

Sale 882

Wednesday, September 29, 2004

**The Blake M. Myers Collection
of Trans-Oceanic Mail
To and From the United States, 1860-65**



Robert A. Siegel

AUCTION GALLERIES, INC.

www.siegelauctions.com

Trans-Oceanic Mails 1860-65

THE EXTRAORDINARY COLLECTION ASSEMBLED BY BLAKE M. MYERS is a comprehensive study of trans-oceanic rates and routes to and from the United States during the period from 1860 through 1865. The array of covers represents the entire world, both inbound and outbound, with special emphasis on unusual frankings, destinations, origins and unusual usages reflecting this turbulent, yet fascinating, period of American history.

In contrast to the 1850's, when mail between the United States and many areas of the world was very limited, beginning in 1860 a significant increase in the volume of trans-oceanic mail occurred. The principal reasons for this growth were the establishment of numerous new postal treaties, the steady growth of ocean steamer routes to distant lands, and the expansion of worldwide commerce. Collectors generally regard the period from 1860 to 1865 as the "classic" era of trans-oceanic mail, which produced a diverse and colorful population of covers, presenting the opportunity to undertake an in-depth study of postal routes to and from the United States.

The Civil War had a profound influence on the postal history of this period, commencing with the secession of South Carolina on December 20, 1860, and ending with the surrender of the South's major armies in April 1865. The Myers collection features several of the most significant artifacts of Civil War trans-oceanic mails, such as the "Southern Letter Unpaid" cover to France, the "Old Stamps Not Recognized" cover to Panama, blockade-run covers to and from the Confederate States, as well as usages from Independent and Confederate States during the early months of the war. Throughout the sale are spectacular Civil War patriotic covers, used to and from the United States, including one of the finest groups of "Angell" covers to reach the market at one time since our 1969 Matthies sale.

Geography is the foundation for the Myers collection; therefore, we have presented covers in groups, beginning with the special Civil War usages and continuing with mail to and from Great Britain and the British Isles, Europe, Scandinavia, Asia and the Far East, Africa, the Near and Middle East, Australasia, Hawaii, the Caribbean and West Indies, and South and Central America. Each country is represented first by covers *from* the United States, followed by covers *to* the United States. Collectors should pay special attention to the extremely rare destinations and origins; in particular, countries in Africa, the Near/Middle East, and the Caribbean/West Indies. Please also note that the bordering countries of Canada and Mexico are excluded from the collection.

Blake M. Myers' long and distinguished collecting career includes winning the American Philatelic Society's coveted Champion of Champions award in 1981 for his exhibit "Civil War Patriotic Covers: The Union and the Confederacy." As the collection presented in this sale catalogue will demonstrate, Mr. Myers is a well-informed collector and student of trans-oceanic mails. At his request, we have included an appendix to the lot descriptions, providing rate and sailing data for each cover, which Mr. Myers assembled through diligent study and consultation with leading experts in the field.

— SCOTT R. TREPEL

AFTERNOON SESSION (LOTS 2001-2272)
WEDNESDAY, SEPTEMBER 29, 2004, AT 1:30 P.M.

THE BLAKE M. MYERS COLLECTION OF TRANS-OCEANIC
MAIL TO AND FROM THE UNITED STATES, 1860-65

"SOUTHERN LETTER UNPAID"



2001

2001^o ☒ **SOUTHN. LETTER UNPAID.** Blue two-line handstamp with matching "Louisville Ky. Jun. 27" double-circle datestamp on 3c Red Star Die entire to **Hautes Pyrennes, France**, "Bayou Chene La. Jun. 8" (1861) circular datestamp, "New York 3 Jul. 11" debit datestamp also cancels entire, ms. "Paid 15" crossed out by blue grids, bold "8" decimes due, transit and receiving backstamps

VERY FINE. AN ESPECIALLY CLEAR STRIKE OF THE "SOUTHERN LETTER UNPAID" HANDSTAMP OF LOUISVILLE. ONE OF ONLY FIVE REPORTED TO FOREIGN DESTINATIONS.

Steven C. Walske's recently published analysis of mail service at the onset of the Civil War provides new information about circumstances surrounding the use of the coveted "Southern Letter Unpaid" marking. Postmaster General Blair's May 27 suspension order prohibited post offices from forwarding southbound mails to disloyal Southern states. However, northbound mail continued to be sent via Louisville. Through June 6, northbound mails were forwarded to Louisville from Memphis or Nashville. From June 7 through 12, only the Nashville post office forwarded mail to Louisville, and Louisville continued to forward mail north. With the resignation of W. D. McNish as Nashville's Federal postmaster on June 12, "Louisville held the mails still being sent north by the discontinued post office at Nashville. This held mail later became the well-known 'Southern Letter Unpaid' mail" (Walske).

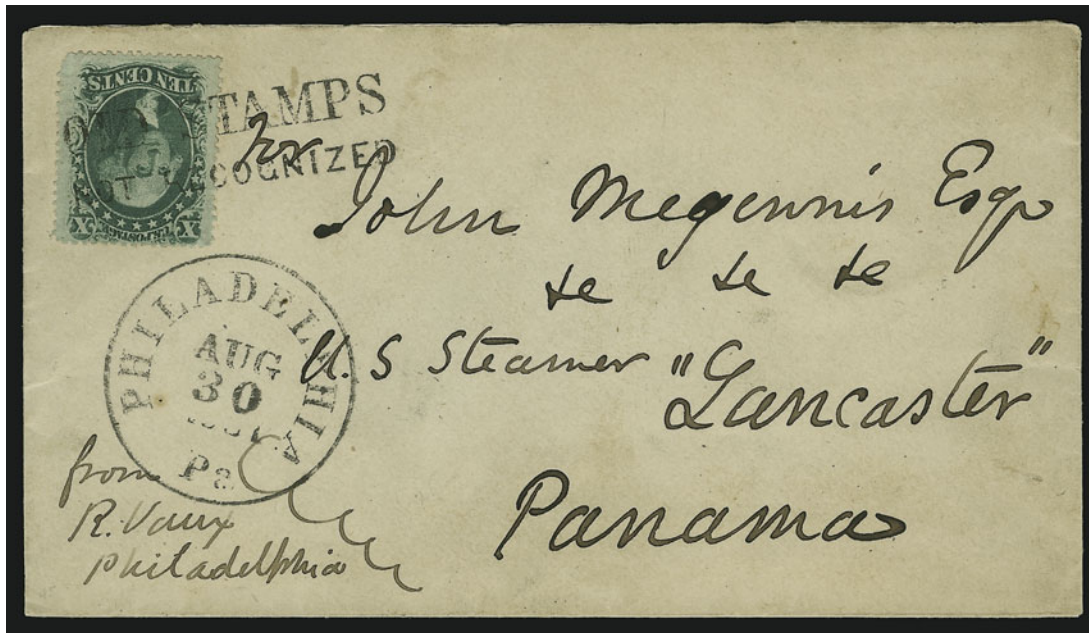
United States postage stamps affixed in the South (and entires used from the South) were regarded as contraband and were refused as prepayment. On June 24, Dr. J. J. Speed, the postmaster at Louisville, was advised to forward letters from the South to the loyal states after *removing* postage. With approximately 5,000 such letters accumulating at Louisville by this date, Postmaster Speed employed a more practical means of invalidating postage by creating the "Southern Letter Unpaid" handstamp.

Immediately after receiving instructions from Washington to forward the held mail, the Louisville post office began marking letters. Some of these have circular datestamps (June 27, 28 and 29 being the most common dates), while others have no Louisville datestamp.

The foreign-bound "Southern Letter Unpaid" covers are as follows: 1) Louisville June 27, from St. Francisville La. to Prussia; 2) Louisville June 27, from Bayou Chene La. to France (the cover offered here) 3) Louisville June 27, from New Orleans to France; 4) no Louisville datestamp, from New Orleans to France; and 5) Louisville Jul. 11, from Petersburg Va. to England.

Ex Wunsch..... E. 40,000-50,000

"OLD STAMPS NOT RECOGNIZED"



2002

2002°☒ **10c Green, Ty. V (35).** Fresh color, short corner perf, tied by "OLD STAMPS/NOT RECOGNIZED" two-line handstamp on cover to a John Megennis, aboard the U.S.S. *Lancaster* at Panama, matching "Philadelphia Pa. Aug. 30, 1861" circular datestamp, ms. note in corner indicates this was sent by **Richard Vaux**, prominent Philadelphian penologist and former mayor

VERY FINE. THE ONLY RECORDED EXAMPLE OF THIS DEMONETIZATION HANDSTAMP ON MAIL BOUND FOR A FOREIGN COUNTRY.

After the U.S. Post Office Department declared its demonetization policy for stamps issued prior to the new 1861 Issue, federal post offices throughout the country were instructed to set expiration dates for the exchange of old for new issues — generally, the exchange period was six days from the date of receipt of new stamps. In Philadelphia the cut-off date was August 26, 1861, from which time letters bearing demonetized stamps were marked "Old Stamps Not Recognized". The absence of a due marking on this cover indicates that the New York City post office (the routing point for mail to Panama) accepted the old stamp, which accords with New York's longer exchange period (ending in November 1861).

The Philadelphia "Old Stamps" marking and similar ones applied to mail originating in the North are related in purpose to the "Southern Letter Unpaid" handstamp, which was applied at the Louisville terminal office on mail originating in the South before all mail exchange was suspended. Six "Southern Letter Unpaid" covers to foreign countries are recorded, one of which bears the 10c 1857 Issue (ex Brown, Baker, Grunin and Ishikawa — realized \$81,700 in Christie's Ishikawa sale). Remarkably, only one "Old Stamps Not Recognized" cover to a foreign country has been recorded to date: this 10c 1857 cover to Panama.

Ex Gibson, Baker and Grunin. Illustrated in Richard Graham's "Postal History and Stamps" series in *The American Philatelist* (Apr. 1978). With 1988 P.F. certificate..... E. 30,000-40,000

BLOCKADE-RUN MAIL TO AND FROM THE CONFEDERATE STATES



2003

2003^o ☒ **ST. VINCENT, 1861, 1p Rose, 6p Yellow Green (1, 1B).** Horizontal strip of three of 1p, horizontal pair of 6p, tied by "A10" in oval grids, "St. Vincent JU 8, 1861" datestamp on back of blue folded letter **carried by blockade-runner into New Orleans, then by Confederate mail to Norfolk Va. via Natchez Miss.,** letter marked "Duplicate/Original p Mail" and datelined "St. Vincent 6 April 1861", clear "St. Thomas JU 13, 1861" transit backstamp, red crayon "4" British rate, "New Orleans La. Sep. 5" receiving datestamp, "Steam" straightline handstamp (pre-war marking), ms. "12" due from recipient for 10c Confederate postage and 2c ship captain's fee, neatly docketed on back with Sep. 10 receipt date, light vertical file folds incl. one between 6p stamps, minor bleached spots and splits along folds

VERY FINE. A REMARKABLE BLOCKADE-RUN COVER FROM ST. VINCENT TO VIRGINIA WITH MULTIPLES OF THE FIRST ISSUE OF ST. VINCENT. ONE OF THE EARLIEST AND ARGUABLY THE MOST SPECTACULAR FRANKING OF ALL BLOCKADE-RUN COVERS.

Beginning with Norfolk, Virginia, on April 30, 1861, the Federal blockade of major Southern ports was successfully implemented over a three-month period. New Orleans was blockaded on May 26, 1861, and it was captured by Union forces on April 29, 1862. Although New Orleans had the potential to become the Confederacy's most important blockade-running port, it was not to be. According to Stephen R. Wise (*Lifelines of the Confederacy*, p. 75): "Throughout the first few months of the war the lack of cooperation between private, state, and government interests wrecked all attempts to send steam blockade runners out of New Orleans." The Mississippi Delta also proved easy for the Federal navy to blockade.

This folded letter, a duplicate of an April 6 letter, was posted from St. Vincent on June 8, 1861, and reached St. Thomas on June 13. It was almost certainly routed thru Havana for an available blockade runner, then brought into New Orleans on September 5, which makes it one of the earliest of all recorded trans-oceanic covers entering any Confederate port after termination of mail exchange (including expresses) on August 26, 1861. The use of the pre-war "Steam" handstamp is very unusual during the Confederate period. Presumably the letter was carried by rail from New Orleans to Norfolk via Memphis.

Very few blockade-run covers bear any stamps, and only a few are franked with stamps of foreign countries. This is the only cover with St. Vincent stamps.

Ex Bogg, Bilden and Haas. With 1967 B.P.A. certificate. E. 30,000-40,000



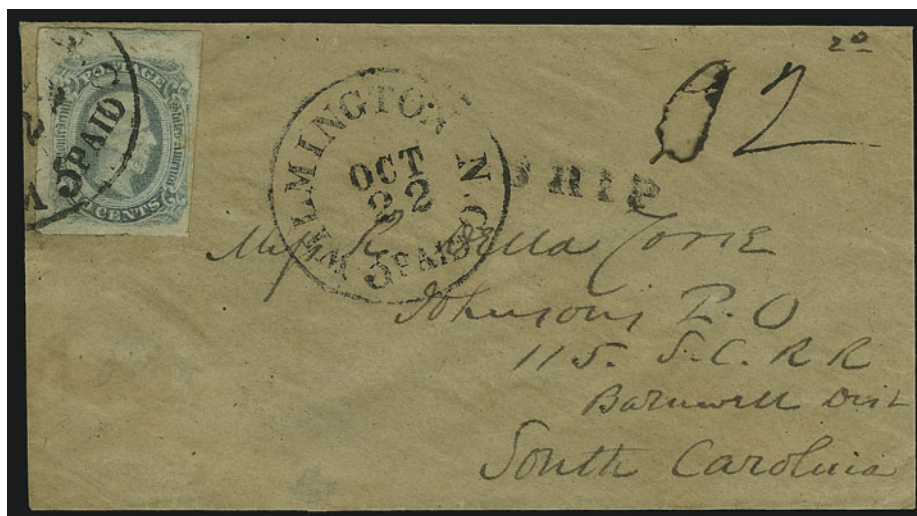
2004

- 2004°✉ **Blockade-Run Usage from Liverpool to Charleston S.C. via Nassau, Bahamas.** June 1862 folded letter with perfect strike of blue oval “Forwarded by Henry Adderley & Co. Nassau N.P. Bahamas” handstamp, faint vertical file folds, fresh and Very Fine incoming blockade-run usage of business contents E. 1,500-2,000



2005

- 2005°✉ **Blockade-Run Usage from London to Richmond Va. via Charleston S.C.** Folded letter datelined “London May 26th 1864” and addressed to Richmond Va., oval “Steam-Ship” handstamp and “Charleston S.C. Jun. 29, 1864” circular datestamp, blue crayon “12” rating, Very Fine, scarce incoming blockade-run usage, ex Corwin, with 1979 C.S.A. certificate E. 1,000-1,500

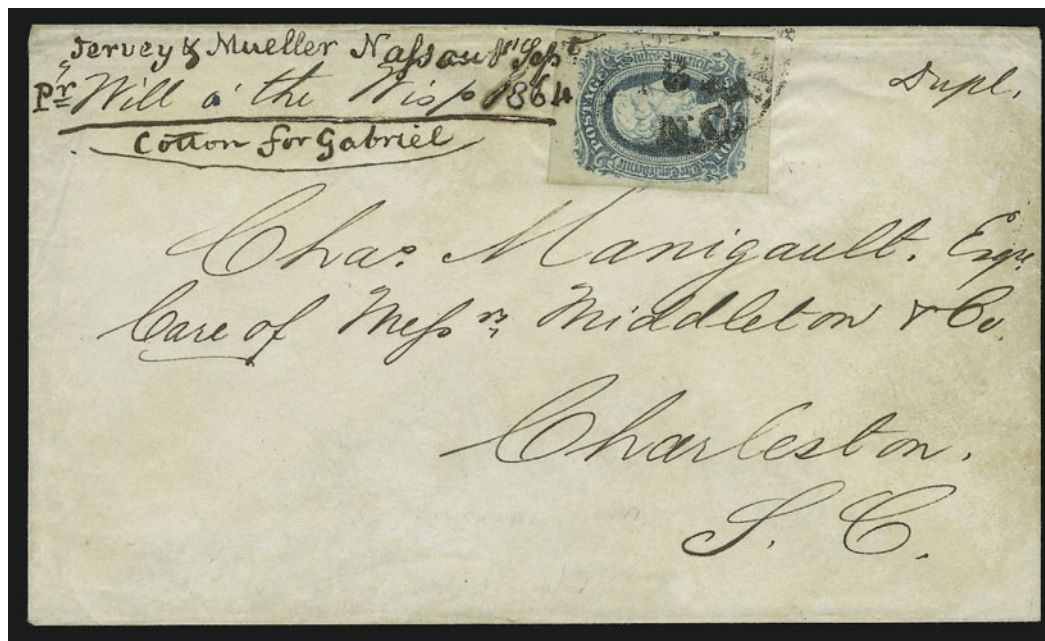


2006

2006°✉ **10c Blue, Die A (11).** Tied by "Wilmington N.C. 5 Paid Oct. 22" circular datestamp (modified pre-war "3 Paid" integral rate) on **incoming blockade-run** cover to Johnson's P.O. S.C., clear strike of Wilmington "Ship" handstamp, ms. "12" due marking changed to "02" for 2c ship's fee in recognition of prepayment with 10c Confederate stamp, some slight ink erosion and small piece out of "0" in ms. marking

VERY FINE. A BEAUTIFUL AND RARE INBOUND BLOCKADE-RUN COVER. VERY FEW KNOWN WITH A CONFEDERATE STAMP PREPAYING INTERNAL RATE.

With 1975 C.S.A. certificate..... E. 7,500-10,000



2007

2007°✉ **10c Blue, Die A (11).** Huge margins all around, tied by "Wilmington N.C. Sep. 6" circular datestamp on **incoming blockade-run** cover from Nassau to Charleston S.C., docketing at top left "Jervey & Mueller Nassau 1st Sept. pr. "Will o' the Wisp" cotton for Gabriel" also ties stamp, minor ink erosion at top

VERY FINE. RARE USE OF A CONFEDERATE STAMP ON BLOCKADE-RUN MAIL WITH NAME-OF-SHIP ENDORSEMENT.

The *Will o' the Wisp* arrived in Wilmington on September 5, 1864, after a run from Nassau. The "Dupl" notation at upper right suggests that this duplicate mailing was sent to Charleston via Wilmington (presumably the original was sent directly to Charleston).

With 1988 P.F. certificate..... E. 3,000-4,000



2008

2008°

Forwarded by Saunders & Son Nassau. Red oval handstamp on **blockade-run folded letter from Liverpool to Richmond Va.**, letter datelined "Liverpool 13th September 1862" and addressed to "Richmond Va. C.S.A.", endorsed "pr. "Scotia"" at top left, fresh and Very Fine, unusual and rare blockade-run usage from England, probably carried into Wilmington and mailed within another envelope, with 1978 C.S.A. certificate E. 2,000-3,000



2009

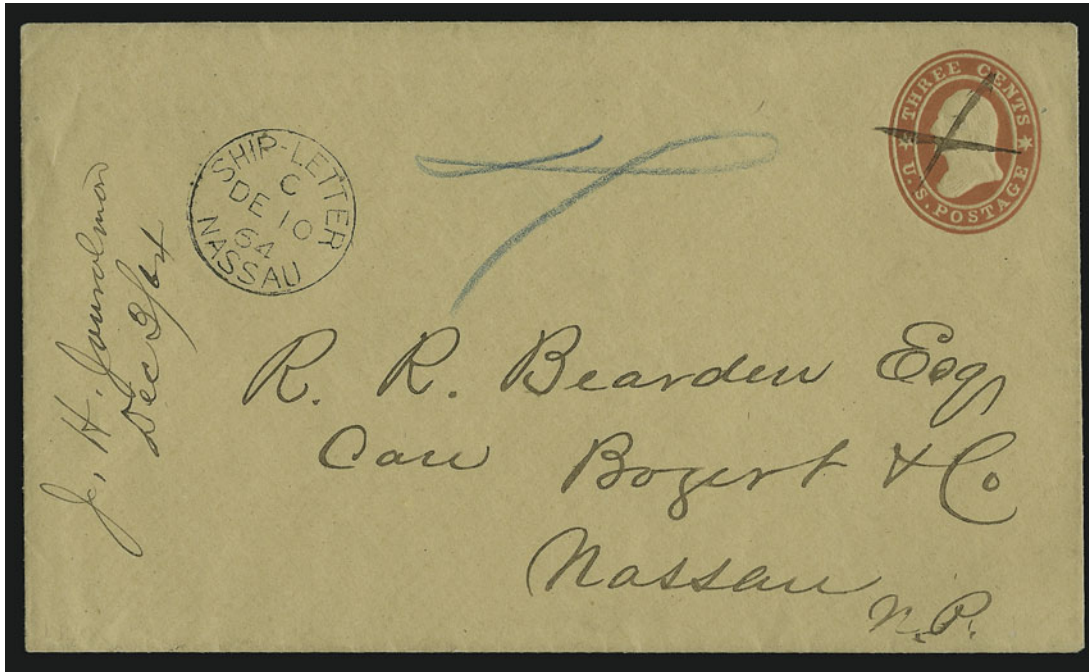
2009°

5c Red Brown (75). Deep shade, used with **1c Blue (63)** and **two 3c Rose (65)**, tied by "New-York Aug. 14, 1862" duplex datestamp and target on **prize-court cover to Nassau, Bahamas**, with red oval "Forwarded by Saunders & Son, Nassau" handstamp, blue pencil "4" British rate, stamps with few faults incl. 1c small piece out at bottom

FINE APPEARANCE. A SPECTACULAR FRANKING AND VERY RARE COVER CAPTURED DURING AN ATTEMPTED BLOCKADE RUN AND USED AS EVIDENCE IN THE PRIZE COURT AT PHILADELPHIA.

The notations at right and evidence number "84" in red at left were applied by the Philadelphia Prize Court. Mail from captured blockade runners was used as evidence in trials to confiscate vessels. This cover was probably mailed at New York City on August 14, 1862, to Saunders and Son in Nassau, who acted as forwarding agents for blockade runs to and from the Confederacy. Evidently, the blockade-run steamer was captured en route from Nassau to one of the destination ports.

Ex Knapp E. 2,000-3,000



2010

2010°
Blockade-Run from Wilmington N.C. to Nassau, Bahamas. Demonetized 3c Red Star Die entire crossed out and addressed to Nassau, Bahamas, well-struck "Nassau Ship-Letter DE 10, 1864" circular datestamp, blue crayon "4", with original letter datelined "Wilmington N.C. Dec. 3rd 1864"

EXTREMELY FINE. A PRISTINE OUTBOUND BLOCKADE-RUN COVER FROM WILMINGTON TO NASSAU.

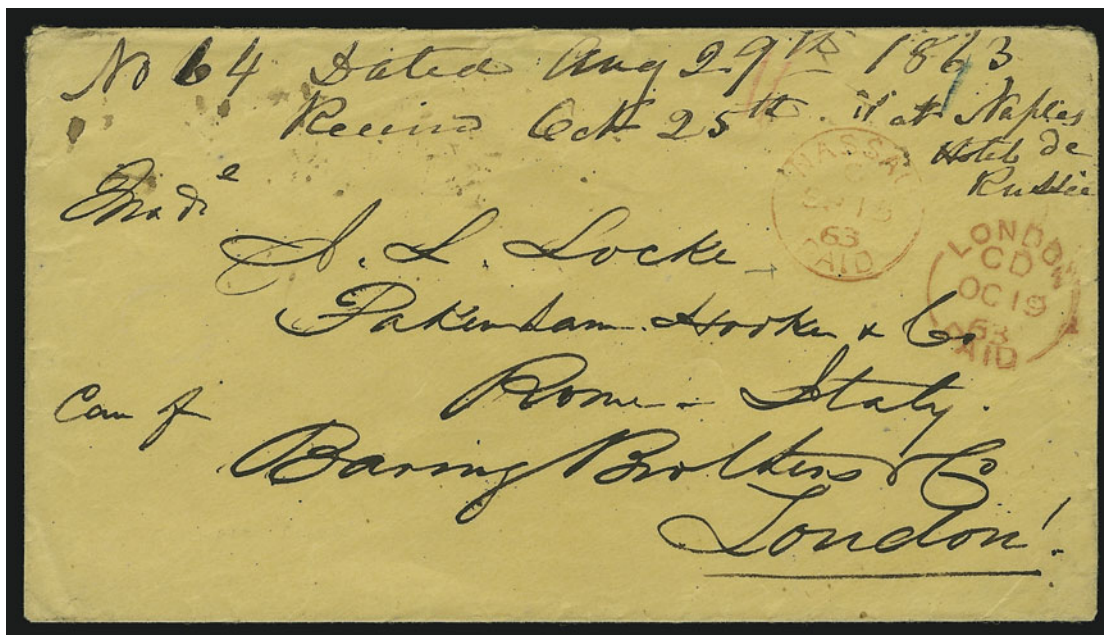
The letter begins "I send this by St. 'Wild Rover'" and mentions a passport request to General Bragg and speculation about Sherman's advance. The *Wild Rover* sailed from Wilmington on Dec. 7, 1864, arriving Dec. 10.

Ex Knapp..... E. 7,500-10,000



2011

- 2011°✉ **Blockade-Run from South Carolina to Liverpool via Nassau, Bahamas.** Burckmyer correspondence cover from Summerville S.C. to care of Fraser, Trenholm & Co., Liverpool, England, clear "Bahamas AP 16, 1864" backstamp, Liverpool receiving circular datestamp, ms. "2/-" due marking, trivial edgewear, Very Fine blockade-run usage, the firm of Fraser, Trenholm & Co. was a principal agent in the blockade-running business..... E. 1,000-1,500



2012

- 2012°✉ **Blockade-Run Usage from Savannah Ga. to Rome, Italy, via Nassau, Bahamas.** Buff cover from the Locke correspondence, originating in Savannah on Aug. 29, 1863 (docketed), addressed to Rome in care of Baring Bros. in London, carried from Charleston to Nassau by blockade runner, held by forwarder until next sailing for New York, red "Nassau Paid C SP 15 63" datestamp, red London Paid transit, forwarded to Naples (receipt docketing), red "11" and blue "1" rate notations at top, minor backflap faults, Very Fine and scarce usage E. 750-1,000

GREAT BRITAIN AND BRITISH ISLES



- 2013° ☒ **1c Blue, Ty. V (24).** Rich color, tied by small "New York P.O. Station E" and "N. York Am. Pkt. ?" circular datestamps on 1861 red and blue **Eagle and Shield Patriotic** cover **to London, England**, ms. "1/-" shilling due marking, red London backstamp, expertly repaired, Fine, rare usage, the only reported example of a transatlantic patriotic with the carrier fee as the only franking E. 750-1,000
- 2014° ☒ **1c Blue (63).** Two, tied by "North Ridge N.Y. May 7 (1861)" circular datestamp on red and blue **Standing Liberty and Flag Patriotic** cover opened and used as a **wrapper to London, England**, bold "1d" due handstamp, bottom stamp torn at bottom, otherwise Very Fine, probably a unique use of the 1c 1861 on a transatlantic wrapper made from a patriotic envelope, with 1977 P.F. certificate E. 1,500-2,000



2015

2015° 24c Gray Lilac (37). Choice centering, tied by grid, red "New York Jul 9 19" circular datestamp on red and blue **Standing Liberty and Flag Patriotic** cover to **London, England**, 1861 London receiving datestamp, few faults incl. small erosion hole in address, otherwise Very Fine, ex Ackerman..... E. 1,500-2,000



2016

2016° 24c Gray Lilac (37). Rich color, tied by grid, "Dayton O. Jul. 11, 1861" circular datestamp on red and blue **Eagle, Flag and Snake Patriotic** cover to **Bolton, England**, stamp strategically placed at same angle as flagpole of patriotic, red "3" credit, London transit, Horwich and receiving backstamps, some slight overall wear, Very Fine, attractive usage, ex Hubbard E. 1,000-1,500



- 2017° 5c Brown, Ty. II (30A). Used with 24c Gray Lilac (37), tied by well-struck "San Francisco Cal. Aug. 15, 1861" circular datestamp on orange cover to **London, England**, red London transit and "19" credit handstamp, blue "Paid" in oval handstamp (applied in Victoria B.C.) under stamps and red crayon "29" also partly under stamps, stamps with trivial faults, fresh and Very Fine, scarce combination of these stamps from Victoria to England, signed Ashbrook E. 1,000-1,500
- 2018° 12c Black, Plate 3 (36b). Two horizontal pairs, tied by grids, "Fall River Ms. Aug. 13, 1861" circular datestamp on cover to **Leeds, England**, red "38" credit, receiving back-stamp, missing top flap, fresh and Very Fine, scarce double-rate usage just prior to demonetization E. 750-1,000
- 2019° 24c Gray Lilac (37). Two horizontal pairs, tied by grids on cover to **London, England**, red "Boston Br. Pkt. Paid Jun. 26" backstamp, London transit, red crayon "76" credit, expertly repaired along edges and on left stamp, otherwise Very Fine, scarce quadruple-rate usage, ex Kapiloff..... E. 2,000-3,000



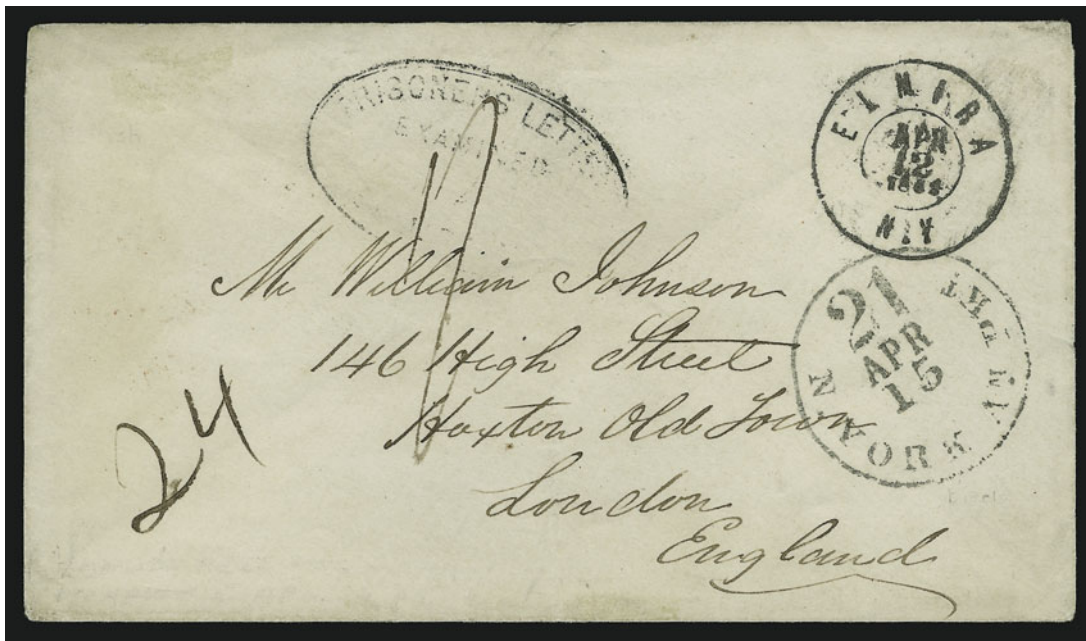
2020

- 2020° ☒ **24c Steel Blue (70b).** Two, deep rich color in the true Steel Blue shade, unusually choice centering, tied by grids on cover to **Manchester, England**, red "N. York Br. Pkt. 38 Dec. 24" credit datestamp, 1862 receiving backstamp, endorsed "Per Steamer "Europa"", sealed opening tear at top, otherwise Very Fine, scarce usage of the 24c Steel Blue..... E. 1,500-2,000



2021

- 2021° ☒ **24c Red Lilac (70).** Cancelled by leaf, "Dayton O. Aug. 6, 1863" double-circle datestamp on cover to **London, England and forwarded to Paris, France**, red "New York Am. Pkt. 3 Aug. 8" credit datestamp, stamp also tied by "London AU 20, 1863" circular datestamp, forwarding postage paid by horizontal pair of **Great Britain 4p Vermilion (43)** tied by "SW 25" in barred oval handstamps, various transits, missing small part of top flap, some minor edgewear, Very Fine, unusual combination usage..... E. 500-750



2022

2022°✉ **Prisoner's Letter Examined Elmira N.Y.** Oval handstamp on cover to **London, England**, bold "Elmira N.Y. Apr. 12, 1865" double-circle datestamp and "N. York Am. Pkt. 21 Apr. 15" debit datestamp, ms. "24" and "1/-" due markings, red London backstamps

VERY FINE. AN INCREDIBLY RARE PRISONER'S LETTER SENT FROM ELMIRA PRISON TO LONDON, ENGLAND.

Only a very small number of prisoner's letters are known to foreign destinations. This cover was mailed just after Appomattox..... E. 4,000-5,000



2023

2023°✉ **1856, 1sh Green (28).** Bright color, s.e. at right, tied by well-struck "131" in grid, "Edinburgh JU 25, 1862" circular datestamp on cover to Charleston S.C., faint strike of red Boston 24c credit datestamp and July 14 double-circle datestamp on back, clear strike of "Sent back to England without a reason for non-delivery" boxed handstamp, expertly repaired, Very Fine appearance, rare attempted usage to Confederate South Carolina thru regular postal channels, postal relations between North and South were severed after May 31 and so this letter was returned as undeliverable E. 1,000-1,500



- 2024° ☒ **Liverpool AU 8, 1861.** Circular datestamp with “19 Cents” handstamp on red and blue **Waving Flag Patriotic** cover to Boston, endorsed “Per “Canada””, neat “Boston Aug. 23 B. Pkt. 24” debit datestamp, fresh and Very Fine foreign usage of a Union patriotic E. 500-750
- 2025° ☒ **Bristol AU 16, 1861.** Well-struck circular datestamp with “19 Cents” handstamp on red and blue **Eagle and Waving Flag Patriotic** cover to Bowdoinham Me., “I.P. Snell & Co., Ship Brokers, Bristol” sender’s handstamp, “N. York Br. Pkt. 24 Aug. 29” debit datestamp, barely reduced at right and some minor wear, Very Fine, attractive incoming usage of the patriotic.... E. 500-750
- 2026° ☒ **1856, 1p Rose Red, Re-engraved (20).** Rich color, tied by “466” in barred oval, “Liverpool JU 5, 1860” circular datestamp on blue folded cover to Richmond Va., red “2” crayon rating, endorsed “pr. Canadian Packet” and “printed sheet”, faint vertical file fold well clear of stamp, fresh and Very Fine, scarce usage paying the printed matter rate..... E. 150-200
- 2027° ☒ **1856, 1sh Green (28).** Vertical pair with wing margin at right, used with 1p Rose Red, Re-engraved (20) and tied by “47” in grid cancels on 1861 folded letter to New York, red “Paid” and “42 Cents” handstamps, blue “London AU-28, 1861” on back, stamps with minor faults mostly in margin, Very Fine double-rate usage, the additional 1p paid late fee in London..... E. 300-400
- 2028° ☒ **1856, 6p Lilac, 1sh Green (27, 28).** Horizontal pair of 1sh, tied by “21” in grid cancels on 1861 **registered** folded letter to Philadelphia, red “Registered 15 JU 1861” oval datestamp, matching “Registered” crown ties 1sh stamps, large red “Lombard Street Registered Letter” handstamp, “48” credit, faint strike of red transit circular datestamp, fresh and Very Fine double-rated registered usage, ex Pratt..... E. 200-300
- 2029° ☒ **1856, 1sh Green (28).** Horizontal pair, used with 2p Blue (29) and 3p Pale Rose (37), tied by “277” in grid and “Paisley AU 16, 1862” datestamp on blue folded letter to San Francisco, red “San Francisco Cal. Paid Sep. 17, 1862” circular datestamp also ties stamps, right 1sh stamp affected from cover wrinkling, otherwise colorful and Very Fine double-rate usage from England to California, ex Kutz..... E. 400-500
- 2030° ☒ **1865, 1sh Green (48).** Bright color, tied by “48” in barred oval handstamp, “Bilston MR 16, 1865” circular datestamp on blue cover to Bath Me., red “21 Cents” credit, red “Boston Am. Pkt. Mar. 30 Paid 24” datestamp, May 15 receiving backstamp, neat “Advertised” and “Not Called For” handstamps, fresh and Very Fine E. 300-400
- 2031° **1865, 4p Vermilion (65).** Wing margin at right, cancelled by “466” in barred oval handstamp **on front page** of *The Daily News of London* newspaper to New York, endorsed at top “Messrs. Brown Bros. & Co. New York 4 papers”, stamp with few tiny nicks, otherwise Very Fine, rare attached to the original newspaper, this was the top paper of four sent at four-times 1p rate..... E. 500-750

IRELAND, SCOTLAND AND WALES



2032

- 2032° ☒ **24c Red Lilac (70).** Radiant color, tied by target and “Washington D.C. Mar. 26, 1864” double-circle datestamp on red and blue **Liberty and Flag Riding Eagle Patriotic** cover to **Cork, Ireland**, red “Boston Br. Pkt. 19 Paid Mar. 3” circular datestamp, receiving backstamp, fresh and Very Fine, beautiful cover E. 1,500-2,000
- 2033° ☒ **“Dundalk DE 12, 1863”.** Circular datestamp on **mourning** cover to Madison Ind., bold “19 Cents” handstamp, “Boston Br. Pkt. Dec. 25 24 or 36 U.S. Notes” depreciated currency datestamp, ms. “7 Due” handstamp, missing top flap, Very Fine usage from Ireland..... E. 100-150



- 2034° 1856, 1p Rose Red, Re-engraved, 6p Lilac (20, 27). Horizontal strip of six of 2p (some perf separations prior to use), tied by "356" in square grid handstamps and "Cork JA. 19, 1861" circular datestamp on cover to New Bedford Mass., stamps also tied by red "N. York Br. Pkt. Feb. 2 Paid 24" credit datestamp and "3 Cents" handstamp, Feb. 3 receiving backstamp, stamps with minor defects from placement at edge of cover, otherwise Very Fine usage paying the equivalent of the 24c rate, very scarce multiple franking from Ireland in this period..... E. 300-400
- 2035° 1856-62, 6p Lilac (27, 39). Two, both s.e. at right, tied by clear strikes of "186" in diamond grids, "Dublin AP 18, 1863" circular datestamp on cover to South Lancaster Mass., red "N. York Am. Pkt. Paid 24 Apr. 21" datestamp, barely reduced at right and minor edgewear, Very Fine usage from Ireland, scarce combination usage of the two different 6p stamps..... E. 300-400
- 2036° Charleston S.C. Jan. 11, 1861. Circular datestamp on blue folded letter to Edinburgh, Scotland, bold "N. York Br. Pkt. Jan. 16 5" debit datestamp, 1sh due marking, receiving backstamp, light vertical file folds, Very Fine, scarce Independent State usage to Scotland..... E. 400-500
- 2037° Boston May 21 B. Pkt. 5. Well-struck circular datestamp on red and blue Standing Liberty and Flag Patriotic cover to Glasgow, Scotland, June 21, 1861 receiving backstamp, "1/-" due marking, ms. "Fort Warren" and "I stand by this flag" at left, barely reduced at top, Very Fine... E. 400-500
- 2038° 10c Yellow Green (68). Two, used with 1c Blue (63) and 3c Rose (65), tied by "Whitestone N.Y. Feb. 26" circular datestamp on red and blue Standing Liberty and Flag Patriotic 1862 cover to Scotland, red "Short Paid" handstamp, treated as unpaid in New York where 10c debit datestamp was applied, red "19" credit crossed out by grid and correctly rated 2sh due for unpaid double rate, receiving datestamp, some faults, otherwise Very Fine, colorful and scarce usage, correctly franked for the single rate, this was overweight and so treated as completely unpaid, ex Hubbard, with 1982 P.F. certificate E. 750-1,000



2039

- 2039° 10c Green, Ty. V (35). Vertical pair, used with 1c Blue, Ty. V (24) and 3c Dull Red, Ty. II (26), tied by unusual grid of dots and "Marshalltown Ioa. Aug. 14" circular datestamp on "Remember Ellsworth" Patriotic cover to Abberffraw, North Wales, red "Boston Br. Pkt. Aug. 21/19" credit datestamp, 1861 receiving backstamp, some overall wear, top 10c defective

VERY FINE APPEARANCE. A BEAUTIFUL AND RARE EXAMPLE OF AN ELLSWORTH PATRIOTIC DESIGN ON A COVER TO NORTH WALES.

According to the website <http://www.us-civilwar.com/ellsworth.htm>, "Ellsworth worked as a law clerk, became interested in military science, and joined Chicago's National Guard Cadets. Made colonel of the group, Ellsworth infused the unit with his enthusiasm. He introduced his men to the flashy Zouave uniforms and drill that emulated French colonial troops in Algeria and turned the group, renamed the U.S. Zouave Cadets, into a national champion drill team. In the summer of 1860, the unit performed hundreds of quick, flashy movements with their muskets and bayonets for awed audiences in 20 cities. In August Ellsworth went to Springfield, Ill., to study law in Abraham Lincoln's office. He helped Lincoln with his campaign for president and went with him to Washington, D.C. Lincoln called Ellsworth 'the greatest little man I ever met.' When the Civil War erupted, Ellsworth went to New York City and raised a regiment of volunteers from the city's firefighters. As colonel of the New York Fire Zouaves, Ellsworth was anxious to be the first to invade the South. On May 24, 1861, the day after Virginia seceded, Ellsworth led his men uncontested down the streets of Alexandria. He sent some of his men to take the railroad station while he and a few others went to secure the telegraph office. On the way he noticed a Confederate flag atop the Marshall House Inn. Ellsworth and four others quickly ascended the stairs; Ellsworth cut down the flag and was on the way down the stairs when the proprietor killed him with a shotgun blast to the chest. Cpl. Francis Brownell immediately killed the innkeeper. Lincoln, grief-stricken, had an honor guard bring his friend's body to the White House, where it lay in state on May 25. The body was then moved to City Hall in New York City, where thousands paid their respects to the first man to fall for the Union. Ellsworth was buried in Mechanicville, N.Y. Volunteers flocked to join the Union cause in response to Ellsworth's death. 'Remember Ellsworth' was a patriotic slogan, and a New York regiment of volunteers called itself the Ellsworth Avengers."..... E. 4,000-5,000

- 2040° Boston Sept. 6 A. Pkt. 21. Bold circular datestamp on red and blue Eagle and Flag Fighting Rattlesnake Patriotic cover to Cardiff, Wales, 1861 London and receiving backstamps, ms. "1/-" due marking, trivial edgewear, Very Fine.....Photo opposite E. 400-500

- 2041° 1856, 1sh Green (28). Deep rich color, s.e. at left, tied by "192" in grid cancel, "Keith SP 28, 1864" backstamp on cover to New York, red "Paid Derry SP 3, 1864" transit with matching "21 Cents" handstamp, "Paid" in arc applied at New York, missing part of back and some edgewear, Very Fine, ex Trowbridge.....Photo opposite E. 150-200

FRANCE



2042



2043

- 2042° ☒ **5c Brown, Ty. II (30A).** Vertical strip of three, scissors-separated perfs leaving portions of stamps at top and bottom but cut into at sides, tied by “New Orleans La. Mar. 21” (1861) circular datestamp on blue 1861 folded letter to **Gironde, France**, red “New York Paid 3 Apr. 6” credit datestamp, various transits, faint horizontal file fold well clear of stamps, Fine, scarce usage from Confederate New Orleans E. 2,000-3,000
- 2043° ☒ **1c Blue, Ty. V, 3c Dull Red, Ty. II (24, 26).** Tied by “New-York Apr. 16, 1861” circular datestamp on folded printed circular to **Havre, France**, French transit and accounting handstamps, Very Fine double circular-rate usage E. 500-750



2044

- 2044° ☒ **12c Black (36).** Used with 3c Dull Red, Ty. II (26), tied by large "Paid" grid, red "Boston Paid 3 Apr. 26" credit datestamp on red and blue **Waving Flag Patriotic** cover to **Paris, France**, ultramarine French transit and red boxed "PD" also tie stamps, 1861 receiving backstamps, fresh and Fine, attractive and scarce usage of patriotic to France E. 1,000-1,500



2045

- 2045° ☒ **30c Orange (38).** Radiant color, tiny corner crease at bottom right, tied by red grid, matching "New York Paid 24 Jul. 3" credit datestamp on blue on yellow **"Why don't you take it?" Patriotic** cover to **Paris, France**, 1861 usage endorsed "Steamer Africa", red boxed "P.D." handstamp, transit and receiving datestamps, opened for display of all markings, trivial wear

VERY FINE. A BEAUTIFUL AND RARE DOUBLE-RATE USAGE OF A PATRIOTIC COVER TO FRANCE.

The 1857 issue was demonetized soon after this cover was mailed. Very few patriotics to foreign destinations are known with the 30c 1860 stamp. E. 4,000-5,000

2046



- 2046° ☒ **12c Black (69).** Used with horizontal pair, block of three and single of 3c Rose (65), tied by red (mixed with black) circle of wedges, red "Boston Paid 24 Jan. 20" credit datestamp on red and blue "In Union there is Strength" Patriotic cover to Paris, France, 1864 usage, red boxed "PD" handstamp, various transits, few stamps incl. 12c faulty, still Very Fine appearing cover from the Angell correspondence, scarce usage and an unusual franking for double rate, none with this design was offered in the Matthies sale E. 2,000-3,000

2047



- 2047° ☒ **12c Black (69).** Horizontal pair, used with two 3c Rose (65) and tied by large "Paid" grids on red and blue **Eagle and Shield Patriotic** cover to Paris, France, Angell correspondence, red "Boston Paid 12 Nov. 14" circular datestamp, endorsed "via Hamburg" at bottom left and carried on HAPAG line to Southampton and thence by British packet service to France, receiving backstamp, stamps have small faults from placement at edge of cover
VERY FINE APPEARANCE. A BEAUTIFUL PATRIOTIC COVER FROM THE ANGELL CORRESPONDENCE.
The arrangement of this cover, with patriotic design at left, stamps at right and slogan at center, has strong visual appeal and balance.
Ex Matthies. E. 5,000-7,500



- 2048° 10c Yellow Green (68). Used with two 1c Blue (63) and 3c Rose (65), cancelled by grids, "Cazenovia N.Y. Mar. 3" circular datestamp on 1862 cover to Paris, France, red boxed "P.D." and French transit tie stamps, red Boston 12c credit datestamp, receiving backstamp, fresh and Very Fine E. 300-400
- 2049° 24c Violet, Thin Paper (70c). Used with 1c Blue (63) and two 3c Rose (65), tied by grids, red "New York Paid 24 Oct. 1" credit datestamp on small 1861 cover to Paris, France and forwarded to Biarritz, small red boxed "PD" handstamp, various transits, slightly reduced at top affecting 1c stamp and missing top flap, otherwise Fine, colorful and unusual usage paying double the 15c rate plus a 1c carrier fee, ex Haas and Hyzen E. 1,500-2,000
- 2050° 30c Orange (71). Horizontal pair, tied by negative 4-Point Star cancels, red "New York Paid 24 Sep. 10" circular datestamp on blue 1864 folded cover to Lyon, France, red boxed "P.D." handstamp, various transits, horizontal file fold well clear of stamps, stamps with light wrinkling, Fine, scarce quadruple-rate usage E. 1,000-1,500



2051

2051°✉ **Prindle's Express From Yreka to Scott & Klamath Rivers.** Bold strike of oval handstamp, "Yreka Cal. Jan. 7" (1862) circular datestamp on cover to **Cluses, France**, red "New York Paid 6 Mar. 1" credit datestamp, magenta ms. "Paid 15", red boxed "P.D." handstamp, various 1862 transits, trivial edgewear

VERY FINE. AN INCREDIBLY RARE WESTERN EXPRESS USAGE, CARRIED FROM THE MINES BY PRINDLE'S EXPRESS AND ADDRESSED TO FRANCE.

According to the Nathan book, Charles W. Prindle operated this express from Yreka to the Scott and Klamath River Mines from 1860 to 1862. He connected with Wells, Fargo at Yreka, sharing an office with them there. The cover offered here entered the mails at Yreka, where 15c in cash was given to the post office, paying the rate to the destination in France.

With 1994 P.F. certificate. E. 7,500-10,000



- 2052° ☒ **1853-60, 80c Rose on Pinkish (20).** Two, large margins to just in, tied by diamond of dots cancel, red "Havre June 7, 1861" double-circle datestamp on blue folded letter to New Orleans La., endorsed "per 'Africa' via Queenstown", red boxed "P.D." and "Br. Service" handstamps, red "New York Paid 30 June 20" credit datestamp, light horizontal file folds, Very Fine, scarce usage, postal relations between North and South were severed after May 31, 1861, this cover apparently made it through to New Orleans, possibly by ship E. 1,000-1,500
- 2053° **1853-60, 20c Blue on Bluish (15).** Horizontal pair and two singles, huge margins to just in, tied by "1460" in diamond of dots cancels, neat "Guebwiller Feb. 21, 1862" double-circle datestamp on cover front only to South Manchester Conn., small red boxed "PD" and "Br. Service" handstamps, red "Boston Mar. 7 Paid 15" circular datestamp, fresh and Fine E. 100-150
- 2054° ☒ **1853-60, 40c Orange on Yellowish (18).** Three vertical pairs and two singles, tied by "441" in diamond of dots cancels, "Bordeaux 7 Sept. 1860" double-circle datestamp on blue folded letter to **San Francisco**, red "Br. Service" and boxed "PD" handstamps, red "Boston Br. Pkt. Paid Sept. 21" transit datestamp, red "60" crayon credit, few faults incl. stamps affected by file folds, otherwise Fine, impressive and very scarce franking on this quadruple-rate cover E. 1,500-2,000
- 2055° ☒ **1853-60, 40c Orange on Yellowish (18).** Two, large margins to just clear, tied by diamond of dots, "Paris Oct. 31, 1862" double-circle datestamp on cover to New York, red London transit, red boxed "P.D." handstamp, endorsed "via Queenstown & Cunard steamer", stamps also tied by "N. York Br. Pkt. 5 Nov. 17" debit datestamp, Very Fine E. 300-400
- 2056° ☒ **1853-60, 80c Rose on Pinkish (20).** Large margins to just in, tied by "laRaP" in diamond of dots cancel, "Rochelle 10 Dec. 1862" circular datestamp on blue folded letter to Boston, red "Boston Br. Pkt. Dec. 29 Paid" datestamp, faint horizontal file fold barely affects stamp, otherwise Fine E. 200-300

AUSTRIA AND HUNGARY



2057



2058

- 2057° ☒ **12c Black, Plate 3 (36b).** S.e. at left, used with 1c Blue (63) and five 3c Rose Pink (64b), two 3c s.e. and one defective at left from separating prior to use, tied by large Boston "Paid" grids and red "Boston Br. Pkt. 7 Paid Sep. 8" credit datestamp on **Major General John E. Wool Patriotic cover to Vienna, Austria**, 1863 usage, red framed Aachen transit, endorsed "Per 'Arabia' via England & Belgium", receiving backstamp, stamps with faults

VERY FINE APPEARANCE. A RARE PATRIOTIC COVER TO AUSTRIA COMBINING THE 12-CENT STAMP FROM THE 1857 ISSUE WITH THE ONE-CENT AND 3-CENT STAMPS FROM THE 1861 ISSUE.

Only five covers in the Matthies sale of Angell covers bear a combination of stamps from the two issues.

Ex Matthies..... E. 7,500-10,000

- 2058° ☒ **12c Black (69).** Used with 3c Rose (65), tied by large grids and red "N. York Brem. Pkt. 12 Paid Oct. 24" credit datestamp on **bronze General Sprague Magnus Patriotic cover to Vienna, Austria**, blue "America Uber Bremen Franco" three-line handstamp, receiving backstamp, 1863 usage, wholesale grocer's embossing on back from Boston, light vertical file fold between stamps does not affect them

VERY FINE. A BEAUTIFUL AND RARE MAGNUS PATRIOTIC COVER TO AUSTRIA PAYING THE 15-CENT RATE VIA BREMEN-HAMBURG MAIL. FROM THE ANGELL CORRESPONDENCE.

This Magnus design in metallic bronze is extremely rare in any usage.

Ex Matthies..... E. 5,000-7,500



2059

2059°

12c Black (69). Used with 3c Rose (65), tied by segmented corks and red "N. York Brem. Pkt. 12 Paid Sep. 26" credit datestamp on red and blue **Waving Flag, Odd Fellows, House and Slogan Patriotic** cover to **Vienna, Austria**, blue "America Uber Bremen Franco" three-line handstamp, receiving backstamp, barely reduced at top and with small nick

VERY FINE AND RARE EXAMPLE OF THE THIS MASONIC PATRIOTIC DESIGN USED TO AUSTRIA.

From the Angell correspondence. Ex Matthies. E. 3,000-4,000



2060

2060°

30c Orange (71). Radiant color, tied by "Paid" in oval on purple **Seated Liberty, Eagle, Flag and Shield Magnus Patriotic** cover to **Vienna, Austria**, red "Boston Br. Pkt. 7 Paid Dec. 3" circular datestamp, stamp also tied by red framed Aachen transit, 1861 receiving backstamp, expertly repaired tear at top

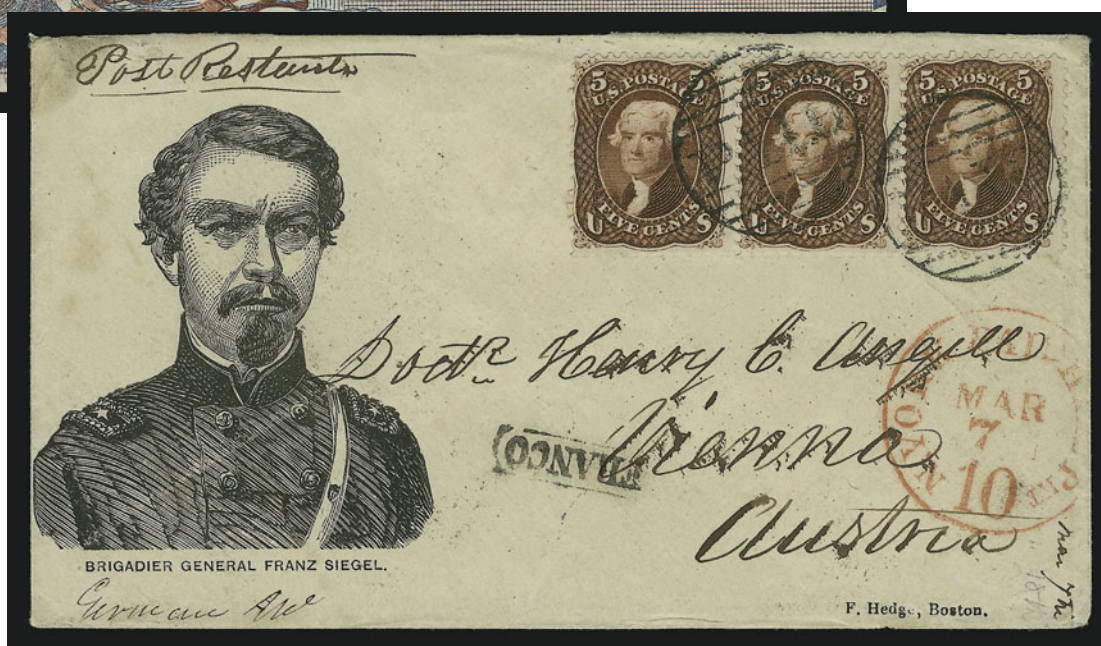
VERY FINE APPEARANCE. A RARE AND BEAUTIFUL "ANGELL" MAGNUS PATRIOTIC COVER USED TO AUSTRIA WITH THE 30-CENT 1861 ISSUE.

The 30c stamp overpays the 28c rate via Prussian Closed Mail. Only two Angell covers were offered in the Matthies sale bearing the 30c stamp. The other paid double the 15c rate to France.

Ex Matthies..... E. 5,000-7,500



2061



2062

- 2061° 2c Black, 24c Lilac (73, 78). Horizontal pair of 2c, tied by circle of wedges cancels, red "Boston Br. Pkt. Dec. 29" circular datestamp on red and blue **Seated Liberty State of Vermont Patriotic** cover to **Vienna, Austria**, Angell correspondence, 1863 usage, red framed Aachen transit, receiving backstamp, small sealed tear at top of cover, left 2c small piece out at top left (probably prior to use)
- VERY FINE. A BEAUTIFUL AND RARE PATRIOTIC COVER TO AUSTRIA FROM THE ANGELL CORRESPONDENCE. ESPECIALLY RARE WITH THE 2-CENT BLACK JACK.

A review of the Angell covers offered in the Matthies sale reveals only two other covers with the 2c Black Jack. One is used with the 10c and 3c to make up the 15c rate to France. The other is a pair used with a pair of the 12c to make up the 28c Prussian Closed Mail rate to Austria.

Ex Matthies..... E. 7,500-10,000

- 2062° 5c Red Brown (75). Horizontal strip of three, beautifully warm color, tied by large Boston "Paid" grids on **Brigadier General Siegel Patriotic** cover to **Vienna, Austria**, Angell correspondence, red "N. York Paid Hamb. Pkt. 10 Mar. 7" circular datestamp, small "Franco" handstamp, 1863 transit and receiving backstamps, trivial edgewear at top left

VERY FINE. A BEAUTIFUL AND RARE STRIP OF THREE OF THE 5-CENT 1862 RED BROWN ON A PATRIOTIC COVER TO AUSTRIA. VERY FEW ARE KNOWN.

Very few patriotic covers are known franked with the 5c Red Brown. This is one of only two offered in the Matthies sale, and the only one to Austria. The much more common franking for this rate was a combination of the 12c and 3c stamps for the 15c rate.

Ex Matthies..... E. 7,500-10,000



2063

2063° ☒ **AUSTRIA (USED IN HUNGARY), 1858-59, 2kr Yellow, 5kr Red, 10kr Brown, 15kr Blue (6, 9, 10, 11).** Two 2kr, vertical pair and two singles of 15kr, tied by "Raab 3/3" datestamps on 1860 **registered** cover **from Hungary to New York**, various transits incl. Vienna and Aachen, well-struck red "Registered" handstamp with crown, red "N. York Am. Pkt. Paid 30 Mar. 23" credit datestamp, opened for display, some slight wear

VERY FINE. A REMARKABLE FOUR-COLOR FRANKING PAYING THE PRUSSIAN CLOSED MAIL RATE PLUS REGISTRY FEE FROM HUNGARY TO NEW YORK.

A wonderful and scarce franking. Ex Ryan. E. 10,000-15,000

2064



- 2064° ☒ **12c Black, Plate 3 (36b).** Horizontal pair, s.e. at left, tied by large Boston "Paid" grids, red "Boston Br. Pkt. 7 Paid Jun. 4" credit datestamp on red and blue "Stand by the Flag" Patriotic cover to Antwerp, Belgium and forwarded to Frankfort, Germany, 1861 usage, embossed grocer's return card at top, small boxed "PD" handstamp, Ostende and Anvers backstamps, blue ms. rating

VERY FINE. A RARE "ANGELL" PATRIOTIC COVER WITH THE 12-CENT 1857 ISSUE, ADDRESSED TO BELGIUM AND FORWARDED TO GERMANY.

A review of the Matthies holding of Angell patriotics found only three covers bearing stamps solely from the 1857 Issue. In addition, this is the only cover addressed to either Belgium or Frankfort.

Ex Matthies..... E. 2,000-3,000



2065

2066

- 2065° ☒ **12c Black (69).** Used with horizontal pair and single of 3c Rose (65), tied by targets and "New Orleans La. Feb. 17, 1865" double-circle datestamp on orange cover to Mons, Belgium, red "New York Paid 18 Feb. 28" credit datestamp, red boxed "P.D.", appropriate transits, minor edgewear, Fine usage to Belgium..... E. 400-500

- 2066° ☒ **24c Red Lilac (70).** Radiant color, used with 3c Rose (65) and cancelled by bold grids, tied by red "New Haven Ct. Oct. 25" double-circle datestamp on 1864 cover to Brussels, Belgium, red "Boston Br. Pkt. 7 Paid Oct. 26" credit datestamp, Ostende and receiving backstamps, some slight wear incl. part of address scratched out, otherwise Fine E. 400-500



2067

2067° ☒ **1858-61, 20c Blue, 40c Vermilion (11, 12).** Vertical strip of three of 40c, large margins to cut into, tied by bold strikes of "4" in grid cancels, "Anvers 30-7 1861" circular datestamp on red and blue **Standing Liberty and Flag with "Union Forever" Slogan Patriotic** cover to New York, red "N. York Am. Pkt. 27 Paid Aug. 14" credit datestamp, clear "Am. Pkt." backstamp, missing backflap, few minor cover repairs

FINE APPEARANCE. A RARE USAGE OF A PATRIOTIC COVER FROM BELGIUM TO NEW YORK. Perhaps four or five patriotics exist used from Belgium, but no others are known with this franking.

Ex Matthies..... E. 4,000-5,000



2068

- 2068° ☒ **Anvers 4-s -7.** Clear circular datestamp with small “PD” handstamp on cover to Boston Mass. with **hand-drawn multicolored Union Flag Patriotic design**, endorsed “Via Ostende” and “per Steamer from Queenstown”, ms. “20” rate at top left, blue “August Andre Ship Broker Antwerp” and 1861 backstamp, Very Fine, scarce hand-painted patriotic from Belgium, reported to be one of four extant E. 500-750



2069

- 2069° ☒ **BELGIUM, 1858-61, 20c Blue, 40c Vermilion (11, 12).** Large margins to just in, radiant color, tied by bold “4” in grid cancels, “Anvers 15-3 1861” circular datestamp on blue folded letter to New York, 20c also tied by well-struck red “N. York Br. Pkt. 27 Paid Mar. 31” credit datestamp, faint horizontal file fold does not affect stamps, fresh and Very Fine E. 500-750

GERMAN STATES



2070

- 2070° ☒ **3c Rose (65).** Block of four and single, tied by quartered corks and "Washington D.C. Aug. 27" circular datestamp on 1865 N.Y. Volunteer Engineer Corps illustrated cover to Graseibstadt, Germany, endorsed "via Bremen or Hamburg", red "New York Hamb. Pkt. Paid 12 Apr. 29" credit datestamp, receiving backstamp, some slight wear incl. small tear at left, otherwise Fine E. 500-750



2071

- 2071° ☒ **30c Orange (71).** Brilliant color, tied by "Saint Joseph Ill. Feb. 10" circular datestamp on red and blue "Our Country, The Union Forever" Patriotic cover to Hameln, Germany, 1862 usage, red "N. York Brem. Pkt. Paid 12 Feb. 15" credit datestamp, blue "America Uber Bremen Franco" three-line handstamp, receiving backstamp, expertly repaired tears on back only, otherwise Fine and attractive usage, carried on the NGL steamer Hansa which encountered mechanical difficulties, her mails were forwarded via London and Ostende rather than going directly to Bremen E. 1,000-1,500



2072

2072°✉ **3c Dull Red, Ty. II (26).** Two horizontal pairs, tied by grid cancels on 3c Red Star Die entire, “Galveston Tex. Apr. 12, 1861” double-circle datestamp, used to **Hannau, Germany**, red “N. York Hamb. Pkt. 10 May 4” credit datestamp, endorsed “*pr Hamburg Steamer*” and sent on the HAPAG line, transit and receiving backstamps

VERY FINE. AN OUTSTANDING USAGE FROM CONFEDERATE TEXAS TO GERMANY.

Texas was admitted to the Confederacy on March 6, 1861, and postal relations between the Confederacy and the North were severed after May 31. Therefore, United States stamps could be used on foreign-bound mail from Confederate Texas only during this brief period.

Ex Wunsch E. 3,000-4,000



2073

2073° ☒ **5c Brown (76).** Horizontal pair and single, tied by grids and indistinct origin datestamp on purple **Monitor and Merrimac Patriotic** cover to **Gonterskirchen, Germany**, red "N. York Brem. Pkt. Paid 12 Aug. 1" credit datestamp, ms. rate, 1863 transit and receiving backstamps, stamps lifted and replaced in slightly different location

VERY FINE APPEARANCE. A BEAUTIFUL AND RARE TRANSATLANTIC USAGE OF THIS MONITOR-AND-MERRIMAC PATRIOTIC COVER TO GERMANY.

The Battle of the *Monitor* and *Merrimac* at Hampton Roads on March 9, 1862, marked the first naval battle between two ironclad ships. The Union's *Monitor* was smaller and lighter than its Confederate counterpart, and had a revolving gun turret with two heavy guns. The Confederate *Merrimac* was made from a converted Union frigate, and was somewhat heavier and more difficult to maneuver. The two armored ships fought each other for several hours, and the *Merrimack* withdrew because of low tides. The battle was considered a draw. The previous day, the *Merrimack* had wreaked havoc on the Federal blockade, ramming and sinking the 24-gun sloop *Cumberland* and setting the 50-gun frigate *Congress* ablaze. The battle of the *Monitor* and *Merrimac* the following day ended the threat to the wooden-hulled blockading Federal warships. In May of 1862, the *Merrimack* was destroyed so it could not be captured. The *Monitor* foundered and sank several months later during a storm off Cape Hatteras.

With 1983 P.F. certificate..... E. 4,000-5,000



- 2074° **Boyd's City Express, New York N.Y., 1c Black on Lilac (20L17).** Large to huge margins incl. part of adjoining stamp at bottom, tied by "Paid" in oval handstamp on 1863 cover to **Neheim, Prussia**, endorsed "via Liverpool" and with "New York Am. Pkt. 23 Apr. 11" debit datestamp, blue "13" rating, some wear incl. part of top flap missing, stamp with few small faults, otherwise Fine, very rare use of a New York City local post stamp "to the mails" for a foreign destination, with 2000 P.F. certificate E. 750-1,000
- 2075° **5c Brown, Ty. II (30A).** Used with **10c Green, Ty. V (35)**, tied by square grid, red "Detroit Mich. Paid 15 May 15" credit datestamp on red and blue **Waving Flag Patriotic** cover to **Berlin, Prussia**, New York 10c credit datestamp, "Franco" handstamp, 1861 transit and receiving backstamps, Very Fine, scarce use of patriotic thru Detroit foreign-mail exchange office..... E. 1,500-2,000
- 2076° **5c Buff (67).** Horizontal strip of three, rich color, tied by bold red grids, matching "N. York Hamb. Pkt. Paid 10 Dec. 14" credit datestamp on orange 1861 cover to **Berlin, Germany**, neat "Franco" handstamp, transit and receiving backstamps, some slight wear, fresh and Very Fine, attractive and scarce usage of the Buff stamps on a cover to Germany, ex Matthies and Rohloff..... E. 1,000-1,500



2077

2077°

Wells, Fargo & Cos. Express, Arcata H.B. Blue oval handstamp struck at top left of 3c entire with dry goods dealer's lithographed advertisement, to Staargard, Prussia, 1863 usage, New York circular datestamp and segmented cork cancels entire, "N. York Brem. Pkt. 3 Nov. 7" debit datestamp, blue "6½" handstamp reaffirmed in blue crayon, minor wear, Very Fine, rare use of the Wells Fargo entire from Humboldt Bay to Prussia, a marvelous exhibition item..... E. 1,500-2,000



2078

2078°

Baltimore Md., 1c Black (1LB8). Ample to full margins, tied by blue "Baltimore Md. Apr. 23, 1861" circular datestamp on cover to Saxony, Germany, blue "30" handstamped rate, stamp additionally tied by "N. York Am. Pkt. 27 Apr. 27" debit datestamp, blue ms. rates for German transit, red Aachen transit and receiving backstamps, very slight wear and minor flap faults

VERY FINE. THIS IS THE ONLY FOREIGN-BOUND COVER KNOWN TO US THAT SHOWS USE OF ANY OF THE BALTIMORE CARRIER STAMPS. A PHENOMENAL COMBINATION OF RARITY AND QUALITY.

Ex Mason and Hall. E. 3,000-4,000



2079

- 2079°✉ **BADEN, 1862-65, 1kr Black, 3kr Rose, 18kr Green (19, 20, 24).** Tied by "Heidelberg 10 Aug." double-circle datestamps on 1865 cover to Detroit Mich., red "New York Brem. Hamb. Aug. 28" circular datestamp and "Paid 10" in oval, transit backstamps, trivial edgewear, Very Fine, a beautiful three-color franking to the United States E. 2,000-3,000



2080

- 2080°✉ **BAVARIA, 1862, 1kr Yellow, 3kr Rose, 18kr Vermilion Red (9, 10, 14).** Horizontal pair of 1kr and two 18kr, tied by well-struck "86c" in circle of dashes, "Wurzburg May 18, 1864" double-circle datestamp on small cover to Pemberton N.J., red "Aachen 5/19 Paid 23cts" double-circle datestamp, slightly reduced at left, few toned spots, otherwise Fine, attractive and rare three-color franking, ex Oppenheimer E. 2,000-3,000



- 2081° ☒ **Erlangen 1. 23.** Framed datestamp on 1861 folded letter from Bavaria to **Galveston Tex.**, two strikes of "Aachen 1/25 5cts" double-circle datestamp, also "Boston Br. Pkt. 30 Feb. 10" debit datestamp, ms. on back indicates received in Texas on April 6, Fine, scarce usage into Texas during Confederate statehood..... E. 400-500
- 2082° ☒ **Bremen Mar. 23.** Bold strike of framed datestamp on gray 1861 folded letter to **Confederate Houston Tex.**, neat "Aachen 24/3 5cts" double-circle datestamp, "Boston Am. Pkt. 30 Apr. 9" debit datestamp, expertly repaired, still Very Fine, the routing is a mystery as it was supposed to have been carried by closed mail to New York, this may have mistakenly been carried by the Allan Line to Portland and then down to Boston, at any rate this is a scarce usage from Bremen into Confederate Texas..... E. 400-500



2083

- 2083° ☒ **BRUNSWICK, 1864, 3sgr Rose, Serpentine Roulette 16 (18).** Bottom left corner margin vertical pair, used with 1/2sgr Black on Green (6), tied by "8" in square grid, "Braunschweig 27 Sep. 1865 6-6 1/2" double-circle datestamp on cover to New York, red "Hamburg Packet Paid 3 Sep. 30" circular datestamp, red crayon rating, blue Hamburg backstamp, expertly repaired along edges
- VERY FINE APPEARING AND RARE USAGE OF A CORNER-MARGIN PAIR OF THE BRUNSWICK 3-SILBERGROSCHEN SERPENTINE ROULETTE. VERY FEW FRANKED COVERS FROM THIS GERMAN STATE TO THE UNITED STATES ARE KNOWN.
- With 1996 Van Der Linden certificate E. 4,000-5,000



2084



2085



2086

- 2084° ☒ **HANOVER, 1860-61, ½g Black, 3g Brown (18, 23).** Two of 3g, margins to in, overlapping, tied by well-struck blue "Nordheim 1/4" double-circle datestamp on 1862 cover to St. Louis Mo., red "Hamburg Paid April 5, 1863" and "N. York Hamb. Pkt. Paid Apr 23" transits, some edge wear, Fine usage, ex Gallagher E. 500-750
- 2085° ☒ **Margonin 29 November, 1862.** Framed datestamp on folded letter to Princetown Wis., overstruck by "Aachen 10cts. 1/12" double-circle datestamp, "N. York Am. Pkt. 60 Dec. 20" debit datestamp, minor wear, Very Fine double-rate usage from Prussia to Wisconsin E. 200-300
- 2086° ☒ **PRUSSIA, 1861-65, 6pf Orange, 2sgr Ultramarine, 3sgr Bister (16, 18, 20).** Used on 1sgr entire and tied by "Dusseldorf 30-7 1863" double-circle datestamps to St. Louis Mo., boxed "Bremen" handstamp, red "Paid" oval and "10" rating, red transit datestamp, receipt docketing on back, some slight wear, 6pf oxidized, otherwise Very Fine, colorful and scarce usage E. 2,000-3,000



2087

- 2087° ☒ **SAXONY, 1855-60, ½ng Black on Gray, 2ng Black on Rose, 5ng Vermilion (9, 10, 13).** Large margins to barely in, cancelled by "193" in diamond grids, "Pillnitz 12/VI 1861" double-circle datestamp on small cover to Fulton Mo., red "Hamburg Paid June 15, 1861" circular datestamp and matching "10" handstamp, red "New York Paid Jul. 2" transit, various rate markings, small cover tear at left, stamps barely affected from placement near edge of cover

VERY FINE APPEARANCE. A RARE THREE-COLOR FRANKING FROM SAXONY TO MISSOURI.

The "10" rate handstamp, applied in Hamburg, indicates that the 10c rate from Hamburg to the United States was fully paid. E. 4,000-5,000



2088

- 2088° ☒ **SAXONY, 1863, 2ng Blue, 5ng Slate (18, 20c).** Horizontal pair of 20ng, tied by perfect strikes of "Leipzig Dresd. Bahn. 27/IV 65.6" octagonal datestamp on mostly complete folded letter to New York, endorsed "Via Cork or Queenstown pr. Steamer" at top, sender's blue datestamp, red "Aachen Paid 23cts. 29/4" datestamp, 2ng stamp small piece out at top right, otherwise Very Fine, attractive usage E. 300-400



2089



2090



2091

- 2089° ☒ **THURN & TAXIS, 1862, 6kr Blue, 9kr Bister (54, 55).** Two vertical pairs of 9kr, margins to just in, few creases, tied by large targets, "Frankfort 3 Nov." circular datestamp on 1864 blue folded cover to New York, red "Aachen Paid 23cts. 3 Nov." double-circle datestamp also ties stamps, red "N. York Br. Pkt. Paid Nov. 16" circular datestamp, Very Fine..... E. 750-1,000
- 2090° ☒ **THURN & TAXIS, 1859-62, 15kr Lilac, 30kr Orange, 3kr Rose (51-53).** Large margins to just in, tied by "220" in target cancels, "Frankfurt 24 Dec. 1862" circular datestamp on gray folded letter to New York, red "N. York Br. Pkt. Paid 23 Jan. 12" credit datestamp, vertical file fold affects 3kr, otherwise Very Fine, unusual, apparently franked to pay the 47kr rate for British Open Mail via England, the sender's instructions caused it to be sent at the lower 41kr Prussian Closed Mail rate..... E. 750-1,000
- 2091° ☒ **WURTTENBERG, 1863, 1kr Yellow Green, 3kr Rose, 9kr Black Brown (34, 36, 39b).** Two 9kr, tied by "Heilbronn 3 Mar. 1864" double-circle datestamps on cover to New York City, red "Hamburg Packet Mar. 5 Paid 3" credit datestamp, various crayon ratings and transit backstamps, expertly repaired tears at top of cover, Very Fine appearance, colorful usage, early usage of the Hamburg credit datestamp..... E. 1,000-1,500

ITALY



2092

- 2092° ☒ **5c Brown (29).** Used with **1c Blue, Ty. V (24)**, tied by "Philadelphia Pa. May 28, 1861" octagonal datestamp on small cover **to the USS Richmond at Spezia, Sardinia**, boxed Anglo-French accountancy marking, London "Paid" marking struck in error, various transit and receiving backstamps, some slight edgewear, Very Fine, the 1c stamp pays the carrier fee, accompanied by short note from Ezra Cole E. 1,500-2,000



2093

- 2093° ☒ **1c Blue, Ty. I, V (18, 24).** Ty. I from Plate 12, Ty. V from Plate 9, tied by "New-York Aug. 10" circular datestamp on folded 1861 printed circular **to Genoa, Italy**, small red Aug. 26 receiving backstamp, light horizontal file fold well clear of stamps, expertly repaired, Very Fine appearance, scarce combination use of 1c 1857 types ... E. 400-500



2094

- 2094°✉ **3c Dull Red, Ty. II (26).** Two vertical strips of five and a single, tied by segmented cork, "Lexington Ky. Mar. 12, 1861" double-circle datestamp on cover to **USS Richmond at Messina, Sicily**, red "New York Br. Pkt. 7 Paid MAR. 13" credit datestamp, due marking also ties stamps as does red framed Aachen transit, some edgewear, few stamps faulty, otherwise Fine, impressive franking apparently accepted for the 40c rate via Prussian Closed Mail, ex Grunin and Kapiloff..... E. 2,000-3,000



2095

- 2095°✉ **12c Black (69).** Used with three 3c Rose (65), tied by large Boston "Paid" grids on **General Butler Patriotic cover to Florence, Italy**, 1862 usage, red "N. York Hamb. Pkt. Paid Sep. 6" circular datestamp, various rates, transit and receiving backstamps, one 3c defective

VERY FINE APPEARANCE. A BEAUTIFUL AND RARE PATRIOTIC COVER TO ITALY. FROM THE ANGELL CORRESPONDENCE.

This unusual franking underpays the 28c rate via Bremen-Hamburg mails, but evidently was accepted as full prepayment.

Ex Matthies..... E. 5,000-7,500



2096

2096° ☒ **24c Red Lilac (70)**. Used with **1c Blue (63)** and **3c Rose (65)**, tied by large Boston "Paid" grids and red "N. York Am. Pkt. 7 Paid May 16" credit datestamp on red and blue **Odd Fellows Emblem, Flag, House and "Victory" Patriotic cover to Florence, Italy**, small boxed "Francobolli Insufficient" handstamp, routed thru Switzerland, 1863 transit and receiving backstamps

VERY FINE. A BEAUTIFUL AND RARE THREE-COLOR FRANKING ON A PATRIOTIC COVER TO ITALY, PAYING THE 28-CENT RATE VIA PRUSSIAN CLOSED MAIL. FROM THE FAMOUS ANGELL CORRESPONDENCE.

Unlike most other covers from this correspondence to Italy, the example offered here was insufficiently paid for its weight and required postage from the recipient.

Ex Matthies..... E. 4,000-5,000



2097

2097° ☒ **2c Black (73)**. Used with horizontal pair and two singles of **10c Yellow Green (68)**, tied by bold "New Orleans La. Oct. 5, 1864" double-circle datestamps on blue folded cover to **Genoa, Italy**, red "New York Paid 36 Oct. 19" credit datestamp, small red "P.D." handstamp, receiving backstamp, light horizontal file fold well clear of stamps, Very Fine, attractive usage paying double 21c rate via French Mail..... E. 750-1,000



- 2098° ☒ **ROMAN STATES, 1852, 8b Black (9).** Two pairs, one horizontal and one vertical, tied by diamond grid, "Roma 14 Dec. 1861" double-circle datestamp on blue cover to Boston Mass., red transit also ties stamps, red boxed "Br. Service" and "Boston Am. Pkt. Paid Jan. 1" datestamp, fresh and Fine E. 400-500
- 2099° ☒ **Bagni Di Lucca 10 Ago 1861.** Double-circle datestamp on blue cover from Sardinia to Newark N.J., Genova and Torino backstamps, red "Sardaigne Culoz 14 Autot 61" French transit, red "Br. Service" boxed handstamp, clear strike of scarce **"Portland Me. Aug. 29 21"** debit datestamp, ms. "18" rate, fresh and Very Fine, scarce route via Culoz and Portland E. 300-400
- 2100° ☒ **SARDINIA, 1862, 80c Yellow (14a).** Large margins to clear, **used with Italy, 1862, 40c Red (20)**, fresh and bright colors, tied by "Milano 29 Nov. 1862" circular datestamp on 1862 cover to Brooklyn N.Y., also tied by red transit datestamp, red "New York Paid 15 Dec. 20" receiving datestamp, small "P.D." handstamp, faint fold at top barely affects stamps, otherwise Very Fine, attractive mixed franking with the 80c stamp of Sardinia and the 40c stamp of Italy E. 750-1,000
- 2101° ☒ **ITALY, 1863, 60c Lilac (32).** Two, radiant color, tied by "Genova 12 Feb. 1864" circular datestamp on cover to Philadelphia Pa., red "P.D." handstamp, New York 15c credit datestamp, trivial edgewear, fresh and Very Fine usage sent via French Mail E. 300-400



2102

- 2102° ☒ **ITALY, 1863, 15c Blue (22).** Four pairs, large margins to clear, tied by "Firenze 21 Mar. 1863" datestamps on cover to New York, red Cherbourg transit, red "N. York Am. Pkt. Paid Apr. 11" datestamp, endorsed "via Svizzera" at top

VERY FINE. A SUPERB AND VERY RARE FRANKING FOR THE FRENCH MAIL RATE FROM ITALY TO THE UNITED STATES.

The use of eight 15c stamps to prepay the French Mail rate is extremely unusual.....
..... E. 3,000-4,000



2103

- 2103° ☒ **LOMBARDY-VENETIA, 1863, 5s Rose (7).** Six, tied by "Venezia 3/9" datestamps on 1863 cover to Jefferson O., one stamp also tied by framed "Bremen" handstamp, red "Paid" in oval, "P.D." in oval and "10" handstamps, red "N. York Brem. Pkt. Paid Sep. 28" datestamp, one stamp few small perf faults

VERY FINE APPEARANCE. A SCARCE AND ATTRACTIVE USE OF THE 5-SOLDI LOMBARDY-VENETIA STAMP FROM VENICE TO OHIO.

With 1992 Diena certificate..... E. 3,000-4,000

SWITZERLAND



2104

- 2104° ☒ **3c Dull Red, Ty. II (26).** Two, tied by "Cape Vincent N.Y. Jul. 15" circular datestamp on red and blue **Zouave with Flag Patriotic** cover to **Geneva, Switzerland**, red "Paid All" handstamp and red framed Aachen transit, 1861 receiving backstamp, cover opened on both sides and **used as a wrapper**

VERY FINE. REPORTED TO BE THE ONLY EXAMPLE OF A PATRIOTIC COVER USED AS A TRANSATLANTIC WRAPPER SENT BY PRUSSIAN CLOSED MAIL.

The two 3c stamps pay the 6c newspaper rate via Prussian Closed Mail.. E. 4,000-5,000



2105

- 2105° ☒ **5c Brown (29).** Used with horizontal pair of **10c Green, Ty. V (35)** on **10c Green** on buff **entire**, tied by "Stockton Cal. Aug. 27" circular datestamp to **Locarno, Switzerland**, 5c tied by red framed Aachen transit, magenta "12" credit, 1861 transit and receiving backstamps, some edgewear, Fine and colorful 1861 usage from California to Switzerland, ex Klein E. 750-1,000



2106

2106° ☒ **24c Lilac (78).** Used with **1c Blue (63)** and **3c Rose (65)**, tied by large Boston “Paid” grids and by red “Boston Br. Pkt. 7 Paid Jul. 8” credit datestamp on red and blue **Clasping Hands Across Constitution and Flag Patriotic cover to Munich and forwarded to Clarens, Switzerland, 1863** usage, label affixed over address panel for forwarding, red framed Aachen transit and also boxed “Munich” handstamp

VERY FINE. A BEAUTIFUL AND RARE PATRIOTIC COVER TO MUNICH AND FORWARDED TO SWITZERLAND. FROM THE ANGELL CORRESPONDENCE.

Ex Matthies..... E. 3,000-4,000



2107

2107° ☒ **1858-62, 10r Blue, 20r Dark Orange, 40r Dark Yellow Green (37, 39, 40).** Horizontal pair of 40r, large margins to just in, tied by neat “Concize 9 Dec. 1862” double-circle datestamps on folded letter to New York, red “N. York Am. Pkt. 30” datestamp, small scotch tape repairs at top, otherwise Very Fine, attractive and scarce three-color franking, with 1994 SBPV certificate..... E. 2,000-3,000



2109



2108

- 2108° ☒ **1855-62, 1fr Lavender with Yellow Thread, 10r Dark Blue (31, 37).** Large margins to just into, tied by "Lausanne 1 Sept. 1862" double-circle datestamp on cover to Poughkeepsie N.Y., boxed "PD" handstamp, red Swiss and New York transits, Very Fine, ex Gallagher E. 750-1,000
- 2109° ☒ **Riesbach 13 Nov. 1861.** Boldly-struck circular datestamp at top right of cover to Hartford Conn., clear Zurich, French and "Boston 21 Nov. 29" debit datestamps, "18" due handstamp, red boxed "Br. Service" handstamp, some slight toning, Very Fine E. 200-300

THE NETHERLANDS



2110

- 2110° ☒ **5c Buff (67).** Deep rich color, small pre-printing paperfold at left, tied by grid and by red "New York Br. Pkt. Jan. 29, 1862" circular datestamp on blue folded cover to **Amsterdam, Holland**, neat "1/-" shilling due marking and "80" Dutch cents due from recipient, London and receiving backstamps, small cover tear at top, Very Fine, scarce usage of the 5c Buff to Amsterdam, with 1983 P.F. certificate..... E. 750-1,000



2111



2112

- 2111° ☒ **5c Brown (76).** Horizontal strip of three, used with 3c Rose (65), tied by targets, "Holland Mich. Mar. 28" circular datestamp on red and blue **Waving Flag Patriotic** cover to **Doesborgh, Netherlands**, red "**Detroit Mich. Am. Pkt. Paid Mar. 31**" circular datestamp, ms. due markings, 1864 transit and receiving backstamps, 3c single pulled perf

VERY FINE APPEARANCE. A BEAUTIFUL AND RARE STRIP OF THREE OF THE 5-CENT BROWN 1861 ISSUE ON A PATRIOTIC COVER FROM HOLLAND, MICHIGAN, TO HOLLAND IN EUROPE. ESPECIALLY RARE TRANSIT VIA DETROIT EXCHANGE OFFICE.

The 18c in postage was apparently accepted as prepayment of the 21c rate via American or British Open Mail. The use of a patriotic envelope to the Netherlands via the Detroit exchange office is most unusual.

Signed Ashbrook..... E. 3,000-4,000

- 2112° ☒ **"Rotterdam 2 May 1861".** Dateline on folded letter to **Confederate Richmond Va.**, red "Rotterdam 5 5-10 1861" circular datestamp (date in error) and London Paid datestamps, "Boston Br. Pkt. 5 May 16" debit datestamp, boxed "Franco" handstamp, ms. "1/" credit marking, light vertical file fold, Very Fine, scarce usage from Netherlands into Confederate Virginia..... E. 500-750



2113

- 2113° 1852, 10c Lake, 15c Orange (2, 3). Horizontal pair of 15c, large margins, cancelled by boxed "Franco" handstamps, "Delfsthaven 3/12/1862" circular datestamp on blue folded letter to New York, red London Paid transit, "N. York Am. Pkt. 21 Dec. 28" debit datestamp, light vertical file fold well away from stamps, fresh and Very Fine, scarce and beautiful franking, prepaid only to Great Britain and charged 21c due for remainder of postage..... E. 2,000-3,000

DENMARK



2114

- 2114° 10c Yellow Green (68). Vertical pair, tied by blue targets, matching "Franklin Grove III. Mar. 30" circular datestamp on 1862 orange cover to Aalborg, Denmark, endorsed "Via Hamburg" at top left, red "15" credit handstamp, various transits, few faults, otherwise Fine, very scarce 20c Bremen-Hamburg rate usage to Denmark E. 400-500



2115



2116

- 2115° **Kiobenhavn 17/7 9.10M.** Clearly struck Copenhagen circular datestamp on 1861 blue cover to Boston Mass., oval Hamburg and Aachen transits, red “2” crayon crossed out and uprated to “4” in blue crayon, “35” handstamp, missing topflap but still showing small part of Boston Br. Pkt. backstamp, Very Fine, inbound covers from Denmark are scarce in this period E. 200-300
- 2116° **Rudkjobing 5-1 1863.** Circular datestamp on multicolored **Eagle and Shield Patriotic** cover to **Big Oak Flat Cal.**, Hamburg oval transit, “Aachen 8/1 10 Cts.” double-circle datestamp, crayon transits, “Boston Br. Pkt. Jan. 21” backstamp, pencil “Due 35cts”, expertly repaired, still Fine, scarce usage of a Union patriotic from Denmark to California E. 400-500

NORWAY



2117

- 2117° **30c Orange (71).** S.e. at left, used with **1c Blue (63)**, **3c Rose (65)** and **12c Black (69)**, tied by “Morris Ill. Nov. 14, 1861” circular datestamp on orange cover to **Teroens, Norway**, red framed Aachen transit, various transits incl. “New York Br. Pkt. Dec. 20” backstamp
- VERY FINE. A SPECTACULAR FOUR-COLOR FRANKING OF THE 1861 ISSUE TO NORWAY.
- This unusual franking pays the 46c rate via Prussian Closed Mail. E. 3,000-4,000



2118

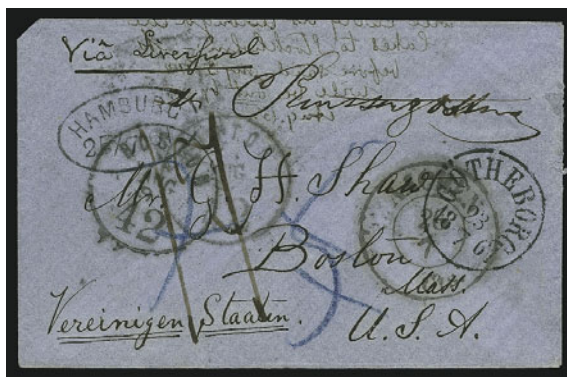
- 2118° ☒ **Frekkefjord Mar. 3, 1861.** Clear strike of circular datestamp on cover to **Confederate New Orleans**, Aachen and Hamburg transits, "New York Br. Pkt. May 31" datestamp, bold "46" due handstamp, some wear and toning spots, Very Fine appearance, rare usage from Norway into the Confederacy..... E. 750-1,000

SWEDEN

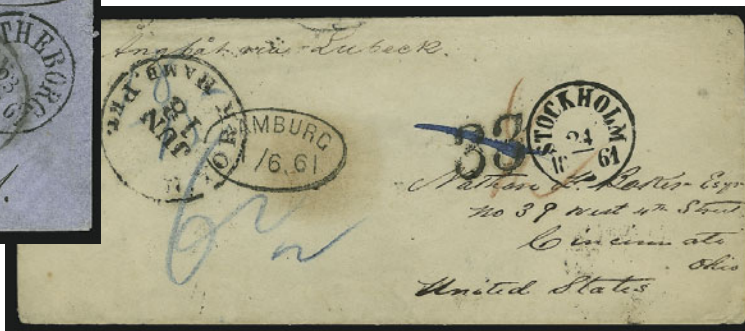


2119

- 2119° ☒ **30c Orange (71).** Used with **12c Black (69)**, s.e. at left, tied by magenta ms. and target cancels, "Harrisburg Pa. May 23, 1864" double-circle datestamp on cover to **Stockholm, Sweden**, red framed Aachen transit, 12c small faults from placement near edge of cover, Very Fine appearance, apparent overpayment of the 40c rate via Prussian Closed Mail, the rate was reduced from 42c to 40c in May 1863..... E. 1,000-1,500



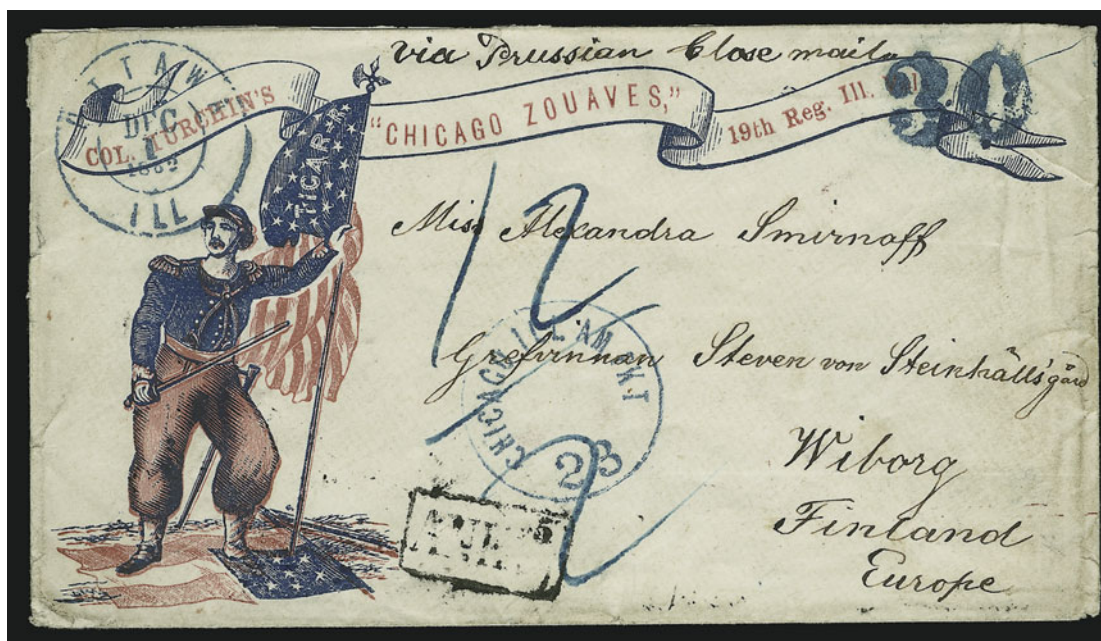
2120



2121

- 2120° ☒ **Gothenburg 23/7 1861.** Well-struck datestamp on blue cover to Boston Mass., oval Hamburg and Aachen transits, "Boston Aug. 9 42" debit datestamp, blue "75" crayon and "17" rates, trivial edgewear, Very Fine, inbound covers from Sweden are scarce in this period E. 200-300
- 2121° ☒ **Stockholm May 24, 1861.** Bold strike of circular datestamp on cover to Cincinnati O., oval Hamburg transit, "N. York Hamb. Pkt. Jun. 18" datestamp, "33" due handstamp, some toning, otherwise Fine E. 200-300

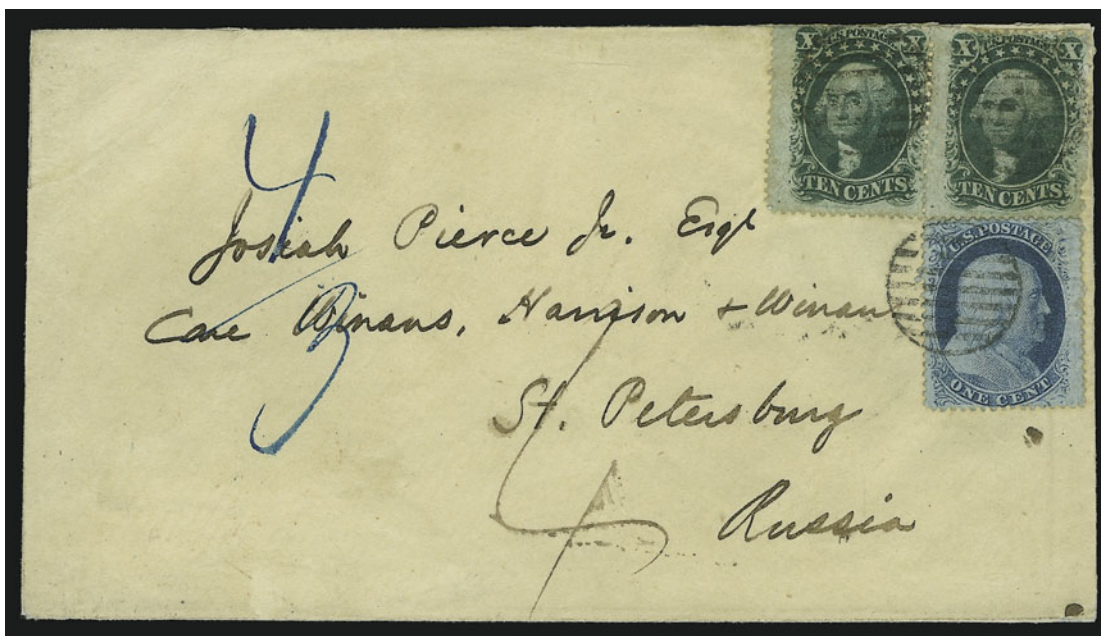
FINLAND



2122

- 2122° ☒ **Ottawa Ill. Dec. 1, 1862.** Well-struck blue double-circle datestamp with matching "30" handstamp on red and blue **Chicago Zouave Patriotic** cover to **Wiborg, Finland**, blue "Chicago Ill. Am. Pkt. 23" debit datestamp, receiving backstamp, some slight wear
 VERY FINE. AN INCREDIBLY RARE CHICAGO ZOUAVE PATRIOTIC COVER TO FINLAND, ROUTED THROUGH THE CHICAGO EXCHANGE OFFICE.
 The majority of mail to Europe was processed at either the New York or Boston exchange offices. This cover to Finland was marked and rated at the Chicago exchange office, in itself a very scarce usage. Combined with the destination and use of a patriotic envelope, this cover is truly remarkable. E. 4,000-5,000

RUSSIA



2123

- 2123° 10c Green, Ty. V (35). Horizontal pair, used with 1c Blue, Ty. V (24), tied by grids on cover to **St. Petersburg, Russia**, neat “Portland Am. Pkt. Apr. 13, 1861” circular datestamp, red Aachen double-circle backstamp, ms. rates, expertly repaired along top edge, Very Fine appearance..... E. 750-1,000



2124

- 2124° 12c Black (36). Horizontal pair and single, used with 1c Blue, Ty. V (24), tied by magenta grids, matching “Hartford Ct. Jun. 25, 1861” circular datestamp on light yellow cover to **St. Petersburg, Russia**, endorsed “Prussian Closed Mail Via England and Belgium”, red framed Aachen transit and red crayon “14” credit, cover tear at top left from opening, otherwise Very Fine, ex Gibson..... E. 1,500-2,000



2125

2125° ☒ **30c Orange (71)**. Used with horizontal pair of **1c Blue (63)** and **5c Brown (76)**, cancelled by grids, red "N. York Br. Pkt. Apr. ?" circular datestamp on blue folded letter to **Nikolayevsk-on-the-Amur, Siberia, Russia**, endorsed "Via Irkutsk" and "per steamer via Liverpool to St. Petersburg", red framed Aachen transit, faint vertical file fold affects one 1c stamp

VERY FINE APPEARANCE. THE ONLY REPORTED 1861 ISSUE COVER TO EASTERN SIBERIA. A SPECTACULAR FRANKING AND USAGE OF THE HIGHEST ORDER OF RARITY.

Up until 1860, Nikolayevsk-on-the-Amur was Russia's principal Pacific port for trade with the Far East. After 1860 Vladivostok became the home base of the new Pacific Squadron, formed after the Crimean War, making Nikolayevsk-on-the-Amur the second most important Far Eastern post in the Russian Empire.

Ex Jessup and Paliafito. E. 5,000-7,500



- 2126° **3c Rose (65).** Tied by target and "Thompson O. Nov. 29" circular datestamp on 1864 orange cover **to Kertsch, Russia**, "N. York Hamb. Pkt. 3 Dec. 3" debit datestamp, blue "America Uber Bremen" two-line transit, blue crayon rate and ms. "unpaid 37 cts." changed to 46c due to different routing (intended for Prussian Closed Mail but sent via Bremen-Hamburg), some wear incl. tear at bottom left, still Fine, unusual usage, treated as completely unpaid, carried aboard the NGL *Bremen* which was forced back to New York for repairs..... E. 300-400
- 2127° **"St. Petersburg Russia, April 12, 1865".** Dateline on folded letter to the Singer sewing machine company in New York City, carried entirely outside of the mails, sender's oval handstamp at top left, Very Fine..... E. 50-75
- 2128° **St. Petersburg May 25, 1861.** Backstamp on cover to Cincinnati O., Konigsborg backstamp, "New York Brem. Pkt. Jun. 24" datestamp, red "Aus Russland" handstamp, some slight wear incl. tear at bottom right, otherwise Fine, scarce usage, apparent understatement of 29c Bremen-Hamburg rate, very few covers from Russia to the U.S. are known from this period E. 300-400

GREECE AND BRITISH EUROPE



2129

- 2129° ☒ **10c Dark Green, First Design (62B).** Used with two **1c Blue (63)** and **30c Orange (71)**, cancelled or tied by red grids on 1861 mourning cover **to Athens, Greece**, endorsed *Via Brussels*, red “19” credit, red framed Aachen transit also ties one 1c stamp, missing top flap, 30c stamp faulty at bottom

VERY FINE APPEARANCE. PROBABLY A UNIQUE USAGE OF THE 1861 10-CENT FIRST DESIGN ON A MOURNING COVER TO GREECE. MAIL TO GREECE IN THIS PERIOD IS EXCEEDINGLY RARE.

Ex “Patrick Henry” E. 5,000-7,500



2130

- 2130° ☒ **24c Violet, Thin Paper, 30c Orange (70c, 71).** Vertical pair of 30c, tied by red “Paid” in circle handstamps, matching “Providence R.I. Oct. 1” circular datestamp on light yellow 1861 cover **to Athens, Greece**, red framed Aachen transit, red crayon “38” credit, receiving backstamp, 24c tiny expert repair at right and tiny corner crease

EXTREMELY FINE APPEARANCE. A SPECTACULAR COVER TO GREECE BEARING THE 24-CENT VIOLET AND A PAIR OF THE 30-CENT 1861 EARLY SHADE. MAIL FROM GREECE TO THE UNITED STATES IS EXTREMELY RARE IN THIS PERIOD.

The cover is franked to pay the double 42c rate via Prussian Closed Mail. Covers to Greece in this period are extremely rare.

Ex Paliafito. Accompanied by rate analysis. With 1972 A.P.S. certificate E. 5,000-7,500



2131



2132



2133

- 2131° ☒ **Athens Greece June 8, 1863.** Neat strike of double-circle datestamp on blue folded letter to New York, Aachen transit, "New York Am. Pkt. Jul. 15" receiving datestamp, endorsed "par Trieste", various rate marks, fresh and Very Fine, sent unpaid at the 42c rate via Prussian Closed Mail and due either 42c specie or 52c of depreciated currency, mail from Greece to the U.S. is extremely rare in this period, ex McDonald..... E. 400-500
- 2132° ☒ **CRETE. "Canea/6 Otto".** Two-line handstamp struck in light blue with matching "Franca" on cover to Plattsburgh N.Y., red Aachen transit, red "N. York Am. Pkt. 30 Paid Nov. 10" credit datestamp, red "55" crayon rate, with original enclosure (no yeardate), fresh and Very Fine, Crete is an extremely rare origin for U.S.-bound mail in this period E. 300-400
- 2133° ☒ **CRETE. "Canea/28 July".** Blue two-line handstamp with matching "Franca" on blue cover to Plattsburgh N.Y., red "Aachen 8/9 Paid 23cts." double-circle datestamp, red "N. York Am. Pkt. 28 Paid Aug. 27" credit datestamp, Trieste backstamp, red crayon "54" credit marking, some slight edgewear, otherwise Very Fine, scarce usage E. 200-300

GIBRALTAR AND MALTA



2134

2134° **10c Yellow Green (68).** Two, used with **1c Blue (63)**, tied by blue grids and matching "Cincinnati O. Jul. 5" double-circle datestamp on 1864 **Fremont Campaign** cover front only **to Gibraltar and forwarded to Barbados**, red "New York Paid 12 Jul. 9" credit datestamp, various transit incl. London, France, Spain, Sep. 1864 Barbados receiving datestamp, some slight wear affects stamps

VERY FINE APPEARANCE. AN EXTRAORDINARY USE OF THIS RARE FREMONT CAMPAIGN DESIGN TO GIBRALTAR, WHICH WAS THEN FORWARDED TO BARBADOS. A REMARKABLE USAGE.

This cover was sent to Gibraltar at the 21c rate via French Mail. The cover was forwarded by British Mail via London.

Ex Paliafito E. 3,000-4,000



2135

- 2135° 30c Orange (71). Radiant color, tied by quartered cork, red "N. York Br. Pkt. Paid Apr. 28" circular datestamp on cover **datelined "Matanzas 17th April 1863"** and addressed **to Malta**, clear strike of "Received April 23, Forwarded April 25 Chas. Lulin & Co. New York" forwarder's backstamp with dates in ms., also ms. rating, London and receiving backstamp, small piece of forwarder's marking out from opening, tiny cover tear at top

VERY FINE. A BEAUTIFUL AND RARE USAGE FROM CUBA TO MALTA VIA THE UNITED STATES MAILS. A REMARKABLE COVER.

Franked by the sender to pay the 30c rate via French Mails, the cover was found to be overweight and so was sent at the 5c British Open Mail rate. The cover was treated as unpaid by Great Britain, who debited Malta 1sh8p for the 8p transatlantic postage, 6p rate from Great Britain to Malta, and a 6p fine for the unpaid letter. E. 4,000-5,000



2136



2137

- 2136° **Gibraltar to New York.** 1863 folded letter to New York with Great Britain 1sh Green and 2p Blue, Plate 9 (29, 28) tied by "A26" in barred oval handstamp, "Gibraltar SP 11, 1863" circular datestamp, red London transit, "N. York Br. Pkt. 5 Oct. 3" debit datestamp, faint horizontal file fold well clear of stamps, fresh and Very Fine, franked to pay the 33c rate via Southampton or Liverpool, extremely scarce inbound cover from Gibraltar during this period E. 500-750
- 2137° **Malta to New York.** Great Britain 1sh Green, 2p Blue, Plate 8 and 4p Vermilion (29, 28, 34) tied by "A25" in barred oval and "Malta AU 9, 1861" datestamp on folded letter to New York, endorsed "*pr Marseilles*", red London Paid transit, "N. York Br. Pkt. 5 Aug. 22" debit datestamp, light file folds, one of which affects 4p stamp, otherwise Fine, colorful franking and very scarce usage from Malta, apparent 2p overpayment of the old 39c rate per 1/4oz., the rate was discontinued after Oct. 1860 but was still used on some mail outbound from Malta. E. 300-400

PORTUGAL AND SPAIN



2138

- 2138°✉ **30c Orange (71)**. Used with 3c Rose (65), tied by grid and "Philadelphia Pa. Dec. 4, 1863" circular datestamp on cover **to the U.S.S. St. Louis at Lisbon, Portugal**, red Philadelphia 12c credit datestamp, 1863 London Paid transit datestamp, neat "40" reales handstamp, receiving backstamp, minor edgewear, fresh and Very Fine, Portugal is an extremely rare destination in this period E. 1,000-1,500



2139

- 2139°✉ **1c Blue, Ty. V (24)**. Horizontal pair, choice centering, tied by "Mobile Ala. Apr. 16, 1861" double-circle datestamp on folded printed circular **from Confederate Mobile to Barcelona, Spain**, neat "1/2Rs" due marking, receiving backstamp, minor overall toning, Very Fine, scarce Confederate use of U.S. stamps on a circular to Spain E. 1,000-1,500



2140

2140°☒ **5c Orange Brown, Ty. II (30).** Two, beautiful rich color, tied by neat grids, red "N. York Br. Pkt. 7 Paid Sep. 11" credit datestamp on 1861 folded letter **to Cadiz, Spain**, endorsed "Via England", blue "8Rs" due handstamp, London transit and receiving backstamps, trivial edgewear incl. one stamp with two short perfs (not mentioned on accompanying certificate)

VERY FINE APPEARANCE. A LATE USE AND RARE EXAMPLE OF THE 1861 5-CENT ORANGE BROWN TYPE II STAMPS ON COVER TO SPAIN.

The 5c Orange Brown was in use for only a short time before it was demonetized. The new 1861 Issue was released in mid-August 1861. The 1861 5c Buff is known used from August 17 and the 10c 1861 is known used from August 20, almost one month prior to this letter's mailing date.

Ex Grunin. With 1967 P.F. certificate..... E. 5,000-7,500



2141

2141°✉ **3c Dull Red, Ty. II (26).** Two pairs and horizontal strip of four, tied by well-struck "Mobile Ala. Apr. 27, 1861" double-circle datestamp on blue folded letter **from Confederate Alabama to Barcelona, Spain**, red "N. York Am. Pkt. May 4" transit, red "3", also "8Rs" due handstamp, receiving datestamp, faint vertical file fold affects two stamps

VERY FINE. A SCARCE USAGE FROM CONFEDERATE MOBILE ALABAMA TO BARCELONA, SPAIN.

Alabama was one of the first states to secede from the Union, and was admitted to the Confederacy on February 4, 1861. By the time this letter was sent, tensions were heating up between North and South. The first shots of the war were fired at Fort Sumter just two weeks prior to the sending of this letter. Postal relations would be severed after May 31. The contents, in Spanish, discuss methods of shipping cotton out of the Confederacy, since a Federal blockade of Southern ports had been declared.

The 3c overpayment of the 21c rate meant that the letter was treated as fully prepaid to England. The recipient was charged the equivalent of the postage due from England to Spain. It was treated as a double-weight letter from England to Spain, and so was charged 4 reales for the postage plus 4 reales penalty for being unpaid.

Ex Grunin. Accompanied by article from *Confederate Philatelist* Jan.-Feb. 1977, by Brian Green...
..... E. 7,500-10,000



2142

2142° ☒ **5c Brown (76)**. Scissors-separated at top just into design, used with **10c Yellow Green (68)**, cancelled by ms. and tied by circle of V's, red "Boston Paid 12 Mar. 8" credit date-stamp on **Eagle, Shield and Liberty Patriotic** cover to **Paris, France** and forwarded to **Madrid, Spain**, 1864 usage, forwarding postage paid by **France 40c Orange on Yellowish, Perf 14 x 13½ (27)**, tied by "8" in star of dots, red "4R" handstamp, various transits

VERY FINE. A BEAUTIFUL AND RARE PATRIOTIC COVER TO FRANCE AND FORWARDED TO SPAIN. PARTICULARLY RARE WITH FORWARDING POSTAGE PAID BY STAMPS OF ANOTHER COUNTRY. FROM THE ANGELL CORRESPONDENCE.

A review of the Matthies sale shows that only two of the forwarded covers from the Angell correspondence had forwarding postage paid by stamps. The others were sent with postage due from the recipient.

Ex Matthies..... E. 5,000-7,500



2143

2143°

1862, 2r Green on Pinkish (60). Two, full margins to clear, deep rich color, tied by hand-stamp, "Valencia Dec. 4, 1863" double-circle datestamp on pink **Battle Monument, Baltimore Patriotic** cover to Baltimore, red London transit, "N. York Am. Pkt. 21 Dec. 28" debit datestamp, expertly repaired at left

VERY FINE APPEARANCE. UNDOUBTEDLY A UNIQUE USE OF AN AMERICAN CIVIL WAR PATRIOTIC FROM SPAIN TO BALTIMORE.

Ex Matthies. With 1969 P.F. certificate. E. 2,000-3,000



2144



2145

2146

- 2144°☒ **1860-61, 2r Lilac on Lilac (54).** Horizontal strip of four, large margins to clear, tied by handstamps, "Cadiz 14 Feb. 1862" double-circle datestamp on cover to New York, "21" due handstamp also ties stamps, red London transit, "New York Am. Pkt. Mar. 5" receiving datestamp, some slight overall wear incl. faint vertical file fold affecting one stamp, otherwise Very Fine, prepaid only to British port of departure, then charged 21c due from recipient E. 500-750
- 2145°☒ **1862, 2r Green on Pinkish (60).** Horizontal strip of four, large margins to into, right stamp defective from placement over edge of cover, tied by grids, "Madrid 3 Feb. 1863" double-circle datestamp on gray folded letter to New York, London transit, "N. York Br. Pkt. 5 Feb. 28" debit datestamp, Fine E. 200-300
- 2146°☒ **1864, 2r Blue on Pinkish (66).** Horizontal pair, strip of three and single, large margins to clear, tied by cancels, "Malaga 9 Oct. 1864" double-circle datestamp on blue folded cover to New York, strip tied by "N. York Br. Pkt. 10 Oct. 30" debit datestamp, London Paid transit, trivial edgewear affects top of one stamp, otherwise Very Fine, impressive franking paying three times the 4-reales rate to the British port of departure E. 2,000-3,000

INDIA



2147

- 2147° ☒ **5c Brown, Ty. II (30A).** Used with **1c Blue, Ty. V (24)** and **five 3c Dull Red, Ty. II (26)**, tied by large red "Paid" grids, "Boston Am. Pkt. Aug. 2" backstamps on 1861 blue folded letter **to Calcutta, India**, red London transit backstamp, Calcutta Steam Letter backstamp, few stamps faulty mostly from placement near edge of cover, minor ink erosion, otherwise Very Fine, colorful and rare usage, especially scarce with the large Boston "Paid" grids struck in red E. 3,000-4,000



2148

- 2148° ☒ **12c Black, 30c Orange (69, 71).** Horizontal pair of 30c, tied by targets and "San Jose Cal. Nov. 10, 1864" double-circle datestamp on cover **to Bombay, India**, endorsed "via Marseilles", red "N. York Am. Pkt. Paid" circular datestamp, London transit, receiving backstamp

FRESH AND VERY FINE. A BEAUTIFUL AND RARE USAGE OF THE 12-CENT AND 30-CENT 1861 ISSUE FROM CALIFORNIA TO INDIA.

The rate on this cover is very unusual. It was likely franked to pay the 72c rate by Bremen-Hamburg Mail via Marseilles. However, the markings indicate it was actually sent at the much cheaper 33c rate by British Mail via Southampton.

Ex Gibson and Palafito. With 1973 R.P.S. certificate. E. 3,000-4,000



- 2149° ☒ **30c Orange (71).** Bright color, cancelled by bold grid and tied by red "Philadelphia Pa. Paid May 5" circular datestamp on 1863 blue cover **to Wellington, India and missent to Wellington, New Zealand**, French transits, "Wellington New Zealand JY 27, 1863" transit, "Madras SP 23, 1863" datestamp, expertly repaired at top, otherwise Very Fine, unusual usage, sent at the 30c French Mail rate, ex Paliafito..... E. 1,500-2,000
- 2150° ☒ **30c Orange (71).** Bright color, tied by segmented cork, red "Boston Br. Pkt. 27 Paid Sep. 16" circular datestamp on 1863 cover **to Smyrna, Turkey and forwarded back to Boston**, endorsed "pr. Prussian or French Closed Mail", sent by French Mail and with red boxed "P.D." handstamp and various transits, Very Fine, unusual usage..... E. 1,000-1,500
- 2151° ☒ **1855-64, 1/2a Blue, 1a Brown, 2a Dull Rose, 8a Rose (11, 12, 13, 18).** Tied by octagonal targets, red "G.P.O. Ex Calcutta JA. 3, 1861" double-circle datestamp on back of blue folded letter to Boston, bold strike of red boxed "India Paid" handstamp, London transit, "Boston Am. Pkt. Feb. 20" receiving datestamp with matching "5" due marking, stamps barely affected from placement near edge of cover, 1a affected by vertical file fold, some overall wear, Very Fine appearance, extremely scarce usage and colorful franking..... E. 400-500
- 2152° ☒ **1855-64, 4a Black, 8a Rose (16, 18).** Tied by clear strikes of octagonal targets and straightline handstamp on cover to Marblehead Mass., endorsed "via Bombay and Marseilles", red boxed "India Paid" handstamp, red ms. "1/5" and "16 cents" handstamps, 1864 London transit, "Boston Am. Pkt. 5 Aug. 7" arrival datestamp, minor edgewear, Very Fine..... E. 200-300

HONG KONG



2153

- 2153° 5c Brown, Ty. II (30A). Rich color, tied by red grid and matching "New-York Br. Pkt. May 22" circular datestamp on 1861 blue folded letter to **Hong Kong, China**, endorsed "Overland mail via Marseilles", ms. "1/7" due marking, London and receiving backstamps, few light age spots, otherwise Fine, scarce usage, sent via Open Mail, then by British Packet, ex Grunin (where sold as 5c Orange Brown, No. 30)..... E. 1,000-1,500



2154

- 2154° 30c Orange (71). Used with 1c Blue (63), vertical pair of 3c Rose (65) and horizontal pair of 10c Dark Green (68a), s.e. at right, tied by grids, red "N. York Am. Pkt. Paid Jun. 28" circular datestamp on blue 1862 folded letter to **Hong Kong, China**, endorsed "pr. "Bavaria" overland via Marseilles" and carried aboard that HAPAG steamer via Southampton, London transit, receiving backstamp, faint horizontal file fold affects 3c stamps
 VERY FINE APPEARANCE. AN ATTRACTIVE AND RARE FOUR-COLOR FRANKING PAYING 57-CENT RATE BY BRITISH MAIL VIA MARSEILLES.
 Ex Baker and Weismann..... E. 3,000-4,000



2155

2155° ☒ **90c Blue (72)**. Used with two **3c Rose (65)** and **10c Yellow Green (68)**, tied by well-struck large Boston "Paid" grids, red "Boston Am. Pkt. Paid Jul. 24" backstamp on 1863 bluish folded cover **to Hong Kong, China**, endorsed "*Via Marseilles August 10th*", red London transit, receiving backstamp, both 3c s.e. at right

VERY FINE. A BEAUTIFUL AND RARE EXAMPLE OF THE 90-CENT 1861 ISSUE ON COVER TO HONK KONG. ONE OF ONLY SIX RECORDED EXAMPLES PAYING DOUBLE THE 53-CENT RATE SENT BY BRITISH MAILS VIA MARSEILLES.

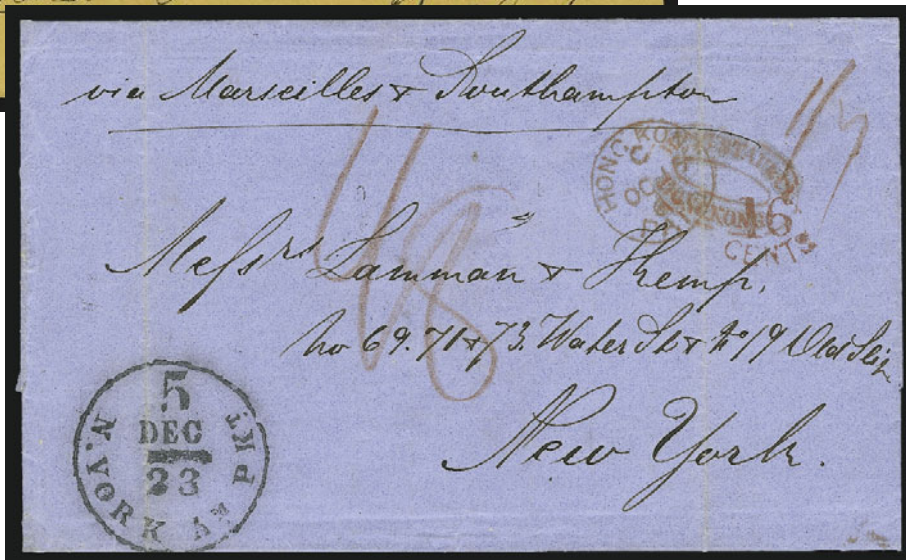
From the Augustine, Heard & Co. correspondence. Ex Rust (from our 1987 Rarities sale)
 E. 15,000-20,000



2156



2157



2158

- 2156° ☒ **24c Lilac, 30c Orange (71, 78).** Bright colors, cancelled by crossroads on blue 1863 folded letter datelined "New York August 28 1863" to **Hong Kong, China**, endorsed "via Marseilles", faint red New York backstamp, red London transit also ties stamps, magenta ms. "48" credit, receiving backstamp, some slight splitting along folds, otherwise Fine, attractive usage overpaying the 53c rate via Marseilles by 1c, ex Gibson and Hyzen, signed Ashbrook E. 1,000-1,500
- 2157° ☒ **Hong Kong NO 29, 1861.** Red circular datestamp on orange cover with red and blue stencilled **Waving Flag Patriotic** cover to Stoneham Mass., red London transit and "16 Cents" credit handstamp, New York 5c debit datestamp, barely reduced at right, Very Fine, rare usage of a stencilled patriotic cover from Hong Kong to the United States, only a very few are known E. 1,500-2,000
- 2158° ☒ **"Hong Kong 14th October 1861".** Dateline on blue folded letter to New York, endorsed "via Marseilles & Southampton", red "Hong Kong OC 16, 1861" circular datestamp, "16 Cents" credit, red crayon "48" and "1/7", "N. York Am. Pkt. 5 Dec. 23" debit datestamp, light vertical file folds, Very Fine E. 500-750



2159

90-CENT 1860 ISSUE ON \$1.68 RATE FOLDED LETTER TO SHANGHAI

2159°✉ **90c Blue (39).** Deep rich color, **used with 3c Dull Red, Ty. II (26), 5c Brown, Ty. II (30A), 10c Green, Ty. V (35) and horizontal pair of 30c Orange (38),** tied by large Boston "Paid" grids on 1860 blue folded letter **to Shanghai, China,** Augustine Heard & Co. correspondence, endorsed "*Via Marseilles*" and also "*pr. Str. "Fulton" from New York*", ms. "8" and red crayon "84/4" ratings, indistinct "Boston Br. Pkt. Nov. 9" and Hong Kong (Jan. 1861) backstamps, red "London NO. 23, 1860" transit, 90c stamp reperforated on all four sides, other stamps small faults

VERY FINE APPEARANCE. THE CELEBRATED 90-CENT 1860 COVER TO SHANGHAI, CHINA. ONE OF THE GREAT RARITIES OF CLASSIC UNITED STATES PHILATELY.

This is one of six recorded 90c 1860 covers: 1) Sep. 11, 1860, to Augustine Heard & Co., Shanghai, single franking for double rate, ex Gibson, Hindes and Kapiloff; 2) Nov. 3, 1860, to Barcelona, Spain, ex Caspary, Rust and Kapiloff; 3) Nov. 9, 1860, to Augustine Heard & Co., Shanghai, the cover offered here, ex Needham, Paliafito, Ishikawa; 4) Jan. 8, 1861, single used on legal-size cover from Cincinnati, ex Filstrup, Grunin; 5) Jul. 16, 1861, to Edwin Howland, Cape of Good Hope, used with 1c pair, 3c, 10c and 30c for four-times 33c rate, ex Jacobs, Newbury, Ishikawa; and 6) Jan. 26, 1861, to Mackellop Stewart & Co., Calcutta, India, used with 12c and 30c, ex Armitage.

This cover to Augustine Heard & Co. is franked with \$1.68 in postage, paying the rate for letters between 1¼ oz. and 1½ oz. It was carried aboard the American Packet *Fulton* of the Havre line. The postage was split equally (84c apiece) between the United States and Great Britain, with the British postal system carrying the letter from Southampton to China via Marseilles.

Augustine Heard & Co. was founded by its namesake after he left the firm of Russell & Co., where he was a partner. The firm established itself fairly quickly, and was a founding member of the Hong Kong Chamber of Commerce in 1861.

Ex Needham, Paliafito and Ishikawa. This cover has been the subject of many articles, including two by Stanley Ashbrook (*Special Service* and the 1951 *17th American Philatelic Congress Book*). Illustrated in Baker's *U.S. Classics* and also described in an article by Richard Searing for *The Chronicle* No. 135 in 1987.

With 1993 P.F. and 1997 P.S.E. certificates E. 200,000-300,000



Colored print of Augustine Heard & Co.'s offices in Shanghai, circa 1860



2160

- 2160° ☒ **24c Red Lilac, 30c Orange (70, 71).** Used with 3c Rose (65), cancelled by red grids, matching "N. York Br. Pkt. Paid Jan. 11" backstamp on 1862 folded cover **to Shanghai, China**, endorsed "*Via Marseilles*", magenta ms. "36" credit and red "1d" handstamp, London and Hong Kong transits, faint horizontal file fold well clear of stamps, 3c few short perfs at right, otherwise Very Fine, colorful and scarce usage paying the 57c rate via Marseilles for letter between $\frac{1}{4}$ and $\frac{1}{2}$ oz., ex White, Gibson and Hyzen..... E. 2,000-3,000



2161

- 2161° ☒ **30c Orange (71).** Tied by circle of V's, red "Boston Am. Pkt. 27 Paid Feb. 13" credit datestamp on 1864 cover **to Shanghai, China**, endorsed "*French Closed Mail*", red boxed "P.D." handstamp, opened on three sides and slightly reduced at right, Fine, scarce usage..... E. 400-500



2162

- 2162° ☒ **HONG KONG, 1863-80, 6c Lilac, 48c Rose Carmine (12, 21).** Bright colors, tied by blue "B62" ovals, blue "Hong Kong FE 26, 1865" backstamp on folded cover **from Shanghai, China, to Ipswich Mass.**, letter datelined *Shanghai Feby. 6, 1865*, red oval **"Forwarded by Augustine Heard & Co."** backstamp, red framed "per Messageries Imperiales" handstamp, red "5 cents" handstamp, London and New York transits, faint horizontal file fold well away from stamps, Very Fine..... E. 500-750



2163

- 2163° ☒ **30c Orange (71).** Used with **10c Yellow Green (68)** and **5c Brown (76)**, cancelled by grids, "Exeter N.H. Jul. 6, 1864" double-circle datestamp on yellow cover **to Swatow, China**, red "N. York Br. Pkt. Paid Jul. 9" datestamp, endorsed *"Overland via Southampton"*, magenta "24" credit, various transits, some edgewear, fresh and Very Fine, colorful and attractive franking for the 45c British Mail rate via Southampton, ex Paliafito..... E. 1,500-2,000

JAPAN



2164

2164°✉ **5c Red Brown, 10c Yellow Green (68, 75).** Five 10c, used with two 1c Blue (63) and cancelled or tied by grids, red "N. York Br. Pkt. Sep. 31 Paid" circular datestamp with day inverted on cover **to Kanagawa, Japan**, red London transit, endorsed "via Marseilles and Overland Mail" and "Care of Russell & Co. Shanghai, China" forwarding instructions, Hong Kong and Shanghai backstamps, various credit markings, few stamps defective
 VERY FINE APPEARANCE. AN EXTREMELY RARE EXAMPLE OF THE 1861 ISSUE USED TO KANAGAWA, JAPAN.

The cover was actually sent to Shanghai, where it was forwarded to Japan by Russell & Co.
 Ex Baker and Ishikawa..... E. 4,000-5,000

BURMA AND DUTCH EAST INDIES



2166



2167

- 2165° 10c Yellow Green (68). Horizontal pair, bright color, tied by segmented cork, "Warren Me. Feb. 7" circular datestamp on 1865 yellow cover **to Rangoon, Burma**, bold "Paid-Only to England" two-line handstamp, red "N. York Am. Pkt. Paid Feb. 11" datestamp, London and transit backstamps incl. blue Calcutta datestamp, slightly reduced at left and some minor edgewear, otherwise Very Fine, attractive usage to a very rare destination, apparent 1c underpayment of the 21c rate to England, with 1986 P.F. certificate E. 1,500-2,000
- 2166° Batavia Franco Oct. 8, 1863. Clear strike of datestamp on cover **from Dutch East Indies** to Centreville N.Y., London transit, red boxed "India Paid" and "16 Cents" handstamp, ms. ratings, "Boston Am. Pkt. 5 Oct. 30" datestamp, small hand-drawn flag at bottom and slogan on back "Hurrah for the Union and Abe Lincoln", some slight wear, Fine and rare usage..... E. 400-500
- 2167° 24c Gray Lilac (37). Used with 5c Brown (30A), each with magenta pen stroke, used on 1861 cover **to Angier, Java**, endorsed "Overland Mail" and "Via London and Paris", ms. "34" credit, red "New York Br. Pkt. Apr. 19" circular datestamp on back, red London Paid transit, red Singapore backstamp, stamps lifted and replaced, some overall wear, Fine appearance, an extremely rare destination, this cover would have required an additional 10c to pay the 39c British rate via Marseilles, probably paid in cash as there is no evidence of a missing stamp, ex Ishikawa and Gallagher E. 2,000-3,000

THE PHILIPPINES



2169

2168°✉ **5c Red Brown, 10c Green, 30c Orange (68, 71, 75).** Brilliant colors, tied by large Boston "Paid" grids, red "Boston Br. Pkt. 40 Mar. 4" credit datestamp on 1863 blue folded letter to **Manila, Philippines**, red London transit, Hong Kong and receiving backstamps, red "1d" credit and "2" due marking for Philippine postage, 30c faint corner crease

VERY FINE. A BEAUTIFUL AND RARE THREE-COLOR FRANKING INCLUDING THE 5-CENT RED BROWN ON A COVER TO THE PHILIPPINES.

The famous Peirce correspondence is often plagued by stamps that have been removed and then hinged back onto their covers. The example offered here is in a remarkable state of preservation. It is especially scarce with the 5c Red Brown stamp. Only five covers are reported paying the 45c rate via Southampton. Of those, at least two have had the stamps removed and hinged back in place.

Ex Paliafito..... E. 7,500-10,000



2170

2169

- 2169° ☒ **Russell & Sturges, Manila Sept. 4, 1856.** Ms. endorsement on back of folded cover to Plymouth Mass., sender's notation "via Marseilles", "Hong Kong 11 SE 1856" and London transit backstamps, ms. "48", clear "New-York Nov. 13 Br. Pkt." circular datestamp and "53" due handstamp, vertical file fold, Very Fine E. 300-400
- 2170° ☒ **"Manila 19 May 1861".** Dateline on folded letter to Boston Mass., bold "Liverpool JY 17, 1861" circular datestamp and "3 Cents" due handstamp, "Boston Aug. 7 A. Pkt. 24" debit datestamp, Very Fine and extremely scarce inbound usage from the Philippines..... E. 200-300

SINGAPORE



2171

- 2171° ☒ **24c Red Lilac, 30c Orange (70, 71).** Three 30c, tied by grids, "Sheffield Ms. May 23" circular datestamp on 1864 cover to **Singapore**, endorsed "Via Marseilles", red "Boston Br. Pkt. May 25" backstamp, London transit, light strike of red Singapore datestamp, stamps affected from placement at edge of cover, otherwise Very Fine, scarce usage paying the old two-times the 57c rate, this rate was lowered in June 1863 to 53c, the sender may not have known about the rate change, resulting in an 8c overpayment..... E. 2,000-3,000



2172

- 2172° ☒ **Singapore to Stoneham Mass.** Faint strike of Singapore circular datestamp on back of red and blue stencilled Waving Flag Patriotic cover to Stoneham Mass., endorsed "Via Marseilles", various ratings incl. "Due 63", "New-York Br. Pkt. Mar. 4, 1862" receiving datestamp struck twice, some wear incl. missing top and right flaps, otherwise Fine, a few patriotic covers are known from Hong Kong, but this patriotic from Singapore is unique..... E. 1,500-2,000

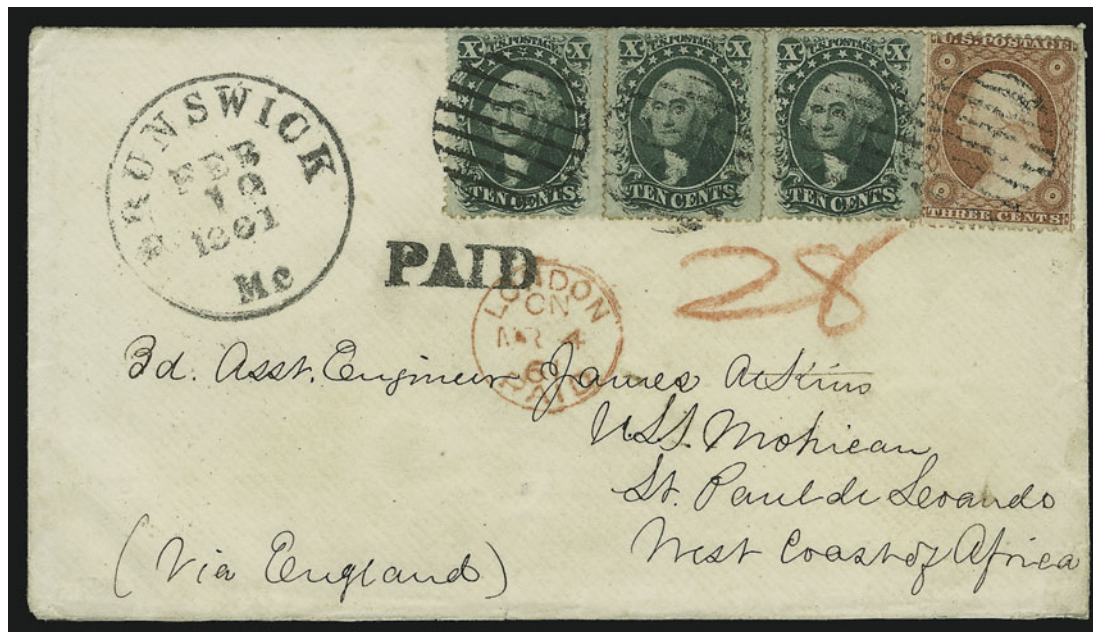
SIAM (THAILAND)



2173

- 2173° ☒ **30c Orange (38).** Used with 3c Dull Red, Ty. II (26) and tied by red and black grids, red "New Haven Con. May 7, 1861" circular datestamp on cover to **Bangkok, Siam**, endorsed "Overland via Southampton and Singapore", magenta ms. "28" credit, London transit, missing top flap
VERY FINE. A RARE AND BEAUTIFUL USAGE OF THE 3-CENT AND 30-CENT 1857-60 ISSUE ON A COVER TO BANGKOK, SIAM.
Ex Grunin and Kapiloff..... E. 5,000-7,500

ANGOLA



2174

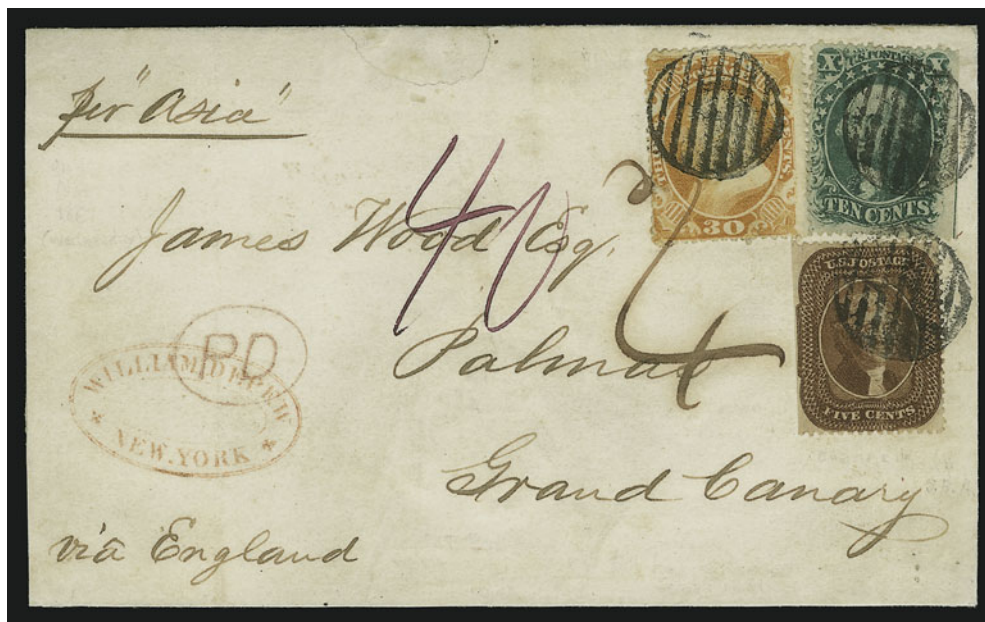
2174° 10c Green, Ty. V (35). Three, used with 3c Dull Red, Ty. II (26), tied by grids, "Brunswick Me. Feb. 19, 1861" circular datestamp on cover to **St. Paul de Loando, West Coast of Africa**, Boston backstamp, red London transit and red crayon "28" credit, docking on back indicates received on June 9th

EXTREMELY FINE. AN IMMACULATE COVER FROM MAINE TO ST. PAUL DE LOANDO ON THE WEST COAST OF AFRICA. A SUPERB EXHIBITION PIECE.

St. Paul de Loando was the capital of the Portuguese colony of Angola and a known area of activity for slave traders. The letter is addressed to the Third Assistant Engineer on the *U.S.S. Mohican*, which was patrolling the waters off of Africa. In August 1860 the *Mohican* had captured the slave trader ship *Erie* in the Congo River. The 867 captured slaves were "repatriated" to Liberia.

Ex Grunin E. 3,000-4,000

CANARY ISLANDS

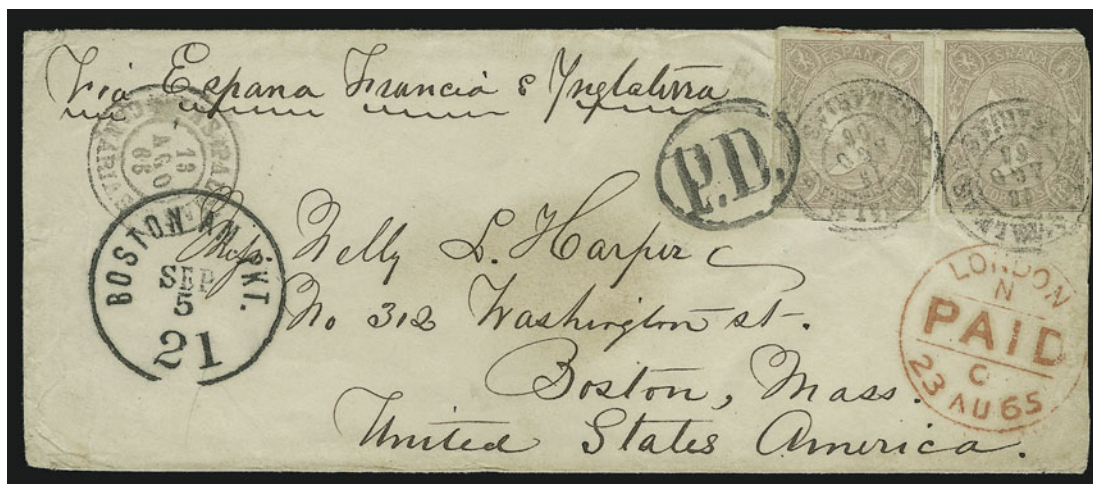


2175

- 2175°✉ **5c Orange Brown, Ty. II (30).** Used with **10c Green (68)** and **30c Orange (38)**, tied by grids, red "New-York Br. Pkt. Sep. 11" datestamp on back of 1861 folded cover to **Palmas, Grand Canary Island**, merchant's oval handstamp, red oval "PD" handstamp, various rate markings, stamps with few faults

VERY FINE APPEARANCE. A LOVELY THREE-COLOR FRANKING WITH THE 1861 5-CENT ORANGE BROWN TO GRAND CANARY ISLAND. AN INCREDIBLY RARE DESTINATION.

Ex Gibson, Krug and Kapiloff. Signed Ashbrook..... E. 7,500-10,000



2176

- 2176°✉ **SPAIN (USED IN CANARY ISLANDS), 1865, 2r Red Lilac (72).** Two, large margins to just in, tied by "Canary Islands Aug. 13, 1866" double-circle datestamps on cover to Boston, blue Madrid backstamp, red London transit, neat "Boston Am. Pkt. Sep. 5 21" debit datestamp, prepaid only to England, slightly reduced at right, some minor wear, otherwise Fine, extremely scarce usage from the Canary Islands E. 1,000-1,500

CAPE OF GOOD HOPE



2177



2178

- 2177° ☒ **5c Red Brown, 10c Yellow Green, 30c Orange (75, 68, 71).** 5c s.e. at right, tied by segmented corks, red "Boston Am. Pkt. Sep. 18" backstamp, on 1863 blue folded cover **to Port Elizabeth, Cape of Good Hope**, red London Paid transit, transit and receiving backstamps

VERY FINE. A BEAUTIFUL THREE-COLOR FRANKING INCLUDING THE 5-CENT RED BROWN ISSUE ON A COVER TO THE CAPE OF GOOD HOPE.

Ex Brown. E. 2,000-3,000

- 2178° ☒ **30c Orange (71).** Three, radiant color, tied by circle of wedges, "New-York Am. Pkt. Jan. 16" backstamp on 1864 blue folded letter **to Port Elizabeth, Cape of Good Hope**, red London transit, trivial overall wear, Very Fine, extremely rare franking paying double the 45c rate, ex Judd E. 1,500-2,000

GABON AND LIBERIA



2179



2180



2181

- 2179° **10c Green, Ty. V (35).** Horizontal pair and single, used with 3c Dull Rose, Ty. II (26), tied by "Marietta O. Jul. 4, 1860" circular datestamp on 1860 orange cover to **Baraka, Gabon, West Africa**, London transit and red "12" credit handstamp, missing top flap, slightly reduced at top affecting stamps, still Fine, U.S. mail to this West African destination is exceedingly rare in any period (not to be confused with mail to the Cape or other African countries) E. 3,000-4,000
- 2180° **Etablissements Du Gabon, Gabon 23 Sept. 1863.** Well-struck blue double-circle datestamp on orange legal-size cover to Philadelphia, French transits, "Philadelphia Am. Pkt. Dec. 4" datestamp, ms. rates, slightly reduced at right, Very Fine, extremely rare usage from the French African Colony of Gabon to Philadelphia E. 1,000-1,500
- 2181° **3c Rose (65).** Strip of four, three pairs and a single, cancelled or tied by matching grids and indistinct town datestamp on Mar. 1865 cover to **Monrovia, Liberia**, red "12" credit handstamp ties right pair, stamps at top originally folded over edge and torn on opening, masterfully restored, Very Fine appearance, a major foreign-mail rarity, only a few covers are known from the U.S. to Liberia, ex Gallagher E. 1,500-2,000



MAURITIUS AND ST. HELENA



2183



2184



2185

- 2183° ☒ **5c Buff , 10c Yellow Green, 30c Orange (67, 68, 71).** Tied by grids, red "N. York Br. Pkt. Jan. 29" backstamp on 1862 blue folded letter to **Port Louis, Mauritius**, red London transit and receiving backstamp, red credit handstamps, stamps with faults incl. 10c with piece out at top left, otherwise Fine, attractive and scarce usage paying the 45c British Mail rate via Marseilles, ex Rohloff and Paliafito..... E. 1,000-1,500
- 2184° ☒ **MAURITIUS, 1859-62, 6p Blue, Imperforate, 1p Brown Lilac, 4p Rose (18, 24, 26).** Horizontal pair of 6p, large margins to just in, cancelled by "B53" in barred oval, "Mauritius MY 2, 1862" backstamp on **mourning** cover to Lancaster Pa., red London and "16 Cents" transits, Boston 5c due marking, expertly repaired along edges, stamps barely affected from placement at edge of cover, otherwise Very Fine, colorful and scarce mixed-issue franking paying the rate by British Mail via Marseilles, ex Gallagher, with 1986 B.P.A. certificate not mentioning any faults..... E. 2,000-3,000
- 2185° ☒ **30c Orange (71).** Used with 3c Rose (65), cancelled by well-struck "Paid" handstamps, "Nantucket MS Apr. 21, 1862" double-circle datestamp on cover to **St. Helena**, red "28" credit handstamp and London transit, red Boston backstamp, barely reduced at right, small piece out at bottom, otherwise Very Fine, attractive and scarce usage, ex Klein..... E. 1,500-2,000

ADEN



2186

2186° ☒ **24c Gray Lilac (37).** Used with **3c Dull Red, Ty. II (26)** and **12c Black, Pl. III (36b)**, tied by well-struck large Boston "Paid" grids, red "Boston Br. Pkt. Paid May 7" backstamp on cover **to Aden, Arabia**, red "34" crayon credit to England, red London transit, May 30 receiving backstamp, 24c small piece out at left

VERY FINE APPEARANCE. A BEAUTIFUL AND RARE THREE-COLOR FRANKING OF THE 1857 ISSUE ON COVER TO ADEN.

Franked to fully prepay the 39c rate by British Mail via Marseilles.

With 1993 P.F. certificate..... E. 5,000-7,500

ALGERIA AND EGYPT



2187

- 2187° **3c Dull Red, Ty. II (26).** Irregular “block” of five, fresh and bright color, tied by grids, “Old Point Comfort Va. Aug. 10” circular datestamp on yellow cover with red and blue **Waving Flag Patriotic** design to **Constantine, Algeria**, red 1864 French transit also ties stamps, red boxed “P.D.” handstamp, Paris and receiving backstamps

VERY FINE. A SPECTACULAR AND RARE USE OF THE 3-CENT 1857 ISSUE ON A PATRIOTIC COVER TO ALGERIA.

The rates to Algeria were the same as those to France. This cover, used in August 1861 from Old Point Comfort, is a remarkable and unique Civil War era usage.

Ex Haas and Grunin..... E. 7,500-10,000



2188

- 2188° **Pigeon Cove Mass. Apr. 25.** Well-struck circular datestamp on red and blue **Waving Flag Patriotic** cover to **Alexandria, Egypt**, endorsed “by French mail”, “Boston 24 Apr. 26” debit datestamp, 1861 ultramarine Havre transit, transit and receiving backstamps, slightly reduced at right and some overall wear, otherwise Fine, believed to be a unique usage of a patriotic to Egypt..... E. 1,500-2,000

MUSCAT (OMAN) AND TURKEY



2189

2189° ☒ **10c Green, Ty. V (35).** Horizontal pair and two singles, used with two **1c Blue, Ty. V (24)**, all tied by red **"Paid"** in circle handstamps, matching "Providence R.I. Jul. 31, 1860" circular datestamp on cover to **Muscat (Oman), Africa, via Bombay, India**, magenta ms. "40" credit, red London transit, ms. "1" colonial rate, Bombay G.P.O. backstamp, faint toning

EXTREMELY FINE. A SPECTACULAR FRANKING OF THE ONE-CENT AND 10-CENT 1857 ISSUE TO AN INCREDIBLY RARE MIDDLE EASTERN DESTINATION. A REMARKABLE USAGE.

The 42c in postage pays double the 21c rate via British Open Mail..... E. 7,500-10,000



2190

2190° ☒ **Smyrne Turquie 4 Dec. 1862.** Neat strike of double-circle datestamp on blue folded letter to Boston, red **"Am. Service"** handstamp, Lyon transit backstamp, **"Boston 30 Jan. 1"** debit datestamp, fresh and Very Fine..... E. 200-300

AUSTRALASIA



2191

- 2191° ☒ **30c Orange (71).** Used with **10c Yellow Green** and **5c Brown (68, 76)**, tied by targets, "Washington D.C. Feb. 6" circular datestamp on 1865 cover **to Sydney, New South Wales**, endorsed "*per steamer via England and Marseilles*", red New York and London transits, red "40" credit, "Ship Letter Sydney AP 23, 1865" receiving backstamp, fresh and Very Fine, a beautiful three-color franking, ex Rohloff and Grunin..... E. 2,000-3,000




2192

- 2192° ☒ **NEW SOUTH WALES, 1855-61, 6p Brown, 2p Blue (28, 36).** Tied by "Sydney JU 29 1861" datestamps on blue folded letter to San Francisco, endorsed "*pr 'Midas' via Newcastle*", "San Francisco Cal. Oct. 17, 1861" double-circle receiving datestamp and "Ship 5" handstamp, light horizontal file fold at bottom well clear of stamps, few age toning spots, otherwise Very Fine, attractive and scarce usage..... E. 400-500




2193

- 2193°  **NEW ZEALAND, 1863, 6p Black Brown, Perf 13 (24a).** Horizontal strip of three, tied by bold strikes of "21" in barred oval handstamps, "Invercargill, South Island N.Z. NO 18, 1864" circular datestamp on cover to New York, red London transit and "16 Cents" credit handstamp, "Due" handstamp with pencil "5", "N. York Br. Pkt. 5 Jan. 28" debit datestamp, right stamp faulty, otherwise Very Fine and extremely rare inbound cover from New Zealand E. 500-750



2194

- 2194°  **SOUTH AUSTRALIA, 1856-59, 2p Pale Red, 6p Slate Blue, Rouletted (11, 12).** Horizontal pair of 2p, large margins to just in, tied by neat strike of "Adelaide S.A. JU 25, 1861 Paid" datestamps on **wrapper** addressed to Edward D. Morgan as Governor of New York, red London transit and "16 Cents" handstamp, bold "N. York Am. Pkt. 5 Sep. 4" debit datestamp, fresh and Very Fine, rare usage of the South Australia stamps on a wrapper to New York, ex Griffiths..... E. 2,000-3,000



2195

- 2195° ☒ **TASMANIA, 1856-57, 1p Carmine, 6p Blue Gray (11, 15).** Two of each, large margins to in, tied by "52" oval grids, red "Post-Office Launceston Ap. 24, 1862" datestamp on mourning cover to Bird's Run O., London transit, some overall wear and toning, otherwise Fine, extremely rare use of a mourning envelope from Tasmania to the U.S. E. 1,500-2,000



2196

- 2196° ☒ **12c Black, Pl. 3, 30c Orange (36b, 38).** Used with 3c Dull Red, Ty. II (26), tied by grids, "East Cambridge Mass. Apr. 13" circular datestamp on orange cover to **Melbourne, Australia**, red 1861 London transit, slightly reduced at right, 12c light diagonal crease at bottom right
- VERY FINE APPEARANCE. A RARE THREE-COLOR FRANKING OF THE 1857-60 ISSUE ON A COVER TO AUSTRALIA.
- This rate is seen more frequently with 30c, 10c and 5c stamps. This combination is rare.
- Ex Grunin. Signed Ashbrook..... E. 4,000-5,000



2197

- 2197° ☒ **5c Red Brown (75).** Seven singles (one with s.e.) arranged in an overlapping fashion with single **10c Green (68)**, tied by targets, "Rushville Ind. Jan. 16, 1863" double-circle datestamp on yellow cover **to Kangaroo Flat Berretigo, Colony of Victoria, Australia**, endorsed "British Mail via Marseilles", red "N. York Br. Pkt. Paid Jan. 20" transit datestamp, London and receiving backstamps, some perfs affected at top from placement at edge of cover, otherwise Very Fine, a spectacular franking paying double rate, the arrangement of the stamps is reminiscent of the Postage Currency of the time, ex Sevenoaks E. 1,500-2,000



2198

- 2198° ☒ **30c Orange (71).** Used with 3c Rose (65), cancelled by grids, 3c tied by "Dover N.H. Aug. 24, 1864" double-circle datestamp on cover **to Melbourne, Victoria**, red crayon "12" credit, London transit, Boston and Melbourne backstamps, fresh and Very Fine, unusually attractive cover to Victoria E. 1,000-1,500



2199

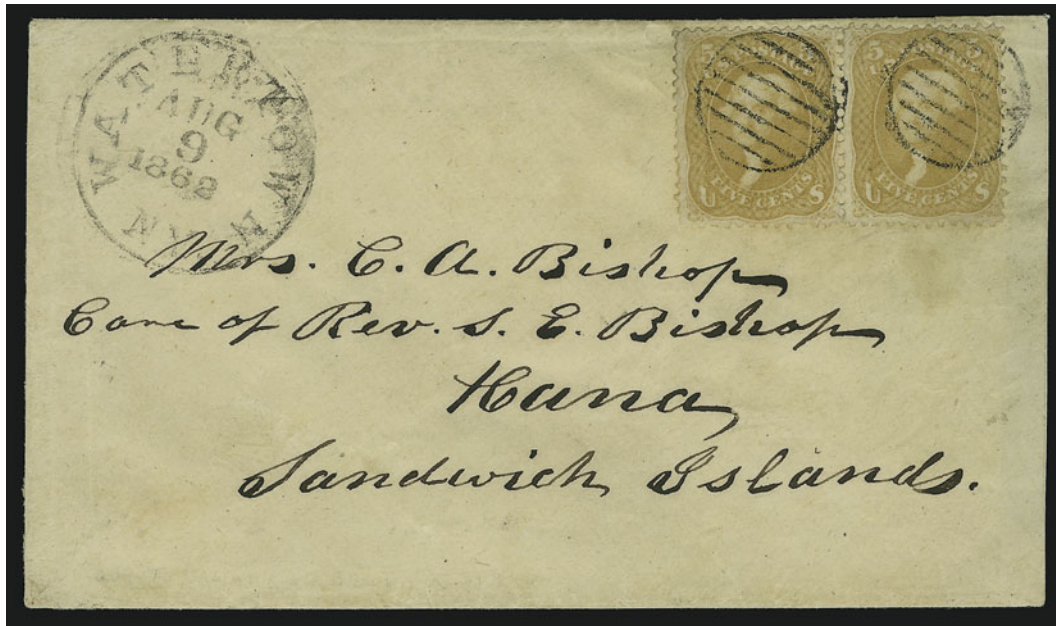
- 2199° ☒ **VICTORIA, 1860-63, 2p Gray Lilac, 1sh Blue (54, 80).** 1sh s.e. at bottom, tied by "Melbourne MR 24, 1864" datestamp on cover to Newark N.J., red London transit and "16 Cents" credit handstamp, "N. York Br. Pkt. 5 May 31" debit datestamp, few faults, appears Fine E. 200-300



2200

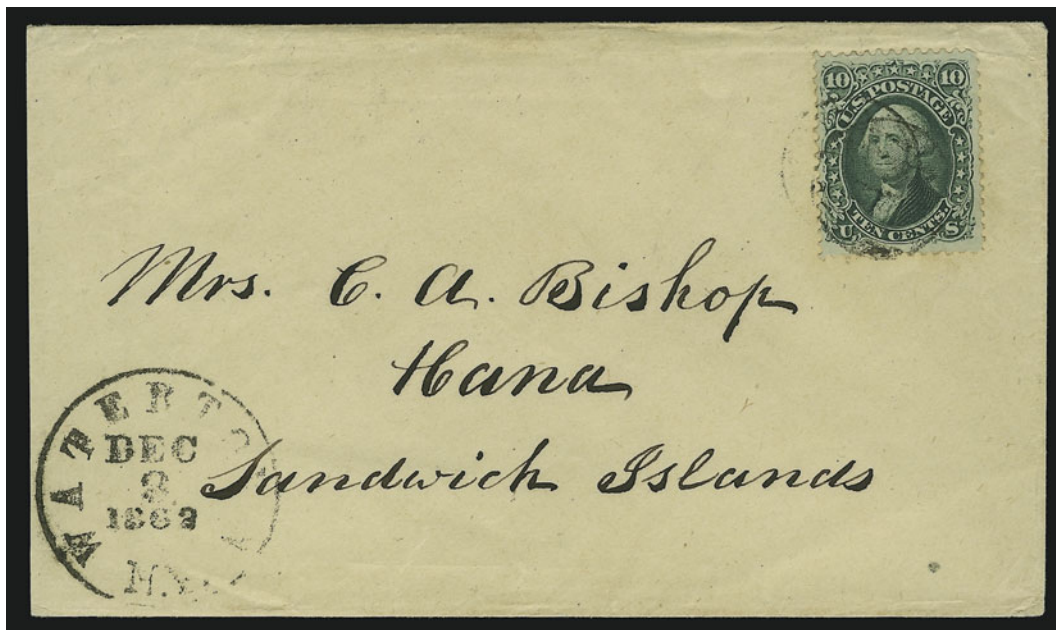
- 2200° ☒ **VICTORIA, 1861-63, 2p Violet, 6p Black (75a, 71).** Horizontal pair of 6p, tied by "148" oval grids, "Emerald Hill, Victoria, AP 24, 1865" backstamp, on cover to Cincinnati O., red London transit and "16 Cents" credit handstamp, trivial toning around a few perfs, Fine, scarce franking and usage in this period..... E. 200-300

HAWAII



2201

2201° ☒ **5c Buff (67).** Horizontal pair, brilliant color, tied by neat grids, "Watertown N.Y. Aug. 9, 1862" circular datestamp on cover **to Hana, Sandwich Islands**, minor edgewear, Very Fine, probably a unique use of the 5c Buff to Hawaii, signed Ashbrook.... E. 1,000-1,500



2202

2202° ☒ **10c Yellow Green (68).** Choice centering, deep rich color, tied by handstamp, "Watertown N.Y. Dec. 3, 1862" circular datestamp on cover **to Hana, Sandwich Islands**, barely reduced at left, Extremely Fine, a pretty cover E. 500-750



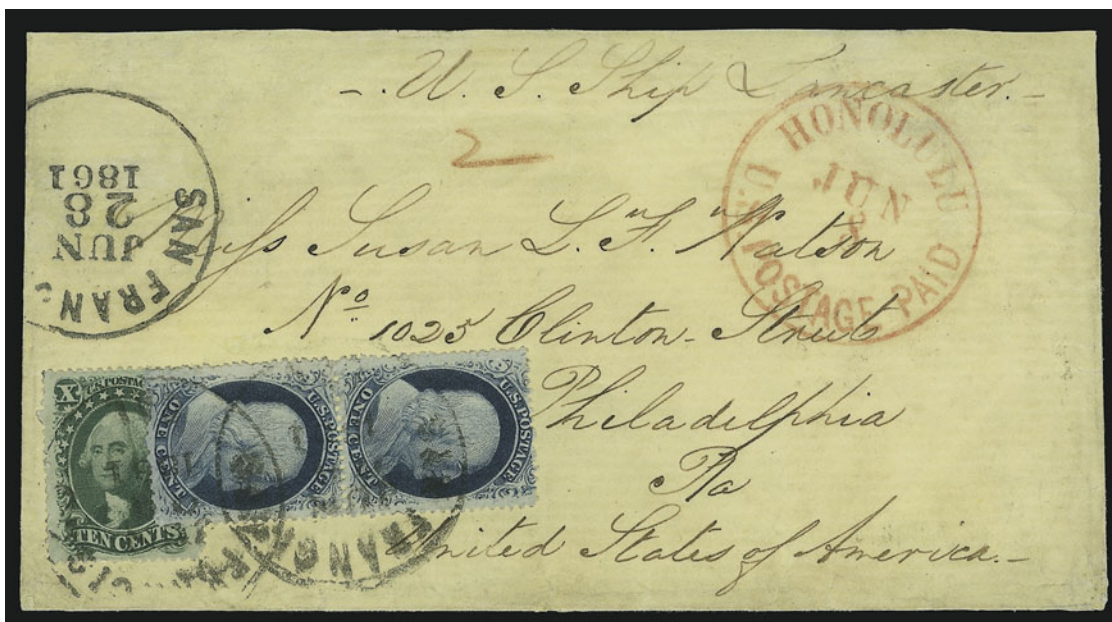
2203

2203°✉ **90c Blue (72).** Rich color, choice centering, tied by oval "Paid" handstamp, red "Boston Mass. Oct. 28" double-circle datestamp on blue cover **to Honolulu, Sandwich Islands**, edge wrinkles due to thick contents

EXTREMELY FINE. THE UNIQUE 90-CENT 1861 ISSUE ON COVER TO HAWAII. A REMARKABLE USAGE.

This cover was the subject of analysis by Richard B. Graham in *Opinions* (Elizabeth C. Pope, Editor, published by The Philatelic Foundation, 1983). According to Graham, the use of a 90c stamp on a relatively small envelope indicates that the content must have been a small pamphlet or daguerrotype weighing between 4 and 4½ ounces. He determined the year of use to be either 1861 or 1862.

Ex Admiral Harris. With 1980 P.F. certificate E. 20,000-30,000



2204

2204° ☒ **10c Green, Ty. V (35).** Used with vertical pair of **1c Blue, Ty. V (24)**, deep rich color, tied by "San Francisco Cal. Jun. 28, 1861" datestamps on yellow cover from Hawaii to Philadelphia, red "Honolulu U.S. Postage Paid Jun. 8" circular datestamp, red "2" crayon credit marking, blue "Dudley C. Bates Commission Merchant, Honolulu H.I." oval backstamp, expertly repaired along top edge

VERY FINE APPEARANCE. A RARE USAGE PAYING THE 10-CENT TRANSCONTINENTAL RATE PLUS 2-CENT SHIP FEE.

The cover was carried to San Francisco on the French brig *Railluer*.

Ex Pietsch. E. 7,500-10,000



2205

2205° ☒ **1853, 13c Dark Red, Thick White Wove, 5c Blue, Thin White Wove (6, 8).** Large margins to just in, **used with 12c Black, Pl. 3 (36b)**, originally affixed over Hawaiian stamps, all tied by "San Francisco Cal. Sep. 15?" double-circle datestamp, red "Honolulu U.S. Postage Paid Sep. 7" circular datestamp on cover to Calais Me., 1861 docketing at left, 5c small corner crease, 13c few small surface scuffs, 12c moved for display purposes
EXTREMELY FINE. A BEAUTIFUL AND RARE MIXED FRANKING COVER WITH THE HAWAIIAN KAMEHAMEHA III AND 12-CENT 1857 ISSUES.

The 18c in Hawaiian postage represents a 1c overpayment of the 5c Hawaiian postage plus 12c for the 10c transcontinental rate and 2c ship fee. The 12c stamp was applied on arrival in San Francisco.

Ex Hindes and Pietsch. With 1964 P.F. certificate. E. 30,000-40,000



2206

2207

2206° ☒ **1861, 5c Blue, Thin Bluish Wove (9).** Large margins to clear incl. part of adjoining stamp at top, bright color, tied by red "Honolulu Hawaiian-Islands Nov. 23" circular datestamp on cover to Brooklyn N.Y., neat "San Francisco Cal. Dec. 5, 1861" double-circle datestamp with "12" and "Ship" handstamps, stamp with light corner crease at top left, cover with minor cosmetic repairs, Very Fine appearance, with 1976 R.P.S. and 1980 P.F. certificates (neither mentioning repairs) 3,750.00

2207° ☒ **1861, 5c Blue, Thin Bluish Wove (9).** Horizontal pair, margins to in, rich color, tied by square grids on cover to Reading Mich., red "Honolulu Hawaiian-Islands Jul. 20" circular datestamp, bold "San Francisco Cal. Aug. 10, 1864" double-circle datestamp also ties stamps, matching "Ship 6" handstamp, red "Aldrich, Walker & Co. Honolulu Shipping & Commission Merchants" oval backstamp, stamps with few faults incl. right stamp expertly repaired at top right

VERY FINE APPEARANCE. AN EXTREMELY RARE MULTIPLE OF THE HAWAII 5-CENT THIRD PRINTING ON COVER. BELIEVED TO BE A UNIQUE USAGE.

The *Honolulu Advertiser* collection contained a pair on cover, used with a U.S. 5c stamp (applied in San Francisco on July 20, 1864). On that cover, the pair of Hawaiian stamps included 5c prepayment of United States postage, as the cover was marked with the "Honolulu Postage Paid" datestamp. The cover offered here was franked the same way, probably intending to pay postage to destination with the Hawaiian stamps. However, the postmaster in Honolulu did not use the "Honolulu Postage Paid" handstamp, either due to error or because he thought the letter was overweight. When it reached San Francisco, the postmaster there treated the U.S. postage as unpaid and so marked it with the "Ship 6" handstamp for 3c postage plus 3c penalty for non-prepayment.

Ex Sharbaugh, Van Dyke and Pietsch. With 1977 P.F. certificate. E. 15,000-20,000



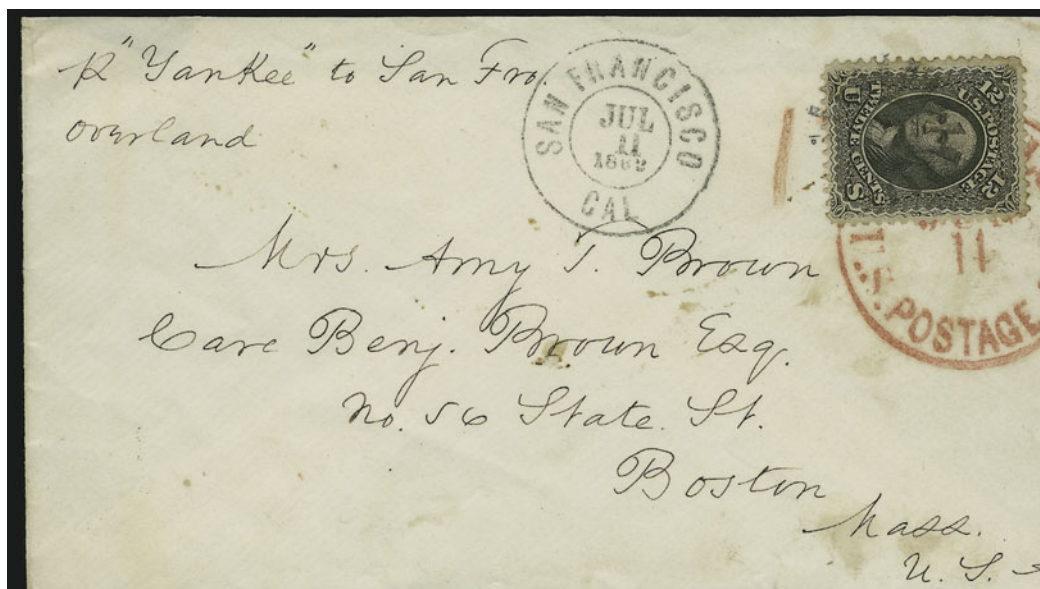
2208

2208° 2c Black (73). Two vertical pairs and single, used with vertical strip of four of 3c Rose (65), tied by cogwheel, "San Francisco Cal. Nov. 29, 1864" double-circle datestamp on cover to Boston, red "Honolulu U.S. Postage Paid Nov. 9" datestamp, right edge and right 2c stamp expertly restored, expertly sealed cover tear

VERY FINE APPEARANCE. A RARE AND IMPORTANT USAGE FROM HAWAII SENT DURING THE EIGHTH PERIOD OF POSTAL RATES. ONE OF THE GREAT CLASSIC COVERS OF HAWAIIAN POSTAL HISTORY.

During the Eighth Period, from September 15 thru November 11, 1864, postal rates were misinterpreted by the postmasters in San Francisco and Honolulu. During this period, letters sent from Hawaii were prepaid according to the following schedule: U.S. postage at 10c per ½ oz; Hawaiian postage at 5c per ½ oz.; and a ship fee of 2c per letter, regardless of weight. The cover offered here is an example of the 22c rate for letters between ½ and one ounce, where the ship fee was charged at a flat 2c rate.

Illustrated in Meyer-Harris and Allen books. Ex Wilson, Allen and Rorke.
..... E. 7,500-10,000



2209



2210

- 2209° ☒ **12c Black (69).** Choice centering, tied by cogwheel, "San Francisco Cal. Jul. 11, 1862" double-circle datestamp on cover **from Hawaii** to Boston, red "Honolulu U.S. Postage Paid Jun. 11" circular datestamp, and red crayon "12" partly under stamp, endorsed "p "Yankee" to San Fro overland", stamp partly lifted to show offset of Honolulu postmark

VERY FINE. A BEAUTIFUL AND RARE USAGE OF THE 12-CENT 1861 ISSUE FROM HAWAII.

The 5c Hawaiian postage plus 12c U.S. postage was paid in cash, as indicated by the "12" credit. The stamp was affixed on arrival in San Francisco.

With 1986 P.F. certificate. E. 3,000-4,000

- 2210° ☒ **1861, 5c Blue, Thin Bluish Wove (9).** Large margins to just in, **used with 5c Brown (76)**, both tied by grid and "San Francisco Cal. Jan. 4, 1864" double-circle datestamp on light yellow cover **to Salem, Oregon**, red "Honolulu U.S. Postage Paid Dec. 11" circular datestamp, small repaired edge tear at top right

VERY FINE APPEARANCE. A RARE AND BEAUTIFUL COMBINATION COVER OF THE HAWAIIAN 5-CENT KAMEHAMEHA III THIRD PRINTING AND UNITED STATES 5-CENT 1861 ISSUE.

The majority of covers sent from Hawaii were addressed to the eastern part of the United States. The cover offered here, addressed to Oregon and with the stamps beautifully cancelled, is a remarkably rare exhibition piece.

With 1977 P.F. certificate. E. 7,500-10,000

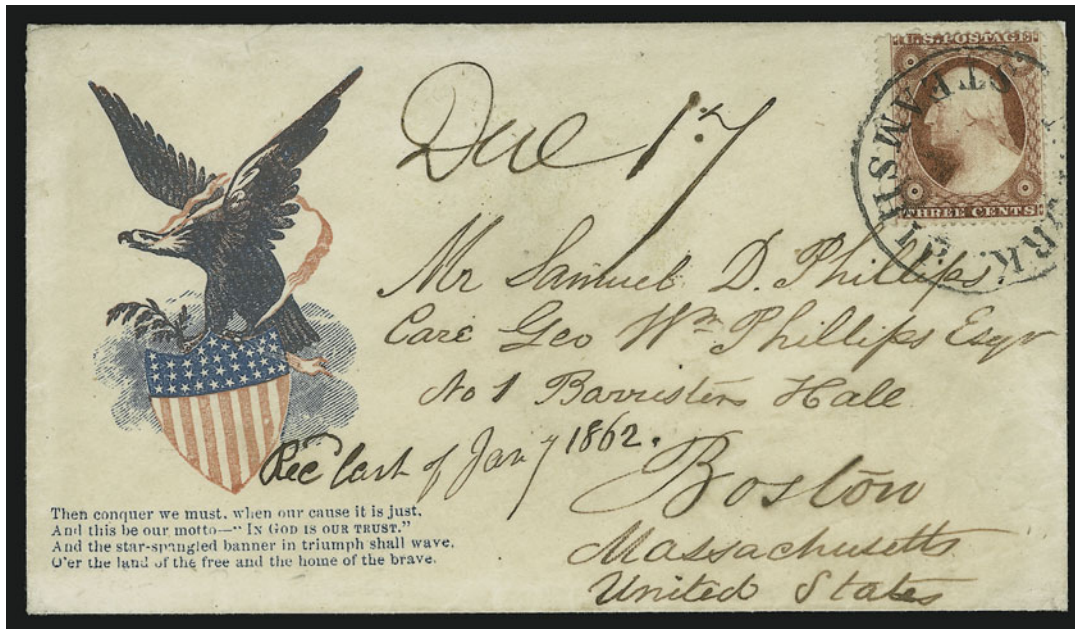


2211

2211°✉ **HAWAII, 1865, 5c Blue on Blue, "Hawaiian Postage" (21).** Plate 9-A, Type IX (Westerberg Position 1), large margins, tied by neat square grid and **used with United States 5c Brown (76)**, Numeral stamp slightly overlapping, San Francisco target cancel ties both stamps on cover to Montclair N.J., red "Honolulu U.S. Postage Paid Apr. 29" datestamp also ties Numeral, neat "San Francisco Cal. Jun. 3, 1865" double-circle datestamp, missing top flap and small cover tear at top
EXTREMELY FINE. AN OUTSTANDING COMBINATION FRANKING — ONE OF THE FINEST OF ITS KIND.

Ex Hall (purchased at the 1925 J. Morgenthau sale of the Bister Collection).
 E. 10,000-15,000

STEAMSHIP MAIL (UNKNOWN ORIGIN)



2212

- 2212° ☒ **3c Dull Red, Ty. II (26).** Deep rich color, tied by “New York Steamship” dateless circular handstamp on red and blue **Eagle and Shield Patriotic** cover to Boston, ms. “Due 17” and “Recd. last of Jany 1862”, expertly repaired, Very Fine appearance, 3c 1857 evidently accepted as part payment of double 10c rate..... E. 1,000-1,500



2213

- 2213° ☒ **3c Dull Red, Ty. II, 10c Green, Ty. II (26, 32).** Two of each, tied by “N. York Steamship” dateless circular handstamp on red and blue **Waving Flag Patriotic** cover to Columbus O., ms. “Recd. 5 July” at left, some overall wear, expertly repaired along edges, Fine appearance, an extremely rare franking and usage, exact origin is unknown, but probably from a vessel sailing from the Caribbean or coast of South America E. 1,000-1,500



2214

2214° 12c Black (36). Horizontal pair, intense shade, choice centering, tied by "N. York Steamship" dateless circular handstamp on red and blue **Standing Liberty, Flag and Shield Patriotic** cover to Columbus O. and **forwarded** to Granville O., neat "Columbus O. Aug. 17, 1861" double-circle datestamp and ms. "Ford. 6", trivial wear

VERY FINE. AN EXTREMELY RARE USE OF 12-CENT 1857 ON AN INBOUND STEAM-LETTER PATRIOTIC COVER

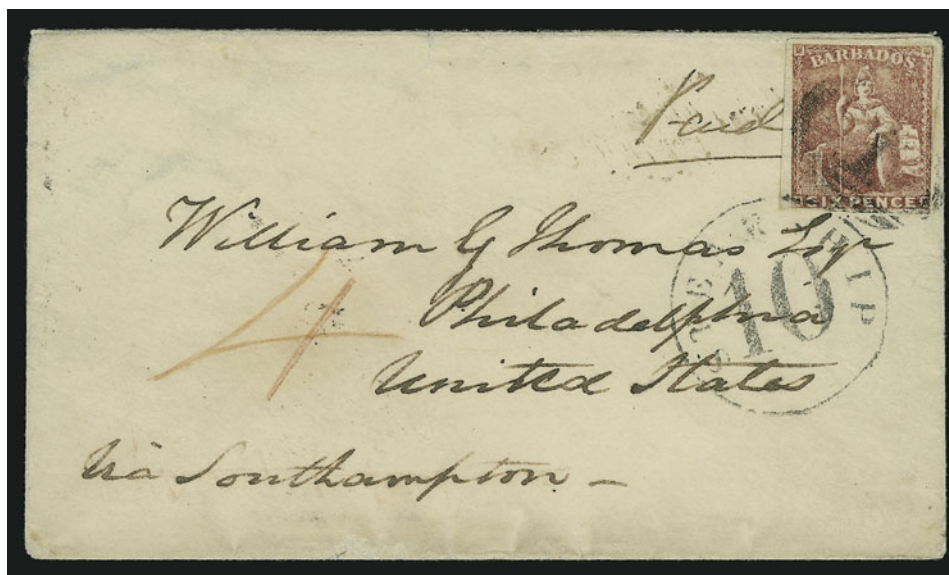
The origin of this cover is unknown, but it was probably carried on a ship sailing from the Carribean or coast of South America. The 24c prepayment overpays the double 10c rate. E. 4,000-5,000

BAHAMAS AND BARBADOS



2215

- 2215° ☒ **BAHAMAS, 1863, 4p Bright Rose (13b).** Horizontal pair, brilliant color, tied by "A05" oval grid, "Bahamas FE 15, 1864" backstamp on cover to Georgetown Del., stamps also tied by "New York Br. Pkt. Feb. 20" circular datestamp, "10" in circle due handstamp, sender's instructions at left, barely reduced at right and some edgewear, Very Fine appearance, rare double-rate franking, with 1972 B.P.A. certificate E. 2,000-3,000



2216

- 2216° ☒ **BARBADOS, 1859, 6p Rose Red (8).** Large margins to just in at bottom right, tied by "1" oval grid and "Steamship 10" in circle handstamps, "Barbadoes MR 13, 1861" backstamp on cover to Philadelphia, endorsed "Via Southampton", sender intended to pay 1sh British Mail rate via Southampton but underpaid it with the 6p, so the cover was sent by U.S. steamer to New York from St. Thomas (transit backstamp), Very Fine, rare usage, with 1963 B.P.A. certificate E. 1,000-1,500

CUBA



2217



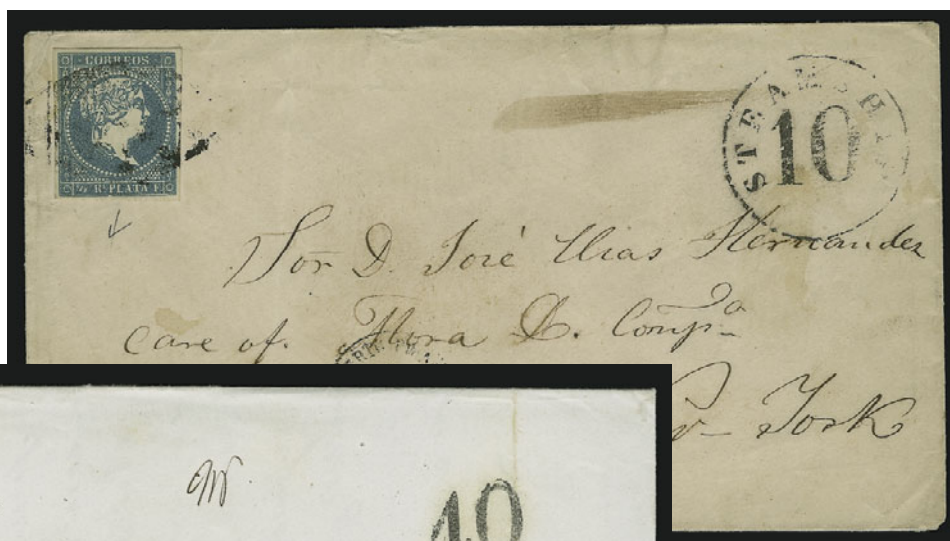
2218



2219

- 2217° 10c Green, Ty. V (35). Rich color, tied by "New Orleans La. Apr. 5" circular datestamp on 1861 folded letter **from Confederate New Orleans to Havana, Cuba**, light strike of oval "NA1" due marking, receiving backstamp, light file folds and minor edgewear, Very Fine, scarce usage E. 1,000-1,500
- 2218° 10c Dark Green, First Design (62B). Two, deep rich color, tied by red "New York Paid Oct. 29" circular datestamp on 1861 folded letter **to Manzanillo, Cuba**, endorsed "pr Cosmopolitan", "NA" in circle and "5" handstamps, receiving backstamp, few slightly toned perf tips, otherwise Very Fine, scarce double-rate usage of the 10c First Design to Cuba, with 1983 P.F. certificate E. 2,000-3,000
- 2219° 10c Yellow Green (68). Tied by "New-York Mar. 22" circular datestamp and "NA1" in oval on blue **Benjamin Franklin Patriotic cover to Havana, Cuba**, part of receiving backstamp, minor edgewear, stamp with sealed tear at bottom left, otherwise Very Fine, the only patriotic reported used to Cuba..... E. 1,000-1,500

2220

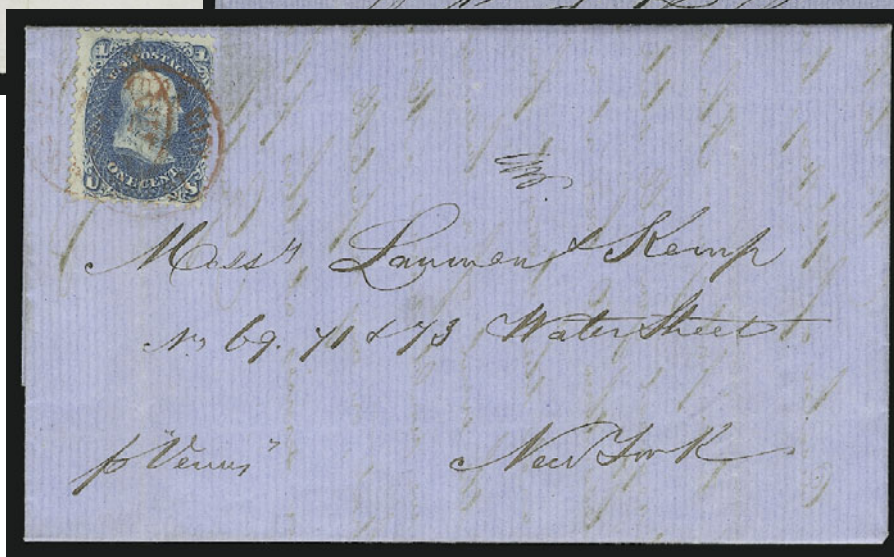


2221



2222

2223



- 2220° ☒ **CUBA, 1857, ½r Blue (12).** Full margins all around, tied by handstamp, "Puerto Principe Apr. 22, 1862" circular datestamp on cover to New York, "Steamship 10" in circle handstamp, trivial wear, Very Fine, rare use of stamps on mail from Cuba to the U.S. in this period..... E. 300-400
- 2221° ☒ **"Havana 23 Setemember 1861".** Dateline on folded letter to New York, bold "40" handstamp, endorsed "Per "Marion"", light vertical file folds, Very Fine quadruple-rate usage E. 50-75
- 2222° ☒ **"Trinidad Enero 15 1862".** Dateline on blue folded cover to New York, clear strike of green "Llopart, Vilay Ca. Habana" forwarder's backstamp, blue "Baltimore Md. Feb. 13" circular datestamp with matching "Ship" and "5" handstamps, light vertical file folds, Very Fine.. E. 100-150
- 2223° ☒ **1c Blue (63).** Tied by red "New York City Paid 1 Ct." circular carrier datestamp on blue folded printed notice **bootlegged from Curacao** to New York, endorsed *per* "Venus" vertical file fold thru stamp, otherwise Fine, extremely rare and unusual bootlegged usage E. 300-400

DANISH WEST INDIES



2224

2224°☒ **2c Black (73).** Used with **30c Orange (71)** and **3c Rose (65)**, tied by targets and "San Jose Cal. Mar. 25, 1865" double-circle datestamps on cover to **St. Thomas, West Indies**, red crayon "Paid 34" and "24" credit, May 13 receiving backstamp, expertly repaired at left, 3c small tear at bottom

VERY FINE APPEARANCE. AN EXTREMELY RARE USE OF THE 1861-63 ISSUE FROM CALIFORNIA TO ST. THOMAS.

Ex Allen, Krug and Paliafito. Illustrated in the Lane book on p. 60. Signed Ashbrook.....
 E. 5,000-7,500



2225

2225° ✉ **10c Yellow Green (68)**. Rich color, perfs partly scissors-separated, **used with Danish West Indies, 1856, 3c Dark Carmine (1)**, large margins to just in, tied by clearly-struck “**Steam/Ship**” two-line handstamp and target cancels on blue folded cover to New York, clear “St. Thomas 12/20/1865” circular datestamp, company handstamp under D.W.I. stamp, faint horizontal file fold well away from stamps

VERY FINE. A REMARKABLY ATTRACTIVE AND RARE MIXED FRANKING WITH THE FIRST DANISH WEST INDIES STAMP AND UNITED STATES 10-CENT 1861 ISSUE. A VERY EARLY USE OF THIS COMBINATION.

Ex Knapp, Tows and Ishikawa..... E. 7,500-10,000



10

am et Kempf
Druggists.
ter - Street
Slip.
New-York.

Richard Shackray Esq
44, Exchange Place
New-York

City of Port-au-Prince

2228

2227

SEPTEMBER 29, 2004

JAMAICA



2229

- 2229° ☒ **10c Yellow Green (68).** Tied by "Los Angeles Cal. Oct. 12" circular datestamp on cover to **Kingston, Jamaica**, blue crayon "4" British rate, Dec. 1, 1861 receiving backstamp, some slight toning and overall wear, small tear at top left from opening, otherwise Very Fine, scarce usage from California to Jamaica E. 750-1,000



2230

- 2230° ☒ **1860-63, 1sh Brown (6).** Tied by oval grid, "Kingston Jamaica JY 5, 1862" circular datestamp on blue folded letter to New York, routing instructions at bottom indicates sent thru Cuba, bold "Steamship 10" in circle handstamp, faint vertical file folds well away from stamp, Very Fine and rare, very few Lanman & Kemp covers were franked with stamps E. 750-1,000

MARTINIQUE



2231

2231 ☒ **FRENCH COLONIES, 1859-62, 5c Yellow Green, 10c Bister, 40c Orange (2, 3, 5).** Pair and single of 40c, large margins, tied by "M.C.E." in diamond of dots, "Martinique MR 12, 1865" backstamp on blue folded letter to New York, sender's blue oval handstamp from St. Pierre, Martinique, endorsed "Voie Anglaise", St. Thomas transit backstamp, magenta "1/-" shilling marking also ties one stamp, "Boston Mass. 10 Mar. 30" double-circle due datestamp and "Steam" handstamp, faint vertical file fold

FRESH AND VERY FINE. A BEAUTIFUL THREE-COLOR EAGLE ISSUE FRANKING AND EXTREMELY RARE USAGE FROM MARTINIQUE TO NEW YORK.

The U.S. rate was 34c by British Mail via either St. Thomas or Havana. This cover was prepaid 135 centimes with a credit of 1sh (24 cents) for the British Packet rate and 10c U.S. steamship rate collected from the addressee..... E. 4,000-5,000

PUERTO RICO



2232

- 2232° ☒ **“Humacao October 8, 1860”**. Dateline on folded letter to New York, clearly-struck red **“Paid at San Juan Porto Rico”** crowned circle handstamp, two **Cuba, 1857, ½r Blue (22)** tied by oval handstamps, red crayon “1/-” at top right and “Steamship 10” in circle, San Juan and St. Thomas backstamps, light file folds incl. one affecting stamps, otherwise Fine, attractive and unusual usage, one reale franking pays local postage and 10c was due from recipient, an exceedingly rare franking from Puerto Rico to the U.S. — very few of the Lanman & Kemp covers were franked with stamps E. 2,000-3,000



2234

2235

2233

- 2233° ☒ **“Arecibo P.R. October 10, 1862”**. Dateline on folded letter to New York, blue company handstamp at bottom left, faint strike of **“Paid at San Juan Porto Rico”** crowned circle handstamp, bold **“Steamship 10”** in circle, St. Thomas transit backstamp, fresh and Fine usage with the crowned circle handstamp E. 200-300
- 2234° ☒ **Ponce, P.R. April 29th 1862**. Dateline on blue folded letter to New York, blue oval **“Forwarded by L. Toro & Co., Ponce, P.R.”** handstamp, clear strike of **“New-Haven Ct. May 20”** double-circle datestamp and **“Ship 5”** handstamp, light vertical file folds, Very Fine usage via forwarder from Puerto Rico E. 100-150
- 2235° ☒ **“Pto Rico 28 Nbre. 1861”**. Dateline on blue folded letter to New York, **“Borras, Montana & Co. San Juan Porto Rico”** forwarder’s handstamp, clear strike of **“New Haven Con. Dec. 27, 1861”** circular datestamp with **“Ship 5”** handstamp, faint vertical file folds, Very Fine E. 100-150

TRINIDAD



2236

- 2236° ☒ **1859, (1p) Dull Rose, 1sh Slate Blue (14, 17).** Large margins to just in, tied by "1" oval grid, faint backstamp on blue cover to **San Francisco**, red **"Paid at Trinidad"** crowned circle handstamp, "St. Thomas AP 29, 1860" backstamp, clear strike of arrival datestamp and "20" due handstamp, some edgewear affects stamps, otherwise Fine, extremely rare usage..... E. 2,000-3,000

ARGENTINA



2237



2238

- 2237° ☒ **3c Rose (65)**. Block of ten and horizontal strip of five, tied by targets, "Barton Vt. Jan. 24" circular datestamp on 1865 light yellow cover **to Buenos Aires, Argentina**, red Boston and London transits, red crayon "24" credit, opened for display, Very Fine, impressive franking paying the 45c rate via British Mail..... E. 1,000-1,500
- 2238° ☒ **1864, 5c Brown Rose (11)**. Bright color, tied by Santa Fe, Argentina handstamp on cover to Barton Vt., Buenos Aires transit, red "London DE 2, 1865" transit backstamp and "40 Cents" handstamp, "N. York 45 Br. Pkt. U.S. Notes 63 Dec. 13" depreciated currency datestamp, slightly reduced at right and opened at sides, Very Fine, unusual usage that crossed the Atlantic twice, the only reported use of the Argentine Rivadavia Issue on this route, with 2001 P.F. certificate..... E. 2,000-3,000

BRAZIL



2239

2239°

5c Brown, Ty. II , 30c Orange (30A, 38). Vertical strip of three of 5c, tied by "New Orleans La. 19 Mar." circular datestamps on 1861 tissue-paper cover **from Confederate New Orleans to Rio de Janeiro, Brazil**, magenta "40" credit, red London transit, fancy framed forwarder's handstamp at left of Geo. J. Esling, some ink erosion affects cover, stamps defective from horizontal paperfold

FINE APPEARANCE. A RARE USAGE OF THE 5-CENT AND 30-CENT 1860 ISSUE ON A COVER FROM CONFEDERATE NEW ORLEANS TO BRAZIL.

Ex Kapiloff. E. 5,000-7,500



2240

2240°

30c Orange (71). Three, left stamp s.e. at left, tied by well-struck quartered corks, "Saint Louis Mo. Feb. 24" circular datestamp on cover **to U.S. Consul James Monroe at Rio de Janeiro, Brazil**, red 1864 London transit, magenta "80" credit, barely reduced at left and trivial edgewear, Very Fine, scarce double-rate usage..... E. 2,000-3,000



2241

- 2241°✉ **1850, 600r Black (28).** Large to huge margins incl. **bottom right corner sheet margin**, tied by unusual segmented cork, "Correio Geral Da Coste Brazil May 18, 1863" double-circle datestamp on cover to Newark N.J., red Bordeaux transit datestamp and rate handstamp, red "New York Paid 15 Jul. 1" credit datestamp, some slight edgewear, stamp with large sealed tear at right, missing top flap

VERY FINE APPEARANCE. AN EXTRAORDINARILY RARE USE OF THE BRAZILIAN 600-REIS 1850 ISSUE ON A COVER TO THE UNITED STATES.

According to specialists we consulted, this issue is rarely found on covers to the United States.
..... E. 2,000-3,000



2243

2242

- 2242°✉ **Rio de Janeiro NO 8, 1864.** Well-struck blue datestamp on back of blue folded letter to New York, endorsed *pr. Str. Oneida Via Southampton*, red London transit and "New York Br. Transit Dec. 20" circular datestamp, neat "40 Cents" and "45" handstamps, "U.S. Notes 95" depreciated currency handstamp, faint vertical file folds, Very Fine E. 150-200

- 2243°✉ **BRITISH GUIANA, 1860-61, 2c Orange, 8c Rose, Thick Paper (19, 20).** Radiant colors, cancelled by oval grids, "Georgetown Br. Guiana Jan. 7, 1865" datestamp on back of cover to New York, St. Thomas transit backstamp, red crayon "4" rate, "Boston Mass. 10 Feb. 2" due datestamp, trivial edgewear, barely reduced at right, Very Fine, scarce origin during this period..... E. 500-750

CHILE



2244

- 2244° ☒ **30c Orange (71).** Used with **1c Blue**, **3c Rose (63, 65)**, tied by targets, "San Francisco Cal. Apr. 18, 1865" double-circle datestamp on light yellow cover **to Santiago, Chile**, Panama transit, 1c defective, cover tear at left, otherwise Very Fine and colorful usage, ex Paliafito..... E. 1,000-1,500



2245

- 2245° ☒ **Consulate U.S.A. Valparaíso.** Clear strike of illustrated eagle handstamp on red and blue **Eagle and Shield Patriotic** cover to Boston, neat "Steamship 20" in circle handstamp, ms. "Dec. 1861" tiny edge tears
- VERY FINE. A REMARKABLE USE OF AN EAGLE CONSULAR HANDSTAMP ON AN EAGLE PATRIOTIC COVER FROM CHILE TO BOSTON.
- Docketing on back reads "Rec'd last of Dec. 1861"..... E. 3,000-4,000



- 2246° ☒ **“Valparaiso Dec. 2, 1863”**. Dateline on folded letter to San Francisco Cal., “Valparaiso 2 DE 1863” backstamp and red **“Paid to Panama”** two-line handstamp, red **“1/-”** crayon and **“20”** handstamp, neat **“Panama DE 21, 1863”** British transit, Jan. 10, 1864 receiving double-circle datestamp, faint horizontal file fold, Very Fine E. 150-200
- 2247° ☒ **COLOMBIA. “Santa Marta, 30th April 1864”**. Dateline on blue folded letter to New York, red oval **“Forwarded by E & H Abramson & Co., Colon N.G.”** forwarder’s handstamp, light vertical file fold, Very Fine, rare example of this forwarder’s handstamp, carried outside of the mails to New York E. 200-300
- 2248° ☒ **COLOMBIA. “Santa Marta November 30, 1862”**. Dateline on folded letter to New York, green oval **“Forwarded by A.N. Henriquez Colombia”** backstamp, **“Steamship 10”** in circle handstamp, Very Fine E. 200-300

ECUADOR



- 2249° ☒ **30c Orange (71)**. Used with **1c Blue**, **3c Pink (63, 64)**, tied by blue **“Baltimore Md. Nov. 20”** circular datestamp on 1861 folded letter to **Guayaquil, Ecuador**, endorsed **“pr. Steamer from NYK - 21 Nov”**, Panama transit, red **“24”** credit handstamp, light vertical file fold affects 3c stamp, otherwise Fine, attractive usage, ex Baker and Palafito, signed Ashbrook E. 2,000-3,000

2250

Seniores
 PAID - 1/10
 PANAMA
Lanman & Kemp
of Water Street
 1867



2251

Hon. E. O. Crosby
Minister Resident
U. S. A.
Guatemala.

2252

Hon. E. O. Crosby
United States Minister, H.
Guatemala

2253

Hon. E. O. Crosby
U. S. Legation
Guatemala

2255

"Via Panamá"

Sres Lanman y Kemp

New York

By Steamer via Panamá

Mrs Lanman & Kemp

New York

2257

Seniores
Lanman y Kemp
New York



2254

Seniores
Lanman y Kemp
New York

2258

Sres
Kemp
Conf



- 2250°✉ **“Guayaquil May 14, 1864”**. Dateline on folded letter to New York, well-struck **“Paid-To Panama”** two-line handstamp, Panama transit and “Steamship 10” in circle handstamp, light vertical file folds, Very Fine, unusual usage with the sender paying half of the 20c rate from Ecuador E. 100-150

GUATEMALA

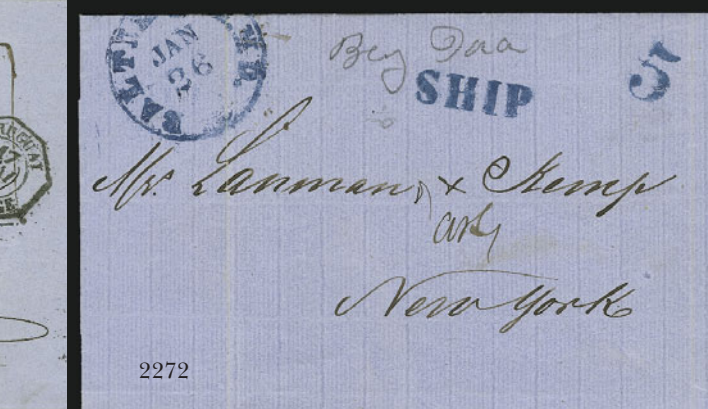
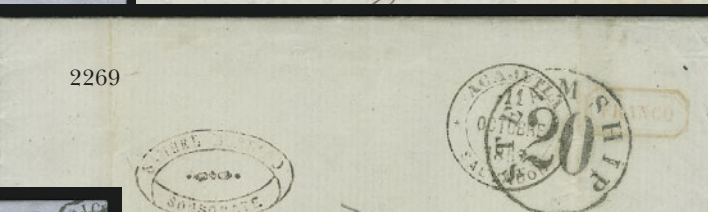
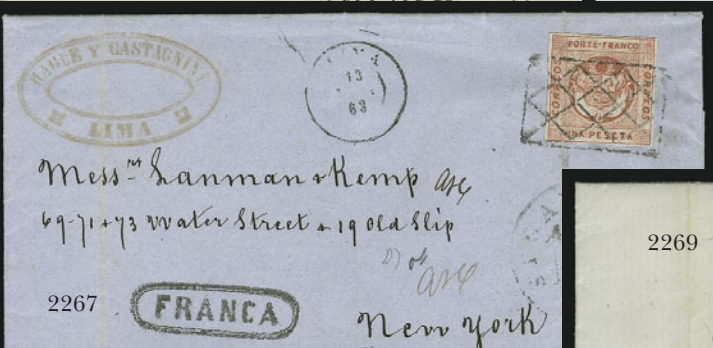
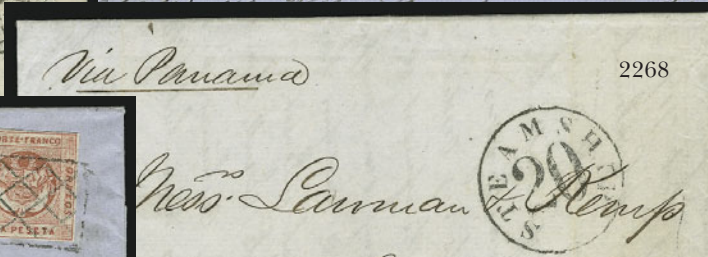
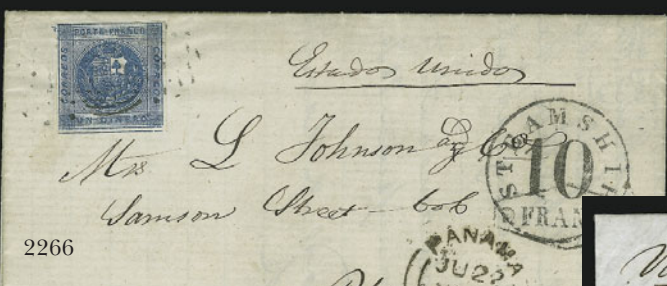
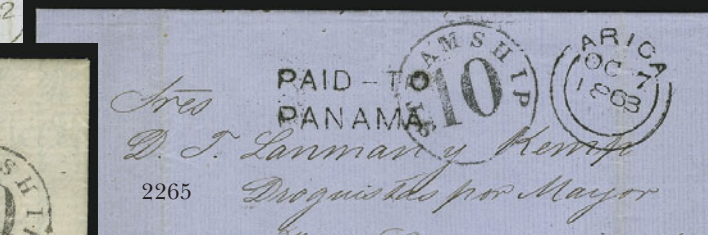
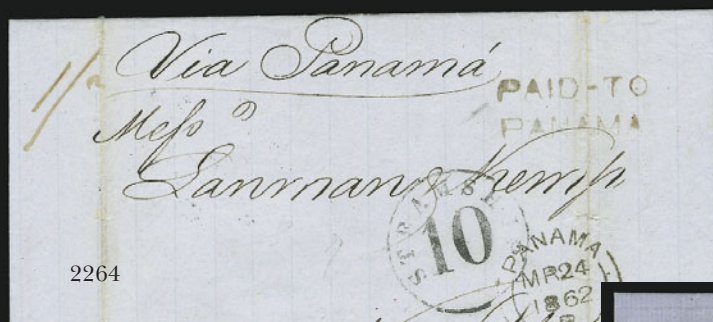
- 2251°✉ **Patriotic Cover to Guatemala**. Red and blue **Waving Flag Patriotic** cover to Guatemala, red “2” reales due, ms. “40” on back for four times the 10c rate, fresh and Very Fine, origin is unknown but probably carried privately to Guatemala E. 1,500-2,000
- 2252°✉ **1c Blue, 3c Rose (63, 65)**. Horizontal pair of 3c, 1c s.e. at right, tied by cogwheels, “San Francisco Cal. Dec. 10, 1862” double-circle datestamp on 3c Pink entire **to Guatemala**, neat “2” reales due handstamp, fresh and Very Fine, beautiful cover and rare combination of stamps and postal stationery for the 10c rate to Guatemala E. 1,000-1,500
- 2253°✉ **5c Deep Red Brown (75 var)**. Two, beautiful rich color, tied by well-struck “Washington D.C. Mar. 7, 1865” double-circle datestamp on cover **to Guatemala**, blue “2” reales due handstamp, fresh and Very Fine, scarce use of this shade on a cover from the Crosby correspondence E. 750-1,000
- 2254°✉ **“Guatemala August 6, 1862”**. Dateline on blue folded letter to New York, clear strike of **“United States Consulate Panama”** illustrated eagle handstamp, “Steamship 10” in circle and “4” handstamps, light vertical file folds, Very Fine, rare usage, according to DeVoss, less than five covers are known with the Panama Consular seal used as a forwarding handstamp E. 750-1,000
- 2255°✉ **Guatemala Mar. 21, 1861**. Well-struck red circular datestamp on printed notice to New York, “Steamship 20” in circle and “4” handstamps, Very Fine double-rate usage E. 300-400
- 2256°✉ **Guatemala July 7, 1864**. Blue double-circle datestamp on blue folded letter to New York, green boxed “Franco” handstamp, bold “Steamship 10” handstamp, “2” backstamp, light vertical file folds, Very Fine E. 150-200
- 2257°✉ **“Guatemala September 7, 1863”**. Dateline on blue folded letter to New York, blue oval company handstamp, well-struck “Steamship 20” handstamp, light vertical file folds, Very Fine E. 200-300
- 2258°✉ **MEXICO to New York via Havana**. “Vera Cruz 1 Febrero 1861” oval datestamp on back of blue folded letter to New York, neat “Habana 16 Feb. 1861” double-circle datestamp, **Cuba, 1857, ½r Blue (22)** tied by oval, also tied by “Steamship 10” in circle, Very Fine, most unusual routing from Vera Cruz to New York via Cuba with Cuban franking E. 200-300

NICARAGUA



2259

- 2259°✉ **30c Orange, 1c Blue, Ty. V, 3c Dull Red (38, 24, 26)**. Single of each, tied by “New York Jan. 11” **Ocean Mail** circular datestamp on cover **to Managua, Nicaragua**, franked to pay the 34c British Mail rate via St. Thomas though actually sent via American Packet Direct (10c), cover with small repaired tear at top left, 30c with minute scuff
- FINE APPEARANCE. POSSIBLY A UNIQUE USE OF THE NEW YORK OCEAN MAIL DATESTAMP ON THE 30-CENT 1860 ISSUE.
- Ex Pollard and Grunin. E. 7,500-10,000



- 2260° ☒ **Grey-Town Paid AP 15, 1864.** Red circular datestamp on blue folded letter to New York, "Steamship 10" in circle handstamp, faint vertical file folds, Very Fine..... E. 500-750

PERU

- 2261° ☒ **Rockland Lake N.Y. Jul. 14.** Bold circular datestamp on cover to **Callao, Peru**, ms. "Paid 32c", red "12" British P.O. credit handstamp, 1864 Panama transit, Lima backstamp, Very Fine..... E. 150-200



2262

- 2262° ☒ **2c Black (73).** Used with horizontal pair of **10c Yellow Green (68)**, cancelled by neat strikes of crossroads, "Rockland Me. Feb. 1" double-circle datestamp on 1864 orange cover to **Chinchas, Peru**, red "12" handstamp crossed out and uprated to "24" in red crayon, Panama transit, blue "2" reales due for local postage, Lima backstamp, Very Fine..... E. 1,000-1,500
- 2263° ☒ **24c Lilac (78).** Used with horizontal pair of **10c Yellow Green (68)**, tied by targets, "San Francisco Cal. Apr. 28, 1865" double-circle datestamp on folded cover to **Lima, Peru**, Panama transit datestamp, blue crayon "2" and "24", receiving backstamp, minor edgewear, part of address crossed out, Very Fine..... E. 750-1,000
- 2264° ☒ **"Arequipa 6th March 1862".** Dateline on folded letter to New York, "Islay MR 9, 1862" backstamp, red **"Paid - To Panama"** two-line British P.O. handstamp, "Panama MR 24, 1862" transit, "Steamship 10" in circle handstamp, light vertical file folds, Very Fine..... E. 200-300
- 2265° ☒ **"Tacna 6th October 1863".** Dateline on blue folded letter to New York, bold strike of "Arica OC 7, 1863" datestamp and matching **"Paid - to Panama"** British P.O. two-line handstamp, "Steamship 10" handstamp, ms. "Recd. 5 Nov." on back, light vertical file folds, Very Fine..... E. 200-300
- 2266° ☒ **1860-61, 1d Blue (9).** Large margins to barely touched, tied by dotted oval cancel on June 1861 folded letter to Philadelphia, Panama transit, "Franca" and "Steamship 10" in circle handstamps, Very Fine, very few franked covers from Peru to the U.S. are known from this period..... E. 500-750
- 2267° ☒ **1858, 1p Rose Red (4).** Large margins, tied by rectangle of diamonds handstamp on 1863 folded letter to New York, "Lima 13 Jan. 1863" double-circle datestamp, bold "Franca" handstamp and "Steamship 10" in circle handstamp, light vertical file folds incl. one affecting stamp, otherwise Very Fine, unusual usage, the Peru stamp pays local postage while remainder of postage (10c) was due from recipient, covers from Peru to the U.S. are rarely franked with a stamp..... E. 400-500

EL SALVADOR

- 2268° ☒ **"Sonsonate 22 October 1861".** Dateline on folded letter to New York, neat "Steamship 20" handstamp and endorsed "Via Panama", light vertical file folds, Very Fine usage paying 20c rate for distance over 2,500 miles..... E. 150-200
- 2269° ☒ **"Sonsonate 10th October 1862".** Dateline on folded letter to New York, clear strike of "Acajutla Salvador 11 Octubre 1862" double-circle datestamp and "Steamship 20" in circle handstamp, red octagonal "Franco" handstamp, faint vertical file folds, Very Fine..... E. 100-150

URUGUAY



2270

- 2270° **90c Blue (72).** Horizontal pair, s.e. at left, tied by grids, "Philadelphia Pa. Oct. 7, 1863" circular datestamp on large cover front only **to Montevideo Uruguay**, London and French transits, oval receiving datestamp, right stamp small piece out at top right and light creases at bottom

FINE APPEARANCE. A VERY RARE FOREIGN-MAIL COVER — THIS IS THE EARLIEST OF THE FOUR RECORDED USAGES OF THE 90-CENT 1861 ISSUE TO URUGUAY.

The cover pays four times the 45c British Mail rate via England. With 1997 P.F. certificate. E. 5,000-7,500

- 2271° **Admno. de Correos, Montevideo, 16 Mayo 1863.** Oval datestamp on blue folded letter to New York, endorsed "*via Bordeaux*", "Uruguay Saintonge 17 Mai 63" transit datestamp, "N.Y. Br. Pkt. Jul. 1 30c or 41 U.S. Notes" depreciated currency datestamp, faint vertical file folds, Very Fine(Photo, p. 126) E. 150-200

- 2272° **"Caracas Dec. 22, 1862".** Dateline on blue folded letter to New York, well-struck blue "Baltimore Md. Jan. 26" circular datestamp with matching "Ship" and "5" handstamps, faint vertical file folds, Very Fine(Photo, p. 126) E. 100-150

END OF SALE—THANK YOU

PRICES REALIZED FOR SALE 882---9/29/2004

The Blake M. Myers Collection

Robert A. Siegel Auction Galleries, Inc.
60 East 56th Street, 4th Floor, New York, NY 10022
Tel (212) 753-6421 Fax (212) 753-6429

Lot#	Realized	Lot#	Realized	Lot#	Realized	Lot#	Realized	Lot#	Realized	Lot#	Realized
2001	35,000	2049	R	2094	2,300	2153	1,600	2200	350	2268	105
2002	55,000	2049	R	2095	3,500	2154	5,000	2201	7,500	2269	65
2003	32,500	2050	700	2096	4,750	2155	21,000	2202	2,900	2270	4,500
2004	1,900	2051	8,000	2097	525	2156	1,000	2203	37,500	2271	160
2005	1,800	2052	1,150	2098	290	2157	2,100	2206	5,000	2272	70
2006	7,500	2053	80	2099	210	2158	600	2208	10,500		
2007	4,000	2056	150	2104	3,500	2159	180,000	2210	7,500		
2008	2,200	2057	R	2105	1,050	2160	2,600	2211	16,000		
2009	8,500	2057	R	2106	2,800	2161	600	2212	1,100		
2010	10,500	2058	4,000	2107	1,400	2162	1,600	2213	900		
2011	1,300	2059	2,500	2108	1,100	2163	2,000	2217	1,300		
2012	1,800	2060	4,250	2110	625	2164	5,250	2218	4,000		
2013	800	2061	6,000	2111	2,700	2165	3,500	2221	85		
2014	3,250	2062	8,000	2112	300	2166	375	2222	95		
2015	2,300	2063	10,500	2113	1,800	2168	9,000	2223	400		
2016	2,200	2064	1,600	2114	800	2169	600	2225	17,500		
2017	1,050	2065	375	2117	3,750	2170	450	2226	5,250		
2018	675	2066	350	2118	750	2171	3,250	2229	700		
2019	R	2067	3,750	2121	140	2172	1,200	2231	3,250		
2019	R	2068	350	2122	3,000	2173	4,250	2232	1,900		
2020	1,100	2069	450	2123	525	2174	9,000	2233	170		
2021	1,400	2070	300	2125	7,500	2175	7,500	2234	130		
2022	4,250	2071	2,100	2126	350	2177	4,750	2235	140		
2023	2,700	2072	2,900	2127	60	2178	1,600	2236	2,200		
2024	475	2073	4,250	2129	8,500	2179	2,900	2237	1,000		
2025	350	2074	800	2130	4,750	2180	800	2241	1,250		
2028	150	2075	1,900	2131	550	2181	1,250	2242	270		
2029	300	2076	1,800	2132	400	2182	18,000	2244	800		
2032	2,000	2077	1,800	2133	220	2183	1,250	2246	220		
2033	180	2078	5,250	2134	6,000	2184	1,900	2249	1,900		
2036	1,600	2079	2,600	2135	3,250	2185	1,150	2250	135		
2037	425	2081	475	2138	1,050	2186	4,750	2252	2,100		
2038	2,000	2082	450	2139	1,700	2187	6,500	2253	1,600		
2039	3,250	2083	R	2140	4,500	2188	1,600	2254	525		
2040	400	2083	R	2141	6,750	2189	8,500	2256	110		
2041	150	2085	180	2142	10,500	2190	190	2258	140		
2042	1,350	2088	R	2143	1,500	2191	4,750	2259	11,000		
2043	950	2088	R	2144	400	2192	1,050	2260	350		
2044	950	2089	850	2147	3,250	2193	450	2261	120		
2045	4,000	2090	950	2148	R	2195	1,500	2262	800		
2046	3,500	2091	700	2148	R	2197	2,200	2263	525		
2047	4,250	2092	2,100	2149	1,150	2198	2,400	2264	150		
2048	675	2093	300	2150	750	2199	170	2265	150		