

**Sale 899**

Tuesday, September 27, 2005

# The “J & J” Collection of United States 12c 1851-57 Issues



*Robert A. Siegel*

AUCTION GALLERIES, INC.

[www.siegelauctions.com](http://www.siegelauctions.com)

# Sale 899

Tuesday, September 27, 2005

## The “J & J” Collection of United States 12c 1851-57 Issues

Offered without reserves

### Pre-sale exhibition

Monday, September 26 — 10:00 a.m. to 4:00 p.m.  
or by appointment (please call 212-753-6421)

On-line catalogue, e-mail bid form, resources and  
the Siegel Encyclopedia are available on our web site:

[www.siegelauctions.com](http://www.siegelauctions.com)



### Arrangement of Sale

Morning session (lots 1-108)  
Tuesday, September 27, at 10:30 a.m.

Essays and Proofs .....	pages 4-7
12c 1851 Issue Stamps.....	8-12
12c 1851 Issue Usages .....	13-20
12c 1857-59 Issue Stamps (Plate One) .....	21-22
12c 1857-59 Issue Stamps (Plate 3).....	23-25
12c 1857-59 Issue Usages .....	26-42

### On the cover

Above: Lot 46  
Front Cover: Lot 22  
Back Cover: Lots 45, 106



2



3EX

5



4EX



6EX

7



8



9EX



MORNING SESSION (LOTS 1-108)  
TUESDAY, SEPTEMBER 27, 2005, AT 10:30 A.M.

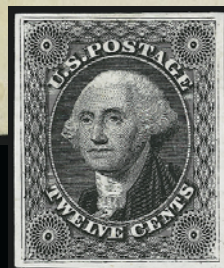
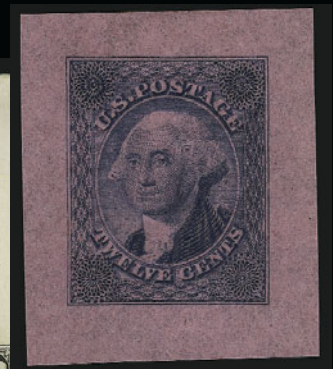
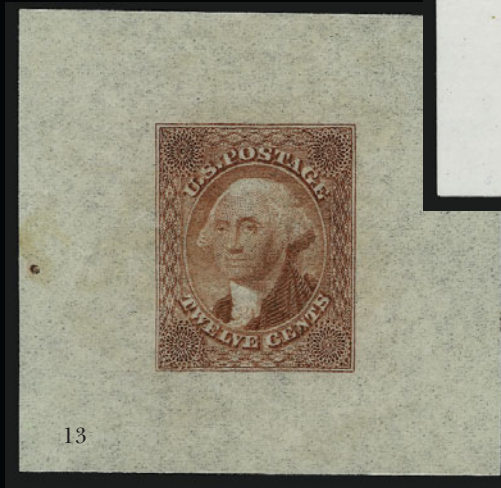
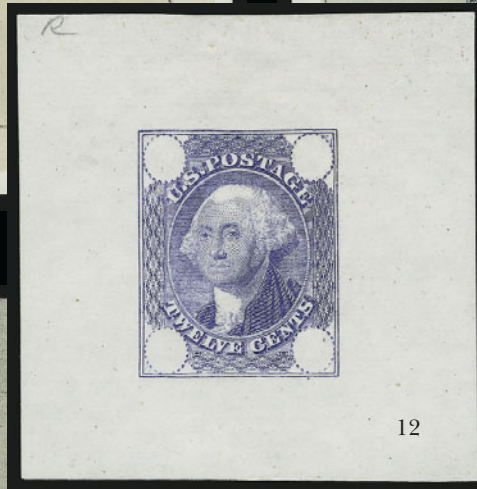
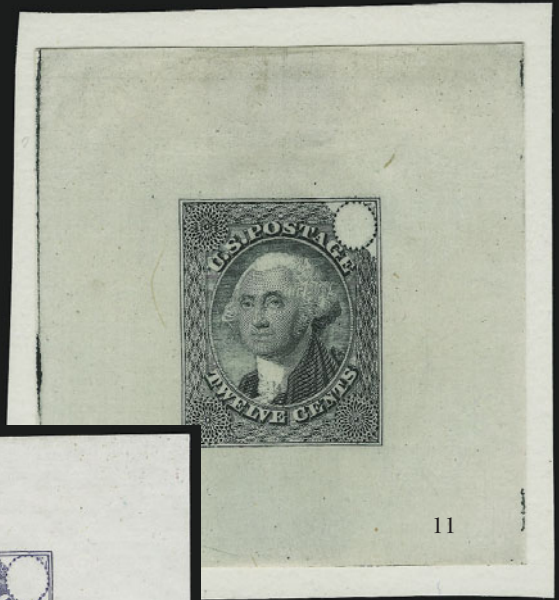
THE "J & J" COLLECTION OF 12-CENT 1851-57 ISSUES  
ESSAYS AND PROOFS



1

- 1° E **(12c) Black, Composite Large Die Essay on India, Cut Close and Mounted on Block Sunk Card (17-E1).** 77 x 57mm with full block sinkage area, portrait pasted into place, lacking any text whatsoever, lightly thinned on back only which is virtually undetectable  
VERY FINE. THE UNIQUE ORIGINAL DIE ESSAY FOR THE 12-CENT 1851 ISSUE. ONE OF THE GREAT RARITIES OF THE ISSUE AND ONE OF THE MOST DRAMATIC CLASSIC ESSAYS IN EXISTENCE.  
This essay was prepared by Toppan, Carpenter, Casilier & Co., the winners of the contract to print stamps to meet requirements due to the rate change of July 1, 1851. This essay is 3mm shorter than the issued stamp, and the background lines are incomplete. The portrait has been pasted into place — this may have been due to either a change in portrait during the design process, or an element of flexibility built into the design process.  
In our opinion and compared with other 1851 Essay realizations, this major classic essay is undervalued in the current Scott Catalogue. .... 6,000.00
- 2 E **12c Brown Violet, Large Die Essay on India, Cut to Shape (17-E2).** Clear and even margins all around, radiant color, differs from issued design in absence of tiny crosses in center rows of diamonds at top, sides and bottom, Very Fine and choice, an attractive essay ..... 750.00
- 3 E **(12c) Washington, Large Die Essays on Proof Paper (69-E1b).** Three, approximately 64 x 65mm with full die sinkage, colors incl. Green, Lilac and Red Violet, Very Fine and choice, two ex Brazer and hinged on his color identification cards ..... **(Photo Ex)** 180.00
- 4 E **(12c) Washington, Large Die Essay on Green Bond (69-E1c).** Complete for all three Scott-listed colors, approximately 62 x 64mm with full die sinkage, rich colors, fresh and Very Fine .. **(Photo Ex)** 450.00
- 5 E **(12c) Washington, Dark Carmine, Large Die Essay on Light Blue Colored Card (69-E1d).** 73 x 73mm with full die sinkage, bright color, small thin spot on back at bottom of card, appears Very Fine ..... 150.00
- 6 E **12c Washington, Large Die Essay on Proof Paper (69-E2a).** Three, approximately 64 x 64mm with full die sinkage, colors incl. Green, Lilac and Red Violet, radiant colors, Very Fine and choice ..... **(Photo Ex)** 225.00
- 7 E **12c Black, Die II, Large Die Essay on Old Proof Paper (69-E2b var).** 49 x 51mm, detailed impression clearly showing the Die II characteristics, shallow thinning across top, Very Fine appearance, scarce, with 1990 P.F. certificate, Die II shows blurring around outer oval and more detailed engraving on the face of the portrait, Scott Catalogue only lists this design as Die I ..... E. 750-1,000
- 8 E **12c Yellow Brown, Washington, Large Die Essay on Pale Thin Yellow Wove (69-E2d).** 65 x 64mm with full die sinkage, bright color, fresh and Very Fine ..... 200.00
- 9 E **12c Washington, Large Die Essay on Colored Card (69-E2e).** Complete set of all six colors, approximately 74 x 74mm with full die sinkage, brilliant colors, Very Fine and choice, a colorful and scarce complete group ..... **(Photo Ex)** 900.00





- 10 E **12c Washington, Large Die Essay on Proof Paper (69-E3a).** Four, approximately 60 x 62mm with full die sinkage, colors incl. Green, Black Blue, Lilac and Red Violet, fresh and Very Fine, attractive group .....(Photo Ex) 500.00
- 11 E **12c Dark Green, Large Die Essay on Old Proof Paper, 1851 Die with Border Lines Complete, Upper Right Rosette Blank (69-E3g).** 50 x 53mm (the exact area of die sinkage), deep rich color, Very Fine and choice, scarce, this is the first example in this color we have offered since keeping computerized records, with 1990 P.F. certificate ..... 750.00
- 12 E **12c Ultramarine, Large Die Essay on Old Proof Paper, All Rosettes Blank, Border Lines Complete (69-E3l).** 46 x 48mm, brilliant color, pencil "R" at top left, fresh and Very Fine, with 1990 P.F. certificate..... 750.00
- 13 E **12c Dark Red, Large Die Essay on Yellow Thin Wove Paper, All Rosettes Complete, Border Lines Complete (69-E3p).** 49 x 47mm, deep rich color, Very Fine and choice, with copy of 1982 P.F. certificate identifying this as Brazer 36E-B (Scott Catalogue did not have an Essays section in 1982) ..... 750.00
- 14 E **12c Blue, Large Die Essay on Thin Pink Wove Paper, All Rosettes Complete, Border Lines Complete (69-E3p).** 30 x 35mm, deep rich color, Very Fine and choice, a stunning essay, with 1990 P.F. certificate..... 750.00
- 15 E **12c Green, Large Die Essay on Glazed Bond, All Rosettes Complete, Border Lines Complete (69-E3 var).** 48 x 49mm, deep rich color, paper shows distinctive glazing, tear at bottom does not affect design, otherwise Very Fine, scarce, with 1990 P.F. certificate, this paper type is unlisted in Scott and is not known to us on any other issue..... E. 1,000-1,500
- 16 E **12c Black, Die Essay on India (69-E4a).** On 61 x 78mm card with die sinkage area at top and bottom, intense impression and dark shade, card with some toned spots, otherwise Very Fine, Scott Catalogue notes that this essay is card mounted, the clear die sinkage area leads us to believe that this is die sunk on card ..... 750.00
- 17 E **12c Black, Die Essay on India, Cut to Shape (69-E4b).** Intense color, clear and even margins all around, Very Fine and choice..... 500.00
- 18 P **12c Black, Plate 3, Plate Proof on India (36bP3).** Large even margins all around, radiant color on bright paper, thin spot at top, appears Very Fine, scarce, with 1990 P.F. certificate ..... 1,250.00
- 19 P **12c Greenish Black, Plate Proof on India (44P3).** Block of four and single, both have sheet margin at bottom and large margins other sides, crisp impressions, single with small translucency from hinge, Very Fine ..... 660.00

- 20 P **12c Black, Panama-Pacific Small Die Proof (44P2a).** Deep shade on paper exhibiting the overall toned characteristics of this issue, usual tiny pinholes in outer margins

VERY FINE APPEARING EXAMPLE OF THE RARE 12-CENT PANAMA-PACIFIC SMALL DIE PROOF. ONLY FOUR OR FIVE WERE PRODUCED.

Despite the Scott catalogue designation as a 44P2a, it is likely that this was created from the original die ..... 2,500.00



20



21

- 21 TC **12c 1851 Issue, Atlanta Trial Color Proofs (44TC).** Blocks of four in all five colors, large to huge margins all around, rich colors

EXTREMELY FINE. A RARE SET OF BLOCKS OF FOUR OF THE 12-CENT 1851 ISSUE PREPARED FOR THE ATLANTA INTERNATIONAL COTTON EXHIBITION.

It is believed that only two or three sets of blocks of four exist. Scott Retail as singles .. 2,080.00



## 12-CENT 1851 ISSUE—STAMPS



22

- 22 ★田 **12c Grayish Black, Part India Paper (17 var).** Positions 61-63/71-73/81-83L1, block of nine with part of left sheet margin, original gum unevenly applied (a characteristic of original-gum examples on Part India paper), lightly hinged, two stamps (Positions 71-72L1) appear Mint N.H., large margins to barely touched at bottom right, distinctive Grayish Black shade and early proof-like impression on unusually bright paper with soft fibrous texture, Positions 63L and 73L are “double recuts” (only four such double-recut positions exist on Plate 1), light vertical crease affects right stamps, faint corner crease at bottom left

VERY FINE-EXTREMELY FINE. A REMARKABLE ORIGINAL-GUM BLOCK OF NINE OF THE 12-CENT 1851 ISSUE ON PART INDIA PAPER. THIS IS ONE OF THE LARGEST AND FINEST ORIGINAL-GUM BLOCKS OF THIS ISSUE. A BEAUTIFUL EXHIBITION-WORTHY MULTIPLE.

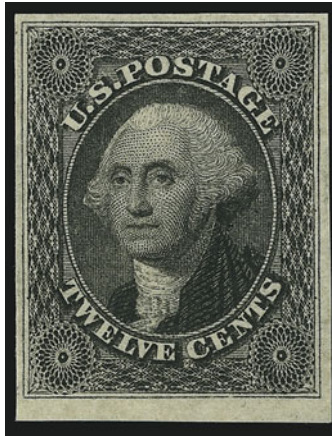
The 3c and 12c 1851 Issue are both found on Part India paper, which is a hand-made silky paper that varies in thickness within the same sheet. The Neinken 12c 1851-57 book (pp. 61-64) quotes from earlier publications by Ashbrook, Chase and Jaeger, which describe the look and feel of Part India stamps. Referring to a pair (ex Richey) and strip of five (ex Newbury), the 12c Part India stamps are described as “undoubtedly from the very first impressions from the Twelve Cent plate. The engravings are very sharp and resemble die proofs or plate proofs on India. The shades of both these items are of the earliest known, the distinctive grayish.” It is also speculated that the Part India stamps “came from ‘trial printings’ i.e., proof sheets that were afterwards thrown in the regular stock, then gummed and issued to various post offices.” Although the 12c Part India paper has been described as “thin” or “very thin”, it is actually thicker when gauged on a micrometer. Its “thinness” is better described as “softness”, a paper characteristic that enhances the impression, but appears to have been problematic in gumming.

The Philatelic Foundation has experienced difficulty certifying examples of the 12c Part India, especially unused examples with gum. Previous certificates for other multiples, which undoubtedly originated from the same Left Pane multiple as the block offered here, have inconsistent opinions. However, looking forward, the P.F. is now informed of the plate positions for three blocks (one of nine, two of four) and two strips (of three and four), all in the same distinctive Grayish Black shade on Part India paper with uneven gum.

This is probably the block of nine offered in the 1917 Worthington sale (J. C. Morganthau & Co., 131st Sale, Aug. 21-23, 1917, lot 109), where described as “lighter shade, block of 9, o.g., the right hand stamps gum crease.” We know of two other 12c Part India blocks, both of four stamps. There are also original-gum blocks of nine, ten and fifteen in the normal Black shade on regular paper.

..... 58,000.00

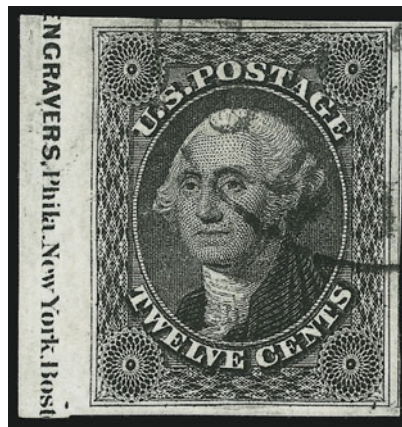




23

- 23 ★ **12c Black (17).** Original gum, lightly hinged, large to huge margins all around incl. **sheet margin at bottom**, intense shade and proof-like impression  
EXTREMELY FINE GEM. A SUPERB ORIGINAL-GUM EXAMPLE OF THE 12-CENT 1851 ISSUE. A MARVELOUS STAMP.

The 12c issue was printed from a plate that provided little space between stamps. Copies such as this one with extra wide margins are rare, especially in sound original-gum condition. In our opinion, this stamp merits nothing less than an XF-Superb 95 grade. ... 5,500.00



24

- 24 **12c Black (17).** Position 51L1, huge margins all around incl. **part imprint at left**, intense shade on bright paper, light strike of town datestamp leaves design clearly visible  
EXTREMELY FINE GEM. WITHOUT QUESTION THIS IS THE FINEST USED IMPRINT SINGLE OF THE 12-CENT 1851 ISSUE. A REMARKABLE POSITION PIECE.

Our informal census of imprint copies of Scott 17 contains only six examples, including four with imprint at left and two with imprint at right. Of these, only three are thought to be sound.

Ex Koppersmith and Klein. With 1988 P.F. certificate..... 325.00



- 25     **12c Black (17).** Position 11R1, huge margins to large incl. **sheet margin with guideline at left**, crisp impression, face-free strike of circular datestamp, Extremely Fine Gem, a superb sheet-margin example, with 1987 P.F. certificate..... 325.00
- 26     **12c Black (17).** Large even margins all around incl. part of three adjoining stamps, detailed impression nicely contrasted by **blue** Louisville circular datestamp, trace of red cancel at bottom right, Extremely Fine Gem, a superb stamp in every respect, with copy of 1982 P.F. certificate..... 335.00
- 27     **12c Black (17).** Ample to large even margins all around, deep shade, light strike of **red** circular datestamp, Very Fine and choice ..... 345.00
- 28     **12c Black (17).** Position 15R1, large margins to ample incl. part of adjoining stamp at top, two distinct **pre-printing paperfolds** incl. one affecting frameline at left, light strike of blue Baltimore circular datestamp, Very Fine and choice, scarce pre-printing paperfold on this issue, ex Emerson..... 335.00
- 29     **12c Black (17).** Large margins to clear incl. **sheet margin at left**, intense shade and impression, neat strike of town datestamp and **red "3"** credit handstamp, Very Fine and choice, a beautiful stamp, with 1989 P.F. certificate, Scott Retail with no premium for the red numeral cancel ..... 325.00
- 30     **12c Black (17).** Large margins to clear, intense shade on bright paper wonderfully contrasted by **Mobile "Paint Red"** circular datestamp, Very Fine and choice, a stunning stamp ..... 345.00
- 31     **12c Black, Double Transfer (17 var).** Large to huge margins incl. part of adjoining stamp at top, clear double transfer which is particularly noticeable at right, lightly cancelled, tiny tear at top right, faint thin speck, appears Extremely Fine, scarce with such a clear double transfer, with 1982 P.F. certificate not mentioning any faults ..... 350.00



- 32 **12c Black (17).** Positions 89-90L1, horizontal pair, enormous margins all around incl. **sheet margin at right** and part of two adjoining stamps, crisp impression, **red grid** cancels, left stamp faint vertical crease visible only in fluid and not mentioned on accompanying certificate  
EXTREMELY FINE APPEARANCE. THE RIGHT STAMP IS A SUPERB GEM AND STUNNING IN EVERY RESPECT.  
Ex Brown. With 1988 P.F. certificate... 740.00



32



33

- 33 **12c Black (17).** Horizontal pair, large margins to barely in, cancelled by bold strike of oval **"Hecktown Pa. Sep."** datestamp with manuscript day, Very Fine, an extremely unusual postmark on the 12c 1851 and an attractive pair, with 1981 and 1992 P.F. certificates..... 700.00



34



35

- 34 **12c Black (17).** Horizontal pair, large to huge margins incl. part of three adjoining stamps, sharp proof-like impression, light strike of **blue** circular datestamp and trace of red transit at bottom, Extremely Fine Gem, a superb pair in every respect, with 1987 P.F. certificate..... 720.00
- 35 **12c Black (17).** Horizontal pair, clear and even margins all around, detailed impression, **blue** town circular datestamp, tiny corner crease at top right, appears Very Fine, with 1989 P.S.E. certificate ..... 720.00
- 36 **12c Black (17).** Vertical pair, large margins all around incl. part of adjoining stamp at top, crisp impression, bold black grid cancels, Very Fine and choice, vertical pairs are significantly scarcer than horizontal pairs..... 700.00



36



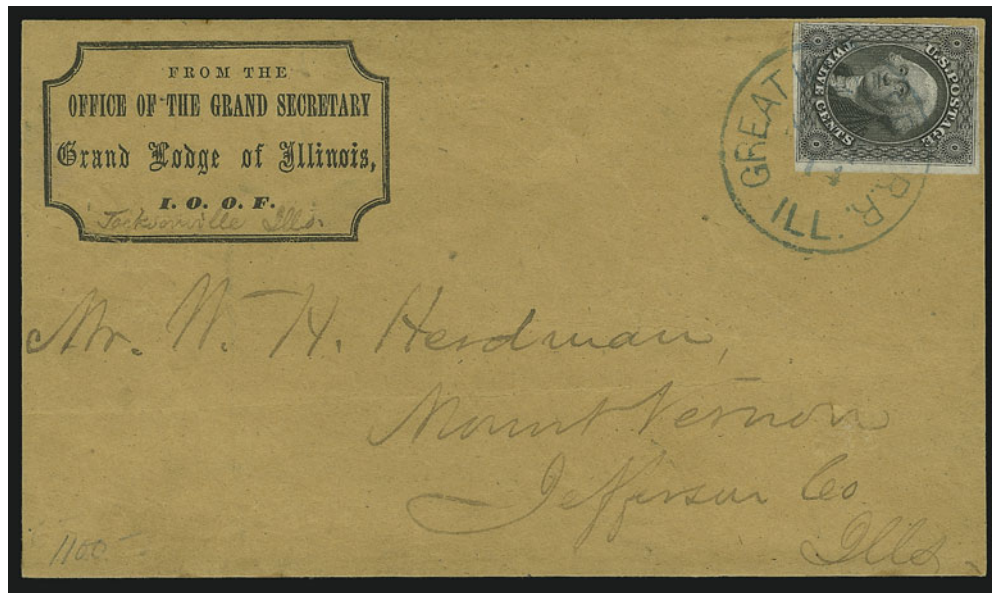


37 front and back

37 **12c Black, Printed on Both Sides (17c).** Back of stamp shows clear impression of two stamps at top and a fainter impression of two additional stamps at bottom, printed in the same direction as design on the front, front of stamp with large margins to in and black grid cancel, back of stamp also shows slight offset, tiny corner crease at bottom right  
FINE APPEARANCE. AN EXTREMELY RARE EXAMPLE OF THE 12-CENT 1851 ISSUE WITH THE DESIGN PRINTED ON BOTH SIDES. ONE OF THE GREAT RARITIES OF THE 1851 ISSUE.

Reports have varied as to how many copies are known. None are known unused. Brookman reported that he knew of four. However, we have only been able to locate two: the Ishikawa copy (ex Worthington, Duveen and Hind) and the example offered here.

Ex Waterhouse. Offered in our Sale 203 (Oct. 7, 1957), 1967 and 1991 Rarities sales.....  
..... 10,000.00



38

- 38 ☒ **12c Black (17).** Three large margins, just in at left, tied by clear strike of blue “Great Western R.R. Ill. Sep. 14” route agent’s circular datestamp on buff cover with “Office of the Grand Secretary, Grand Lodge of Illinois, I.O.O.F.” fraternal corner card with ms. “Jacksonville Ills.”, to Mount Vernon Ill., barely reduced at right, originally legal-size and expertly restored with corner card artfully cut out and affixed, otherwise Very Fine, scarce railroad usage of the 12c 1851 Issue on an Oddfellows’ Lodge corner card cover ..... E. 1,000-1,500



39

- 39 ☒ **12c Black, Diagonal Half Used as 6c (17a).** Top left diagonal half, tied across the cut by clear strike of “New-York Ship 7 Oct. 10” integral-rate circular datestamp on blue folded letter dated “San Francisco Sep. 15, 1853” to Boston, ms. “Via Nicaragua” at bottom left, stamp with very faint crease from vertical file fold

VERY FINE APPEARANCE. A BEAUTIFUL AND RARE BISECT USAGE OF THE 12-CENT 1851 ISSUE, WHICH WAS NOT ACCEPTED AS PREPAYMENT.

Accompanied by typed and signed note from Stanley Ashbrook, who notes that the letter was sent by the Vanderbilt S.S. *Cortes* from San Francisco on Friday, Sept. 16, 1853. It was then transported across Nicaragua and carried out of the regular mails to New York on the *Star of the West*, which arrived in New York late in the afternoon of Oct. 9. The mails were deposited in the N.Y. post office on Oct. 10, where the bisect was not recognized as valid postage due to a recent ruling of the Postmaster General. It was therefore rated and marked as an unpaid ship letter (7c due).

With 1989 Calves and 1991 P.F. certificates. Accompanied by 1943 note from Stanley Ashbrook. ... 5,750.00



40

- 40 ☒ **12c Black (17).** Three huge margins incl. **sheet margin at right**, just touched at top, **used with Hawaii, 1857, 5c Blue, Thin White Wove (8)**, full to large margins, stamps tied by "San Francisco Cal. Nov. 14, 1859" circular datestamp on cover to Parma N.Y., red "**Honolulu U.S. Postage Paid Oct. 26**" circular datestamp at left, sender's instructions "Will the Parma Post Master oblige by giving notice &c &c", carried on the *Frances Palmer* (cleared Oct. 27, arrived Nov. 13), expertly cleaned to remove stains and refolded at edges to reduce wear

VERY FINE APPEARING MIXED-FRANKING COVER WITH THE UNITED STATES 12-CENT 1851 ISSUE AND HAWAIIAN 5-CENT 1857 KAMEHAMEHA ISSUE.

Ex Harris, Ishikawa and *Advertiser*. Signed Ashbrook. With 1981 Jakubek certificate .....  
 ..... E. 15,000-20,000





41

- 41 ✉ **12c Black (17).** Large margins to just shaving outer line at left, tied by "San Francisco Cal. 5 Sep." circular datestamp on small white cover to Buckland Conn., clearly struck red "Honolulu \* U.S. Postage Paid \* Jul. 31" (1856 or 1857) circular datestamp, minor flap tears

FRESH AND VERY FINE. A CHOICE EXAMPLE OF THE 12-CENT 1851 USED FROM HAWAII, PAYING THE 10-CENT TRANSCONTINENTAL POSTAGE AND 2-CENT SHIP CAPTAIN'S FEE.

Ex Stark and Sevenoaks. Signed Ashbrook and accompanied by his letter ..... E. 4,000-5,000



42

- 42 ✉ **12c Black (17).** Large margins to just in at top left, tied by neat strike of blue "Richmond Va. May 10" circular datestamp on blue 1854 folded cover to **Halifax, Nova Scotia**, red "U. States" in arc handstamp, transit backstamps, light vertical file folds do not affect stamp, Very Fine, the 12c 1851 is rarely found on covers to British North America (it overpays the 10c rate) ..... E. 1,500-2,000



43

- 43 ☒ **12c Black (17).** Used with **two 1c Blue, Ty. IV (9)** and **two 3c Dull Red, Ty. II (11)**, large margins to in, tied by grids, red "New Orleans La. Jun. 14" circular datestamp on blue 1855 folded cover to **Vera Cruz, Mexico**, bold "2" due marking, light horizontal file fold well clear of stamps

VERY FINE AND RARE COVER WITH A COMPLETE SET OF THE 1851 ISSUE USED TO MEXICO.

The franking pays double the 10c rate to Mexico direct via American Packet for a distance less than 2,500 miles. .... E. 5,000-7,500



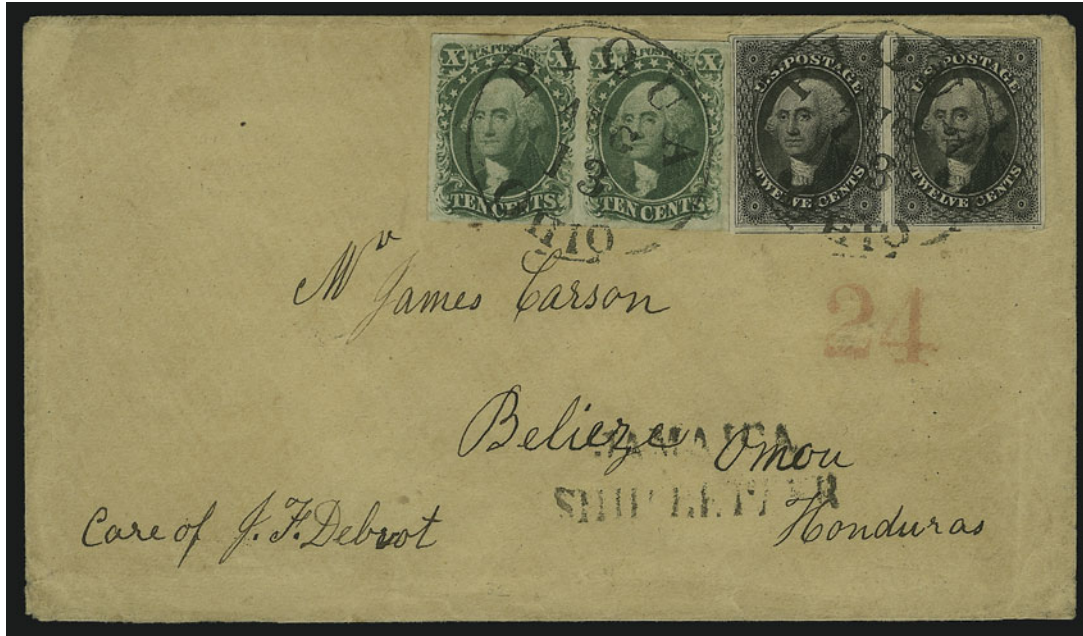
44

- 44 ☒ **12c Black (17).** Clear margins to just in, **used with two 10c Green, Ty. II (14)**, large margins to barely in, tied by **red** grids with matching "New Bedford Mass. Paid Mar. 18" circular datestamp on cover to **Païta, Peru**, large red "12" credit handstamp, missing part of top flap, minor edgewear

FINE. A SCARCE AND COLORFUL USAGE OF THE 1851-55 ISSUE ON COVER TO PERU, CARRIED BY AMERICAN AND BRITISH PACKETS.

The 22c rate paid the 10c rate by American Packet and the 12c rate by British Packet from Panama. .... E. 4,000-5,000





45

- 45 ☒ **12c Black (17).** Horizontal pair used with **10c Green, Ty. III (15)** horizontal pair, each has mostly large margins, deep shades, tiny toned spot on one 10c, tied by two clear strikes of "Piqua Ohio Aug. 13" circular datestamp on cover **to Belize, Honduras**, red "24" credit handstamp, clear "**JAMAICA/SHIP LETTER**" two-line handstamp with matching Kingston Jamaica backstamp (Sep. 12, 1856), Belize receiving backstamp, small piece of backflap missing

EXTREMELY FINE. AN EXTRAORDINARY DESTINATION IN THIS CLASSIC IMPERFORATE PERIOD AND BELIEVED TO BE A UNIQUE COMBINATION OF STAMPS AND MARKINGS FOR THE 34-CENT RATE.

Ex Knapp, Rust, Kapiloff and Sevenoaks..... E. 15,000-20,000





46

- 46 ☒ **12c Black (17)**. Crisp shade, large margins to clear, used with **3c Brownish Orange Carmine (11 var)**, vertical strip of five plus a single, Positions 1/41R3, 51R3, tied by red "New-York Apr. 10" circular datestamps on 1852 folded cover **to Paris, France**, sender's routing "*pr Humboldt*" (Havre Line), red "Outre-Mer Le Havre 26 Avril 52" transit also ties stamps, "6" decimes due marking, receiving backstamps, light horizontal file fold does not affect stamps, Very Fine, unusual franking which evidently overpaid 20c American Packet rate via LeHavre, in Baker's *U.S. Classics* (pp. 296-297), George E. Hargest states "Covers showing Havre Line service during this period [1851-57] are rare. Some of the few seen show a 20c prepayment, others show the maximum prepayment of 21c. . . While all 'Havre Packet' covers in this period are rare, those showing prepayment by stamps are rarest, only several being recorded.", ex Piller ..... E. 1,500-2,000



47

- 47 ☒ **12c Black (17)**. Full margins, sharp impression, tied by red grid and matching "New Orleans La. Dec. 8" circular datestamp on small 1856 cover **to France**, red "New York Br. Pkt. Dec. 18" transit datestamp, French transits incl. "13" decimes due marking, piece out of back (possibly a stamp removed), Very Fine, unusual usage, treated as unpaid in France, ex Earl of Crawford ..... E. 500-750



48

- 48 ☒ **12c Black (17).** Horizontal pair, detailed impression, full margins to barely in at left, used with horizontal pair of 3c Dull Red (11) and tied by clear strikes of blue "Cincinnati O. May 8" circular datestamps on blue 1855 folded cover to **Frankfurt, Germany**, red "N. York Am. Pkt. Paid 7 May 16" credit datestamp, small red "Franco" handstamp, transit and receiving backstamps, expertly repaired cover tear from top to bottom but miraculously not affecting stamps, Very Fine appearance, an attractive usage, ex Caspary (where it realized \$150) ..... E. 750-1,000



49

- 49 ☒ **12c Black (17).** Two, margins clear to barely in, used with two 3c Dull Red, Ty. II (11), stamps artfully placed at all four corners of the cover, tied by either grids or "Reading Pa. Aug. 4" circular datestamps on orange cover to **Coeln, Germany**, red "N. York Br. Pkt. Paid 7 Aug. 6" credit datestamp, red boxed "Aachen Franco" handstamp, receiving backstamp, trivial cover stain at top, Very Fine, a colorful and attractively franked 30c Prussian Closed Mail rate cover ..... E. 1,500-2,000





50

- 50 ☒ **12c Black (17).** Horizontal strip of three, large margins to clear incl. part of adjoining stamp at bottom left, used with vertical pair of 3c Yellowish Rose Red (11 var), large margins to just in, stamps tied by bold strikes of "Knoxville Ten. Jun. 19, 1856" circular datestamps on buff cover **to Berlin, Prussia**, red "New-York Am. Pkt. Jun. 28" transit datestamp, clear strike of "U. S. Pkt." straightline handstamp, receiving backstamp, small scissors-cut in margin only of strip at bottom left, missing top flap, some slight overall wear, Very Fine, rare use of 12c 1851 strip to pay double 21c rate via American Packet, ex Gibson and Piller..... E. 3,000-4,000



51

- 51 ☒ **12c Black (17).** Large margins to in incl. part of adjoining stamp at bottom, used with three singles of 3c Yellowish Rose Red (11 var) arranged as a strip of three, margins to in, tied by neat strikes of "Chicago Ill. Jun. 4" circular datestamp on 1856 cover **to Eghezee, Belgium**, red "New-York Am. Pkt. Jul. 7" transit datestamp, rectangular accountancy handstamp (with rates in blue ink) "DEBOURS ETRANGERS/ TAXE REDUITE/ PORT BELGE", ms. due rates, cover with small repair at bottom, Very Fine appearance, an extremely rare destination in the 1851 Issue era, ex Piller..... E. 3,000-4,000

## 12-CENT 1857-59 ISSUE — PLATE ONE



- 52 **12c Black (36).** Choice centering with frameline intact all around (rare for this issue), crisp shade nicely contrasted by **red grid** cancel, fresh and Extremely Fine, with 1988 P.F. certificate 360.00
- 53 **12c Black (36).** Choice centering, wide **straddle-pane guideline margin** at left, intense shade and impression, town datestamp and trace of red transit, Extremely Fine Gem, a beautiful stamp, with 1986 P.F. certificate..... 350.00
- 54 **12c Black (36).** Bright shade, clear strike of **New York Ocean Mail** datestamp, Fine, ex Koppersmith, with 1988 P.F. certificate, Scott Retail with no premium for the cancel..... 350.00
- 55 **12c Black (36).** Choice centering for this difficult issue, intense shade, neat strike of town datestamp, faint ms. offset on back from address not mentioned on accompanying certificate, Very Fine and choice, ex Koppersmith, with 1986 P.F. certificate..... 350.00
- 56 **12c Black (36).** Crisp impression, distinct **double frameline at bottom**, face-free strike of town datestamp, Very Fine and choice example of this variety, with 1993 P.S.E. certificate not mentioning the double frameline..... 350.00
- 57 **12c Black (36).** Intense shade, **red grid** cancel, prominent **pre-printing paperfolds**, trivial corner perf crease at top left is barely noticeable, Fine, scarce variety on this issue, Scott Retail as normal ..... 360.00
- 58 **12c Black (36).** Horizontal pair, wide **straddle-pane guideline margin** at left, intense shade nicely contrasted by **red "Paid" in circle** and **red "3"** credit handstamps, single pulled perf at bottom right, otherwise Very Fine, a remarkably beautiful pair ..... 800.00
- 59 **12c Black (36).** Horizontal pair, unusually choice centering for this difficult issue, deep shade, light strike of large Boston "Paid" grid and red transit, Extremely Fine, a stunning pair of the 12c 1857 Issue from Plate One ..... 770.00

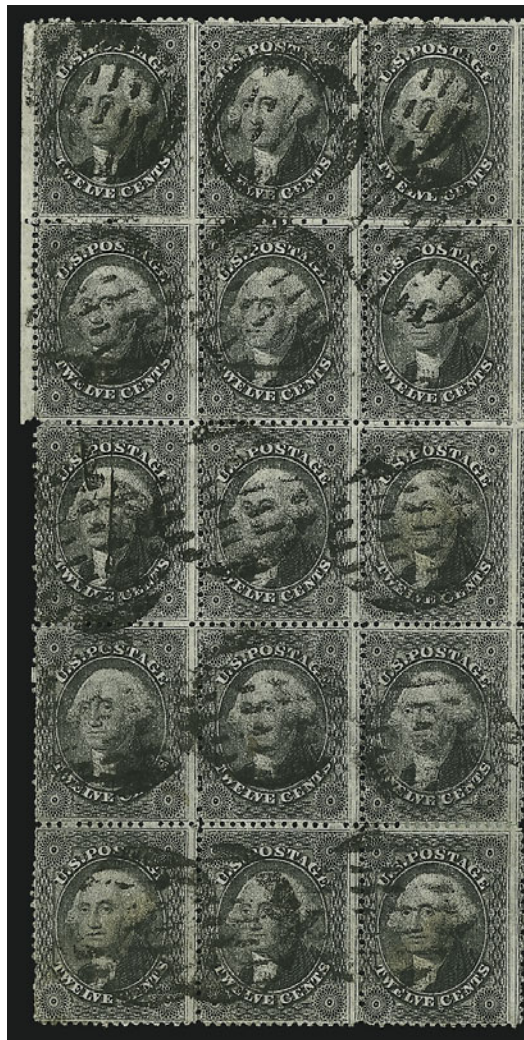




60

60 田 **12c Black (36).** Block of four, intense shade, cancelled by single central strike of New Orleans circular datestamp, top right stamp single short perf FINE-VERY FINE. A SCARCE USED BLOCK OF FOUR OF THE 12-CENT 1857 ISSUE FROM PLATE ONE.

Ex Newbury and Ishikawa..... 2,500.00



61

61 田 **12c Black (36).** Block of fifteen, Positions 1/43R1, Position 3R1 with **double transfer in "Twelve"**, detailed impression, grid cancels, few faults incl. small tears and perf separations FINE APPEARANCE. A RARE LARGE USED BLOCK OF THE 12-CENT 1857 ISSUE.

Scott Retail as two blocks of four, two pairs, two singles and the double transfer ..... 7,575.00

## PLATE THREE



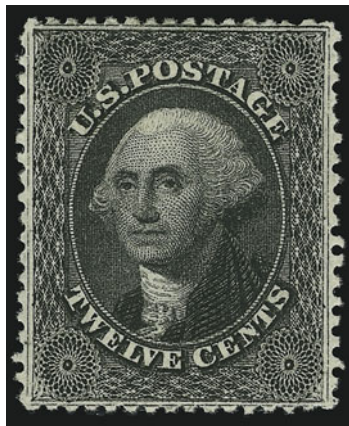
62

62 ★田 **12c Black, Plate 3 (36b).** Reconstructed block of eighteen comprising blocks of twelve and six, Positions 3-8/13-18/23-28R3, mostly h.r. with small hinge reinforcements except Positions 14 and 15 appear Mint N.H., deep shade and proof-like impression, Position 28 with distinct horizontal line across top of top right rosette

FINE. A BEAUTIFUL AND RARE RECONSTRUCTED BLOCK OF EIGHTEEN OF THE 12-CENT 1857 ISSUE FROM PLATE 3.

With 1981 P.F. certificate. Scott Retail as three blocks of four and three pairs ..... 19,200.00





63

- 63 ★ **12c Black, Plate 3 (36b).** Original gum, lightly hinged, perfectly centered, intense shade and proof-like impression  
EXTREMELY FINE GEM. A SUPERB ORIGINAL-GUM EXAMPLE  
OF THE 12-CENT 1857 ISSUE FROM PLATE 3.  
With 1973 P.F. certificate. .... 800.00

- 64 ★ **12c Black, Plate 3 (36b).** Original gum, detailed impression, wide margins, Very Fine and choice, an attractive stamp, with 1985 P.F. certificate ..... 800.00



64



65

- 65 (★) **12c Black, Plate 3, Imperforate (36Bd).** Horizontal pair, unused (no gum), large margins all around incl. **sheet margin at left** and part of adjoining stamps at bottom, intense shade, faint pressed-out crease

EXTREMELY FINE APPEARANCE. THIS IMPERFORATE PAIR OF THE 12-CENT FROM PLATE 3 IS ONE OF THE GREAT RARITIES OF THE ISSUE.

As an indication of rarity, the Scott Catalogue prices the 24c Imperforate pair at \$15,500.00, the 30c pair at \$7,750.00 and the 90c pair at \$37,500.00. We sold a set of 24c-90c Imperforate pairs in our 2000 Rarities sale (the 90c is unique) for \$50,000 hammer. This is the only 12c Plate 3 imperforate, either in single or pair form, that we have offered since keeping computerized records. This is the pair illustrated in Neinken's 12c book (p. 3)..... E. 7,500-10,000



66

**12c Black, Plate 3 (36b).** Perfectly centered with enormous margins at sides, detailed impression and bright shade nicely contrasted by **red** New York grid cancel

EXTREMELY FINE GEM. A SUPERB USED EXAMPLE OF THE 12-CENT 1857 ISSUE FROM PLATE 3. A REMARKABLE STAMP IN TERMS OF CENTERING, SIZE OF MARGINS, IMPRESSION, SHADE AND CANCEL.

With 1989 P.F. certificate. Scott Retail with no premium for the colored cancel..... 225.00

66



- 67 **12c Black, Plate 3 (36b).** Rich shade contrasted by **red "19" credit** handstamp and faint circular datestamp, Extremely Fine, with 1989 P.S.E. certificate, Scott Retail with no premium for the colored numeral cancel..... 225.00
- 68 **12c Black, Plate 3 (36b).** Choice centering with extra wide margins at sides, detailed impression, **red grid** cancel, fresh and Extremely Fine, ex Koppersmith, with 1987 P.F. certificate, Scott Retail with no premium for the colored cancel ..... 225.00
- 69 **12c Black, Plate 3 (36b).** Wide margins, intense shade, face-free strike of target cancel, Very Fine and choice, with 1986 P.F. certificate ..... 225.00
- 70 **12c Black, Plate 3 (36b).** Sharp proof-like impression, indistinct cancel, fresh and Very Fine, with 1986 P.F. certificate ..... 225.00
- 71 **12c Black, Plate 3 (36b).** Unusually deep shade, bold strike of **red grid** cancel, Very Fine and choice, ex Koppersmith, with 1989 P.F. certificate, Scott Retail with no premium for the colored cancel..... 225.00
- 72 **12c Black, Plate 3 (36b).** Intense shade, clear strike of **New York Ocean Mail** datestamp, tiny thinning at top left resulting in two short perfs, appears Very Fine, scarce with the New York Ocean Mail cancel, ex Koppersmith, with 1989 P.F. certificate, Scott Retail with no premium for the cancel..... 225.00
- 73 **12c Black, Plate 3 (36b).** Proof-like impression, neat strike of target cancel, Very Fine and choice, ex Ishikawa..... 225.00
- 74 **12c Black, Plate 3 (36b).** Deep shade and proof-like impression on bright paper, nicely contrasted by **red "3" credit** handstamp, expertly reperfed at left, Very Fine appearance, Scott Retail with no premium for the colored numeral cancel ..... 225.00
- 75 **12c Black, Plate 3 (36b).** Horizontal pair, each with distinct **double side frameline**, bold strikes of **red grid** cancels, Very Fine and choice, Scott Retail with no premium for either the double framelines or the colored cancel..... 500.00

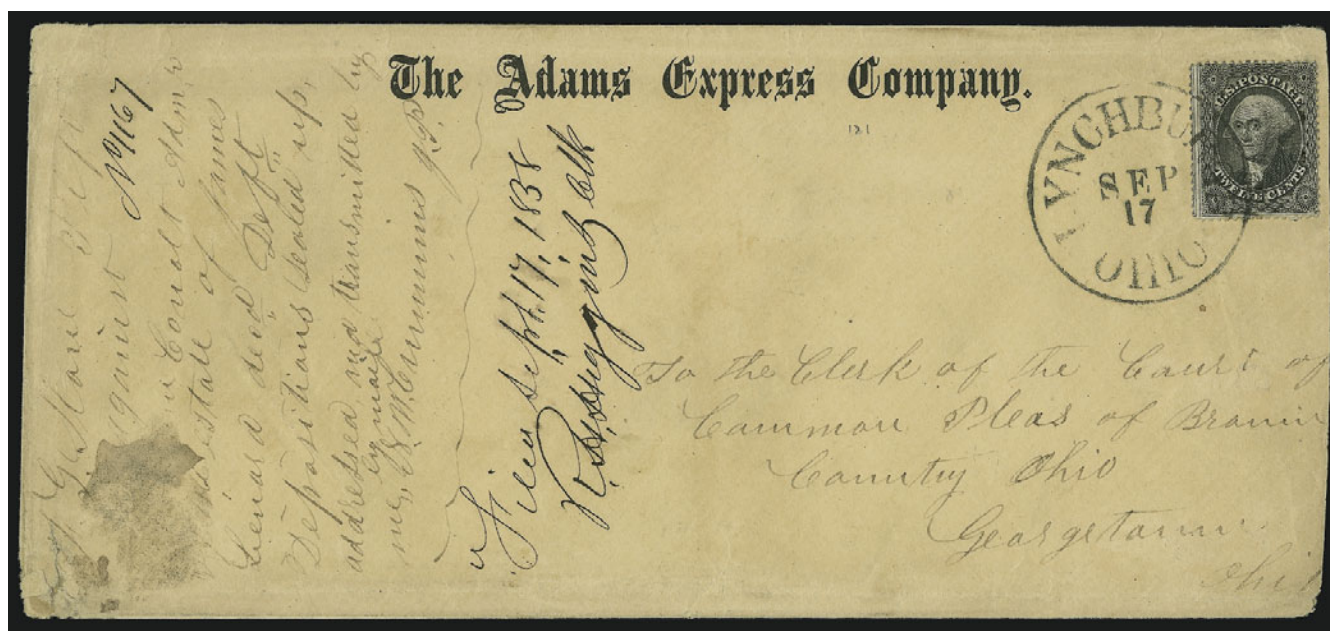


## 12-CENT 1857-59 ISSUE USAGES



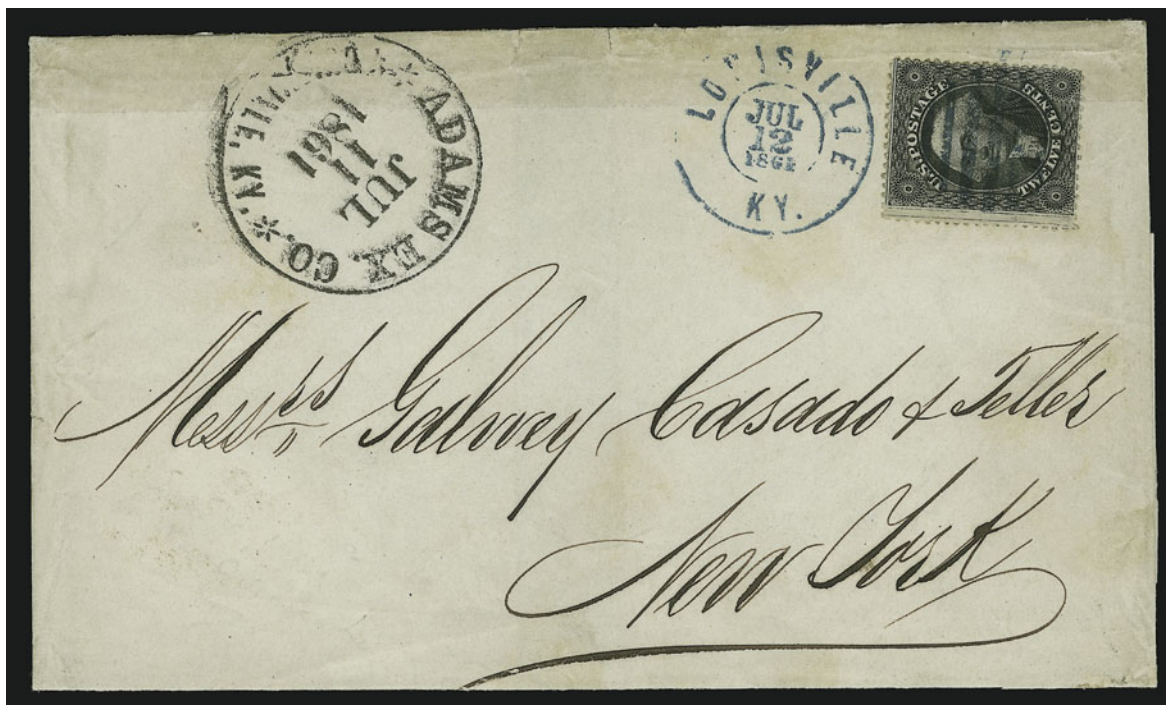
76

- 76 ☒ **12c Black (36).** Bright shade, tied by greenish-blue “N. O. & Vicksburg M.L. Apr. 29” route agent’s circular datestamp on blue 1858 folded letter to Bullers Landing, endorsed “Princess” at bottom left, stamp with few toned perf tips, some slight overall wear, Very Fine contract waterway usage ..... E. 500-750



77

- 77 ☒ **12c Black (36).** Intense shade, tied by clear strike of “Lynchburgh Ohio Sep. 17” circular datestamp on legal-size “The Adams Express Company” corner card cover to court-house in Georgetown O., 1858 docketing at left, slightly reduced at right and some edgewear, Fine, unusual quadruple-rate usage ..... E. 500-750



78

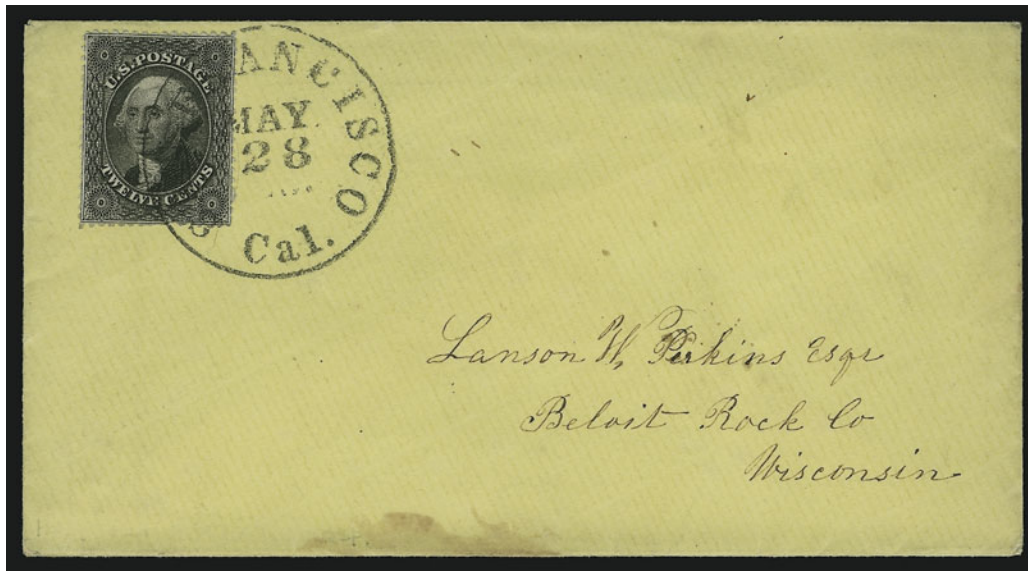
- 78 ☒ **12c Black, Plate 3 (36b).** Tied by blue grid, matching "Louisville Ky. Jul. 12, 1861" double-circle datestamp on folded cover to New York, clear strike of "Adams Ex. Co. \* Louisville, Ky. \* Jul. 26, 1861" circular datestamp, scotch tape reinforcement along top fold shows thru

ONE OF TWO RECORDED QUADRUPLE-RATE EXPRESS USAGES WITH THE 12-CENT 1859 ISSUE. A RARE AND UNUSUAL COVER.

The other example was offered in our sale of the Gallagher Collection (Sale 801, lot 59), and realized \$5,750 hammer.

With 1989 P.F. certificate..... E. 4,000-5,000





79

- 79 ☒ **12c Black (36).** Intense shade, tiny tear at bottom, tied by perfect strike of "San Francisco Cal. May 28" circular datestamp on yellow cover to Beloit Wis., Very Fine appearance, this correspondence has been linked to Hawaii..... E. 300-400



80

- 80 ☒ **12c Black, Plate 3 (36b).** Tied by "San Francisco Cal. Dec. 5, 1861 double-circle datestamp, stamp with brown stain at top, **used with Hawaii, 1861, 5c Blue, Thin Bluish Wove (9)**, three ample to large margins, in at bottom, uncanceled, large red "Honolulu U.S. Postage Paid Nov. 23" circular datestamp on buff cover to Woodburn, Ill., Sturges correspondence, carried on the *Comet* (cleared Nov. 23, arrived Dec. 4 — a record short trip at this time); though the 5c is uncanceled and this is an early use, the Sturges correspondence is a reliable source of Kamehameha III issue mixed frankings, ex *Advertiser*, with 1974 P.F. certificate ..... E. 3,000-4,000



81

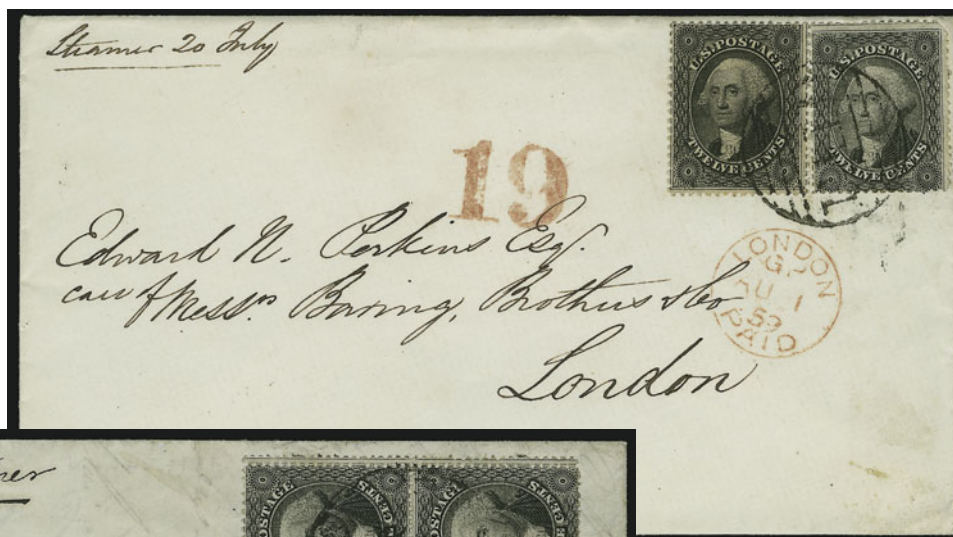
- 81 ☒ **12c Black (36).** Horizontal pair with **sheet margin and part imprint at left**, tied by clear strike of red "Cleveland O. Apr. 10, 1860" circular datestamp on cover **to Loughborough, England**, second strike at right, red "3" credit handstamp, London transit, receiving backstamp, missing part of top flap, some slight soiling, Very Fine, attractive and rare use of an imprint position (the sheet selvage was almost always removed), ex Baker and Haas ..... E. 2,000-3,000



82

- 82 ☒ **12c Black (36).** Horizontal pair, cancelled by **Star fancy cancels**, tied by "Paid" handstamps, "Tuscaloosa Ala. Jan. 22" (1861) circular datestamp on cover **to Blackburn, England**, red "19" credit handstamp, receiving backstamp, small cover stain and light soiling, otherwise Very Fine, scarce **Independent State** usage, sent between the time when Alabama had voted to secede from the Union (Jan. 11) and their admission to the Confederacy (Feb. 4)..... E. 750-1,000





83



84



85

- 83 ☒ **12c Black (36).** Two, significantly different shades because right stamp re-used, tied by central strike of large Boston "Paid" grid on 1859 cover to **London, England**, red "19" credit handstamp, "London Paid Au 1 59" receiving datestamp, fresh and Very Fine, scarce illegal re-usage of 12c 1857..... E. 400-500
- 84 ☒ **12c Black (36).** Vertical pair, **double perforations** at right, tied by "New Orleans La. May 2, 1860" circular datestamp on folded letter to **London, England**, red "19" credit handstamp also ties stamps, red "London Paid My 21 60" receiving datestamp, Very Fine..... E. 400-500
- 85 ☒ **12c Black (36).** Horizontal pair, intense shade, tied by large Boston "Paid" grid on 1858 cover to **London, England**, "Boston Br. Pkt. Jun. 2" backstamp, red "19" credit, red "London Paid Ju 14 58" receiving datestamp, fresh and Very Fine..... E. 300-400



86

- 86 ☒ **12c Black (36).** Four singles, three with wide margin at left, tied by red “Supplementary Mail” Type A handstamps, additional strike at right, on 1859 folded letter to **Liverpool, England**, red “New York Paid 3 Aug. 20” credit datestamp, endorsed “*pr. ‘Fulton’*”, neat strike of “Southampton Ship Letter SP 2 1859” transit datestamp, London and receiving backstamps, faint horizontal file fold well clear of adhesives

VERY FINE. A STUNNING SUPPLEMENTARY MAIL USAGE OF THE 12-CENT 1857 ISSUE FROM PLATE ONE ON A COVER TO ENGLAND.

Ex Grunin ..... E. 2,000-3,000



87

- 87 ☒ **12c Black (36).** Block of four, intense shade, tied by two strikes of “Rochester N.Y.” circular datestamp on cover to **Annan, Scotland**, red “6” credit, red “America Liverpool Paid No 6, 1858” transit, receiving backstamp, expert repair at top left affects bottom left stamp, Very Fine appearance, rare block of four used on a double 24c treaty rate cover to Scotland ..... E. 1,000-1,500





88

- 88 ☒ **12c Black (36).** Single remaining from a pair originally tied by Pa. town datestamp on orange cover **to London, England, forwarded within England**, forwarding postage paid by **Great Britain 1p Red** tied by "75" in grid over space where 12c stamp was removed, "London E. C. No 12 59" datestamp, minor edgewear, Very Fine, with 1993 P.F. certificate mistakenly identifying this as Scott 36b ..... E. 750-1,000



89

- 89 ☒ **12c Black, Plate 3 (36b).** Horizontal pair, intense shade, tied by "New London Ct. Jul. 25" circular datestamp on 1860 cover **to London, England, forwarded to Paris, France**, forwarding postage paid by **Great Britain 4p Rose** tied by numeral in grid cancel, London postal clerk also struck the two U.S. stamps for good measure, red "3" credit and appropriate transits, blue oval "Forwarded by Geo. Peabody & Co. London" backstamp, some overall cover wear, one 12c barely affected from placement at edge of cover, Very Fine appearance, colorful usage..... E. 1,000-1,500





90

- 90 ☒ **12c Black (36).** Horizontal strip of four, few faults, tied by "Waddington N.Y. Aug. 5" circular datestamps on 1858 cover **to London, England, forwarded to Boulogne, France**, various transits in red, oval "Forwarded by Baring Brothers & Co. London" backstamp, some wear, appears Very Fine, attractive double-rate usage ..... E. 750-1,000



91

- 91 ☒ **12c Black (36).** Few short perfs, used with three singles of **5c Red Brown (28)** and **3c Dull Red, Ty. II (26)**, radiant colors, tied by "New Orleans La. Oct. 11, 1857" circular datestamps on folded printed prices current **to Bordeaux, France**, red "Boston Paid 24 Oct. 21" credit datestamp, transit and receiving backstamps, one 5c small tear at bottom right, Very Fine appearance, a beautiful and scarce three-color franking paying double the 15c rate ..... E. 2,000-3,000



92



93



94

- 92 ☒ **12c Black (36).** Horizontal pair, used with 3c Dull Red, Ty. II (26), tied by grids on 3c Red Nesbitt entire (U10) **to Paris, France**, "Savannah Ga. Paid Aug. 13, 1858" circular datestamp, red "New York Paid 24 Aug. 18" credit datestamp, French transit, trivial edgewear, fresh and Very Fine, colorful and most unusual franking to pay double the 15c rate to France..... E. 1,000-1,500
- 93 ☒ **12c Black, Plate 3 (36b).** Used with 3c Dull Red, Ty. II (26), tied by grids, octagonal "Philadelphia Pa. Jun. 24, 1861" datestamp on blue folded cover **to Paris, France**, red Philadelphia 12c credit datestamp, fresh and Very Fine, scarce with the Philadelphia exchange credit marking..... E. 400-500
- 94 ☒ **12c Black (36).** Used with 3c Dull Red, Ty. II (26), tied together by over-inked blue "Louisville, Ky. Dec. 19, 1859" circular datestamp on folded letter **to Prussia, Germany**, red "N. York Brem. Pkt. Paid 12 Dec. 31" credit datestamp, blue "America Uber Bremen Franco" transit, minor soiling, Fine, ex Piller ..... E. 300-400





95

- 95 ☒ **12c Black (36).** Used with two 3c Dull Red, Ty. II (26), tied by "Newport R.I. Sep. 10" circular datestamps on 3c Red Nesbitt entire (U9) **to Leipzig, Germany**, red "New York Am. Pkt. Sep. 12" transit datestamp, bold strike of red "**Paid 21**" in circle handstamp, also "U.S. Pkt." handstamp, transit and receiving backstamps, expertly cleaned and reinforced along edges, one 3c stamp small tear, Very Fine appearance, colorful and unusual franking ..... E. 750-1,000



96

- 96 ☒ **12c Black (36).** Horizontal pair, used with 3c Dull Red, Ty. II (26), tied by several strikes of "Ducktown Ten. Jun. 23" circular datestamps on light buff 1860 cover **to Nassau, Germany**, red "New York Paid 9 Jun. 30" credit datestamp, ultramarine Havre transit, French and German backstamps, fresh and Fine, very scarce small town usage, ex Piller. .... E. 500-750





97

- 97 ☒ **12c Black (36).** Vertical pair, used with vertical straddle-margin pair of 1c Blue, Ty. V (24) and horizontal pair and single of 3c Dull Red, Ty. II (26), tied by clear strikes of "Charleston S.C. Dec. 7, 1858" circular datestamps on cover **to Rome, Italy**, red "Aachen Franco" handstamp also ties 1c and 3c stamps, red "12" credit handstamp, New York American Packet backstamp, top 12c stamp some faults from placement near edge of cover incl. small tear, Very Fine appearance, colorful and extremely rare franking paying the 35c Prussian Closed Mail rate ..... E. 2,000-3,000



98

- 98 ☒ **12c Black (36).** Horizontal strip of three, s.e. at left and bottom, used with vertical pair of 1c Blue, Ty. V (24), tied by four strikes of "New Orleans La. Nov. 3, 1858" circular datestamps on cover **to Savoy, Sardinia**, red Boston 15c credit marking, red boxed "Aachen Franco", "Franca" and "Via Di Svizzera" handstamps, some overall wear, Fine ..... E. 750-1,000



99

- 99 ☒ **12c Black, Plate 3 (36b).** S.e. at left and top, used with **30c Orange (38)**, s.e. at bottom, tied by "New Orleans La. Sep. 4" double-circle datestamp on blue 1860 folded letter to **Genoa, Italy**, red boxed "Aachen Franco" handstamp, red New York and transit backstamps, ms. "Via N.O.T. & G.N. RR" (New Orleans, Texas and Great Northern) railroad route designation at top, Fine, unusual with the railroad route specified ..... E. 1,000-1,500



100

- 100 ☒ **12c Black (36).** Used with three singles of 3c Dull Red, Ty. II (26), arranged in block format and cancelled by red grids on small mourning cover to **Gottlieben, Switzerland**, attractive printed New York City return address and address to destination, ms. "Per Hambourg steamer" routing, "Franco" straightline ties 3c, German and Swiss backstamps, Fine and quite attractive, ex Grunin and Piller..... E. 1,500-2,000





101



102



103

- 101 ☒ **12c Black (36).** Used with three singles of **10c Green, Ty. V (35)**, tied by grids, "Detroit Mich. Dec. 20, 1860" circular datestamp on cover **to Fribourg, Switzerland**, red "New York Am. Pkt. Dec. 24" and five transit backstamps, back of cover also with **Swiss Consulate at Detroit consular seal**, blue "America Uber Bremen Franco" three-line handstamp, various credit markings, Very Fine, the 42c postage was probably intended to pay the double 21c French Mail rate; however, this was sent via Bremen-Hamburg Mail, where the double rate would have been 38c..... E. 2,000-3,000
- 102 ☒ **12c Black (36).** Vertical pair, used with 3c Dull Red, Ty. II (26), tied by "Augusta Ga. Mar. 9, 1859" circular datestamps on orange cover **to Geneva, Switzerland**, various markings include magenta "24" credit, missing part of top flap and with small tear at top, minor edge wear, Fine, scarce, ex Piller..... E. 400-500
- 103 ☒ **12c Black (36).** Vertical pair with gutter margin at right, used with 3c Dull Red, Ty. II (26), tied by "Augusta Ga. Apr. 9" circular datestamps on 1860 cover **to Geneva, Switzerland**, red "New York Paid 9 Apr. 14" credit datestamp, various French transits and receiving backstamp, few toned perfs and 3c with some toning at top, otherwise Very Fine, franked to pay the 27c Bremen-Hamburg rate, this was instead sent via French Mail, which resulted in a 6c overpayment..... E. 300-400



104

- 104 ☒ **12c Black (36).** Used with **24c Gray Lilac (37)** and **1c Blue, Ty. V (24)**, cancelled by grids, "Portland Me. Paid Aug. 7" circular datestamp on 1860 cover to **St. Petersburg, Russia**, Boston backstamp, red boxed "Aachen Franco" handstamp, barely reduced at top, 24c slightly discolored, Very Fine appearance, attractive and scarce usage paying the 37c rate to Russia via Prussian Closed Mail, ex Gibson and Grunin ..... E. 2,000-3,000



105

- 105 ☒ **12c Black (36).** Two pairs and single, used with two 3c Dull Red, Ty. II (26), tied by red cork cancels, matching "New Bedford Mass. Paid Jun. 15" circular datestamp on orange cover to **Kema, Celebes Islands**, red London transit, red crayon "56" credit, stamps on ends defective, few others with perf creases, otherwise Fine, attractive and scarce usage paying double 33c rate via Southampton ..... E. 1,500-2,000





106

- 106 ☒ **12c Black (36).** Pair and single used with 3c Dull Red, Ty. II (26), tied by red "Paid" in circle cancel struck four times on 1858 mourning cover to **Batavia, Island of Java**, "Boston Br. Pkt. Jun." backstamp, red crayon "34" credit and ms. "30", small tear in top right corner of cover from opening and small toned spot

VERY FINE. A BEAUTIFUL AND EXTREMELY RARE USAGE OF THE 12-CENT 1857 ISSUE ON A MOURNING COVER TO BATAVIA, JAVA.

Ex Haas, Grunin and Piller. With 1987 P.F. certificate. .... E. 7,500-10,000



107

- 107 ☒ **12c Black (36).** Block of six and two pairs, used with horizontal pair of 3c Dull Red, Ty. II (26), tied by red **"Paid" in circle** handstamps, matching "Providence R.I. Aug. 9, 1858" circular datestamp on oversize cover **to Hong Kong, China**, red "New-York Am. Pkt. Aug. 13" transit datestamp, endorsed "*Via Marseilles*", Boston, London and receiving backstamps, expertly restored at right affecting some stamps but barely noticeable, Very Fine appearance, a remarkable franking for the triple 39c rate (overpaid 9c) ..... E. 3,000-4,000





108

- 108 ☒ **12c Black (36).** Used with **three 24c Gray Lilac (37)** and two 3c Dull Red, Ty. II (26), tied by large Boston "Paid" grids on 1860 folded letter to **Hong Kong, China**, "Boston Br. Pkt. Jul. 11" and receiving backstamps, red "London Paid Jy 23 60" transit, red crayon "80" credit, horizontal file fold affects two 24c stamps, another 24c small corner crease and 12c stamp small tear

VERY FINE APPEARANCE. AN ATTRACTIVE AND RARE THREE-COLOR FRANKING PAYING DOUBLE 45-CENT RATE TO HONG KONG. FROM THE AUGUSTINE HEARD & COMPANY CORRESPONDENCE.

Ex Rust. .... E. 5,000-7,500

END OF SALE — THANK YOU