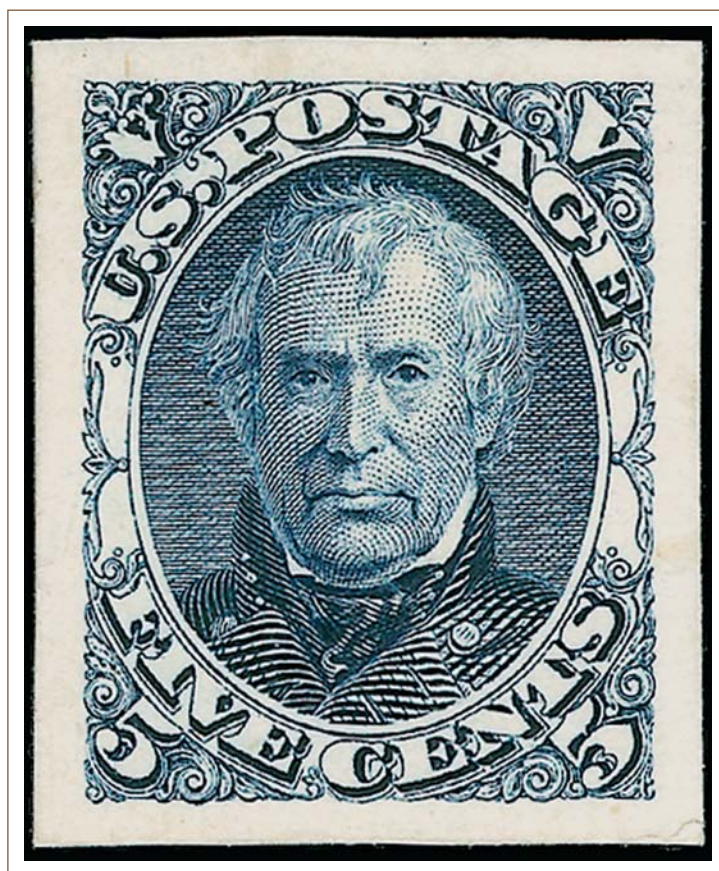


T H E L A K E S H O R E C O L L E C T I O N



P A R T T H R E E — S A L E 9 0 0

United States Essays and Proofs

Tuesday, September 27, 2005

Robert A. Siegel

AUCTION GALLERIES, INC.

www.siegelauctions.com

Sale 900

Tuesday, September 27, 2005

The Lake Shore Collection Part Three: United States Essays and Proofs

Offered without reserves

Pre-sale exhibition

Monday, September 26 — 10:00 a.m. to 4:00 p.m.
or by appointment (please call 212-753-6421)

On-line catalogue, e-mail bid form, resources and
the Siegel Encyclopedia are available on our web site:

www.siegelauctions.com



Arrangement of Sale

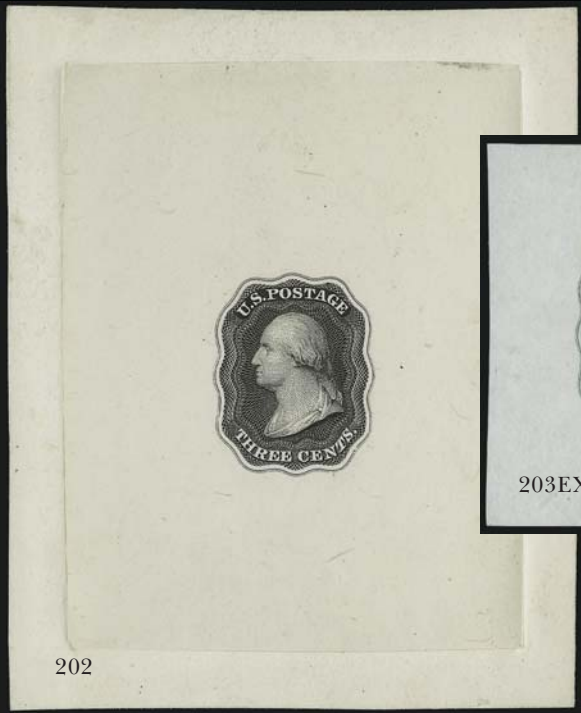
Afternoon session (lots 201-506)

Tuesday, September 27, at 1:30 p.m.

1851-56 Issue	pages 4-7
1861-66 Issue	
Toppan, Carpenter & Co.	7-9
Unknown Authors	9
Butler, Carpenter & Co.....	9
National Bank Note Co.....	10-15
1867 Grilled Issue	
Henry Lowenberg	16-17
National Bank Note Co.....	18-23
1869 Pictorial Issue	24-36
1870-88 Bank Note Issue Essays	
Continental Bank Note Co.	37-38
National Bank Note Co.....	39-45
1873 Issue	45
1877 Philadelphia Bank Note Co.	47-49
Azariah B. Harris	49
Continental Bank Note Co.	50-51
American Bank Note Co.	51-54
1890 and Later Issues	55-56
Special Delivery, Postage Dues	57
Officials.....	58-61

On the cover

Above: Lot 210
Front Cover: Lot 410
Back Cover: Lots 337, 365



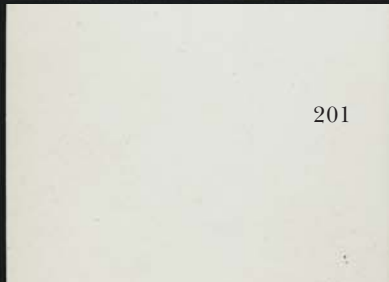
202



203EX



204EX



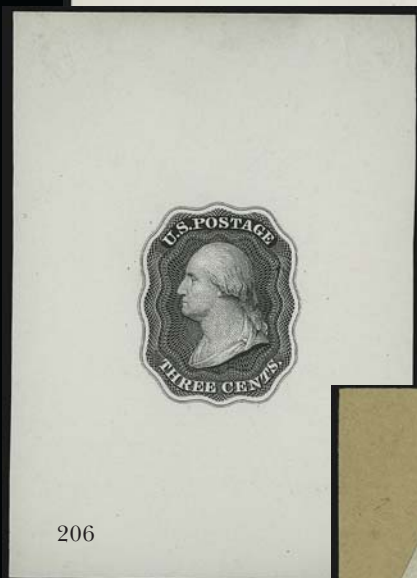
201



205EX



208EX



206



207



209EX

AFTERNOON SESSION (LOTS 201-506)

TUESDAY, SEPTEMBER 27, 2005, AT 1:30 P.M.

THE LAKE SHORE COLLECTION — PART THREE
UNITED STATES ESSAYS AND PROOFS

1851 ISSUE

- 201 E **Gavit & Co., 3c Black, Die Essay on India (11-E4a).** Die sunk on 142 x 222mm card with full die sinkage, small thin spots at top left edge of card, appears Very Fine, scarce on such a large card 750.00
- 202 E **Danforth, Bald & Co., 3c Black, Die Essay on India, Double Line Frame (11-E10a).** Die sunk on 71 x 88mm card with full die sinkage, detailed impression, fresh and Very Fine 750.00
- 203 E **Danforth, Bald & Co., 3c Die Essay on India, Double Line Frame (11-E10b).** Three, Scarlet, Black and Green, from 35 x 37mm to 40 x 48mm, rich colors, Fine-Very Fine....
.....(Photo Ex) 525.00
- 204 E **Danforth, Bald & Co., 3c Die Essay on India, Double Line Frame (11-E10b).** Four, incl. Brown, Blue, Scarlet and Green, approximately 39 x 46mm, rich colors, couple faults incl. small thin spots, appear Very Fine(Photo Ex) 700.00
- 205 E **Danforth, Bald & Co., 3c Die Essay on White Glazed, Double Line Frame (11-E10d).** Two, Blue and Black, 64 x 64mm and 54 x 53mm respectively, former with tiny thin speck, otherwise Very Fine(Photo Ex) 1,500.00
- 206 E **Danforth, Bald & Co., 3c Black, Die Essay on White Glazed, Double Line Frame (11-E10d).** 50 x 71mm, crisp impression, tiny thin spots at top corners from mount removal, appears Very Fine 750.00
- 207 **Danforth, Bald & Co., (3c) Black, Vignette Die Essay on India (11-E11 var).** Cut partly to shape and mounted on card, with "V39907" at bottom left, intense impression, otherwise Very Fine, printed by American Bank Note Co. and taken from one of their die books E. 750-1,000
- 208 E **Danforth, Bald & Co., 3c Die Essay on White Glazed, Single Line Frame (11-E12d).** Two, Scarlet and Blue, 54 x 77mm, rich colors, each with tiny thin spot, appear Very Fine(Photo Ex) 1,500.00
- 209 E **Danforth, Bald & Co., 3c Die Essays Balance (11-E12/11-E16).** Balance lot containing eight essays plus one woodcut forgery, on India or Bond papers, range of colors with no duplication, few trivial imperfections, Fine-Very Fine.....(Photo Ex) E. 750-1,000



210

- 210 E **Bald, Cousland & Co., 3c Blue Green, Triple Die Essay on India (11-E14a).** 36 x 80mm, pretty pastel color, few trivial imperfections normally associated with this fragile paper, appears Very Fine..... 1,800.00



212EX



213EX



214EX



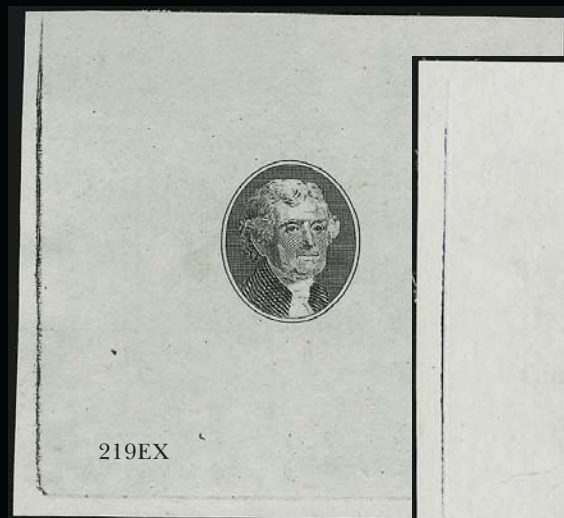
215



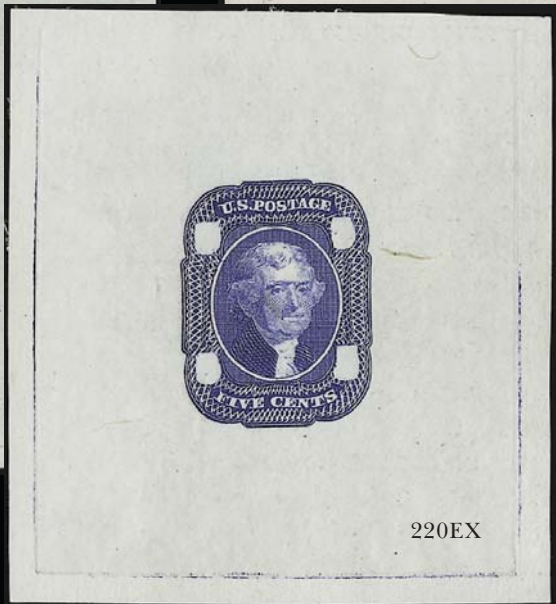
216



218EX



219EX



220EX



221

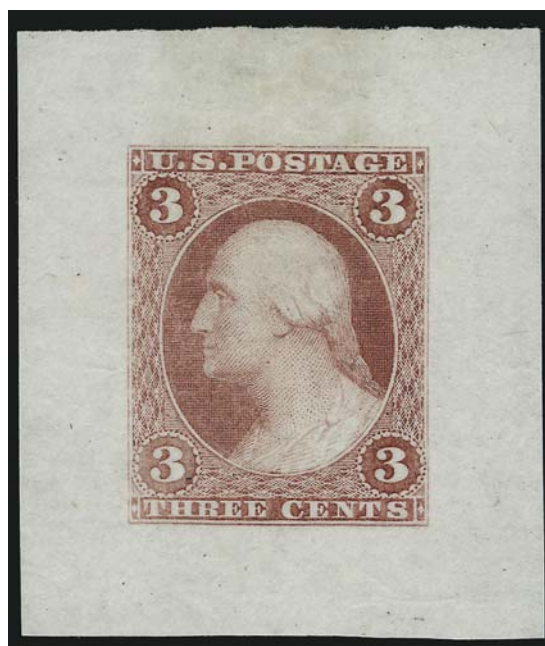
- 211 E **Bald, Cousland & Co., 3c Triple Die Essay on White Glazed (11-E16e).** 44 x 78mm, crisp impressions on bright paper, Very Fine and choice E. 750-1,000
- 212 E **Bald, Cousland & Co., 3c Die Essay on Bond (11-E15b).** Five, range of colors, approximately 34 x 28mm, one with few toned spots, otherwise Very Fine ...**(Photo Ex)** 875.00
- 213 E **Bald, Cousland & Co., 3c Die Essay on Bond (11-E16b).** Five, approximately 42 x 29mm, range of colors, fresh and Very Fine**(Photo Ex)** 875.00

1861-66 ISSUE

TOPPAN, CARPENTER & CO.

- 214 E **1c Franklin, Schernikow Die Essays (63-E1a, 63-E3d, 63-E3e).** Incl. four of first and one each of others, range of colors, virtually all with full die sinkage, most Fine-Very Fine....
.....**(Photo Ex)** 535.00
- 215 E **1c Black, Die Essay on Brown Toned Paper, Cut to Shape (63-E9a).** Intense shade, Very Fine 1,000.00
- 216 E **1c Blue, Die Essay on India, Cut to Shape (63-E9a).** Rich color on bright paper, Very Fine and choice 600.00

- 217 E **3c Washington, Die Essay on Old Proof Paper (65-E3a).** Brown Red, 35 x 40mm, bright color, fresh and Very Fine, a surprisingly scarce essay which in our opinion is undercatalogued in Scott 1,500.00



217

- 218 E **3c Washington, Schernikow Die Essays (65-E1a, 65-E1c, 65-E2c, 65-E2e, 65-E3d, 65-E3e).** Seven total, five with full die sinkage, range of colors, few small faults, appear Fine-Very Fine**(Photo Ex)** 800.00
- 219 E **5c Jefferson, Vignette Only, Die Essay on Proof Paper (67-E1b).** Six different colors, from 55 x 51mm to 63 x 64mm, radiant colors, fresh and Very Fine..**(Photo Ex)** 450.00
- 220 E **5c Jefferson, Die Essay on Proof Paper (67-E2a).** Four different colors, approximately 60 x 60mm, radiant colors, Very Fine**(Photo Ex)** 380.00
- 221 E **5c Black, Die Essay on Old Ivory Paper, Cut to Shape (67-E4d).** Sharp impression, fresh and Very Fine, scarce essay, with 1990 P.S.E. certificate 1,000.00



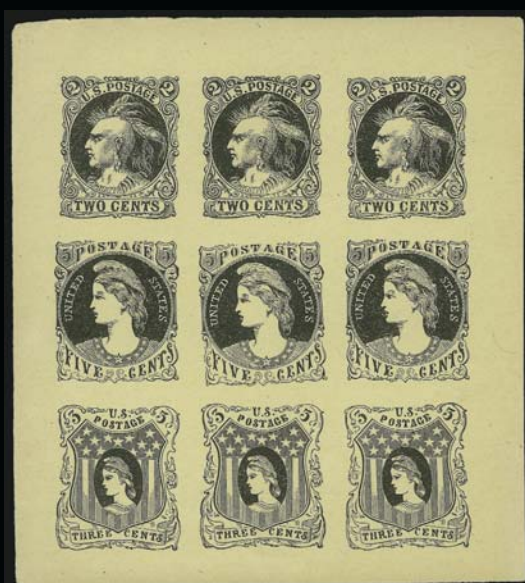
224EX

222

225EX

223EX

226EX



227



228



229EX



230



232



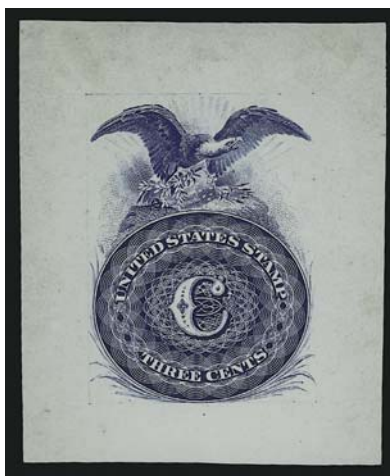
233

- 222 E **12c Gray Black, Die Essay on India (69-E4a).** Die sunk on 60 x 76mm card with full die sinkage at top and bottom, crisp impression, fresh and Very Fine example of this scarce essay 750.00
- 223 E **(24c) Washington, Schernikow Die Essays (70-E1b, 70-E1c, 70-E1a).** Incl. three of first, six of second and three of last, range of sizes from 51 x 52mm, nice display of colors, fresh and Fine-Very Fine **(Photo Ex)** 1,530.00
- 224 E **(24c) Washington, Schernikow Die Essays (70-E2a, 70-E2c, 70-E2e).** Incl. five of second and one each of others, smallest is 46 x 46mm and five with full die sinkage, range of colors, Fine-Very Fine **(Photo Ex)** 960.00
- 225 E **24c Washington, Schernikow Die Essays (70-E4d, 70-E4f-70-E4i).** Four of second and one each of others, range of colors, smallest is 49 x 47mm, fresh and Fine-Very Fine **(Photo Ex)** 1,400.00
- 226 E **90c Washington, Schernikow Die Essays (72-E1c, 72-E2a, 72-E2b, 72-E3a, 72-E5d).** Five of second, four of fourth and one each of others, range of colors, from 57 x 57mm with several showing full die sinkage, Fine-Very Fine **(Photo Ex)** 1,460.00

UNKNOWN AUTHORS

- 227 E **2c-5c Black on Pale Yellow Wove, 1861-66 Essays (73-E3h, 73-E4h, 73-E5h).** Complete sheet of twelve, large margins, few thin spots, light corner crease at top left, appears Very Fine 450.00
- 228 E **2c-5c Green on Pale Yellow Wove, 1861-66 Essays (73-E3h, 73-E4h, 73-E5h).** Complete sheet of twelve, large margins, center left with internal tear, otherwise Very Fine 450.00
- 229 E **2c-5c Black on Pale Yellow Wove, 1861-66 Essays (73-E4/73-E5).** 19 items, incl. two vertical strips of three, few different paper types, fresh and Very Fine **(Photo Ex)** E. 750-1,000
- 230 E **10c Red Violet 1861-66 Essays, Plate Essay on Soft Cream Card (73-E6c).** Pane of four, large margins all around, deep rich color, insignificant thin speck at top, appears Very Fine, quite scarce 600.00

BUTLER, CARPENTER & CO.



231EX

- 231 E **3c Eagle and Coin Essays on Wove, Creamy Bond (Brazer 56E-Ga).** Four different, incl. two on each paper type, fresh and Fine-Very Fine, this essay has been attributed to Butler & Carpenter and may be a Revenue essay **(Photo Ex)** 2,000.00
- 232 E **3c Scarlet, Eagle and Coin Essay on Ivory Paper (Brazer 56E-Gb).** 64 x 77mm, radiant color, fresh and Very Fine, attributed to Butler & Carpenter and may be a Revenue essay 500.00
- 233 E **3c Scarlet, Eagle and Coin Essay on Safety Paper (Brazer 56E-Gb var).** 34 x 43mm, original gum, deep rich color, Very Fine and choice, unlisted in Brazer or Turner, attributed to Butler & Carpenter and may be a Revenue essay E. 750-1,000

234



235



238



236

237



240EX



239

243



242

NATURAL BANK NOTE, CO. & C.



244



245

NATIONAL BANK NOTE CO.

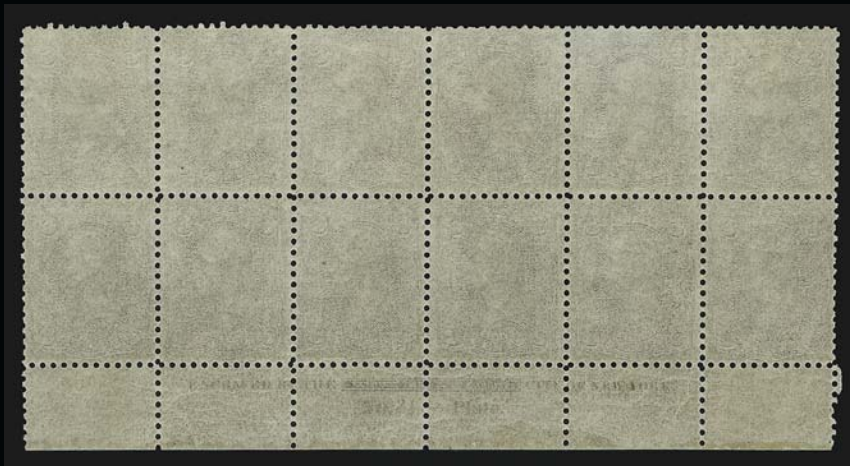
- 234 E **1c Black, First Design, Die Essay on India (63-E11a).** Cut down to stamp size, intense impression, small corner crease at top right, appears Fine, with 1996 P.F. certificate, Scott Retail as die sunk on card 4,000.00
- 235 E **1c Ultramarine, First Design, Plate Essay on India (63-E11c).** Large margins, brilliant color on bright paper, Very Fine and choice 300.00
- 236 E **1c Brown, Bowlsby Patent Coupon, Die Essay on India (63-E13a).** Die sunk on 64 x 101mm card with full die sinkage, rich color, India slightly reduced, Very Fine 1,050.00
- 237 E **1c Black, Bowlsby Patent Coupon Die Essay on White Glazed Paper (63-E13b).** 64 x 77mm, detailed impression, small thin spots at top, appears Very Fine..... 1,050.00
- 238 E **1c Dark Brown, Bowlsby Patent Coupon Die Essay on White Glazed Paper (63-E13b).** 53 x 75mm, intense shade and impression, tiny thin spot at top left, appears Very Fine 1,050.00
- 239 E **1c Scarlet, Bowlsby Patent Coupon Die Essay on White Glazed Paper (63-E13b).** 54 x 78mm, radiant color, small nick out of top left corner and some minor soiling, otherwise Very Fine..... 1,050.00
- 240 E **1c Franklin, Bowlsby Patent Coupon Essays (63-E13c, 63-E13f, 63-E13g, 63-E13h).** Incl. block of four of first, Red and Blue of second and third, last in Blue, o.g., h.r., one with natural paper wrinkles, appear Fine-Very Fine, attractive group.....(Photo Ex) 1,900.00

- 241 TC **1c Gray Black, Large Die Trial Color Proof on India (63TC1).** Die sunk on 148 x 202mm card with full die sinkage, few toned spots on card, otherwise Very Fine, an extremely rare large die trial color proof of the 1c, Don Evans notes in his book on the 1c Franklin that he has no records of a full large die trial color proof, possibly unique, ex Finkelburg..... 2,000.00



241

- 242 E **3c Scarlet, Vignette Die Essay on White Glazed (65-E11b).** 61 x 75mm, bright color, imprint at bottom, small thin spot at right, appears Very Fine 750.00
- 243 E **3c Lake, Die Essay on India (65-E14).** Die sunk on 78 x 75mm card showing full die sinkage, No. 441 and imprint, pencil "1. No. 5" at bottom, few light toned spots, Very Fine and choice, ex Finkelburg..... 750.00
- 244 E **3c Scarlet, First Design, Die Essay on India (65-E15c).** Die sunk on 70 x 85mm card with full die sinkage, some toning, otherwise Fine..... 1,350.00
- 245 TC **3c Black, Large Die Trial Color Proof on India (65TC1).** On 45 x 43mm card, clearly showing die layout lines, manuscript at top right partly trimmed away, Fine, scarce and attractive trial color proof 1,400.00



247



248



249



250



252



253

- 246 TC **3c Black, Large Die Trial Color Proof on Thick Glazed Card (65TC var).** 55 x 73mm with die sinkage area at top and bottom, albino impression of die no., pinhole at top probably caused during production, Very Fine, scarce Trial Color Proof 1,400.00



246

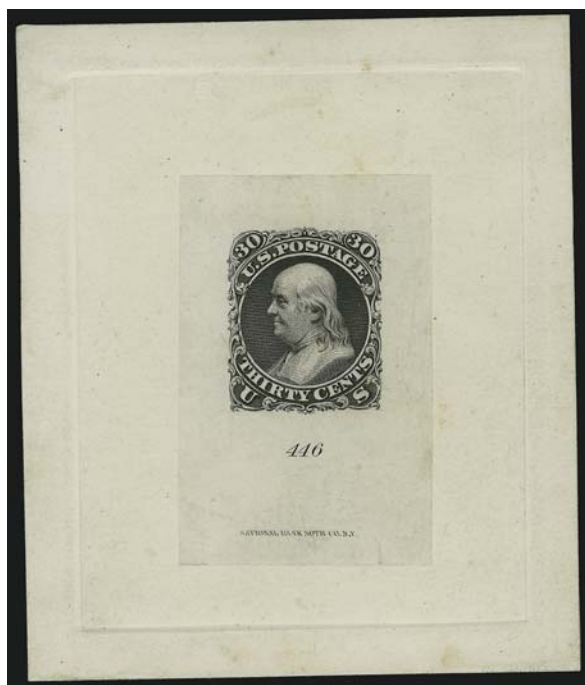
- 247 TC **3c Pale Lilac, Trial Color Proof (65TC var).** Plate barely inked and showing albino impressions with trace of Pale Lilac, bottom imprint and plate no. 21 block of twelve, Brownish original gum with several Mint N.H., one stamp at top part original gum, Very Fine, unusual item E. 1,000-1,500
- 248 P **3c Rose, Francis Patent Paper (65P5).** Irregular block containing all or part of 48 stamps, fresh color, usual wrinkling often associated with this fragile paper, appears Fine, scarce large multiple E. 300-400
- 249 P **3c Blue, Lowenberg Decalcomania, Plate Proof (65P).** Large margins all around incl. **part imprint and plate no. at bottom**, deep rich color, vertical crease as often found on this delicate paper, still Extremely Fine, scarce, particularly in this color..... E. 200-300
- 250 P **5c Brown, 10c Green, Lowenberg Decalcomania, Plate Proof (68P, 75P var).** Single proof which has been printed twice (one for each denomination), large margins, rich colors, few faults as usually associated with this fragile paper, otherwise Very Fine, unusual item E. 200-300



251

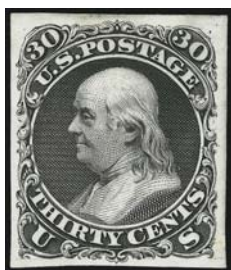
- 251 TC **24c Dark Violet, 1861 Issue, Large Die Trial Color Proof on India (70TC1).** On 38 x 45mm card, deep rich color, Very Fine, unlisted in Scott, this appears to be a large die proof for the First Color, Scott No. 60, Scott Retail as normal No. 70TC1 2,250.00

- 252 E **24c Grayish Lilac, Francis Patent Essay (70-E).** Original gum, h.r., large margins, rich color, Very Fine and choice E. 150-200
- 253 P **24c Lilac, Lowenberg Decalcomania, Plate Proof (70P).** Block of six, large margins to clear, fresh and Very Fine, one of the better blocks we have seen..... E. 400-500



254

- 254 E **30c Black, First Design, Die Essay on India (71-E2a).** Die sunk on 73 x 87mm card with full die sinkage, imprint and die no. at bottom, pencil note on back lists additions and differences to design, few light toned spots, otherwise Very Fine, scarce essay 1,750.00



255



256

- 255 E **30c Black, First Design, Die Essay on India (71-E2a).** Stamp size, removed from card, intense impression, Fine, Scott Retail as die sunk on card..... 1,750.00
- 256 P **90c Blue, First Design, Imperforate (62a; 72-E7g).** Unused (no gum), large margins, deep rich color, light horizontal crease at bottom, appears Very Fine, with 1963 P.F. certificate, Scott Retail as pair..... 5,500.00
- 257 P **90c Pale Blue, Large Die Proof on India (72P1).** Die sunk on 126 x 190mm card with full die sinkage, radiant color, Very Fine..... 500.00



257



258



259



260



261



262EX

- 258 TC **90c Black, Large Die Trial Color Proof on India (72TC1).** On 41 x 42mm card, showing layout lines from the die, detailed impression, Very Fine..... 1,750.00
- 259 P **30c Orange, Lowenberg Decalcomania, Plate Proof (71P).** Large margins, rich color, Very Fine 150.00
- 260 P **2c Black, Lowenberg Decalcomania, Plate Proof (73P).** Block of four, large margins all around incl. part of three adjoining proofs, deep rich color, Very Fine and choice E. 200-300
- 261 E **2c Black, Francis Patent Essay (73-E).** Block of four, perforated, original gum, few perf separations sensibly reinforced, horizontal crease affects top stamps, appears Fine..... E. 300-400
- 262 P **3c-24c Lowenberg Decalcomania, Plate Proofs.** Incl. 3c in Blue, pair of 3c, perforated block of eight of 3c, two 5 and pair of 24c, usual small faults, appear Fine-Very Fine..... (Photo Ex) E. 300-400



263EX



264EX



265EX



267EX

1867-68 GRILLED ISSUE
HENRY LOWENBERG

- 263 E **3c Washington, Plate Essay on Onionskin Paper (78-E8a).** Four complete panes of 25, range of colors, few faults as usually associated with this fragile paper, appear Fine-Very Fine(Photo Ex) 1,750.00
- 264 E **3c Washington, Plate Essay on Clear White Paper (79-E9b).** Two complete panes of 25, incl. Orange and Gray, few faults, appear Fine-Very Fine(Photo Ex) 250.00
- 265 E **3c Washington, Plate Essay on White Chemically Treated Paper (79-E9e).** Three complete panes of 25, large margins, rich colors, few faults as usually associated with this fragile paper, appear Fine-Very Fine(Photo Ex) 750.00

- 266 E **3c Lowenberg, Plate Essay on Onionskin, Se-Tenant with French Design (79-E8 var).** Consisting of vertical strip of four of the U.S. stamp with margin showing three adjoining stamps at left, at right is a vertical strip of four plus single to the right of the French 1c Napoleon design, usual defects associated with this fragile paper, otherwise Very Fine, probably unique, accompanied by *Essay-Proof Journal* article describing this essay, Lowenberg was also trying to secure a contract to sell his process to the French government, and this may have been integral to his attempt..... E. 1,500-2,000



266

- 267 E **Lowenberg Patent Essays Balance (79-E8, 79-E9).** 45 pieces, incl. four pairs, four blocks of four and a block of ten, nine chemical papers, several spacing varieties, range of colors, few faults as usually associated with this fragile paper, otherwise Fine-Very Fine(Photo Ex) E. 500-750



268EX



269



271



272



273



274

NATIONAL BANK NOTE CO.

- 268 E [Unstated Value] **Grilled Circle on White Wove, Perforated 12 (79-E13)**. Six different grill varieties, incl. one with "3" (79-E13e), one with circular grill, original gum or large part original gum, few small faults, appear Fine-Very Fine, interesting group (Photo Ex) E. 500-750
- 269 E [Unstated Value] **All-Over Grill Essay on White Paper (79-E14b)**. 48 x 52mm, grill with points up as adopted, clearly-defined grill points, fresh and Very Fine 150.00



270

- 270 E **3c Rose, All-Over Grill Essay, Points Down (79-E15a)**. Bottom imprint and plate no. 36 block of eight, top essays traces of or part original gum, large margins, few creases affect bottom stamps, appears Very Fine, with 1995 P.F. certificate E. 1,000-1,500
- 271 E **3c Rose, All-Over Grill Essay, Points Down (79-E15a var)**. The so-called "Biscuit Grill", horizontal pair, bold strike of **New York City Segmented Diamond Within Circle cancellation**, known used in July 1867 and evidently applied to a number of experimental grills to test the efficacy of grilling, Very Fine and extremely rare, approximately 12-15 examples are known E. 750-1,000
- 272 E **3c Rose, All-Over Grill Essay, Points Down (79-E15a)**. The so-called "Biscuit Grill" essay, horizontal pair with selvage at top and natural s.e. at left, o.g., h.r., right stamp with ms. "X" trial pen cancel, Fine, scarce E. 300-400
- 273 E **3c Rose, All-Over Pinpoint Grill Essay (79-E15d)**. The so-called "Music Box" grill, bottom imprint and plate no. 11 block of eight, barely hinged with few Mint N.H., surprisingly intact perfs, Fine, scarce plate block, Scott Retail as singles 1,000.00
- 274 E **3c Rose, All-Over Pinpoint Grill Essay (79-E15d)**. The so-called "Music Box" grill, top selvage block of eight with imprint, natural s.e. at left, mostly Mint N.H., few stamps at center with natural paper wrinkles, appears Very Fine, scarce large multiple, Scott Retail as singles 1,200.00

- 275 E **3c Black, Shield-Shaped Die Essay on Thick White Paper (79-E18a)**. Original gum, crisp impression, few faults incl. diagonal creases and few thin spots, otherwise Very Fine 1,000.00



275



278

279EX

277

276

281

280EX

282EX

284EX

286EX

283EX

288EX

285

287EX

289EX

290EX

291EX

292

- 276 E **3c Deep Pink, Shield-Shaped Die Essay on Thick White Paper (79-E18a).** Stamp size at sides, 76mm tall, some soiling, few thin spots and horizontal creases not affecting design, otherwise Fine 1,000.00
- 277 E **2c Black on White, Postal Stationery Essay (Undersander E36Ac).** 139 x 85mm, detailed impression, Very Fine, scarce 700.00
- 278 E **3c Red on White, Postal Stationery Essay (Undersander E37Ba).** 139 x 85mm, bright color, small ink spot at top right and small surface chip at bottom right edge, appears Very Fine, scarce 700.00
- 279 **3c Washington, Plate Essays on White Wove, Imperforate and Gummed (79-E23i).** Seven different colors, six original gum, h.r., one no gum, full margins, bright colors, Very Fine(Photo Ex) 350.00
- 280 E **3c Washington, Plate Essays on White Wove, Imperforate and Gummed (79-E23i).** Complete set of all six Scott-listed colors in blocks of four, large margins, original gum, h.r. except one no gum, Very Fine, Scott Retail as singles(Photo Ex) 1,200.00
- 281 E **(3c) Washington, Portrait Only, Face Lined, National Bank Note Co. Essay (79-E24c).** Scarlet, printed directly on 76 x 102mm card with full die sinkage, uncleared sides of die, Very Fine, scarce with such large card 750.00
- 282 E **3c Washington, Plate Essays on Gibson Patent Starch Coated Opaque White Paper (79-E25c).** 29, incl. eight pairs, range of colors, few minor faults, Fine-Very Fine, attractive group.....(Photo Ex) 725.00
- 283 E **3c Washington, Plate Essays on Gibson Patent Starch Coated Opaque White Paper (79-E25c).** Nine blocks of four, eight different colors, large margins, couple small faults, Fine-Very Fine group.....(Photo Ex) 900.00
- 284 E **3c Washington, Plate Essays on White Paper, Perforated and Gummed (79-E25h).** Eighteen, wide range of colors, original gum, h.r. except two no gum, few small faults, Fine(Photo Ex) 450.00
- 285 E **3c Washington, Plate Essays on White Paper, Perforated and Gummed, Grill Points Down (79-E25j).** Block of fifteen with selvage at top, single horizontal penstroke across each row, original gum, h.r., few pre-printing paperfolds, small faults incl. tear at bottom left, otherwise Fine-Very Fine, unusual essay, ex Earl of Crawford and with his notes on quadrille page E. 300-500
- 286 E **3c Washington, Plate Essays on White Paper, Perforated and Gummed, Grill Points Up (79-E25l).** Thirteen, virtually every color represented, original gum, h.r., few small faults, appear Fine-Very Fine(Photo Ex) 520.00
- 287 E **3c Washington, Plate Essays (79-E25).** Interesting lot containing thirteen blocks of four, two singles and a strip of three, incl. ungrilled and grilled blocks, pelure paper, testing examples, few minor faults to be expected, Fine-Very Fine, fascinating group (Photo Ex) E. 500-750
- 288 E **3c Washington, Plate Essays, Safety Overprints (79-E26).** Four imperforate singles comprising three of the four types, each a different color and each with selvage at one side, few faults incl. one with diagonal crease, appear Very Fine, scarce group as only one sheet of twelve of each is reported to have been produced.....(Photo Ex) 2,200.00
- 289 E **3c Washington, Plate Essays, Safety Network Essay Ty. B (79-E26e).** Three perforated stamps, each different color, two with selvage at right, original gum, h.r., Fine-Very Fine, scarce, it is believed only one sheet of twelve of each was produced (Photo Ex) 1,650.00
- 290 E **3c Washington, Plate Essays, Safety Network Essay Ty. C (79-E26f).** Three, different colors, two with selvage at left, original gum, one h.r., rich colors, choice centering, Very Fine, scarce, only one sheet of twelve of each is believed to have been produced (Photo Ex) 1,650.00
- 291 E **3c Washington, Plate Essays, Safety Network Essay Ty. C (79-E26f).** Horizontal pair of Rose Red and single of Dull Violet, both with selvage at right, original gum, well-balanced margins, Very Fine and choice, scarce, only one sheet of twelve of each is believed to have been produced(Photo Ex) 1,650.00
- 292 E **3c Washington, Plate Essays, Safety Network Essay Ty. D (79-E26g).** Three different colors, two with selvage at sides, original gum, one h.r., choice centering, one with pulled perf, otherwise Very Fine, scarce, only one sheet of twelve of each is reported to have been produced..... 1,650.00

- 293 E **3c Black, Untrimmed Die Essay on Stiff Ivory paper (79-E28a).** 63 x 43mm, intense impression, fresh and Very Fine, scarce..... 700.00
- 294 E **3c Violet, Die Essay on India (79-E28 var).** Radiant color, small thin spot at top, appears Very Fine, unlisted in Scott..... E. 150-200
- 295 E **[Unstated Value] Vignette of Liberty, Black, Large Die Essay on Card (79-E30b).** Die sunk on 66 x 100mm card with full die sinkage, uncleaned die, National imprint at bottom, Very Fine, scarce 600.00
- 296 E **3c Liberty, Black, Vignette Only, Die Essay on Stiff Yellowish Wove Paper (79-E30a).** 36 x 44mm, intense color, Very Fine, scarce essay, this is the first we have offered since keeping computerized records..... 600.00
- 297 E **3c Liberty, Green, Die Essay on Proof Paper (79-E30c).** 47 x 61mm, rich colors, tiny pinhole, appears Very Fine, this color unlisted in Scott..... 600.00
- 298 E **3c Liberty, Carmine, Die Essay on Proof Paper (79-E30e).** 58 x 57mm, rich color, couple minor imperfections as normally associated with this fragile paper, appears Very Fine, scarce 350.00
- 299 E **3c Liberty, Die Essay on Wove Stamp Paper, Gummed (79-E30l).** Sixteen different incl. at least twelve different colors, generally bright colors, few faults, appear Fine-Very Fine, scarce in imperforate form.....(Photo Ex) 2,100.00
- 300 E **3c Liberty, National Bank Note Co. Die Essay on Wove Stamp Paper, Perf 12 Outside, Perf 16 in Oval (79-E30n).** Sixteen, incl. at least ten different shades, all but two full size, couple small faults, appear Fine-Very Fine, impressive group(Photo Ex) 2,100.00
- 301 E **3c Liberty, Rainbow Plate Essay on Transparent Wove, Stiff Yellowish Wove, Imperforate (79-E30p, 79-E30q).** Eight, range of color combinations, few trivial imperfections, Fine-Very Fine.....(Photo Ex) 1,200.00
- 302 E **3c Liberty, Rainbow Plate Essay on Wove, Perf 12 (79-E30r var).** Six vertical pairs, range of colors, original gum, h.r., few thin spots, appear Fine-Very Fine, Scott Retail as the listed variety which is perforated on outside edges only(Photo Ex) 1,800.00
- 303 **3c Liberty, Albino Die Essay on White Card (79-E30v var).** 28 x 32mm, shows complete design, tiny thin spot and faint corner crease, appears Very Fine, scarce, unlisted in Scott, Scott Retail as vignette only..... 125.00
- 304 E **3c Liberty, Essays Balance (79-E30).** Five items, incl. Nos. 79-E30t (3), 79-E30u, last is unlisted variety on thin Bond paper, range of colors, Fine-Very Fine (Photo Ex) E. 500-750
- 305 E **3c Liberty, Essays Balance (79-E30).** Pair and five singles, all perforated, incl. Nos. 79-E30i, 79-E30n (3), 79-E30r, last is unlisted on thin Bond paper, few different colors, original gum, h.r., few thin spots, appear Fine-Very Fine(Photo Ex) E. 500-750
- 306 E **12c Washington, Plate Essays on Colored Papers, Grilled (Unlisted).** Eleven, various papers incl. yellow, rose, blue, orange, few others, each with clear Z Grill, couple on laid paper, original gum, h.r., few small faults, appear Fine-Very Fine, scarce and fascinating group.....(Photo Ex) E. 1,000-1,500

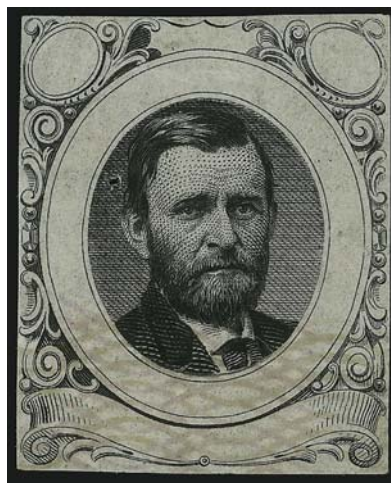
1869 PICTORIAL ISSUE

GEORGE T. JONES



307

- 307 E **5c Light Red & Yellow Orange, Untrimmed Die Essay on Thin White Paper (79-E35a).** Stamp size and mounted on thin card, bright colors, horizontal crease and small nick at bottom, otherwise Fine, this color combination is unique 2,000.00



308

- 308 E **[Unstated Value] George T. Jones Grant Essay on India (112-E1b).** Black with light violet safety overprint, top two-thirds of essay missing overprint, small hole to left of portrait, Very Fine, very rare, especially unusual with the partial overprint..... 3,250.00

NATIONAL BANK NOTE CO.



309



310



311

- 309 E **1c Violet Brown, Small Numeral, Die Essay on India (112-E4a).** Die sunk on 57 x 81mm card with full die sinkage, deep rich color, Very Fine..... 1,250.00
- 310 E **1c Scarlet, Die Essay on White Ivory (112-E5b).** 64 x 67mm with full die sinkage, brilliant color, Very Fine and choice, scarce essay 2,000.00
- 311 E **1c Black, Die Essay on White Ivory (112-E5b).** 45 x 42mm, crisp impression on bright paper, fresh and Fine 2,000.00



- 312 E **2c Small Numeral, Plate Essay on Stamp Paper, Perforated 12, Grilled (113-E3e).** Seven singles and one pair, range of colors with some duplication, all original gum, h.r. except for one unused (no gum), few minor imperfections, Fine-Very Fine ..**(Photo Ex)** 720.00
- 313 E **3c Rose, Small Numeral Die Essay on India (114-E4a).** Die sunk on 57 x 51mm card with full die sinkage area, fresh color, thin spot from mount removal, otherwise Very Fine and very rare, ex Earl of Crawford and Finkelburg..... 1,500.00
- 314 E **3c Orange Red, Small Numeral Die Essay on India (114-E4a).** On 41 x 43mm card, rich color, faint crease, small thin spot on card, appears Very Fine 1,500.00
- 315 E **5c Black, Large Lettering, Large Die Essay on India (115-E1b).** Die sunk on 149 x 227mm card with full die sinkage, intense shade, fresh and Very Fine, scarce on full-size card 600.00
- 316 E **5c Washington, Large Lettering, Large Die Essay on India (115-E1b).** Five different colors, from 44 x 70mm to 56 x 85mm, three show full die sinkage, bright colors, fresh and Fine-Very Fine.....**(Photo Ex)** 3,000.00
- 317 E **5c Washington, Large Lettering, Large Die Essay on India (115-E1b).** Five different colors, approximately 37 x 65mm, deep rich colors, few small thin spots, appear Very Fine, attractive group.....**(Photo Ex)** 3,000.00
- 318 E **5c Washington, Large Lettering, Large Die Essay on India, Proof Paper (115-E1b, 115-E1c).** Eight different, from 26 x 29mm to 49 x 75mm, range of colors, few faults as often associated with this fragile paper, appear Fine-Very Fine, ex Lafayette.....**(Photo Ex)** 4,800.00
- 319 E **5c Washington, Large Lettering, Large Die Essays on Bond Paper (115-E1h, 115-E1i).** Six, from 28 x 28mm to 38 x 39mm, range of colors, fresh and Fine-Very Fine.....**(Photo Ex)** 3,600.00
- 320 E **5c Washington, Large Lettering, Large Die Essays on Glazed Paper (115-E1k).** Two, Scarlet and Black, 40 x 53mm and 38 x 51mm respectively, fresh and bright, Very Fine .
.....**(Photo Ex)** 1,100.00



- 321 E **5c Black, Small Lettering, Large Die Essay on India (115-E2b).** Die sunk on 56 x 75mm card with full die sinkage, intense shade, Very Fine, scarce with the full die sinkage..... 750.00
- 322 E **10c Lincoln, Red Violet, Die Essay on India (116-E1c).** Die sunk on 77 x 80mm card with dull die sinkage, deep rich color, fresh and Very Fine..... 1,000.00
- 323 E **10c Lincoln, Black, Die Essay on India (116-E1c).** Die sunk on 75 x 79mm card with full die sinkage, intense impression which stands out from the bright paper, fresh and Very Fine..... 1,000.00
- 324 E **10c Lincoln, Deep Orange, Die Essay on India (116-E1c).** Die sunk on 76 x 82mm card with full die sinkage, some slight oxidation, otherwise Very Fine..... 1,000.00
- 325 **10c Lincoln, Die Essay on India (116-E1c).** Three different colors, incl. Deep Blue, Deep Orange and Scarlet, 50 x 62mm to 55 x 66mm, each removed from card, couple minor thin spots, appear Very Fine 3,000.00
- 326 E **10c Black Brown, Lincoln Die Essay on Ivory Paper (116-E1e).** 64 x 58mm with imprint at bottom, crisp impression, 5mm tear at top right far from design, otherwise Very Fine. 1,000.00
- 327 E **10c Lincoln, Die Essay on Clear White Bond, Creamy Bond (116-E1f, 116-E1g).** 35 x 42mm and 36 x 45mm, both Red Orange, bright color, Very Fine .(Photo Ex) 2,000.00



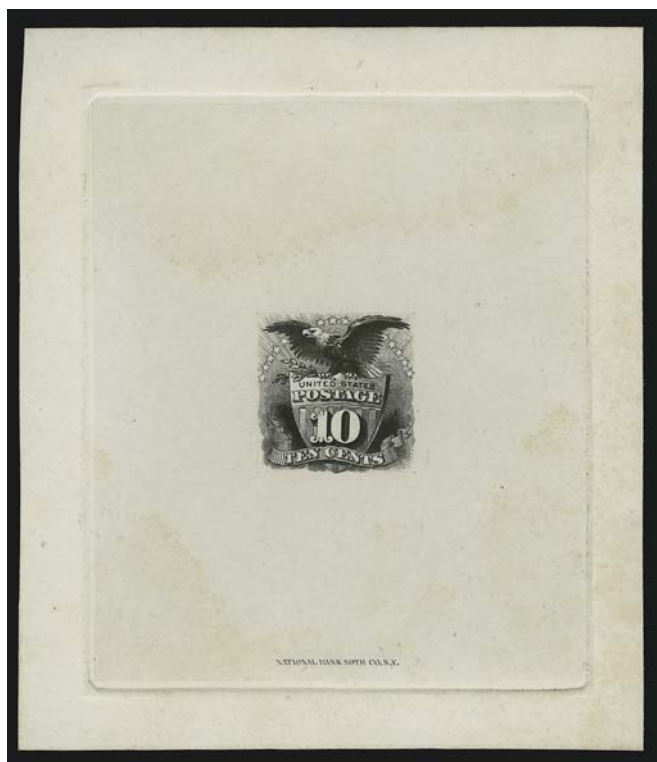
328

- 328 E **10c Blackish Slate, Large Die Essay on India (116-E2a).** Die sunk on 115 x 77mm card, immaculate condition on bright paper, Extremely Fine Gem, very rare especially in such pristine condition, ex Finkelburg 2,500.00



329

- 329 E **10c Orange Brown, Large Die Essay on India (116-E2a).** Die sunk on 123 x 84mm card, showing full die sinkage, rich color, few faint toned spots, slight thinning at bottom left corner from mount removal, otherwise Very Fine, very rare, ex Finkelburg.... 2,500.00



330

- 330 E **10c Black, Large Die Essay on India (116-E4).** Die sunk on 80 x 92mm card with full die sinkage, some slight toning, otherwise Very Fine..... 2,500.00



331



332



333EX

- 331 E **12c Dull Orange Red, Small Numeral, Large Die Essay on India (117-E1c).** On 46 x 51mm card, radiant color, fresh and Very Fine 1,350.00
- 332 E **12c Black, Typographed Small Numeral Die Essay on Card (117-E3a).** 53 x 49mm, intense impression, Very Fine, out of the four we have offered since keeping computerized records this is the only example we have offered in Black..... 750.00
- 333 E **12c Typographed Small Numeral, Die Essays, Stamp Size (117-E3d/117-E3o).** Twelve, each different including wide range of papers and colors, few small faults, all appear Fine-Very Fine, an interesting group, ex Finkelburg.....(Photo Ex) 4,800.00

- 334 TC **15c Black, Large Die Trial Color Proof on India (118TC1).** Die sunk on 68 x 57mm card with full die sinkage, imprint at bottom, minor indentation in India at top, otherwise Very Fine, very rare, ex Finkelburg 2,500.00



334



335

- 335 E **15c Black, Ty. II, Frame Only Essay on India (119-E1a).** On 57 x 42mm card, detailed impression

VERY FINE. A SCARCE FRAME-ONLY ESSAY FOR THE TYPE II 1869 PICTORIAL ISSUE.

This is the first example of this essay we have offered since keeping computerized records 3,000.00

- 336 E **15c Ultramarine, Ty. III, Large Die Essay on India, Red "15" Overprint (129-E1a).** 41 x 47mm, rich colors, few thin spots, small internal tear at left away from design, otherwise Fine, this is only the second example we have offered in this color combination since keeping computerized records..... 3,250.00



336

338



339



340



341



342EX



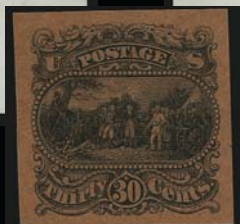
343EX



344EX



345EX





337

- 337 E **24c Black, Small Numeral Large Die Essay on India, Carmine Bands (120-E2a).** On 69 x 62mm card, National imprint at bottom on card in die sinkage area
FRESH AND VERY FINE EXAMPLE OF THIS RARE ESSAY.
None were offered in either the Juhring or Lopez sales. This is the first example in this color combination we have offered since keeping computerized records 2,500.00
- 338 E **24c Black, Small Numeral Plate Essay on Dull Yellow Tinted Paper (120-E2e).** Top plate no. block of twelve with wide selvage at top, large margins, rich color, Very Fine and choice, Scott Retail as singles..... 3,000.00
- 339 E **30c Brown Orange, Yellow Brown, Burgoyne Large Die Essay on India (121-E1a).** Die sunk on 227 x 151mm card with full die sinkage, minor edgewear, some slight oxidation, appears Very Fine, scarce with such large card 800.00
- 340 E **30c Blue, Burgoyne Large Die Essay on India (121-E1a).** Die sunk on 95 x 75mm card with full die sinkage, deep rich color, fresh and Very Fine 800.00
- 341 E **30c Light Brown Red, Burgoyne Large Die Essay on India (121-E1a).** Die sunk on 87 x 65mm card with full die sinkage, pretty shade, Very Fine..... 800.00
- 342 E **30c Orange, Light Brown Red, Burgoyne Large Die Essay on India (121-E1a).** Approximately 70 x 50mm, removed from cards but remarkably intact, Fine-Very Fine...
.....(Photo Ex) 1,600.00
- 343 E **30c Burgoyne, Large Die Essay on Ivory Paper (121-E1g).** Two, incl. Black and Scarlet, 63 x 50mm and 64 x 60mm respectively, radiant colors, first with small thin spot at top right, otherwise Very Fine(Photo Ex) 1,500.00
- 344 E **30c Burgoyne, Large Die Essay on Pink Bond (121-E1i).** Two, Blue and Orange, 43 x 35 and 42 x 39mm respectively, bright colors, Very Fine(Photo Ex) 1,200.00
- 345 E **30c Black, Burgoyne Plate Essay on Thin Surface-Tinted Paper (121-E1p).** Seven, range of papers with no duplication, also one example of No. 121-E1q which has been perforated, all appear Fine-Very Fine.....(Photo Ex) 2,000.00



346

- 346 E **30c Dull Red Violet, Burgoyne Plate Essay on Bond, Red Bands (121-E1s).** Bottom imprint block of 20 with sheet margin on both sides, deep rich colors

EXTREMELY FINE. THE UNIQUE BOTTOM IMPRINT BLOCK OF 20, CONTAINING THE ENTIRE BOTTOM TWO ROWS OF THE PLATE, OF THE 30-CENT BURGOYNE ESSAY WITH RED BANDED SAFETY OVERPRINT. A GREAT RARITY OF THE ISSUE.

Ex Brazer. Scott Retail as singles..... 7,000.00



347



348

- 347 TC **30c Black & Deep Green, Large Die Trial Color Proof on India (121TC1).** Die sunk on 74 x 89mm card with full die sinkage, rich colors, card with tiny thin spot from mount removal, otherwise Very Fine, very rare showing full die sinkage, ex Earl of Crawford and Finkelburg..... 2,500.00

- 348 TC **30c Deep Ocher and Golden Brown, Large Die Trial Color Proof on India (121TC1).** Die sunk on 74 x 81mm card with full die sinkage, rich colors, single tiny age spot at bottom on card, appears Very Fine, very rare showing full die sinkage, ex Earl of Crawford and Finkelburg..... 3,500.00



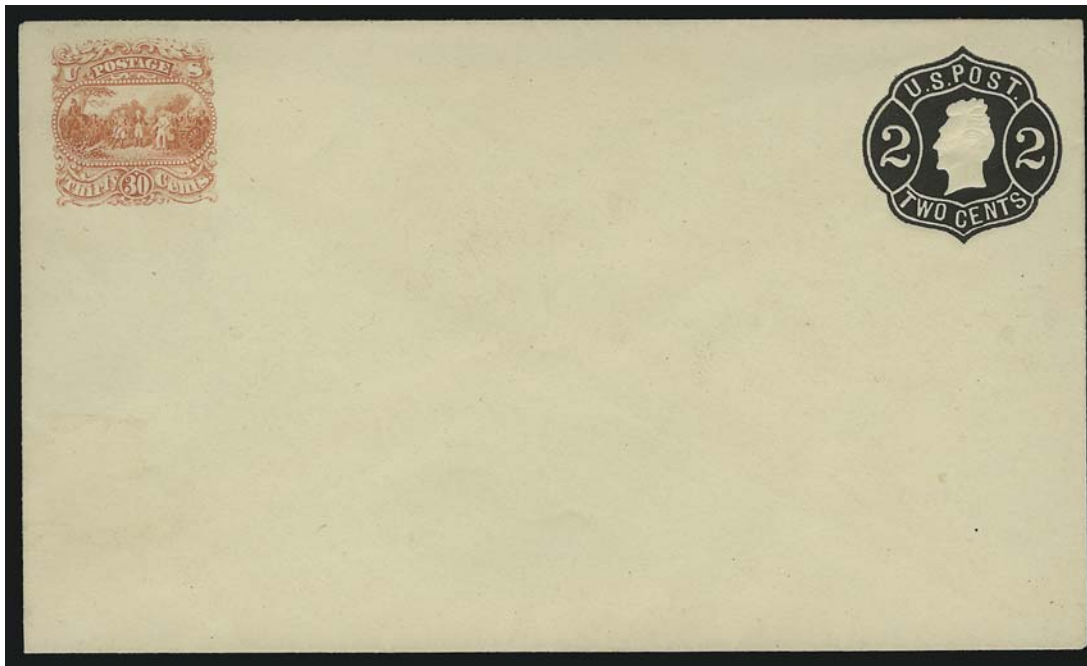
- 349 TC **30c Dull Violet & Carmine Red, Large Die Trial Color Proof on India (121TC1).** Die sunk on 72 x 80mm card with full die sinkage, bright colors, Very Fine and choice, very rare showing full die sinkage, ex Finkelburg 3,500.00
- 350 TC **30c Carmine Lake & Green, Large Die Trial Color Proof on India (121TC1).** 48 x 49mm, bright colors, few thin spots from removal from card, otherwise Very Fine, rare, ex Finkelburg 2,500.00
- 351 TC **30c Deep Green & Brown, Large Die Trial Color Proof on India (121TC1).** 38 x 40mm, beautiful colors, Very Fine and very rare, with 1985 P.F. certificate 3,500.00
- 352 TC **30c Carmine Lake & Brown, Large Die Trial Color Proof on India (121TC1).** 40 x 41mm, deep rich colors, fresh and Fine, scarce color combination 3,500.00
- 353 TC **30c Deep Brown & Blue, Large Die Trial Color Proof on India (121TC1).** 38 x 40mm, rich colors, small thin spot at top, appears Fine, scarce..... 3,500.00
- 354 E **90c Washington, Plate Essays on Stamp Paper (122-E2b, 12-E3).** Three of first and four of second, range of colors with no duplication, large margins, few small imperfections, appear Very Fine.....(Photo Ex) 1,775.00



- 355 E **5c Washington, Vermilion Essay on White entire (Undersander E37Ca).** 194 x 93mm, bright color, fresh and Very Fine..... 1,400.00
- 356 E **5c Washington, Blue Essay on White entire (Undersander E37Cc).** 194 x 93mm, deep rich color, few faint wrinkles, appears Very Fine, scarce 1,400.00
- 357 E **5c Washington, Carmine Essay on Canary entire (Undersander E37Ch).** 223 x 100mm, rich color, few light wrinkles, tiny scuff at top left of design, appears Very Fine, scarce...
..... 1,400.00
- 358 E **5c Washington, Purple Essay on Canary entire (Undersander E37Cj).** 223 x 100mm, rich color, small scuff at right, otherwise Very Fine, scarce 1,400.00
- 359 E **10c Lincoln, Carmine Essay on White entire (Undersander E43Ae).** 194 x 93mm, some slight oxidation, otherwise Very Fine, scarce 1,400.00



- 360 E **30c Burgoyne, Black Essay on White entire (Undersander E43Ae).** 194 x 93mm, detailed impression, fresh and Very Fine, scarce..... 1,400.00
- 361 E **30c Burgoyne, Carmine Essay on White entire (Undersander E43Ai).** 194 x 93mm, radiant color, fresh and Very Fine, scarce..... 1,400.00
- 362 E **30c Burgoyne, Carmine Essay on Canary entire (Undersander E43Am).** 223 x 100mm, radiant color, small dirt spot at left, appears Very Fine, scarce..... 1,400.00
- 363 E **30c Burgoyne, Black Essay on Canary entire (Undersander E43Aq).** 223 x 100mm, crisp impression, fresh and Very Fine, scarce..... 1,400.00
- 364 E **30c Burgoyne, Blue on Canary entire (Undersander E43Ar).** 223 x 100mm, bright color, several scuffs, otherwise Very Fine, scarce..... 1,400.00



365

- 365 E **30c Burgoyne, Orange Essay on Buff 2c U54 Nesbitt entire (Undersander E43As).** 140 x 83mm, bright colors

VERY FINE. THIS IS ONE OF THE SCARCEST OF ALL OF THE 1869 NATIONAL BANK NOTE COMPANY POSTAL STATIONERY ESSAYS.

This is the only example we have ever offered, and it may be unique. 3,500.00

- 366 P **1c-90c 1869 Pictorial, Hybrid Large Die Proofs on India (112P1-122P1).** Leatherbound presentation album titled "Proofs. United States Postage Stamps, Series of 1869, Engraved by the National Bank Note Company, New York.", pencil dedication on inside reads "Presented to Mrs. L. W. Bennett by Gen. W. H. H. Lewell Asst. P.M. Gen'l. Washington D.C. Dec. 1870", appear to be plate proofs on India mounted on cards, loose and partially split binding in need of repair, still Fine-Very Fine, unusual itemNot illustrated E. 750-1,000



367EX

- 367 TC **1c-90c 1869 Pictorial, "Atlanta" Trial Color Plate Proofs on Card (123TC1-132TC1).** Complete set of 79, also incl. additional block of four of 2c Black and pair of 10c Black, also additional 90c, all have ample to large margins, all have fresh colors, few very small faults to be expected

VERY FINE-EXTREMELY FINE. AN INCREDIBLY RARE COMPLETE SET OF "ATLANTA" TRIAL COLOR PLATE PROOFS OF THE 1869 PICTORIAL ISSUE.

The "Atlanta" trial color plate proofs on card were prepared for display at the 1881 International Cotton Exhibition in Atlanta. Only one sheet of 100 in each color was printed. Very few have been kept together as intact sets.

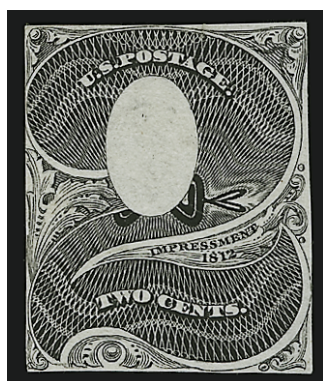
Ex Finkelburg.(Photo Ex) 24,400.00

BANK NOTE ISSUES
CONTINENTAL BANK NOTE CO.

- 368 E **1c Blue, Large Die Essay on India (145-E1a).** 28 x 32mm, on card, bright color, small piece out at top, otherwise Fine 1,500.00



368



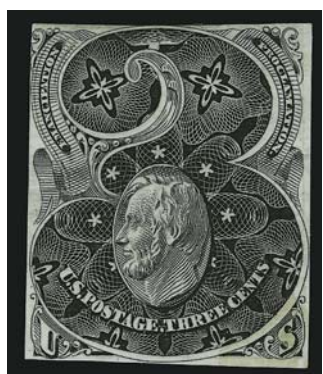
369

- 369 E **2c Black, Large Die Essay on India (146-E1).** Cut close as always and mounted on thin card, thin spot at bottom, appears Very Fine, rare, this is the only example in Black we have ever offered and may well be unique 1,500.00

- 370 E **2c Scarlet, Large Die Essay on India (146-E1).** On 46 x 46mm card, deep rich color, card with small thin spots from mount removal, appears Very Fine, rare, we have only offered one other in this color since keeping computerized records 1,500.00



370



371

- 371 E **3c Black, Large Die Essay on India (147-E1).** Cut to shape (just in at top), thin spot at left, almost Fine, rare, ex Finkelburg, this may be unique in Black 2,250.00



- 372 E (Unstated Value) **Columbia, Vignette Essay on India (147-E1A)**. Die sunk on 227 x 151mm card with full die sinkage, imprint and die no. at bottom with original die no. crossed out, Very Fine, scarce and attractive essay E. 1,500-2,000
- 373 E **3c Green, Columbia Portrait, Large Die Essay on India (147-E1B)**. Die sunk on 74 x 72mm card with die sinkage at sides, radiant color, few toned spots, appears Very Fine, scarce, very few examples of this Continental Bank Note Co. essay are known, this is only the second in this color we have offered since keeping computerized records (the other was in our Finkelburg sale and was reduced much more than this one) 2,000.00



374



375



376

- 374 E **3c Green, Columbia Portrait, Large Die Essay on India (147-E1C)**. On 35 x 39mm card, deep rich colors, light diagonal crease at bottom, appears Very Fine, scarce, this is the only example we have offered since keeping computerized records 2,000.00
- 375 E **3c Black, Columbia Portrait, Large Die Essay on India (147-E6)**. On 34 x 40mm card, detailed impression, some toning, portrait has come loose, card with central thin, otherwise Very Fine, very rare, this is the only example of this essay in any color we have ever offered since keeping computerized records 2,250.00
- 376 E **6c Green, Frame Only, Large Die Essay on India (148-E1a)**. Stamp size and mounted on 47 x 49mm card, rich color, Very Fine, scarce essay 2,000.00

NATIONAL BANK NOTE CO.



- 377 E **1c Franklin, Large Die Essay on India (145-E6a).** Five, die sunk on approximately 73 x 89mm cards with full die sinkage, different colors incl. Light Green, Dull Lilac, Carmine, Red Brown and Dull Yellow Brown, fresh and Very Fine**(Photo Ex)** 2,375.00
- 378 E **1c Franklin, Large Die Essay on India (145-E6a).** 26 x 31mm, removed from card, Fine, also 145TC1 Trial Color in Red Brown approximately the same size, Fine .. E. 300-400
- 379 E **1c Franklin, Large Die Essay on White Glazed Paper (145-E8b).** Two, Blue and Black Brown, 64 x 72mm and 54 x 75mm respectively, bright colors, few small thin spots, appear Very Fine**(Photo Ex)** 850.00
- 380 P **1c Ultramarine, Small Die Proof on Wove (145P2).** 29 x 35mm, removed from original gray card backing but done so expertly so as not to cause an defects, Very Fine, only 85 were produced 175.00
- 381 P **1c Ultramarine, Panama-Pacific Small Die Proof on Wove (145P2a).** Large margins, bright color, Very Fine and choice, scarce as very few were printed 1,200.00

382



384EX



385



389



386



390



387



388



391



- 382 TC **1c Green, Large Die Trial Color Proof on India (145TC1).** Die sunk on 150 x 228mm card with full die sinkage, deep rich color, Very Fine and choice 600.00

- 383 E **2c Jackson, Unadopted Design, Large Die Essay on India (146-E7a).** Two, incl. Orange Brown and one in the Olive family, die sunk on 73 x 85mm and 74 x 89mm cards with full die sinkage, former with unusual National Bank Note Co. imprint on card struck in Blue, Very Fine
.....(Photo Ex) 2,000.00



383EX

- 384 E **2c Jackson, Unadopted Design, Large Die Essay on White Glazed Paper (146-E7b).** Two, Brown Black and Scarlet, 63 x 77mm, brilliant colors, fresh and Very Fine.....
.....(Photo Ex) 2,000.00
- 385 E **2c Green on Buff, Postal Stationery Essay (Undersander E36Cg).** 147 x 83mm, pretty color, fresh and Very Fine, scarce 1,000.00
- 386 E **2c Brown on Creamy White, Postal Stationery Essay (Undersander E36Co).** 147 x 83mm, deep rich color and detailed impression, Very Fine, rare essay 1,000.00
- 387 E **2c Black on Amber, Postal Stationery Essay (Undersander E36Cq).** 159 x 89mm, crisp impression, some slight toning along left edge, small extraneous gum spot at top right corner, appears Very Fine, scarce 1,000.00
- 388 E **3c Green on Canary, Postal Stationery Essay (Undersander E37Dg).** 147 x 83mm, pretty pastel color from a slightly dry print, Very Fine, scarce..... 750.00
- 389 E **6c Dark Yellow Brown, Large Die Essay on India (148-E4).** Die sunk on 74 x 89mm card with full die sinkage, few light toned spots, otherwise Very Fine, ex Brazer..... 600.00
- 390 E **6c Orange Brown, Large Die Essay on India (148-E6).** Die sunk on 100 x 113mm card with full die sinkage, bright color, few light toned spots mostly confined to card, otherwise Very Fine 1,000.00
- 391 E **6c Black, Large Die Essay on India (148-E6).** On 65 x 75mm card, intense shade, few faint toned spots, otherwise Fine..... 1,000.00



392



393EX



394EX



395

ENGRAVED & PRINTED BY THE
NATIONAL BANK-NOTE CO. NEW YORK



396EX

402



400



399EX



401

397

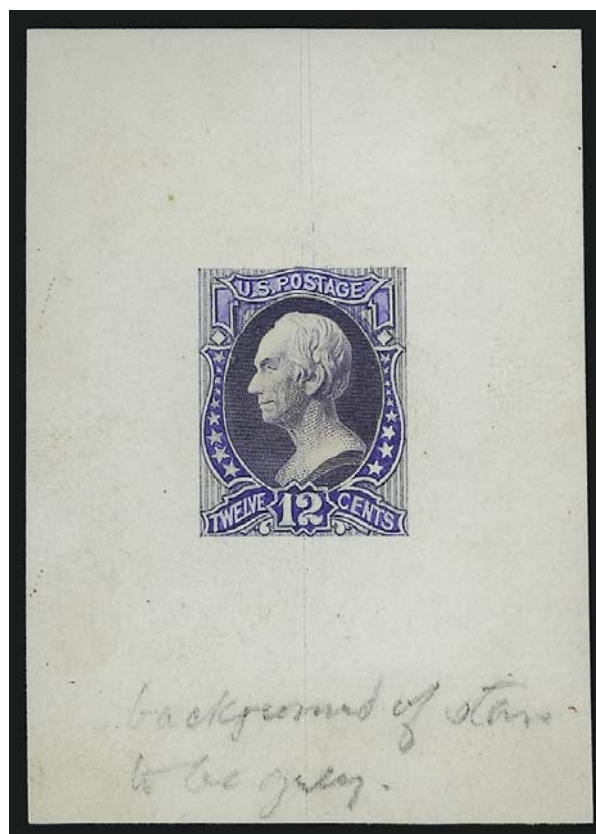


- 392 E **7c Black, Vignette Only, Large Die Essay on White Glazed Paper (149-E5b).** 31 x 34mm, crisp impression, minor translucency at top, appears Fine..... 1,000.00
- 393 E **7c Stanton, Large Die Essay on India (149-E6).** Four, approximately 58 x 70mm, one on card, range of colors incl. Gray Black, Blue Green, Lilac and Light Red, one with thin spot, otherwise Fine-Very Fine(Photo Ex) 2,000.00
- 394 E **10c Jefferson, Large Die Essay of Unadopted Design (150-E3a).** Three, incl. Blue Green, Orange Brown and Dull Red Violet, from 60 x 74mm to 74 x 89mm with one showing full die sinkage, few toned spots, appear Fine-Very Fine(Photo Ex) 2,250.00
- 395 E **10c Green, Jefferson, Large Die Essay on India of Unadopted Design (150-E5a).** Die sunk on 69 x 89mm card with full die sinkage, rich color, Brown National Bank Note Co. imprint on card at bottom, few faint toned spots and small scrape at bottom right not affecting design, otherwise Very Fine 600.00
- 396 E **10c Jefferson, Large Die Essay of Unadopted Design on Glazed Paper (150-E5b).** Three, approximately 65 x 75mm, incl. Black, Black Brown and Scarlet, few minor thin spots, appear Very Fine.....(Photo Ex) 1,500.00
- 397 E **[12c] Clay, Black, Vignette Only, Large Die Essay on India (151-E5).** On 55 x 70mm card, intense color, Very Fine 600.00

- 398 E **12c Clay, Composite Essay (151-E6).** 53 x 75mm, engraved portrait pasted into place and with frame hand-painted in watercolor, pencil notation at bottom reads "background of stars to be grey"

VERY FINE. THE UNIQUE WATER-COLOR ESSAY FOR THE 12-CENT CLAY NATIONAL BANK NOTE COMPANY ISSUE.

A remarkable and beautiful essay..... 3,250.00



398

- 399 E **12c Clay, Die Essays (151-E7a, 151-E7c).** Three, from 24 x 30mm to 36 x 42mm, each different color, incl. Ultramarine and Deep Orange Brown of first (latter removed from card), few faults incl. pinhole in last, otherwise Fine(Photo Ex) 2,500.00
- 400 E **12c Red on Orange, Postal Stationery Essay (Undersander E40Ab).** 147 x 83mm, brilliant color, minor toning at bottom, appears Very Fine, scarce 1,000.00
- 401 E **12c Purple on Canary, Postal Stationery Essay (Undersander E40Ao).** 225 x 100mm, sharp impression, small toned spot and light bend at left, appears Very Fine, scarce..... 1,000.00
- 402 E **12c Green on Amber, Postal Stationery Essay (Undersander E40Aq).** 223 x 100mm, bright color, fresh and Very Fine, rare 1,000.00



405



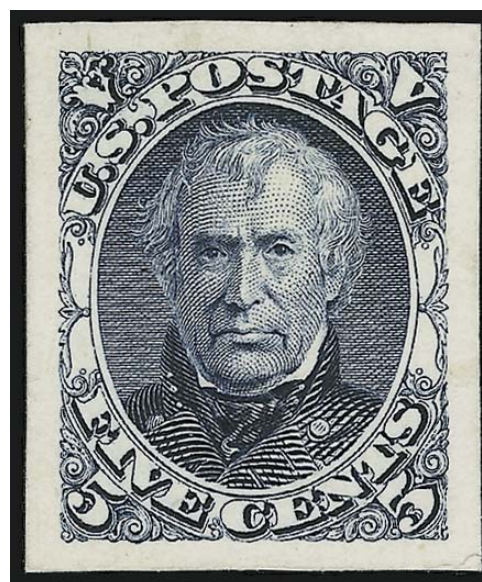
406



- 403 P **24c Purple, Large Die Proof on India (153P1).** Die sunk on 82 x 93mm card with full die sinkage, rich color, few toned spots, otherwise Very Fine 250.00
- 404 E **(30c) Dark Red Brown, Hamilton Die Essay on India (154-E5).** 34 x 41mm, bright color, fresh and Fine 700.00
- 405 TC **1c Black, Atlanta Trial Color Proof (156TC4).** Pane of 100 with imprint and plate nos. at top and bottom and part arrows at right, detailed impression, few slight bends in selvage, otherwise Very Fine, scarce complete pane of 100, Scott Retail as singles with no premium for plate blocks 5,500.00
- 406 TC **1c Black, Trial Color Plate Proof on India (156TC3).** Top imprint block of eight, on card, intense shade, tiny tear to India at top left, appears Very Fine, attractive and scarce multiple, Scott Retail as singles 130.00
- 407 P **7c Orange Vermilion, Panama-Pacific Small Die Proof on Wove (160P2a).** Fresh and bright color, Very Fine and choice, scarce proof 1,200.00
- 408 P **30c Gray Black, Panama-Pacific Small Die Proof on Wove (165P2a).** Bright color, some slight toning at top and bottom, appears Very Fine, scarce, only 3-5 were produced, with 1977 P.F. certificate 1,200.00
- 409 P **90c Rose Carmine, Large Die Proof on India (166P1).** Die sunk on 75 x 87mm card with full die sinkage, radiant color, Very Fine and choice 400.00

1873 ISSUE

- 410 E **5c Blue, Die Essay on India (179-E1).** Stamp size and on card, large and even margins all around, radiant white paper
EXTREMELY FINE. A REMARKABLY BEAUTIFUL AND INCREDIBLY RARE DIE ESSAY FOR THE 5-CENT TAYLOR ISSUE.
This essay also exists in Black. Both should be considered extremely rare — a note in Brazer catalogue states "(Not seen by C.W.B.)" 4,500.00



410



411EX



412



413



414EX



416EX



417EX



415EX

1877 ESSAYS
PHILADELPHIA BANK NOTE CO.

- 411 E **Vignette Only, Die Essay on Proof Paper (182-E1b).** Ten different colors, all ex Brazer and mounted on his cards identifying colors, overall fresh and Fine-Very Fine.....(Photo Ex) 1,000.00
- 412 E **1c-90c Red Violet, Washington, Sheet of 36 on Stamp Paper, Perforated and Gummed (182-E3b/191-E2a).** Complete sheet of 36, selvage all around except missing at top left corner, original gum, bright color, usual natural gum bends, one 90c with ink smear, Very Fine, ex Brazer and hinged on his card..... E. 1,000-1,500
- 413 E **1c-90c Violet Red, Washington, Sheet of 36 on Stamp Paper, Perforated and Gummed (182-E3b/191-E2a).** Complete sheet of 36 with selvage all around, original gum, radiant color, usual natural gum bends, Very Fine and choice, ex Brazer and hinged on his card..... E. 1,000-1,500
- 414 E **2c-30c Washington, Sheet of 16, on Stamp Paper, Perforated and Gummed (183-E2b/190-E2a).** Three, Blue Violet, Dull Yellow Green and Red Brown, original gum, h.r., last with some slight oxidation, few small thin spots, appear Fine-Very Fine.....(Photo Ex) E. 1,000-1,500
- 415 E **2c-30c Washington, Sheet of 16, on Stamp Paper, Perforated and Gummed (183-E2b/190-E2a).** Blue Violet, original gum, h.r., few perf separations sensibly reinforced, appears Fine, also block of eight consisting of two vertical rows in same color.....(Photo Ex) E. 500-750
- 416 E **3c Washington, Die Essay on Proof Paper (184-E1b).** Nineteen, range of colors with some duplication, few small faults incl. thin spots or translucencies from hinges, appear Fine-Very Fine(Photo Ex) 1,900.00
- 417 E **3c Washington, Essays on Proof Paper (184-E2a).** Three, incl. Deep Blue (2) and Blue Green, approximately 54 x 54mm, rich colors, few thin spots, appear Very Fine, scarce, ex Brazer(Photo Ex) 750.00



418

- 418 E **3c Washington, Plate Essay on Stamp Paper, Imperforate (184-E4c).** Sheet of 18 consisting of two panes of nine printed tête-bêche, one in Green, other in Carmine, few faults incl. folded vertically between panes, few other creases and tear at one side, otherwise Very Fine, scarce, ex Brazer 800.00

419EX



PHILADELPHIA HANSB. NOTE CO. PHILA.

420EX



421EX



422EX



423EX



184E-02



426EX

424EX



No 1



427EX

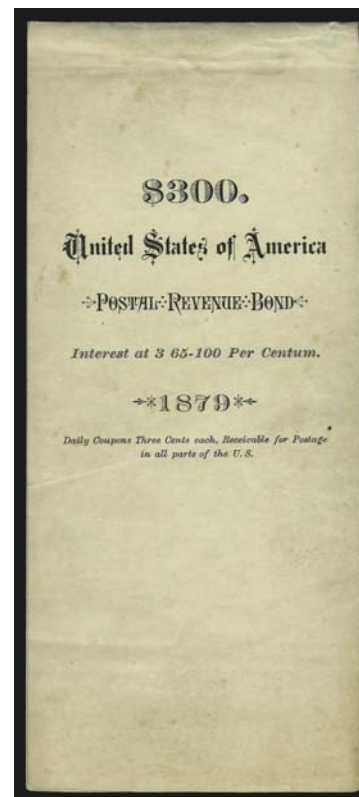


425EX



428EX

- 419 E **3c Washington, Plate Essay on Glazed Thin Wove Paper, Imperforate (184-E4f).** Two panes of nine, Carmine and Blue Green, few small faults to be expected on this fragile paper, appear Very Fine, surprisingly scarce, ex Brazer.....(Photo Ex) 600.00
- 420 E **3c Washington, Essays on Proof Paper (184-E4k).** Nineteen, incl. twelve full-size (ex Brazer and mounted on his cards with color identifications), most fresh and Very Fine ..
.....(Photo Ex) 1,425.00
- 421 E **3c Washington, Essays on Proof Paper (184-E4k).** 30, wide range of colors with some duplication, few small faults to be expected, most Fine-Very Fine, most ex Brazer
.....(Photo Ex) 2,250.00
- 422 E **3c Washington, Essays on Large Colored Card (184-E4l).** Nine total, six different color combinations, from 44 x 51mm to 55 x 62mm, few minor imperfections, overall Fine and attractive group(Photo Ex) 1,350.00
- 423 E **3c Washington, Essays (184-E5).** Accumulation of 21 blocks of four and 25 pairs or singles, incl. Nos. 184-E5e, 184-Eh, 184-E5i, mostly large margins, range of colors, few small faults to be expected, Fine-Very Fine, attractive group .(Photo Ex) E. 1,000-1,500
- 424 E **3c Washington, Die Essay on Proof Paper (184-E5b, 184-E5c).** 30 of first and one of second, range of colors with some duplication, few faults incl. thin spots and translucencies from hinges, appear Fine-Very Fine.....(Photo Ex) 3,150.00
- 425 **3c Washington, Plate Essay on Proof Paper (184-E5e).** Three complete panes of 25, incl. Scarlet, Dark Green and Dull Red Violet, large margins, bright colors, few small thin spots, appear Very Fine.....(Photo Ex) 1,125.00
- 426 E **3c Washington, Plate Essays on Proof Paper (184-E5e).** Fourteen blocks of four in eight distinctive shades, each with sheet margin on at least one side, few small thin spots, overall fresh and Very Fine(Photo Ex) 840.00
- 427 E **3c Washington, Plate Essay on Green Bond, "Crane & Co." Wmk. (184-E5g).** Three panes of 25, two with clear watermarks, colors incl. Black, Dull Olive Green and Red Violet, Very Fine(Photo Ex) 1,975.00
- 428 E **6c-90c Frame Only, Die Essays on Proof Paper (186-E1b, 188-E1b, 190-E1c).** 26 total, incl. six of first and ten of last, range of colors, overall Fine-Very Fine
.....(Photo Ex) 2,600.00
- 428A E **Philadelphia Bank Note Co. Essays Balance.** 22 pieces, incl. Nos. 182-E1b (4), 184-E4k (4), range of frame-only combination pairs, few others, disparate group of colors, few small faults, most appear Fine-Very Fine.....(Photo Ex) E. 300-500
-
- 429 **Azariah B. Harris, 1879 Coupon Essay (184-E8).** Complete bond comprising six panes plus 1879 Postal Revenue Bond in booklet-like cover, outside of cover reads "\$300. United States of America - Postal Revenue Bond — Interest at 3 65-100 Per Centum. - 1879 - Daily Coupons Three Cents each, Receivable for Postage in all parts of the U.S.", some slight toning and other minor defects
- VERY FINE APPEARANCE. THE UNIQUE COMPLETE 1879 COUPON BOND ESSAY PRINTED BY ARARIAH B. HARRIS. A MAGNIFICENT RARITY.
- Accompanied by original outer envelope (split and faulty). Scott Retail as 80 of 184-E8c and 276 of 184-E8d 23,800.00





430



431



433



432



434



436



435



438



437



439



440

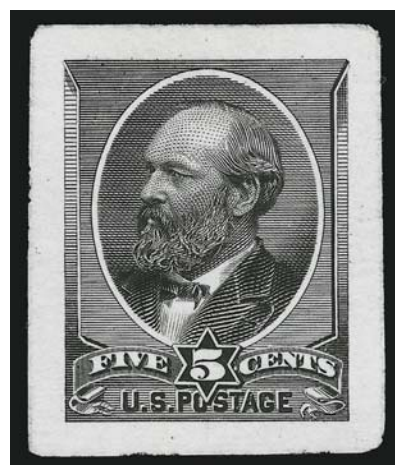
CONTINENTAL BANK NOTE CO.

- 430 E **1c Franklin, Large Die Essay on Proof Paper (182-E4b).** Three, incl. Black, Dull Blue and Dull Green, from 27 x 31mm to 36 x 37mm, rich colors, few faults incl. thin spots or translucencies, appear Fine 1,500.00
- 431 E **3c Liberty, Large Die Essay on India (184-E11a).** Three, Scarlet, Green and Brown (last is unlisted color), 27 x 38mm, 41 x 41mm and 37 x 42mm respectively, rich colors, Fine-Very Fine 1,050.00
- 432 E **3c Liberty, Large Die Essay on White Glazed Paper (184-E11c).** Two, Blue and Scarlet, 39 x 40mm and 31 x 39mm respectively, bright colors, small thin spots, appear Fine-Very Fine 1,500.00
- 433 E **3c Washington, Scarlet, Large Die Essay on White Glazed Paper (184-E13b).** 62 x 77mm which is exact die sinkage size area, **signed by the engraver** at bottom, radiant color, Very Fine and choice, Scott Retail as unsigned 750.00
- 434 E **3c Washington, Large Die Essays on White Glazed Paper (184-E13b, 184-E14b).** 34 x 38mm and 30 x 36mm respectively, Black and Scarlet, first with tiny thin spots from mount removal, appear Very Fine 1,250.00
- 435 E **3c Black, Large Die Essay on White Glazed Paper (184-E14b).** 63 x 73mm with die sinkage on three sides, **signed by the engraver** at bottom, fresh and Very Fine, Scott Retail as unsigned 500.00
- 436 E **3c Washington, Large Die Essay on Proof Paper (184-E14c).** Four, from 29 x 32mm to 30 x 36mm. incl. Black, Dull Scarlet, Dull Green and Dull Blue, rich colors, few small faults usually associated with this fragile paper, appear Fine-Very Fine 1,200.00
- 437 E **30c Hamilton, Large Die Essay on Proof Paper (190-E3a).** Two, Dull Blue and Gray Black, 32 x 34mm and 31 x 39mm respectively, fresh colors, Fine 1,000.00
- 438 E **30c Hamilton, Large Die Essay on White Glazed Paper (190-E3b).** Complete set of all four colors, approximately 45 x 72mm, bright colors, each has small thin spots at top from mount removal, appear Very Fine, scarce complete set 3,000.00

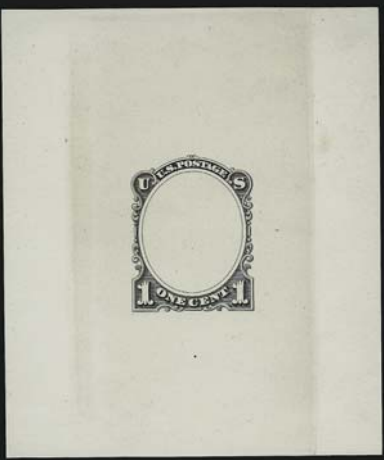
AMERICAN BANK NOTE CO.

- 439 P **2c Vermilion, Panama-Pacific Small Die Proof on Wove (183P2a).** Deep rich color (slightly oxidized), tiny thin spot, otherwise Very Fine, rare as only 3-5 were produced 1,200.00
- 440 E **(5c) Garfield, Gray Brown, Large Die Essay on India (205-E2).** Die sunk on 150 x 228mm card with full die sinkage, American Bank Note Co. and die no. imprint at bottom, also "Pres. Jas. A. Garfield" printed below design, faint toning around edges, otherwise Very Fine 250.00

- 441 E **5c Black, Large Die Essay on India (205-E4).** 25 x 30mm, differs from issued design as oval around portrait is blank, Extremely Fine, reportedly unique, with 1986 P.F. certificate describing this as a cut down essay in Black Brown, this is clearly Black, accompanied by August 1989 *Chronicle* article describing its discovery .. 900.00



441



442



446



447



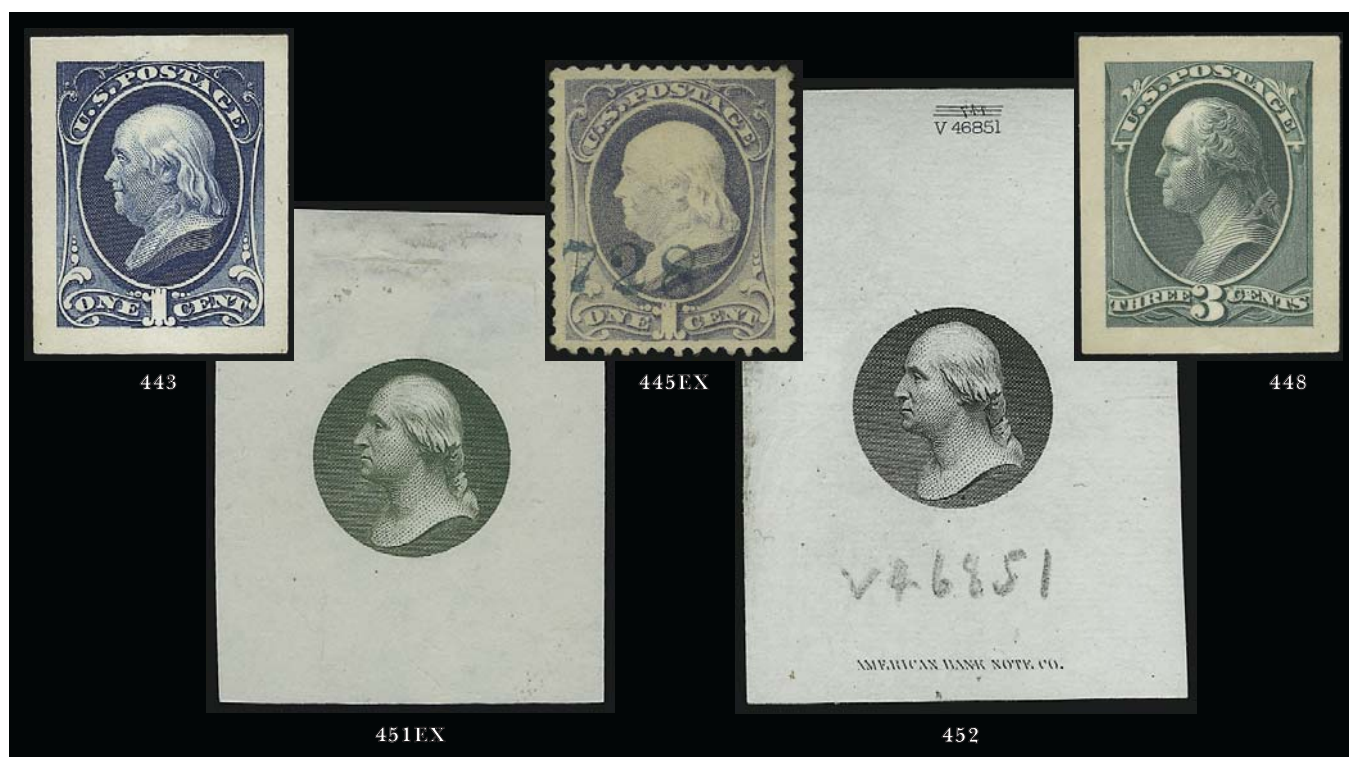
444



449



450



- 442 E **1c Black, Frame Only, Die Essay on White Glazed (206-E1Ca).** 64 x 73mm with full die sinkage, crisp impression, Very Fine, scarce essay, this is the only example we have offered since keeping computerized records 1,000.00
- 443 P **1c Blue, Panama-Pacific Small Die Proof on Wove (206P2a).** Deep rich color on bright paper, Extremely Fine, rare, with 2003 P.F. certificate, no more than five were printed 1,200.00
- 444 P田 **1c Blue, Plate Proof on India (206P3).** Bottom imprint and plate no. block of twenty, large margins all around, radiant color, mounted on card so free from the defects that normally plagues this paper, Very Fine and choice, Scott Retail as plate block, block of four and four singles 950.00
- 445 P **1c Gray Blue, Proofs Balance (206P).** Eleven items, incl. five plate proofs on card, one with red "Specimen" ovpt., one with numeral specimen ovpt., two 206P2, one 206P3, one with eight-hole patent punch, some faults, most appear Fine (Photo Ex) E. 500-750
- 446 ★田 **1c Gray Blue, Eight-Hole Patent Punch (206 var).** Block of four, original gum, pretty color, small crease at bottom, appears Fine, Scott Retail as singles 760.00
- 447 ★田 **1c Gray Blue, Bowlsby-Type Patent Punch (206 var).** Block of four, each stamp with horizontal row of punches, gummed above row and ungummed beneath, light vertical crease at left, appears Fine-Very Fine, unusual design, the bottom half of the stamp was designed to be torn away after use, very rare E. 500-750
- 448 P **3c Blue Green, Panama-Pacific Small Die Proof on Wove (207P2a).** Rich color and detailed impression, Very Fine and choice, rare, only 3-5 were produced 1,200.00
- 449 E **[10c] Black, Franklin Vignette Only, Die Essay on India (209-E4a).** Die sunk on 152 x 227mm card with full die sinkage, imprint at bottom and die no. at top (reversed), crisp impression, pencil archival no. at bottom, Very Fine and choice 575.00
- 450 E **[10c] Black, Washington Vignette Only, Die Essay on India (209-E6a).** Die sunk on 151 x 227mm card with full die sinkage, imprint at bottom, die no. at top with original die no. scored out, fresh and Very Fine, scarce still on the original die-sunk card as most have been removed 600.00
- 451 E **[10c] Washington, Vignette Only, Die Essay on India (209-E6a).** Four different colors, incl. Black, Blue, Dim Blue Green and Dull Brown, approximately 40 x 45mm, each with thin spot and translucency at top from sloppy hinge removal, otherwise Fine (Photo Ex) 2,400.00
- 452 E **[10c] Washington, Black, Vignette Only, Die Essay on India (209-E6a).** 40 x 56mm, unusual and scarce variety with die no. changed at top and with new die no., also die no. in pencil below portrait, fresh and Very Fine, Scott Retail as normal \$600.00 E. 200-300



- 453 E [10c] Washington, Vignette Only, Die Essay on White Ivory Paper (209-E6b). Two, Dull Orange and red Violet, 63 x 71mm and 58 x 69mm respectively with full die sinkage, rich colors, Very Fine.....(Photo Ex) 1,600.00
- 454 P 4c Green, Panama-Pacific Small Die Proof on Wove (211P2a). Incredibly deep rich color and detailed impression, small printer's ink mark at top left, Very Fine, very rare as only 3-5 were produced 1,200.00
- 455 E 1c Black, Blue, Vignette Only, Die Essays on India (212-E1). Die sunk on 70 x 70 and 72 x 82mm cards with full die sinkage, bright colors, few trivial toned spots on cards, otherwise Very Fine set of both Scott-listed colors for this issue, scarce, these are the only examples we have offered since keeping computerized records(Photo Ex) 1,200.00
- 456 E 1c Ultramarine, Franklin Facing Right, Large Die Essay on India (212-E4a). Die sunk on 80 x 93mm card with full die sinkage, bright color, some toned spots, otherwise Very Fine 600.00
- 457 E 1c Franklin, Die Essay on White Glazed Paper (212-E4b). Complete set of all four colors, from 56 x 60mm to 65 x 69mm, one shows full die sinkage area, Blue with thin spot and light crease, Black with tiny thin spot, otherwise Fine(Photo Ex) 3,000.00
- 458 E 1c Franklin, Die Essay on White Glazed Paper (212-E4b). Two, Black and Scarlet, 63 x 71mm and 64 x 73mm respectively with full die sinkage, signed at bottom by both engravers, Black with diagonal crease and affixed to quadrille card (not visible from front), otherwise Very Fine, Scott Retail as unsigned..... 1,500.00
- 459 E 1c Ultramarine, Die Essay on India (212-E6). Die sunk on 55 x 67mm card with traces of die sinkage area at top and right, radiant color, adherence on back, Fine 750.00
- 460 P 1c Ultramarine, Panama-Pacific Small Die Proof on Wove (212P2a). Rich color, some slight toning as often found on this issue, otherwise Very Fine, rare, perhaps 3-5 were produced 1,200.00
- 461 P 5c Blue, Panama-Pacific Small Die Proof on Wove (216P2a). Pretty pastel color, fresh and Very Fine, only 3-5 were produced, this is the only example we have offered since keeping computerized records 1,200.00
- 462 No Lot.

1890 ISSUE



- 463 E (1c) Ultramarine, Vignette Only, Die Essay on India (219-E). Die sunk on 71 x 70mm with full die sinkage, radiant color, tiny thin spot at bottom right corner of card, appears Very Fine, rare, ex Wilson, unlisted in Scott, this differs from design of Scott No. 212 in that portrait is reversed and there is an outer line around the oval similar to others from the 1890 Issue E. 750-1,000
- 464 E 5c Black, Die Essay on Glazed Paper (223-E7b). 63 x 75mm, crisp impression, imprint reads "Essay - March 1890 American Bank Note Co. N.Y.", fresh and Very Fine example of this scarce essay, ex Wilson 750.00
- 465 E 5c Grant, Die Essay on Ivory Paper (223-E10b). Complete set of four colors, from 64 x 63mm to 64 x 76mm, radiant colors, few small thin spots, appear Very Fine, scarce complete set, we have only offered two of the four colors since keeping computerized records (Photo Ex) 3,000.00
- 466 E 5c Black Brown, Die Essay on Ivory Paper (223-E10b). 64 x 76mm with die sinkage area at top and bottom, imprint reads "Essay - March 1890 American Bank Note Co. N.Y.", signed at bottom by both Ronaldson and Skinner, small thin spot at top right, appears Very Fine, especially desirable signed by Ronaldson (frame engraver) and Skinner (vignette engraver), ex Wilson, Scott Retail as unsigned 750.00
- 467 E 10c Black, 1890 Issue, Die Essay on White Glazed Paper (226-E2). 48 x 50mm, bright color, Very Fine example of this scarce essay, ex Wilson, undercatalogued in Scott 1,000.00
- 468 E (90c) Perry, Vignette Only, Die Essay on India (229-E1). Die sunk on 71 x 72mm card with full die sinkage, rich color, few toned spots, card with tiny thin spot at bottom left corner from mount removal, otherwise Very Fine, scarce, ex Wilson, undercatalogued in Scott 750.00

COLUMBIAN THRU TRANS-MISSISSIPPI ISSUES



- 469 P **8c Columbian, Large Die Proof on Card (236P1 var).** Printed directly on 98 x 85mm card with full die sinkage, Very Fine, scarce printed and die sunk directly on card, Scott Retail as normal die sunk on card..... 700.00
- 470 E **15c Blue Green, Die Essay on India (238-E4).** Die sunk on 85 x 73mm card with full die sinkage, deep rich color, Very Fine 1,500.00
- 471 P **50c Orange, Large Die Proof on India (260P1).** Die sunk on 71 x 117mm card with full die sinkage, radiant color, fresh and Very Fine, with 2000 P.S.E. certificate erroneously describing this as an essay..... 450.00
- 472 **1c-\$2.00 Trans-Mississippi, Bi-Color Essays on India (285E-293E).** Die sunk on approximately 152 x 118mm cards with full die sinkage, deep rich colors, 2c tiny toned speck at top

EXTREMELY FINE. A REMARKABLY PRISTINE SET OF THE TRANS-MISSISSIPPI BI-COLOR ESSAYS.

Of the 166 sets printed in these colors, many were hybrids. The set offered here is die sunk and in exceptionally fresh condition.(Photo Ex) 3,125.00

SPECIAL DELIVERY



473

- 473 P **10c Blue, Special Delivery, Hybrid Large Die Proof on India (E1P1 var).** Die sunk on 215 x 143mm card with full die sinkage and gold-trimmed edges, fresh color, trace of binding from presentation album at bottom, Very Fine, Scott Retail as normal .. 600.00

POSTAGE DUE



474EX

- 474 P **1c-50c Claret, 1894 Postage Due Issue, Panama-Pacific Small Die Proofs on Soft Yellowish Wove (J31P2a-J37P2a).** Complete set, rich colors, large margins, some slight overall toning as is usually found on this issue
 VERY FINE. A COMPLETE SET OF THE RARE 1894 ISSUE PANAMA-PACIFIC SMALL DIE PROOFS. ONLY THREE TO FIVE OF EACH VALUE EXIST.
 Scott value of \$500.00 each seems low for die proofs of such rarity. **(Photo Ex)** 3,500.00



476



477



478



479



480



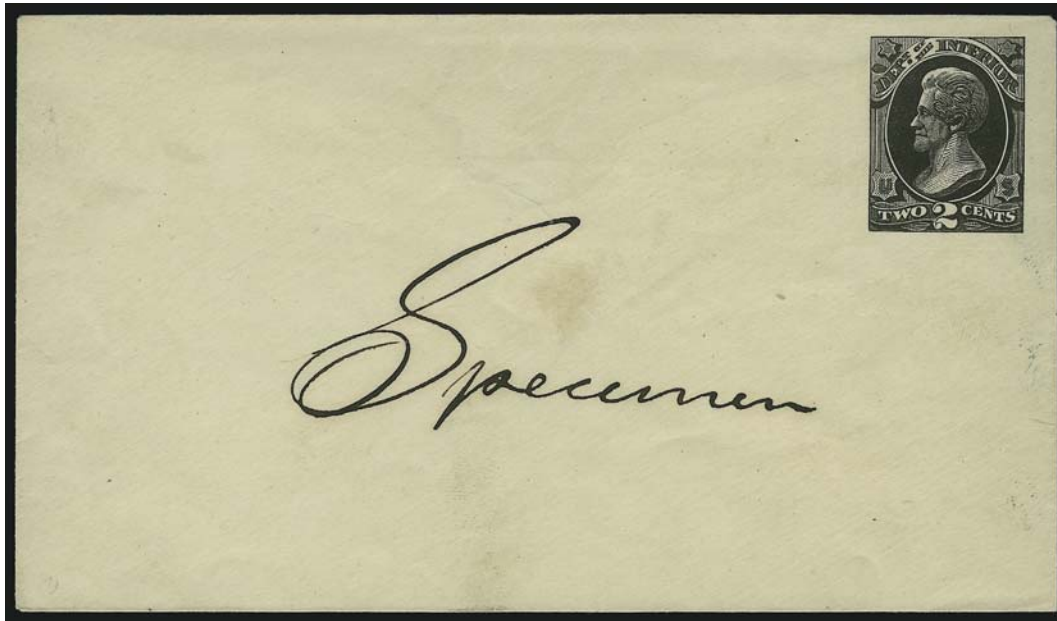
481



482

483EX

OFFICIALS



475

- 475 E **2c Black on Amber, Interior Department Postal Stationery Essay (Undersander E725).** Rich color, large ms. "Specimen", Very Fine and choice, believed to be unique in this color which is not listed in Undersander, the listing is based on a set of five different which were offered in Siegel Sale 446, March 14, 1974..... 1,500.00
- 476 TC **2c Navy, Black, on Wove Paper, Perforated (O36TC var).** Horizontal pair, detailed impression, centered to top, left stamp small fault at bottom left, otherwise almost Fine, scarce, this color is unlisted in Scott, Scott Retail for Deep Green on Wove (the only listed color) 500.00
- 477 E **1c Blue, Post Office Official, Die Essay on India, Mounted on White Ivory Card (O47-E1a).** 60 x 74mm, rich color, small adherences at bottom, card with minor corner crease at top left, otherwise Very Fine..... 1,750.00
- 478 E **1c Orange Red, Post Office Official, Die Essay on White Ivory Paper (O47-E1c).** 65 x 66mm, radiant color, fresh and Very Fine..... 1,250.00
- 479 E **2c Black, Post Office Official, Die Essay on White Ivory Paper (O48-E1c).** 66 x 76mm with die sinkage on three sides, detailed impression, tiny thin spot at top left corner, appears Very Fine, Scott Catalogue lists Brown Black as a color but no Black, several Bank Note issues are printed in the four colors 1,750.00
- 480 E **3c Black, Post Office Official, Die Essay on Proof Paper (O49-E4b).** 35 x 38mm, crisp impression, pencil notation on back reads *The frame while of same design is an entirely different engraved die WA*", fresh and Fine 1,750.00
- 481 E **3c Black, Post Office Official, Die Essay on White Ivory Paper (O49-E4c).** 64 x 78mm, crisp impression, fresh and Very Fine..... 1,750.00
- 482 E **90c Orange Red, Post Office Official, Die Essay on White Ivory Paper (O56-E1c).** 62 x 65mm, brilliant color, few small thin spots, appears Very Fine 1,750.00
- 483 P **\$2.00-\$10.00 State Department, Hybrid Large Die Proofs on India (O68P1-O70P1).** Mounted on India and sunk on approximately 145 x 226mm cards, trace of binding from presentation album at left, few toned spots and corner bends, appear Fine-Very Fine (Photo Ex) 450.00



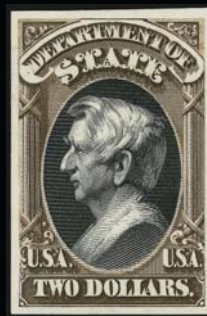
484



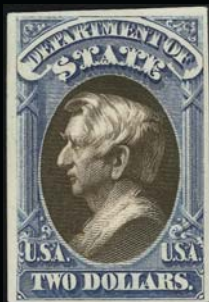
485



486



487



488



489



490



491



492



493



494



495



496



497



498



499



500



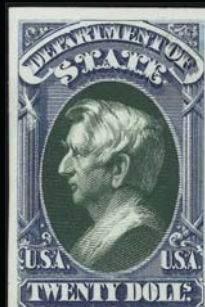
501



502



503



504

484	TC	\$2.00 State, Brown & Blue, Atlanta Trial Color Proof (O68TC). Large margins, rich colors, fresh and Very Fine 1,000.00
485	TC	\$2.00 State, Scarlet & Black, Atlanta Trial Color Proof (O68TC). Large margins to clear, radiant colors, small thin spot at top, appears Very Fine 1,000.00
486	TC	\$2.00 State, Scarlet & Black, Atlanta Trial Color Proof (O68TC). Large margins all around, brilliant colors, small thin spot at top, appears Very Fine 1,000.00
487	TC	\$2.00 State, Brown & Black, Atlanta Trial Color Proof (O68TC). Large margins, rich colors on bright card, tiny thin spot, appears Very Fine 1,000.00
488	TC	\$2.00 State, Blue & Brown, Atlanta Trial Color Proof (O68TC). Large margins to full, radiant colors, small thin spot at top, appears Very Fine 1,000.00
489	TC	\$5.00 State, Scarlet & Black, Atlanta Trial Color Proof (O69TC). Large margins, brilliant colors, light crease at top, appears Very Fine 1,000.00
490	TC	\$5.00 State, Brown & Black, Atlanta Trial Color Proof (O69TC). Large margins, deep rich colors, shallow thin spot at top, appears Very Fine 1,000.00
491	TC	\$5.00 State, Brown & Blue, Atlanta Trial Color Proof (O68TC). Large margins to full, rich colors, tiny thin spot, appears Very Fine 1,000.00
492	TC	\$5.00 State, Green & Brown, Atlanta Trial Color Proof (O68TC). Large margins to clear, rich colors, small surface scrape at top right and small thin spot, appears Fine 1,000.00
493	TC	\$5.00 State, Blue & Brown, Atlanta Trial Color Proof (O68TC). Large and even margins, bright colors, tiny surface scuff at bottom, otherwise Very Fine 1,000.00
494	TC	\$10.00 State, Scarlet & Blue, Atlanta Trial Color Proof (O68TC). Large margins, brilliant colors, Very Fine and choice 1,000.00
495	TC	\$10.00 State, Scarlet & Black, Atlanta Trial Color Proof (O70TC). Large margins, radiant colors, shallow thin spot, appears Very Fine 1,000.00
496	TC	\$10.00 State, Brown & Black, Atlanta Trial Color Proof (O70TC). Large margins to clear, rich colors, small thin spots, appears Fine 1,000.00
497	TC	\$10.00 State, Blue & Brown, Atlanta Trial Color Proof (O70TC). Large and even margins, bright colors, diagonal crease at bottom, appears Very Fine 1,000.00
498	TC	\$10.00 State, Blue & Green, Atlanta Trial Color Proof (O70TC). Large margins to full, rich colors, tiny tear at right, appears Very Fine 1,000.00
499	TC	\$20.00 State, Scarlet & Blue, Atlanta Trial Color Proof (O71TC). Large margins, rich colors, small thin spot at top, appears Very Fine 1,000.00
500	TC	\$20.00 State, Brown & Black, Atlanta Trial Color Proof (O71TC). Large margins all around, deep rich colors, Very Fine and choice 1,000.00
501	TC	\$20.00 State, Blue & Brown, Atlanta Trial Color Proof (O71TC). Large margins, rich colors, small thin spots, few light toned spots, appears Very Fine 1,000.00
502	TC	\$20.00 State, Brown & Blue, Atlanta Trial Color Proof (O71TC). Full margins, deep colors, shallow thin spot, appears Very Fine 1,000.00
503	TC	\$20.00 State, Green & Brown, Atlanta Trial Color Proof (O71TC). Large and even margins, rich colors, thin spot at top, appears Very Fine 1,000.00
504	TC	\$20.00 State, Blue & Green, Atlanta Trial Color Proof (O71TC). Large margins to full, bright colors, small thin spot, appears Very Fine 1,000.00
505	TC	The previous 21 lots of Atlanta Trial Color Proofs offered as a single lot. To be sold as a group if the hammer price exceeds the individual realizations 21,000.00
506	E	Essays and Proofs Balance. 40 items from a range of issues, incl. Nos. 112-E4a, three 115-E1's on various papers, 120-E2e, 122-E3, 122-E4b, 72P2, few other better, most with faults or cut down, some appear Fine-Very Fine <i>Not illustrated</i> E. 2,000-3,000

END OF SALE — THANK YOU

Bid.

Buy.

Sell.

Explore.

Learn.

www.siegelauctions.com



America's premier stamp auctioneer... past, present and future.

Robert A. Siegel
AUCTION GALLERIES, INC.

Bid Form

Sale 900

Tuesday, September 27, 2005

1

Please provide the following information:

NAME.....

ADDRESS.....

CITY/STATE/ZIP

TEL. (DAY) FAX.....

E-MAIL.....

PADDLE #

Do not write in box

2

Have you purchased from us in the past 5 years? ☐ YES (if so, please go to Section 3)

☐ NO (please provide a trade reference and bank information)

References:

Stamp Firm:..... Telephone.....

3

In the space provided below, enter the **lot number** from **Sale 900** and your corresponding bid. Please use **whole dollar amounts** only and enter the **maximum bid** you wish to have us execute on your behalf, according to the bidding increments (on other side of this form). **Your bid will NOT include the 10% buyer's premium.** We will advance the bidding at one increment over the next

highest bid; therefore, you may be awarded the lot at less than your maximum bid. Please do not use "plus" bids or "buy" bids. If you wish to bid on one lot **or** the other, indicate your "or" bid between lot number/bid entries and bracket your choices. If you wish to place a **bidding limit** on the total amount of your bids, please enter your limit in the space marked "Limit Bids".

☐ **LIMIT BIDS:** Check this box if you wish to limit the total amount of your bids (not including the 10% buyer's premium) in this sale. Your bids will be executed until your bidding

\$

Lot	Bid	Lot	Bid	Lot	Bid
	\$		\$		\$

4

AGREEMENT: By signing this bid form, you agree to pay for purchases resulting from your bids, in accordance with the **Conditions of Sale** printed in the sale catalogue. You also agree to pay the 10% buyer's premium and any shipping costs (see reverse), which will be added to your successful bids, and any sales tax or use tax which may be due

on the total invoiced amount. It is understood that these bids will be executed by Siegel Auction Galleries as a courtesy to absentee bidders, but that no legal responsibility shall lie with the auctioneer or the firm if these bids are not executed. **You are responsible for your written bids, including any errors on your part.**

Payment must be made by cash, check, money order or wire transfer. Credit cards will not be accepted.

SIGNED..... TODAY'S DATE

+
5

Please submit your bids promptly (telephone bids must be confirmed in writing).

Mail to: Robert A. Siegel Auction Galleries, Inc.

60 E. 56th Street, 4th Floor, New York, N.Y. 10022

Telephone (212) 753-6421

OR FAX YOUR BIDS: (212) 753-6429

Shipping Instructions, Bidding Increments and space for additional bids on other side of form

Additional Bids

Sale 900—September 27, 2005

Lot	Bid	Lot	Bid	Lot	Bid
	\$		\$		\$

Shipping and Transit Insurance

We will be pleased to arrange for shipping and transit insurance for purchases in this sale (except those described as “floor sale only”). To expedite billing and delivery of lots to hundreds of buyers per sale, we use standard charges for postage and insurance, based on the invoiced total and mailing requirements (see schedule). The standard charges are sometimes slightly more or less than the actual postage, but we do not include any fees for our labor or packing costs. Therefore, we ask all buyers to remit the prescribed amount for shipping charges.

Transit insurance is provided in all cases, except when the buyer has furnished us with proof that insurance coverage is effective under another policy. Proof, in such cases, will be accepted in the form of a written certificate from the insurance carrier.

You are responsible for insurance charges, which will be added to your invoice. This coverage is provided for our mutual protection against theft or loss in transit.

Bidding Increments

The auctioneer may regulate the bidding at his discretion. However, to assist absentee bidders in establishing their maximum bid for each lot, the increments shown at right will be used in most cases. We recommend that written bids conform to these increments (those which do not will be reduced to the next level).

Current Postage & Insurance Charges

Invoice Total	Shipping Method	Charges
Up to 10,000	Fedex Only	\$18.00
Over \$10,000	Fedex Only	\$25.00*
Foreign Destinations (any value)	Fedex/Courier	\$25.00**
Bulk Lots	UPS Preferred	By weight and value (min. \$25.00)
*Insurance and postage on certain heavy or valuable packages may incur an additional charge.		
**Buyers are liable for all customs duties and clearance charges. An accurate declaration of value will be made on all import/export documents.		

2/2002

IMPORTANT NOTICE REGARDING IRRADIATION

The U.S. Postal Service policy of irradiating all classes of mail poses a significant potential risk of irreversible damage to philatelic material, including ink, paper and gum.

WE WILL NOT USE THE MAILS TO SHIP LOTS.
Please provide a street address for Fedex delivery if you intend to have your lots shipped.

Up to \$140	\$5	\$3,000-7,000	\$250
\$140-300	\$10	\$7,000-20,000	\$500
\$300-700	\$25	\$20,000-30,000	\$1,000
\$700-1,400	\$50	\$30,000-75,000	\$2,500
\$1,400-3,000	\$100	\$75,000 up	\$5,000

PRICES REALIZED FOR SALE 900---9/27/2005
The Lake Shore Collection of U.S. Essays and Proofs (Part 2)

Robert A. Siegel Auction Galleries, Inc.
60 East 56th Street, 4th Floor, New York, NY 10022
Tel (212) 753-6421 Fax (212) 753-6429

Lot#	Realized	Lot#	Realized	Lot#	Realized	Lot#	Realized	Lot#	Realized	Lot#	Realized	Lot#	Realized	Lot#	Realized
201	800	243	650	286	200	329	2,100	372	1,250	416	625	458	1,250	502	600
202	625	244	750	287	1,150	330	1,800	373	2,400	417	425	459	325	503	525
203	625	245	375	288	1,350	331	750	374	3,000	418	1,000	460	525	504	600
204	400	246	1,350	289	1,000	332	1,150	375	3,000	419	675	461	1,900	506	2,200
205	1,050	247	750	290	1,150	333	4,000	376	2,100	420	475	463	675		
206	350	248	220	291	1,000	334	4,500	377	3,000	421	950	464	1,000		
207	250	249	280	292	950	335	5,000	378	425	422	525	465	4,000		
208	950	250	210	293	525	336	2,300	379	750	423	700	466	900		
209	1,100	251	2,500	294	125	337	4,000	380	250	424	1,350	467	1,350		
210	950	252	325	295	675	338	2,100	381	1,250	425	350	468	1,500		
211	1,050	253	350	296	500	339	675	382	625	426	400	469	600		
212	550	254	1,000	297	525	340	750	383	1,600	427	500	470	750		
213	850	255	400	298	375	341	850	384	1,500	428	600	471	450		
214	350	256	525	299	1,000	342	525	385	475	428A	260	472	3,500		
215	325	257	475	300	900	343	900	386	475	429	4,000	473	260		
216	475	258	550	301	900	344	1,050	387	475	430	500	474	3,250		
217	2,700	259	180	302	1,200	345	950	388	375	431	700	475	1,600		
218	550	260	350	303	130	346	5,250	389	500	432	475	476	210		
219	160	261	325	304	325	347	4,000	390	625	433	700	477	625		
220	260	262	375	305	525	348	6,000	391	750	434	425	478	1,800		
221	750	263	475	306	1,200	349	2,500	392	450	435	550	479	900		
222	525	264	650	307	1,900	350	1,800	393	1,600	436	550	480	675		
223	375	265	350	308	2,000	351	2,600	394	1,050	437	1,250	481	900		
224	170	266	1,600	309	1,100	352	2,300	395	900	438	1,300	482	850		
225	850	267	475	310	2,100	353	1,800	396	1,300	439	1,250	483	325		
226	1,150	268	1,900	311	1,050	354	1,800	397	325	440	85	484	750		
227	300	269	90	312	400	355	700	398	5,500	441	1,200	485	625		
228	300	270	1,800	313	1,150	356	950	399	1,200	442	1,350	486	575		
229	525	271	1,700	314	1,250	357	625	400	650	443	1,800	487	600		
230	300	272	550	315	800	358	525	401	625	444	1,100	488	600		
231	1,200	273	1,800	316	2,050	359	800	402	625	445	475	489	600		
232	625	274	650	317	1,500	360	625	403	140	446	270	490	600		
233	750	275	675	318	1,800	361	850	404	250	447	425	491	575		
234	650	276	350	319	1,600	362	650	406	105	448	1,700	492	375		
235	200	277	500	320	850	363	950	407	1,900	449	425	493	375		
236	1,350	278	375	321	950	364	700	408	800	450	550	494	675		
237	800	279	200	322	800	365	2,800	409	325	451	800	495	600		
238	R	280	650	323	900	366	400	410	5,750	452	200	496	1,325		
238	R	281	575	324	750	367	18,250	411	550	453	675	497	425		
239	1,000	282	500	325	1,200	368	1,350	412	500	454	1,500	498	375		
240	1,200	283	350	326	425	369	1,800	413	600	455	1,100	499	375		
241	2,400	284	325	327	950	370	2,200	414	800	456	425	500	800		
242	300	285	220	328	2,800	371	2,300	415	375	457	2,100	501	525		

PRICES REALIZED FOR SALE 900---9/27/2005
The Lake Shore Collection of U.S. Essays and Proofs (Part 2)

Robert A. Siegel Auction Galleries, Inc.
60 East 56th Street, 4th Floor, New York, NY 10022
Tel (212) 753-6421 Fax (212) 753-6429

Lot#	Realized	Lot#	Realized	Lot#	Realized	Lot#	Realized	Lot#	Realized	Lot#	Realized	Lot#	Realized	Lot#	Realized
201	800	243	650	286	200	329	2,100	372	1,250	416	625	458	1,250	502	600
202	625	244	750	287	1,150	330	1,800	373	2,400	417	425	459	325	503	525
203	625	245	375	288	1,350	331	750	374	3,000	418	1,000	460	525	504	600
204	400	246	1,350	289	1,000	332	1,150	375	3,000	419	675	461	1,900	506	2,200
205	1,050	247	750	290	1,150	333	4,000	376	2,100	420	475	463	675		
206	350	248	220	291	1,000	334	4,500	377	3,000	421	950	464	1,000		
207	250	249	280	292	950	335	5,000	378	425	422	525	465	4,000		
208	950	250	210	293	525	336	2,300	379	750	423	700	466	900		
209	1,100	251	2,500	294	125	337	4,000	380	250	424	1,350	467	1,350		
210	950	252	325	295	675	338	2,100	381	1,250	425	350	468	1,500		
211	1,050	253	350	296	500	339	675	382	625	426	400	469	600		
212	550	254	1,000	297	525	340	750	383	1,600	427	500	470	750		
213	850	255	400	298	375	341	850	384	1,500	428	600	471	450		
214	350	256	525	299	1,000	342	525	385	475	428A	260	472	3,500		
215	325	257	475	300	900	343	900	386	475	429	4,000	473	260		
216	475	258	550	301	900	344	1,050	387	475	430	500	474	3,250		
217	2,700	259	180	302	1,200	345	950	388	375	431	700	475	1,600		
218	550	260	350	303	130	346	5,250	389	500	432	475	476	210		
219	160	261	325	304	325	347	4,000	390	625	433	700	477	625		
220	260	262	375	305	525	348	6,000	391	750	434	425	478	1,800		
221	750	263	475	306	1,200	349	2,500	392	450	435	550	479	900		
222	525	264	650	307	1,900	350	1,800	393	1,600	436	550	480	675		
223	375	265	350	308	2,000	351	2,600	394	1,050	437	1,250	481	900		
224	170	266	1,600	309	1,100	352	2,300	395	900	438	1,300	482	850		
225	850	267	475	310	2,100	353	1,800	396	1,300	439	1,250	483	325		
226	1,150	268	1,900	311	1,050	354	1,800	397	325	440	85	484	750		
227	300	269	90	312	400	355	700	398	5,500	441	1,200	485	625		
228	300	270	1,800	313	1,150	356	950	399	1,200	442	1,350	486	575		
229	525	271	1,700	314	1,250	357	625	400	650	443	1,800	487	600		
230	300	272	550	315	800	358	525	401	625	444	1,100	488	600		
231	1,200	273	1,800	316	2,050	359	800	402	625	445	475	489	600		
232	625	274	650	317	1,500	360	625	403	140	446	270	490	600		
233	750	275	675	318	1,800	361	850	404	250	447	425	491	575		
234	650	276	350	319	1,600	362	650	406	105	448	1,700	492	375		
235	200	277	500	320	850	363	950	407	1,900	449	425	493	375		
236	1,350	278	375	321	950	364	700	408	800	450	550	494	675		
237	800	279	200	322	800	365	2,800	409	325	451	800	495	600		
238	R	280	650	323	900	366	400	410	5,750	452	200	496	1,325		
238	R	281	575	324	750	367	18,250	411	550	453	675	497	425		
239	1,000	282	500	325	1,200	368	1,350	412	500	454	1,500	498	375		
240	1,200	283	350	326	425	369	1,800	413	600	455	1,100	499	375		
241	2,400	284	325	327	950	370	2,200	414	800	456	425	500	800		
242	300	285	220	328	2,800	371	2,300	415	375	457	2,100	501	525		