

**Sale 902**

Wednesday, October 19, 2005

## Superb and Rare United States Stamps



*Robert A. Siegel*

AUCTION GALLERIES, INC.

[www.siegelauctions.com](http://www.siegelauctions.com)

# Sale 902

Wednesday, October 19, 2005  
at 5:00 p.m.

## Superb and Rare United States Stamps

**Most lots offered without reserves**

### Pre-sale exhibition

Tuesday, October 18 — 10:00 a.m. to 4:00 p.m.  
Wednesday, October 19 — 10:00 a.m. to 4:00 p.m.  
or by appointment (please call 212-753-6421)

**On-line catalogue, e-mail bid form, resources and  
the Siegel Encyclopedia are available on our web site:**

[www.siegelauctions.com](http://www.siegelauctions.com)



Lot 1133

### Arrangement of Sale

Evening session (lots 1001-1371)  
Wednesday, October 19th

**Lot 1001 (24c Inverted "Jenny" single) will be  
offered at 5:00 p.m., immediately after the sale  
of the 24c Inverted "Jenny" Plate Block**

**Lots 1002-1371 will be offered no earlier  
than 5:30 p.m.**

1918 24c Inverted "Jenny" (Lot 1001) .....	5
1847 Issue.....	6-9
1851-56 Issue .....	9-13
1857-60 Issue .....	14-15
1861-66 Issue .....	16-20
1867-68 Grilled Issues .....	21-22
1861 Re-Issue .....	23
1869 Pictorial Issue and Re-Issue .....	24-31
1870-93 Bank Note Issues .....	32-44
Columbian Issue .....	45-55
1894-98 Bureau Issues.....	56-61
Trans-Mississippi Issue .....	62-64
Pan-American, 1902-08 Issues.....	65-71
Louisiana Purchase, Jamestown Issues .....	71-72
1908-23 Issues .....	73-95
1922-29 and Later Issues.....	95-98
Air Post and Back-of-Book Issues .....	99-105
Newspapers and Periodicals .....	106-113
Revenues .....	114-115
Hawaii and U.S. Possessions .....	116-118

### On the cover

Front: 1001

Back: 1006, 1002, 1026  
1060, 1072  
1141, 1114, 1143  
1159, 1176, 1335



# The Philatelic Foundation

70 West 40th Street • 15th Floor  
New York, NY 10018

EXPERT COMMITTEE

No. 431000

10/01/2005

We have examined the enclosed item, of which a photograph is attached, and *described by the applicant* as follows:

Country: UNITED STATES OF AMERICA

<u>Cat. No.</u>	<u>Issue</u>	<u>Denom.</u>	<u>Color</u>
C3a	1918	24¢	Carmine Rose & Blue

Scott's unless otherwise specified.

UNUSED, OG, POSITION 35.

AND WE ARE OF THE OPINION THAT:

IT IS GENUINE, PREVIOUSLY HINGED\*\*\*\*\*

\*\*\* PF GRADED VF/XF 85 \*\*\*



431000

THE PHILATELIC FOUNDATION  
EXPERT COMMITTEE  
*[Signature]*  
For The Expert Committee  
Chairman

Photocopies of this Certificate are not valid.

Submitted by

R. A. SIEGEL AUCTIONS

Lot 1001

The 1918 24¢ Inverted “Jenny” (Scott C3a), Position 35

The first stamp to receive a Philatelic Foundation graded certificate

EVENING SESSION (LOTS 1001-1371)  
WEDNESDAY, OCTOBER 19, 2005, AT 5:00 P.M.

Lot 1001 will be offered immediately after the sale of the Inverted "Jenny" plate block.  
The sale of lots 1002-1371 will commence no earlier than 5:30 p.m.

SUPERB AND RARE UNITED STATES STAMPS

1918 24-CENT INVERTED "JENNY"



1001

1001° ★ **24c Carmine Rose & Blue, Center Inverted (C3a).** Position 35, unusually choice centering with wide and well-balanced margins on all sides, fresh and bright colors, small hinged area  
EXTREMELY FINE. A REMARKABLY FRESH AND BEAUTIFULLY CENTERED EXAMPLE OF THE FAMOUS 1918 24-CENT INVERTED "JENNY". THIS STAMP IS ONE OF THE BEST-CENTERED POSITIONS FROM THE DISCOVERY SHEET.

According to *Jenny* by George Amick (Amos Press, 1986), the original sheet of 100 Inverted "Jenny" stamps was purchased for \$24 by William T. Robey at the New York Avenue Branch Post Office window in Washington D.C., on May 14, 1918, one day after the stamp was first placed on sale at the main post office. On May 20, Robey sold his sheet for \$15,000 to Eugene Klein, a Philadelphia stamp dealer. Klein had already arranged to sell the sheet to Col. Edward H. R. Green for \$20,000. Colonel Green instructed Klein to divide the Inverted "Jenny" sheet into singles and blocks, and to sell all but a few key position blocks.

It is well-known among stamp specialists and professionals that examples of the Inverted "Jenny" come in different grades of freshness and condition. Many of the original 100 stamps were mistreated by collectors during the years, despite the stamps' rarity and value. Colonel Green himself allowed moisture to affect some of the stamps he retained. Other examples have become slightly toned from improper storage and climatic conditions. Hinge removal has caused thins and creases in numerous stamps, and at least seven have been "lost" to philately — or nearly so, as in the case of the copy swept up in a vacuum cleaner. This example is remarkable for its pristine state of preservation and for its centering, which is equalled (or surpassed) by only a small number of stamps in the original sheet (almost all of the others have disturbed gum or faults).

Ex Steffan and Bruechig. With 1969 and 2005 P.F. certificates (latter graded VF-XF 85) and 2005 P.S.E. certificate (VF-XF 85). In our opinion, this stamp deserves a grade of XF 90 ...  
..... 170,000.00



## 1847 ISSUE



1002

1002 ★田 **5c Dark Brown (1a).** Block of four, original gum, large to huge margins incl. **sheet margin at bottom** and part of adjoining stamps at left, beautiful Dark Brown shade, rich color and detailed impression on attractively blued paper, creases between stamps almost entirely in the margins, tiny scissors-cut in margin at right

EXTREMELY FINE APPEARANCE. A SPECTACULAR ORIGINAL-GUM BLOCK OF FOUR OF THE 5-CENT 1847 ISSUE. RARE IN THE DARK BROWN SHADE AND ESPECIALLY DESIRABLE WITH THE SHEET MARGIN AT BOTTOM.

With 1980 Friedl certificate. .... 47,500.00

- 1003 **5c Orange Brown (1b).** Large even margins all around, brilliant color in the rich Orange Brown shade, bold strike of **red grid** cancel

EXTREMELY FINE. A BEAUTIFUL EXAMPLE OF THE 5-CENT 1847 ISSUE IN THE RICH ORANGE BROWN COLOR.

With 2005 P.S.E. certificate (XF-Superb 95). To date this is the only example to earn this high P.S.E. grade. .... 850.00



1003



1004

- 1004 **5c Orange Brown (1b).** Brilliant color in the early Orange Brown shade, large even margins, light strike of **red grid** cancel

EXTREMELY FINE GEM. A BEAUTIFUL AND BRIGHT EXAMPLE OF THE 5-CENT 1847 ISSUE IN VIVID ORANGE BROWN COLOR.

With 2005 P.F. certificate..... 850.00

- 1005 **5c Orange Brown (1b).** Large to huge margins, a late printing in the scarce and elusive Orange Brown shade, neat **black grid** cancel and light red town datestamp

EXTREMELY FINE. A SCARCE EXAMPLE OF THE 5-CENT 1847 ORANGE BROWN WITH A BLACK GRID AND RED TOWN DATESTAMP.

With 1995 and 2005 P.F. certificates. Scott Retail does not include \$200.00 premium for red town cancel.... 950.00



1005



1006

1006 (★) **10c Black (2).** Unused with traces of original gum, large even margins all around, detailed impression which clearly shows the intricately-engraved design

EXTREMELY FINE. A GORGEOUS, REMARKABLY FRESH AND VERY RARE UNUSED EXAMPLE OF THE 10-CENT 1847 ISSUE.

Most unused examples either have margins close or touching, or have defects such as creases. The example offered here, in sound condition and with four large margins, should be considered a great rarity.

With copy of P.F. certificate. Scott Retail with original gum is \$30,000.00. The \$12,500.00 value for No Gum is too low, in our opinion, considering the great rarity of sound unused examples..... 12,500.00

- 1007 **10c Black (2).** Huge margins all around incl. **sheet margin at left**, crisp shade nicely contrasted by **red grid** cancel

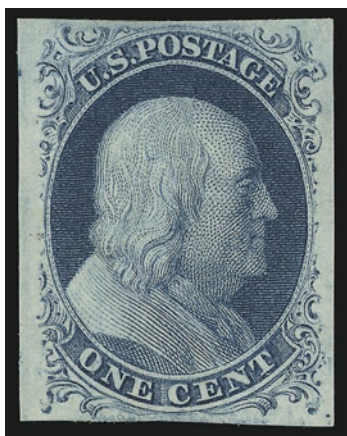
EXTREMELY FINE GEM. A MAGNIFICENT SHEET-MARGIN EXAMPLE OF THE 10-CENT 1847 ISSUE.

With 2001 P.F. certificate and 2005 P.S.E. certificate (XF-Superb 95)..... 1,350.00



1007

## 1851-56 ISSUE



1008

- 1008 ★ **1c Blue, Ty. II (7).** Position 68L3, original gum, barely hinged, full and even margins all around, bright color

EXTREMELY FINE. A RARE ORIGINAL-GUM EXAMPLE OF THE TYPE II ONE-CENT 1851 IMPERFORATE ISSUE FROM PLATE 3.

According to Ashbrook and Neinken, Plate 3 is believed to have been made in March or April 1856, possibly to replace the defective Plate 2 and/or to meet the increased demand for stamps concurrent with the April 1855 change in postal regulations requiring prepayment of postage. For an unknown reason — possibly a severe defect that arose in the plate — very few stamps were printed from the new Plate 3 before it was retired, and surviving examples are rare..

With respect to Plate 3 stamps such as this, which can be plated with certainty, Neinken wrote (p. 220): “The fact is that in this day and age, if a stamp has been plated as a Plate 3 position, and this plating is substantiated by a knowledgeable student or a Philatelic Foundation certificate, the Plate 3 stamp realizes far more in auction sales, or when purchased from a dealer, even though it has no definite Plate 3 characteristics. There is only one certain way to identify a stamp as being printed from Plate 3, and that is to definitely plate the position.”

With copy of 2000 P.F. certificate for strip of three. The Plate 3 stamp is unpriced in unused condition. Another choice original-gum example realized \$10,500 in our 2005 Rarities sale..... E. 10,000-15,000





1009

- 1009 **1c Blue, Ty. III (8).** Large margins to touching, rich color, bold strike of square grid cancel  
 VERY FINE AND CHOICE. A BEAUTIFUL EXAMPLE OF THE 1851 ONE-CENT TYPE III IMPERFORATE ISSUE.  
 With 1973, 1994 and 2005 P.F. certificates..... 3,250.00



1010

- 1010 **1c Blue, Ty. III, Position 99R2 (8).** Three large margins incl. part of adjoining stamps at top and right, just barely touched at top left, deep rich color, neat strike of San Francisco circular datestamp leaves type characteristics clearly visible  
 VERY FINE AND CHOICE. A DESIRABLE EXAMPLE OF THE RARE 1851 ONE-CENT IMPERFORATE TYPE III FROM POSITION 99R2. THIS POSITION IS THE BEST EXAMPLE OF THE TYPE III, WITH THE WIDEST BREAKS AT TOP AND BOTTOM.  
 Type III is defined by breaks in the outer lines at both top and bottom. Many Type III stamps have breaks that were created or enlarged by plate wear. Since the wear occurred over a period of time, a majority of stamps of this type (both unused and used) have small breaks in at least one line. The most notable exception is Position 99R2. According to the Neinken book, "The 99R2 stamp is a fresh entry, that was short transferred both at top and bottom, over an original entry that had been erased... The reason that 99R2 is the finest example of Type III is because of its very short transfer at top and at bottom, giving us the wide breaks in these lines." (p. 184).  
 With 1986 and 1991 P.F. certificates ..... 6,000.00

- 1011 **1c Blue, Ty. IIIa (8A).** Large to full margins, bright "Robin's Egg Blue" shade from Plate 1 Early nicely complemented by **blue** "Providence R.I." circular date-stamp, sharp impression clearly showing break at top which is the defining characteristic of the type

EXTREMELY FINE. A BEAUTIFUL EXAMPLE OF THE 1851 ONE-CENT TYPE IIIA IMPERFORATE ISSUE. ESPECIALLY DESIRABLE WITH THE COLORED CANCEL

With 2005 P.F. certificate..... 1,100.00



1011



1012

- 1012 **1c Blue, Ty. IV (9).** Huge margins all around incl. parts of three adjoining stamps, pretty pastel shade, lightly cancelled

EXTREMELY FINE GEM. A HUGE EXAMPLE OF THE 1851 ONE-CENT TYPE IV IMPERFORATE ISSUE.

With 2005 P.S.E. certificate (Superb 98 Jumbo) ..... 130.00

- 1013 **1c Blue, Ty. IV (9).** Huge margins incl. **full guideline sheet margin at left** and part of adjoining stamp at top, brilliant color, neat strike of town datestamp, Extremely Fine Gem, with 2002 P.F. and 2005 P.S.E. certificates (XF-Superb 95) ..... 130.00



1013



1014

- 1014 **3c Dull Red (11).** Large to huge margins all around incl. part of adjoining stamp at bottom, bright color, neat strike of Philadelphia circular datestamp, Extremely Fine Gem, with 2005 P.F. and P.S.E. certificates (XF-Superb 95)..... 12.00



1015

- 1015 (★) **5c Red Brown (12).** Unused (no gum), full margins to clear, deep rich color  
 VERY FINE. A SCARCE UNUSED EXAMPLE OF THE 5-CENT 1856 ISSUE.  
 With 2005 P.F. certificate..... 8,500.00



1016

- 1016 **5c Red Brown (12).** Enormous margins all around incl. part of adjoining stamp at top,  
 bright color, neat New Orleans circular datestamps  
 EXTREMELY FINE GEM. A SUPERB LARGE-MARGINED EXAMPLE OF THE 5-CENT 1856 ISSUE.  
 With 1985 P.F. certificate and 2005 P.S.E. certificates (XF 90 Jumbo). To date, this is the  
 highest grade P.S.E. has assigned to Scott No. 12, and this is the only example to receive  
 this grade. .... 875.00



- 1017 (★) **10c Green, Ty. I (13).** Unused (no gum), three large margins to clear at right, deep rich color, light diagonal creases at bottom right

VERY FINE APPEARING UNUSED EXAMPLE OF THE 1855 10-CENT TYPE I IMPERFORATE ISSUE.

This scarce unused 10c Type I is extremely desirable because the defining characteristic of the type, completeness of the bottom right shell, is fully visible within a large bottom margin.

With 2005 P.F. certificate ..... 7,000.00



1017



1018

- 1018 **10c Green, Ty. I (13).** Large to huge margins all around, pretty shade, light strike of circular datestamp leaves the bottom right shell clearly visible

EXTREMELY FINE USED EXAMPLE OF THE 1855 10-CENT TYPE I ISSUE.

With 2002 P.F. certificate ..... 850.00

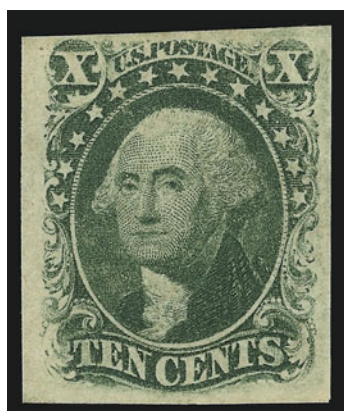
- 1019 ★ **10c Green, Ty. II (14).** Original gum, lightly hinged, three huge margins incl. part of adjoining stamp at left, ample at top, deep rich color

VERY FINE AND CHOICE ORIGINAL-GUM EXAMPLE OF THE 1855 10-CENT TYPE II IMPERFORATE ISSUE.

With 2004 P.F. certificate ..... 5,000.00



1019



1020

- 1020 ★ **10c Green, Ty. III (15).** Original gum, full to large margins rich color

VERY FINE AND CHOICE ORIGINAL-GUM EXAMPLE OF THE 1855 10-CENT IMPERFORATE TYPE III. AN ELUSIVE STAMP IN SOUND ORIGINAL-GUM CONDITION.

With 2003 P.F. certificate ..... 5,000.00





1021

## 1857-60 ISSUE

1021 ★★ **1c Blue, Ty. I (18).** Mint N.H., bright color, choice centering for this difficult issue

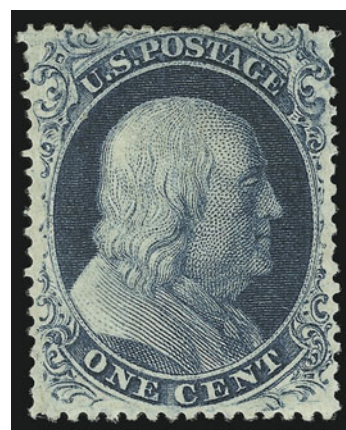
VERY FINE AND CHOICE. A RARE MINT NEVER-HINGED EXAMPLE OF THE 1857 ONE-CENT TYPE I PERFORATED ISSUE. THIS IS THE FIRST MINT NEVER-HINGED EXAMPLE WE HAVE OFFERED SINCE KEEPING COMPUTERIZED RECORDS.

With 2005 P.S.E. certificate. Scott Retail as hinged.....  
 ..... 2,200.00

1022 ★ **1c Blue, Ty. III (21).** Original gum, wide break in line at bottom and distinct break at top, beautiful deep shade and detailed impression on bright fresh paper

EXTREMELY FINE GEM. A SUPERB ORIGINAL-GUM EXAMPLE OF THE PERFORATED 1857 ONE-CENT TYPE III ISSUE. VERY FEW EXIST IN ANY TYPE OF ACCEPTABLE ORIGINAL-GUM CONDITION. THE INCREDIBLE CENTERING AND REMARKABLY FRESH ORIGINAL GUM MAKE THIS STAMP A PHENOMENAL CONDITION RARITY.

With 2003 P.F. certificate..... 15,000.00



1022



1023

1023 **1c Blue, Ty. IIIA-III-III (22-21-21).** Positions 71-73R4, horizontal strip of three, deep rich color nicely contrasted by well-struck blue "Concord N.H. Dec. 1" datestamps, choice centering, couple trivial perf separations not mentioned on accompanying certificate

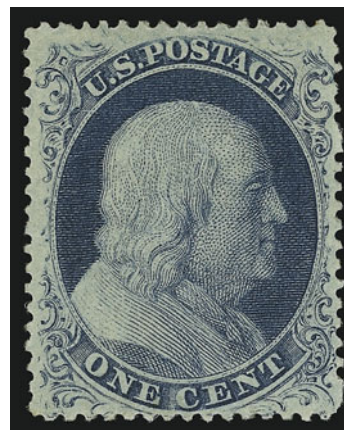
EXTREMELY FINE. AN ATTRACTIVE AND RARE COMBINATION STRIP OF THREE OF THE PERFORATED ONE-CENT 1857 ISSUE. SCARCE WITH SUCH CHOICE CENTERING AND WITH SUCH OVERALL FRESHNESS AND EYE APPEAL.

With 2005 P.S.E. certificate..... 6,800.00

- 1024 ★ **1c Blue, Ty. IIIa (22).** Plate 4, original gum, lightly hinged, brilliant color, well-balanced margins, clearly showing the characteristics of the type with wide break at top

VERY FINE AND CHOICE. A REMARKABLY FRESH ORIGINAL-GUM EXAMPLE OF THE 1857 ONE-CENT TYPE IIIA PERFORATED ISSUE.

With 2005 P.F. certificate..... 2,500.00



1024



1025

- 1025 ★★ **1c Blue, Ty. V (24).** Mint N.H. with selvage at top, brilliant color, wide margins, Extremely Fine, with 1998 P.F. certificate, Scott Retail as hinged..... 175.00

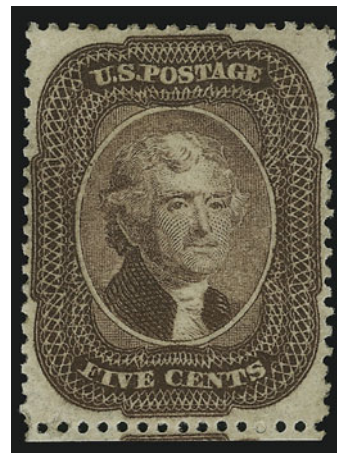
- 1026 ★ **5c Deep Brown (29 var).** Original gum, choice centering for this difficult issue with intact perforations at bottom and with perfs clear of outer projections on all sides, rich color and detailed impression

EXTREMELY FINE ORIGINAL-GUM EXAMPLE OF THE 5-CENT 1857 ISSUE IN THE DEEP BROWN SHADE. THIS IS ONE OF THE FINEST EXAMPLES IN EXISTENCE.

Due to the narrow spacing, many examples have the outer projections touching or in to the perforations. The example offered here, with full original gum, deep rich color, full perforations and with balanced margins, is a true condition rarity.

With 2005 P.F. certificate ..... 2,750.00

- 1027 **No Lot.**



1026

## 1861-66 ISSUE



1028

1028 ★ **3c Pink (64).** Original gum, lightly hinged, bright color in the true Pink shade

VERY FINE AND CHOICE ORIGINAL-GUM EXAMPLE OF THE 1861 3-CENT PINK.

The 3c 1861 Pink (Scott 64) is one of the most difficult stamps of the 1861-66 Issue to find in sound, well-centered, original-gum condition with fresh color. The nature of the ink used to print the 3c Pink shade is such that over the course of time, with exposure to light and other adverse elements, the color tends to oxidize or lose its vibrancy.

Collectors who have searched in vain for a 3c Pink in such condition will appreciate the rarity of this stamp in such a remarkable state of preservation. Others who may be less familiar with the rarity of this early 1861 Issue — and perhaps deceived by the abundance of common 3c 1861 shades (Scott 65) — are urged to consider the extreme rarity of Scott 64 in sound original-gum condition. In numerous auctions, we have offered well-centered original-gum examples of the 1861-66 Issue, and the record realizations at large multiples of Scott value demonstrate the rarity of these stamps.

With 1994 and 2003 P.F. certificates. .... 9,500.00

1029 ★ **3c Rose Pink (64b).** Original gum, lightly hinged, brilliant color on bright paper, Extremely Fine, with 2000 P.F. certificate for pair ..... 600.00



1029

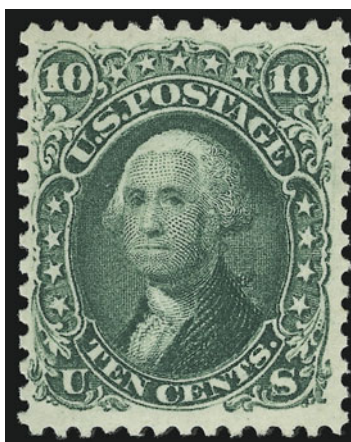


1030

1030

**3c Deep Rose (65).** Almost perfectly centered with wide margins, deep rich color, perfect strike of “Paid” fancy cancel, Extremely Fine Gem, with 2004 P.F. certificate..... E. 200-300





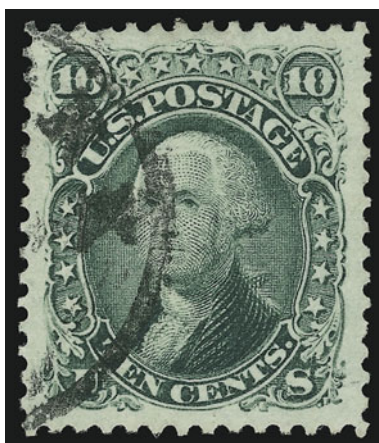
1031

1031 ★★ **10c Yellow Green (68). Mint N.H.**, deep rich color on bright paper,

VERY FINE AND CHOICE. A SCARCE MINT NEVER-HINGED EXAMPLE OF THE 10-CENT 1861 ISSUE.

This is the second Mint N.H. example of the 10c 1861 Issue we have offered since we began maintaining computerized records in 1992. Reaching further into the past through an extensive review of auction catalogues, we have been unable to locate any Mint N.H. singles. Significantly, original-gum blocks of the 10c 1861, from which Mint N.H. stamps might be obtainable, have rarely appeared at auction, including major sales where one would expect to find them. Caspary had hinged blocks of four and six, and West had an off-center block of four. The Klein collection of blocks had only a no-gum block of six, and the Ishikawa collection had very poorly-centered hinged block of four. Not one unused block was found in the Lilly collection or any of our firm's Rarities of the World sales. In recent years the auction realizations for Very Fine or Extremely Fine original-gum (hinged) examples of the 10c 1861 have supported our observation that this issue is especially rare in such condition.

With 2004 P.F. and P.S.E. certificates as strips of three. Scott Retail as hinged ..... 950.00



1032

1032 **10c Yellow Green (68).** Perfectly centered with jumbo margins all around, brilliant color, neat strike of New York circular datestamp, Extremely Fine Gem, a phenomenal stamp, with 2005 P.S.E. certificate (XF-Superb 95 Jumbo) ..... 55.00





1033

1033

**24c Red Lilac (70).** Bright color and crisp impression, light strike of **red grid** cancel, choice centering  
EXTREMELY FINE. A BEAUTIFUL USED EXAMPLE OF THE 24-CENT RED LILAC.

With 1986 and 2005 P.F. certificates..... 265.00

1034

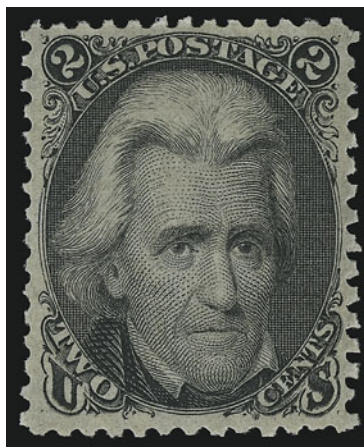
**90c Blue (72).** Rich color on bright paper, beautifully centered, deep rich color nicely contrasted by **red grid** cancel

EXTREMELY FINE. A COLORFUL EXAMPLE OF THE 90-CENT 1861 ISSUE WITH RED GRID CANCEL.

With 1996 P.F. certificate ..... 490.00



1034



1035

1035°★★

**2c Black (73).** **Mint N.H.,** choice centering for this difficult issue, intense shade and proof-like impression

EXTREMELY FINE. A FRESH MINT NEVER-HINGED EXAMPLE OF THE 2-CENT BLACK JACK ISSUE. SCARCE IN SUCH WONDERFULLY PRISTINE CONDITION.

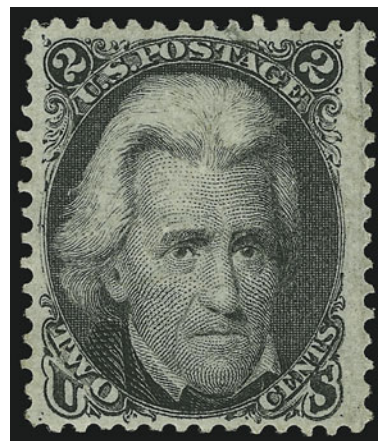
With 2000 P.F. certificate. Scott Retail as hinged ..... 375.00

1036 ★★

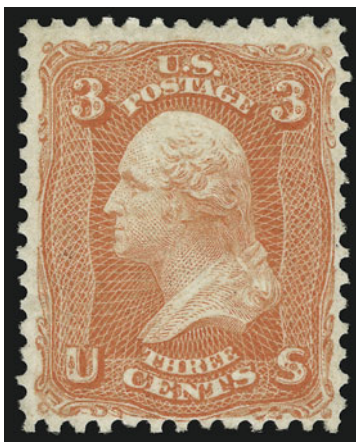
**2c Black (73).** **Mint N.H.,** crisp impression, wide margins

EXTREMELY FINE. A WIDE-MARGINED MINT NEVER-HINGED 2-CENT BLACK JACK ISSUE.

With 2005 P.F. certificate. Scott Retail as hinged ..... 375.00



1036

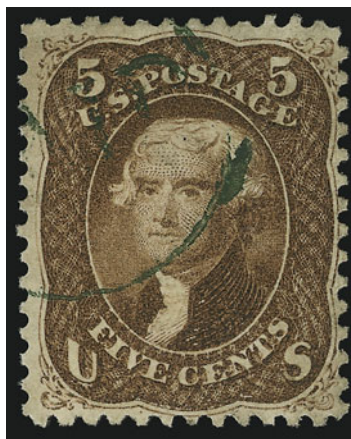


1037

1037 (★) **3c Scarlet (74).** Unused (no gum), radiant color

FRESH AND VERY FINE UNUSED EXAMPLE OF THE 3-CENT SCARLET TRIAL PRINTING.

With 1983 and 2005 P.F. certificates. Scott Retail as with gum..... 7,000.00



1038

1038 **5c Red Brown (75).** Warm color in the true Red Brown shade, nicely contrasted by **green** “Paid” in circle” handstamp, small paper wrinkle at top right not mentioned on either accompanying certificate

VERY FINE AND CHOICE. AN EXCEEDINGLY RARE EXAMPLE OF THE 5-CENT RED BROWN 1862 ISSUE CANCELLED IN GREEN.

It is not widely known that the late Marc Haas, who amassed one of the largest and most valuable U.S. cover collections of all time, also collected classic U.S. stamps in superb used condition. His collection was offered under the title “Distinguished Connoisseur” in our Sale 418, and we frequently refer to that sale catalogue to see what exists. Haas also had a penchant for green cancels, and, if he were able to obtain a green cancel on any of the 5c 1861 shades, it would have been in that sale. Not only is an example missing from the Haas sale, it is also missing from the Rohloff, Grunin and Klein sales, all of which had a significant number of 5c 1861-63 Issues.

With 2004 P.S.E. and copy of 2005 P.F. certificates as a pair. The other stamp in the pair realized \$7,500 hammer in the 2005 Rarities sale. .... 500.00



1039

- 1039 **5c Red Brown (75).** Perfectly centered with wide margins clear of outer frameline all around, brilliant color in the true Red Brown shade, perfect strike of “Paid” in oval cancel

EXTREMELY FINE GEM. A SUPERB USED EXAMPLE OF THE 5-CENT RED BROWN 1862 ISSUE. A WONDERFUL STAMP IN TERMS OF CENTERING, COLOR, FRESHNESS OF PAPER AND CANCELLATION.

With 2003 P.S.E. certificate (XF 90) ..... 525.00

- 1040 **24c Lilac (78).** Intense color, choice centering with unusually wide margins for this difficult issue, bold strike of circle of wedges cancel, fresh and Extremely Fine, with 2004 P.F. certificate ..... 200.00



1040



1041

- 1041 ★ **24c Gray (78b).** Original gum, lightly hinged, deep rich color and detailed impression, choice centering for this difficult issue with well-balanced margins

EXTREMELY FINE GEM. A SUPERB ORIGINAL-GUM EXAMPLE OF THE 24-CENT GRAY 1863 ISSUE. SCARCE IN SUCH CHOICE CONDITION.

Although the 24c 1861-66 Issue exists in large quantities of used stamps and a fair quantity of off-center original-gum examples, all of the shades are rare in higher grades with original gum. This superb Gray (a later printing) is remarkable not only for its centering and gum, but there are no traces of toning that often plague original-gum examples of Scott 78b. .... 2,250.00



## 1867-68 GRILLED ISSUE

- 1042 **3c Rose, D. Grill (85).** Clearly-defined grill which is easily visible from the front, brilliant color, light strike of segmented cork cancel

EXTREMELY FINE USED EXAMPLE OF THE 1868 3-CENT D GRILL.

With 2003 P.F. and 2005 P.S.E. certificates (XF 90).....  
..... 1,050.00



1042

- 1043 **2c Black, Z. Grill (85B).** Well centered with huge margins for this stamp, full and clearly-defined grill showing all of the points, well-struck circle of diamonds cancel, long full perfs

EXTREMELY FINE GEM. AMONG THE FINEST EXISTING USED EXAMPLES OF THE 1868 2-CENT Z GRILL. AN OUTSTANDING STAMP IN EVERY RESPECT.

If this stamp was an ungrilled 2c Black Jack, it would merit the highest rank among used examples. The plates used to print these stamps failed to provide enough space between subjects for the large 12-gauge perf holes. Consequently, most Black Jack stamps have perfs touching the design on one or two sides. This scarcity of centered copies multiplies exponentially when the Z Grill is factored into the equation. Only a small quantity of 2c sheets were grilled during the period when the Z device was active — after the D Grill, the Z is the rarest of Black Jack grilled stamps — and discriminating collectors are well aware of the rarity of well-centered examples of Scott 85B. This stamp's centering and margin width both far exceed the standard of the issue.

With 1995 and 2005 P.F. certificates ..... 1,250.00



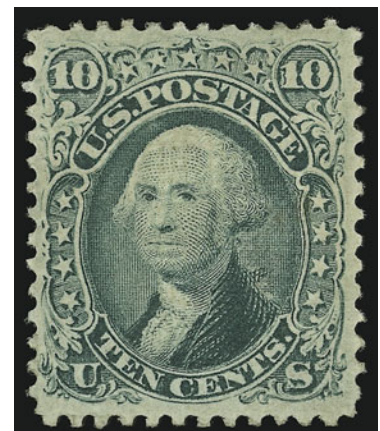
1043

- 1044 ★ **10c Green, E. Grill (89).** Original gum, unusually choice centering, easily identifiable grill points

EXTREMELY FINE. AN OUTSTANDING ORIGINAL-GUM EXAMPLE OF THE 1868 10-CENT E GRILL WITH REMARKABLE CENTERING — RARE IN THIS CHOICE CONDITION.

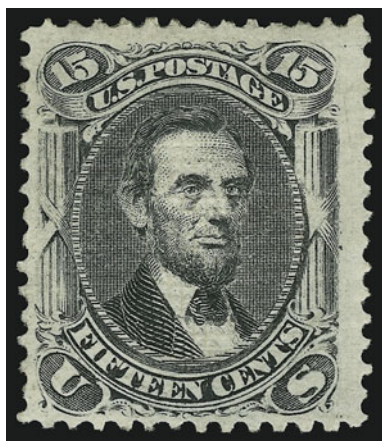
The centering and soundness of this 10c E Grill place it high on the condition census.

With 1999 P.F. certificate..... 5,000.00



1044

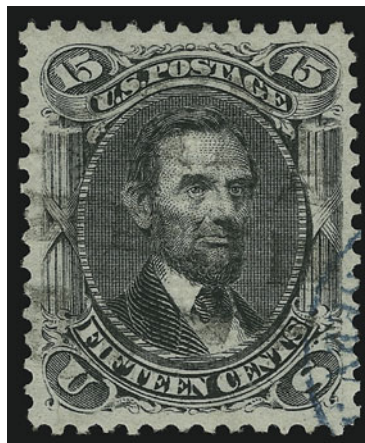




1045

- 1045 ★ **15c Black, E. Grill (91).** Original gum, clearly-defined grill, crisp impression, wide margins  
 VERY FINE AND CHOICE. A RARE SOUND ORIGINAL-GUM EXAMPLE OF THE 1868 15-CENT E GRILL.  
 With 2005 P.F. certificate ..... 10,000.00

- 1046 **15c Black, E. Grill (91).** Perfectly centered, detailed impression, black cork and **blue** transit cancels  
 EXTREMELY FINE. VERY FEW EXAMPLES OF THE 1868 15-CENT E GRILLED ISSUE RIVAL THIS BEAUTIFUL STAMP.  
 With 1996 P.F. and 2005 P.S.E. certificates (XF-Superb 95)..... 675.00



1046



1047

- 1047 **15c Black, E. Grill (91).** Bright shade on white paper, face-free strike of circular datestamp and trace of red cancel at left, clearly-defined grill  
 EXTREMELY FINE EXAMPLE OF THE 1868 15-CENT E GRILL.  
 With 2005 P.F. certificate ..... 775.00

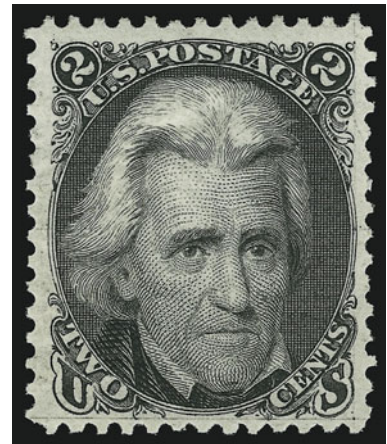
- 1048 **30c Orange, F. Grill (100).** Almost perfectly centered, brilliant color, bold strike of cork cancel  
 EXTREMELY FINE. THE 1868 30-CENT F GRILL IS AN EXCEEDINGLY DIFFICULT ISSUE TO OBTAIN IN SUCH CHOICE CONDITION.  
 With 2005 P.F. certificate..... 850.00



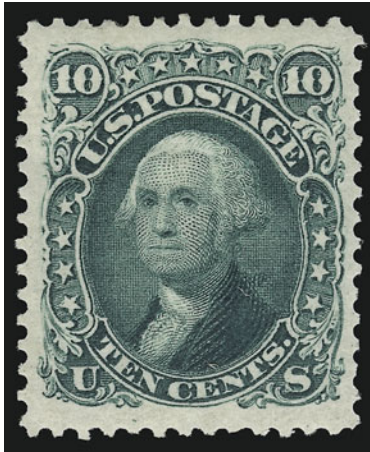
1048

1875 RE-ISSUE OF 1861-66 ISSUE

- 1049 ★ **2c Black, Re-Issue (103).** Original gum, lightly hinged, almost perfectly centered with exceptionally wide margins, proof-like impression on bright paper  
EXTREMELY FINE. A SUPERB ORIGINAL-GUM EXAMPLE OF THE 2-CENT BLACK JACK RE-ISSUE.  
Only 979 sold. With 1999 P.F. certificate .. 4,000.00

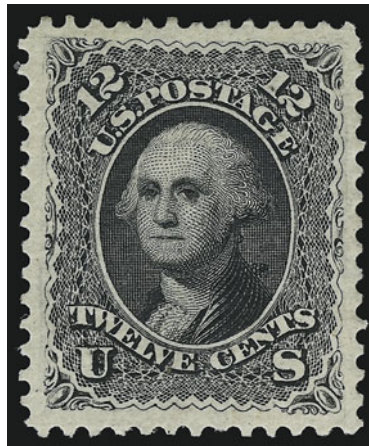


1049



1050

- 1050 ★ **10c Green, Re-Issue (106).** Original gum, almost perfectly centered with wide and well-balanced margins, deep rich color and sharp proof-like impression  
EXTREMELY FINE. A REMARKABLY FRESH EXAMPLE OF THE 10-CENT 1861 RE-ISSUE.  
Only 451 sold. Ex Sheriff. With 1971 P.F. certificate and 2005 P.S.E. certificate..... 3,500.00



1051

- 1051 ★ **12c Black, Re-Issue (107).** Original gum, lightly hinged, intense shade and proof-like impression, beautiful centering with unusually wide margins  
EXTREMELY FINE GEM. A BEAUTIFUL ORIGINAL-GUM EXAMPLE OF THE 12-CENT 1861 RE-ISSUE. SCARCE WITH SUCH WIDE AND BALANCED MARGINS.  
Only 389 sold. With 1977 and 2005 P.F. certificates ..... 4,500.00

1869 PICTORIAL ISSUE



1052

- 1052 ★ **1c Buff (112).** Original gum, clearly-defined grill, pretty shade, almost perfectly centered, fresh and Extremely Fine, with 2002 P.F. certificate..... 850.00



1053

- 1053 ★★ **3c Ultramarine, Split Grill (114 var).** Mint N.H., beautiful fresh color and bright white paper, excellent grill split with two rows at top and balance at bottom, remarkably choice centering and wide margins  
EXTREMELY FINE. A MAGNIFICENT MINT NEVER-HINGED EXAMPLE OF THE 3-CENT 1869 PICTORIAL WITH SPLIT GRILL.  
Scott Retail as Split Grill variety without Mint N.H. premium ..... 400.00





1054

- 1054 ★田 3c Ultramarine, Split Grill (114 var). Block of 32 with right sheet margin and guideline arrow, additional half-arrow at lower right, original gum, contains 15 sound Mint N.H. stamps, lightly hinged on several others, some stamps lightly creased (not counted in Mint N.H. total), beautiful bright shade and post-office fresh

FINE-VERY FINE. AN OUTSTANDING MULTIPLE OF THE 3-CENT 1869 PICTORIAL WITH SPLIT GRILL. EXCEPTIONALLY CHOICE QUALITY AND IDEALLY SUITED FOR EXHIBITION.

Scott Retail as eight normal blocks without premium for Split Grill variety or Mint N.H. condition. .... 13,600.00



1055

- 1055 (★) **15c Brown & Blue, Ty. I (118).** Unused (no gum), radiant color, choice centering with well-balanced margins

VERY FINE AND CHOICE. AN ATTRACTIVE AND FRESH UNUSED EXAMPLE OF THE 15-CENT TYPE I 1869 PICTORIAL ISSUE.

The Type I is more difficult than the Type II to find with such choice centering..... 4,000.00

- 1056 **15c Brown & Blue, Ty. I (118).** Bright colors, clear strike of circle of V's cancel, choice centering, Extremely Fine, with 2001 P.F. and 2005 P.S.E. certificates (XF 90) ..... 700.00



1056



1057

- 1057 ★ **15c Brown & Blue, Ty. II (119).** Original gum, deep rich colors and proof-like impressions, vignette shifted strongly to the right, small natural fiber inclusion at bottom right

VERY FINE AND CHOICE. A BEAUTIFUL ORIGINAL-GUM EXAMPLE OF THE 15-CENT TYPE II 1869 PICTORIAL ISSUE.

With 2005 P.F. certificate ..... 4,000.00

- 1058 ★ **24c Green & Violet (120).** Original gum, clearly-defined grill, rich colors on bright paper, choice centering with wide margins

EXTREMELY FINE. A BEAUTIFUL ORIGINAL-GUM EXAMPLE OF THE 24-CENT 1869 PICTORIAL ISSUE.

The 24c 1869 Pictorial, even in original-gum condition, is not a rare stamp. However, centering and soundness are elusive qualities among examples of this issue. This stamp has color, centering and margins that appear more like its re-issue counterpart.

With 1998 P.F. certificate..... 8,500.00



1058



1059

**24c Green & Violet (120).** Bright colors nicely contrasted by **red** cork cancel — probably applied at New York on supplementary mail — choice centering

EXTREMELY FINE EXAMPLE OF THE 24-CENT 1869 PICTORIAL ISSUE. ESPECIALLY DESIRABLE WITH A RED CANCEL.

With 2002 P.F. certificate ..... 1,075.00



1059



1060

1060 ★

**30c Ultramarine & Carmine (121).** Original gum, rich colors on bright paper, unusually choice centering with wide and balanced margins

EXTREMELY FINE. A GORGEOUS ORIGINAL-GUM EXAMPLE OF THE 30-CENT 1869 PICTORIAL ISSUE.

Our experience with the 1869 Pictorial Issue has shown that the 30c with grill (as opposed to Scott 121a without grill) is extremely rare in well-centered original-gum condition. Centering seems to be a challenge in this issue, and our best estimate is that 12 to 15 stamps exist in the Extremely Fine grade with original-gum.

With 2001 P.F. certificate ..... 7,500.00

1061

**30c Ultramarine & Carmine (121).** Jumbo margins all around, deep rich colors on bright paper, cork cancel leaves design clearly visible, Extremely Fine, a huge stamp, with 2005 P.F. and 2005 P.S.E. certificates (XF 90 Jumbo)..... 550.00



1061





1062

- 1062 ★ **90c Carmine & Black (122).** Original gum, lightly hinged, rich color and detailed impressions on fresh paper, sharp grill, remarkably fresh  
VERY FINE AND CHOICE ORIGINAL-GUM EXAMPLE OF THE 90-CENT 1869 PICTORIAL ISSUE.  
With 2001 P.F. certificate ..... 11,000.00

- 1063 **90c Carmine & Black (122).** Perfectly centered, sharp impressions and deep Carmine color nicely complemented by **red cork** cancel  
EXTREMELY FINE EXAMPLE OF THE 90-CENT 1869 PICTORIAL ISSUE WITH A COLORED CANCEL.  
High-value 1869 Pictorial stamps cancelled by red cork were probably used on supplementary mail from New York City. We have seen very few 90c 1869's cancelled in red with the choice centering of this example..... 2,650.00



1063



1064

- 1064 **90c Carmine & Black (122).** Rich color and deep shade, unusually wide margins all around, cancel leaves design clearly visible  
EXTREMELY FINE USED EXAMPLE OF THE 90-CENT 1869 PICTORIAL ISSUE.  
With 2003 P.F. and 2005 P.S.E. certificates (XF 90).  
..... 2,250.00



1065

- 1065 P **15c-90c 1869 Pictorial Inverts, Plate Proofs on Card (120aP4, 121aP4, 122aP4, 129aP4).** Large margins all around, rich colors and detailed impressions  
EXTREMELY FINE. A BEAUTIFUL SET OF 1869 PICTORIAL ISSUE INVERT PLATE PROOFS WITH INVERTED CENTERS. ONLY ONE SHEET OF 100 OF EACH WAS PRODUCED.  
All known examples of these 1869 Invert proofs come from the sheets in the Earl of Crawford collection..... 10,750.00

## 1875 RE-ISSUE OF 1869 PICTORIAL ISSUE



1066

- 1066 ★ **10c Yellow, Re-Issue (127).** Original gum, wide margins, remarkably fresh  
EXTREMELY FINE. A VIBRANT WIDE-MARGINED EXAMPLE OF THE 10-CENT 1869 PICTORIAL RE-ISSUE WITH ORIGINAL GUM.  
With 2003 P.F. certificate ..... 2,250.00



1067

- 1067 ★ **10c Yellow, Re-Issue (127).** Large part original gum, radiant color, choice centering with well-balanced margins

EXTREMELY FINE. A BEAUTIFUL ORIGINAL-GUM EXAMPLE OF THE 10-CENT 1869 PICTORIAL RE-ISSUE.

With 1992 and 2005 P.F. certificates (the first describing it as full original gum)..... 2,250.00

- 1068 ★ **12c Green, Re-Issue (128).** Original gum, single hinge mark, deep rich color and sharp proof-like impression, wide margins

VERY FINE AND CHOICE. A GORGEOUS EXAMPLE OF THE 12-CENT 1869 PICTORIAL RE-ISSUE WITH GREAT VISUAL APPEAL.

This stamp is remarkably fresh, with color as intense as the day it was printed.

With 2000 P.F. certificate ..... 3,000.00



1068



1069

- 1069° ★ **15c Brown & Blue, Re-Issue (129).** Original gum, deep rich colors on bright paper, detailed impressions

VERY FINE AND CHOICE ORIGINAL-GUM EXAMPLE OF THE 15-CENT 1869 PICTORIAL RE-ISSUE.

With 1998 P.F. certificate ..... 1,900.00

- 1070 **15c Brown & Blue, Re-Issue (129).** Rich colors and proof-like impressions, bold strike of oval registry cancel, Very Fine and choice, an attractive stamp...  
..... 1,150.00



1070





1071

- 1071 ★★ **24c Green & Violet, Re-Issue (130).** Mint N.H. selvage at bottom, rich colors and proof-like impressions on bright paper, wide margins

EXTREMELY FINE. AN INCREDIBLY RARE MINT NEVER-HINGED EXAMPLE OF THE 24-CENT 1869 PICTORIAL RE-ISSUE. WE KNOW OF NO OTHER MINT NEVER-HINGED EXAMPLE OF THIS STAMP.

Due to the extreme rarity of 24c 1869 Re-Issue multiples, there have been few opportunities to harvest Mint N.H. singles from blocks. Our records and a search thru auction catalogues failed to produce another Mint N.H. 24c 1869 Re-Issue.

With 2005 P.F. certificate ..... 2,500.00



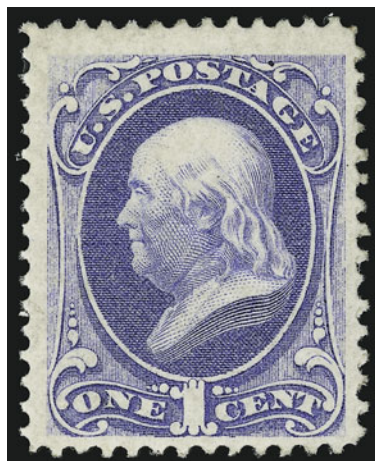
1072

- 1072 ★ **90c Carmine & Black, Re-Issue (132).** Part original gum described on 2001 certificate as "original gum", almost perfectly centered with enormous and well-balanced margins, deep rich colors

EXTREMELY FINE GEM. A SUPERB EXAMPLE OF THE 90-CENT 1869 PICTORIAL RE-ISSUE. SCARCE WITH SUCH WIDE MARGINS.

With 2001 and 2004 P.S.E. certificates (XF-Superb 95 Jumbo)..... 4,850.00

## 1870-88 BANK NOTE ISSUES



1073

- 1073 ★ **1c Ultramarine, Grill (134).** H. Grill, original gum, lightly hinged, brilliant color, clear grill points at bottom right, light natural gum bend not mentioned on accompanying certificate

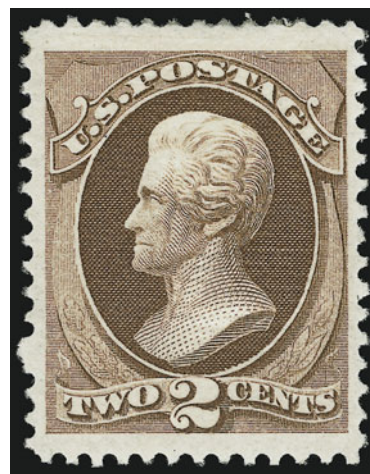
VERY FINE ORIGINAL-GUM EXAMPLE OF THE 1870 ONE-CENT NATIONAL BANK NOTE COMPANY GRILLED ISSUE.

With 2003 P.F. certificate for pair..... 2,300.00

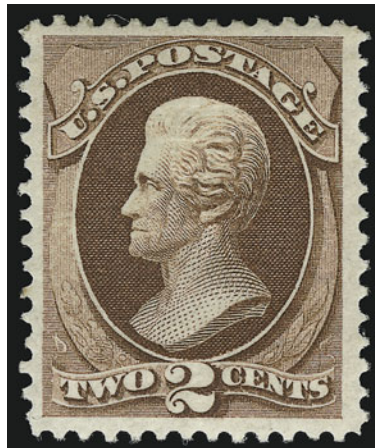
- 1074 ★ **2c Red Brown, Grill (135).** H. Grill, original gum, lightly hinged, unusually clearly-impressed grill, bright color, perfectly centered with wide margins

EXTREMELY FINE GEM. A SUPERB ORIGINAL-GUM EXAMPLE OF THE 1870 2-CENT NATIONAL BANK NOTE GRILLED ISSUE IN EVERY RESPECT — GRILL IMPRESSION, GUM, COLOR, CENTERING AND SIZE OF MARGINS. A FABULOUS STAMP.

With 1988 P.F. certificate..... 1,200.00



1074



1075

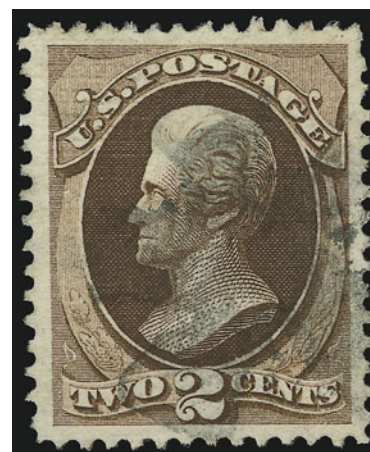
- 1075 ★ **2c Red Brown, I Grill (135).** Large part original gum, clearly-defined grill, wide margins, fresh color

VERY FINE AND CHOICE EXAMPLE OF THE 2-CENT NATIONAL BANK NOTE COMPANY GRILLED ISSUE. ESPECIALLY DESIRABLE WITH THE STRONGER I GRILL.

This is the first unused example of the 2c with an I Grill that we have offered since we started keeping track of the different National grill types, approximately three years ago.

With 2005 P.F. certificate..... 1,200.00

- 1076 **2c Red Brown, I Grill (135).** Almost perfectly centered with wide margins all around, bright color, cork cancel, Extremely Fine Gem, a beautiful stamp, especially desirable as an I Grill, with 2005 P.S.E. certificate (XF-Superb 95)..... 80.00



1076

- 1077 ★ **15c Orange, Grill (141).** H. Grill, original gum, well-centered, vivid color and impression, grill shows clearly

VERY FINE. A CHOICE ORIGINAL-GUM EXAMPLE OF THE 15-CENT 1870 NATIONAL BANK NOTE COMPANY GRILLED ISSUE — ONE OF THE MOST ELUSIVE OF THE BANK NOTE ISSUES IN THIS CONDITION.

With 1998 P.F. certificate as pair..... 7,500.00



1077



1078

- 1078 ★ **6c Carmine (148).** Original gum, lightly hinged, bright color, wide margins

EXTREMELY FINE. THE 6-CENT 1870 NATIONAL BANK NOTE ISSUE IS EXTREMELY RARE IN THIS CHOICE ORIGINAL-GUM CONDITION.

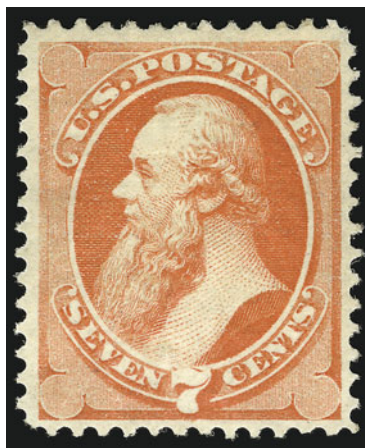
Unlike its counterparts in the Continental and American Bank Note Company issues, the 6c National is rarely found in choice grades with original gum.

With 2005 P.F. certificate ..... 1,000.00

- 1079° ★ **6c Carmine (148).** Original gum, rich color, detailed impression, Very Fine and choice, an attractive stamp, with 1999 P.F. certificate ..... 1,000.00



1079



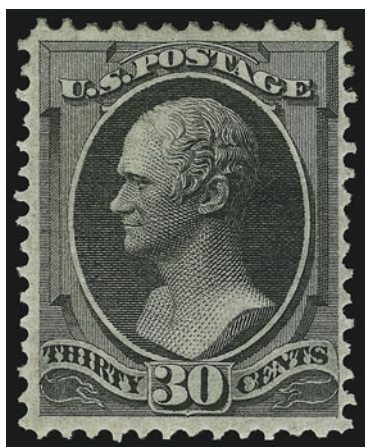
1080

- 1080 ★ **7c Vermilion (149).** Original gum, intense color, choice centering with balanced margins

EXTREMELY FINE ORIGINAL-GUM EXAMPLE OF THE 1870 7-CENT NATIONAL BANK NOTE ISSUE. AN EXCEEDINGLY RARE STAMP IN SUCH SUPERB CONDITION.

With 2000 P.F. certificate ..... 1,100.00





1081

- 1081 ★ **30c Black (154).** Original gum, crisp impression, choice centering for this difficult issue

EXTREMELY FINE. A RARE SOUND AND CENTERED ORIGINAL-GUM EXAMPLE OF THE 30-CENT 1870 NATIONAL BANK NOTE COMPANY UNGRILLED ISSUE.

During the past few years, we have offered very few superb original-gum examples of the 30c 1870 National Bank Note printing. An example in our Sale 881 (lot 509), realized \$12,000 hammer.

With 2005 P.F. certificate ..... 6,500.00

- 1082 **30c Black (154).** Detailed impression on bright paper, nicely contrasted by **red segmented cork** cancel, unusually wide margins, Extremely Fine, a stamp with great visual appeal..... 300.00



1082



1083

- 1083 ★ **90c Carmine (155).** Original gum, beautiful rich color and detailed impression, choice centering

EXTREMELY FINE. THE 1870 90-CENT NATIONAL BANK NOTE ISSUE IS RARE IN CHOICE ORIGINAL-GUM CONDITION.

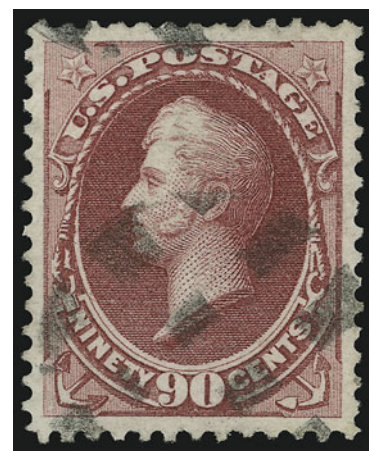
The 1870 90c National Ungrilled Issue, Scott 155, is somewhat overshadowed by its grilled counterpart, Scott 144. Collectors are also misled by the availability of Scott 166, the 90c 1873 Continental. Although the difference in shades is distinct, collectors have a tendency to confuse the two and under-rate the 1870 National printing. Only a few original-gum examples of Scott 155 have the centering, color and freshness of the stamp offered here.

With 2001 P.F. certificate ..... 4,750.00

- 1084 **90c Carmine (155).** Brilliant color, perfectly centered with wide and balanced margins all around, neat segmented cork cancel

EXTREMELY FINE GEM. THIS IS EASILY ONE OF THE FINEST USED EXAMPLES OF THE 1870 90-CENT UNGRILLED NATIONAL BANK NOTE COMPANY ISSUE IN EXISTENCE.

With 2004 P.F. certificate ..... 350.00

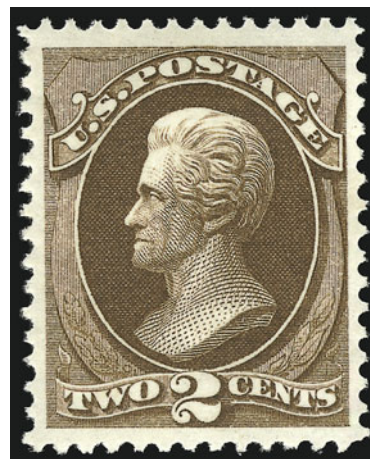


1084

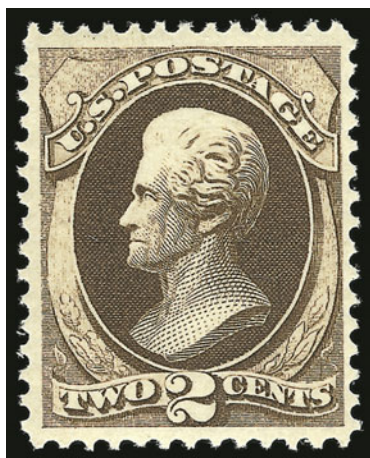
- 1085 ★★ **2c Brown (157). Mint N.H.**, incredibly deep rich color on bright white paper, perfectly centered with enormous balanced margins

EXTREMELY FINE GEM. A SUPERB MINT NEVER-HINGED EXAMPLE OF THE 2-CENT 1873 CONTINENTAL BANK NOTE STAMP IN THE FINEST CONDITION ATTAINABLE.

With 1999 P.F. certificate. Scot Retail as hinged. ....  
..... 375.00



1085



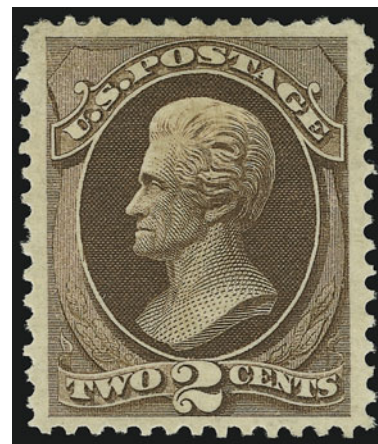
1086

- 1086 ★★ **2c Brown (157). Mint N.H.**, choice centering with evenly proportioned margins, deep dark color

EXTREMELY FINE. A CHOICE MINT NEVER-HINGED EXAMPLE OF THE 2-CENT 1873 CONTINENTAL BANK NOTE ISSUE.

With 2000 P.F. certificate. Scott Retail as hinged.....  
..... 375.00

- 1087 ★ **2c Brown (157).** Original gum, pretty color, wide margins, fresh and Extremely Fine, with 2005 P.F. certificate ..... 375.00



1087





1088

1088 ★田 **6c Dull Pink (159).** Bottom plate no. and imprint block of twelve, slightly disturbed original gum, remarkably fresh and intact, bright color, slightly short gum at bottom  
EXTREMELY FINE. A BEAUTIFUL PLATE BLOCK OF THE 1873 6-CENT CONTINENTAL BANK NOTE ISSUE.

Chapin records ten plate blocks, two of which are in panes of 50. This plate block is not listed in his census. .... 16,000.00



1089

1089 ★★ **10c Brown (161).** Mint N.H., beautiful deep shade, well-proportioned margins  
EXTREMELY FINE. AN EXCEEDINGLY RARE MINT NEVER-HINGED EXAMPLE OF THE 1873 10-CENT CONTINENTAL BANK NOTE ISSUE.

We have offered only one other Mint N.H. example of this stamp since keeping computerized records. With 2005 P.F. certificate. Scott Retail as hinged ..... 1,100.00



- 1090 ★ **10c Brown (161).** Original gum, lightly hinged, deep rich color, wide and balanced margins  
EXTREMELY FINE ORIGINAL-GUM EXAMPLE OF THE 10-CENT 1873 CONTINENTAL BANK NOTE ISSUE.  
With 2003 P.F. certificate and 2005 P.S.E. certificate (XF 90)..... 1,100.00

1091 **No Lot.**



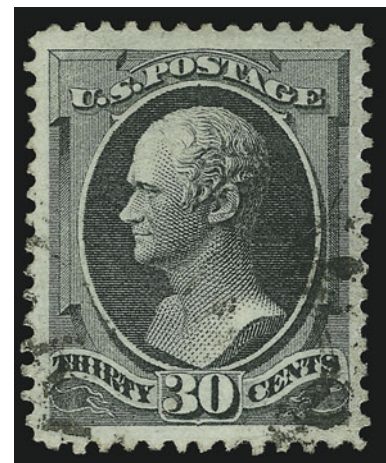
1090



1092

- 1092 ★ **15c Pale Orange (163 var).** Original gum, lightly hinged, vibrant color, well-balanced margins  
VERY FINE AND CHOICE. A SCARCE ORIGINAL-GUM EXAMPLE OF THE 1873 15-CENT CONTINENTAL BANK NOTE REGULAR ISSUE IN THE PALE ORANGE COLOR.  
With 2005 P.F. certificate..... 2,750.00

- 1093 **30c Greenish Black (165 var).** Almost perfectly centered with wide and balanced margins, pretty color, face-free strike of duplex cancel, Extremely Fine Gem, a gorgeous stamp, with 2005 P.F. certificate ..... 130.00



1093



1094

1094 ★ **90c Rose Carmine (166).** Original gum, radiant color, wide and balanced margins

EXTREMELY FINE. A BEAUTIFUL ORIGINAL GUM EXAMPLE OF THE 90-CENT 1873 CONTINENTAL BANK NOTE COMPANY ISSUE.

With 1960 and 2003 P.F. certificates ..... 2,750.00

1095° ★ **90c Rose Carmine (166).** Original gum, barest trace of hinging, rich color, choice centering with well-balanced margins

EXTREMELY FINE. A BRILLIANT LIGHTLY-HINGED EXAMPLE OF THE 90-CENT 1873 CONTINENTAL BANK NOTE ISSUE.

With 2000 P.F. certificate..... 2,750.00



1095



1096

1096 ★ **90c Rose Carmine (166).** Slightly disturbed original gum which appears very fresh to us, perfectly centered with absolutely enormous margins all around, brilliant color

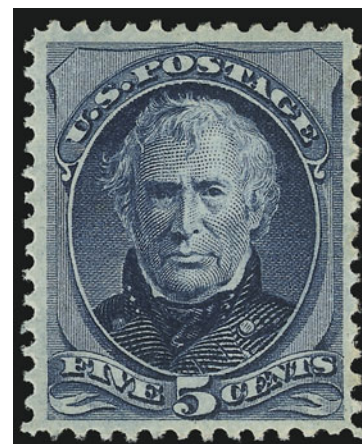
EXTREMELY FINE GEM. THIS IS ONE OF THE LARGEST BANK NOTE ISSUES WE HAVE EVER ENCOUNTERED. A STAMP OF TRULY ENORMOUS PROPORTIONS.

With copy of 2002 and with 2004 P.S.E. certificates (Superb 98 Jumbo), which is the highest rating received by any 90c 1873 Issue to date... 2,750.00

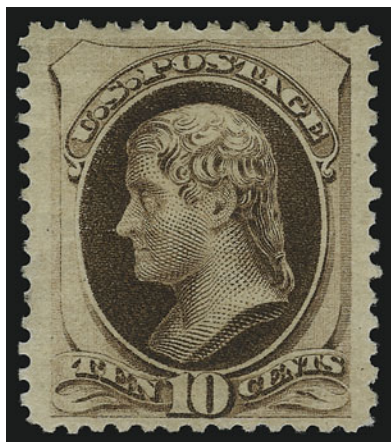
1097 ★★ **5c Blue (185).** Mint N.H., rich color on bright paper, choice centering

EXTREMELY FINE. A BEAUTIFUL MINT NEVER-HINGED EXAMPLE OF THE 1879 5-CENT BLUE TAYLOR. A RARE STAMP IN SUCH CONDITION.

With 2005 P.F. certificate for pair. Scott Retail as hinged ..... 550.00



1097



1098

- 1098°★ **10c Brown, With Secret Mark (188).** Original gum, deep rich color and proof-like impression, unusually wide margins at sides and well-balanced from top to bottom

EXTREMELY FINE EXAMPLE OF THE 10-CENT 1879 AMERICAN BANK NOTE ISSUE WITH SECRET MARK.

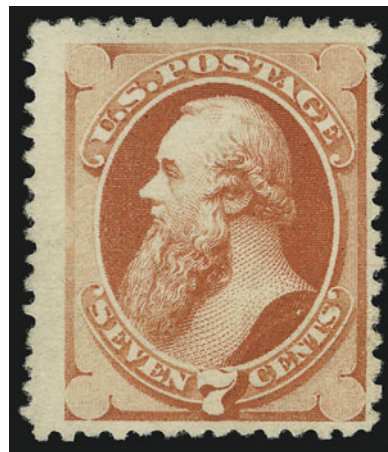
With 1994 P.F. certificate..... 2,500.00

- 1099 ★ **7c Scarlet Vermilion, Special Printing (196).** Without gum as issued, radiant color

FRESH AND FINE EXAMPLE OF THE 1880 7-CENT AMERICAN BANK NOTE COMPANY SPECIAL PRINTING.

Our recent review of records at the Philatelic Foundation found approximately 83 certified copies of Scott 196.

With 1994 P.F. certificate ..... 6,000.00



1099



1100

- 1100 ★ **90c Dull Carmine, Special Printing (202).** Without gum as issued, brilliant color, tiny thin specks not mentioned on accompanying certificate (typical of Soft Paper and visible only in fluid)

FINE-VERY FINE APPEARING EXAMPLE OF THE 1880 90-CENT AMERICAN BANK NOTE COMPANY SPECIAL PRINTING.

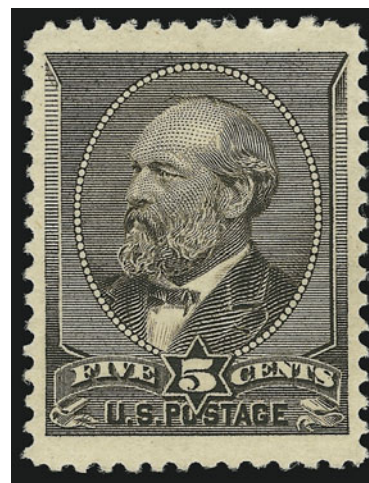
Our recent review of records at the Philatelic Foundation found approximately 40 certified copies of Scott 202. Of these, many are strongly off-center, or have small faults.

With 1946 P.F. certificate..... 25,000.00

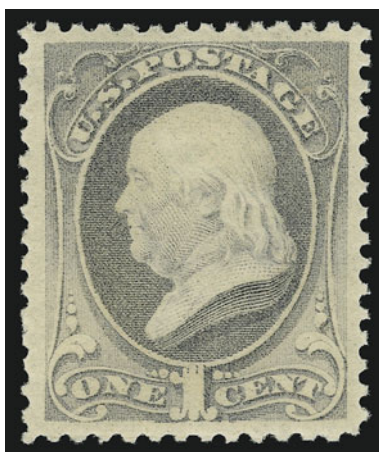


- 1101 ★★ **5c Yellow Brown (205).** Mint N.H., perfectly centered with Jumbo margins at top and bottom, bright color  
EXTREMELY FINE GEM. A HUGE MINT NEVER-HINGED  
EXAMPLE OF THE 5-CENT GARFIELD ISSUE.

With 2005 P.S.E. certificate (XF 90 Jumbo) .. 750.00



1101



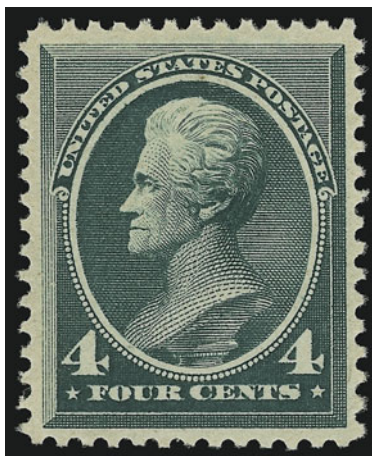
1102

- 1102 ★★ **1c Gray Blue (206).** Mint N.H., brilliant color, almost perfectly centered, fresh and Extremely Fine, with 2002 P.F. certificate..... 200.00

- 1103 ★★ **10c Brown (209).** Mint N.H., pretty shade, wide margins with excellent proportions, fresh and Extremely Fine, a stamp of great visual appeal, with 1996 P.F. certificate ..... 475.00



1103



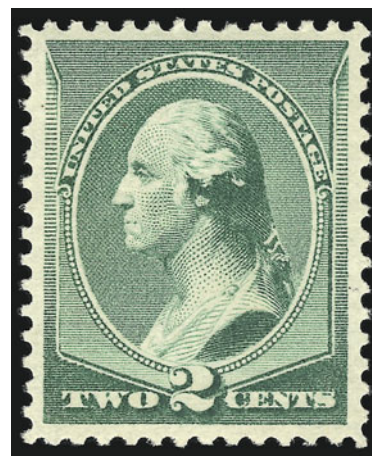
1104

- 1104 ★★ **4c Blue Green (211).** Mint N.H., rich color on bright paper, well-balanced margins  
EXTREMELY FINE MINT NEVER-HINGED EXAMPLE  
OF THE 4-CENT GREEN 1883 ISSUE.  
With 2005 P.S.E. certificate..... 850.00



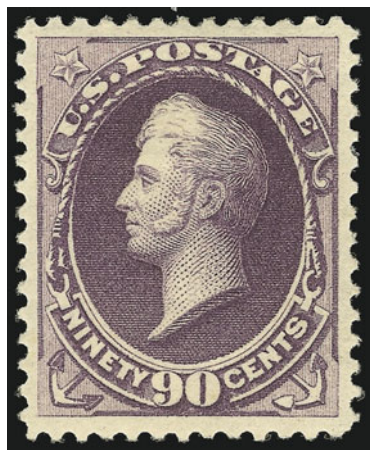
1105

- 1105 ★ **2c Pale Red Brown, Special Printing, Horizontal Pair, Imperforate Between (211Bc).** Original gum, lightly hinged, brilliant color  
 VERY FINE AND CHOICE ORIGINAL-GUM EXAMPLE OF THIS IMPERFORATE BETWEEN ERROR.  
 We have only offered a handful since keeping computerized records. "HF" backstamps.  
 With 2005 P.F. certificate ..... 1,900.00



1106

- 1106 ★★ **2c Green (213). Mint N.H.,** fresh color on bright paper, perfectly centered, Extremely Fine Gem, ex Drucker, Scott Retail as hinged ..... 125.00



1107

- 1107 ★ **90c Purple (218).** Original gum, choice centering with wide and balanced margins, rich color, fresh and Extremely Fine ..... 1,200.00

## 1890-93 ISSUE



1108

- 1108 ★★ **2c Carmine, Cap on Left "2" (220a).** Mint N.H. with **letter of imprint at bottom with wide selvage**, deep rich color, perfectly centered with wide and balanced margins  
 EXTREMELY FINE GEM. THIS IS UNQUESTIONABLY ONE OF THE FINEST MINT NEVER-HINGED EXAMPLES OF THE 2-CENT 1890 ISSUE WITH CAP ON THE LEFT "2" IN EXISTENCE.  
 With 1998 P.F. certificate..... 400.00



1109

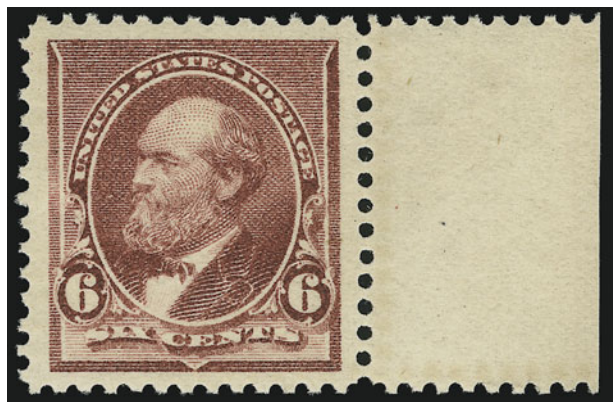
- 1109 ★★ **2c Carmine, Cap on Left "2" (220a).** Mint N.H., brilliant color and impression clearly showing the variety, almost perfectly centered with well-proportioned margins,  
 Extremely Fine Gem, difficult to find in this exceptional condition..... 400.00



- 1110 ★ **3c Purple (221).** Original gum, lightly hinged, deep rich color, Jumbo margins, Extremely Fine Gem, a huge stamp, with 2002 P.S.E. certificate (XF-Superb 95 Jumbo) ..... 85.00



1110



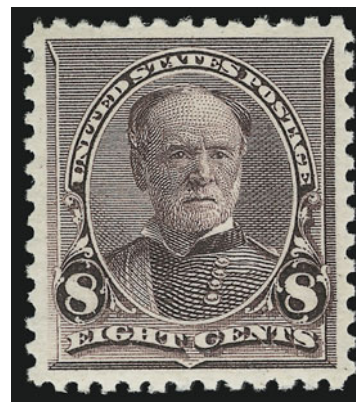
1111

- 1111 ★★ **6c Brown Red (224).** Mint N.H. with **selvage at right**, rich color, enormous margins

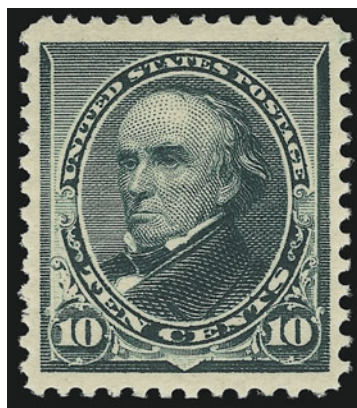
EXTREMELY FINE GEM. THIS PHENOMENAL STAMP PRESENTS A RARE COMBINATION OF MINT NEVER-HINGED GUM, EXTRA WIDE MARGINS, FRESHNESS AND PERFECT CENTERING.

With 1999 P.S.E. certificate .. 225.00

- 1112 ★★ **8c Lilac (225).** Mint N.H., deep rich color and detailed impression, perfect centering, Extremely Fine Gem, a stunning stamp, with copy of 2001 P.F. certificate for block of four ..... 175.00



1112

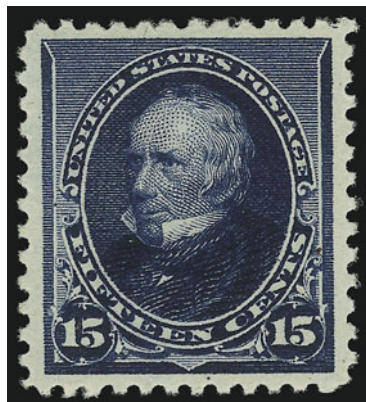


1113

- 1113 ★★ **10c Green (226).** Mint N.H., deep rich color, choice centering with unusually wide and balanced margins at top and bottom

EXTREMELY FINE GEM. A SUPERB MINT NEVER-HINGED EXAMPLE OF THE 10-CENT 1890 ISSUE. A TRUE CONDITION RARITY, THIS IS TRULY ONE OF THE FINEST EXAMPLES IN EXISTENCE.

With 2001 P.S.E. certificate ..... 550.00



1114

- 1114 ★★ **15c Indigo (227).** Mint N.H., incredibly deep rich color, perfectly centered with well-balanced margins  
EXTREMELY FINE GEM. A BEAUTIFUL MINT NEVER-HINGED EXAMPLE OF THE 15-CENT 1890 ISSUE.  
With 1989 P.F. certificate ..... 750.00



1115

- 1115 ★ **90c Orange (229).** Original gum, lightly hinged, vibrant color, extra wide margins  
EXTREMELY FINE. A SUPERB ORIGINAL-GUM EXAMPLE OF THE 90-CENT 1890 ISSUE.  
EXCEEDINGLY SCARCE WITH SUCH WIDE AND BALANCED MARGINS.  
With 2000 P.F. certificate..... 650.00



1116

- 1116 ★ **90c Orange (229).** Original gum, lightly hinged, brilliant color, wide margins, Extremely Fine, with 2005 P.F. certificate ..... 650.00



## COLUMBIAN ISSUE



1117

- 1117 ★★ **1c Columbian (230).** Mint N.H., Jumbo margins with every side is mathematically balanced, rich color, proof-like impression which clearly demonstrates the beauty of the engraver's art  
EXTREMELY FINE GEM. THIS ARGUABLY THE FINEST MINT NEVER-HINGED EXAMPLE OF THE ONE-CENT COLUMBIAN ISSUE WE HAVE EVER OFFERED. A REMARKABLE STAMP IN EVERY RESPECT.  
With 1991 P.S.E. certificate ..... 50.00



1118

- 1118 ★★ **2c Columbian, Broken Hat (231 var).** Mint N.H., rich color on bright paper, perfectly centered with wide and balanced margins all around, Extremely Fine Gem, easily one of the finest Mint N.H. examples of this variety in existence, with 1984 P.F. certificate and 2005 P.S.E. certificate (Superb 98)..... 150.00

- 1119 ★★ **2c Columbian, Broken Hat (231 var).** Mint N.H., rich color, wide and balanced margins, fresh and Extremely Fine, with 2005 P.F. certificate ..... 150.00



1119



1120

- 1120 ★★ **2c Columbian (231).** Mint N.H., rich color, wide margins, Extremely Fine, with 2005 P.S.E. certificate (XF-Superb 95)..... 47.00





1121



1122



1123

- 1121 ★★ **3c Columbian (232).** Mint N.H., brilliant color, Jumbo margins all around, Extremely Fine Gem, a huge stamp, with 2004 P.F. certificate..... 135.00
- 1122 ★★ **3c Columbian (232).** Mint N.H., perfect centering with well-balanced margins, crisp impression, Extremely Fine Gem, a gorgeous stamp in post-office fresh condition, with 2004 P.F. certificate ..... 135.00
- 1123 ★★ **3c Columbian (232).** Mint N.H., enormous margins, intense color on bright paper, Extremely Fine Gem, a phenomenal stamp in every respect, with 2000 P.F. certificate for block of four ..... 135.00



1124

- 1124 ★田 **3c Columbian (232).** Bottom imprint and plate no. block of eight, **four stamps** Mint N.H., others barest trace of hinge, fresh color, Extremely Fine..... 1,200.00



1125



1126



1127

- 1125 ★★ **4c Columbian (233).** Mint N.H., rich color on bright paper, wide and balanced margins, fresh and Extremely Fine Gem, a gorgeous stamp, with 2005 P.F. certificate ..... 200.00
- 1126 ★★ **4c Columbian (233).** Mint N.H., radiant color on post-office fresh paper, beautifully centered, Extremely Fine Gem, with 2005 P.S.E. certificate (XF-Superb 95)..... 200.00
- 1127 ★★ **4c Columbian (233).** Mint N.H., rich color and proof-like impression, unusually wide margins, Extremely Fine Gem, a beautiful stamp, with 2005 P.S.E. certificate (XF 90 Jumbo) ..... 200.00



1128

- 1128 ★★ **5c Columbian (234).** Mint N.H. with **selvage at bottom**, bright color, beautiful centering with well-proportioned margins all around, Extremely Fine Gem, a beautiful stamp, with 2005 P.S.E. certificate (XF-Superb 95)..... 220.00





1129

- 1129 ★★ **6c Columbian (235).** Mint N.H. with **selvage at right**, intense color and proof-like impression, perfectly centered, Extremely Fine Gem, a beautiful stamp, with 2005 P.F. certificate ..... 195.00

- 1130 ★★ **8c Columbian (236).** Mint N.H., rich color on bright paper, fresh and Extremely Fine, with 2005 P.S.E. certificate (XF 90)..... 170.00



1130



1131

- 1131 ★★ **10c Columbian (237).** Mint N.H., intense shade and detailed impression, wide balanced margins, fresh and Extremely Fine Gem, with 1996 P.F. certificate ..... 325.00

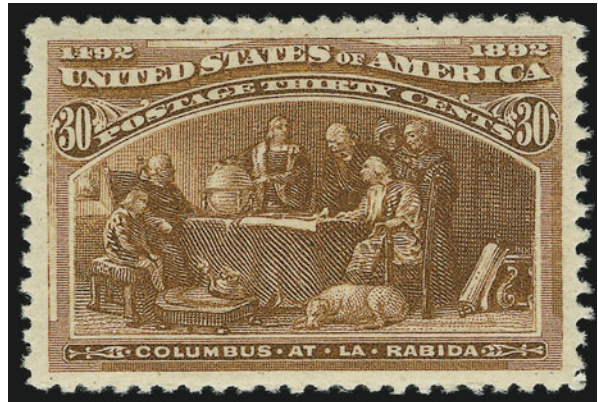
- 1132 ★★ **10c Columbian (237).** Mint N.H., brilliant color, unusually wide margins, fresh and Extremely Fine, with 2005 P.F. and P.S.E. certificates (XF 90 Jumbo) ..... 325.00



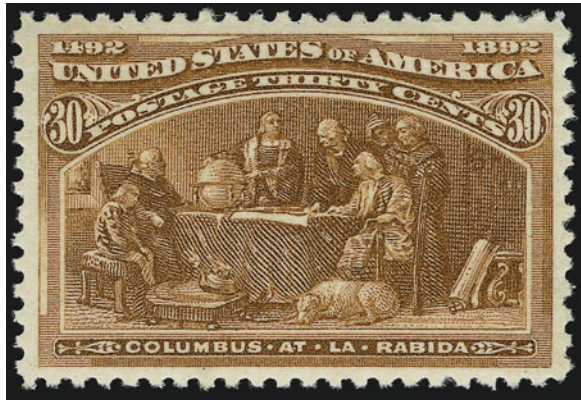
1132



- 1133°★★ **30c Columbian (239).** Mint N.H., intense color on brilliant paper, perfectly centered with wide even margins, post-office fresh  
EXTREMELY FINE GEM. A SUPERB MINT NEVER-HINGED 30-CENT COLUMBIAN. A TRUE CONDITION RARITY AND ONE OF THE FINEST EXTANT.  
With 1987 and 2003 P.F. certificates ..... 675.00



1133



1134

- 1134 ★★ **30c Columbian (239).** Mint N.H., intense color and proof-like impression, almost perfectly centered with well-balanced margins  
EXTREMELY FINE GEM. A BEAUTIFUL MINT NEVER-HINGED EXAMPLE OF THE 30-CENT COLUMBIAN.  
With 2005 P.S.E. certificate (XF-Superb 95) ..... 750.00

- 1135 ★★ **30c Columbian (239).** Mint N.H., truly magnificent color on bright paper, choice centering with well-balanced margins, fresh and Extremely Fine, a stunning stamp with great visual appeal, with 1981 P.F. certificate and 2005 P.S.E. certificate (XF 90) ..... 750.00



1135



1136

- 1136 ★★ **\$1.00 Columbian (241). Mint N.H.** with sheet selvage and part imprint at right, beautiful color and almost perfect centering  
 EXTREMELY FINE GEM. A SUPERB MINT NEVER-HINGED EXAMPLE OF THE \$1.00 COLUMBIAN WITH IMPRINT.  
 With 2001 P.F. certificate ..... 3,500.00



1137

- 1137 ★★ **\$1.00 Columbian (241).** Mint N.H. with **part imprint at right**, intense color and proof-like impression, well-balanced margins  
 VERY FINE. A BEAUTIFUL MINT NEVER-HINGED IMPRINT EXAMPLE OF THE \$1.00 COLUMBIAN.  
 Pencil notation in selvage ..... 3,500.00



- 1138 ★★ **\$1.00 Columbian (241).** Mint N.H., brilliant color, wide margins for this issue

VERY FINE AND CHOICE MINT NEVER-HINGED EXAMPLE OF THE \$1.00 COLUMBIAN ISSUE.

With 1997 and 2005 P.F. certificates, the first as block of four ..... 3,500.00



1138



1139

- 1139 ★ **\$1.00 Columbian (241).** Original gum, lightly hinged, brilliant color, almost perfectly centered

FRESH AND EXTREMELY FINE ORIGINAL-GUM EXAMPLE OF THE \$1.00 COLUMBIAN.

With 2003 P.F. certificate ..... 1,250.00

- 1140 ★ **\$2.00 Columbian (242).** Original gum, lightly hinged, bright color, Very Fine and choice, with 2005 P.F. certificate ..... 1,300.00



1140





1141

- 1141 ★ **\$3.00 Columbian (243).** Original gum, barest trace of hinge, deep shade on bright white paper, perfectly centered with wide even margins  
 EXTREMELY FINE GEM. A BEAUTIFUL ORIGINAL-GUM EXAMPLE OF THE \$3.00 COLUMBIAN.  
 The \$3.00 is one of the most difficult values of the series to obtain in such choice condition.  
 With 2002 P.F. certificate ..... 2,000.00



1142

- 1142 ★ **\$3.00 Olive Green, Columbian (243a).** Original gum, lightly hinged, rich color in the Olive Green shade, almost perfectly centered with well-proportioned margins  
 EXTREMELY FINE. A BEAUTIFUL ORIGINAL-GUM EXAMPLE OF THE \$3.00 COLUMBIAN IN THE OLIVE GREEN COLOR.  
 With 2005 P.F. certificate ..... 2,000.00



1143

- 1143 ★ **\$5.00 Columbian (245).** Original gum, lightly hinged, choice centering with unusually large and well-balanced margins, sharp proof-like impression on bright paper

EXTREMELY FINE GEM. A GORGEOUS ORIGINAL-GUM EXAMPLE OF THE \$5.00 COLUMBIAN ISSUE. SUPERB IN EVERY RESPECT — FRESHNESS OF GUM AND PAPER, SIZE OF MARGINS AND IMPRESSION.

With 2002 P.F. certificate ..... 3,100.00



1144

- 1144 ★ **\$5.00 Columbian (245).** Original gum, enormous margins, detailed impression  
EXTREMELY FINE ORIGINAL-GUM EXAMPLE OF THE \$5.00 COLUMBIAN. SCARCE WITH SUCH WIDE MARGINS.

With 2005 P.F. certificate ..... 3,100.00





1145

1145 P **\$3.00 Columbian, Plate Proof on Card (243P4).** Pane of 50, incl. plate nos. at top and bottom and imprint at left, brilliant color, light creasing affects three horizontal rows towards center and does not affect either plate block

VERY FINE AND CHOICE APPEARANCE. A RARE COMPLETE PANE OF 50 OF THE \$3.00 COLUMBIAN PLATE PROOF ON CARD.

Most panes have been broken to satisfy collector demand for singles, blocks and plate blocks.

Ex Rosenthal. Scott Retail as two plate blocks, six blocks of four and ten singles. .... 9,350.00





1146

1146 P田 **\$4.00 Columbian, Plate Proof on Card (244P4).** Pane of 50, incl. plate nos. at top and bottom and imprint at left, brilliant color, small tear in selvage at top left not affecting plate block, light crease affects second row from the top

VERY FINE AND CHOICE APPEARANCE. A RARE COMPLETE PANE OF 50 OF THE \$4.00 COLUMBIAN PLATE PROOF ON CARD.

Most panes have been broken to satisfy collector demand for singles, blocks and plate blocks. The only panes of any dollar-value Columbian proofs we have handled are the two offered in this sale and the ex-Lilly set.

Ex Rosenthal. Scott Retail as two plate blocks, six blocks of four and ten singles. .... 11,400.00



## 1894-98 BUREAU ISSUES



1147



1148



1149



1151



1150

- 1147 ★★ **1c Ultramarine (246).** Mint N.H., brilliant color, enormous margins all around, Extremely Fine Gem, a fantastic Jumbo stamp, with 2000 P.F. and 2005 P.S.E. certificates (XF-Superb 95 Jumbo)..... 85.00
- 1148 ★★ **1c Ultramarine (246).** Mint N.H. left sheet margin single with part imprint, brilliant color, remarkably wide margins, Extremely Fine Gem, a superb stamp, with 1996 P.F. certificate ..... 85.00
- 1149 ★★ **1c Blue (247).** Mint N.H. left sheet margin with part imprint, deep shade and detailed impression, post-office fresh, Extremely Fine, superb in every respect, with 2000 P.F. certificate..... 200.00
- 1150 ★★ **2c Pink, Ty. I (248).** Mint N.H. with huge top right corner selvage with redirected diagonal perfs in selvage due to foldover in selvage only, perfectly centered with extra wide margins at sides, Extremely Fine Gem, a superb stamp enhanced by the interesting sheet selvage, with 2000 P.F. certificate ..... 77.00
- 1151 ★★ **2c Pink, Ty. I (248).** Mint N.H. with **plate no. at left**, brilliant color, huge margins, fresh and Extremely Fine, with 1999 P.F. certificate for strip of three ..... 77.00



1152

1152 ★★ **2c Scarlet, Ty. II (251a).** Mint N.H. with plate no. in wide left selvage, well-centered, bright color

EXTREMELY FINE GEM. A WONDERFUL MINT NEVER-HINGED EXAMPLE OF THE 2-CENT TYPE II 1894 ISSUE IN THE EXCEEDINGLY RARE SCARLET SHADE.

With 2003 P.F. certificate..... 775.00



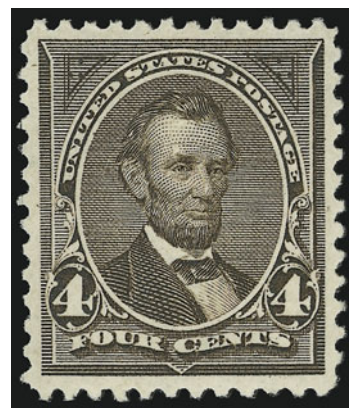
1153

1153 ★★ **2c Carmine, Ty. III (252).** Mint N.H. with plate no. at top, brilliant color, choice centering, Extremely Fine Gem, a superb stamp in every respect, with 2005 P.F. certificate for imprint and plate no. strip of three.....

..... 350.00

1154 ★★ **4c Dark Brown (254).** Mint N.H., detailed impression, wide margins, fresh and Extremely Fine, scarce in such choice condition, with 2005 P.S.E. certificate (XF 90).....

..... 425.00



1154





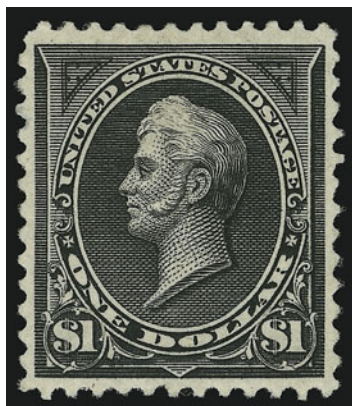
1155

- 1155 ★ **50c Orange (260).** Original gum, barely hinged, radiant color, almost perfectly centered with balanced margins, tiny natural inclusion speck at upper left  
EXTREMELY FINE. A BEAUTIFUL EXAMPLE OF THE 50-CENT 1894 UNWATERMARKED BUREAU ISSUE.  
With 2000 P.F. certificate ..... 575.00

- 1156 ★ **50c Deep Orange (260 var).** Choice centering with **part imprint selvage at bottom**, original gum, lightly hinged, perfectly centered with enormous margins at top and bottom, magnificent deep rich color  
EXTREMELY FINE GEM. A BEAUTIFUL ORIGINAL-GUM EXAMPLE OF THE 50-CENT 1894 UNWATERMARKED BUREAU ISSUE.  
Especially desirable as the Deep Orange sub-shade.....  
..... 575.00



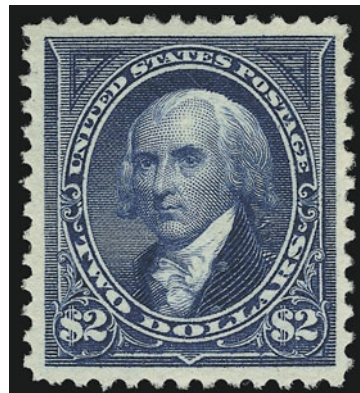
1156



1157

- 1157 ★ **\$1.00 Black, Ty. II (261A).** Original gum, lightly hinged, intense impression, well-proportioned margins  
EXTREMELY FINE. A BEAUTIFUL ORIGINAL-GUM EXAMPLE OF THE 1894 \$1.00 TYPE II UNWATERMARKED BUREAU ISSUE.  
With 2001 P.F. certificate ..... 2,300.00

- 1158 ★ **\$2.00 Bright Blue (262).** Original gum, barest trace of hinging, beautiful color on bright paper, almost perfectly centered with well-proportioned margins  
EXTREMELY FINE. A GORGEOUS ORIGINAL-GUM EXAMPLE OF THE 1894 \$2.00 UNWATERMARKED BUREAU ISSUE. A DIFFICULT STAMP TO FIND IN SUCH SUPERB CONDITION.  
With 2001 P.F. certificate ..... 3,250.00



1158



1159

- 1159°★ **\$5.00 Dark Green (263).** Original gum, lightly hinged, perfectly centered with wide and evenly-balanced margins all around, beautiful deep rich color and incredibly detailed impression showing all of the fine engraving lines in the background, bright and fresh paper

EXTREMELY FINE GEM. A SUPERB EXAMPLE OF THE 1894 \$5.00 UNWATERMARKED BUREAU ISSUE IN THE FINEST CONDITION OBTAINABLE. A BEAUTIFUL STAMP WHICH CERTAINLY DESERVES ITS GRADE OF "SUPERB 98".

The two most difficult denominations of the 1894 Unwatermarked Bureau Issue to find in superb original-gum condition are the \$1.00 Type II (Scott 261A), and the \$5.00. The example offered here is among the finest we have encountered.

With 2005 P.S.E. certificate (Superb 98)..... 4,500.00



1160

- 1160 **\$5.00 Dark Green (263).** Deep rich color, wide margins, light strike of oval cancel  
EXTREMELY FINE USED EXAMPLE OF THE \$5.00 1894 UNWATERMARKED BUREAU ISSUE. ONLY A FEW EXIST IN THIS SUPERB USED CONDITION.

With 2005 P.F. certificate ..... 2,600.00



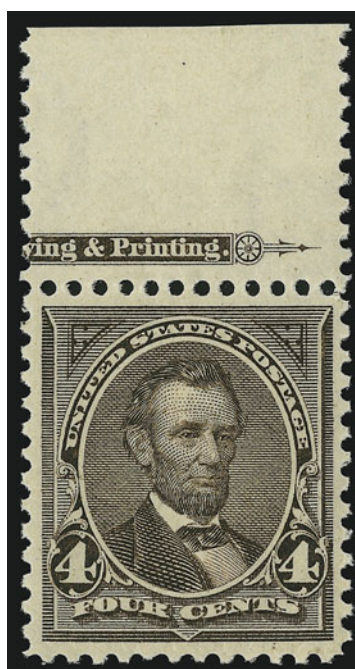
1161

- 1161 ★★ **1c Blue (264).** Mint N.H. with **plate no. at bottom**, rich color on bright paper, wide margins, Extremely Fine Gem, a superb stamp in every respect, with 2001 P.F. and 2005 P.S.E. certificates (XF-Superb 95) ..... 17.00

- 1162 ★★ **2c Carmine, Ty. I (265).** Mint N.H. with **plate no. at top**, brilliant color, choice centering, fresh and Extremely Fine Gem, with 2005 P.F. certificate .. 77.00



1162



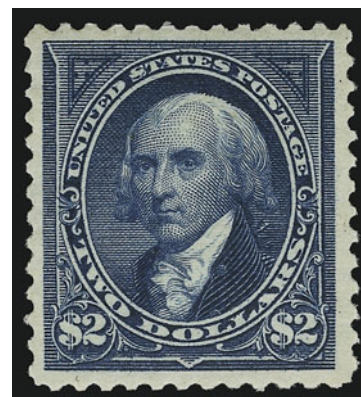
1163

- 1163 ★★ **4c Dark Brown (269).** Part imprint at top, stamp Mint N.H., lightly hinged in selvage only, rich color, Extremely Fine, with 2005 P.F. certificate ..... 115.00

- 1164 ★★ **\$2.00 Bright Blue (277).** Mint N.H., rich color on bright paper, wide margins

VERY FINE AND CHOICE. A RARE MINT NEVER-HINGED EXAMPLE OF THE WATERMARKED 1895 \$2.00 BUREAU ISSUE.

With 1980 and 2000 P.F. certificates..... 3,000.00



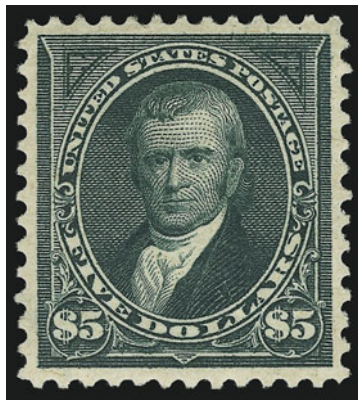
1164



- 1165 ★ **\$5.00 Dark Green (278).** Huge sheet selvage at top, original gum, barest trace of hinge (if at all), remarkably well-centered

EXTREMELY FINE. A BEAUTIFUL ORIGINAL-GUM EXAMPLE OF THE \$5.00 1895 BUREAU ISSUE WITH FULL SELVAGE AT TOP. A TRUE CONDITION RARITY.

With 2003 P.F. certificate ..... 2,300.00

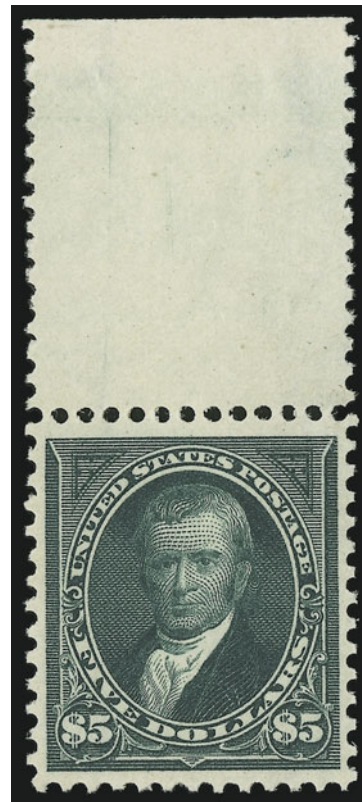


1166

- 1166 ★ **\$5.00 Dark Green (278).** Original gum, lightly hinged, rich color, detailed impression, almost perfectly centered with well-balanced margins

EXTREMELY FINE. A SUPERB ORIGINAL-GUM EXAMPLE OF THE 1895 \$5.00 WATERMARKED BUREAU ISSUE.

With 2005 P.F. certificate ..... 2,300.00



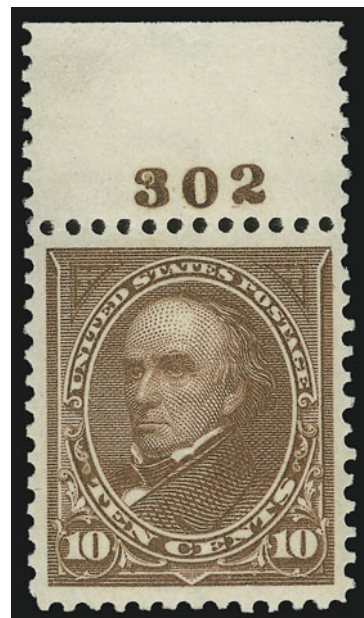
1165

- 1167 ★★ **10c Brown, Ty. I (282C).** Mint N.H. with plate no. at top, rich color on bright paper, perfectly centered

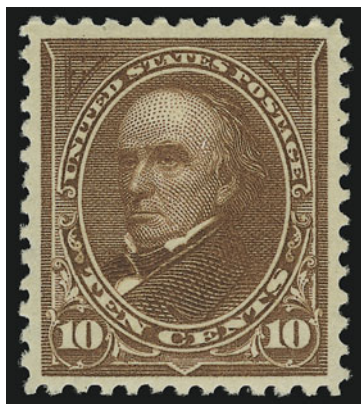
EXTREMELY FINE GEM. THIS MAY WELL BE THE FINEST MINT NEVER-HINGED EXAMPLE OF THE 10-CENT TYPE I 1898 BUREAU ISSUE IN EXISTENCE. A REMARKABLE STAMP IN TERMS OF CENTERING, SIZE OF MARGINS, COLOR, IMPRESSION AND GUM.

With 2003 P.S.E. certificate (XF-Superb 95). This is the only example to receive this high grade to date. ....

..... 500.00



1167



1168

- 1168 ★★ **10c Brown, Ty. I (282C).** Mint N.H., pretty pastel color, well-balanced margins, Extremely Fine, with 1991 P.F. certificate ..... 500.00

## TRANS-MISSISSIPPI ISSUE



1169

- 1169 ★★ **4c Trans-Mississippi (287).** Mint N.H., brilliant color, unusually wide margins, Extremely Fine Gem, a beautiful stamp, with 2002 P.F. certificate for pair ..... 325.00

- 1170 ★★ **4c Trans-Mississippi (287).** Mint N.H. radiant color, well-balanced margins, fresh and Extremely Fine, with 2005 P.F. certificate..... 325.00



1170



1171

- 1171 ★★ **5c Trans-Mississippi (288).** Mint N.H., deep rich color and sharp proof-like impression on bright paper, choice centering with wide margins, fresh and Extremely Fine, with 1982 P.F. certificate and 2005 P.S.E. certificate (XF-Superb 95)..... 325.00

- 1172 ★★ **5c Trans-Mississippi (288).** Mint N.H., brilliant color. Jumbo margins on all sides, bright color, Extremely Fine Gem, a superb stamp in every respect, this is absolutely gorgeous, with 2005 P.F. certificate ..... 325.00



1172



- 1173 ★★ **10c Trans-Mississippi (290).** Mint N.H., perfectly centered with wide and balanced margins all around, deep rich color and proof-like impression

EXTREMELY FINE GEM. A SUPERB MINT NEVER-HINGED EXAMPLE OF THE 10-CENT TRANS-MISSISSIPPI ISSUE. AS FRESH TODAY AS THE DAY IT WAS PRINTED.

With copy of 2000 P.F. certificate for strip of three ..... 425.00



1173



1174

- 1174 ★★ **10c Trans-Mississippi (290).** Mint N.H., beautifully centered, intense shade and sharp impression, Extremely Fine, with 1981 P.F. certificate..... 425.00



1175

- 1175 ★★田 **10c Trans-Mississippi (290).** Mint N.H. top imprint and plate no. block of four, detailed impression, each stamp almost perfectly centered

EXTREMELY FINE. A SUPERB MINT NEVER-HINGED PLATE NO. BLOCK OF FOUR OF THE 10-CENT TRANS-MISSISSIPPI ISSUE.

With 2004 P.F. certificate ..... 3,250.00





1176

- 1176 ★★ **\$1.00 Trans-Mississippi (292).** Mint N.H., sharp proof-like impression on bright paper, perfectly centered

EXTREMELY FINE GEM. A SUPERB MINT NEVER-HINGED EXAMPLE OF THE \$1.00 TRANS-MISSISSIPPI ON UNUSUALLY BRIGHT AND FRESH PAPER. ONE OF THE MOST BEAUTIFUL STAMP DESIGNS IN UNITED STATES PHILATELY.

With 2001 P.F. certificate for block of four  
..... 3,250.00

- 1177 ★ **\$2.00 Trans-Mississippi (293).** Original gum, lightly hinged, rich color and proof-like impression, choice centering with well-balanced margins

EXTREMELY FINE GEM. A BEAUTIFUL LIGHTLY-HINGED EXAMPLE OF THE \$2.00 TRANS-MISSISSIPPI ISSUE.

With 1991 and 2005 P.F. certificates .....  
..... 2,100.00



1177

- 1178 ★ **\$2.00 Trans-Mississippi (293).** Original gum, barely hinged (if at all), rich color

VERY FINE AND CHOICE EXAMPLE OF THE \$2.00 TRANS-MISSISSIPPI ISSUE.

The gum on this beautiful fresh stamp is probably never hinged, but there is a slight irregularity in the surface that will probably trigger a “previously hinged” certificate. .... 2,100.00



1178

PAN-AMERICAN ISSUE

- 1179 ★★ **1c Pan-American (294).** Mint N.H. with part imprint at top, deep rich colors and proof-like impressions, Jumbo margins, Extremely Fine Gem, a superb stamp in every respect, with 2000 P.F. certificate ..... 40.00



1179



1180

- 1180 ★ **1c Pan-American, Center Inverted (294a).** Deep rich colors, single perf tip thin at bottom

FINE APPEARING ORIGINAL-GUM EXAMPLE OF THE ONE-CENT PAN-AMERICAN INVERT.

The 1c Pan-American Inverts were found in at least four different post offices around the country. .... 9,500.00

- 1181 ★ **1c Pan-American, Center Inverted (294a).** Unused (regummed), rich colors, reperfed, Fine appearance ..... 9,500.00



1181



1182

- 1182° **1c Pan-American, Center Inverted (294a).** Deep rich colors, centered to bottom, bold cork cancel leaves invert clearly visible, faint vertical crease not mentioned on accompanying certificate

VERY FINE APPEARING USED EXAMPLE OF THE ONE-CENT PAN-AMERICAN INVERT.

The 1c Pan-American Invert in used condition is considerably scarcer than unused. With the increased collector demand for 20th century stamps, especially in used condition, the price of a used 1c Pan-American Invert has surged ahead from \$7,000 in 2001 to \$11,000 in 2005.

With 2001 A.P.S. certificate..... 11,000.00





1183

- 1183 ★★ **2c Pan-American (295).** Mint N.H., brilliant colors, wide and balanced margins, Extremely Fine Gem, with 2005 P.S.E. certificate (Superb 98) ..... 40.00



1184

- 1184 ★★ **2c Pan-American (295).** Mint N.H., enormous margins, brilliant colors, Extremely Fine Gem, a magnificent stamp, with copy of 2000 P.F. certificate for strip of four. 40.00



1185

- 1185 ★ **10c Pan-American (299).** Single hinge mark, warm shade, perfectly centered with wide and balanced margins, Extremely Fine Gem, with 2005 P.S.E. certificate (Superb 98) ..... 160.00

- 1186 ★ **4c Pan-American, Center Inverted, Specimen Ovpt. (296aS).** Slightly disturbed original gum, pretty colors, clear "Specimen" overprint at bottom

FINE EXAMPLE OF THE 4-CENT PAN-AMERICAN INVERT WITH SPECIMEN OVERPRINT.

If the reported numbers are correct, a total of 203 4c Inverts was released, both with and without the overprint. An unknown quantity of the 4c Pan-American invert was overprinted with a small "Specimen" overprint. .... 6,500.00



1186



## 1902-08 ISSUE



1187

- 1187 ★★ **1c Blue Green, Booklet Pane of Six (300b).** Position H, Mint N.H., rich color, unusually choice centering for this difficult issue

EXTREMELY FINE GEM. A SUPERB MINT NEVER-HINGED BOOKLET PANE OF THE ONE-CENT 1901 ISSUE. SCARCE IN SUCH PRISTINE CONDITION.

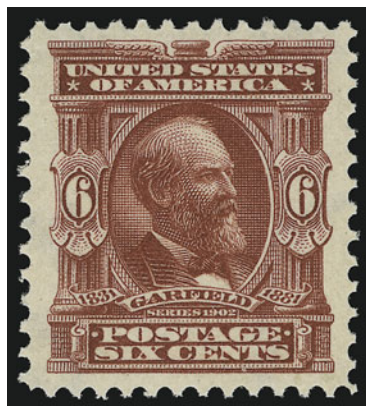
With 2005 P.F. certificate ..... 1,150.00



1188

- 1188 ★★ **2c Carmine (301).** Mint N.H., radiant color, extra wide margins, Extremely Fine, with copy of 2004 P.F. certificate for block of four and 2005 P.S.E. certificate (XF 90 Jumbo)....

..... 35.00



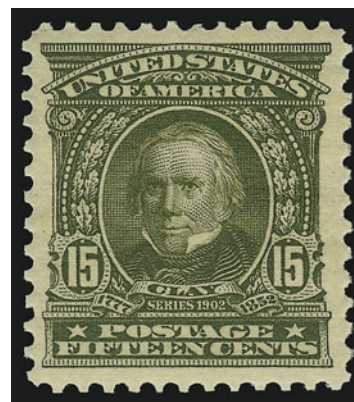
1189

- 1189 ★★ **6c Claret (305).** Mint N.H., bright color on post-office fresh paper, huge margins all around, Extremely Fine Gem, a magnificent stamp, with 2005 P.F. certificate ..

..... 170.00

- 1190 ★★ **15c Olive Green (309).** Mint N.H., pretty pastel color, wide and balanced margins, fresh and Extremely Fine, a stamp of great visual appeal, with 1996 P.F. certificate ..

..... 400.00



1190



1191

1191 ★★ **50c Orange (310).** Mint N.H. top plate no. single, extraordinarily wide and well-balanced margins, vibrant color and pristine condition

EXTREMELY FINE GEM. AN OUTSTANDING MINT NEVER-HINGED EXAMPLE OF THE 50-CENT 1902 ISSUE WITH PLATE NUMBER SELVAGE.

The 1902-03 Regular Issue was a great improvement over the Bureau's first efforts in 1894 and 1895. Perforations tend to be cleaner, and centering better, but the large plate layout and perforating method still resulted in a large number of poorly centered stamps. Furthermore, stamps issued in choice condition seldom stayed that way, because the boom in stamp collecting that began with the Roosevelt administration caused hordes of hinge-bearing philatelists to mount stamps over and over again. For this reason, today's collectors have grown accustomed to paying many multiples of Scott value for Extremely Fine stamps in Mint Never-Hinged state. Anyone who has pursued this set can testify that the 50c is rarely encountered in such condition. The 50c 1902 offered here probably ranks among the five highest-quality examples in existence.

With 1997 P.F. certificate ..... 1,200.00

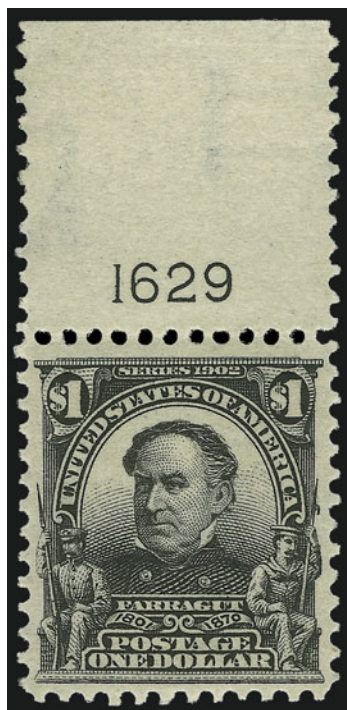
- 1192 ★★ **50c Orange (310).** Mint N.H., brilliant color on white paper, well-balanced margins

EXTREMELY FINE. A BEAUTIFUL MINT NEVER-HINGED EXAMPLE OF THE 50-CENT 1902 ISSUE.

With 2004 P.S.E. certificate (XF 90) and 2005 P.F. certificate ..  
..... 1,200.00



1192



1193

- 1193 ★★ **\$1.00 Black (311).** Mint N.H. with **plate no. at top**, intense shade and proof-like impression, almost perfectly centered

EXTREMELY FINE. A MAGNIFICENT MINT NEVER-HINGED PLATE NUMBER SINGLE OF THE \$1.00 1902 ISSUE.

With 2002 P.S.E. certificate ..... 2,000.00

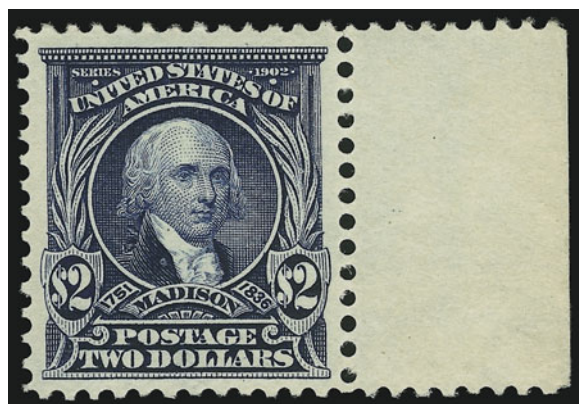
- 1194 ★★ **\$1.00 Black (311).** Mint N.H., intense color on bright paper, well-balanced margins

EXTREMELY FINE. A BEAUTIFUL MINT NEVER-HINGED EXAMPLE OF THE \$1.00 1902 ISSUE.

With 1993 and 2002 P.F. certificates..... 2,000.00



1194



1195

- 1195 ★★ **\$2.00 Dark Blue (312).** Selvage at right, stamp Mint N.H., selvage lightly hinged in ungummed portion, rich color on bright paper, wide margins

EXTREMELY FINE. A SPECTACULAR MINT NEVER-HINGED EXAMPLE OF THE \$2.00 1902 ISSUE.

With 1998 P.F. certificate. Scott Retail as Mint N.H. .... 3,000.00





1196

1196

**\$2.00 Dark Blue (312).** Intense color and proof-like impression, choice centering with wide margins all around, unobtrusive cancel, Extremely Fine, a difficult stamp to find with such wide margins, with 2002 P.F. and 2005 P.S.E. certificates (XF-Superb 95 Jumbo) ..... 200.00

1197 ★ **\$2.00 Dark Blue (312).** Single hinge mark, deep shade, almost perfectly centered with balanced margins

EXTREMELY FINE. A BEAUTIFUL ORIGINAL-GUM EXAMPLE OF THE \$5.00 1902 ISSUE. SCARCE WITH SUCH CHOICE CENTERING.

With 2001 P.F. certificate ..... 2,900.00



1197



1198

1198 ★ **\$5.00 Dark Green (313).** Lightly hinged, deep rich color and proof-like impression

VERY FINE AND CHOICE EXAMPLE OF THE \$5.00 1902 ISSUE.

With 2003 P.S.E. certificate ..... 2,900.00

1199 **\$5.00 Dark Green (313).** Almost perfectly centered with wide margins, rich color, neat strike of oval cancel, fresh and Extremely Fine, a surprisingly difficult stamp to obtain in such choice used condition, with 1985 and 2005 P.F. certificates ..... 750.00



1199



1200

1200 ★ **1c Blue Green, Coil (318).** Pair, deep rich color and proof-like impression, choice centering for this difficult issue

VERY FINE AND CHOICE PAIR OF THE SCARCE ONE-CENT 1908 HORIZONTAL COIL.

Signed Ward and Spencer Anderson. With 1952 and 2003 P.F. certificates and 1999 P.S.E. certificate ..... 14,000.00

## LOUISIANA PURCHASE AND JAMESTOWN ISSUES

1201 ★★ **3c Louisiana Purchase (325).** Mint N.H. with **imprint at bottom**, bright shade, choice centering with unusually wide margins for this issue, Extremely Fine Gem, a phenomenal stamp, with 2001 P.F. and 2005 P.S.E. certificates (XF-Superb 95 Jumbo) ..... 200.00



1201





1202

1202 ★★ **5c Louisiana Purchase (326).** Mint N.H., rich color on bright paper, choice centering with evenly-proportioned margins, Extremely Fine ..... 210.00

1203 ★田 **10c Louisiana Purchase (327).** Bottom imprint and plate no. block of four, bottom stamps Mint N.H., top stamps lightly hinged, crisp impression, faint natural gum bend not mentioned on accompanying certificate, Extremely Fine, with 2005 P.F. certificate, Scott Retail as singles..... 1,100.00



1203



1204

1204 ★★ **5c Jamestown (330).** Mint N.H., deep rich color and detailed impression on white paper, Jumbo margins, Extremely Fine Gem, a phenomenal stamp in the finest condition attainable, ex Drucker, with 1980 P.F. certificate..... 325.00



## 1908-23 ISSUES



1205



1206



1207

- 1205 ★★ **4c Orange Brown (334).** Mint N.H., rich color, extra wide margins, Extremely Fine Gem, a gorgeous stamp in post-office fresh condition, with 2005 P.S.E. certificate (XF-Superb 95) ..... 90.00
- 1206 ★★ **10c Yellow (338).** Mint N.H. with **plate no. at top**, brilliant color, choice centering with well-balanced margins, fresh and Extremely Fine, an extraordinary stamp, with 2005 P.S.E. certificate (XF-Superb 95) ..... 150.00
- 1207 ★★ **15c Pale Ultramarine (340).** Mint N.H., perfectly centered, fresh color and detailed proof-like impression, Extremely Fine Gem, ex Drucker, with 1987 P.F. certificate..... 150.00

- 1208 ★★ **5c Blue, Coil (351).** Mint N.H. guide line pair, deep rich color on bright paper, VERY FINE-EXTREMELY FINE MINT NEVER-HINGED GUIDE LINE PAIR OF THE 5-CENT VERTICAL COIL, SCOTT 351. With 1990 and 2004 P.F. certificates, the former as strip of four ..... 2,750.00



1208



1209

- 1209 ★★ **5c Blue, Coil (351).** Mint N.H. with paste-up tab at top, extraordinarily huge margins all around, deep rich color on bright paper

EXTREMELY FINE GEM. A SPECTACULAR AND BREATHTAKING MINT NEVER-HINGED SINGLE OF THE 5-CENT PERF 12 VERTICAL COIL.

With 2004 P.F. certificate for pair ..... 375.00

- 1210 ★ **1c Green, Coil (352).** Guide line pair, lightly hinged, bright color, wide margins, Extremely Fine, a beautiful stamp, with 1999 P.F. and 2005 P.S.E. certificates (XF 90)..... 750.00



1210



1211

- 1211 ★★ **5c Blue, Coil (355).** Mint N.H. pair, brilliant color, choice centering

EXTREMELY FINE MINT NEVER-HINGED PAIR OF THE 5-CENT COIL, SCOTT 355.

With 2005 P.S.E. certificate.....  
..... 1,250.00





1212

- 1212 ★ **10c Yellow, Coil (356).** Guide line strip of four, sensibly reinforced with hinges, classic bright color of this rare and elusive coil, rather nicely centered  
 VERY FINE. A SCARCE GUIDE LINE STRIP OF FOUR OF THE 10-CENT PERF 12 COIL, SCOTT 356.  
 Most guide line strips have been broken to feed collector demand for guide line pairs and singles. .... 18,700.00



1213

- 1213 ★ **10c Yellow, Coil (356).** Pair, vibrant color, unusually choice centering for this difficult issue  
 EXTREMELY FINE. A MARVELOUSLY WELL-CENTERED AND FRESH ORIGINAL-GUM PAIR OF THE 10-CENT COIL, SCOTT 356.  
 With 1956 P.F. certificate ..... 6,750.00



BLUISH PAPER



1214

- 1214 ★ **3c Deep Violet, Bluish (359).** Lightly hinged, deep rich color on nicely blued paper, choice centering  
 EXTREMELY FINE. A BEAUTIFUL ORIGINAL-GUM EXAMPLE OF THE 3-CENT BLUISH.  
 With 2005 P.F. certificate ..... 2,000.00



1215

- 1215 ★ **5c Blue, Bluish (361).** Lightly hinged, **full selvage at top**, bright color on deeply blued paper  
 VERY FINE AND CHOICE ORIGINAL-GUM EXAMPLE OF THE 5-CENT BLUISH. ESPECIALLY DESIRABLE WITH THE FULL SELVAGE AT TOP.  
 With 1983 and 2005 P.F. certificates..... 5,000.00

- 1216 ★ **6c Red Orange, Bluish (362).** Lightly hinged, bright color on nicely blued paper, choice centering with Jumbo margins all around

EXTREMELY FINE. AN EXCEPTIONAL EXAMPLE OF THE 6-CENT BLUISH PAPER. RARELY AVAILABLE WITH SUCH MASSIVE MARGINS AND OUTSTANDING CENTERING.

Ex Drucker. With 1980 P.F. certificate..... 1,500.00



1216



- 1217 **13c Bluish Green, Bluish (365).** Intense color and impression on nicely blued paper, neat strikes of circular datestamp

VERY FINE AND CHOICE USED EXAMPLE OF THE 13-CENT BLUISH PAPER ISSUE.

With 2000 P.F. certificate ..... 2,250.00

1217

- 1218 ★★ **15c Pale Ultramarine, Bluish (366).** Mint N.H., deep rich color on nicely blued paper, wide margins

VERY FINE AND CHOICE. A SCARCE MINT NEVER-HINGED EXAMPLE OF THE 15-CENT ON BLUISH PAPER.

With 1972 P.F. and 2001 P.S.E. certificates .. 3,100.00



1218





- 1219 ★★ **6c Red Orange (379)**. Mint N.H., vibrant color, Jumbo margins, Extremely Fine, a beautiful stamp, with 2005 P.S.E. certificate (XF-Superb 95 Jumbo) ..... 80.00
- 1220 ★★ **8c Olive Green (380)**. Mint N.H., pretty pastel color, wide margins, fresh and Extremely Fine, with 2000 P.F. certificate ..... 250.00
- 1221 ★★ **10c Yellow (381)**. Mint N.H., choice centering with unusually wide margins, vibrant color on bright white paper, Extremely Fine Gem, with 2002 P.F. certificate for block of four, this being the bottom right stamp ..... 225.00
- 1222 ★★ **10c Yellow (381)**. Mint N.H., brilliant color, wide and balanced margins, post-office fresh and Extremely Fine, with 1986 P.F. certificate ..... 225.00
- 1223 ★ **15c Pale Ultramarine (382)**. Huge margins with **plate no. at bottom**, lightly hinged, radiant color, Extremely Fine Gem, a beautiful stamp, with 2000 P.F. and 2005 P.S.E. certificates (Superb 98) ..... 275.00
- 1224 ★★ **15c Pale Ultramarine (382)**. Mint N.H., radiant color, wide and balanced margins, Extremely Fine, with 2001 P.F. certificate ..... 625.00
- 1225 ★★ **2c Carmine, Coil (386)**. Mint N.H. with **part imprint and letter "A" paste-up at top**, huge margins, Extremely Fine, with 1991 P.F. certificate as pair ..... 180.00

- 1226 ★ **2c Carmine, Coil (388).** Pair with 2mm spacing, lightly hinged, choice centering, rich color  
EXTREMELY FINE. A MAGNIFICENTLY CENTERED PAIR OF THE 2-CENT COIL, SCOTT 388.  
With 1999 P.F. certificate..... 3,250.00



1226



- 1227 **1c Green, Coil (390).** Guide line pair, perfectly centered with Jumbo margins, wavy-line machine cancel, Extremely Fine Gem, a phenomenal used guide line pair, with 2005 P.S.E. certificate (XF-Superb 95) ..... 85.00
- 1228 ★★ **2c Carmine, Coil (393).** Mint N.H. guide line pair, brilliant color, Extremely Fine, with 2005 P.F. certificate ..... 100.00
- 1229 **2c Carmine, Coil (393).** Guide line pair, well-struck Philadelphia circular date stamps, rich color and detailed impression, wide margins, Extremely Fine, an outstanding and rare used guide line pair, with 2003 P.F. certificate ..... 225.00
- 1230 ★★ **4c Brown, Coil (395).** Mint N.H. guide line pair, rich color on bright paper, choice centering  
EXTREMELY FINE. A BEAUTIFUL MINT NEVER-HINGED GUIDE LINE PAIR OF THE 4-CENT HORIZONTAL COIL, SCOTT 395.  
With 2005 P.F. certificate..... 900.00
- 1231 ★★ **5c Blue, Coil (396).** Mint N.H., deep shade, almost perfectly centered with wide margins, Extremely Fine, with 1996 P.F. certificate..... 325.00



## PANAMA-PACIFIC ISSUE

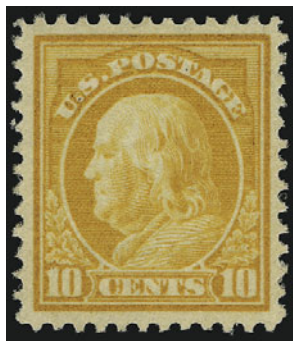


- 1232 ★★ **5c Panama-Pacific (399).** Mint N.H., deep rich color, Jumbo margins all around, Extremely Fine Gem, a gorgeous stamp in post-office fresh condition, with 1999 P.F. and 2005 P.S.E. certificates (XF-Superb 95 Jumbo) ..... 175.00
- 1233 ★ **10c Orange Yellow, Panama-Pacific (400).** Mint N.H., vibrant color, well-balanced margins, fresh and Extremely Fine, with 2000 P.F. certificate ..... 300.00
- 1234 ★★ **10c Orange, Panama-Pacific (400A).** Mint N.H. with **plate no. at right**, perfectly centered with unusually wide margins on all sides, Extremely Fine Gem, a gorgeous stamp, with 1981 P.F. certificate ..... 450.00
- 1235 ★★ **10c Orange, Panama-Pacific (400A).** Mint N.H., brilliant color, almost perfectly centered with wide and balanced margins, Extremely Fine Gem, a beautiful stamp, with 2005 P.S.E. certificate (XF-Superb 95)..... 450.00
- 1236 ★★ **2c Panama-Pacific, Perf 10 (402).** Mint N.H. with **plate no. at bottom**, brilliant color, huge margins, Extremely Fine, with 2004 P.F. certificate..... 160.00

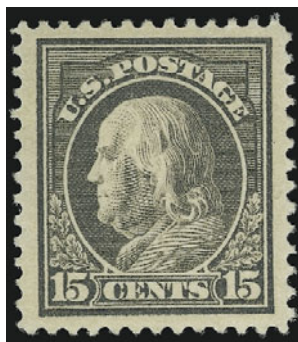




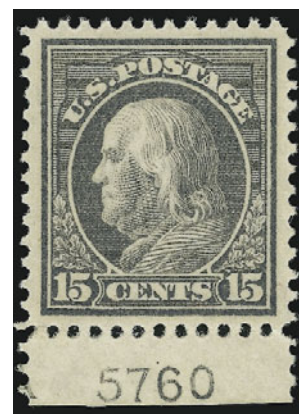
1237



1238



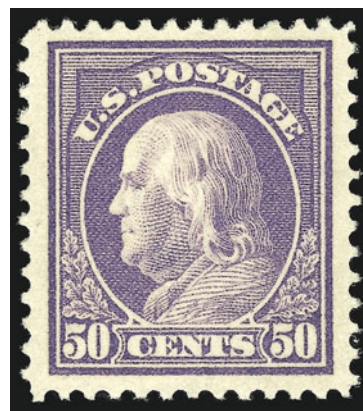
1239



1240

- 1237 ★★ **1c Green (405).** Mint N.H., enormous margins, rich color on bright paper, Extremely Fine Gem, a huge stamp, with 2005 P.S.E. certificate (XF-Superb 95 Jumbo) ..... 15.00
- 1238 ★★ **10c Orange Yellow (416).** Mint N.H., vibrant color, well-proportioned margins, fresh and Extremely Fine, with 2005 P.F. certificate ..... 100.00
- 1239 ★★ **15c Gray (418).** Mint N.H., huge margins, brilliant color, Extremely Fine Gem, a gorgeous stamp, with 2005 P.S.E. certificate (XF-Superb 95)..... 190.00
- 1240 ★★ **15c Gray (418).** Mint N.H. with **plate no. at bottom**, rich color, wide margins, fresh and Extremely Fine, with 2005 P.F. certificate ..... 190.00

- 1241 ★★ **50c Violet (421).** Mint N.H., brilliant color on bright white paper, choice centering with extra wide margins  
EXTREMELY FINE GEM. A SUPERB MINT NEVER-HINGED COPY OF THE 1914 50-CENT PERF 12 SINGLE-LINE WATERMARKED STAMP.  
This is a difficult stamp to find with such enormous margins, especially in Mint N.H. condition.  
With 1992 and 1997 P.F. certificates ..... 950.00



1241



1242

- 1242 **1c Green, Perf 10 x 12 (423D; formerly 424b).** Deep rich color on bright white paper, neat "Dayton Ohio" precancel, few creases  
VERY FINE APPEARING EXAMPLE OF THE RARE 1914 ONE-CENT PERF 10 x 12 ISSUE.  
Our census of Scott 423D contains 37 stamps. All genuine stamps are used, including 31 with the Dayton precancel. .... 12,500.00



- 1243 ★★ **4c Brown (427)**. Mint N.H., pretty shade on bright paper, well-balanced margins, Extremely Fine, with 2005 P.F. certificate..... 75.00
- 1244 ★★田 **4c Brown (427)**. Mint N.H. top plate no. block of six, rich color, wide margins and choice centering throughout, Extremely Fine, with 2005 P.F. certificate..... 775.00
- 1245 ★★ **5c Blue (428)**. Mint N.H. with **selvage at bottom**, deep rich color, Jumbo margins, Extremely Fine, with 2003 P.F. and 2005 P.S.E. certificates (XF 90 Jumbo)..... 75.00
- 1246 ★★田 **5c Blue (428)**. Mint N.H. full top plate no. block of six, deep rich color, remarkably fresh and intact, Extremely Fine, a gorgeous plate block, with 2001 P.F. certificate for plate no. block of ten..... 625.00
- 1247 ★★ **6c Red Orange (429)**. Mint N.H. with **part imprint at top**, vibrant color, wide margins, Extremely Fine Gem, with 2005 P.S.E. certificate (XF-Superb 95)..... 105.00
- 1248 ★★ **30c Orange Red (439)**. Mint N.H., radiant color on bright paper, well-balanced margins, Extremely Fine, with 2005 P.S.E. certificate (XF 90) ..... 575.00



- 1249 ★★ **50c Violet (440).** Mint N.H., perfectly centered, proof-like impression

EXTREMELY FINE GEM. A REMARKABLY CHOICE MINT NEVER-HINGED EXAMPLE OF THE 50-CENT VIOLET PERF 10.

With 1992 P.F. certificate ..... 1,300.00



1249



1250

- 1250 ★★ **2c Carmine, Coil (444).** Mint N.H. joint line pair, brilliant color, perfectly centered

EXTREMELY FINE GEM. A SUPERB MINT NEVER-HINGED GUIDE LINE PAIR OF SCOTT 444 IN THE FINEST ATTAINABLE CONDITION.

With 1993 P.F. certificate ..... 675.00

- 1251°★★ **2c Carmine, Coil (444).** Mint N.H. guide line pair, brilliant color, wide margins

VERY FINE-EXTREMELY FINE. A BEAUTIFUL MINT NEVER-HINGED GUIDE LINE PAIR OF THE 2-CENT COIL, SCOTT 444.

With 1993 P.S.E. and 2000 P.F. certificates ..... 675.00



1251



1252

- 1252 ★★ **5c Blue, Coil (447).** Mint N.H. guide line pair, intense color, choice centering with wide margins, Extremely Fine, with 1992 P.F. certificate ..... 550.00



1253

- 1253 ★★ **2c Red, Ty. I, Coil (449).** Mint N.H. joint line pair, exceptional centering with wide margins all around, brilliant color and detailed impression, tiny natural coal speck inclusion not mentioned on either certificate

EXTREMELY FINE GEM. AN EXTRAORDINARILY RARE MINT NEVER-HINGED JOINT LINE PAIR OF THE 1915 2-CENT TYPE I VERTICAL COIL. AN OUTSTANDING RARITY.

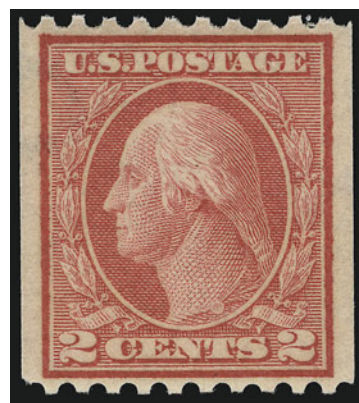
Type I rotary press stamps were produced using the same master dies as had been used for flat plate printings. However, due to the curve of the plate to fit the rotary press, the impressions lacked some of the details of the flat plate printings. New dies were made with strengthened lines, resulting in the Type II stamps. After plate wear was noticed, further strengthening was necessary, resulting in the Type III stamps. Scott 449 was not produced until almost a year and a half after the Type I horizontal coil, Scott 453. Due to the unpopularity of vertical coils, this Type I stamp was in production for only a short period of time before being discontinued. The joint line pair offered here, in Mint N.H. condition and with such choice centering and color, is a major rarity, and it is one of the finest Scott 449 line pairs extant.

With 1973 P.F. certificate as a joint line strip of four and with 2005 P.F. certificate as joint line strip of three. The singles are offered in the following two lots. .... 32,500.00



- 1254 ★★ **2c Red, Ty. I, Coil (449).** Mint N.H., perfectly centered with well-balanced margins, rich color  
EXTREMELY FINE GEM. A SUPERB MINT NEVER-HINGED SINGLE OF THE RARE 2-CENT COIL, SCOTT 449.

With copy of 1973 P.F. certificate for guide line strip of four. This is the bottom stamp of the strip. The joint line pair is offered in the previous lot, and the top single is offered in the next lot. .... 5,500.00



1254



1255

- 1255 ★★ **2c Red, Ty. I, Coil (449).** Mint N.H., bright color, wide margins at sides and at top  
VERY FINE. A SCARCE MINT NEVER-HINGED EXAMPLE OF THE 2-CENT TYPE I ROTARY COIL, SCOTT 449.

With copy of 1973 P.F. certificate as joint line strip of four and with copy of 2005 P.F. certificate as joint line strip of three. The other stamps from the multiple are offered in the previous lots. .... 5,500.00

- 1256 ★★ **2c Carmine Rose, Ty. I, Coil (453).** Mint N.H. joint line pair, almost perfectly centered, beautiful bright color on white paper

EXTREMELY FINE GEM. A SUPERB MINT NEVER-HINGED GUIDE LINE PAIR OF SCOTT 453.

With 2004 P.F. certificate ..... 1,550.00



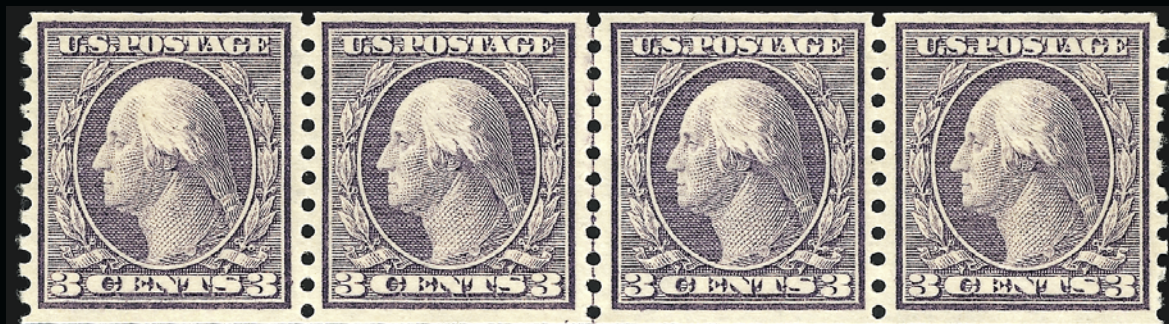
1256



1257

- 1257 ★★ **2c Red, Ty. II, Coil (454).** Mint N.H. joint line pair, brilliant color, perfectly centered with intact perforations at sides, Extremely Fine Gem, with 2002 P.F. certificate ..... 900.00





1258



1259



1260



1261



1262



1263

- 1258 ★ **3c Violet, Coil (456).** Joint line strip of four, lightly hinged, fresh color and proof-like impression, right stamp with light vertical crease, otherwise Very Fine and choice, with 2002 P.F. certificate..... 1,730.00
- 1259 ★★ **5c Blue, Coil (458).** Mint N.H. joint line pair, intense color and impression, wide and balanced margins, Extremely Fine, with 2005 P.F. certificate ..... 375.00
- 1260 ★★ **2c Carmine, Ty. I, Imperforate Coil (459).** Mint N.H. pair, huge margins, brilliant color, Extremely Fine, with 2005 P.S.E. certificate (Superb 98)..... 750.00
- 1261 ★★ **2c Carmine, Ty. I, Imperforate Coil (459).** Mint N.H., large and even margins, brilliant color, Extremely Fine, with 2005 P.S.E. certificate (XF-Superb 95) ..... 750.00
- 1262 ★★ **4c Orange Brown (465).** Mint N.H., rich color, Jumbo margins, Extremely Fine Gem, a phenomenal stamp in every respect, with 1996 P.F. certificate ..... 95.00
- 1263 ★★ **5c Blue (466).** Mint N.H., radiant color, choice centering with unusually wide margins, fresh and Extremely Fine, a huge stamp, with 2002 P.F. certificate..... 160.00



- 1264 ★★ **5c Carmine, Error (467).** Mint N.H., perfectly centered with wide margins, intact perforations on all sides with 2c denominations showing on all adjoining stamps, brilliant color

EXTREMELY FINE GEM. THIS IS UNDOUBTEDLY ONE OF THE FINEST MINT NEVER-HINGED EXAMPLES OF THE 5-CENT PERF 11 ERROR IN EXISTENCE. A REMARKABLE STAMP IN EVERY RESPECT.

Most collectors must resort to large, unwieldy multiples to demonstrate the 5c error in relation to its 2c neighbors. The example offered here, with perfect centering and 2c denominations all around, is worthy of the finest collection.

With 1998 P.F. certificate..... 1,000.00



1264



1265

- 1265 ★★ **5c Carmine, Error (467).** Mint N.H., brilliant color, almost perfectly centered with wide margins all around, tiny paper flaw in top margin, still an Extremely Fine Gem and beautiful stamp ..... 1,000.00

- 1266 ★★ **6c Red Orange (468).** Mint N.H., precise centering and balanced margins, bright color with only a few traces of oxidation around frame not mentioned or evident on accompanying certificate, Extremely Fine, with 2001 P.F. certificate for block of four ..... 200.00



1266



1267

- 1267 ★★ **10c Orange Yellow (472).** Mint N.H., brilliant color, wide margins, Extremely Fine, a gorgeous stamp, with 2005 P.S.E. certificate (XF-Superb 95) ..... 240.00



1268

1268 ★★ **30c Orange Red, Perf 10 (476A).** Position 83 from Plate No. 6911, Mint N.H., very deep and intense color, sharp proof-like impression on bright white paper, unusually choice centering for this difficult issue

FRESH AND EXTREMELY FINE. AN OUTSTANDING MINT NEVER-HINGED EXAMPLE OF THE VERY RARE 30-CENT PERF 10 WASHINGTON-FRANKLIN ON UNWATERMARKED PAPER.

In an article in *Philatelic Opinions V* published by the Philatelic Foundation, William T. Crowe, head of the Expert Committee, discusses the discovery of this rare stamp and how it might have been issued. The production of Scott 476A occurred during the period of transition from gauge-10 perfs to gauge 11. Bureau records do not list a 30c printing on unwatermarked paper that was perforated 10, but the existence of two certified panes—one bottom-right pane from Plate 6917 and one top-right pane from Plate 6911—is evidence that the combination of new unwatermarked paper and old 10-gauge perfs occurred, even if inadvertently. Stamps from these two panes (200 total), two left sheet-margin blocks of four and a bottom plate no. 6914 single, none of which have any trace of watermark, are the only accepted examples of Scott 476A.

The position just above this one, with similar centering, realized \$12,000 in our Piedmont sale in February 2002. With copy of 1984 P.F. certificate ..... 5,750.00



- 1269 ★★ **50c Light Violet (477).** Mint N.H., exceptional centering with wide margins all around, rich color on bright white paper  
EXTREMELY FINE EXAMPLE OF THE 50-CENT PERF 10 FRANKLIN ON UNWATERMARKED PAPER.

This 50c stamp was only in production for a very short period of time. It was actually released only three weeks prior to the beginning of the new Perf 11 series and was only used for a short period of time before being superseded by the new issue.

With 2001 P.F. certificate..... 2,400.00



1269



1270

- 1270 ★ **50c Light Violet (477).** Single hinge mark, pretty pastel color, choice centering with balanced margins  
EXTREMELY FINE ORIGINAL-GUM EXAMPLE OF THE 50-CENT FRANKLIN, SCOTT 477.

With 1991 P.F. and 2005 P.S.E. certificates (XF 90) 1,100.00



1271



1272



1273

- 1271 ★★ **2c Carmine, Ty. II, Coil (487).** Mint N.H. pair, brilliant color, perfectly centered, Extremely Fine Gem, with 2005 P.S.E. certificate (Superb 98)..... 60.00
- 1272 ★★ **2c Carmine, Ty. III, Coil (488).** Mint N.H. pair, enormous margins, rich color, Extremely Fine Gem, this is the widest pair we have ever seen, with 2005 P.S.E. certificate (XF-Superb 95 Jumbo) ..... 12.00
- 1273 ★★ **2c Carmine, Ty. III, Coil (488).** Mint N.H. pair, rich color, perfect centering on all sides, Extremely Fine Gem, scarce in such superb condition, with 2005 P.S.E. certificate (Superb 98)..... 12.00



1274

- 1274 ★ **2c Carmine, Ty. II, Coil (491).** Joint line pair, bright color, wide margins at top and bottom, centered to right

FINE. A RARE JOINT LINE PAIR OF THE 2-CENT ROTARY PRESS HORIZONTAL COIL, SCOTT 491.

Unlike most other issues, the horizontal coil is actually scarcer than the vertical coil. It was in production for only a short period of time before being replaced by the Type III, Scott 492.

With 1964 P.F. certificate ..... 12,000.00



1275

- 1275 ★ **2c Carmine, Ty. II, Coil (491).** Pair, radiant color, h.r.

FINE AND SCARCE PAIR OF THE 2-CENT ROTARY PRESS HORIZONTAL COIL, SCOTT 491.

With 1968 P.F. certificate ..... 5,250.00





- 1276 ★★ **3c Violet, Ty. I, Coil (493).** Mint N.H., pretty pastel color, Jumbo margins all around, Extremely Fine Gem, a beautiful stamp, with 2005 P.S.E. certificate (XF-Superb 95 Jumbo)..... 30.00
- 1277 ★★ **2c Deep Rose, Ty. Ia (500).** Mint N.H., brilliant color on bright paper, fresh and Extremely Fine, with 2005 P.F. certificate ..... 575.00
- 1278 ★★ **4c Brown (503).** Mint N.H., brilliant color, Jumbo margins, Extremely Fine, a phenomenal stamp, with 1996 P.F. and 2005 P.S.E. certificates (XF-Superb 95 Jumbo)..... 21.00
- 1279 ★★田 **4c Brown (503).** Mint N.H. top plate no. block of six, remarkably well-centered, fresh and intact, Extremely Fine, a gorgeous full top plate block, with 2000 P.F. certificate ..... 225.00
- 1280 ★★ **5c Rose, Error (505).** Mint N.H. in strip of three with two 2c stamps, almost perfectly centered with extra wide margins  
EXTREMELY FINE. A BEAUTIFUL MINT NEVER-HINGED EXAMPLE OF THE 5-CENT PERF 11 ERROR.  
With 1992 P.F. certificate..... 650.00
- 1281 ★ **5c Rose, Error (505).** Barest trace of hinging (if at all), radiant color, well-centered, Extremely Fine Gem, scarce in such superb condition, with copy of 2001 P.F. and with 2004 P.S.E. certificate (XF-Superb 95)..... 350.00



1282

1282

**6c Red Orange, Perf 10 at Top (506a).** Radiant color, neat "San Francisco California" precancel

VERY FINE AND CHOICE. ONE OF THE FINEST OF THE TWELVE USED COPIES THAT HAVE BEEN CERTIFIED BY THE PHILATELIC FOUNDATION.

Our updated census of Scott 506a contains twelve used copies. Of these, eight have faults ranging from pulled perfs to creases. This is one of the finest copies contained in our records.

With 2004 P.S.E. and 2005 P.F. certificates. 4,000.00

1283

**8c Olive Bister, Perf 10 at Top or Bottom (508c).** Pretty pastel color, "Dayton Ohio" precancel, top left corner faulty

A VERY RARE PERFORATION VARIETY. OUR RECORDS CONTAIN ONLY FOURTEEN EXAMPLES.

Only three other examples in our records have a Dayton precancel..... 5,250.00



1283



1284

1284

**11c Light Green, Perf 10 at Bottom (511a).** Deep rich color, bold strike of oval cancel

FRESH AND FINE. A SCARCE SOUND USED EXAMPLE OF THE 11-CENT FRANKLIN PERFORATED 10 AT BOTTOM.

With 1997 A.P.S. certificate ..... 3,000.00



- 1285      **11c Light Green, Perf 10 at Bottom (511a).** Bright color on crisp paper, neat "Minneapolis, Minn." precancel, natural paper wrinkle at left, small thin spot at top, Very Fine appearance ..... 3,000.00



1285



1286

- 1286      **11c Light Green, Perf 10 at Bottom (511a).** Bright color, neat "Minneapolis, Minn." precancel, small corner crease at top left and pulled perf at top right, otherwise Fine example of this perforation variety ..... 3,000.00

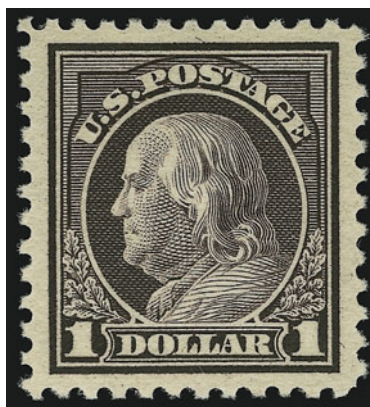


1287

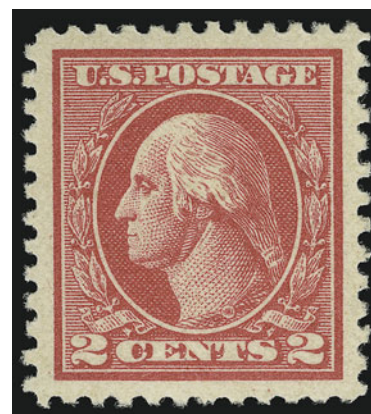
- 1287      **20c Light Ultramarine, Perf 10 at Bottom (515d).** Rich color and detailed impression, bold "Ithaca N.Y." precancel, single pulled perf at top  
 EXTREMELY FINE CENTERING. AN EXCEEDINGLY RARE EXAMPLE OF THE 20-CENT PERF 10 AT TOP OR BOTTOM. THIS IS ONE OF THE RAREST OF ALL PERF 10 ON ONE SIDE VARIETIES.  
 We have only sold two other examples since keeping computerized records. The first was in our 1999 Rarities sale, which realized \$6,750 hammer. The last example we have offered realized \$10,500 hammer in our 2001 auction of the Twigg-Smith Collection (Sale 835). Despite 12 years of searching, Zoellner was never able to find a copy of this rarity.....  
 ..... 12,000.00



1288

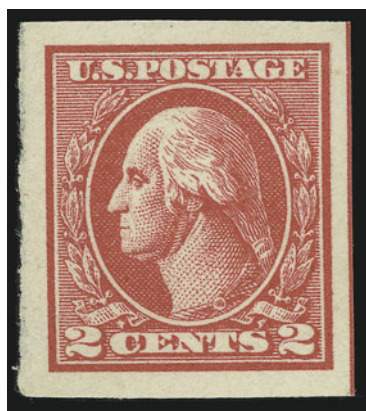


1289



1290

- 1288 ★★ **20c Light Ultramarine (515)**. Mint N.H., brilliant color, huge margins, Extremely Fine Gem, a beautiful stamp, with 2005 P.S.E. certificate (XF-Superb 95)..... 95.00
- 1289 ★★ **\$1.00 Violet Brown (518)**. Mint N.H., deep rich color, Jumbo margins all around, full offset of another Scott No. 518 on reverse, Extremely Fine Gem, with 1990 P.F. and 2005 P.S.E. certificates (XF-Superb 95) ..... 105.00
- 1290 ★★ **2c Carmine, Ty. V (527)**. Mint N.H., brilliant color, enormous margins, Extremely Fine Gem, a gorgeous stamp, with 2005 P.S.E. certificate (Superb 98) ..... 42.00



1291

- 1291 ★ **2c Carmine, Ty. VII, Imperforate (534B)**. Large margins all around, brilliant color, fresh and Extremely Fine, with copy of 1968 P.F. certificate for block of four and with 2005 P.F. certificate 2,100.00

- 1292 ★★ **3c Deep Violet (537a)**. Mint N.H., deep rich color and proof-like impression, post-office fresh

VERY FINE AND CHOICE MINT NEVER-HINGED  
EXAMPLE OF THE 3-CENT VICTORY ISSUE IN THE  
ELUSIVE DEEP RED VIOLET SHADE.

With 2005 P.S.E. certificate for pair..... 2,250.00



1292



- 1293 ★★ **3c Violet, Ty. II (541).** Mint N.H., pretty pastel color, choice centering with balanced margins, fresh and Extremely Fine, a difficult stamp to find in such choice condition, with 2000 P.F. certificate as block of four and 2005 P.S.E. certificate (XF-Superb 95) ..... 95.00



1293



1294

- 1294 **1c Green, Rotary Perf 11 (544).** Rich color and detailed impression, machine cancel leaves design clearly visible  
FRESH AND VERY FINE FOR THIS ISSUE. A BEAUTIFUL AND RARE LIGHTLY-CANCELLED SOUND EXAMPLE OF THE ONE-CENT ROTARY PERF 11 ISSUE, SCOTT 544.  
With 2005 P.S.E. certificate ..... 3,250.00

- 1295 ★ **1c Green, Rotary (545).** Mint N.H., radiant color, wide and balanced margins for this difficult rotary press issue, Extremely Fine, scarce in such superb condition, with 2005 P.S.E. certificate (XF-Superb 95), this is the highest grade achieved thus far for any Scott 545 ..... 200.00



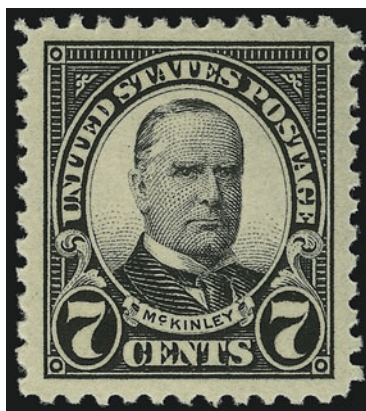
1295

## 1922-29 AND LATER ISSUES

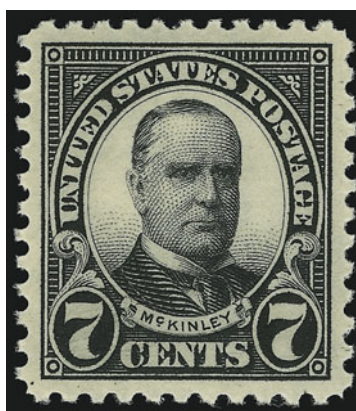


1296

- 1296 ★ **5c Dark Blue, Imperforate Pair (557a).** Large margins, deep rich color, lightly hinged, Very Fine and choice, scarce, Datz states only one pane of 100 known, with copy of 2004 P.F. certificate ..... 1,500.00



1297



1298



1299

- 1297 ★★ **7c Black (559).** Mint N.H., intense shade on bright paper, Jumbo margins all around, Extremely Fine Gem, a gorgeous stamp, with 2004 P.F. certificate..... 18.00
- 1298 ★★ **7c Black (559).** Mint N.H., perfectly centered with wide margins all around, intense impression on bright paper, Extremely Fine Gem, with 2005 P.S.E. certificate (XF-Superb 95)..... 18.00
- 1299 ★★ **10c Orange (562).** Mint N.H., vibrant color, huge balanced margins, Extremely Fine Gem, a phenomenal stamp, with 2005 P.F. certificate..... 37.00



1300

- 1300 (★) **10c Orange, Imperforate Pair (562b).** Vertical pair, Positions 83/93, large margins incl. **sheet margin at bottom**, unused (no gum) as are all known examples, rich color, Very Fine, scarce, according to *United States Stamps 1922-26* by Gary Griffith, noted dealer Philip Ward purchased a pane in 1925 in Oklahoma — large areas were marked for destruction with a blue crayon — examples such as the pair offered here, not defaced by the blue crayon, are scarce. With 2005 P.F. certificate..... 1,500.00

- 1301 **10c Orange, Perf 10 at Top (562c).** Bold "Nashville Tenn." precancel applied inverted, rich color

VERY FINE AND CHOICE. ONE OF THE FINEST EXAMPLES OF THE 10-CENT 1922 PERF 10 AT TOP OR BOTTOM VARIETY. ONLY NINE SINGLES AND TWO PAIRS ARE KNOWN TO US.

Of the examples contained in our records, only four singles and one pair are sound..... 5,500.00



1301



1302

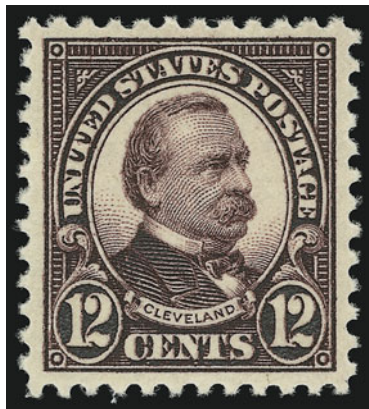
**10c Orange, Perf 10 at Top (562c).** Bold "Minneapolis, Minn." precancel, deep shade, small thin spot at top left, small scuff at bottom right

FINE AND RARE EXAMPLE OF THE 10-CENT 1922 PERF 10 AT TOP OR BOTTOM VARIETY. ONLY NINE SINGLES AND TWO PAIRS ARE KNOWN TO US.

Of the examples contained in our records, only four singles and one pair are sound..... 5,250.00



1302



1303



1304



1305

- 1303 ★★ **12c Brown Violet (564).** Mint N.H., deep rich color on bright paper, perfectly centered with wide margins, Extremely Fine Gem, with 2005 P.S.E. certificate (XF-Superb 95)..... 13.00
- 1304 ★★ **14c Blue (565).** Mint N.H., brilliant color on white paper, enormous margins, Extremely Fine Gem, a magnificent stamp, with 2005 P.S.E. certificate (XF-Superb 95)..... 8.00
- 1305 ★★ **15c Gray (566).** Mint N.H., radiant color on post-office fresh paper, huge margins, Extremely Fine Gem, a gorgeous stamp, with 2005 P.S.E. certificate (XF-Superb 95)..... 42.00

- 1306 ★★ **\$5.00 Carmine & Blue (573).** Mint N.H., beautiful bright colors on white paper, perfectly centered with wide and perfectly proportioned margins on all sides

EXTREMELY FINE GEM. THIS MAGNIFICENT MINT NEVER-HINGED EXAMPLE OF THE \$5.00 1922 ISSUE IS THE ESSENCE OF PERFECTION.

With 2005 P.S.E. certificate (Superb 98)... 225.00



1306



1307



1308



1309



1310



1311



1312



1313

- 1307 ★★ **2c Carmine, Ty. II (634A).** Mint N.H. with **sheet margin at right**, deep shade, perfectly centered with wide even margins  
EXTREMELY FINE. A SUPERB MINT NEVER-HINGED SHEET MARGIN EXAMPLE OF SCOTT 634A.  
With 2002 P.F. certificate ..... 600.00
- 1308 ★★ **7c Kans. Ovpt. (665).** Mint N.H. with **bottom right plate no.**, deep shade, wide margins, Extremely Fine, with 2005 P.F. certificate as plate block of four ..... 50.00
- 1309 ★★ **8c Kans. Ovpt. (666).** Mint N.H. with **selvage at top**, pretty pastel color, perfectly centered with wide and balanced margins, Extremely Fine Gem, a phenomenal stamp, with 2005 P.S.E. certificate (XF-Superb 95) ..... 180.00
- 1310 ★★ **8c Kans. Ovpt. (666).** Mint N.H., pretty shade, well-balanced margins, Extremely Fine Gem, with 2005 P.S.E. certificate (XF-Superb 95) ..... 180.00
- 1311 ★★ **8c Nebr. Ovpt. (677).** Mint N.H. with **selvage at right**, attractive shade, unusually choice centering with wide margins, Extremely Fine Gem, a beautiful stamp, with 2004 P.F. certificate ..... 60.00
- 1312 ★★ **\$5.00 Presidential (834).** Mint N.H., brilliant color, perfectly centered, Extremely Fine Gem, with 2005 P.S.E. certificate (Superb 98) ..... 85.00
- 1313 ★★ **\$5.00 Hamilton (1053).** Mint N.H., perfect centering, wide margins, Extremely Fine, with 2005 P.S.E. certificate (Superb 98) ..... 57.00



## AIR POST



1314



1316



1318



1315



1317



1319



1320

- 1314 ★★ **16c Green, 1918 Air Post (C2).** Mint N.H., brilliant color, Jumbo margins, Extremely Fine Gem, a huge stamp, with 2005 P.S.E. certificate (XF-Superb 95 Jumbo) ..... 150.00
- 1315 ★★田 **16c Green, 1918 Air Post (C2).** Mint N.H. top plate no. and arrow block of eight, deep rich color, wide margins, fresh and Extremely Fine, with 2005 P.F. certificate, Scott Retail as plate no. block of six and two Mint N.H. singles ..... 1,800.00
- 1316 ★★ **24c Carmine Rose & Blue, 1918 Air Post (C3).** Mint N.H., rich colors, detailed impressions, extra wide margins, Extremely Fine Gem, with 2005 P.S.E. certificate (XF-Superb 95 Jumbo) 150.00
- 1317 ★★ **24c Carmine Rose & Blue, 1918 Air Post (C3).** Mint N.H., brilliant colors on bright paper, long and full perfs all around, Extremely Fine Gem, with 2005 P.S.E. certificate (XF-Superb 95)..... 150.00
- 1318 ★★ **5c Winged Globe (C12).** Mint N.H. with **plate no. at left**, enormous margins, bright color, Extremely Fine Gem, a huge stamp, with 2005 P.S.E. certificate (Superb 98 Jumbo) ..... 17.00
- 1319 ★★ **65c Graf Zeppelin (C13).** Mint N.H., deep rich color, Jumbo margins, Extremely Fine Gem, a magnificent example of the 65c Graf Zeppelin Issue, with 2005 P.S.E. certificate (XF-Superb 95 Jumbo) ..... 350.00
- 1320 **65c Graf Zeppelin (C13).** Rich color, wide margins, neat duplex cancel, fresh and Extremely Fine, with copy of 2000 P.F. certificate for pair and 2005 P.S.E. certificate (XF 90) ..... 160.00



1321



1321 ★★田 65c-\$2.60 Graf Zeppelin (C13-C15). Mint N.H. side plate no. blocks of six, brilliant colors, unusually choice centering throughout, the \$1.30 and \$2.60 free from the usual natural gum skips and bends and the 65c with negligible few

EXTREMELY FINE GEMS. A REMARKABLY PRISTINE MINT NEVER-HINGED SET OF PLATE BLOCKS OF THE 1930 GRAF ZEPPELIN ISSUE.

Very few sets are in as superb condition as the set offered here. .... 22,100.00



1322

1322 ★田 \$1.30 Graf Zeppelin (C14). Bottom plate no. block of six, slightly glazed gum, Extremely Fine appearance..... 5,600.00





1323



1324



1325



1326



1327

- 1323 ★★ **\$1.30 Graf Zeppelin (C14).** Mint N.H., crisp impression and rich color, perfectly centered with well-balanced margins  
EXTREMELY FINE GEM. THIS SUPERB-98 EXAMPLE OF THE \$1.30 IS A KEY STAMP FOR ANYONE TRYING TO ASSEMBLE A TOP-RATED SET OF THE GRAF ZEPPELIN ISSUE.  
With 2005 P.S.E. certificate (Superb 98) ..... 700.00
- 1324 ★★ **\$1.30 Graf Zeppelin (C14).** Mint N.H., bright color, free from the usual natural gum skips and bends that can plague this issue, enormous margins at sides, Extremely Fine Gem, with 1982 P.F. and 2005 P.S.E. certificates (XF 90 Jumbo — in our opinion, deserving of XF-Superb 95) ..... 700.00
- 1325 **\$1.30 Graf Zeppelin (C14).** Perfectly centered with huge margins all around, crisp impression, neat cancel leaves design clearly visible, Extremely Fine Gem, a phenomenal stamp, just as difficult to obtain in such choice used condition, with 2005 P.F. and 2005 P.S.E. certificates (Superb-98)..... 375.00
- 1326 ★★ **\$2.60 Graf Zeppelin (C15).** Mint N.H., deep rich color, wide and balanced margins all around, free from the natural gum skips and bends that can plague this issue  
EXTREMELY FINE GEM. THE \$2.60 GRAF ZEPPELIN IS VERY RARE IN THIS XF-SUPERB 95 GRADE.  
With 2005 P.S.E. certificate (XF-Superb 95) ..... 1,050.00
- 1327 ★★ **50c Chicago Zeppelin (C18).** Mint N.H., bright color, wide margins, fresh and Extremely Fine, with 2005 P.S.E. certificate (XF-Superb 95 Jumbo)..... 95.00



## SPECIAL DELIVERY, REGISTRATION



1328



1329



1330



1332



1331

- 1328 ★★ **10c Blue, Special Delivery (E4).** Mint N.H., deep rich color and proof-like impression on bright paper, well-balanced margins  
EXTREMELY FINE MINT NEVER-HINGED EXAMPLE OF THE 1894 10-CENT SPECIAL DELIVERY ISSUE.  
With 2004 P.S.E. certificate (XF 90 — in our opinion, easily XF-Superb 95)..... 1,750.00
- 1329 ★★ **10c Blue, Special Delivery (E5).** Mint N.H., almost perfect centering with unusually wide margins, sharp proof-like impression on post office fresh paper, Extremely Fine Gem, scarce with such enormous margins on all sides, with 2004 P.F. certificate ..... 400.00
- 1330 ★★ **10c Ultramarine (E9).** Mint N.H., radiant color, huge margins all around which are evenly-proportioned, Extremely Fine, with 2005 P.S.E. certificate (XF 90 Jumbo — in our opinion, not a Jumbo but an XF-Superb 95) ..... 400.00
- 1331 ★★ **10c Deep Ultramarine, Special Delivery (E12a).** Mint N.H. with **plate no. at top**, rich color, Jumbo margins, Extremely Fine Gem, a stamp of tremendous visual appeal, with 2005 P.F. certificate..... 90.00
- 1332 ★★ **10c Ultramarine, Registration (F1).** Mint N.H., radiant color on bright paper, wide margins, Extremely Fine, a beautiful stamp, with 2005 P.S.E. certificate (XF-Superb 95) ..... 150.00



POSTAGE DUES

- 1333 ★ **3c Deep Brown, Special Printing (J10).** Part original gum, beautiful rich color, remarkably well-centered on bright white paper, small crease at bottom right

EXTREMELY FINE APPEARANCE. THE 3-CENT IS POSSIBLY THE RAREST OF THE POSTAGE DUE SPECIAL PRINTINGS.

Although 436 copies were reported sold, it is believed that 100 copies were destroyed in the Calman lot. A thorough search of the marketplace, combined with conversations with dealers and collectors, has confirmed the extreme rarity of this stamp.

This is only the fourth example we have sold in the last five years. The other three are the Zoellner copy (original gum, inclusion, poorly centered), the Drucker copy (no gum, poorly centered), and a third copy (original gum, reperfed at top). This is the only sound copy we have offered with any amount of original gum.

With 2003 P.S.E. certificate ..... 19,000.00



1333



1334

- 1334 ★ **1c Vermilion (J29).** Original gum, lightly hinged, brilliant color, choice centering for this difficult issue

VERY FINE AND CHOICE. A BEAUTIFUL EXAMPLE OF THIS RARE POSTAGE DUE ISSUE.

With 2004 P.F. certificate ..... 2,000.00

- 1335 ★★ **50c Deep Claret (J37).** Mint N.H., rich color, fantastic wide margins all around with perfect centering, every perf tooth is fully formed

EXTREMELY FINE GEM. IN OUR OPINION, AND SUBSTANTIATED BY OUR EXTENSIVE AUCTION RECORDS, THIS IS THE FINEST MINT NEVER-HINGED EXAMPLE OF THE 50-CENT 1894 UNWATERMARKED BUREAU POSTAGE DUE ISSUE. NOT ONLY ONE OF THE MOST OUTSTANDING POSTAGE DUE STAMPS IN EXISTENCE, BUT ONE OF THE GREATEST OF ALL BUREAU ISSUES.

The 50c 1894 Unwatermarked Bureau Postage Due Issue is notorious for its typically poor centering. Only a tiny fraction of the total population exists with centering that could be compared with this example, and it is unlikely that any other has the margin width of this stamp or Mint N.H. gum. For the record, we have offered three Mint N.H. singles, none with margins and centering equal to the stamp offered here.

With 2005 P.F. certificate ..... 3,750.00



1335



1336

- 1336 ★ **50c Deep Claret (J44).** Original gum, lightly hinged, detailed impression, almost perfectly centered with wide margins, fresh and Extremely Fine, with 2002 P.S.E. certificate (XF-Superb 95)..... 425.00

- 1337 ★★ **3c Carmine Lake (J54).** Mint N.H., rich color on bright paper, almost perfectly centered  
EXTREMELY FINE. A RARE HIGH-GRADE MINT NEVER-HINGED EXAMPLE OF THE 1914 3-CENT PERF 10 POSTAGE DUE, SCOTT J54.  
With 2005 P.F. certificate ..... 2,250.00



1337



1338

- 1338 ★★ **1c Carmine Rose (J61).** Mint N.H., radiant color, huge margins, Extremely Fine Gem, despite this issue's modest catalogue value, very few examples can rival this stamp, only one Superb 98 is listed in the PSE population report, with 2005 P.S.E. certificate (Superb 98)..... 6.00



## OFFICES IN CHINA, OFFICIALS



1339



1340



1341



1342

- 1339 ★★ **2c on 1c Offices in China (K1).** Mint N.H., rich color, beautiful centering, Extremely Fine Gem, with 2005 P.S.E. certificate (XF-Superb 95)..... 60.00
- 1340 ★★ **2c on 1c Offices in China (K17).** Mint N.H., rich color and proof-like impression, wide and balanced margins, Extremely Fine Gem, with 2005 P.F. certificate ..... 250.00
- 1341 ★ **6c Agriculture (O4).** Original gum, single hinge mark, vibrant color, wide margins, Extremely Fine Gem, a truly incredible stamp, with 2005 P.F. certificate..... 180.00
- 1342 ★★ **6c Interior (O18).** Mint N.H. with **bottom left corner selvage**, vibrant color, enormous margins, Extremely Fine Gem, a phenomenal stamp, with 2003 P.F. certificate for strip of six ..... 55.00

- 1343 ★ **1c Agriculture, Soft Paper (O94).** Without gum as issued, brilliant color on bright paper  
 EXTREMELY FINE EXAMPLE OF THE ONE-CENT AGRICULTURE AMERICAN BANK NOTE PRINTING.  
 As discerning collectors know, the Officials can be extremely difficult to obtain in sound, centered condition. This is especially true of the American printings on soft porous papers, which are prone to faults.  
 With 2001 P.F. certificate ..... 4,500.00



1343

NEWSPAPERS AND PERIODICALS



1344

- 1344 ★ **12c Rose, 1875 Issue (PR16).** Original gum, bright color, Extremely Fine, scarce in such choice condition, with 2005 P.F. certificate ..... 350.00

- 1345 ★ **\$9.00 Yellow, 1875 Issue (PR27).** Original gum, intense color, choice centering

EXTREMELY FINE. A BEAUTIFUL EXAMPLE OF THE \$9.00 1875 ISSUE NEWSPAPER STAMP.

Sound, original-gum and centered examples of high-denomination Newspaper stamps, particularly of the First Issue, are incredibly rare. Only a handful of PR27's exist in this grade.

With 1984 and 2000 P.F. certificates..... 3,000.00



1345

- 1346 ★ **\$24.00 Dark Gray Violet, 1875 Issue (PR29).** Original gum, lightly hinged, dark color, choice centering, trivial corner perf crease at bottom right

VERY FINE AND CHOICE APPEARING ORIGINAL-GUM EXAMPLE OF THE \$24.00 CONTINENTAL BANK NOTE ISSUE.

We have only offered six examples of this rarity since keeping computerized records..... 3,850.00



1346

- 1347 ★ **\$48.00 Red Brown, 1875 Issue (PR31).** Original gum, deep rich color and detailed impression, tiny natural gum bend at bottom not mentioned on accompanying certificate

VERY FINE AND CHOICE ORIGINAL-GUM EXAMPLE OF THE \$48.00 1875 NEWSPAPER ISSUE.

This is one of the most difficult issues to obtain in choice, sound condition.

With 1989 P.F. certificate..... 5,000.00



1347



- 1348 ★ **48c Pale Rose, 1875 Special Printing (PR43).**  
Without gum as issued, deep rich color on brilliant paper  
VERY FINE. A REMARKABLY CHOICE EXAMPLE OF THE 48-CENT 1875 NEWSPAPER SPECIAL PRINTING.  
Only 268 sold. With 1993 P.F. certificate.....  
..... 3,100.00



1348



1349

- 1349 ★ **72c Pale Rose, 1875 Special Printing (PR45).**  
Without gum as issued, brilliant color on bright paper, natural s.e. at bottom incl. part of adjoining stamp and **part arrow** at right  
VERY FINE AND CHOICE EXAMPLE OF THE 72-CENT 1875 CONTINENTAL SPECIAL PRINTING.  
Only 174 sold. With 1985 P.F. certificate .....  
..... 4,000.00

- 1350 ★ **72c Pale Rose, 1875 Special Printing (PR45).**  
Without gum as issued, brilliant color on bright paper  
VERY FINE AND CHOICE EXAMPLE OF THE 72-CENT 1875 CONTINENTAL SPECIAL PRINTING.  
Only 174 sold. Small backstamp barely shows thru.  
With 1998 P.F. certificate ..... 4,000.00



1350



1351

- 1351 ★ **96c Pale Rose, 1875 Special Printing (PR47).** Without gum as issued, brilliant color, wide and well-balanced margins, single nibbed perf at top  
 VERY FINE APPEARANCE. A RARE EXAMPLE OF THE 96-CENT NEWSPAPER CONTINENTAL BANK NOTE COMPANY SPECIAL PRINTING.  
 Only 141 sold. With 1970 P.F. certificate ..... 7,000.00



1352

- 1352 ★ **\$1.92 Dark Brown, 1875 Special Printing (PR48).** Without gum as issued, intense color and proof-like impression on bright white paper, wide margins for this difficult issue  
 VERY FINE. A BEAUTIFUL AND RARE SOUND EXAMPLE OF THE 96-CENT NEWSPAPER CONTINENTAL BANK NOTE COMPANY SPECIAL PRINTING. ONLY 41 WERE SOLD.  
 None was offered in either the Floyd or Lessin sales, and the Lyons copy was not as well centered. This is only the fourth example we have offered since keeping computerized records.  
 With 1993 P.F. certificate ..... 20,000.00





1353

- 1353 ★ **\$60.00 Purple, 1879 Issue (PR79).** Original gum, single hinge mark, pretty shade, fresh and Extremely Fine, with 2004 P.F. and 2005 P.S.E. certificates (XF 90) ..... 825.00



1354

- 1354 ★ **2c Intense Black, 1883 Special Printing (PR80).** Without gum as issued, Jumbo margins all around, intensely dark shade on bright paper  
EXTREMELY FINE GEM. A SPECTACULAR WIDE-MARGINED EXAMPLE OF THE SCARCE 2-CENT 1883 NEWSPAPER SPECIAL PRINTING.  
With 2005 P.F. certificate ..... 1,250.00



1355

- 1355 ★ **60c Pink, 1894 Issue (PR98).** Original gum, natural vertical gum crease at left, tiny scuff speck to the right of "RS"

VERY FINE APPEARANCE. THE 60-CENT 1894 NEWSPAPER ISSUE IS ONE OF THE RAREST OF ALL NEWSPAPER STAMPS. ONLY ELEVEN ARE CONTAINED IN OUR RECORDS.

Of the eleven copies contained in our records, only two are potentially sound, and neither is as well-centered as the example offered here. This example is one of the best-centered copies.

With 1990 P.S.E. certificate..... 60,000.00



1356

- 1356 ★ **96c Pink, 1894 Issue (PR99).** Original gum, h.r., deep rich color, vertical gum crease, accompanying certificate notes "horizontal and vertical creases" which are not readily apparent

FINE AND RARE EXAMPLE OF THE 96-CENT 1894 NEWSPAPER ISSUE.

This is the first example we have offered since our 1993 Rarities sale. None was offered in the Floyd, Lessin or Lyons sale. We have not completed our census work for this rarity, but we feel confident in stating that this will prove to be one of the rarest of all newspaper stamps.

With 1991 P.F. certificate ..... 50,000.00





1357

1357 (★) **\$6.00 Pale Blue, 1894 Issue (PR101).** Unused (no gum), brilliant color, choice centering for this difficult issue

EXTREMELY FINE. A SUPERB UNUSED EXAMPLE OF THE RARE \$6.00 1894 UNWATERMARKED BUREAU ISSUE. ONLY FIFTEEN UNUSED EXAMPLES HAVE BEEN CERTIFIED AS GENUINE BY THE PHILATELIC FOUNDATION, MOST OF WHICH HAVE VARYING DEGREES OF FAULTS. THE EXAMPLE OFFERED HERE IS ONE OF THE FINEST IN EXISTENCE.

With 2004 P.F. certificate ..... 60,000.00



1358

1358 (★) **\$6.00 Pale Blue, 1894 Issue (PR101).** Unused (no gum), brilliant color, natural s.e. at top, tiny thin spot at top not mentioned on accompanying certificate

VERY FINE AND CHOICE APPEARANCE. A RARE EXAMPLE OF THE \$6.00 1894 UNWATER-MARKED BUREAU ISSUE. ONLY FIFTEEN UNUSED EXAMPLES HAVE BEEN CERTIFIED AS GENUINE BY THE PHILATELIC FOUNDATION, MOST OF WHICH HAVE VARYING DEGREES OF FAULTS.

With 1991 P.F. certificate ..... 60,000.00





1359

- 1359 ★ **\$5.00 Ultramarine, 1895 Issue (PR109).** Original gum, lightly hinged, rich color on bright paper

VERY FINE AND CHOICE ORIGINAL-GUM EXAMPLE OF THIS SCARCE NEWSPAPERS AND PERIODICALS ISSUE. SELDOM SEEN IN SOUND CONDITION.

With 2005 P.F. certificate ..... 1,850.00

- 1360 ★ **\$50.00 Dull Rose, 1895 Issue (PR112).** Original gum, lightly hinged, rich color, wide margins for this difficult issue

EXTREMELY FINE. A BEAUTIFUL ORIGINAL-GUM EXAMPLE OF THE \$50.00 1895 UNWATERMARKED NEWSPAPER ISSUE.

With 2002 P.F. and 2005 P.S.E. certificates (XF 90) ..... 2,750.00



1360

## PARCEL POST



1361



1362

- 1361 ★★ **10c Parcel Post (Q6).** Mint N.H. with **plate no. at bottom**, brilliant color, wide and balanced margins, Extremely Fine Gem, with 2005 P.S.E. certificate (XF-Superb 95) ..... 120.00

- 1362 ★★ **\$1.00 Parcel Post (Q12).** Mint N.H., brilliant color and detailed impression on post-office fresh paper, wide and balanced margins all around, tiny natural inclusion at bottom left not mentioned on either accompanying certificate

EXTREMELY FINE GEM. A SUPERB MINT NEVER-HINGED EXAMPLE OF THE \$1.00 PARCEL POST ISSUE. SCARCE IN SUCH SUPERB CONDITION.

With 2000 P.F. and 2005 P.S.E. certificates (XF-Superb 95)..... 850.00

REVENUES



1363

1363 **\$500.00 Red Orange, Green & Black, Second Issue, "Large Persian Rug" (R133).** Rich colors, neat manuscript cancel

VERY FINE AND CHOICE. A RARE AND BEAUTIFUL SOUND EXAMPLE OF THE FAMOUS "LARGE PERSIAN RUG" STAMP. ONE OF THE MOST COLORFUL AND BEAUTIFUL STAMPS IN ALL OF PHILATELY.

Examples of this oversize stamp are usually found with faults to varying degree, due to its size. The example offered here, free from any faults and with deep rich colors, is a great rarity.

Illustrated in Kingsley book (Census No. 6-4) ..... 13,000.00



- 1364 **\$1.00 Green & Black on Green Paper, Proprietary (RB9b).** Original gum, deep rich colors, light natural gum bend

VERY FINE AND CHOICE. THE ONLY KNOWN ORIGINAL-GUM EXAMPLE OF THE \$1.00 PROPRIETARY ISSUE ON GREEN PAPER. ONE OF THE GREAT RARITIES OF REVENUE COLLECTING.

Larry Lyons lists seven used examples in his census. The example offered here was not included in his census. This is the only unused example, and one of only two sound copies in existence.

With 1996 P.S.E. certificate..... 10,000.00



1364



1365

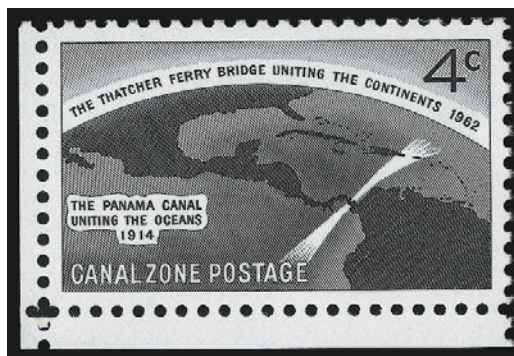
- 1365 **\$5.00 Green & Black on Violet Paper, Proprietary (RB10a).** Rich color, well-centered, lightened manuscript cancellation, few faults incl. filled thin spots

VERY FINE APPEARANCE. A RARE EXAMPLE OF THE \$5.00 PROPRIETARY ON VIOLET PAPER. ONLY 74 WERE ISSUED ON VIOLET PAPER.

Examples of the \$5.00 Proprietary Issue almost invariably have faults, due to the stamp's large size and the nature of its use.

With 1994 P.S.E. certificate .....  
..... 8,000.00

## CANAL ZONE



1366

1366 ★★ 1962, 4c Thatcher Ferry Bridge, Silver (Bridge) Omitted (157a). Position 46, Mint N.H. with bottom left corner selvage, brilliant colors on bright paper

EXTREMELY FINE. THE UNIQUE BOTTOM LEFT CORNER SELVAGE POSITION EXAMPLE OF THE THATCHER FERRY BRIDGE ERROR. ONLY ONE PANE OF 50 WAS EVER ISSUED.

According to *Canal Zone Stamps*, one sheet, consisting of four panes of 50, was printed. Three panes were caught by postal authorities, while the fourth pane of 50 was sent to H. E. Harris & Co. as part of a larger order from the Canal Zone Philatelic Agency. At the same time this error was printed, the U.S. had issued the Dag Hammarskjold error in huge quantities. The Canal Zone authorities made plans to do the same, but were successfully sued by H. E. Harris, and the larger printing never took place. The pane was broken up in 1969.

With 1989 P.S.E. certificate ..... 7,500.00



1367

1367 ★★田 1962, 4c Thatcher Ferry Bridge, Silver (Bridge) Omitted (157a). Positions 44-45/49-50, Mint N.H. block of four with bottom right corner selvage, brilliant colors on bright paper

EXTREMELY FINE. THE UNIQUE BOTTOM RIGHT CORNER SELVAGE BLOCK OF FOUR OF THE THATCHER FERRY BRIDGE ERROR. ONLY ONE PANE OF 50 WAS EVER ISSUED.

Signed in pencil at extreme right of selvage. With copies of 1979 Friedl and 1970 P.F. certificates. With 1990 P.S.E. certificate. Scott Retail as singles..... 30,000.00

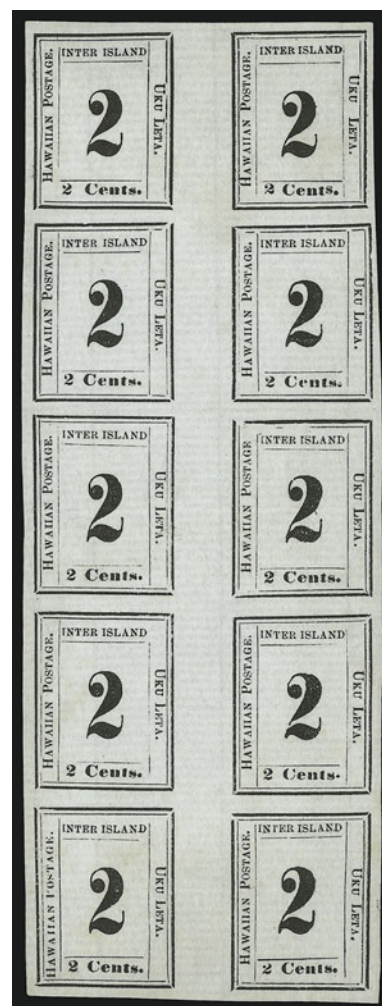


## HAWAII

- 1368 (★) 1864, 2c Black, Laid (24). Complete pane of ten from Plate 7-A, unused (no gum), large margins, detailed impression

VERY FINE AND CHOICE. A SCARCE COMPLETE PANE OF TEN OF THE 2-CENT BLACK NUMERAL ON LAID PAPER.

Scott Retail as two blocks of four and two singles .....  
 ..... 2,850.00



1368



1369

- 1369 (★) 1865, 1c Dark Blue (25). Block of eight with vertical gutter, Plate 11-A, Ty. VII-VIII/V-VI (Westerberg Positions 3-4/5-6), unused (no gum), large margins, rich color on bright paper, vertical crease in gutter only, one stamp tiny toned spot

VERY FINE. A RARE GUTTER BLOCK OF EIGHT OF THE ONE-CENT DARK BLUE NUMERAL ISSUE.

These issues were printed in sheets of 50 comprised of five setting of ten each. Scott Retail as two blocks of four with no premium for the gutter..... 2,700.00

PHILIPPINES



1370

- 1370 ★ **1901, \$1.00 Black, Ty. II (223A).** Original gum, lightly hinged, intense shade and impression, well-balanced margins  
 EXTREMELY FINE. A BEAUTIFUL ORIGINAL-GUM EXAMPLE OF THE 1901 \$1.00 TYPE II WITH PHILIPPINES OVERPRINT.  
 The fifteen left vertical rows of Plate 76 are Type I; the remaining five rows are Type II. Only 3,000 \$1.00 1895 stamps were overprinted for use in the Philippines. Therefore, only 750 Type II stamps were produced.  
 With 2005 P.F. certificate ..... 2,400.00



1371

- 1371 ★★ **1903, 50c Orange (236).** Mint N.H., radiant color, wide margins, fresh and Extremely Fine Gem, a superb stamp in every respect, with 2005 P.S.E. certificate, the P.S.E. no longer grades U.S. Possessions, we feel confident if they did this would receive at least an XF-Superb 95 grade..... 125.00

END OF SALE — THANK YOU