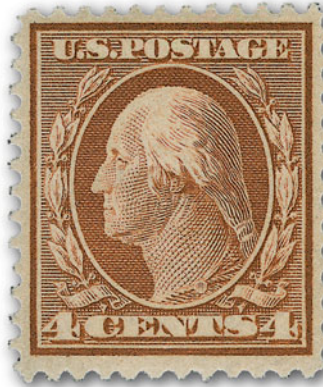
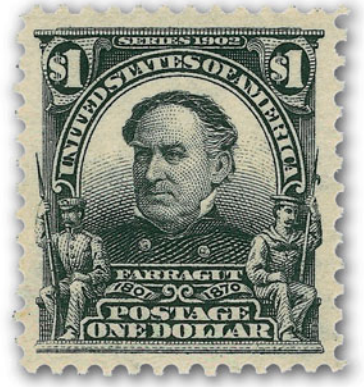


## Sale 903

Thursday, October 20, 2005

# The North Fork Collection of Superb 20th Century United States Stamps



*Robert A. Siegel*

AUCTION GALLERIES, INC.

[www.siegelauctions.com](http://www.siegelauctions.com)

# Sale 903

Thursday, October 20, 2005  
at 1:30 p.m.

## The North Fork Collection of Superb 20th Century United States Stamps

**Offered without reserves**



### Arrangement of Sale

**First session (lots 1501-1790)**  
**Thursday, October 20, at 1:30 p.m.**

1902-08 Issue .....	5-12
Louisiana Purchase, Jamestown Issues .....	13
1908-12 Issues .....	14-21
Bluish Paper .....	22-26
1908-12 Issues continued .....	27-35
Panama-Pacific Issue.....	36-37
1908-12 Issues continued .....	37-40
1912-23 Issues .....	41-61
1922-29 and Later Issues .....	62-68
Balance Lot .....	68

### Pre-sale exhibition

Tuesday, October 18 — 10:00 a.m. to 4:00 p.m.  
Wednesday, October 19 — 10:00 a.m. to 4:00 p.m.  
Thursday, October 20 — 10:00 a.m. to 12:00 p.m.  
or by appointment (please call 212-753-6421)

**On-line catalogue, e-mail bid form, resources and  
the Siegel Encyclopedia are available on our web site:**

[www.siegelauctions.com](http://www.siegelauctions.com)

### On the cover

Front: 1511, 1512  
1573, 1576  
1597, 1630  
1655, 1702

Back: 1517, 1529  
1569, 1596  
1667, 1709

Above: 1579



AFTERNOON SESSION (LOTS 1501-1790)  
THURSDAY, OCTOBER 20, 2005, AT 1:30 P.M.

# THE NORTH FORK COLLECTION OF SUPERB 20TH CENTURY UNITED STATES STAMPS

1902-08 ISSUE



1501



1502



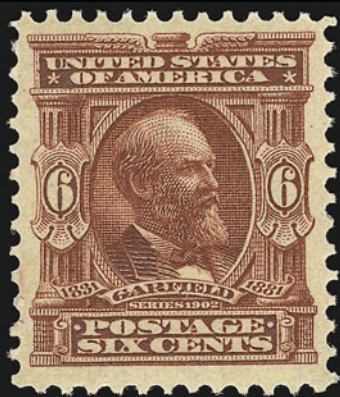
1503



1504

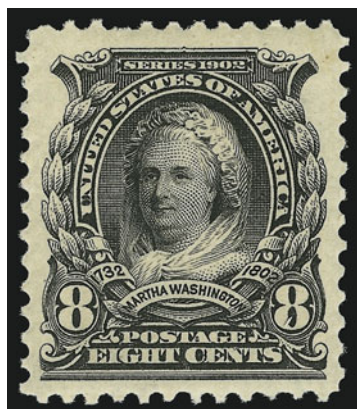


1505

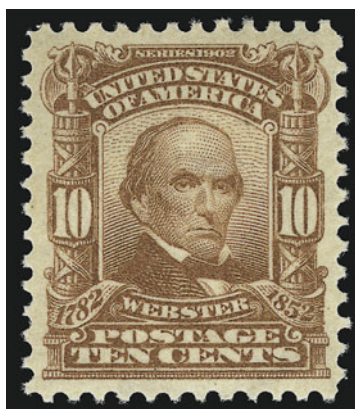


1506

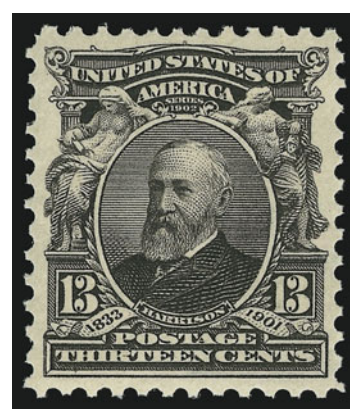
- 1501 ★★ **1c Blue Green (300).** Mint N.H., rich color, well-balanced margins, Extremely Fine ..... 27.00
- 1502 ★★ **2c Carmine (301).** Mint N.H., intense color on bright paper, almost perfectly centered, Extremely Fine..... 35.00
- 1503 ★★ **3c Bright Violet (302).** Mint N.H., deep rich color and proof-like impression on bright paper, perfect centering with well-proportioned margins, Extremely Fine Gem, a superb stamp in every respect, with 1998 P.F. certificate..... 125.00
- 1504 ★★ **4c Brown (303).** Mint N.H., unusually deep color on bright paper, well-balanced margins, Very Fine and choice, with 2003 P.F. certificate ..... 140.00
- 1505 ★★ **5c Blue (304).** Mint N.H., rich color and detailed impression, unusually wide margins for this issue, Extremely Fine Gem, a phenomenal stamp, with 1999 P.F. certificate 140.00
- 1506 ★★ **6c Claret (305).** Mint N.H., intense color and impression, choice centering with extra wide margins, Extremely Fine Gem, a stunning stamp, ex Piedmont, with 1997 P.F. certificate..... 170.00



1507



1508



1509

- 1507 ★★ **8c Violet Black (306).** Mint N.H., sharp proof-like impression, Jumbo margins, single short perf at top not present on accompanying certificate, appears Extremely Fine, with 2003 P.S.E. certificate..... 100.00
- 1508 ★★ **10c Pale Red Brown (307).** Mint N.H., brilliant color, perfectly centered, Extremely Fine Gem, a gorgeous stamp, with 2001 P.F. certificate for block of four..... 160.00
- 1509 ★★ **13c Purple Black (308).** Mint N.H., deep rich color and detailed impression, well-proportioned margins, Extremely Fine, with copy of 1997 P.F. certificate for block of six ..... 110.00

- 1510 ★★ **15c Olive Green (309).** Mint N.H. with **plate no. at bottom**, perfectly centered with enormous margins all around

EXTREMELY FINE GEM. A MAGNIFICENT MINT NEVER-HINGED EXAMPLE OF THE 15-CENT 1902 ISSUE IN THE FINEST CONDITION ATTAINABLE.

With 1984 and 2002 P.F. certificates and with 2005 P.S.E. certificate (XF-90 Jumbo) ..... 400.00



1510



1511

- 1511 ★★ **50c Orange (310).** Mint N.H., radiant color which is as fresh as the day it was printed, perfectly centered with wide and balanced margins

EXTREMELY FINE GEM. THIS IS EASILY ONE OF THE FINEST MINT NEVER-HINGED EXAMPLES OF THE 50-CENT 1902 ISSUE WE HAVE EVER OFFERED. A GORGEOUS STAMP.

With 1997 P.F. certificate for block of four..... 1,200.00



- 1512 ★★ **\$1.00 Black (311)**. Mint N.H., intense shade and proof-like impression on bright paper, unusually wide margins for this issue

EXTREMELY FINE. A SUPERB MINT NEVER-HINGED EXAMPLE OF THE \$1.00 1902 ISSUE.

With 1998 P.F. certificate ..... 2,000.00



1512



1513

- 1513 ★★ **\$2.00 Dark Blue (312)**. Mint N.H., rich color on crisp paper, almost perfectly centered with well-balanced margins

EXTREMELY FINE GEM. A GORGEOUS MINT NEVER-HINGED EXAMPLE OF THE \$2.00 1902 ISSUE, WHICH IS ONE OF THE MOST DIFFICULT VALUES OF THE SET TO OBTAIN IN SUCH CONDITION.

With 1999 P.F. certificate..... 3,000.00

- 1514 ★ **\$5.00 Dark Green (313)**. Barest trace of hinging, deep rich color, perfect centering with wide and balanced margins

EXTREMELY FINE GEM. A SUPERB LIGHTLY-HINGED EXAMPLE OF THE \$5.00 1902 ISSUE. A WONDERFUL STAMP.

With 1987 P.F. certificate ..... 2,900.00



1514



1515

- 1515 ★★ **5c Blue, Imperforate (315)**. Mint N.H. pair, large margins all around, intense color and proof-like impression, Extremely Fine, with 2002 P.F. certificate 875.00



1516

1516 ★ **5c Blue, Coil (317).** Pair, both stamps lightly hinged, deep rich color and proof-like impression, wide margins for this difficult issue

VERY FINE-EXTREMELY FINE. A SUPERB PAIR OF THE RARE 5-CENT 1908 VERTICAL COIL.

Armstrong notes that as of 1980 only 79 pairs had been certified as genuine by the Philatelic Foundation.

With 1991 P.F. certificate ..... 15,000.00





1517

1517 ★ **1c Blue Green, Coil (318).** Pair, lightly hinged, dark color and proof-like impression, wide and balanced margins for this difficult issue

VERY FINE-EXTREMELY FINE. A CHOICE PAIR OF THE RARE ONE-CENT 1908 HORIZONTAL COIL. Armstrong notes that by 1980 approximately 80 pairs had been certified by the Philatelic Foundation.

Right stamp with backstamp. With 1956 and 1996 P.F. certificates..... 14,000.00



- 1518 ★★ **2c Carmine, Ty. I (319).** Mint N.H., brilliant color on bright paper, perfectly centered with Jumbo margins, Extremely Fine Gem, a phenomenal stamp, with 1998 P.F. certificate and 2005 P.S.E. certificate (XF-Superb 95) ..... 12.00
- 1519 ★ **2c Lake, Ty. I (319a).** Lightly hinged, deep rich color, choice centering with wide margins, Extremely Fine, the Lake Type I is one of the scarcest 2c 1903 Shield issues, with 1988 P.F. certificate for block of four, unpriced in Scott..... E. 500-750
- 1520 ★★ **2c Carmine Rose, Ty. I (319b).** Mint N.H., brilliant color, Jumbo margins all around, Extremely Fine Gem, with 2002 P.S.E. certificate (XF-Superb 95) ..... 18.00
- 1521 ★★ **2c Scarlet, Ty. I (319c).** Mint N.H. with **part imprint at bottom**, brilliant color, wide margins all around, Extremely Fine Gem, with 1997 P.F. certificate ..... 15.00
- 1522 ★★ **2c Lake, Ty. II (319f).** Mint N.H., deep rich color and proof-like impression, Extremely Fine ..... 22.00
- 1523 ★★ **2c Carmine, Ty. II (319i).** Mint N.H., brilliant color, Very Fine and choice, with 2000 P.F. certificate ..... 160.00
- 1524 ★★ **2c Carmine Rose, Ty. II (319j).** Mint N.H., brilliant color on bright paper, extra wide margins, Extremely Fine Gem, scarce with such wide margins, with 1996 P.F. certificate . ..... 105.00
- 1525 ★★ **2c Carmine, Ty. I, Imperforate (320).** Mint N.H., huge margins, brilliant color, Extremely Fine..... 35.00
- 1526 ★ **2c Lake, Ty. II, Imperforate (320a).** Pair, huge margins all around, barest trace of what may be hinging, left stamp trivial natural inclusion not mentioned on accompanying certificate, Extremely Fine, with 2003 P.S.E. certificate..... 100.00
- 1527 ★★ **2c Carmine Rose, Ty. I, Imperforate (320c).** Mint N.H., wide margins, radiant color, Extremely Fine, with 2003 P.S.E. certificate ..... 110.00
- 1528 ★ **1c-2c 1902 Issue (314, 319k, 320b).** Singles of each, first Mint N.H., others lightly hinged, fresh and Very Fine-Extremely Fine .....(Photo Ex) 103.00





1529

1529 ★ **2c Carmine, Coil (322).** Pair, lightly hinged, radiant color, wide margins

VERY FINE AND CHOICE PAIR OF THE 2-CENT 1908 HORIZONTAL COIL.

Armstrong notes that only 167 examples had been certified by the Philatelic Foundation as of 1980. The infrequency with which this coil appears at auction would indicate that it may in fact be rarer, and that Armstrong's census information may contain duplicate records. Issued on July 31, 1908, this was intended only to be used by private vending machine companies.

Left stamp with purple Ward backstamp. With 1956 and 2000 P.F. certificates .....  
 ..... 12,000.00



1530



1531

- 1530 ★★ **2c Carmine, Ty. I, Booklet Pane of Six (319g).** Mint N.H., Position F, brilliant color, unusually choice centering for a booklet pane of this issue, Extremely Fine Gem, with 2001 P.F. certificate ..... 240.00
- 1531 ★★ **2c Carmine, Ty. II, Booklet Pane of Six (319h).** Mint N.H., Position E, pretty shade on crisp paper, fresh and Very Fine, a beautiful pane, with 2001 P.F. certificate ..... 850.00



1532



1533

- 1532 ★ **2c Scarlet, Ty. I, Booklet Pane of Six (319p).** Position D with **plate no. at top right**, pretty pastel shade, unusually choice centering, Extremely Fine, with 2000 P.F. certificate.. 185.00
- 1533 ★ **2c Lake, Ty. II, Booklet Pane of Six (319q).** Position F, lightly hinged at top, rich color, few perf separations at top, appears Extremely Fine ..... 300.00



## LOUISIANA PURCHASE AND JAMESTOWN ISSUES



- 1534 ★★ **1c Louisiana Purchase (323).** Mint N.H., deep rich color and proof-like impression, perfectly centered with wide margins, Extremely Fine Gem, scarce in such superb condition, with 2001 P.S.E. certificate ..... 65.00
- 1535 ★★ **2c Louisiana Purchase (324).** Mint N.H., intense shade, well-balanced margins, Extremely Fine, with 1999 P.F. certificate..... 60.00
- 1536 ★★ **3c Louisiana Purchase (325).** Mint N.H., detailed impression, wide margins, fresh and Extremely Fine, with 2001 P.F. certificate..... 200.00
- 1537 ★★ **5c Louisiana Purchase (326).** Mint N.H., rich color and proof-like impression, perfectly centered, Extremely Fine Gem, a beautiful stamp, with 2003 P.F. certificate..... 210.00
- 1538 ★★ **10c Louisiana Purchase (327).** Plate no. at bottom, stamp Mint N.H., lightly hinged in selvage only, radiant color, Very Fine and choice, with 2002 P.F. certificate ..... 375.00
- 1539 ★★ **1c Jamestown (328).** Mint N.H., intense color and impression, wide margins for this difficult issue, Extremely Fine, with 1998 P.F. certificate..... 65.00
- 1540 ★★ **2c Jamestown (329).** Mint N.H., brilliant color on bright paper, Extremely Fine Gem, ex Piedmont, with 1999 and 2000 P.F. certificates..... 75.00
- 1541 ★★ **5c Jamestown (330).** Mint N.H., deep rich color on bright paper, wide margins, Extremely Fine, a beautiful example of this difficult issue, with 2002 P.F. certificate ..... 150.00

## 1908-12 ISSUES

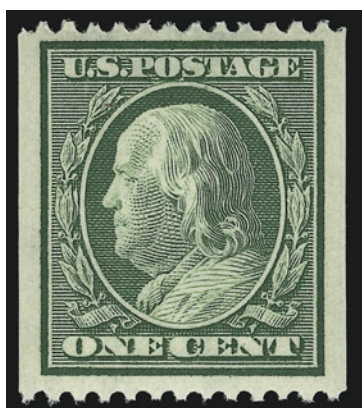


- 1542 ★★ **2c Carmine (332)**. Mint N.H., perfect centering with wide margins, brilliant color, Extremely Fine Gem ..... 14.00
- 1543 ★★ **3c Deep Violet (333)**. Mint N.H., rich color, well-balanced margins, Extremely Fine, with copy of 2002 P.F. certificate for pair ..... 75.00
- 1544 ★★ **4c Orange Brown (334)**. Mint N.H., intense color, unusually wide margins, Extremely Fine Gem, a superb stamp, with 1997 P.F. certificate ..... 90.00
- 1545 ★★ **5c Blue (335)**. Mint N.H., rich color on bright paper, wide and well-balanced margins, Extremely Fine, with 1998 P.F. certificate ..... 120.00
- 1546 ★★ **6c Red Orange (336)**. Mint N.H., radiant color on bright paper, generous margins, Extremely Fine, with 2003 P.F. certificate ..... 140.00
- 1547 ★★ **8c Olive Green (337)**. Mint N.H., deep rich color and detailed impression, perfectly centered with wide and well-balanced margins, Extremely Fine Gem, with 2001 P.F. certificate ..... 105.00

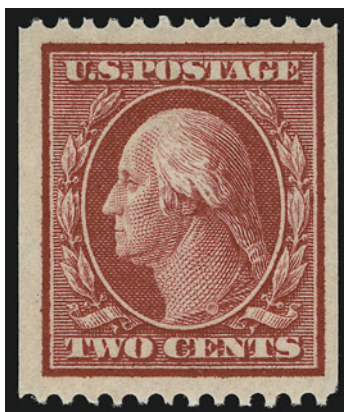




- 1548 ★★ **10c Yellow (338)**. Mint N.H., vibrant color, choice centering, Extremely Fine, one of the most difficult values of the series to obtain in such choice condition, ex Floyd, with 1980 and 2001 P.F. certificates ..... 150.00
- 1549 ★★ **13c Blue Green (339)**. Mint N.H., intense color and impression, wide and balanced margins, Extremely Fine Gem, a stunning stamp of great visual appeal, with 2001 P.F. certificate ..... 90.00
- 1550 ★★ **15c Pale Ultramarine (340)**. Mint N.H., brilliant color on bright paper, wide margins, Extremely Fine, with 1983 and 1997 P.F. certificates..... 150.00
- 1551 ★★ **50c Violet (341)**. Mint N.H., pretty pastel color, almost perfectly centered with well-proportioned margins, Very Fine and choice, with 2002 P.S.E. and 2003 P.F. certificates ..... 750.00
- 1552 ★ **\$1.00 Violet Brown (342)**. Lightly hinged, deep rich color on bright paper, extra wide margins, Very Fine and choice, with 1999 P.F. certificate ..... 525.00



1553



1554



1555

- 1553 ★★ **1c Green, Coil (348).** Mint N.H., intense shade, wide margins, Extremely Fine, with 1999 P.F. certificate ..... 80.00
- 1554 ★★ **2c Carmine, Coil (349).** Mint N.H., intense color on bright paper, extra wide margins, Very Fine and choice, with 1999 P.F. certificate for pair ..... 175.00
- 1555 ★★ **5c Blue, Coil (351).** Mint N.H., deep rich color on crisp bright paper, almost perfectly centered with wide and balanced margins, Extremely Fine Gem, a beautiful stamp, with 1996 P.F. certificate ..... 375.00



1556

- 1556 ★★ **1c Green, Coil (348).** Mint N.H. guide line pair, rich color, wide and balanced margins  
EXTREMELY FINE GEM. AN OUTSTANDING MINT NEVER-HINGED LINE PAIR OF THIS EARLY  
WASHINGTON-FRANKLIN COIL.  
With 1993 and 2002 P.F. certificates ..... 600.00



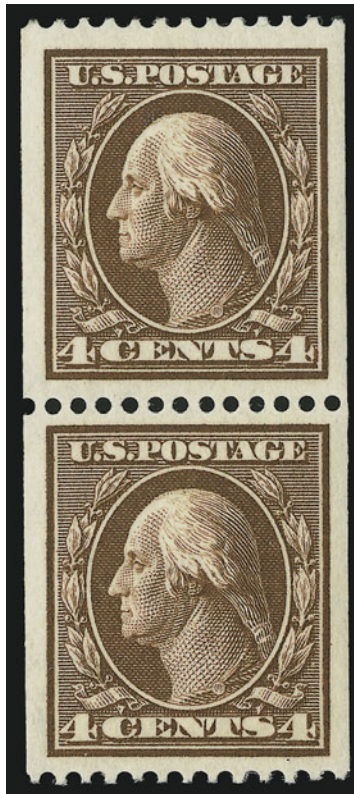
- 1557 ★★ **2c Carmine, Coil (349).** Mint N.H. pair, deep rich color, perfect centering

EXTREMELY FINE GEM MINT NEVER-HINGED PAIR OF THIS PERF 12 WASHINGTON-FRANKLIN COIL. SCARCE IN SUCH SUPERB CONDITION.

With 1999 P.F. certificate ..... 450.00



1557



1558

- 1558 ★ **4c Orange Brown, Coil (350).** Pair, lightly hinged, rich color, Jumbo margins all around, Extremely Fine Gem, a huge pair, with 1998 P.F. certificate..... 370.00



1559

- 1559 ★ **5c Blue, Coil (351).** Guide line pair, bottom stamp Mint N.H., top stamp very lightly hinged, deep rich color and proof-like impression

EXTREMELY FINE. A GORGEOUS GUIDE LINE PAIR OF THE 5-CENT 1909 VERTICAL COIL.

With 1976 and 1999 P.F. certificates ..... 1,250.00



- 1560 ★★ **1c Green, Coil (352).** Mint N.H., intense color, Very Fine and choice, scarce with such wide margins, with 1999 P.F. certificate..... 200.00
- 1561 ★★ **2c Carmine, Coil (353).** Mint N.H. with **paste-up tab at right**, enormous margins on all sides, brilliant color, Extremely Fine Gem, a phenomenal stamp in every respect, with 1998 P.F. certificate for pair..... 200.00
- 1562 ★★ **4c Orange Brown, Coil (354).** Mint N.H., deep rich color, Jumbo margins, Extremely Fine, a huge stamp, with 1999 P.F. certificate ..... 475.00
- 1563 ★★ **5c Blue, Coil (355).** Accompanying certificate states Mint N.H. with slightly disturbed gum at top left (a harsh call in our opinion as it is only a fingerprint), bright color, wide margins, Very Fine and choice, with 2000 P.F. certificate ..... 230.00



- 1564 ★★ **1c Green, Coil (352).** Mint N.H. pair with 2mm spacing, deep rich color and proof-like impression, each stamp with mathematically perfect centering  
EXTREMELY FINE GEM. A SUPERB MINT NEVER-HINGED PAIR OF THE ONE-CENT HORIZONTAL 1909 COIL ISSUE.  
With 1999 P.F. certificate..... 550.00





1565

- 1565 ★ **2c Carmine, Coil (353).** Pair with 3mm spacing, described on accompanying certificate as previously hinged but we see no evidence of any hinging, brilliant color, perfect centering with enormous margins, Extremely Fine Gem, a superb pair in every respect, with 1999 P.F. certificate ..... 235.00



1566

- 1566 ★★ **4c Orange Brown, Coil (354).** Mint N.H. pair with 3mm spacing, bright color on crisp paper, unusually choice centering  
 EXTREMELY FINE. A BEAUTIFUL MINT NEVER-HINGED PAIR OF THIS SCARCE PERF 12 COIL IN THE FINEST CONDITION ATTAINABLE.  
 With 1999 P.F. certificate for strip of three ..... 1,100.00



1567

- 1567 ★ **5c Blue, Coil (355).** Guide line pair, lightly hinged, deep rich color on bright paper, wide and well-balanced margins  
EXTREMELY FINE. A SUPERB GUIDE LINE PAIR OF THE 5-CENT 1909 HORIZONTAL COIL ISSUE. RARE IN THIS CONDITION.  
With 1994 P.F. certificate ..... 1,500.00



1568

- 1568 ★ **10c Yellow, Coil (356).** Lightly hinged, bright color on fresh paper, choice centering  
EXTREMELY FINE. A SUPERB EXAMPLE OF THIS RARE 10-CENT PERF 12 COIL.  
With 1987 and 2000 P.F. certificates..... 2,850.00





1569

1569 ★ **10c Yellow, Coil (356).** Pair, radiant color, choice centering for this difficult issue

VERY FINE-EXTREMELY FINE PAIR OF THE RARE 10-CENT 1909 HORIZONTAL COIL ISSUE.

According to Johl (Volume 1, page 181), only 10,000 of this coil were issued. They were made especially for a New York firm to send out advertising samples, similar to the 3c Orangeburg coil. Only a few rolls were sold to the firm, and the remaining rolls were distributed to some of the larger post offices across the country. Dealers acquired several rolls, but as most collectors of the time did not collect coils many were used and destroyed.

With 1981 and 1999 P.F. certificates..... 6,750.00

BLUISH PAPER



1570



1571

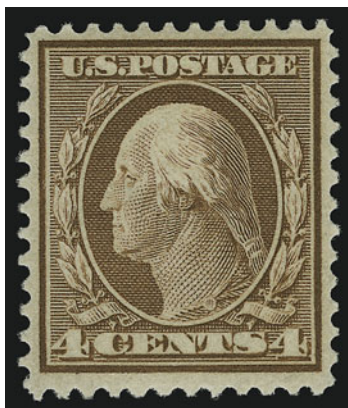
- 1570 ★★ **1c Green, Bluish (357).** Mint N.H., intense color on deeply blued paper, fresh and Extremely Fine, with 2001 P.F. certificate..... 190.00
- 1571 ★ **2c Carmine, Bluish (358).** Well-centered with unusually wide margins for this stamp, barest faint trace of hinging, intense color and impression, Extremely Fine Gem, with 1985 and 1998 P.F. certificates..... 85.00



1572

- 1572 ★ **3c Deep Violet, Bluish (359).** Barely hinged, rich color and proof-like impression on nicely blued paper, wide margins for this difficult issue  
EXTREMELY FINE. A BEAUTIFUL EXAMPLE OF THE 3-CENT BLUISH PAPER. A REMARKABLY FRESH AND CHOICE STAMP.  
With 1993 P.F. certificate..... 2,000.00





1573

1573 ★ **4c Orange Brown, Bluish (360).** Lightly hinged, deep rich color on deeply blued paper, wide and balanced margins for this difficult issue

VERY FINE AND CHOICE. A BEAUTIFUL EXAMPLE OF THE 4-CENT WASHINGTON ON BLUISH PAPER.

A review of our Levi records of the Bluish Paper stamps shows that the 4c is much rarer than the 8c in well-centered condition.

Small "W.H.C." (Colson) backstamp. With 1980 and 2000 P.F. certificates..... 24,000.00



1574

- 1574 ★ **5c Blue, Bluish (361).** At first glance the gum appears Mint N.H. but there are the barest traces of a previous hinge, deep rich color on nicely blued paper, perfectly centered with well-proportioned margins

EXTREMELY FINE GEM. A SUPERB EXAMPLE OF THE 5-CENT BLuish PAPER WHICH HAS ONLY BEEN VERY LIGHTLY HINGED. A STAMP OF REMARKABLE BEAUTY.

The 5c is the rarest of the regularly-issued Bluish Paper set, and it is usually found off center. In our opinion, the centering of this stamp is a solid XF-Superb 95, and the extraordinarily fresh gum with only a trace of a hinge adds to its overall grade.

With 2000 P.F. certificate ..... 5,000.00



1575

- 1575 ★ **6c Red Orange, Bluish (362).** Lightly hinged, brilliant color on deeply blued paper, well-balanced margins

EXTREMELY FINE. A SUPERB ORIGINAL-GUM EXAMPLE OF THE 6-CENT ON BLuish PAPER.

With 1990 P.F. certificate ..... 1,500.00





1576

- 1576 ★ **8c Olive Green, Bluish (363).** Choice centering with wide margins, intense color on deeply blued paper  
 EXTREMELY FINE. A BEAUTIFUL ORIGINAL-GUM EXAMPLE OF THE RARE 8-CENT WASHINGTON ON BLuish PAPER. RARE IN SUCH SUPERB CONDITION.  
 According to Johl (Vol. 1, page 175), the only source of the 4c and 8c Bluish stamps was the archives of the Post Office Department. Approximately 80 of each were traded for rare stamps missing from the archives.  
 With 1971, 1989 and 2000 P.F. certificates..... 27,500.00

- 1577 ★ **10c Yellow, Bluish (364).** Lightly hinged, brilliant color on nicely blued paper, well-proportioned margins

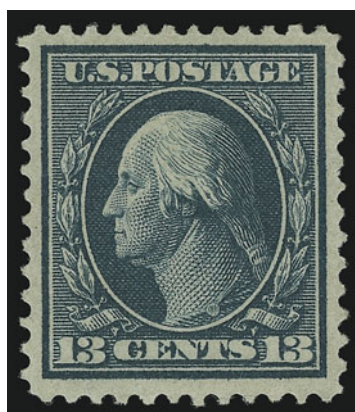
VERY FINE AND CHOICE ORIGINAL-GUM EXAMPLE OF THE 10-CENT ON BLuish PAPER.

The 10c is one of the most difficult values of the set to obtain in superb condition.

Blue backstamp. With 1999 P.F. certificate.. 1,850.00



1577



1578

- 1578 ★ **13c Bluish Green, Bluish (365).** Lightly hinged, deep rich color and proof-like impression on deeply blued paper, wide and well-balanced margins

EXTREMELY FINE. A BEAUTIFUL ORIGINAL-GUM EXAMPLE OF THE 13-CENT BLuish PAPER ISSUE.

With 1990 and 2001 P.F. certificates ..... 3,000.00



1579

- 1579 ★ **15c Pale Ultramarine, Bluish (366).** Lightly hinged, **part imprint at right**, bright color on nicely blued paper, almost perfectly centered

EXTREMELY FINE GEM. A SUPERB ORIGINAL-GUM EXAMPLE OF THE 15-CENT ON BLuish PAPER.

Especially desirable with the selvage, which highlights the bluing of the paper.

With 1999 P.F. certificate ..... 1,450.00



- 1580 ★★ **1c Green, 2c Carmine (374-375).** Mint N.H., rich colors, wide margins, Extremely Fine .....  
 .....(Photo Ex) 30.00



1580EX



1581

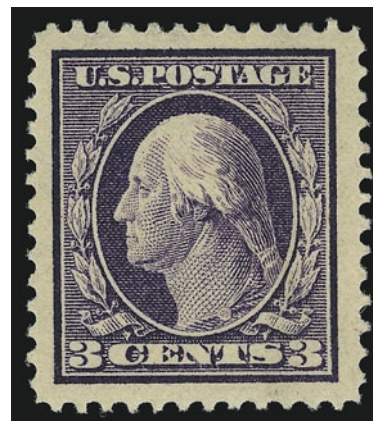
- 1581 ★ **2c Lake (375b).** Lightly hinged, intense color in the true Lake shade, detailed impression on bright white paper, wide margins

EXTREMELY FINE. A BEAUTIFUL ORIGINAL-GUM EXAMPLE OF THE 2-CENT 1910 WASHINGTON ISSUE IN THE SCARCE LAKE SHADE.

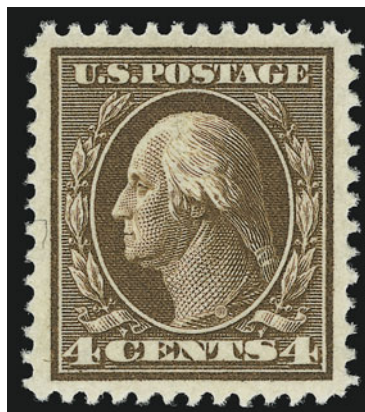
Through an error at the Bureau of Engraving and Printing, a small quantity of this stamp was erroneously printed using the inks in use at the time for the Postage Due issues.

Ex Drucker. With 1985 P.F. certificate. In our opinion, this is severely undercatalogued in Scott..... 525.00

- 1582 ★★ **3c Deep Violet (376).** Mint N.H., Jumbo margins, rich color, Extremely Fine Gem, with 2003 P.F. certificate .  
 ..... 45.00

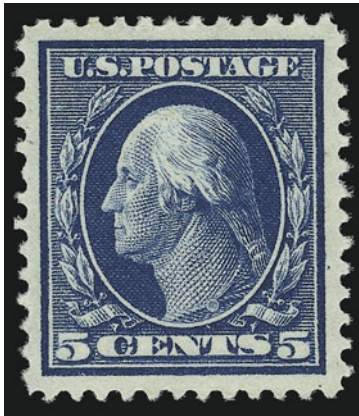


1582



1583

- 1583 ★★ **4c Brown (377).** Mint N.H., crisp impression, perfect centering with well-balanced margins, Extremely Fine Gem, a superb stamp in post-office fresh condition, with 2001 P.F. certificate ..... 67.00



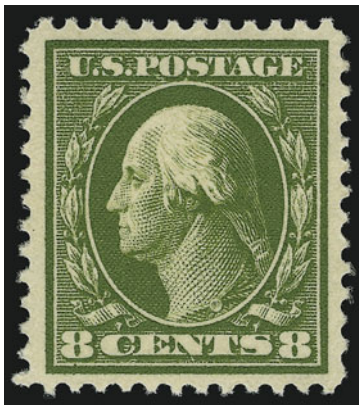
1584

- 1584 ★★ **5c Blue (378).** Mint N.H., rich color on bright paper, Jumbo margins, Extremely Fine, with 2000 P.F. certificate ..... 67.00

- 1585 ★★ **6c Red Orange (379).** Mint N.H. with **part imprint at top**, enormous margins, intense shade, Extremely Fine, a stunning stamp, with 1997 P.F. certificate..... 80.00



1585



1586

- 1586 ★★ **8c Olive Green (380).** Mint N.H., intense shade and impression, well-proportioned margins, fresh and Extremely Fine, with 1998 P.F. certificate ..... 250.00

- 1587 ★★ **10c Yellow (381).** Mint N.H., brilliant color, well-balanced margins, fresh and Extremely Fine, a beautiful stamp, with 1999 P.F. certificate ..... 225.00



1587



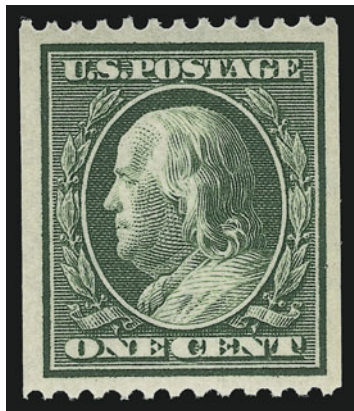


1588

1588 ★★ **15c Pale Ultramarine (382).** Mint N.H., brilliant color, perfectly centered with wide margins all around

EXTREMELY FINE GEM. A SUPERB MINT NEVER-HINGED EXAMPLE OF THE 15-CENT 1910 WASHINGTON ISSUE IN THE FINEST CONDITION ATTAINABLE. A REMARKABLE STAMP IN TERMS OF COLOR, CENTERING, SIZE OF MARGINS, FRESHNESS OF PAPER AND GUM.

With 1998 P.F. certificate and 2005 P.S.E. certificate (XF-Superb 95)..... 625.00



1589

1589 ★★ **1c Green, Coil (385).** Mint N.H., choice centering with wide margins, rich color, Extremely Fine, with 1990 and 1999 P.F. certificates..... 85.00

1590 ★★ **1c Green, Coil (385).** Mint N.H. guide line pair, sharp proof-like impression, well-centered with wide and balanced margins

EXTREMELY FINE GEM. A SUPERB MINT NEVER-HINGED GUIDE LINE PAIR OF THE ONE-CENT VERTICAL COIL, SCOTT 385. SURPRISINGLY SCARCE IN SUCH SUPERB CONDITION.

With 1999 P.F. certificate ..... 1,000.00



1590



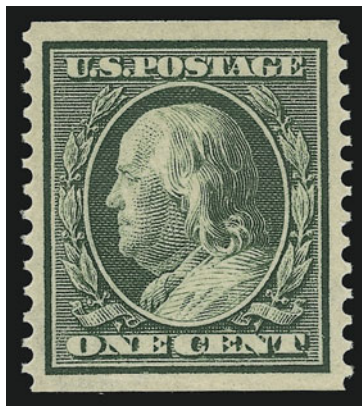
1591

- 1591 ★★ **2c Carmine, Coil (386).** Mint N.H., choice centering with extra wide margins at sides, rich color, Extremely Fine, ex Piedmont, with 1997 P.F. certificate ..... 180.00

- 1592 ★★ **2c Carmine, Coil (386).** Mint N.H. pair, brilliant color, almost perfectly centered, Extremely Fine, a beautiful Mint N.H. pair, with 1991 and 2000 P.F. certificates..... 625.00



1592



1593

- 1593 ★ **1c Green, Coil (387).** Lightly hinged, rich color, Jumbo margins, Extremely Fine Gem, with 1999 P.F. certificate ..... 200.00





1594

- 1594 ★★ **1c Green, Coil (387).** Mint N.H. pair, deep rich color, well-balanced margins, fresh and Extremely Fine, with 1990 P.S.E. and 2004 P.F. certificates..... 1,000.00



1595

- 1595 ★ **2c Carmine, Coil (388).** Barest trace of hinging, almost perfectly centered, brilliant color

EXTREMELY FINE GEM. A BEAUTIFUL ORIGINAL-GUM EXAMPLE OF THE RARE 2-CENT HORIZONTAL COIL, SCOTT 388.

With 1999 P.F. certificate ..... 1,050.00



1596

- 1596 ★ **2c Carmine, Coil (388).** Pair with 3mm spacing, lightly hinged, rich color, wide and balanced margins  
EXTREMELY FINE. A BEAUTIFUL GUIDE LINE PAIR OF THE RARE 1910 SINGLE-LINE WATERMARK 2-CENT HORIZONTAL COIL. THE RIGHT STAMP IS A SUPERB JUMBO.

This example compares very favorably with one we sold in the Vineyard Collection (Sale 883), which realized \$8,500 hammer.

With 1994 P.F. certificate..... 3,500.00



1597

1597 **3c Deep Violet, Orangeburg Coil (389).** Extraordinary margins and choice centering, rich color and sharp impression on bright white paper, light Orangeburg N.Y. wavy-line machine cancel, negligible tiny tears and slight creasing typical of the Orangeburg coils

EXTREMELY FINE APPEARING EXAMPLE OF THE RARE ORANGEBURG COIL.

The Orangeburg coil was made by the Post Office Department in 1911, specifically for use by the Bell Pharmaceutical Company. The 3c coil stamps were used to send samples of their products to physicians. Due to the quantity of mail, they were put through the first-class cancelling machine at Orangeburg, New York. The Orangeburg coil stamps' use on third-class mail, and the fact that philatelists were generally unaware of their production accounts for their rarity.

With 2000 P.F. certificate ..... 10,000.00



1599

- 1598 ★★ **1c Green, Coil (390).** Mint N.H. guide line pair, intense color and impression, perfect centering, Extremely Fine Gem, ex Zoellner, with 1998 P.F. certificate ..... 80.00
- 1599 ★★ **2c Carmine, Coil (391).** Mint N.H., Jumbo margins, deep rich color, Extremely Fine Gem, a superb stamp in every respect, with 1996 P.S.E. certificate for pair ..... 85.00

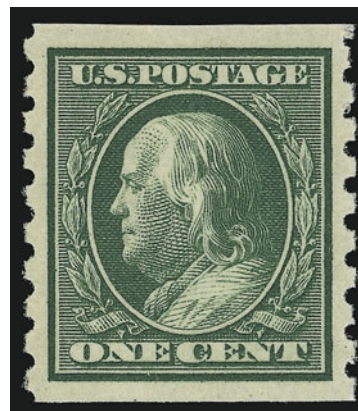


1598



1600

- 1600 ★★ **2c Carmine, Coil (391).** Mint N.H. pair, brilliant color, Jumbo margins all around, Extremely Fine Gem, a superb Mint N.H. pair, with 1989 P.S.E. and 2002 P.F. certificates ..... 230.00
- 1601 ★★ **1c Green, Coil (392).** Mint N.H., intense shade, perfect centering with wide margins, Extremely Fine Gem, with 2000 P.F. certificate ..... 55.00



1601





- 1602 ★★ **2c Carmine, Coil (393).** Mint N.H., perfectly centered with wide margins, brilliant color, Extremely Fine Gem, with 2000 P.F. certificate ..... 47.00
- 1603 ★★ **3c Deep Violet, Coil (394).** Mint N.H., detailed impression on bright paper, wide margins, Extremely Fine Gem, with 1999 P.F. certificate ..... 57.00
- 1604 ★★ **4c Brown, Coil (395).** Mint N.H., pretty shade, well-balanced margins, Extremely Fine, with 2000 P.F. certificate ..... 130.00
- 1605 ★★ **5c Blue, Coil (396).** Mint N.H., deep rich color, wide margins, Extremely Fine Gem, with 2001 P.F. certificate ..... 125.00

- 1606 ★★ **1c Green, Coil (392).** Mint N.H. guide line pair, intense color and impression, perfectly centered with wide and balanced margins, Extremely Fine Gem, with 2000 P.F. certificate ..... 425.00



1606



1607

- 1607 ★★ **2c Carmine, Coil (393).** Mint N.H. pair, brilliant color on bright paper, perfectly centered with Jumbo margins all around, Extremely Fine Gem, a superb Mint N.H. pair, with 1997 P.F. certificate ..... 275.00



1608

1608 ★★ **3c Deep Violet, Coil (394).** Mint N.H. guide line pair, bright shade on fresh white paper, choice centering

EXTREMELY FINE. AN OUTSTANDING MINT NEVER-HINGED GUIDE LINE PAIR OF THE 3-CENT 1911 HORIZONTAL COIL.

With 1990 and 2002 P.F. certificates ..... 850.00



1609

1609 ★★ **4c Brown, Coil (395).** Mint N.H. pair, deep rich color, enormous margins, Extremely Fine Gem, ex Saadi, with 1989 and 2003 P.F. certificates ..... 315.00



1610

1610 ★★ **5c Blue, Coil (396).** Mint N.H. pair, intense shade on bright paper, wide margins, post-office fresh, Extremely Fine, with 1998 P.F. certificate ..... 325.00



## PANAMA-PACIFIC ISSUE



- 1611 ★★ **1c Panama-Pacific (397).** Mint N.H., deep rich color, wide margins, Extremely Fine..... 40.00
- 1612 ★★ **2c Panama-Pacific (398).** Mint N.H., brilliant color, wide margins, fresh and Extremely Fine, with 2003 P.S.E. certificate ..... 45.00
- 1613 ★★ **5c Panama-Pacific (399).** Mint N.H., rich color on bright paper, fresh and Extremely Fine, with 1995 P.F. certificate..... 175.00
- 1614 ★★ **10c Orange Yellow, Panama-Pacific (400).** Mint N.H., radiant color, perfectly centered with well-proportioned margins, Extremely Fine Gem, a beautiful stamp, with 1998 P.F. certificate .. 300.00
- 1615 ★★ **10c Orange, Panama-Pacific (400A).** Mint N.H., brilliant color, wide margins and choice centering, post-office fresh and Extremely Fine, with 1991 and 2004 P.F. certificates ..... 450.00
- 1616 ★★ **1c Panama-Pacific, Perf 10 (401).** Mint N.H. with **plate no. at bottom**, deep rich color on bright paper, perfectly centered, Extremely Fine Gem, a superb stamp in every respect, with 1998 P.F. certificate..... 60.00
- 1617 ★★ **2c Panama-Pacific, Perf 10 (402).** Mint N.H., pretty pastel color, Extremely Fine, with 2003 P.F. certificate ..... 160.00
- 1618 ★★ **5c Panama-Pacific, Perf 10 (403).** Mint N.H., rich color on bright paper, wide margins, Very Fine and choice, with 1999 P.F. certificate ..... 375.00



- 1619 ★★ **10c Panama-Pacific, Perf 10 (404).** Mint N.H., deep rich color on bright paper, almost perfectly centered with well-balanced margins

EXTREMELY FINE. A SUPERB MINT NEVER-HINGED EXAMPLE OF THE 10-CENT PERF 10 PANAMA-PACIFIC ISSUE. SCARCE IN SUCH WONDERFUL CONDITION.

With 2001 P.F. certificate ..... 1,900.00



1619



1620EX



1621



1622



1623

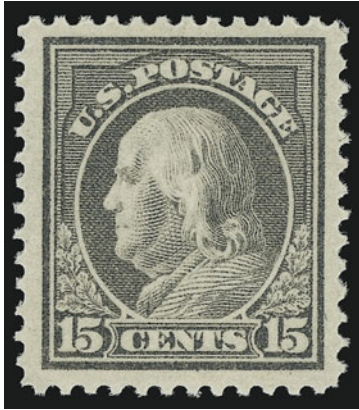


1624



1625

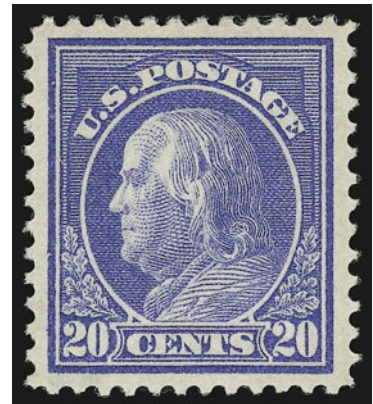
- 1620 ★★ **1c Green, 2c Carmine (405-406).** Mint N.H., deep rich colors on bright paper, huge margins, Extremely Fine Gems .....(Photo Ex) 30.00
- 1621 ★★ **7c Black (407).** Mint N.H., intense shade and proof-like impression, extra wide margins, Extremely Fine Gem, with 1997 P.F. certificate ..... 175.00
- 1622 ★★ **8c Pale Olive Green (414).** Mint N.H. with **part imprint at bottom**, pretty pastel color, fresh and Extremely Fine, with 1998 P.F. certificate..... 100.00
- 1623 ★★ **9c Salmon Red (415).** Mint N.H., brilliant color, almost perfectly centered with wide and well-balanced margins, trivial natural inclusion not mentioned on accompanying certificate, Extremely Fine Gem, a beautiful stamp, with 1997 P.F. certificate..... 120.00
- 1624 ★★ **10c Orange Yellow (416).** Mint N.H., brilliant color, perfect centering with huge margins, Extremely Fine Gem, a gorgeous stamp, with 2002 P.F. certificate ..... 100.00
- 1625 ★★ **12c Claret Brown (417).** Mint N.H., deep rich color on bright paper, almost perfectly centered, Extremely Fine, a beautiful stamp, with 1995 P.F. certificate..... 110.00



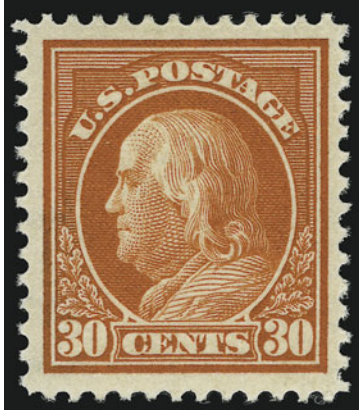
1626

- 1626 ★★ **15c Gray (418).** Mint N.H., brilliant color, Jumbo margins, Extremely Fine Gem, with 1999 P.F. certificate for block of four..... 190.00

- 1627 ★★ **20c Ultramarine (419).** Mint N.H., rich color on bright paper, almost perfectly centered with wide margins, Extremely Fine Gem, with 2002 P.F. certificate..... 425.00



1627



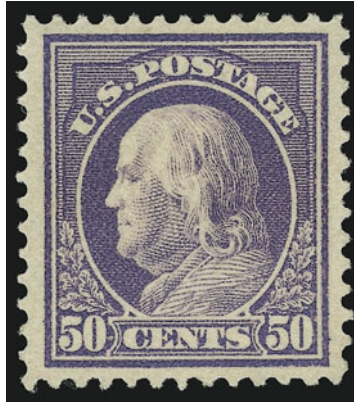
1628

- 1628 ★★ **30c Orange Red (420).** Mint N.H., vibrant color on bright paper, Jumbo margins, Extremely Fine, with 1999 P.F. certificate ..... 260.00

- 1629 ★ **50c Violet (421).** Barest trace of what may be hinging (appears Mint N.H.), pretty shade on bright paper, wide margins, Very Fine and choice, with 1999 P.F. certificate..... 950.00



1629



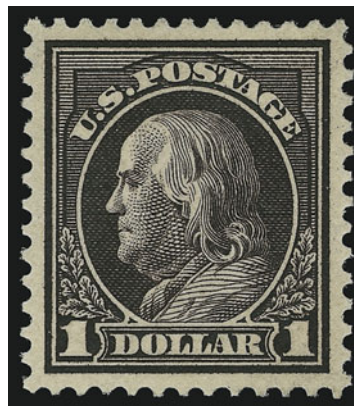
1630

1630 ★★ **50c Violet (422).** Mint N.H., remarkable centering with unusually wide margins at sides, brilliant color on bright paper

EXTREMELY FINE GEM. A SUPERB EXAMPLE OF THE 1912 50-CENT FRANKLIN ON DOUBLE-LINE WATERMARKED PAPER.

According to Johl (Vol. 1, page 203), Scott 422 was issued more than two years prior to the release of Scott 421. A supply of the double-line watermark paper was still on hand, and was used to fill the need for the higher denomination stamps.

With 1998 P.F. certificate..... 550.00



1631

1631 ★★ **\$1.00 Violet Brown (423).** Lightly hinged, intense shade and proof-like impression, perfectly centered

EXTREMELY FINE EXAMPLE OF THE 1912 \$1.00 FRANKLIN ON DOUBLE-LINE WATERMARKED PAPER.

With 2000 P.F. certificate..... 525.00





- 1632 ★★ **1c Green, 2c Carmine, Coils (410-411).** Mint N.H., wide margins, Extremely Fine, ex Piedmont, with 1997 and 1998 P.F. certificates.....**(Photo Ex)** 29.00
- 1633 ★★ **1c Green, Coil (410).** Mint N.H. pair, rich color, perfect centering, Extremely Fine..... 32.00
- 1634 ★★ **2c Carmine, Coil (411).** Mint N.H. guide line pair, brilliant color on bright paper, Extremely Fine Gem, with 1993 P.S.E. certificate..... 125.00
- 1635 ★★ **1c Green, Coil (412).** Mint N.H., deep rich color, Extremely Fine, with 2002 P.S.E. certificate ..... 55.00
- 1636 ★★ **1c Green, Coil (412).** Mint N.H. guide line pair, intense shade and proof-like impression, fresh and Extremely Fine, with 1999 P.F. certificate..... 260.00
- 1637 ★★ **2c Carmine, Coil (413).** Mint N.H., brilliant color, perfectly centered, Extremely Fine, with 2002 P.F. certificate ..... 120.00
- 1638 ★★ **2c Carmine, Coil (413).** Mint N.H. guide line pair, brilliant color, beautifully centered, fresh and Extremely Fine, with 1999 P.F. certificate..... 625.00

## 1912-23 ISSUES



- 1639 ★★ **1c-3c1913-15 Issue (424-426).** Mint N.H., deep rich colors, fresh and Extremely Fine, 3c with 2003 P.S.E. certificate.....**(Photo Ex)** 25.00
- 1640 ★★ **3c Reddish Violet (426 var).** Mint N.H., brilliant shade on bright paper, perfectly centered, Extremely Fine Gem example of this shade variety, with 1996 P.F. certificate... 32.00
- 1641 ★★ **4c Brown (427).** Mint N.H., pretty pastel shade, wide margins, Extremely Fine Gem, with 1997 P.F. certificate ..... 75.00
- 1642 ★★ **5c Blue (428).** Mint N.H., bright shade, wide margins, fresh and Extremely Fine, a beautiful stamp, with 1997 P.F. certificate ..... 75.00
- 1643 ★★ **6c Red Orange (429).** Mint N.H. with **plate no. at left**, radiant color, perfectly centered with Jumbo margins all around, Extremely Fine, with 1990 P.F. certificate and 2005 P.S.E certificate (XF-90)..... 105.00
- 1644 ★★ **7c Black (430).** Mint N.H. intense shade on bright paper, almost perfectly centered with wide margins, fresh and Extremely Fine, with 1999 P.F. certificate..... 200.00
- 1645 ★★ **8c Pale Olive Green (431).** Mint N.H., pretty pastel color, Very Fine and choice, with 1997 P.F. certificate ..... 80.00
- 1646 ★★ **9c Salmon Red (432).** Mint N.H., brilliant color on bright paper, wide margins, fresh and Extremely Fine, with 1993 P.F. certificate ..... 105.00

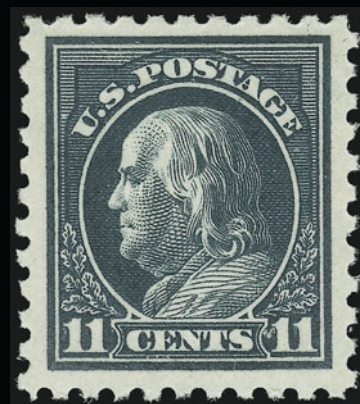




1647



1648



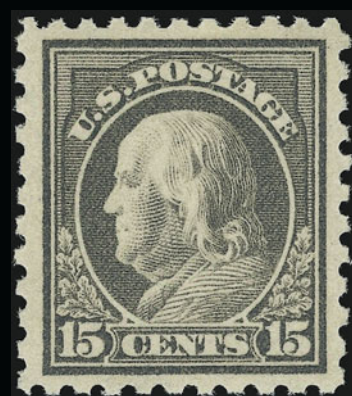
1649



1650



1651



1652

- 1647 ★★ **10c Orange Yellow (433)**. Mint N.H., rich color, perfectly centered with well-balanced margins, Extremely Fine Gem, scarce in such superb condition, with 1997 P.F. certificate ..... 100.00
- 1648 ★★ **11c Dark Green (434)**. Mint N.H., deep rich color on bright paper, Jumbo margins, Extremely Fine, with 1999 P.F. certificate for block of four ..... 52.00
- 1649 ★★ **11c Bluish Green (434 var)**. Mint N.H., unusual shade on brilliant white paper, huge margins, Extremely Fine example of this shade variety, with 2002 P.S.E. certificate not specifying this as the Bluish Green shade, which it is..... 52.00
- 1650 ★★ **\$1.00 Violet Brown (423)**. Mint N.H., intense color and proof-like impression, Extremely Fine, with 2002 P.S.E. certificate ..... 62.00
- 1651 ★★ **12c Copper Red (435a)**. Mint N.H., pretty color, wide margins, Extremely Fine, an outstanding example of this shade variety, with 1982 and 2003 P.F. certificates... 75.00
- 1652 ★★ **15c Gray (437)**. Mint N.H., deep rich color, choice centering, fresh and Extremely Fine, with 1997 P.F. certificate ..... 290.00



- 1653 ★★ **20c Ultramarine (438).** Mint N.H., brilliant color on bright paper, almost perfectly centered, post-office fresh and Extremely Fine, with 1998 P.F. certificate ... 475.00

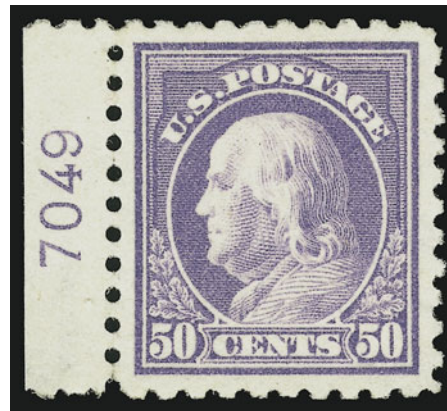


1653



1654

- 1654 ★★ **30c Orange Red (439).** Mint N.H., nearly perfect centering, intense color on bright paper  
EXTREMELY FINE GEM. A SUPERB MINT NEVER-HINGED EXAMPLE OF THE 30-CENT 1914 ISSUE.  
With 2000 P.F. certificate ..... 575.00



1655

- 1655 ★★ **50c Violet (440).** Mint N.H. with **plate no. at left**, radiant color on bright paper, perfectly centered with wide and balanced margins all around  
EXTREMELY FINE GEM. A SUPERB MINT NEVER-HINGED EXAMPLE OF THE WATERMARKED 50-CENT PERF 10 FRANKLIN ISSUE.  
This is easily one of the finest examples of this issue we have ever offered.  
With 1984 and 2002 P.F. certificates..... 1,300.00



- 1656 ★★ **1c Green, 2c Carmine, Coil (441-442).** Mint N.H., brilliant colors, wide margins, fresh and Extremely Fine.....(Photo Ex) 23.00
- 1657 ★★ **1c Green, Coil (441).** Mint N.H. guide line pair, intense color, perfect centering, Extremely Fine Gem ..... 17.00
- 1658 ★★ **2c Carmine, Ty. I, Coil (442).** Mint N.H. guide line pair, vibrant color, well-balanced margins, Extremely Fine, with 2003 P.S.E. certificate ..... 130.00
- 1659 ★★ **1c Green, Coil (443).** Mint N.H., deep rich color, extra wide margins, fresh and Extremely Fine, with 2002 P.S.E. certificate..... 55.00
- 1660 ★★ **2c Carmine, Coil (444).** Mint N.H., brilliant color, mathematically perfect centering, Extremely Fine Gem, a superb stamp in every respect, with 1999 P.F. certificate for pair ..... 87.00
- 1661 ★★ **3c Violet, Coil (445).** Mint N.H., intense shade on bright paper, almost perfectly centered, fresh and Extremely Fine, with 2001 P.F. certificate ..... 500.00
- 1662 ★★ **4c Brown, Coil (446).** Mint N.H., Jumbo margins, rich color and detailed impression, Extremely Fine Gem, with 1996 P.F. certificate for pair ..... 275.00
- 1663 ★★ **5c Blue, Coil (447).** Mint N.H., unusually deep shade on bright paper, choice centering, post-office fresh and Extremely Fine, with copy of 1999 P.F. certificate for strip of three. .... 100.00
- 1664 ★★ **1c Green, Coil (443).** Mint N.H. pair, rich color on white paper, well-balanced margins, fresh and Extremely Fine, with 1999 P.F. certificate..... 160.00



- 1665 ★★ **2c Carmine, Coil (444).** Mint N.H. guide line pair, brilliant color, wide margins, Very Fine and choice, with 1992 and 2003 P.F. certificates ..... 675.00



1665



1666

- 1666 ★ **3c Violet, Coil (445).** Pair, barest trace of hinging, detailed impression, Jumbo margins, Extremely Fine, with 1999 P.F. certificate ..... 575.00



1667

- 1667 ★★ **4c Brown, Coil (446).** Mint N.H. guide line pair, brilliant color on post-office fresh paper, enormous margins

EXTREMELY FINE GEM. A SUPERB MINT NEVER-HINGED GUIDE LINE PAIR OF THE 4-CENT COIL, SCOTT 446, IN THE FINEST CONDITION ATTAINABLE. REMARKABLE IN EVERY RESPECT — GUM, SIZE OF MARGINS, CENTERING, COLOR AND IMPRESSION.

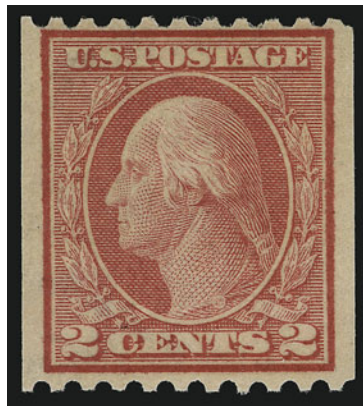
With 2001 P.F. certificate and 2005 P.S.E. certificate (XF-Superb 95)..... 1,600.00





1668

- 1668 ★★ **5c Blue, Coil (447).** Mint N.H. pair, intense color, well-balanced margins, fresh and Extremely Fine, a beautiful Mint N.H. pair, with 1999 P.F. certificate..... 240.00



1669

- 1669 ★ **2c Red, Ty. I, Coil (449).** Lightly hinged, well-centered, fresh color  
 VEY FINE AND CHOICE. A FRESH SINGLE OF THE 2-CENT 1915 ROTARY TYPE I COIL.  
 With 2000 P.F. certificate ..... 2,700.00



1670

- 1670 ★ **2c Red, Ty. I, Coil (449).** Pair, unusually choice centering for this difficult issue with wide and balanced margins all around, brilliant color

EXTREMELY FINE. A SUPERB ORIGINAL-GUM PAIR OF THE 2-CENT VERTICAL COIL, SCOTT 449. AN EXTREMELY DIFFICULT PAIR TO FIND WITH SUCH CHOICE CENTERING.

The 2c Type I rotary plate was used very briefly to make vertical coils issued in late 1915. It was briefly used because the Type I plate was not very deeply engraved and the curvature of the rotary press yielded impressions lacking in some of the details. The Bureau noticed this immediately, and quickly replaced it with the Type III plate (according to Scott, the EDU for No. 449 is Oct. 29, 1915 and the EDU for Type III is Dec. 21, 1915).

With 1981 and 2000 P.F. certificates..... 6,500.00



- 1671 ★★ **2c Carmine, Ty. III, Coil (450).** Mint N.H. pair, brilliant color, well-proportioned margins, Extremely Fine, with 2003 P.F. certificate ..... 55.00
- 1672 ★★ **2c Carmine Rose, Ty. I, Coil (453).** Mint N.H., radiant color, almost perfectly centered with wide and balanced margins, Extremely Fine, with 2001 P.F. certificate ..... 310.00
- 1673 ★★ **2c Red, Ty. II, Coil (454).** Mint N.H., pretty color, fresh and Extremely Fine, with 1996 P.F. certificate ..... 175.00
- 1674 ★★ **3c Violet, Coil (456).** Mint N.H., crisp impression, perfectly centered, Extremely Fine Gem, a beautiful stamp, with 1999 P.F. certificate..... 500.00
- 1675 ★★ **4c Brown, Coil (457).** Mint N.H., bright shade, choice centering, fresh and Extremely Fine ..... 55.00
- 1676 ★★ **5c Blue, Coil (458).** Mint N.H., intense color and proof-like impression, Jumbo margins, Extremely Fine Gem, with 2000 P.F. certificate ..... 65.00
- 1677 ★★ **1c Green, Coil (452).** Mint N.H. joint line pair, almost perfectly centered, sharp impression, Extremely Fine, ex Silver Lake, with 1992 P.F. certificate ..... 160.00



- 1678 ★ **2c Carmine Rose, Ty. I, Coil (453).** Joint line pair, lightly hinged, choice centering, Extremely Fine, with 1985 P.F. certificate ..... 725.00



1678



1679

- 1679 ★★ **2c Red, Ty. II, Coil (454).** Mint N.H. pair, pretty shade, fresh and Extremely Fine, with 1996 P.F. certificate ..... 375.00

- 1680 ★★ **2c Carmine, Ty. III, Coil (455).** Mint N.H., brilliant color, fresh and Extremely Fine..... 45.00



1680



1681

- 1681 ★★ **3c Violet, Coil (456).** Mint N.H. pair, perfect centering with wide and balanced margins all around, fresh color and detailed impression  
EXTREMELY FINE. A SUPERB MINT NEVER-HINGED PAIR OF THE 1916 3-CENT HORIZONTAL COIL.  
With 2001 P.F. certificate..... 1,250.00



1682

- 1682 ★★ **4c Brown, Coil (457).** Mint N.H. joint line pair, pretty pastel color, wide margins, fresh and Extremely Fine, with 1995 P.F. certificate ..... 325.00

- 1683 ★★ **5c Blue, Coil (458).** Mint N.H. pair, almost perfectly centered, deep shade, Extremely Fine, with 2002 P.F. certificate ..... 160.00



1683



1684

- 1684 ★★ **2c Carmine, Ty. I, Imperforate Coil (459).** Mint N.H., large and even margins, brilliant color, Extremely Fine, with 2003 P.F. certificate ..... 350.00

- 1685 ★★ **2c Carmine, Ty. I, Imperforate Coil (459).** Mint N.H. pair, large and even margins, rich color, Extremely Fine, with 2003 P.F. certificate ..... 750.00



1685



- 1686 ★ **\$1.00 Violet Black (460)**. Barest trace of hinging, deep rich color and proof-like impression, wide margins, Very Fine and choice, an attractive stamp, with 1990 P.S.E. and 2003 P.F. certificates..... 850.00



1686



1687

- 1687 ★★ **2c Pale Carmine Red, Ty. I (461)**. Mint N.H., brilliant color, choice centering, fresh and Extremely Fine, with 1996 P.S.E. certificate..... 325.00



1688

1689

1690

1691

- 1688 ★★ **1c Green (462)**. Mint N.H., deep rich color on bright paper, Jumbo margins, Extremely Fine Gem ..... 15.00
- 1689 ★★ **3c Violet (464)**. Mint N.H., brilliant color on bright paper, perfectly centered, Extremely Fine Gem, with 1999 P.S.E. and 2000 P.F. certificates..... 160.00
- 1690 ★★ **4c Orange Brown (465)**. Mint N.H., pretty shade, almost perfectly centered, post-office fresh, Extremely Fine, with 1999 P.F. certificate..... 95.00
- 1691 ★★ **5c Blue (466)**. Mint N.H., intense color on bright paper, beautiful centering, long and full perforations all around, Extremely Fine, a gorgeous stamp, with 1998 P.F. certificate ..... 160.00



- 1692 ★★ **5c Carmine, Error (467).** Single error in Mint N.H. horizontal strip of three, brilliant color, perfectly centered, Extremely Fine Gem, a beautiful strip, with 2003 P.F. certificate. 1,000.00
- 1693 ★★ **6c Red Orange (468).** Mint N.H. with **siderographer's initials at right**, brilliant color, perfectly centered, Extremely Fine Gem, a beautiful stamp, with 1999 P.S.E. certificate..... 200.00
- 1694 ★★ **7c Black (469).** Mint N.H., detailed impression, fresh and Extremely Fine, with 1988 and 2004 P.F. certificates..... 275.00
- 1695 ★★ **8c Olive Green (470).** Mint N.H., bright pastel color, perfectly centered, Extremely Fine Gem, a gorgeous stamp, with 1986 and 1996 P.F. certificates..... 130.00
- 1696 ★★ **9c Salmon Red (471).** Mint N.H., radiant color on bright paper, fresh and Extremely Fine, with 2002 P.F. certificate..... 130.00
- 1697 ★★ **10c Orange Yellow (472).** Mint N.H., vibrant color, uncommonly wide margins, Extremely Fine Gem, a beautiful stamp, with 1997 P.S.E. and 1999 P.F. certificates..... 240.00
- 1698 ★★ **11c Dark Green (473).** Mint N.H., intense shade on bright paper, wide margins, Extremely Fine, with 2002 P.F. certificate..... 85.00
- 1699 ★★ **12c Claret Brown (474).** Mint N.H., rich color on white paper, well-balanced margins, Extremely Fine, with 1987 and 2003 P.F. certificates..... 120.00
- 1700 ★★ **15c Gray (475).** Mint N.H. with **plate no. at bottom**, intense shade, fresh and Extremely Fine, with 1997 P.F. certificate..... 425.00
- 1701 ★★ **20c Light Ultramarine (476).** Mint N.H. with **plate no. at left**, bright color on white paper, Very Fine and choice, an attractive stamp, with 2002 P.F. certificate..... 250.00





1702

1702 ★★ **30c Orange Red, Perf 10 (476A).** Position 32 from Plate No. 6911, Mint N.H., very deep and intense color on bright white paper, sharp proof-like impression, well-centered for this difficult issue with wide margins on all sides

EXTREMELY FINE. EASILY ONE OF THE FINEST EXAMPLES OF THE VERY RARE 30-CENT PERF 10 WASHINGTON-FRANKLIN ON UNWATERMARKED PAPER. A REMARKABLE STAMP IN TERMS OF COLOR, CENTERING, FRESHNESS OF PAPER AND CENTERING FOR THIS ISSUE.

In an article in *Philatelic Opinions V* published by the Philatelic Foundation, William T. Crowe, head of the Expert Committee, discusses the discovery of this rare stamp and how it might have been issued. The production of Scott 476A occurred during the period of transition from gauge-10 perfs to gauge 11. Bureau records do not list a 30c printing on unwatermarked paper that was perforated 10, but the existence of two certified panes—one bottom-right pane from Plate 6917 and one top-right pane from Plate 6911—is evidence that the combination of new unwatermarked paper and old 10-gauge perfs occurred, even if inadvertently. Stamps from these two panes (200 total), two left sheet-margin blocks of four and a bottom plate no. 6914 single, none of which have any trace of watermark, are the only accepted examples of Scott 476A.

With 1984 and 2000 P.F. certificates..... 5,750.00



1703

- 1703 ★ **50c Light Violet (477).** Lightly hinged, rich color, well-proportioned margins

EXTREMELY FINE EXAMPLE OF THE 50-CENT PERF 10 UNWATERMARKED ISSUE.

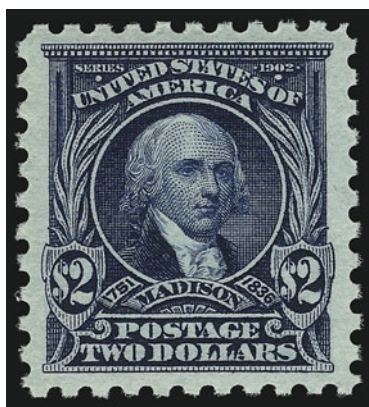
This 50c stamp was only in production for a very short period of time. It was actually released only three weeks prior to the beginning of the new Perf 11 series.

With 1996 P.F. certificate ..... 1,100.00

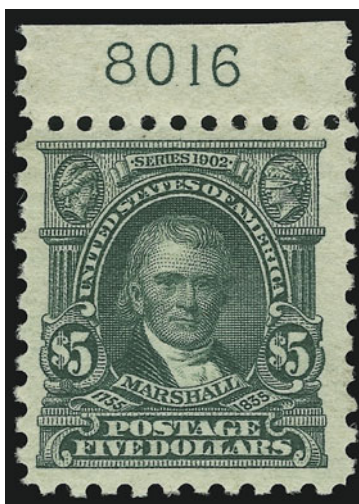
- 1704 ★ **\$1.00 Violet Black (478).** Lightly hinged, deep rich color and proof-like impression on bright paper, choice centering, Extremely Fine, with 1992 P.F. certificate..... 800.00



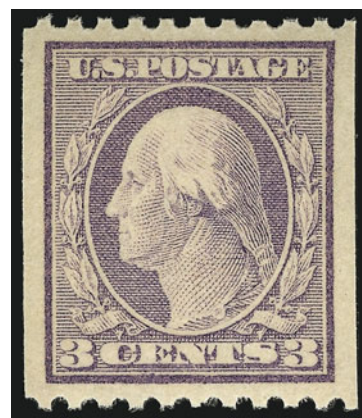
1704



1705



1706



1707

- 1705 ★★ **\$2.00 Dark Blue (479).** Mint N.H., intense shade, fresh and Extremely Fine, with 2000 P.F. certificate ..... 550.00
- 1706 ★★ **\$5.00 Light Green (480).** Mint N.H. with **plate no. at top**, pretty shade, Very Fine and choice, with 2003 P.F. certificate..... 450.00
- 1707 ★★ **3c Violet, Ty. I, Coil (489).** Mint N.H., Jumbo margins all around, bright color, Extremely Fine Gem, ex Morris and Piedmont, with 1992 and 2000 P.F. certificates ..... 10.00





1708

- 1708 ★ **2c Carmine, Ty. II, Coil (491).** Barely hinged, rich color, choice centering  
 EXTREMELY FINE. A BEAUTIFUL ORIGINAL-GUM EXAMPLE OF THE RARE 2-CENT TYPE II  
 PERF 10 HORIZONTAL COIL ON UNWATERMARKED PAPER.  
 With 1994 P.F. certificate..... 2,200.00



1709

- 1709 ★ **2c Carmine, Ty. II, Coil (491).** Pair, lightly hinged, bright color, well-balanced margins for  
 this difficult issue  
 EXTREMELY FINE. A BEAUTIFUL ORIGINAL-GUM PAIR OF THE 2-CENT ROTARY TYPE II COIL.  
 Unlike most other issues, the horizontal coil is actually scarcer than the vertical coil. It was  
 in production for only a short period of time before being replaced by the Type III,  
 Scott 492.  
 With 1968 and 2000 P.F. certificates ..... 5,250.00



- 1710 ★★ **2c Carmine, Ty. III, Coil (492).** Mint N.H., deep rich color, perfectly centered, Extremely Fine, with 2003 P.F. certificate..... 19.00
- 1711 ★★ **3c Violet, Ty. I, Coil (493).** Mint N.H., brilliant color, fresh and Extremely Fine, with 2002 P.S.E. certificate for pair (XF 90)..... 30.00
- 1712 ★★ **1c-3c 1916-19 Issue, Coils (486, 488, 489).** Mint N.H. pairs, bright colors, perfectly centered, Extremely Fine Gems, a great opportunity to capture these low-catalogue items in superb condition .....(Photo Ex) 74.00
- 1713 ★★ **2c Carmine, Ty. II, Coil (487).** Mint N.H. pair, brilliant color, perfectly centered, Extremely Fine Gem, with 1999 P.F. certificate..... 60.00
- 1714 ★★ **2c Carmine, Ty. III, Coil (492).** Mint N.H. pair, brilliant color, perfectly centered, Extremely Fine Gem, a superb Mint N.H. pair, with 2003 P.S.E. certificate..... 45.00
- 1715 ★★ **3c Violet, Ty. I, Coil (493).** Mint N.H. pair, Jumbo margins, deep rich color, Extremely Fine Gem, a phenomenal Mint N.H. pair, with 1999 P.F. certificate..... 75.00





- 1716 ★★ **3c Violet, Ty. II, Coil (494).** Mint N.H. pair, bright shade, post-office fresh and Extremely Fine, with 2003 P.F. certificate..... 50.00
- 1717 ★★ **4c Orange Brown, Coil (495).** Mint N.H. joint line pair, brilliant color on bright paper, perfectly centered, Extremely Fine Gem, a superb Mint N.H. joint line pair, with 2003 P.F. certificate ..... 160.00
- 1718 ★★ **5c Blue, Coil (496).** Mint N.H. joint line pair, sharp proof-like impression, wide margins, Extremely Fine, a superb Mint N.H. joint line pair, with 2003 P.F. certificate ..... 65.00
- 1719 ★★ **10c Orange Yellow, Coil (497).** Mint N.H. joint line pair, fresh and bright color, well-centered, Extremely Fine, with 1998 P.F. certificate..... 280.00

- 1720 ★★ **2c Deep Rose, Ty. Ia (500).** Mint N.H., brilliant color on white paper, almost perfectly centered with balanced margins  
EXTREMELY FINE. A BEAUTIFUL MINT NEVER-HINGED  
EXAMPLE OF THE 2-CENT WASHINGTON, SCOTT 500.  
With 1999 P.F. certificate ..... 575.00



1720



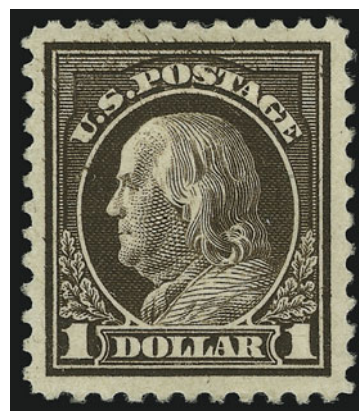
- 1721 ★★ **5c Blue (504)**. Mint N.H., deep rich color and proof-like impression, perfect centering, Extremely Fine Gem, a superb stamp in every respect ..... 19.00
- 1722 ★★ **5c Rose, Error (505)**. Mint N.H., vibrant color, wide margins for this difficult issue, Very Fine and choice, with 2003 P.F. certificate ..... 650.00
- 1723 ★★ **7c Black (507)**. Mint N.H., intense shade and impression, choice centering, Extremely Fine ..... 57.00
- 1724 ★★ **9c Salmon Red (509)**. Mint N.H., beautiful bright color on white paper, almost perfectly centered with unusually wide margins, Extremely Fine Gem, a superb stamp in every respect ..... 28.00
- 1725 ★★ **10c Orange Yellow (510)**. Mint N.H., brilliant color, perfectly centered with well-balanced margins, Extremely Fine ..... 37.00
- 1726 ★★ **11c Light Green (511)**. Mint N.H., deep rich color on bright paper, Jumbo margins, Extremely Fine Gem, a gorgeous stamp, with 1995 P.F. certificate and 2005 P.S.E. certificate (Superb 98) ..... 19.00
- 1727 ★★ **15c Gray (514)**. Mint N.H., intense shade, almost perfectly centered, fresh and Extremely Fine, with 2004 P.F. certificate ..... 77.00
- 1728 ★★ **20c Light Ultramarine (515)**. Mint N.H., pretty shade, post-office fresh, Extremely Fine, with 1999 and 2001 P.F. certificates ..... 95.00
- 1729 ★★ **30c Orange Red (516)**. Mint N.H., radiant color on bright white paper, fresh and Extremely Fine, a stamp of great visual appeal, with 2003 P.F. certificate ..... 80.00
- 1730 ★★ **50c Red Violet (517)**. Mint N.H., rich color on bright paper, unusually wide margins, Extremely Fine, with 2003 P.F. certificate ..... 135.00
- 1731 ★★ **\$1.00 Violet Brown (518)**. Mint N.H., bright color and detailed impression, beautifully balanced margins, Extremely Fine Gem, a superb stamp in every respect, with 2003 P.F. certificate and 2005 P.S.E. certificate (Superb 98) ..... 105.00



- 1732 ★ **\$1.00 Deep Brown (518b).** Small h.r., deep rich color with a heavily inked impression, unusually choice centering for this difficult issue, small corner crease at bottom left

EXTREMELY FINE APPEARANCE. THE \$1.00 IN THE DEEP BROWN COLOR IS EXTREMELY DIFFICULT TO FIND IN SUCH CHOICE-APPEARING CONDITION.

With 1969 and 2000 P.F. certificates (the former not mentioning the small corner crease)..... 1,800.00



1732



1733

- 1733 ★★ **2c Carmine (519).** Mint N.H. with plate no. at left, brilliant color, choice centering, faint natural gum wrinkle at bottom left not mentioned on accompanying certificate, Extremely Fine, with 1997 P.F. certificate for vertical strip of three..... 850.00

- 1734 ★★ **\$2.00 Orange Red & Black (523).** Mint N.H., gorgeous color, Very Fine and choice, with 1995 P.F. certificate ..... 1,250.00



1734



1735

- 1735 ★★ **\$5.00 Deep Green & Black (524).** Mint N.H., deep rich colors on bright paper, wide margins, Extremely Fine, a gorgeous stamp, with 1995 P.F. certificate..... 400.00



- 1736 ★★ **2c Carmine, Ty. IV (526).** Mint N.H., brilliant color, Jumbo margins all around, Extremely Fine Gem, a huge stamp ..... 57.00
- 1737 ★★ **2c Carmine, Ty. VI (528A).** Mint N.H., radiant color, well-balanced margins, Extremely Fine, with 2003 and 2004 P.F. certificates ..... 110.00
- 1738 ★★ **2c Carmine Rose, Ty. IV, Imperforate (532).** Mint N.H., huge margins all around incl. part of adjoining stamp at bottom, brilliant color, Extremely Fine, with 2004 P.F. certificate ..... 75.00
- 1739 ★★ **2c Carmine, Ty. V, Imperforate (533).** Mint N.H., huge margins incl. **part arrow at left**, brilliant color, faint natural gum wrinkle is barely visible, Extremely Fine, with 2000 P.S.E. certificate ..... 210.00
- 1740 ★★ **2c Carmine, Ty. VI, Imperforate (534A).** Mint N.H., large and balanced margins, rich color, fresh and Extremely Fine ..... 90.00



- 1741 ★ **2c Carmine, Ty. VII, Imperforate (534B).** Huge margins all around incl. **plate no. at bottom**, lightly hinged in selvage only, **stamp Mint N.H.**, brilliant color  
EXTREMELY FINE. A BEAUTIFUL EXAMPLE OF THE  
SCARCE 2-CENT TYPE VII IMPERFORATE ISSUE.

Most Type VII stamps were used by private vending and affixing machine companies. However, unlike Scott 314A and 482A, a small supply of the imperforate 2c Type VII stamps did reach the public.

With 1993 and 2002 P.F. certificates. Scott Retail as Mint N.H. .... 3,600.00

1741

- 1742 ★★ **1c Green, Rotary Perf 11 x 10 (538).** Mint N.H., pretty shade, well-centered for this difficult Rotary Press issue, Extremely Fine, with 2000 P.F. certificate ..... 22.00





1743

- 1743 ★ **2c Carmine Rose, Ty. II, Rotary Perf 11 x 10 (539).** Lightly hinged, bright fresh color, beautifully centered

EXTREMELY FINE EXAMPLE OF THE RARE 1919 2-CENT TYPE II ROTARY PRESS WASTE ISSUE, SCOTT 539.

The rotary waste sheets were rarely perforated in a uniform manner. Centered examples such as this are extremely rare.

With 1987 P.F. certificate ..... 2,750.00



- 1744 ★★ **3c Violet, Ty. II (541).** Mint N.H., intense color, wide margin for this difficult issue, Extremely Fine Gem, a beautiful stamp, with 1998 P.F. certificate..... 95.00

- 1745 ★★ **1c Green, Rotary (545).** Mint N.H., brilliant color and detailed impression, unusually wide margins for this issue, Extremely Fine Gem, a phenomenal stamp, with 1989 and 2002 P.F. certificates ..... 425.00

- 1746 ★★ **2c Carmine Rose, Ty. III, Rotary (546).** Mint N.H., well-centered, bright color, Extremely Fine, with 1981 and 2002 P.F. certificates..... 260.00

- 1747 ★★ **\$2.00 Carmine & Black (547).** Mint N.H., intense colors, Extremely Fine, with 2000 P.S.E. certificate ..... 330.00

## 1922-29 AND LATER ISSUES



- 1748 ★★ **3c Violet (555)**. Mint N.H., rich color on bright paper, perfectly centered with wide and balanced margins, Extremely Fine Gem, a beautiful stamp ..... 37.00
- 1749 ★★ **4c Yellow Brown (556)**. Mint N.H., beautiful bright color, wide and balanced margins, fresh and Extremely Fine, a gorgeous stamp..... 42.00
- 1750 ★★ **6c Red Orange (558)**. Mint N.H., radiant color on bright paper, wide and even margins, Extremely Fine Gem, a beautiful stamp, with 2000 P.F. certificate..... 75.00
- 1751 ★★ **8c Olive Green (560)**. Mint N.H., deep rich color, perfectly centered, Extremely Fine Gem, a stamp of great visual appeal, scarce in such superb condition, with 2003 P.F. certificate..... 105.00
- 1752 ★★ **9c Rose (561)**. Mint N.H., vibrant color, huge margins, Extremely Fine Gem, a beautiful stamp..... 29.00
- 1753 ★★ **10c Orange (562)**. Mint N.H., brilliant color on post-office fresh paper, perfectly centered with well-proportioned margins, Extremely Fine..... 37.00
- 1754 ★★ **12c Brown Violet (564)**. Mint N.H., deep rich color and proof-like impression on bright paper, perfectly centered with even margins all around, Extremely Fine Gem, a magnificent stamp..... 13.00
- 1755 ★★ **15c Gray (566)**. Mint N.H., brilliant color, enormous margins, Extremely Fine, a stamp of great visual appeal..... 42.00
- 1756 ★★ **20c Carmine Rose (567)**. Mint N.H., brilliant color on post-office fresh paper, perfectly centered with huge margins, fresh and Extremely Fine, a gorgeous stamp ..... 42.00
- 1757 ★★ **30c Olive Brown (569)**. Mint N.H., rich color, Jumbo margins, fresh and Extremely Fine ..... 62.00
- 1758 ★★ **50c Lilac (570)**. Mint N.H., brilliant color and crisp impression, well-proportioned margins, fresh and Extremely Fine ..... 100.00





- 1759 ★★ **\$1.00 Violet Black (571).** Mint N.H., rich color on bright paper, wide margins, fresh and Extremely Fine, a beautiful stamp..... 85.00
- 1760 ★★ **\$2.00 Deep Blue (572).** Mint N.H., deep rich color on bright white paper, well-balanced margins, Extremely Fine, a gorgeous stamp of great visual appeal ..... 160.00
- 1761 ★★ **\$5.00 Carmine & Blue (573).** Mint N.H., brilliant colors, enormous margins all around, Extremely Fine, a huge stamp, with 2003 P.F. certificate..... 225.00
- 1762 ★★ **Balance of the 1922-25 Issue.** Fifteen Mint N.H. stamps, Nos. 551-554, 557, 559, 563, 563a, 565, 568, 575-577, 622-623, all selected by the owner for color, centering, freshness of paper and overall visual appeal and soundness, Extremely Fine, we feel confident that every stamp would rate at least a grade of 90, with most grading higher.....(Photo Ex) 160.00
- 1763 ★★ **1c Green, Rotary (578).** Mint N.H., rich color and proof-like impression, well-balanced margins, Extremely Fine, a stamp of great visual appeal, with 2002 P.F. certificate ..... 180.00
- 1764 ★★ **2c Carmine, Rotary (579).** Mint N.H., perfectly centered with wide and balanced margins all around, Extremely Fine Gem, a superb stamp in every respect, with 2004 P.F. certificate 170.00
- 1765 ★★ **3c Violet, Perf 10 (584).** Mint N.H., radiant color, perfect centering, Extremely Fine Gem, with 1997 P.F. certificate..... 62.00
- 1766 ★★ **8c Olive Green, Perf 10 (589).** Mint N.H., pretty shade, choice centering, Extremely Fine 57.00
- 1767 ★★ **10c Orange, Perf 10 (591).** Mint N.H., vibrant color, well-balanced margins, fresh and Extremely Fine, with 2002 P.F. certificate..... 140.00



1768

1768 **1c Green, Rotary, Perf 11 (594).** Light machine cancel, deep shade, remarkably choice centering for this difficult stamp

EXTREMELY FINE. SOUND COPIES OF THE 1923 ROTARY PERF 11 ISSUE ARE RARE, AND ONLY A FEW HAVE THE CENTERING AND MARGINS OF THIS SUPERB STAMP.

The 1c Green, Scott 594, is waste from a horizontal rotary printing used to make coils. At the beginning or end of a coil-stamp print run from the 170-subject rotary plates, some leading or trailing paper was produced that was too short for rolling into 500-stamp rolls. In 1919 the Bureau devised a plan to salvage this waste by perforating and cutting the sheets into panes. They were put through the flat-plate perforator in use at the time, giving the sheets full perforations on all sides. In 1923 coil waste from the new 1c and 2c rotary production was turned into stamps later classified as Scott 578-579 and 594-595. These were the last of the coil-waste issues. Fewer than 100 survive of Scott 594 today.

With 1995 P.F. certificate ..... 6,750.00



- 1769 ★★ **2c Carmine, Rotary, Perf 11 (595).** Mint N.H., deep rich color on bright paper, almost perfectly centered with wide margins

EXTREMELY FINE. A BEAUTIFUL MINT NEVER-HINGED EXAMPLE OF THE 2-CENT PERF 11 ROTARY PRESS COIL WASTE ISSUE, SCOTT 595.

With 1984 and 2002 P.F. certificates ..... 1,500.00



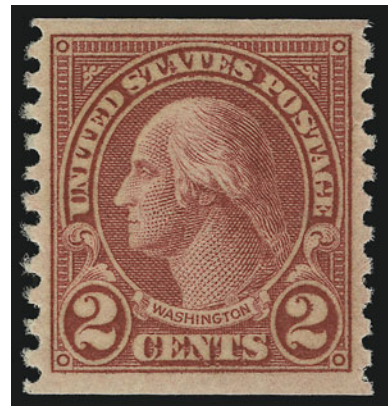
1769



1770

- 1770 ★ **2c Carmine, Joint Line Pair, Ty. I, II (599-599A).** Lightly hinged, brilliant color on white paper, mathematically perfect centering, Extremely Fine Gem, a superb joint line pair, with 2000 P.F. certificate ..... 750.00

- 1771 ★★ **2c Carmine, Ty. II, Coil (599A).** Mint N.H., pretty pastel shade, wide margins, fresh and Extremely Fine, with 1999 P.F. certificate ..... 225.00



1771



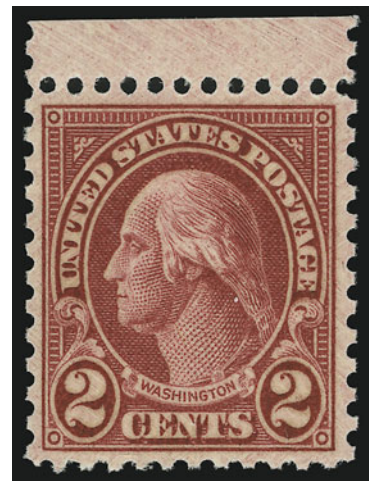
1772

- 1772 ★★ **2c Carmine, Ty. II, Coil (599A).** Mint N.H. joint line pair, brilliant color, well-balanced margins, Very Fine and choice, with 1999 P.F. certificate..... 1,300.00



1773

- 1773 ★★ **2c Harding, Rotary, Perf 10 (612).** Mint N.H., perfectly centered with large and balanced margins, sharp proof-like impression, Extremely Fine Gem, ex Morris, with 1990 P.F. certificate..... 30.00



1774

- 1774 ★★ **2c Carmine, Ty. II (634A).** Mint N.H. with **sheet margin at top**, rich color, Very Fine and choice, with 1990 and 2002 P.F. certificates..... 600.00



1775

- 1775 ★★ **5c Aeronautics (650).** Mint N.H. with **bottom left corner selvage**, enormous margins, Extremely Fine Gem, a huge stamp, with 1990 P.F. certificate..... 7.00





- 1776 ★★ **4c Kans. Ovpt. (662).** Mint N.H., perfectly centered with wide and proportioned margins, rich color, Extremely Fine Gem, a gorgeous stamp, with 2000 P.F. certificate for block of four ..... 37.00
- 1777 ★★ **5c Kans. Ovpt. (663).** Mint N.H., intense shade, well-balanced margins, Extremely Fine, with 2003 P.F. certificate ..... 24.00
- 1778 ★★ **6c Kans. Ovpt. (664).** Mint N.H., brilliant color, perfectly centered, Extremely Fine Gem, with 2000 P.F. certificate for block of six..... 55.00
- 1779 ★★ **8c Kans. Ovpt. (666).** Mint N.H., perfectly centered, Extremely Fine Gem, a superb stamp, with 2001 P.F. certificate ..... 180.00
- 1780 ★★ **2c Nebr. Ovpt. (671).** Mint N.H., deep rich color, wide margins, Extremely Fine, a difficult stamp to find with such wide margins, with 2001 P.F. certificate..... 5.00
- 1781 ★★ **3c Nebr. Ovpt. (672).** Mint N.H., deep rich color and proof-like impression, unusually wide margins for this issue, Extremely Fine Gem, a beautiful stamp ..... 24.00
- 1782 ★★ **4c Nebr. Ovpt. (673).** Mint N.H., wide and balanced margins, pretty color, Extremely Fine Gem, with 2004 P.F. certificate ..... 35.00
- 1783 ★★ **5c Nebr. Ovpt. (674).** Mint N.H., deep rich color, beautifully centered with wide and balanced margins, Extremely Fine Gem ..... 32.00
- 1784 ★★ **6c Nebr. Ovpt. (675).** Mint N.H., radiant color, well-proportioned margins, Extremely Fine, with 1998 P.F. certificate ..... 75.00



- 1785 ★★ **8c Nebr. Ovpt. (677).** Mint N.H., perfectly centered with wide margins for this issue, fresh color, Extremely Fine Gem, ex Piedmont, with 2000 and 2001 P.F. certificates..... 60.00
- 1786 ★★ **9c Nebr. Ovpt. (678).** Mint N.H., beautiful centering, rich color, Extremely Fine Gem, with 2002 P.F. certificate ..... 67.00
- 1787 ★★ **10c Nebr. Ovpt. (679).** Mint N.H., unusually wide margins for this issue, brilliant color, Extremely Fine, with 2000 P.F. certificate..... 225.00
- 1788 ★★ **1c-10c Kans.-Nebr. (658-661, 665, 667-668, 669-670, 676).** Mint N.H., rich colors, each individually selected by the owner for their centering and overall freshness, Very Fine-Extremely Fine.....**(Photo Ex)** 225.00
- 1789 ★★ **11c-50c 1931 Issue (692-701).** Mint N.H., bright and fresh colors, well-centered, Extremely Fine, a scarce set in such wonderful condition.....**(Photo Ex)** 137.00
- 1790 ★★ **Balance of the North Fork Collection of Superb 20th Century Stamps.** Beautiful green Lindner album with computer-generated pages made by the owner, each stamp selected individually by the owner for its superb condition, incl. imperf. such as Nos. 383-384, 408-409, 481-484, coil singles such as Nos. 390, 448, 450, 452, 455, 486-488, 490, 494-497, coil pairs or line pairs incl. Nos. 448 and 490, singles incl. Nos. 331, 463, 498, 499, 501-503, 506, 508, 512-513, 528, 528B, 536, 540 (with 2000 P.F. certificate), 542-543, 548-550, 614-616, 617-621, all have wonderful color and centering, free from faults and Very Fine-Extremely Fine, a marvelous opportunity for the fastidious collector to acquire many of the low catalogue value stamps that can be so difficult to find .....*Not illustrated* 1,656.00

END OF SALE — THANK YOU