

Sale 904

Saturday, December 10, 2005

Superb United States Stamps Featuring The Sarasota Collection



Robert A. Siegel

AUCTION GALLERIES, INC.

www.siegelauctions.com

Sale 904

Saturday, December 10, 2005
at 1:30 p.m.



Lot 232

Superb and Rare United States Stamps

Featuring

The Sarasota Collection

A Mint Never-Hinged Example of
The 1918 24¢ Inverted “Jenny”

A Full Uncut Sheet of 400 Containing
The Imperforate 5¢ Red Transfer Errors

Buffalo Balloon Air Post Rarities

Most lots offered without reserves

**All lots in this sale only are sold
subject to a 15% Buyer's Premium**

Pre-sale exhibition

Wednesday, December 7 — 10:00 a.m. to 4:00 p.m.

Thursday, December 8 — 10:00 a.m. to 4:00 p.m.

Friday, December 9 — 10:00 a.m. to 4:00 p.m.

or by appointment (please call 212-753-6421)

**On-line catalogue, e-mail bid form, resources and
the Siegel Encyclopedia are available on our web site:**

www.siegelauctions.com

Arrangement of Sale

**Afternoon session (lots 1-544)
Saturday, December 10, at 1:30 p.m.**

St. Louis Provisional, 1847 Issue	5-9
1851-56 Issue	9-13
1857-60 Issue and Reprints.....	14-19
1861-66 Issue	20-25
1867-68 Grilled Issues	26-29
1861 Re-Issue	29-30
1869 Pictorial Issue and Re-Issue	31-38
1870-93 Bank Note Issues	39-58
Columbian Issue	59-63
1894-98 Bureau Issues.....	64-76
Trans-Mississippi Issue	77-80
Pan-American, 1902-08 Issues.....	81-87
Louisiana Purchase, Jamestown Issues	88-89
1908 and Later Issues	90-115
Air Post and Back-of-Book Issues	116-128
1918 24c Inverted “Jenny” (Lot 499)	117

On the cover

Front: 499

Back: 1, 32, 44, 55
103, 127, 178, 123
223, 191, 301
203, 247, 266, 366

AFTERNOON SESSION (LOTS 1-544)
SATURDAY, DECEMBER 10, 2005, AT 1:30 P.M.

SUPERB AND RARE UNITED STATES STAMPS
Featuring The Gulf Coast Collection
ST. LOUIS POSTMASTER'S PROVISIONAL



1

- 1 (★) **St. Louis Mo., 5c Black on Greenish (11X1).** Type III, Position 5, unused (no gum), large margins to full all around, bright shade, tiny thin spot
VERY FINE APPEARANCE. A RARE FOUR-MARGIN UNUSED EXAMPLE OF THE 5-CENT ST. LOUIS "BEARS" PROVISIONAL ISSUE ON GREENISH PAPER.
The St. Louis "Bears" provisionals are rare in unused (or uncanceled) condition, and only a few of the 5c value are known unused, all on Greenish paper.
With 1975 and 2005 P.F. certificates, the former not mentioning the thin spot, which is very faint and small. 10,000.00

1847 ISSUE



2

- 2 ★ **5c Red Brown (1).** Original gum, small h.r., large margins all around, deep rich color, tiny corner margin crease at top right entirely outside design (could be trimmed leaving a full margin)
EXTREMELY FINE. A FRESH AND RICHLY-COLORED ORIGINAL-GUM EXAMPLE OF THE 5-CENT 1847 ISSUE.
This was the top stamp in the vertical strip of three from the Caspary sale. With 2004 P.F. certificate..... 6,500.00



3

- 3 (★) **5c Brown (1).** Unused (no gum), large margins all around, deep rich color

EXTREMELY FINE UNUSED EXAMPLE OF THE 5-CENT 1847 ISSUE WITH REMARKABLY DARK RICH COLOR.

With 1978 P.F. certificate 2,500.00



4

- 4 (★) **5c Red Brown (1).** Unused (no gum), full margins all around, bright color

VERY FINE AND CHOICE. A REMARKABLY FRESH UNUSED EXAMPLE OF THE 5-CENT 1847 ISSUE.

With copy of P.F. certificate 2,500.00



5

- 5 **5c Brown (1).** Large margins, late printing shade and impression, tied by black "Philadelphia Pa. May 11" (1852 or later) circular datestamp on small blue piece

EXTREMELY FINE AND RARE DEMONETIZED USE OF THE 5-CENT 1847 FROM PHILADELPHIA.

The 1847 Issue was demonetized when the new 1851 Issue was released on July 1; however, based on surviving examples, major post offices evidently tolerated sporadic late use of 1847 stamps, at least for a period of time. This piece shows the 5c cancelled by the Philadelphia datestamp in black, a color ink used only after 1851. The earliest possible date of use is May 11, 1852, long after demonetization.

Ex Waterhouse, Haas and Wall. With 1991 P.F. certificate. 650.00



6

- 6 **5c Red Brown (1).** Huge margins to full at bottom, intense shade and beautiful fresh color, tied by incredibly bold strike of blue "Philada. Pa. 5 Aug. 17" integral-rate circular datestamp on small blue piece, fresh and Extremely Fine, ex Dick, Mayer and Wall, with 2000 P.F. certificate 675.00

- 7 **5c Red Brown (1).** Horizontal pair, large margins, **black "Smithfield Mar. 19" date-stamp**, trace of ms. at left, Extremely Fine, a superb pair with scarce black town cancel, with 1995 P.F. certificate..... 1,550.00



7



8

- 8 **5c Red Brown (1).** Horizontal pair, large to huge margins all around, distinctive late impression and shade (accompanying certificate states Grayish Brown), two clear strikes of **black grid** cancel, Extremely Fine and scarce use of black grid on a 5c 1847 pair, ex Garrett and Wall, with 1976 P.F. certificate..... 1,350.00

- 9 **5c Brown, Double Transfer Ty. A (1-A).** Position 80R, huge margins all around incl. part of **right sheet margin**, bright shade, red grid, Extremely Fine Gem, with 1992 P.F. certificate..... 700.00



9



10

- 10 **5c Brown, Double Transfer Ty. B (1-B).** Position 90R, full even margins, deep rich color and sharp impression, red square grid cancel clear of top and bottom frame-lines where double transfer is evident, Very Fine and choice 700.00



11

- 11 ★ **5c Orange Brown (1).** Part original gum, ample to huge margins, bright shade and rich color, tiny margin tear, trivial light toning spot

EXTREMELY FINE DESPITE MINOR FLAWS. PROBABLY ONE OF THE FINEST-APPEARING EXAMPLES OF THE FEW EXISTING 5-CENT 1847 ORANGE BROWNS WITH ANY PART OF ORIGINAL GUM.

With 2005 P.F. certificate..... 8,250.00

- 12 **5c Orange Brown (1b).** Large margins, bright color, neat strike of **black grid** cancel, fresh and Extremely Fine, with 2005 P.F. certificate..... 950.00



12



13

- 13 **10c Black (2).** Huge margins to full at bottom, crisp shade and detailed impression, neatly cancelled by **blue town datestamp**, Extremely Fine, with 2005 P.F. certificate..... 1,400.00

- 14 **10c Black (2).** Large top and bottom margins and full margins at sides, **blue Philadelphia "10 cts" datestamp**, fresh and Extremely Fine, with 1979 P.F. certificate 1,400.00



14



15



16

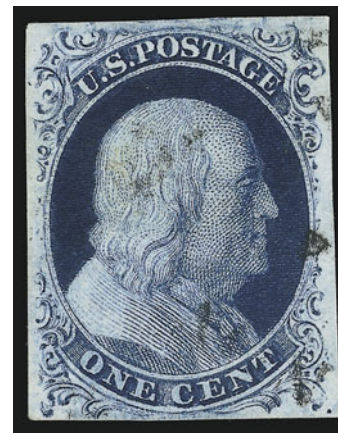


17

- 15 ★ **5c Red Brown, Reproduction (3).** Without gum as issued, large to huge margins, brilliant color, Extremely Fine, with 2005 P.F. certificate 750.00
- 16 ★ **5c Red Brown, Reproduction (3).** Without gum as issued, large even margins all around, bright color, Extremely Fine, with 1985 P.F. and 2005 P.S.E. certificates (XF 90)..... 750.00
- 17 ★ **10c Gray Black, Reproduction (4).** Without gum as issued, large margins, crisp impression, fresh and Extremely Fine, with 1986 P.F. and 2005 P.S.E. certificates (XF 90) 925.00

1851-56 ISSUE

- 18 **1c Blue, Ty. II, Plate 3 (7).** Position 21R3, full even margins, lovely dark Plate 3 shade, very lightly cancelled by datestamp, Very Fine and choice, scarce printing from Plate 3, with 2005 P.F. certificate 1,500.00



18



19

- 19 **1c Blue, Ty. III (8).** Position 61L4, large margins to full all around, rich Plate 4 color, unobtrusive cancel leaves design clearly visible
EXTREMELY FINE LIGHTLY-CANCELLED EXAMPLE OF THE IMPERFORATE 1851 ONE-CENT TYPE III.
With 2005 P.S.E. certificate (XF 90) 3,250.00



20

20

1c Blue, Ty. IV , Triple Transfer, One Inverted (9 var). Position 91L1L, huge margins all around incl. **bottom left corner sheet margins**, dark shade, neat strike of town datestamp leaves design clearly visible

EXTREMELY FINE GEM. A SUPERB USED EXAMPLE OF THE 1851 IMPERFORATE ONE-CENT TYPE IV WITH TRIPLE TRANSFER, ONE INVERTED.

The three inverted transfers occurred during the making of Plate 1 Early. Positions 71L, 81L and 91L were entered from the three-subject transfer roll in the spaces where the first three entries had been made and erased (but not fully erased). The plate was turned 180 degrees before starting fresh entries from the transfer roll. Position 91L was re-entered a third time on Plate 1 Early, creating a triple transfer (two upright, one inverted). When Toppan, Carpenter re-worked the worn plate, many of the subjects were re-entered, and all but one were recut at top and/or bottom, creating Scott 9, Type IV, from what we call Plate 1 Late (the same piece of steel in its modified state). Positions 71L and 81L were re-entered, thus becoming triple transfer (one inverted) positions. Position 91L was not re-entered. Thus, Position 71L and 81L only exist as triple transfers one inverted as Type IV stamps, while Position 91L exists as Type II and Type IV.

With 2000 and 2005 P.S.E. certificates (XF-Superb 95 Jumbo).....
..... 180.00



21



22



23

- 21 **1c Blue, Ty. IV (9).** Recut once at top and once at bottom, enormous margins all around incl. **sheet margin at right** and part of adjoining stamps at top and bottom, rich color, light **blue datestamp**, Extremely Fine Gem, a massive stamp..... 135.00
- 22 **1c Blue, Ty. IV (9).** Large to huge margins incl. parts of adjoining stamps at top and bottom, neat **blue town datestamp**, deep rich color, Extremely Fine 135.00
- 23 **1c Blue, Ty. IV (9).** Huge margins incl. part of adjoining stamps on three sides, bright shade, socked-on-the-nose "Providence R.I. Dec. 21" circular datestamp, Extremely Fine, with 2005 P.F. certificate 130.00



24

- 24 ★ **3c Orange Brown (10).** Full margins all around, brilliant color, original gum, lightly hinged
 VERY FINE AND CHOICE. A SCARCE ORIGINAL-GUM EXAMPLE OF THE 1851 3-CENT ORANGE
 BROWN WITH MARGINS ALL AROUND AND IN A REMARKABLY FRESH STATE OF PRESERVATION.
 With 2005 P.F. certificate for pair 3,500.00



25

- 25 ★田 **3c Dull Red (11).** Positions 85-87/95-97L4, **bottom sheet margin block of six with 1/4mm and 1.25mm spacing variation between vertical rows**, original gum, large margins to slightly in, bright color, creases and trivial flaws

FINE-VERY APPEARANCE. AN OUTSTANDING ORIGINAL-GUM MULTIPLE OF THE 3-CENT 1851 FROM PLATE 4, SHOWING WHAT DR. CARROLL CHASE DESCRIBED AS "THE MOST MARKED VARIATION" IN SPACING ON ANY 3-CENT PLATE, EXAMPLES OF WHICH HE CALLED "DECIDEDLY RARE."

The space between Positions 95L and 96L on Plate 4 is approximately 1/4th of a millimeter, while the space between 96L and 97L is more than six times greater at 1.25 millimeters. This effect resulted from slightly skewed entry of the vertical row of subjects from top to bottom in the plate.

Ex Simpson 2,675.00



26



27

- 26 **3c Claret (11 var).** Huge margins all around incl. part of adjoining stamps on all sides, rich color, well-struck circular datestamp
EXTREMELY FINE GEM. THIS IS THE FIRST STAMP WITH THE PERFECT GRADE OF 100 WE HAVE EVER OFFERED.
With 2005 P.S.E. certificate (Gem 100). This is the stamp that P.S.E. uses in their grading guide as the model for a 100-point 3c 1851 stamp..... 12.00
- 27 **3c Dull Red (11).** Large to huge margins incl. part of adjoining stamp at left, brilliant color, neat strike of circular datestamp, Extremely Fine Gem, with copy of 2005 P.F. certificate and with 2005 P.S.E. certificate (XF-Superb 95 Jumbo)..... 12.00



28

- 28 (★) **10c Green, Ty. I (13).** Unused (regummed), large margins to just clear, rich color
VERY FINE. A RARE SOUND UNUSED EXAMPLE OF THE 1855 10-CENT TYPE I ISSUE.
With 2005 P.F. certificate..... 7,750.00

- 29 **10c Green, Ty. II (14).** Horizontal pair, large to huge margins, rich color, light cancels, Extremely Fine Gem, with 1978 and 2003 P.F. certificates..... 450.00



29

- 30 ★ **10c Green, Ty. III (15).** Original gum, large even margins all around, bright shade on fresh white paper, light crease at top left

EXTREMELY FINE APPEARING ORIGINAL-GUM EXAMPLE OF THE 1855 10-CENT TYPE III IMPERFORATE.

With 2005 P.F. certificate..... 5,000.00



30



31

- 31 **10c Green, Ty. III (15).** Horizontal pair, large even margins all around, bright color, neat strike of New Orleans circular datestamp, Extremely Fine, with 1977 P.F. certificate 450.00

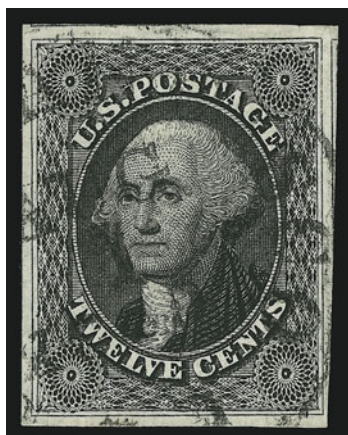
- 32 **10c Green, Ty. IV (16).** Position 55L1, recut at bottom, huge margins to full, pretty color, light strike of circular datestamp

EXTREMELY FINE EXAMPLE OF THE 10-CENT TYPE IV 1855 ISSUE.

With 1989 P.F. certificate 1,700.00



32



33

- 33 **12c Black (17).** Large even margins all around, crisp impression, face-free strike of San Francisco circular datestamp, Extremely Fine, with 2005 P.S.E. certificate (XF 90) 325.00

1857-60 ISSUE



34

- 34 **1c Blue, Ty. I (18).** Unusually choice centering, pretty pastel color, grid cancel, Extremely Fine, with 2005 P.F. certificate 650.00

- 35 **1c Blue, Ty. II (20).** Precise centering, beautiful shade on bright white paper, face-free cancel, Extremely Fine, with 2004 P.F. certificate 275.00



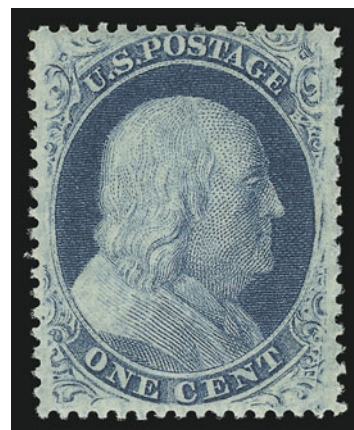
35



36

- 36 **1c Blue, Ty. IV (23).** Recut once at top and once at bottom, barest trace of cancel, brilliant color, choice centering, Extremely Fine, the perforated 1c 1857 stamps from Plate 1 Late are rarely found in this sound high-grade condition, with 2005 P.F. certificate 800.00

- 37 ★★ **1c Blue, Ty. V (24).** Mint N.H., bright color, choice centering, fresh and Extremely Fine, a beautiful stamp, with 2004 P.S.E. certificate (XF 90), Scott Retail as hinged 180.00



37



38

- 38 田 **3c Rose, Ty. I (25).** Block of four, fresh color and rather well-centered for this tightly-spaced plate, neat town datestamp, extra wide perforated margin at right showing full spacing between stamps and parts of the adjoining designs (some blunted perfs along this side), bottom left stamp minor thin spot
VERY FINE FOR THIS EXTREMELY RARE USED MULTIPLE OF THE PERFORATED 3-CENT TYPE I 1857 ISSUE.

Until Toppan Carpenter made new 3c plates with wider spaces between stamps to accommodate the perforations, they simply perforated sheets printed from the earlier Type I plates, beginning in early 1857. As this rare used block demonstrates, the narrow (and irregular) spacing was not well-suited for applying perforations. 7,000.00



39

- 39 ★★田 **3c Dull Red, Ty. II (26).** Mint N.H. bottom selvage block of four, brilliant color, unusually choice centering for this difficult issue

EXTREMELY FINE. A WONDERFULLY FRESH MINT NEVER-HINGED BLOCK OF FOUR OF THE 1857 3-CENT TYPE II ISSUE.

With 2005 P.F. certificate. Scott Retail as hinged block of four 400.00



40

- 40 **5c Orange Brown, Ty. II (30).** Beautifully centered with perfs clear all around, deep rich color on fresh paper, bold **red quartered cork** cancel, tiny natural inclusion at left not mentioned on accompanying certificate

VERY FINE AND CHOICE USED EXAMPLE OF THE 5-CENT TYPE II ORANGE BROWN. COLORED CORK CANCELLATIONS ARE EXTREMELY RARE ON THIS ISSUE.

The Orange Brown is much scarcer used than unused. Examples in this superb used condition are rare, and very few exist with anything other than the standard grid cancel.

With 1990 P.F. certificate..... 1,375.00

- 41 ★ **5c Brown, Ty. II (30A).** Original gum, lightly hinged, crisp impression

EXTREMELY FINE ORIGINAL-GUM EXAMPLE OF THE 5-CENT TYPE II 1860 ISSUE.

Unlike its Orange Brown counterpart, the 5c Type II in Brown was not on hand in post offices when the 1861 demonetization order took effect. Therefore, original-gum examples of Scott 30A are far scarcer than Scott 30. The narrow spacing between subjects on the plate, as well as Toppan Carpenter's imprecise perforating, leaves collectors with very few well-centered original-gum examples.

With 2005 P.F. certificate 2,250.00



41



42

- 42 ★ **5c Brown, Ty. II (30A).** Original gum, small h.r., rich color

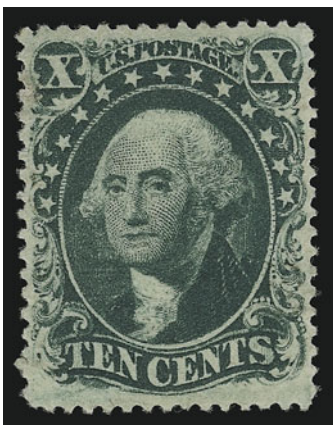
VERY FINE AND CHOICE ORIGINAL-GUM EXAMPLE OF THE 5-CENT BROWN 1860 ISSUE.

With 2003 P.F. certificate..... 2,250.00

- 43 **10c Green, Ty. II (32).** Perfectly centered with well-balanced margins, pretty pastel color, light cancel leaves design clearly visible, Extremely Fine Gem, a superb stamp in every respect, with 1997 P.F. and 2005 P.S.E. certificates (XF-Superb 95)..... 300.00



43



44

- 44 (★) **10c Green, Ty. IV (34).** Position 55L1, recut at bottom, unused (no gum), deep rich color on bright paper, well-balanced margins with perforations well clear of the design on all sides

EXTREMELY FINE. THE 10-CENT TYPE IV PERFORATED 1857 ISSUE IS ONE OF THE RAREST OF ALL CLASSIC UNITED STATES STAMPS IN SOUND UNUSED CONDITION. THIS SUPERB STAMP POSSESSES REMARKABLE FRESHNESS.

The 1857 10c Type IV stamps come from eight positions scattered throughout Plate 1 that have the top, bottom or both lines recut. Only 4% of all 10c Plate 1 stamps produced were Type IV's, and an even smaller percentage was issued with perforations. A review of our computerized auction records for Scott 34 in unused condition found only two other sound examples.

With 2004 P.F. certificate 20,000.00



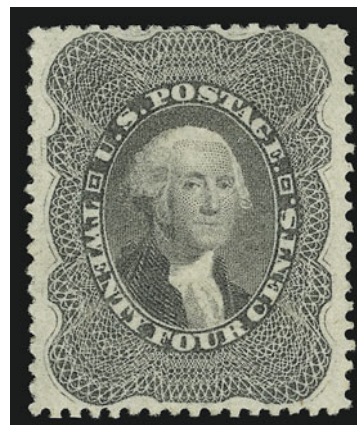
45

- 45 **10c Green, Ty. V (35).** Pretty shade nicely contrasted by **red** circular datestamp, choice centering, Extremely Fine, with 2005 P.S.E. certificate (XF 90)..... 72.00

- 46 ★ **24c Gray Lilac (37).** Original gum, lightly hinged, crisp impression, choice centering with balanced margins

EXTREMELY FINE. A BEAUTIFUL ORIGINAL-GUM EXAMPLE OF THE 24-CENT 1860 ISSUE.

With 2002 P.F. and 2004 P.S.E. certificates (XF 90) 1,700.00



46



47

- 47 **30c Orange (38).** Radiant color nicely contrasted by **blue grid** cancel, wide margins for this difficult issue, fresh and Extremely Fine, a beautiful stamp, scarce in such choice condition, with 2005 P.F. certificate..... 470.00

- 48 **No lot.**

- 49 ★ **90c Blue (39).** Original gum, very lightly hinged, deep rich color, choice centering

VERY FINE ORIGINAL-GUM EXAMPLE OF THE 90-CENT 1860 ISSUE. A STAMP OF GREAT VISUAL APPEAL.

With 2004 P.F. and P.S.E. certificates..... 3,500.00



49

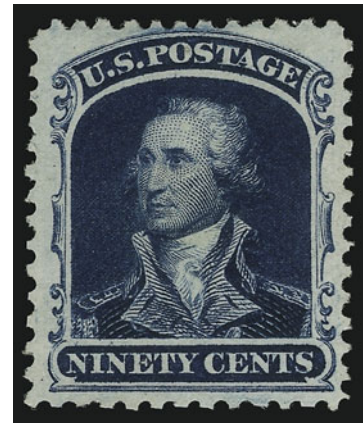
1875 REPRINT OF 1857-60 ISSUE



50

- 50 ★ **1c Bright Blue, Reprint (40).** Without gum as issued, radiant color, trivial natural inclusion at bottom left not mentioned on accompanying certificate, Extremely Fine, with 2003 P.S.E. certificate (XF 90)..... 625.00

- 51 ★ **90c Deep Blue, Reprint (47).** Without gum as issued, deep rich color, wide margins
EXTREMELY FINE EXAMPLE OF THE 1875 REPRINT OF THE 90-CENT 1860 ISSUE.
Only 454 sold. With 2005 P.F. certificate 4,500.00



51



52

- 52 ★ **90c Deep Blue, Reprint (47).** Without gum as issued, deep rich color on bright paper
VERY FINE AND FRESH EXAMPLE OF THE 90-CENT 1857 REPRINT.
Only 454 sold. With 1996 P.F. and 2005 P.S.E. certificates (VF 80) 4,500.00

1861-66 ISSUE



53

- 53 ★★ **1c Blue (63).** Mint N.H., intense shade on brilliant paper, Very Fine and choice, with 1999 P.F. certificate, Scott Retail as hinged..... 350.00

- 54 (★) **1c Blue, Laid Paper (63c).** Unused (no gum), clear horizontal laid lines, brilliant color

FRESH AND FINE. AN INCREDIBLY RARE UNUSED EXAMPLE OF THE ONE-CENT 1861 ISSUE ON LAID PAPER. VERY FEW ARE KNOWN.

With 2005 P.F. certificate. Scott Catalogue lists but does not price this stamp as unused. Scott Retail as used is \$4,000.00. E. 3,000-4,000



54

- 55 ★ **3c Pink (64).** Original gum, lightly hinged, bright color in the true Pink shade

EXTREMELY FINE ORIGINAL-GUM EXAMPLE OF THE 1861 3-CENT PINK.

The 3c 1861 Pink (Scott 64) is one of the most difficult stamps of the 1861-66 Issue to find in sound, well-centered, original-gum condition with fresh color. The nature of the ink used to print the 3c Pink shade is such that over the course of time, with exposure to light and other adverse elements, the color tends to oxidize or lose its vibrancy.

Collectors who have searched in vain for a 3c Pink in such condition will appreciate the rarity of this stamp in such a remarkable state of preservation. Others who may be less familiar with the rarity of this early 1861 Issue — and perhaps deceived by the abundance of common 3c 1861 shades (Scott 65) — are urged to consider the extreme rarity of Scott 64 in sound original-gum condition. In several recent auctions, we have offered well-centered original-gum examples of the 1861-66 Issue, and the record realizations at large multiples of Scott value demonstrate the rarity of these stamps.

With 2002 P.F. certificate 9,500.00



55



56



57

- 56 **3c Rose Pink (64b).** Well-balanced margins, radiant color in the true Rose Pink shade, neat strike of grid cancel, Extremely Fine, with 2005 P.F. certificate 150.00
- 57 ★★ **3c Rose (65). Mint N.H.,** brilliant color on bright paper, Extremely Fine Gem, with 2004 P.F. and 2005 P.S.E. certificates (XF 90 — deserves a 95 in our opinion), Scott Retail as hinged 150.00



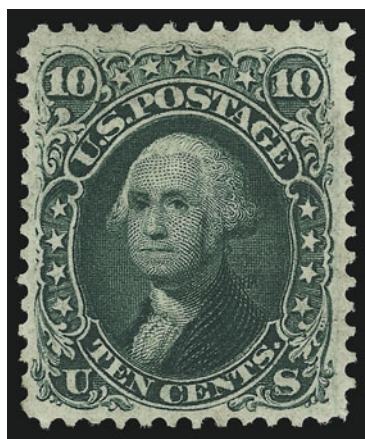
58

- 58 ★ **3c Rose (65).** Original gum, bright color, Extremely Fine, with 1999 P.F. certificate 150.00

- 59 ★ **3c Lake (66).** Original gum, lightly hinged, brilliant color
 VERY FINE AND CHOICE ORIGINAL-GUM EXAMPLE OF
 THE 3-CENT LAKE TRIAL PRINTING.
 With 2005 P.F. certificate 2,000.00

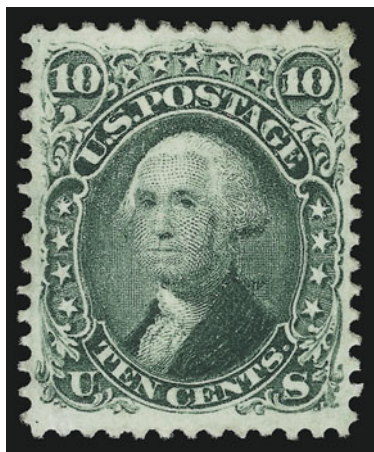


59



60

- 60 ★ **10c Green (68).** Original gum, deep rich color approaching that usually found on the First Design, wide margins
 VERY FINE ORIGINAL-GUM EXAMPLE OF THE 10-CENT 1861 ISSUE.
 With 2005 P.F. certificate 1,100.00



61

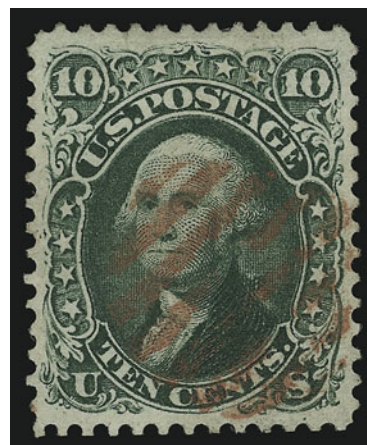
- 61 ★ **10c Yellow Green, "TAG" Variety (68 var).** Original gum, radiant color showing the clear doubling in "TAG", wide and balanced margins

EXTREMELY FINE. A BEAUTIFUL ORIGINAL-GUM EXAMPLE OF THE 10-CENT 1861 ISSUE WITH THE "TAG" VARIETY.

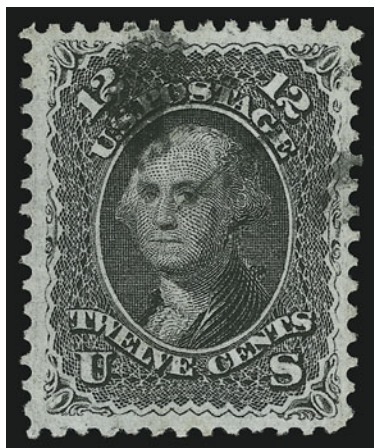
According to Brookman, this variety was caused by the use of a defective transfer roll on which some bits of metal had become lodged.

With 2005 P.S.E. certificate. Scott Retail as normal 1,100.00

- 62 **10c Yellow Green (68).** Deep rich color nicely contrasted by **red grid** cancel, choice centering, fresh and Extremely Fine, with 2005 P.S.E. certificate (XF 90) 60.00



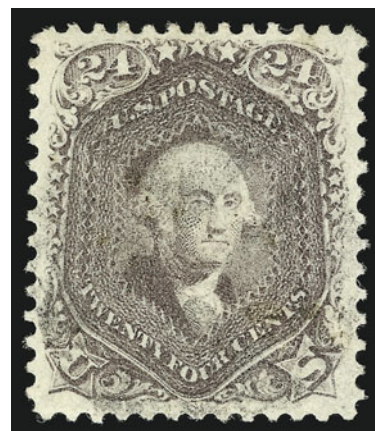
62



63

- 63 **12c Black (69).** Crisp impression and bright shade, cork cancel, wide and balanced margins, Extremely Fine, with 2005 P.F. certificate 110.00

- 64 **24c Red Lilac (70).** Pretty pastel shade, well-balanced margins, light strike of quartered cork cancel, Extremely Fine, an attractive stamp, with 2000 P.F. and P.S.E. certificates 250.00



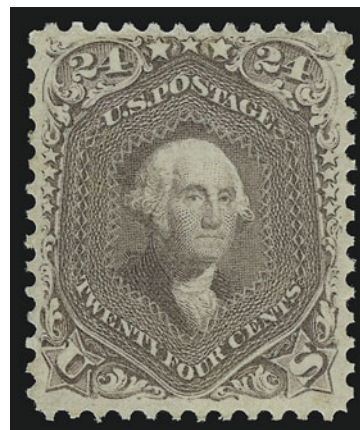
64

- 65 ★ **24c Brown Lilac (70a).** Original gum, lightly hinged, radiant color and detailed impression, well-balanced margins

EXTREMELY FINE. A GORGEOUS ORIGINAL-GUM EXAMPLE OF THE 24-CENT 1861 ISSUE IN THE BROWN LILAC COLOR.

Like the 12c 1861 Issue, the 24c is usually available in unused no-gum condition or low grades of original-gum condition. However, the rare combination of full original gum and choice centering cause Scott values to become irrelevant.

With 2001 P.F. certificate for pair..... 2,500.00



65



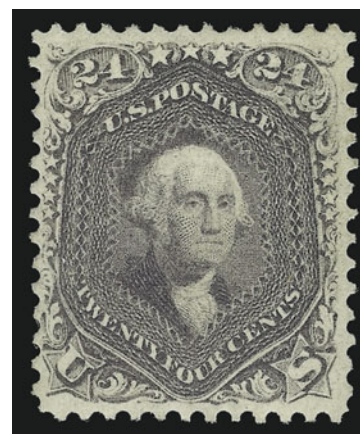
66

- 66 **24c Brown Lilac (70a).** Uncharacteristically wide margins well clear of design all around, essentially perfectly centered, fresh color, bold **Triangular Grid** cancel, Extremely Fine Gem, truly remarkable..... 225.00

- 67 (★) **24c Violet, Thin Paper (70c).** Unused, described by the P.F. as regummed, but appears to be disturbed original gum, rich color and detailed impression, choice centering VERY FINE AND CHOICE. A RARE UNUSED EXAMPLE OF THE 1861 24-CENT VIOLET ON THIN PAPER.

The 24c 1861 exists in four basic shades of Violet: Dark Violet (August 1861 trial printing, formerly Scott 60); Violet on Thin Paper (August-September 1861 regular issue, Scott 70c — the shade offered here); Pale Gray Violet (1861 regular issue, Scott 70d) and Blackish Violet (ca. 1863 printing, Scott 70c).

With 2003 P.F. certificate. Scott Retail as no gum..... 5,000.00



67



68

- 68 **30c Orange (71).** Remarkably choice centering, vibrant color, neat strike of **red** New York grid cancel, fresh and Extremely Fine, with 2004 P.F. certificate 200.00



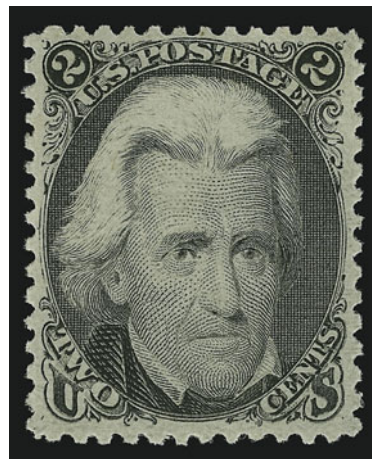
69

- 69 ★ **90c Blue (72).** Original gum, lightly hinged, brilliant color, well-proportioned margins

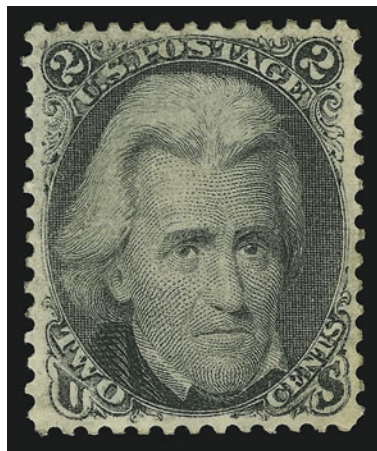
EXTREMELY FINE. A BEAUTIFUL ORIGINAL-GUM EXAMPLE OF THE 90-CENT 1861 ISSUE.

With 2002 P.F. certificate 3,250.00

- 70 ★★ **2c Black (73).** Mint N.H., crisp impression, Very Fine and choice, with 1978 P.F. and 2005 P.S.E. certificates (inexplicably graded VF 80; in our opinion, at least an 85), Scott Retail as hinged .. 375.00



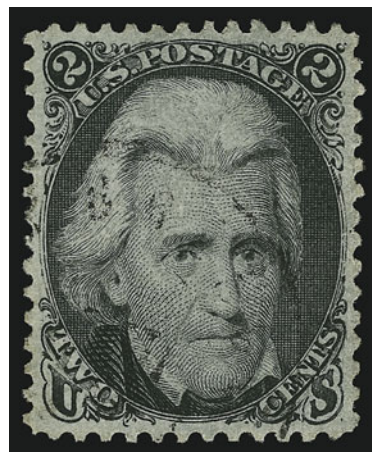
70



71

- 71 ★ **2c Black (73).** Original gum, lightly hinged, crisp impression, almost perfectly centered, Extremely Fine, with 2005 P.F. certificate 375.00

- 72 **2c Black (73).** Intense shade, light cancel leaves design clearly visible, perfectly centered, Extremely Fine Gem, a superb stamp in every respect, with 2002 and 2004 P.S.E. certificates (XF-Superb 95)..... 65.00



72

- 73 **5c Brown (76).** Brilliant color on bright paper, nicely contrasted by strike of **red Star in Circle fancy cancel**, choice centering, fresh and Extremely Fine, with 2003 and 2005 P.S.E. certificates (XF 90) 165.00



73



74

1867-68 GRILLED ISSUE

- 74 ★ **3c Rose, C. Grill (83).** Original gum, lightly hinged, clearly-defined grill, brilliant color on bright paper, beautiful centering with well-balanced margins
EXTREMELY FINE. A SUPERB ORIGINAL-GUM EXAMPLE OF THE 1867 3-CENT C GRILL.
With 1993 P.F. certificate 6,500.00

- 75 ★ **3c Rose, C. Grill (83).** Original gum, lightly hinged, strong grill impression, rich color on bright paper, beautiful centering with well-balanced margins
VERY FINE. A SCARCE ORIGINAL-GUM EXAMPLE OF THE 1867 3-CENT C GRILL.
With 2000 P.S.E. certificate 6,500.00



75



76

- 76 **1c Blue, E. Grill (86).** Unusually wide margins for this difficult issue, deep rich color, clearly-defined grill, light strike of cork cancel, Extremely Fine, with 2002 P.F. certificate 525.00



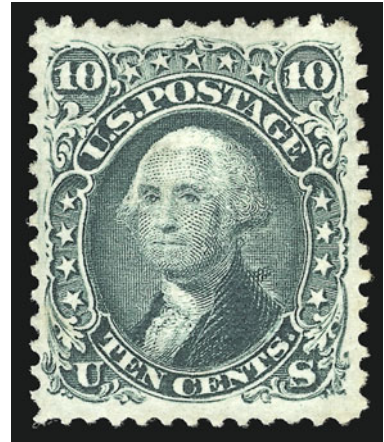
77

- 77 **1c Blue, E. Grill (86).** Clear grill, pretty pastel color, grid cancel, well-proportioned margins, fresh and Extremely Fine, scarce with choice centering, with 1994 and 2005 P.S.E. certificates (VF-XF 85)..... 525.00

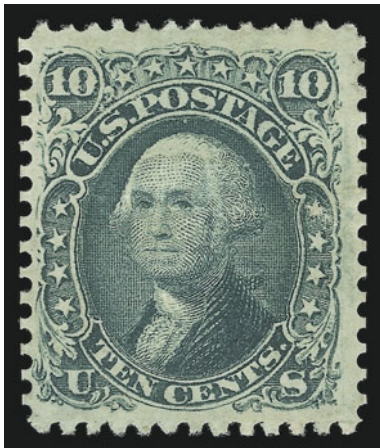
- 78 ★ **10c Green, E. Grill (89).** Original gum, wide margins and remarkably choice centering, rich color and strong grill impression

EXTREMELY FINE. THE 1868 10-CENT E GRILL IS RARELY OBTAINABLE IN THIS SUPERB ORIGINAL-GUM CONDITION.

With 2001 P.F. certificate 5,500.00



78



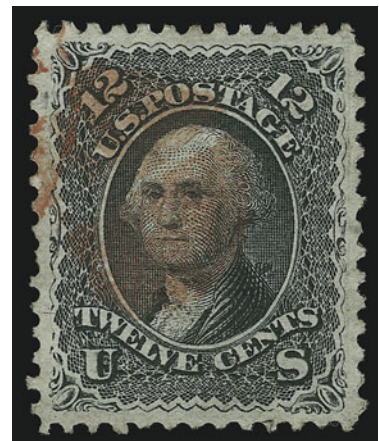
79

- 79 ★ **10c Green, E. Grill (89).** Original gum, lightly hinged, clearly-defined grill, deep rich color, three extra wide margins

VERY FINE AND CHOICE ORIGINAL-GUM EXAMPLE OF THE 1868 10-CENT E GRILL.

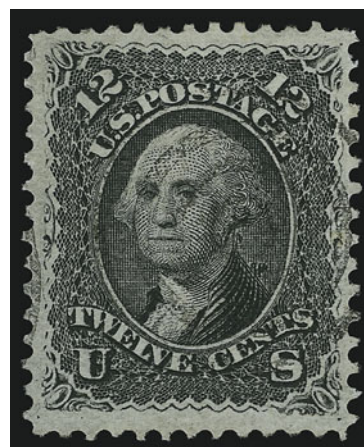
With 1983 and 2005 P. F. certificates..... 5,500.00

- 80 **12c Black, E. Grill (90).** Choice centering with balanced margins, deep shade providing background for vivid **red cork** cancel, Extremely Fine, a wonderful 12c E Grill for the collector looking for colored cancels on superb classics, with 2005 P.F. certificate 465.00



80

- 81 **12c Black, E. Grill (90).** Intense shade, light target cancel, well-centered with wide margins, fresh and Extremely Fine, with 2003 P.F. certificate..... 400.00



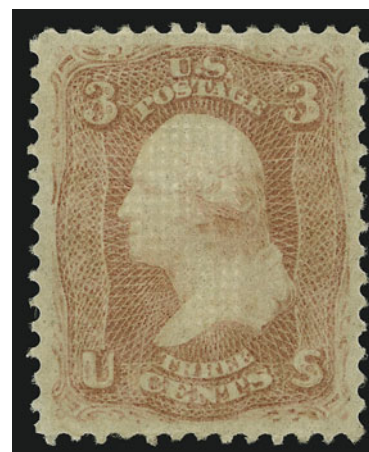
81



82

- 82 **2c Black, F. Grill (93).** Almost perfectly centered with Jumbo margins, crisp impression, clearly-struck “Paid All” handstamp, Extremely Fine Gem, this issue is exceedingly difficult to find with the attributes of the example offered here — wide margins, perfect centering, impression and a “Paid All” cancel — with 2004 P.F. certificate and 2004 P.S.E. certificate (XF-Superb 95 — in our opinion, this stamp meets all of the requirements for a Superb 98) 60.00

- 83 ★ **3c Red, F. Grill (94).** Original gum, lightly hinged, pastel color, clearly-defined grill, choice centering for this difficult grilled issue, Extremely Fine, with 1978 and 2005 P.F. certificates..... 425.00



83



84

- 84 **3c Red, F. Grill (94).** Gargantuan margins all around, brilliant color, face-free cork cancel, Extremely Fine Gem, a huge stamp, with 2001 P.F. certificate. 10.00



85

- 85 ★田 **5c Brown, F. Grill (95).** Block of four, original gum, clear grill points on every stamp, crisp color and impression

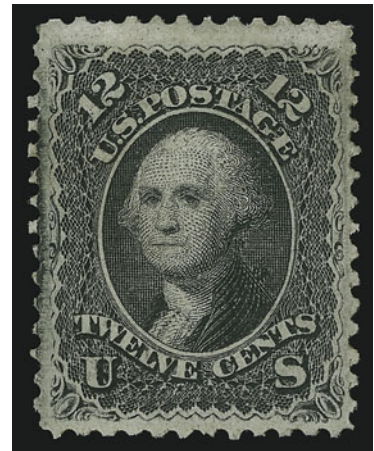
EXTREMELY FINE. A RARE ORIGINAL-GUM BLOCK OF FOUR OF THE 1868 5-CENT F GRILL. ONE OF THE LAST BLOCKS TO SURVIVE IN SUCH WONDERFUL CONDITION.

Original-gum singles and blocks of the 5c F Grill tend to be in rather poor condition, either in terms of centering, color or overall condition. The block offered here should be considered a condition rarity. It is increasingly unlikely that any other well-centered blocks will survive the demand for singles. 16,000.00

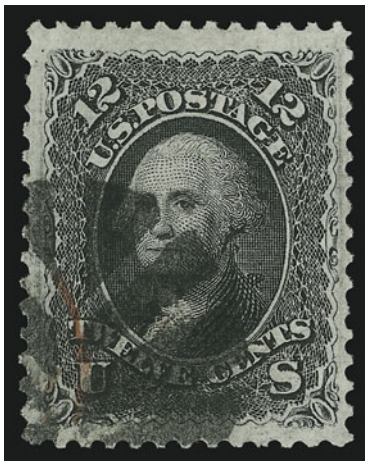
- 86 ★ **12c Black, F. Grill (97).** Redistributed original gum, detailed impression, choice centering with well-balanced margins

EXTREMELY FINE APPEARING EXAMPLE OF THE 1868 12-CENT BLACK F GRILL.

With 2005 P.F. certificate 3,500.00



86

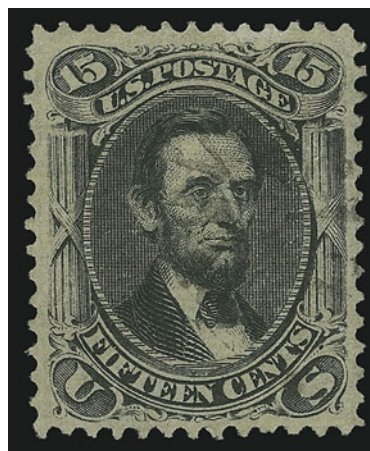


87

- 87 **12c Black, F. Grill (97).** Jumbo margins, crisp impression, bold cork cancel with trace of red transit at bottom left, Extremely Fine, with 1995 P.F. certificate 275.00



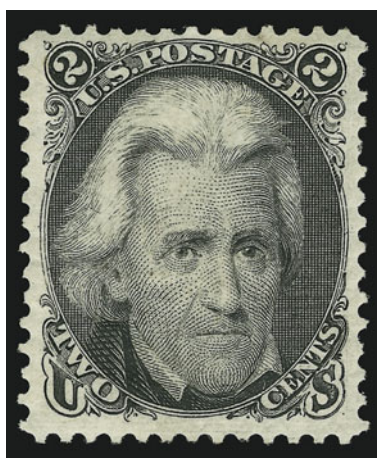
88



89

- 88 **12c Black, F. Grill (97).** Remarkably well-centered, bold **leaf** cancellation and bit of the rim of a red transit, Extremely Fine, with 2000 P.F. certificate..... 275.00
- 89 **15c Black, F. Grill (98).** Well-centered, detailed impression, light cancel, Extremely Fine example of this challenging issue, with 1988 and 2002 P.F. certificates..... 300.00

1875 RE-ISSUE OF 1861-66 ISSUE



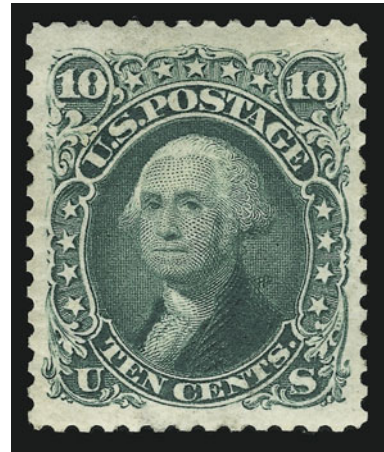
90

- 90 ★ **2c Black, Re-Issue (103).** Original gum, intense shade and impression, wide margins
VERY FINE AND CHOICE ORIGINAL-GUM EXAMPLE OF THE 2-CENT "BLACK JACK" RE-ISSUE.
Only 979 sold. With 1977 P.F. certificate 4,000.00

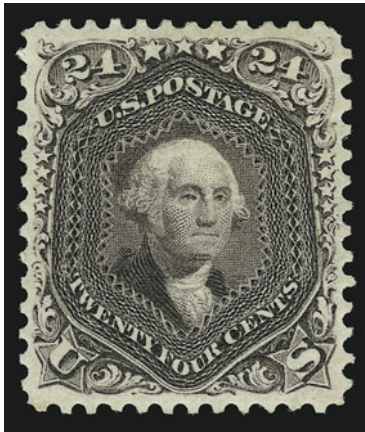
- 91 (★) **10c Green, Re-Issue (106).** Small part original gum, bright color, unusually wide margins

EXTREMELY FINE EXAMPLE OF THE 10-CENT 1861 RE-ISSUE.

Only 451 sold. With 1972 P.F. certificate and 2005 P.S.E. certificate. Scott Retail as no gum . 1,900.00



91



92

- 92 ★ **24c Deep Violet, Re-Issue (109).** Original gum, lightly hinged, deep rich color and proof-like impression, perfectly centered with well-balanced margins

EXTREMELY FINE GEM. THIS IS EASILY ONE OF THE FINEST ORIGINAL-GUM EXAMPLES OF THE 24-CENT 1861 RE-ISSUE.

With 1967 and 1998 P.F. certificates and 2004 P.S.E. certificate, which gives this superb stamp a "conservative" grade of XF 90 (this is a 95, in our opinion and in relation to P.S.E.'s grading guide)..... 6,000.00

- 93 ★ **90c Blue, Re-Issue (111).** Original gum, lightly hinged, deep rich color, unusually wide margins

EXTREMELY FINE. A BEAUTIFUL ORIGINAL-GUM EXAMPLE OF THE 90-CENT 1861 RE-ISSUE.

Only 317 sold. With 1982 and 2004 P.F. certificates and 2002 and 2004 P.S.E. certificates (VF-XF 85)..... 7,000.00



93



94

- 94 ★ **90c Blue, Re-Issue (111).** Original gum, small h.r., deep rich color on bright paper, choice centering with wide margins

EXTREMELY FINE ORIGINAL-GUM EXAMPLE OF THE 90-CENT 1861 RE-ISSUE.

Only 317 sold. Ex Engel and Ford. With 1957 P.F. certificate. 7,000.00

1869 PICTORIAL ISSUE



95

95 ★田 **1c Buff (112)**. Original gum, lightly hinged, brilliant color, well-balanced margins throughout

VERY FINE-EXTREMELY FINE ORIGINAL-GUM BLOCK OF FOUR OF THE ONE-CENT 1869 PICTORIAL ISSUE.

With 1999 P.F. certificate 6,000.00



96



97



98

96 **1c Buff (112)**. Choice centering, pretty pastel color, quartered cork cancel, fresh and Extremely Fine, with 2002 P.S.E. certificate (XF 90) 175.00

97 ★ **2c Brown (113)**. Original gum, rich color, Extremely Fine, with 2004 P.S.E. certificate (VF-XF 85; in our opinion a solid 90) 775.00

98 **2c Brown (113)**. Wide balanced margins, rich color, bold quartered cork cancel, Extremely Fine Gem 90.00



99

- 99 ★★ **3c Ultramarine, Split Grill (114 var).** Mint N.H., rich color, choice centering with well-balanced margins

EXTREMELY FINE. A BEAUTIFUL MINT NEVER-HINGED EXAMPLE OF THE 3-CENT 1869 PICTORIAL ISSUE WITH SPLIT GRILL.

With 2004 P.S.E. certificate (XF 90). Scott Retail as hinged 400.00

- 100 ★ **3c Ultramarine (114).** Original gum, lightly hinged, Jumbo margins with huge bottom right corner sheet margins, Extremely Fine Gem, a spectacular stamp 350.00



100



101



102

- 101 **6c Ultramarine (115).** Extraordinarily well-centered, bright color on crisp white paper, neat target cancellation and bit of a red transit as well, Extremely Fine, with 1992 P.F. certificate..... 240.00
- 102 **6c Ultramarine (115).** Enormously wide margins all around with part of adjoining stamp at left, light target cancel, bright shade, Extremely Fine Gem, the 6c 1869 is rarely found with extra wide margins on all sides, with 2001 P.F. certificate..... 240.00

- 103 ★ **10c Yellow (116).** Original gum, brilliant color as fresh as the day it was printed, perfectly centered with balanced margins all around

EXTREMELY FINE GEM. A SUPERB ORIGINAL-GUM EXAMPLE OF THE 10-CENT 1869 PICTORIAL ISSUE. SCARCE IN SUCH PRISTINE CONDITION.

With 2005 P.F. certificate..... 2,500.00



103



104

- 104 (★) **10c Yellow (116).** Unused (no gum), radiant color, almost perfectly centered

EXTREMELY FINE. A REMARKABLY FRESH UNUSED EXAMPLE OF THE 10-CENT 1869 PICTORIAL ISSUE.

With 2005 P.F. certificate 1,000.00

- 105 **10c Yellow (116).** Wide margins, rich color, neat strike of segmented cork cancel, Extremely Fine, with 2000 and 2004 P.S.E. certificates (latter XF 90) 150.00



105



106

- 106 **10c Yellow (116).** Rich color, wide margins, circle of wedges cancel used at **U.S. Postal Agency in Shanghai**, Extremely Fine, with 1999 P.F. and 2004 P.S.E. certificates 150.00



107

- 107 **12c Green (117).** Deep rich color, wide and balanced margins, cork cancel and part of red transit, Extremely Fine, with 1984 and 2004 P.F. certificates and 2005 P.S.E. certificate (XF 90)..... 310.00

- 108 ★ **15c Brown & Blue, Ty. II (119).** Barely disturbed original gum (as described on certificate, but in our opinion lightly hinged), deep rich colors and proof-like impressions, virtually perfect centering with evenly-balanced margins
EXTREMELY FINE EXAMPLE OF THE 15-CENT TYPE II 1869 PICTORIAL ISSUE.

This superb stamp has the brilliance of its re-issue counterpart, Scott 129, which is rarely encountered in stamps from the 1869 Type II printing.

With 2005 P.F. certificate 4,000.00



108



109

- 109 ★ **24c Green & Violet (120).** Original gum, brilliant colors on bright paper
VERY FINE ORIGINAL-GUM EXAMPLE OF THE 24-CENT 1869 PICTORIAL ISSUE.
With 2005 P.F. certificate..... 9,000.00

- 110 **30c Ultramarine & Carmine (121).** Rich colors, beautiful centering with wide and balanced margins, bold strike of cork cancel, fresh and Extremely Fine, with 1989 P.F. and 2005 P.S.E. certificate (XF-Superb 95)..... 550.00



110

- 111 **30c Ultramarine & Carmine (121).** Wide margins, perfectly centered, bright colors, light unobtrusive cancellation, Extremely Fine, truly outstanding, with 1999 P.F. certificate... 550.00



111



112

- 112 **30c Ultramarine & Carmine (121).** Bright colors, cork cancel leaves design clearly visible, wide margins, Extremely Fine, with 2000 P.F. certificate 550.00

- 113 ★ **90c Carmine & Black (122).** Original gum, lightly hinged, rich colors
VERY FINE ORIGINAL-GUM EXAMPLE OF THE 90-CENT 1869 PICTORIAL ISSUE.
With 1980 and 2000 P.F. certificates. 12,000.00



113



114

- 114 **90c Carmine Rose & Black (122 var).** Bright colors, cork cancel, well-balanced margins
EXTREMELY FINE USED EXAMPLE OF THE 90-CENT 1869 PICTORIAL ISSUE IN THE CARMINE ROSE SHADE.
With 2005 P.F. certificate 2,250.00



115

- 115 (★) **90c Carmine & Black, Without Grill (122a).** Unused (no gum), deep rich colors
 VERY FINE AND CHOICE. A RARE SOUND EXAMPLE OF THE 90-CENT 1869 PICTORIAL ISSUE
 WITHOUT GRILL.
 Only 22 have been certified as genuine by the Philatelic Foundation. With 1998 P.F.
 certificate. Scott Retail as with gum 18,500.00

1875 RE-ISSUE OF 1869 PICTORIAL ISSUE



116

- 116 ★ **1c Buff, Re-Issue (123).** Original gum, lightly hinged,
 well-balanced margins, bright color, Extremely Fine,
 the 1c 1875 Re-issue is considerably more difficult to
 find in superb condition than its 1880 Special
 Printing counterpart, with 2005 P.F. certificate
 675.00

- 117 (★) **3c Blue, Re-Issue (125).** Unused (traces of original
 gum), bright color, choice centering for this difficult
 issue
 EXTREMELY FINE UNUSED EXAMPLE OF THE 3-CENT
 1869 PICTORIAL RE-ISSUE.
 With 2004 P.F. certificate..... 3,250.00



117

- 118 ★ **10c Yellow, Re-Issue (127).** Original gum, small h.r., vivid shade and perfectly centered within wide balanced margins

EXTREMELY FINE GEM. ONE OF THE BEST-CENTERED AND FRESHEST ORIGINAL-GUM EXAMPLES OF THE 10-CENT 1869 PICTORIAL RE-ISSUE WE HAVE ENCOUNTERED.

Only 1,947 sold. 2,250.00



118



119

- 119 ★ **10c Yellow, Re-Issue (127).** Original gum, lightly hinged, vibrant color, choice centering

EXTREMELY FINE. A REMARKABLY FRESH ORIGINAL-GUM EXAMPLE OF THE 10-CENT 1869 PICTORIAL RE-ISSUE.

With 2004 P.F. certificate 2,250.00

- 120 (★) **12c Green, Re-Issue (128).** Unused (no gum), choice centering, rich color and proof-like impression

EXTREMELY FINE. A BEAUTIFULLY-CENTERED EXAMPLE OF THE 12-CENT 1869 PICTORIAL RE-ISSUE.

With 1995 P.F. and 2004 P.S.E. certificate (XF 90) 1,600.00



120



121

- 121 ★ **12c Green, Re-Issue (128).** Original gum, lightly hinged, wide margins and exceptionally well-centered, deep rich color

VERY FINE. A BEAUTIFUL EXAMPLE OF THIS PICTORIAL RE-ISSUE VALUE.

Only 1,947 sold 3,000.00



122

- 122 ★ **24c Green & Violet, Re-Issue (130).** Original gum, deep rich colors and proof-like impressions on bright paper, wide margins

EXTREMELY FINE. AN ATTRACTIVE ORIGINAL-GUM EXAMPLE OF THE 24-CENT 1869 PICTORIAL RE-ISSUE.

With 2002 P.S.E. certificate..... 2,750.00

- 123 ★ **30c Blue & Carmine, Re-Issue (131).** Original gum, bright colors, enormous margins

EXTREMELY FINE. A BEAUTIFUL WIDE-MARGINED ORIGINAL-GUM EXAMPLE OF THE 30-CENT 1869 PICTORIAL RE-ISSUE.

With 1957 and 2000 P.F. certificates and 2004 P.S.E. certificate (XF 90)..... 3,250.00



123



124

- 124 ★ **90c Carmine & Black, Re-Issue (132).** Unused (no gum), deep rich colors and proof-like impressions, wide margins

EXTREMELY FINE EXAMPLE OF THE 90-CENT 1869 PICTORIAL RE-ISSUE. A BEAUTIFUL STAMP.

With 2003 P.F. certificate 2,500.00

- 125 ★★ **1c Buff, 1880 Re-Issue (133).** Mint N.H., brilliant color, well-balanced margins, Extremely Fine, with 2001 P.S.E. certificate, Scott Retail as hinged 375.00



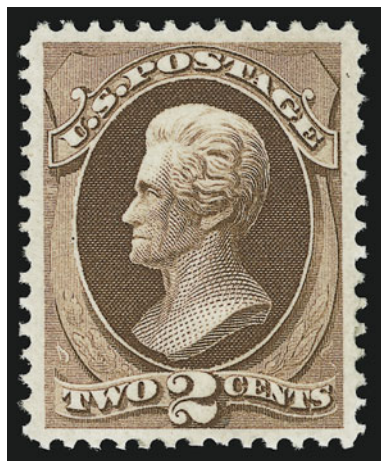
125

1870-93 BANK NOTE ISSUES

- 126 **1c Ultramarine, Grill (134).** H. Grill, radiant color, well-struck target cancel, well-proportioned margins, Extremely Fine, with 2005 P.F. certificate... 175.00



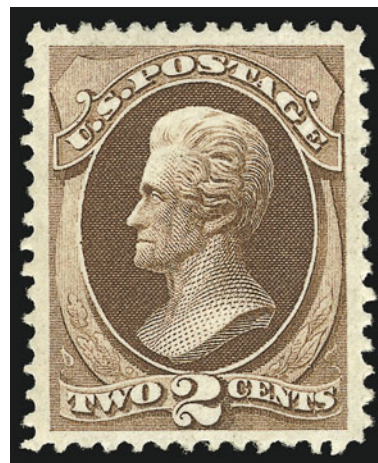
136



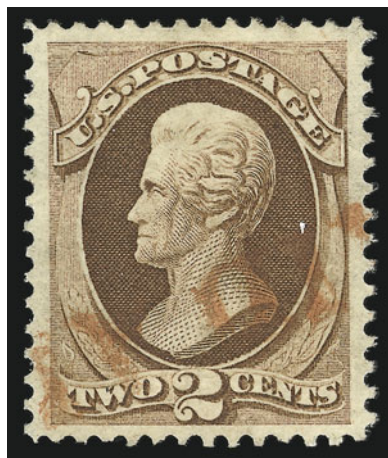
127

- 127 ★ **2c Red Brown, Grill (135).** H. Grill, original gum, lightly hinged, two clearly visible vertical grill rows, choice centering with well-balanced margins
EXTREMELY FINE GEM. A SUPERB ORIGINAL-GUM EXAMPLE OF THE 1870 2-CENT NATIONAL BANK NOTE COMPANY GRILLED ISSUE.
With 2002 P.F. and 2004 P.S.E. certificates (XF-Superb 95) 1,200.00

- 128° ★ **2c Red Brown, Grill (135).** Original gum, lightly hinged, easily discernible grill points, beautifully centered with wide and well-balanced margins, fresh color and crisp impression
EXTREMELY FINE. A SUPERB EXAMPLE OF THE 1870 2-CENT NATIONAL BANK NOTE GRILLED ISSUE.
With 1980 and 2002 P.F. certificates 1,200.00

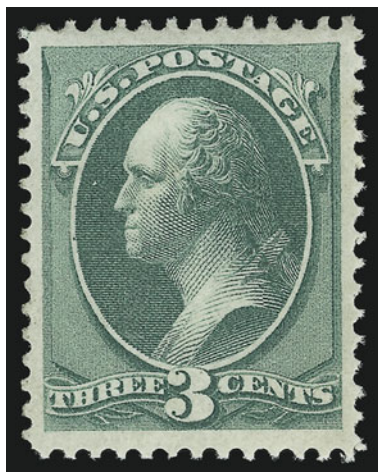


128



129

- 129 **2c Red Brown, Grill (135).** Perfectly centered on fresh paper with long full perfs all around, clear grill points, red "(Paid Al(l))" straightline, Extremely Fine Gem, with 2002 P.F. certificate 90.00



130

- 130 ★ **3c Green, Grill (136).** H. Grill, original gum, bright color and sharp impression on crisp white paper, beautifully centered with extra wide margins

EXTREMELY FINE GEM. A GORGEOUS 1870 3-CENT GRILLED NATIONAL BANK NOTE ISSUE IN SUPERB ORIGINAL-GUM CONDITION.

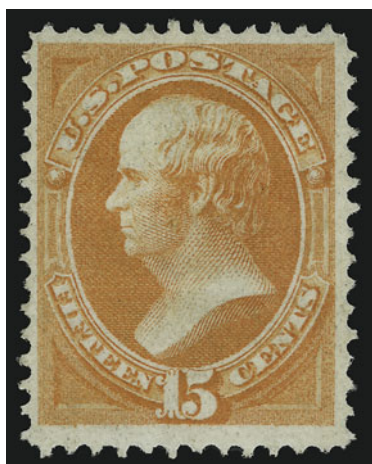
The 3c is more challenging to find in this superior grade than many of the other grilled issues, even though it has a lower catalogue value.

With 2003 P.F. certificate for block of four, this being the top left stamp 750.00

- 131 **7c Vermilion, Grill (138).** H. Grill, choice centering, rich color, many clear grill points, bold circle of wedges cancel, Extremely Fine, with 2003 P.F. certificate..... 475.00



131



132

- 132 ★ **15c Orange, Grill (141).** H. Grill, disturbed original gum, easily discernible grill points to the right of the portrait, vibrant color

VERY FINE. A FRESH EXAMPLE OF THE 1870 15-CENT NATIONAL BANK NOTE COMPANY GRILLED ISSUE.

With 2005 P.F. certificate 7,500.00

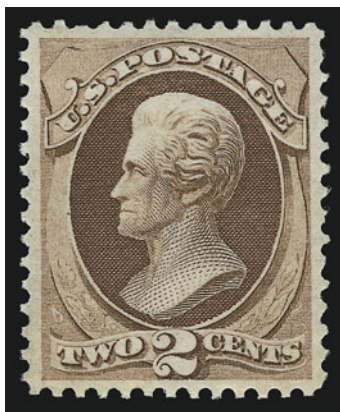
- 133 **24c Purple, Grill (142).** H. Grill, usual pastel shade, neat strike of red New York Foreign Mail cancel, certificates mention lightened stains, which are really quite negligible

VERY FINE APPEARANCE. A SCARCE EXAMPLE OF THE 1870 24-CENT NATIONAL BANK NOTE COMPANY GRILLED ISSUE WITH A RED NEW YORK FOREIGN MAIL CANCEL.

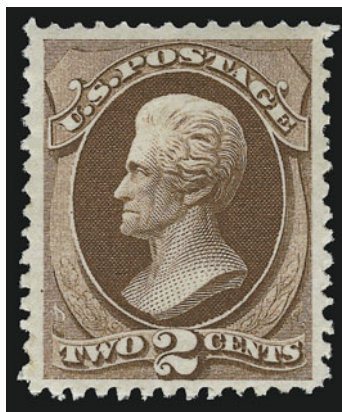
With 1998 P.S.E and 2005 P.F. certificates . 7,000.00



133



134



135

- 134 ★ **2c Red Brown (146).** Original gum, barely hinged, rich color, almost perfectly centered with well-proportioned margins, Extremely Fine, a beautiful stamp, with 2003 P.F. and 2004 P.S.E. certificates (XF 90)..... 350.00
- 135 ★ **2c Red Brown (146).** Original gum, lightly hinged, deep shade and sharp impression, Extremely Fine, with 2002 P.F. certificate..... 350.00

- 136 ★ **15c Bright Orange (152).** Original gum, lightly hinged, vibrant color as fresh as the day it was printed
VERY FINE ORIGINAL-GUM EXAMPLE OF THE 1870
15-CENT UNGRILLED NATIONAL BANK NOTE COMPANY
ISSUE.
With 2004 P.F. certificate..... 2,750.00



136

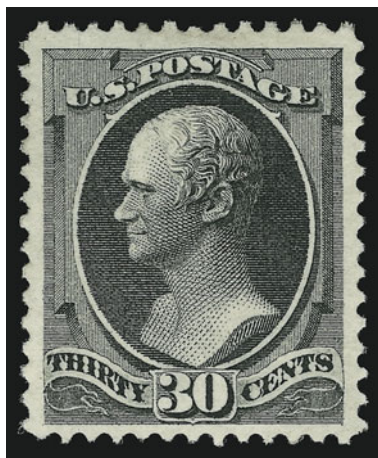


137



138

- 137 **15c Bright Orange (152).** Brilliant color, neat strike of **Hollow Star fancy cancel**, unusually wide margins, Extremely Fine Gem, a phenomenal stamp, with 2005 P.F. certificate .
..... 200.00
- 138 **15c Bright Orange (152).** Rich color, almost perfectly centered, neat strike of "New Britain Conn. Mar. 14" circular datestamp, Extremely Fine, a centered example with town datestamp is rare, with 2005 P.F. certificate 200.00



139

- 139 ★ **30c Black (154).** Large part original gum, crisp impression and bright shade, wide margins

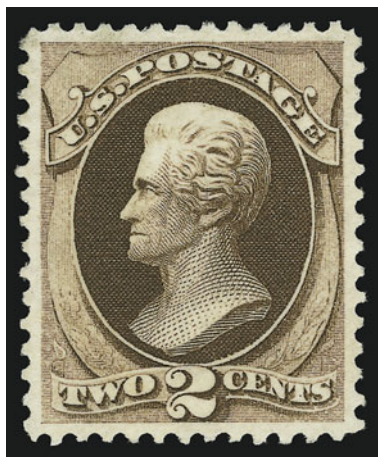
VERY FINE AND CHOICE EXAMPLE OF THE 30-CENT UNGRILLED NATIONAL BANK NOTE COMPANY ISSUE.

With 2005 P.F. certificate 6,750.00

- 140 **90c Carmine (155).** Rich color, wide margins, cork cancel, Extremely Fine, scarce with such wide margins, with 2005 P.F. certificate..... 350.00



140



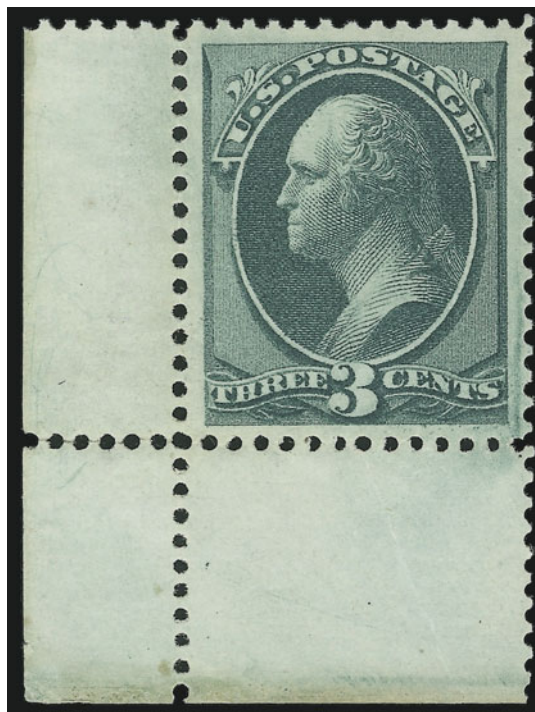
141

- 141 ★ **2c Brown (157).** Original gum, perfectly centered with wide and balanced margins, intense color

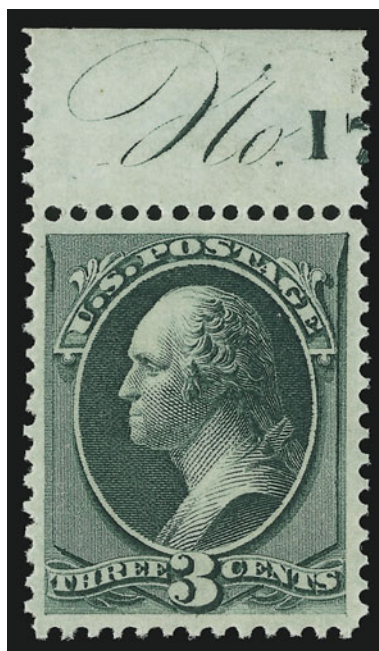
EXTREMELY FINE GEM. A SUPERB ORIGINAL-GUM EXAMPLE OF THE 1873 2-CENT CONTINENTAL BANK NOTE ISSUE.

With 2000 P.F. and 2004 P.S.E. certificates (XF-Superb 95)..... 400.00

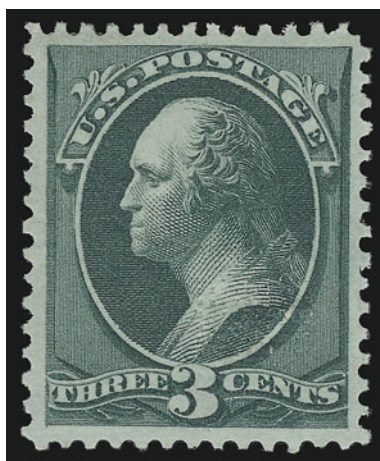
- 142 ★ **3c Green (158).** Bottom left corner sheet margins, original gum, lightly hinged, perfectly centered, Extremely Fine Gem, a gorgeous stamp, with 1988 and 2005 P.F. certificates..... 130.00



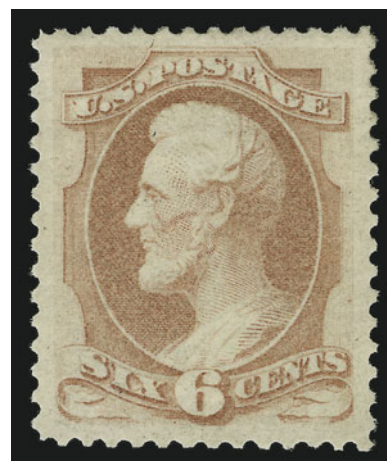
142



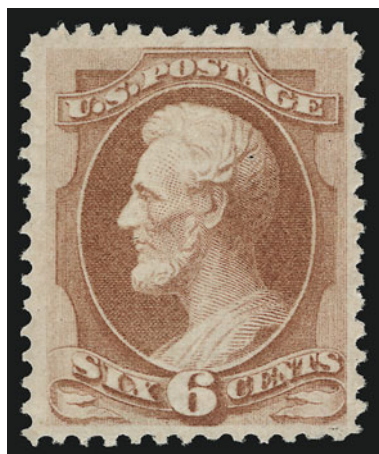
143



144



145



146

- 143 ★★ **3c Green (158).** Mint N.H. with part plate no. at top, deep rich color, wide margins, Extremely Fine, this stamp should not be confused with the other 3c Bank Note Issues as it is extremely difficult to find in such superb condition, with 2004 P.F. certificate for strip of three..... 130.00

- 144 ★ **3c Green, With Grill (158e).** Original gum, lightly hinged, clear grill, choice centering
EXTREMELY FINE. THIS PRISTINE EXAMPLE OF THE 1873 3-CENT CONTINENTAL GRILLED ISSUE IS A TRUE CONDITION RARITY.
With 2005 P.F. certificate 500.00

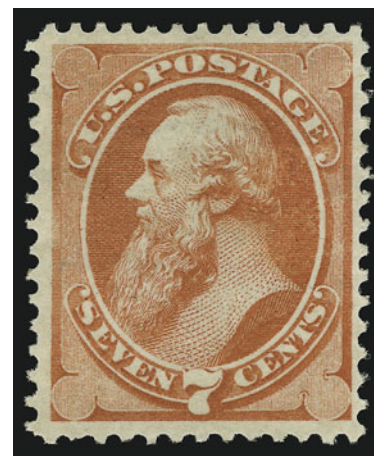
- 145 ★ **6c Dull Pink (159).** Original gum, bright color, choice centering with remarkably wide margins, Extremely Fine Gem, a superb stamp, with 2003 P.F. certificate .
..... 450.00

- 146 ★ **6c Dull Pink (159).** Original gum, unusually rich color, well-proportioned margins, Extremely Fine, with 1981 and 2000 P.F. certificates 450.00

- 147 ★ **7c Orange Vermilion, Silk Fibers (160 var).** Original gum, lightly hinged, brilliant color, several silk fibers are clearly visible

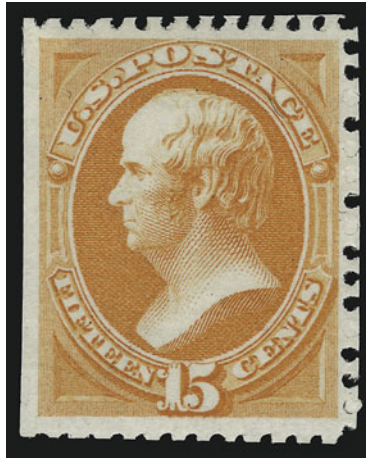
VERY FINE AND CHOICE. A RARE ORIGINAL-GUM EXAMPLE OF THE 1873 7-CENT CONTINENTAL BANK NOTE ISSUE WITH SILK FIBERS.

With 2003 P.F. certificate. Unpriced as unused in Scott. Scott Retail as normal..... 1,500.00



147

1875 CONTINENTAL BANK NOTE CO. SPECIAL PRINTING



148

- 148 ★ **15c Bright Orange, Special Printing (174).** Without gum as issued, brilliant color on bright paper, scissors-separated as usual but leaving intact perforations on three sides, choice centering

EXTREMELY FINE. A LOVELY EXAMPLE OF THE 1875 15-CENT CONTINENTAL BANK NOTE COMPANY SPECIAL PRINTING.

Our recent review of records at the Philatelic Foundation produced only 38 certified examples of Scott 174.

With 2004 P.S.E. certificate..... 17,000.00

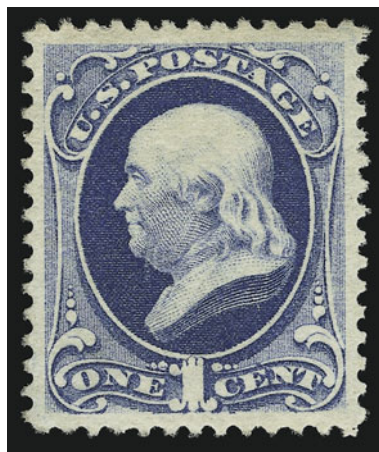
- 149 ★ **5c Blue (179).** Original gum, perfectly centered with wide and even margins all around, sharp and detailed impression

EXTREMELY FINE GEM. A SUPERB EXAMPLE OF THE CONTINENTAL 1875 5-CENT TAYLOR. AN EXTREMELY DIFFICULT STAMP TO FIND IN SUCH EXCEPTIONALLY CHOICE ORIGINAL-GUM CONDITION.

With 2003 P.F. certificate 750.00



149



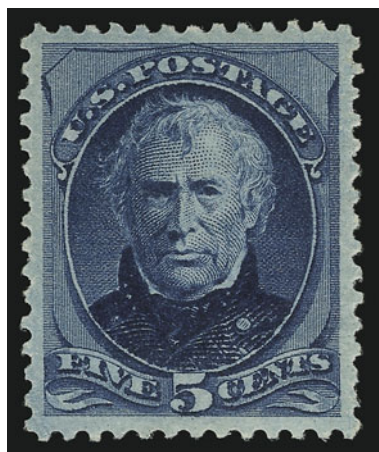
150

- 150 ★ **1c Dark Ultramarine (182).** Original gum, wide balanced margins, deep rich color on bright paper, Extremely Fine, with 2005 P.F. certificate 350.00

- 151 ★★ **2c Vermilion (183).** Mint N.H., radiant color, choice centering, Extremely Fine, with 2004 P.F. and P.S.E. certificates (XF 90), Scott Retail as hinged 150.00

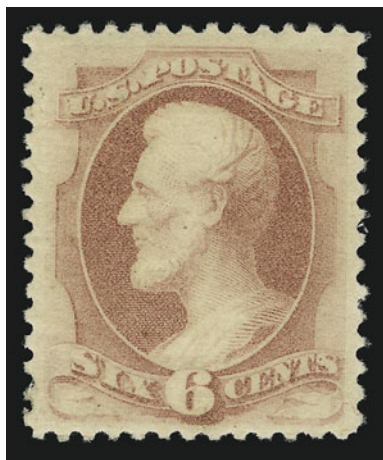


151



152

- 152 ★ **5c Blue (185).** Original gum, lightly hinged, deep rich color, wide and balanced margins, Extremely Fine, with 1980 P.F. and 2004 P.S.E. certificates (XF 90) 550.00



153

- 153 ★ **6c Pink (186).** Original gum, lightly hinged, brilliant color, choice centering

EXTREMELY FINE ORIGINAL-GUM EXAMPLE OF THE 6-CENT 1879 AMERICAN BANK NOTE COMPANY ISSUE.

With 1987 and 2002 P.F. certificates..... 1,100.00

- 154 ★ **6c Pink (186).** Original gum, lightly hinged, wide margins with near perfect centering, pastel shade

EXTREMELY FINE. A SUPERB ORIGINAL-GUM EXAMPLE OF THE 6-CENT 1879 AMERICAN BANK NOTE ISSUE.

With 1990 P.F. certificate 1,100.00



154



155

- 155 ★ **10c Brown, Without Secret Mark (187).** Original gum, lightly hinged, incredibly wide margins all around, rich color and remarkably fresh

EXTREMELY FINE. A SPECTACULAR EXAMPLE OF THE 10-CENT 1879 AMERICAN BANK NOTE ISSUE WITHOUT SECRET MARK, WHICH IS RARELY SEEN IN THIS SUPERB ORIGINAL-GUM CONDITION.

With 2001 P.F. certificate..... 3,500.00

- 156 ★ **10c Brown, With Secret Mark (188).** Original gum, lightly hinged, bright shade, wide and balanced margins

EXTREMELY FINE ORIGINAL-GUM EXAMPLE OF THE 10-CENT 1879 AMERICAN BANK NOTE COMPANY ISSUE WITH SECRET MARK.

With 1991 and 2004 P.F. certificates 2,500.00



156

- 157 ★ **10c Brown, With Secret Mark (188).** Original gum, lightly hinged, beautifully centered, rich color

EXTREMELY FINE. AN OUTSTANDING ORIGINAL-GUM EXAMPLE OF THE 1879 10-CENT AMERICAN BANK NOTE PRINTING WITH SECRET MARK IN EXCEPTIONAL CONDITION.

With 2003 P.F. certificate..... 2,500.00



157



158

- 158 ★ **10c Brown, With Secret Mark (188).** Original gum, lightly hinged, intense shade and proof-like impression

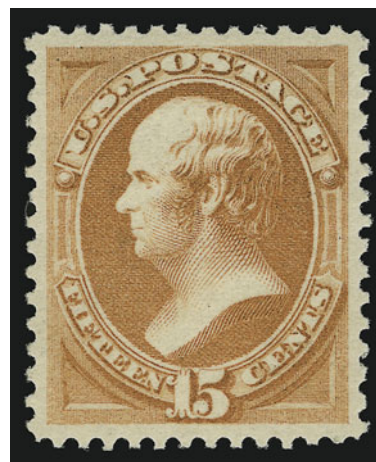
VERY FINE ORIGINAL-GUM EXAMPLE OF THE 10-CENT 1879 AMERICAN BANK NOTE COMPANY ISSUE WITH SECRET MARK.

With 2001 P.F. certificate..... 2,500.00

- 159 ★★ **15c Red Orange (189).** Mint N.H., rich color, almost perfectly centered with wide and balanced margins

EXTREMELY FINE GEM. A SUPERB MINT NEVER-HINGED EXAMPLE OF THE 15-CENT 1879 AMERICAN BANK NOTE COMPANY ISSUE. SCARCE IN SUCH SUPERB CONDITION.

With 2000 P.F. and 2004 P.S.E. certificates (XF-Superb 95). Scott Retail as hinged..... 350.00



159

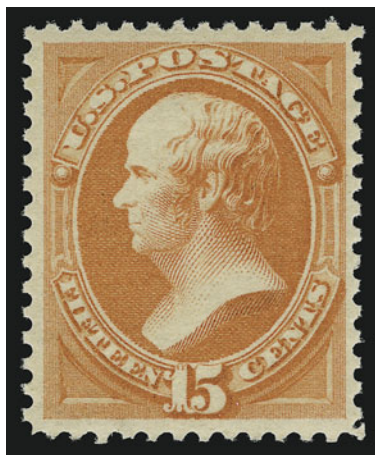


160

- 160 ★★ **15c Red Orange (189).** Mint N.H., brilliant color, choice centering with well-proportioned margins

EXTREMELY FINE MINT NEVER-HINGED EXAMPLE OF THE 15-CENT 1879 AMERICAN BANK NOTE COMPANY ISSUE. AS FRESH AS THE DAY IT WAS PRINTED.

With 2005 P.F. certificate. Scott Retail as hinged 350.00



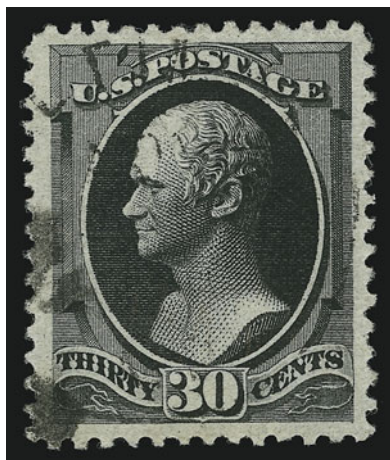
161

- 161 ★★ **15c Red Orange (189).** Mint N.H., brilliant color, well-balanced margins, fresh and Extremely Fine, with 2005 P.F. certificate..... 350.00

- 162 **15c Red Orange (189).** Jumbo margins, brilliant color, neat strike of New York registry oval cancel, Extremely Fine Gem, a huge stamp, with 2005 P.F. certificate..... 25.00



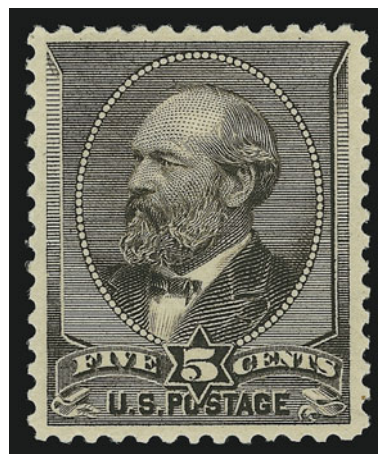
162



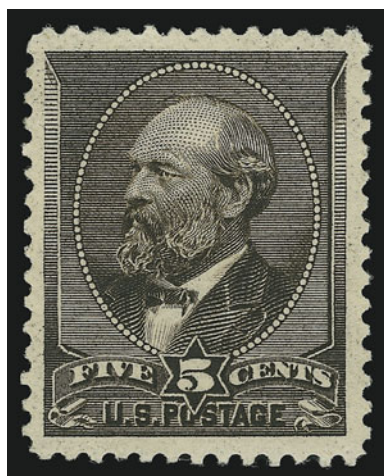
163

- 163 **30c Full Black (190).** Unusually wide margins, intense shade and impression, face-free cancel, Extremely Fine, with 1992 and 2005 P.S.E. certificates 80.00

- 164 ★★ **5c Yellow Brown (205).** Mint N.H., rich color, almost perfectly centered
EXTREMELY FINE MINT NEVER-HINGED EXAMPLE OF THE 5-CENT 1882 AMERICAN BANK NOTE COMPANY ISSUE.
With 2005 P.S.E. certificate (XF 90) 750.00



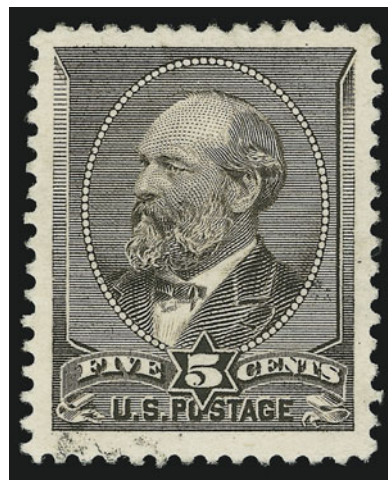
164



165

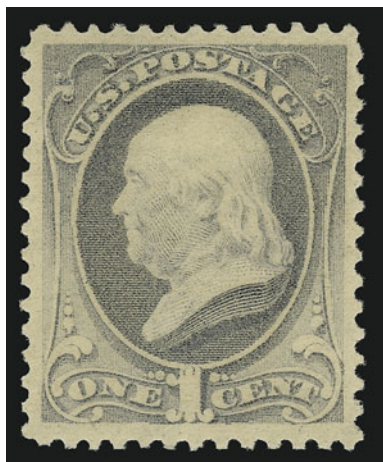


166

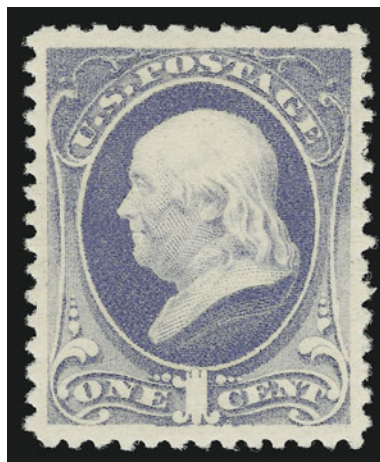


167

- 165 ★ **5c Yellow Brown (205).** Original gum, barely hinged, deep rich color, extra wide margins, Extremely Fine, ex Lyons, with 1991 P.F. certificate 325.00
- 166 ★ **5c Yellow Brown (205).** Original gum, lightly hinged, pretty shade, well-balanced margins, Very Fine and choice, with 1995 P.F. and 2004 P.S.E. certificates 325.00
- 167 **5c Yellow Brown (205).** Jumbo margins all around, light cancel leaves design clearly visible, bright shade, Extremely Fine Gem, a huge stamp, with 2005 P.F. certificate . 10.00



168



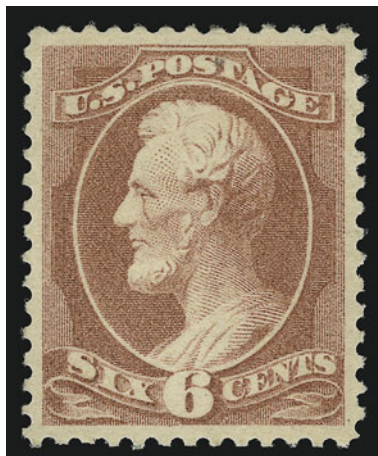
169

- 168 ★★ **1c Gray Blue (206).** Mint N.H., pretty shade, choice centering, fresh and Extremely Fine, with 2004 P.S.E. certificate (XF 90)..... 250.00
- 169 ★ **1c Gray Blue (206).** Original gum, single hinge mark, brilliant color, perfectly centered, Extremely Fine, with 2005 P.S.E. certificate (XF-Superb 95)..... 85.00



170

- 170 ★田 **3c Blue Green, Douglas 8-Hole Patent Punch (207 var).** Bottom imprint and plate no. block of ten, original gum, top stamps h.r., rich color, Fine, scarce plate block of this patent punch variety, this is the first plate block we have offered since keeping computerized records, with 1957 P.F. certificate..... 3,000.00



171

- 171 ★ **6c Rose (208).** Original gum, lightly hinged, bright color, trivial natural inclusion at top not mentioned on accompanying certificate, Extremely Fine, with copy of 2001 P.F. certificate for block of four..... 675.00

- 172 ★★ **10c Brown (209)**. Mint N.H., rich color and proof-like impression, almost perfectly centered, fresh and Extremely Fine, with 2005 P.F. certificate... 525.00



172



173

- 173 ★★ **10c Brown (209)**. Part imprint at top, stamp Mint N.H., lightly hinged in selvage only, bright color, huge margins, Extremely Fine, with 2000 P.F. certificate for pair and 2005 P.S.E. certificate (XF 90 Jumbo) 525.00

- 174 ★ **10c Brown (209)**. Original gum, bright shade, wide margins, Extremely Fine, with 1999 P.F. and 2005 P.S.E. certificates (XF 90)..... 190.00

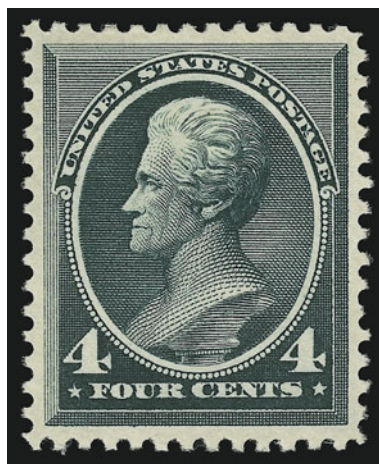


174



175

- 175 ★★ **2c Red Brown (210)**. Mint N.H., radiant color, well-balanced margins, fresh and Extremely Fine, with 2004 P.S.E. certificate (XF 90)..... 140.00



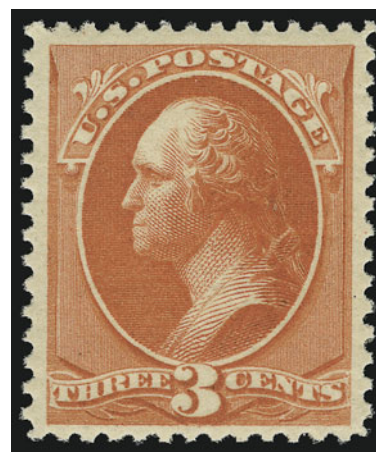
176

- 176 ★★ **4c Blue Green (211).** Mint N.H., rich color and proof-like impression on bright paper, almost perfectly centered

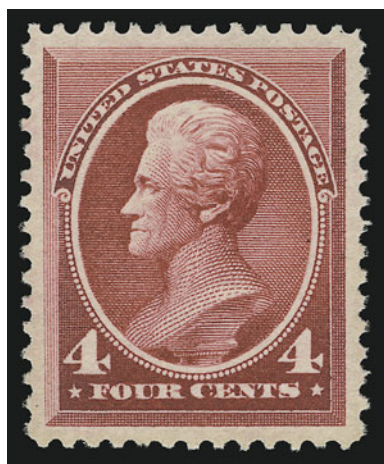
EXTREMELY FINE GEM. A SUPERB MINT NEVER-HINGED EXAMPLE OF THE 4-CENT 1883 AMERICAN BANK NOTE COMPANY ISSUE.

With 1984 and 2003 P.F. certificates and with 2004 P.S.E. certificate (XF-Superb 95) 900.00

- 177 ★★ **3c Vermilion (214).** Mint N.H., radiant color, post-office fresh and Extremely Fine, with 2003 and 2004 P.S.E. certificates (XF 90)..... 225.00



177



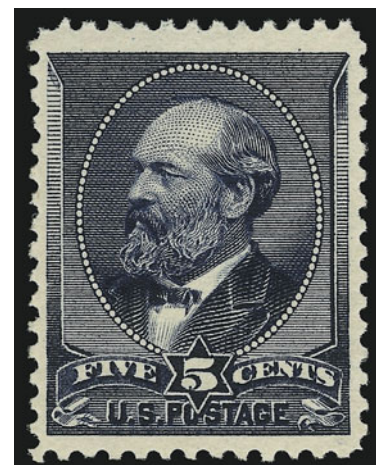
178

- 178 ★★ **4c Carmine (215).** Mint N.H., deep rich color, wide and balanced margins

EXTREMELY FINE GEM. A SUPERB MINT NEVER-HINGED EXAMPLE OF THE 4-CENT 1888 AMERICAN BANK NOTE COMPANY ISSUE. A GORGEOUS STAMP.

With 2004 P.S.E. certificate (XF-Superb 95) . 700.00

- 179 ★★ **5c Indigo (216).** Mint N.H., rich color on bright paper, wide margins, Very Fine and choice, with 1981 and 2000 P.F. certificates and with 2004 P.S.E. certificate (VF 80 — deserves an 85 in our opinion)..... 775.00

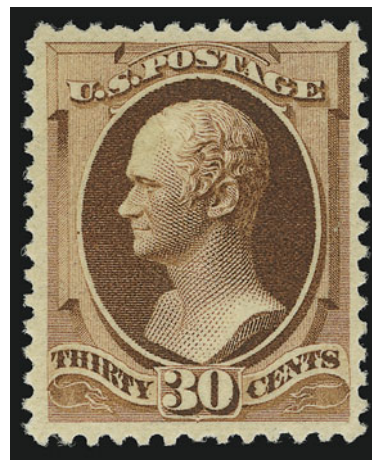


179

- 180 ★★ **30c Orange Brown (217).** Mint N.H., deep rich color, post-office fresh

EXTREMELY FINE MINT NEVER-HINGED EXAMPLE OF THE 30-CENT 1888 AMERICAN BANK NOTE COMPANY ISSUE.

With 2000 P.F. certificate and 2000 and 2004 P.S.E. certificates (latter XF 90) 1,350.00



180



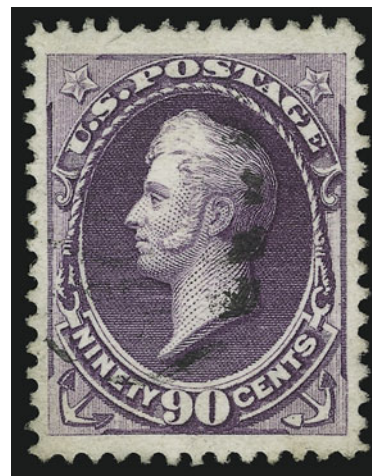
181

- 181 ★ **90c Purple (218).** Original gum, lightly hinged, bright color, wide margins

VERY FINE AND CHOICE ORIGINAL-GUM EXAMPLE OF THE 90-CENT 1888 AMERICAN BANK NOTE COMPANY ISSUE.

With 2002 P.F. and 2004 P.S.E. certificates (XF 90) ... 1,200.00

- 182 **90c Purple (218).** Jumbo margins, deep rich color, unobtrusive duplex cancel leaves design clearly visible, Extremely Fine Gem, with 2005 P.F. certificate 260.00



182



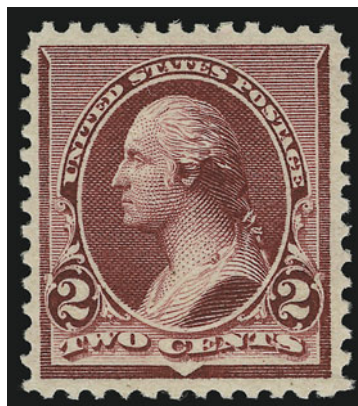
183

- 183 **90c Purple (218).** Enormous margins, light circular datestamp, Extremely Fine, with 2002 P.F. certificate 260.00

1890-93 ISSUE



- 184 ★★ **1c Dull Blue (219).** Mint N.H., brilliant color on bright paper, Jumbo margins all around, Extremely Fine Gem, a beautiful stamp, with 1999 P.F. certificate..... 80.00



- 185 ★★ **2c Lake (219D).** Mint N.H., deep rich color, choice centering
EXTREMELY FINE. A BEAUTIFUL AND RARE HIGH-GRADE MINT
NEVER-HINGED EXAMPLE OF THE 2-CENT 1890 ISSUE IN THE
LAKE COLOR.
With 2001 P.F. certificate..... 650.00

185

- 186 ★ **2c Lake (219D).** Original gum, barely hinged, intense shade and impression, extra wide margins, Extremely Fine Gem, a superb stamp, with 1990 P.F. and 2004 P.S.E. certificates (XF-Superb 95)..... 250.00
- 187 ★★ **2c Carmine (220).** Mint N.H., brilliant color, almost perfectly centered, Extremely Fine, with 2004 P.F. certificate for block of four..... 65.00
- 188 ★★ **2c Dark Carmine (220 var).** Mint N.H., rich color, choice centering, tiny natural inclusion, Extremely Fine example of this shade variety, with 2001 P.F. and 2004 P.S.E. certificates (VF-XF 85)..... 65.00
- 189 ★★ **2c Dark Carmine (220).** Mint N.H., fabulous wide margins, deep rich color on fresh crisp paper, Extremely Fine 65.00
- 190 ★ **2c Carmine, Cap on Left "2" (220a).** Original gum, very lightly hinged, marvelous centering and wide margins, vivid color, Extremely Fine, with 1998 P.F. certificate..... 150.00

- 191 ★★ **2c Carmine, Cap on Both "2"s (220c).** Mint N.H., brilliant color and detailed impression clearly showing the cap on both "2"s, almost perfectly centered with balanced margins

EXTREMELY FINE GEM. THIS IS THE FINEST EXAMPLE OF THE 2-CENT 1890 ISSUE WITH A CAP ON BOTH "2"s THAT WE HAVE EVER OFFERED. AN EXTREMELY RARE STAMP IN SUCH PRISTINE CONDITION.

Only a small percentage of 2c 1890's were printed from Plates 245 and 246, which contained the Cap on Both 2's variety. Examples in Mint N.H. condition are rare, and of those surviving Mint N.H. stamps, only a handful are in high grades (VF 80 or better). The current P.S.E. Population Report shows only two Mint N.H. examples of No. 220c (VF 80 is the higher grade).

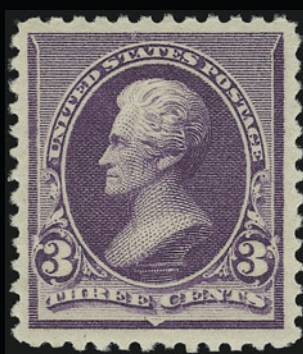
With 1997 and 2004 P.F. certificates..... 1,800.00



191



192



193



194

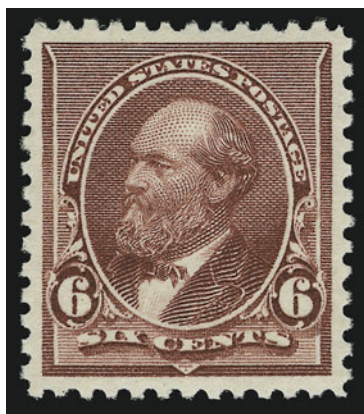


195



196

- 192 ★★ **3c Purple (221).** Mint N.H., rich color, almost perfectly centered with extra wide margins, Extremely Fine, a beautiful stamp, with 1998 P.F. and 2004 P.S.E. certificates (XF 90 — this deserves a 95 grade in our opinion)..... 225.00
- 193 ★★ **3c Purple (221).** Mint N.H., pretty pastel color on bright paper, wide margins, post-office fresh and Extremely Fine, with 1999 and 2005 P.F. certificates 225.00
- 194 ★★ **4c Dark Brown (222).** Mint N.H., rich color, post-office fresh and Extremely Fine, a scarce stamp with such wide margins and in this superior grade, with 1995 and 2003 P.F. certificates..... 290.00
- 195 ★★ **4c Dark Brown (222).** Mint N.H., intense shade and impression, choice centering with well-balanced margins, Extremely Fine, with 2002 P.F. and 2004 P.S.E. certificates (XF 90) 290.00
- 196 ★★ **4c Dark Brown (222).** Mint N.H., deep rich color and detailed impression, perfectly centered, Extremely Fine, with 2000 P.F. certificate..... 290.00



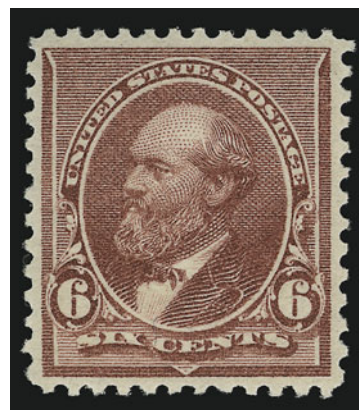
197

- 197 ★★ **6c Brown Red (224).** Mint N.H., pretty shade on bright paper, perfectly centered with wide equal margins on all sides

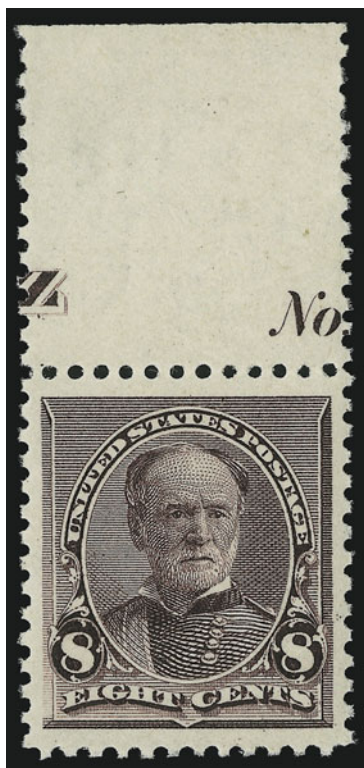
EXTREMELY FINE GEM. AN ABSOLUTELY SUPERB MINT NEVER-HINGED EXAMPLE OF THE 6-CENT 1890 AMERICAN BANK NOTE COMPANY ISSUE.

With 2001 P.F. certificate and 2005 P.S.E. certificate (XF-Superb 95 — we can confidently grade this Superb 98 by all standards) 225.00

- 198 ★★ **6c Brown Red (224).** Mint N.H., pretty pastel shade, well-balanced margins, fresh and Extremely Fine, with 1996 P.F. and 2005 P.S.E. certificates 225.00



198



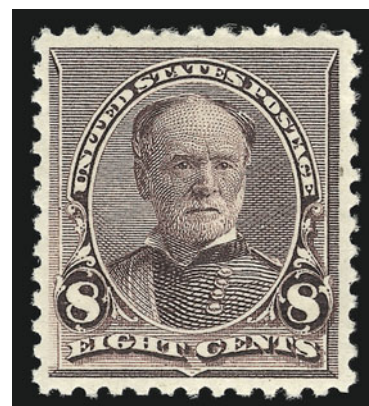
199

- 199 ★★ **8c Lilac (225).** Mint N.H. with **part plate no. and part letter** at top, rich color, perfectly centered with wide margins on all sides

EXTREMELY FINE GEM. EASILY ONE OF THE FINEST MINT NEVER-HINGED EXAMPLES OF THE 8-CENT 1890 ISSUE IN EXISTENCE.

With 2005 P.F. certificate..... 175.00

- 200 ★★ **8c Lilac (225).** Mint N.H., sharp impression on bright paper, Extremely Fine, with photocopy of 2001 P.F. certificate for block of four, this being the top right stamp 175.00

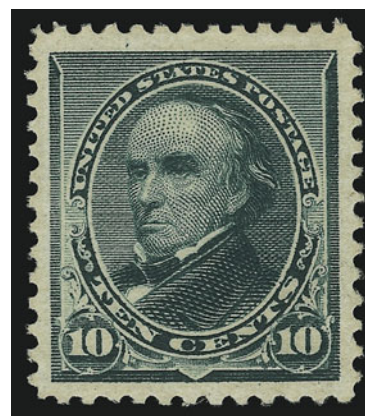


20

- 201 ★★ **10c Green (226).** Mint N.H., intense shade and impression, Jumbo margins

EXTREMELY FINE GEM. A SUPERB JUMBO MINT NEVER-HINGED EXAMPLE OF THE 10-CENT 1890 ISSUE.

With 2002 P.F. certificate..... 550.00

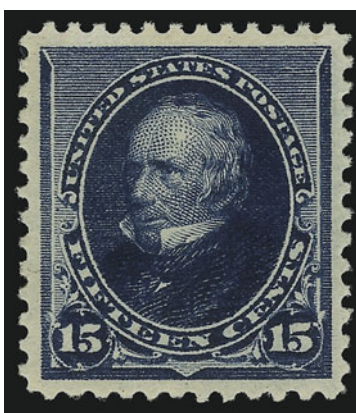


201



202

- 202 ★★ **10c Green, Imperforate (226a).** Mint N.H. pair, huge margins, rich color, Extremely Fine, with 2005 P.F. certificate..... 325.00



203

- 203 ★★ **15c Indigo (227).** Mint N.H., deep rich color on bright paper, wide and balanced margins

EXTREMELY FINE GEM. A SUPERB MINT NEVER-HINGED EXAMPLE OF THE 15-CENT 1890 ISSUE.

The 15c 1890 stamp is, in our opinion, one of the most striking designs of the Gilded Age regular issues. Its distinctive three-quarter portrait of Henry Clay is elegantly framed and printed in an extraordinarily deep shade of Indigo Blue. The beauty of the issue is enhanced in examples such as this stamp, which provides a balanced frame of white margin around the design. Further endowed with Mint N.H. gum and unusual freshness, this stamp ranks among the very finest we have offered.

With 1997 P.F. certificate..... 750.00



204

204 ★★ **30c Black (228)**. Mint N.H., crisp impression on bright paper, wide margins

EXTREMELY FINE. A BEAUTIFUL MINT NEVER-HINGED EXAMPLE OF THE 30-CENT 1890 ISSUE.

With 2003 P.F. certificate 1,150.00

205 ★★ **30c Black (228)**. Mint N.H., crisp impression and bright shade, choice centering, post-office fresh

EXTREMELY FINE. A BEAUTIFUL MINT NEVER-HINGED EXAMPLE OF THE 30-CENT 1890 AMERICAN BANK NOTE COMPANY ISSUE.

With 2004 P.S.E. certificate (XF 90)..... 1,150.00



205



206

206 ★ **90c Orange (229)**. Original gum, lightly hinged, brilliant color on bright paper, perfectly centered with wide margins all around

EXTREMELY FINE GEM. A SUPERB ORIGINAL-GUM EXAMPLE OF THE 90-CENT 1890 ISSUE.

With 2004 P.F. and 2005 P.S.E. certificates (XF-Superb 95)..... 650.00

207 ★ **90c Orange (229)**. Original gum, lightly hinged, vibrant color, choice centering, fresh and Extremely Fine, with 2005 P.F. certificate 650.00



207

COLUMBIAN ISSUE



- 208 ★★ **1c Columbian (230).** Mint N.H., brilliant color on bright paper, post-office fresh, Extremely Fine Gem, a superb stamp in every respect, with 2003 P.S.E. certificate (XF-Superb 95)..... 50.00
- 209 ★★ **2c Columbian (231).** Mint N.H. with **top right corner sheet selvage**, detailed impression, huge margins, Extremely Fine Gem, a stunning stamp..... 47.00
- 210 ★★ **2c Columbian, Broken Hat (231 var).** Mint N.H., intense shade and impression clearly showing the variety, beautiful centering, Extremely Fine Gem, with 1991 P.F. and 2004 P.S.E. certificate (XF-Superb 95)..... 150.00
- 211 ★★ **2c Columbian (231).** Mint N.H., deep rich color and proof-like impression on bright paper, choice centering, Extremely Fine Gem, with 2003 P.S.E. certificate (XF-Superb 95)..... 47.00
- 212 ★★ **2c Columbian (231).** Mint N.H. with **part imprint at left**, detailed impression, Jumbo margins, Extremely Fine, with 1997 P.S.E. certificate 47.00
- 213 ★★ **3c Columbian (232).** Mint N.H., rich color on bright paper, post-office fresh and Extremely Fine, with 2003 P.S.E. certificate (XF-Superb 95)..... 135.00
- 214 ★★ **3c Columbian (232).** Mint N.H. with **letter "L" at bottom**, rich color and detailed impression, wide margins, fresh and Extremely Fine, with 2004 P.S.E. certificate 135.00



215



216



217



218



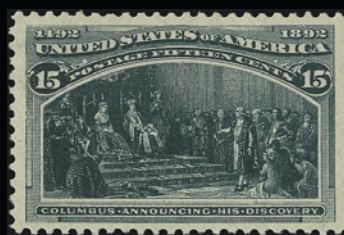
219



220



221



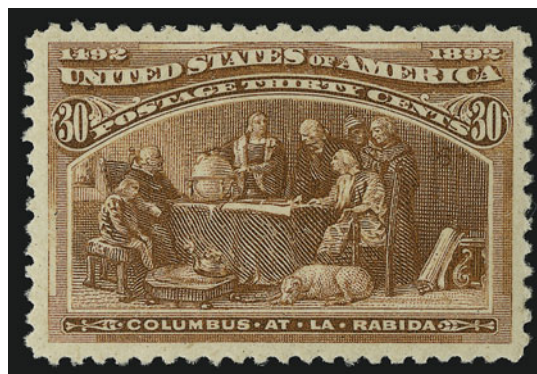
222

- 215 ★★ **4c Columbian (233)**. Mint N.H., beautifully centered with wide even margins, dark shade, Extremely Fine Gem, a superb stamp, with 1999 P.F. certificate..... 200.00
- 216 ★★ **4c Columbian (233)**. Mint N.H., rich color, wide margins, Extremely Fine, a pretty stamp, with 2002 P.S.E. certificate (XF 90)..... 200.00
- 217 ★★ **5c Columbian (234)**. Mint N.H. with selvage at right, intense shade on bright paper, extra wide margins, Extremely Fine, with 2002 P.F. and 2004 P.S.E. certificates (XF 90).
..... 220.00
- 218 ★★ **6c Columbian (235)**. Mint N.H., pretty shade, wide margins (particularly at sides), Extremely Fine, with 2002 P.F. and 2004 P.S.E. certificate (VF-XF 85 — we feel this should grade 90) 195.00
- 219 ★★ **8c Columbian (236)**. Mint N.H., rich color, Jumbo margins at sides, fresh and Extremely Fine, with 2003 P.F. and 2004 P.S.E. certificate (XF 90 Jumbo)..... 175.00
- 220 ★ **10c Columbian (237)**. Original gum, lightly hinged, intense shade and impression, almost perfectly centered, Extremely Fine, with 2005 P.S.E. certificate (XF-Superb 95). 140.00
- 221 ★★ **10c Columbian (237)**. Mint N.H., crisp impression showing all of the detailed engraving, Very Fine and choice, with 2004 P.S.E. certificate (VF-XF 85) 325.00
- 222 ★★ **15c Columbian (238)**. Mint N.H., deep rich color, wide margins, fresh and Extremely Fine, an attractive stamp, with 1989 and 2003 P.F. certificates and with 2004 P.S.E. certificate (XF 90)..... 625.00

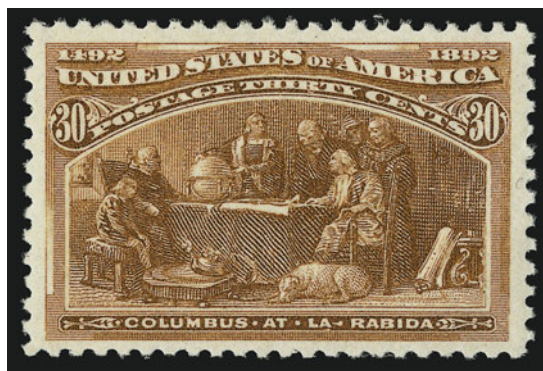
- 223 ★★ **30c Columbian (239).** Mint N.H., intense color and proof-like impression, wide and balanced margins all around

EXTREMELY FINE GEM. A SUPERB MINT NEVER-HINGED EXAMPLE OF THE 30-CENT COLUMBIAN.

With 1997 and 2004 P.S.E. certificates (XF-Superb 95)..... 750.00



223



224

- 224 ★★ **30c Columbian (239).** Mint N.H., rich color on bright paper, wide margins

EXTREMELY FINE MINT NEVER-HINGED EXAMPLE OF THE 30-CENT COLUMBIAN ISSUE.

With 2005 P.F. certificate..... 750.00

- 225 ★★ **\$1.00 Columbian (241).** Mint N.H., brilliant color on bright paper, choice centering with well-balanced margins

EXTREMELY FINE. A BEAUTIFUL MINT NEVER-HINGED EXAMPLE OF THE \$1.00 COLUMBIAN ISSUE. A WONDERFUL STAMP.

With 1988 and 2002 P.F. certificates and with 2004 P.S.E. certificate (XF 90 — in our opinion, this flawless stamp has perfectly-balanced wide margins and meets every qualification for a grade of XF-Superb 95) ... 3,500.00



225



226

- 226 ★ **\$1.00 Columbian (241).** Original gum, lightly hinged, bright color, choice centering with balanced margins

EXTREMELY FINE ORIGINAL-GUM EXAMPLE OF THE \$1.00 COLUMBIAN ISSUE.

With 1977 and 1981 P.F. certificates and 2005 P.S.E. certificate (XF 90)..... 1,200.00



227

- 227 ★ **\$2.00 Columbian (242).** Original gum, lightly hinged, detailed impression with wide and balanced margins

EXTREMELY FINE ORIGINAL-GUM EXAMPLE OF THE \$2.00 COLUMBIAN.

With 1992 P.F. and 2004 P.S.E. certificates (XF 90) 1,250.00

- 228 ★★ **\$3.00 Columbian (243).** Mint N.H., bright color, unusually choice centering

EXTREMELY FINE. A BEAUTIFUL AND RARE MINT NEVER-HINGED EXAMPLE OF THE \$3.00 COLUMBIAN ISSUE.

With 1992 and 2002 P.F. certificates and with 2004 P.S.E. certificate giving this stamp an inexplicably weak grade of VF 80 — we feel strongly this is a solid XF 90 based on centering alone, adding nothing for its freshness..... 5,750.00



228



229

- 229 ★ **\$3.00 Olive Green Columbian (243a).** Original gum, lightly hinged, rich color in the true Olive Green shade, almost perfectly centered with wide top and bottom margins

EXTREMELY FINE. A BEAUTIFUL ORIGINAL-GUM EXAMPLE OF THE \$3.00 COLUMBIAN ISSUE IN THE OLIVE GREEN SHADE.

With 1983 P.F. certificate and with 2002 and 2004 P.S.E. certificates (XF 90 Jumbo — in our opinion, this is a straightforward 95, not a 90 Jumbo) 1,900.00

- 230 ★ **\$4.00 Columbian (244).** Original gum, single hinge mark, deep rich color, well-proportioned margins, tiny natural inclusion at bottom right

EXTREMELY FINE GEM. A SUPERB ORIGINAL-GUM EXAMPLE OF THE \$4.00 COLUMBIAN ISSUE.

With 1991 P.F. and 2005 P.S.E. certificate (XF-Superb 95)..... 2,600.00



230

- 231 **\$4.00 Columbian (244).** Deep rich color, clear strike of "New York Jan. 19, 1894" cancel, wide and balanced margins
EXTREMELY FINE USED EXAMPLE OF THE \$4.00 COLUMBIAN.
With 2005 P.F. certificate..... 1,300.00



231



232

- 232 ★ **\$5.00 Columbian (245).** Original gum, lightly hinged, intense shade and proof-like impression, perfectly centered with balanced margins
EXTREMELY FINE GEM. A SUPERB ORIGINAL-GUM EXAMPLE OF THE \$5.00 COLUMBIAN ISSUE.
With 1994 P.F. and 2004 P.S.E. certificate (XF-Superb 95)..... 3,000.00

- 233 ★ **\$5.00 Columbian (245).** Original gum, lightly hinged once, almost perfectly centered with extra wide margins, crisp shade and impression on bright paper
EXTREMELY FINE. A MAGNIFICENT LIGHTLY-HINGED EXAMPLE OF THE \$5.00 COLUMBIAN.
With 2000 P.F. certificate..... 3,000.00



233



234

- 234 ★ **\$5.00 Columbian (245).** Original gum, lightly hinged, sharp impression, well-proportioned margins
EXTREMELY FINE ORIGINAL-GUM EXAMPLE OF THE \$5.00 COLUMBIAN ISSUE.
With 2005 P.F. certificate 3,000.00

1894-98 BUREAU ISSUE



235



236

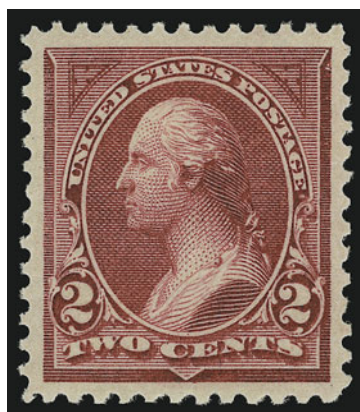


237



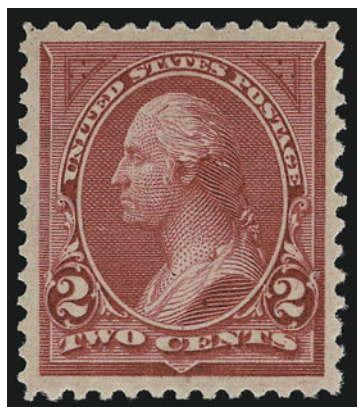
238

- 235 ★★ **1c Ultramarine (246).** Mint N.H., detailed impression on white paper, almost perfectly centered with enormous margins, Extremely Fine Gem, a phenomenal stamp, with 2001 P.F. certificate for pair 85.00
- 236 ★★ **1c Ultramarine (246).** Mint N.H., pretty pastel color on brilliant white paper, perfectly centered with unusually wide margins, Extremely Fine Gem, a superb stamp in every respect, with 2002 P.F. and 2004 P.S.E. certificates (XF-Superb 95)..... 85.00
- 237 ★★ **1c Blue (247).** Mint N.H. with **part imprint at left**, rich color, perfect centering with well-proportioned margins, Extremely Fine Gem, a stamp of great visual appeal 200.00
- 238 ★★ **2c Pink, Ty. I (248).** Mint N.H. with **selvage at right**, vibrant color, perfect centering with wide and balanced margins, Extremely Fine Gem, a spectacular stamp meeting the high standards for a Superb 98 grade, with 2000 P.F. and 2004 P.S.E. certificates (Superb 98)..... 77.00



239

- 239 ★★ **2c Carmine Lake, Ty. I (249).** Mint N.H., intense shade, perfectly centered with wide and balanced margins
EXTREMELY FINE GEM. A SUPERB MINT NEVER-HINGED
EXAMPLE OF THE 2-CENT CARMINE LAKE TYPE I UNWATER-
MARKED BUREAU ISSUE.
With 2001 P.F. certificate and 2005 P.S.E. certificate
(XF-Superb 95)..... 450.00



240

- 240 ★ **2c Carmine Lake, Ty. I (249).** Original gum, single hinge mark, rich color, choice centering, fresh and Extremely Fine, with 2005 P.F. certificate..... 175.00

- 241 ★★ **2c Carmine, Ty. I (250).** Mint N.H., brilliant color on bright paper, unusually wide margins for this issue, Extremely Fine, with 2001 P.F. certificate for pair and 2005 P.S.E. certificate as single (XF-Superb 95)..... 77.00



241



242

- 242 ★★ **2c Carmine, Ty. II (251).** Mint N.H. with **part imprint at left**, brilliant color, fresh and Extremely Fine, with 2004 P.S.E. certificate 900.00

- 243 ★★ **2c Carmine, Ty. III (252).** Mint N.H. with **part imprint at left**, brilliant color on bright paper, post-office fresh

EXTREMELY FINE GEM. THIS IS EASILY ONE OF THE FINEST EXAMPLES OF SCOTT 252 WE HAVE EVER ENCOUNTERED. A REMARKABLE STAMP IN EVERY RESPECT.

With 2002 P.F. certificate 350.00



243



244

- 244 ★★ **3c Purple (253).** Mint N.H. with **part imprint at right**, bright color and crisp impression contrasts nicely with bright paper, perfectly centered with enormous margins all around

EXTREMELY FINE GEM. WE FEEL CONFIDENT IN STATING THAT THIS IS ONE OF THE FINEST EXAMPLES OF THE 1894 3-CENT UNWATERMARKED BUREAU ISSUE IN EXISTENCE.

With 1984 and 2002 P.F. certificates 325.00

- 245 ★★ **5c Chocolate (255).** Mint N.H., rich color on bright paper, almost perfectly centered with balanced margins all around

EXTREMELY FINE GEM. A SUPERB MINT NEVER-HINGED EXAMPLE OF THE 5-CENT UNWATERMARKED BUREAU ISSUE.

With 2003 and 2005 P.S.E. certificates (XF-Superb 95) 300.00



245



246

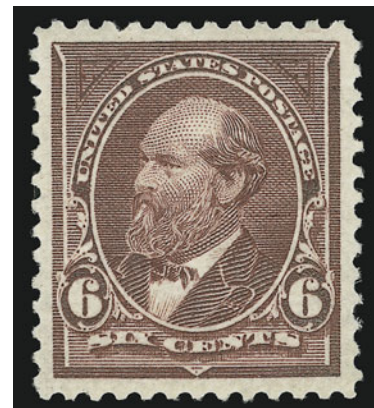
- 246 ★★ **5c Chocolate (255).** Mint N.H., deep shade, wide and balanced margins, fresh and Extremely Fine, with 1991 and 2002 P.F. certificates 300.00

- 247 ★★ **6c Dull Brown (256).** Mint N.H., brilliant color, perfectly centered with wide and balanced margins
EXTREMELY FINE GEM. THIS IS CLEARLY ONE OF THE FINEST EXISTING MINT NEVER-HINGED EXAMPLES OF THE 1894 6-CENT UNWATERMARKED BUREAU ISSUE.

The First Bureau Issue of 1894 was a rough start for the government printers given the task of producing postage stamps after the American Bank Note Company contract expired. After quickly altering the 1890 Issue dies by adding triangles, the Bureau started printing stamps on unwatermarked paper. The quality controls for perforating stamps were obviously not in place for the Bureau's first issue, and the stamps released are notorious among collectors for poor centering and unpunched perf holes.

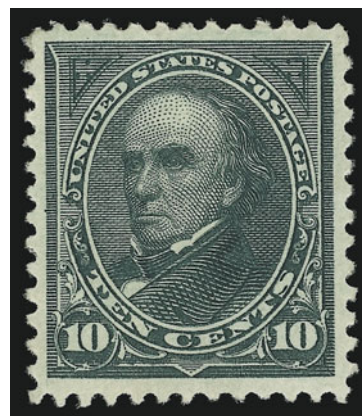
Although the demand for other values was far greater, the 6c was actually the first value released by the Post Office Department (announced for July 1894; EDU 8/11/1894). Other values followed, beginning in September to as late as March 1895 (the 8c). Reviewing auction records of Scott 256, it is obvious that even when judged against normal standards, this stamp is exceptionally choice. Judged by the standards of the 1894 Issue, it is nothing less than a miraculous and fortuitous fluke of quality. We could find only one other (Sale 872, lot 706) that rivals this Gem.

With 2002 P.F. certificate 450.00

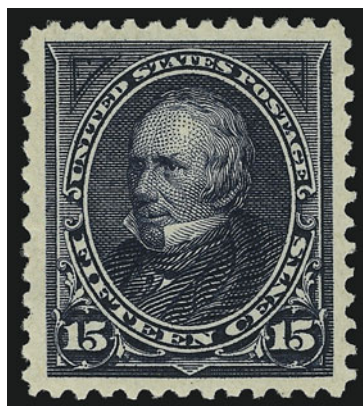


247

- 248 ★ **10c Dark Green (258).** Original gum, lightly hinged, deep rich color, wide margins, fresh and Extremely Fine, difficult to find with such wide margins and in such exceptional condition, with 2005 P.F. certificate 300.00



248



249

- 249 ★★ **15c Dark Blue (259).** Mint N.H., deep rich color on bright paper, unusually wide margins for this difficult issue

EXTREMELY FINE GEM. WITHOUT QUESTION THIS IS ONE OF THE FINEST MINT NEVER-HINGED EXAMPLES OF THE 15-CENT UNWATERMARKED BUREAU ISSUE IN EXISTENCE.

In our description of lot 203 in this sale, the 1890 counterpart to the 15c 1894 Issue offered here, we pointed out the extraordinary beauty of this issue's design and deep blue color. The same comments apply to this First Bureau issue, with the added footnote regarding the notoriously poor quality of the Bureau's early effort in perforating stamps. This stamp stands out as one of the finest 15c 1894's in Mint N.H. condition.

With 1999 and 2004 P.F. certificates and 2005 P.S.E. certificate (XF-Superb 95) 850.00

- 250 ★ **50c Orange (260).** Original gum, perfectly framed with enormous even margins all around, brilliant color and sharp impression

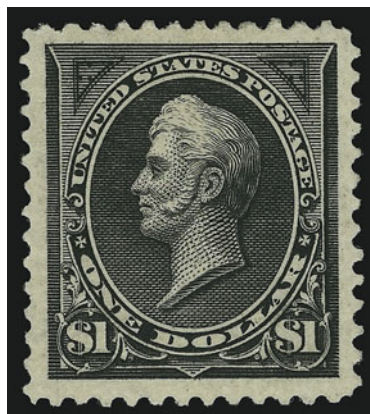
EXTREMELY FINE GEM. A SUPERB JUMBO EXAMPLE OF THE 50-CENT 1894 UNWATERMARKED BUREAU ISSUE. A FANTASTIC STAMP.

The stamp offered here has huge margins and centering comparable to the example offered in our Sale 829 (lot 582). That stamp, which was in Mint N.H. condition, realized \$17,000 hammer.

With 2000 P.F. certificate and 2004 P.S.E. certificate (XF-Superb 95 Jumbo) 575.00



250

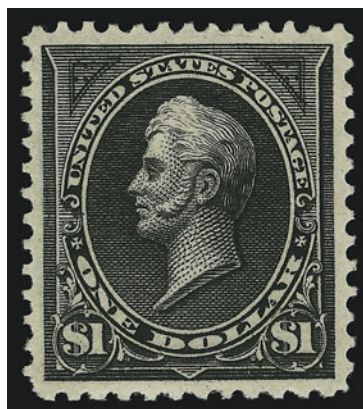


251

- 251 ★ **\$1.00 Black (261).** Original gum, lightly hinged, sharp proof-like impression, Jumbo margins

EXTREMELY FINE GEM. A SUPERB JUMBO EXAMPLE OF THE \$1.00 TYPE I 1894 UNWATERMARKED BUREAU ISSUE.

With 1984 and 2005 P.F. certificates and 2005 P.S.E. certificate (XF-Superb 95 Jumbo) 1,100.00



252

- 252 ★ **\$1.00 Black, Ty. II (261A).** Original gum, lightly hinged, intense shade and impression, choice centering with well-proportioned margins

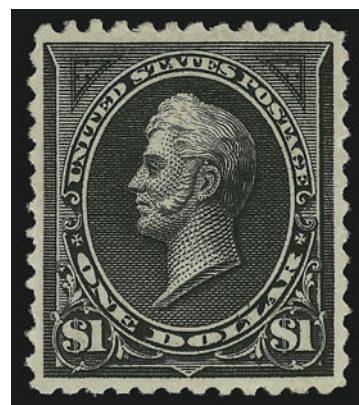
EXTREMELY FINE. A BEAUTIFUL ORIGINAL-GUM EXAMPLE OF THE TYPE II 1894 UNWATERMARKED BUREAU ISSUE.

With 1995 and 2001 P.F. certificates 2,300.00

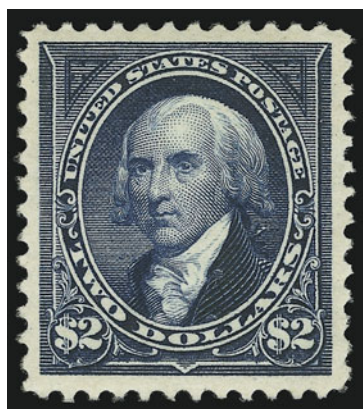
- 253 ★ **\$1.00 Black, Ty. II (261A).** Original gum, lightly hinged, intense shade and impression, almost perfectly centered

EXTREMELY FINE. A BEAUTIFUL LIGHTLY-HINGED EXAMPLE OF THE \$1.00 TYPE II UNWATERMARKED BUREAU ISSUE.

With 2000 P.S.E. certificate..... 2,300.00



253



254

- 254 ★ **\$2.00 Bright Blue (262).** Original gum, lightly hinged, bright shade on crisp paper, unusually choice centering with wide and balanced margins all around

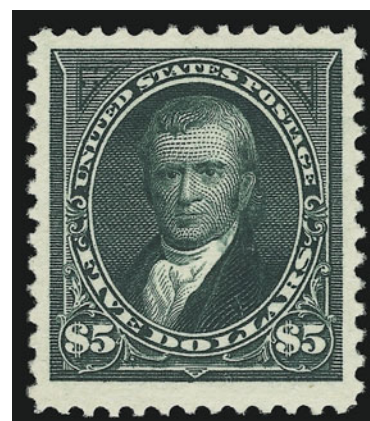
EXTREMELY FINE GEM. THE \$2.00 1894 UNWATERMARKED BUREAU ISSUE IS ONE OF THE MOST DIFFICULT STAMPS OF THE SERIES TO OBTAIN IN SUCH SUPERB CONDITION. A TRUE CONDITION RARITY.

Ex Floyd. With 1982 and 2002 P.F. certificates..... 3,250.00

- 255 ★ **\$5.00 Dark Green (263).** Original gum, barest trace of hinging, rich color on bright paper, extra wide margins

EXTREMELY FINE. THE \$5.00 1894 UNWATERMARKED BUREAU ISSUE IS A RARE STAMP THAT IS SELDOM SEEN WITH SUCH WIDE MARGINS AND CHOICE CENTERING.

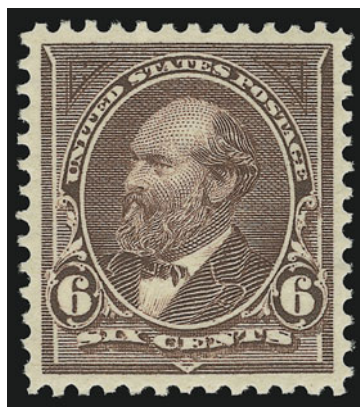
With 2002 P.F. certificate 5,000.00



255



- 256 ★★ **1c Blue (264).** Mint N.H., rich color, well-balanced margins, Extremely Fine Gem..... 17.00
- 257 ★★ **2c Carmine, Ty. I (265).** Mint N.H., radiant color on bright paper, almost perfectly centered with wide margins, Extremely Fine Gem, with copy of 1992 and with 2001 P.F. certificates and with 2005 P.S.E. certificate (XF-Superb 95) 77.00
- 258 ★★ **2c Carmine, Ty. II (266).** Mint N.H. with **part imprint at right**, brilliant color, perfectly centered, Extremely Fine Gem, a superb stamp in every respect, with 2002 P.F. certificate 90.00
- 259 ★★ **2c Reddish Carmine, Ty. III (267 var).** Mint N.H., unusually intense color, perfectly centered with wide margins all around, Extremely Fine Gem, a superb example of this color variety, with 2005 P.S.E. certificate (XF-Superb 95)..... 14.00
- 260 ★★ **3c Purple (268).** Mint N.H., detailed impression, choice centering, post-office fresh and Extremely Fine, with 2000 P.F. certificate..... 97.00
- 261 ★★ **4c Dark Brown (269).** Mint N.H. with **plate no. at bottom**, crisp impression, almost perfectly centered with well-proportioned margins, Extremely Fine, a gorgeous stamp, with 2003 P.F. and 2004 P.S.E. certificates (XF 90)..... 125.00
- 262 ★★ **4c Dark Brown (269).** Mint N.H., deep rich color, detailed impression, choice centering, fresh and Extremely Fine, with 1997 P.F. certificate..... 125.00
- 263 ★★ **5c Chocolate (270).** Mint N.H., bright color, almost perfectly centered with wide and balanced margins, Extremely Fine Gem, a gorgeous stamp, with 1999 P.F. certificate. 97.00
- 264 ★★ **5c Chocolate (270).** Mint N.H., pretty shade on bright paper, choice centering, fresh and Extremely Fine, with 2004 P.S.E. certificate (XF 90) 97.00



265

265 ★★ **6c Dull Brown (271).** Mint N.H., perfectly centered, pretty shade on bright paper

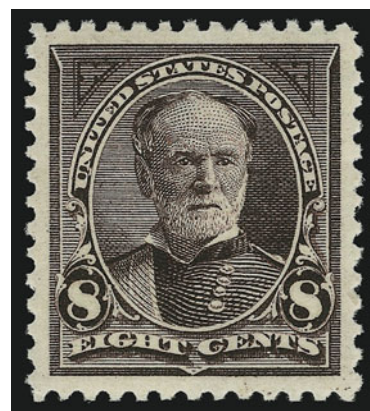
EXTREMELY FINE GEM. A MAGNIFICENT MINT NEVER-HINGED EXAMPLE OF THE 1894 6-CENT WATERMARKED BUREAU ISSUE.

With 2000 P.F. certificate and 2005 P.S.E. certificate (XF-Superb 95)..... 325.00

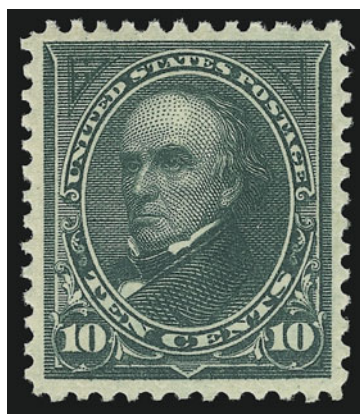
266 ★★ **8c Violet Brown (272).** Mint N.H., deep rich color and sharp proof-like impression on bright paper, Jumbo margins

EXTREMELY FINE GEM. THIS IS EASILY ONE OF THE FINEST MINT NEVER-HINGED EXAMPLES OF THE 1895 8-CENT WATERMARKED BUREAU ISSUE, SCOTT 272, THAT WE HAVE EVER HANDLED.

With 2003 P.F. certificate and 2005 P.S.E. certificate (XF-Superb 95 Jumbo)..... 180.00



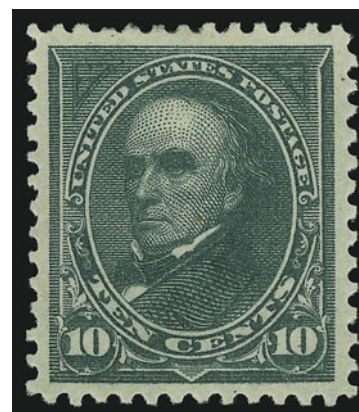
266



267

267 ★★ **10c Dark Green (273).** Mint N.H., rich color, choice centering with well-proportioned margins, Extremely Fine, a stamp of great visual appeal, with 2000 P.F. certificate..... 260.00

268 ★ **10c Dark Green (273).** Original gum, lightly hinged, pretty pastel color, wide margins, Extremely Fine, with 2004 P.S.E. certificate (XF 90)..... 100.00

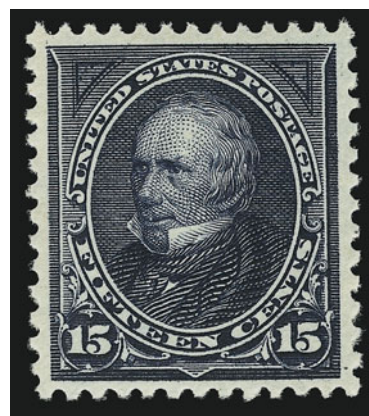


268

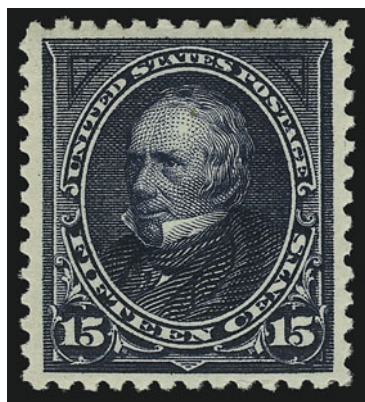
- 269 ★★ **15c Dark Blue (274).** Mint N.H., deep rich color and proof-like impression on bright paper, well-balanced margins

EXTREMELY FINE AND FRESH MINT NEVER-HINGED
EXAMPLE OF THE 1895 15-CENT WATERMARKED
BUREAU ISSUE.

With 2000 P.F. certificate..... 625.00



269



270

- 270 ★★ **15c Dark Blue (274).** Mint N.H., deep rich color on bright paper, wide and balanced margins

EXTREMELY FINE MINT NEVER-HINGED EXAMPLE OF
THE 1895 15-CENT WATERMARKED BUREAU ISSUE.

With 2002 P.F. and 2004 P.S.E. certificates (XF 90) ...
..... 625.00

- 271 ★ **50c Orange (275).** Original gum, lightly hinged, radiant color, perfectly centered with well-balanced margins

EXTREMELY FINE GEM. A SUPERB ORIGINAL-GUM
EXAMPLE OF THE 1895 50-CENT WATERMARKED
BUREAU ISSUE.

With 2002 P.F. certificate..... 300.00



271



272

- 272 ★ **50c Orange (275).** Original gum, barest trace of hinging, brilliant color, almost perfectly centered, Extremely Fine, with 2004 P.F. and 2005 P.S.E. certificates (VF-XF 85) 300.00



273

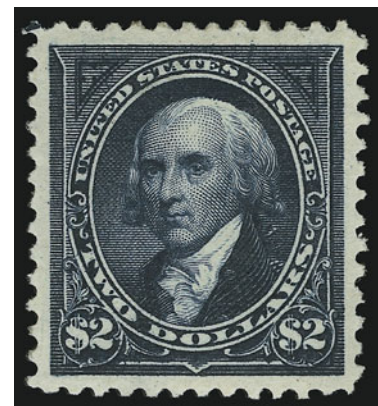
- 273 **\$1.00 Black, Ty. I-II (276-276A).** Horizontal pair with **full imprint at bottom**, original gum, lightly hinged, intense shade and impression, choice centering
 EXTREMELY FINE. A MAGNIFICENT ORIGINAL-GUM COMBINATION PAIR OF THE TYPE I AND TYPE II UNWATERMARKED BUREAU ISSUE. A HIGHLY DESIRABLE POSITION PIECE.
 The plate of the \$1.00 1894 Bureau Issue consisted of fifteen vertical rows of Type I and five vertical rows of Type II, which accounts for the scarcity of Type II compared with Type I. There are only ten positions on the plate which yield combination pairs. This pair, with the full imprint at bottom, is particularly desirable.
 With 2002 P.F. certificate 2,600.00



274

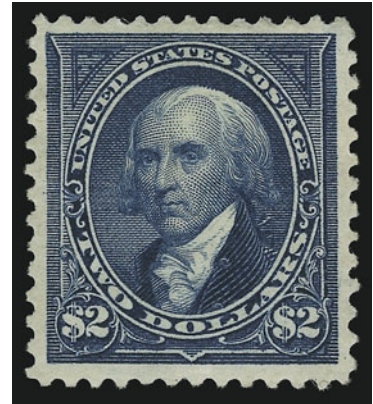
- 274 ★ **\$1.00 Black, Ty. I (276).** Original gum, lightly hinged, intense shade and detailed impression, Extremely Fine, with 2002 P.F. and 2004 P.S.E. certificates (XF 90).....
 675.00

- 275 ★ **\$2.00 Dark Blue (277a).** Original gum, lightly hinged, deep rich color on bright paper, unusually wide margins which are well-proportioned
 EXTREMELY FINE. A SUPERB ORIGINAL-GUM EXAMPLE OF THE 1895 \$2.00 WATERMARKED BUREAU ISSUE IN THE DARK BLUE SHADE.
 With 1990 and 2001 P.F. certificates, the former describing it as Bright Blue and with 2005 P.S.E. certificate (XF-Superb 95)..... 1,100.00

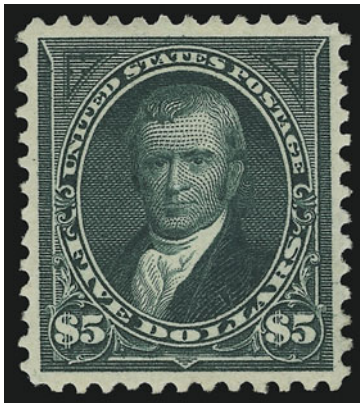


275

- 276 ★ **\$2.00 Bright Blue (277).** Original gum, lightly hinged, deep rich color on bright paper, wide margins, fresh and Extremely Fine, with 2004 P.F. and 2005 P.S.E. certificates (VF-XF 85) 1,100.00



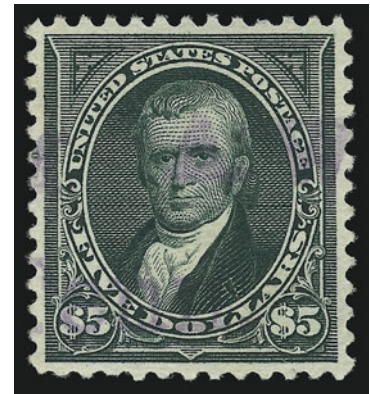
276



277

- 277 ★ **\$5.00 Dark Green (278).** Original gum, lightly hinged, deep rich color, almost perfectly centered with well-balanced margins
EXTREMELY FINE. A BEAUTIFUL ORIGINAL-GUM EXAMPLE OF THE \$5.00 WATERMARKED BUREAU ISSUE.
With 1997 P.F. certificate 2,300.00

- 278 **\$5.00 Dark Green (278).** Rich color on bright paper nicely contrasted by **purple cancel**, well-proportioned margins, fresh and Extremely Fine, with 2005 P.F. certificate 650.00



278



- 279 ★★ **1c Deep Green (279).** Mint N.H. with **plate no. at top**, radiant color on bright paper, mathematically perfect centering, Extremely Fine Gem, a superb stamp in every respect, with 1992 P.F. certificate as strip of three and 2005 P.S.E. certificate as single (Superb 98) 22.00
- 280 ★ **2c Rose Carmine, Ty. III (279Bc).** Original gum, barest trace of hinging, brilliant color, Extremely Fine, ex Floyd, with 1990 and 2003 P.F. certificates 250.00
- 281 ★★ **2c Deep Red, Ty. III (279B var).** Mint N.H. with **part imprint at top**, intense color, well-balanced margins, Extremely Fine example of this shade variety, with 2001 P.F. certificate..... 32.00
- 282 ★★ **4c Orange Brown (280b).** Mint N.H., deep rich color, almost perfectly centered, Extremely Fine, with 1998 P.F. certificate..... 75.00
- 283 ★★ **5c Dark Blue (281).** Mint N.H., intense color and detailed impression, perfect centering with wide margins, Extremely Fine Gem, with 1991 P.F. certificate and 2005 P.S.E. certificate (XF-Superb 95)..... 87.00
- 284 ★★ **5c Dark Blue (281).** Mint N.H., deep rich color on bright paper, wide margins, fresh and Extremely Fine, with 2002 P.S.E. certificate (XF 90) 87.00



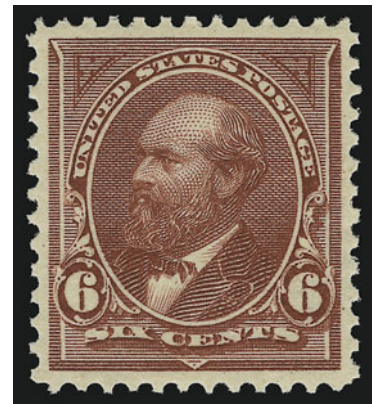
285

285 ★★田 5c Dark Blue (281). Mint N.H. top imprint and plate no. 409 block of six, deep rich color, almost perfectly centered throughout

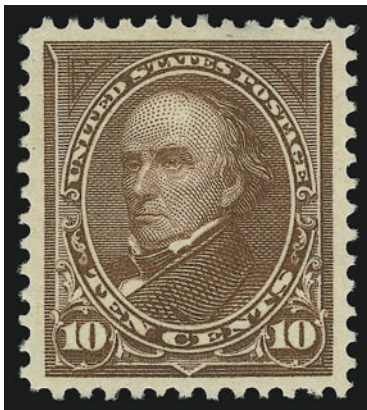
EXTREMELY FINE. A MAGNIFICENT MINT NEVER-HINGED WIDE TOP-MARGIN PLATE BLOCK OF THE 5-CENT 1898 ISSUE.

With 1999 P.F. certificate 1,250.00

286 ★★ 6c Lake (282). Mint N.H., brilliant color, perfectly centered with balanced margins, Extremely Fine Gem, one of the most difficult stamps of the series to obtain in such superb condition, with 2001 P.F. certificate and 2005 P.S.E. certificate (XF-Superb 95) 120.00



286



287

287 ★ 10c Brown, Ty. I (282C). Original gum, lightly hinged, bright color, unusually choice centering with wide and balanced margins, Extremely Fine Gem, a beautiful stamp, scarce in such superb condition, , ex Floyd, with 1992 P.F. certificate 200.00



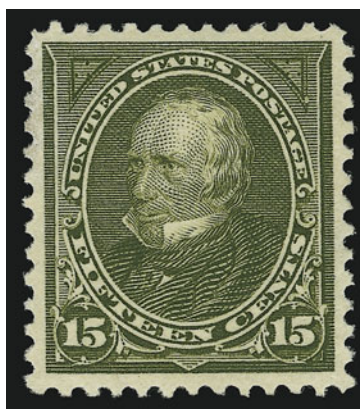
288

288 ★★ **10c Orange Brown, Ty. II (283).** Mint N.H. with **selvage at left**, radiant color, mathematically perfect centering with perfectly proportioned margins

EXTREMELY FINE GEM. A SUPERB MINT NEVER-HINGED EXAMPLE OF THE 10-CENT TYPE II 1898 BUREAU ISSUE.

Many stamps with selvage tend to be slightly off to the other side, so that the selvage will compensate for centering. This is not the case with the stamp offered here. Even if the selvage were removed, this stamp would maintain its appearance of perfect centering.

With 2000 P.F. certificate..... 375.00



289

289 ★★ **15c Olive Green (284).** Mint N.H., pretty color with well-balanced margins all around

EXTREMELY FINE MINT NEVER-HINGED EXAMPLE OF TH 15-CENT 1898 BUREAU ISSUE.

With 1996 P.F. certificate..... 400.00

TRANS-MISSISSIPPI ISSUE

- 290 ★★ **1c Trans-Mississippi (285).** Mint N.H., deep rich color on bright paper, choice centering with wide margins, Extremely Fine Gem, with 2004 P.S.E. certificate (XF-Superb 95)..... 70.00



290



291



292

- 291 ★★ **2c Trans-Mississippi (286).** Mint N.H. with **imprint at top**, choice margins and phenomenal centering, fresh, deep rich color, Extremely Fine Gem..... 65.00
- 292 ★★ **2c Trans-Mississippi (286).** Mint N.H. with **plate no. at top**, brilliant color, choice centering, fresh and Extremely Fine, with 2005 P.F. certificate 65.00



293

- 293 ★★ **2c Trans-Mississippi (286).** Mint N.H., bright color, detailed impression, fresh and Extremely Fine, with 2003 and 2004 P.S.E. certificates (XF 90) . 65.00



294

- 294 ★★ **4c Trans-Mississippi (287).** Mint N.H. with **imprint at top**, vibrant color, framed by wide even margins, fresh and Extremely Fine, with 2005 P.F. certificate..... 325.00



295

- 295 ★★ **4c Trans-Mississippi (287).** Mint N.H., brilliant color, perfectly centered, Extremely Fine Gem, a beautiful stamp, with 2005 P.F. certificate..... 325.00



296

- 296 ★★ **4c Trans-Mississippi (287).** Mint N.H., vibrant color, choice centering, post-office fresh and Extremely Fine, with 2003 and 2004 P.S.E. certificates (XF 90) 325.00

- 297 ★★ **5c Trans-Mississippi (288).** Mint N.H. , rich color and proof-like impression, Jumbo margins all around, fresh and Extremely Fine, with 1999 P.F. and 2004 P.S.E. certificates (XF 90 Jumbo) ..
..... 325.00



297



298

- 298 ★★ **8c Trans-Mississippi (289).** Mint N.H., intense shade and impression, well-proportioned margins, Extremely Fine, with 2001 P.F. and 2004 P.S.E. certificates (XF 90)..... 475.00

- 299 ★★ **10c Trans-Mississippi (290).** Mint N.H., rich color and proof-like impression, essentially perfect centering with wide and balanced margins

EXTREMELY FINE. A BEAUTIFUL MINT NEVER-HINGED EXAMPLE OF THE 10-CENT TRANS-MISSISSIPPI ISSUE.

With 2000 P.F. and 2004 P.S.E. certificates (XF 90 — we cannot find a reason why this stamp was denied a grade of XF-Superb 95) 425.00



299



300

- 300 ★★ **50c Trans-Mississippi (291).** Mint N.H., pretty color, detailed impression

VERY FINE AND CHOICE MINT NEVER-HINGED EXAMPLE OF THE 50-CENT TRANS-MISSISSIPPI ISSUE.

With 2002 and 2004 P.S.E. certificates (VF-XF 85)..... 1,750.00



301

- 301 ★★ **\$1.00 Trans-Mississippi (292).** Mint N.H., beautiful impression showing every nuance of the engraving, almost perfectly centered with wide and balanced margins
EXTREMELY FINE GEM. A SUPERB MINT NEVER-HINGED EXAMPLE OF THE \$1.00 TRANS-MISSISSIPPI ISSUE.
With 2003 P.F. and 2004 P.S.E. certificates (XF 90 — this is a solid 95 in our opinion) ...
..... 3,250.00



302

- 302 ★ **\$2.00 Trans-Mississippi (293).** Original gum, lightly hinged, detailed impression, wide margins
EXTREMELY FINE ORIGINAL-GUM EXAMPLE OF THE \$2.00 TRANS-MISSISSIPPI ISSUE.
With 1985 P.F. and 2005 P.S.E. certificates (XF 90)..... 2,100.00

PAN-AMERICAN ISSUE

- 303 ★ **1c Pan-American, Center Inverted (294a).** Lightly hinged, deep rich color, choice centering

VERY FINE AND CHOICE. A REMARKABLY CHOICE SOUND ORIGINAL-GUM EXAMPLE OF THE ONE-CENT PAN-AMERICAN INVERT.

The 1c Pan-American Inverts were found in at least four different post offices around the country..
..... 11,000.00



303



304

- 304 **1c Pan-American, Center Inverted (294a).** "Lowell Mass" oval cancellation, deep rich colors, small creases and tears

FINE APPEARING EXAMPLE OF THE ONE-CENT PAN-AMERICAN INVERT.

Used 1c Pan-American Inverts are considerably rarer than their unused counterparts. With 1991 P.F. certificate. 12,000.00

- 305 ★ **4c Pan-American, Center Inverted (296a).** Beautiful colors, full original gum showing usual slight disturbance, unusually well-centered and fresh

VERY FINE AND CHOICE EXAMPLE OF THE 4-CENT PAN-AMERICAN INVERT. SCARCE IN SUCH PRISTINE CONDITION.

The 4c Pan-American Invert was a special printing and not regularly issued. Examples were distributed through two official channels, and the gum on the majority of stamps without "Specimen" overprint was disturbed. In fact, because the stamps were removed from mounting paper, they are generally thinned or have seriously disturbed gum. Examples with full intact gum are very scarce.

With 2004 P.S.E. certificate 35,000.00



305



306

- 306 (★) **4c Pan-American, Center Inverted (296a).** Unused (no gum), bright colors, few small tears and creases, reperfed at right

FINE APPEARING EXAMPLE OF THE 4-CENT PAN-AMERICAN INVERT.

With 2005 P.F. certificate 35,000.00



307



308



309



310



311



312



313



314

- 307 ★★ **2c Pan-American (295).** Mint N.H., massive margins, intense colors, Extremely Fine Gem, a huge stamp..... 40.00
- 308 ★★ **2c Pan-American (295).** Mint N.H., uncommonly wide margins, perfectly centered, Extremely Fine Gem, with photocopy of 2002 P.F. certificate for block of four (bottom right stamp)..... 40.00
- 309 ★★ **4c Pan-American (296).** Mint N.H. top imprint margin single, beautifully centered, fresh and crisp, Extremely Fine, with photocopy of 1999 P.F. certificate for strip of three (center stamp) 190.00
- 310 ★★ **5c Pan-American (297).** Mint N.H., perfect centering with well-proportioned margins, Extremely Fine Gem, with 1999 P.F. and 2005 P.S.E. certificates (XF-Superb 95) 210.00
- 311 ★★ **5c Pan-American (297).** Mint N.H., deep rich colors, choice centering, Extremely Fine, with 2005 P.F. certificate 210.00
- 312 ★★ **8c Pan-American (298).** Mint N.H., deep rich colors and proof-like impressions, well-proportioned margins, fresh and Extremely Fine, with 2002 P.S.E. certificate (XF 90)..... 275.00
- 313 ★ **10c Pan-American (299).** Very lightly hinged, appears Mint N.H. at a glance, incredibly wide margins and perfectly centered, intense colors on bright paper, Extremely Fine Gem, with 1999 P.F. certificate 160.00
- 314 ★★ **10c Pan-American (299).** Mint N.H., pretty colors, fresh and Extremely Fine, with 2005 P.S.E. certificate 375.00

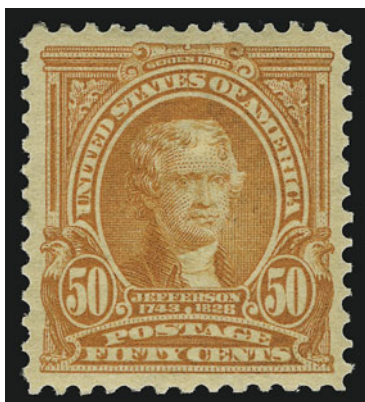
1902-08 ISSUE



- 315 ★★ **1c Blue Green (300)**. Mint N.H., huge margins, bright color, Extremely Fine, with 2004 P.F. certificate for block of nine 27.00
- 316 ★★ **1c Blue Green (300)**. Mint N.H., rich color and proof-like impression, fresh and Extremely Fine, with 2003 P.S.E. certificate (XF 90)..... 27.00
- 317 **1c Blue Green (300)**. Jumbo margins with **selvage at bottom**, rich color, wavy-lines cancel, Extremely Fine Gem, with 2004 P.F. certificate..... 1.00
- 318 ★★田 **1c Blue Green (300)**. Mint N.H. top imprint and plate no. block of six, bright color, wide margins, Extremely Fine, scarce in such superb condition, with 2005 P.F. certificate. 325.00
- 319 ★★ **2c Carmine (301)**. Mint N.H., brilliant color, wide and balanced margins, Extremely Fine, with 2004 P.F. certificate 35.00
- 320 ★★ **3c Bright Violet (302)**. Mint N.H. with **part imprint at right**, deep rich color and proof-like impression, superbly centered with huge margins, Extremely Fine Gem, a beautiful stamp, with 2005 P.S.E. certificate (XF-Superb 95 Jumbo)..... 125.00
- 321 ★★ **3c Bright Violet (302)**. Mint N.H., rich color on bright paper, wide margins, Extremely Fine, a stamp of great visual appeal, with 1993 P.F. and 2003 P.S.E. certificates (XF 90).... 125.00
- 322 ★★ **4c Brown (303)**. Mint N.H., intense shade and impression, choice centering with wide margins, Extremely Fine Gem, a gorgeous stamp, with 2004 P.F. certificate..... 140.00



- 323 ★★ **5c Blue (304).** Mint N.H., intense shade and impression, perfect centering, Extremely Fine, with 2004 P.F. and 2005 P.S.E. certificates (XF 90)..... 140.00
- 324 ★★ **6c Claret (305).** Mint N.H. with **part imprint at left**, bright shade, choice centering, post-office fresh and Extremely Fine, with 2000 P.F. and 2004 P.S.E. certificates (XF 90) 170.00
- 325 ★★ **8c Violet Black (306).** Mint N.H., deep rich color and proof-like impression, well-balanced margins, Extremely Fine, with 2003 P.S.E. certificate (XF 90)..... 100.00
- 326 ★★ **13c Purple Black (308).** Mint N.H., bright color, crisp impression, Extremely Fine, with 1997 P.F. and 2004 P.S.E. certificates (XF-Superb 95)..... 140.00
- 327 ★★ **15c Olive Green (309).** Mint N.H., deep rich color and proof-like impression, choice centering, Extremely Fine, with 1996 and 2002 P.F. certificates and with 2005 P.S.E. certificate (XF 90)..... 450.00
- 328 ★★ **15c Olive Green (309).** Mint N.H., intense shade, extra wide margins, Extremely Fine Gem, with 1978 and 2005 P.F. certificates 325.00



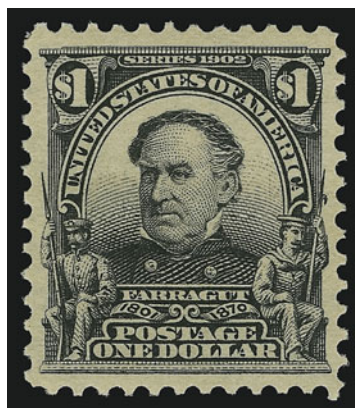
329

- 329 ★ **50c Orange (310).** Lightly hinged, vibrant color, choice centering with wide margins
- EXTREMELY FINE. A BEAUTIFUL LIGHTLY-HINGED ORIGINAL-GUM EXAMPLE OF THE 50-CENT 1902 ISSUE.
- With 2000 P.F. and 2004 P.S.E. certificates (XF-Superb 95)..... 475.00

- 330 ★ **50c Orange (310).** Lightly hinged, radiant color, wide margins, fresh and Extremely Fine, with 2000 P.F. certificate 475.00



330



331

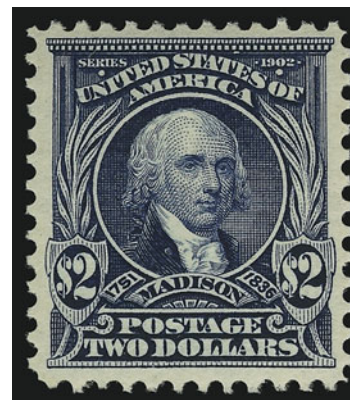
- 331 ★ **\$1.00 Black (311).** Barely hinged, intense shade, almost perfectly centered, fresh and Extremely Fine, with 2000 P.F. and 2004 P.S.E. certificates (XF 90) 750.00

- 332 ★★ **\$2.00 Dark Blue (312).** Mint N.H., detailed impression on bright paper

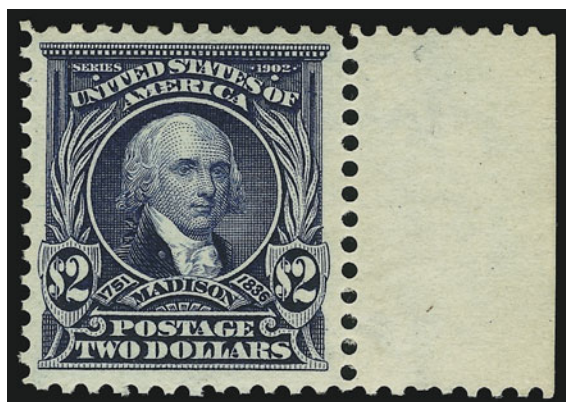
VERY FINE AND CHOICE. AN ATTRACTIVE AND RARE MINT NEVER-HINGED EXAMPLE OF THE \$2.00 1902 ISSUE.

The \$2.00 1902 Issue in Mint N.H. condition is extremely scarce, especially in such choice condition.

With 2004 P.S.E. certificate as block of four 3,000.00



332



333

- 333 ★★ **\$2.00 Dark Blue (312).** Mint N.H. with **right sheet selvage**, well-centered and very nicely margined, fresh and crisp with beautiful intense color

VERY FINE AND CHOICE. A SCARCE MINT NEVER-HINGED EXAMPLE OF THE \$2.00 1902 ISSUE AND MORE DESIRABLE WITH THE SHEET MARGIN INTACT.

We have encountered very few Mint N.H. examples of the \$2.00 1902 with sheet margins. This stamp comes from an old-time holding in glassines and was probably broken from a multiple. 3,000.00



334

- 334 ★ **\$2.00 Dark Blue (312).** Lightly hinged, deep rich color, perfectly centered with balanced margins

EXTREMELY FINE GEM. A SUPERB ORIGINAL-GUM EXAMPLE OF THE \$2.00 1902 ISSUE.

With 2004 P.F. and P.S.E. certificates (XF-Superb 95) 1,200.00

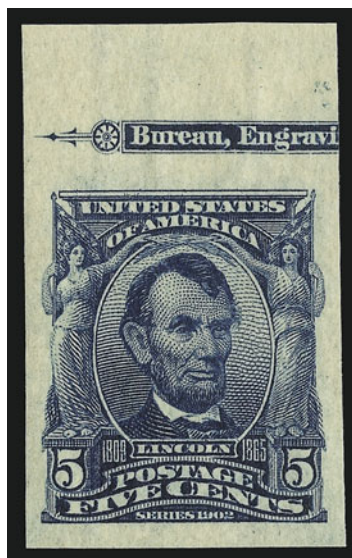
- 335 ★ **\$5.00 Dark Green (313).** Lightly hinged, intense shade and impression, choice centering with wide margins

EXTREMELY FINE ORIGINAL-GUM EXAMPLE OF THE \$5.00 1902 ISSUE.

With 1998 P.F. and 2004 P.S.E. certificates (XF 90 — considering the margin width and precise centering, we are surprised this did not grade 95)..... 2,900.00



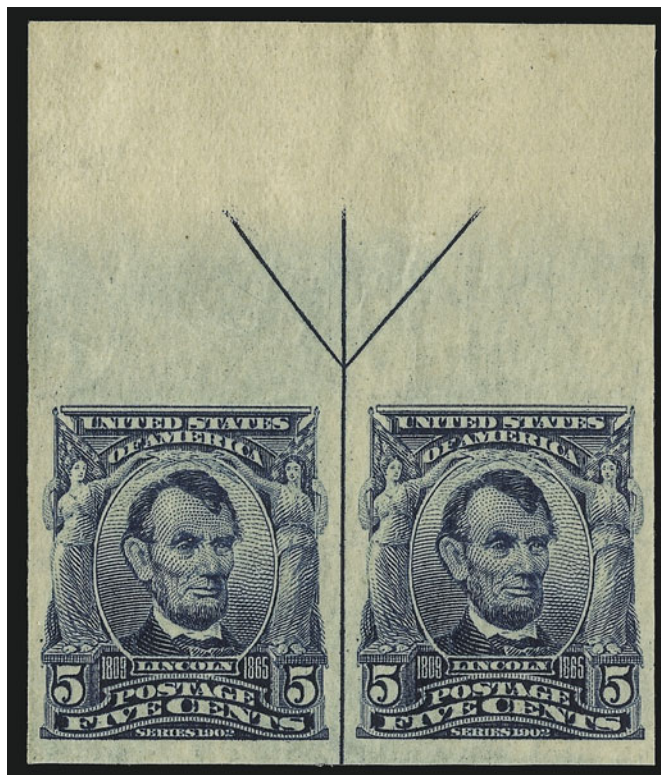
335



336

- 336 ★★ **5c Blue, Imperforate (315).** Mint N.H. single with part top imprint margin, huge margins other sides, very lightly hinged in selvage only, Extremely Fine..... 425.00

- 337 ★★ **5c Blue, Imperforate (315).** Mint N.H. pair with arrow at top, large margins other sides, Extremely Fine, scarce and desirable position piece 875.00



337



338



339



340



341



- 338 ★★ **5c Blue, Imperforate (315).** Mint N.H. pair with vertical guide line between, large margins all around, intense shade, Extremely Fine, with 2005 P.S.E. certificate . 875.00
- 339 ★★ **5c Blue, Imperforate (315).** Mint N.H. pair, large margins, rich color, Extremely Fine, with 2004 P.S.E. certificate..... 875.00
- 340 ★★ **5c Blue, Imperforate (315).** Mint N.H. horizontal pair, large to huge margins, fresh and crisp, Extremely Fine, with 2004 P.F. certificate 875.00
- 341 ★★ **5c Blue, Imperforate (315).** Mint N.H. horizontal pair, large margins all around, rich color, fresh and Extremely Fine, with 2003 P.F. certificate..... 875.00

- 342 ★★田 **5c Blue, Imperforate (315).** Block of four, Mint N.H., fresh, large to huge margins, Extremely Fine 1,750.00



342

LOUISIANA PURCHASE AND JAMESTOWN ISSUES



- 343 ★★ **1c Louisiana Purchase (323).** Mint N.H., intense color, fresh and Extremely Fine 70.00
- 344 ★★ **2c Louisiana Purchase (324).** Mint N.H., brilliant color, perfectly centered, Extremely Fine Gem, a superb stamp in every respect, with 2003 and 2004 P.S.E. certificates (XF-Superb 95)..... 62.00
- 345 ★★ **3c Louisiana Purchase (325).** Mint N.H., deep rich color and proof-like impression, unusually wide margins for this tightly-spaced commemorative, fresh and Extremely Fine, with 2002 P.S.E. certificate (XF 90)..... 200.00
- 346 ★★ **5c Louisiana Purchase (326).** Mint N.H., rich color, extra wide margins, fresh and Extremely Fine, with 2004 P.S.E. certificate (XF 90) 225.00
- 347 ★★ **10c Louisiana Purchase (327).** Mint N.H., pretty pastel color, choice centering with balanced margins, fresh and Extremely Fine, with 2001 and 2004 P.S.E. certificates (XF 90) 400.00
- 348 ★ **10c Louisiana Purchase (327).** Lightly hinged, bright color, choice centering, Extremely Fine, with 2005 P.S.E. certificate (XF-Superb 95)..... 175.00
- 349 ★★田 **5c Louisiana Purchase (326).** Mint N.H. top imprint and plate no. block of eight, part arrow and natural s.e. at right, rich color, choice centering throughout
EXTREMELY FINE. A BEAUTIFUL PLATE BLOCK OF THE 5-CENT LOUISIANA PURCHASE
ISSUE.
Freshly broken from a larger multiple. Scott Retail as plate block of six and two Mint
N.H. singles(Photo, opposite page) 1,850.00



349



350



351



352

350 ★★ **1c Jamestown (328).** Mint N.H., rich color, wide and balanced margins, Extremely Fine .
..... 65.00

351 ★★ **2c Jamestown (329).** Mint N.H., brilliant color on bright paper, perfectly centered, Extremely Fine Gem, a superb stamp in every respect, with 2002 P.S.E. certificate (XF-Superb 95)..... 75.00

352 ★★ **2c Jamestown (329).** Mint N.H., radiant color, beautifully centered, Extremely Fine, with 2002 P.F. certificate 325.00

353 ★★ **5c Jamestown (330).** Mint N.H., rich color and detailed impression on bright paper, perfect centering

EXTREMELY FINE GEM. A SUPERB MINT NEVER-HINGED EXAMPLE OF THE 5-CENT JAMESTOWN ISSUE.

With 2002 P.S.E. certificate (XF-Superb 95).....

325.00



353

1908 AND LATER ISSUES

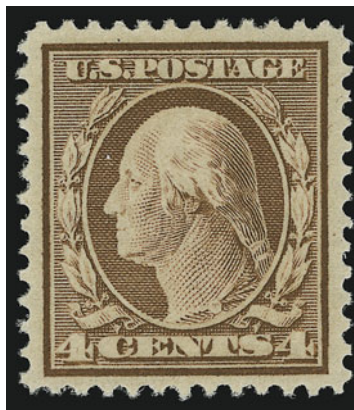


354

- 354 ★★田 3c Deep Violet (333). Mint N.H. top imprint and plate no. block of six with wide selvage, detailed impression, Very Fine and choice, scarce with the wide top selvage, with 2005 P.F. certificate 575.00



355



356



357

- 355 ★★ 4c Orange Brown (334). Mint N.H. with **part imprint at top**, bright color, huge margins, Extremely Fine, with copy of 2000 P.F. and 2005 P.S.E. certificates (XF 90)..... 90.00
- 356 ★★ 4c Orange Brown (334). Mint N.H., brilliant color, choice centering, Extremely Fine, with 2002 and 2004 P.S.E. certificates (VF-XF 85)..... 90.00
- 357 ★★ 6c Red Orange (336). Part imprint at top, stamp Mint N.H., lightly hinged in selvage only, brilliant color, fresh and Extremely Fine, with 2005 P.S.E. certificate (XF 90)..... 140.00



- 358 ★★ **8c Olive Green (337)**. Plate no. at top, stamp Mint N.H., lightly hinged in selvage only, rich color, wide margins, Extremely Fine, with 1997 P.F. certificate 105.00
- 359 ★★ **8c Olive Green (337)**. Mint N.H., almost perfectly centered, pretty shade, Extremely Fine Gem, with 2002 P.S.E. certificate 105.00
- 360 ★ **\$1.00 Violet Brown (342)**. Lightly hinged, deep rich color and proof-like impression, choice centering, Extremely Fine, with 2004 P.S.E. certificate (XF 90) 525.00
- 361 ★ **\$1.00 Violet Brown (342)**. Lightly hinged, proof-like impression, wide margins, Extremely Fine, with 2002 P.F. certificate 525.00
- 362 ★ **1c Green, Coil (352)**. Guide line pair, single small hinge mark, radiant color, choice centering, Extremely Fine, with 2001 P.F. certificate 750.00
- 363 ★ **4c Orange Brown, Coil (354)**. Guide line pair, lightly hinged, bright color, huge margins at top and bottom, Extremely Fine, with 2005 P.F. certificate 1,500.00
- 364 ★ **5c Blue, Coil (355)**. Pair, lightly hinged, Extremely Fine, with 2005 P.F. certificate 575.00



- 365 ★ **10c Yellow, Coil (356)**. Pair, vibrant color on crisp paper, wide and even margins top-to-bottom

EXTREMELY FINE. A BEAUTIFUL PAIR OF THE 10-CENT 1909 HORIZONTAL COIL.

Each stamp with Mekeel's small blue backstamp that does not show thru. With 2004 P.F. certificate 6,750.00

365



366

- 366 ★ **13c Bluish Green, Bluish (365).** Barest trace of what may be hinging (appears Mint N.H.), intense color on deeply blued paper, choice centering with extra wide margins

EXTREMELY FINE. A MAGNIFICENT EXAMPLE OF THE 13-CENT ON BLuish PAPER.

This stamp may be considered a condition rarity, based on the freshness of gum, color, centering and size of margins..... 3,000.00



- 367 ★★ **1c Green (374).** Mint N.H. with selvage at bottom, intense shade, Jumbo margins all around, Extremely Fine Gem, with 2005 P.S.E. certificate (XF-Superb 95 Jumbo) 15.00
- 368 ★★ **3c Deep Violet (376).** Mint N.H., rich color on bright paper, Jumbo margins all around. Extremely Fine Gem, a superb stamp in every respect, with 2004 P.S.E. certificate (XF-Superb 95 Jumbo)..... 45.00
- 369 ★★ **4c Brown (377).** Mint N.H., intense color on bright paper, almost perfectly centered, fresh and Extremely Fine, with 1981 P.F. certificate and 2003 and 2004 P.S.E. certificates (XF-Superb 95) 67.00
- 370 ★★ **5c Blue (378).** Mint N.H. with **plate no. at top**, rich color, enormous margins, Extremely Fine Gem, a huge stamp, with 1998 P.F. and 2004 P.S.E. certificates (XF 90 Jumbo)..... 67.00

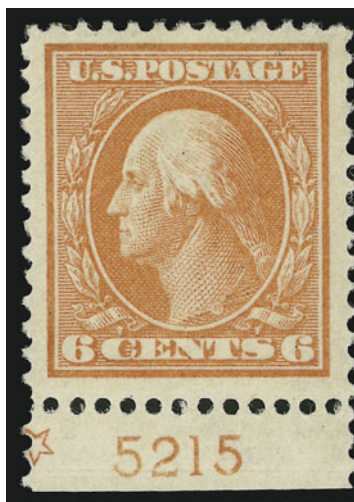


371

- 371 ★★ 5c Blue (378). Mint N.H. bottom imprint and plate no. block of six with wide selvage, well-centered with wide margins, bright color, Extremely Fine, with 2005 P.F. certificate 500.00



372



373



374

- 372 ★★ 6c Red Orange (379). Mint N.H., brilliant color, post-office fresh and Extremely Fine, with 2000 P.F. certificate 80.00
- 373 ★★ 6c Red Orange (379). Mint N.H. with **plate no. at bottom**, vibrant color, Jumbo margins, Extremely Fine, with 2005 P.S.E. certificate (XF 90 Jumbo)..... 80.00
- 374 ★★ 6c Red Orange (379). Mint N.H., choice centering with wide and balanced margins, some oxidation traces not visible on accompanying certificate photos, otherwise Extremely Fine, with 1999 P.F. and 2004 P.S.E. certificates (XF-Superb 95) 80.00



375

- 375 ★★ **8c Olive Green (380).** Mint N.H., pretty pastel color, extra wide margins, Extremely Fine Gem, a phenomenal stamp, with 2003 and 2004 P.S.E. certificates (XF-Superb 95)..... 250.00



376

- 376 ★★ **10c Yellow (381).** Mint N.H., choice centering, Extremely Fine, with 2002 P.F. and 2004 P.S.E. certificates (XF-Superb 95)..... 225.00



377

- 377 ★ **1c Green, Coil (387).** Guide line pair, barely hinged, proof-like impression, choice centering
EXTREMELY FINE. A REMARKABLY CHOICE GUIDE LINE PAIR OF THE ONE-CENT COIL, SCOTT 387.
With 1990 P.F. and 2005 P.S.E. certificates (XF 90) 900.00

- 378 **2c Carmine, Coil (391).** Pair, perfect centering with wide margins, brilliant color, New York oval cancels, Extremely Fine, undercatalogued in Scott as a used pair, with 2005 P.S.E. certificate (XF 90) 110.00



378

PANAMA-PACIFIC ISSUE



- 379 ★★ **1c Panama-Pacific (397).** Mint N.H., deep rich color, wide and balanced margins, fresh and Extremely Fine, with 2002 P.S.E. certificate (XF-Superb 95)..... 45.00
- 380 **2c Panama-Pacific (398).** Mint N.H., perfectly centered, fresh with vivid color, Extremely Fine Gem, with photocopy of 2004 P.F. certificate for vertical pair..... 45.00
- 381 ★★ **2c Panama-Pacific (398).** Mint N.H. with **plate no. at right**, intense color, post-office fresh, Extremely Fine Gem, superb in every respect 45.00
- 382 ★★ **2c Panama-Pacific (398).** Mint N.H., brilliant color, wide margins, fresh and Extremely Fine, with 2003 P.S.E. certificate (XF 90) 45.00
- 383 ★★ **5c Panama-Pacific (399).** Mint N.H., unusually deep color on bright paper, perfectly centered with wide and balanced margins, Extremely Fine Gem, a superb stamp in every respect, with 2000 P.F. and 2004 P.S.E. certificate (XF-Superb 95) 180.00
- 384 ★★ **5c Panama-Pacific (399).** Mint N.H., rich color and detailed impression on bright paper, Extremely Fine, with 2001 P.F. certificate..... 175.00



385

- 385 ★★ **10c Orange Yellow, Panama-Pacific (400).** Mint N.H., vivid color, almost perfectly centered with wide and well-balanced margins, Extremely Fine, a beautiful stamp, with 2003 and 2004 P.S.E. certificates (XF-Superb 95)..... 325.00



386

- 386 ★★ **10c Orange, Panama-Pacific (400A).** Mint N.H., stunning deep color, wide margins, Extremely Fine, a stamp of great visual appeal, with copy of 2000 P.F. certificate for block of four..... 450.00



387

- 387 ★★ **10c Orange, Panama-Pacific (400A).** Mint N.H., intense color on post-office fresh paper, choice centering with wide and balanced margins, Extremely Fine, a beautiful stamp, with 1987 and 1999 P.F. certificates and with 2004 P.S.E. certificate (XF 90) 475.00



388

- 388 ★★ **10c Orange, Panama-Pacific (400A).** Mint N.H., vivid color, almost perfectly centered, Extremely Fine, with 2005 P.F. certificate 475.00



389

- 389 ★★ **1c Panama-Pacific, Perf 10 (401).** Mint N.H., intense color on bright paper, wide margins, Extremely Fine, with 2003 P.S.E. certificate (XF 90)..... 60.00

- 390 ★★ **1c Panama-Pacific, Perf 10 (401).** Mint N.H., beautifully centered, deep shade, Extremely Fine 60.00



390



391

- 391 ★★ **2c Panama-Pacific, Perf 10 (402).** Mint N.H., unusually deep shade on bright paper, well-balanced margins, Extremely Fine, with 2005 P.F. certificate.... 175.00

- 392 ★★ **2c Panama-Pacific, Perf 10 (402).** Mint N.H., brilliant color, wide margins, fresh and Extremely Fine, with 2004 P.S.E. certificate (XF 90)..... 175.00



392



393

- 393 ★★ **5c Panama-Pacific, Perf 10 (403).** Mint N.H., crisp impression, post-office fresh and Extremely Fine, with 2000 P.F. and 2004 P.S.E. certificates (XF 90) ... 400.00



394

394 ★★田 5c Panama-Pacific, Perf 10 (403). Mint N.H. top plate no. block of six, deep rich color on bright paper

VERY FINE AND CHOICE. A RARE WIDE-TOP MINT NEVER-HINGED PLATE BLOCK OF THE 5-CENT PERF 10 PANAMA-PACIFIC ISSUE.

With 2004 P.S.E. certificate 6,750.00



395

395 ★★ 10c Panama-Pacific, Perf 10 (404). Mint N.H. with selvage at bottom, brilliant color on bright paper, choice centering

EXTREMEY FINE. A BEAUTIFUL MINT NEVER-HINGED EXAMPLE OF THE 10-CENT PERF 10 PANAMA-PACIFIC ISSUE.

Especially desirable with the selvage at bottom 1,900.00



- 396 ★★ **1c Green, 2c Carmine (405-406).** Mint N.H., rich colors, wide margins, fresh and Extremely Fine, with 1998 P.F. and 2002 P.S.E. certificates respectively.....(Photo Ex) 30.00
- 397 ★★ **7c Black (407).** Mint N.H., sharp proof-like impression on brilliant paper, Jumbo margins, Extremely Fine Gem, a huge stamp, with 1996 P.F. and 2004 P.S.E. certificates (XF 90 Jumbo) 175.00
- 398 ★★ **7c Black (407).** Mint N.H., intense shade and impression, choice centering with well-balanced margins, Extremely Fine, with 2005 P.S.E. certificate (XF 90)..... 175.00
- 399 ★★ **1c Green, Coil (410).** Mint N.H. guide line pair, intense color, almost perfectly centered, fresh and Extremely Fine, with 2004 P.S.E. certificate (XF 90)..... 65.00
- 400 ★★ **2c Carmine, Coil (411).** Mint N.H. guide line pair, brilliant color, extra wide margins and choice centering, Extremely Fine Gem, with 2004 P.F. and 2005 P.S.E. certificates (XF-Superb 95)..... 125.00
- 401 ★★ **2c Carmine, Coil (413).** Mint N.H. guide line pair, brilliant color, choice centering, Extremely Fine Gem, with 2005 P.F. certificate 625.00
- 402 ★★ **2c Carmine, Coil (413).** Mint N.H. guide line pair, radiant color on fresh white paper, outstanding centering, Extremely Fine, with 1996 P.F. certificate 625.00



- 403 ★★ **12c Claret Brown (417)**. Mint N.H., detailed impression on bright paper, fresh and Extremely Fine, with 2001 P.F. certificate 110.00
- 404 ★ **50c Violet (421)**. Barely hinged, rich color on bright paper, Very Fine and choice, with 2003 P.S.E. certificate 425.00
- 405 ★★ **4c Brown (427)**. Mint N.H., pretty shade, balanced margins, Extremely Fine, encapsulated by P.S.E. (XF 90) 75.00
- 406 ★★ **5c Blue (428)**. Mint N.H., deep rich color, perfectly centered with huge margins, Extremely Fine Gem, encapsulated by P.S.E. (XF-Superb 95) 75.00
- 407 ★★ **8c Pale Olive Green (431)**. Mint N.H. with **part imprint at bottom**, pretty pastel color, Jumbo margins, Extremely Fine Gem, with 2004 P.F. certificate for strip of four 80.00
- 408 ★★ **8c Pale Olive Green (431)**. Mint N.H., brilliant color, wide margins, Extremely Fine, with 2005 P.S.E. certificate (XF 90) 80.00
- 409 ★★ **9c Salmon Red (432)**. Mint N.H. with wide top selvage, rich color on bright white paper, Extremely Fine Gem, a stamp of remarkable freshness, with 2003 P.F. certificate 105.00
- 410 ★★ **10c Orange Yellow (433)**. Mint N.H. with **plate no. at top**, vivid color, Extremely Fine, with 2002 P.F. certificate for block of four and 2004 P.S.E. certificate as single, the latter mentioning a small natural gum wrinkle 100.00
- 411 ★★ **11c Dark Green (434)**. Mint N.H., deep rich color and intense impression on bright paper, Jumbo margins, Extremely Fine Gem, a superb stamp in every respect, with 1999 P.F. and 2004 P.S.E. certificates (XF-Superb 95 Jumbo) 52.00
- 412 ★★ **11c Dark Green (434)**. Mint N.H., Jumbo margins, deep rich color, Extremely Fine Gem, a huge stamp, with 2003 P.S.E. certificate 50.00
- 413 ★★ **12c Claret Brown (435)**. Mint N.H., rich color on bright paper, choice centering, post-office fresh and Extremely Fine, with 2003 P.F. and 2004 P.S.E. certificates (XF 90) 62.00
- 414 ★★ **20c Ultramarine (438)**. Mint N.H., radiant color on bright paper, Very Fine and choice, with 2001 P.F. and 2004 P.S.E. certificates (VF 80 — in our opinion this deserves a grade of 85) 475.00
- 415 ★ **30c Orange Red (439)**. Lightly hinged, intense color on bright paper, almost perfectly centered with wide margins, Extremely Fine, with 2002 P.F. and 2004 P.S.E. certificates (XF-Superb 95) 260.00



416

416 ★★田 30c Orange Red (439). Mint N.H. top plate no. block of six with wide selvage, brilliant color, a few tiny faint natural gum skips and bends

VERY FINE AND CHOICE. A REMARKABLY FRESH AND RARE WIDE-TOP MINT NEVER-HINGED PLATE BLOCK OF THE 30-CENT 1914 ISSUE.

This is the only Mint N.H. plate block of Scott 439 we have offered since keeping computerized records. 6,500.00



417

417 ★★ 50c Violet (440). Mint N.H., pretty pastel color, choice centering with wide margins

EXTREMELY FINE. AN ATTRACTIVE MINT NEVER-HINGED EXAMPLE OF THE 50-CENT FRANKLIN ISSUE, SCOTT 440.

With 1995 P.F. and 2004 P.S.E. certificates (XF 90)..... 1,300.00



418

- 418 ★★ **3c Violet, Coil (445).** Mint N.H. guide line strip of four, rich color and proof-like impression

VERY FINE AND CHOICE. A SCARCE MINT NEVER-HINGED GUIDE LINE STRIP OF FOUR OF THE 3-CENT HORIZONTAL COIL, SCOTT 445.

With 2005 P.F. certificate. Scott Retail as guide line pair and two Mint N.H. singles 3,800.00



419

- 419 ★★ **4c Brown, Coil (446).** Mint N.H. pair, bright color, almost perfectly centered with enormous margins all around

EXTREMELY FINE GEM. A SUPERB MINT NEVER-HINGED PAIR OF THE 4-CENT HORIZONTAL COIL, SCOTT 446.

With 2004 P.S.E. certificate (XF-Superb 95)..... 700.00



420

- 420 ★★ **5c Blue, Coil (447).** Mint N.H. guide line pair, deep rich color, fresh and Extremely Fine, with 2004 P.S.E. certificate (XF 90)..... 550.00

421 ★★ **2c Carmine Rose, Ty. I, Coil (453).**

Mint N.H. joint line pair, pretty color,
choice centering with balanced margins
EXTREMELY FINE MINT NEVER-HINGED
GUIDE LINE PAIR OF SCOTT 453.

With 1997 P.S.E. certificate. 1,550.00



421



422

422 ★★ **2c Carmine Rose, Ty. I, Coil (453).** Mint N.H. joint line strip of four, beautifully centered, rich color on white paper

EXTREMELY FINE. A SUPERB MINT NEVER-HINGED GUIDE LINE PAIR OF SCOTT 453 IN THE
FINEST CONDITION ATTAINABLE.

The Type I rotary press stamps were produced using the same master dies as had been used for flat plate printings. However, due to the curve of the plate to fit the rotary press, the impressions lacked some of the details of the flat plate printings. This printing process made it very difficult for well-centered examples to be produced. New dies were made with strengthened lines, resulting in the Type II stamps.

With 2004 P.F. certificate 2,170.00



423



424

423 ★★ **2c Carmine, Ty. III, Coil (455).** Mint N.H. joint line pair, brilliant color, choice centering, fresh and Extremely Fine, with 2003 P.S.E. certificate (XF 90)..... 105.00424 ★★ **2c Carmine, Ty. I, Imperforate Coil (459).** Mint N.H. pair, huge margins all around, radiant color, Extremely Fine Gem, with 2005 P.S.E. certificate (Superb 98)..... 750.00

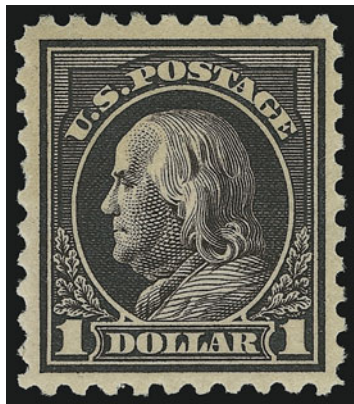


425



426

- 425 ★★ **2c Carmine, Ty. I, Imperforate Coil (459).** Mint N.H. pair, large margins all around, radiant color, Extremely Fine, with 2004 P.F. and 2005 P.S.E. certificates (XF-Superb 95) 750.00
- 426 ★★ **2c Carmine, Ty. I, Imperforate Coil (459).** Mint N.H. pair, large margins, bright color, Extremely Fine, with 2005 P.S.E. certificate (XF-Superb 95) 750.00



427

- 427 ★ **\$1.00 Violet Black (460).** Lightly hinged, intense shade, well-proportioned margins, Extremely Fine, with 2002 P.F. certificate 850.00

- 428 ★★ **5c Carmine, Error (467).** Mint N.H., enormous margins with significant portions of eight adjoining stamps, the stamp itself is perfectly centered, brilliant color

EXTREMELY FINE GEM. A SUPERB MINT NEVER-HINGED EXAMPLE OF THE DESIRABLE 5-CENT PERF 10 ERROR.

This example, showing the 2c denomination of the surrounding stamps, should be considered very desirable.

With 2004 P.S.E. certificate (XF-Superb 95) 1,000.00



428



429

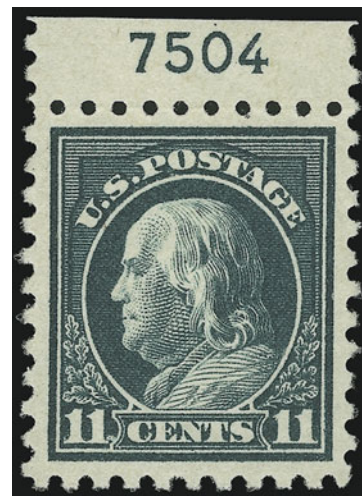
- 429 ★★ **5c Carmine, Error (467).** Mint N.H. in strip of three with two 2c stamps, almost perfectly centered with extra wide margins

EXTREMELY FINE. A BEAUTIFUL MINT NEVER-HINGED EXAMPLE OF THE 5-CENT PERF 11 ERROR.

With 1991 P.F. certificate for double error in block of twelve..... 1,000.00



430



431

- 430 ★★ **10c Orange Yellow (472).** Mint N.H., rich color with some overall oxidation, Extremely Fine, with 2000 P.F. and 2004 P.S.E. certificates (XF 90)..... 240.00

- 431 ★★ **11c Dark Green (473).** Plate no. at top, stamp Mint N.H., rich color on bright paper, choice centering, Extremely Fine Gem, a beautiful and desirable plate number single, with 2004 P.F. certificate. 80.00

- 432 ★★ **20c Light Ultramarine (476).** Mint N.H., brilliant color on bright paper, perfectly centered

EXTREMELY FINE GEM. THIS IS WITHOUT QUESTION ONE OF THE FINEST MINT NEVER-HINGED EXAMPLE OF THE 20-CENT UNWATERMARKED PERF 10, SCOTT 476, IN EXISTENCE.

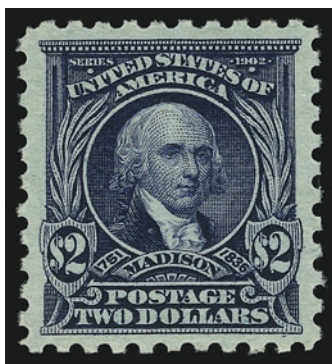
With 1996 P.F. and 2004 P.S.E. certificates (Superb 98). This is the only example of Scott 476 to receive this high grade from P.S.E. 550.00



432



435 detail of all error positions



433



434

- 433 ★★ **\$2.00 Dark Blue (479).** Mint N.H., deep rich color, choice centering with well-balanced margins, Extremely Fine, with 2005 P.S.E. certificate (XF 90) 550.00
- 434 ★★ **\$5.00 Light Green (480).** Mint N.H., rich color, wide margins, Extremely Fine, with 2004 P.S.E. certificate (XF 90) 450.00

- 435°★★田 **5c Carmine, Imperforate, Error (485). Complete pane of 400,** wide selvage all around with **eight plate blocks**, deep rich color, both error blocks Mint N.H., few trivial imperfections in outer selvage as is to be expected

EXTREMELY FINE. A RARE INTACT SHEET OF 400 OF THE 5-CENT IMPERFORATE ERROR. LESS THAN 50 SHEETS WERE RELEASED TO THE PUBLIC.

During the course of production of the normal 2c plate No. 7942, three positions were noted to be defective. The plate was sent back to the siderographer, who burnished out the three positions and mistakenly re-entered them using a transfer roll for the 5c stamp. The error passed unnoticed and the sheets were issued to the public both Perf 10, Imperforate and Perf 11 (Scott 467, 485 and 505). The imperforate is by far the rarest of the three, having come from a group of fifty sheets released to the public.

Scott Retail as single error in Mint N.H. block of nine and double error in Mint N.H. block of twelve, with no additional catalogue value added for the plate blocks and 2c stamps and no premium added for the intact multiple, is \$85,000.00 E. 100,000-125,000

- 436 ★★ **2c Carmine, Ty. II, Coil (487).** Mint N.H. pair, radiant color, choice centering, fresh and Extremely Fine, encapsulated by P.S.E. (XF 90) 60.00



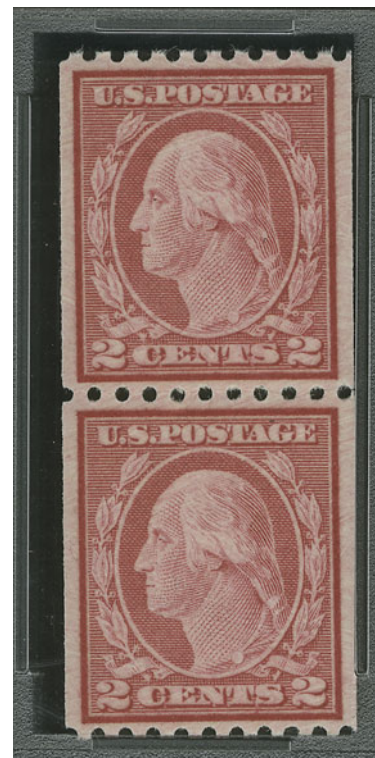
437

- 437 ★ **2c Carmine, Ty. II, Coil (491).** Joint line pair, lightly hinged, deep rich color, choice centering

EXTREMELY FINE. A BEAUTIFUL JOINT LINE PAIR OF THE 2-CENT ROTARY TYPE II COIL.

Unlike most other issues, the horizontal coil is actually scarcer than the vertical coil. It was in production for only a short period of time before being replaced by the Type III, Scott 492.

With 1971 and 2001 P.F. certificates 2,200.00



436 (encapsulated)



438



439



440

- 438 ★★ **3c Violet, Ty. I, Coil (493).** Mint N.H. joint line pair, bright color, choice centering with wide and balanced margins, Extremely Fine Gem, with 2005 P.S.E. certificate (XF-Superb 95)..... 230.00
- 439 ★★ **3c Violet, Ty. I, Coil (493).** Mint N.H. pair, brilliant color, perfectly centered with wide and balanced margins, Extremely Fine, a beautiful pair, with 2003 P.S.E. certificate (XF-Superb 95)..... 75.00
- 440 ★★ **3c Violet, Ty. I, Coil (493).** Mint N.H. joint line pair, pretty shade, fresh and Extremely Fine, with 2004 P.F. and P.S.E. certificates (XF 90) 230.00



441



442

- 441 ★★田 **3c Dark Violet, Ty. II (502).** Mint N.H. top plate no. block of six, detailed impression, Extremely Fine, with 2005 P.F. certificate 240.00
- 442 ★ **3c Dark Violet, Ty. II, Vertical Strip of Three, Imperforate Horizontally (502c).** Lightly hinged, rich color, choice centering, light natural gum wrinkles not visible on front of stamps and not mentioned on accompanying certificate, Extremely Fine, with 1983 P.F. certificate, Scott Retail as pair with no premium for the third stamp, this is undercatalogued in Scott given its scarcity 550.00



- 443 ★★ **5c Rose, Error (505)**. Mint N.H., brilliant color, choice centering, post-office fresh and Extremely Fine, with 1997 P.F. and 2005 P.S.E. certificates (XF 90) 675.00
- 444 ★★ **6c Red Orange (506)**. Mint N.H., huge margins, brilliant color except for some oxidation not present on accompanying certificate, otherwise Extremely Fine, with 2002 P.S.E. certificate (XF-Superb 95)..... 26.00
- 445 ★★ **7c Black (507)**. Mint N.H., intense shade and impression on bright paper, perfectly centered, Extremely Fine Gem, a superb stamp in every respect, with 2004 P.S.E. certificate (XF-Superb 95)..... 57.00
- 446 ★★ **9c Salmon Red (509)**. Mint N.H., vibrant color, wide margins, fresh and Extremely Fine, with 2004 P.S.E. certificate (XF 90)..... 28.00
- 447 ★★ **11c Light Green (511)**. Mint N.H., rich color on bright paper, huge margins, Extremely Fine Gem, with 2005 P.S.E. certificate (XF-Superb 95)..... 19.00
- 448 ★★ **12c Brown Carmine (512a)**. Mint N.H. with **selvage at left**, rich color, Jumbo margins, Extremely Fine Gem, a beautiful example of this shade variety, with 2004 P.F. certificate for plate block..... 21.00
- 449 ★★ **15c Gray (514)**. Mint N.H., intense shade, well-balanced margins, fresh and Extremely Fine, with 2001 A.P.S. and 2004 P.S.E. certificates (XF 90)..... 77.00

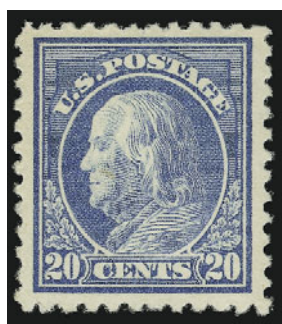


450

450 ★★田 **15c Gray (514)**. Mint N.H. top plate no. block of six, bright color, choice centering throughout

EXTREMELY FINE GEM. A MAGNIFICENT MINT NEVER-HINGED PLATE BLOCK OF THE 15-CENT 1917 FRANKLIN ISSUE

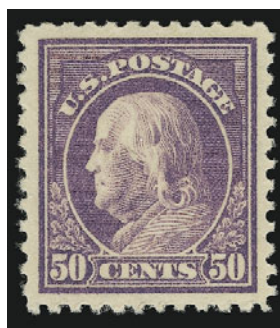
With 2000 P.F. certificate..... 900.00



451



452



453



454

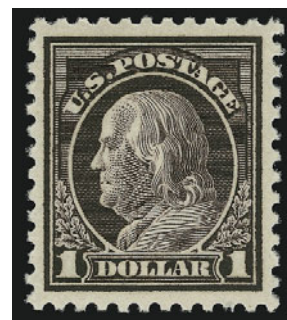
451 ★★ **20c Light Ultramarine (515)**. Mint N.H., brilliant color, light natural gum skips, Extremely Fine, with 2004 P.S.E. certificate.... 95.00

452 ★★ **30c Orange Red (516)**. Mint N.H., vibrant color, huge margins, Extremely Fine, with 2004 P.S.E. certificate (XF 90)..... 80.00

453 ★★ **50c Red Violet (517)**. Mint N.H., pretty pastel color, almost perfectly centered with wide margins, Extremely Fine, with 2004 P.S.E. certificate (XF 90)..... 135.00

454 ★★ **\$1.00 Violet Brown (518)**. Mint N.H., brilliant color, almost perfectly centered with wide margins, Extremely Fine Gem, a beautiful stamp, with 2004 P.S.E. certificate (XF-Superb 95)..... 105.00

455 ★★ **\$1.00 Violet Brown (518)**. Mint N.H., rich color on bright paper, single tiny nibbed perf thin at bottom, appears Very Fine, with 2004 P.S.E. certificate (VF-80)..... 105.00



455

- 456 ★★ **2c Carmine (519).** Mint N.H., choice centering with well-proportioned margins, rich color and proof-like impression

EXTREMELY FINE. A BEAUTIFUL MINT NEVER-HINGED EXAMPLE OF SCOTT 519.

This stamp was created in 1917 when a small excess supply of the imperforate Scott 344 was returned by the post office in New York City to the Bureau. Rather than credit the New York post office for the returned postage, the Bureau perforated the sheets and returned them to the post office in New York City for public sale.

With 1987 (copy) and 2003 P.F. certificates..... 850.00



456



457

- 457 ★★ **\$2.00 Orange Red & Black (523).** Mint N.H. with wide selvage at top, Jumbo margins, pretty colors

EXTREMELY FINE GEM. A SUPERB WIDE-MARGINED MINT NEVER-HINGED EXAMPLE OF THE \$2.00 ORANGE RED & BLACK 1918 FRANKLIN ISSUE.

With 2005 P.F. certificate 1,300.00

- 458 ★★ **\$5.00 Deep Green & Black (524).** Mint N.H., rich colors, well-balanced margins, Extremely Fine, with 2004 P.S.E. certificate (XF 90)

..... 425.00



458



459

- 459 ★★ **\$5.00 Deep Green & Black (524).** Mint N.H., rich colors, well-balanced margins, Extremely Fine, with 2005 P.F. certificate..... 425.00



460

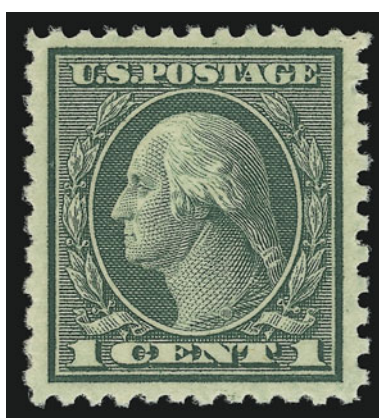
- 460 ★ **2c Carmine, Ty. VII, Imperforate (534B).** Barest trace of hinging, large margins, brilliant color

EXTREMELY FINE ORIGINAL-GUM EXAMPLE OF THE 2-CENT TYPE VII OFFSET PRINTING, SCOTT 534B.

With 2004 P.F. certificate for pair..... 2,100.00



461



462



463

- 461 ★★ **1c Green, Rotary Perf 11 x 10 (538).** Mint N.H., rich color, unusually wide and balanced margins, Extremely Fine Gem, a superb stamp in every respect, with 2002 P.S.E. certificate (Superb 98)..... 22.00
- 462 ★★ **1c Green, Rotary Perf 11 x 10 (538).** Mint N.H., rich color and detailed impression, wide margins, Extremely Fine, with 2005 P.S.E. certificate (XF-Superb 95) 22.00
- 463 ★ **3c Violet, Ty. II (541).** Lightly hinged, pretty pastel color, choice centering, Extremely Fine, with 1985 P.F. and 2004 P.S.E. certificates (XF 90) 45.00

- 464 ★★ **2c Carmine Rose, Ty. III, Rotary (546).** Mint N.H., brilliant color, almost perfectly centered with well-proportioned margins

EXTREMELY FINE GEM. A SUPERB MINT NEVER-HINGED EXAMPLE OF THE 2-CENT ROTARY WASTE ISSUE, SCOTT 546.

With 1998 P.F. and 2004 P.S.E. certificates (XF-Superb 95), this is the highest grade a Scott 546 has received thus far..... 260.00



464



- 465 ★★ **\$2.00 Carmine & Black (547).** Mint N.H., rich colors, almost perfect centering, Extremely Fine, with 2003 P.F. and 2004 P.S.E. certificates (XF-Superb 95)..... 330.00
- 466 ★★ **8c Olive Green (560).** Mint N.H., remarkably fresh color, almost perfect centering, Extremely Fine Gem, a beautiful stamp, with 2004 P.S.E. certificate (XF-Superb 95)..... 105.00
- 467 ★★ **\$1.00 Violet Black (571).** Mint N.H. with **plate no. at top**, sharp proof-like impression, wide and balanced margins, Extremely Fine 95.00
- 468 ★★ **\$5.00 Carmine & Blue (573).** Mint N.H., brilliant colors on bright paper, wide margins, Extremely Fine Gem, with 2004 P.S.E. certificate (XF-Superb 95)..... 240.00
- 469 ★★ **\$5.00 Carmine & Blue (573).** Mint N.H. without any gum skips or bends as often seen, balanced margins, fresh, brilliant colors, Extremely Fine gem..... 240.00
- 470 ★★ **1c Green, Rotary (578).** Mint N.H., bright shade, beautiful centering, fresh and Extremely Fine, scarce with such choice centering, with 1992 and 2005 P.S.E. certificates (XF 90) 180.00
- 471 ★★ **2c Carmine, Rotary (579).** Mint N.H., beautifully centered, fresh and crisp, Extremely Fine, with 2005 P.S.E. certificate for block of four (top left stamp)..... 170.00
- 472 ★★ **2c Carmine, Rotary, Perf 11 (595).** Mint N.H., unbelievably wide margins and nicely centered for this difficult rotary press coil waste issue, fresh and bright, couple small natural gum creases, Extremely Fine 550.00
- 473 ★★ **5c Lexington-Concord (619).** Mint N.H., Jumbo margins, rich color, Extremely Fine, with 2005 P.S.E. certificate (XF 90 Jumbo) 32.00
- 474 ★ **2c Carmine, Ty. II (634A).** Bottom left plate no. 16944 selvage, remarkably wide margins for this difficult issue and almost perfectly centered, Extremely Fine, certainly one of the best known, especially in terms of margin size..... 350.00



- 475 ★★ **2c Kans. Ovpt. (660).** Mint N.H., brilliant color and detailed impression, unusually wide margins, Extremely Fine, a beautiful stamp, with 2003 P.S.E. certificate (XF 90) 7.00
- 476 ★★田 **5c Kans. Ovpt. (663).** Mint N.H. bottom right plate no. block of four, rich color, well-centered throughout, Extremely Fine, with 2005 P.F. certificate..... 250.00
- 477 ★★ **6c Kans. Ovpt. (664).** Mint N.H. with selvage at left, perfectly centered with wide and balanced margins, radiant color, Extremely Fine Gem, with 2005 P.S.E. certificate (XF-Superb 95)..... 55.00
- 478 ★★ **6c Kans. Ovpt. (664).** Mint N.H., brilliant color, almost perfectly centered, Extremely Fine Gem, with 2001 P.S.E. certificate 55.00
- 479 ★★ **7c Kans. Ovpt. (665).** Mint N.H., detailed impression, post-office fresh, perfectly centered with wide margins, Extremely Fine Gem, with 2004 P.S.E. certificate (XF-Superb 95)..... 55.00
- 480 ★★ **8c Kans. Ovpt. (666).** Mint N.H., pretty shade, choice centering for this difficult issue, Extremely Fine, with 2005 P.F. certificate 180.00
- 481 ★★ **8c Kans. Ovpt. (666).** Mint N.H., rich color, choice centering with well-proportioned margins, Extremely Fine, with 2004 P.S.E. certificate 180.00
- 482 ★★ **9c Kans. Ovpt. (667).** Mint N.H. with **top left corner plate no.**, rich color, Jumbo margins, Extremely Fine Gem, a superb stamp in every respect, with 2004 P.F. certificate for plate block..... 26.00
- 483 ★★ **10c Kans. Ovpt. (668).** Mint N.H., vibrant color, choice centering with unusually wide margins for this issue, Extremely Fine Gem, with 2002 P.S.E. certificate (XF-Superb 95) 45.00



- 484 ★★ **6c Nebr. Ovpt. (675).** Mint N.H., vibrant color, wide margins, fresh and Extremely Fine, with 2004 P.S.E. certificate 75.00
- 485 ★★ **9c Nebr. Ovpt. (678).** Mint N.H., bright color, well-balanced margins, Extremely Fine, with 2004 P.S.E. certificate 67.00
- 486 ★★ **9c Nebr. Ovpt. (678).** Mint N.H. plate no. block of four, bright and fresh, choice centering, Extremely Fine, a beautiful plate block, with 2002 P.S.E. certificate for plate block of ten..... 750.00
- 487 ★★ **10c Nebr. Ovpt. (679).** Mint N.H., brilliant color, well-proportioned margins, post-office fresh and Extremely Fine, with 2004 P.S.E. certificate (XF 90) 230.00
- 488 ★★ **10c Nebr. Ovpt. (679).** Mint N.H. with left sheet selvage, post-office fresh, Extremely Fine, with 2002 P.S.E. certificate for block of six 225.00
- 489 ★★ **12c Brown Violet (693).** Mint N.H. with **bottom left corner selvage with plate no.**, rich color, wide margins, Extremely Fine Gem, an unusually wide-margined example of this rotary issue, with 2005 P.S.E. certificate 8.00
- 490 ★★ **\$5.00 Presidential (834).** Mint N.H., bright color, huge margins, Extremely Fine, with 2005 P.S.E. certificate (XF 90 Jumbo) 85.00
- 491 ★★ **\$5.00 Red, Brown & Black (834a).** Mint N.H., beautifully centered, deep rich colors
EXTREMELY FINE. AN OUTSTANDING MINT NEVER-HINGED EXAMPLE OF THE \$5.00 PRESIDENTIAL IN THE RARE RED BROWN AND BLACK COLOR.
With 2005 P.S.E. certificate 3,000.00

AIR POST



- 492 ★★ **6c Orange, 1918 Air Post (C1).** Mint N.H., gorgeous oversized margins and perfect centering, fresh, vivid color, Extremely Fine Gem, with 2001 P.F. certificate for block of four (top right stamp) ..120.00
- 493 ★★ **6c Orange, 1918 Air Post (C1).** Mint N.H., brilliant color, choice centering, Extremely Fine, with 2005 P.S.E. certificate (XF 90) 120.00
- 494 ★★ **16c Green, 1918 Air Post (C2).** Mint N.H., perfectly centered, strong color on bright paper, Extremely Fine Gem, with photocopy of 2000 P.F. certificate for block of four (bottom right stamp)..... 150.00
- 495 ★★ **16c Green, 1918 Air Post (C2).** Mint N.H., rich color on bright paper, wide margins, Extremely Fine, with 2005 P.S.E. certificate (XF 90) 150.00
- 496 ★★ **24c Carmine Rose & Blue, 1918 Air Post (C3).** Mint N.H., beautiful wide margins of near Jumbo proportions, fresh and bright, Extremely Fine Gem, with 2000 P.F. certificate for block of nine (pos. 3) 150.00



497

- 497 ★ **24c Carmine Rose & Blue, 1918 Air Post, Grounded Plane (C3 var).** Lightly hinged, plane significantly grounded with wheels far into "Cents", brilliant color, fresh and Fine E. 1,000-1,500

- 498 **24c Carmine Rose and Blue, "Grounded Plane" (C3 var).** Well-centered, natural s.e. at top, circular dates-tamp, wheels of plane well into "EN" of Cents, light diagonal crease, Very Fine appearance, a very popular variety and excessively rare in used conditionE. 750-1,000



498

MINT NEVER-HINGED 1918 24-CENT INVERTED “JENNY”



499

499°★★ **24c Carmine Rose & Blue, Center Inverted (C3a).** Position 84, **Mint Never Hinged**, rich colors, wide margins with centering better than most examples from the original sheet of 100, couple tiny natural inclusions on back only, pencil notation on back noting position VERY FINE. A RARE MINT NEVER-HINGED EXAMPLE OF THE FAMOUS 191 24-CENT INVERTED “JENNY” ERROR.

According to *Jenny* by George Amick (Amos Press, 1986), the original sheet of 100 Inverted “Jenny” stamps was purchased for \$24 by William T. Robey at the New York Avenue Branch Post Office window in Washington D.C., on May 14, 1918, one day after the stamp was first placed on sale at the main post office. On May 20, Robey sold his sheet for \$15,000 to Eugene Klein, a Philadelphia stamp dealer. Klein had already arranged to sell the sheet to Col. Edward H. R. Green for \$20,000. Colonel Green instructed Klein to divide the Inverted “Jenny” sheet into singles and blocks, and to sell all but a few key position blocks.

It is well-known among stamp specialists and professionals that examples of the Inverted “Jenny” come in different grades of freshness and condition. Many of the original 100 stamps were mistreated by collectors during the years, despite the stamps’ rarity and value. Colonel Green himself allowed moisture to affect some of the stamps he retained. Other examples have become slightly toned from improper storage and climatic conditions. Hinge removal has caused thins and creases in numerous stamps, and at least seven have been “lost” to philately — or nearly so, as in the case of the copy swept up in a vacuum cleaner.

This example is remarkable for its pristine state of preservation. Our review of the census of the Inverted “Jenny” has found that there are only six positions that are either Mint N.H., or are potentially in Mint N.H. condition. These are: Positions 29, 33, 68, 74, 77 and 84. Of these, Position 29 may have a paper speck (needs to be confirmed).

Ex Dick and Matthews. With 1969 P.F certificate and 2005 P.S.E. certificate (F-VF 75). We feel that this stamp deserves a grade of VF 80..... 325,000.00



503



500



501



502

- 500 ★★ **16c Dark Blue, 1923 Air Post (C5).** Mint N.H., rich color on bright paper, wide margins, Extremely Fine, with 2004 P.S.E. certificate (XF 90) 150.00
- 501 ★★ **16c Dark Blue, 1923 Air Post (C5).** Mint N.H., rich color on bright paper, wide margins, Extremely Fine, with 2001 P.S.E. certificate for block of six..... 150.00
- 502 ★★ **24c Carmine, 1923 Air Post (C6).** Mint N.H., rich color, well-balanced margins, Extremely Fine, with 2004 P.S.E. certificate (XF 90) 160.00
- 503 田 **65c-\$2.60 Graf Zeppelin (C13-C15).** Mint N.H. matched top plate no. blocks of six, some minor gum skips and gum bends, 65c minor selvage separation, \$1.30 tiny selvage edge tear and \$2.60 pos. 4 with a tiny margin stain that shows almost entirely on back, otherwise Fine-Very Fine.....(Photo, opposite page) 22,100.00



504



505



506

- 504 ★★ **\$2.60 Graf Zeppelin (C15).** Mint N.H. with **plate no. at top**, bright color
EXTREMELY FINE. A BEAUTIFUL MINT NEVER-HINGED EXAMPLE OF THE \$2.60 GRAF ZEPPELIN ISSUE WITH THE GRADE OF XF-SUPERB 95.
With 2005 P.S.E. certificate (XF-Superb 95) 1,100.00
- 505 **\$2.60 Graf Zeppelin (C15).** With **plate no. selvage at bottom**, detailed impression, machine cancel, Extremely Fine, a gorgeous stamp, scarce in such superb used condition, with 2005 P.S.E. certificate (XF-Superb 95) 575.00
- 506 ★★ **50c Chicago Zeppelin (C18).** Mint N.H., rich color, wide margins, Extremely Fine Gem, with 2005 P.S.E. certificate (XF-Superb 95) 100.00



507

- 507 ★★ **6c Dark Blue & Carmine, Vertical Pair, Imperforate Horizontally (C23a).** Mint N.H. strip of three with selvage at bottom and left, brilliant colors, few small tears in bottom selvage only, Extremely Fine, attractive multiple, Scott Retail as pair..... 325.00



508

- 508 ★★ **16c Red & Blue, Air Post Special Delivery, Horizontal Pair, Imperforate Vertically (CE2a).** Mint N.H. strip of three with **selvage at right**, Positions 13-15 (as noted in pencil on back), brilliant color, light natural gum bends

VERY FINE AND CHOICE. AN EXCEEDINGLY RARE MULTIPLE OF THE 16-CENT RED & BLUE AIR POST SPECIAL DELIVERY IMPERFORATE HORIZONTALLY.

Datz states that 10 pairs are reported. There is also the unique plate block of six, which realized \$40,000 in 1997, and a block of four, which realized \$8,000 in our Sale 826.

With 1970 P.F. certificate. Scott Retail as Mint N.H. pair, with no premium for the third stamp. 3,750.00

BUFFALO BALLOON SEMI-OFFICIAL AIR POST



509

- 509 ★ **5c Deep Blue, Buffalo Balloon (CL1).** Large margins to full at top, rich color
 VERY FINE ORIGINAL-GUM EXAMPLE OF THE RARE *BUFFALO BALLOON* AIR POST ISSUE.
 Red backstamp. 7,500.00



510

- 510 (★) **5c Deep Blue, Buffalo Balloon (CL1).** Unused (no gum), large margins all around, rich
 color, slight thinning at top
 VERY FINE APPEARING EXAMPLE OF THE RARE 5-CENT *BUFFALO BALLOON* ISSUE.
 A very attractive example of this rarity. Most examples are defective to some degree.....
 7,500.00



511

- 511 ★ **5c Deep Blue, Buffalo Balloon (CL1).** Tête-bêche pair, large margins, deep shade and clear impression, few tiny natural paper flaws, usual slight thinning in one side margin
EXTREMELY FINE APPEARING TÊTE-BÊCHE PAIR OF THE RARE *BUFFALO BALLOON* AIR POST ISSUE.

The Buffalo Balloon stamp, designed by John F. B. Lillard and engraved by John H. Snively, was printed by Wheeler Brothers Printers in Nashville, Tennessee. Only 300 were printed in tête-bêche arrangement from a single die. The stamps were intended for use on a balloon flight from Nashville to Gallatin, Tennessee, which took place on June 18, 1877. Of the 300 that were printed, only 23 were used.

Based on previous examples we have handled, at least some of the Buffalo Balloon stamps were exposed to moisture around the time they were printed. This accounts for the fact that only two of the eleven tête-bêche pairs certified by the Philatelic Foundation are sound. The others are mostly thinned in one corner where they were stuck together.

..... 21,500.00

SPECIAL DELIVERY



- 512 ★ **10c Blue, Special Delivery (E2).** Original gum, rich color, enormous margins, Extremely Fine, with 2004 P.F. certificate 400.00
- 513 ★★ **10c Blue, Special Delivery (E5).** Mint N.H., rich color on bright paper, almost perfectly centered with well-balanced margins
EXTREMELY FINE MINT NEVER-HINGED EXAMPLE OF THE 10-CENT SPECIAL DELIVERY ISSUE, SCOTT E5.
With 1982 P.F. and 2005 P.S.E. certificates (XF 90)..... 425.00
- 514 ★★ **10c Ultramarine, Special Delivery (E8).** Mint N.H., pretty pastel color, well-balanced margins, fresh and Extremely Fine, with 2004 P.F. certificate 225.00
- 515 ★★ **10c Ultramarine, Special Delivery (E8).** Mint N.H. with **plate no. at top**, rich color on bright paper, extra wide margins, Extremely Fine Gem, with 2005 P.F. certificate. 225.00
- 516 ★★ **10c Ultramarine (E9).** Mint N.H., bright color, wide margins, post-office fresh and Extremely Fine, with 2005 P.F. and 2005 P.S.E. certificates (XF 90) 400.00
- 517 ★★ **10c Pale Ultramarine, Special Delivery (E10).** Mint N.H. with **plate no. at top**, brilliant color, wide margins, Very Fine and choice, with 2005 P.S.E. certificate..... 600.00
- 518 ★★ **10c Gray Blue, Special Delivery (E11a).** Mint N.H., wide margins, brilliant color, Extremely Fine Gem, with 2004 P.F. certificate for plate block of six, this shade is no longer listed in Scott, Scott Retail as normal..... 40.00
- 519 ★★ **10c Gray Blue, Special Delivery (E11a).** Mint N.H. with **plate no. at bottom**, perfectly centered with wide and balanced margins, Extremely Fine Gem, this shade unlisted in Scott but specifically mentioned on the certificate, with copy of 2004 P.F. certificate for block of six, Scott Retail as normal..... 40.00

POSTAGE DUE



520

- 520 ★ **5c Deep Brown, Special Printing (J11).** Slightly disturbed original gum, bright color, reperfed at left

FINE APPEARING EXAMPLE OF THE RARE 5-CENT POSTAGE DUE SPECIAL PRINTING.

It has been estimated that only 249 of the 5c Postage Due Special Printing reached the public.

With 2005 P.S.E. certificate 12,500.00

- 521 ★ **5c Deep Brown, Special Printing (J11).** Original gum, small paper h.r., small thin spot.

FINE APPEARANCE. A RARE SPECIAL PRINTING IN ATTRACTIVE CONDITION.

With 2005 P.S.E. certificate 9,500.00



521



522

- 522 ★ **10c Deep Brown, Special Printing (J12).** Original gum, lightly hinged, sharp proof-like impression

VERY FINE EXAMPLE OF THE RARE 10-CENT POSTAGE DUE SPECIAL PRINTING.

It has been estimated that no more than 174 examples of the 10c Postage Due Special Printing reached the public.

Signed by Bartels in pencil on back. With 2005 P.S.E. certificate ...
..... 7,500.00

- 523 ★ **10c Deep Brown, Special Printing (J12).** Large part disturbed original gum, intense color, tiny thin spot at top

FINE APPEARANCE. A RARE UNUSED EXAMPLE OF THE 10-CENT POSTAGE DUE SPECIAL PRINTING.

It has been estimated that no more than 174 examples of the 10c Postage Due Special Printing reached the public.

With 2005 P.F. certificate 7,500.00



523



524

- 524 (★) **50c Deep Brown, Special Printing (J14).** Unused (no gum), bright color, reperfed at right

VERY FINE APPEARANCE. AN ATTRACTIVE EXAMPLE OF THE RARE 50-CENT POSTAGE DUE SPECIAL PRINTING.

It has been estimated that no more than 179 examples of the 50c Postage Due Special Printing reached the public.

With 1956 and 2005 P.F. certificates, the first not mentioning the reperfering 7,500.00

- 525 ★ **1c Vermilion (J29).** Original gum, lightly hinged, perfectly centered, bright and fresh

EXTREMELY FINE GEM. A BEAUTIFUL EXAMPLE OF THIS CHALLENGING STAMP IN THE HIGHEST QUALITY ATTAINABLE.

Most copies of this stamp are poorly centered and with small faults.

With 1999 P.F. certificate 2,100.00



525



526

- 526 **30c Deep Claret (J43).** Choice centering with wide and balanced margins, "face free" strike of grid cancel, Extremely Fine Gem, scarce in such superb condition, with 2005 P.S.E. certificate (XF-Superb 95) 55.00

- 527 ★★ **10c Rose Carmine (J49a).** Mint N.H., bright color, huge margins, Extremely Fine, with 1993 P.F. certificate 275.00



527



528

- 528 **50c Deep Claret (J50).** Wide margins, light strike of purple cancel, Extremely Fine, with 2005 P.F. certificate for block of four 140.00



529

529 ★ **50c Carmine Lake (J58).** Original gum, lightly hinged, deep rich color and proof-like impression

VERY FINE. THE 1914 50-CENT POSTAGE DUE WITH ORIGINAL GUM IS ONE OF THE RAREST OF ALL POSTAGE DUE STAMPS.

With 2001 P.F. certificate 15,000.00



530

530 ★ **1c Rose (J59).** Lightly hinged, bright shade, choice centering for this difficult issue

VERY FINE AND CHOICE ORIGINAL-GUM EXAMPLE OF THE 1916 ONE-CENT PERF 10 UNWATERMARKED POSTAGE DUE ISSUE.

With 2002 P.F. certificate 4,250.00



- 531 ★★ **1c Dull Rose (J61 var).** Mint N.H., brilliant color, Jumbo margins, Extremely Fine Gem example of this shade, with 2005 P.S.E. certificate (XF-Superb 95 Jumbo)..... 7.00
- 532 ★★ **30c Carmine Rose (J66).** Mint N.H., intense color, enormous margins, Extremely Fine, with 2004 P.F. certificate 200.00
- 533 ★★ **30c Deep Claret (J66a).** Mint N.H., rich color and proof-like impression, wide margins, Extremely Fine Gem, a huge stamp, with 2005 P.F. certificate 200.00

PARCEL POST

- 534 ★★ **2c Parcel Post (Q2).** Mint N.H., radiant color, huge margins, Extremely Fine Gem, with copy of 2005 P.F. and with 2005 P.S.E. certificates (XF-Superb 95)..... 19.00
- 535 ★★ **3c Parcel Post (Q3).** Mint N.H., deep rich color and detailed impression, Jumbo margins, Extremely Fine Gem, a superb stamp in every respect, with copy of 2005 P.F. and with 2005 P.S.E. certificates (XF-Superb 95 Jumbo)..... 37.00
- 536 ★★ **10c Parcel Post (Q6).** Mint N.H., rich color, wide margins, Extremely Fine, with copy of 2004 P.F. certificate for block of four 120.00
- 537 ★★ **20c Parcel Post (Q8).** Mint N.H., beautiful large margins and almost perfectly centered, fresh and bright, Extremely Fine, with photocopy of 2000 P.F. certificate for block of four (bottom left stamp) 325.00
- 538 ★★ **25c Parcel Post (Q9).** Mint N.H., deep rich color, choice centering, fresh and Extremely Fine, with 2005 P.S.E. certificate (XF 90) 180.00



539

539 ★★ **\$1.00 Parcel Post (Q12).** Mint N.H., brilliant color and detailed impression on post-office fresh paper, wide margins all around

EXTREMELY FINE MINT NEVER-HINGED
EXAMPLE OF THE \$1.00 PARCEL POST
ISSUE.

With 1997 and 2002 P.F. certificates.....
.....1,800.00



540



541



542



543

- 540 ★★ **\$1.00 Parcel Post (Q12).** Lightly hinged, radiant color on bright paper, perfectly centered, Extremely Fine Gem, with 2005 P.S.E. certificate (XF-Superb 95).....350.00
- 541 ★ **\$1.00 Parcel Post (Q12).** Lightly hinged, brilliant color, huge margins, Extremely Fine, with 2005 P.F. certificate.....375.00
- 542 ★★ **2c Dark Green, Parcel Post Postage Due (JQ2).** Mint N.H., deep rich color, choice centering, Extremely Fine, with 2005 P.S.E. certificate (XF 90).....210.00
- 543 ★★ **2c Dark Green, Parcel Post Postage Due (JQ2).** Mint N.H., rich color on bright paper, almost perfectly centered, fresh and Extremely Fine, with 2005 P.S.E. certificate...210.00
- 544 ★★ **Balance of The Gulf Coast Collection.** Fifteen Mint N.H. stamps, incl. Nos. 279B, 344 pair, 347, 486 pair, 511, 548, 550, 658, 659, 662-663, 671-672, 674, C18, Very Fine-Extremely Fine, three with P.S.E. certificates*Not illustrated* 484.00

END OF SALE — THANK YOU