

Sale 921

Wednesday, October 18, 2006

Superb United States Stamps



Robert A. Siegel

AUCTION GALLERIES, INC.

www.siegelauctions.com

Sale 921

Wednesday, October 18, 2006



Superb United States Stamps

**All stamps have graded certificates
(Grading Index page enclosed)**

Most lots are offered without reserves

**All lots in this sale only are sold
subject to a 15% Buyer's Premium**

Pre-sale exhibition

Monday, October 16 — 10:00 a.m. to 4:00 p.m.

Tuesday, October 17 — 10:00 a.m. to 4:00 p.m.
or by appointment (please call 212-753-6421)

**On-line catalogue, e-mail bid form, resources and
the Siegel Encyclopedia are available on our web site:**

www.siegelauctions.com

Arrangement of Sale

Afternoon session (lots 501-854)

Wednesday, October 18, at 1:30 p.m.

1847 Issue, 1851-57 Issues	pages 5-7
1861-68 Issues	8-9
1869 Pictorial Issue	10-12
1870-88 Bank Note Issues	13-16
1890-93 Issue	17
Columbian Issue	18-22
1894-98 Bureau Issue	23-27
Trans-Mississippi Issue	28-31
Pan-American Issue	32
1902-08 Issue	33-36
Louisiana Purchase Issue	36-37
Jamestown Issue	37-38
Washington-Franklin Issues	39-44
Panama-Pacific Issue	45-46
Washington-Franklin Issues	46-56
1922 and Later Issues	57-63
Air Post	64-68
Special Delivery	68-70
Postage Due	70-72
Offices in China	73
Newspapers, Parcel Post	74-75
Hunting Permits	76-78

On the cover

Front Cover: Lots 524, 554, 572, 809

Back Cover: Lots 508, 512, 519, 566, 548, 587, 610,
638, 697

Above: Lot 589

Conditions of Sale (Important—please read carefully)

The property described in this catalogue will be offered at public auction by Robert A. Siegel Auction Galleries, Inc. (“Galleries”) on behalf of various consignors and itself or affiliated companies. By bidding on any lot, whether directly or by or through an agent, in person, or by telephone, facsimile or any other means, the bidder acknowledges and agrees to all of the following Conditions of Sale.

1. The highest bidder acknowledged by the auctioneer shall be the buyer. The term “final bid” means the last bid acknowledged by the auctioneer, which is normally the highest bid offered. **The purchase price payable by the buyer will be the sum of the final bid and a commission of 15% of the final bid (“buyer’s premium”), together with any sales tax or use tax which may be due on the sale.**
2. The auctioneer has the right to reject any bid, to advance the bidding at his discretion and, in the event of a dispute between bidders, to determine the successful bidder, to continue the bidding or to reoffer and resell the lot in dispute. The Galleries’ record of the final sale shall be conclusive.
3. All bids are per numbered lot in the catalogue unless otherwise announced by the auctioneer at the time of sale. The right is reserved to group two or more lots, to withdraw any lot or lots from the sale, or to act on behalf of the seller. The Galleries will execute bidding instructions on behalf of clients, but will not be responsible for any errors in the execution of such bids.
4. **Lots with numbers followed by the symbol ° are offered subject to a confidential minimum final bid (“reserve”), below which the lot will not be sold. The absence of the symbol ° means that the lot is offered without a reserve.** In the absence of a reserve, the auctioneer has sole discretion to establish a minimum opening bid and may refuse an offer of less than half of the published estimate. Any lot that does not reach its reserve or opening bid requested by the auctioneer will be announced as “passed” and excluded from the prices realized lists after the sale. The Galleries may have a direct or indirect ownership interest in any or all lots in the sale resulting from an advance of monies or goods-in-trade or a guarantee of minimum net proceeds made by the Galleries to the seller.
5. Any lot, the description of which is obviously incorrect, is returnable, but only if the lot is returned within 14 days of receipt. All disputed lots must be returned intact with the original packing material. **The following lots may not be returned for any reason: Lots containing ten or more items; lots from buyers who have registered for the pre-sale exhibition or received lots by postal viewing, thereby having had the opportunity to inspect them before the sale; any lot described with “faults” or “defects” may not be returned because of any fault or defect. No illustrated lots may be returned because of centering, margins or other factors shown in the illustrations.**
6. Successful bidders, unless they have established credit with the Galleries prior to the sale, must make payment in full before the lots will be delivered. Buyers not known to the Galleries must make payment in full within three days from the date of sale. **The Galleries retain the right to demand a cash deposit from anyone prior to bidder registration and/or to demand payment at the time the lot is knocked down to the highest bidder, for any reason whatsoever.** In the event that any buyer refuses or fails to make payment in cash for any lot at the time it is knocked down to him, the auctioneer reserves the right to reoffer the lot immediately for sale to the highest bidder. **Credit cards are not accepted as payment.**

7. If the purchase price has not been paid within the time limit specified above, nor lots taken up within seven days from the date of sale, the lots will be resold by whatever means deemed appropriate by the Galleries, and any loss incurred from resale will be charged to the defaulting buyer. Any account more than thirty days in arrears will be subject to a late payment charge of 1½% per month as long as the account remains in arrears. Any expenses incurred in securing payment from delinquent accounts will be charged to the defaulter. A fee of \$250.00 per check will be charged for each check returned for insufficient funds.

8. All lots are sold as genuine. **Any lot accompanied by a certificate issued by The Philatelic Foundation within 5 years of the sale date or by Professional Stamp Experts since January 2004 is sold “as is” and in accordance with the description on the certificate. Such lots may not be returned for any reason, including but not limited to a contrary certificate of opinion.** Buyers who wish to obtain a certificate for any item that does not have a P.F. or P.S.E. certificate (dated as above) may do so, provided that the following conditions are met: (1) the purchase price must be paid in full, (2) the item must be submitted to an acceptable expertizing committee with a properly executed application form within 21 days of the sale, (3) a copy of the application form must be given to the Galleries, (4) in the event that an adverse opinion is received, the Galleries retain the right to resubmit the item on the buyer’s behalf for reconsideration, without time limit or other restrictions, (5) unless written notification to the contrary is received, items submitted for certification will be considered cleared 90 days from the date of sale, and (6) in the event any item is determined to be “not as described”, the buyer will be refunded the purchase price and the certification fee up to \$500.00 unless otherwise agreed.

9. Until paid for in full, all lots remain the property of the Galleries on behalf of the seller.

10. Agents executing bids on behalf of clients will be held responsible for all purchases made on behalf of clients unless otherwise arranged prior to the sale.

11. The buyer assumes all risk for delivery of purchased lots and agrees to pay for prescribed shipping costs.

12. The bidder consents that any action or proceeding against it may be commenced and maintained in any court within the State of New York or in the United States District Court for the Southern District of New York, that the courts of the State of New York and United States District Court for the Southern District of New York shall have jurisdiction with respect to the subject matter hereof and the person of the bidder. The bidder agrees not to assert any defense to any action or proceeding initiated by Galleries based upon improper venue or inconvenient forum. The bidder agrees that any action brought by the bidder shall be commenced and maintained only in a Federal Court in the United States District Court for the Southern District of New York or the State Court in the county in which Galleries has its principal place of business in New York. These Terms and Conditions shall be governed by and construed in accordance with the substantive laws of the State of New York.

SCOTT R. TREPEL, Principal Auctioneer
Auctioneer’s License No. 795952
N.Y.C. Department of Consumer Affairs
80 Lafayette Street, New York, N.Y. 10013
Telephone (212) 577-0111

Revised 5/2006 15%

Copyright Notice

This catalogue in all versions, printed and electronic, is protected by copyright. The descriptions, format, illustrations and information used herein may not be reprinted, distributed or copied in any form without the express written consent of Robert A. Siegel Auction Galleries. Application for permission may be made in writing.

© 2006, Robert A. Siegel Auction Galleries, Inc.

Grading Terms, Abbreviations and Values Used in Descriptions

Grade and Centering

The following terms are used in Siegel sale catalogues (corresponding numerical ranges shown in parentheses). Margin width, centering and gum are described according to generally-accepted standards. Stamps are graded based on our subjective assessment of condition for each issue, which do not necessarily correlate with third-party grading terms or standards for all issues. **A lot may not be returned because a certification service grades a stamp lower than the grade stated. Information from the P.S.E. Stamp Market Quarterly and P.S.E. Population ReportSM is the most current available, but lots may not be returned due to errors or changes in statistics or data.**

Extremely Fine Gem (90-100 pts.): The term “Gem” used in Siegel catalogues describes condition that is the finest possible for the issue.







Extremely Fine (80-90 pts.): Exceptionally large margins or near perfect centering.

Very Fine (70-85 pts.): Normal size margins for the issue and well-centered with the design a bit closer to one side. “Very Fine and choice” applies to stamps that have desirable traits such as rich color, sharp impression, freshness or clarity of cancel.

Fine (60-70): Smaller than usual margins or noticeably off center. Pre-1890 issues may have the design touched in places.

Very Good (below 60): Attractive appearance, but margins or perforations cut into the design.

Good (G) or Average (Ave.): Cut into or perfs far into design and usually with slight faults. This condition is generally acceptable for rarities, scarce multiples or stamps used on unusual covers.

Gum Categories:	MINT N.H.	ORIGINAL GUM (O.G.)				NO GUM
	 Mint Never Hinged <i>Free from any disturbance</i>	 Lightly Hinged <i>Faint impression of a removed hinge over a small area</i>	 Hinge Mark or Remnant <i>Prominent hinged spot with part or all of the hinge remaining</i>	 Part o.g. <i>Approximately half or more of the gum intact</i>	 Small part o.g. <i>Approximately less than half of the gum intact</i>	 No gum <i>Only if issued with gum</i>
Catalogue Symbol:	★ ★	★	★	★	★	(★)
PRE-1890 ISSUES	<i>Pre-1890 stamps in these categories trade at a premium over Scott value</i>			Scott Value for “O.G.”		Scott “No Gum” Values thru No. 218
1890-1935 ISSUES	Scott “Never Hinged” Values for Nos. 219-771	Scott Value for “O.G.” (Actual value will be affected by the degree of hinging)		Disturbed Original Gum: Gum showing noticeable effects of humidity, climate or hinging over more than half of the gum. The significance of gum disturbance in valuing a stamp in any of the Original Gum categories depends on the degree of disturbance, the rarity and normal gum condition of the issue and other variables affecting quality. For example, stamps issued in tropical climates are expected to have some gum disturbance due to humidity, and such condition is not considered a negative factor in pricing.		
1935 TO DATE	Scott Value for “Unused”					

Covers

Minor nicks, short edge tears, flap tears and slight reduction at one side are normal conditions for 19th century envelopes. Folded letters should be expected to have at least one file fold. Light cleaning of covers and small mends along the edges are accepted forms of conservation. Unusual covers may have a common stamp with a slight crease or tiny tear. **These flaws exist in virtually all 19th century covers and are not always described. They are not grounds for return.**

Catalogue Values and Estimates

Unless otherwise noted, the currently available *Scott Catalogue* values are quoted in dollars with a decimal point. Other catalogues are often used for foreign countries or specialized areas and are referred to by their common name: *Stanley Gibbons* (SG), *Dietz*, *American Air Mail Catalogue* (AAMC), *Michel*, *Zumstein*, *Facit*, etc. Estimates are indicated with an “E.” and reflect our conservative valuation in dollars. Reserves will never exceed the low end of the estimate range; they will sometimes exceed Scott Catalogue value for stamps in Extremely Fine condition.

Because of certain pricing inconsistencies in the Scott Catalogue—for example, blocks that have no gum, the absence of premiums for Mint N.H. items, etc.—we cannot guarantee the accuracy of values quoted for multiples, specialized items and collection lots. We generally try to be conservative, but buyers may not return a lot because of a discrepancy in catalogue value due to Scott pricing inconsistencies.

Symbols and Abbreviations (see chart above for gum symbols)

Block	E	Essay	pmk.	Postmark	No.	Scott Catalogue Number
Cover	P	Proof	cds	Circular Datestamp	hs	Handstamp
FC	TC	Trial Color Proof	var.	Variety	ms.	Manuscript

Revised 5/2006

Live Internet Bidding at Siegel Auction Galleries

Internet Floor Bidding for Robert A. Siegel Auction Galleries, Inc.'s Sale 908 closing on Mar 13-15, 2006. Contact us by Phone at (212) 753-6421. [Contact us Via eMAIL](#). Please READ [Instructions/Help](#) [Listen to the Public Auction Broadcast](#). **Welcome John**
 Bidding. Paddle II. Time: 13:50:36. F11 (if using Internet Explorer) toggles full screen mode. You are Cust# , You are approved for

Lot and Description	Bidding
Postal History, California Mails and Western Expre Carriers and Locals Group Lots Lot 5010. Carriers and Locals. More than 30 covers and a few off cover. 1840's, 50's and 60's, comprising General Issue Carriers incl. LO2, LO3, LO5 and Franklin plate proof on card, LO2 on small blue cover to Philadelphia "U.States" indicating origin f E. 1,500-2,000 Sold for 3,500.00 Your Bid 3,500.00 <div> <input type="button" value="1 sec refresh"/> <input type="button" value="3 sec"/> <input type="button" value="5 sec"/> <input type="button" value="Show Images"/> </div>	<div> <input type="button" value="Bid 3750"/> <input type="button" value="Bid 4000"/> <input type="button" value="Bid 4250"/> <input type="button" value="Bid 4500"/> <input type="button" value="Bid 4750"/> <input type="button" value="Bid 5000"/> </div> Send a Message to the Auction Floor
Messages from the public auction Please close this form when you are not bidding or watching the auction. <div> Lot 5010 going for 650... Lot 5010 going for 3500... Lot 5010 Last Call at 3500... Lot 5010 sold to the floor for \$3500. ===== END OF SALE ===== -Thank You!!! </div>	

Siegel Auction Galleries, in coordination with Stamp Auction Network, will broadcast our auctions live over the internet, allowing you to listen to the auction in progress.

Bidders who have pre-registered for Live Internet Bidding will also be able to place bids over the internet, as if bidding in the saleroom. In order to bid by internet, you must be an approved, registered bidder with Stamp Auction Network and Siegel Auction Galleries.

- ❑ If you are already registered at Stamp Auction Network and have been approved for internet bidding by Siegel, just log in at Stamp Auction Network, locate the Siegel sale and start bidding anytime during the auction.
- ❑ If you have never registered as a bidder at Stamp Auction Network, then please go to www.siegelauctions.com/IB2.htm and click on “Register” at the top of the page. Please check the box for Robert A. Siegel Auction Galleries (under “R”) and submit the form. If you have never bid with our firm, please provide trade references whom we may contact to have your account approved (please do not use family members or credit cards as references).
- ❑ If you have registered previously at Stamp Auction Network, but not specifically for our firm, please go to www.siegelauctions.com/IB2.htm and click on “Update Registration” at the top of the page. Your information at Stamp Auction Network will be sent to us for approval. You may be asked to provide additional references before being approved for internet bidding.

Once you are approved for bidding, you will be able to bid live over the internet during the auction. You may participate in Live Internet Bidding using ny browser or operating system. The audio portion is only available to PC users using Internet Explorer. For the audio portion, you will be asked to install a piece of software (ActiveX control) to make it work.

Bidders must log in at Stamp Auction Network to participate. Once logged in, please locate the page for the current Siegel auction.

At the top of the auction's home page there are two links:

- One link allows anyone to listen to the public auction broadcast.
- The second link permits registered bidders to join the public auction in progress.

Please remember that to participate in the auction, you must be pre-registered at Stamp Auction Network and approved by Siegel Auction Galleries as a bidder. Qualified bidders will see a page like the one illustrated above and have a valid paddle number assignment.

AFTERNOON SESSION (LOTS 501-854)
WEDNESDAY, OCTOBER 18, 2006, AT 1:30 P.M.

SUPERB UNITED STATES STAMPS

1847 AND 1851-57 ISSUES



501

- 501 **5c Red Brown (1).** Large balanced margins, bright color, red grid cancellation, Extremely Fine, with 2004 and 2005 P.S.E. certificates (XF 90; SMQ \$840.00) 550.00



502

- 502 **10c Black (2).** Large even margins all around, bright shade and detailed impression, unobtrusive strike of red grid cancel
EXTREMELY FINE USED EXAMPLE OF THE 10-CENT 1847 ISSUE.
P.S.E. encapsulated (XF 90; SMQ \$1,850.00) 1,350.00

- 503 **10c Black (2).** Large to huge margins, light centrally struck red grid cancellation, Extremely Fine, with 2006 P.S.E. certificate (XF 90; SMQ \$1,850.00) 1,350.00



503



504

504

5c Red Brown (12). A Relief from the top row of the plate, large even margins all around, rich color on bright paper, lightly struck New Orleans circular datestamp

EXTREMELY FINE GEM. A BEAUTIFUL USED EXAMPLE OF THE 5-CENT 1856 ISSUE.

With 2005 P.S.E. certificate (XF-Superb 95; SMQ \$2,100.00) 900.00

505

10c Green, Ty. II (14). Huge margins all around incl. **sheet margin at left**, rich color and proof-like impression, neat strike of "Peace Dale R.I. Aug. 1" circular datestamp, Extremely Fine Gem, a superb stamp, with 2003 P.F. and 2006 P.S.E. certificates (XF-Superb 95; SMQ \$630.00) 200.00



505



506

506

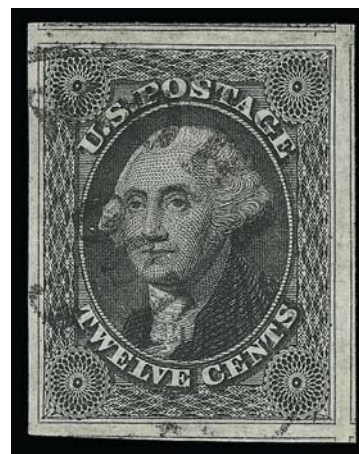
10c Green, Ty. III (15). Large to huge margins, wonderful deep rich color and neat circular datestamp, Extremely Fine, with 2000 and 2006 P.S.E. certificates (XF 90; SMQ \$385.00)..... 200.00

507

12c Black (17). Huge margins all around incl. parts of five adjoining stamps, bright shade and detailed impression, unobtrusive strike of circular datestamp

EXTREMELY FINE GEM. A MAGNIFICENT USED EXAMPLE OF THE 12-CENT 1851 ISSUE, WHICH HAS EARNED THE EXALTED GRADE OF SUPERB 98 FROM P.S.E.

With 1990 P.F. and 2006 P.S.E. certificates (Superb 98; SMQ \$3,050.00)..... 325.00



507

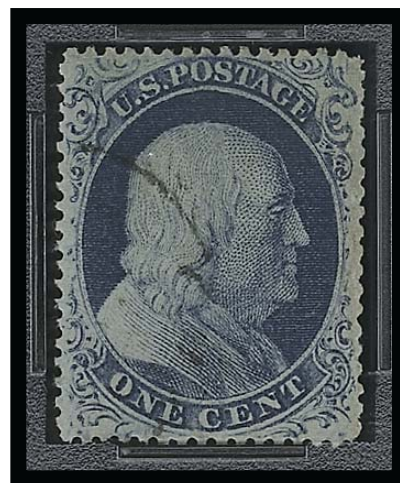
- 508 **1c Blue, Ty. III (21).** Position 40R4, rich color, unusually choice centering for this difficult issue, lightly cancelled by town datestamp

EXTREMELY FINE. A BEAUTIFUL USED EXAMPLE OF THE ONE-CENT PERFORATED TYPE III ISSUE, WITH CLEAR BREAKS AT TOP AND BOTTOM.

P.S.E. encapsulated (XF 90; SMQ \$5,900.00).... 2,750.00



509



508

- 509 **1c Blue, Ty. IV (23).** Recut once at top and once at bottom, choice centering for this difficult issue, brilliant color nicely complemented by red grid cancel

EXTREMELY FINE. A BEAUTIFUL USED EXAMPLE OF THE 1857 TYPE IV ONE-CENT PERFORATED ISSUE. ESPECIALLY DESIRABLE WITH A RED GRID CANCEL.

With 2006 P.F. certificate (XF 90; SMQ \$1,850.00)..... 845.00

- 510 **10c Green, Ty. I (31).** Magnificent centering with unusually wide margins on all sides and showing the complete shell at bottom right, rich color, proof-like impression, neat strike of circular datestamp cancel

EXTREMELY FINE GEM. THIS IS EASILY ONE OF THE FINEST EXAMPLES OF THE 1857 PERFORATED 10-CENT TYPE I EXTANT.

With 2005 P.F. certificate (XF-Superb 95; SMQ \$5,400.00) 1,200.00



511



510

- 511 **10c Green, Ty. III (33).** Magnificent margins and essentially perfectly centered, pleasing light green color, light circular datestamp, Extremely Fine, with 2006 P.F. certificate (XF 90; SMQ \$710.00) 300.00

- 512 **10c Green, Ty. IV (34).** Position 55L1, recut at bottom, pretty color and detailed impression, face-free strike of circular datestamp

EXTREMELY FINE. A BEAUTIFUL USED EXAMPLE OF THE PERFORATED 10-CENT TYPE IV 1857 ISSUE. A DIFFICULT STAMP TO FIND IN SUCH CHOICE CONDITION.

The P.S.E. grade of XF 90 seems conservative to us and does not truly reflect the perfect centering (albeit a bit wider at top and bottom than sides) and light face-free cancel.

With 1996 and 2006 P.F. certificates (XF 90; SMQ \$4,850.00)..... 2,300.00



512

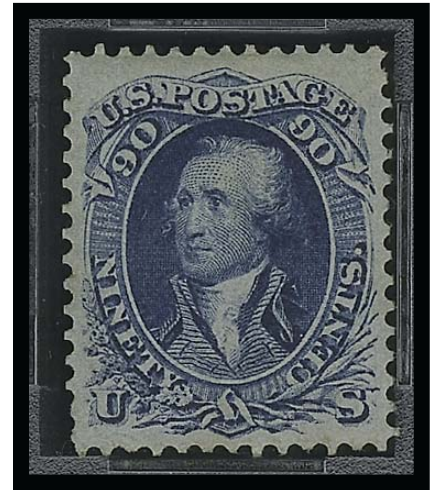
1861-68 ISSUES



513

- 513 **24c Red Lilac (70).** Choice margins and wonderfully well-centered, rich color, large **Open Star** fancy cancel, Extremely Fine, with 2006 P.F. certificate (XF 90; SMQ \$1,050.00)..... 250.00

- 514 ★ **90c Blue (72).** Large part original gum, bright color, choice centering with wide and balanced margins
EXTREMELY FINE EXAMPLE OF THE 90-CENT 1861 ISSUE. A BEAUTIFUL STAMP.
P.S.E. encapsulated (XF 90; SMQ \$7,900.00)..... 3,250.00



514



515

- 515 **3c Rose, D. Grill (85).** Clearly-defined grill which is easily visible from the front, brilliant color, light strike of segmented cork cancel
EXTREMELY FINE USED EXAMPLE OF THE 1868 3-CENT D GRILL.
With 2003 P.F. and 2005 P.S.E. certificates (XF 90; SMQ \$2,500.00)..... 1,050.00

- 516 **2c Black, F. Grill, Very Thin Paper (93 var).** Exceptionally well-centered, small **blue** quartered cork cancel, Extremely Fine, with 2006 P.S.E. certificate (XF 90; SMQ \$200.00 as normal paper). 67.50



516



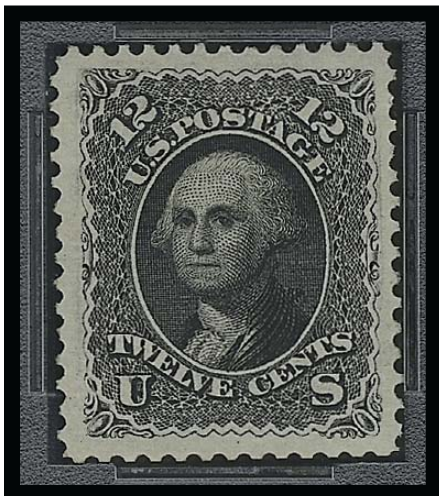
517

- 517 ★ **12c Black, F. Grill (97).** Original gum, lightly hinged, bright shade and crisp impression, clearly-defined grill, choice centering with well-proportioned margins
EXTREMELY FINE. A BEAUTIFUL ORIGINAL-GUM EXAMPLE OF THE 12-CENT F GRILL.
With 1984 and 1999 P.F. certificates and 2005 P.S.E. certificate (XF 90; SMQ \$7,350.00) 3,500.00

- 518 **15c Black, F. Grill (98).** Wonderfully choice centering, clear impression, segmented cork cancellation, Extremely Fine, with 2006 P.F. certificate (XF 90; SMQ \$680.00) 300.00



518



519

- 519 ★ **12c Black, Re-Issue (107).** Original gum, bright shade and detailed impression, Jumbo margins all around
EXTREMELY FINE GEM. A HUGE ORIGINAL-GUM EXAMPLE OF THE 12-CENT 1861 RE-ISSUE. SCARCE WITH SUCH WIDE MARGINS.
P.S.E. encapsulated (XF 90 Jumbo; SMQ \$11,600.00 as 90, \$17,200.00 as 95) 4,500.00

1869 PICTORIAL ISSUE



520

- 520 ★ **2c Brown (113).** Original gum, lightly hinged, choice centering with wide margins, rich color, fresh and Extremely Fine, P.S.E. encapsulated (XF 90; SMQ \$1,600.00)..... 775.00

- 521 ★★ **3c Ultramarine (114).** Mint N.H., brilliant color, clearly-defined grill, choice centering with wide margins

EXTREMELY FINE MINT NEVER-HINGED EXAMPLE OF THE 3-CENT 1869 PICTORIAL ISSUE.

With 2004 P.F. and 2005 P.S.E. certificates (XF 90; SMQ \$1,650.00). Scott Retail as hinged 350.00



521



522

- 522 **15c Brown & Blue, Ty. I (118).** Bright colors, clear strike of circle of V's cancel, choice centering, Extremely Fine, with 2001 P.F. and 2005 P.S.E. certificates (XF 90; SMQ \$1,550.00) 750.00

- 523 **15c Brown & Blue, Ty. II (119).** Choice margins and attractively centered, light crossroads cancellation, Extremely Fine, with 1990 P.F. and 2006 P.S.E. certificates (XF 90; SMQ \$570.00). 275.00



523



524

- 524 ★ **24c Green & Violet (120).** Original gum, deep rich colors and proof-like impressions on bright and crisp paper, choice centering with well-balanced margins

EXTREMELY FINE. A BEAUTIFUL ORIGINAL-GUM EXAMPLE OF THE 24-CENT 1869 PICTORIAL ISSUE. THIS IS THE ONLY ORIGINAL-GUM EXAMPLE TO RECEIVE THE GRADE OF XF 90 — THE HIGHEST GRADE AWARDED TO DATE. A GREAT CONDITION RARITY.

With 2005 P.S.E. certificate (XF 90; SMQ \$18,700.00)..... 9,000.00



525

- 525 ★ **30c Ultramarine & Carmine (121).** Original gum, single hinge mark, deep rich colors and proof-like impressions showing every nuance of the design, wide margins

EXTREMELY FINE. A PRISTINE ORIGINAL-GUM EXAMPLE OF THE 30-CENT 1869 PICTORIAL ISSUE.

With 2005 P.S.E. certificate (VF-XF 85; SMQ \$11,400.00)..... 8,000.00



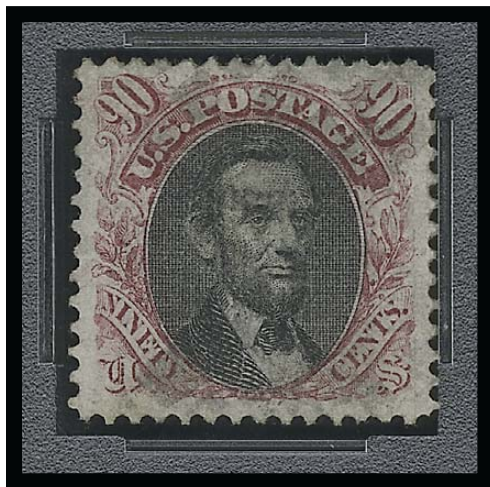
526

- 526 **30c Ultramarine & Carmine (121).** Jumbo margins, cork cancel, Extremely Fine, a stamp of massive proportions, P.S.E. encapsulated (XF 90 Jumbo; SMQ \$1,150.00 as 90, \$2,200.00 as 95) 550.00

- 527 **90c Carmine & Black (122).** Rich color and deep shade, unusually wide margins all around, cancel leaves design clearly visible
EXTREMELY FINE USED EXAMPLE OF THE 90-CENT 1869 PICTORIAL ISSUE.
With 2003 P.F. and 2005 P.S.E. certificates (XF 90; SMQ \$4,400.00)..... 2,250.00



527



528

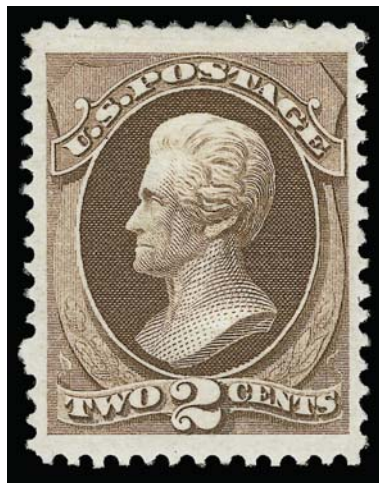
- 528 **90c Carmine & Black (122).** Almost perfectly centered with wide and balanced margins, bright colors, unobtrusive cork cancel
EXTREMELY FINE. A BEAUTIFUL USED EXAMPLE OF THE 90-CENT 1869 PICTORIAL ISSUE.
P.S.E. encapsulated (XF 90; SMQ \$4,400.00) 2,250.00

1870-88 BANK NOTE ISSUES

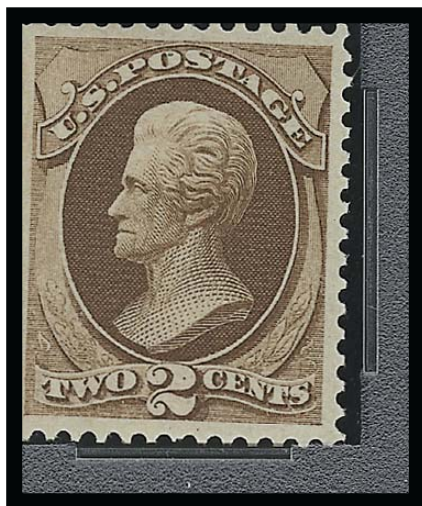
- 529 ★ **2c Red Brown, Grill (135).** H. Grill, original gum, lightly hinged, unusually clearly-impressed grill, bright color, perfectly centered with wide margins

EXTREMELY FINE GEM. A SUPERB ORIGINAL-GUM EXAMPLE OF THE 1870 2-CENT NATIONAL BANK NOTE GRILLED ISSUE IN EVERY RESPECT — GRILL IMPRESSION, GUM, COLOR, CENTERING AND SIZE OF MARGINS. A FABULOUS STAMP.

With 1988 P.F. and 2005 P.F. certificates (XF 90; SMQ \$2,900.00) 1,200.00



529



530

- 530 ★ **2c Red Brown (146).** Original gum, lightly hinged, bright color and crisp impression, choice centering with wide and balanced margins, fresh and Extremely Fine, P.S.E. encapsulated (XF 90; SMQ \$940.00)..... 350.00

- 531 ★ **2c Red Brown (146).** Original gum, lightly hinged, remarkably well-centered, fresh color, Extremely Fine, with 2006 P.S.E. certificate (XF 90; SMQ \$940.00)..... 350.00



531



532

- 532 ★ **10c Brown (150).** Original gum, barest trace of hinging, unusually wide margins, radiant color

EXTREMELY FINE LIGHTLY-HINGED EXAMPLE OF THE 1870 10-CENT NATIONAL BANK NOTE COMPANY UNGRILLED ISSUE.

In searching past auction catalogues, we have located precious few examples of Scott 150 in the condition of the stamp offered here. Collectors who are unwilling to compromise on quality are well-advised to pursue this opportunity.

With 2006 P.F. certificate (XF 90; SMQ \$4,800.00) ...
..... 1,600.00

- 533 ★ **2c Vermilion (178).** Original gum, barest trace of hinging, vibrant color on crisp paper, choice centering with wide margins, Extremely Fine, with 1996 and 2006 P.F. certificates (XF 90; SMQ \$940.00) 450.00



533



534

- 534 ★ **3c Green (184).** Original gum, choice margins and beautifully centered, fresh, strong color, Extremely Fine, with 2006 P.S.E. certificate (XF-Superb 95; SMQ \$1,700.00)..... 120.00

- 535 **10c Brown, With Secret Mark (188).** Uncommonly wide margins and essentially perfect centering, faint secret mark, **purple target** cancel, Extremely Fine Gem, with 2006 P.S.E. certificate (XF-Superb 95; SMQ \$265.00)..... 27.50

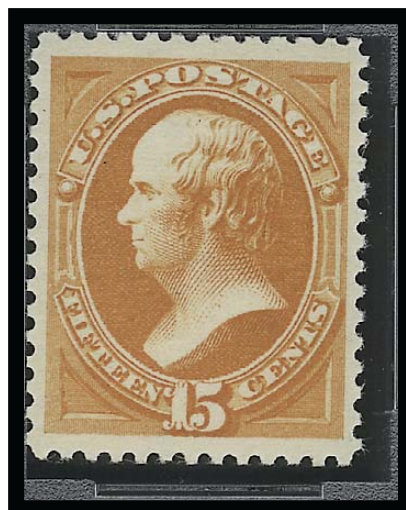


535

- 536 ★★ **15c Red Orange (189).** Mint N.H., brilliant color, perfectly centered with wide margins, crisp paper, long and full perforations all around

EXTREMELY FINE GEM. A MAGNIFICENT MINT NEVER-HINGED EXAMPLE OF THE 1879 15-CENT AMERICAN BANK NOTE COMPANY ISSUE.

P.S.E. encapsulated (XF 90 Jumbo; unpriced in SMQ as Mint N.H., SMQ \$730.00 as 90 hinged, \$1,300.00 as 95 hinged). Scott Retail as hinged ..
..... 350.00



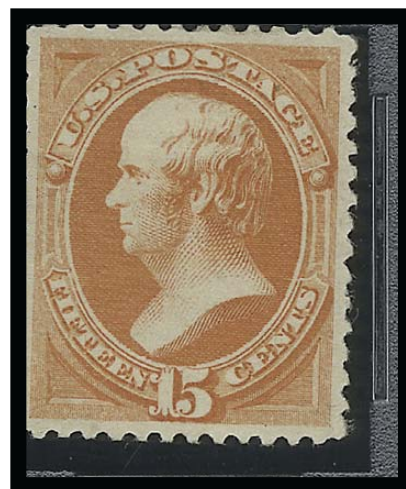
536



537

- 537 ★ **15c Red Orange (189).** Original gum, lightly hinged, choice margins and sensational perfect centering, bright color, Extremely Fine Gem, an outstanding original-gum example, with 2006 P.S.E. certificate (Superb 98; SMQ \$2,100.00)..... 350.00

- 538 ★ **15c Red Orange (189).** Original gum, brilliant color, choice centering with well-balanced margins, fresh and Extremely Fine, P.S.E. encapsulated (XF 90; SMQ \$730.00) 350.00

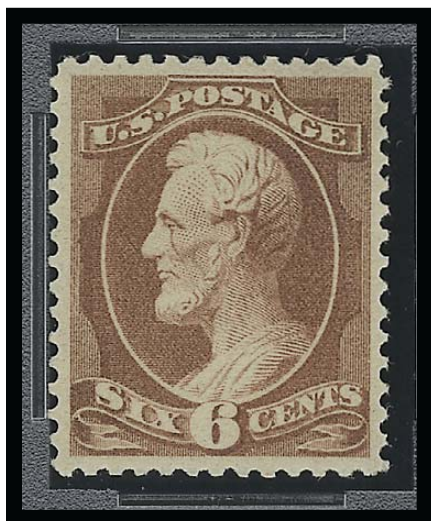


538



539

- 539 **5c Yellow Brown (205).** Huge Jumbo margins, clear impression, cork cancellation, Extremely Fine, with 2006 P.F. certificate (XF 90 Jumbo; SMQ \$47.00 as 90, \$190.00 as 95)..... 10.00



540

- 540 ★ **6c Deep Brown Red (208a).** Original gum, bright and fresh color, choice centering with well-balanced margins, fresh and Extremely Fine, P.S.E. encapsulated (XF 90; SMQ \$1,250.00)..... 625.00

- 541 ★★ **10c Brown (209).** Mint N.H., pretty shade, wide margins with excellent proportions, fresh and Extremely Fine, a stamp of great visual appeal, with 1996 and 2005 P.F. certificates (XF 90; SMQ \$1,500.00)..... 525.00



541



542

- 542 **2c Red Brown (210).** Beautiful balanced margins, bright color, attractively struck **Maltese Cross** fancy cancellation, Extremely Fine Gem, with 2006 P.S.E. certificate (Superb 98; SMQ \$230.00)..... 0.65

- 543 ★★ **2c Green (213).** Mint N.H., fabulous margins of essentially Jumbo proportions, vivid color on crisp paper, Extremely Fine, with 2006 P.F. certificate (XF 90; SMQ \$435.00)..... 140.00



543

1890-93 ISSUE

- 544 ★★ **1c Dull Blue (219).** Mint N.H., beautifully centered and great color, **left “1” with interesting diagonal plate scratch**, Extremely Fine, with 2006 P.F. certificate (XF 90; SMQ \$270.00)..... 80.00

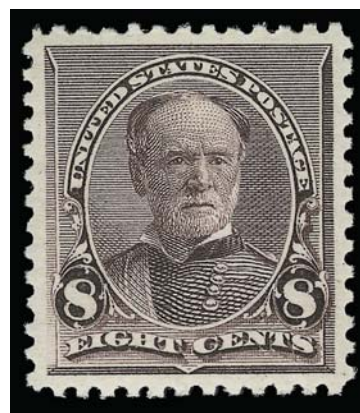


544



545

- 545 ★ **5c Chocolate (223).** Original gum, very lightly hinged, huge Jumbo margins and essentially perfectly centered, wonderful color on fresh bright paper, Extremely Fine Gem, with 2005 P.S.E. certificate (XF-Superb 95 Jumbo; SMQ \$390.00 as 95, \$680.00 as 98)..... 95.00



546

- 546 ★★ **8c Lilac (225).** Mint N.H., deep rich color and detailed impression, perfect centering

EXTREMELY FINE GEM. A STUNNING MINT NEVER-HINGED EXAMPLE OF THE 8-CENT 1890 ISSUE.

With copy of 2001 P.F. certificate for block of four.
With 2005 P.S.E. certificate (XF-Superb 95;
SMQ \$1,800.00) 175.00



547

- 547 ★ **10c Green (226).** Original gum, lightly hinged, handsome wide margins and near perfect centering, deep rich color on bright paper, Extremely Fine, with 2006 P.F. certificate (XF 90; SMQ \$465.00) 200.00



548

- 548 ★★ **15c Indigo (227).** Mint N.H., incredibly deep rich color, perfectly centered with well-balanced margins

EXTREMELY FINE GEM. A BEAUTIFUL MINT NEVER-HINGED EXAMPLE OF THE 15-CENT 1890 ISSUE.

In our opinion this stamp easily deserves an XF-Superb 95 grade. With 1989 P.F. and 2005 P.S.E. certificate (XF 90; SMQ \$2,400.00) 750.00

COLUMBIAN ISSUE



549



550



551

- 549 ★★ **1c Columbian (230).** Mint N.H., beautiful wide margins and perfectly centered, delightful color, clear impression, Extremely Fine Gem, with 2006 P.S.E. certificate (XF-Superb 95; SMQ \$475.00)..... 50.00
- 550 ★★ **2c Columbian (231).** Mint N.H. with left sheet margin, dark color and fine impression, unusually wide margins and choice centering, Extremely Fine Gem, with 2006 P.S.E. certificate (XF-Superb 95; SMQ \$475.00) 47.50
- 551 ★★ **3c Columbian (232).** Mint N.H., choice margins and beautifully centered, bright and crisp, Extremely Fine, with 2006 P.F. certificate (XF 90; SMQ \$400.00) 135.00



552

- 552 ★★ **4c Columbian (233).** Mint N.H., brilliant color and detailed impression, perfectly centered with unusually wide margins

EXTREMELY FINE GEM. A MAGNIFICENT MINT NEVER-HINGED EXAMPLE OF THE 4-CENT COLUMBIAN ISSUE, WHICH HAS ACHIEVED A GRADE OF SUPERB 98 FROM P.S.E.

With 2005 P.S.E. certificate (Superb 98; SMQ \$5,050.00)..... 200.00

- 553 ★★ **4c Columbian (233).** Mint N.H., radiant color, perfectly centered with wide and balanced margins

EXTREMELY FINE GEM. A SUPERB MINT NEVER-HINGED EXAMPLE OF THE 4-CENT COLUMBIAN ISSUE, WHICH HAS BEEN GRADED XF-SUPERB 95 BY P.S.E.

With 2004 P.F. and 2005 P.S.E. certificates (XF-Superb 95; SMQ \$1,800.00) 200.00



553



554

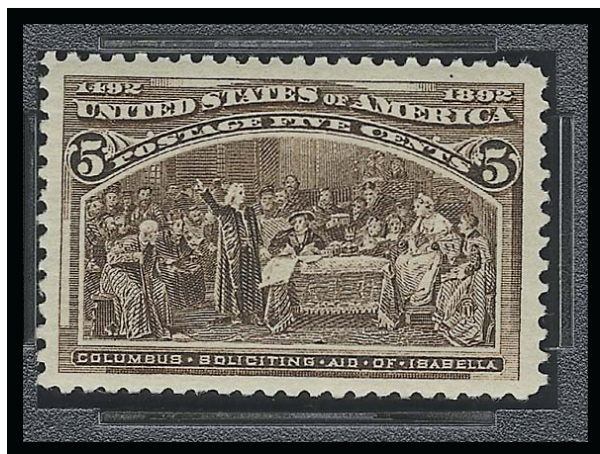
554 ★ **4c Columbian, Error of Color (233a).** Original gum, lightly hinged, breathtaking deep rich color on bright paper, unusually choice centering with Jumbo margins

EXTREMELY FINE. THIS IS EASILY ONE OF THE FINEST ORIGINAL-GUM EXAMPLES OF THE RARE 4-CENT COLUMBIAN ERROR OF COLOR. A MARVELOUS STAMP.

The 4c Columbian color error was caused by the use of a wrong batch of ink, and spectrographic analysis has shown that the blue inks of the 4c error and 1c Columbian have the same components.

Stamps from at least two panes reached collectors, and the few cancelled examples indicate that stamps used by the public came from other panes. It is likely that a number of full sheets were printed using the wrong ink, and most of the stamps have simply been lost to philately.

Ex Hetherington. With 1951 P.F. and 2006 P.S.E. certificates (VF-XF 85 Jumbo; the highest grade priced by SMQ is VF 80 at \$37,000.00). The P.S.E. population report lists one example in the grade of 85 and one in the grade of 90..... 18,500.00



555

- 556 ★★ **6c Columbian (235).** Mint N.H., deep rich color and sharp proof-like impression, perfectly centered with wide margins

EXTREMELY FINE GEM. A SUPERB MINT NEVER-HINGED EXAMPLE OF THE 6-CENT COLUMBIAN ISSUE.

With 2006 P.F. certificate (XF-Superb 95; SMQ \$1,800.00)..... 195.00

- 555 ★★ **5c Columbian (234).** Mint N.H., brilliant color and detailed impression, almost perfectly centered with Jumbo margins, Extremely Fine Gem, a gorgeous stamp, P.S.E. encapsulated (XF 90 Jumbo; SMQ \$700.00 as 90, \$2,050.00 as 95) 220.00



556



557

- 557 ★ **15c Columbian (238).** Original gum, barely hinged (appears Mint N.H.), incredibly wide balanced Jumbo margins and perfectly centered, Extremely Fine Gem, certainly one of the widest-margined, centered original-gum examples of this stamp extant, with 1987 P.F. (stating that it is genuine which implies Mint N.H.) and 2006 P.S.E. certificates (Superb 98 Jumbo, **the only example to receive this grade**; SMQ \$1,400.00 as 98)..... 240.00

- 558 ★★ **30c Columbian (239).** Mint N.H., brilliant color and crisp impression, almost perfectly centered with Jumbo margins

EXTREMELY FINE GEM. A SUPERB MINT NEVER-HINGED EXAMPLE OF THE 30-CENT COLUMBIAN ISSUE, WHICH HAS BEEN GRADED XF-SUPERB 95 JUMBO BY P.S.E.

P.S.E. encapsulated (XF-Superb 95 Jumbo; SMQ \$6,150.00 as 95, \$14,400.00 as 98) 750.00



558

- 559 ★★ **30c Columbian (239).** Mint N.H., deep rich color on bright paper, sharp proof-like impression, perfectly centered with wide and balanced margins

EXTREMELY FINE GEM. A SUPERB MINT NEVER-HINGED EXAMPLE OF THE 30-CENT COLUMBIAN ISSUE, WHICH HAS BEEN GIVEN THE GRADE OF XF-SUPERB 95 BY THE PHILATELIC FOUNDATION.

With 1984 P.F. certificate as block of four and 2006 P.F. certificate (XF-Superb 95; SMQ \$6,150.00)..... 750.00



559



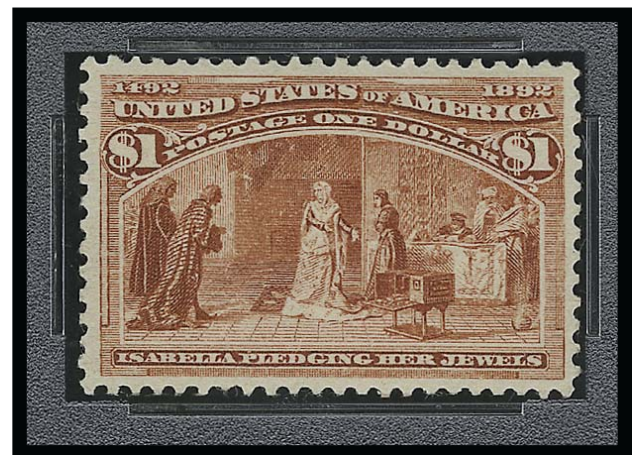
560

- 560 **50c Columbian (240).** Choice wide margins and wonderfully well-centered, intense color, New York grid duplex cancellation, Extremely Fine, with 2006 P.S.E. certificate (XF 90; SMQ \$395.00) 180.00

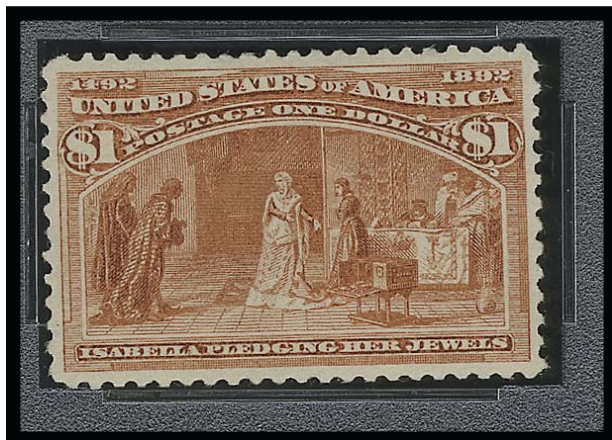
- 561 ★ **\$1.00 Columbian (241).** Original gum, barely hinged, rich color and proof-like impression, choice centering

EXTREMELY FINE ORIGINAL-GUM EXAMPLE OF THE \$1.00 COLUMBIAN ISSUE.

P.S.E. encapsulated (XF 90; SMQ \$2,200.00)..... 1,200.00



561



- 562 ★ **\$1.00 Columbian (241).** Original gum, lightly hinged, brilliant color, beautiful centering with well-proportioned margins

EXTREMELY FINE ORIGINAL-GUM EXAMPLE OF THE \$1.00 COLUMBIAN ISSUE.

P.S.E. encapsulated (XF 90; SMQ \$2,200.00) 1,200.00

562



563

- 563 ★ **\$2.00 Columbian (242).** Original gum, lightly hinged, exceptional centering and color, fresh and crisp

EXTREMELY FINE LIGHTLY-HINGED
EXAMPLE OF THE \$2.00 COLUMBIAN ISSUE.

With 2001 P.F. and 2004 P.S.E. certificates (XF 90; SMQ \$2,300.00) . 1,250.00

- 564 ★ **\$2.00 Columbian (242).** Original gum, lightly hinged, attractive margins and exceptionally well-centered, wonderful deep rich color

EXTREMELY FINE ORIGINAL-GUM EXAMPLE OF THE \$2.00 COLUMBIAN ISSUE.

With 2006 P.S.E. certificate (XF 90; SMQ \$2,300.00)..... 1,250.00



564



565

- 565 ★ **\$4.00 Columbian (244).** Original gum, lightly hinged, deep rich color, choice centering with well-balanced margins

EXTREMELY FINE ORIGINAL-GUM EXAMPLE OF THE \$4.00 COLUMBIAN ISSUE.

With 2006 P.F. certificate (XF 90; SMQ \$4,350.00)..... 2,600.00

- 566 ★ **\$5.00 Columbian (245).** Original gum, single hinge mark, intense shade and detailed impression, beautiful centering with wide and balanced margins

EXTREMELY FINE GEM. A GORGEOUS ORIGINAL-GUM EXAMPLE OF THE \$5.00 COLUMBIAN ISSUE.

With 2006 P.S.E. certificate (XF-Superb 95; SMQ \$8,700.00) 3,000.00



566

1894-98 BUREAU ISSUE

- 567 ★★ **2c Carmine Lake, Ty. I (249).** Mint N.H., beautiful dark shade and proof-like impression, well-centered with extra wide margins

EXTREMELY FINE GEM. A SUPERB MINT NEVER-HINGED EXAMPLE OF THE UNWATERMARKED 2-CENT TYPE I ISSUE IN THE CARMINE LAKE SHADE.

With 2003 P.F. and 2005 P.S.E. certificates (XF-Superb 95; SMQ \$4,200.00). Only one stamp has achieved a higher grade in the P.S.E. population report.... 450.00



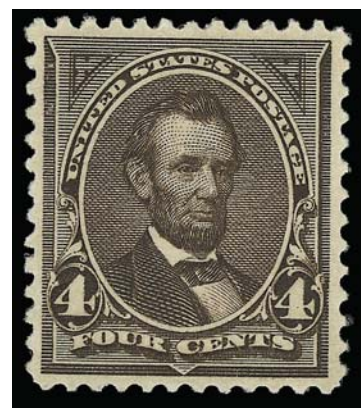
567



568

- 568 ★★ **2c Carmine Lake, Ty. I (249).** Mint N.H., radiant color, Jumbo margins, fresh and Extremely Fine, with 1998 P.F. and 2006 P.S.E. certificates (VF-XF 85 Jumbo; SMQ \$800.00 as 85, \$1,550.00 as 90) 450.00

- 569 ★★ **4c Dark Brown (254).** Mint N.H., unusually deep rich color and proof-like impression, well-proportioned margins, fresh and Extremely Fine, with 1992 and 2006 P.F. certificates (XF 90; SMQ \$1,450.00)..... 425.00



569



570

- 570 ★★ **50c Orange (260).** Mint N.H., uncharacteristically choice centering, vivid bright color

EXTREMELY FINE MINT NEVER-HINGED EXAMPLE OF THE 1894 50-CENT UNWATERMARKED BUREAU ISSUE. SURPRISINGLY DIFFICULT TO FIND IN SUCH CHOICE MINT NEVER-HINGED CONDITION.

With 2004 P.S.E. certificate (VF-XF 85; SMQ \$2,850.00) 1,500.00



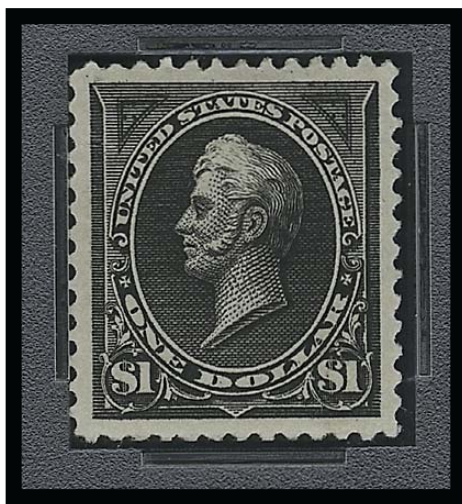
571

- 571 ★ **50c Orange (260).** Original gum, perfectly framed with enormous even margins all around, brilliant color and sharp impression

EXTREMELY FINE GEM. A SUPERB JUMBO EXAMPLE OF THE 50-CENT 1894 UNWATER-MARKED BUREAU ISSUE. A FANTASTIC STAMP.

The stamp offered here has huge margins and centering comparable to the example offered in our Sale 829 (lot 582). That stamp, which was in Mint N.H. condition, realized \$17,000 hammer.

With 2000 P.F. and 2004 P.S.E. certificateS (XF-Superb 95 Jumbo; SMQ \$2,500.00 as 95, \$4,300.00 as 98) 575.00

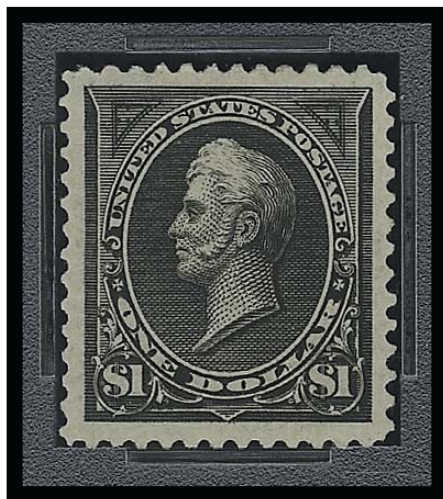


572

- 572 ★ **\$1.00 Black (261).** Original gum, lightly hinged, perfectly centered with enormous margins on all sides, intense shade and sharp proof-like impression

EXTREMELY FINE GEM. THIS MASSIVE ORIGINAL-GUM EXAMPLE OF THE \$1.00 TYPE I UNWATERMARKED BUREAU ISSUE HAS BEEN GRADED SUPERB 98 JUMBO BY PROFESSIONAL STAMP EXPERTS. THIS IS THE HIGHEST GRADE AWARDED TO DATE.

P.S.E. encapsulated (Superb 98 Jumbo; SMQ \$6,750.00 as 98). Only this stamp and one Mint N.H. example have been awarded this high grade to date. 1,100.00

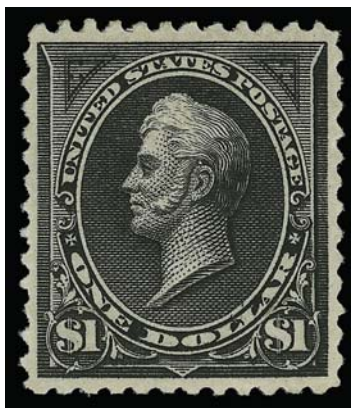


573

- 573 ★ **\$1.00 Black (261).** Original gum, single hinge mark at top, perfectly centered with massive margins all around, bright shade and detailed impression

EXTREMELY FINE GEM. A MAGNIFICENT ORIGINAL-GUM EXAMPLE OF THE \$1.00 TYPE I UNWATERMARKED BUREAU ISSUE. A STAMP OF TRULY MASSIVE PROPORTIONS.

P.S.E. encapsulated (XF-Superb 95 Jumbo; SMQ \$4,100.00 as 95, \$6,750.00 as 98). Only one Mint N.H. and one hinged stamp (offered in the previous lot) have graded higher in the P.S.E. population report. 1,100.00



574

- 574 ★ **\$1.00 Black, Ty. II (261A).** Original gum, lightly hinged, intense shade and impression, almost perfectly centered

EXTREMELY FINE. A BEAUTIFUL LIGHTLY-HINGED EXAMPLE OF THE \$1.00 TYPE II UNWATERMARKED BUREAU ISSUE.

With 2000 and 2006 P.S.E. certificates (XF 90; SMQ \$4,900.00) 2,300.00



575

- 575 ★★ **5c Chocolate (270).** Mint N.H. with part imprint at top, handsome wide margins and choice centering, lovely color on crisp white paper, Extremely Fine, with 2006 P.F. certificate (XF 90; SMQ \$385.00)..... 97.50

- 576 ★ **\$2.00 Dark Blue (277a).** Original gum, lightly hinged, fresh and bright with beautiful margins and almost perfectly centered, intense color and clear impression
EXTREMELY FINE. A BEAUTIFUL ORIGINAL-GUM EXAMPLE OF THE \$2.00 WATERMARKED BUREAU ISSUE IN THE DARK BLUE COLOR.
With 2006 P.S.E. certificate (XF 90; SMQ \$2,250.00).... 1,100.00



576



577

- 577 ★★ **1c Deep Green (279).** Mint N.H., outstanding wide balanced margins, fresh and crisp on white paper, Extremely Fine Gem, with 2006 P.S.E. certificate (XF-Superb 95; SMQ \$400.00)..... 22.00

- 578 ★★ **1c Deep Green (279).** Mint N.H., with plate no. 529 at bottom, beautifully centered and intense color, Extremely Fine, with 2006 P.S.E. certificate (XF 90; SMQ \$125.00) 22.00



578



579

- 579 ★ **10c Orange Brown, Ty. II (283).** Original gum, lightly hinged, marvelous centering, fresh, bright color, Extremely Fine, with 2006 P.S.E. certificate (XF 90; SMQ \$330.00) 150.00

- 580 ★ **15c Olive Green (284).** Original gum, fresh, incredibly well-centered, Extremely Fine, with 2006 P.F. certificate (XF 90; SMQ \$370.00) 160.00



580

TRANS-MISSISSIPPI ISSUE



581

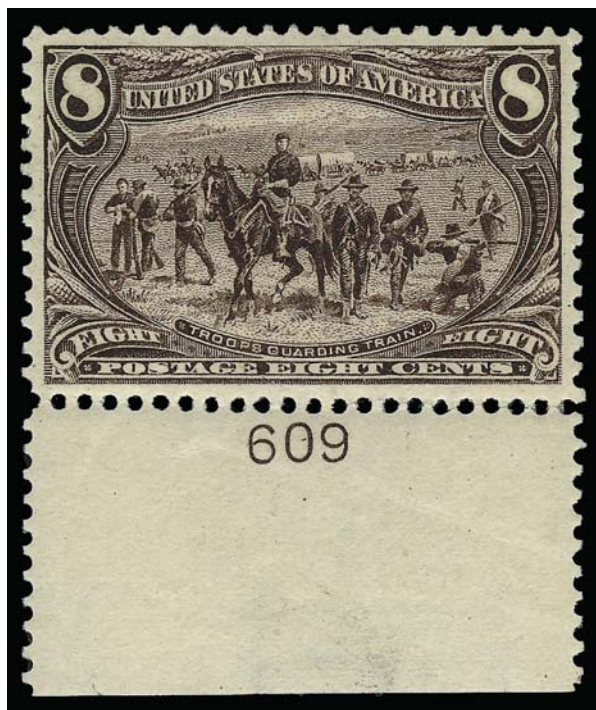
- 582 ★★ **4c Trans-Mississippi (287).** Mint N.H., perfectly centered with wide and balanced margins, brilliant color, long and full perforations all around

EXTREMELY FINE GEM. A MAGNIFICENT MINT NEVER-HINGED EXAMPLE OF THE 4-CENT TRANS-MISSISSIPPI ISSUE.

With 206 P.S.E. certificate (XF-Superb 95; SMQ \$3,400.00)..... 325.00



582



583

- 583 ★ **8c Trans-Mississippi (289).** Original gum, with bottom plate no. 609 selvage, very lightly hinged, remarkably wide margins for this value and perfectly centered, Extremely Fine Gem, with 2005 P.S.E. certificate (XF-Superb 95; SMQ \$550.00) ... 200.00

- 584 ★★ **10c Trans-Mississippi (290).** Mint N.H., intense color, wide margins, fresh and Extremely Fine, with 2006 P.S.E. certificate (XF 90; SMQ \$1,600.00) 425.00



584



585

- 585 ★★ **10c Trans-Mississippi (290).** Mint N.H., lovely margins and exceptionally well-centered, intense color on crisp white paper, Extremely Fine, with 1984 P.F. certificate for block of four (bottom right) and 2006 P.F. certificate as single (XF 90; SMQ \$1,600.00)..... 425.00

- 586 ★★ **10c Trans-Mississippi (290).** Mint N.H., attractive margins and almost perfectly centered, fresh and bright, strong color, Extremely Fine, with 2006 P.S.E. certificate (XF 90; SMQ \$1,600.00)... 425.00



586



587

587 ★★ **\$1.00 Trans-Mississippi (292).** Mint N.H., intense shade and proof-like impression on post-office fresh paper, perfectly centered with wide and balanced margins all around

EXTREMELY FINE GEM. A SUPERB MINT NEVER-HINGED EXAMPLE OF THE \$1.00 TRANS-MISSISSIPPI ISSUE. SCARCE IN SUCH PRISTINE CONDITION — THIS STAMP WAS AWARDED THE GRADE OF XF-SUPERB 95 BY THE PHILATELIC FOUNDATION.

With 1980 and 2005 P.F. certificates (XF-Superb 95; SMQ \$28,000.00). The P.S.E. has only certified five Mint N.H. at this grade and none higher; to date this is the only example graded 95 by the Philatelic Foundation. 3,250.00



588

588 ★★ **\$1.00 Trans-Mississippi (292).** Mint N.H., intense shade and sharp proof-like impression, beautiful centering with wide and balanced margins

EXTREMELY FINE. A GORGEOUS MINT NEVER-HINGED EXAMPLE OF THE \$1.00 TRANS-MISSISSIPPI ISSUE.

With 2006 P.S.E. certificate (XF 90; SMQ \$10,000.00) 3,250.00



589

- 589 ★ **\$2.00 Trans-Mississippi (293).** Original gum, barest trace of hinging, bright color and crisp impression, perfectly centered with wide and balanced margins
EXTREMELY FINE GEM. A SUPERB ORIGINAL-GUM EXAMPLE OF THE \$2.00 TRANS-MISSISSIPPI ISSUE, WHICH HAS BEEN GRADED XF-SUPERB 95 BY THE PHILATELIC FOUNDATION.
With 2006 P.F. certificate (XF-Superb 95; SMQ \$5,450.00)..... 2,100.00



590

- 590 ★ **\$2.00 Trans-Mississippi (293).** Original gum, lightly hinged, deep rich color and detailed impression, perfectly centered with wide margins
EXTREMELY FINE. A BEAUTIFUL ORIGINAL-GUM EXAMPLE OF THE \$2.00 TRANS-MISSISSIPPI ISSUE.
With 2006 P.F. certificate (XF 90; SMQ \$3,250.00)..... 2,100.00

PAN-AMERICAN ISSUE



- 591 ★★ **1c Pan-American (294).** Mint N.H., intense color, choice centering, fresh and Extremely Fine, with 2005 P.S.E. certificate (XF 90; SMQ \$130.00)..... 45.00
- 592 ★★ **2c Pan-American (295).** Mint N.H., incredibly wide margins and perfectly centered, strong colors, fresh and crisp, Extremely Fine Gem, with 2006 P.S.E. certificate (Superb 98; SMQ \$970.00) 40.00
- 593 ★★ **2c Pan-American (295).** Mint N.H., enormous Jumbo margins, brilliant colors, Extremely Fine Gem, a magnificent stamp, with copy of 2000 P.F. certificate for strip of four, with 2005 P.S.E. certificate (XF-Superb 95 Jumbo; SMQ \$330.00 as 95, \$970.00 as 98)..... 40.00
- 594 ★★ **2c Pan-American (295).** Mint N.H., deep rich color and proof-like impressions, vignette is perfectly centered in frame, Jumbo margins all around, Extremely Fine Gem, a superb stamp, with 2005 P.S.E. certificate (XF-Superb 95 Jumbo; SMQ \$330.00 as 95, \$970.00 as 98)..... 40.00
- 595 ★★ **2c Pan-American (295).** Mint N.H., beautiful wide margins and perfectly centered, beautiful colors, fresh and crisp, Extremely Fine Gem, with 2005 P.S.E. certificate (XF-Superb 95; SMQ \$330.00) 40.00
- 596 ★★ **4c Pan-American (296).** Mint N.H., bright colors and crisp impressions, choice centering with wide margins, fresh and Extremely Fine Gem, with 1996 P.F. certificate, with 2004 P.S.E. certificate (XF-Superb 95; SMQ \$940.00) 190.00
- 597 ★★ **4c Pan-American (296).** Mint N.H., wonderfully well-centered, fresh and bright, Extremely Fine, with 2006 P.S.E. certificate (XF 90; SMQ \$400.00)..... 190.00
- 598 ★ **4c Pan-American (296).** Incredibly wide margins and precisely centered, lightly hinged, seldom seen with wide margins and centered, Extremely Fine Gem, a superb stamp, with 2006 P.S.E. certificate (Superb 98; SMQ \$310.00)..... 85.00
- 599 ★ **5c Pan-American (297).** Wonderfully well-centered, small h.r., Extremely Fine, with 2006 P.F. certificate (XF 90; SMQ \$495.00)..... 95.00

1902-08 ISSUE



- 600 ★★ **1c Blue Green (300).** Mint N.H., uncharacteristically wide margins and essentially perfectly centered, beautiful color, Extremely Fine Gem, with 2005 P.F. certificate (XF-Superb 95; SMQ \$380.00) 27.50
- 601 ★★ **3c Bright Violet (302).** Mint N.H. with plate no. 3523 at right, wide margins and beautiful centering, Extremely Fine, especially choice for this 1902 value, with 2006 P.F. certificate (XF 90; SMQ \$430.00)..... 125.00
- 602 ★ **8c Violet Black (306).** Incredibly wide margins and with essentially perfect centering, lightly hinged, intensely colored on bright paper, Extremely Fine Gem, with 2006 P.S.E. certificate (XF-Superb 95; SMQ \$160.00) 45.00
- 603 ★★ **10c Pale Red Brown (307).** Mint N.H., brilliant color, perfectly centered, Extremely Fine, a gorgeous stamp, with 2001 P.F. certificate for block of four, with 2005 P.S.E. certificate (XF 90; SMQ \$530.00)..... 160.00
- 604 ★★ **13c Purple Black (308).** Mint N.H., choice wide margins and almost perfectly centered, fresh and crisp, Extremely Fine, with 2006 P.S.E. certificate (XF 90; SMQ \$370.00)..... 110.00
- 605 ★★ **13c Purple Black (308).** Mint N.H., lovely margins and almost perfectly centered, rich color, Extremely Fine, with 2004 P.S.E. certificate (XF 90; SMQ \$370.00) 110.00
- 606 ★ **13c Purple Black (308).** Exceptionally wide margins and perfectly centered, very lightly hinged, intense color, Extremely Fine Gem, with 2006 P.S.E. certificate (Superb 98; SMQ \$305.00) 50.00



607

- 607 ★★ **15c Olive Green (309).** Mint N.H. with **plate no. at bottom**, perfectly centered with enormous margins all around

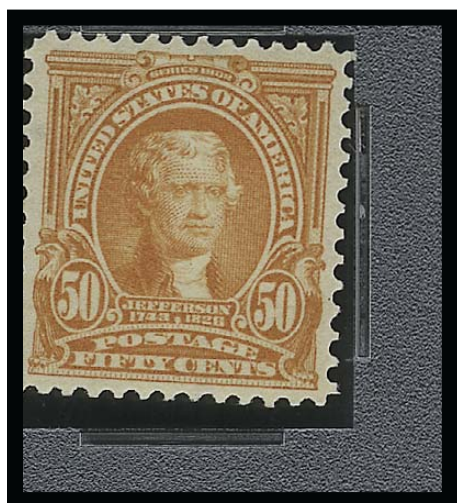
EXTREMELY FINE GEM. A MAGNIFICENT MINT NEVER-HINGED EXAMPLE OF THE 15-CENT 1902 ISSUE. A STUNNING STAMP.

With 1984 and 2002 P.F. certificates and 2005 P.S.E. certificate (XF-90 Jumbo; SMQ \$1,500.00 as 90, \$4,150.00 as 95)..... 450.00

- 608 ★★ **15c Olive Green (309).** Mint N.H., wonderful Jumbo margins and almost perfectly centered, strong color on fresh white paper, Extremely Fine, magnificent example in never-hinged Post Office condition, with 1978 and 1994 P.F. and 2006 P.S.E. certificates (XF 90 Jumbo; SMQ \$1,500 as 90, \$4,150.00 as 95) 450.00



608



609

- 609 ★★ **50c Orange (310).** Mint N.H., brilliant color, choice centering with well-balanced margins, long and full perforations all around

EXTREMELY FINE. A BEAUTIFUL MINT NEVER-HINGED EXAMPLE OF THE 50-CENT 1902 ISSUE

P.S.E. encapsulated (XF 90; SMQ \$4,000.00). Only two examples have graded higher than 90 in the P.S.E. population report. we see this as a solid 95 1,200.00

- 610 ★★ **\$2.00 Dark Blue (312)**. Mint N.H., deep rich color on bright paper, choice centering, long and full perforations all around

EXTREMELY FINE. A BEAUTIFUL MINT NEVER-HINGED EXAMPLE OF THE \$2.00 1902 ISSUE. SCARCE IN SUCH CHOICE CONDITION.

With 2002 P.F. and 2006 P.S.E. certificates (XF 90; SMQ \$6,850.00)..... 3,000.00



610



611

- 611 ★★ **\$5.00 Dark Green (313)**. Mint N.H., intense color, proof-like impression, well-balanced margins

EXTREMELY FINE. A RARE CENTERED MINT NEVER-HINGED EXAMPLE OF THE \$5.00 1902 ISSUE. THIS IS THE ONLY MINT NEVER-HINGED EXAMPLE TO DATE TO ACHIEVE A P.S.E. XF 90 GRADE, WHICH IS THE HIGHEST GRADE AWARDED TO DATE.

With 2005 P.S.E. certificate (XF 90; SMQ \$16,700.00)...
..... 7,000.00

- 612 ★ **\$5.00 Dark Green (313)**. Barest trace of hinging, deep rich color, perfect centering with wide and balanced margins

EXTREMELY FINE GEM. A SUPERB LIGHTLY-HINGED EXAMPLE OF THE \$5.00 1902 ISSUE. A WONDERFUL STAMP.

With 1987 P.F. and 2006 P.S.E. certificates (XF 90; SMQ \$4,200.00) 2,900.00



612



613



614

- 613 ★ **5c Blue, Imperforate (315).** Large even margins all around, crisp impression on bright paper, pencil notation on gum (not mentioned on accompanying certificate and possibly erasable), Extremely Fine, with 2006 P.S.E. certificate (XF-Superb 95; SMQ \$315.00)..... 240.00
- 614 ★★ **2c Carmine, Ty. II (319i).** Mint N.H., exceptional margins and centering, bright color, Extremely Fine, with 2005 P.S.E. certificate (XF 90; SMQ \$570.00) 160.00

LOUISIANA PURCHASE ISSUE



615

- 615 ★★ **3c Louisiana Purchase (325).** Mint N.H., perfectly centered with balanced margins, rich color and proof-like impression
- EXTREMELY FINE MINT NEVER-HINGED
EXAMPLE OF THE 3-CENT LOUISIANA
PURCHASE ISSUE.
- With 2000 P.F. and 2005 P.S.E. certificates
(XF-Superb 95; SMQ \$1,800.00).. 200.00

- 616 ★★ **3c Louisiana Purchase (325).** Mint N.H., very attractive margins and almost perfectly centered, intense color, Extremely Fine, with 2006 P.S.E. certificate (XF 90; SMQ \$640.00) 200.00



616



617

618

619

- 617 ★★ **3c Louisiana Purchase (325).** Mint N.H., attractive margins and exceptionally well-centered, rich color and fine impression, Extremely Fine, with photocopy of 2001 P.F. certificate for a block of four (bottom right) and 2006 P.S.E. certificate as single (XF 90; SMQ \$640.00) 200.00
- 618 ★★ **3c Louisiana Purchase (325).** Mint N.H., exceptionally wide margins and handsome centering, wonderfully fresh and Extremely Fine, with 2006 P.F. certificate (XF 90; SMQ \$640.00) 200.00
- 619 ★★ **10c Louisiana Purchase (327).** Mint N.H., fabulous margins and almost perfectly centered, bright and crisp, Extremely Fine, truly exceptional, with 1998 P.S.E. certificate for block of four (top left stamp) and 2005 P.S.E. certificate as single (XF 90; SMQ \$1,100.00)..... 400.00

JAMESTOWN ISSUE



620

621

622

- 620 ★★ **1c Jamestown (328).** Mint N.H., incredibly wide balanced margins which are very uncharacteristic of this tightly-spaced commemorative issue, extraordinarily beautiful deep rich color
EXTREMELY FINE GEM. A SUPERB MINT NEVER-HINGED EXAMPLE OF THE ONE-CENT JAMESTOWN ISSUE IN THE FINEST CONDITION ATTAINABLE. A TRUE CONDITION RARITY.
The highest grade awarded by P.S.E. to any Mint N.H. example of this stamp is 95J. The example offered here, with rich color and proof-like impression, Mint N.H. gum, bright and fresh paper and perfect centering with wide and balanced margins, is truly rare.
With 2006 P.F. certificate (Superb 98; SMQ \$1,800.00) 65.00
- 621 ★★ **1c Jamestown (328).** Mint N.H., intense color and impression, wide margins for this difficult issue, Extremely Fine, with 1998 P.F. certificate, with 2005 P.S.E. certificate (XF-Superb 95; SMQ \$660.00) 65.00
- 622 ★★ **1c Jamestown (328).** Mint N.H., choice wide margins and almost perfectly centered, deep color, Extremely Fine, with 2005 P.F. certificate (XF 90; SMQ \$255.00)..... 65.00



623

- 623 ★★ **2c Jamestown (329).** Mint N.H., brilliant color on bright paper, Extremely Fine Gem, ex Piedmont, with 1999 and 2000 P.F. certificates, with 2005 P.S.E. certificate (XF-Superb 95; SMQ \$800.00) 75.00

- 624 ★★ **5c Jamestown (330).** Mint N.H., almost perfectly centered, fresh and crisp intense color, Extremely Fine, with 1996 P.F. certificate for block of four (top left) and 2006 P.S.E. certificate for single (XF 90; SMQ \$1,050.00)..... 325.00



624



625

- 625 ★ **5c Jamestown (330).** Exceptionally wide margins for this typically narrow margined issue and almost perfectly centered, lightly hinged, intense color on crisp white paper, Extremely Fine Gem, with 2005 P.F. certificate (XF-Superb 95; SMQ \$410.00) 150.00

- 626 ★ **5c Jamestown (330).** Lightly hinged, exceptionally nice margins for this notoriously small margined issue, incredibly well-centered, Extremely Fine Gem, with 2006 P.S.E. certificate (XF-Superb 95; SMQ \$410.00)..... 150.00



626



627

- 627 ★ **5c Jamestown (330).** Lightly hinged, attractive margins and essentially perfectly centered, fresh, Extremely Fine, with 2006 P.F. certificate (XF 90; SMQ \$215.00) 150.00

WASHINGTON-FRANKLIN ISSUES



628



629

- 628 **1c Green (331).** Huge Jumbo margins, almost perfectly centered, strong color and neat machine cancel, Extremely Fine Gem, with 2006 P.S.E. certificate (XF 90 Jumbo; SMQ \$19.00 as 90, \$43.00 as 95)..... 0.40
- 629 ★★ **13c Blue Green (339).** Mint N.H. with part imprint at bottom, incredibly well-centered, fresh and crisp, Extremely Fine Gem, with 2006 P.F. certificate (XF-Superb 95; SMQ \$1,050.00) 90.00



630

- 630 ★ **5c Blue, Coil (351).** Guide line pair, bottom stamp Mint N.H., top stamp very lightly hinged, deep rich color and proof-like impression

EXTREMELY FINE GEM. A GORGEOUS GUIDE LINE PAIR OF THE 5-CENT 1909 VERTICAL COIL.

With 1976, 1999 and 2006 P.F. certificates (XF-Superb 95; SMQ \$2,750.00 as hinged) 1,250.00

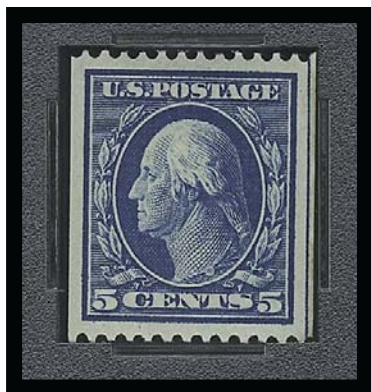
- 631 ★★ **5c Blue, Coil (351).** Mint N.H. pair, choice centering beautiful intense shade and detailed impression

EXTREMELY FINE GEM. AN OUTSTANDING GUIDE LINE PAIR OF THE 5-CENT PERF 12 DOUBLE-LINE WATERMARKED VERTICAL COIL, WHICH HAS BEEN AWARDED THE GRADE OF SUPERB 98 BY P.S.E..

With 2001 P.F. and 2004 P.S.E. certificates (Superb 98; SMQ \$5,750.00)..... 1,000.00



631



632

- 632 ★★ **5c Blue, Coil (351).** Mint N.H., perfectly centered with wide and balanced margins all around, rich color and proof-like impression, Extremely Fine, P.S.E. encapsulated (XF 90 Jumbo; SMQ \$920.00 as 90, \$1,700.00 as 95) 375.00

- 633 ★★ **1c Green, Coil (352).** Mint N.H. pair with 2mm spacing, deep rich color and proof-like impression, each stamp with mathematically perfect centering

EXTREMELY FINE GEM. A SUPERB MINT NEVER-HINGED PAIR OF THE ONE-CENT HORIZONTAL 1909 COIL ISSUE.

With 1999 P.F. and 2005 P.S.E. certificates (XF 90; SMQ \$1,100.00)..... 550.00



633

- 634 ★ **1c Green, Coil (352).** Pair with 3mm spacing, lightly hinged, enormous margins, Extremely Fine Gem, with 1994 and 2006 P.F. certificates (XF-Superb 95; SMQ \$630.00) 235.00

- 635 ★ **2c Carmine, Coil (353).** Pair with 3mm spacing, described on accompanying P.F. certificate as previously hinged but we see no evidence of any hinging, brilliant color, perfect centering with enormous margins, Extremely Fine Gem, a superb pair in every respect, with 1999 P.F. certificate and 2005 P.S.E. certificate (Superb-98 Jumbo; SMQ \$880.00 as 98, which is the highest grade priced in the guide)..... 235.00



634

- 636 ★★ **4c Orange Brown, Coil (354).** Mint N.H., radiant color, perfectly centered with Jumbo margins all around

EXTREMELY FINE. A BEAUTIFUL MINT NEVER-HINGED EXAMPLE OF THE 4-CENT HORIZONTAL COIL, SCOTT 354.

P.S.E. encapsulated (XF 90 Jumbo; SMQ \$1,100.00 as 90, \$2,050.00 as 95). This is the highest grade awarded to date for any Mint N.H. single. 475.00

- 637 ★ **4c Orange Brown, Coil (354).** Jumbo margins all around, lightly hinged, radiant color, Extremely Fine Gem, with 2004 P.F. certificate for pair and 2006 P.F. certificate (XF-Superb 95 Jumbo; SMQ \$510.00 as 95, \$710.00 as 98)..... 220.00



635



636



637



638

638 ★ **10c Yellow, Coil (356).** Pair, radiant color, choice centering for this difficult issue

EXTREMELY FINE PAIR OF THE RARE 10-CENT 1909 HORIZONTAL COIL ISSUE.

According to Johl (Volume 1, page 181), only 10,000 of this coil were issued. They were made especially for a New York firm to send out advertising samples, similar to the 3c Orangeburg coil. Only a few rolls were sold to the firm, and the remaining rolls were distributed to some of the larger post offices across the country. Dealers acquired several rolls, but as most collectors of the time did not collect coils many were used and destroyed.

With 1981, 1999 and 2005 P.F. certificates (XF 90; SMQ \$10,500.00)..... 6,750.00



639

- 639 ★ **10c Yellow, Bluish (364).** Single light hinge mark, intense color on deeply blued paper, unusually choice centering for this difficult issue

EXTREMELY FINE. A STUNNING ORIGINAL-GUM EXAMPLE OF THE 10-CENT ON BLuish PAPER. SCARCE IN SUCH CHOICE CONDITION.

With 2006 P.F. certificate (XF 90; SMQ \$3,050.00)
 1,850.00

- 640 ★ **2c Lincoln, Bluish (369).** Amazingly wide balanced margins of near Jumbo proportions and very lightly hinged, fresh and bright, Extremely Fine Gem, a fabulous example, with 2006 P.S.E. certificate (Superb 98; SMQ \$495.00), this is the only example to receive this high grade to date..... 225.00



640



641

- 641 ★★ **3c Deep Violet (376).** Mint N.H., fabulous Jumbo margins and almost precise centering as well, delicate color, Extremely Fine, with 2004 P.S.E. certificate (XF 90 Jumbo; SMQ \$155.00 as 90, \$510.00 as 95)... 45.00

- 642 ★★ **4c Brown (377).** Mint N.H., choice wide margins and exceptional centering, strong color on crisp white paper, Extremely Fine, with 2006 P.F. certificate (XF 90; SMQ \$255.00)..... 67.50

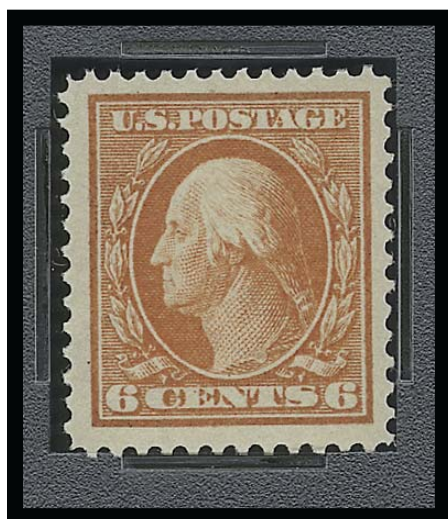


642

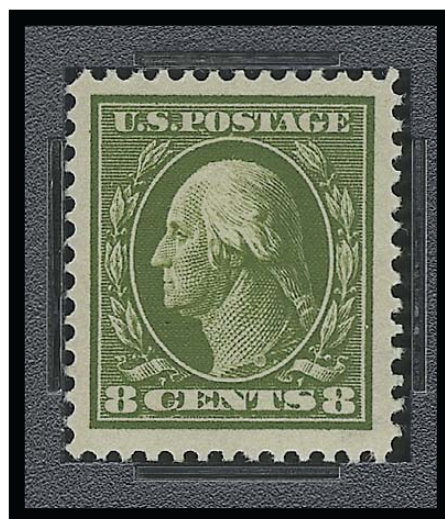


643

- 643 **4c Brown (377).** Huge Jumbo margins and essentially perfectly centered, neat 1914 circular datestamp, fresh color, Extremely Fine Gem, with 2006 P.F. certificate (XF-Superb 95 Jumbo; SMQ \$50.00 as 95, \$120.00 as 98)..... 1.00



644



645

- 644 ★★ **6c Red Orange (379).** Mint N.H., vibrant color, perfectly centered with Jumbo margins, Extremely Fine Gem, P.S.E. encapsulated (XF 90 Jumbo; SMQ \$290.00 as 90, \$910.00 as 95)..... 80.00
- 645 ★ **8c Olive Green (380).** Barest trace of hinging, rich color and intense impression, Jumbo margins, Extremely Fine, P.S.E. encapsulated (XF 90 Jumbo; SMQ \$205.00 as 90, \$355.00 as 95)..... 115.00



646



647



648

- 646 ★ **10c Yellow (381).** Huge Jumbo margins and incredibly well-centered, lightly hinged, vivid color, Extremely Fine Gem, with 1980 P.F. and 2005 P.S.E. certificates (XF-Superb 95 Jumbo; SMQ \$335.00 as 95, \$680.00 as 98)..... 105.00
- 647 ★★ **15c Pale Ultramarine (382).** Mint N.H., brilliant color, perfectly centered with wide margins all around
 EXTREMELY FINE GEM. A SUPERB MINT NEVER-HINGED EXAMPLE OF THE 15-CENT 1910 WASHINGTON ISSUE IN THE FINEST CONDITION ATTAINABLE. A REMARKABLE STAMP IN TERMS OF COLOR, CENTERING, SIZE OF MARGINS, FRESHNESS OF PAPER AND GUM.
 With 1998 P.F. certificate and 2005 P.S.E. certificate (XF-Superb 95; SMQ \$4,100.00). Only one Mint N.H. stamp has achieved a higher grade to date in the P.S.E. population report..... 625.00
- 648 ★ **15c Pale Ultramarine (382).** Huge margins with **plate no. at bottom**, lightly hinged, radiant color, Extremely Fine Gem, a beautiful stamp, with 2000 P.F. certificate and 2005 P.S.E. certificate (Superb 98; SMQ \$1,600.00), this is the highest grade awarded to date for No. 382 in any condition..... 275.00



649

- 649 ★ **2c Carmine, Coil (388).** Pair with 2mm spacing, barest trace of hinging, brilliant color, well-balanced margins

EXTREMELY FINE EXAMPLE OF THE 2-CENT 1911 PERF 12 HORIZONTAL COIL, SCOTT 388.

With 1980 P.F. and 2003 P.S.E. certificates (VF-XF 85; SMQ \$4,050.00)..... 3,250.00

- 650 **1c Green, Coil (390).** Used pair, wonderfully well-centered, rich color, perfect 1914 New York machine cancellation, Extremely Fine, with 2006 P.F. certificate (XF 90; SMQ \$100.00)..... 37.50



650



651

- 651 ★★ **1c Green, Coil (392).** Mint N.H. guide line pair, intense color and impression, almost perfectly centered with wide and balanced margins, Extremely Fine Gem, with 2000 P.F. certificate, with 2005 P.S.E. certificate (XF 90; SMQ \$840.00)..... 425.00

- 652 ★★ **2c Carmine, Coil (393).** Mint N.H., perfectly centered with wide margins, brilliant color, Extremely Fine Gem, with 2000 and 2006 P.F. certificates (XF-Superb 95; SMQ \$450.00)..... 47.00



652

PANAMA-PACIFIC ISSUE

- 653 ★★ **2c Panama-Pacific (398).** Mint N.H., almost perfectly centered with wide balanced margins, rich color, Extremely Fine Gem, with 2005 P.F. certificate (XF-Superb 95; SMQ \$370.00)..... 45.00



653



654

- 654 ★★ **2c Panama-Pacific (398).** Mint N.H., brilliant color, wide margins, fresh and Extremely Fine, with 2003 P.S.E. certificate (XF 90; SMQ \$125.00)..... 45.00

- 655 ★★ **5c Panama-Pacific (399).** Mint N.H., wide balanced margins of near Jumbo proportions, fresh and crisp, lovely color, Extremely Fine Gem, with 2006 P.F. certificate (XF-Superb 95; SMQ \$1,200.00)..... 180.00



655



656

- 656 ★★ **5c Panama-Pacific (399).** Mint N.H., choice margins and beautifully centered, lovely color, Extremely Fine, with 2006 P.F. certificate (XF 90; SMQ \$445.00) 180.00



657

- 657 ★★ **1c Panama-Pacific, Perf 10 (401).** Mint N.H., essentially perfectly centered, rich color, fine impression, Extremely Fine, with 2006 P.F. certificate (XF 90; SMQ \$160.00) 60.00

- 658 ★★ **2c Panama-Pacific, Perf 10 (402).** Mint N.H., perfectly centered, beautiful pastel color on crisp paper, Extremely Fine Gem, with 2006 P.F. certificate (XF-Superb 95; SMQ \$1,350.00) 175.00



658

WASHINGTON-FRANKLIN ISSUES



659

- 659 ★★ **7c Black (407).** Mint N.H., intense shade and sharp proof-like impression on bright paper, unusually wide and balanced margins, Extremely Fine Gem, a stunning stamp, with 2006 P.S.E. certificate (XF-Superb 95; SMQ \$1,550.00), only two stamps have graded higher than 95 in the P.S.E. population report 175.00

- 660 ★★ **7c Black (407).** Mint N.H., sharp proof-like impression on brilliant paper, Jumbo margins, Extremely Fine Gem, a huge stamp, with 1996 P.F. and 2004 P.S.E. certificates (XF 90 Jumbo; SMQ \$570.00 as 90, \$1,550.00 as 95) 175.00

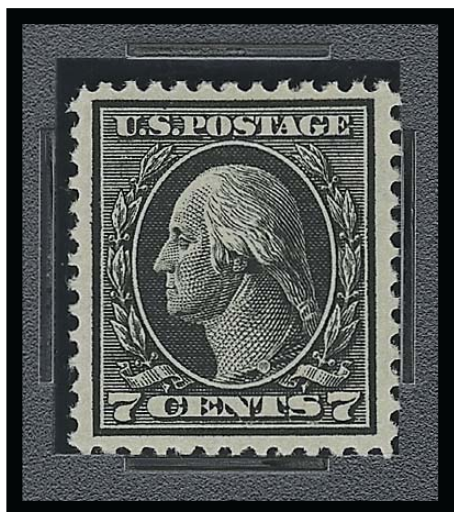


660

- 661 ★★ **7c Black (407).** Mint N.H., beautifully centered and wonderful intense color, Extremely Fine, with 2006 P.F. certificate (XF 90; SMQ \$570.00) 175.00



661



662

- 662 ★★ **7c Black (407).** Mint N.H., detailed impression, almost perfectly centered, fresh and Extremely Fine, P.S.E. encapsulated (XF 90; SMQ \$570.00) 175.00

- 663 **1c Green, Coil (412).** Guide line pair, deep rich color, wide margins, light strikes of 1913 duplex cancels, Extremely Fine, scarce in such choice used condition, with 2005 P.S.E. certificate (XF 90; SMQ \$360.00). 105.00



663



664

- 664 ★★ **30c Orange Red (420).** Mint N.H., essentially perfectly centered, outstanding deep rich color on bright white paper, Extremely Fine, with 2006 P.F. certificate (XF 90; SMQ \$825.00) 260.00



665

- 665 ★★ **50c Violet (422).** Mint N.H., remarkable centering with unusually wide margins at sides, brilliant color on bright paper

EXTREMELY FINE. A SUPERB EXAMPLE OF THE 1912 50-CENT FRANKLIN ON DOUBLE-LINE WATERMARKED PAPER.

According to Johl (Vol. 1, page 203), Scott 422 was issued more than two years prior to the release of Scott 421. A supply of the double-line watermark paper was still on hand, and was used to fill the need for higher denomination stamps.

With 1998 P.F. and 2005 P.S.E. certificates (XF 90; SMQ \$1,600.00), worthy of 95 points 550.00



- 666 ★★ **4c Brown (427).** Mint N.H. with sheet margin at top, wonderful margins and essentially perfectly centered, Extremely Fine, with 2006 P.S.E. certificate (XF 90; SMQ \$290.00) 75.00
- 667 ★★ **5c Blue (428).** Mint N.H. with **selvage at bottom**, deep rich color, Jumbo margins, Extremely Fine, with 2005 P.S.E. certificate (XF 90 Jumbo; SMQ \$290.00 as 90, \$880.00 as 95) 75.00
- 668 ★★ **7c Black (430).** Mint N.H., lovely centering, intense color on crisp white paper, Extremely Fine, with 2006 P.S.E. certificate (XF 90; SMQ \$680.00) 200.00
- 669 ★ **11c Dark Green (434).** Very lightly hinged, magnificent color, margins and centering, Extremely Fine Gem, with 2005 P.S.E. certificate (Superb 98; SMQ \$210.00) 25.00
- 670 ★★ **11c Dark Green (434).** Mint N.H., perfectly centered and with wonderful deep rich color, fresh, Extremely Fine Gem, with 2006 P.F. certificate (XF-Superb 95; SMQ \$620.00) 52.50
- 671 ★★ **20c Ultramarine (438).** Mint N.H., brilliant color on bright paper, almost perfectly centered, post-office fresh and Extremely Fine, with 1998 and 2006 P.F. certificates ((XF 90; SMQ \$1,350.00) 475.00

- 672 ★★ **30c Orange Red (439).** Mint N.H., nearly perfect centering, intense color on bright paper

EXTREMELY FINE. A SUPERB MINT NEVER-HINGED EXAMPLE OF THE 30-CENT 1914 ISSUE.

With 2000 P.F. and 2005 P.S.E. certificates (XF 90; SMQ \$1,550.00)..... 575.00



672



673



674

- 673 ★ **2c Carmine, Coil (444).** Guide line pair, fresh, lightly hinged, magnificent margins and centering, Extremely Fine Gem line pair, with 2005 P.S.E. certificate (XF-Superb 95; SMQ \$800.00) 300.00

- 674 ★ **3c Violet, Coil (445).** Pair, barest trace of hinging, rich color, wide margins, fresh and Extremely Fine, P.S.E. encapsulated (XF 90; SMQ \$900.00)..... 575.00



675

- 675 ★ **4c Brown, Coil (446).** Guide line pair, single hinge mark at top, perfectly centered with wide and perfectly balanced margins, detailed impression

EXTREMELY FINE GEM GUIDE LINE PAIR OF THE 4-CENT HORIZONTAL COIL, SCOTT 446.

With 2006 P.S.E. certificate (Superb 98; SMQ \$2,300.00). This is the highest grade awarded to date to this Scott number in any condition..... 750.00



- 676 ★★ **5c Blue, Coil (447).** Mint N.H. guide line pair, intense color on bright paper, choice centering, fresh and Extremely Fine, with 1999 P.F. certificate, with 2006 P.S.E. certificate (XF 90; SMQ \$1,050.00) 550.00
- 677 ★★ **1c Green, Coil (452).** Mint N.H. pair, wide margins and beautifully centered, Extremely Fine, with 2005 P.S.E. certificate (XF 90; SMQ \$100.00) 55.00
- 678 ★★ **4c Brown, Coil (457).** Mint N.H. pair, beautifully centered, fresh and bright, Extremely Fine, with 2006 P.F. certificate (XF 90; SMQ \$225.00) 130.00
- 679 ★★ **5c Blue, Coil (458).** Mint N.H. pair, essentially perfectly centered, strong color, Extremely Fine, with 2004 P.F. and 2005 P.S.E. certificates (XF 90; SMQ \$630.00) 160.00



680

- 680 ★★ **2c Carmine, Ty. I, Imperforate Coil (459).** Mint N.H. joint line pair **without the customary crease between stamps**, beautiful large margins, fresh, vivid color
EXTREMELY FINE GEM. PARTICULARLY DESIRABLE JOINT LINE PAIR IN THIS STELLAR CONDITION.
With 2005 P.F. certificate (XF-Superb 95; SMQ \$2,500.00) 2,500.00

- 681 ★★ 2c Carmine, Ty. I, Imperforate Coil (459). Mint N.H. joint line pair **without the customary crease between stamps**, large margins and very well-centered, Extremely Fine, with 2005 P.F. certificate (XF 90; SMQ \$2,100.00) 2,500.00



681



682

- 682 ★★ 2c Carmine, Ty. I, Imperforate Coil (459). Mint N.H. pair, beautiful large margins and perfectly centered, fresh and crisp, Extremely Fine Gem pair, with 2005 P.S.E. certificate (Superb 98; SMQ \$920.00) 750.00

- 683 ★★ 2c Carmine, Ty. I, Imperforate Coil (459). Mint N.H. pair, choice balanced margins, Extremely Fine Gem pair, with 2005 P.S.E. certificate (XF-Superb 95; SMQ \$820.00) 750.00



683



684

- 684 ★★ 2c Carmine, Ty. I, Imperforate Coil (459). Mint N.H. pair, choice margins and centering, Extremely Fine, with 2005 P.S.E. certificate (XF 90; SMQ \$750.00) 750.00



685

- 685 ★★ **6c Red Orange (468).** Mint N.H., vibrant color as fresh as the day it was printed, choice centering with wide and balanced margins

EXTREMELY FINE MINT NEVER-HINGED EXAMPLE OF THE 6-CENT 1916 ISSUE.

With 1986 P.F. and 2006 P.S.E. certificates (XF-Superb 95; SMQ \$1,800.00). Only one example has graded higher in the P.S.E. population report 200.00

- 686 ★★ **6c Red Orange (468).** Mint N.H., precise centering and balanced margins, bright color

EXTREMELY FINE GEM. A SUPERB MINT NEVER-HINGED EXAMPLE OF THE 6-CENT 1916 ISSUE, SCOTT 468.

With 2001 P.F. certificate for block of four and 2005 P.S.E. certificate for single (XF-Superb 95; SMQ \$1,800.00) 200.00



686



687

688

689

690

- 687 ★★ **11c Dark Green (473).** Mint N.H. with plate no. 7504 at bottom, beautiful balanced margins and marvelous color, Extremely Fine Gem, with 2006 P.S.E. certificate (XF-Superb 95; SMQ \$960.00) 85.00

- 688 ★★ **11c Dark Green (473).** Mint N.H., beautiful large balanced margins, wonderful deep intense color on crisp paper, Extremely Fine Gem, magnificent condition, with 2006 P.F. certificate (XF-Superb 95; SMQ \$960.00) 85.00

- 689 ★★ **11c Dark Green (473).** Mint N.H., exceptionally well-centered, magnificent deep rich color on crisp paper, Extremely Fine, with 2005 P.F. certificate (XF 90; SMQ \$320.00) ... 85.00

- 690 ★ **15c Gray (475).** Exceptionally well-centered, lightly hinged, attractive soft shade, Extremely Fine, with 2006 P.F. certificate (XF 90; SMQ \$315.00) 200.00

- 691 ★★ **50c Light Violet (477).** Mint N.H., attractive margins and centering, fresh, bright and crisp
EXTREMELY FINE. A CONDITION RARITY IN THIS CHOICE NEVER-HINGED POST OFFICE CONDITION.
With 2006 P.F. certificate (XF 90; SMQ \$5,950.00) 2,400.00



691



692

- 692 ★★ **50c Light Violet (477).** Mint N.H., pretty shade on crisp paper, choice centering with wide margins
EXTREMELY FINE. A BEAUTIFUL MINT NEVER-HINGED EXAMPLE OF THE 50-CENT PERF 10 FRANKLIN STAMP ON UNWATERMARKED PAPER.
With 2002 and 2004 P.S.E. certificates (XF 90; SMQ \$5,950.00) 2,400.00

- 693 ★★ **\$5.00 Light Green (480).** Mint N.H., deep rich color on post-office fresh paper, perfectly centered with wide and balanced margins all around
EXTREMELY FINE GEM. A SUPERB MINT NEVER-HINGED EXAMPLE OF THE \$5.00 PERF 10 MARSHALL ISSUE. ONE OF ONLY TWO EXAMPLES TO ACHIEVE THE LOFTY GRADE OF SUPERB 98. A GREAT CONDITION RARITY.
With 2005 P.S.E. certificate (Superb 98; SMQ \$3,200.00)..... 450.00



693



694

695

696

- 694 ★★ **2c Carmine, Ty. III, Coil (492).** Mint N.H. pair, essentially perfectly centered, fresh, strong color, Extremely Fine Gem, with 2003 P.F. and 2005 P.S.E. certificates (XF-Superb 95; SMQ \$160.00)..... 45.00
- 695 ★★ **5c Blue, Coil (496).** Mint N.H. joint line pair, brilliant color, perfectly centered throughout, Extremely Fine Gem, with 2006 P.S.E. certificate (XF-Superb 95; SMQ \$245.00)..... 65.00
- 696 ★★ **5c Blue (504).** Mint N.H., fabulous balanced margins with strong color on crisp paper, Extremely Fine Gem, with 2006 P.S.E. certificate (XF-Superb 95; SMQ \$220.00). 19.00



697

- 697 ★★ **5c Rose, Error (505).** Mint N.H., brilliant color on bright paper, perfectly centered with extra wide margins on all sides

EXTREMELY FINE GEM. A SUPERB STAMP IN EVERY RESPECT. THE PERFORATED 5-CENT ERROR STAMPS — SCOTT 467 AND 505 — ARE VERY DIFFICULT TO OBTAIN IN SUCH SUPERB CONDITION.

With 2005 P.S.E. certificate (Superb 98; SMQ \$8,600.00). Only one stamp has graded higher in the P.S.E. population report. 675.00

- 698 ★ **5c Rose, Error (505).** Imperceptibly hinged, magnificent margins and centering, lovely bright color, Extremely Fine Gem, with 2004 P.S.E. certificate (XF-Superb 95; SMQ \$830.00) 350.00



698

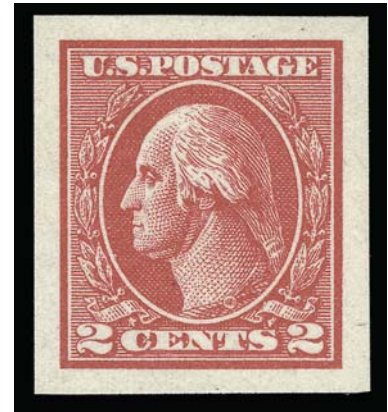


- 699 ★★ **6c Red Orange (506)**. Mint N.H., uncharacteristically wide margins of near Jumbo proportions and virtually perfectly centered, Extremely Fine Gem, with 2006 P.S.E. certificate (XF-Superb 95; SMQ \$285.00) 26.00
- 700 ★★ **7c Black (507)**. Mint N.H., perfectly centered with even margins all around, intense color on bright paper, Extremely Fine Gem, with 2005 P.S.E. certificate (XF-Superb 95; SMQ \$580.00) 57.50
- 701 ★★ **7c Black (507)**. Mint N.H. with plate no. 8897 at top, beautifully centered and with intense color, Extremely Fine, with 2006 P.F. certificate (XF 90; SMQ \$190.00)... 57.50
- 702 ★★ **11c Light Green (511)**. Mint N.H., beautiful color, almost perfectly centered, Extremely Fine, with 2006 P.S.E. certificate (XF 90; SMQ \$65.00) 19.00
- 703 ★★ **15c Gray (514)**. Mint N.H., plate no. 7927 at right, choice margins and essentially perfect centering, strong color, Extremely Fine Gem, with 2005 P.S.E. certificate (XF-Superb 95; SMQ \$740.00) 77.50
- 704 ★★ **30c Orange Red (516)**. Mint N.H., choice margins and exceptional centering, wonderful deep color, Extremely Fine, with 2005 P.S.E. certificate (XF 90; SMQ \$240.00)... 80.00
- 705 ★★ **\$1.00 Violet Brown (518)**. Mint N.H., brilliant color, choice centering with unusually wide margins, Extremely Fine, P.S.E. encapsulated (XF 90; SMQ \$310.00)..... 105.00



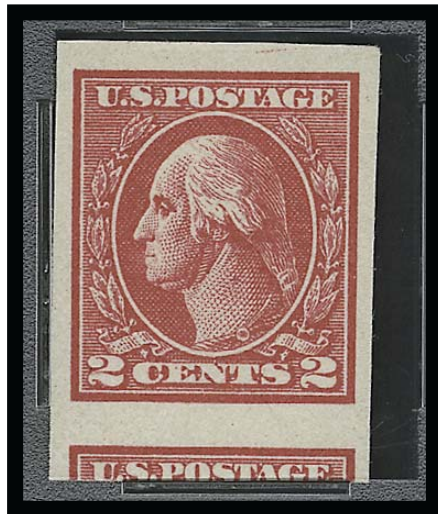
706

- 706 ★★ **\$2.00 Orange Red & Black (523).** Mint N.H. with top half arrow marker selva, wonderfully well-centered, fresh and bright, Extremely Fine, with 2006 P.F. certificate (XF 90; SMQ \$2,200.00).....
..... 1,300.00

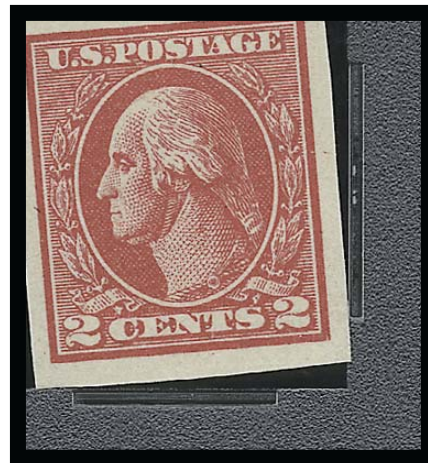


707

- 707 ★★ **2c Carmine, Ty. VII, Imperforate (534B).** Mint N.H., brilliant color on bright paper, huge margins all around, pencil notation on gum notes this came from sheet with plate no. 12280
EXTREMELY FINE. A BEAUTIFUL EXAMPLE OF THE 2-CENT TYPE VII IMPERFORATE ISSUE.
With 2006 P.S.E. certificate (XF-Superb 95; SMQ \$5,000.00 as Mint N.H.). Scott Retail as Mint N.H. 3,600.00



708



709

- 708 ★★ **2c Carmine, Ty. VII, Imperforate (534B).** Mint N.H., large to huge margins all around incl. significant portion of adjoining stamp at bottom, brilliant color
EXTREMELY FINE MINT NEVER-HINGED EXAMPLE OF THE 2-CENT TYPE VII IMPERFORATE ISSUE.
P.S.E. encapsulated (XF 90; SMQ \$4,200.00)..... 3,600.00
- 709 ★★ **2c Carmine, Ty. VII, Imperforate (534B).** Mint N.H., brilliant color, large and balanced margins all around
EXTREMELY FINE MINT NEVER-HINGED EXAMPLE OF THE 2-CENT TYPE VII IMPERFORATE ISSUE.
P.S.E. encapsulated (XF 90; SMQ \$4,200.00)..... 3,600.00



- 710 ★★ **3c Violet (537)**. Mint N.H., choice wide margins and perfectly centered, excellent color, Extremely Fine Gem, with 2006 P.S.E. certificate (XF-Superb 95; SMQ \$145.00). 20.00

1922 AND LATER ISSUES

- 711 ★★ **3c Violet (555)**. Mint N.H., uncharacteristically huge Jumbo margins, choice color on fresh white paper, Extremely Fine, with 2006 P.S.E. certificate (XF 90 Jumbo; SMQ \$105.00 as 90, \$305.00 as 95) 37.50
- 712 ★★ **9c Rose (561)**. Mint N.H., uncharacteristically wide Jumbo margins, wonderfully fresh and bright on crisp paper, Extremely Fine Gem, certainly one of the finest available, with 2006 P.S.E. certificate (XF-Superb 95 Jumbo; SMQ \$230.00) 29.00
- 713 ★★ **9c Rose (561)**. Mint N.H., beautiful wide margins and precise centering, vivid color, Extremely Fine Gem, with 2006 P.S.E. certificate (XF-Superb 95; SMQ \$230.00). 29.00
- 714 ★★ **15c Gray (566)**. Mint N.H. with plate no. 19462 at top, uncommonly wide margins and nearly perfect centered, fresh and bright, Extremely Fine, with 2006 P.S.E. certificate (XF 90; SMQ \$115.00) 42.50
- 715 ★★ **20c Carmine Rose (567)**. Mint N.H., intense color and impression, wide and balanced margins, fresh and Extremely Fine, with 2005 P.S.E. certificate (XF-Superb 95; SMQ \$335.00) 42.00
- 716 ★★ **25c Yellow Green (568)**. Mint N.H., radiant color on bright paper, wide and balanced margins, Extremely Fine Gem, with 2005 P.S.E. certificate (XF-Superb 95; SMQ \$320.00) 37.00
- 717 ★★ **30c Olive Brown (569)**. Mint N.H., nearly perfect centering, intense color and fine impression, Extremely Fine Gem, with 2006 P.S.E. certificate (XF-Superb 95; SMQ \$455.00) 62.50
- 718 ★★ **30c Olive Brown (569)**. Mint N.H., handsome wide margins and essentially perfectly centered, strong color on bright paper, Extremely Fine, with 2006 P.S.E. certificate (XF 90; SMQ \$165.00) 62.50



- 719 ★★ **50c Lilac (570).** Mint N.H. with plate no. 19144 at right, radiant color, choice centering with wide margins, Extremely Fine Gem, with 2002 P.F. certificate, with 2004 P.S.E. certificate (XF-Superb 95; SMQ \$550.00)..... 100.00
- 720 ★★ **\$1.00 Violet Black (571).** Mint N.H., lovely balanced margins, strong intense color, Extremely Fine Gem, with 2006 P.S.E. certificate (Superb 98; SMQ \$1,100.00).... 95.00
- 721 ★★ **\$1.00 Violet Black (571).** Mint N.H., intense shade and impression on bright paper, wide and balanced margins, Extremely Fine Gem, with 2005 P.S.E. certificate (XF-Superb 95; SMQ \$465.00)..... 95.00
- 722 ★★ **\$1.00 Violet Brown (571).** Mint N.H., choice margins and almost perfectly centered, fresh and Extremely Fine, with 2006 P.S.E. certificate as "Violet black" (XF 90; SMQ \$205.00)..... 95.00
- 723 ★★ **\$2.00 Deep Blue (572).** Mint N.H., beautiful margins and centering, fresh and crisp, Extremely Fine Gem, with 2006 P.F. certificate (XF-Superb 95; SMQ \$640.00) .. 175.00
- 724 ★★ **\$2.00 Deep Blue (572).** Mint N.H. with wide selvage at top, rich color, huge margins, Extremely Fine Gem, with 2004 P.S.E. certificate (XF-Superb 95; SMQ \$640.00) 175.00
- 725 ★★ **\$2.00 Deep Blue (572).** Mint N.H., fresh color, choice centering, Extremely Fine, with 2006 P.S.E. certificate (XF 90; SMQ \$360.00)..... 175.00
- 726 ★★ **\$5.00 Carmine & Blue (573).** Mint N.H., brilliant colors on bright paper, wide margins, Extremely Fine Gem, with 2004 P.S.E. certificate (XF-Superb 95; SMQ \$710.00) 240.00



- 727 ★★ **\$5.00 Carmine & Blue (573).** Mint N.H., brilliant colors on bright paper, choice centering with wide margins, Extremely Fine Gem, with 2004 P.S.E. certificate (XF-Superb 95; SMQ \$710.00) 240.00
- 728 ★★ **\$5.00 Carmine & Blue (573).** Mint N.H., brilliant colors and nearly perfectly centered, Extremely Fine, with 2006 P.S.E. certificate (XF 90; SMQ \$410.00) 240.00
- 729 ★★ **\$5.00 Carmine Lake & Dark Blue (573a).** Mint N.H. with **part arrow selvage at right**, intense color, wide margins all around, Extremely Fine Gem, with 2005 P.S.E. certificate (XF-Superb 95; SMQ \$980.00) 375.00
- 730 ★★ **3c Violet, Perf 10 (584).** Mint N.H., perfectly centered, fresh and bright, Extremely Fine, with 2006 P.S.E. certificate (XF 90; SMQ \$175.00)..... 62.50
- 731 ★★ **10c Orange, Perf 10 (591).** Mint N.H. with plate no. 16107 at bottom left, exceptionally well-centered and with choice vivid color, Extremely Fine Gem, with 2006 P.S.E. certificate (XF-Superb 95; SMQ \$520.00)..... 125.00
- 732 ★★ **5c Norse-American (621).** Mint N.H., uncommonly wide margins and perfectly centered, intense colors on bright paper, Extremely Fine Gem, with 2006 P.S.E. certificate (Superb 98; SMQ \$600.00) 24.00
- 733 ★★ **17c Black (623).** Mint N.H., wide balanced margins and nearly Jumbo in size, wonderfully fresh, Extremely Fine Gem, with 2006 P.S.E. certificate (Superb 98; SMQ \$600.00)..... 25.00
- 734 ★★ **5c Ericsson (628).** Mint N.H., very wide balanced margins, bright color, Extremely Fine Gem, with 2006 P.S.E. certificate (Superb 98; SMQ \$310.00) 9.50



735

- 735 ★★ **2c Carmine, Ty. II (634A).** Mint N.H., brilliant color, choice centering with unusually wide margins for this difficult issue, post-office fresh

EXTREMELY FINE GEM. A SUPERB MINT NEVER-HINGED EXAMPLE OF SCOTT 634A.

With 2006 P.S.E. certificate (Superb 98; SMQ \$6,500.00). This is the highest grade awarded to date by P.S.E. 625.00



- 736 ★★ **6c Kans. Ovpt. (664).** Mint N.H., radiant color, perfectly centered with wide margins all around, Extremely Fine Gem, a superb stamp in every respect, with 2006 P.S.E. certificate (Superb 98; SMQ \$1,400.00), only one other shares this high grade and only one other has graded higher in the P.S.E. population report..... 55.00
- 737 ★★ **7c Kans. Ovpt. (665).** Mint N.H., detailed impression, post-office fresh, perfectly centered with wide margins, Extremely Fine Gem, with 2004 P.S.E. certificate (XF-Superb 95; SMQ \$485.00) 55.00
- 738 ★★ **8c Kans. Ovpt. (666).** Mint N.H. with selvage at top, pretty pastel color, perfectly centered with wide and balanced margins, Extremely Fine Gem, a phenomenal stamp, with 2005 P.S.E. certificate (XF-Superb 95; SMQ \$910.00)..... 180.00
- 739 ★★ **10c Kans. Ovpt. (668).** Mint N.H., vibrant color, choice centering with unusually wide margins for this issue, Extremely Fine Gem, with 2002 P.S.E. certificate (XF-Superb 95; SMQ 440.00)..... 45.00
- 740 ★★ **10c Kans. Ovpt. (668).** Mint N.H., beautifully centered, glowing color, Extremely Fine, with 2006 P.S.E. certificate (XF 90; SMQ \$120.00) 45.00
- 741 ★★ **4c Nebr. Ovpt. (673).** Mint N.H., wide margins and nearly perfect centering, rich color and clear impression, Extremely Fine Gem, with 2006 P.F. certificate (XF-Superb 95; SMQ \$390.00)..... 35.00



- 742 ★★ **6c Nebr. Ovpt. (675).** Mint N.H., lovely margins and wonderfully well centered, Extremely Fine Gem, with 2006 P.S.E. certificate (XF-Superb 95; SMQ \$680.00) 75.00
- 743 ★★ **6c Nebr. Ovpt. (675).** Mint N.H., wonderfully well-centered, bright color, Extremely Fine, with 2006 P.S.E. certificate (XF 90; SMQ \$190.00)..... 75.00
- 744 ★★ **7c Nebr. Ovpt. (676).** Mint N.H., intense shade and proof-like impression, beautiful centering with well-balanced margins, Extremely Fine Gem, with 2006 P.S.E. certificate (XF-Superb 95; SMQ \$440.00) 42.00
- 745 ★★ **7c Nebr. Ovpt. (676).** Mint N.H., very choice margins and essentially perfectly centered, Extremely Fine Gem, with 2006 P.S.E. certificate (XF-Superb 95; SMQ \$440.00)..... 42.50
- 746 ★★ **10c Nebr. Ovpt. (679).** Mint N.H., wide Jumbo margins rarely found on rotary press issues, brilliant color, Extremely Fine, with 2000 P.F. certificate, with 2005 P.S.E. certificate (XF 90 Jumbo; SMQ \$470.00 as 90, \$1,000.00 as 95)..... 230.00
- 747 ★★ **10c Nebr. Ovpt. (679).** Mint N.H., intense shade and impression, choice centering for this difficult issue, fresh and Extremely Fine, P.S.E. encapsulated (XF 90; SMQ \$470.00)..... 230.00
- 748 ★★ **2c Massachusetts Bay (682).** Mint N.H. bottom sheet margin single, huge Jumbo margins and impeccably centered, Extremely Fine Gem, with 2006 P.S.E. certificate (XF-Superb 95 Jumbo; SMQ \$39.00 as 95, \$155.00 as 98) 0.85
- 749 ★★ **20c Carmine Rose (698).** Mint N.H., perfectly centered, Extremely Fine Gem, with 2006 P.S.E. certificate (Superb 98; SMQ \$400.00) 12.00
- 750 ★★ **7c National Parks (746).** Mint N.H., perfectly centered with huge and balanced margins, Extremely Fine Gem, with 2006 P.S.E. certificate (Superb 98; SMQ \$205)..... 1.00



- 751 ★★ **3c Presidential (807).** Mint N.H., perfectly centered with wide margins, rich color, Extremely Fine Gem, with 2006 P.S.E. certificate (Superb 98; SMQ \$190.00)..... 1.00
- 752 ★★ **4½c Presidential (809).** Mint N.H., radiant color, wide and perfectly centered margins, Extremely Fine Gem, with 2006 P.S.E. certificate (Superb 98; SMQ \$190.00)..... 1.00
- 753 ★★ **5c Presidential (810).** Mint N.H., rich color, beautiful centering, Extremely Fine Gem, with 2006 P.S.E. certificate (Superb 98; SMQ \$190.00)..... 1.00
- 754 ★★ **11c Presidential (816).** Mint N.H., brilliant color on bright paper, wide and perfectly centered margins, Extremely Fine Gem, with 2006 P.S.E. certificate (Superb 98; SMQ \$200.00) . 1.00
- 755 ★★ **12c Presidential (817).** Mint N.H., radiant color, perfectly centered, fresh and Extremely Fine Gem, with 2006 P.S.E. certificate (Superb 98; SMQ \$200.00) . 1.00
- 756 ★★ **13c Presidential (818).** Mint N.H., brilliant color, wide margins, fresh and Extremely Fine Gem, with 2006 P.S.E. certificate (Superb 98; SMQ \$200.00)..... 1.00
- 757 ★★ **14c Presidential (819).** Mint N.H., rich color on crisp paper, unusually wide margins, Extremely Fine Gem, with 2006 P.S.E. certificate (Superb 98; SMQ \$200.00) . 1.00
- 758 ★★ **15c Presidential (820).** Mint N.H., brilliant color, perfect centering, Extremely Fine Gem, with 2006 P.S.E. certificate (Superb 98; SMQ \$190.00)..... 1.00
- 759 ★★ **16c Presidential (821).** Mint N.H., intense color on bright paper, wide and balanced margins, Extremely Fine Gem, with 2006 P.S.E. certificate (Superb 98; SMQ \$200.00)..... 1.00
- 760 ★★ **17c Presidential (822).** Mint N.H., radiant color that jumps off of the paper, perfectly centered, Extremely Fine Gem, with 2006 P.S.E. certificate (Superb 98; SMQ \$200.00)..... 1.00
- 761 ★★ **18c Presidential (823).** Mint N.H., brilliant color, unusually wide margins and choice centering, Extremely Fine Gem, with 2006 P.S.E. certificate (Superb 98; SMQ \$210.00)..... 1.00
- 762 ★★ **21c Presidential (826).** Mint N.H., bright color, perfect centering with wide margins, Extremely Fine Gem, with 2005 P.S.E. certificate (Superb 98; SMQ \$200.00) . 1.00



- 763 ★★ **25c Presidential (829).** Mint N.H., brilliant color, perfectly centered, Extremely Fine Gem, with 2006 P.S.E. certificate (Superb 98; SMQ \$200.00) 1.00
- 764 ★★ **30c Presidential (830).** Mint N.H., rich color on crisp paper, wide and balanced margins, Extremely Fine Gem, with 2006 P.S.E. certificate (Superb 98; SMQ \$210.00) 3.00
- 765 ★★ **\$5.00 Presidential (834).** Mint N.H., beautiful margins and centering, fresh, Extremely Fine Gem, with 2005 P.S.E. certificate (XF-Superb 95; SMQ \$140.00) 85.00
- 766 ★★ **4c Presidential, Coil (843).** Mint N.H. pair, brilliant color, perfectly centered with wide margins, Extremely Fine Gem, with 2006 P.S.E. certificate (Superb 98; SMQ \$230.00) 16.00
- 767 ★★ **10c Presidential, Coil (847).** Mint N.H., radiant color, beautiful centering with wide margins, Extremely Fine Gem, with 2006 P.S.E. certificate (Superb 98; SMQ unpriced as a single) 11.00
- 768 **1c-10c Famous Americans, Authors (859-863).** The complete set of five stamps, each Mint N.H., encapsulated and graded Superb 98 by P.S.E., Extremely Fine Gems, a scarce high-grade set, SMQ \$920.00 **(Photo Ex)** 2.00
- 769 ★★ **1c-10c Famous Americans (859-893).** The complete Mint N.H. set, each graded XF-Superb 95 and individually encapsulated by P.S.E, beautiful centering
EXTREMELY FINE GEM COMPLETE SET OF THE 35 STAMPS IN THE FAMOUS AMERICANS SERIES, EACH ENCAPSULATED BY PROFESSIONAL STAMP EXPERTS AND GRADED XF-SUPERB 95.
The certification and encapsulation fee alone is \$630.00. SMQ \$1,325.00 **(Photo Ex)** 30.00
- 770 ★★ **1c Washington Irving, Famous American (859).** Mint N.H., deep rich color, perfectly centered with extra wide margins, Extremely Fine Gem, a magnificent stamp, scarce in such superb condition, P.S.E. encapsulated (Gem 100; SMQ \$480.00) 1.00
- 771 ★★ **10c Samuel L. Clemens, Famous American (863).** Mint N.H., rich color, proof-like impression, perfectly centered with huge margins, Extremely Fine Gem, a magnificent stamp, P.S.E. encapsulated (Gem 100; SMQ \$560.00) 1.00
- 772 ★★ **10c Samuel Clemens, Famous American (863).** Mint N.H., rich color, enormous margins, Extremely Fine Gem, a superb stamp, P.S.E. encapsulated (Superb 98; SMQ \$200.00) 1.00
- 773 ★★ **10c James Whitcomb Riley, Famous American (868).** Mint N.H., bright shade, huge margins, Extremely Fine Gem, P.S.E. encapsulated (Superb 98; SMQ \$200.00) 1.00
- 774 ★★ **10c Booker T. Washington, Famous American (873).** Mint N.H., rich color, wide margins and perfect centering, Extremely Fine Gem, P.S.E. encapsulated (Superb 98; SMQ \$200.00) 1.00
- 775 ★★ **10c Jane Addams, Famous American (878).** Mint N.H., rich color, perfectly centered with wide margins, Extremely Fine Gem, P.S.E. encapsulated (Superb 98; SMQ \$200.00) 1.00
- 776 ★★ **10c Frederic Remington, Famous American (888).** Mint N.H., bright color, perfectly centered with wide margins, Extremely Fine Gem, P.S.E. encapsulated (Superb 98; SMQ \$200.00) 1.00

AIR POST



- 777 ★★ **16c Green, 1918 Air Post (C2).** Mint N.H., almost perfectly centered, fresh, Extremely Fine Gem, with 2006 P.S.E. certificate (XF-Superb 95; SMQ \$580.00)..... 150.00
- 778 ★★ **24c Carmine Rose & Blue, 1918 Air Post (C3).** Mint N.H. with red plate no. 8492 at top, choice very wide margins and handsome centering, Extremely Fine, with 2006 P.F. certificate (XF 90; SMQ \$240.00)..... 150.00
- 779 ★★ **16c Dark Blue, 1923 Air Post (C5).** Mint N.H., rich color on brilliant paper, choice centering with Jumbo margins, Extremely Fine, P.S.E. encapsulated (XF 90 Jumbo; SMQ \$240.00 as 90, \$580.00 as 95)..... 150.00
- 780 ★★ **24c Carmine, 1923 Air Post (C6).** Mint N.H., fresh and bright, beautifully centered, Extremely Fine, with 2006 P.S.E. certificate (XF 90; SMQ \$250.00)..... 160.00
- 781 ★ **24c Carmine, 1923 Air Post (C6).** Incredibly wide Jumbo margins and precise centering, rich color on fresh bright paper, very lightly hinged, Extremely Fine Gem, with 2004 P.S.E. certificate (XF-Superb 95 Jumbo; SMQ \$170.00 as 95, \$270.00 as 98)..... 85.00



782

- 782 ★★ **65c Graf Zeppelin (C13).** Mint N.H., choice margins and essentially flawless centering, fresh and bright, Extremely Fine Gem, with 2006 P.F. certificate (XF-Superb 95; SMQ \$910.00)..... 400.00

- 783 ★★ **65c Graf Zeppelin (C13).** Mint N.H., choice margins and essentially perfectly centered, rich color, Extremely Fine Gem, with 2006 P.F. certificate (XF-Superb 95; SMQ \$910.00) 400.00



783



784

- 784 ★★ **65c Graf Zeppelin (C13).** Mint N.H., rich color and proof-like impression, choice centering, tiny natural gum bend, fresh and Extremely Fine, P.S.E. encapsulated (XF 90; SMQ \$625.00) 400.00

- 785 ★★ **65c Graf Zeppelin (C13).** Mint N.H., beautifully centered and without any natural gum creases or skips, Extremely Fine, with 2006 P.F. certificate (XF 90; SMQ \$625.00).... 400.00



785



786

- 786 ★★ **\$1.30 Graf Zeppelin (C14).** Mint N.H., bright color, free from the usual natural gum skips and bends that can plague this issue, enormous margins at sides, Extremely Fine Gem, with 1982 P.F. certificate and 2005 P.S.E. certificate (XF 90 Jumbo — in our opinion, deserving of XF-Superb 95; SMQ \$1,250.00 as 90, \$1,750.00 as 95) 800.00

- 787 ★★ **\$1.30 Graf Zeppelin (C14).** Mint N.H., perfect centering and gum, fresh, Extremely Fine Gem, with 2006 P.F. certificate (XF-Superb 95; SMQ \$1,750.00) 800.00



787



788

- 788 ★★ **\$1.30 Graf Zeppelin (C14).** Mint N.H., brilliant color and crisp impression, well-balanced margins, Extremely Fine, a pretty stamp, P.S.E. encapsulated (XF 90; SMQ \$1,250.00) 800.00



789

- 789 ★★ **\$1.30 Graf Zeppelin (C14).** Mint N.H. with sheet margin at right, beautiful margins and centering, perfect gumming without the typical natural gum creases and skips, Extremely Fine, with 2006 P.F. certificate (XF 90; SMQ \$1,250.00)..... 800.00



790

- 790 ★★ **\$1.30 Graf Zeppelin (C14).** Mint N.H. with plate no. 20087 at right, wide margins and well-centered, completely free of any natural gum creases or skips, Extremely Fine, with 2006 P.F. certificate (XF 90; SMQ \$1,250.00)..... 800.00

- 791 ★★ **\$1.30 Graf Zeppelin (C14).** Mint N.H., exceptionally well-centered, fresh and Extremely Fine, with 2006 P.S.E. certificate (XF 90; SMQ \$1,250.00) 800.00



791



792

- 792 ★★ **\$2.60 Graf Zeppelin (C15).** Mint N.H. with plate no. 20095 at top, perfectly centered with wide and balanced margins, brilliant color

EXTREMELY FINE GEM. A SUPERB MINT NEVER-HINGED PLATE NUMBER SINGLE OF THE \$2.60 GRAF ZEPPELIN ISSUE.

P.S.E. encapsulated (XF-Superb 95; SMQ \$2,700.00)..... 1,100.00



793

- 793 ★★ **\$2.60 Graf Zeppelin (C15).** Mint N.H., beautifully centered, deep rich color, Extremely Fine, with 2005 P.S.E. certificate (XF 90; SMQ \$1,850.00) 1,100.00



794



795

- 794 ★★ **50c Chicago Zeppelin (C18).** Mint N.H., perfect balanced wide margins, near Jumbo in size, pretty bright color, Extremely Fine Gem, with 2006 P.S.E. certificate (XF-Superb 95; SMQ \$230.00) 100.00

- 795 ★★ **50c Chicago Zeppelin (C18).** Mint N.H., brilliant color, wide and balanced margins, Extremely Fine Gem, with 2006 P.S.E. certificate (XF-Superb 95; SMQ \$230.00) 100.00



796



797

- 796 ★★ **50c Chicago Zeppelin (C18).** Mint N.H., wide margins and essentially perfectly centered, no gum skips or creases, Extremely Fine, lovely example, with 2006 P.F. certificate (XF 90; SMQ \$135.00)..... 100.00
- 797 ★★ **50c Chicago Zeppelin (C18).** Mint N.H., essentially perfectly centered, fresh and Extremely Fine, with 2006 P.S.E. certificate (XF 90; SMQ \$135.00) 100.00

SPECIAL DELIVERY



798

- 798 ★ **10c Blue, Special Delivery (E2).** Original gum, bright color, choice centering with Jumbo margins, fresh and Extremely Fine, P.S.E. encapsulated (XF 90 Jumbo; SMQ \$840.00 as 90, \$1,550.00 as 95)..... 400.00

- 799 ★ **10c Orange, Special Delivery (E3).** Original gum, lightly hinged, vibrant color, almost perfectly centered with Jumbo margins all around, Extremely Fine Gem, P.S.E. encapsulated (XF-Superb 95 Jumbo; SMQ \$720.00 as 95, \$1,200.00 as 98) 250.00



799



800

- 800 ★★ **10c Blue, Special Delivery (E4).** Mint N.H., uncommonly wide margins and nearly perfectly centered, deep rich color on crisp white paper

EXTREMELY FINE. PREMIUM EXAMPLE OF THE UNWATERMARKED 1894 SPECIAL DELIVERY AND ESPECIALLY DIFFICULT IN NEVER-HINGED CONDITION.

With 2006 P.S.E. certificate (XF 90; SMQ \$6,450.00)..... 1,900.00

- 801 ★ **10c Blue, Special Delivery (E5).** Original gum, lightly hinged, exceptionally well-centered, fresh, strong color, Extremely Fine, with 2006 P.F. certificate (XF 90; SMQ \$300.00)..... 200.00



801



802

- 802 ★★ **10c Ultramarine, Special Delivery (E8).** Mint N.H. part left imprint margin single, lovely margins and exceptionally well-centered, very attractive pastel color, Extremely Fine, with 2006 P.F. certificate (XF 90; SMQ \$550.00)..... 225.00

- 803 ★★ **10c Ultramarine (E9).** Mint N.H., radiant color, huge margins all around which are evenly-proportioned, Extremely Fine Gem, with 2005 P.S.E. certificate (XF 90 Jumbo — in our opinion, not a Jumbo but an XF-Superb 95; SMQ \$810.00 as 90, \$1,450.00 as 95)..... 400.00



803



804

805

806

- 804 ★★ **10c Ultramarine, Special Delivery (E11).** Mint N.H., huge Jumbo margins with exquisite centering, unusually strong color on bright paper, Extremely Fine Gem, with 2006 P.S.E. certificate (XF-Superb 95 Jumbo; SMQ \$270.00 as 95, \$495.00 as 98)..... 40.00
- 805 ★★ **10c Gray Violet (E15).** Mint N.H., huge balanced margins, fresh and crisp, Extremely Fine Gem, with 2006 P.S.E. certificate (Superb 98; SMQ \$60.00) 1.00
- 806 ★ **10c Ultramarine, Registration (F1).** Lightly hinged, beautiful wide margins and choice centering, bright color, Extremely Fine, with 2006 P.S.E. certificate (XF 90; SMQ \$110.00) 70.00

POSTAGE DUE



807

- 807 ★ **3c Brown (J3).** Original gum, very lightly hinged, fresh and crisp, lovely balanced margins, Extremely Fine, with 2006 P.F. certificate (XF 90; SMQ \$215.00)..... 100.00

- 808 ★★ **5c Red Brown (J18).** Mint N.H., fabulous margins and centering, outstanding color on crisp paper
EXTREMELY FINE. TRULY OUTSTANDING QUALITY FOR THIS 1891 POSTAGE DUE ISSUE AND ESPECIALLY SCARCE IN NEVER-HINGED POST OFFICE CONDITION.
With 2006 P.F. certificate (XF 90; SMQ \$2,750.00), Scott Retail as hinged..... 600.00



808

- 809 ★★ **50c Red Brown (J21).** Mint N.H., bright and fresh color, detailed impression showing every nuance of the design, beautiful centering

EXTREMELY FINE. A GORGEOUS MINT NEVER-HINGED EXAMPLE OF THE 50-CENT 1884 RED BROWN POSTAGE DUE.

With 1990 and 2001 P.F. certificates. With 2004 P.S.E. certificate (XF 90; SMQ \$6,600.00). This is the only Mint N.H. example to be awarded this grade, which is the highest grade given to date in any condition. Scott Retail as hinged..... 1,750.00



809



810

- 810 ★★ **50c Bright Claret (J28).** Mint N.H., deep rich color on brilliant paper, perfectly centered, long and full perforations all around

EXTREMELY FINE GEM. A SUPERB MINT NEVER-HINGED EXAMPLE OF THE 50-CENT POSTAGE DUE, SCOTT J28.

With 2005 P.S.E. certificate (XF-Superb 95; SMQ \$5,400.00). This is the highest grade awarded to date in the P.S.E. population report (two others have also received this grade). Scott Retail as hinged 600.00

- 811 **1c Vermilion (J29).** Attractive margins and fabulous centering, horizontal line cancellation, Extremely Fine, with 2003 and 2005 P.S.E. certificates (XF 90; unpriced in SMQ) 650.00



811



812

- 812 ★★ **2c Deep Claret (J39).** Mint N.H. with part imprint at top, Jumbo margins and virtually perfect centering, beautiful color on crisp paper, Extremely Fine Gem, with 2006 P.S.E. certificate (XF-Superb 95; SMQ \$265.00)... 27.50



813

- 813 ★★ **5c Deep Claret (J41).** Mint N.H., brilliant color on bright paper, detailed impression, perfectly centered with unusually wide margins

EXTREMELY FINE GEM. A SUPERB MINT NEVER-HINGED OF THE 5-CENT DEEP CLARET POSTAGE DUE, SCOTT J41.

With copy of 1990 P.F. certificate for plate block and 2006 P.S.E. certificate for single (Superb 98; SMQ \$1,450.00). This is the highest grade awarded to date (only one other shares this grade) .. 230.00

- 814 ★★ **5c Deep Claret (J41).** Mint N.H. with part imprint selvage at bottom, deep rich color and detailed impression, wide margins, fresh and Extremely Fine, with 2003 P.F. certificate, with 2006 P.S.E. certificate (XF 90; SMQ \$580.00)..... 230.00



814



815

- 815 ★ **10c Deep Claret (J49).** Lightly hinged, wide margins of near Jumbo proportions, beautiful dark color, Extremely Fine, with 2006 P.F. certificate (XF 90; SMQ \$225.00)..... 130.00

- 816 ★★ **5c Dull Rose (J55a).** Mint N.H., balanced margins and essentially perfectly centered, vibrant color, Extremely Fine, with 2006 P.S.E. certificate (XF 90; SMQ \$320.00) 110.00



816

OFFICES IN CHINA



817



818



819



820



822

- 817 ★★ **2c on 1c Offices in China (K1).** Mint N.H., exceptionally wide margins and precise centering, choice dark color, Extremely Fine Gem, with 2006 P.S.E. certificate (Superb 98; SMQ \$1,250.00) 60.00
- 818 ★★ **2c on 1c Offices in China (K1).** Mint N.H., wide balanced margins, wonderfully fresh, Extremely Fine Gem, with 2006 P.F. certificate (XF-Superb 95; SMQ \$560.00) 60.00
- 819 ★★ **4c on 2c Offices in China (K2).** Mint N.H., attractive margins and exceptionally well-centered, rich color, Extremely Fine, with 2005 P.F. certificate (XF 90; SMQ \$190.00) 60.00
- 820 ★★ **6c on 3c Offices in China (K3).** Mint N.H. with top sheet salvage, exceptionally well-centered, Extremely Fine, with 2005 P.S.E. certificate (XF 90; SMQ \$385.00) 125.00

- 821 ★★ **\$1.00 on 50c Offices in China (K15).** Mint N.H., fabulous margins and centering, bright color on white paper

EXTREMELY FINE. A WONDERFUL HIGH QUALITY "KEY" OFFICES IN CHINA VALUE AND RARE IN THIS MINT NEVER-HINGED CONDITION.

With 2006 P.F. certificate (XF 90; SMQ \$2,500.00) ... 1,200.00



821

- 822 ★★ **\$1.00 Postal Savings (O123).** Mint N.H., wide margins and almost perfectly centered, lovely bright color, Extremely Fine, surprisingly scarce in this choice Mint N.H. state, with 2006 P.F. certificate (XF 90; SMQ \$1,050.00) 350.00

NEWSPAPERS AND PERIODICALS



823

- 823 ★ **\$60.00 Purple, 1879 Issue (PR79).** Original gum, lightly hinged, pretty color, almost perfectly centered with well-balanced margins, fresh and Extremely Fine, a beautiful stamp, P.S.E. encapsulated (XF 90; SMQ \$1,550.00)..... 825.00

PARCEL POST



824



825



826



827



828

- 824 ★★ **1c Parcel Post (Q1).** Mint N.H., brilliant color on post-office fresh paper, perfectly centered with wide margins, Extremely Fine Gem, with 2005 P.S.E. certificate (XF-Superb 95; SMQ \$310.00)..... 14.00
- 825 ★★ **5c Parcel Post (Q5).** Mint N.H., magnificent margins and nearly perfectly centered, fresh and bright, rich color, Extremely Fine, with 2006 P.S.E. certificate (XF 90; SMQ \$250.00)..... 90.00
- 826 ★★ **10c Parcel Post (Q6).** Mint N.H. with plate no. at bottom, brilliant color, wide and balanced margins, Extremely Fine Gem, with 2005 P.S.E. certificate (XF-Superb 95; SMQ \$820.00)..... 120.00
- 827 ★ **10c Parcel Post (Q6).** Uncharacteristically wide margins and precisely centered, fresh, deep color on bright paper, Extremely Fine Gem, with 2006 P.S.E. certificate (Superb 98; SMQ \$275.00)..... 120.00
- 828 ★ **15c Parcel Post (Q7).** Magnificent margins and centering, lightly hinged, strong color and clear impression, Extremely Fine Gem, with 2006 P.S.E. certificate (XF-Superb 95; SMQ \$190.00)..... 67.50



829



830

- 829 ★ **25c Parcel Post (Q9).** Outstanding huge Jumbo margins, lightly hinged with strong color on bright white paper, Extremely Fine Gem, with 2006 P.S.E. certificate (XF 90 Jumbo; SMQ \$110.00 as 90, \$190.00 as 95) 67.50
- 830 ★ **50c Parcel Post (Q10).** Original gum, lightly hinged, wonderfully fresh and magnificently centered, beautiful color on crisp white paper, Extremely Fine Gem, with 2006 P.S.E. certificate (XF-Superb 95; SMQ \$700.00)..... 300.00

- 831 ★★ **\$1.00 Parcel Post (Q12).** Mint N.H., deep rich color and proof-like impression, beautiful centering with wide and balanced margins
- EXTREMELY FINE MINT
NEVER-HINGED EXAMPLE OF
THE \$1.00 PARCEL POST
ISSUE.
- P.S.E. encapsulated (XF 90;
SMQ \$1,900.00) 850.00



831



832

- 832 ★★ **2c Dark Green, Parcel Post Postage Due (JQ2).** Mint N.H., wide balanced margins, essentially perfectly centered, deep rich color, Extremely Fine Gem, with 2006 P.S.E. certificate (XF-Superb 95; SMQ \$1,050.00) 210.00

HUNTING PERMITS



833

- 833 ★★ **\$1.00 1935 Hunting Permit (RW2).** Mint N.H. with left sheet margin, wonderfully well-centered, deep rich color

EXTREMELY FINE GEM MINT NEVER-HINGED EXAMPLE OF THE \$1.00 1935 HUNTING PERMIT.

With 2006 P.F. certificate (XF-Superb 95; SMQ \$2,200.00) 700.00

- 834 ★★ **\$1.00 1936 Hunting Permit (RW3).** Mint N.H., rich color and proof-like impression, perfectly centered with wide and balanced margins

EXTREMELY FINE GEM. A MAGNIFICENT MINT NEVER-HINGED EXAMPLE OF THE \$1.00 1936 HUNTING PERMIT ISSUE.

With 2006 P.S.E. certificate (Superb 98; SMQ \$2,050.00) 350.00



834



835

- 835 ★★ **\$1.00 1939 Hunting Permit (RW6).** Mint N.H., rich color, choice centering, fresh and Extremely Fine Gem, with 2006 P.S.E. certificate (XF-Superb 95; SMQ \$850.00)..... 250.00



836

- 836 ★★ **\$1.00 1939 Hunting Permit (RW6).** Mint N.H., choice margins and almost perfectly centered, Extremely Fine, with 2006 P.S.E. certificate (XF 90; SMQ \$415.00)..... 250.00



- 837 ★★ **\$1.00 1940 Hunting Permit (RW7).** Mint N.H., beautifully centered and without any gum bends or skips, Extremely Fine Gem, with 2006 P.S.E. certificate (XF-Superb 95; SMQ \$900.00)..... 225.00
- 838 ★★ **\$1.00 1941 Hunting Permit (RW8).** Mint N.H., wonderfully fresh, fabulous centering and without any gum bends or skips, Extremely Fine Gem, with 2006 P.S.E. certificate (XF-Superb 95; SMQ \$750.00)..... 225.00
- 839 ★★ **\$1.00 1944 Hunting Permit (RW11).** Mint N.H. with plate no. 155603 at top, fresh glowing color with fabulous precise centering, Extremely Fine Gem, with 2006 P.S.E. certificate (XF-Superb 95; SMQ \$520.00)..... 110.00
- 840 ★★ **\$1.00 1944 Hunting Permit (RW11).** Mint N.H., essentially perfectly centered, choice vibrant color, Extremely Fine Gem, with 2006 P.F. certificate (XF-Superb 95; SMQ \$520.00)..... 110.00
- 841 ★★ **\$1.00 1946 Hunting Permit (RW13).** Mint N.H., attractive margins and precisely centered, Extremely Fine Gem, with 2005 P.S.E. certificate (XF-Superb 95; SMQ \$195.00)..... 50.00
- 842 ★★ **\$1.00 1947 Hunting Permit (RW14).** Mint N.H., beautiful margins and essentially perfect centering, Extremely Fine Gem, with 2006 P.S.E. certificate (Superb 98; SMQ \$510.00) 50.00
- 843 ★★ **\$2.00 1949 Hunting Permit (RW16).** Mint N.H., precisely centered, beautiful bright color, Extremely Fine Gem, with 2006 P.S.E. certificate (XF-Superb 95; SMQ \$180.00)..... 65.00
- 844 ★★ **\$2.00 1954 Hunting Permit (RW21).** Mint N.H. with plate no. 164745 at bottom, perfectly centered, Extremely Fine Gem, with 2005 P.S.E. certificate (XF-Superb 95; SMQ \$215.00) 85.00
- 845 ★★ **\$2.00 1954 Hunting Permit (RW21).** Mint N.H. with plate no. 164745 at top, choice margins, almost perfectly centered, Extremely Fine, with 2006 P.S.E. certificate (XF 90; SMQ \$135.00)..... 85.00



846



847



848



849



850



851



852



853



854

- 846 ★★ **\$2.00 1955 Hunting Permit (RW22).** Mint N.H. with sheet margin at right, fresh, essentially perfectly centered, Extremely Fine Gem, with 2005 P.S.E. certificate (XF-Superb 95; SMQ \$205.00) 85.00
- 847 ★★ **\$2.00 1955 Hunting Permit (RW22).** Mint N.H., choice margins and centering, Extremely Fine Gem, with 2006 P.S.E. certificate (XF-Superb 95; SMQ \$205.00)..... 85.00
- 848 ★★ **\$3.00 1963 Hunting Permit (RW30).** Mint N.H., incredibly well-centered, fresh and crisp, Extremely Fine Gem, with 2006 P.S.E. certificate (XF-Superb 95; SMQ \$200.00)..... 110.00
- 849 ★★ **\$3.00 1964 Hunting Permit (RW31).** Mint N.H. top plate no. 168629 margin single, fresh, essentially perfectly centered, Extremely Fine Gem, with 2006 P.S.E. certificate (XF-Superb 95; SMQ \$200.00)..... 105.00
- 850 ★★ **\$3.00 1967 Hunting Permit (RW34).** Mint N.H., fabulous centering and colors, Extremely Fine, with 2006 P.S.E. certificate (XF 90; SMQ \$180.00)..... 125.00
- 851 ★★ **\$3.00 1971 Hunting Permit (RW38).** Mint N.H. absolute perfection in all respects, Extremely Fine Gem, the pinnacle of quality for this issue, with 2005 P.S.E. certificate (Gem 100; unpriced as 100, SMQ \$210.00 as 98) 42.50
- 852 ★★ **\$3.00 1971 Hunting Permit (RW38).** Mint N.H., exquisite centering, fresh and bright, Extremely Fine Gem, with 2005 P.S.E. certificate (Gem 100; unpriced as 100, SMQ \$210.00 as 98)..... 42.50
- 853 ★★ **\$5.00 1974 Hunting Permit (RW41).** Mint N.H. with selvage at left, choice centering with wide margins, fresh and Extremely Fine Gem, with 2005 P.S.E. certificate (Superb 98; SMQ \$150.00) 18.00
- 854 ★★ **\$7.50 1985 Hunting Permit (RW52).** Mint N.H., mathematically perfect centering, rich colors, Extremely Fine Gem, with 2006 P.S.E. certificate (Gem 100; unpriced as 100, SMQ \$130.00 as 98)..... 15.00

END OF SALE — THANK YOU

Bid Form—15% Premium Sale

Sale 921

Wednesday, October 18, 2006

1

Please provide the following information:

NAME.....
ADDRESS.....
CITY/STATE/ZIP.....
TEL. (DAY) FAX.....
E-MAIL.....

PADDLE #

Do not write in box

2

Have you purchased from us in the past 5 years? ☐ YES (if so, please go to Section 3)
☐ NO (please provide a trade reference and bank information)

References:

Stamp Firm:..... Telephone.....

3

In the space provided below, enter the **lot number** from **Sale 921** and your corresponding bid. Please use **whole dollar amounts** only and enter the **maximum bid** you wish to have us execute on your behalf, according to the **revised bidding increments** (on other side of this form). **Your bid will NOT include the 15% buyer's premium.** We will advance the bidding at one increment over the next highest bid; therefore, you may be awarded the lot at less than your maximum bid. Please do not use "plus" bids or "buy" bids. If you wish to bid on one lot or the other, indicate your "or" bid between lot number/bid entries and bracket your choices. If you wish to place a **bidding limit** on the total amount of your bids, please enter your limit in the space marked "Limit Bids".

PLEASE NOTE REVISED BIDDING INCREMENTS (ON BACK OF THIS PAGE)

☐ **LIMIT BIDS:** Check this box if you wish to limit the total amount of your bids (not including the **15% buyer's premium**) in this sale. Your bids will be executed until your bidding

\$.....

Lot	Bid	Lot	Bid	Lot	Bid
	\$		\$		\$

4

AGREEMENT: By signing this bid form, you agree to pay for purchases resulting from your bids, in accordance with the **Conditions of Sale** printed in the sale catalogue. You also agree to pay the **15% buyer's premium** and any shipping costs (see reverse), which will be added to your successful bids, and any sales tax or use tax which may be due

on the total invoiced amount. It is understood that these bids will be executed by Siegel Auction Galleries as a courtesy to absentee bidders, but that no legal responsibility shall lie with the auctioneer or the firm if these bids are not executed. **You are responsible for your written bids, including any errors on your part.**

Payment must be made by cash, check, money order or wire transfer. Credit cards will not be accepted.



SIGNED..... TODAY'S DATE

5

Please submit your bids promptly (telephone bids must be confirmed in writing).

Mail to: Robert A. Siegel Auction Galleries, Inc.

60 E. 56th Street, 4th Floor, New York, N.Y. 10022
Telephone (212) 753-6421

OR FAX YOUR BIDS: (212) 753-6429

Shipping Instructions, Bidding Increments and space for additional bids on other side of form

Additional Bids

Sale 921—October 18, 2006

Lot	Bid	Lot	Bid	Lot	Bid
	\$		\$		\$

Shipping and Transit Insurance

We will be pleased to arrange for shipping and transit insurance for purchases in this sale (except those described as “floor sale only”). To expedite billing and delivery of lots to hundreds of buyers per sale, we use standard charges for postage and insurance, based on the invoiced total and mailing requirements (see schedule). The standard charges are sometimes slightly more or less than the actual postage, but we do not include any fees for our labor or packing costs. Therefore, we ask all buyers to remit the prescribed amount for shipping charges.

Transit insurance is provided in all cases, except when the buyer has furnished us with proof that insurance coverage is effective under another policy. Proof, in such cases, will be accepted in the form of a written certificate from the insurance carrier.

You are responsible for insurance charges, which will be added to your invoice. This coverage is provided for our mutual protection against theft or loss in transit.

REVISED Bidding Increments

The auctioneer may regulate the bidding at his discretion. However, to assist absentee bidders in establishing their maximum bid for each lot, the increments shown at right will be used in most cases. We recommend that written bids conform to these increments (those which do not will be reduced to the next level).

Current Postage & Insurance Charges

Invoice Total	Shipping Method	Charges
Up to 10,000	Fedex Only	\$18.00
Over \$10,000	Fedex Only	\$25.00*
Foreign Destinations (any value)	Fedex/Courier	\$25.00**
Bulk Lots	UPS Preferred	By weight and value (min. \$25.00)
*Insurance and postage on certain heavy or valuable packages may incur an additional charge. **Buyers are liable for all customs duties and clearance charges. An accurate declaration of value will be made on all import/export documents. 2/2002		

IMPORTANT NOTICE REGARDING IRRADIATION

The U.S. Postal Service policy of irradiating all classes of mail poses a significant potential risk of irreversible damage to philatelic material, including ink, paper and gum.

WE WILL NOT USE THE MAILS TO SHIP LOTS.

Please provide a street address for Fedex delivery if you intend to have your lots shipped.

Up to \$50	\$5	\$3,000-7,000	\$250
\$50-200	\$10	\$7,000-20,000	\$500
\$200-500	\$25	\$20,000-30,000	\$1,000
\$500-1,000	\$50	\$30,000-75,000	\$2,500
\$1,000-3,000	\$100	\$75,000 up	\$5,000

Grading Index to Sale 921

Grade	Scott	Lot	Year/Service/Grade
100	859	770	Enc. PSE 100 NH
100	863	771	Enc. PSE 100 NH
100	RW38	851	2005 PSE 100 NH
100	RW38	852	2005 PSE 100 NH
100	RW52	854	2006 PSE 100 NH
98J	238	557	2006 PSE 98J OGph
98J	261	572	Enc. PSE 98J Mint OG
98J	353	635	2005 PSE 98J Mint OG
98	17	507	2006 PSE 98 USED
98	189	537	2006 PSE 98 OGph
98	210	542	2006 PSE 98 USED
98	233	552	2005 PSE 98 NH
98	295	592	2006 PSE 98 NH
98	296	598	2006 PSE 98 OGph
98	308	606	2006 PSE 98 NH
98	328	620	2006 PF 98 NH
98	351	631	2004 PSE 98 NH
98	369	640	2006 PSE 98 OGph
98	382	648	2005 PSE 98 Mint OG
98	434	669	2005 PSE 98 OGph
98	446	675	2006 PSE 98 OGph
98	459	682	2005 PSE 98 NH
98	480	693	2005 PSE 98 NH
98	505	697	2005 PSE 98 NH
98	571	720	2006 PSE 98 NH
98	621	732	2006 PSE 98 NH
98	623	733	2006 PSE 98 NH
98	628	734	2006 PSE 98 NH
98	634A	735	2006 PSE 98 NH
98	664	736	2006 PSE 98 NH
98	698	749	2006 PSE 98 NH
98	746	750	2006 PSE 98 NH
98	807	751	2006 PSE 98 NH
98	809	752	2006 PSE 98 NH
98	810	753	2006 PSE 98 NH
98	816	754	2006 PSE 98 NH
98	817	755	2006 PSE 98 NH
98	818	756	2006 PSE 98 NH
98	819	757	2006 PSE 98 NH
98	820	758	2006 PSE 98 NH
98	821	759	2006 PSE 98 NH
98	822	760	2006 PSE 98 NH
98	823	761	2006 PSE 98 NH
98	826	762	2056 PSE 98 NH
98	829	763	2006 PSE 98 NH
98	830	764	2006 PSE 98 NH
98	843	766	2006 PSE 98 NH
98	847	767	2006 PSE 98 NH
98	859-863	768	Enc. PSE 98 NH
98	863	772	Enc. PSE 98 NH
98	868	773	Enc. PSE 98 NH
98	873	774	Enc. PSE 98 NH
98	878	775	Enc. PSE 98 NH
98	888	776	Enc. PSE 98 NH
98	E15	805	2006 PSE 98 NH
98	J41	813	2006 PSE 98 NH
98	K1	817	2006 PSE 98 NH
98	Q6	827	2006 PSE 98 OGph
98	RW3	834	2006 PSE 98 NH
98	RW14	842	2006 PSE 98 NH
98	RW41	853	2005 PSE 98 NH

Grade	Scott	Lot	Year/Service/Grade
95J	223	545	2005 PSE 95J OGph
95J	239	558	Enc. PSE 95J NH
95J	260	571	2004 PSE 95J OGph
95J	261	573	Enc. PSE 95J OGph
95J	295	593	2005 PSE 95J NH
95J	295	594	2005 PSE 95J NH
95J	354	637	2006 PF 95J OGph
95J	377	643	2006 PF 95J USED
95J	381	646	2005 PSE 95J OGph
95J	561	712	2006 PSE 95J NH
95J	682	748	2006 PSE 95J NH
95J	C6	781	2004 PSE 95J Mint OG
95J	E3	799	Enc. PSE 95J Mint OG
95J	E11	804	2006 PSE 95J NH
95	12	504	2005 PSE 95 USED
95	14	505	2006 PSE 95 USED
95	31	510	2006 PF 95 USED
95	184	534	2006 PSE 95 OGph
95	188	535	2006 PSE 95 USED
95	225	546	2005 PSE 95 NH
95	230	549	2006 PSE 95 NH
95	231	550	2006 PSE 95 NH
95	233	553	2005 PSE 95 NH
95	235	556	2006 PF 95 NH
95	239	559	2006 PF 95 NH
95	245	566	2006 PSE 95 OGph
95	249	567	2005 PSE 95 NH
95	279	577	2006 PSE 95 NH
95	287	582	2006 PSE 95 NH
95	289	583	2005 PSE 95 OGph
95	292	587	2005 PF 95 NH
95	293	589	2006 PF 95 OGph
95	295	595	2005 PSE 95 NH
95	296	596	2004 PSE 95 NH
95	300	600	2005 PF 95 NH
95	306	602	2006 PSE 95 OGph
95	315	613	2006 PSE 95 OGph
95	325	615	2005 PSE 95 NH
95	328	621	2005 PSE 95 NH
95	329	623	2005 PSE 95 NH
95	330	625	2005 PF 95 OGph
95	330	626	2006 PSE 95 OGph
95	339	629	2006 PF 95 NH
95	351	630	2006 PF 95
95	352	634	2006 PF 95 OGph
95	382	647	2005 PSE 95 NH
95	393	652	2006 PF 95 NH
95	398	653	2005 PF 95 NH
95	399	655	2006 PF 95 NH
95	402	658	2006 PF 95 NH
95	407	659	2006 PSE 95 NH
95	434	670	2006 PF 95 NH
95	444	673	2005 PSE 95 OGph
95	459	680	2005 PF 95 NH
95	459	683	2005 PSE 95 NH
95	468	685	2006 PSE 95 NH
95	468	686	2005 PSE 95 NH
95	473	687	2006 PSE 95 NH
95	473	688	2006 PF 95 NH
95	492	694	2005 PSE 95 NH
95	496	695	2006 PSE 95 NH

Grade	Scott	Lot	Year/Service/Grade
95	504	696	2006 PSE 95 NH
95	505	698	2004 PSE 95 Mint OG
95	506	699	2006 PSE 95 NH
95	507	700	2005 PSE 95 NH
95	514	703	2005 PSE 95 NH
95	534B	707	2006 PSE 95 NH
95	537	710	2006 PSE 95 NH
95	561	713	2006 PSE 95 NH
95	567	715	2005 PSE 95 NH
95	568	716	2005 PSE 95 NH
95	569	717	2006 PSE 95 NH
95	570	719	2005 PSE 95 NH
95	571	721	2005 PSE 95 NH
95	572	723	2006 PF 95 NH
95	572	724	2004 PSE 95 NH
95	573	726	2004 PSE 95 NH
95	573	727	2004 PSE 95 NH
95	573a	729	2005 PSE 95 NH
95	591	731	2006 PSE 95 NH
95	665	737	2004 PSE 95 NH
95	666	738	2005 PSE 95 NH
95	668	739	2002 PSE 95 NH
95	673	741	2006 PF 95 NH
95	675	742	2006 PSE 95 NH
95	676	744	2006 PSE 95 NH
95	676	745	2006 PSE 95 NH
95	834	765	2005 PSE 95 NH
95	869-893	769	Enc. PSE 95 NH
95	C2	777	2006 PSE 95 NH
95	C13	782	2006 PF 95 NH
95	C13	783	2006 PF 95 NH
95	C14	787	2006 PF 95 NH
95	C15	792	Enc. PSE 95 NH
95	C18	794	2006 PSE 95 NH
95	C18	795	2006 PSE 95 NH
95	J28	810	2005 PSE 95 NH
95	J39	812	2006 PSE 95 NH
95	JQ2	832	2006 PSE 95 NH
95	K1	818	2006 PF 95 NH
95	Q1	824	2005 PSE 95 NH
95	Q6	826	2005 PSE 95 NH
95	Q7	828	2006 PSE 95 OGph
95	Q10	830	2006 PSE 95 OGph
95	RW2	833	2006 PF 95 NH
95	RW6	835	2006 PSE 95 NH
95	RW7	837	2006 PSE 95 NH
95	RW8	838	2006 PSE 95 NH
95	RW11	839	2006 PSE 95 NH
95	RW11	840	2006 PF 95 NH
95	RW13	841	2005 PSE 95 NH
95	RW16	843	2006 PSE 95 NH
95	RW21	844	2005 PSE 95 NH
95	RW22	846	2005 PSE 95 NH
95	RW22	847	2006 PSE 95 NH
95	RW30	848	2006 PSE 95 NH
95	RW31	849	2006 PSE 95 NH
90J	107	519	Enc. PSE 90J Mint OG
90J	121	526	Enc. PSE 90J USED
90J	189	536	Enc. PSE 90J NH
90J	205	539	2006 PF 90J USED
90J	234	555	Enc. PSE 90J NH

Grading Index to Sale 921

Grade	Scott	Lot	Year/Service/Grade
90J	309	607	2005 PSE 90J NH
90J	309	608	2006 PSE 90J NH
90J	331	628	2006 PSE 90J USED
90J	351	632	Enc. PSE 90J NH
90J	354	636	Enc. PSE 90J NH
90J	376	641	2004 PSE 90J NH
90J	379	644	Enc. PSE 90J NH
90J	380	645	Enc. PSE 90J OGph
90J	407	660	2004 PSE 90J NH
90J	428	667	2005 PSE 90J NH
90J	555	711	2006 PSE 90J NH
90J	679	746	2005 PSE 90J NH
90J	C5	779	Enc. PSE 90J NH
90J	C14	786	2005 PSE 90J NH
90J	E2	798	Enc. PSE 90J Mint OG
90J	E9	803	2005 PSE 90J NH
90J	Q9	829	2006 PSE 90J OGh
90	1	501	2005 PSE 90 USED
90	2	502	Enc. PSE 90 USED
90	2	503	2006 PSE 90 USED
90	15	506	2006 PSE 90 USED
90	21	508	Enc. PSE 90 USED
90	23	509	2006 PF 90 USED
90	33	511	2006 PF 90 USED
90	34	512	2006 PF 90 USED
90	70	513	2006 PF 90 USED
90	72	514	Enc. PSE 90 POG
90	85	515	2005 PSE 90 USED
90	93 var.	516	2006 PSE 90 USED
90	97	517	2005 PSE 90 Mint OG
90	98	518	2006 PF 90 USED
90	113	520	Enc. PSE 90 Mint OG
90	114	521	2005 PSE 90 NH
90	118	522	2005 PSE 90 USED
90	119	523	2006 PSE 90 USED
90	120	524	2005 PSE 90 Mint OG
90	122	527	2005 PSE 90 USED
90	122	528	Enc. PSE 90 USED
90	135	529	2005 PF 90 NH
90	146	530	Enc. PSE 90 OGph
90	146	531	2006 PSE 90 OGph
90	150	532	2006 PF 90 OGph
90	178	533	2006 PF 90 OGph
90	189	538	Enc. PSE 90 Mint OG
90	208a	540	Enc. PSE 90 Mint OG
90	209	541	2005 PF 90 NH
90	213	543	2006 PF 90 NH
90	219	544	2006 PF 90 NH
90	226	547	2006 PF 90 OGph
90	227	548	2005 PSE 90 NH
90	232	551	2006 PF 90 NH
90	240	560	2006 PSE 90 USED
90	241	561	Enc. PSE 90 OGph
90	241	562	Enc. PSE 90 Mint OG
90	242	563	2004 PSE 90 OGph
90	242	564	2006 PSE 90 OGph
90	244	565	2006 PF 90 OGph
90	254	569	2006 PF 90 NH
90	261A	574	2006 PSE 90 OGph
90	270	575	2006 PF 90 NH
90	277a	576	2006 PSE 90 OGph

Grade	Scott	Lot	Year/Service/Grade
90	279	578	2006 PSE 90 NH
90	283	579	2006 PSE 90 OGph
90	284	580	2006 PF 90 OGph
90	286	581	2006 PSE 90 NH
90	290	584	2006 PSE 90 NH
90	290	585	2006 PF 90 NH
90	290	586	2006 PSE 90 NH
90	292	588	2006 PSE 90 NH
90	293	590	2006 PF 90 OGph
90	294	591	2005 PSE 90 NH
90	296	597	2006 PSE 90 NH
90	297	599	2006 PF 90 OGph
90	302	601	2006 PF 90 NH
90	307	603	2005 PSE 90 NH
90	308	604	2006 PSE 90 NH
90	308	605	2004 PSE 90 NH
90	310	609	Enc. PSE 90 NH
90	312	610	2006 PSE 90 NH
90	313	611	2005 PSE 90 NH
90	313	612	2006 PSE 90 OGph
90	319i	614	2005 PSE 90 NH
90	325	616	2006 PSE 90 NH
90	325	617	2006 PSE 90 NH
90	325	618	2006 PF 90 NH
90	327	619	2005 PSE 90 NH
90	328	622	2005 PF 90 NH
90	330	624	2006 PSE 90 NH
90	330	627	2006 PF 90 OGph
90	352	633	2005 PSE 90 NH
90	356	638	2005 PF 90 OGph
90	364	639	2006 PF 90 OGph
90	377	642	2006 PF 90 NH
90	390	650	2006 PF 90 USED
90	392	651	2005 PSE 90 NH
90	398	654	2003 PSE 90 NH
90	399	656	2006 PF 90 NH
90	401	657	2006 PF 90 NH
90	407	661	2006 PF 90 NH
90	407	662	Enc. PSE 90 NH
90	412	663	2006 PSE 90 USED
90	420	664	2006 PF 90 NH
90	422	665	2005 PSE 90 NH
90	427	666	2006 PSE 90 NH
90	430	668	2006 PSE 90 NH
90	438	671	2006 PF 90 NH
90	439	672	2005 PSE 90 NH
90	445	674	Enc. PSE 90 Mint OG
90	447	676	2006 PSE 90 NH
90	452	677	2005 PSE 90 NH
90	457	678	2006 PF 90 NH
90	458	679	2005 PSE 90 NH
90	459	681	2005 PF 90 NH
90	459	684	2005 PSE 90 NH
90	473	689	2005 PF 90 NH
90	475	690	2006 PF 90 OGph
90	477	691	2006 PF 90 NH
90	477	692	2004 PSE 90 NH
90	507	701	2006 PF 90 NH
90	511	702	2006 PSE 90 NH
90	516	704	2005 PSE 90 NH
90	518	705	Enc. PSE 90 NH

Grade	Scott	Lot	Year/Service/Grade
90	523	706	2006 PF 90 NH
90	534B	708	Enc. PSE 90 NH
90	534B	709	Enc. PSE 90 NH
90	566	714	2006 PSE 90 NH
90	569	718	2006 PSE 90 NH
90	571	722	2006 PSE 90 NH
90	572	725	2006 PSE 90 NH
90	573	728	2006 PSE 90 NH
90	584	730	2006 PSE 90 NH
90	668	740	2006 PSE 90 NH
90	675	743	2006 PSE 90 NH
90	679	747	Enc. PSE 90 NH
90	C3	778	2006 PF 90 NH
90	C6	780	2006 PSE 90 NH
90	C13	784	Enc. PSE 90 NH
90	C13	785	2006 PF 90 NH
90	C14	788	Enc. PSE 90 NH
90	C14	789	2006 PF 90 NH
90	C14	790	2006 PF 90 NH
90	C14	791	2006 PSE 90 NH
90	C15	793	2005 PSE 90 NH
90	C18	796	2006 PF 90 NH
90	C18	797	2006 PSE 90 NH
90	E4	800	2006 PSE 90 NH
90	E5	801	2006 PF 90 OGph
90	E8	802	2006 PF 90 NH
90	F1	806	2006 PSE 90 OGph
90	J3	807	2006 PF 90 OGph
90	J18	808	2006 PF 90 NH
90	J21	809	2004 PSE 90 NH
90	J29	811	2005 PSE 90 USED
90	J41	814	2006 PSE 90 NH
90	J49	815	2006 PF 90 OGph
90	J55a	816	2006 PSE 90 NH
90	K2	819	2005 PF 90 NH
90	K3	820	2005 PSE 90 NH
90	K15	821	2006 PF 90 NH
90	O123	822	2006 PF 90 NH
90	PR79	823	Enc. PSE 90 Mint OG
90	Q5	825	2006 PSE 90 NH
90	Q12	831	Enc. PSE 90 NH
90	RW6	836	2006 PSE 90 NH
90	RW21	845	2006 PSE 90 NH
90	RW34	850	2006 PSE 90 NH
85J	233a	554	2006 PSE 85J OGph
85J	249	568	2006 PSE 85J NH
85	121	525	2005 PSE 85 Mint OG
85	260	570	2004 PSE 85 NH
85	388	649	2003 PSE 85 Mint OG

Robert A. Siegel Auction Galleries, Inc.
 Prices Realized for
 Sale 921 10/18/2006 Superb Graded United States Stamps

Lot#	Realized	Lot#	Realized	Lot#	Realized	Lot#	Realized	Lot#	Realized	Lot#	Realized
501	800	546	2,600	590	2,800	633	1,200	678	225	723	R
502	1,600	547	400	591	110	634	475	679	250	723	R
503	1,900	548	2,600	592	1,500	635	475	680	2,400	724	750
504	2,600	549	650	593	450	636	850	681	1,800	725	325
505	800	550	650	594	900	637	600	682	800	726	650
506	375	551	350	595	425	638	R	683	700	727	700
507	4,000	552	6,500	596	R	638	R	684	600	728	375
508	3,500	553	2,000	596	R	639	2,900	685	2,100	729	900
509	3,000	554	25,000	597	400	640	450	686	2,100	730	140
510	10,500	555	900	598	275	641	225	687	1,100	731	700
511	600	556	1,400	599	120	642	225	688	950	732	900
512	7,000	557	2,900	600	R	643	600	689	325	733	850
513	1,500	558	6,000	600	R	644	325	690	275	734	400
514	3,750	559	5,500	601	700	645	200	691	4,250	735	7,000
515	2,100	560	550	602	150	646	450	692	5,250	736	2,600
516	500	561	1,500	603	700	647	4,500	693	4,750	737	425
517	5,000	562	1,500	604	350	648	1,300	694	190	738	950
518	750	563	1,800	605	275	649	4,000	695	500	739	375
519	10,500	564	2,100	606	250	650	160	696	225	740	190
520	1,200	565	4,250	607	2,000	651	850	697	6,000	741	R
521	1,400	566	5,250	608	2,000	652	500	698	700	741	R
522	1,600	567	5,000	609	4,250	653	325	699	375	742	700
523	600	568	950	610	6,750	654	130	700	600	743	180
524	13,500	569	1,200	611	12,000	655	1,200	701	225	744	500
525	9,500	570	2,600	612	3,500	656	300	702	70	745	500
526	800	571	3,500	613	250	657	150	703	850	746	650
527	3,750	572	4,750	614	350	658	1,800	704	190	747	375
528	3,250	573	3,250	615	2,300	659	1,700	705	225	748	130
529	2,800	574	2,900	616	550	660	475	706	1,700	749	750
530	900	575	375	617	550	662	450	707	4,750	750	275
531	800	576	2,000	618	375	663	700	708	3,500	751	250
532	4,750	577	600	619	950	664	700	709	3,000	752	250
533	700	578	120	620	3,750	665	1,400	710	200	753	250
534	400	579	275	621	750	666	350	711	250	754	300
535	600	580	300	622	350	667	450	712	475	755	350
536	1,100	581	325	623	1,100	668	550	713	250	756	300
537	2,100	582	3,500	624	1,000	669	200	714	130	757	300
538	450	583	450	625	350	670	550	715	450	758	275
539	550	584	1,200	626	R	671	550	716	350	759	300
540	750	585	1,300	626	R	672	1,500	717	700	760	250
541	1,000	586	1,400	627	170	673	600	718	130	761	250
542	1,100	587	14,500	628	150	674	600	719	750	762	325
543	400	588	7,500	629	800	675	2,100	720	1,900	763	250
544	225	589	R	631	5,000	676	1,000	721	550	764	275
545	375	589	R	632	700	677	110	722	225	765	160

Robert A. Siegel Auction Galleries, Inc.
 Prices Realized for
 Sale 921 10/18/2006 Superb Graded United States Stamps

Lot#	Realized	Lot#	Realized	Lot#	Realized
766	250	810	4,500	854	150
767	150	811	1,200		
768	800	812	275		
769	1,100	813	1,900		
770	500	814	650		
771	500	815	225		
772	140	816	350		
773	160	817	1,600		
774	160	818	R		
775	160	818	R		
776	180	819	275		
777	700	820	450		
778	375	821	2,200		
779	250	822	800		
780	225	823	750		
781	200	824	350		
782	R	825	325		
782	R	826	850		
783	800	827	225		
784	475	828	150		
785	500	829	200		
786	1,400	830	550		
787	1,500	831	1,500		
788	1,000	832	1,400		
789	1,100	833	2,200		
790	1,100	834	2,100		
791	1,200	835	1,000		
792	2,900	836	350		
793	1,600	837	1,000		
794	275	838	850		
795	250	839	500		
796	150	840	500		
797	120	841	275		
798	900	842	550		
799	1,400	843	200		
800	5,250	844	225		
801	275	845	160		
802	450	846	190		
803	1,000	847	180		
804	550	848	170		
805	130	849	180		
806	160	850	160		
807	300	851	425		
808	2,500	852	425		
809	6,000	853	190		