

THE SCARSDALE COLLECTION



**PART THREE—SALE 924**  
**WEDNESDAY, NOVEMBER 14, 2006**

*Robert A. Siegel*

AUCTION GALLERIES, INC.

THE SCARSDALE COLLECTION

*Robert A. Siegel*

AUCTION GALLERIES, INC.

**[www.siegelauctions.com](http://www.siegelauctions.com)**



**PART ONE — REALIZED \$1,284,573**

**FRIDAY, APRIL 21, 2006**

- Columbian, Trans-Mississippi, Pan-American and Other 20th Century Commemorative Issues
- 1902 Issue, 1922 Issue, and 1938 Presidential Issue
- Air Post, Special Delivery, Registration, Offices in China and Parcel Post Issues



**PART TWO — REALIZED \$951,050**

**WEDNESDAY, SEPTEMBER 20, 2006**

- 1847 First General Issue
- 1851-56 Imperforate and 1857-60 Perforated Issues
- 1861-66 and 1867-68 Grilled Issues
- 1869 Pictorial Issue and Re-Issues
- Confederate States General Issues



**PART THREE**

**NOVEMBER 14, 2006**

- 1870-88 Large Bank Note Issues
- 1890-93 Small Bank Note Issues
- 1894-98 Bureau Issues
- 19th and 20th Century Postage Due Issues



**PART FOUR**

**MARCH 2007**

1908-26 Washington-Franklin Series, including

- Bluish Paper Issue
- Coil Singles, Pairs and Line Pairs
- Rotary Press Coil and Sheet Waste Issues

# THE SCARSDALE COLLECTION

PART THREE—SALE 924  
TUESDAY, NOVEMBER 14, 2006, AT 1:30 P.M.

1870-88 Large Bank Note Issues,  
1890-93 Small Bank Note Issues,  
1894-98 Bureau Issues,  
19th and 20th Century Postage Due Issues

*Offered at unreserved public auction by*

*Robert A. Siegel*

AUCTION GALLERIES, INC.

60 EAST 56TH STREET, 4TH FLOOR  
NEW YORK, NEW YORK 10022

Phone (212) 753-6421 Fax (212) 753-6429

E-mail: [stamps@siegelauctions.com](mailto:stamps@siegelauctions.com)

[www.siegelauctions.com](http://www.siegelauctions.com)

## PRE-SALE EXHIBITION

Monday, November 13 — 10:00 a.m. to 4:00 p.m.

Tuesday, November 14 — 10:00 a.m. to 1:00 p.m.

or by appointment (please call 212-753-6421)

Lots in this sale will be sold subject to a 15% buyer's premium

*Robert A. Siegel*  
AUCTION GALLERIES, INC.  
**www.siegelauctions.com**



**Scott R. Trepel**  
President

e-mail: [strepel@siegelauctions.com](mailto:strepel@siegelauctions.com)



**John P. Zuckerman**  
Senior Vice President

e-mail: [jzuckerman@siegelauctions.com](mailto:jzuckerman@siegelauctions.com)



**Elizabeth C. Pope**  
Vice President

e-mail: [epope@siegelauctions.com](mailto:epope@siegelauctions.com)



**Starr Tucker-Ortega**  
Financial and Sale Administration

e-mail: [starrrt@siegelauctions.com](mailto:starrrt@siegelauctions.com)



**Jason Tabor**  
Sale Administration

e-mail: [jtabor@siegelauctions.com](mailto:jtabor@siegelauctions.com)

**Address:**

60 East 56th Street  
4th Floor  
New York, New York 10022

**Phone:** (212) 753-6421

**Fax:** (212) 753-6429

**e-mail:** [stamps@siegelauctions.com](mailto:stamps@siegelauctions.com)

**Bidding**

Bidders who cannot attend the sale may leave written bids (see Bid Form). Bids called in by phone must be confirmed in writing. E-mail bids may be sent up to one hour before each session.

Bidders may apply for a phone link to the auction and bid through our staff. Applicants must call at least 24 hours prior to the sale. Phone links are subject to application.

**Viewing**

Subject to availability, many lots can be sent to established clients (or those who submit references) for examination. Requests must be made no later than 5 days prior to the auction. Lots must be returned on the day of receipt. Postage/insurance costs will be invoiced. Large lots will not be available for mail viewing.

In addition to the regular public viewing hours, prospective bidders may view lots at our galleries by appointment.

Our on-staff philatelists will be pleased to review the description of any lot and provide more detailed information.

**Expert Certification**

Individual items offered without a Philatelic Foundation certificate dated within the past 5 years (or PSE certificate dated since January 2004) may be purchased subject to certification (please see Conditions of Sale for details).

**Shipping and Delivery**

Instructions for shipping must be given to the gallery prior to or immediately after the sale. Unless special instructions are received, we will follow the shipping guidelines on the back of the Bid Form. Buyers are responsible for all prescribed shipping charges, whether or not the actual expense is equal to the invoiced charge.

**Prices Realized**

A list of prices realized will be included with every invoice. We accept phone and fax requests for prices realized during or after the auction. Bidders who wish to receive realizations by e-mail should provide an e-mail address on the bid form. Results are also posted to our web site immediately after each session at [www.siegelauctions.com](http://www.siegelauctions.com)

**Hotels and Restaurants**

We will be pleased to furnish the names of area hotels and restaurants. During peak seasons, we may be able to assist in placing reservations.



## Live Internet Bidding at Siegel Auction Galleries

Internet Floor Bidding for Robert A. Siegel Auction Galleries, Inc.'s Sale 908 closing on Mar 13-15, 2006. Contact us by Phone at (212) 753-6421. [Contact us Via eMAIL](#). Please READ [Instructions/Help](#) Listen to the [Public Auction Broadcast](#). Welcome John Bidding. Paddle II. Time: 13:50:36. F11 (if using Internet Explorer) toggles full screen mode. You are Cust# , You are approved for

Lot and Description	Bidding
<b>Postal History, California Mails and Western Expre</b> <b>Carriers and Locals Group Lots</b> <b>Lot 5010.</b> Carriers and Locals. More than 30 covers and a few off cover, 1840's, 50's and 60's, comprising General Issue Carriers incl. LO2, LO3, LO5 and Franklin plate proof on card, LO2 on small blue cover to Philadelphia "U.States" indicating origin f E. 1,500-2,000  <b>Sold for 3,500.00</b> <b>Your Bid 3,500.00</b> <div> <input type="button" value="1 sec refresh"/> <input type="button" value="3 sec"/> <input type="button" value="5 sec"/> <input type="button" value="Show Images"/> </div>	<div> <input type="button" value="Bid 3750"/> <input type="button" value="Bid 4000"/> <input type="button" value="Bid 4250"/> <input type="button" value="Bid 4500"/> <input type="button" value="Bid 4750"/> <input type="button" value="Bid 5000"/> </div> <a href="#">Send a Message to the Auction Floor</a>
<b>Messages from the public auction</b>  Please close this form when you are not bidding or watching the auction.	Lot 5010 going for 650... Lot 5010 going for 3500... Lot 5010 Last Call at 3500... Lot 5010 sold to the floor for \$3500.  ===== END OF SALE =====  -Thank You!!!

**Siegel Auction Galleries, in coordination with Stamp Auction Network, will broadcast our auctions live over the internet, allowing you to listen to the auction in progress.**

Bidders who have pre-registered for Live Internet Bidding will also be able to place bids over the internet, as if bidding in the saleroom. In order to bid by internet, you must be an approved, registered bidder with Stamp Auction Network and Siegel Auction Galleries.

- ☐ If you are already registered at Stamp Auction Network and have been approved for internet bidding by Siegel, just log in at Stamp Auction Network, locate the Siegel sale and start bidding anytime during the auction.
- ☐ If you have never registered as a bidder at Stamp Auction Network, then please go to [www.siegelauctions.com/IB2.htm](http://www.siegelauctions.com/IB2.htm) and click on “Register” at the top of the page. Please check the box for Robert A. Siegel Auction Galleries (under “R”) and submit the form. If you have never bid with our firm, please provide trade references whom we may contact to have your account approved (please do not use family members or credit cards as references).
- ☐ If you have registered previously at Stamp Auction Network, but not specifically for our firm, please go to [www.siegelauctions.com/IB2.htm](http://www.siegelauctions.com/IB2.htm) and click on “Update Registration” at the top of the page. Your information at Stamp Auction Network will be sent to us for approval. You may be asked to provide additional references before being approved for internet bidding.

Once you are approved for bidding, you will be able to bid live over the internet during the auction. You may participate in Live Internet Bidding using ny browser or operating system. The audio portion is only available to PC users using Internet Explorer. For the audio portion, you will be asked to install a piece of software (ActiveX control) to make it work.

Bidders must log in at Stamp Auction Network to participate. Once logged in, please locate the page for the current Siegel auction.

At the top of the auction's home page there are two links:

- One link allows anyone to listen to the public auction broadcast.
- The second link permits registered bidders to join the public auction in progress.

Please remember that to participate in the auction, you must be pre-registered at Stamp Auction Network and approved by Siegel Auction Galleries as a bidder. Qualified bidders will see a page like the one illustrated above and have a valid paddle number assignment.

## Conditions of Sale (Important—please read carefully)

The property described in this catalogue will be offered at public auction by Robert A. Siegel Auction Galleries, Inc. ("Galleries") on behalf of various consignors and itself or affiliated companies. By bidding on any lot, whether directly or by or through an agent, in person, or by telephone, facsimile or any other means, the bidder acknowledges and agrees to all of the following Conditions of Sale.

1. The highest bidder acknowledged by the auctioneer shall be the buyer. The term "final bid" means the last bid acknowledged by the auctioneer, which is normally the highest bid offered. **The purchase price payable by the buyer will be the sum of the final bid and a commission of 15% of the final bid ("buyer's premium"), together with any sales tax or use tax which may be due on the sale.**
2. The auctioneer has the right to reject any bid, to advance the bidding at his discretion and, in the event of a dispute between bidders, to determine the successful bidder, to continue the bidding or to reoffer and resell the lot in dispute. The Galleries' record of the final sale shall be conclusive.
3. All bids are per numbered lot in the catalogue unless otherwise announced by the auctioneer at the time of sale. The right is reserved to group two or more lots, to withdraw any lot or lots from the sale, or to act on behalf of the seller. The Galleries will execute bidding instructions on behalf of clients, but will not be responsible for any errors in the execution of such bids.
4. **Lots with numbers followed by the symbol ° are offered subject to a confidential minimum final bid ("reserve"), below which the lot will not be sold. The absence of the symbol ° means that the lot is offered without a reserve.** In the absence of a reserve, the auctioneer has sole discretion to establish a minimum opening bid and may refuse an offer of less than half of the published estimate. Any lot that does not reach its reserve or opening bid requested by the auctioneer will be announced as "passed" and excluded from the prices realized lists after the sale. The Galleries may have a direct or indirect ownership interest in any or all lots in the sale resulting from an advance of monies or goods-in-trade or a guarantee of minimum net proceeds made by the Galleries to the seller.
5. Any lot, the description of which is obviously incorrect, is returnable, but only if the lot is returned within 14 days of receipt. All disputed lots must be returned intact with the original packing material. **The following lots may not be returned for any reason: Lots containing ten or more items; lots from buyers who have registered for the pre-sale exhibition or received lots by postal viewing, thereby having had the opportunity to inspect them before the sale; any lot described with "faults" or "defects" may not be returned because of any fault or defect. No illustrated lots may be returned because of centering, margins or other factors shown in the illustrations.**
6. Successful bidders, unless they have established credit with the Galleries prior to the sale, must make payment in full before the lots will be delivered. Buyers not known to the Galleries must make payment in full within three days from the date of sale. **The Galleries retain the right to demand a cash deposit from anyone prior to bidder registration and/or to demand payment at the time the lot is knocked down to the highest bidder, for any reason whatsoever.** In the event that any buyer refuses or fails to make payment in cash for any lot at the time it is knocked down to him, the auctioneer reserves the right to reoffer the lot immediately for sale to the highest bidder. **Credit cards are not accepted as payment.**

7. If the purchase price has not been paid within the time limit specified above, nor lots taken up within seven days from the date of sale, the lots will be resold by whatever means deemed appropriate by the Galleries, and any loss incurred from resale will be charged to the defaulting buyer. Any account more than thirty days in arrears will be subject to a late payment charge of 1½% per month as long as the account remains in arrears. Any expenses incurred in securing payment from delinquent accounts will be charged to the defaulter. A fee of \$250.00 per check will be charged for each check returned for insufficient funds.

8. All lots are sold as genuine. **Any lot accompanied by a certificate issued by The Philatelic Foundation within 5 years of the sale date or by Professional Stamp Experts since January 2004 is sold "as is" and in accordance with the description on the certificate. Such lots may not be returned for any reason, including but not limited to a contrary certificate of opinion.** Buyers who wish to obtain a certificate for any item that does not have a P.F. or P.S.E. certificate (dated as above) may do so, provided that the following conditions are met: (1) the purchase price must be paid in full, (2) the item must be submitted to an acceptable expertizing committee with a properly executed application form within 21 days of the sale, (3) a copy of the application form must be given to the Galleries, (4) in the event that an adverse opinion is received, the Galleries retain the right to resubmit the item on the buyer's behalf for reconsideration, without time limit or other restrictions, (5) unless written notification to the contrary is received, items submitted for certification will be considered cleared 90 days from the date of sale, and (6) in the event any item is determined to be "not as described", the buyer will be refunded the purchase price and the certification fee up to \$500.00 unless otherwise agreed.

9. Until paid for in full, all lots remain the property of the Galleries on behalf of the seller.

10. Agents executing bids on behalf of clients will be held responsible for all purchases made on behalf of clients unless otherwise arranged prior to the sale.

11. The buyer assumes all risk for delivery of purchased lots and agrees to pay for prescribed shipping costs.

12. The bidder consents that any action or proceeding against it may be commenced and maintained in any court within the State of New York or in the United States District Court for the Southern District of New York, that the courts of the State of New York and United States District Court for the Southern District of New York shall have jurisdiction with respect to the subject matter hereof and the person of the bidder. The bidder agrees not to assert any defense to any action or proceeding initiated by Galleries based upon improper venue or inconvenient forum. The bidder agrees that any action brought by the bidder shall be commenced and maintained only in a Federal Court in the United States District Court for the Southern District of New York or the State Court in the county in which Galleries has its principal place of business in New York. These Terms and Conditions shall be governed by and construed in accordance with the substantive laws of the State of New York.

SCOTT R. TREPEL, Principal Auctioneer

Auctioneer's License No. 795952  
N.Y.C. Department of Consumer Affairs  
80 Lafayette Street, New York, N.Y. 10013  
Telephone (212) 577-0111

*Revised 9/2005*

### Copyright Notice

This catalogue in all versions, printed and electronic, is protected by copyright. The descriptions, format, illustrations and information used herein may not be reprinted, distributed or copied in any form without the express written consent of Robert A. Siegel Auction Galleries. Application for permission may be made in writing.

© 2006, Robert A. Siegel Auction Galleries, Inc.

# Grading Terms, Abbreviations and Values Used in Descriptions

## Grade and Centering

The following terms are used in Siegel sale catalogues (corresponding numerical ranges shown in parentheses). Margin width, centering and gum are described according to generally-accepted standards. Stamps are graded based on our subjective assessment of condition for each issue, which do not necessarily correlate with third-party grading terms or standards for all issues. **A lot may not be returned because a certification service grades a stamp lower than the grade stated. Information from the P.S.E. Stamp Market Quarterly and P.S.E. Population Report<sup>SM</sup> is the most current available, but lots may not be returned due to errors or changes in statistics or data.**

**Extremely Fine Gem (90-100 pts.):** The term “Gem” used in Siegel catalogues describes condition that is the finest possible for the issue.







**Extremely Fine (80-90 pts.):** Exceptionally large margins or near perfect centering.

**Very Fine (70-85 pts.):** Normal size margins for the issue and well-centered with the design a bit closer to one side. “Very Fine and choice” applies to stamps that have desirable traits such as rich color, sharp impression, freshness or clarity of cancel.

**Fine (60-70):** Smaller than usual margins or noticeably off center. Pre-1890 issues may have the design touched in places.

**Very Good (below 60):** Attractive appearance, but margins or perforations cut into the design.

**Good (G) or Average (Ave.):** Cut into or perfs far into design and usually with slight faults. This condition is generally acceptable for rarities, scarce multiples or stamps used on unusual covers.

Gum Categories:	MINT N.H.	ORIGINAL GUM (O.G.)				NO GUM
	 <b>Mint Never Hinged</b> <i>Free from any disturbance</i>	 <b>Lightly Hinged</b> <i>Faint impression of a removed hinge over a small area</i>	 <b>Hinge Mark or Remnant</b> <i>Prominent hinged spot with part or all of the hinge remaining</i>	 <b>Part o.g.</b> <i>Approximately half or more of the gum intact</i>	 <b>Small part o.g.</b> <i>Approximately less than half of the gum intact</i>	 <b>No gum</b> <i>Only if issued with gum</i>
Catalogue Symbol:	★ ★	★	★	★	★	(★)
PRE-1890 ISSUES	<i>Pre-1890 stamps in these categories trade at a premium over Scott value</i>			Scott Value for “O.G.”		Scott “No Gum” Values thru No. 218
1890-1935 ISSUES	Scott “Never Hinged” Values for Nos. 219-771	Scott Value for “O.G.” (Actual value will be affected by the degree of hinging)		<b>Disturbed Original Gum:</b> Gum showing noticeable effects of humidity, climate or hinging over more than half of the gum. The significance of gum disturbance in valuing a stamp in any of the Original Gum categories depends on the degree of disturbance, the rarity and normal gum condition of the issue and other variables affecting quality. For example, stamps issued in tropical climates are expected to have some gum disturbance due to humidity, and such condition is not considered a negative factor in pricing.		
1935 TO DATE	Scott Value for “Unused”					

## Covers

Minor nicks, short edge tears, flap tears and slight reduction at one side are normal conditions for 19th century envelopes. Folded letters should be expected to have at least one file fold. Light cleaning of covers and small mends along the edges are accepted forms of conservation. Unusual covers may have a common stamp with a slight crease or tiny tear. **These flaws exist in virtually all 19th century covers and are not always described. They are not grounds for return.**

## Catalogue Values and Estimates

Unless otherwise noted, the currently available *Scott Catalogue* values are quoted in dollars with a decimal point. Other catalogues are often used for foreign countries or specialized areas and are referred to by their common name: *Stanley Gibbons* (SG), *Dietz*, *American Air Mail Catalogue* (AAMC), *Michel*, *Zumstein*, *Facit*, etc. Estimates are indicated with an “E.” and reflect our conservative valuation in dollars. Reserves will never exceed the low end of the estimate range; they will sometimes exceed Scott Catalogue value for stamps in Extremely Fine condition.

Because of certain pricing inconsistencies in the Scott Catalogue—for example, blocks that have no gum, the absence of premiums for Mint N.H. items, etc.—we cannot guarantee the accuracy of values quoted for multiples, specialized items and collection lots. We generally try to be conservative, but buyers may not return a lot because of a discrepancy in catalogue value due to Scott pricing inconsistencies.

## Symbols and Abbreviations (see chart above for gum symbols)

⌘	Block	E	Essay	pmk.	Postmark	No.	Scott Catalogue Number
⌘	Cover	P	Proof	cds	Circular Datestamp	hs	Handstamp
FC	Fancy Cancel	TC	Trial Color Proof	var.	Variety	ms.	Manuscript

*Revised 3/2006*



1914 Perf 10 Watermarked 190

J52



J53



J54



J55



J56



J57



J58

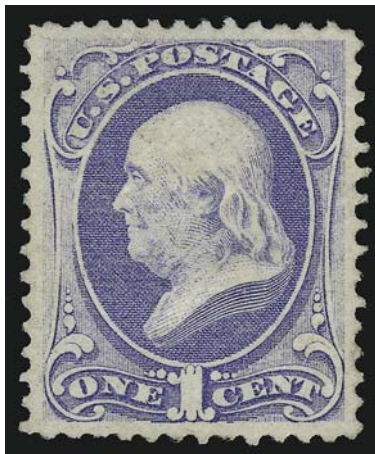




AFTERNOON SESSION (LOTS 1-222)  
TUESDAY, NOVEMBER 14, 2006, AT 1:30 P.M.

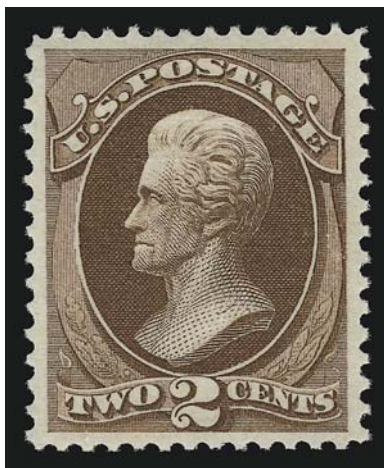
THE SCARSDALE COLLECTION — PART THREE

1870-71 NATIONAL BANK NOTE CO. GRILLED ISSUE



1

- 1 ★ **1c Ultramarine, Grill (134).** H. Grill, original gum, lightly hinged, clearly-defined grill points, brilliant color on bright paper, choice centering with well-proportioned margins  
EXTREMELY FINE GEM. A SUPERB ORIGINAL-GUM EXAMPLE OF THE 1870 ONE-CENT NATIONAL BANK NOTE COMPANY GRILLED ISSUE.  
With 1998 and 2001 P.F. certificates..... 2,750.00



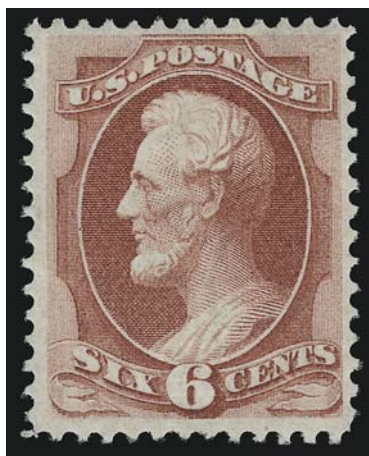
2

- 2 ★ **2c Red Brown, Grill (135).** I. Grill, clearly-defined with twelve horizontal rows, original gum, lightly hinged, deep rich color, perfectly centered with wide margins  
EXTREMELY FINE EXAMPLE OF THE 1870 2-CENT NATIONAL BANK NOTE COMPANY GRILLED ISSUE. ESPECIALLY DESIRABLE WITH THE STRONGER I GRILL.  
This is only the second unused example of the 2c with an I Grill that we have offered since we started keeping track of the different National grill types, approximately three years ago.  
With 1999 P.F. certificate which does not specify the grill type..... 1,300.00



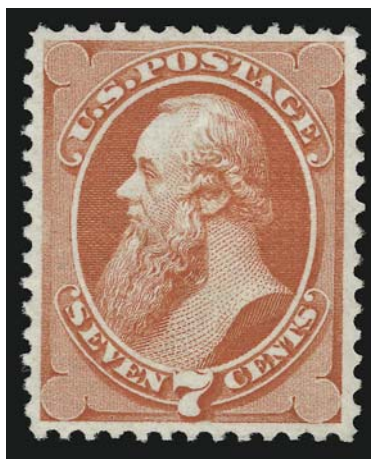
3

- 3 ★ **3c Green, Grill (136).** I. Grill, clearly twelve horizontal rows in height, easily visible on the face of the stamp, original gum, lightly hinged, rich color, choice centering, subtle diagonal scoring line not mentioned on accompanying certificate, otherwise Extremely Fine, a pretty stamp and especially desirable with the I Grill, with 1998 P.F. certificate not specifying the grill type ..... 800.00



4

- 4 ★ **6c Carmine, Grill (137).** H. Grill, original gum, rich color and proof-like impression, several noticeable vertical rows of grill points, choice centering with well-proportioned margins  
 VERY FINE AND CHOICE. A BRIGHT AND FRESH ORIGINAL-GUM EXAMPLE OF THE 1870 6-CENT NATIONAL BANK NOTE GRILLED ISSUE.  
 With 1995 P.F. certificate ..... 5,500.00



5

- 5 ★★ **7c Vermilion, Grill (138).** I. Grill with clearly-defined grill throughout, **Mint N.H.**, brilliant color on post-office fresh paper, gorgeous centering

EXTREMELY FINE GEM. THIS 1870 7-CENT NATIONAL BANK NOTE COMPANY GRILLED ISSUE IS OUTSTANDING IN EVERY RESPECT. THE STAMP IS IN MINT NEVER-HINGED SUPERBLY-CENTERED CONDITION. IT POSSESSES BRILLIANT COLOR, LONG AND FULL PERFORATIONS ALL AROUND AND IS THE SCARCER I GRILL VARIETY. WE SIMPLY CANNOT IMAGINE A FINER COPY OF THIS ISSUE.

The 7c stamp depicting Edwin Stanton was designed to prepay the rate for mail sent directly to Prussia, Austria and the German States, effective July 1, 1870. Production of the 7c stamp was postponed when the Franco-Prussian War caused a temporary discontinuance of this service, and hence the need for this specific denomination was greatly reduced. The earliest documented use of the 7c stamp is Feb. 12, 1871. Later in 1871 the rate for mail sent to Germany and Austria by Prussian Closed Mail via England was reduced from 10c to 7c, so the stamp's utility was restored. Luff notes that the first deliveries were after January 1871.

With 1999 P.F. certificate. Scott Retail as hinged. This is the only Mint N.H. example we have ever offered. .... 4,500.00



6

- 6 ★ **10c Brown, Grill (139).** H. Grill, several noticeable vertical rows of grill points, original gum, deep rich color, unusually wide margins for this issue

EXTREMELY FINE. AN OUTSTANDING ORIGINAL-GUM EXAMPLE OF THE 1870 10-CENT NATIONAL BANK NOTE GRILLED ISSUE.

This stamp is found more frequently with small margins and very few visible grill points. The original-gum example offered here, with extra wide margins and a well-defined grill, is a condition rarity and ranks among the finest known.

With 1997 P.F. certificate ..... 7,000.00



7

- 7 ★ **15c Orange, Split Grill (141 var).** H. Grill clearly showing part of grill at bottom and part at top, original gum, lightly hinged, radiant color, unusually wide margins for this issue, essentially a Jumbo-margined stamp

EXTREMELY FINE. A MAGNIFICENT ORIGINAL-GUM EXAMPLE OF THE 1870 15-CENT NATIONAL BANK NOTE COMPANY GRILLED ISSUE, WHICH CLEARLY SHOWS THE SPLIT GRILL VARIETY.

This is the only 15c split grill we have offered — in either unused or used condition — since keeping computerized records. The Scott Catalogue assigns the variety a meager \$1,250.00 premium, which in our opinion inadequately reflects its rarity. Even without the grill variety, this superb wide-margined stamp would rank among the most desirable examples of the 15c 1870 Grill extant.

With 1980 and 1997 P.F. certificates..... 8,750.00





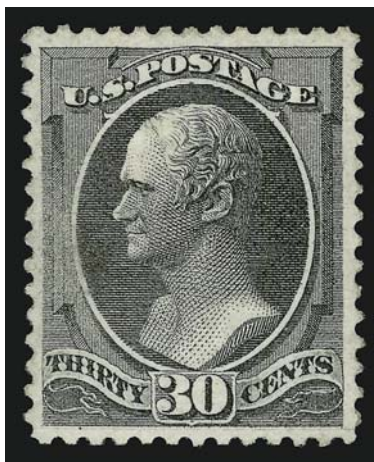
8

- 8     **24c Purple, Grill (142).** H. Grill with noticeable grill points at left, the distinctive light shade but the color is fresh and nicely complemented by **red New York Foreign Mail cancel**, choice centering for this difficult issue

VERY FINE AND CHOICE. A BEAUTIFUL EXAMPLE OF THE 1870 24-CENT NATIONAL BANK NOTE COMPANY GRILLED ISSUE. ESPECIALLY DESIRABLE WITH THE RED NEW YORK FOREIGN MAIL CANCEL.

This is one of the few used stamps in the Scarsdale Collection, as it is not known in genuine unused condition.

With 1997 P.F. certificate ..... 7,000.00



9

- 9 ★ **30c Black, Grill (143).** H. Grill clearly showing several distinct grill points, original gum, lightly hinged, sharp impression, almost perfectly centered with wide and balanced margins

EXTREMELY FINE GEM. POSSIBLY THE FINEST ORIGINAL-GUM EXAMPLE OF THE 1870 30-CENT NATIONAL BANK NOTE COMPANY GRILLED ISSUE IN EXISTENCE. A TRULY OUTSTANDING CONDITION RARITY.

The 30c 1870 Grilled Issue is notorious among collectors for its typical poor centering. Among the original-gum examples, which are rare, only a few would grade Very Fine or better. Our computerized records contain four others in sound, original-gum condition with centering that would grade Fine-Very Fine or Very Fine by current standards. A search through sixty years of past auction catalogues and name sales produced only two blocks of four, both poorly centered, which means that there have been no multiples from which choice singles could be harvested. In fact, even among the collections famed for quality Bank Note issues — Caspary, Lilly, Henry, Ambassador, Braus, Floyd et al — we could not find *any* original-gum examples that would grade Very Fine or better. Further demonstrating just how rare Scott 143 is in this condition, the P.S.E. Population Report does not even show an “OG” category for this stamp in *any* grade (although the SMQ lists OG values up to VF 80).

With 2000 P.F. certificate ..... 19,000.00

## 1870-71 NATIONAL BANK NOTE COMPANY UNGRILLED ISSUE

- 10 ★★ **1c Ultramarine (145).** Mint N.H. with part imprint at top, rich color, choice centering with wide margins, strong offset on back

EXTREMELY FINE. A SUPERB NEVER-HINGED EXAMPLE OF THE 1870 ONE-CENT UNGRILLED NATIONAL BANK NOTE STAMP. THIS IS THE ONLY MINT NEVER-HINGED EXAMPLE OF THIS ISSUE WE HAVE OFFERED SINCE KEEPING COMPUTERIZED RECORDS.

Ex Drucker. With 1986 P.F. certificate. Scott Retail as hinged..... 700.00



10



11

- 11 ★★ **2c Red Brown (146).** Pristine original gum in **Mint N.H.** state, beautifully centered with wide margins, wonderful rich color and sharp proof-like impression

EXTREMELY FINE GEM. A PERFECTLY-CENTERED MINT NEVER-HINGED EXAMPLE OF THE UNGRILLED 2-CENT 1870 NATIONAL BANK NOTE ISSUE. A TRUE CONDITION RARITY WITH SUCH SUPERB COLOR, CENTERING, FRESHNESS, IMPRESSION AND GUM.

As scarce as the 2c 1873 Continental stamp (Scott 157) is in Mint N.H. condition, the 2c 1870 National (Scott 146) is rarely obtainable in this state. The stamp offered here is easily one of the finest — if not *the* finest — we have encountered. Collectors on a quest to acquire the Bank Note issues in Extremely Fine Mint N.H. condition will be hard-pressed to locate a stamp of comparable quality.

With 2000 P.F. certificate. Scott Retail for hinged..... 400.00



12

- 12 ★ **3c Green (147).** Original gum, lightly hinged, brilliant color on bright paper, well-balanced margins, Extremely Fine Gem, a beautiful stamp, with 2000 P.F. certificate..... 325.00

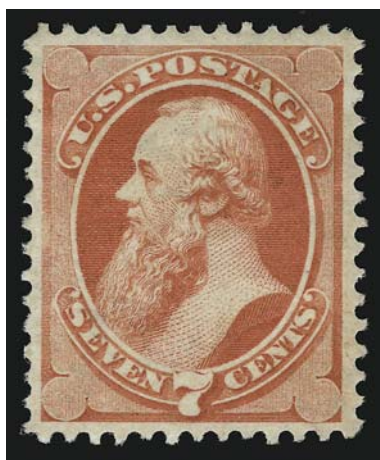
- 13 ★ **6c Carmine (148).** Original gum, lightly hinged, bright color and detailed impression, wide margins for this issue

EXTREMELY FINE LIGHTLY-HINGED EXAMPLE OF THE 1870 6-CENT UNGRILLED NATIONAL BANK NOTE COMPANY ISSUE.

With 2002 and 2004 P.F. certificates.. 1,100.00



13



14

- 14 ★ **7c Vermilion (149).** Original gum, lightly hinged, radiant color, well-proportioned margins

EXTREMELY FINE ORIGINAL-GUM EXAMPLE OF THE 1870 7-CENT NATIONAL BANK NOTE COMPANY UNGRILLED ISSUE. A STAMP OF REMARKABLE FRESHNESS.

This is a difficult stamp to find in such fresh and centered condition.

With 2000 P.F. certificate..... 1,300.00



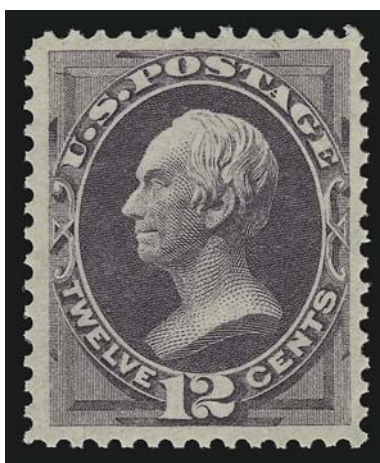
15

- 15 ★ **10c Brown (150).** Original gum, lightly hinged, intense color and impression, near perfect centering within well-balanced margins

EXTREMELY FINE GEM. AN EXCEEDINGLY RARE ORIGINAL-GUM EXAMPLE OF THE 10-CENT 1870 UNGRILLED NATIONAL BANK NOTE ISSUE.

In searching past auction catalogues, we have located precious few examples of Scott 150 in the condition of the stamp offered here. Collectors who are unwilling to compromise on quality are well-advised to pursue this opportunity.

With 2002 and 2003 P.F. certificates..... 1,750.00



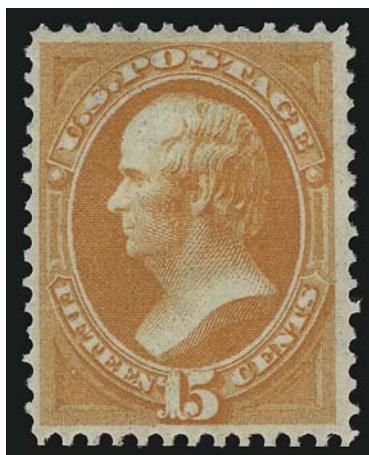
16

- 16 ★ **12c Dull Violet (151).** Original gum, barest trace of hinge mark, almost perfectly centered with wide margins all around, pretty pastel color and detailed impression

EXTREMELY FINE GEM. A SUPERB STAMP IN EVERY RESPECT — GUM, CENTERING, SIZE OF MARGINS, COLOR AND IMPRESSION. ONE OF THE FINEST EXAMPLES OF THE 1870 12-CENT NATIONAL BANK NOTE COMPANY ISSUE IN EXISTENCE.

Ex Lilly (Position 2 in block of eight) and Drucker (Siegel Sale 851, where it realized \$12,000 hammer). With 1988 and 2002 P.F. certificates..... 3,000.00





17

- 17 ★ **15c Bright Orange (152).** Original gum, lightly hinged, vibrant color as fresh as the day it was printed  
VERY FINE AND CHOICE ORIGINAL-GUM EXAMPLE OF THE UNGRILLED 1870 15-CENT NATIONAL BANK NOTE COMPANY ISSUE.  
With copy of 1998 and 2000 P.F. certificates ..... 3,000.00



18

- 18 ★ **24c Purple (153).** Original gum, single hinge mark, deep rich color and proof-like impression, well-balanced margins  
EXTREMELY FINE. A STUNNING ORIGINAL-GUM EXAMPLE OF THE 1870 24-CENT NATIONAL BANK NOTE COMPANY UNGRILLED ISSUE.  
With 2001 P.F. certificate ..... 2,200.00



19

- 19 ★ **30c Black (154).** Original gum, lightly hinged, intense shade and proof-like impression, perfectly centered with Jumbo margins all around

EXTREMELY FINE GEM. THE 1870 30-CENT NATIONAL UNGRILLED ISSUE IS ONE OF THE MOST DIFFICULT OF ALL BANK NOTE ISSUES TO FIND IN SOUND, WELL-CENTERED, ORIGINAL-GUM CONDITION. THIS IS THE FINEST EXAMPLE WE HAVE EVER HAD THE PRIVILEGE OF OFFERING.

During the past few years, we have offered very few superb original-gum examples of the 30c 1870 National Bank Note printing. The margins and light hinging of the example offered here are better than any we have offered.

With 1999 P.S.E. and 2001 P.F. certificates. .... 5,000.00



20

- 20 ★ **90c Carmine (155).** Original gum, lightly hinged, well-centered with wide Jumbo margins all around, radiant color, proof-like impression

EXTREMELY FINE GEM ORIGINAL-GUM EXAMPLE OF THE 1870 90-CENT UNGRILLED NATIONAL BANK NOTE ISSUE. THIS IS EASILY ONE OF THE FINEST ORIGINAL-GUM EXAMPLES IN EXISTENCE. A REMARKABLE STAMP IN EVERY RESPECT.

In general, the Grilled National Bank Note Issues in superb original-gum condition overshadow their ungrilled counterparts. This is also true for the 90c. However, in the case of the 90c, collectors are frequently misled by the availability of Scott 166, the 1873 Continental printing. The difference in shades is distinct, yet collectors have a tendency to under-rate the 1870 National printing. Most original-gum examples are poorly centered. This example is remarkable for its centering, freshness of color, size of margins and overall appeal.

With 1997 P.F. certificate ..... 5,000.00

## 1873 CONTINENTAL BANK NOTE CO. ISSUE

- 21 ★ **1c Ultramarine (156).** Original gum, barest trace of hinging, brilliant color on bright paper, wide margins, fresh and Extremely Fine, with 2000 P.F. certificate ..... 300.00



21



22

- 22 ★★ **2c Brown (157).** Mint N.H., Jumbo margins, fresh color and detailed impression

EXTREMELY FINE GEM. A SUPERB MINT NEVER-HINGED EXAMPLE OF THE 1873 2-CENT CONTINENTAL BANK NOTE PRINTING.

With 2000 P.F. certificate. Scott Retail as hinged ..... 450.00

- 23 ★★ **3c Green (158).** Mint N.H., rich color and crisp paper which is as fresh as the day it was printed, perfectly centered with Jumbo margins all around

EXTREMELY FINE GEM. A MAGNIFICENT MINT NEVER-HINGED EXAMPLE OF THE 3-CENT 1873 CONTINENTAL BANK NOTE COMPANY ISSUE IN THE FINEST CONDITION ATTAINABLE.

This stamp has every quality one could ask for — pristine Mint Never-Hinged gum, beautiful color, perfect centering, wide margins and a detailed impression.

With 2000 P.F. certificate. Scott Retail as hinged does not even begin to approach its value in today's marketplace. .... 140.00



23



24

- 24 ★ **6c Dull Pink (159).** Original gum, lightly hinged, brilliant color, choice centering

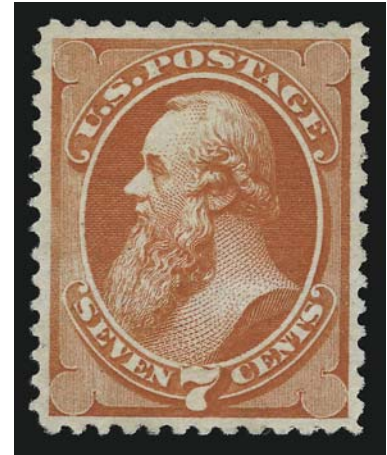
EXTREMELY FINE AND FRESH ORIGINAL-GUM EXAMPLE OF THE 1873 6-CENT CONTINENTAL BANK NOTE COMPANY ISSUE.

With 1999 P.F. certificate..... 475.00

- 25 ★ **7c Orange Vermilion (160).** Original gum, brilliant color, almost perfectly centered

EXTREMELY FINE ORIGINAL-GUM EXAMPLE OF THE 1873 7-CENT CONTINENTAL BANK NOTE COMPANY ISSUE.

With 1998 P.F. certificate ..... 1,500.00



25



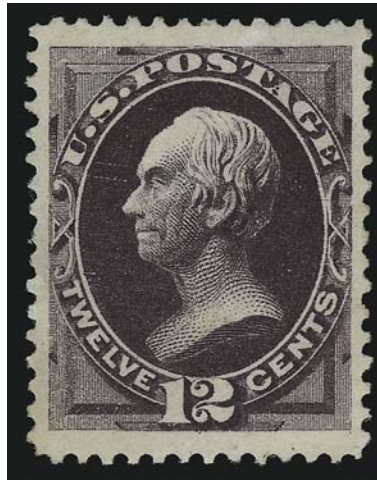
26

- 26 ★★ **10c Brown (161).** Mint N.H., beautiful deep shade and proof-like impression, well-proportioned margins  
EXTREMELY FINE. AN EXCEEDINGLY RARE MINT NEVER-HINGED EXAMPLE OF THE 1873 10-CENT CONTINENTAL BANK NOTE ISSUE.

We have offered only two other Mint N.H. examples of this stamp since keeping computerized records.

With 1980 and 1999 P.F. certificates. Scott Retail as hinged ..... 1,300.00



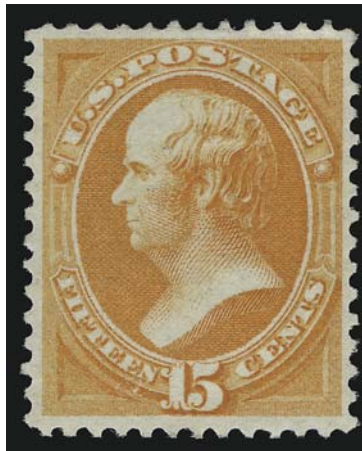


27

- 27 ★ **12c Blackish Violet (162).** Original gum, lightly hinged, incredibly dark shade on fresh paper, unusually choice centering with wide margins all around

EXTREMELY FINE GEM. A MAGNIFICENT ORIGINAL-GUM EXAMPLE OF THE 1873 12-CENT CONTINENTAL — ONE OF THE MOST DIFFICULT BANK NOTE ISSUES TO OBTAIN IN THIS OUTSTANDING CONDITION.

With 1996 P.F. certificate. .... 2,750.00



28

- 28 ★ **15c Yellow Orange (163).** Original gum, lightly hinged, radiant color, well-balanced margins

EXTREMELY FINE ORIGINAL-GUM EXAMPLE OF THE 1873 15-CENT CONTINENTAL BANK NOTE COMPANY ISSUE WITH ORIGINAL GUM.

With 1992 and 2000 P.F. certificates..... 3,000.00



29

- 29 ★ **30c Gray Black (165).** Original gum, bright shade and detailed impression, unusually wide margins

EXTREMELY FINE ORIGINAL-GUM EXAMPLE OF THE 30-CENT 1873 CONTINENTAL PRINTING. A SUPERB STAMP IN EVERY RESPECT.

Lost among the 1870 National Grilled and Ungrilled Issues, 1875 Continental and 1880 American Bank Note Special Printings, and the 1879 and 1888 American Issues is the 30c 1873 Continental printing. Scott 165 is distinguished from its National counterpart by shade and the shape of the perforations, and from its 1879 American counterpart by paper. Many philatelists — even intermediate and advanced collectors — have difficulty classifying Scott 165. When it comes to naming the most elusive Bank Note stamps in choice original-gum condition, the 30c 1873 is often overlooked. However, go to any serious collection and look for this stamp, and most of the time it is missing or represented by something that compromises quality. The 30c 1870 is frequently found filling the space for Scott 165. The 30c Continental is *extremely rare* in any original-gum condition that approaches this example. Blocks have always been rare — for example, Caspary did not have one; Lilly had one well-centered block of four and an off-center block of six — which means that singles could not be harvested from multiples. Our analysis of the rarity of this stamp is confirmed by the \$21,000 hammer realization for a superb example in our 2000 Rarities sale. We hope that collectors who still have a tendency to overlook the 30c Continental will be awakened to its rarity in Extremely Fine original-gum condition by our comments and recent realizations.

With 1984 and 2000 P.F. certificates..... 3,500.00



30

- 30 ★ **90c Rose Carmine (166).** Original gum, barely hinged, brilliant color on crisp paper, perfectly centered with wide and balanced margins

EXTREMELY FINE GEM. A SUPERB ORIGINAL-GUM EXAMPLE OF THE 90-CENT 1873 CONTINENTAL BANK NOTE COMPANY ISSUE, SCOTT 166. THIS STAMP HAS BEEN GRADED SUPERB 98 BY P.S.E. — THE HIGHEST GRADE AWARDED TO DATE TO AN ORIGINAL-GUM (OGph) EXAMPLE OF THIS STAMP. A TRUE CONDITION RARITY.

The Superb 98 grade becomes exponentially more difficult to achieve as one moves away from the modern issues toward the perforated classics. In particular, the Bank Note Issue high values rarely possess the wide “boxed” margins and precise centering that define the Superb 98 grade. This is the only 90c stamp — the highest denomination of the Large Bank Note series — to achieve a P.S.E. OGph Superb 98 grade until we reach the 1888 Purple color-change issue (Scott 218). Behind it in the P.S.E. Population Report are OGph examples of Scott 155 (one), 166 (one) and 191 (two) in XF-Superb 95 grade. There are no Mint N.H. examples of these 90c stamps currently reported (for the record, one Scott 166 with disturbed gum has been graded 98J).

The difference between a 95 and 98 in later issues is frequently a matter of separating a minority of stamps from a big pile. However, the difference between a 90c 1873 Issue in Superb 98 grade and *every other copy* of this issue is enormous. Although multiples of the 90c 1873 have been broken up to furnish Very Fine and Extremely Fine (80-90 points) stamps, it is unlikely that more than a half-dozen exist in truly XF-Superb 95 or Superb 98 condition. This stamp could well be alone in holding its Superb 98 position for many years, if not forever.

With 2002 P.F. certificate. With 2002 P.S.E. certificate (Superb 98; SMQ \$16,300.00).....  
 ..... 2,750.00

## 1875 CONTINENTAL BANK NOTE CO. ISSUE



31

- 31 ★★ **2c Vermilion (178). Mint N.H.**, brilliant color on crisp paper, choice centering with wide and balanced margins

EXTREMELY FINE GEM. A SUPERB MINT NEVER-HINGED EXAMPLE OF THE 1875 2-CENT VERMILION CONTINENTAL BANK NOTE COMPANY ISSUE.

A search of our computerized records indicates that this stamp is exceedingly difficult to find in Mint N.H. and centered condition, despite its modest catalogue value. Collectors of superb Mint N.H. stamps would do well to pay attention to the example offered here.

With 1995 P.F. certificate for block of four. With 2005 P.S.E. certificate (XF-Superb 95; SMQ \$1,700.00). This is the highest grade awarded to date..... 475.00



32

- 32 ★★ **5c Blue (179). Mint N.H.** with part imprint at top, deep rich color on bright paper, choice centering with enormous margins at top and bottom

EXTREMELY FINE. A BREATHTAKING MINT NEVER-HINGED 1875 5-CENT TAYLOR PRINTED BY CONTINENTAL BANK NOTE COMPANY. A TRUE CONDITION RARITY.

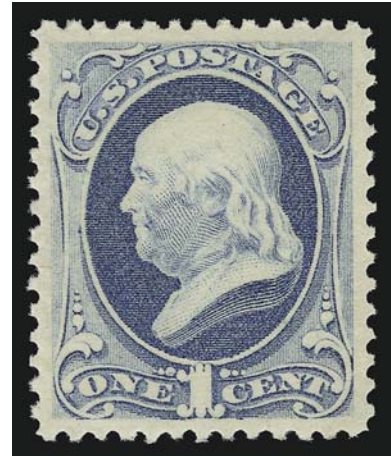
Although large multiples of the 5c Taylor American printing on soft paper (Scott 185) have provided Mint Never-Hinged singles, the 1875 Continental is very scarce in Mint Never-Hinged condition and rare in this grade. We have only offered three other Mint N.H. examples since keeping computerized records

With 1988 and 2000 P.F. certificates. Scott Retail as hinged..... 850.00



## 1879 AMERICAN BANK NOTE CO. ISSUE

- 33 ★★ **1c Dark Ultramarine (182).** Mint N.H., brilliant color on post-office fresh paper, choice centering with well-balanced margins, fresh and Extremely Fine, a beautiful stamp, with 2002 P.F. certificate, Scott Retail as hinged..... 350.00



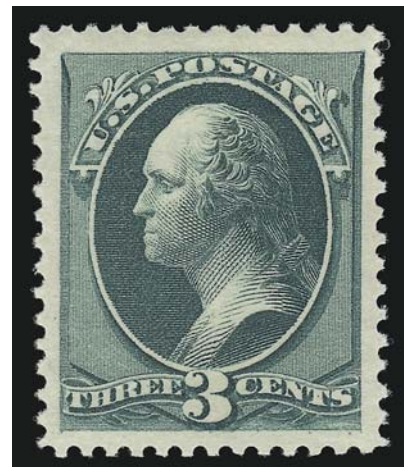
33



34

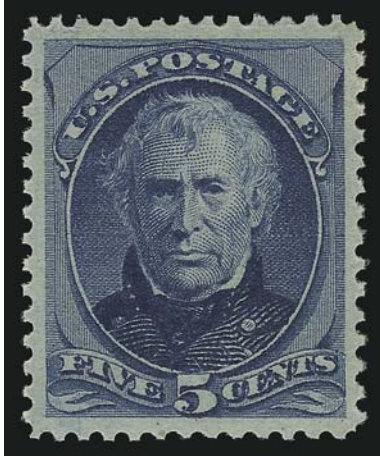
- 34 ★★ **2c Vermilion (183).** Mint N.H., brilliant color, perfectly centered with wide and unusually well-balanced margins, as pristine as the day it was printed  
EXTREMELY FINE GEM. A SUPERB MINT NEVER-HINGED EXAMPLE OF THE 2-CENT 1879 AMERICAN BANK NOTE COMPANY ISSUE. THIS IS THE HIGHEST GRADE AWARDED TO DATE BY P.S.E., AND THIS IS THE ONLY EXAMPLE TO ACHIEVE THIS GRADE.  
With 1998 P.F. certificate. With 2003 P.S.E. certificate (XF-Superb 95; SMQ \$3,050.00). Scott Retail as hinged..... 150.00

- 35 ★★ **3c Green (184).** Mint N.H., brilliant color on crisp paper, perfectly centered with Jumbo margins all around, Extremely Fine Gem, a superb stamp in every respect, with 1985 and 1999 P.F. certificates, Scott Retail as hinged..... 120.00



35





36

- 36 ★ **5c Blue (185).** Original gum, barest trace of hinging (if at all), intense color, well-centered with nicely balanced margins

EXTREMELY FINE. A BEAUTIFUL EXAMPLE OF THE 1879 5-CENT BLUE TAYLOR PRINTED BY AMERICAN BANK NOTE COMPANY.

With 1987 and 2000 P.F. certificates..... 550.00



37

- 37 ★ **6c Pink (186).** Original gum, lightly hinged, brilliant color, choice centering for this difficult issue

EXTREMELY FINE. A BEAUTIFUL ORIGINAL-GUM EXAMPLE OF THE 6-CENT 1879 AMERICAN BANK NOTE ISSUE.

This is a difficult issue to find in such choice condition. Collectors who are waiting for a similarly-centered Mint N.H. copy are advised to consider the stamp offered here — we have not offered a Mint N.H. single since keeping computerized records. The block of nine offered in our Sale 920 contains the only Mint N.H. stamps we have ever offered, but they are not well-centered

With 1995 and 2002 P.F. certificates..... 1,100.00



38

- 38 ★ **10c Brown, Without Secret Mark (187).** Original gum, barest trace of hinging, deep rich color and proof-like impression, choice centering with wide margins

EXTREMELY FINE. A BEAUTIFUL LIGHTLY-HINGED EXAMPLE OF THE 10-CENT 1879 AMERICAN BANK NOTE COMPANY ISSUE WITHOUT SECRET MARK.

Scott 187 without secret mark is significantly more difficult than Scott 188 to find in such superb condition.

With 1973 and 2000 P.F. certificates..... 3,500.00



39

- 39 ★★ **10c Brown, With Secret Mark (188).** Mint N.H., rich color and sharp proof-like impression, choice centering with wide margins

EXTREMELY FINE GEM. A SUPERB MINT NEVER-HINGED 10-CENT 1879 AMERICAN ISSUE WITH SECRET MARK.

Unlike other values of the 1879 Issue, there are virtually no 10c stamps in Mint Never-Hinged condition. A thorough review of auction catalogues, including sales of the Caspary, Close, Sinkler, Col. Green, Lilly, Braus, Wunderlich and Klein collections, among others, produced no Mint N.H. singles and no blocks containing Mint N.H. stamps. We doubt that more than four or five Mint N.H. copies exist in total.

Ex Drucker (our Sale 851, where it realized \$11,500 hammer). With 2002 P.F. certificate. Scott Retail as hinged ..... 2,500.00

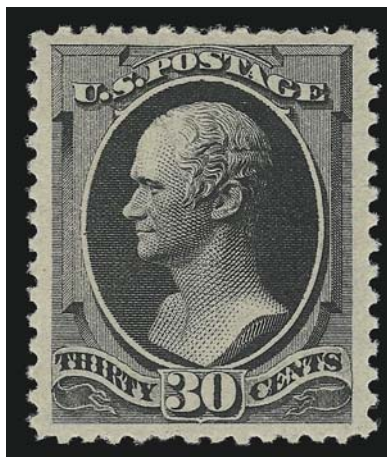


40

- 40 ★★ **15c Red Orange (189). Mint N.H.**, radiant color, almost perfectly centered with wide and balanced margins

EXTREMELY FINE. A SUPERB MINT NEVER-HINGED EXAMPLE OF THE 15-CENT 1879 AMERICAN BANK NOTE COMPANY ISSUE. SCARCE IN SUCH SUPERB CONDITION.

With 1999 P.F. certificate. Scott Retail as hinged.....  
 ..... 350.00



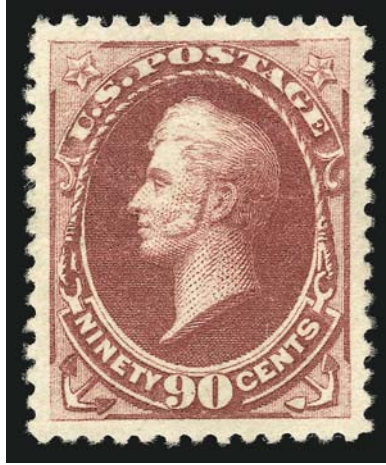
41

- 41 ★★ **30c Full Black (190). Mint N.H.**, intense shade and sharp proof-like impression, beautifully centered with enormous margins, single perf disc at bottom rests lightly on gum  
 EXTREMELY FINE GEM. AN EXTRAORDINARY MINT NEVER-HINGED 30-CENT 1879 AMERICAN BANK NOTE ISSUE. THIS ISSUE IS RARELY OBTAINABLE IN CHOICE NEVER-HINGED CONDITION.

The 30c 1879 American Bank Note Company issue is surprisingly difficult to obtain in choice Mint N.H. condition. It is surprising because the 15c (Scott 189) is readily available. However, a survey of our photo records and auction library revealed the scarcity of well-centered 30c blocks from which singles could be harvested. The blocks in the Green sales were off center. Caspary had a well-centered hinged block of four, and Lilly had a block of nine with problems. The Moody block of six was well-centered, but appears to have had hinge remnants on all stamps. The Todd collection had two blocks, including one with a Mint N.H. pair at bottom (this has probably been broken, furnishing at least two Mint N.H. stamps). The Close collection had a well-centered block of four (with reinforcing) and a large plate block. The Siegel firm's three major Bank Note Issue sales (Braus, Hirschfield, Wunderlich) contained blocks, but all were either off center or had hinge remnants. A well-centered block of four appeared in our 1982 Rarities sale, but it was hinged.

For the collector who desires only Mint Never-Hinged stamps, this offering is significant. As a guide to relative value, a Mint N.H. example of this stamp in the Fox collection (Sale 829) realized \$12,000 hammer.

With 1997 P.F. certificate. Scott Retail as hinged ..... 1,100.00



42

- 42 ★ **90c Carmine (191).** Original gum, lightly hinged, perfectly centered with enormous margins on all sides, rich color and proof-like impression

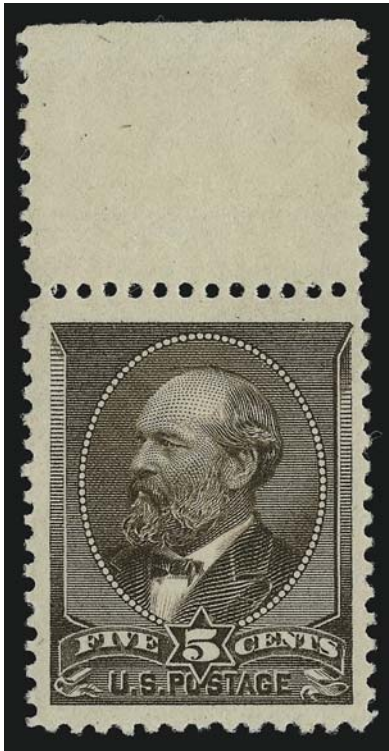
EXTREMELY FINE GEM. A SUPERB ORIGINAL-GUM EXAMPLE OF THE 90-CENT 1879 AMERICAN BANK NOTE ISSUE.

There are lots of loose fibers along the perf tips, which is just what one wants to see on a 90c 1879 American Bank Note Co. Issue in fresh original-gum condition. A review of our computerized records indicates that this is the widest-margined example we have offered in over ten years. The P.S.E. Population Report lists two Scott 191 stamps with the OG XF-Superb 95 grade, and it seems inevitable that this stamp will join them.

With 1999 P.F. certificate ..... 2,500.00



1881-82 AMERICAN BANK NOTE CO. ISSUES

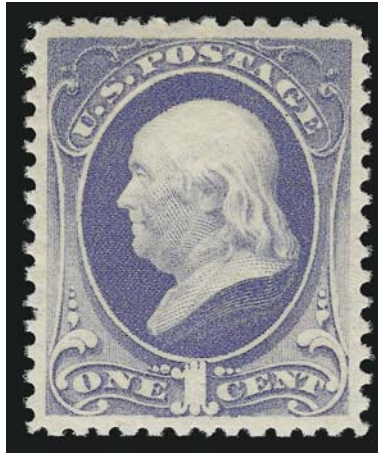


43

- 43 ★★ **5c Yellow Brown (205).** Mint N.H. with selvage at top, fresh color and crisp impression, choice centering with Jumbo margins

EXTREMELY FINE. A BEAUTIFUL MINT NEVER-HINGED EXAMPLE OF THE 1882 5-CENT GARFIELD ISSUE. A SURPRISINGLY DIFFICULT STAMP TO FIND IN SUCH SUPERB MINT NEVER-HINGED CONDITION.

With 1989 and 2000 P.F. certificates..... 1,000.00



44

- 44 ★★ **1c Gray Blue (206).** Mint N.H., deep rich color on bright paper, perfectly centered with wide and balanced margins

EXTREMELY FINE GEM. A SUPERB MINT NEVER-HINGED EXAMPLE OF THE 1881 ONE-CENT RE-ENGRAVED ISSUE. A STUNNING STAMP.

With 1992 and 2000 P.F. certificates..... 300.00



45

- 45 ★★ **3c Blue Green (207).** Mint N.H. with "No." of plate no. at bottom, bright color, perfectly centered with wide margins at top and bottom, pencil notation on back in ungummed part of selvage

EXTREMELY FINE GEM. A SUPERB MINT NEVER-HINGED EXAMPLE OF THE 1881 3-CENT RE-ENGRAVED ISSUE.

With copy of 1984 P.F. certificate for strip of three and with 1999 P.F. certificate..... 325.00



46

- 46 ★ **6c Rose (208).** Original gum, lightly hinged, fresh color on white paper, beautifully centered

EXTREMELY FINE GEM. AN OUTSTANDING EXAMPLE OF THE ROSE SHADE. AN ELUSIVE STAMP IN THIS SUPERIOR GRADE.

Despite being the major Scott listing, the Rose shade is far rarer than the Brown Red, Scott No. 208a, in well-centered and sound condition. As an indication of rarity, we have only offered one Mint N.H. example since keeping computerized records, which was off center.

With 2001 P.F. certificate..... 700.00

- 47 ★★ **6c Deep Brown Red (208a).** Mint N.H. with part plate no. at bottom, deep rich color, enormous margins at top and bottom, fresh and Very Fine, with 1988 and 2000 P.F. certificates..... 2,000.00



47



48

- 48 ★★ **10c Brown (209).** Mint N.H., rich color and proof-like impression, almost perfectly centered with unusually wide margins

EXTREMELY FINE GEM. A SUPERB MINT NEVER-HINGED EXAMPLE OF THE 1882 10-CENT RE-ENGRAVED ISSUE IN THE HIGHEST ATTAINABLE CONDITION.

With 2004 P.F. certificate..... 550.00



49

- 49 ★★ **2c Red Brown (210).** Mint N.H., radiant color, wide margins, Very Fine and choice, with 1996 P.F. certificate ..... 160.00

- 50 ★★ **4c Blue Green (211).** Mint N.H. with selvage at top, deep rich color on bright paper, enormous margins, fresh and Extremely Fine, a surprisingly difficult stamp to find with such wide margins, with 1987 and 2000 P.F. certificates..... 1,100.00



50



## 1887-88 AMERICAN BANK NOTE CO. ISSUE

- 51 ★★ **1c Ultramarine (212).** Mint N.H., brilliant color on post-office fresh paper, Jumbo margins all around  
EXTREMELY FINE GEM. A SUPERB MINT NEVER-HINGED EXAMPLE OF THE ONE-CENT 1887 AMERICAN BANK NOTE ISSUE PRINTING.

Ex Morris. With 1981, 1989 and 1998 P.F. certificates. With 2004 P.S.E. certificate (XF-Superb 95 Jumbo; SMQ \$2,500.00 as 95, \$6,400.00 as 98)..... 400.00



51



52

- 52 ★★ **2c Green (213).** Mint N.H., deep rich color, choice centering with wide margins, fresh and Extremely Fine, with 1998 P.F. certificate, with 2004 P.S.E. certificate (XF 90; SMQ \$460.00), only two examples have graded higher to date ..... 150.00

- 53 ★★ **3c Vermilion (214).** Mint N.H., vibrant color, Jumbo margins all around

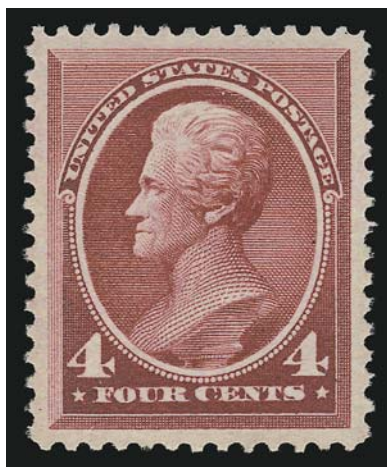
EXTREMELY FINE. AN ENORMOUS MINT NEVER-HINGED EXAMPLE OF THE 1887 3-CENT VERMILION AMERICAN BANK NOTE COMPANY ISSUE.

With 1993 and 2003 P.F. certificates. With 2004 P.S.E. certificate (XF 90 Jumbo; SMQ \$650.00 as 90, \$1,600.00 as 95). Only two examples have graded higher to date. .... 240.00



53



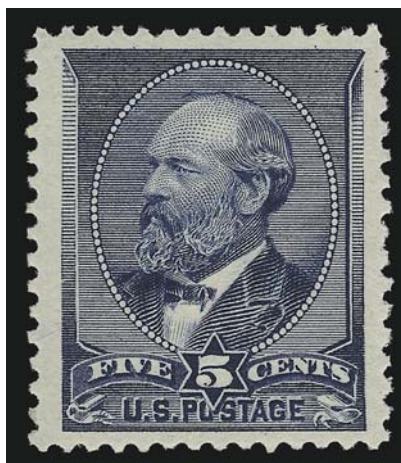


54

54 ★★ **4c Carmine (215).** Mint N.H., deep rich color and sharp proof-like impression, perfectly centered with wide and balanced margins

EXTREMELY FINE GEM. A MAGNIFICENT MINT NEVER-HINGED EXAMPLE OF THE 1888 4-CENT CARMINE AMERICAN BANK NOTE COMPANY ISSUE. THIS IS ONE OF THE MOST DIFFICULT VALUES OF THE SERIES TO OBTAIN IN SUCH SUPERB CONDITION. THIS STAMP HAS BEEN GRADED 95 BY P.S.E. — THE HIGHEST GRADE AWARDED TO DATE.

With 2004 P.S.E. certificate (XF-Superb 95; SMQ \$5,250.00). Only one other has achieved this high grade..... 800.00

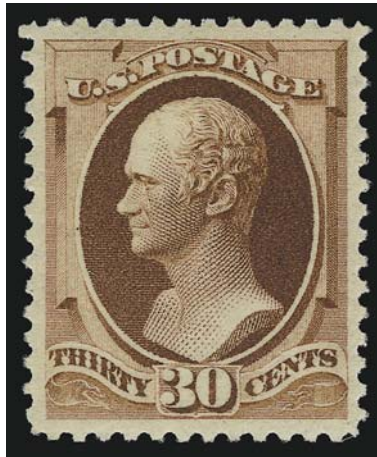


55

55 ★★ **5c Indigo (216).** Mint N.H., intense color, enormous margins at sides

EXTREMELY FINE GEM. A BEAUTIFUL MINT NEVER-HINGED EXAMPLE OF THE 1888 5-CENT INDIGO AMERICAN BANK NOTE COMPANY ISSUE.

With 1999 and 2000 P.F. certificates. .... 900.00



56

- 56 ★★ **30c Orange Brown (217).** Mint N.H., fresh color and detailed impression, perfectly centered with wide margins all around

EXTREMELY FINE GEM. A SUPERB MINT NEVER-HINGED EXAMPLE OF THE 1888 30-CENT AMERICAN BANK NOTE COMPANY ISSUE, WHICH HAS BEEN GRADED SUPERB 95 BY P.S.E. — THIS IS THE HIGHEST GRADE AWARDED BY P.S.E. TO DATE.

With 1990 and 2000 P.F. certificates. With 2004 P.S.E. certificate (XF-Superb 95; SMQ \$7,450.00). Only one other shares this grade..... 1,500.00



57

- 57 ★★ **90c Purple (218).** Mint N.H., rich color and crisp impression, choice centering with wide margins

EXTREMELY FINE. A SCARCE MINT NEVER-HINGED EXAMPLE OF THE 1888 90-CENT PURPLE AMERICAN BANK NOTE COMPANY ISSUE.

With 1998 P.F. and 2004 P.S.E. certificates (VF-XF 85; SMQ \$5,100.00). Only two Mint N.H. examples have been certified and graded by P.S.E., compared with 19 hinged copies. .... 4,000.00

## 1890-93 ISSUE

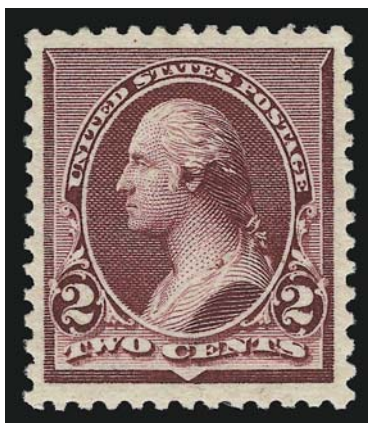


58

- 58 ★★ **1c Dull Blue (219).** Mint N.H., brilliant color on post-office fresh paper, beautifully centered with wide margins

EXTREMELY FINE GEM. A MAGNIFICENT MINT NEVER-HINGED EXAMPLE OF THE ONE-CENT SMALL BANK NOTE ISSUE. THIS STAMP HAS BEEN GRADED 95 JUMBO BY P.S.E. — IT STANDS ALONE AS THE HIGHEST GRADE AWARDED TO DATE.

Ex Saadi. With 1990 and 2000 P.F. certificates. With 2005 P.S.E. certificate (XF-Superb 95 Jumbo; SMQ \$900.00 as 95, \$2,700.00 as 98) ..... 90.00



59

- 59 ★★ **2c Lake (219D).** Mint N.H., deep rich color on bright paper, sharp proof-like impression, choice centering with wide and balanced margins

EXTREMELY FINE GEM. A BEAUTIFUL MINT NEVER-HINGED EXAMPLE OF THE 2-CENT SMALL BANK NOTE ISSUE IN THE LAKE SHADE.

With 1989 and 2000 P.F. certificates. With 2004 P.S.E. certificate (XF 90; SMQ \$2,350.00)..... 800.00

- 60 ★★ **2c Carmine (220).** Mint N.H., brilliant color, perfectly centered with huge margins, Extremely Fine Gem, a superb stamp in every respect, with 2000 P.F. certificate, with 2004 P.S.E. certificate (XF-Superb 95; SMQ \$710.00), only two stamps have graded higher in the P.S.E. Population Report.....  
..... 70.00



60

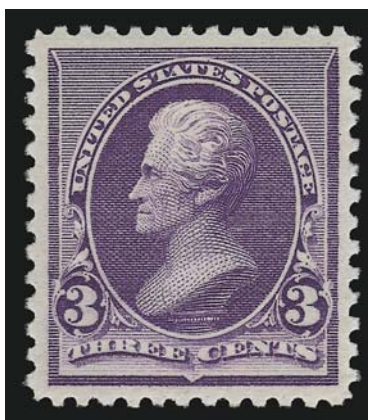


61

- 61 ★★ **2c Carmine, Cap on Left "2" (220a).** Mint N.H., brilliant color on bright paper, perfectly centered with wide margins, sharp impression which clearly shows the variety

EXTREMELY FINE. A BEAUTIFUL MINT NEVER-HINGED EXAMPLE OF THE 2-CENT SMALL BANK NOTE ISSUE WITH CAP ON THE LEFT "2"

With copy of 1990 P.F. certificate for block of six and with 2000 P.F. certificate as single ..... 410.00



62

- 62 ★★ **3c Purple (221).** Mint N.H., brilliant color, proof-like impression showing every detail of the engraving, perfectly centered with huge margins all around, long and full perforations

EXTREMELY FINE GEM. A SUPERB MINT NEVER-HINGED EXAMPLE OF THE 3-CENT SMALL BANK NOTE ISSUE, WHICH HAS BEEN AWARDED THE EXALTED GRADE OF SUPERB 98 BY P.S.E. THIS IS THE ONLY EXAMPLE TO ACHIEVE THIS GRADE, WHICH IS THE HIGHEST GRADE AWARDED TO DATE. A STUNNING STAMP IN EVERY RESPECT.

With 1992 and 2000 P.F. certificates. With 2005 P.S.E. certificate (Superb 98; SMQ \$7,250.00)..... 275.00





63

- 63 ★★ **4c Dark Brown (222).** Mint N.H. with letter "M" at bottom, bright shade and crisp impression, choice centering with unusually wide margins, Extremely Fine, with 1983 and 1999 P.F. certificates, with 2004 P.S.E. certificate (XF 90; SMQ \$1,050.00), in our opinion this stamp should have been awarded the grade of 90 Jumbo..... 360.00

- 64 ★★ **5c Chocolate (223).** Mint N.H., deep rich color, Jumbo margins all around, bright paper

EXTREMELY FINE MINT NEVER-HINGED EXAMPLE OF THE 5-CENT SMALL BANK NOTE ISSUE.

With 1992 and 2001 P.F. certificates. With 2004 P.S.E. certificate (XF 90 Jumbo; SMQ \$880.00 as 90, \$2,550.00 as 95)..... 300.00

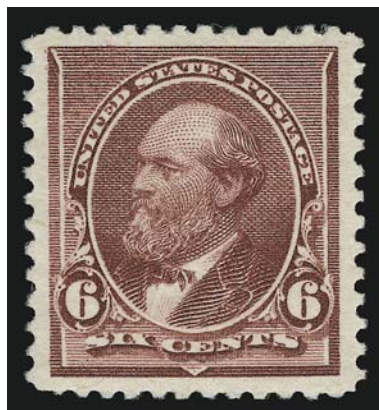


64

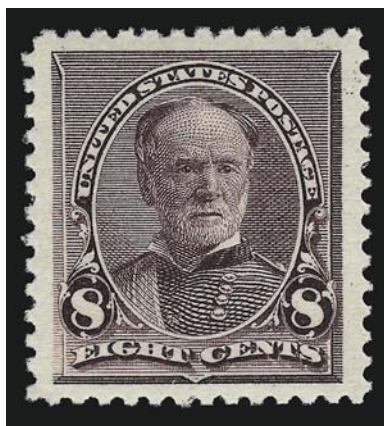
- 65 ★★ **6c Brown Red (224).** Mint N.H., intense color on bright paper, detailed impression, huge margins deserving of Jumbo status

EXTREMELY FINE GEM. A SUPERB MINT NEVER-HINGED EXAMPLE OF THE 6-CENT SMALL BUREAU ISSUE, WHICH HAS BEEN AWARDED THE GRADE OF 95 BY P.S.E.

With 1981 and 1999 P.F. certificates. With 2004 P.S.E. certificate (XF-Superb 95; SMQ \$2,400.00). Six Mint N.H. stamps have been graded 95 by P.S.E. to date (only one has a higher grade of 98)..... 275.00



65



66

- 66 ★★ **8c Lilac (225).** Mint N.H., deep rich color and sharp proof-like impression, perfectly centered with Jumbo margins, long and full perforations

EXTREMELY FINE GEM. A MAGNIFICENT MINT NEVER-HINGED EXAMPLE OF THE 8-CENT SMALL BANK NOTE ISSUE, WHICH HAS BEEN AWARDED THE GRADE OF 95 JUMBO BY P.S.E. — A REMARKABLE STAMP IN EVERY RESPECT.

With 1999 P.F. and 2004 P.S.E. certificates (XF-Superb 95 Jumbo; SMQ \$1,900.00 as 95, \$5,450.00 as 98). Only one stamp has graded higher to date on the P.S.E. Population Report..... 200.00

- 67 ★★ **10c Green (226).** Mint N.H. with part imprint at top, deep rich color on bright paper, wide margins, Extremely Fine, a beautiful stamp, with 1982 and 1999 P.F. certificates..... 675.00



67



68

68 ★★ **15c Indigo (227).** Mint N.H., deep rich color on bright paper, beautiful centering with wide and balanced margins

EXTREMELY FINE GEM. A SUPERB MINT NEVER-HINGED EXAMPLE OF THE 15-CENT 1890 ISSUE.

The 15c 1890 stamp is, in our opinion, one of the most striking designs of the Gilded Age regular issues. Its distinctive three-quarter portrait of Henry Clay is elegantly framed and printed in an extraordinarily deep shade of Indigo Blue. The beauty of the issue is enhanced in examples such as this stamp, which provides a balanced frame of white margins around the design. Further endowed with Mint N.H. gum and unusual freshness, this stamp ranks among the very finest we have offered.

With 1998 P.F. and 2004 P.S.E. certificates (XF-Superb 95; SMQ \$6,800.00). Only one Mint N.H. stamp has graded higher in the P.S.E. Population Report..... 925.00



69

69 ★★ **30c Black (228).** Mint N.H., almost perfectly centered with well-balanced margins, sharp proof-like impression

EXTREMELY FINE GEM. A SUPERB MINT NEVER-HINGED EXAMPLE OF THE 30-CENT 1890 SMALL BANK NOTE ISSUE.

With 1976 and 2002 P.F. certificates and with 2004 P.S.E. certificate (XF-Superb 95; SMQ \$9,150.00). Only one stamp has graded higher on the P.S.E. Population Report..... 1,400.00



70

70 ★★ **90c Orange (229).** Mint N.H., radiant color on post-office fresh paper, choice centering with wide and balanced margins

EXTREMELY FINE. A BEAUTIFUL MINT NEVER-HINGED EXAMPLE OF THE 90-CENT 1890 SMALL BANK NOTE ISSUE. AS PRISTINE AS THE DAY IT WAS PRINTED.

With 1999 P.F. and 2004 P.S.E. certificates (XF 90; SMQ \$5,300.00)..... 2,150.00



## 1894 UNWATERMARKED BUREAU ISSUE



71

- 71 ★★ **1c Ultramarine (246).** Mint N.H. with plate no. 2 at left, intense color which is probably the Dark Ultramarine sub-shade (but not noted as such on accompanying certificates), perfectly centered with enormous margins all around

EXTREMELY FINE GEM. A SUPERB MINT NEVER-HINGED EXAMPLE OF THE 1894 ONE-CENT UNWATERMARKED BUREAU ISSUE, WHICH HAS BEEN AWARDED THE GRADE OF 95 JUMBO BY P.S.E.

With 2000 P.F. and 2004 P.S.E. certificates (XF-Superb 95 Jumbo; SMQ \$1,050.00 as 95, \$2,700.00 as 98). Only one stamp has graded higher to date. .... 95.00



72

- 72 ★★ **1c Ultramarine (246).** Mint N.H., brilliant color which contrasts the shades this issue can be found in nicely with the previous lot, huge margins all around, Extremely Fine Gem, a beautiful stamp in every respect, with 2000 P.F. and 1998 P.S.E. certificates ..... 95.00

- 73 ★★ **1c Blue (247).** Mint N.H. with plate no. 102 at top, deep rich color and sharp proof-like impression, almost perfectly centered with huge margins all around

EXTREMELY FINE GEM. A MAGNIFICENT MINT NEVER-HINGED EXAMPLE OF THE 1894 ONE-CENT UNWATERMARKED BUREAU ISSUE IN THE BLUE COLOR. ESPECIALLY DESIRABLE WITH THE PLATE NUMBER, THIS STAMP HAS BEEN AWARDED THE EXALTED GRADE OF 95 JUMBO BY P.S.E. — THIS IS THE HIGHEST GRADE AWARDED TO DATE.

According to Brookman, the Ultramarine color of the one-cent stamps was unsatisfactory, and so they changed the color to the more distinctive Blue of this issue.

With 1987 and 2000 P.F. certificates. With 2004 P.S.E. certificate (XF-Superb 95 Jumbo; SMQ \$2,150.00 as 95, \$5,850.00 as 98). Only one other stamp shares this grade to date. .... 225.00



73



74

- 74 ★★ **2c Pink, Ty. I (248).** Mint N.H., radiant color on post-office fresh paper, beautiful centering, fresh and Extremely Fine, according to Brookman the color of this issue (like the 1c, Scott 246) proved unsatisfactory and so it was only in production for a few months before the color was changed, with 1998 P.F. certificate, with 2004 P.S.E. certificate (XF 90; SMQ \$385.00)..... 87.50

- 75 ★★ **2c Carmine Lake, Ty. I (249).** Mint N.H. with plate no. 32 at top, deep rich color described on accompanying P.F. certificates as the Dark Carmine Lake shade and on accompanying P.S.E. certificate as Carmine Lake, detailed impression, choice centering with unusually wide margins

EXTREMELY FINE GEM. A GORGEOUS MINT NEVER-HINGED EXAMPLE OF THE 1894 2-CENT TYPE I UNWATERMARKED BUREAU ISSUE, SCOTT 249.

With copy of 1983 P.F. certificate and with 1999 P.F. certificate. With 2004 P.S.E. certificate (XF 90; SMQ \$1,700.00). We feel that the margins on this stamp qualify it for Jumbo status and should be graded 90 Jumbo. .... 525.00



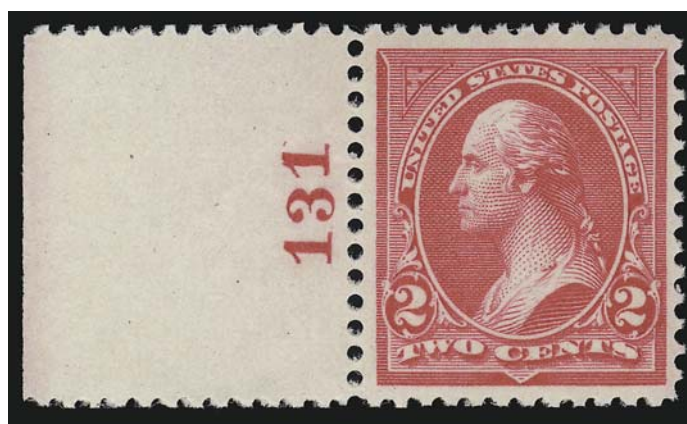
75



76

- 76 ★★ **2c Carmine, Ty. I (250).** Mint N.H. with part imprint at left, brilliant color on crisp paper, long and full perforations which are difficult to find on this issue, perfectly centered, Extremely Fine Gem, a superb stamp in every respect, with 2000 P.F. certificate, with 1998 and 2004 P.S.E. certificates (XF-Superb 95; SMQ \$1,000.00), only one stamp has graded higher to date..... 85.00

- 77 ★★ **2c Carmine, Ty. II (251).** Mint N.H. with plate no. 131 and wide selvage at left, radiant color and detailed impression, Very Fine and choice, with 1998 P.F. certificate, with 2004 P.S.E. certificate (VF 80; SMQ \$1,050.00), this is the most difficult type and shade to obtain in choice condition, the highest grade awarded to date in any condition is 90..... 1,000.00



77



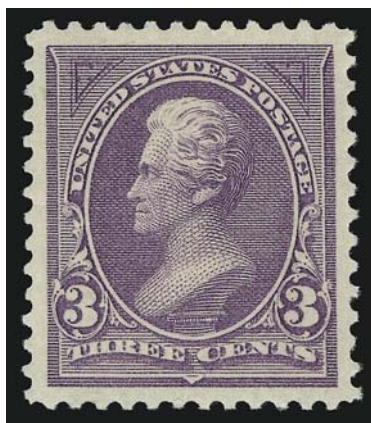
78

- 78 ★★ **2c Carmine, Ty. III (252).** Mint N.H. with plate no. 142 and wide selvage at left, radiant color, crisp impression, perfectly centered with wide margins

EXTREMELY FINE GEM. A SUPERB MINT NEVER-HINGED EXAMPLE OF THE 1894 2-CENT TYPE III UNWATERMARKED BUREAU ISSUE IN THE CARMINE COLOR. THIS STAMP HAS BEEN GIVEN THE GRADE OF 95 BY P.S.E., WHICH IS THE HIGHEST GRADE AWARDED TO DATE.

With 1988 and 2000 P.F. certificates. With 2004 P.S.E. certificate (XF-Superb 95; SMQ \$3,700.00). Only two other stamps share this grade ..... 400.00



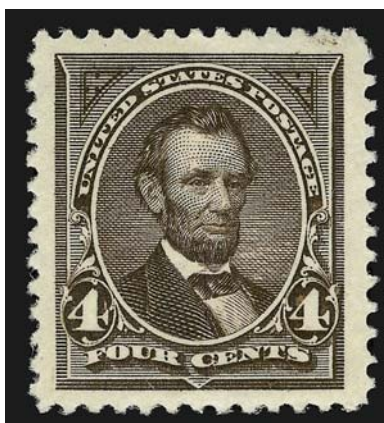


79

- 79 ★★ **3c Purple (253).** Mint N.H., brilliant color and detailed impression showing every detail of the engraving, bright paper as fresh as the day it was made, long and full perforations all around, perfectly centered with wide margins

EXTREMELY FINE GEM. THIS IS WITHOUT QUESTION THE FINEST EXAMPLE OF THIS ISSUE WE HAVE EVER HANDLED. A SPECTACULAR STAMP IN EVERY RESPECT — ITS PRISTINE GUM, WIDE MARGINS, FULL PERFORATIONS, BRIGHT COLOR AND GORGEOUS CENTERING MAKE THIS ONE OF OUR FAVORITE STAMPS IN THE SALE. THIS IS THE ONLY EXAMPLE TO ACHIEVE THE EXALTED P.S.E. GRADE OF SUPERB 98.

With 1997 P.F. and 2006 P.S.E. certificates (Superb 98; SMQ \$9,550.00)..... 375.00



80

- 80 ★★ **4c Dark Brown (254).** Mint N.H., deep rich color on bright paper, proof-like impression, absolutely enormous margins all around

EXTREMELY FINE GEM. A HUGE MINT NEVER-HINGED EXAMPLE OF THE 1894 4-CENT UNWATERMARKED BUREAU ISSUE. A STUNNING STAMP, NOTEWORTHY FOR THE IMPOSING SIZE OF ITS MARGINS, PRISTINE GUM, LONG PERFORATIONS AND INTENSE COLOR.

With 1984 and 1999 P.F. certificates. With 2004 P.S.E. certificate (XF-Superb 95 Jumbo; SMQ \$4,400.00 as 95, \$12,200.00 as 98). This is the only example to be graded 95 Jumbo by P.S.E. to date. Curiously, one has been graded 98 Jumbo. We would be interested in comparing the two side by side..... 525.00





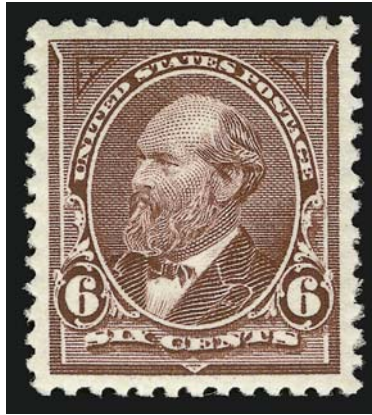
81

- 81 ★★ **5c Chocolate (255).** Mint N.H. with plate no. 163 at bottom, deep rich color, crisp impression showing every detail of the engraving, perfectly centered with wide and balanced margins, long and full perforations all around

EXTREMELY FINE GEM. THIS MINT NEVER-HINGED EXAMPLE OF THE 1894 5-CENT UNWATERMARKED BUREAU ISSUE IS THE ESSENCE OF PERFECTION. IT HAS BEEN GRADED SUPERB 98 BY P.S.E., WHICH IS THE HIGHEST GRADED AWARDED TO DATE. IT IS THE ONLY STAMP TO ACHIEVE THIS EXALTED GRADE.

According to Brookman, the nature of the ink used for printing the 5c stamp caused rapid plate wear. The stamp offered here, with such remarkably detailed impression, in such pristine condition and with such beautiful centering, is truly the finest we have ever seen.

With 2001 P.F. certificate. With 2004 P.S.E. certificate (Superb 98; SMQ \$9,250.00) ..... 375.00

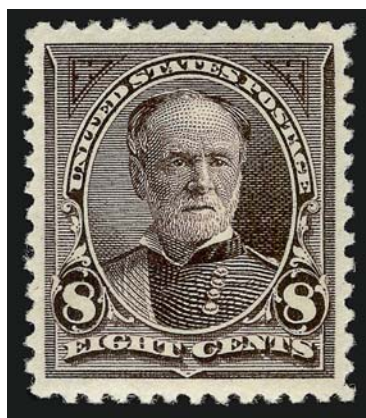


82

82 ★★ **6c Dull Brown (256).** Mint N.H., rich color and proof-like impression nicely complemented by bright paper, perfectly centered

EXTREMELY FINE GEM. A MAGNIFICENT MINT NEVER-HINGED EXAMPLE OF THE 1894 6-CENT UNWATERMARKED BUREAU ISSUE IN THE FINEST CONDITION ATTAINABLE. THIS REMARKABLE STAMP, WITH ITS PRISTINE GUM, BEAUTIFUL COLOR, POST-OFFICE FRESH PAPER AND PERFECT CENTERING, HAS BEEN AWARDED THE GRADE OF SUPERB 98 BY P.S.E.

With 1988 and 2000 P.F. certificates. With 2004 P.S.E. certificate (Superb 98; SMQ \$12,800.00). Only one other has achieved this exalted grade. .... 500.00



83

- 83 ★★ **8c Violet Brown (257).** Mint N.H., stunning shade and impression on bright paper, perfectly centered with well-balanced margins

EXTREMELY FINE GEM. A SUPERB MINT NEVER-HINGED EXAMPLE OF THE 1894 8-CENT UNWATERMARKED BUREAU ISSUE. SCARCE IN SUCH MAGNIFICENT CONDITION.

With 1994 P.F. certificate. .... 500.00



84

- 84 ★★ **10c Dark Green (258).** Mint N.H., pretty color and detailed impression on bright paper, beautiful centering with wide margins all around

EXTREMELY FINE GEM. A SUPERB MINT NEVER-HINGED EXAMPLE OF THE 1894 10-CENT UNWATERMARKED BUREAU ISSUE. THE 10-CENT IS ONE OF THE MOST DIFFICULT DENOMINATIONS OF THE SET TO OBTAIN IN SUCH SUPERB CONDITION. THIS STAMP HAS BEEN AWARDED THE GRADE OF 95 BY P.S.E., WHICH IS THE HIGHEST GRADE AWARDED TO DATE IN ANY CONDITION. IT IS THE ONLY EXAMPLE TO RECEIVE THIS GRADE.

A review of our past computerized records confirms that this is the finest example we have offered.

With 1989 and 2000 P.F. certificates. With 2004 P.S.E. certificate (XF-Superb 95; SMQ \$8,200.00)..... 975.00



85

- 85 ★★ **15c Dark Blue (259).** Mint N.H. with selvage at bottom, deep rich color which is nicely complemented by bright paper, wide and balanced margins, long and full perforations all around

EXTREMELY FINE GEM. A SUPERB MINT NEVER-HINGED EXAMPLE OF THE 1894 15-CENT UNWATERMARKED BUREAU ISSUE. SCARCE IN SUCH PRISTINE CONDITION.

With 1989 and 2000 P.F. certificates..... 975.00



86

86 ★★ **50c Orange (260).** Mint N.H., deep rich color and detailed impression, choice centering for this most difficult issue

EXTREMELY FINE. A SCARCE SOUND AND CENTERED MINT NEVER-HINGED EXAMPLE OF THE 1894 50-CENT UNWATERMARKED BUREAU ISSUE.

With 1995 P.F. certificate. With 2004 P.S.E. certificate (VF-XF 85; SMQ \$3,200.00)..... 1,800.00



87

87 ★★ **\$1.00 Black (261).** Mint N.H., intense shade and proof-like impression on bright paper, well-balanced and enormous margins all around

EXTREMELY FINE GEM. A HUGE MINT NEVER-HINGED EXAMPLE OF THE 1894 \$1.00 TYPE I UNWATERMARKED BUREAU ISSUE. A STAMP OF TRULY MASSIVE DIMENSIONS.

With 1999 P.F. and 2004 P.S.E. certificates (XF 90 Jumbo; SMQ \$8,700.00 as 90, \$20,800.00 as 95). Only one stamp has graded higher in the P.S.E. Population Report.... 3,250.00





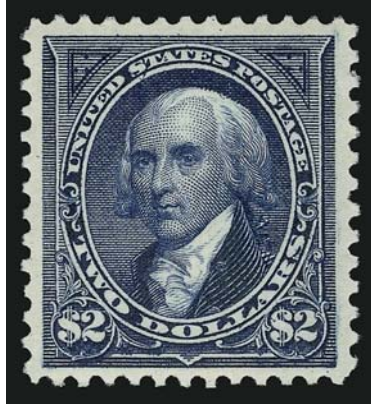
88

88 ★★ **\$1.00 Black, Ty. II (261A).** Mint N.H., intense shade and impression on bright paper, choice centering with balanced margins

EXTREMELY FINE. A SUPERB MINT NEVER-HINGED EXAMPLE OF THE \$1.00 1894 UNWATERMARKED TYPE II BUREAU ISSUE.

Collectors of this issue know that it is extremely difficult to find the first Bureau issue in centered, Mint Never-Hinged condition, particularly the higher denominations. This is mostly due to production problems as the Bureau of Engraving and Printing assumed responsibility for stamp production after the American Bank Note contract expired.

With 1988 P.F. certificate as block of four and 2003 P.F. certificate as single. With 2004 P.S.E. certificate (VF-XF 85; SMQ \$11,500.00). In our opinion this meets every criteria for XF 90 (see lot 104 for corresponding Scott 276A with XF 90 grade). ..... 6,750.00



89

89 ★★ **\$2.00 Bright Blue (262).** Mint N.H., beautiful color and detailed impression, choice centering with well-balanced margins

EXTREMELY FINE. A RARE MINT NEVER-HINGED EXAMPLE OF THE 1894 \$2.00 UNWATERMARKED BUREAU ISSUE.

The higher-value 1894 Unwatermarked Bureau Issue can be difficult to find in well-centered and sound condition, due to production problems. Mint Never-Hinged examples in superior grades, such as the stamp offered here, should be considered great condition rarities. This is one of *four* \$2.00 1894 stamps we have offered in Mint Never-Hinged condition in the last 13 years, the other three having much inferior centering.

With 1984 and 1999 P.F. certificates. With 2004 P.S.E. certificate (XF 90; SMQ \$25,100.00). This is the highest grade awarded to date (one other shares this grade), and is the highest grade with a priced catalogue value in SMQ..... 9,750.00



90

90 ★ **\$5.00 Dark Green (263).** Original gum, lightly hinged, deep rich color, detailed impression, remarkably choice centering with wide and balanced margins

EXTREMELY FINE GEM. AN OUTSTANDING EXAMPLE OF THE 1894 \$5.00 UNWATERMARKED BUREAU ISSUE. A BEAUTIFUL STAMP, OF WHICH A MERE 25,000 WERE ISSUED.

As noted for the \$2.00, the 1894 Unwatermarked issue was the first U.S. postage issue to be printed by the Bureau of Engraving & Printing, after the contract with American Bank Note Co. expired. The first stamps printed by the Bureau are notoriously difficult to find well-centered, as production was marred by initial problems as they geared up to meet the needs of the public for stamps. The designs were kept the same from the 1890 ABN Co. issue, with the addition of corner triangles to distinguish the printings. The use of the same designs is another indication of the time pressure that may have caused some of the initial production problems. Perhaps the two most difficult denominations to find in superb condition are the \$1.00 Type II (Scott 261A), and the \$5.00.

Ex Saadi and Zoellner. With 1988 and 1989 P.F. certificates. With 2004 P.S.E. certificate (XF 90; SMQ \$11,200.00)..... 5,000.00

## 1895 WATERMARKED BUREAU ISSUE

- 91 ★★ **1c Blue (264).** Mint N.H., incredibly deep rich color and proof-like impression on bright paper, perfectly centered with wide margins all around, long and full perforations, Extremely Fine Gem, a superb stamp in every respect, with 1993 and 2000 P.F. certificates, with 2004 P.S.E. certificate (Superb 98; SMQ \$880.00), this is the highest grade awarded to date by P.S.E., five others share this grade ..... 19.00



91



92

- 92 ★★ **2c Carmine, Ty. I (265).** Mint N.H. with plate no. 125 and wide selvage at right, radiant color on bright paper, choice centering with wide margins, perfs intact at bottom, Extremely Fine Gem, with 1987 and 2000 P.F. certificates, with 2004 P.S.E. certificate (XF-Superb 95; SMQ \$1,000.00), this is the highest grade awarded to date by P.S.E., five others share this grade ..... 90.00

- 93 ★★ **2c Carmine, Ty. II (266).** Mint N.H. with part imprint and wide selvage at right, vibrant color on post-office fresh paper, choice centering with wide and balanced margins for this issue, fresh and Extremely Fine, a pretty stamp, with 1988 and 2000 P.F. certificates, with 2004 P.S.E. certificate (XF 90; SMQ \$420.00)..... 110.00



93



94

- 94 ★★ **2c Carmine, Ty. III (267).** Mint N.H. with plate no. 183 in shaded type at right, pretty shade and beautifully detailed impression, perfectly centered with wide margins all around, Extremely Fine Gem, a superb stamp in every respect, with 1998 P.F. certificate, with 2006 P.S.E. certificate (Superb 98; SMQ \$800.00), this is the only example to achieve this grade ..... 16.00





95

- 95 ★★ **3c Purple (268).** Mint N.H. with part imprint and wide selvage at top, deep rich color, detailed impression, Very Fine and choice, with 1998 P.F. certificate, with 2004 P.S.E. certificate (VF 80; SMQ \$115.00) ..... 110.00

- 96 ★ **4c Dark Brown (269).** Mint N.H., deep rich color and proof-like impression on post-office fresh paper, choice centering with wide and balanced margins

EXTREMELY FINE GEM. A SUPERB MINT NEVER-HINGED EXAMPLE OF THE 1895 4-CENT WATERMARKED BUREAU ISSUE.

With 1990 and 2001 P.F. certificates. With 2004 P.S.E. certificate (XF-Superb 95; SMQ \$1,400.00). Only one stamp has graded higher in the P.S.E. Population Report..... 145.00

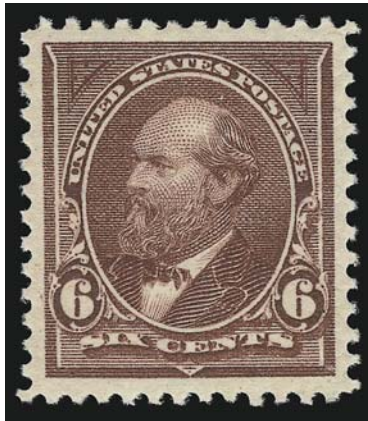


96



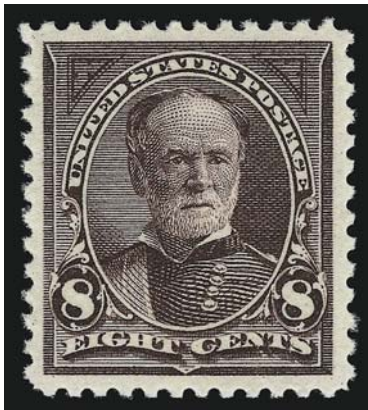
97

- 97 ★★ **5c Chocolate (270).** Original gum, barest trace of hinging (described on accompanying P.F. certificate as Mint N.H.), intense shade and impression, Jumbo margins, Extremely Fine Gem, with 1999 P.F. certificate as Mint N.H., with 2004 P.S.E. certificate (XF-Superb 95 Jumbo; SMQ \$180.00 as 95, \$325.00 as 98) ..... 37.00



98

- 98 ★★ **6c Dull Brown (271).** Mint N.H., pretty color and crisp impression on bright paper, perfectly centered with wide margins, long and full perforations all around  
 EXTREMELY FINE GEM. A SUPERB MINT NEVER-HINGED EXAMPLE OF THE 1895 6-CENT WATERMARKED BUREAU ISSUE. THIS IS EASILY ONE OF THE FINEST COPIES IN EXISTENCE.  
 With 1987 and 2000 P.F. certificates. With 2004 P.S.E. certificate (XF-Superb 95; SMQ \$3,700.00). This is the highest grade awarded to a Mint N.H. example to date; four others share this grade, ..... 375.00



99

- 99 ★★ **8c Violet Brown (272).** Mint N.H., deep rich color and proof-like impression on bright paper, beautiful centering with wide margins, long and full perforations all around  
 EXTREMELY FINE GEM. A SUPERB MINT NEVER-HINGED EXAMPLE OF THE 1895 8-CENT WATERMARKED BUREAU ISSUE, WHICH HAS BEEN AWARDED THE GRADE OF 95 BY P.S.E.  
 With 1999 P.F. certificate. With 2004 P.S.E. certificate (XF-Superb 95; SMQ \$2,150.00). Only one stamp has graded higher in the P.S.E. Population Report..... 2,200.00



100

- 100 ★★ **10c Dark Green (273).** Mint N.H., intense shade on bright paper which gives this a stunning appearance, perfectly centered

EXTREMELY FINE GEM. A MAGNIFICENT MINT NEVER-HINGED EXAMPLE OF THE 1895 10-CENT WATERMARKED BUREAU ISSUE. AN EXTREMELY DIFFICULT STAMP TO FIND IN SUCH SUPERB CONDITION AND A TRUE CONDITION RARITY.

With 1984 and 1999 P.F. certificates. With 2004 P.S.E. certificate (XF-Superb 95; SMQ \$3,150.00). Only one stamp has graded higher in the P.S.E. Population Report, and only two others share this grade. .... 300.00

- 101 ★★ **15c Dark Blue (274).** Mint N.H., deep rich color on bright paper, proof-like impression, choice centering with balanced margins

EXTREMELY FINE. A BEAUTIFUL MINT NEVER-HINGED EXAMPLE OF THE 1895 15-CENT WATERMARKED BUREAU ISSUE.

With 1996 P.F. certificate. With 2004 P.S.E. certificate (XF 90; SMQ \$2,250.00) ..... 725.00

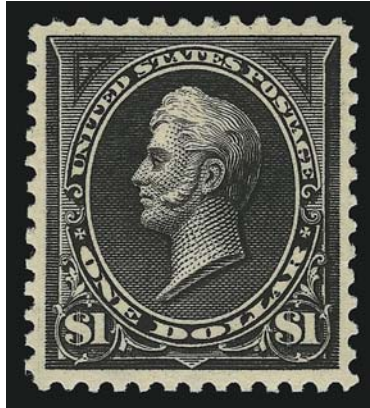


101



102

- 102 ★ **50c Orange (275).** Original gum, barest trace of hinging, vibrant color, detailed impression, well-proportioned margins, fresh and Extremely Fine, with 1985 and 1999 P.F. certificates, with 2004 P.S.E. certificate (XF 90; SMQ \$600.00) ..... 325.00

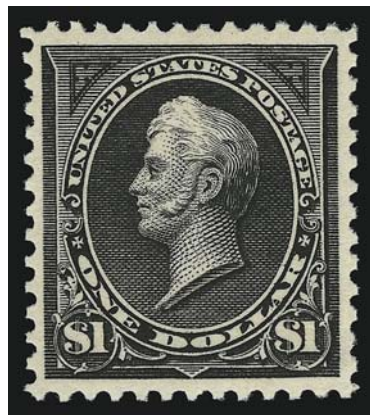


103

- 103 ★★ **\$1.00 Black, Ty. I (276).** Mint N.H., intense shade on bright paper, sharp proof-like impression, choice centering with wide margins

EXTREMELY FINE GEM. A SUPERB MINT NEVER-HINGED EXAMPLE OF THE 1895 \$1.00 TYPE I WATERMARKED BUREAU ISSUE. A DIFFICULT STAMP TO FIND IN SUCH SUPERB CONDITION. THIS IS THE HIGHEST GRADE AWARDED TO ANY EXAMPLE OF SCOTT NO. 276, EITHER IN MINT NEVER-HINGED OR IN HINGED CONDITION.

With 1982 and 2006 P.F. certificates (XF 90; SMQ \$5,650.00) ..... 2,000.00



104

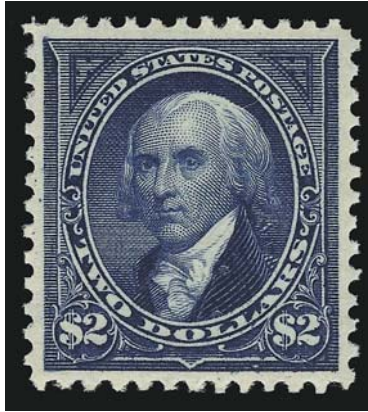
- 104 ★★ **\$1.00 Black, Ty. II (276A).** Mint N.H., bright shade and detailed impression, perfectly centered

EXTREMELY FINE GEM MINT NEVER-HINGED EXAMPLE OF THE 1895 \$1.00 TYPE II WATERMARKED BUREAU ISSUE. AN EXCEEDINGLY RARE STAMP IN THIS REMARKABLE POST-OFFICE FRESH CONDITION.

As an indication of rarity, we have only offered three other Mint N.H. examples of this issue since keeping computerized records. Of those, only one could be considered to have Extremely Fine centering.

With 2003 P.F. and 2004 P.S.E. certificates (XF 90; SMQ \$11,900.00). This is the highest grade awarded to date by P.S.E. for a Mint N.H. stamp, and this is the only example to achieve this grade..... 4,250.00





105

105 ★★ **\$2.00 Bright Blue (277).** Mint N.H., rich color on bright paper, perfectly centered with wide and balanced margins all around

EXTREMELY FINE GEM. A BEAUTIFUL MINT NEVER-HINGED EXAMPLE OF THE 1895 \$2.00 WATERMARKED BUREAU ISSUE IN THE BRIGHT BLUE COLOR. AN EXCEEDINGLY RARE STAMP IN MINT NEVER-HINGED AND CENTERED CONDITION. THIS STAMP HAS BEEN AWARDED THE GRADE OF 95 BY P.S.E.

With 1999 P.F. and 2004 P.S.E. certificates (XF-Superb 95; SMQ \$20,800.00). This is the only Mint N.H. example graded to date by P.S.E. .... 3,250.00



106

106 ★ **\$5.00 Dark Green (278).** Original gum, lightly hinged, deep rich color and proof-like impression, wide margins

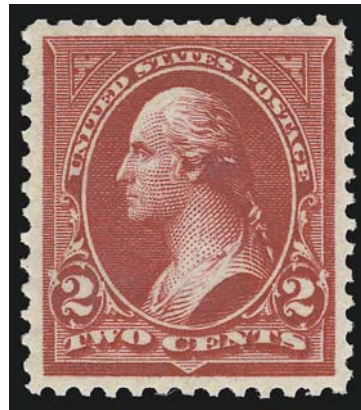
EXTREMELY FINE. A BEAUTIFUL ORIGINAL-GUM EXAMPLE OF THE 1895 \$5.00 WATER-MARKED BUREAU ISSUE.

With 1997 P.F. and 2004 P.S.E. certificates (VF-XF 85; SMQ \$3,350.00)..... 2,400.00

## 1898 BUREAU ISSUE



107



108

- 107 ★★ **1c Deep Green (279).** Mint N.H., radiant color, huge margins all around, fresh and Extremely Fine, a superb stamp in every respect, with 2000 P.F. certificate, with 2004 P.S.E. certificate (XF-Superb 95; SMQ \$415.00) ..... 25.00
- 108 ★★ **2c Red, Ty. IV (279B).** Mint N.H., brilliant color on radiant paper, perfectly centered with wide and balanced margins, Extremely Fine Gem, a superb stamp in every respect and extremely difficult to find in such superb condition, the owner searched for years before locating this superb example, with 2001 P.F. and 2004 P.S.E. certificates (XF-Superb 95; SMQ \$415.00), this is the highest grade awarded by P.S.E. to date, only one other shares this grade..... 25.00



109

- 109 ★★ **2c Rose Carmine, Ty. IV (279Bc).** Mint N.H., brilliant color, crisp impression, wide margins

EXTREMELY FINE. A BEAUTIFUL MINT NEVER-HINGED EXAMPLE OF THE 2-CENT ROSE CARMINE 1898 ISSUE. THIS IS EASILY ONE OF THE FINEST EXAMPLES WE HAVE EVER OFFERED AT AUCTION.

A search of auction catalogues for the past several years has demonstrated to us that this is one of the most difficult issues to obtain in such choice condition. It is easily one of the finest we have ever offered at auction.

With 1987 and 2000 P.F. certificates. Although this stamp is not graded, the highest grade awarded to date for a Mint N.H. Scott No. 279Bc is a 90. .... 750.00

- 110 ★★ **4c Rose Brown (280).** Mint N.H., pretty shade and crisp impression, choice centering with wide margins, fresh and Extremely Fine, with 1998 P.F. certificate, with 2004 P.S.E. certificate (XF 90; SMQ \$385.00)..... 85.00



110



111

- 111 ★★ **5c Dark Blue (281).** Mint N.H., intense shade and impression, beautiful centering with unusually wide margins

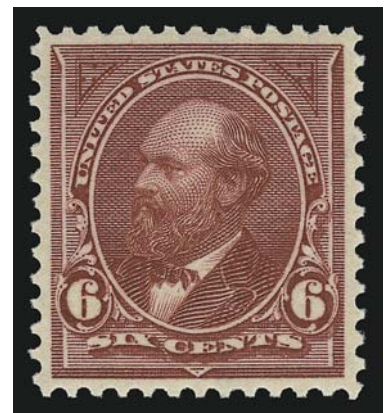
EXTREMELY FINE GEM. A SUPERB MINT NEVER-HINGED EXAMPLE OF THE 1898 5-CENT DARK BLUE BUREAU ISSUE, WHICH HAS BEEN AWARDED THE GRADE OF 95 BY P.S.E..

With 1986 and 2000 P.F. certificates. With 2004 P.S.E. certificate (XF-Superb 95; SMQ \$1,050.00). This is the highest grade awarded to date; only four others have achieved this grade ..... 100.00

- 112 ★★ **6c Lake (282).** Mint N.H., radiant color on post-office fresh paper, perfectly centered, long and full perforations all around

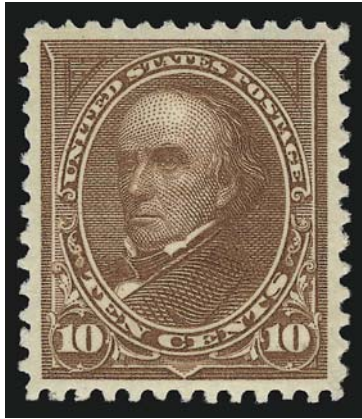
EXTREMELY FINE GEM. A BEAUTIFUL MINT NEVER-HINGED EXAMPLE OF THE 1898 6-CENT WATERMARKED BUREAU ISSUE. THIS STAMP HAS BEEN AWARDED THE GRADE OF 95 BY P.S.E., WHICH IS THE HIGHEST GRADE GIVEN TO DATE.

With 1997 P.F. certificate. With 2004 P.S.E. certificate (XF-Superb 95; SMQ \$1,500.00). Only one other shares this grade. .... 140.00



112





113

- 113 ★★ **10c Brown, Ty. I (282C).** Mint N.H., radiant color on bright paper, unusually wide margins for this issue

EXTREMELY FINE. A BEAUTIFUL MINT NEVER-HINGED EXAMPLE OF THE 1898 10-CENT BROWN TYPE I ISSUE.

The 10c was changed from Green (Scott No. 273) to Brown because the 1c denomination (Scott No. 279) was changed to Green to meet the UPU color scheme.

With 1980 and 1999 P.F. certificates..... 625.00

- 114 ★★ **10c Orange Brown, Ty. II (283).** Mint N.H. with plate no. 997 at top, radiant color, almost perfectly centered with well-proportioned margins, fresh and Extremely Fine, this issue is almost never found with the wide margins that some other Bureaus are seen with, the stamp offered here should be considered a condition rarity, with 1999 P.F. certificate.... 450.00



114



115

- 115 ★★ **15c Olive Green (284).** Mint N.H., radiant color, detailed impression, long and full perforations all around

EXTREMELY FINE. A BEAUTIFUL MINT NEVER-HINGED EXAMPLE OF THE 1898 15-CENT OLIVE GREEN ISSUE. A DIFFICULT STAMP TO FIND IN SUCH SUPERB CONDITION.

With 1985 and 1999 P.F. certificates. With 2004 P.S.E. certificate (XF 90; SMQ \$1,700.00). Only two stamps have graded higher than a 90 in the P.S.E. Population Report (both 95) and only one other has graded 90..... 475.00

## POSTAGE DUE ISSUES

The collector who formed the Scarsdale Collection was particularly keen on acquiring and studying the many shades of the Postage Due Issues in the finest condition attainable. Many are not listed in the Scott Catalogue.

We have presented his study so that the shades of the same denomination are easily compared. To our knowledge, this is the first time that such an important study has been presented.

## 1879 AMERICAN BANK NOTE CO. POSTAGE DUE ISSUE

- 116 ★ **1c Brown (J1).** Original gum, lightly hinged, radiant color, crisp impression, perfectly centered with wide margins, Extremely Fine Gem, a superb stamp in every respect, with 1999 P.F. certificate, with 2004 P.S.E. certificate (XF-Superb 95; SMQ \$800.00), the next highest grade in the Population Report is 80 ..  
..... 90.00



116



117

- 117 ★★ **2c Brown (J2).** Mint N.H., beautiful bright color and detailed impression, choice centering with wide and balanced margins

EXTREMELY FINE. A SUPERB MINT NEVER-HINGED EXAMPLE OF THE 1879 2-CENT BROWN POSTAGE DUE ISSUE. SCARCE IN SUCH SUPERB CONDITION.

With 2004 P.F. certificate..... 1,100.00

- 118 ★★ **3c Brown (J3).** Mint N.H., brilliant color and detailed impression, choice centering with wide and balanced margins

EXTREMELY FINE GEM. A SUPERB MINT NEVER-HINGED EXAMPLE OF THE 1879 3-CENT BROWN POSTAGE DUE ISSUE, WHICH HAS BEEN GRADED 95 BY P.S.E.

With 1999 P.F. certificate. With 2004 P.S.E. certificate (XF-Superb 95; SMQ \$1,000.00). This is the only stamp to achieve this high grade to date. In our opinion, SMQ values are very conservative for high-grade Mint N.H. Postage Dues in general  
..... 300.00



118



119

- 119 ★★ **5c Brown (J4).** Mint N.H., rich color, sharp impression, wide margins for this difficult issue

EXTREMELY FINE MINT NEVER-HINGED EXAMPLE OF THE 1879 5-CENT BROWN POSTAGE DUE ISSUE. THIS IS ONE OF THE MOST DIFFICULT OF ALL POSTAGE DUE STAMPS TO OBTAIN IN CENTERED, MINT NEVER-HINGED CONDITION.

A review of our computerized records shows we have only offered three other Mint N.H. stamps, only one of which could be considered Extremely Fine.

With 1983 and 1999 P.F. certificates. With 2004 P.S.E. certificate (VF-XF 85; SMQ \$2,700.00). This is the highest grade awarded to date by P.S.E. to a Mint N.H. stamp, and this is the only example to achieve this grade. The SMQ value is very conservative given its rarity. .... 2,100.00



120

- 120 ★ **10c Brown (J5).** Original gum, barely hinged, intense shade and impression, choice centering for this difficult issue

VERY FINE AND CHOICE. A RARE SOUND AND WELL-CENTERED ORIGINAL-GUM EXAMPLE OF THE 1879 10-CENT BROWN POSTAGE DUE ISSUE. A DIFFICULT STAMP TO FIND IN CHOICE CONDITION.

As an indication of rarity, we have not offered a Mint N.H. example since keeping computerized records over ten years ago. This hinged copy is among the two or three finest we have offered.

With 2000 P.F. certificate. With 1996 and 2004 P.S.E. certificates (F-VF 75; SMQ \$1,150.00 as 70 and \$2,650.00 as 80). This is the highest grade awarded to date by P.S.E. ... 950.00





121

- 121 ★ **30c Brown (J6).** Original gum, lightly hinged, deep rich color and sharp proof-like impression, choice centering for this difficult issue with wide and balanced margins, fresh and Extremely Fine, a beautiful stamp, with 1989 P.F. certificate, with 2004 P.S.E. certificate (VF-XF 85; SMQ \$450.00), this is the highest grade awarded to date by P.S.E., we have only offered two Mint N.H. examples since keeping computerized records (none are listed on P.S.E.'s Population Report) and among the hinged copies this is easily one of the finest we have ever offered ..... 400.00



122

- 122 ★ **50c Brown (J7).** Original gum, barest trace of hinging, radiant color, crisp impression, choice centering with wide and balanced margins
- EXTREMELY FINE GEM. A SUPERB LIGHTLY-HINGED EXAMPLE OF THE 1879 50-CENT BROWN FIRST POSTAGE DUE ISSUE. A DIFFICULT STAMP TO FIND IN SUCH SUPERB CONDITION, THIS HAS BEEN AWARDED THE GRADE OF 95 BY P.S.E. — THE HIGHEST GRADE AWARDED TO DATE.
- With 1982 and 1999 P.F. certificates. With 2004 P.S.E. certificate (XF-Superb 95; SMQ \$1,800.00). This is the only example to achieve this grade. No Mint N.H. stamps have been graded. .... 650.00



## 1884 AMERICAN BANK NOTE CO. POSTAGE DUE ISSUE



123



124

- 123 ★★ **1c Red Brown (J15).** Mint N.H., intense color and proof-like impression, perfectly centered with wide margins, long and full perforations, Extremely Fine Gem, a superb stamp in every respect, with 1986 and 2000 P.F. certificates, with 2004 P.S.E. certificate (XF-Superb 95; SMQ \$700.00), this is the only example graded 95, and only one has graded higher ..... 200.00
- 124 ★★ **2c Red Brown (J16).** Mint N.H., radiant color and crisp impression, choice centering with extra wide margins, fresh and Extremely Fine, with 1988 and 2000 P.F. certificates, with 2004 P.S.E. certificate (XF 90; SMQ \$485.00), this is the only Mint N.H. graded stamp in the P.S.E. Population Report (and hence the highest grade), we have only sold four other Mint N.H. examples since keeping computerized records ..... 250.00



125

- 125 ★★ **3c Red Brown (J17).** Mint N.H., beautiful warm shade and detailed impression which shows the remarkable detail of the engraved lathework background, choice centering with Jumbo margins

EXTREMELY FINE. A GORGEOUS MINT NEVER-HINGED EXAMPLE OF THE 1884 3-CENT RED BROWN POSTAGE DUE ISSUE. SCARCE WITH SUCH WIDE MARGINS AND IN SUCH PRISTINE CONDITION — THIS IS ONLY THE SECOND MINT NEVER-HINGED EXAMPLE WE HAVE EVER OFFERED SINCE KEEPING COMPUTERIZED RECORDS.

The other Mint N.H. example we offered was offered in the Silver Lake collection (Sale 866) where it realized \$8,500 hammer. The margins on this stamp are significantly larger.

With 1982 and 1999 P.F. certificates. With 2004 P.S.E. certificate (XF 90 Jumbo; SMQ \$4,600.00 as 90, SMQ does not price this stamp graded 95). This is the only Mint N.H. graded stamp at this time..... 2,500.00



126

- 126 ★ **5c Red Brown (J18).** Original gum, barest trace of hinging, deep rich color and detailed impression, perfectly centered with wide and balanced margins

EXTREMELY FINE GEM. A SUPERB ORIGINAL-GUM EXAMPLE OF THE 1884 5-CENT RED BROWN POSTAGE DUE ISSUE.

Scarce with such choice centering. We have only offered two Mint N.H. examples with any degree of decent centering since keeping computerized records.

With 1997 P.F. certificate. With 2004 P.S.E. certificate (XF-Superb 95; SMQ \$1,600.00). This is one of only two examples to receive this grade, which is the highest awarded to date..... 625.00



127

- 127 ★★ **10c Red Brown (J19).** Mint N.H., deep rich color and proof-like impression on bright paper, wide margins

EXTREMELY FINE. A RARE MINT NEVER-HINGED EXAMPLE OF THE 10-CENT 1884 RED BROWN POSTAGE DUE. A STAMP OF TREMENDOUS VISUAL APPEAL.

This is one of the most difficult denominations of the series to obtain in such choice Mint N.H. condition.

With 1988 and 2000 P.F. certificates. With 2004 P.S.E. certificate (VF-XF 85; SMQ \$2,100.00). This is the second-highest grade awarded to date (the highest grade thus far for a Mint N.H. stamp is 90 with only one receiving that grade)..... 1,450.00



128

128 ★★ **30c Red Brown (J20).** Mint N.H., bright color and crisp impression on post-office fresh paper, Jumbo margins

EXTREMELY FINE. A BEAUTIFUL WIDE-MARGINED MINT NEVER-HINGED EXAMPLE OF THE 1884 30-CENT RED BROWN POSTAGE DUE ISSUE.

With 1994 and 2000 P.F. certificates. With 2004 P.S.E. certificate (XF 90 Jumbo; SMQ \$1,050.00 as 90, \$1,800.00 as 95). Only two Mint N.H. examples have graded higher. .... 550.00



129

129 ★★ **50c Red Brown (J21).** Mint N.H., rich color, proof-like impression, choice centering for this difficult issue

VERY FINE. A RARE MINT NEVER-HINGED EXAMPLE OF THE 50-CENT 1884 POSTAGE DUE ISSUE.

We have only offered seven Mint N.H. examples since keeping computerized records.

With 1999 P.F. certificate. .... 4,250.00



## 1891 AMERICAN BANK NOTE CO. POSTAGE DUE ISSUE

- 130 ★★ **1c Bright Claret (J22).** Mint N.H. with selvage at top, brilliant color, crisp impression, choice centering with huge margins, Extremely Fine, a beautiful stamp, with 1999 P.F. certificate, with 2004 P.S.E. certificate (XF 90; SMQ \$195.00) ..... 95.00



130



131

- 131 ★★ **2c Bright Claret (J23).** Mint N.H., rich color and unusually detailed impression on bright paper, perfectly centered, Extremely Fine Gem, a superb stamp in every respect, with 2000 P.F. certificate, with 2004 P.S.E. certificate (XF-Superb 95; SMQ \$395.00)..... 100.00

- 132 ★★ **3c Bright Claret (J24).** Mint N.H., radiant color on post-office fresh paper, gorgeous centering with wide margins all around, Extremely Fine Gem, a magnificent stamp, scarce in such superb condition, with 2006 P.F. certificate (XF-Superb 95; SMQ \$720.00) ..... 200.00



132





133

- 133 ★★ **5c Bright Claret (J25).** Mint N.H., beautiful bright color on post-office fresh paper, perfectly centered with enormous margins, long and full perforations all around

EXTREMELY FINE GEM. A MAGNIFICENT MINT NEVER-HINGED EXAMPLE OF THE 1891 5-CENT BRIGHT CLARET POSTAGE DUE ISSUE. THE ESSENCE OF PERFECTION — THIS STAMP HAS BEEN GRADED GEM 100 BY P.S.E. THIS IS THE ONLY EXAMPLE TO ACHIEVE THIS ULTIMATE GRADE — WE DOUBT A FINER COPY EXISTS.

With 1995 and 2002 P.F. certificates. With 2004 P.S.E. certificate (Gem 100; unpriced as 100 in SMQ, SMQ \$2,100.00 as 98)..... 325.00



134

- 134 ★★ **10c Bright Claret (J26).** Mint N.H., brilliant color and detailed impression, perfectly centered with huge margins

EXTREMELY FINE GEM. A SUPERB MINT NEVER-HINGED EXAMPLE OF THE 1891 10-CENT BRIGHT CLARET POSTAGE DUE ISSUE. A REMARKABLE STAMP IN EVERY RESPECT.

With 2002 and 2003 P.F. certificates (the former as part of a pair). With 2004 P.S.E. certificate (XF-Superb 95 Jumbo; SMQ \$1,550.00 as 95, \$2,500.00 as 98). This is the only example to have achieved this high grade to date. None have graded higher. It is also the finest we have offered since keeping computerized records..... 550.00



135

- 135 ★★ **30c Bright Claret (J27).** Mint N.H., brilliant color and detailed impression showing every detail of the lathework engraving, beautiful centering with wide and balanced margins  
EXTREMELY FINE GEM. A SUPERB MINT NEVER-HINGED EXAMPLE OF THE 30-CENT BRIGHT CLARET 1891 POSTAGE DUE ISSUE. SCARCE IN SUCH SUPERB CONDITION.  
With 1987 and 2000 P.F. certificates. With 2004 P.S.E. certificate (XF-Superb 95; SMQ \$4,900.00). This is the highest grade awarded to date by P.S.E. and this is the only one to achieve this grade..... 1,800.00



136

- 136 ★★ **50c Bright Claret (J28).** Mint N.H. with selvage at top, radiant color, wide margins for this difficult issue  
VERY FINE AND CHOICE. A BEAUTIFUL MINT NEVER-HINGED EXAMPLE OF THE 1891 50-CENT BRIGHT CLARET POSTAGE DUE ISSUE.  
With 1986 and 1999 P.F. certificates. With 2004 P.S.E. certificate (VF 80; SMQ \$2,100.00) ..... 1,800.00

1894 UNWATERMARKED BUREAU POSTAGE DUE ISSUE



137

- 137 ★ **1c Vermilion (J29).** Original gum, barest trace of hinging, brilliant color on bright paper, sharp impression which is unusual for this difficult issue, choice centering with wide margins

EXTREMELY FINE ORIGINAL-GUM EXAMPLE OF THE ONE-CENT VERMILION 1894 UNWATERMARKED BUREAU POSTAGE DUE.

With 1988 and 2000 P.F. certificates. .... 2,400.00



138

- 138 ★★ **2c Vermilion (J30).** Mint N.H., deep rich color which may be the Deep Vermilion subshade (though not noted as such on accompanying certificates), bright paper, perfectly centered

EXTREMELY FINE GEM. A SUPERB MINT NEVER-HINGED EXAMPLE OF THE 1894 2-CENT VERMILION ISSUE WITH STUNNING COLOR, BRIGHT PAPER AND PERFECT CENTERING.

With 1983 and 1999 P.F. certificates..... 2,100.00



139

- 139 ★ **2c Vermilion (J30).** Original gum, lightly hinged, brilliant color on bright paper, wide margins, Very Fine and choice, with 1991 P.F. certificate..... 850.00



## 1894-95 UNWATERMARKED BUREAU POSTAGE DUE ISSUE

- 140 ★★ **1c Deep Claret (J31).** Mint N.H., unusually rich color, sharp proof-like impression on bright paper, Jumbo margins

EXTREMELY FINE GEM. A HUGE MINT NEVER-HINGED EXAMPLE OF THE 1894 ONE-CENT POSTAGE DUE ISSUE, IN AN EYE-CATCHING DEEP SHADE. A GORGEOUS STAMP.

With 1989 and 2004 P.F. certificates..... 300.00



140



141



142

- 141 ★ **1c Claret (J31 var).** Original gum, barely hinged (if at all), radiant color which shows significant contrast from the previous lot, perfectly centered with huge margins all around, Extremely Fine Gem, with 2000 P.F. certificate as Deep Claret ..... 80.00
- 142 ★★ **2c Deep Claret (J32).** Mint N.H., deep rich color and proof-like impression which clearly shows every detail of the engraved lathework, choice centering with wide and balanced margins, Extremely Fine Gem, a superb stamp in every respect, ex Lyons, with 1997 and 2006 P.F. certificates (XF 90; SMQ \$520.00) ..... 275.00

- 143 ★★ **3c Deep Claret (J33).** Mint N.H., intense shade and proof-like impression on white paper, perfectly centered with wide and balanced margins

EXTREMELY FINE GEM. A BEAUTIFUL MINT NEVER-HINGED EXAMPLE OF THE 1895 3-CENT UNWATERMARKED POSTAGE DUE ISSUE.

With 1988 and 2000 P.F. certificates..... 600.00



143





144

- 144 ★★ **3c Deep Claret (J33).** Mint N.H., intense color in a deeper shade than the previous lot, proof-like impression, perfectly centered with balanced margins

EXTREMELY FINE GEM. A SUPERB EXAMPLE OF THIS DIFFICULT 1894 UNWATERMARKED FIRST BUREAU ISSUE POSTAGE DUE.

Ex Piedmont (Siegel Sale 842). With 1997 and 2001 P.F. certificates ..... 600.00

- 145 ★★ **5c Deep Claret (J34).** Mint N.H., deep rich color, detailed impression, perfectly centered with enormous margins on all sides

EXTREMELY FINE GEM. A MAGNIFICENT MINT NEVER-HINGED EXAMPLE OF THE 1895 5-CENT DEEP CLARET UNWATERMARKED POSTAGE DUE ISSUE. WE HAVE NEVER SEEN ITS EQUAL.

With 1986 and 2000 P.F. certificates. .... 1,000.00



145



146

- 146 ★★ **10c Claret (J35 var).** Mint N.H., unusually bright color, wide margins

EXTREMELY FINE MINT NEVER-HINGED EXAMPLE OF THE 1895 10-CENT DEEP CLARET POSTAGE DUE ISSUE. A STAMP OF REMARKABLE FRESHNESS.

It is interesting to note that, unlike other denominations of the series, Scott Catalogue only lists the 10c in the Deep Claret shade. We would classify this as Claret, and it is noted as such on the most recent certificate.

With 1988 and 2000 P.F. certificates..... 1,100.00



147

- 147 ★★ **30c Deep Claret (J36).** Mint N.H., deep rich color on bright paper, amazingly detailed impression, enormous margins all around

EXTREMELY FINE GEM. A MAGNIFICENT MINT NEVER-HINGED EXAMPLE OF THE 30-CENT DEEP CLARET 1895 POSTAGE DUE ISSUE. THIS IS THE WIDEST-MARGINED EXAMPLE WE HAVE EVER OFFERED, EITHER IN MINT NEVER-HINGED OR HINGED CONDITION.

With 1992 and 2004 P.F. certificates..... 1,400.00



148

- 148 ★★ **30c Deep Claret (J36).** Mint N.H., deep rich color and detailed impression on bright paper which is a slightly different shade than the previous lot, enormous margins especially at sides

EXTREMELY FINE GEM. A STUNNING MINT NEVER-HINGED EXAMPLE OF THE 1895 30-CENT UNWATERMARKED POSTAGE DUE ISSUE IN THE DEEP CLARET COLOR.

With 2002 P.F. certificate ..... 600.00

- 149 ★★ **30c Pale Rose (J36b).** Mint N.H., brilliant color on post-office fresh paper, choice centering with wide margins

EXTREMELY FINE. A BEAUTIFUL MINT NEVER-HINGED EXAMPLE OF THE 1895 30-CENT UNWATERMARKED POSTAGE DUE ISSUE IN THE PALE ROSE COLOR.

With 1988 and 2000 P.F. certificates..... 1,200.00



149



150

- 150 ★ **50c Deep Claret (J37).** Original gum, barest trace of hinging, intense shade and impression, choice centering with well-proportioned margins

EXTREMELY FINE. A BEAUTIFUL LIGHTLY-HINGED EXAMPLE OF THE 50-CENT 1895 DEEP CLARET POSTAGE DUE ISSUE. THIS BUREAU ISSUE IS ONE OF THE RAREST POSTAGE DUES IN ANY CHOICE GRADE.

With 1994 and 2000 P.F. certificates ..... 1,800.00

- 151 ★ **50c Pale Rose (J37a).** Original gum, lightly hinged, radiant color, perfectly centered with wide and balanced margins

EXTREMELY FINE. A BEAUTIFUL ORIGINAL-GUM EXAMPLE OF THE 1895 50-CENT UNWATERMARKED POSTAGE DUE ISSUE IN THE PALE ROSE SHADE.

With 2001 P.F. certificate..... 1,800.00



151

## 1895-97 WATERMARKED BUREAU POSTAGE DUE ISSUE



152



153



154

- 152 ★ **1c Deep Claret (J38).** Original gum, barest trace of what may be hinging (appears Mint N.H.), intense color and impression, choice centering with wide margins, Extremely Fine Gem example of the main Scott-listed shade, with 2000 P.F. certificate ..... 15.00
- 153 ★★ **1c Claret (J38 var).** Mint N.H., radiant color, Jumbo margins, Extremely Fine Gem example of this sub-shade, faint pencil notation on back, with 2004 P.F. certificate ..... 40.00
- 154 ★★ **1c Carmine (J38 var).** Mint N.H., pretty color in a warmer shade than the previous two lots, choice centering with wide margins, fresh and Extremely Fine example of this sub-shade, with 2000 P.F. certificate ..... 40.00



- 155 ★★ **2c Claret (J39 var).** Mint N.H., brilliant color on crisp paper, detailed impression, choice centering with wide margins, Extremely Fine Gem, a beautiful stamp, with 1999 P.F. certificate as Deep Claret..... 40.00



155



156

- 156 ★★ **3c Claret (J40 var).** Mint N.H., rich color described on accompanying certificate as Deep Claret (the default shade) but we would identify this as the Claret shade, perfectly centered, Extremely Fine Gem, a beautiful stamp, with 1999 P.F. certificate for block of four and 2000 P.F. certificate as single Deep Claret..... 275.00

- 157 ★★ **3c Claret (J40 var).** Mint N.H., rich color on crisp paper, choice centering with well-proportioned margins, fresh and Extremely Fine example of this sub-shade, with 2000 P.F. certificate..... 275.00



157



158

- 158 ★★ **3c Deep Claret (J40).** Mint N.H., rich color which to us seems to approach the Carmine shade, well-balanced margins, fresh and Extremely Fine..... 275.00





159

- 159 ★★ **5c Deep Claret (J41).** Mint N.H., deep rich color and sharp proof-like impression on bright paper, beautiful centering with wide margins, fresh and Extremely Fine, an attractive stamp, with 1999 P.F. certificate .. 290.00



160

- 160 ★★ **5c Carmine Rose (J41 var).** Mint N.H. with selvage at right, radiant color, perfectly centered with wide margins all around

EXTREMELY FINE GEM. A SUPERB MINT NEVER-HINGED EXAMPLE OF THE 1895 5-CENT WATERMARKED POSTAGE DUE ISSUE, IN THE DESIRABLE CARMINE ROSE SUB-SHADE.

With 1988 and 2001 P.F. certificates, the former describing the shade as Claret and the latter as Carmine Rose ..... 290.00



161



162

- 161 ★★ **5c Carmine Rose (J41 var).** Mint N.H., attractive warm shade on crisp paper, Very Fine and choice example of this sub-shade, with 1999 P.F. certificate..... 290.00

- 162 ★★ **5c Deep Claret (J41).** Mint N.H., brilliant color which to us appears to be the Claret shade, choice centering, bright and fresh, Extremely Fine, a beautiful stamp of great visual appeal, with 2000 P.F. certificate ..... 290.00



163



164

- 163 ★★ **10c Deep Claret (J42).** Mint N.H., deep rich color and proof-like impression on bright paper, choice centering with wide margins, fresh and Extremely Fine, a gorgeous stamp, with 2000 P.F. certificate ..... 290.00
- 164 ★★ **10c Claret (J42 var).** Mint N.H., rich color and detailed impression, choice centering with well-proportioned margins, fresh and Extremely Fine, with 2004 P.F. certificate 290.00



165

- 165 ★★ **10c Carmine (J42 var).** Mint N.H. with bottom left corner selvage, brilliant color and detailed impression on post-office fresh paper, perfectly centered with wide and balanced margins on all sides

EXTREMELY FINE GEM. A STUNNING MINT NEVER-HINGED EXAMPLE OF THE 1895 10-CENT WATERMARKED POSTAGE DUE ISSUE IN THE CARMINE SUB-SHADE. THIS MAY WELL BE THE FINEST COPY IN EXISTENCE. A REMARKABLE STAMP.

With 2003 P.F. certificate..... 290.00



166

- 166 ★★ **30c Deep Claret (J43).** Mint N.H., intense shade and impression on bright paper, wide margins

EXTREMELY FINE. A RARE MINT NEVER-HINGED EXAMPLE OF THE 1895 30-CENT WATERMARKED POSTAGE DUE ISSUE.

A search of our past auction catalogues yielded only four Mint N.H. stamps. Of these, only one other rated the grade of Extremely Fine

With 1999 P.F. certificate. .... 1,800.00



167

- 167 ★★ **50c Deep Claret (J44).** Mint N.H., intense shade and impression, choice centering with well-proportioned margins

EXTREMELY FINE. A BEAUTIFUL MINT NEVER-HINGED EXAMPLE OF THE 50-CENT DEEP CLARET 1897 POSTAGE DUE ISSUE. THIS BUREAU ISSUE IS ONE OF THE RAREST POSTAGE DUES IN ANY CHOICE GRADE.

With 1982 and 1999 P.F. certificates. The older certificate describes this as Deep Claret and the more recent certificate describes this as Claret, comparing this to the previous lot confirms that this is the Deep Claret shade..... 1,200.00



168

- 168 ★★ **50c Claret (J44 var).** Mint N.H., brilliant color and crisp impression, choice centering with well-balanced margins

EXTREMELY FINE. A BEAUTIFUL MINT NEVER-HINGED EXAMPLE OF THE 1895 50-CENT WATERMARKED POSTAGE DUE ISSUE.

A search of our computerized records shows that this is the finest Mint N.H. example we have offered since our Zoellner auction in 1998. P.S.E.'s Population Report shows the highest grade they have awarded is a 90.

With 2004 P.F. certificate..... 1,200.00



## 1910-12 POSTAGE DUE ISSUE



169



170



171



172

- 169 ★★ **1c Deep Claret (J45).** Mint N.H. with plate no. 5522 and star at bottom, rich color, wide margins, Very Fine and choice, with 2000 P.F. certificate ..... 130.00
- 170 ★ **1c Deep Claret (J45).** Barest trace of hinging (if at all), intense color and impression, enormous margins, Extremely Fine Gem, a phenomenally huge stamp, with 2002 P.F. certificate ..... 45.00
- 171 ★★ **1c Rose Carmine (J45a).** Mint N.H. with part imprint and wide selvage at top, brilliant color, perfectly centered with extra wide margins, Extremely Fine Gem, a gorgeous stamp of tremendous visual appeal, with 2000 P.F. certificate ..... 120.00
- 172 ★★ **1c Deep Claret (J45).** Mint N.H., described on accompanying certificate as the default shade of Deep Claret but which we would call Deep Rose Carmine, choice centering with well-balanced margins, fresh and Extremely Fine, with 2000 P.F. certificate ..... 130.00



173



174

- 173 ★★ **2c Deep Claret (J46).** Mint N.H., brilliant color on bright paper, choice centering with wide and balanced margins, Extremely Fine Gem, with 2004 P.F. certificate, with 2005 P.S.E. certificate (XF-Superb 95; SMQ \$500.00) ..... 130.00
- 174 ★★ **2c Rose Carmine (J46a).** Mint N.H., brilliant color which is unusually fresh and is undoubtedly the Rose Carmine shade, choice centering with huge margins all around, Extremely Fine Gem, a gorgeous stamp, with 2000 P.F. certificate as Deep Claret..... 130.00





175

- 175 ★★ **3c Deep Claret (J47).** Mint N.H., deep rich color and sharp impression on bright paper, choice centering with well-proportioned margins

EXTREMELY FINE MINT NEVER-HINGED EXAMPLE OF THE 3-CENT PERF 12 SINGLE-LINE WATERMARK POSTAGE DUE.

Despite its relatively modest catalogue value, this is one of the most difficult values to obtain in superb Mint N.H. condition.

With 1985 and 1999 P.F. certificates..... 1,750.00



176



177



178

- 176 ★★ **5c Deep Claret (J48).** Mint N.H., deep rich color on bright paper, sharp proof-like impression, choice centering, fresh and Extremely Fine, a gorgeous stamp, with 1992 and 2002 P.F. certificates ..... 300.00

- 177 ★★ **5c Deep Claret (J48).** Mint N.H., brilliant color on post-office fresh paper, the shade appears to be different from the two other examples of this issue offered in the sale, detailed impression, perfectly centered, Extremely Fine Gem, a superb stamp in every respect, with 2005 P.F. certificate ..... 300.00

- 178 ★ **5c Rose Carmine (J48a).** Barely hinged (to us it looks like tiny gum skips), radiant color, choice centering, fresh and Extremely Fine, with 2000 P.F. certificate as Deep Claret..... 130.00

- 179 ★★ **10c Claret (J49 var).** Mint N.H., rich color and detailed impression, Jumbo margins, fresh and Extremely Fine, with 1992 and 2000 P.F. certificates as Deep Claret ..... 360.00



179



180

- 180 ★★ **10c Deep Claret (J49).** Mint N.H., color described on accompanying certificate as Carmine Rose but comparing it to others we feel confident that it is in the richer Deep Claret family, huge margins, fresh and Extremely Fine, a pretty stamp, with 2000 P.F. certificate ..... 360.00



181

- 181 ★★ **10c Rose Carmine (J49a).** Mint N.H., attractive warm shade, Jumbo margins all around, Extremely Fine Gem, a huge stamp of great visual appeal, with 1987 and 2000 P.F. certificates ..... 360.00



182

- 182 ★★ **10c Rose Carmine (J49a).** Mint N.H., brilliant color on crisp paper which stands out quite nicely, perfectly centered, Extremely Fine Gem, a superb stamp in every respect, with 2000 P.F. certificate ..... 360.00



183

- 183 ★★ **50c Deep Claret (J50).** Mint N.H., wide margins, detailed impression on post-office fresh paper

EXTREMELY FINE. THE 50-CENT PERF 12 SINGLE-LINE WATERMARK POSTAGE DUE IS RARE IN SUPERB MINT NEVER-HINGED CONDITION.

Ex Drucker. With 1984 P.F. certificate for block of four, this being the bottom right stamp and with 2002 P.F. certificate as single ..... 3,000.00



184

- 184 ★ **50c Deep Claret (J50).** Original gum, lightly hinged, radiant color, detailed impression, wide margins for this difficult issue

EXTREMELY FINE. A BEAUTIFUL ORIGINAL-GUM EXAMPLE OF THE 50-CENT PERF 12 SINGLE-LINE WATERMARK POSTAGE DUE ISSUE.

With 1999 P.F. certificate ..... 1,150.00



## 1914 POSTAGE DUE ISSUE



185

- 185 ★★ **1c Carmine Lake (J52).** Mint N.H., radiant color on crisp paper, Jumbo margins all around, fresh and Extremely Fine, with 2000 P.F. certificate..... 250.00

- 186 ★ **1c Carmine Lake (J52).** Barest trace of what may be hinging (appears Mint N.H.), deep rich color, huge margins, fresh and Extremely Fine, with 1988 and 2000 P.F. certificates..... 85.00



186



187

- 187 ★★ **1c Dull Rose (J52a).** Mint N.H., radiant color on bright paper, choice centering with well-proportioned margins, Extremely Fine, a pretty stamp of great visual appeal, with copy of 1992 P.F. certificate for block of four and 1999 P.F. certificate as single ..... 260.00





188

- 188 ★★ **2c Carmine Lake (J53)**. Mint N.H., wonderful color and detailed impression, unusually wide margins, Very Fine and choice ..... 170.00

- 189 ★★ **2c Dull Rose (J53a)**. Mint N.H., radiant color and detailed impression in a shade different from the one offered in the previous lot, perfectly centered with extra wide margins all around

EXTREMELY FINE GEM. A SUPERB MINT NEVER-HINGED EXAMPLE OF THE 1914 2-CENT POSTAGE DUE ISSUE IN THE DULL ROSE COLOR. EASILY ONE OF THE FINEST COPIES IN EXISTENCE.

With 1988 and 2000 P.F. certificates..... 190.00



189



190

- 190 ★★ **2c Deep Carmine Lake (J53 var)**. Mint N.H., pretty shade which is unusually deep, huge margins, Very Fine and choice, with 2000 P.F. certificate noting this as the Dull Rose shade..... 190.00

- 191 ★★ **2c Vermilion (J53b)**. Mint N.H., brilliant color on bright paper, beautifully centered with wide and balanced margins, Extremely Fine Gem, a superb example of the 2c Vermilion shade, with 1999 P.F. certificate as block of four and 2001 P.F. certificate as single ..... 190.00



191



192

- 192 ★★ **3c Carmine Lake (J54).** Mint N.H. with plate no. 5529 and star at bottom, deep rich color on bright paper, wide margins

VERY FINE AND CHOICE. A RARE MINT NEVER-HINGED EXAMPLE OF THE 3-CENT CARMINE LAKE PERF 10 POSTAGE DUE.

With 2001 P.F. certificate ..... 3,300.00



193

- 193 ★ **3c Dull Rose (J54a).** Original gum, lightly hinged, brilliant color on post-office fresh paper, choice centering

EXTREMELY FINE ORIGINAL-GUM EXAMPLE OF THE 1914 3-CENT DULL LAKE PERF 10 POSTAGE DUE ISSUE.

Curiously, we have never offered a Mint N.H. example identified as this shade. Also, none are listed in the P.S.E. Population Report.

With 1995 P.F. certificate. .... 1,100.00





194



195



196

- 194 ★★ **5c Carmine Lake (J55).** Mint N.H., deep rich color on bright paper, wide margins, fresh and Extremely Fine, a beautiful stamp, with 2000 P.F. certificate ..... 160.00
- 195 ★★ **5c Dull Rose (J55a).** Mint N.H., brilliant color on bright paper, choice centering with wide and balanced margins, Extremely Fine, a pretty stamp of remarkable freshness, with 1998 P.F. certificate ..... 150.00
- 196 ★★ **5c Carmine Rose (J55a var).** Mint N.H. with part imprint at bottom, brilliant color, choice centering with extra wide margins, fresh and Extremely Fine example of this appealing sub-shade of the Dull Rose listing, with 2000 P.F. certificate ..... 150.00



197



198



199



200

- 197 ★★ **10c Carmine Lake (J56).** Mint N.H., deep rich color, huge margins at sides, Very Fine and choice, with 1999 P.F. certificate ..... 220.00
- 198 ★ **10c Dull Rose (J56a).** Original gum, barely hinged, brilliant color, beautiful centering, Extremely Fine Gem, with 2000 P.F. certificate ..... 85.00
- 199 ★★ **10c Carmine Rose (J56a var).** Mint N.H., brilliant color which to us appears closer to the Carmine Lake shade, perfectly centered with unusually wide and balanced margins, Extremely Fine Gem, a superb stamp in every respect, ex Piedmont, with 1990, 2000 and 2006 P.F. certificates (XF-Superb 95; SMQ \$650.00) ..... 220.00
- 200 ★★ **10c Dull Rose (J56a).** Mint N.H., radiant color which is closer to resembling the Carmine Rose shade as offered in the previous lot, detailed impression, choice centering, fresh and Extremely Fine example of this Scott number, with 2002 P.F. certificate ..... 240.00

- 201 ★★ **30c Carmine Lake (J57).** Mint N.H. with part imprint at bottom, deep rich color on bright paper, perfectly centered with huge margins all around

EXTREMELY FINE GEM. A HUGE MINT NEVER-HINGED EXAMPLE OF THE 30-CENT POSTAGE DUE ISSUE, SCOTT J57.

With 2002 P.F. certificate ..... 575.00



201



202

- 202 ★ **50c Carmine Lake (J58).** Original gum, barely hinged, brilliant color on post-office fresh paper

VERY FINE. THE 1914 50-CENT POSTAGE DUE WITH ORIGINAL GUM IS ONE OF THE RAREST OF ALL POSTAGE DUE STAMPS.

Scott No. J58 has the highest catalogue value of any regularly issued Postage Due stamp. Only the 1c and 3c Special Printings, Scott Nos. J8 and J10, catalogue higher, at \$20,000.00 each. This stamp is the key to any meaningful collection of the Postage Due issues.

With 1999 P.F. certificate ..... 17,500.00



1916 POSTAGE DUE ISSUE



203

203 ★★ **1c Rose (J59).** Mint N.H., sheet margin at right with “VING & PRINTING” of imprint with star at right, unusually choice centering, post office fresh

EXTREMELY FINE GEM. AN INCALCULABLY RARE MINT NEVER-HINGED EXAMPLE OF THE 1916 ONE-CENT PERF 10 UNWATERMARKED POSTAGE DUE ISSUE. THIS IS ONE OF THE FINEST EXAMPLES IN EXISTENCE.

The Perf 10 stamps were printed on unwatermarked paper for only a brief period of time. Well-centered original-gum examples are exceedingly rare. We have only sold *three* Mint N.H. example in the past thirteen years, when we started to keep computerized records. Of those, only one compares favorably with the example offered here.

With 1999 P.F. certificate. .... 10,000.00



204

204 ★★ **2c Rose (J60).** Mint N.H., brilliant color on post-office fresh paper, perfectly centered with wide margins all around, long and full perforations

EXTREMELY FINE GEM. A STUNNING MINT NEVER-HINGED EXAMPLE OF THE 1916 2-CENT ROSE PERF 10 UNWATERMARKED POSTAGE DUE ISSUE. THIS IS THE ONLY EXAMPLE TO ACHIEVE THE GRADE OF SUPERB 98, WHICH IS THE HIGHEST GRADE AWARDED TO DATE. THIS STAMP IS LIKELY THE FINEST IN EXISTENCE.

The unwatermarked Perf 10 Postage Due stamps (Scott J59 and J60) were only in production for a short period of time before being replaced by the Perf 11 stamps.

With 2002 P.F. and 2006 P.S.E. certificates (Superb 98; SMQ \$4,200.00)..... 650.00



205

205 ★★ **2c Rose (J60).** Mint N.H., brilliant color on bright paper, perfectly centered with well-balanced margins

EXTREMELY FINE GEM. A SUPERB MINT NEVER-HINGED 2-CENT PERF 10 UNWATERMARKED POSTAGE DUE ISSUE.

With 1995 P.F. certificate..... 650.00

## 1917 POSTAGE DUE ISSUE



206



207

- 206 ★★ **2c Rose Red (J62a).** Mint N.H., radiant color and detailed impression, perfectly centered with Jumbo margins, Extremely Fine Gem, a superb example of this shade, with 1998 P.F. certificate, with 2006 P.S.E. certificate (XF-Superb 95 Jumbo; SMQ \$49.00 as 95, \$95.00 as 98), this is the highest grade awarded to date..... 10.00
- 207 ★★ **3c Carmine Rose (J63).** Mint N.H. with plate no. 8478 at top, rich color on bright paper, Jumbo margins, Extremely Fine Gem, a gorgeous stamp..... 40.00



208



209



210



211

- 208 ★★ **5c Carmine (J64).** Mint N.H., deep rich color on bright paper, perfectly centered with wide margins, Extremely Fine Gem ..... 37.50
- 209 ★★ **5c Carmine Rose (J64 var).** Mint N.H., rich color and proof-like impression, choice centering with wide and balanced margins, Extremely Fine Gem, with 2004 P.F. certificate..... 37.50
- 210 ★★ **5c Rose Red (J64a).** Mint N.H., vibrant color, perfectly centered with huge margins all around, Extremely Fine Gem, a beautiful stamp..... 37.50
- 211 ★★ **5c Deep Claret (J64b).** Mint N.H., intense shade and impression, choice centering with wide and balanced margins, Extremely Fine Gem example of this sub-shade..... 37.50





212



213

- 212 ★★ **10c Carmine Rose (J65).** Mint N.H., brilliant color, choice centering with wide margins, Extremely Fine, with copy of 2000 P.F. certificate for block of four and 2002 P.F. certificate as single..... 70.00
- 213 ★★ **10c Deep Claret (J65b).** Mint N.H., intense color and proof-like impression, choice centering with extra wide margins, fresh and Extremely Fine example of this shade ..... 70.00



214



215



216

- 214 ★★ **30c Carmine Rose (J66).** Mint N.H., radiant color on bright paper which looks like the Rose Red shade listed for other values of the series but not this one, mathematically perfect centering, Extremely Fine Gem, a superb stamp in every respect, with 1996 P.F. certificate..... 260.00
- 215 ★★ **30c Carmine Rose (J66).** Mint N.H., stunning color, perfectly centered, Extremely Fine Gem, with 2000 P.F. certificate..... 260.00
- 216 ★★ **30c Deep Claret (J66a).** Mint N.H., intense color and proof-like impression, Jumbo margins, fresh and Extremely Fine example of this shade, with 1987 and 2000 P.F. certificates..... 260.00





217



218

- 217 ★★ **50c Carmine Rose (J67).** Mint N.H., radiant color, choice centering with wide and balanced margins, Extremely Fine Gem, a beautiful stamp, with 1983 and 1999 P.F. certificates..... 370.00
- 218 ★★ **50c Rose Red (J67a).** Mint N.H., bright color, huge margins, fresh and Extremely Fine example of this shade, with 1997 P.F. certificate..... 370.00

## LATER POSTAGE DUE ISSUES



219



220



221EX



222EX

- 219 ★★ **30c Carmine (J75).** Mint N.H., brilliant color, detailed impression, perfectly centered, Extremely Fine Gem, with 1987 and 2000 P.F. certificates..... 325.00
- 220 ★★ **50c Carmine (J76).** Mint N.H., brilliant color on bright paper, choice centering with unusually wide margins, Extremely Fine Gem, with 1987 and 2000 P.F. certificates ..... 450.00
- 221 ★★ **\$1.00-\$5.00 1930 Postage Dues (J77-J78).** Three Mint N.H. examples of each, different shades incl. Carmine and Scarlet, wet printing of \$5.00, choice centering, Extremely Fine .....(Photo Ex) 455.00
- 222 ★★ **½c-\$1.00 1931-56 Postage Due Issues (J79-J87).** Two of each except one of \$1.00, different shades, Mint N.H., choice centering, fresh and Extremely Fine...(Photo Ex) 110.00

END OF SALE — THANK YOU

## Sell through America's premier stamp auctioneer

Other firms may try to copy the Siegel firm's formula for success, but no one can match our expertise and track record in selling collections at auction.

When the time comes to sell your collection, there are some facts we would like you to consider:

- Year after year, the Siegel firm sells more United States and Confederate stamps and covers than anyone else.
- Siegel sales generate the kind of excitement that creates more competitive bidding and higher prices.
- The Siegel mailing list has been built over 70 years and has a 90% active-buyer rate over the past five years. It continues to grow every day, and our clients continue to increase their buying power.
- The Siegel website receives many thousands of hits before the auction, which gives your stamps wider exposure and creates more competitive bidding.
- Siegel sale catalogues win top national awards. They have become philately's most effective tool by educating and enticing buyers.
- The Siegel firm's reputation for paying all obligations on time is backed by a strong capital base and consistent record of profitability.

If excellence is your goal in collecting, when it is time to sell, it makes sense to choose an auctioneer whose excellence has been proven over time.

*Robert A. Siegel*

AUCTION GALLERIES, INC.

**[www.siegelauctions.com](http://www.siegelauctions.com)**

60 East 56th Street, 4th Floor, New York, N.Y. 10022

Phone (212) 753-6421 • Fax (212) 753-6429 • E-mail: [stamps@siegelauctions.com](mailto:stamps@siegelauctions.com)

## Grading Index to Scarsdale Sale, Part Three

Grade	Scott	Lot	Year/Service/Grade
100	J25	133	2004 PSE 100 NH
98	166	30	2002 PSE 98 Mint OG
98	221	62	2004 PSE 98 NH
98	253	79	2006 PSE 98 NH
98	255	81	2004 PSE 98 NH
98	256	82	2004 PSE 98 NH
98	264	91	2004 PSE 98 NH
98	267	94	2006 PSE 98 NH
98	J60	204	2006 PSE 98 NH
95J	212	51	2004 PSE 95J NH
95J	219	58	2004 PSE 95J NH
95J	225	66	2004 PSE 95J NH
95J	246	71	2004 PSE 95J NH
95J	247	73	2004 PSE 95J NH
95J	254	80	2004 PSE 95J NH
95J	270	97	2004 PSE 95J OGph
95J	J26	134	2004 PSE 95J NH
95J	J62a	206	2006 PSE 95J NH
95	178	31	2005 PSE 95 NH
95	183	34	2003 PSE 95 NH
95	215	54	2004 PSE 95 NH
95	217	56	2004 PSE 95 NH
95	220	60	2004 PSE 95 NH
95	224	65	2004 PSE 95 NH
95	227	68	2004 PSE 95 NH
95	228	69	2004 PSE 95 NH
95	250	76	2004 PSE 95 NH
95	252	78	2004 PSE 95 NH
95	258	84	2004 PSE 95 NH
95	265	92	2004 PSE 95 NH
95	269	96	2004 PSE 95 NH
95	271	98	2004 PSE 95 NH
95	272	99	2004 PSE 95 NH
95	273	100	2004 PSE 95 NH
95	279	107	2004 PSE 95 NH
95	279B	108	2004 PSE 95 NH
95	281	111	2004 PSE 95 NH
95	282	112	2004 PSE 95 NH
95	J1	116	2004 PSE 95 Mint OG
95	J3	118	2004 PSE 95 NH
95	J7	122	2004 PSE 95 Mint OG

Grade	Scott	Lot	Year/Service/Grade
95	J15	123	2004 PSE 95 NH
95	J18	126	2004 PSE 95 Mint OG
95	J23	131	2004 PSE 95 NH
95	J24	132	2006 PF 95 NH
95	J27	135	2004 PSE 95 NH
95	J46	173	2005 PSE 95 NH
95	J56a var	199	2006 PF 95 NH
90J	214	53	2004 PSE 90J NH
90J	223	64	2004 PSE 90J NH
90J	261	87	2004 PSE 90J NH
90J	J17	125	2004 PSE 90J NH
90J	J20	128	2004 PSE 90J NH
90	213	52	2004 PSE 90 NH
90	219D	59	2004 PSE 90 NH
90	222	63	2004 PSE 90 NH
90	229	70	2004 PSE 90 NH
90	248	74	2004 PSE 90 NH
90	249	75	2004 PSE 90 NH
90	262	89	2004 PSE 90 NH
90	263	90	2004 PSE 90 Mint OG
90	266	93	2004 PSE 90 NH
90	274	101	2004 PSE 90 NH
90	275	102	2004 PSE 90 OGph
90	276	103	2006 PF 90 NH
90	276A	104	2004 PSE 90 NH
90	280	110	2004 PSE 90 NH
90	284	115	2004 PSE 90 NH
90	J16	124	2004 PSE 90 NH
90	J22	130	2004 PSE 90 NH
90	J32	142	2006 PF 90 NH
85	218	57	2004 PSE 85 NH
85	260	86	2004 PSE 85 NH
85	261A	88	2004 PSE 85 NH
85	278	106	2004 PSE 85 OGph
85	J4	119	2004 PSE 85 NH
85	J6	121	2004 PSE 85 Mint OG
85	J19	127	2004 PSE 85 NH
80	251	77	2004 PSE 80 NH
80	268	95	2004 PSE 80 NH
80	J28	136	2004 PSE 80 NH
75	J5	120	2004 PSE 75 Mint OG

# Bid Form—15% Premium Sale

Sale 924

Tuesday, November 14, 2006

1

Please provide the following information:

NAME.....  
ADDRESS.....  
CITY/STATE/ZIP.....  
TEL. (DAY) ..... FAX.....  
E-MAIL.....

PADDLE #

*Do not write in box*

2

Have you purchased from us in the past 5 years? ☐ YES (if so, please go to Section 3)  
☐ NO (please provide a trade reference and bank information)

References:

Stamp Firm:..... Telephone.....

3

In the space provided below, enter the **lot number** from **Sale 924** and your corresponding bid. Please use **whole dollar amounts** only and enter the **maximum bid** you wish to have us execute on your behalf, according to the **revised bidding increments** (on other side of this form). **Your bid will NOT include the 15% buyer's premium.** We will advance the bidding at one increment over the next

highest bid; therefore, you may be awarded the lot at less than your maximum bid. Please do not use "plus" bids or "buy" bids. If you wish to bid on one lot or the other, indicate your "or" bid between lot number/bid entries and bracket your choices. If you wish to place a **bidding limit** on the total amount of your bids, please enter your limit in the space marked "Limit Bids".

**PLEASE NOTE REVISED BIDDING INCREMENTS (ON BACK OF THIS PAGE)**

☐ **LIMIT BIDS:** Check this box if you wish to limit the total amount of your bids (not including the **15% buyer's premium**) in this sale. Your bids will be executed until your bidding

\$.....

Lot	Bid	Lot	Bid	Lot	Bid
	\$		\$		\$

4

**AGREEMENT:** By signing this bid form, you agree to pay for purchases resulting from your bids, in accordance with the **Conditions of Sale** printed in the sale catalogue. You also agree to pay the **15% buyer's premium** and any shipping costs (see reverse), which will be added to your successful bids, and any sales tax or use tax which may be due

on the total invoiced amount. It is understood that these bids will be executed by Siegel Auction Galleries as a courtesy to absentee bidders, but that no legal responsibility shall lie with the auctioneer or the firm if these bids are not executed. **You are responsible for your written bids, including any errors on your part.**

**Payment must be made by cash, check, money order or wire transfer. Credit cards will not be accepted.**



SIGNED..... TODAY'S DATE .....

5

Please submit your bids promptly (telephone bids must be confirmed in writing).

**Mail to: Robert A. Siegel Auction Galleries, Inc.**

60 E. 56th Street, 4th Floor, New York, N.Y. 10022  
Telephone (212) 753-6421

**OR FAX YOUR BIDS: (212) 753-6429**

**Shipping Instructions, Bidding Increments and space for additional bids on other side of form**



## Additional Bids

Sale 924—November 14, 2006

Lot	Bid	Lot	Bid	Lot	Bid
	\$		\$		\$

## Shipping and Transit Insurance

We will be pleased to arrange for shipping and transit insurance for purchases in this sale (except those described as “floor sale only”). To expedite billing and delivery of lots to hundreds of buyers per sale, we use standard charges for postage and insurance, based on the invoiced total and mailing requirements (see schedule). The standard charges are sometimes slightly more or less than the actual postage, but we do not include any fees for our labor or packing costs. Therefore, we ask all buyers to remit the prescribed amount for shipping charges.

Transit insurance is provided in all cases, except when the buyer has furnished us with proof that insurance coverage is effective under another policy. Proof, in such cases, will be accepted in the form of a written certificate from the insurance carrier.

You are responsible for insurance charges, which will be added to your invoice. This coverage is provided for our mutual protection against theft or loss in transit.

## REVISED Bidding Increments

The auctioneer may regulate the bidding at his discretion. However, to assist absentee bidders in establishing their maximum bid for each lot, the increments shown at right will be used in most cases. We recommend that written bids conform to these increments (those which do not will be reduced to the next level).

## Current Postage & Insurance Charges

Invoice Total	Shipping Method	Charges
Up to 10,000	Fedex Only	\$18.00
Over \$10,000	Fedex Only	\$25.00*
Foreign Destinations (any value)	Fedex/Courier	\$25.00**
Bulk Lots	UPS Preferred	By weight and value (min. \$25.00)
<b>*Insurance and postage on certain heavy or valuable packages may incur an additional charge.</b> <b>**Buyers are liable for all customs duties and clearance charges. An accurate declaration of value will be made on all import/export documents.</b> 2/2002		

## IMPORTANT NOTICE REGARDING IRRADIATION

The U.S. Postal Service policy of irradiating all classes of mail poses a significant potential risk of irreversible damage to philatelic material, including ink, paper and gum.

**WE WILL NOT USE THE MAILS TO SHIP LOTS.**

**Please provide a street address for Fedex delivery if you intend to have your lots shipped.**

Up to \$50	\$5	\$3,000-7,000	\$250
\$50-200	\$10	\$7,000-20,000	\$500
\$200-500	\$25	\$20,000-30,000	\$1,000
\$500-1,000	\$50	\$30,000-75,000	\$2,500
\$1,000-3,000	\$100	\$75,000 up	\$5,000

## Grading Index to Scarsdale Sale, Part Three

Grade	Scott	Lot	Year/Service/Grade
100	J25	133	2004 PSE 100 NH
98	166	30	2002 PSE 98 Mint OG
98	221	62	2004 PSE 98 NH
98	253	79	2006 PSE 98 NH
98	255	81	2004 PSE 98 NH
98	256	82	2004 PSE 98 NH
98	264	91	2004 PSE 98 NH
98	267	94	2006 PSE 98 NH
98	J60	204	2006 PSE 98 NH
95J	212	51	2004 PSE 95J NH
95J	219	58	2004 PSE 95J NH
95J	225	66	2004 PSE 95J NH
95J	246	71	2004 PSE 95J NH
95J	247	73	2004 PSE 95J NH
95J	254	80	2004 PSE 95J NH
95J	270	97	2004 PSE 95J OGph
95J	J26	134	2004 PSE 95J NH
95J	J62a	206	2006 PSE 95J NH
95	178	31	2005 PSE 95 NH
95	183	34	2003 PSE 95 NH
95	215	54	2004 PSE 95 NH
95	217	56	2004 PSE 95 NH
95	220	60	2004 PSE 95 NH
95	224	65	2004 PSE 95 NH
95	227	68	2004 PSE 95 NH
95	228	69	2004 PSE 95 NH
95	250	76	2004 PSE 95 NH
95	252	78	2004 PSE 95 NH
95	258	84	2004 PSE 95 NH
95	265	92	2004 PSE 95 NH
95	269	96	2004 PSE 95 NH
95	271	98	2004 PSE 95 NH
95	272	99	2004 PSE 95 NH
95	273	100	2004 PSE 95 NH
95	279	107	2004 PSE 95 NH
95	279B	108	2004 PSE 95 NH
95	281	111	2004 PSE 95 NH
95	282	112	2004 PSE 95 NH
95	J1	116	2004 PSE 95 Mint OG
95	J3	118	2004 PSE 95 NH
95	J7	122	2004 PSE 95 Mint OG

Grade	Scott	Lot	Year/Service/Grade
95	J15	123	2004 PSE 95 NH
95	J18	126	2004 PSE 95 Mint OG
95	J23	131	2004 PSE 95 NH
95	J24	132	2006 PF 95 NH
95	J27	135	2004 PSE 95 NH
95	J46	173	2005 PSE 95 NH
95	J56a var	199	2006 PF 95 NH
90J	214	53	2004 PSE 90J NH
90J	223	64	2004 PSE 90J NH
90J	261	87	2004 PSE 90J NH
90J	J17	125	2004 PSE 90J NH
90J	J20	128	2004 PSE 90J NH
90	213	52	2004 PSE 90 NH
90	219D	59	2004 PSE 90 NH
90	222	63	2004 PSE 90 NH
90	229	70	2004 PSE 90 NH
90	248	74	2004 PSE 90 NH
90	249	75	2004 PSE 90 NH
90	262	89	2004 PSE 90 NH
90	263	90	2004 PSE 90 Mint OG
90	266	93	2004 PSE 90 NH
90	274	101	2004 PSE 90 NH
90	275	102	2004 PSE 90 OGph
90	276	103	2006 PF 90 NH
90	276A	104	2004 PSE 90 NH
90	280	110	2004 PSE 90 NH
90	284	115	2004 PSE 90 NH
90	J16	124	2004 PSE 90 NH
90	J22	130	2004 PSE 90 NH
90	J32	142	2006 PF 90 NH
85	218	57	2004 PSE 85 NH
85	260	86	2004 PSE 85 NH
85	261A	88	2004 PSE 85 NH
85	278	106	2004 PSE 85 OGph
85	J4	119	2004 PSE 85 NH
85	J6	121	2004 PSE 85 Mint OG
85	J19	127	2004 PSE 85 NH
80	251	77	2004 PSE 80 NH
80	268	95	2004 PSE 80 NH
80	J28	136	2004 PSE 80 NH
75	J5	120	2004 PSE 75 Mint OG

Robert A. Siegel Auction Galleries, Inc.  
 Prices Realized for  
 Sale 924 11/14/2006 The Scarsdale Collection, Part 3

Lot#	Realized	Lot#	Realized	Lot#	Realized	Lot#	Realized	Lot#	Realized
1	5,250	36	1,300	72	1,000	108	850	144	1,200
2	4,750	37	1,600	73	4,500	109	1,400	145	R
3	1,500	38	7,500	74	425	110	350	145	2,100
4	6,000	39	13,000	75	1,600	111	1,700	146	1,300
5	32,500	40	750	76	1,400	112	1,900	147	4,250
6	22,000	41	10,000	77	1,300	113	6,250	148	1,600
7	22,000	42	16,000	78	3,750	114	1,000	149	1,400
8	13,000	43	1,600	79	15,000	115	1,700	150	2,600
9	40,000	44	2,700	80	6,750	116	800	151	4,000
10	8,000	45	1,100	81	17,500	117	2,600	152	200
11	5,250	46	1,100	82	16,000	118	1,800	153	150
12	850	47	1,700	83	1,900	119	2,500	154	225
13	2,400	48	2,300	84	8,500	120	1,300	155	225
14	R	49	550	85	2,500	121	425	156	450
14	R	50	1,200	86	2,600	122	1,600	157	R
15	4,250	51	2,500	87	35,000	123	1,100	157	R
16	19,500	52	375	88	7,000	124	425	158	R
17	3,750	53	850	89	25,000	125	6,250	158	R
18	4,500	54	5,250	90	12,000	126	2,200	159	R
19	23,000	55	1,200	91	1,300	127	1,600	159	R
20	32,500	56	7,500	92	1,400	128	950	160	750
21	800	57	5,000	93	375	129	3,000	161	400
22	1,900	58	4,000	94	1,300	130	300	162	500
23	3,500	59	2,000	95	140	131	500	163	475
24	1,800	60	850	96	2,000	132	750	164	325
25	3,000	61	1,300	97	300	133	3,750	165	1,600
26	14,500	62	10,500	98	3,500	134	2,200	166	3,000
27	7,500	63	950	99	2,200	135	6,750	167	2,800
28	3,250	64	1,200	100	3,250	136	1,500	168	R
29	9,500	65	2,900	101	1,500	137	3,250	168	R
30	28,000	66	5,250	102	650	138	3,750	169	R
31	4,250	67	1,100	103	3,750	139	700	169	R
32	3,750	68	9,500	104	11,500	140	1,700	170	325
33	4,250	69	9,000	105	30,000	141	190	171	450
34	3,000	70	4,750	106	2,300	142	500	172	250
35	1,400	71	2,700	107	700	143	1,500	173	850

Robert A. Siegel Auction Galleries, Inc.  
Prices Realized for  
Sale 924 11/14/2006 The Scarsdale Collection, Part 3

Lot#	Realized	Lot#	Realized
174	500	210	250
175	4,000	211	275
176	600	212	150
177	650	213	250
178	475	214	500
179	500	215	500
180	750	216	325
181	425	217	700
182	550	218	1,300
183	4,000	219	325
184	1,500	220	650
185	475	221	750
186	150	222	600
187	300		
188	225		
189	700		
190	200		
191	700		
192	4,500		
193	1,300		
194	200		
195	325		
196	275		
197	275		
198	100		
199	1,500		
200	600		
201	1,500		
202	11,500		
203	15,500		
204	6,750		
205	2,000		
206	275		
207	170		
208	250		
209	150		