

THE SCARSDALE COLLECTION



**PART FOUR — SALE 932
FRIDAY, MARCH 30, 2007**

Robert A. Siegel

AUCTION GALLERIES, INC.

THE SCARSDALE COLLECTION

Robert A. Siegel

AUCTION GALLERIES, INC.

www.siegelauctions.com



PART ONE — REALIZED \$1,284,573

FRIDAY, APRIL 21, 2006

- Columbian, Trans-Mississippi, Pan-American and Other 20th Century Commemorative Issues
- 1902 Issue, 1922 Issue, and 1938 Presidential Issue
- Air Post, Special Delivery, Registration, Offices in China and Parcel Post Issues



PART TWO — REALIZED \$951,050

WEDNESDAY, SEPTEMBER 20, 2006

- 1847 First General Issue
- 1851-56 Imperforate and 1857-60 Perforated Issues
- 1861-66 and 1867-68 Grilled Issues
- 1869 Pictorial Issue and Re-Issues
- Confederate States General Issues



PART THREE — REALIZED \$903,250

TUESDAY, NOVEMBER 14, 2006

- 1870-88 Large Bank Note Issues
- 1890-93 Small Bank Note Issues
- 1894-98 Bureau Issues
- 19th and 20th Century Postage Due Issues



PART FOUR

FRIDAY, MARCH 30, 2007

1908-26 Washington-Franklin Series, including

- Bluish Paper Issue
- Coil Singles, Pairs and Line Pairs
- Rotary Press Coil and Sheet Waste Issues

THE SCARSDALE COLLECTION

PART FOUR—SALE 932
FRIDAY, MARCH 30, 2007, AT 1:30 P.M.

1908-26 Washington-Franklin Issues

Offered at unreserved public auction by

Robert A. Siegel

AUCTION GALLERIES, INC.

60 EAST 56TH STREET, 4TH FLOOR
NEW YORK, NEW YORK 10022

Phone (212) 753-6421 Fax (212) 753-6429

E-mail: stamps@siegelauctions.com

www.siegelauctions.com

PRE-SALE EXHIBITION

Wednesday, March 28 — 10:00 a.m. to 4:00 p.m.

Thursday, March 29 — 10:00 a.m. to 4:00 p.m.

Friday, March 30 — 10:00 a.m. to 1:00 p.m.

or by appointment (please call 212-753-6421)

Lots in this sale will be sold subject to a 15% buyer's premium

Robert A. Siegel
AUCTION GALLERIES, INC.
www.siegelauctions.com

Address:

60 East 56th Street
4th Floor
New York, New York 10022

Phone: (212) 753-6421

Fax: (212) 753-6429

e-mail: stamps@siegelauctions.com



Scott R. Trepel
President

e-mail: strepel@siegelauctions.com



John P. Zuckerman
Senior Vice President

e-mail: jzuckerman@siegelauctions.com



Elizabeth C. Pope
Vice President

e-mail: epope@siegelauctions.com



Starr Tucker-Ortega
Financial and Sale Administration

e-mail: starrt@siegelauctions.com



Stephanie Chambers
Financial and Sale Administration

e-mail: schambers@siegelauctions.com



Jason Tabor
Sale Administration

e-mail: jtabor@siegelauctions.com

Bidding

Bidders who cannot attend the sale may leave written bids (see Bid Form). Bids called in by phone must be confirmed in writing. E-mail bids may be sent up to one hour before each session.

Bidders may apply for a phone link to the auction and bid through our staff. Applicants must call at least 24 hours prior to the sale. Phone links are subject to application.

Viewing

Subject to availability, many lots can be sent to established clients (or those who submit references) for examination. Requests must be made no later than 5 days prior to the auction. Lots must be returned on the day of receipt. Postage/insurance costs will be invoiced. Large lots will not be available for mail viewing.

In addition to the regular public viewing hours, prospective bidders may view lots at our galleries by appointment.

Our on-staff philatelists will be pleased to review the description of any lot and provide more detailed information.

Expert Certification

Individual items offered without a Philatelic Foundation certificate dated within the past 5 years (or PSE certificate dated since January 2004) may be purchased subject to certification (please see Conditions of Sale for details).

Shipping and Delivery

Instructions for shipping must be given to the gallery prior to or immediately after the sale. Unless special instructions are received, we will follow the shipping guidelines on the back of the Bid Form. Buyers are responsible for all prescribed shipping charges, whether or not the actual expense is equal to the invoiced charge.

Prices Realized

A list of prices realized will be included with every invoice. We accept phone and fax requests for prices realized during or after the auction. Bidders who wish to receive realizations by e-mail should provide an e-mail address on the bid form. Results are also posted to our web site immediately after each session at **www.siegelauctions.com**

Hotels and Restaurants

We will be pleased to furnish the names of area hotels and restaurants. During peak seasons, we may be able to assist in placing reservations.

Live Internet Bidding at Siegel Auction Galleries

Internet Floor Bidding for Robert A. Siegel Auction Galleries, Inc.'s Sale 908 closing on Mar 13-15, 2006. Contact us by Phone at (212) 753-6421. [Contact us Via eMAIL](#). Please READ [Instructions/Help](#) Listen to the Public Auction Broadcast. Welcome John
 Bidding. Paddle 11. Time: 13:50:36. F11 (if using Internet Explorer) toggles full screen mode. You are Cust# , You are approved for

Lot and Description	Bidding
Postal History, California Mails and Western Expre Carriers and Locals Group Lots Lot 5010. Carriers and Locals. More than 30 covers and a few off cover, 1840's, 50's and 60's, comprising General Issue Carriers incl. LO2, LO3, LO5 and Franklin plate proof on card, LO2 on small blue cover to Philadelphia "U.States" indicating origin f E. 1,500-2,000 Sold for 3,500.00 Your Bid 3,500.00 1 sec refresh 3 sec 5 sec Show Images	Bid 3750 Bid 4000 Bid 4250 Bid 4500 Bid 4750 Bid 5000 Send a Message to the Auction Floor

Messages from the public auction

Please close this form when you are not bidding or watching the auction.

Lot 5010 going for 650...
 Lot 5010 going for 3500...
 Lot 5010 Last Call at 3500...
 Lot 5010 sold to the floor for \$3500.

===== END OF SALE =====

-Thank You!!!

Siegel Auction Galleries, in coordination with Stamp Auction Network, will broadcast our auctions live over the internet, allowing you to listen to the auction in progress.

Bidders who have pre-registered for Live Internet Bidding will also be able to place bids over the internet, as if bidding in the saleroom. In order to bid by internet, you must be an approved, registered bidder with Stamp Auction Network and Siegel Auction Galleries.

- ☐ **If you are already registered at Stamp Auction Network and have been approved for internet bidding by Siegel, just log in at Stamp Auction Network, locate the Siegel sale and start bidding anytime during the auction.**
- ☐ **If you have never registered as a bidder at Stamp Auction Network, then please go to www.siegelauctions.com/IB2.htm and click on "Register" at the top of the page. Please check the box for Robert A. Siegel Auction Galleries (under "R") and submit the form. If you have never bid with our firm, please provide trade references whom we may contact to have your account approved (please do not use family members or credit cards as references).**
- ☐ **If you have registered previously at Stamp Auction Network, but not specifically for our firm, please go to www.siegelauctions.com/IB2.htm and click on "Update Registration" at the top of the page. Your information at Stamp Auction Network will be sent to us for approval. You may be asked to provide additional references before being approved for internet bidding.**

Once you are approved for bidding, you will be able to bid live over the internet during the auction. You may participate in Live Internet Bidding using any browser or operating system. The audio portion is only available to PC users using Internet Explorer. For the audio portion, you will be asked to install a piece of software (ActiveX control) to make it work.

Bidders must log in at Stamp Auction Network to participate. Once logged in, please locate the page for the current Siegel auction.

At the top of the auction's home page there are two links:

- One link allows anyone to listen to the public auction broadcast.
- The second link permits registered bidders to join the public auction in progress.

Please remember that to participate in the auction, you must be pre-registered at Stamp Auction Network and approved by Siegel Auction Galleries as a bidder. Qualified bidders will see a page like the one illustrated above and have a valid paddle number assignment.

Conditions of Sale (Important—please read carefully)

The property described in this catalogue will be offered at public auction by Robert A. Siegel Auction Galleries, Inc. (“Galleries”) on behalf of various consignors and itself or affiliated companies. By bidding on any lot, whether directly or by or through an agent, in person, or by telephone, facsimile or any other means, the bidder acknowledges and agrees to all of the following Conditions of Sale.

1. The highest bidder acknowledged by the auctioneer shall be the buyer. The term “final bid” means the last bid acknowledged by the auctioneer, which is normally the highest bid offered. **The purchase price payable by the buyer will be the sum of the final bid and a commission of 15% of the final bid (“buyer’s premium”), together with any sales tax or use tax which may be due on the sale.**
2. The auctioneer has the right to reject any bid, to advance the bidding at his discretion and, in the event of a dispute between bidders, to determine the successful bidder, to continue the bidding or to reoffer and resell the lot in dispute. The Galleries’ record of the final sale shall be conclusive.
3. All bids are per numbered lot in the catalogue unless otherwise announced by the auctioneer at the time of sale. The right is reserved to group two or more lots, to withdraw any lot or lots from the sale, or to act on behalf of the seller. The Galleries will execute bidding instructions on behalf of clients, but will not be responsible for any errors in the execution of such bids.
4. **Lots with numbers followed by the symbol ° are offered subject to a confidential minimum final bid (“reserve”), below which the lot will not be sold. The absence of the symbol ° means that the lot is offered without a reserve.** In the absence of a reserve, the auctioneer has sole discretion to establish a minimum opening bid and may refuse an offer of less than half of the published estimate. Any lot that does not reach its reserve or opening bid requested by the auctioneer will be announced as “passed” and excluded from the prices realized lists after the sale. The Galleries may have a direct or indirect ownership interest in any or all lots in the sale resulting from an advance of monies or goods-in-trade or a guarantee of minimum net proceeds made by the Galleries to the seller.
5. Any lot, the description of which is obviously incorrect, is returnable, but only if the lot is returned within 14 days of receipt. All disputed lots must be returned intact with the original packing material. **The following lots may not be returned for any reason: Lots containing ten or more items; lots from buyers who have registered for the pre-sale exhibition or received lots by postal viewing, thereby having had the opportunity to inspect them before the sale; any lot described with “faults” or “defects” may not be returned because of any fault or defect. No illustrated lots may be returned because of centering, margins or other factors shown in the illustrations.**
6. Successful bidders, unless they have established credit with the Galleries prior to the sale, must make payment in full before the lots will be delivered. Buyers not known to the Galleries must make payment in full within three days from the date of sale. **The Galleries retain the right to demand a cash deposit from anyone prior to bidder registration and/or to demand payment at the time the lot is knocked down to the highest bidder, for any reason whatsoever.** In the event that any buyer refuses or fails to make payment in cash for any lot at the time it is knocked down to him, the auctioneer reserves the right to reoffer the lot immediately for sale to the highest bidder. **Credit cards are not accepted as payment.**

7. If the purchase price has not been paid within the time limit specified above, nor lots taken up within seven days from the date of sale, the lots will be resold by whatever means deemed appropriate by the Galleries, and any loss incurred from resale will be charged to the defaulting buyer. Any account more than thirty days in arrears will be subject to a late payment charge of 1½% per month as long as the account remains in arrears. Any expenses incurred in securing payment from delinquent accounts will be charged to the defaulter. A fee of \$250.00 per check will be charged for each check returned for insufficient funds.

8. All lots are sold as genuine. **Any lot accompanied by a certificate issued by The Philatelic Foundation within 5 years of the sale date or by Professional Stamp Experts since January 2004 is sold “as is” and in accordance with the description on the certificate. Such lots may not be returned for any reason, including but not limited to a contrary certificate of opinion.** Buyers who wish to obtain a certificate for any item that does not have a P.F. or P.S.E. certificate (dated as above) may do so, provided that the following conditions are met: (1) the purchase price must be paid in full, (2) the item must be submitted to an acceptable expertizing committee with a properly executed application form within 21 days of the sale, (3) a copy of the application form must be given to the Galleries, (4) in the event that an adverse opinion is received, the Galleries retain the right to resubmit the item on the buyer’s behalf for reconsideration, without time limit or other restrictions, (5) unless written notification to the contrary is received, items submitted for certification will be considered cleared 90 days from the date of sale, and (6) in the event any item is determined to be “not as described”, the buyer will be refunded the purchase price and the certification fee up to \$500.00 unless otherwise agreed.

9. Until paid for in full, all lots remain the property of the Galleries on behalf of the seller.

10. Agents executing bids on behalf of clients will be held responsible for all purchases made on behalf of clients unless otherwise arranged prior to the sale.

11. The buyer assumes all risk for delivery of purchased lots and agrees to pay for prescribed shipping costs.

12. The bidder consents that any action or proceeding against it may be commenced and maintained in any court within the State of New York or in the United States District Court for the Southern District of New York, that the courts of the State of New York and United States District Court for the Southern District of New York shall have jurisdiction with respect to the subject matter hereof and the person of the bidder. The bidder agrees not to assert any defense to any action or proceeding initiated by Galleries based upon improper venue or inconvenient forum. The bidder agrees that any action brought by the bidder shall be commenced and maintained only in a Federal Court in the United States District Court for the Southern District of New York or the State Court in the county in which Galleries has its principal place of business in New York. These Terms and Conditions shall be governed by and construed in accordance with the substantive laws of the State of New York.

SCOTT R. TREPEL, Principal Auctioneer

Auctioneer’s License No. 795952
N.Y.C. Department of Consumer Affairs
80 Lafayette Street, New York, N.Y. 10013
Telephone (212) 577-0111

Revised 9/2005

Copyright Notice

This catalogue in all versions, printed and electronic, is protected by copyright. The descriptions, format, illustrations and information used herein may not be reprinted, distributed or copied in any form without the express written consent of Robert A. Siegel Auction Galleries. Application for permission may be made in writing.

© 2006, Robert A. Siegel Auction Galleries, Inc.

Grading Terms, Abbreviations and Values Used in Descriptions

Grade and Centering

The following terms are used in Siegel sale catalogues (corresponding numerical ranges shown in parentheses). Margin width, centering and gum are described according to generally-accepted standards. Stamps are graded based on our subjective assessment of condition for each issue, which do not necessarily correlate with third-party grading terms or standards for all issues. **A lot may not be returned because a certification service grades a stamp lower than the grade stated. Information from the P.S.E. Stamp Market Quarterly and P.S.E. Population ReportSM is the most current available, but lots may not be returned due to errors or changes in statistics or data.**

Extremely Fine Gem (90-100 pts.): The term “Gem” used in Siegel catalogues describes condition that is the finest possible for the issue.







Extremely Fine (80-90 pts.): Exceptionally large margins or near perfect centering.

Very Fine (70-85 pts.): Normal size margins for the issue and well-centered with the design a bit closer to one side. “Very Fine and choice” applies to stamps that have desirable traits such as rich color, sharp impression, freshness or clarity of cancel.

Fine (60-70): Smaller than usual margins or noticeably off center. Pre-1890 issues may have the design touched in places.

Very Good (below 60): Attractive appearance, but margins or perforations cut into the design.

Good (G) or Average (Ave.): Cut into or perfs far into design and usually with slight faults. This condition is generally acceptable for rarities, scarce multiples or stamps used on unusual covers.

Gum Categories:	MINT N.H.	ORIGINAL GUM (O.G.)				NO GUM
	 Mint Never Hinged <i>Free from any disturbance</i>	 Lightly Hinged <i>Faint impression of a removed hinge over a small area</i>	 Hinge Mark or Remnant <i>Prominent hinged spot with part or all of the hinge remaining</i>	 Part o.g. <i>Approximately half or more of the gum intact</i>	 Small part o.g. <i>Approximately less than half of the gum intact</i>	 No gum <i>Only if issued with gum</i>
Catalogue Symbol:	★ ★	★	★	★	★	(★)
PRE-1890 ISSUES	<i>Pre-1890 stamps in these categories trade at a premium over Scott value</i>			Scott Value for “O.G.”		Scott “No Gum” Values thru No. 218
1890-1935 ISSUES	Scott “Never Hinged” Values for Nos. 219-771	Scott Value for “O.G.” (Actual value will be affected by the degree of hinging)		Disturbed Original Gum: Gum showing noticeable effects of humidity, climate or hinging over more than half of the gum. The significance of gum disturbance in valuing a stamp in any of the Original Gum categories depends on the degree of disturbance, the rarity and normal gum condition of the issue and other variables affecting quality. For example, stamps issued in tropical climates are expected to have some		
1935 TO DATE	Scott Value for “Unused”					

Covers

Minor nicks, short edge tears, flap tears and slight reduction at one side are normal conditions for 19th century envelopes. Folded letters should be expected to have at least one file fold. Light cleaning of covers and small mends along the edges are accepted forms of conservation. Unusual covers may have a common stamp with a slight crease or tiny tear. **These flaws exist in virtually all 19th century covers and are not always described. They are not grounds for return.**

Catalogue Values and Estimates

Unless otherwise noted, the currently available *Scott Catalogue* values are quoted in dollars with a decimal point. Other catalogues are often used for foreign countries or specialized areas and are referred to by their common name: *Stanley Gibbons* (SG), *Dietz*, *American Air Mail Catalogue* (AAMC), *Michel*, *Zumstein*, *Facit*, etc. Estimates are indicated with an “E.” and reflect our conservative valuation in dollars. Reserves will never exceed the low end of the estimate range; they will sometimes exceed Scott Catalogue value for stamps in Extremely Fine condition.

Because of certain pricing inconsistencies in the Scott Catalogue—for example, blocks that have no gum, the absence of premiums for Mint N.H. items, etc.—we cannot guarantee the accuracy of values quoted for multiples, specialized items and collection lots. We generally try to be conservative, but buyers may not return a lot because of a discrepancy in catalogue value due to Scott pricing inconsistencies.

Symbols and Abbreviations (see chart above for gum symbols)

⌘	Block	E	Essay	pmk.	Postmark	No.	Scott Catalogue Number
⌘	Cover	P	Proof	cds	Circular Datestamp	hs	Handstamp
FC	Fancy Cancel	TC	Trial Color Proof	var.	Variety	ms.	Manuscript

Revised 3/2006

POSTAGE

1908-10

COIL STAMPS

Watermark 191

Perforated 12 Horizontally



Perforated 12 Vertically



AFTERNOON SESSION (LOTS 1-287)
FRIDAY, MARCH 30, 2007, AT 1:30 P.M.

THE SCARSDALE COLLECTION — PART FOUR

1908-09 ISSUE
DOUBLE-LINE WATERMARK, PERF 12

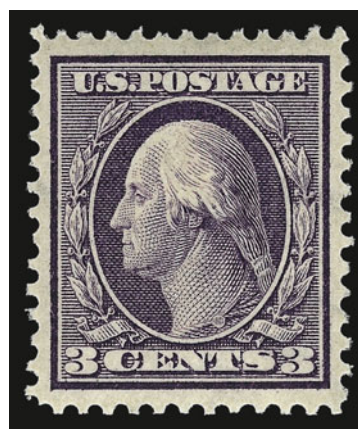


1

- 1 ★★ **1c Green (331).** Mint N.H., deep rich color and proof-like impression, perfectly centered with Jumbo margins all around, post-office fresh paper, Extremely Fine Gem, a magnificent stamp, ex Killien, with 1998 P.F. and 2006 P.S.E. certificates (Superb 98 Jumbo; unpriced in SMQ in any grade higher than 98, SMQ \$870.00 as 98), this is the only example to achieve this exalted grade, only one has graded higher 17.50

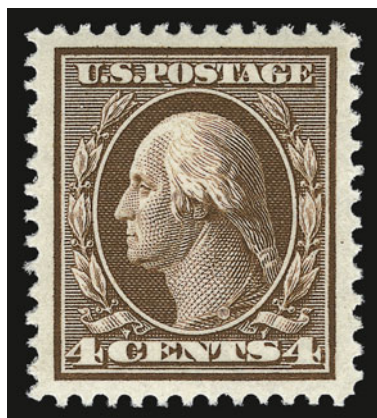


2



3

- 2 ★★ **2c Carmine (332).** Mint N.H., radiant color, detailed impression, unusually wide margins of near Jumbo proportions, Extremely Fine Gem, with 1997 P.F. certificate 16.00
- 3 ★★ **3c Deep Violet (333).** Mint N.H., rich color, beautiful impression, long and full perfs all around, Extremely Fine, with 1999 P.F. certificate 80.00



4

- 4 ★★ **4c Orange Brown (334).** Mint N.H., radiant color, detailed impression on bright paper, well-proportioned margins, Extremely Fine Gem, a pretty stamp, with 1986 and 1999 P.F. certificates 95.00

- 5 ★★ **5c Blue (335).** Mint N.H., deep rich color showing every nuance of the design, choice centering with wide Jumbo margins, Extremely Fine Gem, a gorgeous stamp, with 2002 P.F. certificate. 125.00



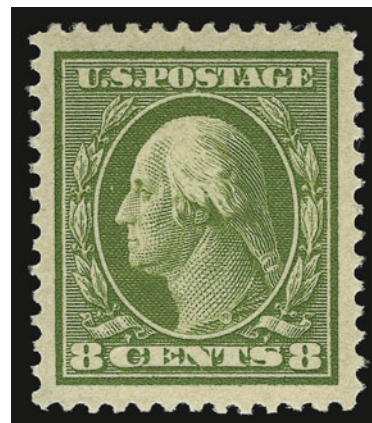
5



6

- 6 ★★ **6c Red Orange (336).** Mint N.H., vivid color as fresh as the day it was printed, choice centering with wide margins, Extremely Fine Gem, a stunning stamp, with 2005 P.F. certificate..... 160.00

- 7 ★★ **8c Olive Green (337).** Mint N.H., pretty shade, Jumbo margins, fresh and Extremely Fine Gem, with 1999 P.F. certificate 110.00



7

- 8 ★★ **10c Yellow (338).** Mint N.H. with **part imprint** at bottom, blazing color, well-balanced margins, Extremely Fine, with 1983, 1986 and 2000 P.F. certificates 170.00



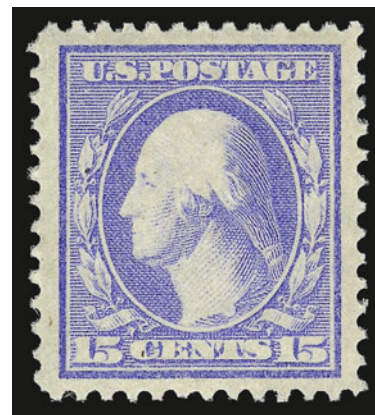
8



9

- 9 ★★ **13c Blue Green (339).** Mint N.H., deep rich color and proof-like impression, choice centering on crisp paper, fresh and Extremely Fine, with 1987 and 2000 P.F. certificates 95.00

- 10 ★★ **15c Pale Ultramarine (340).** Mint N.H., brilliant color, choice centering for this issue with unusually wide margins, Extremely Fine Gem, with 2000 P.F. certificate 160.00

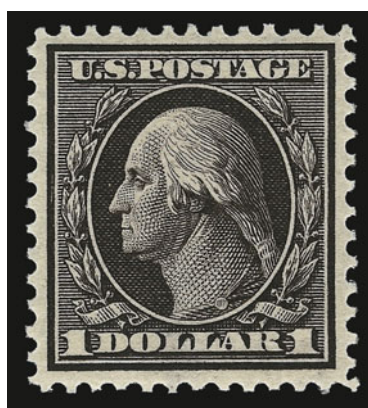


10



11

- 11 ★★ **50c Violet (341).** Mint N.H., radiant color, detailed impression on post-office fresh paper, almost perfectly centered with well-balanced margins
 EXTREMELY FINE. A BEAUTIFUL MINT NEVER-HINGED EXAMPLE OF THE 50-CENT 1909 PERF 12 DOUBLE-LINE WATERMARK ISSUE.
 With 1986, 1989 and 2000 P.F. certificates..... 800.00



12

- 12 ★★ **\$1.00 Violet Brown (342).** Mint N.H., intense shade and proof-like impression
 EXTREMELY FINE. A BEAUTIFUL MINT NEVER-HINGED EXAMPLE OF THE \$1.00 1909 PERF 12 DOUBLE-LINE WATERMARK ISSUE. A STAMP WITH TREMENDOUS EYE APPEAL.
 With 2004 P.F. certificate 1,250.00

1908-10 COIL ISSUE
DOUBLE-LINE WATERMARK, PERF 12



13

- 13 ★★ **1c Green, Coil (348).** Mint N.H. guide line pair, brilliant color and detailed impression, gorgeous centering with wide and balanced margins
EXTREMELY FINE GEM. A SUPERB MINT NEVER-HINGED GUIDE LINE PAIR OF THE ONE-CENT VERTICAL COIL, SCOTT 348. EXCEEDINGLY RARE IN SUCH SUPERB CONDITION.
With 1981 and 1999 P.F. and 2004 P.S.E. certificates (Superb 98; SMQ \$3,150.00), this is the highest grade awarded to date, and only one other shares this grade. 600.00



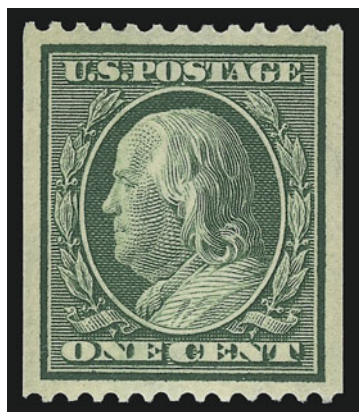
14

- 14 ★★ **1c Green, Coil (348).** Mint N.H. pair, rich color and proof-like impression, mathematically perfect centering with wide margins

EXTREMELY FINE GEM. A MAGNIFICENT MINT NEVER-HINGED PAIR OF THE ONE-CENT VERTICAL COIL, SCOTT 348, WHICH HAS BEEN AWARDED THE GRADE OF GEM 100 BY P.S.E.

With 1998 P.F. and 2004 P.S.E. certificates (Gem 100; unpriced as 100 in SMQ, SMQ \$1,050.00 as 98). This is the highest grade awarded to date (two others share this grade)

..... 210.00



15

- 15 ★★ **1c Green, Coil (348).** Mint N.H., intense shade, choice centering with wide margins, fresh and Extremely Fine, with 2000 P.F. certificate..... 80.00

- 16 ★★ **2c Carmine, Coil (349).** Mint N.H. guide line pair, rich color, detailed impression, wide margins at sides, fresh and Very Fine, a pretty Mint N.H. guide line pair, with 1998 P.F. certificate 1,200.00



16



17

- 17 ★★ **2c Carmine, Coil (349).** Mint N.H. pair, dazzling bright color, choice centering with wide and balanced margins
EXTREMELY FINE GEM. A SUPERB MINT NEVER-HINGED PAIR OF THE 1909 2-CENT VERTICAL COIL, SCOTT 349.
With 1999 P.F. and 2004 P.S.E. certificates (XF-Superb 95; SMQ \$2,450.00). This is the highest grade awarded, and is the only pair to achieve this grade..... 450.00

- 18 ★★ **2c Carmine, Coil (349).** Mint N.H., brilliant color and detailed impression, wide and balanced margins, Extremely Fine Gem, with 1994 and 2004 P.F. certificates, the former as a pair..... 175.00



18



19

- 19 ★★ **4c Orange Brown, Coil (350).** Mint N.H. guide line pair, deep rich color and proof-like impression on bright paper, wide margins

EXTREMELY FINE GEM. A SUPERB MINT NEVER-HINGED GUIDE LINE PAIR OF THE 4-CENT PERF 12 DOUBLE-LINE WATERMARKED COIL, WHICH HAS BEEN GRADED XF-SUPERB 95 BY P.S.E.

According to Johl (Vol. 1, page 153), this coil was issued approximately eighteen months *after* the horizontal coil Scott 354 and was only in use for a short period of time.

With 1992 and 2000 P.F. and 2004 P.S.E. certificates (XF-Superb 95; SMQ \$12,900.00). This is the only Mint N.H. guide line pair to grade 95; only one has graded higher to date. 2,750.00



20

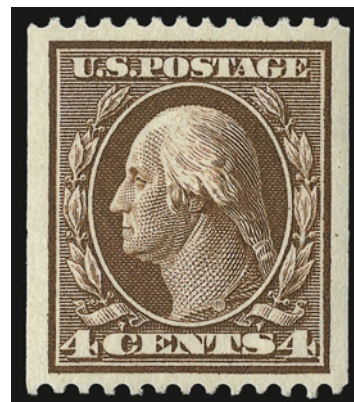
- 20 ★★ **4c Orange Brown, Coil (350).** Mint N.H. pair, brilliant color, almost perfectly centered with wide and balanced margins

EXTREMELY FINE GEM. A BEAUTIFUL MINT NEVER-HINGED PAIR OF THE 1909 4-CENT VERTICAL COIL, SCOTT 350.

This coil was issued approximately eighteen months *after* the horizontal coil Scott 354 and was only in use for a short period of time.

With 1979 and 2001 P.F. certificates 800.00

- 21 ★★ **4c Orange Brown, Coil (350).** Mint N.H., rich color on bright paper, wide margins, fresh and Extremely Fine, a lovely stamp, with 1998 P.F. certificate..... 350.00



21



22

22 ★★ **5c Blue, Coil (351).** Mint N.H. guide line pair, choice centering beautiful intense shade and detailed impression

EXTREMELY FINE GEM. AN OUTSTANDING MINT NEVER-HINGED GUIDE LINE PAIR OF THE 5-CENT PERF 12 DOUBLE-LINE WATERMARK VERTICAL COIL.

Interestingly, this is the only 5c Washington-Franklin perforated vertical coil stamp ever produced. Demand proved to be so low that no others were made.

With 1974, 1985 and 1999 P.F. certificates 2,750.00



23

- 23 ★★ **5c Blue, Coil (351).** Mint N.H. pair, rich color, detailed impression, choice centering with wide margins

EXTREMELY FINE. AN ATTRACTIVE MINT NEVER-HINGED PAIR OF THE 1909 5-CENT VERTICAL COIL, SCOTT 351.

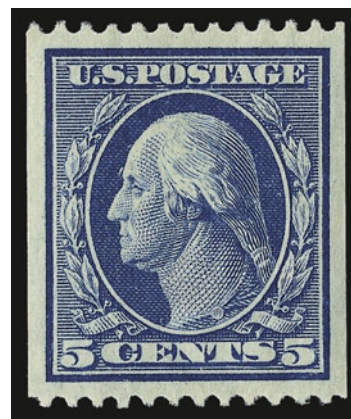
This is the only 5c Washington-Franklin perforated vertical coil stamp ever produced. Demand proved to be so low that no others were made.

With 1986 and 2000 P.F. and 2004 P.S.E. certificates (XF 90; SMQ \$2,200.00). Only two have graded higher to date. 1,000.00

- 24 ★★ **5c Blue, Coil (351).** Mint N.H., brilliant color on bright and crisp paper, almost perfectly centered with wide and balanced margins

EXTREMELY FINE GEM. A SUPERB MINT NEVER-HINGED EXAMPLE OF THIS COIL ISSUE.

With 1997 P.F. certificate 375.00



24



25

- 25 ★ **1c Green, Coil (352).** Guide line pair, lightly hinged, deep rich color, almost perfectly centered with wide and balanced margins, fresh and Extremely Fine, scarce with such choice centering, with 1996 P.F. and 2004 P.S.E. certificates (XF 90; SMQ \$1,400.00), this is the highest grade awarded to date by P.S.E. for any guide line pair (either Mint N.H. or hinged)..... 825.00



26

- 26 ★★ **1c Green, Coil (352).** Mint N.H. pair with 3mm spacing, rich color, proof-like impression, choice centering with well-proportioned margins, fresh and Extremely Fine, with 2000 P.F. and 2004 P.S.E. certificates (XF 90; SMQ \$1,200.00), only one pair has graded higher 525.00



27

- 27 ★★ **2c Carmine, Coil (353).** Mint N.H. guide line pair, luminous color, detailed impression, choice centering with wide margins at top and bottom

VERY FINE AND CHOICE MINT NEVER-HINGED GUIDE LINE PAIR OF THE 2-CENT PERF 12 HORIZONTAL COIL, SCOTT 353.

With 1986 and 2000 P.F. certificates..... 1,600.00



28

- 28 ★★ **2c Carmine, Coil (353).** Mint N.H. pair with 3mm spacing, radiant color, wide margins, fresh and Extremely Fine, with 1998 P.F. certificate..... 525.00

- 29 ★★ **2c Carmine, Coil (353).** Mint N.H., brilliant color, detailed impression, long and full perforations at sides, Extremely Fine Gem, a superb stamp, with 1996 and 2006 P.F. certificates (the former as pair, the latter XF-Superb 95; SMQ \$1,300.00), also with 2004 P.S.E. certificate as pair (XF-Superb 95) 200.00



29



30

- 30 ★★ **4c Orange Brown, Coil (354).** Mint N.H. guide line pair, perfectly centered with wide margins, deep rich color on bright paper, sharp proof-like impression

EXTREMELY FINE GEM. A SUPERB MINT NEVER-HINGED GUIDE LINE PAIR OF THE 4-CENT 1909 HORIZONTAL COIL. SURPRISINGLY SCARCE IN SUCH SUPERB CONDITION.

A review of our computerized records reveals that we have only offered six Mint N.H. guide line pairs in the past 13 years of auctions. Of these, perhaps two or three compare favorably to the example offered here.

With 1978 and 2004 P.F. certificates..... 3,250.00

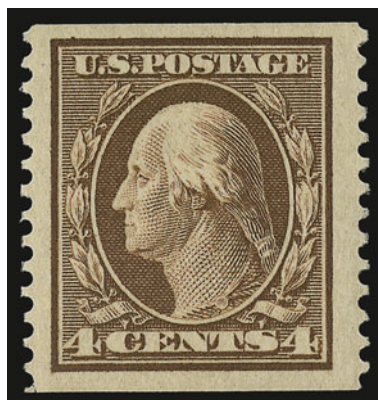


31

- 31 ★★ **4c Orange Brown, Coil (354).** Mint N.H. pair with 3mm spacing, bright shade, unusually wide margins

FRESH AND EXTREMELY FINE. AN ATTRACTIVE MINT NEVER-HINGED PAIR OF THE 4-CENT HORIZONTAL COIL, SCOTT 354.

With 1987 and 2000 P.F. and 2004 P.S.E. certificates (VF-XF 85; SMQ \$1,850.00). This is the only graded Mint N.H. pair in the P.S.E. Population Report 1,150.00



32

- 32 ★★ **4c Orange Brown, Coil (354).** Mint N.H., choice centering with Jumbo margins, intense shade, Extremely Fine, a huge stamp, with 1998 P.S.E. and 2000 P.F. certificates..... 475.00



33

33 ★★ **5c Blue, Coil (355).** Mint N.H. guide line pair, brilliant color and detailed impression, remarkably choice centering with balanced margins

EXTREMELY FINE. A GORGEOUS MINT NEVER-HINGED GUIDE LINE PAIR OF THE 5-CENT HORIZONTAL COIL, SCOTT 355.

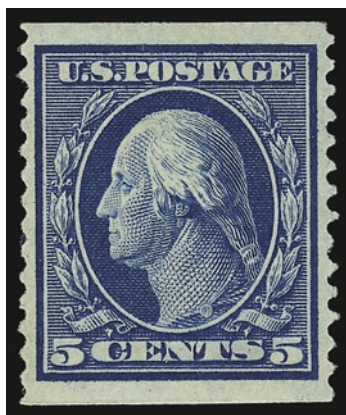
With 1976 and 1999 P.F. and 2004 P.S.E. certificates (XF 90; SMQ \$7,350.00). This is the highest grade awarded to date (two others share this grade). A review of our computerized records shows that we have on average offered one Mint N.H. guide line pair a year for the past ten years. Very few of those compare favorably to the example offered here..... 3,250.00



34

- 34 ★★ **5c Blue, Coil (355).** Mint N.H. pair, rich color on crisp paper, well-balanced margins
EXTREMELY FINE MINT NEVER-HINGED PAIR OF THE 1909 5-CENT HORIZONTAL COIL,
SCOTT 355.

With 1984, 1996 and 2003 P.F. and 2004 P.S.E. certificates (VF-XF 85; SMQ \$1,900.00).
This is the highest Mint N.H. grade awarded to date (only two pairs in P.S.E. Population
Report). 1,250.00



35

- 35 ★★ **5c Blue, Coil (355).** Mint N.H., deep rich color, well-balanced margins, Very Fine and
choice, with 1986 and 1999 P.F. certificates 500.00



36

- 36 ★ **10c Yellow, Coil (356).** Guide line pair, right stamp Mint N.H., left stamp lightly hinged, brilliant color, unusually choice centering with wide margins

VERY FINE AND CHOICE. AN EXCEEDINGLY RARE GUIDE LINE PAIR OF THE 10-CENT HORIZONTAL COIL, SCOTT 356, WITH ONE MINT NEVER-HINGED STAMP. SCARCE IN SUCH PRISTINE CONDITION.

According to Johl (Volume 1, page 181), only 10,000 of the 10c Washington coil stamp were issued. They were made especially for a New York firm to send out advertising samples, similar to the 3c Orangeburg coil. Only a few rolls were sold to the firm, and the remaining rolls were distributed to some of the large post offices across the country. Dealers acquired several rolls, but because most contemporary collectors did not collect coils, many were used and destroyed.

With 2000 P.F. and 2004 P.S.E. certificates (VF 80; SMQ \$50,000.00 does not take into consideration the one Mint N.H. stamp)..... 13,000.00



37

- 37 ★★ **10c Yellow, Coil (356).** Mint N.H. pair, vibrant color on crisp paper, choice centering for this difficult issue

VERY FINE AND CHOICE. AN INCREDIBLY RARE MINT NEVER-HINGED PAIR OF THE 10-CENT PERF 12 HORIZONTAL COIL, SCOTT 356. THIS IS ONE OF THE MOST DIFFICULT ISSUES TO OBTAIN IN MINT NEVER-HINGED CONDITION. A MAJOR CONDITION RARITY.

As the previous description notes, very few examples of this coil issue were saved for collectors. A review of our computerized records revealed an astonishing fact: **this is the first Mint N.H. pair we have offered since keeping computerized records.** Our computerized records encompass almost 13 years of auctions. In that time we have offered in Mint N.H. condition the following examples of Scott No. 356: 1) Mint N.H. guide line strip of four (Zoellner Sale 804, lot 560, realized \$35,000 hammer); 2) One Mint N.H. single offered twice (once in Sale 848 and once in Sale 913); and 3) One Mint N.H. guide line pair, ex Silver Lake (Sale 866, lot 206, realized \$47,500 hammer).

With 1975 and 2000 P.F. certificates..... 13,000.00



38

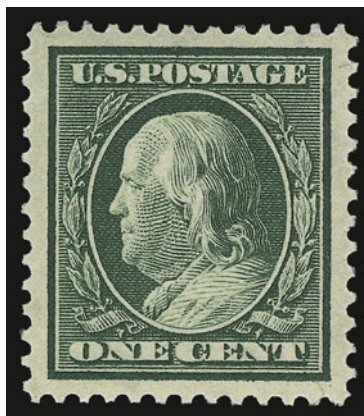
- 38 ★ **10c Yellow, Coil (356).** Mint N.H., dazzling color as fresh as the day it was printed, choice centering for this difficult issue

EXTREMELY FINE. A REMARKABLY FRESH EXAMPLE OF THE 1909 10-CENT HORIZONTAL COIL, SCOTT 356. SCARCE IN SUCH PRISTINE CONDITION.

As the previous description notes, this is one of the most difficult issues to obtain in Mint N.H. condition.

With 2000 P.F. certificate..... 3,000.00

1909 BLUISH PAPER



39

- 39 ★★ **1c Green, Bluish (357).** Mint N.H., deep rich color on deeply blued paper, almost perfectly centered with Jumbo margins all around

EXTREMELY FINE GEM. A MAGNIFICENT MINT NEVER-HINGED EXAMPLE OF THE ONE-CENT ON BLUISH PAPER. THIS CONDITION RARITY HAS BEEN AWARDED THE GRADE OF SUPERB 98 JUMBO BY P.S.E., WHICH IS THE HIGHEST GRADE AWARDED TO DATE.

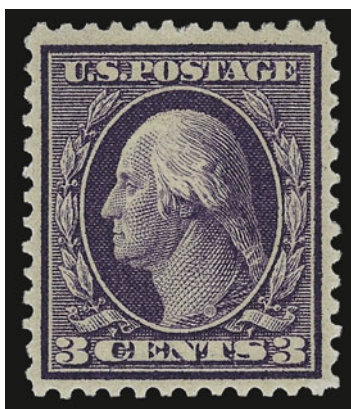
As the description for lot 42 states, the Bluish paper stamps were made as part of an experiment to correct problems with paper shrinkage and spoilage. The existence of this stamp with such superb centering and huge margins is truly remarkable.

With 2001 and 2002 P.F. certificates (the former as block of four). With 2004 P.S.E. certificate (Superb 98 Jumbo; unpriced in SMQ above the grade of 98, SMQ \$5,500.00 as 98). This is the only example to achieve this exalted grade. 210.00



40

- 40 ★★ **2c Carmine, Bluish (358).** Mint N.H., bright color on nicely blued paper, wide margins, Very Fine and choice, with 2000 P.F. and 1998 and 2004 P.S.E. certificates (VF-XF 85; SMQ \$355.00)..... 190.00

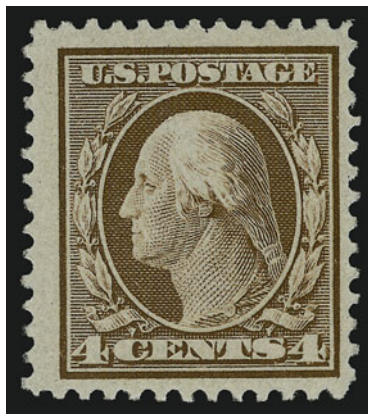


41

- 41 ★★ **3c Deep Violet, Bluish (359).** Mint N.H., deep rich color and proof-like impression on noticeably blued paper, choice centering for this difficult issue
VERY FINE AND CHOICE. A SCARCE MINT NEVER-HINGED EXAMPLE OF THE 3-CENT ON BLUISH.

It is worth noting that this is only the third Mint N.H. example of this issue we have offered since keeping computerized records. It is also the only example to be graded as Mint N.H. by P.S.E.

With 1970 and 1998 P.F. and 2004 P.S.E. certificates (VF 80; SMQ \$4,350.00). In our opinion SMQ is far too low considering its rarity. 4,250.00



42

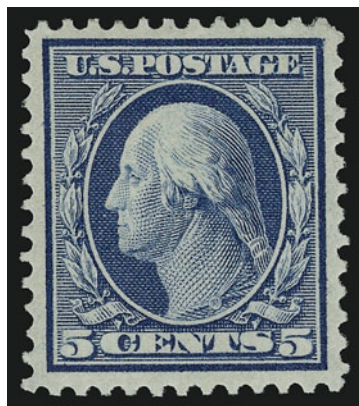
- 42 ★★ **4c Orange Brown, Bluish (360). Mint N.H.**, deep rich color and proof-like impression on deeply blued paper, wide margins for this difficult issue with perfs well clear of design on all sides

VERY FINE. AN EXTREMELY RARE MINT NEVER-HINGED EXAMPLE OF THE 4-CENT ON BLuish PAPER. THIS IS THE FIRST MINT NEVER-HINGED EXAMPLE OF THIS RARITY WE HAVE OFFERED SINCE KEEPING COMPUTERIZED RECORDS.

During the early stages of production of the 1908-09 Washington-Franklin stamps, the Bureau tried to solve the problem of paper shrinkage that caused off-center perforations and resulted in a large number of unusable sheets. Armstrong notes that up to twenty percent of sheets had to be discarded. The first such experiments resulted in the Bluish Paper stamps (Scott 357-366). Rag cloth was added to the wood pulp mixture, but this did not have the desired effect and the experiment was discontinued.

According to Johl (Vol. 1, page 175), the only source of the 4c and 8c Bluish stamps was the archives of the Post Office Department. Approximately 80 of each were traded for rare stamps missing from the archives. Given the failed experimental nature of the paper mixture, it is no surprise that virtually all copies are off-center to some extent.

With 1998 P.F. and 2004 P.S.E. certificates (F-VF 75; SMQ \$23,000.00 as 70, \$43,000.00 as 75). This is the highest grade awarded by P.S.E. to any 4c Bluish Paper and the only Mint N.H. copy certified so far. Given this stamp's rarity in Mint N.H. condition we feel that both Scott Catalogue and SMQ pricing are too low. 37,500.00



43

- 43 ★ **5c Blue, Bluish (361).** Lightly hinged, deep rich color on nicely blued paper, beautifully centered with wide margins

EXTREMELY FINE EXAMPLE OF THE 5-CENT BLUISH PAPER. A STAMP OF REMARKABLE BEAUTY.

The 5c is the rarest of the regularly-issued Bluish Paper set, and it is usually found off center.

With 1999 P.F. certificate 5,000.00



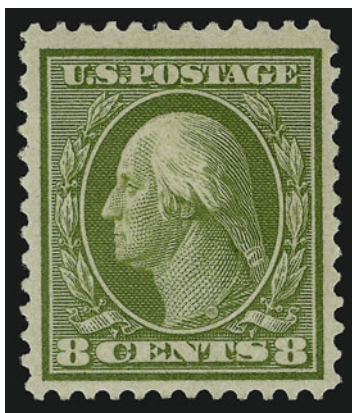
44

- 44 ★★ **6c Red Orange, Bluish (362).** Part imprint selvage at left, **stamp Mint N.H.**, lightly hinged in selvage only, intense shade on deeply blued paper, unusually choice centering for this difficult issue, long and full perforations all around

EXTREMELY FINE. A BEAUTIFUL MINT NEVER-HINGED EXAMPLE OF THE 6-CENT ON BLUISH PAPER. SCARCE IN SUCH PRISTINE CONDITION.

As an indication of rarity, we have only offered seven Mint N.H. examples since keeping computerized records, which extend over approximately 13 years of our auctions — one of which had a small fault.

With 1985 and 1996 P.F. and 2004 P.S.E. certificates (XF 90; SMQ \$8,750.00). This is the highest grade awarded to date, and is one of only two graded in Mint N.H. condition. 3,750.00



45

- 45 ★ **8c Olive Green, Bluish (363).** Choice centering with wide margins, intense color on deeply blued paper

VERY FINE AND CHOICE ORIGINAL-GUM EXAMPLE OF THE RARE 8-CENT WASHINGTON ON BLUISH PAPER. RARE IN SUCH WONDERFUL CONDITION.

According to Johl (Vol. 1, page 175), the only source of the 4c and 8c Bluish stamps was the archives of the Post Office Department. Approximately 80 of each were traded for rare stamps missing from the archives. Our Levi records show perhaps three Mint N.H. examples, all of which are off-center.

With 1969 and 1999 P.F. and 2004 P.S.E. certificates (VF-XF 85; SMQ \$34,300.00). Only one has graded higher to date. 27,500.00

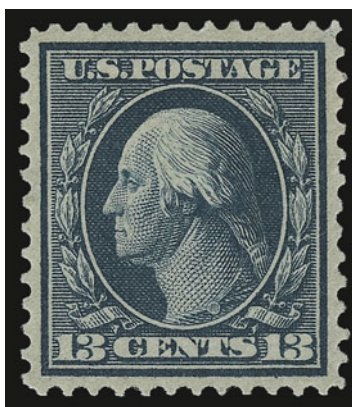


46

- 46 ★ **10c Yellow, Bluish (364).** Barest trace of hinging, with **part imprint** at bottom, blindingly bright color which is as fresh as the day it was printed, nicely blued paper

EXTREMELY FINE. A BEAUTIFUL EXAMPLE OF THE 10-CENT ON BLUISH PAPER.

With 1984 and 1999 P.F. and 1999 and 2004 P.S.E. certificates (VF-XF 85; SMQ \$2,250.00). None have been graded to date in Mint N.H. condition and we have only offered two such stamps in the past 13 years. Collectors are strongly advised to consider acquiring this stamp in hinged condition, or risk never owning one..... 1,900.00



47

- 47 ★ **13c Bluish Green, Bluish (365).** Lightly hinged, deep rich color and proof-like impression on nicely blued paper, choice centering with well-balanced margins, long and full perforations all around

EXTREMELY FINE. A BEAUTIFUL LIGHTLY-HINGED EXAMPLE OF THE 13-CENT ON BLUISH.

With 1995 P.F. and 2004 P.S.E. certificates (XF 90; SMQ \$4,400.00). Only two have graded higher to date. Only one has been graded in Mint N.H. condition (Fine 70), and we have only offered four as such in the past 13 years..... 3,000.00



48

- 48 ★★ **15c Pale Ultramarine, Bluish (366).** Mint N.H., brilliant color on deeply blued paper, unusually choice centering for this difficult issue with well-proportioned margins, long and full perforations all around

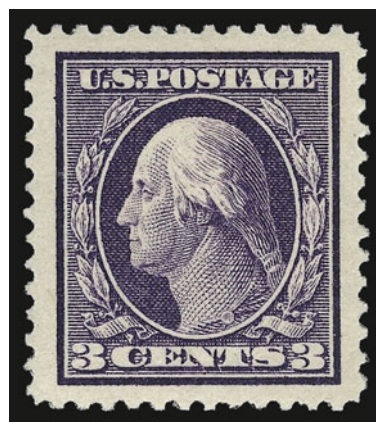
EXTREMELY FINE GEM. A SUPERB MINT NEVER-HINGED EXAMPLE OF THE 15-CENT ON BLUISH PAPER. SCARCE IN SUCH PRISTINE CONDITION.

With 1996 P.F. and 2004 P.S.E. certificates (XF 90; SMQ \$8,750.00). This is the highest grade awarded to date and only one other shares this grade. 3,250.00

1910-11 ISSUE
SINGLE-LINE WATERMARK, PERF 12

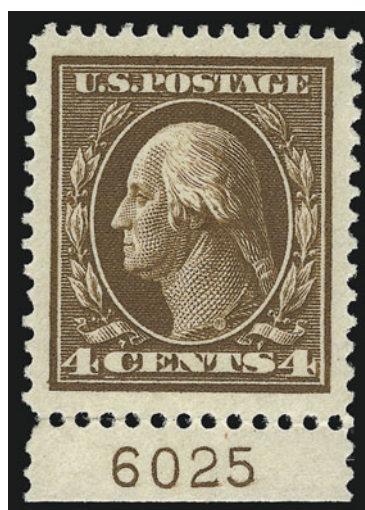


49



50

- 49 ★★ **2c Carmine (375).** Mint N.H., brilliant color on post-office fresh paper, perfectly centered with enormous margins, Extremely Fine Gem, a magnificent stamp, with 1996 P.F. and 2007 P.S.E. certificates (Superb 98 Jumbo; unpriced in SMQ in any grade higher than 98, SMQ \$840.00 as 98), only one other has achieved this grade, which is the highest awarded to date 16.00
- 50 ★★ **3c Deep Violet (376).** Mint N.H., deep rich color on bright paper, Jumbo margins all around, Extremely Fine Gem, a huge stamp which is sure to grade very highly, with 2000 P.S.E. certificate as block of four and 2001 P.F. certificate as single 47.50



51

- 51 ★★ **4c Brown (377).** Mint N.H. with **plate no. 6025** at bottom, deep rich color and proof-like impression, choice centering with Jumbo margins, Extremely Fine, a huge stamp, with 1995 P.F. and 2007 P.S.E. certificates (XF-Superb 95 Jumbo; SMQ \$880 as 95, \$2,800.00 as 98) 75.00

- 52 ★★ **5c Blue (378).** Mint N.H., radiant color as fresh as the day it was printed, wide and balanced Jumbo margins, Extremely Fine Gem, with 1988 and 2001 P.F. certificates 75.00

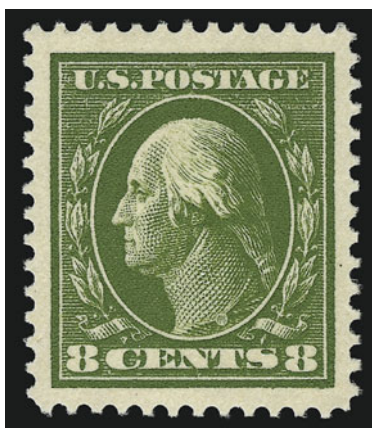


52



53

- 53 ★★ **6c Red Orange (379).** Mint N.H., electrifying color which is as fresh as the day it was printed, perfectly centered with enormous margins
 EXTREMELY FINE GEM. A MAGNIFICENT MINT NEVER-HINGED EXAMPLE OF THE 1911 6-CENT PERF 12 SINGLE-LINE WATERMARK ISSUE. THIS STAMP HAS BEEN AWARDED THE GRADE OF SUPERB 98 JUMBO BY P.S.E., WHICH IS THE HIGHEST GRADE AWARDED TO DATE.
 With 1992 and 2000 P.F. and 2007 P.S.E. certificates (XF-Superb 98 Jumbo; unpriced in SMQ in any grade higher than 98, SMQ \$3,050.00 as 98). Only one other shares this lofty grade. 85.00



54

- 54 ★★ **8c Olive Green (380).** Mint N.H., intense color and impression on bright paper, Jumbo margins

EXTREMELY FINE GEM. A SUPERB MINT NEVER-HINGED EXAMPLE OF THE 1911 8-CENT PERF 12 SINGLE-LINE WATERMARK ISSUE. THIS STAMP HAS EARNED THE GRADE OF XF-SUPERB 95 JUMBO BY P.S.E., WHICH IS THE HIGHEST GRADE AWARDED TO DATE.

With 2000 P.F. and 2007 P.S.E. certificates (XF-Superb 95 Jumbo; SMQ \$2,400.00 as 95, \$7,100.00 as 98). Only one other has achieved this grade. 260.00



55

- 55 ★★ **10c Yellow (381).** Mint N.H. with **plate no. 5239** at left, radiant color, choice centering with wide margins, trivial natural inclusion as often found on this color stamp and not mentioned on accompanying certificates, Extremely Fine Gem, with 1993 and 1999 P.F. certificates..... 250.00

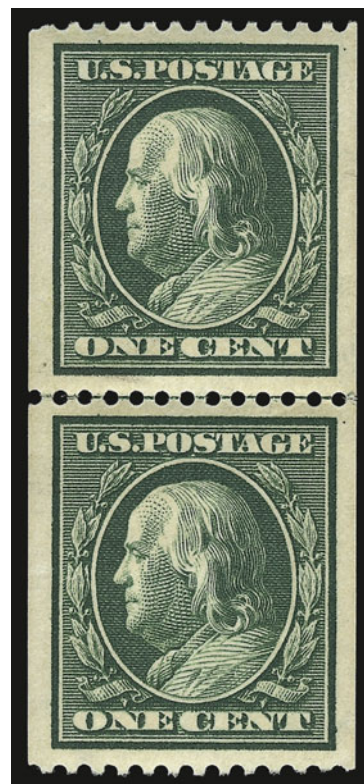


56

- 56 ★★ **15c Pale Ultramarine (382).** Mint N.H., rich color on bright paper, well-proportioned margins, fresh and Extremely Fine, a remarkably attractive stamp, with 1982 and 1999 P.F. certificate..... 625.00

1910-11 COIL ISSUE
SINGLE-LINE WATERMARK, PERF 12

- 57 ★★ **1c Green, Coil (385).** Guide line pair, top stamp Mint N.H., bottom stamp small spot on gum, rich color, Extremely Fine, with 1996 P.F. certificate as Mint N.H., Scott Retail as hinged 450.00

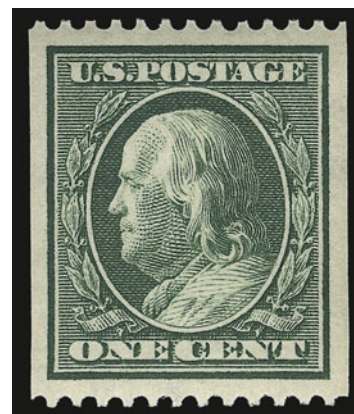


57



58

- 58 ★★ **1c Green, Coil (385).** Mint N.H. pair, rich color, beautiful centering with well-balanced margins, fresh and Extremely Fine, with 1998 P.F. and 2004 P.S.E. certificates (XF 90; SMQ \$510.00), only two have graded higher and only one other has graded its equal..... 230.00



59

- 59 ★★ **1c Green, Coil (385).** Mint N.H., rich color, choice centering with wide margins, fresh and Extremely Fine, with 1990 and 2000 P.F. certificates 90.00



60

60 ★★ **2c Carmine, Coil (386).** Mint N.H. guide line pair, brilliant color, gorgeous centering both side to side and top to bottom

EXTREMELY FINE GEM. A MAGNIFICENT MINT NEVER-HINGED GUIDE LINE PAIR OF THE 2-CENT 1910 VERTICAL COIL, SCOTT 386. THIS REMARKABLE GUIDE LINE PAIR HAS BEEN AWARDED THE GRADE OF XF-SUPERB 95 BY P.S.E., WHICH IS THE HIGHEST GRADE AWARDED TO DATE.

According to Johl (Vol. 1, p. 111), the Bureau switched to Perf 8½ for their coils after a very short period of time. The Perf 12 coils proved to be too susceptible to falling apart in the machines used to affix (and make) the coils. Scott 386 was one of the first to be discontinued.

With 1998 P.F. and 2004 P.S.E. certificates (XF-Superb 95; SMQ \$14,200.00). This is the only guide line pair awarded this high grade..... 3,250.00



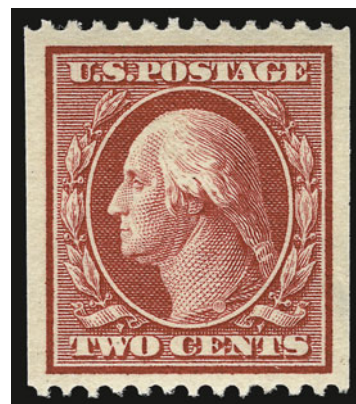
61

- 61 ★★ **2c Carmine, Coil (386).** Mint N.H. pair, radiant color on post-office fresh paper, almost perfectly centered with wide and balanced margins

EXTREMELY FINE GEM. A SUPERB MINT NEVER-HINGED PAIR OF THE 2-CENT 1910 VERTICAL COIL, SCOTT 386.

With 1997 P.F. and 2004 P.S.E. certificates (XF-Superb 95; SMQ \$2,900.00). This is the highest grade awarded to date, and the only pair to achieve this lofty grade..... 625.00

- 62 ★★ **2c Carmine, Coil (386).** Mint N.H., brilliant color, choice centering with wide margins, fresh and Extremely Fine, with 1991 and 1999 P.F. certificates..
..... 190.00



62



63

- 63 ★ **1c Green, Coil (387).** Guide line pair, single hinge mark, intense shade and impression, Very Fine and choice, with 1996 P.F. certificate..... 1,000.00



64

- 64 ★★ **1c Green, Coil (387).** Mint N.H. pair with 3mm spacing, deep rich color, proof-like impression, choice centering with wide margins

EXTREMELY FINE. A GORGEOUS MINT NEVER-HINGED PAIR OF THE ONE-CENT 1910 HORIZONTAL COIL, SCOTT 387.

Ex Killien. With 1976, 2001 and 2006 P.F. certificates (XF 90; SMQ \$3,100.00)..... 1,050.00



65

- 65 ★★ **1c Green, Coil (387).** Mint N.H., brilliant color, crisp impression, Jumbo margins, fresh and Extremely Fine, with 1999 P.F. and 1999 P.S.E. certificates..... 425.00



66

66 ★★ 2c Carmine, Coil (388). Mint N.H. guide line pair, brilliant color

FINE-VERY FINE. A RARE MINT NEVER-HINGED GUIDE LINE PAIR OF THE 1910 SINGLE-LINE WATERMARK 2-CENT PERF 12 HORIZONTAL COIL, SCOTT 388. PROBABLY NO MORE THAN THREE OR FOUR MINT NEVER-HINGED GUIDE LINE PAIRS OF SCOTT 388 EXIST, AND IT IS UNLIKELY ANY ARE CENTERED BETTER THAN THIS.

This 2c coil was in production for only a short period of time before being superseded by the Perf 8½ issue. Due to the greater popularity of the horizontal coils with users, combined with a wary attitude by many collectors that early coils were simply trimmed stamps, many were used and few preserved.

With 1968 and 2000 P.F. certificates..... 16,000.00



67

- 67 ★★ **2c Carmine, Coil (388).** Mint N.H. pair with 3mm spacing, radiant color, crisp impression, magnificent centering with wide and balanced margins

EXTREMELY FINE GEM. A BEAUTIFUL GUIDE LINE PAIR OF THE RARE 1910 SINGLE-LINE WATERMARK 2-CENT PERF 12 HORIZONTAL COIL. THE RIGHT STAMP IS A SUPERB JUMBO.

This 2c coil was in production for only a short period of time before being superseded by the Perf 8½ issue. Due to the greater popularity of the horizontal coils with users, combined with a wary attitude by many collectors that early coils were simply trimmed stamps, many were used and few preserved.

With 2003 P.F. and 2004 P.S.E. certificates (XF 90; SMQ \$19,400.00). This is the only Mint N.H. pair certified by P.S.E. 7,250.00



68

- 68 ★ **2c Carmine, Coil (388).** Bright color, crisp impression, choice centering with unusually wide margins for this issue

EXTREMELY FINE. A HUGE EXAMPLE OF THE 1910 SINGLE-LINE WATERMARK 2-CENT PERF 12 HORIZONTAL COIL, SCOTT 388.

With 1998 P.F. certificate 1,250.00



69

69 3c Deep Violet, Orangeburg Coil (389). Choice centering with huge margins, deep rich color and proof-like impression showing every detail of the engraving, neat wavy-line machine cancel used at Orangeburg N.Y.

EXTREMELY FINE GEM. THIS MAY WELL BE THE FINEST SOUND EXAMPLE OF THE 3-CENT ORANGEBURG COIL IN EXISTENCE. ONE OF THE HIGHLIGHTS OF THE SCARSDALE COLLECTION.

Due to their use on mass mailings, many of the existing Orangeburg coils are faulty to some extent. The most common defects are corner creases or tears. Sound and well-centered copies have been recognized by collectors as truly rare, and bidding has been fierce for premium copies such as the stamp offered here.

With 1989 and 2003 P.F. certificates..... 10,000.00

1910-13 COIL ISSUE
SINGLE-LINE WATERMARK, PERF 8½



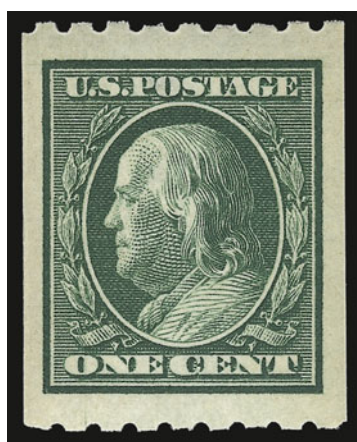
70

- 70 ★★ **1c Green, Coil (390).** Mint N.H. guide line pair, deep rich color, proof-like impression, perfectly centered with wide margins, Extremely Fine Gem, with 1998 P.F. and 2007 P.S.E. certificates (Superb 98; SMQ \$580.00), this is the highest grade awarded to date... 80.00



71

- 71 ★★ **1c Green, Coil (390).** Mint N.H. pair, glowing color, beautifully centered, fresh and Extremely Fine, with 2000 P.F. and 2004 P.S.E. certificates (XF 90; SMQ \$55.00) 24.00



72

- 72 ★★ **1c Green, Coil (390).** Mint N.H., intense shade and impression, perfectly centered with enormous margins all around, Extremely Fine Gem, a massive example of this coil issue, with 1999 P.S.E. and 2000 P.F. certificates..... 11.00

- 73 ★★ **2c Carmine, Coil (391).** Mint N.H. guide line pair, almost perfect centering with Jumbo margins, brilliant color

EXTREMELY FINE GEM. AN OUTSTANDING MINT NEVER-HINGED GUIDE LINE PAIR OF THE 2-CENT 1910 VERTICAL COIL, SCOTT 391.

Ex Silverlake. With 2004 P.F. and P.S.E. certificates (latter graded XF 90; SMQ \$1,100.00). Only one has graded higher to date..... 550.00



73



74

- 74 ★★ **2c Carmine, Coil (391).** Mint N.H. pair, bright color, almost perfectly centered with wide and balanced margins, Extremely Fine Gem, a gorgeous Mint N.H. pair, with 2000 P.F. and 1996 and 2004 P.S.E. certificates (XF-Superb 95; SMQ \$1,100.00), this is the highest grade awarded to date (two others have also achieved this grade)..... 230.00

- 75 ★★ **2c Carmine, Coil (391).** Mint N.H., lively color, almost perfectly centered with wide margins, fresh and Extremely Fine, a pretty stamp, with 2003 P.F. certificate..... 90.00



75



76

- 76 ★★ **1c Green, Coil (392).** Mint N.H. guide line pair, glowing color, beautiful centering with wide margins

EXTREMELY FINE GEM. A SUPERB MINT NEVER-HINGED GUIDE LINE PAIR OF THE 1911 ONE-CENT HORIZONTAL COIL, SCOTT 392.

With 1999 P.F. and 2004 P.S.E. certificates (XF-Superb 95; SMQ \$1,800.00). Only one has graded higher to date. 200.00



77

- 77 ★★ **1c Green, Coil (392).** Mint N.H. pair, deep rich color on bright paper, choice centering with wide and balanced margins, fresh and Extremely Fine, with 1997 P.F. and 2004 P.S.E. certificates (XF 90; SMQ \$335.00) 160.00



78

- 78 ★★ **1c Green, Coil (392).** Mint N.H., rich color and proof-like impression, beautiful centering with wide margins, Extremely Fine Gem, with 2000 P.F. and 2007 P.S.E. certificates (Superb 98; SMQ \$590.00), this is the only example to achieve this grade, which is the highest awarded to date 60.00



79

- 79 ★★ **2c Carmine, Coil (393).** Mint N.H. guide line pair, glowing color on bright paper, beautiful centering with wide and balanced margins

EXTREMELY FINE GEM. A SUPERB MINT NEVER-HINGED GUIDE LINE PAIR OF THE 2-CENT 1911 HORIZONTAL COIL, SCOTT 393. THIS IS THE ONLY EXAMPLE TO BE GRADED XF-SUPERB 95 BY P.S.E., WHICH IS THE HIGHEST GRADE AWARDED TO DATE.

Ex Drucker. With 1981 and 2002 P.F. and 2004 P.S.E. certificates (XF-Superb 95; SMQ \$3,000.00) 650.00



80

- 80 ★★ **2c Carmine, Coil (393).** Mint N.H. pair, radiant color on bright and fresh paper, gorgeous centering with wide margins on all sides

EXTREMELY FINE GEM. A MAGNIFICENT MINT NEVER-HINGED PAIR OF THE 2-CENT 1911 HORIZONTAL COIL, SCOTT 393, WHICH HAS BEEN AWARDED THE GRADE OF SUPERB 98 BY P.S.E.

With 1992 and 2001 P.F. and 2004 P.S.E. certificates (Superb 98; SMQ \$2,100.00). This is the only pair to achieve this lofty grade, which is the highest awarded to date. 275.00

- 81 ★★ **2c Carmine, Coil (393).** Mint N.H., brilliant color, wide and balanced margins, fresh and Extremely Fine, a pretty stamp, with 1993 and 2000 P.F. certificates..... 100.00



81

82



- 82 ★★ **3c Deep Violet, Coil (394).** Mint N.H. guide line pair, deep rich color and proof-like impression, gorgeous centering with huge margins

EXTREMELY FINE. A BEAUTIFUL MINT NEVER-HINGED GUIDE LINE PAIR OF THE 3-CENT 1911 HORIZONTAL COIL, SCOTT 394.

With 1998 P.F. and 2004 P.S.E. certificates (XF 90; SMQ \$1,950.00). Only two have graded higher to date..... 900.00

83



- 83 ★★ **3c Deep Violet, Coil (394).** Mint N.H. pair with 3mm spacing, rich color and proof-like impression, choice centering with wide margins

EXTREMELY FINE GEM. A SUPERB MINT NEVER-HINGED PAIR OF THE 2-CENT 1911 HORIZONTAL COIL, SCOTT 394, WHICH HAS BEEN GRADED XF-SUPERB 95 BY P.S.E.

With 1984 and 1999 P.F. and 2004 P.S.E. certificates (XF-Superb 95; SMQ \$1,500.00). Only one has graded higher..... 310.00



84

- 84 ★★ **3c Deep Violet, Coil (394).** Mint N.H., radiant color, perfectly centered with Jumbo margins, Extremely Fine Gem, a superb stamp in every respect, with 1999 P.F. and 2007 P.S.E. certificates (Superb 98 Jumbo; unpriced in SMQ in any grade higher than 98, SMQ \$1,300.00 as 98), this is the only example to achieve this lofty grade, which is the highest awarded to date 130.00



85

- 85 ★★ **4c Brown, Coil (395).** Mint N.H. guide line pair, deep rich color on bright paper, unusually choice centering with wide and balanced margins

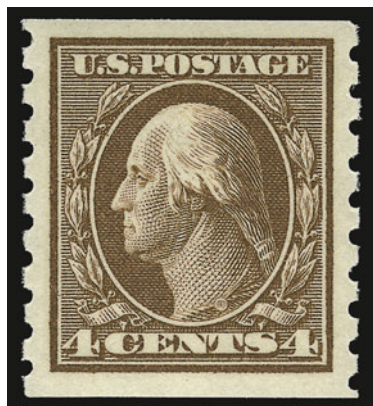
EXTREMELY FINE. A BEAUTIFUL MINT NEVER-HINGED GUIDE LINE PAIR OF THE 4-CENT HORIZONTAL COIL, SCOTT 395.

With 2000 P.F. and 2004 P.S.E. certificates (XF 90; SMQ \$1,950.00)..... 1,100.00



86

- 86 ★★ **4c Brown, Coil (395).** Mint N.H. pair with 3mm spacing, rich color on crisp paper, wide margins, Extremely Fine Gem, with 1984 and 1999 P.F. and 2004 P.S.E. certificates (XF-Superb 95; SMQ \$1,500.00), this is one of only two Mint N.H. pairs to grade 95, which is the highest grade awarded to date..... 325.00



87

- 87 ★★ **4c Brown, Coil (395).** Mint N.H., pretty color on bright paper, huge margins, fresh and Extremely Fine, with 1995 P.F. certificate 135.00



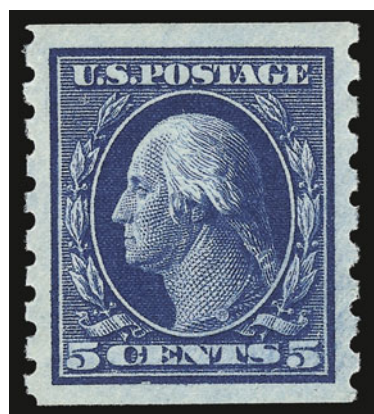
88

- 88 ★★ **5c Blue, Coil (396).** Mint N.H. guide line pair, intense shade and impression, Very Fine and choice, with 1999 P.F. certificate 900.00



89

- 89 ★★ **5c Blue, Coil (396).** Mint N.H. pair, unusually deep shade on bright paper, gorgeous centering with wide margins
EXTREMELY FINE GEM. A SUPERB MINT NEVER-HINGED PAIR OF THE 5-CENT HORIZONTAL COIL, SCOTT 396.
With 1983 and 1999 P.F. and 2004 P.S.E. certificates (XF-Superb 95; SMQ \$1,500.00).
Only one pair has graded higher to date. 350.00



90

- 90 ★★ **5c Blue, Coil (396).** Mint N.H., intense shade and impression, choice centering with Jumbo margins, Extremely Fine, a pretty stamp, with 1997 P.F. certificate 130.00

1912-14 ISSUE

NEW DESIGN, SINGLE-LINE WATERMARK, PERF 12

- 91 ★★ **1c Green (405).** Mint N.H., deep rich color and proof-like impression, Jumbo margins all around, Extremely Fine Gem, a huge stamp, with 2000 P.F. and 2007 P.S.E. certificates (Superb 98 Jumbo; unpriced in SMQ in any grade higher than 98, SMQ \$840.00 as 98), this is the highest grade awarded to date, and only one other shares this grade..... 16.00



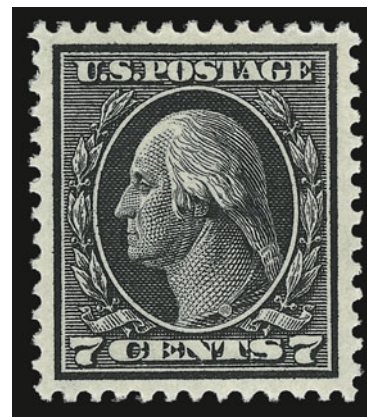
91



92

- 92 ★★ **2c Carmine (406).** Mint N.H., brilliant color, detailed impression, perfectly centered with wide and balanced margins, Extremely Fine Gem, a magnificent stamp, with 2000 P.F. and 2007 P.S.E. certificates (Superb 98; SMQ \$840.00), this is the highest grade awarded to date, and only one other has achieved this lofty grade 16.00

- 93 ★★ **7c Black (407).** Mint N.H., intense shade and impression on bright paper, wide margins, Extremely Fine, with 2000 P.F. certificate.. 180.00



93

1912 COIL ISSUE
SINGLE-LINE WATERMARK, PERF 8½



94

- 94 ★★ **1c Green, Coil (410).** Mint N.H. guide line pair, pretty shade, unusually choice centering with wide and balanced margins, Extremely Fine Gem, with 2002 P.F. and 2007 P.S.E. certificates (XF-Superb 95; SMQ \$280.00), only one has graded higher and this is the only example to date with the grade of 95 65.00



96

- 95 ★★ **1c Green, Coil (410).** Mint N.H. pair, rich color, choice centering with wide and balanced margins, Extremely Fine Gem, a beautiful and fresh Mint N.H. pair, with 1999 P.F. certificate..... 32.50



95

- 96 ★★ **2c Carmine, Coil (411).** Mint N.H. guide line pair, vibrant color, perfectly centered with wide and balanced margins, Extremely Fine Gem, a magnificent Mint N.H. guide line pair, with 1985 and 1999 P.F. and 2007 P.S.E. certificates (Superb 98; SMQ \$820.00), this is the highest grade awarded, and only one other shares this grade 125.00

- 97 ★★ **2c Carmine, Coil (411).** Mint N.H. pair, luminous color, almost perfectly centered with wide margins all around, Extremely Fine Gem, a beautiful pair, with 1999 P.F. certificate 55.00



97



98

- 98 ★★ **2c Carmine, Coil (411).** Mint N.H., brilliant color, gorgeous centering with Jumbo margins, Extremely Fine Gem, with 2000 P.F. and 2007 P.S.E. certificates (Superb 98 Jumbo; unpriced in SMQ in any grade higher than 98, SMQ \$200.00 as 98), this is the only example to achieve this lofty grade, which is the highest awarded to date 22.50



99

- 99 ★★ **1c Green, Coil (412).** Mint N.H. guide line pair, rich color and proof-like impression on bright paper, well-balanced margins, Extremely Fine Gem, with 2000 P.F. certificate 260.00



100



101

- 100 ★★ **1c Green, Coil (412).** Mint N.H. pair, radiant color on post-office fresh paper, gorgeous centering, Extremely Fine Gem, a superb Mint N.H. pair in every respect, with 1988 and 2000 P.F. certificates 130.00
- 101 ★★ **1c Green, Coil (412).** Mint N.H., gorgeous color on crisp paper, perfectly centered with wide margins, Extremely Fine Gem, with 2004 P.F. and P.S.E. certificates (the latter as strip of four)..... 55.00



102

- 102 ★★ **2c Carmine, Coil (413).** Mint N.H. guide line pair, bright color, detailed impression showing every nuance of the design, perfect centering with wide and balanced margins
EXTREMELY FINE GEM. A SUPERB MINT NEVER-HINGED GUIDE LINE PAIR OF THE 1912 2-CENT HORIZONTAL COIL, SCOTT 413. THIS GUIDE LINE PAIR HAS BEEN AWARDED THE GRADE OF SUPERB 98 BY P.S.E.
With 1982 and 1998 P.F. and 2007 P.S.E. certificates (Superb 98; SMQ \$4,300.00). This is the only example to achieve this grade. One has graded higher. 625.00



103



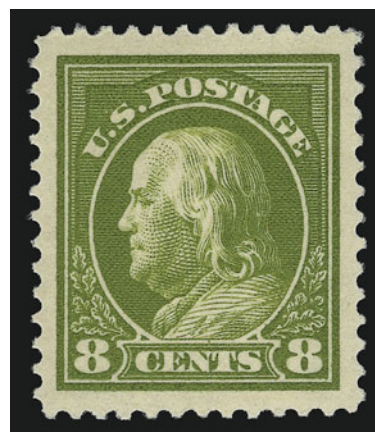
104

103 ★★ **2c Carmine, Coil (413).** Mint N.H. pair, brilliant color on bright paper, Very Fine and choice, with 1997 and 2000 P.F. certificates, the former as strip of four 250.00

104 ★★ **2c Carmine, Coil (413).** Mint N.H., luminous color on bright paper, choice centering, fresh and Extremely Fine, with 1997 P.F. certificate..... 120.00

1912-14 ISSUE
SINGLE-LINE WATERMARK, PERF 12

105 ★★ **8c Olive Green (414 var).** Mint N.H., pretty color in the Olive Green sub-shade, choice centering with Jumbo margins, Extremely Fine Gem, a huge stamp, with 2001 P.F. and 2007 P.S.E. certificates (XF-Superb 95 Jumbo; SMQ \$1,150.00 as 95, \$3,500.00 as 98) 100.00

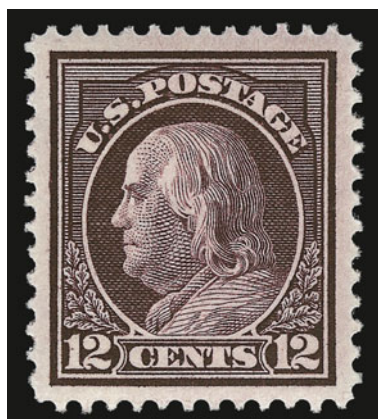


105

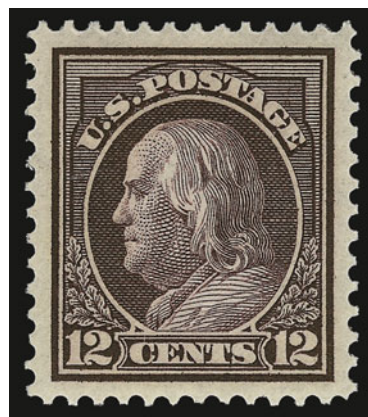


106

106 ★★ **9c Salmon Red (415).** Mint N.H., bright color and paper, choice centering with wide margins, fresh and Extremely Fine, with 1998 P.F. certificate..... 120.00

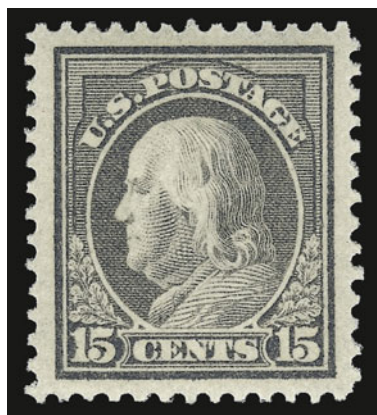


107



108

- 107 ★★ **12c Claret Brown (417).** Mint N.H., deep rich color and proof-like impression, wide and balanced margins, fresh and Extremely Fine, with 2001 P.F. certificate 110.00
- 108 ★★ **12c Deep Claret Brown (417 var).** Mint N.H., distinctly darker shade than the previous lot, detailed impression, wide margins, Extremely Fine example of this sub-shade, with 2000 P.F. certificate as normal Claret Brown shade..... 110.00



109



110



111

- 109 ★★ **15c Gray (418).** Mint N.H., intense shade and impression on crisp paper, unusually wide margins, Extremely Fine Gem, a stunning stamp, with 2000 P.F. certificate 190.00
- 110 ★★ **20c Ultramarine (419).** Mint N.H., radiant color on bright paper, Very Fine and choice, a fresh stamp, with 1982 and 1999 P.F. certificates 430.00
- 111 ★★ **30c Orange Red (420).** Mint N.H., vivid color as fresh as the day it was printed on bright paper, choice centering with wide margins all around, Extremely Fine Gem, a gorgeous stamp, with 1999 P.F. certificate 270.00



112

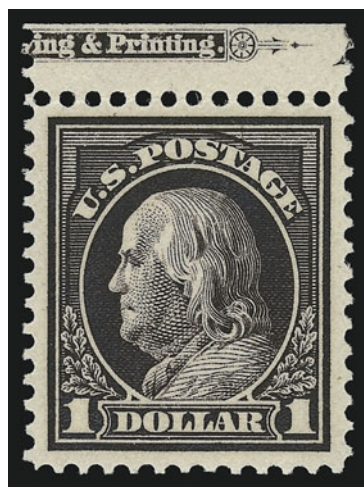
- 112 ★★ **50c Violet (421).** Mint N.H., intense shade and impression, wide margins for this difficult issue, fresh and Extremely Fine, a pretty stamp, with 1997 P.F. certificate..... 975.00

1912 ISSUE — DOUBLE-LINE WATERMARK, PERF 12

- 113 ★★ **50c Violet (422).** Mint N.H., rich color, detailed impression, wide margins, fresh and Extremely Fine, with 1984 and 2000 P.F. certificates 575.00



113



114

- 114 ★★ **\$1.00 Violet Brown (423).** Mint N.H. with **part imprint** at top, deep rich color and proof-like impression, choice centering with balanced margins
EXTREMELY FINE GEM. A SUPERB MINT NEVER-HINGED EXAMPLE OF THE \$1.00 FRANKLIN, SCOTT 423.
With 1998 P.F. certificate..... 1,150.00

1913-15 ISSUE
SINGLE-LINE WATERMARK, PERF 10

- 115 ★★ **2c Rose Red, Ty. I (425).** Mint N.H. with **bottom right corner selva**ge with siderographer's initials, brilliant color on bright paper, fresh and Extremely Fine, with 2000 P.F. certificate 4.75



115



116

- 116 ★★ **3c Reddish Violet, Pink Back (426 var).** Mint N.H., vibrant color on brilliant paper, strong Pink Back, almost perfectly centered, Extremely Fine Gem example of this shade variety which is also a Pink Back, with 1994 and 2004 P.F. certificates which inexplicably do not note the Pink Back 35.00

- 117 ★★ **4c Brown (427).** Mint N.H., radiant color on post-office fresh paper, well-balanced margins, Extremely Fine, with 1997 P.F. certificate 80.00



117



118

- 118 ★★ **5c Blue (428).** Mint N.H., lively color on bright paper, wide margins, Very Fine and choice, with 1998 P.F. certificate 80.00

- 119 ★★ **6c Red Orange (429).** Mint N.H., dazzling color on bright paper, Jumbo margins, Extremely Fine Gem, a huge stamp, with 1998 P.F. certificate..... 115.00

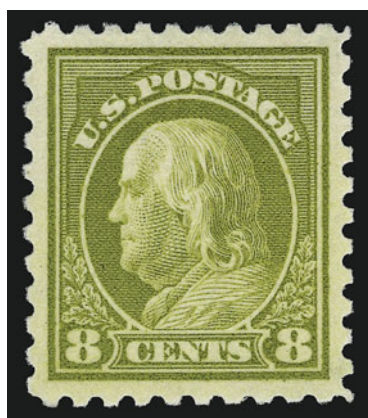


119



120

- 120 ★★ **7c Black (430).** Mint N.H. with **wide selvage** at top, intense shade and proof-like impression on bright paper, well-proportioned margins, Extremely Fine, with 1981 and 1999 P.F. certificates..... 225.00



121



122

- 121 ★★ **8c Pale Olive Green (431).** Mint N.H., pretty shade, perfectly centered with wide and balanced margins, Extremely Fine Gem, with 1996 and 2004 P.F. certificates 82.50
- 122 ★★ **8c Olive Green (431 var).** Mint N.H., pretty shade, well-balanced margins, Extremely Fine example of this sub-shade, with 1998 P.S.E. certificate..... 82.50



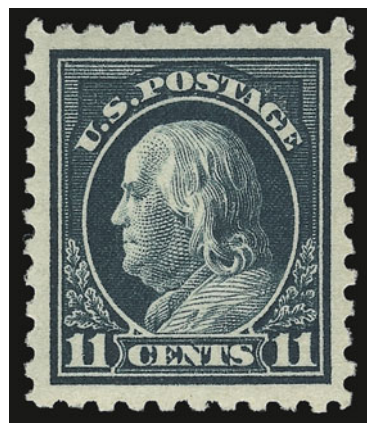
123

- 123 ★★ **9c Salmon Red (432).** Mint N.H., vibrant color on post-office fresh paper, well-balanced margins, fresh and Extremely Fine, a beautiful stamp, with 1987 and 2000 P.F. certificates 115.00

- 124 ★★ **10c Orange Yellow (433).** Mint N.H., brilliant color, choice centering with wide margins, tiny natural inclusion not mentioned on accompanying certificates, Extremely Fine, with 1993 P.S.E. and 2000 P.F. certificates 115.00

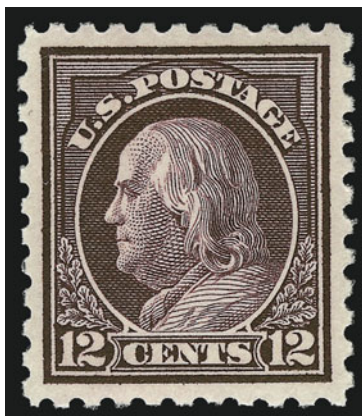


124



125

- 125 ★★ **11c Dark Green (434).** Mint N.H., deep rich color and proof-like impression nicely contrasted by bright paper, choice centering with wide and balanced margins, Extremely Fine Gem, a gorgeous stamp, with 1987 and 2000 P.F. certificates 60.00

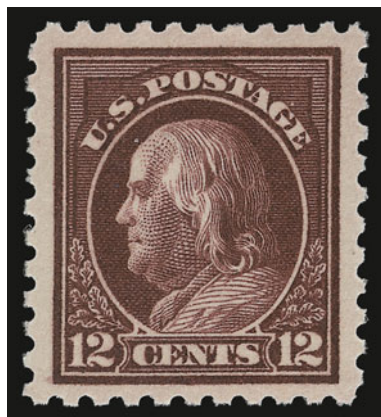


126

- 126 ★★ **12c Claret Brown (435).** Mint N.H., deep rich color which should really be classified as the Deep Claret Brown sub-shade, proof-like impression on crisp paper, perfectly centered with wide and balanced margins

EXTREMELY FINE GEM. A SUPERB MINT NEVER-HINGED EXAMPLE OF THE 1914 12-CENT PERF 10 SINGLE-LINE WATERMARK ISSUE. ONE OF ONLY TWO EXAMPLE TO BE AWARDED THE GRADE OF SUPERB 98 BY P.S.E., WHICH IS THE HIGHEST GRADE AWARDED TO DATE.

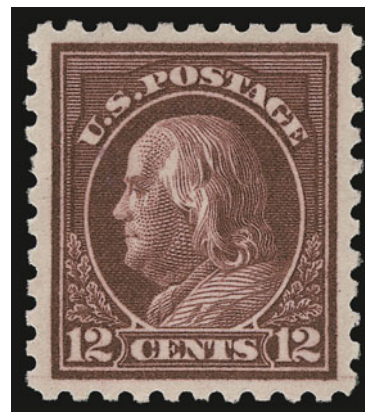
With 2003 P.F. and 2007 P.S.E. certificates (Superb 98; SMQ \$2,000.00) 65.00



127



128

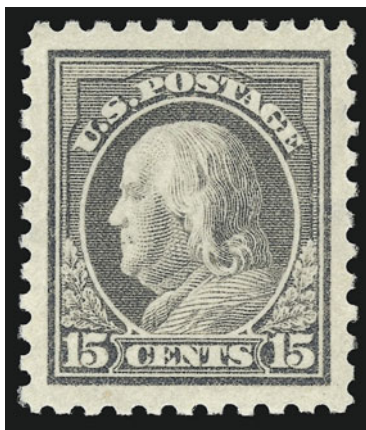


129

- 127 ★★ **12c Claret Brown (435).** Mint N.H., pretty shade, huge margins, Extremely Fine, with 1999 P.F. certificate 65.00

- 128 ★★ **12c Deep Claret Brown (435).** Mint N.H., intense shade in marked contrast to the previous lot, well-proportioned margins, fresh and Extremely Fine example of this sub-shade, light pencil notation on gum, with 1999 P.F. certificate 65.00

- 129 ★★ **12c Copper Red (435a).** Mint N.H., beautiful color in the true Copper Red shade, well-balanced margins, fresh and Extremely Fine, with 1999 P.F. certificate 75.00



130

- 130 ★★ **15c Gray (437).** Mint N.H., rich color and detailed impression, perfectly centered with unusually wide margins all around

EXTREMELY FINE GEM. A MAGNIFICENT MINT NEVER-HINGED EXAMPLE OF THE 1914 15-CENT GRAY PERF 10 SINGLE-LINE WATERMARKED ISSUE. WITHOUT QUESTION THIS IS ONE OF THE FINEST EXAMPLES IN EXISTENCE. IT HAS BEEN GRADED SUPERB 98 JUMBO BY P.S.E. — THIS IS BY FAR THE HIGHEST GRADE AWARDED TO DATE, AND IS THE ONLY ONE AWARDED THIS GRADE.

With 1991 and 2000 P.F. and 2007 P.S.E. certificates (Superb 98 Jumbo; unpriced in SMQ in any grade higher than 98, SMQ \$6,000.00 as 98). The next-highest grade in the P.S.E. Population Report is 95..... 300.00



131

- 131 ★★ **20c Ultramarine (438).** Mint N.H., bright color on post-office fresh paper, choice centering with well-balanced margins, Extremely Fine Gem, a gorgeous stamp of extraordinary freshness, with 2004 P.F. certificate..... 500.00



132

- 132 ★★ **30c Orange Red (439).** Mint N.H. with **bottom right corner selvage** with siderographer's initials, vivid color as fresh as the day it was printed, wide margins
EXTREMELY FINE GEM. A BEAUTIFUL CORNER-MARGIN EXAMPLE OF THE 30-CENT 1914 PERF 10 ISSUE ON WATERMARKED PAPER.
With 1998 P.F. certificate..... 600.00



133

133 ★★ **50c Violet (440).** Mint N.H., deep rich color on bright paper, perfectly centered with wide and balanced margins all around

EXTREMELY FINE GEM. A SUPERB MINT NEVER-HINGED EXAMPLE OF THE SINGLE-LINE WATERMARKED 50-CENT PERF 10 FRANKLIN ISSUE IN WHAT IS PROBABLY THE FINEST CONDITION ATTAINABLE. THIS STAMP HAS BEEN AWARDED THE GRADE OF SUPERB 98 BY P.S.E.

With 2002 P.F. and 2007 P.S.E. certificates (Superb 98; SMQ \$16,400.00). Only one other has achieved this grade, which is the highest awarded to date. 1,300.00

1914 COIL ISSUE
SINGLE-LINE WATERMARK, PERF 10

- 134 ★★ **1c Green, Coil (441).** Mint N.H. guide line pair, deep rich color, choice centering with wide and balanced margins, Extremely Fine Gem, with 2000 P.F. certificate 17.50



135

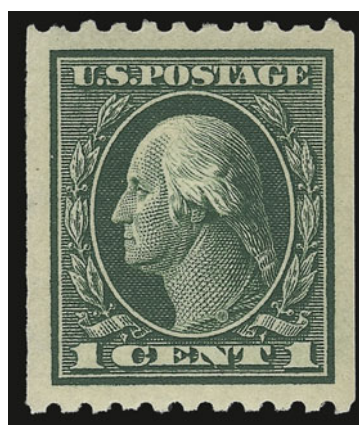


134

- 135 ★★ **1c Green, Coil (441).** Mint N.H. pair, intense shade and impression, huge margins, Extremely Fine Gem, with 2001 P.F. certificate..... 5.75



136



137

- 136 ★★ **1c Green, Coil (441).** Mint N.H., rich color, detailed impression, perfectly centered with huge margins, Extremely Fine Gem, with 2007 P.S.E. certificate (Superb 98 Jumbo; unpriced in SMQ in any grade higher than 98, SMQ \$90.00 as 98)..... 2.00
- 137 ★★ **1c Green, Coil (441).** Mint N.H., deep rich color, perfectly centered with Jumbo margins, Extremely Fine Gem, a phenomenal stamp, with 2000 P.F. certificate 2.00



138

- 138 ★★ **2c Carmine, Ty. I, Coil (442).** Mint N.H. guide line pair, brilliant color, essentially perfectly centered, Extremely Fine Gem, a magnificent Mint N.H. guide line pair of this issue, ex Killien, with 1996 P.F. and 2006 P.S.E. certificates (XF-Superb 95; SMQ \$540.00), only one has graded higher and only one other shares this grade..... 130.00

- 139 ★★ **2c Carmine, Ty. I, Coil (442).** Mint N.H. pair, brilliant color on bright paper, wide and balanced margins, Extremely Fine Gem, with 1975 A.P.S. and 2000 P.F. certificates 55.00



139



140

- 140 ★★ **2c Carmine, Ty. I, Coil (442).** Mint N.H., mathematically perfect centering with wide margins, brilliant color, Extremely Fine Gem, a superb example of this issue, with 1995 and 2000 P.F. and 2007 P.S.E. certificates (Gem 100; unpriced as 100 in SMQ, SMQ \$220.00 as 98), only one other has attained Gem 100 status..... 21.00



141

- 141 ★★ **1c Green, Coil (443).** Mint N.H. guide line pair, bright shade, choice centering with wide margins, fresh and Extremely Fine, with 1998 P.S.E. and 2000 P.F. certificates, this would surely grade highly..... 325.00



142

- 142 ★★ **1c Green, Coil (443).** Mint N.H. pair, rich color on bright paper, beautiful centering with wide and balanced margins, Extremely Fine, a beautiful pair, with 1996 and 1998 P.F. certificates..... 160.00

- 143 ★★ **1c Green, Coil (443).** Mint N.H., intense shade on bright paper, tiny natural gum skips, Very Fine and choice, with 2000 P.F. certificate 65.00



143



144

- 144 ★★ **2c Carmine, Coil (444).** Mint N.H. guide line pair, deep rich color and proof-like impression, beautiful centering with wide margins all around

EXTREMELY FINE. A GORGEOUS MINT NEVER-HINGED GUIDE LINE PAIR OF THE 1914 2-CENT SINGLE-LINE WATERMARK HORIZONTAL COIL, SCOTT 444.

With 2004 P.F. and 2007 P.S.E. certificates (XF-Superb 95; SMQ \$2,750.00). This is the highest grade awarded to date and only two others share this grade..... 675.00



145

- 145 ★★ **2c Carmine, Coil (444).** Mint N.H. pair, glowing color on bright paper, almost perfectly centered, Extremely Fine Gem, a phenomenal pair, with 1993 P.S.E. and 2000 P.F. certificates, the former as strip of four 275.00



146

- 146 ★★ **2c Carmine, Coil (444).** Mint N.H., radiant color, wide and balanced margins, Extremely Fine, with 2000 P.F. certificate 110.00



147

- 147 ★★ **3c Violet, Coil (445).** Mint N.H. guide line pair, deep rich color and proof-like impression on bright paper, beautiful centering with wide margins

EXTREMELY FINE GEM. AN OUTSTANDING MINT NEVER-HINGED PAIR OF THE 3-CENT SINGLE-LINE WATERMARK PERF 10 COIL, SCOTT 445.

According to Johl (p. 143) this issue was mainly used for special mailing purposes such as samples and pamphlets which were sent out in large quantities by individual mailers and resulted in limited distribution among collectors.

Ex Drucker. With 1982 and 2002 P.F. and 2007 P.S.E. certificates (XF-Superb 95; SMQ \$9,900.00). This is the only Mint N.H. line pair to achieve this grade, the highest awarded to date. 2,800.00



148

- 148 ★★ **3c Violet, Coil (445).** Mint N.H. pair, deep rich color and proof-like impression on bright paper, almost perfectly centered with Jumbo margins

EXTREMELY FINE GEM. A SUPERB MINT NEVER-HINGED PAIR OF THE 3-CENT 1914 HORIZONTAL COIL, SCOTT 445. THIS IS THE HIGHEST GRADE AWARDED TO DATE, AND THE ONLY EXAMPLE TO ACHIEVE THIS LOFTY GRADE (THE NEXT HIGHEST GRADE IS 80).

Ex Killien. With 1993 and 1997 P.F. and 2006 P.S.E. certificates (XF-Superb 95 Jumbo; SMQ \$4,500 as 95, \$7,250.00 as 98) 1,250.00

- 149 ★★ **3c Violet, Coil (445).** Mint N.H., bright color and crisp impression, Jumbo margins, fresh and Extremely Fine, with 1991 and 2000 P.F. certificates 550.00



149



150

- 150 ★★ **4c Brown, Coil (446).** Mint N.H. guide line pair, rich color, detailed impression, wide margins

EXTREMELY FINE. A BEAUTIFUL MINT NEVER-HINGED GUIDE LINE PAIR OF THE 1914 4-CENT PERF 10 SINGLE-LINE WATERMARK COIL, SCOTT 446.

With 1988 and 2000 P.F. certificates..... 1,600.00

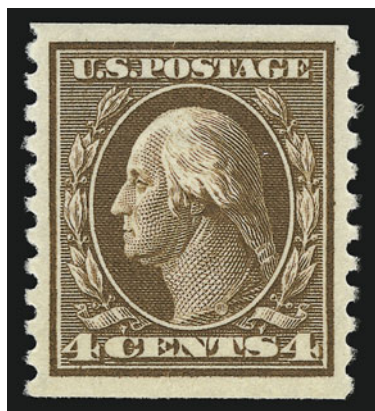


151

- 151 ★★ **4c Brown, Coil (446).** Mint N.H. pair, bright color, perfectly centered with Jumbo margins all around

EXTREMELY FINE GEM. A MAGNIFICENT PAIR OF THE 1914 4-CENT PERF 10 SINGLE-LINE WATERMARK COIL, SCOTT 446. THIS PAIR HAS BEEN AWARDED THE GRADE OF SUPERB 98 JUMBO BY P.S.E.

With 1995 and 2003 P.F. and 2007 P.S.E. certificates (Superb 98 Jumbo; unpriced in SMQ in any grade higher than 98, SMQ \$4,400.00 as 98). This is the highest grade awarded to date, and this is the only example to achieve this lofty grade 700.00



152

- 152 ★★ **4c Brown, Coil (446).** Mint N.H., bright shade, choice centering with unusually wide margins, Extremely Fine, with 1998 P.F. and 2007 P.S.E. certificates (XF-Superb 95; SMQ \$1,250.00), this is the highest grade awarded to date for a single (only two others share this grade)..... 300.00



153

- 153 ★★ **5c Blue, Coil (447).** Mint N.H. guide line pair, almost perfectly centered with wide and balanced margins, deep rich color on post-office fresh paper

EXTREMELY FINE GEM. A SUPERB MINT NEVER-HINGED GUIDE LINE PAIR OF THE 1914 5-CENT PERF 10 SINGLE-LINE WATERMARK COIL, SCOTT 447, WHICH HAS BEEN AWARDED THE GRADE OF SUPERB 98 BY P.S.E.

With 1999 P.F. and 2007 P.S.E. certificates (Superb 98; SMQ \$3,200.00). Only one other has been given this grade, which is the highest awarded to date..... 550.00

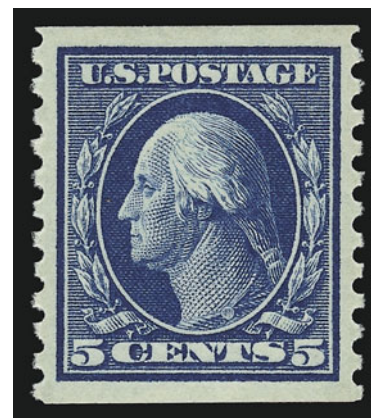


154

- 154 ★★ **5c Blue, Coil (447).** Mint N.H. pair, intense shade on bright paper, beautiful centering with wide margins, fresh and Extremely Fine, with 2000 P.F. and 2000 and 2007 P.S.E. certificates (XF-Superb 95; SMQ \$900.00), only one pair has graded higher to date.....

..... 240.00

- 155 ★★ **5c Blue, Coil (447).** Mint N.H., rich color and proof-like impression on bright paper, perfect centering with wide margins, Extremely Fine Gem, with 1995 P.F. and 2007 P.S.E. certificates (Superb 98; SMQ \$760.00), only one other has graded 98..... 110.00



155

1915 ROTARY PRESS COIL ISSUE



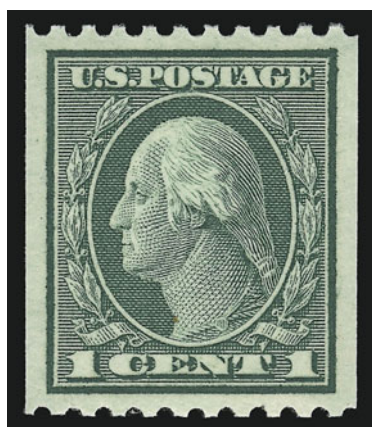
156

- 156 ★★ **1c Green, Coil (448).** Mint N.H. joint line pair, bright color, Very Fine and choice, with 1998 P.F. certificate 110.00



157

- 157 ★★ **1c Green, Coil (448).** Mint N.H. pair, rich color and detailed impression, almost perfectly centered with wide margins, Extremely Fine, a superb pair, with 2000 P.F. and 2007 P.S.E. certificates (XF-Superb 95; SMQ \$235.00), this is the highest grade to date (three reported)..... 40.00



158

- 158 ★★ **1c Green, Coil (448).** Mint N.H., bright shade and detailed impression, wide and balanced margins, fresh and Extremely Fine, with 2000 P.F. certificate. 16.00



159

159 ★★ **2c Red, Ty. I, Coil (449).** Mint N.H. joint line pair, exceptional centering with wide margins all around, brilliant color and detailed impression.

EXTREMELY FINE. AN EXCEEDINGLY RARE MINT NEVER-HINGED JOINT LINE PAIR OF THE 1915 2-CENT TYPE I VERTICAL COIL. AN OUTSTANDING RARITY.

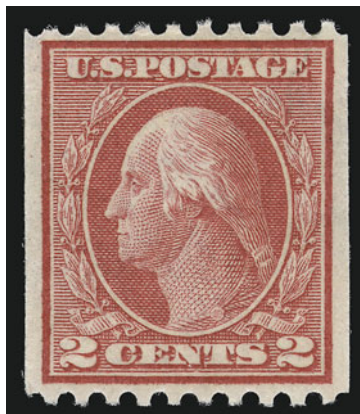
Type I rotary press stamps were produced using the same master dies as had been used for flat plate printings. However, due to the curve of the plate to fit the rotary press, the impressions lacked some of the details of the flat plate printings. New dies were made with strengthened lines, resulting in the Type II stamps. After plate wear was noticed, further strengthening was necessary, resulting in the Type III stamps. Scott 449 was not produced until almost a year and a half after the Type I horizontal coil, Scott 453. Due to the unpopularity of vertical coils, this Type I stamp was in production for only a short period of time before being discontinued. The joint line pair offered here, in Mint N.H. condition and with such choice centering and color, is a major rarity. We doubt whether more than a handful exist in such condition.

With 1999 P.F. certificate 32,500.00



160

- 160 ★ **2c Red, Ty. I, Coil (449).** Pair, bottom stamp Mint N.H., top stamp lightly hinged, glowing color, as fresh as the day it was printed, choice centering with unusually wide and balanced margins
- EXTREMELY FINE. A BEAUTIFUL PAIR OF THE 2-CENT TYPE I VERTICAL COIL, SCOTT 449. ESPECIALLY DESIRABLE WITH THE BOTTOM STAMP IN MINT NEVER-HINGED CONDITION.
- Bottom stamp with Ward backstamp. With 1998 P.F. certificate. Scott Retail as singles....
 8,550.00



161

- 161 ★★ **2c Red, Ty. I, Coil (449).** Mint N.H., bright color, wide margins for this difficult issue
EXTREMELY FINE. A BEAUTIFUL AND SCARCE MINT NEVER-HINGED EXAMPLE OF THE
2-CENT TYPE I ROTARY COIL, SCOTT 449.
With 1998 P.F. and 2007 P.S.E. certificates (XF 90; SMQ \$10,800.00). This is the highest
grade awarded to date and the only example to achieve this grade. 6,500.00



162



163



164

- 162 ★★ **2c Carmine, Ty. III, Coil (450).** Mint N.H. joint line pair, glowing color on post-office fresh paper, choice centering with wide margins, Extremely Fine Gem, a gorgeous Mint N.H. joint line pair, with 2000 P.F. certificate 350.00
- 163 ★★ **2c Carmine, Ty. III, Coil (450).** Mint N.H. pair, radiant color on bright paper, choice centering with well-balanced margins, Extremely Fine, with 2000 P.F. certificate . 65.00
- 164 ★★ **2c Carmine, Ty. III, Coil (450).** Mint N.H., radiant color, wide and balanced margins, Extremely Fine, with 2000 P.F. certificate..... 27.50

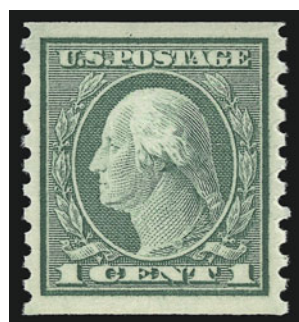


165



166

- 165 ★★ **1c Green, Coil (452).** Mint N.H. joint line pair, brilliant color, crisp impression, wide and balanced margins, Extremely Fine Gem, with 1987 and 2001 P.F. certificates 160.00
- 166 ★★ **1c Green, Coil (452).** Mint N.H. pair, brilliant color, fresh and Extremely Fine, with 2000 P.F. certificate 55.00



167

- 167 ★★ **1c Green, Coil (452).** Mint N.H., brilliant color, perfect centering with well-proportioned margins, Extremely Fine Gem, with 1999 and 2000 P.F. and 2007 P.S.E. certificates (Superb 98; SMQ \$220.00), this is the highest grade awarded and only one other shares this grade 21.00



168

- 168 ★★ **2c Carmine Rose, Ty. I, Coil (453).** Mint N.H. joint line pair, beautifully centered, rich color on white paper

EXTREMELY FINE. A SUPERB MINT NEVER-HINGED JOINT LINE PAIR OF SCOTT 453.

The Type I rotary press stamps were produced using the same master dies as had been used for flat plate printings. However, due to the curve of the plate to fit the rotary press, the impressions lacked some of the details of the flat plate printings. This printing process made it very difficult for well-centered examples to be produced. New dies were made with strengthened lines, resulting in the Type II stamps.

With 1997 P.S.E. and 2006 P.F. certificates 1,550.00



169

- 169 ★★ **2c Carmine Rose, Ty. I, Coil (453).** Mint N.H. pair, radiant color, well-proportioned margins, fresh and Extremely Fine, with 1994 P.F. certificate 675.00

- 170 ★★ **2c Carmine Rose, Ty. I, Coil (453).** Mint N.H., vibrant color, wide margins, Extremely Fine, with 2000 P.F. certificate..... 325.00



170



171

- 171 ★★ 2c Red, Ty. II, Coil (454). Mint N.H. joint line pair, choice centering with wide margins, brilliant color, fresh and Extremely Fine, with 1992 and 2000 P.F. certificates, the former as strip of four 900.00



172

- 172 ★★ 2c Red, Ty. II, Coil (454). Mint N.H. pair, brilliant color, beautiful centering with wide and well-balanced margins, fresh and Extremely Fine, with 1998 A.P.S. and 2000 P.F. certificates..... 375.00



173

- 173 ★★ 2c Red, Ty. II, Coil (454). Mint N.H., intense shade, Very Fine and choice, with 1999 and 2000 P.F. certificates 175.00



174

- 174 ★★ **2c Carmine, Ty. III, Coil (455).** Mint N.H. joint line pair, brilliant color, almost perfectly centered with wide margins, Extremely Fine Gem, with 1994 P.F. certificate 110.00



175

- 175 ★★ **2c Carmine, Ty. III, Coil (455).** Mint N.H. pair, brilliant color, perfectly centered with wide margins, Extremely Fine Gem, a beautiful pair, with 2000 P.F. and 2007 P.S.E. certificates (Superb 98; SMQ \$435.00), this is the only example to achieve this lofty grade, which is the highest grade awarded to date 45.00

- 176 ★★ **2c Carmine, Ty. III, Coil (455).** Mint N.H., brilliant color, well-balanced margins, fresh and Extremely Fine, a pretty stamp, with 2000 P.F. certificate 19.00



176



177

- 177 ★★ **3c Violet, Type I, Coil (456).** Mint N.H. joint line pair, choice centering with wide margins and part of adjoining stamps at sides, fresh color and detailed impression
EXTREMELY FINE. A SUPERB MINT NEVER-HINGED JOINT LINE PAIR OF THE 1916 3-CENT HORIZONTAL COIL.

With 1985 and 2000 P.F. certificates..... 2,600.00



178

- 178 ★★ **3c Violet, Coil (456).** Mint N.H. pair, choice centering with wide and balanced margins all around, fresh color and detailed impression
EXTREMELY FINE GEM. A SUPERB MINT NEVER-HINGED PAIR OF THE 1916 3-CENT HORIZONTAL COIL.

With 1983 and 1999 P.F. and 2007 P.S.E. certificates (XF-Superb 95; SMQ \$4,350.00). Only one pair has graded higher in the P.S.E. Population Report..... 1,250.00



179

- 179 ★★ **3c Violet, Coil (456).** Mint N.H., lively color on bright paper, beautiful centering, fresh and Extremely Fine, a pretty stamp, with 1991 and 2004 P.F. certificates 525.00



180

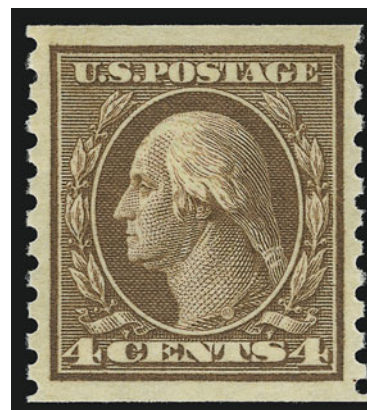
- 180 ★★ **4c Brown, Coil (457).** Mint N.H. joint line pair, bright color, Very Fine and choice, with 1997 P.S.E. and 2000 P.F. certificates..... 325.00



181

- 181 ★★ **4c Brown, Coil (457).** Mint N.H. pair, pretty shade, well-balanced margins, fresh and Extremely Fine, with 1993 and 1997 P.F. certificates, the former as strip of four..... 130.00

- 182 ★★ **4c Brown, Coil (457).** Mint N.H., brilliant color, huge and balanced margins, Extremely Fine Gem, with 2000 P.F. and 2007 P.S.E. certificates (XF-Superb 95; SMQ \$210.00), only two singles have graded higher to date 55.00



182



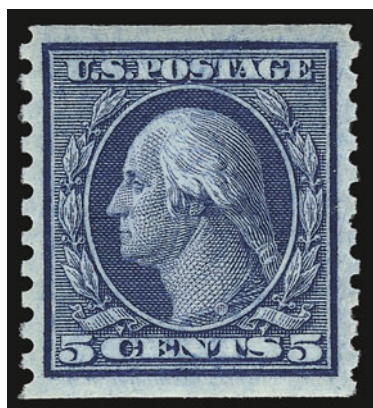
183

- 183 ★★ **5c Blue, Coil (458).** Mint N.H. joint line pair, deep rich color and detailed impression, beautiful centering with wide margins, Extremely Fine Gem, a beautiful joint line pair, with 1988 and 2000 P.F. and 2007 P.S.E. certificates (XF-Superb 95; SMQ \$1,350.00), only one joint line pair has graded higher 375.00



184

- 184 ★★ **5c Blue, Coil (458).** Mint N.H. pair, deep rich color and proof-like impression, perfectly centered with unusually wide and balanced margins, Extremely Fine Gem, a magnificent Mint N.H. pair, with 2004 P.F. and 2007 P.S.E. certificates (Superb 98; SMQ \$940.00), this is the highest grade awarded to date and it shares this grade with only one other pair 160.00



185

- 185 ★★ **5c Blue, Coil (458).** Mint N.H., rich color and detailed impression, wide margins, Extremely Fine, with 2000 P.F. certificate 65.00

1914 IMPERFORATE HORIZONTAL COIL



186

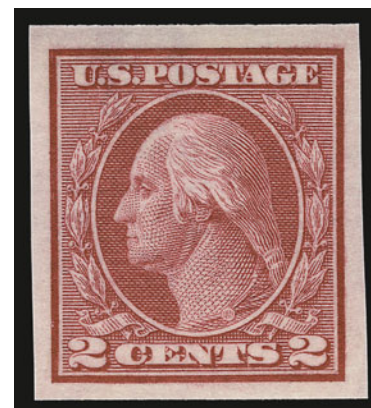
- 186 ★★ **2c Carmine, Ty. I, Imperforate Coil (459).** Mint N.H. joint line pair **without the customary crease between stamps**, beautiful large margins, fresh, vivid color
EXTREMELY FINE. PARTICULARLY DESIRABLE JOINT LINE PAIR IN THIS STELLAR CONDITION
With 1997 P.S.E. and 2000 P.F. certificates 2,200.00



187

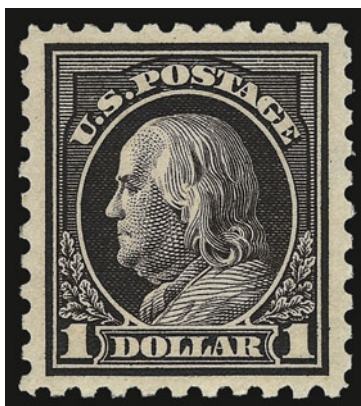
- 187 ★★ **2c Carmine, Ty. I, Imperforate Coil (459).** Mint N.H. pair, radiant color, large and even margins, Extremely Fine, with 2000 P.F. certificate..... 725.00

- 188 ★★ **2c Carmine, Ty. I, Imperforate Coil (459).** Mint N.H., brilliant color, large and even margins, fresh and Extremely Fine, with 1997 P.F. certificate 350.00



188

1915 DOUBLE-LINE WATERMARK PERF 10 ISSUE



189

- 189 ★★ **\$1.00 Violet Black (460).** Mint N.H., deep rich color and proof-like impression, perfectly centered with wide margins all around

EXTREMELY FINE GEM. A SUPERB MINT NEVER-HINGED EXAMPLE OF THE THE PERF 10 DOUBLE-LINE WATERMARK \$1.00 FRANKLIN.

The change from 12-gauge to 10-gauge perforations occurred after single-line watermarked paper was introduced. However, unlike the other denominations, the \$1.00 was never printed on the new single-line watermark paper. The 50c and \$1.00 denominations were originally printed in plates of 200 subjects, and the Bureau still had stocks of the double-line watermark paper in this size on hand. The other denominations were printed in sheets of 400. The Bureau continued to use up their stocks of this paper, but the stamps were perforated on the newly-outfitted Perf 10 perforating machines.

With 1991 and 2000 P.F. certificates..... 1,850.00

1915 SINGLE-LINE WATERMARK PERF 11 ISSUE



190

- 190 ★★ **2c Pale Carmine Red, Ty. I (461).** Mint N.H., brilliant color on post-office fresh paper, almost perfectly centered with wide and balanced margins

EXTREMELY FINE GEM. A GORGEOUS MINT NEVER-HINGED EXAMPLE OF THE RARE 2-CENT PALE CARMINE RED PERF 11 ON SINGLE-LINE WATERMARKED PAPER, SCOTT 461.

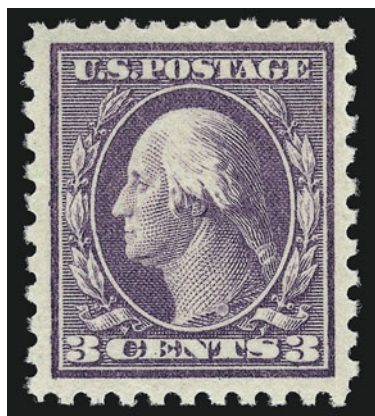
With 2002 P.F. and 2007 P.S.E. certificates (XF-Superb 95; SMQ \$2,700.00). Only one example has graded higher. 325.00

1916-17 ISSUE
UNWATERMARKED, PERF 10

- 191 ★★ **1c Green (462).** Mint N.H., brilliant color and detailed impression, perfectly centered with unusually wide margins, Extremely Fine Gem, a magnificent stamp, with 2000 P.F. and 2000 and 2007 P.S.E. certificates (Superb 98 Jumbo; unpriced in SMQ in any grade higher than 98, SMQ \$880.00 as 98), this is the only example to achieve this exalted grade, which is the highest awarded to date..... 16.00



191



192

- 192 ★★ **3c Violet (464).** Mint N.H., rich color and detailed impression on bright paper, gorgeous centering with wide and balanced margins, Extremely Fine Gem, a magnificent stamp, with 2000 P.F. and 2007 P.S.E. certificates (XF-Superb 95; SMQ \$1,650.00), this is the highest grade awarded to date and only one other has been given this grade 170.00

- 193 ★★ **4c Orange Brown (465).** Mint N.H. with plate no. at top with wide selvage, rich color on bright paper, well-balanced margins, Extremely Fine Gem, with 1996 P.F. certificate..... 100.00



193

- 194 ★★ **5c Blue (466).** Mint N.H., brilliant color on bright paper, wide margins, Very Fine and choice, with 1990 and 2000 P.F. certificates 170.00



194



195

- 195 ★★ **5c Carmine, Error (467).** Mint N.H. double error in block of twelve, natural s.e. at bottom, brilliant color, choice centering
 VERY FINE AND CHOICE. A BEAUTIFUL MINT NEVER-HINGED DOUBLE ERROR BLOCK OF THE PERF 10 5-CENT CARMINE ERROR.
 With 1993 P.F. certificate 3,400.00

- 196 ★★ **5c Carmine, Error (467).** Mint N.H., brilliant color on bright paper, tiny natural inclusion at bottom not mentioned on accompanying certificate, tiny natural perf indent at bottom left, Extremely Fine, with 1998 P.F. and 1999 P.S.E. certificates 1,100.00



196



197

- 197 ★★ **6c Red Orange (468).** Mint N.H., dazzling color as fresh as the day it was printed on post-office fresh paper, tiny natural inclusion, Extremely Fine, with 1990 and 2000 P.F. certificates..... 210.00

- 198 ★★ **7c Black (469).** Mint N.H., intense shade and proof-like impression on bright paper, superb centering, Extremely Fine Gem, with 1998 P.F. certificate 290.00



198



199

- 199 ★★ **8c Olive Green (470).** Mint N.H. with **part imprint** at bottom, pretty color, wide margins, fresh and Extremely Fine, with 1998 P.F. certificate 135.00



200

- 200 ★★ **9c Salmon Red (471).** Mint N.H., luminous color on crisp paper, well-balanced margins, Extremely Fine Gem, a beautiful stamp, with 1984 and 1999 P.F. certificates 135.00



201

- 201 ★★ **10c Orange Yellow (472).** Mint N.H., vibrant color as fresh as the day it was printed, perfectly centered with unusually wide and balanced margins

EXTREMELY FINE GEM. THIS IS EASILY ONE OF THE FINEST MINT NEVER-HINGED EXAMPLES OF THE 1916 10-CENT PERF 10 ON UNWATERMARKED PAPER. A TRUE CONDITION RARITY, THIS PHENOMENAL STAMP HAS BEEN GRADED SUPERB 98 BY P.S.E. — THIS IS THE HIGHEST GRADE AWARDED TO DATE, AND THIS IS THE ONLY EXAMPLE TO ACHIEVE THIS ILLUSTRIOUS GRADE.

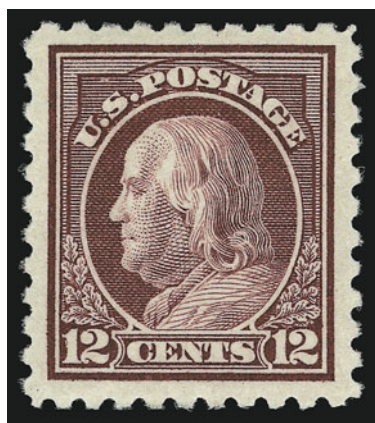
Unwatermarked paper arrived at the BEP during the transition from Perf 10 to Perf 11 gauge. The use of unwatermarked paper in conjunction with the old Perf 10 gauge was not expected by collectors, and the supply available to philatelists was relatively small.

Ex Killien. With 1997 P.F. and 2006 P.S.E. certificates (Superb 98; SMQ \$6,850.00). 250.00

- 202 ★★ **11c Dark Green (473).** Mint N.H., deep rich color on bright paper, well-proportioned margins, fresh and Extremely Fine, with 1991 and 2001 P.F. certificates 95.00



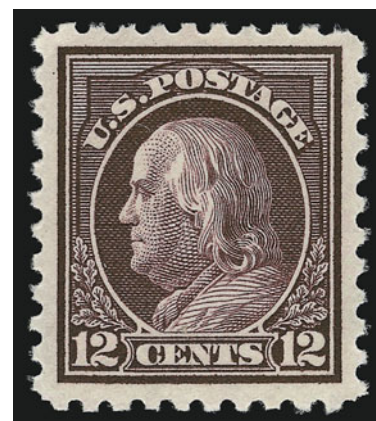
202



203

- 203 ★★ **12c Claret Brown (474).** Mint N.H., brilliant color on post-office fresh paper, beautiful centering with wide and balanced margins, Extremely Fine Gem, a beautiful stamp, with 1999 P.F. and 1998 and 2007 P.S.E. certificates (XF-Superb 95; SMQ \$1,450.00), only one stamp has graded higher on the P.S.E. Population Report 135.00

- 204 ★★ **12c Claret Brown (474).** Mint N.H., deep rich color on bright paper, choice centering with wide and balanced margins, Extremely Fine, with 2003 P.F. certificate, Scott Catalogue does not list a Deep Claret Brown for this issue (as they do for other 12c) but perhaps they should 135.00



204



205

205 ★★ **15c Gray (475).** Mint N.H., brilliant color on post-office fresh paper, perfectly centered with wide and balanced margins

EXTREMELY FINE GEM. A MAGNIFICENT MINT NEVER-HINGED EXAMPLE OF THE 1916 15-CENT PERF 10 UNWATERMARKED ISSUE, WHICH HAS ACHIEVED THE GRADE OF SUPERB 98 BY P.S.E. — THE HIGHEST GRADE AWARDED TO DATE.

With 1988 and 2000 P.F. and 2007 P.S.E. certificates (Superb 98; SMQ \$9,000.00). Only one other has received this lofty grade. 440.00



206

206 ★★ **20c Light Ultramarine (476).** Mint N.H., brilliant color on bright paper, perfectly centered

EXTREMELY FINE GEM. THIS IS WITHOUT QUESTION ONE OF THE FINEST EXISTING MINT NEVER-HINGED EXAMPLES OF THE 20-CENT UNWATERMARKED PERF 10 ISSUE, SCOTT 476. THIS PHENOMENAL STAMP HAS EARNED THE LOFTY GRADE OF SUPERB 98 BY P.S.E., WHICH IS THE HIGHEST GRADE AWARDED TO DATE.

Ex Killien. With 1985 and 1999 P.F. and 2006 P.S.E. certificates (Superb 98; SMQ \$11,100.00). Only one other shares this grade..... 575.00



207

207 ★★ **30c Orange Red, Perf 10 (476A).** Position 77 from Plate No. 6911, Mint N.H., vivid color on post-office fresh paper

FRESH AND VERY FINE. AN OUTSTANDING EXAMPLE OF THE VERY RARE 30-CENT PERF 10 WASHINGTON-FRANKLIN ON UNWATERMARKED PAPER.

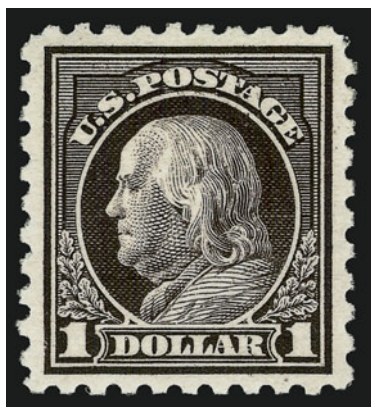
Despite the recent P.S.E. claim that a watermark has been “discovered” on one stamp from one of the 476A panes, the vestige of a watermark on the dandy roll used to make unwatermarked paper has been known to philatelists since 1918. The unwatermarked paper supplied to the Bureau for printings of sheets that were perforated gauge 10 and 11 is known to have had “ghost” watermarks where the brass pieces were removed. We currently side with the group of philatelists who believe that the 30c Perf 10 Unwatermarked, Scott 476A, was legitimately issued.

With 1984 and 2000 P.F. certificates..... 9,000.00



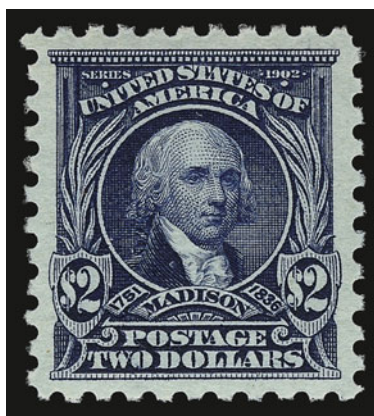
208

- 208 ★★ **50c Light Violet (477).** Mint N.H., brilliant color on bright paper, wide margins
 VERY FINE AND CHOICE MINT NEVER-HINGED EXAMPLE OF THE 50-CENT PERF 10 FRANKLIN ISSUE ON UNWATERMARKED PAPER.
 This 50c issue was only available in post-office stocks for a very short period of time, because it was released only three weeks prior to the beginning of the new Perf 11 series.
 Ex Piedmont. With 1987 and 2001 P.F. certificates 2,400.00



209

- 209 ★★ **\$1.00 Violet Black (478).** Mint N.H., deep rich color and proof-like impression on bright paper, choice centering with well-balanced margins
 EXTREMELY FINE MINT NEVER-HINGED EXAMPLE OF THE \$1.00 PERF 10 UNWATERMARKED FRANKLIN ISSUE. A BEAUTIFUL STAMP.
 This stamp was only used for less than six months before the Perf 11 stamps were produced. Due to its short production run and the only difference between this and the previous \$1.00 stamp (Scott 460) being the watermark, many collectors and dealers of the day overlooked this stamp.
 With 1999 P.F. certificate 1,800.00



210

- 210 ★★ **\$2.00 Dark Blue (479).** Mint N.H., intense shade and impression, wide margins, Extremely Fine, ex Piedmont, with 1998 P.F. certificate 550.00



211

- 211 ★★ **\$5.00 Light Green (480).** Mint N.H., brilliant color and detailed impression, choice centering with Jumbo margins
 EXTREMELY FINE GEM. A SUPERB MINT NEVER-HINGED EXAMPLE OF THE \$5.00 MARSHALL 1917 PERF 10 ISSUE.
 With 1992 and 2002 P.F. and 2007 P.S.E. certificates (XF-Superb 95 Jumbo; SMQ \$2,050.00 as 95, \$3,350.00 as 98)..... 450.00

1916-17 IMPERFORATE ISSUE



212

212 2c Deep Rose, Ty. Ia, Imperforate, Schermack Ty. III Private Perforation (482A).

Incredibly deep rich color on bright paper, with full Schermack perforations on both sides, with additional margin to left of Schermack perforations, wide margins at top and bottom, centered to left as are virtually all known examples, cancelled by perfect wavy-line machine cancel

EXTREMELY FINE GEM. THIS IS PROBABLY THE FINEST EXAMPLE OF THE 2-CENT Type Ia IMPERFORATE IN EXISTENCE. AN OUTSTANDING RARITY AND ONE OF THE RAREST STAMPS OF TWENTIETH CENTURY UNITED STATES PHILATELY.

Scott 482A, like its slightly more famous predecessor, Scott 314A, was issued imperforate by the Bureau of Engraving and Printing and sold to the Schermack Company for use in its patented stamp-affixing machines. The Schermack "Sealer and Stamper" machine typically applied stamps one at a time, and, in most cases, the hyphen-hole perfs on one side would be cut off. Unlike Scott 314A, the release of imperforate sheets printed from the experimental Type Ia plates escaped the notice of contemporary collectors, and, therefore, has a very small survival rate.

Our census of Scott 482A (published in our Zoellner sale and available at www.siegelauctions.com/enc/census/482A/482A.htm) records one pair (ex Zoellner), three covers, one unused single and 34 used singles for a total of 40 stamps.

Schermack Type III stamps are often cut into the design by the oblong perforations or miscut with one side of the perforated margin missing. This problem for collectors, which meant very little to contemporary users of the stamps, resulted from two consecutive events. First, the sheets were perforated with the Schermack holes, creating an opportunity for misalignment between the stamps. Second, when the strip of stamps was fed through the Schermack affixing machine, the cutting blade did not always align with the space between stamps. The stamp offered here is remarkable because the Schermack perforations just touch the design, and it was cut with margins well clear of the design and with Schermack perforations intact.

Census No. 482A-CAN-20. Ex Twigg-Smith. With 1989 and 2001 P.F. certificates.....
..... 15,000.00



213

213 ★★田 5c Carmine, Imperforate, Error (485). Mint N.H. double error in block of fifteen, large margins all around, luminous color

EXTREMELY FINE. A BEAUTIFUL MINT NEVER-HINGED EXAMPLE OF THE 5-CENT IMPERFORATE ERROR IN A BLOCK OF 40. AN IMPRESSIVE MULTIPLE.

During the course of production of the normal 2c plate No. 7942, three positions were noted to be defective. The plate was returned to the siderographer, who burnished out the three positions and mistakenly re-entered them using a transfer roll for the 5c stamp. The error passed unnoticed and the sheets were issued to the public Perf 10, Imperforate and Perf 11 (Scott 467, 485 and 505). The imperforate is by far the rarest of the three.

With 1998 P.F. certificate 52,500.00

1916-19 ROTARY PRESS COIL ISSUE
UNWATERMARKED, PERF 10



214



215

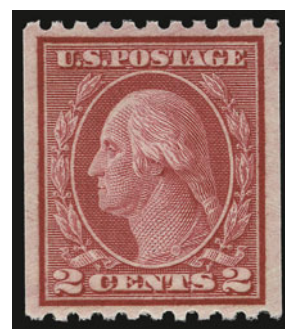
- 214 ★★ **1c Green, Coil (486).** Mint N.H. joint line pair, brilliant color, almost perfectly centered, Extremely Fine Gem..... 9.50
- 215 ★★ **1c Green, Coil (486).** Mint N.H. pair, brilliant color, perfectly centered, Extremely Fine Gem, a gorgeous Mint N.H. pair, with 2000 P.F. certificate..... 4.25



216



217



218

- 216 ★★ **2c Carmine, Ty. II, Coil (487).** Mint N.H. joint line pair, rich color and proof-like impression on bright paper, Very Fine and choice, with 1991 and 2000 P.F. certificates 250.00
- 217 ★★ **2c Carmine, Ty. II, Coil (487).** Mint N.H. pair, glowing color on crisp paper, wide and balanced margins, Extremely Fine, with 2003 P.F. certificate 65.00
- 218 ★★ **2c Carmine, Ty. II, Coil (487).** Mint N.H., choice centering, fresh color, Extremely Fine, ex Piedmont, with 2000 P.F. certificate 26.00



219



220

- 219 ★★ **2c Carmine, Ty. III, Coil (488).** Mint N.H. pair, bright color, crisp impression, Extremely Fine, with 2000 P.F. certificate..... 12.00
- 220 ★★ **3c Violet, Ty. I, Coil (489).** Mint N.H. joint line pair, brilliant color, choice centering with wide margins, fresh and Extremely Fine 70.00

- 221 ★★ **3c Violet, Ty. I, Coil (489).** Mint N.H. pair, glowing color on bright paper, wide and unusually balanced margins, Extremely Fine Gem, with 2000 P.F. certificate..... 22.50



221



222

- 222 ★★ **3c Violet, Ty. I, Coil (489).** Mint N.H., rich color and proof-like impression, perfectly centered with wide margins, Extremely Fine Gem, with 1998 P.F. certificate..... 10.00



223

223 ★★ **2c Carmine, Ty. II, Coil (491).** Mint N.H. joint line pair, rich color, detailed impression, beautiful centering for this difficult issue

VERY FINE. AN EXTREMELY RARE MINT NEVER-HINGED JOINT LINE PAIR OF THE 2-CENT ROTARY TYPE II JOINT LINE PAIR.

Unlike most other issues, the horizontal coil is actually scarcer than the vertical coil. It was in production for only a short period of time before being replaced by the Type III, Scott 492.

This coil is surprisingly rare in Mint N.H. condition. A review of our computerized records, which spans 13 years of our auctions, revealed only one other Mint N.H. joint line pair (with perfs noticeably into the design at right). We have also only offered only one Mint N.H. pair and two Mint N.H. singles.

With 1998 P.F. certificate 24,000.00



224

224 ★★ **2c Carmine, Ty. II, Coil (491).** Mint N.H. pair, rich color, detailed impression, beautiful centering for this difficult issue

EXTREMELY FINE. THIS IS EASILY ONE OF THE FINEST MINT NEVER-HINGED PAIRS OF THE 2-CENT ROTARY TYPE II IN EXISTENCE.

Unlike most other issues, the horizontal coil is actually scarcer than the vertical coil. It was in production for only a short period of time before being replaced by the Type III, Scott 492.

This coil is surprisingly rare in Mint N.H. condition. A review of our computerized records, which spans 13 years of our auctions, revealed only one other Mint N.H. pair.

With 1999 P.F. certificate 12,500.00



225

225 ★★ **2c Carmine, Ty. II, Coil (491).** Mint N.H., choice centering with well-proportioned margins, fresh color and detailed impression

VERY FINE AND CHOICE. A SUPERB MINT NEVER-HINGED EXAMPLE OF THE RARE 2-CENT TYPE II PERF 10 HORIZONTAL COIL, SCOTT 491.

As an indication of rarity, we have only offered two other Mint N.H. singles since keeping computerized records.

With 1999 and 2000 P.F. certificates, the former as a pair..... 5,000.00



226

- 226 ★★ **2c Carmine, Ty. III, Coil (492).** Mint N.H. joint line pair, brilliant color, choice centering with wide and balanced margins, Extremely Fine Gem, with 1999 P.F. and 2007 P.S.E. certificates (XF-Superb 95; SMQ \$510.00), this is the highest grade awarded to date and only two others share this grade..... 115.00



227

- 227 ★★ **3c Violet, Ty. I, Coil (493).** Mint N.H. joint line pair, radiant color, detailed impression, unusually wide margins, fresh and Extremely Fine, with 2001 P.F. certificate 230.00



228

- 228 ★★ **3c Violet, Ty. I, Coil (493).** Mint N.H. pair, intense shade, choice centering with wide and balanced margins, Extremely Fine Gem, a beautiful pair, with 2001 P.F. certificate 75.00



229

229 ★★ **3c Violet, Ty. II, Coil (494).** Mint N.H. joint line pair, beautiful color and detailed impression, gorgeous centering

EXTREMELY FINE GEM. A SUPERB MINT NEVER-HINGED JOINT LINE PAIR OF THE 3-CENT 1918 TYPE II HORIZONTAL COIL, SCOTT 494. THIS IS EASILY ONE OF THE FINEST IN EXISTENCE.

Ex Silver Lake, Cohen and Killien. With 2004 P.F. and 2005 P.S.E. certificates (XF-Superb 95; SMQ \$710.00). This is the only example to achieve this grade, which is the highest awarded to date..... 160.00



230

230 ★★ **3c Violet, Ty. II, Coil (494).** Mint N.H. pair, blazing color on bright paper, essentially perfectly centered, Extremely Fine Gem, a superb pair in every respect, with 2000 P.F. certificate..... 50.00



231



232

- 231 ★★ **4c Orange Brown, Coil (495).** Mint N.H. joint line pair, fresh color, beautiful centering with wide and balanced margins, Extremely Fine Gem, with 2000 P.F. certificate 160.00
- 232 ★★ **4c Orange Brown, Coil (495).** Mint N.H. pair, brilliant color on bright paper, gorgeous centering with wide and balanced margins, Extremely Fine Gem, with 2005 P.F. certificate..... 50.00

- 233 ★★ **4c Orange Brown, Coil (495).** Mint N.H., brilliant color, perfectly centered with huge margins, Extremely Fine Gem, with 2000 P.F. and 2007 P.S.E. certificates (Superb 98; SMQ \$210.00), this is the only single to achieve this grade, which the highest awarded to date 21.50



233



234



235

- 234 ★★ **5c Blue, Coil (496).** Mint N.H. joint line pair, brilliant color and detailed impression, choice centering with wide margins, Extremely Fine Gem, with 1999 P.F. and 2007 P.S.E. certificates (XF-Superb 95; SMQ \$290.00), only one has graded higher 65.00
- 235 ★★ **5c Blue, Coil (496).** Mint N.H. pair, bright color, choice centering with wide margins, Extremely Fine Gem, a pretty pair, with 2001 P.F. certificate 17.50



236

- 236 ★★ **10c Orange Yellow, Coil (497).** Mint N.H. joint line pair, radiant color, perfectly centered with wide and balanced margins, Extremely Fine Gem, a superb Mint N.H. joint line pair, with 2003 P.S.E. certificate (Superb 98; SMQ \$1,050.00), this is the highest grade awarded to a Scott 497 line pair and the only example to achieve this grade)..... 280.00



237

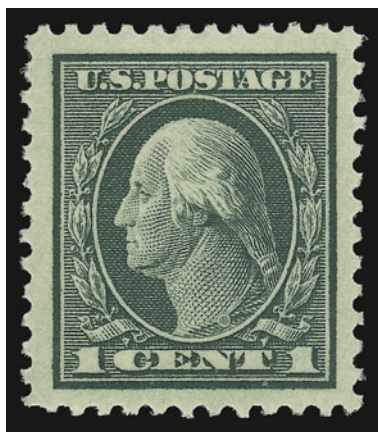
- 237 ★★ **10c Orange Yellow, Coil (497).** Mint N.H. pair, vivid color which is as fresh as the day it was printed, well-balanced margins, fresh and Extremely Fine, with 2003 P.F. certificate 95.00



238

- 238 ★★ **10c Orange Yellow, Coil (497).** Mint N.H., vibrant color, wide margins, Extremely Fine Gem, with 2000 P.F. certificate 40.00

1917-19 ISSUE
UNWATERMARKED, PERF 11



239



240

- 239 ★★ **1c Green (498).** Mint N.H., bright color and crisp impression, Jumbo margins, Extremely Fine Gem, a huge stamp, with 1995 P.S.E. certificate 0.75
- 240 ★★ **2c Rose, Ty. I (499).** Mint N.H., radiant color, perfectly centered with huge margins, Extremely Fine Gem, a superb stamp in every respect, with 1998 P.F. certificate... 0.75



241

- 241 ★★ **2c Deep Rose, Ty. Ia (500).** Mint N.H., rich color on bright paper, perfect centering with wide and balanced margins, long and full perforations all around
EXTREMELY FINE GEM. A MAGNIFICENT MINT NEVER-HINGED EXAMPLE OF THE 2-CENT DEEP ROSE TYPE Ia. A TRUE CONDITION RARITY.
The Type Ia Scott 500 was created during an experiment of the Bureau in creating a new type of transfer roll. A die was made from the old Type I transfer roll, having ten impressions on it. A new transfer roll was then made, using the new ten-impression master die. This new transfer roll was then used to create two new plates. Since this is essentially a "lossy" process, there are some noticeable differences between the plates created using this method and the old method of using one die impression to create the transfer roll.
With 1988 and 2000 P.F. and 2007 P.S.E. certificates (XF-Superb 95; SMQ \$4,000.00)....
..... 600.00



242

- 242 ★★ **3c Light Violet, Ty. I (501).** Mint N.H., rich color on bright paper, huge margins, Extremely Fine Gem, with 1992 and 2001 P.F. certificates ... 25.00

- 243 ★★ **3c Dark Violet, Ty. II (502).** Mint N.H., deep rich color on bright paper, intense impression, wide margins, Extremely Fine Gem, a superb example of this issue in the finest condition attainable, with 1997 P.F. and 2007 P.S.E. certificates (Gem 100 Jumbo; unpriced as 100 in SMQ, SMQ \$980.00 as 98), this is the only example to achieve this lofty grade to date..... 32.50



243



244

- 244 ★★ **5c Blue (504).** Mint N.H. with **plate no. 8485** at top, deep rich color, perfectly centered with Jumbo margins, Extremely Fine Gem, a massive stamp, with 2001 P.F. certificate..... 20.00

- 245 ★★田 5c Rose, Error (505). Mint N.H. double error in block of twelve, natural s.e. at bottom, brilliant color, completely free from the natural gum skips and bends that are often found on this issue

EXTREMELY FINE MINT NEVER-HINGED BLOCK OF TWELVE CONTAINING TWO EXAMPLES OF THE 5-CENT ERROR. THE BOTTOM ERROR STAMP IS A TRUE GEM.

With 1998 P.F. certificate
..... 2,250.00



245



- 246 ★★田 5c Rose, Error (505). Single Mint N.H. error in block of nine, natural s.e. at top, brilliant color, completely free from the natural gum skips and bends that are often found on this issue, Very Fine and choice, with 2002 P.F. certificate 1,150.00

246



247

- 247 ★★ **5c Rose, Error (505).** Mint N.H., radiant color, perfs intact all around and showing part of all adjoining stamps

EXTREMELY FINE MINT NEVER-HINGED
EXAMPLE OF THE PERF 11 5-CENT ROSE ERROR.

With 1998 P.F. certificate 700.00

- 248 ★★ **6c Red Orange (506).** Mint N.H., glowing color as fresh as the day it was printed, enormous margins, Extremely Fine Gem, a huge stamp, with 1996 P.F. certificate 27.50



248



249

- 249 ★★ **7c Black (507).** Mint N.H., intense shade and detailed impression, choice centering with well-balanced margins, fresh and Extremely Fine, with 2001 P.F. certificate..... 65.00

- 250 ★★ **8c Olive Bister (508).** Mint N.H., radiant color, perfectly centered with unusually wide margins, Extremely Fine Gem, a superb stamp in every respect, with 196 P.F. and 2007 P.S.E. certificates (Superb 98 Jumbo; unpriced in SMQ in any grade higher than 98, SMQ \$840.00 as 98), only one has graded higher and this is the only example to achieve this lofty grade in the P.S.E. Population Report 27.50

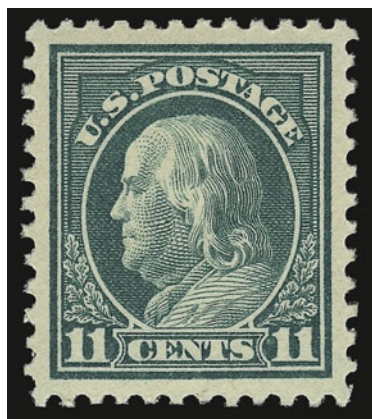


250

- 251 ★★ **9c Salmon Red (509).** Mint N.H., intense shade and impression, choice centering with unusually wide margins for this issue, Extremely Fine Gem, a gorgeous stamp, with 1996 P.F. and 2005 P.S.E. certificates (Superb 98; SMQ \$890.00), only one has graded higher to date..... 30.00



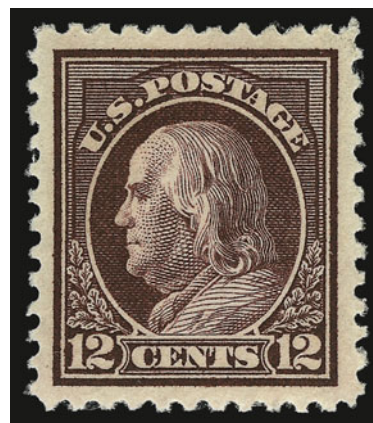
251



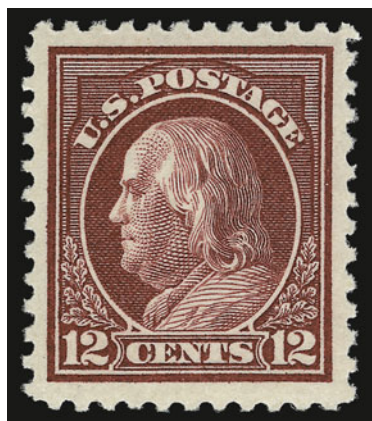
252

- 252 ★★ **11c Light Green (511).** Mint N.H., intense shade and impression on bright paper, perfectly centered with wide and balanced margins, Extremely Fine Gem, a gorgeous stamp, with 1989 and 2004 P.F. certificates 20.00

- 253 ★★ **12c Claret Brown (512).** Mint N.H., deep rich color on bright paper, beautiful centering with unusually wide margins, Extremely Fine Gem, ex Killien, with 1998 P.F. and 2006 P.S.E. certificates (Superb 98; SMQ \$650.00), only two have graded higher .. 20.00

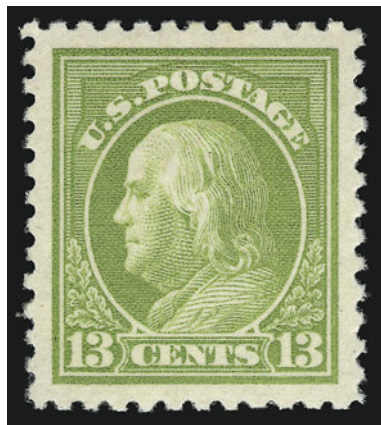


253



254

- 254 ★★ **12c Brown Carmine (512a).** Mint N.H., deep rich color on bright paper, Extremely Fine example of this distinctive shade, with 1998 P.F. certificate..... 22.50



255

- 255 ★★ **13c Apple Green (513).** Mint N.H., brilliant color which is unusually fresh and very eye-appealing, perfect centering with wide and balanced margins, Extremely Fine Gem, a gorgeous stamp, with 1999 P.F. certificate 25.00

- 256 ★★ **15c Gray (514).** Mint N.H., radiant color, crisp impression, gorgeous centering with Jumbo margins

EXTREMELY FINE GEM. A SUPERB MINT NEVER-HINGED EXAMPLE OF THE 15-CENT 1917 PERF 11 ISSUE IN THE FINEST CONDITION ATTAINABLE. THIS REMARKABLE STAMP HAS BEEN AWARDED THE GRADE OF SUPERB 98 JUMBO BY P.S.E., WHICH IS THE HIGHEST GRADE AWARDED TO DATE. IT IS THE ONLY EXAMPLE TO ACHIEVE THIS EXALTED GRADE.

With 1996 P.F. and 2006 P.S.E. certificates (Superb 98 Jumbo; unpriced in SMQ above the grade of 98, SMQ \$2,050.00 as 98) 85.00



256



257

- 257 ★★ **20c Light Ultramarine (515).** Mint N.H. with plate no. 7033 at bottom, rich color beautifully complemented by bright paper, perfectly centered with enormous margins all around

EXTREMELY FINE GEM. A MAGNIFICENT MINT NEVER-HINGED PLATE NUMBER SINGLE OF THE 20-CENT 1917 ISSUE, SCOTT 515. THIS FANTASTIC STAMP HAS BEEN AWARDED THE GRADE OF SUPERB 98 JUMBO BY P.S.E. — THIS IS THE HIGHEST GRADE AWARDED TO DATE, AND THIS IS THE ONLY EXAMPLE TO ACHIEVE THIS LOFTY GRADE.

With 1995 P.F. and 2007 P.S.E. certificates (Superb 98 Jumbo; unpriced in SMQ above the grade of 98, SMQ \$2,300.00 as 98) 95.00

- 258 ★★ **30c Orange Red (516).** Mint N.H. with **plate no. 6927** at top with wide selvage, vibrant color on bright paper, choice centering, Extremely Fine Gem, a beautiful stamp, with 1999 P.F. certificate..... 85.00



258

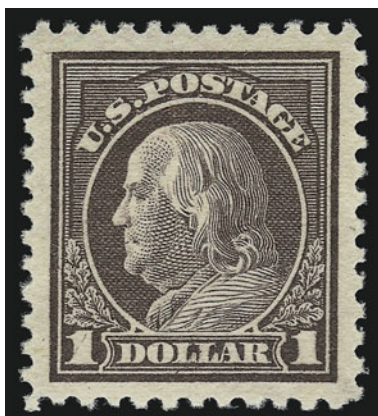


259

- 259 ★★ **50c Red Violet (517).** Mint N.H., brilliant color and detailed impression, perfect centering with wide and balanced margins, long and full perforations all around

EXTREMELY FINE GEM. A SUPERB MINT NEVER-HINGED EXAMPLE OF THE 50-CENT 1917 ISSUE, SCOTT 517, WHICH HAS BEEN AWARDED THE GRADE OF SUPERB 98. ONLY TWO HAVE GRADED HIGHER.

With 2001 P.F. and 2001 and 2007 P.S.E. certificates (Superb 98; SMQ \$2,600.00)..... 150.00

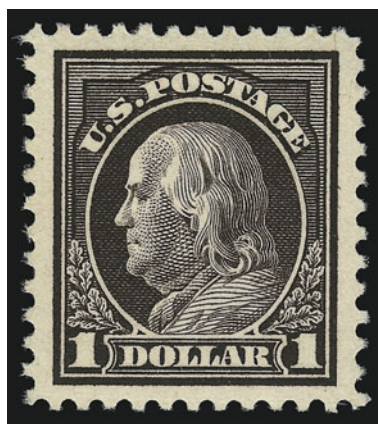


260

- 260 ★★ **\$1.00 Violet Brown (518).** Mint N.H., beautiful warm color which is in marked contrast to the example offered in the following lot, perfectly centered with wide and balanced margins, long and full perforations all around

EXTREMELY FINE GEM. A SUPERB MINT NEVER-HINGED EXAMPLE OF THE \$1.00 1917 ISSUE, SCOTT 518, IN THE VIOLET BROWN SHADE. THIS STAMP HAS BEEN AWARDED THE GRADE OF SUPERB 98 JUMBO BY P.S.E., WHICH IS THE HIGHEST GRADE AWARDED TO DATE.

With 1999 and 2007 P.S.E. certificates (Superb 98 Jumbo; unpriced in SMQ in any grade higher than 98, SMQ \$2,350.00 as 98). Only four have been awarded this lofty grade, including one in the Violet Black sub-shade offered in the following lot..... 120.00



261

- 261 ★★ **\$1.00 Violet Black (518 var).** Mint N.H., deep rich color and proof-like impression on bright paper, perfectly centered with uncommonly wide margins, beautiful perforations

EXTREMELY FINE GEM. A GORGEOUS MINT NEVER-HINGED EXAMPLE OF THE \$1.00 1917 ISSUE, SCOTT 518, IN THE VIOLET BLACK SUB-SHADE. THIS STAMP HAS BEEN AWARDED THE GRADE OF SUPERB 98 JUMBO BY P.S.E., WHICH IS THE HIGHEST GRADE AWARDED TO DATE.

Ex Piedmont. With 1994 and 2002 P.F. and 2007 P.S.E. certificates (Superb 98 Jumbo; unpriced in SMQ in any grade higher than 98, SMQ \$2,350.00 as 98). Only four have been awarded this lofty grade, including one in the main shade offered in the previous lot..... 120.00

1917 DOUBLE-LINE WATERMARK, PERF 11 ISSUE



262

- 262 ★★ **2c Carmine (519).** Mint N.H., unusually choice centering with well-proportioned margins, radiant color and detailed impression

EXTREMELY FINE GEM. A BEAUTIFUL MINT NEVER-HINGED EXAMPLE OF SCOTT 519. SCARCE WITH SUCH BEAUTIFUL CENTERING AND IN SUCH PRISTINE CONDITION.

This stamp was created in 1917 when a small excess supply of the imperforate Scott 344 was returned by the New York City post office to the Bureau for credit. Rather than issue the credit, the Bureau perforated the sheets and returned them to the New York City post office for public sale.

With 1986 and 1997 P.F. certificates 875.00

1918 BI-COLORED ISSUE



263

- 263 ★★ **\$2.00 Orange Red & Black (523).** Mint N.H., brilliant colors as fresh as the day it was printed, mathematically perfect alignment of vignette and frame, perfectly centered with unusually wide margins

EXTREMELY FINE GEM. A SUPERB MINT NEVER-HINGED EXAMPLE OF THE \$2.00 ORANGE RED & BLACK 1918 FRANKLIN ISSUE, WHICH HAS BEEN AWARDED THE GRADE OF SUPERB 98 BY P.S.E. — ONLY ONE HAS GRADED HIGHER.

The \$2.00 and \$5.00 1918 Issue are the first bi-colored dollar-denominated postage stamps issued by the United States. Both were released just three months after the famous 1918 24c Inverted Jenny, but the early printings were issued in small quantities, since stocks of the 1902 \$2.00 and \$5.00 1917 issue were still on hand.

According to Johl, the \$2.00 Orange Red & Black was a color error on the part of the Bureau of Engraving & Printing. The official description and order for the bi-color stamps specified "Red and Black" for the \$2.00. When subsequent printings appeared in 1920 and philatelists brought the matter to the attention of the Bureau, they were told "this stamp has always been this color" (Johl, p. 306). From studies of Bureau and Post Office records, it is clear that the originally-intended color was not issued until November 1920 (Scott 547), and that the earlier Orange Red stamps were mistakes. The quantity issued has been variously estimated at between 47,000 and 68,000.

With 1994 and 2000 P.F. and 2007 P.S.E. certificates (Superb 98; SMQ \$8,000.00). Only two others have achieved this grade, and only one has graded higher. 1,300.00



264

- 264 ★★ **\$5.00 Deep Green & Black (524).** Mint N.H., deep rich colors and proof-like impressions on bright paper, remarkably choice centering with well-balanced margins, Extremely Fine Gem, a beautiful stamp, with 1998 P.F. certificate 425.00

1918-20 OFFSET ISSUE
UNWATERMARKED, PERF 11

- 265 ★★ **2c Carmine, Ty. IV (526).** Mint N.H. with **albino plate no. 1084** at bottom, brilliant color, crisp impression on bright paper, wide and balanced margins, Extremely Fine Gem, with 1998 P.F. certificate 62.50



265



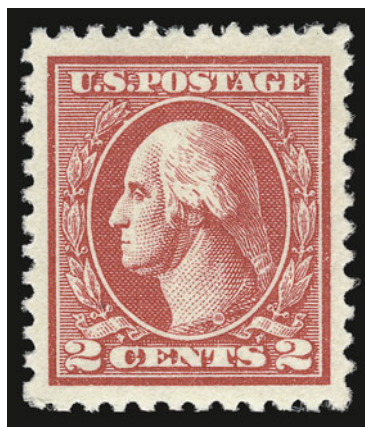
266

- 266 ★★ **2c Carmine, Ty. V (527).** Mint N.H., brilliant color, wide margins, fresh and Extremely Fine, a pretty stamp of great eye appeal, with 2001 P.F. certificate 45.00

- 267 ★★ **2c Carmine, Ty. Va (528).** Mint N.H. with **plate no. 11965** at top with wide selvage, radiant color, perfectly centered with unusually wide margins, Extremely Fine Gem, a superb stamp in every respect, the offset issues are difficult to find in such superb condition, with 1993 P.F. and 2007 P.S.E. certificates (Superb 98 Jumbo; unpriced in SMQ in any grade higher than 98, SMQ \$810.00 as 98), this is the highest grade awarded to date and only one other has achieved this lofty grade 22.50



267



268

- 268 ★★ **2c Carmine, Ty. VI (528A).** Mint N.H., brilliant color on bright paper, wide margins, Extremely Fine Gem, with 2001 P.F. certificate..... 115.00

- 269 ★★ **2c Carmine, Ty. VII (528B).** Mint N.H., dazzling color, Jumbo margins, Extremely Fine Gem, light pencil on gum, with 1998 P.F. certificate 50.00



269



270

- 270 ★★ **3c Purple, Ty. IV, Double Impression (530a).** Mint N.H., showing clear doubling of the entire design, rich color on bright paper, wide margins, Extremely Fine, a stunning example of this undercatalogued variety, with 1996 P.F. certificate..... 35.00

1918-20 IMPERFORATE OFFSET ISSUE
UNWATERMARKED

- 271 ★★ **2c Carmine Rose, Ty. IV, Imperforate (532).** Mint N.H. with **plate no. 10918** at top with wide sheet margin, enormous margins other sides, Extremely Fine Gem, with 1999 P.F. certificate..... 85.00



271



272

- 272 ★★ **2c Carmine, Ty. V, Imperforate (533).** Mint N.H., huge margins all around, brilliant color, fresh and Extremely Fine, with 1998 P.F. certificate . 230.00

- 273 ★★ **2c Carmine, Ty. VI, Imperforate (534A).** Mint N.H., Jumbo margins all around incl. trace of adjoining stamps on two sides, brilliant color, Extremely Fine Gem, a huge stamp, with 2000 P.F. and 2007 P.S.E. certificates (Superb 98 Jumbo; unpriced in SMQ in any grade higher than 98, SMQ \$340.00 as 98), this is the highest grade awarded to date and this is the only example to achieve this grade 100.00



273



274

- 274 ★★ **2c Carmine, Ty. VII, Imperforate (534B).** Mint N.H., large to huge margins incl. **sheet margin** at bottom, brilliant color on bright paper, trivial natural inclusion in selvage only and not mentioned on accompanying certificate

EXTREMELY FINE. A BEAUTIFUL MINT NEVER-HINGED EXAMPLE OF THE 2-CENT TYPE VII IMPERFORATE ISSUE.

Most Type VII stamps were used by private vending and affixing machine companies. However, unlike Scott 314A and 482A, a small supply of the imperforate 2c Type VII stamps reached the public.

With 1999 P.F. certificate 3,600.00

- 275 ★★ **3c Violet, Ty. IV, Imperforate (535).** Mint N.H., Jumbo margins showing part of all eight adjoining stamps, brilliant color, Extremely Fine Gem, a superb example of this issue in the highest grade attainable, with 1999 P.F. and 2007 P.S.E. certificates (Gem 100 Jumbo; unpriced in SMQ in any grade higher than 98, SMQ \$95.00 as 98) 21.00



275

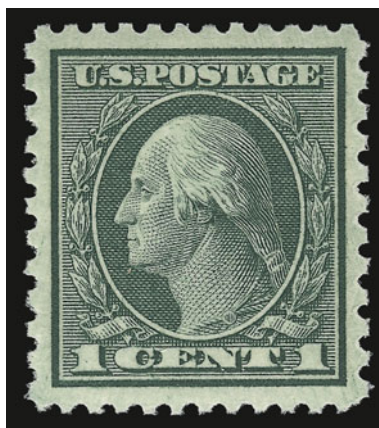
1919 ROSBACK PERF 12½ OFFSET ISSUE



276

- 276 ★★ **1c Gray Green (536).** Mint N.H. with selvage at left, deep rich color and unusually strong impression on bright paper, choice centering with wide margins, Extremely Fine Gem, a stunning stamp, with 1994 and 2003 P.F. certificates 50.00

1919-22 ROTARY PRESS ISSUES



277

- 277 ★★ **1c Green, Rotary Perf 11 x 10 (538).** Mint N.H., rich color and detailed impression, gorgeous centering with jumbo margins, Extremely Fine Gem, a superb stamp in every respect, with 1998 P.F. and 2006 P.S.E. certificates (XF-Superb 95 Jumbo; SMQ \$240.00 as 95, \$860.00 as 98)..... 22.50



278

278 ★★ **2c Carmine Rose, Ty. II, Rotary Perf 11 x 10 (539).** Mint N.H., rich color and sharp impression, wide balanced margins and choice centering

EXTREMELY FINE GEM. A SUPERB MINT NEVER-HINGED EXAMPLE OF THIS RARE ROTARY-PRESS COIL WASTE ISSUE. AN EXCEEDINGLY DIFFICULT STAMP TO FIND IN SUCH CONDITION. THIS IS THE FINEST WE HAVE EVER OFFERED.

At the beginning or end of a coil-stamp print run from the 170-subject rotary plates, some leading or trailing paper was left over that was too short for rolling into 500-stamp rolls. In 1919, the Bureau devised a plan to salvage this waste by converting the stamps from coil stamps into sheet stamps. This was accomplished by cutting the sheets into panes and putting the panes through the flat-plate perforator in use at the time, giving the stamps perforations on all sides.

Since Scott 539 was put through two different perforating machines of differing gauges at different times, most of the stamps are off-center. The stamp offered here is a true condition rarity by virtue of its centering, margins and Mint N.H. state.

Ex Piedmont. With 1968, 1988 and 2000 P.F. certificates..... 4,000.00



279

- 279 ★★ **2c Carmine Rose, Ty. III, Rotary Perf 11 x 10 (540).** Mint N.H., deep rich color and detailed impression, perfectly centered with well-balanced margins for this difficult rotary waste issue, Extremely Fine Gem, easily one of the finest examples in existence, ex Killien, with 1996 P.F. and 2006 P.S.E. certificates (Superb 98; SMQ \$1,000.00), this is the highest grade awarded to date, and only one other shares this grade 27.50

- 280 ★★ **2c Carmine, Ty. III, Rotary Perf 11 x 10 (540 var).** Mint N.H., rich color and proof-like impression, choice centering with well-balanced margins, Extremely Fine, a beautiful example of the Carmine sub-shade, with 2004 P.F. certificate..... 27.50



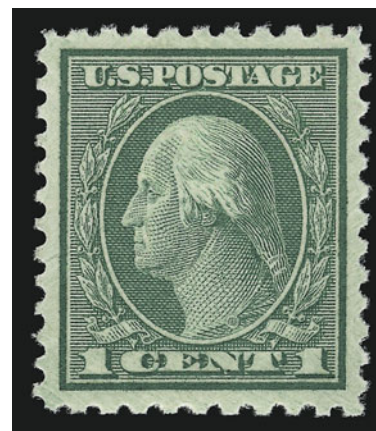
280



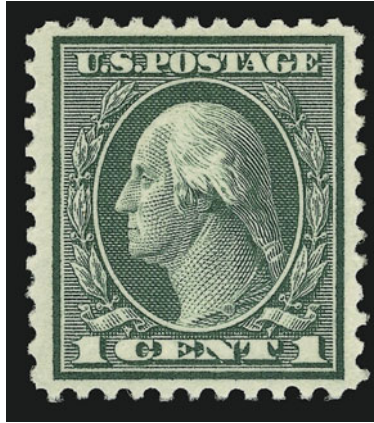
281

- 281 ★★ **3c Violet, Ty. II, Rotary Perf 11 x 10 (541).** Mint N.H., pretty color, well-balanced margins, Extremely Fine, with 1995 P.F. certificate.... 95.00

- 282 ★★ **1c Green, Rotary Perf 10 x 11 (542).** Mint N.H., brilliant color and crisp impression, almost perfectly centered with huge margins, Extremely Fine Gem, a gorgeous stamp, the rotary press waste issues are notoriously difficult to obtain in such superb condition, with 2003 P.F. and 2007 P.S.E. certificates (Superb 98; SMQ \$1,100.00), this is the highest grade awarded to date and only one other has achieved this lofty grade 30.00



282



283

283 ★★ **1c Green, Rotary Perf 11 (544). Mint N.H.,** fresh and bright color, remarkably choice centering with wide and nicely proportioned margins

EXTREMELY FINE GEM. EASILY ONE OF THE FINEST OF THE FEW EXTANT MINT NEVER-HINGED EXAMPLES OF THIS MAJOR RARITY. PROBABLY FEWER THAN 20 ARE KNOWN UNUSED.

A small quantity of 1c Rotary Press stamps was perforated 11 at the end of 1922, using remainder sheets from the earlier printings that were normally perforated in 10 gauge or 11/10 compound gauge. Its existence as a Perf 11 variety was discovered in 1936, and the stamp received its Scott catalogue listing in 1938.

Most of the recorded copies of Scott 544 are off-center or have been damaged — the result of poor production standards and mis-handling. The finest copies known come from a block of four, of which this stamp was originally the bottom right stamp. The Zoellner copy, subsequently offered in our 2000 Rarities sale where it realized \$62,500, also comes from this block.

Ex Drucker (Siegel Sale 851, lot 441, realized \$60,000 hammer). With 1987 and 2002 P.F. certificates. 32,500.00



284

284 ★★ **1c Green, Rotary Perf 11 (545).** Mint N.H., brilliant color, detailed impression, almost perfectly centered with unusually wide and balanced margins

EXTREMELY FINE GEM. A SUPERB MINT NEVER-HINGED EXAMPLE OF THE ONE-CENT ROTARY COIL WASTE ISSUE, SCOTT 545. A DIFFICULT STAMP TO FIND IN SUCH SUPERB CONDITION.

Due to the nature of the rotary press printing process, it is often difficult, if not impossible, to find these issues with perfect centering. The stamp offered here is the exception to the rule.

Ex Piedmont. With 2000 and 2001 P.F. certificates (the former as a block of four). With 2007 P.S.E. certificate (XF Superb 95 Jumbo; SMQ \$3,500.00 as 95, \$10,200.00 as 98). Only two others have graded higher to date. 425.00



285

285 ★★ **2c Carmine Rose, Ty. III, Rotary Perf 11 (546).** Mint N.H., brilliant color, almost perfectly centered with well-proportioned margins

EXTREMELY FINE GEM. A SUPERB MINT NEVER-HINGED EXAMPLE OF THE 2-CENT ROTARY COIL WASTE ISSUE, SCOTT 546, WHICH HAS BEEN GRADED XF-SUPERB 95 BY P.S.E.

With 2003 P.F. and 2007 P.S.E. certificates (XF-Superb 95; SMQ \$2,200.00). Only one has graded higher in the P.S.E. Population Report..... 260.00

1920 BI-COLORED ISSUE
UNWATERMARKED, PERF 11



286

286 ★★ **\$2.00 Lake & Black (547a).** Mint N.H., deep rich colors and proof-like impressions on bright paper, choice centering with unusually wide margins, Extremely Fine Gem, ex Killien, with 1989 and 1996 P.F. and 2006 P.S.E. certificates (XF-Superb 95; SMQ \$1,350.00), this is the highest grade awarded to date for this shade and this is the only example to achieve this grade 330.00



287

287 ★★ **\$2.00 Carmine & Black (547).** Mint N.H., bright colors, wide margins, fresh and Extremely Fine, with 1996 P.F. certificate 330.00

END OF SALE — THANK YOU

Live Internet Bidding at Siegel Auction Galleries

Internet Floor Bidding for Robert A. Siegel Auction Galleries, Inc.'s Sale 908 closing on Mar 13-15, 2006. Contact us by Phone at (212) 753-6421, [Contact us Via eMAIL](#). Please READ [Instructions/Help](#) [Listen to the Public Auction Broadcast](#), Welcome John Bidding. Paddle #11. Time: 13:50:36. F11 (if using Internet Explorer) toggles full screen mode. You are Cust# , You are approved for

Lot and Description	Bidding
Postal History, California Mails and Western Expre Carriers and Locals Group Lots Lot 5010. Carriers and Locals. More than 30 covers and a few off cover, 1840's, 50's and 60's, comprising General Issue Carriers incl. LO2, LO3, LO5 and Franklin plate proof on card, LO2 on small blue cover to Philadelphia "U.States" indicating origin f E. 1,500-2,000 Sold for 3,500.00 Your Bid 3,500.00 1 sec refresh 3 sec 5 sec Show Images	Bid 3750 Bid 4000 Bid 4250 Bid 4500 Bid 4750 Bid 5000 Send a Message to the Auction Floor

Messages from the public auction

Please close this form when you are not bidding or watching the auction.

Lot 5010 going for 650...
 Lot 5010 going for 3500...
 Lot 5010 Last Call at 3500...
 Lot 5010 sold to the floor for \$3500.

***** END OF SALE *****

-Thank You!!!

Siegel Auction Galleries, in coordination with Stamp Auction Network, will broadcast our auctions live over the internet, allowing you to listen to the auction in progress.

Bidders who have pre-registered for Live Internet Bidding will also be able to place bids over the internet, as if bidding in the saleroom. In order to bid by internet, you must be an approved, registered bidder with Stamp Auction Network and Siegel Auction Galleries.

- ☐ If you are already registered at Stamp Auction Network and have been approved for internet bidding by Siegel, just log in at Stamp Auction Network, locate the Siegel sale and start bidding anytime during the auction.
- ☐ If you have never registered as a bidder at Stamp Auction Network, then please go to www.siegelauctions.com/IB2.htm and click on "Register" at the top of the page. Please check the box for Robert A. Siegel Auction Galleries (under "R") and submit the form. If you have never bid with our firm, please provide trade references whom we may contact to have your account approved (please do not use family members or credit cards as references).
- ☐ If you have registered previously at Stamp Auction Network, but not specifically for our firm, please go to www.siegelauctions.com/IB2.htm and click on "Update Registration" at the top of the page. Your information at Stamp Auction Network will be sent to us for approval. You may be asked to provide additional references before being approved for internet bidding.

Once you are approved for bidding, you will be able to bid live over the internet during the auction. You may participate in Live Internet Bidding using any browser or operating system. The audio portion is only available to PC users using Internet Explorer. For the audio portion, you will be asked to install a piece of software (ActiveX control) to make it work.

Bidders must log in at Stamp Auction Network to participate. Once logged in, please locate the page for the current Siegel auction.

At the top of the auction's home page there are two links:

- One link allows anyone to listen to the public auction broadcast.
- The second link permits registered bidders to join the public auction in progress.

Please remember that to participate in the auction, you must be pre-registered at Stamp Auction Network and approved by Siegel Auction Galleries as a bidder. Qualified bidders will see a page like the one illustrated above and have a valid paddle number assignment.

Important Note for Live Internet Bidders: Please refer to our Tips for Internet Bidders at our website at www.siegelauctions.com/IB.htm for ways to increase your chances of being a successful bidder.

Bid.

Buy.

Sell.

Explore.

Learn.

www.siegelauctions.com



America's premier stamp auctioneer... past, present and future.

Robert A. Siegel
AUCTION GALLERIES, INC.

Grading Index to Sale 932

Grade	Scott	Lot	Year/Service/Grade
100J	502	243	2007 PSE 100J NH
100J	535	275	2007 PSE 100J NH
100	348	14	2004 PSE 100 NH
100	442	140	2007 PSE 100 NH
98J	331	1	2006 PSE 98J NH
98J	357	39	2004 PSE 98J NH
98J	375	49	2007 PSE 98J NH
98J	379	53	2007 PSE 98J NH
98J	394	84	2007 PSE 98J NH
98J	405	91	2007 PSE 98J NH
98J	411	98	2007 PSE 98J NH
98J	437	130	2007 PSE 98J NH
98J	441	136	2007 PSE 98J NH
98J	446	151	2007 PSE 98J NH
98J	462	191	2007 PSE 98J NH
98J	508	250	2007 PSE 98J NH
98J	514	256	2006 PSE 98J NH
98J	515	257	2007 PSE 98J NH
98J	518	260	2007 PSE 98J NH
98J	518	261	2007 PSE 98J NH
98J	528	267	2007 PSE 98J NH
98J	534A	273	2007 PSE 98J NH
98	348	13	2004 PSE 98 NH
98	390	70	2007 PSE 98 NH
98	392	78	2007 PSE 98 NH
98	393	80	2004 PSE 98 NH
98	406	92	2007 PSE 98 NH
98	411	96	2007 PSE 98 NH
98	413	102	2007 PSE 98 NH
98	435	126	2007 PSE 98 NH
98	440	133	2007 PSE 98 NH
98	447	153	2007 PSE 98 NH
98	447	155	2007 PSE 98 NH
98	452	167	2007 PSE 98 NH
98	455	175	2007 PSE 98 NH
98	458	184	2007 PSE 98 NH

Grade	Scott	Lot	Year/Service/Grade
98	472	201	2006 PSE 98 NH
98	475	205	2007 PSE 98 NH
98	476	206	2006 PSE 98 NH
98	495	233	2007 PSE 98 NH
98	497	236	2003 PSE 98 NH
98	509	251	2005 PSE 98 NH
98	512	253	2006 PSE 98 NH
98	517	259	2007 PSE 98 NH
98	523	263	2007 PSE 98 NH
98	540	279	2006 PSE 98 NH
98	542	282	2007 PSE 98 NH
95J	377	51	2007 PSE 95J NH
95J	380	54	2007 PSE 95J NH
95J	414	105	2007 PSE 95J NH
95J	445	148	2006 PSE 95J NH
95J	480	211	2007 PSE 95J NH
95J	538	277	2006 PSE 95J NH
95J	545	284	2007 PSE 95J NH
95	349	17	2004 PSE 95 NH
95	350	19	2007 PSE 95 NH
95	353	29	2006 PF 95NH, 2006 PSE 95NH
95	386	60	2004 PSE 95 NH
95	386	61	2004 PSE 95 NH
95	391	74	2004 PSE 95 NH
95	392	76	2004 PSE 95 NH
95	393	79	2004 PSE 95 NH
95	394	83	2004 PSE 95 NH
95	395	86	2004 PSE 95 NH
95	396	89	2004 PSE 95 NH
95	410	94	2007 PSE 95 NH
95	442	138	2006 PSE 95 NH
95	444	144	2007 PSE 95 NH
95	445	147	2007 PSE 95 NH
95	446	152	2007 PSE 95 NH
95	447	154	2007 PSE 95 NH
95	448	157	2007 PSE 95 NH

Grade	Scott	Lot	Year/Service/Grade
95	456	178	2007 PSE 95 NH
95	457	182	2007 PSE 95 NH
95	458	183	2007 PSE 95 NH
95	461	190	2007 PSE 95 NH
95	464	192	2007 PSE 95 NH
95	474	203	2007 PSE 95 NH
95	492	226	2007 PSE 95 NH
95	496	234	2007 PSE 95 NH
95	500	241	2007 PSE 95 NH
95	547	286	2006 PSE 95 NH
90	351	23	2004 PSE 90 NH
90	352	26	2004 PSE 90 NH
90	352	25	2004 PSE 90 OGph
90	355	33	2004 PSE 90 NH
90	362	44	2004 PSE 90 NH
90	365	47	2004 PSE 90 Mint OG
90	366	48	2004 PSE 90 NH
90	385	58	2004 PSE 90 NH
90	387	64	2006 PF 90 NH
90	388	67	2004 PSE 90 NH
90	390	71	2004 PSE 90 NH
90	391	73	2004 PSE 90 NH
90	392	77	2004 PSE 90 NH
90	394	82	2004 PSE 90 NH
90	395	85	2004 PSE 90 NH
90	449	161	2007 PSE 90 NH
85	354	31	2004 PSE 85 NH
85	355	34	2004 PSE 85 NH
85	358	40	2004 PSE 85 NH
85	363	45	2004 PSE 85 OGph
85	364	46	2004 PSE 85 Mint OG
80	356	36	2004 PSE 80 OGph
80	359	41	2004 PSE 80 NH
75	360	42	2004 PSE 75 NH

Bid Form—15% Premium Sale

Sale 932

Friday, March 30, 2007

1

Please provide the following information:

NAME.....
ADDRESS.....
CITY/STATE/ZIP.....
TEL. (DAY) FAX.....
E-MAIL.....

PADDLE #

Do not write in box

2

Have you purchased from us in the past 5 years? ☐ YES (if so, please go to Section 3)
☐ NO (please provide a trade reference and bank information)

References:

Stamp Firm: Telephone.....

Bank: Account #

3

In the space provided below, enter the **lot number** from **Sale 932** and your corresponding bid. Please use **whole dollar amounts** only and enter the **maximum bid** you wish to have us execute on your behalf, according to the **revised bidding increments** (on other side of this form). **Your bid will NOT include the 15% buyer's premium.** We will advance the bidding at one increment over the next

highest bid; therefore, you may be awarded the lot at less than your maximum bid. Please do not use "plus" bids or "buy" bids. If you wish to bid on one lot or the other, indicate your "or" bid between lot number/bid entries and bracket your choices. If you wish to place a **bidding limit** on the total amount of your bids, please enter your limit in the space marked "Limit Bids".

PLEASE NOTE REVISED BIDDING INCREMENTS (ON BACK OF THIS PAGE)

☐ **LIMIT BIDS:** Check this box if you wish to limit the total amount of your bids (not including the **15% buyer's premium**) in this sale. Your bids will be executed until your bidding limit no longer allows for additional bids.

The total amount you wish to bid is: \$

Lot	Bid	Lot	Bid	Lot	Bid
	\$		\$		\$

4

AGREEMENT: By signing this bid form, you agree to pay for purchases resulting from your bids, in accordance with the **Conditions of Sale** printed in the sale catalogue. You also agree to pay the **15% buyer's premium** and any shipping costs (see reverse), which will be added to your successful bids, and any sales tax or use tax which may be due

on the total invoiced amount. It is understood that these bids will be executed by Siegel Auction Galleries as a courtesy to absentee bidders, but that no legal responsibility shall lie with the auctioneer or the firm if these bids are not executed. **You are responsible for your written bids, including any errors on your part.**

Payment must be made by cash, check, money order or wire transfer. Credit cards will not be accepted.



SIGNED..... TODAY'S DATE

5

Please submit your bids promptly (telephone bids must be confirmed in writing).

Mail to: **Robert A. Siegel Auction Galleries, Inc.**

60 E. 56th Street, 4th Floor, New York, N.Y. 10022
Telephone (212) 753-6421

OR FAX YOUR BIDS: (212) 753-6429

Shipping Instructions, Bidding Increments and space for additional bids on other side of form

Additional Bids

Sale 932—March 30, 2007

Lot	Bid	Lot	Bid	Lot	Bid
	\$		\$		\$

Shipping and Transit Insurance

We will be pleased to arrange for shipping and transit insurance for purchases in this sale (except those described as “floor sale only”). To expedite billing and delivery of lots to hundreds of buyers per sale, we use standard charges for postage and insurance, based on the invoiced total and mailing requirements (see schedule). The standard charges are sometimes slightly more or less than the actual postage, but we do not include any fees for our labor or packing costs. Therefore, we ask all buyers to remit the prescribed amount for shipping charges.

Transit insurance is provided in all cases, except when the buyer has furnished us with proof that insurance coverage is effective under another policy. Proof, in such cases, will be accepted in the form of a written certificate from the insurance carrier.

You are responsible for insurance charges, which will be added to your invoice. This coverage is provided for our mutual protection against theft or loss in transit.

REVISED Bidding Increments

The auctioneer may regulate the bidding at his discretion. However, to assist absentee bidders in establishing their maximum bid for each lot, the increments shown at right will be used in most cases. We recommend that written bids conform to these increments (those which do not will be reduced to the next level).

Current Postage & Insurance Charges

Invoice Total	Shipping Method	Charges
Up to 10,000	Fedex Only	\$18.00
Over \$10,000	Fedex Only	\$25.00*
Foreign Destinations (any value)	Fedex/Courier	\$25.00**
Bulk Lots	UPS Preferred	By weight and value (min. \$25.00)
*Insurance and postage on certain heavy or valuable packages may incur an additional charge. **Buyers are liable for all customs duties and clearance charges. An accurate declaration of value will be made on all import/export documents. 2/2002		

IMPORTANT NOTICE REGARDING IRRADIATION

The U.S. Postal Service policy of irradiating all classes of mail poses a significant potential risk of irreversible damage to philatelic material, including ink, paper and gum.

WE WILL NOT USE THE MAILS TO SHIP LOTS.

Please provide a street address for Fedex delivery if you intend to have your lots shipped.

Up to \$50	\$5	\$3,000-7,000	\$250
\$50-200	\$10	\$7,000-20,000	\$500
\$200-500	\$25	\$20,000-30,000	\$1,000
\$500-1,000	\$50	\$30,000-75,000	\$2,500
\$1,000-3,000	\$100	\$75,000 up	\$5,000

Robert A. Siegel Auction Galleries, Inc.
 Prices Realized for
 Sale 932 3/30/2007 The Scarsdale Collection, Part 4

Lot#	Realized	Lot#	Realized	Lot#	Realized	Lot#	Realized	Lot#	Realized
1	2,200	34	1,800	70	450	104	225	136	225
2	250	35	850	71	80	105	2,100	137	225
3	200	36	22,000	72	450	106	475	138	1,100
4	600	37	17,500	73	950	107	425	139	1,800
5	700	38	R	74	1,200	108	1,200	140	850
6	2,100	38	R	75	400	109	4,750	141	1,500
7	700	39	15,500	76	1,700	110	R	142	500
8	375	40	400	77	275	110	R	143	R
9	225	41	7,500	78	1,000	111	1,900	143	R
10	750	42	70,000	79	4,250	112	3,000	144	4,500
11	2,900	43	10,000	80	3,500	113	1,500	145	850
12	1,900	44	14,500	81	425	114	2,700	146	300
13	5,000	45	37,500	82	1,300	115	60	147	17,500
14	3,000	46	6,500	83	1,300	116	375	148	5,250
15	375	47	4,000	84	2,300	117	350	149	1,400
16	1,000	48	8,000	85	1,550	118	325	150	2,700
17	3,250	49	2,400	86	1,500	119	R	151	8,500
18	1,200	50	700	87	600	119	R	152	1,200
19	11,000	51	2,100	88	1,100	120	500	153	5,750
20	R	52	350	89	1,300	121	700	154	1,500
20	R	53	9,500	90	600	122	400	155	750
21	700	54	3,000	91	2,400	123	500	156	325
22	5,000	55	1,100	92	1,200	124	350	157	700
23	1,500	56	2,300	93	R	125	650	158	375
24	1,700	57	700	93	R	126	2,600	159	50,000
25	1,500	58	475	94	500	127	650	160	11,500
26	1,200	59	600	95	R	128	400	161	8,000
27	R	61	2,600	95	R	129	275	162	3,000
27	R	62	700	96	1,700	130	17,500	163	400
28	R	63	1,100	97	150	131	2,200	164	130
28	R	64	2,800	98	650	132	R	165	350
29	1,600	65	2,000	99	850	132	R	166	130
30	10,500	66	16,000	100	275	133	28,000	167	225
31	2,600	67	40,000	101	425	134	150	168	3,750
32	1,100	68	2,100	102	6,250	135	R	169	1,500
33	9,500	69	67,500	103	200	135	R	170	900

Robert A. Siegel Auction Galleries, Inc.
Prices Realized for
Sale 932 3/30/2007 The Scarsdale Collection, Part 4

Lot#	Realized	Lot#	Realized	Lot#	Realized	Lot#	Realized
171	1,100	205	6,500	240	R	274	4,000
172	375	206	16,000	240	R	275	200
173	200	207	4,250	241	4,250	276	475
174	2,200	208	4,500	242	325	277	800
175	850	209	3,250	243	4,500	278	22,000
176	70	210	2,300	244	1,000	279	1,500
177	3,000	211	2,600	245	R	280	275
178	3,500	212	155,000	245	R	281	325
179	1,200	213	50,000	246	2,100	282	1,500
180	800	214	300	247	475	283	80,000
181	180	215	70	248	425	284	8,500
182	250	216	275	249	400	285	2,600
183	2,100	217	160	250	2,300	286	4,000
184	3,500	218	60	251	1,500	287	1,400
185	350	219	60	252	1,900		
186	1,600	220	180	253	850		
187	550	221	250	254	300		
188	R	222	150	255	3,500		
188	R	223	24,000	256	7,500		
189	4,500	224	16,000	257	4,250		
190	3,250	225	8,500	258	600		
191	2,800	226	600	259	2,700		
192	1,500	227	425	260	6,500		
193	450	228	110	261	6,500		
194	750	229	2,100	262	3,750		
195	2,100	230	400	263	9,500		
196	600	231	1,100	264	800		
197	R	232	150	265	750		
197	R	233	300	266	275		
198	2,100	234	190	267	2,300		
199	1,400	235	100	268	475		
200	475	236	2,100	269	600		
201	8,500	237	250	270	300		
202	300	238	110	271	120		
203	2,000	239	R	272	350		
204	425	239	R	273	300		