

THE SADDLEBACK COLLECTION

United States Errors and Plate Blocks



SALE 935

TUESDAY AFTERNOON, MAY 22, 2007

Robert A. Siegel

AUCTION GALLERIES, INC.

Sale 935

Tuesday, May 22, 2007, at 1:30 p.m.

The Saddleback Collection of United States Errors and Plate Blocks

All lots are offered without reserves

**All lots in this sale are sold subject
to a 15% Buyer's Premium**

Pre-sale exhibition

Monday, May 21 — 10:00 a.m. to 4:00 p.m.
Tuesday, May 22 — 10:00 a.m. to 12:00 noon
or by appointment (please call 212-753-6421)

**On-line catalogue, e-mail bid form, resources and
the Siegel Encyclopedia are available on our web site:**

www.siegelauctions.com



Lot 35

Arrangement of Sale

**Afternoon session (lots 1-188)
Tuesday, May 22, at 1:30 p.m.**

Columbian Issue	5-15
Trans-Mississippi Issue	16-22
Pan-American Issue	23-27
Louisiana Purchase Issue.....	28-29
1908-09 Issue	30-34
Bluish Paper	34-36
1909 Lincoln, 1910-11 Issues	37-38
Panama-Pacific Issue	39-42
1912-23 Issues	43-66
1922 and Later Issues	67-75
Air Post	76-81
Balance Lots	82

On the cover

Front Cover: Lot 177
Back Cover: Lots 29 and 56

Live Internet Bidding at Siegel Auction Galleries

Internet Floor Bidding for Robert A. Siegel Auction Galleries, Inc.'s Sale 908 closing on Mar 13-15, 2006. Contact us by Phone at (212) 753-6421, [Contact us Via eMAIL](#). Please READ [Instructions/Help](#) [Listen to the Public Auction Broadcast](#). Welcome John
Bidding. Paddle 11. Time: 13:50:36. F11 (if using Internet Explorer) toggles full screen mode. You are Cust# , You are approved for

Lot and Description	Bidding
Postal History, California Mails and Western Expre Carriers and Locals Group Lots Lot 5010. Carriers and Locals. More than 30 covers and a few off cover, 1840's, 50's and 60's, comprising General Issue Carriers incl. LO2, LO3, LO5 and Franklin plate proof on card, LO2 on small blue cover to Philadelphia "U.States" indicating origin f E. 1,500-2,000 Sold for 3,500.00 Your Bid 3,500.00 <input type="button" value="1 sec refresh"/> <input type="button" value="3 sec"/> <input type="button" value="5 sec"/> <input type="button" value="Show Images"/>	<input type="button" value="Bid 3750"/> <input type="button" value="Bid 4000"/> <input type="button" value="Bid 4250"/> <input type="button" value="Bid 4500"/> <input type="button" value="Bid 4750"/> <input type="button" value="Bid 5000"/> Send a Message to the Auction Floor

Messages from the public auction
Please close this form when you are not bidding or watching the auction.

Lot 5010 going for 650...
Lot 5010 going for 3500...
Lot 5010 Last Call at 3500...
Lot 5010 sold to the floor for \$3500.

===== END OF SALE =====

-Thank You!!!

Siegel Auction Galleries, in coordination with Stamp Auction Network, will broadcast our auctions live over the internet, allowing you to listen to the auction in progress.

Bidders who have pre-registered for Live Internet Bidding will also be able to place bids over the internet, as if bidding in the saleroom. In order to bid by internet, you must be an approved, registered bidder with Stamp Auction Network and Siegel Auction Galleries.

- ☐ If you are already registered at Stamp Auction Network and have been approved for internet bidding by Siegel, just log in at Stamp Auction Network, locate the Siegel sale and start bidding anytime during the auction.
- ☐ If you have never registered as a bidder at Stamp Auction Network, then please go to www.siegelauctions.com/IB2.htm and click on "Register" at the top of the page. Please check the box for Robert A. Siegel Auction Galleries (under "R") and submit the form. If you have never bid with our firm, please provide trade references whom we may contact to have your account approved (please do not use family members or credit cards as references).
- ☐ If you have registered previously at Stamp Auction Network, but not specifically for our firm, please go to www.siegelauctions.com/IB2.htm and click on "Update Registration" at the top of the page. Your information at Stamp Auction Network will be sent to us for approval. You may be asked to provide additional references before being approved for internet bidding.

Once you are approved for bidding, you will be able to bid live over the internet during the auction. You may participate in Live Internet Bidding using any browser or operating system. The audio portion is only available to PC users using Internet Explorer. For the audio portion, you will be asked to install a piece of software (ActiveX control) to make it work.

Bidders must log in at Stamp Auction Network to participate. Once logged in, please locate the page for the current Siegel auction.

At the top of the auction's home page there are two links:

- One link allows anyone to listen to the public auction broadcast.
- The second link permits registered bidders to join the public auction in progress.

Please remember that to participate in the auction, you must be pre-registered at Stamp Auction Network and approved by Siegel Auction Galleries as a bidder. Qualified bidders will see a page like the one illustrated above and have a valid paddle number assignment.

AFTERNOON SESSION (LOTS 1-186)
TUESDAY, MAY 22, 2007, AT 1:30 P.M.

THE SADDLEBACK COLLECTION OF UNITED STATES ERRORS AND PLATE BLOCKS

COLUMBIAN ISSUE



1 P 1c-\$5.00 Columbian, Plate Proofs on Card (230P4-245P4). Large margins to clear, intense colors and impressions, Fine-Very Fine set.....(Photo Ex) 1,435.00

1EX



2

2 ★田 1c Columbian (230). Top imprint, plate no. 194 and letter "V V" block of eight, top stamps Mint N.H., bottom stamps with small hinge slivers where few minor perf separations sensibly reinforced, few small faults in selvage, natural gum wrinkle affects three stamps, appears Very Fine 700.00



3

3 ★★田 2c Columbian (231). Mint N.H. top imprint, plate no. 157 and letter "N N" block of eight, brilliant color, faint residue from hinge in ungummed part of selvage, fresh and Fine-Very Fine 900.00



4

- 4 ★田 3c **Columbian (232)**. Top imprint, plate no. 57 and letter "L" block of eight, original gum, h.r. in selvage and two stamps at bottom, trimmed selvage, few tiny toned specks, otherwise Fine-Very Fine 1,200.00



5

- 5 ★★田 4c **Columbian (233)**. Mint N.H. bottom imprint, plate no. 16 and letter "D" block of eight, brilliant color on crisp paper, well-centered throughout
 VERY FINE AND CHOICE. A BEAUTIFUL MINT NEVER-HINGED PLATE BLOCK OF EIGHT OF THE 4-CENT COLUMBIAN ISSUE.
 With 1996 P.F. certificate 3,750.00



6

- 6 ★ **4c Columbian, Error of Color (233a).** Disturbed original gum, deep rich color in the more intense of the two shades, wide margins for this difficult issue, light diagonal crease at bottom

VERY FINE APPEARING EXAMPLE OF THE 4-CENT COLUMBIAN ERROR OF COLOR.

The 4c Columbian color error was caused by the use of a wrong batch of ink, and spectrographic analysis has shown that the blue inks of the 4c error and 1c Columbian have the same components.

Stamps from at least two panes reached collectors, and the few cancelled examples indicate that stamps used by the public came from other panes. It is likely that a number of full sheets were printed using the wrong ink, and most of the stamps have simply been lost to philately.

With 1987 P.F. certificate 19,000.00



7

- 7 ★★田 5c **Columbian** (234). Mint N.H. top imprint, plate no. 6 and letter "B" block of eight, bright color and detailed impression, usual light natural gum bends

FINE-VERY FINE MINT NEVER-HINGED PLATE BLOCK OF EIGHT OF THE 5-CENT COLUMBIAN ISSUE.

Scarce in such fresh condition..... 4,700.00



8

- 8 ★田 6c **Columbian** (235). Top imprint, plate no. 104 and letter "Z" block of eight, original gum, lightly hinged, bit heavy natural gum wrinkles, few perf separations at top sensibly reinforced, appears Very Fine 2,150.00



9

- 9 ★田 8c **Columbian (236)**. Top imprint, plate no. 129 and letter "I I" block of eight, original gum, lightly hinged, rich color and proof-like impression, fresh and Extremely Fine, a pretty plate block 1,450.00



10

- 10 ★★田 10c **Columbian (237)**. Mint N.H. top imprint, plate no. 101 and letter "Y" block of eight, radiant color on bright paper, usual light natural gum bends

FINE. A SCARCE MINT NEVER-HINGED PLATE BLOCK OF EIGHT OF THE 10-CENT COLUMBIAN ISSUE

A review of our computerized records indicates that we have only offered one other Mint N.H. plate block of eight (as well as one plate block of six and one plate block of ten) since keeping computerized records. 9,500.00



11

- 11 ★★田 15c Columbian (238). Mint N.H. bottom imprint, plate no. 58 and letter "M" block of eight, brilliant color and detailed impression, beautiful centering throughout

EXTREMELY FINE. A MAGNIFICENT MINT NEVER-HINGED PLATE BLOCK OF EIGHT OF THE 15-CENT COLUMBIAN ISSUE. EASILY ONE OF THE FINEST IN EXISTENCE. THIS IS AN EXTREMELY DIFFICULT PLATE BLOCK TO OBTAIN IN SUCH WONDERFUL MINT NEVER-HINGED CONDITION.

This plate block is surprisingly scarce. Since we started keeping computerized records almost 13 years ago, we have only offered one Mint N.H. multiple larger than a plate block of six (except for in a pane of 100), which was a bottom plate block of eight. It realized \$28,000 hammer in our Sale 920. We have also only offered one hinged plate block of six and two hinged plate blocks of eight in that time..... 12,000.00



12

- 12 ★ 30c Columbian (239). Bottom imprint, plate no. 59 and letter "N" block of eight, original gum, top stamps small h.r., bottom stamps Mint N.H., deep rich color, usual natural gum bends, small tear in selvage at bottom right

FINE-VERY FINE. A SCARCE PLATE BLOCK OF EIGHT OF THE 30-CENT COLUMBIAN ISSUE.

A review of our records indicates that the full plate block of eight is extremely scarce. We have only offered one other (also hinged) since the start of our computerized records almost 13 years ago..... 12,000.00



13

- 13 ★田 **50c Columbian (240)**. Bottom imprint, plate no. 77 and letter "S" block of eight, original gum, **bottom stamps Mint N.H.**, top stamps lightly hinged, deep rich color and proof-like impression, choice centering

VERY FINE. A RARE PLATE BLOCK OF EIGHT OF THE 50-CENT COLUMBIAN ISSUE. A HIGHLY DESIRABLE CLASSIC COMMEMORATIVE PLATE BLOCK.

A review of our computerized records shows that we have offered the following three plate blocks over the past 13 years, which varied widely in condition: 1) Mint N.H. corner block of ten, realized \$42,500 hammer in our Sale 836; 2) Bottom block of eight, disturbed original gum and Fine-Very Fine centering, realized \$5,250 hammer in our Sale 891; and 3) Bottom block of six, realized \$16,500 hammer in our Sale 837.

Collectors of commemorative plate blocks should not miss this opportunity to acquire a great rarity in choice condition. 22,500.00



14

- 14 ★田 **\$1.00 Columbian (241)**. Block of four, original gum, small h.r., radiant color few perf tips at top gum soaked from hinge removal (not mentioned on accompanying certificate)
FINE APPEARING ORIGINAL-GUM BLOCK OF FOUR OF THE \$1.00 COLUMBIAN ISSUE.
With 1989 P.S.E. certificate 5,000.00



15

- 15 ★ **\$2.00 Columbian (242)**. Pair with **plate no. 105** and **part imprint at bottom**, original gum, lightly hinged, bright shade and detailed impression, faint crease in selvage only, single short perf at top right, otherwise Fine, scarce plate no. multiple, Scott Retail as two singles with no premium for the position 2,500.00



16

- 16 ★田 **\$2.00 Columbian (242)**. Right imprint block of four, original gum, lightly hinged, detailed impression, bright color

FINE-VERY FINE. AN ATTRACTIVE SOUND ORIGINAL-GUM BLOCK OF FOUR OF THE \$2.00 COLUMBIAN ISSUE WITH IMPRINT AT RIGHT.

The right pair is particularly choice. Scott Retail as block of four with no premium for the imprint 5,250.00



17

- 17 ★田 **\$3.00 Columbian (243)**. Block of four, slightly disturbed original gum, h.r. at top, deep rich color and proof-like impression, choice centering throughout

EXTREMELY FINE. A BEAUTIFUL AND SCARCE BLOCK OF THE \$3.00 COLUMBIAN ISSUE.

The \$3.00 is difficult to find with such choice centering..... 9,000.00



18

- 18 ★田 **\$4.00 Columbian (244)**. Block of four, original gum, lightly hinged, bright color on crisp paper

FINE-VERY FINE. A BEAUTIFUL ORIGINAL-GUM BLOCK OF FOUR OF THE \$4.00 COLUMBIAN ISSUE.

Sound blocks are surprisingly scarce..... 11,500.00



19

- 19 ★田 **\$5.00 Columbian (245)**. Block of four with selvage at right, slightly disturbed original gum, intense shade and impression, choice centering throughout

VERY FINE. A SCARCE BLOCK OF FOUR OF THE \$5.00 COLUMBIAN ISSUE

The \$5.00 is perhaps the most difficult of all Columbian Issues to obtain in block form. 13,500.00

TRANS-MISSISSIPPI ISSUE



20EX

- 20 E **1c-\$2.00 Trans-Mississippi, Bi-color Die Essays on India (285-E8a-293-E7a).** Complete set of "normal" bi-color proofs as listed in Scott, each 62 x 50mm die sunk on card cut to size, fresh and Very Fine, a bright and fresh set of these gorgeous bi-color essays, the concept of bi-colored printing was abandoned due to demands on the BEP for revenue stamps to finance the 1898 Spanish-American War, Scott Retail for the nine listed essays.....

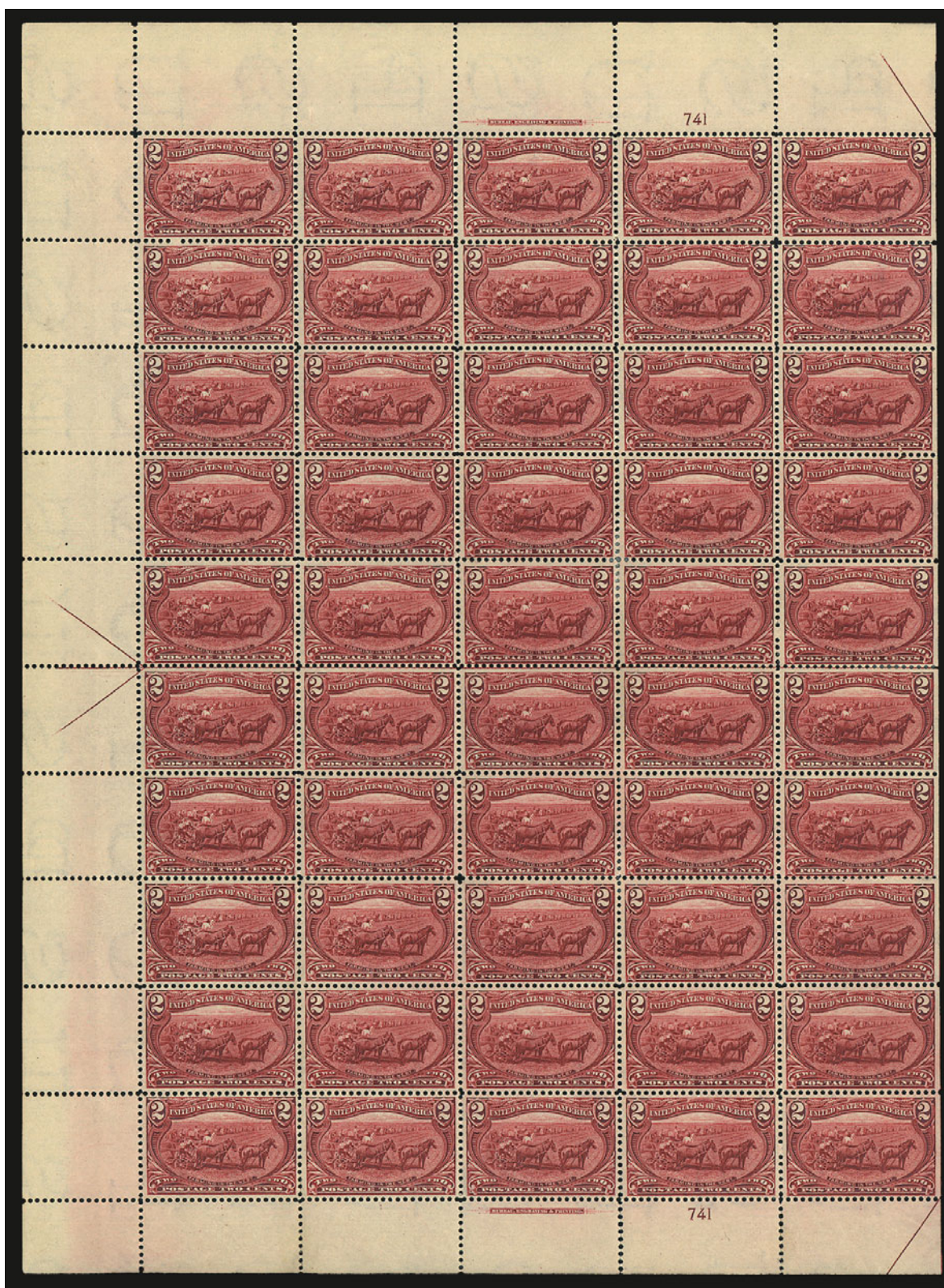
.....(Photo Ex) 3,125.00



21

- 21 ★★田 **1c Trans-Mississippi (285).** Pane of 50 with imprint and plate no. 590 at top and bottom and selva at left, natural s.e. at right, Mint N.H., upper half includes some stamps with choice centering and a Fine-Very Fine plate block, bottom Good-Fine, a lovely intact pane

4,390.00



22

- 22 ★田 2c Trans-Mississippi (286). Pane of 50 with imprint and plate no. 741 at top and bottom and selva at left, natural s.e. at right, top plate block and many others Mint N.H., few perf separations sensibly and expertly reinforced which possibly affects bottom plate block, one stamp towards center thin spot, appears Fine-Very Fine..... 3,810.00



23

- 23 ★★田 4c Trans-Mississippi (287). Mint N.H. top right corner imprint and plate no. 599 block of eight, vibrant color, fresh and Fine, Scott Retail as plate no. block of six and two singles..... 3,450.00



24

- 24 ★田 8c Trans-Mississippi (289). Top right corner selvage imprint and plate no. 609 block of ten, natural s.e. at left, top stamps Mint N.H., bottom stamps h.r., rich color and detailed impression, fresh and Fine-Very Fine 4,050.00



25

- 25 ★田 **10c Trans-Mississippi (290).** Bottom left corner selvage imprint and plate no. 604 block of ten, natural s.e. at right, original gum, few stamps Mint N.H., bright color and detailed impression, Fine, scarce large multiple 4,220.00



26

- 26 ★田 **50c Trans-Mississippi (291).** Bottom imprint and plate no. 603 block of four, original gum, lightly hinged, rich color and proof-like impression, unusually choice centering, slight crease in selvage only

VERY FINE-EXTREMELY FINE. A BEAUTIFUL AND RARE ORIGINAL-GUM PLATE BLOCK OF FOUR OF THE 50-CENT TRANS-MISSISSIPPI ISSUE. SCARCE WITH SUCH CHOICE CENTERING.

The 50c Trans-Mississippi issue is scarce as a plate block. We have only offered one plate block of six and one other plate block of four since keeping computerized records. 14,000.00



- 27 ★★田 \$1.00 Trans-Mississippi (292). Mint N.H. horizontal block of ten with selvage at left and natural s.e. at right, intense shade and proof-like impression

FINE. A RARE MINT NEVER-HINGED BLOCK OF TEN OF THE ONE-DOLLAR TRANS-MISSISSIPPI, CONSIDERED BY MANY TO BE THE MOST BEAUTIFUL ENGRAVED STAMP EVER ISSUED BY THE UNITED STATES.

Other than the three recorded panes of 50, this is the largest recorded multiple.

..... 35,000.00



28

- 28 ★田 **\$1.00 Trans-Mississippi (292).** Top imprint and plate no. 606 block of six, original gum, slight disturbance from hinge removal, well-centered, excellent impression, reduced top margin, few rejoined perfs, couple faint thins in previously hinged areas and tiny repaired tear in corner of bottom right stamp

VERY FINE APPEARANCE. AN EXTREMELY RARE PLATE NUMBER BLOCK OF SIX OF THE \$1.00 TRANS-MISSISSIPPI ISSUE.

The \$1.00 Trans-Mississippi stamp is widely regarded as the most beautiful stamp ever issued by the United States. Plate blocks of six are much rarer than the four-stamp plate blocks. The Kobacker and Wampler collections only had plate number blocks of four, and other than a pane of 50 this is the only plate block of six we have offered since keeping computerized records..... 50,000.00



29

29 ★田 **\$2.00 Trans-Mississippi (293).** Bottom imprint and plate no. 613 block of four, original gum, very lightly hinged, bright shade and detailed impression

FINE-VERY FINE. AN EXCEEDINGLY RARE WIDE BOTTOM PLATE BLOCK OF FOUR OF THE \$2.00 TRANS-MISSISSIPPI ISSUE. THIS IS ONE OF THE RAREST OF ALL COMMEMORATIVE PLATE BLOCKS.

There are perhaps three imprint and plate no. blocks of six in existence. The imprint and plate no. block of four format is also extremely scarce. 80,000.00

PAN-AMERICAN ISSUE



30EX

- 30 P **1c-10c Pan-American, Large Die Proofs on India (294P1-299P1).** Each approx. 62 x 50mm die sunk on 8 x 6 in. card, blue control nos. on back (15758, 16255, 16480, 16791, 17031, 17096), 4c usual slight oxidation in frame, 10c toned on back of card, a few minor bends or creases at corners, otherwise Very Fine set**(Photo Ex)** 3,450.00



31EX

- 31 P **1c-10c Pan-American, Roosevelt Small Die Proofs (294P2-299P2).** Each expertly removed from original gray card backing, light overall toning, 2c and 10c tiny pinholes (as do many), Very Fine set, only 85 were produced**(Photo Ex)** 3,450.00



32EX



32EX

- 32 ★田 **1c-10c Pan-American (294-299)**. Complete set of imprint and plate no. blocks of ten, 2c and 4c from bottom with two plate nos., others from either top left or top right with corner selvage (only the 2c lacks corner selvage), 1c and 10c Mint N.H., others lightly hinged with some stamps Mint N.H., few small flaws mostly confined to selvage

FINE-VERY FINE. A SCARCE AND DESIRABLE COMPLETE SET OF IMPRINT AND PLATE NUMBER BLOCKS OF TEN OF THE PAN-AMERICAN ISSUE.

This group of large-format plate blocks is highly exhibitable. 24,180.00



33

- 33 ★ **1c Pan-American, Center Inverted (294a).** Slightly disturbed original gum (described as previously hinged on certificate), deep rich colors, tiny corner crease at bottom left and small stain spot

FINE APPEARING EXAMPLE OF THIS MAJOR 20TH CENTURY INVERT ERROR.

The 1c Pan-American Inverts were found in at least four different post offices around the country, soon after release of the issue in May 1901. Between 600 and 700 are likely to have been issued.

With 1983 P.F. certificate 11,000.00



34

- 34 ★ **2c Pan-American, Vignette Shifted to Bottom (295 var).** Lightly hinged, vignette strongly shifted into "Postage Two Cents" at bottom, Very Fine and choice example of this dramatic shift E. 150-200



35

- 35 ★ **2c Pan-American, Center Inverted (295a).** Barely disturbed original gum, superbly centered with wide balanced margins, bright colors and clear impressions of vignette and frame

EXTREMELY FINE. ONE OF THE FINEST ORIGINAL-GUM EXAMPLES OF THE 2-CENT PAN-AMERICAN INVERT.

The 2c is the rarest of the three Pan-American Inverts. It is surmised that approximately 200 were issued through the post office, with two distinct shades known. Estimates of surviving examples range from an early count (1945) of 55 unused and 2-3 used to the 1998 Datz estimate of 150 unused, 3-5 used and a block of four intact. Our Levi records contain the intact block (4), reconstructed block (4), 64 unused singles and 6 used singles, for a total of 72 unused and 6 used. Many of the unused singles have disturbed gum or no gum, and/or are off center to top or top left. This Extremely Fine sound stamp with original gum that is only slightly disturbed from hinge removal is among the finest known examples.

Scott footnote states "Almost all unused copies of No. 295a have partial or disturbed gum. Values are for examples with full original gum that is slightly disturbed." 45,000.00

LOUISIANA PURCHASE ISSUE

36



- 36 ★★田 1c Louisiana Purchase (323). Mint N.H. bottom right corner imprint, plate no. 2130 and half arrow block of ten, natural s.e. at left, deep rich color and detailed impression, Very Fine and choice, a beautiful block, Scott Retail as plate block of six and four singles 780.00

37



- 37 ★田 2c Louisiana Purchase (324). Bottom left corner imprint, plate no. 2154 and half arrow block of ten, natural s.e. at right, three stamps at top small h.r., brilliant color, crisp impression, Very Fine, Scott Retail as hinged plate block, three Mint N.H. and one hinged single..... 522.50

38



- 38 ★田 3c Louisiana Purchase (325). Top right corner imprint, plate no. 2103 and half arrow block of ten, natural s.e. at left, stamps Mint N.H., lightly hinged in selvage above Positions 2 and 5, deep rich color, detailed impression, Very Fine and choice, Scott Retail as Mint N.H. stamps with no premium for the position or the larger multiple. 2,590.00



39

- 39 ★田 **5c Louisiana Purchase (326)**. Bottom left corner imprint, plate no. 2099 and half arrow block of ten, natural s.e. at right, top right stamp and side selvage lightly hinged, others (incl. plate block) Mint N.H., intense color and proof-like impression, Very Fine and choice, an attractive and scarce multiple, Scott Retail as Mint N.H. plate block, three Mint N.H. singles and one hinged single 2,620.00



40

- 40 ★★田 **10c Louisiana Purchase (327)**. Mint N.H. top left corner imprint, plate no. 2105 and half arrow block of ten, natural s.e. at right, radiant color, crisp impression, top left stamp tiny toned spot at left

FINE-VERY FINE. A BEAUTIFUL AND RARE PLATE BLOCK OF TEN OF THE 10-CENT LOUISIANA PURCHASE ISSUE. SCARCE WITH SUCH WIDE SELVAGE.

Scott Retail as Mint N.H. plate block and four Mint N.H. singles..... 5,450.00

1908-09 ISSUE



41



42

- 41 ★★田 3c Deep Violet (333). Mint N.H. bottom imprint and plate no. 4926 block of six, intense color, choice centering, subtle natural gum wrinkle affects three stamps, Extremely Fine..... 575.00
- 42 ★★田 3c Deep Violet (333). Mint N.H. bottom imprint, plate no. 5121 and star block of six, pretty shade, Very Fine 625.00



43



44

- 43 ★田 5c Blue (335). Top imprint and plate no. 4931 block of six, barest trace of hinging, bright color, bottom right stamp natural gum bend, Very Fine and choice, scarce top plate block 525.00
- 44 ★田 6c Red Orange (336). Top imprint and plate no. 4938 block of six, barely hinged at bottom left and in selva, radiant color with trace of oxidation at top, otherwise Fine-Very Fine 750.00



45



46

- 45 ★田 **8c Olive Green (337)**. Top imprint and plate no. 4922 block of six, barest trace of hinging at bottom center, others Mint N.H., bright color, Very Fine and choice, an attractive plate block 525.00
- 46 ★田 **10c Yellow (338)**. Top imprint and plate no. 4943 block of six with wide selvage, lightly hinged at top center, others Mint N.H., vibrant color, fresh and Fine-Very Fine 800.00



47



48

- 47 ★★田 **13c Blue Green (339)**. Mint N.H. top imprint and plate no. 4945 block of six with wide selvage, deep rich color, fresh and Fine-Very Fine..... 850.00
- 48 ★田 **15c Pale Ultramarine (340)**. Top imprint and plate no. 4954 block of six, lightly hinged, vibrant color, Very Fine, top center stamp is particularly nice..... 650.00



49

- 49 ★★田 **50c Violet (341)**. Mint N.H. top imprint and plate no. block of six, deep rich color, remarkably choice centering throughout, fresh an intact perfs

EXTREMELY FINE GEM. THIS IS PROBABLY THE FINEST MINT NEVER-HINGED PLATE BLOCK OF THE 50-CENT 1909 DOUBLE-LINE WATERMARKED WASHINGTON ISSUE IN EXISTENCE. A REMARKABLE SHOWPIECE.

Scott 341 was produced from only one plate, No. 4956. It produced plate blocks at top and bottom. A search of past auction catalogues has failed to find an equal. to the plate block offered here

Ex Silver Lake. Undercatalogued in Scott — they assign a 228% premium for Mint N.H. singles versus hinged, but only assign a 178% premium for a Mint N.H. plate block versus the hinged despite its far greater rarity. Applying the same premium would result in a catalogue value of \$16,000.00 and still would not fully account for the rarity of this plate block in relation to catalogue value for singles 7,000.00



50

- 50 ★田 **\$1.00 Violet Brown (342)**. Top imprint and plate no. 4957 block of six, lightly hinged in selvage only, stamps Mint N.H., rich color, perfectly centered, one toned perf tip, sealed selvage tear just above imprint

EXTREMELY FINE APPEARANCE. A BEAUTIFUL PLATE NUMBER BLOCK OF THE \$1.00 WASHINGTON.

Excluding the Bluish Paper issue, this is one of the rarest of the Washington-Franklin plate blocks. The Bureau experienced difficulty with paper shrinkage while printing the 1908 Issue, and the Bluish Paper experiment of 1909 was part of an effort to correct the problem. The 1908 high-denomination stamps are difficult to find well-centered, and plate blocks are extremely rare in higher grades.

Ex Wampler..... 17,500.00



51EX



52EX

- 51 ★田 **1c-5c 1908-09 Issue, Imperforate (343-347).** Top imprint and plate no. blocks of six, first four Mint N.H. and with wide selvage, 5c lightly hinged, 3c and 4c minor flaws in selvage only, Very Fine(Photo Ex) 985.00
- 52 ★田 **5c Blue, Imperforate (347).** Left, right and bottom imprint and plate no. 4931 blocks of six, lightly hinged, rich color, large margins, one stamp in right plate small scuff, otherwise Very Fine(Photo Ex) 825.00

BLUISH PAPER



53

- 53 ★★田 **1c Green, Bluish (357).** Mint N.H. top imprint and plate no. 4889 block of six, intense shade on nicely blued paper, light natural gum bends, fresh and Very Fine 1,850.00



54

- 54 ★★田 2c Carmine, Bluish (358). Mint N.H. top imprint and plate no. 4863 block of six, brilliant color and detailed impression on nicely blued paper, unusually choice centering throughout

EXTREMELY FINE. A GORGEOUS MINT NEVER-HINGED PLATE BLOCK OF THE 2-CENT BLuish PAPER ISSUE.

With 1990 P.F. certificate. 1,800.00



55

- 55 ★田 3c Deep Violet, Bluish (359). Block of four, lightly hinged, rich color on deeply blued paper, long and full perforations all around

FINE-VERY FINE. A SCARCE BLOCK OF FOUR OF THE 3-CENT BLuish PAPER ISSUE

With 1998 P.F. certificate 8,500.00



56

56 ★★田 15c Pale Ultramarine, Bluish (366). Mint N.H. plate no. block of six with full top selvage, incredibly well-centered on deeply blued paper, lovely shade and detailed impression, remarkably fresh and intact, tiny natural inclusion in margin

EXTREMELY FINE GEM. A GORGEOUS MINT NEVER-HINGED 15-CENT PLATE BLOCK ON BLUISH PAPER IN THE FINEST QUALITY ATTAINABLE. ONE OF THE RAREST 20TH CENTURY PLATE BLOCKS AND EXCEPTIONALLY RARE IN THIS CHOICE CONDITION.

We doubt that a finer example of this rare 15c Bluish Paper plate block exists.. 20,000.00



57



58

- 57 ★田 2c Lincoln (367). Bottom imprint and plate no. 4978 block of six, stamps Mint N.H., small h.r. in selvage only, brilliant color, choice centering, Very Fine 200.00
- 58 ★田 2c Lincoln, Bluish (369). Top imprint, plate no. 4979 and small star block of six with wide selvage, barely hinged, intense shade on nicely blued paper, Fine-Very Fine, an attractive plate block of the 2c Lincoln on Bluish Paper..... 3,000.00

1910-11 ISSUE



59



60

- 59 ★★田 3c Deep Violet (376). Mint N.H. top imprint and plate no. 5428 block of six with wide selvage, rich color and detailed impression, Fine-Very Fine..... 375.00
- 60 ★★田 4c Brown (377). Mint N.H. top imprint and plate no. 5576 block of six with wide selvage, intense shade and impression on bright paper, fresh and Fine-Very Fine, the top center stamp is real Gem 425.00



61



62

61 ★田 5c Blue (378). Top plate no. 5894 and "A" block of six with wide selvage, top center stamp and selvage h.r., others Mint N.H., deep rich color and proof-like impression, Fine-Very Fine 350.00

62 ★田 6c Red Orange (379). Top imprint and plate no. 5231 block of six with star, wide selvage, barest trace of hinging at bottom, vibrant color, Very Fine and choice 440.00



63



64

63 ★★田 8c Olive Green (380). Mint N.H. top imprint and plate no. 4919 block of six with wide selvage, bright color, natural gum crease, few perf separations in top of selvage expertly reattached (easily trimmed), Fine-Very Fine 1,900.00

64 ★★田 10c Yellow (381). Mint N.H. top imprint and plate no. 5239 block of six with wide selvage, some overall oxidation, otherwise Very Fine, with 1993 P.S.E. certificate 2,250.00

PANAMA-PACIFIC ISSUE

- 65 P **1c-10c Panama-Pacific, Roosevelt Small Die Proofs (397P2-400P2).** Expertly removed from original gray card backing, brilliant colors

VERY FINE AND CHOICE GROUP OF THE FOUR DENOMINATIONS OF THE PANAMA-PACIFIC ISSUE.

Only 85 were produced. This group lacks the 10c Orange, but is complete for the four denominations.
.....(Photo Ex) 6,000.00



65EX



66

- 66 ★★ **2c Panama-Pacific, "Varnish Ink" (398 var).** Mint N.H., distinctive color and impression, fresh and Very Fine example of this unusual printing variety, the ink must have been mixed with a component that caused this distinctive variety, with 1995 P.S.E. certificate. E. 500-750



67

- 67 ★★田 **1c Panama-Pacific (397).** Mint N.H. top plate no. 6127 block of six, deep rich color and proof-like impression, fresh and Very Fine, an attractive plate block 400.00

68



68 ★田 2c Panama-Pacific (398). Top plate no. 6322 block of six with wide selvage, lightly hinged on top center stamp only, rich color, fresh and Fine-Very Fine 350.00

69



69 ★田 5c Panama-Pacific (399). Top plate no. 6138 block of six, stamps Mint N.H., lightly hinged in selvage, deep rich color, choice centering, natural gum crease, Extremely Fine, an attractive plate block 1,900.00



70

- 70 ★田 **10c Orange Yellow, Panama-Pacific (400).** Top plate no. 6139 block of six, barest trace of hinging, vibrant color, choice centering, fresh and Very Fine 2,350.00



71

- 71 ★田 **10c Orange, Panama-Pacific (400A).** Bottom plate no. 6135 block of six, lightly hinged, radiant color and intense impression

FINE-VERY FINE. A SCARCE AND ATTRACTIVE PLATE BLOCK OF THE 10-CENT ORANGE PERF 12 PANAMA-PACIFIC ISSUE. PROBABLY RARER THAN THE 10-CENT PERF 10 PLATE BLOCK.

An examination of catalogue values and a search of past auction catalogues demonstrates the rarity of the 10c Orange Perf 12 as a plate block 12,500.00



72

- 72 ★田 2c Panama-Pacific, Perf 10 (402). Top plate no. 7034 block of six, stamps Mint N.H., lightly hinged in selvage, radiant color, fresh and Fine plate block 1,950.00



73

- 73 ★田 10c Panama-Pacific, Perf 10 (404). Bottom plate no. 6130 block of six, single hinge mark on bottom center stamp, rich color and proof-like impression
FINE-VERY FINE. A RARE PLATE BLOCK OF THE 10-CENT PANAMA-PACIFIC PERF 10 ISSUE.
We estimate that 30-40 plate blocks of Scott 404 have survived, including those still in complete panes..... 12,500.00

1912-23 ISSUES



74



75 detail



75

- 74 ★★田 **1c Green (405)**. Mint N.H. top plate no. 6042 block of six, deep rich color and proof-like impression on bright paper, light natural gum skip at top not mentioned on accompanying certificate, Very Fine, with 1997 P.F. certificate..... 155.00
- 75 ★田 **2c Carmine, Two Different Plate Nos. (406 var)**. Top plate no. block of six, with plate no. 5946 in selvage and plate no. 5954 in top margin, lightly hinged, Very Fine, unusual item, apparently two pieces of paper were fed into the press with one slightly misplaced so that only the plate no. printed (5954), the otherwise blank sheet of paper was then fed into the press again where it received the impressions of the stamps and plate no. 5946, ex Lilly..... E. 750-1,000



76



77EX

- 76 ★田 **7c Black (407)**. Top plate no. 6919 block of six, lightly hinged, intense shade and proof-like impression, fresh and Very Fine..... 1,200.00
- 77 ★田 **1c Green, 2c Carmine, Ty. I, Kansas City Roulettes (408 var, 409 var)**. Blocks of four of each, rich colors, hinge reinforcements, Very Fine, a rare set of blocks of four of this officially sanctioned private perforation. In December 1914, the Kansas City post office had an oversupply of imperforate stamps, originally intended for vending machines. The supply of stamps was rouletted with women's dressmaking tracing wheels, and official approval for their release was given by Washington.....(Photo Ex) 300.00



78



79

- 78 ★田 **8c Pale Olive Green (414)**. Top imprint and plate no. 5719 block of six with wide selvage, lightly hinged, pretty shade, fresh and Fine-Very Fine..... 475.00
- 79 ★田 **9c Salmon Red (415)**. Top plate no. 6907 block of six, lightly hinged, vibrant color on bright paper, Fine-Very Fine 650.00



80



81

- 80 ★★田 **10c Orange Yellow (416)**. Mint N.H. top imprint, plate no. 5764 and "A" block of six, radiant color, trivial natural inclusion at bottom right not mentioned on accompanying certificate, fresh and Very Fine, with 2004 P.F. certificate..... 900.00
- 81 ★田 **12c Claret Brown (417)**. Bottom plate no. 6913 block of six, four stamps h.r., deep rich color on bright paper, choice centering throughout, Very Fine-Extremely Fine, a pretty plate block 625.00



82 ★★田 30c Orange Red (420). Mint
N.H. top plate no. 6911 block
of six, rich color, fresh and
Fine 2,350.00

82

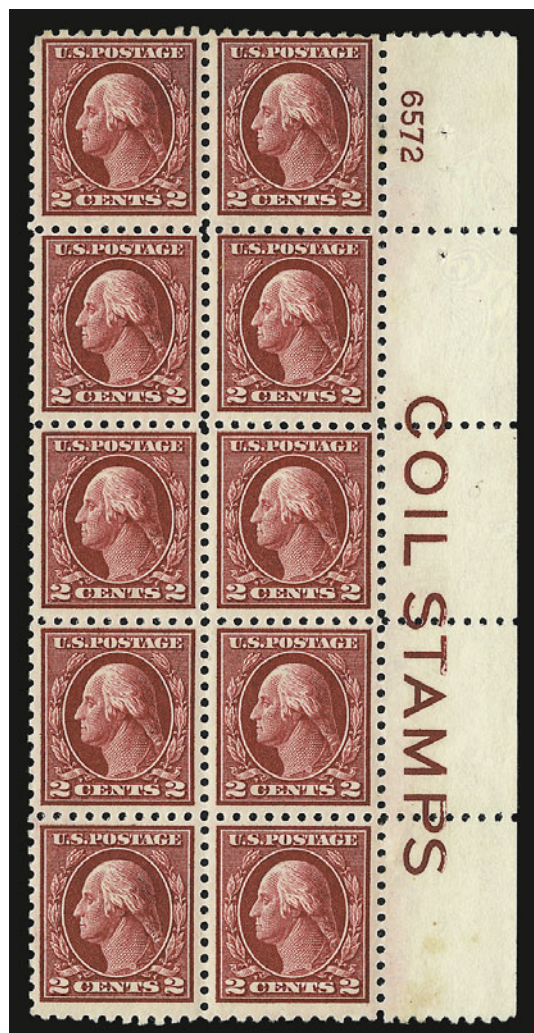


83

83 ★田 50c Violet (422). Top imprint, "A" and plate no. block of six with wide selvage, top row
Mint N.H., bottom row lightly hinged, rich color on fresh paper, slight internal crease in
top right stamp with a bit of offset ink on gum in same place

VERY FINE AND CHOICE. A BEAUTIFUL AND RARE 50-CENT PERF 12 DOUBLE-LINE WATER-
MARKED FRANKLIN PLATE BLOCK.

Wide-top plate blocks of the 50c Perf 12 with double-line watermark are extremely rare.
The Mint N.H. wide-top plate block in the 2005 Fogelson sale (Shreves) realized \$17,000
hammer. For the collector who is happy with lightly-hinged plate blocks, this is probably
the best wide-top example extant. 4,750.00



84EX

- 84 ★田 **1c Green, 2c Carmine (424-425).** Right plate no. and "Coil Stamps" blocks of twelve, 1c few h.r., Fine-Very Fine(Photo Ex) 280.00
- 85 ★田 **3c Deep Violet (426).** Top plate no. 6755 block of six with wide selvage, small h.r. at bottom center, deep rich color on bright paper, Fine-Very Fine, an attractive plate block 210.00
- 86 ★★田 **4c Brown (427).** Mint N.H. bottom plate no. 6010 block of six, rich color, choice centering, natural gum bends, Very Fine..... 775.00



85



86



87



88

- 87 ★田 5c Blue (428). Bottom plate no. 7242 block of six, top stamps lightly hinged, remarkably deep shade, Very Fine..... 390.00
- 88 ★★田 6c Red Orange (429). Mint N.H. top imprint and plate no. 5430 block of six with star, vibrant color on bright paper, few small natural gum skips, trace of oxidation at right, otherwise Very Fine 725.00



89



90

- 89 ★田 7c Black (430). Top plate no. 6904 block of six, top center stamp lightly hinged, others Mint N.H., detailed impression, bright paper, Fine-Very Fine, Scott Retail as singles.. 1,225.00
- 90 ★田 8c Pale Olive Green (431). Top imprint, plate no. 5725 and "A" block of six with wide selvage, two stamps at top right lightly hinged, others Mint N.H., pretty shade, fresh and Very Fine, an attractive plate block..... 550.00



91



92

- 91 ★★田 **9c Salmon Red (432)**. Mint N.H. top plate no. 6905 block of six, brilliant color, selvage reduced, Fine-Very Fine 1,150.00
- 92 ★田 **11c Dark Green (434)**. Bottom plate no. 7505 block of six, bottom left stamp Mint N.H., deep rich color and proof-like impression, top center stamp natural perf dimple, Very Fine, the bottom left stamps are Extremely Fine..... 275.00



93



94

- 93 ★★田 **12c Claret Brown (435)**. Mint N.H. top plate no. 6900 block of six with wide selvage, intense color on bright paper, fresh and Fine-Very Fine 500.00
- 94 ★田 **20c Ultramarine (438)**. Bottom plate no. 6909 block of six, bottom stamps Mint N.H., top stamps lightly hinged, brilliant color, fresh and Fine-Very Fine, an extremely scarce plate block..... 3,250.00



95

- 95 ★田 **50c Violet (440)**. Top plate no. 7057 block of six, five stamps Mint N.H., center stamp at bottom barely hinged, beautiful color, remarkably fresh and intact, each stamp is perfectly centered

EXTREMELY FINE GEM. THIS IS PROBABLY THE FINEST PLATE BLOCK OF THE 50-CENT FRANKLIN (SCOTT 440) IN EXISTENCE.

This full top selvage plate block is absolutely pristine and perfectly centered. It is the finest we have ever encountered. Last offered in our 2000 Rarities sale, where it realized \$35,000 hammer 15,000.00



96 ★田 **\$1.00 Violet Black (460).**
Top imprint, plate no. 5782
and "A" block of six, lightly
hinged on top center stamp,
deep rich color and intense
impression, natural staple
hole in selvage at top left

FRESH AND FINE. A RARE
PLATE BLOCK OF THE PERF
10 DOUBLE-LINE WATER-
MARK \$1.00 FRANKLIN,
SCOTT 460.

With 1991 P.S.E. certificate
..... 12,500.00

96

97 ★田 **2c Pale Carmine Red,
Ty. I (461).** Top plate no.
7261 block of six with
wide selvage, top center
and both right stamps
lightly hinged, others
Mint N.H., bright color,
fresh and intact, Fine-
Very Fine, one of the
scarce "keys" to a
Washington-Franklin
plate block collection,
with 1996 P.F. certificate.
..... 1,500.00



97



98



99

- 98 ★★田 2c Carmine, Ty. I (463). Mint N.H. bottom plate no. 7776 block of six, brilliant color, bottom center stamp trivial natural inclusion, Very Fine and choice 220.00
- 99 (★)田 3c Violet (464). Bottom plate no. 7254 block of six, gum is either disturbed or regummed ("as is"), Fine centering and scarce..... E. 200-300



100



101

- 100 ★★田 4c Orange Brown (465). Mint N.H. top plate no. 7372 block of six with wide selvage, bright shade, Very Fine and choice, a pretty plate block 1,100.00
- 101 ★★田 6c Red Orange (468). Mint N.H. top plate no. 7137 block of six, bright color but with hint of oxidation, bottom right stamp small natural gum skip, Fine-Very Fine 2,500.00



102



103

- 102 ★★田 8c Olive Green (470). Mint N.H. top imprint, plate no. 5725 and "A" block of six, pretty shade, fresh and Fine-Very Fine..... 900.00
- 103 ★★田 9c Salmon Red (471). Mint N.H. top plate no. 6907 block of six, vibrant color on bright paper, Fine-Very Fine..... 1,250.00



104



105

- 104 ★★田 11c Dark Green (473). Mint N.H. top plate no. 7504 block of six, rich color on bright paper, light natural gum bend at top center, fresh and Fine-Very Fine..... 625.00
- 105 ★★田 12c Claret Brown (474). Mint N.H. top plate no. 6913 block of six, rich color on bright paper, natural short gum at top, Fine-Very Fine..... 1,050.00



106

- 106 ★田 **15c Gray (475)**. Top plate no. 6819 block of six, lightly hinged, deep rich color, selvage reduced, Very Fine, a scarce plate block, we have only offered two others (both also hinged) since keeping computerized records 3,000.00



107

- 107 ★田 **\$1.00 Violet Black (478)**. Top imprint, plate no. 5782 and "A" block of six, very lightly hinged, intense shade and impression, choice centering for this difficult plate block

FINE-VERY FINE. AN INCREDIBLY RARE PLATE BLOCK OF THE \$1.00 PERF 10 UNWATER-MARKED FRANKLIN ISSUE.

Our search of auction catalogues of major plate block collections has yielded precious few examples. Todd had two with full top selvage, and Wampler had one hinged with narrow bottom selvage. The Silver Lake collection contained a Mint N.H. top plate block, which may be unique in that condition.

With 1991 P.F. certificate 13,000.00



108

- 108 ★田 **\$2.00 Dark Blue (479)**. Top plate no. 8015 block of six, top left stamp and bottom row Mint N.H., others lightly hinged, deep rich color and detailed impression, tiny natural inclusion in bottom center stamp, slight crease in bottom left stamp

FINE-VERY FINE CENTERING. A BRILLIANT AND FRESH PLATE NUMBER BLOCK OF THE \$2.00 MADISON PERF 10.

Ex Fox 4,000.00



109

- 109 ★田 **\$5.00 Light Green (480)**. Wide top plate no. 8016 block of six, stamps are essentially Mint N.H. except for expert strengthening between perfs, fresh color on bright paper

FINE-VERY FINE. AN EXCEEDINGLY RARE WIDE TOP PLATE BLOCK OF THE \$5.00 MARSHALL 1917 PERF 10 ISSUE.

Scott Retail as hinged 3,100.00



110

- 110 ★★田 **5c Carmine, Imperforate, Error (485)**. Single error in block of nine, two 2c stamps at top h.r., two 2c stamps at bottom lightly hinged, other four 2c stamps and **error stamp Mint N.H.**, wide margins

EXTREMELY FINE. A BEAUTIFUL EXAMPLE OF THE 5-CENT IMPERFORATE ERROR IN A BLOCK OF NINE WITH THE ERROR STAMP MINT NEVER-HINGED.

During the course of production of the normal 2c plate No. 7942, three positions were noted to be defective. The plate was returned to the siderographer, who burnished out the three positions and mistakenly re-entered them using a transfer roll for the 5c stamp. The error passed unnoticed and the sheets were issued to the public Perf 10, Imperforate and Perf 11 (Scott 467, 485 and 505). The imperforate is by far the rarest of the three.

Ex Drucker. With 1981 A.P.S. and 2003 P.F. certificates 22,500.00



111

- 111 ★田 **2c Deep Rose, Ty. Ia, Imperforate at Top (500 var).** Top margin plate no. 10209 block of six, showing no trace of perforations between the top row and plate number, left stamps slightly glazed original gum from mount, other stamps Mint N.H., deep rich color, bottom right stamp natural carbon speck inclusion

VERY FINE. AN IMPORTANT AND VERY RARE 20TH CENTURY VARIETY. PROBABLY UNIQUE AS A PLATE BLOCK.

This perforation variety is footnoted in Scott. Examples have been used to create the rare Scott 482A by trimming and adding Schermack Type III perforations. This is the only plate block with the imperforate sheet margin known to us.

Ex Zoellner E. 4,000-5,000



112



113

112 ★田 **3c Light Violet, Ty. I (501).** Top plate no. 8129 block of six, stamps Mint N.H., lightly hinged in ungummed part of selvage, radiant color, choice centering, fresh and Extremely Fine, Scott Retail as Mint N.H. singles 150.00

113 ★★田 **3c Dark Violet, Ty. II (502).** Mint N.H. top plate no. 8462 block of six, rich color, detailed impression, well-balanced margins, Very Fine-Extremely Fine, a beautiful plate block 250.00



114



115

114 ★★田 **5c Blue (504).** Mint N.H. top plate no. 10312 block of six, deep rich color on bright paper, fresh and Very Fine 210.00

115 ★田 **5c Rose, Error (505).** Single error in block of nine, natural s.e. at top, two 2c lightly hinged, others and error Mint N.H., brilliant color, fresh and Very Fine 725.00



116

- 116 ★★田 5c Rose, Error (505). Mint N.H. double error in block of twelve, natural s.e. at bottom, radiant color, usual faint natural gum bends, fresh and Very Fine 2,250.00



1117



118

- 117 ★★田 6c Red Orange (506). Mint N.H. top plate no. 7828 block of six with wide selvage, radiant color except for some faint traces of oxidation, Very Fine 285.00
- 118 ★★田 7c Black (507). Mint N.H. top plate no. 12562 block of six, intense shade and impression on bright paper, minor crease in selvage at top left, appears Very Fine 450.00



119



120

- 119 ★田 8c Olive Bister (508). Top plate no. 5846 and "A" block of six, top center stamp lightly hinged, others Mint N.H., pretty shade, fresh and Very Fine..... 220.00
- 120 ★★田 9c Salmon Red (509). Mint N.H. top plate no. 11774 block of six with unusually wide selvage, brilliant color on bright paper, fresh and Very Fine, a remarkably fresh plate block 240.00



121EX



122EX

- 121 ★田 10c Orange Yellow, 11c Light Green (510-511). Top plate no. blocks of six, 10c with wide selvage, 10c one stamp very lightly hinged, 11c stamps Mint N.H. and barely hinged in ungummed part of selvage, Very Fine and choice.....(Photo Ex) 305.00
- 122 ★★田 12c Claret Brown, 12c Brown Carmine (512, 512a). Mint N.H. top plate no. blocks of six, beautiful colors in the two distinct shades, latter with few small natural gum skips, Very Fine(Photo Ex) 450.00



123



124

- 123 ★★田 **13c Apple Green (513)**. Mint N.H. bottom plate no. 12587 block of six, brilliant color, Very Fine, an attractive plate block..... 220.00
- 124 ★田 **15c Gray (514)**. Top plate no. 12592 block of six, stamps Mint N.H., barest trace of what may be hinging in ungummed part of selvage, natural short gum at top, bright color, short perf in selvage at top right, otherwise Very Fine, Scott Retail as hinged.... 550.00



125

- 125 ★★田 **30c Orange Red (516)**. Mint N.H. top plate no. 6899 block of six, vibrant color, unusually choice centering, top left stamp trivial natural inclusion, Very Fine-Extremely Fine, the top stamps are real Gems..... 925.00

126 ★★田 50c Red Violet (517).

Mint N.H. top plate no. 13656 block of six, deep dark shade, post-office fresh and intact, beautiful centering rarely seen on this plate block

EXTREMELY FINE GEM. A SUPERB MINT NEVER-HINGED PLATE BLOCK IN THE FINEST ATTAINABLE CONDITION.

With 1999 P.F. certificate 2,550.00



126



127 ★★田 \$1.00 Violet Brown (518).

Mint N.H. top imprint, plate no. 5782 and "A" block of six with wide selvage, deep rich color and proof-like impression on bright paper

FRESH AND EXTREMELY FINE PLATE BLOCK OF THE \$1.00 PERF 11 ISSUE, SCOTT 518. EASILY ONE OF THE FINEST IN EXISTENCE.

Of the various \$1.00 Washington-Franklin printings, Scott 518 is the most common. However, Mint N.H. plate blocks in superb condition are extremely rare..... 2,100.00

127



128

128 ★★田 2c Carmine (519). Mint N.H. left margin imprint and plate no. 4818 block of six, fresh color and crisp impression

FINE. A RARE MINT NEVER-HINGED PLATE BLOCK OF SCOTT 519.

Many of the known plate blocks — approximately 30-40 — have narrow selvage and are not nearly as well-centered as this example.

With 1982 P.F. certificate 6,500.00



129

129 ★田 \$2.00 Orange Red & Black (523). Top double plate no. and arrow block of twelve, lightly hinged, deep rich colors and proof-like impressions, Position 2 natural pre-printing paperfold, few natural gum skips and bends

FINE-VERY FINE. AN EXTREMELY RARE AND DESIRABLE PLATE NUMBER BLOCK OF THE 1918 \$2.00 ORANGE RED & BLACK. ONLY A HANDFUL OF PLATE BLOCKS EXIST, AND THIS LARGE MULTIPLE IS EVEN RARER AND MORE DESIRABLE.

The \$2.00 and \$5.00 1918 Issue are the first bi-colored dollar-denominated postage stamps issued by the United States. Both were released just three months after the famous 1918 24c Inverted Jenny, but the early printings were issued in small quantities, since stocks of the 1902 \$2.00 and \$5.00 1917 issue were still on hand.

According to Johl, the \$2.00 Orange Red & Black was a color error on the part of the Bureau of Engraving & Printing. The official description and order for the bi-color stamps specified "Red and Black" for the \$2.00. When subsequent printings appeared in 1920 and philatelists brought the matter to the attention of the Bureau, they were told "this stamp has always been this color" (Johl, p. 306). From studies of Bureau and Post Office records, it is clear that the originally-intended color was not issued until November 1920 (Scott 547), and that the earlier Orange Red stamps were mistakes. The quantity issued has been variously estimated at between 47,000 and 68,000. 14,700.00



130

- 130 ★★田 \$5.00 Deep Green & Black (524). Mint N.H. top margin arrow and double plate no. block of eight, beautiful intensely deep color, one stamp has small natural gum skip
VERY FINE AND CHOICE. A SCARCE MINT NEVER-HINGED PLATE BLOCK OF THE FIRST BI-COLORED \$5.00 STAMP ISSUED BY THE UNITED STATES.

Ex Zoellner. We have only offered one other since keeping computerized records, approximately 13 years ago. 7,000.00



131EX



132

- 131 ★田 1c-2c 1918-20 Offset Issue (525-528, 528B). Top plate no. blocks of six, incl. second of No. 528 with monogram, most Mint N.H., No. 527 light gum creases, few trivial natural inclusions, Fine-Very Fine group(Photo Ex) 1,262.50
- 132 ★★田 2c Carmine, Ty. VI (528A). Mint N.H. top plate no. 11712 block of six, brilliant color on bright paper, fresh and Very Fine 750.00



133EX



134

- 133 ★田 **1c Green (531)**. Matched set of four plate no. 9817 blocks of six, large margins, right plate block Mint N.H., bright color, Very Fine.....(Photo Ex) 520.00
- 134 ★★田 **2c Carmine Rose, Ty. IV, Imperforate (532)**. Mint N.H. top plate no. 10918 block of six, huge margins all around and wide selvage, radiant color and crisp impression, fresh and Extremely Fine, a beautiful plate block..... 625.00



135

- 135 ★★田 **2c Carmine, Ty. V, Imperforate (533)**. Mint N.H. top plate no. 11260 block of six, huge margins, brilliant color
- EXTREMELY FINE. A BEAUTIFUL MINT NEVER-HINGED PLATE BLOCK OF THE 2-CENT TYPE V IMPERFORATE OFFSET ISSUE.
- This is surprisingly difficult to obtain in Mint N.H. condition from the top plate position. We have only offered one other since keeping computerized records. 1,800.00



136EX



137

- 136 ★田 **2c Carmine, Ty. Va, Imperforate (534).** Matched set of four plate no. 11433 blocks of six, large margins, left and bottom plates Mint N.H., radiant color, Very Fine and choice matched set(Photo Ex) 660.00
- 137 ★★田 **2c Carmine, Ty. VI, Imperforate (534A).** Mint N.H. top plate no. 11641 block of six, large margins and wide sheet margin at top, brilliant color, Extremely Fine, a pretty plate block 650.00



138EX



139EX

- 138 ★田 **3c Violet, Ty. IV, Imperforate (535).** Complete set of matched plate no. 9386 blocks of six, large margins, top and right plates Mint N.H., vibrant color, fresh and Very Fine-Extremely Fine.....(Photo Ex) 410.00
- 139 ★田 **1c-3c Rotary Perf 11 x 10 Issue (538, 540, 541).** Four plate no. blocks of four, incl. two of 1c (one with star), the 2c imperforate between stamps and selvage, one 1c and 2c Mint N.H., Very Fine and choice group.....(Photo Ex) 935.00



140

- 140 ★★田 2c Carmine Rose, Ty. III, Rotary (546). Mint N.H. top plate no. 13387 and "S 30" block of four, brilliant color on bright paper, Very Fine and choice 1,400.00



141

- 141 ★★田 \$2.00 Carmine & Black (547). Mint N.H. top double plate no. and arrow block of 24, intense shades and impressions, choice centering throughout, usual light natural gum skips and bends

EXTREMELY FINE. A MAGNIFICENT LARGE MULTIPLE CONTAINING A PLATE BLOCK OF THE \$2.00 CARMINE & BLACK BI-COLORED ISSUE. A GORGEOUS MULTIPLE IN TERMS OF COLOR, CENTERING, GUM AND OVERALL FRESHNESS.

Scott Retail as plate block and 16 singles. 12,280.00

1922 AND LATER ISSUES



142

- 142 ★★田 **2c Carmine (554)**. Mint N.H. top plate no. 16786 block of six with large five-point star, intense shade and impression, natural short gum at top, fresh and Very Fine, a pretty plate block 900.00



- 143 ★★田 **12c Brown Violet (564)**. Mint N.H. right plate no. 17421 block of eight with large six-point star, brilliant color and detailed impression, beautiful centering, fresh and Extremely Fine, a gorgeous plate block, with 2006 P.F. certificate 426.00

143



144EX

- 144 ★★田 1c Green, 2c Carmine, Rotary (578-579). Mint N.H. top plate no. and five-point star blocks of four, bright colors, 2c faint pencil notation in selvage, fresh and Fine-Very Fine complete "set" of plate blocks for this issue.....(Photo Ex) 2,350.00

- 145 ★★田 2c Carmine, Ty. I, "Long Ear" Recut (634 var). Two Mint N.H. blocks, one block of 25 with selvage at top and left and containing the "Long Ear" recut, Very Fine and choice, second is plate no. 21423 block of sixteen with one stamp showing "smiling" Washington, Very Fine and choice, the "Long Ear" recut comes from Position 34 from upper right pane of plate 20342(Photo Ex) E. 500-750



145EX



146

- 146 ★田 2c Carmine, Ty. II (634A). Top right corner plate no. 19746 block of four, intense shade and impression, fresh and Fine-Very Fine, the left stamps are particularly nice..... 2,200.00



147

- 147 ★★田 \$1.00 Presidential, USIR Wmk. (832b). Mint N.H. double plate no. block of twenty, the two top rows of the sheet complete with selvage at both sides, clearly showing the watermark, usual natural gum skips and bends typically found on this issue, selvage creases at left, Very Fine-Extremely Fine plate block, Scott Retail as plate no. block of four and sixteen singles..... 4,450.00



148

- 148 ★★田 \$5.00 Presidential (834). Mint N.H. top arrow and double plate no. block of four, radiant colors, Very Fine and choice..... 400.00



149

149 (★)田 **\$5.00 Red, Brown & Black (834a)**. Top double plate no. and arrow block of four, unused (no gum), beautifully centered, deep rich colors

EXTREMELY FINE. A RARE PLATE BLOCK OF THE \$5.00 PRESIDENTIAL IN THE RED BROWN AND BLACK COLOR.

Roland E. Rustad notes that only twelve plate blocks are recorded of this distinctive color error.

With 1974 P.F. certificate 9,500.00



- 150 ★★田 2c Jefferson, Silkote Paper (1033a). Mint N.H. block of four with selvage at left, brilliant color, pen "25061 Printed o" in selvage, Fine-Very Fine, with copy of 1999 A.P.S. certificate for block of 50 which shows where this block originated, Scott Retail as singles 2,000.00
- 151 ★★ 5c International Philatelic Exhibition, Foldover with Plate No. (1311 var). Mint N.H., unusual additional paper at bottom caused by foldover and showing plate no. 28501 (which was normally trimmed away), Very Fine, unusual item, the foldover happened after printing and before cutting..... E. 200-300
- 152 ★★ 6c Hemisfair, White Omitted (1340a). Mint N.H., rich colors, Very Fine and choice, only 100 are reported, normal accompanies for comparison, with 1997 P.F. certificate 1,200.00
- 153 ★★ 6c Disney, Ocher Omitted (1355a). Mint N.H., fresh and Very Fine example of this popular error 500.00
- 154 ★★ 10c Horse Racing, Blue (Horse Racing) Omitted (1528a). Mint N.H., bright colors, Very Fine and choice, normal accompanies for comparison, with 1995 P.F. certificate 825.00
- 155 ★★ 10c Energy Conservation, Orange and Green Omitted (1547b). Mint N.H. with selvage at right, Very Fine and choice, much nicer than usually found for this error..... 550.00
- 156 ★★ 10c Energy Conservation, Green Omitted (1547c). Mint N.H., bright colors, Very Fine and choice example of this error..... 825.00
- 157 ★★ \$1.00 Candleholder, Brown (engr.) Omitted (1610a). Mint N.H. with selvage at right, Very Fine and choice, with copy of 1990 P.F. certificate for block of six..... 250.00
- 158 ★★田 \$1.00 Candleholder, Tan, Orange & Yellow Omitted (1610b). Mint N.H. block of four, choice centering, fresh and Very Fine, also accompanied by three blocks of four incl. one normal, one normal with strong offset on back and one with plate no. and partly missing Brown at left and with flame shifted to bottom right, Scott Retail for 1610b only as singles...(Photo Ex) 1,100.00



159

- 159 ★★ **\$1.00 Candle Holder, Intaglio Brown Color Inverted (1610c).** Mint N.H., fresh colors and well-centered

VERY FINE AND CHOICE. A PRISTINE EXAMPLE OF THIS POPULAR MODERN ERROR.

Popularly called the "C.I.A. Invert", a single pane of 100 stamps was purchased at a the McLean Va. Post Office by employees of the C.I.A., for use on mail from the agency. They noticed the error, pooled together funds to buy a replacement sheet and kept the pane for themselves. When it was discovered who had purchased the stamps, a scandal ensued over who actually owned the stamps. Of the pane of 100, only 93 sound examples reached collectors. 22,500.00



- 160 ★★田 **13c Spirit of 76, Imperforate (1631b).**
 Mint N.H. top plate no. multiple
 containing four of the errors, large
 margins other sides
 VERY FINE AND CHOICE. THIS IS ONE
 OF ONLY THREE POSSIBLE PLATE
 NUMBER BLOCKS OF THIS ERROR.
 With 1982 P.F. certificate. Scott Retail
 as four strips of three with no premium
 for the plate block..... 3,800.00



- 161 ★★ **22c American Folk Art, Black (engr.) Omitted (2238b).** Mint N.H. block of the four designs
 with **plate no** at bottom, brilliant colors, Very Fine and choice 375.00

- 162 ★★ **\$2.40 Moon Landing, Black (engr.) Omitted (2419a).** Mint N.H., bright colors, trace of few
 black ink specks, Very Fine, scarce 2,250.00



162



163



170



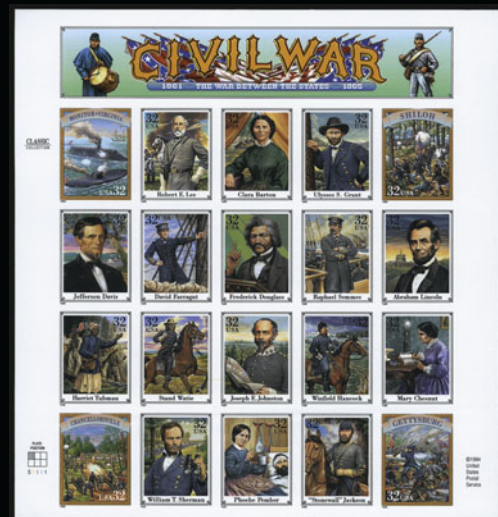
166



165



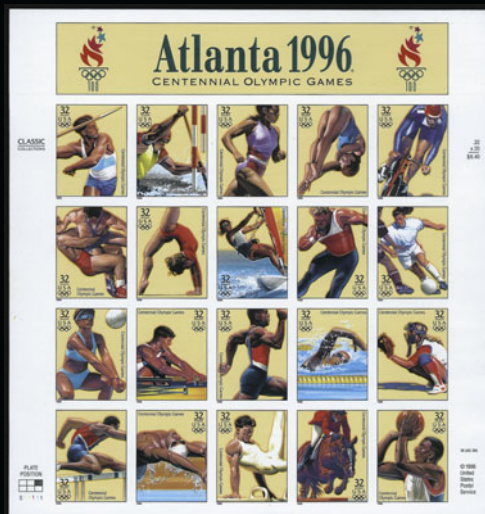
167EX



169



168



171



172

- 163 ★★ **25c 2th UPU Congress, Dark Blue (engr.) Omitted (2437b).** Mint N.H. block of the four designs with selvage at bottom, rich colors, Fine-Very Fine, Scott Catalogue value is for the grade of Fine 500.00

- 164 ★★ **29c Liberty Torch, Die Cutting Omitted (2531Ac).** Mint N.H. vertical pair with adhesive backing paper, brilliant colors, Very Fine and choice example of this rarity..... 2,000.00



164

- 165 ★★ **29c Love, Imperforate Vertically (2618a).** Mint N.H. block of four with selvage at bottom, brilliant colors, wide margins, fresh and Extremely Fine, Scott Retail as two pairs 1,400.00
- 166 ★★ **29c Wonders of the Sea, Imperforate Block of Four (2866b).** Mint N.H. with **bottom left corner margin with plate nos.**, brilliant colors, insignificant fingerprint on gum, Extremely Fine, scarce 1,500.00
- 167 ★★ **29c Legends of the West, Recalled (2870).** Two Mint N.H. panes of 20, light trace of fingerprint on gum, Very Fine.....**(Photo Ex)** 480.00
- 168 ★★ **32c Recreational Sports, Yellow Omitted (2965c).** Mint N.H. vertical strip of five with plate nos. at top and bottom and selvage at left, brilliant colors, bottom two stamps with internal crease, appears Very Fine 2,250.00
- 169 ★★ **32c Civil War, Se-Tenant Pane of 20, Imperforate (2975w).** Mint N.H., Very Fine 1,500.00
- 170 ★★田 **50c Jacqueline Cochran, Black (engr.) Omitted (3066a).** Mint N.H. bottom right corner plate no. block of ten, radiant colors on bright paper, fresh and Extremely Fine, Scott Retail as ten singles with no premium for the plate block 600.00
- 171 ★★ **32c 1996 Summer Olympics, Se-Tenant Pane of 20, Imperforate (3068u).** Mint N.H., Very Fine..... 1,250.00
- 172 ★★ **32c Georgia O'Keefe, Imperforate (3069a).** Mint N.H. pane of 15, Very Fine. 1,250.00

AIR POST



173



174

173 ★田 6c Orange, 1918 Air Post (C1). Top plate no. 9155 and arrow block of six, stamps Mint N.H., lightly hinged in selvage, vibrant color, fresh and Very Fine..... 725.00

174 ★田 16c Green, 1918 Air Post (C2). Top plate no. 8900 and arrow block of six, stamps Mint N.H., lightly hinged in selvage, top stamps natural gum skips, usual natural gum bends, Very Fine 1,000.00



175

175 ★田 24c Carmine Rose & Blue, 1918 Air Post (C3). Top arrow, double plate no. and double "Top" block of twelve, most stamps Mint N.H., small h.r. in selvage, trivial natural inclusion at bottom, top left stamp tiny thin speck, appears Very Fine 1,225.00



176

- 176 ★田 **24c Carmine Rose & Blue, 1918 Air Post, Grounded Plane Variety (C3 var).** Bottom selvage block of four, vignette shifted down exceeding the standard amount for classification as the Grounded Plane variety, pristine gum described by the P.F. as “previously hinged”, an opinion with which both the P.S.E. and we (vehemently) disagree, bright fresh colors on brilliant paper, bottom left stamp with small light internal wrinkle harshly described by the P.F. as a crease

EXTREMELY FINE GEM. A STUNNING BLOCK OF FOUR OF THE RARE GROUNDED PLANE VARIETY — EXTRAORDINARY BOTH FOR ITS CONDITION AND THE EXTREME DOWNWARD SHIFT OF THE PLANE VIGNETTE.

The true Grounded Plane stamps, in which the wheels of the plane break thru the top of “Cents”, come from portions of three sheets. The discovery sheet was owned and broken up by J. Klemann of Nassau Stamp Company. A second sheet was discovered in 1946 and sold in the Thomas A. Matthews sale (H.R. Harmer, Nov. 4, 1964), where it was purchased by Georges A. Medawar, publisher of *Sanabria Airmail Catalogue*. In *Linn’s Stamp News* of April 21, 1986, specialist Joseph R. Kirker Jr. published his research revealing a third source of this variety.

With 2003 P.F. and P.S.E. certificates E. 15,000-20,000



177

- 177 ★ **24c Carmine Rose & Blue, Center Inverted (C3a).** Position 38, bright and fresh, well-centered, barest trace of hinging

VERY FINE AND CHOICE. A REMARKABLY FRESH AND BEAUTIFULLY CENTERED EXAMPLE OF THE FAMOUS 1918 24-CENT INVERTED "JENNY". THIS STAMP IS ONE OF THE BETTER-CENTERED POSITIONS FROM THE DISCOVERY SHEET.

According to *Jenny* by George Amick (Amos Press, 1986), the original sheet of 100 Inverted "Jenny" stamps was purchased for \$24 by William T. Robey at the New York Avenue Branch Post Office window in Washington D.C., on May 14, 1918, one day after the stamp was first placed on sale at the main post office. On May 20, Robey sold his sheet for \$15,000 to Eugene Klein, a Philadelphia stamp dealer. Klein had already arranged to sell the sheet to Col. Edward H. R. Green for \$20,000. Colonel Green instructed Klein to divide the Inverted "Jenny" sheet into singles and blocks, and to sell all but a few key position blocks.

It is well-known among stamp specialists and professionals that examples of the Inverted "Jenny" come in different grades of freshness and condition. Many of the original 100 stamps were mistreated by collectors during the years, despite the stamps' rarity and value. Colonel Green himself allowed moisture to affect some of the stamps he retained. Other examples have become slightly toned from improper storage and climatic conditions. Hinge removal has caused thins and creases in numerous stamps, and a few have been "lost" to philately — or nearly so, as in the case of the copy swept up in a vacuum cleaner. This example is remarkable for its pristine state of preservation and for its centering, equalled by only a few stamps in the original sheet (almost all of the others have disturbed gum or faults).

Ex Stephen Brown and Oscar Lichtenstein. With 1978 P.F. certificate..... 275,000.00

- 178 ★田 8c Dark Green, 1923 Air Post (C4). Bottom plate no. 14826 block of six, bottom center stamp lightly hinged, others Mint N.H., bright shade, Fine-Very Fine 250.00



178



179

- 179 ★★田 16c Dark Blue, 1923 Air Post (C5). Mint N.H. top plate no. 14828 block of six, deep rich color and proof-like impression, Very Fine and choice, with 1982 P.F. certificate 2,350.00

- 180 ★田 24c Carmine, 1923 Air Post (C6). Bottom plate no. 14840 block of six, bottom center stamp lightly hinged, others Mint N.H., small hr. and tear in selva and few perf separations sensibly reinforced, bright color, Very Fine appearance 2,050.00



180



181

181 ★★田 65c-\$2.60 Graf Zeppelin (C13-C15). Set of Mint N.H. top plate no. blocks of six, deep rich colors and proof-like impressions, choice centering throughout, very minor natural gum skips and bends

EXTREMELY FINE. A BEAUTIFUL SET OF MINT NEVER-HINGED PLATE NUMBER BLOCKS OF SIX OF THE 1930 GRAF ZEPPELIN ISSUE. ESPECIALLY DESIRABLE AND SCARCE AS A COMPLETE SET OF TOP PLATE BLOCKS.

A search of our computerized database indicates that we have only offered five sets of top plate blocks over the past 13 years. Tops are widely considered to be the most desirable plate blocks. 23,250.00



182

182 ★★田 50c Chicago Zeppelin (C18). Mint N.H. top plate no. 21177 block of six, bright color, natural gum bends, fresh and Very Fine..... 750.00



183

183 ★★ 45c 20th UPU Congress, Air Post, Light Blue (engr.) Omitted (C122-C125b). Mint N.H., rich colors, Very Fine and choice 750.00

BALANCE LOTS

184 ★田 **Balance of Earlier Issue Plate Blocks.** 29 plate blocks, incl. Nos. 343, 346, 374 (2), 375, 383, 384, 408 (2), 409, 483, 484, 498, 503, 525, 536, 542, 543 and 654, also matched set of four plate blocks of Nos. 481 and 482, overall fresh and Fine-Very Fine
2,879.00

185 ★田 **Balance of Modern Plate Blocks.** Three beautiful Safe albums with slipcovers covering 1919-70, primarily plate blocks but with some larger multiples, some better earlier issues incl. Farleys with National Parks imperforate and perforated plate blocks, Presidentials plate blocks to \$2.00, Famous Americans, Overrun Countries, Mint N.H., fresh and Very Fine
E. 400-500

186 ★★田 **Balance of Modern Issue Multiples.** Beautiful Safe albums with slipcovers covering years 1971 thru 2006, virtually complete for these years incl. plate blocks, sheetlets, panes, booklet panes, many better premium items, various Priority Mail and Express Mail values in sheets, many are two of each with matching FDC's, 3095b special die cut (cats. \$80), 3138c (cats. \$100 + FDC), Looney Tunes, also incl. albums of Olympic FDC's, Joint issues, maximum cards, zip blocks, mint sheet file with Bicentennial souvenir sheets, Birds and Flowers, se-tenant, etc., face value approximately
10,990.00

187 ★★ **E.F.O. Balance.** Three items, incl. Nos. 1556b with trace of blue printing, 2145a, 1690 with yellow mostly missing, Mint N.H., Very Fine, interesting group
E. 200-300

188 ★★田 **Air Post Plate Blocks and Multiples Balance.** Two beautiful Safe albums with slipcovers, incl. plate blocks of Nos. C7-C11, C12, C17-C17, C19-end basically complete, few sheets of later issues, fresh and Very Fine
E. 400-500

END OF SALE — THANK YOU

Bid Form—15% Premium Sale

Sale 935

Tuesday, May 22, 2007

1

Please provide the following information:

NAME.....
ADDRESS.....
CITY/STATE/ZIP.....
TEL. (DAY) FAX.....
E-MAIL.....

PADDLE #

Do not write in box

2

Have you purchased from us in the past 5 years? ☐ YES (if so, please go to Section 3)
☐ NO (please provide a trade reference and bank information)

References:

Stamp Firm:..... Telephone.....

Bank:..... Account #

3

In the space provided below, enter the **lot number** from **Sale 935** and your corresponding bid. Please use **whole dollar amounts** only and enter the **maximum bid** you wish to have us execute on your behalf, according to the **revised bidding increments** (on other side of this form). **Your bid will NOT include the 15% buyer's premium.** We will advance the bidding at one increment over the next highest bid; therefore, you may be awarded the lot at less than your maximum bid. Please do not use "plus" bids or "buy" bids. If you wish to bid on one lot or the other, indicate your "or" bid between lot number/bid entries and bracket your choices. If you wish to place a **bidding limit** on the total amount of your bids, please enter your limit in the space marked "Limit Bids".

PLEASE NOTE REVISED BIDDING INCREMENTS (ON BACK OF THIS PAGE)

☐ **LIMIT BIDS:** Check this box if you wish to limit the total amount of your bids (not including the **15% buyer's premium**) in this sale. Your bids will be executed until your bidding limit no longer allows for additional bids. **The total amount you wish to bid is:** \$

Lot	Bid	Lot	Bid	Lot	Bid
	\$		\$		\$

4

AGREEMENT: By signing this bid form, you agree to pay for purchases resulting from your bids, in accordance with the **Conditions of Sale** printed in the sale catalogue. You also agree to pay the **15% buyer's premium** and any shipping costs (see reverse), which will be added to your successful bids, and any sales tax or use tax which may be due on the total invoiced amount. It is understood that these bids will be executed by Siegel Auction Galleries as a courtesy to absentee bidders, but that no legal responsibility shall lie with the auctioneer or the firm if these bids are not executed. **You are responsible for your written bids, including any errors on your part.**

Payment must be made by cash, check, money order or wire transfer. Credit cards will not be accepted.



SIGNED..... TODAY'S DATE

5

Please submit your bids promptly (telephone bids must be confirmed in writing).

Mail to: Robert A. Siegel Auction Galleries, Inc.

60 E. 56th Street, 4th Floor, New York, N.Y. 10022
Telephone (212) 753-6421

OR FAX YOUR BIDS: (212) 753-6429

Shipping Instructions, Bidding Increments and space for additional bids on other side of form

Additional Bids

Sale 935—May 22, 2007

Lot	Bid	Lot	Bid	Lot	Bid
	\$		\$		\$

Shipping and Transit Insurance

We will be pleased to arrange for shipping and transit insurance for purchases in this sale (except those described as “floor sale only”). To expedite billing and delivery of lots to hundreds of buyers per sale, we use standard charges for postage and insurance, based on the invoiced total and mailing requirements (see schedule). The standard charges are sometimes slightly more or less than the actual postage, but we do not include any fees for our labor or packing costs. Therefore, we ask all buyers to remit the prescribed amount for shipping charges.

Transit insurance is provided in all cases, except when the buyer has furnished us with proof that insurance coverage is effective under another policy. Proof, in such cases, will be accepted in the form of a written certificate from the insurance carrier.

You are responsible for insurance charges, which will be added to your invoice. This coverage is provided for our mutual protection against theft or loss in transit.

REVISED Bidding Increments

The auctioneer may regulate the bidding at his discretion. However, to assist absentee bidders in establishing their maximum bid for each lot, the increments shown at right will be used in most cases. We recommend that written bids conform to these increments (those which do not will be reduced to the next level).

Current Postage & Insurance Charges

Invoice Total	Shipping Method	Charges
Up to 10,000	Fedex Only	\$18.00
Over \$10,000	Fedex Only	\$25.00*
Foreign Destinations (any value)	Fedex/Courier	\$25.00**
Bulk Lots	UPS Preferred	By weight and value (min. \$25.00)
*Insurance and postage on certain heavy or valuable packages may incur an additional charge. **Buyers are liable for all customs duties and clearance charges. An accurate declaration of value will be made on all import/export documents. 2/2002		

IMPORTANT NOTICE REGARDING IRRADIATION

The U.S. Postal Service policy of irradiating all classes of mail poses a significant potential risk of irreversible damage to philatelic material, including ink, paper and gum.

WE WILL NOT USE THE MAILS TO SHIP LOTS.

Please provide a street address for Fedex delivery if you intend to have your lots shipped.

Up to \$50	\$5	\$3,000-7,000	\$250
\$50-200	\$10	\$7,000-20,000	\$500
\$200-500	\$25	\$20,000-30,000	\$1,000
\$500-1,000	\$50	\$30,000-75,000	\$2,500
\$1,000-3,000	\$100	\$75,000 up	\$5,000

Robert A. Siegel Auction Galleries, Inc.

Prices Realized for

Sale 935 5/22/2007 The Saddleback Collection of U.S. Errors and Plate Blocks

Lot#	Realized	Lot#	Realized	Lot#	Realized	Lot#	Realized	Lot#	Realized
1	800	36	550	71	4,000	105	1,200	139	325
2	400	37	550	72	1,200	106	2,000	140	R
3	1,000	38	1,200	73	11,500	107	8,500	140	R
4	450	39	1,000	74	150	108	2,200	141	11,000
5	6,250	40	2,700	75	2,400	109	2,500	142	600
6	7,500	41	300	76	600	110	21,000	143	2,300
7	2,000	42	350	77	300	111	5,750	144	650
8	900	43	1,200	78	350	112	375	145	300
9	1,800	44	600	79	375	113	700	146	750
10	5,750	45	800	80	550	114	350	147	2,400
11	R	46	750	81	450	115	350	148	250
11	R	47	425	82	1,300	116	800	149	4,500
12	5,250	48	550	83	9,500	117	250	150	550
13	18,000	49	R	84	200	118	300	151	170
14	2,100	49	R	85	300	119	200	152	325
15	1,600	50	18,000	86	R	120	350	153	160
16	3,750	51	475	86	R	121	225	154	350
17	4,750	52	400	87	R	122	600	155	225
18	6,250	53	2,600	87	R	123	170	156	300
19	6,500	54	6,750	88	650	124	400	157	140
20	2,200	55	4,500	89	850	125	1,400	158	550
21	6,250	56	52,500	90	350	126	7,500	159	12,500
22	6,250	57	130	91	300	127	10,000	160	1,600
23	1,900	58	2,600	92	300	128	R	161	160
24	2,100	59	325	93	600	128	R	162	1,000
25	1,400	60	900	94	1,400	129	R	163	250
26	17,000	61	275	95	67,500	129	R	164	1,000
27	19,000	62	700	96	9,000	130	8,500	165	500
28	12,000	63	1,500	97	2,600	131	625	166	800
29	80,000	64	1,200	98	325	132	350	167	300
30	2,000	65	4,750	99	325	133	325	168	600
31	1,600	66	900	100	1,500	134	700	169	700
32	11,500	67	450	101	950	135	2,000	170	225
33	5,750	68	450	102	350	136	375	171	R
34	900	69	2,700	103	2,100	137	550	171	R
35	35,000	70	2,700	104	350	138	250	172	R

Robert A. Siegel Auction Galleries, Inc.

Prices Realized for

Sale 935 5/22/2007 The Saddleback Collection of U.S. Errors and Plate Blocks

Lot#	Realized
172	R
173	325
174	600
175	750
176	28,000
177	350,000
178	250
179	850
180	700
181	17,000
182	650
183	300
184	1,000
185	800
186	7,500
187	130
188	950