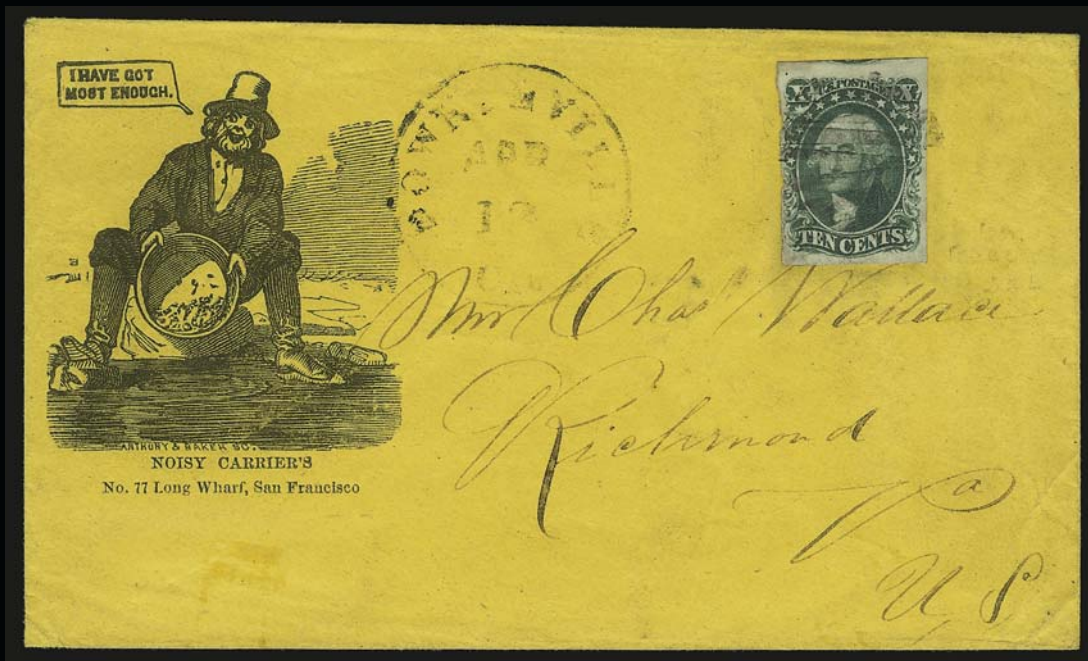


Sale 939

Wednesday, September 26, 2007

The Allan Goldberg Collection of United States Postal History



Robert A. Siegel

AUCTION GALLERIES, INC.

www.siegelauctions.com

Sale 939

Wednesday, September 26, 2007
at 1:30 p.m.

The Allan Goldberg Collection of United States Postal History

All lots are offered without reserves

All lots in this sale are sold subject
to a 15% Buyer's Premium

Pre-sale exhibition

Monday, September 24 — 10:00 a.m. to 4:00 p.m.

Tuesday, September 25 — 10:00 a.m. to 4:00 p.m.

Wednesday, September 26 — 10:00 a.m. to 12:00 p.m.
or by appointment (please call 212-753-6421)

On-line catalogue, e-mail bid form, resources and
the Siegel Encyclopedia are available on our web
site:

www.siegelauctions.com



Arrangement of Sale

Afternoon session (lots 1-136)
Wednesday, September 26, at 1:30
p.m.

Stampless Covers:

Free Franks	5-6
Stampless Markings	7
Transatlantic Mail	8-9
Inbound Ship Mail.....	9
Forwarding Agents.....	10-13

California and Western Mails:

Thomas O. Larkin, Forwarder	14
S.F. and Sacramento Straightlines.....	15
Pacific Mail Steamship Company.....	16
Nicaragua Steamship Company	17-20
Independent Opposition Line.....	21
Noisy Carrier's	22-26
J. W. Sullivan	27
Via Tehuantepec	28
Overland Route	29
Western Expresses	30-35
Hawaiian Mails.....	36-37
Inbound Ship Mail to San Francisco	38-40

United States Stamps on Cover:

5c 1847 Issue	41-50
10c 1847 Issue	51
1851-68 Issues	52
2c Black Jack.....	53-59
5c Taylor	60-61

Confederate States: Blockade-Run Mail 62

On the cover

Front Cover: Lot 54
Back Cover: Lots 75, 96
Above: Lot 95

Conditions of Sale (Important—please read carefully)

The property described in this catalogue will be offered at public auction by Robert A. Siegel Auction Galleries, Inc. (“Galleries”) on behalf of various consignors and itself or affiliated companies. By bidding on any lot, whether directly or by or through an agent, in person, or by telephone, facsimile or any other means, the bidder acknowledges and agrees to all of the following Conditions of Sale.

1. The highest bidder acknowledged by the auctioneer shall be the buyer. The term “final bid” means the last bid acknowledged by the auctioneer, which is normally the highest bid offered. **The purchase price payable by the buyer will be the sum of the final bid and a commission of 15% of the final bid (“buyer’s premium”), together with any sales tax or use tax which may be due on the sale.**

2. The auctioneer has the right to reject any bid, to advance the bidding at his discretion and, in the event of a dispute between bidders, to determine the successful bidder, to continue the bidding or to reoffer and resell the lot in dispute. The Galleries’ record of the final sale shall be conclusive.

3. All bids are per numbered lot in the catalogue unless otherwise announced by the auctioneer at the time of sale. The right is reserved to group two or more lots, to withdraw any lot or lots from the sale, or to act on behalf of the seller. The Galleries will execute bidding instructions on behalf of clients, but will not be responsible for any errors in the execution of such bids.

4. **Lots with numbers followed by the symbol ° are offered subject to a confidential minimum final bid (“reserve”), below which the lot will not be sold. The absence of the symbol ° means that the lot is offered without a reserve.** In the absence of a reserve, the auctioneer has sole discretion to establish a minimum opening bid and may refuse an offer of less than half of the published estimate. Any lot that does not reach its reserve or opening bid requested by the auctioneer will be announced as “passed” and excluded from the prices realized lists after the sale. The Galleries may have a direct or indirect ownership interest in any or all lots in the sale resulting from an advance of monies or goods-in-trade or a guarantee of minimum net proceeds made by the Galleries to the seller.

5. Any lot, the description of which is obviously incorrect, is returnable, but only if the lot is returned within 14 days of receipt. All disputed lots must be returned intact with the original packing material. **The following lots may not be returned for any reason: Lots containing ten or more items; lots from buyers who have registered for the pre-sale exhibition or received lots by postal viewing, thereby having had the opportunity to inspect them before the sale; any lot described with “faults” or “defects” may not be returned because of any fault or defect. No illustrated lots may be returned because of centering, margins or other factors shown in the illustrations.**

6. Successful bidders, unless they have established credit with the Galleries prior to the sale, must make payment in full before the lots will be delivered. Buyers not known to the Galleries must make payment in full within three days from the date of sale. **The Galleries retain the right to demand a cash deposit from anyone prior to bidder registration and/or to demand payment at the time the lot is knocked down to the highest bidder, for any reason whatsoever.** In the event that any buyer refuses or fails to make payment in cash for any lot at the time it is knocked down to him, the auctioneer reserves the right to reoffer the lot immediately for sale to the highest bidder. **Credit cards are not accepted as payment.**

7. If the purchase price has not been paid within the time limit specified above, nor lots taken up within seven days from the date of sale, the lots will be resold by whatever means deemed appropriate by the Galleries, and any loss incurred from resale will be charged to the defaulting buyer. Any account more than thirty days in arrears will be subject to a late payment charge of 1½% per month as long as the account remains in arrears. Any expenses incurred in securing payment from delinquent accounts will be charged to the defaulter. A fee of \$250.00 per check will be charged for each check returned for insufficient funds.

8. All lots are sold as genuine. **Any lot accompanied by a certificate issued by The Philatelic Foundation within 5 years of the sale date or by Professional Stamp Experts since January 2004 is sold “as is” and in accordance with the description on the certificate. Such lots may not be returned for any reason, including but not limited to a contrary certificate of opinion.** Buyers who wish to obtain a certificate for any item that does not have a P.F. or P.S.E. certificate (dated as above) may do so, provided that the following conditions are met: (1) the purchase price must be paid in full, (2) the item must be submitted to an acceptable expertizing committee with a properly executed application form within 21 days of the sale, (3) a copy of the application form must be given to the Galleries, (4) in the event that an adverse opinion is received, the Galleries retain the right to resubmit the item on the buyer’s behalf for reconsideration, without time limit or other restrictions, (5) unless written notification to the contrary is received, items submitted for certification will be considered cleared 90 days from the date of sale, and (6) in the event any item is determined to be “not as described”, the buyer will be refunded the purchase price and the certification fee up to \$500.00 unless otherwise agreed.

9. Until paid for in full, all lots remain the property of the Galleries on behalf of the seller.

10. Agents executing bids on behalf of clients will be held responsible for all purchases made on behalf of clients unless otherwise arranged prior to the sale.

11. The buyer assumes all risk for delivery of purchased lots and agrees to pay for prescribed shipping costs.

12. The bidder consents that any action or proceeding against it may be commenced and maintained in any court within the State of New York or in the United States District Court for the Southern District of New York, that the courts of the State of New York and United States District Court for the Southern District of New York shall have jurisdiction with respect to the subject matter hereof and the person of the bidder. The bidder agrees not to assert any defense to any action or proceeding initiated by Galleries based upon improper venue or inconvenient forum. The bidder agrees that any action brought by the bidder shall be commenced and maintained only in a Federal Court in the United States District Court for the Southern District of New York or the State Court in the county in which Galleries has its principal place of business in New York. These Terms and Conditions shall be governed by and construed in accordance with the substantive laws of the State of New York.

SCOTT R. TREPEL, Principal Auctioneer

Auctioneer’s License No. 795952
N.Y.C. Department of Consumer Affairs
80 Lafayette Street, New York, N.Y. 10013
Telephone (212) 577-0111

Revised 5/2006 15%

Copyright Notice

This catalogue in all versions, printed and electronic, is protected by copyright. The descriptions, format, illustrations and information used herein may not be reprinted, distributed or copied in any form without the express written consent of Robert A. Siegel Auction Galleries. Application for permission may be made in writing.

© 2006, Robert A. Siegel Auction Galleries, Inc.

Grading Terms, Abbreviations and Values Used in

Grade and Centering

The following terms are used in Siegel sale catalogues (corresponding numerical ranges shown in parentheses). Margin width, centering and gum are described according to generally-accepted standards. Stamps are graded based on our subjective assessment of condition for each issue, which do not necessarily correlate with third-party grading terms or standards for all issues. **A lot may not be returned because a certification service grades a stamp lower than the grade stated. Information from the P.S.E. Stamp Market Quarterly and P.S.E. Population ReportSM is the most current available, but lots may not be returned due to errors or changes in statistics or data.**

Extremely Fine Gem (90-100 pts.): The term “Gem” used in Siegel catalogues describes condition that is the finest possible for the issue.







Extremely Fine (80-90 pts.): Exceptionally large margins or near perfect centering.

Very Fine (70-85 pts.): Normal size margins for the issue and well-centered with the design a bit closer to one side. “Very Fine and choice” applies to stamps that have desirable traits such as rich color, sharp impression, freshness or clarity of cancel.

Fine (60-70): Smaller than usual margins or noticeably off center. Pre-1890 issues may have the design touched in places.

Very Good (below 60): Attractive appearance, but margins or perforations cut into the design.

Good (G) or Average (Ave.): Cut into or perfs far into design and usually with slight faults. This condition is generally acceptable for rarities, scarce multiples or stamps used on unusual covers.

Gum Categories:	MINT N.H.	ORIGINAL GUM (O.G.)				NO GUM
	 Mint Never Hinged <i>Free from any disturbance</i>	 Lightly Hinged <i>Faint impression of a removed hinge over a small area</i>	 Hinge Mark or Remnant <i>Prominent hinged spot with part or all of the hinge remaining</i>	 Part o.g. <i>Approximately half or more of the gum intact</i>	 Small part o.g. <i>Approximately less than half of the gum intact</i>	 No gum <i>Only if issued with gum</i>
Catalogue Symbol:	★ ★	★	★	★	★	(★)
PRE-1890 ISSUES	<i>Pre-1890 stamps in these categories trade at a premium over Scott value</i>			Scott Value for “O.G.”		Scott “No Gum” Values thru No. 218
1890-1935 ISSUES	Scott “Never Hinged” Values for Nos. 219-771	Scott Value for “O.G.” (Actual value will be affected by the degree of hinging)		Disturbed Original Gum: Gum showing noticeable effects of humidity, climate or hinging over more than half of the gum. The significance of gum disturbance in valuing a stamp in any of the Original Gum categories depends on the degree of disturbance, the rarity and normal gum condition of the issue and other variables affecting quality. For example, stamps issued in tropical climates are expected to have some gum disturbance due to humidity, and such condition is not considered a negative factor in pricing.		
1935 TO DATE	Scott Value for “Unused”					

Covers



Minor nicks, short edge tears, flap tears and slight reduction at one side are normal conditions for 19th century envelopes. Folded letters should be expected to have at least one file fold. Light cleaning of covers and small mends along the edges are accepted forms of conservation. Unusual covers may have a common stamp with a slight crease or tiny tear. **These flaws exist in virtually all 19th century covers and are not always described. They are not grounds for return.**

Catalogue Values and Estimates

Unless otherwise noted, the currently available *Scott Catalogue* values are quoted in dollars with a decimal point. Other catalogues are often used for foreign countries or specialized areas and are referred to by their common name: *Stanley Gibbons* (SG), *Dietz*, *American Air Mail Catalogue* (AAMC), *Michel*, *Zumstein*, *Facit*, etc. Estimates are indicated with an “E.” and reflect our conservative valuation in dollars. Reserves will never exceed the low end of the estimate range; they will sometimes exceed Scott Catalogue value for stamps in Extremely Fine condition.

Because of certain pricing inconsistencies in the Scott Catalogue—for example, blocks that have no gum, the absence of premiums for Mint N.H. items, etc.—we cannot guarantee the accuracy of values quoted for multiples, specialized items and collection lots. We generally try to be conservative, but buyers may not return a lot because of a discrepancy in catalogue value due to Scott pricing inconsistencies.

Symbols and Abbreviations (see chart above for gum symbols)

	Block	E	Essay	pmk.	Postmark	No.	Scott Catalogue Number
	Cover	P	Proof	cds	Circular Datestamp	hs	Handstamp
FC	Fancy Cancel	TC	Trial Color Proof	var.	Variety	ms.	Manuscript

Revised 5/2006

Internet Floor Bidding for Robert A. Siegel Auction Galleries, Inc.'s Sale 908 closing on Mar 13-15, 2006. Contact us by Phone at (212) 753-6421, [Contact us Via eMAIL](#). Please READ [Instructions/Help](#) [Listen to the Public Auction Broadcast](#). Welcome John
Bidding. Paddle II. Time: 13:50:36. F11 (if using Internet Explorer) toggles full screen mode. You are Cust# , You are approved for

Lot and Description	Bidding
Postal History, California Mails and Western Expre Carriers and Locals Group Lots Lot 5010. Carriers and Locals. More than 30 covers and a few off cover, 1840's, 50's and 60's, comprising General Issue Carriers incl. LO2, LO3, LO5 and Franklin plate proof on card, LO2 on small blue cover to Philadelphia "U.States" indicating origin f E. 1,500-2,000 Sold for 3,500.00 Your Bid 3,500.00 1 sec refresh 3 sec 5 sec Show Images	Bid 3750 Bid 4000 Bid 4250 Bid 4500 Bid 4750 Bid 5000 Send a Message to the Auction Floor

Messages from the public auction

Please close this form when you are not bidding or watching the auction.

Lot 5010 going for 650...
Lot 5010 going for 3500...
Lot 5010 Last Call at 3500...
Lot 5010 sold to the floor for \$3500.

***** END OF SALE *****

-Thank You!!!

Siegel Auction Galleries, in coordination with Stamp Auction Network, will broadcast our auctions live over the internet, allowing you to listen to the auction in progress.

Bidders who have pre-registered for Live Internet Bidding will also be able to place bids over the internet, as if bidding in the saleroom. In order to bid by internet, you must be an approved, registered bidder with Stamp Auction Network and Siegel Auction Galleries.

- ☐ **If you are already registered at Stamp Auction Network and have been approved for internet bidding by Siegel, just log in at Stamp Auction Network, locate the Siegel sale and start bidding anytime during the auction.**
- ☐ **If you have never registered as a bidder at Stamp Auction Network, then please go to www.siegelauctions.com/IB2.htm and click on "Register" at the top of the page. Please check the box for Robert A. Siegel Auction Galleries (under "R") and submit the form. If you have never bid with our firm, please provide trade references whom we may contact to have your account approved (please do not use family members or credit cards as references).**
- ☐ **If you have registered previously at Stamp Auction Network, but not specifically for our firm, please go to www.siegelauctions.com/IB2.htm and click on "Update Registration" at the top of the page. Your information at Stamp Auction Network will be sent to us for approval. You may be asked to provide additional references before being approved for internet bidding.**

Once you are approved for bidding, you will be able to bid live over the internet during the auction. You may participate in Live Internet Bidding using any browser or operating system. The audio portion is only available to PC users using Internet Explorer. For the audio portion, you will be asked to install a piece of software (ActiveX control) to make it work.

Bidders must log in at Stamp Auction Network to participate. Once logged in, please locate the page for the current Siegel auction.

At the top of the auction's home page there are two links:

- One link allows anyone to listen to the public auction broadcast.
- The second link permits registered bidders to join the public auction in progress.

Please remember that to participate in the auction, you must be pre-registered at Stamp Auction Network and approved by Siegel Auction Galleries as a bidder. Qualified bidders will see a page like the one illustrated above and have a valid paddle number assignment.

AFTERNOON SESSION (LOTS 1-136)
WEDNESDAY, SEPTEMBER 26, 2007, AT 1:30 P.M.

THE ALLAN GOLDBERG COLLECTION OF
UNITED STATES POSTAL HISTORY

GEORGE WASHINGTON FREE FRANK



1

- 1 ☒ **George Washington.** Free frank "G Washington" as Commanding General of the Continental Army on folded cover addressed in another hand to "His Excellency Governor Harrison, Richmond Virginia", ms. "4:16" (4dwt 16gr) rate, receipt docketing at left "Genl. Washington Dec. 1782 Copd.", skillfully cleaned

VERY FINE. A BOLD AND ATTRACTIVE FREE FRANK OF GEORGE WASHINGTON AS COMMANDING GENERAL OF THE CONTINENTAL ARMY TO BENJAMIN HARRISON AS GOVERNOR OF VIRGINIA.

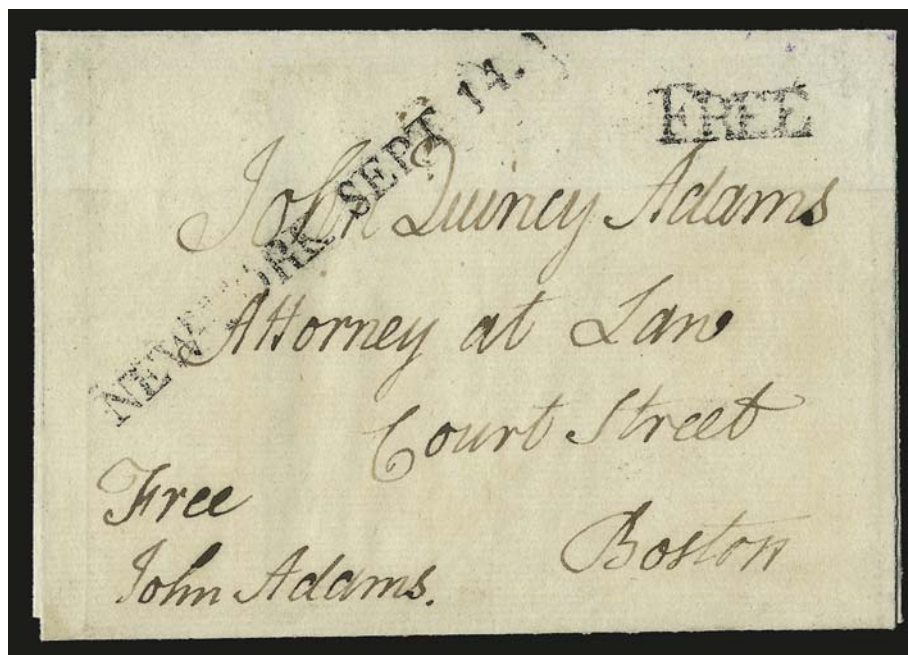
This cover was sent to Virginia Governor Benjamin Harrison in December 1782 from Washington's headquarters at Newburgh N.Y. According to George Washington Papers at the Library of Congress (<http://memory.loc.gov/ammem/gwhtml/gwhome.html>), Washington wrote letters to Harrison on December 11 and 25, 1782.

Benjamin Harrison, a signer of the Declaration of Independence and a delegate to the Continental Congress, was Governor of Virginia from 1781 to 1784. His son (William H.) and grandson (Benjamin) were Presidents of the United States.

Apparently this letter was not considered exempt from postage charges and was rated 4dwt16gr (1sh2p). It is difficult to imagine that any postage was actually collected from Governor Harrison.

With 1976 Hamilton certificate. E. 4,000-5,000

JOHN ADAMS FREE FRANK



2

- 2 **John Adams.** Bold free frank "J. Adams" as Vice President and addressed in his hand to his son "John Quincy Adams, Attorney at Law, Court Street, Boston", on cover front only with flaps added, well-struck "NEW-YORK SEPT 14" (ca. 1790-91) straightline datestamp and matching "Free" handstamp, Very Fine appearance, an attractive example of John Adams franking signature and rare piece associating father and son; the New York straightline style is listed in ASCC Vol. 1 used 1790-91, when Adams was Vice President (1789-97) and John Quincy Adams practiced law in Boston (1787-94) E. 1,000-1,500

STAMPLESS MARKINGS



- 3 ☒ **Steamer 10.** Well-struck red oval handstamp on folded letter datelined "Boston, April 21st 1847" to Philadelphia, faint pressed-out file folds, Very Fine, outstanding quality, ex Malcolm and Jarrett..... E. 200-300
- 4 ☒ **Steamer 10.** Well-struck red oval handstamp on light green folded letter datelined "New York June 5th 1847" to North Edgcomb Me., fresh and Very Fine, exceptionally bold strike of this Long Island Sound steamboat marking, ex Lehman and Jarrett..... E. 300-400
- 5 ☒ **SLOATSBURG, N.Y. Nov. 11.** Straightline handstamp with date in ms. on blue 1853 folded letter datelined "Ringwood Nov. 10, 1853" to New York City, ms. "Paid 3", light vertical file folds, Very Fine strike of this marking used when stamps were available but their use was not compulsory, ex Jarrett..... E. 150-200

TRANSATLANTIC MAIL



- 6 ✉ **Forwarded from Harnden's Package Express and Foreign Letter Office, No. 8 Court St. Boston.** Red oval handstamp on folded letter datelined "Boston April 24, 1844" to Paris, France, red "Colonies & Art. 12" framed accountancy handstamp, London backstamp, French due marking, docketed at top right, Very Fine, the cover was probably forwarded by Harnden's to their London office where it entered the mails..... E. 200-300
- 7 ✉ **Retaliatory Rate Cover from Smyrna to Boston via England.** Folded letter datelined "Smyrna, 8 October 1847", red "Paid L S 21 OC 23 1847" datestamp, ms. "1/-" prepaid packet rate, endorsed "pr. Washington" and carried on that Ocean Line vessel, red "29" due handstamp applied in New York (24c ocean transit plus 5c inland rate), some ink erosion in address, otherwise Very Fine, scarce usage E. 300-400
- 8 ✉ **Paid at Liverpool, AU 19, 1848.** Red octagonal datestamp on folded letter to New York, red "1/-" prepaid packet rate handstamp, red "24" U.S. due handstamp, carried on the Cunarder *Niagara*, fresh and Very Fine Retaliatory Rate cover..... E. 200-300
- 9 ✉ **Paid at Liverpool, OC 28, 1848.** Bold strike of red octagonal datestamp on folded letter to Wiscasset Me., red "1/-" prepaid packet rate handstamp, red "New York Ship 34cts. Nov. 3" due datestamp (24c ocean transit plus 10c internal rate), carried on the Cunarder *America*, light vertical file folds, small part of address expertly scratched out, Very Fine, a choice Retaliatory Rate cover..... E. 300-400
- 10 ✉ **Inbound Ship Letter from France to Confederate Richmond Va.** Cover to M. S. Valentine Jr. in Richmond Va., indistinct April 1861 French circular datestamp and ms. rate, red April 10, 1861 Marseilles transit datestamp and "Br Service" framed handstamp, clear strike of "Portland Me. 27 25 Apr." debit datestamp, trivial edgewear, Very Fine, rare usage from a foreign destination into Confederate Richmond Va. sent before postal relations were severed, probably carried aboard the Cunarder *Asia*..... E. 750-1,000



- 11 ☒ **Norway to Minneapolis.** Folded letter with "Skien 4/12 1861" origination circular datestamp to South Bend Minn., additional strikes of Svinskund, Aachen and Hamburg transits, also with blue "Chicago Ill. Am. Pkt. Dec. 31" exchange office datestamp with matching "46" in circle rate, various ms. rates, trivial edgewear, Very Fine, an impressive usage sent from Norway via American Packet and routed thru the Chicago exchange office..... E. 200-300
- 12 ☒ **New York U.S. Notes 29 Jul. 10.** Depreciated currency datestamp on folded letter datelined "Smyrne, 18 June 1870" from Turkey to Lanman & Kemp in New York City, neat "Smyrne Turquie 18 Juin 1870" double-circle datestamp, bold "24" debit handstamp, bold French transit marking, Marseilles and London backstamps, Very Fine, scarce usage..... E. 200-300

INBOUND SHIP MAIL

- 13 ☒ **Baltimore Am. Pkt.** Six stampless covers with clear strikes of this arrival marking, all addressed to Lanman & Kemp in New York, origins incl. Havana (5) and St. Jago de Cuba, each with bold "10" due handstamp, fresh and Very Fine..... Not illustrated E. 300-400
- 14 ☒ **Charleston S.C. 10 Havana 11 May.** Clear strike of blue integral-rate circular datestamp on folded letter datelined "Habana May 7, 1854" from Cuba to Lanman & Kemp in New York City, light vertical file fold, Very Fine strike of this scarce port-of-entry marking, particularly on a cover to New York..... E. 200-300
- 15 ☒ **Washington D.C. Jun. 1, 1859.** Circular datestamp and ms. "Ship 5" due marking on blue folded letter datelined "Caracas March 17th 1859" from Venezuela to Lanman & Kemp in New York City, neat light vertical file fold, Very Fine, unusual routing thru Washington D.C. E. 150-200
- 16 ☒ **Inbound Steamship Covers.** Five, incl. one with large "Steamship 20cts." handstamp from Havana to N.Y., one with "6" handstamp on 1851 folded letter from Maracaibo to New York, one with "Steamship 12½cts." handstamp on blue folded cover to Portland Me., one with large "2" handstamp on printed circular from Cuba to Rhode Island, two others with different N.Y. markings on 10c rate covers from Cuba to N.Y., well-struck markings, fresh and Very Fine.....Not illustrated E. 200-300
- 17 ☒ **Stampless Trans-Oceanic Covers.** Nine, incl. seven inbound, one to France and one to Italy, from 1830's-60, range of markings which are all well-struck, better incl. one from Valparaiso to France with red "Panama/Transit" handstamp, 1838 ship broker's tombstone handstamp on folded cover from Germany to Philadelphia routed thru New York, several other better, most markings are very well-struck, overall fresh and Fine-Very Fine, a fascinating groupNot illustrated E. 150-200
- 18 ☒ **Depreciated Currency Covers.** Six inbound covers, range of markings and rates incl. 20, 29, 32, 39, 63 and 96, origins incl. Messina, London (4) and Germany, clear markings, fresh and Fine-Very Fine groupNot illustrated E. 200-300

FORWARDING AGENTS



- 19 ☒ **N. Brandon & Co., Panama.** Bold strike of double-oval forwarder's handstamp with ms. "31/12/69" date on blue folded letter datelined "Cali de Nueva Granada Diciembre 8 de 1869" from Colombia to Lanman & Kemp in New York City, neat "N.Y. Steamship 10 Jan. 11" circular datestamp, light vertical file folds, Very Fine and rare, ex DeVoss, who reported two known E. 300-400
- 20 ☒ **Cova & Co., Panama.** Forwarder's small double-oval handstamp clearly struck on blue folded letter datelined "Valparaiso 30 Sept. 1853" from Chile to Boston Mass., clear strikes of New York "Steam/Ship" and "40" handstamps, faint vertical file folds, Very Fine, attractive usage E. 200-300
- 21 ☒ **From T. R. Cowan, Shipping & Commission Agent, Colon, New Granada.** Red oval handstamp in conjunction with "Forwarded by C. J. Fox, Aspinwall N.G." red oval and blue "Antonio Ma Merlano, Cartagena, New Granada" oval on folded letter datelined "Quibdo, May 9, 1860" from Colombia to Lanman & Kemp in New York City, light vertical file folds, Very Fine, scarce triple-forwarder usage, ex DeVoss E. 300-400
- 22 ☒ **Forwarded by J. B. Donalisio, Colon. Navy Bay.** Well-struck red oval handstamp on blue folded letter datelined "Santa Marta June 21, 1857" from Colombia to Lanman & Kemp in New York City, light vertical file fold, fresh and Very Fine example of this scarce forwarder's marking, DeVoss reported fewer than five examples E. 300-400
- 23 ☒ **Forwarded by Drake & Coit, Matanzas.** Red boxed handstamp on folded cover to U.S. Consul at Havana, Cuba, neat "Matanzas" straightline handstamp, fresh and Very Fine, this forwarder is unlisted in the Rowe book, it may be an offshoot of Drake Bros. & Co. Ltd. of Havana E. 300-400
- 24 ☒ **Forwarded by Geo. W. Fletcher, Aspinwall N.G.** Clearly struck red oval handstamp in conjunction with bold red "Forwarded by Ramon Leon Sanchez, Cartagena N.G." oval handstamp on folded letter from Colombia to Lanman & Kemp in New York City, datelined "Cartagena 20 Julio 1855", New York "Steamship 20" in circle handstamp struck on arrival, trivial wear, Very Fine, attractive double-forwarder usage E. 300-400



- 25 ☒ **Forwarded by W.C. Foster, Commission Merchant, Cartagena, N.G.** Large elaborate blue handstamp in conjunction with blue “Forwarded by E. Isaacs & Co., Barranquilla” oval forwarder’s handstamp on back of folded letter from Colombia to Lanman & Kemp in New York City, datelined “Barranquilla January 1863”, neat New York “Steamship 10” in circle handstamp, light vertical file fold, Very Fine, a beautiful and rare double-forwarder usage..... E. 300-400
- 26 ☒ **Forwarded by C. J. Fox, Aspinwall N.G.** Clear strike of red oval in conjunction with red “Forwarded by Ramon Leon Sanchez, Cartagena N.G.” oval and blue “Albert Mathieu, Cartagena N.G.” backstamp on blue folded letter datelined “Barranquilla July 16, 1859” from Colombia to Lanman & Kemp in New York City, light vertical file folds, Very Fine, scarce triple-forwarder usage E. 300-400
- 27 ☒ **Forwarded by C. J. Fox, Aspinwall N.G.** Red oval in conjunction with red “Forwarded by Ramon Leon Sanchez, Cartagena N.G.” oval handstamp and blue “Albert Mathieu, Cartagena N.G.” backstamp on blue folded letter datelined “Barranquilla 19 May 1859” from Colombia to Lanman & Kemp in New York City, light vertical file folds, Very Fine, scarce triple-forwarder usage, ex DeVoss..... E. 200-300
- 28 ☒ **Forwarded by C. J. Fox, Aspinwall N.G.** Clear strike of red oval in conjunction with blue “Albert Mathieu, Cartagena N.G.” backstamp on green folded letter datelined “Quibdo, Abre 22, 1859” from Colombia to Lanman & Kemp in New York City, blue “Jose Lorenzo Arce Quibdo” double-oval sender’s handstamp, light vertical file folds, Very Fine, scarce and colorful double-forwarder usage E. 200-300
- 29 ☒ **Encaminada Por F. Gogorza y Ca., Panama.** Green three-line forwarder’s handstamp on folded mourning stationery (cover) to Lima, Peru, April 11, 1861 docketing on back, bold strike of “ACAJUTLA FRANCA” (El Salvador) straightline handstamp, Very Fine, rare forwarder’s marking, ex DeVoss, who reported fewer than ten examples of this forwarder handstamp E. 300-400
- 30 ☒ **Forwarded by A. N. Henriquez, Colon N.G.** Blue oval handstamp on folded letter datelined “Santa Marta 7 September 1862” from Colombia to Lanman & Kemp in New York City, sender’s blue oval handstamp, bold New York “Steamship 10” in circle handstamp, light vertical file fold misses all markings, fresh and Very Fine, ex Haas E. 200-300



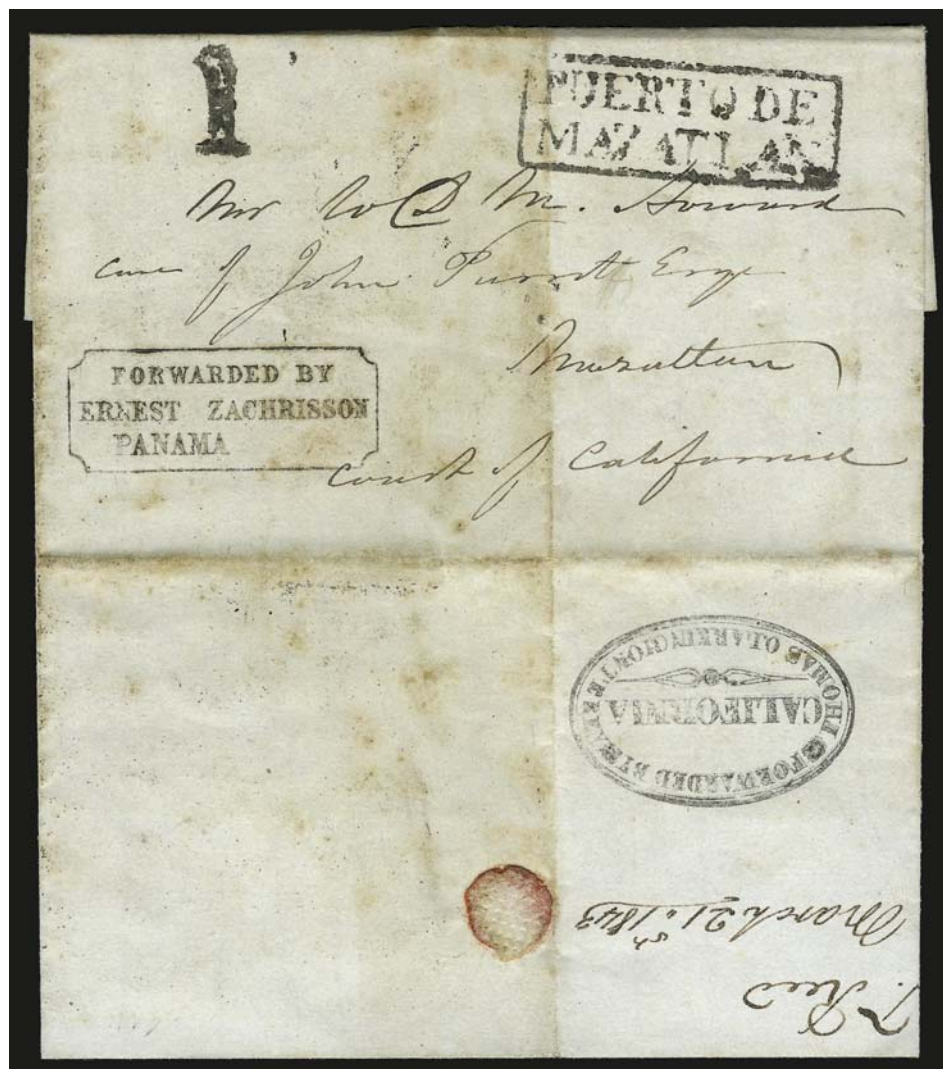
- 31 ✉ **Encaminada Por Hourquet Poylo & Ca., Panama.** Greenish-blue oval handstamp on folded letter datelined "Valparaiso, Aug. 2, 1867" from Chile to Lanman & Kemp in New York City, bold "N. York Steamship 10 Sep. 2" circular due datestamp, Very Fine, scarce forwarder's marking, DeVoss reported fewer than ten known..... E. 200-300
- 32 ✉ **Encaminada Por Hurtado i Hermanos, Panama.** Red oval handstamp on folded letter datelined "Piura, September 28, 1855" from Peru to New York, "New York 1st. Oct. 31" due datestamp for drop rate, light vertical file fold, Very Fine, unusual usage, apparently this was brought to the New York post office as a drop letter..... E. 200-300
- 33 ✉ **Forwarded by W. P. Maal, Aspinwall.** Blue oval handstamp struck on back of folded letter datelined "Santa Marta 1 December 1868" from Colombia to Lanman & Kemp in New York City, sender's blue oval handstamp, light vertical file folds, Very Fine, scarce..... E. 200-300
- 34 ✉ **Derijda por Pedro Merino, Panama.** Three-line handstamp struck in blue on back of back of blue folded letter datelined "Panama, August 2, 1860" to Lanman & Kemp in New York City, bold New York "Steamship 10" in circle handstamp, light vertical file folds, Very Fine, rare, ex DeVoss, who reported only two examples known..... E. 300-400
- 35 ✉ **Forwarded by Miller & Houghton, New York.** Clear strike of red oval handstamp on blue folded letter from Puerto Rico to Lanman & Kemp in New York City, datelined "Aguadilla May 1st 1862", sender's ship routing "Schr. Trident", light file folds, Very Fine, carried outside of the mails E. 150-200
- 36 ✉ **Forwarded by A. Morrell, Aspinwall, N.G..** Red oval handstamp with forwarder's name in ms. in conjunction with red "Forwarded by Ramon Leon Sanchez, Cartagena N.G." oval handstamp on folded letter datelined "Baranquilla 18th May 1857" from Colombia to New York, New York "Steamship 10" in circle handstamp, Very Fine, rare double-forwarder usage, DeVoss reported only two examples of the Morrell marking..... E. 300-400



- 37 ☒ **Forwarded by Morrison & Philips, New York.** Blue oval handstamp on blue folded letter datelined "St. Thomas June 30, 1868" from Danish West Indies to Lanman & Kemp in New York City, fresh and Very Fine, this forwarder is unlisted in the Rowe book..... E. 200-300
- 38 ☒ **Obarrio, Planas & Perez, Panama, Oct. 22, 1866.** Blue oval double-circle datestamp on back of blue folded letter datelined "Lima, October 13th 1866" from Peru to Lanman & Kemp in New York City, endorsed "Per steamer via Panama" by sender, New York "Steamship 20" in circle handstamp, light vertical file folds, Very Fine E. 200-300
- 39 ☒ **E. & J. Serruys & Co. Panama.** Clear strike of the scarcer 35 x 21mm oval handstamp on blue folded letter datelined "San Francisco 15 October 1850" to Paris, France, red "Colonies &c Art. 13" framed accountancy handstamp, red Calais transit, backstamps incl. Panama, London and French circular datestamps, ms. "30" decimes due, light horizontal file fold, Very Fine, ex DeVoss, who reported only two examples known of this oval marking E. 500-750
- 40 ☒ **E. & J. Serruys & Co. Panama.** Clear strike of double-line oval handstamp on folded letter datelined "Vaplaraiso de 5 Fevrier 1852" and addressed to Bordeaux, France, red "Colonies &c Art. 13" framed accountancy handstamp, Panama, London, Calais, Paris and receiving datestamps, trivial edgewear, Very Fine, ex DeVoss E. 300-400
- 41 ☒ **Star Office Panama.** Unusual red oval handstamp with starburst at center on blue folded letter datelined "David Decr. 5th 1852" from John Whiting to A. W. Thompson in Philadelphia, bold "Steamship 20 cts." in circle handstamp, letter mentions arrival of Mr. Adams and arrangements for roadcutters, light vertical file folds, tiny tear at top, few extraneous ink spots at top left, still Very Fine, scarce usage from the third-largest city in Panama, which is near the Costa Rica border, with the rare "Star Office Panama" handstamp..... E. 400-500
- 42 ☒ **Forwarded by Uslar Heymel & Co., Vera Cruz.** Perfectly struck blue oval handstamp on top flap of blue folded letter datelined "Mexico, 19 April 1854" to New York, back also with "Vera Cruz Abril 21, 54" datestamp, red "New Orleans La. Apr. 25" transit circular datestamp, well-struck "Steamship 10" in circle handstamp, light vertical file fold at center, Very Fine..... E. 300-400

CALIFORNIA AND WESTERN MAILS

THOMAS O. LARKIN, FORWARDER



43



Thomas O. Larkin (1802-1858)
Image reproduced with permission from
California Views Historical Photographs

43 ☒ **Forwarded by Thomas O. Larkin (Monterey), California.** Double-line oval handstamp with fleuron, struck on back and used in conjunction with “**Forwarded by Ernest Zachrisson, Panama**” framed handstamp on folded letter datelined “*Boston March 21, 1843*” and addressed to “*Mazatlan, Coast of California*”, bold “**PUERTO DE/MAZATLAN**” boxed handstamp with “1” reale due handstamp, some toning, vertical file fold
VERY FINE. AN EXTREMELY RARE EXAMPLE OF THE HANDSTAMPED MARKING APPLIED BY THOMAS O. LARKIN, THE FIRST AND ONLY UNITED STATES CONSUL TO ALTA CALIFORNIA.

Thomas O. Larkin arrived in California in 1832 and became the U.S. Consul to Alta California (then part of Mexico) at Monterey in 1843. He served as a mail forwarder, and his scarce oval marking is found on covers sent via Monterey. E. 1,500-2,000

SAN FRANCISCO AND SACRAMENTO STRAIGHTLINES



44

- 44 ☒ **SAN FRANCISCO.** Clearly-struck straightline handstamp (Williams SAF 230) with magenta ms. "July 2" and "40" rate on folded letter datelined "Stockton California June 28th 1849" to Waterbury Conn. in "U.S. of America", ms. "1849" year date, some edgewear and minor strengthening along folds with tape

VERY FINE. AN ATTRACTIVE AND RARE COVER WITH THE FIRST HANDSTAMPED POSTMARK USED AT SAN FRANCISCO.

This San Francisco marking is recorded on covers dated from June 20 to August 1, 1849. Although written from California, the sender addressed the letter to the "U.S. of America"..... E. 1,500-2,000



45

- 45 ☒ **SACRAMENTO/OCT. 21 1849/PAID/40.** Two-line handstamp with attached rate (Williams SAC-2470) clearly struck on blue folded letter to Elk Grove Ill., ms. "40" at top right, some wear incl. edge flaws and some splitting reinforced by hinges

VERY FINE. ONE OF THE CLEAREST OF THE FIVE OR SO KNOWN STRIKES OF THIS RARE SACRAMENTO YEAR-DATED STRAIGHTLINE WITH 40-CENT RATE.

This is the earliest of the five or so reported examples of the Sacramento straightline, which is known used from October 21 thru November 10, 1849..... E. 1,500-2,000

PACIFIC MAIL STEAMSHIP COMPANY



46

- 46 ☒ **Pan. & San. Fran. S.S. 12 Sep.** Clear strike of PMSS Co. route agent's circular datestamp on blue folded letter datelined "*St. Diego Cal. Sept. 3, 1850*" to Brunswick Me., ms. "40" rate, some slight edgewear and minor waterstains at bottom right, Very Fine, an unusually bold strike and early use of this scarce marking, the "Pan. & San Fran. S.S." circular datestamp was used between September 1850 and June 1852 on mail handled by route agents aboard ships of the Pacific Mail Steam Ship Company; while contract mail carried by PMSS Co. was received in locked bags, letters picked up en route were presumably postmarked by official route agents on board, as evidenced by approximately 25 known examples of the rare route agent markings on covers..... E. 1,000-1,500

NICARAGUA STEAMSHIP COMPANY



47

- 47 ☒ **Nicaragua Line In Advance of the Mails.** Clear strike of oval handstamp on blue folded letter datelined "New York 19th December 1853" addressed to a ship captain "on board Steamer Cortes, San Juan del Sud", small tear at bottom, Very Fine, scarce usage, no indication that any postage was paid, this Nicaragua Steamship Co. steamer plied the waters between San Juan del Sur on the west coast of Nicaragua and San Francisco E. 750-1,000



48

- 48 ☒ **3c Dull Red (11).** Horizontal pair, margins to just in, tied by "New-York Ship Oct. 10" circular datestamp on buff cover to Clinton N.Y., well-struck blue "VIA NICARAGUA/AHEAD OF THE MAILS/LELAND" two-line framed handstamp, some slight wear incl. light vertical file fold affecting right stamp, Very Fine strike of the rare "Leland" handstamp E. 750-1,000



49

- 49 ☒ **3c Dull Red (11).** Margins to in, stamp with few flaws, tied by well-struck "New-York Ship Jun. 24" (1853) circular datestamp on blue cover to Bangor Me., endorsed "Via Nicaragua" and with blue "VIA NICARAGUA/AHEAD OF THE MAILS" two-line handstamp in small italic caps, marked "Due 4" in ms. for total of 7c postage, some edgewear
 VERY FINE. A CHOICE 3-CENT 1851 ISSUE COVER WITH ONE OF THE SCARCEST OF THE VARIOUS "VIA NICARAGUA" HANDSTAMPS.

Based on the New York June 24 arrival date, this cover was carried on the Vanderbilt Line's *Northern Light*, which departed San Juan del Norte on June 16, 1853. It was carried between San Francisco and San Juan del Sur on the Vanderbilt Line's *Brother Jonathan*, which left San Francisco on June 1, 1853. E. 1,500-2,000



50

- 50 ☒ **12c Black (17).** Horizontal pair, large margins to clear incl. **sheet margin at top**, used with horizontal pair of **3c Dull Red (11)**, tied by grids on Dec. 1853 folded letter **to London, England**, sender's routing "*Via Nicaragua*", well-struck blue "**VIA NICARAGUA/AHEAD OF THE MAILS**" two-line framed handstamp, red London transit datestamp (Feb. 7, 1854), neatly pressed file fold affects right 12c stamp

VERY FINE APPEARANCE. A RARE AND ATTRACTIVE FRANKING FOR THE 29-CENT RATE FROM CALIFORNIA TO ENGLAND. ONE OF TWO SUCH COVERS REPORTED WITH THE "VIA NICARAGUA/AHEAD OF THE MAILS" HANDSTAMP.

Interestingly, the New York exchange office did not apply a credit or transit marking to this cover, but the stamps were cancelled on arrival by the New York 7-bar grid, and it was treated as fully prepaid by the British post office.

Ex Piller E. 4,000-5,000



51

- 51 ☒ **12c Black, Diagonal Half Used as 6c (17a).** Bottom right half tied by “New-York Ship Sep. 25” (ca. 1853-54) circular datestamp on cover to West Chester Pa., clear strike of red “VIA NICARAGUA/AHEAD OF THE MAILS” framed handstamp applied in San Francisco, bold “6” due handstamp overstruck by New York datestamp, also crossed out and re-rated “7” due in blue ms. (5c plus 2c ship fee), some slight edgewear, stamp with negligible small tear at bottom

VERY FINE APPEARANCE. AN EXTREMELY RARE USE OF THE 1851 12-CENT BISECT IN COMBINATION WITH THE “VIA NICARAGUA/AHEAD OF THE MAILS” HANDSTAMP AND NEW YORK SHIP-LETTER DATESTAMP. A FASCINATING COVER SHOWING CORRECTED RATING AS AN UNPAID SHIP LETTER.

During the period from 1853 to April 1855, bisected 12c 1851 stamps were used on mail from San Francisco to prepay the 6c over-3,000 miles rate to the East Coast. Upon arrival in New York, the bisects were either accepted or rejected. In this case, the New York office did not accept the bisect, but incorrectly applied the 6c due marking for a letter received from a non-contract vessel addressed to the port of arrival. This was then corrected by applying the New York “Ship” datestamp and 7c rate for a non-contract ship letter to another post office (5c unpaid rate plus 2c ship fee).

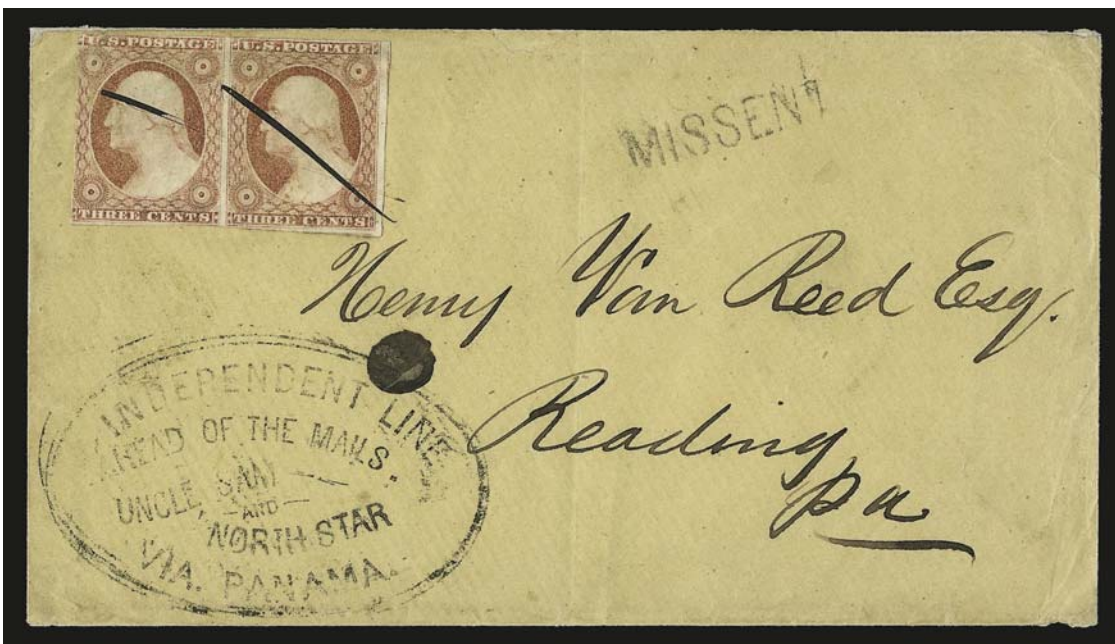
Ex Grunin..... E. 7,500-10,000

INDEPENDENT OPPOSITION LINE



52

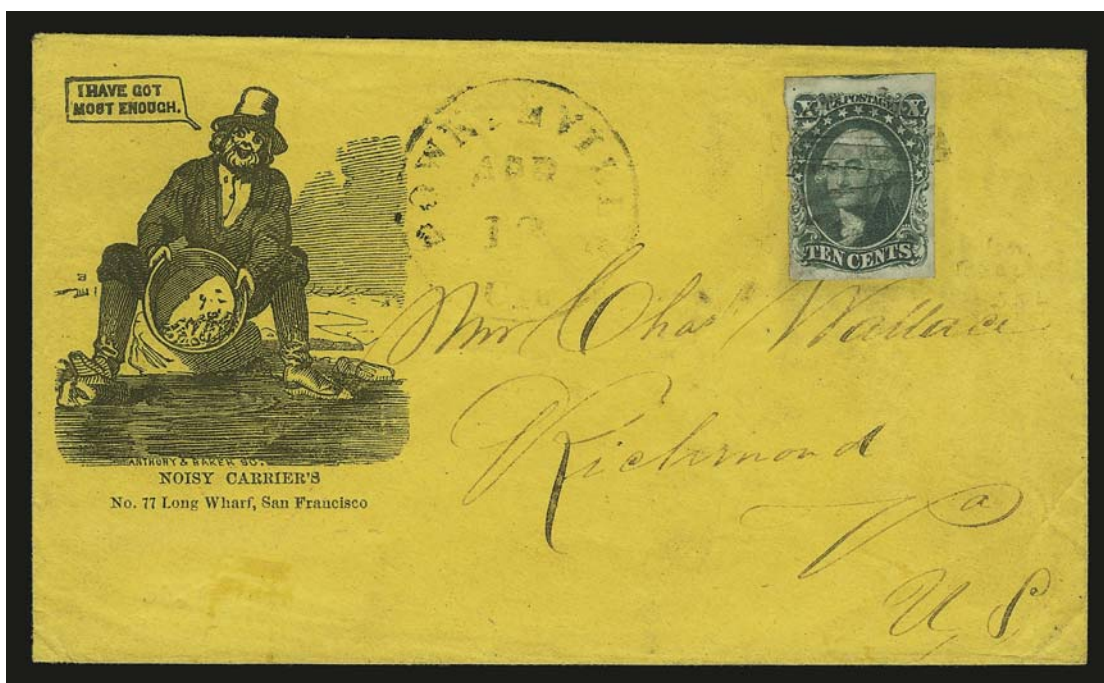
- 52 ☒ **3c Dull Red (11).** Horizontal pair, large margins to clear, bright color, tied by "New-York Jun. 24" circular datestamp and also by "**Independent Line, Via Panama, Ahead of the Mails, Yankee Blade and North Star**" double-line oval handstamp on buff cover to Churchville N.Y., minor cover wear, Very Fine, scarce marking, the *Yankee Blade* was wrecked on Oct. 1, 1854, ex Caspary E. 750-1,000



53

- 53 ☒ **3c Dull Red (11).** Horizontal pair, margins to in, bright color, tied by penstrokes on cover to Reading Pa., clear strike of "**Independent Line, Via Panama, Ahead of the Mails, Uncle Sam and North Star**" handstamp, "Missent" handstamp, top flap reattached as is tiny nick at top, ink spot at left, Fine E. 500-750

NOISY CARRIER'S



54

- 54 ☒ **10c Green, Ty. IV (16).** Position 55L1, recut at bottom, huge margins to just in at left, tied by “clamshell” cork grid, “Downieville Cal. Apr. 13” circular datestamp on orange cover with **Noisy Carrier’s illustrated miner’s corner card** to Richmond Va., marvelous depiction of **miner panning for gold, exclaiming “I have got most enough”,** with **“Noisy Carrier’s, No. 77 Long Wharf, San Francisco” imprint,** woodcut has “Anthony & Baker” imprint, stamp has small scored lines at bottom, trivial edgewear, but overall excellent condition, especially for a Gold Rush-era cover

VERY FINE. A UNIQUE USE OF THE SCARCE 1855 10-CENT TYPE IV ON THIS RARE “I HAVE GOT MOST ENOUGH” ILLUSTRATED MINER’S COVER PUBLISHED BY NOISY CARRIER’S.

Ex Jessup, Haas and Grunin..... E. 10,000-15,000



55

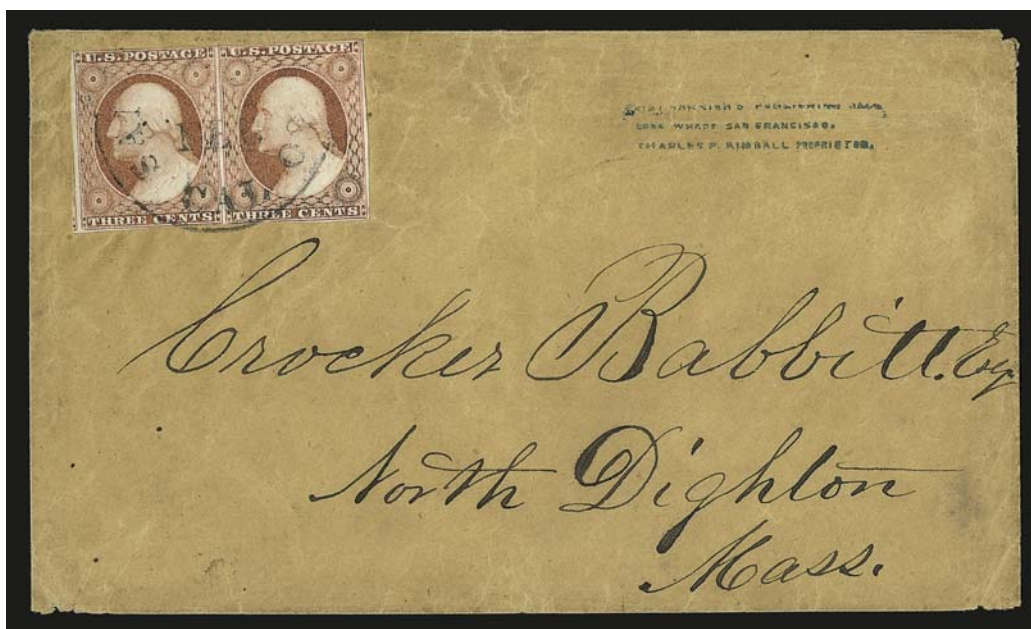
- 55 ☒ **1c Blue, Ty. IV, 3c Dull Red (9, 11).** Horizontal strip of three of 3c, margins to in, tied by "San Francisco Cal. Dec. 5" circular datestamp on cover to Philadelphia, clear strike of "By Mail Steamer, From Noisy Carrier's" in ribbon handstamp, minor edgewear, stamps with small flaws

VERY FINE APPEARANCE. ONE OF FINEST OF THE FEW COVERS KNOWN WITH THIS RARE FORM OF NOISY CARRIER'S MARKING.

Of the various types of markings used by Noisy Carrier's forwarding office on outbound mail from San Francisco, this is one of the scarcest and most difficult to find clearly struck. This cover's impressive pedigree includes the fastidious collectors Louis Grunin and David Jarrett, which testifies to its exceptionally choice quality.

Ex Knapp, Jessup, Haas, Grunin and Jarrett..... E. 4,000-5,000

56

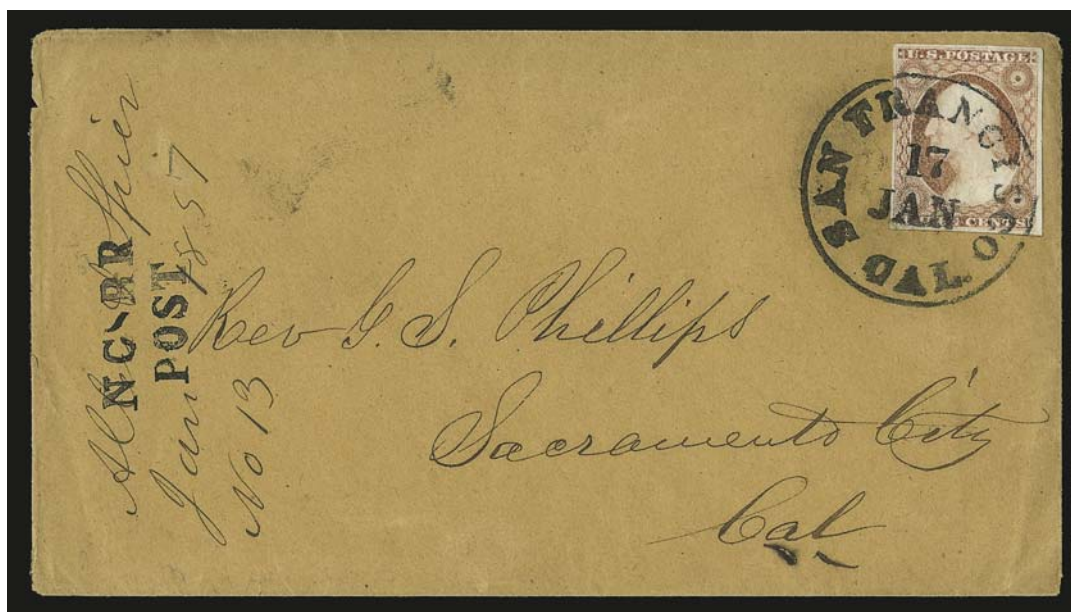


- 56 ✉ **3c Dull Red (11).** Horizontal pair, large margins to in, tied by "San Francisco Cal. ? Feb." circular datestamp on brown cover to North Dighton Mass., clear strike of blue "NOISY CARRIER'S PUBLICATION HALL/LONG WHARF SAN FRANCISCO/CHARLES P. KIMBALL PROPRIETOR" three-line handstamp in very small type, minor overall wear

VERY FINE. THIS THREE-LINE HANDSTAMP IS ONE OF THE RAREST OF ALL NOISY CARRIER'S MARKINGS. THE STRIKE ON THIS COVER IS QUITE POSSIBLY THE FINEST EXTANT.

Ex Jessup, Haas and Jarrett E. 2,000-3,000

57

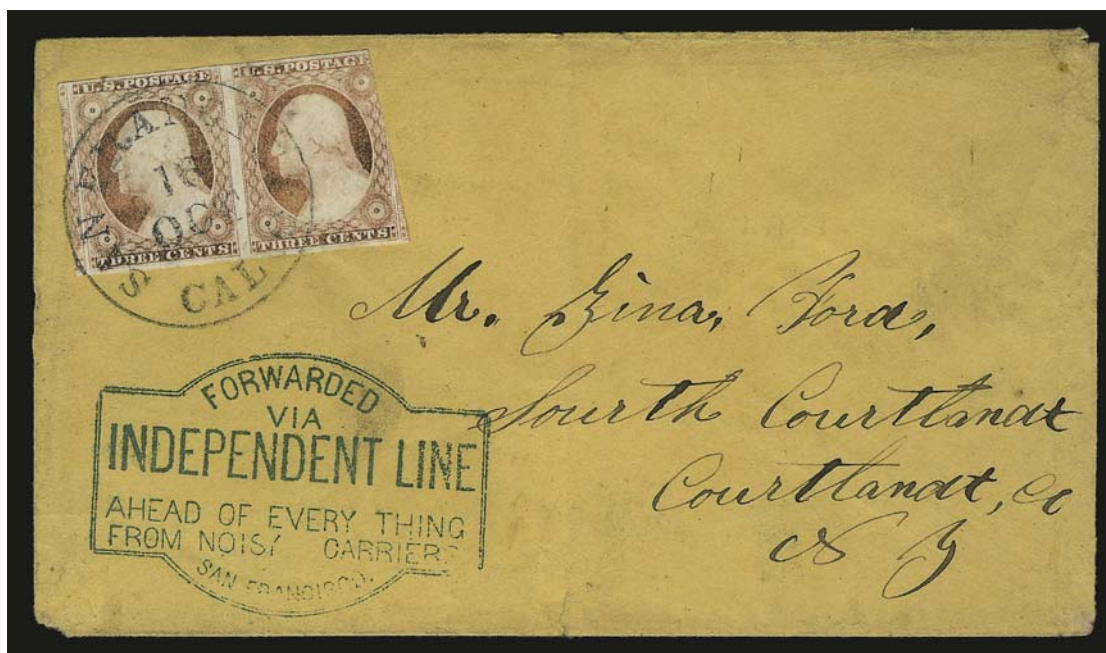


- 57 ✉ **3c Dull Red (11).** Large margins, bright color, tied by bold "San Francisco Cal. 17 Jan." circular datestamp on buff cover to Sacramento City Cal., clear strike of "NC-RR/POST" (Noisy Carrier River Route) two-line handstamp at left, struck again on back, Jan. 1857 docketing, stamp with tiny corner repair at bottom left

EXTREMELY FINE APPEARANCE. ONE OF THE FINEST EXAMPLES OF THE RARE "NC-RR/POST" MARKING.

According to the description of the "NC-RR/POST" cover in the 1982 Kelleher catalogue of the Dr. W. Scott Pollard collection (lot 193): "one of only 4 known. . .this mail service by steamer between San Francisco and Sacramento was operated by Charles P. Kimball in 1857-58."

Ex Lehman, Baker and Haas. With 1969 P.F. certificate E. 2,000-3,000



58

- 58 ☒ **3c Dull Red (11)**. Horizontal pair, large margins to in at top right, tied by "San Francisco Cal. 16 Oct." circular datestamp on buff cover to South Cortlandt N.Y., clear strike of blue **"Forwarded Via Independent Line, Ahead of Every Thing, From Noisy Carriers, San Francisco"** handstamp, minor edgewear, Very Fine, an unusually clear strike of this very scarce Independent Line forwarder's handstamp, ex Grunin E. 1,500-2,000



59

- 59 ☒ **3c Dull Red (11)**. Horizontal pair, large margins incl. **sheet margin** at right to slightly in, tied by "San Francisco Cal. 1 Jul." circular datestamp on buff cover to Brunswick Me., well-struck blue **"From/Noisy Carrier's/Mail, 77 Long Wharf, S.F. Cal."** framed handstamp, Very Fine, this marking is rarely struck with such clarity, ex Jarrett. E. 500-750



60

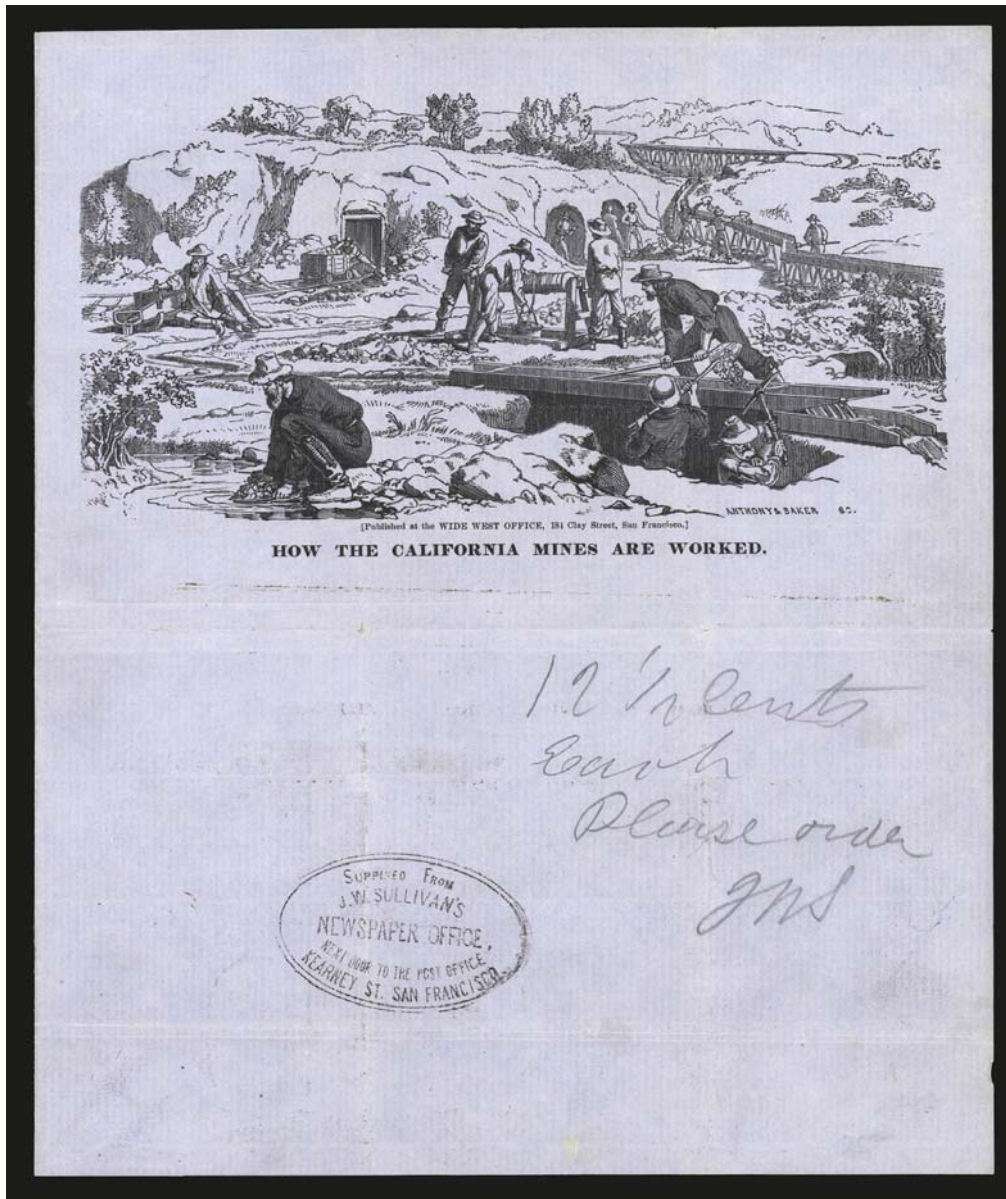
- 60 ☒ **10c Green, Ty. III (15).** Large margins all around, tied by "San Francisco Cal. (15?) Jan." circular datestamp on buff cover to North Weymouth Mass., clear strike of "From/Noisy Carrier's/Mail, 77 Long Wharf, S.F. Cal." framed handstamp, "Quincy Ms. Jan. 31" receiving datestamp, Extremely Fine, an exceptionally attractive example of this scarce usage, carried by the *Star of the West*..... E. 750-1,000



61

- 61 ☒ **3c Dull Red (11).** Horizontal strip of three, large margins to just in, **used with 1c Blue, Ty. II (20),** tied by "San Francisco Cal. Feb. 5, 1858" circular datestamp on cover to Auburn N.Y., 1c also tied by "Noisy Carrier's Mail, San Francisco" oval handstamp, trivial overall wear, Very Fine, a beautiful cover, an unusual combination of imperforate and perforated issues used in conjunction with the scarce Noisy Carrier's oval, with 1992 P.F. certificate..... E. 1,500-2,000

J. W. SULLIVAN



62

- 62 ☒ Supplied from J. W. Sullivan's Newspaper Office, Next Door to the Post Office, Kearney St. San Francisco. Clear strike of oval handstamp on blue lettersheet with "How the California Mines are Worked" illustration depicting various activities around the mines, pencil ms. "12 1/2 cents each please order" and initialed J.W.S., light file folds, Very Fine, an outstanding piece of Gold Rush Americana..... E. 750-1,000

VIA TEHUANTEPEC



63

- 63 ☒ **10c Green, Ty. III (33).** Choice centering, tied by blurry circular datestamp (probably a southeastern post office) on yellow cover to Liberty C. Bartlett in Big Bar Cal., rare “Mail Via Tehuantepec” route endorsement, some very minor edgewear and toning

VERY FINE. AN EXTREMELY RARE COVER ROUTED VIA THE ISTHMUS OF TEHUANTEPEC.

As endorsed, this cover was intended to travel to California by the Gulf of Mexico route from New Orleans to San Francisco via the Isthmus of Tehuantepec. This route was operated by the Louisiana Tehuantepec Company, which ran a semi-monthly mail and passenger service. According to the *Pony Express: Historic Resource Study* website (<http://www.nps.gov/archive/poex/hrs/hrs1b.htm>): “. . .it began in October 1858, under contract to the Louisiana Tehuantepec Company. Starting from New Orleans, a Concord coach carried mail and passengers to Minatitlan on the east coast of Mexico. From there, the route crossed the Isthmus of Tehuantepec to the Pacific Coast. Mail and passengers were then transferred to steamships going to San Francisco. The new overland ocean service from New Orleans to San Francisco took approximately fifteen to eighteen days one way. The accomplishment of the new company clearly presented itself as a shorter and faster alternative to all previous ocean and overland mail routes.” Despite its advantages, the Louisiana Tehuantepec Company’s mail contract was not renewed by the Postmaster General in 1859.

The addressee, Liberty C. Bartlett, was the son of a judge in Little Rock Ark. He joined the Confederate Army in 1861 and was killed at the Battle of Shiloh (<http://familytreemaker.genealogy.com/users/f/e/n/K-Fenton/FILE/0048page.html>)

Ex Kutz E. 1,500-2,000

OVERLAND ROUTE



64

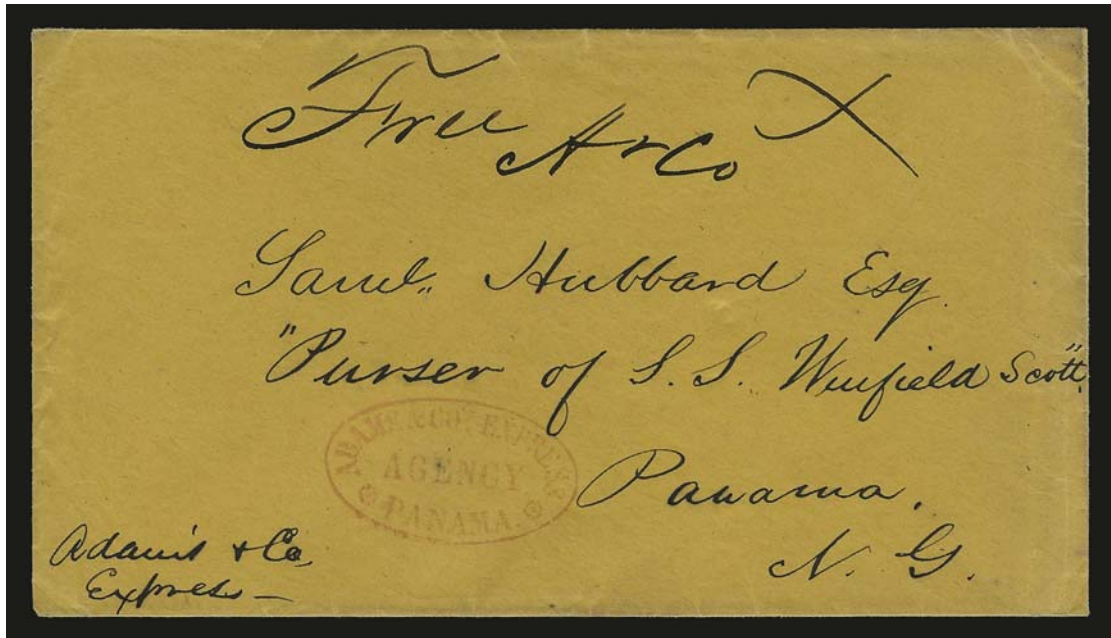
- 64 ☒ **3c Dull Red (26).** Wide straddle-pane margin at left, tied by "Fort Smith Ark. 13 Jan." (ca. 1859) circular datestamp on cover with **4-Horse Stagecoach and "Via Visalia & Los Angeles" banner** corner card, endorsed "*Telegraphic*" and addressed to the National Telegraph Office in St. Louis, ms. "pd 35c" for telegraph fee, minor soiling and cover fold at bottom

VERY FINE. AN EXTREMELY RARE USE OF THE VISALIA AND LOS ANGELES STAGECOACH ENVELOPE IN CONNECTION WITH A TELEGRAPH DISPATCH FROM ST. LOUIS.

According to Thomas J. Alexander, "Reporters along the Butterfield Overland Mail Route carried information concerning events in the West. At the first telegraph office, the information was transmitted to newspapers in the East. When the Butterfield operations began, the National Telegraph Office in St. Louis was at the terminus, not only of the route, but also of the furthest westward extension of any telegraph line. Later, the wire was extended to Springfield, Missouri" (http://www.postalmuseum.si.edu/statepostalhistory/Missouri-Western_Frontier.pdf). This stagecoach envelope was undoubtedly used by one of the news reporters to mail a telegraphic message from Fort Smith Ark. to St. Louis, where it could be sent electronically from the National Telegraph Office. The Alexander article illustrates two envelopes with similar printed addresses, which bear 3c 1857 stamps but were not postmarked because they never entered the mails.

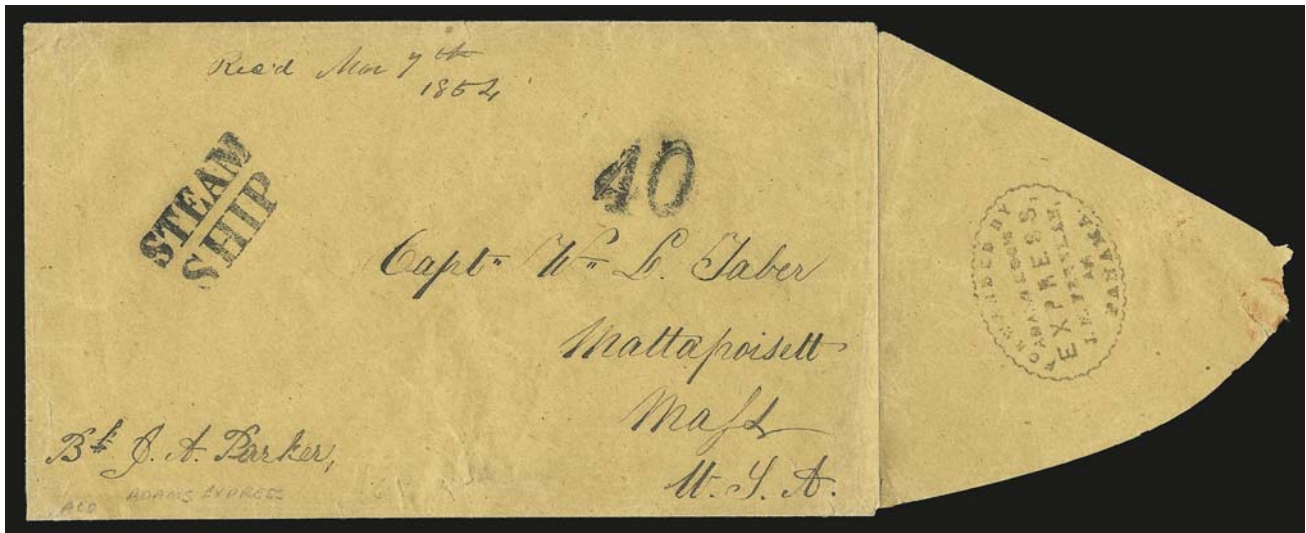
Ex Baker, Grunin and Piller E. 2,000-3,000

WESTERN EXPRESSES



65

- 65 ☒ **Adams & Co. Express Agency, Panama.** Clear red oval handstamp on orange-buff cover to "Purser of S.S. Winfield Scott, Panama N.Y." with ms. "Free A. & Co." with ms. "x" denoting no fee to be charged, fresh and Extremely Fine, this is the rarest of the Adams & Co. handstamps used by its Panama office in 1852 and 1853; the Pacific Mail Steam Ship Co.'s *Winfield Scott* was a 1,291-ton steamer built in New York City in 1851, which was put into service along the Pacific Coast route in 1852; on December 2, 1853, she was stranded off Anacapa Island in the Santa Barbara Channel and lost, but the mails, passengers and cargo were saved; illustrated in DeVoss Panama book, ex Clifford, DeVoss and Jarrett E. 1,000-1,500



66

- 66 ☒ **Forwarded by Adams & Cos. Express, J.M. Fenneah Agt., Panama.** Serrated oval handstamp on side flap of buff cover to Mattapoisett Mass., well-struck New York "Steam/Ship" and "40" due handstamps, 1854 docketing at top, side flap opened for display, Very Fine, scarce usage of this Panama forwarder's handstamp on a cover sent thru U.S. mails E. 500-750



67

- 67 ☒ **Adams & Co. Express Southern Coast.** Large blue circular handstamp boldly struck on folded cover to editor of the *California Farmer*, Very Fine and extremely rare, reported to be the finer of two known..... E. 1,000-1,500



68

- 68 ☒ **Berford & Cos. Californian Express.** Blue oval handstamp with red "B & Co./Collect" handstamp on buff cover to San Francisco, fresh and Very Fine, ex Knapp, reported to be only one of three recorded examples of this Berford's "Californian Express" marking..... E. 1,500-2,000



69

- 69 ☒ **Cram Rogers & Cos. Express Yreka.** Red oval handstamp with ms. "Union" written over "Yreka", used in conjunction with blue "Adams & Co. Express, Shasta" and red "Adams & Co. Marysville, July 22" oval datestamps at top of *The Mountain Herald* newspaper published at Yreka Cal., dated July 16, 1853, folds and slight wear as is to be expected

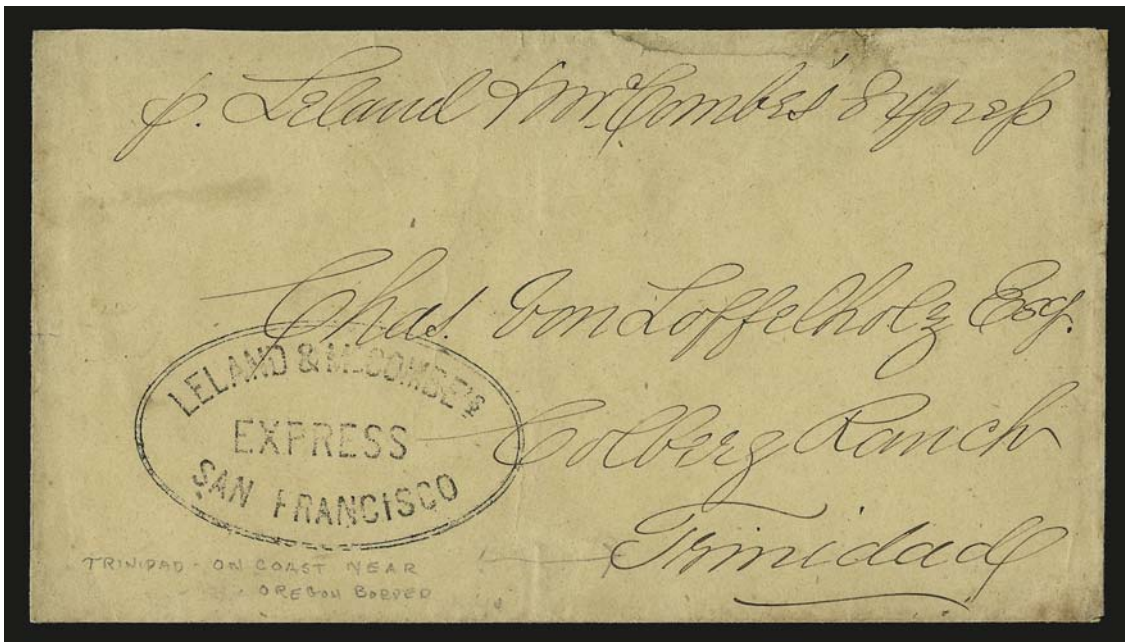
VERY FINE. A REMARKABLE WESTERN EXPRESS USAGE WITH CONJUNCTIVE SERVICE BY CRAM ROGERS & COMPANY AND ADAMS & COMPANY WITH MARKINGS OF THREE DIFFERENT OFFICES.

This newspaper, published in Yreka, was carried by Cram Rogers & Co. to Shasta, then by Adams & Co. to Marysville. E. 2,000-3,000



70

- 70 ☒ **The Central Overland California & Pikes Peak Express Company, Denver City K.T. Dec. 1.** Bold strike of oval datestamp on 3c Red Nesbitt entire to Milwaukee Wis., oval St. Joseph office's Dec. 10 receiving datestamp, second strike of Denver City oval on back but without date, 3c embossed stamp cancelled by well-struck grid and "Saint Joseph Mo. Dec. 11" double-circle datestamp, slightly reduced at right, Very Fine E. 1,000-1,500



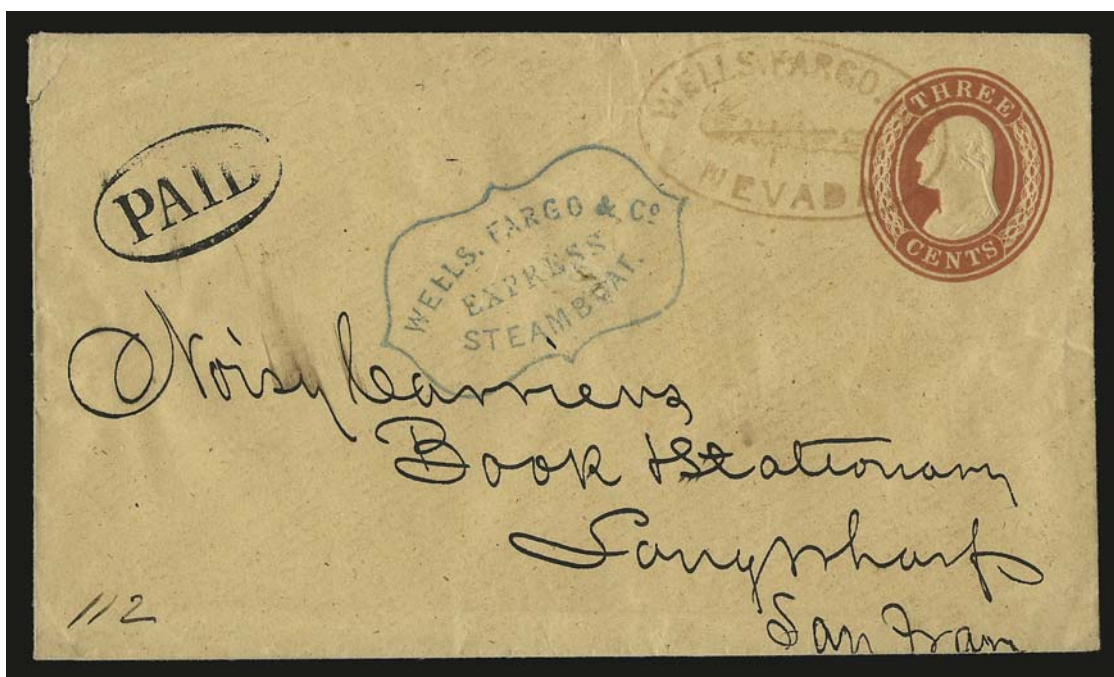
71

- 71 ☒ **Leland & McCombe's Express, San Francisco.** Clear strike of oval handstamp on cover to Trinidad (on the coast near Oregon border), some slight wear incl. expert repair at top, Very Fine strike, an extremely rare express usage; in 1853 George Leland and John McCombe started their express business, carrying mail by water between San Francisco and Crescent City, Port Orford and other towns in Humboldt Bay; their partnership was dissolved in June 1854, and Leland formed a new partnership with David McComb (without the "e"), serving the same area and expanding in August 1854 with a South Coast express to Monterey, Santa Barbara, San Pedro, Los Angeles and San Diego..... E. 1,000-1,500



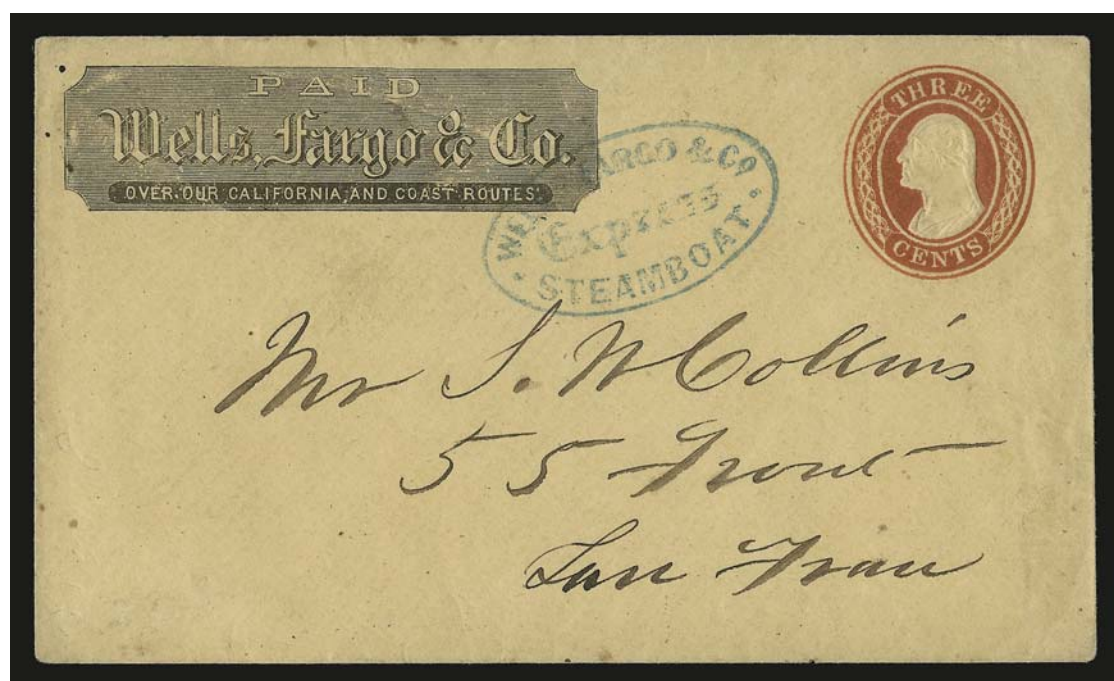
72 front and back

- 72 ☒ **3c Dull Red (11).** Horizontal pair, large margins to just in, tied by well-struck New Orleans “Steamship” in circle handstamp, corresponding red “New Orleans La. Apr. 15” port-of-entry datestamp on cover to New Orleans, back of cover with “J. Hawes & Cos. Express S.F. & N.Y.” double-circle handstamp, endorsed “Via Nicaragua”, fresh and Very Fine, attractive and unusual usage, carried by Hawes to San Francisco and placed on board a ship bound for San Juan del Sur and onward to New Orleans..... E. 1,500-2,000



73

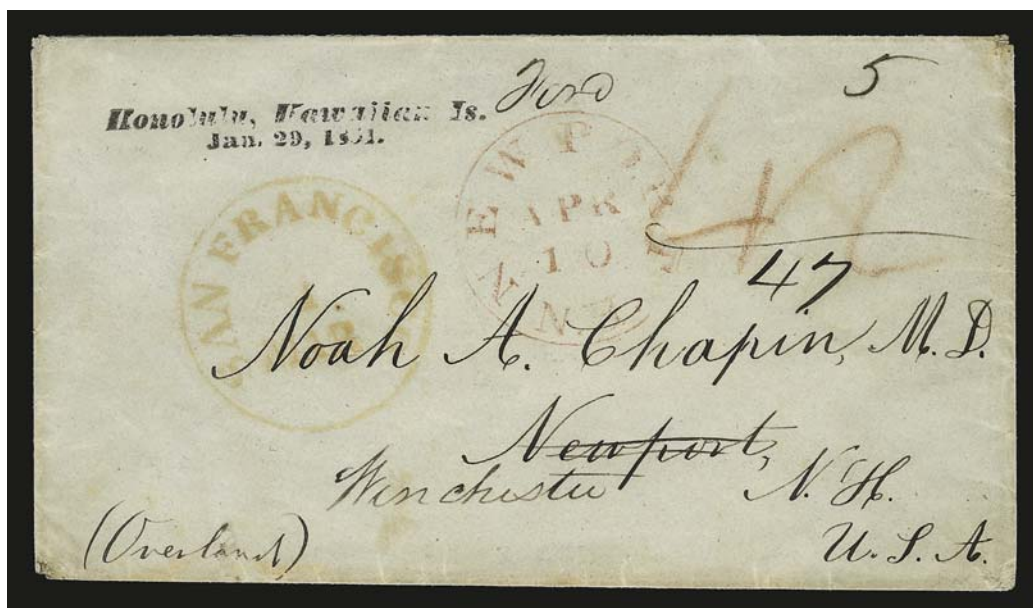
- 73 ☒ **Wells, Fargo & Co. Express, Steamboat.** Fancy framed handstamp in blue on 3c Red Nesbitt entire addressed to Noisy Carrier's in San Francisco, cancelled by red "Wells, Fargo & Co. Express, Nevada" oval handstamp, "Paid" in oval handstamp, small filing holes and trivial wear, Very Fine, extremely rare combination of Wells, Fargo & Co.'s Nevada Cal. office oval and "Steamboat" handstamp..... E. 1,000-1,500



74

- 74 ☒ **Wells, Fargo & Co. Express, Steamboat.** Blue oval handstamp on 3c Red Nesbitt entire with Wells, Fargo printed frank to San Francisco, fresh and Very Fine, choice strike of this scarce Wells, Fargo & Co. marking..... E. 300-400

HAWAIIAN MAILS



75

- 75 ☒ **Honolulu, Hawaiian Is./Jan. 29, 1851.** clear strike of italic-style two-line handstamp in black (Ty. 20, Scarcity 2) on cover to Dr. Noah A. Chapin in Newport N.H. and **forwarded** to Winchester N.H., orange-red "San Francisco Cal. 1 Mar." circular datestamp and red crayon "42" rate (40c transcontinental rate plus 2c ship captain's fee), ms. "Ford" and "5", totaled in ms. to "47", red "Newport N.H. Apr. 10" circular datestamp, ms. "Overland" in corner suggests the sender originally intended this to go via Mexico

VERY FINE STRIKE OF THE HONOLULU STRAIGHTLINE, THE FIRST HANDSTAMPED POSTMARK OF HAWAII.

According to www.hawaiianstamps.com, this cover was carried aboard the *Corsair*, which departed Honolulu on Jan. 31, 1851, arriving in San Francisco on Feb. 19. It was then carried aboard the *California* from San Francisco to Panama on March 5, 1851. There are currently 34 recorded examples of the Honolulu straightline in the Gregory census (including eight in blue).

No. 23 in Gregory's Inaugural Treaty Period Log of Covers (www.hawaiianstamps.com). Illustrated in Ashbrook, Vol. II, page 242. Ex Honolulu Advertiser ... E. 10,000-15,000

The Polynesian.

HONOLULU, JULY 24, 1858.

No. 12.

Business Cards.

LEWIS & HORTON,
Importers and Commission Merchants,
Kauai-street, at Moke & Antone's Block.

NEW COOPERAGE!
LEWIS & HORTON,
PORT STREET, HONOLULU.

THE SUBSCRIBERS WOULD INFORM THEIR FRIENDS, that they have just received a large quantity of new cooperage, of all sizes, in great lots, and at very low prices. They are also agents for the sale of the same, and are prepared to receive orders for the same, and to have them made to order, and to have them shipped to any part of the world, and to have them delivered at the door of Mr. W. F. Field. All orders will be promptly attended to.

Particular Attention paid to Gangs.
JAMES L. LEITCH,
GEORGE W. HORTON.

Mr. JOHN ALEX. MATTHEWS,
COMMISSION MERCHANT,
QUEEN'S PLACE,
SYDNEY.

Reference to W. L. Green, Esq., Honolulu.

J. W. HARRIS,
Attorney at Law
Office at Honolulu House, over Mr. Whitney's Bookstore.
G. H.

WELCHERS & CO.,
Commission Merchants and Ship Chandlers

Business Cards.

The Northern Assurance Company, (Established 1836.)
FOR FIRE AND LIFE ASSURANCE AT HOME AND ABROAD.
CAPITAL £1,385,760 STERLING.

HOTELS & C.

COMMERCIAL HOTEL.
HENRY MACFARLANE begs to announce that he has just received a large quantity of new cooperage, of all sizes, in great lots, and at very low prices. They are also agents for the sale of the same, and are prepared to receive orders for the same, and to have them made to order, and to have them shipped to any part of the world, and to have them delivered at the door of Mr. W. F. Field. All orders will be promptly attended to.

NATIONAL HOTEL.
Corner of Kuanan and Hotel streets.

HOTEL DE FRANCE.—French Hotel.
VICTOR CHANCELLER, Proprietor,
begs to announce that he has just received a large quantity of new cooperage, of all sizes, in great lots, and at very low prices. They are also agents for the sale of the same, and are prepared to receive orders for the same, and to have them made to order, and to have them shipped to any part of the world, and to have them delivered at the door of Mr. W. F. Field. All orders will be promptly attended to.

The Polynesian.

FOREIGN NEWS.

By the arrival of the clipper bark *Fanny Meyer*, Capt. Paty, in 15 days from San Francisco, we received the United States and European mails; the former to June 5th, New York; the latter May 22, Liverpool.

From the foreign journals at hand we quote and condense the following.

War Debate in the Senate.

The War Debate in the Senate lasted several days, the Senate was slightly dissatisfied on the point that the British aggression upon our commerce should be stopped, now and forever. Mr. Mason cited both English and American authorities to show that no armed ship of any nation has the right to stop, visit, or board, for any purpose.

Mr. Mallory proposed an amendment that the American people should permit such aggression, and therefore legislate to enable the Executive to adopt measures to prevent the continuance of such aggression. But Mr. Mallory eventually withdrew his amendment in favor of one by Mr. Hale, to the effect that the acts of the British are intelligible in character, and should be resisted by all the power of the country. He considered that the acts of the British should be met by acts, and not by argument.

insignificant trade which the civilized world would see suppressed, and our best and truest friends our cooperation to effect its suppression. But the rights of American vessels are a subject of paramount importance, and must be maintained first of all. The country went to war with Great Britain in 1812, to maintain these, and would not hesitate, if necessary, to do so again.

While there is no doubt that our government will take prompt and decided action to put an end to these interruptions of our lawful commerce, it will also use its best endeavors to suppress the slave trade, for it is well known that it is carried on principally under the American flag. But under the Webster-Ashburton Treaty of 1842, great and frequent difficulty is liable to arise from the undefined relations of the various parties to the attempted suppression of the trade by a naval force.

The right of visit is so nearly the right of search, that it is liable to great abuse, and for this reason it has been stoutly resisted by our government, and particularly by Mr. Webster, in his extended negotiations on this point. But he failed to define the precise course which should be followed, in order to render the force available which was agreed to be kept on the coast for the suppression of the slave trade. That force is in constant danger of falling into a nullity; and if a mistaken challenge, made on probable grounds, is to be a cause belli, there can be nothing done by Americans or British cruisers, and both may suffer by withdrawal. The government should at once define the precise duty of a master of a vessel, if a positive line of duty must be determined for him, or how far courtesy should go. As it now stands, the matter clearly has a right to hold its course, and to make the action of a British

FRANCE REVIEW.
INDIAN OUTRAGE.—On the 10th June, a party of Cocheco Indians, numbering about 150, in right canoe, stretched a net of mineers bound for Foster river, from Fort Townsend, and succeeded in taking all their provisions, guns, etc., as well as destroying their canoes. Joseph Foster who is well known in these waters, informed us that it occurred about 10 o'clock at night, whilst all were in camp on Orma Island. The first discovery of the Indians being several was a volley fired into the camp—killing an Indian who was with the party of mineers.

On the application of Mr. Hobbs, the U. S. Inspector at Bellevue, to Capt. Richards, of H. B. R. steamer *Plumper*, for assistance, two of the boats were immediately provisioned, and sent in pursuit of the Indians who had committed the outrage, but did not succeed in finding them. Mr. Foster was found on the island by the boats' crews, having been there two days without anything to eat, and was taken to Bellingham Bay.

Trade is in a serious condition here. Sometimes the Company's prices are slightly above those of the few traders here, and at others far below them. When flour was 85¢ a barrel, large loaves of bread were furnished at the Company's bakery at 25 cents each. Traders in provisions, however, cooking utensils, crockery and furniture could do well here now.

The unanimity of opinion in regard to the richness of the diggings is perfectly wonderful. No one coming or writing from there seems to have a doubt on the subject. I have just night some gold brought down on the *Surprise* from Thompson's river. It resembles California gold more than any

76 Wells, Fargo & Co. Express, Honolulu. Blue oval handstamp clearly struck on complete July 24, 1858 edition of *The Polynesian* newspaper from Honolulu, interesting news incl. debate in U.S. Senate regarding British aggression towards U.S. ships in the Gulf of Mexico and debates over how to respond, an advertisement for Wells, Fargo & Co. appears inside, minor stain spot and trivial small edge tears

VERY FINE. THE ONLY RECORDED EXAMPLE OF THIS RARE WELLS, FARGO & COMPANY HONOLULU OFFICE MARKING ON A NEWSPAPER.

Covers from this early period of Wells, Fargo & Co.'s express service in Hawaii are rare. This newspaper was probably on the top of a bundle carried by Wells, Fargo & Co. from Honolulu to San Francisco. Since its discovery in 1997, no others have surfaced.....

E. 4,000-5,000

INBOUND SHIP MAIL TO SAN FRANCISCO



77

- 77 ☒ **FOREIGN.** Exceptionally clear strike on inbound cover to San Francisco, matching “San Francisco Cal. Nov. 16” double-circle datestamp and “10” due handstamp, fresh and Very Fine, scarce use of the “Foreign” handstamp which was applied in San Francisco in incoming non-contract foreign mail, with 1980 P.F. certificate E. 1,000-1,500



78

- 78 ☒ **PURSER.** Perfect strike of straightline handstamp applied on arrival on cover to San Francisco, equally bold “San Francisco Cal. 10 Jul. 9” integral-rate circular datestamp, trivial edgewear

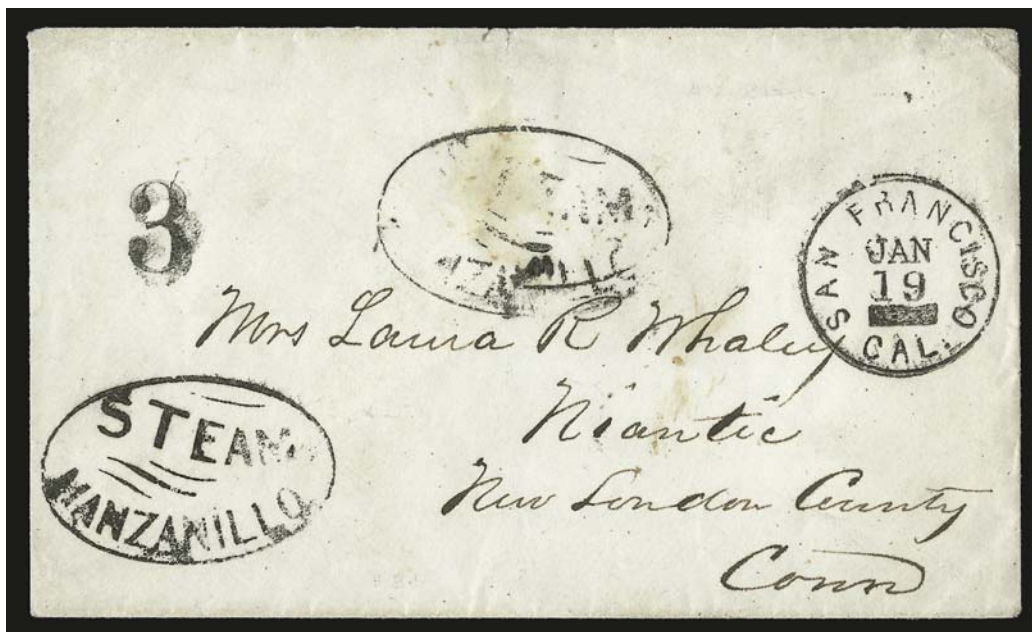
EXTREMELY FINE. A BEAUTIFUL AND RARE COVER WITH THE “PURSER” HANDSTAMP. VERY FEW ARE KNOWN.

This marking is known on incoming ship letters from 1865 to 1867, which were subject to a 10c blanket rate applicable to mail from countries with which the United States had no postal treaty arrangements. E. 1,500-2,000



79

- 79 ☒ **Steam Mazatlan.** Partly clear strike of oval handstamp on 3c Pink entire to San Francisco, cancelled by cork, "San Francisco Cal. Apr. 24" circular datestamp, bold "Due 7" handstamp, some overall soiling and wear, otherwise Very Fine E. 400-500



80

- 80 ☒ **Steam Manzanillo.** Well-struck oval handstamp with second less clear strike at center on cover to Niantic Conn., bold "San Francisco Cal. Jan. 19" circular datestamp with "3" due marking, barely reduced at left, few light age spots, Very Fine, the "Steam Manzanillo" handstamp is the rarest of the oval markings applied to PMSS Co. mail, this appears to be a late use (based on San Francisco datestamp style) and apparently mis-rated at 3c due instead of 10c..... E. 1,000-1,500



81

- 81 ☒ **3c Brown Red (65 var).** Tied by cogwheel, "San Francisco Cal. Jan. 23, 1865" double-circle datestamp on cover to Fort Wayne Ind., clear strikes of "**Steam Mazatlan**" oval and "Due 7" handstamps, with original enclosure datelined "*Colorado mines, Dec. 25th, 1864*", some interesting mining contents, fresh and Very Fine, a very desirable cover, ex Kutz, with 1983 P.F. certificate E. 1,000-1,500



82

- 82 ☒ **Steam Panama.** Oval handstamp on 1866 cover **from Callao, Peru to San Francisco**, blue "20" crayon (due marking), neat "San Francisco Cal. May 12" double-circle datestamp, fascinating docketing on back reads "*A.J. Liffken, P.S.N. Compy's Office Callao, John Prain Esq. Panama, Pay postage only to Panama as it is free from there!*", some slight wear incl. restored corner at bottom right, otherwise Fine, unusual usage, Liffken was a Pacific Steam Navigation Co. agent E. 1,000-1,500

5-CENT 1847 ISSUE



83

- 83 ☒ **5c Red Brown (1).** Large margins to clear, deep rich color, cancelled by **red grid of diamond-shaped dots** handstamp, matching "Easthampton Mass. Jan. 22" circular date-stamp on 1848 folded letter to New York, faint file fold at left far away from stamp

VERY FINE. A BEAUTIFUL EXAMPLE OF THE 5-CENT 1847 ISSUE, WITH A RED FANCY CANCELLATION.

Only seven examples of this cancel are recorded in the Alexander book (including one in blue). Ex Judd and Cole. E. 3,000-4,000



84

- 84 ☒ **5c Dark Brown (1 var).** Large even margins, tied by red grid and also by matching "Boston 5cts. 24 Apr." integral-rate circular datestamp on blue 1848 folded letter to Taunton Mass., with blue "**Pitman's Phonography**" label affixed at left, Extremely Fine example of this scarce shade, ex Klein, with note on back from Stanley Ashbrook "1848 use Dark Brown, Ridgeway's Chestnut Brown" E. 1,000-1,500



85

- 85 **5c Red Brown (1).** Large margins to clear, deep rich color, tied by **blue grid** cancel, matching "**Philada. Pa. 5cts. Jul. 16**" (1847) integral-rate circular datestamp on large part of folded cover, address portion (bottom half) of cover reduced, horizontal file fold does not affect stamp, Very Fine, scarce early usage within weeks of the issue date (July 1, 1847)..... E. 750-1,000



86

- 86 ☒ **5c Red Brown (1).** Large margins to clear, cancelled by red grid (not tied), red “Jamaica Plain Ms. May 26” circular datestamp on folded letter to Portsmouth N.H., **unusual postmaster’s postage due notation “Not Paid R Seaver PM, 5cts. Unpaid”** in legible manuscript, Very Fine, the stamp is tied by the notation but not by the grid, which leads us to believe the sender attempted to use a cancelled stamp to pay postage, which was detected and rejected by the Jamaica Plain postmaster, with 1984 P.F. certificate E. 1,000-1,500



87

- 87 ☒ **5c Red Brown (1).** Large margins to clear incl. **sheet margin at left**, tied by two bold strikes of **blue grid**, matching “Troy N.Y. Jun. 28” circular datestamp on blue 1851 folded letter to Plattsburgh N.Y., faint file folds, fresh and Very Fine, very late usage, this was used on Friday, June 28, the 1847 Issue was demonetized three days later, ex Gore, signed by Ashbrook E. 1,000-1,500

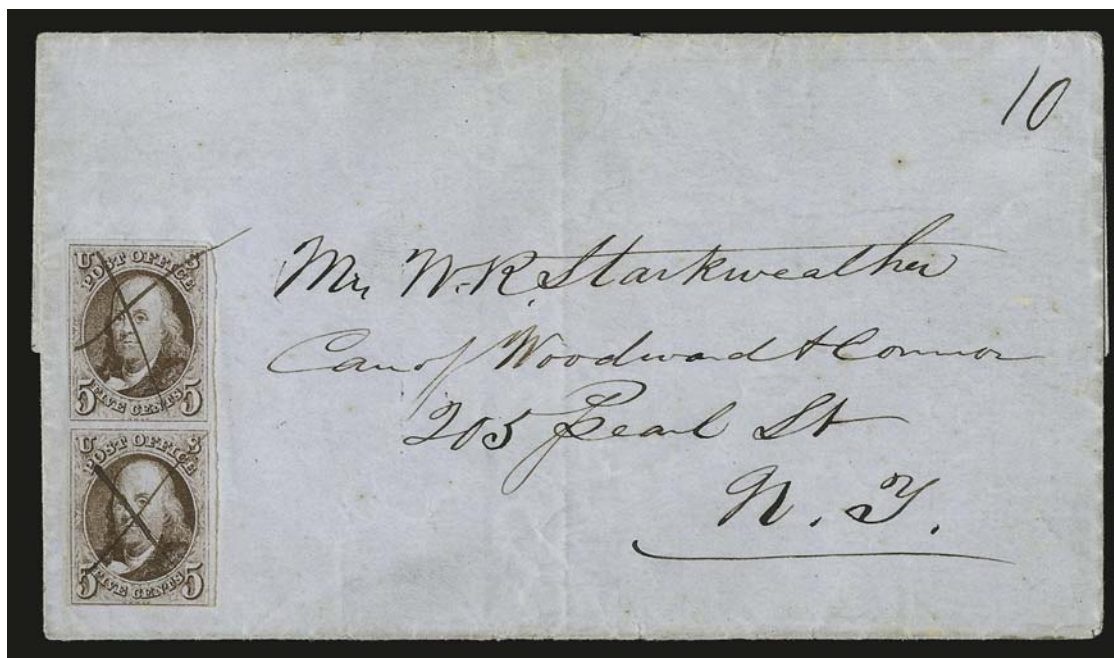


88

- 88 ☐ **5c Blackish Brown (1a var).** Vertical pair, large margins to clear, tied by vivid **paint-red** grids, matching "St. Louis Mo. 10 Oct. 9" integral-rate circular datestamp on folded cover to Philadelphia

VERY FINE AND CHOICE. A RARE COVER BEARING A PAIR OF THE 5-CENT 1847 ISSUE IN THE BLACKISH BROWN SHADE.

Scott Retail as off-cover pair \$2,000.00..... E. 2,000-3,000



89

- 89 ☐ **5c Red Brown (1).** Vertical pair, large margins to clear, tied by ms. "X" cancels on blue folded cover to New York, with original contents datelined "Monroe, Union Co. N.C. Feby. 4th 1849", ms. "10" rate at top right, faint vertical file fold, Very Fine, scarce usage, this is the only example of the 1847 Issue used from Monroe N.C., listed in Alexander book..... E. 750-1,000



90 with detail

- 90 ✉ **5c Red Brown (1).** Horizontal strip of three, large margins to just in, each cancelled by neat ms. "X", "Wallingford Ct. Feb. 16" **Valentine week** circular datestamp with day in ms. and matching "Paid" handstamp on large folded cover to Middlebury Conn., tiny tear between second and third stamps, right stamp small tear at top, cover with few file folds not affecting stamp

VERY FINE APPEARANCE. AN EXTREMELY RARE USE OF A 5-CENT 1847 STRIP OF THREE TO PAY THE TRIPLE 5-CENT RATE ON A COVER WHICH UNDOUBTEDLY ENCLOSED A VALENTINE.

This is one of only three recorded usages from Wallingford Conn. (and the only multiple franking)..... E. 4,000-5,000

5-CENT 1847 ISSUE — RAILROADS



91

- 91 ☒ **5c Red Brown (1).** Large margins to clear, tied by bold strike of large **blue** open grid, matching “**Mic. Central R.R. Mic. Jun. 6**” (ca. 1850) route agent’s circular datestamp on folded cover to Detroit Mich., light vertical file folds well away from stamp

VERY FINE. A CHOICE EXAMPLE OF THE SCARCE MICHIGAN CENTRAL RAILROAD ROUTE AGENT’S MARKING ON AN 1847 ISSUE COVER.

Ex Burrus and Matthies..... E. 2,000-3,000



92

- 92 ☒ **5c Red Brown (1).** Full even margins, tied by **blue** grid, matching “**Norwich Ct. Feb. 28**” circular datestamp and “**Steamboat 5 in circle**” handstamp on cover to Boston Mass., back of cover with suspender manufacturer’s oval return card and Alberton imprint

EXTREMELY FINE. A RARE USE OF THE NORWICH, CONNECTICUT, “STEAMBOAT 5” HANDSTAMP ON AN 1847 ISSUE COVER.

Ex Gibson and Brigham E. 2,000-3,000



93

- 93 ☒ **5c Red Brown (1).** Large margins to in at left incl. **sheet margin at bottom**, tied by perfectly struck **Hudson River Mail red 17-bar grid in circle**, matching "**Hudson Riv. Mail N.Y., Jun. 16**" route agent's circular datestamp with matching "5" handstamp next to ms. "due" on 1849 folded letter datelined "*N. York June 15, 1849*" to Saratoga Springs N.Y.

VERY FINE. A BEAUTIFUL 1847 ISSUE COVER WITH THE DISTINCTIVE 17-BAR GRID AND HUDSON RIVER MAIL ROUTE AGENT'S DATESTAMP.

The "Due" 5 was applied because the letter weighed over the half-ounce limit (the distance was well under the 300-mile rate limit). E. 2,000-3,000



94

- 94 ☒ **5c Red Brown (1).** Large margins to clear, deep rich color, tied by red New York City square grid, matching "**PHILA. RAILROAD**" straightline handstamp on Oct. 13, 1847 folded printed circular for The Philadelphia Home Missionary Society to Florida N.Y., fresh and Very Fine, this straightline marking was applied at the New York post office on mail taken off trains arriving from Philadelphia, ex Hart E. 750-1,000

5-CENT 1847 ISSUE — CARRIERS AND LOCALS



95

95 5c Red Brown (1). Large even margins, brilliant color, small scissors-cut just into design at bottom left, tied by **Philadelphia blue "2" numeral in double-line circle handstamp**, second strike at right, on small cover to Miss Benjaline French at "North 7th St. above Poplar, West Side, Philadelphia", ms. "all pd" indicating full prepayment of both the 5c rate (by stamp) and 2c carrier fee (handstamp)

VERY FINE. A REMARKABLY BEAUTIFUL AND RARE COVER WITH THE 5-CENT 1847 PAYING THE 5-CENT RATE AND HANDSTAMPED "2" FOR CARRIER FEE.

According to Dr. Vernon R. Morris Jr., this cover to North 7th Street (above Poplar) was correctly prepaid 5c, because the destination was outside the old city limits (pre-1854 consolidation). He further believes that the "2" handstamp was used to indicate payment received for "to the mails" carrier service (*Chronicle* 200, November 2003). Other students previously classified this as an overpaid drop-rate usage, but apparently they were unaware that mail to this location would be considered inter-city mail and subject to the 5c rate.

Ex Gibson and Hart. With 1965 P.F. certificate E. 3,000-4,000



96

- 96 ☒ **5c Red Brown (1).** Large margins to clear, tied by **blue “12” in circle** handstamp, matching “Philada. Pa. 5 Mar. 3” integral-rate circular datestamp and **used with Eagle City Post, Philadelphia Pa., (2c) Black (61L2)**, Type B with 46 points, tied by ms. “X”, on 1849 blue folded letter to Carlisle Pa., ms. “Paid 5cts” at top right, minor edgewear, both stamps with minor age and gum stains

VERY FINE. THE ONLY RECORDED COMBINATION OF THE 5-CENT 1847 ISSUE WITH THE EAGLE CITY POST ISSUE “SAWTOOTH” ADHESIVE. A MAGNIFICENT POSTAL HISTORY RARITY.

There are only two recorded 1847 Issue covers with Eagle City Post adhesives (Meyersburg census, *Chronicle* No. 156, Nov. 1992, and confirmed in Alexander 1847 Census). The earlier is this March 3, 1849, cover with the “Sawtooth” adhesive (Scott 61L2). The second is a July 25, 1850, cover to Providence R.I. with the small Red adhesive (Scott 61L3). None were offered in either Knapp, Gibson, Caspary, Rohloff or other major sales we reviewed.

Ex Brown and Klein. The Scott Catalogue does not list No. 61L2 used in combination with any other issue. E. 15,000-20,000



97

- 97 ☒ **5c Red Brown (1).** Deep rich color, large margins to clear, light diagonal crease at bottom left, tied by red square grid, matching “New-York Mar. 7” circular datestamp on 1848 folded letter to Remsen N.Y., bold strike of red “**Swarts Post Office N.Y., Chatham Square**” oval handstamp, Very Fine, carried by Swarts to the post office E. 1,000-1,500

5-CENT ORANGE BROWN



98

- 98 ☒ **5c Orange Brown (1b).** Horizontal pair, large margins to just touched at bottom left, brilliant color, tied by **blue** grids, matching “Detroit Mich. Apr. 29 (1851)” circular datestamp on blue folded letter to Hartford Conn., light vertical file fold well away from stamps, Very Fine, a beautiful example of the striking late-printing Orange Brown shade, ex Haas and Klein, with 1969 P.F. certificate E. 1,500-2,000

10-CENT 1847 ISSUE



99

- 99 ☒ **10c Black (2).** Full even margins all around, detailed impression, tied by blue “Paid” handstamp and also by matching “Baltimore Md., Jul. 12” circular datestamp on blue folded letter with **1847 docketing** to Ridgewater Mass., matching “10” in oval handstamp, part of dateline missing, light horizontal file fold well away from stamp, cover with age spot at bottom right, Very Fine, attractive **first-month usage**..... E. 2,000-3,000



100

- 100 ☒ **10c Black (2).** Large margins to just in at top, tied by red grid, matching “New-York Oct. 30” circular datestamp on blue 1849 folded letter **to Kingston, Canada West**, ms. “3” due for **ferriage rate**, receiving backstamp, stamp and cover with trivial age spots, horizontal file fold well away from stamp

FINE. AN EXTREMELY RARE 1847 ISSUE COVER TO CANADA WITH THE 3-PENCE FERRIAGE RATE.

The special 3p ferriage rate applied to mail crossing between Cape Vincent and Kingston, which required two ferries and a land crossing. The 3p ferriage rate applied until the new U.S.-Canadian postal treaty took effect on April 6, 1851. E. 3,000-4,000

1851-68 ISSUES



101

- 101 ☒ **1c Blue, Ty. IV, 3c Dull Red (9, 11).** Horizontal pair and single of 3c, left stamp likely double transfer, 1c recut twice at bottom and once at top, margins to in, cancelled by grids and tied by large red "New Orleans La. Nov. 1" circular datestamp on 1855 folded letter from France to Tepic, Mexico, datelined "Bordeaux September 25th 1855", neat "Vera Cruz 4 Novbre 1855" oval handstamp and "4" due marking, fresh and Fine usage carried outside of the mails to New Orleans..... E. 300-400

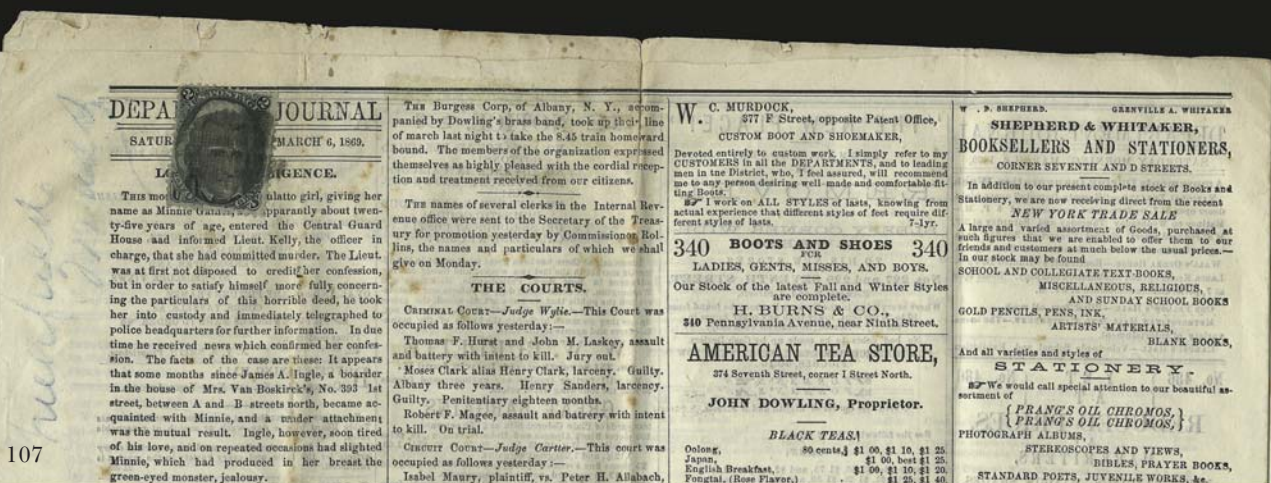
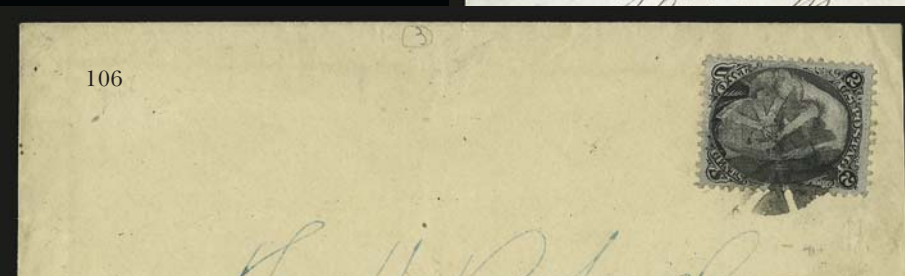
102



103

- 102 ☒ **1c Blue, 3c Rose (63, 65).** Tied by grid and "New-York Oct. 10" circular datestamp on shirt manufacturer's illustrated advertising cover to New Haven Conn., 3c small tear at bottom, otherwise Very Fine, attractive carrier usage..... E. 150-200
- 103 ☒ **3c Rose, E. Grill (88).** Bright color, clear grill, tied by rosette and also by "New-York Mar. 25" circular datestamp on Great American Teas illustrated advertising cover to N.J., fresh and Fine, a beautiful design..... E. 100-150

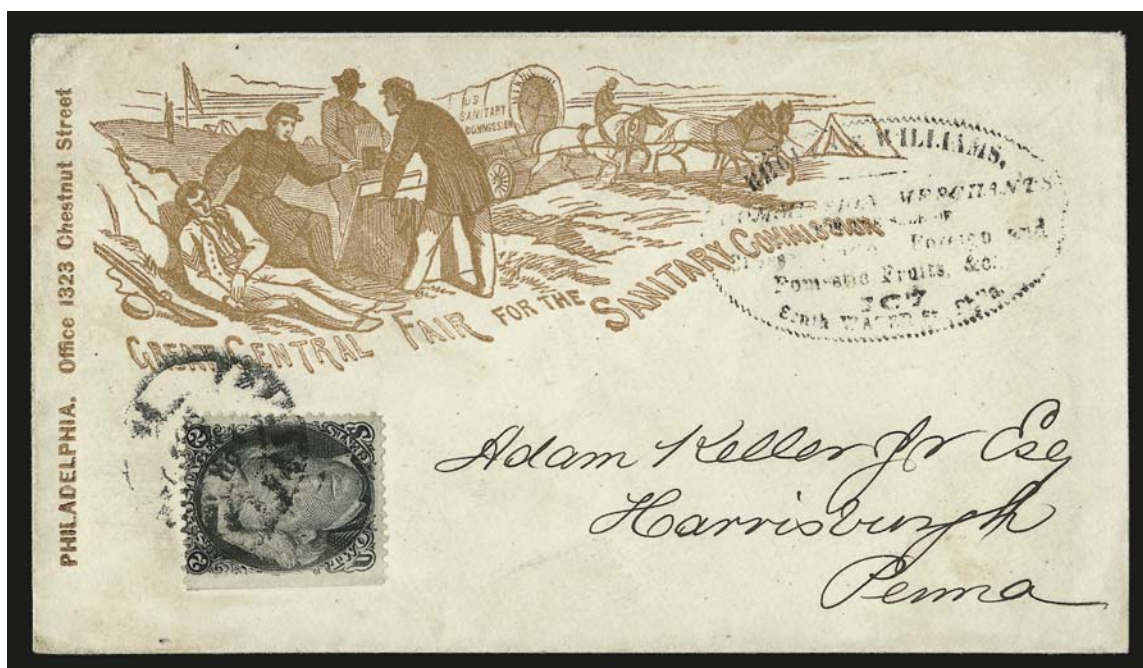
2-CENT BLACK JACK — DOMESTIC USAGES



- 104 ☒ **2c Black (73).** Choice centering, tied by target, "Station A Philada. Apr. 10, 1867" circular datestamp on small cover used locally, few lightly toned perfs, still Extremely Fine, ex Grunin E. 150-200
- 105 ☒ **2c Black, Diagonal Half Used as 1c (73a).** Tied together with full 2c stamp by segmented cork, "Gum Tree Pa. July 13" circular datestamp on cover to Philadelphia, with original 1872-dated contents, blue "Due 1" in circle handstamp, reduced at right into 2c stamp and with piece out at bottom right, still Fine, unusually late Black Jack usage and attempted use of the bisect, with 1876 P.F. certificate 1,750.00
- 106 ☒ **2c Black, F. Grill, Split Grill (93 var).** Choice centering, tied by Leaf cancel on cover to Pepperell Mass., few edge flaws incl. bottom right corner with piece out, stamp is Extremely Fine E. 150-200
- 107 **2c Black, F. Grill (93).** Intense shade, clear grill, tied by cork on back of "Department Journal" newspaper from Washington D.C. dated Saturday, March 6, 1869 (two days after Grant's inauguration), addressed in blue crayon to Mass., containing various news of the day incl. "Jose Partagas complains that his cigars are counterfeited in New York", newspaper with some slight toned spots, still Very Fine, scarce usage E. 300-400



- 108 ☒ **2c Black (73).** Centered to bottom left, tied by segmented cork on beautiful **Great American Tea Company blue lithographed illustrated** cover to Dartmouth Mass., with original enclosure of illustrated card and also printed price list titled "Great Reduction in Teas, In consequence of the Great Fall in Gold", missing top flap, Very Fine, a wonderful Black Jack advertising usage E. 750-1,000
- 109 ☒ **2c Black (73).** Detailed impression, tied by **red target** and matching "N.Y. City Jan. 28" circular datestamp on orange cover with **real estate broker's corner card** to local street address, barely reduced at right, stamp with sealed tear at top left, Very Fine appearance E. 100-150
- 110 ☒ **2c Black (73).** Sharp proof-like impression, tied by grid on orange cover with **Air Bath Co. of Rochester N.Y. corner card** to Pittsford N.Y., fresh and Extremely Fine E. 150-200
- 111 ☒ **2c Black (73).** Centered to top left, tied by circle of V's on unsealed **Anchor Line Steamship Co. illustrated corner card** cover to Cortland N.Y., fresh and Fine, attractive usage E. 200-300
- 112 ☒ **2c Black (73).** Vertical pair, centered to bottom, cancelled by **blue grids**, matching "Ill. River R.R. May 4" circular datestamp on yellow cover with Havana Ill. corner card to Chicago., 1865 docketing at left, Fine usage overpaying the 3c rate, the Illinois River R.R. route agent's marking is scarce and especially rare on the 2c Black Jack, ex Cole E. 300-400
- 113 ☒ **2c Black, E. Grill (87).** Clearly-defined grill, tied by large grid on **tea wholesaler's corner card** cover to New Hartford N.Y., minor edgewear, stamp with some toning around perfs, otherwise Fine, attractive usage of the grilled 2c Black Jack E. 200-300



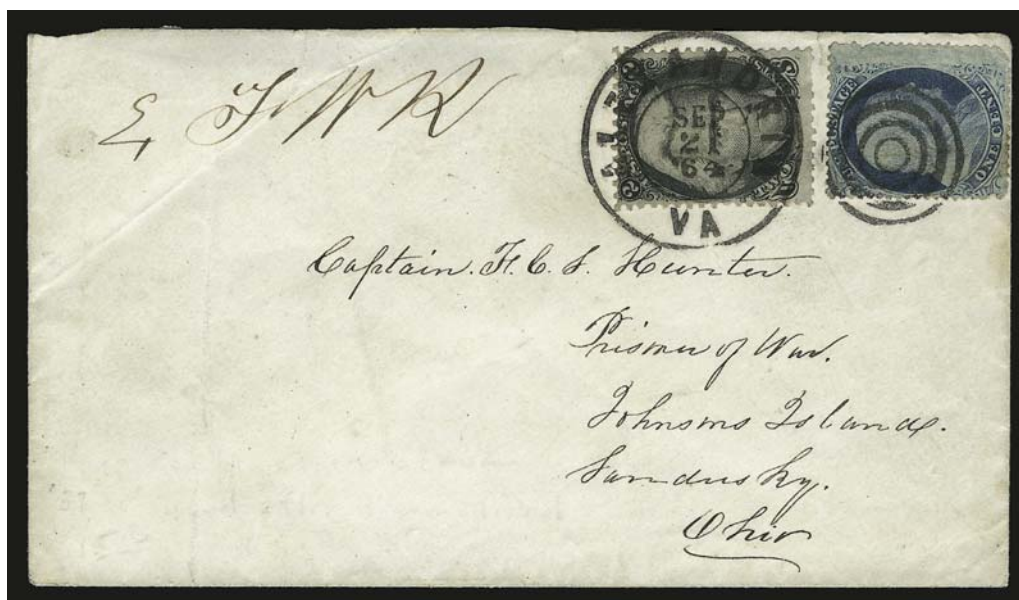
114

- 114 ☒ **2c Black (73).** Centered to top, tied by "Philadelphia Pa. Apr. 2?" double-circle datestamp on brown **Great Central Sanitary Fair** cover to Harrisburgh Pa., battlefield scene with fallen soldier, oval Commission Merchant's handstamp at right, Very Fine, rare Blackjack use on one of the colored versions of this design, ex Kantor, illustrated as Fig. 135 in their book)..... E. 1,000-1,500



115

- 115 ☒ **2c Black (73).** Intense shade and impression, tied by target, "Westfield N.Y. Sep. 29, 1864" double-circle datestamp on yellow cover with red **"Jeff. Davis on the March" Civil War cartoon parody** design, addressed locally, few light age spots, small tear at top of cover, Very Fine, extremely rare use of the 2c Black Jack on a Civil War caricature cover, ex Lehman and Haas, with 1983 P.F. certificate E. 1,000-1,500



116

- 116 ☒ **Inbound Prisoner's Cover to Johnson's Island.** Cover bearing 2c Black (73) and demonetized 1857 Issue 1c Blue, Ty. V (24), tied by target and "Alexandria Va. Sep. 21, 1864" double-circle datestamp, addressed to "Captain F.C.S. Hunter, Prisoner of War, Johnson's Island, Sandusky Ohio", ms. "Ex FWR" examiner's marking at top left, missing most of top flap, 1c minor perf flaw at right

VERY FINE. A REMARKABLE AND VERY RARE COMBINATION OF THE 1863 2-CENT BLACK JACK AND DEMONETIZED ONE-CENT 1857 ISSUE, ACCEPTED FOR POSTAGE ON A COVER TO A CONFEDERATE OFFICER HELD PRISONER AT JOHNSON'S ISLAND IN OHIO.

Company K of the 30th Virginia infantry was formed on April 27, 1861, under the command of Captains G. T. Tayloe, H. L. Foster and F. C. S. Hunter. This unit was at Sharpsburg on September 17, 1862.

With 1986 P.F. certificate..... E. 1,500-2,000



117

- 117 ☒ **2c Black (73).** Bright shade, used with 1c Blue, Ty. II (20), both tied by blue grids, matching "Louisville Ky. Dec. 16" double-circle datestamp on orange cover to Lexington Ky., ms. "Due 2", 1c with tear at bottom and few perf flaws, cover with tiny nick at left, otherwise Fine and attractive attempted use of the demonetized 1c stamp, charged 1c due for unpaid postage plus 1c penalty, ex Allen E. 500-750

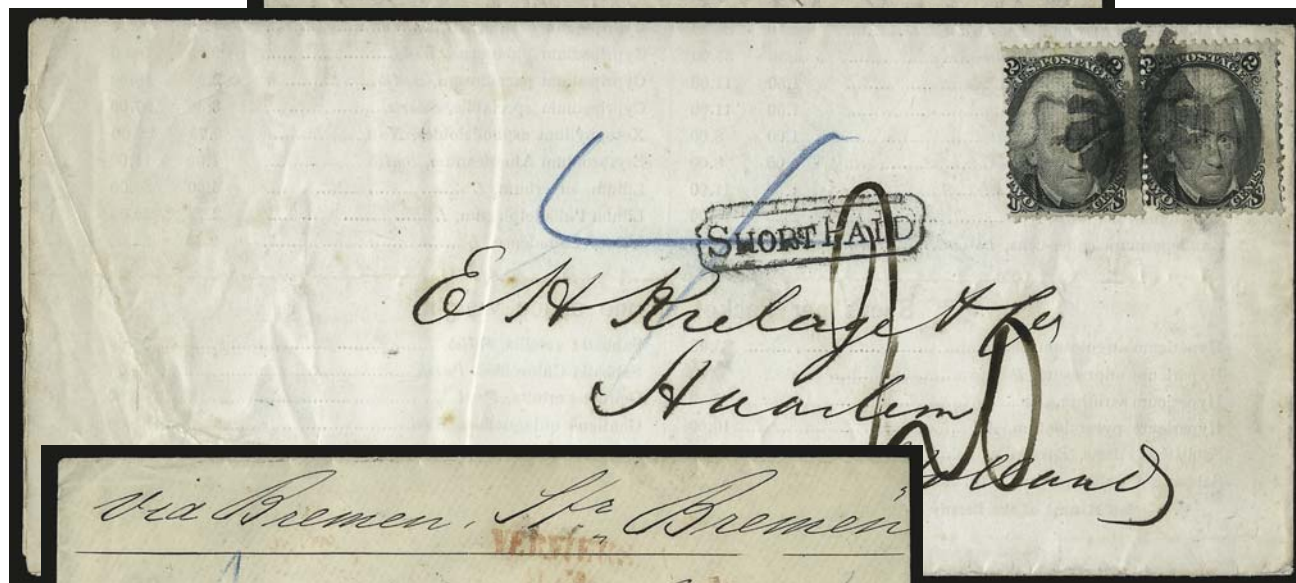
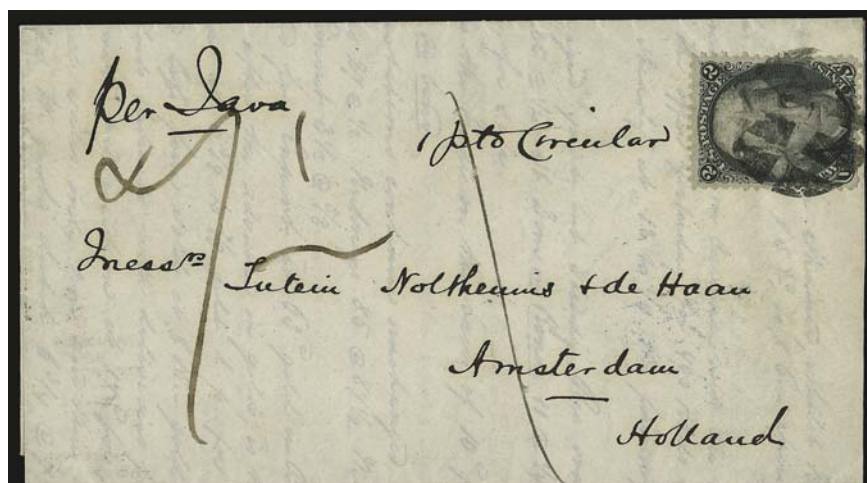
- 118 ☒ **Black Jack Balance.** Five covers, incl. vertical pair of No. 73 from St. Louis to New York, single of same used in Brooklyn, another tied by blue New York circular datestamp, No. 93 cancelled by red leaf cancel, last is combination of Nos. 63 and 73 from Mich. to Ohio, few faults, all appear Fine-Very Fine.....Not illustrated E. 200-300

2-CENT BLACK JACK — FOREIGN DESTINATIONS



- 119 ☒ **2c Black (73).** Centered to bottom, tied by cork on folded printed Prices Current from Philadelphia of Dec. 12, 1866 **to Caibarien, Cuba**, endorsed "Str. Morro Castle", fresh and Fine, a scarce usage of the Black Jack to Cuba..... E. 200-300
- 120 ☒ **2c Black, F. Grill (93).** Tied by cork on Feb. 15, 1869 folded printed circular written in Spanish **to Mexico City**, bold "1/2" due marking for Mexican inland postage, fresh and Very Fine..... E. 200-300
- 121 ☒ **2c Black (73).** Centered to top right, tied by grid, "Aurora Ill. Dec. 1, 1863" double-circle date-stamp on orange cover **to Montgomeryshire, England**, bold "1d" handstamp, Shrewsbury backstamp, cover expertly repaired, Fine appearance, a most unusual usage..... E. 300-400
- 122 ☒ **2c Black, F. Grill (93).** Three, some perfs scissors-trimmed or other perf flaws, clear grills, cancelled by corks on folded printed Prices Current for New Orleans cotton dated Sep. 1868, **to Liverpool, England**, some slight wear, Fine, scarce usage paying the 6c rate, with 1988 P.F. certificate E. 200-300
- 123 ☒ **2c Black, 2c Black, F. Grill (73, 93).** Two items, first is No. 73 on folded cover endorsed "Circular" **to Bremen, Germany** and tied by blue "America/Uber Bremen/Franco" handstamp with "Paid All" handstamp, second with No. 93 on wrapper with printed address **to Paris, France**, red "15c" credit handstamp, fresh and Fine, very suitable for exhibition(Photo Ex) E. 300-400

124

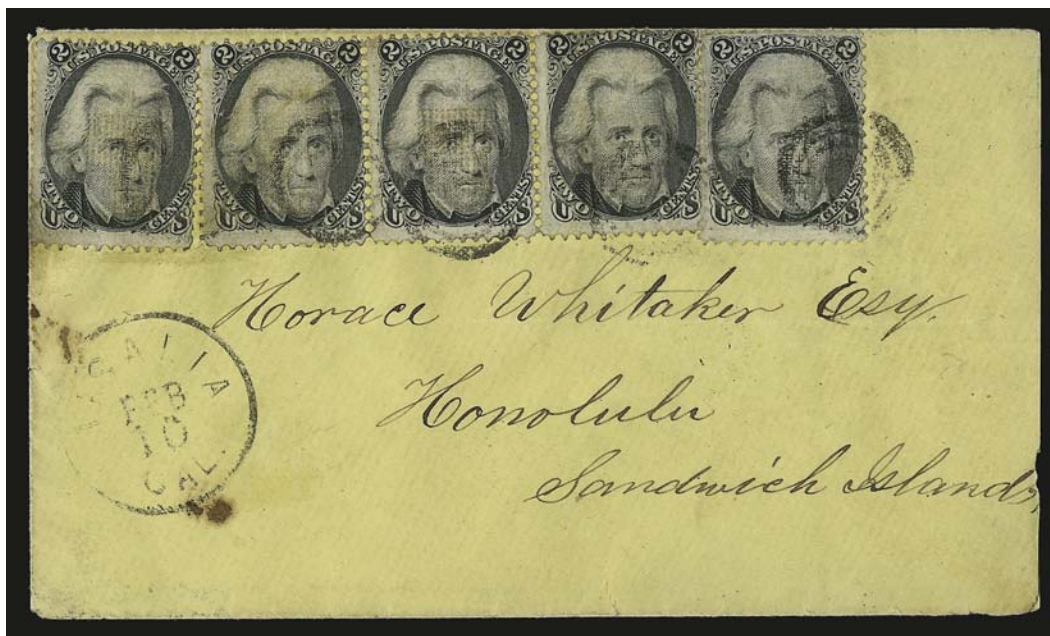


125



126

- 124 ☒ **2c Black (73).** Choice centering, tied by segmented cork on 1867 folded printed circular to **Amsterdam, Holland**, blue "1½c. Amsterdam" in triangle handstamp on back, ms. rate, fresh and Very Fine, ex Gibson E. 300-400
- 125 ☒ **2c Black, F. Grill (93).** Horizontal pair, centered to left, right stamp small piece out at bottom left, tied by well-struck circle of V's on folded printed price list of plants from the Northern United States to **Haarlem, Holland**, blue "4" crayon and also marked with "Short Paid" in oval and "20" due in ms., 1868 receiving backstamp, slight toning around perfs, light file folds well away from stamps, Fine appearance, scarce usage E. 300-400
- 126 ☒ **10c Yellow Green, F. Grill (96).** Horizontal pair, used with two 2c Black, F. Grill (93), perfs trimmed into design on all stamps, tied by corks on cover to **Rome, Italy**, endorsed "Via Bremen" and with New York, Verona and Rome backstamps, various credit markings and "P.P." handstamp, Fine E. 300-400



127

- 127 ☒ **2c Black, F. Grill (93).** Horizontal strip of three and two singles, clearly-defined grills, tied by targets, "Visalia Cal. Feb. 10" circular datestamp on yellow cover **to Honolulu, Sandwich Islands**, slightly reduced at right, stamps with trivial flaws, Very Fine appearance, scarce usage, ex Allen, with 1982 P.F. certificate..... E. 500-750



128

- 128 ☒ **2c Black, 3c Red, F. Grill (93, 94).** Two of each, cancelled by targets on 1869 cover **to the U.S. Consul in Swatow, China**, large magenta "Paid All" in double-line circle handstamp applied at San Francisco, endorsed "By California and China Mail", Hong Kong and receiving backstamps, some edgewear affects 3c stamps, otherwise Very Fine, scarce franking and usage, the "Paid All" marking is rarely seen..... E. 1,000-1,500

5-CENT TAYLOR



129

- 129 ☒ **5c Blue (185).** Tied by quartered cork, "U.S. Postal Agcy, Shanghai, Jun. 1" circular datestamp on cover with "U.S. Consulate. Hong Kong" imprint to Richmond Me., San Francisco and receiving backstamps, some overall soiling, Very Fine, ex Klein E. 500-750



130

- 130 ☒ **2c Brown, 5c Blue (157, 179).** Horizontal pair of 2c, tied by segmented cork, "New Orleans La. Dec. 16 7PM" circular datestamp on 1876 folded letter to **Branne, France**, red "New York Paid Dec. 21" transit datestamp, appropriate French transits, left 2c with pre-use crease at bottom left, Very Fine usage during the 9c treaty period, ex Hubbard and Klein..... E. 500-750



- 131 ☒ **5c Blue (179).** Two, bright colors, tied by **blue Leaf corks**, matching “New Orleans La. Jun. 24 4PM” circular datestamp on 1876 folded letter **to Paris, France**, red “New York Jun. 28” circular datestamp, French transit, one stamp small piece out at right, otherwise Very Fine, attractive usage E. 200-300
- 132 ☒ **5c Blue (185).** Horizontal pair, tied by “**N.Y. Supplementary Paid Mar. 4, 1882**” duplex cancels with “1” in grid on folded cover **to Zurich, Switzerland**, docketing at right also ties stamp, transit and receiving backstamps, light vertical file folds away from stamp, missing bottom flap, Very Fine Supplementary Mail usage, ex Klein E. 200-300
- 133 ☒ **5c Blue (185).** Horizontal pair, deep rich color, tied by quartered corks, red “Boston Paid Apr. 16” circular datestamp on cover **to Fayal, Azores**, endorsed “*Via Lisbon*”, London and Lisbon backstamps, 1880 docketing, fresh and Very Fine usage to a scarce destination E. 300-400
- 134 ☒ **5c Taylor Covers.** Seven, incl. six single frankings to destinations such as Germany, Turkey, Spain, Amsterdam, Italy and England, last bears two 5c with 3c on registered cover from Ohio to Penn., few faults incl. some with toning around stamps, most all appear Fine-Very Fine *Not illustrated* E. 300-400
- 135 ☒ **7c Orange Vermilion (160).** Tied by quartered cork on **3c Green entire with importer's and wholesaler's advertising**, stamp also tied by “San Francisco Cal. Jun. 30” circular datestamp, **to Vevey, Switzerland**, red New York transit datestamp, 1875 receiving backstamp, with original contents, barely reduced at left, stamp with few toned perfs, Fine E. 150-200

CONFEDERATE STATES BLOCKADE-RUN MAIL



165

- 136 ☒ **Blockade-Run Usage from England to Oswichee Ala. via Charleston S.C.** Folded letter with bold "Charleston S.C. May 13, 186-" circular datestamp (fourth digit of year is blank) and "Steam-Ship" in oval handstamp, pencil "22" ms. rate (double 10c plus 2c ship fee), letter discusses cotton prices, 1863 docketing at left, fresh and Very Fine, two blockade-runners arrived from the Bahamas at Charleston on the May 13, 1863 — the *Antonica* (formerly *Herald*) and the *Norseman* — the addressee (Wright) was associated early on with Fraser & Co., but neither ship was owned by them in 1863, the *Antonica/Herald* had been previously owned by Fraser, so this cover probably travelled on that ship (source: S. Walske)..... E. 2,000-3,000

END OF SALE — THANK YOU

Bid Form—15% Premium Sale

Sale 939
Wednesday, September 26, 2007

1

Please provide the following information:

NAME.....
ADDRESS.....
CITY/STATE/ZIP.....
TEL. (DAY) FAX.....
E-MAIL.....

PADDLE #

Do not write in box

2

Have you purchased from us in the past 5 years? ☐ YES (if so, please go to Section 3)
☐ NO (please provide a trade reference and bank information)

References:

Stamp Firm:..... Telephone.....

Bank:..... Account #

3

In the space provided below, enter the **lot number** from **Sale 939** and your corresponding bid. Please use **whole dollar amounts** only and enter the **maximum bid** you wish to have us execute on your behalf, according to the **revised bidding increments** (on other side of this form). **Your bid will NOT include the 15% buyer's premium.** We will advance the bidding at one increment over the next

highest bid; therefore, you may be awarded the lot at less than your maximum bid. Please do not use "plus" bids or "buy" bids. If you wish to bid on one lot or the other, indicate your "or" bid between lot number/bid entries and bracket your choices. If you wish to place a **bidding limit** on the total amount of your bids, please enter your limit in the space marked "Limit Bids".

PLEASE NOTE REVISED BIDDING INCREMENTS (ON BACK OF THIS PAGE)

☐ **LIMIT BIDS:** Check this box if you wish to limit the total amount of your bids (not including the **15% buyer's premium**) in this sale. Your bids will be executed until your bidding limit no longer allows for additional bids.

The total amount you wish to bid is: \$

Lot	Bid	Lot	Bid	Lot	Bid
	\$		\$		\$

4

AGREEMENT: By signing this bid form, you agree to pay for purchases resulting from your bids, in accordance with the **Conditions of Sale** printed in the sale catalogue. You also agree to pay the **15% buyer's premium** and any shipping costs (see reverse), which will be added to your successful bids, and any sales tax or use tax which may be due

on the total invoiced amount. It is understood that these bids will be executed by Siegel Auction Galleries as a courtesy to absentee bidders, but that no legal responsibility shall lie with the auctioneer or the firm if these bids are not executed. **You are responsible for your written bids, including any errors on your part.**

Payment must be made by cash, check, money order or wire transfer. Credit cards will not be accepted.



SIGNED..... TODAY'S DATE

5

Please submit your bids promptly (telephone bids must be confirmed in writing).

Mail to: Robert A. Siegel Auction Galleries, Inc.

60 E. 56th Street, 4th Floor, New York, N.Y. 10022
Telephone (212) 753-6421

OR FAX YOUR BIDS: (212) 753-6429

Shipping Instructions, Bidding Increments and space for additional bids on other side of form

Additional Bids

Sale 939—September 26, 2007

Lot	Bid	Lot	Bid	Lot	Bid
	\$		\$		\$

Shipping and Transit Insurance

We will be pleased to arrange for shipping and transit insurance for purchases in this sale (except those described as “floor sale only”). To expedite billing and delivery of lots to hundreds of buyers per sale, we use standard charges for postage and insurance, based on the invoiced total and mailing requirements (see schedule). The standard charges are sometimes slightly more or less than the actual postage, but we do not include any fees for our labor or packing costs. Therefore, we ask all buyers to remit the prescribed amount for shipping charges.

Transit insurance is provided in all cases, except when the buyer has furnished us with proof that insurance coverage is effective under another policy. Proof, in such cases, will be accepted in the form of a written certificate from the insurance carrier.

You are responsible for insurance charges, which will be added to your invoice. This coverage is provided for our mutual protection against theft or loss in transit.

REVISED Bidding Increments

The auctioneer may regulate the bidding at his discretion. However, to assist absentee bidders in establishing their maximum bid for each lot, the increments shown at right will be used in most cases. We recommend that written bids conform to these increments (those which do not will be reduced to the next level).

Current Postage & Insurance Charges

Invoice Total	Shipping Method	Charges
Up to 10,000	Fedex Only	\$18.00
Over \$10,000	Fedex Only	\$25.00*
Foreign Destinations (any value)	Fedex/Courier	\$25.00**
Bulk Lots	UPS Preferred	By weight and value (min. \$25.00)
*Insurance and postage on certain heavy or valuable packages may incur an additional charge.		
**Buyers are liable for all customs duties and clearance charges. An accurate declaration of value will be made on all import/export documents. 2/2002		

IMPORTANT NOTICE REGARDING IRRADIATION

The U.S. Postal Service policy of irradiating all classes of mail poses a significant potential risk of irreversible damage to philatelic material, including ink, paper and gum.

WE WILL NOT USE THE MAILS TO SHIP LOTS.

Please provide a street address for Fedex delivery if you intend to have your lots shipped.

Up to \$50	\$5	\$3,000-7,000	\$250
\$50-200	\$10	\$7,000-20,000	\$500
\$200-500	\$25	\$20,000-30,000	\$1,000
\$500-1,000	\$50	\$30,000-75,000	\$2,500
\$1,000-3,000	\$100	\$75,000 up	\$5,000

Robert A. Siegel Auction Galleries, Inc.

Prices Realized for

Sale 939 9/26/2007 The Allan Goldberg Collection of United States Postal History

Lot#	Realized	Lot#	Realized	Lot#	Realized	Lot#	Realized
1	7,000	37	120	73	1,000	109	100
2	5,250	38	275	74	700	110	300
3	140	39	1,600	75	7,500	111	190
4	900	40	425	76	4,250	112	475
5	275	41	650	77	2,300	113	250
6	180	42	200	78	1,100	114	1,400
7	500	43	3,250	79	325	115	1,800
8	225	44	2,100	80	1,000	116	1,500
9	425	45	1,800	81	2,500	117	375
10	950	46	2,600	82	750	118	160
11	750	47	1,100	83	4,750	119	190
12	170	48	1,000	84	3,750	120	325
13	160	49	4,000	85	1,000	121	200
14	275	50	4,000	86	1,100	122	650
15	120	51	5,250	87	900	123	1,100
16	275	52	6,750	88	2,800	124	850
17	150	53	900	89	1,900	125	500
18	325	54	12,500	90	3,000	126	250
19	800	55	9,000	91	6,750	127	750
20	500	56	2,800	92	4,500	128	2,400
21	700	57	6,250	93	1,600	129	500
22	650	58	3,750	94	950	130	350
23	350	59	2,500	95	6,750	131	450
24	325	60	1,900	96	42,500	132	120
25	350	61	3,500	97	1,000	133	200
26	275	62	1,100	98	2,200	134	225
27	150	63	5,000	99	3,750	135	180
28	375	64	5,750	100	2,300	136	3,750
29	700	65	1,600	101	650		
30	450	66	950	102	130		
31	160	67	1,400	103	70		
32	400	68	2,100	104	110		
33	160	69	2,600	105	225		
34	800	70	6,500	106	110		
35	100	71	1,000	107	160		
36	800	72	2,300	108	450		