

Wednesday, December 12, 2007

# The Philip T. Wall Collection of United States Postmasters' Provisionals and Carrier Issues



*Robert A. Siegel*

AUCTION GALLERIES, INC.

# Sale 947

Wednesday, December 12, 2007,  
at 6:00 p.m.



Lot 12

## The Philip T. Wall Collection of United States Postmasters' Provisionals and Carrier Issues

All lots are offered without reserves

**All lots in this sale are sold subject  
to a 15% Buyer's Premium**

### Pre-sale exhibition

Monday, December 10 — 10:00 a.m. to 4:00 p.m.  
Tuesday, December 11 — 10:00 a.m. to 4:00 p.m.  
Wednesday, December 12 — 10:00 a.m. to 4:00 p.m.  
or by appointment (please call 212-753-6421)

On-line catalogue, e-mail bid form, resources and  
the Siegel Encyclopedia are available on our web site:

[www.siegelauctions.com](http://www.siegelauctions.com)

### Arrangement of Sale

Evening session (lots 1-48)

Wednesday, December 12, at 6:00 p.m.

Baltimore Postmaster's Provisional .....	pages 5-7
St. Louis Postmaster's Provisional .....	8-13
Franklin Carrier Issue .....	14-18
Baltimore Carrier Department Issues .....	19-31

### On the cover

Front: Lots 8, 9

Back: Lots 15, 31

## Conditions of Sale (Important—please read carefully)

The property described in this catalogue will be offered at public auction by Robert A. Siegel Auction Galleries, Inc. (“Galleries”) on behalf of various consignors and itself or affiliated companies. By bidding on any lot, whether directly or by or through an agent, in person, or by telephone, facsimile or any other means, the bidder acknowledges and agrees to all of the following Conditions of Sale.

1. The highest bidder acknowledged by the auctioneer shall be the buyer. The term “final bid” means the last bid acknowledged by the auctioneer, which is normally the highest bid offered. **The purchase price payable by the buyer will be the sum of the final bid and a commission of 15% of the final bid (“buyer’s premium”), together with any sales tax or use tax which may be due on the sale.**
2. The auctioneer has the right to reject any bid, to advance the bidding at his discretion and, in the event of a dispute between bidders, to determine the successful bidder, to continue the bidding or to reoffer and resell the lot in dispute. The Galleries’ record of the final sale shall be conclusive.
3. All bids are per numbered lot in the catalogue unless otherwise announced by the auctioneer at the time of sale. The right is reserved to group two or more lots, to withdraw any lot or lots from the sale, or to act on behalf of the seller. The Galleries will execute bidding instructions on behalf of clients, but will not be responsible for any errors in the execution of such bids.
4. **Lots with numbers followed by the symbol ° are offered subject to a confidential minimum final bid (“reserve”), below which the lot will not be sold. The absence of the symbol ° means that the lot is offered without a reserve.** In the absence of a reserve, the auctioneer has sole discretion to establish a minimum opening bid and may refuse an offer of less than half of the published estimate. Any lot that does not reach its reserve or opening bid requested by the auctioneer will be announced as “passed” and excluded from the prices realized lists after the sale. The Galleries may have a direct or indirect ownership interest in any or all lots in the sale resulting from an advance of monies or goods-in-trade or a guarantee of minimum net proceeds made by the Galleries to the seller.
5. Any lot, the description of which is obviously incorrect, is returnable, but only if the lot is returned within 14 days of receipt. All disputed lots must be returned intact with the original packing material. **The following lots may not be returned for any reason: Lots containing ten or more items; lots from buyers who have registered for the pre-sale exhibition or received lots by postal viewing, thereby having had the opportunity to inspect them before the sale; any lot described with “faults” or “defects” may not be returned because of any fault or defect. No illustrated lots may be returned because of centering, margins or other factors shown in the illustrations.**
6. Successful bidders, unless they have established credit with the Galleries prior to the sale, must make payment in full before the lots will be delivered. Buyers not known to the Galleries must make payment in full within three days from the date of sale. **The Galleries retain the right to demand a cash deposit from anyone prior to bidder registration and/or to demand payment at the time the lot is knocked down to the highest bidder, for any reason whatsoever.** In the event that any buyer refuses or fails to make payment in cash for any lot at the time it is knocked down to him, the auctioneer reserves the right to reoffer the lot immediately for sale to the highest bidder. **Credit cards are not accepted as payment.**

7. If the purchase price has not been paid within the time limit specified above, nor lots taken up within seven days from the date of sale, the lots will be resold by whatever means deemed appropriate by the Galleries, and any loss incurred from resale will be charged to the defaulting buyer. Any account more than thirty days in arrears will be subject to a late payment charge of 1½% per month as long as the account remains in arrears. Any expenses incurred in securing payment from delinquent accounts will be charged to the defaulter. A fee of \$250.00 per check will be charged for each check returned for insufficient funds.

8. All lots are sold as genuine. **Any lot accompanied by a certificate issued by The Philatelic Foundation within 5 years of the sale date or by Professional Stamp Experts since January 2004 is sold “as is” and in accordance with the description on the certificate. Such lots may not be returned for any reason, including but not limited to a contrary certificate of opinion.** Buyers who wish to obtain a certificate for any item that does not have a P.F. or P.S.E. certificate (dated as above) may do so, provided that the following conditions are met: (1) the purchase price must be paid in full, (2) the item must be submitted to an acceptable expertizing committee with a properly executed application form within 21 days of the sale, (3) a copy of the application form must be given to the Galleries, (4) in the event that an adverse opinion is received, the Galleries retain the right to resubmit the item on the buyer’s behalf for reconsideration, without time limit or other restrictions, (5) unless written notification to the contrary is received, items submitted for certification will be considered cleared 90 days from the date of sale, and (6) in the event any item is determined to be “not as described”, the buyer will be refunded the purchase price and the certification fee up to \$500.00 unless otherwise agreed.

9. Until paid for in full, all lots remain the property of the Galleries on behalf of the seller.

10. Agents executing bids on behalf of clients will be held responsible for all purchases made on behalf of clients unless otherwise arranged prior to the sale.

11. The buyer assumes all risk for delivery of purchased lots and agrees to pay for prescribed shipping costs.

12. The bidder consents that any action or proceeding against it may be commenced and maintained in any court within the State of New York or in the United States District Court for the Southern District of New York, that the courts of the State of New York and United States District Court for the Southern District of New York shall have jurisdiction with respect to the subject matter hereof and the person of the bidder. The bidder agrees not to assert any defense to any action or proceeding initiated by Galleries based upon improper venue or inconvenient forum. The bidder agrees that any action brought by the bidder shall be commenced and maintained only in a Federal Court in the United States District Court for the Southern District of New York or the State Court in the county in which Galleries has its principal place of business in New York. These Terms and Conditions shall be governed by and construed in accordance with the substantive laws of the State of New York.

SCOTT R. TREPEL, Principal Auctioneer  
Auctioneer’s License No. 795952  
N.Y.C. Department of Consumer Affairs  
80 Lafayette Street, New York, N.Y. 10013  
Telephone (212) 577-0111

*Revised 5/2006 15%*

### Copyright Notice

This catalogue in all versions, printed and electronic, is protected by copyright. The descriptions, format, illustrations and information used herein may not be reprinted, distributed or copied in any form without the express written consent of Robert A. Siegel Auction Galleries. Application for permission may be made in writing.

© 2007, Robert A. Siegel Auction Galleries, Inc.

# Grading Terms, Abbreviations and Values Used in Descriptions

## Grade and Centering

The following terms are used in Siegel sale catalogues (corresponding numerical ranges shown in parentheses). Margin width, centering and gum are described according to generally-accepted standards. Stamps are graded based on our subjective assessment of condition for each issue, which do not necessarily correlate with third-party grading terms or standards for all issues. **A lot may not be returned because a certification service grades a stamp lower than the grade stated. Information from the P.S.E. Stamp Market Quarterly and P.S.E. Population Report<sup>SM</sup> is the most current available, but lots may not be returned due to errors or changes in statistics or data.**

**Extremely Fine Gem (90-100 pts.):** The term “Gem” used in Siegel catalogues describes condition that is the finest possible for the issue.







**Extremely Fine (80-90 pts.):** Exceptionally large margins or near perfect centering.

**Very Fine (70-85 pts.):** Normal size margins for the issue and well-centered with the design a bit closer to one side. “Very Fine and choice” applies to stamps that have desirable traits such as rich color, sharp impression, freshness or clarity of cancel.

**Fine (60-70):** Smaller than usual margins or noticeably off center. Pre-1890 issues may have the design touched in places.

**Very Good (below 60):** Attractive appearance, but margins or perforations cut into the design.

**Good (G) or Average (Ave.):** Cut into or perfs far into design and usually with slight faults. This condition is generally acceptable for rarities, scarce multiples or stamps used on unusual covers.

Gum Categories:	MINT N.H.	ORIGINAL GUM (O.G.)				NO GUM
	 <b>Mint Never Hinged</b> <i>Free from any disturbance</i>	 <b>Lightly Hinged</b> <i>Faint impression of a removed hinge over a small area</i>	 <b>Hinge Mark or Remnant</b> <i>Prominent hinged spot with part or all of the hinge remaining</i>	 <b>Part o.g.</b> <i>Approximately half or more of the gum intact</i>	 <b>Small part o.g.</b> <i>Approximately less than half of the gum intact</i>	 <b>No gum</b> <i>Only if issued with gum</i>
Catalogue Symbol:	★ ★	★	★	★	★	(★)
PRE-1890 ISSUES	<i>Pre-1890 stamps in these categories trade at a premium over Scott value</i>			Scott Value for “O.G.”		Scott “No Gum” Values thru No. 218
1890-1935 ISSUES	Scott “Never Hinged” Values for Nos. 219-771	Scott Value for “O.G.” (Actual value will be affected by the degree of hinging)		<b>Disturbed Original Gum:</b> Gum showing noticeable effects of humidity, climate or hinging over more than half of the gum. The significance of gum disturbance in valuing a stamp in any of the Original Gum categories depends on the degree of disturbance, the rarity and normal gum condition of the issue and other variables affecting quality. For example, stamps issued in tropical climates are expected to have some		
1935 TO DATE	Scott Value for “Unused”					

## Covers

Minor nicks, short edge tears, flap tears and slight reduction at one side are normal conditions for 19th century envelopes. Folded letters should be expected to have at least one file fold. Light cleaning of covers and small mends along the edges are accepted forms of conservation. Unusual covers may have a common stamp with a slight crease or tiny tear. **These flaws exist in virtually all 19th century covers and are not always described. They are not grounds for return.**

## Catalogue Values and Estimates

Unless otherwise noted, the currently available *Scott Catalogue* values are quoted in dollars with a decimal point. Other catalogues are often used for foreign countries or specialized areas and are referred to by their common name: *Stanley Gibbons* (SG), *Dietz*, *American Air Mail Catalogue* (AAMC), *Michel*, *Zumstein*, *Facit*, etc. Estimates are indicated with an “E.” and reflect our conservative valuation in dollars. Reserves will never exceed the low end of the estimate range; they will sometimes exceed Scott Catalogue value for stamps in Extremely Fine condition.

Because of certain pricing inconsistencies in the Scott Catalogue—for example, blocks that have no gum, the absence of premiums for Mint N.H. items, etc.—we cannot guarantee the accuracy of values quoted for multiples, specialized items and collection lots. We generally try to be conservative, but buyers may not return a lot because of a discrepancy in catalogue value due to Scott pricing inconsistencies.

## Symbols and Abbreviations (see chart above for gum symbols)

▣	Block	E	Essay	pmk.	Postmark	No.	Scott Catalogue Number
✉	Cover	P	Proof	cds	Circular Datestamp	hs	Handstamp
FC	Fancy Cancel	TC	Trial Color Proof	var.	Variety	ms.	Manuscript

*Revised 5/2006*



## Philip T. Wall

IT IS IMPOSSIBLE TO COLLECT OR STUDY CLASSIC UNITED STATES STAMPS without encountering Philip T. Wall's name and contributions. His first article on the New York Postmaster's Provisional was published in the February 1978 issue of *The Chronicle*, and, for nearly three decades, Mr. Wall has been a major contributor to the knowledge pool of United States philately.

Mr. Wall's careful and methodical research earned him the U.S. Philatelic Classic Society's Chase Cup in 1979 and 1984, and the American Philatelic Society's Luff Award in 1997. He also received the Classics Society's Distinguished Philatelist Award in 1995. However, if you ask Mr. Wall what he considers his proudest achievement, he will say it is his 1982 article on the blocks of the New York provisional and 1847 Issue which were stolen from the Miller collection at The New York Public Library and marketed through Lambert Gerber. Mr. Wall's article was the catalyst for the FBI investigation that led to the recovery of many stolen Miller items.

As a collector, Mr. Wall has formed and sold important collections of (in chronological order) the New York Postmaster's Provisional, the 1847 Issue, and the Brattleboro Postmaster's Provisional. In each case, Mr. Wall chose to acquire what he considered exceptional items, by virtue of their quality or unique characteristics. For example, the New York collection contained two complete platings; one in unused condition, and the other made up entirely of stamps cancelled by red handstamps, instead of the usual pen cancels. Mr. Wall's eye for quality was also evident in his 1847 collection, which was sold at auction through the Siegel firm (Sale 826). The Brattleboro collection contained all of the important items, such as the complete plating and the double-rate cover with two stamps.

This sale comprises Mr. Wall's collections of Baltimore and St. Louis Postmasters' Provisionals, the Franklin Carrier Issue, and the Baltimore Carrier Department Issues. Again, he has chosen carefully in building these specialized studies. The Baltimore provisionals include a wonderful corner-margin copy on cover and a unique cover with the stamp tied by three different handstamped markings. His St. Louis "Bears" include copies cancelled solely by the red handstamps (without the usual pen cancels), a superb 5c on Gray Lilac, and one of the most important pieces in the entire field of Postmasters' Provisionals, the 20c-20c-5c se-tenant strip of three, a uniquely-configured multiple from the left half of the pane. Among the Carrier items is the Franklin stamp cancelled by the New York datestamp, in both red and black, as well as the key multiples of the Baltimore Carrier Department issues.

Mr. Wall, a graduate of High Point College and Wake Forest Law School, is a retired attorney who lives in Greensboro, North Carolina. He and his wife, Miriam, will celebrate their 50th wedding anniversary in December. Mr. Wall will continue to collect other areas of philately, and I am sure he will tackle them with the same determination and scholarship that have characterized all of his collections.

—SCOTT R. TREPEL

EVENING SESSION (LOTS 1-48)  
WEDNESDAY, DECEMBER 12, 2007, AT 6:00 P.M.

THE PHILIP T. WALL COLLECTION OF  
UNITED STATES POSTMASTERS' PROVISIONALS  
AND CARRIER ISSUES

POSTMASTERS' PROVISIONALS  
BALTIMORE, MARYLAND



1

- 1 ☒ **Baltimore Md., 5c Black (3X1).** Position 1 with **top left corner sheet margins**, tied by wavy-line ms. cancel, bold blue "Baltimore Md. Nov. 16" (1846) circular datestamp, matching "Paid" straightline and ms. "5" rate on blue folded letter to New York City street address, light file fold well away from stamp

EXTREMELY FINE. A FRESH AND BEAUTIFUL COVER BEARING A LARGE CORNER SHEET-MARGIN EXAMPLE OF THE BALTIMORE 5-CENT BLACK ON WHITE POSTMASTER'S PROVISIONAL STAMP.

No. 18 in Hayes census. Ex Martin. With 1991 P.F. certificate. Scott Retail \$13,500.00 on cover..... E. 10,000-15,000



2

- 2 ☒ **Baltimore Md., 5c Black (3X1).** Position 3, ample to large margins with two full frame-lines, bottom right corner slightly clipped, **without usual pen cancellation, tied by "Baltimore Md. Feb. 16" circular datestamp and also tied by "5" in circle and two strikes of "Paid" handstamp** on 1847 folded letter to New York, additional strike of "Paid" handstamp at left, light vertical file fold thru stamp has been skillfully pressed

EXTREMELY FINE APPEARANCE. A REMARKABLE USAGE WITH THE 5-CENT BALTIMORE PROVISIONAL TIED BY THE TOWN DATESTAMP, RATE MARKING AND "PAID" HANDSTAMP.

This is the only recorded Baltimore provisional cover with the stamp tied by three different markings. It is especially desirable, as all three markings are in blue.

No. 25 in Hayes census. Ex Caspary and Haas. With 2001 P.F. certificate. Scott Retail \$13,500.00 for normally pen-cancelled stamp on cover (footnote states: "Stamps on cover tied by handstamps command premiums.") ..... E. 10,000-15,000



3

- 3 ☒ **Baltimore Md., 5c Black on Bluish (3X3).** Position 12, large margins with two complete framelines, **without pen cancellation, cancelled by blue "Paid" handstamp and tied by blue "Baltimore Md. Feb. 25" circular datestamp** on blue folded letter to Philadelphia, second strike of "Paid" handstamp at right, matching "5" in circle handstamp, two vertical file folds incl. one affecting adhesive which has been lifted and placed back on the cover
- VERY FINE APPEARANCE. A SCARCE ON-COVER EXAMPLE OF THE 5-CENT BALTIMORE POSTMASTER'S PROVISIONAL ON BLUISH PAPER. ONE OF THE VERY FEW BALTIMORE PROVISIONAL COVERS WITH THE STAMP TIED BY THE TOWN DATESTAMP.
- No. 10 in the Hayes census. Ex Duveen, Hind, Troy and Faiman. With 2003 P.F. certificate. Scott Retail \$13,000.00 for normally pen-cancelled stamp on cover (footnote states: "Stamps on cover tied by handstamps command premiums.").... E. 10,000-15,000



SAINT LOUIS, MISSOURI



4

- 4 **St. Louis Mo., 5c Black on Greenish (11X1).** Type III, Position 5, large margins to just touched, **without pen cancellation, tied by red “St. Louis Mo. Mar. 6” circular date-stamp** on small piece

VERY FINE EXAMPLE OF THE 5-CENT ST. LOUIS POSTMASTER'S PROVISIONAL ON GREENISH PAPER. RARE CANCELLED SOLELY BY THE RED ST. LOUIS DATESTAMP.

Colson's small "W.H.C." backstamp. Scott Retail \$7,000.00 for normally pen-cancelled stamp off cover (footnote states: "Values for used off-cover stamps are for pen-cancelled copies. Handstamp cancelled copies sell for much more.") ..... E. 7,500-10,000



5

- 5 **St. Louis Mo., 10c Black on Greenish (11X2).** Type I, Position 2, large margins to clear at top, **without pen cancellation, tied by red "St. Louis Mo. Nov. 28" circular datestamp** on small piece, lifted and hinged in place to confirm soundness of the stamp

VERY FINE AND CHOICE. A BEAUTIFUL AND RARE EXAMPLE OF THE 10-CENT ST. LOUIS POSTMASTER'S PROVISIONAL CANCELLED SOLELY BY THE RED CIRCULAR DATESTAMP.

Ex Ferrary and with his small purple trefoil at bottom right. Also ex Waterhouse and Faiman. With 2004 P.F. certificate. Scott Retail \$7,000.00 for normally pen-cancelled stamp off cover (footnote states: "Values for used off-cover stamps are for pen-cancelled copies. Handstamp cancelled copies sell for much more.") ..... E. 10,000-15,000



6

- 6 **St. Louis Mo., 10c Black on Greenish (11X2).** Type I, Position 2, large margins to just barely in along frameline at top right, **without pen cancellation, tied by red St. Louis circular datestamp** on small piece

FRESH AND VERY FINE. A BEAUTIFUL EXAMPLE OF THE 10-CENT ST. LOUIS POSTMASTER'S PROVISIONAL ON GREENISH PAPER. ESPECIALLY DESIRABLE CANCELLED SOLELY BY THE RED CIRCULAR DATESTAMP, WHICH LEAVES THE ENTIRE DESIGN CLEARLY VISIBLE.

With 2004 P.S.E. certificate. Scott Retail \$7,000.00 for normally pen-cancelled stamp off cover (footnote states: "Values for used off-cover stamps are for pen-cancelled copies. Handstamp cancelled copies sell for much more.") ..... E. 5,000-7,500



7

- 7 **St. Louis Mo., 5c Black on Gray Lilac (11X4).** Type III, Position 5, large to huge margins, unusually deep impression, cancelled by two unobtrusive penstrokes

EXTREMELY FINE GEM. ONE OF THE FINEST KNOWN EXAMPLES OF THE 5-CENT ST. LOUIS POSTMASTER'S PROVISIONAL ON GRAY LILAC PAPER.

The St. Louis Bear stamps were printed from a single plate of six subjects (two horizontal by three vertical) that was modified twice to change the denominations of two positions. The original plate (Plate 1) contained three 5c stamps at left and three 10c stamps at right. All stamps from Plate 1 were printed on Greenish paper. The plate was then altered by burnishing out the "5" on Positions 1 and 3 and engraving a new "20" denomination (Plate 2). A small printing on Greenish paper was made from this altered plate. 5c stamps (Position 5) and 10c stamps (Positions 2/4/6) on Greenish Paper cannot usually be identified as Plate 1 or Plate 2 impressions (the 20c on Greenish paper is a great rarity). The larger portion of stamps from Plate 2 is on Gray Lilac paper. However, because only *one of six subjects* was a 5c value, the 5c on Gray Lilac is an *extremely rare* stamp — perhaps even rarer than the 20c on Gray Lilac. The plate was modified again by burnishing out the "20" and engraving the old "5" denomination (Plate 3). At the time of this second alteration, a large ball was engraved inside the end curl of the numeral "5" on Position 5. As far as we know, all stamps from Plate 3 were printed on a very thin pelure paper. These were the last stamps used before the 1847 Issue was placed on sale in St. Louis.

Ex Vineyard. With 1976 and 1996 P.F. certificates ..... 45,000.00



8

- 8 **St. Louis Mo., 20c/20c/5c Black on Gray Lilac, Se-Tenant Strip of Three (11X6-11X4).** Vertical strip of three containing the **entire left vertical row on the plate**, Positions 1/3/5, top two stamps 20c (Types I/II), bottom stamp 5c (Type III), ample margins to slightly in along frameline at right and lower left, cancelled by light looping pen line on large piece of cover from the "Louisville" find (Tyler & Rutherford correspondence), complete strike of red "St. Louis Mo. May 26" circular datestamp, piece with light vertical file fold well away from strip

VERY FINE. THE UNIQUE COMBINATION STRIP OF THREE OF THE ST. LOUIS POSTMASTER'S PROVISIONAL FROM THE LEFT VERTICAL ROW OF THE PLATE, CONTAINING TWO 20-CENT AND ONE 5-CENT VALUES. ONE OF THE MOST IMPORTANT ST. LOUIS POSTMASTER'S PROVISIONAL MULTIPLES IN EXISTENCE.

The St. Louis "Bears" were issued by Postmaster John M. Wimer from November 1845 until the first United States General Issue became available in July 1847. The stamps were issued in three denominations — 5c, 10c and 20c — and were sold at a premium over face value to pay the costs of printing. All of the stamps were printed from a single copper plate of six subjects (2 x 3) engraved by J. M. Kershaw. The plate underwent two significant modifications. Philatelists identify each state of the plate as Plates 1, 2 and 3, but in fact the same piece of metal was used in each state.

On Plate 1 there were three 5c subjects in the vertical column at left (we refer to the positions on the sheet, which are mirrored on the plate) and three 10c subjects at right. To fill the need for 20c stamps, the denominations on two of the 5c subjects (Positions 1 and 3) were burnished out and reengraved with "20", creating Plate 2. After some time the two 5c values were restored by burnishing out the "20" and reengraving "5", which is Plate 3. The three 10c subjects were untouched throughout the modifications to Positions 1 and 3. The 5c Position 5 was slightly altered on Plate 3 by adding a large dot to the inside of the ball at the bottom of the "5".

The first paper used was Greenish in color; the earliest recorded use is November 13, 1845, one week after the first newspaper announcement of the issue. Most of the Greenish paper supply was used in combination with Plate 1, comprising three 5c subjects in the vertical row at left and three 10c subjects at right. A small supply of Greenish paper was used with Plate 2, which contained the two 20c subjects. As a rule, 5c and 10c stamps on Greenish paper (Scott 11X1-2) printed from Plate 2 cannot be distinguished from the Plate 1 printing, although Plate 2 stamps on Greenish must be considerably rarer. The 20c on Greenish (Scott 11X3) is a great rarity with only six recorded, which indicates that the number of Greenish paper sheets used in conjunction with Plate 2 must have been very small.

*continued on next page*



*continued from previous page*



8 detail

Gray Lilac paper replaced Greenish paper (earliest recorded use is February 27, 1846) and was only used in conjunction with Plate 2. Of the 20c stamps, all except the six known on Greenish paper are printed on Gray Lilac (Scott 11X6). Because only one position furnished the 5c value, the 5c on Gray Lilac (Scott 11X4) is a very rare stamp. The Plate 2 printing on Gray Lilac also furnished the only recorded examples of se-tenant multiples, in which stamps of more than one denomination are joined together.

The last paper used is classified as Pelure, which is extremely thin and fragile. This paper was used only in conjunction with Plate 3, containing the two restored 5c values in addition to the bottom 5c and three 10c at right (no 20c on Pelure is known). The earliest recorded date of use of Pelure paper is November 25, 1846, which is a folded letter bearing a 10c Position 2 with an impression of the reengraved 5c Position 1 on back. This remarkable item provides the earliest use of Plate 3 as well as Pelure paper. Any stamp on Pelure paper is a rarity.

Se-tenant multiples of classic stamps are highly prized, and most are very rare. Among United States Postmasters' Provisionals, there are only three issues produced from plates containing more than one denomination: Baltimore, Providence and St. Louis. There is no known genuine se-tenant example of the Baltimore 5c and 10c provisionals. Se-tenant multiples of the Providence 5c and 10c are readily available in unused condition, due to the survival of remainder sheets. Of the St. Louis "Bears", there are only **six recorded se-tenant multiples** involving any of the three denominations. These are: 1) **5c-10c Positions 5-6**, horizontal pair on Gray Lilac (11X4-11X5), red circular datestamp, 5c faint corner crease, Siegel 1978 Rarities sale as part of a reconstruction, lot 17; 2) **5c-10c-10c Positions 4/5-6**, L-shaped strip of three on Gray Lilac (11X4-11X5), pen cancels, ex Caspary, Siegel 1979 Rarities sale as part of a reconstruction, lot 15; 3) **5c-10c-10c-10c Positions 2/4/5-6**, L-shaped block of four on Gray Lilac (11X4-11X5), pen cancels (tiny break), ex Lapham, Siegel 1977 Rarities sale (lot 22), Siegel 2000 Rarities sale (lot 16), Siegel 2007 Rarities sale (lot 13, realized \$260,000 hammer); 4) **20c-20c-5c Positions 1/3/5**, vertical strip of three on Gray Lilac (11X6-11X4), pen cancels, on large piece of cover with May 26 (1846) circular datestamp, the item offered here, ex Worthington, "Isleham"

collection in Siegel Ameripex sale, lot 1030; 5) **20c-10c Positions 1-2**, horizontal pair on Gray Lilac (11X6-11X5), pen cancels, 10c crease and small thin, Siegel 1980 Rarities sale (lot 14); and 6) **20c-10c Positions 3-4**, horizontal pair (11X6-11X5), tied by pen cancel and red May 31 (1846) circular datestamp on folded cover to Charnley & Whelen, Philadelphia, ex Pope. Se-tenant item numbers 1, 2, 4, 5 and 6 were all sold in the 2003 sale of the Faiman collection.

Five large groups of St. Louis "Bears" have been discovered during the past 132 years. In 1869 J. W. Scott acquired a correspondence bearing 50 of the 5c, 100 of the 10c and three 20c stamps, probably all of which have been removed from their original covers. In 1880 the Riggs correspondence produced 20 examples of the 5c and 10c. In 1889 the J. & J. Stuart correspondence contained 25 examples of the 5c and 10c, most on Pelure paper. The huge "Louisville" find in 1895, salvaged by a janitor who was burning papers, yielded 75 of the 5c, 46 of the 10c and 16 of the 20c, including se-tenant multiples that revealed the plate layout and proved the authenticity of the 20c stamps, which had been in question since 1869. All of the stamps in the Louisville find were found on covers addressed to Tyler & Rutherford, a banking firm in Louisville, but many of the stamps were later removed. Additional material from the Tyler & Rutherford correspondence surfaced around 1902 and was acquired by C. H. Mekeel. The piece offered here comes from the Tyler & Rutherford correspondence. In 1912 the first portion of the Charnley & Whelen correspondence reached philatelists, which provided another six of the 5c, 61 of the 10c and 16 of the 20c. Additional Charnley & Whelen covers were sold over the next three decades.

The two largest St. Louis "Bears" correspondences were addressed to Tyler & Rutherford in Louisville, a distance under 300 miles, and to Charnley & Whelen in Philadelphia, a distance over 300 miles. The postage rates in effect during that period were 5c for any distance under 300 miles and 10c for 300 miles and over. Assuming that the se-tenant strip offered here represents all of the postage from one cover, then the total of 45c would represent nine times the 5c rate per half-ounce.

Ex Isleham and Faiman. With 1962 P.F. certificate. Due to the increase in value for Scott 11X4 and 11X6, the value of the 11X6-11X4 se-tenant strip of three now carries only a small \$5,000.00 premium over the value of singles (\$140,000.00 vs. \$135,000.00). It is likely that this will change after this unique strip is sold. .... E. 100,000-150,000



9

- 9 **St. Louis Mo., 10c Black on Gray Lilac (11X5).** Vertical strip of three containing all three positions from the right vertical row of the plate, Positions 2/4/6, full to huge margins, top stamps cancelled by single penstroke, bottom stamp cancelled solely by red St. Louis circular datestamp, top two stamps with faint creases

VERY FINE APPEARANCE. BY FAR THE FINER OF THE TWO RECORDED OFF-COVER STRIPS OF THREE OF THE 10-CENT ST. LOUIS POSTMASTER'S PROVISIONAL ON GRAY LILAC PAPER. A MAGNIFICENT SHOWPIECE AND A RARITY OF THE HIGHEST CALIBER.

As noted in the previous two descriptions, the plate was altered twice, once adding two 20c denominations and one more time to replace them with 5c denominations. The right column, as demonstrated by this strip, was never altered. Each engraving of the 10c design differs slightly, particularly in the lines underneath "Post Office" at bottom, which aids in identifying positions. This strip beautifully demonstrates the subtle differences in each position.

Ex Duckwall, Moody and Faiman. Signed Colson. With 1981 P.F. certificate. Scott Retail \$32,500.00..... E. 30,000-40,000

## FRANKLIN CARRIER ISSUE



10

- 10 (★) **(1c) Dull Blue, Franklin Carrier (LO1).** Unused (traces of original gum), three large margins, ample to barely touched at bottom, beautiful bright color and remarkably detailed impression, tiny thin spot and tiny surface scrape at bottom right

VERY FINE APPEARANCE. A RARE UNUSED EXAMPLE OF THE FRANKLIN CARRIER WITH TRACES OF ORIGINAL GUM. A GREAT RARITY.

A review of our 14 years of computerized records indicates we have only offered a pair (offered in lot 11) and two singles with original gum. We have also offered four unused singles without gum.

With 2002 P.F. certificate ..... 6,000.00



11

- 11 ★ **(1c) Dull Blue, Franklin Carrier (LO1).** Horizontal pair, original gum, margins slightly in to just clear, fine impression, each stamp with slight crease and small thin spot

VERY GOOD-FINE APPEARANCE. THIS IS THE ONLY RECORDED MULTIPLE OF THE 1851 FRANKLIN CARRIER STAMP WITH ORIGINAL GUM.

The rarity of Franklin Carrier unused multiples has been undermined by the plethora of reprint multiples, including the famous and controversial Slater block, which was finally proven to be a reprint. Perry's records contained only two items: this original-gum pair from the Hollowbush collection and a "defective" unused strip of three sold by George B. Sloane to H. R. Harmer. We have been unable to verify the existence of the strip.

Ex D.K. Collection and our 2000 Rarities sale. With 2000 P.F. certificate. .... 14,500.00





12

- 12 (1c) **Dull Blue, Franklin Carrier (LO1)**. Large to huge margins, extraordinary rich color and proof-like impression, cancelled by vivid red “New York” dateless circle used by carrier department, negligible small thin spot

EXTREMELY FINE APPEARANCE. ONE OF THE FINEST OFF-COVER FRANKLIN CARRIER STAMPS KNOWN WITH THE RED NEW YORK DATESTAMP.

250,000 Franklin Carrier stamps were sent to New York City in October 1851 (in addition to 50,000 to New Orleans and 10,000 to Philadelphia), but very few were used at New York. Only three Franklin Carrier covers from New York are recorded. In addition, there are perhaps five to seven off-cover stamps with the red New York dateless circle and another three or four with the black datestamp.

Ex De Coppet, Duveen, Hind and Hall. With 2001 P.F. certificate..... 7,500.00



13

- 13 (1c) **Dull Blue, Franklin Carrier (LO1)**. Large even margins all around, deep rich color on fresh paper, light strike of blue “Philadelphia Pa.” circular datestamp, small faint corner crease at top right

EXTREMELY FINE APPEARANCE. A SUPERB USED EXAMPLE OF THE FRANKLIN CARRIER STAMP. VERY FEW EXIST WITH THE PHILADELPHIA DATESTAMP USED AS A CANCEL.

Ex Meyersburg. With 1997 P.F. certificate..... 7,500.00





14

- 14 (1c) **Dull Blue, Franklin Carrier (LO1)**. Two huge margins, other sides touched, beautiful early impression on bright Rose paper, tied by remarkably bold **"New-York Dec. 1"** circular datestamp on approximately one-quarter of a cover (with part of flaps), part of New York City address shows, pencil 1852 yeardate on back, tiny natural wrinkles not noted on certificate

A FINE STAMP AND SUPERB STRIKE OF THE BLACK NEW YORK CIRCULAR DATESTAMP. THE FINER OF TWO RECORDED EXAMPLES OF THIS MARKING ON A FRANKLIN CARRIER.

In addition to the three recorded Franklin Carrier covers from New York, there are perhaps five to seven stamps off cover with the red New York dateless circle, which was used by the carrier department. There are two recorded examples of the regular circular datestamp on the Franklin Carrier: this piece and an off-cover stamp pictured in the Perry records. An off-cover stamp (ex Hessel) and another on piece (ex Middendorf), each cancelled by the black "New-York 1ct." drop-rate marking, are also recorded.

Ex Golden and D.K. Collection. With 1957 and 2000 P.F. certificates. Scott Retail \$30,000.00 as a full cover with this circular datestamp. .... 10,500.00

## Philip T. Wall

IT IS IMPOSSIBLE TO COLLECT OR STUDY CLASSIC UNITED STATES STAMPS without encountering Philip T. Wall's name and contributions. His first article on the New York Postmaster's Provisional was published in the February 1978 issue of *The Chronicle*, and, for nearly three decades, Mr. Wall has been a major contributor to the knowledge pool of United States philately.

Mr. Wall's careful and methodical research earned him the U.S. Philatelic Classic Society's Chase Cup in 1979 and 1984, and the American Philatelic Society's Luff Award in 1997. He also received the Classics Society's Distinguished Philatelist Award in 1995. However, if you ask Mr. Wall what he considers his proudest achievement, he will say it is his 1982 article on the blocks of the New York provisional and 1847 Issue which were stolen from the Miller collection at The New York Public Library and marketed through Lambert Gerber. Mr. Wall's article was the catalyst for the FBI investigation that led to the recovery of many stolen Miller items.

As a collector, Mr. Wall has formed and sold important collections of (in chronological order) the New York Postmaster's Provisional, the 1847 Issue, and the Brattleboro Postmaster's Provisional. In each case, Mr. Wall chose to acquire what he considered exceptional items, by virtue of their quality or unique characteristics. For example, the New York collection contained two complete platings; one in unused condition, and the other made up entirely of stamps cancelled by red handstamps, instead of the usual pen cancels. Mr. Wall's eye for quality was also evident in his 1847 collection, which was sold at auction through the Siegel firm (Sale 826). The Brattleboro collection contained all of the important items, such as the complete plating and the double-rate cover with two stamps.

This sale comprises Mr. Wall's collections of Baltimore and St. Louis Postmasters' Provisionals, the Franklin Carrier Issue, and the Baltimore Carrier Department Issues. Again, he has chosen carefully in building these specialized studies. The Baltimore provisionals include a wonderful corner-margin copy on cover and a unique cover with the stamp tied by three different handstamped markings. His St. Louis "Bears" include copies cancelled solely by the red handstamps (without the usual pen cancels), a superb 5c on Gray Lilac, and one of the most important pieces in the entire field of Postmasters' Provisionals, the 20c-20c-5c se-tenant strip of three, a uniquely-configured multiple from the left half of the pane. Among the Carrier items is the Franklin stamp cancelled by the New York datestamp, in both red and black, as well as the key multiples of the Baltimore Carrier Department issues.

Mr. Wall, a graduate of High Point College and Wake Forest Law School, is a retired attorney who lives in Greensboro, North Carolina. He and his wife, Miriam, will celebrate their 50th wedding anniversary in December. Mr. Wall will continue to collect other areas of philately, and I am sure he will tackle them with the same determination and scholarship that have characterized all of his collections.

—SCOTT R. TREPEL



15

- 15 ☒ (1c) **Dull Blue, Franklin Carrier (LO1)**. Large to full margins, deep rich color and proof-like impression, cancelled by Philadelphia **red star**, used on March 9, 1852 folded letter datelined in Philadelphia to "Messrs. Tatham & Brothers, 8 St. Wharves, Philada", neat receipt docketing on back, vertical file folds well clear of adhesive, stamp with faint toned spot at top left, trivial cover edge tears

EXTREMELY FINE STAMP AND A BEAUTIFUL COVER. ONE OF THE FINEST OF THE EIGHTEEN FRANKLIN CARRIER COVERS RECORDED IN THE MEYERSBURG CENSUS, OF WHICH ELEVEN ARE CANCELLED BY THE PHILADELPHIA RED STAR.

This superb cover shows proper use of the Franklin Carrier stamp in March 1852 to prepay the fee for delivery within city limits by the carrier department, entirely outside of the regular mails. The Meyersburg census of Franklin Carrier covers, which has been revised with corrections, contains 18 confirmed examples. Included among the 18 covers are 3 from New York (each tied by the red circular datestamp, one of which is in the New York Public Library), one cover from New Orleans, and 14 covers from Philadelphia (3 tied by blue circular datestamp, 10 cancelled by red star but not tied, and one tied by red star).

Ex Seybold and Gibson. With 1983 P.F. certificate..... 17,500.00





16

- 16 (★)田 (1c) **Blue on Rose, Franklin Carrier Reprint (LO3)**. Block of 50, the bottom half of left pane with part imprint, shows plate crack below Position 91, slight creasing, minor faults in sheet margin as usual, still Very Fine and impressive, ex Hall, Scott Retail \$2,500.00 for singles without premium for blocks or plate crack (imprint block listed but unpriced)  
 ..... E. 1,000-1,500

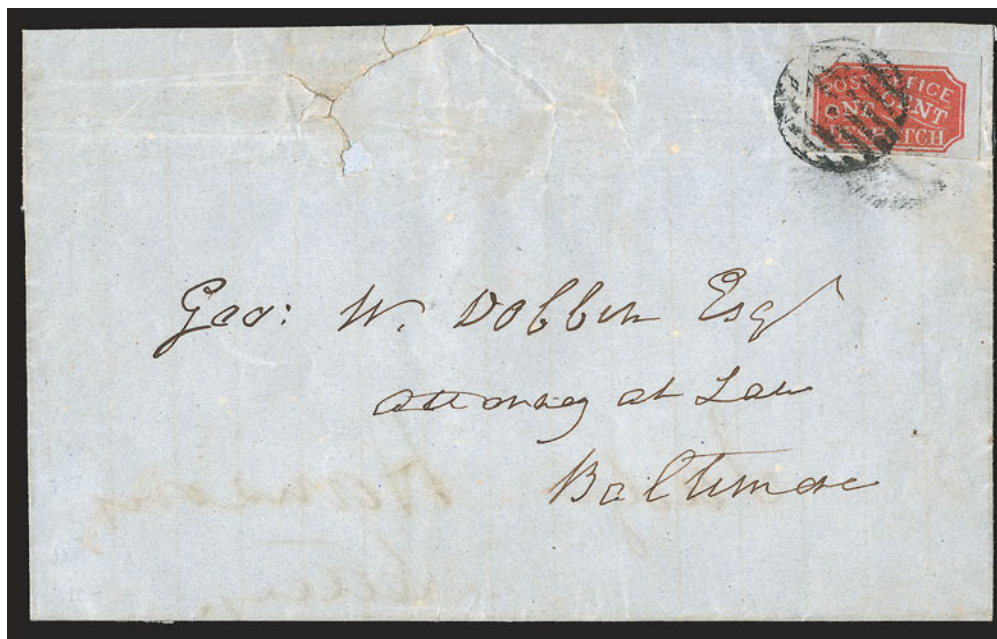


## BALTIMORE CARRIER DEPARTMENT ISSUES



17EX

- 17 **Baltimore Md., 1c Red on Bluish, 1c Blue (1LB1 two, 1LB3).** Large margins to clear, first two distinctly different shades and with ms. cancels (incl. "F" for for Fusselbaugh), few small flaws, appear Fine-Very Fine .....**(Photo Ex)** 420.00



18

- 18 ☒ **Baltimore Md., 1c Red on Bluish (1LB1).** Large to enormous margins, deep rich color, tied by bold strike of grid on folded cover to George W. Dobbin in Baltimore, opening tear at top with tiny piece out, stamp slightly affected by light horizontal file fold, appears Extremely Fine, a huge stamp, ex Hall and Johnstone..... 1,000.00



- 19 ☒ **Baltimore Md., 1c Red on Bluish (1LB1).** Type 3, left sheet margin, other sides large to just touching at top, tied by black grid on Mar. 3, 1853 folded letter to local addressee, Very Fine and choice, ex Hall and Johnstone ..... 1,000.00
- 20 ☒ **Baltimore Md., 1c Red on Bluish (1LB1).** Large margins all around, rich color, tied by neat strike of grid handstamp on buff cover to local street address, Oct. 12, 1852 docketing at left, minor edgewear not mentioned on accompanying certificate, fresh and Very Fine, a beautiful stamp and cover, with 2006 P.F. certificate, illustrated in Kelly series (CCP, Jan. 1973, p. 36) ..... 1,000.00
- 21 ☒ **Baltimore Md., 1c Red on Bluish (1LB1).** Large margins to clear, tied by penstrokes on printed "Trinity Church, East Baltimore" notice soliciting donations, to local street address, fresh and Very Fine, scarce usage on a printed circular, Scott Retail as tied by handstamp ..... 1,000.00
- 22 ☒ **Baltimore Md., 1c Red on Bluish (1LB1).** Large even margins, bright color cancelled by ms. "X" penstrokes on buff cover to local street address, small cover stain at top center, otherwise Very Fine, with 2004 P.F. certificate, Scott Retail as tied by handstamp ..... 1,000.00





23

- 23 ★田 **Baltimore Md., 1c Blue (1LB3).** Cross-gutter block of fourteen showing two impressions with *tête-bêche* orientation, Types 1-10 (complete setting) and adjoining Types 5/7/9-10, original gum, **papermaker's embossed seal with Anchor design**, four punch holes, slight creasing and toning, Position 8 small surface scrapes

THE UNIQUE TÊTE-BÊCHE BLOCK OF THE BALTIMORE ONE-CENT BLUE CARRIER STAMP. THE LARGEST RECORDED BLOCK AND ONE OF TWO TÊTE-BÊCHE MULTIPLES OF THE 1850-55 ISSUE. A SPECTACULAR EXAMPLE OF THE WORK-AND-TURN METHOD OF TYPOGRAPHY USED TO PRINT SHEETS.

One other tête-bêche multiple is recorded: a strip of five with one inverted stamp at top, heavily creased. This block is illustrated in the Kelly series (*Collectors Club Philatelist*, Vol. 51, No. 4, p. 221).

Signed Costales. Ex Hollowbush, Golden and D.K. Collection. With 2000 P.F. certificate. Scott Retail \$6,000.00..... E. 5,000-7,500

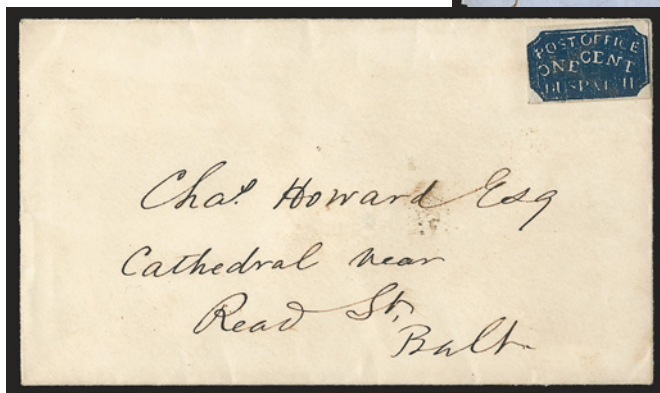


24

- 24 **Baltimore Md., 1c Blue on Laid (1LB3a).** Huge margins, pencil cancel, Extremely Fine, ex Caspary and Golden, with 1957 P.F. certificate ..... 150.00



25



27



26

- 25 ☒ **Baltimore Md., 1c Blue on Bluish (1LB2).** Margins all around, deep shade, ms. "X" cancel, tied at upper left by blue "Baltimore Md. Feb. 25" circular datestamp, second full strike and red "10" handstamp on cover to Buchannon Carroll & Co. in New Orleans, Extremely Fine, very scarce tied usage and unusual 10c letter rate combination, ex Caspary, Middendorf and Kuphal..... E. 1,500-2,000
- 26 ☒ **Baltimore Md., 1c Blue (1LB3).** Type 4, large margins, fine early impression, tied by ms. "X" on blue folded cover to local street address, docketed Apr. 1855, Very Fine, ex Hessel and Golden ..... E. 200-300
- 27 ☒ **Baltimore Md., 1c Blue (1LB3).** Type 5, remarkably dark shade and heavily-inked impression that shows white lines resembling wood grain, margins all around, pencil cancel (not tied), used on small cover to local street address, Extremely Fine, ex Kelly and Golden ..... E. 150-200





28

- 28 **Baltimore Md., 1c Green (1LB4).** Large to huge margins incl. **sheet margin** at top, cancelled by four neat penstrokes on small piece, fresh and Extremely Fine, a beautiful stamp, ex Caspary ..... 1,000.00



29

- 29 **Baltimore Md., 1c Deep Green (1LB4).** Type 6, trace of faded pen cancel at right (described in 1973 Robson Lowe sale as unused), clear to ample margins, rich color, Very Fine, an extremely rare stamp, ex Caspary, Boker and Golden, with 2000 P.F. certificate ..... 1,000.00



30

30 **Baltimore Md., 1c Green (1LB4).** Types 8/10, vertical pair, huge margins including right sheet margin, bright color, pencil cancel

EXTREMELY FINE. THE FAMOUS AND UNIQUE PAIR OF THE RARE GREEN BALTIMORE CARRIER STAMP. ONE OF TWO RECORDED USED MULTIPLES OF ANY BALTIMORE CARRIER ISSUE AND A SIGNIFICANT EXAMPLE OF THE 2-CENT RATE PREPAID BY STAMPS.

Denwood N. Kelly describes this pair in his *Collectors Club Philatelist* series (Vol. 51, No. 3, p. 157): "The only piece known to the writer that offers definite evidence that such a two cent fee [for delivery from the post office] was occasionally prepaid is the pair of one cent green stamps (Scott 1LB4) used on a small piece of cover, pencil cancelled. . . This rare pair, formerly in the Frank A. Hollowbush collection, was sold to a professional in 1946 by a Baltimorean who claimed to have torn it off a letter as he was destroying some family correspondence. . . the supposition is that the pair of stamps was used by some person temporarily out of the city who mailed a letter home and used the stamps to prepay its delivery by carrier when it arrived in Baltimore, having taken the stamps with him for the purpose. There is also the good possibility that the pair paid a special two cent rate for a bulk mailing of a magazine or other printed matter. . . This is one of only two examples on record of used multiples of Baltimore carrier stamps."

Ex Hollowbush, Boker, Golden and D.K. Collection. With 2000 P.F. certificate. Scott Retail \$6,750.00..... E. 5,000-7,500



31

- 31 ☒ **Baltimore Md., 1c Green (1LB4).** Type 8, three full to large margins, in at right, bright shade, **tied by blue grid** with matching "Baltimore Md. Jun. 13, 1861" circular datestamp on cover to local street address, neatly docketed, backflap removed and shallow nick at top right

VERY FINE. THE ONLY RECORDED EXAMPLE OF THE RARE GREEN BALTIMORE CARRIER STAMP TIED BY THE BLUE GRID CANCEL. ONE OF THE MOST OUTSTANDING OF ALL BALTIMORE CARRIER COVERS.

Denwood N. Kelly describes this cover in his *Collectors Club Philatelist* series (Vol. 51, No. 4, p. 211): "This rare cover is now in a prominent Eastern collection [Middendorf] and in addition to being a fine example of late usage is also an example of a drop letter delivered by carrier for the rate of one cent, as specified under the Act of April 3, 1860, the Baltimore circular date stamp showing that the letter had first been handed in at the Post Office and then turned over to the Carrier Department for delivery." Our records and a thorough search of auction catalogues turned up no other example of the Green stamp tied by the blue grid.

Ex Caspary, Middendorf, Golden and D.K. Collection. With 2000 P.F. certificate. This rare cover realized \$8,500 hammer in our Sale 908..... E. 7,500-10,000



32

- 32 ☒ **Baltimore Md., 1c Green (1LB4).** Large margins, deep shade, **tied** by pencil and also tied by "Baltimore Md. Nov. 24" circular datestamp with matching "1" in circle drop letter rate handstamp on brown folded cover, locally addressed

AN EXTREMELY FINE EXAMPLE OF THE RARE GREEN BALTIMORE SEMI-OFFICIAL CARRIER. VERY FEW COVERS BEARING THIS STAMP ARE KNOWN, AND THIS IS BY FAR THE FINEST OF THE TWO OR THREE WITH THE POSTMARK TYING THE STAMP.

The 1c Green and 1c Red on White are the rarest of the Baltimore semi-official carrier stamps. Many of the examples on cover are uncanceled or cancelled only by manuscript pen or pencil. Our survey of major carrier collections produced only two or three covers with the 1c Green satisfactorily tied by the government handstamp, of which this is superior in quality. It is also very rare as a drop letter usage.

Ex Kuphal. With 1994 P.F. certificate..... E. 7,500-10,000



- 33 (★) **Baltimore Md., 1c Red (1LB5).** Position 10, unused (no gum), large even margins, wonderful color and impression on bright paper, small crease ending in tiny tear at top center, otherwise Extremely Fine, the Red-on-white stamp is one of the rarest of the Baltimore Carrier stamps — even rarer than the Green 1LB4, with 2004 P.F. certificate..... 2,250.00



33



34

- 34 **Baltimore Md., 1c Red (1LB5).** Large margins, bright color, cancelled by penstrokes, Very Fine and choice, with 2006 P.F. certificate..... 1,750.00



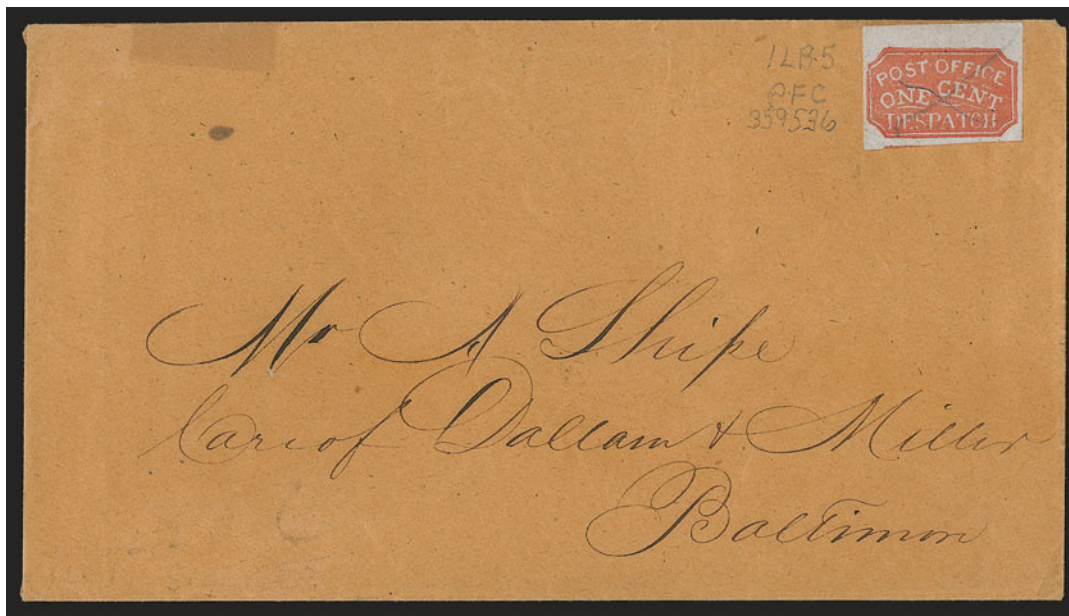
35

- 35 ☒ **Baltimore Md., 1c Red (1LB5).** Type 2, three huge margins including right sheet margin, full at bottom, small corner crease at top left and small tear at top right (both so far from design as to be inconsequential), vivid shade and early impression, tied by **black grid** on folded printed advertising circular for French language lessons, to local street address, Sep. 1852 receipt docketing

EXTREMELY FINE APPEARANCE. AN OUTSTANDING EXAMPLE OF THE RED-ON-WHITE BALTIMORE CARRIER STAMP — RARE IN ANY FORM AND EXCEEDINGLY RARE TIED ON COVER.

Accompanied by a note from Daniel F. Kelleher: "Dear Doctor Cleveland — Being aware of your fondness of nice items, I am taking the liberty of submitting this item for your approval. Only 5 or 6 copies are known to exist. This example being the finest existing on cover. The price is very reasonable. It lists \$850.00 on cover." (1951).

Ex Emerson (Kelleher Sale 402, lot 186), Golden and D.K. Collection. With 1950 and 2000 P.F. certificates. Scott Retail \$4,500.00..... E. 4,000-5,000



36

- 36 ☒ **Baltimore Md., 1c Red (1LB5).** Type 3, large to huge margins incl. **sheet margin** at top and part of adjoining stamp at bottom, cancelled by pencil "X" (not tied) on orange cover to local street address, small hinge spot at top left of cover, stamp with light corner crease at bottom left not mentioned on accompanying certificate

VERY FINE APPEARING EXAMPLE OF THE RED-ON-WHITE BALTIMORE CARRIER STAMP ON COVER.

Ex Seybold. With 2000 P.F. certificate ..... E. 3,000-4,000



37EX

- 37 **Baltimore Md. Carrier Department Stamps.** Seven stamps and one cover, incl. unused and used Nos. 1LB6, two used of No. 1LB7, two unused and one used of No. 1LB8 and also No. 1LB8 used on cover with U.S. No. 26, few flaws, most appear Fine-Very Fine ..... **(Photo Ex)** 755.00



38

39

- 38 ☒ **Baltimore Md., 1c Blue (1LB6).** Large margins to clear, **used with 3c Dull Red, Ty III (26)** and tied together by blue "Baltimore Md. ? 30" circular datestamp on small cover to New Milford Conn., missing top flap, 3c with scrapes at bottom right, otherwise Very Fine, with 2006 P.F. certificate..... 1,250.00
- 39 ☒ **Baltimore Md., 1c Blue (1LB6).** Large margins to clear, **used with 3c Dull Red, Ty III (26)**, perfs trimmed and oxidized, tied together by blue "Baltimore Md. Feb. 9" circular datestamp on small cover to Washington D.C., stamps barely affected from placement at edge of cover, otherwise Very Fine ..... 1,250.00



40

- 40 ★田 **Baltimore Md., 1c Red (1LB7).** Positions 7-8/9-10, block of four, original gum, large margins to just touched at bottom, top left stamp has tiny tear, bottom left small toned spot, bottom pair small thins, Very Fine appearance, only two multiples are recorded — this block and another unused block of four (Golden collection) — ex Caspary (realized \$260 in 1957), Lilly (realized \$210 in 1967) and Hall, with 2001 P.F. certificate. 850.00





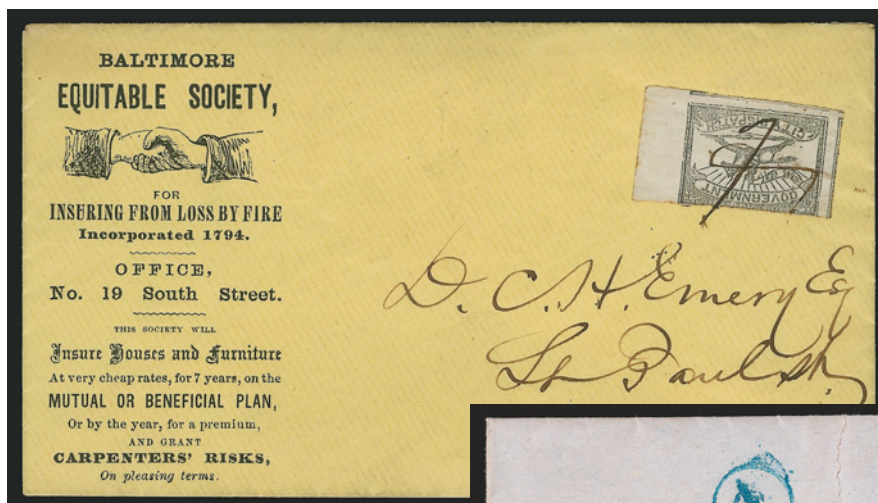
- 41 ☒ **Baltimore Md., 1c Red (1LB7).** Large margins to just clear, deep rich color, tied by penstroke on orange cover to local street address, fresh and Very Fine..... 300.00
- 42 ☒ **Baltimore Md., 1c Red (1LB7).** Full margins to just touched, cancelled by three vertical penstrokes (not tied) on blue folded printed circular for Church Home and Infirmary dated Oct. 21, 1858 to local street address, Very Fine..... 300.00
- 43 ☒ **Baltimore Md., 1c Red (1LB7).** Full to large margins, deep shade, tied by pencil "X", blue "Baltimore Md. Jul. 2" (1859) circular datestamp on buff cover to Commissioner of Pensions, Washington D.C., large double-line receiving datestamp, slightly reduced at top, otherwise Very Fine, ex Hessel and Golden, with 2000 P.F. certificate..... 300.00
- 44 ☒ **Baltimore Md., 1c Red (1LB7).** Ample margins to just touching, tied by "Baltimore Md. Jun. 22, 1859" circular datestamp on 3c Red Nesbitt entire to Sunbury Pa., upper left corner of cover creased and torn but not affecting carrier stamp, otherwise Fine, very unusual for the Baltimore carrier to be tied in this manner..... 350.00



- 45 ★田 **Baltimore Md., 1c Black (1LB8).** Pane of ten, Position 2 Short Rays, Position 7 "SENT", original gum, Mint N.H. except for Position 4, full to large margins, small extraneous ink spot at right, two creases, one ending in small margin tear, otherwise Very Fine, ex Golden, with 2000 P.F. certificate ..... 1,000.00

45





46



47



48

- 46 ☒ **Baltimore Md., 1c Black (1LB8).** Huge right sheet margin, two others sides enormous, slightly in at top, tied by **ms. "F" initial** (J. S. Fusselbaugh) on yellow local cover with **Equitable Society insurance company corner card**, Mar. 1860 enclosure, Very Fine, scarce and very attractive, ex Schwartz ..... E. 500-750
- 47 ☒ **Baltimore Md., 1c Black (1LB8).** Large margins except just in at top left, tied by blue "Baltimore Md. Feb. 14" circular datestamp, matching **"1" in circle** on 1862 printed bank notice to local address, sealed tear across face of cover, still exhibitable, the latest recorded use of the Horse & Rider carrier stamp, also a rare drop-rate/carrier combination cover, ex Straus and Golden, illustrated in Kelly CCP series (Vol. 51, No. 4, p.211) ..... E. 200-300
- 48 ☒ **Baltimore Md., 1c Red (1LB9).** Position 2 with **short rays**, also with unusual "eighth moon" at right, huge margins to just in at top right incl. **sheet margin** at right, uncanceled and **used with 3c Dull Red, Ty. III (26)**, tied by blue "Baltimore Md. Sep. 25" circular datestamp on cover to Bremo Bluff P.O. Va., Very Fine, ex Knapp and Souren ..... 300.00

END OF SALE — THANK YOU

# Live Internet Bidding at Siegel Auction Galleries

Internet Floor Bidding for Robert A. Siegel Auction Galleries, Inc.'s Sale 908 closing on Mar 13-15, 2006. Contact us by Phone at (212) 753-6421. [Contact us Via eMAIL](#). Please READ [Instructions/Help](#) [Listen to the Public Auction Broadcast](#). Welcome John  
Bidding, Paddle 11, Time: 13:50:36. F11 (if using Internet Explorer) toggles full screen mode. You are Cust# , You are approved for

Lot and Description	Bidding
Postal History, California Mails and Western Expre Carriers and Locals Group Lots <b>Lot 5010.</b> Carriers and Locals. More than 30 covers and a few off cover. 1840's, 50's and 60's, comprising General Issue Carriers incl. LO2, LO3, LO5 and Franklin plate proof on card, LO2 on small blue cover to Philadelphia "U.States" indicating origin f E. 1,500-2,000  <b>Sold for 3,500.00</b> <b>Your Bid 3,500.00</b>  <input type="button" value="1 sec refresh"/> <input type="button" value="3 sec"/> <input type="button" value="5 sec"/> <input type="button" value="Show Images"/>	<input type="button" value="Bid 3750"/> <input type="button" value="Bid 4000"/> <input type="button" value="Bid 4250"/> <input type="button" value="Bid 4500"/> <input type="button" value="Bid 4750"/> <input type="button" value="Bid 5000"/> <a href="#">Send a Message to the Auction Floor</a>

Messages from the public auction  
Please close this form when you are not bidding or watching the auction.

Lot 5010 going for 650...  
Lot 5010 going for 3500...  
Lot 5010 Last Call at \$500...  
Lot 5010 sold to the floor for \$3500.

===== END OF SALE =====

-Thank You!!!

**Siegel Auction Galleries, in coordination with Stamp Auction Network, will broadcast our auctions live over the internet, allowing you to listen to the auction in progress.**

Bidders who have pre-registered for Live Internet Bidding will also be able to place bids over the internet, as if bidding in the saleroom. In order to bid by internet, you must be an approved, registered bidder with Stamp Auction Network and Siegel Auction Galleries.

- ☐ **If you are already registered at Stamp Auction Network and have been approved for internet bidding by Siegel, just log in at Stamp Auction Network, locate the Siegel sale and start bidding anytime during the auction.**
- ☐ **If you have never registered as a bidder at Stamp Auction Network, then please go to [www.siegelauctions.com/IB2.htm](http://www.siegelauctions.com/IB2.htm) and click on "Register" at the top of the page. Please check the box for Robert A. Siegel Auction Galleries (under "R") and submit the form. If you have never bid with our firm, please provide trade references whom we may contact to have your account approved (please do not use family members or credit cards as references).**
- ☐ **If you have registered previously at Stamp Auction Network, but not specifically for our firm, please go to [www.siegelauctions.com/IB2.htm](http://www.siegelauctions.com/IB2.htm) and click on "Update Registration" at the top of the page. Your information at Stamp Auction Network will be sent to us for approval. You may be asked to provide additional references before being approved for internet bidding.**

Once you are approved for bidding, you will be able to bid live over the internet during the auction. You may participate in Live Internet Bidding using any browser or operating system. The audio portion is only available to PC users using Internet Explorer. For the audio portion, you will be asked to install a piece of software (ActiveX control) to make it work.

Bidders must log in at Stamp Auction Network to participate. Once logged in, please locate the page for the current Siegel auction.

At the top of the auction's home page there are two links:

- One link allows anyone to listen to the public auction broadcast.
- The second link permits registered bidders to join the public auction in progress.

Please remember that to participate in the auction, you must be pre-registered at Stamp Auction Network and approved by Siegel Auction Galleries as a bidder. Qualified bidders will see a page like the one illustrated above and have a valid paddle number assignment.

**Important Note for Live Internet Bidders:** Please refer to our Tips for Internet Bidders at our website at [www.siegelauctions.com/IB.htm](http://www.siegelauctions.com/IB.htm) for ways to increase your chances of being a successful bidder.



EVENING SESSION (LOTS 1-48)  
WEDNESDAY, DECEMBER 12, 2007, AT 6:00 P.M.

THE PHILIP T. WALL COLLECTION OF  
UNITED STATES POSTMASTERS' PROVISIONALS  
AND CARRIER ISSUES

POSTMASTERS' PROVISIONALS  
BALTIMORE, MARYLAND



1

- 1 ☒ **Baltimore Md., 5c Black (3X1).** Position 1 with **top left corner sheet margins**, tied by wavy-line ms. cancel, bold blue "Baltimore Md. Nov. 16" (1846) circular datestamp, matching "Paid" straightline and ms. "5" rate on blue folded letter to New York City street address, light file fold well away from stamp

EXTREMELY FINE. A FRESH AND BEAUTIFUL COVER BEARING A LARGE CORNER SHEET-MARGIN EXAMPLE OF THE BALTIMORE 5-CENT BLACK ON WHITE POSTMASTER'S PROVISIONAL STAMP.

No. 18 in Hayes census. Ex Martin. With 1991 P.F. certificate. Scott Retail \$13,500.00 on cover..... E. 10,000-15,000





2

- 2 ☒ **Baltimore Md., 5c Black (3X1).** Position 3, ample to large margins with two full frame-lines, bottom right corner slightly clipped, **without usual pen cancellation, tied by "Baltimore Md. Feb. 16" circular datestamp and also tied by "5" in circle and two strikes of "Paid" handstamp** on 1847 folded letter to New York, additional strike of "Paid" handstamp at left, light vertical file fold thru stamp has been skillfully pressed

EXTREMELY FINE APPEARANCE. A REMARKABLE USAGE WITH THE 5-CENT BALTIMORE PROVISIONAL TIED BY THE TOWN DATESTAMP, RATE MARKING AND "PAID" HANDSTAMP.

This is the only recorded Baltimore provisional cover with the stamp tied by three different markings. It is especially desirable, as all three markings are in blue.

No. 25 in Hayes census. Ex Caspary and Haas. With 2001 P.F. certificate. Scott Retail \$13,500.00 for normally pen-cancelled stamp on cover (footnote states: "Stamps on cover tied by handstamps command premiums.") ..... E. 10,000-15,000



3

- 3 ✉ **Baltimore Md., 5c Black on Bluish (3X3).** Position 12, large margins with two complete framelines, **without pen cancellation, cancelled by blue "Paid" handstamp and tied by blue "Baltimore Md. Feb. 25" circular datestamp** on blue folded letter to Philadelphia, second strike of "Paid" handstamp at right, matching "5" in circle handstamp, two vertical file folds incl. one affecting adhesive which has been lifted and placed back on the cover
- VERY FINE APPEARANCE. A SCARCE ON-COVER EXAMPLE OF THE 5-CENT BALTIMORE POSTMASTER'S PROVISIONAL ON BLuish PAPER. ONE OF THE VERY FEW BALTIMORE PROVISIONAL COVERS WITH THE STAMP TIED BY THE TOWN DATESTAMP.
- No. 10 in the Hayes census. Ex Duveen, Hind, Troy and Faiman. With 2003 P.F. certificate. Scott Retail \$13,000.00 for normally pen-cancelled stamp on cover (footnote states: "Stamps on cover tied by handstamps command premiums.").... E. 10,000-15,000

SAINT LOUIS, MISSOURI



4

- 4 **St. Louis Mo., 5c Black on Greenish (11X1).** Type III, Position 5, large margins to just touched, **without pen cancellation, tied by red “St. Louis Mo. Mar. 6” circular datestamp** on small piece

VERY FINE EXAMPLE OF THE 5-CENT ST. LOUIS POSTMASTER'S PROVISIONAL ON GREENISH PAPER. RARE CANCELLED SOLELY BY THE RED ST. LOUIS DATESTAMP.

Colson's small "W.H.C." backstamp. Scott Retail \$7,000.00 for normally pen-cancelled stamp off cover (footnote states: "Values for used off-cover stamps are for pen-cancelled copies. Handstamp cancelled copies sell for much more.") ..... E. 7,500-10,000





5

- 5 **St. Louis Mo., 10c Black on Greenish (11X2).** Type I, Position 2, large margins to clear at top, **without pen cancellation, tied by red "St. Louis Mo. Nov. 28" circular datestamp** on small piece, lifted and hinged in place to confirm soundness of the stamp

VERY FINE AND CHOICE. A BEAUTIFUL AND RARE EXAMPLE OF THE 10-CENT ST. LOUIS POSTMASTER'S PROVISIONAL CANCELLED SOLELY BY THE RED CIRCULAR DATESTAMP.

Ex Ferrary and with his small purple trefoil at bottom right. Also ex Waterhouse and Faiman. With 2004 P.F. certificate. Scott Retail \$7,000.00 for normally pen-cancelled stamp off cover (footnote states: "Values for used off-cover stamps are for pen-cancelled copies. Handstamp cancelled copies sell for much more.") ..... E. 10,000-15,000



6

- 6 **St. Louis Mo., 10c Black on Greenish (11X2).** Type I, Position 2, large margins to just barely in along frameline at top right, **without pen cancellation, tied by red St. Louis circular datestamp** on small piece

FRESH AND VERY FINE. A BEAUTIFUL EXAMPLE OF THE 10-CENT ST. LOUIS POSTMASTER'S PROVISIONAL ON GREENISH PAPER. ESPECIALLY DESIRABLE CANCELLED SOLELY BY THE RED CIRCULAR DATESTAMP, WHICH LEAVES THE ENTIRE DESIGN CLEARLY VISIBLE.

With 2004 P.S.E. certificate. Scott Retail \$7,000.00 for normally pen-cancelled stamp off cover (footnote states: "Values for used off-cover stamps are for pen-cancelled copies. Handstamp cancelled copies sell for much more.") ..... E. 5,000-7,500



7

- 7 **St. Louis Mo., 5c Black on Gray Lilac (11X4).** Type III, Position 5, large to huge margins, unusually deep impression, cancelled by two unobtrusive penstrokes

EXTREMELY FINE GEM. ONE OF THE FINEST KNOWN EXAMPLES OF THE 5-CENT ST. LOUIS POSTMASTER'S PROVISIONAL ON GRAY LILAC PAPER.

The St. Louis Bear stamps were printed from a single plate of six subjects (two horizontal by three vertical) that was modified twice to change the denominations of two positions. The original plate (Plate 1) contained three 5c stamps at left and three 10c stamps at right. All stamps from Plate 1 were printed on Greenish paper. The plate was then altered by burnishing out the "5" on Positions 1 and 3 and engraving a new "20" denomination (Plate 2). A small printing on Greenish paper was made from this altered plate. 5c stamps (Position 5) and 10c stamps (Positions 2/4/6) on Greenish Paper cannot usually be identified as Plate 1 or Plate 2 impressions (the 20c on Greenish paper is a great rarity). The larger portion of stamps from Plate 2 is on Gray Lilac paper. However, because only *one of six subjects* was a 5c value, the 5c on Gray Lilac is an *extremely rare* stamp — perhaps even rarer than the 20c on Gray Lilac. The plate was modified again by burnishing out the "20" and engraving the old "5" denomination (Plate 3). At the time of this second alteration, a large ball was engraved inside the end curl of the numeral "5" on Position 5. As far as we know, all stamps from Plate 3 were printed on a very thin pelure paper. These were the last stamps used before the 1847 Issue was placed on sale in St. Louis.

Ex Vineyard. With 1976 and 1996 P.F. certificates ..... 45,000.00



8

- 8 **St. Louis Mo., 20c/20c/5c Black on Gray Lilac, Se-Tenant Strip of Three (11X6-11X4).** Vertical strip of three containing the **entire left vertical row on the plate**, Positions 1/3/5, top two stamps 20c (Types I/II), bottom stamp 5c (Type III), ample margins to slightly in along frameline at right and lower left, cancelled by light looping pen line on large piece of cover from the "Louisville" find (Tyler & Rutherford correspondence), complete strike of red "St. Louis Mo. May 26" circular datestamp, piece with light vertical file fold well away from strip

VERY FINE. THE UNIQUE COMBINATION STRIP OF THREE OF THE ST. LOUIS POSTMASTER'S PROVISIONAL FROM THE LEFT VERTICAL ROW OF THE PLATE, CONTAINING TWO 20-CENT AND ONE 5-CENT VALUES. ONE OF THE MOST IMPORTANT ST. LOUIS POSTMASTER'S PROVISIONAL MULTIPLES IN EXISTENCE.

The St. Louis "Bears" were issued by Postmaster John M. Wimer from November 1845 until the first United States General Issue became available in July 1847. The stamps were issued in three denominations — 5c, 10c and 20c — and were sold at a premium over face value to pay the costs of printing. All of the stamps were printed from a single copper plate of six subjects (2 x 3) engraved by J. M. Kershaw. The plate underwent two significant modifications. Philatelists identify each state of the plate as Plates 1, 2 and 3, but in fact the same piece of metal was used in each state.

On Plate 1 there were three 5c subjects in the vertical column at left (we refer to the positions on the sheet, which are mirrored on the plate) and three 10c subjects at right. To fill the need for 20c stamps, the denominations on two of the 5c subjects (Positions 1 and 3) were burnished out and reengraved with "20", creating Plate 2. After some time the two 5c values were restored by burnishing out the "20" and reengraving "5", which is Plate 3. The three 10c subjects were untouched throughout the modifications to Positions 1 and 3. The 5c Position 5 was slightly altered on Plate 3 by adding a large dot to the inside of the ball at the bottom of the "5".

The first paper used was Greenish in color; the earliest recorded use is November 13, 1845, one week after the first newspaper announcement of the issue. Most of the Greenish paper supply was used in combination with Plate 1, comprising three 5c subjects in the vertical row at left and three 10c subjects at right. A small supply of Greenish paper was used with Plate 2, which contained the two 20c subjects. As a rule, 5c and 10c stamps on Greenish paper (Scott 11X1-2) printed from Plate 2 cannot be distinguished from the Plate 1 printing, although Plate 2 stamps on Greenish must be considerably rarer. The 20c on Greenish (Scott 11X3) is a great rarity with only six recorded, which indicates that the number of Greenish paper sheets used in conjunction with Plate 2 must have been very small.

*continued on next page*



*continued from previous page*



8 detail

Gray Lilac paper replaced Greenish paper (earliest recorded use is February 27, 1846) and was only used in conjunction with Plate 2. Of the 20c stamps, all except the six known on Greenish paper are printed on Gray Lilac (Scott 11X6). Because only one position furnished the 5c value, the 5c on Gray Lilac (Scott 11X4) is a very rare stamp. The Plate 2 printing on Gray Lilac also furnished the only recorded examples of se-tenant multiples, in which stamps of more than one denomination are joined together.

The last paper used is classified as Pelure, which is extremely thin and fragile. This paper was used only in conjunction with Plate 3, containing the two restored 5c values in addition to the bottom 5c and three 10c at right (no 20c on Pelure is known). The earliest recorded date of use of Pelure paper is November 25, 1846, which is a folded letter bearing a 10c Position 2 with an impression of the reengraved 5c Position 1 on back. This remarkable item provides the earliest use of Plate 3 as well as Pelure paper. Any stamp on Pelure paper is a rarity.

Se-tenant multiples of classic stamps are highly prized, and most are very rare. Among United States Postmasters' Provisionals, there are only three issues produced from plates containing more than one denomination: Baltimore, Providence and St. Louis. There is no known genuine se-tenant example of the Baltimore 5c and 10c provisionals. Se-tenant multiples of the Providence 5c and 10c are readily available in unused condition, due to the survival of remainder sheets. Of the St. Louis "Bears", there are only **six recorded se-tenant multiples** involving any of the three denominations. These are: 1) **5c-10c Positions 5-6**, horizontal pair on Gray Lilac (11X4-11X5), red circular datestamp, 5c faint corner crease, Siegel 1978 Rarities sale as part of a reconstruction, lot 17; 2) **5c-10c-10c Positions 4/5-6**, L-shaped strip of three on Gray Lilac (11X4-11X5), pen cancels, ex Caspary, Siegel 1979 Rarities sale as part of a reconstruction, lot 15; 3) **5c-10c-10c-10c Positions 2/4/5-6**, L-shaped block of four on Gray Lilac (11X4-11X5), pen cancels (tiny break), ex Lapham, Siegel 1977 Rarities sale (lot 22), Siegel 2000 Rarities sale (lot 16), Siegel 2007 Rarities sale (lot 13, realized \$260,000 hammer); 4) **20c-20c-5c Positions 1/3/5**, vertical strip of three on Gray Lilac (11X6-11X4), pen cancels, on large piece of cover with May 26 (1846) circular datestamp, the item offered here, ex Worthington, "Isleham"

collection in Siegel Ameripex sale, lot 1030; 5) **20c-10c Positions 1-2**, horizontal pair on Gray Lilac (11X6-11X5), pen cancels, 10c crease and small thin, Siegel 1980 Rarities sale (lot 14); and 6) **20c-10c Positions 3-4**, horizontal pair (11X6-11X5), tied by pen cancel and red May 31 (1846) circular datestamp on folded cover to Charnley & Whelen, Philadelphia, ex Pope. Se-tenant item numbers 1, 2, 4, 5 and 6 were all sold in the 2003 sale of the Faiman collection.

Five large groups of St. Louis "Bears" have been discovered during the past 132 years. In 1869 J. W. Scott acquired a correspondence bearing 50 of the 5c, 100 of the 10c and three 20c stamps, probably all of which have been removed from their original covers. In 1880 the Riggs correspondence produced 20 examples of the 5c and 10c. In 1889 the J. & J. Stuart correspondence contained 25 examples of the 5c and 10c, most on Pelure paper. The huge "Louisville" find in 1895, salvaged by a janitor who was burning papers, yielded 75 of the 5c, 46 of the 10c and 16 of the 20c, including se-tenant multiples that revealed the plate layout and proved the authenticity of the 20c stamps, which had been in question since 1869. All of the stamps in the Louisville find were found on covers addressed to Tyler & Rutherford, a banking firm in Louisville, but many of the stamps were later removed. Additional material from the Tyler & Rutherford correspondence surfaced around 1902 and was acquired by C. H. Mekeel. The piece offered here comes from the Tyler & Rutherford correspondence. In 1912 the first portion of the Charnley & Whelen correspondence reached philatelists, which provided another six of the 5c, 61 of the 10c and 16 of the 20c. Additional Charnley & Whelen covers were sold over the next three decades.

The two largest St. Louis "Bears" correspondences were addressed to Tyler & Rutherford in Louisville, a distance under 300 miles, and to Charnley & Whelen in Philadelphia, a distance over 300 miles. The postage rates in effect during that period were 5c for any distance under 300 miles and 10c for 300 miles and over. Assuming that the se-tenant strip offered here represents all of the postage from one cover, then the total of 45c would represent nine times the 5c rate per half-ounce.

Ex Isleham and Faiman. With 1962 P.F. certificate. Due to the increase in value for Scott 11X4 and 11X6, the value of the 11X6-11X4 se-tenant strip of three now carries only a small \$5,000.00 premium over the value of singles (\$140,000.00 vs. \$135,000.00). It is likely that this will change after this unique strip is sold. .... E. 100,000-150,000



9

- 9 **St. Louis Mo., 10c Black on Gray Lilac (11X5).** Vertical strip of three containing all three positions from the right vertical row of the plate, Positions 2/4/6, full to huge margins, top stamps cancelled by single penstroke, bottom stamp cancelled solely by red St. Louis circular datestamp, top two stamps with faint creases

VERY FINE APPEARANCE. BY FAR THE FINER OF THE TWO RECORDED OFF-COVER STRIPS OF THREE OF THE 10-CENT ST. LOUIS POSTMASTER'S PROVISIONAL ON GRAY LILAC PAPER. A MAGNIFICENT SHOWPIECE AND A RARITY OF THE HIGHEST CALIBER.

As noted in the previous two descriptions, the plate was altered twice, once adding two 20c denominations and one more time to replace them with 5c denominations. The right column, as demonstrated by this strip, was never altered. Each engraving of the 10c design differs slightly, particularly in the lines underneath "Post Office" at bottom, which aids in identifying positions. This strip beautifully demonstrates the subtle differences in each position.

Ex Duckwall, Moody and Faiman. Signed Colson. With 1981 P.F. certificate. Scott Retail \$32,500.00..... E. 30,000-40,000

## FRANKLIN CARRIER ISSUE



10

- 10 (★) **(1c) Dull Blue, Franklin Carrier (LO1).** Unused (traces of original gum), three large margins, ample to barely touched at bottom, beautiful bright color and remarkably detailed impression, tiny thin spot and tiny surface scrape at bottom right

VERY FINE APPEARANCE. A RARE UNUSED EXAMPLE OF THE FRANKLIN CARRIER WITH TRACES OF ORIGINAL GUM. A GREAT RARITY.

A review of our 14 years of computerized records indicates we have only offered a pair (offered in lot 11) and two singles with original gum. We have also offered four unused singles without gum.

With 2002 P.F. certificate ..... 6,000.00



11

- 11 ★ **(1c) Dull Blue, Franklin Carrier (LO1).** Horizontal pair, original gum, margins slightly in to just clear, fine impression, each stamp with slight crease and small thin spot

VERY GOOD-FINE APPEARANCE. THIS IS THE ONLY RECORDED MULTIPLE OF THE 1851 FRANKLIN CARRIER STAMP WITH ORIGINAL GUM.

The rarity of Franklin Carrier unused multiples has been undermined by the plethora of reprint multiples, including the famous and controversial Slater block, which was finally proven to be a reprint. Perry's records contained only two items: this original-gum pair from the Hollowbush collection and a "defective" unused strip of three sold by George B. Sloane to H. R. Harmer. We have been unable to verify the existence of the strip.

Ex D.K. Collection and our 2000 Rarities sale. With 2000 P.F. certificate. .... 14,500.00





12

- 12 (1c) **Dull Blue, Franklin Carrier (LO1)**. Large to huge margins, extraordinary rich color and proof-like impression, cancelled by vivid red “New York” dateless circle used by carrier department, negligible small thin spot

EXTREMELY FINE APPEARANCE. ONE OF THE FINEST OFF-COVER FRANKLIN CARRIER STAMPS KNOWN WITH THE RED NEW YORK DATESTAMP.

250,000 Franklin Carrier stamps were sent to New York City in October 1851 (in addition to 50,000 to New Orleans and 10,000 to Philadelphia), but very few were used at New York. Only three Franklin Carrier covers from New York are recorded. In addition, there are perhaps five to seven off-cover stamps with the red New York dateless circle and another three or four with the black datestamp.

Ex De Coppet, Duveen, Hind and Hall. With 2001 P.F. certificate..... 7,500.00



13

- 13 (1c) **Dull Blue, Franklin Carrier (LO1)**. Large even margins all around, deep rich color on fresh paper, light strike of blue “Philadelphia Pa.” circular datestamp, small faint corner crease at top right

EXTREMELY FINE APPEARANCE. A SUPERB USED EXAMPLE OF THE FRANKLIN CARRIER STAMP. VERY FEW EXIST WITH THE PHILADELPHIA DATESTAMP USED AS A CANCEL.

Ex Meyersburg. With 1997 P.F. certificate..... 7,500.00





14

- 14 (1c) **Dull Blue, Franklin Carrier (LO1)**. Two huge margins, other sides touched, beautiful early impression on bright Rose paper, tied by remarkably bold **"New-York Dec. 1"** circular datestamp on approximately one-quarter of a cover (with part of flaps), part of New York City address shows, pencil 1852 yeardate on back, tiny natural wrinkles not noted on certificate

A FINE STAMP AND SUPERB STRIKE OF THE BLACK NEW YORK CIRCULAR DATESTAMP. THE FINER OF TWO RECORDED EXAMPLES OF THIS MARKING ON A FRANKLIN CARRIER.

In addition to the three recorded Franklin Carrier covers from New York, there are perhaps five to seven stamps off cover with the red New York dateless circle, which was used by the carrier department. There are two recorded examples of the regular circular datestamp on the Franklin Carrier: this piece and an off-cover stamp pictured in the Perry records. An off-cover stamp (ex Hessel) and another on piece (ex Middendorf), each cancelled by the black "New-York 1ct." drop-rate marking, are also recorded.

Ex Golden and D.K. Collection. With 1957 and 2000 P.F. certificates. Scott Retail \$30,000.00 as a full cover with this circular datestamp. .... 10,500.00



15

- 15 ☒ (1c) **Dull Blue, Franklin Carrier (LO1)**. Large to full margins, deep rich color and proof-like impression, cancelled by Philadelphia **red star**, used on March 9, 1852 folded letter datelined in Philadelphia to "Messrs. Tatham & Brothers, 8 St. Wharves, Philada", neat receipt docketing on back, vertical file folds well clear of adhesive, stamp with faint toned spot at top left, trivial cover edge tears

EXTREMELY FINE STAMP AND A BEAUTIFUL COVER. ONE OF THE FINEST OF THE EIGHTEEN FRANKLIN CARRIER COVERS RECORDED IN THE MEYERSBURG CENSUS, OF WHICH ELEVEN ARE CANCELLED BY THE PHILADELPHIA RED STAR.

This superb cover shows proper use of the Franklin Carrier stamp in March 1852 to prepay the fee for delivery within city limits by the carrier department, entirely outside of the regular mails. The Meyersburg census of Franklin Carrier covers, which has been revised with corrections, contains 18 confirmed examples. Included among the 18 covers are 3 from New York (each tied by the red circular datestamp, one of which is in the New York Public Library), one cover from New Orleans, and 14 covers from Philadelphia (3 tied by blue circular datestamp, 10 cancelled by red star but not tied, and one tied by red star).

Ex Seybold and Gibson. With 1983 P.F. certificate..... 17,500.00



16

- 16 (★)田 (1c) **Blue on Rose, Franklin Carrier Reprint (LO3)**. Block of 50, the bottom half of left pane with part imprint, shows plate crack below Position 91, slight creasing, minor faults in sheet margin as usual, still Very Fine and impressive, ex Hall, Scott Retail \$2,500.00 for singles without premium for blocks or plate crack (imprint block listed but unpriced)  
 ..... E. 1,000-1,500

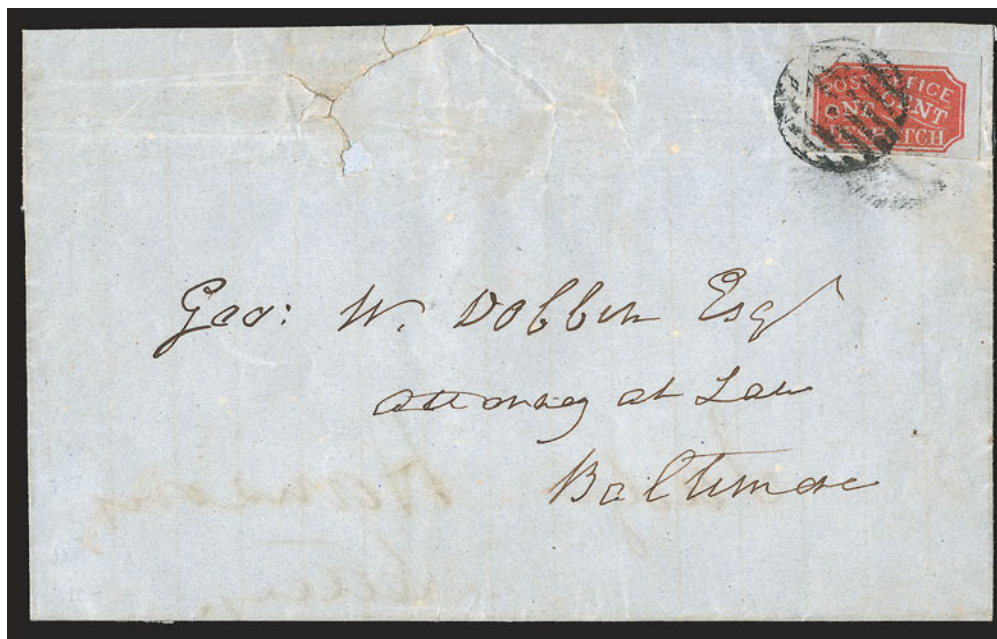


## BALTIMORE CARRIER DEPARTMENT ISSUES



17EX

- 17 **Baltimore Md., 1c Red on Bluish, 1c Blue (1LB1 two, 1LB3).** Large margins to clear, first two distinctly different shades and with ms. cancels (incl. "F" for for Fusselbaugh), few small flaws, appear Fine-Very Fine .....**(Photo Ex)** 420.00



18

- 18 ☒ **Baltimore Md., 1c Red on Bluish (1LB1).** Large to enormous margins, deep rich color, tied by bold strike of grid on folded cover to George W. Dobbin in Baltimore, opening tear at top with tiny piece out, stamp slightly affected by light horizontal file fold, appears Extremely Fine, a huge stamp, ex Hall and Johnstone..... 1,000.00





- 19 ☒ **Baltimore Md., 1c Red on Bluish (1LB1).** Type 3, left sheet margin, other sides large to just touching at top, tied by black grid on Mar. 3, 1853 folded letter to local addressee, Very Fine and choice, ex Hall and Johnstone ..... 1,000.00
- 20 ☒ **Baltimore Md., 1c Red on Bluish (1LB1).** Large margins all around, rich color, tied by neat strike of grid handstamp on buff cover to local street address, Oct. 12, 1852 docketing at left, minor edgewear not mentioned on accompanying certificate, fresh and Very Fine, a beautiful stamp and cover, with 2006 P.F. certificate, illustrated in Kelly series (CCP, Jan. 1973, p. 36) ..... 1,000.00
- 21 ☒ **Baltimore Md., 1c Red on Bluish (1LB1).** Large margins to clear, tied by penstrokes on printed "Trinity Church, East Baltimore" notice soliciting donations, to local street address, fresh and Very Fine, scarce usage on a printed circular, Scott Retail as tied by handstamp ..... 1,000.00
- 22 ☒ **Baltimore Md., 1c Red on Bluish (1LB1).** Large even margins, bright color cancelled by ms. "X" penstrokes on buff cover to local street address, small cover stain at top center, otherwise Very Fine, with 2004 P.F. certificate, Scott Retail as tied by handstamp ..... 1,000.00



23

- 23 ★田 **Baltimore Md., 1c Blue (1LB3).** Cross-gutter block of fourteen showing two impressions with *tête-bêche* orientation, Types 1-10 (complete setting) and adjoining Types 5/7/9-10, original gum, **papermaker's embossed seal with Anchor design**, four punch holes, slight creasing and toning, Position 8 small surface scrapes

THE UNIQUE TÊTE-BÊCHE BLOCK OF THE BALTIMORE ONE-CENT BLUE CARRIER STAMP. THE LARGEST RECORDED BLOCK AND ONE OF TWO TÊTE-BÊCHE MULTIPLES OF THE 1850-55 ISSUE. A SPECTACULAR EXAMPLE OF THE WORK-AND-TURN METHOD OF TYPOGRAPHY USED TO PRINT SHEETS.

One other tête-bêche multiple is recorded: a strip of five with one inverted stamp at top, heavily creased. This block is illustrated in the Kelly series (*Collectors Club Philatelist*, Vol. 51, No. 4, p. 221).

Signed Costales. Ex Hollowbush, Golden and D.K. Collection. With 2000 P.F. certificate. Scott Retail \$6,000.00..... E. 5,000-7,500



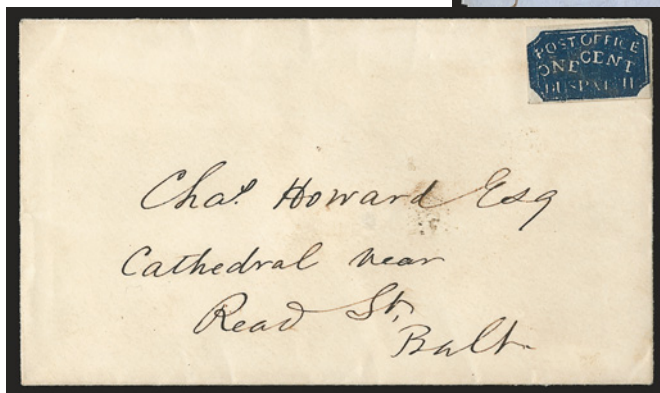


24

- 24 **Baltimore Md., 1c Blue on Laid (1LB3a).** Huge margins, pencil cancel, Extremely Fine, ex Caspary and Golden, with 1957 P.F. certificate ..... 150.00



25



27



26

- 25 ☒ **Baltimore Md., 1c Blue on Bluish (1LB2).** Margins all around, deep shade, ms. "X" cancel, tied at upper left by blue "Baltimore Md. Feb. 25" circular datestamp, second full strike and red "10" handstamp on cover to Buchannon Carroll & Co. in New Orleans, Extremely Fine, very scarce tied usage and unusual 10c letter rate combination, ex Caspary, Middendorf and Kuphal..... E. 1,500-2,000
- 26 ☒ **Baltimore Md., 1c Blue (1LB3).** Type 4, large margins, fine early impression, tied by ms. "X" on blue folded cover to local street address, docketed Apr. 1855, Very Fine, ex Hessel and Golden ..... E. 200-300
- 27 ☒ **Baltimore Md., 1c Blue (1LB3).** Type 5, remarkably dark shade and heavily-inked impression that shows white lines resembling wood grain, margins all around, pencil cancel (not tied), used on small cover to local street address, Extremely Fine, ex Kelly and Golden ..... E. 150-200



28

- 28 **Baltimore Md., 1c Green (1LB4).** Large to huge margins incl. **sheet margin** at top, cancelled by four neat penstrokes on small piece, fresh and Extremely Fine, a beautiful stamp, ex Caspary ..... 1,000.00



29

- 29 **Baltimore Md., 1c Deep Green (1LB4).** Type 6, trace of faded pen cancel at right (described in 1973 Robson Lowe sale as unused), clear to ample margins, rich color, Very Fine, an extremely rare stamp, ex Caspary, Boker and Golden, with 2000 P.F. certificate ..... 1,000.00





30

30 **Baltimore Md., 1c Green (1LB4).** Types 8/10, vertical pair, huge margins including right sheet margin, bright color, pencil cancel

EXTREMELY FINE. THE FAMOUS AND UNIQUE PAIR OF THE RARE GREEN BALTIMORE CARRIER STAMP. ONE OF TWO RECORDED USED MULTIPLES OF ANY BALTIMORE CARRIER ISSUE AND A SIGNIFICANT EXAMPLE OF THE 2-CENT RATE PREPAID BY STAMPS.

Denwood N. Kelly describes this pair in his *Collectors Club Philatelist* series (Vol. 51, No. 3, p. 157): "The only piece known to the writer that offers definite evidence that such a two cent fee [for delivery from the post office] was occasionally prepaid is the pair of one cent green stamps (Scott 1LB4) used on a small piece of cover, pencil cancelled. . . This rare pair, formerly in the Frank A. Hollowbush collection, was sold to a professional in 1946 by a Baltimorean who claimed to have torn it off a letter as he was destroying some family correspondence. . . the supposition is that the pair of stamps was used by some person temporarily out of the city who mailed a letter home and used the stamps to prepay its delivery by carrier when it arrived in Baltimore, having taken the stamps with him for the purpose. There is also the good possibility that the pair paid a special two cent rate for a bulk mailing of a magazine or other printed matter. . . This is one of only two examples on record of used multiples of Baltimore carrier stamps."

Ex Hollowbush, Boker, Golden and D.K. Collection. With 2000 P.F. certificate. Scott Retail \$6,750.00..... E. 5,000-7,500



31

- 31 ☒ **Baltimore Md., 1c Green (1LB4).** Type 8, three full to large margins, in at right, bright shade, **tied by blue grid** with matching "Baltimore Md. Jun. 13, 1861" circular datestamp on cover to local street address, neatly docketed, backflap removed and shallow nick at top right

VERY FINE. THE ONLY RECORDED EXAMPLE OF THE RARE GREEN BALTIMORE CARRIER STAMP TIED BY THE BLUE GRID CANCEL. ONE OF THE MOST OUTSTANDING OF ALL BALTIMORE CARRIER COVERS.

Denwood N. Kelly describes this cover in his *Collectors Club Philatelist* series (Vol. 51, No. 4, p. 211): "This rare cover is now in a prominent Eastern collection [Middendorf] and in addition to being a fine example of late usage is also an example of a drop letter delivered by carrier for the rate of one cent, as specified under the Act of April 3, 1860, the Baltimore circular date stamp showing that the letter had first been handed in at the Post Office and then turned over to the Carrier Department for delivery." Our records and a thorough search of auction catalogues turned up no other example of the Green stamp tied by the blue grid.

Ex Caspary, Middendorf, Golden and D.K. Collection. With 2000 P.F. certificate. This rare cover realized \$8,500 hammer in our Sale 908..... E. 7,500-10,000



32

- 32 ☒ **Baltimore Md., 1c Green (1LB4).** Large margins, deep shade, **tied** by pencil and also tied by "Baltimore Md. Nov. 24" circular datestamp with matching "1" in circle drop letter rate handstamp on brown folded cover, locally addressed

AN EXTREMELY FINE EXAMPLE OF THE RARE GREEN BALTIMORE SEMI-OFFICIAL CARRIER. VERY FEW COVERS BEARING THIS STAMP ARE KNOWN, AND THIS IS BY FAR THE FINEST OF THE TWO OR THREE WITH THE POSTMARK TYING THE STAMP.

The 1c Green and 1c Red on White are the rarest of the Baltimore semi-official carrier stamps. Many of the examples on cover are uncanceled or cancelled only by manuscript pen or pencil. Our survey of major carrier collections produced only two or three covers with the 1c Green satisfactorily tied by the government handstamp, of which this is superior in quality. It is also very rare as a drop letter usage.

Ex Kuphal. With 1994 P.F. certificate..... E. 7,500-10,000

- 33 (★) **Baltimore Md., 1c Red (1LB5).** Position 10, unused (no gum), large even margins, wonderful color and impression on bright paper, small crease ending in tiny tear at top center, otherwise Extremely Fine, the Red-on-white stamp is one of the rarest of the Baltimore Carrier stamps — even rarer than the Green 1LB4, with 2004 P.F. certificate..... 2,250.00



33



34

- 34 **Baltimore Md., 1c Red (1LB5).** Large margins, bright color, cancelled by penstrokes, Very Fine and choice, with 2006 P.F. certificate..... 1,750.00



35

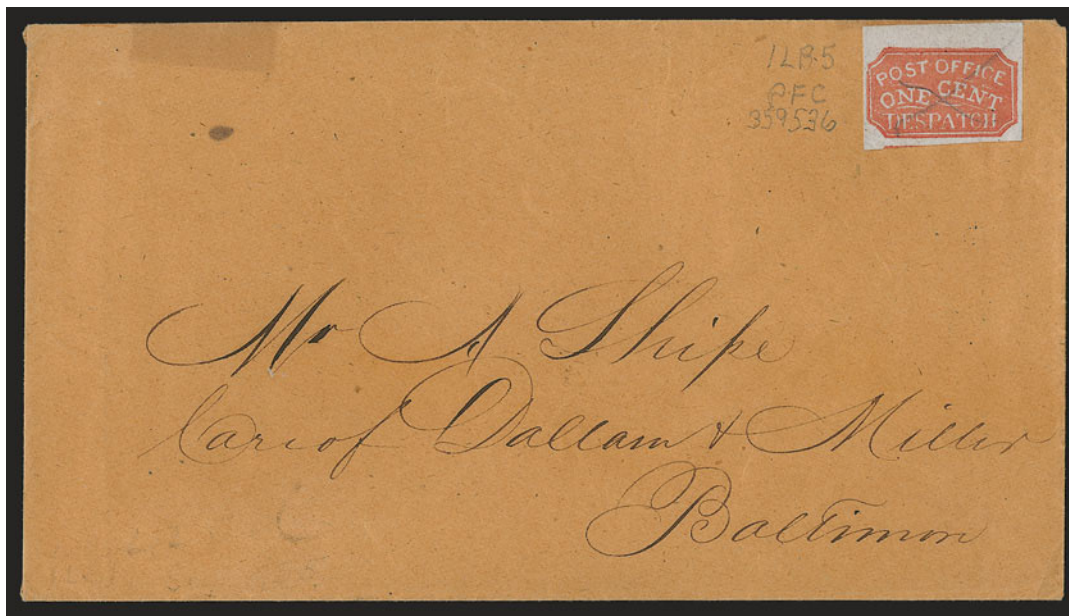
- 35 ☒ **Baltimore Md., 1c Red (1LB5).** Type 2, three huge margins including right sheet margin, full at bottom, small corner crease at top left and small tear at top right (both so far from design as to be inconsequential), vivid shade and early impression, tied by **black grid** on folded printed advertising circular for French language lessons, to local street address, Sep. 1852 receipt docketing

EXTREMELY FINE APPEARANCE. AN OUTSTANDING EXAMPLE OF THE RED-ON-WHITE BALTIMORE CARRIER STAMP — RARE IN ANY FORM AND EXCEEDINGLY RARE TIED ON COVER.

Accompanied by a note from Daniel F. Kelleher: "Dear Doctor Cleveland — Being aware of your fondness of nice items, I am taking the liberty of submitting this item for your approval. Only 5 or 6 copies are known to exist. This example being the finest existing on cover. The price is very reasonable. It lists \$850.00 on cover." (1951).

Ex Emerson (Kelleher Sale 402, lot 186), Golden and D.K. Collection. With 1950 and 2000 P.F. certificates. Scott Retail \$4,500.00..... E. 4,000-5,000





36

- 36 ☒ **Baltimore Md., 1c Red (1LB5).** Type 3, large to huge margins incl. **sheet margin** at top and part of adjoining stamp at bottom, cancelled by pencil "X" (not tied) on orange cover to local street address, small hinge spot at top left of cover, stamp with light corner crease at bottom left not mentioned on accompanying certificate

VERY FINE APPEARING EXAMPLE OF THE RED-ON-WHITE BALTIMORE CARRIER STAMP ON COVER.

Ex Seybold. With 2000 P.F. certificate ..... E. 3,000-4,000



37EX

- 37 **Baltimore Md. Carrier Department Stamps.** Seven stamps and one cover, incl. unused and used Nos. 1LB6, two used of No. 1LB7, two unused and one used of No. 1LB8 and also No. 1LB8 used on cover with U.S. No. 26, few flaws, most appear Fine-Very Fine .....(Photo Ex) 755.00



38

39

- 38 ☒ **Baltimore Md., 1c Blue (1LB6).** Large margins to clear, **used with 3c Dull Red, Ty III (26)** and tied together by blue "Baltimore Md. ? 30" circular datestamp on small cover to New Milford Conn., missing top flap, 3c with scrapes at bottom right, otherwise Very Fine, with 2006 P.F. certificate..... 1,250.00
- 39 ☒ **Baltimore Md., 1c Blue (1LB6).** Large margins to clear, **used with 3c Dull Red, Ty III (26)**, perfs trimmed and oxidized, tied together by blue "Baltimore Md. Feb. 9" circular datestamp on small cover to Washington D.C., stamps barely affected from placement at edge of cover, otherwise Very Fine ..... 1,250.00



40

- 40 ★田 **Baltimore Md., 1c Red (1LB7).** Positions 7-8/9-10, block of four, original gum, large margins to just touched at bottom, top left stamp has tiny tear, bottom left small toned spot, bottom pair small thins, Very Fine appearance, only two multiples are recorded — this block and another unused block of four (Golden collection) — ex Caspary (realized \$260 in 1957), Lilly (realized \$210 in 1967) and Hall, with 2001 P.F. certificate. 850.00





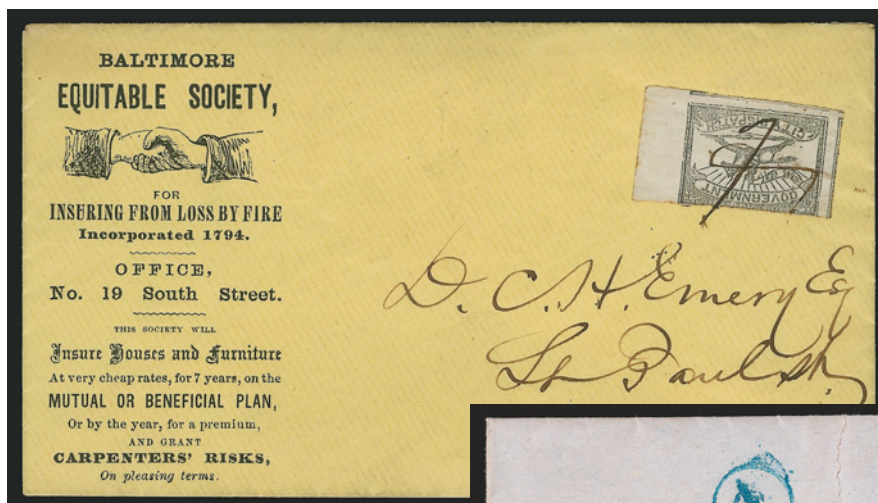
- 41 ☒ **Baltimore Md., 1c Red (1LB7).** Large margins to just clear, deep rich color, tied by penstroke on orange cover to local street address, fresh and Very Fine..... 300.00
- 42 ☒ **Baltimore Md., 1c Red (1LB7).** Full margins to just touched, cancelled by three vertical penstrokes (not tied) on blue folded printed circular for Church Home and Infirmary dated Oct. 21, 1858 to local street address, Very Fine..... 300.00
- 43 ☒ **Baltimore Md., 1c Red (1LB7).** Full to large margins, deep shade, tied by pencil "X", blue "Baltimore Md. Jul. 2" (1859) circular datestamp on buff cover to Commissioner of Pensions, Washington D.C., large double-line receiving datestamp, slightly reduced at top, otherwise Very Fine, ex Hessel and Golden, with 2000 P.F. certificate..... 300.00
- 44 ☒ **Baltimore Md., 1c Red (1LB7).** Ample margins to just touching, tied by "Baltimore Md. Jun. 22, 1859" circular datestamp on 3c Red Nesbitt entire to Sunbury Pa., upper left corner of cover creased and torn but not affecting carrier stamp, otherwise Fine, very unusual for the Baltimore carrier to be tied in this manner..... 350.00



- 45 ★田 **Baltimore Md., 1c Black (1LB8).** Pane of ten, Position 2 Short Rays, Position 7 "SENT", original gum, Mint N.H. except for Position 4, full to large margins, small extraneous ink spot at right, two creases, one ending in small margin tear, otherwise Very Fine, ex Golden, with 2000 P.F. certificate ..... 1,000.00

45





46



47



48

- 46 ☒ **Baltimore Md., 1c Black (1LB8).** Huge right sheet margin, two others sides enormous, slightly in at top, tied by **ms. "F" initial** (J. S. Fusselbaugh) on yellow local cover with **Equitable Society insurance company corner card**, Mar. 1860 enclosure, Very Fine, scarce and very attractive, ex Schwartz ..... E. 500-750
- 47 ☒ **Baltimore Md., 1c Black (1LB8).** Large margins except just in at top left, tied by blue "Baltimore Md. Feb. 14" circular datestamp, matching **"1" in circle** on 1862 printed bank notice to local address, sealed tear across face of cover, still exhibitable, the latest recorded use of the Horse & Rider carrier stamp, also a rare drop-rate/carrier combination cover, ex Straus and Golden, illustrated in Kelly CCP series (Vol. 51, No. 4, p.211) ..... E. 200-300
- 48 ☒ **Baltimore Md., 1c Red (1LB9).** Position 2 with **short rays**, also with unusual "eighth moon" at right, huge margins to just in at top right incl. **sheet margin** at right, uncanceled and **used with 3c Dull Red, Ty. III (26)**, tied by blue "Baltimore Md. Sep. 25" circular datestamp on cover to Bremo Bluff P.O. Va., Very Fine, ex Knapp and Souren ..... 300.00

END OF SALE — THANK YOU

# Live Internet Bidding at Siegel Auction Galleries

Internet Floor Bidding for Robert A. Siegel Auction Galleries, Inc.'s Sale 908 closing on Mar 13-15, 2006. Contact us by Phone at (212) 753-6421. [Contact us Via eMAIL](#). Please READ [Instructions/Help](#) [Listen to the Public Auction Broadcast](#). Welcome John  
Bidding, Paddle 11, Time: 13:50:36. F11 (if using Internet Explorer) toggles full screen mode. You are Cust# , You are approved for

Lot and Description	Bidding
Postal History, California Mails and Western Expre Carriers and Locals Group Lots <b>Lot 5010.</b> Carriers and Locals. More than 30 covers and a few off cover. 1840's, 50's and 60's, comprising General Issue Carriers incl. LO2, LO3, LO5 and Franklin plate proof on card, LO2 on small blue cover to Philadelphia "U.States" indicating origin f E. 1,500-2,000  <b>Sold for 3,500.00</b> <b>Your Bid 3,500.00</b>  <input type="button" value="1 sec refresh"/> <input type="button" value="3 sec"/> <input type="button" value="5 sec"/> <input type="button" value="Show Images"/>	<input type="button" value="Bid 3750"/> <input type="button" value="Bid 4000"/> <input type="button" value="Bid 4250"/> <input type="button" value="Bid 4500"/> <input type="button" value="Bid 4750"/> <input type="button" value="Bid 5000"/> <a href="#">Send a Message to the Auction Floor</a>

Messages from the public auction  
Please close this form when you are not bidding or watching the auction.

Lot 5010 going for 650...  
Lot 5010 going for 3500...  
Lot 5010 Last Call at \$500...  
Lot 5010 sold to the floor for \$3500.

===== END OF SALE =====

-Thank You!!!

**Siegel Auction Galleries, in coordination with Stamp Auction Network, will broadcast our auctions live over the internet, allowing you to listen to the auction in progress.**

Bidders who have pre-registered for Live Internet Bidding will also be able to place bids over the internet, as if bidding in the saleroom. In order to bid by internet, you must be an approved, registered bidder with Stamp Auction Network and Siegel Auction Galleries.

- ☐ **If you are already registered at Stamp Auction Network and have been approved for internet bidding by Siegel, just log in at Stamp Auction Network, locate the Siegel sale and start bidding anytime during the auction.**
- ☐ **If you have never registered as a bidder at Stamp Auction Network, then please go to [www.siegelauctions.com/IB2.htm](http://www.siegelauctions.com/IB2.htm) and click on "Register" at the top of the page. Please check the box for Robert A. Siegel Auction Galleries (under "R") and submit the form. If you have never bid with our firm, please provide trade references whom we may contact to have your account approved (please do not use family members or credit cards as references).**
- ☐ **If you have registered previously at Stamp Auction Network, but not specifically for our firm, please go to [www.siegelauctions.com/IB2.htm](http://www.siegelauctions.com/IB2.htm) and click on "Update Registration" at the top of the page. Your information at Stamp Auction Network will be sent to us for approval. You may be asked to provide additional references before being approved for internet bidding.**

Once you are approved for bidding, you will be able to bid live over the internet during the auction. You may participate in Live Internet Bidding using any browser or operating system. The audio portion is only available to PC users using Internet Explorer. For the audio portion, you will be asked to install a piece of software (ActiveX control) to make it work.

Bidders must log in at Stamp Auction Network to participate. Once logged in, please locate the page for the current Siegel auction.

At the top of the auction's home page there are two links:

- One link allows anyone to listen to the public auction broadcast.
- The second link permits registered bidders to join the public auction in progress.

Please remember that to participate in the auction, you must be pre-registered at Stamp Auction Network and approved by Siegel Auction Galleries as a bidder. Qualified bidders will see a page like the one illustrated above and have a valid paddle number assignment.

**Important Note for Live Internet Bidders:** Please refer to our Tips for Internet Bidders at our website at [www.siegelauctions.com/IB.htm](http://www.siegelauctions.com/IB.htm) for ways to increase your chances of being a successful bidder.

Robert A. Siegel Auction Galleries, Inc.

Prices Realized for

Sale 947 12/12/2007 The Philip T. Wall Collection of U.S. Postmasters' Provisionals

Lot#	Realized	Lot#	Realized
1	11,500	37	475
2	27,000	38	650
3	12,000	39	600
4	21,000	40	550
5	16,500	41	375
6	5,750	42	160
7	60,000	43	350
8	120,000	44	350
9	37,500	45	750
10	5,250	46	750
11	7,500	47	300
12	6,250	48	160
13	6,500		
14	9,500		
15	9,500		
16	900		
17	550		
18	600		
19	500		
20	700		
21	400		
22	325		
23	6,750		
24	180		
25	1,900		
26	225		
27	190		
28	1,000		
29	1,300		
30	4,250		
31	6,500		
32	8,000		
33	1,600		
34	1,800		
35	3,000		
36	2,400		