

Friday, December 14, 2007

General Foreign Stamps and Covers



Robert A. Siegel

AUCTION GALLERIES, INC.

Sale 949

Friday, December 14, 2007

General Foreign Stamps and Covers

Featuring

The Warren Latshaw Collection
The Pasadena Collection

Most lots are offered without reserves

**All lots in this sale are sold subject
to a 15% Buyer's Premium**

Pre-sale exhibition

Monday, December 10 — 10:00 a.m. to 4:00 p.m.
Tuesday, December 11 — 10:00 a.m. to 4:00 p.m.
Wednesday, December 12 — 10:00 a.m. to 4:00 p.m.
or by appointment (please call 212-753-6421)

**On-line catalogue, e-mail bid form, resources and
the Siegel Encyclopedia are available on our web site:**

www.siegelauctions.com



Arrangement of Sale

Morning session (lots 1001-1120)

Friday, December 14, at 10:30 a.m.

Albania thru Canada	pages 5-12
Cape of Good Hope	13-15
China thru French Colonies	16-19

Afternoon session (lots 1121-1437)

Friday, December 14, at 1:30 p.m.

German States thru Great Britain	20-24
Guatemala thru Israel	24-27
Japan thru Korea	27-31
Liberia thru Mexico	32-37
Natal thru Trinidad	38-47
Collection Lots by Country	47-54
Group Lots and Accumulations	55-56

On the cover

Front: Lots 1020, 1032, 1131, 1238
1089, 1091

Back: Lots 1294, 1110, 1159

Above: Lot 1003

Sale 949

Friday, December 14, 2007

General Foreign Stamps and Covers

Featuring

The Warren Latshaw Collection
The Pasadena Collection

Most lots are offered without reserves

**All lots in this sale are sold subject
to a 15% Buyer's Premium**

Pre-sale exhibition

Monday, December 10 — 10:00 a.m. to 4:00 p.m.
Tuesday, December 11 — 10:00 a.m. to 4:00 p.m.
Wednesday, December 12 — 10:00 a.m. to 4:00 p.m.
or by appointment (please call 212-753-6421)

On-line catalogue, e-mail bid form, resources and
the Siegel Encyclopedia are available on our web site:

www.siegelauctions.com



Arrangement of Sale

Morning session (lots 1001-1120)

Friday, December 14, at 10:30 a.m.

Albania thru Canada	pages 5-12
Cape of Good Hope	13-15
China thru French Colonies	16-19

Afternoon session (lots 1121-1437)

Friday, December 14, at 1:30 p.m.

German States thru Great Britain	20-24
Guatemala thru Israel	24-27
Japan thru Korea	27-31
Liberia thru Mexico	32-37
Natal thru Trinidad	38-47
Collection Lots by Country	47-54
Group Lots and Accumulations	55-56

On the cover

Front: Lots 1020, 1032, 1131, 1238
1089, 1091

Back: Lots 1294, 1110, 1159

Above: Lot 1003

Conditions of Sale (Important—please read carefully)

The property described in this catalogue will be offered at public auction by Robert A. Siegel Auction Galleries, Inc. (“Galleries”) on behalf of various consignors and itself or affiliated companies. By bidding on any lot, whether directly or by or through an agent, in person, or by telephone, facsimile or any other means, the bidder acknowledges and agrees to all of the following Conditions of Sale.

1. The highest bidder acknowledged by the auctioneer shall be the buyer. The term “final bid” means the last bid acknowledged by the auctioneer, which is normally the highest bid offered. **The purchase price payable by the buyer will be the sum of the final bid and a commission of 15% of the final bid (“buyer’s premium”), together with any sales tax or use tax which may be due on the sale.**

2. The auctioneer has the right to reject any bid, to advance the bidding at his discretion and, in the event of a dispute between bidders, to determine the successful bidder, to continue the bidding or to reoffer and resell the lot in dispute. The Galleries’ record of the final sale shall be conclusive.

3. All bids are per numbered lot in the catalogue unless otherwise announced by the auctioneer at the time of sale. The right is reserved to group two or more lots, to withdraw any lot or lots from the sale, or to act on behalf of the seller. The Galleries will execute bidding instructions on behalf of clients, but will not be responsible for any errors in the execution of such bids.

4. **Lots with numbers followed by the symbol ° are offered subject to a confidential minimum final bid (“reserve”), below which the lot will not be sold. The absence of the symbol ° means that the lot is offered without a reserve.** In the absence of a reserve, the auctioneer has sole discretion to establish a minimum opening bid and may refuse an offer of less than half of the published estimate. Any lot that does not reach its reserve or opening bid requested by the auctioneer will be announced as “passed” and excluded from the prices realized lists after the sale. The Galleries may have a direct or indirect ownership interest in any or all lots in the sale resulting from an advance of monies or goods-in-trade or a guarantee of minimum net proceeds made by the Galleries to the seller.

5. Any lot, the description of which is obviously incorrect, is returnable, but only if the lot is returned within 14 days of receipt. All disputed lots must be returned intact with the original packing material. **The following lots may not be returned for any reason: Lots containing ten or more items; lots from buyers who have registered for the pre-sale exhibition or received lots by postal viewing, thereby having had the opportunity to inspect them before the sale; any lot described with “faults” or “defects” may not be returned because of any fault or defect. No illustrated lots may be returned because of centering, margins or other factors shown in the illustrations.**

6. Successful bidders, unless they have established credit with the Galleries prior to the sale, must make payment in full before the lots will be delivered. Buyers not known to the Galleries must make payment in full within three days from the date of sale. **The Galleries retain the right to demand a cash deposit from anyone prior to bidder registration and/or to demand payment at the time the lot is knocked down to the highest bidder, for any reason whatsoever.** In the event that any buyer refuses or fails to make payment in cash for any lot at the time it is knocked down to him, the auctioneer reserves the right to reoffer the lot immediately for sale to the highest bidder. **Credit cards are not accepted as payment.**

7. If the purchase price has not been paid within the time limit specified above, nor lots taken up within seven days from the date of sale, the lots will be resold by whatever means deemed appropriate by the Galleries, and any loss incurred from resale will be charged to the defaulting buyer. Any account more than thirty days in arrears will be subject to a late payment charge of 1½% per month as long as the account remains in arrears. Any expenses incurred in securing payment from delinquent accounts will be charged to the defaulter. A fee of \$250.00 per check will be charged for each check returned for insufficient funds.

8. All lots are sold as genuine. **Any lot accompanied by a certificate issued by The Philatelic Foundation within 5 years of the sale date or by Professional Stamp Experts since January 2004 is sold “as is” and in accordance with the description on the certificate. Such lots may not be returned for any reason, including but not limited to a contrary certificate of opinion.** Buyers who wish to obtain a certificate for any item that does not have a P.F. or P.S.E. certificate (dated as above) may do so, provided that the following conditions are met: (1) the purchase price must be paid in full, (2) the item must be submitted to an acceptable expertizing committee with a properly executed application form within 21 days of the sale, (3) a copy of the application form must be given to the Galleries, (4) in the event that an adverse opinion is received, the Galleries retain the right to resubmit the item on the buyer’s behalf for reconsideration, without time limit or other restrictions, (5) unless written notification to the contrary is received, items submitted for certification will be considered cleared 90 days from the date of sale, and (6) in the event any item is determined to be “not as described”, the buyer will be refunded the purchase price and the certification fee up to \$500.00 unless otherwise agreed.

9. Until paid for in full, all lots remain the property of the Galleries on behalf of the seller.

10. Agents executing bids on behalf of clients will be held responsible for all purchases made on behalf of clients unless otherwise arranged prior to the sale.

11. The buyer assumes all risk for delivery of purchased lots and agrees to pay for prescribed shipping costs.

12. The bidder consents that any action or proceeding against it may be commenced and maintained in any court within the State of New York or in the United States District Court for the Southern District of New York, that the courts of the State of New York and United States District Court for the Southern District of New York shall have jurisdiction with respect to the subject matter hereof and the person of the bidder. The bidder agrees not to assert any defense to any action or proceeding initiated by Galleries based upon improper venue or inconvenient forum. The bidder agrees that any action brought by the bidder shall be commenced and maintained only in a Federal Court in the United States District Court for the Southern District of New York or the State Court in the county in which Galleries has its principal place of business in New York. These Terms and Conditions shall be governed by and construed in accordance with the substantive laws of the State of New York.

SCOTT R. TREPEL, Principal Auctioneer

Auctioneer’s License No. 795952
N.Y.C. Department of Consumer Affairs
80 Lafayette Street, New York, N.Y. 10013
Telephone (212) 577-0111

Revised 5/2006 15%

Copyright Notice

This catalogue in all versions, printed and electronic, is protected by copyright. The descriptions, format, illustrations and information used herein may not be reprinted, distributed or copied in any form without the express written consent of Robert A. Siegel Auction Galleries. Application for permission may be made in writing.

© 2007, Robert A. Siegel Auction Galleries, Inc.

Grading Terms, Abbreviations and Values Used in Descriptions

Grade and Centering

The following terms are used in Siegel sale catalogues (corresponding numerical ranges shown in parentheses). Margin width, centering and gum are described according to generally-accepted standards. Stamps are graded based on our subjective assessment of condition for each issue, which do not necessarily correlate with third-party grading terms or standards for all issues. **A lot may not be returned because a certification service grades a stamp lower than the grade stated. Information from the P.S.E. Stamp Market Quarterly and P.S.E. Population Report™ is the most current available, but lots may not be returned due to errors or changes in statistics or data.**

Extremely Fine Gem (90-100 pts.): The term “Gem” used in Siegel catalogues describes condition that is the finest possible for the issue.







Extremely Fine (80-90 pts.): Exceptionally large margins or near perfect centering.

Very Fine (70-85 pts.): Normal size margins for the issue and well-centered with the design a bit closer to one side. “Very Fine and choice” applies to stamps that have desirable traits such as rich color, sharp impression, freshness or clarity of cancel.

Fine (60-70): Smaller than usual margins or noticeably off center. Pre-1890 issues may have the design touched in places.

Very Good (below 60): Attractive appearance, but margins or perforations cut into the design.

Good (G) or Average (Ave.): Cut into or perfs far into design and usually with slight faults. This condition is generally acceptable for rarities, scarce multiples or stamps used on unusual covers.

Gum Categories:	MINT N.H.	ORIGINAL GUM (O.G.)				NO GUM
	 Mint Never Hinged <i>Free from any disturbance</i>	 Lightly Hinged <i>Faint impression of a removed hinge over a small area</i>	 Hinge Mark or Remnant <i>Prominent hinged spot with part or all of the hinge remaining</i>	 Part o.g. <i>Approximately half or more of the gum intact</i>	 Small part o.g. <i>Approximately less than half of the gum intact</i>	 No gum <i>Only if issued with gum</i>
Catalogue Symbol:	★ ★	★	★	★	★	(★)
PRE-1890 ISSUES	<i>Pre-1890 stamps in these categories trade at a premium over Scott value</i>			Scott Value for “O.G.”		Scott “No Gum” Values thru No. 218
1890-1935 ISSUES	Scott “Never Hinged” Values for Nos. 219-771	Scott Value for “O.G.” (Actual value will be affected by the degree of hinging)		Disturbed Original Gum: Gum showing noticeable effects of humidity, climate or hinging over more than half of the gum. The significance of gum disturbance in valuing a stamp in any of the Original Gum categories depends on the degree of disturbance, the rarity and normal gum condition of the issue and other variables affecting quality. For example, stamps issued in tropical climates are expected to have some		
1935 TO DATE	Scott Value for “Unused”					

Covers

Minor nicks, short edge tears, flap tears and slight reduction at one side are normal conditions for 19th century envelopes. Folded letters should be expected to have at least one file fold. Light cleaning of covers and small mends along the edges are accepted forms of conservation. Unusual covers may have a common stamp with a slight crease or tiny tear. **These flaws exist in virtually all 19th century covers and are not always described. They are not grounds for return.**

Catalogue Values and Estimates

Unless otherwise noted, the currently available *Scott Catalogue* values are quoted in dollars with a decimal point. Other catalogues are often used for foreign countries or specialized areas and are referred to by their common name: *Stanley Gibbons* (SG), *Dietz*, *American Air Mail Catalogue* (AAMC), *Michel*, *Zumstein*, *Facit*, etc. Estimates are indicated with an “E.” and reflect our conservative valuation in dollars. Reserves will never exceed the low end of the estimate range; they will sometimes exceed Scott Catalogue value for stamps in Extremely Fine condition.

Because of certain pricing inconsistencies in the Scott Catalogue—for example, blocks that have no gum, the absence of premiums for Mint N.H. items, etc.—we cannot guarantee the accuracy of values quoted for multiples, specialized items and collection lots. We generally try to be conservative, but buyers may not return a lot because of a discrepancy in catalogue value due to Scott pricing inconsistencies.

Symbols and Abbreviations (see chart above for gum symbols)

⊞	Block	E	Essay	pmk.	Postmark	No.	Scott Catalogue Number
⊞	Cover	P	Proof	cds	Circular Datestamp	hs	Handstamp
FC	Fancy Cancel	TC	Trial Color Proof	var.	Variety	ms.	Manuscript

Revised 5/2006



1001



1002



1004



1005



1006



1007



1008



1009



1010



1011EX



1012EX

FIRST SESSION (LOTS 1001-1120)
FRIDAY, DECEMBER 14, 2007, AT 10:30 A.M.

GENERAL FOREIGN STAMPS AND COVERS

- 1001 **ALBANIA, 1913, 20pa Carmine Rose (6).** Horizontal pair, tied by "Elbasan Sept. 10, 1913" circular datestamp on petite cover to Vione, Very Fine, signed Dr. Oertel, Scott Retail as two off-cover used singles..... 350.00
- 1002 **ANTIGUA, 1862, 6p Blue Green, No Wmk., Rough Perf 14-16 (1; SG 1).** "A02" oval grid cancel, tiny thin spot, Fine appearance, SG £500 575.00



1003

- 1003 ★ **ANTIGUA, 1862, 6p Blue Green, No Wmk., Rough Perf 14-16 (1; SG 1).** Horizontal pair, original gum, fresh and Fine, attractive and scarce multiple, SG £1,600..... 1,800.00
- 1004 ★★ **ARGENTINA, 1930, 1.80p Green Zeppelin Ovpt. (C29).** Mint N.H. with top sheet margin, single short perf, otherwise Very Fine, Scott Retail as hinged 600.00
- 1005 **AUSTRIA, 1850, 3kr Red, Ty. Ia, Hand-Made Paper (3).** Bottom left corner margin, large margins other sides, bright color, tied by perfect strike of "Kohljanowitz 16/6" circular datestamp on small piece, Extremely Fine, Ferchenbauer value e 500.00
- 1006 **AUSTRIA, 1854, 3kr Red, Ty. IIIa, Machine Paper (3e).** Top left corner margin single, large margins other sides, tied by "Riva 20 10" circular datestamp on small piece, light diagonal crease, otherwise Extremely Fine, Ferchenbauer value..... e 480.00
- 1007 **AUSTRIA, 1850, 6kr Brown, Ty. Ib, Hand-Made Paper (4).** Bottom left corner margin single, large margins other sides, fresh color, neat strike of "Burgau 23/8" circular datestamp, Extremely Fine Gem, a beautiful stamp, Ferchenbauer value..... e 600.00
- 1008 **AUSTRIA, 1854, 6kr Brown, Ty. III, Machine Paper (4b).** Top right corner margin single, large margins other sides, rich color, neat strike of "Babony 9/10" circular datestamp, Very Fine and choice, Ferchenbauer value with no premium for the Hungarian usage..... e 525.00
- 1009 ★ **AUSTRIA, 1936, 10sh Dollfuss (380).** Lightly hinged, Very Fine..... 725.00
- 1010 ★ **AUSTRIA, 1933, 50g WIPA Souvenir Sheet, Granite Paper (B111).** Lightly hinged, beautifully centered, Extremely Fine, with original folder 2,650.00
- 1011 ★★ **AUSTRIA, 1946, 1sh-5sh Renner Souvenir Sheets (B185-B188).** Mint N.H., Very Fine.... (Photo Ex) 2,000.00
- 1012 ★★ **AUSTRIA, 1946, 1sh-5sh Renner Souvenir Sheets (B185-B188).** Mint N.H., some light toning, otherwise Very Fine (Photo Ex) 2,000.00



1013



1014



1015



1016



1019



1017EX



1018



1021



1023



1024



1025



1027



1026



1028



1029



1030

- 1013 **AUSTRIA, 1859, 2kr Brown, Ty. II, Newspaper Tax (PR3).** Bottom left corner sheet margin, large to huge margins other sides, well-struck "Triest 6/1 I.L." oval hs, Extremely Fine Gem, a superb stamp, signed twice incl. once by Muller and A. Diena..... 6.75
- 1014 **AUSTRIA, Lombardy-Venetia, 1850, 15c Red, Ty. I (4b).** Huge margins all around incl. **top right corner sheet margin**, bold boxed "Verona" handstamp, Extremely Fine Gem, Ferchenbauer value e 675.00
- 1015 **AUSTRIA, Lombardy-Venetia, 1850, 15c Red, Ty. II, Ribbed Paper (4c).** Huge margins all around incl. **bottom left corner sheet margin**, rich color, bold "Como 23/11" circular datestamp, Extremely Fine Gem, a beautiful stamp, signed E. Diena, Ferchenbauer value 1,750 Euros, Scott Retail with no premium for corner margin 825.00
- 1016 **AUSTRIA, Lombardy-Venetia, 1850, 45c Blue, Ty. I (6a).** Huge margins incl. part of adjoining stamp at top and **bottom right corner sheet margin with part St. Andrews Cross at right**, tied by bold "Padova 21/7" circular datestamp on small piece, piece with clipped corner at far lower left well away from stamp, Extremely Fine Gem, signed Brunner..... E. 200-300
- 1017 **AUSTRIA, Lombardy-Venetia, 1850, 45c Blue, Ty. I (6a).** Five used singles, each with either sheet margin (3) or corner margin (2), each also has neat boxed "Milano" cancel, four are on small piece, Very Fine-Extremely Fine group, three are ex Windner, each signed Brunner (Photo Ex) E. 150-200
- 1018 ☒ **AUSTRIA, Lombardy-Venetia, 1864, 10s Blue, Perf 9½ (23).** Tied by "Meteline 2/4" circular datestamp and **used with Greece 201 Blue on Bluish**, tied by 1868 circular datestamp on folded cover, vertical file fold well clear of stamps, receiving backstamps, Very Fine and choice, attractive combination cover, ex Rothschild, signed Muller and with expert's handstamp E. 300-400
- 1019 **BAHAMAS, 1859, 1p Reddish Lake 1a; SG 1).** Margins all around, neat "A05" in oval grid cancel, Very Fine and very scarce, SG £2,250 2,600.00

- 1020 ★ **BAHAMAS, 1859, 1p Brownish Lake (1b; SG 1).** Horizontal pair, original gum, margins virtually all around, excellent color

FINE-VERY FINE. A RARE ORIGINAL-GUM HORIZONTAL PAIR OF THE 1859 BAHAMAS ONE-PENCE BROWNISH LAKE.

With 1986 R.P.S. certificate as CW V2. SG £9,500 11,000.00



1020

- 1021 **BRAZIL, 1843, 30r-90r "Bullseyes" (1-3).** Complete used set, margins all around, first two thin spots, last closed scissors cut, Fine-Very Fine appearance, after the Great Britain 1p Black, this is the second earliest postage stamp issue of the world (there was an issue in the United States in 1842 for local mail delivery)..... 1,990.00
- 1022 ☒ **BRAZIL, Don Pedro Issue Covers.** Two covers, one with block of four of No. 73 on back of 1884 cover to Mallorca, second with pair on 200r registered entire to Dresden, Germany, some slight wear, appear Fine-Very Fine *Not illustrated* E. 300-400
- 1023 **BRITISH GUIANA, 1853-59, 4c Deep Blue (10; SG 19).** Margins all around, wonderful color, 1854 Demerara datestamp, Very Fine, with 2007 B.P.A. certificate, SG £500 525.00

CANADA

- 1024 P **1851-64, 3p Red, Plate Proof (1P).** Horizontal strip of four, huge margins incl. **part imprint (inverted) beneath right proof**, Extremely Fine, Unitrade value C\$ 1,100.00
- 1025 **1851, 3p Red, Laid (1).** Large and even margins all around, neat 7-ring target cancel, Very Fine 950.00
- 1026 TC **1857, 6p Red Lilac, Trial Color Plate Proof (2TC).** Block of four, large to mostly huge margins, color somewhat resembles the shade of the 6p on Thick Soft Paper (No. 10), Extremely Fine..... Unitrade value C\$ 1,100.00
- 1027 **1857, 3p Red, Wove (4).** Huge margins all around incl. part of adjoining stamps at top and left, neat "21" in target cancel, showing noticeable short transfer at right, tiny corner crease at bottom right, otherwise Extremely Fine 200.00
- 1028 **1852, 3p Red (4).** Large margins all around incl. **sheet margin** at bottom, rich color, neat target cancel, Extremely Fine 200.00
- 1029 **1852, 3p Red (4).** Horizontal pair, large to huge margins all around incl. **bottom right corner sheet margin**, fresh and bright color, two light strikes of target cancels, also part of red "Canada" in arc, Extremely Fine Gem, a superb pair..... 400.00
- 1030 **1852, 3p Brown Red, Wove (4a).** Large margins all around, deep rich color, neat grid cancel, Extremely Fine 225.00



- 1031 **1855, 6p Slate Gray, Wove (5; SG 9).** Large to huge margins incl. par of adjoining stamps at top and bottom, rich color and detailed impression, target cancel, Extremely Fine, with 1992 P.F. certificate, SG £950..... 1,250.00
- 1032 **1855, 6p Slate Gray, Wove (5).** Huge margins all around incl. part of adjoining stamp at top, light strike of square grid cancel, fresh and bright color, Extremely Fine Gem, a beautiful example of the Slate Gray shade 1,250.00

- 1033 **1855, 10p Blue (7).** Large margins all around, rich color, neat strike of "16" in grid cancel of Hamilton
EXTREMELY FINE GEM. A SUPERB EXAMPLE OF THE CANADA 1855 10-PENCE CARTIER.
With 2001 Greene certificate 1,500.00



1033

- 1034 **1855, 10p Blue (10).** Large to huge margins, intense color, neat grid cancel, Extremely Fine, with 1980 and 2003 P.F. certificates..... 1,500.00
- 1035 **1851-64, 1/2p Rose, Plate Proof (8P).** Block of four, large to huge margins, Extremely Fine, also incl. Very Fine horizontal pair of the 1/2p Rose Plate Proof with Vertical Green Black "Specimen" Ovpt. (No. 8Pi), Unitrade value(Photo Ex) C\$ 1,600.00
- 1036 **1857, 1/2p Rose (8).** Three large to huge margins, ample to barely in at bottom, tied by four-ring "21" target (Montreal) on folded insurance policy, Fine, scarce Printed Matter rate, with 2007 Greene certificate E. 500-750
- 1037 TC **1859-67, 10c Lilac, 12 1/2c Blue Green, Trial Color Plate Proofs (17TC, 18TC).** Former margin single with **part imprint**, latter block of four, large to huge margins, Extremely Fine, Unitrade value(Photo Ex) C\$ 1,250.00



- 1038 TC 1859-67, 2c Dark Rose, Claret, Trial Color Plate Proofs 20TC, 20TCi). Horizontal pair of each, Very Fine and choice, Unitrade value.....(Photo Ex) C\$ 1,000.00
- 1039 ★田 1868, ½c Black, Perf 12 (21). Block of four, original gum, bottom pair Mint N.H., attractively centered, Fine-Very Fine, Scott Retail as four hinged singles..... 320.00
- 1040 ★ 1868-75, 15c Gray Violet, Gray (29-30). Thirteen singles and two blocks of four, both blocks original gum, nine singles original gum, h.r., other four singles unused (no gum), also incl. No. 30a 15c Blue Gray, generally Fine-Very Fine.....Not illustrated 1,695.00
- 1041 ★ 1890, 15c Gray Violet, Imperforate Pair (29d). Horizontal pair, original gum, lightly hinged, large even margins, Extremely Fine..... 1,150.00
- 1042 ★ 1870-93, 1c-10c Small Queens (35/44). 18 stamps, virtually all original gum, h.r., variety of shades, incl. six 10c, Fine lot.....Not illustrated E. 750-1,000
- 1043 ★田 1873-79, 1c Orange, Montreal Printing, Perf. 11½x12 (35d). Block of four, original gum, bottom right stamp Mint N.H., Fine, Scott Retail as four hinged singles..... 800.00
- 1044 ★田 1872-73, 3c Orange Red, Dull Red (37, 37c). Blocks of four, original gum, one of former tiny inclusion, bottom pair of latter light crease, otherwise Fine-Very Fine (Photo Ex) 720.00
- 1045 ★ 1880, 10c Magenta (40a). Original gum, wide margins and deep rich color, Fine 675.00
- 1046 ★ 1893, 8c Gray, Imperforate Pair (44d). Horizontal pair, original gum, beautiful large to huge margins, fresh, Extremely Fine..... 650.00
- 1047 ★ 1888, 10c Dull Rose (45a). Original gum, h.r., choice margins and attractively centered, Very Fine..... 475.00
- 1048 ★ 1897, 5c-50c Jubilee (54-56, 60). Three, four, two and one respectively, original gum, two 6c slightly in at bottom one other small thin spots, others nearly all Fine-Very Fine.....Not illustrated 1,290.00



1049



1050



1051



1057



1052



1053



1054



1059



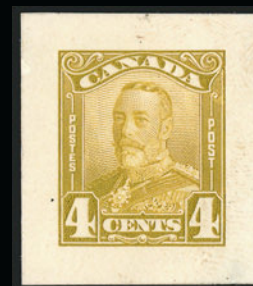
1060



1055



1061EX



1062EX

- 1049 ★★田 **1897, 8c Jubilee (56; SG 130).** Mint N.H. block of four, deep rich color on bright paper, choice centering, fresh and Extremely Fine, Scott Retail as Mint N.H. singles..... 640.00
- 1050 ★田 **1897, 15c Jubilee (58; SG 132).** Original gum block of four, very lightly hinged, bottom pair appears Mint N.H., Very Fine, top right especially nice 800.00
- 1051 ★★ **1897, 20c Jubilee (59; SG 133).** Mint N.H. with **part imprint** at top, vibrant color, some slight creasing in selvaige only, the stamp is an Extremely Fine Gem, with 2002 P.F. certificate for pair 500.00
- 1052 ★ **1897, \$1.00 Jubilee (61).** Slightly disturbed original gum, rich color, Very Fine 800.00
- 1053 ★★ **1900, 2c Carmine, Booklet (77b).** Complete booklet of two panes with interleaving, bright color, small cover flaws
 VERY FINE. A SCARCE COMPLETE BOOKLET OF THE 2-CENT 1900 QUEEN VICTORIA ISSUE.
 Scott Retail as two panes with no premium for the covers 4,700.00
- 1054 ★★ **1903-08, 2c Carmine, Booklet Pane of Six (90b).** Mint N.H., radiant color, bottom left stamp small natural paper wrinkle, Very Fine example of this scarce booklet pane 1,750.00
- 1055 S **1903, 5c Blue on Bluish, Diagonal Pink "Specimen" Ovpt. (91S).** Mint N.H. horizontal pair, right stamp light crease, Fine appearance, left stamp huge margins and centered and an Extremely Fine Gem, very scarce..... E. 200-300
- 1056 ★ **1908, ½c-20c Tercentenary (96-103).** Small wholesale lot of 29 stamps, virtually all original gum, one 7c, two each 5c and 20c, four to six each of others, somewhat mixed quality, still mostly Fine-Very Fine.....*Not illustrated* E. 200-300
- 1057 **1908, ½c-20c Tercentenary (96-103).** Complete set tied on Dec. 3, 1908 Registered cover by Montreal Que (Sub Office No. 20) circular datestamps, the 1c value is **Major Re-Entry (Unitrade 97iii)**, the cover has a horizontal filing crease beneath stamps and there is a light stain below the 20c value, otherwise Fine-Very Fine, there are perhaps ten Quebec Tercentenary "set" covers known, this being the only one with the 1c Re-Entry, with 2007 Greene certificate..... E. 750-1,000
- 1058 ★ **1911-25, 1c-\$1.00 Admirals (104-122).** Fine-Very Fine set*Not illustrated* 965.00
- 1059 ★ **1922, 1c Orange Yellow, Booklet Pane of Four and Two Labels, Pyramid Guide (105ai).** One stamp h.r., Fine, rare, Unitrade value C\$ 2,500.00
- 1060 ★ **1922, 2c Yellow Green, Booklet Pane of Four and Two Labels, Pyramid Guide (107bi).** Top pair h.r., Fine-Very Fine, rare, Unitrade value for Fine C\$ 3,000.00
- 1061 ★ **1926, 2c on 3c Carmine, Double and Triple Surcharges (139b, 140b).** Former Mint N.H. horizontal pair with top left selvaige, latter lightly hinged, Fine-Very Fine, No. 140b with 1950 P.F. certificate and states the surcharge is quadruple rather than triple, Scott Retail as hinged.....
(Photo Ex) 600.00
- 1062 P **1928-29, 1c Orange, 4c Olive Bister, Die Proofs (149P, 152P).** Each approximately 26 x 30 mm, mounting thins on back, Extremely Fine appearance, rare.....(Photo Ex) E. 400-500

- 1063 ★★ **1928-29, 1c-\$1.00 Commemoratives, Vertical Pairs, Imperforate Horizontally (Unitrade 149ii-159ii).** Mint N.H. set, large margins, rich colors, Very Fine and choice, unlisted in Scott, Unitrade value.....
(Photo Ex) 5,325.00

1063EX





1064EX

- 1064 ★★ 1928-29, 1c-\$1.00 Commemoratives, Horizontal Pairs, Imperforate Vertically (Unitrade 149i-159i). Mint N.H., 3c, 12c, 20c and \$1.00 with sheet margin at side, 1c and 3c sheet margin at top, large margins, Very Fine and choice, scarce set, unlisted in Scott, Unitrade value(Photo Ex) 5,325.00



- 1065 ★★ 1930, \$1.00 Mt. Cavell (177). Mint N.H., essentially perfectly centered, .Extremely Fine 375.00
- 1066 ★★田 1942, \$1.00 Destroyer (262). Mint N.H. block of four with bottom selvage, beautifully centered, Extremely Fine 400.00
- 1067 ★田 1922, 20c Carmine (E2). Block of four, three Mint N.H., top right small thin spot, otherwise top pair Very Fine, bottom pair Extremely Fine Gems..... C\$ 1,002.50
- 1068 ★★田 1928, 4c Violet (J3). Mint N.H. imprint and plate no. A-1 block of six and ordinary block of four, Fine lot.....*Not illustrated* C\$ 640.00
- 1069 ★★ Canada Officials. Incl. 33 different "OHMS" perfin between Canadian Specialized Nos. O231/O262, OC1/OC9 and OE10-OE11, these are all Mint N.H., also incl approximately \$500.00 catalog value in regular Officials featuring a block of four of No. O27, virtually all Mint N.H., Very Fine lot*Not illustrated* E. 300-400
- 1070 ★田 1916, 2c Carmine, Brown, War Tax (MR3-MR5, MR7). First three blocks of four, last two pair and strip of four respectively, some stamps Mint N.H., Fine-Very Fine *Not illustrated* 1,020.00
- 1071 ★田 1916, 2c Carmine, Brown, War Tax (MR3-MR4). Vertical blocks of eight and six respectively, some stamps Mint N.H., Very Fine-Extremely Fine, the right column of the former contains three Extremely Fine Gems*Not illustrated* 365.00
- 1072 TC Canada, First Bill Stamp Trial Color Proofs. Seven items, incl. four colors of the 1c and two \$2.00 and one \$3.00 Bicolored,.....(Photo Ex) E. 200-300
- 1073 ★ Canada Back-of-the-Book. Small lot incl. Canadian Specialized Nos. MR2D (three), MR3a, MR5, OX1 (unused, no gum and used), OX3 and OX4, also incl. \$2.00 Queen Victoria Red and Black "Bill Stamp" used in 1877, mixed condition, scarce lot....*Not illustrated* E. 200-300
- 1074 ★ Canada Balance. Five unused stamps, incl. Nos. 57, 59 (2, one with part imprint) and 82 (2 with part imprint at top), Very Fine-Extremely Fine.....*Not illustrated* 1,010.00



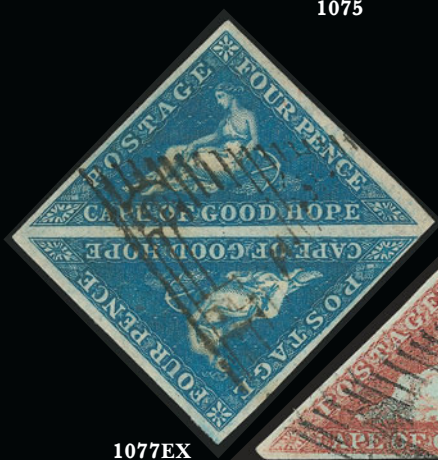
1076



1075



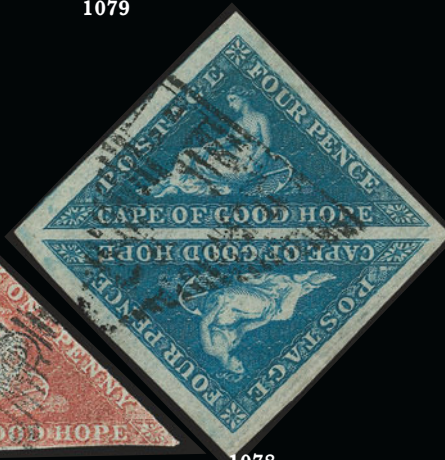
1079



1077EX



1080



1078

CAPE OF GOOD HOPE

- 1075 田 **1853, 1p Brick Red, Deeply Blued Paper (1a; SG 1).** Block of four, ample to large margins, two neat strikes of "CGH" in triangular grid cancel, fresh and Very Fine, SG £1,200..... 1,400.00
- 1076 田 **1853, 1p Brown Red (1f; SG 3a).** Rectangular block of six, clear to large margins all around except just in on one side of one stamp, triangular cancels, light creases, Fine-Very Fine appearance, SG £1,350 as singles 2,175.00
- 1077 田 **1853, 1p Red Brown on Blue Paper, 4p Deep Blue on Deeply Blued Paper (1, 2a; SG 2-3).** Triangular and rectangular blocks of four respectively, margins to slightly in, triangular cancels, 1p light crease, otherwise Fine-Very Fine, 1p ex Sir Henry Tucker, SG £1,540 as singles(Photo Ex) 2,450.00
- 1078 **1853, 4p Blue, Deeply Blued Paper (2a; SG 2).** Pair, ample to large margins, neat triangular grid cancel, fresh and Very Fine, SG £320 360.00
- 1079 ★田 **1857, 1p Rose (3; SG 5a).** Block of four, original gum, pale shade, large and even margins all around, Very Fine and choice, SG £1,800..... 2,060.00
- 1080 **1855-58, 4p Blue (4; SG 6a).** Used square pair, massive margins, triangular "CGH" grid cancel, Extremely Fine Gem, strikingly beautiful, with 2000 B.P.A. certificate, SG £100 115.00



1081



1083



1084



1085



1086



1087



1082



1088



1090



1092



1093



1094EX

- 1081 田 **1855-58, 4p Blue (4; SG 6a).** Rectangular block of ten, margins nearly all around, mostly large to huge, triangular cancels, almost Fine-Extremely Fine, right block of four exceptional, impressive used multiple, SG £500 as singles 1,060.00
- 1082 田 **1855-58, 1sh Yellow Green (6; SG 8).** Rectangular block of eight, margins all around, mostly large to huge, trifle heavy triangular cancels, couple fairly minor creases, otherwise Very Fine, scarce multiple, SG £1,440 as singles 3,200.00
- 1083 ★ **1855-58, 1sh Dark Green (6a; SG 8a).** Original gum square pair, large to huge margins incl. sheet margin on one side, intense color and attractive impression, Extremely Fine, SG £550..... 630.00
- 1084 ★田 **1855-58, 1sh Dark Green (6a; 8b).** Rectangular block of four, original gum, large to huge margins virtually all around, wonderful color, Very Fine, SG £1,100 as singles . 1,800.00
- 1085 **1855, 1sh Dark Green (6a; SG 8b).** Huge well-balanced margins, rich color, bold oval grid cancel leaves vignette completely visible, Extremely Fine Gem, a superb stamp, SG £500 575.00
- 1086 **1861, 4p Milky Blue, “Woodblock” (9; SG 14).** Pair, huge margins to slightly in, triangular cancels, color affected and faint crease, otherwise nearly Fine, scarce and affordable multiple of this great rarity, SG £3,400 as singles..... 10,000.00
- 1087 ★田 **1863-64, 1p Dark Carmine (12; SG 18).** Original gum triangular shaped block of four with huge sheet margin one side, margins ample other sides, wonderful deep rich color, Very Fine, with 1978 B.P.A. certificate, S.C.S.A. certificate, SG £640..... 700.00
- 1088 ★田 **1863-64, 1p Dark Carmine (12; SG 18).** Square block of eight, original gum, ample to large margins, one block light creases and lightly creased between blocks, otherwise Very Fine, SG £1,280 as singles 2,200.00



1089



1091

- 1089 ★田 **1863, 4p Dark Blue (13; SG 19).** Block of eight, original gum, lightly hinged, large margins, rich color, fresh and Extremely Fine, SG £1,280..... 1,520.00
- 1090 ★ **1863-64, 6p Purple (14; SG 20).** Original gum square pair, large to huge margins, bright color, Extremely Fine, with 1977 B.P.A. certificate, SG £400 450.00
- 1091 ★田 **1863-64, 6p Purple (14; SG 20).** Square block of eight with sheet margin, original gum, large to huge margins, trivial toning speck between two stamps, otherwise Extremely Fine, lovely multiple, SG £1,600 as singles 2,700.00
- 1092 ★ **1863, 1sh Emerald (15; SG 21).** Pair, original gum, large to huge margins incl. sheet margin, vivid color, Extremely Fine, SG £800 as singles 1,100.00
- 1093 ★ **1863, 1sh Emerald (15; SG 21).** Rectangular block of four, original gum, large to huge margins, choice color, fresh and Extremely Fine, SG £1,600 as singles 2,750.00
- 1094 **MAFEKING, 1900, 1p, 3p Blue on Blue (178-179; SG Mafeking 17, 20).** 3p 18½mm wide, each tied on separate small piece, Fine lot, SG £625.....(Photo Ex) 775.00



1096EX



1097



1098



1099EX



1100EX



1101



1102



1103



1104



1108EX



1109



1106

- 1095 ★ **CHINA, 1952-53, 10c-\$5.00 Chiang Kai-shek, Imperforate (1052-1056, 1064-1069 vars.).** Unused (without gum as issued), Very Fine*Not illustrated* 650.00
- 1096 ★ **CHINA, 1952, \$10.00-\$50.00 Geese Surcharges (1061-1063).** Unused (without gum as issued), Very Fine, scarce.....**(Photo Ex)** 2,165.00
- 1097 ★ **COLOMBIA, 1910, ½c Violet and Black, Inverted Center (331a).** Well-centered, original gum, very mild toning, actually very nice for this scarce error which usually has disturbed original gum and heavier toning, Very Fine 425.00
- 1098 ★ **COLOMBIA, 1910, ½c Violet & Black, Inverted Center (331a).** On original hand-drawn watercolor exhibition page, part original gum and some tiny toning spots (may be the case for all of these errors), otherwise Fine..... 425.00
- 1099 ★ **COLOMBIA, 1935, 2c-10p Olympic Games (421-436).** Lightly hinged, Very Fine**(Photo Ex)** 1,028.00
- 1100 ★ **COLOMBIA, 1935, 2c-10p Olympic Games (421-436).** Lightly hinged, Very Fine**(Photo Ex)** 1,028.00
- 1101 (★) **COLOMBIA, 1921, 30c on 50c green, Ty. "f" Surcharge (C23).** Unused (no gum), trivial nibbed perf., otherwise Fine..... 1,200.00
- 1102 **COLOMBIA, 1921, 30c on 50c green, Ty. "g" Surcharge (C24).** Lightly cancelled, Fine .. 1,000.00
- 1103 (★) **COLOMBIA (Bolivar), 1880, 1p Orange on Bluish Laid Paper (28).** Unused (no gum) with partial left selvage, Fine, signed "VM" (Mozian), **only one sheet of 100 was printed,** rare stamp 400.00
- 1104 ★ **COOK ISLANDS, 1920, 1p Carmine & Black, Inverted Center (62a; SG 71 var.).** Fresh and Fine, Gibbons does not price this variety as they consider it printer's waste, signed "S.A." in pencil (Spencer Anderson)..... 550.00



1105

- 1105 ☒ **COSTA RICA, 1863, ½r Blue (1).** With right selvage, tied on April 25, 1868 folded letter to San Jose, Fine and scarce E. 1,500-2,000
- 1106 ★ **CYPRUS, 1880, 1p Red, Plate 220 (2; SG 2).** Original gum, h.r., Fine, Scott Retail \$550.00, SG value £ 350.00
- 1107 ★ **CZECHOSLOVAKIA, 1934, National Anthem Souvenir Sheets (200a-201a).** Unused (without gum as issued), Very Fine*Not illustrated* 650.00
- 1108 ☐ **DENMARK, 1926-27, 7o Surcharges (185-191).** Used blocks of four, Fine-Very Fine**(Photo Ex)** 660.60
- 1109 ★ **ESTONIA, 1919, 5r Dark Blue, Green and Pale Blue (26; Michel 13B).** Margins all around, tiny margin tear at right, otherwise Very Fine, rare stamp with only **40 issued,** several signatures, Michel value 1,000 Euros 500.00



1110

- 1110 ☒ **FRANCE, 1849-50, 1fr Dark Carmine (9c; Yvert 6).** Five singles, faults and/or slightly cut in, on 1853 folded letter to San Francisco Cal., range of transits incl. orange red London "Paid", reasonably attractive and a very scarce high franking, signed Calves and with his certificate 4,050.00

- 1111 ★ **FRANCE, 1853, 25c Blue on Bluish (17; Yvert 15).** Original gum, lightly hinged, large margins to clear incl. **sheet margin at right**, bright color, small ink spot at bottom left not mentioned on accompanying certificate, otherwise Very Fine, with 1993 Calves certificate and with his backstamp, Brun backstamp, Scott Retail \$1,900.00, Yvert value e 2,500.00



1111



1112

- 1112 ★ **FRANCE, 1862, 40c Pale Orange (27 var; Yvert 23a).** Original gum, h.r., bright color, faint horizontal crease, short perfs at bottom right, otherwise Fine, Scott Retail \$1,050.00 as normal Orange shade, Yvert value e 1,250.00



1113



1114



1115



1116

- 1113 ★ **FRANCE, 1862, 80c Rose (28; Yvert 24).** Original gum, h.r., brilliant color, choice centering for this difficult issue, fresh and Extremely Fine, Calves backstamp, with 1989 Renon certificate, Scott Retail \$1,000.00, Yvert value e 1,400.00
- 1114 ★ **FRANCE, 1876, 10c Green, Ty. I (68; Yvert 65).** Original gum, faintly hinged (appears Mint N.H.), pretty color, pretty color, fresh and Fine, Scott Retail \$800.00, Yvert value e 1,200.00
- 1115 ★ **FRANCE, 1876, 20c Red Brown, Ty. II (70; Yvert 67).** Original gum, barely hinged, deep rich color and proof-like impression, Very Fine and choice, signed Raybaudi and with 1999 certificate, Scott Retail \$500.00; Yvert value e 750.00
- 1116 ★ **FRANCE, 1903, 30c Violet, Imperforate (142a; Yvert 133c).** Horizontal pair, three wide margins, Very Fine, Yvert value 1,530 Euros 950.00



1117

1118

1120

- 1117 ☒ **FRENCH ANTARCTIC TERRITORY, 1872-73, 5c Yellow Green, 15c Bistre, 40c Orange (53, 61, 59; Yvert 53, 55, 48).** Horizontal pair of 40c, tied by "Le Havre Jul. 17, 1876" double-circle datestamps on folded letter to Buenos Ayres, Argentina, red boxed "P.P." handstamp, blue crayon rating also ties two stamps, light horizontal file fold well clear of stamps, Very Fine, attractive three-color franking to Argentina E. 400-500
- 1118 ☒ **FRENCH ANTARCTIC TERRITORY, Republique Francaise * Iles Kerguelen * Residence de France.** Perfect strike of Ty. II cancel ties France 25c stamp (168; Yvert 140) on cover addressed to Louis Delore at Le Havre, France, fresh and Very Fine, scarce early usage from Kerguelen, Calves handstamp at left E. 1,000-1,500
- 1119 ★★☐ **FRENCH ANTARCTIC TERRITORY, 1955, 15fr Deep Green & Deep Ultramarine (1; Yvert 1).** Mint N.H. sheet of 50 with selvage on all sides, deep rich color on bright paper, choice centering with wide margins, fresh and Extremely Fine, a pristine sheet, Scott Retail as singles 725.00
- 1120 ☒ **FRENCH COLONIES, 1859, 10c Bister on Yellowish, 40c Orange on Yellowish (3, 5).** Horizontal pair and strip of three respectively, margins all around, tied by lozenges of diamond on cover to Paris, rimless "Pointe-A-Pitre Guadeloupe 1 Fev 1865" circular datestamp, red Colonies Fra. V. Angl. double circle, cover creases, otherwise Very Fine E. 200-300

END OF FIRST SESSION



1121



1122



1124EX

IPOSTA

1123



1126



1127



1130



1128



1129EX

SECOND SESSION (LOTS 1121-1437)

FRIDAY, DECEMBER 14, 2007, AT 1:30 P.M.

- 1121 ★ **GERMANY (BREMEN), 1855, 3gr Black on Blue, Ty.I-III (1, Michel 1y).** Horizontal strip of three, original gum, huge margins all around, right stamp trifle heavy natural vertical wrinkle, otherwise Extremely Fine, Michel value 1,300 Euros 525.00
- 1122 ★ **GERMANY (SCHLESWIG-HOLSTEIN), 1850, 2s Rose and Pink (2; Michel 2).** Margins all around, part original gum, bright colors, Very Fine, Michel value 700 Euros . 525.00
- 1123 ★★ **GERMANY, 1930, IPOSTA Souvenir Sheet (B33; Michel Block 1).** Mint N.H., couple minor margin bends, otherwise Extremely Fine, Michel value 1,500 Euros 950.00
- 1124 ★★ **GERMANY, 1933, 20pf-40pf Wagner (B55a, B56, B57; Michel 506A, 507A, 505B).** Mint N.H., 20pf trivial perf flaw top left, otherwise Fine-Very Fine, Scott Catalogue does not adequately identify these perforation varieties, Michel value.....(Photo Ex) e 2,250.00
- 1125 ★★ **GERMANY, 1933, Nothilfe souvenir Sheet (B58; Michel Block 2).** Mint N.H., tiny translucency in extreme left margin, otherwise Extremely Fine, Michel 7,000 Euros 4,500.00
- 1126 ☒ **GERMAN OFFICES IN TURKEY, 1908, 5c-100c Surcharges (55-59; Michel 48-52).** Tied on printed address registered cover by Constantinople circular datestamps, Berlin back-stamp, Very Fine..... E. 200-300
- 1127 **GERMAN OFFICES IN MOROCCO, 1900, 25pi on 5m Slate and Carmine, Ty. II (24B; Michel 23II).** Tied on piece by Constantinople circular datestamp, beautifully centered, Extremely Fine, Scott Retail \$350.00, Michel value e 550.00
- 1128 ★★ **GERMANY (BERLIN), 1949, 10pf-30f Currency Victims (9NB1-9NB3).** A "Triptych" from the souvenir sheet with inscription margin at top, Mint N.H., Very Fine, Michel value 450 Euros..... 350.00
- 1129 ★★田 **GERMANY (BERLIN), 1949, 10pf + 5pf-30pf + 5pf Currency Victims (9NB1-9NB3).** Mint N.H. top right corner margin blocks of four with counter numbers, Very Fine (Photo Ex) 1,050.00
- 1130 ★★ **GERMANY, Russian Zone (East Saxony), 1945, 12k Red (Michel 41).** Mint N.H., Very Fine, very scarce, on sale for only eight hours, Michel value..... e 500.00

GREAT BRITAIN



1131

- 1131 **1840, 1p Black (1; SG 2).** Plate 11, lettered P-I, ample to large margins, bold MC cancel, fresh and Very Fine, rare from Plate 11, this plate unspecified in Scott, with 2001 B.P.A. certificate, Stanley Gibbons value £ 3,800.00



1132



1133



1134



1135

- 1132 **1840, 1p Black (1; SG 2).** T-J, large to huge margins, light red Maltese Cross cancellation, Extremely Fine Gem, SG £250 275.00
- 1133 **1840, 1p Black (1; SG 2).** Plate 6, lettered A-F, large to mostly huge margins, red MC cancel, Extremely Fine Gem, truly outstanding, SG £275 275.00
- 1134 **1840, 1p Black (1; SG 2).** Plate 8, lettered S-B, large to huge margins incl. part of adjoining stamp at top and bottom, neat red MC cancel, Extremely Fine and choice, SG £275 275.00
- 1135 **1840, 1p Black (1; SG 2).** Four-margin single from Plate 8, pretty color, bold strike of Maltese Cross cancel, toned spot at center which looks as though it may have been caused by application of a wax seal to assist in affixing this to its cover, otherwise Very Fine, SG value..... £ 325.00



1137



1138



1136EX

- 1136 **1840, 1p Black (1; SG 2).** Two, one used with black MC cancel (C-E), small scissors-cut, other P-F and cancelled by red MC cancel on Jan. 13, 1841 folded letter from Liverpool to Preston, Fine.....(Photo Ex) E. 200-300
- 1137 **1840, 2p Blue (2; SG 4).** Horizontal strip of three, lettered I-C/I-E, choice margins plus a bit of the next stamp at left, wonderful deep rich color, each with neat black MC cancel, lightly creased between stamps, otherwise Extremely Fine, handsome appearance,SG £1,950..... 1,950.00
- 1138 **1840, 2p Blue (2; SG 5).** Horizontal strip of three, LF-LH, large margins to clear, rich color, neat strikes of Maltese Cross cancel, faint vertical crease at center, appears Very Fine, SG £1,800 as singles, Scott Retail as singles 1,725.00



1139

1140

- 1139 **1841, 2p Blue (4; SG 14).** Lettered H-A, huge margins all around showing bits of two adjoining stamps, numeral grid cancel, Extremely Fine Gem, SG £75 85.00
- 1140 **1847, 1sh Green (5; SG 54).** Horizontal pair, large margins to just in, cancelled by "466" barred ovals on blue folded cover to Boston Mass., neat "Liverpool F.R.H. JU 7, 1856" backstamp, red "5 Cents" credit, large Boston receiving datestamp, right stamp affected by light vertical file fold, left stamp with pre-use vertical crease, appears Very Fine, with 2006 P.F. certificate E. 750-1,000



1141



1142



1143

- 1141 **1882, £1 Brown Lilac on White Paper (92a).** Well-centered, slightly smudgy circular datestamp, Very Fine, SG £6,500 6,300.00
- 1142 **1883, 2sh6p Lilac (96; SG 178).** Original gum, bright color, fresh and Fine, SG £400 450.00
- 1143 **1884, 10sh Ultramarine (109; SG 183).** Original gum, single hinge mark, bright color, faint natural gum bend, Very Fine, SG £1,500 1,725.00



1144



1145



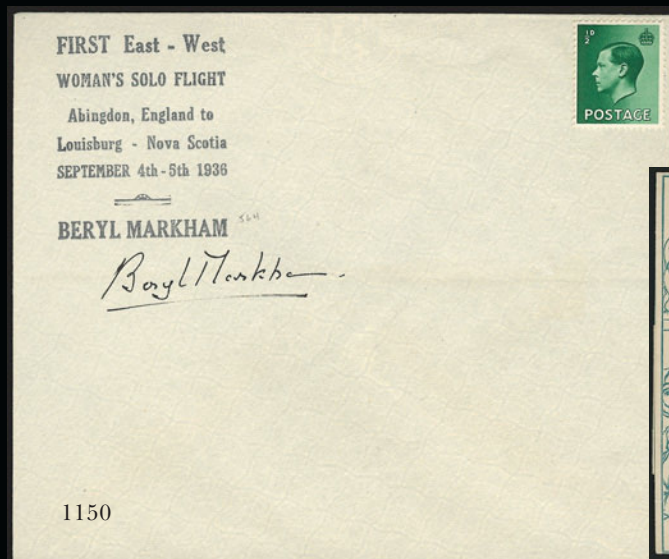
1148



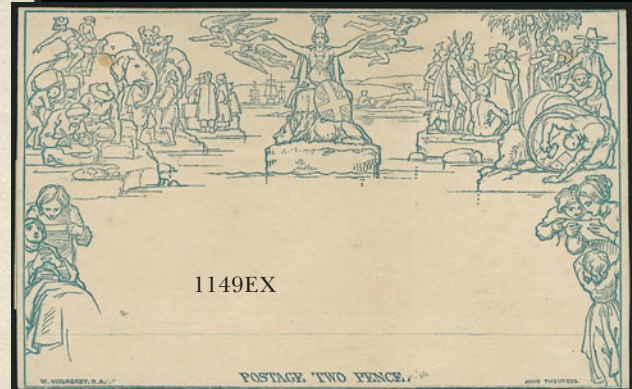
1147EX



1146



1150



1149EX

- 1144 1888, £1 Brown Violet (123). Rich color, choice centering, few faults incl. creases, appears Very Fine, SG £3,250..... 3,750.00
- 1145 ★★ 1929, £1 Black, Postal Congress (209; SG 438). Barely hinged, **bottom right sheet corner margins**, beautifully centered, uncommonly fresh and bright, Extremely Fine, with 2005 P.F. certificate, SG £750 850.00
- 1146 ★ 1929, £1 Black, Postal Congress (209; SG 438). Fresh, well-centered, very lightly hinged, Extremely Fine 850.00
- 1147 ★★田 1951, 2sh6p-£1 George VI (286-289; SG 509-512). Mint N.H. margin blocks of four, fresh, Fine-Very Fine, SG £360 as hinged.....(Photo Ex) 490.00
- 1148 ★★田 1955, 5sh Red on Yellow (J54). Mint N.H. top margin block of four, fresh and Fine 380.00
- 1149 ☒ 1840, 1p-2p Mulready Envelope (U1-U2). Unused, first A19, second a99, few trivial wrinkles or age spots, appear Fine-Very Fine, SG £525(Photo Ex) 675.00
- 1150 ☒ Beryl Markham First East-West Trans-Atlantic Solo Flight, September 4-5, 1936 (AAMC Record Flight 1265). Markham autograph signature beneath six-line handstamp cachet on European size cover franked with uncanceled Great Britain ½p Edward VIII, none of the **26 flown covers** bear postal markings due to a hasty take-off and forced landing at Louisburg, Nova Scotia, Very Fine, Ms. Markham, who passed away in August 1986 at the age of 83, was a colorful woman who learned to fly while living in Kenya 400.00

- 1151 (★) **GUATEMALA, 1882, 5c Red & Green, Inverted Center (23a).** Unused (no gum), bright colors, centered to left, almost Fine example of this rarity, hinged on original hand-drawn watercolor exhibition page..... 3,000.00



1151



- 1152 ★★田 **HONG KONG, 1954-60, 5c-\$10.00 Elizabeth II (185-198).** Mint N.H. blocks of four with selvage, fresh, Fine-Very Fine.....(Photo Ex) 1,097.00
- 1153 ★★田 **HONG KONG, 1962, 5c-\$20.00 Elizabeth II (203-217).** Mint N.H. blocks of four with selvage, Very Fine.....(Photo Ex) 1,000.00
- 1154 ★★ **HUNGARY, 1951, 60f Rose Lilac, First Stamp Issue Anniversary Souvenir Sheets, Perforated and Imperforate (C95 vars.).** Mint N.H., imperforate minor corner bend at bottom, otherwise Very Fine, only 1,200 of each printed and given to exhibitors and members of the organizing committee of the exhibition.....(Photo Ex) 2,600.00



1155



1156



1157



1158



1160EX



1161EX



1162EX



1164EX



1165EX



1166



1167



1163EX



1168



1169



1170



1171EX

- 1155 ★ **ICELAND, 1873, 2sk Ultramarine (1).** Original gum, very lightly hinged, Fine and attractive 1,000.00
- 1156 ★ **ICELAND, 1873, 2s Ultramarine, Imperforate (1a).** Horizontal pair, unused, without gum as issued, huge margins all around, Extremely Fine 1,250.00
- 1157 ★田 **ICELAND, 1873, 4s Carmine, Perf. 12½ (6).** Block of four, original gum, slight hinge reinforcement, trivial rounded top right corner perf, otherwise Fine-Very Fine, with 1963 D.F.P. certificate 5,600.00
- 1158 **INDIA, 1854, 4a Red and Blue, First Printing (6; SG 18).** Huge margins, neat octagonal grid cancel, Extremely Fine Gem, SG £425..... 450.00



1159

- 1159 匣 **INDOCHINA, Zeppelin Flight.** Registered cover bearing Nos. C4, C6, C8 and C14, tied by "Saigon-Central Cochinchine 16-7 34" datestamps to Pernambuco, Brazil, Friedrichshafen transit and red cachet, Koln and receiving backstamps, Very Fine, very rare, with 2006 P.F. certificate E. 2,000-3,000
- 1160 ★ **ISRAEL, 1948, 250m-1000m First Coins (7-9).** Set with tabs, 500m and 1000m also with selvage at sides, lightly hinged, Fine-Very Fine, Scott Retail as Mint N.H. (Photo Ex) 6,000.00
- 1161 ★★ **ISRAEL, 1948, 250m-1000m First Coins (7-9).** Mint N.H. tab singles, 250m tiny gum soak at bottom, 500m tiny perf thin, 1000m trivial natural inclusions, still Fine-Very Fine (Photo Ex) 6,000.00
- 1162 ★★ **ISRAEL, 1948, 250m-1000m First Coins (7-9).** Mint N.H., 250m with selvage at right, Fine-Very Fine (Photo Ex) 410.00
- 1163 ★★田 **ISRAEL, 1948, 250m-1000m First Coins (7-9).** Mint N.H. top left sheet corner margin blocks of four, Fine-Very Fine..... (Photo Ex) 1,500.00

JAPAN

- 1164 ★ **1871, 48m-200m First Issue on Native Laid Paper (1-3).** Unused (without gum as issued), margins all around, Fine-Very Fine (Photo Ex) 775.00
- 1165 (★) **1871, 48m-200m First Issue on Laid Paper, Plates I and II (1, 2b, 3).** Unused (without gum as issued), margins all around, Very Fine..... (Photo Ex) 1,050.00
- 1166 ★ **1871, 500m Blue Green on Wove Paper (4d).** Unused (without gum as issued), margins essentially all around, large three sides, Very Fine..... 525.00
- 1167 **1872, ½s Brown, Top Character in Top Label Missing Diagonal Top Strokes (9a).** Feb. 11, 1875 postmark, couple short perfs at right, otherwise Fine, scarce and seldom seen variety..... 1,250.00
- 1168 **1872, ½s Brown on Wove Paper, Top Character in Left Label Missing Two Diagonal Top Strokes (9a).** Light cork cancel, Very Fine..... 1,250.00
- 1169 ★ **1874, 45s Lake, Syl. 2 (50).** Original gum, h.r., usual rough perfs but still Very Fine 1,250.00
- 1170 (★) **1874, 45s Lake, Syl. 3 (50).** Unused (no gum), short perf, otherwise Very Fine 1,200.00
- 1171 ★ **1888-92, 5r-1y Chrysanthemums (75-84, 81a).** Original gum, beautiful fresh colors, couple with small gum creases as typically seen, Fine-Very Fine (Photo Ex) 686.50



1172EX



1173



1174



1175EX



1176



1177



1178



1179EX



1184EX



1183



1182



1186

- 1172 ★★ **1899-1907, 2s, 4s, 10s Booklet Panes of Six (96, 99, 103 vars.).** Mint N.H. with interleaving, Fine-Very Fine, scarce, unlisted in Scott**(Photo Ex)** E. 400-500
- 1173 ★ **1908, 5y Green (113).** Exceptionally well-centered, small h.r., Extremely Fine 750.00
- 1174 ★ **1908, 10y Dark Violet (114).** Well-centered, minor h.r., Very Fine and attractive 1,000.00
- 1175 ★ **1914, 5y Green, 10y Violet (146-147).** Lightly hinged, fresh colors, Very Fine.....**(Photo Ex)** 1,025.00
- 1176 S **1916, 10y Ceremonial Cap, "Mihon" (Specimen) Ovpt. (154S).** With right selvage, tiny stain spot in margin between stamp and selvage, also another tiny one on back of stamp (does not show through), otherwise Very Fine, very scarce, Scott Retail as normal unused stamp 625.00
- 1177 ★ **1916, 10s Ceremonial Cap (154).** Faintly hinged, Fine and attractive 625.00
- 1178 ★★ **1916, 10y Ceremonial Cap (154).** Mint N.H., also incl. the two low values of the set in Mint N.H. condition, Very Fine, Scott Retail as hinged 630.75
- 1179 ★ **1924, 5y Gray Green, 10y Dull Violet (188-189).** Fresh and Fine.....**(Photo Ex)** 535.00

- 1180 ★田 **1925, 1½s, 8s Silver Anniversary, Imperforate (190, 192 vars.).** Blocks of four, without gum as issued, huge margins, one 1½s with preprinting crease, otherwise Extremely Fine, only one sheet of 50 of each value without gum found, these may be proofs but nevertheless are rare and desirable, these are the only two values of the set of four found imperforate**(Photo Ex)** E. 1,500-2,000



1180EX

- 1181 ★★ **1935, 1½s to 10s Battleships (218-221).** Mint N.H. sheets of 20, bright colors, Very Fine and choice, Scott Retail as singles.....*Not illustrated* 342.00
- 1182 ★★ **1935, 1½s New Year's Miniature Sheet of 20 (222a).** Mint N.H., Very Fine, Scott Retail as hinged 600.00
- 1183 ★★ **1937, 1y Yellow Green and Maroon 252).** Mint N.H. horizontal strip of three with **bottom imprint margin**, fresh and Very Fine, scarce E. 400-500
- 1184 ★★田 **1946-47, 50y Bister Brown, 100y Brown Carmine (369, 371-372).** Blocks of four, first unused, without gum as issued, last two Mint N.H., Very Fine, Scott Retail as hinged.....**(Photo Ex)** 690.00
- 1185 ★★ **1947, 50y Bister Brown, 100y Brown Carmine (371-372).** Seven and eight respectively, one of former and two of latter hinged, others Mint N.H., Fine-Very Fine, Scott Retail as hinged*Not illustrated* 862.50
- 1186 ★★ **1948, 5y Philatelic Week Souvenir Sheet (422a).** Mint N.H., Very Fine 400.00
- 1187 **No Lot.**



1189



1190



1199EX



1192



1200



1201EX



1193



1202EX



1196EX



1197



1204



1205EX

- 1188 ★★ 1949, 100y Carmine Lake, 500y Deep Blue (435-436). Mint N.H., Very Fine.....
.....*Not illustrated* 700.00
- 1189 ★★田 1949, 100y Carmine Lake (435). Mint N.H. horizontal block of six, Very Fine . 2,250.00
- 1190 ★★田 1949, 500y Deep Blue (436). Mint N.H. horizontal block of six with bottom imprint
selvage, Very Fine 1,950.00
- 1191 ★★田 1949, 10y-16y Views (439-442). Mint N.H. sheets of 20, each with marginal inscription
publicizing various exhibitions, Fine-Very Fine, scarce set of sheets
.....*Not illustrated* 1,880.00
- 1192 ★★ 1949, 5y Children's Exhibition Souvenir Sheet (456). Mint N.H., Very Fine 300.00
- 1193 ★★ 1949, 8y Postal Week Souvenir Sheet (479a). Mint N.H., Fine-Very Fine 600.00
- 1194 ★★田 1949-52, 8y, 10y Famous Japanese Personages (480-492, 497). Mint N.H. miniature
sheets of twenty, incl. the "key" No. 492, also extra No. 484, Fine-Very Fine
.....*Not illustrated* 3,175.00
- 1195 ★★田 1950, 8y Athletic Meet, Se-Tenant Strip of Four (508a). Mint N.H. miniature sheet of 20
containing five se-tenant strips of four, Very Fine*Not illustrated* 750.00
- 1196 ★★ 1950-52, 30y-500y Pictorials (520-521B). Mint N.H., Fine-Very Fine.....
.....(Photo Ex) 1,010.00
- 1197 ★★田 1951, 50y Dark Brown (521). Mint N.H. horizontal block of eight with bottom left selvage
and imprint, Very Fine..... 880.00
- 1198 ★★田 1951, 8y, 24y Scenic Spots, Miniature Sheets of 20 (525-526). Mint N.H., Very Fine.....
.....*Not illustrated* 1,650.00
- 1199 ★ 1919, 1½s, 3s First Air Post (C1-C2). Fresh and Fine-Very Fine(Photo Ex) 710.00
- 1200 ★★ 1934, Communications Day Souvenir Sheet (C8). Mint N.H., few minute gum toning
specks of little consequence, otherwise Very Fine..... 2,200.00
- 1201 ★★ 1951-52, 15y-160y Airplanes (C14-C15, C18-C24). Mint N.H., first three are bottom right
corner margin imprint blocks of six, first two some natural gum creases as usual, Fine-
Very Fine(Photo Ex) 686.50
- 1202 ★★ 1951-52, 15y-160y Airplanes (C14-C24). Mint N.H., Very Fine.....(Photo Ex) 532.75

- 1203 ★ 1872, Tosa Local Stamp, Bright Red on Native
Laid Paper. Unused, without gum as issued, huge
margins, Extremely Fine, a very scarce official local
issue whose central wording translates "Official
Service/Carry Day or Night" E. 750-1,000

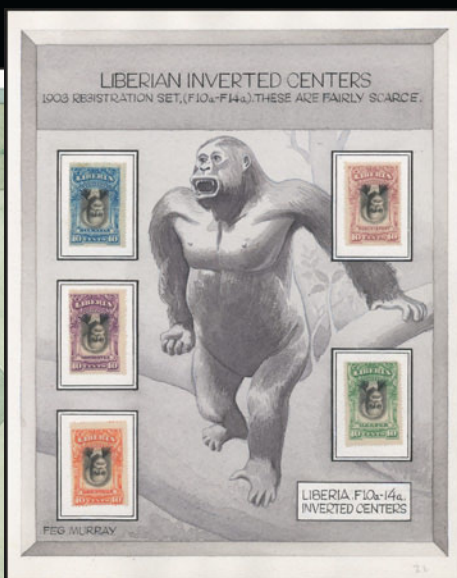


1203

- 1204 1942, Occupation of Kwangtung, 8c Olive Green (1N26). Very Fine, scarce..... 300.00
- 1205 ★★ KOREA, 1957, 15h-30h Christmas and New Year Souvenir Sheets (265a-267a). Mint
N.H., Very Fine.....(Photo Ex) 1,575.00



1206



1207



1208



1210EX



1209EX



1211

- 1206 ★ **LIBERIA, 1906, 1c-\$2.00 Pictorials, Inverted Centers (101a-102a, 104a, 106b-107a, 109b-112a).** On original hand-drawn watercolor exhibition page, fresh and bright, Fine-Very Fine..... 552.50
- 1207 ★ **LIBERIA, 1903, 10c Registration, Inverted Centers (F10a-F14a).** On original hand-drawn watercolor exhibition page, one with small light margin gum stain, otherwise Fine..... 500.00
- 1208 ★★ **LIECHTENSTEIN, 1934, 5m Vaduz Souvenir Sheet (115).** Mint N.H., faint bend one corner from photo mount, Very Fine 2,450.00
- 1209 ★★ **LUXEMBOURG, 1956, 2fr-4fr Europa (318-320).** Mint N.H., Very Fine..... (Photo Ex) 850.00
- 1210 ★田 **LIECHTENSTEIN, 1936, 1fr, 2fr Graf Zeppelin (C15-C16).** Bottom right corner margin blocks of four with part imprint, three stamps of each Mint N.H., Very Fine..... (Photo Ex) 425.00
- 1211 ☒ **LUXEMBOURG, 1935, 5c-20fr Semi-Postals (B65A-B65Q).** Complete set, tied by "Luxembourg 7.12.35" circular date stamps on registered cover to Winterthur, Switzerland, few small toned spots, appears Very Fine, colorful franking. E. 1,500-2,000



- 1211A ☒ **MALAYSIA, Penang to Canada.** 1847 cover with boxed "Penang 18/Bearing" handstamp with ms. "Jany. 11" and addressed to Richmond Canada, bold "1/4Cy" in circle rating handstamp, various Canadian transits incl. London and receiving backstamps, also with red "MR 6, 1847" London (England) transit backstamp, minor wear, Very Fine, scarce, reportedly the only stampless cover from Penang to Canada, ex Arnell and Steinhart..... E. 1,000-1,500
- 1212 **MARIANA ISLANDS, 1901, 5m Slate and Carmine (29; Michel 19).** Tied on piece by "Saipan Marianen 17/9 07" circular datestamps, Very Fine, with 1985 P.F. certificate, Scott Retail \$475.00, Michel value..... e 600.00
- 1213 ★ **MARSHALL ISLANDS, 1897, 3pf Light Brown (1a; Michel 11b).** Part original gum, well-centered, lightly toned, otherwise Very Fine, with 2007 B.P.A. certificate, Michel 4,500 Euros..... 3,600.00
- 1214 **MAURITIUS, 1848, 1p Red Orange on Bluish Paper, Intermediate Impression (5a; SG 10).** Large to huge margins, neat target cancels, small thin spot, Extremely Fine appearance, SG £2,000..... 2,400.00
- 1215 ★ **MAURITIUS, 1859, (9p) Magenta (11; SG 29).** Original gum, lightly hinged, margins all around, mostly large, Very Fine, scarce in this fresh condition with original gum, SG £650 650.00

MEXICO



- 1216 ☒ **1856, 1r Yellow, 2r Yellow Green (First Plate) 2, 3).** "Hermosillo" district names, on folded cover tied by "Franco En Hermosillo" double straight lines on Sept. 1857 folded cover, light staining and tiny erosions along cover file fold, otherwise Fine, scarce, signed John Bash..... E. 300-400
- 1217 **1856, 4r Red (4).** Large to huge margins, ms. "Zacatecas" district name, cancelled by two large "O's", insignificant crease at top well clear of design, Very Fine and scarce..... E. 750-1,000



1218



1219

- 1218 ✉ **1861, 2r Black on Pink (8).** Tied by Victoria double oval on folded cover to Matamoros, additional strike on reverse of cover, Fine E. 200-300
- 1219 **1864, 2r Blue (15).** "Saltillo" district name, oval town cancel, h.r., and single sort perf., otherwise, Very Fine 1,000.00



1220

- 1220 **1864, 1p Black (17).** "Monterrey" district name, double-circle town cancel, centered to top

FINE. A RARE EXAMPLE OF THE 1864 HIDALGO ISSUE OVERPRINTED FOR THE DISTRICT OF MONTERREY. ONE OF THE GREAT RARITIES OF MEXICO PHILATELY.

According to Linn's *Philatelic Gems* (Vol. 2), the Mexican government provided each of the 56 districts with a handstamp bearing the district name. After the French invaded Mexico in 1863, the Mexican government retreated first to Saltillo and then to Monterrey. Very few were used from either Saltillo or Monterrey, which accounts for their great rarity. 22,500.00

- 1221 **1867, 4r Red, "Mexico" Ovpt. (37).** Large to huge margins, light double circle circular datestamp, Very Fine..... 3,250.00

1221



- 1222 ★田 **Porte De Mar, 1884 Unissued 10c-100c Black on Yellow.** Complete sheet of 49, original gum, partially se-tenant with fourteen of the 10c, seven each 25c, 35c and 50c, four each of 60c and 85c and three each of 75c and 100c, there are four varieties of the 10c and two each of the 25c, 35c and 50c, creased between third and fourth horizontal rows, otherwise Very Fine, Porte De Mar stamps were used to indicate the amount of cash to be paid the captains of the mail steamers taking outgoing foreign mail.....*Not illustrated* E. 200-300
- 1223 **1892, 5p Carmine (228).** Fairly light corner cancel, Very Fine..... 900.00
- 1224 **1892, 10p Carmine (229).** Very lightly cancelled, single short perf, otherwise nearly Fine..... 1,250.00
- 1225 **1892, 10p Blue Green (230).** Neat corner cancel, couple really trivial perf. flaws and small margin thin spot, otherwise Very Fine..... 1,200.00
- 1226 ★ **1898, 5p Carmine Rose (290).** Original gum, h.r., Fine 500.00
- 1227 ★ **1898, 10p Deep Blue (291).** Very lightly hinged, nicely centered, Very Fine..... 750.00



1228

1228 **1913, 5c Black and Red, "Sonora", Perf 12, Tête-Bêche Vertical Pair with Gutter Between (321 var.).** Without gum as issued

FINE-VERY FINE. PROBABLY THE RAREST CIVIL WAR ISSUE AND HIGHLY COLLECTABLE IN THIS FORMAT.

This issue was printed in sheets of ten with a wide gutter between rows and no selvage at either top or bottom. 8,500.00

- 1229 ★ **1914, 20c Yellow Brown, "Torreon" Ovpt. (367).** Lightly hinged, fresh and Very Fine..... 2,500.00
- 1230 ★ **1915, 50c Red Lilac and Black (446).** Lightly hinged, Very Fine 500.00
- 1231 ★ **1915, 5p Carmine and Black (448).** Large margins and well-centered, trivial short corner perf, otherwise Very Fine..... 750.00
- 1232 ★ **1915, 50c Carmine and Black, "Villa" Monogram on 1903 Issue (454).** Attractively centered and lightly hinged, Very Fine, scarce, listed but unpriced E. 500-750
- 1233 ★★ **1916, 15c Lavender and Claret (516).** Mint N.H., Fine and attractive, Scott Retail as hinged..... 475.00
- 1234 ★ **1916, 60c Red on 2c Green (585).** Deep rich colors, fresh and Fine 425.00
- 1235 ★ **1916, 60c Red on 2c Green (590).** Lightly hinged, Fine, not regularly issued 450.00



1230



1231



1232



1229



1233



1234



1235



- 1236 S **1917, 1c-5p Regular Issue (618-623, 626-628).** Along with 10c Blue (574), all over-printed "Muestra" (Specimen) and affixed on special 1917 multicolor card, central printed inscription in French from the Director General of the Mexican Postal System wishing the recipient best wishes for the New Year, creased along bottom affecting three stamps, otherwise Fine-Very Fine, it is believed that there are only two of these presentation sheets in existence (see MEPSI Vol. 25, No. 3, Page 1, 7/76), scarce collateral item *Not illustrated* E. 400-500

- 1237 ★ **1934, 5c-10p University (698-706).** Fine-Very Fine set, also incl. No. RA13B **(Photo Ex)** 1,579.00

- 1238 **1937, 2c Scarlet, Perf 10½, Watermarked Lines and "SECRETARIA DE HACIENDA MEXICO" (735A).** Used, attractively centered

VERY FINE. A RARE AND ELUSIVE ISSUE THAT IS ONLY KNOWN IN USED CONDITION.

..... 4,000.00



1238

- 1239 ★ **1934, 20c-20p University (C54-C61).** Fine-Very Fine set, the "key" 20p handsomely centered and choice **(Photo Ex)** 1,617.00
- 1240 ★ **1934, 20c-20p University (C54-C61).** Lightly hinged, Fine-Very Fine **(Photo Ex)** 1,617.00
- 1241 ★ **1935, 20c Brown Carmine, Amelia Earhart Overprint. (C74).** Wonderfully well-centered, lightly hinged, Extremely Fine, Sanabria handstamp guarantees and signed I. Heiman and with his 1974 certificate 3,250.00
- 1242 ★★ **1939, 20c Sarabia (C93A).** Mint N.H. with selvage at right, Extremely Fine, Scott Retail as hinged 450.00



1243



1245

1244



Rev. A. L. Groot
 Amsterdamsch
 Canis G. C. Cato Esq
 D. V. V. V.



1247EX



1250



1246EX



1251EX

Sam. Hallett Esq
 Hampton



1249



1258



1254



1255EX



1259EX



1256



1260EX

- 1243 **NATAL, 1857, 3p Rose (1; SG 4).** Margins nearly all around, tied on small piece by Natal circular datestamp, Fine, with 1977 Royal certificate, SG £400 550.00
- 1244 ☒ **NATAL, 1857, 3p Rose (1; SG 4).** Margins to slightly in, on fresh cover to Durban tied by "Post Office P.M. Burg" (Pietermaritzburg) handstamp, Fine, with 1990 Holcombe certificate, Gibbons minimum value on cover £ 800.00
- 1245 (★) **NETHERLANDS, 1852, 15c Orange (3).** Unused (no gum), margins all around, Very Fine C\$ 650.00
- 1246 ★★ **NETHERLANDS, 1949-51, 5c-10g Juliana (306-322, 325-327).** Mint N.H., Very Fine, NVPH value 1,660 Euros (Photo Ex) 1,113.30
- 1247 **NEW BRUNSWICK, 1851, 1p-1sh First Issue (1-3).** Used, margins virtually all around (barely in on one side of the 1sh), 3p Red "PAID" cancels, 6p Blue Oval grid, small faults, some trivial, Fine appearing lot (Photo Ex) 6,100.00
- 1248 **NEW BRUNSWICK, 1851, 3p Red, 6p Olive Yellow (1, 2).** Seven and two respectively, used, essentially all with four margins, also incl. 5c Connell proof with faults (not included in value), stamps generally Fine *Not illustrated* 4,475.00
- 1249 ☒ **NEW BRUNSWICK, 1851, 3p Red (1).** Ample to huge margins, tied by barred oval on neat orange cover to Hampton (Ferry), partial strike of "St. Johns N.B. AP 1 1856" backstamp and clear strike of receiving backstamp, flap tears and small piece missing, otherwise Very Fine, ex Emerson E. 200-300
- 1250 **NEW BRUNSWICK, 1851, 6p Olive Yellow (2; SG 4).** Full to huge margins, intense color on deeply blued paper, well-struck oval grid cancel, Extremely Fine and choice, SG £700 .. 900.00
- 1251 P田 **NEW BRUNSWICK, 1860, 5c Connell, Plate Proof on India (5P).** Left margin block of four, large to mostly huge margins other sides, **large plate scratch across right pair from top to bottom on slight angle**, bottom right light crease, otherwise Extremely Fine, also incl. Dark Brown single with Red Serif Letters "Specimen" Ovpt. no. 5Piii, on original card, narrow side margins, Fine (Photo Ex) C\$ 1,575.00
- 1252 (★) **NEWFOUNDLAND, Imperforate Heraldics.** Thirty stamps between Nos. 1 to 23, one used, others unused (no gum) to part to full original gum, incl. six examples of No. 8 and blocks of four of Nos. 22 and 23 (latter with watermark), condition much better than typically seen, mostly Fine-Very Fine *Not illustrated* 3,580.00

- 1253 **NEWFOUNDLAND, 1857, 4p Scarlet Vermilion (4).** Horizontal pair, margins essentially all around, wide at sides, each with light rimless circular grid cancel, tiny insignificant thin speck extreme top right corner
- STILL FINE FOR THIS FIRST ISSUE
NEWFOUNDLAND RARITY. POSSIBLY UNIQUE
AS A MULTIPLE.
- Ex Carey Fox and Robert Pratt .. 6,000.00



1253

- 1254 ★ **NEWFOUNDLAND, 1857, 8p Scarlet Vermilion (8).** Part original gum, ample to large margins, vivid color, Very Fine 325.00
- 1255 (★) **NEWFOUNDLAND, 1857, 8p Scarlet Vermilion (8).** Two singles, one small part original gum, other unused (no gum), large to huge margins, brilliant colors, Extremely Fine (Photo Ex) 650.00
- 1256 ★ **NEWFOUNDLAND, 1868, 5c Black (26).** Original gum, fairly lightly hinged, beautifully centered, Extremely Fine 250.00
- 1257 ★田 **NEWFOUNDLAND, 1865-94, 12c and 24c Victoria (28, 29, 31).** Original gum blocks of four, Fine-Very Fine *Not illustrated* 540.00
- 1258 ★田 **NEWFOUNDLAND, 1865, 24c Pale Red Brown on Thin Yellowish Paper (28a).** Block of four, original gum, bottom right stamp natural gum wrinkle, otherwise Fine, scarce 1,700.00
- 1259 ★ **NEWFOUNDLAND, 1870-73, 3c Vermilion, Blue (33-34).** Original gum, Fine (Photo Ex) 575.00
- 1260 ★ **NEWFOUNDLAND, 1876-79, 1c-5c Pictorials, Rouletted (37-40).** Large part original gum, 1c is horizontal pair, Very Fine (Photo Ex) 935.00



1261EX



1262



1263EX



1264EX



1265EX



1267EX



1269



1270



1272



1271



1273EX



1277



1274

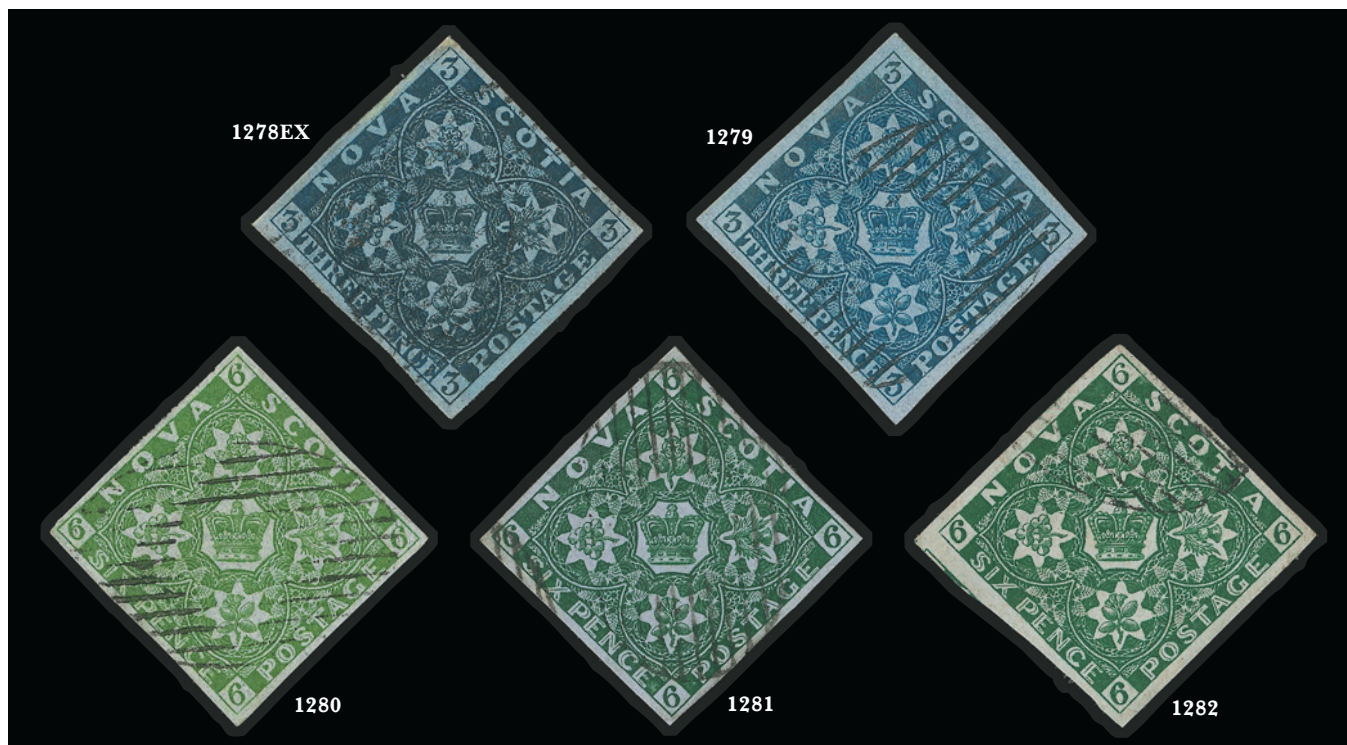


1275



1276

- 1261 ★田 **NEWFOUNDLAND, 1880-94, 5c Pale Blue, Dark Blue, Bright Blue (53-55).** Original gum blocks of four, the three listed shades of the 5c Harp Seal, bottom pairs of last two Mint N.H., first few small creases, otherwise Fine-Very Fine, Scott Retail as hinged singles.....**(Photo Ex)** 1,950.00
- 1262 ★田 **NEWFOUNDLAND, 1887, 10c Black (59).** Original gum block of four, bottom pair Mint N.H., Fine-Very Fine, Scott Retail as four hinged singles 400.00
- 1263 ★田 **NEWFOUNDLAND, 1897, 1c-60c Anniversaries (61-74).** Original gum blocks of four, majority of stamps Mint N.H., incl. two Mint N.H. sets except one each 1c and 15c hinged, few natural gum creases, otherwise Fine-Very Fine, Scott Retail as two hinged sets and two Mint N.H. sets**(Photo Ex)** 1,534.30
- 1264 ★田 **NEWFOUNDLAND, 1897, 1c-60c Anniversaries (61-74).** Original gum blocks of four, each with small central h.r., Fine-Very Fine**(Photo Ex)** 1,128.60
- 1265 ★★田 **NEWFOUNDLAND, 1908, 2c Rose Carmine (86).** Two Mint N.H. horizontal books of eight, Fine-Very Fine.....**(Photo Ex)** 1,000.00
- 1266 ★ **NEWFOUNDLAND, 1910-11, 1c-15c Guy, Lithographed and Engraved (87-103).** Complete sets of singles plus some blocks of four (3c, 4c, 6c Ty. I and II Litho and 6c and 15c Engraved), few h.r., few stamps in blocks Mint N.H., Fine-Very Fine; also a 12c Engraved Proof on wove paper, imperforate, strong impression but weak color, creased (not counted)*Not illustrated* 1,748.00
- 1267 ★★田 **NEWFOUNDLAND, 1929-31, 1c-20c Pictorials (163-171).** Mint N.H. blocks of four, Very Fine.....**(Photo Ex)** 850.40
- 1268 ★ **NEWFOUNDLAND, 1931-33, 5c-\$1.00 Air Post (C6-C11, C13-C17).** Two, one and three complete sets respectively, Very Fine*Not illustrated* 848.00
- 1269 **NEW SOUTH WALES, 1851, 2p Ultramarine, Bluish, Pl. I (Sc. 14a; SG 52).** Bottom left corner sheet margins, large on other sides, "64" oval grid (West Maitland), Extremely Fine Gem, SG £30..... 47.50
- 1270 **NEW SOUTH WALES, 1851, 2p Grayish Blue, Bluish, Pl. I (Sc. 14b; SG 55).** Large to enormous margins incl. part of sheet margin, oval grid, Extremely Fine Gem, a gorgeous stamp, SG £30..... 47.50
- 1271 ★ **NIUE, 1902, 1p Carmine, Green Handstamp "NIUE" Ovpt. (1; SG 1).** Attractively centered, Very Fine, signed H. Bloch, SG £300..... 375.00
- 1272 ★ **NIUE, 1920, 6p Deep Green & Red Brown, Inverted Center (39a).** Single with top right sheet corner selvage, Fine, also incl. Penrhyn Island 1p Red and Black Inverted Center No. 26a with a horizontal crease, otherwise Very Fine, Gibbons does not list these two varieties because, according to footnotes, these "were never supplied to the post office" 1,350.00
- 1273 ★ **NORTH WEST PACIFIC ISLANDS, 1915, 10sh Pink & Gray, £1 Ultramarine & Brown (9-10).** Fresh, Fine-Very Fine, SG £535**(Photo Ex)** 625.00
- 1274 (★) **NORTHWEST PACIFIC ISLANDS, 1915-16, 1p Carmine, Substituted Cliche (12 var.; SG 67ca).** Plate 2R, R6/4, unused (no gum), small corner crease, otherwise Very Fine, with 2007 B.P.A. certificate, Gibbons value £ 1,200.00
- 1275 ★ **NORTHWEST PACIFIC ISLANDS, 1918-23, 1p Carmine Red, Substituted Cliche (41 var.; SG 103a).** Plate 2R, R6/4, large part original gum, Fine, with 2007 B.P.A. certificate, Gibbons value..... £ 700.00
- 1276 **NORTHWEST PACIFIC ISLANDS, 1918-23, 1p Carmine Red, Substituted Cliche (41 var.; SG 103ba).** Plate 2R, 6/4, Rabaul circular datestamp, Fine, with 2007 B.P.A. certificate, Gibbons value £ 425.00
- 1277 ★ **NORTHWEST PACIFIC ISLANDS, 1915-16, 5SH Yellow and Gray (22; SG 92).** Vertical strip of three, **complete setting of the ovpt**, nice margins and centering, center stamp Mint N.H., Extremely Fine, SG £210 240.00



- 1278 **NOVA SCOTIA, 1851, 3p Bright Blue, Dark Blue (2-3; SG 2-3).** Five total, incl. three of former, all have ample to large margins, all are fresh and Very Fine, SG £720.....**(Photo Ex)** 1,100.00
- 1279 **NOVA SCOTIA, 1851, 3p Dark Blue (3; SG 2).** Huge well-balanced margins all around, rich color on nicely blued paper, light strike of oval grid cancel leaves design clearly visible, Extremely Fine Gem, a superb stamp in every respect, SG £160..... 250.00
- 1280 **NOVA SCOTIA, 1851, 6p Yellow Green (4; SG 5).** Large margins, rich color, neat grid cancel, Extremely Fine and choice, ex Reford, SG £450..... 550.00
- 1281 **NOVA SCOTIA, 1857, 6p Dark Green (5; SG 6).** Full to large margins, deep rich color, light strike of oval grid cancel, fresh and Extremely Fine, ex Reford, SG £750. 1,500.00
- 1282 **NOVA SCOTIA, 1857, 6p Dark Green (5; SG 6).** Huge margins all around incl. part of one adjoining stamp, deep rich color, light strike of oval grid cancel, Extremely Fine Gem, a superb stamp, ex Moody, SG £750 1,500.00

- 1283 **NOVA SCOTIA, 1851, 1sh Cold Violet (7; SG 7).** Ample to very large margins except a trifle close partially on one side, light oval grid cancel
FRESH AND FINE. A SCARCE AND ATTRACTIVE
EXAMPLE OF THE NOVA SCOTIA ONE-SHILLING
COLD VIOLET.
SG £5,000 6,000.00



1283



1284EX



1287EX



1288



1285



1286EX



1289

- 1284 ★ **NYASALAND PROTECTORATE, 1908, ½p- £1 Edward VII (1-10; SG 73-81).** Fine-Very Fine, SG £700(Photo Ex) 790.25
- 1285 ★ **NYASSA, 1901, 2½r-300r Giraffes and Camels, Inverted Centers (26-38 vars.).** On original hand-drawn watercolor exhibition page, Fine-Very Fine 650.00
- 1286 ★★田 **PAPUA AND NEW GUINEA, 1952, ½p-£1 Pictorials (128-136).** Mint N.H. bottom imprint margin blocks of four, fresh, Fine-Very Fine(Photo Ex) 472.00
- 1287 ★ **PERU, 1857, 1r Blue on Blue, 2r Brown Red on Blue (1, 2).** Part original gum, ample to large margins, 1r light crease, Fine-Very Fine appearance.....(Photo Ex) 2,600.00
- 1288 ★ **PRINCE EDWARD ISLAND, 1861, 3p Blue (2).** Original gum, shows frame break top left, this may be a constant flaw but is not mentioned in Unitrade, Fine, with 1996 C.P.E.S. certificate 1,000.00
- 1289 ㊟ **PRINCE EDWARD ISLAND, 1862, 1p Yellow Orange (4).** Two, tied by grids, "Summerside P.E. Island Dec. 21" circular datestamp on mourning cover to Charlotte Town, 1868 backstamp, receipt docketing at right, some overall soiling, Fine E. 300-400

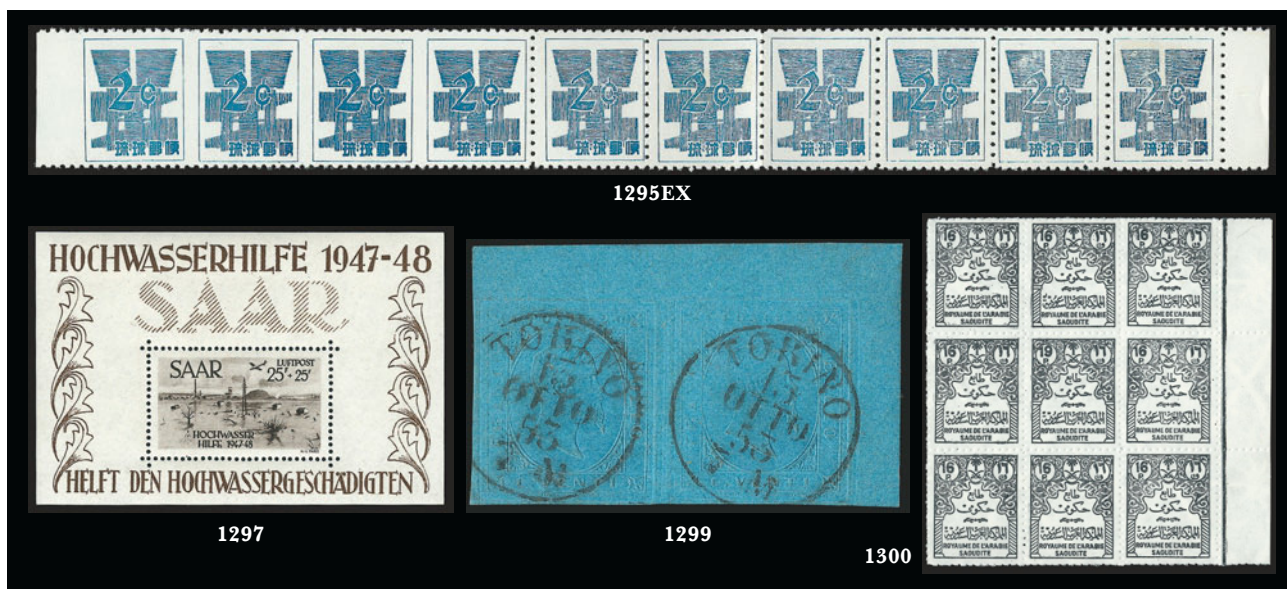


- 1290 **QUEENSLAND, 1860, 1p-3p Victoria (1-3).** The complete First Issue imperforate set, ample to large margins essentially all around, neat cancels of the period, Fine-Very Fine, SG £3,300(Photo Ex) 4,250.00
- 1291 ✉ **RHODESIA, 1890-94, ½p Blue and Vermilion, 2p Gray Green and Vermilion (1, 3; SG 18, 20).** Single of former, horizontal strip of three of latter, tied by "Bulawayo Matabeleland Ap 5 95" circular datestamps on 1895 cover to El Paso Texas, some cover edge creases and wrinkles from contents (no longer with cover), still Fine and scarce E. 300-400
- 1292 ★ **RHODESIA, 1892, £2 Rose (17; SG 11).** Original gum, bright color, Fine, SG £400 400.00
- 1293 **RUSSIA, 1857, 10k Brown & Blue (1).** Ample to large margins, neat strike of straightline cancel, Very Fine 800.00

- 1294 ✉ **RUSSIA, 1857, 10k Brown & Blue (1).** Large margins, tied by "9" in oval of dots, Taurrogen boxed handstamp on Sept. 23, 1858 folded cover to Mittau, Very Fine and choice, signed H. Bloch 3,500.00

1294





- 1295 ★ **RYUKYU ISLANDS, 1958, ½c-10c Currency Conversion Provisionals, Imperforate Between (44b, 45a, 46d, 47b, 48b, 50b).** Without gum as issued, ½c strip of six with error pair in center, 2c strip of ten with error strip of four at left, 3c vertical strip of three, bottom pair the error, others pairs, Fine-Very Fine, scarce and seldom seen.....(Photo Ex) 1,700.00

- 1296 ★★田 **RYUKYU ISLANDS, 1950, 8y-16y First Air Post and Special Delivery (C1-C3, E1).** Mint N.H. margin blocks of four, Very FineNot illustrated 960.00

- 1297 ★★ **SAAR, 1948, 25fr+25fr Flood Relief Souvenir Sheet (CB1a; Michel Block 2).** Mint N.H., Very Fine, Michel value 600 Euros 475.00

- 1298 (★) **SAMOA, 1914, 1sh on 1m Carmine (110; SG 110).** Unused (regummed), Very Fine, with 2007 B.P.A. certificate, SG £3,250 as original gum, Scott Retail as original gum..... 3,000.00



- 1299 **SARDINIA, 1853, 20c Dull Blue, Embossed (5; Sassone 5).** Top right corner margin horizontal pair, close at left and bottom, fresh and bright paper, clear and crisp embossing, cancelled by two neat strikes of "Torino 15 Otto 53" circular datestamp, Extremely Fine, a superb pair used during the first month of issue, ex Ackerman, signed twice in pencil incl. once by Diena, Sassone 500 Euros 350.00

- 1300 ★★田 **SAUDI ARABIA, 1965, 16p Black, 19p Black Error, Official (O36, O36a).** Block of nine, center stamp the error, Mint N.H., Fine-Very Fine 1,850.00

- 1301 ★田 **SAUDI ARABIA, 1965, 16p Black, 19p Black Error, Official (O36, O36a).** Complete sheet of 25, the error in Position 14, 19 stamps Mint N.H. (incl the error), six others with gum disturbances (several minor) and three of these with thin spots, right and top selvage partially defective but neatly repaired, otherwise Fine-Very Fine, over \$4,000.00 in sound catalog valueNot illustrated 4,650.00



1302



1303



1305



1304



1309



1307



1308



1310



1311

- 1302 **SERBIA, 1866, 10pa Orange (4).** Nicely centered, boxed green "(NAPL)ACENO" cancel, Very Fine and scarce, with 2002 Dr. Velickovic certificate..... 500.00
- 1303 ☒ **SOMALI COAST, 1894, 15c and 25c Pictorials (12-13).** Former on back, latter on front of 1900 Registered/Mourning cover, tied by blue Djibouti Aug. 30, 1900 double circle datestamp, other transits and handstamps, minor cover edge flaws, Fine-Very Fine E. 200-300
- 1304 (★) **SPAIN, 1850, 12c Lilac (2).** Unused (no gum), margins all around, Fine and attractive, Roig handstamp guarantee and with 1968 A.I.E.P. certificate..... 2,300.00
- 1305 ★★ **SPAIN, 1953, 50p Sorolla (C144).** Mint N.H., Very Fine..... 675.00

- 1306 ★ **ST. HELENA, 1922, 15sh Violet & Black on Blue (94; SG 113).** Fresh and Very Fine, SG £850 1,025.00



1306

- 1307 ★ **ST. HELENA, 1922, £1 Red Violet and Black on Red (99; SG 96).** Well-centered, Very Fine, SG £400..... 475.00
- 1308 **SWITZERLAND, 1855, 10r Blue, Second Bern Printing (27; Zumstein 23Cd).** Fabulous margins incl. top left sheet corner, shows interesting frame variety at right (Zumstein 23Cd.2.02), light Riehen 5. Pk. circular datestamp, Extremely Fine, with 1992 Renggli certificate, Scott Retail as ordinary stamp..... 45.00
- 1309 ★★ **SWITZERLAND, 1934, NABA Souvenir Sheet (226),** Mint N.H., Very Fine 900.00
- 1310 **SWITZERLAND, 1915, 5c Green on Buff, Tete-Beche Pair (B2a).** Bold Dec. 27, 1915 circular datestamp, Very Fine, several signatures 875.00
- 1311 ★ **TRINIDAD, 1856, (1p) Brick Red, Blued Paper (1, SG 8).** Ample to large margins, original gum, h.r., fresh and Very Fine, ex Lilly, SG £170..... 200.00

COLLECTION LOTS BY COUNTRY

- 1312 **Afghanistan, 1873-1997.** One volume, used and unused, early issues spotty, fairly complete after 1927 with singles, complete sets and souvenir sheets, also a few covers, generally Fine-Very Fine..... E. 500-750
- 1313 **Australia, 1913-81.** One volume, nearly all used, better items incl. used Nos. 127, 132 and O1-O2, unused 37, 95a and 365-379 (Mint N.H.), also 127-129 "Specimen" ovpts., Fine-Very Fine E. 750-1,000
- 1314 ★ **Austria, 1850-2002.** Two volumes, nearly complete, mostly unused, incl. Nos. 106-109 (used), 110a-144, B87-B92, B110, B110a, Air Post complete with C54-C60 Mint N.H., also back-of-book, Fine-Very Fine with few exceptions..... E. 1,000-1,500
- 1315 **Austria, 1850-1950.** Nearly complete used and unused collection for these years in one album, incl. 1910 Birthday Jubilee set unused, used 1931 Rotary set, 1933 WIPA regular and granite paper unused, 1936 10s Dolfuss, better Semi-Postal and Air Post sets, some Offices and Occupations, overall Fine-Very Fine..... E. 1,000-1,500
- 1316 ★ **Belgian Congo, 1886-1965.** One volume, fairly complete and mostly unused, of note are over 25 1917-29 covers and cards and a set of N17-N24 German East Africa Occupation on "Wilson" covers, while the stamps are inexpensive, they are surprisingly difficult to find on cover, Fine-Very Fine, also incl. some Ruanda Urundi E. 750-1,000

- 1317 ★ **Belgium, 1849-2002.** Very handsome largely complete collection in four volumes, mostly unused with some Mint N.H., many better incl. Nos. 121 (used), 124-137, 170a, 171, B45-B47, B69-B71 with "L" Ovyts., B114-B122, B132-B143, excellent Parcel Post, also an 1882 Progress Proof of an unissued 2fr design, overall Fine-Very Fine, desirable lot E. 2,000-3,000
- 1318 **Brazil, 1844-1900.** Used and unused on pages, incl. Postage Dues and Newspapers, generally Fine-Very Fine 1,150.75
- 1319 **Canada Small Queens, Ottawa and Montreal Printings.** Well over 200 used stamps on pages, considerable duplication but there are a few nice cancels and shades to be found, also incl. one page of Victoria Maple Leaf Issues of 1897-98 and 1898-1902, all used except three unused original gum (Nos. 66, 71 and 83), generally Fine-Very Fine E. 750-1,000
- 1320 ★ **Canada, King George V "Admiral" Issue, 1911-26.** Small stock of about 75 unused stamps and four booklet panes, incl. Nos. 115 (four), 116 (six, one no gum), 118 (six, four Mint N.H.), 119 (four), 120, 130 (two strips of four, end stamps Mint N.H.), 133, 136-138 (five or six of each) and 139 (Mint N.H. block of four), a few with faults, some h.r., vast majority Fine-Very Fine..... E. 750-1,000
- 1321 ★ **Canada.** Collection on pages, incl. few used earlier issues (catalog \$357.00), essentially complete unused from 1912 Admirals through 1939 with all dollar values plus Air Post, Special Delivery and Postage Dues, Fine-Very Fine lot..... 4,484.00
- 1322 ★ **Canada, 1898-early 1950's.** Nearly 200 different unused stamps on stock sheets, incl. Jubilee to 50c, Victoria Maple Leafs to 8c, Quebec to 20c, Admirals complete, Scroll and Arch sets complete plus the subsequent four \$1.00 values, also some Air Post and couple Special Delivery, Fine-Very Fine lot E. 750-1,000
- 1323 ★ **Canada Accumulation.** Well over 200 stamps, mostly on stock pages, virtually all late 1920's to the early 1950's, many blocks of four with Nos. 152, 173, 190 and C4, booklet panes with Nos. 153a, 166c (two) and 218a, eight George V coil pairs, also a sprinkling of earlier material with couple better Victoria Maple leafs and a 20c Edward VII, a little stuck together material included but not counted, quite a bit Mint N.H. and overall a nice clean Fine-Very Fine lot..... E. 1,000-1,500
- 1324 ★ **Canada Accumulation.** Several hundred stamps, 1930's to 1970's, incl. Regulars, Commemoratives, some Air Post, Special Delivery, a few Postage Dues and Officials, vast majority are blocks of four and plate no. blocks of four incl. few matched sets, largely Mint N.H., Fine-Very Fine, nice clean lot..... E. 750-1,000
- 1325 **Canada Small Accumulation.** About 125 used and unused stamps on approval cards, material ranges from Imperf Pence Issues to George V, several better incl. Admirals apparently complete (50c and \$1.00 Mint N.H.), generally Fine-Very Fine.... E. 300-400
- 1326 **Canada.** Small used accumulation of about 60 stamps on a stock sheet, incl. 1c First Decimal, Large Queens with three ½c, six 1c and fifteen 3c, some Small Queens, two 8c and one 10c Jubilee, 20c Victoria Maple Leaf, 20c and 50c Edward VII, 15c Quebec, three each 50c "Blue Nose" and Grand Pre plus a few others, generally Fine-Very Fine, useful lot..... E. 400-500
- 1327 **Cape of Good Hope, 1853-64.** Mounted collection of over 200 Triangular stamps, virtually all used, incl. Dies "A" and "B", shades, pairs, blocks, on piece and on cover, incl. one each of the two "Woodblock" values and used Mafeking No. 178, some with faults or cut in but still a fair number of very attractive stamps to be found, overall Fine for these, this is part of the Warren Latshaw award winning exhibition collection..... E. 5,000-7,500
- 1328 **Cape of Good Hope Triangular Issues, 1853-58.** Over 60 used stamps on pages identified as Die "A" or Die "B", few slight shade variations, Very Good-Fine..... E. 750-1,000
- 1329 ★ **China and People's Republic of China, 1878-2002.** Rather complete for both in five volumes, incl. many better singles and sets, China incl. better early issues, Nos. 1041, 1095a (staple bends one side), Air Post, back-of-book and Local Posts, mostly unused, Fine-Very Fine..... E. 5,000-7,500
- 1330 **Colombia Collection.** Two volumes, nearly complete with virtually all of the Classic Issues, Air Post from 1920 with an interesting showing of unlisted C11 vars. in multiples incl. Tete-Beche, back-of-the-book and States, also one volume of covers, virtually all First Days of the late 1960's to early 1970's, E. 1,500-2,000
- 1331 ★ **Colombia "SCADTA" Overprints.** One volume mounted collection of approximately 220 different, virtually all unused stamps, incl. handstamped and machine printed issues, quite a few complete sets, better incl. Denmark machine printed and Germany Baranquilla handstamps, also legal size "EU" cover with pairs of the 10c, 3c and a single 1p with Colombian postage, Fine-Very Fine collection, some signed Kessler, Rendon and others..... E. 1,500-2,000

- 1332 **Colombia Varieties Collection.** Small album containing about 50-75 items, incl. imperforates and part perforates, "Specimens" (some archival with tiny punch holes as always), inverted and double ovpts., printed on both sides, proofs and essays, spelling and denomination errors, etc., mostly unlisted, overall Fine-Very Fine, a fabulous lot of scarce material and a must for the specialist E. 1,500-2,000
- 1333 ☒ **Colombia Covers, 1846-1930.** Approximately 80 in two binders, starts with stampless cover from Bogota to James Buchanan as Secretary of State, stamps incl. Nos. 4, 17, two 31, 31a to Paris, 38, 39, 54, 54b, three 81, each with 5c U.S. Postage Due No. J4; 82, two U.S. No. U179 Entires used from Colon to U.S., 104 and 106 combination, 109, 131 and F8 combination and more, generally Fine-Very Fine, scarce lot..... E. 3,000-4,000
- 1334 ★ **Egypt Collection, 1866-1954.** One volume, virtually complete for the period and nearly all unused, incl. better singles, many complete sets, Air Post and other back-of-book, Fine-Very Fine E. 500-750
- 1335°★★ **Europa Topical, 1950-83.** Massive specialized collection in twelve Lighthouse volumes, begins with Europa-Union period with better Saar, Luxembourg, Greece and Portugal, 1953 Belgium with complete black proof and set of imperforate pairs, the Europa issues from 1956-83 include year sets, perforated and imperforate singles, miniature and souvenir sheets, covers, trial color proofs, die proofs, artist's signed proofs, Austrian "Black" proofs and more, a few better highlights include Belgium 1956-59 with Black proofs, deluxe sheets and imperforates, 1962 composite trial color die proofs in Vermilion and Turquoise Blue, France 1957 two different artist progress proofs, various trial color and issued color plate proofs, 1958 composite Black die proof, trial color large die and plate proofs, 1959 trial color plate proofs and issued dies, Liechtenstein 1960 and Luxembourg 1956 First Day covers and Greece Nos. 539-541 Mint N.H. blocks of four with full offset on reverse (almost as strong as the impression on front, really remarkable), a 1966 common design with Black omitted, presumably all the stamps are Mint N.H., Fine-Very Fine, incredibly comprehensive valuable collection which is ideal for expansion and continuation..... E. 10,000-15,000
- 1336 **France Collection, 1849-1963.** Very comprehensive one volume collection which is virtually complete for the period less about twelve stamps, early issues mostly used, later virtually all unused, many better incl. Nos. 197, 226 (used), 241, 246, C1-C2, C14-C15 (used), C17 and J40 to name a few, also incl. some Offices Abroad, French Colonies 1859-1906, French Occupation of Germany 1947-49, Saar and Memel, etc., early issues typical mixed condition, later on virtually all Fine-Very Fine, nice collection..... E. 2,000-3,000
- 1337 **France, 1849-1992.** Collection of hundreds of used and unused stamps in three hingeless albums, almost complete, includes some better items such as used Nos. 9, 21, 37 and C15, unused Nos. B8-B9, B66-B67, C1-C2 and C14, the more modern material appears to be all Mint N.H., also incl. a less valuable, mostly used collection from 1849-1972, there are a few lightly stuck in mount and some very trivial toning, otherwise vast majority Fine-Very Fine..... E. 1,000-1,500
- 1338 **France, 1849-1949.** Nearly complete, nearly all used collection on pages, incl. 10c, 15c, 40c and 1fr Carmine First Issue, 1853 1fr Napoleon, 1863-71 5fr, 1917-18 1fr and 5fr War Orphans (unused), First Air Post set of two (unused), later Air Post with 1936 50f Emerald and Bank Note used, condition on the early material is slightly mixed but still nicer than typically seen, otherwise Fine-Very Fine E. 1,000-1,500
- 1339 **France Used Collection, 1849-1900.** On Lighthouse hingeless pages, virtually complete for these years with the exception of some the more valuable earlier issues, incl. Nos. 1, 3, 9b, two 5fr Laureated No. 37, Nos. 38-48, Peace and Commerce Issues almost complete, includes a few varieties, also some 1871-77 French Colonies, some duplicates (a few run into the early 20th Century), range of cancels, few faults as usually found but condition better than most (all imperfs have four margins), generally Fine-Very Fine E. 2,000-3,000
- 1340 ☒ **France Covers.** The Petetin correspondence, 1836-75, nearly 30 covers from France to Grand Coteau, Louisiana, nice variety of markings incl. "New York U.S. Notes 18", red "New York Ship", red straight line "Ship", one 2fr40c Registered rate with red "Charge", London and New York registry handstamps, "New York Due 10 U.S. Currency", "N.Y. Steamship 10", red "Baltimore Am. Pkt. Paid", red "2" over "cents" and more, most of the frankings are the more common, however there are two of note, the first a **triple mixed issues cover** with Nos. 23, 36 and 56, the other 30c and 40c 1870-71 Bordeaux Issue singles with large to mostly huge margins, quite attractive and scarce, other covers mixed condition although generally Fine, a nice lot for the Trans-Atlantic specialist E. 300-400
- 1341 ☒ **France, Fancy Cancels on Peace & Commerce Stamps.** Sixteen covers used between 1898-1900, all with "R.F." in waving flag cancels of Paris incl. few different designs, fresh and Very Fine..... E. 300-400

- 1342 **France and Colonies Collection, 1843-2002.** Eleven volumes (one is France 19th and 20th Century covers), wide range of issues and Colonies, France proper incl. 1964 PHILALEC Deluxe Proof and Nos. C1-C2, generally less expensive material but a lot of it and very attractively displayed, overall Fine-Very Fine E. 1,500-2,000
- 1343 P **French Area Die Proofs.** Assortment of 109 different, incl. Cambodia and Laos, much topical material, Very Fine E. 400-500
- 1344° P **French Southern and Antarctic Territory Proofs Collection.** Wonderful holding of Large Die Proofs, Deluxe Proofs, Progressive Trial Color Plate Proofs and few other Plate Proofs, incl. **seven signed by the artist**, incl. one hand-painted Progressive Large Die Essay for No. 10, another "Epreuve D'Etat" for the same issue, also five Large Die Proofs for the same issue as well as some also hand-colored artists's proof for No. 22 and a few others for the same issue, all are pristine and Very Fine, an excellent opportunity to acquire a highly exhibitable holding of these beautiful proofs..... E. 12,000-15,000
- 1345 ☒ **French Southern and Antarctic Territory Covers.** Eleven, incl. seven with Nos. 8-10 with cachets and four with Nos. 28 and 30, one of latter from XIX Expedition, various cancels incl. Terre Adelie, Archipel-des-Crozet, Kerguelen, Iles St. Paul et Amsterdam, fresh and Very Fine E. 500-750
- 1346 ★ **Germany and Areas Collection, 1850's-2002.** Strong comprehensive collection in eight spring-back binders (two are covers, one other contains only a few pages), incl. States, Colonies, Offices Abroad, Occupations incl. 10NB11, excellent Berlin with UPU set, booklet panes, varieties, 9NB1-9NB3 on cover, 9NB3a, Germany proper regular issues with Post Horns complete, strong Semi-Postals with many booklet panes, better Souvenir Sheets as B33, B58 and B68, and all of the later early 1950's sets, Air Post complete, and more, mostly unused with some Mint N.H., earlier issues somewhat mixed condition as typically seen, otherwise vast majority Fine-Very Fine E. 5,000-7,500
- 1347 **German Areas Collection.** Many hundreds of mostly used stamps in an album and on pages, incl. States, Germany proper, Occupations, Saar and other areas, substantially complete with many better items, excellent Wurttemberg with used 18kr values and an original gum 70kr, strong Saar, Germany with 5m Reichpost, OSTROPA souvenir sheet, better Semi-Postals, o.g Polar Flight set, and much more, there are varieties and a section of used inflation (not expertized but look genuine), generally Fine-Very Fine, a valuable and very appealing collection..... E. 4,000-5,000
- 1348 **Germany Stock.** Large Elbe expandable stock book, starts with Semi-Postals and includes several better early Souvenir Sheets, the N.H. sets from the early 1950's, French Occupation, Berlin with No. 9N1-9N3 (three sets, two Mint N.H.) and 9NB3a Souvenir Sheet (Mint N.H., edge crease) and some Saar, also two binders of virtually all used Germany between Nos. 2 and 1530, mostly Fine-Very Fine E. 1,000-1,500
- 1349 **German Offices and Colonies.** Essentially complete used and unused collection on pages, incl. better as unused Offices in China, Morocco and Turkey 5m "Reichost" (Turkey Ty. 1), Kiauchau \$1½ and \$2½ unwatermarked, some useful duplication, virtually all Fine-Very Fine E. 2,000-3,000
- 1350 ★★ **Germany (Berlin) Collection, 1948-55.** Mint N.H. on stock sheets, incl. nos. 9N1-16, 35-11, B1-B13, B3a (extra sets of 1-16 and B1-3), **all key stamps signed Schlegel**, Very Fine, Michel value 6,575 Euros E. 1,500-2,000
- 1351 **German Democratic Republic Collection, 1949-90.** Twelve volumes in all, six are covers from the first issue onward and incl. better such as Nos. 82-84 "set" cover, 83, block of four and B21a, four are for the unused stamps which are probably complete for the period and most likely all Mint N.H., incl. singles, blocks, booklets, booklet panes and souvenir sheets, the eleventh album is Russian Zone and incl. East Saxony Michel No. 41, the last is only a few pages and contains German Fieldpost and Propaganda issues, Fine-Very Fine, an exceptional lot of this collecting area..... E. 1,500-2,000
- 1352 **Great Britain, 1840-1948.** Solid used collection on pages, incl. Nos 1, 2, 5-7, 27, 28, two each 40 and 42, 53, 55, three, 56, 57, three, 65, 75, 93, 108, 109, two, 110, 123, 124, 140-142, 206, some Officials and Turkish Offices, typical mixed condition, generally Fine-Very Fine as these collections are seen..... E. 2,000-3,000
- 1353 ☒ **Great Britain, 1840, 1p Black (1; SG 2).** Eleven covers, one front and a fragment, variety of dates and plates, generally Fine lot 5,775.00
- 1354 **Great Britain.** Wholesale lot of used Castles (between nos. 309/528), approximately 300 stamps, virtually all Fine-Very Fine..... 1,688.50
- 1355 **Greece Mint and Used Collection and Accumulation, 1861-1961.** Virtually complete used and unused collection in Scott Specialty album including Occupations, plus collection balances, duplicates, some "upgrades" from used to unused and a few covers, generally Fine-Very Fine..... E. 4,000-5,000

- 1356 **Greece Collection, 1861-1988.** One volume, nearly complete for the period used and unused, incl. Regular Issues, Commemoratives, Air Post and other back-of-the-book, many better singles and complete sets, Fine-Very Fine collection E. 1,500-2,000
- 1357 ★ **Greenland Collection, 1938-2000.** One volume, apparently complete unused collection, some Mint N.H., incl. 1945 Normal Overprints and the Six Errors, Fine-Very Fine..... E. 750-1,000
- 1358 **Hungary Collection, 1871-1968.** Solid two volume collection with a high degree of completeness, incl. many imperforates (1958-62) and Souvenir Sheets such as No. C81 perforated (unused and on First Day Cover) and unused imperforate, overall Fine-Very Fine E. 1,500-2,000
- 1359 ★ **Iceland Collection, 1873-2002.** One volume, nearly complete and nearly all unused, incl. Nos. 85, 98, 140, 149, 152-166, 232-235, 245 (used), 273, C4-C11, O2 (used), O53-O67 and more, virtually all Fine-Very Fine, nice collection..... E. 1,000-1,500
- 1360 ☒ **Indochina, Covers.** Ten, from 1897-1922, most addressed to U.S. and sent registered, colorful frankings with most bearing 1919-22 surcharged issue, Very Fine, worthwhile group E. 1,500-2,000
- 1361 **Iran Collection 1868-2001.** One volume, nearly complete used and unused, many better sets and singles, Regular Issues, Semi-Postals, Air Post and other back-of-the-book, virtually all Fine-Very Fine, No. 809 with 2000 Sadii certificate E. 1,000-1,500
- 1362 **Israel Used Collection, 1948-62.** Pages of used tabbed singles, incl. Nos. 1-9 and also the three rouletted values, J1-J5, fairly complete for period covered, overall Fine-Very Fine... E. 750-1,000
- 1363 ★ **Italy Collection, 1862-2002.** Two volumes, nearly complete and mostly unused, some Mint N.H., better incl. Nos. 142A-142D (used), 170, B11a, B14, C27 and CO2, also back-of-the-book, Offices and some Colonies, virtually all Fine-Very Fine..... E. 1,500-2,000
- 1364 **Japan Collection, 1872-1964.** Incredibly attractive mounted collection in two volumes (stops in 1951) and is nearly complete from 1883 incl. some blocks, better booklet panes, “Mihons” (Specimens) from the late 1940’s to 1951, extensive informative typewritten descriptions of each issue, and a third volume containing Postal Stationery and WWII Occupations of Kwangtung China and the Philippines, lastly there are two additional volumes, one for Cacheted Covers of the 1964 Olympics and the other about 200 Post Cards with First Day cancellations from the late 1950’s to early 1960’s, virtually all Fine-Very Fine, should be viewed to fully appreciate E. 5,000-7,500
- 1365 ★ **Japan Collection, 1872-2003.** Hundreds of virtually all unused stamps mounted in seven spring-back binders, incl. singles, sets, booklet panes, blocks, miniature sheets, much Mint N.H., better items throughout as No. C8 Souvenir Sheet (slight gum toning), some earlier questionable or not genuine as often is the case and not included in our estimate, overall Fine-Very Fine, pleasing collection E. 3,000-4,000
- 1366 ★★☐ **Japan Souvenir and Miniature Sheet Collection, 1934-51.** Well over 100 items mounted in an album, vast majority Mint N.H. (possibly all), incl. 1934 Red Cross, 1935 Emperor’s Visit, 1938-41 National Parks Souvenir Sheets, thirteen different 1951 Tourist Propaganda sheets (527/540), 1951 Children’s Day (541), 1951 Peace Treaty (546-548), also a few later issues, Fine-Very Fine E. 3,000-4,000
- 1367 ★★☐ **Japan Miniature Sheets.** Over 200 items in two binders between Nos. 639 to 2125, B12-B14, B43, most are between Nos. 1500 and 1764, also a few Souvenir Sheets and part sheets of definitive values, Mint N.H., Fine-Very Fine..... E. 1,000-1,500
- 1368 **Japan Used and Unused Stock, 19th and 20th Century.** Many hundreds in a large Elbe expandable stock book and three binders, appears to be predominately used, nice variety in various quantities, noted are some better regular issue sets and singles, some Souvenir Sheets and some better Air Post, generally Fine-Very Fine E. 750-1,000
- 1369 ★ **Japan, Offices in China and Korea Collection.** Thirty-eight stamps on pages, incl. China Nos. 1-12, 14-19, and Korea Nos. 1, 2, 4-8, 10-13 and 15, Fine-Very Fine lot.. 1,503.10
- 1370 ★ **Korea Collection, 1885-2003.** Powerful collection in eight volumes, virtually complete with all of the desirable early sets as 13F-15, 18-33, 39-51 and 52-54, post WWII incl. Nos. 211, 285a, 286a, 183, 227-228 Souvenir Sheets, complete “Flag” singles and Souvenir Sheets, loads of better sets, imperforates, imperforate between pairs, some FDC’s, etc., also Pyongyang Locals and other early North Korea, Fine-Very Fine, a splendid collection and a pleasure to view E. 5,000-7,500
- 1371 ★ **Liechtenstein Collection, 1912-2002.** One volume, virtually complete and nearly all unused, many better as Nos. 1-3, 3a (used), 3b, 82-89, 107 (used), 108-110, 114 (used), 116-131, 171 Miniature Sheet, 218 Miniature Sheet (used), complete Air Post and O1-O8, Fine-Very Fine..... E. 1,000-1,500

- 1372 ★★ **Liechtenstein Collection, 1912-95.** Virtually complete for these years, incl. better singles and sets, largely Mint N.H. but there are some expertly regummed stamps scattered throughout, fresh and attractive Fine-Very Fine appearance, a few signed and six with certificates..... E. 1,000-1,500
- 1373 **Liechtenstein Collection, 1912-75.** Largely complete for the period, nearly all unused, incl. better singles, sets and souvenir sheets, also an accumulation of used and unused Worldwide, Fine-Very Fine..... E. 500-750
- 1374 ★ **Luxembourg Collection, 1852-2002.** One volume, virtually complete and nearly all unused, incl. regulars, Semi-Postals, Air Post, Postage Dues and Officials, better noted incl. Nos. 82a, 151 and B65A-B65Q, Fine-Very Fine..... E. 1,000-1,500
- 1375 **Mexico Collection, 1856-1990.** Two volume collection of many hundreds of used and unused stamps, first volume (to 1944) is packed with interesting material, much of which is specialized, there are inverted ovpts., imperforates, proofs, unlisted, shades and other varieties, the second volume slightly duplicates the first to 1944 then is virtually complete to 1990, as is the case with nearly all substantially valuable collections of Mexico there will be many items that require expert scrutiny from the very first issue to about the Revolutionary period, we have taken this into account in our estimate which may be proven to be on the conservative side, generally Fine-Very Fine, one of the more interesting collections of Mexico that we have encountered E. 5,000-7,500
- 1376 **Mexico Collection, 1856-1981.** Largely complete for the period, 19th century mostly used, 20th century virtually all unused, Regulars, Commemoratives and Air Post, incl. many of the difficult overprints and surcharges, plus a few varieties, while the collector seems to have been cautious in collecting genuine stamps there may be some stamps with questionable overprints and we have adjusted our estimate accordingly, nevertheless this is a fairly significant collection of this popular area and condition is nearly all Fine-Very Fine..... E. 4,000-5,000
- 1377 **Mexico First Issue District Names, 1856.** Two volume collection containing about 170 stamps from a variety of Districts, virtually all used, fair number of 4r and 8r values, there are some that are not genuine, otherwise generally Fine-Very Fine, a challenging area for the specialist, the collector has already set up all the pages for the different districts so the new owner only has to go and search for the missing pieces E. 750-1,000
- 1378 **Mexico Collection, 1856-95.** Mostly used on pages, generally Fine-Very Fine... 1,400.00
- 1379 ★ **Monaco Collection, 1885-2002.** Two volumes, virtually complete and mostly unused with some Mint N.H., incl. Regulars, Commemoratives, Semi-Postals, Air Post and Postage Dues, better sets and singles, the First Issue is complete with No. 9 original gum and No. 10 regummed over thin, overall Fine-Very Fine collection..... E. 1,000-1,500
- 1380 **Monaco Collection, 1885-1986.** Largely complete for these years used and unused in one volume, virtually all Fine-Very Fine..... E. 400-500
- 1381 **Netherlands Collection, 1852-2002.** Two volumes, almost 100% complete, used and unused with some Mint N.H., lacks only a few back-of-book, many booklets, better used incl. Nos. 54, 86 and 101, unused Nos. 320-322, Fine-Very Fine..... E. 1,000-1,500
- 1382 ★ **Newfoundland Collection.** Over 150 different unused stamps on stock pages, late nineteenth to 1940's, incl. complete sets, better values, some Air Post featuring \$4.50 Balbo Flight surcharge, Fine-Very Fine lot E. 750-1,000
- 1383 ★ **Newfoundland Collection, 1901-35.** Unused on Scott pages, fairly complete, Fine-Very Fine 1,188.05
- 1384 ★ **Newfoundland Stock.** Approximately 125 stamps on stock sheets, nearly all unused, fairly high percentage of original gum, between Nos. 25 and 130a with a few others, several better stamps in quantity as 25, 26 and 37-40, generally Fine-Very Fine, nice lot from an old time holding..... E. 2,000-3,000
- 1385 ★ **Newfoundland Small Accumulation.** Over 100 stamps, all unused except two, wide variety, some blocks of four, minor duplication, incl. several better sets two unlisted plate proofs of Nos. 88 and 91, heavily etched on thick coated paper, possibly made by thermographic process, Fine-Very Fine lot E. 500-750
- 1386 **Papua New Guinea Collection.** Specialized collection in four volumes, 1901 to the mid-1970's, includes better unused sets such as Nos. 11-18, 94-109 and Air Post, SG perforated "O.S." on and off-cover, SG varieties as Nos. O1 and O57a, one volume with approximately 30 covers with "Relief" No. 7, 8 or 9 cancellations, these were used as temporary markings until the official postmark devices were received by the various post offices, volume of 85 FDC's from 1977-84, all from different towns and one volume of 1962-75 FDC's, some of the covers have light toning, otherwise virtually all Fine-Very Fine E. 3,000-4,000

- 1387 **Portugal Collection, 1853-2000.** Three volumes, virtually complete used and unused, many better singles and sets, nice back-of-book, better noted incl. Nos. 1, 3 (used, signed Calves), 5 and 298, also incl. two volumes of Portuguese Colonies, generally Fine-Very Fine E. 1,500-2,000
- 1388 **Portugal Collection, 1853-98.** Over 75 different virtually all used stamps on pages, nearly complete for the period, generally Fine-Very Fine 2,979.15
- 1389 ☒ **Prussia Covers.** Five items, incl. block of four of Prussia 1sgr. rouletted to Amsterdam, two other Prussia items incl. one front only, two of No. 13 to Amsterdam, one of No. 5 to Amsterdam, two of No. 18 on cover, some faults, appear Fine-Very Fine..... E. 150-200
- 1390 **Russia Collection, 1858-2000.** Five volumes, virtually complete used and unused, some varieties incl. imperfs and a used No. C46a pair, generally Fine-Very Fine E. 1,000-1,500
- 1391 **Saar Collection, 1920-59.** One volume, apparently complete less six stamps (all from second 1920 set of overprinted Bavaria), virtually all unused, incl. all the good Semi-Postal sets and both of the Flood Relief Souvenir Sheets, Fine-Very Fine.... E. 750-1,000
- 1392 ★ **San Marino Collection, 1877-2002.** One volume, apparently complete less a few back-of-book, virtually all unused, incl. all the nice sets from the late 1920's to mid 1930's and the better Air Post sets and singles, also some Souvenir Sheets and a couple Miniature Sheets, Fine-Very Fine, wonderful collection..... E. 2,000-3,000
- 1393 ★ **Saudi Arabia Collection.** The fabulous and very valuable Warren Latshaw collection in five volumes covering the issues from 1916 to 2002, incl. the issues of Hejaz, Nejd and the Kingdom of Saudi Arabia, this is not a one-of-a-kind collection but rather specialized with overprint errors (some in blocks of four), imperforates, unlisted varieties, proofs and complete sheets, some of the Hejaz highlights incl. Nos. L16b, L22, L23, L48a, L51b, L52c, L53a, L63a, **L66b**, L76, L77a, L78, L84, L92, L98, L100a, L105, L123a, LJ17a, LJ22, LJ35-LJ39 and used L70a, L71a and L75a (these three are ex Thoden), Nejd and Kingdom incl. Nos. 33, 55, 115, 138-149 perforated and imperforate, 184a in horizontal pair with normal and a single error in complete sheet of twenty, 313, 323, 340, 341, 413, 419-421, 449, 450, 461 (used), 464, 500, 674, 789 imperforate pair (25 known), **very rare C34**, C37 (two used), C63 (used on and off-cover), C87, C97, J24, O32, O36-O36a pair, O46, O53a, O54, O58 and O58A (unpriced), O59a, O59B, O61, O62 (used and unused), RA2 and RA9, much of the unused is Mint N.H., Fine-Very Fine, a fabulous opportunity to acquire a nearly complete collection of Saudi Arabia along with a wonderful array of varieties..... E. 20,000-30,000
- 1394 ★★ **Saudi Arabia, Specialized Collection of Holy Ka'aba and Al Khafji Oil Rig Issues, 1976-79.** Couple hundred Mint N.H. stamps in a binder, incl. watermark varieties (normal, inverted and sideways left or right), shades, horizontal pairs with vertical gutters between (10 and 47 respectively), the latter with original printings and retouches, plus the listed color errors Nos. 738a and 740a, lastly there are ten and eight different imperforate pairs from each issue respectively with the Oil Rig also including an imperforate horizontal block of six of the 40h with vertical gutter between, Fine-Very Fine, fascinating collection, perfect for further study and expansion..... E. 1,500-2,000
- 1395 ★★ **Saudi Arabia Stock.** Many hundreds in five stock books of various sizes, by volume predominately issues of the mid-1970's to 2002, these are generally represented by 10 to 20 of each and presumably all Mint N.H., noted are better sets cataloging \$20.00 each, four blocks of four at \$55.00 each and five souvenir sheets at \$90.00 each, the earlier material, Air Post and other back-of-book is generally one or two of each (some exceptions) with better items noted, also incl. a binder of covers from the 1940's to 1970's, Fine-Very Fine, useful clean stock..... E. 1,500-2,000
- 1396 **Scandinavia Collection, 1851-2002.** Five volumes, incl. Denmark, Faroe Islands, Finland and Norway, the Finland is in two volumes and incl. Aland Islands, noted are Denmark No. 1, Faroe Islands first two issues used, some better early Norway and an unused No. 218, used and unused, overall Fine-Very Fine..... E. 1,500-2,000
- 1397 ★ **Sweden Collection, 1855-2000.** Four volumes, virtually complete and mostly unused with some Mint N.H., loads of booklets and both 1924 Postal Union and Postal Congress sets, Fine-Very Fine with few exceptions, nice lot E. 1,500-2,000
- 1398 **Sweden Collection, 1855-1967.** One volume, virtually all used, incl. both 1924 Postal Union and Postal Congress sets, Fine-Very Fine E. 500-750
- 1399 **Spain Collection, 1850-2002.** Three volumes, largely complete, mixed used and unused to about 1959, unused thereafter with some Mint N.H., many better singles and sets, good representation of all categories, generally Fine-Very Fine..... E. 1,500-2,000

- 1400 **Switzerland Collection and Accumulation, 1850-1950.** Many hundreds of stamps, some covers and souvenir sheets in three albums, two stock books and a small wooden box, incl. fairly extensive showing of 1854-62 Seated Helvetias and some earlier material, excellent, virtually complete Semi-Postals with multiple used examples in many cases, also covers, there are some varieties throughout and some issues are present in small quantities, Mint N.H. NABA souvenir sheet No. 226 (one stamp small wrinkle), Air Post and Postage Dues, early material bit mixed, generally Fine-Very Fine..... E. 4,000-5,000
- 1401 **Switzerland Collection, 1850-2001.** Two volumes, used and unused, incl. a number of varieties, booklets, souvenir sheets and covers, nice Semi-Postals, good Air Post, Postage Dues and some Officials, better items incl. Nos. 226, PAX set (used), 1075a, B105, Fine-Very Fine with the exception of some of the classics in slightly mixed condition, overall a very nice lot..... E. 1,000-1,500
- 1402 ★★ **Trieste Zone "A" Collection, 1947-54.** One volume, Italian stamps overprinted "AMG-FTT", apparently complete and all Mint N.H., incl. "key" Air Post, Postage Due and Parcel Post sets, also a few gutter pairs, etc.,..... E. 500-750
- 1403 ★ **Turkey Collection, 1863-2002.** One volume, fairly solid and largely complete, nearly all unused, incl. No. 270 and other better singles and sets, good back-of-book, virtually all Fine-Very Fine..... E. 1,000-1,500
- 1404 **Tuscany.** First and Second issue, 25 used stamps on an album page, high catalog value, typical mixed condition E. 200-300
- 1405 ★ **Vatican City Collection, 1929-2002.** One volume, apparently complete unused, incl. all the better items as 1934 Provisional set and all the Air Post, Fine-Very Fine E. 750-1,000
- 1406 ★ **Vatican City Collection, 1929-81.** Practically complete for these years and virtually all unused, incl. some better early issues, Stage Coach souvenir sheet and a few better Air Post, Fine-Very Fine lot..... E. 200-300
- 1407 **Vatican City Collection, 1929-60.** Specialized material attractively mounted on pages, incl. "Saggio" (Proofs), Gutter Pairs, Ornamental Corner Blocks and Surcharge Varieties, Fine-Very Fine, excellent lot for the specialist E. 300-400
- 1408 ★ **Venezuela Collection, 1859-2001.** Four volumes, virtually complete and mostly unused, incl. some nice varieties as First Air Post imperforate pairs, 1944 Baseball imperforate pairs, Inverted Ovpts. and other Sanabria items, Fine-Very Fine, very nice collection..... E. 1,000-1,500
- 1409 ☒ **Zeppelin Covers.** 56 covers or cards, wide range of countries represented incl. Turkey (6), Yugoslavia (7), Romania (9), Bulgaria (7), Albania (3), Greece (9) and Hungary (15), phenomenal range of frankings, cancels, cachets and flights, most destinations are South America, fresh and Very Fine, a gorgeous group of covers which would be difficult to assemble..... E. 15,000-20,000
- 1410 ☒ **Zeppelin Covers.** Five different, incl. U.S. 55c rate 1929 Round the World Flight, Germany 2m Polar Flight with additional franking, Liechtenstein 1932 Flight with four of the First Air Post set and 20rp regular postage and two other covers, 2m Polar Flight tiny margin erosion spot, otherwise Fine-Very Fine E. 200-300
- 1411 ☒ **Zeppelin Covers to the Philippines.** Two, incl. one with pair of 4m Sudamerika Flight stamps (C39) tied by "Luftschiff Graf Zeppelin 9.5.1930" on cacheted cover to Manila and with receiving backstamp, second bears two 2m and 4m Sudamerika Flight stamps (C38-C39) tied by "Luftschiff Graf Zeppelin 22.5.1930" circular datestamp on cacheted cover to Manila and with receiving backstamp, some toning (particularly around stamps on first), otherwise Very Fine, scarce destination E. 500-750
- 1412 ☒ **Zeppelin Polar Flight Covers.** Three cards and one registered cover, various frankings and cachets incl. Leningrad (3) and Malyguin (2), one with 1fr Luxembourg stamp tied by Luxembourg circular datestamp, another cancelled at Blotberget, fresh and Very Fine..... E. 300-400
- 1413 ☒ **Zeppelin Balance.** Seven flown covers or cards, most with Nos. C35, C36 or C37 to USA but one to Sweden with Austrian cachet of July 12, 1931, also incl. four colorful labels mostly from different fairs depicting Zeppelins, four unused stamps and two picture post-cards showing Zeppelins, overall Fine-Very Fine..... E. 500-750
- 1414 ☒ **South America Flights.** 11 cacheted covers or cards, incl. five with various frankings used in May 1930, three used in Sept. 1931, one in Oct. 1931, two used in 1936 (toned), various frankings incl. one card with 2m Polar Flight stamp, overall Fine-Very Fine, interesting group E. 1,000-1,500
- 1415 ☒ **Flight Covers.** Seven items, incl. four 1936-37 Hindenburg covers (various German frankings), 1938 Baltimore to Hamilton, Bermuda, 1925 Dirigible "Los Angeles" flight to Bermuda and 1927 U.S.S. Leviathan Ship-to-Shore flight, also includes souvenir card showing pilot Chamberlain delivering the mail from the Leviathan..... E. 200-300

GROUP LOTS AND ACCUMULATIONS

- 1416 ★ **British Commonwealth Accumulation.** Perhaps a couple hundred different, virtually all unused stamps on stock sheets, reigns of George V, VI and Elizabeth II, incl. fair Australia and New Zealand, also better sets of Gambia, Grenada and St. Lucia, also some Egypt and other foreign miscellany, fair amount Mint N.H., Fine-Very Fine, useful lot E. 300-400
- 1417 ★ **British Commonwealth Omnibus.** Three different series, incl. the popular 1935 George V Silver Jubilee, 1937 George VI Coronation (both these mounted in special albums) and 1946 Peace in blocks of four on pages, Fine-Very Fine E. 500-750
- 1418 ★ **1935 Silver Jubilee.** 248 different, lightly hinged, the Gibraltar 3p is **extra flagstaff** variety (SG 115a; £325), one stamp in the South Africa bi-lingual pair creased, overall Very fine lot... E. 500-750
- 1419 ★★ **Eastern Europe Accumulation.** Massive multi-carton lot containing thousands of stamps, incl. Albania with 18 volumes of mint and CTO complete sheets (most are mint) , issues of the 1960's-80's and one with earlier issues in singles and part sheets, Bulgaria with 1920 Prisoner of War fund imperforate sheets with inverted or triple ovpt., Hungary one volume of imperforates, 1978-84, one volume perforated 1945-55, other better Hungary with Souvenir Sheets, Imperforates, earlier Proofs, Essays, Drawings and scarce Booklets, Poland with four No. 1's (Mikulski certificates), better Souvenir and Miniature Sheets, errors, Locals and Occupations, "Sosnowice" complete sheet, Michel No. 122B Ty. I pair and more, Romania with rare 1939 Booklets, Imperforates and Souvenir Sheets and a seven volume collection for the issue of 1945-95 apparently complete, there are two small glassine type boxes full of more Hungarian imperforates with some better early (most though 1960's) and stamps with some better Hungary, Poland and Romania, there is a sheet album with Russia issues of the 1950's to late 1960's plus a few earlier and a multi-volume collection of Mint N.H. sheets of emerging countries after the breakup of the Soviet Union, twelve different stamp issuing entities in all with colorful material from the mid to late 1990's, incl. Armenia, Belarus, Estonia, Gruzija, Karabakh, Kazakstan, Latvia, Lithuania, Moldova, Ukraine, etc., also eight empty albums and a little early Castro period Cuba imperforates and souvenir sheets, Fine-Very Fine, an amazing lot with much useful and valuable material to be found throughout E. 20,000-30,000
- 1420 ★ **Latin America Collection.** Extensive and valuable collection of nineteen different countries in 26 albums, incl. Argentina, Bolivia, Brazil, Chile, Colombia, Costa Rica, Cuba, Dominican Republic, Ecuador, Guatemala, Haiti, Honduras, Mexico, Nicaragua, Panama, Paraguay, Peru, Salvador and Uruguay, many better singles and complete sets, souvenir sheets, booklets and booklet panes, some specialized material, some countries virtually complete, mostly unused with some Mint N.H., overall Fine-Very Fine, a phenomenal offering of this popular collecting area and provides an excellent foundation for expansion E. 7,500-10,000
- 1421 ★ **Franklin D. Roosevelt Topical Collection.** Two volumes, exceptionally nice assemblage, incl. two Monaco 2fr Large Die Progress Proofs, good Hungary and Poland Souvenir Sheets, Guatemala artist's sketches, imperforates, unlisted, covers and more, Fine-Very Fine, one of the best Roosevelt Topical collections we have seen E. 500-750
- 1422 ☒ **Foreign Cover Balance, 19th-20th Century.** 75 very selective covers, wide range of countries represented incl. Belgium, Nauru, Niger Coast, Greenland, Germany and areas, Spain, Romania, many others, many represented by complete sets on covers with some registered or flight usages, condition overall is exceptional, Very Fine, a wonderful group . E. 4,000-5,000
- 1423 ☒ **Classic Covers Balance.** 24 covers, many better incl. 1858 usage from Bavaria, few from Tuscany, Mexico, India, Brazil, Netherlands, one from Italy to U.S. with U.S. Legation hand-stamp, many multicolored frankings, few flaws to be expected, many Fine-Very Fine E. 750-1,000
- 1424 ★ **General Foreign.** Album, stock book and stock pages, almost exclusively sets and singles of the 1930's to early 1940's from Latin America and British West Indies, vast majority of material in stock book is Mint N.H., better incl. Peru No. C39, nice sets of Costa Rica, Cuba and Guatemala, also some South Africa souvenir sheets (in small quantity) and Semi-Postals and bit of Scandinavia with Iceland 1940 World's Fair ovpts., generally Fine-Very Fine, useful lot E. 1,000-1,500
- 1425 **Foreign Balance, 19th-20th Century.** Two stock pages and few album pages of unused and used stamps, incl. 15 covers mostly from France, some spacefillers and reference items, some Fine-Very Fine E. 1,000-1,500
- 1426 **General Foreign.** Small accumulation, wide range of issues, better incl. couple early French classics, Germany 5m "Reichspost" unused (no gum), "OSTROPA" Souvenir sheet singles (unused, no gum), three different Wurttemberg used 18kr values, Greta Britain 5/- Victoria original gum, Bahamas 1p-£1 Edward VII "Specimen" Ovpts., some miscellaneous covers, small collection of Great Britain on pages to George V 10sh Seahorse, generally Fine-Very Fine E. 750-1,000

- 1427 **Worldwide Collection.** Thousands of used and unused stamps in approximately 20 volumes, most of which are handsome old KABE printed albums from about 60 years ago, representation from just about every stamp issuing entity in the world, there are better or substantial representations of China, Korea, Russia, Sweden, Switzerland, Netherlands, Norway, Iceland, Brazil and many others, British Colonies are a bit scattered yet there are any number of better individual stamps and the Cyprus is rather nice, also there are some stock books, noted is one with better unused German Semi-Postals, generally Fine-Very Fine, a joy to view and a very valuable "old timer" E. 20,000-30,000
- 1428 **Worldwide 19th and 20th Century Collection.** Approximately 60 volumes in eight cartons, vast range of countries and issues, some perhaps complete or nearing completion, incl. Western Europe, Eastern Europe, Dutch Colonies, Philippines, Iraq, Ethiopia, Danzig, Czechoslovakia, Liberia, Lebanon, Romania, Independent Africa, Thailand, Bulgaria, Topicals, extensive four volume Europa, Foreign Revenues, Canadian Revenues, and other stamp issuing entities too numerous to mention, much unused and some Mint N.H., overall Fine-Very Fine, viewers should allow ample time to carefully value this valuable offering E. 10,000-15,000
- 1429 **Worldwide Stock and Accumulation.** Literally tens of thousands of stamps in seventeen cartons, most are in stock books but many sorted in glassines or in other containers, incl. covers, new issues, large stock books of Germany and DDR, Saudi Arabia used, covers and complete sheets, some Great Britain and Commonwealth, lots of Latin America, the three countries with the most significant quantities are Colombia, Nicaragua, Pakistan and Venezuela (1950's-60's), the collector had been at this for a very long time and just loved owning piles of stamps, we have been as careful as possible in sifting through this mountain of material but we can not say for certain that there aren't better stamps here and there (no doubt there are), generally Fine-Very Fine E. 7,500-10,000
- 1430 **Worldwide Assortment.** Stock of used and unused stamps on over 500 small retail cards, sorted and identified, wide range of countries and issues, Fine-Very Fine lot.... 4,250.00
- 1431 ★★ **Worldwide Accumulation.** A diverse variety of material incl. U.S. face, British Commonwealth more recent issues and a couple of earlier Omnibus series, one in blocks of four, small collection of Belgian Congo, United Nations and some fairly modern European souvenir sheets, vast majority Mint N.H., Fine-Very Fine lot..... E. 750-1,000
- 1432 **Worldwide Accumulation.** Dealer's small lots and collections, used and unused, incl. Belgium, Ceylon, Cuba, Ecuador, Ethiopia, French Colonies, Spanish Philippines and Vatican, 2,007.99
- 1433 **Worldwide Collections.** Six early twentieth century albums, scattering of stamps, mostly used, occasional better item, noted are some unused Bahamas and Japan, mixed condition E. 500-750
- 1434 ★ **Worldwide Inverted Centers.** Collection of about 60 items on original hand-drawn water-color exhibition pages, incl. Liberia Nos. 116a/123a and O63a/O68a, Panama 185a/193a, Iran 493a/498a, Lithuania C39a, Mexico 514a and Unlisted French Somalia 18/60 vars., Fine-Very Fine lot E. 1,000-1,500
- 1435 ☒ **19th Century Worldwide Covers.** More than 100 covers from archival correspondences, lots of variety incl. vertical pair of G.B. 1p Black, transatlantics incl. 1853 to York Pa. with two of G.B. 10p Embossed plus 2p Blue, multicolored Roman States franking, mixed condition but worth careful examination..... E. 1,500-2,000
- 1436 ☒ **Worldwide Bisect Covers.** Over 30 in one binder, incl. U.S., Argentina, Bolivia, Canada, Channel Islands, Guatemala, Honduras, Macau and Nicaragua, also a few on piece, no doubt virtually all, if not all, are unauthorized usages but nevertheless did go through the mail accepted as fully prepaid, generally Very Fine, fascinating lot and no doubt scarce... E. 500-750
- 1437 **Worldwide Miscellany.** Carton with a hodgepodge of U.S., U.N. and Germany, nothing terribly exciting, just lots of used and unused stamps, Fine-Very Fine lot..... E. 200-300

END OF SALE — THANK YOU

Sell through America's premier stamp auctioneer

Other firms may try to copy the Siegel firm's formula for success, but no one can match our expertise and track record in selling collections at auction.

When the time comes to sell your collection, there are some facts we would like you to consider:

- Year after year, the Siegel firm sells more United States and Confederate stamps and covers than anyone else.
- Siegel sales generate the kind of excitement that creates more competitive bidding and higher prices.
- The Siegel mailing list has been built over 77 years and has a 90% active-buyer rate over the past five years. It continues to grow every day, and our clients continue to increase their buying power.
- The Siegel website receives many thousands of hits before the auction, which gives your stamps wider exposure and creates more competitive bidding.
- Siegel sale catalogues win top national awards. They have become philately's most effective tool by educating and enticing buyers.
- The Siegel firm's reputation for paying all obligations on time is backed by a strong capital base and consistent record of profitability.

If excellence is your goal in collecting, when it is time to sell, it makes sense to choose an auctioneer whose excellence has been proven over time.

A stylized, cursive signature of Robert A. Siegel in black ink.

AUCTION GALLERIES, INC.

www.siegelauctions.com

60 East 56th Street, 4th Floor, New York, N.Y. 10022

Phone (212) 753-6421 • Fax (212) 753-6429 • E-mail: stamps@siegelauctions.com

Live Internet Bidding at Siegel Auction Galleries

Internet Floor Bidding for Robert A. Siegel Auction Galleries, Inc.'s Sale 908 closing on Mar 13-15, 2006. Contact us by Phone at (212) 753-6421, [Contact us Via eMAIL](#). Please READ [Instructions/Help](#) [Listen to the Public Auction Broadcast](#), Welcome John Bidding, Paddle 11. Time: 13:50:36. F11 (if using Internet Explorer) toggles full screen mode. You are Cust# , You are approved for

Lot and Description	Bidding
Postal History, California Mails and Western Expre Carriers and Locals Group Lots Lot 5010. Carriers and Locals. More than 30 covers and a few off cover. 1840's, 50's and 60's, comprising General Issue Carriers incl. LO2, LO3, LO5 and Franklin plate proof on card, LO2 on small blue cover to Philadelphia "U.States" indicating origin f E. 1,500-2,000 Sold for 3,500.00 Your Bid 3,500.00 1 sec refresh 3 sec 5 sec Show Images	Bid 3750 Bid 4000 Bid 4250 Bid 4500 Bid 4750 Bid 5000 Send a Message to the Auction Floor

Messages from the public auction

Please close this form when you are not bidding or watching the auction.

Lot 5010 going for 650...
Lot 5010 going for 3500...
Lot 5010 Last Call at 3500...
Lot 5010 sold to the floor for \$3500.

===== END OF SALE =====

-Thank You!!!

Siegel Auction Galleries, in coordination with Stamp Auction Network, will broadcast our auctions live over the internet, allowing you to listen to the auction in progress.

Bidders who have pre-registered for Live Internet Bidding will also be able to place bids over the internet, as if bidding in the saleroom. In order to bid by internet, you must be an approved, registered bidder with Stamp Auction Network and Siegel Auction Galleries.

- ☐ **If you are already registered at Stamp Auction Network and have been approved for internet bidding by Siegel, just log in at Stamp Auction Network, locate the Siegel sale and start bidding anytime during the auction.**
- ☐ **If you have never registered as a bidder at Stamp Auction Network, then please go to www.siegelauctions.com/IB2.htm and click on "Register" at the top of the page. Please check the box for Robert A. Siegel Auction Galleries (under "R") and submit the form. If you have never bid with our firm, please provide trade references whom we may contact to have your account approved (please do not use family members or credit cards as references).**
- ☐ **If you have registered previously at Stamp Auction Network, but not specifically for our firm, please go to www.siegelauctions.com/IB2.htm and click on "Update Registration" at the top of the page. Your information at Stamp Auction Network will be sent to us for approval. You may be asked to provide additional references before being approved for internet bidding.**

Once you are approved for bidding, you will be able to bid live over the internet during the auction. You may participate in Live Internet Bidding using any browser or operating system. The audio portion is only available to PC users using Internet Explorer. For the audio portion, you will be asked to install a piece of software (ActiveX control) to make it work.

Bidders must log in at Stamp Auction Network to participate. Once logged in, please locate the page for the current Siegel auction.

At the top of the auction's home page there are two links:

- One link allows anyone to listen to the public auction broadcast.
- The second link permits registered bidders to join the public auction in progress.

Please remember that to participate in the auction, you must be pre-registered at Stamp Auction Network and approved by Siegel Auction Galleries as a bidder. Qualified bidders will see a page like the one illustrated above and have a valid paddle number assignment.

Important Note for Live Internet Bidders: Please refer to our Tips for Internet Bidders at our website at www.siegelauctions.com/IB.htm for ways to increase your chances of being a successful bidder.

Bid Form—15% Premium Sale

Sale 949
Wednesday, December 14, 2007

1

Please provide the following information:

NAME.....
ADDRESS.....
CITY/STATE/ZIP.....
TEL. (DAY) FAX.....
E-MAIL.....

PADDLE #

Do not write in box

2

Have you purchased from us in the past 5 years? ☐ YES (if so, please go to Section 3)
☐ NO (please provide a trade reference and bank information)

References:

Stamp Firm:..... Telephone.....

Bank:..... Account #.....

3

In the space provided below, enter the **lot number** from **Sale 949** and your corresponding bid. Please use **whole dollar amounts** only and enter the **maximum bid** you wish to have us execute on your behalf, according to the **revised bidding increments** (on other side of this form). **Your bid will NOT include the 15% buyer's premium.** We will advance the bidding at one increment over the

next highest bid; therefore, you may be awarded the lot at less than your maximum bid. Please do not use "plus" bids or "buy" bids. If you wish to bid on one lot **or** the other, indicate your "or" bid between lot number/bid entries and bracket your choices. If you wish to place a **bidding limit** on the total amount of your bids, please enter your limit in the space marked "Limit Bids".

PLEASE NOTE REVISED BIDDING INCREMENTS (ON BACK OF THIS PAGE)

☐ **LIMIT BIDS:** Check this box if you wish to limit the total amount of your bids (not including the **15% buyer's premium**) in this sale. Your bids will be executed until your bidding limit no longer allows for additional bids. **The total amount you wish to bid is:** \$.....

Lot	Bid	Lot	Bid	Lot	Bid
	\$		\$		\$

4

AGREEMENT: By signing this bid form, you agree to pay for purchases resulting from your bids, in accordance with the **Conditions of Sale** printed in the sale catalogue. You also agree to pay the **15% buyer's premium** and any shipping costs (see reverse), which will be added to your successful bids, and any sales tax or use tax which may be due

on the total invoiced amount. It is understood that these bids will be executed by Siegel Auction Galleries as a courtesy to absentee bidders, but that no legal responsibility shall lie with the auctioneer or the firm if these bids are not executed. **You are responsible for your written bids, including any errors on your part.**

Payment must be made by cash, check, money order or wire transfer. Credit cards will not be accepted.



SIGNED..... TODAY'S DATE.....

5

Please submit your bids promptly (telephone bids must be confirmed in writing).

Mail to: Robert A. Siegel Auction Galleries, Inc.

60 E. 56th Street, 4th Floor, New York, N.Y. 10022
Telephone (212) 753-6421

OR FAX YOUR BIDS: (212) 753-6429

Shipping Instructions, Bidding Increments and space for additional bids on other side of form

Additional Bids

Sale 949—December 14, 2007

Lot	Bid	Lot	Bid	Lot	Bid
	\$		\$		\$

Shipping and Transit Insurance

We will be pleased to arrange for shipping and transit insurance for purchases in this sale (except those described as “floor sale only”). To expedite billing and delivery of lots to hundreds of buyers per sale, we use standard charges for postage and insurance, based on the invoiced total and mailing requirements (see schedule). The standard charges are sometimes slightly more or less than the actual postage, but we do not include any fees for our labor or packing costs. Therefore, we ask all buyers to remit the prescribed amount for shipping charges.

Transit insurance is provided in all cases, except when the buyer has furnished us with proof that insurance coverage is effective under another policy. Proof, in such cases, will be accepted in the form of a written certificate from the insurance carrier.

You are responsible for insurance charges, which will be added to your invoice. This coverage is provided for our mutual protection against theft or

REVISED Bidding Increments

The auctioneer may regulate the bidding at his discretion. However, to assist absentee bidders in establishing their maximum bid for each lot, the increments shown at right will be used in most cases. We recommend that written bids conform to these increments (those which do not will be reduced to the next level).

Current Postage & Insurance Charges

Invoice Total	Shipping Method	Charges
Up to 10,000	Fedex Only	\$18.00
Over \$10,000	Fedex Only	\$25.00*
Foreign Destinations (any value)	Fedex/Courier	\$25.00**
Bulk Lots	UPS Preferred	By weight and value (min. \$25.00)
*Insurance and postage on certain heavy or valuable packages may incur an additional charge. **Buyers are liable for all customs duties and clearance charges. An accurate declaration of value will be made on all import/export documents.		

2/2002

IMPORTANT NOTICE REGARDING IRRADIATION

The U.S. Postal Service policy of irradiating all classes of mail poses a significant potential risk of irreversible damage to philatelic material, including ink, paper and gum.

WE WILL NOT USE THE MAILS TO SHIP LOTS.
Please provide a street address for Fedex delivery if you intend to have your lots shipped.

Up to \$50	\$5	\$3,000-7,000	\$250
\$50-200	\$10	\$7,000-20,000	\$500
\$200-500	\$25	\$20,000-30,000	\$1,000
\$500-1,000	\$50	\$30,000-75,000	\$2,500
\$1,000-3,000	\$100	\$75,000 up	\$5,000

7/2006

Robert A. Siegel Auction Galleries, Inc.

Prices Realized for

Sale 949 December 14, 2007 General Foreign Stamps and Covers

Lot#	Realized	Lot#	Realized	Lot#	Realized	Lot#	Realized	Lot#	Realized
1001	225	1038	250	1074	425	1111	700	1147	325
1002	90	1039	375	1075	750	1112	150	1148	120
1003	1,500	1040	450	1076	550	1113	550	1149	300
1004	190	1041	1,400	1077	425	1114	400	1150	300
1005	190	1042	650	1078	225	1115	250	1151	1,300
1006	120	1043	225	1079	750	1116	400	1152	1,800
1007	325	1044	180	1080	200	1117	325	1153	900
1008	190	1045	225	1081	400	1118	600	1154	1,000
1009	425	1046	700	1082	950	1119	225	1155	275
1010	1,300	1047	200	1083	600	1120	500	1156	800
1011	1,200	1048	225	1084	950	1121	475	1157	1,100
1012	850	1049	500	1085	375	1122	250	1158	425
1013	325	1050	500	1086	1,400	1123	450	1159	3,250
1014	325	1051	950	1088	1,100	1124	650	1160	1,800
1015	400	1052	300	1089	3,750	1125	1,900	1161	2,600
1016	550	1053	2,100	1090	550	1126	225	1162	140
1017	250	1054	1,700	1091	2,500	1127	225	1163	650
1018	475	1055	225	1092	950	1128	100	1164	2,100
1019	1,300	1056	275	1093	1,500	1129	550	1165	1,900
1021	450	1057	1,300	1094	375	1130	140	1166	700
1022	475	1058	200	1095	450	1131	2,500	1167	1,200
1023	650	1059	1,300	1096	1,400	1132	375	1168	500
1024	550	1060	1,600	1097	325	1133	600	1169	800
1025	650	1061	425	1098	225	1134	275	1170	650
1026	450	1062	300	1099	600	1135	190	1171	700
1027	400	1063	2,600	1100	650	1136	250	1172	350
1028	180	1064	2,800	1101	425	1137	1,200	1173	750
1029	550	1065	225	1102	375	1138	1,100	1174	950
1030	160	1066	110	1103	180	1139	150	1175	1,000
1031	800	1067	425	1104	350	1140	700	1176	300
1032	2,600	1068	300	1105	1,600	1141	1,400	1177	550
1033	1,900	1069	375	1106	140	1142	190	1178	1,000
1034	1,800	1070	325	1107	550	1143	800	1179	450
1035	600	1071	250	1108	100	1144	1,500	1180	1,700
1036	350	1072	160	1109	300	1145	850	1181	475
1037	425	1073	250	1110	1,000	1146	700	1182	650

Robert A. Siegel Auction Galleries, Inc.
 Prices Realized for
 Sale 949 December 14, 2007 General Foreign Stamps and Covers

Lot#	Realized	Lot#	Realized	Lot#	Realized	Lot#	Realized	Lot#	Realized
1183	450	1219	275	1255	300	1291	300	1327	8,500
1184	275	1220	5,000	1256	350	1292	275	1328	1,700
1185	325	1221	1,600	1257	225	1293	550	1329	16,500
1186	300	1222	120	1258	750	1294	5,000	1330	4,000
1188	500	1223	500	1259	225	1295	1,000	1331	2,500
1189	1,800	1224	400	1260	650	1296	375	1332	2,500
1190	1,700	1225	325	1261	1,400	1297	275	1333	10,500
1191	1,600	1226	300	1262	350	1298	2,000	1334	1,900
1192	250	1227	600	1263	950	1299	250	1335	5,500
1193	375	1228	2,500	1264	700	1300	500	1336	6,000
1194	1,700	1229	1,300	1265	800	1301	650	1337	4,000
1195	650	1230	600	1266	1,100	1302	250	1338	2,600
1196	800	1231	650	1267	700	1303	350	1339	2,400
1197	650	1232	800	1268	475	1304	1,800	1340	1,200
1198	1,400	1233	300	1269	80	1305	600	1341	600
1199	550	1234	150	1270	130	1306	850	1342	4,000
1200	1,100	1235	200	1271	200	1307	425	1343	425
1201	375	1236	200	1272	800	1308	140	1344	8,000
1202	375	1237	900	1273	325	1309	475	1345	600
1203	450	1238	2,600	1274	190	1310	300	1346	12,500
1204	140	1239	1,000	1275	700	1311	170	1347	8,500
1205	1,400	1240	950	1276	375	1312	2,000	1348	1,800
1206	650	1241	3,250	1277	250	1313	800	1349	5,000
1207	600	1242	375	1278	950	1314	3,500	1350	2,600
1208	900	1243	325	1279	500	1315	2,400	1351	3,000
1209	225	1244	800	1280	500	1316	1,400	1352	6,750
1210	225	1245	150	1281	1,400	1317	6,500	1353	1,800
1211	1,600	1246	550	1282	2,000	1318	160	1354	100
1211A	1,800	1247	1,300	1283	2,500	1319	700	1355	4,750
1212	275	1248	1,100	1284	475	1320	800	1356	2,700
1213	1,000	1249	500	1285	650	1321	650	1357	1,300
1214	850	1250	850	1286	425	1322	900	1358	1,700
1215	550	1251	600	1287	1,800	1323	750	1359	2,200
1216	350	1252	1,700	1288	850	1324	950	1360	1,000
1217	5,250	1253	2,100	1289	350	1325	800	1361	2,900
1218	300	1254	180	1290	2,900	1326	450	1362	1,900

Robert A. Siegel Auction Galleries, Inc.
 Prices Realized for
 Sale 949 December 14, 2007 General Foreign Stamps and Covers

Lot#	Realized	Lot#	Realized	Lot#	Realized
1363	6,250	1400	6,750	1436	900
1364	11,500	1401	2,800	1437	275
1365	7,500	1402	1,600		
1366	6,250	1403	3,500		
1367	2,100	1404	275		
1368	3,000	1405	1,500		
1369	1,100	1406	500		
1370	11,000	1407	650		
1371	1,800	1408	3,250		
1373	1,100	1409	13,000		
1374	2,100	1410	375		
1375	8,500	1411	650		
1376	6,750	1412	550		
1377	1,600	1413	550		
1378	475	1414	750		
1379	3,250	1415	325		
1380	1,200	1416	600		
1381	2,800	1417	550		
1382	1,300	1418	800		
1383	400	1419	18,000		
1384	4,250	1420	17,500		
1385	750	1421	2,200		
1386	5,750	1422	4,750		
1387	4,750	1423	1,600		
1388	400	1424	2,000		
1389	100	1425	4,750		
1390	5,250	1426	3,000		
1391	1,600	1427	40,000		
1392	3,000	1428	28,000		
1393	17,000	1429	3,000		
1394	1,400	1430	600		
1395	2,700	1431	1,800		
1396	4,750	1432	425		
1397	3,750	1433	1,600		
1398	1,100	1434	1,800		
1399	4,250	1435	3,000		