

The **TAHOE** Collection of Superb Used United States Stamps



Sale 951

Wednesday Evening, February 27, 2008, at 6:00 p.m.

Robert A. Siegel

AUCTION GALLERIES, INC.

siegelauctions.com

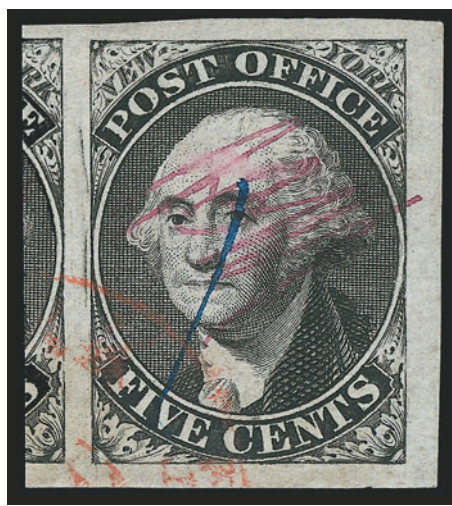
Sale 951—Wednesday, February 27, 2008, at 6:00 p.m.

The Tahoe Collection of Superb Used United States Stamps

Live auction to be held at Siegel Auction Galleries,
60 East 56th Street (Park/Madison), 4th Floor, New York City

All lots offered without reserves

Lots are sold subject to a 15% buyer's premium and
any applicable sales tax (or customs duty for non-U.S. buyers)



Evening Session (lots 1-142) Wednesday, February 27, at 6:00 p.m.

| | |
|---|----------|
| Postmasters' Provisionals | lots 1-3 |
| 1847 Issue | 4-5 |
| 1851-56 Issue | 6-13 |
| 1857-60 Issue | 14-22 |
| 1861-66 Issue | 23-28 |
| 1867-68 Grilled Issues | 29-40 |
| 1875 Re-Issue of 1861-66 Issue | 41-42 |
| 1869 Pictorial Issue and Re-Issue | 43-52 |
| 1870-93 Bank Note Issues | 53-76 |
| Columbian Issue | 77-82 |
| 1894-98 Bureau Issues | 84-86 |
| Trans-Mississippi Issue | 87-88 |
| 20th Century Issues | 89-114 |
| Air Post | 115-118 |
| Special Delivery, Postage Dues | 119-130 |
| Offices in China thru Parcel Post | 131-138 |
| Hawaii | 139-142 |
| Grading Chart | page 84 |

Pre-Sale Lot Viewing

Monday, February 25 — 10:00 a.m. to 4:00 p.m.
Tuesday, February 26 — 10:00 a.m. to 4:00 p.m.
Wednesday, February 27 — 10:00 a.m. to 4:00 p.m.
or by appointment (please call 212-753-6421)

Robert A. Siegel

AUCTION GALLERIES, INC.

60 EAST 56TH STREET, 4TH FLOOR, NEW YORK, N.Y. 10022
Phone (212) 753-6421 • Fax (212) 753-6429 • E-mail: stamps@siegelauctions.com

Catalogues, internet bidding, resources, archives and the Siegel Encyclopedia at
www.siegelauctions.com



Robert A. Siegel

AUCTION GALLERIES, INC.

60 EAST 56TH STREET, 4TH FLOOR, NEW YORK, N.Y. 10022

Phone (212) 753-6421 • Fax (212) 753-6429 • E-mail: stamps@siegelauctions.com

siegelauctions.com



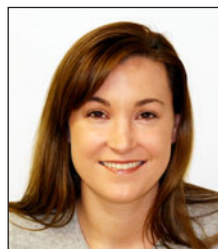
Scott R. Trepel
President
strepel
[@siegelauctions.com](mailto:strepel@siegelauctions.com)



John P. Zuckerman
Senior Vice President
jzuckerman
[@siegelauctions.com](mailto:jzuckerman@siegelauctions.com)



Stephanie Chambers
Accounts
schambers
[@siegelauctions.com](mailto:schambers@siegelauctions.com)



Starr Tucker-Ortega
Accounts
starrt
[@siegelauctions.com](mailto:starrt@siegelauctions.com)



Carlene Counihan
Bids and Inquiries
carlene
[@siegelauctions.com](mailto:carlene@siegelauctions.com)

Scott R. Trepel Principal Auctioneer (licensed by NYC Dept. of Consumer Affairs, #795952)

Nathaniel Estes Catalogue and Digital Production

Information for Bidders

Bidding

The following means are available for placing bids:

1) Attending the Live Auction in Person: All bidders must register for a paddle, and new bidders must provide references at least three business days in advance of the sale.

2) Live Internet Bidding: Instructions for participating as a Live Internet Bidder are provided on the page opposite.

3) Phone Bidding: Bidders can be connected to the sale by phone and bid through a member of staff. Requests for phone bidding are subject to approval (please contact our office at least 24 hours before the sale). A signed Bid Form is required.

4) Absentee Bids. All bids received in advance of the sale, either by mail, fax, phone, e-mail or internet, are Absentee Bids, which instruct the auctioneer to bid up to a specific amount on one or more lots in the sale. Absentee Bids sent by phone, fax or e-mail should arrive at least one hour prior to the start of the sale session. Bids entered through Live Internet Bidding will be visible to the auctioneer during the sale. Written bids should be entered legibly on the Bid Form in the sale catalogue. E-mail and internet bids should be carefully typed and double-checked. All new bidders must provide references. We recommend calling or e-mailing to confirm that Absentee Bids sent by mail, fax or e-mail have been received and entered.

Pre-Sale Viewing

Subject to availability, certain lots (except group lots) can be sent to known clients for examination. Requests must be made no later than 7 days prior to the sale. Lots must be returned on the day received. Postage/insurance costs will be invoiced.

In addition to regular viewing, clients may view lots by appointment. Our staff will be pleased to answer questions or provide additional information about lots.

Expert Certification

Individual items offered without a current certificate (PF dated within the past five years of sale; PSE dated January 2004 or later) may be purchased subject to independent certification of genuineness and our description. **Please refer to the Conditions of Sale and Grading Terms for policies governing certification.**

Shipping and Delivery

Procedures and charges for shipping lots are printed on the back of the Bid Form. **Bidders are responsible for all prescribed shipping charges and any applicable sales tax or customs duties.**

Price Realized

Prices realized are sent with each invoice. Bidders with e-mail will receive a Bid Results report after the sale. Session results are posted immediately to siegelauctions.com

Live Internet Bidding at Siegel Auctions



Bidding from your computer lets you be part of the live auction from anywhere in the world!

There's no substitute for following the auction in real time. Live Internet Bidding lets you bid and buy as though you were right there in the saleroom.

And it's easy. Just start by following the simple steps to become a registered Live Internet Bidder. Once you've been approved for bidding, you can listen to the auction and place bids with the click of a mouse.

This step-by-step guide will instruct you how to register, set your browser and use the bidding interface.

1 Registering with Stamp Auction Network and Siegel Auction Galleries

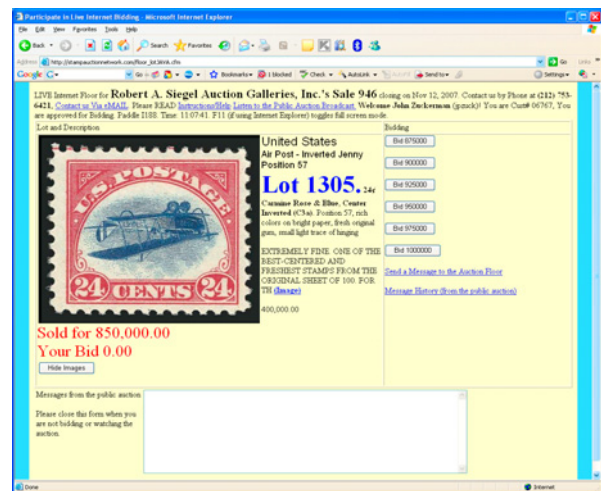
Live Internet Bidding is managed by Stamp Auction Network (SAN). To bid, you must be registered and approved by *both* SAN and Siegel. To decide what you need to do, choose the description below that best fits you.

I've already registered with SAN and have been approved by Siegel for internet bidding. You're ready for Step 2.

I've never registered with SAN, but I'm a Siegel client. Go to stampauctionnetwork.com/siegel and click on "Register" at the top. Check the box for Robert A. Siegel Auction Galleries (under "R") and submit the form, indicating you are a Siegel client. Once registered at SAN, you're ready for Step 2.

I've never registered with SAN, and this is the first time I've bid with Siegel. Go to stampauctionnetwork.com/siegel and click on "Register" at the top. Check the box for Robert A. Siegel Auction Galleries (under "R") and submit the form **with your trade references** (please, no family members or credit card companies as references). Once registered at SAN and approved by Siegel for bidding, you're ready for Step 2.

I've bid through SAN before, but this is the first time I've bid in a Siegel sale. Then you just need to be approved by Siegel. Go to stampauctionnetwork.com/siegel and click on "Update Registration" at the top. Your SAN account information will be sent to us for approval (you might be asked for other trade references). Once approved by Siegel for bidding, you can move to Step 2.



2 Using your browser for Live Internet Bidding and understanding the way it works.

Live Internet Bidding works by providing an audio feed of the auction (for anyone using Internet Explorer) and by allowing registered bidders to observe and place bids. The bidding interface shows a photo and description of the lot, the current bid (and your bidding status), and options for placing competitive bids. To join the auction, go to stampauctionnetwork.com/siegel. You can also log on at siegelauctions.com

The visual interface will work with any browser on both PC and Mac operating systems. However, the audio feed only works with Internet Explorer on a PC with ActiveX software installed. If ActiveX is not on your computer, you will have the option to install it.

Before bidding by internet for the first time, we recommend finding a sale in progress and listening to the public broadcast or logging in as a registered bidder. This will help you develop a feel for the sale tempo and bidding interface.

"System down" or "lost connection" events do occasionally happen. If you have any problems with Live Internet Bidding, please call 212-753-6421 for immediate assistance.



3 Using Live Internet Bidding to bid, track results and communicate with the auctioneer.

When you're logged on as a Live Internet Bidder, the screen will display buttons with bid increments. After you click on a bid amount, the auctioneer is immediately notified of your bid. Retracting a bid is usually not acceptable, so please bid carefully.

If you bid, then decide to stop, please use the "Pass" button, which appears once you've started bidding. This tells the auctioneer not to wait for another bid from you.

You can send messages to the auctioneer (for example, a request for extension). You can also track prior realizations from the bidding screen.

Conditions of Sale (please read carefully before bidding)

The property described in this catalogue will be offered at public auction by Robert A. Siegel Auction Galleries, Inc. ("Galleries") on behalf of various consignors and itself or affiliated companies. By bidding on any lot, whether directly or by or through an agent, in person, or by telephone, facsimile or any other means, the bidder acknowledges and agrees to all of the following Conditions of Sale.

1. The highest bidder acknowledged by the auctioneer shall be the buyer. The term "final bid" means the last bid acknowledged by the auctioneer, which is normally the highest bid offered. **The purchase price payable by the buyer will be the sum of the final bid and a commission of 15% of the final bid ("buyer's premium"), together with any sales tax, use tax or customs duties due on the sale.**
2. The auctioneer has the right to reject any bid, to advance the bidding at his discretion and, in the event of a dispute between bidders, to determine the successful bidder, to continue the bidding or to reoffer and resell the lot in dispute. The Galleries' record of the final sale shall be conclusive.
3. All bids are per numbered lot in the catalogue unless otherwise announced by the auctioneer at the time of sale. The right is reserved to group two or more lots, to withdraw any lot or lots from the sale, or to act on behalf of the seller. The Galleries will execute bidding instructions on behalf of clients, but will not be responsible for the failure to execute such bids or for any errors in the execution of such bids.
4. **Lots with numbers followed by the symbol ° are offered subject to a confidential minimum bid ("reserve"), below which the lot will not be sold. The absence of the symbol ° means that the lot is offered without a reserve. If there is no reserve, the auctioneer has sole discretion to establish a minimum opening bid and may refuse an offer of less than half of the published estimate. Any lot that does not reach its reserve or opening bid requested by the auctioneer will be announced as "passed" and excluded from the prices realized lists after the sale. The Galleries may have a direct or indirect ownership interest in any or all lots in the sale resulting from an advance of monies or goods-in-trade or a guarantee of minimum net proceeds made by the Galleries to the seller.**
5. Subject to the exclusions listed in 5(A), the Galleries will accept the return of lots which have been misidentified or which have obvious faults that were present when the lot was in the Galleries' custody, but not so noted in the lot description. **All disputed lots must be received by the Galleries intact with the original packing material within 5 days of delivery to the buyer but no later than 30 days from the sale date. (5A) EXCLUSIONS:** The following lots may not be returned for any reason: lots containing 10 or more items; lots from buyers who registered for the pre-sale exhibition or received lots by postal viewing, thereby having had the opportunity to inspect them before the sale; any lot described with "faults," "defects" or a specific fault may not be returned because of any secondary fault. Photographed lots may not be returned because of centering, margins, short/nibbed perforations or other factors shown in the illustrations. Lots may not be returned for any of the following reasons: the color of the item does not match the color reproduction in the sale catalogue or website listing; the description contains inaccurate information about the quantity known or reported; or a certification service grades a stamp lower than the grade stated in the description.
6. Successful bidders, unless they have established credit with the Galleries prior to the sale, must make payment in full before the lots will be delivered. Buyers not known to the Galleries must make payment in full within 3 days from the date of sale. **The Galleries retains the right to demand a cash deposit from anyone prior to bidder registration and/or to demand payment at the time the lot is knocked down to the highest bidder, for any reason whatsoever.** In the event that any buyer refuses or fails to make payment in cash

for any lot at the time it is knocked down to him, the auctioneer reserves the right to reoffer the lot immediately for sale to the highest bidder. **Credit cards are not accepted as payment.**

7. If the purchase price has not been paid within the time limit specified above, nor lots taken up within 7 days from the date of sale, the lots will be resold by whatever means deemed appropriate by the Galleries, and any loss incurred from resale will be charged to the defaulting buyer. Any account more than 30 days in arrears will be subject to a late payment charge of 1½% per month as long as the account remains in arrears. Any expenses incurred in securing payment from delinquent accounts will be charged to the defaulter. A fee of \$250.00 per check will be charged for each check returned for insufficient funds.
8. All lots are sold as genuine. **Any lot accompanied by a certificate issued by The Philatelic Foundation within 5 years of the sale date or by Professional Stamp Experts since January 2004 is sold "as is" and in accordance with the description on the certificate. Such lots may not be returned for any reason, including but not limited to a contrary certificate of opinion.** Buyers who wish to obtain a certificate for any item that does not have a P.F. or P.S.E. certificate (dated as above) may do so, provided that the following conditions are met: (1) the purchase price must be paid in full, (2) the item must be submitted to an acceptable expertizing committee with a properly executed application form within 21 days of the sale, (3) a copy of the application form must be given to the Galleries, (4) in the event that an adverse opinion is received, the Galleries retain the right to resubmit the item on the buyer's behalf for reconsideration, without time limit or other restrictions, (5) unless written notification to the contrary is received, items submitted for certification will be considered cleared 90 days from the date of sale, and (6) in the event any item is determined to be "not as described", the buyer will be refunded the purchase price and the certification fee up to \$600.00 unless otherwise agreed.
9. Until paid for in full, all lots remain the property of the Galleries on behalf of the seller.
10. Agents executing bids on behalf of clients will be held responsible for all purchases made on behalf of clients unless otherwise arranged prior to the sale.
11. The buyer assumes all risk for delivery of purchased lots and agrees to pay for prescribed shipping costs. Buyers outside the U.S. are responsible for all customs duties.
12. **The bidder consents that any action or proceeding against it may be commenced and maintained in any court within the State of New York or in the United States District Court for the Southern District of New York, that the courts of the State of New York and United States District Court for the Southern District of New York shall have jurisdiction with respect to the subject matter hereof and the person of the bidder. The bidder agrees not to assert any defense to any action or proceeding initiated by Galleries based upon improper venue or inconvenient forum. The bidder agrees that any action brought by the bidder shall be commenced and maintained only in a Federal Court in the United States District Court for the Southern District of New York or the State Court in the county in which Galleries has its principal place of business in New York. These Terms and Conditions shall be governed by and construed in accordance with the substantive laws of the State of New York.**

SCOTT R. TREPEL, Principal Auctioneer

Auctioneer's License No. 795952
N.Y.C. Department of Consumer Affairs
80 Lafayette Street, New York, N.Y. 10013
Telephone (212) 577-0111

Revised 1/2008 15%

Copyright Notice

© 2008, Robert A. Siegel Auction Galleries, Inc. This catalogue in all versions, printed and electronic, is protected by copyright. The descriptions, format, illustrations and information used herein may not be reprinted, distributed or copied in any form without the express written consent of Robert A. Siegel Auction Galleries. Application for permission may be made in writing.

Grades, Abbreviations and Values Used in Descriptions

Grades and Centering

Our descriptions contain detailed information and observations about each item's condition. We have also assigned grades to stamps and covers, which reflect our subjective assessment. For stamps, the margin width, centering and gum are described and graded according to generally-accepted standards (an approximate correlation to numeric grades is provided at right). Although we believe our grades are accurate, they are not always exactly aligned with third-party grading terms or standards for all issues. **A lot may not be returned because a certification service grades a stamp lower than the grade stated in the description. Information from the P.S.E. Stamp Market Quarterly and P.S.E. Population Report™ is the most current available, but lots may not be returned due to errors or changes in statistics or data.**

Extremely Fine Gem (90-100): The term “Gem” describes condition that is the finest possible for the issue. This term is equivalent to “Superb” used by grading services.







Extremely Fine (80-90): Exceptionally large/wide margins or near perfect centering.

Very Fine (70-85): Normal-size margins for the issue and well-centered with the design a bit closer to one side. “Very Fine and choice” applies to stamps that have desirable traits such as rich color, sharp impression, freshness or clarity of cancel.

Fine (60-70): Smaller than usual margins or noticeably off center. Pre-1890 issues may have the design touched in places.

Very Good (below 60): Attractive appearance, but margins or perforations cut into the design.

Guide to Gum Condition

| Gum Categories: | MINT N.H. | ORIGINAL GUM (O.G.) | | | | NO GUM |
|-------------------|---|--|---|--|--|--|
| |  Mint Never Hinged <i>Free from any disturbance</i> |  Lightly Hinged <i>Faint impression of a removed hinge over a small area</i> |  Hinge Mark or Remnant <i>Prominent hinged spot with part or all of the hinge remaining</i> |  Part o.g. <i>Approximately half or more of the gum intact</i> |  Small part o.g. <i>Approximately less than half of the gum intact</i> |  No gum <i>Only if issued with gum</i> |
| Catalogue Symbol: | ★ ★ | ★ | ★ | ★ | ★ | (★) |
| PRE-1890 ISSUES | <i>Pre-1890 stamps in these categories trade at a premium over Scott value</i> | | | Scott Value for “O.G.” | | Scott “No Gum” Values thru No. 218 |
| 1890-1935 ISSUES | Scott “Never Hinged” Values for Nos. 219-771 | Scott Value for “O.G.” (Actual value will be affected by the degree of hinging) | | Disturbed Original Gum: Gum showing noticeable effects of humidity, climate or hinging over more than half of the gum. The significance of gum disturbance in valuing a stamp in any of the Original Gum categories depends on the degree of disturbance, the rarity and normal gum condition of the issue and other variables affecting quality. For example, stamps issued in tropical climates are expected to have some | | |
| 1935 TO DATE | Scott Value for “Unused” | | | | | |

Covers

Minor nicks, short edge tears, flap tears and slight reduction at one side are normal conditions for 19th century envelopes. Folded letters should be expected to have at least one file fold. Light cleaning of covers and small mends along the edges are accepted forms of conservation. Unusual covers may have a common stamp with a slight crease or tiny tear. **These flaws exist in virtually all 19th century covers and are not always described. They are not grounds for return.**

Catalogue Values and Estimates

Unless otherwise noted, the currently available *Scott Catalogue* values are quoted in dollars with a decimal point. Other catalogues are often used for foreign countries or specialized areas and are referred to by their common name: *Stanley Gibbons* (SG), *Dietz*, *American Air Mail Catalogue* (AAMC), *Michel*, *Zumstein*, *Facit*, etc. Estimates are indicated with an “E.” and reflect our conservative valuation in dollars. Reserves will never exceed the low end of the estimate range; they will sometimes exceed Scott Catalogue value for stamps in Extremely Fine condition.

Because of certain pricing inconsistencies in the *Scott Catalogue*—for example, blocks that have no gum, the absence of premiums for Mint N.H. items, etc.—we cannot guarantee the accuracy of values quoted for multiples, specialized items and collection lots. We generally try to be conservative, but buyers may not return a lot because of a discrepancy in catalogue value due to Scott pricing inconsistencies.

Symbols and Abbreviations (see chart above for gum symbols)

| | | | | | | | |
|----|--------------|----|-------------------|------|--------------------|-----|------------------------|
| ⊞ | Block | E | Essay | pmk. | Postmark | No. | Scott Catalogue Number |
| ⊞ | Cover | P | Proof | cds | Circular Datestamp | hs | Handstamp |
| FC | Fancy Cancel | TC | Trial Color Proof | var. | Variety | ms. | Manuscript |

Resources at siegelauctions.com

ROBERT A SIEGEL AUCTION GALLERIES INC.
60 East 56th Street, 4th Floor, NY, NY 10022 • Phone (212) 753-6663 • Fax (212) 753-6669

The Scarsdale Collection, Part Five: Used United States 1847-69 Issues continued...

| Lot | Sym. | Lot Description | Est. Cat. | Realized |
|------|------|--|------------|-------------|
| 2863 | | <p>1851-56 Issue</p>  <p>1c Blue-Ty. 1851, Position 78-1E, large margins including portion of adjoining stamp at bottom, just touched at left, rich color in the distinctive bright blue. 1 Early shade, proof-like impression, near oval of blue "Richmond's Va. Nov. 24" circular datestamp leaves design at bottom and double transfer at top right clearly visible.</p> <p>EXTREMELY FINE, QUITE PROBABLY THE FINEST EXAMPLE OF SCOTT NO. 3 IN EXISTENCE, AND ONE OF ONLY A FEW SOUND EXAMPLES.</p> <p>POSITION 78-1E - THE SEVENTH STAMP IN THE RIGHT PANE OF PLATE ONE EARLY - IS THE ONLY ONE OF THE 1,000 POSITIONS USED TO PRINT IMPERFORATE ONE-CENT STAMPS THAT SHOWS THE COMPLETE DESIGN (TYPE D). ESPECIALLY DESIRABLE WITH THE BLUE RICHMOND CIRCULAR DATESTAMP. A MAGNIFICENT EXAMPLE OF THE RAREST AND MOST DESIRABLE CLASSIC IMPERFORATE UNITED STATES STAMP.</p> <p>The published census compiled by Jerome S. Wagshal contains 90 unduplicated records of Scott's 3. There has been one addition to the Wagshal census, and there are probably no more than ten examples existing outside of the census population. Therefore, the 1c 1851 Type D is the rarest of all United States stamps issued regularly prior to the 1868 Gills.</p> <p>Because of the significance attached to the outer portions of the 1c 1851 design, rare types that have been carefully cut apart, so as not to impair on any part of the design, are extremely desirable. The narrow spacing between stamps in the sheet and the more indifference to the cutting arrangement during separation are factors that contributed to the great rarity of four-margin examples. The example offered here comes from the "Warner strip" of Positions 78-1E, which was cut apart with a view towards preserving the margins of this stamp. Examples of Position 78-1E (Scott 3) with large right and bottom margins, where there was very little space between it and the adjoining stamps, are true rarities. In fact, using the census data, it may be argued that this stamp is among the two or three finest sound examples known.</p> <p>Wagshal Census No. 5-CAN-047. Ex Copsey, Twigg-Smith and Harshbarger. With 1970 and 2001 P.F. certificates. (Image Mounted)</p> | \$5,750.00 | \$75,000.00 |

Catalogues and Prices Realized

Images and descriptions for all current sale catalogues are available from our website.

An archive of past sales (from Sale 786, April 1997) and prices realized (from Sale 742, May 1992) is constantly maintained to allow users to search for items and information from past sales.

The Siegel Encyclopedia and Rarities Census

This feature of our website contains a wealth of information gleaned from decades of philatelic research by the dedicated philatelists at Siegel.

The up-to-date census data for 19th and 20th century U.S. rarities are a valuable resource for buyers, sellers and researchers. Every recorded example of more than 30 different rare stamps is described and, in most cases, photographed.

Our updated census of Scott 396 records thirteen used stamps. None is recorded unused. Of the five non-precanceled stamps, two have major faults and one has poor centering. There are the only three well-centered non-precanceled examples in existence.

| | | | | |
|--------------------------------|---|--|--|--|
| Census No. History: FPC: | 396-CAN-01 RAS 424/1982 9124 "Overseas" | 396-CAN-02 Coke Coll. - RAS 324/1983, Lot 1793 - \$22,000 Zandberg Coll. - RAS Sale 804 10/22/98, Lot 713 - \$20,000 24031 "Overseas" | 396-CAN-03 Ortman Coll. - RAS 11/00/1971, Lot 518 16736 "Overseas" | 396-CAN-04 40001 "Overseas, small crease, thin spot" 132791 "Overseas, two corner creases at top and small scrape" |
| Census No. History: FPC: | 396-CAN-05 RAS 10/31/1992 Playal Coll. - IPO 10/23/2001, Lot E39 \$15,000 260313 "Overseas corner crease and tiny tear" | 396-CAN-06 RAS 325/1989 10741 "Overseas" 26920 "Overseas" | 396-CAN-07 Ewing Coll. - HR 6/18-21/1940 offered as "unrecorded variety of 1c and the only known copy" 24852 "Overseas" 324490 "Overseas, tiny thin spot at B.L. and small corner crease at T.R." | 396-CAN-08 Kallisher 3/27/1980 10076 "Overseas, some staining at top" |
| Census No. History: | 396-CAN-09 Molenaar Coll. - RAS 5/2/1973, Lot | 396-CAN-10 IPO 10/15/2002, Lot 633 - \$10,000 | 396-CAN-11 Isleham Coll. - RAS 5/25/1996, Lot | 396-CAN-12 Lewson Coll. - IPO 5/01/2002, Lot 640 - |




Rarities of the World Sales Archive

Images and descriptions for every annual Rarities sale since 1964 provide an unparalleled source of information on the world's greatest philatelic rarities. Digital images made from color slides for Rarities sales between 1964 and 1991 (the era of black-and-white catalogues) make this the only source of color images anywhere.

Informative Video Presentations

Downloadable video documentaries tell the stories of stamps and covers, such as the famous Inverted "Jenny." This is the ideal way to introduce philately to others.



The 1918 24¢ INVERTED "JENNY"

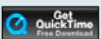
Position 57 — auctioned by Siegel Auction Galleries on Wednesday, November 14, 2007 — set a world record for the amount paid at auction for a single U.S. Stamp.

JENNY AUCTION FOOTAGE

Also see Scott Trepel's exclusive video preview:
THE INVERTED JENNY

Also available as an iPod video

To view this presentation will require the standalone Apple QuickTime Player or the QuickTime web browser plug-in.



EVENING SESSION (LOTS 1-142)
WEDNESDAY, FEBRUARY 27, 2008, AT 6:00 P.M.

THE TAHOE COLLECTION OF
SUPERB USED UNITED STATES STAMPS

POSTMASTERS' PROVISIONALS



1

- 1 **New York N.Y., 5c Black, "ACM" Initials (9X1).** Enormous margins all around incl. significant portion of adjoining stamp at left, intense shade and proof-like impression, red circular datestamp cancel at bottom left and single blue penstroke

EXTREMELY FINE GEM. ARGUABLY THE FINEST EXAMPLE OF THE 5-CENT NEW YORK POSTMASTER'S PROVISIONAL IN EXISTENCE. A REMARKABLE STAMP IN TERMS OF MARGINS, IMPRESSION, CLARITY OF SIGNATURE, CANCELLATION, AND OVERALL FRESHNESS.

Ex Hinrichs. With 1999 and 2004 P.F. certificates. The P.S.E is no longer grading Postmasters' Provisionals, but if they were we are confident this would achieve the highest grade. 525.00



2

- 2 **New York N.Y., 5c Black on Blue, “ACM” Initials (9X2).** Large margins all around, sharp proof-like impression on deep blue paper, blue pen cancel

EXTREMELY FINE. WITHOUT QUESTION THIS IS ONE OF THE FINEST EXAMPLES OF THE 5-CENT NEW YORK POSTMASTER'S PROVISIONAL ON BLUE WOVE PAPER. THIS IS THE ONLY SOUND EXAMPLE WE HAVE OFFERED IN ALMOST TEN YEARS.

In *The New York Postmaster's Provisional*, Stanley Piller cites Luff's statement that the last printing of the New York provisional took place on January 7, 1847, when 100 sheets were delivered. Piller also conveys Philip Wall's belief that most if not all of the stamps on Gray (Scott 9X3) and Blue (Scott 9X2) papers come from this last printing, as all the known covers are used after that date.

As an indication of rarity, this is only the second example we have offered in four years. The other was defective and on cover. The stamp offered here is the only sound example we have offered since the Zoellner sale in October 1998 (which was a pair). A search of the P.F.'s records reveals that they have certified only six sound stamps off cover and one sound copy on cover.

With 1998 P.F. certificate 3,500.00



3

- 3 **St. Louis Mo., 10c Black on Gray Lilac (11X5).** Type III (Position 6), large even margins all around, cancelled by single penstroke and trace of handstamp at bottom left which leaves the entire design clearly visible, crisp impression

EXTREMELY FINE. A SUPERB EXAMPLE OF THE 10-CENT ST. LOUIS POSTMASTER'S PROVISIONAL ON GRAY LILAC PAPER IN THE FINEST CONDITION ATTAINABLE.

Ex Vineyard. With 1993 and 2004 P.F. certificates 7,000.00

1847 ISSUE



4

- 4 **5c Red Orange (1c).** Horizontal pair, large even margins all around, brilliant color nicely complemented by **red grid** cancels on nicely blued paper

EXTREMELY FINE GEM. AN IMMENSELY RARE PAIR OF THE 5-CENT 1847 ISSUE IN THE ELUSIVE RED ORANGE SHADE. THIS IS THE LARGEST RECORDED MULTIPLE OF THIS SHADE, AND ONE OF ONLY TWO SOUND PAIRS. A HIGHLY EXHIBITABLE 1847 ISSUE ITEM.

According to a series of articles by the late Calvet M. Hahn in the *Collector's Club Philatelist*, the Red Orange shade was printed some time during the fourth and last printing, which took place in December 1850. Mr. Hahn reports seeing only five covers in his article, and that Chase had only seen three.

The P.F. has certified four pairs of this distinctive shade. Of these, only one other is sound.

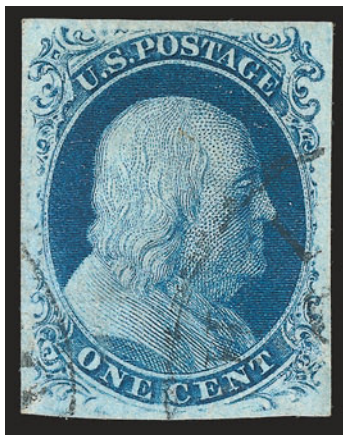
Ex Grunin and Hinrichs. With 1977, 1996 and 2004 P.F. certificates..... 25,000.00



5

- 5 **10c Black (2).** Huge margins all around incl. part of adjoining stamp at bottom, bright shade and crisp impression showing every detail of the engraving, light strike of red grid cancel
 EXTREMELY FINE GEM. A SUPERB USED EXAMPLE OF THE 10-CENT 1847 ISSUE. A STAMP OF REMARKABLE FRESHNESS AND BEAUTY, WHICH HAS BEEN GRADED SUPERB 98 BY P.S.E.
 Ex Floyd. With 1990 P.F. and 2008 P.S.E. certificates (Superb 98; SMQ \$8,650.00). Only five others share this grade, and only two have graded higher to date..... 1,400.00

1851-56 ISSUE



6

- 6 **1c Blue, Ty. III (8).** Plate 4, large even margins all around, deep rich color and detailed impression showing clear breaks at both top and bottom (the characteristic of the type), light strike of circular datestamp cancels

EXTREMELY FINE GEM. A SUPERB USED EXAMPLE OF THE IMPERFORATE ONE-CENT TYPE III, WHICH HAS BEEN GRADED XF-SUPERB 95 BY P.S.E. A MAGNIFICENT STAMP IN EVERY RESPECT.

Type III is defined by breaks in the outer lines at both top and bottom. Many Type III stamps have breaks that were created or enlarged by plate wear. Since the wear occurred over a period of time, the majority of stamps of this type (both unused and used) has small breaks in at least one line. This stamp is notable both for its overall condition and also for the clear breaks which are evident at both top and bottom.

With 2007 P.S.E. certificate (XF-Superb 95; SMQ \$13,600.00). This is the highest grade awarded to date, and only two others share this desirable grade. 3,500.00



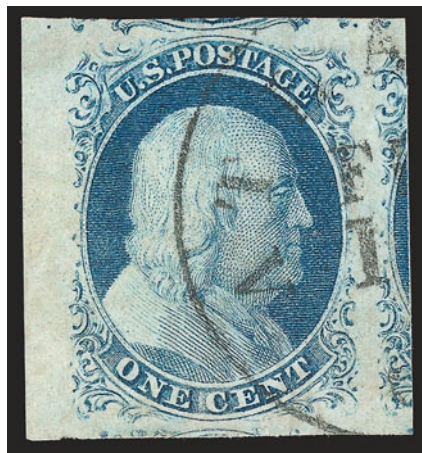
7

- 7 **1c Blue, Ty. IIIa (8A).** Plate 4, huge margins all around incl. parts of adjoining stamps at sides, deep rich color on bright white paper, wide break at top and complete outer line at bottom, two small light pen stroke cancels leave the entire design clearly visible

EXTREMELY FINE GEM. A MAGNIFICENT USED EXAMPLE OF THE 1851 ONE-CENT IMPERFORATE TYPE IIIA FROM PLATE 4. AN EXTREMELY DIFFICULT STAMP TO FIND WITH SUCH HUGE MARGINS.

Stamps printed from Plate 4 were issued in April-June 1857 before perforations were introduced. The relatively small number of imperforate Plate 4 stamps issued during this period explains the rarity and desirability of any of the imperforate stamp types produced from this plate.

With 1981 and 2002 P.F. certificates for horizontal strip of three, this being the center stamp.
 600.00



8

- 8 **1c Blue, Ty. IV (9).** Enormous margins all around incl. parts of five adjoining stamps and **sheet margin** at left, brilliant color, crisp impression, neat strike of Atlanta circular datestamp

EXTREMELY FINE GEM. THIS MARVELOUS STAMP, WHICH IS SURELY ONE OF THE FINEST IN EXISTENCE, HAS BEEN AWARDED THE SUPREME GRADE OF GEM 100 JUMBO BY P.S.E. — A PERFECT STAMP IN TERMS OF MARGINS, COLOR, IMPRESSION, CANCEL AND OVERALL FRESHNESS.

With 2006 P.S.E. certificate (Gem 100 Jumbo; unpriced in SMQ above the grade of 98, SMQ \$1,850.00 as 98). This is the only example to date to receive this ultimate grade..... 130.00



9

- 9 **1c Blue, Ty. IV, Triple Transfer, One Inverted (9 var).** Position 91L1L, huge margins all around incl. **bottom left corner sheet margins**, dark shade, neat strike of town datestamp leaves design clearly visible

EXTREMELY FINE GEM. A SUPERB USED EXAMPLE OF THE 1851 IMPERFORATE ONE-CENT TYPE IV WITH TRIPLE TRANSFER/ONE INVERTED IN THE FINEST CONDITION ATTAINABLE.

The three inverted transfers occurred during the making of Plate 1 Early. Positions 71L, 81L and 91L were entered from the three-subject transfer roll in the spaces where the first three entries had been made and erased (but not fully erased). The plate was turned 180 degrees before starting fresh entries from the transfer roll. Position 91L was re-entered a third time on Plate 1 Early, creating a triple transfer (two upright, one inverted). When Toppan, Carpenter re-worked the worn plate, many of the subjects were re-entered, and all but one were recut at top and/or bottom, creating Scott 9, Type IV, from what we call Plate 1 Late (the same piece of steel in its modified state). Positions 71L and 81L were re-entered, thus becoming triple transfer (one inverted) positions. Position 91L was not re-entered. Thus, Position 71L and 81L only exist as triple transfers one inverted as Type IV stamps, while Position 91L exists as Type II and Type IV.

With 2000 and 2005 P.S.E. certificates (XF-Superb 95 Jumbo; the variety is unpriced in SMQ, SMQ \$860.00 as normal 95, \$1,800.00 as normal 98)..... 180.00



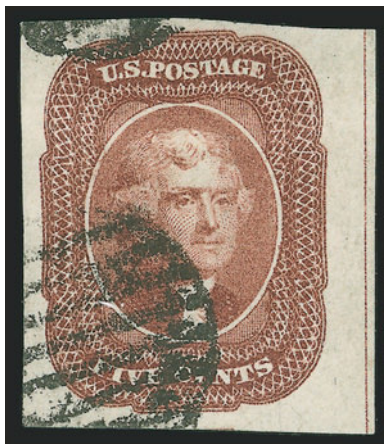
10

- 10 **3c Rose Red, Ty. I (11).** Huge margins all around incl. part of seven adjoining stamps, brilliant color on crisp paper, unobtrusive strike of **blue** cancel

EXTREMELY FINE GEM AND THE ESSENCE OF PERFECTION. THIS IS ONE OF ONLY TWO EXAMPLES OF THE 3-CENT 1851 ISSUE TO ACHIEVE THE P.S.E. GRADE OF GEM 100 JUMBO.

Many collectors have a tendency to discount how difficult it is to find imperforate classics in such superb condition. The assumption is that there are multiples which can be split to “make” perfect singles. However, one would need a lightly-cancelled block of nine, with no wrinkles or other minor defects, to produce a single such as the one offered here.

With 1997 P.F. and 2008 P.S.E. certificates (Gem 100 Jumbo; unpriced in SMQ above the grade of 98, SMQ \$750.00 as 98 in the normal Dull Red shade). Of the nearly 300 submissions of used 3c 1851 stamps to P.S.E., only four have graded Gem 100 and only two are Gem 100J (all are used No. 11's). 16.00



11

- 11 **5c Red Brown (12).** Enormous margins incl. **full guideline sheet margin at right**, rich color, bold grid cancels

EXTREMELY FINE GEM. AN EXCEEDINGLY RARE SHEET-MARGIN EXAMPLE OF THE 5-CENT 1856 ISSUE WITH FULL GUIDELINE. VERY FEW EXIST.

Our ongoing census of off-cover sheet margin examples of Scott 12 contains twelve singles with imprint and an additional thirteen with sheet margin, including three with corner margins.

Ex Mayer. With 2002 P.F. certificate..... 950.00



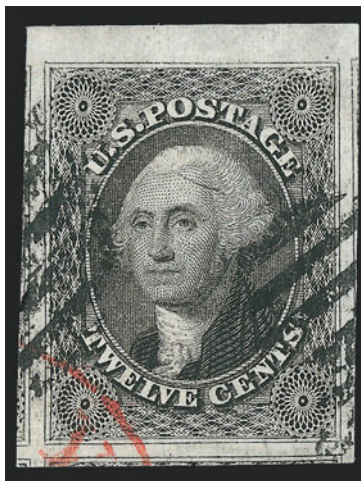
12

- 12 **5c Red Brown, Defective Transfer (12).** Position 23R1, showing distinctive white “cloud” at right or portrait, large and even margins all around, light strike of circular datestamp leaves entire design clearly visible

VERY FINE AND CHOICE. A BEAUTIFUL AND RARE EXAMPLE OF THE 5-CENT 1856 ISSUE SHOWING THE DISTINCTIVE DEFECTIVE TRANSFER. THIS IS ONE OF THE FINEST EXAMPLES IN EXISTENCE.

Our computerized records (which include every Rarities sale since 1964) indicate we have only offered three other examples of this variety. One is on cover, and the other two had faults.

With 1998 P.F. certificate..... 1,400.00



13

- 13 **12c Black (17).** Phenomenally huge margins all around incl. **sheet margin** at top and parts of four adjoining stamps, bright shade and crisp impression, grid cancels frame Washington's face, part of red circular datestamp cancel at bottom left



EXTREMELY FINE GEM. WITHOUT QUESTION ONE OF THE FINEST USED SINGLES OF THE 12-CENT 1851 ISSUE EXTANT. THIS MAGNIFICENT STAMP HAS BEEN GRADED GEM 100 JUMBO BY P.S.E. — THIS IS ONE OF ONLY TWO EXAMPLES TO ACHIEVE THIS ULTIMATE GRADE TO DATE.

Our comments regarding the 3c 1851 Imperforate (see lot 10) apply to the stamp offered here, and even more so considering its greater scarcity.

Ex Lehman, Haas and Morris. With 1993 P.F. and 2008 P.S.E. certificates (Gem 100 Jumbo; unpriced in SMQ above the grade of 98, SMQ \$4,100.00 as 98). Only two 12c 1851's have achieved the unbeatable Gem 100J grade (both used). There are no Gem 100 examples without the Jumbo appellation. 370.00



14

|  | No. | 01162691 | 1/18/2008 | | | | | | | | |
|---|---|----------|-----------|-------|-------|------|----|------|--------------------------------|--|--|
| |  | | | | | | | | | | |
| Professional Stamp Experts P.O. Box 6170, Newport Beach, CA 92658 | | | | | | | | | | | |
| Expert Committee We have examined the enclosed item submitted to PSE, of which an image is shown below, and are of the opinion that: | | | | | | | | | | | |
| <table border="1"> <thead> <tr> <th>Cat #</th> <th>Issue</th> <th>Denom.</th> <th>Color</th> </tr> </thead> <tbody> <tr> <td>US#19</td> <td>1857</td> <td>1c</td> <td>Blue</td> </tr> </tbody> </table> | Cat # | Issue | Denom. | Color | US#19 | 1857 | 1c | Blue | GRADE: Superb 98J, Used | | |
| Cat # | Issue | Denom. | Color | | | | | | | | |
| US#19 | 1857 | 1c | Blue | | | | | | | | |
| "It is genuine used, Position 92L4, with a c.d.s. cancel." | | | | | | | | | | | |
|  | | | | | | | | | | | |
|  For The Expert Committee | | | | | | | | | | | |
| <small>THIS CERTIFICATE IS PRINTED ON WATERMARKED PAPER AND IS NOT VALID WITHOUT WATERMARK</small> | | | | | | | | | | | |

1857-60 ISSUE

- 14 **1c Blue, Ty. Ia (19).** Position 92L4, **wide-spaced perforations** at top and bottom, perfectly centered with wide margins at right and left, rich color, lightly cancelled by "Boston 18 Sep. Paid" circular datestamp

EXTREMELY FINE GEM. THIS IS WITHOUT QUESTION THE FINEST RECORDED SINGLE OF THE RARE 1857 ONE-CENT TYPE IA PERFORATED. VERY FEW EXIST WITH WIDE-SPACED PERFORATIONS. THIS IS WIDELY REGARDED AS ONE OF THE MOST IMPORTANT USED CLASSIC UNITED STATES STAMPS IN EXISTENCE. THIS MAGNIFICENT STAMP HAS BEEN AWARDED THE GRADE OF SUPERB 98 JUMBO BY P.S.E.

Type Ia stamps were produced from 18 of the 20 bottom-row positions on Plate 4. After perforations were introduced in mid-1857, sheets on hand printed from Plates 1 Late and 2 were fed through the new perforating machine, but the narrow spaces between stamps made perforating difficult to accomplish without cutting into the designs. Plate 4 was produced in early 1857 when the introduction of perforations was anticipated; thus, it was entered from a new six-relief transfer roll, and the spaces between stamps were enlarged to allow for perforations. Some Plate 4 sheets were issued in imperforate form (April to June 1857), while the greater portion was issued perforated beginning in July 1857, along with perforated sheets from Plates 1L and 2.

Plate 4's most distinctive feature is that the top row (Positions 1-10L and 1-10R) was entered with the designs complete at top (Type II) and the bottom row (Positions 91-100L and 91-100R) was entered with designs complete or nearly complete at bottom (Types Ia and Ic). Although the plate layout provided sufficient space for perforations, the height of the top-row and bottom-row designs was larger than others in the sheet, which resulted in perforations cutting into either the top or bottom rows, depending on which direction the sheet was fed into the perforator. Type Ia and Ic stamps from the bottom row are almost always cut into at bottom, an unfortunate situation for collectors because the bottom part of the design is what makes Type Ia and Ic stamps desirable.

The exceptions to the normal cut-into condition of top-row and bottom-row Plate 4 stamps are those with *wide-spaced* perforations. It has been assumed for years that the pins of the bottom row of the perforator were reset to create more space, but some students of the 1851-57 Issue have begun to reexamine this aspect of Plate 4 production to seek alternative explanations for wide-spaced perforations. Whatever the cause, wide-spaced stamps are extremely rare and highly desirable, because they exhibit all of the features that define their respective types. The so-called Waterhouse strip (ex Sir Nicholas Waterhouse, Saul Newbury and Mortimer Neinken; illustrated on p. 280 of the Neinken book) and this single are the most famous of 1c 1857 Type Ia wide-spaced examples. Although a small number of single wide-spaced stamps are recorded, the example offered in this sale is the best-centered and one of the few completely sound stamps. When it was acquired by the late Amos Eno decades ago, this extraordinary stamp realized *ten times* Scott Catalogue value. In 1993 our firm sold this stamp by private treaty to Robert Zoellner for the same multiple of Scott value. It also realized the same multiple of catalogue value when acquired by the present owner at the Shreve sale of the Hinrichs collection.

Ashbrook states: "I consider perforated Type IA stamps that are not touched by perforations as the rarest stamps in the 1857 perforated issue." (Neinken book, p. 279). The Scott Catalogue contains a footnote to the basic price quotes: "Copies of this stamp exist with perforations not touching the design at any point. Such copies command very high prices."

Ex Eno, Zoellner and Hinrichs. With 2004 P.F. and 2008 P.S.E. certificates (Superb 98 Jumbo; SMQ \$180,000 as 98). The P.S.E. Population Report lists seven graded examples of Scott 19 (6 used, 1 OG). This Superb 98J is trailed by one 90 and four graded 40 or below (the OG copy is a 30)..... 10,000.00



15

- 15 **1c Blue, Ty. III, Position 99R2 (21).** Deep rich color, choice centering for this unique position with its characteristic wide breaks and double transfer clearly visible, light strike of **blue town datestamp**

VERY FINE AND CHOICE. EASILY ONE OF THE FINEST KNOWN EXAMPLES OF THE EXTREMELY RARE PERFORATED ONE-CENT 1857 ISSUE FROM POSITION 99R2. THIS POSITION IS WIDELY REGARDED AS THE BEST EXAMPLE OF TYPE III.

On Plate 2, 198 of the 200 positions were Type II. Position 100R was Type II in the early stage of the plate, but as wear began to weaken the bottom line, it became Type IIIa with a small break at bottom. Positions 89R and 99R on Plate 2 have been the focus of special attention, because of their unusual nature. Ashbrook states: "A study of the double transfers of 89R2 and 99R2 is most interesting, because here in a vertical pair of positions we have two distinct varieties... The 99R2 stamp is a fresh entry that was short transferred both at top and bottom over an original entry that had been erased... The stamp, 89R2, is a re-entry, but not in the proper sense of this term, because the re-entry on the lower part of this position was an error, as it was not made to correct an existent fault of the original 89R transfer."

Plate 2 stamps were issued imperforate from December 1855 through June 1857. Beginning in July 1857 stamps from Plates 1 Late, 2 and 4 were issued with perforations, and Plates 2 and 4 continued to produce stamps through late 1857. Plate 2 stamps are rarer perforated than in imperforate form; conversely, Plate 4 stamps are rarer imperforate than in perforated form. However, perforated 99R2 stamps are of extreme rarity with perhaps 10 to 15 examples known in any condition (one unused, which is contained in a block, and the others used, including two on covers). Most have faults or are very off-center. This sound example cancelled by a lightly-struck blue datestamp is one of the finest extant.

With 1993 and 2005 P.F. certificate 20,000.00

- 16 **1c Blue, Ty. V (24).** Brilliant color, gorgeous centering with balanced Jumbo margins all around incl. top and bottom, unobtrusive cancel leaves entire design clearly visible, Extremely Fine Gem, a superb stamp in every respect, wide side margins are the norm for Scott 24, but this stamp with wide top and bottom margins is very unusual, with 1998 P.F. and 2008 P.S.E. certificates (XF-Superb 95 Jumbo; SMQ \$320.00 as 95, \$670.00 as 98), this is the highest grade awarded to date by P.S.E., and the only example to achieve this grade 45.00



16



17

- 17 **5c Brick Red (27).** Brilliant color, beautiful centering with wide and balanced margins and with outer projections completely untouched by the perfs, well-struck "New Orleans La. May 19, 1859" circular datestamp

EXTREMELY FINE GEM. A SUPERB USED EXAMPLE OF THE 1857 5-CENT BRICK RED. EASILY ONE OF THE FINEST EXAMPLES IN EXISTENCE — THIS REMARKABLE STAMP HAS BEEN AWARDED THE GRADE OF XF-SUPERB 95 BY P.S.E., WHICH IS THE HIGHEST GRADE AWARDED TO DATE.

Based on dated covers, the 5c Type I shades were released in the following order: 1) Red Brown, Scott 28, EDU 8/23/1857; 2) Indian Red, Scott 28A, EDU 3/31/1858; 3) Brick Red, Scott 27, EDU 10/6/1858; 4) Brown, Scott 29, EDU 3/21/1859, almost certainly the last printing from the first 5c plate. The second 5c plate was made from a new six-relief transfer roll with the design projections cut away at top and bottom, to varying degrees. The Type II Brown was issued first (Scott 30A, EDU 5/4/1860), and the Orange Brown printing from the same plate followed about one year later (Scott 30, EDU 5/8/1861).

The first 5c sheets to be perforated in mid-1857 undoubtedly came from the unissued supply of 5c imperforate sheets in the "1856" Red Brown shade. These are akin to 1c perforated stamps from Plate 1 Late (Type IV, Scott 23) and Plate 2, and 3c perforated stamps from the Type I plate (Scott 25). Covers dated during the second half of 1857 and first quarter of 1858 have 5c stamps in the "1856" shade of Red Brown, which look like Scott 12 with perforations. By March 31, 1858, the EDU of the Indian Red shade, a second printing must have been made. We suspect that the entire family of Red Brown, Bright Red Brown and Indian Red shades — all of which differ from the "1856" Red Brown — were printed at the same time during the first quarter of 1858.

The Brick Red EDU of October 6, 1858, and its predominant use in early 1859 indicate either a separate printing (3rd Quarter 1858) or a *later release date* for stamps printed earlier. The Brick Red color is so far removed from any of the other 5c shades, we strongly suspect it was made inadvertently while the printers tried to match the earlier 1856 Red Brown. Sheets of the irregular 5c shades (Brick Red) would have been added to the stacks along with the subsequent Red Brown, Bright Red Brown and Indian Red sheets. However, when stamps were issued to post offices, the "color corrected" sheets would be released before the "irregular" Brick Red sheets were distributed.

With 2006 P.S.E. certificate (XF-Superb 95; SMQ \$8,750.00). This is the highest grade awarded to date, and only three others share this grade 1,800.00



18

- 18 **5c Brown (29).** A Relief from the top row of the plate, rich color and proof-like impression on bright paper, beautifully centered with wide margins all around which are well clear of the outer projections of the design, bold strikes of red grid cancels
EXTREMELY FINE GEM. A SUPERB USED EXAMPLE OF THE 5-CENT 1857 ISSUE IN THE BROWN COLOR. A BEAUTIFUL STAMP IN EVERY RESPECT.

Ex Floyd. With 1988 P.F. and 2008 P.S.E. certificates (XF 90; SMQ \$1,150.00). A note accompanying this graded stamp explains that the cancel was a bit heavy, otherwise it would have graded higher. We actually think a colorful red cancel adds to this stamp's appeal, which puts it on a par with the five other examples which have graded higher.

475.00



19

- 19 **10c Green, Ty. II (32).** Beautifully centered with unusually wide and balanced margins, deep rich color nicely complemented by **blue circular datestamp**, bright paper, proof-like impression

EXTREMELY FINE GEM. A SUPERB USED EXAMPLE OF THE PERFORATED 10-CENT GREEN TYPE II, WHICH HAS BEEN GRADED XF-SUPERB 95 BY P.S.E. — THIS IS THE HIGHEST GRADE AWARDED TO DATE.

With 1992 and 2003 P.F. and 2008 P.S.E. certificates (XF-Superb 95; SMQ \$1,750.00). This is the highest graded awarded to date. A total of eleven used 10c Type II perforated stamps are reported in the current P.S.E. Population Report, but we wonder how many of the others have a neat colorful cancel.

310.00



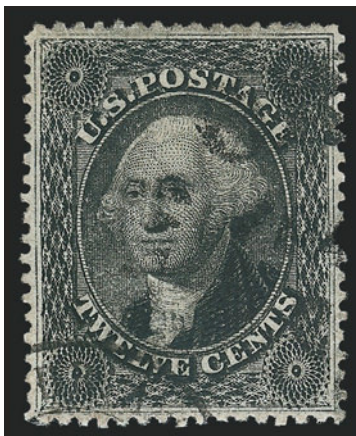
20

- 20 **10c Green, Ty. V (35).** Almost perfectly centered with extra wide margins all around—wide side margins are the norm, but this stamp also has extra wide top and bottom margins—deep rich color on bright fresh paper, neatly cancelled by **red town** datestamp leaving portrait oval completely unobscured, Extremely Fine Gem, a superb stamp in every respect, with 1997 and 2005 P.F. certificates 72.50



21

- 21 **10c Green, Ty. V (35).** Horizontal strip of three, pretty shade, light strikes of town datestamp, red transit and **red framed "PD" French transit** (Paid to Destination) handstamp, huge margins, Extremely Fine, a superb strip in every respect, with 1989 and 2004 P.F. certificates, Scott Retail as pair and single with no premium for the cancel..... 227.50



22

22 **12c Black, Plate 3 (36b).** Extra wide margins all around with perfs far from framelines, intense shade and impression which clearly shows **double transfer at bottom**, neat cancels leave design clearly visible

EXTREMELY FINE GEM. A SUPERB USED EXAMPLE OF THE 12-CENT 1860 ISSUE FROM PLATE 3, WHICH HAS BEEN GRADED XF-SUPERB 95 BY P.S.E. THIS IS ESPECIALLY DESIRABLE WITH THE CLEAR DOUBLE TRANSFER AT BOTTOM.

Ex Floyd. With 1990 P.F. and 2008 P.S.E. certificates (XF-Superb 95; SMQ \$1,650.00 with no premium for the double transfer). This is the highest grade awarded to any 12c 1857-60 perforated stamp (Scott 36 or 36b). Only seven Plate 3 (Scott 36b) stamps graded 95 are reported in the P.S.E. Population Report. Considering the extraordinary margin width—almost unheard of in this issue—and the centering and face-free cancel, we consider this a very strong 95, if not a 98. 250.00

1861-66 ISSUE



23

- 23 **3c Rose Pink (64b).** Vibrant color, perfectly centered, neat strike of “Cleveland O. Sep. 7, 1861” circular datestamp, fresh and Extremely Fine Gem, a surprisingly difficult stamp to obtain in such superb condition, with 1994 P.F. certificate for cover from which stamp was originally soaked and with original cover (a second stamp has also been removed), also with 2008 P.F. certificate 160.00



24

- 24 **5c Brown Yellow (67a).** Wide and even margins, beautiful shade nicely contrasted by well-struck **blue** “Baltimore Md. Jan. 28” circular datestamp
 EXTREMELY FINE GEM. A SUPERB WIDE-MARGINED EXAMPLE OF THE 1861 5-CENT IN THE BROWN YELLOW SHADE CANCELLED BY A BOLD BLUE CIRCULAR DATESTAMP. A STUNNING STAMP.
 With 1983 and 2004 P.F. certificates..... 1,320.00



25

25 **12c Black (69).** Perfectly centered with extra wide margins framing design on all sides, bold strike of **true green target cancel**

EXTREMELY FINE GEM. THE 12-CENT 1861 IS ONE OF THE MOST DIFFICULT DENOMINATIONS OF ANY ISSUE TO OBTAIN WITH A GREEN COLORED CANCEL.

Green cancels are generally very scarce, and most examples are found on 3c values of classic issues used from small post offices. Because the 12c was typically used to pay the U.S-British treaty rates on mail from large cities, examples cancelled in green are extremely rare. A collector looking for a green cancel on a 12c 1861 in *any* condition would experience great difficulty. A condition-conscious collector who asked a professional for a superb 12c 1861 with a green cancel would be considered slightly mad. The stamp offered here answers that call.

With 2006 P.F. certificate (XF 90 — conservatively based solely on centering/margins without any regard for the cancellation)..... 670.00



26

26 **24c Brown Lilac (70a).** Perfectly centered with immense margins, light blue grid cancel, deep shade and sharp impression

EXTREMELY FINE GEM. A SUPERB EXAMPLE OF THE 1861 24-CENT BROWN LILAC FEATURING HUGE EVEN MARGINS, FRESH COLOR, SHARP IMPRESSION AND COLORED CANCEL. THIS MAGNIFICENT STAMP HAS BEEN GRADED XF-SUPERB 95 JUMBO BY P.S.E., WHICH IS THE SECOND-HIGHEST GRADE AWARDED TO DATE.

With 2002 P.F. and 2008 P.S.E. certificates (XF-Superb 95 Jumbo; SMQ \$2,450 as 95, \$5,400.00 as 98). Only one has graded higher to date (Superb 98), and this is the only example to achieve a P.S.E. 95J grade. 230.00



27

27 **90c Blue (72).** Precisely centered within wide even margins, beautiful color and detailed impression, face-free circle of wedges cancel leaves design clearly visible

EXTREMELY FINE GEM USED EXAMPLE OF THE 90-CENT 1861 ISSUE IN THE FINEST CONDITION ATTAINABLE. THIS MAGNIFICENT STAMP HAS BEEN AWARDED THE GRADE OF SUPERB 98 BY P.S.E. — THIS IS THE HIGHEST GRADE AWARDED TO DATE, AND THIS STAMP IS ONE OF ONLY TWO EXAMPLES TO ACHIEVE THIS LOFTY GRADE.

With 2004 P.F. and 2008 P.S.E. certificates (Superb 98; SMQ \$7,600.00). This and one other stamp are the only examples of the 90c 1861 (in any shade) to achieve the P.S.E. Superb 98 grade, which is the highest awarded to date. 550.00



28

- 28 **24c Lilac (78).** Choice centering with unusually wide and balanced margins, rich color and proof-like impression on bright paper which is as fresh as the day it was printed, neat strike of circle of V's cancel and trace of red transit at top left
EXTREMELY FINE GEM. A SUPERB USED EXAMPLE OF THE 1862 24-CENT LILAC.
Ex Koppersmith. With 1985 P.F. certificate 265.00

1867-68 GRILLED ISSUE



29

- 29 **3c Rose, D. Grill (85).** Brilliant color on bright paper, clear grill points, wide and balanced margins, neat strikes of circular datestamp and also rosette cancel, slightly choppy perfs typical of this early grilled issue
EXTREMELY FINE GEM. A MAGINFICENTLY-CENTERED USED EXAMPLE OF THE 1868 3-CENT D GRILL. SCARCE WITH SUCH BRIGHT COLOR AND SUPERB CENTERING.
With 2001 P.F. certificate 1,200.00



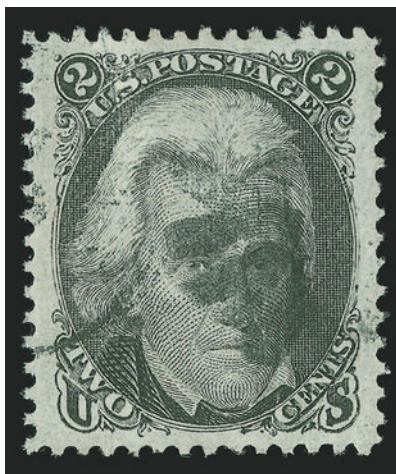
30

30 **1c Blue, E. Grill (86).** Perfectly centered with wide and well-balanced margins, brilliant color on bright paper, light cancel leaves design clearly visible, strong grill impression

EXTREMELY FINE GEM. THE 1868 ONE-CENT E GRILL IS ONE OF THE MOST DIFFICULT STAMPS OF THE SERIES TO OBTAIN WITH SUCH CHOICE CENTERING AND IN SUCH PRISTINE CONDITION. THIS IS EASILY ONE OF THE FINEST IN EXISTENCE — THE P.S.E. AGREES AND HAS AWARDED THIS STAMP THE GRADE OF SUPERB 98. THIS IS THE HIGHEST GRADE AWARDED TO DATE, AND THIS STAMP IS THE ONLY ONE TO ACHIEVE IT.

We have encountered only two others which compare favorably to the example offered here. They are: 1) blue circle of wedges cancel, ex Puliafito, Siegel Sale 818, lot 75, realized \$5,750 hammer in 1999; and 2) blue grid cancel, ex Scarsdale, Siegel Sale 943, lot 2050, realized \$7,500 hammer. P.S.E. has also graded two stamps Superb 95 Jumbo.

With 2003 P.F. and 2008 P.S.E. certificates (Superb 98; SMQ \$7,800.00)..... 550.00



31

31 **2c Black, E. Grill (87).** Remarkably well-centered with Jumbo margins all around, strong grill impression on fresh paper, cork cancel and also circular datestamp

EXTREMELY FINE GEM. A SUPERB USED EXAMPLE OF THE 1868 2-CENT F GRILL. AN EXTREMELY DIFFICULT STAMP TO FIND WITH SUCH HUGE MARGINS AND IN SUCH PRISTINE CONDITION. AN EXTRAORDINARY STAMP WHICH MAY WELL BE THE FINEST IN EXISTENCE — IT HAS JUST RECEIVED THE GRADE OF SUPERB 98 JUMBO BY P.S.E.

With 2003 P.F. and 2008 P.S.E. certificates (Superb 98 Jumbo; unpriced in SMQ above the grade of 98, SMQ \$3,400.00 as 98). This is the highest grade awarded to date, and the stamp offered here is the only example to achieve Superb 98J..... 200.00



32

- 32 **3c Rose, E. Grill (88).** Brilliant color, gorgeous centering with huge margins all around, clearly-defined grill which is easily discernible from the front of the stamp, unobtrusive cancel, Extremely Fine Gem, a superb stamp in every respect, with 1989 and 2003 P.F. certificates 27.50



33

- 33 **3c Rose, E. Grill, Very Thin Paper (88 var).** Horizontal pair, perfectly centered, remarkably bright and fresh color with clear grill points, beautiful strike of "Albany Ga. Aug. 20" circular datestamp with rosette cancel, Extremely Fine Gem, a magnificent pair and surely the finest in existence, with 2000 A.P.S. and 2002 P.F. certificates 65.00



34

- 34 **10c Green, E. Grill (89).** Brilliant color with clearly-defined grill, gorgeous centering with Jumbo margins, unobtrusive cancel
EXTREMELY FINE GEM. A STUNNING JUMBO-MARGINED EXAMPLE OF THE 1868 10-CENT E GRILL.
With 1997 P.F. certificate..... 325.00



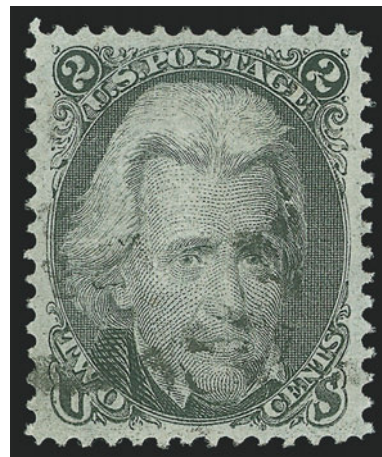
35

- 35 **1c Blue, F. Grill (92).** Near perfect centering with Jumbo margins, clear grill points, bright color on fresh paper, neat circle of wedges cancel and with circular datestamp at bottom left

EXTREMELY FINE GEM. THIS IS WITHOUT QUESTION THE LARGEST-MARGINED EXAMPLE OF THE 1868 ONE-CENT F GRILL WE HAVE EVER ENCOUNTERED. A MAGNIFICENT STAMP IN EVERY RESPECT.

With 1984 and 2003 P.F. certificates 550.00

- 36 **2c Black, F. Grill (93).** Wide even margins all around, clear grill points, light cork cancel, fresh and Extremely Fine Gem, a difficult stamp to find with such choice centering, with 2002 P.F. certificate for pair 60.00



36



37

37

5c Brown, F. Grill (95). Rich color and clear grill, phenomenally huge margins all around incl. captured part of adjoining stamp at left, neat penstrokes cancel which cleverly frames Jefferson's eye

EXTREMELY FINE GEM. THIS IS EASILY THE LARGEST EXAMPLE OF THE 1868 5-CENT F GRILL IN EXISTENCE. A STUNNING STAMP OR MAMMOTH PROPORTIONS.

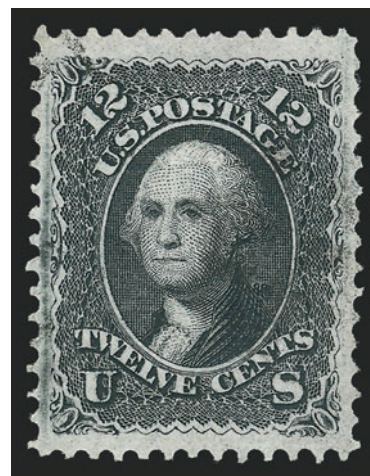
Ex Lyons. With 1999 P.F. certificate..... 875.00

38

12c Black, F. Grill (97). Choice centering with exceptionally wide and balanced margins, unobtrusive cancel at leaves entire design clearly visible, characteristic plate bruises in left margin

EXTREMELY FINE GEM. A BEAUTIFUL USED WIDE-MARGINED EXAMPLE OF THE 1868 12-CENT F GRILL.

With 2001 P.F. certificate 300.00



38



39

39 田

15c Black, F. Grill (98). Block of four, intact perfs at top with large part of adjoining pair, neat segmented cork cancels, sharp impression on bright paper, unusually choice centering

EXTREMELY FINE. UNDOUBTEDLY THE FINEST USED BLOCK OF THE 1868 15-CENT LINCOLN WITH F GRILL.

As an indication of rarity, the Twigg-Smith collection of used blocks lacked a block of Scott 98. Considering the centering of this block and the fact it is sound, we have no hesitation describing this as the finest used block extant.

With 2002 P.F. certificate. In our opinion, Scott Catalogue value does not adequately reflect the rarity of this block..... 3,000.00



40

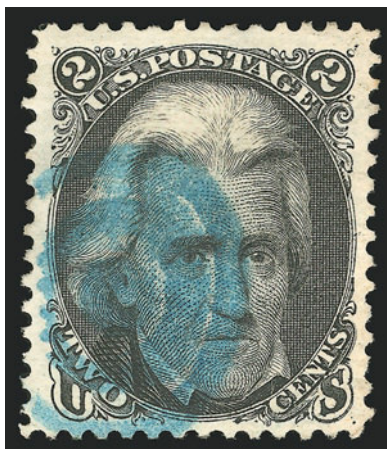
40 **90c Blue, F. Grill (101).** Perfectly centered, gorgeous intense blue shade and impression, **blue and red cancels**, grid in blue and part of red foreign transit in red, clear grill points, very fresh

EXTREMELY FINE GEM. THIS STAMP IS BREATHTAKINGLY BEAUTIFUL — A COMBINATION OF PERFECT CENTERING AND FLAWLESS CONDITION, THE STRIKING PORTRAIT OF A YOUTHFUL GENERAL WASHINGTON AND COLORFUL CANCELLATIONS — UNLIKE ANY OTHER 90-CENT F GRILL WE HAVE ENCOUNTERED.

The 90c stamps used to make grilled issues were printed on a thick stock of paper. It is likely that sheets remaining from the pre-grill period were used and that the thinner paper introduced in 1868 had not been used for the 90c value. Two characteristics of 90c F Grill stamps are poorly punched perforations and generally bad centering. This stamp is a remarkable exception. The perfs are much better formed than usual (although they show the genuine characteristics) and the centering is mathematically precise. In this stamp there is the added feature of color. Red cancellations are sometimes seen on the 90c, applied at New York City to supplementary mail, but blue is an extremely unusual color.

With 1992 P.F. and P.S.E. certificates and with 2004 P.F. certificate..... 2,420.00

1875 RE-ISSUE OF 1861-66 ISSUE



41

- 41 **2c Black, Re-Issue (103).** Beautifully centered with balanced margins at sides and wide margins at top and bottom, sharp proof-like impression, bold strike of **blue target** cancellation, insignificant corner crease at bottom right is not even visible in fluid and can only be seen for a split second when the fluid dries

EXTREMELY FINE APPEARANCE. THIS IS THE SECOND FINEST USED EXAMPLE OF THE 2-CENT BLACK JACK RE-ISSUE. ONLY 21 USED COPIES ARE RECORDED IN OUR CENSUS.

Of the 21 used 2c Black Jack Re-Issue stamps in our recently updated census records, only six are sound and rate a grading of Very Fine or better. The finest copy in existence is the ex-Zoellner copy, which realized \$11,000 in 1998. The stamp offered here is arguably the second finest and has the added attraction of a colored cancel. It is followed by four others with centering that is not quite as choice. Two of the other four have not been seen in over 20 years and, therefore, their condition needs to be verified.

Ex Morris and Twigg-Smith. With 1986 (not noting corner crease) and 2001 P.F. certificates. 7,000.00



42

42 **5c Brown, Re-Issue (105).** Choice centering with wide and beautifully balanced margins, light strike of cork cancellation at left, detailed impression

EXTREMELY FINE GEM. A SUPERB USED EXAMPLE OF THE 5-CENT 1861 RE-ISSUE, WHICH HAS BEEN GRADED XF-SUPERB 95 BY P.S.E. — EASILY ONE OF THE FINEST IN EXISTENCE..

Only 672 were issued, and of these only a small number were used. Our recently completed unpublished census of this issue records only 35 used examples. This is easily one of the finest.

With 2002 P.F. and 2008 P.S.E. certificates (XF-Superb 95; SMQ \$12,200.00). This is the only example graded XF-Superb 95 by P.S.E., and only one has graded higher to date.
 6,000.00

1869 PICTORIAL ISSUE



43

- 43 **10c Yellow (116).** Vibrant color as fresh as the day it was printed, perfectly centered with Jumbo margins all around, neat strike of Philadelphia circular datestamp, Extremely Fine Gem, with 2008 P.S.E. certificate (XF-Superb 95 Jumbo; SMQ \$1,050.00 as 95, \$2,200.00 as 98), this is the only example to achieve this high grade and only two have graded higher to date 150.00

- 44 **12c Green (117).** Deep rich color and proof-like impression, gorgeous centering with wide and balanced margins, neat strike of crossroads cancel, Extremely Fine Gem, a superb stamp in every respect, with 1998 P.S.E. certificate 160.00



44



45

- 45 **15c Brown & Blue, Ty. I (118).** Beautiful centering with unusually wide margins all around, bright colors as fresh as the day they were printed, clearly-defined grill, bold strike of rosette cancel
EXTREMELY FINE. A HUGE USED EXAMPLE OF THE 15-CENT TYPE I 1869 PICTORIAL ISSUE. SCARCE WITH SUCH WIDE MARGINS AND IN SUCH WONDERFUL CONDITION.
With 2001 P.F. certificate..... 750.00

- 46 **30c Ultramarine & Carmine (121).** Bright colors, wide and well-proportioned margins, unusual cork cancel which leaves the design clearly visible, Extremely Fine, a beautiful stamp, with 2000 P.F. certificate..... 550.00



46



47

- 47 **30c Ultramarine & Carmine, Double Grill (121 var).** Perfectly centered with wide margins, bold strike of propeller-style cork cancel, both grills clearly visible (though one is slightly fainter)

EXTREMELY FINE GEM. THIS IS UNDOUBTEDLY THE FINEST EXAMPLE OF THE 30-CENT 1869 PICTORIAL ISSUE WITH DOUBLE GRILL. AN EXTREMELY RARE VARIETY OF THIS POPULAR ISSUE. THIS IS THE ONLY EXAMPLE WE HAVE OFFERED SINCE KEEPING COMPUTERIZED RECORDS.

Ex Lake Shore. With 1985 and 2005 P.F. certificates. Massively undercatalogued in Scott — this stamp realized \$6,000 hammer when we sold it in 2004, and the P.F. has certified less than a half-dozen as genuine in any condition..... 1,100.00



48

- 48 **90c Carmine & Black (122).** Choice centering with well-balanced margins, bright colors, bold strike of cork cancel
EXTREMELY FINE. A BEAUTIFUL USED EXAMPLE OF THE 90-CENT 1869 PICTORIAL ISSUE.
With 1955 and 2004 P.F. certificates..... 2,400.00

1875 RE-ISSUE OF 1869 PICTORIAL ISSUE



49

- 49 **1c Buff, Re-Issue (123).** Brilliant color on post office-fresh paper, gorgeous centering with wide and balanced margins, well-struck duplex cancel, Extremely Fine Gem, a superb stamp in every respect, with 2000 P.F. certificate 400.00



50

50 **2c Brown, Re-Issue (124).** Perfectly centered with immense even margins, bold double registry ovals, dark color on bright white paper

EXTREMELY FINE GEM. A BEAUTIFUL USED EXAMPLE OF THE 2-CENT 1869 RE-ISSUE, AND EASILY ONE OF THE FINEST IN EXISTENCE. THIS STAMP HAS BEEN GRADED XF-SUPERB 95 JUMBO BY P.S.E. — THIS IS THE ONLY EXAMPLE TO ACHIEVE 95J, WHICH IS THE HIGHEST AWARDED TO DATE.

The 2c 1869 Pictorial Re-Issue is one of the most difficult values of the set (after the 3c) to obtain in such superb condition and with such wide margins. We are aware of only one other which compares favorably to the stamp offered here. That other stamp was purchased by us for a client in the Shreve Floyd sale in 2001 for \$12,000 hammer.

With 2002 P.F. and 2008 P.S.E. certificates (XF-Superb 95 Jumbo; SMQ \$3,200.00 as 95, \$6,400.00 as 98). This is the only example to achieve this grade, which is the highest awarded to date. 475.00



51

51 **12c Green, Re-Issue (128).** Incredibly rich color and proof-like impression, almost perfect centering with well-proportioned margins, neat strike of New York duplex cancel

EXTREMELY FINE GEM. A SUPERB USED EXAMPLE OF THE 12-CENT 1869 PICTORIAL RE-ISSUE. A DIFFICULT STAMP TO FIND IN SUCH SUPERB CONDITION, AND EASILY ONE OF THE FINEST IN EXISTENCE. THIS REMARKABLE STAMP HAS BEEN GRADED XF-SUPERB 95 BY P.S.E.

With 2001 P.F. and 2008 P.S.E. certificates (XF-Superb 95; unpriced in SMQ above the grade of 90, SMQ \$6,450.00 as 90). This is the highest grade awarded to date and the only example to achieve this grade. 3,250.00



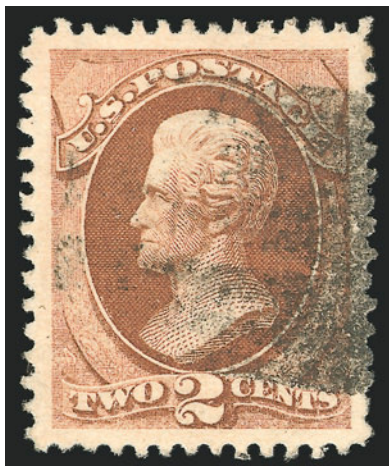
52

52 **30c Blue & Carmine, Re-Issue (131).** Choice centering with Jumbo well-balanced margins, deep rich colors on fresh paper, neat strike of registry oval cancel and also blue British registry crayon mark

EXTREMELY FINE GEM. A SUPERB USED EXAMPLE OF THE 30-CENT 1869 PICTORIAL RE-ISSUE, WITH GORGEOUS COLORS, HUGE MARGINS, LONG PERFORATIONS AND A BEAUTIFUL CANCEL. A REMARKABLE STAMP IN EVERY RESPECT.

With 2002 P.F. and 2008 P.S.E. certificates (XF-Superb 95; SMQ \$6,900.00). Only one other shares this grade, and only two have graded higher to date..... 3,000.00

1870-88 BANK NOTE ISSUES



53

- 53 **2c Red Brown, Grill (135).** H. Grill, perfectly centered with enormous even margins all around, clearly-defined grill, fresh color, bold strike of cork cancel, Extremely Fine Gem, a beautiful stamp, with 1999 A.P.S. and 2001 P.F. certificates 80.00



54

- 54 **6c Carmine, Grill (137).** H. Grill, gorgeous centering with wide and balanced margins all around, radiant color, discernible grill points, neat strike of crossroads cancel, long and full perforations all around
- EXTREMELY FINE GEM. A SUPERB USED EXAMPLE OF THE 1870 6-CENT NATIONAL BANK NOTE COMPANY GRILLED ISSUE. A DIFFICULT STAMP TO FIND IN SUCH SUPERB CONDITION, AND EASILY ONE OF THE FINEST IN EXISTENCE.
- With 2001 P.F. and 2008 P.S.E. certificates (XF-Superb 95; SMQ \$3,050.00). This is the highest grade awarded to date, and only four others share this grade..... 525.00



55

- 55 **15c Orange, I Grill (141 var).** Well-defined I Grill points visible on both sides of the stamp, choice centering for this difficult issue, bright color, neat strike of circle of wedges cancel and part of red transit cancel

VERY FINE AND CHOICE. THE 1870 15-CENT I GRILL IS ONE OF THE RAREST OF ALL UNITED STATES STAMPS. ONLY TEN USED AND TWO UNUSED EXAMPLES HAVE BEEN IDENTIFIED. THIS RARITY DESERVES MAJOR CATALOGUE LISTING STATUS.

At least two sizes of grills were used by the National Bank Note Company for the 1870 Issue. The I Grill measures from 9-11 points wide by 10-13 points tall. The I Grill is currently recorded on all values except the 12c, 24c and 30c (there are unconfirmed reports of the I Grill on the 12c and 24c). The 1c thru 7c values make up most of the population of I Grill stamps. The 10c, 15c and 90c I Grills are extremely rare, and it is only in recent years that their existence was reported by Ronald Burns.

Ex Chapin and Lake Shore. With 2003 P.F. certificate. E. 3,000-4,000



56

56 **15c Orange, Double Grill (141 var).** H. Grill, well-centered, bright shade with lightly struck cork cancel, clear impressions of two distinct grills at top

EXTREMELY FINE. A SUPERB USED EXAMPLE OF THE 1870 15-CENT NATIONAL BANK NOTE DOUBLE GRILL VARIETY.

This is the only example contained in our computerized records (which now contains all of our Rarities sales from 1964 to date plus 14 years of auctions).

Ex Morris and Lake Shore. With 1997 and 2005 P.F. certificates. Scott Catalogue value is loosely based on the realization of this stamp in our 1995 Lake Shore auction (\$4,000 hammer). 3,900.00



57

- 57 **24c Purple, Grill (142).** H. Grill, perfectly centered with wide even margins, unusually fine impression in typical light pastel shade of the 24c Grill, crisp centrally-struck small circle of squares cancel and part of blue town circular datestamp
- EXTREMELY FINE. ONE OF THE FEW SOUND AND CENTERED EXAMPLES OF THIS BANK NOTE RARITY, AND POSSIBLY THE FINEST IN TERMS OF COLOR AND CANCELLATION.
- Ex Morris. With 1993 P.S.E. and 1997 P.F. certificates. 7,500.00



58

58 **90c Carmine, Grill (144).** Rich color, unusually wide and even margins, clearly discernible grill points at top, cork cancel

EXTREMELY FINE GEM. THIS IS WITHOUT QUESTION ONE OF THE FINEST USED EXAMPLES OF THE 90-CENT 1870 NATIONAL GRILLED ISSUE. AN EXTREMELY DIFFICULT STAMP TO FIND WITH SUCH WIDE MARGINS AND IN SOUND CONDITION. THIS REMARKABLE STAMP HAS BEEN AWARDED THE GRADE OF XF-SUPERB 95 JUMBO BY P.S.E., WHICH IS THE HIGHEST GRADE AWARDED TO DATE.

For no apparent reason, most examples of this issue with wide margins tend to have small flaws. We have encountered perhaps a dozen copies which are sound and also have wide margins. The example offered here is easily one of the finest.

With 2001 P.F. and 2008 P.S.E. certificates (XF-Superb 95 Jumbo; SMQ \$12,600.00 as 95, \$25,500.00 as 98, a grade which is not shown in P.S.E. Population Report). This is the only example to achieve this lofty grade, which is the highest awarded to date. 2,500.00



59

- 59 **7c Vermilion (149).** Brilliant color, wide and balanced margins all around, neat strike of **New York Foreign Mail "Clothespins" cancel in brown** (Weiss Ty. TR-C7), long and full perforations all around

EXTREMELY FINE GEM. A SUPERB USED EXAMPLE OF THE 1870 7-CENT UNGRILLED NATIONAL BANK NOTE COMPANY ISSUE, WHICH HAS BEEN GRADED SUPERB 98 BY P.S.E. THIS CANCEL IS ONE OF THE FEW KNOWN NEW YORK FOREIGN MAIL TYPES STRUCK IN BROWN.

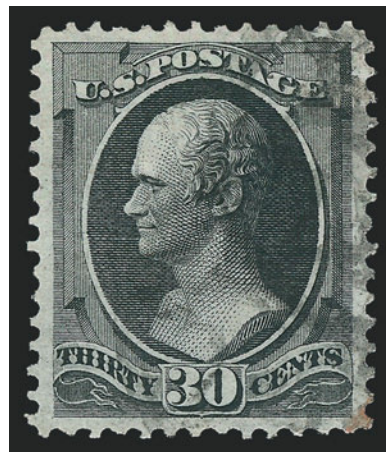
With 1995 P.S.E. and 1995 and 2003 P.F. certificates. With 2008 P.S.E. certificate (Superb 98; SMQ \$1,500.00). Only one has graded higher to date, and only one other shares this grade. 95.00



60

- 60 **15c Bright Orange (152).** Bright shade, wide balanced margins with long and full perforations all around, bold target cancel, fresh and Extremely Fine, a beautiful stamp, ex Floyd, with 1993 P.F. certificate..... 200.00

- 61 **30c Black (154).** Intense shade and proof-like impression on crisp paper, unusually well-balanced margins for this difficult issue, unobtrusive cancel with trace of red transit at bottom right, Extremely Fine Gem, with 1999 P.F. certificate 275.00



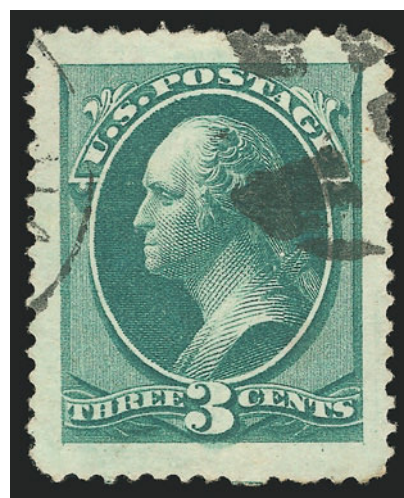
61



62

- 62 **90c Carmine (155).** Brilliant color, wide balanced margins, bold cork cancel, fresh and Extremely Fine, a surprisingly difficult stamp to obtain with choice centering, only four have graded higher than a 90 on the P.S.E.'s Population Report, with 1993 P.F. certificate 350.00

- 63 **3c Green (158).** Perfectly centered with massive Jumbo margins, neat face-free cork cancel, brilliant color, Extremely Fine Gem, a phenomenal stamp in every respect and without question one of the finest in existence, with 2003 P.F. certificate 1.00



63



64

- 64 **7c Orange Vermilion (160).** Choice centering with unusually wide margins, cancelled by well-struck **New York Foreign Mail Star in Circle** cancel (Ty. ST-8P5), bright color, Extremely Fine Gem, a gorgeous stamp of tremendous visual appeal, with 1985 and 2007 P.F. certificates 90.00



65

- 65 **90c Rose Carmine (166).** Radiant color as fresh as the day it was printed on bright paper, wide and balanced margins, neat strike of cork cancel at bottom right leaves design clearly visible

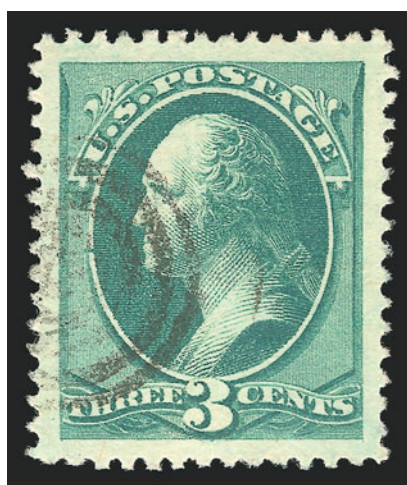
EXTREMELY FINE GEM. A SUPERB USED EXAMPLE OF THE 90-CENT 1873 CONTINENTAL BANK NOTE COMPANY ISSUE. THIS GORGEOUS STAMP HAS BEEN AWARDED THE GRADE OF XF-SUPERB 95 BY P.S.E., WHICH IS THE HIGHEST GRADE AWARDED TO DATE.

With 2007 P.S.E. certificate (XF-Superb 95; SMQ \$2,050.00). This is the highest grade awarded to date, and only four others share this grade 275.00



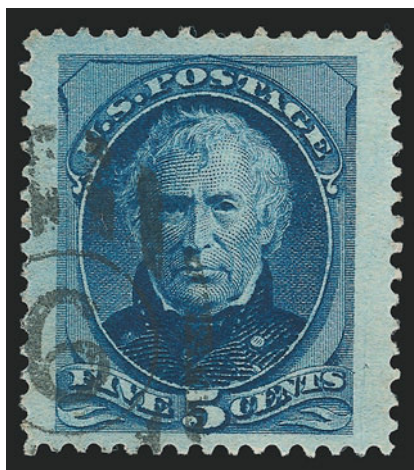
66

- 66 **1c Dark Ultramarine (182).** Enormous margins all around, radiant color, light strike of target cancel, Extremely Fine Gem, a massive stamp and easily one of the largest we have ever encountered, with 2002 P.F. certificate 4.50



67

- 67 **3c Green (184).** Perfectly centered with massive even margins, light strike of target cancel, deep rich shade, Extremely Fine Gem, a fantastic example of this issue, with 2003 P.F. and 2008 P.S.E. certificates (Gem 100 Jumbo; unpriced in SMQ above the grade of 98, SMQ \$390.00 as 98). This is the only Scott 184 to achieve the ultimate P.S.E. grade of Gem 100 Jumbo..... 0.80



68

- 68 **5c Blue (185).** Jumbo margins and attractively centered, beautiful intense color, neat numeral grid cancel, Extremely Fine, a huge stamp, with 2005 P.F. certificate..... 15.00

- 69 **15c Red Orange, Double Transfer (189 var).** Clear double transfer in "ENTS" of "CENTS", deep rich color, gorgeous centering with wide and balanced margins, cork cancel, Extremely Fine Gem, a magnificent example of this variety, ex Floyd, with 2001 P.F. certificate, Scott Retail with no premium for the double transfer (which is unpriced in Scott as used and unlisted as unused)..... 25.00



69



70

- 70 **30c Full Black (190).** Almost perfect centering with wide and well-balanced margins, crisp impression on bright paper, neat cancel, long and full perforations all around, Extremely Fine Gem, a superb stamp in every respect, with 2001 P.F. certificate..... 80.00

- 71 **90c Carmine (191).** Almost perfectly centered with well-balanced margins, brilliant color, neat strike of New York oval cancels

EXTREMELY FINE GEM. A SURPRISINGLY DIFFICULT STAMP TO FIND IN SUCH SUPERB AND SOUND CONDITION.

With 2004 P.F. certificate 325.00

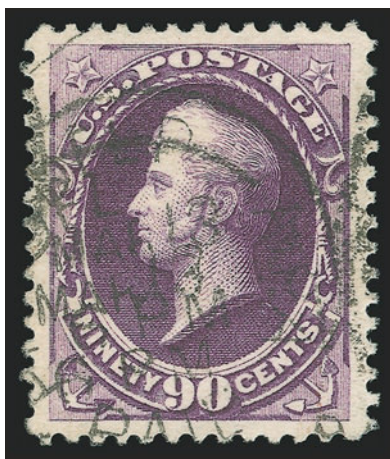


71



72

- 72 **10c Brown (209).** Rich color and proof-like impression, beautiful centering with wide and balanced margins, bold strikes of duplex and circular datestamp cancels, Extremely Fine Gem, a superb stamp in every respect, with 2000 A.P.S. and 2003 P.F. certificates..... 6.00



73

- 73 **90c Purple (218).** Deep rich color, two neat strikes of circular datestamp, wide and well-balanced margins

EXTREMELY FINE GEM. A SUPERB USED EXAMPLE OF THE 90-CENT 1888 AMERICAN BANK NOTE COMPANY ISSUE, WHICH HAS BEEN GRADED XF-SUPERB 95 BY P.S.E. — THIS IS THE HIGHEST GRADE AWARDED TO DATE.

With 2004 P.F. and 2008 P.S.E. certificates (XF-Superb 95; SMQ \$1,750.00). This is the highest grade awarded to date, and only six others share this grade. A note from master grader William Litle explains that the strength of the cancel kept this from being graded Superb 98. 260.00

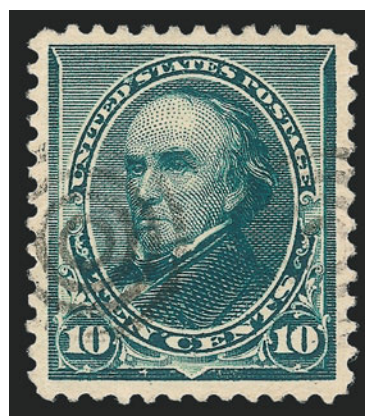
1890-93 ISSUE



74

- 74 **2c Carmine (220).** Perfectly centered with enormous margins all around, brilliant color, long and full perforations all around, bold strike of grid cancel, Extremely Fine Gem, a spectacular used example of this issue, with 2003 P.F. and P.S.E. certificates and with 2008 P.S.E. certificate (Superb 98 Jumbo; unpriced in this grade in SMQ, SMQ \$315.00 as 98). This is the highest grade awarded to date and the only example to achieve this exalted grade. 0.55

- 75 **10c Green (226).** Deep rich color, unusually choice centering with wide and balanced margins, unobtrusive target cancel, Extremely Fine, surprisingly difficult to obtain in such choice used condition... 3.75



75



76

- 76 **90c Orange (229).** Well-centered with Jumbo margins all around, vivid color on brilliant paper, neat strike of San Francisco registry oval cancel
EXTREMELY FINE GEM. AN OUTSTANDING USED EXAMPLE OF THE 90-CENT 1890 ISSUE, WHICH HAS BEEN GRADED XF-SUPERB 95 JUMBO BY P.S.E..
With 2002 P.F. and 2008 P.S.E. certificates (XF-Superb 95 Jumbo; SMQ \$920.00 as 95, \$2,200.00 as 98). This is the only used 90c 1890 to achieve this 95 Jumbo grade, and only two better (both 98) are reported in the P.S.E. Population Report..... 140.00

COLUMBIAN ISSUE



77

77 **5c Columbian (234).** Lightly cancelled, perfectly balanced Jumbo margins, strong color
EXTREMELY FINE GEM. A SUPERB USED EXAMPLE OF THE 5-CENT COLUMBIAN IN THE
FINEST CONDITION ATTAINABLE. THIS MAGNIFICENT STAMP HAS RECEIVED THE
EXALTED GRADE OF SUPERB 98 JUMBO FROM P.S.E. — THIS IS THE HIGHEST GRADE
AWARDED TO DATE AND ONLY THIS STAMP HAS THIS GRADE.

A note from master grader William Litle of P.S.E. accompanies wherein he states "This is,
I believe, the finest used Columbian so far (only a 230 '98J' and a 239 '98' precede this
one)." With 2007 P.S.E. certificate (Superb 98 Jumbo; \$560.00 as an ordinary 98, 100
grade not listed). The P.S.E. Population Report lists one used 98 and this 98J. 8.00



78

78 **50c Columbian (240).** Gorgeous centering with wide and balanced margins deep rich
color and proof-like impression, neat strike of New York registry oval cancel
EXTREMELY FINE GEM. A SUPERB USED EXAMPLE OF THE 50-CENT COLUMBIAN ISSUE. A
GORGEOUS STAMP IN TERMS OF CENTERING, COLOR, CANCEL AND OVERALL APPEAL.

With 1995 P.F. certificate..... 180.00



79

- 79 **\$1.00 Columbian (241).** Choice centering with unusually wide margins for this issue, brilliant color, neat strike of “Liebenthal Kans. Aug. 21, 1902” circular datestamp

EXTREMELY FINE GEM. THE \$1.00 COLUMBIAN ISSUE IS SURPRISINGLY DIFFICULT TO OBTAIN IN SUCH SUPERB USED CONDITION. THIS IS EASILY ONE OF THE FINEST WE HAVE ENCOUNTERED. THIS REMARKABLE STAMP HAS BEEN AWARDED THE GRADE OF XF-SUPERB 95 JUMBO BY P.S.E. — THIS IS THE HIGHEST GRADE AWARDED TO DATE AND THE ONLY EXAMPLE TO ACHIEVE THIS GRADE.

With 1999 P.F. and 2008 P.S.E. certificates (XF-Superb 95 Jumbo; SMQ \$3,350.00 as 95, unpriced above the grade of 95 in SMQ). This is the highest grade awarded to a used \$1.00 Columbian (there are three ordinary 95's). 650.00



80

80 **\$2.00 Columbian (242).** Brilliant color and proof-like impression, gorgeous centering with wide and balanced margins all around, neat strikes of New York registry oval cancels

EXTREMELY FINE GEM. A MAGNIFICENT USED EXAMPLE OF THE \$2.00 COLUMBIAN ISSUE. THIS BEAUTIFUL STAMP HAS BEEN AWARDED THE GRADE OF XF-SUPERB 95 BY P.S.E., WHICH IS THE HIGHEST GRADE AWARDED TO DATE.

With 2007 P.S.E. certificate (XF-Superb 95; SMQ \$3,500.00). This is the highest grade awarded to date, and only three others share this grade..... 600.00



81

- 81 **\$3.00 Olive Green, Columbian (243a).** Perfectly centered with wide margins, deep shade and sharp proof-like impression on bright fresh paper, "Lynn Mass." oval cancel leaves design clearly visible

EXTREMELY FINE GEM. BEYOND ANY DOUBT, THIS IS ONE OF THE FINEST USED EXAMPLES OF THE \$3.00 COLUMBIAN ISSUE IN EXISTENCE. THIS MAGNIFICENT STAMP HAS BEEN AWARDED THE LOFTY GRADE OF SUPERB 98 BY P.S.E. — THIS IS THE HIGHEST GRADE AWARDED TO EITHER \$3.00 SHADE, AND THIS STAMP IS THE ONLY ONE TO ACHIEVE THIS GRADE. A TRULY SPECIAL STAMP IN EVERY RESPECT.

The dollar-value Columbians are rarely found with centering that would qualify for a high numerical grade, but in used condition they are further handicapped by heavy registry cancels, which almost invariably knock points off the final grade. The \$3.00 offered here is extraordinary not only for its precise centering and wide margins, but the lightly-struck cancel leaves the entire design visible. We doubt that more than a handful of any Columbian dollar values will ever reach Superb 98 status.

With 1987 P.F. and 2008 P.S.E. certificates (Superb 98; unpriced in SMQ above the grade of 95, SMQ \$5,250.00 as 95)..... 1,000.00



82

82 **\$5.00 Columbian (245).** Perfectly centered with Jumbo even margins, deep dark color on fresh paper, bold cancel still leaves design clearly visible

EXTREMELY FINE. A MASSIVE USED \$5.00 COLUMBIAN WITH PERFECT CENTERING.
EXTREMELY RARE WITH SUCH HUGE MARGINS.

With 2004 P.F. certificate 1,500.00

1894-98 BUREAU ISSUES



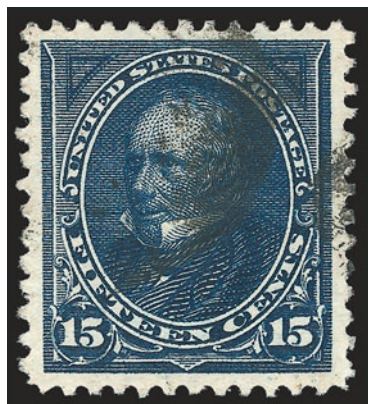
84

84 **6c Dull Brown, USIR Watermark (271a).** Showing clear “I” of watermark, deep rich color, bold New York double oval cancel

EXTREMELY FINE. EASILY ONE OF THE FINEST RECORDED EXAMPLES OF THE 6-CENT USIR WATERMARK IN EXISTENCE. ONLY 22 USED COPIES HAVE BEEN CERTIFIED BY THE PHILATELIC FOUNDATION.

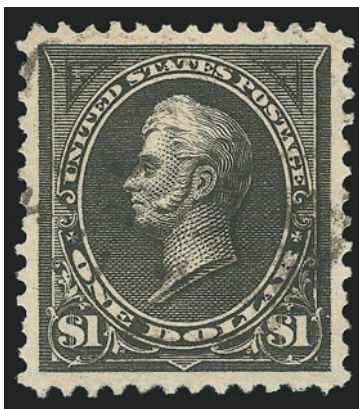
Unlike its more common 8c counterpart, the 6c is an extremely rare stamp. Our recently updated census contains only seven unused and 22 used examples of this rarity which have been certified as genuine by the P.F. Of the 22 used copies certified by the Philatelic Foundation, sixteen have perfs either close or touching the design (including both copies in the only recorded used pair and one with straight edge)

With 1986 and 2002 P.F. certificates 10,000.00



85

85 **15c Dark Blue (274).** Deep rich color and proof-like impression on bright paper, unobtrusive cancel, wide and balanced margins, fresh and Extremely Fine, a beautiful stamp 15.00



86

86 **\$1.00 Black, Ty. I (276).** Perfectly centered with wide even margins, light cancel leaves design clearly visible, intense shade on brilliant paper

EXTREMELY FINE GEM. A MAGNIFICENT USED EXAMPLE OF THE \$1.00 TYPE I WATERMARKED BUREAU ISSUE, WHICH HAS BEEN AWARDED THE GRADE OF SUPERB 98 BY P.S.E. — EASILY ONE OF THE FINEST COPIES IN EXISTENCE.

The dollar-value Bureaus are rarely found with centering that would qualify for a high numerical grade, but in used condition they are further handicapped by heavy registry cancels, which almost invariably knock points off the final grade. The \$1.00 Type I 1895 Issue offered here is extraordinary not only for its precise centering and wide margins, but the lightly-struck cancel leaves the entire design visible.

With 2002 P.F. and 2008 P.S.E. certificates (Superb 98; SMQ \$1,950.00). This is the highest grade awarded to date and only one other shares this lofty grade. 95.00

TRANS-MISSISSIPPI ISSUE



87

87 **10c Trans-Mississippi (290).** Perfectly centered with wide and balanced margins, deep rich color, sharp proof-like impression, neat machine cancel, Extremely Fine Gem, a superb stamp in every respect and surprisingly difficult to find in such choice condition, with 2003 P.F. and 2008 P.S.E. certificates (XF-Superb 95; SMQ \$380.00), this is the highest grade awarded to date, and only five others share this grade 32.50



88

- 88 **\$1.00 Trans-Mississippi (292).** Perfectly centered with unusually wide and balanced margins on all sides, deep shade and proof-like impressions which shows every nuance of the detailed engraving, clear and unobtrusive strike of "Baltimore Md. Reg." oval registry cancel, full perforations all around

EXTREMELY FINE GEM. WITHOUT QUESTION ONE OF THE FINEST USED EXAMPLES OF THE \$1.00 TRANS-MISSISSIPPI ISSUE IN EXISTENCE. THIS STAMP HAS BEEN AWARDED THE LOFTY GRADE OF SUPERB 98 BY P.S.E. — THIS IS THE HIGHEST GRADE AWARDED TO DATE, AND THIS STAMP IS THE ONLY EXAMPLE TO ACHIEVE THIS GRADE.

The dollar-value Trans-Mississippi stamps are rarely found with centering that would qualify for a high numerical grade, but in used condition they are further handicapped by heavy registry cancels, which almost invariably knock points off the final grade. The \$1.00 offered here is extraordinary not only for its precise centering and wide margins, but the clearly-struck cancel leaves the entire design visible.

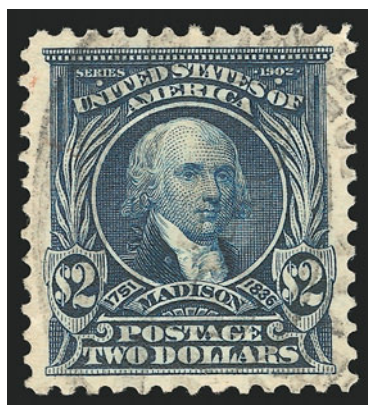
With 2007 P.S.E. certificate (Superb 98; SMQ \$7,800.00). This is the highest grade awarded to date, and this is the only stamp to achieve this grade. 650.00

20TH CENTURY ISSUES

- 89 **\$1.00 Black (311).** Jumbo margins, intense shade and proof-like impression, oval Los Angeles registry cancel, Extremely Fine Gem, a massive stamp, with 1988 and 2006 P.S.E. certificates (VF 80 Jumbo; SMQ \$70.00 as 80, \$115.00 as 85), we feel this grade is rather low given the massive size of the stamp's margins 80.00



89



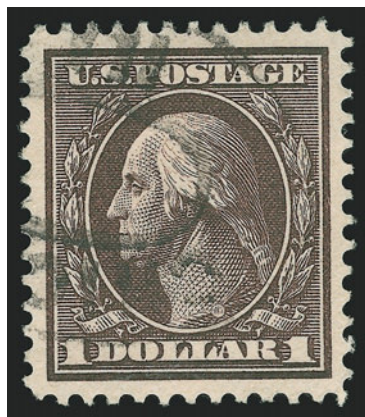
90

- 90 **\$2.00 Dark Blue (312).** Perfectly centered, wide margins, light cancel, remarkably bright and fresh, Extremely Fine Gem, a beautiful stamp, with 2001 P.F. and 2008 P.S.E. certificates (XF-Superb 95; SMQ \$1,050.00), this is the only example to achieve this grade and only one has graded higher to date 225.00

- 91 **2c Carmine (332).** Intense shade, light machine cancel, Jumbo margins and superb centering, Extremely Fine Gem, a phenomenal stamp.... 0.35



91



92

92

\$1.00 Violet Brown (342). Deep shade and detailed impression, exceptionally wide margins and choice centering, double-oval cancel, Extremely Fine, this is probably the most difficult denomination of the set to obtain in such superb used condition (only one has graded higher than 90 to date in P.S.E.'s Population Report), with 2004 P.F. certificate.....

100.00

93

1c Green, Coil (352). Guide line pair, deep rich color on bright paper, wavy-line machine cancel

VERY FINE AND CHOICE. A SCARCE USED GUIDE LINE PAIR OF THE ONE-CENT COIL, SCOTT 352.

Undercatalogued in Scott. With 1994 and 2004 P.F. certificates.
..... 1,500.00



93



94

94

1c Green, Coil (390). Guide line pair, beautifully centered with huge and even margins, wavy-line machine cancel, Extremely Fine Gem, a phenomenal used guide line pair, with 2005 P.S.E. certificate (XF-Superb 95; SMQ \$600.00), this is the highest grade awarded to date, and only three others share this grade

110.00

- 95 **2c Carmine, Coil (391).** Guide line pair with intact perfs and parts of adjoining stamps at top and bottom, rich color on bright white paper, sharp "Waukegan Ill. Aug. 23, 1916" duplex cancels

EXTREMELY FINE GEM. A SUPERB USED GUIDE LINE PAIR OF THE 2-CENT VERTICAL COIL, SCOTT 391, IN THE FINEST CONDITION ATTAINABLE.

With 2002 P.S.E. and 2003 P.F. certificates. . 1,350.00



96



95

- 96 **4c Brown, Coil (395).** Intense shade, huge and even margins, neat oval registry cancel, Extremely Fine Gem, with 2002 P.F. and 2008 P.S.E. certificates (XF-Superb 95; SMQ \$355.00), this is the highest grade awarded to date and the only example to achieve this high grade.... 62.50



97

- 97 **1c Green, Coil (412).** Guide line pair, deep rich color and detailed impression, wide margins, light strikes of 1913 duplex cancels leave design clearly visible, Extremely Fine Gem, scarce in such choice used condition and especially desirable with a cancel dated so shortly after it was issued, with 2005 P.S.E. certificate (XF 90; SMQ \$540.00), only one has graded higher to date in the P.S.E. Population Report 150.00



98

98 **2c Rose Red, Ty. I, Perf 12 x 10 (423B; formerly 425d).** Bright shade, unusually wide margins, neat machine cancel

EXTREMELY FINE. ONE OF THE FINEST EXAMPLES OF THE 1914 2-CENT PERF 12 x 10 ISSUE. ONLY 30 USED COPIES ARE RECORDED.

Our census of Scott 423B, available at www.siegelauctions.com/enc/census/423B/423B.htm, records 30 used and one unused example of this great rarity.

Census No. 423B-CAN-06. Ex Twigg-Smith and Chesapeake. With 1977 and 2001 P.F. certificates. 18,500.00



99

99 **5c Blue, Perf 12 x 10 (423C; formerly 428a).** Choice centering, "Tampa Fla." hand-stamped precancel, deep rich color

EXTREMELY FINE. EASILY ONE OF THE FINEST OF ONLY SEVEN RECORDED SOUND EXAMPLES OF THE 1914 5-CENT WASHINGTON PERF 12 x 10.

For no apparent reason, the 5c has the highest percentage of faulty stamps of any of the 1914 Compound Perf issues. Of the 24 used copies in our census, seventeen are either faulty or have the perforations in on at least one side of the design. The stamp offered here is easily one of the finest, and it was the highlight of the 5c Compound Perforations offered in our Chesapeake sale.

Census No. 423C-CAN-05. Ex Floyd and Chesapeake. With 1960 and 2001 P.F. certificates. 25,000.00



100

- 100 **3c Violet, Coil (445).** Pair, rich color, unusually wide and balanced margins, unobtrusive magenta cancel

EXTREMELY FINE GEM. A SUPERB USED PAIR OF THE 3-CENT HORIZONTAL COIL, SCOTT 445, IN THE FINEST CONDITION ATTAINABLE.

With 2002 A.P.S. and 2004 P.F. certificates. With 2008 P.S.E. certificate (XF-Superb 95; SMQ \$2,800.00). The P.S.E. Population Report lists Scott 445 in single, pair and line pair format. This is the only used example in any of the three categories to achieve a P.S.E. XF-Superb 95 grade. One used line pair has been graded 90, the next highest grade, followed by two singles and two pairs graded 85. 675.00



101

- 101 **5c Blue, Coil (447).** Guide line pair, deep rich color and proof-like impression on bright paper, beautiful centering with wide and balanced margins, light wavy-line machine cancel

EXTREMELY FINE GEM. A SUPERB USED GUIDE LINE PAIR OF THE 5-CENT HORIZONTAL COIL, SCOTT 447. EASILY ONE OF THE FINEST IN EXISTENCE, AND THE ONLY LINE PAIR GRADED XF-SUPERB 95 BY P.S.E.

Coil multiples can be extremely difficult to obtain in such superb used condition. They are rarely found well-centered both side-to-side and also top-to-bottom. Guide line pairs add an additional degree of rarity, as they occur only once every 20 stamps. Add in the factor that few guide line pairs were used, and its true rarity in this condition can begin to be appreciated.

With 1999 P.F. and 2008 P.S.E. certificates (XF-Superb 95; SMQ \$3,450.00). This is the only used line pair to achieve this grade, which is the highest awarded to date (used pairs have received two 95's and one 98). 850.00



102

- 102 **2c Red, Ty. I, Coil (449).** Pretty shade, gorgeous centering with wide and balanced margins, neat machine cancel
 EXTREMELY FINE GEM. A SUPERB USED EXAMPLE OF THE 2-CENT VERTICAL COIL, SCOTT 449, IN WHAT MAY BE THE FINEST CONDITION ATTAINABLE.
 Ex Floyd. With 1981 P.F. certificate 600.00



103



104

- 103 **4c Brown, Coil (457).** Rich shade, wide balanced margins, unobtrusive registry oval cancel, fresh and Extremely Fine, a beautiful used coil single 25.00
- 104 **5c Blue, Coil (458).** Pair, rich color, remarkably well-centered with even margins, 1918 duplex cancel, Extremely Fine Gem, especially desirable with the yeardate of the cancel showing contemporary usage, with 2003 P.F. certificate for strip of three, this being the left pair 85.00



105

- 105 **50c Light Violet (477).** Perfectly centered with wide margins all around, pretty pastel color, boxed cancel leaves design clearly visible, Extremely Fine Gem, a surprisingly difficult stamp to find in such choice used condition, with 2005 P.F. certificate..... 80.00

- 106 **\$5.00 Light Green (480).** Jumbo margins, neat oval cancel leaves design clearly visible, Extremely Fine Gem, difficult to find in such superb used condition, with 1989 P.F. certificate for pair 40.00



106



107

- 107 **5c Blue, Coil (496).** Pair, perfectly centered, deep rich color and proof-like impression, bold "St. Louis Mo." cancel, Extremely Fine Gem, a superb pair in every respect and without question one of the finest we have ever encountered, with 2002 P.F. certificate 9.00



108

- 108 **1c Green, Perf 10 at Top (498g).** Deep rich color and sharp proof-like impression, neat machine cancel, unusually choice centering for this rare Perf 10 at Top or Bottom variety VERY FINE AND CHOICE. THIS IS THE FINEST OF THE FOUR RECORDED USED EXAMPLES OF THE ONE-CENT GREEN 1917 ISSUE PERFORATED 10 AT TOP OR BOTTOM. ONE OF THE HIGHLIGHTS OF THE TAHOE COLLECTION, AND OF ANY COLLECTION OF USED 20TH CENTURY UNITED STATES STAMPS.

Our records of this rarity contain twelve unused (including two in a block of four, four in a block of 25 and a plate block of six containing 1½ stamps with the variety) and four used examples. The four used examples can be identified as follows: 1) bottom stamp in top selvage vertical pair, PFC 37681, condition unconfirmed; 2) the stamp offered here, last offered in Siegel Sale 930, realized \$42,500 hammer; 3) Ohio boxed cancel, PFC 157251, centered to top and right; and 4) lightly cancelled, perfs just in at right, offered in Siegel Sale 872, realized \$19,000 hammer.

With 1978 and 2007 P.F. certificates..... 30,000.00



109

- 109 田 **2c Carmine, Ty. Va, Imperforate (534).** Centerline block of four, huge margins all around, two neat strikes of Salem Mass. double oval cancels, Extremely Fine Gem, a beautiful used centerline block, with 2004 P.S.E. certificate..... 57.50



110

- 110 **3c Deep Violet (537a).** Deep rich color on brilliant paper, bold "Salem Ohio" precancel
EXTREMELY FINE GEM. ONLY SIXTEEN USED EXAMPLES OF THE RED VIOLET ARE CURRENTLY KNOWN.

The Philatelic Foundation has certified only six singles, one pair (now split) and one block of four as genuine. The other block (uncertified) has a straight edge at right and slight thinning.

With photocopy of 2002 P.F. certificate for vertical pair, this being the bottom stamp. In our opinion this rarity is undercatalogued in Scott..... 2,250.00



111

- 111 **1c Green, Rotary Perf 11 (544).** Light machine cancel, exceptionally well-centered for this notoriously challenging issue with unusually wide margins, fresh and bright color, tiny trace of corner crease at top right is visible basically only in fluid

EXTREMELY FINE APPEARANCE. A MARVELOUS USED EXAMPLE OF THIS MAJOR 20TH CENTURY RARITY, AND ONE OF THE WIDEST-MARGINED COPIES IN EXISTENCE.

A small quantity of 1c Rotary Press stamps was perforated 11 at the end of 1922, using remainder sheets from the earlier printings that were normally perforated in 10 gauge or 11/10 compound gauge. Most of the recorded copies of Scott 544 are off-center or have been damaged as a result of lower production standards and poor handling. The issue normally comes with much narrower margins at sides. The example offered here, with wide margins all around, is certainly one of the biggest copies in existence.

With 2000 P.F. and 2008 P.S.E. certificates, the former not mentioning the trivial faint corner crease. The latter P.S.E. certificate still grades as a VF-XF 85 3,250.00



112

112 **4c Yellow Brown, Perf 10 at Bottom (556b).** "Johnstown Pa." two-line precancel applied inverted, rich color, wide margins

EXTREMELY FINE. THE 4-CENT MARTHA WASHINGTON IS ONE OF THE RAREST OF ALL PERF 10 AT ONE SIDE STAMPS. THE EXAMPLE OFFERED HERE IS PROBABLY THE BEST-CENTERED EXAMPLE IN EXISTENCE.

Our records of Scott 556b contain only four used examples. Of these, three have precancels, and one shows transitional perfs at top.

With 1993 P.S.E. and 2004 P.F. certificates..... 15,000.00

- 113 **2c Carmine, Rotary, Perf 11 (595).** Almost perfectly centered with unusually wide and well-balanced margins all around, brilliant color, machine cancel, Extremely Fine Gem, scarce in such pristine condition, with 2004 P.F. and 2008 P.S.E. certificates (XF 90; SMQ \$680.00), this is the highest grade awarded to to date, and only one other shares this grade; in our opinion, this coil waste issue is very undercatalogued in SMQ, and if a stamp with this centering and margins is graded 90, there might not be a better used copy 375.00



113

AIR POST



115



116



118

- 114 **No Lot.**
- 115 **6c Orange, 1918 Air Post (C1).** Perfectly centered with wide margins, bright and fresh, choice centering with wide even margins, light 1919 duplex cancel, Extremely Fine Gem 30.00
- 116 **16c Dark Blue, 1923 Air Post (C5).** Perfectly centered with Jumbo margins, deep rich color on bright paper, neat cancel, Extremely Fine Gem, a beautiful stamp, with 2004 P.F. certificate 30.00



117

- 117 **\$1.30 Graf Zeppelin (C14).** Perfectly centered with huge margins all around, crisp impression, neat cancel leaves design clearly visible
EXTREMELY FINE GEM. A GORGEOUS USED EXAMPLE OF THE \$1.30 GRAF ZEPPELIN ISSUE, WHICH HAS BEEN GRADED SUPERB 98 BY P.S.E. — THIS IS THE HIGHEST GRADE AWARDED TO DATE.
With 2005 P.F. and 2005 P.S.E. certificates (Superb 98; SMQ \$1,550.00). Only three others share this grade, which is the highest awarded to date. 375.00
- 118 **50c Chicago Zeppelin (C18).** Brilliant color, beautiful centering with wide and balanced margins, unobtrusive oval cancel struck at top left, Extremely Fine Gem 55.00

SPECIAL DELIVERY



119

119 **10c Blue, Special Delivery (E4).** Deep rich color and proof-like impression on crisp paper, perfectly centered with unusually wide and balanced margins, unobtrusive cancel leaves design clearly visible

EXTREMELY FINE GEM. A SUPERB USED EXAMPLE OF THE 10-CENT 1894 UNWATERMARKED BUREAU SPECIAL DELIVERY ISSUE. THIS MAGNIFICENT STAMP HAS BEEN AWARDED THE GRADE OF SUPERB 98 BY P.S.E., WHICH IS THE HIGHEST GRADE AWARDED TO DATE.

With 2005 P.S.E. certificate (Superb 98; SMQ \$620.00). Only one other has been awarded this grade. We are surprised the P.S.E. did not see fit to add the Jumbo appellation to this uncharacteristically wide-margined example. SMQ also seems too conservative to us.
 55.00

POSTAGE DUE

- 120 **1c Brown (J1).** Almost perfectly centered with well-proportioned margins, radiant color and detailed impression, cork cancel, fresh and Extremely Fine, a beautiful stamp 14.00



120



121

- 121 **5c Red Brown (J18).** Perfectly centered with immense margins, sharp impression, light cancel, Extremely Fine Gem, a huge stamp, with 2003 P.F. certificate 45.00

- 122 **30c Red Brown (J20).** Unusually choice centering with well-balanced margins, bright shade, detailed impression, unobtrusive cancel leaves entire design clearly visible, fresh and Extremely Fine, a highly desirable stamp 60.00



122



123

- 123 **30c Bright Claret (J27).** Intense color, Jumbo margins all around, neat oval cancel, Extremely Fine Gem, a superb stamp in every respect, with 2001 P.F. certificate 225.00

- 124 **50c Bright Claret (J28).** Choice centering with immense margins, light strike of circular datestamp, deep dark shade and proof-like impression, Extremely Fine Gem, a true condition rarity featuring outstanding color, centering, freshness and cancel, with 2000 P.F. certificate..... 210.00



124



125

- 125 **1c Vermilion (J29).** Brilliant color on bright paper, unusually wide margins, light strike of oval cancel leaves design clearly visible

EXTREMELY FINE, ARGUABLY THE FINEST USED EXAMPLE OF THE ONE-CENT POSTAGE DUE ISSUE, SCOTT J29, IN EXISTENCE. AN EXTREMELY DIFFICULT STAMP TO FIND IN SOUND CONDITION AND WITH WIDE MARGINS.

Ex Twigg-Smith. With 2001 P.F. certificate 725.00

- 126 **2c Vermilion (J30).** Rich color and crisp impression on bright paper, unobtrusive strike of oval registry cancel, well-balanced margins, fresh and Extremely Fine, a gorgeous stamp, surprisingly difficult to obtain in such choice used condition, with 1988 P.F. certificate 350.00



126



127

- 127 **30c Deep Claret (J36).** Radiant color on bright paper, mathematically perfect centering with wide and balanced margins, unobtrusive cancel leaves design clearly visible
- EXTREMELY FINE GEM. THIS BEAUTIFUL USED EXAMPLE OF THE 30-CENT UNWATERMARKED 1895 POSTAGE DUE ISSUE HAS BEEN AWARDED THE LOFTY GRADE OF SUPERB 98 BY P.S.E. — UNQUESTIONABLY THE FINEST USED EXAMPLE OF THIS ISSUE IN EXISTENCE.
- As collectors of Postage Dues can attest, very few used examples from *any* series can be found in such superb condition.
- With 1987 P.F. and 2008 P.S.E. certificates (Superb 98; unpriced in used condition in SMQ). The righthand columns of the P.S.E. Population Report are virtually bare for Scott J36. Only this used stamp (98) and one OGph copy (98J) will be found above the grade of 85, while the other certified used copy scored only 40. 225.00



128

- 128 **30c Deep Claret (J43).** Choice centering with wide and balanced margins, “face free” strike of grid cancel, Extremely Fine Gem, scarce in such superb condition, with 2005 P.S.E. certificate (XF-Superb 95; unpriced as used in SMQ), this is the highest grade awarded to date and the only example to achieve this grade 70.00

- 129 **50c Deep Claret (J50).** Brilliant color, enormous margins all around, light strike of cancel leaves entire design clearly visible, Extremely Fine Gem, a superb stamp in every respect, with 2002 P.F. certificate..... 175.00



129



130

- 130 **2c Rose (J60).** Bright color, perfectly centered, unobtrusive oval cancel, Extremely Fine, a beautiful stamp, difficult to obtain in such superb used condition 75.00

OFFICES IN CHINA

- 131 **4c on 2c Offices in China (K2).** Brilliant color as fresh as the day it was printed, gorgeous centering with unusually wide and balanced margins, neat strike of Shanghai cancel, Extremely Fine Gem, a superb stamp in every respect, exceedingly difficult to find in such choice condition as an unused stamp (which is more common), this stamp is far rarer in such choice used condition, with 2005 P.S.E. certificate (Superb 98; SMQ \$960.00), this is the highest grade awarded to date in any condition, and this stamp is the only example to achieve this lofty grade 50.00



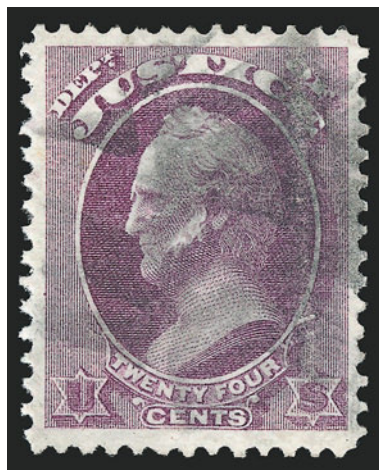
131



132

- 132 **4c on 2c Offices in China (K18).** Brilliant color on bright paper, gorgeous centering with unusually wide margins on all sides, face-free strike of Shanghai circular datestamp, Extremely Fine Gem, a superb stamp in every respect, with 2008 P.S.E. certificate (XF-Superb 95 Jumbo; SMQ \$1,000.00 as 95, \$2,400.00 as 98), this is the highest grade awarded to date and the only example to achieve this grade..... 140.00

OFFICIALS



133

- 133 **24c Justice (O32).** Pretty shade, choice centering with wide margins, cork cancel, fresh and Extremely Fine, scarce in such wonderful condition ... 425.00



134

134 **30c Treasury, Soft Paper (O112).** Perfectly centered with wide even margins, deep rich color, bold cancels

EXTREMELY FINE GEM. A SUPERB USED EXAMPLE OF THE 30-CENT AMERICAN BANK NOTE COMPANY TREASURY DEPARTMENT ISSUE. VERY FEW ARE KNOWN IN USED CONDITION, AND THIS IS LIKELY THE FINEST IN EXISTENCE.

This is the only sound and centered example we have offered since keeping computerized records. The P.F. has certified approximately ten sound examples, and this is the best-centered example we have been able to locate.

With 2003 and 2008 P.S.E. certificates (XF 90, unpriced as used in any grade in SMQ)
 425.00

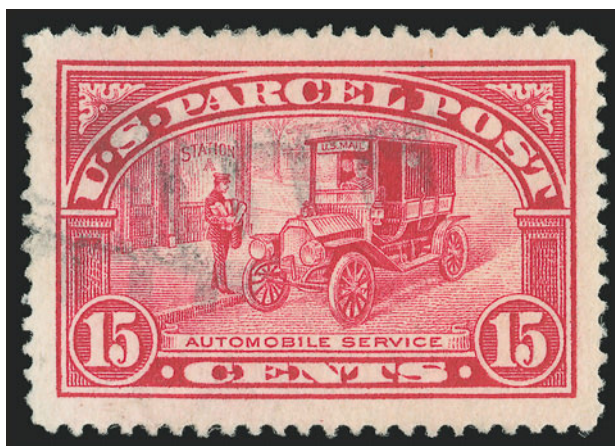
NEWSPAPERS AND PERIODICALS



135

135 **24c Rose, 1875 Issue (PR17).** Beautifully centered, deep rich color on bright fresh paper, light blue cancel, Extremely Fine Gem, a gorgeous stamp and certainly one of the finest in existence, with 2002 P.F. certificate 115.00

PARCEL POST



136

- 136 **15c Parcel Post (Q7).** Mathematically perfect centering with massive margins all around, sharp proof-like impression on crisp paper, lightly cancelled

EXTREMELY FINE GEM. THIS MAGNIFICENT STAMP HAS BEEN AWARDED THE ULTIMATE GRADE OF GEM 100 JUMBO BY P.S.E. — THIS IS ALMOST CERTAINLY THE FINEST EXAMPLE IN EXISTENCE. A PERFECT STAMP IN EVERY RESPECT.

With 2004 P.F. and 2008 P.S.E. certificates (Gem 100 Jumbo; unpriced in SMQ above the grade of 98, SMQ \$370.00 as 98). This is the highest grade awarded by P.S.E. to *any* graded example, whether unused or used, and this stamp is the only example to achieve this unimprovable grade. 15.00



137



138

- 137 **20c Parcel Post (Q8).** Deep rich color and proof-like impression on bright paper, beautifully centered with wide and balanced margins, neat strikes of double-oval registry cancels

EXTREMELY FINE GEM. THIS IS THE FIRST UNITED STATES STAMP TO DEPICT AN AIRPLANE. THE EXAMPLE OFFERED HERE IS THE ONLY USED COPY TO RECEIVE THE COVETED SUPERB 98 GRADE FROM THE P.S.E.

With 2007 P.S.E. certificate (Superb 98; SMQ \$470.00). This is the highest grade awarded to date, and this stamp is the only example to achieve this lofty grade..... 30.00

- 138 **10c Dark Green, Parcel Post Postage Due (JQ4).** Deep rich color and proof-like impression on bright paper, perfectly centered with wide and even margins all around, neatly struck cancel at bottom left leaves entire design clearly visible, Extremely Fine Gem, a superb stamp in every respect and possibly the finest used example in existence, with 2004 P.S.E. certificate (Superb 98; SMQ \$710.00), this is the highest grade awarded to date and the only example to achieve this lofty grade 45.00

HAWAII



139

139 **1863, 2c Black, Grayish (16).** Plate 3-E, Type VI (Westerberg Pos. 6), huge margins all around, well-struck **blue Lahaina Customs House Full-Rigged Ship** negative seal handstamp (M-H 303), faint corner crease at top right in margin

EXTREMELY FINE. A MAGNIFICENT EXAMPLE OF THE 2-CENT NUMERAL WITH LAHAINA CUSTOMS HOUSE SEAL.

Very few examples of this distinctive cancel are found on stamps of such extraordinary quality. With 2004 P.F. certificate E. 3,000-4,000

- 140 **1864, 2c Black, Laid (24).** Plate 7-A, Type IV (Westerberg Pos. 4), large margins, ms. and blue crayon cancels, fresh and Extremely Fine... 1,050.00



140



141

- 141 **Kahului Railroad, 5c Deep Blue, Schmidt Printing (157).** Block of four, natural s.e. at bottom, two neat blue crayon cancels, Very Fine-Extremely Fine, a pretty block E. 200-300



142

- 142 **Kahului Railroad, 6c-\$1.00 Issues (155-156, 158-159).** 10c s.e. at bottom, 6c and \$1.00 purple handstamp cancels, 10c and 50c blue crayon cancels, Very Fine..... E. 150-200

END OF SALE — THANK YOU

Grading Index to Sale 951

| Grade | Scott | Lot | Year/Service/Grade |
|-------|-------|-----|--------------------|
| 100J | 9 | 8 | 2006 PSE 100J USED |
| 100J | 11 | 10 | 2008 PSE 100J USED |
| 100J | 17 | 13 | 2008 PSE 100J USED |
| 100J | 184 | 67 | 2008 PSE 100J USED |
| 100J | Q7 | 136 | 2008 PSE 100J USED |
| 98J | 87 | 31 | 2008 PSE 98J USED |
| 98J | 220 | 74 | 2008 PSE 98J USED |
| 98J | 234 | 77 | 2007 PSE 98J USED |
| 98 | 2 | 5 | 2008 PSE 98 USED |
| 98 | 72 | 27 | 2008 PSE 98 USED |
| 98 | 86 | 30 | 2008 PSE 98 USED |
| 98 | 149 | 59 | 2008 PSE 98 USED |
| 98 | 243a | 81 | 2008 PSE 98 USED |
| 98 | 276 | 86 | 2008 PSE 98 USED |
| 98 | 292 | 88 | 2007 PSE 98 USED |
| 98 | C14 | 117 | 2005 PSE 98 USED |
| 98 | E4 | 119 | 2005 PSE 98 USED |
| 98 | J36 | 127 | 2008 PSE 98 USED |
| 98 | JQ4 | 138 | 2004 PSE 98 USED |
| 98 | K2 | 131 | 2005 PSE 98 USED |
| 98 | Q8 | 137 | 2007 PSE 98 USED |
| 95J | 9 var | 9 | 2005 PSE 95J USED |
| 95J | 24 | 16 | 2008 PSE 95J USED |
| 95J | 70a | 26 | 2008 PSE 95J USED |
| 95J | 116 | 43 | 2008 PSE 95J USED |
| 95J | 124 | 50 | 2008 PSE 95J USED |
| 95J | 144 | 58 | 2008 PSE 95J USED |
| 95J | 229 | 76 | 2008 PSE 95J USED |
| 95J | 241 | 79 | 2008 PSE 95J USED |
| 95J | K18 | 132 | 2008 PSE 95J USED |
| 95 | 8 | 6 | 2007 PSE 95 USED |
| 95 | 27 | 17 | 2006 PSE 95 USED |
| 95 | 32 | 19 | 2008 PSE 95 USED |
| 95 | 36b | 22 | 2008 PSE 95 USED |
| 95 | 105 | 42 | 2008 PSE 95 USED |
| 95 | 128 | 51 | 2008 PSE 95 USED |
| 95 | 131 | 52 | 2008 PSE 95 USED |
| 95 | 137 | 54 | 2008 PSE 95 USED |
| 95 | 166 | 65 | 2007 PSE 95 USED |
| 95 | 218 | 73 | 2008 PSE 95 USED |
| 95 | 242 | 80 | 2007 PSE 95 USED |
| 95 | 262 | 83 | 2007 PF 95 USED |
| 95 | 290 | 87 | 2008 PSE 95 USED |
| 95 | 312 | 90 | 2008 PSE 95 USED |
| 95 | 390 | 94 | 2005 PSE 95 USED |
| 95 | 395 | 96 | 2008 PSE 95 USED |
| 95 | 445 | 100 | 2008 PSE 95 USED |
| 95 | 447 | 101 | 2008 PSE 95 USED |
| 95 | J43 | 128 | 2005 PSE 95 USED |
| 90 | 29 | 18 | 2008 PSE 90 USED |
| 90 | 69 | 25 | 2006 PF 90 USED |
| 90 | 412 | 97 | 2005 PSE 90 USED |
| 90 | 595 | 113 | 2008 PSE 90 USED |
| 90 | O112 | 134 | 2008 PSE 90 USED |
| 85 | 544 | 111 | 2008 PSE 85 USED |
| 80J | 311 | 89 | 1996 PSE 80J USED |

Bid Form—15% Premium Sale

Sale 951
Wednesday, February 27, 2008

1

Please provide the following information:

NAME.....
ADDRESS.....
CITY/STATE/ZIP.....
TEL. (DAY) FAX.....
E-MAIL.....

PADDLE #

Do not write in box

2

Have you purchased from us in the past 5 years? ☐ YES (if so, please go to Section 3)
☐ NO (please provide a trade reference and bank information)

References:

Stamp Firm: Telephone.....

Bank: Account #

3

In the space provided below, enter the **lot number** from **Sale 951** and your corresponding bid. Please use **whole dollar amounts** only and enter the **maximum bid** you wish to have us execute on your behalf, according to the **revised bidding increments** (on other side of this form). **Your bid will NOT include the 15% buyer's premium.** We will advance the bidding at one increment over the

next highest bid; therefore, you may be awarded the lot at less than your maximum bid. Please do not use "plus" bids or "buy" bids. If you wish to bid on one lot **or** the other, indicate your "or" bid between lot number/bid entries and bracket your choices. If you wish to place a **bidding limit** on the total amount of your bids, please enter your limit in the space marked "Limit Bids".

PLEASE NOTE REVISED BIDDING INCREMENTS (ON BACK OF THIS PAGE)

☐ **LIMIT BIDS:** Check this box if you wish to limit the total amount of your bids (not including the **15% buyer's premium**) in this sale. Your bids will be executed until your bidding limit no longer allows for additional bids. **The total amount you wish to bid is:** \$

| Lot | Bid | Lot | Bid | Lot | Bid |
|-----|-----|-----|-----|-----|-----|
| | \$ | | \$ | | \$ |
| | | | | | |
| | | | | | |
| | | | | | |
| | | | | | |

4

AGREEMENT: By signing this bid form, you agree to pay for purchases resulting from your bids, in accordance with the **Conditions of Sale** printed in the sale catalogue. You also agree to pay the **15% buyer's premium** and any shipping costs (see reverse), which will be added to your successful bids, and any sales tax or use tax which may be due

on the total invoiced amount. It is understood that these bids will be executed by Siegel Auction Galleries as a courtesy to absentee bidders, but that no legal responsibility shall lie with the auctioneer or the firm if these bids are not executed. **You are responsible for your written bids, including any errors on your part.**

Payment must be made by cash, check, money order or wire transfer. Credit cards will not be accepted.



SIGNED..... TODAY'S DATE

5

Please submit your bids promptly (telephone bids must be confirmed in writing).

Mail to: Robert A. Siegel Auction Galleries, Inc.
60 E. 56th Street, 4th Floor, New York, N.Y. 10022

OR FAX YOUR BIDS: (212) 753-6429

Shipping Instructions, Bidding Increments and space for additional bids on other side of form

Additional Bids

Sale 951—February 27, 2008

| Lot | Bid | Lot | Bid | Lot | Bid |
|-----|-----|-----|-----|-----|-----|
| | \$ | | \$ | | \$ |
| | | | | | |
| | | | | | |
| | | | | | |
| | | | | | |
| | | | | | |
| | | | | | |
| | | | | | |
| | | | | | |
| | | | | | |
| | | | | | |

Shipping and Transit Insurance

We will be pleased to arrange for shipping and transit insurance for purchases in this sale (except those described as “floor sale only”). To expedite billing and delivery of lots to hundreds of buyers per sale, we use standard charges for postage and insurance, based on the invoiced total and mailing requirements (see schedule). The standard charges are sometimes slightly more or less than the actual postage, but we do not include any fees for our labor or packing costs. Therefore, we ask all buyers to remit the prescribed amount for shipping charges.

Transit insurance is provided in all cases, except when the buyer has furnished us with proof that insurance coverage is effective under another policy. Proof, in such cases, will be accepted in the form of a written certificate from the insurance carrier.

You are responsible for insurance charges, which will be added to your invoice. This coverage is provided for our mutual protection against theft or loss in transit.

REVISED Bidding Increments

The auctioneer may regulate the bidding at his discretion. However, to assist absentee bidders in establishing their maximum bid for each lot, the increments shown at right will be used in most cases. We recommend that written bids conform to these increments (those which do not will be reduced to the next level).

Current Postage & Insurance Charges

| Invoice Total | Shipping Method | Charges |
|---|-----------------|------------------------------------|
| Up to 10,000 | Fedex Only | \$18.00 |
| Over \$10,000 | Fedex Only | \$25.00* |
| Foreign Destinations (any value) | Fedex/Courier | \$25.00** |
| Bulk Lots | UPS Preferred | By weight and value (min. \$25.00) |
| *Insurance and postage on certain heavy or valuable packages may incur an additional charge. **Buyers are liable for all customs duties and clearance charges. An accurate declaration of value will be made on all import/export documents. | | |

2/2002

IMPORTANT NOTICE REGARDING IRRADIATION

The U.S. Postal Service policy of irradiating all classes of mail poses a significant potential risk of irreversible damage to philatelic material, including ink, paper and gum.

WE WILL NOT USE THE MAILS TO SHIP LOTS.
Please provide a street address for Fedex delivery if you intend to have your lots shipped.

| | | | |
|---------------|-------|-----------------|---------|
| Up to \$50 | \$5 | \$3,000-7,000 | \$250 |
| \$50-200 | \$10 | \$7,000-20,000 | \$500 |
| \$200-500 | \$25 | \$20,000-30,000 | \$1,000 |
| \$500-1,000 | \$50 | \$30,000-75,000 | \$2,500 |
| \$1,000-3,000 | \$100 | \$75,000 up | \$5,000 |

7/2006

Robert A. Siegel Auction Galleries, Inc.

Prices Realized for

Sale 951 2/27/2008 The Tahoe Collection of Superb Used U.S. Stamps

| Lot# | Realized | Lot# | Realized | Lot# | Realized | Lot# | Realized |
|------|----------|------|----------|------|----------|------|----------|
| 1 | 13,000 | 37 | 2,600 | 73 | 4,000 | 110 | 2,600 |
| 2 | 8,000 | 38 | 750 | 74 | 1,300 | 111 | 9,000 |
| 3 | 17,500 | 39 | 5,500 | 75 | 425 | 112 | 52,500 |
| 4 | 32,500 | 40 | 11,000 | 76 | 900 | 113 | 1,700 |
| 5 | 7,000 | 41 | 27,000 | 77 | 2,900 | 115 | 375 |
| 6 | 21,000 | 42 | 20,000 | 78 | 900 | 116 | 375 |
| 7 | 4,750 | 43 | 3,750 | 79 | 5,250 | 117 | 2,300 |
| 8 | 8,000 | 44 | 750 | 80 | 6,000 | 118 | 400 |
| 9 | 2,200 | 45 | 1,900 | 81 | 16,000 | 119 | 1,600 |
| 10 | 5,500 | 46 | 600 | 82 | 4,000 | 120 | 150 |
| 11 | 2,200 | 47 | 5,250 | 84 | 26,000 | 121 | 550 |
| 12 | 1,600 | 48 | 3,000 | 85 | 200 | 122 | 225 |
| 13 | 10,500 | 49 | 1,700 | 86 | 2,600 | 123 | 950 |
| 14 | 330,000 | 50 | 9,500 | 87 | 1,600 | 124 | 950 |
| 15 | 21,000 | 51 | 21,000 | 88 | 15,000 | 125 | 2,700 |
| 16 | 2,300 | 52 | 10,000 | 89 | 275 | 127 | 1,800 |
| 17 | 14,000 | 53 | 375 | 90 | 3,750 | 128 | 650 |
| 18 | 3,500 | 54 | 5,250 | 91 | 45 | 129 | 1,100 |
| 19 | 4,750 | 55 | 3,750 | 92 | 800 | 130 | 425 |
| 20 | 450 | 56 | 3,250 | 93 | 1,400 | 131 | 1,500 |
| 21 | 1,300 | 57 | 16,500 | 94 | 850 | 132 | 2,200 |
| 22 | 4,250 | 58 | 32,500 | 95 | 2,500 | 133 | 475 |
| 23 | 1,700 | 59 | 3,500 | 96 | 800 | 134 | 1,600 |
| 24 | 3,750 | 60 | 650 | 97 | 1,300 | 135 | 750 |
| 25 | 7,000 | 61 | 3,000 | 98 | 37,500 | 136 | 2,200 |
| 26 | 6,750 | 62 | 950 | 99 | 67,500 | 137 | 750 |
| 27 | 23,000 | 63 | 550 | 100 | 4,250 | 138 | 1,300 |
| 28 | 3,250 | 64 | 1,300 | 101 | 3,250 | 139 | 4,500 |
| 29 | 3,500 | 65 | 3,250 | 102 | 3,750 | 140 | 1,400 |
| 30 | 22,000 | 66 | 600 | 103 | 425 | 141 | 1,200 |
| 31 | 10,500 | 67 | 3,000 | 104 | 1,100 | 142 | 850 |
| 32 | 275 | 68 | 200 | 105 | 170 | | |
| 33 | 3,500 | 69 | 300 | 106 | 1,800 | | |
| 34 | 4,250 | 70 | 700 | 107 | 250 | | |
| 35 | 5,000 | 71 | 1,300 | 108 | 40,000 | | |
| 36 | 3,750 | 72 | 250 | 109 | 400 | | |