

# THE SUMMIT COLLECTION OF UNITED STATES ENCASED POSTAGE



SALE 955  
FRIDAY AFTERNOON, APRIL 11, 2008, AT 1:30 P.M.

*Robert A. Siegel*  
AUCTION GALLERIES, INC.  
**siegelauctions.com**

Sale 955—Friday, April 11, 2008

# The Summit Collection of United States Encased Postage

Live auction to be held at Siegel Auction Galleries,  
60 East 56th Street (Park/Madison), 4th Floor, New York City

All lots offered without reserves

Lots are sold subject to a 15% buyer's premium and  
any applicable sales tax (or customs duty for non-U.S. buyers)



Afternoon Session (lots 4001-4193)  
Friday, April 11, at 1:30 p.m.

Encased Postage A-Z .....	lots	4001-4128
Postage Envelopes and Scrip .....		4129-4154
Fractional Currency.....		4155-4175
Coin-Related Postal Covers.....		4176-4193

## Pre-Sale Lot Viewing

Monday, April 7 — 10:00 a.m. to 4:00 p.m.  
Tuesday, April 8 — 10:00 a.m. to 4:00 p.m.  
Wednesday, April 9 — 10:00 a.m. to 4:00 p.m.  
Thursday, April 10 — 10:00 a.m. to 4:00 p.m.  
or by appointment (please call 212-753-6421)

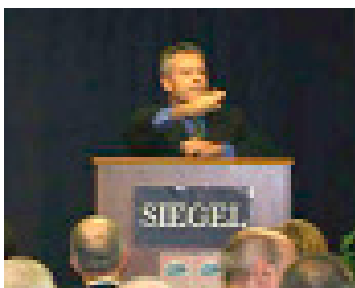
Front cover: lots 4001, 4081 / 4124, 4101  
Back cover: lots 4130 / 4134 / 4187

*Robert A. Siegel*

AUCTION GALLERIES, INC.

60 EAST 56TH STREET, 4TH FLOOR, NEW YORK, N.Y. 10022  
Phone (212) 753-6421 • Fax (212) 753-6429 • E-mail: [stamps@siegelauctions.com](mailto:stamps@siegelauctions.com)

Catalogues, internet bidding, resources, archives and the Siegel Encyclopedia at  
[siegelauctions.com](http://siegelauctions.com)



*Robert A. Siegel*

AUCTION GALLERIES, INC.

60 EAST 56TH STREET, 4TH FLOOR, NEW YORK, N.Y. 10022

Phone (212) 753-6421 • Fax (212) 753-6429 • E-mail: [stamps@siegelauctions.com](mailto:stamps@siegelauctions.com)

[siegelauctions.com](http://siegelauctions.com)



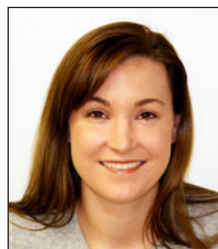
Scott R. Trepel  
President  
strepel  
[@siegelauctions.com](mailto:strepel@siegelauctions.com)



John P. Zuckerman  
Senior Vice President  
jzuckerman  
[@siegelauctions.com](mailto:jzuckerman@siegelauctions.com)



Stephanie Chambers  
Accounts  
schambers  
[@siegelauctions.com](mailto:schambers@siegelauctions.com)



Starr Tucker-Ortega  
Accounts  
starrt  
[@siegelauctions.com](mailto:starrt@siegelauctions.com)



Carlene Counihan  
Bids and Inquiries  
carlene  
[@siegelauctions.com](mailto:carlene@siegelauctions.com)

Scott R. Trepel Principal Auctioneer (licensed by NYC Dept. of Consumer Affairs, #795952)

Nathaniel Estes Catalogue and Digital Production

## Information for Bidders

### Bidding

The following means are available for placing bids:

**1) Attending the Live Auction in Person:** All bidders must register for a paddle, and new bidders must provide references at least three business days in advance of the sale.

**2) Live Internet Bidding:** Instructions for participating as a Live Internet Bidder are provided on the page opposite.

**3) Phone Bidding:** Bidders can be connected to the sale by phone and bid through a member of staff. Requests for phone bidding are subject to approval (please contact our office at least 24 hours before the sale). A signed Bid Form is required.

**4) Absentee Bids.** All bids received in advance of the sale, either by mail, fax, phone, e-mail or internet, are Absentee Bids, which instruct the auctioneer to bid up to a specific amount on one or more lots in the sale. Absentee Bids sent by phone, fax or e-mail should arrive at least one hour prior to the start of the sale session. Bids entered through Live Internet Bidding will be visible to the auctioneer during the sale. Written bids should be entered legibly on the Bid Form in the sale catalogue. E-mail and internet bids should be carefully typed and double-checked. All new bidders must provide references. We recommend calling or e-mailing to confirm that Absentee Bids sent by mail, fax or e-mail have been received and entered.

### Pre-Sale Viewing

Subject to availability, certain lots (except group lots) can be sent to known clients for examination. Requests must be made no later than 7 days prior to the sale. Lots must be returned on the day received. Postage/insurance costs will be invoiced.

In addition to regular viewing, clients may view lots by appointment. Our staff will be pleased to answer questions or provide additional information about lots.

### Expert Certification

Individual items offered without a current certificate (PF dated within the past five years of sale; PSE dated January 2004 or later) may be purchased subject to independent certification of genuineness and our description. **Please refer to the Conditions of Sale and Grading Terms for policies governing certification.**

### Shipping and Delivery

Procedures and charges for shipping lots are printed on the back of the Bid Form. **Bidders are responsible for all prescribed shipping charges and any applicable sales tax or customs duties.**

### Price Realized

Prices realized are sent with each invoice. Bidders with e-mail will receive a Bid Results report after the sale. Session results are posted immediately to [siegelauctions.com](http://siegelauctions.com)



# Live Internet Bidding at Siegel Auctions



## Bidding from your computer lets you be part of the live auction from anywhere in the world!

There's no substitute for following the auction in real time. Live Internet Bidding lets you bid and buy as though you were right there in the saleroom.

And it's easy. Just start by following the simple steps to become a registered Live Internet Bidder. Once you've been approved for bidding, you can listen to the auction and place bids with the click of a mouse.

This step-by-step guide will instruct you how to register, set your browser and use the bidding interface.

## 1 Registering with Stamp Auction Network and Siegel Auction Galleries

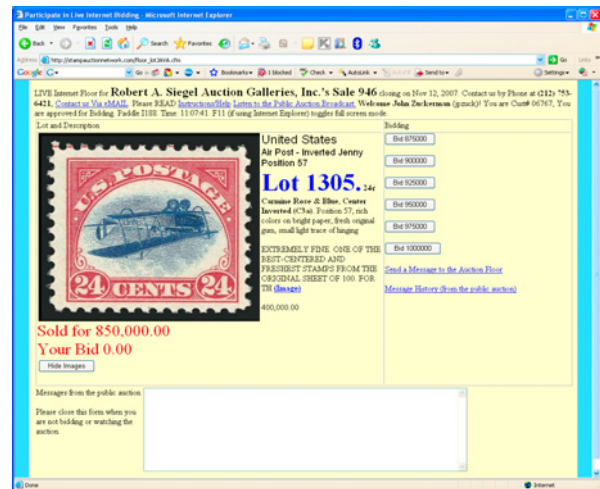
Live Internet Bidding is managed by Stamp Auction Network (SAN). To bid, you must be registered and approved by *both* SAN and Siegel. To decide what you need to do, choose the description below that best fits you.

**I've already registered with SAN and have been approved by Siegel for internet bidding.** You're ready for Step 2.

**I've never registered with SAN, but I'm a Siegel client.** Go to [stampauctionnetwork.com/siegel](http://stampauctionnetwork.com/siegel) and click on "Register" at the top. Check the box for Robert A. Siegel Auction Galleries (under "R") and submit the form, indicating you are a Siegel client. Once registered at SAN, you're ready for Step 2.

**I've never registered with SAN, and this is the first time I've bid with Siegel.** Go to [stampauctionnetwork.com/siegel](http://stampauctionnetwork.com/siegel) and click on "Register" at the top. Check the box for Robert A. Siegel Auction Galleries (under "R") and submit the form **with your trade references** (please, no family members or credit card companies as references). Once registered at SAN and approved by Siegel for bidding, you're ready for Step 2.

**I've bid through SAN before, but this is the first time I've bid in a Siegel sale.** Then you just need to be approved by Siegel. Go to [stampauctionnetwork.com/siegel](http://stampauctionnetwork.com/siegel) and click on "Update Registration" at the top. Your SAN account information will be sent to us for approval (you might be asked for other trade references). Once approved by Siegel for bidding, you can move to Step 2.



## 2 Using your browser for Live Internet Bidding and understanding the way it works.

Live Internet Bidding works by providing an audio feed of the auction (for anyone using Internet Explorer) and by allowing registered bidders to observe and place bids. The bidding interface shows a photo and description of the lot, the current bid (and your bidding status), and options for placing competitive bids. To join the auction, go to [stampauctionnetwork.com/siegel](http://stampauctionnetwork.com/siegel). You can also log on at [siegelauctions.com](http://siegelauctions.com)

The visual interface will work with any browser on both PC and Mac operating systems. However, the audio feed only works with Internet Explorer on a PC with ActiveX software installed. If ActiveX is not on your computer, you will have the option to install it.

Before bidding by internet for the first time, we recommend finding a sale in progress and listening to the public broadcast or logging in as a registered bidder. This will help you develop a feel for the sale tempo and bidding interface.

"System down" or "lost connection" events do occasionally happen. If you have any problems with Live Internet Bidding, please call 212-753-6421 for immediate assistance.



## 3 Using Live Internet Bidding to bid, track results and communicate with the auctioneer.

When you're logged on as a Live Internet Bidder, the screen will display buttons with bid increments. After you click on a bid amount, the auctioneer is immediately notified of your bid. Retracting a bid is usually not acceptable, so please bid carefully.

If you bid, then decide to stop, please use the "Pass" button, which appears once you've started bidding. This tells the auctioneer not to wait for another bid from you.

You can send messages to the auctioneer (for example, a request for extension). You can also track prior realizations from the bidding screen.



## Conditions of Sale (please read carefully before bidding)

The property described in this catalogue will be offered at public auction by Robert A. Siegel Auction Galleries, Inc. ("Galleries") on behalf of various consignors and itself or affiliated companies. By bidding on any lot, whether directly or by or through an agent, in person, or by telephone, facsimile or any other means, the bidder acknowledges and agrees to all of the following Conditions of Sale.

1. The highest bidder acknowledged by the auctioneer shall be the buyer. The term "final bid" means the last bid acknowledged by the auctioneer, which is normally the highest bid offered. **The purchase price payable by the buyer will be the sum of the final bid and a commission of 15% of the final bid ("buyer's premium"), together with any sales tax, use tax or customs duties due on the sale.**
2. The auctioneer has the right to reject any bid, to advance the bidding at his discretion and, in the event of a dispute between bidders, to determine the successful bidder, to continue the bidding or to reoffer and resell the lot in dispute. The Galleries' record of the final sale shall be conclusive.
3. All bids are per numbered lot in the catalogue unless otherwise announced by the auctioneer at the time of sale. The right is reserved to group two or more lots, to withdraw any lot or lots from the sale, or to act on behalf of the seller. The Galleries will execute bidding instructions on behalf of clients, but will not be responsible for the failure to execute such bids or for any errors in the execution of such bids.
4. **Lots with numbers followed by the symbol ° are offered subject to a confidential minimum bid ("reserve"), below which the lot will not be sold. The absence of the symbol ° means that the lot is offered without a reserve. If there is no reserve, the auctioneer has sole discretion to establish a minimum opening bid and may refuse an offer of less than half of the published estimate. Any lot that does not reach its reserve or opening bid requested by the auctioneer will be announced as "passed" and excluded from the prices realized lists after the sale. The Galleries may have a direct or indirect ownership interest in any or all lots in the sale resulting from an advance of monies or goods-in-trade or a guarantee of minimum net proceeds made by the Galleries to the seller.**
5. Subject to the exclusions listed in 5(A), the Galleries will accept the return of lots which have been misidentified or which have obvious faults that were present when the lot was in the Galleries' custody, but not so noted in the lot description. **All disputed lots must be received by the Galleries intact with the original packing material within 5 days of delivery to the buyer but no later than 30 days from the sale date. (5A) EXCLUSIONS:** The following lots may not be returned for any reason: lots containing 10 or more items; lots from buyers who registered for the pre-sale exhibition or received lots by postal viewing, thereby having had the opportunity to inspect them before the sale; any lot described with "faults," "defects" or a specific fault may not be returned because of any secondary fault. Photographed lots may not be returned because of centering, margins, short/nibbed perforations or other factors shown in the illustrations. Lots may not be returned for any of the following reasons: the color of the item does not match the color reproduction in the sale catalogue or website listing; the description contains inaccurate information about the quantity known or reported; or a certification service grades a stamp lower than the grade stated in the description.
6. Successful bidders, unless they have established credit with the Galleries prior to the sale, must make payment in full before the lots will be delivered. Buyers not known to the Galleries must make payment in full within 3 days from the date of sale. **The Galleries retains the right to demand a cash deposit from anyone prior to bidder registration and/or to demand payment at the time the lot is knocked down to the highest bidder, for any reason whatsoever.** In the event that any buyer refuses or fails to make payment in cash

for any lot at the time it is knocked down to him, the auctioneer reserves the right to reoffer the lot immediately for sale to the highest bidder. **Credit cards are not accepted as payment.**

7. If the purchase price has not been paid within the time limit specified above, nor lots taken up within 7 days from the date of sale, the lots will be resold by whatever means deemed appropriate by the Galleries, and any loss incurred from resale will be charged to the defaulting buyer. Any account more than 30 days in arrears will be subject to a late payment charge of 1½% per month as long as the account remains in arrears. Any expenses incurred in securing payment from delinquent accounts will be charged to the defaulter. A fee of \$250.00 per check will be charged for each check returned for insufficient funds.
8. All lots are sold as genuine. **Any lot accompanied by a certificate issued by The Philatelic Foundation within 5 years of the sale date or by Professional Stamp Experts since January 2004 is sold "as is" and in accordance with the description on the certificate. Such lots may not be returned for any reason, including but not limited to a contrary certificate of opinion.** Buyers who wish to obtain a certificate for any item that does not have a P.F. or P.S.E. certificate (dated as above) may do so, provided that the following conditions are met: (1) the purchase price must be paid in full, (2) the item must be submitted to an acceptable expertizing committee with a properly executed application form within 21 days of the sale, (3) a copy of the application form must be given to the Galleries, (4) in the event that an adverse opinion is received, the Galleries retain the right to resubmit the item on the buyer's behalf for reconsideration, without time limit or other restrictions, (5) unless written notification to the contrary is received, items submitted for certification will be considered cleared 90 days from the date of sale, and (6) in the event any item is determined to be "not as described", the buyer will be refunded the purchase price and the certification fee up to \$600.00 unless otherwise agreed.
9. Until paid for in full, all lots remain the property of the Galleries on behalf of the seller.
10. Agents executing bids on behalf of clients will be held responsible for all purchases made on behalf of clients unless otherwise arranged prior to the sale.
11. The buyer assumes all risk for delivery of purchased lots and agrees to pay for prescribed shipping costs. Buyers outside the U.S. are responsible for all customs duties.
12. **The bidder consents that any action or proceeding against it may be commenced and maintained in any court within the State of New York or in the United States District Court for the Southern District of New York, that the courts of the State of New York and United States District Court for the Southern District of New York shall have jurisdiction with respect to the subject matter hereof and the person of the bidder. The bidder agrees not to assert any defense to any action or proceeding initiated by Galleries based upon improper venue or inconvenient forum. The bidder agrees that any action brought by the bidder shall be commenced and maintained only in a Federal Court in the United States District Court for the Southern District of New York or the State Court in the county in which Galleries has its principal place of business in New York. These Terms and Conditions shall be governed by and construed in accordance with the substantive laws of the State of New York.**

SCOTT R. TREPEL, Principal Auctioneer

Auctioneer's License No. 795952  
N.Y.C. Department of Consumer Affairs  
80 Lafayette Street, New York, N.Y. 10013  
Telephone (212) 577-0111

*Revised 1/2008 15%*

### Copyright Notice

© 2008, Robert A. Siegel Auction Galleries, Inc. This catalogue in all versions, printed and electronic, is protected by copyright. The descriptions, format, illustrations and information used herein may not be reprinted, distributed or copied in any form without the express written consent of Robert A. Siegel Auction Galleries. Application for permission may be made in writing.

## Grades, Abbreviations and Values Used in Descriptions

### Grades and Centering

Our descriptions contain detailed information and observations about each item's condition. We have also assigned grades to stamps and covers, which reflect our subjective assessment. For stamps, the margin width, centering and gum are described and graded according to generally-accepted standards (an approximate correlation to numeric grades is provided at right). Although we believe our grades are accurate, they are not always exactly aligned with third-party grading terms or standards for all issues. **A lot may not be returned because a certification service grades a stamp lower than the grade stated in the description. Information from the P.S.E. Stamp Market Quarterly and P.S.E. Population Report<sup>SM</sup> is the most current available, but lots may not be returned due to errors or changes in statistics or data.**

**Extremely Fine Gem (90-100):** The term "Gem" describes condition that is the finest possible for the issue. This term is equivalent to "Superb" used by grading services.







**Extremely Fine (80-90):** Exceptionally large/wide margins or near perfect centering.

**Very Fine (70-85):** Normal-size margins for the issue and well-centered with the design a bit closer to one side. "Very Fine and choice" applies to stamps that have desirable traits such as rich color, sharp impression, freshness or clarity of cancel.

**Fine (60-70):** Smaller than usual margins or noticeably off center. Pre-1890 issues may have the design touched in places.

**Very Good (below 60):** Attractive appearance, but margins or perforations cut into the design.

### Guide to Gum Condition

Gum Categories:	MINT N.H.	ORIGINAL GUM (O.G.)				NO GUM
	 <b>Mint Never Hinged</b> <i>Free from any disturbance</i>	 <b>Lightly Hinged</b> <i>Faint impression of a removed hinge over a small area</i>	 <b>Hinge Mark or Remnant</b> <i>Prominent hinged spot with part or all of the hinge remaining</i>	 <b>Part o.g.</b> <i>Approximately half or more of the gum intact</i>	 <b>Small part o.g.</b> <i>Approximately less than half of the gum intact</i>	 <b>No gum</b> <i>Only if issued with gum</i>
Catalogue Symbol:	★ ★	★	★	★	★	(★)
PRE-1890 ISSUES	<i>Pre-1890 stamps in these categories trade at a premium over Scott value</i>			Scott Value for "O.G."		Scott "No Gum" Values thru No. 218
1890-1935 ISSUES	Scott "Never Hinged" Values for Nos. 219-771	Scott Value for "O.G." (Actual value will be affected by the degree of hinging)		<b>Disturbed Original Gum:</b> Gum showing noticeable effects of humidity, climate or hinging over more than half of the gum. The significance of gum disturbance in valuing a stamp in any of the Original Gum categories depends on the degree of disturbance, the rarity and normal gum condition of the issue and other variables affecting quality. For example, stamps issued in tropical climates are expected to have some		
1935 TO DATE	Scott Value for "Unused"					

### Covers

Minor nicks, short edge tears, flap tears and slight reduction at one side are normal conditions for 19th century envelopes. Folded letters should be expected to have at least one file fold. Light cleaning of covers and small mends along the edges are accepted forms of conservation. Unusual covers may have a common stamp with a slight crease or tiny tear. **These flaws exist in virtually all 19th century covers and are not always described. They are not grounds for return.**

### Catalogue Values and Estimates

Unless otherwise noted, the currently available *Scott Catalogue* values are quoted in dollars with a decimal point. Other catalogues are often used for foreign countries or specialized areas and are referred to by their common name: *Stanley Gibbons* (SG), *Dietz*, *American Air Mail Catalogue* (AAMC), *Michel*, *Zumstein*, *Facit*, etc. Estimates are indicated with an "E." and reflect our conservative valuation in dollars. Reserves will never exceed the low end of the estimate range; they will sometimes exceed Scott Catalogue value for stamps in Extremely Fine condition.

Because of certain pricing inconsistencies in the *Scott Catalogue*—for example, blocks that have no gum, the absence of premiums for Mint N.H. items, etc.—we cannot guarantee the accuracy of values quoted for multiples, specialized items and collection lots. We generally try to be conservative, but buyers may not return a lot because of a discrepancy in catalogue value due to Scott pricing inconsistencies.

### Symbols and Abbreviations (see chart above for gum symbols)

⊞	Block	E	Essay	pmk.	Postmark	No.	Scott Catalogue Number
⊞	Cover	P	Proof	cds	Circular Datestamp	hs	Handstamp
FC	Fancy Cancel	TC	Trial Color Proof	var.	Variety	ms.	Manuscript

*Revised 1/2008*

# Resources at siegelauctions.com

**ROBERT A SIEGEL AUCTION GALLERIES INC.**  
60 East 56th Street, 4th Floor, NY, NY 10022 • Phone (212) 753-6663 • Fax (212) 753-6669

The Scarsdale Collection, Part Five: Used United States 1847-69 Issues continued...

Lot	Stamps	Lot Description	Est. Cat.	Realized
2803		<b>1c 1851-56 Issue</b> EXTREMELY FINE, QUITE PROBABLY THE FINEST EXAMPLE OF SCOTT NO. 3 IN EXISTENCE, AND ONE OF ONLY A FEW SOUND EXAMPLES. POSITION "78-1E" - THE SEVENTH STAMP IN THE RIGHT PANE OF PLATE ONE EARLY - IS THE ONLY ONE OF THE 1,000 POSITIONS USED TO PRINT IMPERFORATE ONE-CENT STAMPS THAT SHOWS THE COMPLETE DESIGN (TYPE D). ESPECIALLY DESIRABLE WITH THE BLUE RICHMOND CIRCULAR DATESTAMP. A MAGNIFICENT EXAMPLE OF THE RAREST AND MOST DESIRABLE CLASSIC IMPERFORATE UNITED STATES STAMP.  The published census compiled by Jerome S. Wagshal contains 90 unduplicated records of Scott's 3. There has been one addition to the Wagshal census, and there are probably no more than ten examples existing outside of the census population. Therefore, the 1c 1851 Type D is the rarest of all United States stamps issued regularly prior to the 1868 Gills.  Because of the significance attached to the outer portions of the 1c 1851 design, rare types that have been carefully cut apart, so as not to impair on any part of the design, are extremely desirable. The narrow spacing between stamps in the sheet and the more indifference to the cutting arrangement during separation are factors that contributed to the great rarity of four-margin examples. The example offered here comes from the "Warner strip" of Positions 7-9R1E, which was cut apart with a view towards preserving the margins of this stamp. Examples of Position 78-1E (Scott 3) with large right and bottom margins, where there was very little space between it and the adjoining stamps, are true rarities. In fact, using the census data, it may be argued that this stamp is among the two or three finest sound examples known.	\$5,750.00	\$75,000.00

## Catalogues and Prices Realized

Images and descriptions for all current sale catalogues are available from our website.

An archive of past sales (from Sale 786, April 1997) and prices realized (from Sale 742, May 1992) is constantly maintained to allow users to search for items and information from past sales.

## The Siegel Encyclopedia and Rarities Census

This feature of our website contains a wealth of information gleaned from decades of philatelic research by the dedicated philatelists at Siegel. The up-to-date census data for 19th and 20th century U.S. rarities are a valuable resource for buyers, sellers and researchers. Every recorded example of more than 30 different rare stamps is described and, in most cases, photographed.

Our updated census of Scott 396 records thirteen used stamps. None is recorded unused. Of the five non-precanceled stamps, two have major faults and one has poor centering. There are the only three well-centered non-precanceled examples in existence.

Census No. History: FPC:	396-CAN-01 RAS 424/1982 9124 "Overseas"	396-CAN-02 Coke Coll. - RAS 324/1983, Lot 1793 - \$22,000 Zandberg Coll. - <a href="#">RAS Sale 804</a> 10/2/1998, Lot 713 - \$20,000 24081 "Overseas"	396-CAN-03 Ortman Coll. - RAS 11/00/1971, Lot 518 16736 "Overseas"	396-CAN-04 40001 "Overseas, small crease, thin spot" 132791 "Overseas, two corner creases at top and small crease"
Census No. History: FPC:	396-CAN-05 RAS 10/31/1992 Playal Coll. - IPO 10/23/2001, Lot E39 \$15,000 260313 "Overseas corner crease and tiny tear"	396-CAN-06 RAS 325/1989 10741 "Overseas" 26920 "Overseas"	396-CAN-07 Ewing Coll. - HR 6/18-21/1940 offered as "unrecorded variety of 1c and the only known copy" 24852 "Overseas" 324490 "Overseas, tiny thin spot at B.L. and small corner crease at T.R."	396-CAN-08 Kallisher 3/27/1980 10076 "Overseas, some staining at top"
Census No. History:	396-CAN-09 Molenaar Coll. - RAS 5/2/1973, Lot	396-CAN-10 IPO 10/15/2002, Lot 633 - \$10,000	396-CAN-11 Isleham Coll. - RAS 5/25/1996, Lot	396-CAN-12 Lewson Coll. - IPO 5/01/2002, Lot 640 -




## Rarities of the World Sales Archive

Images and descriptions for every annual Rarities sale since 1964 provide an unparalleled source of information on the world's greatest philatelic rarities. Digital images made from color slides for Rarities sales between 1964 and 1991 (the era of black-and-white catalogues) make this the only source of color images anywhere.

## Informative Video Presentations

Downloadable video documentaries tell the stories of stamps and covers, such as the famous Inverted "Jenny." This is the ideal way to introduce philately to others.



**The 1918 24c  
INVERTED "JENNY"**

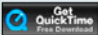
Position 57 — auctioned by Siegel Auction Galleries on Wednesday, November 14, 2007 — set a world record for the amount paid at auction for a single U.S. Stamp.

**JENNY AUCTION FOOTAGE**

Also see Scott Trepel's exclusive video preview:  
**THE INVERTED JENNY**

Also available as an **iPod video**

To view this presentation will require the standalone Apple QuickTime Player or the QuickTime web browser plug-in.





AFTERNOON SESSION (LOTS 4001-4193)

FRIDAY, APRIL 11, 2008, AT 1:30 P.M.

THE SUMMIT COLLECTION OF  
UNITED STATES ENCASED POSTAGE

4001

4001 **Aerated Bread Co., New York, 1c Blue (EP1).** Stamp with fresh color, slight mica wrinkling and lamination at left

VERY FINE. AN EXCEPTIONAL EXAMPLE OF THE VERY RARE ONE-CENT AERATED BREAD COMPANY ONE-CENT ENCASED POSTAGE.

The Aerated Bread Co. was located on the corner of Lafayette Place and 4th Street in New York City. The firm was based on the novel "aerated" bread process, but it folded after two years. Aerated Bread Co. produced only two denominations of encased postage — 1c and 5c — but the 5c is believed to be unique; therefore, the only practical way to represent this firm is with one of the 11-15 examples of the 1c value. .... 5,000.00



4002

4002 **Ayer's Cathartic Pills, Lowell Mass., 1c Blue, Short Arrows (EP2).** Stamp well-positioned and mica appears intact, Extremely Fine, especially nice quality ..... 400.00



4003

4003 **Ayer's Cathartic Pills, Lowell Mass., 3c Rose, Long Arrows (EP3).** Fairly strong Rose Pink shade, not washed out as usual, the case is in excellent condition, some wrinkling and slight mica crazing, Very Fine ..... 350.00



4004

- 4004 **Ayer's Cathartic Pills, Lowell Mass., 10c Green, Long Arrows (EP5).** Stamp nicely positioned with denomination label fully visible, typical mica flaws mainly along bottom, Very Fine, ex Mayer ..... 800.00



4005

- 4005 **Ayer's Cathartic Pills, Lowell Mass., 12c Black, Long Arrows (EP6).** Stamp well-positioned, some mica faults and small dent in rim nick about eleven o'clock on reverse VERY FINE. A CHOICE EXAMPLE OF THIS RARE AYER'S 12-CENT "LONG ARROWS" VARIETY Fewer than ten examples of the Ayer's Cathartic Pill's 12c are reported. The Ford sale catalogue (Stack's 6/23/2004, lot 346) reported as few as two or three of the Long Arrows variety. .... 2,200.00



4006



4007

- 4006 **Take Ayer's Pills, 1c Blue (EP8).** Retains large part of original silvering on reverse, slight stamp bends and trivial mica flaw bottom right, Very Fine..... 400.00
- 4007 **Take Ayer's Pills, 3c Rose (EP9).** Bright stamp color, tiny mica flaw, Very Fine 400.00





4008

- 4008 **Take Ayer's Pills, 5c Red Brown (EP10).** A good amount of **original silvering** on reverse, mica clear with only slight lamination, Extremely Fine, a rare encased postage with 5-10 reported in Reed census, this Plain Frame variety is rarer than the Ribbed Frame..... 1,000.00



4009

- 4009 **Take Ayer's Pills, 12c Black (EP12).** Stamp beautifully positioned with "U.S. Postage" and "Twelve Cents" labels fully visible, **silvering on reverse** with the raised letters colored in a golden brown shade, slight scratches on right obverse case tab  
VERY FINE. AN EXCELLENT EXAMPLE OF THE RARE 12-CENT "TAKE AYER'S PILLS" ENCASEMENT.  
This 12c Take Ayer's Pills has a rarity rating of R-8 (5-10 known) in Reed census ... 2,500.00



4010



4011

- 4010 **Ayer's Sarsaparilla, 1c Blue, Medium "Ayer's" (EP13).** Some mica cracking and crazing, Very Fine ..... 500.00
- 4011 **Ayer's Sarsaparilla, 1c Blue, Small "Ayer's" (EP13a).** Slight stamp wrinkling and small mica flaw top left, Very Fine, with 2006 P.F. certificate that does not mention any flaws ..... 750.00





4012



4013



4014

- 4012 **Ayer's Sarsaparilla, 3c Rose, Medium "Ayer's" (EP15).** Excellent stamp color, some mica cracks and laminations, Very Fine ..... 400.00
- 4013 **Ayer's Sarsaparilla, 3c Rose, Small "Ayer's" (EP15a).** Intense stamp color, minimal mica flaws, Extremely Fine ..... 650.00
- 4014 **Ayer's Sarsaparilla, 3c Rose, Large "Ayer's" (EP15b).** Excellent Rose Pink color, bright golden reverse, peripheral mica faults, Very Fine ..... 450.00



4015

- 4015 **Ayer's Sarsaparilla, 5c Red Brown, Medium "Ayer's" (EP16).** Stamp centered and deep rich color, some case abrasions on the left and right obverse tabs, tiny mica flaw at right VERY FINE. AN EXTREMELY SCARCE 5-CENT AYER'S SARSAPARILLA ENCASEMENT.  
There are 16-20 reported examples in Reed census. With 2006 P.F. certificate (which only mentions the abrasions) ..... 2,000.00



4016



4017

4016 **Ayer's Sarsaparilla, 10c Green, Medium "Ayer's" (EP17).** Stamp centered, case has lovely brown color, small mica fault at top, Very Fine, 16-20 reported in Reed census..... 475.00

4017 **Ayer's Sarsaparilla, 10c Green, Large "Ayer's" (EP17c).** Stamp nicely centered, mica fault bottom right, Very Fine, much rarer than the Scott Catalogue indicates, the Large "Ayer's" variety has an R-9+ rating in Reed census (2-4 known)..... 1,000.00



4018

4018 **Ayer's Sarsaparilla, 12c Black, Medium "Ayer's" (EP18).** Fairly well-centered, mica cracked in two places

A FINE AND COLLECTIBLE EXAMPLE OF THE 12-CENT AYER'S SARSAPARILLA WITH MEDIUM "AYER'S" INSCRIPTION, OF WHICH FIVE TO TEN ARE REPORTED IN REED CENSUS.

With 1990 P.F. certificate ..... 2,000.00





4019



4020

- 4019 **Bailey & Co., Philadelphia, 1c Blue (EP21).** Small mica crack and reverse mostly dark, Very Fine, undervalued in Scott as there are only 5-10 reported in Reed census, with 1989 P.F. certificate which does note any flaws ..... 1,000.00
- 4020 **Bailey & Co., Philadelphia, 3c Rose (EP22).** Stamp has unusually rich color, mica cracked at top, Fine, in our opinion undervalued in Scott as there are only 5-10 reported in Reed census, with 1989 P.F. certificate ..... 1,100.00



4021

- 4021 **Bailey & Co., Philadelphia, 10c Green (EP24).** Stamp well-centered with value fully visible, only a couple tiny mica flaws  
VERY FINE. A DESIRABLE EXAMPLE OF THE RARE 10-CENT BAILEY AND COMPANY ENCASED POSTAGE STAMP.  
J. Bailey & Company was one of the largest jewelry firms in the United States (it still operates under the name Bailey, Banks and Biddle). The firm's engravers also freelanced for the U.S. Mint.  
The Reed census reports only 5-10 known. .... 2,000.00



4022



4023

- 4022 **Joseph L. Bates, Boston, 1c Blue, "FANCYGOODS" One Word (EP26).** Stamp nicely centered, small mica fault at bottom, Very Fine, very scarce with only 16-20 reported in Reed census ..... 450.00
- 4023 **Joseph L. Bates, Boston, 1c Blue, "FANCY GOODS" Two Words (EP26a).** Remarkably fresh with large part of original silvering on reverse, Extremely Fine, the Ford catalogue (Stack's 6/23/2004, lot 399) reports that the "Fancy Goods" (in two words) variety is rarer than the other ..... 600.00





4024



4025



4026

- 4024 **Joseph L. Bates, Boston, 3c Rose, "FANCYGOODS" One Word (EP27).** Strong stamp color and mica essentially intact, minor wrinkles, Extremely Fine and very rare, very few of the 3c Bates are known (in either variety)..... 1,500.00
- 4025 **Joseph L. Bates, Boston, 5c Red Brown, "FANCY GOODS" Two Words (EP28).** Beautiful Dark Red Brown stamp color, mica in excellent condition with only two tiny flaws, Very Fine, this is an extremely rare encasement, the 5c two-word "Fancy Goods" was listed in the Stacks sale of the Ford collection as Scott EP28a (the one-word "Fancygoods" inscription was EP28b ribbed), one source states there are only two known with one-word inscriptions and perhaps a couple more than that for the two-word inscription.. 750.00
- 4026 **Joseph L. Bates, Boston, 10c Green, "FANCYGOODS" One Word (EP29a).** Stamp well-centered, minor mica flaws, Very Fine and choice, only 5-10 reported in Reed census, ex Mayer..... 625.00



4027

- 4027 **Brown's Bronchial Troches, 1c Blue (EP31).** Stamp centered, rich color, couple very trivial mica flaws, beautiful deep golden brown case, tiny dent in rim at bottom of obverse EXTREMELY FINE. A RARE ENCASED POSTAGE STAMP, WITH THE REED CENSUS REPORTING ONLY FIVE TO TEN KNOWN. THIS IS CERTAINLY ONE OF THE FINEST.  
Ex Ford and Mayer ..... 2,000.00



4028



4029



4030

- 4028 **Brown's Bronchial Troches, 3c Rose (EP32).** Large part of original silvering on back, stamp slightly faded as usual, small central mica flaw and slight case dent on reverse, otherwise Very Fine, only 16-20 reported in Reed census..... 650.00
- 4029 **Brown's Bronchial Troches, 5c Red Brown (EP33).** Stamp centered, rich color, mica faults mostly confined to bottom, otherwise Very Fine..... 400.00
- 4030 **Brown's Bronchial Troches, 10c Green (EP34).** Wonderful deep rich color with fair amount of **original silvering** on reverse, Extremely Fine, a choice example..... 900.00



4031

- 4031 **Brown's Bronchial Troches, 12c Black (EP35).** Mica faults and stamp slightly soiled, but the "Twelve Cents" value is clearly visible  
FINE. THE 12-CENT BROWN'S BRONCHIAL TROCHES ENCASED POSTAGE IS EXTREMELY RARE WITH APPROXIMATELY TWO TO FOUR KNOWN.  
The Ford sale catalogue (Stack's 6/23/2004, lot 418) states "We have no recent records of a Brown's 12 Cents encasement and none seems to have been auctioned in decades." The Reed census reports 2-4 known..... 2,500.00



4032

4032

**F. Buhl & Co., Detroit, 1c Blue (EP38).** Stamp has light wrinkling and some faint soiling, mica has a slight flaw at upper left, case is bright with a couple flecks of original silvering VERY FINE. THE ONE-CENT BUHL AND COMPANY ENCASED POSTAGE IS VERY RARE, WITH APPROXIMATELY FIVE TO TEN KNOWN.

Frederick Buhl & Co. of Detroit, dealers and hats and furs, produced some of the rarest encased postage.

Ex Ford and Mayer ..... 2,500.00



4033

4033

**F. Buhl & Co., Detroit, 10c Green (EP41).** Stamp well-centered with wonderful deep rich color, mica essentially fault free, shows only the slightest lamination in cross-lighting EXTREMELY FINE. A RARE ENCASED PSOTAGE STAMP WHICH IS SUPERIOR IN QUALITY TO THE FORD EXAMPLE OFFERED IN 2004. ONLY FIVE TO TEN REPORTED IN REED CENSUS.

Although the 10c denomination is the most available of the Buhl & Company encase-ments, it is still extremely rare. The example offered here is certainly among the finest of the few known.

With 1987 P.F. certificate ..... 1,750.00





4034

- 4034 **F. Buhl & Co., Detroit, 24c Red Lilac (EP43).** Stamp well-positioned in the encasement, unusually fresh color in a rich Red Lilac shade, some wrinkles and mica faults including an arc-shaped shallow crack, the case is in excellent condition with only a few minute rim dents

VERY FINE. AN ENORMOUSLY RARE 24-CENT ENCASED POSTAGE STAMP FROM BUHL AND COMPANY.

The Ford collection lacked a 24c Buhl, and the introductory note to the Buhl entries in the sale catalogue (Stack's 6/23/2004) alluded to a sole 24c with stamp substitution. The Reed census reports seven known, but this figure seems far too high. This example, which has been certified genuine by both ANACS and The Philatelic Foundation, is one of the great rarities of encased postage.

With 1984 ANACS and 1992 P.F. certificates..... 5,750.00



4035



4036



4037



4038

- 4035 **Burnett's Cocoaaine Kalliston, 1c Blue (EP44).** Stamp has rich color, bright reverse showing traces of original silvering, mica has only the tiniest imperfections, Extremely Fine..... 600.00
- 4036 **Burnett's Cocoaaine Kalliston, 3c Rose (EP45).** Rich stamp color with some minor wrinkling, **large part of original silvering on reverse**, Extremely Fine..... 600.00
- 4037 **Burnett's Cocoaaine Kalliston, 5c Red Brown (EP46).** Stamp nicely positioned and the color is a remarkably bright Red Brown, mica is clear and nearly perfect, only the slightest laminations visible in cross-lighting, the reverse shows **virtually complete silvering** as well as traces on the obverse tabs, Extremely Fine (About Uncirculated), this is most likely the finest obtainable condition for this encased postage stamp ..... 525.00
- 4038 **Burnett's Cocoaaine Kalliston, 10c Green (EP47).** Slight mica flaws, reverse shows some original silvering, some spotty black discoloration on obverse rim and reverse, Fine ..... 575.00



4040

4040 **Burnett's Cocaine Kalliston, 12c Black (EP48).** Stamp fairly well-centered and mica essentially intact, case lightly polished

VERY FINE. THE 12-CENT BURNETT'S IS AN EXCEEDINGLY RARE ENCASEMENT, WITH ONLY FIVE TO TEN REPORTED.

Despite the Reed estimate of 5-10 known, other reports vary from "fewer than three" to "two known" (see Stack's 6/23/2004 Ford sale catalogue, lot 435).

Ex Mayer ..... 3,750.00



4041



4042



4043



4044

4041 **Burnett's Standard Cooking Extracts, 1c Blue (EP52).** Minor wrinkling and soiling, small mica fault at bottom, Very Fine ..... 450.00

4042 **Burnett's Standard Cooking Extracts, 3c Rose (EP53).** Excellent stamp color and placement, mica intact with only a tiny flaw at bottom, Extremely Fine..... 500.00

4043 **Burnett's Standard Cooking Extracts, 5c Red Brown (EP54).** Mica is in excellent condition, but it appears the stamp was torn before it was encased, otherwise Very Fine..... 500.00

4044 **Burnett's Standard Cooking Extracts, 10c Green (EP55).** Stamp has rich color and is well-positioned, mica is clear and essentially in perfect condition, Extremely Fine..... 700.00





4045

4045 **Burnett's Standard Cooking Extracts, 12c Black (EP56).** Stamp beautifully placed with "Twelve Cents" label fully visible, mica intact with minor laminations visible in cross-lighting, partial original silvering remains on reverse, slight scratches on obverse, nearly all on left tab

EXTREMELY FINE. A CHOICE EXAMPLE OF THE 12-CENT BURNETT'S COOKING EXTRACTS ENCASED POSTAGE, OF WHICH THERE ARE ONLY FIVE TO TEN RECORDED.

Ex Mayer ..... 2,000.00



4046

4046 **Burnett's Cooking Extracts, 30c Orange (EP58).** Stamp with deep rich color and proof-like impression, small mica crack at top, the case has taken on a lovely patina

EXTREMELY FINE. THIS IS AN IMPORTANT ENCASED POSTAGE RARITY WITH AN ESTIMATED TWO TO FOUR EXTANT.

The Ford sale catalogue (Stack's 6/23/2004, lot 448) described the 30c Burnett's as "Possibly just three known" and "may only be as few as two."

Ex Ford and Mayer ..... 5,500.00





4047

- 4047 **H. A. Cook, Evansville Ind., 5c Red Brown (EP64).** Rich color, slight mica crazing and tiny speck out in area of Jefferson's eye, the case is in excellent condition  
 VERY FINE. FEWER THAN SIX EXAMPLES OF THE H. A. COOK 5-CENT ENCASEMENT ARE BELIEVED TO EXIST. ONLY TWO DENOMINATIONS WERE ISSUED BY THIS FIRM.  
 Ex Mayer ..... 3,500.00



4048

- 4048 **H. A. Cook, Evansville Ind., 10c Green (EP65).** Mica faults, the stamp and case are intact  
 FINE. A RARE 10-CENT COOK ENCASEMENT. ONLY TWO DENOMINATIONS WERE ISSUED BY THIS EVANSVILLE, INDIANA, DRY GOODS MERCHANT.  
 The 10c is the more available of the two Cook encasements, but still only 11-15 are reported in Reed census. .... 3,000.00



4049

4049

**Dougan, Hatter, New York, 1c Blue (EP66).** Mica intact with only tiny imperfections, stamp with some slight soiling and a small stain, reverse of case with **almost complete original silvering**

VERY FINE. THE REED CENSUS ESTIMATES ONLY ELEVEN TO FIFTEEN ONE-CENT DOUGAN THE HATTER ENCASED POSTAGE STAMPS HAVE SURVIVED IN ANY CONDITION.

Dougan the Hatter, located at Nassau and Ann Street in New York City, produced the distinctive "hat" encasement to advertise his business. .... 2,500.00



4050

4050

**Dougan, Hatter, New York, 3c Rose (EP67).** Mica in excellent condition with only tiny imperfections, small stamp edge fault, the reverse is beautiful and looks almost like a proof strike

VERY FINE. RARE, WITH AN ESTIMATED SURVIVING POPULATION OF BETWEEN ELEVEN AND FIFTEEN.

The Reed census reports 11-15 known..... 2,250.00



4051

4051 **Dougan, Hatter, New York, 5c Red Brown (EP68).** Stamp shows full “Five Cents” value label and has rich color, mica has small cracks and minor faults, case is intact and in excellent condition

FINE. AN ATTRACTIVE EXAMPLE OF THE RARE 5-CENT DOUGAN THE HATTER ENCASEMENT, OF WHICH FEWER THAN FIVE ARE REPORTED KNOWN.

The Ford sale catalogue (Stack’s 6/23/2004, lot 459) reports “fewer than five known” of this elusive Dougan the Hatter 5c encased postage stamp. .... 3,750.00



4052

4052 **Dougan, Hatter, New York, 10c Green (EP69).** The stamp has some very minor wrinkling, some mica lamination and slight crazing, the case is a beautiful golden brown shade

VERY FINE. A PARTICULARLY CHOICE EXAMPLE OF THE VERY RARE 10-CENT DOUGAN THE HATTER ENCASED POSTAGE STAMP. IT IS BELIEVED THAT THERE ARE NO MORE THAN TWO TO FOUR SURVIVING EXAMPLES.

Ex Ford and Mayer ..... 3,750.00





4053



4054



4055



4056

- 4053 **Drake's Plantation Bitters, 1c Blue (EP70).** Stamp well-positioned, rich color, mica intact and reverse with small part of original silvering, Extremely Fine..... 450.00
- 4054 **Drake's Plantation Bitters, 3c Rose (EP71).** Stamp with good color and mica intact, well-struck and pretty "brassy" reverse, Extremely Fine..... 450.00
- 4055 **Drake's Plantation Bitters, 5c Red Brown (EP72).** Stamp wrinkled and mica faults, the reverse appears to have been plated with a shiny golden material, some of which has worn off in places, otherwise Very Fine..... 600.00
- 4056 **Drake's Plantation Bitters, 10c Green (EP73).** Stamp well-positioned, rich color, small mica fault and slight spot of corrosion along one edge on the reverse, otherwise Very Fine ..... 650.00



4057

- 4057 **Drake's Plantation Bitters, 12c Black (EP74).** Stamp centered a little to the right but the "Twelve Cents" value label is fully visible, lightly toned, clear mica with some slight lamination, case condition is excellent
- VERY FINE. A LOVELY EXAMPLE OF THE VERY RARE 12-CENT DRAKE'S PLANTATION BITTERS, WITH ABOUT FIVE TO TEN REPORTED.
- Ex Ford ..... 2,000.00



4058

4058

**Drake's Plantation Bitters, 24c Rd Lilac (EP75).** Stamp with rich color (almost a Violet shade), positioned downward with part of "Twenty-four Cents" label obscured but showing "24" numerals at top, slight mica laminations, the case is in excellent condition

VERY FINE AND CHOICE. AN EXTREMELY RARE 24-CENT DRAKE'S PLANTATION BITTERS ENCASEMENT. THE REED CENSUS REPORTS ONLY TWO TO FOUR SURVIVING EXAMPLES.

Both the Reed census and the Ford catalogue describer report no more than five examples known of this high-value encasement.

Ex Mayer ..... 3,000.00



4059

4059

**Drake's Plantation Bitters, 30c Orange (EP76).** Stamp with strong color and positioned a bit to left, slight soiling, minor mica lamination, the case is a lovely olive brown shade and in excellent condition

VERY FINE. THIS IS AMONG THE FINEST OF THE FEWER THAN FIVE REPORTED SURVIVING EXAMPLES OF THIS 30-CENT DRAKE'S PLANTATION BITTERS ENCASED POSTAGE STAMP.

Ex Ford (where the stamp color was described as "typically faded," an opinion with which we disagree) ..... 3,000.00





4060



4061

- 4060 **Ellis, McAlpin & Co., Cincinnati, 5c Red Brown (EP80).** Stamp well-positioned, rich color, small piece out of mica at bottom and the mica protrudes above the case edge at top, the encasement itself is in excellent condition with traces of original silvering, nearly Very Fine, rare with Reed census reporting 5-10 known ..... 1,250.00
- 4061 **Ellis, McAlpin & Co., Cincinnati, 10c Green (EP81).** Stamp has rich color, minor soiling spot at bottom, rotated in case but shows "Ten Cents" label, mica intact with only minor crazing, few rim flaws on reverse, otherwise Very Fine, only 10-12 reported in Ford catalogue ..... 1,000.00



4062

- 4062 **Ellis, McAlpin & Co., Cincinnati, 12c Black (EP82).** Stamp well-positioned, couple trivial mica cracks, the case is in excellent condition with attractive dark brown patina  
VERY FINE. A VERY RARE 12-CENT ELLIS MCALPIN & COMPANY ENCASED POSTAGE STAMP, WITH ONLY FOUR TO FIVE REPORTED EXAMPLES.  
The Ford sale catalogue (Stack's 6/23/2004, lot 484) reported four to five known after a revised census count.  
Ex Mayer..... 2,750.00



4063

- 4063 **Ellis, McAlpin & Co., Cincinnati, 24c Red Lilac (EP83).** Stamp with beautiful intense color (nearly Violet shade), positioned to the right but value tablet visible, mica intact with only tiny imperfections, the case is in excellent condition (possibly lacquered at one point)  
VERY FINE. A RARE HIGH-VALUE ENCASEMENT, WITH FEWER THAN TEN REPORTED EXAMPLES.  
The Ford sale catalogue (Stack's 6/23/2004, lot 486) notes "although a higher denomination than the 12 Cents, the 24 Cents issue is less difficult to find and we estimate there are about 10 to a dozen surviving."  
Ex Mayer..... 2,250.00





4064



4065



4066



4067



4068

- 4064 **C. G. Evans, Philadelphia, 1c Blue (EP84).** Stamp has rich color, couple tiny trivial toning specks, mica intact with trivial laminations, the case shows an **almost complete silvering on the reverse**, Very Fine..... 1,250.00
- 4065 **C. G. Evans, Philadelphia, 3c Rose (EP85).** Stamp has rich color, a few minor wrinkles, some mica faults, the case is nice with **some original silvering on the reverse**, Very Fine, Reed census reports 11-15 known ..... 1,500.00
- 4066 **Gage Bros. & Drake, Tremont House, Chicago, 1c Blue (EP88).** Stamp positioned to left and slightly rotated, minor wrinkles, mica has only tiny imperfections, the case is richly toned, Very Fine and elusive, the Reed census reports only 5-10 known, with 2004 P.F. certificate ..... 1,200.00
- 4067 **Gage Bros. & Drake, Tremont House, Chicago, 5c Red Brown (EP90).** Stamp has beautiful rich color, slight crease, mica has a few trivial imperfections, the case is in excellent condition, Very Fine ..... 750.00
- 4068 **Gage Bros. & Drake, Tremont House, Chicago, 10c Green (EP91).** Stamp in a dark rich shade and nicely positioned, mica intact with only tiny imperfections, Very Fine 900.00



4069

4069 **Gage Bros. & Drake, Tremont House, Chicago, 12c Black (EP92).** Stamp positioned with "Twelve Cents" label fully visible, intense dark shade, some mica faults at bottom, case is an attractive dark brown color

VERY FINE. A VERY RARE 12-CENT GAGE BROTHERS ENCASEMENT WITH ABOUT TWO TO FOUR REPORTED.

Ex Mayer ..... 3,000.00



4070



4071



4072



4073

4070 **J. Gault, 1c Blue (EP93).** Stamp very well-positioned, rich color, slight mica faults, case shows traces of original silvering, Very Fine and choice, Reed census reports 11-15 known ..... 600.00

4071 **J. Gault, 3c Rose (EP95).** Stamp with deep Brown Rose color, light bend, mica clear and intact (light soiling in cross-lighting), the case is a beautiful light olive brown, Extremely Fine, rarely seen this nice, Reed census reports 11-15 known, ex Ford ..... 500.00

4072 **J. Gault, 5c Red Brown (EP96).** Stamp with rich Red Brown color, very minor mica crazing, Extremely Fine ..... 350.00

4073 **J. Gault, 5c Red Brown, Ribbed Frame (EP96a).** Stamp well-positioned and with rich color, minor mica crazing, the case is in wonderful condition, Extremely Fine (About Uncirculated by numismatic standards) ..... 600.00





4074



4075



4076

- 4074 **J. Gault, 10c Green (EP97).** Stamp slight soiling, mica intact with only tiny imperfections, Very Fine ..... 750.00
- 4075 **J. Gault, 10c Green, Ribbed Frame (EP97a).** Couple tiny pinpoint punctures in mica, case in excellent condition, Very Fine ..... 650.00
- 4076 **J. Gault, 12c Black (EP98).** Stamp toned and light crease, mica appears intact, greenish patina on reverse of case, about Very Fine..... 900.00



4077

- 4077 **J. Gault, 24c Red Lilac (EP99).** Unusual stamp shade that closely resembles **Steel Blue**, tiny mica puncture in the area of "N" of Cents  
EXTREMELY FINE. A CHOICE EXAMPLE OF THE 24-CENT GAULT ENCASED POSTAGE STAMP.  
With 31-40 reported in the Reed census, the 24c Gault (Plain Frame) is one of the more collectible high values of the encased postage issues. .... 1,700.00





4078

- 4078 **J. Gault, 30c Orange (EP100).** Stamp slight soiling, also a speck of black on Franklin's head, mica intact with a couple trivial flaws, two small dents on the reverse  
 VERY FINE. A RARE 30-CENT GAULT, WITH ABOUT SIXTEEN TO TWENTY SURVIVING EXAMPLES REPORTED IN REED CENSUS.  
 With 1993 P.F. certificate ..... 2,750.00



4079

- 4079 **J. Gault, 90c Blue (EP101).** Stamp well-positioned with lovely bright color, trivial mica crazing of no consequence, the case is in excellent condition with even golden brown toning  
 EXTREMELY FINE. THE TOP VALUE 90-CENT GAULT IS VERY RARE, AND THE EXAMPLE OFFERED HERE IS ONE OF THE FINEST AMONG THE REPORTED SURVIVING EXAMPLES.  
 The Ford sale catalogue (Stack's 6/23/2004, lot 514) reports "probably fewer than 10 known." This example compares favorably to the About Uncirculated example offered in the Ford sale, which realized more than \$10,000. .... 6,500.00



4080

4080

**L. C. Hopkins & Co., Cincinnati, 3c Rose (EP103).** Stamp has rich color and positioned to show the complete denomination at bottom, slight mica crazing and lamination of little consequence, the case shows **nearly half of its original silvering**

EXTREMELY FINE. A VERY RARE ENCASED POSTAGE STAMP, OF WHICH FEWER THAN FIVE EXAMPLES ARE REPORTED.

Ex Ford where reported as "probably fewer than five known." ..... 5,000.00



4081

4081

**L. C. Hopkins & Co., Cincinnati, 5c Red Brown (EP104).** Stamp with beautiful bright Red Brown color and positioned to show full denomination at bottom, the vignette is also centered between the case tabs, mica is clear and essentially problem free (minor laminations in cross-lighting), the case is beautiful with a little of the original silvering still intact

EXTREMELY FINE. AS WITH THE 3-CENT HOPKINS IN THE PREVIOUS LOT, FEWER THAN FIVE SURVIVING EXAMPLES OF THE 5-CENT HOPKINS ENCASEMENT ARE REPORTED KNOWN. THIS EXAMPLE IS WITHOUT QUESTION AMONG THE FINEST EXTANT.

Ex Ford where reported as "only about five of these known." ..... 6,000.00

4082



- 4082 **L. C. Hopkins & Co., Cincinnati, 10c Green (EP105).** Stamp has rich color, couple minor mica flaws and a cloudy spot at bottom, there are a couple of discolored spots on the case, one on the left obverse tab and the other on the left edge of the reverse  
VERY FINE. THE TEN-CENT HOPKINS & COMPANY IS AN EXCEEDINGLY RARE ENCASED POSTAGE STAMP.

The Ford sale catalogue (Stack's 6/23/2004, lot 519) offered another example of this rarity with the comment, "There may be only three of these in existence. We note none sold publicly since 1994." ..... 5,500.00

4083



- 4083 **Hunt & Nash, Irving House, New York, 5c Red Brown, Ribbed Frame (EP108a).** Stamp has rich color, small mica flaw at top and an even more trifling imperfection at bottom, the reverse is exceptionally beautiful with bright golden color, Extremely Fine.. 950.00

4084



- 4084 **Hunt & Nash, Irving House, New York, 5c Red Brown, Ribbed Frame (EP108a).** Stamp with intense Red Brown color and nicely positioned, small mica flaw above the "S" in "Cents", case is very attractive, Very Fine, with 2006 P.F. certificate ..... 950.00





4085

- 4085 **Hunt & Nash, Irving House, New York, 10c Green (EP109).** Stamp with rich color and slight diagonal crease or bend, value label fully visible, mica clear with minor imperfections visible in cross-lighting, the case is attractive with some of the original silvering in the central area, Very Fine, much better than typically seen, ex Ford..... 1,200.00



4086

- 4086 **Hunt & Nash, Irving House, New York, 10c Green, Ribbed Frame (EP109a).** Stamp has deep rich color, marvelously placed in the frame with both labels full visible, mica has trivial imperfections, a lovely case with light olive gold color, Extremely Fine, a particularly choice example, with 2006 P.F. certificate..... 800.00



4087

- 4087 **Hunt & Nash, Irving House, New York, 12c Black (EP110).** Stamp superbly positioned within the frame, very lightly toned, mica is clear and has only negligible lamination, the case is in excellent condition with dark toning in places on the reverse  
 VERY FINE. AN ATTRACTIVE EXAMPLE OF THE EXCEEDINGLY RARE 12-CENT HUNT & NASH ENCASED POSTAGE. FEWER THAN FIVE EXAMPLES REPORTED.  
 Ex Ford (lot 527). The Ford sale catalogue (Stack's 6/23/2004, lot 526) noted "there may be as few as five, or so, known."..... 1,750.00



4088

4088 **Hunt & Nash, Irving House, New York, 12c Black, Ribbed Frame (EP110a).** Stamp lightly toned and minor mica flaws, excellent encasement condition with a brightly colored reverse

VERY FINE. ONLY TWO OR THREE OF THE 12-CENT IRVING HOUSE RIBBED-FRAME ENCASEMENT ARE REPORTED.

The Ford sale catalogue (Stack's 6/23/2004, lot 528) reports "two or three known" of the 12c Irving House with ribbed frame. .... 2,750.00



4089

4089 **Hunt & Nash, Irving House, New York, 24c Red Lilac (EP111).** Stamp with good color (Violet-like shade) and slight wrinkles, positioned with first letter of value label under tab, mica essentially problem free but shows light lamination in cross-lighting, the case is in excellent condition and has beautiful olive gold color

VERY FINE. THE 24-CENT IRVING HOUSE IS EXTREMELY RARE, WITH ONLY FIVE EXAMPLES REPORTED, THIS BEING ONE OF THE FINEST.

Ex Ford (lot 530) where noted as one of "about five known" ..... 2,500.00





4090



4091



4092



4093

- 4090 **Kirkpatrick & Gault, New York, 3c Rose (EP114).** Stamp with lovely color and nicely positioned, mica intact, pretty case with lovely brown reverse that may have been lacquered many years ago, Extremely Fine ..... 700.00
- 4091 **Kirkpatrick & Gault, New York, 5c Red Brown (EP115).** Some defects affecting stamp, mica and case, reasonably attractive, with 1985 P.F. certificate ..... 500.00
- 4092 **Kirkpatrick & Gault, New York, 10c Green (EP116).** Stamp has rich color, mica with diagonal crack at bottom right, sound case with beautiful bright reverse, Very Fine ..... 500.00
- 4093 **Kirkpatrick & Gault, New York, 12c Black (EP117).** Stamp mildly toned, mica intact with only minor imperfections, attractive case with a handsome dark brown reverse, Very Fine, scarce with only 10-12 known, with 2006 P.F. certificate ..... 1,250.00



4094

- 4094 **Kirkpatrick & Gault, New York, 24c Red Lilac (EP118).** Stamp with rich color and light wrinkles, shows full "Twenty-four Cents" label at bottom, minor mica crazing of no consequence, a beautiful case which retains **over 50% of its original silvering**  
EXTREMELY FINE. A MAGNIFICENT EXAMPLE OF THE 24-CENT KIRKPATRICK & GAULT ENCASED POSTAGE.  
The Reed census assigns an R-6 rating to the 24c Kirkpatrick & Gault (16-20 known).  
With 1987 P.F. certificate ..... 1,750.00





4095

4095

**Kirkpatrick & Gault, New York, 30c Orange (EP119).** Stamp with incredibly deep rich shade suggestive of the Deep Orange seen on the 30c First Color (Scott 61), superb positioning with labels at top and bottom fully visible (this encasement is usually not well-centered) small tear at top, some mica flaws, one noticeable at left near edge, intact case with a brightly colored reverse VERY FINE APPEARANCE. THIS KIRKPATRICK & GAULT ISSUE IS ONE OF THE FEW 30-CENT ENCASEMENTS WHICH EXIST IN ANY SORT OF COLLECTIBLE QUANTITY.

The Reed census assigns an R-6 rating to the 30c Kirkpatrick & Gault (16-20 known). . 2,750.00



4096

4096

**Lord & Taylor, New York, 1c Blue (EP121).** Stamp nicely positioned showing full denomination, mica is clear and has only the tiniest imperfections, Very Fine, a lovely example of this famous department store's encased postage, much scarcer than its \$1,250.00 Scott value would suggest (only 5-10 reported in Reed census), with 2000 P.F. certificate..... 1,250.00



4097

4097

**Lord & Taylor, New York, 3c Rose (EP122).** Stamp has rich color, usual trivial mica irregularities, choice reverse showing **virtually complete original silvering**

EXTREMELY FINE. A VERY DESIRABLE EXAMPLE OF THE 3-CENT LORD & TAYLOR ENCASED POSTAGE STAMP AND ESPECIALLY DESIRABLE WITH THE LARGE AREA OF SILVERING.

Ex Mayer..... 1,500.00



4098

- 4098 **Lord & Taylor, New York, 10c Green (EP124).** Stamp superbly positioned showing full labels at top and bottom, mica shows only slight lamination in cross-lighting, sound case with the reverse in an attractive olive brown color, Extremely Fine, Reed census reports 16-20 known, ex Ford..... 1,250.00



4099

- 4099 **Lord & Taylor, New York, 12c Black (EP125).** Stamp well-positioned showing complete top and bottom labels, slight mica lamination, the reverse shows **over 80% of the original silvering**, tabs with minor discoloration spots

VERY FINE. THIS ONE OF THE CHOICEST OF THE 12-CENT LORD & TAYLOR ENCASED POSTAGE STAMPS.

The Ford sale catalogue (Stack's 6/23/2004, lot 550) comments, "the number of these that survive is under 10 and probably closer to five or six." The Reed census rating is R-8 (5-10 known). ..... 2,500.00



4100

- 4100 **Lord & Taylor, New York, 24c Red Lilac (EP126).** Stamp has rich color, positioned with complete top and bottom labels, minor mica crazing, a nearly perfect case with pretty olive brown reverse

EXTREMELY FINE. THIS IS WITHOUT QUESTION ONE OF THE FINEST KNOWN EXAMPLES OF THE 24-CENT LORD & TAYLOR ENCASED POSTAGE STAMP.

The Reed census reports 5-10 known, and the Ford sale catalogue (Stack's 6/23/2004, lot 551) comments "probably closer to six."

With 2000 P.F. certificate ..... 2,750.00





4101

- 4101 **Lord & Taylor, New York, 30c Orange (EP127).** Stamp has crisp color, well-positioned in the case with most of "Thirty Cents" label complete, slight wrinkles, mica clear with only tiny imperfections, the reverse in a rich brown shade  
EXTREMELY FINE. ONE OF THE RAREST OF ALL ENCASED POSTAGE ISSUES. A MARVELOUS EXAMPLE OF THIS HIGH-DENOMINATION LORD & TAYLOR ENCASEMENT.

The Ford sale catalogue (Stack's 6/23/2004, lot 552) comments "we believe there are only two of these known and have not seen an auction sale of one since 1988." The Reed census rates it R-9 (2-4 known).

With 2000 P.F. certificate ..... 3,250.00



4102



4103

- 4102 **Mendum's Family Wine Emporium, New York, 1c Blue (EP129).** Well-positioned stamp, light horizontal crease or bend, mica appears intact with only tiny imperfections, lovely case, Very Fine ..... 800.00
- 4103 **Mendum's Family Wine Emporium, New York, 5c Red Brown (EP131).** Stamp with slight soiling, mica essentially sound with only slight lamination visible in cross-lighting, the case is in excellent condition with **reverse showing considerable original silvering**, Very Fine, ex Lilly and Ford ..... 1,200.00





4104

- 4104 **Mendum's Family Wine Emporium, New York, 12c Black (EP133).** Stamp beautifully positioned in frame showing complete top and bottom labels, trifling mica flaw at bottom left, nice olive brown reverse
- VERY FINE. A CHOICE EXAMPLE OF THE RARE 12-CENT MENDUM'S FAMILY WINE EMPORIUM ENCASED POSTAGE STAMP, THE HIGHEST VALUE OF THIS PRODUCER.
- Ex Mayer ..... 2,750.00



4105

- 4105 **John W. Norris, Chicago, 1c Blue (EP136).** Stamp exceptionally well positioned in case, tiny trivial mica flaw at top edge, beautiful encasement with a very pretty bronze colored back (looks uncirculated)
- EXTREMELY FINE. TRULY OUTSTANDING CONDITION FOR THIS RARE ONE-CENT ENCASED POSTAGE STAMP ISSUED BY JOHN W. NORRIS.
- The 1c Norris is rated R-8 (5-10 known) in the Reed census. This example is superior to the Ford specimen, which realized \$3,500 hammer. .... 3,000.00



4106

- 4106 **John W. Norris, Chicago, 3c Rose (EP137).** Stamp slightly soiled, mica has small cracks and crazing at top and bottom, the case is essentially sound but has some wear marks

FINE. AN EXCEEDINGLY RARE 3-CENT ENCASEMENT ISSUED BY JOHN W. NORRIS.

This specimen was described in the Ford sale catalogue (Stack's 6/23/2004, lot 565) as "Choice Extremely Fine" and "Certainly one of the nicest known." We suppose this is true, considering there are fewer than five reported examples.

Ex Ford ..... 3,000.00



4107

- 4107 **John W. Norris, Chicago, 5c Red Brown (EP138).** Stamp with rich color, choice positioning with "Five Cents" value fully visible, trivial mica laminations, the case is dark olive brown on the reverse with traces of original silvering

EXTREMELY FINE. ONE OF THE FINEST KNOWN 5-CENT JOHN W. NORRIS ENCASED POSTAGE STAMPS FROM THE TINY POPULATION ESTIMATED AT FIVE OR LESS.

Ex Mayer ..... 2,500.00



4108

- 4108 **John W. Norris, Chicago, 10c Green (EP139).** Rich stamp color, minor mica crack at top right, the case is in excellent condition showing **approximately half of its original silvering**
- VERY FINE. ONE OF THE FINEST OF THE FEW KNOWN EXAMPLES OF THE 10-CENT NORRIS ENCASEMENT.

The Reed census rates this 10c Norris at R-8+, meaning 5-10 known and possibly scarcer..... 2,750.00



4109



4110



4111

- 4109 **North America Life Insurance Co., New York, 1c Blue, Curved "INSURANCE" (EP140).** Stamp shifted upward with complete value at bottom and centered side-to-side, mica is clear with only the tiniest imperfections, the case has **nearly 100% of its original silvering, both reverse and on the obverse tabs and rims**, quite remarkable, Extremely Fine (About Uncirculated), this has even more silvering than the best of Ford's three 1c specimens (of either type)..... 475.00
- 4110 **North America Life Insurance Co., New York, 1c Blue, Straight "INSURANCE" (EP140a).** Stamp with bright color, slight wrinkles, mica is clear with slight lamination visible in cross-lighting, the case with **nearly full original silvering on the reverse**, Extremely Fine (About Uncirculated), the equal of the Ford specimen, which also showed considerable silvering..... 525.00
- 4111 **North America Life Insurance Co., New York, 3c Rose, Straight "INSURANCE" (EP141).** Stamp with wrinkles, minor mica faults around edge, lovely case in an olive brown color, Very Fine..... 800.00



4112

- 4112 **Pearce, Tolle & Holton, Cincinnati, 3c Rose (EP146).** Stamp with light wrinkles and just a hint of soiling, mica clear with only tiny imperfections at left, the case is sound with a lovely olive gold tone on the reverse  
EXTREMELY FINE. A VERY RESPECTABLE EXAMPLE OF THE RARE 3-CENT PEARCE, TOLLE & HOLTON ENCASED POSTAGE STAMP.  
The Reed census gives the 3c Pearce, Tolle & Holton a rating of R-8 (5-10 known)..... 3,000.00





4113

- 4113 **Pearce, Tolle & Holton, Cincinnati, 5c Red Brown (EP147).** Stamp with beautiful rich color and essentially perfect positioning, trivial mica lamination and tiny flaw at six o'clock, the case is sound with a lovely olive gold tone on the reverse
- VERY FINE. POSSIBLY AS FINE AS THIS RARE ENCASEMENT EXISTS. ONLY FIVE TO TEN EXAMPLES OF THE 5-CENT PEARCE, TOLLE & HOLTON ARE REPORTED TO EXIST.
- The Reed census reports 5-10 known.
- Ex Ford ..... 3,000.00



4114

- 4114 **Sands Ale, 30c Orange (EP154).** Stamp fairly bright and some mica flaws, rim shows pry marks, this **unique** but controversial piece is listed but unpriced in the Scott U.S. Specialized catalogue, where there is a footnote to the effect that the case has been opened and that it is possible that the 30c stamp has been substituted for the original stamp and/or the mica has been replaced, ex Lilly ..... E. 500-750



4115

- 4115 **Schapker & Bussing, Evansville Ind., 3c Rose (EP156).** Stamp with tiny toned spot, trivial mica flaws, attractive case with olive golden tone on the reverse
- VERY FINE. A HANDSOME AND CHOICE EXAMPLE OF THIS VERY SCARCE 3-CENT SCHAPKER & BUSSING ENCASED POSTAGE STAMP.
- With 2005 P.F. certificate ..... 1,750.00



4116



4117

- 4116 **Schapker & Bussing, Evansville Ind., 5c Red Brown (EP157).** Stamp has bright color, nice positioning with full denomination at bottom, minor mica flaws, pretty olive gold reverse on the case, Extremely Fine, the 5c has a lower Scott value but higher rarity in Reed census, with 1987 P.F. certificate..... 650.00
- 4117 **Schapker & Bussing, Evansville Ind., 10c Green (EP158).** Stamp with rich color and nice positioning with "Ten Cents" value label fully visible, small mica faults, case is sound with a rich olive brown tone on the reverse, Very Fine ..... 700.00



4118

- 4118 **John Shillito & Co., Cincinnati, 1c Blue (EP160).** Stamp has bright fresh color, positioned slightly to the right and down but value label still visible, couple mica flaws at bottom, sound case with a nice dark olive gold tone on reverse  
 VERY FINE. A RARE AND DIFFICULT ENCASED POSTAGE STAMP, WITH AN ESTIMATED POPULATION OF FIVE TO TEN.  
 The 1c Shillito & Co. has a rarity rating of R-8+ in Reed census. The Ford sale catalogue (Stack's 6/23/2004, lot 599) reports "fewer than 10 known, with the actual number being somewhat lower).  
 With 2004 P.F. certificate with no mention of the mica flaws..... 2,250.00





4119



4120



4121

- 4119 **John Shillito & Co., Cincinnati, 3c Rose (EP161).** Stamp with good color, slight bends and really trivial soiling spot, mica nearly perfect, shows slight laminations in cross-lighting, sound case with traces of original silvering on the reverse, Extremely Fine, ex Ford..... 1,000.00
- 4120 **John Shillito & Co., Cincinnati, 5c Red Brown (EP162).** Stamp with rich color, couple light bends, positioned strongly upward with full denomination showing at bottom, slight mica flaws, sound case with olive gold tone on reverse, Extremely Fine, with 1987 P.F. certificate .... 600.00
- 4121 **John Shillito & Co., Cincinnati, 10c Green (EP163).** Stamp has rich color, nicely positioned with value label readable, some mica faults around edge, nice case with olive brown tone on the reverse, Very Fine, extremely scarce with a Reed census rating of R-8 (5-10 known)..... 700.00



4122

- 4122 **S. Steinfeld, New York, 1c Blue (EP165).** Stamp has fresh color with a few minute toning flecks of little consequence, positioned strongly to top with full denomination at bottom, negligible mica flaws, a lovely sound case with golden toned back
- EXTREMELY FINE. CERTAINLY ONE OF THE FINEST ONE-CENT STEINFELD ENCASED POSTAGE STAMPS AMONG AN ESTIMATED POPULATION OF ELEVEN TO FIFTEEN.
- The Ford sale offered a remarkable *three* specimens of the 1c Steinfeld and noted "rare, with only about 10 to 15 known, and because the 1 Cent is the only issue most collectors can ever hope to buy, is usually quite expensive." Each of three Ford specimens realized \$3,250 hammer. .... 3,500.00





4123

- 4123 **N. G. Taylor & Co., Philadelphia, 1c Blue (EP169).** Stamp with slight soiling, mica essentially flawless, sound case with brown and gold hues with traces of the original silvering still showing on the reverse

EXTREMELY FINE. A VERY RARE ENCASEMENT, WITH ELEVEN TO FIFTEEN REPORTED.

Ex Ford where this item was described as "one of the nicest we have seen" (Stack's 6/23/2004, lot 612) ..... 3,700.00



4124

- 4124 **Weir & Larminie, Montreal, 10c Green (EP177).** Stamp has rich color and perfect positioning, mica nearly fault free, sound case with brownish tone and **about one-third of the original silvering**

EXTREMELY FINE. THIS EXAMPLE RIVALS THE TWO IN THE FORD COLLECTION AND AESTHETICALLY IS MORE PLEASING WITH REGARD TO THE POSITIONING OF THE STAMP. EACH OF THE FORD EXAMPLES WAS DESCRIBED AS "ONE OF THE NICEST 10 CENTS KNOWN".

With 1987 P.F. certificate ..... 3,000.00



4125

- 4125 **White, The Hatter, New York, 3c Rose (EP179).** Stamp light bend, some mica flaws, sound case with nearly complete original silvering on reverse and even traces on the obverse tabs

VERY FINE. THE 3-CENT WHITE THE HATTER IS RARE, WITH A TINY ESTIMATED POPULATION OF BETWEEN FIVE TO TEN SPECIMENS.

The Reed census reports 5-10 known..... 2,650.00



4126

4126

**White, The Hatter, New York, 5c Red Brown (EP180).** Stamp has rich color, trivial bends, excellent positioning with both labels fully visible, mica lamination at center, sound case with pretty olive gold toned reverse

VERY FINE. THE 5-CENT WHITE THE HATTER IS AN EXCEEDINGLY RARE ENCASEMENT, WITH A MINISCULE ESTIMATED POPULATION OF TWO TO FOUR.

The Reed census reports 2-4 known, but the Ford sale catalogue description of this specimen (Stack's 6/23/2004, lot 635) states "we think there are only two of these known."

Ex Lilly and Ford ..... 3,750.00



4127EX

4127 E

**12c Black, Scovill Die Essay for Encased Postage,** Lithographic impression on 113 x 88mm die sunk card, Extremely Fine, Scovill was contracted by John Gault to produce his encased postage stamps, interesting and rare encased postage essay, also incl. "exploded" 3c Ayer's Pills with stamp, mica and obverse and reverse frame parts and an extra 3c unused stamp.....  
.....(Photo Ex) E. 500-750



4128

4128

**"Feuchtwanger" 9c Strip of Three.** Three 3c 1861's slightly overlapped, right one natural s.e. in rectangular copper frame, some mica faults, frame embossed with floral motif and central eagle and snake, this is reminiscent to Feuchtwanger's 1c obverse design, this fantasy was not made by Gault or Scovill and have nothing to do with Feuchtwanger, nevertheless they have been collected along with encased postage stamps for decades..... E. 500-750

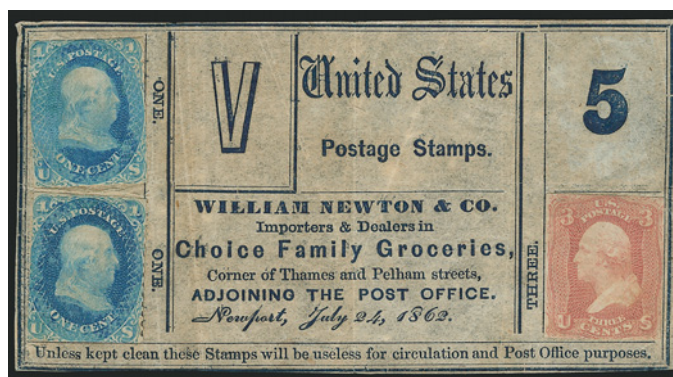


POSTAGE ENVELOPES AND SCRIP



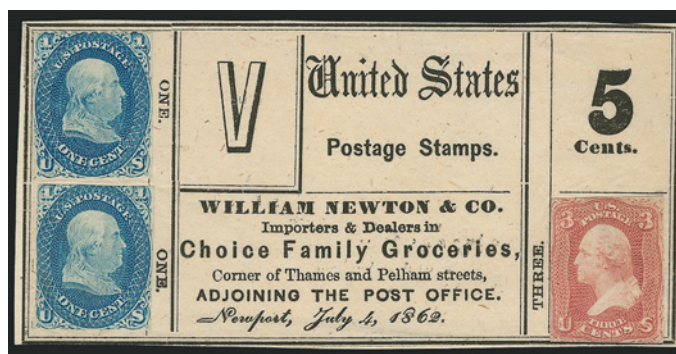
4129

- 4129 **Long's Varieties, 756 So. 3rd St. Philadelphia.** Imprint on two small, thick stamp-size cards, each with 1c Blue (63) affixed to the reverse, one stamp fairly heavily toned at top and slightly at bottom right, otherwise Fine, these were used as fractional currency pieces during the Civil War to help conserve metals for weapons and armament ... E. 500-750



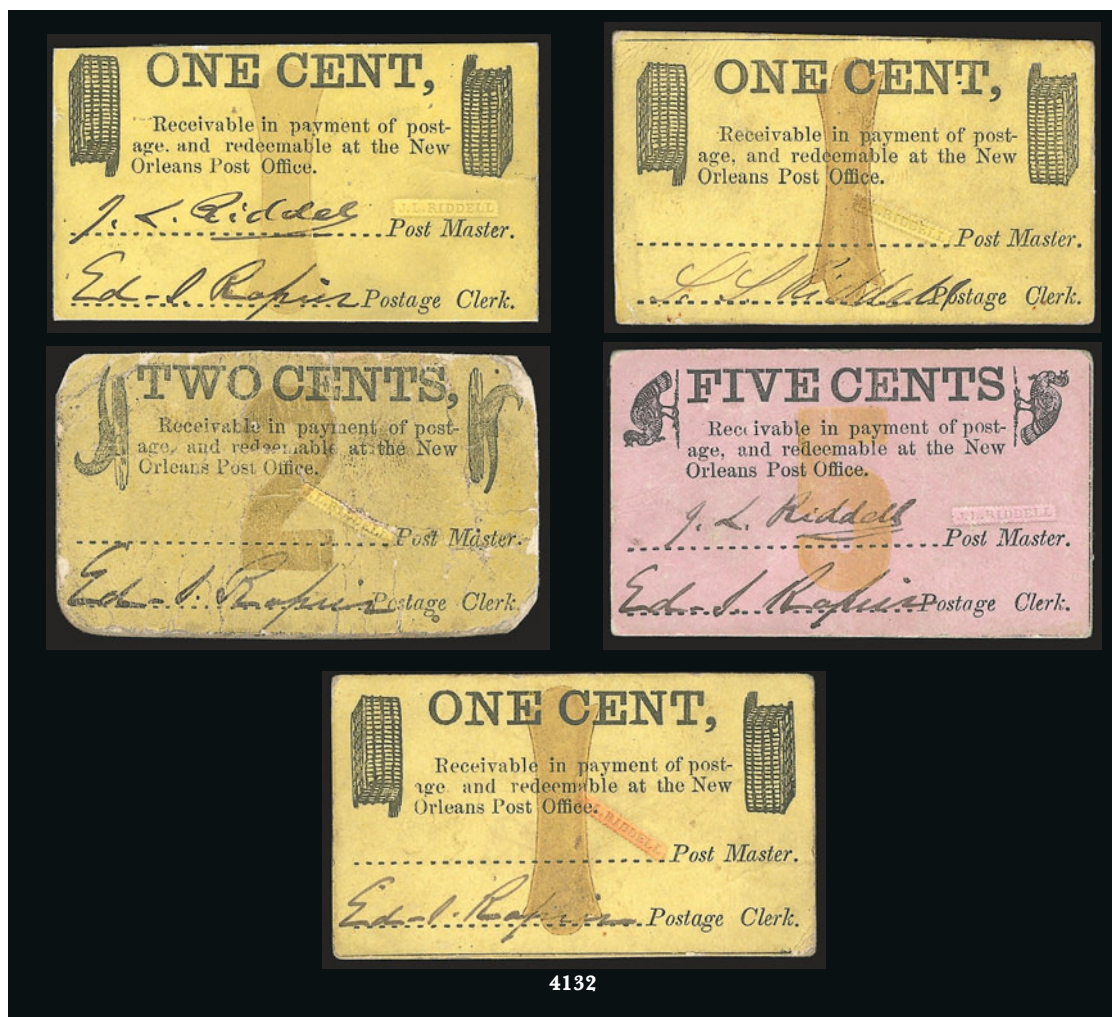
4130

- 4130 **William Newton & Co., 5c Fractional Currency with Postage Stamps.** 110 x 59mm with two 1c Blue (63) and one 3c (65) stamps affixed in spaces, all with trimmed perfs and 1c slightly discolored, imprint at bottom reads "Unless kept clean these Stamps will be useless for circulation and Post Office purposes.", printed dateline "Newport, July 24, 1862", several creases, still handsome and very rare, due to a shortage of coins and distrust of paper currency, some private firms used stamps to increase their business, much along the same lines as encased postage, unfortunately due to the fragile nature of the paper many are defective or were destroyed — this note realized \$2,900 hammer in our 2003 Mitchell sale (Sale 859), ex Mitchell..... E. 1,500-2,000



4131

- 4131 **William Newton & Co., 5c Fractional Currency with Postage Stamps.** 110 x 59mm with two 1c (63) and one 3c (65) stamps affixed in spaces, all with trimmed perfs, in contrast to previous lot there is no imprint at bottom, printed dateline "Newport, July 4, 1862", Very Fine and rare use of postage stamps to create fractional currency.. E. 1,500-2,000



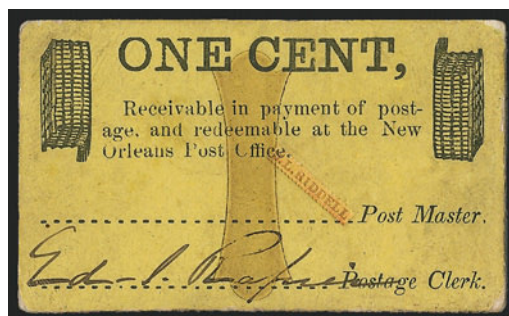
4132

- 4132 **1861 New Orleans Stamp Money, "One Cent", "Two Cents" and "Five Cents".** Group of five: three of "One Cent" in light brown and black on yellow card, one signed "J. L. Riddell" (in his hand) and postal clerk "Ed. S. Rapier", other two signed by postal clerks "L. S. Riddell" (his son, Sanford) and "Ed. S. Rapier"; "Two Cents" in olive and black on yellow card, signed by postal clerk "Ed. S. Rapier"; "Five Cents" in brown and black on pink card, signed "J. L. Riddell" (in his hand) and postal clerk "Ed. S. Rapier", each card has the blind impression of the "J. L. RIDDELL" silver mark, each is lightly creased, 2c has rounded corners, 5c has thins on back

A REMARKABLE GROUP OF NEW ORLEANS STAMP MONEY CARDS, ISSUED BY POSTMASTER RIDDELL TO MAKE CHANGE AT THE POST OFFICE DURING A SHORTAGE OF COINS. VERY FEW EXIST.

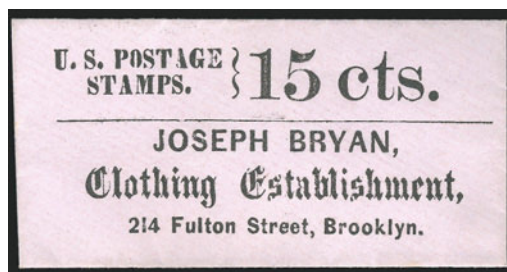
Ex Brown, Knapp, Grant, Freeland, Weill Brothers and Skinner. .... E. 4,000-5,000

4133



- 4133 **1861 New Orleans Stamp Money, "One Cent".** 64 x 38mm black and olive on yellow card with blind impression of the "J. L. RIDDELL" silver mark (highlighted in red), signed by Edward S. Rapier, post office clerk, Fine and rare. .... E. 750-1,000





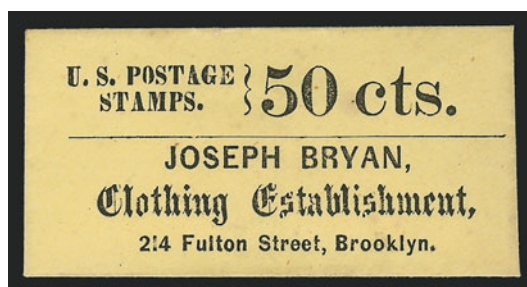
4134

- 4134 **Joseph Bryan, Clothing Establishment, 214 Fulton Street, Brooklyn.** 65 x 33mm **violet** envelope, "U.S. Postage Stamps. } 15 cts." above with "T.R. Dawley, Manufact'r. Reade and Centre Sts., N.Y." imprint and "15" on back, Krause-Lemke 9-15, Drowne 1918 listed, small bit of greenish blue mounting material on back, the front is clean

EXTREMELY FINE. A RARE POSTAGE ENVELOPE ISSUED BY JOSEPH BRYAN, A BROOKLYN CLOTHING MERCHANT.

The Ford sale catalogue (Stack's 10/11/2007, lot 9) reported "The issuer missing from all collections we have surveyed." The Ford specimen in nearly identical condition realized \$3,600 hammer .....

E. 2,000-3,000



4135

- 4135 **Joseph Bryan, Clothing Establishment, 214 Fulton Street, Brooklyn.** 65 x 33mm **yellow** envelope, "U.S. Postage Stamps. } 50 cts." above with "T.R. Dawley, Manufact'r. Reade and Centre Sts., N.Y." and "15" on flap, Krause-Lemke 9-50, Drowne 1918 listed, a few insignificant toning specks and small bit of greenish blue mounting material on back

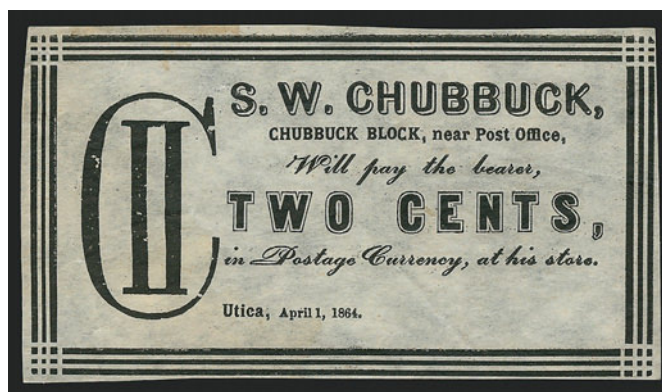
EXTREMELY FINE. ONLY THREE EXAMPLES OF THIS BROOKLYN ISSUER'S 50-CENT POSTAGE ENVELOPE ARE REPORTED KNOWN.

The Ford sale catalogue (Stack's 10/11/2007, lot 10) reports "at least three are known." There were two specimens in the Ford collection (the one in comparable condition realized \$2,200 hammer) ..

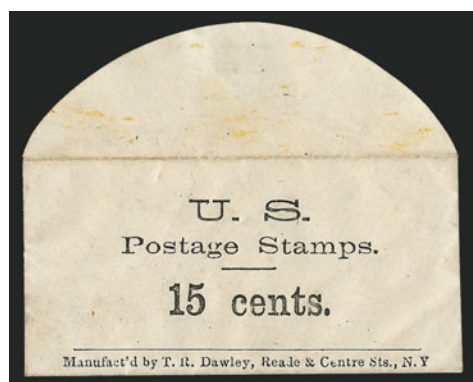
E. 1,500-2,000

- 4136 **S. W. Chubbuck, Utica N.Y., 2c Fractional Currency.** 84 x 46mm, woodcut design, "Will pay the bearer, TWO CENTS, in Postage Currency, at this store." and dated "Utica, April 1, 1864," large Roman numeral "II" encircled by large "C" at left, Very Fine and rare.....

E. 300-400



4136



4137



4138

- 4137 **Manufact'd by T.R. Dawley, Reade & Centre Sts., N.Y.** Imprint at bottom of 65 x 32mm envelope, "U.S. Postage Stamps. 15 cents." in three lines, negligible soiling, otherwise Very Fine and rare Dawley envelope, accompanied by 3c and 12c 1861 stamps for exhibit purposes..... E. 750-1,000
- 4138 **J. Jones and A.H. Sawyer 25c Fractional Currency.** 100 x 52mm, numbered in ms. "495", promises to pay bearer 25c on demand in sums of one dollar or more, dated "Alton, Oct. 18. 1862" signed on back by Daniel Sawyer and with Alton N.H. Nov 13 circular datestamp possibly indicating date of redemption, light creases, Very Fine appearance and rare..... E. 300-400



4139



4140



4141

- 4139 **J. LEACH, Writing Paper Envelopes and Blank Books, Cheap, 86 Nassau St., N.Y., 15 CENTS, U.S. Postage Stamps.** Blue on white 69 x 34mm envelope, Krause-Lemke 60-15, Drowne 1918 listed, a bit of greenish blue mounting paper on back, Extremely Fine, rare..... E. 750-1,000
- 4140 **J. LEACH, Writing Paper Envelopes and Blank Books, Cheap, 86 Nassau St., N.Y., 25 CENTS, U.S. Postage Stamps.** Blue on white 69 x 34mm envelope, Krause-Lemke 60-25, Drowne 1918 listed, a bit of greenish blue mounting paper on back, insignificant toning spot at bottom edge, still Extremely Fine, rare ..... E. 750-1,000
- 4141 **J. LEACH, Writing Paper Envelopes and Blank Books, Cheap, 86 Nassau St., N.Y., 15 CENTS, U.S. Postage Stamps.** Blue on white 69 x 34mm envelope, Krause-Lemke 60-50, Drowne 1918 listed, a bit of greenish blue mounting paper on back, Extremely Fine, rare..... E. 750-1,000



- 4142 **J. LEACH, Writing Paper Envelopes and Blank Books, Cheap, 86 Nassau St., N.Y., 50 CENTS, U.S. Postage Stamps.** Red on 69 x 34mm envelope, Krause-Lemke 60-50 variety, Drowne 1918 listed, Extremely Fine, a superb example of this rare postage envelope ..... E. 1,000-1,500



4142

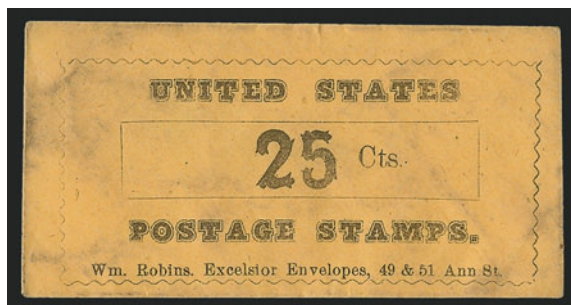


- 4143 **J. LEACH, Writing Paper Envelopes and Blank Books, Cheap, 86 Nassau St., N.Y., 25 (Cents) U.S. Postage Stamps.** Blue on white 70 x 32mm envelope, Krause-Lemke 59-25, Drowne 1918 listed, a bit of stray adhesive on front and light toning specks on back, otherwise Extremely Fine ..... E. 750-1,000
- 4144 **J. LEACH, Writing Paper Envelopes and Blank Books, Cheap, 86 Nassau St., N.Y., 50 (Cents) U.S. Postage Stamps.** Blue on white 70 x 32mm envelope, Krause-Lemke 59-50, Drowne 1918 listed, light toning specks, otherwise Extremely Fine ..... E. 750-1,000
- 4145 **J. LEACH, Writing Paper Envelopes and Blank Books, Cheap, 86 Nassau St., N.Y., 75 (Cents) U.S. Postage Stamps.** Blue on white 70 x 32mm envelope, Krause-Lemke 59-75, Drowne 1918 listed, small natural printing flaw (light spot) and some greenish blue mounting remnant on back, otherwise Extremely Fine..... E. 750-1,000
- 4146 **J. LEACH, Writing Paper Envelopes and Blank Books, Cheap, 86 Nassau St., N.Y., 30 (Cents) U.S. Postage Stamps.** Blue on yellow 70 x 36mm envelope, Krause-Lemke 59-30, Drowne 1918 listed, small spot of bluish green mounting material on back, otherwise Extremely Fine, rare denomination..... E. 1,000-1,500



- 4147 **J. LEACH, Writing Paper Envelopes and Blank Books, Cheap, 86 Nassau St., N.Y., 10 (Cents) U.S. Postage Stamps.** Red on white 70 x 34mm envelope, Krause-Lemke 59-10 variety, Drowne 1918 listed, minor toning and small bit of greenish blue mounting material on back, otherwise Extremely Fine, very rare, it is estimated that there are perhaps fewer than ten exist in ny condition..... E. 1,000-1,500
- 4148 **J. LEACH, Writing Paper Envelopes and Blank Books, Cheap, 86 Nassau St., N.Y., 15 (Cents) U.S. Postage Stamps.** Red on white 70 x 34mm envelope, Krause-Lemke 59-15 variety, Drowne 1918 listed, small bit of greenish blue mounting material on back, otherwise Extremely Fine..... E. 750-1,000
- 4149 **J. LEACH, Writing Paper Envelopes and Blank Books, Cheap, 86 Nassau St., N.Y., 20 (Cents) U.S. Postage Stamps.** Red on white 70 x 34mm envelope, Krause-Lemke 59-20 variety, Drowne 1918 listed, minor toning and small bit of greenish blue mounting material on back, otherwise Extremely Fine ..... E. 750-1,000
- 4150 **J. LEACH, Writing Paper Envelopes and Blank Books, Cheap, 86 Nassau St., N.Y., 30 (Cents) U.S. Postage Stamps.** Red on white 70 x 34mm envelope, Krause-Lemke 59-30 variety, Drowne 1918 listed, partial strong offset on back of the left most part of the design, nice variety, tiny bit of greenish blue mounting material on back, otherwise Extremely Fine..... E. 1,000-1,500
- 4151 **J. LEACH, Writing Paper Envelopes and Blank Books, Cheap, 86 Nassau St., N.Y., 75 (Cents) U.S. Postage Stamps.** Red on white 70 x 34mm envelope, Krause-Lemke 59-75 variety, Drowne 1918 listed, small bit of greenish blue mounting material on back, otherwise Extremely Fine, rare ..... E. 1,000-1,500





4152

- 4152 **Wm. Robins. Excelsior Envelopes, 49 & 51 Ann St., 25 Cts. United States Postage Stamps.** Black 70 x 36mm orange-buff envelope, Krause-Lemke 123-25C unlisted, Drowne 1918 listed, some fairly light soiling, otherwise Very Fine..... E. 500-750



4153

- 4153 **Sold by Snow & Hapgood, 22 Court St., Boston.** Imprint beneath framed "25 Cents Worth Of Postage Stamps" on buff on laid 64 x 34mm envelope, slight overall soiling has created a "rubbing" at left that shows a circular outline of what may have been an encased postage stamp or U.S. coin, Fine and rare ..... E. 500-750



4154

- 4154 **United States Postage Stamps, 25 Cts.** In oval frame on 70 x 35mm envelope with a rather large pre-print paper fold, no origin or maker's imprint but designed in the William Robins style, Krause-Lemke unlisted, Very Fine despite the fold .... E. 400-500

## FRACTIONAL CURRENCY



- 4155 TC **50c Postage Currency, Single 10c Washington, Trial Color Proof in Black on India (PC4TC).** The right hand stamp from the strip of five, Very Fine, with 1995 P.F. certificate ..... E. 200-300
- 4156 P **5c Jefferson, Die Proofs on Bond (PC9P).** Uniface obverse and reverse proofs, each about 100 x 65mm, issued colors and without ABCO. imprint, obverse diagonal crease, otherwise Extremely Fine ..... E. 500-750
- 4157 P **5c Jefferson, Die Proofs on Bond (PC9P).** Uniface obverse and reverse proofs, about 90 x 58mm or larger, issued colors and without ABCO. imprint, Extremely Fine . E. 750-1,000
- 4158 P **10c Washington, Die Proofs on India (PC10P).** Uniface obverse and reverse proofs, 90 x 63mm or larger, issued colors and without ABCO. imprint, obverse faint pressed crease, reverse tiny corner mounting thins far from design, otherwise Extremely Fine E. 500-750
- 4159 P **25c Jefferson, Die Proofs on Bond (PC9P).** Uniface obverse and reverse proofs, each about 97 x 65mm, issued colors and without ABCO. imprint, Extremely Fine..... E. 750-1,000





4160



4161EX



4164

- 4160 P **50c Washington, Die Proofs on India (PC12P).** Uniface obverse and reverse proofs, each about 80 x 58mm, issued colors and without ABCO. imprint, Extremely Fine..... E. 750-1,000
- 4161 **5c-50c Postage Currency, Perforated, "ABCo." Imprint (PC1-PC4).** Crisp uncirculated, Fine .....(Photo Ex) 825.00
- 4162 **5c-50c Postage Currency, Perforated, "ABCo." Imprint (PC1-PC3).** Uncirculated, centering varies as usual, couple tiny imperfections, Fine .....Not illustrated 825.00
- 4163 **5c-25c Postage Currency, Perforated, "ABCo." Imprint (PC1-PC3).** Crisp uncirculated, two shades of the 5c, 25c reperfed at left, couple others each with single short perf, otherwise Fine.....Not illustrated 725.00
- 4164 **5c Jefferson, Imperforate, "ABCo." Imprint (PC5).** Complete sheet of 20, huge margins to slightly in, most lightly creased, Fine-Very Fine appearance, Scott Retail as singles ..... 1,400.00





4166EX



4167EX



4168EX



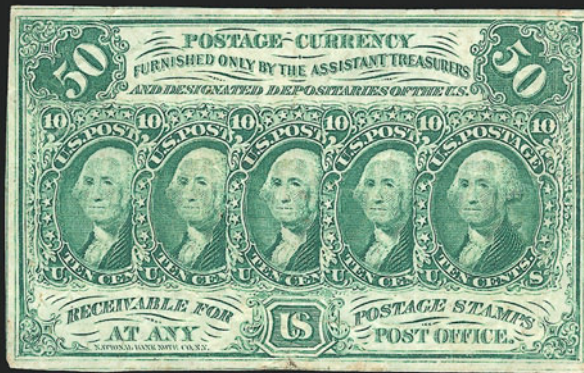
4169

- 4165 5c Jefferson, Imperforate, "ABCo." Imprint (PC5). Seven, selected to show a range of shades, crisp uncirculated to very lightly circulated, Fine-Very Fine.....*Not illustrated* 490.00
- 4166 5c Jefferson, 10c Washington, Imperforate, "ABCo." Imprint (PC5-PC6). Vertical strips of four, three of the 5c, margins virtually all around, three with creases between pos. 2 and 3, one 5c with pulp inclusion, otherwise Fine-Very Fine, Scott Retail as singles...(Photo Ex) 1,120.00
- 4167 5c-50c Postage Currency, Imperforate, "ABCo." Imprint (PC5-PC8). Crisp uncirculated, Fine-Very Fine.....(Photo Ex) 415.00
- 4168 5c-50c Postage Currency, Imperforate, "ABCo." Imprint (PC5-PC8). Crisp uncirculated, Fine-Very Fine.....(Photo Ex) 415.00
- 4169 10c Washington, Imperforate, "ABCo." Imprint (PC6). Complete sheet of 20, huge margins all around, most with creases, some trifle heavy, otherwise Extremely Fine, Scott Retail as singles ..... 1,400.00





4170



4174EX



4172

- 4170 **10c Washington, Imperforate, "ABCo." Imprint, Inverted Back (PC6a).** Crisp uncirculated, Fine, the inverted backs, in our opinion, are considerably scarcer than catalog value indicates..... 675.00
- 4171 **25c Jefferson, Imperforate, "ABCo." Imprint (PC7).** Three singles, two distinct shades, crisp uncirculated, Fine-Very Fine.....*Not illustrated* 375.00
- 4172 **50c Washington, Imperforate, "ABCo." Imprint (PC8).** Vertical pair, crisp uncirculated, Fine-Very Fine ..... 300.00
- 4173 **5c-50c Postage Currency, Perforated, Without "ABCo." Imprint (PC9-PC12).** Circulated, 50c rather heavily so with s.e. top and left and small piece out of top left corner, otherwise Fine appearance.....*Not illustrated* 1,215.00
- 4174 **5c-50c Postage Currency, Imperforate, Without "ABCo." Imprint (PC13-PC16).** First two crisp uncirculated, last two circulated, Fine-Very Fine appearance .....**(Photo Ex)** 1,625.00
- 4175 **Balance of Postage Currency.** Seven different comprising fourteen singles and a pair, incl. Nos. PC1, 3, 5-7, 11, 13-14, there is a vertical pair of No. PC7 that is very brittle and will fall apart if handled improperly, others various levels of circulation, some heavy, still a useful lot.....*Not illustrated* 2,215.00

## COIN-RELATED POSTAL COVERS



- 4176 ☒ **Watertown N.Y. 23 Jun.** Circular datestamp on petite lady's cover with embossed edge, matching "Paid C/III" fancy "coin" rate handstamp stylized from the then-current 3c piece, Extremely Fine..... E. 200-300
- 4177 ☒ **Eutaw Ala. Mar. 11.** Black circular datestamp and framed "Paid" handstamp with blue "Half-Dime" coin rate handstamp on green folded cover to Gainesville Ala., side panels removed, small stains along file folds, otherwise Very Fine, a choice strike of this rare coin marking E. 400-500
- 4178 ☒ **Augusta Me. 3 Paid 28 Mar.** Integral-rate circular datestamp ties red wax wafer used to hold 3c coin affixed when the cover was mailed, to China Me., Very Fine and unusual ..... E. 150-200
- 4179 ☒ **New-York Paid 3 Cts. Dec. 2 (1855).** Red integral-rate circular datestamp on **Hudson River Railroad Service corner card** cover from Canal St. station to Seymour Conn., traces of wax wafer peeled away at upper right, used to hold 3c coin for prepayment, with year-dated enclosure, Very Fine, prepayment was made compulsory in April 1855, this method filled the void when stamps were not conveniently available ..... E. 150-200
- 4180 ☒ **East Winstead Ct. Oct. 9 (1854).** Circular datestamp and "Paid 3" handstamp on cover to North Amherst Mass. with sender's notation "Paid by a 3 cent piece deposited herewith, Hubbard.", with original enclosure, Very Fine..... E. 200-300
- 4181 ☒ **U.S. Express Mail Boston Mass. May 15.** Red route agent's circular datestamp and matching "5" rate handstamp on 1849 blue folded letter to Bristol R.I., red wax wafer at upper left used to hold 5c coin, pencil "Paid 5 cts piece" crossed out in red crayon, Very Fine, accompanied by an 1871 Half-Dime for display purposes..... E. 300-400





4182

- 4182      **50c Postage Currency Used as Postage.** "Strip" of five overlapping 10c stamps cut from Postage Currency note and tied by "Cincinnati Ohio" oval cancel on front only addressed to Lt. Bandholz in Newport Ky., short tear at right of strip, creases in piece not affecting stamps, otherwise Fine, an extraordinary illegal yet accepted use of old 50c Postage Currency (probably in the 1880s) ..... E. 750-1,000

## CONFEDERATE STATES AND CIVIL WAR



4183

- 4183      **Liberty Va. 17 Aug.** Circular datestamp and "PAID 5" woodcut straightline handstamp on cover to Lynchburg Va. with mucilage remnants showing **clear impression of U.S. Half-Dime affixed to pay postage**, minor toning, still Very Fine, these scarce Confederate "coin" covers are rarely seen with such a clear impression of the coin, ex MacBride ..... E. 500-750



4184



4185

4186

- 4184 ☒ **Greenville Ten. Jul. 26.** Circular datestamp and "Paid 5" handstamp on cover to Varnell's Station Ga. with mucilage remnants showing **impression of U.S. Half-Dime coin** affixed to pay postage, roughly opened at right into coin impression, otherwise Fine..... E. 150-200
- 4185 **U.S. Coin Used to Pay C.S.A. Postage.** Cover to Robertville S.C. with mucilage remnants at top left where **Half-Dime coin** was affixed to pay C.S.A. rate, trace of circular datestamp over the area where the coin was affixed, with original letter datelined "Hamilton December 17/1862", some war-related content, stain at bottom right, otherwise Fine ..... E. 300-400
- 4186 ☒ **Coin Used to Pay Postage.** Cover to Hamilton N.Y. with remnants of adhesive used to affix coin affixed at top left to pay postage, straightline "DUE 6 cts." and "Dead Letter Office P.O. Dept." double oval at bottom left, original July 1863 letter headed "Greenwood" accompanies, writer makes reference to not being able to mail her letter because "there has been a change in the mail arrangements which I was ignorant of", without flap and tear through the Due handstamp, otherwise Fine, a fascinating usage, obviously a civilian thru-the-lines cover from the Confederate States ..... E. 200-300



4187

- 4187 ☒ **3c Rose (65).** Well-centered, couple toned spots, tied by blue "Norfolk Va. Nov. 18, 1861" circular datestamp on **North-to-South flag-of-truce** cover to Salem N.C., remnants of brown paper used to hold **Half-Dime coin** in place (replacement coin for display), trace of the word "Confederate" on paper which probably referred to coin or the postage it was intended to pay, blue "5" handstamp and "Due 5" in circle handstamp, this cover was prepared by E. S. Zevely, brother of the 3rd Assistant PMG and is addressed to his sister, name in address partly erased and restored, otherwise Fine and fascinating cover, illustrated in Shenfield (p. 13), ex Knapp and Antrim .. E. 1,000-1,500





4188

- 4188 ☒ **Norfolk Va. Jan. 10, 1862.** Blue double-circle datestamp and matching “Paid 5c” in circle handstamp on small **flag-of-truce** cover to Charlotte C.H. Va., red ms. “Exd S.C.” at upper right, **criss-crossed adhesive strips** on back which held a coin that was removed to pay postage, flap unsealed, Very Fine, a beautiful and scarce flag-of-truce cover sent via Norfolk..... E. 400-500



4189

- 4189 ☒ **10c Greenish Blue, Die B (12c).** Large margins to clear at top, bright color, trivial corner crease, tied by bold “Richmond Va. Nov. 4, 1863” circular datestamp on small **mourning envelope** to Rappahannock Va., adhesive and circular fastener remnants at upper right, which show faint impression of **U.S. Dime** coin that was attached to pay C.S.A. postage, sent by flag-of-truce in an outer envelope with 3c U.S. stamp, Very Fine, rare with such a clear coin impression and also a seldom-seen high-quality mourning envelope ..... E. 1,000-1,500



4191

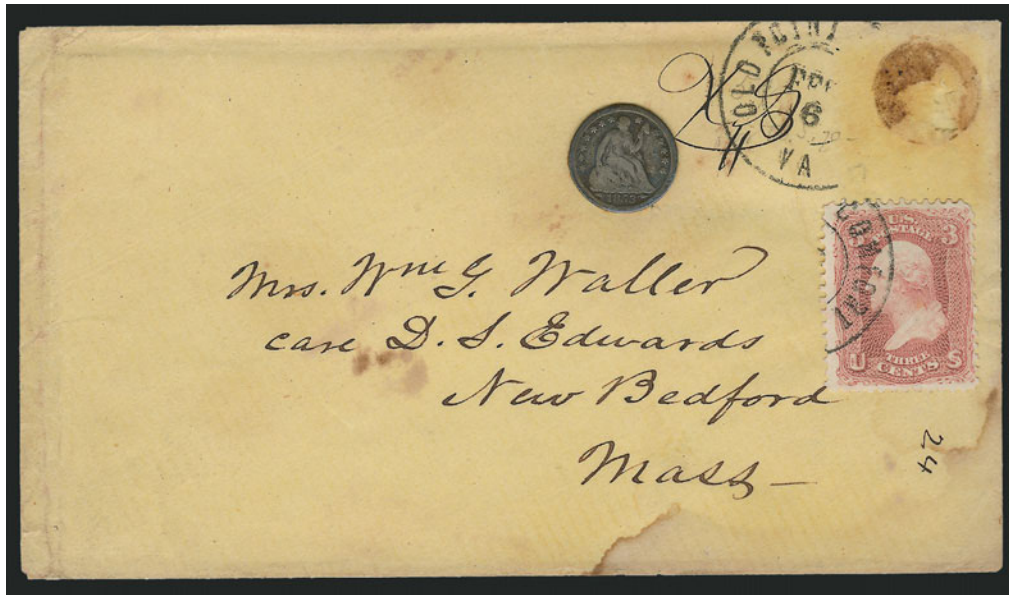
- 4190 ☒ **Old Capitol Prison.** “Passed W.P. Wood Supt. Military Prison” examiner’s circular handstamp on cover to University of Va., **10c Blue, Die B (12)**, huge margins to ample at top, tied by faint strike of double-circle datestamp, sender’s routing “For Flag of Truce Boat via Fortress Monroe” and endorsed “C. D. McCoy, Capt., 25th Va. Infantry, Prisoner of War”, ms. “Exd HW” censor’s marking, slight reduced at top, scuffed area at right around examiner’s marking where stamp or coin was removed, Fine, with 2006 P.F. certificate ..... E. 750-1,000



4190

- 4191 ☒ **Fort Norfolk.** Cover bearing small boxed “Approved, Chas. M. Whelden, Lt. Col. & Provost Marshall, District Va.” handstamp known to have been used at Fort Norfolk and endorsed “Via Flag of Truce” at top, to Charlotte N.C., bearing **10c Blue, Die B (12)** tied by Richmond Va. circular datestamp, trivial wear, Very Fine and rare, the cover probably had a coin attached to pay the U.S. postage, with 1994 P.F. certificate ..... E. 750-1,000





4192

- 4192 ☒ **3c Rose (65).** Tied by "Old Point Comfort Va. Feb. 6" double-circle datestamp on **flag-of-truce** yellow cover to New Bedford Mass., stamp lifted to show brown mucilage remnants where a **Half-Dime coin** was affixed, censor's mark beneath datestamp, receiving backstamp, waterstain at bottom right, minor wear, Fine and unusual, with 1853 Half-Dime affixed to cover for exhibit purposes ..... E. 500-750



4193

- 4193 ☒ **3c Rose (65).** Tied by quartered cork cancel over paper and mucilage use to affix 3c coin on **South-to-North flag-of-truce** cover to Washington D.C., "Old Point Comfort Va. Nov. 26" double-circle datestamp, ms. "Ex E.B.B." censor's marking, horizontal crease thru stamp, otherwise Very Fine, this was the inner envelope in a flag-of-truce cover posted from a Confederate State ..... E. 400-500

END OF SALE — THANK YOU

# Live Internet Bidding at Siegel Auctions



Bidding from your computer lets you be part of the live auction from anywhere in the world!

There's no substitute for following the auction in real time. Live Internet Bidding lets you bid and buy as though you were right there in the saleroom.

And it's easy. Just start by following the simple steps to become a registered Live Internet Bidder. Once you've been approved for bidding, you can listen to the auction and place bids with the click of a mouse.

This step-by-step guide will instruct you how to register, set your browser and use the bidding interface.

## 1 Registering with Stamp Auction Network and Siegel Auction Galleries

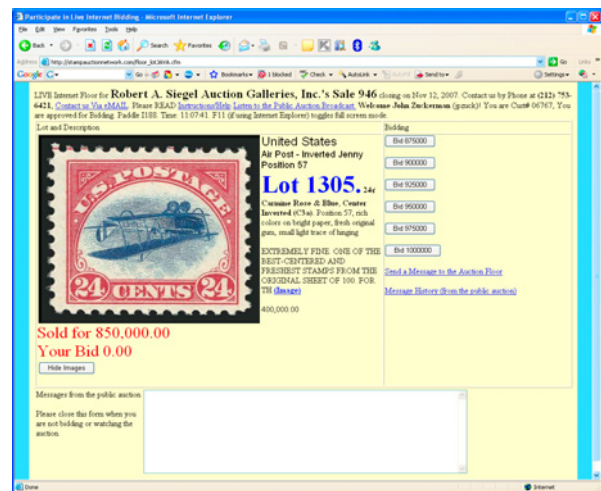
Live Internet Bidding is managed by Stamp Auction Network (SAN). To bid, you must be registered and approved by *both* SAN and Siegel. To decide what you need to do, choose the description below that best fits you.

**I've already registered with SAN and have been approved by Siegel for internet bidding.** You're ready for Step 2.

**I've never registered with SAN, but I'm a Siegel client.** Go to [stampauctionnetwork.com/siegel](http://stampauctionnetwork.com/siegel) and click on "Register" at the top. Check the box for Robert A. Siegel Auction Galleries (under "R") and submit the form, indicating you are a Siegel client. Once registered at SAN, you're ready for Step 2.

**I've never registered with SAN, and this is the first time I've bid with Siegel.** Go to [stampauctionnetwork.com/siegel](http://stampauctionnetwork.com/siegel) and click on "Register" at the top. Check the box for Robert A. Siegel Auction Galleries (under "R") and submit the form **with your trade references** (please, no family members or credit card companies as references). Once registered at SAN and approved by Siegel for bidding, you're ready for Step 2.

**I've bid through SAN before, but this is the first time I've bid in a Siegel sale.** Then you just need to be approved by Siegel. Go to [stampauctionnetwork.com/siegel](http://stampauctionnetwork.com/siegel) and click on "Update Registration" at the top. Your SAN account information will be sent to us for approval (you might be asked for other trade references). Once approved by Siegel for bidding, you can move to Step 2.



## 2 Using your browser for Live Internet Bidding and understanding the way it works.

Live Internet Bidding works by providing an audio feed of the auction (for anyone using Internet Explorer) and by allowing registered bidders to observe and place bids. The bidding interface shows a photo and description of the lot, the current bid (and your bidding status), and options for placing competitive bids. To join the auction, go to [stampauctionnetwork.com/siegel](http://stampauctionnetwork.com/siegel). You can also log on at [siegelauctions.com](http://siegelauctions.com)

The visual interface will work with any browser on both PC and Mac operating systems. However, the audio feed only works with Internet Explorer on a PC with ActiveX software installed. If ActiveX is not on your computer, you will have the option to install it.

Before bidding by internet for the first time, we recommend finding a sale in progress and listening to the public broadcast or logging in as a registered bidder. This will help you develop a feel for the sale tempo and bidding interface.

"System down" or "lost connection" events do occasionally happen. If you have any problems with Live Internet Bidding, please call 212-753-6421 for immediate assistance.



## 3 Using Live Internet Bidding to bid, track results and communicate with the auctioneer.

When you're logged on as a Live Internet Bidder, the screen will display buttons with bid increments. After you click on a bid amount, the auctioneer is immediately notified of your bid. Retracting a bid is usually not acceptable, so please bid carefully.

If you bid, then decide to stop, please use the "Pass" button, which appears once you've started bidding. This tells the auctioneer not to wait for another bid from you.

You can send messages to the auctioneer (for example, a request for extension). You can also track prior realizations from the bidding screen.



# Bid Form—15% Premium Sale

Sale 955  
Friday, April 11, 2008

# 1

Please provide the following information:

NAME.....  
ADDRESS.....  
CITY/STATE/ZIP.....  
TEL. (DAY) ..... FAX.....  
E-MAIL.....

PADDLE #

*Do not write in box*

# 2

Have you purchased from us in the past 5 years? ☐ YES (if so, please go to Section 3)  
☐ NO (please provide a trade reference and bank information)

References:

Stamp Firm: ..... Telephone.....

Bank: ..... Account # .....

# 3

In the space provided below, enter the **lot number** from **Sale 955** and your corresponding bid. Please use **whole dollar amounts** only and enter the **maximum bid** you wish to have us execute on your behalf, according to the **revised bidding increments** (on other side of this form). **Your bid will NOT include the 15% buyer's premium.** We will advance the bidding at one increment over the

next highest bid; therefore, you may be awarded the lot at less than your maximum bid. Please do not use "plus" bids or "buy" bids. If you wish to bid on one lot **or** the other, indicate your "or" bid between lot number/bid entries and bracket your choices. If you wish to place a **bidding limit** on the total amount of your bids, please enter your limit in the space marked "Limit Bids".

## PLEASE NOTE REVISED BIDDING INCREMENTS (ON BACK OF THIS PAGE)

☐ **LIMIT BIDS:** Check this box if you wish to limit the total amount of your bids (not including the **15% buyer's premium**) in this sale. Your bids will be executed until your bidding limit no longer allows for additional bids. **The total amount you wish to bid is:** \$ .....

Lot	Bid	Lot	Bid	Lot	Bid
	\$		\$		\$

# 4

**AGREEMENT:** By signing this bid form, you agree to pay for purchases resulting from your bids, in accordance with the **Conditions of Sale** printed in the sale catalogue. You also agree to pay the **15% buyer's premium** and any shipping costs (see reverse), which will be added to your successful bids, and any sales tax or use tax which may be due

on the total invoiced amount. It is understood that these bids will be executed by Siegel Auction Galleries as a courtesy to absentee bidders, but that no legal responsibility shall lie with the auctioneer or the firm if these bids are not executed. **You are responsible for your written bids, including any errors on your part.**

**Payment must be made by cash, check, money order or wire transfer. Credit cards will not be accepted.**



SIGNED..... TODAY'S DATE .....

# 5

Please submit your bids promptly (telephone bids must be confirmed in writing).

**Mail to: Robert A. Siegel Auction Galleries, Inc.**

60 E. 56th Street, 4th Floor, New York, N.Y. 10022  
Telephone (212) 753-6421

**OR FAX YOUR BIDS: (212) 753-6429**

**Shipping Instructions, Bidding Increments and space for additional bids on other side of form**

## Additional Bids

Sale 955—April 11, 2008

Lot	Bid	Lot	Bid	Lot	Bid
	\$		\$		\$

## Shipping and Transit Insurance

We will be pleased to arrange for shipping and transit insurance for purchases in this sale (except those described as “floor sale only”). To expedite billing and delivery of lots to hundreds of buyers per sale, we use standard charges for postage and insurance, based on the invoiced total and mailing requirements (see schedule). The standard charges are sometimes slightly more or less than the actual postage, but we do not include any fees for our labor or packing costs. Therefore, we ask all buyers to remit the prescribed amount for shipping charges.

Transit insurance is provided in all cases, except when the buyer has furnished us with proof that insurance coverage is effective under another policy. Proof, in such cases, will be accepted in the form of a written certificate from the insurance carrier.

You are responsible for insurance charges, which will be added to your invoice. This coverage is provided for our mutual protection against theft or loss in transit.

## REVISED Bidding Increments

The auctioneer may regulate the bidding at his discretion. However, to assist absentee bidders in establishing their maximum bid for each lot, the increments shown at right will be used in most cases. We recommend that written bids conform to these increments (those which do not will be reduced to the next level).

## Current Postage & Insurance Charges

Invoice Total	Shipping Method	Charges
Up to 10,000	Fedex Only	\$18.00
Over \$10,000	Fedex Only	\$25.00*
Foreign Destinations (any value)	Fedex/Courier	\$25.00**
Bulk Lots	UPS Preferred	By weight and value (min. \$25.00)
<b>*Insurance and postage on certain heavy or valuable packages may incur an additional charge.</b> <b>**Buyers are liable for all customs duties and clearance charges. An accurate declaration of value will be made on all import/export documents.</b>		

2/2002

## IMPORTANT NOTICE REGARDING IRRADIATION

The U.S. Postal Service policy of irradiating all classes of mail poses a significant potential risk of irreversible damage to philatelic material, including ink, paper and gum.

**WE WILL NOT USE THE MAILS TO SHIP LOTS.**  
Please provide a street address for Fedex delivery if you intend to have your lots shipped.

Up to \$50	\$5	\$3,000-7,000	\$250
\$50-200	\$10	\$7,000-20,000	\$500
\$200-500	\$25	\$20,000-30,000	\$1,000
\$500-1,000	\$50	\$30,000-75,000	\$2,500
\$1,000-3,000	\$100	\$75,000 up	\$5,000

7/2006



Robert A. Siegel Auction Galleries, Inc.  
 Prices Realized for  
 Sale 955 4/11/2008 The Summit Collection of Encased Postage

Lot#	Realized	Lot#	Realized	Lot#	Realized	Lot#	Realized	Lot#	Realized
4001	6,000	4041	375	4077	1,600	4118	2,800	4154	450
4002	650	4042	400	4078	1,800	4119	1,100	4155	200
4003	300	4043	325	4079	9,500	4120	400	4156	475
4004	1,100	4044	1,300	4080	5,750	4121	1,000	4157	475
4005	2,200	4045	2,100	4081	14,500	4122	3,750	4158	425
4006	650	4046	4,750	4082	3,250	4123	3,250	4159	1,100
4007	250	4047	3,750	4083	600	4124	2,600	4160	650
4010	425	4048	1,500	4084	650	4125	1,900	4161	1,300
4011	550	4049	2,300	4085	1,500	4126	4,750	4162	150
4012	325	4050	2,400	4086	1,100	4127	600	4163	110
4013	550	4051	2,200	4087	1,700	4128	450	4164	425
4014	300	4052	2,600	4088	2,500	4129	2,300	4165	200
4016	500	4053	600	4089	4,000	4130	5,750	4166	425
4017	950	4054	500	4091	200	4131	7,000	4167	600
4018	1,800	4055	350	4092	275	4132	5,250	4168	475
4019	800	4056	325	4094	1,700	4133	1,500	4169	1,400
4020	1,000	4057	1,600	4095	2,000	4134	2,400	4170	650
4021	1,900	4058	3,500	4097	1,600	4135	1,500	4171	250
4022	350	4059	2,300	4098	1,200	4136	375	4172	425
4023	700	4060	700	4099	1,700	4137	750	4173	150
4024	1,900	4061	900	4102	1,100	4138	350	4174	225
4025	1,200	4062	3,250	4103	1,500	4139	900	4175	450
4026	1,400	4063	2,700	4104	3,250	4140	800	4176	350
4027	2,400	4064	1,600	4105	4,500	4141	800	4177	550
4028	400	4065	1,000	4106	1,700	4142	900	4178	250
4029	375	4066	475	4107	3,750	4143	700	4179	190
4030	1,300	4067	650	4108	5,250	4144	650	4180	180
4031	2,200	4068	1,000	4109	2,500	4145	650	4181	225
4032	2,400	4069	2,500	4110	900	4146	850	4182	1,300
4033	2,100	4070	650	4111	450	4147	800	4183	850
4034	3,500	4071	850	4112	2,800	4148	850	4184	160
4035	1,100	4072	325	4113	2,800	4149	750	4185	325
4036	700	4073	450	4114	600	4150	850	4186	225
4037	1,900	4074	325	4115	1,000	4151	850	4187	5,000
4038	375	4075	500	4116	850	4152	475	4188	350
4040	2,800	4076	750	4117	750	4153	850	4189	3,500

Robert A. Siegel Auction Galleries, Inc.  
Prices Realized for  
Sale 955 4/11/2008 The Summit Collection of Encased Postage

Lot#	Realized
4190	1,200
4191	1,600
4192	300
4193	200