

Sale 960—Thursday, June 26, 2008

General Foreign Stamps and Covers

Live auction to be held at Siegel Auction Galleries,
60 East 56th Street (Park/Madison), 4th Floor, New York City

Most lots offered without reserves

Lots are sold subject to a 15% buyer's premium and
any applicable sales tax (or customs duty for non-U.S. buyers)



Morning Session (lots 1001-1192)
Thursday, June 26, at 10:30 a.m.

Great Britain	lots	1001-1018
Antigua thru Canada		1019-1192

Afternoon Session (lots 1193-1372)
Thursday, June 26, at 1:30 p.m.

C.G.H. thru Newfoundland	1193-1236
New Guinea thru Victoria	1237-1250
Foreign Countries A-Z	1251-1315
Group Lots by Country	1316-1359
Collections and Accumulations	1360-1372

Pre-Sale Lot Viewing

Monday, June 23 — 10:00 a.m. to 4:00 p.m.
Tuesday, June 24 — 10:00 a.m. to 4:00 p.m.
Wednesday, June 25 — 10:00 a.m. to 4:00 p.m.
or by appointment (please call 212-753-6421)

Robert A. Siegel

AUCTION GALLERIES, INC.

60 EAST 56TH STREET, 4TH FLOOR, NEW YORK, N.Y. 10022
Phone (212) 753-6421 • Fax (212) 753-6429 • E-mail: stamps@siegelauctions.com

Catalogues, internet bidding, resources, archives and the Siegel Encyclopedia at
www.siegelauctions.com



Robert A. Siegel

AUCTION GALLERIES, INC.

60 EAST 56TH STREET, 4TH FLOOR, NEW YORK, N.Y. 10022

Phone (212) 753-6421 • Fax (212) 753-6429 • E-mail: stamps@siegelauctions.com

siegelauctions.com



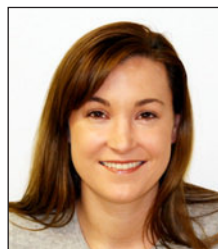
Scott R. Trepel
President
strepel@siegelauctions.com



John P. Zuckerman
Senior Vice President
jzuckerman@siegelauctions.com



Stephanie Chambers
Accounts
schambers@siegelauctions.com



Starr Tucker-Ortega
Accounts
starrt@siegelauctions.com



Carlene Counihan
Bids and Inquiries
carlene@siegelauctions.com

Scott R. Trepel Principal Auctioneer (licensed by NYC Dept. of Consumer Affairs, #795952)

Nathaniel Estes Catalogue and Digital Production

Information for Bidders

Bidding

The following means are available for placing bids:

1) Attending the Live Auction in Person: All bidders must register for a paddle, and new bidders must provide references at least three business days in advance of the sale.

2) Live Internet Bidding: Instructions for participating as a Live Internet Bidder are provided on the page opposite.

3) Phone Bidding: Bidders can be connected to the sale by phone and bid through a member of staff. Requests for phone bidding are subject to approval (please contact our office at least 24 hours before the sale). A signed Bid Form is required.

4) Absentee Bids. All bids received in advance of the sale, either by mail, fax, phone, e-mail or internet, are Absentee Bids, which instruct the auctioneer to bid up to a specific amount on one or more lots in the sale. Absentee Bids sent by phone, fax or e-mail should arrive at least one hour prior to the start of the sale session. Bids entered through Live Internet Bidding will be visible to the auctioneer during the sale. Written bids should be entered legibly on the Bid Form in the sale catalogue. E-mail and internet bids should be carefully typed and double-checked. All new bidders must provide references. We recommend calling or e-mailing to confirm that Absentee Bids sent by mail, fax or e-mail have been received and entered.

Pre-Sale Viewing

Subject to availability, certain lots (except group lots) can be sent to known clients for examination. Requests must be made no later than 7 days prior to the sale. Lots must be returned on the day received. Postage/insurance costs will be invoiced.

In addition to regular viewing, clients may view lots by appointment. Our staff will be pleased to answer questions or provide additional information about lots.

Expert Certification

Individual items offered without a current certificate (PF dated within the past five years of sale; PSE dated January 2004 or later) may be purchased subject to independent certification of genuineness and our description. **Please refer to the Conditions of Sale and Grading Terms for policies governing certification.**

Shipping and Delivery

Procedures and charges for shipping lots are printed on the back of the Bid Form. **Bidders are responsible for all prescribed shipping charges and any applicable sales tax or customs duties.**

Price Realized

Prices realized are sent with each invoice. Bidders with e-mail will receive a Bid Results report after the sale. Session results are posted immediately to siegelauctions.com

Live Internet Bidding at Siegel Auctions



Bidding from your computer lets you be part of the live auction from anywhere in the world!

There's no substitute for following the auction in real time. Live Internet Bidding lets you bid and buy as though you were right there in the saleroom.

And it's easy. Just start by following the simple steps to become a registered Live Internet Bidder. Once you've been approved for bidding, you can listen to the auction and place bids with the click of a mouse.

This step-by-step guide will instruct you how to register, set your browser and use the bidding interface.

1 Registering with Stamp Auction Network and Siegel Auction Galleries

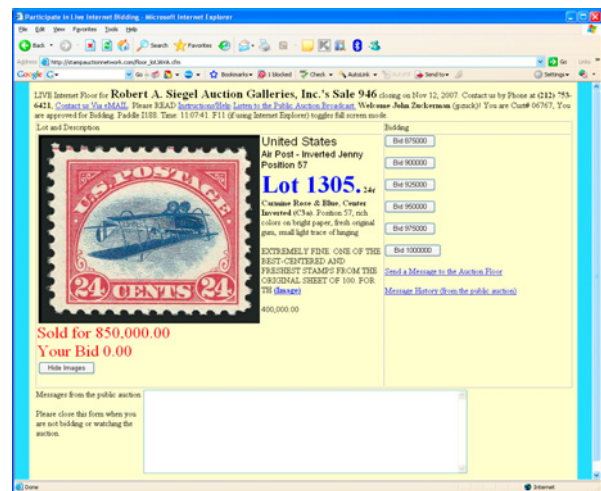
Live Internet Bidding is managed by Stamp Auction Network (SAN). To bid, you must be registered and approved by *both* SAN and Siegel. To decide what you need to do, choose the description below that best fits you.

I've already registered with SAN and have been approved by Siegel for internet bidding. You're ready for Step 2.

I've never registered with SAN, but I'm a Siegel client. Go to stampauctionnetwork.com/siegel and click on "Register" at the top. Check the box for Robert A. Siegel Auction Galleries (under "R") and submit the form, indicating you are a Siegel client. Once registered at SAN, you're ready for Step 2.

I've never registered with SAN, and this is the first time I've bid with Siegel. Go to stampauctionnetwork.com/siegel and click on "Register" at the top. Check the box for Robert A. Siegel Auction Galleries (under "R") and submit the form **with your trade references** (please, no family members or credit card companies as references). Once registered at SAN and approved by Siegel for bidding, you're ready for Step 2.

I've bid through SAN before, but this is the first time I've bid in a Siegel sale. Then you just need to be approved by Siegel. Go to stampauctionnetwork.com/siegel and click on "Update Registration" at the top. Your SAN account information will be sent to us for approval (you might be asked for other trade references). Once approved by Siegel for bidding, you can move to Step 2.



2 Using your browser for Live Internet Bidding and understanding the way it works.

Live Internet Bidding works by providing an audio feed of the auction (for anyone using Internet Explorer) and by allowing registered bidders to observe and place bids. The bidding interface shows a photo and description of the lot, the current bid (and your bidding status), and options for placing competitive bids. To join the auction, go to stampauctionnetwork.com/siegel. You can also log on at siegelauctions.com

The visual interface will work with any browser on both PC and Mac operating systems. However, the audio feed only works with Internet Explorer on a PC with ActiveX software installed. If ActiveX is not on your computer, you will have the option to install it.

Before bidding by internet for the first time, we recommend finding a sale in progress and listening to the public broadcast or logging in as a registered bidder. This will help you develop a feel for the sale tempo and bidding interface.

"System down" or "lost connection" events do occasionally happen. If you have any problems with Live Internet Bidding, please call 212-753-6421 for immediate assistance.



3 Using Live Internet Bidding to bid, track results and communicate with the auctioneer.

When you're logged on as a Live Internet Bidder, the screen will display buttons with bid increments. After you click on a bid amount, the auctioneer is immediately notified of your bid. Retracting a bid is usually not acceptable, so please bid carefully.

If you bid, then decide to stop, please use the "Pass" button, which appears once you've started bidding. This tells the auctioneer not to wait for another bid from you.

You can send messages to the auctioneer (for example, a request for extension). You can also track prior realizations from the bidding screen.

Conditions of Sale (please read carefully before bidding)

The property described in this catalogue will be offered at public auction by Robert A. Siegel Auction Galleries, Inc. ("Galleries") on behalf of various consignors and itself or affiliated companies. By bidding on any lot, whether directly or by or through an agent, in person, or by telephone, facsimile or any other means, the bidder acknowledges and agrees to all of the following Conditions of Sale.

1. The highest bidder acknowledged by the auctioneer shall be the buyer. The term "final bid" means the last bid acknowledged by the auctioneer, which is normally the highest bid offered. **The purchase price payable by the buyer will be the sum of the final bid and a commission of 15% of the final bid ("buyer's premium"), together with any sales tax, use tax or customs duties due on the sale.**
2. The auctioneer has the right to reject any bid, to advance the bidding at his discretion and, in the event of a dispute between bidders, to determine the successful bidder, to continue the bidding or to reoffer and resell the lot in dispute. The Galleries' record of the final sale shall be conclusive.
3. All bids are per numbered lot in the catalogue unless otherwise announced by the auctioneer at the time of sale. The right is reserved to group two or more lots, to withdraw any lot or lots from the sale, or to act on behalf of the seller. The Galleries will execute bidding instructions on behalf of clients, but will not be responsible for the failure to execute such bids or for any errors in the execution of such bids.
4. **Lots with numbers followed by the symbol ° are offered subject to a confidential minimum bid ("reserve"), below which the lot will not be sold. The absence of the symbol ° means that the lot is offered without a reserve. If there is no reserve, the auctioneer has sole discretion to establish a minimum opening bid and may refuse an offer of less than half of the published estimate. Any lot that does not reach its reserve or opening bid requested by the auctioneer will be announced as "passed" and excluded from the prices realized lists after the sale. The Galleries may have a direct or indirect ownership interest in any or all lots in the sale resulting from an advance of monies or goods-in-trade or a guarantee of minimum net proceeds made by the Galleries to the seller.**
5. Subject to the exclusions listed in 5(A), the Galleries will accept the return of lots which have been misidentified or which have obvious faults that were present when the lot was in the Galleries' custody, but not so noted in the lot description. **All disputed lots must be received by the Galleries intact with the original packing material within 5 days of delivery to the buyer but no later than 30 days from the sale date. (5A) EXCLUSIONS:** The following lots may not be returned for any reason: lots containing 10 or more items; lots from buyers who registered for the pre-sale exhibition or received lots by postal viewing, thereby having had the opportunity to inspect them before the sale; any lot described with "faults," "defects" or a specific fault may not be returned because of any secondary fault. Photographed lots may not be returned because of centering, margins, short/nibbed perforations or other factors shown in the illustrations. Lots may not be returned for any of the following reasons: the color of the item does not match the color reproduction in the sale catalogue or website listing; the description contains inaccurate information about the quantity known or reported; or a certification service grades a stamp lower than the grade stated in the description.
6. Successful bidders, unless they have established credit with the Galleries prior to the sale, must make payment in full before the lots will be delivered. Buyers not known to the Galleries must make payment in full within 3 days from the date of sale. **The Galleries retains the right to demand a cash deposit from anyone prior to bidder registration and/or to demand payment at the time the lot is knocked down to the highest bidder, for any reason whatsoever.** In the event that any buyer refuses or fails to make payment in cash

for any lot at the time it is knocked down to him, the auctioneer reserves the right to reoffer the lot immediately for sale to the highest bidder. **Credit cards are not accepted as payment.**

7. If the purchase price has not been paid within the time limit specified above, nor lots taken up within 7 days from the date of sale, the lots will be resold by whatever means deemed appropriate by the Galleries, and any loss incurred from resale will be charged to the defaulting buyer. Any account more than 30 days in arrears will be subject to a late payment charge of 1½% per month as long as the account remains in arrears. Any expenses incurred in securing payment from delinquent accounts will be charged to the defaulter. A fee of \$250.00 per check will be charged for each check returned for insufficient funds.
8. All lots are sold as genuine. **Any lot accompanied by a certificate issued by The Philatelic Foundation within 5 years of the sale date or by Professional Stamp Experts since January 2004 is sold "as is" and in accordance with the description on the certificate. Such lots may not be returned for any reason, including but not limited to a contrary certificate of opinion.** Buyers who wish to obtain a certificate for any item that does not have a P.F. or P.S.E. certificate (dated as above) may do so, provided that the following conditions are met: (1) the purchase price must be paid in full, (2) the item must be submitted to an acceptable expertizing committee with a properly executed application form within 21 days of the sale, (3) a copy of the application form must be given to the Galleries, (4) in the event that an adverse opinion is received, the Galleries retain the right to resubmit the item on the buyer's behalf for reconsideration, without time limit or other restrictions, (5) unless written notification to the contrary is received, items submitted for certification will be considered cleared 90 days from the date of sale, and (6) in the event any item is determined to be "not as described", the buyer will be refunded the purchase price and the certification fee up to \$600.00 unless otherwise agreed.
9. Until paid for in full, all lots remain the property of the Galleries on behalf of the seller.
10. Agents executing bids on behalf of clients will be held responsible for all purchases made on behalf of clients unless otherwise arranged prior to the sale.
11. The buyer assumes all risk for delivery of purchased lots and agrees to pay for prescribed shipping costs. Buyers outside the U.S. are responsible for all customs duties.
12. **The bidder consents that any action or proceeding against it may be commenced and maintained in any court within the State of New York or in the United States District Court for the Southern District of New York, that the courts of the State of New York and United States District Court for the Southern District of New York shall have jurisdiction with respect to the subject matter hereof and the person of the bidder. The bidder agrees not to assert any defense to any action or proceeding initiated by Galleries based upon improper venue or inconvenient forum. The bidder agrees that any action brought by the bidder shall be commenced and maintained only in a Federal Court in the United States District Court for the Southern District of New York or the State Court in the county in which Galleries has its principal place of business in New York. These Terms and Conditions shall be governed by and construed in accordance with the substantive laws of the State of New York.**

SCOTT R. TREPEL, Principal Auctioneer

Auctioneer's License No. 795952
N.Y.C. Department of Consumer Affairs
80 Lafayette Street, New York, N.Y. 10013
Telephone (212) 577-0111

Revised 1/2008 15%

Copyright Notice

© 2008, Robert A. Siegel Auction Galleries, Inc. This catalogue in all versions, printed and electronic, is protected by copyright. The descriptions, format, illustrations and information used herein may not be reprinted, distributed or copied in any form without the express written consent of Robert A. Siegel Auction Galleries. Application for permission may be made in writing.

Grades, Abbreviations and Values Used in Descriptions

Grades and Centering

Our descriptions contain detailed information and observations about each item's condition. We have also assigned grades to stamps and covers, which reflect our subjective assessment. For stamps, the margin width, centering and gum are described and graded according to generally-accepted standards (an approximate correlation to numeric grades is provided at right). Although we believe our grades are accurate, they are not always exactly aligned with third-party grading terms or standards for all issues. **A lot may not be returned because a certification service grades a stamp lower than the grade stated in the description. Information from the P.S.E. Stamp Market Quarterly and P.S.E. Population ReportSM is the most current available, but lots may not be returned due to errors or changes in statistics or data.**

Extremely Fine Gem (90-100): The term "Gem" describes condition that is the finest possible for the issue. This term is equivalent to "Superb" used by grading services.







Extremely Fine (80-90): Exceptionally large/wide margins or near perfect centering.

Very Fine (70-85): Normal-size margins for the issue and well-centered with the design a bit closer to one side. "Very Fine and choice" applies to stamps that have desirable traits such as rich color, sharp impression, freshness or clarity of cancel.

Fine (60-70): Smaller than usual margins or noticeably off center. Pre-1890 issues may have the design touched in places.

Very Good (below 60): Attractive appearance, but margins or perforations cut into the design.

Guide to Gum Condition

Gum Categories:	MINT N.H.	ORIGINAL GUM (O.G.)				NO GUM
	 Mint Never Hinged <i>Free from any disturbance</i>	 Lightly Hinged <i>Faint impression of a removed hinge over a small area</i>	 Hinge Mark or Remnant <i>Prominent hinged spot with part or all of the hinge remaining</i>	 Part o.g. <i>Approximately half or more of the gum intact</i>	 Small part o.g. <i>Approximately less than half of the gum intact</i>	 No gum <i>Only if issued with gum</i>
Catalogue Symbol:	★ ★	★	★	★	★	(★)
PRE-1890 ISSUES	<i>Pre-1890 stamps in these categories trade at a premium over Scott value</i>			Scott Value for "O.G."		Scott "No Gum" Values thru No. 218
1890-1935 ISSUES	Scott "Never Hinged" Values for Nos. 219-771	Scott Value for "O.G." (Actual value will be affected by the degree of hinging)		Disturbed Original Gum: Gum showing noticeable effects of humidity, climate or hinging over more than half of the gum. The significance of gum disturbance in valuing a stamp in any of the Original Gum categories depends on the degree of disturbance, the rarity and normal gum condition of the issue and other variables affecting quality. For example, stamps issued in tropical climates are expected to have some		
1935 TO DATE	Scott Value for "Unused"					

Covers

Minor nicks, short edge tears, flap tears and slight reduction at one side are normal conditions for 19th century envelopes. Folded letters should be expected to have at least one file fold. Light cleaning of covers and small mends along the edges are accepted forms of conservation. Unusual covers may have a common stamp with a slight crease or tiny tear. **These flaws exist in virtually all 19th century covers and are not always described. They are not grounds for return.**

Catalogue Values and Estimates

Unless otherwise noted, the currently available *Scott Catalogue* values are quoted in dollars with a decimal point. Other catalogues are often used for foreign countries or specialized areas and are referred to by their common name: *Stanley Gibbons* (SG), *Dietz*, *American Air Mail Catalogue* (AAMC), *Michel*, *Zumstein*, *Facit*, etc. Estimates are indicated with an "E." and reflect our conservative valuation in dollars. Reserves will never exceed the low end of the estimate range; they will sometimes exceed Scott Catalogue value for stamps in Extremely Fine condition.

Because of certain pricing inconsistencies in the *Scott Catalogue*—for example, blocks that have no gum, the absence of premiums for Mint N.H. items, etc.—we cannot guarantee the accuracy of values quoted for multiples, specialized items and collection lots. We generally try to be conservative, but buyers may not return a lot because of a discrepancy in catalogue value due to Scott pricing inconsistencies.

Symbols and Abbreviations (see chart above for gum symbols)

⊞	Block	E	Essay	pmk.	Postmark	No.	Scott Catalogue Number
⊞	Cover	P	Proof	cds	Circular Datestamp	hs	Handstamp
FC	Fancy Cancel	TC	Trial Color Proof	var.	Variety	ms.	Manuscript

Revised 1/2008

Resources at siegelauctions.com

ROBERT A SIEGEL AUCTION GALLERIES INC.
80 East 44th Street, 4th Floor, New York, NY 10017 • Phone (212) 368-3400 • Fax (212) 368-3401

The Scarsdale Collection, Part Five: Used United States 1947-69 Issues continued...

Lot	Qty.	Lot Description	Est. Val.	Realized
2003		 <p>1c Blue, 1x45, Position 78 II. Large margins including portions of adjoining stamp at bottom, just touched at left, rich color in the distinctive bright blue. Early shade, pressed-like impression, most striking of the "Blackman/Va. No. 247" circular design stamp design at bottom and double border at top right clearly visible.</p> <p>EXTREMELY FINE, QUITE PROBABLY THE FINEST EXAMPLE OF SCOTT NO. 3 IN EXISTENCE, AND ONE OF ONLY A FEW SECOND-CLASS, POSITION 78 II. — THE SEVENTH STAMP IN THE RIGHT PANE OF PLATE ONE EARLY — IS THE ONLY ONE OF THE 1,000 POSTINGS USED TO PRINT IMPERFORATE ONE-CENT STAMPS THAT SHOWS THE COMPLETE DESIGN TYPE ESPECIALLY DESIRABLE WITH THE BLUE RICHMOND CIRCULAR DESIGN TYPE. A MAGNIFICENT EXAMPLE OF THE RAREST AND MOST DESIRABLE CLASSIC IMPERFORATE UNITED STATES STAMP.</p> <p>The published census compiled by Jerome S. Wagshul contains 90 unperfected records of Scott 3. There has been one addition to the Wagshul census, and there are probably no more than ten examples existing outside of the census population. Therefore, the 1c 1951 Type I is the scarcest of all United States stamps issued regularly prior to the 1968 Gells.</p> <p>Because of the significance attached to the outer portions of the 1c 1951 design, one type that has been carefully cut apart, so as not to impair in any part of the design, are extremely desirable. The narrow spacing between stamps in the sheet and the user's indifference to the outlying ornamentation during separation are factors that contributed to the great rarity of four margin examples. The example offered here comes from the "Warner strip" of Position 78 II, which was cut apart with a view towards preserving the margins of this stamp. Examples of Position 78 II (Scott 3) with large right and bottom margins, where there was very little space between it and the adjoining stamps, are true rarities. In fact, using the census data, it may be argued that this stamp is among the two or three finest sound examples known.</p> <p>Wagshul Census No. 5-CAN-607. Ex Capary, Twigg Smith and Harbich. With 1976 and 2001 P.F. certificates. <i>image available</i></p>	\$5,750.00	\$75,000.00

Catalogues, Prices Realized and Power Search

Images and descriptions for all current sale catalogues are available from our website.

Using our Power Search™ tool, you can locate items from the Siegel database, including every Rarities sale since 1964 and every Siegel sale since 1993—more than 180,000 lots worth hundreds of millions of dollars.



The Siegel Encyclopedia and Rarities Census

This feature of our website contains a wealth of information gleaned from decades of philatelic research by the dedicated philatelists at Siegel.

The up-to-date census data for 19th and 20th century U.S. rarities are a valuable resource for buyers, sellers and researchers. Every recorded example of more than 30 different rare stamps is described and, in most cases, photographed.

Our updated census of 2008 596 records thirteen used stamps. None is recorded unused. Of the five non-perforated stamps, two have major faults and one has poor centering. There are only three well-centered non-perforated examples in existence.

Census No. History: FPC:	396-CAN-01 RA5 424/192 R24 "Omniscia"	396-CAN-02 Coke Col. - RA5 204/190, Lot 179 - \$2,000 Zedden Col. - RA5 204/190, Lot 179 - \$2,000	396-CAN-03 Omniscia Col. - RA5 11/20/191, Lot 111 16736 "Omniscia"	396-CAN-04 43081 "Omniscia, small crease, this spot" 152791 "Omniscia, two corner creases at top and small scrape"
Census No. History: FPC:	396-CAN-05 RA5 10/2/192 Floyd Col. - SPO 10/2/192, Lot 139 \$5,500 260311 "Omniscia corner crease and tiny tear"	396-CAN-06 RA5 522/198 10748 "Omniscia" 26520 "Omniscia"	396-CAN-07 Boring Col. - RB, 6/15/21/1940 offered as "overlaid gold variety of 1c and the 3076 "Omniscia, some staining at top"	396-CAN-08 Schubert 327/190
Census No. History:	396-CAN-09 Mastropo Col. - RA5 52/1973, Lot	396-CAN-10 SPO 10/2/192, Lot 433 - \$30,000	396-CAN-11 Tobacco Col. - RA5 52/1996, Lot	396-CAN-12 Lemon Col. - SPO 5/1/2002, Lot 640 -




Rarities of the World Sales Archive

Images and descriptions for every annual Rarities sale since 1964 provide an unparalleled source of information on the world's greatest philatelic rarities. Digital images made from color slides for Rarities sales between 1964 and 1991 (the era of black-and-white catalogues) make this the only source of color images anywhere.

Informative Video Presentations

Downloadable video documentaries tell the stories of stamps and covers, such as the famous Inverted "Jenny." This is the ideal way to introduce philately to others.



The 1918 24¢ INVERTED "JENNY"


Position 57 — auctioned by Siegel Auction Galleries on Wednesday, November 14, 2007 — set a world record for the amount paid at auction for a single U.S. Stamp.

JENNY AUCTION FOOTAGE

Also see Scott Trepel's exclusive video preview:
THE INVERTED JENNY

Also available as an iPod video

To view this presentation will require the standalone Apple QuickTime Player or the QuickTime web browser plugin.



MORNING SESSION (LOTS 1001-1192)
THURSDAY, JUNE 26, 2008, AT 10:30 A.M.

GENERAL FOREIGN STAMPS AND COVERS

GREAT BRITAIN



- 1001 **1840, 1p Gray Black (1; SG 3).** D-A, large to huge margins, neat red Maltese cross cancel, Extremely Fine, SG £350 275.00
- 1002 ★ **1841, 2p Blue (4; SG 14).** S-H, original gum, ample to large margins, bright color, Very Fine, with 1991 P.F. certificate, SG £3,250 2,750.00
- 1003 **1847, 1sh Green (5; SG 54).** Remarkably large to huge margins, numeral "2" oval grid cancel, Extremely Fine, SG £750 750.00
- 1004 ★ **1856, 6p Lilac (27; SG 70).** Original gum, remarkably well-centered, Very Fine and choice, with 1994 P.F. certificate, SG £1,000 925.00
- 1005 ★ **1870, 1½p Lake Red (32a; SG 52).** Plate 3, typical crackly original gum (smooth gum would be a sign of regumming), incredibly well-centered, Extremely Fine, with 1991 P.F. certificate, SG £400 400.00
- 1006 ★ **1862, 3p Pale Rose (37; SG 77).** Original gum, beautifully centered, Extremely Fine, with 1994 P.F. certificate, SG £1,700 1,600.00
- 1007 **1867, 5sh Pale Rose (57a; SG 127).** Plate 1, incredibly well-centered, fresh color and bold "Fenchurch EC. JA 1, 1872" circular datestamp, Extremely Fine, SG £600 625.00
- 1008 ★ **1873, 1sh Pale Green (64; SG 150).** Plate 13, original gum, lightly hinged with vivid color, perfectly centered, Extremely Fine Gem, SG £500 550.00
- 1009 ★ **1880, 4p Gray Brown (71; SG 154).** Original gum, wonderfully well-centered and clear impression, Extremely Fine, SG £1,800 1,450.00



1011



1012



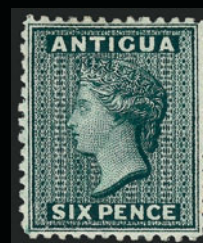
1013EX



1014



1015



1019



1016



1017EX



1027



1021



1022



1023



1024EX



1025



1026

1018



1010

- 1010 ★ **1882, £5 Bright Orange (93; SG 137).** Original gum, barest trace of hinging and a minimal amount of natural gum creasing that habitually affects this large format stamp, magnificent color and centering
EXTREMELY FINE. A TRULY OUTSTANDING EXAMPLE OF THE GREAT BRITAIN 1882 5-POUND BRIGHT ORANGE
With 1972 B.P.A. certificate stating “large part original gum” which is the typical nomenclature for this committee for original gum. SG £10,000 10,000.00
- 1011 ★ **1883-84, 2sh6p Lilac, 5sh Carmine Rose (96, 108; SG 178, 180).** Original gum, usual natural gum creases, fresh colors, beautifully centered, Extremely Fine, SG £1,325 (Photo Ex) 1,325.00
- 1012 **1884, £1 Brown Violet (110; SG 185).** Handsomely centered, Birmingham circular datestamp and additional lightly struck rectangle, Very Fine and choice, SG £2,400 2,400.00
- 1013 ★ **1902-11, 2sh6p-10sh Edward VII (139-141; SG 260, 263, 265).** Fresh and well-centered, 5sh h.r. and natural gum bend, Extremely Fine, SG £1,275 (Photo Ex) 1,350.00
- 1014 ★ **1902-11, £1 Blue Green (142; SG 266).** Fairly light hinging, incredibly fresh and bright, well-centered, Very Fine and choice, SG £1,750 1,750.00
- 1015 ★ **1919, 2sh6p-10sh Seahorses (179-181; SG 415a, 416-417).** Magnificent centering, Extremely Fine set, SG £735 (Photo Ex) 830.00
- 1016 ★ **1929, £1 Black, Postal Congress (209; SG 438).** Lightly hinged and beautifully centered, Extremely Fine, SG £750 850.00
- 1017 ★ **1934, 2sh6p-10sh Seahorses, Waterlow Printing (222-224; SG 450-452).** Lightly hinged, beautiful colors, Very Fine-Extremely Fine, SG £575 (Photo Ex) 660.00
- 1018 ☒ **G.B. USED IN ST. THOMAS, 1865, 4p Vermilion, Plate 11 (43).** Horizontal pair with bold horizontal oval “C51” (Gibbons Ty. 4) of St. Thomas Danish, West Indies, on 1869 cover to Bordeaux, France, red St. Thomas and London Paid, French Calais transit, Fine and attractive E. 150-200

BRITISH COMMONWEALTH

- 1019 ★ **ANTIGUA, 1872, 6p Blue Green (7; SG 8).** Original gum, incredibly well-centered, strong color and detailed impression, Extremely Fine, truly exceptional, SG £550 550.00
- 1020 ★★田 **ASCENSION, 1938-53, ½p-1sh George VI, Views (Betw. 40-46).** Twelve different, three Mint N.H. blocks of four of each, incl. “key” No. 44, Fine-Very Fine 1,900.00

AUSTRALIA

- 1021 ★ **1915, 5sh Yellow & Gray (44; SG 30).** Magnificent margins and centering, bright colors, Extremely Fine, SG £700 900.00
- 1022 ★ **1917, 10sh Bright Pink & Gray (55; SG 43).** Well-centered, barest trace of hinging, lovely colors, Very Fine and choice, SG £450 650.00
- 1023 ★ **1924, £1 Gray (57; SG 75).** Barest trace of hinging, Very Fine, SG £500 725.00
- 1024 ★ **1929-30, 5sh Yellow & Gray, 10sh Pink & Gray (100-101; SG 111-112).** Fresh and Very Fine, SG £565 (Photo Ex) 875.00
- 1025 **1930, £2 Dull Red & Black (102; SG 114).** Exceptionally well-centered, fresh colors with neat circular datestamp, Extremely Fine, SG £600 700.00
- 1026 ★ **1932, 10sh Pink & Gray (127; SG 136).** Wonderfully well-centered, exceptionally bright and crisp, Extremely Fine, SG £300 450.00
- 1027 ★ **1935, £1 Gray (128; SG 137).** Barest trace of hinging, incredibly fresh and Very Fine, SG £500 775.00
- 1028 ★★田 **1963-65, 7sh6p Olive Green (376).** Mint N.H. complete sheet of 80, Very Fine (Not illustrated) 1,320.00



1029



1030



1031



1032



1033



1034



1035



1036



1037



1038



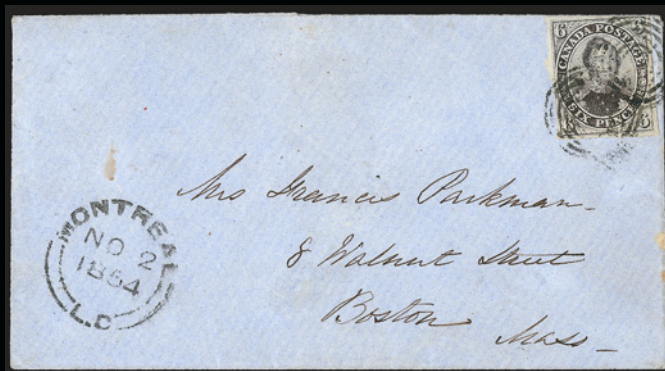
1039EX



1041



1042



1040



1043



1044



1045

- 1029 ★ **BAHAMAS, 1882, 4p Rose (21; SG 41).** Original gum, h.r., incredibly well-centered, bright color, Extremely Fine, with 1990 B.P.A. certificate stating "small part original gum", the gum is far more complete than indicated, SG £550..... 1,000.00
- 1030 **BRITISH COLUMBIA & VANCOUVER ISLAND, 1865, 10c Blue (4; SG 12).** Handsome, virtually even margins all around, bright color, blue Victoria oval cancels in top corners, Very Fine, with 1995 P.F. certificate, SG £850..... 975.00
- 1031 ★ **BRITISH COLUMBIA & VANCOUVER ISLAND, 1869 10c on 3p Lilac Rose (15; SG 24).** Original gum, lightly hinged, beautifully centered and lovely color, Extremely Fine, with 1990 B.P.A. certificate stating "large part original gum", in actuality the gum is essentially complete, SG £900 975.00

CANADA

- 1032 **1851, 3p Red, Laid (1).** Large to huge margins, vivid color, neat seven-ring target cancel, Extremely Fine, lovely used single 950.00
- 1033 **1851, 3p Red, Laid (1).** Three huge margins incl. part bottom sheet margin, large at left, red seven-ring target cancel, color trifle oxidized, otherwise Extremely Fine..... 950.00
- 1034 **1851, 3p Red, Laid (1).** Ample to large margins, classic laid paper color, seven-ring target cancel, Very Fine 950.00
- 1035 ☒ **1851, 3p Red, Laid (1).** Ample to large margins, tied by seven-ring target on small cover to Heck's Corners CW, perfectly struck "Bytown U.C. OCT 14 1851" double-circle datestamp, straightline script letter "TOO LATE" handstamp, some cover toning, otherwise Very Fine, scarce..... 1,800.00
- 1036 **1851, 6p Slate Violet (2).** Large to huge margins, strong color, neat target cancel, Extremely Fine Gem, signed Holcombe and with his 1987 photo certificate..... 1,500.00
- 1037 **1851, 6p Slate Violet, Laid (2).** Large to huge margins, excellent color and neat target cancel, Extremely Fine Gem 1,500.00
- 1038 **1851, 6p Slate Violet, Laid (2).** Large margins to full, excellent color, seven-ring target cancel, tiny crease in left margin near top of little consequence, otherwise Extremely Fine 1,500.00
- 1039 **1851, 6p Slate Violet, Grayish Purple, Laid (2, 2b).** Margins all around, mostly large, seven ring target cancels, former in blue, fine and attractive lot(Photo Ex) 3,000.00
- 1040 **1851, 6p Grayish Purple, Laid (2b).** Margins essentially all around, magnificent color, tied by seven-ring target, "Montreal L.C. NO 2, 1854" double-circle datestamp on Parkman correspondence cover to Boston, Mass, small piece of tape on back flap, Fine and rather attractive 3,100.00
- 1041 **1852, 3p Red (4).** Huge margins all around, very dark color, lightly cancelled, Extremely Fine Gem 200.00
- 1042 **1852, 3p Red (4).** Large to huge margins incl. bottom sheet margin, light target cancel, rich color, Extremely Fine, ex Dale-Liechtenstein 200.00
- 1043 **1852, 3p Red (4).** Vertical pair, ample to mostly huge margins, rich color, each with bold Toronto square grid cancel, Very Fine and choice 400.00
- 1044 **1852, 3p Red, Thin Wove (4d).** Horizontal pair, ample to huge margins, neat blue target cancels, Very Fine-Extremely Fine 400.00
- 1045 **1852, 3p Red, Thin Wove (4d).** Horizontal pair, large to huge margins, vivid color, light blue target cancels, Extremely Fine 400.00
- 1046 **1852, 3p Red (4, 4a, 4d).** Six stamps, ample to huge margins, numeral/target and seven-ring target cancels (two in blue), nice shades, Very Fine lot*Not illustrated* 1,750.00
- 1047 **1852, 3p Red, Shades (4, 4a, 4d).** Five singles and vertical pair, ample to huge margins, cancels incl. one numeral target and blue target, large part double-circle datestamp, pair faintly creased, otherwise Very Fine-Extremely Fine, couple really exceptional*Not illustrated* 1,025.00
- 1048 ☒ **1852, 3p Brown Red (4).** Two covers, first four margin tied by target on folded cover to Toronto, Very Fine, ex Dale-Liechtenstein; other on petite envelope, margins to barely in , ms. "Money Letter" repeated by red straight line sans-serif "MONEY-LETTER" handstamp, small cover tear, Fine.....*Not illustrated* 920.00



- 1049 **1855, 6p Slate Gray, Wove (5).** Ample to huge margins, attractive color, seven-ring target cancel, Extremely Fine..... 1,250.00
- 1050 **1855, 6p Slate Gray, Wove (5).** Ample to very large margins, fresh color, seven-ring target cancel, Very Fine and choice..... 1,250.00
- 1051 **1855, 6p Slate Gray, Wove (5).** Ample to huge margins, excellent color, seven-ring target cancel, Very Fine and choice 1,250.00
- 1052 **1855, 6p Slate Gray, Wove (5).** Clear to very large margins, beautiful clear impression, bold square grid cancel, Very Fine..... 1,250.00
- 1053 **1855, 6p Slate Gray, Wove (5).** Three singles, two with huge margins to touching, Montreal "21" in four-ring target and seven-ring target cancels, last with **red double circle circular datestamp** (repaired), Fine-Very Fine appearance ...**(Photo Ex)** 3,750.00
- 1054 **1855, 6p Slate Gray, Wove (5).** Margins virtually all around, true Slate Gray color, lightly tied by "5" in four-ring target, light strike of "Brantford AU 23 1860" circular datestamp on cover to Perry Centre, N.Y., right side flap missing, a bit of extraneous ms. on stamp at top right, otherwise Fine 1,600.00
- 1055 **1855, 6p Slate Gray, Wove (5).** Three ample to large margins, barely in at bottom, strong color, tied on Parkman correspondence cover by bold seven-ring target, "Montreal MR 20 1856" double-circle datestamp, Fine, very clean cover..... 1,600.00
- 1056 **1852, 6p Brownish Gray, Wove (5a).** Margins virtually all around, wonderful intense color, tied by seven-ring target, "Montreal JU 4, 1855" double-circle datestamp on folded letter to New York, red "PAID" in arc, trivial cover toning spots, Fine 2,750.00



- 1057 **1855, 10p Blue (7).** Margins all around, attractive color, part circular datestamp, Very Fine..... 1,800.00
- 1058 **1855, 10p Blue (7).** Ample to very large margins, intense color, numeral target cancel, couple small faults, Very Fine appearance..... 1,800.00
- 1059 **1855, 10p Blue (7).** Margins all around, deep rich color, neat target cancel, about Very Fine..... 1,500.00
- 1060 ☒ **1855, 10p Blue (7).** Three clear to ample margins, ample to barely in at bottom, great color and impression, tied by "Montreal FE 7, 1859" double-circle datestamp, repeated again at bottom left on folded cover **to Sheffield, England**, blackish blue "America Paid FE 21 1859 Dublin" rimless double-circle datestamp, slight soiling along horizontal cover file fold, Fine..... 3,600.00
- 1061 (★) **1857, ½p Rose (8).** Unused (no gum), possibly traces of original gum, large to mostly huge margins, vivid color, Extremely Fine, Scott Retail as original gum..... 750.00
- 1062 **1857, ½p Rose (8).** Large to huge margins, lovely pastel color and light grid cancel, Extremely Fine..... 600.00
- 1063 ☒ **1857, ½p Rose (8).** Margins virtually all around, large at sides, on neat wrapper tied by "10" in four-ring target (Cobourg). also incl. off-cover single with bold "21" in four-ring target (Montreal), margins all around, Fine lot 1,450.00
- 1064 ☒ **1857, ½p Rose (8).** Margins virtually all around, rich color, tied by small target on folded Flour and Grain Prices Current to South Lee, Mass., Fine..... 850.00
- 1065 **1857, ½p Rose, Vertically Ribbed Paper (8b).** Large margins, nice color, very light numeral four-ring target cancel
 VERY FINE AND CHOICE EXAMPLE OF THE ONE-HALF PENNY ROSE IMPERFORATE ON VERTICALLY LAID PAPER.
 Signed H. Bloch 3,250.00



1065



1066

1066 (★) **1857, 7½p Green (9).** Unused (no gum), large margins to full, strong color and detailed impression

VERY FINE. AN EXCEPTIONALLY CHOICE UNUSED EXAMPLE OF THE 1857 SEVEN AND ONE-HALF PENCE GREEN.

A pretty stamp. 7,000.00



1067



1068



1069

1067 **1857, 7½p Green (9).** Large to mostly huge margins, lightly cancelled (probably a Toronto square grid), rich color, very light diagonal crease, Extremely Fine appearance, exceptionally handsome looking..... 2,750.00

1068 **1857, 7½p Green (9).** Ample to large margins, strong color, attractive numeral "19" in four-ring target cancel, tiny corner crease and small thin spot, Very Fine appearance..... 2,750.00

1069 **1857, 7½p Green (9).** Ample to large margin, deep rich color, numeral target cancel essentially clear of Queen's portrait, tiny fault bottom margin, otherwise Very Fine and choice 2,750.00



1070

1070 ☒ **1857, 7½p Green (9).** Ample to large margins, tied by "21" in four-ring target, "Montreal L.C. AU 27 1858" double-circle datestamp on cover **to Scotland**, red two-line "BY-CANADIAN PACKET" and red "PKT. LETTER PAID LIVERPOOL" tombstone handstamp, ms. "*pr Canadian line*" at top, some cover creases and soiling, otherwise Fine..... 5,000.00



1071



1072

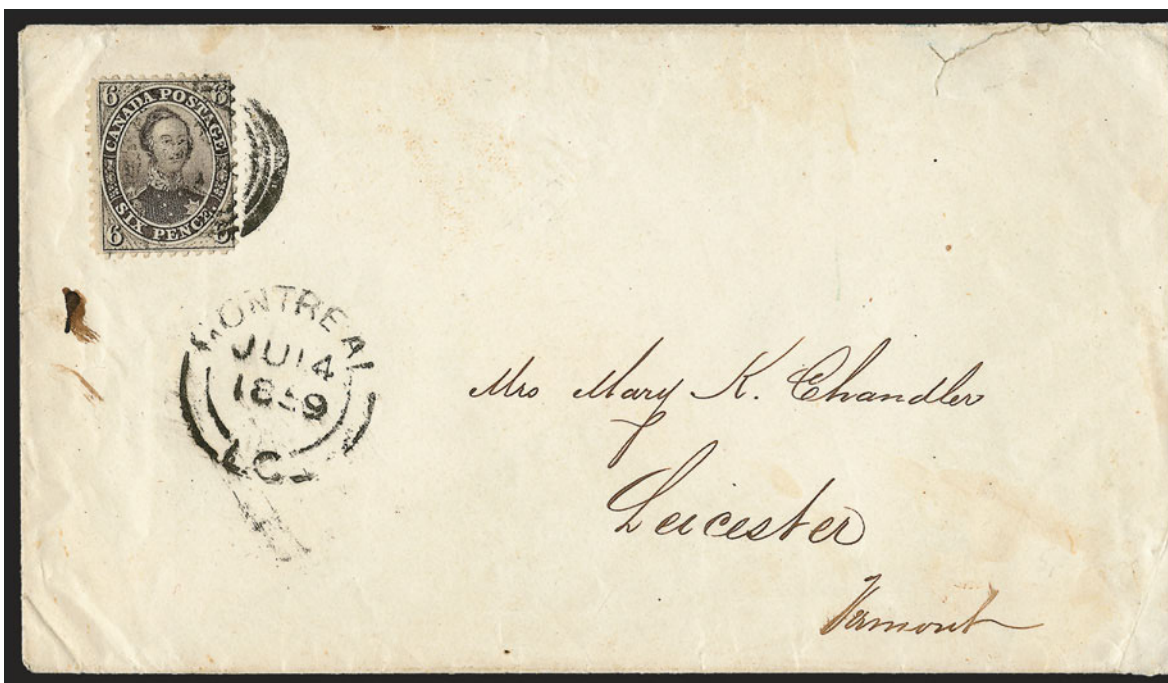


1073



1074

- 1071 **1857, 6p Reddish Purple, Very Thick Soft Wove (10).** Ample margins all around, good color, square grid cancel, thin spots, nearly Very Fine appearance, a difficult stamp to find in any condition 4,750.00
- 1072 **1858, 3p Red, Perf 12 (12).** Incredibly well-centered with bright color and neat target cancel, Very Fine and choice, very difficult stamp to find this well-centered and with perfs completely clear of design all around 900.00
- 1073 **1859, 6p Brown Violet, Perf 12 (13).** Fairly well-centered, square grid cancel, small paper split on back at top, some scissors blunted perfs at right, otherwise Fine, also incl. used No. 11 with filled thins 7,500.00
- 1074 **1859, 6p Brown Violet, Perf 12 (13).** Perfs slightly in at left, strong color, light grid cancel, about Fine for this, Scott Retail values for the three Perforated Pence Issues are for stamps with perfs touching the design 6,000.00



1075

- 1075 ☒ **1859, 6p Brown Violet, Perf 12 (13).** Choice centering for this tightly-spaced issue with top perfs just touching and perfs at right ever so barely into frameline, excellent color, tied by target, "Montreal JU 14, 1859" double-circle datestamp paying the single cross-border rate on cover to Vermont, colorless embossed shield-shaped return card on back flap, trivial cover edge tear top right
- FINE. A RARE COVER BEARING THE 6-PENCE PERFORATED PENCE ISSUE.
- Scott Retail as a used stamp off-cover is \$6,000.00 8,000.00



1077



1078



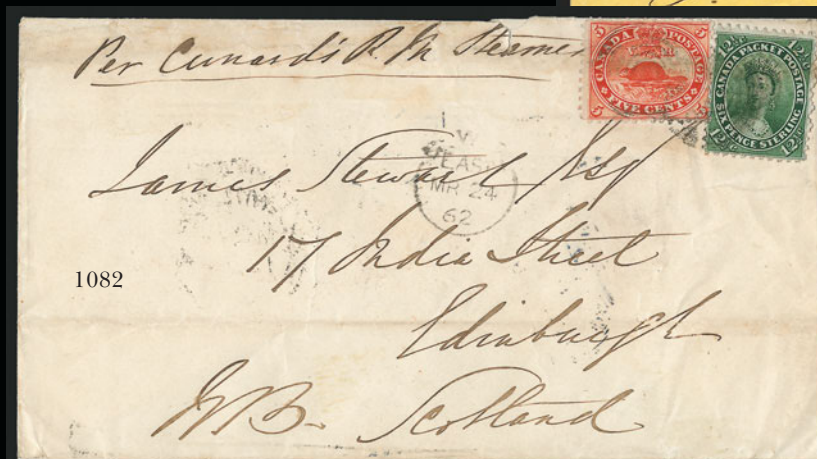
1088



1091



1079



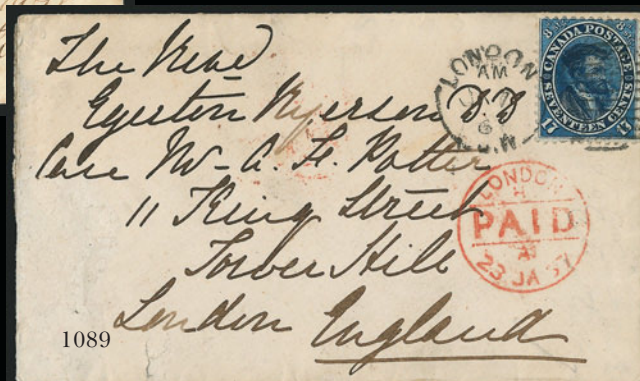
1082



1085

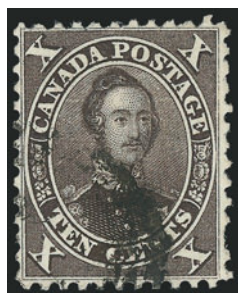


1087



1089

- 1076 **1859, 1c-17c First Decimal Issue (14-19).** One 1c and two each of the other values, **all with scarce cancellations**, 1c with **blue Prince Edward Island grid (Jarrett #943)**, 5c, 10c and 12½c with red and blue targets (one 5c greenish blue), 17c red target and **green Toronto type square grid**, Fine lot, Scott Retail as ordinary cancellations *Not illustrated* 950.00
- 1077 ★田 **1859, 1c Rose (14).** Block of four, original gum, fresh color, Fine, very scarce multiple, Scott Retail as four original gum singles 1,400.00
- 1078 **1859, 1c Deep Rose, Perf 11¼ (14b).** Average centering, strong color, readable "Montreal JY 6, 1859" circular datestamp, **this is the earliest known date of use for this stamp** which was issued July 1, 1859, Scott retail as ordinary used stamp 110.00
- 1079 ☒ **1859, 1c Rose, 5c Vermilion (14-15).** Horizontal pair of former, single of latter, tied by 1865 Montreal rimless grid duplex circular datestamp on yellow **registered** cover with merchant's corner card, the 2c paying the registry fee and the 5c for domestic postage, straightline "REGISTERED" handstamp, bit reduced at left, otherwise Very Fine, scarce usage E. 300-400
- 1080 ★ **1859, 2c-17c First Decimal Issue (15, 17-20).** 5c and 10c disturbed original gum, 12½c unused (regummed) 17c unused (no gum), 2c part original gum (stained), generally Fine lot *Not illustrated* E. 500-750
- 1081 ☒ **1859, 5c Vermilion (15).** Two average singles, tied by bold targets, 1866 Montreal circular datestamp on **St Lawrence Hall hotel illustrated corner card cover**, bit reduced at left, also incl. two 10c Red Lilac No. 17 tied by Montreal 1867 circular datestamp on cover front with similar illustrated corner card (different printers), fairly attractive and scarce *Not illustrated* E. 300-400
- 1082 ☒ **1859, 5c Vermilion, 12½c Green (15, 18).** Single of each tied by target on 1862 cover **to Edinburgh, Scotland**, ms. "Per Cunard's R.M. steamer" routing instruction, cover file fold and tiny edge nick, otherwise Very Fine, scarce ½c overpayment of the 17c Royal Mail rate E. 300-400



1083



1084

- 1083 **1859, 10c Black Brown (16).** Rather well-centered for this elusive shade, part of target cancel clear of central portrait, short perf at right near bottom, otherwise Fine, rare stamp from the First Printing and seldom offered in any condition 4,750.00
- 1084 **1859, 10c Chocolate Brown (16 var; Unitrade 16i).** Average centering, incredibly strong color which is so very close to Black Brown, in addition this rare stamp has a **Green Target cancel** which may be unique on this stamp, light vertical crease, Fine appearance, this shade comes from the First Printing when 1,000 sheets each of this color and the Black Brown were produced E. 1,000-1,500
- 1085 ☒ **1859, 10c Deep Reddish Purple (17e).** Second Printing, intense color, tied by targets, "Montreal FE 7, 1860" circular datestamp on Parkman correspondence cover to Boston, Fine, striking very scarce shade 1,050.00
- 1086 ☒ **1859, 12½c Yellow Green, Shades (18).** Four single Canadian Packet Rate covers to Scotland or England, nice range of colors and attractive markings, Fine-Very Fine *Not illustrated* 1,200.00
- 1087 ☒ **1859, 12½c Dark Green (18).** Horizontal pair, tied by targets, Woodstock 1860 double-circle datestamp on cover **to Scotland**, red "Paid Liverpool Col. Packet" datestamp, flap tear and slight ageing, still Fine, scarce double Canadian Packet rate cover E. 400-500
- 1088 **1859, 17c Blue (19).** Incredibly well-centered with margins clear of the design all around, intense color, neat circular datestamp, Extremely Fine Gem 175.00
- 1089 ☒ **1859, 17c Blue (19).** Deep rich color, on small cover to England, tied by "London C.W. 1867" grid duplex, red London "Paid", cover scuff bottom left, otherwise Fine, very attractive example of the single 17c rate per Royal Mail Steamer (Cunard Line) 475.00
- 1090 ☒ **1859, 17c Blue (19).** Horizontal pair paying 34c of the 51c triple rate on a large size linen-lined blue cover to Scotland tied by rimless grids, "London C.W. JA 25 64" circular datestamps, straight-line "MORE TO PAY" and ms. rating marks, some cover crease, still attractive and scarce *Not illustrated* E. 750-1,000
- 1091 ★ **1868, 2c Green (24).** Original gum, minor h.r., exceptionally well-centered, strong dark color, Extremely Fine, with 1991 P.F. certificate 525.00



1093



1094EX



1097



1098



1096



1099



1100



1101



1104EX



1105



1117



1113



1118



1139



1131



1132

1133



1172



1191

- 1092 **1868, 1c Brown Red, Laid (31).** Fairly well-centered, deep rich color and light circular date-stamp, unobtrusive short perf bottom right, rare and seldom-seen variety 5,000.00



1092

- 1093 ★ **1888, 10c Brown Red (45).** Original gum, wide margins, rich color, Very Fine and choice 500.00
- 1094 ★ **1897, ½c-50c Jubilee (50-60).** Original gum, lightly hinged (couple lower values may be Mint N.H.), sensational centering throughout, several with exceptional margins, Extremely Fine lot, 50c with 1995 P.F. certificate **(Photo Ex)** 1,272.00
- 1095 ★ **1897, ½c-\$1.00 Jubilee (50-61).** Original gum except 50c regummed over filled thins, few other trivial flaws, otherwise Very Fine lot *Not illustrated* 2,072.00
- 1096 ★★田 **1897, 15c Jubilee (58).** Mint N.H. horizontal block of six with right selvage (small separation), very attractively centered, strong color and fine impression, couple tiny trivial edge flaws in left margins of left pair, otherwise Very Fine 3,000.00
- 1097 ★★ **1897, \$1.00 Jubilee (61).** Mint N.H., rich color on bright paper, wide margins, Fine and very attractive 2,150.00
- 1098 ★ **1897, \$4.00 Jubilee (64).** Original gum, lightly hinged, choice color and centering, fresh, Extremely Fine 1,250.00
- 1099 ★ **1897, \$4.00 Jubilee (64).** Original gum, faintly hinged, deep rich color, rounded bottom left corner perf, otherwise Fine 1,250.00
- 1100 ★ **1897, \$5.00 Jubilee (65).** Original gum, very faintly hinged, essentially perfectly centered with incredible depth of color, Extremely Fine, a true premium example of this 1897 Jubilee top value, with 1993 P.F. certificate 1,250.00
- 1101 ★ **1897, \$5.00 Jubilee (65).** Original gum, faintly hinged if at all, light fingerprint mark, reperfed at right, Extremely Fine appearance, Scott Retail as hinged 1,250.00
- 1102 ★田 **1897-98, ½c-8c Maple Leaf (66-72).** Original gum blocks of four or six plus extra 1c block of four, 24 of the 38 stamps Mint N.H., 6c disturbed original gum, Fine-Very Fine with the exception of the 6c which has some gum staining (less than 10% of the value of the entire lot) *Not illustrated* 4,176.00
- 1103 ★★ **1908, ½c Quebec (96).** Accumulation of 455 Mint N.H. stamps in pairs, blocks of four and part sheets of 80 and 90, also incl. twelve 1c and nineteen 2c, Fine-Very Fine *Not illustrated* 7,270.00
- 1104 ★★ **1908, 1c-2c Quebec (97-98).** Mint N.H., beautiful margins and perfectly centered, **the 2c a Jumbo**, Extremely Fine Gems, surprisingly difficult to find this nice **(Photo Ex)** 110.00
- 1105 ★ **1908, 7c-20c Quebec (100-103).** Wide balanced margins, 10c and 15c exceptionally so, rich colors, Extremely Fine lot 680.00
- 1106 ★★田 **1911, 1c Green (104).** Complete Mint N.H. sheet of 100 with plate "No.-A 148 901K", Very Good-Very Fine *Not illustrated* 4,500.00
- 1107 ★★田 **1911-25, 1c-10c Admirals (104-105, 107-110, 112, 112a, 114, 117).** Approximately 470 stamps, apparently all Mint N.H., various quantities, no. 107 (161), 109 (92), 112a (61), 114 (63), others from four to 28 each, Fine-Very Fine *Not illustrated* 20,725.00
- 1108 ★★田 **1922, 1c Orange Yellow, Die I (105).** Mint N.H. block of 45 with right selvage and partially printed bottom **Lathework Margin**, fresh and bright, Very Fine-Extremely Fine with a surprisingly high number of choice stamps *Not illustrated* 1,800.00

- 1109 ★★田 **1922-24, 2c Green, Regular and Thin Paper (107, 107a).** First is two part sheets of 81, distinct shades (no s.e.'s) with plate nos. "T-2 OTTAWA-No.-A-1 59 910 A-D" and T-7 OTTAWA-No.-A 1 62 910 AD", latter top left corner selvage block of 36 with plate no. T-7-OTTAWA-No.-A185 910 B B", all Mint N.H., Fine-Very Fine. *Not illustrated* 6,417.00
- 1110 ★★田 **1918, 3c Brown (108).** Two Mint N.H. blocks of 25, Fine to mostly Very Fine-Extremely Fine with several Gem quality Jumbos noted.....*Not illustrated* 2,000.00
- 1111 ★★田 **1918, 3c Brown (108).** Mint N.H. irregular block of 71, the bottom block of eight with **Lathework Selvage Ty. "D"**, Fine-Very Fine, Scott Retail as Mint N.H. singles.....*Not illustrated* 2,840.00
- 1112 ★田 **1922, 5c Violet (112).** Horizontal block of eight with bottom Lathework Ty. D, pos. 5 and 6 faintly hinged, other six Mint N.H., Fine, Scott Retail as hinged and Mint N.H. singles.....*Not illustrated* 525.00
- 1113 ★★田 **1924, 5c Violet, Thin Paper (112a).** Mint N.H. block of 36 with top plate no. "T4 OTTAWA-No.-A 22 940 V", Very Fine-Extremely Fine, incl. quite a few very nice stamps.....*Not illustrated* 2,340.00
- 1114 ★★田 **1924, 5c Violet, Thin Paper (112a).** Mint N.H. block of 44 with left "(G)AUGE" imprint selvage, Fine-Very Fine.....*Not illustrated* 2,860.00
- 1115 **1922, 10c Blue (117).** Block of 48 with top plate no. "T-7-OTTAWA-No.-A 15 934 Y", 45 stamps Mint N.H., unusual light blue shade, almost "milky" in appearance, left column of six natural s.e., Fine-Very Fine, attractive multiple.....*Not illustrated* 5,077.09
- 1116 ★★田 **1922-25, 10c Blue, Bister Brown (117-118).** Mint N.H. blocks of seventeen and twenty, wonderfully fresh, Fine-Very Fine with two or three wide margined Extremely Fine 10c Blues.....*Not illustrated* 3,870.00
- 1117 ★★田 **1925, 50c Black Brown (120).** Mint N.H. block of fifteen with bottom right corner selvage, some separations, generally Fine multiple.....**(Photo, p. 18)** 3,000.00
- 1118 ★★ **1923, \$1.00 Orange (123).** Mint N.H., incredibly wide Jumbo margins, great centering and with fabulous depth of color, Extremely Fine.....**(Photo, p. 18)** 230.00
- 1119 ★★ **1923, \$1.00 Orange (122).** Irregular "block" of three and horizontal block of six with top selvage showing partial faint imprint and plate no., Mint N.H., Fine-Very Fine.....*Not illustrated* 2,070.00
- 1120 ★★田 **1922-23, 1c Orange Yellow, 2c Green, Perf 8 Coil Blocks (126a, 128a).** Mint N.H. vertical blocks of 50, Very Fine-Extremely Fine.....*Not illustrated* 2,000.00
- 1121 ★★田 **1922, 2c Green, Perf 8 Coil Blocks (128a).** Seven Mint N.H. blocks (six to 50 stamps per block), also two Mint N.H. blocks of four of No. 126a, virtually all Fine-Very Fine with a fair amount Extremely Fine.....*Not illustrated* 2,430.00
- 1122 ★★ **1917, 3c Confederation (135).** 58 Mint N.H. singles, Fine-Very Fine.....*Not illustrated* 5,800.00
- 1123 ★★田 **1924, 1c Orange Yellow, Imperforate (136).** Mint N.H. vertical block of eighteen with top "T-3-OTTAWA-No.-A 180" margin, also Mint N.H. pair, Extremely Fine.....*Not illustrated* 1,200.00
- 1124 ★★田 **1924, 2c Carmine, Imperforate (138).** Mint N.H. horizontal block of 40 with **Pyramid Guide margin at left** (Unitrade 138i), Extremely Fine, Scott Retail as 20 Mint N.H. pairs.....*Not illustrated* 1,200.00
- 1125 ★★田 **1924, 3c Carmine, Imperforate (138).** Three Mint N.H. items, incl. top right plate no. 131 block of fourteen and two blocks of four with Ty. "D" lathework and plate nos. 127 and 128, Extremely Fine.....*Not illustrated* E. 500-750
- 1126 ★★ **1926, 2c on 3c Carmine, One Line and Two Line Surcharges (139-140).** Fifteen and sixteen respectively, Mint N.H., Fine-Very Fine.....*Not illustrated* 1,955.00
- 1127 ★★田 **1928-29, 1c-20c George V "Scroll" Issue (149-150, 152).** Mint N.H. blocks and part sheets, 1c-12c part sheets of 40-81, 20c is block of fifteen and plate block of twenty, Fine-Very Fine.....*Not illustrated* 17,123.00
- 1128 ★ **1928-29, 1c-50c George V, Pictorials (149-158).** Accumulation of over 400 stamps, 177 of No. 150, five of No. 158, 17 to 85 each of others, No. 158 hinged, others Mint N.H., Fine-Very Fine.....*Not illustrated* 15,500.25
- 1129 ★ **1928-29, 1c-\$1.00 Scroll Issue (149-159).** Two unused sets and one used set, also unused set to 50c and a few other stamps of 1932-38, virtually all Fine-Very Fine.....*Not illustrated* E. 400-500
- 1130 ★★ **1929, 50c "Bluenose" (158).** Two Mint N.H. vertical pairs, one with top left corner selvage, tiny surface speck on one, otherwise Fine-Very Fine.....*Not illustrated* 1,600.00

- 1131 ★田 1929, 50c "Bluenose" (158). Block of four with top "Ottawa-No.A-3 936 Y" margin, bottom pair lightly hinged, bottom pair Mint N.H., Fine, Scott Retail as two hinged and two Mint N.H. singles(Photo, p. 18) 1,200.00
- 1132 ★★田 1929, 50c "Bluenose" (158). Mint N.H. block of four, very attractively centered, Very Fine-Extremely Fine(Photo, p. 18) 1,600.00
- 1133 ★★ 1929, \$1.00 Parliament (159). Mint N.H., perfectly centered, Extremely Fine(Photo, p. 18) 550.00
- 1134 1930-31, 1c-8c George V "Arch" Issue (162-172). Over 1,800 Mint N.H. stamps, various quantities in blocks of four, part sheets and complete sheets of 100, 5c with both flat plate and rotary press printings, better incl. 82 of No. 168 and 70 of No. 171, Fine-Very FineNot illustrated 17,317.00
- 1135 ★★田 1930-31, 1c-8c George V "Arch" Issue (162-173). Complete Mint N.H. sheets of 100 except No. 170 block of four and plate no. 1 block of six, and No. 173 plate no. 1 block of 76 and blocks of six and eighteen, these also Mint N.H., Fine-Very Fine.....Not illustrated 16,225.00
- 1136 ★★田 1930, 8c Dark Blue (171). Complete Mint N.H. sheet of 100 with top left and top right plate no. 1 blocks, Fine-Very Fine.....Not illustrated 5,000.00
- 1137 ★★ 1930, 12c Citadel, 20c Harvesting (174-175). 12c Mint N.H. plate no. 1 blocks of twenty and 24, 20c Mint N.H. block of ten, single, three blocks of four (one plate block) and block of six, Fine-Very FineNot illustrated 3,720.00
- 1138 ★★田 1931, 12c Citadel, 20c Harvesting (174-175). Mint N.H. part sheets of 36 with plate nos. 1 (no s.e.'s), Fine-Very FineNot illustrated 4,680.00
- 1139 ★★田 1930, \$1.00 Mt. Cavell (177). Mint N.H. block of four, Fine-Very Fine.....(Photo, p. 18) 1,500.00
- 1140 ★ 1930, \$1.00 Mt. Cavell (177). Single, pair and block of four, two stamps Mint N.H., Fine-Very Fine.....Not illustrated 1,650.00
- 1141 ★★田 1931, 3c Carmine, Perf 12 x 8 (184). Two Mint N.H. sheets of 100 plus Mint N. H. block of 76, Fine-Very FineNot illustrated 3,864.00
- 1142 ★★田 1931, 10c Cartier (190). Complete Mint N.H. sheet of 100, Fine-Very Fine.....Not illustrated 2,750.00
- 1143 ★★田 1932, 3c-13c Economic Conference (192-194). Mint N.H. sheets of 100 for 3c and 5c (two each), and Mint N.H. pane of 50 of 13c, Fine-Very FineNot illustrated 3,980.00
- 1144 ★★田 1932, 1c-13c George V (195-201). Over 600 Mint N.H. stamps, only five of the 4c, 100 each 1c-3c and 5c, 78 of the 8c and 50 of the 13c, mostly in complete sheets of 100, Fine-Very Fine.....Not illustrated 13,780.00
- 1145 ★★田 1932, 13c Dull Violet (201). Mint N.H. vertical block of eight, beautifully centered, Extremely Fine.....Not illustrated 640.00
- 1146 ★★田 1933, 5c UPU Meeting (202). Complete Mint N.H. sheet of 100, folded for storage between 5th and 6th columns and 8th and 9th rows, Very Fine ..Not illustrated 1,750.00
- 1147 ★★田 1933, 20c Grain Conference Ovpt. (203). Two singles, three blocks of four, two blocks of six and top right plate no. 1 block of four, three stamps with **Broken "X" variety** (Unitrade 203i), Mint N.H., Very Fine lot, Scott Retail as normal Mint N.H. singlesNot illustrated 2,100.00
- 1148 ★★田 1934, 10c Loyalists (209). Mint N.H. bottom left plate no. 1 block of twenty, trivial selvage corner crease, Very FineNot illustrated 950.00
- 1149 ★★田 1934, 10c Loyalists (209). Mint N.H. pane of 50, couple tiny selvage faults, otherwise Fine-Very FineNot illustrated 2,375.00
- 1150 ★★田 1934, 10c Loyalists (209). Complete Mint N.H. sheet of 100, folded for storage between 5th and 6th columns and 2nd and 3rd rows, some selvage faults slightly affecting one plate block, Fine-Very Fine sheet.....Not illustrated 4,750.00
- 1151 ★★田 1935, 1c-20c George V, Pictorials (217-225). Accumulation of over 1,000 Mint N.H. stamps in complete and part sheets, 85 to 260 of each, Fine-Very Fine.....Not illustrated 7,524.00
- 1152 ★★田 1935, 50c Parliament Buildings (226). Matched Mint N.H. top and bottom plate no. 1 blocks of ten, Very Fine-Extremely Fine, Scott Retail as Mint N.H. singlesNot illustrated 900.00
- 1153 ★★田 1935, 50c Parliament Buildings, \$1.00 Champlain Monument (226-227). 50c single and top plate no. 1 block of six, \$1.00 horizontal block of six, Mint N.H., Extremely FineNot illustrated 915.00
- 1154 ★★田 1935, \$1.00 Champlain Monument (227). Mint N.H. block of twenty with selvage on three sides, Extremely Fine.....Not illustrated 2,000.00

- 1155 ★★田 1942, 13c "Ram" Tank (258). 37 Mint N.H. sheets of 50, Fine-Very Fine
.....*Not illustrated* 13,875.00
- 1156 ★★ 1946, 8c-\$1.00 Resources (268-273). Eighteen Mint N.H. sets, incl. blocks, well-centered,
Very Fine-Extremely Fine*Not illustrated* 1,444.50
- 1157 No Lot.
- 1158 ★★田 1946, 8c-\$1.00 Resources (268-273). Small Mint N.H. accumulation in various quantities,
incl. fourteen 50c and eight \$1.00, Very Fine-Extremely Fine*Not illustrated* 1,302.25
- 1159 ★★田 1951, \$1.00 Fisheries (302). Single, block of nine and plate no. 1 block of four, Mint
N.H., Extremely Fine*Not illustrated* 712.50
- 1160 ★ 1918-19, 25c, \$1.00 Aero Club of Canada, Air Post Semi-Officials (CLP2-CLP3). First is
original gum single (couple short perfs) and original gum Tete-Beche pair (small edge
nick in one stamp, last with original gum also, scarce lot*Not illustrated* E. 400-500
- 1161 ★★田 1928-46, 5c-17c Air Post, Air Post Special Delivery (C1, C3-C6, C8-C9, CE1-CE3).
Accumulation of Mint N.H. blocks and complete sheets with some plate blocks, fourteen
of No. C1, 70 of No. C3 and 76 of "key" No. C4 (about half of value), 120 to 230 each
of others, also incl. used part sheet of 40 of No. CE1, Fine-Very Fine
.....*Not illustrated* 11,365.00
- 1162 ★ 1930, 5c Olive Brown (C2). Twenty singles, half Mint N.H., Fine-Very Fine
.....*Not illustrated* 2,000.00
- 1163 ★★田 1930, 5c Olive Brown (C2). Mint N.H. block of twenty with bottom left corner selvage,
Very Fine-Extremely Fine*Not illustrated* 2,000.00
- 1164 ★★田 1932, 6c on 5c Brown Olive (C3). Two Mint N.H. part sheets of 90 with top double plate
no. A-1 915 A, Fine-Very Fine*Not illustrated* 3,150.00
- 1165 ★ 1932, 6c on 5c Ottawa Conference Ovpt. (C4). 69 stamps, 47 Mint N.H., incl. some
blocks, Fine-Very Fine*Not illustrated* 3,245.00
- 1166 ★★田 1932, 6c on 5c Ottawa Conference Ovpt. (C4). Mint N.H. blocks of 34, 35 and 36, Fine-
Very Fine*Not illustrated* 7,315.00
- 1167 ★★田 1942, 16c Bright Ultramarine, Air Post Special Delivery (CE1). 42 Mint N.H. sheets of
50, Fine-Very Fine*Not illustrated* 6,825.00
- 1168 ★★田 1898, 10c Blue Green, Special Delivery (E1). Two Mint N.H. blocks of four, one with
natural s.e. at left and top plate no. 2-922F selvage (h.r. in selvage), Fine-Very Fine
.....*Not illustrated* 2,000.00
- 1169 ★★ 1898-1922, 10c Blue Green, 20c Carmine, Special Delivery (E1-E2). Former block of
four with right selvage, latter four singles, Mint N.H., one E2 small gum disturbance,
Fine-Very Fine*Not illustrated* 1,720.00
- 1170 ★★田 1898-1946, 10c & 20c Special Delivery (E1-E11). Blocks of four, nearly all stamps Mint
N.H., Fine-Very Fine with the vast majority in the higher grade and some better
.....*Not illustrated* 2,180.00
- 1171 ★田 1898-1946, 10c & 20c Special Delivery (E1-E11). Blocks of four except No. E5 three
singles only, majority of stamps hinged, two E4 and one E10 creased, otherwise Fine-
Very Fine*Not illustrated* 1,424.50
- 1172 ★★田 1898, 10c Blue Green, Special Delivery (E1). Mint N.H. block of four, incredibly fresh
with phenomenal centering, Extremely Fine(Photo, p. 18) 1,000.00
- 1173 ★★田 1927, 20c Orange, Special Delivery (E3). 104 stamps, 90 Mint N.H., few singles, others
blocks of four or larger, Fine-Very Fine*Not illustrated* 4,887.00
- 1174 ★★田 1930, 20c Henna Brown, Special Delivery (E4). Mint N.H. part sheet of 36 with plate no.
1 at left center, folded between 8th and 9th rows for storage, Very Fine-Extremely Fine,
beautiful part sheet*Not illustrated* 3,960.00
- 1175 ★★田 1935-46, 10, 20c Special Deliveries (E6-E7, E9-E11). Mint N.H. blocks and complete
sheets, No. E10 with 128 stamps, 40 to 80 each of others, Very Fine lot
.....*Not illustrated* 2,569.25
- 1176 ★★田 1906-28, 1c-10c Violet, Postage Due (J1-J5, J4a). Mint N.H. blocks of four, 10c with
bottom left corner selvage, Very Fine lot*Not illustrated* 1,070.00
- 1177 ★田 1906-28, 1c-10c Violet, Postage Due (J1-J5, J4a). 1c-4c and both 5c block of four, 10c
four singles, two each Mint N.H. except all J4a Mint N.H., Fine-Very Fine
.....*Not illustrated* 915.00
- 1178 ★★ 1906-28, 1c-10c Postage Due (J1-J5, J4a). 183 virtually all Mint N.H. stamps (eight natu-
ral s.e.), 73 of the 1c, 7-31 each of others, some occasional light gum toning on a few,
otherwise Fine-Very Fine lot*Not illustrated* 6,515.00
- 1179 ★★田 1906-30, 1c-5c Postage Due (J1, J7-J9). Mint N.H., 75 to 100 of each, J1 with plate "No.
A3" and J7 "1", Fine-Very Fine*Not illustrated* 7,447.50

- 1180 ★★田 **1926, 10c Violet, Postage Due (J5).** Mint N.H. block of 27 (3 x 9) with bottom left sheet corner selvage, Fine-Very Fine*Not illustrated* 3,510.00
- 1181 ★★ **1930-34, 1c-10c Postage Due (J6-J7, J11-J14).** Mint N.H. in various quantities (eight J6 hinged), also incl. couple hundred J15/J20 (no 3c or 6c values), not counted, Fine-Very Fine*Not illustrated* 4,695.00
- 1182 ★★田 **1933-34, 1c-10c Postage Due (J11-J14).** Mint N.H. part sheets, 40 of 1c, 50 each of others, first three with "PLATE NO. 1". Fine-Very Fine*Not illustrated* 4,415.00
- 1183 ★★ **1915, 1c Green, 2c Carmine, War Tax (MR1-MR2).** 74 and 119 respectively, all Mint N.H. except six or so, incl. few natural s.e.'s, Fine-Very Fine*Not illustrated* 9,100.00
- 1184 ★ **1915-16, 2c + 1c War Tax (MR1-MR7).** Blocks and coil pairs, 9-24 each, over 20 Mint N.H. (nearly all of these are MR3 and MR5), others lightly hinged to heavy h.r., virtually all Fine-Very Fine*Not illustrated* 5,220.00
- 1185 ★★田 **1915, 2c Carmine, War Tax (MR2).** Mint N.H. part sheet of 81 (no s.e.'s) with plate "No.-A9", Fine-Very Fine*Not illustrated* 3,847.50
- 1186 ★★田 **1916, 2c + 1c Carmine, Die I, War Tax (MR3).** 140 Mint N.H. stamps in multiples of various sizes, Fine-Very Fine*Not illustrated* 9,800.00
- 1187 ★★田 **1916, 2c + 1c Carmine, Brown, War Tax (MR3-MR5).** Mint N.H. multiples, fifteen, ten and fifteen stamps respectively, Fine-Very Fine*Not illustrated* 3,250.00
- 1188 ★★田 **1916, 2c + 1c Brown, Die II, War Tax (MR4).** Mint N.H. part sheet of 81 with plate "No. A 56 937 U", Fine-Very Fine*Not illustrated* 3,240.00
- 1189 ★田 **1915, 20c Olive Green, 50c Black, Two-Line "War Tax" Ovpts. (Unitrade MR2C-MR2D).** Single and block of four of each, two each Mint N.H. others lightly hinged, Fine-Very Fine*Not illustrated* E. 300-400
- 1190 ★★ **1949-53, 1c-50c Officials (O1/O37, CO1-CO2, EO1-EO2).** Mint N.H. accumulation, 35 different in various quantities, incl. some complete sheets, better incl. Nos. O2, CO2 and EO2, Fine-Very Fine*Not illustrated* 7,895.25
- 1191 ★ **1902, Black on Bluish, Official Seal (OX2).** Barely hinged, Very Fine*(Photo, p. 18)* 425.00
- 1192 ★ **1907-13, Black and Dark Brown, Official Seals (OX3-OX4).** Former Mint N.H. horizontal pair with top selvage, latter horizontal strip of three with bottom left sheet corner selvage, original gum, one Mint N.H., Fine-Very Fine*Not illustrated* 710.00

END OF MORNING SESSION



1193



1196



1200



1201EX



1197



1202



1203



1204EX



1205



1206EX



1207



1208



1209



1210



1211



1195

AFTERNOON SESSION (LOTS 1193-1372)

THURSDAY, JUNE 26, 2008, AT 1:30 P.M.

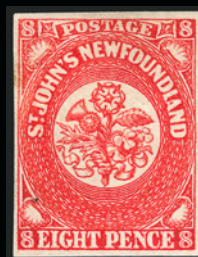
BRITISH COMMONWEALTH (CONTINUED)

CAPE OF GOOD HOPE

- 1193 **1853, 1p Deep Brick Red on Deeply Blued Paper (1b; SG 1a).** Margins all around, rich color, triangular cancels, Very Fine, SG £325 375.00
- 1194 **1853-63, 1p-1sh Perkins, Bacon Triangles (2-6; SG 2-3, 6-8).** Nine stamps, ample to huge margins, incl. unused No. 4 (no gum), extra used examples of Nos. 4-6, 6p distinct shades, other two subtle differences in colors, No. 2 creases, unused no. 4 and one used No. 5 light creases, otherwise Fine-Very Fine, SG £1,870.....*Not illustrated* 1,885.00
- 1195 ☒ **1853, 2p Deep Blue on Deeply Blued Paper (2a; SG 2).** Beautiful large margins and strong color, tied by negative "CGH" triangle on 1861 folded cover, parts of back flaps missing, still Extremely Fine, lovely cover E. 300-400
- 1196 **1853, 6p Slate Purple on Bluish Paper (5c; SG 7d).** Margins all around, a little closer at bottom center, light triangular grid cancel, Fine, ex Chapin, with 2002 Sismondo certificate, SG £1,000 1,150.00
- 1197 ★田 **1863-64, 1p Dark Carmine (12; SG 18).** Original gum triangular shaped block of four with huge sheet margin one side, margins ample other sides, wonderful deep rich color, Very Fine, with 1978 B.P.A. certificate, S.C.S.A. certificate, SG £640..... 700.00
- 1198 **1863-64, 1p-6p De La Rue Triangles (12-14; SG 18-20).** Unused singles of each (1p traces of original gum, other two no gum), and used singles of 1p and 6p, margins all around, Fine-Very Fine; SG £1,240*Not illustrated* 1,375.00
- 1199 **1863-64, 1p-1sh De La Rue Triangles (12-15).** Clear to large margins, triangular grid cancels, 1sh small thin spot, otherwise Fine-Very Fine, SG £1,180.*Not illustrated* 1,372.50
- 1200 ★ **CAYMAN ISLANDS, 1908, 2½p on 4p Brown & Blue, Provisional Surcharge (20; SG 35).** Lightly hinged, Fine, SG £1,700 1,750.00
- 1201 **CEYLON, 1857-59, 6p Plum on Blue Paper, 8p Brown (2, 8; SG 1, 7).** Margins all around, rather nice on the 8p, grid cancels, 8p tiny thin spot, otherwise Fine-Very Fine, 8p ex Ferrary, SG £1,950.....**(Photo Ex)** 2,275.00
- 1202 ★ **CYPRUS, 1881, 4pi Olive Green (14; SG 14).** Large part original gum, small h.r., essentially flawless centering, Extremely Fine, SG £900 1,050.00
- 1203 ★ **FALKLAND ISLANDS, 1933 5sh Centenary (74; SG 136).** Lightly hinged, wonderfully fresh with near perfect centering, Extremely Fine, SG £650 625.00
- 1204 ★ **GIBRALTAR, 1903-12, £1 Violet & Black on Red (48, 64; SG 55, 64).** Lightly hinged, beautifully centered, Extremely Fine, SG £1,000.....**(Photo Ex)** 1,200.00
- 1205 ★ **GIBRALTAR, £5 Dull Violet & Black (93; SG 108).** Lightly hinged, well-centered, B.P.A. certificate and choice, signed E. Diena and with his 1987 certificate, SG £1,300 1,750.00
- 1206 ★ **HONG KONG, 1890-1902, \$2.00 Gray Green, \$3.00 Lilac, Perf. 14 (57-58; SG F4-F5).** Faintly hinged, fresh colors and beautiful centering, Extremely Fine, SG £1,025 **(Photo Ex)** 1,050.00
- 1207 ★ **IRELAND, 1935, 2sh6p-10sh Seahorses (93-95; SG 99-101).** Faintly hinged, intense colors, Very Fine-Extremely Fine, lovely set, SG £375 725.00
- 1208 ★ **LEEWARD ISLANDS, 1897, 5sh Diamond Jubilee (16; SG 16).** Original gum, essentially perfectly centered, Extremely Fine, with 1994 P.F. certificate, SG £450 525.00
- 1209 ★ **MAURITIUS, 1858, (4p) Green on Bluish (9; SG 27).** Original gum, margins all around, Very Fine and choice, SG £450..... 500.00
- 1210 ★ **MAURITIUS, 1859, 6p Blue (18; SG 32).** Original gum, ample to large margins, strong color and wonderfully fresh, Extremely Fine, SG £600 725.00
- 1211 ★ **MAURITIUS, 1924, 50r Lilac & Green (200; SG 222).** Barest trace of hinging, well-centered, Very Fine and choice, with 1990 P.F. certificate, SG £700..... 900.00



1212



1214



1215



1221EX



1222



1238EX



1240



1242EX



1243



1244



1245



1246



1247



1248



1249



1250

- 1212 ★ **NEW BRITAIN, 1914, 3sh on 3m Black Violet, First Setting (14).** Light toning, otherwise Fine .. 3,500.00
- 1213 (★)田 **NEW BRUNSWICK, 1860-63, 1c-17c Pictorials (6-11).** Blocks of four, two of the 5c (distinct shades), 12½c with bottom left sheet corner selvage, original gum or unused (no gum), mostly the latter, Fine-Very Fine for these, scarce lot.....*Not illustrated* 894.00

NEWFOUNDLAND

- 1214 ★ **1857, 8p Scarlet Vermilion (8).** Part original gum, ample to large margins, vivid color, Very Fine 325.00
- 1215 **1860, 6p Orange (13).** Ample to large margins, light grid cancel, Very Fine, with 1962 B.P.A. certificate 800.00
- 1216 ★★ **1865, 12c Pale Red Brown (28).** 20 Mint N.H., virtually all in multiples, Fine-Very Fine, Scott Retail as hinged singles.....*Not illustrated* 950.00
- 1217 ★★田 **1880-97, 1c Violet Brown, 2c Deep Green, Green (41, 44-45).** 14, 52 and 104 respectively, mostly in multiples, virtually all Mint N.H. and Fine-Very Fine, Scott Retail as hinged*Not illustrated* 3,021.00
- 1218 ★★田 **1887, 2c Orange (48).** Complete Mint N.H. sheet of 100, piece of top left selvage missing, natural gum creases, Fine and rare sheet, Scott Retail as 100 hinged singles*Not illustrated* 2,500.00
- 1219 ★★田 **1887, 2c Orange (48).** Mint N.H. sheet of 100, natural gum bends and wrinkles, Fine and rare sheet, Scott Retail as 100 hinged singles.....*Not illustrated* 2,500.00
- 1220 ★田 **1887-94, 5c Dark Blue, Bright Blue (54-55).** Original gum blocks of four, former with bottom right corner selvage (bottom pair Mint N.H.), Very Fine, Scott Retail as hinged singles*Not illustrated* 650.00
- 1221 ★★ **1887, 10c Black (59).** Mint N.H. single, vertical pair and block of four with left selvage, fresh, well-centered, Very Fine, Scott Retail as seven hinged singles**(Photo Ex)** 700.00
- 1222 ★★田 **1887, 10c Black (59).** Mint N.H. horizontal block of eight with huge top right sheet corner selvage and full "British American Bank Note Co. Montreal", incredibly fresh, Fine-Very Fine, pos. 2 and 3 exceptional, a marvelous showpiece, Scott Retail as eight hinged singles 800.00
- 1223 ★★田 **1890, 3c Slate (60).** 124, original gum, virtually all Mint N.H., few with slight gum toning, otherwise Very Good-Very Fine, mostly Fine or better, cataloged as the least expensive shade, Scott Retail as all hinged*Not illustrated* 2,440.00
- 1224 ★★田 **1897, 60c Black (74).** Mint N.H. irregular block of 63 plus five singles and three blocks of four, these also Mint N.H., Fine-Very Fine, Scott Retail as 80 hinged singles.....*Not illustrated* 1,280.00
- 1225 ★★田 **1899, 5c Blue (85).** Mint N.H. horizontal block of ten plus one horizontal pair, beautifully centered, Very Fine-Extremely Fine, Scott Retail as hinged singles*Not illustrated* 480.00
- 1226 ★★ **1910-11, 3c-6c Guy, Lithographed and Engraved (89-91, 92A, 98).** Mint N.H. in various quantities, Very Fine lot, Scott Retail as hinged singles.....*Not illustrated* 1,000.00
- 1227 ★★田 **1928, 1c-30c Pictorials (145-159).** Mint N.H. blocks of four, Fine-Very Fine*Not illustrated* 799.00
- 1228 ★★田 **1928, 1c-30c Pictorials (145-159).** Mint N.H. blocks of four, Very Fine.....*Not illustrated* 700.00
- 1229 ★★田 **1931, 1c-10c Views (172-177, 179).** Mint N.H. accumulation, 161 of No. 175, ten to 50 each of others, Fine-Very Fine, Scott Retail as hinged.....*Not illustrated* 2,413.50
- 1230 ★★田 **1932-37, 15c-48c Pictorials (195-199).** Mint N.H. in various quantities, also Mint N.H. 1c-4c in various quantities, incl. complete sheets, Fine-Very Fine, Scott Retail only lists hinged.....*Not illustrated* E. 1,000-1,500
- 1231 ★★田 **1932, 7c-24c Pictorials (208-210).** Complete Mint N.H. sheets of 100, incl. extra 7c sheet, Fine-Very Fine, Scott Retail as hinged singles.....*Not illustrated* 825.00
- 1232 ★★田 **1933, 15c "L. & S. Post" Ovpts. (211).** Three hundred sixty-six Mint N.H. stamps, nearly all in blocks of 25, Fine-Very Fine 5,124.00
- 1233 ★★田 **1933, 1c-32c Gilbert (212-225).** Mint N.H. blocks of four, Very Fine 720.00
- 1234 ★★田 **1933, 1c-32c Gilbert (212-225).** Mint N.H. blocks of four, Very Fine 720.00
- 1235 ★★田 **1933, 1c-32c Gilbert (212-225).** Mint N.H. blocks of four except 9c and 14c three singles each, Very Fine..... 697.00
- 1236 ★★田 **1932, \$1.00 Dark Blue, Unissued Air Mail.** Complete Mint N.H. sheet of 20, produced by a U. S. Firm for the First Trans-Atlantic Mail and Passenger Crossing but the contract was cancelled by the Newfoundland Government and the stamp was never issued, Fine-Very Fine, very scarce in sheet form..... 500.00

- 1237 ★★ **NEW GUINEA, 1931, 1p-£1 Mandate Anniversary (18-33).** Mint N.H., Very Fine, SG £350, Scott and Gibbons Retail as hinged*Not illustrated* 423.00
- 1238 ★ **NEW GUINEA, 1935, £2 & £5 Goldfields (C44-C45; SG 204-205).** Faintly hinged, Extremely Fine, SG £800.....(Photo Ex, p. 22) 885.00
- 1239 ★★ **NEW GUINEA, 1931, 1p-5sh Mandate Anniversary, Officials (O12-O22; SG O31-O41).** Mint N.H., Very Fine, SG £200 as hinged, Scott Retail as hinged...*Not illustrated* 259.50
- 1240 **NEW SOUTH WALES, 1851, 2p Grayish Blue, Bluish, Pl. I (Sc. 14b; SG 55).** Large to enormous margins incl. part of sheet margin, oval grid, Extremely Fine Gem, a gorgeous stamp, SG £30(Photo, p. 22) 47.50



1241

- 1241 ☒ **NEW ZEALAND, 1864-65, 4p Deep Rose, 6p Red Brown (34, 36; SG 119, 122).** Single of each, tied by "Dunedin Nov. 18, 1865" duplex, second strike at left, on cover to Scotland, 4p attractively centered, also tied by red London Paid transit, Jan. 13, 1866 Edinburgh arrival backstamp, couple cover tears top left
VERY FINE. THERE ARE VERY FEW COVERS KNOWN BEARING THE 4-PENCE DEEP ROSE STAMP.
Ex Burrus..... E. 2,000-3,000
- 1242 ★ **NORTH BORNEO, 1886, 50c Violet, \$1.00 Red (32-33).** Original gum, \$1.00 single nibbed perf at top, otherwise Fine-Very Fine.....(Photo Ex, p. 22) 650.00
- 1243 ★ **ST. HELENA, 1922-27, 15sh Violet & Black on Blue (94; SG 113).** Lightly hinged, Very Fine, SG £900 (Photo, p. 22) 1,025.00
- 1244 ★★ **ST. HELENA, 1922, 15sh Violet & Black on Blue (94; SG 113).** Mint N.H. block of four, beautifully centered, fresh and
EXTREMELY FINE. A BEAUTIFUL POST OFFICE CONDITION MULTIPLE OF THE "KEY" VALUE OF THE 1922-27 "BADGE OF THE COLONY" ISSUE.
SG £3,600 as four hinged singles. Scott Retail as four hinged singles..... 4,100.00
- 1245 ★ **ST. HELENA, 1922-27, £1 Red Violet & Black on Red (99; SG 96).** Beautiful colors, Very Fine, SG £400..... 475.00
- 1246 ★ **ST. KITTS-NEVIS, 1923, £1 Violet & Black on Red (64; SG 60).** Lightly hinged, wonderfully fresh and well-centered, Extremely Fine, SG £750 850.00
- 1247 ★ **TOBAGO, 1884, 6p Bister Brown (21; SG 19).** Original gum, fresh color, Very Fine and choice, with 1977 P.F. certificate, SG £550..... 625.00
- 1248 ★ **TRANSVAAL, 1875-76, 3p Dull Violet (37; SG 56).** Traces of original gum, large balanced margins, Extremely Fine, surprisingly difficult to find this nice, with 1958 Royal Philatelic Society and 1991 P.F. certificates, SG £400 450.00
- 1249 ★ **TURKS ISLANDS, 1881, 4p on 6p Gray Black (35; SG 42).** Original gum, h.r., about Very Fine for this, SG £450 475.00
- 1250 ★ **VICTORIA, 1907, £2 Pale Red (230; SG 444).** Exceptionally well-centered, Gibbons "Salmon" shade, Very Fine and choice, with 1991 P.F. certificate, SG £400 400.00

COUNTRIES A-Z



- 1251 ★ **ARGENTINA, 1892-95, 5c Green, Error of Color (96a).** O. g. lightly hinged with left selvage, fresh and well-centered, Extremely Fine, very scarce 1,000.00
- 1252 ★★田 **AUSTRIA, 1929-30, 10g-60g Views (326-337).** Mint N.H. blocks of four, Very Fine.....
.....(Photo Ex) 1,748.75
- 1253 ★ **AUSTRIA, 1936, 10sh Dollfuss (380).** Perfectly centered, Extremely Fine 725.00
- 1254 ★ **AUSTRIA, 1936, 10sh Dollfuss (380).** Lightly hinged, Very Fine 725.00
- 1255 **AUSTRIA, 1933, 12g-50g Ski Confederation (B106-B109).** Mint N.H. set and CTO set with special Innsbruck cancels, Very Fine.....*Not illustrated* 697.50
- 1256 ★ **AUSTRIA, 1933, 50g WIPA Souvenir Sheet, Granite Paper (B111).** Lightly hinged, beautifully centered, Extremely Fine, with original folder 2,650.00
- 1257 ★★田 **AUSTRIA, 1936, 12g-64g Inventors (B146-B151).** Mint N.H. sheets of 40, Fine-Very Fine*Not illustrated* 1,440.00
- 1258 ★★ **AUSTRIA, 1946, Renner Souvenir Sheets (B185-B188).** Mint N.H., Very Fine.....
..... 2,000.00
- 1259 ☒ **BELGIUM, 1915, 5c-20c Red Cross (B31-B33).** Three "Set" cards and a large size Registered cover to Switzerland with the 10c and 20c values plus a variety of 1912-13 Albert I Definitives with labels, Fine-Very Fine*Not illustrated* E. 150-200
- 1260 ★ **BELGIUM, 1932, 10c-10fr Cardinal Mercier (B114-B122).** Very fine(Photo Ex) 475.90
- 1261 ★ **BELGIUM, 1933, 5c-10fr Orval Abbey (B132-B143).** Very Fine(Photo Ex) 607.50



1262



1263



1264



1265



1266



1267



1268



1269



1270



1274



1276



1275EX

- 1262 **BRAZIL, 1843, 30r Black (1).** Early impression, ample to large margins, double-circle date-stamp, Very Fine, signed H. Bloch and with 1984 P.F. certificate..... 600.00
- 1263 ★ **CHINA, 1883, 5c Yellow (9).** Dry gum, small margin crease top right, otherwise Fine, with 1994 Holcombe certificate 725.00
- 1264 ☒ **FAROE ISLANDS, 1919, 2ø on 5ø Green (1).** Used with Denmark 5ø Green, tied on cover by "Thorshavn Jan. 1, 1919" circular datestamp, Very Fine, with 1975 Gunner L. Nielsen certificate E. 500-750
- 1265 **FINLAND, 1856-58, 5k Blue (1).** Large margins, ms. "X" and partial Helsingors circular date-stamp, Very Fine, signed H. Bloch and A. Brun and with 1998 L. Nielsen certificate ... 1,400.00
- 1266 **FRANCE, 1849-50, 1fr Vermilion on Yellowish (8).** Ample to huge margins, fresh color, partial lozenge cancel, small thin spot, Very Fine appearance..... 13,750.00
- 1267 ★ **FRANCE, 1860, 80c Rose on Pinkish (20; Yvert 17B).** Original gum, lightly hinged, large margins, fresh and Extremely Fine, with 1991 P.F. certificate, 2006 Yvert 2,500 Euros. 1,400.00
- 1268 **FRANCE, 1860, 80c Rose on Pinkish (20).** Group consisting of four singles, two pairs, two strips of three and also 1860 cover to Ecuador ("VOIE DE PANAMA") with strip of four and additional 40c franking, virtually all four margins and Fine-Very Fine(Photo Ex) E. 200-300
- 1269 ★ **FRANCE, 1868, 80c Rose on Pinkish (36; Yvert 32).** Original gum, remarkably well-centered, bright color, Extremely Fine, 2006 Yvert 1,200 Euros 850.00
- 1270 ★ **FRANCE, 1932, 20fr Bright Red Brown, Die II, Perf 11 (254; Yvert 262B).** Barest trace of hinging, choice color and centering, Extremely Fine, 2006 Yvert 1,200 Euros 675.00
- 1271 ★★ **FRENCH SOUTHERN & ANTARCTIC TERRITORIES, 1969-71, 30fr-500fr Meteorological Station (C19-C23).** Five Mint N.H. sets, also complete Mint N.H. sheet of ten of No. C48, Very Fine.....*Not illustrated* 1,175.00
- 1272 ★★ **GERMANY, 1933, Nothilfe Souvenir Sheet (B58).** Mint N.H., some very minor toning, shows mostly on reverse, otherwise Extremely Fine*Not illustrated* 4,500.00
- 1273 ★★ **GERMANY (Berlin), 1949-53, 1pf-5m Pictorials, Ovpts. (9N35-9N98).** Mint N.H., a complete run less one very inexpensive stamp (9N49), Very Fine*Not illustrated* 2,470.00
- 1274 ★★ **GERMANY (Berlin), 1949, Currency Victims Souvenir Sheet (9NB3a).** Mint N.H., Fine-Very Fine..... 825.00
- 1275 ★ **GERMAN OCCUPATION OF ZARA, 1943, 5c-2l Postage Due, Ty. II Overprints (Sassone S1-S10).** Virtually all Mint N.H. including "key" 25c and 60c-5l, deep rich colors on bright paper FINE-VERY FINE. A RARE COMPLETE SET OF THE ZARA OCCUPATION POSTAGE DUES.
All except a couple of the inexpensive stamps signed A. Diena and couple others. With 1987 E. Diena certificate. Unlisted in Scott. Sassone value(Photo Ex) [E] 9,550.00
- 1276 ☒ **GREECE, 20l Blue Used from Alexandria, Turkey.** Horizontal pair, tied by "Alexandria (Toypkia) 19 Aeke 72" double-circle datestamp, second strike at right, on folded letter, red hand-stamp, Very Fine, scarce usage..... E. 300-400



1277

- 1277 **HONDURAS, 1925, 5c Light Blue, Red "AERO CORREO" Ovpt. (C3).** Full original gum with some very trivial gum toning as to be expected, well-centered, light vertical gum crease
VERY FINE AND CHOICE. A DESIRABLE EXAMPLE OF THIS RARE AIR POST STAMP IN OVERALL ABOVE AVERAGE CONDITION.
Signed Dr. Duron and with Agency handstamp, Scott Retail is for without gum..... 7,250.00



1278



1279



1280



1283



1284



1285



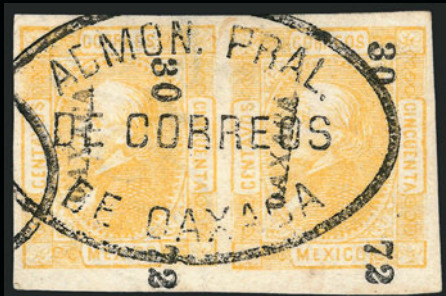
1286EX



1287



1288



1289



1290



1291



1292



1293



1294EX



1295

- 1278 **HONDURAS, 1925, 10c Dark Blue, Normal and Inverted "AERO CORREO" Ovpt. in Red, Tête Bêche Pair (C4b).** Some toning as always, top stamp short perf at right, otherwise, Fine-Very Fine, signed Dr. Duron..... 800.00
- 1279 ★ **HONDURAS, 1925, 20c Red Brown, Inverted "AERO CORREO" Ovpt. in Blue (C7a).** Few tiny gum toning specks as always, Fine 700.00
- 1280 (★) **HONDURAS, 1925, 50c Red, "AERO CORREO" Ovpt. (C8).** Unused (no gum), Very Fine, signed I. Heiman..... 450.00
- 1281 ★★ **ICELAND, 1937, Christian X Anniversary Souvenir Sheet (B5).** 44, Mint N.H., Very Fine *Not illustrated* 3,300.00
- 1282 ★★ **ICELAND, 1937, Christian X Anniversary Souvenir Sheet (B5).** 44, Mint N.H., Very Fine *Not illustrated* 3,300.00
- 1283 ★ **INDO-CHINA, 1922-23, 12c Brown & Black, Head and Value (11c + 12c) Double (109a).** Barely hinged, Very Fine and choice, scarce, seldom seen variety..... 350.00
- 1284 ★ **ITALIAN SOCIALIST REPUBLIC, 1943-44, 2l Blue, Brescia Printing, Type I Overprint (Sassone PA122/I).** Very lightly hinged, Fine and attractive, unlisted in Scott, Sassone value € 3,500.00
- 1285 ★ **KIAUCHAU, 1905, \$2½ Slate and Carmine (32).** Beautifully centered, light gum toning, Extremely Fine appearance 1,200.00
- 1286 ★★ **LATVIA, 1933, 10s-100s Africa Flight Ovpts. (Cp-C13).** Mint N.H., last four values with huge sheet margins, Extremely Fine **(Photo Ex)** 525.00

MEXICO

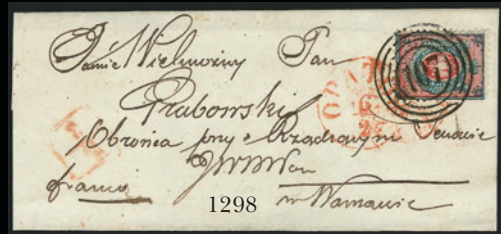
- 1287 ★ **1872, 6c Black on Buff, "Anotado" Ovpt. (71).** Full original gum, possibly Mint N.H., Ample to huge margins incl. right sheet margin, "Guadalajara" district name, Very Fine 650.00
- 1288 **1872, 100c Black on Brown, "Anotado" Ovpt. (75).** Margins all around, neat cancel, Very Fine..... 1,000.00
- 1289 **1872, 50c Yellow (84).** Horizontal pair, large to huge margins, bright color and bold Oaxaca oval cancel, Extremely Fine, Scott Retail as two used singles..... 500.00
- 1290 **1872, 100c Gray Blue, Watermarked "LA + F" (86a).** Ample to huge margins incl. right sheet margin, "TAMPICO" district name, Very Fine, with 1978 MEPSI certificate 600.00
- 1291 ★ **1872, 50c Blue Error of Color (90a).** Original gum, slightly irregular perfs as always, fresh and Extremely Fine..... 500.00
- 1292 **1872, 50c Blue, Error of Color (96d).** Large margins, neat circular datestamp, Extremely Fine 650.00
- 1293 (★) **1872, 50c Blue, Error of Color (102b).** Unused (no gum), typical rough margins, well-centered and Very Fine 475.00
- 1294 ★★ **1934, 20c-20p University (C54-C61).** Mint N.H., Very Fine and choice, it seems that the Never Hinged premium in the Scott Catalog is on the low side (approximately 8% over hinged), in our opinion at least an increase of 40% to 50% would be more in line **(Photo Ex)** 1,750.00
- 1295 ★★ **1934, 20p University (C61).** Mint N.H., Extremely Fine 1,250.00



- 1296 ★★ **1935, 20c Brown Carmine, Amelia Earhart Overprint (C74).** Mint N.H., wonderfully fresh and well-centered, Very Fine and choice, signed H. Bloch and with Sanabria hand-stamp guarantees 5,000.00



1297



1298



1299



1300



1301



1304



1305



1302



1303



1306



1309



1307



1308



1315



1311



1310



1312



1314

- 1297 ☒ **PERU, 1877, 5c Blue (23).** Tied by British Post Office at Callao "B38" oval grid on partly prepaid 1878 cover to **Florence, Italy**, 40c and vertical pair 50c Italian Postage dues affixed on arrival to make up the deficiency and tied by "Arrivo Firenze" boxes, three line "Panama Transit", ms. rate marks, backstamped with Callao British Post Office marking, French transit and Florence arrival, Fine, a very attractive and scarce cover E. 500-750
- 1298 ☒ **POLAND, 1860, 10k Blue & Rose (1).** Nicely centered, tied by bold "107" in four-ring target and red circular datestamp on small neat folded cover to Warsaw, very trivial rounded top right corner perf, otherwise Very Fine, quite attractive..... 1,000.00
- 1299 ☒ **PORTUGUESE INDIA, 1871, 10r Black (1).** Cover bearing horizontal pair and used with India ½a Blue (20) tied by "Bombay S.W. DE 24" duplexes on back of cover to Nova Goa, pair also tied by "Too Late" handstamp, 1871 docketing, slightly reduced at top, some wear and flaws, still Fine, scarce franking E. 200-300
- 1300 ★ **RUSSIA, 1858, 30k Carmine & Green (4).** Original gum h.r., Fine and very scarce 4,500.00
- 1301 ★ **SAN MARINO, 1903, 2l Violet (72).** Typical crackly original gum, lightly hinged, trivial natural perf dimple top left, normally a stamp with this centering would be considered Fine at best, but actually this example is better than typically seen with most of those cutting into the design, many severely, Very Fine for this, Sassone adds a 50% premium for centering 750.00
- 1302 (★) **SPAIN, 1865, 4c Blue (68).** Without gum as always, three huge margins, large at bottom, faint crease, Extremely Fine appearance, a very scarce stamp that was never placed in use 2,400.00

SWEDEN

- 1303 **1855, 3s Blue Green (1).** Light circular datestamp, repaired (as are many of this stamp), Very Fine appearance..... 3,000.00
- 1304 **1855, 3s Pale Blue Green (1b).** Light circular datestamp, tiny thin spot, Fine appearance..... 3,000.00
- 1305 (★) **1855, 6s Gray (3).** Unused (no gum), thin spot, Fine appearance..... 6,000.00
- 1306 (★) **1855, 8s Red Orange (4).** Unused (no gum), bright color, Fine..... 4,250.00
- 1307 **1855, 24s Dull Red (5).** Nicely centered, neat circular datestamp, couple nibbed perfs at left, otherwise Very Fine..... 1,500.00
- 1308 (★) **1855, 24s Orange Red, Thin Paper (5a).** Unused (no gum), fresh color, tiny margin nick at left, otherwise Fine 6,500.00
- 1309 ☒ **1886-92, 4ö Gray, Diagonal Bisect (42 var.).** In strip of four with three normal stamps plus 2ö Orange No. 40 and 4ö Carmine and Ultramarine No. 55, all tied by "Stockholm Sept. 14, 1892" circular datestamps (the bisect well-tied across the cut) on cover to London, England prepaying the correct 20ö rate, all stamps, incl. the bisect, have faults of varying degrees, still a highly exhibitable cover of considerable rarity, note accompanies showing that this cover was purchased at auction in March 1939 for \$51.00 and further states that "Only one other Swedish bisect is known. The one presented to the Swedish Postal Museum by Mr. Hans Lagerlof", with 2005 Helena O. Wilen certificate E. 1,000-1,500
- 1310 ★ **1889, 10ö on 12ö Blue, Official, Inverted Surcharge (O26a).** Original gum, lightly hinged, minute margin thin speck, perfs barely in at right, scarce..... 900.00
- 1311 **1889, 10ö on 24ö Yellow, Official, Inverted Surcharge (O27a).** Well-centered, perfect strike of "Lund Dec. 26, 1889" circular datestamp, tiny thin speck, Very Fine appearance..... 2,200.00
- 1312 **SWITZERLAND, 1855, 10r Blue, Second Bern Printing (27; Zumstein 23Cd).** Fabulous margins incl. top left sheet corner, **shows interesting frame variety at right** (Zumstein 23Cd.2.02), light Riechen 5. Pk. circular datestamp, Extremely Fine, with 1992 Renggli certificate, Scott Retail as ordinary stamp..... 45.00
- 1313 ★★☐ **SWITZERLAND, 1916, 3c-10c Children, "Pro Juventute" (B4-B6).** Mint N.H. blocks of 25 with sheet corner selvage, fresh and Very Fine..... *Not illustrated* 4,375.00
- 1314 ☒ **THURN & TAXIS, 1859-62, 30kr Orange (52).** Used with two 1kr Green No. 56 and one 9kr Bister No. 55 on cover to U.S., tied by "245" in four-ring targets, Weisbaden circular datestamp, 1kr stamps also tied by red "N. York Br. Pkt. Paid", red "Aachen Paid 23 Cts." double-circle at left, cover creases and small edge tear, some light soiling as well, reasonably attractive and very scarce, Scott Retail as 30kr used with additional postage 3,400.00
- 1315 ★★☐ **TRIESTE ZONE "A", 1949-53, 1l Yellow Brown, Parcel Post, "Skipped" Comb Perforation (Sassone PP13q).** Mint N.H. vertical "block" of five pairs with huge top sheet margin, second pair imperf at sides and in between second and third pairs, Fine-Very Fine, attractive show-piece, unlisted in Scott, Sassone value..... € 2,500.00

GROUP LOTS BY COUNTRY

- 1316 ★ **Australia Collection.** Couple hundred virtually all unused stamps in hingeless album, incl. 1913 used 5/-, ½p-1sh4p George V with shades and varieties, 1915 used 5/-, 1915-25 used 5/- and 10/-, 1929-30 used 5/-, 1931 used 10/- and £1, 1937-49 5/- to £1 Royal Couple, 1948 5/- to £2 Arms, essentially complete from 1946 to 1971 with complete Sterling and Decimal Navigators, "B.C.O.F." Occupation set to 5/-, and more, nearly all Fine-Very Fine..... E. 750-1,000
- 1317 ★★ **Austria, Semi-Postals, 1928-36.** Six different sets, Mint N.H., incl. Nos. B77-B80, B87-B92, B122-B127, Fine-Very Fine 925.00
- 1318 ★★ **Austria, Air Post Issues, 1918-35.** Nos. C1-C46, one to seven of each, Mint N.H., Fine-Very Fine 850.00
- 1319 ★ **Bermuda Collection.** Fairly complete from Queen Victoria to about 1960 in a stock book, incl. better earlier issues, some high value Geo V (fiscally used not counted), generally Fine-Very Fine E. 1,500-2,000
- 1320 ★ **British Commonwealth Collection.** Many hundreds of unused stamps on Scott Specialty pages, wide range of countries incl. Great Britain, Cyprus, Gibraltar, Malta, New Zealand, Antigua, Canada, Newfoundland, Australia, Papua New Guinea, and many more, all stamps neatly housed in Showgard mounts, many better singles and sets, too numerous to mention, also a small box of stamps in glassines, largely more recent issues but does incl. better earlier sets and singles, Fine-Very Fine, a particularly nice neat and valuable collection of this popular collecting area..... E. 10,000-15,000
- 1321 ★ **British Commonwealth Small Accumulation.** About 60 stamps on mail sale lot cards, incl. G.B. Nos. 286-289 and 309-312, Antigua 17, couple Cape of Good Hope, five sets of Christmas Islands 1-10, Cyprus 110 and used Rhodesia 138, also U.N. 38 Souvenir Sheet and Germany B91-B92 Souvenir Sheets, virtually all Fine-Very Fine E. 750-1,000
- 1322 ☒ **British Commonwealth Covers.** Small accumulation, wide variety of Colonies, reigns of George V to QEII, Fine-Very Fine..... E. 300-400
- 1323 ★ **British Pacific Collection.** Several hundred virtually all unused stamps in Scott Specialty Album, incl. New Zealand Semi-Postal singles and miniature sheets, some Officials, Niue, Pitcairn Islands, Sabah, excellent Sarawak and Tonga, issues to about 1971, quite a bit Mint N.H., Fine-Very Fine collection E. 750-1,000
- 1324 ★ **Cambodia Collection, 1951-Early 1990's.** Virtually complete in three-ring binders, incl. singles, souvenir sheets with early issues, imperfs, deluxe proofs, 1970's Gold Foil Air Post Souvenir Sheets (some listed as foot notes only), also nearly complete collection of Indo China, collection of Vietnam 1951-64 then later issues of North Vietnam to the late 1980's, 1993 Columbus Topical collection with Souvenir Sheets and some used Cape of Good Hope, virtually all Fine-Very Fine, the Cambodia very nice and comprehensive..... E. 2,000-3,000
- 1325 **Canada Classic Accumulation.** Few hundred virtually all used stamps, incl. 1859 First Decimal and Large and Small Queens in nice quantities for shades, cancels, etc., fair amount of unused Small Queens incl. multiples, much with original gum, also some early Revenues, very mixed condition, still a useful lot for the specialist with quite a nice part Fine-Very Fine E. 2,000-3,000
- 1326 **Canada First Decimal Issue, 1859.** Balance of exhibition collection on pages, incl. used Nos. 14 (16, with shades and plate vars.) and five covers, 15 (12) and four covers, 17 (24, identified by printings) and two covers plus a third with 5c, two 10c, believed to be one of only five quintuple rate covers (cover repaired and readdressed), 18 (7), 19 (10), incl. Major Re-Entry pos. 100, and 20 (3), attractively presented and written-up, generally Fine-Very Fine E. 2,000-3,000
- 1327 P **Canada Plate Proofs on India.** Five items, incl. No. 7 with top sheet margin, No. 9 in Black with Red vertical "Specimen" Ovpt., No. 8 block of four and No. 17 single with Red Vertical "Specimen" Ovpt. and a horizontal pair without ovpt., Very Fine lot..... E. 750-1,000
- 1328 FC **Canadian Fancy Cancels on Small Queen Issue.** 32 singles and two pairs, 1c, 3c and 6c values, virtually all different, incl. "Way Leeter" in Circle, letters, numerals, geometrics, Crown, mostly bold complete strikes, lovely lot for the specialist..... E. 400-500
- 1329 ★ **Canada Collection.** Nearly complete from Large Queens to 1967 in one hingeless album, incl. 6c Red Brown No. 43 Major Re-Entry, 20c and 50c Widow Weeds, Maple Leaf sets nearly complete, 50c Jubilee, \$5.00 Jubilee (unused, no gum), 1908 Quebec, Edward VII with 20c, Admirals complete, 1928-31 "Scroll" and "Arch" sets complete to \$1.00, beautiful showing of Booklet Panes, Coils, later sets to \$1.00, Special Delivery, Registration and Officials, unusually nice neat collection with virtually all Fine-Very Fine E. 3,000-4,000

- 1330 **Canada Used and Unused Stock, 1852-1956.** Thousands of used and unused stamps in two Elbe stockbooks, incl. used No. 13 (thin), lots of used 1c-17c 1859 First Decimal, several hundred Large and Small Queens with few original gum blocks of four incl. No. 46 (Very Good), generally ten or more 1897 Jubilees to 50c, quantities continue with ten, twenty and more of each stamp, also Back-of-the-Book with Air Post, Special Delivery, Postage Due, Registration and some Officials, condition is very mixed and the unused range from unused (no gum) to original gum with some Mint N.H. among the better, a very valuable and useful stock nonetheless, Canada stocks of this depth are hardly ever seen offered in today's auction market..... E. 20,000-30,000
- 1331 ★★田 **Canada Sheets and Part Sheets.** Several thousand stamps in sheet files between Nos. 170 to 342, nice variety in various quantities, incl. some better values, also three Official sheets, almost 100% Mint N.H., Fine-Very Fine..... E. 4,000-5,000
- 1332 **Canada, Back-of-the-Book Accumulation.** Largely Revenues, but also incl. Official Seals, Air Post Semi-Officials, Cut Squares, few "O.H.M.S." Mint N.H. perfins, generally Fine-Very Fine, interesting group..... E. 500-750
- 1333 **Cape of Good Hope Forgeries.** Accumulation of over 350 on stock pages, virtually all seem to be the work of Fornier with wide bar cancels but there are other "authors" included and some different cancels, generally Fine-Very Fine, accumulations of this type are seldom seen offered..... E. 750-1,000
- 1334 ☒ **Crete, Picture Post Cards.** Eighteen, incl. Nos. 50, 74-75, 111-114, some military themes, Fine-Very Fine lot..... E. 200-300
- 1335 **Dominican Republic, 1940-99.** Massive collection and accumulation in thirteen large volumes, incl. used, unused, blocks, commercial and First Day covers, few Specimens, Proofs, many unlisted varieties and imperforate errors in pairs and blocks of four or larger, quite a few used on covers from the 1950's and 1960's, strong in 1957, 1958 and 1960 Olympics, a sampling of better items incl. No. 407 Souvenir Sheets with folders (four unused and three used), 424 two imperforate half sheets of 25 and imperforate blocks of four of 423, 426 and 427, 1957 Olympics Souvenir Sheet with Transposed Flag Colors (four sets), Nos. 536-540 Inverted Surcharges unused plus the low value used on cover, No. C86a Special Souvenir Sheet with folder, other air post with Nos. C57-C61 Imperforate pairs and a C99 Blue color only, also six additional volumes and stamps on pages covering Semi-Postals, Postage Dues, Postal Tax, etc., generally Fine-Very Fine, an adventurous lot that can be rearranged into a fascinating comprehensive collection for this period with lots of extra material to trade or sell..... E. 3,000-4,000
- 1336 ★ **Falkland Islands Collection.** Fairly complete and nearly all unused from Queen Victoria First Issue to 1977, strong early issues, later incl. George V £1 unused (no gum), Nos. 45, 63, 84-96, 100, 1L19-1L33 and many other better items, nearly all Fine-Very Fine..... E. 2,000-3,000
- 1337 **France Collection and Accumulation.** Massive lifetime assemblage offered intact as received in multiple cartons, tens of thousands of used and unused stamps, starts in 1843 and continues into the 1980's but lesser representation in the later years, in addition to Regular Issues, Semi-Postals, Air Post and Postage Dues there are substantial sections of non-Scott material as "Annule" and "Specimen" ovpts, essays, Trial Color Plate Proofs, regular issue color Imperfs and Deluxe Die Proofs, 1947 UPU Deluxe Proofs, Millelimes, Revenues, Postal Forgery Sheet, Stampless and Early Stamped Covers, Parcel Post, Military Franchise, Offices Abroad, Offices in China, General Colonies, Cancellations, complete Booklets and Souvenir Sheets, Plate Varieties and more, there are many better stamps in quantity, a few noted incl. nineteen sets of Louvre B66-B67 on cards incl. block of four, twelve different 1903-38 50c "Sower" imperf color proof pairs, Mint sheets incl. Nos. 612-615 (seven), 624a (two), 1100, C22 and C27 (ten), also early "Paintings", 2fr First Air Post with "Broken Strut" (signed H. Bloch), eight No. 197 (several Mint N.H.), Better Souvenir Sheets, the unused nearly all original gum with a fair amount of Mint N.H., generally Fine-Very Fine, fabulous opportunity for the collector, accumulator or dealer, a very impressive lot..... E. 75,000-100,000
- 1338 ★ **France, Liberation Issues, 1944.** Outstanding one-volume collection of stamps and covers, nearly all are towns not listed in Yvert, Fine-Very Fine, lovely specialized collection..... E. 1,000-1,500
- 1339 ☒ **France Covers, 1935-40.** Approximately 100 covers, virtually all with blocks of four and additional franking, same correspondence and all apparently prepared by famous French stamp dealer Champion, incl. single usages of Nos. 348 and C17, Fine-Very Fine..... E. 750-1,000
- 1340 P **French Area Deluxe Proofs.** Assortment of 109 different, incl. Cambodia and Laos, much topical material, Very Fine..... E. 400-500
- 1341 ☒ **French Colonies Covers.** Fourteen items, wide variety, incl. 1830 Martinique stampless, others virtually all 1895 to 1938, several scarce items, Fine-Very Fine..... E. 750-1,000

- 1342 ★ **Germany Balance.** Approximately 86 unused stamps, incl. Post Horns complete, also Nos. 702-721, B310-B337, few other better, some Mint N.H., most all Fine-Very Fine..... 572.85
- 1343 ★ **German Areas Balance.** Auction lot cards containing unused stamps, incl. Offices in Morocco, Caroline Islands, German East Africa, Mariana, Marienwerder, few occupation issues incl. Estonia, few reference items marked as such, few with certificates, overall quite fresh and Very Fine..... E. 1,500-2,000
- 1344 ★ **Honduras Air Post, 1925-30.** Ten items, eight different, incl. Nos. C1, two C2, two C4, C10, C19b, C21, C25c and C32b, 1925 issue with the usual toning issues, C1 couple short perfs, overall Fine-Very Fine for these..... 1,880.00
- 1345 **Hong Kong Collection, 1862-1977.** Used and unused collection on pages, largely complete, lacks perhaps three dozen stamps for the period, strong early issues but in somewhat mixed condition, incl. many better and overall nearly all Fine-Very Fine E. 3,000-4,000
- 1346 ★★ **Israel Collection and Accumulation, 1948-1980's.** Many hundreds of virtually all unused Mint N.H. stamps in nine binders and a box containing about three dozen registered envelopes containing new issues from the Israeli New Issue Service (late 1970's to early 1980's), singles, tabs, blocks, plate blocks, souvenir sheets, uncut booklet panes, etc., there are a couple forerunner items and early issues on original auction lot sheets, First Coin Tabs (1-9) affixed to presentation sheet (1,000m "short" tab), other better tabs incl. Nos. 10-14 (singles and block of four), 25, 28-30, 33-34, 55, C1-C6 and C16, also stock book of U.A.R. issues in small quantities and a used and unused collection of Egypt, generally Fine-Very Fine E. 2,000-3,000
- 1347 ★ **Italian Area.** Over 30 unused overprinted stamps, lightly hinged, mostly Italian Socialist republic "G.N.R." ovpts., also couple WWII Locals and one Yugoslavian Occupation of Fiume, all non-Scott, these are either failed extensions in all or part (some genuine value remains), one with 1979 Sorani certificate stating Florence Printing and new opinion that it is a Verona production, Fine-Very Fine, fairly high Sassone value as genuine, sold as is, useful spacefillers..... E. 200-300
- 1348 ★ **Latin America Collection.** Perhaps a couple hundred mostly unused stamps in an album, incl. Argentina, Colombia, Mexico, Paraguay, Uruguay and Venezuela, issues of the 1870's and 1880's, **vast majority of value is in Mexico**, includes varieties, some multiples, couple certificates, quality much better than typically seen, Fine-Very Fine, exceptionally nice lot..... E. 2,000-3,000
- 1349 ☒ **Mexican Civil War, 1913-16, Sonora Provisional Covers.** Collection of approximately 70 covers, incl. Nos. 323 and 325a combination usage, Ures to Nogales (ex I. Heiman auction when the two stamps cataloged \$203 off-cover vs. a current value of \$764.00), several covers with unlisted "tall" stamps with coupons and green seals, one with different 2c stamp (no seal), one with 2c and 5c values with No. 347 (Roessler cover), two with "G.P. DeM" 5c surcharges, different pairs from Tijuana to San Diego, large size reduced cover with unlisted 5c, 50c and 1p coupon stamps with green seals and a strip of three 2c no seal used with pair of 2c Yellow Green Transitorus and other combinations, "MARO" errors, couple covers used to Norway, then the 1915 Nos. 394-398 (which account for most of the covers in the lot), mostly 2c and 5c values, some with multiple franking, vast majority commercial correspondence, cover condition varies from rather nice to roughly opened one side, also incl. 1971 Henry Irwin monograph "The White And Green Seals Of Sonora" plus some other information, a nice lot from this interesting period in Mexican philately..... E. 2,000-3,000
- 1350 **New Caledonia, 1942-54.** Collection on pages, primarily 1946 "Chad to Rhine" Air Post Omnibus set with blocks of four on covers, Imperforate Pairs and Imperforate Blocks of four and Large Die Proofs, Fine-Very Fine E. 200-300
- 1351 **Newfoundland Stock.** Well over 1,000 used and unused stamps arranged on manila stock sheets in a binder, strong representation to about 1905, then thins out a bit but still areas of concentration to the last issue, also Air Post, Postage Dues and a little other Back-of-the-Book, lastly there stamps from other Maritime provinces incl. British Columbia, New Brunswick, Nova Scotia and Prince Edward Island, the unused is virtually all original gum with some Mint N.H., generally Fine-Very Fine, valuable stock containing a high amount of usable material..... E. 5,000-7,500
- 1352 ★ **Newfoundland Stock.** Thousands of stamps from 1932 onward, singles, complete and part sheets, nice selection of used blocks of four, also some earlier sheets and part sheets from 1897 to 1933, some New Brunswick, Nova Scotia and Prince Edward Island, lastly there are two Air Post covers in the rear of the binder, first is no. C3 used Nov. 26, 1921 and backstamped Halifax Feb. 4, 1922, the other is No. C8 used with ordinary 20c and 30c Pictorials on St. John's May 19, 1932 cover with instructions to send via DO-X flight, St. John's June 2, 1932 backstamp, the unused is original gum with great percentage Mint N.H., Fine-Very Fine, wonderful fresh lot of desirable material..... E. 5,000-7,500

- 1353 ★ **New Guinea Collection, 1925-39.** On Scott album pages, 112 different of the 145 issued, incl. six £1 values, Fine-Very Fine, exceptionally attractive lot..... 2,767.05
- 1354 ☒ **Saar, Covers.** 33, all earlier issues (couple Memel), nice variety, Fine-Very Fine lot..... E. 400-500
- 1355 ★ **Scandinavia Balance.** Auction lot cards of unused stamps, incl. some Denmark, Finland, Norway and Sweden, issues from 1870's thru 1930's, few flaws to be expected, most Fine-Very Fine, few with certificates E. 750-1,000
- 1356 ☒ **South Africa Flight Covers.** Five covers and four cards, experimental flights of 1925, four with Great Britain frankings (three sets British Empire Exhibition Nos. 185-186 and definitives), others South Africa First Air Post with 1p and 6p plus definitives, various legs of the flight, Fine-Very Fine E. 200-300
- 1357 **Uruguay.** Collection and accumulation, virtually all 20th Century used and unused, the key to the value of this lot is in the **wealth of non-Scott listed varieties** such as imperforates, part perforates, proofs, overprint and surcharge errors, misperfs, paper folds, also complete sheets and Revenues, old auction or retail offerings valued some of these items in the hundreds of dollars, a few are also signed by respected experts, generally Fine-Very Fine, a fascinating lot for the specialist collector or dealer E. 2,000-3,000
- 1358 ★ **Western Europe Collection.** Several thousand used stamps on Scott Specialty pages neatly housed on Showgard mounts, about twelve different countries, incl. Belgium with nice Parcel Post, better France and Liechtenstein Air Post, some German Zeppelin covers, also Scandinavia with 1945 Greenland Ovpt. set, also a few miscellaneous countries, stamps in envelopes from various countries and a small box crammed with stamps in glassines (nearly all newer issues), very neat and clean collection, Fine-Very Fine E. 5,000-7,500
- 1359 ★ **Zara Collection.** Safe hingeless album pages of unused stamps, most of the better stamps are forgeries but there are some genuine mostly in the lower values, thirteen with Sismondo certificates from 2004 incl. three which are genuine, overall Fine-Very Fine collection of this difficult collecting area, an excellent reference mixing genuine and forged E. 1,500-2,000

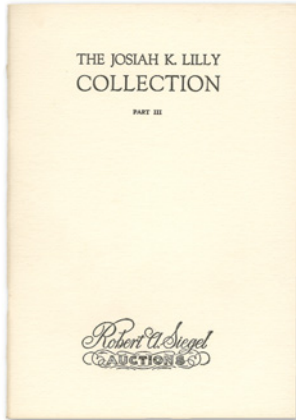
COLLECTIONS AND ACCUMULATIONS

- 1360 **Worldwide Collection.** Property intact as received, 35 albums or binders and one stock book, about two dozen different countries, both 19th and 20th Centuries, incl. Western, Southern and Eastern Europe, Denmark, Sweden, Mexico, Cuba, Brazil, Great Britain and seven different Commonwealth countries, condition is quite mixed and there are some occasional misattributed items, much Fine-Very Fine, considerable catalog value E. 15,000-20,000
- 1361 **Worldwide Collection and Accumulation.** Several thousand nearly all used stamps, incl. spotty U.S. collection, some more modern U.S. plate blocks and face postage, U.N. collection with better early issues in inscription blocks, fairly decent collection of Scandinavia, couple Topical collections, inexpensive used in stock books, commercial correspondence, etc., somewhat mixed condition, vast majority Fine-Very Fine..... E. 1,500-2,000
- 1362 **Worldwide Collection.** Collection in homemade album, 19th Century to about 1940's, nothing scarce noted, also a jumbled mess of used and unused, some mint U. S. postage and a few covers, generally Fine-Very Fine E. 400-500
- 1363 **Foreign Balance.** Four items, incl. Cape of Good Hope No. 6a "block" of four, Ryukyu and two other reference items, most appear Fine-Very Fine..... E. 200-300
- 1364 **Balance.** Three items, incl. Baden Nos. 1 and 1a and Norway No. 1, all appear Fine-Very Fine 1,015.00
- 1365 **Worldwide Air Post Collection.** Several hundred used and unused stamps in a 1934 "Air Mail Stamp Album", better incl. U.S. 6c and 24c 1918, China C1-C5, Brazil C1-C6, C7-C16, Denmark C5, Estonia C8, Germany used C43-C45, Iran C50, San Marino C1-C10, Uruguay C24-C25, and loaded with many more singles and sets cataloging \$10.00 to \$50.00 and more, overall Fine-Very Fine, very useful lot..... E. 2,000-3,000
- 1366 ☒ **Worldwide Postal Cards and Picture Post Cards Addressed to the United States, 1880's to 1920's.** Approximately 280 cards from about 90 different countries, British Commonwealth and Worldwide, no domestic U.S. but U.S. used aboard warships and in foreign territories such as Philippines and Puerto Rico, many postal markings and usages with postage dues, small colonies, better illustrated such as Grus Aus and English "Court" size views to the U.S. 1896-1902, generally Very Fine, no doubt many years in its formation as much of this material is surprisingly hard to find E. 7,500-10,000

- 1367 **Worldwide Stock.** Multi-carton lot containing many thousands of nearly all used stamps in over 80 albums, stock books and other containers, wide range of countries, generally inexpensive material but occasional better with small collections of Monaco and French Oceania and a two volume Scott International collection (1840-1940 and Volume II), also retired circuit books and a small library with reference material, auction catalogs, etc., generally Fine-Very Fine E. 3,000-4,000
- 1368 **Worldwide Accumulation.** Several thousand stamps in several boxes, incl. a spotty but decent collection of British Oceania with highlight such as Victoria Nos. 206 and 208 (light toning), better items on old auction lot sheets, on approval cards, etc., considerable amount of Colombia in singles, blocks and part sheets from the 1950's-70's, thousands of common used stamps sorted in envelopes and some reference material (bad P.F. certificates from the 1960's), generally Fine-Very Fine E. 2,000-3,000
- 1369 **Worldwide Accumulation.** The best part is a collection of Germany and Berlin in a stock-book with better issues of the 1920's, late 1940's and early 1950's with much Mint N.H., also Liechtenstein Mint N.H. miniature sheets of 20 (Nos. 411/485, virtually complete), Latin America on pages and two virtually empty old 1920's Scott International spring-back albums, essentially all Fine-Very Fine E. 750-1,000
- 1370 **Accumulation, 20th Century.** Five stockbooks, two albums and few loose items, range of countries represented incl. China, G.B., Vatican, many others, replete with topicals, a diverse group E. 100-150
- 1371 **Worldwide Accumulation.** Material from various countries, appears to be almost entirely 1940's-1950's incl. two stockbooks of Colombia, two folders of Turkey on album pages, some British Offices in Africa with some better values, a little bit of Saudi Arabia and Belgian Congo 20fr-100fr Masks Nos. 254-256 in complete sheets of 50, plus a cover and 50 used copies of the 100fr, virtually all Fine-Very Fine, useful lot E. 500-750
- 1372 **Worldwide Miscellany.** Thousands of stamps and covers (first days and commercial correspondence), mostly Israel with some original New Issues envelopes with stamps, a little U.S., deluxe United Nations hingeless album (no stamps), etc., may contain better items but we did not see them E. 200-300

END OF SALE — THANK YOU

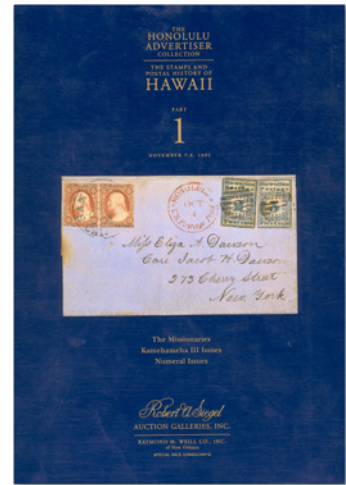
Visualize selling.



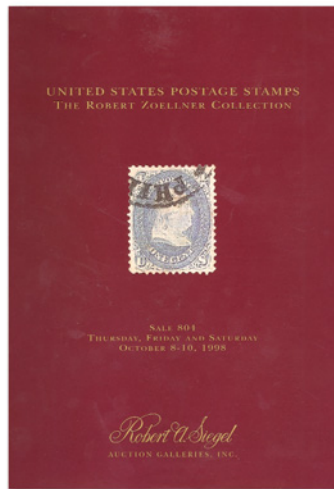
Lilly 1967



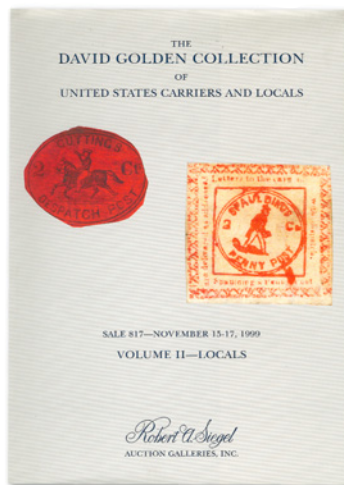
Kapiloff 1992



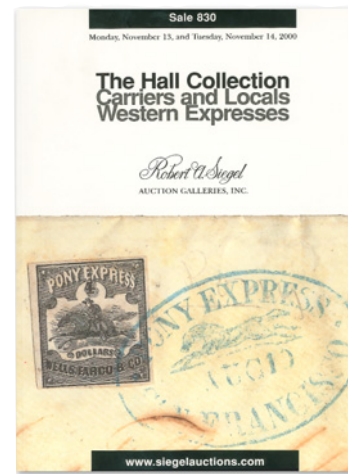
Honolulu Advertiser 1995



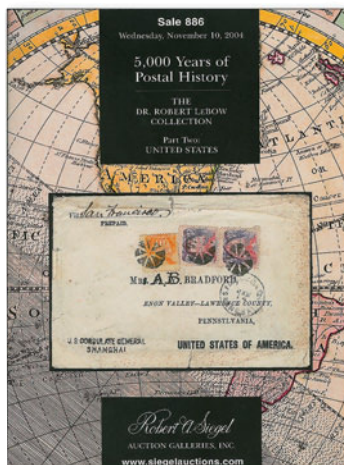
Zoellner 1998



Golden 1999



Hall 2001



LeBow 2004



Scarsdale 2006

The next great
Siegel sale could have
your name on it.

Robert A. Siegel
AUCTION GALLERIES, INC.

60 EAST 56th STREET, 4th FLOOR
NEW YORK, N.Y. 10022
Ph. (212) 753-6421 Fax (212) 753-6429
E-mail: stamps@siegelauctions.com

www.siegelauctions.com

Bid Form—15% Premium Sale

Sale 960
Thursday, June 26, 2008

1

Please provide the following information:

NAME.....
ADDRESS.....
CITY/STATE/ZIP.....
TEL. (DAY) FAX.....
E-MAIL.....

PADDLE #

Do not write in box

2

Have you purchased from us in the past 5 years? ☐ YES (if so, please go to Section 3)
☐ NO (please provide a trade reference and bank information)

References:

Stamp Firm: Telephone.....

Bank: Account #

3

In the space provided below, enter the **lot number** from **Sale 960** and your corresponding bid. Please use **whole dollar amounts** only and enter the **maximum bid** you wish to have us execute on your behalf, according to the **bidding increments** on other side of this form. **Your bid will NOT include the 15% buyer's premium.** We will advance the bidding at one increment over the

next highest bid; therefore, you may be awarded the lot at less than your maximum bid. Please do not use "plus" bids or "buy" bids. If you wish to bid on one lot **or** the other, indicate your "or" bid between lot number/bid entries and bracket your choices. If you wish to place a **bidding limit** on the total amount of your bids, please enter your limit in the space marked "Limit Bids".

PLEASE NOTE BIDDING INCREMENTS AND SHIPPING CHARGES (ON BACK OF THIS PAGE)

☐ **LIMIT BIDS:** Check this box if you wish to limit the total amount of your bids (not including the **15% buyer's premium**) in this sale. Your bids will be executed until your bidding limit no longer allows for additional bids.

The total amount you wish to bid is: \$

Lot	Bid	Lot	Bid	Lot	Bid
	\$		\$		\$

4

AGREEMENT: By signing this bid form, you agree to pay for purchases resulting from your bids, in accordance with the **Conditions of Sale** printed in the sale catalogue. You also agree to pay the **15% buyer's premium, shipping costs (see reverse), and sales tax or use tax or customs duty which may be due on the total invoiced amount.** It is

understood that these bids will be executed by Siegel Auction Galleries as a courtesy to absentee bidders, but you waive the right to make any claim against the auctioneer or the firm, arising from the these bids. **You are responsible for your written bids, including any errors on your part and any additions or changes to the bids herein.**

Payment must be made by cash, check, money order or wire transfer. Credit cards will not be accepted.



SIGNED..... TODAY'S DATE

5

Please submit your bids promptly (telephone bids must be confirmed in writing).

Mail to: Robert A. Siegel Auction Galleries, Inc.

60 E. 56th Street, 4th Floor, New York, N.Y. 10022
Telephone (212) 753-6421

OR FAX YOUR BIDS: (212) 753-6429

Shipping Instructions, Bidding Increments and space for additional bids on other side of form

Additional Bids

Sale 960—June 26, 2008

Lot	Bid	Lot	Bid	Lot	Bid
	\$		\$		\$

Shipping and Transit Insurance

We will be pleased to arrange for shipping and transit insurance for purchases in this sale (except those described as “floor sale only”). To expedite billing and delivery of lots to hundreds of buyers per sale, we use standard charges for postage and insurance, based on the package weight and mailing requirements (see schedule). The standard charges are sometimes slightly more or less than the actual postage or Fedex fees, but we do not include any charge for our labor or packing costs. Therefore, we ask all buyers to remit the prescribed amount for shipping charges.

Transit insurance is provided in all cases, except when the buyer has furnished us with proof that insurance coverage is effective under another policy. Proof, in such cases, will be accepted in the form of a written certificate from the insurance carrier.

You are responsible for insurance charges, which will be added to your invoice. This coverage is provided for our mutual protection against theft or loss in transit.

Bidding Increments

The auctioneer may regulate the bidding at his discretion. However, to assist absentee bidders in establishing their maximum bid for each lot, the increments shown at right will be used in most cases. We recommend that written bids conform to these increments (those which do not will be reduced to the next level).

REVISED CHARGES FOR SHIPPING EFFECTIVE JUNE 1, 2008

Due to increased Fedex charges for secured delivery and fuel, we are revising our shipping charges. We apologize for circumstances beyond our control.

Current Postage & Insurance Charges

Weight/Class	Shipping Method	Charges
Up to 2 lbs.	Fedex Envelope	\$25.00
Over 2 lbs.	Fedex Box	\$35.00*
Non-U.S.	Fedex/Courier	\$50.00**
Bulk Lots	UPS Preferred	By weight and value
<p>These fees reflect additional Fedex charges for residential delivery, signature and fuel surcharge.</p> <p>*Higher fees will be charged on packages weighing more than 5 lbs. or insured for more than \$75,000.</p> <p>**Buyers are liable for all customs duties and clearance charges. An accurate declaration of value will be made on all import/export documents.</p>		

6/2008

Up to \$50	\$5	\$3,000-7,000	\$250
\$50-200	\$10	\$7,000-20,000	\$500
\$200-500	\$25	\$20,000-30,000	\$1,000
\$500-1,000	\$50	\$30,000-75,000	\$2,500
\$1,000-3,000	\$100	\$75,000 up	\$5,000

6/2008

PRICES REALIZED FOR SALE 960---6/26/2008

General Foreign Stamps and Covers

Robert A. Siegel Auction Galleries, Inc.
60 East 56th Street, 4th Floor, New York, NY 10022
Tel (212) 753-6421 Fax (212) 753-6429

Lot#	Realized	Lot#	Realized	Lot#	Realized	Lot#	Realized	Lot#	Realized	Lot#	Realized	Lot#	Realized	Lot#	Realized
1001	450	1044	950	1087	325	1130	425	1174	950	1217	1,700	1260	180	1304	275
1002	1,900	1045	700	1088	450	1131	550	1175	750	1218	1,300	1261	325	1305	800
1003	850	1046	500	1089	375	1132	1,400	1176	400	1219	1,500	1262	325	1307	400
1004	475	1047	550	1090	425	1133	700	1177	200	1220	500	1263	450	1308	425
1005	200	1048	275	1091	800	1134	5,250	1178	1,200	1221	500	1264	400	1309	1,000
1006	950	1049	500	1092	1,500	1135	5,250	1179	1,300	1222	1,000	1265	1,000	1310	350
1007	425	1050	425	1093	450	1136	1,300	1180	750	1223	950	1266	5,500	1311	1,500
1008	400	1051	400	1094	1,000	1137	800	1181	800	1224	1,000	1267	700	1312	150
1009	425	1052	325	1095	225	1138	850	1182	950	1225	350	1268	425	1313	1,300
1010	9,000	1053	425	1096	1,200	1139	425	1183	1,600	1226	475	1269	400	1314	550
1011	650	1054	425	1097	650	1140	650	1184	750	1227	550	1270	650	1315	500
1012	2,700	1055	400	1098	800	1141	1,300	1185	650	1228	550	1271	300	1316	2,000
1013	850	1056	500	1099	350	1142	650	1186	1,900	1229	1,050	1272	800	1318	275
1014	2,100	1057	1,100	1100	2,600	1143	1,500	1187	650	1230	1,700	1273	650	1319	1,300
1015	600	1058	400	1101	1,500	1144	3,500	1188	1,188	1231	550	1274	250	1320	32,500
1016	650	1059	550	1102	750	1145	350	1189	550	1232	1,700	1275	2,100	1321	1,300
1017	275	1060	950	1103	1,100	1146	550	1190	1,500	1233	450	1276	500	1322	475
1018	160	1061	700	1104	550	1147	750	1191	250	1234	450	1277	2,900	1323	1,700
1019	325	1062	750	1105	350	1148	225	1192	300	1235	375	1278	375	1325	5,000
1020	475	1063	325	1106	750	1149	450	1193	200	1236	375	1279	300	1326	3,250
1021	900	1064	275	1107	5,000	1150	1,200	1194	375	1237	1,600	1280	160	1327	950
1022	650	1065	3,500	1108	700	1151	1,600	1195	275	1238	750	1281	550	1328	325
1023	650	1066	4,250	1109	1,300	1152	325	1196	200	1239	325	1282	650	1329	3,750
1024	750	1067	650	1110	950	1153	325	1197	600	1240	70	1283	200	1330	29,000
1025	325	1068	425	1111	750	1154	850	1198	350	1241	2,000	1284	375	1331	4,250
1026	450	1069	700	1112	300	1155	3,250	1199	160	1242	200	1285	325	1332	1,800
1027	675	1070	750	1113	950	1156	700	1200	1,200	1243	800	1286	425	1334	375
1028	500	1071	1,200	1114	650	1158	275	1201	425	1244	5,250	1287	425	1335	4,250
1029	325	1072	2,100	1115	1,500	1159	200	1202	325	1245	350	1289	425	1336	3,250
1030	1,500	1073	1,500	1116	1,300	1160	550	1203	600	1246	600	1290	475	1337	37,500
1031	1,050	1074	1,500	1117	550	1161	2,300	1204	750	1247	325	1291	350	1338	2,600
1032	950	1075	3,750	1118	250	1162	400	1205	1,200	1248	250	1292	450	1339	900
1033	600	1076	650	1119	700	1163	600	1206	800	1249	325	1293	150	1340	450
1034	450	1077	700	1120	550	1164	750	1207	400	1250	325	1294	1,200	1341	650
1035	375	1078	700	1121	650	1165	750	1208	300	1251	550	1295	800	1342	1,000
1036	1,600	1079	250	1122	1,000	1166	1,900	1209	275	1252	550	1296	4,000	1343	2,600
1037	1,000	1080	850	1123	450	1167	1,300	1210	400	1253	425	1297	600	1344	425
1038	400	1081	225	1124	650	1168	450	1211	600	1254	425	1298	2,100	1345	2,600
1039	950	1082	300	1125	2,300	1169	325	1212	550	1255	225	1299	475	1346	2,400
1040	700	1083	1,200	1126	600	1170	850	1213	225	1256	1,400	1300	7,500	1347	275
1041	375	1084	1,700	1127	3,750	1171	225	1214	190	1257	700	1301	350	1348	2,500
1042	250	1085	500	1128	3,750	1172	800	1215	325	1258	1,000	1302	800	1349	1,300
1043	160	1086	500	1129	300	1173	800	1216	500	1259	150	1303	325	1350	325

PRICES REALIZED FOR SALE 960---6/26/2008

General Foreign Stamps and Covers

Robert A. Siegel Auction Galleries, Inc.
60 East 56th Street, 4th Floor, New York, NY 10022
Tel (212) 753-6421 Fax (212) 753-6429

Lot#	Realized
1351	12,000
1352	11,500
1353	1,500
1354	450
1355	1,600
1356	180
1357	4,000
1358	16,000
1359	750
1360	15,500
1361	2,500
1362	325
1363	950
1364	225
1365	2,100
1367	5,250
1368	5,500
1369	3,500
1370	350
1371	325
1372	150