

Sale 961—Tuesday, September 23, 2008, at 1:30 p.m.

The Dr. Edward and Joanne Dauer Collection of Superb Used United States Stamps

Live auction to be held at Siegel Auction Galleries,
60 East 56th Street (Park/Madison), 4th Floor, New York City

All lots offered without reserves

Lots are sold subject to a 15% buyer's premium and
any applicable sales tax (or customs duty for non-U.S. buyers)



Afternoon Session (lots 1-136) Tuesday, September 23, at 1:30 p.m.

1847 Issue.....lots	1-3
1851-56 Issue	4-16
1857-60 Issue	17-36
1861-66 Issue	37-48
1867-68 Grilled Issues.....	49-61
1875 Re-Issue of 1861-66 Issue	62-66
1869 Pictorial Issue and Re-Issue.....	67-77
1875 Re-Issue of 1869 Pictorial Issue.....	78-85
1870-93 Bank Note Issues.....	86-109
Columbian Issue	110-117
1894-98 Bureau Issues	118-127
Trans-Mississippi Issue	128-130
Pan-American Issue.....	131
1902-08 Issue.....	132-134
Group Lots.....	135-136

Pre-Sale Lot Viewing

Monday, September 22 — 10:00 a.m. to 4:00 p.m.
Tuesday, September 23 — 10:00 a.m. to 12:00 p.m.
or by appointment (please call 212-753-6421)

Robert A. Siegel

AUCTION GALLERIES, INC.

60 EAST 56TH STREET, 4TH FLOOR, NEW YORK, N.Y. 10022
Phone (212) 753-6421 • Fax (212) 753-6429 • E-mail: stamps@siegelauctions.com

Catalogues, internet bidding, resources, archives and the Siegel Encyclopedia at
www.siegelauctions.com

Live Internet Bidding at Siegel Auctions



Bidding from your computer lets you be part of the live auction from anywhere in the world!

There's no substitute for following the auction in real time. Live Internet Bidding lets you bid and buy as though you were right there in the saleroom.

And it's easy. Just start by following the simple steps to become a registered Live Internet Bidder. Once you've been approved for bidding, you can listen to the auction and place bids with the click of a mouse.

This step-by-step guide will instruct you how to register, set your browser and use the bidding interface.

1 Registering with Stamp Auction Network and Siegel Auction Galleries

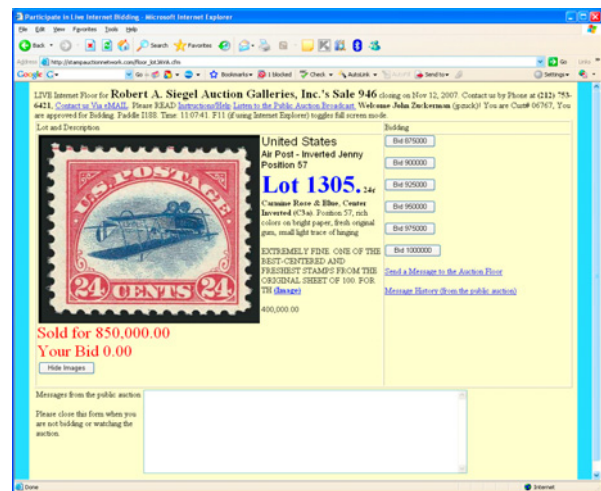
Live Internet Bidding is managed by Stamp Auction Network (SAN). To bid, you must be registered and approved by *both* SAN and Siegel. To decide what you need to do, choose the description below that best fits you.

I've already registered with SAN and have been approved by Siegel for internet bidding. You're ready for Step 2.

I've never registered with SAN, but I'm a Siegel client. Go to stampauctionnetwork.com/siegel and click on "Register" at the top. Check the box for Robert A. Siegel Auction Galleries (under "R") and submit the form, indicating you are a Siegel client. Once registered at SAN, you're ready for Step 2.

I've never registered with SAN, and this is the first time I've bid with Siegel. Go to stampauctionnetwork.com/siegel and click on "Register" at the top. Check the box for Robert A. Siegel Auction Galleries (under "R") and submit the form **with your trade references** (please, no family members or credit card companies as references). Once registered at SAN and approved by Siegel for bidding, you're ready for Step 2.

I've bid through SAN before, but this is the first time I've bid in a Siegel sale. Then you just need to be approved by Siegel. Go to stampauctionnetwork.com/siegel and click on "Update Registration" at the top. Your SAN account information will be sent to us for approval (you might be asked for other trade references). Once approved by Siegel for bidding, you can move to Step 2.



2 Using your browser for Live Internet Bidding and understanding the way it works.

Live Internet Bidding works by providing an audio feed of the auction (for anyone using Internet Explorer) and by allowing registered bidders to observe and place bids. The bidding interface shows a photo and description of the lot, the current bid (and your bidding status), and options for placing competitive bids. To join the auction, go to stampauctionnetwork.com/siegel. You can also log on at siegelauctions.com

The visual interface will work with any browser on both PC and Mac operating systems. However, the audio feed only works with Internet Explorer on a PC with ActiveX software installed. If ActiveX is not on your computer, you will have the option to install it.

Before bidding by internet for the first time, we recommend finding a sale in progress and listening to the public broadcast or logging in as a registered bidder. This will help you develop a feel for the sale tempo and bidding interface.

"System down" or "lost connection" events do occasionally happen. If you have any problems with Live Internet Bidding, please call 212-753-6421 for immediate assistance.



3 Using Live Internet Bidding to bid, track results and communicate with the auctioneer.

When you're logged on as a Live Internet Bidder, the screen will display buttons with bid increments. After you click on a bid amount, the auctioneer is immediately notified of your bid. Retracting a bid is usually not acceptable, so please bid carefully.

If you bid, then decide to stop, please use the "Pass" button, which appears once you've started bidding. This tells the auctioneer not to wait for another bid from you.

You can send messages to the auctioneer (for example, a request for extension). You can also track prior realizations from the bidding screen.

Conditions of Sale (please read carefully before bidding)

The property described in this catalogue will be offered at public auction by Robert A. Siegel Auction Galleries, Inc. ("Galleries") on behalf of various consignors and itself or affiliated companies. By bidding on any lot, whether directly or by or through an agent, in person, or by telephone, facsimile or any other means, the bidder acknowledges and agrees to all of the following Conditions of Sale.

1. The highest bidder acknowledged by the auctioneer shall be the buyer. The term "final bid" means the last bid acknowledged by the auctioneer, which is normally the highest bid offered. **The purchase price payable by the buyer will be the sum of the final bid and a commission of 15% of the final bid ("buyer's premium"), together with any sales tax, use tax or customs duties due on the sale.**
2. The auctioneer has the right to reject any bid, to advance the bidding at his discretion and, in the event of a dispute between bidders, to determine the successful bidder, to continue the bidding or to reoffer and resell the lot in dispute. The Galleries' record of the final sale shall be conclusive.
3. All bids are per numbered lot in the catalogue unless otherwise announced by the auctioneer at the time of sale. The right is reserved to group two or more lots, to withdraw any lot or lots from the sale, or to act on behalf of the seller. The Galleries will execute bidding instructions on behalf of clients, but will not be responsible for the failure to execute such bids or for any errors in the execution of such bids.
4. **Lots with numbers followed by the symbol ° are offered subject to a confidential minimum bid ("reserve"), below which the lot will not be sold. The absence of the symbol ° means that the lot is offered without a reserve. If there is no reserve, the auctioneer has sole discretion to establish a minimum opening bid and may refuse an offer of less than half of the published estimate. Any lot that does not reach its reserve or opening bid requested by the auctioneer will be announced as "passed" and excluded from the prices realized lists after the sale. The Galleries may have a direct or indirect ownership interest in any or all lots in the sale resulting from an advance of monies or goods-in-trade or a guarantee of minimum net proceeds made by the Galleries to the seller.**
5. Subject to the exclusions listed in 5(A), the Galleries will accept the return of lots which have been misidentified or which have obvious faults that were present when the lot was in the Galleries' custody, but not so noted in the lot description. **All disputed lots must be received by the Galleries intact with the original packing material within 5 days of delivery to the buyer but no later than 30 days from the sale date. (5A) EXCLUSIONS:** The following lots may not be returned for any reason: lots containing 10 or more items; lots from buyers who registered for the pre-sale exhibition or received lots by postal viewing, thereby having had the opportunity to inspect them before the sale; any lot described with "faults," "defects" or a specific fault may not be returned because of any secondary fault. Photographed lots may not be returned because of centering, margins, short/nibbed perforations or other factors shown in the illustrations. Lots may not be returned for any of the following reasons: the color of the item does not match the color reproduction in the sale catalogue or website listing; the description contains inaccurate information about the quantity known or reported; or a certification service grades a stamp lower than the grade stated in the description.
6. Successful bidders, unless they have established credit with the Galleries prior to the sale, must make payment in full before the lots will be delivered. Buyers not known to the Galleries must make payment in full within 3 days from the date of sale. **The Galleries retains the right to demand a cash deposit from anyone prior to bidder registration and/or to demand payment at the time the lot is knocked down to the highest bidder, for any reason whatsoever.** In the event that any buyer refuses or fails to make payment in cash

for any lot at the time it is knocked down to him, the auctioneer reserves the right to reoffer the lot immediately for sale to the highest bidder. **Credit cards are not accepted as payment.**

7. If the purchase price has not been paid within the time limit specified above, nor lots taken up within 7 days from the date of sale, the lots will be resold by whatever means deemed appropriate by the Galleries, and any loss incurred from resale will be charged to the defaulting buyer. Any account more than 30 days in arrears will be subject to a late payment charge of 1½% per month as long as the account remains in arrears. Any expenses incurred in securing payment from delinquent accounts will be charged to the defaulter. A fee of \$250.00 per check will be charged for each check returned for insufficient funds.
8. All lots are sold as genuine. **Any lot accompanied by a certificate issued by The Philatelic Foundation within 5 years of the sale date or by Professional Stamp Experts since January 2004 is sold "as is" and in accordance with the description on the certificate. Such lots may not be returned for any reason, including but not limited to a contrary certificate of opinion.** Buyers who wish to obtain a certificate for any item that does not have a P.F. or P.S.E. certificate (dated as above) may do so, provided that the following conditions are met: (1) the purchase price must be paid in full, (2) the item must be submitted to an acceptable expertizing committee with a properly executed application form within 21 days of the sale, (3) a copy of the application form must be given to the Galleries, (4) in the event that an adverse opinion is received, the Galleries retain the right to resubmit the item on the buyer's behalf for reconsideration, without time limit or other restrictions, (5) unless written notification to the contrary is received, items submitted for certification will be considered cleared 90 days from the date of sale, and (6) in the event any item is determined to be "not as described", the buyer will be refunded the purchase price and the certification fee up to \$600.00 unless otherwise agreed.
9. Until paid for in full, all lots remain the property of the Galleries on behalf of the seller.
10. Agents executing bids on behalf of clients will be held responsible for all purchases made on behalf of clients unless otherwise arranged prior to the sale.
11. The buyer assumes all risk for delivery of purchased lots and agrees to pay for prescribed shipping costs. Buyers outside the U.S. are responsible for all customs duties.
12. **The bidder consents that any action or proceeding against it may be commenced and maintained in any court within the State of New York or in the United States District Court for the Southern District of New York, that the courts of the State of New York and United States District Court for the Southern District of New York shall have jurisdiction with respect to the subject matter hereof and the person of the bidder. The bidder agrees not to assert any defense to any action or proceeding initiated by Galleries based upon improper venue or inconvenient forum. The bidder agrees that any action brought by the bidder shall be commenced and maintained only in a Federal Court in the United States District Court for the Southern District of New York or the State Court in the county in which Galleries has its principal place of business in New York. These Terms and Conditions shall be governed by and construed in accordance with the substantive laws of the State of New York.**

SCOTT R. TREPEL, Principal Auctioneer

Auctioneer's License No. 795952
N.Y.C. Department of Consumer Affairs
80 Lafayette Street, New York, N.Y. 10013
Telephone (212) 577-0111

Revised 1/2008 15%

Copyright Notice

© 2008, Robert A. Siegel Auction Galleries, Inc. This catalogue in all versions, printed and electronic, is protected by copyright. The descriptions, format, illustrations and information used herein may not be reprinted, distributed or copied in any form without the express written consent of Robert A. Siegel Auction Galleries. Application for permission may be made in writing.

Grades, Abbreviations and Values Used in Descriptions

Grades and Centering

Our descriptions contain detailed information and observations about each item's condition. We have also assigned grades to stamps and covers, which reflect our subjective assessment. For stamps, the margin width, centering and gum are described and graded according to generally-accepted standards (an approximate correlation to numeric grades is provided at right). Although we believe our grades are accurate, they are not always exactly aligned with third-party grading terms or standards for all issues. **A lot may not be returned because a certification service grades a stamp lower than the grade stated in the description. Information from the P.S.E. Stamp Market Quarterly and P.S.E. Population ReportSM is the most current available, but lots may not be returned due to errors or changes in statistics or data.**

Extremely Fine Gem (90-100): The term "Gem" describes condition that is the finest possible for the issue. This term is equivalent to "Superb" used by grading services.







Extremely Fine (80-90): Exceptionally large/wide margins or near perfect centering.

Very Fine (70-85): Normal-size margins for the issue and well-centered with the design a bit closer to one side. "Very Fine and choice" applies to stamps that have desirable traits such as rich color, sharp impression, freshness or clarity of cancel.

Fine (60-70): Smaller than usual margins or noticeably off center. Pre-1890 issues may have the design touched in places.

Very Good (below 60): Attractive appearance, but margins or perforations cut into the design.

Guide to Gum Condition

Gum Categories:	MINT N.H.	ORIGINAL GUM (O.G.)				NO GUM
	 Mint Never Hinged <i>Free from any disturbance</i>	 Lightly Hinged <i>Faint impression of a removed hinge over a small area</i>	 Hinge Mark or Remnant <i>Prominent hinged spot with part or all of the hinge remaining</i>	 Part o.g. <i>Approximately half or more of the gum intact</i>	 Small part o.g. <i>Approximately less than half of the gum intact</i>	 No gum <i>Only if issued with gum</i>
Catalogue Symbol:	★ ★	★	★	★	★	(★)
PRE-1890 ISSUES	<i>Pre-1890 stamps in these categories trade at a premium over Scott value</i>			Scott Value for “O.G.”		Scott “No Gum” Values thru No. 218
1890-1935 ISSUES	Scott “Never Hinged” Values for Nos. 219-771	Scott Value for “O.G.” (Actual value will be affected by the degree of hinging)		Disturbed Original Gum: Gum showing noticeable effects of humidity, climate or hinging over more than half of the gum. The significance of gum disturbance in valuing a stamp in any of the Original Gum categories depends on the degree of disturbance, the rarity and normal gum condition of the issue and other variables affecting quality. For example, stamps issued in tropical climates are expected to have some		
1935 TO DATE	Scott Value for “Unused”					

Covers

Minor nicks, short edge tears, flap tears and slight reduction at one side are normal conditions for 19th century envelopes. Folded letters should be expected to have at least one file fold. Light cleaning of covers and small mends along the edges are accepted forms of conservation. Unusual covers may have a common stamp with a slight crease or tiny tear. **These flaws exist in virtually all 19th century covers and are not always described. They are not grounds for return.**

Catalogue Values and Estimates

Unless otherwise noted, the currently available *Scott Catalogue* values are quoted in dollars with a decimal point. Other catalogues are often used for foreign countries or specialized areas and are referred to by their common name: *Stanley Gibbons* (SG), *Dietz*, *American Air Mail Catalogue* (AAMC), *Michel*, *Zumstein*, *Facit*, etc. Estimates are indicated with an "E." and reflect our conservative valuation in dollars. Reserves will never exceed the low end of the estimate range; they will sometimes exceed Scott Catalogue value for stamps in Extremely Fine condition.

Because of certain pricing inconsistencies in the *Scott Catalogue*—for example, blocks that have no gum, the absence of premiums for Mint N.H. items, etc.—we cannot guarantee the accuracy of values quoted for multiples, specialized items and collection lots. We generally try to be conservative, but buyers may not return a lot because of a discrepancy in catalogue value due to Scott pricing inconsistencies.

Symbols and Abbreviations (see chart above for gum symbols)

⊞	Block	E	Essay	pmk.	Postmark	No.	Scott Catalogue Number
⊞	Cover	P	Proof	cds	Circular Datestamp	hs	Handstamp
FC	Fancy Cancel	TC	Trial Color Proof	var.	Variety	ms.	Manuscript

Revised 1/2008

Resources at siegelauctions.com



Catalogues, Prices Realized and Power Search

Images and descriptions for all current sale catalogues are available from our website.

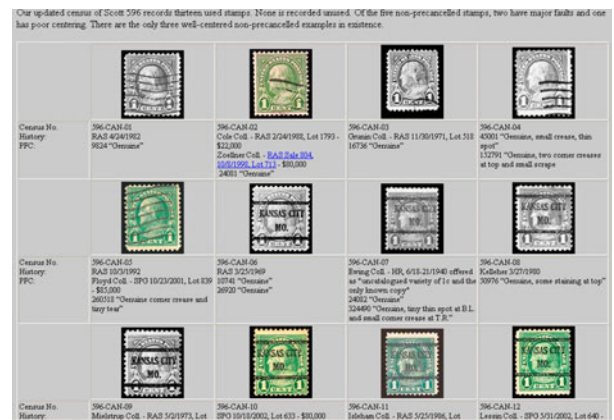
Using our Power Search™ tool, you can locate items from the Siegel database, including every Rarities sale since 1964 and every Siegel sale since 1993—more than 180,000 lots worth hundreds of millions of dollars.



The Siegel Encyclopedia and Rarities Census

This feature of our website contains a wealth of information gleaned from decades of philatelic research by the dedicated philatelists at Siegel.

The up-to-date census data for 19th and 20th century U.S. rarities are a valuable resource for buyers, sellers and researchers. Every recorded example of more than 30 different rare stamps is described and, in most cases, photographed.




Rarities of the World Sales Archive

Images and descriptions for every annual Rarities sale since 1964 provide an unparalleled source of information on the world's greatest philatelic rarities. Digital images made from color slides for Rarities sales between 1964 and 1991 (the era of black-and-white catalogues) make this the only source of color images anywhere.

Informative Video Presentations

Downloadable video documentaries tell the stories of stamps and covers, such as the famous Inverted "Jenny." This is the ideal way to introduce philately to others.



The 1918 24¢ INVERTED "JENNY"

Position 57 — auctioned by Siegel Auction Galleries on Wednesday, November 14, 2007 — set a world record for the amount paid at auction for a single U.S. Stamp.

JENNY AUCTION FOOTAGE

Also see Scott Trepel's exclusive video preview:
THE INVERTED JENNY

Also available as an **iPod video**

To view this presentation will require the standalone Apple QuickTime Player or the QuickTime web browser plugin.



AFTERNOON SESSION (LOTS 1-136)
TUESDAY, SEPTEMBER 23, 2008, AT 1:30 P.M.

THE DR. EDWARD AND JOANNE DAUER COLLECTION
OF SUPERB USED UNITED STATES STAMPS

1847 ISSUE



1

- 1 **5c Red Brown (1).** Large even margins all around, bright color beautifully complemented by orange-red "Paid" handstamp struck multiple times and also single strike of "Free" handstamp

EXTREMELY FINE. A BEAUTIFUL USED EXAMPLE OF THE 5-CENT 1847 ISSUE. ESPECIALLY DESIRABLE WITH SUCH AN UNUSUAL CANCELLATION.

With 1999 P.F. certificate 1,065.00



2

- 2 **10c Black (2).** Huge margins all around incl. **wide sheet margin at top**, bright shade and crisp impression, unobtrusive strike of red St. Louis circular datestamp leaves entire design clearly visible

EXTREMELY FINE GEM. A SUPERB TOP SHEET-MARGIN EXAMPLE OF THE 10-CENT 1847 ISSUE. NO DOUBT THIS STAMP WOULD GRADE VERY HIGHLY.

With 1996 and 2004 P.F. certificates..... 1,400.00



3

- 3 ☒ **10c Black (2).** Position 10L, huge margins all around incl. **enormous top right corner margins**, 3-4mm at right and 8mm at top, intense early impression, tied by red square grid, matching "New-York Aug. 25" circular datestamp on blue 1847 folded letter to Vienna N.Y., faint vertical file folds well away from the stamp

EXTREMELY FINE GEM. THIS IS WITHOUT QUESTION THE FINEST CORNER-MARGIN COPY OF THE 10-CENT 1847 ISSUE ON COVER. FROM A NEW DISCOVERY, WHICH WAS OFFERED TO THE MARKET FOR THE FIRST TIME IN OUR 2006 RARITIES SALE.

In his extensive census of the 10c 1847 issue with corner sheet margins, Philip T. Wall records a total of sixteen used stamps on or off cover (another three or four covers have since been recorded). Others can be plated as corner margin positions but do not show significant sheet margins. Many of these have faults, the most common being creases in the selvage.

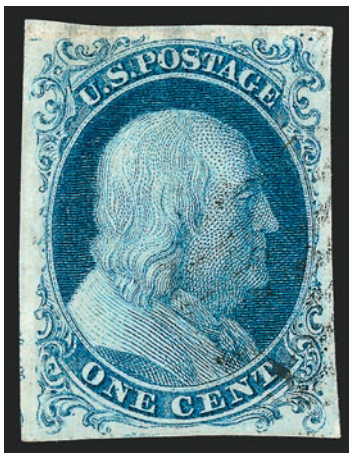
This cover was part of a recent find of eleven 5c and 10c 1847 covers, which were discovered in 2004 in Geneva N.Y. Nine of the eleven are addressed to Samuel Baldwin.

With 2006 P.F. certificate. E. 30,000-40,000



3 detail

1851-56 ISSUE



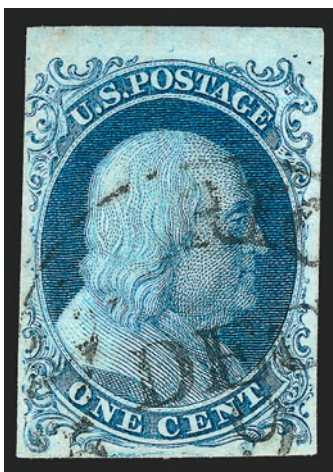
4

- 4 **1c Blue, Ty. I (5).** Position 7R1E, large margins all around, bright early shade and impression, very lightly cancelled by black grid, with 1989 P.F. certificate describing stamp as “defective and repaired”; however, in fluid and under UV light, we detect only a crease in the top margin and several thins, but no evidence of any repair in the true sense of the word (an observation shared by Jerome S. Wagshal in his census of this issue)

VERY FINE APPEARANCE. POSITION 7R1E — THE SEVENTH STAMP IN THE RIGHT PANE OF PLATE 1 EARLY — IS THE ONLY ONE OF THE 1,000 POSITIONS USED TO PRINT IMPERFORATE ONE-CENT STAMPS THAT SHOWS THE COMPLETE DESIGN (TYPE I). A GREAT RARITY.

The published census compiled by Jerome S. Wagshal contains at least 98 unduplicated records of Scott 5. There are probably no more than ten examples existing outside of the Wagshal census population. Therefore, the 1c 1851 Type I is the rarest of all United States stamps issued regularly prior to the 1868 Grills.

Ex Kelley and LeBow. Wagshal Census No. 5-CAN-22. With 1989 P.F. certificate.. 80,000.00



5

- 5 **1c Blue, Ty. Ib (5A).** Position 8R1E, huge margins to barely touched incl. **sheet margin at top**, beautiful warm shade, neat strike of circular datestamp leaves the design characteristics clearly visible

VERY FINE AND CHOICE. A STUNNING EXAMPLE OF THE RARE 1851 ONE-CENT TYPE IB FROM PLATE ONE EARLY FROM ONE OF THE TWO POSITIONS THAT FURNISHED THE BEST TYPE IB EXAMPLES.

Type Ib was produced only as an imperforate stamp from Plate 1 Early. Six positions on Plate 1E furnished stamps qualifying as Type Ib — Positions 3-6R and 8-9R — distinguished by the complete design at top and nearly complete design at bottom. When first entered on the plate, these six positions (as well as 7R1E) had the complete design at top and bottom. However, unlike 7R, small portions of the bottoms were burnished away. Positions 6R and 8R had less of the bottom erased than the other Type Ib positions, and for this reason they are more desirable examples of the type.

With 1994 P.F. certificate 15,000.00



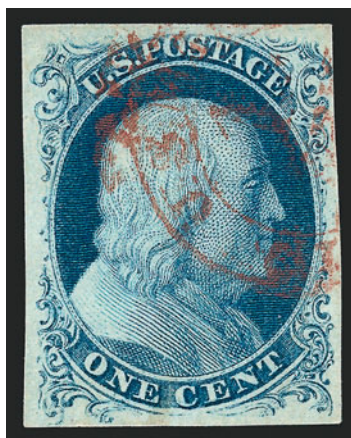
6

- 6 **1c Blue, Ty. Ia (6).** Position 100R4, huge margins all around incl. **bottom right corner sheet margin**, deep rich Plate 4 color, neat strike of circular datestamp leaves the design characteristics clearly visible

EXTREMELY FINE. A REMARKABLE CORNER SHEET-MARGIN EXAMPLE OF THE 1851 IMPERFORATE ONE-CENT TYPE IA, ONE OF THE RARITIES FURNISHED BY PLATE FOUR.

Stamps printed from Plate 4 were issued in April, May and briefly in June 1857 before perforations were introduced. The relatively small number of imperforate Plate 4 stamps issued during this period explains the rarity and desirability of any of the imperforate stamp types produced from this plate (Ia, Ic, II, III and IIIa). The extremely rare Type Ia, showing the full design at bottom, was furnished only by 18 of the 200 subjects on Plate 4 (the remaining two bottom-row positions were sub-type Ic).

With 1992 and 2006 P.F. certificates (XF 90; SMQ \$30,400.00). This remarkable stamp realized \$10,000 more than 16 years ago in our 1992 Rarities sale. 12,500.00



7

- 7 **1c Blue, Ty. III (8).** Position 82L4, large margins all around, wonderful dark Plate 4 shade which is nicely complemented by **red “U.S. Mail” New York carrier datestamp**, clearly showing breaks at top and bottom (the defining characteristic of the type)

EXTREMELY FINE. A STUNNING EXAMPLE OF THE 1851 IMPERFORATE ONE-CENT TYPE III WITH A RED CARRIER CANCELLATION.

Type III is defined by breaks in the outer lines at both top and bottom. Many Type III stamps have breaks that were created or enlarged by plate wear. Since the wear occurred over a period of time, the majority of stamps of this type (both unused and used) has small breaks in at least one line. This stamp is notable both for its overall condition and also for the clear breaks which are evident at both top and bottom. It should also be considered extremely rare with a red cancellation — most have either black cancels or occasionally a blue cancel, neither of which stands out from the design as prominently as this red carrier datestamp.

With 2003 P.F. certificate 3,700.00

- 8 **1c Blue, Ty. IIIa (8A).** Large margins to full at top showing wide beak in outer line at top, deep rich Plate 4 color on bright paper, neat strike of **blue circular datestamp** cancel

VERY FINE AND CHOICE EXAMPLE OF THE 1851 ONE-CENT TYPE IIIA IMPERFORATE WITH A BLUE CIRCULAR DATESTAMP CANCEL.

Ex Hinrichs. With 1997 P.F. certificate..... 1,250.00



8



9

- 9 **1c Blue, Ty. IV (9).** Position 42L1L, huge margins incl. significant portions of adjoining stamps at top and bottom, bold strike of **blue town datestamp**, Extremely Fine Gem, a huge stamp, with 2006 P.F. certificate (XF-Superb 95; SMQ \$860.00)..... 135.00

- 10 **5c Red Brown (12).** Large even margins all around, gorgeous warm color from what must be an early printing, unobtrusive strike of circular datestamp cancel leaves entire design clearly visible

EXTREMELY FINE GEM. A SUPERB USED EXAMPLE OF THE 5-CENT 1856 ISSUE.

Ex Hinrichs. With 1994 P.S.E. and 2004 P.F. certificates. .
..... 950.00



10



11

- 11 **10c Green, Ty. I (13).** Position 95L1, huge to enormous margins all around incl. portion of **bottom sheet margin** and adjoining stamp at right, lovely bright color and lightly cancelled by an almost face-free circular datestamp

EXTREMELY FINE GEM. EASILY ONE OF THE FINEST USED 1855 10-CENT TYPE I IMPERFORATE STAMPS WE HAVE EVER OFFERED. A BREATHTAKING GEM.

For some unknown reason, even though the 10c Type I stamps come from the bottom row of the sheet, most have the sheet margin trimmed. The stamp offered here, with its wide sheet margin and enormous margins on all sides, is a true condition rarity.

With 1993 and 2005 P.F. certificates 950.00

- 12 **10c Green, Ty. I (13).** Enormous margins incl. **sheet margin at bottom** and significant portion of adjoining stamp at top, deep rich color, bold strikes of circular datestamp as well as trace of red transit at bottom right and also part of **red numeral** cancel at right

EXTREMELY FINE GEM. A MASSIVE EXAMPLE OF THE 1855 10-CENT TYPE I WITH SHEET MARGIN AT BOTTOM AND A PORTION OF ADJOINING STAMP AT TOP.

With 1979 and 2004 P.F. certificates 1,075.00



12



- 13 **10c Green, Ty. II (14).** Huge margins all around incl. **straddle-pane margin** at left, deep rich color and proof-like impression, bold strike of circular datestamp

EXTREMELY FINE GEM. A MASSIVE EXAMPLE OF THE 1855 10-CENT IMPERFORATE TYPE II.

With 1986 and 1998 P.F. certificates..... 200.00

13

- 14 **10c Green, Ty. III (15).** Phenomenal Jumbo margins all around incl. **sheet margin at left**, "New-York Oct. 15" circular datestamp, rich color

EXTREMELY FINE GEM. A MASSIVE SHEET-MARGIN EXAMPLE OF THE 1855 10-CENT IMPERFORATE TYPE III.

In recent years it has become fashionable to cut down imperforate multiples into enormous singles with parts of adjoining stamps attached. This stamp is what we might call a "natural" beauty. The "New-York" circular datestamp was not normally used to cancel stamps on foreign-bound covers, so this single was probably used alone on a trans-continental rate cover. Although it does not have parts of adjoining stamps all around, its margins extend to the limit, creating a "small die proof" effect. In a collection filled with great stamps, this is one we particularly admire.

With 1989 and 2004 P.F. certificates 200.00

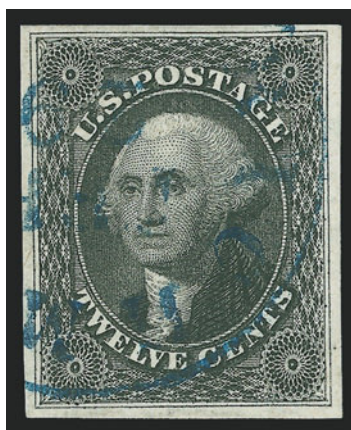


14



15

- 15 **10c Green, Ty. IV (16).** Position 74L1, large balanced margins, deep rich color and detailed impression, neat strike of “New Orleans La. Aug. 3, 1857” circular datestamp
EXTREMELY FINE. A SUPERB EXAMPLE OF THE 1855 10-CENT TYPE IV IMPERFORATE.
With 1999 P.F. certificate 1,700.00



16

- 16 **12c Black (17).** Huge margins all around, intense shade on bright paper, gorgeous impression, neat **blue circular datestamp**
EXTREMELY FINE GEM. A WONDERFUL LARGE-MARGINED EXAMPLE OF THE 12-CENT 1851 ISSUE WITH A BLUE CIRCULAR DATESTAMP CANCELLATION.
With 1985 and 2004 P.F. certificates 360.00

1857-60 ISSUE



17

- 17 **1c Blue, Ty. I (18).** Radiant color, choice centering with wide and balanced margins, well-struck Oct. 31 circular datestamp

EXTREMELY FINE. A BEAUTIFUL USED EXAMPLE OF THE PERFORATED 1857 ONE-CENT TYPE I.

With 1983 and 2003 P.F. and 2005 P.S.E. certificates (XF 90; SMQ \$1,750.00). Only five have graded higher to date and only two others share this grade. 700.00



18

- 18 **1c Blue, Ty. Ia (19).** Position 95R4, choice centering with large part of the bottom plumes visible, light strike of town datestamp, intense shade and proof-like impression, a very early state of the plate with clearly defined plating marks including the vertical layout line along right ornaments

VERY FINE AND CHOICE. A MAGNIFICENT EXAMPLE OF THE RARE 1857 ONE-CENT PERFORATED TYPE Ia STAMP. ONE OF THE FEW KNOWN USED EXAMPLES WITH CHOICE CENTERING AND A LIGHT CANCEL.

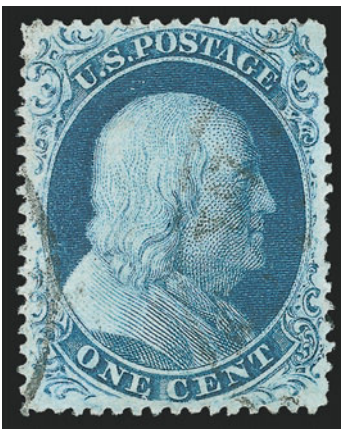
Due to narrow spacing on the plate, most examples of this stamp have part of the type characteristics cut away by the perforations. It is an obvious early impression from Plate 4.

Signed Ashbrook. With 1984 and 2004 P.F. certificates..... 10,000.00



19

- 19 **1c Blue, Ty. II (20).** Plate 2, well-centered, rich color, **red New York “U.S. Mail” carrier datestamp** cancel, Very Fine and choice, a pretty stamp, with 1994 P.F. certificate..... 335.00



20

- 20 **1c Blue, Ty. III (21).** Deep rich Plate 4 color on bright paper, almost perfectly centered with clear breaks at top and at bottom, light circular datestamp cancels
 EXTREMELY FINE GEM. THE 1857 ONE-CENT TYPE III PERFORATED ISSUE IS RARE IN THIS CHOICE USED CONDITION.
 Due to the narrow vertical spacing on this plate, stamps are most typically found with the perforations impinging on some portion of the design. The example offered here is centered so that the type characteristics are clearly visible.
 With 2004 P.F. certificate 2,750.00



21

- 21 **1c Blue, Ty. IIIa (22).** Plate 4, perfectly centered showing wide break at top, rich color on bright paper, light strike of **New York "U.S. Mail" carrier datestamp** cancel leaves design and type characteristics clearly visible

EXTREMELY FINE GEM. A SUPERB USED EXAMPLE OF THE PERFORATED 1857 ONE-CENT TYPE IIIA.

With 1996 and 2004 P.F. certificates. 600.00



22

- 22 **1c Blue, Ty. IV (23).** Position 51L1L, **recut twice at top and once at bottom**, radiant color, face-free cancel, perfectly centered with wide margins all around and clearly showing the recut lines

EXTREMELY FINE GEM. A SUPERB EXAMPLE OF THE PERFORATED ONE-CENT TYPE IV, RECUT TWICE AT TOP AND ONCE AT BOTTOM.

There are only four positions on the recut plate which are recut twice at top and once at bottom. One of those, Position 71L1L, is a triple transfer, one inverted position.

With 2005 P.F. certificate..... 950.00



23

- 23 **5c Red Brown (28).** Brilliant color in the 1856 shade, unusually choice centering with perforations comfortably clear of the outer projections of the design on all four sides, light strike of **red grid** cancel

EXTREMELY FINE. A STUNNING USED EXAMPLE OF THE 1857 5-CENT RED BROWN.

With 2000 P.F. certificate. 1,245.00

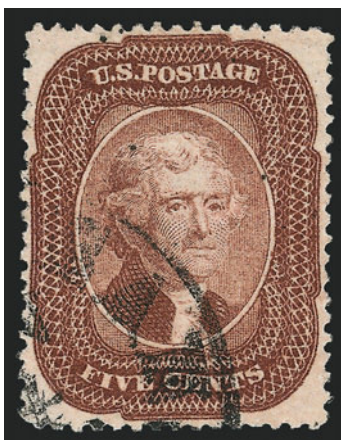


24

- 24 **5c Indian Red (28A).** Choice centering with **straddle-pane margin at right** showing full guideline, gorgeous color in the true Indian Red shade, unobtrusive strike of "New Orleans La. Aug. 1, 1858" circular datestamp

VERY FINE AND CHOICE USED EXAMPLE OF THE 1857 5-CENT INDIAN RED. ESPECIALLY DESIRABLE WITH THE STRADDLE-PANE MARGIN.

Ex Yost. With 1989 and 1996 P.F. certificates..... 3,850.00



25

- 25 **5c Brown (29).** Unusually choice centering with wide and balanced margins, bright color, long and full perforations all around, virtually face-free strike of New Orleans circular datestamp

EXTREMELY FINE. A BEAUTIFUL USED EXAMPLE OF THE 1857 5-CENT BROWN. SCARCE IN SUCH SUPERB CONDITION.

With 1988 and 2000 P.F. certificates 450.00



26

- 26 **5c Orange Brown, Ty. II (30).** Remarkably well-centered with unusually wide margins at sides and with design completely clear at top and bottom, deep rich color, light face-free grid cancel

EXTREMELY FINE. A WONDERFUL EXAMPLE OF THE 1861 5-CENT TYPE II ORANGE BROWN. RARE IN WELL-CENTERED AND SOUND USED CONDITION.

The Orange Brown was issued just before the 1857-61 Issue was demonetized, and thus is very scarce in used condition.

With 1997 P.S.E. and 1997 and 2004 P.F. certificates. 1,300.00

- 27 **10c Green, Ty. I (31).** Choice centering with unusually wide margins, extra wide margin at bottom (from the bottom of the sheet) which leaves plenty of room around the type characteristics, pretty shade, light cancel at top left leaves entire design clearly visible

EXTREMELY FINE GEM. A SUPERB USED EXAMPLE OF THE 1857 10-CENT TYPE I PERFORATED. A DESIRABLE STAMP IN EVERY RESPECT.

With 1998 and 2004 P.F. certificates..... 1,300.00



27



28

- 28 **10c Green, Ty. II (32).** Wide and balanced margins, deep rich color and detailed impression, **red town datestamp**, Extremely Fine Gem, a magnificent stamp combining color, impression and a colored cancel, with 2004 P.F. certificate 300.00

- 29 **10c Green, Ty. III (33).** Choice centering with well-balanced margins, deep rich color on bright paper, detailed impression, clear strike of **New York Ocean Mail** cancel, Extremely Fine, with 1992 and 2004 P.F. certificates, Scott Retail with no premium for the cancel 300.00



29



30

- 30 **10c Green, Ty. IV (34).** Position 64L1, **recut at top and bottom**, lightly cancelled by Apr. 1859 town datestamp (accompanying 1990 P.F.C. states Sep. 19, 1858 in error), deep rich color on bright paper

EXTREMELY FINE GEM. AN OUTSTANDING EXAMPLE OF THE TYPE IV PERFORATED 10-CENT 1857 ISSUE FROM THE ONLY POSITION RECUT AT BOTH TOP AND BOTTOM.

With 1988, 1990 and 2004 P.F. certificates 2,750.00



31

- 31 **10c Green, Ty. V (35).** Choice centering with enormous balanced margins at sides, radiant color, bold strike of **blue circular datestamp**, fresh and Extremely Fine, with 1989 P.F. certificate 70.00



32

- 32 **12c Black (36).** Intense shade and proof-like impression, perfectly centered with perforations clear of design on all sides, face-free strike of **blue target** cancel

EXTREMELY FINE GEM. A SUPERB EXAMPLE OF THE 12-CENT 1857 ISSUE FROM PLATE 1. THIS STAMP IS EXCEEDINGLY RARE WITH SUCH WONDERFUL CENTERING, IMPRESSION AND CANCELLATION.

Ex Drucker and Hinrichs. With 1988 and 2004 P.F. certificates 380.00

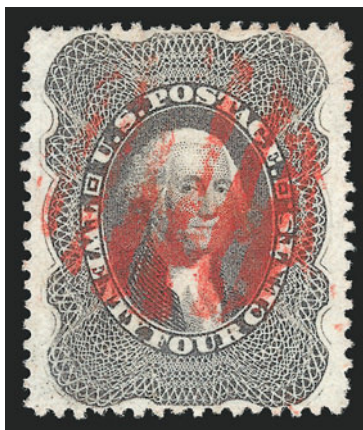


33

- 33 **12c Black, Plate 3 (36b).** Extra wide margins all around with perfs well clear of framelines, showing unusual doubling of frameline at left, bright shade nicely complemented by **red grid** cancel

EXTREMELY FINE GEM. A SUPERB USED EXAMPLE OF THE 12-CENT 1860 ISSUE FROM PLATE 3. SCARCE IN SUCH PRISTINE CONDITION.

Ex Morris. With 1985 and 1991 P.F. certificates 225.00



34

- 34 **24c Gray Lilac (37).** Perfectly centered with wide and balanced margins, radiant color on crisp paper, bold strike of **red grid** cancel

EXTREMELY FINE GEM. A SUPERB USED EXAMPLE OF THE 24-CENT 1860 ISSUE, WHICH HAS BEEN GRADED XF-SUPERB 95 BY P.S.E.

With 2005 P.S.E. certificate (XF-Superb 95; SMQ \$3,050.00). Only three have graded higher to date and only seven others share this desirable grade. 440.00



35

- 35 **30c Orange (38).** Vibrant color as fresh as the day it was printed, unusually choice centering for this difficult issue, neat strike of Boston large "Paid" grid cancel

EXTREMELY FINE GEM. A GORGEOUS USED EXAMPLE OF THE 30-CENT 1860 ISSUE WHICH HAS BEEN GRADED XF-SUPERB 95 BY P.S.E. AN EXTREMELY DIFFICULT STAMP TO FIND IN SUCH SUPERB USED CONDITION.

The 30c 1860 challenges collectors for several reasons. First, the subjects were closely spaced together on the plate, leaving almost no room for perforations and little opportunity to create stamps with perforations clear of the design on all four sides. Second, the 30c and 90c 1860 were only in circulation for a brief period before the series was demonetized in the Fall of 1861. Third, this high-denomination stamp was issued for use on transatlantic mail, and postal clerks were careful to thoroughly cancel the stamps to prevent cleaning and re-use. Therefore, 30c 1860 stamps in sound, well-centered and lightly-cancelled condition defy all circumstances and are extremely rare.

With 1984 P.F. and 2005 P.S.E. certificates (XF-Superb 95; SMQ \$4,000.00). Only one has graded higher (at 95J) and only four others share this grade. 500.00



36

- 36 **90c Blue (39).** Gorgeous centering with wide margins all around, deep rich color and sharp impression, clear strike of black Philadelphia circular datestamp cancel, long and full perforations

EXTREMELY FINE GEM. A SUPERB USED EXAMPLE OF THE SHORT-LIVED 90-CENT 1860 — THE FIRST UNITED STATES 90-CENT ISSUE.

The 90c stamp was issued in 1860, along with the 24c and 30c values, all of which were needed to prepay high international letter rates established by various postal treaties. The basic 24c and 30c rates to England, France and Germany created a large volume of mail franked with those values. However, the 90c saw much more limited use, partly due to the rates in effect, but more because of the American Civil War. When supplies of current postage stamps were declared invalid in the South and ultimately demonetized by the Federal government, the 90c had been in use for only one year. For this reason, genuinely cancelled copies and covers bearing the 90c are extremely rare. Approximately 180 used examples have been certified as genuine by the Philatelic Foundation, of which approximately one-quarter are sound. Of these sound examples, many are off-center.

Ex Hinrichs. With 1980, 1995 and 2004 P.F. certificates 9,500.00

1861-66 ISSUE



37

37 **10c Dark Green, First Design (62B).** Choice centering with wide and even margins, deep rich color and proof-like impression beautifully complemented by **red** New York circular datestamp, long and full perforations all around

EXTREMELY FINE GEM. A SUPERB USED EXAMPLE OF THE FIRST DESIGN 10-CENT 1861 ISSUE. AN EXTREMELY DIFFICULT STAMP TO FIND IN SUCH PRISTINE CONDITION. ESPECIALLY DESIRABLE WITH THE RED CANCEL.

The 10c 1861 "First Design" (or Type I from Plate 4) is extremely difficult to find in well-centered and sound condition. This is partly due to the narrow spacing on Plate 4, which was used for the earliest printing. This stamp is nearly the equal of the 10c Type I in our Sale 953 (lot 299), which realized \$25,000 hammer.

Ex Zoellner. With 1992 and 2006 P.F. certificates 1,580.00



38

38 **3c Pink (64).** Beautifully centered, light strike of **blue** “Amherst N.Y. 14 Sep.” circular datestamp

EXTREMELY FINE GEM. A BEAUTIFUL USED EXAMPLE OF THE 1861 3-CENT PINK, WITH A GORGEOUS BLUE “SOCKED-ON-THE-NOSE” CIRCULAR DATESTAMP.

With 2004 P.F. certificate 1,050.00



39

39 **3c Pigeon Blood Pink (64a).** Brilliant color in the true Pigeon Blood shade, choice centering, bold strike of grid cancel

VERY FINE AND CHOICE USED EXAMPLE OF THE RARE 1861 3-CENT PIGEON BLOOD PINK.

With 2001 P.F. certificate 4,000.00



40

- 40 **5c Buff (67).** Rich color and detailed impression nicely complemented by **red grid** cancel, choice centering with balanced margins, long and full perforations

EXTREMELY FINE. A BEAUTIFUL USED EXAMPLE OF THE 1861 5-CENT BUFF WITH GORGEOUS COLOR, CENTERING, PERFORATIONS AND CANCEL. A REMARKABLE STAMP.

With 2005 P.S.E. certificate (XF 90; SMQ \$2,400.00). Only two have graded higher to date and only ten others share this grade..... 1,140.00



41

- 41 **5c Brown Yellow (67a).** Fresh color in an unusually bright shade, choice centering with perforations clear of design on all sides, neat strike of **red town** circular datestamp at right leaves design clearly visible

EXTREMELY FINE GEM. A SUPERB USED EXAMPLE OF THE 5-CENT 1861 ISSUE IN THE BROWN YELLOW COLOR.

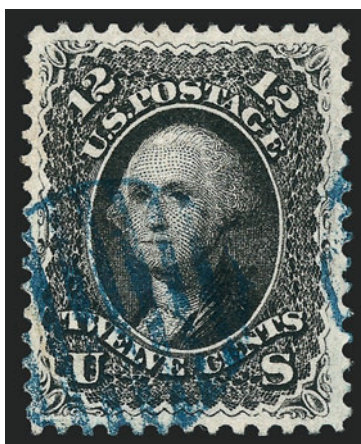
Due to narrow spacing on the 5c plate, it is very difficult to find centered copies with the perforations clear of the design on all sides. The stamp offered here, with choice centering and the red town cancellation, should be considered a condition rarity.

With 2002 P.F. certificate 1,340.00



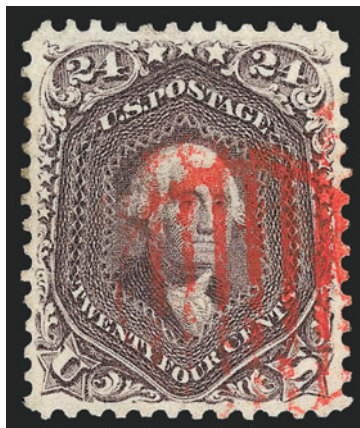
42

- 42 **10c Green (68 var).** Perfectly centered with wide margins all around, deep rich color in the Green sub-shade, proof-like impression, neat strike of "Mount Pleasant Pa. Oct. 20" circular datestamp, Extremely Fine Gem, with 2004 P.F. certificate 60.00



43

- 43 **12c Black (69).** Choice centering with wide and balanced margins, intense shade and proof-like impression nicely complemented by **blue grid** cancel, Extremely Fine Gem, a beautiful stamp, with 2004 P.F. certificate 122.50

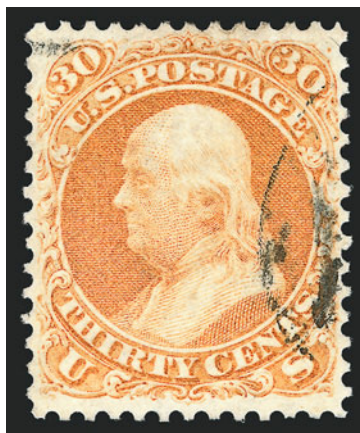


- 44 **24c Red Lilac (70).** Beautifully centered with balanced margins all around, deep shade and proof-like impression on bright paper, **red grid** cancel

EXTREMELY FINE GEM. A SUPERB USED EXAMPLE OF THE 24-CENT RED LILAC SHADE IN THE FINEST CONDITION ATTAINABLE.

This stamp is certainly one of the finest examples of the early 24c 1861 Red Lilac shade we have handled, in terms of centering, margins, cancellation and overall condition.

With 1991, 1996 and 2005 P.F. certificates 315.00



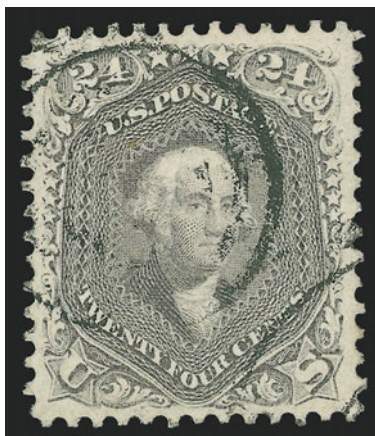
45

- 45 **30c Orange (71).** Radiant color, choice centering with well-proportioned margins, face-free cancel leaves design clearly visible, Extremely Fine Gem, a beautiful stamp, ex Hinrichs, with 1995 and 2004 P.F. certificates 200.00



46

- 46 **90c Blue (72).** Deep rich color and detailed impression, choice centering with enormous margins on all sides, unobtrusive target cancel
EXTREMELY FINE GEM. A TRULY OUTSTANDING USED EXAMPLE OF THE 1861 90-CENT BLUE WITH EXCEPTIONALLY WIDE MARGINS.
Ex Hinrichs. With 1991 and 2004 P.F. certificates 550.00



47

- 47 **24c Grayish Lilac (78a).** Nearly perfect centering with wide even margins, beautiful dark shade and proof-like impression, target cancels, Extremely Fine, the ubiquitous Scott 78 is a remarkably scarce stamp in this choice used condition, with 2005 P.F. certificate 300.00



48

- 48 **24c Blackish Violet (78c).** Magnificent intense color, perfect clear strike of "Paid" cancel, perfs just in at top
 FINE EXAMPLE OF THE 24-CENT BLACKISH VIOLET. THIS IS POSSIBLY THE MOST DIFFICULT SHADE OF THE 1861-63 ISSUE TO OBTAIN IN ANY CONDITION.
 A thorough search through past auction catalogues will demonstrate how rare this stamp is in either used or unused condition. With regard to used stamps, this shade was lacking from the Ishikawa, Grunin, Klein, Caspary and Twigg-Smith collections. The Zoellner collection contained an original-gum single even though the rest of the series was obtained in used condition, because a suitable used stamp was never offered.
 With 1992 P.S.E. and 2005 P.F. certificates..... 15,000.00

1867-68 GRILLED ISSUE



49

- 49 **2c Black, D. Grill (84).** Perfectly centered, deep shade, lightly cancelled by blue-black target, full clear grill impression showing the requisite 15 columns of points

EXTREMELY FINE GEM. APART FROM THE A AND Z GRILL RARITIES, THE 2-CENT 1868 D GRILL IS THE RAREST OF ALL GRILLED ISSUES. PROBABLY FEWER THAN TEN COPIES EXIST IN THIS SUPERB CONDITION.

The device equipped with the D Grill was refitted with the E Grill on or about February 9, 1868. Based on the earliest known usages of the 2c D Grill (2/15/68) and 3c E Grill (2/19/68), it is our theory that the conversion from the D to E Grill took place only a day or so after sheets of 2c stamps were first run through the D-equipped machine. The great rarity of 2c D Grills, relative to all other regular-production grills, bears out this theory.

With 1999 P.F. certificate. Scott Retail for Fine centering 4,500.00



50

- 50 **3c Rose, D. Grill (85).** Choice centering with wide and balanced margins, bright color, clearly-defined grill points, neat strike of target cancel

EXTREMELY FINE. A BEAUTIFUL USED EXAMPLE OF THE 1868 3-CENT ROSE D GRILL.

With 1998 P.F. certificate 1,200.00

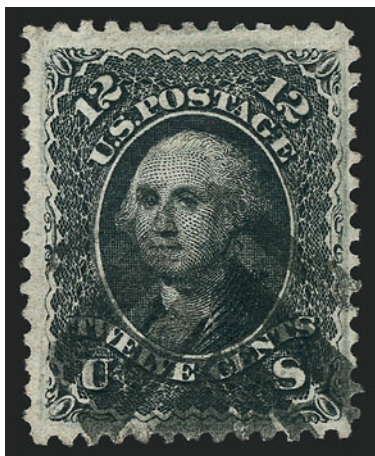


51

- 51 **3c Rose, Z. Grill (85C).** Rich color, strong grill which is clearly visible from the front of the stamp, three enormous margins and well clear at top, light strike of cork cancel

EXTREMELY FINE. A RARE SOUND EXAMPLE OF THE 1868 3-CENT Z GRILL WITH UNUSUALLY WIDE MARGINS.

Ex Vineyard. With 1992 P.S.E. and 2000 P.F. certificates..... 3,750.00



52

52 **12c Black, Z. Grill (85E).** Intense shade and impression with wide and balanced margins, bold strike of cork cancel

EXTREMELY FINE. A BEAUTIFUL USED EXAMPLE OF THE 1868 12-CENT Z GRILL. A STUNNING STAMP.

Although the 12c Z Grill is the most common of the Z Grills, it is still extremely scarce compared to other regular-production grilled issues and is very rarely found in the superb used condition.

With 1993 P.F. and 2005 P.S.E. certificates (XF 90; SMQ \$6,800.00). Only two have graded higher and no others share this grade. 2,500.00



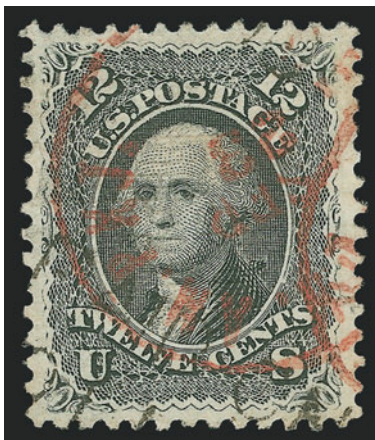
53

- 53 **3c Lake Red, E. Grill (88a).** Perfectly centered with extra wide margins, neatly struck target cancel, intense shade and impression on crisp white paper, Extremely Fine Gem, a marvelous example of the printer's art at a time when quality control was decidedly lacking, with 2005 P.F. certificate..... 50.00



54

- 54 **10c Blue Green, E. Grill (89 var).** Wide margins all around, rich color, "N. York Steamship Nov. 19" circular datestamp
 EXTREMELY FINE EXAMPLE OF THE 1868 10-CENT E GRILL IN THE BLUE GREEN SUB-SHADE. A PHENOMENAL STAMP.
 With 1980, 1992 and 2004 P.F. certificates 325.00

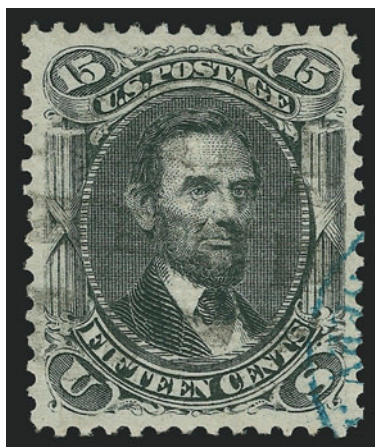


55

55 **12c Black, E. Grill (90).** Well-centered with wide balanced margins, red cancel and black “Paid Only to England” transit

EXTREMELY FINE GEM EXAMPLE OF THE 1868 12-CENT E GRILL. OUTSTANDING IN EVERY RESPECT.

With 1993 and 2004 P.F. certificates 465.00

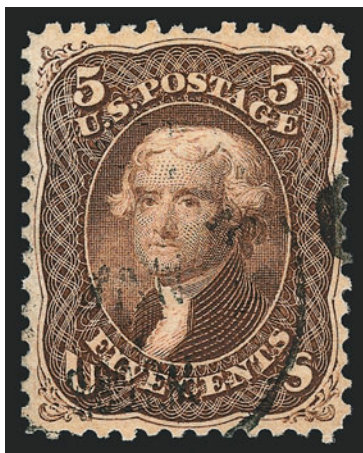


56

56 **15c Black, E. Grill (91).** Perfectly centered, detailed impression, black cork and blue transit cancels

EXTREMELY FINE GEM. VERY FEW EXAMPLES OF THE 1868 15-CENT E GRILLED ISSUE RIVAL THIS BEAUTIFUL STAMP, WHICH HAS BEEN GRADED XF-SUPERB 95 BY P.S.E. — THIS IS THE HIGHEST GRADE AWARDED TO DATE.

With 1996 P.F. and 2005 P.S.E. certificates (XF-Superb 95; SMQ \$5,900.00). This is the highest grade awarded to date and only two others share this grade..... 700.00



57

57 **5c Brown, F. Grill (95).** Beautiful color, choice centering, clear grill points, unobtrusive cancel

EXTREMELY FINE USED EXAMPLE OF THE 1868 5-CENT F GRILL.

With 2002 P.F. and 2005 P.S.E. certificates (VF-XF 85; SMQ \$1,350.00). Only four have graded higher to date..... 875.00



58

58 **10c Yellow Green, F. Grill (96).** Wide and balanced margins, warm shade nicely complemented by red New York Ty. A “Supplementary Mail” cancel

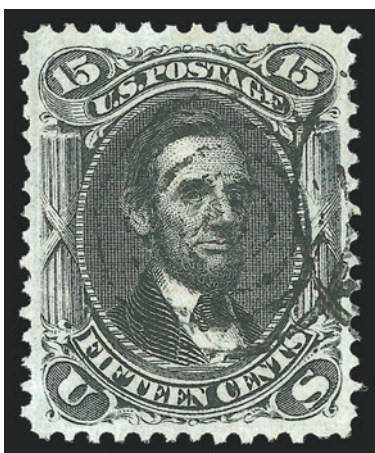
EXTREMELY FINE GEM. A SUPERB USED EXAMPLE OF THE 1868 10-CENT F GRILL WITH A RED SUPPLEMENTARY MAIL CANCELLATION.

With 2000 P.F. certificate..... 250.00



59

- 59 **12c Black, F. Grill (97).** Choice centering with well-proportioned margins, crisp impression, bold strike of **red cork** cancel
 EXTREMELY FINE EXAMPLE OF THE 1868 12-CENT F GRILL. PARTICULARLY DESIRABLE WITH THE COLORED CANCEL.
 With 1987 and 2006 P.F. certificates (XF 90; SMQ \$750.00). 350.00



60

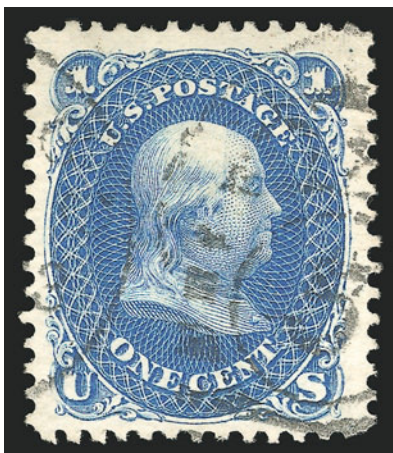
- 60 **15c Black, F. Grill (98).** Choice centering with well-balanced margins, neat target cancel, bright white paper, clear grill impression, Extremely Fine, an outstanding stamp, with 2002 P.F. certificate 375.00



61

- 61 **90c Blue, F. Grill (101).** Deep rich color on bright paper, clear grill, unobtrusive strike of circle of wedges cancel, choice centering for this difficult issue
EXTREMELY FINE. A BEAUTIFUL USED EXAMPLE OF THE 1868 90-CENT F GRILL. ONE OF THE MOST CHALLENGING OF THE CLASSIC ISSUES TO OBTAIN IN THIS QUALITY.
With 1986 and 2006 P.F. certificates..... 2,200.00

1875 RE-ISSUE OF 1861-66 ISSUE



62

62 **1c Blue, Re-Issue (102).** Deep rich color on bright white paper, wide margins, New York circular datestamp and "5" duplex cancel

VERY FINE AND CHOICE. A SCARCE USED EXAMPLE OF THE ONE-CENT 1861 RE-ISSUE. OUR RECENTLY COMPLETED CENSUS RECORDS LESS THAN 50 GENUINELY USED EXAMPLES OF THIS ISSUE.

Our census, available at our website at <http://siegelauctions.com/enc/census/102.pdf>, contains 47 examples with contemporary cancels.

Census No. 102-CAN-06. Ex Twigg-Smith. With 1986 and 2006 P.F. certificates . 1,250.00

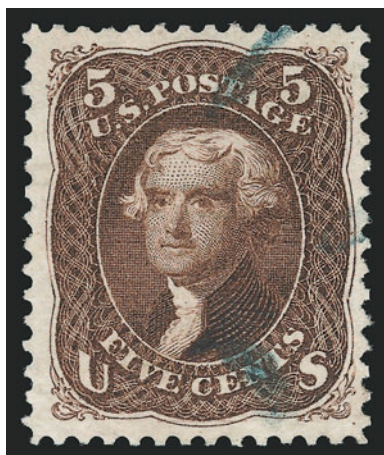


63

- 63 **3c Brown Red, Re-Issue (104).** Deep rich color and detailed impression on bright paper, neat strike of duplex cancel, small thin spot at top, tiny corner perf crease at bottom left
EXTREMELY FINE APPEARANCE. THIS IS EASILY ONE OF THE FINEST OF THE 20 USED
EXAMPLES OF THE 3-CENT 1861 RE-ISSUE RECORDED IN OUR CENSUS. A GREAT RARITY.

Our recently updated census of Scott 104 in used condition, available at our website at <http://siegelauctions.com/enc/census/104.pdf>, contains only 20 used examples of the 3c 1861 Re-Issue (one has never been certified). Of these, less than half are sound. By virtue of centering, this is easily one of the finest in our records.

Census No. 104-CAN-02. Ex Twigg-Smith. With 1982 and 2006 P.F. certificates.
..... 12,500.00



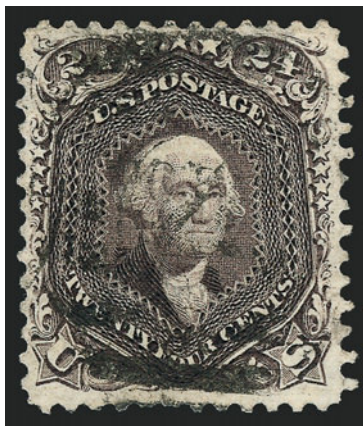
64

64 **5c Brown, Re-Issue (105).** Deep rich color on bright paper, unobtrusive strike of **blue** cancel

VERY FINE AND CHOICE. A RARE EXAMPLE OF THE 5-CENT 1861 RE-ISSUE WITH A COLORED CANCEL. OUR RECENTLY COMPLETED CENSUS CONTAINS ONLY 34 USED COPIES.

Our recently completed census of this issue, available at our website at <http://siegelauctions.com/enc/census/105.pdf>, contains only 34 used examples. Most have heavy duplex cancels.

Census No. 105-CAN-28. With 2000 P.F. certificate..... 6,000.00



65

65 **24c Deep Violet, Re-Issue (109).** Choice centering, dark shade, proof-like impression on bright paper, neat strike of duplex cancel

EXTREMELY FINE. THE 24-CENT 1861 RE-ISSUE IS EXTREMELY RARE IN USED CONDITION. ONLY THIRTEEN USED COPIES ARE CONTAINED IN OUR RECORDS. THIS STAMP, CENTERED AND SOUND, IS ONE OF THE FINEST KNOWN.

Our census of Scott 109 records thirteen used copies. Of these, four have faults.

Unpublished Census No. 109-CAN-05. With 1990 and 2002 P.F. certificates.. 17,500.00



66

- 66 **90c Blue, Re-Issue (111).** Perfect centering with wide even margins, deep rich color and intense impression on crisp white paper, neatly cancelled by New York City circular date-stamp and oval grid

EXTREMELY FINE GEM. ONE OF THE TWO FINEST EXAMPLES OF THE 90 CENT 1861 RE-ISSUE IN USED CONDITION. ONLY FOUR USED COPIES ARE KNOWN TO EXIST. AN OUTSTANDING CLASSIC RARITY.

The footnote in Scott Catalogue at the end of the Re-Issue section states that *"Five examples are recorded of No. 111 used, one of which has a non-contemporaneous cancel. Value is for centered and sound example (two are known thus.)"*

The four recorded used copies of this stamp are as follows: 1) Census No. 111-CAN-01, sound and superbly centered, ex Sheriff, Zoellner (Siegel Sale 804, lot 275, realized \$40,000 hammer), the stamp offered here; 2) Census No. 111-CAN-02, oval grid cancel, ex Twigg-Smith (Siegel Sale 835, lot 216, realized \$50,000 hammer); 3) Census No. 111-CAN-03, sound, duplex cancel, centered slightly to top, from our 1986 Rarities sale (lot 97); and 4) Census No. 111-CAN-04, centered to top, small corner creases at top left with one ending in a small tear, offered in the Ameripex auction. They are illustrated in the census on our website at <http://siegelauctions.com/enc/census/111.pdf>

Ex Sheriff and Zoellner. With 2006 P.F. certificate (XF 90; SMQ \$160,000.00). 110,000.00

1869 PICTORIAL ISSUE



67

67 **1c Buff (112).** Beautifully centered and cancelled by a rare **green town datestamp**, choice fresh color

EXTREMELY FINE GEM. THIS IS PROBABLY THE FINEST EXAMPLE OF THE ONE-CENT 1869 PICTORIAL ISSUE WITH A GREEN CANCEL IN EXISTENCE.

This stamp is remarkable for its outstanding color, centering, impression and the cancel.

With 2004 P.F. certificate..... 1,175.00

- 68 **2c Brown (113).** Huge Jumbo margins and perfectly centered, fresh color, neat target cancel, Extremely Fine Gem, with 2006 P.F. certificate (XF-Superb 95; SMQ \$880.00)..... 100.00



68



69

- 69 **6c Ultramarine (115).** Wide margins, deep rich color on bright paper, bold strike of 5-point Star fancy cancel and also part of red cancel at bottom right, Very Fine, with 1998 P.F. certificate 250.00

- 70 **12c Green (117).** Well-proportioned margins, intense shade and proof-like impression, unobtrusive strike of **blue cancel**, fresh and Extremely Fine, small blue backstamp, with 2000 P.F. certificate..... 310.00



70



71

- 71 **15c Brown & Blue, Ty. II (119).** Deep rich colors nicely complemented by **blue target** cancel, wide and balanced margins, full perforations all around
EXTREMELY FINE EXAMPLE OF THE 15-CENT TYPE II 1869 PICTORIAL ISSUE CANCELLED IN BLUE.
With 1997 P.F. certificate..... 335.00



72

72 **15c Brown & Blue, Ty. II, Center Inverted (119b).** Deep rich colors, unusually choice centering for this difficult invert

VERY FINE. AN EXCEPTIONALLY CHOICE AND RARE SOUND USED EXAMPLE OF THE 15-CENT 1869 PICTORIAL INVERT. THE COLORS ARE RICH AND DEEP, AND THE TARGET CANCEL LEAVES MOST OF THE VIGNETTE CLEARLY VISIBLE. ONLY 93 COPIES ARE RECORDED IN OUR CENSUS.

Our census of 1869 Inverts, published in the February 1999 *Chronicle* and updated with three new stamps, contains 93 examples of the 15c Invert, including three unused and 90 used (one in the British Library's Tapling collection).

Ex De Verymont, Seymour and Ishikawa. Census No. 119b-CAN-NC01. With 1968 P.F. certificate..... 17,500.00



73

73 **24c Green & Violet, Center Inverted (120b).** Rich colors, light cork cancel **red circular datestamp** which allow the vignette to be clearly seen

FINE. A RARE SOUND EXAMPLE OF THE 24-CENT 1869 PICTORIAL ISSUE INVERT, WHICH IS ESPECIALLY DESIRABLE BY VIRTUE OF THE RED COLORED CANCEL. ONLY 89 EXAMPLES OF THE 24-CENT 1869 PICTORIAL INVERT ARE RECORDED IN OUR CENSUS.

Our published 1869 Invert census (with unpublished updates) contains 89 copies of the perforated 24c Invert, including four unused stamps and used multiples. Excluding the unused singles, used block and used pair, there are perhaps 15 sound singles. The example offered here is particularly desirable by virtual of the colored cancel.

Census No. 120b-CAN-SW03. With 1957, 1990 and 2005 P.F. certificates. The Scott value is for "fine centered copies with only minimal faults." 20,300.00



74

- 74 **24c Green & Violet, Center Inverted (120b).** Deep rich colors and detailed impressions, bright paper, rosette cancel leaves vignette clearly visible, tiny trivial corner crease at bottom right

VERY FINE APPEARANCE. AN UNUSUALLY ATTRACTIVE EXAMPLE OF THE 24-CENT 1869 PICTORIAL ISSUE INVERT. ONLY 89 USED EXAMPLES OF THE 24-CENT 1869 PICTORIAL INVERT ARE RECORDED.

Our published 1869 Invert census (with unpublished updates) contains 89 copies of the perforated 24c Invert, including four unused stamps and used multiples.

Ex Seymour and Ishikawa. Census No. 120b-CAN-SW14. With 1993 P.F. certificate. The Scott value is for "fine centered copies with only minimal faults." 20,000.00

- 75 **30c Ultramarine & Carmine (121).** Intense colors and impressions, bold cork cancel and also prominent **blue** cancel at left, Very Fine and choice, with 1991 P.F. certificate 750.00



75



76

- 76 **90c Carmine & Black (122).** Choice centering with unusually wide margins, light strike of **red cork** cancel
EXTREMELY FINE. A HANDSOME USED EXAMPLE OF THE 90-CENT 1869 PICTORIAL. ESPECIALLY SCARCE AND DESIRABLE WITH A RED CANCELLATION.
With 2004 P.F. certificate 2,900.00

- 77 **90c Carmine & Black (122).** Very well-centered with wide margins, lovely pastel shade, bright and fresh, faint cancel
EXTREMELY FINE GEM. A WONDERFUL USED EXAMPLE OF THE 90-CENT 1869 ISSUE. A TRUE CONDITION RARITY IN TERMS OF COLOR, CENTERING AND CANCEL.
With 1993 and 2004 P.F. certificates . 2,400.00



77

1875 RE-ISSUE OF 1869 PICTORIAL ISSUE



78

78 **2c Brown, Re-Issue (124).** Deep rich color, essentially perfect centering with wide balanced margins, sharp strike of “6” oval grid duplex cancel

EXTREMELY FINE GEM. ONE OF THE FINEST USED EXAMPLES OF THE 2-CENT 1869 PICTORIAL RE-ISSUE EXTANT.

We are aware of three or four sound used examples of the 2c 1869 Re-Issue with comparable centering and margins. The finest copy — with wider margins and a small oval grid cancel — was purchased by the Siegel firm on behalf of a client from Shreves sale of the William S. Floyd collection (October 2001) for \$12,000 hammer.

Ex Coulter. With 2006 P.F. certificate (XF 90; SMQ \$1,450.00)..... 900.00



79

79 **6c Blue, Re-Issue (126).** Choice centering for this difficult issue with wide margins, rich color on bright paper, unobtrusive strike of duplex cancel

EXTREMELY FINE USED EXAMPLE OF THE 6-CENT 1869 PICTORIAL RE-ISSUE.

Ex Twigg-Smith. With 2001 P.F. and 2005 P.S.E. certificates (VF-XF 85; SMQ \$3,350.00). Only two have graded higher to date. SMQ estimates that approximately 30 are known used. 2,750.00



80

80 **6c Blue, Re-Issue (126).** Deep rich color and proof-like impression, bold strike of registry oval cancel

VERY FINE AND CHOICE USED EXAMPLE OF THE 6-CENT 1869 PICTORIAL RE-ISSUE.

With 1967 and 2000 P.F. certificates..... 2,750.00



81

81 **10c Yellow, Re-Issue (127).** Bold strike of oval registry cancel

FRESH AND VERY FINE USED EXAMPLE OF THE 10-CENT 1869 PICTORIAL RE-ISSUE.

Ex Coulter. With 1974 and 2006 P.F. certificates (XF 90; SMQ \$3,750.00). SMQ estimates that approximately 30 are known used. 2,000.00



82

82 **12c Green, Re-Issue (128).** Absolutely perfect centering, wide even margins, deep rich color, clear strike of New York City oval grid, trivial tiny corner creases at top
EXTREMELY FINE APPEARANCE. ONE OF THE MOST ELUSIVE OF THE 1869 RE-ISSUES IN
USED CONDITION.

The Rose book estimates 15-25 extant used copies, and SMQ estimates 20 extant.

Ex Zoellner. With 1970 and 1999 P.F. certificates 3,250.00



83

- 83 **15c Brown & Blue, Re-Issue (129).** Very lightly cancelled and magnificently centered
EXTREMELY FINE GEM. A SUPERB USED EXAMPLE OF THE 15-CENT 1869 RE-ISSUE GRADED
XF-SUPERB 95 BY THE PHILATELIC FOUNDATION.
With 2006 P.F. certificate (XF-Superb 95; SMQ \$4,400.00). 1,300.00



84

- 84 **24c Green & Violet, Re-Issue (130).** Deep rich colors and proof-like impressions, wide
margins, bold strike of duplex cancel
VERY FINE AND CHOICE USED EXAMPLE OF THE 24-CENT 1869 PICTORIAL RE-ISSUE.
With 1998 P.F. certificate 1,750.00



85

- 85 **90c Carmine & Black, Re-Issue (132).** Deep rich colors, unobtrusive strike of quartered cork cancel, wide margins
VERY FINE AND CHOICE. A BEAUTIFUL AND RARE USED EXAMPLE OF THE 90-CENT 1869 PICTORIAL RE-ISSUE.
Ex Coulter. With 1972 and 2006 P.F. certificates 6,500.00

1870-88 BANK NOTE ISSUES



86

- 86 **2c Red Brown, Grill (135).** I. Grill with clearly-defined grill points, rich color, wide and balanced margins, cork cancel at top, Extremely Fine Gem, with 1995 P.F. certificate 80.00



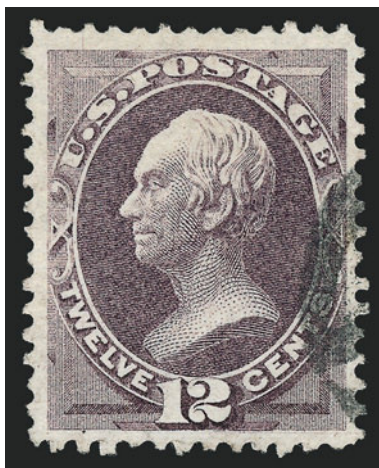
87

- 87 **7c Vermilion, Grill (138).** H. Grill, clear grill points, brilliant color on bright paper, neat target cancel, wide margins, Extremely Fine Gem, a huge stamp, with 2001 P.F. and P.S.E. certificates 525.00



88

- 88 **10c Brown, Grill (139).** H. Grill, remarkably well-centered with wide margins, dark color on bright white paper with long full perfs all around, many clear grill points, neat part strike of “**N. York Steamship**” circular datestamp
 EXTREMELY FINE GEM. A PHENOMENAL USED 1870 10-CENT NATIONAL GRILLED ISSUE THAT SURELY RANKS AMONG THE FINEST KNOWN.
 With 2002 P.F. certificate..... 800.00



89

- 89 **12c Dull Violet, Grill (140).** H. Grill, gorgeous color and discernible grill points, unusually wide margins for this difficult issue, light cancel at right leaves entire design clearly visible

EXTREMELY FINE GEM. A SUPERB USED EXAMPLE OF THE 1870 12-CENT NATIONAL BANK NOTE COMPANY GRILLED ISSUE. THIS IS EASILY ONE OF THE FINEST IN EXISTENCE.

For some reason, the 12c National Bank Note Co. grilled issue is an exceedingly difficult stamp to obtain with wide margins. A Power Search review of our sale records failed to find another with such wide margins.

With 2004 P.F. certificate 3,250.00



90

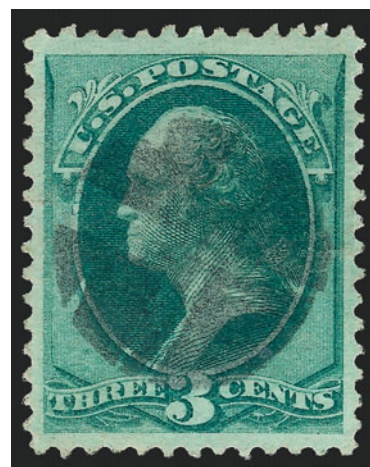
- 90 **90c Carmine, Grill (144).** H. Grill, brilliant color, unusually choice centering for this difficult issue with well-proportioned margins, bold strike of grid cancel
 EXTREMELY FINE. A BEAUTIFUL USED EXAMPLE OF THE 1870 90-CENT NATIONAL BANK NOTE COMPANY GRILLED ISSUE.
 With 1999 and 2006 P.F. certificates (XF 90; SMQ \$5,850.00) 2,500.00



91

- 91 **2c Red Brown (146).** Pretty shade, wide and balanced margins, neat strike of **blue circular datestamp**, fresh and Extremely Fine, with 2000 P.S.E. certificate. 18.00

- 92 **3c Green (147).** Deep rich color, wide and balanced margins, well-struck quartered cork cancel, Extremely Fine Gem, for some reason the 3c National is much rarer with Jumbo margins than the Continental and American issues, with 2000 P.S.E. certificate 1.75



92



93

- 93 **6c Carmine (148).** Rich color, detailed impression, well-balanced margins, quartered cork cancel, fresh and Extremely Fine, a beautiful stamp, ex Hinrichs, with 1999 P.F. certificate 35.00

- 94 **7c Vermilion (149).** Radiant color, choice centering with extra wide margins, bold cork cancel, fresh and Extremely Fine, with 1997 P.F. certificate..... 95.00



94

- 95 **12c Dull Violet (151).** Beautiful Jumbo margins, fresh color and neatly cancelled with a **blue Cincinnati** circular datestamp, Extremely Fine, with 2004 P.F. certificate 205.00



95



96

- 96 **15c Bright Orange (152).** Magnificent Jumbo margins with essentially perfect centering, bright and fresh color, neat target cancel, an Extremely Fine Gem, the ideal stamp for the collector who has been patiently waiting for the “right” 15c National, with 2004 P.F. certificate 200.00

- 97 **24c Purple (153).** Choice centering with wide and well-balanced margins, brilliant color as fresh as the day it was printed, well-struck **New York Foreign Mail** cancel

EXTREMELY FINE GEM. A SUPERB USED EXAMPLE OF THE 15-CENT UNGRILLED NATIONAL BANK NOTE COMPANY ISSUE. A STAMP WITH TREMENDOUS VISUAL APPEAL.

Ex Hinrichs. With 1988 and 2004 P.F. certificates 200.00



97



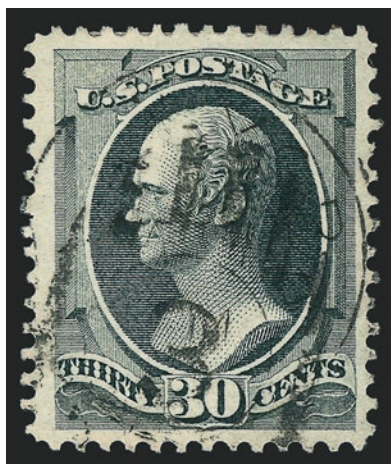
98

- 98 **10c Brown (161).** Choice centering with wide and balanced margins, deep rich color, cork cancel, Extremely Fine Gem, a beautiful stamp, with 2006 P.F. certificate (XF-Superb 95; SMQ \$340.00) 25.00

- 99 **10c Brown (161).** Enormous margins, detailed impression, **blue target** and part of **red** transit cancels, Extremely Fine Gem, a phenomenal stamp, with 1990 P.F. certificate 32.50



99



100

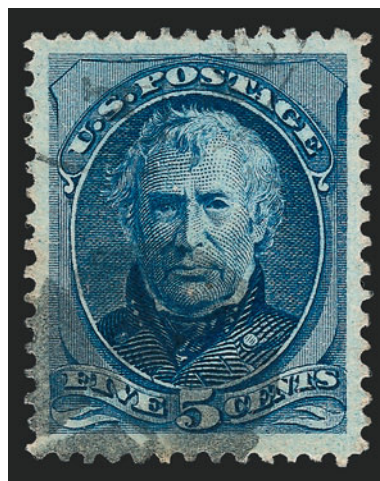
- 100 **30c Gray Black (165).** Wide margins, bright shade and crisp impression, bold strike of New York circular datestamp and duplex cancels, fresh and Extremely Fine, a pretty stamp, with 2004 P.F. certificate 130.00

- 101 **2c Vermilion, Intermediate Paper (178 var).** Radiant color, choice centering with wide and balanced margins, bold strike of **negative "J"** cancel, fresh and Extremely Fine, with 2000 P.S.E. certificate specifically mentioning the paper, Scott Retail as on normal paper..... 12.50



101

- 102 **5c Blue (185).** Deep rich color and proof-like impression, wide and balanced margins, bold strike of cork cancel, fresh and Extremely Fine, a pretty stamp, with 2000 P.S.E. certificate..... 15.00



102



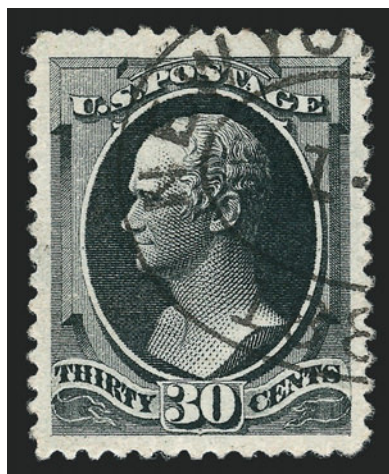
103

- 103 **10c Brown, With Secret Mark (188).** Unusually wide margins for this issue, bold strike of target cancel, Extremely Fine Gem, a beautiful stamp, with 2006 P.F. certificate (XF 90; SMQ \$130.00)..... 27.50

- 104 **15c Red Orange (189).** Vibrant color as fresh as the day it was printed, bright paper, long and full perforations, choice centering with Jumbo margins, neat strike of New York oval registry cancel, fresh and Extremely Fine, with 2005 and 2006 P.F. certificates (XF 90 Jumbo; SMQ \$115.00 as 90, \$340.00 as 95) 25.00

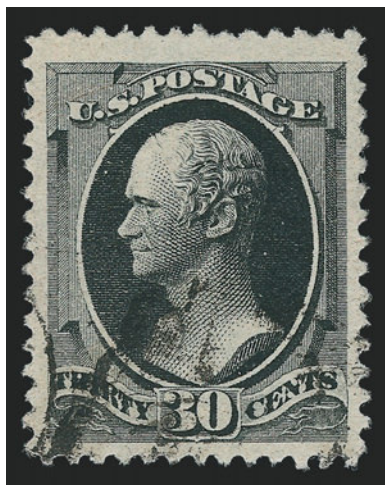


104



105

- 105 **30c Full Black (190).** Intense shade and impression, gorgeous centering with unusually wide margins, well-struck New York oval registry cancel, fresh and Extremely Fine, a superb stamp in every respect, purple backstamp, with 1992 A.P.S. and 1986 P.F. certificates 80.00



106

- 106 **30c Full Black (190).** Wide margins, detailed impression, face-free cancel, Extremely Fine, with 1988 and 2006 P.F. certificates 80.00

- 107 **90c Carmine (191).** Wide margins and choice centering, fresh bright color, clear strike of Boston circular datestamp

EXTREMELY FINE. A HIGHLY DESIRABLE USED EXAMPLE OF THE 90-CENT 1879 AMERICAN BANK NOTE COMPANY ISSUE. SCARCE CANCELLED BY A TOWN MARKING RATHER THAN THE USUAL OVAL REGISTRY OR PARCEL CANCEL.

With 2004 P.F. certificate..... 325.00



107



108

- 108 **10c Brown (209).** Jumbo margins all around, deep rich color, detailed impression, cork cancel, Extremely Fine Gem, a huge stamp, with 2000 P.S.E. certificate 6.00

- 109 **2c Green (213).** Jumbo margins on all sides, brilliant color, bold strike of duplex cancel, Extremely Fine Gem, a massive stamp, with 2000 P.S.E. certificate..... 0.50



109

COLUMBIAN ISSUE



110

110 **4c Columbian, Error of Color (233a).** Beautiful deep rich color, light strike of duplex circular datestamp, faint diagonal crease at top left

FINE APPEARANCE. ONLY THIRTEEN USED EXAMPLES OF THE 4-CENT COLUMBIAN ERROR OF COLOR HAVE BEEN CERTIFIED BY THE PHILATELIC FOUNDATION. ONE OF THE GREAT RARITIES OF USED UNITED STATES STAMPS.

Only four of the thirteen are sound, and two of the sound copies have not been re-examined for faults since the 1940's. Therefore, the number of sound copies may actually be less than four, and may only be two. Most of the used examples are also off-center to some degree, with eight having the perforations either close or touching on at least one side. In the last seven years, this is only the fifth used example of this rarity we have handled.

Unpublished Census No. 233a-CAN-09. Ex Lake Shore. With 1979 Friedl and 1997 P.F. certificates. In our opinion, this is undercatalogued in Scott given its rarity compared to unused copies. 16,500.00



111

- 111 **50c Columbian (240).** Beautiful wide margins and handsomely centered, incredibly intense color on bright white paper, light strike of circular datestamp, Extremely Fine, striking used example, with 2006 P.S.E. certificate (VF-XF 85; SMQ \$270.00) ... 180.00



112

- 112 **\$2.00 Columbian (242).** Choice centering with wide margins, intense shade and impression, lightly-struck cancel leaves design clearly visible
FRESH AND EXTREMELY FINE. A BEAUTIFUL USED EXAMPLE OF THE \$2.00 COLUMBIAN ISSUE.
With 1990 and 2007 P.F. certificates 600.00



113

- 113 **\$2.00 Columbian (242).** Brilliant shade, neat strike of circular datestamp cancel, fresh and Very Fine, a pretty stamp, many are plagued by heavy cancels, with 1995 and 2005 P.F. certificates 600.00



114

- 114 **\$3.00 Columbian (243).** Deep rich color, proof-like impression, choice centering with well-proportioned margins, open grid cancel
 EXTREMELY FINE. A BEAUTIFUL LIGHTLY-CANCELLED USED EXAMPLE OF THE \$3.00 COLUMBIAN ISSUE.
 With 1989 and 2005 P.F. certificates..... 1,000.00

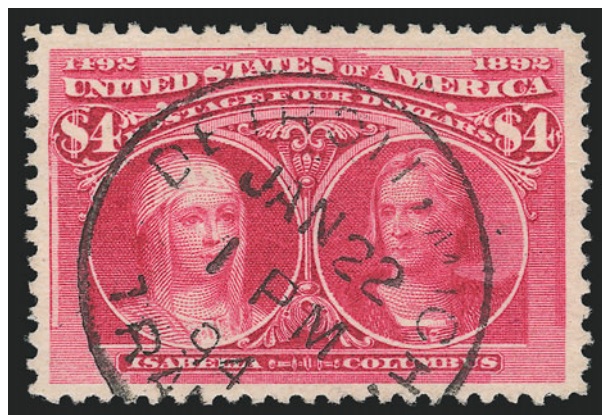


115

115 **\$4.00 Columbian (244).** Radiant color as fresh as the day it was printed, bright paper, long and full perforations all around, neat strike of Dec. 30, 1893 circular datestamp

EXTREMELY FINE GEM. A SUPERB USED EXAMPLE OF THE \$4.00 COLUMBIAN, WHICH HAS BEEN GRADED XF-SUPERB 95 BY P.S.E. — THIS IS THE HIGHEST GRADE AWARDED TO DATE AND ONLY ONE OTHER SHARES THIS GRADE.

With 2006 P.S.E. certificate (XF-Superb 95; SMQ \$7,450.00). This is the highest grade awarded to date and only one other has achieved this grade. The next-highest grade is a 90. SMQ does not even price this stamp in used condition above the grade of 95. 1,300.00



116

- 116 **\$4.00 Columbian (244).** Brilliant color, choice centering with well-proportioned margins, neat strike of "Detroit Mich. Jan. 22, 1894" cancel

EXTREMELY FINE. A BEAUTIFUL USED EXAMPLE OF THE \$4.00 COLUMBIAN ISSUE.

With 1989 P.F. certificate as on piece (which accompanies) and 2006 P.F. certificate off-piece (XF 90; SMQ \$2,700.00) 1,300.00



117

- 117 **\$5.00 Columbian (245).** Choice centering with wide and balanced margins, crisp impression, face-free cork cancel

EXTREMELY FINE. A BEAUTIFUL USED EXAMPLE OF THE \$5.00 COLUMBIAN ISSUE.

With 1985 and 2007 P.F. certificates (XF 90; SMQ \$3,100.0)..... 1,500.00

1894-98 BUREAU ISSUE



118

- 118 **2c Pink, Ty. I (248).** Jumbo margins, bright color, bold strike of target cancel, Extremely Fine, a huge stamp, with 2001 P.S.E. certificate 7.50

119

- 6c Dull Brown (256).** Choice centering with wide margins, pretty shade, bold strike of Chicago circular datestamp, fresh and Extremely Fine, with 2001 P.S.E. certificate 25.00



119



120

- 120 **15c Dark Blue (259).** Intense shade on bright paper, unusually wide margins, cork cancel, fresh and Extremely Fine, with 2001 P.S.E. certificate... 60.00

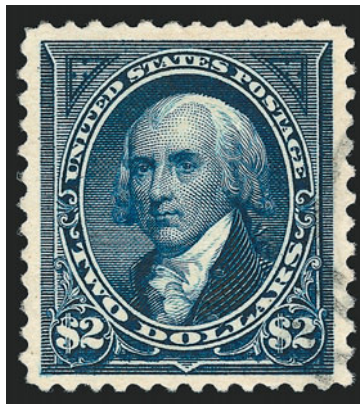


121

121 **\$1.00 Black, Ty. II (261A).** Wide and balanced margins, bright shade and remarkably detailed impression, face-free circular datestamp confined to the lower left corner of the stamp

EXTREMEY FINE GEM. A SUPERB USED EXAMPLE OF THE \$1.00 TYPE II 1894 UNWATER-MARKED BUREAU ISSUE. A DIFFICULT STAMP TO FIND IN SUCH SUPERB CONDITION.

Ex Hoffner, Rubin and Hinrichs. With 1994 and 2004 P.F. and 1992 P.S.E. certificates
..... 750.00



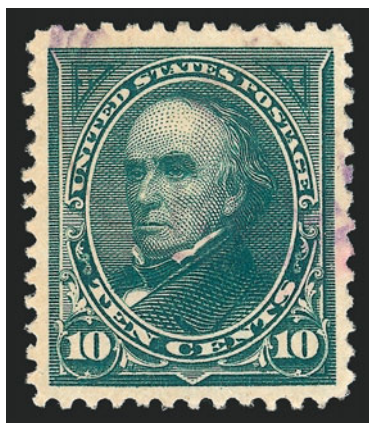
122

- 122 **\$2.00 Bright Blue (262).** Warm color on bright paper, detailed impression, unobtrusive cancel at right is barely noticeable, long and full perforations all around
EXTREMELY FINE. A GORGEOUS USED EXAMPLE OF THE \$2.00 1894 UNWATERMARKED BUREAU ISSUE.
With 1961 and 1992 P.F. and 2005 P.S.E. certificates (XF 90; SMQ \$2,850.00). Only two have graded higher to date (both graded 95) and only two others share this grade..... 1,250.00

- 123 **5c Chocolate (270).** Unusually choice centering with wide and balanced margins, rich color and proof-like impression, neat strike of circular datestamp, Extremely Fine Gem, a superb stamp in every respect 3.00



123



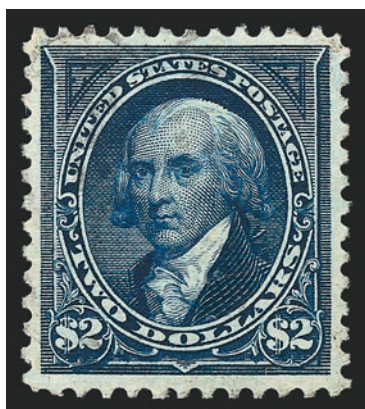
124

- 124 **10c Dark Green (273).** Wide and balanced margins, intense shade and impression, light strike of **purple cancel**, fresh and Extremely Fine 2.00

- 125 **50c Orange (275).** Vibrant color as fresh as the day it was printed, perfectly centered with well-proportioned margins, unobtrusive circular datestamp, Extremely Fine Gem, a beautiful stamp, with 2000 P.S.E. certificate 35.00

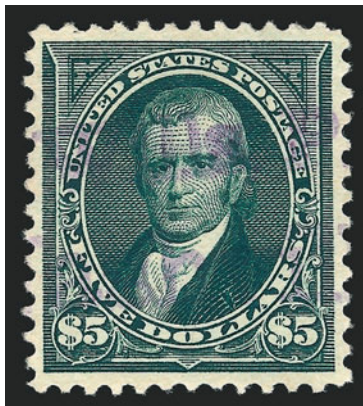


125



126

- 126 **\$2.00 Dark Blue (277a).** Deep rich color and proof-like impression, well-proportioned margins, light strike of cancel at top left leaves entire design clearly visible, Extremely Fine, an elusive stamp in higher grades, with 2000 P.F. certificate 450.00



127

- 127 **\$5.00 Dark Green (278).** Perfectly centered with wide and balanced margins, deep rich color and proof-like impression on bright paper, unobtrusive strike of **purple** cancel, EXTREMELY FINE GEM. A SUPERB USED EXAMPLE OF THE 1895 \$5.00 WATERMARKED BUREAU ISSUE IN THE FINEST CONDITION ATTAINABLE.
- Ex Hoffner and Hinrichs. With 1997 P.S.E. and 2006 P.F. certificates (XF-Superb 95; SMQ \$3,400.00)..... 650.00

TRANS-MISSISSIPPI ISSUE



128

- 128 **4c Trans-Mississippi (287).** Gorgeous centering with wide and balanced margins, rich color, bold "Brockton Mass." oval registry cancel, Extremely Fine Gem, a beautiful stamp 24.00



129

- 129 **50c Trans-Mississippi (291).** Jumbo margins and choice centering, detailed impression, unobtrusive cancels, Extremely Fine, a huge stamp, with 2006 P.F. certificate.... 190.00



130

- 130 **\$1.00 Trans-Mississippi (292).** Wide margins, intense shade and impression, centrally-struck target cancel leaves design clearly visible
EXTREMELY FINE. A BEAUTIFUL USED EXAMPLE OF THE \$1.00 TRANS-MISSISSIPPI ISSUE, WHICH HAS BEEN WIDELY DESCRIBED AS THE MOST BEAUTIFUL U.S. STAMP DESIGN.
With 1998 and 2006 P.F. certificates (XF 90; SMQ \$1,500.00)..... 650.00

PAN-AMERICAN ISSUE



131

131 **1c Pan-American, Center Inverted (294a).** Deep rich colors, unusually choice centering, machine cancel leaves invert clearly visible

EXTREMELY FINE GEM. EASILY ONE OF THE FINEST USED EXAMPLES OF THE ONE-CENT PAN-AMERICAN INVERT IN EXISTENCE.

The 1c Pan-American Inverts were found in at least four different post offices around the country, soon after release of the issue in May 1901. According to the revised Johl-King book (p.7) "The first known copies of this error were discovered at Bessemer, Alabama, by the Carrell Jewelry Company on some circulars just prior to mailing them. When they realized the find they had made they lost no time in removing the stamps from the circulars and thus saved them to philately." Three covers are known with one each used from Bessemer Ala., Oakland Cal. and St. Louis Mo.

The 1c Pan-American Invert in used condition is considerably scarcer than unused. With the increased collector demand for 20th Century stamps in used condition, the price of a used 1c Pan-American Invert has surged ahead from \$7,000 in 2001 to \$13,000 in 2008; in our opinion, it is still undervalued.

Ex Mayer. With 1994 and 2003 P.F. certificates 13,000.00

1902-08 ISSUE

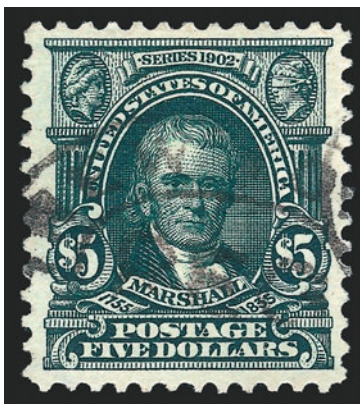


132

132 **\$2.00 Dark Blue (312).** Intense color and proof-like impression, choice centering with wide margins all around, unobtrusive cancel

EXTREMELY FINE GEM. A SUPERB USED EXAMPLE OF THE \$2.00 1902 ISSUE, WHICH HAS BEEN GRADED XF-SUPERB 95 JUMBO BY P.S.E. THIS IS THE HIGHEST GRADE AWARDED TO DATE AND THE ONLY EXAMPLE TO ACHIEVE THIS GRADE.

With 2002 P.F. and 2005 P.S.E. certificates (XF-Superb 95 Jumbo; SMQ \$1,155.00 as 95, \$3,050.00 as 98). This is the only example to achieve this grade, which is the highest awarded to date..... 225.00



133

133 **\$5.00 Dark Green (313).** Deep rich color, oval registry cancel, Very Fine and choice, an elusive stamp in used condition in higher grades, with 1983 and 2006 P.F. certificates 750.00



134

- 134 **4c Brown, Imperforate, Schermack Ty. III (314A).** Large margins to full with full Schermack perforations on right side, deep rich color, usual wavy-line cancel

VERY FINE. A RARE SOUND EXAMPLE OF THE 4-CENT 1908 IMPERFORATE WITH SCHERMACK PERFORATIONS, SCOTT 314A.

With the rising popularity of vending and affixing machines, the Bureau of Engraving and Printing received numerous requests from manufacturers for supplies of imperforate stamps, which could then be privately perforated to conform to each firm's machine. In May 1908, a supply of 25 sheets (400 stamps per sheet) of the 4c 1902 Issue, without perforations, was delivered to the Schermack Mailing Machine Co. in Detroit. The entire supply was cut into coils with Schermack Type III perforations, designed for the firm's patented affixing machine and delivered to the Winfield Printing Co. for use on mass mailings of advertising material. Approximately 6,000 were used on a mailing for Hamilton Carhartt Manufacturer, and almost all of the 4,000 balance were used on a mailing for Burroughs Adding Machine Co.

Our unpublished census contains 44 used examples, including three strips of three (one on cover), three singles on separate covers, and 32 single used copies (four are or were at one time on piece, including one of the sound copies with full margins). All three strips of three and two covers were used by Karl Koslowski, who was the only person able to acquire some of the 4c Imperforates. He is also the source for the only known unused copies. Our published census (updated) contains four pairs, two guide line pairs and nine singles, for a total of 21 unused stamps.

With 2005 P.F. certificate. 45,000.00

GROUP LOTS

- 135 **Balance of the Dauer Collection of Used U.S. Stamps.** 72 used stamps (33 with certificates), incl. Nos. 26, 65, excellent group of Bank Note issues, Columbians incl. 2c, 4c, 6c and 10c, few Trans-Mississippi, Pan-Americans, nice showing of 1894-98 Bureau issues, occasional small flaw will be found but most are Very Fine, few Extremely Fine, 33 with P.F. or P.S.E. certificates..... E. 1,000-1,500
- 136 **Additional Balance Lot.** Two three-ring binders containing almost 100 used stamps, originally a balance lot in the Hinrichs sale, some additional Gems have been pulled out, a significant number have certificates, strength is in Bank Note and Bureau issues, few unusual cancels incl. NYFM, few flaws, many appear Very Fine, the cost of the certificates alone is significant E. 1,000-1,500

END OF SALE — THANK YOU

Bid Form—15% Premium Sale

Sale 961

Tuesday, September 23, 2008

1

Please provide the following information:

NAME.....

ADDRESS.....

CITY/STATE/ZIP

TEL. (DAY) FAX.....

E-MAIL.....

PADDLE #

Do not write in box

2

Have you purchased from us in the past 5 years? ☐ YES (if so, please go to Section 3)

☐ NO (please provide a trade reference and bank information)

References:

Stamp Firm: Telephone.....

Bank: Account #

3

In the space provided below, enter the **lot number** from **Sale 961** and your corresponding bid. Please use **whole dollar amounts** only and enter the **maximum bid** you wish to have us execute on your behalf, according to the **bidding increments** on other side of this form. **Your bid will NOT include the 15% buyer's premium.** We will advance the bidding at one increment over the

next highest bid; therefore, you may be awarded the lot at less than your maximum bid. Please do not use "plus" bids or "buy" bids. If you wish to bid on one lot **or** the other, indicate your "or" bid between lot number/bid entries and bracket your choices. If you wish to place a **bidding limit** on the total amount of your bids, please enter your limit in the space marked "Limit Bids".

PLEASE NOTE BIDDING INCREMENTS AND SHIPPING CHARGES (ON BACK OF THIS PAGE)

☐ **LIMIT BIDS:** Check this box if you wish to limit the total amount of your bids (not including the **15% buyer's premium**) in this sale. Your bids will be executed until your bidding limit no longer allows for additional bids.

The total amount you wish to bid is: \$

Lot	Bid	Lot	Bid	Lot	Bid
	\$		\$		\$

4

AGREEMENT: By signing this bid form, you agree to pay for purchases resulting from your bids, in accordance with the **Conditions of Sale** printed in the sale catalogue. You also agree to pay the **15% buyer's premium, shipping costs (see reverse), and sales tax or use tax or customs duty which may be due on the total invoiced amount.** It is

understood that these bids will be executed by Siegel Auction Galleries as a courtesy to absentee bidders, but you waive the right to make any claim against the auctioneer or the firm, arising from the these bids. **You are responsible for your written bids, including any errors on your part and any additions or changes to the bids herein.**

Payment must be made by cash, check, money order or wire transfer. Credit cards will not be accepted.



SIGNED..... TODAY'S DATE

5

Please submit your bids promptly (telephone bids must be confirmed in writing).

Mail to: Robert A. Siegel Auction Galleries, Inc.

60 E. 56th Street, 4th Floor, New York, N.Y. 10022

Telephone (212) 753-6421

OR FAX YOUR BIDS: (212) 753-6429

Shipping Instructions, Bidding Increments and space for additional bids on other side of form

Additional Bids

Sale 961—September 23, 2008

Lot	Bid	Lot	Bid	Lot	Bid
	\$		\$		\$

Shipping and Transit Insurance

We will be pleased to arrange for shipping and transit insurance for purchases in this sale (except those described as “floor sale only”). To expedite billing and delivery of lots to hundreds of buyers per sale, we use standard charges for postage and insurance, based on the package weight and mailing requirements (see schedule). The standard charges are sometimes slightly more or less than the actual postage or Fedex fees, but we do not include any charge for our labor or packing costs. Therefore, we ask all buyers to remit the prescribed amount for shipping charges.

Transit insurance is provided in all cases, except when the buyer has furnished us with proof that insurance coverage is effective under another policy. Proof, in such cases, will be accepted in the form of a written certificate from the insurance carrier.

You are responsible for insurance charges, which will be added to your invoice. This coverage is provided for our mutual protection against theft or loss in transit.

Bidding Increments

The auctioneer may regulate the bidding at his discretion. However, to assist absentee bidders in establishing their maximum bid for each lot, the increments shown at right will be used in most cases. We recommend that written bids conform to these increments (those which do not will be reduced to the next level).

REVISED CHARGES FOR SHIPPING EFFECTIVE JUNE 1, 2008

Due to increased Fedex charges for secured delivery and fuel, we are revising our shipping charges. We apologize for circumstances beyond our control.

Current Postage & Insurance Charges

Weight/Class	Shipping Method	Charges
Up to 2 lbs.	Fedex Envelope	\$25.00
Over 2 lbs.	Fedex Box	\$35.00*
Non-U.S.	Fedex/Courier	\$50.00**
Bulk Lots	UPS Preferred	By weight and value
<p>These fees reflect additional Fedex charges for residential delivery, signature and fuel surcharge.</p> <p>*Higher fees will be charged on packages weighing more than 5 lbs. or insured for more than \$75,000.</p> <p>**Buyers are liable for all customs duties and clearance charges. An accurate declaration of value will be made on all import/export documents.</p>		

6/2008

Up to \$50	\$5	\$3,000-7,000	\$250
\$50-200	\$10	\$7,000-20,000	\$500
\$200-500	\$25	\$20,000-30,000	\$1,000
\$500-1,000	\$50	\$30,000-75,000	\$2,500
\$1,000-3,000	\$100	\$75,000 up	\$5,000

6/2008

PRICES REALIZED FOR SALE 961---9/23/2008
The Dr. Edward and Joanne Dauer Collection of Superb Used U.S.

Robert A. Siegel Auction Galleries, Inc.
60 East 56th Street, 4th Floor, New York, NY 10022
Tel (212) 753-6421 Fax (212) 753-6429

Lot#	Realized	Lot#	Realized	Lot#	Realized	Lot#	Realized
1	1,600	44	3,250	87	1,700	131	45,000
2	1,500	45	1,200	88	7,500	132	5,000
3	30,000	46	62,500	89	9,500	133	850
4	32,500	47	1,200	90	8,000	134	67,500
5	16,500	48	12,500	91	325	135	5,000
6	24,000	49	26,000	92	160	136	3,750
7	8,500	50	2,200	93	300		
8	1,200	51	10,000	94	225		
9	1,200	52	5,250	95	1,600		
10	1,000	53	5,000	96	1,200		
11	19,000	54	2,800	97	2,500		
12	3,250	55	2,200	98	500		
13	500	56	5,250	99	500		
14	2,900	57	1,300	100	550		
15	2,700	58	1,800	101	750		
16	1,600	59	1,700	102	200		
17	1,900	60	1,300	103	300		
18	10,000	61	3,250	104	750		
19	1,200	62	5,000	105	600		
20	10,000	63	35,000	106	350		
21	2,100	64	10,000	107	1,700		
22	5,500	65	45,000	108	500		
23	6,000	66	280,000	109	600		
24	3,500	67	11,500	110	9,500		
25	1,000	68	2,400	111	600		
26	1,200	69	800	112	1,200		
27	3,000	70	475	113	1,200		
28	15,000	71	1,400	114	2,000		
29	950	72	120,000	115	7,500		
30	4,000	73	40,000	116	3,750		
31	300	74	40,000	117	4,750		
32	17,000	75	750	118	250		
33	2,100	76	11,500	119	400		
34	3,500	77	5,250	120	350		
35	8,000	78	6,000	121	11,000		
36	20,000	79	13,500	122	6,250		
37	9,000	80	4,250	123	2,400		
38	7,500	81	5,000	124	3,500		
39	2,700	82	8,000	125	325		
40	2,700	83	4,000	126	500		
41	13,000	84	2,100	127	5,500		
42	650	85	11,500	129	2,200		
43	1,000	86	750	130	1,800		