

THE
ALAN B. WHITMAN COLLECTION
OF
OUTSTANDING UNITED STATES STAMPS



SALE 968

PART ONE: 1847-1869 Issues

PART TWO: 1870-1901 Issues

PART THREE: 1902-1934 Issues

Robert A. Siegel

AUCTION GALLERIES, INC.

siegelauctions.com



Robert A. Siegel

AUCTION GALLERIES, INC.

60 EAST 56TH STREET, 4TH FLOOR, NEW YORK, N.Y. 10022
 Phone (212) 753-6421 • Fax (212) 753-6429 • E-mail: stamps@siegelauctions.com
siegelauctions.com



Scott R. Trepel
 President
 strepel
 @siegelauctions.com



John P. Zuckerman
 Senior Vice President
 jzuckerman
 @siegelauctions.com



Corey Long
 Vice President
 clong
 @siegelauctions.com



Starr Tucker-Ortega
 Accounts
 stamps
 @siegelauctions.com



Carlene Counihan
 Bids and Inquiries
 carlene
 @siegelauctions.com

Scott R. Trepel Principal Auctioneer (licensed by NYC Dept. of Consumer Affairs, #795952)
 Nathaniel Estes Catalogue and Digital Production

Information for Bidders

Bidding

The following means are available for placing bids:

1) Attending the Live Auction in Person: All bidders must register for a paddle, and new bidders must provide references at least three business days in advance of the sale.

2) Live Internet Bidding: Instructions for participating as a Live Internet Bidder are provided on the page opposite.

3) Phone Bidding: Bidders can be connected to the sale by phone and bid through a member of staff. Requests for phone bidding are subject to approval (please contact our office at least 24 hours before the sale). A signed Bid Form is required.

4) Absentee Bids. All bids received in advance of the sale, either by mail, fax, phone, e-mail or internet, are Absentee Bids, which instruct the auctioneer to bid up to a specific amount on one or more lots in the sale. Absentee Bids sent by phone, fax or e-mail should arrive at least one hour prior to the start of the sale session. Bids entered through Live Internet Bidding will be visible to the auctioneer during the sale. Written bids should be entered legibly on the Bid Form in the sale catalogue. E-mail and internet bids should be carefully typed and double-checked. All new bidders must provide references. We recommend calling or e-mailing to confirm that Absentee Bids sent by mail, fax or e-mail have been received and entered.

Pre-Sale Viewing

Subject to availability, certain lots (except group lots) can be sent to known clients for examination. Requests must be made no later than 7 days prior to the sale. Lots must be returned on the day received. Postage/insurance costs will be invoiced.

In addition to regular viewing, clients may view lots by appointment. Our staff will be pleased to answer questions or provide additional information about lots.

Expert Certification

Individual items offered without a current certificate (PF dated within the past five years of sale; PSE dated January 2004 or later) may be purchased subject to independent certification of genuineness and our description. **Please refer to the Conditions of Sale and Grading Terms for policies governing certification.**

Shipping and Delivery

Procedures and charges for shipping lots are printed on the back of the Bid Form. **Bidders are responsible for all prescribed shipping charges and any applicable sales tax or customs duties.**

Price Realized

Prices realized are sent with each invoice. Bidders with e-mail will receive a Bid Results report after the sale. Session results are posted immediately to **siegelauctions.com**

Live Internet Bidding at Siegel Auctions



Bidding from your computer lets you be part of the live auction from anywhere in the world!

There's no substitute for following the auction in real time. Live Internet Bidding lets you bid and buy as though you were right there in the saleroom.

And it's easy. Just start by following the simple steps to become a registered Live Internet Bidder. Once you've been approved for bidding, you can listen to the auction and place bids with the click of a mouse.

This step-by-step guide will instruct you how to register, set your browser and use the bidding interface.

1 Registering with Stamp Auction Network and Siegel Auction Galleries

Live Internet Bidding is managed by Stamp Auction Network (SAN). To bid, you must be registered and approved by *both* SAN and Siegel. To decide what you need to do, choose the description below that best fits you.

I've already registered with SAN and have been approved by Siegel for internet bidding. You're ready for Step 2.

I've never registered with SAN, but I'm a Siegel client. Go to stampauctionnetwork.com/siegel and click on "Register" at the top. Check the box for Robert A. Siegel Auction Galleries (under "R") and submit the form, indicating you are a Siegel client. Once registered at SAN, you're ready for Step 2.

I've never registered with SAN, and this is the first time I've bid with Siegel. Go to stampauctionnetwork.com/siegel and click on "Register" at the top. Check the box for Robert A. Siegel Auction Galleries (under "R") and submit the form **with your trade references** (please, no family members or credit card companies as references). Once registered at SAN and approved by Siegel for bidding, you can move to Step 2.

I've bid through SAN before, but this is the first time I've bid in a Siegel sale. Then you just need to be approved by Siegel. Go to stampauctionnetwork.com/siegel and click on "Update Registration" at the top. Your SAN account information will be sent to us for approval (you might be asked for other trade references). Once approved by Siegel for bidding, you can move to Step 2.



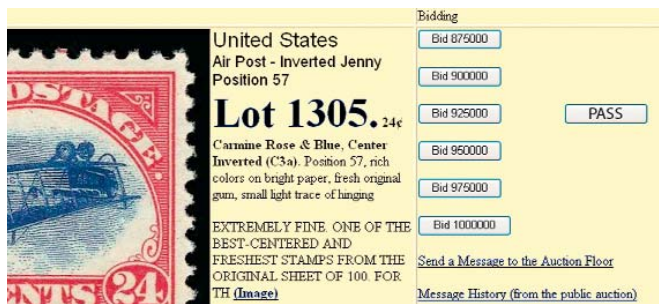
2 Using your browser for Live Internet Bidding and understanding the way it works.

Live Internet Bidding works by providing an audio feed of the auction (for anyone using Internet Explorer) and by allowing registered bidders to observe and place bids. The bidding interface shows a photo and description of the lot, the current bid (and your bidding status), and options for placing competitive bids. To join the auction, go to stampauctionnetwork.com/siegel. You can also log on at siegelauctions.com

The visual interface will work with any browser on both PC and Mac operating systems. However, the audio feed only works with Internet Explorer on a PC with ActiveX software installed. If ActiveX is not on your computer, you will have the option to install it.

Before bidding by internet for the first time, we recommend finding a sale in progress and listening to the public broadcast or logging in as a registered bidder. This will help you develop a feel for the sale tempo and bidding interface.

"System down" or "lost connection" events do occasionally happen. If you have any problems with Live Internet Bidding, please call 212-753-6421 for immediate assistance.



3 Using Live Internet Bidding to bid, track results and communicate with the auctioneer.

When you're logged on as a Live Internet Bidder, the screen will display buttons with bid increments. After you click on a bid amount, the auctioneer is immediately notified of your bid. Retracting a bid is usually not acceptable, so please bid carefully.

If you bid, then decide to stop, please use the "Pass" button, which appears once you've started bidding. This tells the auctioneer not to wait for another bid from you.

You can send messages to the auctioneer (for example, a request for extension). You can also track prior realizations from the bidding screen.

Conditions of Sale (please read carefully before bidding)

The property described in this catalogue will be offered at public auction by Robert A. Siegel Auction Galleries, Inc. ("Galleries") on behalf of various consignors and itself or affiliated companies. By bidding on any lot, whether directly or by or through an agent, in person, or by telephone, facsimile or any other means, the bidder acknowledges and agrees to all of the following Conditions of Sale.

1. The highest bidder acknowledged by the auctioneer shall be the buyer. The term "final bid" means the last bid acknowledged by the auctioneer, which is normally the highest bid offered. **The purchase price payable by the buyer will be the sum of the final bid and a commission of 15% of the final bid ("buyer's premium"), together with any sales tax, use tax or customs duties due on the sale.**

2. The auctioneer has the right to reject any bid, to advance the bidding at his discretion and, in the event of a dispute between bidders, to determine the successful bidder, to continue the bidding or to reoffer and resell the lot in dispute. The Galleries' record of the final sale shall be conclusive.

3. All bids are per numbered lot in the catalogue unless otherwise announced by the auctioneer at the time of sale. The right is reserved to group two or more lots, to withdraw any lot or lots from the sale, or to act on behalf of the seller. The Galleries will execute bidding instructions on behalf of clients, but will not be responsible for the failure to execute such bids or for any errors in the execution of such bids.

4. **Lots with numbers followed by the symbol ° are offered subject to a confidential minimum bid ("reserve"), below which the lot will not be sold. The absence of the symbol ° means that the lot is offered without a reserve. If there is no reserve, the auctioneer has sole discretion to establish a minimum opening bid and may refuse an offer of less than half of the published estimate. Any lot that does not reach its reserve or opening bid requested by the auctioneer will be announced as "passed" and excluded from the prices realized lists after the sale. The Galleries may have a direct or indirect ownership interest in any or all lots in the sale resulting from an advance of monies or goods-in-trade or a guarantee of minimum net proceeds made by the Galleries to the seller.**

5. Subject to the exclusions listed in 5(A), the Galleries will accept the return of lots which have been misidentified or which have obvious faults that were present when the lot was in the Galleries' custody, but not so noted in the lot description. **All disputed lots must be received by the Galleries intact with the original packing material within 5 days of delivery to the buyer but no later than 30 days from the sale date. (5A) EXCLUSIONS:** The following lots may not be returned for any reason: lots containing 10 or more items; lots from buyers who registered for the pre-sale exhibition or received lots by postal viewing, thereby having had the opportunity to inspect them before the sale; any lot described with "faults," "defects" or a specific fault may not be returned because of any secondary fault. Photographed lots may not be returned because of centering, margins, short/nibbed perforations or other factors shown in the illustrations. Lots may not be returned for any of the following reasons: the color of the item does not match the color reproduction in the sale catalogue or website listing; the description contains inaccurate information about the quantity known or reported; or a certification service grades a stamp lower than the grade stated in the description.

6. Successful bidders, unless they have established credit with the Galleries prior to the sale, must make payment in full before the lots will be delivered. Buyers not known to the Galleries must make payment in full within 3 days from the date of sale. **The Galleries retains the right to demand a cash deposit from anyone prior to bidder registration and/or to demand payment at the time the lot is knocked down to the highest bidder, for any reason whatsoever.** In the event that any buyer refuses or fails to make payment in cash

for any lot at the time it is knocked down to him, the auctioneer reserves the right to reoffer the lot immediately for sale to the highest bidder. **Credit cards are not accepted as payment.**

7. If the purchase price has not been paid within the time limit specified above, nor lots taken up within 7 days from the date of sale, the lots will be resold by whatever means deemed appropriate by the Galleries, and any loss incurred from resale will be charged to the defaulting buyer. Any account more than 30 days in arrears will be subject to a late payment charge of 1½% per month as long as the account remains in arrears. Any expenses incurred in securing payment from delinquent accounts will be charged to the defaulter. A fee of \$250.00 per check will be charged for each check returned for insufficient funds.

8. All lots are sold as genuine. **Any lot accompanied by a certificate issued by The Philatelic Foundation within 5 years of the sale date or by Professional Stamp Experts since January 2004 is sold "as is" and in accordance with the description on the certificate. Such lots may not be returned for any reason, including but not limited to a contrary certificate of opinion.** Buyers who wish to obtain a certificate for any item that does not have a P.F. or P.S.E. certificate (dated as above) may do so, provided that the following conditions are met: (1) the purchase price must be paid in full, (2) the item must be submitted to an acceptable expertizing committee with a properly executed application form within 21 days of the sale, (3) a copy of the application form must be given to the Galleries, (4) in the event that an adverse opinion is received, the Galleries retain the right to resubmit the item on the buyer's behalf for reconsideration, without time limit or other restrictions, (5) unless written notification to the contrary is received, items submitted for certification will be considered cleared 90 days from the date of sale, and (6) in the event any item is determined to be "not as described", the buyer will be refunded the purchase price and the certification fee up to \$600.00 unless otherwise agreed.

9. Until paid for in full, all lots remain the property of the Galleries on behalf of the seller.

10. Agents executing bids on behalf of clients will be held responsible for all purchases made on behalf of clients unless otherwise arranged prior to the sale.

11. The buyer assumes all risk for delivery of purchased lots and agrees to pay for prescribed shipping costs. Buyers outside the U.S. are responsible for all customs duties.

12. **The bidder consents that any action or proceeding against it may be commenced and maintained in any court within the State of New York or in the United States District Court for the Southern District of New York, that the courts of the State of New York and United States District Court for the Southern District of New York shall have jurisdiction with respect to the subject matter hereof and the person of the bidder. The bidder agrees not to assert any defense to any action or proceeding initiated by Galleries based upon improper venue or inconvenient forum. The bidder agrees that any action brought by the bidder shall be commenced and maintained only in a Federal Court in the United States District Court for the Southern District of New York or the State Court in the county in which Galleries has its principal place of business in New York. These Terms and Conditions shall be governed by and construed in accordance with the substantive laws of the State of New York.**

SCOTT R. TREPEL, Principal Auctioneer

Auctioneer's License No. 795952
N.Y.C. Department of Consumer Affairs
80 Lafayette Street, New York, N.Y. 10013
Telephone (212) 577-0111

Revised 1/2008 15%

Copyright Notice

© 2009, Robert A. Siegel Auction Galleries, Inc. This catalogue in all versions, printed and electronic, is protected by copyright. The descriptions, format, illustrations and information used herein may not be reprinted, distributed or copied in any form without the express written consent of Robert A. Siegel Auction Galleries. Application for permission may be made in writing.

Grades, Abbreviations and Values Used in Descriptions

Grades and Centering

Our descriptions contain detailed information and observations about each item's condition. We have also assigned grades to stamps and covers, which reflect our subjective assessment. For stamps, the margin width, centering and gum are described and graded according to generally-accepted standards (an approximate correlation to numeric grades is provided at right). Although we believe our grades are accurate, they are not always exactly aligned with third-party grading terms or standards for all issues. **A lot may not be returned because a certification service grades a stamp lower than the grade stated in the description. Information from the P.S.E. Stamp Market Quarterly and P.S.E. Population ReportSM is the most current available, but lots may not be returned due to errors or changes in statistics or data.**

Extremely Fine Gem (90-100): The term "Gem" describes condition that is the finest possible for the issue. This term is equivalent to "Superb" used by grading services.







Extremely Fine (80-90): Exceptionally large/wide margins or near perfect centering.

Very Fine (70-85): Normal-size margins for the issue and well-centered with the design a bit closer to one side. "Very Fine and choice" applies to stamps that have desirable traits such as rich color, sharp impression, freshness or clarity of cancel.

Fine (60-70): Smaller than usual margins or noticeably off center. Pre-1890 issues may have the design touched in places.

Very Good (below 60): Attractive appearance, but margins or perforations cut into the design.

Guide to Gum Condition

Gum Categories:	MINT N.H.	ORIGINAL GUM (O.G.)				NO GUM
	 Mint Never Hinged <i>Free from any disturbance</i>	 Lightly Hinged <i>Faint impression of a removed hinge over a small area</i>	 Hinge Mark or Remnant <i>Prominent hinged spot with part or all of the hinge remaining</i>	 Part o.g. <i>Approximately half or more of the gum intact</i>	 Small part o.g. <i>Approximately less than half of the gum intact</i>	 No gum <i>Only if issued with gum</i>
Catalogue Symbol:	★ ★	★	★	★	★	(★)
PRE-1890 ISSUES	<i>Pre-1890 stamps in these categories trade at a premium over Scott value</i>			Scott Value for “O.G.”		Scott “No Gum” Values thru No. 218
1890-1935 ISSUES	Scott “Never Hinged” Values for Nos. 219-771	Scott Value for “O.G.” (Actual value will be affected by the degree of hinging)		Disturbed Original Gum: Gum showing noticeable effects of humidity, climate or hinging over more than half of the gum. The significance of gum disturbance in valuing a stamp in any of the Original Gum categories depends on the degree of disturbance, the rarity and normal gum condition of the issue and other variables affecting quality. For example, stamps issued in tropical climates are expected to have some		
1935 TO DATE	Scott Value for “Unused”					

Covers

Minor nicks, short edge tears, flap tears and slight reduction at one side are normal conditions for 19th century envelopes. Folded letters should be expected to have at least one file fold. Light cleaning of covers and small mends along the edges are accepted forms of conservation. Unusual covers may have a common stamp with a slight crease or tiny tear. **These flaws exist in virtually all 19th century covers and are not always described. They are not grounds for return.**

Catalogue Values and Estimates

Unless otherwise noted, the currently available *Scott Catalogue* values are quoted in dollars with a decimal point. Other catalogues are often used for foreign countries or specialized areas and are referred to by their common name: *Stanley Gibbons* (SG), *Dietz*, *American Air Mail Catalogue* (AAMC), *Michel*, *Zumstein*, *Facit*, etc. Estimates are indicated with an "E." and reflect our conservative valuation in dollars. Reserves will never exceed the low end of the estimate range; they will sometimes exceed Scott Catalogue value for stamps in Extremely Fine condition.

Because of certain pricing inconsistencies in the *Scott Catalogue*—for example, blocks that have no gum, the absence of premiums for Mint N.H. items, etc.—we cannot guarantee the accuracy of values quoted for multiples, specialized items and collection lots. We generally try to be conservative, but buyers may not return a lot because of a discrepancy in catalogue value due to Scott pricing inconsistencies.

Symbols and Abbreviations (see chart above for gum symbols)

⊞	Block	E	Essay	pmk.	Postmark	No.	Scott Catalogue Number
⊞	Cover	P	Proof	cds	Circular Datestamp	hs	Handstamp
FC	Fancy Cancel	TC	Trial Color Proof	var.	Variety	ms.	Manuscript

Preface to The Whitman Sale

BY HARRY (SONNY) HAGENDORF, COLUMBIAN STAMP COMPANY

TO SEE THE ALAN WHITMAN COLLECTION COME TO AUCTION BRINGS ME both great pleasure and some slight remorse. The remorse is in seeing a collection that I enjoyed nurturing come to an end. The pleasure is in being able to witness this extraordinary collection come to market under the direction of Scott Trepel and the Siegel firm. Mr. Whitman's impeccable taste in forming this collection will become immediately evident to everyone who studies the pages of this breathtaking catalogue.



The unique unused 5¢ Brick Red block (lot 34)

Alan and I first met in 1998, when he approached me at a Los Angeles stamp show about the unique blocks of the 1861 Re-Issues (Scott 102-110), which a dealer had available for purchase. Alan recalled that I displayed the same set at Pacific '97 and was wondering what I thought of these items and, more generally, about the idea of collecting classic United States blocks. I recall telling him that it was a great idea, that the blocks were fairly priced, and that blocks of classic U.S. stamps were underappreciated at that time by the stamp collecting community.

I recommended to Alan that he should immediately purchase the 1861 Re-Issue blocks. I also suggested that he should contact Scott Trepel, who had a booth at the show, because Scott had just sold the magnificent and unique block of the 5¢ Brick Red (Scott 27) to a dealer, and I thought Alan should acquire it.

As you can see from this catalogue, Alan had the astuteness and confidence in great philatelic rarities to acquire these items at that time. He handed me his card and told me to call should I ever have any interesting blocks for sale.

When I finally did call Alan, it was to offer him the Pan-American Invert blocks, as well as the Mint Never-Hinged block of the 4c Columbian error (Scott 233a). Thus began a relationship that has lasted a decade, in which he and I have worked together to acquire some of the most magnificent material in philately.

What a wonderful journey it has been. Alan and I would scour the auction catalogues to find items that would "flesh" out his collection and give it more breadth. Alan started with two objectives: to have each stamp in the best possible condition for that issue, and to have as many of the *Scott Catalogue* sub-numbered varieties, as well as a single, pair and line pair of each coil issue. We were able to locate items which had been off the market for many years, such as the 3¢ Orangeburg coil pair (Scott 389), the 4c Bluish Paper Mint N.H. with plate number selvage (Scott 360), the extraordinary plate block of the 3c F Grill Printed on Both Sides (Scott 94d), as well as so many other outstanding items in this collection, which are too numerous to list here.

As others have pointed out before me, the two most important attributes of a collector who sets out to form a great collection are means and inclination. Alan has both. He has confidence in his own taste and judgment, but he also considers advice from others. He truly believes in the material, which manifests itself in his preparedness to purchase an item while others hesitate (his unflinching decision to acquire the 5¢ Brick Red block comes to mind). In my opinion, these character traits enabled Alan to form one of the great philatelic collections of all time.

Over the decade we have known each other, Alan and I have become close friends. He joined me several years ago on the Smithsonian Council of Philatelists, where we and several other members serve on the committee to form the National Collection, spending many happy hours in the vaults of the National Postal Museum. We have shared many meals and bottles of good wine (1992 and 1994 Caymus Special Selection made for a particularly memorable evening). I will enjoy continuing our friendship and working with Alan as he continues to build his next great collection.

I now encourage each of you to show the same confidence in bidding that Alan has had in building his collection. After a long time in professional philately, I feel justified in describing this sale as a rare opportunity to acquire the great Gems and Rarities of American Philately, on a scale which will not likely occur again for decades. Do not hesitate. Do not equivocate. What you acquire from this collection will become the prize of your collection.

As Tennyson says in *Ulysses*, "I will drink life to the lees!" And so should you. Come friends, and drink from Alan's offers.



The 4¢ 1908 Imperforate in all three formats: pair, line pair and single (lots 388-390)

Introduction to The Whitman Sale

BY SCOTT R. TREPEL

ALAN WHITMAN'S ENTIRE COLLECTION IS PRESENTED IN THIS CATALOGUE, comprising 889 lots spread over more than 400 pages. The lots will be offered in three auctions with an interval of months between each part. The first sale will be held on January 27th and 28th, in which the extraordinary stamps and multiples from the 1847 Issue through the 1869 Pictorial Issue will be offered. The second sale will include all issues from 1870 through 1901, ending with the unique set of Pan-American Inverts in blocks of four. The third and final sale will begin with the 1902-08 Issue, including the magnificent group of 1908 coils and imperforates, then continue through the 20th Century regular and commemorative issues, and finish with the air post and other special-service issues. When the last lot is sold, it is quite likely that the total dollar realization will reach more than \$10 million.

The collector's desire was to see his entire collection presented in one catalogue, so that its overall balance and quality could be assessed at the outset. We concurred. Therefore, rather than release a catalogue for each part over time, we are presenting the Whitman collection in one hardcover catalogue. The division of lots into sale parts and sessions has been clearly stated on each page, to avoid any confusion about the content of the sales. Part One will be held on January 27-28, 2009, and the exact dates and times of Parts Two and Three will be announced well ahead of the sales.

The unusual arrangement of this sale—presented at once, but offered over time—requires some special effort on our part to ensure that the information is accurate and updated. Although the lot descriptions give the grade and P.S.E. Population Report figures at the time of publication, we did not include values from the *Stamp Market Quarterly*. The values quoted are standard values from the *Scott Catalogue*. Prior to each sale, clients will receive a supplement to the sale catalogue, listing current statistics from the P.S.E. Population Report and current SMQ values. Any other changes to the descriptions will be included in the supplement.



Alan B. Whitman

In the Preface to this catalogue, our colleague Sonny Hagendorf describes the character of the collection and collector. We would add two more ingredients to Alan Whitman's formula for success as a collector: perseverance and discipline. There are collectors who want everything to come to them quickly and think they are maintaining a high standard of quality while haggling over price or writing a check, instead of carefully evaluating what they are buying. Alan Whitman probably rejected ten or, in some cases, a hundred stamps for every one he bought. He studied his subject, worked closely with professional advisors, waited patiently and knew when to seize opportunities at auction or through private treaty. As Sonny has said to us many times, Alan is a dream client, the kind a professional is lucky to work with once in his career.

Spending time with the Whitman collection calms the mind, soothes the soul, and provides a visual feast to last a lifetime. We wish our clients the best of luck in this historic philatelic auction, and our staff will be pleased to assist in any way possible.

**THE
ALAN B. WHITMAN
COLLECTION OF
OUTSTANDING
UNITED STATES
STAMPS**

**Part Two
1870-1901 Issues**

**Sessions
2.1—Lots 174-258
2.2—Lots 259-369**

Introduction to The 1870-1901 Issues

THE PERIOD OF POSTAGE STAMP PRODUCTION FROM 1870 THROUGH 1901 is marked by several significant changes and innovations: the switch from private bank note companies to the government Bureau of Engraving and Printing for stamp production; the introduction of commemorative stamps as souvenirs for collectors; and the creation of bicolored stamps for the 1901 Pan-American Exposition. Philatelists generally divide the 1870 to 1901 Issues into the following categories: the *Bank Note Issues*, produced by the National, Continental and American Bank Note Company in succession from 1870 to 1893; the *Bureau Issues*, starting in 1894 when the contract was awarded to the BEP; and *Commemorative Issues*, which made their first appearance in 1893 with the release of the Columbian 1¢ to \$5 set.

The 1870 Portrait stamps are better known as the “Large Bank Note” issue. The designs were a return to the traditional portraiture and monochromatic printing, following the 1869 Pictorial Issue’s poor public reception and the ascendancy of the Grant administration. The eleven original Large Bank Note denominations, from 1¢ to 90¢, were supplemented with a 5¢ stamp in 1875 to meet the new General Postal Union rate for member mail, and with a 4¢ stamp in 1883 to pay the double 2¢ domestic letter rate.

From 1870 until the new “Small Bank Note” issue was released in 1890, the Large Bank Notes were the only postage stamps available at post offices. They were printed exclusively on unwatermarked paper and with 12-gauge perforations. The 1870 Issue was produced by the National Bank Note Company. The contract required grills on all of the stamps, and National met that obligation for at least some of the production. The National grilled stamps are much scarcer than their ungrilled counterparts. The Whitman collection has a nearly complete set of the grilled issue, including the only recorded 12¢ in Mint Never-Hinged condition, which was removed from a vertical pair. The collection also features exceedingly rare Mint Never-Hinged examples of the ungrilled 24¢—a plate number single from the famous block of four formerly in the Walter Klein collection—and the ungrilled 30¢, an exquisite stamp that is quite probably the only Mint Never-Hinged copy in existence.

In 1873 the stamp contract was awarded to National’s competitor, the Continental Bank Note Company. All of the dies and plates were turned over to Continental. Tiny engraved secret marks were added by Continental to the dies of all values, but new plates were made only for the 1¢ through 15¢ values. For the 24¢, 30¢ and 90¢ values, the same National plates were used, which forces philatelists to distinguish between the National and Continental printings on the basis of shade and other physical characteristics. The unusual circumstance in which one printer used the plates of another is strikingly displayed by the 90¢ block in the Whitman collection. The stamps in the block are in the Rose Carmine shade of the Continental printing, yet the imprint in the selvage reads “National Bank Note Co. New York.”

The Large Bank Note stamps were part of the Post Office Department’s Special Printing program, which made stamps of all issues available to collectors through the Third Assistant Postmaster General’s office. Regular-production stamps were not used for the POD’s program. Instead, the printer furnished stamps printed from separate press runs, left ungummed and distinguishable from ordinary stamps only by the impression, shade and paper. Collectors refer to these distinctive Large Bank Note stamps as “Special Printings” on both hard and soft paper.

continued

continued from previous page

The first Special Printing stamps were printed by Continental in 1875 in very rich colors on bright white “hard” paper. Almost all of the limited number of stamps sold were scissors-separated. William E. Mooz has presented compelling evidence that the trimming process for Official Special Printing stamps (overprinted “Specimen”) involved placing sheets of several denominations one on top of the other, then cutting through all of the sheets with scissors or a blade. In this way, a set of all values for a particular department could be assembled and inserted into its Special Printing envelope with greater efficiency and less chance for error. It is possible that the 1¢ to 90¢ 1875 Continental Special Printing set on hard paper—Scott 167-177 (excluding the 2¢ and 5¢ 1875, Scott 180 and 181)—was cut and packaged in a similar manner. Although trimmed perforations are the norm for this reason, there are examples known without trimmed perforations, including the set of plate number and imprint strips from the Earl of Crawford collection, which were divided into singles many years ago. The Whitman collection features a nearly complete set of 1875 Special Printings, in which every stamp has complete perforations.

Changes in currency printing in 1877 forced the large security printers to consolidate under the American Bank Note Company in December 1878. The stamp contract held by Continental was assumed by American in February 1879, and once again many of the existing plates were used by a new firm. The changeover from Continental to American, which defines the 1879 Large Bank Note Issue, is identified in the stamps by the softer, wide-mesh paper used by American. As new plates were introduced, re-engraving and other changes distinguish American’s product from its predecessors’.

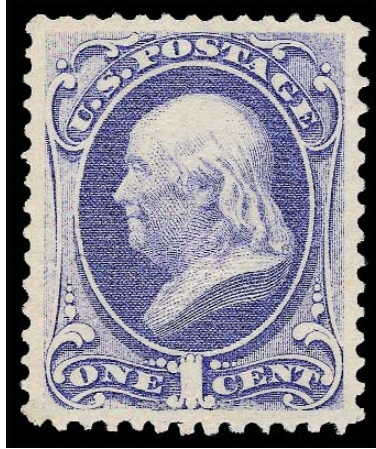
American also produced Special Printing stamps for the POD. The 1880-83 Bank Note Special Printings on soft paper can be extremely difficult to separate from the supply of regular stamps. All of the 1880-83 Special Printing stamps are rare, but this is especially the case for the most common 1¢ and 3¢ values, probably because there was so little demand for stamps that were readily available at any post office. The Whitman collection includes superb examples of nearly all soft-paper Special Printings.

The private bank note company era came to a close with the 1890-93 Small Bank Note regular issue and the 1893 Columbian Issue, the first commemorative stamps. In 1894 the BEP took over stamp production, and the series of First Bureau Issues (1894-98) commenced. During this period concerns over security and accountability prompted the use of watermarked paper for postage stamps. The first stamps on “USPS” (United States Postage Stamp) watermarked paper were released in 1895. An interesting and rare philatelic variety was created when a small supply of “USIR” watermarked paper reserved for revenue stamps was accidentally used to print the 6¢ and 8¢ regular postage stamps. The Whitman collection includes a choice 6¢ “USIR” with original gum and a plate number and imprint strip of the 8¢ “USIR.”

As one century turned into the next, two celebrations gave postal officials reason to issue new sets of commemorative stamps. The 1898 Trans-Mississippi Exposition and 1901 Pan-American Exposition commemorative issues gave the talented designers and engravers at the BEP an opportunity to display their skills. Although they originally intended to print the Trans-Mississippi stamps in two colors, the BEP reverted to monochrome designs due to production demands caused by the Spanish-American War. In 1901 they got their chance to use bicolored printing for the Pan-American Issue. The novelty was somewhat soured by embarrassment when 1¢ and 2¢ stamps turned up in post offices with upside-down vignettes. The complete set of Pan-American Inverts in blocks—including the unique 2¢ block—is a grand finale to Part Two of the Whitman sale.

PART TWO: SESSION 2.1 (LOTS 174-258)
SALE DATE TO BE ANNOUNCED

1870 NATIONAL BANK NOTE COMPANY GRILLED ISSUE



174

- 174 ★ **1c Ultramarine, Grill (134).** I. Grill, original gum, very lightly hinged, brilliant color on post-office fresh paper, clearly-defined I grill which is the smaller of the two grill sizes, beautiful centering with wide and balanced margins

EXTREMELY FINE GEM. A STUNNING ORIGINAL-GUM EXAMPLE OF THE 1870 ONE-CENT NATIONAL BANK NOTE ISSUE WITH THE SCARCER I GRILL. THIS IMPRESSIVE STAMP HAS BEEN AWARDED THE GRADE OF XF-SUPERB 95 BY P.S.E. — THIS IS THE HIGHEST GRADE AWARDED TO DATE TO EITHER GRILL TYPE.

In 2004 we started to distinguish between the H and I Grills in our catalogue descriptions and research, in an effort to establish relative scarcity. It is our opinion that the Scott Catalogue should list the H and I Grills separately, as they do for the A, B, C, D, Z, E and F Grills of the 1867-68 Issue. According to the Scott Catalogue, the H Grill is found on all values, and the I Grill is found only on the 1c, 2c, 3c, 7c, 10c and 15c. Certified copies of the 6c are also known, and the 24c and 90c are reported to exist as well. We have only offered four other unused 1c I Grill stamps since we started keeping our detailed records.

Ex Anderson. With 1992 P.F. and 2008 P.S.E. certificates (OGph, XF-Superb 95). This is the highest grade awarded to date to either grill type and the only example to achieve this grade. Scott Catalogue and SMQ do not list the I grills separately, even though they deserve separate listings. 2,500.00

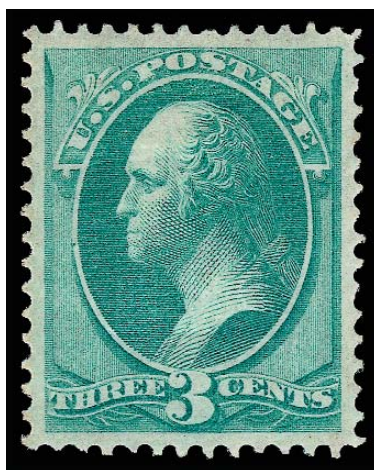


175

- 175 ★ **2c Red Brown, Grill (135).** H. Grill, original gum, rich color, choice centering with Jumbo margins

EXTREMELY FINE. AN INCREDIBLY WIDE-MARGINED ORIGINAL-GUM EXAMPLE OF THE 1870 2-CENT NATIONAL BANK NOTE COMPANY GRILLED ISSUE.

With 2000 P.S.E. certificate 1,250.00



176

- 176 ★ **3c Green, Grill (136).** H. Grill, clearly-defined grill points, original gum, bright color, perfectly centered with wide and balanced margins

EXTREMELY FINE GEM. A STUNNING ORIGINAL-GUM EXAMPLE OF THE 1870 3-CENT NATIONAL BANK NOTE COMPANY GRILLED ISSUE, WHICH HAS BEEN GRADED SUPERB 98 BY P.S.E. — THIS IS BY FAR THE HIGHEST GRADE AWARDED TO DATE IN ANY CONDITION. A TRUE CONDITION RARITY.

Although 3c 1870 Issue stamps were produced in huge quantities, it is still a difficult denomination to find in high grades, especially in original-gum condition. This is the finest we have encountered and ranks at the top of the P.S.E. Population Report.

With 1995 and 1999 P.F. and 2008 P.S.E. certificates (OGph, Superb 98). This is the highest grade awarded to date in *any* condition, and this stamp is the only one to achieve this grade. 750.00



177

- 177 ★ **6c Carmine, Grill (137).** H. Grill, original gum, intense shade and impression, several clear grill points, almost perfectly centered

EXTREMELY FINE GEM. A SUPERB ORIGINAL-GUM EXAMPLE OF THE 1870 6-CENT NATIONAL BANK NOTE COMPANY GRILLED ISSUE. SCARCE IN SUCH GORGEOUS CONDITION.

Well-centered and sound examples of the 6c National Bank Note Grilled issue with original gum are rare. This example is one of the finest original-gum copies that we have ever offered.

With 1990 P.S.E. and 1997 P.F. certificates 6,000.00



178

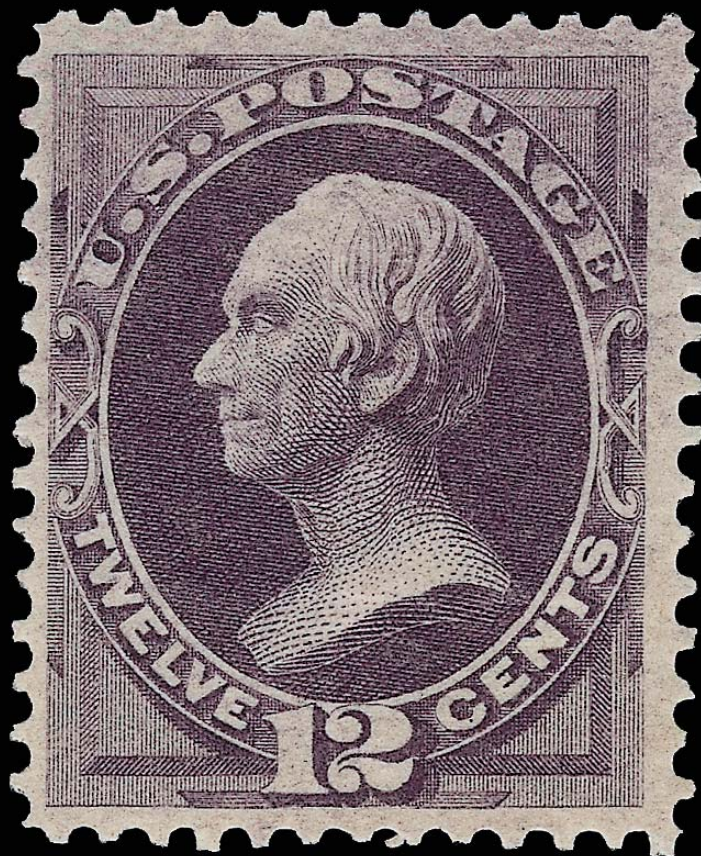
- 178 ★ **7c Vermilion, Grill (138).** H. Grill, original gum, intense shade, wide margins, faint natural gum bend at bottom left not mentioned on accompanying certificate
VERY FINE AND CHOICE ORIGINAL-GUM EXAMPLE OF THE 1870 7-CENT NATIONAL BANK NOTE COMPANY GRILLED ISSUE
With 1989 and 2002 P.F. certificates..... 5,000.00



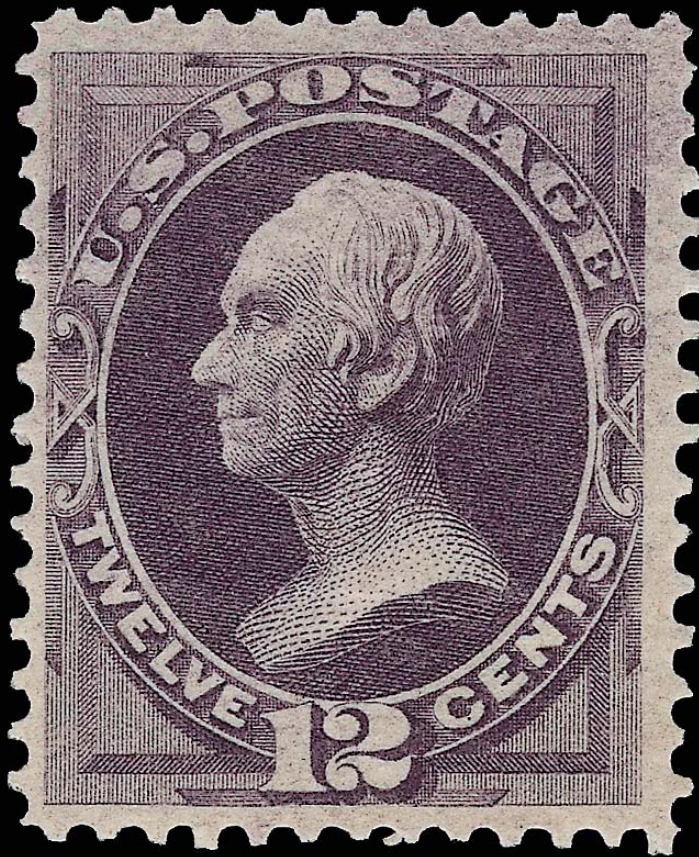
179

- 179 ★ **10c Brown, Grill (139).** H. Grill, original gum, several grill points visible to the left of the portrait, warm shade
VERY FINE AND CHOICE. A BEAUTIFUL SOUND ORIGINAL-GUM EXAMPLE OF THE 1870 10-CENT NATIONAL BANK NOTE COMPANY GRILLED ISSUE.
Signed lightly in pencil by Ward. With 1991 and 1993 P.F. certificates..... 7,500.00

1870 12-CENT DULL VIOLET
NATIONAL BANK NOTE GRILLED ISSUE



1870 12¢ Dull Violet, Scott 140
Mint Never-Hinged



- 180 ★★ **12c Dull Violet, Grill (140).** H. Grill, **Mint N.H.**, rich color and proof-like impression, grill points are easily discernible on the front of the stamp near the base of the bust

VERY FINE AND CHOICE. THIS IS THE ONLY MINT NEVER-HINGED EXAMPLE OF THE 1870 12-CENT NATIONAL BANK NOTE GRILLED ISSUE IN EXISTENCE. THE 12-CENT IS THE MOST DIFFICULT DENOMINATION TO OBTAIN IN SOUND ORIGINAL-GUM CONDITION. THIS STAMP IS WITHOUT QUESTION THE FINEST WE HAVE EVER ENCOUNTERED. ITS RARITY CANNOT BE OVERSTATED.

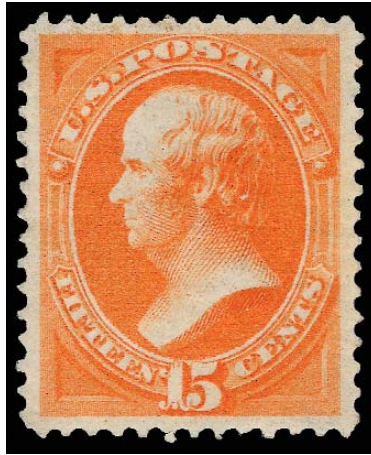
A review using Power Search demonstrates exactly how scarce this stamp is in sound original-gum condition (ignoring, for a moment, Mint N.H.). The last example we offered was in 2002, which was described as having disturbed part original gum. The example before that was sold in 1993. We also undertook a review of major name sales. Walter Klein, for whom one of the five-part catalogue series was devoted to Bank Note issues, did not have a 12c with original gum. Caspary, Ewing, Lilly, Morris, "Angel" and Floyd never had one. Weisman had one, centered to top left, which is hinged. Zoellner had the unique block of four (the only recorded multiple).

This stamp was once the bottom stamp in a vertical pair (offered in the 1978 Rarities sale). It was separated into two singles so that this phenomenal Mint N.H. stamp with a clear grill could be sold on its own. The other is hinged and has no apparent grill (according to the description).

With 1986 and 2004 P.F. certificates. Scott Retail as hinged 27,500.00



The original vertical pair from which the Mint N.H. stamp in this collection was removed (bottom stamp).



181

181 **15c Orange, Grill (141).** H. Grill, full original gum, intense color, perfectly centered within nicely proportioned margins

EXTREMELY FINE GEM. EASILY ONE OF THE TWO OR THREE FINEST RECORDED EXAMPLES OF THE 15-CENT 1870 GRILL—ONE OF THE MOST DIFFICULT OF THE 1870 GRILLED ISSUES TO FIND IN SUCH SUPERB CONDITION.

Ex Argentum. With 1976, 1989 and 1999 P.F. certificates 9,000.00



182

182 **24c Purple, Grill (142).** H. Grill, several clear rows of grill points, pretty shade, bold strike of cork cancel, choice centering for this difficult issue

VERY FINE AND CHOICE. A PARTICULARLY FRESH EXAMPLE OF THE 1870 24-CENT NATIONAL BANK NOTE COMPANY GRILLED ISSUE.

This 24c 1870 Grilled Issue is known only in used condition. The color and centering of this example are superior to what is typically encountered.

With 1992 P.S.E. certificate. 7,500.00



183

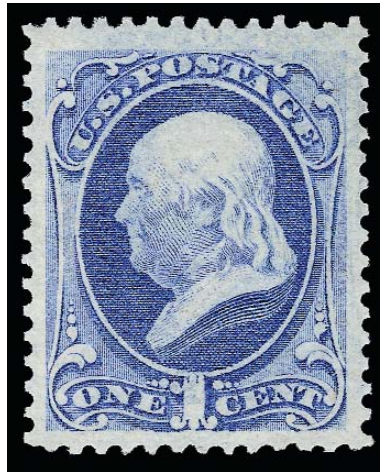
- 183 ★ **90c Carmine, Grill (144).** H. Grill, original gum, clearly-defined grill points clearly visible on face of stamp, intense shade and impression

EXTREMELY FINE. AN EXCEEDINGLY RARE ORIGINAL-GUM EXAMPLE OF THE 1870 90-CENT GRILLED NATIONAL BANK NOTE ISSUE. THE 90-CENT IS THE THIRD MOST DIFFICULT OF THE NATIONAL BANK NOTE GRILLED ISSUES TO OBTAIN IN ORIGINAL-GUM CONDITION.

Considering original-gum examples only, after the extremely rare 12c and non-existent 24c, the 90c is the rarest of the 1870 National Grilled Issue. As a point of reference, the P.S.E. Population Report lists only two OG examples: one Mint N.H. stamp at VF 80 and one OGph stamp at 20(!).

Ex Argentum (where it realized \$32,500 hammer in our 1999 auction). With 1984 and 1999 P.F. certificates 25,000.00

1870 NATIONAL BANK NOTE COMPANY UNGRILLED ISSUE



184

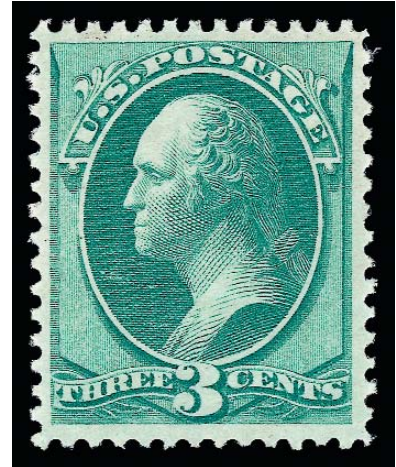
- 184 ★ **1c Ultramarine (145).** Original gum, lightly hinged with unusual strong offset on back of the entire design, rich color on bright paper, Jumbo margins, fresh and Extremely Fine, a beautiful stamp, with 1991 P.F. certificate 675.00



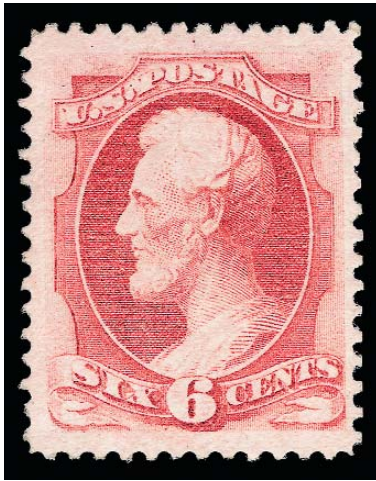
185

- 185 (★) **2c Red Brown, Double Impression (146d).** Unused (no gum), clear doubling with dramatic second impression shifted up and to the left, light creases and small repair FINE APPEARANCE. THIS EXAMPLE OF THE 1870 2-CENT UNGRILLED NATIONAL BANK NOTE COMPANY ISSUE WITH DOUBLE IMPRESSION MAY BE UNIQUE.
This error is not known used, and this is the only unused example contained in our records.
Ex Lake Shore. With 1983 and 2005 P.F. certificates 6,500.00

- 186 ★★ **3c Green (147). Mint N.H.**, bright shade, choice centering with wide and balanced margins, fresh and Extremely Fine, the 3c 1870 National is extremely difficult to find in such pristine Mint N.H. condition, as opposed to its 1873 Continental counterpart, with 1987 and 1996 P.F. certificates, Scott Retail as hinged 300.00



186



187

- 187 ★ **6c Carmine (148).** Original gum, lightly hinged, brilliant color, crisp impression, choice centering with wide and balanced margins

EXTREMELY FINE. A PRISTINE ORIGINAL-GUM EXAMPLE OF THE 1870 6-CENT NATIONAL BANK NOTE COMPANY UNGRILLED ISSUE. A DIFFICULT STAMP TO FIND WITH THIS EXTREME DEGREE OF FRESHNESS.

With 1995 P.F. certificate..... 1,200.00

- 188 ★★ **10c Brown (150). Mint N.H.**, bright shade, detailed impression, choice centering

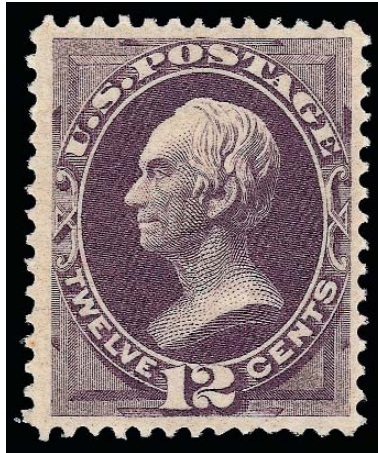
EXTREMELY FINE. A RARE MINT NEVER-HINGED EXAMPLE OF THE 1870 10-CENT NATIONAL BANK NOTE COMPANY UNGRILLED ISSUE.

In searching past auction catalogues and Power Search, we have located very few examples of Scott 150 in Mint Never-Hinged condition. Collectors who are unwilling to compromise on gum are well-advised to pursue this opportunity.

With 1989 and 2000 P.F. certificates. Scott Retail as hinged..... 1,750.00



188



189

189 ★★ **12c Dull Violet (151).** Mint N.H., intense shade and proof-like impression on crisp paper, well-balanced margins

VERY FINE AND CHOICE. AN EXCEEDINGLY RARE MINT NEVER-HINGED EXAMPLE OF THE 1870 12-CENT UNGRILLED NATIONAL BANK NOTE COMPANY ISSUE. THIS IS ONLY THE SECOND NEVER-HINGED COPY WE HAVE OFFERED. A GREAT RARITY.

Large multiples of the mid-to-higher denominations do not exist in any quantity to potentially furnish Mint N.H. singles.

With 1983 and 1995 P.F. certificates, the former as strip of seven. Scott Retail as hinged
 3,000.00



190

190 ★ **15c Bright Orange (152).** Original gum, lightly hinged, **selvage at right**, vibrant color as fresh as the day it was printed on bright paper

VERY FINE AND CHOICE. A BEAUTIFUL ORIGINAL-GUM EXAMPLE OF THE 1870 15-CENT NATIONAL BANK NOTE COMPANY UNGRILLED ISSUE.

The 15c 1870 National Grilled Issue (Scott 141) is widely recognized as an extremely rare stamp in choice original-gum condition. Less well known is the fact that its ungrilled counterpart — Scott 152 — is comparably challenging to find in such condition. This remarkable stamp, with its wide margins and vibrant color, is one of the best we have encountered.

With 1983, 1992 and 2000 P.F. and 2008 P.S.E. certificates (OGph, VF 80). There are two 90's and one 95 in the P.S.E. Population Report — we believe this to be better than the VF 80 grade..... 3,250.00



191

- 191 ★★ **24c Purple (153). Mint N.H. with plate no. 21 selvage at top**, new P.S.E. certificate mentions “fingerprints” on gum, which are truly negligible and probably occurred in the National Bank Note Company gumming room 138 years ago, intense color on crisp paper, well-balanced margins for this difficult issue

VERY FINE AND CHOICE. THIS IS THE ONLY KNOWN MINT NEVER-HINGED PLATE NUMBER EXAMPLE OF THE 1870 24-CENT NATIONAL BANK NOTE COMPANY ISSUE. A FABULOUS CLASSIC RARITY FROM THE FAMOUS BLOCK THAT WAS BROKEN.

This stamp comes from the top left of the Mint N.H. plate number block of four that was part of the Walter Klein collection and last sold in our 1998 Rarities sale. Sadly, after the Rarities sale it was broken into singles. Each of the righthand stamps from the block has a straight edge at right. The bottom left stamp was offered in our Silver Lake sale (Sale 866, lot 84) and is not quite as well-centered as the stamp offered here, nor does it have the plate number selvage.

Ex Klein as a block of four. With 1989 and 1999 P.F. certificates, the former for the block. With 2008 P.S.E. certificate (VF 80). Only three Mint N.H. stamps have been graded: two at 80 and one at 70. Scott Retail as hinged..... 2,200.00



192

192 ★★ **30c Black (154). Mint N.H.**, intense shade characteristic of National printing, remarkably detailed impression, magnificent centering with unusually wide and balanced margins

EXTREMELY FINE GEM. A SPECTACULAR MINT NEVER-HINGED EXAMPLE OF THE 1870 30-CENT NATIONAL BANK NOTE COMPANY UNGRILLED ISSUE. THIS IS EASILY THE FINEST EXAMPLE OF THIS ISSUE WE HAVE EVER ENCOUNTERED, AND WE ARE CONFIDENT IT IS THE FINEST EXTANT. THIS IS THE FIRST MINT NEVER-HINGED EXAMPLE EVER SOLD BY THE SIEGEL FIRM, AND IT IS BELIEVED TO BE THE ONLY ONE IN EXISTENCE.

Among classic United States stamps, there are certain issues that fail to achieve the normal survival rates for Mint Never-Hinged versus hinged, or high grade versus low. The 30c 1870 National is one of those impossibly difficult issues. Ignoring the grilled stamps (Scott 143), let us consider Scott 154, the ungrilled version of the basic 30c 1870 Issue.

We reviewed every major sale containing significant offerings of Bank Note singles and blocks. A cursory overview follows: Ambassador collection—one no gum; Argentum—regummed single; Caspary—large part OG and another with a crease, no blocks; Hetherington—one of Caspary's singles; Lilly—one part OG, no blocks; Seymour—two OG Fine-Very Fine; West—a few off-cover singles, no blocks; Siegel Sale 612—off-center block and single with nibbed perfs; Klein—off-center block with s.e.; Braus—two no gum singles, no blocks; and Hirschfield—none. Zoellner had to settle for a well-centered stamp with traces of gum. There are perhaps four to five Fine-Very Fine OG singles and two Extremely Fine OG singles. All of the half-dozen or so known blocks are off center. The P.S.E. Population Report lists five OG stamps, including one 70, two 90's and one 95. There is only one Mint N.H. stamp (offered here).

In the context of this dismal report on the population of surviving Scott 154 stamps, the Extremely Fine Mint Never-Hinged example in the Whitman collection is nothing short of phenomenal. It is reported to have turned up in an old-time collection of gem-quality stamps that was sold privately several years ago. The first collector to own it after the collection was dispersed is believed to be Dr. Robert Hinrichs. It was then sold privately to the consignor of the Lakeview collection (Siegel Sale 836), but this stamp was removed from the collection and sold privately to Alan Whitman before the balance of the collection was consigned to auction. Now that the P.S.E. has given the stamp its blessings with an XF 90 OGnh grade, we can confidently describe it as the finest 30c 1870 National Ungrilled Issue extant, and we are equally confident there is no other copy in existence which can rival it.

With 1995 P.F. and 2008 P.S.E. certificates (XF 90). This is the only graded Mint N.H. example, probably for all time. Scott Retail as hinged..... 7,500.00

1873 CONTINENTAL BANK NOTE COMPANY ISSUE

- 193 ★ **1c Ultramarine (156).** Original gum, barest trace of hinging, intense shade and impression, tiny speck of blue ink at bottom left not mentioned on accompanying certificate, Extremely Fine, with 1998 P.F. certificate..... 275.00



193



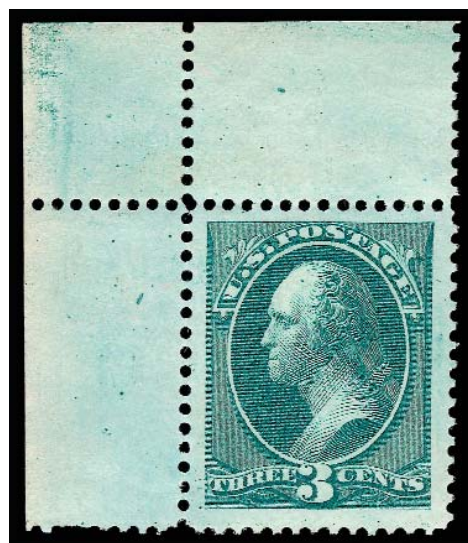
194

- 194 ★ **2c Brown (157).** Original gum, described as previously hinged on new P.S.E. certificate but in our opinion it is Mint N.H., with **bottom right corner sheet selvage**, the stamp itself is beautifully centered with Jumbo margins, brilliant color, crisp impression, long and full perforations

EXTREMELY FINE GEM. A SUPERB ORIGINAL-GUM EXAMPLE OF THE 1873 2-CENT CONTINENTAL BANK NOTE COMPANY ISSUE. A LOVELY STAMP.

This fantastic stamp exists because a complete sheet of 100 in the 1985 Rarities sale was divided into singles and blocks, which explains why Scott 157 is available in Mint N.H. condition. We are confident this stamp is Mint N.H., despite the recent P.S.E. certificate to the contrary. During the 1980's and 1990's, when many sheets and blocks were broken to obtain singles, the P.F. was shown the pieces to see which stamps were Mint N.H. before certification. Unfortunately, that visual confirmation is not possible when the P.S.E. certifies a single stamp years later, and any natural gum irregularity is regarded as a trace of previous hinging. We think that has happened in this case. In our opinion, this stamp is Mint N.H., and bidders may refer to the 1985 Rarities sale catalogue for a photo of the original sheet.

With 1986 and 1997 P.F. certificates as Mint N.H.. With 2008 P.S.E. certificate (OGph, XF-Superb 95 Jumbo). This is the highest grade awarded to date and the only example to achieve this grade.. 425.00



195

- 195 ★★ **3c Green (158).** Mint N.H., Jumbo margins and also with **top left corner selvage**, bright color, Extremely Fine, a stamp of massive proportions, with 1992 P.F. certificate, Scott Retail as hinged..... 140.00



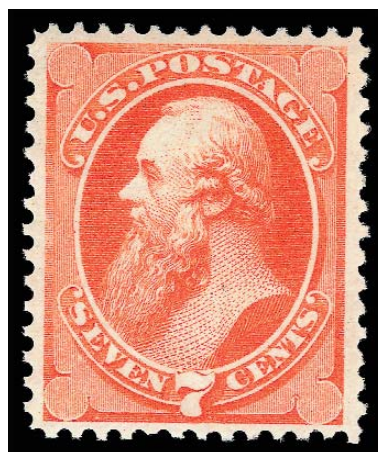
196

- 196 ★★ **6c Dull Pink (159).** Mint N.H., brilliant color, slight dry print at top, almost perfectly centered with well-proportioned margins

EXTREMELY FINE GEM. A SUPERB MINT NEVER-HINGED EXAMPLE OF THE 1873 CONTINENTAL BANK NOTE COMPANY ISSUE. A STUNNING STAMP.

With 1999 P.F. certificate. Scott Retail as hinged. 475.00

- 197 ★ **7c Orange Vermilion (160).** Original gum, lightly hinged, brilliant color and as fresh as the day it was printed, wide margins, Very Fine and choice, a pretty stamp, with 1984 and 1993 P.F. certificates 1,500.00



197



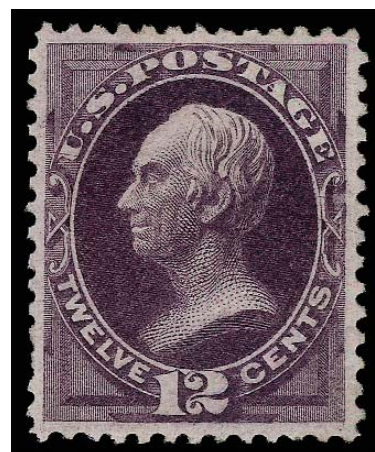
198

- 198 ★ **10c Brown (161).** Original gum, lightly hinged, beautiful intense shade, well-proportioned margins, Very Fine and choice, a pretty stamp, with 1992 P.F. certificate for block 1,300.00

- 199 ★ **12c Blackish Violet (162).** Original gum, lightly hinged, deep dark color in the distinctive shade of the Continental printing

VERY FINE LIGHTLY-HINGED EXAMPLE OF THE 1873 CONTINENTAL BANK NOTE COMPANY ISSUE.

With 1996 P.F. certificate..... 2,750.00



199



200

- 200 ★ **30c Gray Black (165).** Original gum, lightly hinged, charcoal gray shade, fine impression on fresh paper

EXTREMELY FINE. AN OUTSTANDING ORIGINAL-GUM EXAMPLE OF THE 30-CENT 1873 CONTINENTAL PRINTING. A SUPERB STAMP IN EVERY RESPECT.

When it comes to naming the most elusive Bank Note stamps in choice original-gum condition, the 30c 1873 is often overlooked. However, go to any serious collection and look for this stamp, and most of the time it is missing or represented by something that compromises quality. The 30c 1870 is frequently found filling the space for Scott 165. The 30c Continental is extremely rare in any original-gum condition that approaches this example. Blocks have always been rare — for example, Caspary did not have one; Lilly had one well-centered block of four and an off-center block of six — which means that singles could not be removed from multiples. We hope that collectors who still have a tendency to overlook the 30c Continental will be awakened to its rarity in Extremely Fine original-gum condition by our comments.

With 2001 P.F. certificate 3,500.00



201

- 201 ★ **90c Rose Carmine (166).** Original gum, lightly hinged, rich color on bright paper, Jumbo margins

EXTREMELY FINE. A BEAUTIFUL ORIGINAL-GUM EXAMPLE OF THE 1873 90-CENT CONTINENTAL BANK NOTE COMPANY ISSUE. SCARCE WITH SUCH MASSIVE MARGINS.

With 1989 and 1997 P.F. certificates..... 2,750.00



202

- 202 ★田 **90c Rose Carmine (166)**. Bottom margin block of four with **full “NATIONAL BANK NOTE CO. NEW YORK” imprint**, original gum, top pair lightly hinged, **bottom pair Mint N.H.**, beautiful bright color on fresh paper, top stamps almost perfectly-centered, bottom stamps with extra wide margins

EXTREMELY FINE GEM BLOCK OF THE 90-CENT 1873 CONTINENTAL BANK NOTE COMPANY PRINTING. THIS IS THE ONLY BLOCK OF THIS STAMP KNOWN TO US SHOWING THE IMPRINT. THE PRESENCE OF TWO MINT NEVER-HINGED STAMPS IS ALSO REMARKABLE.

As this block vividly demonstrates, Continental Bank Note Co. used the National plate to print 90c stamps in 1873, leaving the National imprint unchanged. The Chapin book records a unique plate number block of four without imprint. Our search of specialized Bank Note auctions and major name sales failed to reveal another block showing the imprint. Probably a half-dozen additional blocks still exist, but most of the well-centered blocks have been broken into singles. Given the two Mint N.H. stamps, we are surprised this is still intact — we have sold only three Mint N.H. singles, according to Power Search.

With 2001 P.F. certificate. Scott Retail as block of four with no premium for either the imprint or the two Mint N.H. stamps..... 12,000.00

1875 CONTINENTAL BANK NOTE COMPANY
SPECIAL PRINTING



2¢ Vermilion, Scott 180
One of 24 recorded examples

1875 CONTINENTAL BANK NOTE COMPANY SPECIAL PRINTING



203

- 203 ★ **2c Dark Brown, Special Printing (168).** Without gum as issued, **bottom selvage with plate no. "161, full perforations without the usual scissors-separation,** deep shade and proof-like impression, choice centering for this difficult issue

VERY FINE AND CHOICE. ONLY TWO ARE RECORDED WITH THE PLATE NUMBERS, AND THIS IS THE FINER OF THE TWO. ASIDE FROM THE PLATE NUMBER, THE STAMP ITSELF IS ONE OF THE MOST DESIRABLE EXAMPLES OF THE 2-CENT DARK BROWN 1875 CONTINENTAL BANK NOTE COMPANY SPECIAL PRINTING. FROM THE EARL OF CRAWFORD STRIP.

Our recently updated census records for Scott 168 contain only 55 copies certified as genuine. Of these, 22 have straight edges on at least one side and several are faulty. In fact, almost all known examples of the 2c 1875 Special Printing are off center. One other is known with the plate number (at top) but the leftmost number is not visible. The stamp offered here comes from the Earl of Crawford bottom selvage strip of four with plate number and imprint. This strip was spared the usual fate of scissors-separation.

Unpublished Census No. 168-UNC-54. Ex Earl of Crawford, Ackerman, Concord and Hinrichs. With 2004 P.F. certificate 10,000.00



204

204 ★ **3c Blue Green, Special Printing (169).** Without gum as issued, **full perforations without the usual scissors-separation, selvage at bottom with small part of imprint**, rich color

VERY FINE AND CHOICE. A MAGNIFICENT EXAMPLE OF THE 3-CENT 1875 CONTINENTAL BANK NOTE COMPANY SPECIAL PRINTING. FROM THE EARL OF CRAWFORD STRIP. EASILY ONE OF THE FINEST COPIES IN EXISTENCE.

Our recently updated records for Scott 169 contain 35 examples that have been certified as genuine by the Philatelic Foundation (including one on cover). This stamp comes from the Earl of Crawford bottom selvage strip of four with plate number and imprint. This strip was spared the usual fate of scissors-separation.

Unpublished Census No. 169-UNC-05. Ex Earl of Crawford and Ackerman. With 1992 and 2002 P.F. certificates..... 25,000.00



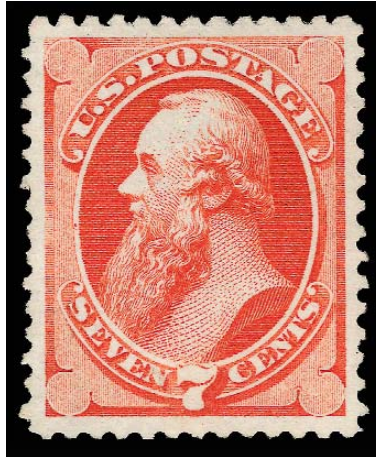
205

- 205 ★ **6c Dull Rose, Special Printing (170).** Without gum as issued, **full perforations without the usual scissors-separation, selvage at top with trace of imprint**, radiant color, wide margins

VERY FINE AND CHOICE. A RARE TOP SHEET SELVAGE EXAMPLE OF THE 6-CENT 1875 CONTINENTAL BANK NOTE COMPANY SPECIAL PRINTING FROM THE EARL OF CRAWFORD STRIP. THE 6-CENT IS AN EXTREMELY DIFFICULT DENOMINATION TO OBTAIN IN SUCH PRISTINE CONDITION AND WITH PERFORATIONS ON ALL SIDES.

Our recently updated census records for Scott 170 contain 33 certified examples. Of these, approximately half have full perforations on all sides, including several which are faulty. This stamp comes from the Earl of Crawford top selvage strip of four with plate number and imprint. This strip was spared the usual fate of scissors-separation.

Unpublished Census No. 170-UNC-08. Ex Earl of Crawford, Ackerman and Weisman.
With 1992 P.F. and P.S.E. certificates 24,000.00



206

- 206 ★ **7c Reddish Vermilion, Special Printing (171).** Without gum as issued, **full perforations all around without the usual scissors-separation**, radiant color as fresh as the day it was printed on crisp paper, perfect centering with wide and balanced margins

EXTREMELY FINE GEM. THIS IS WITHOUT QUESTION THE FINEST EXAMPLE OF THE 7-CENT 1875 CONTINENTAL BANK NOTE COMPANY SPECIAL PRINTING IN EXISTENCE. THIS SENSATIONAL STAMP HAS BEEN AWARDED THE GRADE OF XF-SUPERB 95 BY P.S.E.

Our recently updated census records for Scott 171 contain 70 certified examples. Most stamps were scissors-separated, affecting the perforations on at least one side and in some cases two or three sides. The stamp offered here, with intact perforations on all sides, superb centering, and remarkably vibrant color is, in our opinion, the ultimate copy for the connoisseur collector.

Unpublished Census No. 171-UNC-69. With 1967 and 1989 P.F. and 2008 P.S.E. certificates (XF-Superb 95). As an indication of the rarity of this stamp in better grades, SMQ does not even price this above the grade of 80, and the next highest grade in the P.S.E. Population Report is Fine 70. 6,250.00



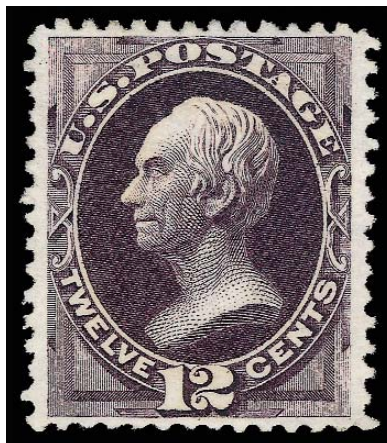
207

- 207 ★ **10c Pale Brown, Special Printing (172).** Without gum as issued, **bottom sheet selvage with “No. 2” portion of plate number, full perforations all around without the usual scissors-separation**, bright color, wide margins, closed tear in selvage only which does not affect the stamp

VERY FINE AND CHOICE. THE UNIQUE EXAMPLE OF THE 10-CENT 1875 CONTINENTAL BANK NOTE COMPANY SPECIAL PRINTING WITH THIS PART OF THE PLATE NUMBER IMPRINT AT BOTTOM AND INTACT PERFORATIONS. FROM THE EARL OF CRAWFORD STRIP.

Our recently updated census records for Scott 172 contain 36 certified examples. A majority of these have been scissors-separated into the perforations on at least one side. Of the eleven copies with full perforations, most have either pulled perforations or are not centered. This stamp comes from the Earl of Crawford bottom selvage strip of four with plate number and imprint. This strip was spared the usual fate of scissors-separation.

Unpublished Census No. 172-UNC-01. Ex Earl of Crawford and Ackerman. With 1998 P.F. certificate 23,000.00



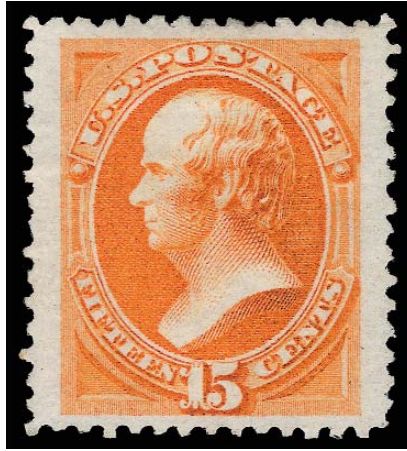
208

208 ★ **12c Dark Violet, Special Printing (173).** Without gum as issued, deep rich color and detailed impression on bright paper, **full perforations all around without the usual scissors-separation**, well-balanced margins

EXTREMELY FINE. A SUPERB EXAMPLE OF THE 12-CENT 1875 CONTINENTAL BANK NOTE COMPANY SPECIAL PRINTING. EXTREMELY RARE IN SUCH CONDITION.

Our recently updated census records for Scott 173 contain 70 certified examples.

Unpublished Census No. 173-UNC-47. With 1986 and 2004 P.F. certificates... 8,000.00



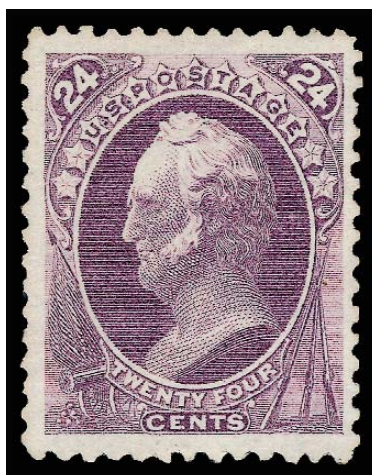
209

- 209 ★ **15c Bright Orange, Special Printing (174).** Without gum as issued, radiant color on unmistakable Special Printing paper, **full perforations all around without the usual scissors-separation and with Jumbo margins**

EXTREMELY FINE GEM. A SPECTACULAR JUMBO-MARGINED EXAMPLE OF THE 15-CENT 1875 CONTINENTAL SPECIAL PRINTING IN THE FINEST CONDITION ATTAINABLE. A REMARKABLE STAMP IN EVERY RESPECT.

Our recently updated census records for Scott 174 contain 39 certified examples. Of these, an overwhelming majority have the perforations scissors-separated on at least one side. Only five or six have intact perforations, and of those perhaps half are faulty.

Unpublished Census No. 174-UNC-39. Ex Chapin (acquired privately). With 1938 A.P.S. and 2003 P.F. certificates..... 23,000.00



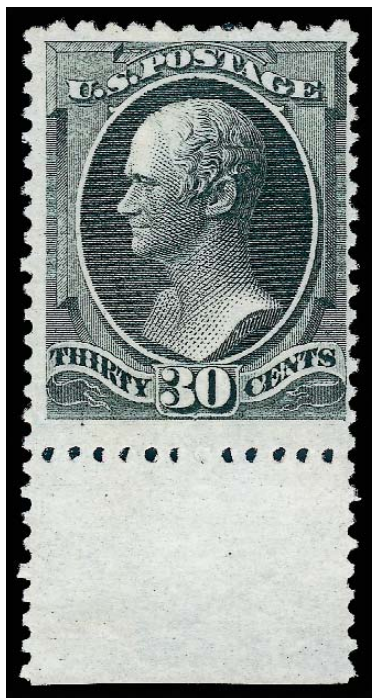
210

- 210 ★ **24c Dull Purple, Special Printing (175).** Without gum as issued, **full perforations all around without the usual scissors-separation**, bright color, wide margins and with much better centering than usually found

EXTREMELY FINE. A BEAUTIFUL EXAMPLE OF THE 24-CENT 1875 CONTINENTAL BANK NOTE COMPANY SPECIAL PRINTING.

Our recently updated census records for Scott 175 contain approximately 100 examples.

Unpublished Census No. 175-UNC-86. Ex Kantor and Weisman. With 1992 P.S.E. and 1969, 1989 and 1998 P.F. certificates..... 5,500.00



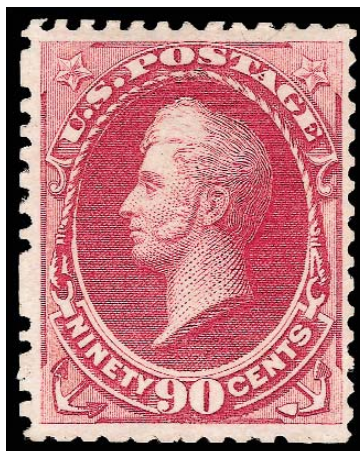
211

- 211 ★ **30c Greenish Black, Special Printing (176).** Without gum as issued, **full perforations all around without the usual scissors-separation, wide selvage at bottom**, bright shade and crisp impression, wide margins and with intact perfs all around

VERY FINE AND CHOICE. A BEAUTIFUL EXAMPLE OF THE 30-CENT 1875 CONTINENTAL BANK NOTE COMPANY SPECIAL PRINTING WITH SELVAGE AT BOTTOM. THIS IS ONE OF THE FINEST IN EXISTENCE. FROM THE EARL OF CRAWFORD STRIP.

Many examples of the Continental Bank Note special printings were separated by scissors, and so are often found with perforations partly missing or entirely trimmed away. Our recently updated census records for Scott 176 contain 50 copies. Of these, only three or four have perforations on all four sides. This stamp comes from the Earl of Crawford bottom selvage strip of four with plate number and imprint. This strip was spared the usual fate of scissors-separation.

Unpublished Census No. 176-UNC-25. Ex Earl of Crawford, Ackerman, Concord, Weisman and Hinrichs. With 1992 P.S.E. and 1992 and 2004 P.F. certificates. 19,000.00



212

- 212 ★ **90c Violet Carmine, Special Printing (177).** Without gum as issued, brilliant color, scissors-separated perforations as usual but leaving **full and intact perforations on all sides**, choice centering for this difficult issue

VERY FINE AND CHOICE. A DESIRABLE EXAMPLE OF THE 1875 90-CENT CONTINENTAL BANK NOTE COMPANY SPECIAL PRINTING. ONE OF THE RAREST SPECIAL PRINTINGS IN SOUND AND CENTERED CONDITION.

Our recently updated census records for Scott 177 contains 44 certified examples, many of which have faults. Only 16 have perforations on all four sides, and few of those are as well-centered as the example offered here.

Unpublished Census No. 177-UNC-34. With 1938 A.P.S. and 1967 and 1989 P.F. certificates
..... 30,000.00



213

- 213 ★ **2c Carmine Vermilion, Special Printing (180).** Without gum as issued, intense color and proof-like impression, **full perforations all around without any scissors-separation**, beautifully centered with extra wide margins on three sides

AN EXTREMELY FINE EXAMPLE OF THE 1875 2-CENT CARMINE VERMILION CONTINENTAL SPECIAL PRINTING. ONE OF THE RAREST OF ALL BANK NOTE SPECIAL PRINTINGS. ONLY 24 EXAMPLES ARE RECORDED IN OUR CENSUS. THIS STAMP RANKS AMONG THE TOP TWO OR THREE IN TERMS OF CONDITION.

Our census of Scott 180 (available at <http://siegelauctions.com/enc/census/180.pdf>) records 24 examples of this rare Special Printing, one of which is in The New York Public Library collection. Comparing this stamp to the others, we would rank it among the top two or three best-centered copies.

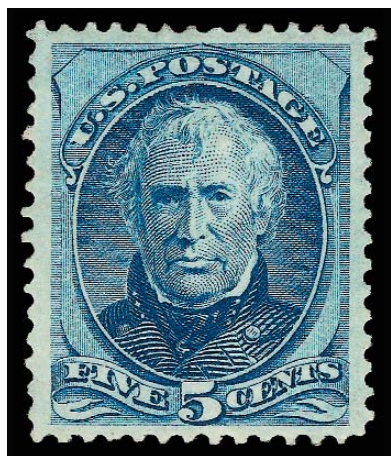
Census No. 180-UNC-18. Ex Hewitt and Concord. With 1985 and 1997 P.F. and 2008 P.S.E. certificates (VF-XF 85). 80,000.00

1875 CONTINENTAL BANK NOTE COMPANY ISSUE

- 214 ★ **2c Vermilion, With Grill (178c).** Original gum, lightly hinged, clearly-defined grill, brilliant color, choice centering, clearly-defined grill which is easily visible on the face of the stamp, Extremely Fine, ex Braus, Klein and Zoellner (as a pair), with 1998 P.F. certificate for pair, see historical note in lot 216 description..... 900.00



214



215

- 215 ★ **5c Blue (179).** Original gum, lightly hinged, bright color, beautiful centering with well-proportioned margins, fresh and Extremely Fine, with 1997 and 2005 P.F. certificates..... 800.00

- 216 ★ **5c Blue, Continental Grill (179c).** Original gum, clearly-defined grill with points, deep rich color
VERY FINE AND CHOICE. ONE OF THE FEW SOUND AND WELL-CENTERED EXAMPLES OF THE 5-CENT 1875 CONTINENTAL GRILL.

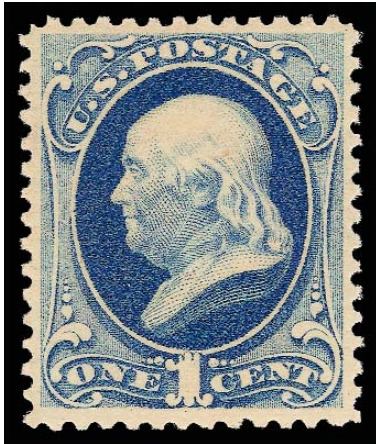
It is believed that the Continental grills were made experimentally in 1876, after a stamp-cleaning court trial renewed fears of stamp re-use. The primary source of the rare J Grills was the Worthington collection, which was dispersed in 1917. It is believed that most or all examples in collectors' hands came from the archive of Charles F. Steel, who patented the grilling machines used between 1867 and 1873.

Ex Lake Shore. With 1991 P.S.E. and 2005 P.F. certificates. 4,500.00



216

1879 AMERICAN BANK NOTE COMPANY ISSUE



217

- 217 ★★ **1c Dark Ultramarine (182).** Mint N.H., brilliant color, detailed impression, wide margins, Very Fine and choice, a pretty stamp, with 1988 and 1993 P.F. certificates, the former as a block of six 1,100.00

- 218 ★★ **2c Vermilion (183).** Mint N.H., radiant color as fresh as the day it was printed, wide margins, Very Fine and choice, scarce in such fresh condition, with 1993 P.F. certificate 500.00



218



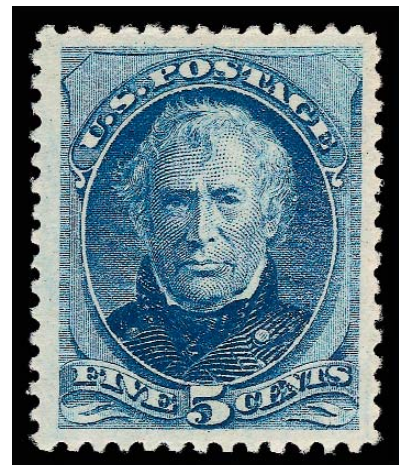
219

- 219 ★★ **3c Green (184).** Mint N.H., deep rich color and proof-like impression which “pops” off of the bright paper, wide and balanced margins, long and full perforations all around, Extremely Fine, a stunning stamp, with 1992 and 1999 P.F. certificates 400.00

- 220 ★★ **5c Blue (185).** Mint N.H., brilliant color, Jumbo margins which are well-balanced, long and full perforations all around

EXTREMELY FINE GEM. A GORGEOUS MINT NEVER-HINGED EXAMPLE OF THE 1879 5-CENT TAYLOR. A STAMP OF REMARKABLE FRESHNESS.

With 1988 P.F. and 2008 P.S.E. certificates (XF 90 Jumbo). This is the highest grade awarded to date to a Mint N.H. copy. 1,850.00

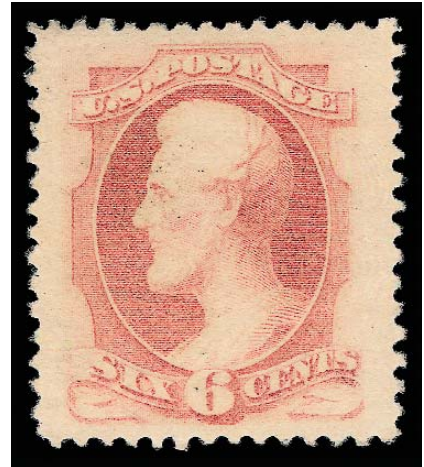


220

- 221 ★ **6c Pink (186).** Original gum, lightly hinged, brilliant color, enormous margins at sides and well-balanced from top-to-bottom

EXTREMELY FINE. A BEAUTIFUL ORIGINAL-GUM EXAMPLE OF THE 1879 6-CENT AMERICAN BANK NOTE COMPANY ISSUE. SCARCE WITH SUCH WIDE MARGINS.

With 1992 P.F. certificate 1,050.00



221



222

- 222 ★ **10c Brown, Without Secret Mark, "Cameo" Variety (187 var).** Original gum, deep rich color which is distinctively different from the normal issued color and which looks like a varnish ink type of printing, choice centering with wide and balanced margins

EXTREMELY FINE. A BEAUTIFUL ORIGINAL-GUM EXAMPLE OF THE 1879 10-CENT AMERICAN BANK NOTE COMPANY ISSUE. THIS DISTINCTIVE INKING VARIETY IS VERY SCARCE AND HIGHLY DESIRABLE, ESPECIALLY ON SUCH A CHOICE STAMP.

With 1984 and 1999 P.F. certificates 3,500.00

- 223 ★★ **10c Brown, With Secret Mark (188).** Mint N.H., fresh color and detailed impression

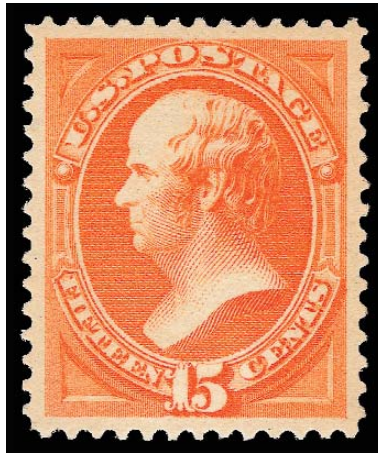
VERY FINE AND CHOICE. A RARE MINT NEVER-HINGED EXAMPLE OF THE 10-CENT 1879 AMERICAN BANK NOTE COMPANY ISSUE WITH SECRET MARK.

Unlike other values of the 1879 Issue, there are virtually no 10c stamps in Mint Never-Hinged condition. A thorough review of auction catalogues, including sales of the Caspary, Close, Sinkler, Col. Green, Lilly, Braus, Wunderlich and Klein collections, among others, produced no Mint N.H. singles and no blocks containing Mint N.H. stamps. We doubt that more than a half-dozen or so Mint N.H. copies exist in total.

With 1999 P.F. certificate..... 8,250.00



223



224

224 ★★ **15c Red Orange (189).** Mint N.H., vibrant color as fresh as the day it was printed, mathematically perfect centering with wide and balanced margins, long and full perforations all around

EXTREMELY FINE GEM. A STUNNING MINT NEVER-HINGED EXAMPLE OF THE 1879 15-CENT AMERICAN BANK NOTE COMPANY ISSUE. THIS IMPRESSIVE STAMP HAS BEEN AWARDED THE GRADE OF GEM 100 BY P.S.E. — THIS IS THE HIGHEST GRADE AWARDED TO DATE AND THE ONLY EXAMPLE TO ACHIEVE THIS PERFECT GRADE.

We acknowledge that several large multiples, including a pane of 100, have been broken in recent years to feed collector demand for singles, particularly in Mint N.H. condition. This has driven up the population of Mint N.H. singles. However, very few stamps out of those multiples are well-centered—many are off to one or two sides and would not grade very highly.

The stamp offered here is the exception to the rule. It is mathematically centered. The color is as fresh as the day it was printed, without even a hint of the oxidation that can plague this issue. The impression is detailed, and the perfs are all long and well-formed. It truly deserves the Gem 100 grade it was given.

With 1990 and 1999 P.F. and 2008 P.S.E. certificates (Gem 100). This is the only example to achieve this grade to date, and this is the highest grade awarded..... 1,000.00



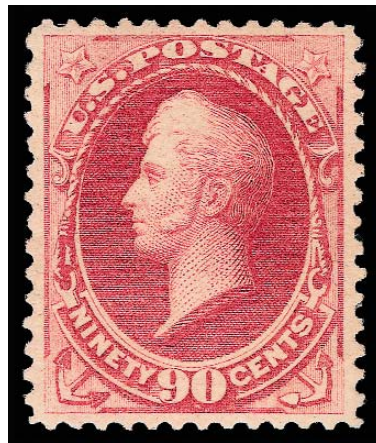
225

- 225 ★★ **30c Full Black (190).** Mint N.H., intense shade and sharp proof-like impression, beautifully centered with enormous margins, single perf disc at bottom rests lightly on gum

VERY FINE AND CHOICE. AN EXTRAORDINARY MINT NEVER-HINGED 30-CENT 1879 AMERICAN BANK NOTE ISSUE. THIS ISSUE IS RARELY OBTAINABLE IN CHOICE NEVER-HINGED CONDITION.

The 30c 1879 American Bank Note Company issue is surprisingly difficult to obtain in choice Mint N.H. condition. It is surprising because the 15c (Scott 189) is readily available. However, a survey of our photo records and auction library revealed the scarcity of well-centered 30c blocks from which singles could be removed. A review of Power Search found only seven other Mint N.H. singles.

With 1992 and 1998 P.F. certificates. 4,000.00



226

- 226 ★★ **90c Carmine (191).** Mint N.H., brilliant color, crisp paper, well-proportioned margins

EXTREMELY FINE. A RARE MINT NEVER-HINGED EXAMPLE OF THE 90-CENT 1879 AMERICAN BANK NOTE COMPANY ISSUE.

A review using Power Search shows we have offered only four others in Mint N.H. condition since keeping computerized records.

With 1985 and 1995 P.F. certificates 8,500.00



227

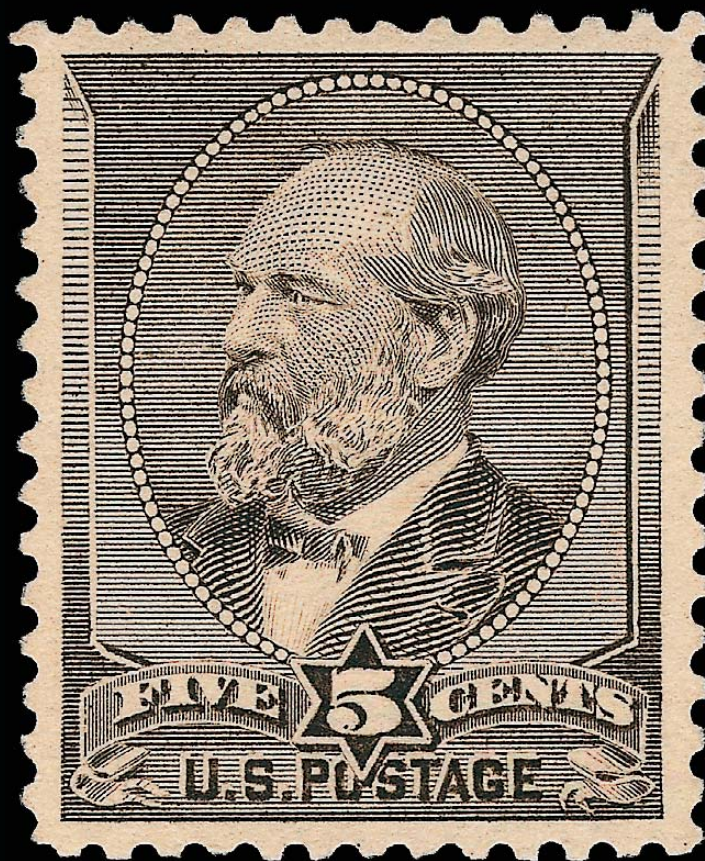
227 ★田 **90c Carmine (191).** Right sheet margin block of four, brilliant and fresh color, well-centered with wide margins, full original gum, some perf separations expertly reinforced and not mentioned on accompanying certificates

VERY FINE AND CHOICE RIGHT SELVAGE BLOCK OF FOUR OF THE 90-CENT 1879 AMERICAN BANK NOTE COMPANY ISSUE.

Most blocks of 19th Century stamps containing such attractive stamps have been broken to feed collector demand for singles.

Ex Moody and Klein as a block of eight. With 1989, 1998 and 2003 P.F. certificates, the first as a block of eight. 13,000.00

1880-83 AMERICAN BANK NOTE COMPANY
SPECIAL PRINTING

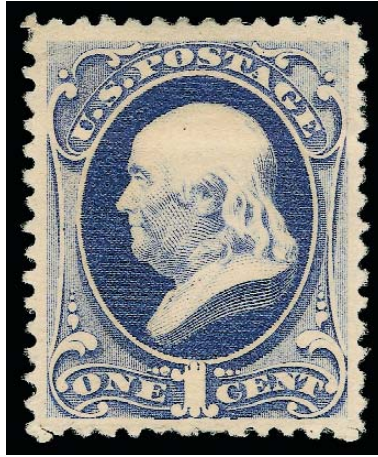


5¢ Gray Brown, Special Printing

Scott 205C

One of 21 recorded examples

1880-83 AMERICAN BANK NOTE COMPANY SPECIAL PRINTING



228

- 228 ★ **1c Dark Ultramarine, Special Printing (192).** Without gum as issued, perfect centering with wide and well-balanced margins, radiant color

EXTREMELY FINE GEM. THIS IS ARGUABLY THE FINEST EXAMPLE OF THE ONE-CENT 1880 AMERICAN BANK NOTE COMPANY SPECIAL PRINTING IN EXISTENCE, OF WHICH 25 ARE RECORDED IN OUR CENSUS. A REMARKABLE STAMP IN TERMS OF COLOR, CENTERING, PERFORATIONS AND OVERALL FRESHNESS.

Our comprehensive census of Scott 192 (available at siegelauctions.com/enc/census/192.pdf) contains a total of 25 copies of Scott 192. Of these, thirteen are reported to be sound. Of these thirteen, however, the centering of only one other comes close to the example offered here.

Census No. 192-UNC-02. With 1971 and 2005 P.F. certificates 75,000.00



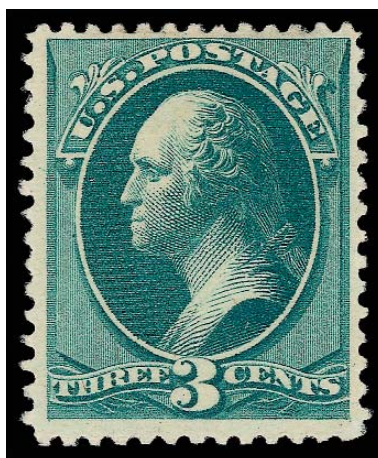
229

229 ★ **2c Black Brown, Special Printing (193).** Without gum as issued, deep rich color, detailed impression, choice centering with well-balanced margins

EXTREMELY FINE. A SCARCE SOUND AND SUPERBLY CENTERED EXAMPLE OF THE 2-CENT 1880 AMERICAN BANK NOTE COMPANY SPECIAL PRINTING. THIS IS ONE OF THE FINEST WE HAVE ENCOUNTERED.

Our recently updated census records for Scott 193 contain 47 certified examples, of which almost half half faults (mostly thins). Of the sound examples, nearly all are centered to top or one side. The stamp offered here is one of the very few sound and centered examples.

Unpublished Census No. 193-UNC-19. Signed by E. Stern in pencil. With 1964, 1990 and 1997 P.F. certificates. Offered to the market for the first time in over a decade. 27,500.00



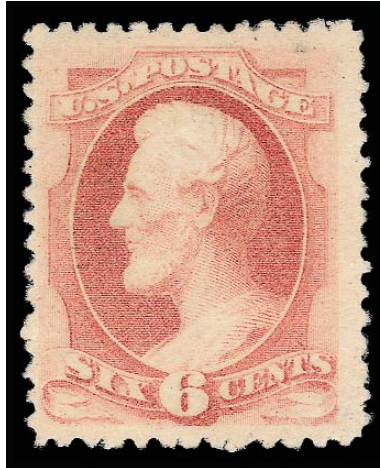
230

230 ★ **3c Blue Green, Special Printing (194).** Without gum as issued, intense shade and detailed impression, choice centering for this difficult issue

VERY FINE AND CHOICE. A GORGEOUS SOUND AND WELL-CENTERED EXAMPLE OF THE 3-CENT 1880 AMERICAN BANK NOTE COMPANY SPECIAL PRINTING. — ONLY FOURTEEN EXAMPLES ARE RECORDED IN OUR CENSUS, MAKING THIS ONE OF THE RAREST OF ALL SPECIAL PRINTINGS.

Our census of Scott 194 (available at <http://siegelauctions.com/enc/census/194.pdf>) contains only fourteen examples. Its rarity matches or exceeds the most valuable Special Printings, such as Scott Nos. 180 (24 known), 181 (10 known), 203 (20 known), 204 (18 known), 205C (21 known) and 211D (25 known). In fact, it is the rarest of any Bank Note Special Printing among the Scott-listed "sets" (167-177 and 192-202). As further evidence of its elusiveness, six years passed here at Siegel between the sale of the Scott 194 from the Drucker collection in 2002 and the Hoffman copy in 2008, during which time not one other appeared in our auctions.

Census No. 194-UNC-02. Ex Lilly, Kantor, Lessin and Hinrichs. With 1948, 1967, 1992 and 2004 P.F. certificates 110,000.00

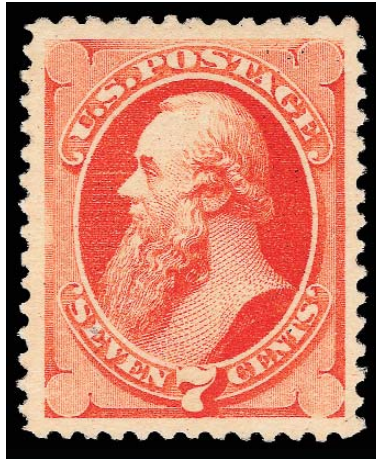


231

- 231 ★ **6c Dull Rose, Special Printing (195).** Without gum as issued, fresh and bright color
 VERY FINE EXAMPLE OF THE 6-CENT 1880 AMERICAN BANK NOTE COMPANY SPECIAL
 PRINTING. FEWER THAN 30 ARE BELIEVED TO EXIST.

Our recently updated census records contain 26 certified examples of Scott 195, an oddly low number. Some of the stamps submitted as the Special Printing, but certified as the regular issue, Scott 186, could in fact be Special Printing stamps (the two are difficult to tell apart). We record another three stamps which we feel are possibly Scott 195, despite previous P.F. certification.

Unpublished Census No. 195-CAN-10. Ex Ambassador, Cole and Golin. With 1957, 1988 and 2008 P.F. certificates 100,000.00



232

232 ★ **7c Scarlet Vermilion, Special Printing (196).** Without gum as issued, radiant color as fresh as the day it was printed, unusually choice centering with wide and balanced margins, tiny natural inclusion at bottom left not mentioned on accompanying certificates
EXTREMELY FINE GEM. A SUPERB EXAMPLE OF THE 1880 7-CENT AMERICAN BANK NOTE COMPANY SPECIAL PRINTING.

Our recently updated census records for Scott 196 contain approximately 80 certified examples. It is the most common of the soft-paper Special Printings because the 7c was no longer in production in 1880 and, probably to some degree, because it can be easily identified since there is no regular issue on soft paper.

Unpublished Census No. 196-UNC-22. With 1991 and 1998 P.F. certificates... 9,000.00



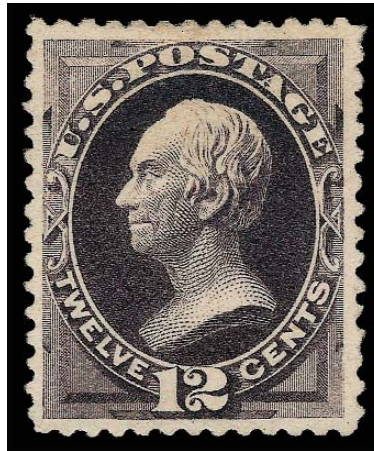
233

233 ★ **10c Deep Brown, Special Printing (197).** Without gum as issued, deep rich color, intense impression, choice centering for this difficult issue

VERY FINE AND CHOICE. A STUNNING EXAMPLE OF THE RARE 10-CENT 1880 AMERICAN BANK NOTE COMPANY SPECIAL PRINTING. ONLY 30 ARE RECORDED IN OUR CENSUS.

Our recently updated census records for Scott 197 contain 30 certified examples certified. Of these, eight have faults, leaving only 22 sound or potentially sound examples (some have not been examined in many years). Many of the sound copies are not as well-centered as the one offered here.

Unpublished Census No. 196-UNC-21. With 1986 and 1997 P.F. certificates. 55,000.00



234

234 ★ **12c Blackish Purple, Special Printing (198).** Without gum as issued, deep rich color and proof-like impression, beautiful centering with wide margins

EXTREMELY FINE. A STUNNING EXAMPLE OF THE 12-CENT 1880 AMERICAN BANK NOTE COMPANY SPECIAL PRINTING.

Our recently updated census records for Scott 198 contain approximately 60 certified examples. Of these, fully one-third have small flaws (mostly thin spots).

Unpublished Census No. 198-UNC-14. Signed by E. Stern in pencil. With 1986 and 1997 P.F. certificates..... 15,000.00



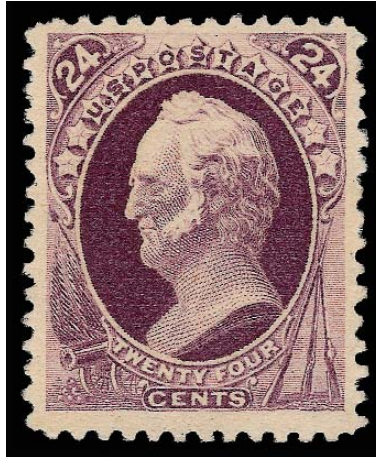
235

235 ★ **15c Orange, Special Printing (199).** Without gum as issued, vibrant color, detailed impression, choice centering for this difficult issue

VERY FINE AND CHOICE. A GORGEOUS EXAMPLE OF THE 15-CENT 1880 AMERICAN BANK NOTE COMPANY SPECIAL PRINTING. ONLY 36 ARE RECORDED IN OUR CENSUS.

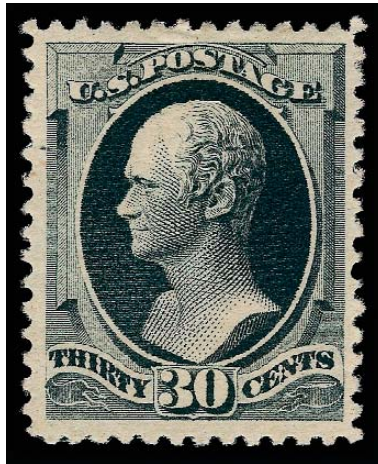
Our recent review of the records of the Philatelic Foundation found only 36 certified examples of Scott 199. This is a difficult Special Printing to obtain, especially in such choice condition.

Unpublished Census No. 199-UNC-05. Ex Lessin. With 1953 and 2002 P.F. certificates
 50,000.00



236

- 236 ★ **24c Dark Violet, Special Printing (200).** Without gum as issued, deep rich color on bright paper, wide margins
VERY FINE AND CHOICE. A BEAUTIFUL EXAMPLE OF THE 24-CENT 1880 AMERICAN BANK NOTE COMPANY SPECIAL PRINTING.
Our recent review of records at the Philatelic Foundation found approximately 66 certified copies of Scott 200.
Unpublished Census No. 200-UNC-06. With 1972 and 2005 P.F. certificates. 14,000.00



237

237 ★ **30c Greenish Black, Special Printing (201).** Without gum as issued, deep shade, detailed impression, wide margins, long and full perforations all around

EXTREMELY FINE. A BEAUTIFUL EXAMPLE OF THE 30-CENT 1880 AMERICAN BANK NOTE COMPANY SPECIAL PRINTING.

Our recently updated census records for Scott 201 contain approximately 45 certified examples.

Unpublished Census No. 201-UNC-05. Ex Col. Green. With 1993 P.F. certificate.
..... 35,000.00



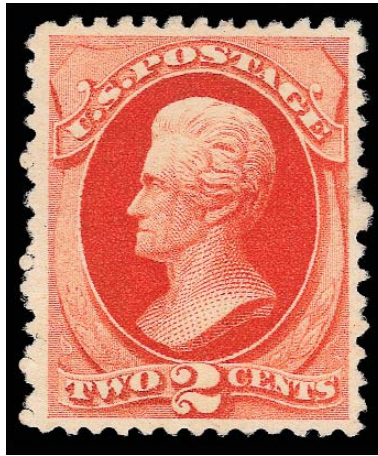
238

238 ★ **90c Dull Carmine, Special Printing (202).** Without gum as issued, brilliant color on crisp paper, unusually wide margins

EXTREMELY FINE. VERY FEW OF THE 41 RECORDED COPIES OF THE 1880 90-CENT AMERICAN BANK NOTE COMPANY SPECIAL PRINTING CAN COMPARE TO THE STAMP OFFERED HERE. THIS IS ONE OF THE MOST DIFFICULT SPECIAL PRINTING STAMPS TO FIND IN SOUND CONDITION.

The 90c 1880 Special Printing on soft paper is notorious for its condition (thins affect most of the known examples) and typically poor centering. In this stamp we have the rare combination of soundness, margins and centering, as well as extraordinary freshness. We regard it as among the finest of the 41 in our census records.

Unpublished Census No. 201-UNC-01. Signed in pencil by E. Stern. Ex Engel and Golin. With 1957, 1989 and 1999 P.F. certificates 45,000.00



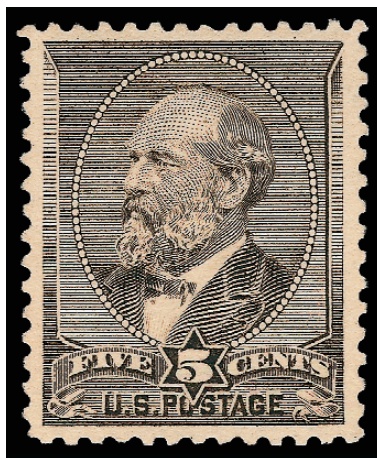
239

239 ★ **2c Scarlet Vermilion, Special Printing (203).** Without gum as issued, intense shade and impression, choice centering for this difficult issue

VERY FINE AND CHOICE. THIS IS ONE OF THE FINEST EXAMPLES OF ONE OF THE RAREST OF ALL BANK NOTE SPECIAL PRINTINGS. ONLY 20 ARE RECORDED IN OUR CENSUS, MANY OF WHICH ARE OFF CENTER.

Our census of Scott 203 (available at <http://siegelauctions.com/enc/census/203.pdf>) contains only 19 stamps which are available to collectors. The 20th copy is in the Miller collection at The New York Public Library. Five of the 19 available stamps have small faults or short perfs. Of the 14 remaining sound copies, we see only three others which rival the stamp offered here for centering and margins.

Census No. 203-UNC-14. With 1947, 1969, 1989 and 1995 P.F. certificates. .. 150,000.00



240

240 ★ **5c Gray Brown, Special Printing (205C).** Without gum as issued, deep rich color and proof-like impression, beautifully centered

EXTREMELY FINE. THE 5-CENT GARFIELD IS ONE OF THE RAREST OF THE SPECIAL PRINTINGS. THIS SUPERB EXAMPLE IS ONE OF 21 RECORDED.

This elusive Special Printing was the subject of an informative article by William E. Mooz in the Chronicle, February 1992. His research provides strong evidence that the stamps recognized as Scott 205C are a small part of the 2,463 sold as Special Printings through the Third Asst. PMG, and that regular issues were used to fill the backlog of orders for the 5c Garfield.

Our census of Scott 205C (available at <http://siegelauctions.com/enc/census/205C.pdf>) illustrates the 21 recorded examples (only three have faults).

Census No. 205C-UNC-09. Ex Cole. With 1988 and 1995 P.F. and 2008 P.S.E. certificates (XF 90). All four graded copies have graded 90; based on our census, it is uncertain if any would grade 95 at P.S.E. 85,000.00



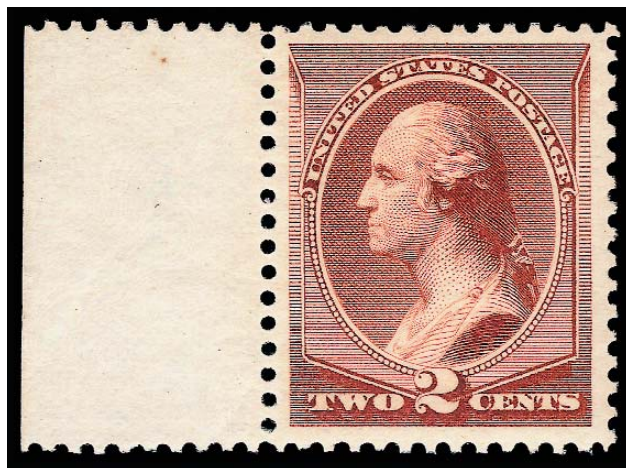
241

- 241 ★ **4c Deep Blue Green, Special Printing (211D).** Without gum as issued, rich color and proof-like impression, beautiful centering with well-proportioned margins

EXTREMELY FINE. A BEAUTIFUL EXAMPLE OF THE RARE 4-CENT 1883 AMERICAN BANK NOTE COMPANY SPECIAL PRINTING. THIS IS ONE OF THE RAREST OF ALL SPECIAL PRINTINGS — ONLY 26 ARE RECORDED.

Our census of the 4c 1883 Special Printing (at siegelauctions.com/enc/census/211D.pdf) contains 26 stamps offered as No. 211D, of which 25 have been certified by The Philatelic Foundation. Post Office Department records indicate that only 26 were sold. Of the known copies, five have small faults. This stamp comes from the block of four sold in the legendary Alfred H. Caspary sale (bottom right stamp).

Census No. 211D-UNC-05. Ex Caspary. With 1957 and 1992 P.F. and 2008 P.S.E. certificates (VF-XF 85). 80,000.00



242

- 242 ★★ **2c Pale Red Brown, Special Printing (211B).** Mint N.H., with left sheet selvage, wide margins, bright shade, fresh and Extremely Fine, with 1987 P.F. certificate..... 950.00



243

- 243 ★ **2c Pale Red Brown, Special Printing, Horizontal Pair, Imperforate Between (211Bc).** Horizontal strip of six with “STEAMER – AMERICAN BANK NOTE CO.” imprint in top selvage and imperforate-between pair at center, original gum, barest trace of previous hinging, some very minor perf reinforcement between second and third stamps, remarkably well-centered, bright and fresh

EXTREMELY FINE. THIS IS THE FINER OF TWO SURVIVING MULTIPLES OF THE 2-CENT SPECIAL PRINTING WITH THE FULL “STEAMER - AMERICAN BANK NOTE CO.” IMPRINT. AN IMPORTANT RARITY OF THE BANK NOTE COMPANY PERIOD.

In 1885 the American Bank Note Co. experimented with a Hoe & Co. steam-powered, chain-driven printing press to increase the rate of production. New plates of 200 subjects were created for use on the steam press, including one with the distinctive “STEAMER - AMERICAN BANK NOTE CO.” imprint at the top center of the plate. Five sheets of 200 stamps were printed from this “Steamer” plate and sent to the Post Office Department. Since the full sheets were intended to be divided into panes of 100, the vertical gutter between the two panes was left imperforate. These sheets were later sold into the philatelic market and divided into smaller units.

We can account for all five top imprint pieces from the “Steamer” sheets. One is a block of sixteen with disturbed gum and creases (Siegel 1974 Rarities sale, lot 113), which probably came from the sheet once owned by Senator Ackerman. The strip of six offered here is the second largest multiple. **These two are the only recorded multiples with the complete imprint.** The three remaining imperforate-between multiples from the tops of the sheets are a block of four and two pairs, each with the “American Ban” portion of the imprint but lacking the word “Steamer”.

The “Never Hinged” listing for an imprint strip in the current Scott U.S. Specialized Catalogue is erroneously based on the 1991 P.F. certificate that accompanies this strip, which states “it is genuine”. The wording on this certificate implies that it is Mint N.H., but it is not and has never been offered as such. Therefore, there is only one strip of six (offered here) and the creased block of sixteen. In our opinion, this remarkable imprint multiple is worth far more than its \$5,000.00 Scott value, which is based on the realization from a 1996 auction.

With 1991 P.F. certificate 5,000.00

1881-88 AMERICAN BANK NOTE COMPANY ISSUES



- 244 ★ **5c Yellow Brown (205).** Original gum, enormous Jumbo margins all around, sharp impression, Extremely Fine, a fantastic stamp, with 1992 P.F. certificate 300.00
- 245 ★★ **1c Gray Blue (206).** Mint N.H., extra wide margins and choice centering, bright and fresh, Extremely Fine, with 1993 P.F. certificate 300.00
- 246 ★★ **3c Blue Green (207).** Mint N.H., wide margins and beautifully centered, rich color, Very Fine and choice, with 1999 P.F. certificate 310.00
- 247 ★ **6c Rose (208).** Original gum, lightly hinged, almost perfectly centered with extra wide top and bottom margins, bright shade, Extremely Fine, a wonderfully choice original-gum example of this challenging Bank Note issue, with 2001 P.F. certificate 850.00
- 248 ★★ **6c Deep Brown Red (208a).** Mint N.H., extra wide margins with **part imprint** in selva at top, deep rich color, minute natural gum skip, Extremely Fine, a striking example of the 6c Re-engraved, with 2000 P.F. certificate 2,100.00
- 249 ★★ **10c Brown (209).** Mint N.H., perfectly centered, deep rich color, Extremely Fine, a superb stamp, with 1994 P.F. certificate 600.00



- 250 ★ **10c Black Brown (209b).** Original gum, lightly hinged, deep rich color and proof-like impression on bright paper, nearly perfect centering and wide margins rarely encountered among examples of this rare shade variety

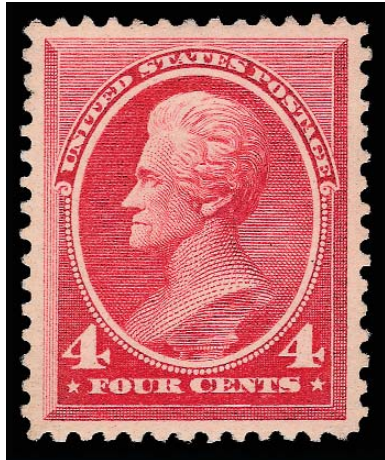
EXTREMELY FINE. A MAGNIFICENT ORIGINAL-GUM EXAMPLE OF THE 1882 10-CENT RE-ENGRAVED ISSUE IN THE RARE BLACKISH BROWN SHADE.

With 1980 and 2000 P.F. certificates 2,500.00

250



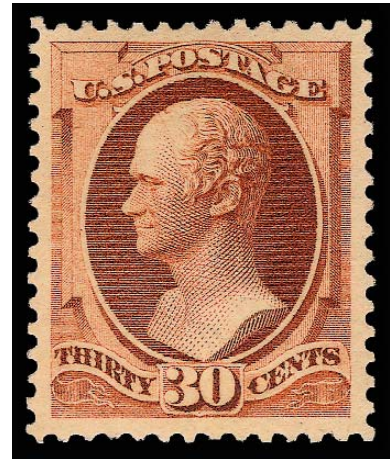
- 251 ★★ **2c Red Brown (210).** Mint N.H., intense shade and proof-like impression on bright paper, beautiful centering with wide margins, fresh and Extremely Fine, a superb stamp in every respect, with 1998 P.F. and 2008 P.S.E. certificates (XF-Superb 95), only one has graded higher to date and only two others share this grade..... 150.00
- 252 ★★ **4c Blue Green (211).** Mint N.H., Jumbo margins, intense shade and impression, Very Fine and choice, with 2003 P.F. certificate..... 1,100.00
- 253 ★★ **1c Ultramarine (212).** Mint N.H. with **part imprint with wide selvage at top**, radiant color, well-balanced margins, fresh and Extremely Fine, with 1993 P.F. and 2008 P.S.E. certificates (XF 90)..... 375.00
- 254 ★ **2c Green (213).** Original gum with **top left corner selvage**, small and faint gum disturbance at bottom precludes Mint N.H., exceptionally well-centered with Jumbo margins, Extremely Fine, with 1999 P.F. certificate as Mint N.H., with 2008 P.S.E. certificate (OGph, XF-Superb 95 Jumbo) 47.50
- 255 ★★ **3c Vermilion (214).** Mint N.H. with **wide selvage at left**, brilliant color, crisp impression, Jumbo margins with bright paper, fresh and Extremely Fine, a beautiful stamp, with 1993 P.F. certificate 230.00



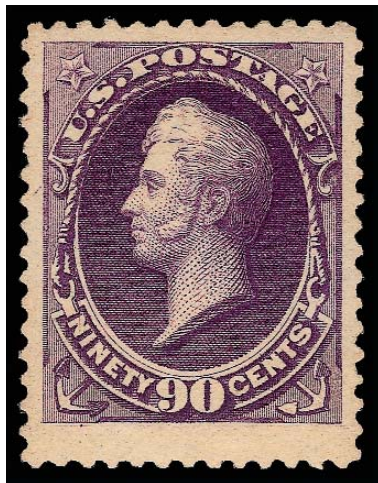
256

- 256 ★ **4c Carmine (215).** Original gum, minute trace of hinging according to P.S.E. but 1996 P.F. certificate states Mint N.H., bright color, almost mathematically perfect centering with wide margins, Extremely Fine Gem, with 1986 and 1996 P.F. certificates (as Mint N.H.), with 2008 P.S.E. certificate (OGph, Superb 98), only four have reached the 98 grade (two OGph and two OGnh), none higher 240.00

- 257 ★★ **30c Orange Brown (217).** Mint N.H., brilliant color, wide margins, long and full perforations, Very Fine and choice, with 1992 P.F. certificate 1,350.00



257



258

- 258 ★★ **90c Purple (218).** Mint N.H., bright shade, detailed impression on crisp paper, unusually wide margins
EXTREMELY FINE. A JUMBO MINT NEVER-HINGED EXAMPLE OF THE 90-CENT 1888 AMERICAN BANK NOTE COMPANY ISSUE. SCARCE WITH SUCH WIDE MARGINS.
With 1992 P.F. certificate 3,500.00

END OF SESSION 2.1

PART TWO: SESSION 2.2 (LOTS 259-369)

SALE DATE TO BE ANNOUNCED

1890-93 ISSUE



259



260



261



262

- 259 ★★ **1c Dull Blue (219).** Mint N.H., brilliant color on bright paper, detailed impression, choice centering with wide and balanced margins, fresh and Extremely Fine, with 2000 P.F. certificate 90.00
- 260 ★★ **2c Lake (219D).** Mint N.H., deep rich color in the distinctive Lake shade, nicely complemented by bright paper, wide margins which are well-proportioned, Extremely Fine, a beautiful stamp, with 1993 P.F. certificate 800.00
- 261 ★★ **2c Carmine (220).** Mint N.H., gorgeous color as fresh as the day it was printed on bright paper, unusually wide margins, fresh and Extremely Fine, a stamp of tremendous visual appeal, with 1993 P.F. certificate 75.00
- 262 ★★ **2c Carmine, Cap on Left "2" (220a).** Mint N.H., brilliant color on post-office fresh paper, wide margins, fresh and Extremely Fine example of this variety, with 2000 P.F. certificate 425.00



263

- 263 ★★ **2c Carmine, Cap on Both "2"'s (220c).** Mint N.H., brilliant color and detailed impression clearly showing the cap on both "2"'s, almost perfectly centered with balanced margins

EXTREMELY FINE GEM. THIS IS THE FINEST EXAMPLE OF THE 2-CENT 1890 ISSUE WITH A CAP ON BOTH "2"'s THAT WE HAVE EVER OFFERED. AN EXTREMELY RARE STAMP IN SUCH PRISTINE CONDITION.

Only a small percentage of 2c 1890's were printed from Plates 245 and 246, which contained the Cap on Both 2's variety. Examples in Mint N.H. condition are rare (only six were located with Power Search), and of those surviving Mint N.H. stamps, only a handful are in high grades.

With 2004 P.F. and 2008 P.S.E. certificates (XF 90). This is the highest grade awarded to date and the only example to achieve this grade. In fact, 90 is the highest grade with a catalogue value in SMQ — it is unpriced in any higher grade. 2,000.00



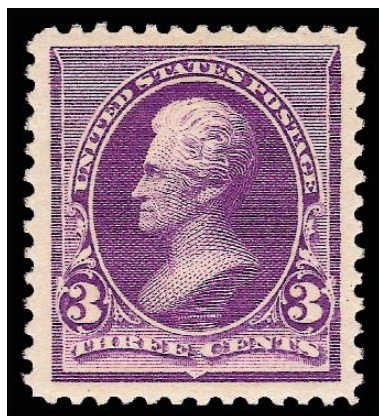
264

- 264 ★田 **2c Carmine, Cap on Left "2", Both "2" (220a, 220c).** Block of four, left stamps with cap over left "2", right stamps with caps on both "2"s, bottom stamps Mint N.H., top stamps narrow h.r. at top, intense shade and impression with the varieties clearly displayed on all stamps

VERY FINE-EXTREMELY FINE. AN INCREDIBLY RARE COMBINATION BLOCK SHOWING BOTH VARIETIES OF CAP OVER "2". A HIGHLY EXHIBITABLE ITEM.

According to Brookman, the varieties were caused by a breakdown of the metal of the transfer roll. There is only one plate of the dozens used which contains a combination of both varieties — Plate 246.

Ex Golin, Blumenkopf and Floyd. With 1997 P.F. certificate. Scott Retail as singles does not reflect the rarity of this multiple — the bottom combination pair with both varieties is Mint N.H. 3,240.00



265

- 265 ★★ **3c Purple (221).** Mint N.H., pretty shade, balanced Jumbo margins

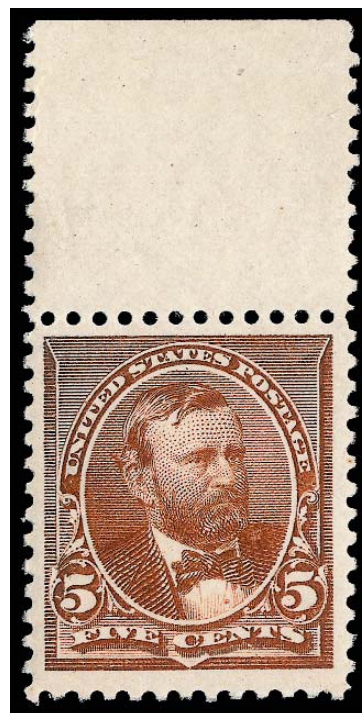
EXTREMELY FINE GEM. A PARTICULARLY WIDE-MARGINED EXAMPLE OF THE 3-CENT 1890 ISSUE.

With 1986 and 2000 P.F. and 2008 P.S.E. certificates (XF-Superb 95 Jumbo). Only one has graded higher to date (at 98) and none share this grade. 260.00



266

- 266 ★★ **4c Dark Brown (222).** Mint N.H., intense shade and impression, unusually wide margins, fresh and Extremely Fine, a Jumbo stamp, with 1995 P.F. certificate.. 340.00
- 267 ★★ **5c Chocolate (223).** Mint N.H. with wide selvage at top, rich color, wide margins, Very Fine and choice, with 1992 P.F. certificate..... 280.00



267



268

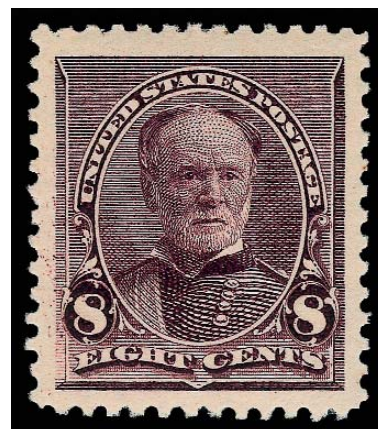
- 268 ★★ **6c Brown Red (224).** Mint N.H. with wide bottom left corner sheet selvage, brilliant color, unusually choice centering with wide and balanced margins

EXTREMELY FINE GEM. A SUPERB MINT NEVER-HINGED EXAMPLE OF THE 6-CENT 1890 ISSUE. ESPECIALLY DESIRABLE WITH THE BOTTOM LEFT CORNER SELVAGE—A STUNNING STAMP.

With 1987 P.F. and 2008 P.S.E. certificates (XF-Superb 95).. 250.00

- 269 ★★ **8c Lilac (225).** Mint N.H., rich color and proof-like impression on bright paper, gorgeous centering with Jumbo margins
- EXTREMELY FINE GEM. A STUNNING MINT NEVER-HINGED EXAMPLE OF THE 8-CENT SMALL BANK NOTE ISSUE WITH MASSIVE MARGINS.

With 1988 P.F. and 2008 P.S.E. certificates (XF-Superb 95 Jumbo). Only one has graded higher to date and only two others share this grade. 200.00



269



270

270 ★★ **10c Green (226).** Mint N.H., deep rich color and proof-like impression, perfectly balanced Jumbo margins

EXTREMELY FINE GEM. A SUPERB MINT NEVER-HINGED EXAMPLE OF THE 10-CENT 1890 SMALL BANK NOTE ISSUE, GRADED 98 JUMBO BY P.S.E. THIS IS THE HIGHEST GRADE AWARDED TO DATE.

With 2002 P.F. and 2008 P.S.E. certificates (Superb 98 Jumbo). This magnificent stamp is the only example to achieve this grade..... 650.00



271



272



273

271 ★★ **15c Indigo (227).** Mint N.H., deep rich color on bright paper, well-proportioned margins, fresh and Extremely Fine, with 1994 P.F. certificate..... 850.00

272 ★★ **30c Black (228).** Mint N.H. with wide selvage at top, intense shade and impression, wide and balanced margins

EXTREMELY FINE. A BEAUTIFUL MINT NEVER-HINGED EXAMPLE OF THE 30-CENT 1890 ISSUE.

With 1990 and 1993 P.F. certificates..... 1,300.00

273 ★★ **90c Orange (229).** Mint N.H. with **top right corner sheet selvage**, brilliant color, unusually wide margins for this difficult issue

EXTREMELY FINE. A SPECTACULAR CORNER-MARGIN COPY OF THE 90-CENT 1890 ISSUE. A DIFFICULT ISSUE TO OBTAIN IN MINT NEVER-HINGED CONDITION WITH SUCH WIDE MARGINS.

With 1997 P.F. certificate. 2,000.00

COLUMBIAN ISSUE



274

- 274 ★★ **1c Columbian (230).** Mint N.H., with **top right corner sheet selvage**, intense color and proof-like impression on bright paper, absolutely enormous margins, Extremely Fine Gem, a striking stamp, with 1991 P.F. certificate for a block and 2008 P.S.E. certificate (XF-Superb 95 Jumbo)..... 60.00



275



276



277



278

- 275 ★★ **2c Columbian (231).** Mint N.H., with **part imprint selvage** at top, rich color, Jumbo margins, Extremely Fine Gem, with 2008 P.S.E. certificate (XF-Superb 95 Jumbo) 60.00
- 276 ★★ **2c Columbian, "Broken Hat" (231 var).** Mint N.H. with wide selvage with **plate no. 167 at top**, brilliant color and remarkably detailed impression, wide margins, Very Fine and choice, with 2000 P.S.E. certificate..... 175.00
- 277 ★★ **3c Columbian (232).** Mint N.H. with selvage at right, rich color, sharp impression, Jumbo margins, fresh and Extremely Fine, with 1996 P.F. certificate..... 160.00
- 278 ★★ **4c Columbian (233).** Mint N.H., rich color and proof-like impression, wide and balanced margins, Extremely Fine Gem, a beautiful stamp, with 2000 P.F. certificate 240.00



279

- 279 ★★ **4c Columbian, Error of Color (233a).** Mint N.H., deep rich color and proof-like impression on bright paper, the deeper of the two shades, wide margins for this difficult issue
 VERY FINE. ONE OF THE FEW AVAILABLE MINT NEVER-HINGED EXAMPLES OF THE RARE 4-CENT COLUMBIAN ERROR OF COLOR.

The 4c Columbian color error was caused by the use of a wrong batch of ink, and spectrographic analysis has shown that the blue inks of the 4c error and 1c Columbian have the same components.

Stamps from at least two panes reached collectors, and the few cancelled examples indicate that stamps used by the public came from additional panes. It is likely that a number of full sheets were printed using the wrong ink, and most of the stamps have simply been lost to philately.

With 1980 and 1994 P.F. certificates..... 35,000.00

1893 COLUMBIAN ISSUE
4-CENT BLUE ERROR OF COLOR



4¢ Blue Error of Color, Scott 233a
Mint Never-Hinged block of four



280 ★★田 **4c Columbian, Error of Color (233a).** Mint N.H. block of four with sheet selvage at right, intense color in the deeper of the two shades, detailed impression, crisp paper

FINE-VERY FINE. A RARE MINT NEVER-HINGED BLOCK OF FOUR OF THE 4-CENT COLUMBIAN ERROR OF COLOR. VERY FEW MULTIPLES ARE KNOWN OF THIS DISTINCTIVE COLOR ERROR, AND FEW ARE IN MINT NEVER-HINGED CONDITION. A GREAT RARITY OF THE ISSUE.

The 4c Columbian color error was caused by the use of a wrong batch of ink, and spectrographic analysis has shown that the blue inks of the 4c error and 1c Columbian have the same components.

Stamps from at least two panes reached collectors, and the few cancelled examples indicate that stamps used by the public came from additional panes. It is likely that a number of full sheets were printed using the wrong ink, and most of the stamps have simply been lost to philately.

With 2001 P.F. certificate..... 160,000.00



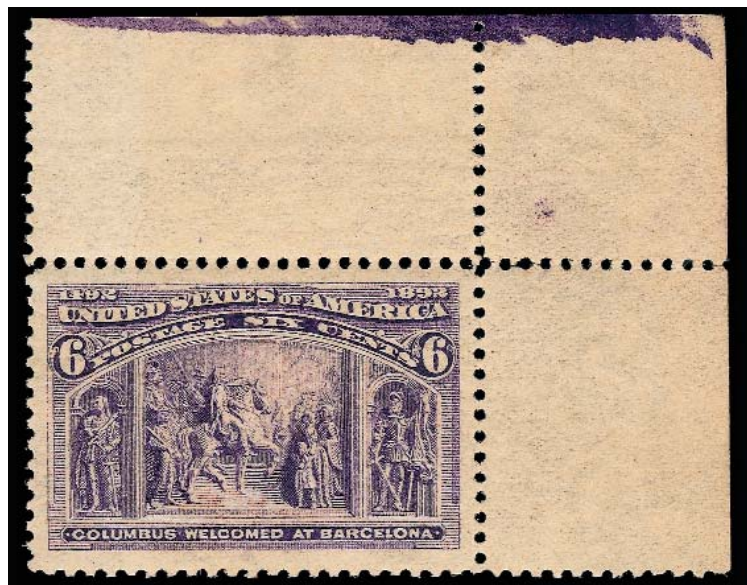
281

- 281 ★★ **5c Columbian (234).** Mint N.H. with **plate no. 8 in bottom selvage**, pretty shade, wide and balanced margins, fresh and Extremely Fine, a stamp of great visual appeal, with 1993 P.F. certificate 260.00

- 282 ★★ **6c Columbian (235).** Mint N.H. with **top right corner sheet selvage**, intense color, beautiful centering with Jumbo margins which are well-balanced

EXTREMELY FINE GEM. A STUNNING MINT NEVER-HINGED CORNER SELVAGE SINGLE OF THE 6-CENT COLUMBIAN ISSUE. A MARVELOUS STAMP.

With 1996 P.F. and 2008 P.S.E. certificates (XF-Superb 95 Jumbo). Only six have graded higher to date and only three others share this grade. 240.00



282



283

- 283 ★★ **6c Red Violet, Columbian (235a).** Mint N.H., brilliant color on bright paper, choice centering with wide and balanced margins, long and full perforations

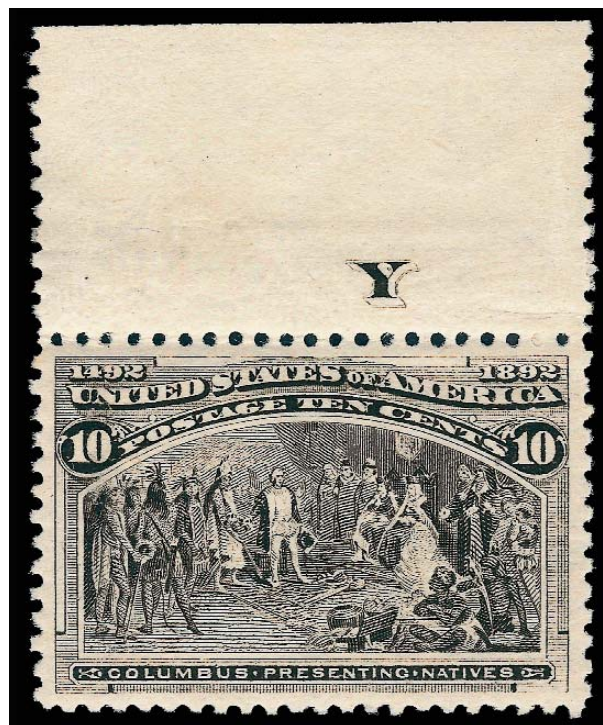
EXTREMELY FINE GEM. A SUPERB MINT NEVER-HINGED EXAMPLE OF THE 6-CENT COLUMBIAN IN THE RED VIOLET SHADE.

With 1983 P.F. and 2008 P.S.E. certificates (XF-Superb 95). None graded higher to date and only four others share this grade..... 240.00



284

- 284 ★★ **8c Columbian (236).** Mint N.H. with **part imprint in top selvage**, brilliant color on post-office fresh paper, wide and balanced margins, fresh and Extremely Fine, a beautiful stamp, with 1993 and 1995 P.F. certificates, the former as a strip..... 215.00



285

- 285 ★★ **10c Columbian (237).** Mint N.H. with **wide selvage at top with letter "Y"**, bright shade, detailed impression, well-proportioned margins, fresh and Extremely Fine, a wonderful stamp, the beauty of which far exceeds its numerical grade, with 1996 P.F. and 2008 P.S.E. certificates (XF 90) 400.00

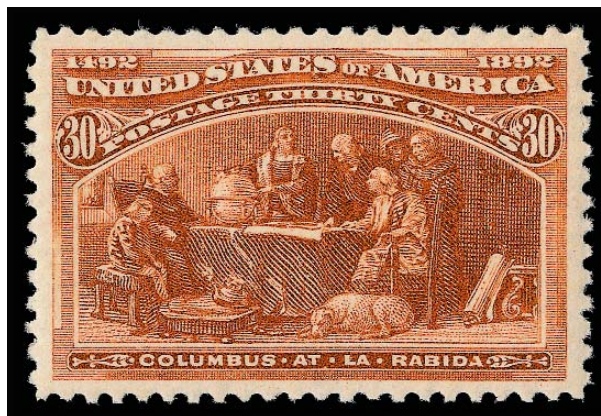


286

- 286 ★★ **15c Columbian (238).** Mint N.H., rich color and proof-like impression on post-office fresh paper, perfectly centered with wide and balanced margins, long and full perforations all around

EXTREMELY FINE GEM. A SUPERB MINT NEVER-HINGED EXAMPLE OF THE 15-CENT COLUMBIAN ISSUE, WHICH HAS BEEN AWARDED THE GRADE OF SUPERB 98 — ONLY ONE HAS GRADED HIGHER TO DATE.

With 1998 P.F. and 2008 P.S.E. certificates (Superb 98). Only one has graded higher to date and only five others share this grade..... 750.00



287

- 287 ★★ **30c Columbian (239).** Mint N.H., radiant color as fresh as the day it was printed on post-office fresh paper, perfectly centered with wide margins

EXTREMELY FINE GEM. THIS MAGNIFICENT MINT NEVER-HINGED EXAMPLE OF THE 30-CENT COLUMBIAN ISSUE HAS BEEN AWARDED THE GRADE OF SUPERB 98 BY P.S.E. — ONLY TWO HAVE GRADED HIGHER TO DATE. A STUNNING STAMP OF GREAT VISUAL APPEAL.

With 1998 P.F. and 2008 P.S.E. certificates (Superb 98). Only two have graded higher to date (one graded 98J and one graded 100 which realized \$100,000 hammer in our Sale 962) and only eight others share this grade. 850.00



288

- 288 ★★ **50c Columbian (240).** Mint N.H., deep rich color and proof-like impression, well-balanced margins
 VERY FINE AND CHOICE. A BEAUTIFUL MINT NEVER-HINGED EXAMPLE OF THE 50-CENT COLUMBIAN ISSUE.
 With 1996 P.F. certificate 1,800.00



289

- 289 ★★ **\$1.00 Columbian (241).** Mint N.H. with **part imprint at right**, radiant color as fresh as the day it was printed, wide margins for this issue
 VERY FINE AND CHOICE. A WONDERFULLY FRESH MINT NEVER-HINGED EXAMPLE OF THE \$1.00 COLUMBIAN ISSUE.
 With 1978 P.F. certificate for block of four 4,250.00



290

290 ★★ **\$2.00 Columbian (242).** Mint N.H., deep rich color and sharp proof-like impression, perfectly centered with wide and balanced margins for this difficult stamp

EXTREMELY FINE GEM. A MAGNIFICENT MINT NEVER-HINGED EXAMPLE OF THE \$2.00 COLUMBIAN ISSUE. THIS STUNNING STAMP HAS ACHIEVED THE GRADE OF XF-SUPERB 95 FROM P.S.E., WHICH IS THE HIGHEST GRADE AWARDED TO ANY \$2.00 COLUMBIAN, AND ONLY THREE HAVE ACHIEVED IT.

Typically, when a collector assembles an Extremely Fine, Mint Never-Hinged set of Columbians, the \$2.00 space remains empty to the very end due to the low supply and high demand. It is simply one of the rarest stamps of the set in this condition. The Scott value of \$4,250.00 for a Mint N.H. stamp (in Very Fine grade) does not begin to reflect the true rarity of such examples. We offered one of the two other Mint N.H. \$2.00 stamps in this high grade in our Scarsdale sale in 2006.

With 1999 P.F. and 2008 P.S.E. certificates (XF-Superb 95). This is the highest grade awarded to date and only two others share this grade. 4,250.00



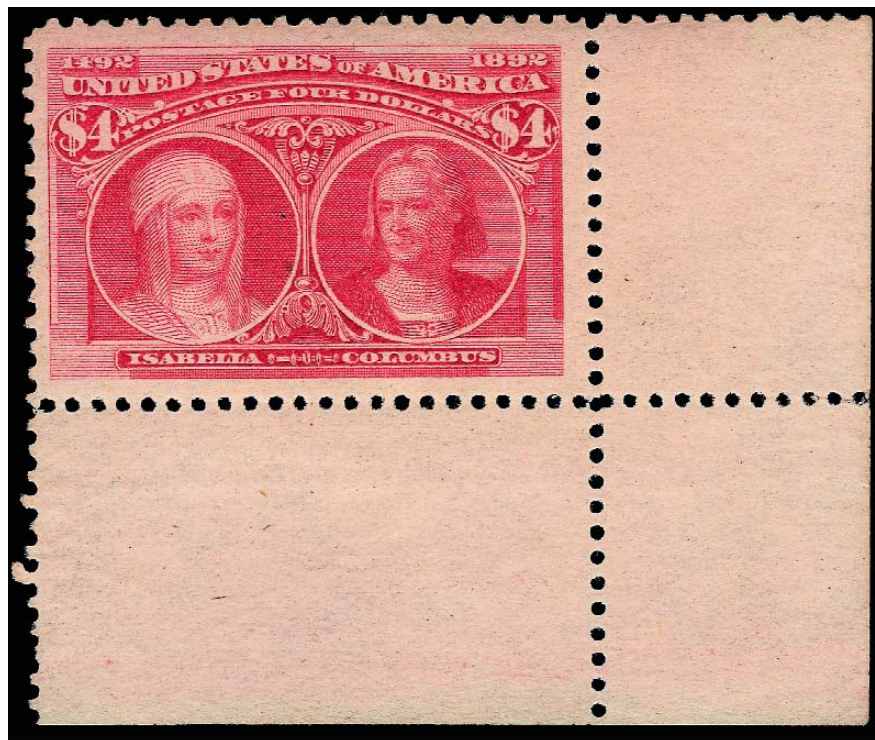
291

291 ★★ **\$3.00 Columbian (243).** Mint N.H., rich color, detailed impression, choice centering for this difficult issue

VERY FINE AND CHOICE. A BEAUTIFUL MINT NEVER-HINGED EXAMPLE OF THE \$3.00 COLUMBIAN ISSUE. THIS IS ONE OF THE MOST DIFFICULT DENOMINATIONS TO OBTAIN IN MINT NEVER-HINGED CONDITION.

A review using Power Search shows that we generally offer less than one Mint N.H. example a year in any grade.

With 1992 P.F. certificate 6,500.00



292

292 ★★ **\$4.00 Columbian (244).** Mint N.H. with **bottom right corner sheet selvage**, radiant color, Jumbo margins, tiny natural inclusion at center not mentioned on accompanying certificate

VERY FINE AND CHOICE. A JUMBO MINT NEVER-HINGED CORNER COPY OF THE \$4.00 COLUMBIAN. AN OUTSTANDING STAMP — THIS IS A DIFFICULT DENOMINATION TO OBTAIN IN MINT NEVER-HINGED CONDITION, AND THIS STAMP IS ESPECIALLY DESIRABLE AS A CORNER-MARGIN POSITION.

A review using Power Search found only nine Mint N.H. examples in either shade offered in our auctions since 1992.

With 1992 P.F. certificate 8,750.00



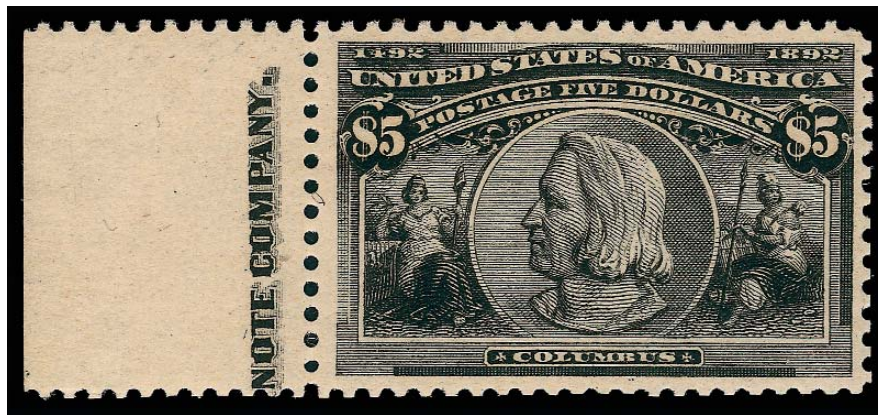
293

293 ★★ **\$4.00 Rose Carmine, Columbian (244a).** Mint N.H., vibrant shade on bright paper, well-proportioned and nicely balanced margins

VERY FINE AND CHOICE. A RARE MINT NEVER-HINGED EXAMPLE OF THE \$4.00 COLUMBIAN IN THE ROSE CARMINE SUB-SHADE. A DIFFICULT ISSUE TO OBTAIN IN MINT NEVER-HINGED CONDITION.

A review using Power Search found only two Mint N.H. examples of this shade offered since 1992.

With 1999 P.F. certificate 8,750.00



294

294 ★★ **\$5.00 Columbian (245).** Mint N.H. with **part imprint selvage at left**, intense shade and impression, long and full perforations

VERY FINE. A RARE MINT NEVER-HINGED EXAMPLE OF THE \$5.00 COLUMBIAN.

The number of Extremely Fine, Mint Never-Hinged examples of the \$5.00 Columbian is extremely limited. Using Power Search, we found that we have averaged selling only one or two a year in *any* grade. This stamp comes from a vertical imprint pair that was broken years ago.

With 1992 P.F. and 2008 P.S.E. certificates (F-VF 75) 10,500.00

1894 UNWATERMARKED BUREAU ISSUE

- 295 ★★ **1c Ultramarine (246).** Mint N.H. with **plate no. 33 at bottom**, radiant color as fresh as the day it was printed, choice centering with Jumbo margins

EXTREMELY FINE GEM. A SUPERB MINT NEVER-HINGED EXAMPLE OF THE 1894 ONE-CENT UNWATERMARKED BUREAU ISSUE, WHICH HAS BEEN AWARDED THE GRADE OF XF-SUPERB 95 JUMBO BY P.S.E.

With 1995 P.F. and 2008 P.S.E. certificates (XF-Superb 95 Jumbo). Only two have graded higher to date and only four others share this grade. 97.50



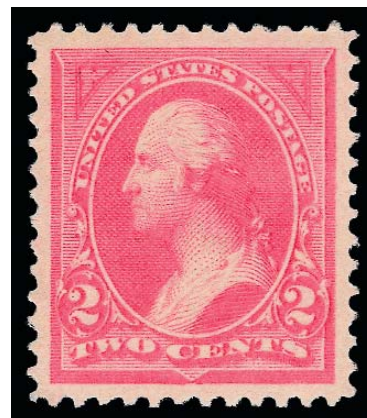
295



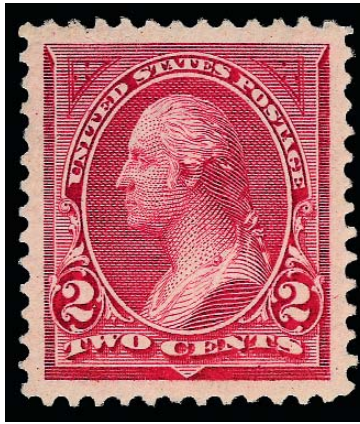
296

- 296 ★★ **1c Blue (247).** Mint N.H., Jumbo margins with **plate no. 35** selvage at top, bright shade, selvage has slight crease, stamp is Very Fine and choice, with 1995 P.F. certificate 225.00

- 297 ★★ **2c Pink, Ty. I (248).** Mint N.H., radiant color on fresh paper, beautiful centering with Jumbo margins, Extremely Fine Gem, according to Brookman the color of this issue (like the 1c, Scott 246) proved unsatisfactory and so it was in production for only a few months before the color was changed, with 1995 P.F. certificate, with 2008 P.S.E. certificate (XF-Superb 95 Jumbo), only two 95J's and three 98's listed in P.S.E. Population Report 90.00



297



298

298 ★★ **2c Carmine Lake, Ty. I (249).** Mint N.H., beautiful dark shade and proof-like impression on fresh paper, long full perfs all around, mathematically perfect centering with Jumbo margins

EXTREMELY FINE GEM. A SPECTACULAR ONE-OF-A-KIND EXAMPLE OF THE UNWATERMARKED 2-CENT TYPE I 1894 ISSUE IN THE CARMINE LAKE SHADE. THIS MAGNIFICENT MINT NEVER-HINGED STAMP HAS BEEN AWARDED THE GRADE OF GEM 100 JUMBO BY P.S.E. — IT IS THE ONLY EXAMPLE TO ACHIEVE THIS ULTIMATE GRADE.

As collectors of the First Bureau Issue know, great difficulty was experienced in perforating the stamps, either due to poor equipment or improper operation. Choppy, ragged perfs and poor centering are so common on this issue that it is often possible to separate the 1894 unwatermarked stamps from the 1895 watermarked stamps by the appearance of the perforations alone. This example, with precise centering, Jumbo margins and perfectly formed perforations is an extreme condition rarity.

With 1995 P.F. and 2008 P.S.E. certificates (Gem 100 Jumbo). This is the only stamp to achieve this perfect grade in the P.S.E. Population Report, with no other examples in any condition grading above 98J 550.00



- 299 ★★ 2c Carmine, Ty. I (250). Mint N.H. with part bottom imprint selvage, wide Jumbo margins with vivid color, Extremely Fine, with 2008 P.S.E. certificate (VF-XF 85 Jumbo) 90.00
- 300 ★★ 2c Scarlet, Ty. I (250b). Mint N.H., with **plate no. 124** selvage at top, vivid shade, bright and fresh paper, Very Fine, with 2005 P.F. certificate..... 90.00
- 301 ★ 2c Carmine, Ty. II (251). Original gum, barest trace of previous hinge at bottom, with **plate no. 126** selvage at top, bright shade, Very Fine and choice, with 1992 P.F. certificate 350.00
- 302 ★★ 2c Carmine, Ty. III (252). Mint N.H., Jumbo margins, deep shade and proof-like impression, Very Fine and choice, with 1992 P.F. certificate 400.00
- 303 ★★ 3c Purple (253). Mint N.H., with **part imprint** selvage at top, choice centering, bright color, Extremely Fine, with 1999 P.F. certificate 400.00
- 304 ★ 4c Dark Brown (254). Original gum, barest trace of previous hinging, extra wide top and bottom margins, deep shade, Very Fine and choice, with 1992 P.F. certificate ... 175.00
- 305 ★★ 5c Chocolate (255). Mint N.H., Jumbo margins, gorgeous rich color, Very Fine and choice, with 1993 P.F. certificate..... 375.00



306

- 306 ★ **5c Chocolate, Vertical Pair, Imperforate Horizontally (255c).** Original gum, previously hinged, huge margins at top and bottom, exceptionally choice centering with wide perforated margins at sides, fresh color and detailed impression

EXTREMELY FINE PAIR OF THE RARE UNWATERMARKED 5-CENT 1894 ISSUE IMPERFORATE HORIZONTALLY.

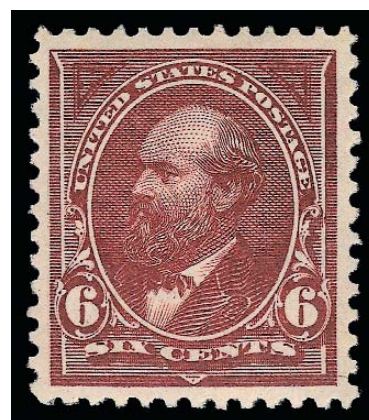
It is believed that most examples of this error originate from a part sheet purchased by a collector at the Richmond Va. post office. The unique unused block of nine with imprint and plate number, ex Col. Green collection, also originated from this find.

Ex Floyd. With 1993 and 2001 P.F. certificates..... 4,000.00

- 307 ★★ **6c Dull Brown (256).** Mint N.H., deep rich color on bright white paper, perfectly centered with wide and balanced margins

EXTREMELY FINE GEM. A BEAUTIFUL MINT NEVER-HINGED EXAMPLE OF THE 1894 6-CENT UNWATERMARKED BUREAU ISSUE.

With 1992 P.F. and 2008 P.S.E. certificates (XF-Superb 95). Only four have graded higher and only six others share this grade..... 525.00



307

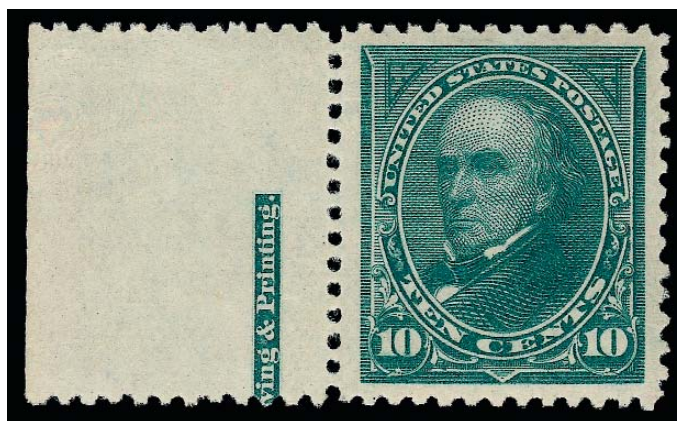


308

- 308 ★★ **8c Violet Brown (257).** Mint N.H., intense shade and impression on post-office fresh paper, wide and balanced margins

EXTREMELY FINE GEM. A STRIKING MINT NEVER-HINGED EXAMPLE OF THE 1894 UNWATERMARKED 8-CENT BUREAU ISSUE.

With 1996 P.F. and 2008 P.S.E. certificates (XF-Superb 95). Only one example has been graded higher in the P.S.E. Population Report and only two others share this grade..... 525.00



309

- 309 ★★ **10c Dark Green (258).** Mint N.H. with **part imprint selvage** at left, uncommonly wide Jumbo margins, beautiful color on post office fresh paper

EXTREMELY FINE. 10-CENT 1894 BUREAU ISSUE STAMPS ARE SELDOM FOUND WITH JUMBO MARGINS, ESPECIALLY IN MINT NEVER-HINGED POST OFFICE CONDITION.

With 1986 P.F. and 2008 P.S.E. certificates (XF 90 Jumbo). Only three examples have been graded higher in the P.S.E. Population Report to date and no others share this grade..... 1,000.00



310

- 310 ★★ **15c Dark Blue (259).** Mint N.H., deep rich color which is striking against the bright white paper, wide and balanced margins

EXTREMELY FINE. A BEAUTIFUL MINT NEVER-HINGED EXAMPLE OF THE 1894 15-CENT UNWATERMARKED BUREAU ISSUE. SCARCE IN SUCH PRISTINE CONDITION.

With 1991 and 2008 P.S.E. certificates (XF 90). Only two stamps have graded higher to date and only two others share this grade..... 1,000.00

- 311 ★ **50c Orange (260).** Original gum, barest trace of previous hinge, bright shade, Very Fine, with 1992 P.F. certificate 600.00



311



312

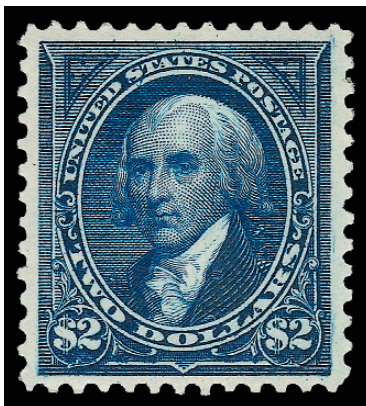
- 312 ★田 **\$1.00 Black, Ty. II (261A).** Bottom right corner sheet selvage block of six, **three bottom stamps Mint N.H.**, bottom right stamp has a tiny gum disturbance in the corner mentioned on new P.S.E. certificate, which is so negligible they still call it Mint N.H., the same certificate also describes a trivial natural gum crease in lower right corner of the same stamp, which is barely noticeable (the P.F. certificate simply states "genuine, never hinged"), intense shade and impression on bright paper

EXTREMELY FINE. A STUNNING BOTTOM RIGHT CORNER-MARGIN BLOCK OF SIX OF THE \$1.00 TYPE II 1894 UNWATERMARKED BUREAU ISSUE. MULTIPLES ARE VERY RARE, ESPECIALLY THOSE CONTAINING MINT NEVER-HINGED STAMPS.

According to Brookman, the Type II stamps, with circles complete around the bottom left denomination, were not discovered until several years after the stamp was issued. Its discoverer was the custodian of the stamp collection in the National Museum, who determined that the Type II stamps are found on only five rows of the plate. Brookman estimated that only 8,762 were distributed.

This multiple was separated from a larger block, originally containing the complete bottom two rows of the plate. The plate block currently resides in a private collection. Alan Whitman acquired this gem block privately.

With 2001 P.F. and 2008 P.S.E. certificates. Scott Retail as singles..... 29,700.00



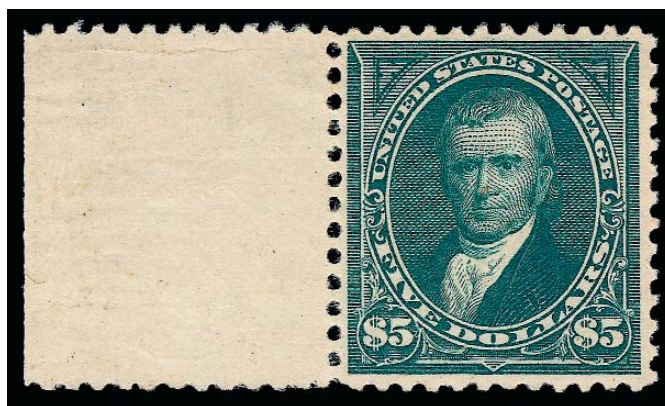
313

- 313 ★★ **\$2.00 Bright Blue (262)**. Mint N.H., beautiful color and detailed impression, choice centering with well-balanced margins

EXTREMELY FINE. A RARE MINT NEVER-HINGED EXAMPLE OF THE 1894 \$2.00 UNWATERMARKED BUREAU ISSUE.

The higher-value 1894 Unwatermarked Bureau Issue can be difficult to find in well-centered and sound condition, due to production problems. Mint Never-Hinged examples in superior grades, such as the stamp offered here, should be considered great condition rarities. This is one of *four* \$2.00 1894 stamps we have offered in Mint Never-Hinged condition in the last 13 years, the other three having much inferior centering.

Ex Scarsdale. With 1984 and 1999 P.F. certificates. With 2004 P.S.E. certificate (XF 90). This is the highest grade awarded to date (one other shares this grade). 10,000.00



314

- 314 ★★ **\$5.00 Dark Green (263)**. Mint N.H., with wide selvage at left, choice centering and balanced margins, beautiful deep rich color and incredibly detailed impression showing all of the finely-engraved lines in the background, bright and fresh paper, slight wrinkle in selvage only

VERY FINE AND CHOICE. AN EXTREMELY RARE MINT NEVER-HINGED EXAMPLE OF THE \$5.00 1894 UNWATERMARKED BUREAU ISSUE.

Without question, the \$5.00 is the rarest of the 1894 Unwatermarked Bureau Issue in sound, well-centered Mint Never-Hinged condition. It is unlikely that more than three or four Extremely Fine Mint N.H. examples exist.

Ward handstamp in selvage. With copy of 1993 P.F. certificate for block and 1999 P.F. certificate for single 16,500.00

1895-98 WATERMARKED BUREAU ISSUE



315



316

- 315 ★★ **1c Blue (264).** Mint N.H. with **part imprint selvage** at top, deep rich color and proof-like impression on bright paper, choice centering with Jumbo margins, Extremely Fine, with 2008 P.S.E. certificate (XF 90 Jumbo) 19.00

- 316 ★★ **2c Carmine, Ty. I (265).** Mint N.H., radiant color on bright paper, wide margins, almost perfect centering, Extremely Fine Gem, with 1993 P.F. and 2004 P.S.E. certificates (XF-Superb 95), only one stamp has graded higher to date 90.00

- 317 ★★ **2c Carmine, Ty. II (266).** Mint N.H. with **plate no. 132 at right**, vivid color and proof-like impression, gorgeous centering with Jumbo margins

EXTREMELY FINE GEM. A SUPERB EXAMPLE OF THE 2-CENT 1895 TY. II WATERMARKED BUREAU ISSUE.

With 1998 P.F. and 2008 P.S.E. certificates (XF-Superb 95 Jumbo). Only one stamp has graded higher to date and no others share this grade 110.00



317



318

- 318 ★★田 **2c Carmine, Ty. II-III (266-267).** Horizontal combination block, Mint N.H., beautiful bright color, choice centering, Extremely Fine, combination blocks are rarely encountered in this superb Mint N.H. condition, with 2002 P.S.E. and 2007 P.F. certificates 850.00



- 319 ★★ **2c Carmine, Ty. II-III (266-267).** Horizontal combination pair, Mint N.H., vibrant color, choice centering, Extremely Fine, with 2003 P.F. certificate 425.00
- 320 ★★ **2c Carmine, Ty. III (267).** Mint N.H., with **plate no. 437** selvage at left, wide margins, bright shade, tiny natural inclusion in bottom margin, Extremely Fine, with 1981 P.F. certificate 16.00
- 321 ★★ **3c Purple (268).** Mint N.H., almost perfectly centered, deep rich color, Extremely Fine, with 1998 P.F. certificate 115.00
- 322 ★★ **4c Dark Brown (269).** Mint N.H., exceptionally wide margins and near perfect centering, dark shade and crisp impression, fresh and Extremely Fine, a lovely stamp, with 1995 P.F. certificate 150.00



- 323 ★★ **5c Chocolate (270).** Mint N.H., unusually choice centering with Jumbo margins, deep rich color, proof-like impression
EXTREMELY FINE GEM. A SUPERB MINT NEVER-HINGED
EXAMPLE OF THE 5-CENT 1895 WATERMARKED BUREAU ISSUE.
With 1995 P.F. and 2008 P.S.E. certificates (XF-Superb 95 Jumbo). Only two have graded higher to date and only five others share this grade..... 115.00

323

- 324 ★ **6c Dull Brown (271).** Barest trace of hinging (P.F. certificate calls Mint N.H.), rich color on bright paper, beautifully centered, Extremely Fine, with 1996 P.F. and 2008 P.S.E. certificates (OGph, XF-Superb 95) 130.00
- 325 ★★ **8c Violet Brown (272).** Mint N.H., with **plate no. 249** selvage at top, choice centering, dark shade on bright fresh paper, Extremely Fine, with 1985 P.F. certificate 400.00

“USIR” WATERMARK ERROR



326

- 326 ★ **6c Dull Brown, USIR Watermark (271a).** Original gum, lightly hinged, clear “I” of watermark, rich color on bright white paper

VERY FINE. AN EXCEEDINGLY RARE ORIGINAL-GUM EXAMPLE OF THE 6-CENT 1895 ISSUE WITH USIR WATERMARK.

The 6c USIR Watermark is considerably rarer than the 8c, especially in original-gum condition. We record seven original-gum copies. However, we are not certain how many of the stamps in multiples have the “I” or “R” portion of the watermark. Of the recorded singles, one has perfs touching the design at top, and one is also very close on one side. The pair with original gum in the P.F. records is a top sheet margin horizontal pair, with part of the imprint above the left stamp. There was also a pair centered to top with a straight edge at left in the Lilly collection, as well as a strip of three centered to top in the Col. Green collection.

With 2000 P.F. certificate 12,500.00



327

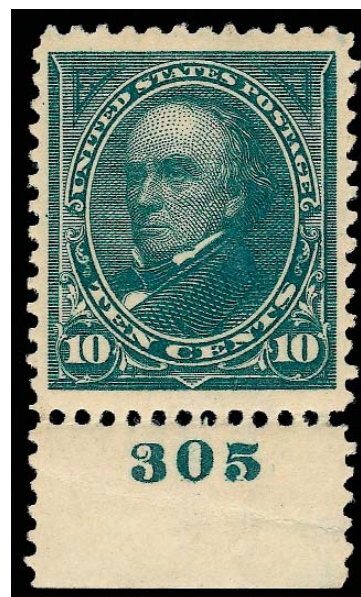
- 327 ★ **8c Violet Brown, USIR Watermark (272a).** Top imprint and plate no. 58 strip of three, original gum, barely hinged, stamps show S-U-R watermark and selvage shows I-S-U watermark (vertical orientation), wide margins and choice centering — especially the right pair — wonderful deep rich color and proof-like impression

EXTREMELY FINE. THE FINEST OF THE THREE RECORDED IMPRINT AND PLATE NUMBER STRIPS OF THE 8-CENT 1895 BUREAU ISSUE WITH THE “USIR” WATERMARK ERROR.

The “USIR” (United States Internal Revenue) watermark error occurred when a supply of paper reserved for revenue stamp production was used for printing the 6c and 8c postage stamps. Our records contain only three imprint and plate number strips of the 8c (a plate block of six is part of the Miller collection at The New York Public Library).

Ex Close, B. D. Phillips and Weill Stock. With 1989 and 2001 P.F. certificates..... 20,000.00

- 328 ★★ **10c Dark Green (273).** Mint N.H., with **plate no. 305** selvage at bottom, beautiful centering with extra wide top and bottom margins, intense shade and impression, fresh and Extremely Fine, with 1983 P.F. certificate..... 300.00



328



329

- 329 ★★ **15c Dark Blue (274).** Mint N.H. with **part imprint selvage at bottom**, incredibly deep rich color on bright paper, proof-like impression, choice centering with Jumbo margins

EXTREMELY FINE GEM. A SUPERB MINT NEVER-HINGED EXAMPLE OF THE 1895 15-CENT WATERMARKED BUREAU ISSUE GRADED XF-SUPERB 95 JUMBO BY P.S.E.

With 1996 P.F. and 2008 P.S.E. certificates (XF-Superb 95 Jumbo). Only one stamp has graded higher to date and no others share this grade..... 750.00

- 330 ★★ **50c Orange (275).** Mint N.H., nicely centered, bright color, Very Fine and choice, with 1994 P.F. certificate..... 950.00



330



331

- 331 ★★ **\$1.00 Black, Ty. I (276).** Mint N.H., well-balanced margins and nicely centered, intense shade, Very Fine and choice, with 1994 P.F. certificate..... 2,200.00



332

332 ★田 **\$1.00 Black, Ty. I (276).** Block of four, original gum, previously hinged, crisp shade and impression

FINE-VERY FINE. A HANDSOME AND SCARCE ORIGINAL-GUM BLOCK OF THE 1895 \$1.00 TYPE I BUREAU ISSUE.

With 1985 and 2008 P.F. certificates..... 3,000.00



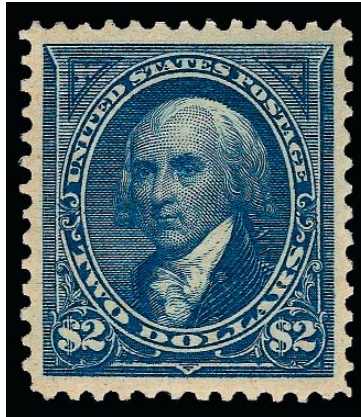
333

333 ★★ **\$1.00 Black, Ty. II (276A).** Mint N.H., intense shade and detailed impression, choice centering with well-balanced margins

EXTREMELY FINE GEM MINT NEVER-HINGED EXAMPLE OF THE 1895 \$1.00 TYPE II WATERMARKED BUREAU ISSUE. AN EXCEEDINGLY RARE STAMP IN THIS REMARKABLE POST-OFFICE FRESH CONDITION.

As an indication of rarity, we have only offered four other Mint N.H. examples of the 1895 \$1.00 Type II since keeping computerized records. Of those, only two could be considered to have Extremely Fine centering.

Ex Odeneal. With 1992 and 2007 P.F. certificates 4,250.00



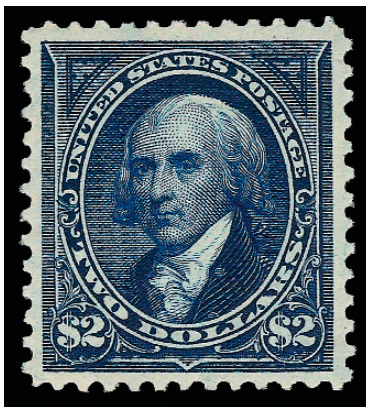
334

334 ★★ **\$2.00 Bright Blue (277).** Mint N.H., rich color and proof-like impression, perfectly centered with wide and balanced margins all around

EXTREMELY FINE GEM. A BEAUTIFUL MINT NEVER-HINGED EXAMPLE OF THE 1895 \$2.00 WATERMARKED BUREAU ISSUE IN THE BRIGHT BLUE COLOR. AN EXCEEDINGLY RARE STAMP IN MINT NEVER-HINGED AND CENTERED CONDITION. THIS STAMP HAS BEEN AWARDED THE GRADE OF XF-SUPERB 95 BY P.S.E.

As an indication of rarity, we have offered only nine of this shade and three of the Dark Blue shade (including the one in this sale) in Mint N.H. condition since keeping computerized records.

With 1992 P.F. and 2008 P.S.E. certificates (XF-Superb 95). Only one other stamp shares this grade and none have graded higher in the P.S.E. Population Report..... 3,500.00



335

335 ★★ **\$2.00 Dark Blue (277a).** Mint N.H., deep rich color in the true Dark Blue shade, post office-fresh paper, wide and balanced margins, long and full perforations all around

EXTREMELY FINE GEM. THE 1895 \$2.00 DARK BLUE WATERMARKED BUREAU ISSUE IS ONE OF THE MOST DIFFICULT ISSUES TO OBTAIN IN SOUND AND CENTERED MINT NEVER-HINGED CONDITION. A TRUE CONDITION RARITY.

As an indication of rarity, we have only offered two other Mint N.H. examples of this issue in the past fourteen years. This is easily the finest of the three.

Ex Odeneal. With 2005 and 2007 P.F. certificates (the latter graded XF 90) ... 3,250.00



336

336 ★田 **\$2.00 Bright Blue (277).** Block of four, original gum, lightly hinged, beautiful deep shade, unusually choice centering

VERY FINE ORIGINAL-GUM BLOCK OF FOUR OF THE 1895 \$2.00 WATERMARKED BUREAU ISSUE.

Blocks of the dollar-value Bureau Issue are rarely encountered in this choice condition. As more blocks are broken to feed the market for high-quality singles, blocks such as this are becoming increasingly rarer.

With 2008 P.F. certificate 5,000.00



337

337 ★★ **\$5.00 Dark Green (278). Mint N.H. with plate no. 85 at bottom**, deep rich color and sharp proof-like impression on fresh paper, perfect centering with long full perfs all around

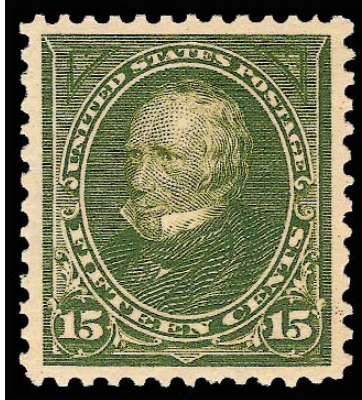
EXTREMELY FINE GEM. AN INCOMPARABLE MINT NEVER-HINGED EXAMPLE OF THE \$5.00 1895 WATERMARKED BUREAU ISSUE. THIS STAMP HAS BEEN AWARDED THE GRADE OF SUPERB 98 BY P.S.E. — BY FAR THE HIGHEST GRADE TO DATE. A REMARKABLE STAMP THAT WOULD BE NEARLY IMPOSSIBLE TO IMPROVE UPON.

The \$5.00 watermarked Bureau issue is an exceedingly rare stamp in sound, well-centered Mint N.H. condition. We have offered only four singles plus a plate number and imprint strip of three since keeping computerized records. This stamp is without question the finest Mint N.H. example extant.

With 1994 P.F. certificate for a strip of three, with 1995 P.F. and 2008 P.S.E. certificates (Superb 98). This is the highest graded example in the P.S.E. Population Report. The next highest grade for a Mint N.H. stamp is 85 7,500.00



- 338 ★★ **1c Deep Green (279).** Mint N.H., top sheet selvage with **part imprint**, rich color, Very Fine and choice..... 25.00
- 339 ★★ **2c Red, Ty. IV (279B).** Mint N.H., radiant color, beautiful centering with wide and balanced margins, Extremely Fine, with 2008 P.S.E. certificate (XF 90), only three examples have graded higher to date..... 25.00
- 340 ★★ **4c Rose Brown (280).** Mint N.H. with top selvage, beautiful deep color, wide margins with almost perfect centering, Extremely Fine, with 2001 and 2008 P.S.E. certificate (XF-Superb 95), only one example has graded higher to date..... 90.00
- 341 ★★ **4c Lilac Brown (280a).** Mint N.H., unusual shade with great visual appeal, wide and balanced margins, Extremely Fine Gem, with 1990 and 2000 P.F. certificates and 2008 P.S.E. certificate (XF-Superb 95), this is the highest grade awarded to a stamp in this shade, only three others share this grade 90.00
- 342 ★★ **4c Orange Brown (280b).** Mint N.H., beautiful color on bright paper, choice centering with wide and balanced margins, fresh and Extremely Fine, a beautiful example of this shade, with 1992 and 2000 P.F. certificates..... 90.00
- 343 ★★ **5c Dark Blue (281).** Mint N.H. with partial imprint in wide bottom selvage, deep rich color on bright paper, Extremely Fine, with 1997 P.F. and 2008 P.S.E. certificates (XF 90)..... 110.00
- 344 ★★ **6c Lake (282).** Mint N.H., wonderful rich color and remarkably fresh, nicely centered, Extremely Fine, with 1996 P.F. certificate 160.00
- 345 ★★ **6c Purple Lake (282a).** Mint N.H., exceptionally well-centered, gorgeous purplish color, Very Fine and choice, with 1994 P.F. certificate 225.00
- 346 ★★ **10c Orange Brown, Ty. II (283).** Mint N.H., almost perfectly centered, bright shade, Extremely Fine, with 1983 and 2000 P.F. certificates..... 500.00



347

347 ★★ **15c Olive Green (284).** Mint N.H., radiant color, proof-like impression, wide margins with almost mathematically perfect centering

EXTREMELY FINE GEM. A MAGNIFICENT MINT NEVER-HINGED EXAMPLE OF THE 1898 15-CENT OLIVE GREEN ISSUE GRADED SUPERB 98 BY P.S.E. — THIS IS THE HIGHEST GRADE AWARDED TO DATE. AN EXTREME CONDITION RARITY.

With 1998 P.F. and 2008 P.S.E. certificates (Superb 98). This is the only stamp to achieve this lofty grade in the P.S.E. Population Report 550.00

TRANS-MISSISSIPPI ISSUE



348



349

348 ★★ **1c Trans-Mississippi (285).** Mint N.H., wide margins, gorgeous dark shade and proof-like impression, Very Fine and choice, with 1995 P.F. certificate..... 80.00

349 ★★ **2c Trans-Mississippi (286).** Mint N.H., rich color, detailed impression, wide and balanced margins, fresh and Extremely Fine, with 1995 P.F. certificate..... 80.00



350

350 ★★ **4c Trans-Mississippi (287).** Mint N.H., vibrant color on post-office fresh paper, exceptional centering with wide margins

EXTREMELY FINE GEM. A GORGEOUS MINT NEVER-HINGED EXAMPLE OF THE 4-CENT TRANS-MISSISSIPPI ISSUE GRADED SUPERB 98 BY P.S.E.

With 1990 and 1997 P.F. certificates and 2008 P.S.E. certificate (Superb 98). Only one example has graded higher to date 400.00



351

- 351 ★★ **5c Trans-Mississippi (288).** Mint N.H. with **imprint and wide selvage at bottom**, deep rich color and proof-like impression, unusually choice centering with wide margins
 EXTREMELY FINE GEM. A SUPERB MINT NEVER-HINGED EXAMPLE OF THE 5-CENT TRANS-MISSISSIPPI ISSUE
 With 1996 P.F. and 2008 P.S.E. certificates (XF-Superb 95). Only four have graded higher to date 400.00



352

- 352 ★★ **8c Trans-Mississippi (289).** Mint N.H., rich color, marvelous impression, Extremely Fine, with 1993 and 1996 P.F. certificates 600.00



353

- 353 ★ **8c Trans-Mississippi, Vertical Pair, Imperforate Horizontally (289a).** Original gum, lightly hinged, incl. sheet margin at top, few light natural gum bends — much less noticeable than usually found on all existing pairs

EXTREMELY FINE CENTERING AND SUPERB FRESH CONDITION. ONE OF THE MOST DESIRABLE EXAMPLES OF THE ONLY MAJOR ERROR OF THE TRANS-MISSISSIPPI ISSUE.

Datz states that 25 pairs are known. We have only offered one other since 2002.....
 27,500.00



354

- 354 ★★ **10c Trans-Mississippi (290).** Mint N.H., bright shade and detailed impression, balanced Jumbo margins, fresh and Extremely Fine, a beautiful stamp, with 1999 P.F. certificate 550.00



355

- 355 ★★ **50c Trans-Mississippi (291).** Mint N.H. with **wide selvage** and **plate no. 603** at bottom, rich color, proof-like impression on post-office fresh paper
EXTREMELY FINE. AN ATTRACTIVE MINT NEVER-HINGED PLATE NUMBER SINGLE OF THE 50-CENT TRANS-MISSISSIPPI ISSUE.
With 1998 P.F. certificate 2,200.00



356

356 ★★ **\$1.00 Trans-Mississippi (292).** Mint N.H., deep shade and remarkably detailed impression on post-office fresh paper, balanced Jumbo margins

EXTREMELY FINE. A STUNNING MINT NEVER-HINGED EXAMPLE OF THE \$1.00 TRANS-MISSISSIPPI ISSUE, WHICH HAS BEEN CALLED THE MOST BEAUTIFUL DESIGN IN UNITED STATES PHILATELY.

With 1992 P.F. certificate 3,900.00



357

357 ★★ **\$2.00 Trans-Mississippi (293).** Mint N.H., intense shade and impression, unusually choice centering with wide and balanced margins, long and full perforations all around

EXTREMELY FINE. THE \$2.00 TRANS-MISSISSIPPI IS AN EXTREMELY DIFFICULT ISSUE TO OBTAIN IN SOUND, CENTERED AND MINT NEVER-HINGED CONDITION. A GORGEOUS STAMP.

With 1982 P.F. certificate 6,500.00

PAN-AMERICAN ISSUE



358



359

358 ★★ **1c Pan-American (294).** Mint N.H., approaching the “fast boat” variety, wide and balanced margins, fresh and Extremely Fine..... 45.00

359 ★★ **2c Pan-American (295).** Mint N.H., brilliant colors, wide margins, fresh and Extremely Fine 42.50



360

360 ★★ **4c Pan-American (296).** Mint N.H., bright colors, proof-like impressions, perfectly centered with exceptionally wide margins for this difficult issue

EXTREMELY FINE GEM. A STRIKING MINT NEVER-HINGED EXAMPLE OF THE 4-CENT PAN-AMERICAN ISSUE, WHICH HAS BEEN GRADED SUPERB 98 BY P.S.E.

With 1996 P.F. and 2008 P.S.E. certificates (Superb 98). Only one stamp has graded higher to date and only one other shares this desirable grade..... 200.00



361



362

- 361 ★★ **5c Pan-American (297).** Mint N.H., intense colors on bright paper, wide margins, Very Fine and choice 225.00
- 362 ★★ **8c Pan-American (298).** Mint N.H., rich colors, well-proportioned margins, Extremely Fine, a pretty stamp, with 1992 P.F. certificate 275.00



363

- 363 ★★ **10c Pan-American (299).** Mint N.H., beautiful colors on paper as fresh as the day it was printed, exceptionally wide and even margins
 EXTREMELY FINE GEM. A SPECTACULAR MINT NEVER-HINGED EXAMPLE OF THE 10-CENT PAN-AMERICAN ISSUE WITH THE COVETED SUPERB 98 GRADE FROM P.S.E.
 With 1993 P.F. certificate and 2008 P.S.E. certificates (Superb 98). Only one example has graded higher to date and no other examples share this grade 360.00

THE 1901 PAN-AMERICAN INVERTS



1¢, 2¢ and 4¢ Pan-American Inverts
Scott 294a, 295a and 296a



364



365



366

- 364 ★ **1c Pan-American, Center Inverted (294a).** Lightly hinged, unusually choice centering and wide margins for this popular invert error, deep rich colors on post-office fresh paper

EXTREMELY FINE GEM. THIS IS WITHOUT DOUBT ONE OF THE FINEST EXAMPLES OF THE ONE-CENT PAN-AMERICAN INVERT — GRADED XF 90 BY P.S.E.

The 1c Pan-American Inverts were found in at least four different post offices around the country. Of the 600 to 700 known, most have disturbed gum and are off-center. The stamp offered here is remarkably fresh and certainly one of the best-centered examples known.

With 1974 and 1998 P.F. and 2008 P.S.E. certificates (OGph, XF 90). This is the highest grade awarded to date and only four others share this grade. In our opinion, this is a very strong 90, possibly crossing the border into 95 territory..... 12,500.00

- 365 ★ **2c Pan-American, Center Inverted (295a).** Original gum, h.r., superbly centered with wide balanced margins, bright colors and clear impressions of vignette and frame

EXTREMELY FINE GEM. ONE OF THE FINEST ORIGINAL-GUM EXAMPLES OF THE 2-CENT PAN-AMERICAN INVERT. THIS MARVELOUS STAMP HAS BEEN AWARDED THE GRADE OF XF 90 BY P.S.E.

The 2c is the rarest of the three Pan-American Inverts. It is surmised that approximately 200 were issued through the post office, with two distinct shades known. Estimates of surviving examples range from an early count (1945) of 55 unused and 2-3 used to the 1998 Datz estimate of 150 unused, 3-5 used and a block of four intact. Our Levi records contain the intact block offered in this sale (4), a reconstructed block offered in our Zoellner sale (4), 64 unused singles and 6 used singles, for a total of 72 unused and 6 used. Many of the unused singles have disturbed gum or no gum, and/or are off center to top or top left.

With 1976 and 1993 P.F. certificates and 2008 P.S.E. certificate (OGh, XF 90). The Scott Catalogue value is for a stamp with slightly disturbed gum 55,000.00

- 366 ★ **4c Pan-American, Center Inverted (296a).** Original gum, lightly hinged for this issue, fresh and completely sound

FINE. ONE OF THE FEW SOUND EXAMPLES OF THE 4-CENT PAN-AMERICAN INVERT WITH INTACT ORIGINAL GUM.

The 4c Pan-American Invert was a special printing and not regularly issued. Examples were distributed through two official channels, and the gum on the majority of stamps without "Specimen" overprint was disturbed. In fact, because the stamps were removed from mounting paper, they are generally thinned or have seriously disturbed gum. This is a rare exception.

With 1976 and 1999 P.F. certificates and 2008 P.S.E. certificate (OGph, Fine 70). The Scott Catalogue value is for a stamp with slightly disturbed gum..... 70,000.00



367



368



369

- 367 ★田 **1c Pan-American, Center Inverted (294a).** Block of four, rich colors, small hinge-reinforced perf separations, insignificant toned perf tips not mentioned on accompanying certificate

FINE AND RARE BLOCK OF FOUR OF THE ONE-CENT PAN-AMERICAN INVERT.

The Pan-American inverts were the first bicolored postage stamps produced by the Bureau of Engraving and Printing and the first invert postage errors issued by the Post Office since the 1869's. The 1c Pan-American Inverts were found in several post offices around the country. Thirteen blocks of four, a block of six and a block of 20 are recorded in our Levi records, some of which may have been broken into singles.

With 2001 P.F. certificate 75,000.00

- 368 ★田 **2c Pan-American, Center Inverted (295a).** Block of four, deep rich colors and proof-like impressions on crisp paper, each stamp is exceptionally well-centered for the issue, bright and fresh, certificate notes "thin spot in both top stamps" but we see only one thin in the top left stamp and a watermark in the other, nevertheless of little consequence

VERY FINE. THIS THE ONLY INTACT BLOCK OF THE 2-CENT PAN-AMERICAN INVERT. ONE OF THE MOST IMPORTANT AND INSTANTLY RECOGNIZABLE ICONS OF 20TH CENTURY AMERICAN PHILATELY.

Ex Col. Edward H. R. Green, Philip H. Ward, Weill Stock and Connoisseur. Illustrated in Lidman's *Treasury of Stamps* (p. 81), *Life* magazine, "World's Rarest Stamps" (May 3, 1954). Exhibited in *Aristocrats of Philately* displays in the Anphilex 1971, Interphil 1976 and Ameripex 1986 exhibitions.

With 2001 P.F. certificate. The Scott Catalogue price for this block does not accurately reflect its true value relative to the value of four choice singles. 425,000.00

- 369 ★田 **4c Pan-American, Center Inverted (296a).** Block of four, slightly disturbed original gum as usual, bright colors, proof-like impressions, unusually choice centering throughout, top right and bottom left stamps have small thin spots

EXTREMELY FINE. A MAGNIFICENT BLOCK OF THE 4-CENT PAN-AMERICAN INVERT. ONLY SEVEN BLOCKS ARE RECORDED, AND THIS IS AMONG THE BEST-CENTERED. A FABULOUS 20TH CENTURY PHILATELIC RARITY.

The 4c Pan-American Invert was not regularly issued. According to Sloane, an erroneous report reached the Post Office department that the 4c had been discovered with inverted center. Edwin C. Madden, the 3rd Assistant Postmaster General, remarked that if any were found they should not be destroyed but kept for the archives. None was found, but two sheets of inverts (400 stamps total) were deliberately printed. This caused an uproar as it was not clear at first whether these had been deliberately ordered by Madden (in violation of his duties). He was later exonerated of any wrongdoing.

Examples were distributed through two official channels. One sheet was overprinted with "Specimen". A total of 106 copies, both with and without "Specimen", were distributed to friends and dignitaries. 197 were destroyed. One pane of 100 was retained by the Post Office Department and was stuck down on a ledger page in the Post Office archives. The sheet was broken up in about 1916 or 1917, and 97 copies were traded in exchange for material needed for the government collection. Since most of the stamps were removed from the mounting paper, they are generally thinned or have seriously disturbed gum.

A review of our Levi records located seven blocks of four. Two of the blocks have perfs cutting into the design. One has not been seen since the 1944 Col. Edward H. R. Green auction and has probably been broken into singles, and another has not been seen since 1970. Of the other two well-centered blocks, one has a crease and thin spots, and the other has a small tear on the bottom left stamp.

With 1998 P.F. certificate..... 500,000.00

END OF SESSION 2.2

Grading Index to The Alan B. Whitman Collection (by Scott No.)

Grade	Scott	Lot	Year/Service/Grade
98J	3	6	2008 PSE 98J NGAI
98J	4	7	2008 PSE 98J NGAI
95J	7	9	2008 PSE 95J NH
95	9	14	2008 PSE 95 OGph
90	12	19	2008 PSE 90 OGph
90	22	28	2008 PSE 90 NH
90	23	29	2008 PSE 90 DOG
95	26	32	2008 PSE 95 NH
75	27	33	2007 PF 75 OGph
98J	40	55	2008 PSE 98J NGAI
95	42	57	2008 PSE 95 NGAI
95	63	70	2008 PSE 95 NH
95	78	99	2008 PSE 95 OGh
95	83	102	2008 PSE 95 OGph
98	98	124	2008 PSE 98 OGph
95	115	144	2008 PSE 95 OGph
95	117	146	2008 PSE 95 OGph
95	125	162	2008 PSE 95 OGph
95	126	163	2008 PSE 95 OGph
98	128	166	2008 PSE 98 OGph
95	130	169	2008 PSE 95 OGph
95J	132	171	2008 PSE 95J OGph
90	133	172	2008 PSE 90 OGph
98	136	176	2008 PSE 98 OGph
80	152	190	2008 PSE 80 OGph
80	153	191	2008 PSE 80 NH
90	154	192	2008 PSE 90 NH
95J	157	194	2008 PSE 95J OGph
95	171	206	2008 PSE 95 NGAI
85	180	213	2008 PSE 85 NGAI
90J	185	220	2008 PSE 90J NH
100	189	224	2008 PSE 100 NH
95	210	251	2008 PSE 95 NH
90	212	253	2008 PSE 90 NH
95J	213	254	2008 PSE 95J OGph
98	215	256	2008 PSE 98 OGph
95J	221	265	2008 PSE 95J NH
95	224	268	2008 PSE 95 NH
95J	225	269	2008 PSE 95J NH
98J	226	270	2008 PSE 98J NH
95J	230	274	2008 PSE 95J NH
95J	231	275	2008 PSE 95J NH
95J	235	282	2008 PSE 95J NH
90	237	285	2008 PSE 90 NH
98	238	286	2008 PSE 98 NH
98	239	287	2008 PSE 98 NH
95	242	290	2008 PSE 95 NH
75	245	294	2008 PSE 75 NH
95J	246	295	2008 PSE 95J NH
95J	248	297	2008 PSE 95J NH
100J	249	298	2008 PSE 100J NH
85J	250	299	2008 PSE 85J NH
95	256	307	2008 PSE 95 NH
95	257	308	2008 PSE 95 NH
90J	258	309	2008 PSE 90J NH
90	259	310	2008 PSE 90 NH
90	262	313	2004 PSE 90 NH

Grade	Scott	Lot	Year/Service/Grade
90J	264	315	2008 PSE 90J NH
95	265	316	2008 PSE 95 NH
95J	266	317	2008 PSE 95J NH
95J	270	323	2008 PSE 95J NH
95	271	324	2008 PSE 95 OGph
95J	274	329	2008 PSE 95J NH
95	277	334	2008 PSE 95 NH
98	278	337	2008 PSE 98 NH
95	280	340	2008 PSE 95 NH
90	281	343	2008 PSE 90 NH
98	284	347	2008 PSE 98 NH
98	287	350	2008 PSE 98 NH
95	288	351	2005 PSE 95 NH
98	296	360	2008 PSE 98 NH
98	299	363	2008 PSE 98 NH
90	304	376	2008 PSE 90 NH
95	305	377	2008 PSE 95 NH
95J	306	378	2008 PSE 95J NH
95	307	379	2008 PSE 95 NH
98	309	381	2008 PSE 98 NH
98	311	383	2008 PSE 98 OGph
95	323	417	2008 PSE 95 NH
95	324	418	2008 PSE 95 NH
98	325	420	2008 PSE 98 NH
98J	326	421	2008 PSE 98J NH
98	328	423	2008 PSE 98 NH
90	330	424	2008 PSE 90 NH
90J	331	425	2008 PSE 90J NH
95J	332	426	2008 PSE 95J NH
95J	334	428	2008 PSE 95J NH
95	335	429	2008 PSE 95 OGph
95	337	430	2008 PSE 95 NH
90	339	431	2008 PSE 90 NH
90	340	432	2008 PSE 90 NH
90	341	433	2008 PSE 90 OGph
90	342	434	2008 PSE 90 NH
98	348	438	2008 PSE 98 NH
90J	348	437	2008 PSE 90J NH
85	348	439	2008 PSE 85 NH
90J	351	448	2008 PSE 90J NH
90	351	446	2008 PSE 90 NH
80	352	449	2008 PSE 80 NH
95	353	454	2005 PSE 95 NH
95	354	456	2008 PSE 95 NH
95	356	462	2008 PSE 95 NH
75	356	461	2008 PF 75 NH
98	357	464	2008 PSE 98 NH
95	364	470	2008 PSE 95 NH
95	365	471	2008 PSE 95 OGph
85	366	472	2008 PSE 85 NH
85	369	474	2008 PSE 85 NH
95	376	477	2008 PSE 95 NH
95J	377	478	2008 PSE 95J NH
98J	379	480	2006 PSE 98J NH
95J	380	481	2008 PSE 95J NH
95	381	482	2008 PSE 95 NH
90	385	486	2008 PSE 90 NH

Grade	Scott	Lot	Year/Service/Grade
95J	387	490	2008 PSE 95J NH
95	391	497	2008 PSE 95 NH
90	392	499	2008 PSE 90 NH
95	393	501	2008 PSE 95 NH
95	393	503	2008 PSE 95 NH
98	394	505	2008 PSE 98 NH
95J	394	506	2008 PSE 95J NH
95J	395	508	2008 PSE 95J NH
98	396	512	2008 PSE 98 NH
90J	398	514	2008 PSE 90J NH
98J	399	515	2008 PSE 98J NH
95	401	518	2008 PSE 95 NH
95J	403	520	2008 PSE 95J NH
95	404	521	2008 PSE 95 NH
95	407	524	2008 PSE 95 NH
90	413	528	2008 PSE 90 NH
98J	415	531	2008 PSE 98J NH
90	416	532	2008 PSE 90 NH
100J	417	533	2008 PSE 100J NH
100J	418	534	2008 PSE 100J NH
95	420	536	2008 PSE 95 NH
95	421	537	2008 PSE 95 NH
98J	427	544	2008 PSE 98J NH
95J	429	546	2008 PSE 95J NH
85	431	548	2008 PSE 85 NH
98J	432	549	2008 PSE 98J NH
98J	434	551	2008 PSE 98J NH
95	438	555	2008 PSE 95 NH
95J	439	556	2008 PSE 95J NH
98J	441	559	2008 PSE 98J NH
95	442	562	2008 PSE 95 NH
90	443	565	2007 PF 90 NH
100J	446	573	2008 PSE 100J NH
100	448	580	2008 PSE 100 NH
98	448	579	2008 PSE 98 NH
90	449	582	2008 PSE 90 OGph
98	452	585	2008 PSE 98 NH
95	452	586	2008 PSE 95 NH
95	453	588	2008 PSE 95 NH
98	454	591	2008 PSE 98 NH
95	455	593	2008 PSE 95 NH
95	457	598	2008 PSE 95 NH
98J	470	617	2008 PSE 98J NH
95	471	618	2008 PSE 95 NH
95J	473	620	2008 PSE 95J NH
95	474	621	2008 PSE 95 NH
98	476	623	2008 PSE 98 NH
95	477	625	2008 PSE 95 NH
98	480	628	2008 PSE 98 NH
95	491	635	2008 PSE 95 OGph
90	492	639	2008 PSE 90 NH
98	493	640	2008 PSE 98 NH
90	493	641	2008 PSE 90 NH
85	494	642	2008 PSE 85 NH
98	495	643	2008 PSE 98 NH
98	496	644	2008 PSE 98 NH
95	497	645	2008 PSE 95 NH

Grading Index to The Alan B. Whitman Collection (by Scott No.)

Grade	Scott	Lot	Year/Service/Grade
95	501	657	2008 PSE 95 NH
98J	503	664	2008 PSE 98J NH
95J	504	665	2008 PSE 95J NH
90	505	669	2008 PSE 90 NH
100J	507	672	2008 PSE 100J OGph
90J	509	676	2008 PSE 90J NH
98	511	678	2008 PSE 98 NH
95	512	680	2008 PSE 95 NH
95	513	683	2008 PSE 95 NH
90J	514	684	2008 PSE 90J NH
100	515	685	2008 PSE 100 NH
90	517	687	2008 PSE 90 NH
90	519	689	2008 PSE 90 NH
98J	523	690	2008 PSE 98J NH
95	524	691	2008 PSE 95 NH
90	526	692	2008 PSE 90 NH
90	527	693	2008 PSE 90 NH
90J	528	694	2008 PSE 90J NH
95J	530	698	2008 PSE 95J NH
90J	536	710	2008 PSE 90J NH
95	538	712	2008 PSE 95 NH
80	539	714	2008 PSE 80 NH
95	541	718	2008 PSE 95 NH
95J	543	719	2008 PSE 95J NH
85	546	722	2008 PSE 85 NH
95	547	723	2008 PSE 95 NH
95	573	735	2008 PSE 95 NH
90	578	737	2008 PSE 90 NH
98	579	738	2008 PSE 98 NH
90	595	739	2008 PSE 90 NH
95	10A	16	2008 PSE 95 NH
98J	11A	17	2008 PSE 98J NH
95	134 I	174	2008 PSE 95 OGph
95J	1a	1	2008 PSE 95J NH
90	205C	240	2008 PSE 90 NGAI
85	211D	241	2008 PSE 85 NGAI
90	220c	263	2008 PSE 90 NH
95	235a	283	2008 PSE 95 NH
90	277a	335	2007 PF 90 NH
90	279B	339	2008 PSE 90 NH
95	280a	341	2008 PSE 95 NH
90	294a	364	2008 PSE 90 OGph
90	295a	365	2008 PSE 90 OGh
70	296a	366	2008 PSE 70 OGph
95	314A	388	2008 PSE 95 OGph
95J	319f	406	2008 PSE 95J NH
100J	320a	413	2006 PSE 100J NH
98	36b	48	2008 PSE 98 OGph
95J	400A	517	2008 PSE 95J NH
95J	405-406	522	2005 PSE 95J NH
95	435a	553	2008 PSE 95 NH
85	508c	674	2006 PF 85 USED
98J	512a	681	2008 PSE 98J NH
98J	528B	695	2008 PSE 98J NH
95	547a	724	2008 PSE 95 NH
98	573a	736	2008 PSE 98 NH
90	599-599A	743	2008 PSE 90 NH

Grade	Scott	Lot	Year/Service/Grade
98	599A	746	2008 PSE 98 NH
90	599A	745	2008 PSE 90 NH
85	599A	744	2008 PSE 85 NH
80	62B	69	2008 PSE 80 OGh
95J	634A	748	2008 PSE 95J NH
98	703b	752	2008 PSE 98 NH
90	C15	764	2008 PSE 90 NH
98	C2	757	2008 PSE 98 NH
100	C4	759	2008 PSE 100 NH
98	C6	761	2008 PSE 98 NH
98	E11	777	2008 PSE 98 NH
95	E11	778	2008 PSE 95 OGph
98	E11b	779	2008 PSE 98 NH
100	E12a	780	2008 PSE 100 NH
98	E12a	781	2008 PSE 98 NH
90	E3	769	2008 PSE 90 NH
98	E5	771	2008 PSE 98 NH
85	E6	772	2008 PSE 85 NH
100J	E8	774	2008 PSE 100J NH
98	E9a	776	2008 PSE 98 NH
95	F1	783	2008 PSE 95 NH
85	J14	791	2007 PF 85 OG
95	J15	792	2004 PSE 95 NH
90	J20	795	2008 PSE 90 NH
90J	J22	797	2008 PSE 90J NH
80	J24	799	2008 PSE 80 NH
98	J26	801	2008 PSE 98 NH
90	J28	803	2008 PSE 90 NH
95	J31	806	2004 PSE 95 NH
95J	J32	807	2008 PSE 95J NH
90	J33	808	2008 PSE 90 NH
90J	J38	813	2008 PSE 90J NH
98	J39	814	2005 PSE 98 NH
90	J39	815	2008 PSE 90 NH
95	J40	816	2008 PSE 95 NH
95	J44	820	2008 PSE 95 NH
90	J46	822	2006 PF 90 NH
90J	J46a	821	2008 PSE 90J NH
90	J49a	826	2006 PF 90 NH
90	J50	827	2008 PSE 90 NH
90	J52	828	2008 PSE 90 NH
95	J53b	830	2008 PSE 95 NH
90	J54	831	2008 PSE 90 NH
98	J55	832	2008 PSE 98 NH
85	J55a	833	2008 PSE 85 NH
95	J61	838	2004 PSE 95 NH
95J	J62b	839	2003 PSE 95J NH
95J	J63	840	2008 PF 95J NH
95	J64b	841	2007 PF 95 NH
95	J65b	842	2004 PSE 95 NH
90	J66	843	2008 PSE 90 NH
90	J67	845	2006 PF 90 NH
100	J75	847	2008 PSE 100 NH
95J	JQ1	879	2008 PSE 95J NH
95	K10	859	2008 PSE 95 NH
80	K15	863	2008 PSE 80 NH
90J	K18	867	2008 PSE 90J NH

Grade	Scott	Lot	Year/Service/Grade
95	K2	850	2008 PSE 95 NH
95	K2	851	2005 PSE 95 NH
95J	K6	854	2008 PSE 95J NH
95	K7	855	2008 PSE 95 NH
95J	K8a	857	2008 PSE 95J NH
90	K8a	856	2008 PSE 90 NH
95	K9	858	2008 PSE 95 NH
90	Q11	877	2008 PSE 90 NH
95J	Q2	869	2007 PSE 95J NH
98J	Q6	871	2008 PSE 98J OGph
95	Q8	874	2008 PSE 95 NH
95J	Q9	875	2008 PSE 95J NH

Grading Index to The Alan B. Whitman Collection (by Grade)

Grade	Scott	Lot	Year/Service/Grade
100J	249	298	2008 PSE 100J NH
100J	320a	413	2006 PSE 100J NH
100J	417	533	2008 PSE 100J NH
100J	418	534	2008 PSE 100J NH
100J	446	573	2008 PSE 100J NH
100J	507	672	2008 PSE 100J OGph
100J	E8	774	2008 PSE 100J NH
100	189	224	2008 PSE 100 NH
100	448	580	2008 PSE 100 NH
100	515	685	2008 PSE 100 NH
100	C4	759	2008 PSE 100 NH
100	E12a	780	2008 PSE 100 NH
100	J75	847	2008 PSE 100 NH
98J	3	6	2008 PSE 98J NGAI
98J	4	7	2008 PSE 98J NGAI
98J	11A	17	2008 PSE 98J NH
98J	40	55	2008 PSE 98J NGAI
98J	226	270	2008 PSE 98J NH
98J	326	421	2008 PSE 98J NH
98J	379	480	2006 PSE 98J NH
98J	399	515	2008 PSE 98J NH
98J	415	531	2008 PSE 98J NH
98J	427	544	2008 PSE 98J NH
98J	432	549	2008 PSE 98J NH
98J	434	551	2008 PSE 98J NH
98J	441	559	2008 PSE 98J NH
98J	470	617	2008 PSE 98J NH
98J	503	664	2008 PSE 98J NH
98J	512a	681	2008 PSE 98J NH
98J	523	690	2008 PSE 98J NH
98J	528B	695	2008 PSE 98J NH
98J	O6	871	2008 PSE 98J OGph
98	36b	48	2008 PSE 98 OGph
98	98	124	2008 PSE 98 OGph
98	128	166	2008 PSE 98 OGph
98	136	176	2008 PSE 98 OGph
98	215	256	2008 PSE 98 OGph
98	238	286	2008 PSE 98 NH
98	239	287	2008 PSE 98 NH
98	278	337	2008 PSE 98 NH
98	284	347	2008 PSE 98 NH
98	287	350	2008 PSE 98 NH
98	296	360	2008 PSE 98 NH
98	299	363	2008 PSE 98 NH
98	309	381	2008 PSE 98 NH
98	311	383	2008 PSE 98 OGph
98	325	420	2008 PSE 98 NH
98	328	423	2008 PSE 98 NH
98	348	438	2008 PSE 98 NH
98	357	464	2008 PSE 98 NH
98	394	505	2008 PSE 98 NH
98	396	512	2008 PSE 98 NH
98	448	579	2008 PSE 98 NH
98	452	585	2008 PSE 98 NH
98	454	591	2008 PSE 98 NH
98	476	623	2008 PSE 98 NH
98	480	628	2008 PSE 98 NH

Grade	Scott	Lot	Year/Service/Grade
98	493	640	2008 PSE 98 NH
98	495	643	2008 PSE 98 NH
98	496	644	2008 PSE 98 NH
98	511	678	2008 PSE 98 NH
98	573a	736	2008 PSE 98 NH
98	579	738	2008 PSE 98 NH
98	599A	746	2008 PSE 98 NH
98	703b	752	2008 PSE 98 NH
98	C2	757	2008 PSE 98 NH
98	C6	761	2008 PSE 98 NH
98	E5	771	2008 PSE 98 NH
98	E9a	776	2008 PSE 98 NH
98	E11	777	2008 PSE 98 NH
98	E11b	779	2008 PSE 98 NH
98	E12a	781	2008 PSE 98 NH
98	J26	801	2008 PSE 98 NH
98	J39	814	2005 PSE 98 NH
98	J55	832	2008 PSE 98 NH
95J	1a	1	2008 PSE 95J NH
95J	7	9	2008 PSE 95J NH
95J	132	171	2008 PSE 95J OGph
95J	157	194	2008 PSE 95J OGph
95J	213	254	2008 PSE 95J OGph
95J	221	265	2008 PSE 95J NH
95J	225	269	2008 PSE 95J NH
95J	230	274	2008 PSE 95J NH
95J	231	275	2008 PSE 95J NH
95J	235	282	2008 PSE 95J NH
95J	246	295	2008 PSE 95J NH
95J	248	297	2008 PSE 95J NH
95J	266	317	2008 PSE 95J NH
95J	270	323	2008 PSE 95J NH
95J	274	329	2008 PSE 95J NH
95J	306	378	2008 PSE 95J NH
95J	319f	406	2008 PSE 95J NH
95J	332	426	2008 PSE 95J NH
95J	334	428	2008 PSE 95J NH
95J	377	478	2008 PSE 95J NH
95J	380	481	2008 PSE 95J NH
95J	387	490	2008 PSE 95J NH
95J	394	506	2008 PSE 95J NH
95J	395	508	2008 PSE 95J NH
95J	400A	517	2008 PSE 95J NH
95J	403	520	2008 PSE 95J NH
95J	405-406	522	2005 PSE 95J NH
95J	429	546	2008 PSE 95J NH
95J	439	556	2008 PSE 95J NH
95J	473	620	2008 PSE 95J NH
95J	504	665	2008 PSE 95J NH
95J	530	698	2008 PSE 95J NH
95J	543	719	2008 PSE 95J NH
95J	634A	748	2008 PSE 95J NH
95J	J32	807	2008 PSE 95J NH
95J	j62b	839	2003 PSE 95J NH
95J	J63	840	2008 PF 95J NH
95J	JQ1	879	2008 PSE 95J NH
95J	K6	854	2008 PSE 95J NH

Grade	Scott	Lot	Year/Service/Grade
95J	K8a	857	2008 PSE 95J NH
95J	O2	869	2007 PSE 95J NH
95J	O9	875	2008 PSE 95J NH
95	9	14	2008 PSE 95 OGph
95	10A	16	2008 PSE 95 NH
95	26	32	2008 PSE 95 NH
95	42	57	2008 PSE 95 NGAI
95	63	70	2008 PSE 95 NH
95	78	99	2008 PSE 95 OGh
95	83	102	2008 PSE 95 OGph
95	115	144	2008 PSE 95 OGph
95	117	146	2008 PSE 95 OGph
95	125	162	2008 PSE 95 OGph
95	126	163	2008 PSE 95 OGph
95	130	169	2008 PSE 95 OGph
95	134 l	174	2008 PSE 95 OGph
95	171	206	2008 PSE 95 NGAI
95	210	251	2008 PSE 95 NH
95	224	268	2008 PSE 95 NH
95	235a	283	2008 PSE 95 NH
95	242	290	2008 PSE 95 NH
95	256	307	2008 PSE 95 NH
95	257	308	2008 PSE 95 NH
95	265	316	2008 PSE 95 NH
95	271	324	2008 PSE 95 OGph
95	277	334	2008 PSE 95 NH
95	280	340	2008 PSE 95 NH
95	280a	341	2008 PSE 95 NH
95	288	351	2005 PSE 95 NH
95	305	377	2008 PSE 95 NH
95	307	379	2008 PSE 95 NH
95	314A	388	2008 PSE 95 OGph
95	323	417	2008 PSE 95 NH
95	324	418	2008 PSE 95 NH
95	335	429	2008 PSE 95 OGph
95	337	430	2008 PSE 95 NH
95	353	454	2005 PSE 95 NH
95	354	456	2008 PSE 95 NH
95	356	462	2008 PSE 95 NH
95	364	470	2008 PSE 95 NH
95	365	471	2008 PSE 95 OGph
95	376	477	2008 PSE 95 NH
95	381	482	2008 PSE 95 NH
95	391	497	2008 PSE 95 NH
95	393	501	2008 PSE 95 NH
95	393	503	2008 PSE 95 NH
95	401	518	2008 PSE 95 NH
95	404	521	2008 PSE 95 NH
95	407	524	2008 PSE 95 NH
95	420	536	2008 PSE 95 NH
95	421	537	2008 PSE 95 NH
95	435a	553	2008 PSE 95 NH
95	438	555	2008 PSE 95 NH
95	442	562	2008 PSE 95 NH
95	452	586	2008 PSE 95 NH
95	453	588	2008 PSE 95 NH
95	455	593	2008 PSE 95 NH

Grading Index to The Alan B. Whitman Collection (by Grade)

Grade	Scott	Lot	Year/Service/Grade
95	457	598	2008 PSE 95 NH
95	471	618	2008 PSE 95 NH
95	474	621	2008 PSE 95 NH
95	477	625	2008 PSE 95 NH
95	491	635	2008 PSE 95 OGph
95	497	645	2008 PSE 95 NH
95	501	657	2008 PSE 95 NH
95	512	680	2008 PSE 95 NH
95	513	683	2008 PSE 95 NH
95	524	691	2008 PSE 95 NH
95	538	712	2008 PSE 95 NH
95	541	718	2008 PSE 95 NH
95	547	723	2008 PSE 95 NH
95	547a	724	2008 PSE 95 NH
95	573	735	2008 PSE 95 NH
95	F11	778	2008 PSE 95 OGph
95	F1	783	2008 PSE 95 NH
95	J15	792	2004 PSE 95 NH
95	J31	806	2004 PSE 95 NH
95	J40	816	2008 PSE 95 NH
95	J44	820	2008 PSE 95 NH
95	J53b	830	2008 PSE 95 NH
95	J61	838	2004 PSE 95 NH
95	J64b	841	2007 PF 95 NH
95	J65b	842	2004 PSE 95 NH
95	K2	850	2008 PSE 95 NH
95	K2	851	2005 PSE 95 NH
95	K7	855	2008 PSE 95 NH
95	K9	858	2008 PSE 95 NH
95	K10	859	2008 PSE 95 NH
95	Q8	874	2008 PSE 95 NH
90J	185	220	2008 PSE 90J NH
90J	258	309	2008 PSE 90J NH
90J	264	315	2008 PSE 90J NH
90J	331	425	2008 PSE 90J NH
90J	348	437	2008 PSE 90J NH
90J	351	448	2008 PSE 90J NH
90J	398	514	2008 PSE 90J NH
90J	509	676	2008 PSE 90J NH
90J	514	684	2008 PSE 90J NH
90J	528	694	2008 PSE 90J NH
90J	536	710	2008 PSE 90J NH
90J	J22	797	2008 PSE 90J NH
90J	J38	813	2008 PSE 90J NH
90J	j46a	821	2008 PSE 90J NH
90J	K18	867	2008 PSE 90J NH
90	12	19	2008 PSE 90 OGph
90	22	28	2008 PSE 90 NH
90	23	29	2008 PSE 90 DOG
90	133	172	2008 PSE 90 OGph
90	154	192	2008 PSE 90 NH
90	205C	240	2008 PSE 90 NGAI
90	212	253	2008 PSE 90 NH
90	220c	263	2008 PSE 90 NH
90	237	285	2008 PSE 90 NH
90	259	310	2008 PSE 90 NH
90	262	313	2004 PSE 90 NH

Grade	Scott	Lot	Year/Service/Grade
90	277a	335	2007 PF 90 NH
90	279B	339	2008 PSE 90 NH
90	281	343	2008 PSE 90 NH
90	294a	364	2008 PSE 90 OGph
90	295a	365	2008 PSE 90 OGh
90	304	376	2008 PSE 90 NH
90	330	424	2008 PSE 90 NH
90	339	431	2008 PSE 90 NH
90	340	432	2008 PSE 90 NH
90	341	433	2008 PSE 90 OGph
90	342	434	2008 PSE 90 NH
90	351	446	2008 PSE 90 NH
90	385	486	2008 PSE 90 NH
90	392	499	2008 PSE 90 NH
90	413	528	2008 PSE 90 NH
90	416	532	2008 PSE 90 NH
90	443	565	2007 PF 90 NH
90	449	582	2008 PSE 90 OGph
90	492	639	2008 PSE 90 NH
90	493	641	2008 PSE 90 NH
90	505	669	2008 PSE 90 NH
90	517	687	2008 PSE 90 NH
90	519	689	2008 PSE 90 NH
90	526	692	2008 PSE 90 NH
90	527	693	2008 PSE 90 NH
90	578	737	2008 PSE 90 NH
90	595	739	2008 PSE 90 NH
90	599-599A743		2008 PSE 90 NH
90	599A	745	2008 PSE 90 NH
90	C15	764	2008 PSE 90 NH
90	E3	769	2008 PSE 90 NH
90	J20	795	2008 PSE 90 NH
90	J28	803	2008 PSE 90 NH
90	J33	808	2008 PSE 90 NH
90	J39	815	2008 PSE 90 NH
90	J46	822	2006 PF 90 NH
90	J49a	826	2006 PF 90 NH
90	J50	827	2008 PSE 90 NH
90	J52	828	2008 PSE 90 NH
90	J54	831	2008 PSE 90 NH
90	J66	843	2008 PSE 90 NH
90	J67	845	2006 PF 90 NH
90	K8a	856	2008 PSE 90 NH
90	Q11	877	2008 PSE 90 NH
85J	250	299	2008 PSE 85J NH
85	180	213	2008 PSE 85 NGAI
85	211D	241	2008 PSE 85 NGAI
85	348	439	2008 PSE 85 NH
85	366	472	2008 PSE 85 NH
85	369	474	2008 PSE 85 NH
85	431	548	2008 PSE 85 NH
85	494	642	2008 PSE 85 NH
85	508c	674	2006 PF 85 USED
85	546	722	2008 PSE 85 NH
85	599A	744	2008 PSE 85 NH
85	E6	772	2008 PSE 85 NH
85	J14	791	2007 PF 85 OG

Grade	Scott	Lot	Year/Service/Grade
85	J55a	833	2008 PSE 85 NH
80	62B	69	2008 PSE 80 OGh
80	152	190	2008 PSE 80 OGph
80	153	191	2008 PSE 80 NH
80	352	449	2008 PSE 80 NH
80	539	714	2008 PSE 80 NH
80	J24	799	2008 PSE 80 NH
80	K15	863	2008 PSE 80 NH
75	27	33	2007 PF 75 OGph
75	245	294	2008 PSE 75 NH
75	356	461	2008 PF 75 NH
70	296a	366	2008 PSE 70 OGph

PRICES REALIZED FOR SALE 968A---4/14-15/2009
The Alan B. Whitman Collection, Part Two: 1870-1901 Issues

Robert A. Siegel Auction Galleries, Inc.
60 East 56th Street, 4th Floor, New York, NY 10022
Tel (212) 753-6421 Fax (212) 753-6429

Lot#	Realized	Lot#	Realized	Lot#	Realized	Lot#	Realized	Lot#	Realized
174	6,500	217	1,000	260	950	303	425	346	950
175	2,100	218	1,300	261	425	304	350	347	16,500
176	4,000	219	2,300	262	1,100	305	425	348	550
177	8,000	220	2,400	263	5,000	306	3,750	349	325
178	2,600	221	1,200	264	9,500	307	2,400	350	15,500
179	2,800	222	4,250	265	2,200	308	2,700	351	2,000
180	220,000	223	16,000	266	650	309	3,000	352	325
181	13,500	224	15,000	267	275	310	3,000	353	31,250
182	4,750	225	3,250	268	1,600	311	300	354	750
183	85,000	226	11,500	269	1,700	312	47,500	355	3,500
184	1,500	227	13,500	270	18,000	313	17,000	356	6,250
185	8,000	228	85,000	271	1,100	314	10,000	357	7,500
186	2,700	229	30,000	272	900	315	275	358	100
187	1,700	230	135,000	273	3,250	316	1,500	359	110
188	3,250	231	65,000	274	650	317	1,000	360	6,000
189	15,500	232	15,000	275	900	318	2,700	361	375
190	2,700	233	37,500	276	170	319	800	362	425
191	40,000	234	15,500	277	325	320	75	363	12,500
192	67,500	235	52,500	278	550	321	300	364	19,000
193	400	236	12,000	279	18,000	322	1,100	365	90,000
194	2,800	237	28,000	280	100,000	323	1,100	366	90,000
195	375	238	37,500	281	750	324	350	367	21,000
196	2,100	239	105,000	282	900	325	225	368	800,000
197	2,000	240	85,000	283	750	326	15,000	369	325,000
198	800	241	70,000	284	800	327	18,000		
199	3,000	242	1,100	285	800	328	550		
200	4,750	243	32,500	286	17,500	329	4,750		
201	4,750	244	800	287	12,000	330	1,300		
202	22,000	245	600	288	1,600	331	950		
203	15,000	246	750	289	6,250	332	2,000		
204	26,000	247	1,400	290	60,000	333	5,500		
205	23,000	248	2,400	291	10,500	334	23,000		
206	20,500	249	1,000	292	11,000	335	7,500		
207	30,000	250	3,750	293	13,000	336	4,250		
208	15,500	251	1,000	294	13,000	337	65,000		
209	29,000	252	750	295	650	338	70		
210	5,250	253	750	296	450	339	475		
211	23,000	254	500	297	1,300	340	1,000		
212	26,000	255	550	298	27,000	341	1,400		
213	85,000	256	1,800	299	170	342	275		
214	1,800	257	1,800	300	1,400	343	400		
215	1,600	258	2,600	301	750	344	160		
216	3,750	259	650	302	550	345	200		