

SALE 974—TUESDAY, JUNE 16, 2009

# The “Laila” Collection of Hawaii and United States Possessions



*Robert A. Siegel*

AUCTION GALLERIES, INC.

Sale 974—Tuesday, June 16, 2009

## The “Laila” Collection of Hawaii and United States Possessions

Live auction to be held at Siegel Auction Galleries,  
60 East 56th Street (Park/Madison), 4th Floor, New York City

Offered without reserves

Lots are sold subject to a 15% buyer's premium and  
any applicable sales tax (or customs duty for non-U.S. buyers)



First Session (lots 501-635)  
Tuesday, June 16, at 10:30 a.m.

Hawaii.....lots 501-635

Second Session (lots 636-878)  
Tuesday, June 16, at 1:30 p.m.

Canal Zone .....	636-775
Cuba .....	776-816
Danish West Indies .....	817-830
Guam .....	831-839
Philippines .....	840-877
Puerto Rico.....	878

### Pre-Sale Lot Viewing

Friday, June 12 — 10:00 a.m. to 4:00 p.m.  
Monday, June 15 — 10:00 a.m. to 4:00 p.m.  
or by appointment (please call 212-753-6421)

*Robert A. Siegel*

AUCTION GALLERIES, INC.

60 EAST 56TH STREET, 4TH FLOOR, NEW YORK, N.Y. 10022  
Phone (212) 753-6421 • Fax (212) 753-6429 • E-mail: [stamps@siegelauctions.com](mailto:stamps@siegelauctions.com)

Catalogues, internet bidding, resources, archives and the Siegel Encyclopedia at  
[www.siegelauctions.com](http://www.siegelauctions.com)





*Robert A. Siegel*

AUCTION GALLERIES, INC.

60 EAST 56TH STREET, 4TH FLOOR, NEW YORK, N.Y. 10022  
 Phone (212) 753-6421 • Fax (212) 753-6429 • E-mail: [stamps@siegelauctions.com](mailto:stamps@siegelauctions.com)  
[siegelauctions.com](http://siegelauctions.com)



Scott R. Trepel  
 President  
 strepel  
[@siegelauctions.com](mailto:@siegelauctions.com)



John P. Zuckerman  
 Senior Vice President  
 jzuckerman  
[@siegelauctions.com](mailto:@siegelauctions.com)



Corey Long  
 Vice President  
 clong  
[@siegelauctions.com](mailto:@siegelauctions.com)



Starr Tucker-Ortega  
 Accounts  
 stamps  
[@siegelauctions.com](mailto:@siegelauctions.com)



Carlene Counihan  
 Bids and Inquiries  
 carlene  
[@siegelauctions.com](mailto:@siegelauctions.com)

Scott R. Trepel Principal Auctioneer (licensed by NYC Dept. of Consumer Affairs, #795952)  
 Nathaniel Estes Catalogue and Digital Production

## Information for Bidders

### Bidding

The following means are available for placing bids:

- 1) **Attending the Live Auction in Person:** All bidders must register for a paddle, and new bidders must provide references at least three business days in advance of the sale.
- 2) **Live Internet Bidding:** Instructions for participating as a Live Internet Bidder are provided on the page opposite.
- 3) **Phone Bidding:** Bidders can be connected to the sale by phone and bid through a member of staff. Requests for phone bidding are subject to approval (please contact our office at least 24 hours before the sale). A signed Bid Form is required.
- 4) **Absentee Bids.** All bids received in advance of the sale, either by mail, fax, phone, e-mail or internet, are Absentee Bids, which instruct the auctioneer to bid up to a specific amount on one or more lots in the sale. Absentee Bids sent by phone, fax or e-mail should arrive at least one hour prior to the start of the sale session. Bids entered through Live Internet Bidding will be visible to the auctioneer during the sale. Written bids should be entered legibly on the Bid Form in the sale catalogue. E-mail and internet bids should be carefully typed and double-checked. All new bidders must provide references. We recommend calling or e-mailing to confirm that Absentee Bids sent by mail, fax or e-mail have been received and entered.

### Pre-Sale Viewing

Subject to availability, certain lots (except group lots) can be sent to known clients for examination. Requests must be made no later than 7 days prior to the sale. Lots must be returned on the day received. Postage/insurance costs will be invoiced.

In addition to regular viewing, clients may view lots by appointment. Our staff will be pleased to answer questions or provide additional information about lots.

### Expert Certification

Individual items offered without a current certificate (PF dated within the past five years of sale; PSE dated January 2004 or later) may be purchased subject to independent certification of genuineness and our description. **Please refer to the Conditions of Sale and Grading Terms for policies governing certification.**

### Shipping and Delivery

Procedures and charges for shipping lots are printed on the back of the Bid Form. **Bidders are responsible for all prescribed shipping charges and any applicable sales tax or customs duties.**

### Price Realized

Prices realized are sent with each invoice. Bidders with e-mail will receive a Bid Results report after the sale. Session results are posted immediately to [siegelauctions.com](http://siegelauctions.com)



# Live Internet Bidding at Siegel Auctions



Bidding from your computer lets you be part of the live auction from anywhere in the world!

There's no substitute for following the auction in real time. Live Internet Bidding lets you bid and buy as though you were right there in the saleroom.

And it's easy. Just start by following the simple steps to become a registered Live Internet Bidder. Once you've been approved for bidding, you can listen to the auction and place bids with the click of a mouse.

This step-by-step guide will instruct you how to register, set your browser and use the bidding interface.

## 1 Registering with Stamp Auction Network and Siegel Auction Galleries

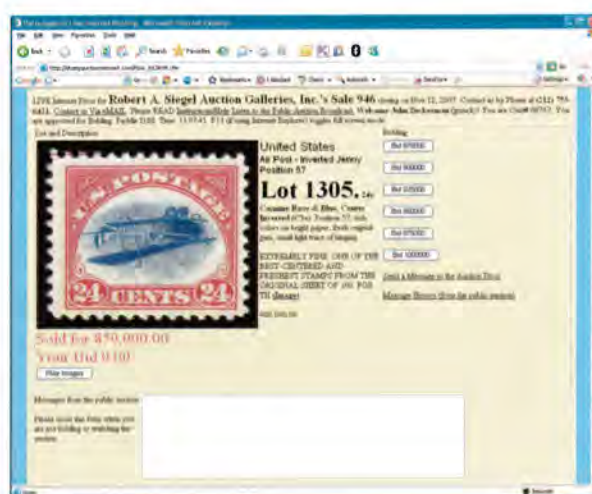
Live Internet Bidding is managed by Stamp Auction Network (SAN). To bid, you must be registered and approved by *both* SAN and Siegel. To decide what you need to do, choose the description below that best fits you.

**I've already registered with SAN and have been approved by Siegel for internet bidding.** You're ready for Step 2.

**I've never registered with SAN, but I'm a Siegel client.** Go to [stampauctionnetwork.com/siegel](http://stampauctionnetwork.com/siegel) and click on "Register" at the top. Check the box for Robert A. Siegel Auction Galleries (under "R") and submit the form, indicating you are a Siegel client. Once registered at SAN, you're ready for Step 2.

**I've never registered with SAN, and this is the first time I've bid with Siegel.** Go to [stampauctionnetwork.com/siegel](http://stampauctionnetwork.com/siegel) and click on "Register" at the top. Check the box for Robert A. Siegel Auction Galleries (under "R") and submit the form **with your trade references** (please, no family members or credit card companies as references). Once registered at SAN and approved by Siegel for bidding, you're ready for Step 2.

**I've bid through SAN before, but this is the first time I've bid in a Siegel sale.** Then you just need to be approved by Siegel. Go to [stampauctionnetwork.com/siegel](http://stampauctionnetwork.com/siegel) and click on "Update Registration" at the top. Your SAN account information will be sent to us for approval (you might be asked for other trade references). Once approved by Siegel for bidding, you can move to Step 2.



## 2 Using your browser for Live Internet Bidding and understanding the way it works.

Live Internet Bidding works by providing an audio feed of the auction (for anyone using Internet Explorer) and by allowing registered bidders to observe and place bids. The bidding interface shows a photo and description of the lot, the current bid (and your bidding status), and options for placing competitive bids. To join the auction, go to [stampauctionnetwork.com/siegel](http://stampauctionnetwork.com/siegel). You can also log on at [siegelauctions.com](http://siegelauctions.com)

The visual interface will work with any browser on both PC and Mac operating systems. However, the audio feed only works with Internet Explorer on a PC with ActiveX software installed. If ActiveX is not on your computer, you will have the option to install it.

Before bidding by internet for the first time, we recommend finding a sale in progress and listening to the public broadcast or logging in as a registered bidder. This will help you develop a feel for the sale tempo and bidding interface.

"System down" or "lost connection" events do occasionally happen. If you have any problems with Live Internet Bidding, please call 212-753-6421 for immediate assistance.



## 3 Using Live Internet Bidding to bid, track results and communicate with the auctioneer.

When you're logged on as a Live Internet Bidder, the screen will display buttons with bid increments. After you click on a bid amount, the auctioneer is immediately notified of your bid. Retracting a bid is usually not acceptable, so please bid carefully.

If you bid, then decide to stop, please use the "Pass" button, which appears once you've started bidding. This tells the auctioneer not to wait for another bid from you.

You can send messages to the auctioneer (for example, a request for extension). You can also track prior realizations from the bidding screen.



## Conditions of Sale (please read carefully before bidding)

The property described in this catalogue will be offered at public auction by Robert A. Siegel Auction Galleries, Inc. ("Galleries") on behalf of various consignors and itself or affiliated companies. By bidding on any lot, whether directly or by or through an agent, in person, or by telephone, facsimile or any other means, the bidder acknowledges and agrees to all of the following Conditions of Sale.

1. The highest bidder acknowledged by the auctioneer shall be the buyer. The term "final bid" means the last bid acknowledged by the auctioneer, which is normally the highest bid offered. **The purchase price payable by the buyer will be the sum of the final bid and a commission of 15% of the final bid ("buyer's premium"), together with any sales tax, use tax or customs duties due on the sale.**
  2. The auctioneer has the right to reject any bid, to advance the bidding at his discretion and, in the event of a dispute between bidders, to determine the successful bidder, to continue the bidding or to reoffer and resell the lot in dispute. The Galleries' record of the final sale shall be conclusive.
  3. All bids are per numbered lot in the catalogue unless otherwise announced by the auctioneer at the time of sale. The right is reserved to group two or more lots, to withdraw any lot or lots from the sale, or to act on behalf of the seller. The Galleries will execute bidding instructions on behalf of clients, but will not be responsible for the failure to execute such bids or for any errors in the execution of such bids.
  4. **Lots with numbers followed by the symbol ° are offered subject to a confidential minimum bid ("reserve"), below which the lot will not be sold. The absence of the symbol ° means that the lot is offered without a reserve. If there is no reserve, the auctioneer has sole discretion to establish a minimum opening bid and may refuse an offer of less than half of the published estimate. Any lot that does not reach its reserve or opening bid requested by the auctioneer will be announced as "passed" and excluded from the prices realized lists after the sale. The Galleries may have a direct or indirect ownership interest in any or all lots in the sale resulting from an advance of monies or goods-in-trade or a guarantee of minimum net proceeds made by the Galleries to the seller.**
  5. Subject to the exclusions listed in 5(A), the Galleries will accept the return of lots which have been misidentified or which have obvious faults that were present when the lot was in the Galleries' custody, but not so noted in the lot description. **All disputed lots must be received by the Galleries intact with the original packing material within 5 days of delivery to the buyer but no later than 30 days from the sale date. (5A) EXCLUSIONS:** The following lots may not be returned for any reason: lots containing 10 or more items; lots from buyers who registered for the pre-sale exhibition or received lots by postal viewing, thereby having had the opportunity to inspect them before the sale; any lot described with "faults," "defects" or a specific fault may not be returned because of any secondary fault. Photographed lots may not be returned because of centering, margins, short/nibbed perforations or other factors shown in the illustrations. Lots may not be returned for any of the following reasons: the color of the item does not match the color reproduction in the sale catalogue or website listing; the description contains inaccurate information about the quantity known or reported; or a certification service grades a stamp lower than the grade stated in the description.
  6. Successful bidders, unless they have established credit with the Galleries prior to the sale, must make payment in full before the lots will be delivered. Buyers not known to the Galleries must make payment in full within 3 days from the date of sale. **The Galleries retains the right to demand a cash deposit from anyone prior to bidder registration and/or to demand payment at the time the lot is knocked down to the highest bidder, for any reason whatsoever. In the event that any buyer refuses or fails to make payment in cash**
- for any lot at the time it is knocked down to him, the auctioneer reserves the right to reoffer the lot immediately for sale to the highest bidder. **Credit cards are not accepted as payment.**
7. If the purchase price has not been paid within the time limit specified above, nor lots taken up within 7 days from the date of sale, the lots will be resold by whatever means deemed appropriate by the Galleries, and any loss incurred from resale will be charged to the defaulting buyer. Any account more than 30 days in arrears will be subject to a late payment charge of 1½% per month as long as the account remains in arrears. Any expenses incurred in securing payment from delinquent accounts will be charged to the defaulter. A fee of \$250.00 per check will be charged for each check returned for insufficient funds.
  8. All lots are sold as genuine. **Any lot accompanied by a certificate issued by The Philatelic Foundation within 5 years of the sale date or by Professional Stamp Experts since January 2004 is sold "as is" and in accordance with the description on the certificate. Such lots may not be returned for any reason, including but not limited to a contrary certificate of opinion.** Buyers who wish to obtain a certificate for any item that does not have a P.F. or P.S.E. certificate (dated as above) may do so, provided that the following conditions are met: (1) the purchase price must be paid in full, (2) the item must be submitted to an acceptable expertizing committee with a properly executed application form within 21 days of the sale, (3) a copy of the application form must be given to the Galleries, (4) in the event that an adverse opinion is received, the Galleries retain the right to resubmit the item on the buyer's behalf for reconsideration, without time limit or other restrictions, (5) unless written notification to the contrary is received, items submitted for certification will be considered cleared 90 days from the date of sale, and (6) in the event any item is determined to be "not as described", the buyer will be refunded the purchase price and the certification fee up to \$600.00 unless otherwise agreed.
  9. Until paid for in full, all lots remain the property of the Galleries on behalf of the seller.
  10. Agents executing bids on behalf of clients will be held responsible for all purchases made on behalf of clients unless otherwise arranged prior to the sale.
  11. The buyer assumes all risk for delivery of purchased lots and agrees to pay for prescribed shipping costs. Buyers outside the U.S. are responsible for all customs duties.
  12. **The bidder consents that any action or proceeding against it may be commenced and maintained in any court within the State of New York or in the United States District Court for the Southern District of New York, that the courts of the State of New York and United States District Court for the Southern District of New York shall have jurisdiction with respect to the subject matter hereof and the person of the bidder. The bidder agrees not to assert any defense to any action or proceeding initiated by Galleries based upon improper venue or inconvenient forum. The bidder agrees that any action brought by the bidder shall be commenced and maintained only in a Federal Court in the United States District Court for the Southern District of New York or the State Court in the county in which Galleries has its principal place of business in New York. These Terms and Conditions shall be governed by and construed in accordance with the substantive laws of the State of New York.**

SCOTT R. TREPEL, Principal Auctioneer

Auctioneer's License No. 795952  
N.Y.C. Department of Consumer Affairs  
80 Lafayette Street, New York, N.Y. 10013  
Telephone (212) 577-0111

Revised 1/2008 15%

### Copyright Notice

© 2009, Robert A. Siegel Auction Galleries, Inc. This catalogue in all versions, printed and electronic, is protected by copyright. The descriptions, format, illustrations and information used herein may not be reprinted, distributed or copied in any form without the express written consent of Robert A. Siegel Auction Galleries. Application for permission may be made in writing.



## Grades, Abbreviations and Values Used in Descriptions

### Grades and Centering

Our descriptions contain detailed information and observations about each item's condition. We have also assigned grades to stamps and covers, which reflect our subjective assessment. For stamps, the margin width, centering and gum are described and graded according to generally-accepted standards (an approximate correlation to numeric grades is provided at right). Although we believe our grades are accurate, they are not always exactly aligned with third-party grading terms or standards for all issues. **A lot may not be returned because a certification service grades a stamp lower than the grade stated in the description.** Information from the P.S.E. *Stamp Market Quarterly* and P.S.E. *Population Report*<sup>SM</sup> is the most current available, but lots may not be returned due to errors or changes in statistics or data.

**Extremely Fine Gem (90-100):** The term "Gem" describes condition that is the finest possible for the issue. This term is equivalent to "Superb" used by grading services.







**Extremely Fine (80-90):** Exceptionally large/wide margins or near perfect centering.

**Very Fine (70-85):** Normal-size margins for the issue and well-centered with the design a bit closer to one side. "Very Fine and choice" applies to stamps that have desirable traits such as rich color, sharp impression, freshness or clarity of cancel.

**Fine (60-70):** Smaller than usual margins or noticeably off center. Pre-1890 issues may have the design touched in places.

**Very Good (below 60):** Attractive appearance, but margins or perforations cut into the design.

### Guide to Gum Condition

Gum Categories:	MINT N.H.	ORIGINAL GUM (O.G.)				NO GUM
	 <b>Mint Never Hinged</b> <i>Free from any disturbance</i>	 <b>Lightly Hinged</b> <i>Faint impression of a removed hinge over a small area</i>	 <b>Hinge Mark or Remnant</b> <i>Prominent hinged spot with part or all of the hinge remaining</i>	 <b>Part o.g.</b> <i>Approximately half or more of the gum intact</i>	 <b>Small part o.g.</b> <i>Approximately less than half of the gum intact</i>	 <b>No gum</b> <i>Only if issued with gum</i>
Catalogue Symbol:	★ ★	★	★	★	★	(★)
PRE-1890 ISSUES	<i>Pre-1890 stamps in these categories trade at a premium over Scott value</i>			Scott Value for "O.G."		Scott "No Gum" Values thru No. 218
1890-1935 ISSUES	Scott "Never Hinged" Values for Nos. 219-771	Scott Value for "O.G." (Actual value will be affected by the degree of hinging)		<b>Disturbed Original Gum:</b> Gum showing noticeable effects of humidity, climate or hinging over more than half of the gum. The significance of gum disturbance in valuing a stamp in any of the Original Gum categories depends on the degree of disturbance, the rarity and normal gum condition of the issue and other variables affecting quality. For example, stamps issued in tropical climates are expected to have some		
1935 TO DATE	Scott Value for "Unused"					

### Covers

Minor nicks, short edge tears, flap tears and slight reduction at one side are normal conditions for 19th century envelopes. Folded letters should be expected to have at least one file fold. Light cleaning of covers and small mends along the edges are accepted forms of conservation. Unusual covers may have a common stamp with a slight crease or tiny tear. **These flaws exist in virtually all 19th century covers and are not always described. They are not grounds for return.**

### Catalogue Values and Estimates

Unless otherwise noted, the currently available *Scott Catalogue* values are quoted in dollars with a decimal point. Other catalogues are often used for foreign countries or specialized areas and are referred to by their common name: *Stanley Gibbons* (SG), *Dietz*, *American Air Mail Catalogue* (AAMC), *Michel*, *Zumstein*, *Facit*, etc. Estimates are indicated with an "E." and reflect our conservative valuation in dollars. Reserves will never exceed the low end of the estimate range; they will sometimes exceed Scott Catalogue value for stamps in Extremely Fine condition.

Because of certain pricing inconsistencies in the *Scott Catalogue*—for example, blocks that have no gum, the absence of premiums for Mint N.H. items, etc.—we cannot guarantee the accuracy of values quoted for multiples, specialized items and collection lots. We generally try to be conservative, but buyers may not return a lot because of a discrepancy in catalogue value due to Scott pricing inconsistencies.

### Symbols and Abbreviations (see chart above for gum symbols)

田	Block	E	Essay	pmk.	Postmark	No.	Scott Catalogue Number
☒	Cover	P	Proof	cds	Circular Datestamp	hs	Handstamp
FC	Fancy Cancel	TC	Trial Color Proof	var.	Variety	ms.	Manuscript







FIRST SESSION (LOTS 501-635)  
TUESDAY, JUNE 16, 2009, AT 10:30 A.M.

## THE "LAILA" COLLECTION OF HAWAII AND UNITED STATES POSSESSIONS

### HAWAII

#### 1851 2-CENT BLUE

501

**1851, 2c Blue (1) and 13c Blue, "Hawaiian Postage" (3).** 2c Type II (right-hand position in form), 13c Type I (left-hand position in form), used together on piece from upper left corner of a brown envelope with a few letters of address: "Miss. A/. . J/Carle of. . J"; tied by vivid red sponge or "sugar cane" cancel of Honolulu, red "San Francisco Cal. 15 Mar." circular datestamp with "CAL." in upper case letters; the piece has been severed horizontally below stamps and rejoined, the 2c has been extensively restored and repainted, the 13c less so

APART FROM THE UNIQUE COVER, THIS IS THE ONLY RECORDED USAGE OF THE HAWAIIAN 2-CENT MISSIONARY ON A PIECE OF MAIL AND THE ONLY RECORDED 2-CENT WITH THE RED FANCY CANCEL. IT IS ALSO THE ONLY RECORDED 13-CENT "HAWAIIAN POSTAGE" STAMP USED IN COMBINATION WITH ANOTHER MISSIONARY.

Assuming the stamps on this piece represent the entire Hawaiian franking, the only logical rate that 15c could prepay is the triple 5c Hawaiian postage. Another triple-rate Missionary usage is the strip of three 13c "Hawaiian Postage" Missionary on a partially charred cover from the Dawson correspondence (Honolulu Advertiser sale, lot 29).

The stamps on both the piece and the Dawson cover are cancelled by the amorphous red blob that appears on some of the known Missionary stamps. This cancel, unique to the Hawaiian post office, has previously been identified as the Honolulu "Sunburst", but its true nature was unrecognized. Specialists now believe it was made with the cut end of sugar cane or a sponge.

There is an interesting relationship between the Missionary piece offered here and the Dawson cover in the Honolulu Advertiser sale (lot 29). This piece bears the San Francisco datestamp of March 15 — although no year-date is present, it is almost certainly 1852. The charred Dawson cover has part of a faint red San Francisco datestamp at lower left and a clearly struck Honolulu February 20 datestamp, which is an 1852 year-date. The two pieces of mail were probably postmarked in Honolulu on the same day or very close to one another. The Honolulu February 20 date ties in with three 1852 sailing departure dates: the *Maid of Julpha* (cleared Feb. 24, arrived Mar. 22), the *Eagle* (cleared Feb. 25, arrived Mar. 26), and the *Noble* (cleared Feb. 25, arrived Mar. 16) [Gregory]. Apart from these two dated pieces, there are eleven off-cover Missionaries with the sponge or "sugar cane" cancel, all 13c "Hawaiian Postage" stamps (see Honolulu Advertiser catalogue, Appendix I), indicating that its use pre-dated the 13c "H.I. & U.S. Postage" issue of April 1852 and that it was not used on 5c rate covers at all.

The history of this unique piece can be traced back to Henry J. Duveen, whose collection was sold privately through Charles J. Phillips from 1922 to 1926. After the Duveen dispersal the piece found its way into Alfred H. Caspary's collection. Caspary, though careful in his selection of philatelic material, was less fastidious in his curatorship and is reputed to have kept his material in a rather haphazard fashion. Several contemporary accounts confirm that Caspary carelessly placed a beverage glass on the 2c Missionary piece. As the moisture condensed, the thin pelure paper of the Missionaries curled and tore. Caspary, horrified by the consequences, gave the piece back to Warren H. Colson, the dealer from whom he acquired it, and never spoke of the matter again. Colson had the stamps expertly restored and sold the piece to Philipp Kosack. When the Kosack Missionaries were sold, an unidentified English collector purchased the piece, and, after his holding was dispersed, the piece became part of the Admiral Frederic R. Harris collection.

Ex Duveen, Caspary, Kosack, English Collection, Harris and Honolulu Advertiser. Colson mark at lower right. Census No. 1-II-PCE-14 and 3-I-PCE-133. Other census references: Meyer-Harris 14; Brewster 1-II-On Piece-1 and 3-I-On Piece-2. With 1995 P.F. certificate. Scott value for both stamps off cover with minor repairs and the usual black Hawaiian cancel..... 278,000.00



## 1851 5-CENT BLUE



502

- 502 (★) **1851, 5c Blue (2).** Type I (left-hand position in form), unused (no gum), repaired with portions of paper and design added at lower left and along right side, two tears (one interior)

ONE OF TWELVE RECORDED UNUSED EXAMPLES OF THE HAWAIIAN 1851 5-CENT MISSIONARY, OF WHICH ONLY TEN ARE AVAILABLE TO COLLECTORS

A respectable example of this rare Missionary, of which there are 61 recorded copies, including twelve unused (two of which are in the Tapling collection at the British Library).

Ex Burrus, Ostheimer III and Honolulu Advertiser. Census No. 2-I-UNC-18, Brewster 2-I-Unused-1. With 1995 P.F. certificate. Scott value for an unused example with minor repair..... 55,000.00



1851 13-CENT BLUE  
 "HAWAIIAN POSTAGE"



503

503 **1851, 13c Blue, "Hawaiian Postage" (3).** Type I (left-hand position in form), neatly cancelled by 7-bar grid, part of red "Honolulu \* U.S. Postage Paid \*" circular datestamp, full to large margins and free of the serious faults or repairs that affect most Hawaiian Missionaries, two small sealed tears at right

VERY FINE, AN OUTSTANDING QUALITY EXAMPLE OF THE RARE 1851 13-CENT "HAWAIIAN POSTAGE" MISSIONARY STAMP. ONLY THIRTEEN USED EXAMPLES OFF COVER ARE RECORDED IN SOUND CONDITION OR WITH MINOR FAULTS.

Census No. 3-I-CAN-123. Ex Clapp, Harris, Isleham and Lake Shore. With 2001 P.F. certificate..... 37,500.00



1852 13-CENT BLUE  
 "H.I. & U.S. POSTAGE"



504

- 504 (★) **1852, 13c Blue, "H.I. & U.S. Postage" (4).** Type II (right-hand position in form), unused (no gum), small portions of the design and frameline drawn in at top, bottom and left center

VERY FINE APPEARANCE. A RARE UNUSED EXAMPLE OF THE 1852 13-CENT "H.I. & U.S. POSTAGE" MISSIONARY ISSUE.

Census No. 4-II-UNC-147. Ex Lilly and Collector C. With 1994 and 2004 P.F. certificates. Scott Retail is for an example with minor damage that has been skillfully repaired .....

..... 52,500.00



## 1853 KAMEHAMEHA III ISSUE



505



506



507EX

- 505 (★) **1853, 5c Blue, Thick White Wove (5).** Unused (no gum), large margins to clear, tiny flaw at bottom right outside of design, otherwise Fine..... 1,750.00
- 506 ★ **1853, 13c Dark Red, Thick White Wove (6).** Original gum, h.r., large margins to just in at bottom, intense color, natural inclusion at center, small thin spot at top, appears Fine ..... 700.00
- 507 **1853, 13c Dark Red, Thick White Wove (6).** Unused and used, first no gum and margins to just in, second similar margins and face-free red circular datestamp, both flawed, otherwise Fine ..... (Photo Ex) 2,200.00



508

- 508 (★) **1857, 5c on 13c Dark Red (7).** Unused (no gum), Type I with long flag, large margins to just barely touched at top right, brilliant color and impression, thinned at right
- VERY FINE APPEARING EXAMPLE OF THE RARE 5-CENT ON 13-CENT PROVISIONAL MANUSCRIPT SURCHARGE.
- A very presentable copy of this rarity. .... 7,000.00

- 509 **1857, 5c on 13c Dark Red (7).** Type I with short flag, large margins to just touched, face-free strike of circular datestamp at top left, few flaws incl. thinned
- FINE. A SCARCE USED EXAMPLE OF THE 5-CENT ON 13-CENT PROVISIONAL MANUSCRIPT SURCHARGE.
- Cancelled examples of this issue are scarcer and more valuable than unused (or uncanceled) copies. 10,000.00



509





- 510 1857, 5c Blue, Thin White Wove (8). Large margins to clear, bright color, neat strike of San Francisco circular datestamp, tiny corner crease at top right, Very Fine appearance ..... 750.00
- 511 (★) 1857, 5c Blue, Thin White Wove, Thin Bluish Wove (8, 9). First unused (no gum) and margins to just touched, second original gum, large margins to just touched at one spot and with light horizontal crease, Fine appearance and presentable copies of these issues.....(Photo Ex) 1,000.00
- 512 (★) 1857, 5c Blue, Thin White Wove, Thin Bluish Wove (8, 9). Unused (no gum), first with three large margins and in at left, second with large even margins and toned spot at right, tiny flaws, Fine-Very Fine appearance, first with copy of 1990 P.F. certificate for strip of three.....(Photo Ex) 1,000.00
- 513 ★ 1861, 5c Blue, Line Thru "Honolulu" (9a). Position 2, huge margins to full incl. **sheet margin at top**, original gum, bright color, Very Fine and choice example of this distinct variety, with 2007 P.F. certificate..... 750.00
- 514 ★ 1861, 5c Blue, Line Thru "Honolulu" (9a). Position 2, original gum, large margins to clear, bright color, fresh and Very Fine..... 750.00
- 515 (★) 1861, 5c Blue, Line Thru "Honolulu" (9a). Position 2, huge margins to clear incl. **sheet margin at top**, unused (no gum), rich color, tiny thin spot at center, Extremely Fine appearing example of this variety ..... 750.00
- 516 ★★田 1868, 5c Blue, Re-Issue (10, 10a). Top left corner margin block of eight, Position 2 with **line thru "Honolulu"**, large margins other sides, Mint N.H. except narrow band of toning at top and left on gum, bright color, Very Fine and choice, Scott Retail as pair of No. 10 and 10a, two singles and block of four (all as hinged)..... 525.00
- 517 (★) 1868, 13c Dull Rose, Re-Issue (11). Unused (no gum), full margins to clear, radiant color, fresh and Very Fine, red Stolow backstamp, with 2006 P.F. certificate..... 300.00
- 518 (★) 1889, 13c Orange Red, Reprint (11R). Unused (no gum), full margins to clear, vibrant color, fresh and Very Fine, a pretty stamp ..... 300.00



## 1859-65 NUMERAL ISSUE

- 519 (★) **1859, 2c Light Blue, Bluish White (13).** Plate 3-B, Type VIII (Westerberg Position 8), unused (no gum), clear margins to just in

FINE. A SCARCE SOUND UNUSED EXAMPLE OF THE 2-CENT LIGHT BLUE ON BLUISH NUMERAL.

With 2006 P.F. certificate..... 6,250.00



519



- 520 **1859, 2c Light Blue, Bluish White (13).** Plate 3-A, Type II (Westerberg Position 2), clear margins to just in, tied by red "Postage Paid" in oval handstamp on small piece, also with ms. cancel, Fine ..... 5,000.00
- 521 **1859, 2c Light Blue, Bluish White (13).** Plate 3-A, Type IV (Westerberg Position 4), huge margins, cancelled by red "Postage Paid" in oval handstamp, somewhat defective with several holes, otherwise Very Fine, attractive with such wide margins..... 5,000.00
- 522 **1859, 2c Dark Blue, Bluish White (13).** Plate 3-A, Type VI (Westerberg Position 6), large margins to just in, neat strike of red "Postage Paid" handstamp, bit heavily thinned, otherwise Fine ..... 5,000.00
- 523 **1859, 2c Light Blue, Bluish White (13).** Plate 3-A, Type VI (Westerberg Position 6), large margins to clear, bright color nicely complemented by red Honolulu circular date-stamp of December 8, expertly repaired, Very Fine appearance ..... 5,000.00
- 524 **1859, 2c Dark Blue, Grayish White (13a).** Plate 3-B, Type VIII (Westerberg Position 8), margins to just in, cancelled by ms. "X", tiny thins, Fine appearance, with 1995 H.P.S. and 2007 P.F. certificates ..... 5,000.00



525

- 525 ★ **1862, 2c Black, Greenish Blue (14).** Plate 3-Gx, Type IX (Westerberg Position 9), original gum, full and even margins

EXTREMELY FINE. A RARE SOUND ORIGINAL-GUM AND FOUR-MARGIN EXAMPLE OF THE 2-CENT BLACK NUMERAL ON GREENISH BLUE PAPER.

With 2007 P.F. certificate..... 8,000.00

- 526 **1862, 2c Black, Greenish Blue (14).** Plate 3-Gx, Type V (Westerberg Position 5), large margins to just touched, neat strike of Lahaina circular datestamp, small surface scrape at bottom right, otherwise Fine, with 2006 P.F. certificate..... 5,250.00



526



527EX



528EX



529



530

- 527 (★) **1863, 1c Black, Grayish (15).** Five from Plate 4-A, Westerberg Positions 4, 6, 8, 9 and 10, unused (no gum), margins to in, some flaws, otherwise Fine, still a presentable group .... (Photo Ex) 3,250.00
- 528 **1863, 2c Black, Grayish (16).** Seven used copies from several different plates, large margins to in, range of cancels incl. ms., Lahaina, red grid, generally defective, otherwise Fine, valuable group ..... (Photo Ex) 5,000.00
- 529 **1863, 2c Black, "2" at Top (16a).** Plate 3-E, Type IX (Westerberg Position 9), full margins on three sides, in at top, light strike of red Honolulu circular datestamp, faulty, Fine appearing example of this variety ..... 3,750.00
- 530 (★) **1863, 2c Black, Blue Gray (18).** Plate 5-A, Type III (Westerberg Position 3), unused (no gum), margins to full, defective, otherwise Fine example of this scarce numeral ..... 3,500.00





- 531 (★) **1864, 1c Black, 2c Black (19, 20).** Two of first, Plate 6-A, Types VIII and X (Westerberg Positions 8 and 10), last is Plate 5-C, Type VI (Westerberg Position 6), unused (no gum), margins to just in, few flaws, appear Fine .....(Photo Ex) 1,775.00
- 532 (★) **1865, 5c Blue on Blue (21).** Plate 9-A, Type III (Westerberg Position 7), unused (no gum), large even margins, small corner creases at left, Very Fine appearance ..... 850.00
- 533 (★) **1865, 5c Blue on Blue (21).** Five, Plate 9-A, Westerberg Positions 3, 4, 6, 9 and 10, unused (no gum), large margins to just touched on one, faulty, still Fine-Very Fine appearing group .....(Photo Ex) 4,250.00
- 534 **1865, 5c Blue on Blue (21).** Plate 9-A, Type X (Westerberg Position 2), large even margins, rich color, well-struck square grid cancel, few small age spots, vertical crease at right, Very Fine appearance ..... 650.00
- 535 **1865, 5c Blue on Blue (21).** Plate 9-A, Type IV (Westerberg Position 8), large margins to just in, trace of San Francisco cogwheel cancel at top left, Fine ..... 650.00
- 536 **1865, 5c Blue on Blue (21).** Six, Westerberg Positions 1, 3, 5, 6, 9 and 10, large margins to just in, each used, five with square grids, one with target, some flaws, appear Fine .....(Photo Ex) 3,900.00
- 537 (★) **1865, 5c Blue on Blue (22).** Plate 12-A, Type VII (Westerberg Position 3), unused (no gum), large margins to full, rich color, fresh and Very Fine ..... 550.00
- 538 (★) **1865, 5c Blue on Blue (22).** Three, Plate 12-A, Westerberg Positions 1, 2 and 4, unused (no gum), large margins to full, few flaws incl. age spot, thins etc., appear Fine-Very Fine .....(Photo Ex) 1,650.00
- 539 **1865, 5c Blue on Blue (22).** Plate 12-A, Type VI (Westerberg Position 2), full margins to just in at top right, faintly cancelled at bottom and also by blue crayon, Fine ..... 900.00
- 540 **1865, 5c Blue on Blue (22).** Plate 12-A, Type IX (Westerberg Position 1), large margins to full, intense shade, cancelled by bold strike of grid and also by San Francisco double-circle datestamp, thin spots, horizontal crease at bottom, appears Very Fine ..... 900.00
- 541 (★) **1864, 1c Black, Laid (23).** Complete reconstruction of Plate 8-A, unused (no gum), full margins to close, some flaws to be expected, Fine and desirable reconstruction .....Not illustrated 2,750.00
- 542 (★) **1864, 1c, 2c Black, Laid (23, 24).** Five 1c and four 2c, 1c Plate 8-A Positions 1,3,6, 7 and 8, Position 3 original gum, others unused, 2c Plate 7-A Positions 2, 5, 7 and 10, large margins to just in, generally flawed, otherwise Fine group .....Not illustrated 2,575.00





- 543 (★) **1864, 2c Black, "NTER" (24a).** Plate 7-A, Type III (Westerberg Position 3), unused (no gum), full and even margins all around, small thin spot at top left, Very Fine appearing example of this scarce and desirable variety, with 2004 P.F. certificate ..... 3,750.00
- 544 (★) **1864, 2c Black, "S" Omitted (24b).** Plate 7-A, Type IX (Westerberg Position 9), unused (no gum), margins to in, lightly soiled at bottom, otherwise Fine, scarce, the last example we offered was in our Honolulu Advertiser sale in 1995, with 2006 P.F. certificate ..... 1,500.00
- 545 (★) **1865, 1c Dark Blue (25).** Plate 11-A, Type IX (Westerberg Position 1), unused (no gum), full and even margins all around, fresh and Very Fine..... 350.00
- 546 (★) **1865, 1c Dark Blue (25).** Partial plate reconstruction of Plate 11-A, consisting of the five positions of the righthand column plus Positions 3 and 7, unused (no gum), full margins to just in, few flaws to be expected (plating quality), appear Fine .....(Photo Ex) 2,450.00
- 547 (★) **1865, 1c, 2c Dark Blue (25-26).** Two of each, 1c Plate 11-A Positions 4 and 8, 2c Plate 10-A Positions 5 and 6, one 1c original gum, h.r., others unused (no gum), margins to just in, few flaws incl. thin spots, appear Fine .....(Photo Ex) 1,400.00
- 548 (★) **1865, 2c Dark Blue (26).** Plate 10-A, Type VII (Westerberg Position 3), unused (no gum), large even margins, Very Fine..... 350.00
- 549 (★) **1865, 2c Dark Blue (26).** Plate 10-A, Type VIII (Westerberg Position 4), unused (no gum), large even margins, Very Fine, small purple backstamp (mostly removed) shows thru at top left ..... 350.00
- 550 (★) **1865, 2c Dark Blue (26).** Reconstruction containing nine of the ten positions on Plate 10-A, lacking only Position 3 but with Position 10 showing **broken "2"**, unused (no gum), Position 7 ms. mark at top, some others with flaws, overall appear Fine .....(Photo Ex) 3,150.00

#### 1863-69 KAMEHAMEHA IV ISSUE

- 551 ★ **1861, 2c Pale Rose, Horizontally, Vertically Laid (27, 28, 28a).** One of each, last two original gum, first unused (no gum), margins to in, few flaws, appear Fine .....(Photo Ex) 950.00
- 552 **1861, 2c Pale Rose, Horizontally Laid, 2c Carmine Rose, Vertically Laid (27, 28a).** Unused and used of each, No. 28a unused with original gum, couple trivial flaws, appear Fine..... (Photo Ex) 1,300.00



- 553 ★ **1863, 2c Carmine Rose, Horizontally Laid (27a).** Original gum, lightly hinged, brilliant color, large margins to clear incl. part of adjoining stamp at top

VERY FINE ORIGINAL-GUM EXAMPLE OF THE 1863 2-CENT CARMINE ROSE ON HORIZONTALLY LAID PAPER. A GREAT RARITY.

Power Search contains only three unused examples — we have only sold one other since our 1995 Honolulu Advertiser sale. With 2007 P.F. certificate ..... 3,000.00



553

- 554 ★田 **1869, 2c Red, Re-Issue (29).** Complete sheet of fifteen, original gum, some slight creasing and toned spots, otherwise Very Fine, Scott Retail as two blocks of four and singles ..... *Not illustrated* 765.00

### 1864-91 ROYAL PORTRAITS ISSUE



555EX



558EX



559

- 555 P **1864-86, 1c-18c Royal Portraits, Plate Proofs on India (30P3-31P3, 33P3-34P3).** Large margins, bright color, the 1c, 2c and 18c mounted on card, Very Fine and choice group ..... **(Photo Ex)** 860.00
- 556 ★ **1864-91, 1c-18c Royal Portraits (30/52C).** 65 unused stamps, mostly original gum, some faults, some Fine-Very Fine..... *Not illustrated* 2,566.00
- 557 **1864-91, 1c-18c Royal Portraits (30/52C).** Approximately 113 used stamps, most with target cancels, some flaws to be expected, overall Fine-Very Fine .. *Not illustrated* 2,007.50
- 558 ★田 **1864-86, 1c-18c Royal Portraits (31-31, 33a, 34-35).** Blocks of four, original gum except 18c few traces of tropicalized original gum, few flaws incl. one 2c defective at top, otherwise Fine ..... **(Photo Ex)** 932.50
- 559 ★田 **1866, 5c Blue (32).** Block of four, original gum, rich color on bright paper, few toned spots, Fine ..... 800.00



560



560AEX



561

- 560 ★田 1875, 12c Black (36). Block of four, original gum, barely hinged, intense shade and impression, well-balanced margins, Very Fine and choice ..... 350.00
- 560A ★田 1882, 1c-15c Royal Portraits (37-41). Blocks of four, original gum, h.r., top right 2c light diagonal crease, Fine-Very Fine, attractive complete set .....(Photo Ex) 1,230.00
- 561 ★田 1882, 2c Lilac Rose (38). Block of four, top right and bottom left Mint N.H., others h.r., radiant color, few light natural gum bends, Extremely Fine, Scott Retail as singles ..... 800.00



562

- 562 ★ 1882, 5c Ultramarine, Vertical Pair, Imperforate Horizontally (39a). Original gum, h.r., wide margins at top and bottom, bright and fresh, tiny corner crease at top right

EXTREMELY FINE APPEARANCE. PROBABLY ONE OF THE WIDEST-MARGINED PAIRS OF THIS PART-IMPERFORATE ERROR.

With 2004 P.F. certificate ..... 5,000.00





563EX



564



565



566

- 563 ★田 **1883-86, 1c-12c Royal Portraits (42-43, 45-46).** Blocks of four, original gum, h.r., rich colors, fresh and Fine-Very Fine .....(Photo Ex) 662.50
- 564 ★田 **1883, 12c Red Lilac (46).** Block of four, original gum, lightly hinged, rich color on bright paper, Very Fine..... 425.00
- 565 ★田 **1883, \$1.00 Rose Red (49).** Block of four with **selvage at right**, original gum, small h.r. at left where few perf separations sensibly reinforced, with **embossed impression** in selvage, radiant color, small toned spot between bottom stamps, otherwise Very Fine..... 1,400.00
- 566 ★田 **1886, 2c Orange Vermilion, Reproduction (50).** Block of four, original gum, large margins to clear, vibrant color, natural gum wrinkles, bottom right stamp small natural inclusion, Very Fine ..... 800.00



567 and detail



567 **1891, 2c Dull Violet, Horizontal Pair, Imperforate Horizontally (52a var).** Tied by "Honolulu H.I. Dec. 2, 1892" duplex cancels on large piece addressed to Hilo, wide margins and showing part of adjoining stamp at bottom left, clearly evident scoring line at bottom where separated

VERY FINE AND VERY RARE. THIS VARIETY, WHICH IS A HORIZONTAL PAIR IMPERFORATE HORIZONTALLY, IS UNLISTED IN SCOTT.

Scott Retail for the vertical pair imperforate horizontally is \$4,000.00.... E. 2,000-3,000



- 568 ★ 1890, 5c Deep Indigo (52C). Block of four, original gum, top right and bottom left stamps h.r., rich color on bright paper, Very Fine..... 575.00
- 569 ★田 1890, 5c Deep Indigo (52C). Block of four, original gum, deep rich color and proof-like impression on bright paper, wide margins, Fine-Very Fine..... 575.00
- 570 1890, 5c Deep Indigo (52C). Horizontal pair, crisp impression, neat strike of purple Maui double-circle datestamp, Extremely Fine..... 300.00

### 1893 PROVISIONAL GOVERNMENT ISSUE

- 571 ★田 1893, 1c-25c Provisionals, Red Ovpt. (53-61, 62, 64). Blocks of four, generally three in each Mint N.H. except last two h.r., rich colors, trivial imperfections, Fine-Very Fine..*Not illustrated* 876.00
- 572 ★田 1893, 1c-10c Provisionals, Red Ovpt. (53, 54, 55-57, 59, 61). Blocks of four, all except two stamps Mint N.H., Nos. 53 and 59 with selva at side (first with part imprint), also incl. used block of four of No. 71 and used block of nine of No. 54, also block of si of No. 59 with faint double overprint (counted as normal), fresh and Fine-Very Fine group .....*Not illustrated* 998.00
- 573 ★ 1893, 1c-\$1.00 Provisional Ovpts. (53-61, 62-66, 67-73). Original gum, mostly h.r., rich colors, overall fresh and Fine-Very Fine.....*Not illustrated* 803.25
- 574 ★ 1893, 1c-\$1.00 Provisional Ovpts. (53/73). Approximately 36 unused stamps, original gum, few h.r., few small flaws to be expected, overall Fine-Very Fine.....*Not illustrated* 1,247.25
- 575 1893, 1c-\$1.00 Provisional Ovpts. (53/73). 30 used stamps, some duplication incl. two 50c, some flaws, some Fine-Very Fine.....*Not illustrated* 1,082.25
- 576 ★ 1893, Provisional Overprint Varieties. 14 singles and one block of four, incl. Nos. 53b, 54e, 55f, 57a, 57f, 61 with faint double, two 62 with faint double, 65b used, 71f, split overprints incl. two of No. 53 and one of No. 57, generally Fine-Very Fine, a useful lot for the specialist .....*Not illustrated* E. 1,000-1,500
- 577 ★ 1893, 1c-25c Provisional Ovpts., No Period After "GOVT." (54b, 58b, 64b, 65b). Original gum, h.r., rich colors, last with light mount staining, Fine and desirable group.....(Photo Ex) 940.00
- 578 ★ 1893, 1c Blue, Category II Double Ovpt. (54e). Original gum, lightly hinged, deep rich color, second overprint split horizontally, Very Fine and choice, with 2004 P.F. certificate..... 1,500.00
- 579 ★ 1893, 1c Green, Category II Double Ovpt. (55d). Original gum, rich color, second overprint struck at an angle, tiny toned spot at top right, otherwise Fine, with 2004 P.F. certificate 625.00
- 580 ★ 1893, 2c Brown, Red Ovpt., No Period After "Govt." (56b). Original gum, single h.r., rich color on bright paper, Very Fine and choice ..... 300.00



- 581 (★) **1893, 1c Green, Vertical Pair, One Without Ovpt. (55g).** Top left corner selvage, rich colors, unused (no gum), h.r. at top right where few perf separations sensibly reinforced

FINE AND RARE. THIS IS ONE OF THE RAREST OF ALL OF THE HAWAII PROVISIONAL OVERPRINT VARIETIES. THE EXAMPLE OFFERED HERE, WITH THE CORNER SELVAGE IDENTIFYING IT AS THE FIRST POSITION ON THE SHEET, IS A MAGNIFICENT SHOWPIECE.

A review using Power Search shows that the only other we have offered in our computerized records was in our 1995 Honolulu Advertiser sale.

With 2004 P.F. certificate..... 10,000.00



581



582

- 582 ★ **1893, 2c Dull Violet, Red Ovpt., Inverted Ovpt. (57g).** Original gum, h.r., rich color, clear impression of the inverted overprint, fresh and Fine, scarce, with 1982 H.P.S. and 2007 P.F. certificates..... 4,000.00

- 583 ★ **1893, 5c Ultramarine, Category I Double Ovpt. (59d).** Left sheet margin, clearly showing the double overprint and part of overprint at far edge of selvage, original gum, stamp with insignificant stain spot at top right

A VERY FINE AND RARE EXAMPLE OF THE DOUBLE OVERPRINT ON THE 5-CENT ULTRAMARINE RED PROVISIONAL OVERPRINT ISSUE, WITH BOTH OVERPRINTS VERY STRONG.

Another example, probably from the same sheet and showing part imprint at left, is illustrated in Meyer-Harris on page 241.

With 2004 P.F. certificate ..... 6,500.00



583



584

- 584 (★) **1893, 5c Ultramarine, Category II Double Ovpt. (59e).** Unused (no gum), radiant color, second overprint split horizontally, small paper split at top right

FINE APPEARANCE. A VERY RARE EXAMPLE OF THE DOUBLE OVERPRINT ON THE 5-CENT ULTRAMARINE RED PROVISIONAL OVERPRINT ISSUE, WITH ONE OF THE OVERPRINTS OF MODERATE STRENGTH.

With 2007 P.F. certificate ..... 4,000.00

- 585 **1893, 5c Ultramarine, Category II Double Ovpt. (59e).**

Bright shade, second overprint is partial and struck off partly at left (this is probably from the rightmost vertical row in the sheet), neat strike of duplex cancel, small tear at left and pulled perf

VERY FINE APPEARANCE. A RARE USED EXAMPLE OF THE DOUBLE OVERPRINT ON THE 5-CENT ULTRAMARINE RED PROVISIONAL OVERPRINT ISSUE, WITH ONE OF THE OVERPRINTS OF MODERATE STRENGTH.

Very few are known in used condition. .... 4,000.00



585



586



587

- 586 ★ **1893, 6c Green, Category II Double Ovpt. (60e).** With wide selvage at left, stamp Mint N.H., lightly hinged in selvage, second overprint split horizontally, bright color, fresh and Very Fine, Scott Catalogue only lists one category of double overprint for this issue, with 2007 P.F. certificate, Scott Retail as hinged ..... 1,000.00

- 587 ★ **1893, 6c Green, Category II Double Ovpt. (60e).** Original gum, h.r., rich color, second overprint shifted to bottom and is only partial (this may be from the top row of the sheet), Fine, Scott Catalogue lists only one category of double overprint for this issue..... 1,000.00





588

- 588 ★ **1893, 10c Red Brown, Red Overprint Error (61B).** Position 37, original gum, h.r., bright shade, completely sound

FINE. AN EXTREMELY RARE SOUND ORIGINAL-GUM EXAMPLE OF THE 1893 10-CENT RED OVERPRINT ERROR. ONLY ONE SHEET OF FIFTY WAS ISSUED.

Most of the original sheet of fifty was bought by dealer J. H. Makins in 1901, probably on behalf of Henry J. Crocker. The San Francisco earthquake is said to have destroyed eight of the fifty.

With 1975 and 2004 P.F. certificates..... 14,000.00



589

- 589 (★) **1893, 12c Black, Category I Double Ovpt. (62d).**

Traces of original gum, choice centering, well-balanced margins, second overprint split horizontally, Extremely Fine, a beautiful example of this variety, with 2007 P.F. certificate..... 2,000.00

- 590 ★ **1893, 12c Black, Category I Double Ovpt. (62d).** Large part original gum, detailed impression, second overprint split horizontally, small thin spot at bottom, Very Fine appearance, with 2007 P.F. certificate.. 2,000.00



590



- 591 ☒ **1893, 12c Black, Red Ovpt., 10c Red Brown, Black Ovpt. (62, 68).** Each tied by neat "Honolulu H.I. May 23, 1893" duplex cancel on **First Day** covers, both addressed to H. S. Crocker & Co. in San Francisco, each with San Francisco May 31 receiving back-stamp, fresh and Very Fine ..... E. 750-1,000
- 592 ★田 **1893, 12c Red Lilac, Red Ovpt. (63).** Block of four, original gum, h.r. at top, bottom right stamp Mint N.H., bright shade, Fine-Very Fine ..... 1,185.00
- 593 ★ **1893, 25c Dark Violet, Red Ovpt., No Period After "Govt." (64b).** In pair with normal, left stamp the variety, original gum, rich color, fresh and Fine ..... 357.00
- 594 ★田 **1893, 25c Dark Violet, Red Ovpt., No Period After "Govt." (64b).** Bottom left stamp in block of four with three normal, slightly disturbed original gum with few adherences, bottom right stamp short perfs, otherwise Fine ..... 421.00
- 595 ★田 **1893, 2c-18c Provisionals, Black Ovpt. (65-66, 67-68, 70-71).** Blocks of four, 2c-15c one or two in each Mint N.H., 18c traces of original gum, few trivial imperfections, Fine-Very Fine ..... (Photo Ex) 836.00



- 596 ★ **1893, 2c Rose, Category II Double Ovpt. (66e).** Original gum, h.r., brilliant color, clear second overprint, three wide margins

VERY FINE ORIGINAL-GUM EXAMPLE OF THE 2-CENT ROSE WITH DOUBLE OVERPRINT. VERY FEW ARE KNOWN.

With 2006 P.F. certificate. The last example we offered was in the Drucker sale in 2003.. 2,750.00



596



597

- 597 ★ **1893, 2c Rose, Category II Double Ovpt. (66e).** Original gum, brilliant color, clear second overprint, some staining around perforation

FINE APPEARING ORIGINAL-GUM EXAMPLE OF THE 2-CENT ROSE WITH DOUBLE OVERPRINT. VERY FEW ARE KNOWN.

Ex Karash. With 1975 P.F. certificate. The last example we offered was in the Drucker sale in 2003 ..... 2,750.00



598



599

- 598 ★ **1893, 2c Rose, Category III Double Ovpt. (66f).** Original gum, fresh color, easily discernible second overprint, Very Fine..... 300.00
- 599 ★田 **1893, 2c Rose, Black Ovpt., Split (66 var).** Block of four original gum, h.r., overprint split horizontally on all four stamps, light corner crease at top left, Very Fine, unlisted in Scott, bottom left stamp small backstamp ..... E. 300-400



600

- 600 ★ **1893, 6c Green, Black Overprint Error (66C).** Original gum, h.r., bright shade, accompanied by selva which is affixed to paper embossed with Postmaster General's seal and with ms. "Genuine Jos. M. Oat. P.M. Gen'l"

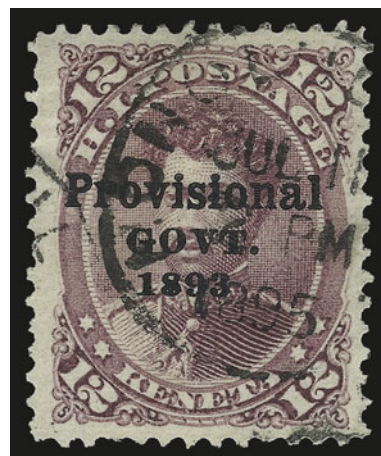
FINE. AN EXTREMELY RARE ORIGINAL-GUM EXAMPLE OF THE RARE 1893 6-CENT BLACK OVERPRINT ERROR.

Only one sheet of 50 was printed. Four copies are used, and some were lost in the San Francisco earthquake.

With 1999 A.P.S. certificate..... 14,000.00



601



602

- 601 (★) **1893, 10c Vermilion, Category III Double Ovpt. (67f).** Unused (no gum), radiant color, fresh and Very Fine, scarce, this is only known with a weak second overprint and this is the first we have ever offered since keeping computerized records (which includes Honolulu Advertiser, Aall, Drucker, Twigg-Smith and many others), with 1979 H.P.S. and 2007 P.F. certificates, we suspect this is very undercatalogued in Scott..... 1,250.00

- 602 **1893, 12c Red Lilac, Black Ovpt. (69).** Canceled by "Honolulu H.I. Jul. 11, 1895" circular datestamp, rich color, couple partly nibbed perfs, otherwise Fine, scarce used..... 500.00





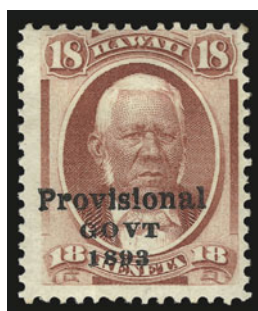
603

- 603 ★田 1893, 15c Red Brown, Black Ovpt. (70). Block of fifteen with selvage on three sides, bottom two rows and two at top Mint N.H., rich color on crisp paper, Fine-Very Fine, Scott Retail as singles ..... 667.50

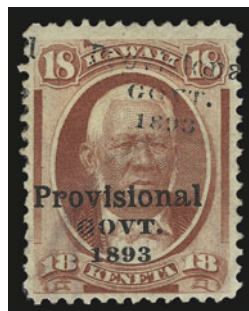


604

- 604 ★ 1893, 15c Red Brown, Category II Double Ovpt. (70e). Original gum, with captured imprint at bottom, defective and repaired at top right (no it's not used), otherwise Fine, scarce, Scott Catalogue only lists this double overprint as Category II..... 2,000.00



605



606



607

- 605 ★ 1893, 18c Dull Rose, Black Ovpt., No Period After "Govt." (71b). Slightly disturbed original gum, h.r., bright color, fresh and Fine ..... 300.00
- 606 1893, 18c Dull Rose, Category III Double Ovpt. (71f). Faint second overprint at top, light strike of target cancel, still with traces of original gum, Fine, scarce in used condition, listed but unpriced in Scott..... E. 200-300
- 607 ★★田 1893, 50c Red, Black Ovpt. (72). Mint N.H. block of four with selvage at left, vibrant color as fresh as the day it was printed, choice centering throughout, Extremely Fine, pencil notation in selvage on back, Scott Retail as singles ..... 700.00





608



609



610



611



612



613



619



614



618EX



620



621



623EX



622



627EX



628EX



- 608 ★田 **1893, 50c Red, Black Ovpt. (72).** Block of four, bottom right stamp Mint N.H., radiant color, fresh and Fine, Scott Retail as singles..... 400.00
- 609 ★ **1893, 50c Red, Black Ovpt., No Period After “Govt.” (72b).** In pair with normal, left stamp the variety, original gum, h.r., radiant color, Fine..... 475.00
- 610 ★ **1893, 50c Red, Black Ovpt., No Period After “Govt.” (72b).** Original gum, h.r., brilliant color on crisp paper, Very Fine and choice..... 400.00
- 611 ★ **1893, 50c Red, Category III Double Black Ovpt. (72f).** Original gum, h.r., vivid color, faint but clear second overprint at center, fresh and Fine, this is only known with a faint second overprint and not with anything more pronounced, with 2004 P.F. certificate ..... 1,000.00
- 612 ★★ **1893, \$1.00 Rose Red, Black Ovpt. (73).** Mint N.H., brilliant color, well-balanced margins, Very Fine and choice ..... 300.00
- 613 ★田 **1893, \$1.00 Rose Red, Black Ovpt. (73).** Block of four with **selvage at right**, bottom stamps Mint N.H., intense shade and impression, well-balanced margins, Very Fine-Extremely Fine, a gorgeous block, Scott Retail as singles ..... 870.00
- 614 ★ **1893, \$1.00 Rose Red, Black Ovpt., No Period After “Govt.” (73b).** In pair with normal, left stamp the variety, original gum, rich color, Very Fine ..... 585.00

## 1899 FINAL ISSUE

- 615 ★田 **1894-99, 1c-25c Final Issue (74-82).** 20 blocks of four or six, incl. one set used (less 10c), few dupes, most of the unused are Mint N.H., Fine-Very Fine group.....*Not illustrated* 1,303.50
- 616 ★★田 **1894, 12c Blue (78).** Mint N.H. sheet of 40 with selvage and imprints at left, right and bottom, rich color, few weak perfs, Very Fine, Scott Retail as Mint N.H. singles .....*Not illustrated* 1,600.00

## OFFICIALS

- 617 **1896, 2c-25c Officials (O1-O6).** 15 singles and used block of six of 2c with Foreign Office cancel, others incl. complete used and unused sets, overall Fine-Very Fine .....*Not illustrated* 575.00

## REVENUES

- 618 ★★田 **1877, 25c Green, 20c on 25c Green (R1, R7).** Mint N.H. blocks of four, large margins, rich colors, coupe slight gum imperfections on latter of little consequence, Very Fine, Scott Retail as singles.....**(Photo Ex)** 440.00
- 619 ★ **1894, 20c Red, Imperforate (R9a).** Slightly glazed original gum, large to huge margins incl. **sheet margin at top**, rich color, Extremely Fine..... 450.00
- 620 **1894, 25c Violet Brown (R10).** Vertical pair, rich color, purple “Cancelled” handstamp, Very Fine and choice, Scott Retail as singles..... 1,700.00
- 621 ★★田 **1901, \$50.00 Slate Blue & Carmine (R12).** Mint N.H. block of four with bottom selvage, captured imprint, rich color, wide margins, few natural gum skips, Very Fine and choice, Scott Retail as singles ..... 520.00
- 622 ★★田 **1901, \$50.00 Slate Blue & Carmine (R12).** Mint N.H. block of four with selvage at top and part imprint, fresh and Very Fine, Scott Retail as singles ..... 520.00
- 623 ★★田 **1910-13, 50c-\$10.00 Revenues (R13-R16).** Mint N.H. blocks of four, rich colors, fresh and Very Fine, Scott Retail as Mint N.H. singles .....**(Photo Ex)** 1,134.00
- 624 ★ **1877-1901, 20c-\$10.00 Revenues (R1-R3, R7-R9, R11-R16).** Mostly original gum but few unused (no gum), rich colors, overall Fine-Very Fine group .....*Not illustrated* 619.00
- 625 **Hawaii, Used Revenues.** 15 singles and two blocks of four, incl. Nos. R2, R3, R3a, R4-R9, R11, R12, R14-R16, two of No. R6, blocks of Nos. R4 and R7, range of cancels, some flaws to be expected, many Fine-Very Fine .....*Not illustrated* 1,228.25
- 626 **Hawaii Revenues.** Ten singles and four blocks of four, blocks of Nos. R1 (2), R7, and R11, some Mint N.H., mostly Fine-Very Fine.....*Not illustrated* 772.50
- 627 **5c-\$1.00 Kahului Railroad Co. (151-159).** Complete set of eight, 6c and 18c unused (no gum), others cancelled mostly by usual blue crayon, few flaws, appear Fine .....**(Photo Ex)** E. 200-300
- 628 **5c-\$1.00 Kahului Railroad Co. (151-159).** 18 singles and two blocks of four (6c and 18c, both unused no gum), incl. six 5c, four 6c, two each of 50c and \$1.00, mostly used, some faults, some appear Fine, desirable group.....**(Photo Ex)** E. 400-500

## HAWAII GROUP LOTS

- 629 P **Hawaii, Plate Proofs on India.** Five, incl. Nos. 31P3, 32TC3, 37P3, 40P3 and 82P3, large margins, few flaws as often seen on this fragile paper, Very Fine appearance.. 1,050.00
- 630 **Hawaii Balance.** 15 mostly used stamps, incl. Nos. 8-10, seven Numerals, Nos. 28, 28a, 50 and 51 with favor cancels, mixed condition, some Fine ..... E. 1,500-2,000
- 631 ★ **Hawaii Balance, 1869-91 (29-52C).** Complete, original gum, h.r., few flaws to be expected, overall Fine-Very Fine group ..... 2,055.75
- 632 **Hawaii Cancellations.** Over 50 items of the Bank Note and Pictorials issues, range of cancels with varying clarity of strikes, range of cancels, some Fine-Very Fine .... E. 200-300
- 633 **Hawaii Postal Stationery.** 23 cut squares and one entire, incl. Nos. U6-U9 and U14 (duplication), few used, few flaws, most Fine-Very Fine ..... 1,497.75
- 634 S **Hawaii Reprints and Specimens.** Ten items, incl. Nos. 10S, 11S (both types), 10RS, 11RS, 29S, 50S and 51S, also incl. normal Nos. 10 and 11, margins to in, few small flaws, most Fine-Very Fine ..... 1,060.00
- 635 S **Hawaii Reprints and Specimens.** 12 items, incl. blocks of four of Nos. 10 and 11S, also incl. Nos. 10a, 11, 10S (4), 10RS, overall Fine-Very Fine ..... 950.00

## END OF FIRST SESSION



SECOND SESSION (LOTS 636-878)  
TUESDAY, JUNE 16, 2009, AT 1:30 P.M.

## CANAL ZONE



636EX



637EX



638

- 636 ★ **1904, 2c-10c First Issue (1-3).** First two tropicalized original gum, last unused (no gum), bright colors, Fine-Very Fine, last with purple backstamp.....(Photo Ex) 1,300.00
- 637 **1904, 2c-5c First Issue (1-2).** Each with neat purple cancel, few minor toned spots, Fine-Very Fine .....(Photo Ex) 625.00
- 638 ★ **1904, 2c Rose, “Panama” Reading Down and Up (1d).** Positions 99-100, right stamp the variety, original gum, h.r., natural s.e. at bottom and selvage at right, Very Fine and choice, only 52 stamps with the “Panama” reading up and down were printed, of these two also had “Canal Zone” inverted, with 1993 P.F. certificate, Scott Retail as singles..... 1,350.00



639

- 639 **1904, 2c Rose, “Panama” Reading Down and Up, “Canal Zone” Inverted (1e).** Position 1, neat strike of “Culebra, Canal Zone, Jun. 25, 1904” circular datestamp, rich color FINE. THE UNIQUE USED EXAMPLE OF CANAL ZONE NUMBER ONE WITH “CANAL ZONE” INVERTED AND “PANAMA” READING DOWN AND UP. ONE OF THE GREAT RARITIES OF CANAL ZONE PHILATELY.

One pane of 100 was printed with “Canal Zone” inverted. There were two positions on the pane with “Panama” reading down and up: Positions 1 and 100. Position 100 is unused, and is offered in the previous lot. The example offered here was also used on the first day of use of the cancel at Culebra.

Ex Drucker. With 2003 P.F. certificate. .... 7,000.00

- 640 ★ **1904, 2c Rose, Vertical Pair, “Panama” Reading Up on Top 2c, Down on Other (1f).** Top stamp h.r., fresh and bright color

VERY FINE AND CHOICE. A RARE VERTICAL PAIR WITH “PANAMA” READING UP ON TOP STAMP AND DOWN ON BOTTOM STAMP.

The “Panama” overprints were applied using the “work-and-turn” method. One half of the pane received the overprint and was then turned to overprint the second half. Only 260 pairs were printed. Of these, only eighteen are recorded, including two in vertical strips of three on cover.

Ex Plass and Drucker. Signed J.C. Perry. With 1993 and 2003 P.F. certificates. .... 2,100.00



640



641

- 641 ★田 1904, 5c Blue, "Canal Zone" Inverted (2a). Right selva block of four, tropicalized original gum, rich colors

VERY FINE AND CHOICE. AN EXCEEDINGLY RARE BLOCK OF FOUR OF THE 5-CENT BLUE "CANAL ZONE" INVERTED. A WONDERFUL SHOWPIECE.

One pane of 100 was printed. Multiples are extremely rare.

From our 1976 Rarities sale. HFC backstamp. With 2003 P.F. certificate. Scott Retail as singles..... 3,100.00



642

- 642 ★ 1904, 5c Blue, "Canal Zone" Double (2b). Horizontal strip of three, center stamp the error, tropicalized original gum, h.r., right stamp rejoined, left and center stamps with vertical creases at left

FINE APPEARANCE. A RARE EXAMPLE OF THIS "CANAL ZONE" DOUBLE VARIETY — ONLY ELEVEN COPIES HAVE BEEN RECORDED.

We are aware of only one other multiple, offered in our Sale 872. With 2003 P.F. certificate ..... 2,850.00





643

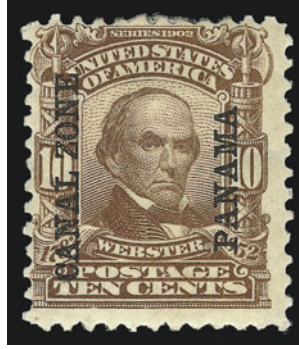
643 1904, 10c Yellow, "Canal Zone" Double (3b). Clear second overprint, lightly cancelled at bottom left by purple handstamp, bright colors

VERY FINE AND CHOICE. THIS IS THE FINER OF THE TWO RECORDED EXAMPLES OF THIS RARITY. AN IMPORTANT CANAL ZONE RARITY.

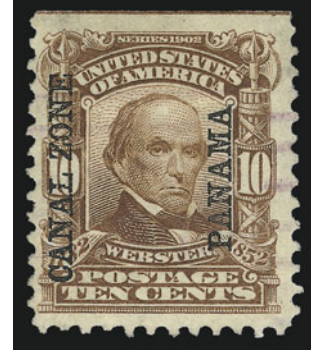
The other example, ex Plass and Drucker, has a small thin spot and light corner crease. Illustrated in *Canal Zone Stamps* on p. 19. With 1995 P.F. certificate ..... 15,000.00



644



645EX



646EX

644 ★ **1904, 10c Yellow, “Canal Zone” Inverted (3a).** Single h.r., radiant color, fresh and Very Fine ..... 775.00

645 ★ **1905, 5c-10c Overprints (6-8).** Two of first, .r., 8c natural gum bend, Fine-Very Fine.....  
.....(Photo Ex) 555.00

646 **1904, 8c-10c Overprints (7-8).** Two of each, all have very light cancels, one 10c natural  
s.e. at top, few small flaws, appear Fine.....(Photo Ex) 350.00

647 **1904, 1c Green, Inverted Ovpt. (9c).** Rich color,  
neat cancel  
FRESH AND FINE. ONLY SIX EXAMPLES OF THIS  
RARITY ARE RECORDED.

The authors of *Canal Zone Stamps* record only six  
copies. They state that one is possibly unused (it  
may have a light cancel) and all others are  
confirmed as used.

With 2006 P.F. certificate ..... 4,000.00



647



648

648 ★ **1904, 1c Green, Double Ovpt. (9d).** Original  
gum, clear doubling of the overprint, pretty  
color, well-proportioned margins

VERY FINE AND CHOICE. ONE OF THE FINEST  
EXAMPLES OF THE ONE-CENT 1904 MAP ISSUE  
WITH DOUBLE OVERPRINT.

According to *Canal Zone Stamps*, ten unused and  
eight used copies are recorded. Most of the  
unused copies have defects, including marks on  
the face, creases or other serious defects. The  
example offered here is in far better condition  
than most.

With 2006 P.F. certificate ..... 2,750.00



- 649 ★ **1904, 2c Rose, Inverted Ovpt. (10a).** Barely hinged, radiant color, fresh and Fine, an estimated 240 were issued ..... 225.00



649

- 650 ★田 **1904, 10c Rose, “L” of “Canal” Sideways (10b).** Single error in block of six, right center stamp the variety which is Position 68 on the sheet, h.r., radiant color

VERY FINE AND CHOICE. A RARE EXAMPLE OF THE “CANAL ZONE” OVERPRINT WITH THE “L” OF “CANAL” SIDeways. ONE OF THE MOST UNUSUAL OF ALL CANAL ZONE ERRORS.

According to *Canal Zone Stamps*, this is the only example of a Canal Zone overprint where a letter is turned sideways. The authorities noticed the error, and went to the trouble of removing and destroying the one stamp from each pane. 920 were destroyed — 17 unused and four used are recorded.

With 2003 P.F. certificate. As an indication of rarity, this is the first we have offered since keeping computerized records..... 2,500.00



650



651EX



652EX

- 651 ★ **1905, 2c Rose, “Zone” in Antique Type (11a).** Two: one single, other in pair with normal, latter tropicalized original gum, Fine-Very Fine, the single with 1999 P.F. certificate ..... (Photo Ex) 407.50
- 652 ★田 **1904, 5c Blue, “Canal” in Antique Type, “Zone” in Antique Type (12a, 12b).** Two blocks of four, first with single of No. 12a with three normal, second with single of No. 12b with three normal, latter with barely tropicalized original gum, rich colors, Fine-Very Fine..... (Photo Ex) 198.00
- 653 ★ **1904, 5c Blue, “Canal Zone” Double (12c).** Tropicalized original gum, rich color, clear second overprint, Fine, only 200 were printed..... 800.00



653



654

- 654 ★ **1904, 5c Blue, “Panama” Double (12d).** Single error in horizontal strip of three, center stamp the variety, slightly tropicalized original gum, rich colors, Very Fine and choice, a rare variety, it is believed that 120 were printed, of these only 20 are recorded (nine unused and eleven used) — as the red bar at top indicates, this variety was created when the pane was fed too deeply into the press when the second half of the pane received the overprint, causing one vertical row to receive the two overprints ..... 1,050.00

- 655 **1904, 5c Blue, “Panama” Inverted, Bar at Bottom (12e).** Choice centering, neat strike of duplex cancel, small corner crease at top left, Very Fine appearance, scarce, only twelve copies are recorded and all are used, with 2001 P.F. certificate ..... 2,000.00



655



656



657



658

- 656 ★田 **1904, 10c Yellow, “Panama” 16mm Long (13 var).** Block of four, bottom right stamp the variety, tropicalized original gum, some blue interleaving adheres, top left stamp toned spot at top, otherwise Fine, only 400 were printed ..... 167.50
- 657 ★ **1904, 10c Yellow, Right “Panama” 5mm Below Bar (13 var).** In right selvage pair with normal, right stamp the variety, h.r., radiant color, fresh and Fine, only 398 were printed ..... 150.00
- 658 ★田 **1904, 10c Yellow, “Canal” in Antique Type (13a).** In block of four with three normal, bottom right stamp the variety, slightly tropicalized original gum, h.r. at top center where few perf separations sensibly reinforced, Very Fine, attractive multiple, only 200 were printed ..... 267.50





659



660



661



662



663

- 659 ★田 1904, 10c Yellow, "Zone" in Antique Type (13b). Block of four with three normal, bottom right stamp the variety, tropicalized original gum, vibrant color, choice centering, Very Fine, only 400 were printed ..... 242.50
- 660 ★ 1904, 10c Yellow, "Panama" Ovpt. Double (13c). Tropicalized original gum, clear doubling on both "PANAMA"s, fresh and Fine, only 80 were printed, with 1999 P.F. certificate ..... 650.00
- 661 ★田 1904, 8c on 50c Bister Brown, "Zone" in Antique Type (14a). Block of four with three normal, bottom left stamp the variety, h.r., rich colors, Fine, scarce, only 25 were printed, with 1999 P.F. certificate ..... 1,247.50
- 662 ★ 1904, 8c on 50c Bister Brown, "Canal Zone" Inverted (14b). Small h.r., crisp impression, fresh and Fine, scarce, according to *Canal Zone Stamps*, the two error panes of 100 were sold in 1908 by their original owner who claimed to have purchased them at the Administration Building in Ancon ..... 450.00
- 663 ★田 1904, 8c on 50c Bister Brown, "Canal Zone" Inverted (14b). Block of four, lightly hinged, deep rich color, Very Fine and choice, a scarce and desirable multiple, according to *Canal Zone Stamps* the two error panes of 100 were sold in 1908 by their original owner who claimed to have purchased them at the Administration Building in Ancon, with 1969 A.P.S. and 2003 P.F. certificates ..... 1,800.00



664

- 664 ★田 1904, 8c on 50c Bister Brown, "Panama" Ovpt. in Rose Brown, "Canal" in Antique Type (14d). Right selvage block of eighteen, Positions 15-20/25-30/35-40, Position 26 the variety, unused (no gum), bright colors, blue crayon "X" at right in selvage, top left stamp with hinge rejoined separations at right

VERY FINE. ONLY AN ESTIMATED TEN COPIES WERE PRINTED, OF WHICH ONLY FOUR ARE RECORDED. A GREAT RARITY.

With 2006 P.F. certificate ..... 2,860.00

- 665 ★田 1904. 8c on 50c Bister Brown, "Panama" Ovpt. in Rose Brown, "Zone" in Antique Type (14e). Top right stamp in block of four, Positions 47-48/57-58, slightly tropicalized original gum, "Panama" shifted significantly to right, deep rich colors

VERY FINE AND CHOICE. AN EXCEEDINGLY RARE BLOCK OF THE ROSE BROWN OVERPRINT CONTAINING ONE STAMP WITH "ZONE" IN ANTIQUE TYPE.

According to *Canal Zone Stamps*, only an estimated ten copies of this variety were issued. Of these, perhaps five are known, including one in a pair with normal (ex Plass), one in right margin block of six with imprint (illustrated in *Canal Zone Stamps*) and one in block of four with small fault in bottom margin (ex Tows).

Ex Drucker. Small green backstamps. With 1969 A.P.S. and 2003 P.F. certificates ..... 2,120.00



665



666

- 666 (★) 1904, 8c on 50c Bister Brown, "Panama" Ovpt. in Rose Brown, "8cts" Double (14f). Unused (no gum), clear doubling of the surcharge, crisp impression, fresh and Fine, scarce, according to *Canal Zone Stamps* only 30 were printed (25 from the lower right quadrant of one pane and five from the top row or a quadrant of another), with 2006 P.F. certificate, Scott Retail as with gum..... 1,100.00





667

- 667 ★田 1904, 8c on 50c Bister Brown, "Panama" Ovpt. in Rose Brown, "8" Omitted (14g). Left margin block of four, top left stamp (Position 1) the error, "Panama" overprints shifted to left so that "Panama" reads up and down close to one another and is completely missing at left side of right stamps, small h.r.

FINE AND RARE. THIS IS THE LISTING EXAMPLE OF THE "8" OMITTED ERROR. A TOTAL OF SIX WERE PRINTED.

According to *Canal Zone Stamps*, all other examples of this variety were caused by shifted overprints where "cts" is split horizontally on the stamp. To our knowledge, this is the only example with the "8" missing due to either the "8" falling out of the typeset form or from foreign matter blocking the impression.

Ex Plass and Drucker. Illustrated in *Canal Zone Stamps* on p. 53. With 1967 and 2003 P.F. certificates. Scott Retail as error and three normal stamps with no premium for shifted overprint variety. .... 4,250.00



668



669

- 668 ★田 1904, 8c on 50c Bister Brown, "Canal Zone" Omitted (14 var). Right selva block of eight, tropicalized original gum, bright shade, "Panama" shifted significantly to the right, Very Fine, Scott Catalogue notes that this is considered printer's waste and was not regularly issued ..... E. 400-500
- 669 ★ 1904, 8c on 50c Bister Brown (15). Slightly tropicalized original gum, bright colors, fresh and Fine, only 435 were issued, with 1970 A.P.S. certificate ..... 2,600.00
- 670 ★ 1904, 8c on 50c Bister Brown, "Panama" 15mm Long (15 var). Bright colors, lightly hinged, wide margins, Very Fine and choice example of the elongated "Panama" variety, only 50 were printed, with 1971 A.P.S. certificate ..... 2,750.00



670



671

- 671 ★ **1904, 8c on 50c Bister Brown, “P NAMA” at Right (15 var).** Position 83, tropicalized original gum, rich color, choice centering

VERY FINE AND CHOICE. A RARE EXAMPLE OF THE “P NAMA” PRINTING ERROR.

According to *Canal Zone Stamps* the error was likely caused by the “A” dropping below the type surface in the form. It is not constant to any specific position.

Ex Plass as a block of four. With 1969 A.P.S. and 2002 P.F. certificates ..... 5,000.00



672

- 672 ★ **1904, 8c on 50c Bister Brown, “Panama” Reading Down and Up (15a).** Position 51 with part imprint at left, left stamp with faint first “A” of “Panama”, barely tropicalized original gum, deep rich colors, almost perfectly centered

EXTREMELY FINE. A RARE EXAMPLE OF CANAL ZONE NO. 15 WITH “PANAMA” READING DOWN AND UP.

According to *Canal Zone Stamps*, this variety comes from Positions 1 and 51. Either eight or ten were printed. Eight are known.

Ex Plass and Drucker. Illustrated in *Canal Zone Stamps* on p. 55. With 1967 and 2003 P.F. certificates ..... 7,500.00





673



674



675



676EX



677

- 673 ★田 1905, 8c on 50c Bister Brown, "Panama" Reading Down and Up (18b). Top left stamp in block of four with three normal, tropicalized original gum, small h.r., bright color, fresh and Very Fine, only 350 were printed, with 1999 P.F. certificate..... 340.00
- 674 ★田 1906, 8c on 50c Bister Brown, Both "Panama" Reading Up, 15mm "Panama" (19 var). Block of four, tropicalized original gum, each stamp shows the variety, fresh and Very Fine, Scott Retail as singles ..... 340.00
- 675 ★ 1906, 8c on 50c Bister Brown, "Canal" in Antique Type, "Zone" in Antique Type, "Panama" Reading Down and Up (19a, 19b, 19d). Single of each, tropicalized original gum and small tear, otherwise Fine, first two with 1999 P.F. certificates..... 530.00
- 676 ★ 1906, 8c on 50c Bister Brown, "Canal" in Antique Type, "Zone" in Antique Type (20a, 20b). Tropicalized original gum, rich colors, fresh and Very Fine, each with 1999 P.F. certificates .....(Photo Ex) 400.00
- 677 ★ 1906, 8c on 50c Bister Brown, "Panama" Reading Up and Down, "8 cts" Omitted (20c). Barely hinged, sharp proof-like impression, almost perfectly centered, Extremely Fine Gem, only 50 were printed with the surcharge omitted, ex Schay and Drucker, with 2003 P.F. certificate ..... 800.00



678



679



680

- 678 ★ **1907, 1c Green & Black, Ovpt. Reading Down, Horizontal Pair, Imperforate Between (22a).** H.r., deep rich colors, right stamp tiny thin spot, Very Fine appearance, it is believed only 50 were printed, with 1999 P.F. certificate ..... 1,300.00
- 679 ★ **1907, 1c Green & Black, Ovpt. Reading Down, Horizontal Pair, Imperforate Between (22a).** Slightly tropicalized original gum, h.r., rich colors, Fine, scarce, only 50 were issued ..... 1,300.00
- 680 (★) **1907, 1c Green & Black, Ovpt. Reading Down, Double Ovpt. (22e).** Unused (no gum), deep rich colors, clear doubling of overprint, Very Fine, only 300 were printed, Scott Retail as with gum..... 275.00



681

- 681 ★ **1907, 1c Green & Black, Ovpt. Reading Down, Inverted Center, Ovpt. Reading Up (22g).** Lightly hinged, deep rich colors, wide and balanced margins  
EXTREMELY FINE. A SUPERB EXAMPLE OF THE 1907 ONE-CENT BALBOA WITH INVERTED CENTER AND OVERPRINT READING UP. ONLY 22 COPIES ARE KNOWN UNUSED.  
According to *Canal Zone Stamps*, one pane of 100 was printed. It was sold in March 1909 to the Panama Railroad Co. and all but 22 copies were used before the error was discovered. Only about thirteen used copies were recovered after the error was noticed.  
With 1969 A.P.S. and 1999 P.F. certificates. .... 5,000.00





682

- 682 ★ **1906, 2c Red & Black, Ovpt. Reading Down,, Horizontal Pair, Imperforate Between (23a).** Horizontal strip of four, middle pair the error, barest trace of what may (or may not) be hinging), deep rich colors, Very Fine and choice, according to *Canal Zone Stamps*, two panes of 100 were discovered with the center vertical row of perforations omitted, of the 20 pairs printed of this variety there are two known blocks of four, leaving only 16 pairs ..... 2,000.00



683

- 683 ★ **1906, 2c Red & Black, Ovpt. Reading Down, Vertical Pair, One Without Ovpt. (23b).** Top stamp missing overprint, slightly tropicalized original gum, h.r., few sensibly reinforced perf separations, intense colors, Very Fine and choice, only ten pairs were printed, the error was caused when the top row of the sheet missed receiving the overprint, with 1969 A.P.S. and 2003 P.F. certificates ..... 2,500.00



684



685

- 684 ★ **1906, 2c Red & Black, Ovpt. Reading Down, Double Ovpt. (23c).** Barely tropicalized original gum, brilliant colors, clear doubling of the overprint, well-balanced margins, Very Fine and choice, only 100 were printed ..... 700.00
- 685 ★ **1906, 2c Red & Black, Ovpt. Reading Down, Double Ovpt, One Diagonal (23d).** Tropicalized original gum, intense colors, light gum soaks, otherwise Very Fine, scarce, only part of one pane is known to have been printed with this variety, ex Drucker, with 2003 P.F. certificate ..... 800.00



686

- 686 ★ 1906, 2c Red & Black, Ovpt. Reading Down, “Canal” Double (231). In pair with normal, tropicalized original gum, intense color

VERY FINE AND CHOICE. ONLY THREE EXAMPLES ARE KNOWN.

Of the three recorded examples, only this one and one other are in a pair with normal stamp. Ex Plass and Drucker. Illustrated in *Canal Zone Stamps* on p. 77 (detail). With 1970 A.P.S. and 2003 P.F. certificates ..... 4,000.00

- 687 ★ 1906, 5c Ultramarine & Black, Double Ovpt. (24c). Tropicalized original gum, rich colors, clear doubling of the overprint, fresh and Fine, only 200 were printed (one pane with 6¾mm spacing, one with 7¼mm spacing) ..... 500.00



687



688

- 688 ★ 1906, 5c Ultramarine & Black, “Canal” Only (24d). Part tropicalized original gum, h.r., fresh and bright color, light corner crease at bottom right

VERY FINE APPEARING EXAMPLE OF THIS “CANAL” ONLY VARIETY. OF THE TEN THAT WERE PRINTED, ONLY THREE ARE KNOWN. A GREAT RARITY OF THE ISSUE.

According to *Canal Zone Stamps*, one pane of 100 was printed with the overprint shifted left, so that the right vertical row received “Canal” only and the other 90 stamps received the “Zone Canal” variety, Scott 24e (two of the 90 are known). Only three copies of Scott 24d are recorded: 1) single with part sheet margin at right, ex Plass lot 486; 2) in rejoined horizontal pair with “Zone Canal” variety, ex Plass lot 487; and 3) the example offered here, ex Drucker, offered in our Sale 856. .... 4,000.00



- 689 ★ 1906, 8c Purple & Black, Horizontal Pair, Imperforate Between and at Left Margin (25a). Block of four with **part imprint at left**, tropicalized original gum, rich colors, left stamps small surface scrapes

VERY FINE. A SCARCE BLOCK OF THEIS CANAL ZONE RARITY. OF THE 40 PAIRS PRINTED, ONLY 34 WERE SAVED.

According to *Canal Zone Stamps*, the first two vertical rows of perforations were omitted from four panes. Of the 40 pairs originally printed, only 34 were saved. One is known used.

With 1999 P.F. certificate..... 4,000.00



689



690

- 690 ★ 1906, 10c Violet & Black, Double Ovpt., One Reading Up (26a). H.r., deep rich colors, wide margins

VERY FINE AND CHOICE. ONLY TEN COPIES OF THIS RARE ERROR WERE PRINTED AND ONLY FIVE ARE KNOWN.

According to *Canal Zone Stamps*, the overprint was originally printed too far to the right, and the left vertical row did not receive an overprint. To correct the error, the printer turned the pane, intending to print just the one missing row. However, he placed the pane too far into the press, thus two rows received the inverted overprint.

There are five copies known with the double overprint with one reading up (Scott 26a) and four known with the overprint reading up (Scott 26b). These were mostly contained in an irregular block of eight with four of No. 26b and three of 26a, which was broken up after the Plass sale.

Ex Plass as part of the irregular block of eight. With copy of 1969 A.P.S. certificate for the irregular block of eight, this was the top right stamp. .... 5,000.00

- 691 ★ 1909, 10c Violet & Black, Ovpt. Reading Down, Vertical Pair, One Without Ovpt. (30b). Top stamp with overprint shifted to right and bottom stamp missing overprint, traces of original gum, deep rich colors

VERY FINE AND CHOICE. THE UNIQUE VERTICAL PAIR CONTAINING ONE STAMP WITHOUT OVERPRINT. THIS IS ALSO THE FINEST OF THE THREE PAIRS RECOGNIZED AS BEING IN A PAIR WITH NORMAL STAMP.

In addition to the unique vertical pair offered here, two examples are recognized as being in horizontal pair with normal stamp. One has significant faults, including a rust mark on the face of the stamp. The other has the overprint shifted to the right so that part of "Can" of "Canal" extends onto the stamp missing the overprint, but has usually been accepted as the error variety, Scott 30a.

Ex Plass and Drucker. Illustrated in *Canal Zone Stamps* on p. 83. With 1993 and 2003 P.F. certificates..... 3,000.00



691



692

**692 1909, 1c Dark Green & Black, Inverted Center and Ovpt. Reading Down (31a).** Neat strike of duplex datestamp, deep rich colors

VERY FINE AND CHOICE. ONLY FOUR EXAMPLES OF THIS INVERT ARE RECORDED, AND ALL ARE USED. ONE OF THE GREAT RARITIES OF CANAL ZONE PHILATELY.

According to *Canal Zone Stamps*, the first copy of this error was discovered by George W. Wirth in 1932 on a 1913 postcard from which it was removed. The example offered here was the second copy, and was discovered in the 1950's. A third example was badly damaged. The clipped perforations at left on this stamp indicates that these may have come from sheet stamps used to make handmade booklets.

Ex Plass and Drucker. With 1967 and 2003 P.F. certificates..... 22,500.00



- 693 ★ 1909, 1c Dark Green & Black, Ovpt. Reading Up, Booklet Pane of Six, Handmade, Perf Margins (31c). Single h.r. away from selvage, rich colors, fresh and Fine..... 575.00



693

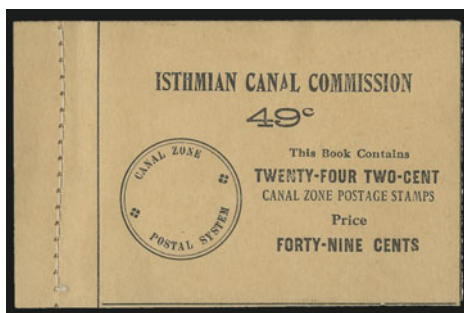


694

- 694 ★★ 1909, 2c Vermilion & Black, Ovpt. Reading Up, Booklet Pane of Six, Handmade, Perf Margins (32c). Complete booklet of four panes with tabs at bottom, with salmon-colored cover intended for use with the one-cent stamps, front cover almost completely detached VERY FINE APPEARANCE. AN EXTREMELY RARE COMPLETE BOOKLET OF THE 2-CENT WITH THE COVER FOR THE ONE-CENT PANES PRINTED ON THE WRONG COLORED STOCK. VERY FEW ARE KNOWN.

According to *Canal Zone Stamps* a few 1c covers were printed in the color used for the 2c, and they were overlooked by the postal employees assembling the booklets, who went by color. It is possible that the purchaser at the post office window obtained these at half price. Approximately a half-dozen are known.

Scott Retail as four panes with no premium for the incorrect cover..... 3,000.00



695



696

- 695 ★ **1909, 2c Vermilion & Black, Ovpt. Reading Up, Booklet Pane of Six, Handmade, Perf Margins (32c).** Two panes in booklet originally containing four panes and costing 49c, adhering to interleaving as usual, Very Fine ..... 1,500.00
- 696 ★★ **1909, 2c Vermilion & Black, Ovpt. Reading Up, Booklet Pane of Six, Handmade, Perf Margins (32c).** Mint N.H., radiant colors, perfs at left trimmed but those at right mostly intact, few short perfs at top, Fine, attractive pane, Scott Retail as hinged ..... 750.00



697



698



699



700

- 697 ★ **1909, 5c Deep Blue & Black, Ovpt. Reading Up, Double Ovpt. (33a).** Lightly hinged, clear doubling of the overprint, centered to bottom, Fine, only 200 were printed, with 1990 P.F. certificate ..... 375.00
- 698 ★田 **1909, 10c Violet & Black (35).** Block of four, barest trace of what may be hinging, rich colors, choice centering, Very Fine, a pretty block ..... 225.00
- 699 ★ **1911, 10c on 13c Gray, "10 cts" Inverted (36a).** Tropicalized original gum, bright shade, Very Fine, it is believed than only one pane of 100 was issued (some of which are known used), with 1972 A.P.S. certificate ..... 350.00
- 700 ★ **1911, 10c on 13c Gray, "10 cts" Omitted (36b).** Original gum, bright shade, natural gum bend at bottom not mentioned on accompanying certificate, tiny toned spot at center, appears Fine, with 1999 P.F. certificate ..... 350.00





- 701 ★ **1912, 2c Vermilion & Black, Horizontal Pair, Right Stamp Without Ovpt. (39a).** Single error in strip of three with normal, selvage at right, tropicalized original gum, bright colors, Very Fine and choice, a total of 30 were printed (including ten where the left stamp is missing the overprint), with 1991 P.F. certificate ..... 1,500.00
- 702 ★ **1912, 2c Vermilion & Black, Ovpt. Reading Down (39d).** Slightly tropicalized original gum, rich colors, well-balanced margins, Very Fine and choice ..... 200.00
- 703 ★ **1912, 2c Vermilion & Black, Ovpt. Reading Down (39d).** Slightly tropicalized original gum, intense colors, Very Fine and choice ..... 200.00
- 704 ★ **1912, 2c Vermilion & Black, Ovpt. Reading Down, Inverted Center (39e).** Adhering to interleaving, fresh and Fine, it is surmised that 400 were printed including at least 168 of which were used for booklets ..... 600.00

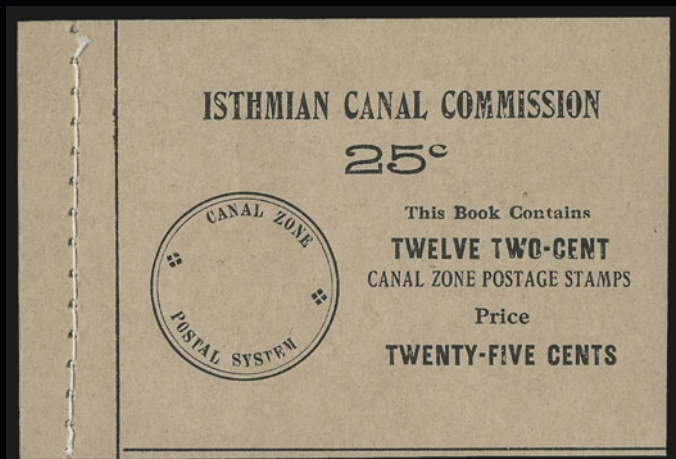


- 705 ★ **1912, 2c Vermilion & Black, Ovpt. Reading Down, Inverted Center, Booklet Pane of Six, Handmade Perf Margins (39f).** Tropicalized original gum, tab at bottom with stitching holes (one goes into one stamp), bright colors

VERY FINE. ONE OF THE RAREST OF ALL CANAL ZONE BOOKLET PANE ERRORS. LESS THAN TEN INTACT PANES ARE RECORDED.

According to *Canal Zone Stamps* most were broken up and used as postage ..... 8,000.00





706



707



708



709



710



711



712



713



714



715

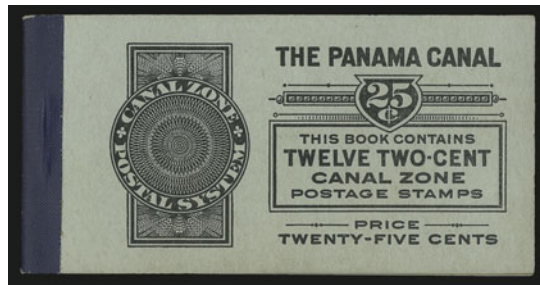


- 706 ★★ **1912, 2c Vermilion & Black, Booklet Pane of Six, Handmade Perf Margins (39g).** Intact booklet of two panes with tab at left, bright colors, fresh and Fine-Very Fine, an attractive and desirable complete booklet, with 2006 P.F. certificate, Scott Retail as panes with no premium for the intact booklet ..... 2,000.00
- 707 ★田 **1915, 1c Green & Black (46).** Block of four with **position guide selvage at top**, stamps Mint N.H., h.r. in selvage only, rich colors, Fine-Very Fine, Scott Retail as hinged ..... 725.00
- 708 ★ **1915, 1c Green & Black, Ovpt. Reading Down (46a).** Two singles: one normal and one the variety, latter tropicalized original gum with small corner perf crease and some soiling, otherwise Fine ..... 535.00
- 709 ★ **1915, 1c Green & Black, Double Ovpt. (46b).** Tropicalized original gum, Fine, only 180 were printed: two panes were printed, one with overprints close together, the pane with overprints apart also produced two other varieties: Scott 46c "Zone" double (two) and 46d double overprint one reading "Zone Canal" (18), with 1999 P.F. certificate. 350.00
- 710 ★ **1918, 1c Green & Black, Ovpt. Reading Down (52a).** Sheet margin at top, part tropicalized original gum, choice centering, Extremely Fine, ex Drucker, with 2003 P.F. certificate ..... 175.00
- 711 ★ **1915, 5c Deep Blue & Black (48).** Small h.r., intense colors, fresh and Fine ..... 500.00
- 712 ★ **1918, 1c Green & Black, Ovpt. Reading Down (52a).** Sheet margin at top, part tropicalized original gum, choice centering, Extremely Fine, ex Drucker, with 2003 P.F. certificate ..... 175.00
- 713 ★ **1918, 1c Green & Black, Ovpt. Reading Down (52a).** Slightly disturbed original gum, crisp impressions, Very Fine, with 1999 P.F. certificate ..... 175.00
- 714 ★ **1918, 1c Green & Black, Booklet Pane of Six (52b).** Lightly hinged, some slight overall toning, otherwise Very Fine, with 2003 P.F. certificate ..... 650.00
- 715 ★田 **1918, 2c Vermilion & Black, Ovpt. Reading Down (53a).** Block of four, h.r. at left where some perf separations sensibly reinforced, bright colors, Fine, Scott Retail as singles ..... 600.00



716

- 716 ★ **1918, 2c Vermilion & Black, Horizontal Pair, Right Stamp Without Ovpt. (53b).** Horizontal strip of four, right stamp missing overprint, tropicalized original gum, brilliant color, beautiful centering  
 VERY FINE AND VERY RARE. ONLY 22 PAIRS ARE KNOWN TO EXIST.  
 The error was caused when the sheet was misfed into the printing press, and the right-most vertical row did not receive the overprint. Two additional copies are known caused by a foldover.  
 Ex Drucker. With 2003 P.F. certificate ..... 2,220.00



717

- 717 ★★ 1918, 2c Vermilion & Black, Booklet Pane of Six (53c). Complete booklet of two panes, tab at top as always found on this issue, fresh and Very Fine, a beautiful intact booklet, with 2003 P.F. certificate, Scott Retail as two panes with no premium for the intact booklet..... 2,100.00
- 718 ★★ 1921, 1c Light Green & Black, Ovpt. Reading Down (55a). Mint N.H. with selvage at bottom, choice centering, bright colors, Extremely Fine, a superb stamp in every respect, with 1992 P.F. certificate, Scott Retail as hinged..... 300.00



718

- 719 ★ 1921, 1c Light Green & Black, Horizontal Pair, Right Stamp Without Ovpt. (55b). Horizontal pair, slightly disturbed original gum, bright color, Fine-Very Fine, scarce, only ten copies were issued, with 2006 P.F. certificate..... 1,750.00



719



720

- 720 ★ 1921, 1c Light Green & Black, "Zone" Only (55d). Left margin horizontal pair with normal, "Canal" clearly visible in sheet margin, lightly hinged, left stamp with vertical foldover creases which caused the error, rich colors
- VERY FINE AND CHOICE EXAMPLE OF THE "ZONE" ONLY ERROR. ONLY FIVE OR SO ARE KNOWN, ONE OF WHICH IS USED.

This error was created by a foldover in the left vertical row of one pane, which caused "Canal" to print in the sheet margin. The following examples are known: 1) offered in Siegel Sale 878, lot 615; 2) similar example offered in our Drucker sale 856, lot 591, the example offered here; 3) unused in horizontal pair with normal, part of "Canal" visible at left, ex Plass lot 581; 4) single contained in a large unused block; and 5) left stamp in horizontal strip of five used on cover, ex Plass lot 582.

Ex Drucker. With 2003 P.F. certificate..... 4,250.00



- 721 ★ 1921, 1c Light Green & Black, "Canal" Double (55f). Original gum, lightly hinged, selvage at right with "Zone", deep rich colors, almost perfectly centered with wide margins

EXTREMELY FINE GEM. ONE OF THE FINEST COPIES OF THIS DISTINCTIVE VARIETY IN EXISTENCE.

With 2006 P.F. certificate..... 2,000.00



721



- 722 ★ 1920, 2c Orange Vermilion & Black, Double Ovpt. (56a). Original gum, lightly hinged, intense color, Very Fine, only 100 were printed, with 1999 P.F. certificate ..... 600.00
- 723 ★田 1920, 2c Orange Vermilion & Black, Double Ovpt., One Reading Down (56b). Block of four, original gum, h.r., rich color, fresh and Fine, scarce multiple, only 100 were printed, with 1999 P.F. certificate ..... 2,600.00
- 724 ★ 1920, 2c Orange Vermilion & Black, Horizontal Pair, Right Stamp Without Ovpt. (56c). Selvage at right, original gum, h.r., radiant color, Very Fine and choice, exceedingly scarce, only eleven were printed, ex Plass, with 1993 P.F. certificate ..... 1,500.00
- 725 ★ 1920, 2c Orange Vermilion & Black, "Zone" Double (56f). Left stamp in horizontal pair with normal, small selvage at left, lightly hinged, brilliant color, Very Fine, scarce, only 30 were printed ..... 1,250.00
- 726 ★ 1921, 5c Deep Blue & Black (57). Slightly tropicalized original gum, h.r., rich color on bright paper, Very Fine..... 300.00



- 727 ★ 1921, 5c Deep Blue & Black, Horizontal Pair, Right Stamp Without Ovpt. (57a). Bottom right corner margin with narrow selvage at right and huge selvage at bottom, original gum, h.r. reinforces a few internal perf separations

VERY FINE AND CHOICE. THE UNIQUE BOTTOM RIGHT CORNER MARGIN PAIR CONTAINING ONE STAMP WITHOUT OVERPRINT. ONLY TEN PAIRS WERE PRINTED WITH THE RIGHT STAMP MISSING THE OVERPRINT.

According to *Canal Zone Stamps*, the missing overprint occurs on the left pane of the sheet of 200, as evidenced by the narrow selvage at right and the existence at one time of a horizontal strip of ten with wide selvage and "Canal Zone" printed at left.

Ex Drucker. With 1978 A.P.S. and 2003 P.F. certificates..... 2,500.00

727



- 728 ★ 1920, 50c Orange & Black (58). Original gum, small h.r., rich colors on bright paper, wide margins, Very Fine and choice..... 275.00
- 729 ★ 1921, 1c Green, Booklet Pane of Six (60b). Slightly tropicalized original gum, h.r. where few few perf separations sensibly reinforced between top left vertical pair, rich color, Very Fine, with 2003 P.F. certificate..... 1,000.00
- 730 ★★ 1921, 2c Carmine, Ovpt. Reading Down (61a). Mint N.H. block of four with selvage at top, brilliant color on crisp paper, Very Fine and choice, with 1999 P.F. certificate, Scott Retail as hinged..... 800.00
- 731 ★★ 1921, 2c Carmine, Double Ovpt. (61b). Top left corner selvage, stamp Mint N.H., lightly hinged in ungummed part of selvage, rich color, Very Fine and choice, a wonderful position piece, only ten were printed with this close placement of the two overprints and come from the top horizontal row of one pane, another pane received a skewed second overprint on approximately 30-40 stamps, with 2005 P.F. certificate, Scott Retail as hinged..... 900.00





- 732 ★ 1921, 50c Black (66). Lightly hinged, crisp impression, fresh and Very Fine ..... 150.00
- 733 ★ 1924, 1c Green (67). Lightly hinged, rich color, selvage at left, Very Fine ..... 500.00
- 734 ★田 1924, 1c Green (67). Block of four, slightly tropicalized original gum, h.r., bright color, top left stamp small thin spots, left stamps light diagonal crease, top right stamp small adherence at top left, otherwise Very Fine, scarce multiple ..... 2,000.00
- 735 ★ 1924, 1c Green, “Zone Canal” Reading Down (67a). H.r., rich color, Fine ..... 850.00
- 736 ★ 1924, 5c-1b Coat of Arms, Unissued Set (68var-69var). Complete set of seven values, tropicalized original gum, rich colors, Very Fine and choice, scarce as only 600 sets were not destroyed, according to *Canal Zone Stamps*, these values were never issued as a decision was made to use U.S. stamps overprinted “Canal Zone” starting July 1, 1924 ..... (Photo Ex) 2,469.25
- 737 ★ 1924-25, ½c-\$1.00 Ty. A Ovpts. (70-81). H.r., bright colors, fresh and Very Fine complete set ..... Not illustrated 541.90
- 738 ★ 1924, 1c Green, Inverted Ovpt. (71a). Deep rich color, tiny surface scrapes at bottom, otherwise Fine, the Canal Zone Study Group believes there were only 50 of this error printed, with 1999 P.F. certificate ..... 500.00
- 739 ★ 1924, 1c Green, Inverted Ovpt. (71a). Tropicalized original gum, intense color, Fine, the Canal Zone Study Group believes there were only 50 of this error printed ..... 500.00



740 ★★田 1924, 1c Deep Green, "Zone" Inverted (71b). Right center stamp in Mint N.H. block of nine with eight normal, natural s.e. at right, rich color, Fine, with 1999 P.F. certificate, Scott Retail as hinged variety..... 350.00

740



741

741 ★田 1924, 1c Deep Green, "Canal" Only, "Zone Canal" (71c, 71d). Top left corner selvage block of four with part arrow at left, natural s.e. at left, barely tropicalized original gum, deep rich color

VERY FINE AND CHOICE. THE UNIQUE TOP LEFT CORNER SELVAGE BLOCK WITH TOP STAMPS THE "CANAL" ONLY VARIETY AND BOTTOM STAMPS THE "ZONE CANAL" VARIETY. ONLY TWENTY SUCH COMBINATION PAIRS WERE PRINTED.

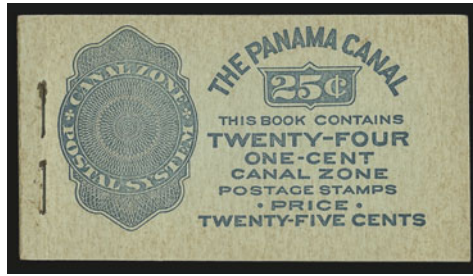
This variety was created when the sheet was shifted downwards during overprinting. 180 stamps bear the "Zone Canal" variety. Only twenty were printed with "Canal" only. It is believed the bottom panes were destroyed.

Ex Plass. "HFC" backstamps in selvage at top left. With 1993 P.F. certificate. Scott Retail as four singles..... 4,500.00





742



743



744EX

- 742 ★ 1924, 1c Deep Green, Ty. "A" Ovpt., Second Printing, "Zone Canal" Error (71d). Tropicalized original gum, rich color, reperfed at right, Very Fine appearance, with 1999 P.F. certificate ..... 500.00
- 743 ★★ 1924, 1c Deep Green, Ty. "A" Ovpt., Booklet Pane of Six (71e). Complete unexploded 25c booklet of four panes, Mint N.H. with very slight tropical disturbance, Fine-Very Fine, Scott Retail as four hinged panes..... 320.00
- 744 ★ 1925-28, 2c-\$1.00 Ty. B Ovpts. (84-95). H.r., bright colors, fresh and Fine-Very Fine set .....(Photo Ex) 538.00



745

- 745 ★ 1925, 2c Carmine, "Canal" Only Ovpt. (84a). Top selvage single, lightly hinged, rich color, choice centering

EXTREMELY FINE. A RARE EXAMPLE OF THE "CANAL" ONLY VARIETY. ONLY TWENTY WERE PRINTED.

This variety was created when the sheet was shifted downwards during overprinting. 180 stamps bear the "Zone Canal" variety. Only twenty were printed with "Canal" only. It is believed the bottom panes were destroyed.

With 1993 and 2006 P.F. certificates, the former as a pair with Scott No. 84b ..... 2,750.00

- 746 ★ 1925, 2c Carmine, Ty. "B" Ovpt., "Zone Canal" Error (84b). Lightly hinged, brilliant color, choice centering, Very Fine and choice..... 500.00



746



747



748



749



750

- 747 ★田 1925, 3c Violet, "Zone Zone" Ovpt. (85a). Bottom center stamp in block with five normal, natural s.e. at top, tropicalized original gum, rich color, Fine, scarce, with 2006 P.F. certificate... 600.00
- 748 ★田 1925, 3c Violet, "Zone Zone" Ovpt. (85a). Block of four, top right stamp the variety, others normal, tropicalized original gum, rich color and proof-like impression, Fine, desirable in a block with normal stamps, with 1998 P.F. certificate ..... 600.00
- 749 ★ 1926, 5c Dark Blue, "Canal" Inverted (86b). In rejoined horizontal pair with normal, Positions 7-8 from bottom right pane, disturbed original gum, h.r., natural s.e. at top, rich color, the variety light gum soaks at bottom, otherwise Fine, approximately 30 are known, with 1999 P.F. certificate ..... 950.00
- 750 ★★ 1926, 5c Dark Blue, "Zone Canal" (86e, 86e var). Mint N.H. horizontal pair, left stamp "ZON CAN" and right stamp with "ZONE CANAL" split vertically, rich color, fresh and Fine, this likely comes from the leftmost two rows of the plate (or else the left stamp would also have been split vertically), with 1999 P.F. certificate, Scott Retail as two normal hinged "Zone Canal" stamps ..... 700.00



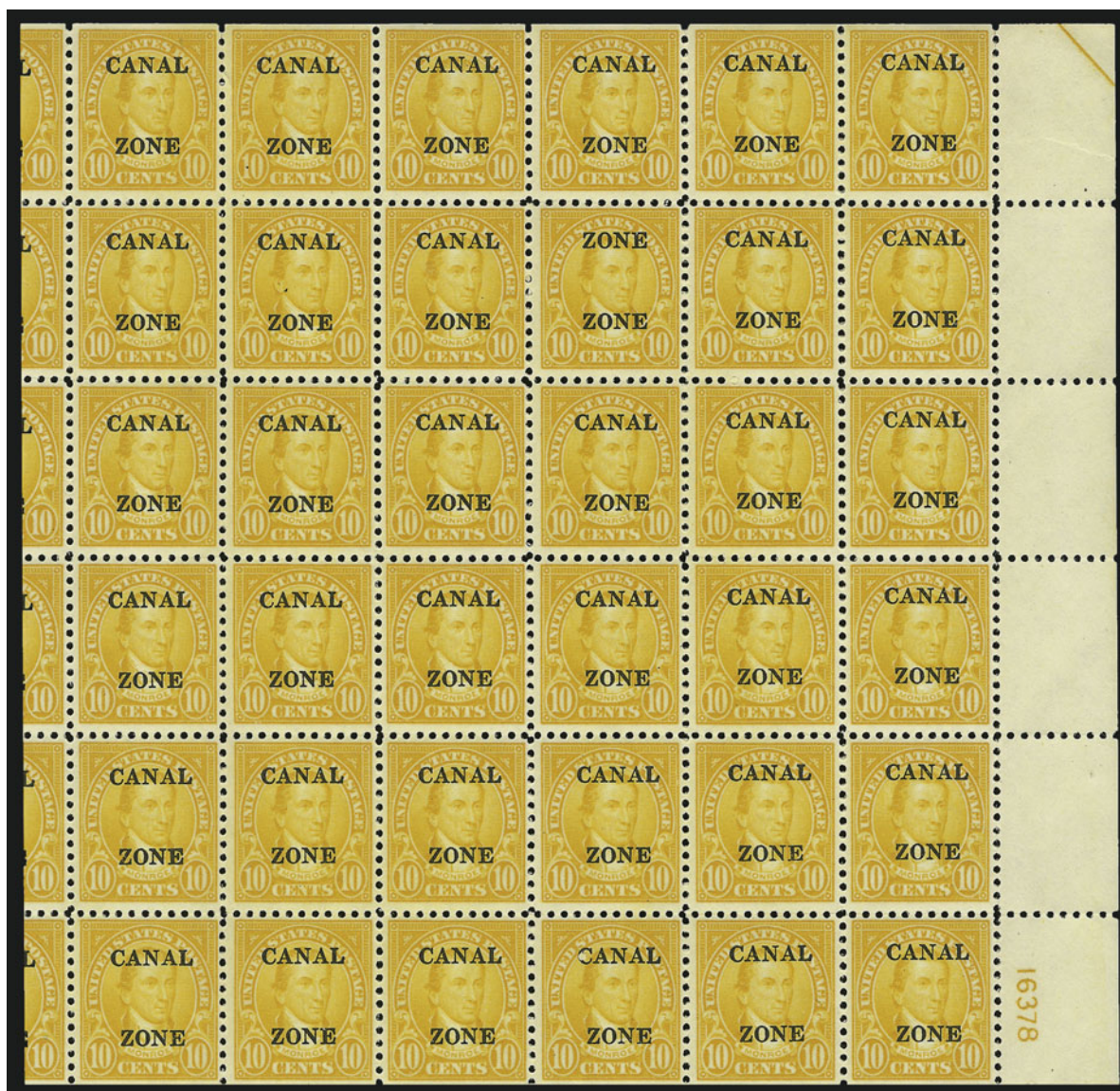
- 751 ★田 1926, 5c Dark Blue, "Canal" Only Ovpt. (86h). Bottom margin block of sixteen with part arrow and natural s.e. at left, top left stamp "Canal" only, three stamps "Zone Canal", most others with vertically split "Zone", top row lightly hinged, bottom stamps Mint N.H., deep rich color, few minor perf separations

VERY FINE. AN IMPRESSIVE MULTIPLE CONTAINING TWO MAJOR OVERPRINT VARIETIES. ONLY EIGHT EXAMPLES OF THE "CANAL" ONLY OVERPRINT VARIETY ARE RECORDED.

Ex Drucker. Signed in pencil by Gilbert Plass. With 2003 P.F. certificate. Scott Retail as singles..... 3,348.00

751





752

752 ★田 1925, 10c Orange, "Zone Zone" (87a). Position 18 in pane of 100 from Plate 16378, slightly tropicalized original gum, brilliant color, choice centering, Position 79 natural paper inclusion, choice centering

VERY FINE. ONLY FIVE COPIES OF THE "ZONE ZONE" ERROR ARE RECORDED FOR THE 10-CENT VALUE.

According to *Canal Zone Stamps*, the error only occurs on Position 18 of the bottom right pane. All were officially destroyed, except for five copies. Two of the five are contained in complete panes. The other pane is plate no. 16379.

Ex Drucker. Signed I. Koslow in pencil at bottom right. With 2003 P.F. certificate. Scott Retail as the error, two plate blocks, nineteen blocks of four and six singles.... 7,355.00



753

- 753 ★ 1926, 17c Black, "Zone" only, "Zone Canal" (91a, 91c). Vertical pair with selvage at bottom, bottom stamp "Zone" only, tropicalized original gum, crisp impression erased pencil notation in selvage leaves slight indentation, Very Fine, scarce and desirable pair, only 20 of the "Zone" only were printed, with 1998 P.F. certificate..... 1,500.00



755

- 754 ★ 1926, 17c Black, "Canal" Only (91b). Selvage at top, lightly hinged with naturally short gum at top, crisp impression, typical centering for this rarity

FINE. A SCARCE EXAMPLE OF THE "CANAL" ONLY OVERPRINT ON THE 17-CENT SCOTT 91.

According to *Canal Zone Stamps*, this error occurred on one pane when the overprint was shifted too far downwards. It also occurred on one stamp due to a foldover, and is occasionally found on some shifted overprints from the bottom row of a sheet or sheets. There are perhaps a total of fifteen in existence, including at least one with a trace of the word "Zone".

With 2003 P.F. certificate ..... 1,700.00



754



756

- 755 ★★ 1926, 17c Black, "Zone Canal" (91c). Mint N.H., bright shade, Fine, Scott Retail as hinged..... 300.00
- 756 ★田 1926, 17c Black, "Zone Canal" (91c). Block of four with selvage at left, bottom stamps Mint N.H., h.r. in selvage where few perf separations sensibly reinforced, intense shade, light pencil notation in selvage, Fine, attractive multiple, Scott Retail as hinged singles ..... 1,200.00





757

- 757 ★田 1926, 20c Carmine Rose, "Zone Canal" Ovpt. (92c). Position 91 in block of fifteen with bottom left corner margin incl. siderographer's initials and plate no. 16648 at left, few sensibly reinforced perf separations, intense color

FINE AND RARE. ONLY THREE EXAMPLES OF THE "ZONE CANAL" OVERPRINT VARIETY ARE RECORDED.

Unlike many other overprint varieties of this type, this one was caused not by a shift in the overprint, but rather by the mistaken use of the slugs on the overprint form.

Ex Plass and Drucker. Illustrated in *Canal Zone Stamps* on p. 159 (detail). With 1967 and 2003 P.F. certificates..... 3,735.00



758

- 758 ★ 1926, 2c Carmine, Booklet Pane of Six (97b). Lightly hinged, rich color, light diagonal gum bend, Very Fine, with 1988 P.F. certificate ..... 525.00



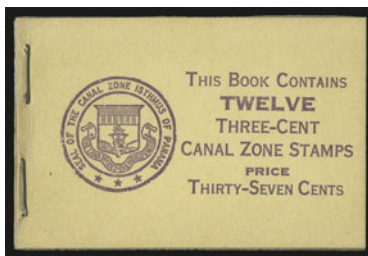
759

- 759 ★田 **1927, 1c Green, Vertical Pair, One Without Ovpt. (100a).** The unique bottom right corner margin plate no. block of four, bottom stamps missing overprint, bottom stamps Mint N.H., fresh and bright color

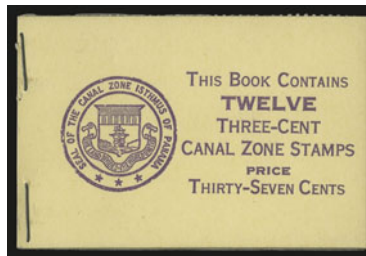
VERY FINE AND CHOICE. THIS IS THE UNIQUE PLATE BLOCK CONTAINING THE "CANAL ZONE" OMITTED ERROR. ONLY TEN WERE PRINTED.

According to *Canal Zone Stamps*, the error was caused when the sheet was misfed into the press. The overprint was omitted from the bottom row of the plate.

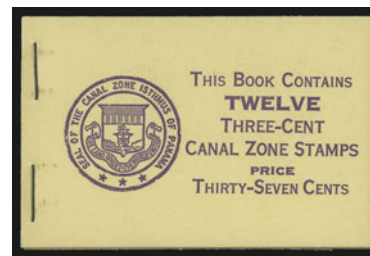
Ex Plass and Drucker. Illustrated in *Canal Zone Stamps* on p. 167. With 1967 and 2003 P.F. certificates..... 11,000.00



760



761



762

- 760 ★★ **1933, 3c Deep Violet, Booklet Pane of Six (115c).** Complete handmade booklet of two panes with interleaving, narrow selvage at left, covers with light bends not mentioned on accompanying certificate, Very Fine, with 1994 P.F. certificate, Scott Retail as two hinged panes ..... 350.00
- 761 ★★ **1933, 3c Deep Violet, Booklet Pane of Six (115c).** Complete unexploded booklet of two panes with interleaving, fresh and Very Fine, Scott Retail as two hinged panes.. 350.00
- 762 ★★ **1933, 3c Deep Violet, Booklet Pane of Six (115c).** Complete unexploded booklet of two panes with interleaving, narrow selvage at left, **back cover inverted** in relation to front cover and panes, Very Fine and choice, with 2006 P.F. certificate, Scott Retail as two hinged panes..... 350.00





763



764

- 763 ★ **1914, 10c Rose Carmine, Postage Due (J3).** Slightly tropicalized original gum, brilliant color, perfect offset on back of overprint, Fine ..... 1,000.00
- 764 ★ **1950, 2c Olive Brown, Postage Due (J5).** H.r., choice centering with wide margins, Very Fine and choice ..... 225.00



765

- 765 ★ **1919, 4c on 4c Olive Brown, Postage Due, "Zone" Omitted (J11a).** Lightly hinged, deep rich color, clear strike of the surcharge

FINE. THE UNIQUE EXAMPLE OF THE 4-CENT ON 4-CENT POSTAGE DUE WITH "ZONE" OMITTED. ONE OF THE RAREST OF ALL CANAL ZONE STAMPS.

This error was likely caused when some foreign matter adhered between the stamp and the printing plate. As an indication of rarity, this is the only example we have offered since keeping computerized records.

Ex Plass and Drucker. Illustrated in *Canal Zone Stamps* on p. 239. With 1967 and 2003 P.F. certificates. .... 8,250.00

- 766 ★ **1919, 4c on 4c Olive Brown, Postage Due, "4" Omitted (J11b).** Slightly tropicalized original gum, fresh color

FINE AND RARE. IT IS BELIEVED THAT ONLY TWO COPIES OF THIS VARIETY EXIST.

Part of the "C" of "Canal" is also missing, which indicates that this error was caused by foreign matter blocking the overprint impression. As an indication of rarity, this is the only example we have offered since keeping computerized records.

Ex Plass and Drucker. Illustrated in *Canal Zone Stamps* on p. 239. With 1971 A.P.S. and 2003 P.F. certificates. .... 8,250.00



766



767



768

- 767 ★ **1925, 10c Orange, Postage Due, “Postage Due” Double (J17a).** Slightly tropicalized original gum, vibrant color, clear second overprint, Very Fine and choice, only 98 were printed ..... 800.00
- 768 ★ **1925, 10c Orange, Postage Due, “E” of “Postage” Omitted (J17b).** In pair with normal, natural s.e. at bottom, tropicalized original gum, brilliant color, right stamp small corner crease at bottom right, Fine appearance, only a few sheets with the error went into circulation as the error was quickly discovered and corrected, with 1999 P.F. certificate ..... 800.00

- 769 ★ **1925, 10c Orange, Postage Due, “Postage Due” Double, “Postage Due” Double (J17a, J17c).** Horizontal pair, Positions 83-84, slightly tropicalized original gum, intense color which is slightly oxidized

FINE AND RARE EXAMPLE OF THIS DOUBLE OVERPRINT VARIETY. ONLY TWO EXAMPLES ARE KNOWN OF THE MISSING “E” OF “POSTAGE”.

According to *Canal Zone Stamps*, only one pane of 100 with the double overprint was issued. On this pane, two positions — 83 and 93 — have either all or most of the “E” of “Postage” omitted. The other example, from Position 93, has a straight-edge at bottom.

Ex Plass and Drucker. Illustrated in *Canal Zone Stamps* on p. 240. With 1967 and 2003 P.F. certificates. .... 4,000.00



769



770

- 770 ★田 **1925, 1c Carmine Rose, Postage Due, “Zone Zone” Ovpt. (J18a).** Center stamp in block of nine with eight normal, natural s.e. at top, the error and several others Mint N.H., some vertical perf separations between first two rows, otherwise Fine-Very Fine, scarce, only approximately 15 of the 75 printed are known — the rest are lost to philately, with 2003 P.S.E. certificate ..... 1,814.00



- 771 ★田 1925, 1c Carmine Rose, Postage Due, "Zone Zone" Ovpt. (J18a). Center stamp in block of nine with eight normal, natural s.e. at top, tropicalized original gum, some normal with h.r., bright color, Fine-Very Fine, scarce, only approximately 15 of the 75 printed are known — the rest are lost to philately, with 1998 P.F. certificate..... 1,814.00



771



772

- 772 ★ 1925, 10c Carmine Rose, Postage Due, Vertical Pair, One Missing Ovpt. (J20a). Sheet margin at top, top stamp missing overprint as always, small h.r.

VERY FINE AND RARE. ONLY TEN 10-CENT POSTAGE DUE STAMPS WERE ISSUED WITH THE MISSING OVERPRINT.

Three of the ten issued stamps are contained in the unique plate block which was recently offered in our sale of the Whitpain collection.

Ex Drucker. With 1969 A.P.S. and 2003 P.F. certificates..... 3,500.00

- 773 ★ 1925, 10c Rose Red, Postage Due, Double Ovpt. (J20c). Single hinge mark, brilliant color, clear second overprint, three wide margins, Very Fine and choice, only one pane of 100 received the second overprint..... 450.00



773

- 774 ★ Canal Zone, Third Series 1904-06, Specialized Collection. Nos. 9-14 on pages, approximately 150 stamps with singles and blocks of four or larger, all with excellent descriptions which incl. Scott or CZSG catalog numbers, several better incl. used No. 11b (35 known, faulty) and 12c (large sealed tear), several with one or two Antique Letters (non-Scott listed), also small collection of Fourth Series Nos. 16-17 with various surcharges similarly annotated, generally Fine-Very Fine, great lot for the specialist .....Not illustrated E. 2,000-3,000
- 775 ★ Canal Zone Collection and Accumulation. Over 450 stamps neatly arranged in a stockbook, nearly all unused and fairly complete to 1939, generally one to four of each, incl. some interesting varieties, virtually all Fine-Very Fine, useful lot .....Not illustrated E. 3,000-4,000

## CUBA



776EX



777EX

- 776 S 1899, 1c-10c on 1c-10c 1899 Issue, "Specimen" Overprints (221S-226S). Original gum, h.r., 10c s.e. at top, rich colors, Fine set.....(Photo Ex) 1,200.00
- 777 S 1899, 1c-10c on 1c-10c 1899 Issue, "Specimen" Overprints (221S-226S). Three small pieces each with between one and three stamps affixed, large "Specimen" handstamp(one stamp is tied by it), both 2c s.e. on one side, Fine, prepared for the 1900 Paris Exhibition, Scott Retail as normal "Specimen" .....(Photo Ex) 1,200.00



778

- 778 1899, 2c on 2c Reddish Carmine, Ty. IV, Inverted Surcharge (222Ad). Face-free strike of grid cancel, faded color, few small flaws

FINE APPEARANCE. A RARE USED EXAMPLE OF THE CUBA TWO-CENT INVERTED SURCHARGE.

Very few are known. .... 5,000.00



779



780

- 779 ★田 1899, 3c on 3c Purple (224). Bottom imprint and plate no. 449 block of six, original gum, stamps Mint N.H., h.r. in center selvage, rich color, Very Fine, a pretty plate block ..... 675.00
- 780 ★★田 1899, 5c on 5c Blue (225). Mint N.H. top imprint and plate no. 410 block of six with wide selvage, deep rich color, choice centering throughout, Very Fine-Extremely Fine, a beautiful Mint N.H. plate block, Scott Retail as hinged ..... 800.00





781

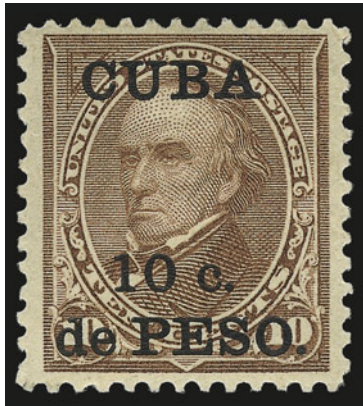


782EX



783

- 781 ★ 1899, 5c on 5c Blue (225). Bottom imprint and plate no. 410 block of six, stamps Mint N.H., h.r. in selvage, bright shade, fresh and Very Fine ..... 800.00
- 782 ★ 1899, 5c on 5c Blue (225). Block of four and two singles, the block and one single s.e. at right, bottom right stamp of block with "CUPA" overprint, singles with shifted overprints and broken "C" caused by foldover, overall Fine-Very Fine, interesting group ..... (Photo Ex) E. 200-300
- 783 ★ 1899, 10c on 10c Brown, Ty. I, "CUBA" at Bottom (226 var). Original gum, h.r., intense shade and impression, well-balanced margins, few trivial toned spots on back, Very Fine appearing example of this distinctive variety..... 400.00



784

- 784 ★ 1900, 10c on 10c Brown, Ty. II (226A). Original gum, h.r., pretty shade, wide margins

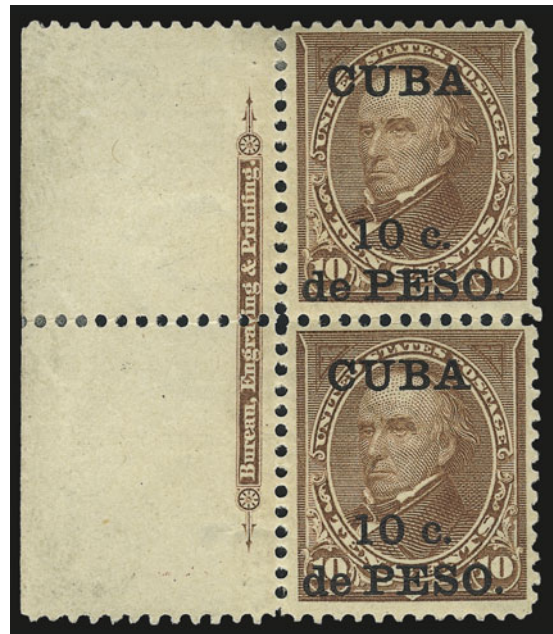
VERY FINE AND CHOICE. A BEAUTIFUL EXAMPLE OF THE CUBA 10-CENT ON 10-CENT TYPE II SPECIAL PRINTING.

Signed in pencil by Bartels and one other. .... 5,500.00

- 785 ★ 1900, 10c on 10c Brown, Ty. II (226A). Vertical pair with imprint selvage at left, original gum, small h.r. at top, bright color
- VERY FINE. A RARE AND DESIRABLE IMPRINT PAIR OF THE CUBA 10-CENT TYPE II ISSUE, WHICH ONLY EXISTS AS A SPECIAL PRINTING.

In March 1900 one pane of each denomination was prepared for the Paris and Pan-American Expositions. For the 10c the Type II design was used and it is only known as a Special Printing. Only two plate number and imprint positions were printed. The plate number position from the right side was recently sold in the Whitpain sale. The largest recorded multiple is a block of four (which does not have the other plate number position), so this pair with the imprint is likely unique.

Each stamp with Scott Stamp & Coin Co. backstamp. Weill backstamps in selvage. Scott Retail as singles ..... 13,000.00



785



786EX

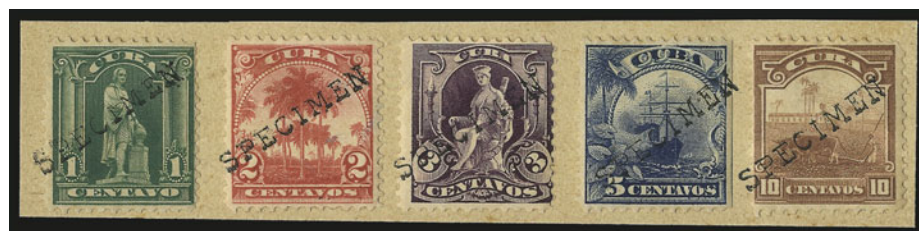


787EX

- 786 P **1899, 1c-10c Pictorial Issue, Large Die Proofs on India (227P1-231P1, E3P1).** On approximately 152 x 200mm cards with full die sinkage, incl. second 2c in slightly different shade, Very Fine and choice set .....(Photo Ex) 1,335.00
- 787 P **1899, 1c-10c Pictorial Issue, Small Die Proofs on Wove (227P2-231P2, E3P2).** Complete page from Roosevelt presentation album, No. E2P2 slightly oxidized, otherwise Very Fine, scarce, only 85 were produced .....(Photo Ex) 1,125.00



788EX



789

- 788 S **1899, 1c-10c Republic Issues, "Specimen" Overprints (227S-231S).** 1c and 2c s.e. at left, original gum, most h.r., some faults incl. thins, otherwise Fine, scarce set .....(Photo Ex) 1,125.00
- 789 S **1899, 1c-10c Republic Issues, "Specimen" Overprints (227S-231S).** Each stamp tied on piece by large "Specimen" handstamp, stamps hinged in place, rich colors, Fine-Very Fine, scarce, this type of "Specimen" handstamp was used for the 1900 Paris Exhibition, Scott Retail as normal "Specimen" ..... 1,125.00



- 790 ★ **1899, 2c Carmine, Booklet Pane of Six (228b).** Tropicalized original gum, bright color, some slight toning on back

FINE. A VERY RARE AND SELDOM-OFFERED BOOKLET PANE.

We have only offered one other intact pane since keeping computerized records — in our Whitpain sale in February of 2009..... 3,750.00



790



791

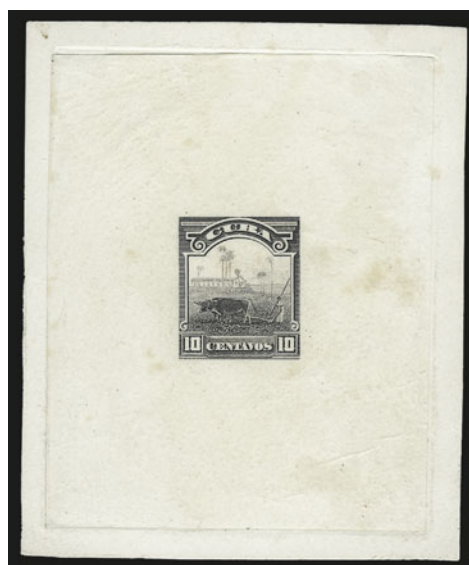
- 791 ★ **1899, 2c Carmine, Booklet Pane of Six (228b).** Tropicalized original gum, bright color, small adherence on gum at bottom right

VERY FINE. A VERY RARE AND SELDOM-OFFERED BOOKLET PANE.

We have only offered one other intact pane since keeping computerized records — in our Whitpain sale in February of 2009..... 3,750.00



792



793

- 792 ★ **1899, 2c Carmine, Booklet Pane of Six (228b).** Three horizontal pairs originally forming a complete pane, bottom pairs rejoined by hinge, h.r. with overall toning on gum, Fine appearance, this booklet is scarce in any form ..... 3,750.00
- 793 TC **1899, 10c Gray, Large Die Trial Color Proof on India (231TC1).** On 69 x 83mm card with full die sinkage, bright shade, Very Fine ..... 625.00



- 794 TC **1899, 10c Gray, Large Die Trial Color Proof on India (231TC1).** On 152 x 203mm card with full die sinkage, intense shade, Very Fine and choice..... 625.00
- 795 S **1899, 10c on 10c Blue, Special Delivery, "Specimen" Ovpt. (E1S).** Large part tropicalized original gum, h.r., large "Specimen" overprint, some slight toning, otherwise Very Fine, scarce, this type of overprint was used on stamps at the 1900 Paris Exhibition, Scott Retail as normal "Specimen" overprint..... 550.00
- 796 ★ **1899, 10c on 10c Blue, Special Delivery (E1).** Top imprint and plate no. 492 strip of three with extra wide selvage, deep rich color, lightly hinged, faint crease in selvage at top right (easily trimmed), few expertly rejoined perf separations at top, Fine-Very Fine, an attractive multiple..... 1,000.00
- 797 ★★田 **1899, 10c on 10c Blue, Special Delivery (E1).** Mint N.H. left selvage block of four with part arrow, intense shade and impression, well-balanced margins, Very Fine and choice, Scott Retail as hinged..... 575.00
- 798 ★ **1899, 10c on 10c Blue, Special Delivery, No Period After "Cuba" (E1, E1a).** Se-tenant pair, left stamp missing the period, right stamp normal, original gum, h.r., rich color, few sensibly reinforced perf separations, Very Fine, the se-tenant pair is unlisted in Scott, Scott Retail as singles..... 705.00
- 799 S **1899, 10c on 10c Blue, Special Delivery, Five Dots in Curved Frame Above Messenger's Head, "Specimen" Ovpt. (E1aSa).** H.r., rich color, light purple "Specimen" overprint at left, Fine..... 1,750.00
- 800 ★ **1899, 10c on 10c Blue, Special Delivery, No Period After "Cuba" (E1a).** Bottom imprint and plate no. 492 strip of three, original gum, h.r. where some perf separations reinforced, few thins, ms. in selvage at bottom left, otherwise Fine..... 1,000.00
- 801 TC **1899, 10c Blue, Large Die Trial Color Proof on India (E2TC1).** On 199 x 153mm card with full die sinkage, rich color, fresh and Very Fine..... 1,500.00





- 802 S 1899, 10c Orange, Special Delivery, Specimen Overprint (E2S). Original gum, small adherences on gum, radiant color, clear overprint, Fine ..... 1,000.00
- 803 S 1899, 10c Orange, Special Delivery, Specimen Overprint (E2S). Bold black "Specimen" overprint, original gum, h.r., small indentation at top right, Fine, this "Specimen" comes from a foreign postal archive and is scarce, Scott Retail as normal ..... 1,000.00
- 804 ★ 1910, 10c Orange & Blue, Special Delivery, Center Inverted (E4a). Selvage at left, bright colors, wide margins, Very Fine, scarce, with 2006 A.P.S. certificate ..... 1,250.00
- 805 ★ 1910, 10c Orange & Blue, Special Delivery, Center Inverted (E4a). Deep rich colors, choice centering, Very Fine, scarce..... 1,250.00
- 806 S 1899, 1c-10c Deep Claret, Postage Due, "Specimen" Ovpt. (J1S-J4S). H.r., rich colors, crisp impressions, 2c rounded corner at bottom left, 1c short perf at top, otherwise Fine .....(Photo Ex) 1,100.00
- 807 S 1899, 1c-10c Deep Claret, Postage Due, "Specimen" Ovpt. (J1S-J4S). Two pieces, one containing first three values and last with 10c, cancelled or tied by large "Specimen" handstamps, hinged in place, Fine, prepared for use at the 1900 Paris Exhibition, Scott Retail as normal "Specimen" overprint ..... 1,100.00
- 808 ★ 1899, 1c-10c Deep Claret, Postage Due (J1-J4). Top imprint and plate no. pairs, 5c with especially wide selvage, slightly disturbed original gum, 10c with some perf separations, otherwise Fine-Very Fine, Scott Retail as singles .....(Photo Ex) 487.50



809

- 809 ★ **1900, 1c-10c Deep Claret, Postage Due, Paris Exposition Special Printings (J1 var-J4 var).** Left arrow vertical pairs, original gum, h.r. where some perf separations sensibly reinforced, each with purple Special Surcharge" backstamp, 1c some toning on top stamp and in selvage, 10c thin spot

FINE APPEARANCE. THESE LEFT ARROW VERTICAL PAIRS OF THE CUBA POSTAGE DUE SPECIAL PRINTINGS ARE UNIQUE.

Marvelous exhibition items..... 5,000.00

- 810 ☒ **Postage Due Covers.** Ten, attractively mounted on album pages, Nos. J1-J4 are represented, all are interesting and used in combination with stamps of either the U.S. or Cuba, one used with G.B. 1p stamp, condition about what one would expect, most appear Fine-Very Fine, fascinating group..... E. 300-400



811

- 811 1899, 2c on 2c Deep Claret, Postage Due, Inverted Surcharge (J2a). Rich color, neat cancel leaves design and inverted surcharge clearly visible, light internal natural paper wrinkle, short perf at bottom right  
FINE APPEARING EXAMPLE OF THE CUBA 2-CENT ON 2-CENT POSTAGE DUE WITH INVERTED OVERPRINT.

Very few are known..... 4,000.00



- 812 1899, 2c on 2c Deep Claret, Postage Due, Inverted  
**Surcharge (J2a).** Light strike of cork cancel, rich color,  
 defective with top left corner missing, otherwise Fine,  
 very rare..... 4,000.00



812



813



814



815EX

- 813 ★田 1899, 5c on 5c Deep Claret, Postage Due (J3). Bottom imprint and plate no. 255 block of eight, appears Mint N.H., rich color, few minor perf separations, Fine-Very Fine, an attractive multiple..... 990.00
- 814 ★田 1899, 5c on 5c Deep Claret, Postage Due (J3). Top imprint and plate no. 255 block of eight, original gum, five stamps Mint N.H., others h.r., bright shade, fresh and Fine ..... 990.00
- 815 ★田 1899, 10c on 10c Deep Claret, Postage Due (J4). Top and bottom imprint and plate no. 256 blocks of six, top with some perf separations reinforced by h.r., bottom tropicalized original gum, Fine .....(Photo Ex) 1,600.00
- 816 ★ **Cuba U. S. Administration Collection.** Two volumes with fairly good showing of the different Imprint and plate number strips of three for 1c-10c Ty. I (a few plate block of six as well), nice section of Postage Dues incl. blocks, plate strips, "CUPA" variety of the 5c, E2 multiples, etc., also some cut squares and about \$450.00 catalog value in miscellaneous Puerto Rico U.S. Administration stamps and cut squares.....  
 .....Not illustrated E. 7,500-10,000





817EX



822



823



818



820



819



824



825



827



## DANISH WEST INDIES

- 817 **1856, 3c Dark Carmine, Brown Gum, 3c Rose (1, 2).** First with large margins and tied on piece by target cancel with "St. Thomas 20 ? 1866" circular datestamp, few faults, second tied by target of large part of folded letter (missing bottom half of cover), Fine appearance, Scott Retail as used off cover (on cover they catalogue \$3,000.00 apiece) ..... **(Photo Ex)** 350.00
- 818 ★田 **1866, 3c Rose (2).** Bottom margin block of ten, Positions 184-188/194-198, large margins other sides, slightly tropicalized original gum, clear papermaker's watermark in margin, Very Fine and choice, sound multiples are scarce, Scott Retail as two blocks of four and two singles ..... 480.00
- 819 ★ **1866, 3c Rose (2).** Large to huge margins incl. **sheet margin at bottom**, original gum, h.r., rich color, horizontal crease in selvage only well away from stamps, Very Fine-Extremely Fine, Scott Retail as singles ..... 120.00
- 820 ★田 **1872, 3c Rose (3).** Top selvage block of four, original gum, h.r., rich color, right stamps natural paper wrinkle, Very Fine ..... 525.00
- 821 ★田 **1874, 7c Lilac & Orange, Normal and Inverted Frames (9, 9b).** Top right and top left corner selvage blocks of ten, containing seven with inverted frames and 13 normal, stamps Mint N.H., h.r. in selvage only, few perf separations, ms. and one with purple handstamp in selvage, Fine-Very Fine, Scott Retail as hinged ..... *Not illustrated* 842.50
- 822 (★) **1874, 14c Lilac & Green (12).** Unused (no gum), bright colors, fresh and Fine . 650.00
- 823 ★ **1874, 14c Lilac & Green (12).** Original gum, radiant colors, Fine, dealer's backstamp .... 650.00
- 824 ★ **1902, 2c on 3c Blue & Carmine, Inverted Frame (23).** Original gum, deep rich colors, wide margins, Very Fine, Colson backstamp ..... 575.00
- 825 ★ **1902, 2c on 3c Blue & Lake, Inverted Frame, Dated "1901" (24b).** Original gum, rich colors on bright paper, three wide margins, Fine, several backstamps ..... 600.00



826

- 826 ★ **1902, 2c on 3c Blue & Lake, Inverted Frame, Dark Green Surcharge (24d).** Original gum, h.r., brilliant colors on crisp paper, Fine, scarce example of this variety and seldom offered ..... 2,000.00
- 827 ☒ **1905, 2fr Orange Red & Brown (38).** Top left corner selvage, cancelled by well-struck "St. Thomas 8 4 1907" circular datestamp on registered cover **to Dresden, Germany**, registry markings at left, receiving backstamp, Extremely Fine, an immaculate and attractive cover ..... 1,100.00
- 828 ★ **Danish West Indies, Varieties.** Eight items, incl. Nos. 14b, 14c, 17a, 25a, 25c, 27a, also book of four of No. 14a, combination block of four of Nos. 40 and 40a (two of each), some flaws, overall Fine ..... *Not illustrated* 1,652.00
- 829 ★ **Danish West Indies Exhibition Collection.** Hundreds of mostly unused stamps and some covers (some items removed but not very many), incl. multiples, printings, plate varieties and plated positions, many stamps in the numerous blocks are Mint N.H., Fine-Very Fine lot, excellent for expansion ..... *Not illustrated* E. 4,000-5,000
- 830 ★ **Danish West Indies Collection and Accumulation.** Couple hundred stamps in stock book, virtually all unused, incl. interesting varieties, virtually all Fine-Very Fine ..... *Not illustrated* E. 2,000-3,000

## GUAM



- 831 ★ **1899, 1c-50c Ovpts.** (1-8, 10-11, E1). Also incl. No. 2a, original gum, h.r., 50c oxidized, otherwise Fine-Very Fine group .....(Photo Ex) 1,485.00
- 832 ★ **1899, 1c-15c Ovpts.** (1-3, 5-8, 10). Original gum, 1c, 5c and 8c h.r., rich colors, choice centering, Very Fine group .....(Photo Ex) 720.00



833

- 833 ★ **1899, 10c Brown, Ty. II (9).** Original gum, h.r., pretty shade, well-balanced margins  
VERY FINE ORIGINAL-GUM EXAMPLE OF THE RARE 1899 10-CENT TYPE II WITH GUAM OVERPRINT.  
The 10c Type II with Guam overprint exists both as a regular issue and a Special Printing..... 4,000.00

- 834 ★ **1899, 50c Orange (11).** Original gum, rich color, detailed impression, Very Fine ..... 350.00
- 835 ★ **1899, 50c Red Orange (11a).** Original gum, small h.r., intense shade which is strikingly different from the issued color, Very Fine and choice example of this shade variety ..... 550.00
- 836 ★ **1899, 50c Red Orange (11a).** Original gum, lightly hinged, deep rich color and proof-like impression on bright paper, Very Fine example of this distinct shade, with 1980 P.F. certificate..... 550.00
- 837 (★) **1899, \$1.00 Black, Ty. I (12).** Unused (no gum), intense shade, fresh and Fine. 350.00
- 838 ★ **1899, \$1.00 Black, Ty. I (12).** Original gum, lightly hinged, intense shade, Fine, with 2004 P.F. certificate ..... 350.00
- 839 ★ **1899, \$1.00 Black, Ty. II (13).** Original gum, lightly hinged, crisp impression, fresh and Fine example of this rarity ..... 4,500.00



## PHILIPPINES

- 840 (★) **1855, 5c Vermilion, Redrawn (7).** Unused (no gum), large margins to just in at top, radiant color, small thin spot at bottom

FINE AND RARE EXAMPLE OF THE REDRAWN 1855 5-CENT PHILIPPINES ISSUE.

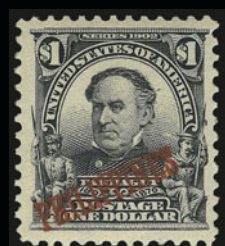
On the redrawn stamp, the inner circle is not broken by the labels at top and bottom. With 2002 Behr certificate which states original gum in error..... 8,000.00



840



- 841 **1855, 5c Vermilion, Redrawn (7).** Large margins to just in, rich color, neat strike of oval handstamp, few flaws, appears Fine..... 1,000.00
- 842 ★ **1873, 1r Green on Bluish (26).** Horizontal pair, original gum, h.r., large margins, rich color, Very Fine, Scott Retail as singles ..... 350.00
- 843 ★ **1883, 20c on 250m Ultramarine, Green Surcharge (133 var).** Original gum, h.r., bright color, tiny corner crease at top right, small thin spot, Fine appearance, an unusual variety, Scott Catalogue states that this was surcharged in red or black so the status of the item offered here is open to further research..... 600.00
- 844 ★ **1899, 1c-\$2.00 Ovpts. (212-222, 224, 219a).** Original gum, couple h.r., rich colors, few trivial flaws, Fine-Very Fine .....(Photo Ex) 1,511.50
- 845 ★ **1900, 2c Carmine, Booklet Pane of Six (214b).** Two, both Scott-listed shades, Red with tropicalized original gum, Orange Red Mint N.H. with one stamp slightly disturbed original gum, Fine-Very Fine, latter with 2000 P.F. certificate.....(Photo Ex) 500.00



851



852



853



854



855

- 846 ★ 1901, \$1.00 Black, Ty. I (223). Barely hinged, bright shade and detailed impression, well-proportioned margins, Very Fine and choice..... 450.00
- 847 (★) 1901, \$1.00 Black, Ty. II (223A). Unused (no gum), intense shade, small thin spot, tiny tear at left, appears Fine ..... 2,400.00
- 848 ★ 1901, \$1.00 Black, Ty. II (223A). H.r., bright shade, crisp impression, wide margins, Very Fine and choice, with 2000 P.F. certificate..... 2,400.00
- 849 ★ 1901, \$5.00 Dark Green (225). Bright shade, scissors-separated perfs at right, light horizontal crease at top, Very Fine appearance ..... 750.00
- 850 ★ 1903-04, 1c-50c Ovpts. (226-236). Mostly h.r., rich colors, Fine-Very Fine group ..... (Photo Ex) 566.00
- 851 ★ 1903, \$1.00 Black (237). Bright shade, crisp impression, wide margins, Very Fine..... 450.00
- 852 ★ 1903, \$2.00 Dark Blue (238). Disturbed original gum, .h.r. with few adherences, bright color, single toned perf at left, otherwise Fine..... 750.00
- 853 ★ 1903, \$5.00 Dark Green (239). Lightly hinged, deep rich color and proof-like impression, wide margins, Very Fine ..... 1,000.00
- 854 ★ 1911, 10p Deep Green (274). Lightly hinged, rich color, fresh and Very Fine ... 250.00
- 855 ★ 1914, 2c Green, Booklet Pane of Six (276a). Tropicalized original gum, h.r. at bottom right where few perf separations, deep rich color, typical centering for this difficult issue, Fine ..... 750.00





- 856 ★★田 1918, 16c Olive Green (289). Mint N.H. top right corner block of four, bright color, centered to top left, almost Fine, still an attractive position block, Scott Retail as singles..... 1,000.00
- 857 S 1917-26, 2c-4p Regular Issue, "Specimen" Overprints (290S-304S). 26c natural s.e. at bottom, h.r., rich colors, Fine-Very Fine.....(Photo Ex) 530.00
- 858 S 1926, 2c-1p Regular Issue, "Specimen" Overprints (319S-325S). H.r., rich colors, Fine-Very Fine set.....(Photo Ex) 455.00
- 859 ★ 1926, 2c Green & Black, Horizontal Pair, Imperforate Between (319a). Lightly hinged, bright colors, fresh and Very Fine, with 2002 P.F. certificate ..... 300.00
- 860 ★★ 1926, 16c Olive Green & Black, Horizontal Pair, Imperforate Between (321a). Mint N.H. with selvage at right, deep rich colors, Very Fine and choice, backstamp in selvage only, with 2000 P.F. certificate ..... 350.00
- 861 ★ 1926, 18c Light Brown & Black, Double Impression of Center (322a). Tropicalized original gum, clear doubling of the vignette, faint toning mostly evident on back, Fine appearance, only 150 were printed, with 2002 P.F. certificate ..... 1,250.00



- 862 ★ 1925, 4p Deep Blue, Imperforate (352a). Horizontal pair, left stamp Mint N.H., right stamp single hinge mark, large margins, rich color
- VERY FINE AND CHOICE. AN ATTRACTIVE AND SCARCE PAIR OF THE 1925 4-PESO IMPERFORATE IN THE DEEP BLUE SHADE.
- Scott Retail as singles..... 5,350.00

862

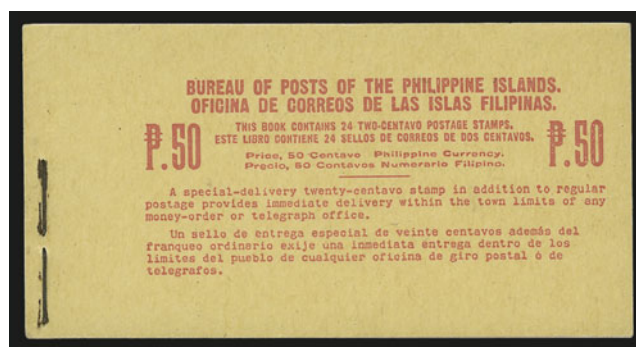


863



864

- 863 ★ **1931, 10p Green, Imperforate (353).** Horizontal pair, lightly hinged, radiant color, large margins all around, Very Fine and choice..... 270.00
- 864 ★ **1931, 10p Green, Imperforate (353).** Horizontal pair, right stamp Mint N.H., left stamp single hinge mark, bright shade, Very Fine and choice, Scott Retail as singles ... 355.00



865

- 865 ★★ **1939, 2c Rose, "WEALTH COMMON-" Overprint Error (433b).** Unexploded booklet containing four panes, each with bottom left stamp showing the error, Mint N.H. with interleaving, booklet cover free of creases near staples
- VERY FINE. AN EXTRAORDINARY COMPLETE BOOKLET CONTAINING ONE OF THE RAREST ERRORS OF THE PHILIPPINES.
- Only 24 were issued, which would have been six complete booklets. We are unaware of another intact booklet.
- With 2005 P.F. certificate. Scott Retail as four panes..... 16,000.00



866



867

- 866 ★★ **1940, 4p Montalban Gorge (445).** Mint N.H., rich colors, Very Fine and choice. 450.00
- 867 ★ **Philippines Air Post.** 15 unused stamps, Nos. C1-C6, C9-C12 and C17, five better dupes, overall Fine-Very Fine.....(Photo Ex) 1,098.00



- 868 ★ **1926, 16c Light Olive Green, Violet Overprint (C7).** Disturbed original gum, h.r., pretty shade, single toned perf at left, otherwise Very Fine, scarce as only 300 were issued, Kessler, Sanabria and third back-stamp, with 1981 R.P.S. certificate..... 3,250.00



868



869

- 869 ★ **1926, 16c Olive Bister, Air Post (C8).** Slightly tropicalized original gum, radiant color, Fine example of this rare issue, only 100 were issued, Manila dealer's back-stamp..... 5,000.00



870



871



872

- 870 ★ **1926, 12p Violet Brown, Air Post (C13).** Rich color, fresh and Fine, only 900 were issued..... 650.00
- 871 ★ **1926, 12p Violet Brown, Air Post (C13).** H.r., intense shade and impression, wide margins, Very Fine, only 900 were issued..... 650.00
- 872 ★ **1926, 12p Violet Brown, Air Post (C13).** Small h.r., rich color, Fine, only 900 were issued..... 650.00



873



874



875

- 873 ★ **1926, 4p Dark Blue, Air Post (C14).** Small h.r., rich color, centered to left, light corner crease at top right, Fine appearance, only 700 were issued, Sanabria and other backstamp ..... 750.00
- 874 ★ **1926, 4p Dark Blue, Air Post (C14).** Slightly disturbed original gum, rich color, Fine, only 700 were issued, two backstamps ..... 750.00
- 875 ★ **1899, 50c Deep Claret, Postage Due (J5).** Original gum, h.r., radiant color, well-proportioned margins, Very Fine and choice, a beautiful stamp ..... 200.00
- 876 **Cut Squares.** 47, virtually all different and virtually all full corners, bright colors, fresh and Very Fine group ..... *Not illustrated* 722.85
- 877 **Philippines Stock, 1899-1940.** Thousands of used and unused stamps neatly arranged in four large stock books, incl. U. S. Administration Ovpts., Regular Issues, Commemoratives, Air Post, Special Delivery, Postage Dues, few Cut Squares and Entires and other Back-of-the Book, also some covers, the stamps are typically in large quantities of up to 50 or more in some cases, various gum states (unused, hinged and Mint N.H.), generally Fine-Very Fine, Philippines stocks of the magnitude are almost never seen offered ..... *Not illustrated* E. 3,000-4,000



878

- 878 ★田 **PUERTO RICO, Coamo Provisional, 1898, 5c Black, Ty. I-II-III-IV (201).** Complete sheet of ten, tropicalized original gum described on accompanying certificate as original gum, F. Santiago control mark, top right stamp with tiny thin spot at top  
VERY FINE APPEARANCE. A RARE COMPLETE SHEET OF THE PUERTO RICO 1898 COAMO ISSUE.

We have only sold one other complete sheet since keeping computerized records, in our 1995 Rarities sale. The example offered here was acquired by the current owner in our 2005 Rarities sale.

With 2005 P.F. certificate. .... 10,000.00

END OF SALE — THANK YOU



# Bid Form—15% Premium Sale

Sale 974

Tuesday, June 16, 2009

1

Please provide the following information:

NAME.....  
ADDRESS.....  
CITY/STATE/ZIP .....  
TEL. (DAY) ..... FAX.....  
E-MAIL.....

PADDLE #

*Do not write in box*

2

Have you purchased from us in the past 5 years? ☐ YES (if so, please go to Section 3)  
☐ NO (please provide a trade reference and bank information)

References:

Stamp Firm: ..... Telephone.....

Bank: ..... Account # .....

3

In the space provided below, enter the **lot number** from **Sale 974** and your corresponding bid. Please use **whole dollar amounts** only and enter the **maximum bid** you wish to have us execute on your behalf, according to the **bidding increments** on other side of this form. **Your bid will NOT include the 15% buyer's premium.** We will advance the bidding at one increment over the

next highest bid; therefore, you may be awarded the lot at less than your maximum bid. Please do not use "plus" bids or "buy" bids. If you wish to bid on one lot **or** the other, indicate your "or" bid between lot number/bid entries and bracket your choices. If you wish to place a **bidding limit** on the total amount of your bids, please enter your limit in the space marked "Limit Bids".

## PLEASE NOTE BIDDING INCREMENTS AND SHIPPING CHARGES (ON BACK OF THIS PAGE)

☐ **LIMIT BIDS:** Check this box if you wish to limit the total amount of your bids (not including the **15% buyer's premium**) in this sale. Your bids will be executed until your bidding limit no longer allows for additional bids.

The total amount you wish to bid is: \$ .....

Lot	Bid	Lot	Bid	Lot	Bid
	\$		\$		\$

4

**AGREEMENT:** By signing this bid form, you agree to pay for purchases resulting from your bids, in accordance with the **Conditions of Sale** printed in the sale catalogue. You also agree to pay the **15% buyer's premium, shipping costs (see reverse), and sales tax or use tax or customs duty which may be due on the total invoiced amount.** It is

understood that these bids will be executed by Siegel Auction Galleries as a courtesy to absentee bidders, but you waive the right to make any claim against the auctioneer or the firm, arising from the these bids. **You are responsible for your written bids, including any errors on your part and any additions or changes to the bids herein.**

**Payment must be made by cash, check, money order or wire transfer. Credit cards will not be accepted.**



SIGNED..... TODAY'S DATE .....

5

Please submit your bids promptly (telephone bids must be confirmed in writing).

Mail to: **Robert A. Siegel Auction Galleries, Inc.**

60 E. 56th Street, 4th Floor, New York, N.Y. 10022

Telephone (212) 753-6421

**OR FAX YOUR BIDS: (212) 753-6429**

**Shipping Instructions, Bidding Increments and space for additional bids on other side of form**

## Additional Bids

Sale 974—June 16, 2009

Lot	Bid	Lot	Bid	Lot	Bid
	\$		\$		\$

## Shipping and Transit Insurance

We will be pleased to arrange for shipping and transit insurance for purchases in this sale (except those described as “floor sale only”). To expedite billing and delivery of lots to hundreds of buyers per sale, we use standard charges for postage and insurance, based on the package weight and mailing requirements (see schedule). The standard charges are sometimes slightly more or less than the actual postage or Fedex fees, but we do not include any charge for our labor or packing costs. Therefore, we ask all buyers to remit the prescribed amount for shipping charges.

Transit insurance is provided in all cases, except when the buyer has furnished us with proof that insurance coverage is effective under another policy. Proof, in such cases, will be accepted in the form of a written certificate from the insurance carrier.

You are responsible for insurance charges, which will be added to your invoice. This coverage is provided for our mutual protection against theft or loss in transit.

## Bidding Increments

The auctioneer may regulate the bidding at his discretion. However, to assist absentee bidders in establishing their maximum bid for each lot, the increments shown at right will be used in most cases. We recommend that written bids conform to these increments (those which do not will be reduced to the next level).

## REVISED CHARGES FOR SHIPPING EFFECTIVE JUNE 1, 2008

**Due to increased Fedex charges for secured delivery and fuel, we are revising our shipping charges. We apologize for circumstances beyond our control.**

## Current Postage & Insurance Charges

Weight/Class	Shipping Method	Charges
Up to 2 lbs.	Fedex Envelope	\$25.00
Over 2 lbs.	Fedex Box	\$35.00*
Non-U.S.	Fedex/Courier	\$50.00**
Bulk Lots	UPS Preferred	By weight and value
<b>These fees reflect additional Fedex charges for residential delivery, signature and fuel surcharge.</b> <b>*Higher fees will be charged on packages weighing more than 5 lbs. or insured for more than \$75,000.</b> <b>**Buyers are liable for all customs duties and clearance charges. An accurate declaration of value will be made on all import/export documents.</b>		

6/2008

Up to \$50	\$5	\$3,000-7,000	\$250
\$50-200	\$10	\$7,000-20,000	\$500
\$200-500	\$25	\$20,000-30,000	\$1,000
\$500-1,000	\$50	\$30,000-75,000	\$2,500
\$1,000-3,000	\$100	\$75,000 up	\$5,000

6/2008



**PRICES REALIZED FOR SALE 974---6/16/2009**  
**The Laila Collection of Hawaii and U.S. Possessions**

Robert A. Siegel Auction Galleries, Inc.  
60 East 56th Street, 4th Floor, New York, NY 10022  
Tel (212) 753-6421 Fax (212) 753-6429

Lot#	Realized	Lot#	Realized	Lot#	Realized	Lot#	Realized	Lot#	Realized	Lot#	Realized	Lot#	Realized	Lot#	Realized
501	140,000	544	500	587	300	630	750	673	150	717	1,800	760	110	804	800
502	14,500	545	300	588	6,000	631	600	674	225	718	160	761	110	805	800
503	17,000	546	500	589	500	632	450	675	170	719	1,100	762	110	806	425
504	20,000	547	300	590	500	633	650	676	170	720	3,000	763	200	807	550
505	750	548	300	591	400	634	600	677	700	721	1,600	764	110	808	225
506	120	549	120	592	400	635	350	678	500	722	425	765	8,000	809	5,500
507	300	550	550	593	250	636	325	679	300	723	1,300	766	7,500	810	375
508	2,000	551	300	594	250	637	150	680	60	724	1,100	767	350	811	1,600
509	1,300	552	200	595	300	638	650	681	4,250	725	650	768	200	813	900
510	180	553	1,800	596	1,400	639	8,000	682	2,300	726	150	769	2,500	814	200
511	325	554	150	597	1,200	640	1,700	683	2,000	727	2,000	770	550	815	325
512	250	555	250	598	225	641	2,100	684	500	728	150	771	550	817	140
513	500	556	475	599	325	642	2,100	685	450	729	225	772	2,500	818	190
514	500	557	450	600	5,500	643	11,500	686	5,250	730	600	773	200	819	110
515	180	558	475	601	800	644	650	687	375	731	650	774	1,300	820	190
516	190	559	325	602	1,300	645	100	688	4,750	732	150	775	2,400	821	275
517	425	560	250	603	180	646	70	689	2,200	733	150	776	200	822	200
518	160	560A	800	604	160	647	4,250	690	4,500	734	700	777	475	823	100
519	2,600	561	375	605	100	648	2,000	691	3,750	735	425	779	225	824	160
520	750	562	3,750	606	225	649	160	692	17,500	736	1,100	780	600	825	130
521	1,500	563	325	607	300	650	2,500	693	100	737	100	781	160	826	850
522	600	564	250	608	120	651	150	694	1,200	738	400	782	450	827	200
523	650	565	350	609	150	652	100	695	500	739	130	783	550	828	250
524	1,000	566	275	610	200	653	170	696	160	740	300	784	2,200	829	2,100
525	3,750	568	170	611	500	654	1,200	697	140	741	2,500	785	8,500	830	2,200
526	1,900	569	375	612	200	655	1,300	698	100	742	160	786	1,000	831	200
527	350	570	170	613	375	656	70	699	300	743	110	787	600	832	200
528	750	571	325	614	350	657	60	700	300	744	190	788	350	833	1,600
529	500	572	250	615	500	658	100	701	1,000	745	1,300	789	475	834	100
530	500	573	300	616	250	659	110	702	100	746	400	790	4,500	835	110
531	275	574	250	617	130	660	425	703	110	747	150	791	3,250	836	110
532	300	575	200	618	120	661	375	704	180	748	170	792	550	837	70
533	425	576	1,000	619	275	662	300	705	4,750	749	250	793	800	838	80
534	120	577	500	620	650	663	900	706	1,100	750	325	794	950	839	750
535	200	578	800	621	140	664	1,300	707	250	751	2,000	795	225	840	2,000
536	550	579	130	622	170	665	1,400	708	200	752	4,250	796	325	842	200
537	400	580	225	623	500	666	700	709	225	753	600	797	250	844	200
538	400	581	7,500	624	170	667	4,500	711	150	754	1,100	798	300	845	110
539	120	582	1,800	625	350	668	375	712	130	755	100	799	425	846	200
540	150	583	4,500	626	250	669	1,100	713	100	756	500	800	200	847	300
541	600	584	2,100	627	950	670	1,600	714	325	757	3,500	801	1,700	848	1,500
542	450	585	1,000	628	1,100	671	3,250	715	100	758	150	802	275	849	110
543	1,200	586	600	629	350	672	6,750	716	1,600	759	5,500	803	550	850	150

**PRICES REALIZED FOR SALE 974---6/16/2009**  
**The Laila Collection of Hawaii and U.S. Possessions**

Robert A. Siegel Auction Galleries, Inc.  
60 East 56th Street, 4th Floor, New York, NY 10022  
Tel (212) 753-6421 Fax (212) 753-6429

Lot#	Realized
851	110
852	110
853	425
854	90
855	550
856	120
857	90
858	180
859	180
860	275
861	325
862	2,000
863	90
864	90
865	5,750
866	200
867	200
868	900
869	900
870	100
871	190
872	100
873	130
874	150
875	100
876	100
877	2,600
878	5,250