

The Barry K. Schwartz Collection of
Kentucky
Postal History



SALE 981—THURSDAY, DECEMBER 10, 2009



ROBERT A. SIEGEL AUCTION GALLERIES, INC.

The Barry K. Schwartz Collection of *Kentucky* Postal History

Sale 981—Thursday, December 10, 2009

Live auction to be held at Siegel Auction Galleries,
60 East 56th Street (Park/Madison), 4th Floor, New York City

All lots offered without reserves

Lots are sold subject to a 15% buyer's premium and
any applicable sales tax (or customs duty for non-U.S. buyers)



**Afternoon Session—Lots 4001-4166
Thursday, December 10, 2009, at 1:30 p.m.**

Kentucky Town Markings	lots	4001-4059
1847 Issue Used from Kentucky		4060-4065
Steamboat Mail.....		4066-4086
Western Express Covers from Kentucky		4087-4089
Louisville Carrier Department		4090-4094
1857 and Later Issues Used from Kentucky		4095-4110
J. J. Macklin & Co. Match Stamp		4111
Kentucky in the Civil War		4112-4166

**Lots will be available for viewing on
Monday and Tuesday, December 7-8, 10-4, and by appointment.**

Robert A. Siegel
AUCTION GALLERIES, INC.

60 EAST 56TH STREET, 4TH FLOOR, NEW YORK, N.Y. 10022
Phone (212) 753-6421 • Fax (212) 753-6429 • E-mail: stamps@siegelauctions.com

Catalogues, internet bidding, resources, archives and the Siegel Encyclopedia at
siegelauctions.com



Robert A. Siegel

AUCTION GALLERIES, INC.

60 EAST 56TH STREET, 4TH FLOOR, NEW YORK, N.Y. 10022
 Phone (212) 753-6421 • Fax (212) 753-6429 • E-mail: stamps@siegelauctions.com
siegelauctions.com



Scott R. Trepel
 President
 strepel
 @siegelauctions.com



John P. Zuckerman
 Senior Vice President
 jzuckerman
 @siegelauctions.com



Corey Long
 Vice President
 clong
 @siegelauctions.com



Starr Tucker-Ortega
 Accounts
 stamps
 @siegelauctions.com



Carlene Counihan
 Bids and Inquiries
 carlene
 @siegelauctions.com

Scott R. Trepel Principal Auctioneer (licensed by NYC Dept. of Consumer Affairs, #795952)
 Nathaniel Estes Catalogue and Digital Production

Information for Bidders

Bidding

The following means are available for placing bids:

- 1) Attending the Live Auction in Person:** All bidders must register for a paddle, and new bidders must provide references at least three business days in advance of the sale.
- 2) Live Internet Bidding:** Instructions for participating as a Live Internet Bidder are provided on the page opposite.
- 3) Phone Bidding:** Bidders can be connected to the sale by phone and bid through a member of staff. Requests for phone bidding are subject to approval (please contact our office at least 24 hours before the sale). A signed Bid Form is required.
- 4) Absentee Bids.** All bids received in advance of the sale, either by mail, fax, phone, e-mail or internet, are Absentee Bids, which instruct the auctioneer to bid up to a specific amount on one or more lots in the sale. Absentee Bids sent by phone, fax or e-mail should arrive at least one hour prior to the start of the sale session. Bids entered through Live Internet Bidding will be visible to the auctioneer during the sale. Written bids should be entered legibly on the Bid Form in the sale catalogue. E-mail and internet bids should be carefully typed and double-checked. All new bidders must provide references. We recommend calling or e-mailing to confirm that Absentee Bids sent by mail, fax or e-mail have been received and entered.

Pre-Sale Viewing

Subject to availability, certain lots (except group lots) can be sent to known clients for examination. Requests must be made no later than 7 days prior to the sale. Lots must be returned on the day received. Postage/insurance costs will be invoiced.

In addition to regular viewing, clients may view lots by appointment. Our staff will be pleased to answer questions or provide additional information about lots.

Expert Certification

Individual items offered without a current certificate (PF dated within the past five years of sale; PSE dated January 2004 or later) may be purchased subject to independent certification of genuineness and our description. **Please refer to the Conditions of Sale and Grading Terms for policies governing certification.**

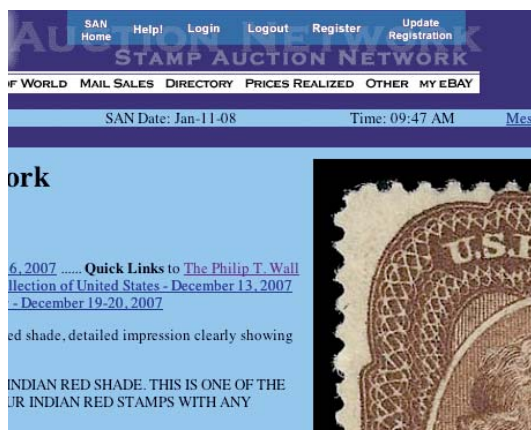
Shipping and Delivery

Procedures and charges for shipping lots are printed on the back of the Bid Form. **Bidders are responsible for all prescribed shipping charges and any applicable sales tax or customs duties.**

Price Realized

Prices realized are sent with each invoice. Bidders with e-mail will receive a Bid Results report after the sale. Session results are posted immediately to **siegelauctions.com**

Live Internet Bidding at Siegel Auctions



Bidding from your computer lets you be part of the live auction from anywhere in the world!

There's no substitute for following the auction in real time. Live Internet Bidding lets you bid and buy as though you were right there in the saleroom.

And it's easy. Just start by following the simple steps to become a registered Live Internet Bidder. Once you've been approved for bidding, you can listen to the auction and place bids with the click of a mouse.

This step-by-step guide will instruct you how to register, set your browser and use the bidding interface.

1 Registering with Stamp Auction Network and Siegel Auction Galleries

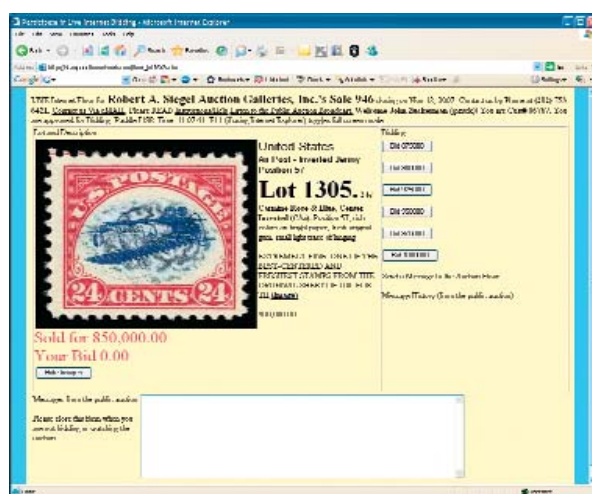
Live Internet Bidding is managed by Stamp Auction Network (SAN). To bid, you must be registered and approved by *both* SAN and Siegel. To decide what you need to do, choose the description below that best fits you.

I've already registered with SAN and have been approved by Siegel for internet bidding. You're ready for Step 2.

I've never registered with SAN, but I'm a Siegel client. Go to stampauctionnetwork.com/siegel and click on "Register" at the top. Check the box for Robert A. Siegel Auction Galleries (under "R") and submit the form, indicating you are a Siegel client. Once registered at SAN, you're ready for Step 2.

I've never registered with SAN, and this is the first time I've bid with Siegel. Go to stampauctionnetwork.com/siegel and click on "Register" at the top. Check the box for Robert A. Siegel Auction Galleries (under "R") and submit the form **with your trade references** (please, no family members or credit card companies as references). Once registered at SAN and approved by Siegel for bidding, you're ready for Step 2.

I've bid through SAN before, but this is the first time I've bid in a Siegel sale. Then you just need to be approved by Siegel. Go to stampauctionnetwork.com/siegel and click on "Update Registration" at the top. Your SAN account information will be sent to us for approval (you might be asked for other trade references). Once approved by Siegel for bidding, you can move to Step 2.



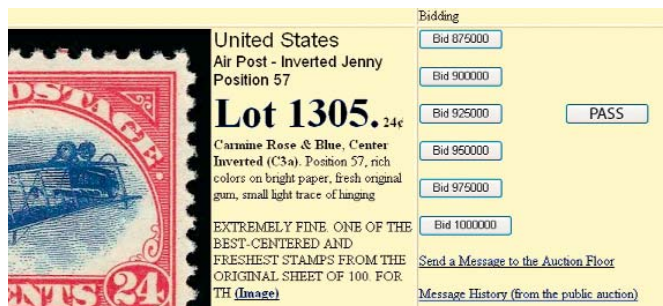
2 Using your browser for Live Internet Bidding and understanding the way it works.

Live Internet Bidding works by providing an audio feed of the auction (for anyone using Internet Explorer) and by allowing registered bidders to observe and place bids. The bidding interface shows a photo and description of the lot, the current bid (and your bidding status), and options for placing competitive bids. To join the auction, go to stampauctionnetwork.com/siegel. You can also log on at siegelauctions.com

The visual interface will work with any browser on both PC and Mac operating systems. However, the audio feed only works with Internet Explorer on a PC with ActiveX software installed. If ActiveX is not on your computer, you will have the option to install it.

Before bidding by internet for the first time, we recommend finding a sale in progress and listening to the public broadcast or logging in as a registered bidder. This will help you develop a feel for the sale tempo and bidding interface.

"System down" or "lost connection" events do occasionally happen. If you have any problems with Live Internet Bidding, please call 212-753-6421 for immediate assistance.



3 Using Live Internet Bidding to bid, track results and communicate with the auctioneer.

When you're logged on as a Live Internet Bidder, the screen will display buttons with bid increments. After you click on a bid amount, the auctioneer is immediately notified of your bid. Retracting a bid is usually not acceptable, so please bid carefully.

If you bid, then decide to stop, please use the "Pass" button, which appears once you've started bidding. This tells the auctioneer not to wait for another bid from you.

You can send messages to the auctioneer (for example, a request for extension). You can also track prior realizations from the bidding screen.

Conditions of Sale (please read carefully before bidding)

The property described in this catalogue will be offered at public auction by Robert A. Siegel Auction Galleries, Inc. ("Galleries") on behalf of various consignors and itself or affiliated companies. By bidding on any lot, whether directly or by or through an agent, in person, or by telephone, facsimile or any other means, the bidder acknowledges and agrees to all of the following Conditions of Sale.

1. The highest bidder acknowledged by the auctioneer shall be the buyer. The term "final bid" means the last bid acknowledged by the auctioneer, which is normally the highest bid offered. **The purchase price payable by the buyer will be the sum of the final bid and a commission of 15% of the final bid ("buyer's premium"), together with any sales tax, use tax or customs duties due on the sale.**

2. The auctioneer has the right to reject any bid, to advance the bidding at his discretion and, in the event of a dispute between bidders, to determine the successful bidder, to continue the bidding or to reoffer and resell the lot in dispute. The Galleries' record of the final sale shall be conclusive.

3. All bids are per numbered lot in the catalogue unless otherwise announced by the auctioneer at the time of sale. The right is reserved to group two or more lots, to withdraw any lot or lots from the sale, or to act on behalf of the seller. The Galleries will execute bidding instructions on behalf of clients, but will not be responsible for the failure to execute such bids or for any errors in the execution of such bids.

4. **Lots with numbers followed by the symbol ° are offered subject to a confidential minimum bid ("reserve"), below which the lot will not be sold. The absence of the symbol ° means that the lot is offered without a reserve. If there is no reserve, the auctioneer has sole discretion to establish a minimum opening bid and may refuse an offer of less than half of the published estimate. Any lot that does not reach its reserve or opening bid requested by the auctioneer will be announced as "passed" and excluded from the prices realized lists after the sale. The Galleries may have a direct or indirect ownership interest in any or all lots in the sale resulting from an advance of monies or goods-in-trade or a guarantee of minimum net proceeds made by the Galleries to the seller.**

5. Subject to the exclusions listed in 5(A), the Galleries will accept the return of lots which have been misidentified or which have obvious faults that were present when the lot was in the Galleries' custody, but not so noted in the lot description. **All disputed lots must be received by the Galleries intact with the original packing material within 5 days of delivery to the buyer but no later than 30 days from the sale date. (5A) EXCLUSIONS:** The following lots may not be returned for any reason: lots containing 10 or more items; lots from buyers who registered for the pre-sale exhibition or received lots by postal viewing, thereby having had the opportunity to inspect them before the sale; any lot described with "faults," "defects" or a specific fault may not be returned because of any secondary fault. Photographed lots may not be returned because of centering, margins, short/nibbed perforations or other factors shown in the illustrations. Lots may not be returned for any of the following reasons: the color of the item does not match the color reproduction in the sale catalogue or website listing; the description contains inaccurate information about the quantity known or reported; or a certification service grades a stamp lower than the grade stated in the description.

6. Successful bidders, unless they have established credit with the Galleries prior to the sale, must make payment in full before the lots will be delivered. Buyers not known to the Galleries must make payment in full within 3 days from the date of sale. **The Galleries retains the right to demand a cash deposit from anyone prior to bidder registration and/or to demand payment at the time the lot is knocked down to the highest bidder, for any reason whatsoever.** In the event that any buyer refuses or fails to make payment in cash

for any lot at the time it is knocked down to him, the auctioneer reserves the right to reoffer the lot immediately for sale to the highest bidder. **Credit cards are not accepted as payment.**

7. If the purchase price has not been paid within the time limit specified above, nor lots taken up within 7 days from the date of sale, the lots will be resold by whatever means deemed appropriate by the Galleries, and any loss incurred from resale will be charged to the defaulting buyer. Any account more than 30 days in arrears will be subject to a late payment charge of 1½% per month as long as the account remains in arrears. Any expenses incurred in securing payment from delinquent accounts will be charged to the defaulter. A fee of \$250.00 per check will be charged for each check returned for insufficient funds.

8. All lots are sold as genuine. **Any lot accompanied by a certificate issued by The Philatelic Foundation within 5 years of the sale date or by Professional Stamp Experts since January 2004 is sold "as is" and in accordance with the description on the certificate. Such lots may not be returned for any reason, including but not limited to a contrary certificate of opinion.** Buyers who wish to obtain a certificate for any item that does not have a P.F. or P.S.E. certificate (dated as above) may do so, provided that the following conditions are met: (1) the purchase price must be paid in full, (2) the item must be submitted to an acceptable expertizing committee with a properly executed application form within 21 days of the sale, (3) a copy of the application form must be given to the Galleries, (4) in the event that an adverse opinion is received, the Galleries retain the right to resubmit the item on the buyer's behalf for reconsideration, without time limit or other restrictions, (5) unless written notification to the contrary is received, items submitted for certification will be considered cleared 90 days from the date of sale, and (6) in the event any item is determined to be "not as described", the buyer will be refunded the purchase price and the certification fee up to \$600.00 unless otherwise agreed.

9. Until paid for in full, all lots remain the property of the Galleries on behalf of the seller.

10. Agents executing bids on behalf of clients will be held responsible for all purchases made on behalf of clients unless otherwise arranged prior to the sale.

11. The buyer assumes all risk for delivery of purchased lots and agrees to pay for prescribed shipping costs. Buyers outside the U.S. are responsible for all customs duties.

12. **The bidder consents that any action or proceeding against it may be commenced and maintained in any court within the State of New York or in the United States District Court for the Southern District of New York, that the courts of the State of New York and United States District Court for the Southern District of New York shall have jurisdiction with respect to the subject matter hereof and the person of the bidder. The bidder agrees not to assert any defense to any action or proceeding initiated by Galleries based upon improper venue or inconvenient forum. The bidder agrees that any action brought by the bidder shall be commenced and maintained only in a Federal Court in the United States District Court for the Southern District of New York or the State Court in the county in which Galleries has its principal place of business in New York. These Terms and Conditions shall be governed by and construed in accordance with the substantive laws of the State of New York.**

SCOTT R. TREPEL, Principal Auctioneer

Auctioneer's License No. 795952
N.Y.C. Department of Consumer Affairs
80 Lafayette Street, New York, N.Y. 10013
Telephone (212) 577-0111

Revised 1/2008 15%

Copyright Notice

© 2009, Robert A. Siegel Auction Galleries, Inc. This catalogue in all versions, printed and electronic, is protected by copyright. The descriptions, format, illustrations and information used herein may not be reprinted, distributed or copied in any form without the express written consent of Robert A. Siegel Auction Galleries. Application for permission may be made in writing.

Grades, Abbreviations and Values Used in Descriptions

Grades and Centering

Our descriptions contain detailed information and observations about each item's condition. We have also assigned grades to stamps and covers, which reflect our subjective assessment. For stamps, the margin width, centering and gum are described and graded according to generally-accepted standards (an approximate correlation to numeric grades is provided at right). Although we believe our grades are accurate, they are not always exactly aligned with third-party grading terms or standards for all issues. **A lot may not be returned because a certification service grades a stamp lower than the grade stated in the description. Information from the P.S.E. Stamp Market Quarterly and P.S.E. Population ReportSM is the most current available, but lots may not be returned due to errors or changes in statistics or data.**

Extremely Fine Gem (90-100): The term "Gem" describes condition that is the finest possible for the issue. This term is equivalent to "Superb" used by grading services.







Extremely Fine (80-90): Exceptionally large/wide margins or near perfect centering.

Very Fine (70-85): Normal-size margins for the issue and well-centered with the design a bit closer to one side. "Very Fine and choice" applies to stamps that have desirable traits such as rich color, sharp impression, freshness or clarity of cancel.

Fine (60-70): Smaller than usual margins or noticeably off center. Pre-1890 issues may have the design touched in places.

Very Good (below 60): Attractive appearance, but margins or perforations cut into the design.

Guide to Gum Condition

Gum Categories:	MINT N.H.	ORIGINAL GUM (O.G.)				NO GUM
	 Mint Never Hinged <i>Free from any disturbance</i>	 Lightly Hinged <i>Faint impression of a removed hinge over a small area</i>	 Hinge Mark or Remnant <i>Prominent hinged spot with part or all of the hinge remaining</i>	 Part o.g. <i>Approximately half or more of the gum intact</i>	 Small part o.g. <i>Approximately less than half of the gum intact</i>	 No gum <i>Only if issued with gum</i>
Catalogue Symbol:	★ ★	★	★	★	★	(★)
PRE-1890 ISSUES	<i>Pre-1890 stamps in these categories trade at a premium over Scott value</i>			Scott Value for “O.G.”		Scott “No Gum” Values thru No. 218
1890-1935 ISSUES	Scott “Never Hinged” Values for Nos. 219-771	Scott Value for “O.G.” (Actual value will be affected by the degree of hinging)		Disturbed Original Gum: Gum showing noticeable effects of humidity, climate or hinging over more than half of the gum. The significance of gum disturbance in valuing a stamp in any of the Original Gum categories depends on the degree of disturbance, the rarity and normal gum condition of the issue and other variables affecting quality. For example, stamps issued in tropical climates are expected to have some		
1935 TO DATE	Scott Value for “Unused”					

Covers

Minor nicks, short edge tears, flap tears and slight reduction at one side are normal conditions for 19th century envelopes. Folded letters should be expected to have at least one file fold. Light cleaning of covers and small mends along the edges are accepted forms of conservation. Unusual covers may have a common stamp with a slight crease or tiny tear. **These flaws exist in virtually all 19th century covers and are not always described. They are not grounds for return.**

Catalogue Values and Estimates

Unless otherwise noted, the currently available *Scott Catalogue* values are quoted in dollars with a decimal point. Other catalogues are often used for foreign countries or specialized areas and are referred to by their common name: *Stanley Gibbons* (SG), *Dietz*, *American Air Mail Catalogue* (AAMC), *Michel*, *Zumstein*, *Facit*, etc. Estimates are indicated with an "E." and reflect our conservative valuation in dollars. Reserves will never exceed the low end of the estimate range; they will sometimes exceed Scott Catalogue value for stamps in Extremely Fine condition.

Because of certain pricing inconsistencies in the *Scott Catalogue*—for example, blocks that have no gum, the absence of premiums for Mint N.H. items, etc.—we cannot guarantee the accuracy of values quoted for multiples, specialized items and collection lots. We generally try to be conservative, but buyers may not return a lot because of a discrepancy in catalogue value due to Scott pricing inconsistencies.

Symbols and Abbreviations (see chart above for gum symbols)

⊞	Block	E	Essay	pmk.	Postmark	No.	Scott Catalogue Number
⊞	Cover	P	Proof	cds	Circular Datestamp	hs	Handstamp
FC	Fancy Cancel	TC	Trial Color Proof	var.	Variety	ms.	Manuscript

Resources

siegelauctions.com



Catalogues, Prices Realized, POWER SEARCH and MY SIEGEL

Images and descriptions for all current sale catalogues are available from our website.

An archive of past sales (from Sale 786, April 1997) and prices realized (from Sale 742, May 1992) is constantly maintained to allow users to search for items and information from past sales.

Power Search™ and My Siegel™ allow you to create and save highly specialized data searches, and to receive e-mail notifications of related items in future sales.



The Siegel Encyclopedia and Rarities Census

This feature of our website contains a wealth of information gleaned from decades of philatelic research by the dedicated philatelists at Siegel.

The up-to-date census data for 19th and 20th century U.S. rarities are a valuable resource for buyers, sellers and researchers. Every recorded example of more than 30 different rare stamps is described and, in most cases, photographed.



Informative Video Presentations

Downloadable video documentaries tell the stories of stamps and covers, such as the famous Inverted “Jenny.” This is the ideal way to introduce philately to others.

AFTERNOON SESSION (LOTS 4001-4166)
THURSDAY, DECEMBER 10, 2009, AT 1:30 P.M.

THE BARRY K. SCHWARTZ COLLECTION OF
KENTUCKY POSTAL HISTORY

KENTUCKY TOWN MARKINGS



- 4001 ☒ **AUGUSTA KY./JAN 24th.** Well-struck two-line handstamp with date in red manuscript, matching "25" rate on folded cover to Woodville Miss., **forwarded** to Centreville Miss., manuscript "Ford. 6" additional rate, blue "Woode. Mi. Feb. 18" circular datestamp, minor wear at top, Very Fine, only seven examples of this Augusta marking are reported..... E. 200-300
- 4002 ☒ **Bardstown Ky.** 1818-32, seven stampless covers, most mounted on exhibit pages, incl. four with sawtooth circular datestamps with three in red and one in black, also two different types of straightline handstamps, one is for deposition involving slave girl used as partial payment of a debt, various destinations and rates incl. 6c, 12c, 25c, 18½c, free, some sight wear, overall fresh and Very Fine, scarce group.....**(Photo Ex)** E. 750-1,000
- 4003 ☒ **"Bardstown Ky. Dec. 10".** Manuscript postmark with matching "Paid 50" rate on 1823 folded letter **to Paris, France**, red "Colonies Par Le Havre" two-line handstamp, manuscript "9" decimes due, receiving backstamp, fresh and Very Fine double-rate usage to France..... E. 200-300
- 4004 ☒ **Bardstown Ky. May 12.** Clear strike of red circular datestamp with sawtooth edge with manuscript "Paid 50" on 1825 folded letter **to Paris, France**, indistinct red "Colonies Par Le Havre" two-line handstamp at top, manuscript "11" decimes due, receiving backstamp, Very Fine double-rate usage to France of this unusual circular datestamp..... E. 300-400
- 4005 ☒ **"Bardstown K. Feb. 2nd".** Manuscript postmark with matching "Paid 25" rate on 1832 folded letter **to Paris, France**, neat strike of "Pays D'Outremer" boxed handstamp and Le Havre transit, manuscript "9" decimes due marking, blue receiving backstamp, fresh and Very Fine E. 200-300



- 4006 ☒ **Bardstown Ky. Feb. 6.** Red circular datestamp struck at left of 1853 folded letter to **Mauriac, France**, manuscript "5" rate and "13" decimes due marking, red "N. York Br. Pkt. Feb. 15" transit datestamp, minor wear, Very Fine E. 200-300
- 4007 ☒ **Bowling Green Ky.** Two covers each with a variation of the semi-circle handstamp, first on 1828 folded letter (deposition) with manuscript "Paid 50" to St. Charles Mo., some slight waterstaining, second on 1851 folded letter to Alexandria Va. and free franked by tax collector, both are notable for the clarity of strikes, Very Fine..... E. 400-500
- 4008 ☒ **BROADWELL/KY.** Two-line handstamp struck in red with "November 14th" date in manuscript, matching "18 $\frac{3}{4}$ " rate on 1843 folded letter to Piqua O., some soiling and some splitting along vertical file fold well clear of marking, still Very Fine strike, this marking is reported to be unique..... E. 500-750
- 4009 ☒ **Choctaw Agency.** Two covers, first with red "Choctaw Academy Ky." double-ring handstamp on folded cover with matching "Paid" in circle and manuscript "25" rate to Choctaw Agency Miss., second with "Choctaw Acady. 11 May 1837" manuscript postmark with manuscript "Free P.M. Johnson" on folded cover to Raleigh N.C., latter with some slight wear, Very Fine, scarce, under the 1825 treaty of Dancing Rabbit Creek, an academy was established for the education of young Indians in Scott County Ky., a post office was opened in 1827 and continued until 1840.....**(Photo Ex)** E. 300-400
- 4010 ☒ **CHRISTIANSBURGH KY.** Brown boxed handstamp with manuscript "Sept. 12th" date in manuscript, matching "50" rate on 1832 folded cover to Louisa Court House Va., minor splitting along vertical file fold well away from markings, Very Fine strike, this cancel is reportedly unique, Christiansburg was an important stop on the Wilderness Road, Daniel Boone and Davy Crockett lived there at one time as well as George Rogers Clark of Lewis & Clark fame and Abraham Lincoln's father, ASCC \$1,000.00 E. 1,000-1,500
- 4011 ☒ **Cloverport Ky.** Seven covers, most mounted on exhibit pages, incl. three examples of the negative postmark (two different styles), two with boxed "Cloverport" in arc used in 1838 and 1848, two circular datestamps with different styles of negative "Paid", overall fresh and Very Fine, these markings are quite scarce**(Photo Ex)** E. 1,500-2,000



- 4012 ☒ **3c Dull Red (26).** Tied by pen cancel on light buff cover with large “**Cloverport Ky. 20 Aug.**” oval datestamp with date in manuscript, 1858 docketing at left, Very Fine, scarce, this is the cover from which the tracing in Simpson/Alexander was made E. 150-200
- 4013 ☒ **3c Dull Red, Ty. III (26).** Vertical pair, tied by pen cancels and also by “**Cloverport Ky. Dec. 1**” woodcut rimless circular datestamp with date in manuscript on 1857 folded deposition to Hardensburgh Ky., some minor soiling around stamps from gum, Very Fine, scarce tied by the circular datestamp E. 200-300
- 4014 ☒ **1c Blue, Ty. V (24).** Tied by bold “**Crittenden Ky. Jan. 19**” rimless datestamp on cover to Write’s Station Ky., penciled “*C.Ky. R.R.*” just above “*care of Mr. Robert Hitch*”, stamp with tiny nick, cover with light soiling, still a Very Fine strike of this scarce cancel, this is the cover from which the tracing in Simpson/Alexander was made E. 200-300
- 4015 ☒ **Crittenden Ky. Jan. 31.** Rimless circular datestamp with day in manuscript on 3c Red Nesbitt entire (U10) to Danville Ky., manuscript “*via K.C.R.R.*” at bottom left, 1859 docketing on back, Extremely Fine, an attractive cover, ex Jarrett and Gallagher E. 300-400
- 4016 ☒ **Danville Ky. Apr. 2.** Bold strike of circular datestamp with manuscript “25” rate on 1828 folded letter to St. Charles Mo., with additional manuscript “*Inst. 2 3/4*” rate added up at the bottom, minor wear, Very Fine, an unusual usage..... E. 300-400
- 4017 ☒ **Drennon Ky.** Two covers with corner card of **Western Military Institute**, first with 3c Dull Red, Ty. II (11A) tied by “**Drennon Ky. Oct. 25**” circular datestamp, to Rahway N.J., second with “**Drennon Ky. Nov. 19**” circular datestamp and matching “5” in circle due handstamp, to West Point N.Y., minor edgewear, both Very Fine...(Photo Ex) E. 150-200
- 4018 ☒ **Flemingsburg Ky.** Three stampless covers on exhibit pages, used in 1820, 1824 and 1825, each with straightline handstamp and incl. two different types, rates incl. 12½ and 25c (2), destinations incl. Jefferson O., New Haven Conn. and Natchez Miss. (last is earliest recorded use of that marking), two with slight soiling, Very Fine strikes, a scarce trio of covers.....(Photo Ex) E. 1,000-1,500



- 4019 ☒ **Frankfort Ky.** Three covers on exhibit pages, incl. April 1 oval datestamp on 1810 folded printed resolution of Kentucky Legislature sent to Philadelphia and forwarded to Lancaster Penn., other two with double-oval datestamps also used in 1810 with one rated 10c and the other 25c, Very Fine, a fantastic trio of covers, the latter two are reported to be two-thirds of the world's supply of the double-oval marking(Photo Ex) E. 600-800
- 4020 ☒ **Georgetown Ky.** Three covers on exhibit pages, first used in 1814 with "Georgetown (K) Feb. 28" oval datestamp and manuscript "25" to Philadelphia, other two are 1819 and 1822 usages of "Geo. Town Ky." double-circle datestamps struck in magenta and black, former rated 25c to Lebanon N.H., latter rated 10c to Louisville, few small edge flaws, Very Fine strikes and attractive covers, the first is one of two reported examples of this marking and the only one with printed date.....(Photo Ex) E. 400-500
- 4021 ☒ **Germantown, Ky. 5 June.** Arc-style datestamp with date in manuscript, matching manuscript "Public Service 12 1/2c" on 1823 folded letter to Frankfort Ky., contents are from Brig. General John H. Rudd to his Adjutant General with copy of his affidavit showing he had been sworn into office on May 12, 1823, fresh and Very Fine, this is the only reported example of this marking, this was not entitled to free mail handling but was a reimbursable expense, ASCC \$400.00.... E. 400-500
- 4022 ☒ **Great Crossing Kentucky Oct. 17.** Brown oval datestamp with date in manuscript and matching "Free" in circle on 1832 folded cover to Philadelphia, originally addressed to Washington but crossed out, also with **free frank of Richard M. Johnson** as a U.S. Senator, light file folds, Very Fine, Johnson served as Vice President under Van Buren 1837-41, during the War of 1812 he raised a regiment of 1,000 volunteers from Kentucky, only two examples of this postmark are recorded, ASCC \$250.00 E. 200-300
- 4023 ☒ **GREENSBURG KY.** Brown straightline handstamp with "Jan. 8" (1841) manuscript date, matching "10" rate on **turned** folded cover to Elizabethtown Ky., inside is part-printed form dated 1840 for summons to appear before a judge in Elizabethtown, other usage (on back) with "Eliz. Tn. Oct. 31" circular datestamp with day in manuscript and matching "Paid" handstamp to Greensburg Ky., Very Fine, rare usage, this is the only reported example of this Greensburg cancel, ASCC \$400.00 E. 400-500
- 4024 ☒ **HARDINS/BURG/KY.** Bold strike of three-line handstamp with manuscript "Augt. 24th" date on 1830 folded letter to Philadelphia, red manuscript "Paid 25" rate, sealed tear at top center well away from markings, Very Fine strike of this rare marking, only two are reported to exist, ex Ashbrook, ASCC \$500.00..... E. 500-750



- 4025 ☒ **Harrodsburg Ky. Nov. 16.** Clear strike of circular datestamp with matching "Paid" handstamp and manuscript "25" rate on 1842 folded letter to **Wurttemberg, Germany**, sent via France and with Havre transits and blue Paris backstamp, red crayon "44" for kreuzers due from recipient, light vertical file fold, Very Fine E. 300-400
- 4026 ☒ **Henderson Ky.** Two covers on exhibit pages, first is large rimless "Henderson, Kentucky Augt. 20" datestamp with date in manuscript and matching "25" rate on 1826 folded letter to Charleston S.C., second is "Henderson KY" in rimless arc with manuscript "July 6" date and "6" rate on 1829 folded letter to Owensborough Ky., first with internal scotch tape repairs not noticeable from looking at the cover, Very Fine strikes, ASCC \$300.00 **(Photo Ex)** E. 300-400
- 4027 ☒ **Lexington Ky.** Three covers on exhibit pages, first bears "Lexington, K. June 25" straightline handstamp with manuscript "25" rate on 1800 folded letter to Reading Penn., contents from a traveller discussing area and its people, some slight waterstaining, second is 1804 folded letter with "Lex. K APR 6" straightline handstamp with manuscript "25" to Salem Mass., last is similar to second and used in 1805 but with month in both upper and lower case, rated "12½" and sent to Cincinnati O., Very Fine strikes, ASCC \$800.00..... E. 750-1,000
- 4028 ☒ **LEX. K. OCT. 27.** Well-struck straightline handstamp with "James Morrison Supr." free frank as Supervisor of Internal Revenue on 1806 folded letter to Marietta O., contents are to executors of an estate dunning them for \$679.87, fresh and Extremely Fine, a beautiful cover E. 200-300
- 4029 ☒ **Lexington Ky.** 1807-20, twelve covers, most mounted on exhibit pages, eleven with "Lexington Kentucky" ovals in a range of type styles, one in red, rates are mostly 25c but also some with 50c, 20½c, 37½c and 18¼c, last is "Lex. K. Mar. 23" straightline on 1806 folded letter to Virginia, overall fresh and Very Fine, a beautiful group of covers..... **(Photo Ex)** E. 1,000-1,500
- 4030 ☒ **Richard M. Johnson.** Free frank as Vice President on very unusual 1837 folded letter containing an integral letterpress copy of a 2pp letter headed **Batavia, Java**, signed I. J. Roberts, on the third page is a printed notice and a second letter from Roberts (in manuscript) regarding the addressee's interest in missionary work among the Western Indians and suggesting instead "these eastern heathen", cover addressed to College Hill, D.C., "Lexington Ky. Jul. 6" circular datestamp, small paper loss at corners, not affecting text or appearance, still Fine, rare and very unusual usage; during the War of 1812 Johnson raised a battalion of Kentuckians to fight the British and Indians; at the battle of Thames he killed the great Indian chief Tecumseh, ex Robertson E. 300-400



- 4031 ☒ **Lodge * Fulton Co. Ky. Apr. 18.** Balloon-style circular datestamp with matching large "Paid" handstamp and manuscript "3" rate on 1857 cover to Chepachet R.I., back of cover with "The Universal Masonic Library" design, with original enclosure of "Catalogue of the Universal Masonic Library", some edgewear, Very Fine, scarce marking with only three reported, it is also very unusual with the county name incorporated, ASCC \$300.00 E. 300-400
- 4032 ☒ **"Louisville Augt. 6th 1796".** Manuscript postmark with matching "50" rate on small folded cover to Wheeling Va., endorsed "p paquet" at lower left, some slight wear, still Very Fine, scarce double-rate usage for a letter sent over 450 miles, Kentucky became a state only four years earlier E. 1,000-1,500
- 4033 ☒ **Louisville Ky. 1806-30,** ten covers, many on exhibit pages, first is only reported example of the "Louisville, K." circular datestamp, five are "Louisville Kentucky" oval datestamps with several different type styles, one with "Ky." at center, also red 1830 usage with manuscript postmark, two other styles of circular datestamp incl. one with name spelled out and one abbreviated, several different rates and destinations, overall Very Fine, the markings are generally Extremely Fine, a desirable group (Photo Ex) E. 1,000-1,500
- 4034 ☒ **Louisville Ky. Jan. 6.** Clear strike of blue-green circular datestamp with "Paid" handstamp on 1842 folded letter to **Wurttemberg, Germany**, red "New York Jan. 21" transit, French transits from Havre and Paris, red crayon "47" for kreuzers due from recipient, light vertical file fold, Very Fine E. 200-300
- 4035 ☒ **Maysville Ky. 1817-27,** four covers on exhibit pages, incl. 1817 "Maysville Kentucky" small oval with date in manuscript and "25" rate to Philadelphia, 1824 usage with "Maysville Ky. July 24" rope oval design with day in manuscript and "12½" rate to Greenfield O., third is similar but struck in red and with full date in manuscript, used in 1827 to Hillsborough O., last is "Maysville). Jany. 20" manuscript postmark with matching "Free" used in 1826 to New Orleans and with note at bottom of contents reading "Frank you must excuse the stamp (postmark) as the ink is frozen solid so completely that he can not get it to thaw", last with some splitting along folds reinforced with document tape, Very Fine, desirable group, the marking struck in red is reportedly unique (Photo Ex) E. 600-800
- 4036 ☒ **Midway Ky. Jan. 14.** Well-struck circular datestamp with matching "Paid" handstamp and manuscript "20" rate on cover to **Aspinwall, New Grenada**, trivial edgewear, Extremely Fine, a beautiful and scarce usage, Aspinwall is the current location of Colon, Panama E. 150-200
- 4037 ☒ **Military Institute Ky. Nov. 3.** Bold strike of circular datestamp with manuscript "5" rate on 1851 folded letter to Urbana O., light vertical file folds, Very Fine, scarce, the Kentucky Military Institute was established in 1845, only a half-dozen examples of this marking are known, ex Knapp, ASCC \$200.00 E. 200-250



- 4038 ☒ **Mount Eden Ky. Jun. 25 5.** Clear strike of intricate double-circle datestamp with fleurons, matching "Paid" handstamp, on brown cover to Centreville Ky., some slight wear, Very Fine strike, reportedly unique, ASCC \$350.00 E. 300-400
- 4039 ☒ **NICHOLASVILLE. KY.** Bold strike of straightline handstamp with manuscript "May 11" and "25" rate on 1832 folded letter to Philadelphia, Extremely Fine strike of this scarce marking, only five are reported, ASCC \$300.00 E. 300-400
- 4040 ☒ **OWENSBORO KY./NOV. 22, 1839.** Well-struck two-line handstamp with manuscript "Paid 25" on 1839 folded letter to Philadelphia, Very Fine and choice, this is the only reported example of this marking, ASCC \$400.00 E. 400-500
- 4041 ☒ **PARIS KY.** Oval handstamp with 2.5mm letters and manuscript "4 June" date on 1818 folded letter to Providence R.I., manuscript "25" rate and sender's instructions "via Marietta and City of Washington", light vertical file folds, Very Fine, scarce, less than five examples of this marking are reported E. 200-300
- 4042 ☒ **Paris Ky.** 1818-45, twelve covers, most mounted on exhibit pages, incl. nine used from 1818-21 period with several variations of letters, three with fully printed dates, one with month only printed and others with date in manuscript, also three with fleuron-style marking with one struck in red, nice range of rates and destinations, Very Fine, an attractive group (Photo Ex) E. 500-750
- 4043 ☒ **Russellville Ky.** 1812-29, five covers mounted on exhibit pages, incl. "Russellville Ky. June 17" (1829) two-line handstamp to Hopkinsville (reportedly unique), 1812 with arc-style postmark to Berkley Springs Va. (one of three reported), 1817 with oval datestamp and contents discussing a duel, 1826 with large circular datestamp and double rate, last 1826 with large circular datestamp (only three reported), some edgewear but markings are all notable for their clarity, Very Fine, scarce group (Photo Ex) E. 1,000-1,500



- 4044 ☒ **“Thomas Smith P.M., Severn Creek, Kentucky”**. Manuscript postmark with “Free” on 1831 folded letter to Wills, England, manuscript “1/” due rate, some slight wear, Very Fine, rare, this town is unlisted in ASCC, according to the Kentucky Post Offices book by Rennick, during this period the post office was operated by Thomas and John Smith, its location is where the creek was crossed by the road between Owentown and the Cedar Creek post office, four miles north of the latter E. 200-300
- 4045 ☒ **Shelbyville Kentucky, Jun. 11 1821**. Beautiful strike of this fancy negative cancel with manuscript “18½” rate on folded letter to New Market O., some non-contemporary docketing at top, some overall toning, still a Very Fine strike of this scarce marking, this is the only negative-style postmark used in Kentucky prior to the 1850’s E. 400-500
- 4046 **Shelbyville Kentucky, Feb. 26 1818**. Bold strike of negative letters in black band on cover front only to General James Taylor in Newport Ky., Very Fine strike, rare E. 150-200
- 4047 ☒ **South Union, K. JUN. 25, 1836**. Well-struck boxed datestamp with manuscript “25” rate on folded cover to Montgomery Ala., light vertical file fold well away from marking, Very Fine strike, South Union was a community established by Shakers, only six examples of this marking are reported E. 300-400
- 4048 ☒ **SOUTH UNION/KENTUCKY/MAR. 19**. Boxed three-line datestamp on 3c Red Nesbitt entire (U10) to Washington D.C., creases not affecting postmark, Fine and scarce, an attractive cover E. 150-200
- 4049 ☒ **SOUTH UNION/DEC. 31/KENTUCKY**. Boldly struck boxed three-line datestamp on 3c Red Nesbitt entire (U10) to West Pittsfield Mass., trivial edge wear, a Very Fine strike of the Kentucky cancel, ex Grunin and Gallagher E. 200-300
- 4050 ☒ **“Trimble Iron Works Ky., Aug. 4th”**. Red manuscript postmark with matching “Paid 18¾” rate on 1838 folded letter to Troy O., Very Fine, this is the only reported example of this marking which is unlisted in ASCC, Trimble Iron Works was located in Greenup County in the eastern coal regions E. 300-400
- 4051 ☒ **Versailles Ky.** Two 1834 covers on exhibit pages, both with red double-circle datestamps with slight variations in letters, one with bold matching “10” handstamp to Winchester Ky., other with bold matching “25” handstamp and used to Nassau Street in New York, Very Fine strikes and an attractive pair of covers(Photo Ex) E. 100-150



- 4052 ☒ **Washington Ky.** Two 1806 covers on exhibit pages, first with "Wash*K*October 15" straightline handstamp and manuscript "Paid 20" rate on folded letter to Chillicothe O., second with "Wash*K*October,15" straightline handstamp and manuscript "Paid 10" on folded letter to Chillicothe, light file folds, Very Fine, excellent examples of this scarce marking on single and double-rate covers.....(Photo Ex) E. 500-750
- 4053 ☒ **Washington Kentucky, Jan. 5.** Two clear strikes of oval datestamp at left of oversize 1812 folded cover to Newport Ky., manuscript "1 3/4 oz." and "87 1/2" rate, also endorsed "public service" and signed, some minor edgewear, Very Fine strikes, this is the earliest of the four reported examples of this marking E. 200-300
- 4054 ☒ **Washington Kentucky, Nov. 10.** Oval handstamp with state in italics and manuscript date on 1814 folded letter to Missouri Territory, ink stain (modern) on back, just shows at bottom edge, Fine and very scarce E. 200-300
- 4055 ☒ **Washington Kentucky, June 5.** Red oval datestamp with date in manuscript, matching "25" rate on 1817 folded letter to Stafford Va., few small age spots, still Very Fine strike of this rare marking, this is the only reported example struck in red..... E. 300-400
- 4056 ☒ **Winchester Ky.** Three covers on exhibit pages, incl. two used in 1816 with "Winchester Kentucky" oval datestamps used on May 31 and Dec. 11 to Wethersfield Conn. and Dunkirk Va., last with "WINCHESTER. K AUG 30" straightline and manuscript "18 3/4" rate on 1831 folded letter to Harrisburg Ky., Very Fine strikes, the last is reportedly unique(Photo Ex) E. 500-750
- 4057 ☒ **Kentucky Straightline Handstamps.** Four covers, incl. earliest of nine recorded examples of "AUGUSTA. KY", only recorded example of "MILLVILLE KY" on 1832 folded letter, 1837 usage with two strikes of "NICHOLASVILLE, KY." straightline to Philadelphia, last is 1844 with small "OWENSBORO, KY." straightline to Meade Ky., generally Very Fine strikes, each is scarce or rare, ASCC \$1,300.00.....Not illustrated E. 1,000-1,500
- 4058 ☒ **Kentucky Manuscript Postmarks.** 58 each in separate pouchette, wide range of towns incl. Casey's Creek to Canada West, Bardstown, Big Hill, Bridgeport, Blue Lick Springs on Valentine, Hawesville, Grayson, Smithland, many others with little (if any) duplication, overall Very Fine, a difficult group to assembleNot illustrated E. 1,500-2,000
- 4059 ☒ **Kentucky Pre-Stamp Covers — Circular Datestamps.** 23, wide range of towns and styles incl. rimless circular datestamps such as Henderson, Mt. Washington (one of three reported) and Morganfield (only reported), several other better markings incl. 1827 Cynthiana, brown Greensburgh, red Bloomfield, red Paris with fleurons, some edgewear and slight toning to be expected, these were selected for the superior quality of the strikes of the markings which are uniformly Very Fine.....Not illustrated E. 500-750

1847 ISSUE USED FROM KENTUCKY



4060

- 4060 ☒ **5c Red Brown (1).** Large margins to full, tied by neat strike of **blue** grid, matching "Louisville Ky. 5 Jul. 12" integral-rate circular datestamp on blue 1850 folded letter to Indianapolis Ind., light vertical file fold well away from stamp, Very Fine, an attractive usage..... E. 400-500



4061

- 4061 ☒ **5c Red Brown (1).** Horizontal pair, bright shade, large margins to full, tied by **blue** grids, matching "Hopkinsville Ky. Apr. 24" circular datestamp on blue 1850 folded letter to New Orleans, vertical file fold at left well away from stamps, Very Fine, scarce usage..... E. 1,000-1,500



4062

4062 ✉ **10c Black (2).** Large margins to clear, tied by **blue-green** grid, matching "Frankfort Ky. Jul. 24" circular datestamp on 1850 folded letter to New York, light vertical file folds well clear of stamp

VERY FINE. A RARE USAGE OF THE 10-CENT 1847 ISSUE FROM FRANKFORT, KENTUCKY, TO NEW YORK.

Ex Craveri. With 1981 P.F. certificate E. 1,000-1,500



4063

4063 ☒ **10c Black (2).** Large even margins, wonderful proof-like impression and intense shade, tied by black grid with "Louisville Ky. Aug. 15/10" integral-rate circular datestamp also struck in black on folded cover to Philadelphia, 1850 docketing on flap, lightly toned along file folds
EXTREMELY FINE. A FRESH AND ATTRACTIVE USE OF THE 10-CENT 1847 ISSUE ON A COVER WITH BOTH A BLACK GRID AND BLACK CIRCULAR DATESTAMP CANCEL.

Ex Sevenoaks E. 1,000-1,500



4064

4064 ☒ **10c Black (2).** Huge margins to large, tied by large **blue** targets, matching "Louisville Ky. Oct. 2" circular datestamp on 1847 folded cover to New York, light file folds well away from stamp

EXTREMELY FINE. A BEAUTIFUL AND RARE EXAMPLE OF THE 10-CENT 1847 ISSUE, TIED BY A LARGE BLUE TARGET CANCELLATION.

A review using Power Search found many 1847 covers originating in Louisville, but all are cancelled by the usual small grid. This large target struck in blue is extremely rare.

Ex Craveri. With 1992 P.F. certificate..... E. 1,500-2,000

The 1847 Cover to Egypt





4065



THE 1847 COVER TO EGYPT

- 4065 ✉ **5c Red Brown (1).** Horizontal pair, large margins at sides, clear to slightly in at top and bottom, right stamp has faint pre-use vertical crease, tied by pen cancels, red **“Bardstown Ky. Dec. 4” (1850)** circular datestamp on small envelope **to Alexandria and Cairo, Egypt**, red etiquette seal on flap, addressed to *“Joseph Holt Esq., London, England, Care of Baring & Bro. London”*, red **“19”** credit handstamp—applied at New York foreign-mail office, although there is no indication of 24c prepaid treaty rate—red **“X/Paid/29DE29 1850”** framed receiving datestamp, mailed from London to Rathbone & Co. in Alexandria, Egypt, then forwarded from there to Cairo, red **“London Paid (7?) Jan. 1851”** circular datestamp and manuscript **“2/1”** rate marking, two strikes of red **“VIA MARSEILLES”** straightline handstamp probably applied by Baring Brothers forwarding clerk to indicate route to Alexandria, the back has a partly readable strike of **“Alexandria JA 18 1851”** receiving datestamp and manuscript docketing *“Received at Cairo No. 2, Answered at Cairo”*

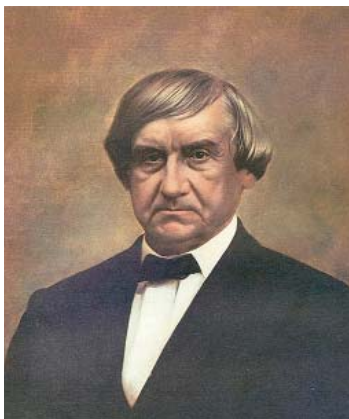
VERY FINE. THIS IS THE ONLY RECORDED 1847 ISSUE COVER TO EGYPT. A REMARKABLE POSTAL HISTORY ARTIFACT AND FASCINATING FOREIGN-MAIL USE.

Joseph Holt (1807-1894) was a leading member of the Buchanan administration and served as Judge Advocate General in the United States Army, most notably during the Lincoln assassination trials. Under President Buchanan he was appointed Postmaster General (March 9, 1859, to December 31, 1860) and Secretary of War (December 31, 1860, to March 2, 1861). Earlier in life, Holt became wealthy through his legal profession. In 1848 he made a trip to Europe and to the East, and was away from home for seventeen months (*Harper's Weekly*, February 16, 1861). This cover was mailed to Holt during his travels. It was sent in care of the banking and mail-forwarding firms of Baring Brothers and Rathbone & Co., each of which would have been given instructions by Holt for sending mail to him as he travelled. Baring Brothers mailed the letter to Alexandria, Egypt, where Rathbone & Co. redirected it to Cairo.

The letter was carried on the Cunarder *Asia*, departing New York on December 18 and reaching Liverpool on December 28, 1850. The pair of 5c 1847 stamp pays the rate from Bardstown, Kentucky, to New York City. Despite the absence of any markings to indicate prepayment of the 24c U.S.-British treaty rate, the foreign-mail clerk in New York applied the **“19”** cents credit handstamp, which was sufficient for the receiving clerk in England to consider it prepaid. When Baring Brothers mailed the letter at the London post office, it was marked prepaid **“2/1”** (2sh1p) and datestamped with the red **“London Paid”** circle. The **“VIA MARSEILLES”** straightline handstamps do not resemble official post office markings, so we assume they are private markings applied by Baring Brothers.

According to all of the literature and census work on the 1847 Issue, this is the only known 1847 cover to Egypt. The fact that it was actually carried in the postal system to Alexandria, Egypt, rather than handled outside the mails, adds to its importance as a postal history artifact. Further, the Kentucky origin and addressee's prominence at a later stage of life are elements that add considerable character to the cover.

Ex Kapiloff and Craveri. With 1993 and 2003 P.F. certificates E. 50,000-75,000



Joseph Holt (1807-1894)

STEAMBOAT MAIL



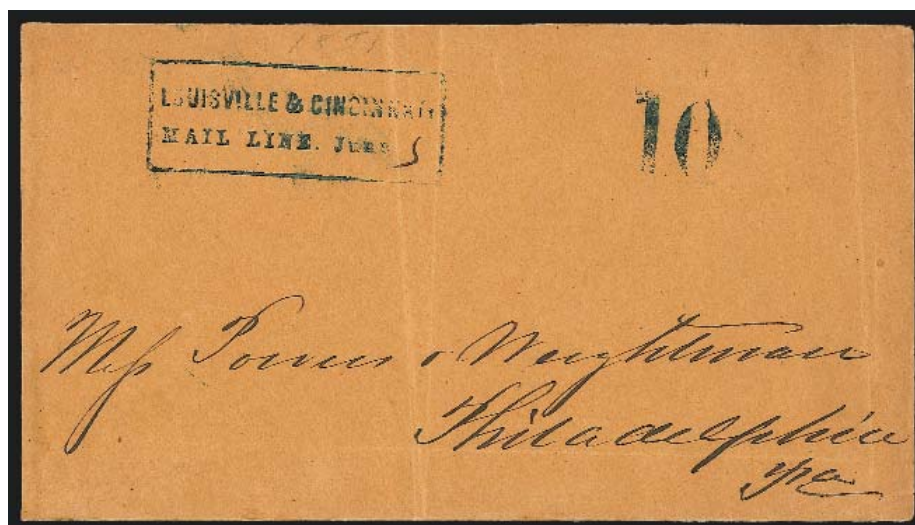
4067

4066

4068



- 4066 ☒ **SHIP.** Red straightline handstamp applied on arrival at Louisville on folded letter dated "Economy April 12th 1827", manuscript *chg. 18 3/4* rate, light vertical file fold, Very Fine Ohio River steamboat usage..... E. 300-400
- 4067 ☒ **Louise(ville). Ky. May 4.** Well-struck circular datestamp with manuscript "**Steam 25**" rate on 1830 folded letter to Russellville Ky., few age spots, Very Fine, scarce usage, rated 25c for distance greater than 400 miles..... E. 200-300
- 4068 ☒ **3c Dull Red, Ty. II (11A).** Rich color, large margins to barely in, tied by well-struck "Maysville Ky. May 30" circular datestamp on buff cover to Midway Ky., bold "**STEAM**" handstamp, Very Fine, carried on the Ohio River, the "Steam" marking was used by the postmaster to account for mail carried on non-contract steamboats..... E. 300-400



4069

- 4069 ☒ **LOUISVILLE & CINCINNATI/MAIL LINE/June 5.** Blue two-line framed datestamp with day in manuscript, matching "10" rate handstamp on brown cover to Philadelphia, light vertical file folds, Very Fine, a rare marking..... E. 500-750



4070

- 4070 ☒ **1c Blue, Ty. V (9).** Recut twice at top and once at bottom, large margins to just touched, tied by blue "L.Ville & Cinn. Mail Line Sep. 16" route agent's circular datestamp, second strike alongside, on blue 1853 folded cover to Indianapolis Ind., light vertical file fold well away from stamp, Very Fine, scarce circular rate usage, less than five examples of this marking are reported used with the 1c 1851 Issue, signed Ashbrook. E. 500-750



4071

- 4071 ☒ **1c Blue, Ty. IV (9).** Positions 42/52/62L1L, vertical strip of three, large margins to just in, bright color, tied by two clear strikes of "Louisville & Cincinnati Mail Line, May 13" route agent's circular datestamps on blue 1853 folded cover to Indianapolis Ind., light vertical file fold well away from stamps, bottom stamp small tear at left, Very Fine appearance, attractive usage, ex Chase and Emerson..... E. 750-1,000



4072

- 4072 ☒ **3c Brownish Carmine, Ty. II (11A).** Large margins to barely in along bottom outer frame-line, tied by vivid red grid, matching red “Lou. & Cin. S. B. Mail Line March 19” circular datestamp and “U.S. (Mail) Steamer Telegraph No. 2 * McLelland, Master *” route agent’s handstamp on 1852 folded from Cincinnati to Nashville Tenn., neatly docketed
EXTREMELY FINE. A REMARKABLY BEAUTIFUL CONTRACT STEAMBOAT COVER WITH THE 3-CENT 1851 ISSUE.

Ex Grunin E. 2,000-3,000



4073

- 4073 ☒ **3c Dull Red, Ty. II (11A).** Huge margins to just in incl. top right corner sheet margins with guideline at right, cancelled by unusual red segmented cork, matching “Lou. & Cin. S.B. Mail Line 21 Nov.” route agent’s circular datestamp on blue 1852 folded cover to Indianapolis Ind., light vertical file folds do not affect stamp

VERY FINE. A RARE AND COLORFUL 3-CENT 1851 COVER WITH A CORNER SHEET-MARGIN STAMP AND THE LOUISVILLE & CINCINNATI STEAMBOAT MAIL LINE MARKINGS IN RED.

Signed Ashbrook..... E. 1,500-2,000



4074

- 4074 ☒ **3c Dull Red, Ty. II (11A).** Left straddle-pane margin, full margins all around, tied by perfect strike of “Louisville & Cincinnati Mail Line Nov. 7” circular datestamp in intense jet-black ink on brown cover to New Albany Ind.

EXTREMELY FINE. AN ABSOLUTELY SUPERB EXAMPLE OF THE 3-CENT 1851 ON COVER WITH THE SCARCE LOUISVILLE & CINCINNATI MAIL LINE ROUTE AGENT'S DATESTAMP.

Ex Moody, Haas and Sevenoaks E. 2,000-3,000



4075

- 4075 ☒ **3c Dull Red, Ty. II (11A).** Large margins to in, tied by red “Lou. & Cin. S.B. Mail Line Jun. 25” route agent's circular datestamp on folded letter datelined “Steamer Telegraph, 10 miles above Louisville” and addressed to Potosi Mo., part of contents mentions “We got to Louisville last night at 6 o'clock, it rained dreadfully all day yesterday so we staid all night aboard the Fashion.”, Very Fine strike E. 500-750



4076



4077



4078

- 4076 ✉ **3c Dull Red, Ty. II (11A).** Large margins to clear, tied by unusual **red** segmented cork, matching “Lou. & Cin. S.B. Mail Line Sep. 17” circular datestamp on blue 1852 folded cover to Raleigh N.C., vertical file fold affects stamp which also has some waterstaining, still Very Fine..... E. 200-300
- 4077 ✉ **Louisville & Cincinnati Mail Line.** Route agent's large balloon-style circular handstamp cancels 3c Red Nesbitt (U10) entire to Keokuk Iowa, some slight wear incl. small tear at top, Very Fine strike E. 300-400
- 4078 ✉ **Cincinnati & Louisville Mail Route Sep. 7.** Clear strike of circular datestamp struck partly off top of cover with blue “Cincinnati & Louisville Steamer, U.S. Mail Line, Telegraph No. 3” cameo corner card to Bowling Green Ky., red “Cincinnati O. 3 Paid Sep. 8” circular datestamp with matching “Paid” handstamp, expertly restored, still Very Fine, the U.S. Mail Line was the successor to the Cincinnati & Louisville Mail Line, which is the first recorded steam packet company, ex Eggen E. 750-1,000



- 4079 ☒ **3c Dull Red, Ty. III (26).** Rich color, choice centering, cancelled by penstrokes on orange cover to Dover Ky., with “C.M. & P. Mail Line, Kentucky, S.B. Briggs, Clk., Dec. 29, 1857” circular datestamp at left, Very Fine, a rare marking, the company was originally formed as the Cincinnati and Maysville Packet Co. with the steamboats *Boone* and *Kenton*, and in 1855 or 1856 the line was expanded and renamed the Cincinnati, Maysville and Portsmouth Packet Co., they competed with several other companies running the same routes, including the Railroad Line and the Lightning Line, this line was dissolved in 1859, this marking is unlisted in Simpson, ex Eggen E. 1,000-1,500
- 4080 ☒ **3c Dull Red, Ty. III (26).** Bright color, cancelled by penstrokes, matching “Louisville & Cairo M. Bt. Route August 3” route agent’s manuscript postmark on cover to Towanda Penn., endorsed “Via Erie Pa.” at bottom left, barely reduced at right, Very Fine, scarce usage, this thrice-weekly mail service between Cairo Ill. and Louisville Ky. was contracted in 1858, discontinued in 1860 and reinstated in 1861, ex Eggen E. 500-750
- 4081 ☒ **3c Dull Red, Ty. II (11A).** Large margins to full, bright color, cancelled by penstrokes, matching “Louisville & St. Louis M R 11 Oct.” route agent’s manuscript postmark on buff cover to Pittsburgh Penn., Very Fine, scarce and desirable usage with the manuscript route agent’s marking, ex Eggen E. 500-750
- 4082 ☒ **1c Columbian (230).** Tied by “Louisville” oval on cover with green “Louisville & Jeffersonville Ferry Company, Louisville Ky.” illustrated design depicting the *Sunshine*, to the Masonic Temple in Louisville, fresh and Very Fine, attractive usage.. E. 200-300
- 4083 ☒ **Ohio River Steamboat Usages.** Thirteen covers and one Pass issued by Memphis & Ohio River Packet Co. attractive mounted on exhibit pages, five covers are stampless, incl. several different Louisville markings applied on arrival, also two with Louisville & Cincinnati Mail Line circular datestamp with integral due “5” marking, several varieties of Louisville & Cincinnati Mail Line markings, stamps are mostly 3c 1851 but also No. 65, and two with 3c Bank Notes, overall fresh and Very FineNot illustrated E. 750-1,000

NAME-OF-BOAT PACKET MARKINGS



4084

- 4084 ☒ **Louisville & New-Orleans Packet, Bunker Hill No. 3.** Perfectly-struck red illustrated handstamp on December 1849 folded letter to Louisville, manuscript initials and "Bunker Hill" name-of-boat endorsement at top right, Extremely Fine and early strike of this scarce marking, the *Bunker Hill No. 3* was built in New Albany Ind. in 1849 and its first captain, Job. Whipple, died aboard ship between Natchez and Memphis on March 25, 1849 (several other crew members also died of cholera)..... E. 1,000-1,500



4085

4086

- 4085 ☒ **Louisville & New Orleans Packet Bunker Hill No. 3..** Well-struck red illustrated handstamp on illustrated bill of lading with yeardate cut off, to New Orleans, manuscript initials at left, some slight wear incl. splitting along folds, still Very Fine strike of this scarce marking, the *Bunker Hill No. 3* was built in New Albany Ind. in 1849 and its first captain, Job. Whipple, died aboard ship between Natchez and Memphis on March 25, 1849 (several other crew members also died of cholera), this item was carried outside of the mails from Uniontown Ky. to New Orleans..... E. 500-750
- 4086 ☒ **3c Dull Red, Ty. III (26).** Bright color, tied by indistinct strike of "Cairo Ill. Dec. 21, 1858" circular datestamp on cover with blue boxed "Louisville & New Orleans Regular Passenger Packet Pacific, will leave Louisville for New Orleans on Monday Dec. 27, at 5 o'clock, P.M." handstamp, addressed to Louisville, also with blind-embossed commission merchant's corner card, light strike of **forwarder's backstamp**, 1858 docketing on back, some opening tears at top left have been repaired, still Very Fine, scarce, carried by steam packet from New Orleans to Cairo Ill. then put into the mails at Cairo by the forwarder..... E. 300-400

WESTERN EXPRESS COVERS FROM KENTUCKY



4087

- 4087 ☒ **3c Dull Red, Ty. II (11A).** Vertical pair, large margins to full, cancelled by penstrokes and tied by blue “W. E. Singer & Co., Feather River Express” oval handstamp, red “Georgetown Ky. Oct. 27” circular datestamp on cover to Marysville Cal., bottom stamp light horizontal crease not mentioned on accompanying certificate, Very Fine, scarce and desirable usage with the western express marking, with 2005 P.F. certificate E. 750-1,000



4088

- 4088 ☒ **3c Dull Red, Ty. III (26).** Tied by blue “W. E. Singer & Co.s Feather River Express” oval handstamp on orange cover to Marysville Cal. and **forwarded** to “opposite mouth of Nelson Creek, Plumas Co., California”, red “Lexington Ky. Jun. 28” circular datestamp with matching “Paid” and “6” handstamps, Very Fine, unusual usage, the 3c stamp was applied for forwarding postage and tied by the express marking E. 750-1,000



4089



THE PONY EXPRESS COVER FROM KENTUCKY

- 4089 ☒ **Wells, Fargo & Co. Pony Express, (\$1.00) Red Type II East-to-West Frank, 10c Green on Thin Hard White Entire (unlisted in Scott).** 10c embossed stamp cancelled at origin by blue "Caseyville Ky. Sep. 5" (1861) circular datestamp, printed address to the "Agent of Pony Express, St. Joseph, Mo." and handwritten address to James L. (Laird) Christian at Staples Ranch Cal., clear strike of "**Pony Express/The Central Overland California & Pikes Peak Express Company St. Joseph Mo. Sep. 18**" oval in circle datestamp, manuscript "*Missent to Cacheville*" and blue "**Wells, Fargo & Co. Express Cacheville**" oval handstamp, "Stockton Cal. Oct. 5" circular datestamp over embossed stamp, manuscript "*Ford 3*" for U.S. postage to Staples Ranch, expertly restored along right edge (affects embossed stamp and circular datestamps at upper right), cleaned to removed stains (mostly on back)

ONE OF 21 RECORDED TYPE II EAST-TO-WEST PONY EXPRESS FRANKED ENTIERES AND THE ONLY PONY EXPRESS COVER TO ORIGINATE IN KENTUCKY. IT IS ALSO THE ONLY PONY EXPRESS COVER WITH AN ADDITIONAL WELLS FARGO & COMPANY HANDSTAMP UNRELATED TO THE PONY EXPRESS SERVICE.

In Rate Period 3, Wells Fargo & Co. introduced a special franked envelope for west-bound mail, but its use was extremely limited. On July 1, 1861, the new contract rate went into effect. On August 12, 1861, Wells Fargo & Co. announced in the New York papers that "Pony Express Envelopes" were "Now ready and for sale at our office." Although this announcement refers only to "envelopes," in fact both the franked entieres and \$1.00 adhesive stamps were put on sale in August 1861.

The 1861 10c "Pumpkin" entire with the Type II printed frank was ordered from George F. Nesbitt & Co. (New York) by the Overland Mail Company after they obtained approval for the design and imprint from the Postmaster General's office. The earliest recorded Type II envelope is dated August 14, 1861, according to the FKW census.

The FKW census lists 20 examples of the Type II \$1.00 East-to-West frank, including a few that have stamps added or have been extensively repaired. Adding one cover that was not included in the FKW census (Siegel 2009 Rarities of the World sale, lot 298), there are 21 Type II franks.

This Pony Express cover entered the post office at Caseyville, Kentucky, and was treated as regular mail until it reached the Wells Fargo & Co. agent at St. Joseph. From there (or Atchison, Kansas) it made the September 19, 1861, westbound Pony trip to California. From the terminus at Placerville, the Pony mail was brought to Sacramento. This letter was carried by a Wells Fargo & Co. stage in the wrong direction, north to Cacheville. The agent at Cacheville caught the mistake and redirected the letter south to Stockton, where it entered the post office and was carried by regular mail to nearby Staples Ranch.

The addressee, James Laird Christian, was born in 1827 in Hopkins County, Kentucky. The family moved to California by wagon train after 1850 and settled in San Joaquin County on the north side of the Mokelumne River. In the will of his great-uncle, Samuel Laird, in 1856 James was called the only living descendant of Jane Laird. He was living in Elkhorn township, San Joaquin County, in the 1860 federal census, where he was a farmer.

The cover's original mailing point—Caseyville, Kentucky—is located in Union County, two miles above the mouth of Tradewater River and 12½ miles southeast of Morganfield, Kentucky. It was founded in 1826 or 1827 by Nicholas Casey, the son of a pioneer and Revolutionary War veteran, Peter Casey. The town Caseyville was first called Casey's Landing. The post office was established on August 6, 1838. John Casey was the postmaster. The post office at Staples Ranch was established in 1851. In 1863 its name was changed to Locust Shade.

Census No. W58. Trip WT-141. Illustrated in Frajola-Kramer-Walske *The Pony Express: A Postal History* (p. 58). E. 20,000-30,000

Bidders interested in the Pony Express are directed to the Siegel firm's sale of the Pony Express collection formed by Thurston Twigg-Smith, to be held on Saturday, December 5. The sale catalogue is available at siegelauctions.com

LOUISVILLE CARRIER DEPARTMENT



4090

- 4090 ☒ **Brown & McGill's U.S.P.O. Despatch, Louisville Ky., (2c) Blue (5LB2).** Three large margins, mostly clear at top except at upper left corner, tied by pencil, used with 3c Dull Red, Ty. II (26), tied by blue "Louisville Ky. May 25, 1859" circular datestamp (also tied corner of carrier stamp) on **newspaper publisher's advertising cover** with overall illustrated design lithographed in green on yellow, to the "Patriot" newspaper office at Baltimore Md.

VERY FINE AND OUTSTANDING EXAMPLE OF THE BROWN & MCGILL'S CARRIER STAMP TIED ON COVER. ONLY SIX OR SEVEN TIED EXAMPLES ARE BELIEVED TO EXIST.

Ex Boker, Meyersburg and Golden. With 1985 P.F. certificate. E. 5,000-7,500



4091

- 4091 ☒ **Brown & McGill's U.S.P.O. Despatch, Louisville Ky., (2c) Blue (5LB2).** Large margins to just touched at corner of frameline, tied by blue "DUE 3" straightline with 3c Dull Red (26) tied by blue "Louisville Ky. May 24, 1860" circular datestamp on brown cover to court clerk at Somerset Ky., flap repaired, reduced and repaired tear at top

VERY FINE. AN EXTRAORDINARY EXAMPLE OF THE BROWN & MCGILL'S CARRIER STAMP TIED BY THE "DUE 3" OF LOUISVILLE. ONLY SIX OR SEVEN ARE KNOWN TIED ON COVER, THIS BEING THE ONLY ONE TIED BY A DUE MARKING.

The Middendorf sale catalogue reported five tied examples of the Brown & McGill carrier stamp. Our records contain seven genuine tied usages, one of which is a front only. This is the only cover on which the carrier stamp is tied by a due marking.

Ex Mason and Hall..... E. 2,000-3,000



4092

- 4092 **Brown & McGill's U.S.P.O. Despatch, (2c) Black (5LB3).** Huge margins surrounding all four framelines, used with 3c Dull Red, Ty. II (26), both stamps tied by blue "Louisville Ky. Mar. 18" circular datestamp on small buff piece

EXTREMELY FINE. THE FINER OF THE TWO RECORDED GENUINELY-CANCELLED EXAMPLES OF THE BROWN & MCGILL BLACK CARRIER STAMP.

Our census contains 13 examples of 5LB3, including 10 uncanceled stamps, some (or all) of which were removed from pieces of covers, all dated in 1858. Two of the uncanceled stamps remain on their original covers with a 3c 1857 tied by the Louisville datestamp (Apr. 13 and Aug. 14, 1858 — each with P.F. certificate). A cancelled stamp with two defective corners was sold in the 1921 "German Sale" and subsequently repaired; it was certified by the P.F. as having a counterfeit cancel and is not counted for the record. A cancelled stamp tied on a Valentine cover (with 3c 1857 stamp removed) was offered in the Robert Laurence Nov. 15, 1940 sale of the L. B. Mason collection and recently reappeared in a Rumsey sale. The piece offered here, according to a letter from Alfred H. Caspary, was originally in the C. T. Harbeck collection, then passed to C. E. Chapman, and from Chapman to Caspary, circa 1913.

Ex Harbeck, Chapman, Caspary, Boker and Golden. With 1999 P.F. certificate. E. 7,500-10,000



4093

- 4093 ☒ **Brown & McGill's U.S.P.O. Despatch, Louisville Ky., (2c) Black (5LB3).** Large margins with three full framelines and almost complete frameline at right, uncanceled, used with 3c Dull Red, Ty. II (26) tied by blue "Louisville Ky. Apr. 13" circular datestamp on buff cover addressed in blue to Mr. W. Gail, Baltimore Md., the cover has two vertical folds, one thru 3c stamp, the other creating a faintly toned area where the surface of the Brown & McGill's stamp was in contact with envelope, effectively tying it to the cover

VERY FINE APPEARANCE. ONE OF TWO RECORDED EXAMPLES OF THE BROWN & MCGILL BLACK CARRIER STAMP USED WITH REGULAR STAMPS ON COVER (BOTH UNCANCELLED).

Our census contains 13 examples of 5LB3, including 10 uncanceled stamps, some (or all) of which were removed from pieces of covers, all dated in 1858. Two of the uncanceled stamps remain on their original covers with a 3c 1857 tied by the Louisville datestamp: the Apr. 13 cover offered here and a cover postmarked Aug. 14, 1858, each with P.F. certificate. This cover comes from the well-known Gail correspondence, from which a number of the genuine Brown & McGill carrier covers originate. A third cover with 5LB3 is missing the 3c 1857 stamp (it recently reappeared in a Rumsey sale after 70 years in hiding).

Ex Chapman. With 1981 and 2002 P.F. certificates..... E. 10,000-15,000



4094

4094 ★田 **Wharton's U.S.P.O. Despatch, Louisville Ky., (2c) Bluish Green (5LB1).** Complete sheet of 50 (two panes), original gum, slight creases and small thin spots, trivial selvage tears
 VERY FINE APPEARANCE. AN OUTSTANDING EXHIBITION PIECE AND ONE OF THE FEW
 REMAINING COMPLETE SHEETS OF FIFTY OF THE WHARTON'S CARRIER STAMP.

Our records of Wharton indicate the existence of a half-dozen panes of 25 and at least
 four complete sheets of 50, two of which are known to remain intact.

Ex Worthington and Hall..... 7,000.00

1857 AND LATER ISSUES USED FROM KENTUCKY



- 4095 ☒ **1c Blue, Ty. IIIa (22).** Positions 33-35R4, horizontal strip of three, each stamp with wide break at top, deep rich color, tied by two neat strikes of "Paris Ky. Jan. 16, 1858" circular datestamp on cover to Frankfort Ky., some perfs unpunched, left pair few faint toned spots (neither mentioned on accompanying certificate), Very Fine, an attractive cover, with 1981 P.F. certificate.... E. 750-1,000
- 4096 ☒ **3c Dull Red, Ty. IV (26A).** Some clipped perfs, tied by "Danville Ky. Aug. 31" (1860) circular datestamp on yellow cover to Bardstown Ky. with **illustrated corner card of Caldwell Female Institute**, which later became Kentucky College for Women and eventually absorbed into Centre College, Very Fine..... E. 200-300
- 4097 ☒ **3c Rose (65).** Tied by "Leavenworth City Kas." double-circle datestamp on cover to Louisville, bold blue **"Louisville Advertised Jun. 7"** circular datestamp with ornaments, back with "Louisville Ky. Aug. 9" circular datestamp in darker blue with matching **"NOT CALLED FOR"** in small circle, Fine and very scarce E. 150-200
- 4098 ☒ **5c Red Brown (75).** Used with 10c Yellow Green (68), tied by grids, matching "Portland Ky. Jul. 14" double-circle datestamp on buff 1864 cover to **Paris, France**, New York 6c credit datestamp, French transits and receiving backstamp, embossed Apothecary return address on backflap, barely reduced at bottom and left, some wear, still Fine and attractive, a rare Kentucky usage, ex Gallagher E. 300-400



- 4099 ☒ **30c Orange (71).** Horizontal pair, used with **24c Lilac (78)** and tied by **blue negative Star fancy cancels** and also matching "Louisville Ky. Jul. 15" circular datestamp on cover to **Milan, Italy**, red New York transit circular datestamp, red boxed "PD" handstamp and red crayon "48" credit, quadruple 21c rate via French Mails, with **blue Italian Consular seal** backstamp, slightly reduced at left, some edgewear incl. small repair at top right corner
 VERY FINE. A COLORFUL AND RARE USE OF 1861 HIGH-VALUES WITH STAR FANCY CANCELLATIONS ON A COVER TO ITALY.
 Ex DuPuy..... E. 1,500-2,000



- 4100 ☒ **2c Black (73)**. Horizontal pair, tied by targets and by "Nicholasville Ky. Nov. 16, 1863" double-circle datestamp on cover to Hamilton O., endorsed "in Haste" at bottom, fresh and Very Fine, a beautiful cover paying the 3c rate plus 1c carrier fee..... E. 200-300
- 4101 ☒ **2c Brown (113)**. Tied by **blue** grid, matching "Cynthiana Ky. May. 29" circular datestamp on yellow cover with **illustrated design for importer of Italian Queen Bees** to Leavistown Me., Very Fine, attractive cover with an unusual theme..... E. 200-300
- 4102 ☒ **3c Ultramarine (114)**. Bright color, tied by well-struck **blue Cross in Circle** with matching "Frankfort Ky. Jul. 7" circular datestamp on buff "State of Kentucky, Office Supt. Public Instruction" corner card cover to Lexington Ky., fresh and Extremely Fine, ex Gibson..... E. 150-200
- 4103 ☒ **6c Ultramarine (115)**. Three, quartered cork cancels, "Louisville Ky. Feb. 13" circular datestamp, two stamps tied by red "New York U.S." transit datestamp on 1871 cover to Scotland, red Liverpool transit, redirected with manuscript "3d" due, various transit backstamps, somewhat stained and worn, otherwise Fine, ex Kuphal E. 400-500
- 4104 ☒ **12c Green (117)**. Deep shade, tied by quartered cork cancel, "Frankfort Ky. Feb. 22" circular datestamp on 3c Pink entire to Montreux, Switzerland, red New York transit, Very Fine, extremely fresh and choice, scarce combination of 12c 1869 and postal stationery, ex Kuphal and Dr. Martin..... E. 1,000-1,500
- 4105 ☒ **3c Blue Green (207)**. Tied by purple "Paris Ky. Aug. 16" circular datestamp and target on **Handmade Sour Mash and Pure Bourbon Whisky two-part illustrated advertising** cover to Circleville O., matching "Due 3 cts." and **3c Brown, Postage Due (J3)** at bottom right tied by quartered cork handstamp, 1879 docketing at left, missing part of top flap, Very Fine..... E. 200-300
- 4106 ☒ **5c Indigo (216)**. Tied by "Louisville Ky. Apr. 8, 1889" duplex cancel on cover to **Goree, Senegambia, West Coast of Africa**, with leaf and tobacco company corner card, also with "T 25 Centimes" deficiency handstamp, various backstamps incl. New York, London and Paris, manuscript "Received Apr. 29/89", slightly reduced at right and small cover tear at right, still Very Fine..... E. 300-400



- 4107 ☒ **1c Columbian (230).** Tied by brown "Frankfort Ky. Apr. 15 4 P.M. 1897" **Eagle machine cancel** on 1c Columbian entire (U348) to Philadelphia, fresh and Very Fine, a rare and desirable fancy machine cancel and especially desirable used with the Columbian Issue E. 750-1,000
- 4108 ☒ **Frankfort Ky. Jun. 22 6P.M. 1897.** Brown machine cancel with Eagle design repeated across top of 2c Green entire to Cincinnati O., red "Insurance Department of Kentucky" illustrated corner card, receiving backstamp, missing small part of top flap, small tear at top right from opening, Very Fine, scarce and desirable marking E. 200-300



- 4109 ☒ **\$1.00 Trans-Mississippi (292).** Tied by "Evansville Ind. Dec. 1, 1898" flag machine cancel on **Post Office Department Official Money Order Business** imprint cover from Madisonville Ky. to Evansville Ind., neat strike of "Madisonville Ky. Nov. 26, 1898" duplex does not tie stamp, which was affixed over duplex and cancelled on arrival, stamp has small corner crease, Very Fine, a remarkable usage E. 2,000-3,000
- 4110 ☒ **Balance of Schwartz Kentucky Cover Collection.** 66 items with stamps, incl. 5c Columbian on illustrated advertising cover from Paducah, 8c Columbian on 2c entire from Wiley Ky. to Louisville, many with 3c 1861 Issue from a range of towns incl. some manuscript, one with 2c, 3c and 5c Bank Notes from Pine Hill to Berne, Switzerland, also cover with 16 copies of 1c Blue (63) from Albany Ky. to Monticello Ky., few other better, somewhat mixed condition but nevertheless an interesting group *Not illustrated* E. 750-1,000

JOHN J. MACKLIN & CO. MATCH STAMP



4111

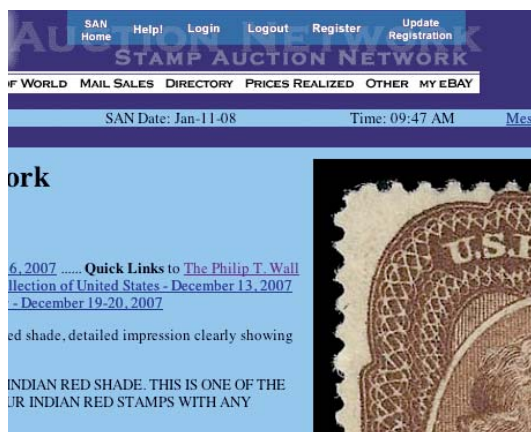
4111 **John J. Macklin & Co., 1c Black, Old Paper, Rouletted (RO129a).** Better condition than most for this issue which is printed on fragile white paper, few imperfections incl. thin spots and sealed tear

VERY FINE APPEARANCE. AN ATTRACTIVE EXAMPLE OF THE EXTREMELY RARE ONE-CENT ROULETTED JOHN J. MACKLIN & CO. MATCH STAMP.

The history of this stamp is recorded in the book *Private Die Match Stamps* by Christopher West, the nom-de-plume of Elliott Perry. In the book, he notes that the stamps were printed by American Phototype Co. When other match manufacturers saw the inferior workmanship of the stamp, they called it to the attention of Butler, Carpenter & Co., who reported it to the authorities as a stamp easy to counterfeit. Butler & Carpenter refused to print from the same plate. Macklin refused to have a new plate made due to the cost (he had lost his business several times due to fire) and used 1c Proprietary stamps for a period of time.

Eleven examples are recorded in the Aldrich census. Of these, eight are faulty. With 2001 P.S.E. certificate. 10,000.00

Live Internet Bidding at Siegel Auctions



Bidding from your computer lets you be part of the live auction from anywhere in the world!

There's no substitute for following the auction in real time. Live Internet Bidding lets you bid and buy as though you were right there in the saleroom.

And it's easy. Just start by following the simple steps to become a registered Live Internet Bidder. Once you've been approved for bidding, you can listen to the auction and place bids with the click of a mouse.

This step-by-step guide will instruct you how to register, set your browser and use the bidding interface.

1 Registering with Stamp Auction Network and Siegel Auction Galleries

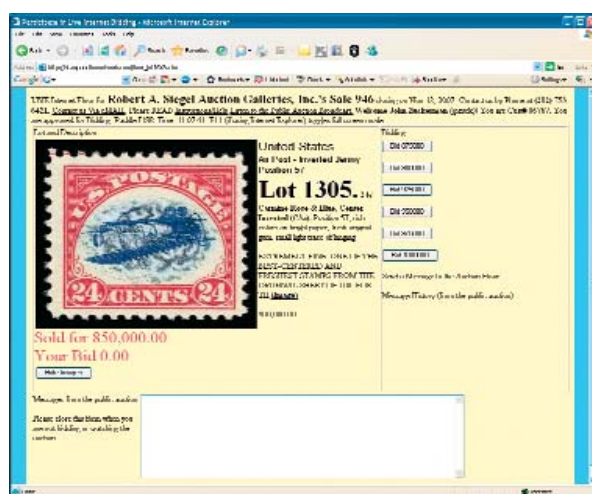
Live Internet Bidding is managed by Stamp Auction Network (SAN). To bid, you must be registered and approved by *both* SAN and Siegel. To decide what you need to do, choose the description below that best fits you.

I've already registered with SAN and have been approved by Siegel for internet bidding. You're ready for Step 2.

I've never registered with SAN, but I'm a Siegel client. Go to stampauctionnetwork.com/siegel and click on "Register" at the top. Check the box for Robert A. Siegel Auction Galleries (under "R") and submit the form, indicating you are a Siegel client. Once registered at SAN, you're ready for Step 2.

I've never registered with SAN, and this is the first time I've bid with Siegel. Go to stampauctionnetwork.com/siegel and click on "Register" at the top. Check the box for Robert A. Siegel Auction Galleries (under "R") and submit the form **with your trade references** (please, no family members or credit card companies as references). Once registered at SAN and approved by Siegel for bidding, you're ready for Step 2.

I've bid through SAN before, but this is the first time I've bid in a Siegel sale. Then you just need to be approved by Siegel. Go to stampauctionnetwork.com/siegel and click on "Update Registration" at the top. Your SAN account information will be sent to us for approval (you might be asked for other trade references). Once approved by Siegel for bidding, you can move to Step 2.



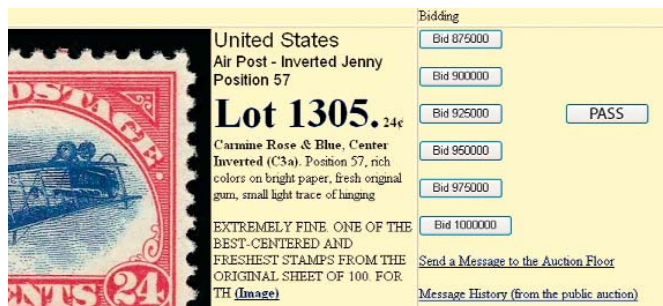
2 Using your browser for Live Internet Bidding and understanding the way it works.

Live Internet Bidding works by providing an audio feed of the auction (for anyone using Internet Explorer) and by allowing registered bidders to observe and place bids. The bidding interface shows a photo and description of the lot, the current bid (and your bidding status), and options for placing competitive bids. To join the auction, go to stampauctionnetwork.com/siegel. You can also log on at siegelauctions.com

The visual interface will work with any browser on both PC and Mac operating systems. However, the audio feed only works with Internet Explorer on a PC with ActiveX software installed. If ActiveX is not on your computer, you will have the option to install it.

Before bidding by internet for the first time, we recommend finding a sale in progress and listening to the public broadcast or logging in as a registered bidder. This will help you develop a feel for the sale tempo and bidding interface.

"System down" or "lost connection" events do occasionally happen. If you have any problems with Live Internet Bidding, please call 212-753-6421 for immediate assistance.



3 Using Live Internet Bidding to bid, track results and communicate with the auctioneer.

When you're logged on as a Live Internet Bidder, the screen will display buttons with bid increments. After you click on a bid amount, the auctioneer is immediately notified of your bid. Retracting a bid is usually not acceptable, so please bid carefully.

If you bid, then decide to stop, please use the "Pass" button, which appears once you've started bidding. This tells the auctioneer not to wait for another bid from you.

You can send messages to the auctioneer (for example, a request for extension). You can also track prior realizations from the bidding screen.

KENTUCKY IN THE CIVIL WAR



4112

- 4112 ☒ **3c Dull Red, Ty. III (26).** Tied by blue grid and matching “Louisville Ky. Apr. 14, 1861” double-circle datestamp on red and blue **7-Star Confederate Flag Patriotic** cover to Pittsburgh Penn., addressed “In Care of Mr. James Collins for Steam Boat Renton from Memphis to Pittsburgh, Pittsburgh Pa.”, with original contents dated April 12, stamp with some slight soiling VERY FINE. THIS IS THE ONLY REPORTED USE OF A CONFEDERATE PATRIOTIC FROM KENTUCKY TO THE NORTH.

The letter is dated on the day the first shots of the war were fired at Fort Sumter. Pro-Confederate sympathizers in the border states of Kentucky, Missouri and Tennessee used Confederate flag patriotic stationery early in the war. E. 2,000-3,000



4113

- 4113 ☒ **3c Rose (65).** Straddle-pane margin at right, tied by blue grid, matching “Louisville Ky. Dec. 17, 1861” double-circle datestamp on cover to Oaks Wis. with red **13-Star “Excelsior” Flag Pro-Southern Patriotic** design, Very Fine, this extremely rare cover is illustrated in Wishnietzky book on Confederate patriotics, because the 13 stars in this flag is believed to represent Kentucky as the 13th Confederate State E. 1,000-1,500

DISCONTINUATION OF MAIL SERVICE BETWEEN NORTH AND SOUTH



4114

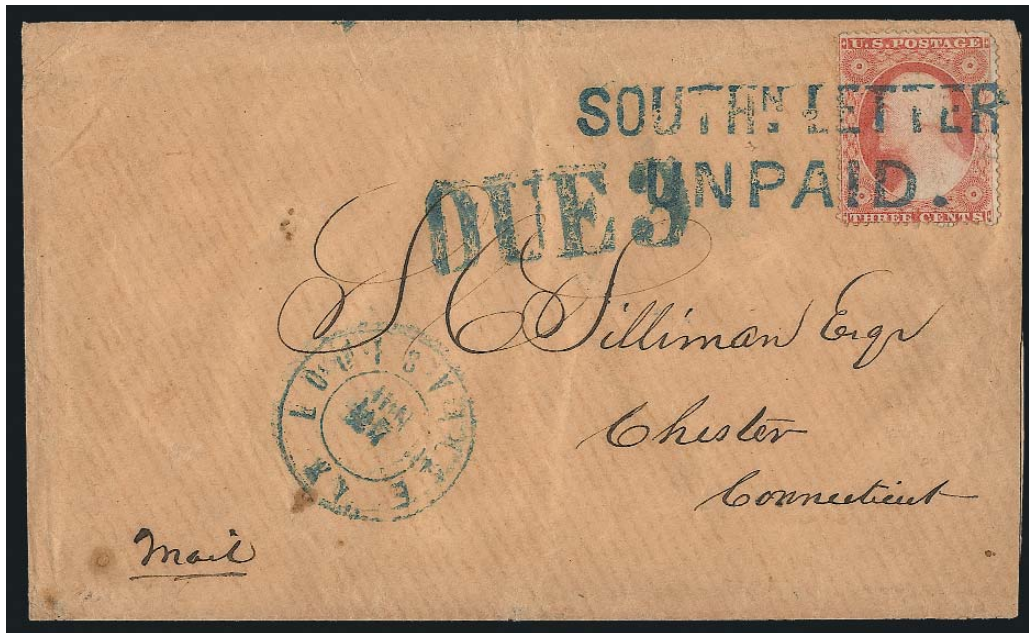
- 4114 ☒ **Keene Ky. Jun. 8 (1861).** Circular datestamp clearly struck on 3c Red Nesbitt entire to Rev. J. N. Goss in Lumpkin Ga., postmarked on the day the postal route to Nashville was closed by the U.S. government and mail was diverted to the Dead Letter Office, boldly struck **"Dead Letter Office P.O. Dept. No. ____ July 31, 1861"** oval datestamp and **"DUE 3 cts"** straightline handstamp, docketing indicates letter was sent by Rev. N. M. Gordon

EXTREMELY FINE. AN IMMACULATE AND VERY RARE EXAMPLE OF THE UNITED STATES "DEAD LETTER OFFICE" DATESTAMP APPLIED TO SOUTHBOUND MAIL AFTER JUNE 7, 1861.

Tennessee voted to secede on June 8, 1861, the date this cover was postmarked at Keene, Kentucky. Pursuant to the June 7 U.S. discontinuance order, southbound letters that had previously been routed through Nashville were now diverted to the U.S. Dead Letter Office (see Walske-Trepel, pp. 5-11). This cover is noteworthy for the June 8 date and Kentucky origin.

Ex Gallagher E. 2,000-3,000

SOUTHERN LETTER UNPAID



4115

- 4115 ☒ **3c Dull Red, Ty. III (26).** Tied by "SOUTH. LETTER UNPAID" bold blue two-line handstamp on buff cover to Chester Conn., blue "Louisville Ky. Jun. 27" (1861) double-circle datestamp and "DUE 3" straightline, stamp with small tear at right, slightly reduced at right

VERY FINE COVER AND PERFECT STRIKE OF THE RARE "SOUTHERN LETTER UNPAID" MARKING.

Postmaster General Blair's May 27 suspension order prohibited post offices from forwarding southbound mails to disloyal Southern states. However, northbound mail continued to be sent via Louisville. With the resignation of W. D. McNish as Nashville's Federal postmaster on June 12, "Louisville held the mails still being sent north by the discontinued post office at Nashville. This held mail later became the well-known 'Southern Letter Unpaid' mail" (Walske). On June 24, Dr. J. J. Speed, the postmaster at Louisville, was advised to forward letters from the South to the loyal states after *removing* postage. With approximately 5,000 such letters accumulating at Louisville by this date, Postmaster Speed employed a more practical means of invalidating postage by creating the "Southern Letter Unpaid" handstamp.

Immediately after receiving instructions from Washington to forward the held mail, the Louisville post office began marking letters. Some of these have circular datestamps (June 27, 28 and 29 being the most common dates), while others have no Louisville datestamp.

Ex Antrim. Illustrated in Brookman on p. 216. With 1998 P.F. certificate..... E. 10,000-15,000

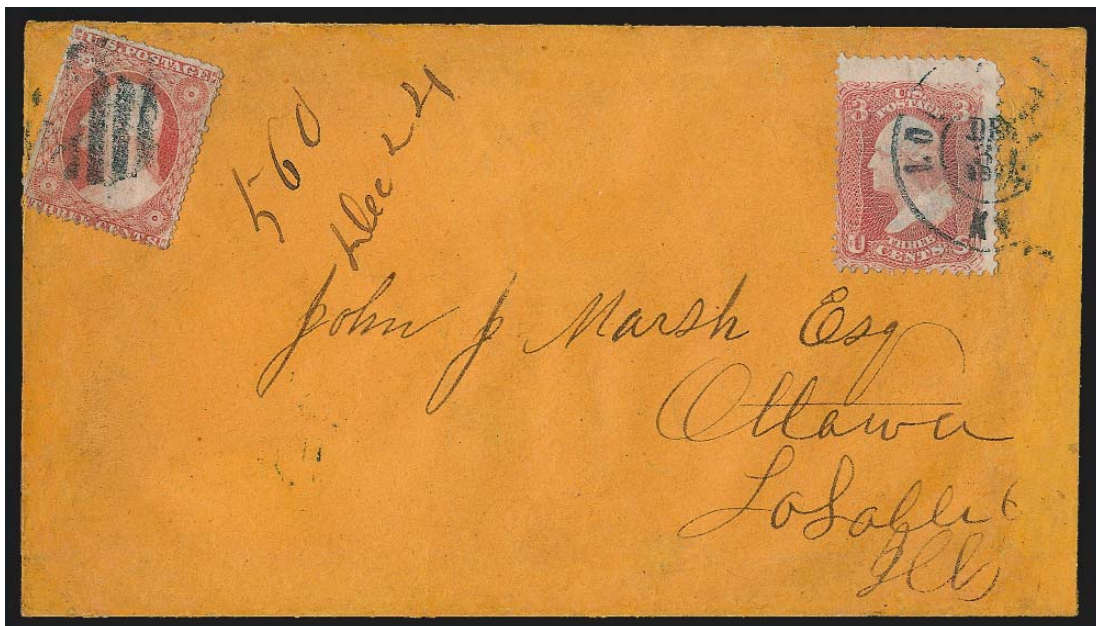


DEMONETIZED USAGE



4116

- 4116 ☒ **1c Blue, Ty. V, 1c Blue (24, 63).** Two No. 63's, tied by blue targets, matching "Midway Ky. Oct. 31" circular datestamp on buff cover to Paris Ky., with letter enclosure, No. 24 and one No. 63 with small toned spots, cover repaired at right not affecting stamps, otherwise Fine, use of demonetized stamps seems to have been tolerated more in Kentucky, with 1998 P.F. certificate E. 500-750



4117

- 4117 ☒ **3c Dull Red, Ty. III (26).** Old stamp not recognized as postage, tied by black grid at Louisville Ky. post office on buff cover to Ottawa Ill., backstamped "**DETAINED FOR/POSTAGE**" two-line handstamp, manuscript "560 Dec. 24", 3c Rose (65) applied days later and tied by "Louisville Ky. Dec. 31, 1862" circular datestamp, cover restored at right edge, scarce use E. 500-750

THROUGH-THE-LINES EXPRESS MAIL



4118 front and back

- 4118 ☒ **Am. Letter Exp. Co. Louisville Ky. 367 Green.** Bold blue circular handstamp on U.S. 3c Red Star Die entire to Louisville, originated in seceded state, **U.S. 1c Blue, Ty. V (24)**, horizontal pair and single, affixed to reverse and tied by blue grids, single tied by second strike of American Letter Express circular handstamp, expertly repaired at top, appears Extremely Fine, an extremely rare usage, only twelve northbound American Letter Express Co. covers are recorded in Walske-Trepel census (No. N-AX-3) E. 1,000-1,500



4119

- 4119 ☒ **Adams Express Co. Nashville Aug. 8.** Blue oval datestamp on folded letter datelined **Lynchburg Va. Aug. 5, 1861**, to New York City, black "PAID/10" C.S.A. rate handstamp applied at Lynchburg, blue crayon "2/-" express charge (two bits, or 25c), re-stated in manuscript "Paid 2/c", first 3c Dull Red (26) tied by "Adams Ex. Co. Louisville, Ky." circular datestamp, invalid at Louisville and covered by second 3c stamp, cancelled by blue grid with matching "Louisville Ky. Aug. 10, 1861" double-circle datestamp, letter re business affairs but also contains reference to recent battles and Adams Express, minor wear and splits along folds

VERY FINE AND EXTREMELY RARE THRU-THE-LINES EXPRESS USAGE FROM LYNCHBURG.

One other cover from Lynchburg sent north by Adams Express is known to us (see Sale 801, lot 72). The "Paid 10" handstamp indicates prepayment of Confederate postage from Lynchburg to Nashville. From there Adams carried the letter to Louisville, where it was franked with valid postage and sent in the Federal mails to New York City. The 3c stamp affixed at Lynchburg was not accepted for postage.

Ex Grunin, Gallagher and Sevenoaks E. 3,000-4,000



4120

- 4120 ☒ **Adams Ex. Co. * Louisville, Ky. * Jul. 27, 1861.** Date inverted, mostly clear circular datestamp on 3c Red Star Die entire to Wilmington Vt., blue "Paid" and "10" hand-stamps of Nashville Tenn. without town marking, 3c Dull Red (26) affixed over C.S.A. markings, tied by grid and "Louisville Ky. Jul. 27, 1861" double-circle datestamp, slight bend thru stamp, fresh and Very Fine, an unusual South-to-North express usage, ex Nunnelley E. 1,500-2,000



4121

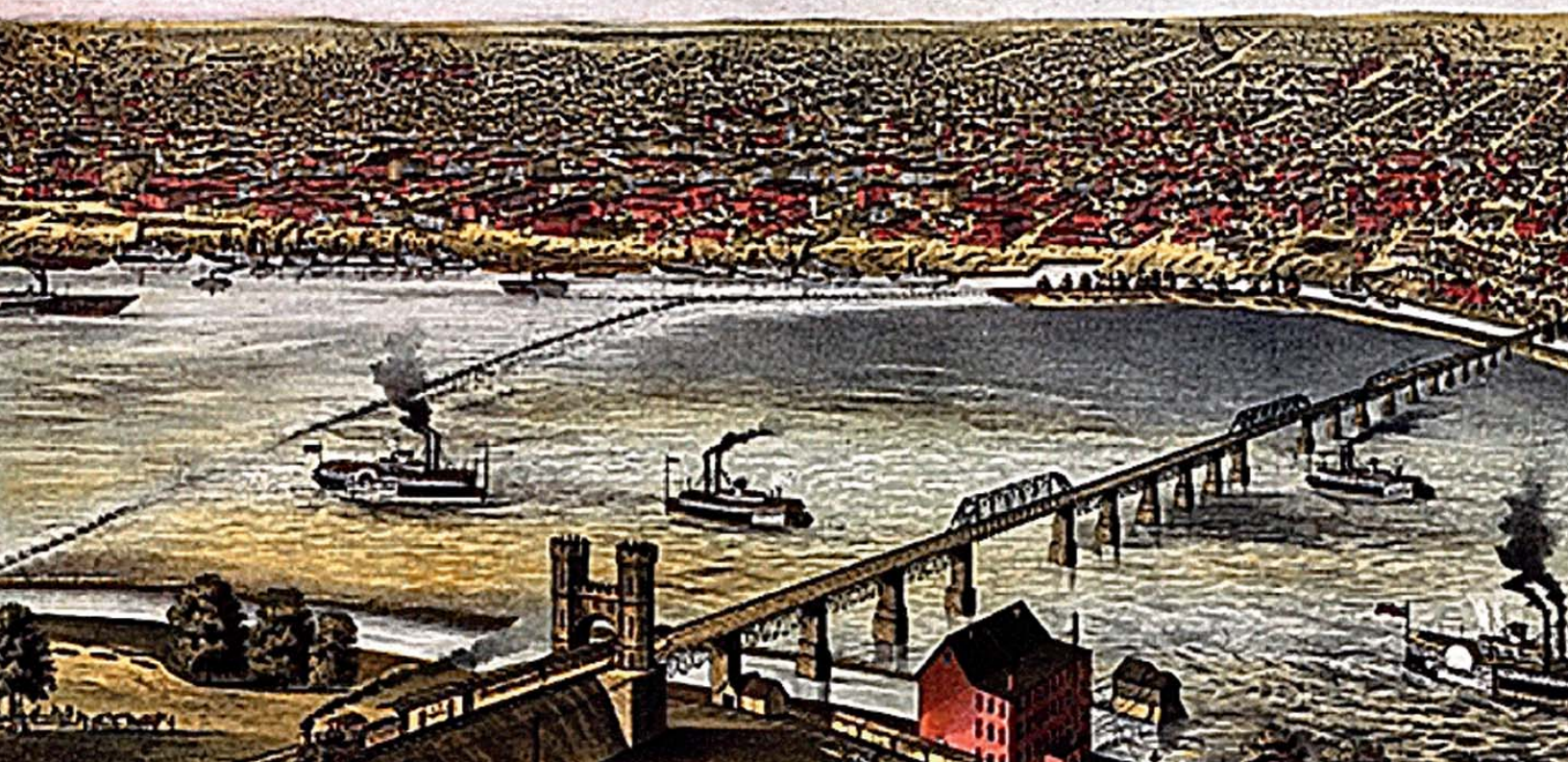
- 4121 ☒ **Adams Ex. Co. * Louisville, Ky. * Jul. 10, 1861.** Bold circular datestamp (day inverted) on blue folded letter datelined "*New Orleans 5th July*" to New York City, pencil "35/" at upper left, two 3c Brownish Carmine (26) tied by blue "Louisville Ky. Jul. 11, 1861" double-circle datestamp and duplex grid, file folds (vertical stationery fold does not affect stamp)
 VERY FINE. A CHOICE AND RARE DOUBLE-RATE THRU-THE-LINES EXPRESS COVER FROM NEW ORLEANS TO NEW YORK CITY.
 With 1986 C.S.A. certificate..... E. 2,000-3,000



4122

- 4122 ☒ **12c Black, Plate 3 (36B).** Trivial perf flaws, blue grid cancel, matching "Louisville Ky. Jul. 27, 1861" double-circle datestamp, "Adams Ex. Co. * Louisville, Ky. * Jul. 26, 1861" circular datestamp struck twice on blue linen-lined cover to Philadelphia, pencil "1.00/4" quadruple express rate, pencil "12" for U.S. postage, refolded around edges to enhance appearance, wrinkles slightly affecting stamp
 ONE OF TWO RECORDED QUADRUPLE-RATE EXPRESS USAGES WITH THE 12-CENT 1859 ISSUE. A RARE AND UNUSUAL COVER.
 Ex Walcott, Grunin, Gallagher and Sevenoaks..... E. 3,000-4,000

Adams Express Covers to France





4123

- 4123 ☒ **5c Brown, Ty. II (30A).** Horizontal strip of three, well-centered, rich color and proof-like impression, trivial toned specks, tied over several perfs at lower left by blue "Louisville Ky. Aug. 13, 1861" duplex datestamp and grid (datestamp struck again at lower right), used with **3c Dull Red, Ty. II, and 12c Black, Plate 3 (26, 36B)**, 12c s.e., tied at upper right by "**Adams Express Co. Louisville, Ky. Aug. 12, 1861**" circular datestamp on folded letter in French to **Paris, France**, datelined "**New Orleans, August 7, 1861**" and addressed to "**Monsieur G. d'Arnaud de Vitrolles**", red "**New York Paid 3 Aug. 17**" credit datestamp, ultramarine Havre transit (Aug. 29), red "**PD**" in frame, Paris receiving backstamp, pencil "**40**" express rate (with code letters) EXTREMELY FINE. ONE OF THE MOST OUTSTANDING OF ALL KNOWN CIVIL WAR EXPRESS USAGES, WITH A UNIQUE COMBINATION OF STAMPS GRAPHICALLY DEMONSTRATING THE REFUSAL OF FEDERAL POSTAL AUTHORITIES TO RECOGNIZE POSTAGE AFFIXED IN CONFEDERATE STATES.

This cover was posted from Confederate New Orleans on August 7, 1861, with 15c postage for the treaty rate to France (prepaid by the 3c and 12c stamps). It was datestamped on August 12 by Adams Express Company in Louisville, ten days prior to the demonetization of old stamps. The exchange period in Louisville began August 22nd for three days; beginning on August 25th, stamps other than the new 1861 Issue would no longer be accepted by the Louisville post office. However, as shown by this cover and certain other Adams thru-the-lines usages, U.S. stamps affixed to mail originating in the Confederate States were considered contraband and not accepted at the Louisville post office, requiring Adams to affix stamps from its own supply. The 3c credit confirms that this was a single-rate letter, so the additional 15c postage (paid by the strip of 5c) was not applied to make up a short payment. The "40" pencil marking (followed by a letter code used by express offices) includes the 25c fee charged by Adams and 15c for the postage to France. The other Adams Express Co. cover from this correspondence, bearing a 30c 1861, is offered in this sale (lot 4124). The 30c cover was also dated in New Orleans on August 7, 1861, but it may have been deliberately routed to Louisville on a later trip or held at the Adams office for additional postage from the sender (it was a double-rate letter). It had no stamps affixed in New Orleans and was stamped in Louisville on August 22 with the new 30c 1861 Issue.

The cover offered here was carried to France on the Havre Line's *Fulton*, departing from New York on August 17, 1861, arriving in Havre on August 29. Later in 1861 both of the Havre Line's ships, the *Fulton* and *Arago*, were commissioned as transport ships during the Civil War and not returned to mail service until late in 1865. A history of the Arnaud de Vitrolles family may be found at <http://gillesdubois.blogspot.com/2007/05/arnaud-de-vitrolles.html>

From a Jamet sale in France (Dec. 28, 1955) and ex Dr. Martin. Signed Ashbrook and written up in his *Special Service*. Illustrated in Brookman (p. 248) and the National Postal Museum's 1957 Perforation Centennial book. With 1991 P.F. certificate and analysis. E. 50,000-75,000



4124

- 4124 ☒ **30c Orange (71).** Vivid early color, beautifully centered with wide natural straddle-pane margin at left, tied by bold strike of blue grid cancel and matching “Louisville Ky. Aug. 22” (1861) double-circle datestamp on blue folded letter to Paris, France, letter datelined “New Orleans La. 7 Aug. 1861” and addressed to “Monsieur G. d’Arnaud de Vitrolles”, perfect strike of “Adams Ex. Co. * Louisville, Ky. * Aug. 21, 1861” circular datestamp, red “New York Paid 24 Aug. 17” credit datestamp overstruck by grid, same red credit datestamp re-applied with Aug. 28 date, bold red boxed “P.D.” and French transit, receiving back-stamp, pencil “40” express rate (with code letters) and pencil “30”

EXTREMELY FINE. THE ONLY RECORDED EXAMPLE OF THE 30-CENT 1861 ISSUE USED ON A THRU-THE-LINES EXPRESS COVER — ONLY POSSIBLE DURING A WINDOW OF OPPORTUNITY THAT EXISTED FOR APPROXIMATELY SEVEN DAYS IN AUGUST 1861. ONE OF THE RAREST AND MOST SPECTACULAR 1861 COVERS IN EXISTENCE.

This cover was handled by Adams Express Company within days of the August 26th termination date for all express intercourse between the North and South and also at the point when Northern post offices commenced demonetization of old stamps. The exchange period in Louisville began August 22nd for three days; beginning on August 25th, stamps other than the new 1861 Issue would no longer be accepted by the Louisville post office. The earliest recorded use of the 30c from *any* post office is August 20; therefore, for a period certainly no greater than seven days, beginning August 20th, it was possible for a 30c 1861 stamp to be used on a thru-the-lines express cover via Louisville. In this case, the sender in New Orleans prepaid the express fee and postage to France, either in cash or by affixing stamps to an outer transmittal envelope, and the Adams office in Louisville applied the 30c stamp from the newly-issued 1861 series. We know of one other thru-the-lines cover with the 1861 Issue, a 3c Pink with Adams August 26 and Louisville August 27 datestamps.

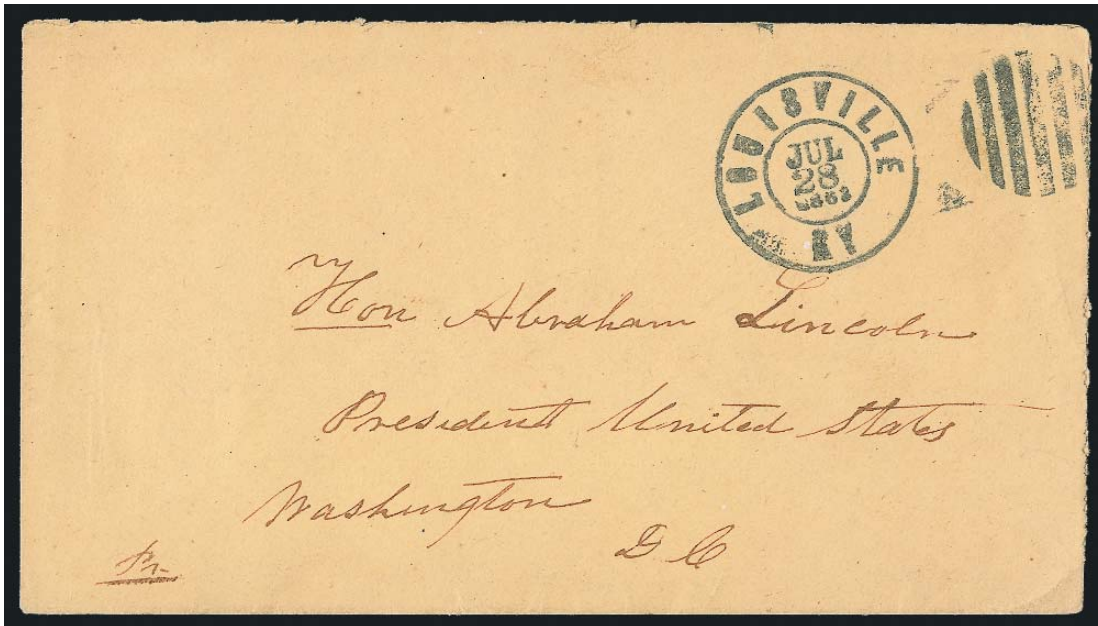
Both this cover and the cover in lot 4123 are addressed to a member of the French noble family of Arnaud de Vitrolles. A history of the Arnaud de Vitrolles family may be found at <http://gillesdubois.blogspot.com/2007/05/arnaud-de-vitrolles.html>

Illustrated in the *Chronicle*, May 1986. Ex Paliafito and Sevenoaks. With 2001 P.F. certificate..... E. 30,000-40,000

FEDERAL POST OFFICES IN KENTUCKY



- 4125 ☒ **3c Rose (65).** Tied by "Barbourville Ky. Jan. 11" circular datestamp on "**Our Dog Boxer After the Rats**" **Cartoon Patriotic** cover to Blairsville Ind., depicts "Scott" dog chasing "Floyd" rats in front of the U.S. Mint, cover barely reduced at right, Very Fine, ex Walcott and Gallagher..... E. 150-200
- 4126 ☒ **Bowling Green Ky. Mar. 7, 1862.** Blue double-circle datestamp and manuscript "Due 3" on yellow soldier's endorsed cover to Marion O., red and blue **Shield-Shaped Flag Patriotic** sticker tied by "Morrow O. Mar. 21" circular datestamp, manuscript "Missent", slightly reduced at left, Very Fine, very early use from Bowling Green after Federal occupation (February 15, 1862) E. 500-750
- 4127 ☒ **"Catawba Ky. April 12".** Manuscript postmark on red and blue **McClellan "Star of Liberty" Patriotic** cover to 3rd Asst. PMG in Washington D.C., Very Fine E. 150-200
- 4128 ☒ **3c Rose (65).** Tied by bold "Cynthia Ky. Oct. 4" circular datestamp on dark blue **Gen. Rosecrans Patriotic** cover to Oregon O., striking portrait design, slightly reduced at right affecting stamp, some overall toning, Fine, ex Gallagher E. 150-200
- 4129 ☒ **Elizabethtown Ky. Dec. 28.** Circular datestamp and "Paid 3" in circle on yellow **Flag Patriotic** cover to Milwaukie Wis. with "Soldier's Letter, 10th regiment, Wisconsin Volunteers" box, Very Fine E. 150-200
- 4130 ☒ **3c Rose (65).** Two small pieces missing from margins, not immediately noticeable, tied by blue grid, matching "Frankfort Ky. Mar. 12, 1862" double-circle datestamp on overall light violet **Kentucky "Loyal States" Patriotic** cover to Philadelphia, addressed to "L. A. Goody" (L. A. Godey of Godey's Lady's Book), a bit toned and worn around edges, otherwise Fine, scarce E. 150-200
- 4131 ☒ **3c Rose (65).** Tied by bold "Henderson Ky. Feb. 12, 1862" double-circle datestamp on small cover to Lisbon Ind. with blue **"The Union and The Constitution" Eagle and Ribbon Patriotic** design, Very Fine, ex Gallagher E. 200-300
- 4132 ☒ **3c Rose (65).** Tied by "Lexington Ky. Aug. 29" double-circle datestamp on overall red and blue **Kentucky "Loyal State" Patriotic** cover to New Haven N.Y., Extremely Fine..... E. 400-500



4133

- 4133 ☒ **Louisville Ky. Jul. 28, 1862.** Greenish-blue double-circle datestamp and grid on cover addressed to Abraham Lincoln, "Hon. Abraham Lincoln, President United States, Washington DC", Extremely Fine, this cover contained a letter from James Speed to Abraham Lincoln, the original is in the Abraham Lincoln Papers at the Library of Congress (transcription accompanies this lot)..... E. 750-1,000



4134

- 4134 ☒ **3c Rose (65).** Tied by bold greenish-blue grid cancel, matching "Louisville Ky. Mar. 20, 1863" circular datestamp on Magnus bronze "Camp Scene" Patriotic cover to Galesburg Ill., Extremely Fine, with 1983 P.F. certificate E. 750-1,000



- 4135 ☒ **3c Rose (65).** Tied by blue grid with matching "Louisville Ky. May 21, 1863" double-circle datestamp on overall gray **Kentucky "The War for the Union" Patriotic** cover to Crittenden N.Y., with original letter datelined "Hospital No. 2 May 20, Louisville, Kentucky", from a soldier named Albert Robinson, good content mentions Battle of Pittsburgh Landing where 275 men from his regiment were "kild and wounded", trivial perf toning, otherwise Extremely Fine, scarce design and good letter from a wounded soldier..... E. 500-750
- 4136 ☒ **3c Rose (65).** Tied by blue "Louisville Ky. Apr. 2, 1862" circular datestamp with matching grid on red and blue **Mounted Dragoon "Fourth Regt. Ohio Vol. Cavalry" Patriotic cover to Westphalia, Germany**, rare Gates & Co. design with names of officers, manuscript "30" due, "N.York Hamb. Pkt. 5 Apr. 5" debit datestamp, blue "6½" handstamp and manuscript "6½", Hamburg backstamps, slightly age toned, Very Fine, scarce use..... E. 500-750
- 4137 ☒ **3c Rose (65).** Gum stains and perf faults, tied by blue "Louisville Ky. Jun. 21 '62" double-circle datestamp and target on cover to Ohio with **"Forty Rounds U.S." in red diamond** emblem of 15th Army Corps, matching design on soldier's letter enclosure, minor wear and toning, still Very Fine, rare design, each division had its own color..... E. 400-500
- 4138 ☒ **3c Rose (65).** Gum stains and perf faults, tied by blue target and "Louisville Ky. Jun. 23 '62" double-circle datestamp on cover to LaPorte Ind. with **"Forty Rounds U.S." in blue diamond** emblem of 15th Army Corps, faint toning, Very Fine, rare design, each division had its own color, ex Walcott E. 400-500
- 4139 ☒ **3c Rose (65).** Small creases at bottom right, tied by blue grid and matching "Louisville Ky. Jan. 7, 1862" double-circle datestamp on brown **McClellan Portrait Patriotic** cover to Lockport N.Y., ornately framed with symbols of Union military, horizontal fold and slightly reduced at right, otherwise Fine E. 200-300



- 4140 ☒ **3c Rose (65).** Tied by blue “Louisville Ky. Nov. 22, 1861” double-circle datestamp and grid on **W. G. Brownlow Portrait Patriotic** cover to Mercersburg Pa., stamp has a few blunted perfs from scissors separation, some edgewear, otherwise Very Fine E. 300-400
- 4141 ☒ **Clay General Hospital No. 2, Louisville Ky.** Soldier’s letter endorsement “*Genl. Hospt No. 2 Louisville Ky*” on buff cover to Ohio, attractive red **Liberty, Eagle & Shield** patriotic design, bold blue “Due 3” and “Louisville Ky. Mar. 3, 1862” double-circle datestamp, side flap partly missing, few edge nicks at bottom, still Very Fine and very scarce usage from this Federal hospital in Kentucky, ex Kantor (Fig. 224 in their book)..... E. 300-400
- 4142 ☒ **3c Rose (65).** Tied by bright blue “Louisville Ky. Jun. 1 ‘64” double-circle datestamp and target on immaculate cover with “**U.S. Sanitary Commission**” beautiful calligraphic style imprint, addressed to Sanitary Comm. office in New York City, Extremely Fine, desirable Kentucky usage in pristine condition, ex Kantor (Fig. 39 in their book) E. 200-300
- 4143 ☒ **3c Rose (65).** Tied by blue target, matching “Louisville Ky. May 14 ‘65” double-circle datestamp on overall lithographed “**U.S. Sanitary Commission, Kentucky Branch**” cover to Boston, Extremely Fine..... E. 300-400
- 4144 ☒ **3c Rose (65).** Tied by blue “Louisville Ky. Oct. 17 ‘64” double-circle datestamp on yellow cover to Illinois with “**U.S. Sanitary Commission, Hospital Directory, Louisville Ky.**” three-line imprint, blue “Peoria Ill. 20 Oct.” double-circle datestamp and “Missent” in oval handstamp, small opening tear at top, Very Fine, scarce southern office corner card and unusual markings, ex Kantor (Fig. 49 in their book) E. 150-200
- 4145 ☒ **May’s Lick Ky., Jun. 23.** Bold strike of dark blue circular datestamp with matching “Free” handstamp on cover to Rock Island Ill., endorsed “*E.H. Herndon P.M.*” at top right, with red “**United We Stand, Divided We Fall**” cameo design on top flap, opening tear is barely noticeable but affects design, Very Fine, a beautiful cover..... E. 150-200
- 4146 ☒ **Paducah Ky. Feb. 4, 1862.** Well-struck blue double-circle datestamp with matching “Paid” handstamp on orange cover to **Copenick, Prussia**, red “N. York Br. Pkt. Paid 7 Feb. 12” transit circular datestamp, red boxed Aachen Franco” handstamp, endorsed “*via Prussian Closed Mail*” at top and with “Paid 30”, receiving backstamp, slightly reduced at right and some slight wear, Very Fine, scarce stampless usage from 1862 Kentucky to Germany..... E. 150-200
- 4147 ☒ **Union Patriotics Used in Kentucky.** Three different designs with 3c 1861’s, McClellan portrait and “Ohio true to the Constitution” Clasp Hands designs from Catlettsburg Ky., “Liberty and Union” Flag and Clasp Hands design from Nicholasville Ky., minor faults, all Very Fine appearance, exhibit-worthy group, includes a fourth scarce Fortress Monroe design with 3c stamp added(Photo Ex) E. 300-400

ADAMS EXPRESS IN FEDERAL-OCCUPIED KENTUCKY



- 4148 ☒ **Adams Express Co., Burnside Expedition.** Neat "Pulaski Ky. Oct. 13, 1863" manuscript cancel ties 3c Rose (65) on illustrated cover with four horses pulling a large wagon, to Bradford N.H., portions of address re-inked, otherwise Very Fine, with 2003 P.F. certificate E. 500-750
- 4149 ☒ **Forwarded by the Adams Express Co. from Lexington Ky.** Black on yellow glazed label (oxidized) on buff **Western Union Telegraph Consolidated Lines** imprint cover to Danville Ky., pencil "Ex 25" charge, docketed on back "Natchez, May 13th, 1861" indicating war-time usage, flap removed, otherwise Very Fine, rare example of express telegram delivery within Kentucky E. 400-500
- 4150 ☒ **Adams Express Co., Paducah, Ky.** Black on yellow label affixed with brownish mucilage on small cover to West Stephentown N.Y., red and blue border, 3c Rose (65) tied by "Washington D.C. Sep. 23" (1861?) circular datestamp, manuscript "Ans" (Answered) notation effectively ties label, flap sealed with same brown glue, slightly reduced at left, small tear at top left, stamp slightly oxidized, Fine and extremely rare express usage from western Kentucky E. 750-1,000
- 4151 ☒ **Forwarded by the Adams Express Co. from Sheppardsville Ky.** Black on yellow glazed label affixed to 3c Pink entire to Memphis Tenn., Adams Memphis Jun. 10, 1869 unclaimed valuable label on back — so-called Three Gatherings, in which undelivered express letters were assembled and advertised after the war — with original letter dated Feb. 1, 1867, crude spelling from a sister (?) complaining a lot ("I am not well and I cant stand the work I have to do"), slightly reduced at right, Very Fine, rare Kentucky post-war express usage E. 500-750

CONFEDERATE POST OFFICES IN KENTUCKY



4152

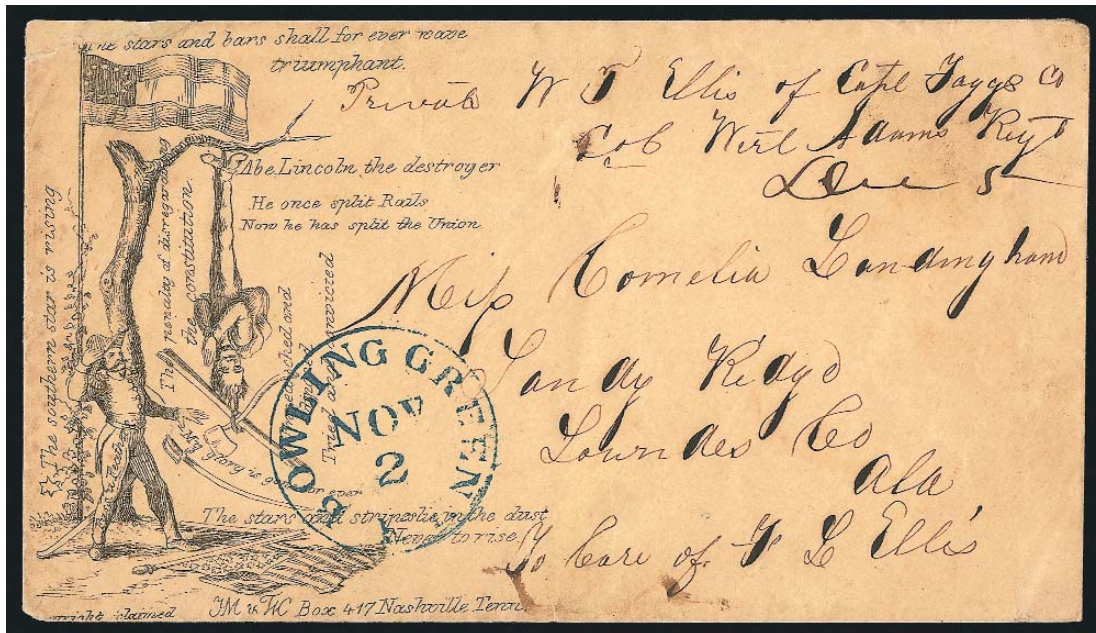
- 4152 ☒ **"Bowling Green Ky Oct 17" and "paid 10" Manuscript Postmark.** On fresh white envelope to Alderbrook Ark., 1861 usage, Extremely Fine, one of two recorded manuscript postmarks from the Confederate post office at Bowling Green (occupied Sept. 18 — this Oct. 17 cover is the earliest recorded), sent by addressee's fiancé, L. A. Dixon, who served as a surgeon with the 8th Regt. Ark. Vol., ex Gallagher..... E. 500-750



4153

- 4153 ☒ **Bowling Green Ky. Jan. 1.** (New Year's Day 1862) partly clear blue circular datestamp and manuscript "Due 10" on red and blue **11-Star Confederate Flag Patriotic** cover to Oakley La., soldier's letter endorsement from member of 1st Regt. La. Cavalry, minor wrinkles
- FRESH AND VERY FINE. AN OUTSTANDING QUALITY CONFEDERATE FLAG PATRIOTIC COVER FROM CONFEDERATE-OCCUPIED BOWLING GREEN, KENTUCKY.
- Illustrated in Dietz (p. 60). Ex MacBride and Gallagher. With 1998 C.S.A. certificate..... E. 2,000-3,000

HANGING LINCOLN



4154

- 4154 ☒ **Bowling Green Ky. Nov. 2 (1861).** Remarkably bold well-defined strike of blue circular datestamp with manuscript "Due 5" on **Hanging Lincoln Cartoon** cover to Sandy Ridge Ala., soldier's endorsement "Private W. T. Ellis of Capt. Fagg's Co., Col. Wirt Adams Regt.", excellent impression of printed design, negligible opening nick at top left corner just touches design (simply mended)

EXTREMELY FINE. ONLY TWELVE EXAMPLES OF THE CELEBRATED HANGING LINCOLN ENVELOPE ARE RECORDED. THIS IS THE ONLY EXAMPLE POSTMARKED IN KENTUCKY. AN OUTSTANDING AND HISTORIC CONFEDERATE PATRIOTIC.

The Hanging Lincoln design is widely recognized as the most distinctive of all Confederate patriotics. In this extraordinary cartoon, President Lincoln is hanging upside down from a tree limb, with his symbolic axe and fence rail tied around his neck. The caption reads "Abe Lincoln the destroyer. He once split Rails. Now he has split the Union." To the left and right is the caption "The penalty of disregarding the constitution. Impeached, deposed, Tried and convicted" (there is a spelling correction from "diposed" to "deposed"). Standing beside Lincoln is a mustachioed Winfield Scott, labeled "Old Fuss n Feathers", dropping his sword and exclaiming "My glory is gone for ever." On the ground is the Union flag, captioned "The stars and stripes lie in the dust, Never to rise." A star at left has the caption "The southern star is rising" and the Confederate 11-star flag towers above with the caption "The stars and bars shall for ever wave triumphant." Along the bottom is the imprint "Copyright claimed. HM & WC Box 417 Nashville Tenn."

According to a census by the late John R. Hill Jr. (updated with two new discoveries), there are twelve genuine Hanging Lincoln patriotics (listed in date order): 1) Jul. 25, 1861, Marshall Tex. Paid 10; 2) Aug. 21, 1861, Nashville Ten., two 5c provisionals, ex Kimmel, Myers, Rudy (Siegel Sale 874, lot 115, realized \$57,500); 3) Aug. 30, 1861, Athens La. "Paid X", ex Hall (Siegel Sale 840, lot 27, realized \$13,000); 4) Nov. 2, 1861, Bowling Green Ky., ex Dr. Howard Green (Siegel Sale 822, lot 225, realized \$28,000), the cover offered here; 5) Jan. 1, 1862, Nashville Ten., 5c Olive Green (Siegel Sale 933, lot 978, realized \$11,500); 6) Jan. 4, 1862, Nashville Ten., 5c Olive Green; 7) Feb. 20, 1862, Cumberland Gap Ten., manuscript Paid 5 (Siegel Sale 940, lot 462, realized \$11,000); 8) Apr. 15, 1862, Cartersville Miss., manuscript Due 5; 9) Apr. 15, 1862, Camden Miss., 10c Rose; 10) Jun. 24, 1862, Camden Miss., 10c Pale Rose; 11) date unknown to JRH, West Union S.C., manuscript Due 5; and 12) privately carried and not postally used. In addition, there is a genuine envelope with fake markings and a stamp added.

Ex Howard Green E. 20,000-30,000

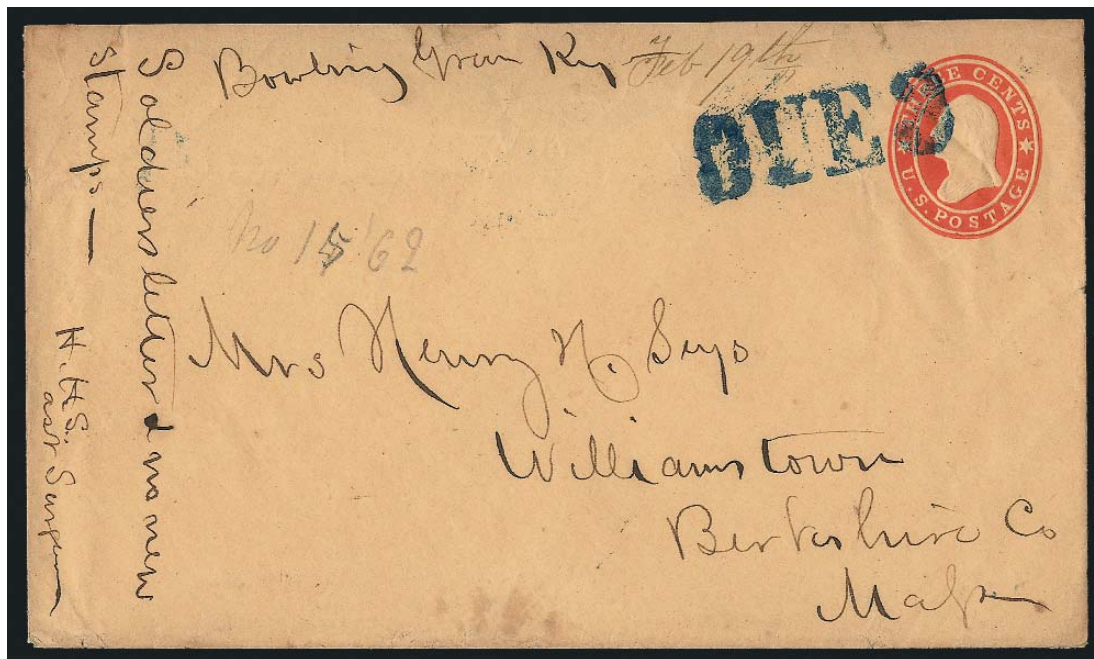


- 4155 ☒ **Bowling Green Ky. Jan. 7 (1862).** Extraordinarily bold strike of blue circular datestamp and matching "5" in circle due handstamp on tiny cover to Randolph Tenn., soldier's endorsement, lightly toned, still Extremely Fine and one of the finest strikes known of the Bowling Green town datestamp (often faint or blurry), ex Emerson.... E. 750-1,000
- 4156 ☒ **Bowling Green Ky. Dec. 20 (1861).** Blue partly readable circular datestamp on soldier's blue folded letter to Saltville Miss., with soldier's endorsement, manuscript "Due 5", "Due 5" handstamp applied at Memphis, interesting letter re camp life, faint age bleach spots, Fine and scarce..... E. 500-750
- 4157 ☒ **5c Green, Stone 1-2 (1).** Vertical pair, ample to large margins, small internal crease and scuffs visible under close examination, tied by lightly struck brownish "Bowling Green Ky." circular datestamp on cover to Church Hill Miss., reduced at left, fresh and Very Fine appearance E. 400-500
- 4158 ☒ **5c Yellowish Green, Stone 1-2 (1).** Horizontal pair, cut in on three sides, pre-use crease, tied by "Bowling Green Ky. Jan. 17" (1862) circular datestamp, bolder than usual strike, on cover to Wytheville Va., few toned spots, minor flap fault, still Fine, very scarce..... E. 400-500
- 4159 ☒ **10c Dark Blue, Hoyer & Ludwig (2b).** Ample margins, tied by "Bowling Green Ky. Feb. 8" (1862) circular datestamp on narrow cover to Relfs Bluff Ark., a few letters of typically light cancel strengthened in pencil, stamp has small scuff, cover has mended hole and part of sideflap removed, Very Fine appearance, scarce Kentucky usage — Bowling Green evacuated days later — ex Pratt, Everett E. 500-750



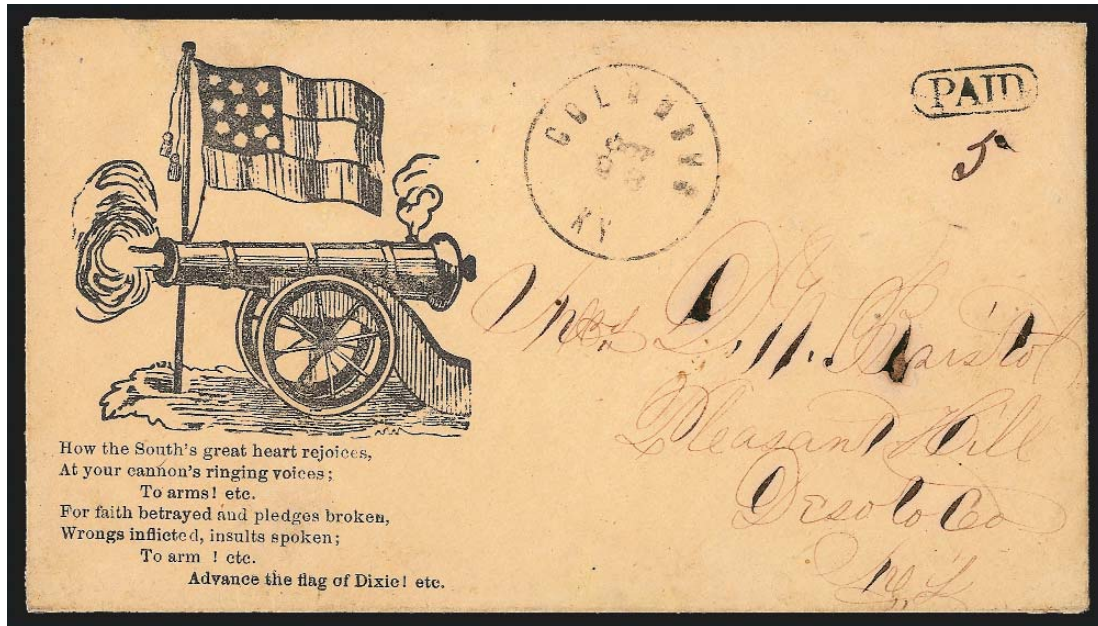
4160

- 4160 ☒ **Bowling Green Ky. Feb. 12 (1862).** Lightly struck brownish-black circular datestamp and manuscript "10" due on tiny cover to Bastrop Tex., soldier's endorsement from member of Terry's Regt., Texas Rangers, small mend at upper left corner, flap removed, otherwise Fine and scarce — Confederate forces began evacuating Bowling Green on February 11th E. 300-400



4161

- 4161 ☒ **"Bowling Green Ky. Feb. 19th" (1862) — Earliest Reported Federal Use After Occupation.** Manuscript postmark on 3c Red Star Die entire to Williamstown Mass., endorsed "Soldiers letter & no new stamps — H.H.S. Ast Surgeon", obsolete embossed stamp cancelled by Louisville "DUE 3" straightline handstamp applied in transit, backflap removed, Very Fine, this is the earliest reported cover posted at Bowling Green after U.S. occupation, the Confederates evacuated completely by February 14, 1862, this was mailed just five days later E. 1,000-1,500



4162

- 4162 ☒ **Columbus Ky. Oct. 23 (1861).** Circular datestamp with "Paid" in oval handstamp and manuscript "5" rate on **10-Star Confederate Flag, Cannon and Verse Patriotic** cover to Pleasant Hill Ky., expertly repaired edge tear, otherwise Very Fine, rare used during Kentucky occupation (joined C.S.A. in December), ex Gallagher..... E. 1,500-2,000



4163



4164

- 4163 ☒ **Columbus Ky.** Bold circular datestamp with unreadable date on buff cover to Mifflin Tenn., manuscript "Due 5" and in the same hand "I Paid 5 Cents postage M.S.E.", soldier's endorsement from member of 13th Regt. Tenn. Vol., bottom right and left corners clipped and repaired, reduced at right, rare and unusual E. 500-750
- 4164 ☒ **Columbus Ky. Feb. - .** Partly readable circular datestamp on small 1862 cover to Egg's Point Miss. with soldier's endorsement from member of Bolivar Troops, 1st Battalion, Miss. Cavalry, "DUE/5" two-line handstamp, with original letter which mentions Zollicoffer and action on the Tennessee River, flap removed, otherwise Very Fine..... E. 500-750



4165

4166

- 4165 ✉ **Hickman Ky. Sep. 5, 1861.** Double-circle datestamp with manuscript "Pd 5" C.S.A. rate on small cover to Laconia Ark., pencil soldier's endorsement "*John B. Abercrombie, Fourth Reg. Tenn. Vol.*", rate overstruck "DUE 5" at Memphis, backflap partially removed and small mended nicks at top

THE EARLIEST RECORDED COVER FROM CONFEDERATE KENTUCKY, POSTMARKED JUST TWO DAYS AFTER THE SEPTEMBER 3, 1861, INVASION OF KENTUCKY BY THE CONFEDERATE ARMY.

Kentucky proclaimed its policy of neutrality on May 20, 1861, but the pro-Confederate and pro-Union citizens within the state were wary of an invasion force throughout the summer months, with each side accusing the other of breaching neutrality. Finally, to preempt a Federal occupation of Columbus, General Leonidas Polk ordered General Gideon Pillow to move on Hickman and Columbus; Pillow's troops entered Hickman on the morning of September 3. In response, General Ulysses S. Grant seized Paducah on September 6, and the Unionist movement in Kentucky gained momentum, ending neutrality.

This cover, postmarked at Hickman on September 5, is an extremely early Confederate occupation date. There is no record of an earlier postmark from any Confederate post office in Kentucky.

Ex Gallagher and Agre. E. 1,500-2,000

- 4166 ✉ **Hopkinsville Ky. Dec. 12, 1861.** Partly clear double-circle datestamp with manuscript "Due 5" on buff **Jefferson Davis Medallion and Verse Patriotic** cover to Elm Grove Miss., soldier's endorsement from member of 7th Regt. Miss. Vol., "DUE/5" two-line handstamp applied in transit at Memphis, with original letter, slight wear at left and faint waterstain at bottom right

VERY FINE. A RARE AND CHOICE CONFEDERATE PATRIOTIC COVER FROM THE CONFEDERATE-OCCUPIED TOWN OF HOPKINSVILLE, KENTUCKY.

Ex Nunnelley E. 2,000-3,000

END OF SALE — THANK YOU

Bid Form—15% Premium Sale

Sale 981

Thursday, December 10, 2009

1

Please provide the following information:

NAME.....

ADDRESS.....

CITY/STATE/ZIP

TEL. (DAY) FAX.....

E-MAIL.....

PADDLE #

Do not write in box

2

Have you purchased from us in the past 5 years? ☐ YES (if so, please go to Section 3)
☐ NO (please provide a trade reference and bank information)

References:

Stamp Firm:..... Telephone.....

Bank:..... Account #

3

In the space provided below, enter the **lot number** from **Sale 981** and your corresponding bid. Please use **whole dollar amounts** only and enter the **maximum bid** you wish to have us execute on your behalf, according to the **bidding increments** on other side of this form. **Your bid will NOT include the 15% buyer's premium.** We will advance the bidding at one increment over the

next highest bid; therefore, you may be awarded the lot at less than your maximum bid. Please do not use "plus" bids or "buy" bids. If you wish to bid on one lot **or** the other, indicate your "or" bid between lot number/bid entries and bracket your choices. If you wish to place a **bidding limit** on the total amount of your bids, please enter your limit in the space marked "Limit Bids".

PLEASE NOTE BIDDING INCREMENTS AND SHIPPING CHARGES (ON BACK OF THIS PAGE)

☐ **LIMIT BIDS:** Check this box if you wish to limit the total amount of your bids (not including the **15% buyer's premium**) in this sale. Your bids will be executed until your bidding limit no longer allows for additional bids. **The total amount you wish to bid is:** \$

Lot	Bid	Lot	Bid	Lot	Bid
	\$		\$		\$

4

AGREEMENT: By signing this bid form, you agree to pay for purchases resulting from your bids, in accordance with the **Conditions of Sale** printed in the sale catalogue. You also agree to pay the **15% buyer's premium, shipping costs (see reverse), and sales tax or use tax or customs duty which may be due on the total invoiced amount.** It is

understood that these bids will be executed by Siegel Auction Galleries as a courtesy to absentee bidders, but you waive the right to make any claim against the auctioneer or the firm, arising from the these bids. **You are responsible for your written bids, including any errors on your part and any additions or changes to the bids herein.**

Payment must be made by cash, check, money order or wire transfer. Credit cards will not be accepted.



SIGNED..... TODAY'S DATE

5

Please submit your bids promptly (telephone bids must be confirmed in writing).

Mail to: **Robert A. Siegel Auction Galleries, Inc.**

60 E. 56th Street, 4th Floor, New York, N.Y. 10022

Telephone (212) 753-6421

OR FAX YOUR BIDS: (212) 753-6429

Shipping Instructions, Bidding Increments and space for additional bids on other side of form

Additional Bids

Sale 981—December 10, 2009

Lot	Bid	Lot	Bid	Lot	Bid
	\$		\$		\$

Shipping and Transit Insurance

We will be pleased to arrange for shipping and transit insurance for purchases in this sale (except those described as “floor sale only”). To expedite billing and delivery of lots to hundreds of buyers per sale, we use standard charges for postage and insurance, based on the package weight and mailing requirements (see schedule). The standard charges are sometimes slightly more or less than the actual postage or Fedex fees, but we do not include any charge for our labor or packing costs. Therefore, we ask all buyers to remit the prescribed amount for shipping charges.

Transit insurance is provided in all cases, except when the buyer has furnished us with proof that insurance coverage is effective under another policy. Proof, in such cases, will be accepted in the form of a written certificate from the insurance carrier.

You are responsible for insurance charges, which will be added to your invoice. This coverage is provided for our mutual protection against theft or loss in transit.

Bidding Increments

The auctioneer may regulate the bidding at his discretion. However, to assist absentee bidders in establishing their maximum bid for each lot, the increments shown at right will be used in most cases. We recommend that written bids conform to these increments (those which do not will be reduced to the next level).

REVISED CHARGES FOR SHIPPING EFFECTIVE SEPTEMBER 1, 2009

We have reduced the Fedex Envelope charge to \$20, reflecting the elimination of the fuel surcharge. All other charges remain the same.

Current Postage & Insurance Charges

Weight/Class	Shipping Method	Charges
Up to 2 lbs.	Fedex Envelope	\$20.00
Over 2 lbs.	Fedex Box	\$35.00*
Non-U.S.	Fedex/Courier	\$50.00**
Bulk Lots	UPS Preferred	By weight and value
<p>These fees reflect additional Fedex charges for residential delivery, signature and fuel surcharge.</p> <p>*Higher fees will be charged on packages weighing more than 5 lbs. or insured for more than \$75,000.</p> <p>**Buyers are liable for all customs duties and clearance charges. An accurate declaration of value will be made on all import/export documents.</p>		

9/2009

Up to \$50	\$5	\$3,000-7,000	\$250
\$50-200	\$10	\$7,000-20,000	\$500
\$200-500	\$25	\$20,000-30,000	\$1,000
\$500-1,000	\$50	\$30,000-75,000	\$2,500
\$1,000-3,000	\$100	\$75,000 up	\$5,000

6/2008

PRICES REALIZED FOR SALE 981---12/10/2009
The Barry K. Schwartz Collection of Kentucky Postal History

Robert A. Siegel Auction Galleries, Inc.
60 East 56th Street, 4th Floor, New York, NY 10022
Tel (212) 753-6421 Fax (212) 753-6429

Lot#	Realized	Lot#	Realized	Lot#	Realized	Lot#	Realized
4001	225	4043	1,300	4085	550	4128	130
4002	800	4044	225	4086	850	4129	180
4003	350	4045	375	4087	1,000	4130	425
4004	325	4046	110	4088	750	4131	500
4005	375	4047	425	4089	21,000	4132	900
4006	180	4048	150	4090	4,000	4133	1,300
4007	450	4049	350	4091	1,900	4134	600
4008	650	4050	425	4092	12,000	4135	300
4009	650	4051	225	4094	3,000	4136	800
4010	1,600	4052	650	4095	650	4137	800
4011	2,100	4053	250	4096	90	4138	650
4012	160	4054	375	4097	80	4139	200
4013	160	4055	500	4098	100	4140	325
4014	225	4056	950	4099	1,300	4141	275
4015	300	4057	1,200	4100	120	4142	475
4016	325	4058	1,600	4101	375	4143	475
4017	160	4059	850	4102	225	4144	250
4018	1,700	4060	425	4103	200	4145	110
4019	650	4061	1,000	4104	1,400	4146	120
4020	650	4062	1,200	4105	300	4147	300
4021	600	4063	950	4106	300	4148	475
4022	375	4064	3,000	4107	1,600	4149	300
4023	650	4065	85,000	4108	200	4150	450
4024	600	4066	425	4109	3,500	4151	300
4025	325	4067	300	4110	425	4152	650
4026	425	4068	550	4111	7,000	4153	1,900
4027	800	4069	1,900	4112	2,300	4154	18,000
4028	350	4070	1,100	4113	1,900	4155	650
4029	1,100	4071	1,700	4114	5,750	4156	425
4030	325	4072	3,750	4115	32,500	4157	500
4031	325	4073	2,100	4116	700	4158	500
4032	1,100	4074	5,750	4117	950	4159	900
4033	1,100	4075	600	4118	1,600	4160	500
4034	225	4076	350	4119	3,000	4161	1,000
4035	850	4077	275	4120	1,700	4162	1,300
4036	120	4078	2,400	4121	2,000	4163	425
4037	210	4079	2,000	4122	5,750	4164	450
4038	475	4080	2,800	4123	185,000	4165	1,200
4039	550	4081	1,200	4124	105,000	4166	2,300
4040	600	4082	200	4125	150		
4041	375	4083	1,500	4126	300		
4042	700	4084	2,000	4127	150		