



The "Hampshire" Collection of United States Stamps  
Sale 983—Tuesday, February 23, 2010

*Robert A. Siegel*



Sale 983—Tuesday, February 23, 2010

## The “Hampshire” Collection of United States Stamps

Live auction to be held at Siegel Auction Galleries,  
60 East 56th Street (Park/Madison), 4th Floor, New York City

All lots offered without reserves

Lots are sold subject to a 15% buyer's premium and  
any applicable sales tax (or customs duty for non-U.S. buyers)



Afternoon Session—Lots 1-207  
Tuesday, February 23, 2010, at 1:30 p.m.

|  |          |
|--|----------|
| Postmasters' Provisionals, 1847 Issue .....  | lots 1-4 |
| 1851-56 Issue .....                          | 5-12     |
| 1857-60 Issue and Reprint .....              | 13-40    |
| 1861-66 Issue .....                          | 41-53    |
| 1867-68 Grilled Issue .....                  | 54-70    |
| 1875 Re-Issue of 1861-66 Issue .....         | 71-75    |
| 1869 Pictorial Issue and Re-Issue .....      | 76-91    |
| 1870-88 Bank Note Issues .....               | 92-131   |
| 1890-93 Issue .....                          | 132-140  |
| Columbian Issue .....                        | 141-152  |
| 1894-98 Bureau Issue .....                   | 153-177  |
| Trans-Mississippi, Pan-American Issues ..... | 178-194  |
| 1902-08 Issue .....                          | 195-207  |

Lots will be available for viewing on  
Monday, February 22 from 10-4, and by appointment.

*Robert A. Siegel*

AUCTION GALLERIES, INC.

60 EAST 56TH STREET, 4TH FLOOR, NEW YORK, N.Y. 10022  
Phone (212) 753-6421 • Fax (212) 753-6429 • E-mail: [stamps@siegelauctions.com](mailto:stamps@siegelauctions.com)

Catalogues, internet bidding, resources, archives and the Siegel Encyclopedia at  
[siegelauctions.com](http://siegelauctions.com)



# Robert A. Siegel

## AUCTION GALLERIES, INC.

60 EAST 56TH STREET, 4TH FLOOR, NEW YORK, N.Y. 10022  
 Phone (212) 753-6421 • Fax (212) 753-6429 • E-mail: stamps@siegelauctions.com  
**siegelauctions.com**



Scott R. Trepel  
 President  
 strepel  
 @siegelauctions.com



John P. Zuckerman  
 Senior Vice President  
 jzuckerman  
 @siegelauctions.com



Corey Long  
 Vice President  
 clong  
 @siegelauctions.com



Starr Tucker-Ortega  
 Accounts  
 stamps  
 @siegelauctions.com



Carlene Counihan  
 Bids and Inquiries  
 carlene  
 @siegelauctions.com

Scott R. Trepel Principal Auctioneer (licensed by NYC Dept. of Consumer Affairs, #795952)  
 Nathaniel Estes Catalogue and Digital Production

## Information for Bidders

### Bidding

The following means are available for placing bids:

- 1) Attending the Live Auction in Person:** All bidders must register for a paddle, and new bidders must provide references at least three business days in advance of the sale.
- 2) Live Internet Bidding:** Instructions for participating as a Live Internet Bidder are provided on the page opposite.
- 3) Phone Bidding:** Bidders can be connected to the sale by phone and bid through a member of staff. Requests for phone bidding are subject to approval (please contact our office at least 24 hours before the sale). A signed Bid Form is required.
- 4) Absentee Bids.** All bids received in advance of the sale, either by mail, fax, phone, e-mail or internet, are Absentee Bids, which instruct the auctioneer to bid up to a specific amount on one or more lots in the sale. Absentee Bids sent by phone, fax or e-mail should arrive at least one hour prior to the start of the sale session. Bids entered through Live Internet Bidding will be visible to the auctioneer during the sale. Written bids should be entered legibly on the Bid Form in the sale catalogue. E-mail and internet bids should be carefully typed and double-checked. All new bidders must provide references. We recommend calling or e-mailing to confirm that Absentee Bids sent by mail, fax or e-mail have been received and entered.

### Pre-Sale Viewing

Subject to availability, certain lots (except group lots) can be sent to known clients for examination. Requests must be made no later than 7 days prior to the sale. Lots must be returned on the day received. Postage/insurance costs will be invoiced.

In addition to regular viewing, clients may view lots by appointment. Our staff will be pleased to answer questions or provide additional information about lots.

### Expert Certification

Individual items offered without a current certificate (PF dated within the past five years of sale; PSE dated January 2004 or later) may be purchased subject to independent certification of genuineness and our description. **Please refer to the Conditions of Sale and Grading Terms for policies governing certification.**

### Shipping and Delivery

Procedures and charges for shipping lots are printed on the back of the Bid Form. **Bidders are responsible for all prescribed shipping charges and any applicable sales tax or customs duties.**

### Price Realized

Prices realized are sent with each invoice. Bidders with e-mail will receive a Bid Results report after the sale. Session results are posted immediately to **siegelauctions.com**



## Bidding from your computer lets you be part of the live auction from anywhere in the world!

There's no substitute for following the auction in real time. Live Internet Bidding lets you bid and buy as though you were right there in the saleroom.

And it's easy. Just start by following the simple steps to become a registered Live Internet Bidder. Once you've been approved for bidding, you can listen to the auction and place bids with the click of a mouse.

This step-by-step guide will instruct you how to register, set your browser and use the bidding interface.

### 1 Registering with Stamp Auction Network and Siegel Auction Galleries

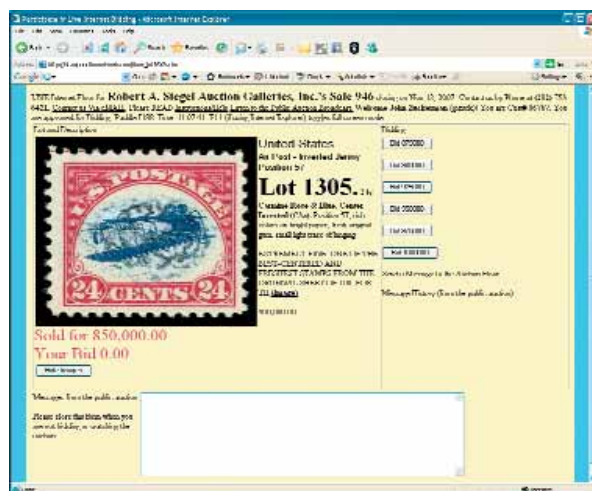
Live Internet Bidding is managed by Stamp Auction Network (SAN). To bid, you must be registered and approved by *both* SAN and Siegel. To decide what you need to do, choose the description below that best fits you.

**I've already registered with SAN and have been approved by Siegel for internet bidding.** You're ready for Step 2.

**I've never registered with SAN, but I'm a Siegel client.** Go to [stampauctionnetwork.com/siegel](http://stampauctionnetwork.com/siegel) and click on "Register" at the top. Check the box for Robert A. Siegel Auction Galleries (under "R") and submit the form, indicating you are a Siegel client. Once registered at SAN, you're ready for Step 2.

**I've never registered with SAN, and this is the first time I've bid with Siegel.** Go to [stampauctionnetwork.com/siegel](http://stampauctionnetwork.com/siegel) and click on "Register" at the top. Check the box for Robert A. Siegel Auction Galleries (under "R") and submit the form **with your trade references** (please, no family members or credit card companies as references). Once registered at SAN and approved by Siegel for bidding, you're ready for Step 2.

**I've bid through SAN before, but this is the first time I've bid in a Siegel sale.** Then you just need to be approved by Siegel. Go to [stampauctionnetwork.com/siegel](http://stampauctionnetwork.com/siegel) and click on "Update Registration" at the top. Your SAN account information will be sent to us for approval (you might be asked for other trade references). Once approved by Siegel for bidding, you can move to Step 2.



### 2 Using your browser for Live Internet Bidding and understanding the way it works.

Live Internet Bidding works by providing an audio feed of the auction (requires Adobe Flash free plug-in) and by allowing registered bidders to observe and place bids. The bidding interface shows a photo and description of the lot, the current bid (and your bidding status), and options for placing competitive bids. To join the auction, go to [stampauctionnetwork.com/siegel](http://stampauctionnetwork.com/siegel). You can also log on at [siegelauctions.com](http://siegelauctions.com)

Before bidding by internet for the first time, we recommend finding a sale in progress and listening to the public broadcast or logging in as a registered bidder. This will help you develop a feel for the sale tempo and bidding interface.

"System down" or "lost connection" events do occasionally happen. If you have any problems with Live Internet Bidding, please call 212-753-6421 for immediate assistance.



### 3 Using Live Internet Bidding to bid, track results and communicate with the auctioneer.

When you're logged on as a Live Internet Bidder, the screen will display buttons with bid increments. After you click on a bid amount, the auctioneer is immediately notified of your bid. Retracting a bid is usually not acceptable, so please bid carefully.

If you bid, then decide to stop, please use the "Pass" button, which appears once you've started bidding. This tells the auctioneer not to wait for another bid from you.

You can send messages to the auctioneer (for example, a request for extension). You can also track prior realizations from the bidding screen.



## Conditions of Sale (please read carefully before bidding)

The property described in this catalogue will be offered at public auction by Robert A. Siegel Auction Galleries, Inc. ("Galleries") on behalf of various consignors and itself or affiliated companies. By bidding on any lot, whether directly or by or through an agent, in person, or by telephone, facsimile or any other means, the bidder acknowledges and agrees to all of the following Conditions of Sale.

1. The highest bidder acknowledged by the auctioneer shall be the buyer. The term "final bid" means the last bid acknowledged by the auctioneer, which is normally the highest bid offered. **The purchase price payable by the buyer will be the sum of the final bid and a commission of 15% of the final bid ("buyer's premium"), together with any sales tax, use tax or customs duties due on the sale.**

2. The auctioneer has the right to reject any bid, to advance the bidding at his discretion and, in the event of a dispute between bidders, to determine the successful bidder, to continue the bidding or to reoffer and resell the lot in dispute. The Galleries' record of the final sale shall be conclusive.

3. All bids are per numbered lot in the catalogue unless otherwise announced by the auctioneer at the time of sale. The right is reserved to group two or more lots, to withdraw any lot or lots from the sale, or to act on behalf of the seller. The Galleries will execute bidding instructions on behalf of clients, but will not be responsible for the failure to execute such bids or for any errors in the execution of such bids.

4. **Lots with numbers followed by the symbol ° are offered subject to a confidential minimum bid ("reserve"), below which the lot will not be sold. The absence of the symbol ° means that the lot is offered without a reserve. If there is no reserve, the auctioneer has sole discretion to establish a minimum opening bid and may refuse an offer of less than half of the published estimate. Any lot that does not reach its reserve or opening bid requested by the auctioneer will be announced as "passed" and excluded from the prices realized lists after the sale. The Galleries may have a direct or indirect ownership interest in any or all lots in the sale resulting from an advance of monies or goods-in-trade or a guarantee of minimum net proceeds made by the Galleries to the seller.**

5. Subject to the exclusions listed in 5(A), the Galleries will accept the return of lots which have been misidentified or which have obvious faults that were present when the lot was in the Galleries' custody, but not so noted in the lot description. **All disputed lots must be received by the Galleries intact with the original packing material within 5 days of delivery to the buyer but no later than 30 days from the sale date. (5A) EXCLUSIONS:** The following lots may not be returned for any reason: lots containing 10 or more items; lots from buyers who registered for the pre-sale exhibition or received lots by postal viewing, thereby having had the opportunity to inspect them before the sale; any lot described with "faults," "defects" or a specific fault may not be returned because of any secondary fault. Photographed lots may not be returned because of centering, margins, short/nibbed perforations or other factors shown in the illustrations. Lots may not be returned for any of the following reasons: the color of the item does not match the color reproduction in the sale catalogue or website listing; the description contains inaccurate information about the quantity known or reported; or a certification service grades a stamp lower than the grade stated in the description.

6. Successful bidders, unless they have established credit with the Galleries prior to the sale, must make payment in full before the lots will be delivered. Buyers not known to the Galleries must make payment in full within 3 days from the date of sale. **The Galleries retains the right to demand a cash deposit from anyone prior to bidder registration and/or to demand payment at the time the lot is knocked down to the highest bidder, for any reason whatsoever.** In the event that any buyer refuses or fails to make payment in cash

for any lot at the time it is knocked down to him, the auctioneer reserves the right to reoffer the lot immediately for sale to the highest bidder. **Credit cards are not accepted as payment.**

7. If the purchase price has not been paid within the time limit specified above, nor lots taken up within 7 days from the date of sale, the lots will be resold by whatever means deemed appropriate by the Galleries, and any loss incurred from resale will be charged to the defaulting buyer. Any account more than 30 days in arrears will be subject to a late payment charge of 1½% per month as long as the account remains in arrears. Any expenses incurred in securing payment from delinquent accounts will be charged to the defaulter. A fee of \$250.00 per check will be charged for each check returned for insufficient funds.

8. All lots are sold as genuine. **Any lot accompanied by a certificate issued by The Philatelic Foundation within 5 years of the sale date or by Professional Stamp Experts since January 2004 is sold "as is" and in accordance with the description on the certificate. Such lots may not be returned for any reason, including but not limited to a contrary certificate of opinion.** Buyers who wish to obtain a certificate for any item that does not have a P.F. or P.S.E. certificate (dated as above) may do so, provided that the following conditions are met: (1) the purchase price must be paid in full, (2) the item must be submitted to an acceptable expertizing committee with a properly executed application form within 21 days of the sale, (3) a copy of the application form must be given to the Galleries, (4) in the event that an adverse opinion is received, the Galleries retain the right to resubmit the item on the buyer's behalf for reconsideration, without time limit or other restrictions, (5) unless written notification to the contrary is received, items submitted for certification will be considered cleared 90 days from the date of sale, and (6) in the event any item is determined to be "not as described", the buyer will be refunded the purchase price and the certification fee up to \$600.00 unless otherwise agreed.

9. Until paid for in full, all lots remain the property of the Galleries on behalf of the seller.

10. Agents executing bids on behalf of clients will be held responsible for all purchases made on behalf of clients unless otherwise arranged prior to the sale.

11. The buyer assumes all risk for delivery of purchased lots and agrees to pay for prescribed shipping costs. Buyers outside the U.S. are responsible for all customs duties.

12. **The bidder consents that any action or proceeding against it may be commenced and maintained in any court within the State of New York or in the United States District Court for the Southern District of New York, that the courts of the State of New York and United States District Court for the Southern District of New York shall have jurisdiction with respect to the subject matter hereof and the person of the bidder. The bidder agrees not to assert any defense to any action or proceeding initiated by Galleries based upon improper venue or inconvenient forum. The bidder agrees that any action brought by the bidder shall be commenced and maintained only in a Federal Court in the United States District Court for the Southern District of New York or the State Court in the county in which Galleries has its principal place of business in New York. These Terms and Conditions shall be governed by and construed in accordance with the substantive laws of the State of New York.**

SCOTT R. TREPEL, Principal Auctioneer

Auctioneer's License No. 795952  
N.Y.C. Department of Consumer Affairs  
80 Lafayette Street, New York, N.Y. 10013  
Telephone (212) 577-0111

*Revised 1/2008 15%*

### Copyright Notice

© 2009, Robert A. Siegel Auction Galleries, Inc. This catalogue in all versions, printed and electronic, is protected by copyright. The descriptions, format, illustrations and information used herein may not be reprinted, distributed or copied in any form without the express written consent of Robert A. Siegel Auction Galleries. Application for permission may be made in writing.

## Grades, Abbreviations and Values Used in Descriptions

### Grades and Centering

Our descriptions contain detailed information and observations about each item's condition. We have also assigned grades to stamps and covers, which reflect our subjective assessment. For stamps, the margin width, centering and gum are described and graded according to generally-accepted standards (an approximate correlation to numeric grades is provided at right). Although we believe our grades are accurate, they are not always exactly aligned with third-party grading terms or standards for all issues. **A lot may not be returned because a certification service grades a stamp lower than the grade stated in the description. Information from the P.S.E. Stamp Market Quarterly and P.S.E. Population Report<sup>SM</sup> is the most current available, but lots may not be returned due to errors or changes in statistics or data.**

**Extremely Fine Gem (90-100):** The term "Gem" describes condition that is the finest possible for the issue. This term is equivalent to "Superb" used by grading services.







**Extremely Fine (80-90):** Exceptionally large/wide margins or near perfect centering.

**Very Fine (70-85):** Normal-size margins for the issue and well-centered with the design a bit closer to one side. "Very Fine and choice" applies to stamps that have desirable traits such as rich color, sharp impression, freshness or clarity of cancel.

**Fine (60-70):** Smaller than usual margins or noticeably off center. Pre-1890 issues may have the design touched in places.

**Very Good (below 60):** Attractive appearance, but margins or perforations cut into the design.

### Guide to Gum Condition

| Gum Categories:   | MINT N.H.   | ORIGINAL GUM (O.G.)  |   |  |  | NO GUM   |
|-------------------|---|--|---|--|--|--|
|                   | <br><b>Mint<br/>Never Hinged</b><br><i>Free from any disturbance</i> | <br><b>Lightly Hinged</b><br><i>Faint impression of a removed hinge over a small area</i> | <br><b>Hinge Mark or Remnant</b><br><i>Prominent hinged spot with part or all of the hinge remaining</i> | <br><b>Part o.g.</b><br><i>Approximately half or more of the gum intact</i>  | <br><b>Small part o.g.</b><br><i>Approximately less than half of the gum intact</i> | <br><b>No gum</b><br><i>Only if issued with gum</i> |
| Catalogue Symbol: | ★ ★   | ★  | ★   | ★  | ★  | (★)  |
| PRE-1890 ISSUES   | <i>Pre-1890 stamps in these categories trade at a premium over Scott value</i>  |  |   | Scott Value for “O.G.”   |  | Scott “No Gum” Values thru No. 218   |
| 1890-1935 ISSUES  | Scott “Never Hinged” Values for Nos. 219-771  | Scott Value for “O.G.” (Actual value will be affected by the degree of hinging)  |   | <b>Disturbed Original Gum:</b> Gum showing noticeable effects of humidity, climate or hinging over more than half of the gum. The significance of gum disturbance in valuing a stamp in any of the Original Gum categories depends on the degree of disturbance, the rarity and normal gum condition of the issue and other variables affecting quality. For example, stamps issued in tropical climates are expected to have some |  |  |
| 1935 TO DATE      | Scott Value for “Unused”  |  |   |  |  |  |

### Covers

Minor nicks, short edge tears, flap tears and slight reduction at one side are normal conditions for 19th century envelopes. Folded letters should be expected to have at least one file fold. Light cleaning of covers and small mends along the edges are accepted forms of conservation. Unusual covers may have a common stamp with a slight crease or tiny tear. **These flaws exist in virtually all 19th century covers and are not always described. They are not grounds for return.**

### Catalogue Values and Estimates

Unless otherwise noted, the currently available *Scott Catalogue* values are quoted in dollars with a decimal point. Other catalogues are often used for foreign countries or specialized areas and are referred to by their common name: *Stanley Gibbons* (SG), *Dietz*, *American Air Mail Catalogue* (AAMC), *Michel*, *Zumstein*, *Facit*, etc. Estimates are indicated with an "E." and reflect our conservative valuation in dollars. Reserves will never exceed the low end of the estimate range; they will sometimes exceed Scott Catalogue value for stamps in Extremely Fine condition.

Because of certain pricing inconsistencies in the *Scott Catalogue*—for example, blocks that have no gum, the absence of premiums for Mint N.H. items, etc.—we cannot guarantee the accuracy of values quoted for multiples, specialized items and collection lots. We generally try to be conservative, but buyers may not return a lot because of a discrepancy in catalogue value due to Scott pricing inconsistencies.

### Symbols and Abbreviations (see chart above for gum symbols)

|    |              |    |                   |      |                    |     |                        |
|----|--------------|----|-------------------|------|--------------------|-----|------------------------|
| ⊞  | Block        | E  | Essay             | pmk. | Postmark           | No. | Scott Catalogue Number |
| ⊞  | Cover        | P  | Proof             | cds  | Circular Datestamp | hs  | Handstamp              |
| FC | Fancy Cancel | TC | Trial Color Proof | var. | Variety            | ms. | Manuscript             |



# Resources

## siegelauctions.com



### Catalogues, Prices Realized, POWER SEARCH and My SIEGEL

Images and descriptions for all current sale catalogues are available from our website.

An archive of past sales (from Sale 786, April 1997) and prices realized (from Sale 742, May 1992) is constantly maintained to allow users to search for items and information from past sales.

Power Search™ and My Siegel™ allow you to create and save highly specialized data searches, and to receive e-mail notifications of related items in future sales.



### The Siegel Encyclopedia and Rarities Census

This feature of our website contains a wealth of information gleaned from decades of philatelic research by the dedicated philatelists at Siegel.

The up-to-date census data for 19th and 20th century U.S. rarities are a valuable resource for buyers, sellers and researchers. Every recorded example of more than 30 different rare stamps is described and, in most cases, photographed.



### Informative Video Presentations

Downloadable video documentaries tell the stories of stamps and covers, such as the famous Inverted "Jenny." This is the ideal way to introduce philately to others.

AFTERNOON SESSION (LOTS 1-207)  
TUESDAY, FEBRUARY 23, 2010, AT 1:30 P.M.  
THE "HAMPSHIRE" COLLECTION  
OF UNITED STATES STAMPS  
POSTMASTERS' PROVISIONALS



1

- 1 ☒ **Baltimore Md., 5c Blue on Manila entire (3XU1).** Sharp strikes of provisional markings, blue "Baltimore Md. Jul. 12" (1846) circular date stamp on entire addressed to Miss Susan Julia Mayer in Reading Pa., negligible wax seal stain at center  
EXTREMELY FINE EXAMPLE OF THE 5-CENT BLUE BALTIMORE PROVISIONAL ENTIRE.  
No. 31 in the Hayes census. From the Weill sale and ex Concord. With 2002 P.F. certificate. .... 6,500.00



2

- 2 (★) **Providence R.I., 5c & 10c Gray Black, Se-Tenant (10X2a).** Block of four, top right stamp 10c, large to huge margins incl. top right corner sheet margin, unused (no gum), Extremely Fine, with 2000 P.F. certificate ..... 2,700.00



1847 ISSUE



3

- 3 ★ **5c Dark Brown (1a).** Part original gum, large balanced margins, wonderful deep rich color and sharply defined impression, light diagonal corner crease

EXTREMELY FINE APPEARANCE. A BEAUTIFUL FOUR-MARGIN ORIGINAL-GUM EXAMPLE OF THE 5-CENT 1847 ISSUE IN THE DARK BROWN SHADE.

With 1983 P.F. certificate as "Red Brown" shade ..... 8,750.00



4

- 4 ★ **10c Black (2).** Original gum across the entire back of stamp described on accompanying certificate as part original gum, full to large margins, intense shade and impression, trivial toned spots on face and at top right

VERY FINE APPEARANCE. A RARE FOUR-MARGIN ORIGINAL-GUM EXAMPLE OF THE 10-CENT 1847 ISSUE.

Ex Hoffman. With 2007 P.F. certificate ..... 35,000.00

## 1851-56 ISSUE



5

- 5 **1c Blue, Ty. Ib (5A).** Position 8R1E, huge margins to barely touched incl. **sheet margin at top**, beautiful warm shade, neat strike of circular datestamp leaves the design characteristics clearly visible

VERY FINE AND CHOICE. A STUNNING EXAMPLE OF THE RARE 1851 ONE-CENT TYPE IB FROM PLATE ONE EARLY FROM ONE OF THE TWO POSITIONS THAT FURNISHED THE BEST TYPE IB EXAMPLES.

Type Ib was produced only as an imperforate stamp from Plate 1 Early. Six positions on Plate 1E furnished stamps qualifying as Type Ib — Positions 3-6R and 8-9R — distinguished by the complete design at top and nearly complete design at bottom. When first entered on the plate, these six positions (as well as 7R1E) had the complete design at top and bottom. However, unlike 7R, small portions of the bottoms were burnished away. Positions 6R and 8R had less of the bottom erased than the other Type Ib positions, and for this reason they are more desirable examples of the type.

Ex Dauer. With 1994 P.F. and 2008 P.S.E. certificates (VF 80; SMQ \$13,800.00).....  
 ..... 16,000.00



6

- 6 ★ **1c Blue, Ty. II (7).** Original gum, barest trace of hinging (almost appears Mint N.H.), large margins all around, deep rich color and choice proof-like impression

EXTREMELY FINE. A GORGEOUS LIGHTLY-HINGED EXAMPLE OF THE 1851 ONE-CENT TYPE II. SCARCE IN SUCH PRISTINE CONDITION.

With 2004 P.S.E. certificate ..... 1,100.00





7

- 7 ★ **1c Blue, Ty. IV (9).** Recut once at top and twice at bottom, original gum, large margins to just touched, fresh and Very Fine, with 2008 P.F. certificate ..... 800.00



8

- 8 (★) **1c Blue, Ty. II-IV (7-9).** Positions 4-5R1L, **Position 4R1L is the only one on Plate 1L which was not recut**, thus this pair is a combination of Types II and IV, unused (no gum), margins mostly clear to ample with a large **top sheet margin** showing the characteristic burr above Position 4R, the Type IV is recut at bottom, negligible small thin spots

VERY FINE APPEARANCE. AN EXCEEDINGLY RARE UNUSED MULTIPLE FROM THE TOP ROW OF PLATE 1 LATE, CONTAINING POSITION 4R1L, THE ONLY TYPE II ON THE REWORKED PLATE.

The two positions in this pair, 4R and 5R, were Type Ib positions on Plate 1 Early. When Plate 1 was reworked by re-entering subjects from the transfer roll and strengthening the tops and bottoms of 199 of the 200 positions, only 4R1L was left without any form of recut. 5R was recut, and impressions are classified as Type IV. 4R became Type II because some of the design at the bottom was burnished away. However, both 4R and 5R on Plate 1 Late still show the complete design at top, and both have strong double transfers from re-entries made when the plate was reworked.

Examples of 4R1L are very scarce, and unused copies are rare. This unused multiple containing 4R1L is an important rarity for the 1851 Issue specialist. A review of our auction records with Power Search produced a small number of used examples, but *not one other unused 4R1L* turned up. There must be others outside the present scope of our database, but clearly this is an extremely rare item.

Ex Hansen. With 1985 and 1999 P.F. certificates ..... 3,900.00



9

- 9 ★ **5c Red Brown (12).** Large margins to clear of projection at right, original gum, lightly hinged, bright color and detailed impression  
VERY FINE AND CHOICE. A RARE SOUND ORIGINAL-GUM AND FOUR-MARGIN EXAMPLE OF THE 5-CENT 1856 ISSUE.  
Sound, original-gum examples of the 5c 1856 Issue are extremely rare, and probably fewer than six exist with margins around the entire design.  
Ex Caspary and Hoffman. With 1976 and 1998 P.F. certificates. .... 30,000.00





10

- 10 ★ **10c Green, Ty. II (14).** Original gum, lightly hinged, three large to huge margins incl. part of adjoining stamp at top, ample at left, deep rich color

VERY FINE AND CHOICE ORIGINAL-GUM EXAMPLE OF THE IMPERFORATE 1855 10-CENT TYPE II.

Ex Argentum. With 1982, 1999 and 2008 P.F. certificates ..... 5,000.00

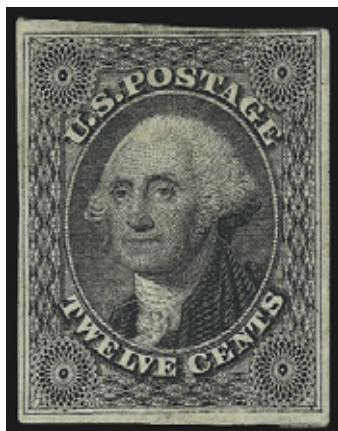
- 11 ★ **10c Green, Ty. III (15).** Original gum, large even margins, rich color on bright paper

EXTREMELY FINE. A BEAUTIFUL ORIGINAL-GUM EXAMPLE OF THE IMPERFORATE 1855 10-CENT TYPE III.

Ex Hoffman. With 2006 P.F. certificate (VF-XF 85)..... 5,000.00



11



12

- 12 ★ **12c Black (17).** Disturbed original gum, large margins to clear, pretty shade, Very Fine, an attractive original-gum example, with 2000 P.F. certificate ..... 6,500.00

## 1857-60 ISSUE



13

- 13 ★ **1c Blue, Ty. I (18).** Position 26R12, original gum, lightly hinged, radiant color on bright paper, choice centering with the characteristics of the type clearly visible  
EXTREMELY FINE. A SUPERB ORIGINAL-GUM EXAMPLE OF THE 1857 ONE-CENT PERFORATED TYPE I.

Due to narrow spacing between subjects on Plate 12, it is especially difficult to find Type I stamps with margins showing the top and bottom parts of the design with the degree of completeness seen in this example.

Ex Scarsdale and Hoffman. With 1989 (for block) and 2003 P.F. certificates ... 2,250.00



14

- 14 ★ **1c Blue, Ty. II-I (20-18).** Horizontal pair, left stamp Ty. II, original gum, h.r., bright color, centered slightly to top but clearly showing the Type I characteristics at bottom, fresh and Fine, attractive multiple, ex Geisler, with 1983 P.F. certificate..... 4,000.00





15

- 15 ★田 **1c Blue, Ty. I, II, IIIa (18, 20, 22).** Positions 71-73/81-83/91-93R12, block of nine, bottom six stamps Ty. I, top left Ty. IIIa, other two at top Ty. II, natural s.e. at left and **selvage at bottom**, original gum, lightly hinged, bright shade, few toned spots, some expertly rejoined perf separations

FINE. A RARE AND DESIRABLE ORIGINAL-GUM BLOCK OF THE 1857 PERFORATED ONE-CENT ISSUE FROM PLATE 12, WITH SELVAGE AT BOTTOM AND CONTAINING THREE DIFFERENT TYPES.

Ex Hansen. With 2007 P.F. certificate. Scott Retail as block of four of Type I, pair of Types IIIa and I and singles of remaining three stamps ..... 26,450.00



16

- 16 ★★ **1c Blue, Ty. II (20).** Mint N.H., from the top row of Plate 4, deep rich color on bright paper, unusually choice centering clearly showing the **complete design at top**

VERY FINE AND CHOICE. AN INCREDIBLY RARE MINT NEVER-HINGED EXAMPLE OF THE PERFORATED ONE-CENT TYPE II FROM THE TOP ROW OF PLATE 4. THIS IS THE ONLY MINT NEVER-HINGED COPY OF SCOTT 20 FROM PLATE 4 WE HAVE OFFERED. A GREAT RARITY.

When perforations were introduced in 1857, the plates used to print stamps at Toppan, Carpenter & Co. were laid out with narrow spaces between the subjects, because no thought had been given to the concept of perforation holes between the stamps. The imperforate sheets of 1c stamps on hand were printed from Plates 1 Late, 2 and 4, and the perforations on those stamps rarely clear the design all around. The example from Plate 4 offered here is not only extremely rare as a Mint Never-Hinged copy, it is also exceptionally well-centered.

Ex Odeneal. With 1990 and 2007 P.F. certificates, the former with selvage at top. Scott Retail as hinged. .... 3,500.00



17

- 17 ★ **1c Blue, Ty. II (20).** Plate 12, original gum, lightly hinged, deep rich color, unusually wide margins

EXTREMELY FINE. A GORGEOUS ORIGINAL-GUM EXAMPLE OF THE 1857 ONE-CENT PERFORATED TYPE II.

Ex Hansen. With 1999 P.F. certificate..... 1,100.00



18

- 18 **1c Blue, Ty. III (21).** Position 66L4 with clear and wide breaks at top and bottom, intense shade and proof-like impression, cancelled by rim of circular datestamp free of Franklin's face, unusually choice centering with balanced margins

EXTREMELY FINE. A SUPERB USED EXAMPLE OF THE 1857 PERFORATED ONE-CENT TYPE III.

With 2005 P.F. certificate for combination strip of three on piece..... 2,750.00

- 19 ★ **1c Blue, Ty. IIIa (22).** Plate 4, original gum, lightly hinged, fresh and bright color, showing clear break at top and complete outer line at bottom (the defining characteristic of the type)

VERY FINE AND CHOICE ORIGINAL-GUM EXAMPLE OF THE 1857 PERFORATED ONE-CENT TYPE IIIA.

Ex Hoffman. With 1982 and 2006 P.F. certificates ..... 2,600.00



19



20

- 20 ★★ **1c Blue, Ty. V (24).** Mint N.H., rich color, wide and balanced margins, Extremely Fine, with 2009 P.S.E. certificate (XF 90; SMQ \$990.00), Scott Retail as hinged..... 150.00

- 21 ★ **3c Rose, Ty. I (25).** Original gum, single hinge mark, radiant color, detailed impression, single short perf at right not mentioned on accompanying certificate, fresh and Very Fine appearance, ex Geisler, with 2006 P.F. certificate..... 2,750.00



21





22

- 22 ★ **5c Bright Red Brown (28b).** Part original gum, marvelous intense shade on fresh paper  
FINE FOR THIS EXTREMELY RARE UNUSED EXAMPLE OF THE 5-CENT 1857 BRIGHT RED BROWN SHADE. THIS IS THE FIRST UNUSED EXAMPLE WE HAVE EVER OFFERED.

This is the first unused example of the sub-listed *Bright Red Brown* shade variety of Scott 28. In our analysis of the 5c 1856-61 printings, we consider the Bright Red Brown (28b) and Indian Red (28A) to be in the same printing family. There are only five examples of the Indian Red with any part of original gum, and they sell for \$100,000 or more. The Bright Red Brown shade is usually the default classification for a stamp that does not have sufficiently intense color to receive an Indian Red classification, but the difference is very subtle. In fact, unused examples of the Bright Red Brown (Scott 28b) shade appear to be rarer than the Indian Red.

Many collectors know this issue by type and shade, but fewer are aware of the order of production (or release). This state of confusion is partly due to the Scott Catalogue. Based on dated covers, the 5c Type I shades were released in the following order: 1) Red Brown, Scott 28, EDU 8/23/1857; 2) Indian Red, Scott 28A, EDU 3/31/1858; 3) Brick Red, Scott 27, EDU 10/6/1858; 4) Brown, Scott 29, EDU 3/21/1859, almost certainly the last printing from the first 5c plate. The second 5c plate was made from a new six-relief transfer roll with the design projections cut away at top and bottom, to varying degrees. The Type II Brown was issued first (Scott 30A, EDU 5/4/1860), and the Orange Brown printing from the same plate followed about one year later (Scott 30, EDU 5/8/1861).

The first 5c sheets to be perforated in mid-1857 undoubtedly came from the unissued supply of 5c imperforate sheets in the "1856" Red Brown shade. These are akin to 1c perforated stamps from Plate 1 Late (Type IV, Scott 23) and Plate 2, and 3c perforated stamps from the Type I plate (Scott 25). Covers dated during the second half of 1857 and first quarter of 1858 have 5c stamps in the "1856" shade of Red Brown, which look like Scott 12 with perforations. By March 31, 1858, the EDU of the Indian Red shade, a second printing must have been made. We suspect that the entire family of Red Brown, Bright Red Brown and Indian Red shades — all of which differ from the "1856" Red Brown — were printed at the same time during the first quarter of 1858. Looking at the EDU's, there is a largely consistent pattern of new 5c printings at the beginning of each year in 1858 (Red Brown), 1859 (Brown), 1860 (Type II Brown) and 1861 (Type II Orange Brown). The only exceptions to this pattern are the "1856" Red Brown perforated sheets released in mid-1857, which make sense in the context of the first perforated issue, and the October 1858 Brick Red.

With 2009 P.S.E. certificate..... 70,000.00



23

- 23 **5c Indian Red (28A).** Gorgeous warm color in the unmistakable true Indian Red color and towards the deeper end of the color spectrum, choice centering with outer projections clear of perfs on all sides, neat strike of New Orleans circular datestamp

EXTREMELY FINE. A BEAUTIFUL USED EXAMPLE OF THE 1857 5-CENT INDIAN RED. A DIFFICULT STAMP TO FIND IN SUCH CHOICE CONDITION.

With 2007 P.F. certificate (XF 90) ..... 3,750.00

- 24 ★ **5c Orange Brown, Ty. II (30).** Original gum, h.r., deep rich color and detailed impression, reperfed at right, Fine appearance, with 2007 P.F. certificate ... 1,250.00



24



25

- 25 ★ **5c Brown, Ty. II (30A).** Original gum, crisp impression, three wide margins, long and full perforations all around

VERY FINE ORIGINAL-GUM EXAMPLE OF THE 1860 5-CENT BROWN TYPE II.

With 1996 and 2009 P.F. certificates ..... 2,200.00



26

- 26 ★ **10c Green, Ty. III (33).** Original gum, lightly hinged, wonderful centering with wide even margins, rich color on bright paper

EXTREMELY FINE GEM. ONE OF THE FINEST KNOWN ORIGINAL-GUM EXAMPLES OF THE 1857 10-CENT GREEN FROM PLATE 1. A SPECTACULAR STAMP IN TERMS OF CENTERING, COLOR, IMPRESSION AND GUM.

The first perforated 10c stamps produced by Toppan, Carpenter from sheets printed from Plate 1 are notorious among collectors for their poor centering. They are also very scarce in original-gum condition because, unlike 10c Plate 2 stamps (Scott 35), there were no supplies on hand in 1861 when the issue was demonetized due to the outbreak of the Civil War.

Ex Hoffman. With 2002 P.F. certificate..... 6,250.00





27

- 27 ★ **10c Green, Ty. V (35).** Original gum, lightly hinged, attractively centered and wonderful deep rich color, Very Fine, with 1996 P.F. certificate..... 250.00

- 28 ★田 **12c Black, Plate 3 (36B).** Block of four, original gum, lightly hinged, intense shade and proof-like impression, top right stamp puled perf at right, few rejoined perf separations at bottom

VERY FINE APPEARANCE. A SCARCE AND ATTRACTIVE ORIGINAL-GUM BLOCK OF FOUR OF THE 12-CENT 1857 ISSUE FROM PLATE 3.

Most 12c 1857 blocks come from the multiples that were stuck together and soaked apart. This block is scarce with original gum and also has remarkable freshness of color and paper.

Ex Hansen. With 1977 and 2004 P.F. certificates as previous Scott 36b ..... 5,000.00



28



29

- 29 ★ **12c Black, Plate 3 (36B).** Original gum, lightly hinged, unusually choice centering with wide margins for this difficult issue, intense shade and proof-like impression on bright paper

EXTREMELY FINE. A SUPERB ORIGINAL-GUM EXAMPLE OF THE 12-CENT 1857 ISSUE FROM PLATE 3.

Plate 3 stamps (Scott 36b) are characterized primarily by uneven or broken outer framelines of the design. The subjects on Plate 1, which produced Scott Nos. 17 and 36, have even framelines that were extensively recut. Original-gum Plate 3 stamps with the centering evident in this example are very scarce — we offer about one a year in this condition.

Ex Hoffman. With 1983 and 2005 P.F. certificates as previous Scott 36b..... 825.00

- 30 ★ **24c Gray Lilac (37).** Original gum, lightly hinged, radiant color, detailed impression, fresh and Fine, with 1995 P.F. certificate ..... 1,600.00



30



31

- 31 ★田 **24c Gray Lilac (37).** Block of four, original gum and very lightly hinged, wonderfully fresh, sharp color

FINE-VERY FINE. A BRILLIANT ORIGINAL-GUM BLOCK OF FOUR OF THE 24-CENT 1860 ISSUE.

With 2009 P.S.E. certificate ..... 9,500.00

- 32 ★ **30c Orange (38).** Original gum, lightly hinged, vibrant color as fresh as the day it was printed, choice centering for this difficult issue

EXTREMELY FINE. A BEAUTIFUL LIGHTLY-HINGED EXAMPLE OF THE 30-CENT 1860 ISSUE. SCARCE WITH SUCH PRISTINE COLOR.

Ex Whitman. With 1987, 2000 and 2009 P.F. certificates ..... 2,400.00



32



33

- 33 ★ **90c Blue (39).** Original gum, lightly hinged, well-proportioned margins, deep rich color, long and full perforations

EXTREMELY FINE. A SPECTACULAR ORIGINAL-GUM EXAMPLE OF THE 90-CENT 1860 ISSUE.

With 2009 P.F. certificate (VF-XF 85) ..... 3,500.00

1875 REPRINT OF 1857-60 ISSUE



34

- 34 ★ **1c Bright Blue, Reprint (40).** Without gum as issued, well-centered, tiny natural inclusion speck, otherwise Very Fine and choice ..... 600.00

- 35 ★ **3c Scarlet, Reprint (41).** Without gum as issued, vibrant color on brilliant fresh paper, three enormous margins  
VERY FINE. ONE OF THE WIDEST-MARGINED 3-CENT 1857 REPRINTS EXTANT.  
Only 479 issued. With 1972 P.F. certificate ..... 3,000.00



35



36

- 36 ★ **5c Orange Brown, Reprint (42).** Without gum as issued, brilliant color, small sealed tear at top, Very Fine appearance, ex Hoffman, with 2003 P.S.E. certificate 1,300.00

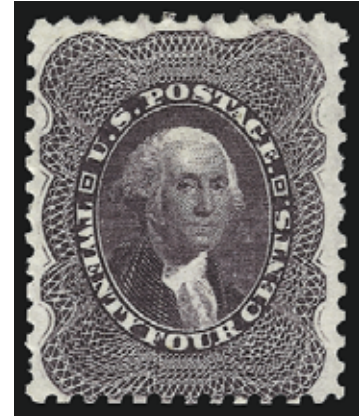
- 37 ★ **12c Greenish Black, Reprint (44).** Without gum as issued, deep shade, well-balanced margins  
VERY FINE EXAMPLE OF THE 12-CENT 1857 ISSUE REPRINT.  
Only 489 sold. With 1950 and 2008 P.F. certificates .... 3,000.00



37



- 38 ★ **24c Blackish Violet, Reprint (45).** Without gum as issued, intense shade and proof-like impression on crisp paper  
FRESH AND FINE EXAMPLE OF THE 24-CENT 1857 REPRINT.  
Only 479 sold. Ex Hoffman. With 2002 P.F. certificate  
..... 3,000.00



38



39

- 39 ★ **30c Yellow Orange, Reprint (46).** Without gum as issued, brilliant color on bright fresh paper, exceptionally choice centering  
EXTREMELY FINE. A MAGNIFICENT EXAMPLE OF THE 30-CENT 1857 REPRINT. AN EXCEEDINGLY RARE STAMP WITH SUCH CHOICE CENTERING.  
The 30c 1857 Reprint, of which 480 were sold, is one of the tightest-margined of the series. This is an extraordinary stamp, by virtue of its wide margins and choice centering.  
Ex Hoffman. With 2007 P.S.E. certificate (XF 90; SMQ \$7,200.00). Only two have graded higher to date (at 90J) and only five others share this grade. .... 3,000.00

- 40 ★ **90c Deep Blue, Reprint (47).** Without gum as issued, intense shade and proof-like impression, choice centering  
VERY FINE AND CHOICE. A BEAUTIFULLY-CENTERED AND EXCEPTIONALLY FRESH EXAMPLE OF THE 90-CENT 1857 REPRINT.  
Only 454 sold. With 1983 and 2008 P.F. certificates.....  
..... 4,500.00



40

## 1861 FIRST COLORS AND DESIGNS



41

- 41 ★ **24c Dark Violet, First Color (60).** Original gum, deep rich color and proof-like impression, single short perf at left

VERY FINE APPEARANCE. A RARE ORIGINAL-GUM EXAMPLE THE 1861 24-CENT DARK VIOLET EARLY TRIAL PRINTING. ONE OF THE RAREST OF THE 24-CENT 1861-63 ISSUE SHADES.

The Dark Violet trial printing and Violet regular issue shades are often confused, and the Scott Catalogue adds to the confusion by putting the Dark Violet (the old Scott 60) in the Trial Color Proofs section as 70TCe, while the Violet gets a front seat as Scott 70c. In our opinion, there is no good reason to relegate the Dark Violet to the Trial Color Proof section. As a result, the stamp offered here is undercatalogued in relation to other 24c stamps of equal rarity.

Ex Hansen. With 1991 and 2008 P.F. certificates ..... 15,000.00



42

- 42 ★ **30c Red Orange, First Color (61).** Original gum, beautiful shade and impression, choice centering for this difficult issue, full perforations all around

EXTREMELY FINE. THIS IS WITHOUT QUESTION ONE OF THE FINEST ORIGINAL-GUM EXAMPLES OF THE RARE 30-CENT 1861 FIRST COLOR. AN EXTREMELY RARE STAMP IN COMPLETELY SOUND CONDITION.

Our census of the 30c 1861 First Color (available at <http://siegelauctions.com/enc/census/61.pdf>) contains a total of 30 examples, including one in the Miller collection at The New York Public Library. A characteristic common to most examples of the 30c 1861 First Color is faint creasing, which in some cases is very severe and in others barely visible. Six stamps with original gum are free of faults, although a few have a trivial nibbed perf or two. All of the sound stamps are centered to one side (as are most of the others). Our October 28, 2008 auction of the Perry Hansen Collection contained one of the others (Siegel Sale 963, lot 487), which realized \$62,500 hammer.

Census No. 61-OG-02. Ex Lessmann, McNall, Weisman and Whitman. With 1971, 1992 and 2009 P.F. and 1993 P.S.E. certificates. .... 45,000.00

## 1861-66 ISSUE

- 43 ★ **1c Blue (63).** Original gum, single hinge mark, rich color on bright paper, wide margins, Extremely Fine, with 1987 P.F. and 2010 P.S.E. certificates (OGph, VF-XF 85; SMQ \$500.00) ..... 325.00



43



44

- 44 ★ **3c Pink (64).** Original gum, barest trace of hinging, intense Pink shade, trivial perf flaw at top right

THE 1861 3-CENT PINK IS AN EXCEEDINGLY DIFFICULT STAMP TO LOCATE IN UNUSED CONDITION WITH GOOD COLOR, ESPECIALLY WITH FULL ORIGINAL GUM. THIS STAMP HAS EXCELLENT COLOR.

With 1960 and 2008 P.F. certificates ..... 14,000.00

- 45 ★ **3c Lake (66).** Original gum, single hinge mark, rich color and proof-like impression on bright paper  
VERY FINE AND CHOICE. A BEAUTIFUL ORIGINAL-GUM EXAMPLE OF THE 1861 LAKE TRIAL PRINTING.  
With 2005 P.F. certificate ..... 2,000.00



45





46

- 46 ★ **5c Buff (67).** Original gum, lightly hinged, deep rich color on bright paper, couple short perfs at left not mentioned on accompanying certificates

VERY FINE APPEARANCE. A RARE ORIGINAL-GUM EXAMPLE OF THE 5-CENT BUFF 1861 ISSUE.

Our sales during the past several years have contained a number of original-gum 1861-66 Issues, and we have made frequent reference to the rarity of these stamps in such choice condition. The 5c Brown Yellow and Buff are recognized as the rarest of 1861-66 Issue stamps in sound original-gum condition. Perhaps the only shade varieties rarer than the 5c Brown Yellow or Buff are the 3c Pigeon Blood Pink and 24c Blackish Violet (Scott 64a and 78c).

With 1976 and 2005 P.F. certificates..... 27,500.00

- 47 ★ **10c Yellow Green, "TAG" Double Transfer (68 var).** Original gum, deep shade on bright fresh paper, wide margins

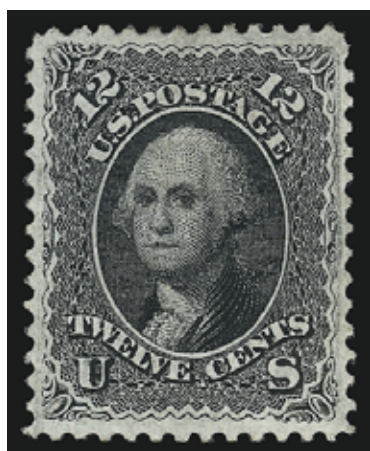
EXTREMELY FINE ORIGINAL-GUM EXAMPLE OF THE 10-CENT 1861 ISSUE WITH DOUBLE TRANSFER. AN EXTREMELY SCARCE STAMP IN THIS SUPERIOR GRADE.

The increased awareness of the rarity of 1847 to 1879 issues in superb original-gum condition has elevated many valuations for issues with modest Scott values. The 1861-66 issues are prime examples of this trend. This 10c 1861 has a Scott value of \$1,200.00, yet one would be severely challenged to locate more than a few examples with original gum, choice centering and rich color.

Ex Hoffman. With 1994 P.F. certificate (not noting double transfer). Scott Retail as normal..... 1,200.00



47



48

- 48 (★) **12c Black (69).** Unused (no gum), detailed impression, unusually choice centering with wide and balanced margins, Extremely Fine Gem, a beautiful stamp, with 1994 P.F. and 2009 P.S.E. certificates (XF-Superb 95; SMQ \$1,950.00)..... 800.00

- 49 ★ **30c Orange (71).** Original gum, brilliant color as fresh as the day it was printed, long and full perforations all around, fresh and Fine, ex Hansen, with 1994 (for pair) and 2008 P.F. certificates..... 2,600.00



49



50

- 50 ★ **90c Blue (72).** Original gum, brilliant color and detailed impression on crisp paper, well-proportioned margins for this difficult issue

VERY FINE AND CHOICE. A BEAUTIFUL ORIGINAL-GUM EXAMPLE OF THE 90-CENT 1861 ISSUE.

With 1988 and 2009 P.F. certificates..... 3,250.00



51

- 51 ★★ **2c Black (73). Mint N.H.**, choice centering for this difficult issue, intense shade and proof-like impression

EXTREMELY FINE. A FRESH MINT NEVER-HINGED EXAMPLE OF THE 2-CENT BLACK JACK ISSUE. SCARCE IN SUCH WONDERFULLY PRISTINE CONDITION.

With 2000 and 2006 P.F. certificates (XF 90). Scott  
Retail as hinged ..... 375.00

- 52 **3c Scarlet (74).** Four neat pen strokes, vibrant color, radiant color, unusually choice centering

EXTREMELY FINE. A REMARKABLY FRESH AND ATTRACTIVE EXAMPLE OF THE 3-CENT SCARLET TRIAL PRINTING.

As has been documented by Jerome S. Wagshal in a series of *Chronicle* articles (Nos. 56, 60, 61 and 62), Carl F. Rothfuchs, a Washington D.C. stamp dealer, obtained a supply of the 3c Scarlet in 1893 — probably from the Post Office Department in exchange for his assistance with the Columbian Exposition — and sold them with pen marks and original gum.

With 2002 P.F. certificate..... 5,500.00



52



53

- 53 ★ **24c Grayish Lilac (78a).** Original gum, small h.r., radiant color and detailed impression

VERY FINE. AN ATTRACTIVE ORIGINAL-GUM EXAMPLE OF THE 1862 24-CENT IN THE DISTINCTIVE GRAYISH LILAC SHADE.

With 2000 P.F. certificate..... 2,900.00



## 1867-68 GRILLED ISSUE



54

- 54 ★ **3c Rose, C. Grill (83).** Original gum, lightly hinged, clearly-defined grill which is easily visible from the front of the stamp, radiant color on post-office fresh paper, gorgeous centering with wide and balanced margins

EXTREMELY FINE GEM. A STUNNING ORIGINAL-GUM EXAMPLE OF THE 1867 3-CENT C GRILL, WHICH HAS BEEN GRADED XF-SUPERB 95 BY P.S.E. — THIS IS THE HIGHEST GRADE AWARDED TO DATE. A STAMP OF GREAT BEAUTY.

The 3c is the only denomination that comes with the distinctive C Grill, with the grill points facing up instead of down. The few high-grade original-gum examples owe their existence to the division of blocks of four in recent years.

Ex Whitman. With 1967, 1989 and 1997 P.F. and 2008 P.S.E. certificates (OGph, XF-Superb 95; SMQ \$26,000.00). Only one has graded higher to date and only two others share this desirable grade..... 6,250.00



55

- 55 (★) **2c Black, D. Grill (84).** Unused (no gum), centered to bottom left, perfs clear, wide at top and right, clear impression

FINE. THE 1868 2-CENT D GRILL IS A GREAT RARITY AMONG THE 1867-68 GRILLED ISSUES.

The Scott Catalogue states that the value for No. 84 is for a stamp in Fine grade. With 2002 P.F. and 2008 P.S.E. certificates (Fine 70; SMQ \$4,900.00)..... 6,500.00



56

- 56 ★ **12c Black, Z. Grill (85E).** Original gum, clearly-defined grill, intense shade and proof-like impression, light diagonal creases and slightly blunted perfs at left

FINE APPEARANCE. A RARE ORIGINAL-GUM EXAMPLE OF THE 1868 12-CENT Z GRILL.

Unlike the 2c Z Grill, no well-centered blocks of the 3c or 12c have been available to furnish singles. We have offered only approximately ten examples with original gum in the past fifteen years.

Ex Geisler. With 1978 and 2007 P.F. certificates ..... 14,000.00

- 57 ★ **1c Blue, E. Grill (86).** Original gum, lightly hinged, bright blue color and proof-like impression on fresh paper, clear grill points

VERY FINE AND CHOICE. THE 1868 ONE-CENT E GRILL IS FAR SCARCER THAN ITS F-GRILL COUNTERPART, PARTICULARLY IN ORIGINAL-GUM CONDITION.

Some time ago we observed that the 1c E Grill appeared at auction very infrequently, in any form. After analyzing the early 1868 regular-production grills (Z, D, E and F), we concluded that grilling of the 1c 1861 issue with the E (and Z) Grill must have been short-lived, occurring sometime around February 28, 1868. Later grilling of 1c stamps was probably done with the F Grill. Relatively little of the 1c E Grill supply appears to have reached the philatelic market, as evidenced by the stamp's scarcity.

Ex Silver Lake and Hoffman. With 2000 P.F. certificate..... 3,500.00



57



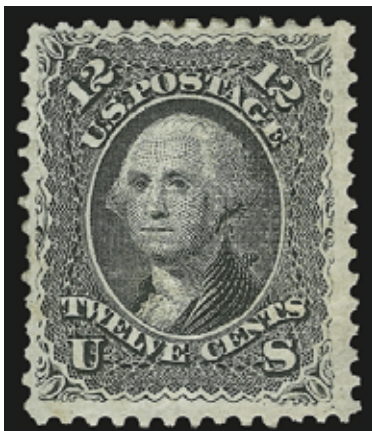
58

- 58 ★ **2c Black, E. Grill (87).** Original gum, lightly hinged, well-defined grill clearly visible from front, intense shade and impression, fresh and Very Fine, with 1997 and 2009 P.F. certificates..... 1,750.00

- 59 ★ **3c Rose, E. Grill (88).** Original gum, lightly hinged, clearly-defined grill, brilliant color, fresh and Very Fine, ex Hoffman, with 2002 P.F. certificate..... 1,000.00



59



60

- 60 ★ **12c Black, E. Grill (90).** Original gum, strong grill, sharp impression, very fresh  
VERY FINE ORIGINAL-GUM EXAMPLE OF THE 1868 12-CENT E GRILL.  
With 1985, 1997 and 2005 P.F. certificates..... 5,000.00





61

- 61 ★ **15c Black, E. Grill (91).** Original gum, lightly hinged, bright shade, crisp impression, clearly-defined grill, wide margins

EXTREMELY FINE AND ONE OF THE WIDEST-MARGINED EXAMPLES OF THE 1868 15-CENT E GRILL WE HAVE EVER ENCOUNTERED.

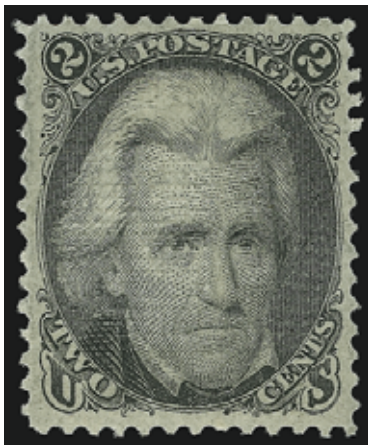
As an indication of the rarity of 15c E Grill stamps with original gum, the Scott Catalogue values Scott 91 at \$5,250.00 without gum, and \$13,500.00 with original gum. This stamp, with its unusually wide margins, full original gum, and overall freshness, is truly a remarkable rarity.

Ex Lessin and Odeneal. With 1997 and 2007 P.F. certificates ..... 13,500.00

- 62 (★) **1c Blue, F. Grill (92).** Unused (no gum), magnificent margins and centering, bright color, sharp impression  
EXTREMELY FINE GEM. THIS IS THE ONLY UNUSED 1868 ONE-CENT F GRILL TO RECEIVE THE LOFTY GRADE OF SUPERB 98 FROM P.S.E. (WITH NONE HIGHER). A FABULOUS STAMP FOR THE CONNOISSEUR.  
With 2008 P.S.E. certificate (Superb 98; SMQ \$4,700.00) ..... 1,075.00



62



63

- 63 ★ **2c Black, F. Grill (93).** Original gum, single hinge mark, well-defined grill, wide and well-balanced margins, detailed impression  
EXTREMELY FINE. A SUPERB ORIGINAL-GUM EXAMPLE OF THE 1868 2-CENT F GRILL.  
With 2005 P.F. certificate..... 500.00

- 64 ★ **3c Red, F. Grill (94).** Original gum, clearly-defined grill, brilliant color, wide margins, Extremely Fine, with 2009 P.S.E. certificate (OGph, VF-XF 85 Jumbo; SMQ \$720.00 as 85, \$1,100.00 as 90)..... 375.00



64



65

- 65 ★★ **5c Brown, F. Grill (95).** Mint N.H., deep rich color and proof-like impression, clearly-impressed grill, choice centering for this narrowly-spaced issue, single nibbed perf at top not mentioned on accompanying certificate

VERY FINE AND CHOICE. A SCARCE MINT NEVER-HINGED EXAMPLE OF THE 1868 5-CENT F GRILL.

We have offered only four other Mint N.H. stamps in Power Search. Most were removed from blocks, and only a few are sound.

Ex Whitman. With 1989 (copy), 1997 and 2009 P.F. certificates. Scott Retail as hinged  
 ..... 3,750.00



66

- 66 ★ **10c Yellow Green, F. Grill (96).** Original gum, lightly hinged, clear and sharp grill points, choice centering with unusually wide margin at top, rich color

VERY FINE AND CHOICE ORIGINAL-GUM EXAMPLE OF THE 1868 10-CENT F GRILL.

With 2000 P.F. certificate ..... 3,000.00





67

- 67 ★ **12c Black, F. Grill (97).** Original gum, clear and complete grill impression, intense shade and detailed impression, long and full perforations

VERY FINE AND CHOICE. A MAGNIFICENT ORIGINAL-GUM EXAMPLE OF THE 1868 12-CENT F GRILL.

Ex Hoffman. With 2000 P.S.E. and 1989 and 2003 P.F. certificates ..... 3,250.00



68

- 68 ★ **15c Black, F. Grill (98).** Barely disturbed original gum described on accompanying certificates as original gum, bright shade and crisp impression, clear grill, small stain spot barely shows through on Lincoln's head, otherwise Very Fine, with 1983 and 2007 P.F. certificates ..... 4,500.00



69

- 69 ★ **24c Gray Lilac, F. Grill (99).** Large part original gum, bright shade and detailed impression  
 VERY FINE ORIGINAL-GUM EXAMPLE OF THE 1868 24-CENT F GRILL.  
 Ex Geisler. With 1986 and 2007 P.F. certificates ..... 9,000.00



70

- 70 (★) **30c Orange, F. Grill (100).** Small part original gum (traces of gum), intense shade, clearly-defined grill, tiny corner perf crease at top left not mentioned on accompanying certificate  
 FINE APPEARANCE. A SCARCE UNUSED EXAMPLE OF THE 1868 30-CENT F GRILL.  
 Ex Hoffman. With 2002 P.S.E. certificate. The Scott footnote to No. 100 states: "Values for No. 100 are for examples with small margins, especially at sides." Scott Retail with gum \$8,500.00. Scott Retail as no gum ..... 3,250.00

1875 RE-ISSUE OF 1861-66 ISSUE



71

- 71 ★ **2c Black, Re-Issue (103).** Original gum, sharp proof-like impression and crisp shade, wide margins  
VERY FINE AND CHOICE ORIGINAL-GUM EXAMPLE OF THE 2-CENT BLACK JACK RE-ISSUE.  
Only 979 sold. With 1985 and 1994 P.F. certificates ..... 4,250.00



72

- 72 ★ **5c Brown, Re-Issue (105).** Original gum, lightly hinged, choice centering, pretty “milk chocolate” color  
VERY FINE AND CHOICE ORIGINAL-GUM EXAMPLE OF THE 5-CENT 1861 RE-ISSUE.  
Only 672 sold. Ex Hoffman. With 2001 and 2003 P.F. and 2005 P.S.E. certificates (VF 80; SMQ \$3,450.00) ..... 3,250.00





73

- 73 ★ **10c Green, Re-Issue (106).** Original gum, deep rich color and proof-like impression on bright paper, wide margins

EXTREMELY FINE ORIGINAL-GUM EXAMPLE OF THE 10-CENT 1861 RE-ISSUE.

With 1990 P.F. and 2007 P.S.E. certificates (OGh, XF 90; SMQ \$7,200.00) ..... 4,000.00



74

- 74 ★ **24c Deep Violet, Re-Issue (109).** Original gum, lightly hinged, deep rich color and proof-like impression, well-balanced margins

VERY FINE AND CHOICE ORIGINAL-GUM EXAMPLE OF THE 24-CENT 1861 RE-ISSUE.

Only 346 sold. Ex Weisman, Vineyard and Hoffman. With 1994 P.S.E. and 1986 and 2003 P.F. certificates..... 6,500.00



75

75 ★ **30c Brownish Orange, Re-Issue (110).** Original gum, vibrant color as fresh as the day it was printed, bright paper, gorgeous centering with well-proportioned margins

EXTREMELY FINE GEM. A STUNNING ORIGINAL-GUM EXAMPLE OF THE 30-CENT 1861 RE-ISSUE. THIS IS THE MOST DIFFICULT DENOMINATION TO OBTAIN IN SUCH CHOICE CONDITION.

Little space was left on the 30c 1861 plate for vertical rows of perforations between stamps, and the same plate was used for the 1875 Re-Issue. Therefore, well-centered copies with perforations clear at the sides are rare. Only 346 were sold. Our Levi records contain 146 unused singles, an unused pair and an unused block of four. Many have margins either touching or in on at least one side. Few of the sound copies retain all or part of their original gum.

Ex Whitman. With 1983, 1997 and 2009 P.F. certificates ..... 6,750.00

## 1869 PICTORIAL ISSUE



76

- 76 ★ **1c Buff (112).** Slightly disturbed original gum described as “original gum” on accompanying certificate, bright color, Very Fine, with 1981 P.F. certificate ..... 750.00

- 77 ★ **2c Dark Brown (113).** Original gum, magnificent deep “chocolate” color and very well-centered, sharp impression, Very Fine and choice, with 2009 P.F. certificate, this shade is certainly scarcer than the shades of Brown and Reddish Brown typically seen, although not reflected in the Scott Retail price ..... 700.00



77



78

- 78 ★ **3c Ultramarine (114).** Original gum, wide margins, fresh and Very Fine, with 2008 P.F. certificate ..... 275.00

- 79 ★ **6c Ultramarine (115).** Original gum, well-centered, bright color on fresh paper, clearly visible grill points  
VERY FINE ORIGINAL-GUM EXAMPLE OF THE 6-CENT  
1869 PICTORIAL ISSUE.  
With 2000 and 2008 P.F. certificates..... 2,750.00



79

- 80 ★ **10c Yellow (116).** Original gum, vibrant color, well-centered, Very Fine, a lovely original-gum example of the 10c 1869 Pictorial, with 2008 P.F. certificate ..... 2,250.00



80



81

- 81 ★ **12c Green (117).** Original gum, lightly hinged, choice centering with balanced margins all around, deep rich color and intense proof-like impression on fresh paper  
EXTREMELY FINE. A GORGEOUS EXAMPLE OF THE 12-CENT 1869 PICTORIAL ISSUE — ONE OF THE MORE DIFFICULT 1869 PICTORIALS TO FIND IN THIS CHOICE ORIGINAL-GUM CONDITION.

Ex Silver Lake and Hoffman. With 1998 P.F. certificate ..... 2,250.00

- 82 (★) **24c Green & Violet (120).** Unused (no gum), rich colors and detailed impressions on crisp paper, choice centering  
VERY FINE UNUSED EXAMPLE OF THE 24-CENT 1869 PICTORIAL ISSUE.  
With 1985 and 2007 P.F. certificates ..... 3,500.00



82





83

- 83 ★ **30c Ultramarine & Carmine (121).** Original gum, intense colors, exceptionally well-centered with nicely balanced margins all around

EXTREMELY FINE GEM. A SUPERB ORIGINAL-GUM EXAMPLE OF THE 30-CENT 1869 PICTORIAL ISSUE. A WONDERFUL STAMP IN TERMS OF GUM, COLOR, CENTERING, FRESHNESS OF PAPER AND IMPRESSION.

The rarity of centered original-gum examples of the 30c 1869 with grill is somewhat obscured by the availability of off-center copies of the 30c with and without grill. If the scope were narrowed to Scott 121 only, and only grades of Very Fine or Extremely Fine were considered, we estimate that fewer than 15 examples would be counted. Among the qualifying stamps, this is without question one of the finest.

Ex Silver Lake and Hoffman. With 2001 P.F. certificate..... 7,000.00



84

- 84 ★ **90c Carmine & Black (122).** Original gum, deep rich colors and proof-like impressions, unusually choice centering with wide and balanced margins

EXTREMELY FINE GEM. A SUPERB ORIGINAL-GUM EXAMPLE OF THE 90-CENT 1869 PICTORIAL ISSUE, WHICH HAS BEEN GRADED XF-SUPERB 95 BY P.S.E. — THIS IS THE HIGHEST GRADE FOR AN ORIGINAL-GUM SCOTT 122 TO DATE.

With 1991 P.F. and 1991 and 2008 P.S.E. certificates (OGph, XF-Superb 95; SMQ \$66,000.00). This is the highest grade awarded to date. Only one other stamp has equaled this grade (from our 2006 Scarsdale sale) ..... 13,000.00

## 1875 RE-ISSUE OF 1869 PICTORIAL ISSUE



85



86

- 85 ★ **1c Buff, Re-Issue (123).** Original gum, minor h.r., fresh and Very Fine..... 600.00
- 86 (★) **6c Blue, Re-Issue (126).** Unused (no gum), beautifully centered with bright pastel color, Very Fine and choice, with 2008 P.S.E. certificate (VF-XF 85; SMQ \$1,050.00).. 900.00



87

- 87 ★ **10c Yellow, Re-Issue (127).** Original gum, brilliant color, choice centering with wide and balanced margins, tiny natural inclusion  
EXTREMELY FINE. A BEAUTIFUL ORIGINAL-GUM EXAMPLE OF THE 10-CENT 1869 PICTORIAL ISSUE.  
Unlike many examples of the 10c 1869 Re-Issue, this stamp has vibrant color without any trace of oxidation.  
With 2007 P.F. certificate ..... 2,000.00



88

- 88 ★ **12c Green, Re-Issue (128).** Original gum, deep rich color and proof-like impression, choice centering with wide and balanced margins  
EXTREMELY FINE. A BEAUTIFUL ORIGINAL-GUM EXAMPLE OF THE 12-CENT 1869 PICTORIAL RE-ISSUE.  
With 2009 P.F. certificate (XF 90) ..... 2,750.00



89

- 89 ★ **15c Brown & Blue, Re-Issue (129).** Original gum, deep rich colors and proof-like impressions, unusually choice centering with Jumbo margins  
EXTREMELY FINE. A BEAUTIFUL ORIGINAL-GUM JUMBO-MARGINED EXAMPLE OF THE 15-CENT 1869 PICTORIAL RE-ISSUE.  
With 2009 P.S.E. certificate (OGph, XF 90 Jumbo; SMQ \$3,250.00 as 90, \$5,500.00 as 95). Only three have graded higher to date and only one other shares this grade. .... 1,650.00





90



91

- 90 ★ **24c Green & Violet, Re-Issue (130).** Slightly disturbed original gum from hinge removal, deep rich colors and detailed impressions, Very Fine, an attractive stamp, with 1991 and 2006 P.F. certificates..... 2,500.00
- 91 ★ **1c Brown Orange, 1881 Re-Issue (133a).** Without gum as issued, wonderfully fresh and beautifully centered, Extremely Fine, with 2009 P.S.E. certificate (XF 90; SMQ \$650.00), one of three in this grade with only two higher..... 225.00

## 1870-88 BANK NOTE ISSUES

- 92 ★ **1c Ultramarine, Grill (134).** H. Grill, original gum, lightly hinged, clear grill, radiant color, well-balanced margins
- VERY FINE AND CHOICE ORIGINAL-GUM EXAMPLE OF THE 1870 ONE-CENT NATIONAL BANK NOTE COMPANY GRILLED ISSUE.
- Ex Vineyard. With 2007 A.P.S. and 2003 and 2008 P.F. certificates (VF 80)..... 2,250.00



92



93

- 93 ★ **2c Red Brown, Grill (135).** H. Grill, original gum, noticeable row of horizontal grill points, wide and balanced margins
- EXTREMELY FINE. A BEAUTIFUL ORIGINAL-GUM EXAMPLE OF THE 1870 2-CENT NATIONAL BANK NOTE COMPANY GRILLED ISSUE.
- With 2001 and 2008 P.F. certificates..... 1,100.00

- 94 ★ **3c Green, Grill (136).** H. Grill, original gum, lightly hinged, fresh, wonderful color, Very Fine and attractive, with 1983 and 2009 P.F. certificates ..... 675.00



94



95

- 95 ★ **6c Carmine, Grill (137).** H. Grill, original gum, pencil notation on back, brilliant color and proof-like impression, several noticeable rows of grill points, choice centering with well-proportioned margins

VERY FINE AND CHOICE. A BRIGHT AND FRESH ORIGINAL-GUM EXAMPLE OF THE 1870 6-CENT NATIONAL BANK NOTE GRILLED ISSUE.

Ex Hoffman. With 2003 P.F. certificate..... 5,250.00

- 96 ★ **7c Vermilion, Grill (138).** H. Grill, unusually strong grill points clearly visible from front of the stamp, original gum, brilliant color

VERY FINE. A REMARKABLY PRISTINE ORIGINAL-GUM EXAMPLE OF THE 1870 7-CENT NATIONAL BANK NOTE GRILLED ISSUE.

Ex Vineyard and Hoffman. With 1992 and 2003 P.F. certificates..... 4,500.00



96



97

- 97 ★ **10c Brown, Grill (139).** H. Grill, original gum, well-defined grill points at right, few lightly gum soaked perfs at bottom

FINE AND RARE ORIGINAL-GUM EXAMPLE OF THE 1870 10-CENT NATIONAL BANK NOTE GRILLED ISSUE.

With 2007 P.F. certificate ..... 7,000.00



98

- 98     **12c Dull Violet, End Roller Grill (140 var).** H. Grill, right third of the stamp with clearly-defined grill points, cancel removed, light horizontal crease and small tear at bottom, appears Fine, scarce grill variety, this is the listing copy, with 1980 P.F. certificate ..... 7,250.00



99

- 99 ★     **15c Orange, Grill (141).** H. Grill, disturbed original gum with some light overall gum staining, bright color  
 VERY FINE. A RARE ORIGINAL-GUM EXAMPLE OF THE 1870 15-CENT NATIONAL BANK NOTE COMPANY GRILLED ISSUE.  
 With 1984 and 2003 P.F. certificates..... 8,000.00

- 100 ★ **6c Carmine (148).** Original gum, radiant color, unusually choice centering with balanced margins, small natural spot on chin in printed ink mentioned only on most recent certificate

EXTREMELY FINE. A BEAUTIFUL ORIGINAL-GUM EXAMPLE OF THE 1870 6-CENT UNGRILLED NATIONAL BANK NOTE COMPANY ISSUE.

Ex Odeneal. With 1989, 1998 and 2007 P.F. certificates..... 1,100.00



100



101

- 101 ★ **10c Brown (150).** Original gum, lightly hinged, intense color, wide margins

EXTREMELY FINE. A RARE ORIGINAL-GUM EXAMPLE OF THE 10-CENT 1870 UNGRILLED NATIONAL BANK NOTE ISSUE.

Ex Hoffman. With 1997 and 2004 P.F. certificates..... 2,000.00

- 102 ★ **12c Dull Violet (151).** Original gum, deep rich color and proof-like impression, fresh and Very Fine, ex Hoffman, with 2001 P.F. certificate ..... 2,750.00



102





103

- 103 ★ **30c Black (154).** Original gum, crisp impression, choice centering for this difficult issue VERY FINE AND CHOICE. A RARE SOUND AND CENTERED ORIGINAL-GUM EXAMPLE OF THE 30-CENT 1870 NATIONAL BANK NOTE COMPANY UNGRILLED ISSUE.

In recent years, we have offered a few superb original-gum examples of the 30c Bank Note issues, including the Continental printing, Scott 165. Collectors have recognized the rarity of these stamps, bidding aggressively for the best stamps and often setting record prices. The Ungrilled National printing Scott 154 is particularly difficult to find in such choice condition.

With 2005 P.F. certificate ..... 7,500.00



104

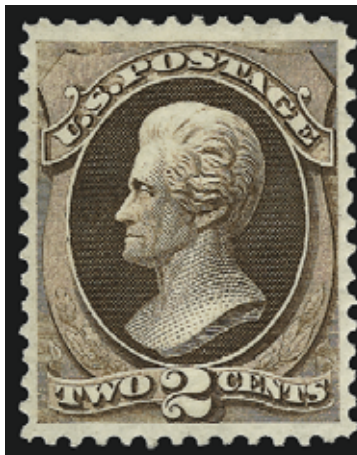
- 104 ★ **90c Carmine (155).** Original gum with **selvage at right**, lightly hinged, beautiful rich color and detailed impression, choice centering EXTREMELY FINE. THE 1870 90-CENT NATIONAL BANK NOTE ISSUE IS RARE IN CHOICE ORIGINAL-GUM CONDITION.

The 1870 90c National Ungrilled Issue, Scott 155, is somewhat overshadowed by its grilled counterpart, Scott 144. Collectors are also misled by the availability of Scott 166, the 90c 1873 Continental. Although the difference in shades is distinct, collectors have a tendency to confuse the two and under-rate the 1870 National printing. Only a few original-gum examples of Scott 155 have the centering, color and freshness of the stamp offered here.

With 2003 P.F. certificate ..... 5,500.00



105



106



107

- 105 ★★ **1c Ultramarine (156).** Mint N.H., brilliant color on post-office fresh paper, wide and balanced margins, fresh and Extremely Fine, a beautiful stamp, with 2010 P.S.E. certificate (XF 90; unpriced in SMQ in Mint N.H. condition, SMQ \$760.00 as hinged), this is the highest grade awarded to date to a Mint N.H. copy (two others share this grade), Scott Retail as hinged..... 275.00
- 106 ★ **2c Brown (157).** Original gum, virtually precise centering, incredible depth of color and with a sharp impression, Extremely Fine, with 1992 P.F. certificate ..... 400.00
- 107 ★★ **3c Green (158).** Mint N.H., wonderfully well-centered, fresh and crisp with extraordinary deep color, Extremely Fine Gem, with 2009 P.S.E. certificate, Scott Retail as hinged..... 130.00



108



109

- 108 ★田 **3c Green, With Grill (158e).** Block of four, original gum, Fine, difficult to find in multiples, Scott Retail as four singles ..... 2,000.00
- 109 ★ **6c Dull Pink (159).** Original gum, barely hinged if at all, nicely centered, crisp pastel color, Very Fine and choice, with 2002 P.F. certificate ..... 425.00





110

- 110 ★ **7c Orange Vermilion (160).** Original gum, lightly hinged, radiant color, choice centering with unusually wide margins

VERY FINE AND CHOICE. A BEAUTIFUL ORIGINAL-GUM EXAMPLE OF THE 1873 7-CENT CONTINENTAL BANK NOTE ISSUE.

Ex Odeneal. With 2000 and 2007 P.F. certificates..... 1,400.00



111

- 111 ★ **10c Brown (161).** Original gum, deep shade, well-centered, fresh and Very Fine, a lovely example of this scarce Continental issue, with 1992 and 2008 P.F. certificates ..... 1,150.00



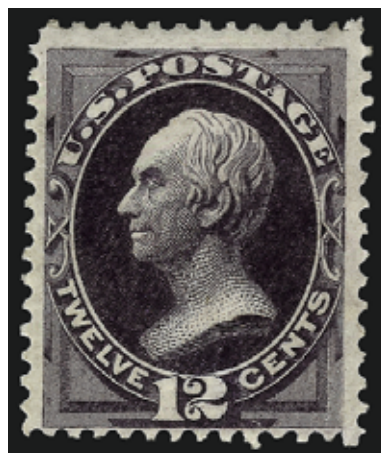
112

- 112 ★田 **10c Brown (161).** Block of ten, original gum, **positions 6 and 7 Mint N.H.**, balance lightly hinged, deep rich color, faint horizontal bends not noted on accompanying certificate, top left stamp with tiny corner crease

VERY FINE APPEARANCE. A RARE BLOCK OF TEN OF THE 1873 10-CENT CONTINENTAL BANK NOTE COMPANY ISSUE.

With 2006 P.F. certificate. Scott Retail as two blocks of four and a pair with no premium for the two Mint N.H. stamps. .... 14,500.00

- 113 ★ **12c Blackish Violet (162).** Original gum, beautiful dark Continental shade, three balanced margins but centered a bit low, still Fine and well above the usual quality for this difficult issue, with 2004 P.F. certificate ..... 2,500.00



113



114

- 114 ★ **15c Yellow Orange (163).** Original gum, radiant color, trivial natural inclusion

VERY FINE. THE 15-CENT 1873 CONTINENTAL IS AMONG THE MOST ELUSIVE OF THE REGULAR BANK NOTE ISSUES IN THIS CHOICE ORIGINAL-GUM CONDITION.

Although defined by a secret mark, the 15c Continental, Scott 163, is very difficult to distinguish from its National counterpart, Scott 152. The stamp offered here has what we believe are characteristics unique to Continental's work. The shade is very bright and yellowish. The secret mark in the upper left triangle is also prominently featured in this impression.

Ex Hoffman. With 1990 P.F. certificate..... 2,750.00

- 115 ★ **30c Gray Black (165).** Original gum, charcoal gray shade, fine impression on fresh paper

EXTREMELY FINE. AN OUTSTANDING ORIGINAL-GUM EXAMPLE OF THE 30-CENT 1873 CONTINENTAL PRINTING. A SUPERB STAMP IN EVERY RESPECT.

The 30c Continental is *extremely rare* in any original-gum condition that approaches this example. Blocks have always been rare — for example, Caspary did not have one; Lilly had one well-centered block of four and an off-center block of six — which means that singles could not be harvested from multiples.

With 2008 P.F. certificate ..... 3,250.00



115



116

- 116 ★ **2c Vermilion, With Grill (178c).** Original gum, lightly hinged, vibrant color, clearly-defined grill, fresh and Fine, ex Geisler, with 1993 P.F. certificate ..... 900.00





117



118



119



120

- 117 ★ **1c Dark Ultramarine (182).** Original gum, barest trace of hinging, rich color on bright paper, well-proportioned margins, Very Fine and choice, ex Hoffman, with 2004 P.F. certificate..... 300.00
- 118 ★ **2c Vermilion (183).** Original gum, lightly hinged, excellent centering and vivid color, Extremely Fine, with 1998 P.F. certificate..... 110.00
- 119 ★ **3c Green (184).** Original gum, choice margins and perfectly centered, fresh, bright color, Extremely Fine Gem, with 1989 P.F. certificate..... 95.00
- 120 ★ **5c Blue (185).** Original gum, small h.r., almost perfectly centered, bright color and clear impression, Extremely Fine, with 2007 P.F. certificate..... 475.00

- 121 ★ **6c Pink (186).** Original gum, unusually well-centered, deep rich color and incredibly intense impression showing all of the engraving lines in sharp detail — rarely seen on this issue, which is normally found with a weak mottled impression on yellowish paper  
EXTREMELY FINE. AN OUTSTANDING EXAMPLE OF THE 6-CENT 1879 AMERICAN BANK NOTE ISSUE.  
With 2000 P.F. certificate ..... 950.00



121



122

- 122 ★ **10c Brown, Without Secret Mark (187).** Original gum, attractive shade and crisp impression  
FRESH AND VERY FINE ORIGINAL-GUM EXAMPLE OF THE 10-CENT 1879 AMERICAN BANK NOTE COMPANY ISSUE WITHOUT SECRET MARK.  
With 2005 P.F. certificate ..... 3,500.00

- 123 ★ **10c Brown, With Secret Mark (188).** Original gum, h.r., exceptionally fresh, natural winkle and small inclusion, otherwise Fine and attractive ..... 2,000.00



123



124

- 124 ★ **6c Deep Brown Red (208a).** Original gum, small hinge mark, brilliant color, gorgeous centering with Jumbo margins

EXTREMELY FINE GEM. A SUPERB EXAMPLE OF THE 6-CENT 1882 LINCOLN ISSUE WITH ENORMOUS MARGINS.

With 2010 P.S.E. certificate (OGph, XF-Superb 95 Jumbo; SMQ \$1,850.00 as 95, \$3,700.00 as 98). This is the only example to achieve this grade in *any* category and only one has graded higher to date. .... 600.00

- 125 ★★ **10c Yellow Brown (209 var).** Mint N.H., radiant color in the Yellow Brown sub-shade, Very Fine and choice, ex Hoffman, with 2003 P.F. certificate..... 525.00



125



126

- 126 ★ **4c Blue Green (211).** Original gum, deep rich color, Very Fine, with 2008 P.F. certificate, also incl. Mint N.H. No. 210, Fine ..... 430.00



127



128



129



130

- 127 ★★ **1c Ultramarine (212).** Mint N.H., superbly centered with wide margins, beautiful pastel color, fresh and Extremely Fine Gem, with 2004 P.F. certificate..... 310.00
- 128 ★★ **3c Vermilion (214).** Mint N.H., vibrant color on bright paper, Very Fine and choice, ex Odeneal, with 2007 P.F. certificate..... 200.00
- 129 ★ **4c Carmine (215).** Most recent certificate states Mint N.H. with spots of gum glazing, deep rich color and proof-like impression, well-balanced margins, Extremely Fine, ex Odeneal, with 1999 P.F. and 2008 P.S.E. certificates..... 225.00
- 130 ★★ **5c Indigo (216).** Mint N.H., rich color on bright paper, wide and balanced margins, long and full perforations, fresh and Extremely Fine, a stamp with tremendous visual appeal, with 2010 P.F. certificate (XF 90)..... 775.00



131

- 131 ★ **90c Purple (218).** Original gum, lightly hinged, part imprint selvage at top, wonderful dark color and sharp impression, wide margins, Extremely Fine, eye-catching single in splendid condition, with 2009 P.F. certificate..... 1,000.00



## 1890-93 ISSUE



- 132 ★★ **2c Lake (219D)**. Mint N.H., rich color in the beautiful Lake shade, crisp paper, Very Fine and choice, ex Odeneal, with 1991 and 2007 P.F. certificates ..... 700.00
- 133 ★★ **2c Carmine (220)**. Mint N.H., wide margins, superb centering, radiant color on bright fresh paper, Extremely Fine Gem, with copy of 2004 P.F. certificate for block..... 70.00
- 134 ★★ **3c Purple (221)**. Mint N.H., bright shade on post office-fresh paper, choice centering with evenly-balanced margins, Extremely Fine, ex Odeneal, with 2007 P.F. certificate ..... 230.00
- 135 ★★ **6c Brown Red (224)**. Mint N.H., extra wide margins and choice centering, deep rich color, Extremely Fine, with 1987 and 2005 P.F. certificates..... 230.00
- 136 ★★ **8c Lilac (225)**. Mint N.H., lovely margins, strong color and well-defined impression, Very Fine and choice, with 1998 and 2009 P.F. certificates..... 180.00
- 137 ★ **10c Green (226)**. Original gum, minor h.r., choice balanced margins, deep rich color, Extremely Fine, with 2003 P.S.E. certificate (XF 90; SMQ \$360.00) ..... 190.00
- 138 ★ **15c Indigo (227)**. Original gum, small gum disturbance from hinge removal, uncommonly wide margins of near Jumbo proportions, especially top and bottom, intense color on bright paper, outstanding centering, Extremely Fine, with 1995 P.S.E. certificate (does not mention the small gum disturbance)..... 250.00
- 139 ★★ **30c Black (228)**. Mint N.H., intense shade and detailed impression, well-proportioned margins, Extremely Fine, a most attractive stamp, ex Odeneal, with 1999 and 2007 P.F. certificates ..... 1,200.00
- 140 ★ **90c Orange (229)**. Original gum, attractively centered, beautiful strong color, Very Fine, with 2009 P.F. certificate ..... 550.00



## COLUMBIAN ISSUE



141

- 141 ★★ **3c Columbian (232).** Mint N.H., incredible Jumbo margins and perfectly centered, vibrant color on crisp paper, Extremely Fine Gem, with 2004 P.F. and 2007 P.S.E. certificates (XF-Superb 95 Jumbo; SMQ \$625.00 for 95, \$2,300.00 as 98)... 150.00

- 142 ★★ **4c Columbian (233).** Mint N.H., brilliant color on crisp paper, gorgeous centering with wide and balanced margins, Extremely Fine Gem, with 2009 P.S.E. certificate (XF-Superb 95; SMQ \$1,200.00) ..... 200.00



142



143

- 143 ★★ **4c Columbian, Error of Color (233a).** Mint N.H., deep rich color in the darker of the two recognized shades, bright paper, centered to bottom left but with perfs clear of design

FINE AND PRISTINE. ONE OF THE FEW AVAILABLE MINT NEVER-HINGED EXAMPLES OF THE RARE 4-CENT COLUMBIAN ERROR OF COLOR.

The 4c Columbian color error was caused by the use of a wrong batch of ink, and spectrographic analysis has shown that the blue inks of the 4c error and 1c Columbian have the same components.

Stamps from at least two panes reached collectors, and the few cancelled examples indicate that stamps used by the public came from additional panes. It is likely that a number of full sheets were printed using the wrong ink, and most of the stamps have simply been lost to philately.

Ex Hoffman. With 2002 P.S.E. certificate. With copy of 1967 (for block of four) and 2008 P.F. certificates. We have offered only five other Mint N.H. examples since keeping computerized records..... 35,000.00



144



145



146

- 144 ★★ **6c Columbian (235).** Mint N.H., intense shade, well-proportioned margins, fresh and Extremely Fine, with 2008 P.S.E. certificate (XF 90; SMQ \$400.00) ..... 200.00
- 145 ★ **10c Columbian (237).** Original gum, lightly hinged, intense shade and impression, wide and balanced margins, Extremely Fine, with 2010 P.S.E. certificate (OGph, XF-Superb 95; SMQ \$315.00) ..... 110.00
- 146 ★★ **15c Columbian (238).** Mint N.H., bright shade and crisp impression, fresh and Fine ..... 675.00



147



148



149

- 147 ★ **30c Columbian (239).** Original gum, lightly hinged, almost perfectly centered, bright color and crisp impression, Very Fine and choice ..... 240.00
- 148 ★ **50c Columbian (240).** Original gum, lightly hinged, intense shade and impression, well-proportioned margins, Very Fine and choice, with 2009 P.S.E. certificate (OGph, VF-XF 85; SMQ \$620.00) ..... 500.00
- 149 ★ **\$1.00 Columbian (241).** Original gum, nicely centered, bright color, tiny natural inclusion, Very Fine and choice ..... 1,100.00





150

- 150 ★田 **\$1.00 Columbian (241)**. Block of four, original gum, lightly hinged, rich fiery color, top right stamp tiny natural inclusion, Fine-Very Fine, an attractive and scarce block in fresh and sound condition..... 5,000.00



151

- 151 ★田 **\$2.00 Columbian (242)**. Block of four, top pair lightly hinged, bottom pair imperceptibly hinged, appears Mint N.H., wonderfully fresh and exceptionally well-centered for a block of four

VERY FINE AND CHOICE. EASILY ONE OF THE FINEST SURVIVING \$2.00 COLUMBIAN BLOCKS OF FOUR.

Due to the ever-increasing demand for choice singles, virtually every known block of the dollar-value Columbians has been broken. This remarkable \$2.00 block has managed to avoid that fate..... 5,000.00

- 152 ★ **\$4.00 Rose Carmine, Columbian (244a).** Original gum, lightly hinged, brilliant color in this distinctive sub-shade, wide margins

EXTREMELY FINE ORIGINAL-GUM EXAMPLE OF THE \$4.00 COLUMBIAN ISSUE IN THE ROSE CARMINE SHADE.

With 1991 P.F. and 2006 P.S.E. certificates (OGph, XF 90; SMQ \$3,600.00)..... 2,250.00



152

### 1894-98 BUREAU ISSUE



- 153 ★★ **1c Ultramarine (246).** Mint N.H., detailed impression on bright white paper, almost perfectly centered with enormous margins, natural gum bends, Extremely Fine Gem, a beautiful stamp, with 2001 P.F. certificate for pair..... 90.00
- 154 ★★ **1c Blue (247).** Mint N.H., deep rich color on bright paper, huge margins, light corner perf crease at top left not mentioned on accompanying certificate, Extremely Fine appearance, ex Odeneal, with 1989 A.P.S. certificate..... 190.00
- 155 ★★ **2c Carmine Lake, Ty. I (249).** Mint N.H., radiant color on bright paper, choice centering, fresh and Extremely Fine, the Carmine Lake Ty. I is rarely found in this choice condition, with 2003 P.F. certificate ..... 450.00
- 156 ★ **2c Carmine, Ty. II (251).** Original gum which appears to be Mint N.H. except for small diagonal line on gum, vibrant color, choice centering, Extremely Fine, ex Odeneal..... 350.00
- 157 ★ **3c Purple (253).** Original gum, barest trace of hinging, beautiful margins and centering, perfect color on crisp paper, Very Fine and choice, with 2002 P.F. certificate for block (this stamp described as "never hinged") ..... 110.00
- 158 ★★ **4c Dark Brown (254).** Mint N.H., wide margins of near Jumbo proportions, well-centered, rich color and sharp impression, Extremely Fine, with 1992 and 2009 P.F. certificates (XF 90)..... 525.00





159



160

- 159 ★★ **6c Dull Brown (256).** Mint N.H. with **plate no. 28** at top with wide selvage, pretty shade, wide margins, Very Fine and choice, with 2010 P.S.E. certificate..... 500.00
- 160 ★★ **8c Violet Brown (257).** Mint N.H., deep rich color on bright paper, well-balanced margins, fresh and Extremely Fine, a pretty stamp, with 2005 P.S.E. certificate (XF 90; SMQ \$1,100.00)..... 525.00

- 161 ★★ **50c Orange (260).** Mint N.H., brilliant color as fresh as the day it was printed, choice centering with well-proportioned margins

EXTREMELY FINE. A SUPERB MINT NEVER-HINGED EXAMPLE OF THE 50-CENT 1894 UNWATERMARKED BUREAU ISSUE.

Ex Odeneal. With 1996 A.P.S. and 2007 P.F. certificates ..... 1,600.00



161



162

- 162 ★ **\$1.00 Black (261).** Original gum, barely hinged, sharp proof-like impression, fresh and Very Fine, with 2004 P.F. certificate ..... 1,050.00

- 163 ★ **\$1.00 Black, Ty. II (261A).** Original gum, bright shade, crisp impression, unusually wide margins

VERY FINE AND CHOICE ORIGINAL-GUM EXAMPLE OF THE 1894 \$1.00 TYPE II UNWATERMARKED ISSUE.

With 2009 P.S.E. certificate (OGph, VF 80 Jumbo; SMQ \$1,900.00 as 80, \$2,650.00 as 85) ..... 2,200.00



163



164



165

- 164 ★★ **1c Blue (264).** Mint N.H., radiant color on bright paper, choice centering with Jumbo margins, Extremely Fine Gem, a beautiful stamp in every respect, with 2003 P.F. and 2005 P.S.E. certificates (XF-Superb 95 Jumbo; SMQ \$240.00 as 95, \$800.00 as 98) ..... 17.50
- 165 ★★ **4c Dark Brown (269).** Mint N.H., rich color, proof-like impression, unusually wide and balanced margins for this difficult issue, Extremely Fine Gem, a beautiful stamp, with 2010 P.S.E. certificate (XF-Superb 95; SMQ \$1,050.00), only three have graded higher to date ..... 135.00



166

- 166 ★★ **5c Chocolate (270).** Mint N.H., **wide selvage with part imprint** at top, unusually choice centering with Jumbo margins, gorgeous color

EXTREMELY FINE GEM. A SUPERB MINT NEVER-HINGED EXAMPLE OF THE 5-CENT 1895 WATER-MARKED BUREAU ISSUE.

With 2006 P.S.E. certificate (XF-Superb 95 Jumbo; SMQ \$850.00 as 95, \$3,250.00 as 98). Only two have graded higher to date and only five others share this grade..... 105.00

- 167 **8c Violet Brown, USIR Watermark (272a).** Clear "R" watermark, partial circular datestamp and oval numeral grid cancel, Fine, very scarce and especially desirable with the positive watermark identification right in the center of the stamp, with 2009 P.S.E. certificate for pair..... 1,000.00



167



168

- 168 ★★ **\$1.00 Black, Ty. I (276).** Mint N.H., well-balanced margins and nicely centered, intense shade, Very Fine and choice, ex Whitman, with 1994 and 2009 P.F. certificates..... 2,000.00

- 169 ★田 **\$1.00 Black, Ty. I (276).** Top imprint block of four, original gum, deep shade and proof-like impression, choice centering, perf separations at selvage expertly reattached, bottom left stamp small thin spot at top

VERY FINE-EXTREMELY FINE APPEARANCE. A SCARCE IMPRINT BLOCK OF THE \$1.00 TYPE I WATERMARKED BUREAU ISSUE.

This block comes from the fifteen Plate 76 rows that produced only Type I stamps.

With 2004 P.F. certificate. Scott Retail as block of four with no premium for the imprint ..... 2,800.00



169



170

- 170 ★ **\$1.00 Black, Ty. II (276A).** Original gum, lightly hinged, unbelievably intense shade and impression, well-balanced margins, Extremely Fine, a stamp of tremendous visual appeal, with 2010 P.S.E. certificate (OGph, VF-XF 85; SMQ \$1,650.00)..... 1,350.00



- 171 ★ **\$2.00 Bright Blue (277).** Original gum, lightly hinged, radiant color, well-proportioned margins, Extremely Fine, with 2009 P.S.E. certificate (OGph, VF-XF 85; SMQ \$1,150.00)..... 1,000.00



171



172

- 172 ★ **\$5.00 Dark Green (278).** Original gum, lightly hinged, wide margins, strong color with a beautiful impression on crisp paper, Very Fine, with 2008 P.S.E. certificate ..... 2,250.00



173

- 173 ★田 **\$5.00 Dark Green (278).** Block of four, slightly disturbed original gum, deep rich color and proof-like impression, bottom right stamp small toned spot on one perf at top not mentioned on accompanying certificates

VERY FINE APPEARANCE. AN EXCEEDINGLY RARE BLOCK OF FOUR OF THE 1895 \$5.00 WATERMARKED BUREAU ISSUE. VERY FEW ARE KNOWN.

Apart from the block sold in the Whitpain collection (Siegel 977), this is the only other block of four we have offered in the past ten years. Only one full plate block exists. The Scott Catalogue assigns a paltry \$1,000.00 premium for the block versus four singles, which in no way reflects its rarity.

With 1972 and 2008 P.F. certificates..... 10,000.00





174

- 174 ★★ **10c Brown, Ty. I (282C).** Mint N.H., rich color and crisp impression on brilliant paper, Very Fine and choice, an elusive stamp in Mint N.H. condition, ex Hoffman, with 2004 P.F. certificate ..... 575.00

- 175 ★田 **10c Orange Brown, Ty. II (283).** Block of four, original gum, well-centered, bright and fresh, Fine-Very Fine ..... 650.00



175



176

- 176 **10c Orange Brown, Ty. II, Vertical Watermark (283a).** Mint N.H., attractively centered, fresh, bright color, Very Fine example of this overlooked watermark variety, seldom offered, ex Morris, with 1994 and 2009 P.F. certificates, former with part bottom imprint selvage since removed..... 700.00

- 177 ★★ **15c Olive Green (284).** Mint N.H. with **part imprint selvage at bottom**, beautiful color, Very Fine and choice, with 2008 P.S.E. certificate (VF-XF 85; SMQ \$780.00) ..... 500.00



177

## TRANS-MISSISSIPPI ISSUE



178



179



180

- 178 ★★ **1c Trans-Mississippi (285).** Mint N.H., wonderfully rich shade, unusually choice centering, long and full perforations all around, Extremely Fine Gem, with 2005 P.S.E. certificate (XF-Superb 95; SMQ \$750.00)..... 75.00
- 179 ★★ **2c Trans-Mississippi (286).** Mint N.H., brilliant color on post-office fresh paper, gorgeous centering, Extremely Fine Gem, with 1996 P.F. and 2009 P.S.E. certificates (XF-Superb 95; SMQ \$670.00) ..... 75.00
- 180 ★★ **4c Trans-Mississippi (287).** Mint N.H., blazing color, unusually wide margins, Very Fine and choice, ex Odeneal, with 1983 and 2007 P.F. certificates ..... 360.00



181

- 181 ★田 **4c Trans-Mississippi (287).** Bottom imprint and plate no. 636 block of four, original gum, small h.r. at bottom, some slight oxidation, natural paper crease affects top left stamp, Fine ..... 950.00





182



183



184

- 182 ★★ **5c Trans-Mississippi (288)**. Mint N.H. with wide top plate no. 602 selva, handsome centering, beautiful color and impression on crisp white paper, Extremely Fine, with 2009 P.S.E. certificate (XF 90; SMQ \$800.00)..... 360.00
- 183 ★★ **8c Trans-Mississippi (289)**. Mint N.H., exceptional centering for this difficult Trans-Mississippi denomination, strong color and detailed impression, Extremely Fine, with 2009 P.S.E. certificate (XF 90; SMQ \$1,400.00) ..... 525.00
- 184 ★ **10c Trans-Mississippi (290)**. Original gum, barest trace of hinging, appears Mint N.H., superbly centered, strong color and clear impression, Extremely Fine Gem, with 2004 P.S.E. certificate (OGph, XF-Superb 95; SMQ \$500.00) ..... 160.00



185

- 185 ★田 **10c Trans-Mississippi (290)**. Bottom imprint and plate no. 620 block of four, original gum, lightly hinged, lovely dark shade and proof-like impression, choice centering, some rejoined perfs in selva, otherwise Very Fine ..... 2,100.00





186

- 186 ★ **50c Trans-Mississippi (291).** Original gum, lightly hinged, deep rich color and proof-like impression, perfectly centered with unusually wide and balanced margins, long and full perforations all around

EXTREMELY FINE GEM. AN ABSOLUTELY STUNNING ORIGINAL-GUM EXAMPLE OF THE 50-CENT TRANS-MISSISSIPPI ISSUE, WHICH HAS BEEN GRADED SUPERB 98 BY P.S.E.

With 2010 P.S.E. certificate (OGph, Superb 98; SMQ \$4,000.00). None has graded higher in any category. .... 650.00



187

- 187 ★★ **\$1.00 Trans-Mississippi (292).** Mint N.H., choice margins and essentially perfectly centered, guide line at top, intense shade on crisp white paper

EXTREMELY FINE. A STUNNING MINT NEVER-HINGED EXAMPLE OF THE \$1.00 TRANS-MISSISSIPPI ISSUE, WHICH HAS BEEN CALLED THE MOST BEAUTIFUL DESIGN IN UNITED STATES PHILATELY.

With 2009 P.S.E. certificate. .... 3,400.00



188

- 188 ★ **\$2.00 Trans-Mississippi (293).** Original gum, deep rich color on bright paper, well-proportioned margins

VERY FINE AND CHOICE ORIGINAL-GUM EXAMPLE OF THE \$2.00 TRANS-MISSISSIPPI ISSUE.

With 1981 P.F. certificate ..... 1,900.00

PAN-AMERICAN ISSUE



189

189 ★ **1c Pan-American, Center Inverted (294a).** Original gum, h.r., unusually choice centering and wide margins for this popular invert error, deep rich colors on post-office fresh paper

VERY FINE AND CHOICE ORIGINAL GUM EXAMPLE OF THE ONE-CENT PAN-AMERICAN INVERT

The 1c Pan-American Inverts were found in at least four different post offices around the country. Of the 600 to 700 known, most have disturbed gum and are off-center. The example offered here is remarkably fresh

With 1993 P.S.E. and 2009 P.F. certificates..... 12,500.00

- 190 ★★ **2c Pan-American (295)**. Mint N.H., radiant color and detailed impressions, wide margins, Extremely Fine Gem, a gorgeous stamp, with 1990 P.F. and 2009 P.S.E. certificates (XF-Superb 95; SMQ \$350.00)..... 42.50



190



191

- 191 ★★田 **2c Pan-American (295)**. Mint N.H. top imprint and plate no. 1176 block of six, fresh and bright, impeccable centering, light "scoring line" from right selvage to across top left stamp, Extremely Fine, with 2009 P.S.E. certificate (XF 90)..... 475.00



192

- 192 ★田 **4c Pan-American (296)**. Bottom imprint and plate no. 1145 block of six, lightly hinged on top only, bottom three stamps **Mint N.H.** Fine-Very Fine, with 2008 P.F. certificate ..... 2,100.00





193



194

- 193 ★★ **8c Pan-American (298)**. Mint N.H., magnificent margins and almost perfectly centered, strong colors and fine impression, Extremely Fine, with 1993 P.F. certificate for block and 2009 P.S.E. certificate (XF 90; SMQ \$525.00) ..... 250.00
- 194 ★★ **10c Pan-American (299)**. Mint N.H., well-centered, fresh and Very Fine, with 2006 and 2007 P.F. certificates ..... 325.00

### 1902-08 ISSUE

- 195 ★★ **4c Brown (303)**. Mint N.H., beautiful wide margins with absolutely precise centering, excellent color in the orange brown/red brown family

EXTREMELY FINE GEM. A MAGNIFICENT MINT NEVER-HINGED EXAMPLE OF THE 4-CENT 1902 ISSUE, WHICH HAS BEEN GRADED SUPERB 98 BY P.S.E.

With 2009 P.S.E. certificate (Superb 98; SMQ \$4,450.00). One of only two awarded this desirable grade with only one higher ..... 150.00



195



196



197

- 196 ★ **6c Claret (305)**. Incredibly beautiful margins and centering, crisp impression, faintly hinged if at all, Extremely Fine Gem, with 2004 P.S.E. certificate (OGph, Superb 98; SMQ \$380.00) ..... 60.00
- 197 ★★ **10c Pale Red Brown (307)**. Mint N.H., pretty shade, almost perfectly centered with wide margins, Extremely Fine Gem, with 2004 P.S.E. certificate (XF-Superb 95; SMQ \$1,300.00), only one has graded higher to date ..... 150.00

- 198 ★★ **\$1.00 Black (311)**. Mint N.H., choice margins and exceptionally well-centered, intense shade and clear impression on fresh white paper

EXTREMELY FINE. A CHOICE MINT NEVER-HINGED EXAMPLE OF THE \$1.00 1902 ISSUE.

With 2009 P.S.E. certificate (XF 90; SMQ \$3,500.00).....  
 ..... 2,100.00



198



199

- 199 ★ **\$2.00 Dark Blue (312)**. Lightly hinged, rich color on bright paper, well-proportioned margins, fresh and Extremely Fine, with 2009 P.F. certificate (XF 90) .....  
 ..... 1,000.00

- 200 ★ **\$5.00 Dark Green (313)**. Lightly hinged, bright color and crisp impression, beautiful centering with wide and balanced margins

EXTREMELY FINE GEM. A GORGEOUS ORIGINAL-GUM EXAMPLE OF THE \$5.00 1902 ISSUE.

With 2009 P.S.E. certificate (XF-Superb 95; SMQ \$3,850.00). Only four have graded higher to date in any category..... 2,500.00



200



201

201 ★★ **1c Blue Green, Imperforate Horizontal Coil (314H).** Mint N.H. guide line strip of seven, large margins, deep rich color, light vertical crease along the guide line

EXTREMELY FINE APPEARANCE. A RARE MINT NEVER-HINGED GUIDE LINE STRIP OF SEVEN OF THE ONE-CENT 1908 IMPERFORATE FLAT PLATE COIL STAMP.

These coils were made from the flat plate regular issue stamps, and were issued in rolls of either 500 or 1,000. Very few large multiples are known for this issue.

With 1986 and 2007 P.F. certificates. Undercatalogued as Scott Retail for hinged guide line pair and two Mint N.H. pairs contains no premium for Mint N.H. gum on the guide line pair and does not include value for the additional single. .... 12,500.00





202

202

**4c Brown, Imperforate, Schermack Ty. III Private Perforation (314A).** Large margins to well clear at left with full Schermack perforations on right side, deep rich color, usual wavy-line cancel, small thins and small sealed tear

FINE APPEARANCE. A RARE EXAMPLE OF THE 4-CENT 1908 IMPERFORATE WITH SCHERMACK PERFORATIONS, SCOTT 314A. ONLY 31 USED SINGLES ARE CONTAINED IN OUR CENSUS.

Our recently-completed census of Scott 314A incorporates the records of the Philatelic Foundation, the Levi records (which represents over 40 years of auction sales) and our own computerized sales history. The census reveals a startling fact — there are only 31 used singles (two on piece), a used strip of three and three covers (one of which contains a strip of three), for a total of 39 used stamps. Our previous assumption was that this number was much higher.

With 2007 P.S.E. certificate..... 50,000.00



203

- 203 ★ **5c Blue, Imperforate, U.S. Automatic Vending Co. Ty. II Private Perforations (315 var).** Pair, small h.r., exceptionally well-centered, tiny natural inclusion in top margin of left stamp, otherwise Extremely Fine.....  
..... 1,400.00

- 204 ★ **5c Blue, Vertical Coil (317).** Pair, lightly hinged, deep rich color, well-centered for this challenging issue  
VERY FINE. AN OUTSTANDING EXAMPLE OF THE RARE 5-CENT 1908 VERTICAL COIL.  
With 1951, 1990 and 2004 P.F. certificates ... 17,500.00



204



205

- 205 ★ **1c Blue Green, Horizontal Coil (318).** Pair, lightly hinged, dark color  
FINE EXAMPLE OF THE RARE ONE-CENT 1908 HORIZONTAL COIL.  
With 1972, 1992 and 2004 P.F. certificates ..... 16,500.00



206

- 206 ★★田 **2c Lake, Ty. II, Imperforate (320a)**. Mint N.H. block of four, large margins and rich color, Extremely Fine, Scott Retail as two Mint N.H. pairs..... 450.00



207

- 207 ★ **2c Carmine, Coil (322)**. Guide line at right with paste-up tab beneath, ample to wide margins other sides, bright color  
 FRESH AND FINE ORIGINAL-GUM EXAMPLE OF THE 2-CENT 1908 HORIZONTAL COIL.  
 Issued on July 31, 1908, and intended only for use by private vending machine companies, Scott 322 comes from Die II.  
 With 1972 and 2003 (copy) P.F. certificates for pair..... 7,000.00

END OF SALE — THANK YOU





# The Most Powerful WANT LIST in Philately.

## STEP 1: Go to [siegelauctions.com](http://siegelauctions.com) and click on "My Siegel":

When you create a new account you will receive a confirming e-mail, which tests whether your spam filter will allow e-mails from Siegel. Click on the link in the e-mail to activate your account.



## STEP 2: Once you are logged in, you can start setting your preferences

There are four tabs in MY SIEGEL. The first has the latest news from Siegel. The second has your saved searches. The third allows you to set preferences and change your password. The fourth logs you out.



## STEP 3: Go to the "Saved Searches" tab

The searches will be blank until you create some. Click on the blue "New Search" button.

## STEP 4: Create your search using "Power Search"

Fill out the criteria for your search. If you are looking for a specific U.S. Scott number, there is no need to use the drop-down menus because it defaults to U.S. Stamps. You can make your search as specific or as broad as you like. Use the "Help" menu for suggestions. Name your search and save it at the bottom of the page. Click on "My Searches" to review what you've done.

## STEP 5: Review your searches

Your searches will appear alphabetically. You can then quickly see whether any lots in upcoming auctions match your searches. If you choose, MY SIEGEL will automatically send you e-mails when lots matching your search criteria are offered.



Tells you whether something in an upcoming sale matches your criteria. Click on the checkmark to see matches in future sales.

Run the search here to see matches in upcoming and past sales. It's always a good idea to run the search after it's been set up, to make sure you get the desired results.

For each search you can specify whether or not you wish to receive e-mail notifications that lots matching your search criteria are coming up at auction.

# Bid Form—15% Premium Sale

Sale 983

Tuesday, February 23, 2010

1

Please provide the following information:

NAME.....

ADDRESS.....

CITY/STATE/ZIP .....

TEL. (DAY) ..... FAX.....

E-MAIL.....

PADDLE #

*Do not write in box*

2

Have you purchased from us in the past 5 years? ☐ YES (if so, please go to Section 3)

☐ NO (please provide a trade reference and bank information)

References:

Stamp Firm: ..... Telephone.....

Bank: ..... Account # .....

3

In the space provided below, enter the **lot number** from **Sale 983** and your corresponding bid. Please use **whole dollar amounts** only and enter the **maximum bid** you wish to have us execute on your behalf, according to the **bidding increments** on other side of this form. **Your bid will NOT include the 15% buyer's premium.** We will advance the bidding at one increment over the

next highest bid; therefore, you may be awarded the lot at less than your maximum bid. Please do not use "plus" bids or "buy" bids. If you wish to bid on one lot **or** the other, indicate your "or" bid between lot number/bid entries and bracket your choices. If you wish to place a **bidding limit** on the total amount of your bids, please enter your limit in the space marked "Limit Bids".

## PLEASE NOTE BIDDING INCREMENTS AND SHIPPING CHARGES (ON BACK OF THIS PAGE)

☐ **LIMIT BIDS:** Check this box if you wish to limit the total amount of your bids (not including the **15% buyer's premium**) in this sale. Your bids will be executed until your bidding limit no longer allows for additional bids. **The total amount you wish to bid is:** \$ .....

| Lot | Bid | Lot | Bid | Lot | Bid |
|-----|-----|-----|-----|-----|-----|
|     | \$  |     | \$  |     | \$  |
|     |     |     |     |     |     |
|     |     |     |     |     |     |
|     |     |     |     |     |     |
|     |     |     |     |     |     |

4

**AGREEMENT:** By signing this bid form, you agree to pay for purchases resulting from your bids, in accordance with the **Conditions of Sale** printed in the sale catalogue. You also agree to pay the **15% buyer's premium, shipping costs (see reverse), and sales tax or use tax or customs duty which may be due on the total invoiced amount.** It is

understood that these bids will be executed by Siegel Auction Galleries as a courtesy to absentee bidders, but you waive the right to make any claim against the auctioneer or the firm, arising from the these bids. **You are responsible for your written bids, including any errors on your part and any additions or changes to the bids herein.**

**Payment must be made by cash, check, money order or wire transfer. Credit cards will not be accepted.**



SIGNED..... TODAY'S DATE .....

5

Please submit your bids promptly (telephone bids must be confirmed in writing).

Mail to: **Robert A. Siegel Auction Galleries, Inc.**

60 E. 56th Street, 4th Floor, New York, N.Y. 10022

Telephone (212) 753-6421

**OR FAX YOUR BIDS: (212) 753-6429**

**Shipping Instructions, Bidding Increments and space for additional bids on other side of form**



## Additional Bids

Sale 983—February 23, 2010

| Lot | Bid | Lot | Bid | Lot | Bid |
|-----|-----|-----|-----|-----|-----|
|     | \$  |     | \$  |     | \$  |
|     |     |     |     |     |     |
|     |     |     |     |     |     |
|     |     |     |     |     |     |
|     |     |     |     |     |     |
|     |     |     |     |     |     |
|     |     |     |     |     |     |
|     |     |     |     |     |     |
|     |     |     |     |     |     |
|     |     |     |     |     |     |
|     |     |     |     |     |     |
|     |     |     |     |     |     |

## Shipping and Transit Insurance

We will be pleased to arrange for shipping and transit insurance for purchases in this sale (except those described as “floor sale only”). To expedite billing and delivery of lots to hundreds of buyers per sale, we use standard charges for postage and insurance, based on the package weight and mailing requirements (see schedule). The standard charges are sometimes slightly more or less than the actual postage or Fedex fees, but we do not include any charge for our labor or packing costs. Therefore, we ask all buyers to remit the prescribed amount for shipping charges.

Transit insurance is provided in all cases, except when the buyer has furnished us with proof that insurance coverage is effective under another policy. Proof, in such cases, will be accepted in the form of a written certificate from the insurance carrier.

You are responsible for insurance charges, which will be added to your invoice. This coverage is provided for our mutual protection against theft or loss in transit.

## Bidding Increments

The auctioneer may regulate the bidding at his discretion. However, to assist absentee bidders in establishing their maximum bid for each lot, the increments shown at right will be used in most cases. We recommend that written bids conform to these increments (those which do not will be reduced to the next level).

## REVISED CHARGES FOR SHIPPING EFFECTIVE SEPTEMBER 1, 2009

We have reduced the Fedex Envelope charge to \$20, reflecting the elimination of the fuel surcharge. All other charges remain the same.

## Current Postage & Insurance Charges

| Weight/Class  | Shipping Method | Charges             |
|---|-----------------|---------------------|
| Up to 2 lbs.  | Fedex Envelope  | \$20.00             |
| Over 2 lbs.   | Fedex Box       | \$35.00*            |
| Non-U.S.  | Fedex/Courier   | \$50.00**           |
| Bulk Lots   | UPS Preferred   | By weight and value |
| <p><b>These fees reflect additional Fedex charges for residential delivery, signature and fuel surcharge.</b></p> <p><b>*Higher fees will be charged on packages weighing more than 5 lbs. or insured for more than \$75,000.</b></p> <p><b>**Buyers are liable for all customs duties and clearance charges. An accurate declaration of value will be made on all import/export documents.</b></p> |                 |                     |

9/2009

|               |       |                 |         |
|---------------|-------|-----------------|---------|
| Up to \$50    | \$5   | \$3,000-7,000   | \$250   |
| \$50-200      | \$10  | \$7,000-20,000  | \$500   |
| \$200-500     | \$25  | \$20,000-30,000 | \$1,000 |
| \$500-1,000   | \$50  | \$30,000-75,000 | \$2,500 |
| \$1,000-3,000 | \$100 | \$75,000 up     | \$5,000 |

6/2008





**PRICES REALIZED FOR SALE 983---2/23/2010**  
**The "Hampshire" Collection of United States Stamps**

Robert A. Siegel Auction Galleries, Inc.  
60 East 56th Street, 4th Floor, New York, NY 10022  
Tel (212) 753-6421 Fax (212) 753-6429

| Lot# | Realized | Lot# | Realized | Lot# | Realized | Lot# | Realized | Lot# | Realized |
|------|----------|------|----------|------|----------|------|----------|------|----------|
| 1    | 1,900    | 43   | 375      | 85   | 400      | 127  | 1,100    | 169  | 1,200    |
| 2    | 1,400    | 44   | 1,700    | 86   | 850      | 128  | 225      | 170  | 2,200    |
| 3    | 2,600    | 45   | 1,400    | 87   | 1,300    | 129  | 350      | 171  | 1,300    |
| 4    | 10,000   | 46   | 6,500    | 88   | 4,500    | 130  | 1,600    | 172  | 1,300    |
| 5    | 11,000   | 47   | 1,500    | 89   | 3,000    | 131  | 1,500    | 173  | 3,250    |
| 6    | 1,000    | 48   | 1,500    | 90   | 1,000    | 132  | 450      | 174  | 700      |
| 7    | 750      | 49   | 900      | 91   | 550      | 133  | 550      | 175  | 400      |
| 8    | 1,500    | 50   | 4,250    | 92   | 1,400    | 134  | 325      | 176  | 1,100    |
| 9    | 15,000   | 51   | 1,000    | 93   | 900      | 135  | 300      | 177  | 850      |
| 10   | 2,300    | 52   | 4,250    | 94   | 475      | 136  | 300      | 178  | 600      |
| 11   | 5,000    | 53   | 3,000    | 95   | 4,500    | 137  | 300      | 179  | 800      |
| 12   | 1,700    | 54   | 25,000   | 96   | 1,600    | 138  | 225      | 180  | 350      |
| 13   | 1,700    | 55   | 2,200    | 97   | 1,800    | 139  | 900      | 181  | 300      |
| 14   | 900      | 56   | 2,600    | 98   | 1,100    | 140  | 475      | 182  | 800      |
| 15   | 5,000    | 57   | 2,700    | 99   | 1,100    | 141  | 850      | 183  | 1,000    |
| 16   | 6,000    | 58   | 650      | 100  | 950      | 142  | 650      | 184  | 600      |
| 17   | 1,300    | 59   | 400      | 101  | 3,750    | 143  | 9,000    | 185  | 1,100    |
| 18   | 1,500    | 60   | 2,400    | 102  | 1,000    | 144  | 350      | 186  | 4,750    |
| 19   | 1,600    | 61   | 11,500   | 103  | 4,250    | 145  | 325      | 187  | 3,500    |
| 20   | 850      | 62   | 2,300    | 104  | 4,750    | 146  | 300      | 188  | 1,300    |
| 21   | 750      | 63   | 900      | 105  | 1,800    | 147  | 140      | 189  | 12,500   |
| 22   | 22,000   | 64   | 600      | 106  | 400      | 148  | 475      | 190  | 350      |
| 23   | 6,250    | 65   | 2,400    | 107  | 550      | 149  | 500      | 191  | 600      |
| 24   | 250      | 66   | 1,900    | 108  | 375      | 150  | 2,000    | 192  | 950      |
| 25   | 950      | 67   | 2,500    | 109  | 275      | 151  | 6,500    | 193  | 475      |
| 26   | 9,000    | 68   | 750      | 110  | 1,600    | 152  | 4,500    | 194  | 190      |
| 27   | 180      | 69   | 1,900    | 111  | 425      | 153  | 180      | 195  | 2,500    |
| 28   | 1,300    | 70   | 1,000    | 112  | 3,250    | 154  | 190      | 196  | 500      |
| 29   | 800      | 71   | 3,000    | 113  | 550      | 155  | 375      | 197  | 1,000    |
| 30   | 475      | 72   | 2,800    | 114  | 2,100    | 156  | 225      | 198  | 2,400    |
| 31   | 3,750    | 73   | 4,000    | 115  | 4,250    | 157  | 300      | 199  | 1,500    |
| 32   | 1,400    | 74   | 5,500    | 116  | 950      | 158  | 950      | 200  | 3,750    |
| 33   | 3,250    | 75   | 8,500    | 117  | 275      | 159  | 375      | 201  | 6,500    |
| 34   | 250      | 76   | 325      | 118  | 275      | 160  | 1,100    | 202  | 13,000   |
| 35   | 2,000    | 77   | 850      | 119  | 250      | 161  | 3,500    | 203  | 450      |
| 36   | 375      | 78   | 250      | 120  | 350      | 162  | 650      | 204  | 6,250    |
| 37   | 1,600    | 79   | 1,100    | 121  | 1,200    | 163  | 2,400    | 205  | 4,500    |
| 38   | 1,100    | 80   | 800      | 122  | 1,200    | 164  | 375      | 206  | 250      |
| 39   | 4,000    | 81   | 5,750    | 123  | 350      | 165  | 1,400    | 207  | 1,700    |
| 40   | 3,750    | 82   | 1,500    | 124  | 1,900    | 166  | 1,100    |      |          |
| 41   | 6,000    | 83   | 8,000    | 125  | 425      | 167  | 425      |      |          |
| 42   | 32,500   | 84   | 55,000   | 126  | 275      | 168  | 800      |      |          |