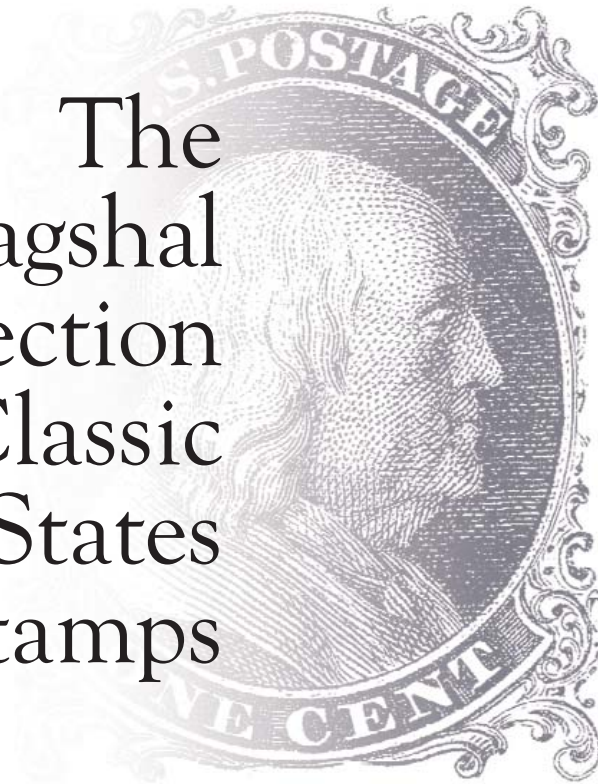


The
Wagshal
Collection
of Classic
United States
Stamps



Robert A. Siegel

AUCTION GALLERIES, INC.

siegelauctions.com





Part 3—Sale 996
Three-Cent 1851-57 Issues

Thursday, October 21, 2010

Session 3.1 (lots 3001-3071) at 10:30 a.m.

Session 3.2 (lots 3072-3281) at 1:30 p.m.

A 15% buyer's premium will be added to the hammer price of each lot sold.

*Lots will be available for viewing on Monday-Wednesday, October 18-20, from 10-4
and by appointment (please call 212-753-6421).*

Robert A. Siegel

AUCTION GALLERIES, INC.

60 EAST 56TH STREET, 4TH FLOOR, NEW YORK, N.Y. 10022

Phone (212) 753-6421 • Fax (212) 753-6429 • E-mail: stamps@siegelauctions.com

siegelauctions.com



Robert A. Siegel

AUCTION GALLERIES, INC.

60 EAST 56TH STREET, 4TH FLOOR, NEW YORK, N.Y. 10022
 Phone (212) 753-6421 • Fax (212) 753-6429 • E-mail: stamps@siegelauctions.com
siegelauctions.com



Scott R. Trepel
 President
 strepel
siegelauctions.com



John P. Zuckerman
 Senior Vice President
 jzuckerman
siegelauctions.com



Corey Long
 Vice President
 clong
siegelauctions.com



Starr Tucker-Ortega
 Accounts
 stamps
siegelauctions.com



Carlene Okola
 Bids and Inquiries
 carlene
siegelauctions.com

Scott R. Trepel Principal Auctioneer (licensed by NYC Dept. of Consumer Affairs, #795952)
 Nathaniel Estes Catalogue and Digital Production

Information for Bidders

Bidding

The following means are available for placing bids:

- 1) Attending the Live Auction in Person:** All bidders must register for a paddle, and new bidders must provide references at least three business days in advance of the sale.
- 2) Live Internet Bidding:** Instructions for participating as a Live Internet Bidder are provided on the page opposite.
- 3) Phone Bidding:** Bidders can be connected to the sale by phone and bid through a member of staff. Requests for phone bidding are subject to approval (please contact our office at least 24 hours before the sale). A signed Bid Form is required.
- 4) Absentee Bids.** All bids received in advance of the sale, either by mail, fax, phone, e-mail or internet, are Absentee Bids, which instruct the auctioneer to bid up to a specific amount on one or more lots in the sale. Absentee Bids sent by phone, fax or e-mail should arrive at least one hour prior to the start of the sale session. Bids entered through Live Internet Bidding will be visible to the auctioneer during the sale. Written bids should be entered legibly on the Bid Form in the sale catalogue. E-mail and internet bids should be carefully typed and double-checked. All new bidders must provide references. We recommend calling or e-mailing to confirm that Absentee Bids sent by mail, fax or e-mail have been received and entered.

Pre-Sale Viewing

Subject to availability, certain lots (except group lots) can be sent to known clients for examination. Requests must be made no later than 7 days prior to the sale. Lots must be returned on the day received. Postage/insurance costs will be invoiced.

In addition to regular viewing, clients may view lots by appointment. Our staff will be pleased to answer questions or provide additional information about lots.

Expert Certification

Individual items offered without a current certificate (PF dated within the past five years of sale; PSE dated January 2004 or later) may be purchased subject to independent certification of genuineness and our description. **Please refer to the Conditions of Sale and Grading Terms for policies governing certification.**

Shipping and Delivery

Procedures and charges for shipping lots are printed on the back of the Bid Form. **Bidders are responsible for all prescribed shipping charges and any applicable sales tax or customs duties.**

Price Realized

Prices realized are sent with each invoice. Bidders with e-mail will receive a Bid Results report after the sale. Session results are posted immediately to siegelauctions.com

Live Internet Bidding at Siegel Auctions

BIDDING FROM YOUR COMPUTER LETS YOU BE PART OF THE LIVE AUCTION FROM ANYWHERE IN THE WORLD!

There's NO SUBSTITUTE for following the auction in real time.
Live Internet Bidding lets you bid and buy as though you were right there in the saleroom.
And it's easy.

This step-by-step guide will instruct you how to register, set your browser and use the bidding interface.

Start by following the simple steps to become a registered Live Internet Bidder.
Once you've been approved for bidding, you can listen to the auction and place bids with the click of a mouse.

Registering with STAMP AUCTION NETWORK & SIEGEL AUCTION GALLERIES

Live Internet Bidding is managed by Stamp Auction Network (SAN).
To bid, you must be registered and approved by *both* SAN and Siegel.
To decide what you need to do, choose the description below that best fits you.



I've already registered with SAN and have been approved by Siegel for internet bidding.

I'm a Siegel client, but I'm not registered with SAN.

Go to stampauctionnetwork.com/siegel and click on "Register" at the top. Check the box for Robert A. Siegel Auction Galleries (under "R") and submit the form, indicating you are a Siegel client. Once registered at SAN, you're ready for internet bidding.

I've bid through SAN before, but this is the first time I've bid in a Siegel sale.

Then you just need to be approved by Siegel. Go to stampauctionnetwork.com/siegel and click on "Update Registration" at the top. Your SAN account information will be sent to us for approval (you might be asked for other trade references). Once approved by Siegel for bidding, you're ready for internet bidding.

I've never bid with Siegel, nor registered with SAN.

Go to stampauctionnetwork.com/siegel and click on "Register" at the top. Check the box for Robert A. Siegel Auction Galleries (under "R") and submit the form **with your trade references** (please, no family members or credit card companies as references). Once registered at SAN and approved by Siegel for bidding, you're ready for internet bidding.

Live Internet Bidding works by allowing registered bidders to observe and place bids.

Live Internet Bidding will work with any browser on both PC and Mac operating systems.

Before bidding by internet for the first time, we recommend finding a sale in progress and listening to the public broadcast or logging in as a registered bidder. This will help you develop a feel for the sale tempo and bidding interface.

Log on to the auction at stampauctionnetwork.com/siegel.

You can also log on at siegelauctions.com

When you're logged on as a Live Internet Bidder, the bidding interface shows a photo and description of the lot, the current bid (and your bidding status), options for placing competitive bids and buttons with bid increments.

- After you click on a bid amount, the auctioneer is immediately notified of your bid.
- Retracting a bid is usually not acceptable, so please bid carefully.
- If you bid and then decide to stop, the "Pass" button will tell the auctioneer you are no longer bidding.
- You can send messages to the auctioneer (for example, a request for extension).
- You can track prior realizations from the bidding screen.



"System Down" or "Lost Connection" events do occasionally happen.

If you have any problems with Live Internet Bidding please call 212-753-6421 for immediate assistance.

Conditions of Sale (please read carefully before bidding)

The property described in this catalogue will be offered at public auction by Robert A. Siegel Auction Galleries, Inc. ("Galleries") on behalf of various consignors and itself or affiliated companies. By bidding on any lot, whether directly or by or through an agent, in person, or by telephone, facsimile or any other means, the bidder acknowledges and agrees to all of the following Conditions of Sale.

1. The highest bidder acknowledged by the auctioneer shall be the buyer. The term "final bid" means the last bid acknowledged by the auctioneer, which is normally the highest bid offered. **The purchase price payable by the buyer will be the sum of the final bid and a commission of 15% of the final bid ("buyer's premium"), together with any sales tax, use tax or customs duties due on the sale.**

2. The auctioneer has the right to reject any bid, to advance the bidding at his discretion and, in the event of a dispute between bidders, to determine the successful bidder, to continue the bidding or to reoffer and resell the lot in dispute. The Galleries' record of the final sale shall be conclusive.

3. All bids are per numbered lot in the catalogue unless otherwise announced by the auctioneer at the time of sale. The right is reserved to group two or more lots, to withdraw any lot or lots from the sale, or to act on behalf of the seller. The Galleries will execute bidding instructions on behalf of clients, but will not be responsible for the failure to execute such bids or for any errors in the execution of such bids.

4. **Lots with numbers followed by the symbol ° are offered subject to a confidential minimum bid ("reserve"), below which the lot will not be sold. The absence of the symbol ° means that the lot is offered without a reserve. If there is no reserve, the auctioneer has sole discretion to establish a minimum opening bid and may refuse an offer of less than half of the published estimate. Any lot that does not reach its reserve or opening bid requested by the auctioneer will be announced as "passed" and excluded from the prices realized lists after the sale. The Galleries may have a direct or indirect ownership interest in any or all lots in the sale resulting from an advance of monies or goods-in-trade or a guarantee of minimum net proceeds made by the Galleries to the seller.**

5. Subject to the exclusions listed in 5(A), the Galleries will accept the return of lots which have been misidentified or which have obvious faults that were present when the lot was in the Galleries' custody, but not so noted in the lot description. **All disputed lots must be received by the Galleries intact with the original packing material within 5 days of delivery to the buyer but no later than 30 days from the sale date. (5A) EXCLUSIONS:** The following lots may not be returned for any reason: lots containing 10 or more items; lots from buyers who registered for the pre-sale exhibition or received lots by postal viewing, thereby having had the opportunity to inspect them before the sale; any lot described with "faults," "defects" or a specific fault may not be returned because of any secondary fault. Photographed lots may not be returned because of centering, margins, short/nibbed perforations or other factors shown in the illustrations. Lots may not be returned for any of the following reasons: the color of the item does not match the color reproduction in the sale catalogue or website listing; the description contains inaccurate information about the quantity known or reported; or a certification service grades a stamp lower than the grade stated in the description.

6. Successful bidders, unless they have established credit with the Galleries prior to the sale, must make payment in full before the lots will be delivered. Buyers not known to the Galleries must make payment in full within 3 days from the date of sale. **The Galleries retains the right to demand a cash deposit from anyone prior to bidder registration and/or to demand payment at the time the lot is knocked down to the highest bidder, for any reason whatsoever.** In the event that any buyer refuses or fails to make payment in cash

for any lot at the time it is knocked down to him, the auctioneer reserves the right to reoffer the lot immediately for sale to the highest bidder. **Credit cards are not accepted as payment.**

7. If the purchase price has not been paid within the time limit specified above, nor lots taken up within 7 days from the date of sale, the lots will be resold by whatever means deemed appropriate by the Galleries, and any loss incurred from resale will be charged to the defaulting buyer. Any account more than 30 days in arrears will be subject to a late payment charge of 1½% per month as long as the account remains in arrears. Any expenses incurred in securing payment from delinquent accounts will be charged to the defaulter. A fee of \$250.00 per check will be charged for each check returned for insufficient funds.

8. All lots are sold as genuine. **Any lot accompanied by a certificate issued by The Philatelic Foundation within 5 years of the sale date or by Professional Stamp Experts since January 2004 is sold "as is" and in accordance with the description on the certificate. Such lots may not be returned for any reason, including but not limited to a contrary certificate of opinion.** Buyers who wish to obtain a certificate for any item that does not have a P.F. or P.S.E. certificate (dated as above) may do so, provided that the following conditions are met: (1) the purchase price must be paid in full, (2) the item must be submitted to an acceptable expertizing committee with a properly executed application form within 21 days of the sale, (3) a copy of the application form must be given to the Galleries, (4) in the event that an adverse opinion is received, the Galleries retain the right to resubmit the item on the buyer's behalf for reconsideration, without time limit or other restrictions, (5) unless written notification to the contrary is received, items submitted for certification will be considered cleared 90 days from the date of sale, and (6) in the event any item is determined to be "not as described", the buyer will be refunded the purchase price and the certification fee up to \$600.00 unless otherwise agreed.

9. Until paid for in full, all lots remain the property of the Galleries on behalf of the seller.

10. Agents executing bids on behalf of clients will be held responsible for all purchases made on behalf of clients unless otherwise arranged prior to the sale.

11. The buyer assumes all risk for delivery of purchased lots and agrees to pay for prescribed shipping costs. Buyers outside the U.S. are responsible for all customs duties.

12. **The bidder consents that any action or proceeding against it may be commenced and maintained in any court within the State of New York or in the United States District Court for the Southern District of New York, that the courts of the State of New York and United States District Court for the Southern District of New York shall have jurisdiction with respect to the subject matter hereof and the person of the bidder. The bidder agrees not to assert any defense to any action or proceeding initiated by Galleries based upon improper venue or inconvenient forum. The bidder agrees that any action brought by the bidder shall be commenced and maintained only in a Federal Court in the United States District Court for the Southern District of New York or the State Court in the county in which Galleries has its principal place of business in New York. These Terms and Conditions shall be governed by and construed in accordance with the substantive laws of the State of New York.**

SCOTT R. TREPEL, Principal Auctioneer

Auctioneer's License No. 795952
N.Y.C. Department of Consumer Affairs
80 Lafayette Street, New York, N.Y. 10013
Telephone (212) 577-0111

Revised 1/2008 15%

Copyright Notice

© 2009, Robert A. Siegel Auction Galleries, Inc. This catalogue in all versions, printed and electronic, is protected by copyright. The descriptions, format, illustrations and information used herein may not be reprinted, distributed or copied in any form without the express written consent of Robert A. Siegel Auction Galleries. Application for permission may be made in writing.

Grades, Abbreviations and Values Used in Descriptions

Grades and Centering

Our descriptions contain detailed information and observations about each item's condition. We have also assigned grades to stamps and covers, which reflect our subjective assessment. For stamps, the margin width, centering and gum are described and graded according to generally-accepted standards (an approximate correlation to numeric grades is provided at right). Although we believe our grades are accurate, they are not always exactly aligned with third-party grading terms or standards for all issues. **A lot may not be returned because a certification service grades a stamp lower than the grade stated in the description. Information from the P.S.E. Stamp Market Quarterly and P.S.E. Population ReportSM is the most current available, but lots may not be returned due to errors or changes in statistics or data.**

Extremely Fine Gem (90-100): The term "Gem" describes condition that is the finest possible for the issue. This term is equivalent to "Superb" used by grading services.







Extremely Fine (80-90): Exceptionally large/wide margins or near perfect centering.

Very Fine (70-85): Normal-size margins for the issue and well-centered with the design a bit closer to one side. "Very Fine and choice" applies to stamps that have desirable traits such as rich color, sharp impression, freshness or clarity of cancel.

Fine (60-70): Smaller than usual margins or noticeably off center. Pre-1890 issues may have the design touched in places.

Very Good (below 60): Attractive appearance, but margins or perforations cut into the design.

Guide to Gum Condition

Gum Categories:	MINT N.H.	ORIGINAL GUM (O.G.)				NO GUM
	 Mint Never Hinged <i>Free from any disturbance</i>	 Lightly Hinged <i>Faint impression of a removed hinge over a small area</i>	 Hinge Mark or Remnant <i>Prominent hinged spot with part or all of the hinge remaining</i>	 Part o.g. <i>Approximately half or more of the gum intact</i>	 Small part o.g. <i>Approximately less than half of the gum intact</i>	 No gum <i>Only if issued with gum</i>
Catalogue Symbol:	★ ★	★	★	★	★	(★)
PRE-1890 ISSUES	<i>Pre-1890 stamps in these categories trade at a premium over Scott value</i>			Scott Value for “O.G.”		Scott “No Gum” Values thru No. 218
1890-1935 ISSUES	Scott “Never Hinged” Values for Nos. 219-771	Scott Value for “O.G.” (Actual value will be affected by the degree of hinging)		Disturbed Original Gum: Gum showing noticeable effects of humidity, climate or hinging over more than half of the gum. The significance of gum disturbance in valuing a stamp in any of the Original Gum categories depends on the degree of disturbance, the rarity and normal gum condition of the issue and other variables affecting quality. For example, stamps issued in tropical climates are expected to have some		
1935 TO DATE	Scott Value for “Unused”					

Covers

Minor nicks, short edge tears, flap tears and slight reduction at one side are normal conditions for 19th century envelopes. Folded letters should be expected to have at least one file fold. Light cleaning of covers and small mends along the edges are accepted forms of conservation. Unusual covers may have a common stamp with a slight crease or tiny tear. **These flaws exist in virtually all 19th century covers and are not always described. They are not grounds for return.**

Catalogue Values and Estimates

Unless otherwise noted, the currently available *Scott Catalogue* values are quoted in dollars with a decimal point. Other catalogues are often used for foreign countries or specialized areas and are referred to by their common name: *Stanley Gibbons* (SG), *Dietz*, *American Air Mail Catalogue* (AAMC), *Michel*, *Zumstein*, *Facit*, etc. Estimates are indicated with an "E." and reflect our conservative valuation in dollars. Reserves will never exceed the low end of the estimate range; they will sometimes exceed Scott Catalogue value for stamps in Extremely Fine condition.

Because of certain pricing inconsistencies in the *Scott Catalogue*—for example, blocks that have no gum, the absence of premiums for Mint N.H. items, etc.—we cannot guarantee the accuracy of values quoted for multiples, specialized items and collection lots. We generally try to be conservative, but buyers may not return a lot because of a discrepancy in catalogue value due to Scott pricing inconsistencies.

Symbols and Abbreviations (see chart above for gum symbols)

⊞	Block	E	Essay	pmk.	Postmark	No.	Scott Catalogue Number
⊞	Cover	P	Proof	cds	Circular Datestamp	hs	Handstamp
FC	Fancy Cancel	TC	Trial Color Proof	var.	Variety	ms.	Manuscript

Resources

siegelauctions.com



CATALOGUES AND PRICES REALIZED

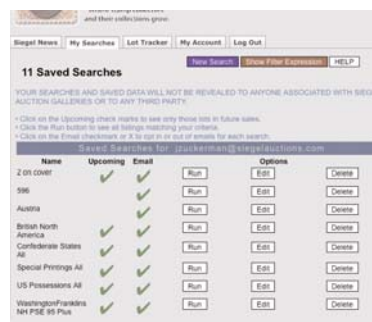
Images and descriptions for all current sale catalogues are available from our website, as well as all sales going back to 1992, our Rarities sales from 1964 and selected name sales.

POWER SEARCH™

Search by Scott number or keyword through all of the sales at our website. The best resource in philately for research.

MY SIEGEL™

Save your Power Searches as want lists. We will automatically notify you when a match is included in an upcoming sale, whether it's as broad as any Columbian issue, or as narrow as a 241 graded 98. The most powerful want list in philately.



LOT TRACKER™

Never miss another lot because you were away from your computer. Log into My Siegel™, then set up notifications to get texts and/or emails 10-30 lots before yours comes up (live bidding is still through Stamp Auction Network).

THE SIEGEL ENCYCLOPEDIA™

This feature of our website contains a wealth of information gleaned from decades of philatelic research by the dedicated philatelists at Siegel.

RARITIES CENSUS

The up-to-date census data for 19th and 20th century U.S. rarities are a valuable resource for buyers, sellers and researchers. Every recorded example of almost 40 different rare stamps is described and, in most cases, photographed.



EXHIBITS AND MOUNTED COLLECTIONS

Downloadable PDF files of some of the top exhibits ever formed. See how others collect and benefit from their original research.

VIDEO PRESENTATIONS

Downloadable video documentaries tell the stories of stamps and covers. This is the ideal way to introduce philately to others.

The Three-Cent 1851-57 Issues: An Overview

THE UBIQUITOUS 3¢ 1851-57 STAMP PAID THE BASIC LETTER RATE FOR A decade, beginning on July 1, 1851, and ending in 1861 when the Post Office Department demonetized circulating postage stamps to prevent the rebellious South from selling or exchanging its supplies.

Under Postmaster General Nathan K. Hall, the contract to print the 1851 Issue was awarded to the Philadelphia firm of Toppan, Carpenter, Casilear & Co. (Casilear retired in October 1854, but his name was included in plate imprints as late as 1857). To start, only the 1¢, 3¢ and 12¢ (and the General Issue Carrier stamps) were produced. A 10¢ stamp was added in 1855 to meet the new transcontinental rate, and a 5¢ stamp was added in 1856 for use on transatlantic mail. The firm's original six-year contract was extended to 1861, during which time stamps were perforated and three new denominations were issued (24¢, 30¢ and 90¢), for a total of eight different stamps under Toppan Carpenter's contract.

The 3¢ 1851-57 design depicts a bust of George Washington facing left, his hair tied back and his shoulders draped with a Roman toga. This engraved image of Washington was based on one of the sculptures by Jean-Antoine Houdon, a French neoclassical sculptor. Houdon's portrait sculpture of Washington was the result of an invitation by Benjamin Franklin to cross the Atlantic specifically to visit Mount Vernon, so that Washington could model for him. Washington sat for wet clay life models and a plaster life mask in 1785. These models served for many commissions of Washington and for images on numerous postage stamps.

THE 3-CENT 1851-57 PLATES

More than one billion 3¢ 1851-57 Issue stamps were produced from 29 engraved steel plates of 200 subjects. All 3¢ stamps were issued without perforations from 1851 through the end of 1856. In February 1857 the first 3¢ perforated stamps were distributed to seven cities on an experimental basis, and the government contract requiring perforations took effect on June 10, 1857.

As recently pointed out by Wade Saadi (*Chronicle* 227, August 2010), the basic 3¢ 1851 stamp is one of only five face-different 19th Century postage stamps designed with rectangular framelines. Saadi theorizes that the preference for ornamental borders was the result of the difficulty experienced in precisely aligning subjects on the plate. Misaligned entries are more noticeable on plates (and sheets) of stamps with rectangular framelines than those with ornamental borders.

The plates used to print 3¢ 1851 imperforate stamps are Plates "0" (unnumbered), 1 (Early, Intermediate, Late), 2 (Early, Late), 3, 4, 5 (Early, Late) and 6 through 8. All of the subjects on Plates 0 through 8 were entered from one (or possibly two) 3-relief transfer rolls. Perforations were applied to sheets of stamps printed from Plates 2L, 3, 4, 5L, 6, 7 and 8; therefore, varieties from these plates exist both imperforate and perforated. Plates numbered 9 through 28 (including the three states of Plates 10 and 11) were made from a 6-relief transfer roll, and these plates only produced stamps that were issued with perforations.

Imprints were added to the 3¢ plates after printing from Plate 1 had commenced. Plate 1 Early was the only plate put to press before imprints were added; therefore, it is possible to have Plate 1E sheet-margin positions without the imprint where it would later appear (see lots 3010-3012). Imprints were added to certain plates before numbers were engraved. The first plate used to print the 3¢ stamps did not receive its number until October 1851; therefore, it is possible to have imprint examples without the plate number where it would later appear (see lots 3013-3015). Plate 0 is the only 3¢ plate that was taken out of service before plate numbers were first used, hence its designation as plate "0."

THE 3-CENT 1851-57 TYPES

Starting with the 2008 edition of the Scott U.S. Specialized Catalogue, the 3¢ 1851-57 types were reclassified as follows:

Type I—outer frameline on all four sides; outer framelines at sides always recut, but **inner lines along tessellated lathework are not recut.**

Type I stamps:

Scott 10, Imperforate, Orange Brown (Plates 1E, 1i)

Scott 11, Imperforate, Dull Red shades (Plates 4, 6, 7, 8)

Scott 25, Perforated, Rose shades (Plates 4, 6, 7, 8)

Type II—outer framelines on all four sides; outer framelines at sides always recut and **inner lines along tessellated lathework are recut.**

Type II stamps:

Scott 10A, Imperforate, Orange Brown (Plates 1E, 1i, 2E, 5E, 0)

Scott 11A, Imperforate, Dull Red shades (Plates 1L, 2L, 3, 5L)

Scott 25A, Perforated, Rose shades (Plates 2L, 3, 5L)

Type III—no outer framelines at top or bottom; outer framelines at sides recut so as to be continuous from the top to bottom of plate. All Type III stamps were issued with perforations.

Type III stamps:

Scott 26, Perforated, Dull Red shades (Plates 9, 12-28)

Type IV—no outer framelines at top or bottom; outer framelines at sides recut individually on each subject and extend only to the top and bottom of the stamp design. Type IV stamps come only from Plates 10 and 11 (three states each), and these plates produced only Type IV stamps with perforations.

Type IV stamps:

Scott 26A, Perforated, Dull Red shades (Plates 10E, 10i, 10L, 11E, 11i, 11L)

The myriad transfer and recutting varieties found on the 3¢ 1851-57 plates were summarized in a very useful article, "The Three Cent Issue of 1851-1861: Condensed Plating Information," by William K. McDaniel (*Chronicle* 77, pages 13-22, available in digitized format at www.uspcs.org).

THE 3-CENT 1851-57 COLORS

The basic color of the 3¢ 1851-57 stamp was produced by a nearly incalculable number of ink mixtures over a ten-year period. Specialists have devoted considerable time and effort to the consistent classification of 3¢ 1851-57 shades. The Scott Catalogue lists many of these shade varieties and assigns major numbers (10 and 10A) to the 1851 Orange Brown, while the other imperforate stamp shades are listed under Scott 11 and 11A.

Jerry Wagshal was fascinated by the 3¢ 1851-57 shades and frequently corresponded with Dr. William Amonette, the leading authority on this subject. Many of the shades offered in this sale have been identified by Dr. Amonette. Specialists will find some of the most elusive 3¢ 1851-57 shade varieties in this sale, including examples of the Plate 1 Late Experimental Orange Brown, 1856 Orange Brown, Plum, Etruscan Red and Plate 10 Experimental Orange Brown.

SPECIAL NOTES ABOUT THE WAGSHAL SALES

We have made every effort to verify plating notes and shade classifications from past experts such as Chase, Card and Wagshal, and living experts such as Amonette. However, unless a stamp proves to be misclassified by Scott number, thus significantly affecting its value, no lot may be returned because the position or shade noted in the description is incorrect. Further, the presence of notes on the back of a stamp, block or cover is not grounds for return. It never has been, but certain stamp graders have marked down points for a notation on the back of a stamp. We have been assured that such notations will not reduce the points awarded to a stamp submitted for grading.

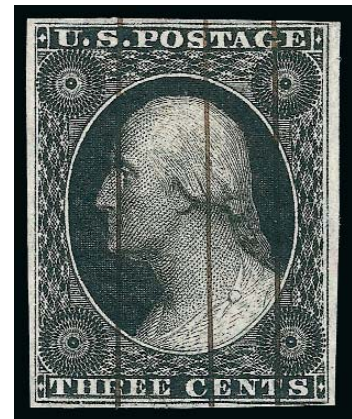
SESSION 3.1 (LOTS 3001-3071)
THURSDAY, OCTOBER 21, 2010, AT 10:30 A.M.

THE JEROME S. WAGSHAL COLLECTION OF
CLASSIC UNITED STATES STAMPS

THREE-CENT 1851-57 ISSUES

PROOFS

- 3001 TC **3c Black Trial Color Proof on Wove Paper (11TC5).** Margins all around, three vertical pen strokes neatly applied by printer, plated by Dr. Chase as Position 18R4
VERY FINE. THE BETTER OF ONLY TWO KNOWN EXAMPLES OF THE FINISHED 3-CENT DESIGN IN BLACK. A STRIKING RARITY.
Ex Brazer, Joyce and Piller. The Scott Retail value has not changed since this example was offered in our 1993 Piller sale 3,000.00



3001



3002

- 3002 P **3c Red, Ty. I, Plate Proof on India, Brush Stroke Obliteration (11P3).** Block of four, **sheet margin** at top, margins completely clear on other sides, rich color, slightly split crease in selvage well outside the top stamps, couple tiny India paper imperfections as normally found
VERY FINE. A SCARCE BLOCK OF FOUR FROM THE ORIGINAL PROOF SHEETS SENT IN 1854 FROM TOPPAN, CARPENTER & COMPANY TO GREAT BRITAIN FOR USE IN EARLY EXPERIMENTS TO PERFORATE UNITED STATES STAMPS.
In 1854 complete sheets of 200 3c India proofs from Plate 4 were sent by Toppan, Carpenter to Bemrose and Perkins Bacon in England for a perforating experiment. Each firm received left and right panes. All of the proofs were cancelled with brush strokes to prevent use as postage..... 5,000.00



3003EX

THE CARROLL CHASE AND DEVERE CARD
COMPLETE 3-CENT 1851 IMPERFORATE PLATE RECONSTRUCTION

3003 **The Carroll Chase-DeVere Card Complete 3c 1851 Issue Imperforate Plate Reconstruction (10-11A).** 2,600+ stamps mounted on stiff boards, each board with one-half pane of 50 stamps, representing **every position from all 13 plates** or states of plates that were used to print the 1851 3c stamps, including 1,000+ of Nos. 10 or 10A from Plates 1E, 1i, 2E, 5E and 0, 1,600+ of Nos. 11 or 11A from Plates 1L, 2L, 3, 4, 5L, 6, 7 and 8, every stamp selected for clarity of impression as well as margins and a cancel that allow certain identification of the position, some pen cancels as is expected and even desirable for a plating study

THE CELEBRATED CARROLL CHASE-DEVERE CARD 3-CENT 1851 IMPERFORATE PLATING STUDY. AN EXTRAORDINARY ACHIEVEMENT IN CLASSIC PHILATELY AND THE HIGHLIGHT OF THE WAGSHAL 3-CENT COLLECTION.

The unpublished article written by Mr. Wagshal and posted to our website tells the story of this plating study. It was initially completed by Dr. Chase and purchased from him by DeVere Card in the 1930's. Mr. Card is not widely known to today's philatelists but he was an exceptionally accomplished student of the 3c issues, regarded by many as even more skilled at establishing the position of an unplated 3c stamp than Dr. Chase himself. Mr. Card spent the next 40 years studying and improving on Dr. Chase's plating, confirming all positions, replacing stamps with better examples as he came across them, and at all times maintaining meticulous accuracy in designating the positions. Mr. Wagshal purchased the Card estate intact upon the owner's death approximately 30 years ago, and except for a few minor improvements, this study is as it was when Mr. Card passed away.

Dr. Chase succinctly summarized the condition standard to be applied to platings when he stated that, "stamps showing fine impressions, good margins and light cancellations are much easier to plate than those not in good condition." A small fault in a stamp that does not impinge on the plating characteristics does not disqualify it from a good plating study. The architects of this study sought to meet those condition standards, and succeeded brilliantly. While some faults will be found, nearly all stamps have a sharper than typical impression, four margins and an unobtrusive cancel.

Complete 3c plate reconstructions are extremely rare. Large partly-finished studies come to market occasionally, but often these are riddled with errors. This is an extraordinary opportunity to acquire a complete study assembled and continued over more than 70 years by three of the most noteworthy specialists of the 3c issues.

Accompanied by the Wagshal article and a multi-page introduction to the plating. Scott Retail with no premium for the various plate and recut varieties and not counting the extra stamps from pairs is \$180,400.00.....**(Photo Ex)** E. 40,000-50,000



3004EX

3004

The DeVere Card Exhibit of 3c 1851 Imperforate Issues. An attractive collection with more than 250 items mounted on exhibit pages, includes off-cover and on-cover material of Nos. 10-10A and 11-11A, highlights abound, including No. 10A with **red Boston "Paid"** on piece, selection of large and small Boston "Paid" cancels, stampless cancels, patent cancel, postal clerk "decorated" stamps, colored cancels, numerous other better cancels, **Newbern N.C. roulette** (fewer than ten singles recorded, three of the singles sold in our Hulme sale for \$1,000 each), Oct. 4, 1851 usage on cover from Plate 1L (which would predate the Scott listed EDU by two days), No. 11 original-gum imprint strip of 5 (faults), "Way" and "Steam" markings, missent and forwarded covers, corner cards, an abundance of plate and recut varieties including examples of triple transfers, plate cracks, impression varieties, "Three Rows" positions showing the various dramatic recuts from Plate 3 Left, a small study of plate spacing varieties showing straddle-pane margins — some with centerlines, sheet margins and imprints, pre-printing paper creases, inking varieties, stitch watermark, many others, most items are described with text on the pages, the condition almost universally nice with fresh stamps and covers and beautifully struck markings

A WONDERFUL OPPORTUNITY TO ACQUIRE AN OUTSTANDING NEARLY INTACT COLLECTION FROM ONE OF THE NOTED STUDENTS OF THE 3-CENT 1851 ISSUE.

This collection is being offered nearly intact as Mr. Wagshal acquired it from the estate of Mr. Card approximately 30 years ago. Only a few rare items have been removed and offered as separate lots. Mr. Card used varieties and covers to tell the story of the 3c 1851 Issue without sacrificing aesthetics or condition(Photo Ex) E. 5,000-7,500

- 3005 **3c Orange Brown, Ty. I & II, Part Plating Study (10-10A).** Approximately 380 stamps arranged by plate row on stock sheets, Plates 1E, 1i, 2E, 5E and 0, greatest strength is in Plate 2E, many with four margins and attractive cancels, small amount of duplication and some with pen cancels, a few faults to be expected from this large a study, overall condition is better than often seen, a valuable assemblage representing more than 35% of all possible positions from these plates, conservative Scott Retail counting all stamps from Plates 1E and 1i as the cheaper No. 10A approximately \$57,000.00*Not illustrated* E. 5,000-7,500
- 3006 **3c Orange Brown, Ty. I & II, Off-Cover Balance (10-10A).** More than 125 stamps arranged on stock sheets, many with plating notations on back, vast majority with handstamp cancels, several quite nice incl. blue, red, magenta, greenish, "Steam Boat", "Paid", others, some shade variation, few faults but most are sound and many are Very Fine, worthwhile group, Scott Retail counting all stamps as No. 10A approximately \$18,750.00*Not illustrated* E. 2,000-3,000
- 3007 **3c 1851 Issue, Part Plating Study (11-11A).** A colossal holding of more than 1,300 plated stamps, appears to be complete for Plates 3 (including a complete reconstruction of the "Three Rows" positions from the left pane) and 4, otherwise ranges between a smattering to a decent percentage of the positions for Plates 1L, 2L, 3, 5L, 6, 7 and 8, some duplication as well, obviously a huge range of available plate varieties and shades, while pen cancels will be found as usual in plating studies, many more attractive cancellations are present as well, some of this material was the working stock that DeVere Card used and removed in making his improvements to the Dr. Chase complete imperforate plating (see lot 3003), a valuable and useful group for the specialist, Scott Retail approximately \$19,500.00*Not illustrated* E. 2,000-3,000
- 3008 **3c 1851 Issue, Color Study (10-11A).** Approximately 200 stamps, the bulk consisting of the **DeVere Card 3c Imperforate Color Study Exhibit**, mounted on pages with explanatory text, more than 25 of the 150 stamps in the exhibit are Nos. 10 or 10A, incl. five identified as **Copper Brown** (Scott Retail \$1,250.00 each), two Yellowish Orange Brown, Bright Orange Brown, Pinkish, Brownish Orange, others, for Nos. 11 and 11A examples identified by owner as Plate 1L and Plate 2L Experimental Orange Brown, **five identified as Plum** (Scott Retail \$2,000.00 each), Dull Rose Red, Dull Red, Purple Claret and many more, lot also includes approximately 50 stamps compiled by Mr. Wagshal for interesting color varieties, incl. ten or so of Nos. 10 or 10A, perforated examples of Experimental Orange Brown, a few covers, condition generally better than might be expected for a group of this nature with many sound and attractive stamps, no doubt a few colors misidentified
- A WONDERFUL ASSEMBLAGE WHICH VIVIDLY DEMONSTRATES THE VAST COLOR SPECTRUM FOUND ON THE 3-CENT 1851-57 ISSUE.
- Many of the DeVere Card stamps are ex Chase. Several stamps accompanied by notes from Dr. Amonette*Not illustrated* E. 5,000-7,500



3009EX

- 3009 **3c 1851 Issue, Color Study by Year (10-11A).** Ten index cards with mounted stamps organized by year, 1851 cards contain 12 singles of No. 10 or 10A, shades include the standard Orange Brown as well as Yellowish, Reddish and Brownish shades, one on **Part India** paper (Scott Retail \$1,250.00), also late 1851 Plate 1L Experimental Orange Brown, 1852 cards with 17 stamps showing early and late Clarets, range of Brownish Carmine from pale to deep (incl. straddle-pane margin pair with centerline), 1853-55 cards with 18 stamps ranging from Dull Red to shades of Dull Rose Red and pale to deep Orange Red, 1856 cards with 16 stamps showing range of Yellowish Rose Red, Brownish Carmine, as well as an **1856 Orange Brown and 1856 Pinkish** (Orange Brown mounted on an 1851 card), 1857 cards with 16 stamps and one cover showing the range of Clarets, finally an 1857 card with Dull Rose Brown, Dull Yellow Brown and the rare **Plum** (Scott Retail \$2,000.00), a few pen-cancelled but overall attractive four-margin stamps prevail, a valuable and Very Fine color chart, several stamps accompanied by notes from the premier color specialist of the Issue, Dr. Amonette**(Photo Ex)** E. 2,000-3,000

1851 3-CENT ORANGE BROWN
 EXAMPLES SHOWING ABSENCE OF IMPRINT AND PLATE NUMBER

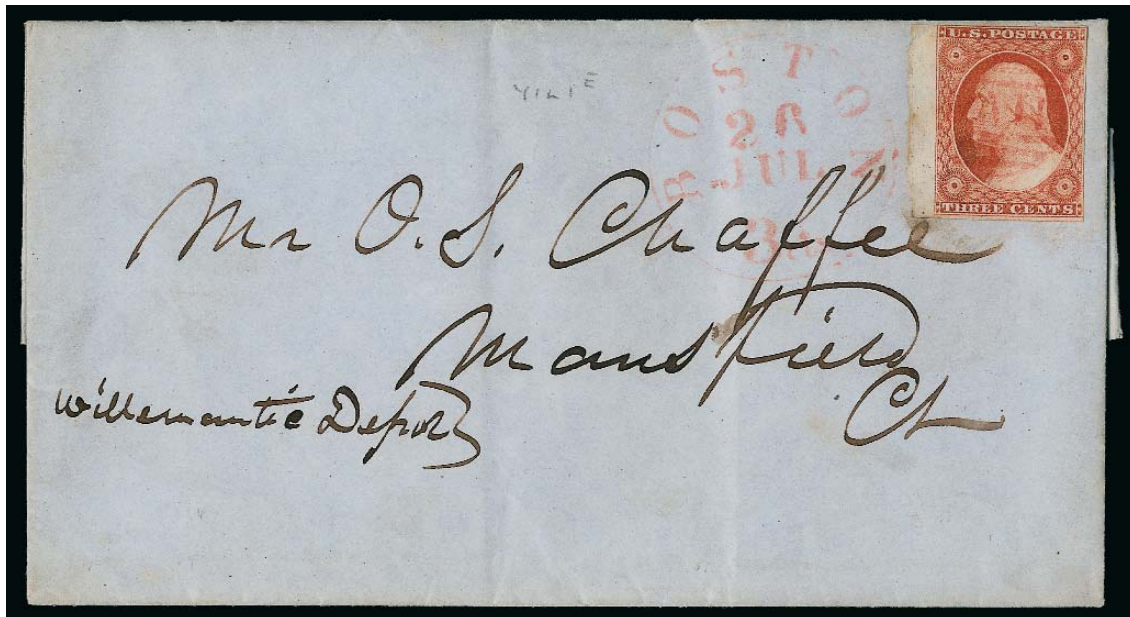


3010



3011EX

- 3010 **3c Orange Brown, Ty. I (10).** Position 40R1E, large margins except barely touching at bottom, **wide sheet margin at right proving the absence of an imprint on this state of the plate**, creasing in margin and scattered toned spots, Fine appearance, described as "extremely rare" by Chase, with a signed note by him accompanying the stamp, ex Amonette..... E. 300-400
- 3011 **3c Orange Brown, Ty. II (10A).** Positions 61L and 50R1E, each with **sheet margin proving no imprint existed in this state**, small faults, rare positions, ex Amonette, with Chase notes.....(Photo Ex) E. 300-400



3012EX

- 3012 ☒ **3c Orange Brown, Ty. I, II (10-10A).** Two covers, Positions 41L1E and 60R1E, each with **sheet margin demonstrating the absence of an imprint on this plate in the earliest state**, first used July 26, 1851 from Boston with small red "Paid" in grid, other used July 18 from Wrightsville Pa., last with heavy file crease, rare pair of covers made even more desirable by the red Boston "Paid" on the first, a note by Dr. Chase on the first cover states only five such stamps known, this being the only one known on cover; the note on the latter cover states one of two known, both ex Amonette.....(Photo Ex) E. 500-750



3013

- 3013 **3c Orange Brown, Ty. II (10A).** Position 50R1i, with **part imprint and no plate number**, mostly large to huge margins except touching at top, rich color, red grid cancel, lightened stain at far right edge, Fine appearance, accompanied an Extremely Fine example of 3c Brownish Carmine (11A) from Position 50R1L, showing the addition of "1" in the late state of the plate, ex Amonette E. 400-500



3014

- 3014 **3c Orange Brown, Ty. II (10A).** Position 51L2E showing **imprint at left and no plate number**, full to huge margins except touched at top right corner, accompanied by the same position in the late state of the plate with "No. 2", Fine and very scarce E. 400-500



3015

- 3015 **3c Orange Brown, Ty. II (10A).** Two, Positions 51L5E and 60R0, with **imprints at left and right respectively and no plate numbers**, margins huge to just touching, first with circular grid, second with pen cancel, both with small faults, Fine appearance and scarce E. 300-400

ORANGE BROWN — IMPRINT EXAMPLES



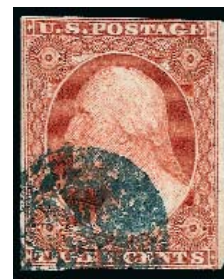
- 3016 **3c Orange Brown, Ty. II (10A).** Six stamps, Positions 31, 41 and 51L from Plates 0 and 1i, each set of three stamps partially **reconstructs the Toppan Carpenter imprint**, with only a small part of the end of "Boston" and all of "& Cincinnati" missing, margins full to cutting on the non-selvage sides, all but one with handstamp cancel, small defects, still a Fine appearing and very scarce group, Scott Retail with no premium for the imprints.....(**Photo Ex**) 900.00
- 3017 **3c Orange Brown, Ty. II (10A).** Two, Positions 50R0 and 31L2E, both with **part imprint**, first with full to huge margins, grid cancel, tiny corner crease in top right margin and tiny thin speck in top left corner, Very Fine appearance, second touched to barely in other sides, creased near bottom, Fine appearance, scarce positions, ex Amonette.....(**Photo Ex**) E. 300-400
- 3018 **3c Orange Brown, Ty. II (10A).** Two, Positions 50R5E and 60R5E, **each with part imprint**, huge margins to barely in, first with faint diagonal crease entirely in margin, Very Fine plating pair, ex Amonette..... E. 400-500
- 3019 **3c Orange Brown, Ty. II (10A).** Positions 41-43L0, horizontal strip of three with 10.5mm **sheet margin and part imprint at left**, large margins to slightly in other sides, part of red circular datestamp and pen cancels, small faults, an attractive Plate 0 position piece, ex Piller..... 1,250.00
- 3020 ☒ **3c Orange Brown, Ty. II (10A).** Position 50R5E with **part imprint at right**, tied by bold "New-York Sep. 25" circular datestamp on small cover to Newport R.I., some very minor light toning in margins of stamp and left side of cover, overall Very Fine, an attractive and scarce Orange Brown imprint single on cover..... E. 400-500
- 3021 **3c Orange Brown, Ty. II (10A).** Eight singles and horizontal pair, seven with **straddle-pane margins**, one with top sheet margin, one with corner margins, margins mostly clear to large, only a single pen cancel in the group, couple small faults, Fine-Very Fine appearance, Scott Retail with no premium for the positions.....(**Photo Ex**) 1,750.00



3022



3023



3024

- 3022 **3c Orange Brown, Ty. II (10A).** Position 69R1E, a **unique recut position** showing a discontinuous recut of the upper left diamond block and triangle and also a recut inner line at right only, large to clear margins, bright color, circular grid cancel, Very Fine, Plate 1 Early produced the fewest number of impressions among the seven plates or states of plates that produced Nos. 10 and 10A, making this the rarest recut position of the Orange Brown imperforate stamps E. 300-400
- 3023 **3c Orange Brown, Ty. II (10A).** Position 69R1E, a **unique recut position** showing a discontinuous recut of the upper left diamond block and triangle and also a recut inner line at right only, bright color, perfect socked-on-the-nose small Boston "Paid" cancel, tiny corner crease visible in fluid is of little consequence, Very Fine appearance, Plate 1 Early produced the fewest number of impressions among the seven plates or states of plates that produced Nos. 10 and 10A, making this the rarest recut position of the Orange Brown imperforate stamps..... E. 200-300
- 3024 **3c Orange Brown, Ty. II (10A).** Position 45R2E, a **unique recut position** with top frame-line joining the corner of the upper left diamond block, margins large to just in at top right, blue cork cancel, Fine, rare position 1,000.00



3026

3025

3027

- 3025 ☒ **3c Orange Brown, Ty. II (10A var).** Positions 47-48L0, horizontal pair, left stamp with **five lines recut upper left triangle**, tied by perfect strike of "San Francisco Cal 1 Jun." circular datestamp on brown cover to New Bedford Mass., cover with some minor edgewear, Very Fine, a scarce example of this distinctive recut variety on cover, even more attractive as a 6c rate from California to Massachusetts, Scott Retail as singles 1,150.00
- 3026 ☒ **3c Orange Brown, Ty. II (10A).** Position 67L0 with **two lines recut upper left and one line recut lower right**, bright color, margins clear to barely touching at bottom left, cancelled by **blue italic "Paid"** in grid, matching "E. Winthrop Me. Nov. 28" circular datestamp with date in manuscript, on folded letter to Middleborough Mass., Very Fine and choice, a fresh cover with a scarce town and an unusual combination of recuts — found on only four positions of the Orange Brown plates, ex Newbury and Oakley E. 400-500
- 3027 ☒ **3c Orange Brown, Dull Red, Ty. II (10A, 11A).** Four covers, each from **Position 69L5 with dot in lower right diamond**, first two No. 10A from early state of plate, one a bootlegged cover from Paris, last two No. 11A from late state of plate, one is an Extremely Fine embossed lady's cover, margins slightly cutting in on the other No. 11A, some minor cover edgewear on a couple, overall a Very Fine group of this prominent plate position which is the only plate variety named by position in the main listing for No. 10A..... E. 400-500



- 3028 **3c Orange Brown, Ty. II (10A).** Position 99L2E, rich color and beautiful early impression, large margins to clear, red “Ju 1(4)” town datestamp, most likely the **earliest known usage from Plate 2 Early**, while it cannot be absolutely proven that this is a July 1851 usage, June 1852 is very unlikely as the detailed impression is free from wear which is characteristic of the earliest impressions from Plate 2 Early, comparison of this stamp with the Chase photo of the same position shows considerable wear on the latter, Scott lists July 23, 1851 as the EDU for Plate 2 Early, with 1997 P.F. certificate and accompanied by a note from Dr. Amonette 150.00
- 3029 **3c Deep Orange Brown, Ty. II (10A).** Position 46L5E, vivid color, ample margins all around, bold strikes of both **red and black** small Boston “Paid” cancels, striking and Very Fine, ex Sheriff, with 1986 P.F. certificate..... 157.50
- 3030 **3c Orange Brown, Ty. II (10A).** Position 92L5E, large to clear margins with **sheet margin** at bottom, neat strike of **red** circular grid cancel, Very Fine 157.50
- 3031 **3c Orange Brown, Ty. II (10A).** Bright color, large margins to barely touching at top left, light strike of **red** “Way” cancel, fresh and Very Fine..... 160.00
- 3032 **3c Orange Brown, Ty. I, Ty. II (10-10A).** 16 stamps, 14 with Boston “Paid” handstamp (two the large variety) and two stamps with straightline “Paid” (one blue), rich colors, most with four margins, couple inconsequential small faults, Fine-Very Fine group with almost universally clear strikes, Scott Retail as all No. 10A.....**(Photo Ex)** 2,400.00
- 3033 **3c Orange Brown, Ty. II (10A).** Positions 85-86L0, horizontal pair, rich color, large margins to just touched at top, bold San Francisco circular datestamp, Fine-Very Fine, a pretty pair 550.00



- 3034 **3c Orange Brown, Ty. I (10).** Positions 84-85/94-95R1i, block of four, vivid color, large to huge margins all around, light strikes of Washington D.C. circular datestamp, small repaired edge tear at left of top left stamp and inconsequential tiny thin speck between bottom two stamps

EXTREMELY FINE APPEARANCE. A SPECTACULAR AND EXCEPTIONALLY RARE USED BLOCK OF THE 1851 3-CENT ORANGE BROWN.

Despite the small repair this is still likely the finest used block known. The few other examples contained in our records are either faulty to some degree, have margins that cut in or both. This is the first we have offered in any condition since 2001.

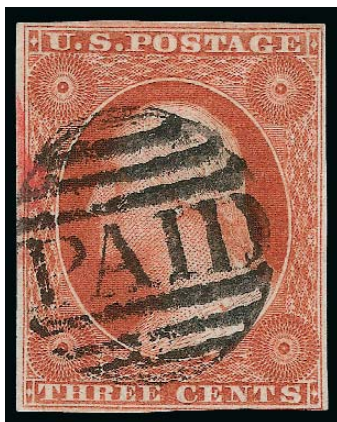
Ex Grunin and Klein. With 1989 P.F. certificate. Listed but unpriced in Scott..... E. 2,000-3,000

ORANGE BROWN SHADES



- 3035 ☒ **3c Coper Brown, Ty. II (10A var).** Beautiful rich color, margins large to clear all around, cancelled by **blue italic "Paid"** in grid and tied by matching "E. Winthrop Me. Nov. 6" circular datestamp with date in manuscript, on small embossed lady's cover to Foxborough Mass., minor back wear, Very Fine and choice, a beautiful cover with this scarce shade, ex Hugh J. Baker and Oakley, Scott Retail as single off-cover 1,250.00
- 3036 ☒ **3c Bright Orange Brown, Ty. I (10 var).** Position 74R1E, brilliant color and large margins, tied by boldly struck "New-York Sep. 8" (1851) circular datestamp on cover to Charlestown Mass., docketed at left "Sep. 1851", cover with minor corner nicks, Very Fine example of this vibrant shade, ex Amonette, Scott Retail as normal color 275.00
- 3037 ☒ **3c Yellowish Orange Brown, Ty. I (10 var).** Position 51R1E, four margins, tied by blue "Philadelphia Pa. Sep. 3" (1851) circular datestamp on folded letter to Academia Pa., some minor toning on cover and in one spot on stamp, otherwise Very Fine, ex Amonette, also incl. Position 74R1E, off-cover single in same shade, Very Fine, Scott Retail as normal color..... (Photo Ex) 475.00
- 3038 ☒ **3c Orange Brown, Ty. II (10A var).** Four covers and three stamps, picked to demonstrate some of the more intense shade varieties of this issue, incl. cover and single of **Intense Orange Brown**, cover and single of **Deep Orange Brown**, pair on cover and single of **Copperish Orange Brown**, and cover approaching Deep Orange Brown, red and blue circular datestamps incl. Pawtucket R.I., Romney N.Y. and Chicago, only one single with a pen cancel, Very Fine and an excellent group for reference, ex Amonette.....(Photo Ex) E. 500-750

ORANGE BROWN ON PART INDIA PAPER



3039EX



3040

- 3039 **3c Orange Brown, Ty. II, Part India Paper (10A var).** Position 56L1E, margins ample to clear, rich color, neat strike of small "Paid" grid and trace of red Boston integral-rate circular datestamp at left, accompanied by small piece from which it originated as well as two additional stamps on very thin but not Part India paper for comparison (10A, 11A), Very Fine, scarce variety seen only from Plate 1E, each with a note from Dr. Amonette(Photo Ex) 1,415.00
- 3040 **3c Orange Brown, Ty. II, Part India Paper (10A var).** Plate 1E, margins clear to just touched, rich color, socked-on-the-nose small Boston "Paid" grid, accompanied by folded letter from which it originated, Very Fine, scarce variety seen only from Plate 1E..... 1,250.00



3041

- 3041 ☒ **3c Orange Brown, Ty. II, Part India Paper (10A var).** Position 4L1E, large margins to just clear, bright color, socked-on-the-nose small Boston "Paid" grid, lifted to confirm the paper and hinged back on folded letter from which it originated, "Boston 3cts 2 Aug." integral-rate circular datestamp, Very Fine, scarce variety seen only from Plate 1E..... 1,250.00

FIRST DAY OF ISSUE
JULY 1, 1851



3042

- 3042 ☒ **3c Orange Brown, Ty. I (10).** Position 1R1E, margins clear to just touched at left, tied by circular grid, **magenta "Hartford Ct. Jul. 1" (1851) first day of issue** circular datestamp on buff cover to Uxbridge Mass., docketed at left "*Hartford July 1, 1851*", small corner cover stain gently cleaned, fresh and pristine

VERY FINE AND CHOICE. A BEAUTIFUL AND RARE FIRST DAY COVER OF THE 1851 3-CENT ORANGE BROWN USED FROM HARTFORD.

In his census in the 1851 Sesquicentennial book, Wilson Hulme records a total of 43 covers used on July 1, 1851, which is the first day they were valid for postage, including four from Hartford. This cover (3c #4 in the Hulme census) is the only example from Hartford with the stamp tied.

Ex Simpson, Shaughnessy and J. David Baker. With 1978 P.F. certificate. Scott Retail for first day cover \$12,500.00 E. 7,500-10,000

ORANGE BROWN — COVERS



- 3043 ☒ **3c Orange Brown, Ty. I, II (10-10A).** Seven covers, each a **July 1851** usage, incl. “**Rock Bottom Mass**” unusual circular datestamp with manuscript date (Simpson-Alexander Rarity 7), range of colored circular datestamps incl. **magenta** from Hartford, red from Richmond and New York, blue from Lowell Mass. and Philadelphia, also pair paying 6c rate from San Francisco to Wisconsin on rebacked front with corner card for Placer Times, Fine-Very Fine group of first-month usages, most are quite attractive.....(Photo Ex) E. 750-1,000
- 3044 ☒ **3c Orange Brown, Ty. II (10A).** Position 31R2E, beautiful deep color, large to clear margins, perfect strike of **blue** “**Water Town N.Y. Sep. 27**” circular datestamp on 1851 folded letter to Pierrepont Manor N.Y., fresh and Extremely Fine..... 210.00
- 3045 **3c Orange Brown, Ty. I (10).** Position 18R1i, pen-cancelled, affixed to rebacked cover front only and folded as a full cover, clear strike of “**LEO N.C.**” **heart-shaped fancy town hand-stamp** with “*Nov. 3*” pen date, stamp with some stray adhesive from the rebacking, Very Fine strike and extremely rare, ex Beals, this is the Simpson-Alexander listing example, which is rated as Rarity 10 (unique), though we know of one other example E. 500-750
- 3046 ☒ **3c Orange Brown, Ty. II (10A).** Position 93R2E, clear margins, rich color, cancelled by small **green** grid, matching “**Columbia Va. 29 Nov.**” circular datestamp on small ornate lady’s cover to Gravel Hill Va., some inconsequential light cover staining, overall Very Fine, a beautiful cover 435.00
- 3047 ☒ **3c Orange Brown, Ty. I (10).** Position 57R1E, large margins to just touching at upper right, tied by **green** circular grid with matching “**Lancaster Pa. Jul. 14**” (1851) circular datestamp on Lancaster Bank pre-printed notice to Columbia Pa., cover gently cleaned, file folds clear of stamp, Very Fine, choice first-month usage with green markings..... 375.00
- 3048 ☒ **3c Orange Brown, Ty. II (10A).** Deep rich color, margins clear to just in at top left, tied by **green** grid, with matching “**Washington O. Oct. 31**” circular datestamp on cover to Hendrysburgh O., fresh and Very Fine, with 1987 P.F. certificate 375.00



- 3049 ☒ **3c Orange Brown, Ty. I (10).** Brilliant color, large margins to clear at top left, tied by red criss-crossed circular grid with matching "Skowhegan Me. Sep 19" circular datestamp on folded letter to Dartmouth College, Sep. 18, 1851 docketing on back, file fold well clear of stamp, Very Fine, an attractive cover from a scarce Maine town, this was sent five years before the railroad reached Skowhegan in 1856..... E. 300-400
- 3050 ☒ **3c Orange Brown, Ty. I (10).** Ample to large margins, rich color, tied by perfect strike of red "Lancaster Pa. Oct. 10" (1851) circular datestamp, back of cover with hole and part of back-flap missing, front is Extremely Fine with a beautiful stamp and strike, ex Grunin ... 275.00
- 3051 ☒ **3c Orange Brown, Ty. II (10A).** Margins clear to slightly in, tied by unusual blue 6-bar open grid cancel, matching "Mic. Central R.R. Mic. Jul. 18" route agent datestamp on brown cover to Howell Mich., enclosure datelined "New Buffalo July 16th, 1851 Wed. Eve", gum soaks on stamp, otherwise Extremely Fine strike and cover, ex Jarrett, illustrated in Simpson-Alexander on p. 168..... E. 300-400
- 3052 ☒ **3c Orange Brown, Ty. II (10A).** Vivid color, huge margins to clear incl. part of adjoining stamp at top, tied by multiple strikes of red circular grid and by matching "N. York & Phila. R.R. Nov. 10" route agent datestamp on 1851 folded letter to New Orleans, receipt docketing on front, file fold well clear of stamp, fresh and Very Fine..... E. 200-300
- 3053 ☒ **3c Orange Brown, Ty. II (10A).** Position 77LIE, cancelled by blue circular grid, matching "Philadelphia Pa. Jul. 18" circular datestamp with blue "1" double rimmed octagonal hand-stamp on folded letter to street address in Philadelphia, datelined "Duncannon, July 18, 1851", stamp with small margin nick, otherwise Very Fine, interesting usage mailed from outside the city proper and assessed the 1c carrier fee from the mails..... E. 200-300

- SIEGEL AUCTION GALLERIES



- 3060 ☒ **3c Orange Brown, Ty. I (10).** Margins ample to clear, tied by bold strike of **Mobile "Steam 5"** double-oval handstamp on folded letter to Mobile, datelined "*Gainesville Jany 22d - 1852*", light file fold well clear of stamp which has some gum soaks, otherwise Very Fine, scarce marking prepared for use on stampless letters but occasionally found on stamped letters E. 300-400
- 3061 ☒ **3c Orange Brown, Ty. II (10A).** Position 92R2E, margins all around to just touching at lower right, rich color, cancelled by bold strike of **blue "Way 6"** in circle on Sep. 6, 1851 folded letter from Richmond to Lynchburg, cover with central vertical file fold, Very Fine, also incl. single of No. 11A, Position 41L2L, on piece with full strike of "**Way 6**" in black, this marking for the 5c collect fee plus 1c way fee was originally applied to stampless covers and was obsolete when struck on stamped covers such as this, it was applied to mail travelling on the James River & Kanawha Canal (Photo Ex) E. 300-400
- 3062 ☒ **3c Orange Brown, Ty. II (10A).** Rich color, large margins to just clear, tied by "**Doakes Vile Ark. Jul. 13**" **Choctaw Nation** double-circle datestamp on 1852 folded letter to New York, letter included a draft which was torn out, remaining contents refer to the draft and how it was to be applied, central file fold clear of stamp, Very Fine, the community of Doakesville was once the largest town in the Choctaw Nation and flourished from the 1830s until shortly after the Civil War, it served as the Choctaw National Capital from 1850 until 1863, and is where General Stand Watie became the last Confederate General to surrender, in June of 1865 (<http://www.ou.edu/cas/archsur/counties/choctaw.htm>) E. 400-500
- 3063 ☒ **3c Orange Brown, Ty. II (10A).** Four margins, bright color, tied by "**Sacramento City Cal. 9 Sep.**" circular datestamp, with choice strike of "**Cram Rogers & Cos. Shasta Express**" blue double-line oval handstamp on brown cover to Shasta Cal., cover with small stain and tear in corner, still Very Fine, scarce express, ex Piller E. 200-300
- 3064 ☒ **3c Orange Brown, Ty. II (10A).** Positions 46-47L1i, horizontal pair, large margins to just in at bottom, tied by bold strike of **blue "Paid 6"** in double-line oval, matching "**Marysville Cal Apr. 17**" circular datestamp on buff cover paying the 6c over 3,000 mile rate to Providence, receipt docketing on back, couple inconsequential margin nicks in pair, Extremely Fine, an outstanding and extremely rare example of the Marysville "**Paid 6**" handstamp on a transcontinental cover, Simpson-Alexander Rarity 10 E. 1,000-1,500



3065

- 3065 ☒ **3c Orange Brown, Ty. II (10A).** Two strips of three, one a left sheet-margin strip, deep rich color, both tied by red circular grids, matching “U.S. Express Mail N.Y. N York 19 Dec.” route agent’s circular datestamp on folded cover to Boston, manuscript “Paid” notation and docketed on back “New York 19th Dec. 1851 Clary & Co”, file folds thru both strips and inconsequential small nicks in sheet margin of top strip and in bottom margin of bottom strip

A SPECTACULAR SIX-TIMES RATE NEW YORK U.S. EXPRESS MAIL COVER TO BOSTON, FRANKED WITH TWO STRIPS OF THE 1851 3-CENT ORANGE BROWN.

While pairs of the 3c Orange Brown on cover are sometimes encountered, strips of three or larger are rare, particularly paying a domestic rate. The census of 3c 1851-57 stamps paying multiple domestic rates compiled by William K. McDaniel and published in the 1851 Sesquicentennial book contains only two examples bearing multiples of No. 10 or 10A. Both of these examples are franked with three pairs paying a multiple of the over-3,000 miles rate. This cover does not appear in the census. This is the largest on-cover franking we have offered since the strip of six and pair on cover to Liverpool in our 1998 Sevenoaks sale E. 2,000-3,000



- 3066 ☒ **3c Orange Brown, Ty. I, II (10-10A).** 24 covers, each with a different **colored circular datestamp**, many also with colored grids, incl. New Orleans, Chicago, Boston, Louisville, Worcester, Fredericksburg, Cincinnati, Beloit, Utica oval, many others, stamps are mostly four margin with good color, a number of covers with content, nearly all Very Fine, attractive and worthwhile group, Scott Retail as all No. 10A more than \$5,000.00**(Photo Ex)** E. 1,500-2,000
- 3067 ☒ **3c Orange Brown, Ty. I, II (10-10A).** Nine covers, each selected for four margin stamps with good color and a neat grid or circular datestamp cancel, range of originations incl. Pottsville Pa. with fancy "Due 3" in circle, Boston, New Orleans, Meriden Conn., Buffalo, Charlestown Va., several with colored cancels, few small cover faults, stamps are Very Fine, nice group**(Photo Ex)** E. 750-1,000
- 3068 ☒ **3c 1851-57 Issues, Unusual Forwarded Usages (10A, 11A, 25, 26).** Four covers, each demonstrating an unusual forwarded usage, first with two No. 11A, twice forwarded and struck with **three different colored circular datestamps**, stamps pay the original postage and the first forwarding, "Paid 3" in arc handstamp indicates cash payment for second forwarding, second cover with single No. 10A used to pay the forwarding postage after cash paid the original postage (usually seen the other way around), third cover with single No. 11A (Position 92L2L, triple transfer) used to pay the forwarding postage after the letter was originally sent unpaid, "5" in circle handstamp, last cover bears both a single **No. 26** and a single **No. 25** for forwarding postage, few small cover flaws, overall a fascinating and scarce group**(Photo Ex)** E. 400-500
- 3069 ☒ **3c 1851 Issue, Missent and Forwarded Markings (10A-11A).** Ten covers, two with Orange Brown stamps, nice variety of straightline and circular markings, incl. "Missent & Forwarded" straightline on cover from Boston to Augusta Illinois, missent to Augusta Me., writing on back of cover identifies the stamp as **Part India paper**, stamp with faults (we did not lift the stamp to confirm the paper), also incl. several covers with "New-Haven Conn. Mis/Sent" circular handstamp, other straightline Missents, overall Fine-Very Fine, interesting group**(Photo Ex)** E. 500-750
- 3070 ☒ **3c Orange Brown, Ty. I, II, Cover Balance (10-10A).** 68 covers, many better usages incl. Harrison Square double-circle datestamp with fancy "MS" (light strike), pair used from Nevada City Cal. to Ohio, July 1851 usages, triple transfer (Scott Retail \$450.00), bold numerals, variety of colored circular datestamps, many others, some faults to be expected but many four-margin stamps, overall Fine-Very Fine, Scott Retail as all No. 10A more than \$14,000.00 ..**(Photo Ex)** E. 2,000-3,000
- 3071 ☒ **3c Orange Brown, Ty. I, II, Cover Balance (10-10A).** 56 covers, wide variety of interesting usages incl. circular datestamps with manuscript dates, late uses, forwarded, New Year's date, colored circular datestamps (one in brown), several plate varieties, incl. Position 20R2E (only position on plate with 2 lines recut upper left and one line recut lower right), double transfer on forwarded cover, triple transfers, corner margin copy, others, only a few pen cancels, condition better than usually found with most Very Fine, a few Extremely Fine, Scott Retail as all No. 10A more than \$11,000.00**(Photo Ex)** E. 2,000-3,000

END OF SESSION 3.1

Live Internet Bidding at Siegel Auctions

BIDDING FROM YOUR COMPUTER LETS YOU BE PART OF THE LIVE AUCTION FROM ANYWHERE IN THE WORLD!

There's NO SUBSTITUTE for following the auction in real time.
Live Internet Bidding lets you bid and buy as though you were right there in the saleroom.
And it's easy.

This step-by-step guide will instruct you how to register, set your browser and use the bidding interface.

Start by following the simple steps to become a registered Live Internet Bidder.
Once you've been approved for bidding, you can listen to the auction and place bids with the click of a mouse.

Registering with STAMP AUCTION NETWORK & SIEGEL AUCTION GALLERIES

Live Internet Bidding is managed by Stamp Auction Network (SAN).
To bid, you must be registered and approved by *both* SAN and Siegel.
To decide what you need to do, choose the description below that best fits you.



I've already registered with SAN and have been approved by Siegel for internet bidding.

Live Internet Bidding works by allowing registered bidders to observe and place bids.

Live Internet Bidding will work with any browser on both PC and Mac operating systems.

Before bidding by internet for the first time, we recommend finding a sale in progress and listening to the public broadcast or logging in as a registered bidder. This will help you develop a feel for the sale tempo and bidding interface.

I'm a Siegel client, but I'm not registered with SAN.
Go to stampauctionnetwork.com/siegel and click on "Register" at the top. Check the box for Robert A. Siegel Auction Galleries (under "R") and submit the form, indicating you are a Siegel client. Once registered at SAN, you're ready for internet bidding.

Log on to the auction at stampauctionnetwork.com/siegel.

You can also log on at siegelauctions.com

When you're logged on as a Live Internet Bidder, the bidding interface shows a photo and description of the lot, the current bid (and your bidding status), options for placing competitive bids and buttons with bid increments.

- After you click on a bid amount, the auctioneer is immediately notified of your bid.
- Retracting a bid is usually not acceptable, so please bid carefully.
- If you bid and then decide to stop, the "Pass" button will tell the auctioneer you are no longer bidding.
- You can send messages to the auctioneer (for example, a request for extension).
- You can track prior realizations from the bidding screen.

I've bid through SAN before, but this is the first time I've bid in a Siegel sale.
Then you just need to be approved by Siegel. Go to stampauctionnetwork.com/siegel and click on "Update Registration" at the top. Your SAN account information will be sent to us for approval (you might be asked for other trade references). Once approved by Siegel for bidding, you're ready for internet bidding.

I've never bid with Siegel, nor registered with SAN.
Go to stampauctionnetwork.com/siegel and click on "Register" at the top. Check the box for Robert A. Siegel Auction Galleries (under "R") and submit the form with **your trade references** (please, no family members or credit card companies as references). Once registered at SAN and approved by Siegel for bidding, you're ready for internet bidding.



"System Down" or "Lost Connection" events do occasionally happen.

If you have any problems with Live Internet Bidding please call 212-753-6421 for immediate assistance.

SESSION 3.2 (LOTS 3072-3281)
THURSDAY, OCTOBER 21, 2010, AT 1:30 P.M.

THE JEROME S. WAGSHAL COLLECTION OF CLASSIC UNITED STATES STAMPS

1851 3-CENT DULL RED SHADES

IMPRINT EXAMPLES



3072

- 3072 ★ **3c Dull Red, Ty. I (11).** Positions 40/50R4, vertical pair with **part imprint and plate no. "4"** at right, thickly applied original gum slightly disturbed and washes over onto sheet margin, large margins with portions of five adjoining stamps, otherwise Extremely Fine, a rare plate number and imprint pair from Plate 4, the left plate number on this plate was a mirror-image "4" (see lot 3073), the right plate number offered here was right-reading E. 1,000-1,500

3073

- 3c Dull Red, Ty. I (11).** Positions 51/61L4, vertical pair with **imprint and plate no. "4"** (mirror image) at left, worn impression and color a bit faded, pen cancels, couple small faults confined mostly to the selvage, a very rare used pair showing the plate number, according to the Chase book only the left pane of Plate 4, Plate 9 and the "4" in Plate 14 were engraved in mirror image... E. 400-500



3073



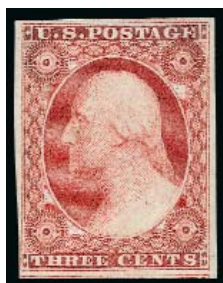
3074

- 3074 ★ **3c Dull Red, Ty. II (11A).** Position 51L5L with **part imprint and plate no. "5"** at left, original gum, margins to slightly in at top right with portion of adjoining stamp at bottom, couple creases, Fine appearance, with 1970 P.F. certificate E. 300-400

3075

- 3c 1851 Issue, Imprints and Sheet Margins (11-11A).** 39 stamps, 12 with part imprints and 27 with either straddle-pane with centerline or sheet margins, incl. a few corner-margin positions, most with handstamp cancels, few faults to be expected but a number are quite attractive, overall Fine appearance *Not illustrated* E. 300-400

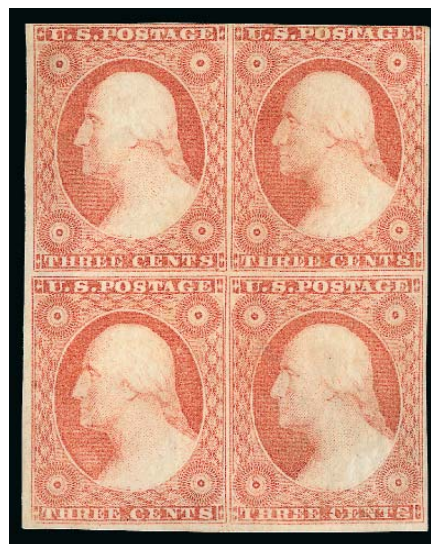
DULL RED SHADES — UNUSED



3076



3077



3078

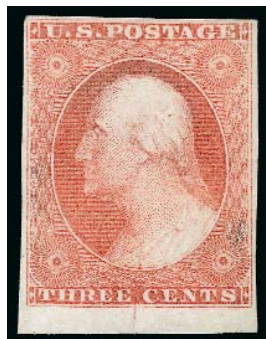
- 3076 ★ **3c Brownish Carmine, Ty. II (11A).** Position 70R2L, original gum, lightly hinged, large margins with part of adjacent stamp at bottom, clear at lower left, bright color, trivial natural inclusion, Very Fine, with 1998 P.F. certificate and note from Dr. Amonette..... 300.00
- 3077 ★ **3c Dull Red, Ty. II (11A).** Positions 95-96L1L, horizontal pair, original gum, h.r., left stamp showing **five lines recut in upper left triangle**, sheet margin at bottom and large portions of two adjoining stamps at top, margins clear to ample on sides, some natural light internal wrinkling and tiny thin spot not mentioned on accompanying certificate, Extremely Fine appearance, with 1999 P.F. certificate..... 925.00
- 3078 (★)田 **3c Dull Red, Ty. II (11A).** Positions 81-82/91-92L1L, block of four, unused (no gum), bottom right stamp with **major double transfer “line thru Three Cents”**, large margins to just in at top right, couple light creases, Fine-Very Fine appearance, accompanied by a note from Dr. Amonette, Scott Retail with original gum \$2,100.00..... E. 200-300



3079

- 3079 ★田 **3c Dull Red, Ty. I (11).** Positions 59-60/69-70/79-80R4, vertical block of six, large part original gum, two small h.r., bright color, bottom right stamp with couple tiny thin spots, Very Fine appearance, Position 69R4 has an extra frameline at right and is discussed and illustrated in the Chase book on pp.115-116..... 2,750.00

PLATE CRACKS



3080



3081

3082EX



- 3080 (★) **3c Dull Red, Ty. II, Plate Crack (11A var).** Position 96L5L, unused (no gum), sheet margin at bottom which nicely shows the extent of the crack below the stamp design, margins other sides clear, Fine, with 1978 P.F. certificate, Scott Retail as with gum..... 525.00
- 3081 **3c Claret, Ty. II, Plate Crack (11A var).** Position 94L5L, sheet margin at bottom and deep rich color combine to dramatically highlight the plate crack, complemented by a neat strike of magenta “5” in circle handstamp cancel, Very Fine and choice, a beautiful example of this major plate crack position..... 160.00
- 3082 ☒ **3c Dull Red, Ty. II, Plate Crack (11A var).** Two covers, first with pair from Positions 84-85L5L, left stamp with the **major plate crack** which runs thru the lower right rosette and into the large portion of the adjoining stamp at bottom, margins other sides clear to large, on cover from Saint Louis to Philadelphia, Very Fine and choice, second also from Position 84L5L, clearly showing the crack, cover age toned, Fine.....(Photo Ex) 320.00

THE “THREE ROWS” OF PLATE THREE

The “Three Rows” recutting adjustments were required due to the unintentionally wide spacing between the eighth and ninth vertical rows and the narrow spacing between the ninth and tenth vertical rows of the left pane of Plate 3. The frameline recutting was done in a way that attempted to minimize the visual spacing anomalies, including the triple frameline recutting on Positions 89 and 99 (see Chase p. 101).



3083

- 3083 **3c Dull Red, Ty. II (11A).** Positions 79-80L3, horizontal pair from two of the “Three Rows” positions, left stamp with double frameline at left and the right inner line taken by the right frameline, right stamp with left inner line taken by the frameline, huge margins incl. straddle-pane margin at right and significant or trace parts of six adjoining stamps, perfect central strike of “New Orleans La. Jan. 31” circular datestamp, Extremely Fine Gem, a beautiful pair demonstrating the narrow spacing recutting adjustments that were required between the ninth and tenth vertical rows of Plate 3 Left..... 62.50

3084



- 3084 **3c Brownish Claret, Ty. II, Plate 3 "Three Rows" Block (11A).** Positions 73-80/83-90/93-100L3, horizontal block of 24, deep rich color, numerous strikes of Philadelphia Dec. 3 (1856) circular datestamp, the right block of nine (Positions 78/100L3) vividly demonstrates the **"Three Rows" recutting adjustments** that were required due to the unintentionally wide spacing between the eighth and ninth vertical rows and the narrow spacing between the ninth and tenth vertical rows of the left pane of Plate 3, the frameline recutting done in a way that attempted to minimize the visual spacing anomalies, including the triple frameline recutting on Positions 89 and 99 (see Chase p. 101), faults incl. tears and edgewear, still a striking and extremely rare "Three Rows" large multiple in a distinctive shade which is known used in late 1856 and 1857, listed in *Linn's U.S. Stamp Facts* as the **largest known used multiple**, accompanied by a 1983 note from Dr. Amonette, Scott Retail as blocks of four, strips of three and a pair 4,342.50

3085



- 3085 **3c Dull Red, Ty. II (11A).** Positions 98-99L3, a "Three Rows" pair with wide spacing, double frameline on right of left stamp and triple frameline on left of right stamp along with inner line at right being taken by the frameline, large to ample margins, tied by perfect strike of "Plattsburgh N.Y. Jun. 11" circular datestamp on "North'n N.Y. Mutual Insurance Co." corner card to Rouse's Point N.Y., some minor cover edge and corner mending, still Extremely Fine, a beautiful cover demonstrating the recutting adjustments that were necessary between the eighth and ninth and ninth and tenth vertical rows on the left pane of Plate 3 due to unusually wide and narrow spacing, between the first two rows extra framelines were recut to minimize the spacing and between the second and third rows framelines took the place of inner lines to maximize the spacing. E. 300-400

DULL RED — USED

3086

3c Dull Red, Ty. II (11A). Jumbo margins all around with at least a trace of **all eight adjoining stamps**, bright color, neat red circular datestamp

EXTREMELY FINE GEM. THIS SPECTACULAR STAMP HAS BEEN AWARDED THE ULTIMATE GRADE OF GEM 100 JUMBO BY P.S.E. — ONLY THREE OTHER EXAMPLES OF SCOTT 11 OR 11A HAVE ACHIEVED THIS GRADE.

Many collectors have a tendency to discount how difficult it is to find imperforate classics in such superb condition. The assumption is that there are multiples which can be split to “make” perfect singles. However, one would need a lightly-cancelled block of nine, with no wrinkles or other minor defects, to produce a single such as the one offered here.

With 2010 P.S.E. certificate (Gem 100 Jumbo; SMQ \$450.00 as 98, unpriced in the higher grades). Only one other example of No. 11A and two of No. 11 have achieved this perfect grade 22.50



3086



3087



3088



3089

3087

3c Dull Red, Ty. II (11A). Four singles, Positions 1, 10, 91 and 100R1L, **comprising the four corners of the right pane of Plate 1 Late**, large corner margins on each incl. the centerline on the two straddle-pane margin singles, Position 100R with a dry print lower right corner and also a large portion of the adjoining stamp above, three with circular datestamp cancels, Position 90R pen cancel, small flaws, Very Fine appearing and highly collectible group E. 300-400

3088

3c Dull Red, Ty. II (11A). Position 100R2L, huge bottom right corner margins, other sides clear, neat “Galena Ill. May 16” circular datestamp, Fine and striking. E. 200-300

3089

3c Dull Red, Ty. II (11A). Sheet margin at top, huge margins other sides showing portions of all five surrounding stamps, two strikes of Philadelphia circular datestamp, Extremely Fine Gem 15.00



- 3090 **3c Dull Red, Ty. I (11).** Position 47R6 with **recut lines in the bust and the lower part of the medallion**, neat blue circular datestamp, margins large to barely touching at top right, Fine and attractive..... 500.00
- 3091 FC **3c Dull Red, Ty. II (11A).** Large margins to barely touching, clear strike of Canton Miss. **Odd Fellows' Three Links and Crossed Arrows fancy cancel**, couple small flaws, Fine appearance..... E. 200-300
- 3092 **3c 1851 Issue, Better "Paid" Cancels (11-11A).** 14 stamps, outstanding variety of "Paid" cancels incl. Ipswich Mass. "Paid 3" in scroll, New Ipswich N.H., Jewett City Conn. in blue socked-on-the-nose, three negative strikes in blue from Norwich Conn. incl. a **negative mirror strike** (Simpson rarity 8), several other "Paid 3" strikes in arcs and circles in blue and red, couple with small faults, overall Very Fine appearing, a desirable and scarce group.....(Photo Ex) E. 750-1,000
- 3093 **3c 1851 Issue, Straightline "Paid" Cancels (11-11A).** 17 stamps, wonderful variety of straightline "Paid" cancels incl. blue, orange-red and magenta, numerous different styles represented, two double-struck, couple small faults do not detract, Very Fine appearing and desirable group.....(Photo Ex) E. 300-400
- 3094 FC **3c 1851 Issue, Star Fancy Cancels (11-11A).** Eight stamps, first four the distinctive Chicopee Mass. Star of David (Skinner-Eno St-69 23), also Canton Miss., Worcester Mass., and two others, most are Very Fine strikes.....(Photo Ex) E. 500-750
- 3095 **3c 1851 Issue, Green Cancels (11-11A).** Nine stamps, each with a true green town datestamp without the bluish-green examples often seen, towns include two from Napanock N.Y. (one a No. 26), Lancaster Pa., Farnumsville Mass., two are on piece, couple small faults, Fine-Very Fine appearance, Scott Retail approximately \$1,700.00.....(Photo Ex) E. 400-500
- 3096 **3c Brownish Carmine, Ty. I, Ribbed Paper (11var).** Rich color, distinct ribbing easily visible from front, slight doubling of frameline at right, neat strike of New York circular datestamp, margins clear to just in at upper right, Fine, an interesting variety..... E. 200-300
- 3097 **3c 1851 Issue, Pre-Printing Paper Folds (11-11A).** Six stamps, one on piece with Janesville Wis. blue "5" integral-rate circular datestamp, another with two folds, Fine-Very Fine, interesting group*Not illustrated* E. 150-200



- 3098 **3c Brownish Carmine, Ty. I (11).** Positions 2-3/12-13L7, block of four, beautiful deep shade, large margins incl. small parts of four other stamps, perfectly struck "Chicago Ill. Jan. 7, 1857" circular datestamp, Extremely Fine Gem, a gorgeous used block and unquestionably the finest extant..... 1,000.00
- 3099 **3c 1851 Issue, Used Multiples (11-11A).** Horizontal strip of six, horizontal and vertical strips of three with sheet margins and five pairs, Plates 1L, 3, 4 and 5L, variety of shades, couple with blue circular datestamps and one red, the strip of six with four strikes of Boston "Paid", margins clear to large on virtually all, large strip with some faint creasing between the stamps and a tiny nick, overall Very Fine-Extremely Fine.....*Not illustrated* 872.50

- 3100 **3c 1851 Issue, Off-Cover Balance (11-11A).** More than 400 stamps arranged on stock sheets, gathered by Jerry Wagshal for varieties or cancels that interested him, incl. "Gents", major plate cracks (84/94 L5L), other plate flaws, recuts, triple transfers, shade varieties, pair with interesting sawtooth perforations (P.F. certificate decline opinion), as well as a nice range of cancels with red and blue numeral "3" handstamps, "Steam 5" oval, "Paid", seven "Way", numerous town datestamps — many in color and many on piece to preserve the full strike, a page of multiples showing pairs, strips of three and a strip of six (ex Amonette), also a few proofs, some faults as is inevitable in a group this large, but a large number of sound and attractive stamps, not the typical lower quality accumulation of an inexpensive stamp, Mr. Wagshal was well known to devote as much of his considerable interest and energy to the study of inexpensive varieties as to the study of his great rarities, this accumulation is a testament to that*Not illustrated* E. 1,000-1,500

PLUM



3101



3102

- 3101 **3c Plum, Ty. II (11A var).** Position 72L2L, rich color, margins clear all around, unobtrusive town cancel, tiny corner crease, Very Fine appearance, a beautiful example of this rare shade 2,000.00
- 3102 **3c Plum, Ty. II (11A var).** Position 73R2L, unusually deep color for this rare shade, margins clear to slightly in, light town cancel, faint corner crease, Fine appearance, accompanied by a letter from Dr. Amonette confirming the shade and stating that it is "deeper than any I have" 2,000.00

PLATE 1 LATE EXPERIMENTAL ORANGE BROWN



3103

- 3103 (★) **3c Experimental Orange Brown, Ty. II (11A).** Positions 54-55R1L, pair, unused (no gum), vivid color, margins clear to ample all around, small internal crease

VERY FINE APPEARANCE. AN EXTREMELY RARE UNUSED PAIR OF THE 1851-52 EXPERIMENTAL ORANGE BROWN.

Accompanied by a 1988 letter from Dr. Amonette confirming the color. Listed but unpriced in Scott as unused (\$800.00 as two used singles). The catalog value for a used example of Experimental Orange Brown is 26 times the normal Dull Red ... E. 1,500-2,000

- 3104 (★)田 **3c Experimental Orange Brown, Ty. II (11A var).** Positions 1-2/11-12L1L, top sheet margin block of four, unused (no gum), beautiful vivid color, margins other sides clear to in at lower right, light corner crease bottom left, light horizontal crease between the two rows

FINE-VERY FINE APPEARANCE. AN EXTREMELY RARE UNUSED BLOCK OF THE PLATE 1 LATE EXPERIMENTAL ORANGE BROWN SHADE.

A review using Power Search found only a single unused example of this shade, from the 1993 Piller sale. This is the only block, either used or unused, that we have encountered.

Accompanied by a 1987 letter and note from Dr. Amonette confirming the color and position and stating "your block of Exp. OB is unique as far as I am concerned." Unlisted in Scott Catalogue as a block, listed but unpriced as unused single E. 3,000-4,000



3104



- 3105 **3c Experimental Orange Brown, Ty. II (11A var).** Positions 21-22L1L, horizontal pair, full margins to just touched, two strikes of blue **Mobile Due/Way 1c** with attached grid, back with manuscript offset, Fine and rare combination of the Experimental Orange Brown shade with a better cancel, ex Amonette and accompanied by a 1996 note from him..... 800.00
- 3106 **3c Experimental Orange Brown, Ty. II (11A var).** Positions 81-82R1L, pair, vivid color, neat "Lexington (Ky.) 3 Sep" (1852) circular datestamp, large margins to just touching at bottom left, fresh and Very Fine, accompanied by a 1992 letter from Dr. Amonette confirming the match to the Chase color charts..... 800.00
- 3107 **3c Experimental Orange Brown, Ty. II (11A var).** Rich color, tied by clear strike of "Northern R.R. N.Y. Oct. 8" double-circle datestamp on cover to Vergennes Vt., Oct. 1851 docketing at left, backflap tear and some mounting remnants on back, still Very Fine, a lovely combination of this scarce shade with a rare route agent marking, Simpson-Alexander list this as Rarity 10 (unique), however that is incorrect as the Wyer collection contained a different example — which interestingly contains a manuscript day within the handstamp E. 500-750
- 3108 **3c Dull Experimental Orange Brown, Ty. II (11A var).** Position 86R1L, lovely soft shade, small nicks at bottom, tied by "New-York Dec 13" (1851) circular datestamp on folded cover to Cleveland O., sender's oval handstamp, bit heavy filing folds clear of stamp, Fine appearing example of this rare shade, Dr. Chase notes on back "Experimental O.B. The really rare Dull O.B. Dec. 1851", also accompanied by note from Dr. Amonette stating "VF example of the rare dull Experimental O.B. This stamp has not changed color since checked by Dr. Chase years ago", Scott Retail as regular Experimental Orange Brown..... 900.00
- 3109 **3c Experimental Orange Brown, Ty. II (11A var).** Two covers, first Position 37L1L, exceptional depth of color, large margins to just cutting at bottom, tied by bold blue strike of "Richfield O. Jan. 2" (1852) circular datestamp on buff cover to Oberlin O., original contents datelined "Dec. 28th 1851", some cover wrinkling, still Very Fine, signed by Dr. Amonette and accompanied by a 1990 note from him where he states, "as fine an example of the Plate 1L Experimental O.B. as I have seen", second cover from same correspondence with same markings except postmarked "Jan. 22", equally beautiful color, margins clear to touching with a slightly irregular corner at upper left, signed on back by Dr. Amonette with same quote as first cover..... 1,800.00
- 3110 **3c Experimental Orange Brown, Ty. II (11A var).** Four covers, first three vivid Plate 1L Orange Browns, two used from New York in October 1851 and February 1852, large to clear margins and Very Fine, one signed by Dr. Amonette, third used from Lancaster Pa. in May 1852, with blue grid and circular datestamp on folded bank notice, stamp with single line recut in upper left triangle, some paper splitting along folds, otherwise Very Fine, fourth cover used from New York in November 1851, Mr. Wagshal called it Orange Brown, but we think the color is not quite to the depth of the others, still Very Fine, Scott Retail for only the first three Experimental Orange Brown covers(Photo Ex) 2,700.00



- 3111 ☒ **3c Deep Experimental Orange Brown, Ty. II (11A var).** Two covers, first Position 41L1L, deep rich color, margins mostly clear, couple small nicks from placement near edge of cover, tied by blue "Philadelphia Pa. Oct. 25" circular datestamp with **red star carrier handstamp** on cover to Princeton N.J., date docketing on back, Very Fine, color identified and signed by Dr. Amonette, second Position 57L1L, balanced margins, tied by blue "Philadelphia Pa. Nov. 23" circular datestamp on brown cover to New York, backflap with interesting small green rectangular "Sunday Dispatch Philada" embossed design, Very Fine, signed Dr. Amonette, attractive examples of this scarce shade..... 1,800.00
- 3112 ☒ **3c Plates 2 and 3 Orange Brown, Ty. II (11A var).** Two covers and one front, each a **Plate 2 or 3 Orange Brown**, first Position 88L3, a "Three Rows" position with extra frameline at right and one-line recut upper left triangle, vivid color and choice margins, tied by blue "Lancaster Pa. May 24" circular datestamp on folded bank notice to Columbia Pa., second Position 49L2L, clear margins, tied by blue grid with matching "Lancaster Pa. Aug. 5" circular datestamp on folded cover to same addressee, last is a front only, Position 53L2L, large margins, from Richmond to Boston, Very Fine group, two signed by Dr. Amonette, unlisted in Scott Catalogue, Scott Retail as Plate 1L Experimental Orange Brown**(Photo Ex)** 2,200.00
- 3113 **3c Plate 3 Orange Brown, Ty. II (11A).** Position 95R3, rich color, margins clear to ample all around, **blue** circular datestamp cancel, Very Fine, accompanied by a 1989 letter from Dr. Amonette confirming the color and stating "an extremely fine example of the Plate 3 orange brown color", Scott Retail as Plate 1L Experimental Orange Brown 400.00
- 3114 ☒ **3c 1856 Orange Brown, Ty. II (11A var).** Two covers, first Position 69R6, huge margins, cancelled by red open grid, matching "Athol Mass. Jun. 23" circular datestamp on small cover to Charlotte Center N.Y., light cover toning, otherwise Very Fine, second Position 69R4, margins huge to ample, tied by centrally struck "Whatley Mas. Dec 4" circular datestamp on cover to West Dover Vt., some minor cover edge and backflap wear, still Very Fine, signed Dr. Amonette, scarce shades which are unlisted in Scott Catalogue**(Photo Ex)** E. 500-750

DOUBLE IMPRESSION

- 3115 **3c Rose Red, Ty. II, Double Impression (11Ae).** Three large margins, just into label at top, pen squiggle cancel, remarkably strong impressions with pronounced doubling of rosettes and virtually unreadable wording, small corner crease

FINE APPEARANCE. AN EXCEPTIONALLY RARE EXAMPLE OF THE 1851 3-CENT TYPE II IMPERFORATE WITH DOUBLE IMPRESSION. AN IMPORTANT CLASSIC RARITY.

A review of the Philatelic Foundation records and Power Search revealed only this single example of the 1851 3c Issue with double impression.

From our 1968 Rarities of the World sale and ex Piller. Accompanied by the cover from which this stamp was removed (manuscript "Clear Spring Pa" postmark). With 1980 P.F. certificate 5,000.00



3115

DULL RED SHADES — COVERS



- 3116 ☒ **3c Dull Red, Ty. I (11).** Position 4L6, large even margins, rich color, tied by blurry strike of Elmira circular datestamp, but with clear “Feb. 18” date on embossed Chemung Canal Bank corner card cover to Otsego N.Y., enclosure on printed stationery from Chemung Canal Bank dated “**Feb. 18 1856**”, small back tear from opening, otherwise Extremely Fine, the **earliest documented use from Plate 6** E. 400-500
- 3117 ☒ **3c Claret, Ty. II (11A).** Position 70R1L with **double transfer** in “Postage”, balanced margins, deep rich color, cancelled by perfect strike of “**Paid 3**” two-line handstamp, equally perfect matching strike of “**Orford-Ville, N.H.**” arced handstamp with manuscript “*Mar. 15th*” on 1852 pre-printed folded vote record addressed to the “Clerk of Common Pleas for the County of Grafton-Haverhill”, Extremely Fine Gem, a gorgeous cover E. 400-500
- 3118 ☒ **3c Dull Red, Ty. II (11A).** Position 63L1L, margins clear all around, bright shade, tied by perfect strike of **blue negative “Paid”** cancel with matching “Norwich Conn. Apr. 21” circular datestamp on folded letter to South Windham Conn., light file folds do not affect stamp, fresh and Extremely Fine E. 200-300
- 3119 ☒ **3c Dull Red, Ty. I (11).** Position 11R4, large to clear margins, tied by **italic “Paid” straightline** cancel with matching “Brookline Mass. May 5” double-oval datestamp with the **month inverted and reversed**, on cover to North Brookfield Mass., mended backflap tear extends just into front at top, Very Fine appearing and striking with the month out of place E. 200-300
- 3120 ☒ **3c Red Brown, Ty. I (11).** Margins clear to just touching, indistinct cancel, bold strike of “**Adamsville Mich. June 13**” **semi-circular handstamp** with day in manuscript, on cover to Ashton Wis., Very Fine and extremely rare, the listing example in Simpson-Alexander and illustrated on p. 27 (Rarity 10), with 1992 P.F. certificate E. 750-1,000
- 3121 ☒ **3c Brownish Carmine, Ty. II (11A).** Margins clear to just touching, pen-cancelled and tied by **red “Pines Bridge N.Y. Sept. 3d” oval handstamp** with date in manuscript on cover to Middletown Conn., Extremely Fine, the listing example in Simpson-Alexander and believed to be unique (Rarity 10), with 1984 P.F. certificate E. 300-400



- 3122 ☒ **3c Brownish Carmine, Ty. I (11).** Position 62L4, lower left corner missing, cancelled by unusual **cross in circle**, matching “North Hampton Depot. N.H. Aug. 31, 1857” circular datestamp with year in manuscript, despite the stamp fault a Fine cover with a rare town marking E. 150-200
- 3123 ☒ **3c Dull Red, Ty. II (11A).** Margins clear, pen-cancelled, “Nicholville N.Y. Apr. 6 Paid 3” circular datestamp, partly double struck, with date in manuscript and “Paid 3” in an angled orientation, on small yellow cover to New York, small toned spots on cover and one on stamp, an extremely rare town postmark of a style unlisted in Simpson-Alexander, accompanied by lengthy correspondence discussing the postmark..... E. 200-300
- 3124 ☒ **3c Dull Red, Ty. II (11A).** Tied by clear strike of red “North Salem N.Y. Paid 3 Cts” handstamp on cover to New York City, wear and piece of backflap missing, still a Very Fine strike and extremely rare, Simpson-Alexander Rarity 9 E. 200-300
- 3125 ☒ **3c Dull Red, Ty. II (11A).** Margins to in, tied by mostly clear strike of **blue Running Stag in Circle fancy cancel**, red “Shelburne Falls Mass. Aug. 14” circular datestamp on small lady’s cover to Hinsdale N.H., some toning on the stamp and light cover wear, still a Very Fine and a fairly well-defined strike of this scarce cancel, which usually appears as an indistinct blob..... E. 750-1,000
- 3126 ☒ **3c Dull Red, Ty. I (11).** Large margins to touching, tied by well-struck **Odd Fellows’ Three Links, Seeing Eye and Crossed Arrows fancy cancel**, “Canton Mi. Nov. 2” circular datestamp on cover to New Orleans La., Carroll & Hoy correspondence, stamp a bit toned, small backflap tear, Very Fine strike, scarce example of this distinctive cancel E. 750-1,000
- 3127 ☒ **3c Dull Red, Ty. III (26).** Tied by two strikes of “**US**” woodcut handstamp, “Haverhill O. April ?” manuscript townmark on 3c Red on Buff Nebitt Entire (U10) to Hudson Summit O., cover with mended faults and backflap reattached, still Fine strikes of this exceedingly rare cancel, this cover apparently was the first to provide the origin of this cancel, Simpson-Alexander shows a tracing but lists it as unidentified, referenced in *Chronicle* 120, pp. 252-253, with 1984 P.F. certificate..... E. 400-500



- 3128 ☒ **3c Brownish Carmine, Ty. II (11A).** Margins clear to slightly in, rich color, tied by vivid **green** circular grid, matching perfect strike of "Schaghticoke N-Y. Oct. 11" (1852) circular datestamp on folded letter to Troy N.Y., fresh and Very Fine, a pretty cover..... E. 200-300
- 3129 ☒ **3c Brownish Carmine, Ty. II (11A).** Margins clear to just in, cancelled by bold strike of deep **green** "Paid" handstamp, matching "Denmark Iowa Aug. 24th" circular datestamp with date in manuscript, on folded letter to South Carrollton Ky., datelined "April 27, 1852", fresh and Very Fine, a striking cover, ex Beals and Alexander..... E. 200-300
- 3130 ☒ **3c Brownish Carmine, Ty. II (11A).** Deep shade, margins large to cut in at right, tied by "New-York Nov. 1" circular datestamp on immaculate folded letter to Troy N.Y., perfect strike of **blue** "Advertised/Nov 15, 52} 1 ct" straightline between bars handstamp, Extremely Fine, a rare and beautiful example of this distinctive "Advertised" handstamp, illustrated in Simpson-Alexander on p. 249, with 1984 P.F. certificate E. 400-500
- 3131 ☒ **3c Dull Red, Ty. II (11A).** Large margins, tied by "Chemung R.R. N.Y. Jun 6" route agent's circular datestamp on brown cover to Palmyra N.Y., part of backflap missing, otherwise Very Fine, this was the discovery example of this scarce route agent marking, ex Wyer..... E. 150-200
- 3132 ☒ **3c Dull Red, Ty. II (11A).** Tied by clear strike of "Conn. River R.R. Nov. 18" route agent's circular datestamp on folded letter to Troy N.Y., letter datelined *Royalston Nov. 17/ 54*", stamp with irregular gum soaked margin at lower left, cover with some paper adherence on back, still a Very Fine strike and an attractive cover, rare route agent marking which is the basis for the tracing in Simpson-Alexander (Rarity 9), ex Wyer..... E. 200-300
- 3133 ☒ **3c Dull Red, Ty. II (11A).** Position 56L1L, margins clear all around, tied by mostly readable strike of blue "Montreal & Concord R.R. Oct. 6" (1852) route agent's circular datestamp on folded cover to Concord N.H., docketing on back, file folds clear of stamp and marking, Fine and extremely rare, the basis for the incomplete tracing in Simpson-Alexander, Rarity 9. E. 300-400
- 3134 ☒ **3c Dull Red, Ty. II (11A).** Tied by perfect strike of blue "Phila. & Columbia R.R. Jul. 16" route agent's circular datestamp on buff cover to Philadelphia, stamp with light toning, Extremely Fine strike of this rare route agent marking, Simpson-Alexander Rarity 9..... E. 300-400



- 3135 ☒ **3c Dull Red, Ty. II (11A).** Margins to in, rich color, tied by "Philadelphia Pa. Jun. 27" (1856) circular datestamp, "Ship" and "2" rate in circle handstamps on cover to Machiasport Maine, forwarder's handstamp, receipt docketing at top, Very Fine..... E. 200-300
- 3136 ☒ **3c Dull Red, Ty. II (11A).** Position 95L2L, tied by "Randolph Macon College Va. Apr. 6" circular datestamp on 1850's cover to Murfreesboro N.C., cover **re-used May 10, 1864 for a Confederate soldier's letter sent from near the Battle of Spotsylvania Court House** to Charlottesville Va., contents discuss the sender's battalion's movement and the "Yankee" charge, describing heavy Union losses and stating that "a good Providence has still been with us," a war torn cover but a fascinating dual usage, cannot be properly described as "turned" since the front of the envelope was used both times, as such a most unusual cover, the Battle of Spotsylvania Court House was the second major battle of U.S. Grant's 1864 Overland Campaign, and was fought from May 8-21, 1864, it is known for the famous Confederate counterattack in the "Mule Shoe", which Robert E. Lee was reported to have initially attempted to lead himself before hearing the familiar "Lee to the rear" calls of his soldiers, the battle saw some of the most savage fighting of the war and gave rise to the name "The Bloody Angle" of Spotsylvania E. 300-400
- 3137 ☒ **3c Dull Red, Ty. II (11A).** Plate 1L, large margins and rich color, tied by "Lowell Mass. Jul. 14" circular datestamp on small ornate lady's cover to Epping N.H., likely 1854 or 1855 based on plate wear, fresh and Extremely Fine, a lovely cover, accompanied by a note from Dr. Amonette E. 200-300
- 3138 ☒ **3c Dull Red, Ty. I (11).** Position 21L6, with **left sheet margin**, large margins other sides, tied by "Detroit Mich. 3 Paid Jun. 5" circular datestamp, second part strike below, on "**Johnson & Dunham Dry Dock Boiler Shop**" green cameo corner card cover to New York, Very Fine and choice, a pretty cover..... E. 200-300
- 3139 ☒ **3c Dull Red, Ty. I (11A).** Large margins all around, deep shade, tied by large "Paid" in grid, red "Boston Mass. Oct. 24" circular datestamp on cover to Bath N.H., with **Fremont three-quarter portrait**, Putnam imprint, Milgram JF-3, with design half of matching letter sheet, Extremely Fine E. 400-500
- 3140 ☒ **3c Dull Red, Ty. II (11A).** Large margins, tied by "Portland Me. Sep. 28" circular datestamp on cover to New Haven Conn., with **Fremont three-quarter portrait**, Putnam imprint, Milgram JF-4, small backflap tear, Very Fine..... E. 300-400
- 3141 ☒ **3c Dull Red, Ty. II (11A).** Rich color, margins large to just in, tied by light blue strike of Ill. town datestamp on yellow cover to Raymond N.H., with **blue Fremont three-quarter portrait in oval**, John Andrew imprint, Milgram JF-36, couple inconsequential cover edge nicks, Fine E. 200-300



- 3142 ☒ **3c Dull Red, Ty. II (11A).** Large margins to just touching at bottom, tied by "New-York Oct. 25" circular datestamp on cover to Cooperstown N.Y., with dark blue **"Free Trade, No Monopoly!" slogan in top and bottom of ornately-framed stamp collar**, original contents datelined Oct. 22, 1853, Very Fine and choice, extremely rare, this and the following lots are among the earliest forms of stamp collars used in the United States, Dr. Chase notes on back..... E. 1,000-1,500
- 3143 ☒ **3c Dull Red, Ty. II (11A).** Tied by well-struck "New-York Sep. 10" circular datestamp on brown cover to New London Conn., with dark blue **"Free Trade, No Monopoly!" slogan above and below ornately-framed stamp collar**, trivial edgewear, Very Fine and rare, among the earliest forms of stamp collars used in the United States, a similar example (ex Pillar) sold in our Jarrett Sale 970, Chase illustrates another on p. 355, otherwise we found no others using Power Search..... E. 1,000-1,500
- 3144 ☒ **3c Dull Red, Ty. II (11A).** Tied by "New-York Nov. 8" circular datestamp on cover to Brooklyn N.Y., with **dark blue ornately-framed stamp collar**, matching the example in the prior lot but without the "Free Trade, No Monopoly!" declaration, missing backflap, still Fine and rare, ex Toaspern with his handstamp on back..... E. 400-500
- 3145 ☒ **3c Brownish Carmine, Ty. II (11A).** Large margins to just in at bottom, tied by light strike of Philadelphia circular datestamp on cover to Lamar Pa., ornate **"Miller & Lyon, 95 Market St. Phi" stamp collar**, 1852 docketing on back, cover with edgewear all around, still a Fine appearing and rare advertising stamp collar, we have not encountered another of this design, with 1971 A.P.S. certificate..... E. 500-750



3146

- 3146 ☒ **3c Rose Red, Ty. II (11A).** Margins all around, tied by red “Leavenworth City K.T. Nov. 1854” year-dated circular datestamp on folded letter from the Kansas District Attorney, stamp with small corner creases, Fine and very rare, this is reported to be the only 1854 year-dated marking known, ex Amonette, with 1975 P.F. certificate E. 750-1,000



- 3147 ☒ **3c Dull Red, Ty. II (11A).** Large margins incl. sheet margin at right, pen cancel, “Maysville Arks March 31” manuscript postmark on 1856 folded letter to Van Buren Arkansas, stamp with light toning and small margin faults, Fine appearance and an extremely rare town marking, Maysville (\$34.38 in net postal proceeds for Jul. 1, 1856-Jun. 30, 1857) was formally known as Beaties Prairie, accompanied by extensive correspondence discussing the cover..... E. 150-200
- 3148 ☒ **3c Dull Red, Ty. II (11A).** Pair, bright color, nicely complemented by **blue segmented cork** and matching “Marysville Cal. Paid by Stamps Mar. 29” circular datestamp on cover to Brooklyn N.Y., some light cover toning and some edgewear which slightly affects the pair, otherwise Very Fine, an attractive 6c rate cover to New York with the Marysville grid which was designed to cancel two stamps at once..... E. 300-400
- 3149 ☒ **3c Dull Red, Ty. II (11A).** Positions 40/50/60R1L, vertical strip of three, used with **1c Blue, Ty. IV (9)**, Position 85L1L, recut once at top and once at bottom, tied by “San Francisco Cal. 5 Jan.” circular datestamps on 3c Red on Buff Nesbitt entire (U10) to Ursa Ill., red Nesbitt printed seal on top flap, trivial edge soiling, Very Fine, apparently a 3c overpayment of the 10c rate..... E. 300-400
- 3150 ☒ **3c Rose Red, Ty. II (11A).** Positions 85-86/95-96R3, block of four, large margins to barely touched at lower right, bright color, cancelled by multiple strikes of **blue grid**, two tie the block, perfect matching “Haverhill N.H. Apr. 26” circular datestamp on outer folded cover to Rumney N.H., contents refers to business enclosures which would have required the multiple rate, two light file folds well clear of block, fresh and Extremely Fine, blocks of this issue on cover are seldom encountered in the pristine condition of this block and cover E. 1,000-1,500

DULL RED — CARRIER AND LOCAL COMBINATIONS



3151

- 3151 ☒ **U.S.P.O., Philadelphia Pa., 1c Black (7LB18).** Large margins with “& Cincinnati” of imprint at top, tied by the same oval handstamp used to produce the 7LB18 stamp and used with **3c Dull Red, Ty. I (11)**, tied by bold strike of “Philadelphia Pa. Nov. 14” circular datestamp on immaculate cover to Wilmington Del.

VERY FINE. ONE OF THE FINEST OF THE RECORDED EXAMPLES OF THIS REMARKABLE CARRIER STAMP. THIS IS ALSO THE ONLY RECORDED EXAMPLE WHICH IS TIED BY THE SAME PHILADELPHIA OVAL CARRIER HANDSTAMP USED TO PRODUCE THE CARRIER STAMP.

The Philadelphia carrier stamps printed on the sheet selvage of imperforate 1c 1851 stamps hold a unique position in United States philately. Elsewhere in the world there are very few instances in which sheet selvage was used to produce adhesive stamps – the early stamps of Zanzibar from a much later period immediately come to mind. Two handstamps were used to produce the Philadelphia carrier stamps, this being the larger version, which is usually found partly or weakly struck. This example, a bold strike with rectangular margins showing a large part of the imprint, is among the two or three finest known stamps, and the usage on cover is extremely rare, especially tied by the same marking used to produce the carrier stamp.

With 1990 note from Robert B. Meyersburg..... E. 5,000-7,500



3152

- 3152 ☒ **U.S.P.O., Philadelphia Pa., 1c Black (7LB13).** Large margins to just touched, **tied by red star handstamp** and used with **3c Dull Red, Ty. II (11A)**, large margins to barely touched, tied by **"Baton Rouge La. Nov. 9"** circular datestamp on blue cover to Philadelphia street address, trivial edgewear

VERY FINE. THIS IS THE ONLY REPORTED USE OF THE ONE-CENT BLACK CARRIER STAMP USED FOR THE DELIVERY OF INCOMING MAIL. ONE OF THE GREAT RARITIES OF THE ISSUE.

The normal use of the carrier stamp was to indicate payment for delivery to the post office. The cover offered here has the stamp paying for delivery to a street address.

Illustrated in *Chronicle* No. 117, Feb. 1983, p. 20. With 1985 P.F. certificate and with note from same year by Robert B. Meyersburg E. 2,000-3,000



- 3153 ☒ **One Cent Despatch (Wiley), Washington D.C., 1c Violet (112L1).** Large margins all around, tied by **"City Despatch Oct. 30 9 P.M."** circular datestamp, used with **3c Dull Red, Ty. I (11)**, full margins to just in, tied by **"Washington D.C. Oct. 31, 1856"** circular datestamp on cover to Philadelphia, Very Fine usage and quite scarce, with 1985 P.F. certificate 1,500.00
- 3154 ☒ **Swarts' City Dispatch Post, New York N.Y., (1c) Red on Wove (136L9).** Large margins, bright color, used with **3c Dull Red, Ty. II (11A)**, both tied by **"New-York Mar. 22"** circular datestamp on buff cover to Macedon N.J., 3c with small margin nick, some cover staining on back, otherwise Very Fine, attractive usage 450.00



3155

- 3155 ☒ **3c Rose Red, Ty. I (11).** Large margins to cut in at top, tied by "Austin Texas" circular datestamp on manila cover **to Goteburg, Sweden**, sender's notations "*Franca*" and "*Per U.S. Mail Steamer Via Great Britain*", underpaid and rated with manuscript "*Due 33*", "*New-York Am. Pkt. 23 Jan. 29*" (1859) debit datestamp, manuscript rates, Hamburg transit backstamp, half of backflap removed, creased along bottom of cover, otherwise Fine, a rare destination in this period, the addressee — D. F. Bonniers — was a printer and publisher in Goteburg..... E. 1,500-2,000



3156

- 3156 ☒ **3c Rose Red, Ty. II (11A).** Block of seven, large margins to slightly in at right., tied by grids and red "New-York Am. Packet June 27" circular datestamp on 1855 folded letter **to Nantes, France**, red "New Orleans La. Jun. 19" circular datestamp, endorsed "*pr Asia*", though no doubt sent by the Collins Line, top row of block originally folded over at top, flap sensibly refolded to display whole block, Very Fine appearance, a scarce 21c American packet rate prepaid in a fashion rarely seen, signed Ashbrook, ex Hubbard, Klein and Piller..... E. 750-1,000



- 3157 ☒ **3c 1851 Issue, Ty. II (11A).** Four covers, each chosen for appealing shades, margins and colored circular datestamps, first in a shade close to Experimental Orange Brown, perfect strike of blue "Apalachicola Fla." dateless circular handstamp on Dec. 1851 folded cover to Providence, second Position 1R1L with large **corner margin** selvage, blue N.Y. town datestamp on cover to Cooperstown, third Position 36L5L, bright Rose shade, with bold red Fayetteville N.Y. circular datestamp (cover edge nicks), last Position 93R3, blue Taunton Ms. integral-rate circular datestamp on fire insurance corner card (slight gum soaks), very attractive group.....(Photo Ex) E. 200-300
- 3158 ☒ **3c Dull Red, Ty. II (11A).** Five covers, first two **turned usages**, one with 3c 1851 stamps paying the postage both times, second use stamp with double frameline at right, second turned cover with 3c Nesbitt paying the first postage and 3c 1851 paying the second, next three covers each a Feb. 29 Leap Year date, one addressed to Clara Barton, last a folded letter with fascinating slave content, interesting and unusual group(Photo Ex) E. 200-300
- 3159 ☒ **3c Dull Red, Ty. II, Advertised Covers (11A).** Three covers, first with clear strike of "Adv. 1." **framed handstamp** tying large-margined stamp along with New York circular datestamp on corner card cover to New Orleans, fresh and Extremely Fine, other two with "Advertised" straightline handstamps, one a bit blurry, Fine(Photo Ex) E. 300-400
- 3160 ☒ **3c 1851-57 Issues, County Postmarks (11/26).** 38 items, most are 3c 1851-57 Issue covers, also a few off-cover stamps and entires, each with a postmark incorporating the name of the county in which the town resided, outstanding range of examples with only a small amount of duplication, incl. the unique largest circular datestamp used during the period (from Waymanville Ga., cover faulty), many others with Simpson-Alexander Rarity rating of 7-10, some faults but condition is generally as Fine as can be found for most of these
- AN OUTSTANDING GROUP OF RARE 1850'S COUNTY NAME POSTMARKS. THIS IS THE LARGEST COLLECTION WE HAVE OFFERED IN A SINGLE LOT.
- During the life of the 1851-57 Issue, postmarks were required to show only the name of the town, state, month and day of mailing. A small number of towns also incorporated the county or postmaster name into the datestamp, though this practice would not become widespread until the 1880's. According to the Simpson-Alexander book, nearly all of the devices which incorporated the county name originate from Zevely family of handstamp manufacturers. All of the postmarks in this lot are scarce, and some are extremely rare or unique. This is a wonderful opportunity to acquire a large number of these desirable handstamps at one time.
- Several P.F. certificates accompany.....(Photo Ex) E. 7,500-10,000



- 3161 ☒ **3c 1851-57 Issues, Green Cancels on Cover (11/26).** 39 covers, with **green** cancels, circular datestamps or both, majority are Nos. 11 or 11A, wide range of usages, several better, most are vivid greens with just a few that are darkened or have a hint of bluish, some faults but many quite attractive and fresh, Fine-Very Fine, scarce in an assemblage this large, the premium over normal Scott Retail for a green cancel ranges from \$125.00 to \$175.00 each. **(Photo Ex)** E. 1,500-2,000
- 3162 ☒ **3c 1851-57 Issues, Unusual Town Cancels on Cover (11/26).** 24 covers, many desirable cancels and scarce towns including Star of Turner Me., "C" in Rays of Chestertown Md., postmaster-name circular handstamp of Harrison Square Mass., manuscript "1854" cancel from Waterford Me. (two, one P.F. certificate accompanies), fancy stars from Worcester Mass., "Pepin" Wis., with "North" removed, two from Paris Pa. with rounded red rectangular handstamp with manuscript date, another from Paris with manuscript town name, bold two-line "New Garden Ia" (Indiana) with date and state in manuscript, Poplar Ridge N.Y., boxed Mitchell Iowa, Killingly Conn., several others, overall Very Fine strikes, an attractive and very scarce group..... **(Photo Ex)** E. 2,000-3,000
- 3163 ☒ **3c 1851 Issue, Straightline Handstamps (11-11A).** 12 covers, nearly all different, several scarce handstamps, originations incl. Rouse's Point Village (Champlain & St. Lawrence Railroad Office), Hoyleton N.Y., Townsendville N.Y., Green Island N.Y. (two, one on corner card), Clermont N.Y. (stamp is close to the Plum shade), Lawrenceville N.J., Haddonfield N.J., Springfield N.H., Cold Spring Conn., couple others, few minor cover faults but most with clear strikes
VERY FINE. A SCARCE GROUP OF STRAIGHTLINE TOWN HANDSTAMPS ON 3-CENT 1851 ISSUE COVERS.
Several covers are ex Alexander. One P.F. certificate accompanies **(Photo Ex)** E. 2,000-3,000
- 3164 ☒ **3c 1851-57 Issues, College Postmarks (11/26).** 30 covers incl. a few entires, wide range of colleges and institutes with very little duplication, several quite obscure and a few with original contents, some cover faults but many are Very Fine, interesting group ... **(Photo Ex)** E. 400-500
- 3165 ☒ **3c 1851 Issue, July 1853 New York Collection (11-11A).** 17 covers and two off-cover stamps, showing day by day progression of the **year-dated New York City circular datestamp** covering every date from July 11 through July 26, mounted on pages with detailed analyses of the changes in the datestamp as the days progressed, some cover and stamp faults, strikes clear and strong
A RARE COMPLETE "CALENDAR" OF THE FASCINATING "1853" YEAR-DATED CIRCULAR DATESTAMP USED AT THE NEW YORK POST OFFICE FOR FIFTEEN DAYS IN JULY 1853 .
This collection includes both of the scarce Sunday dates on cover, a July 20 example on cover struck without the day slug (in addition to a regular dated July 20 example) and a July 26 example off-cover E. 3,000-4,000



- 3166 ☒ **3c 1851 Issue, Imitation Boston "Paid" Cancels (11-11A).** Ten covers and two off-cover singles, nice range of "Paid" circular handstamps resembling the well-known Boston Paid's, incl. two with blue negative strikes from Norwich Conn., neat red example from Jamaica Vt., also Ashburnham Mass., Saco Me., Bradford N.H., Haverhill Mass., few others, nearly all Very Fine strikes on attractive covers, worthwhile group(Photo Ex) E. 1,000-1,500
- 3167 ☒ **3c 1851-57 Issues, Orange Cancels on Cover (11A/26).** Eight covers and one off-cover stamp, each with an **orange** circular datestamp, almost universally strong and clear strikes, incl. Madison Ga., Butternuts N.Y. (four), Slaterville R.I., Saugerties N.Y., couple others, only two are on the perforated issue, Very Fine and scarce group, premium to Scott Retail for an orange cancel on No. 11 or 11A is \$250.00(Photo Ex) E. 750-1,000
- 3168 ☒ **3c 1851 Issue, Colored Cancels on Cover (11-11A).** Approximately 120 covers, each with a colored cancel, circular datestamp or both, wide range of colors incl. blue, green, red, couple that tend toward orange and brown, and a few in between, mostly grid cancels, few pen-cancelled, plate varieties, ladies' covers, many with original contents, generally strong strikes and attractive, a few perforated issues noted as well, overall Fine-Very FineNot illustrated E. 500-750
- 3169 ☒ **3c 1851-57 Issues, Carrier and Local Usages (11/26).** 13 covers, range of carriers and locals incl. New Orleans "snow shovel" in green with matching "Car. 2" in oval, Westtown (not tied, P.F. cert), Boyd's City Express, Bloods City Despatch, one 1860 New York example with carrier fee due, showing a "Due 1" handstamp, Lowell Mass. example with pen "1", few others, some of the covers faulty but several are Very Fine(Photo Ex) E. 500-750
- 3170 ☒ **3c Dull Red, Ty. II, Registered Covers (11A).** Five covers, incl. one with red straightline "Registered" on folded letter from Newport R.I. which includes an analysis from Thomas Alexander concluding that it is a not certain but probable genuine pre-1855 registered usage, also a blue straightline "Registered" handstamp on cover from Newbern N.C. (P.F. certificate), and three manuscript registered usages from Middletown Conn., Astoria N.Y., and Greencastle Pa., (two with P.F. certificates), Very Fine group(Photo Ex) E. 500-750
- 3171 ☒ **3c 1857-57 Issues, Railroad Covers (10A/26).** Fifteen covers, nice range of route agent markings, several rated scarcer in Simpson-Alexander incl. Mad. River & Lake Erie R.R. (Rarity 7), Sullivan & Passumpsic R.R. (Rarity 7), Baltimore & Susquehanna R.R. (Rarity 8, faults), Louisville & Lexington R.R. (Rarity 7), many others, a couple with 1851 No. 10A, few faults but many are Very Fine and attractive(Photo Ex) E. 1,000-1,500



- 3172 ☒ **3c 1851-57 Issues, Steam and Way Covers (11/26).** 19 covers, outstanding range of markings incl. a number of name-of-boat handstamps, "From Steamer Master H.M. Wright. J.D. Clarke", "Steamer Geo. Collier", "Steamer J.F. Parsoud", "Packet Steamer New Latona", "Steamer Grand Real Saml. Applegate, Master", "U.S. Mail Packet Natchez", also a variety of "Way", "Steam" and "Steamboat" markings, many handstamps clearly struck, overall Very Fine, an outstanding group with many items that have been offered as individual lots in sales past.....(Photo Ex) E. 2,000-3,000
- 3173 ☒ **3c 1851 Issue, Corner Cards (11-11A).** 31 corner cards, mostly advertising, wide range of businesses and styles represented with very little duplication, many in color and quite fancy, a couple are blind embossed, few cover flaws to be expected but overall Fine-Very Fine, a desirable group offering a fascinating glimpse into 1850's businesses.....(Photo Ex) E. 500-750
- 3174 ☒ **3c 1851-57 Issues, Illustrated Covers (11A/26).** 14 covers, either illustrated or with full cover designs, several quite fancy and beautiful incl. No. 25 on Cosmopolitan Art Association advertising cover, three phonography covers, Pacific Mutual Insurance with illustration of N.Y. Trinity Building, "I'll think of thee" fancy poem design with J. A. Howells imprint, Fulton Iron Works, two Starbuck's Trojan plows, fascinating David Prouty & Co. Furnaces, Stoves, Ranges and Grates circular design on reverse, one Union patriotic, couple others, few faults but many Very Fine, a desirable group without the usual simple corner cards.....(Photo Ex) E. 500-750
- 3175 ☒ **3c 1851-57 Issues, Wine and Liquor Covers (11A, 26).** Two covers, first No. 11A, Position 18L2L, margin faults, used on illustrated cover for "W.W. Bliss & Co. Proprietors of Jacob's Cordial", missing part of backflap, otherwise Fine, second No. 26 on corner card for "Whitney Brothers. . . Manufacturers of Every Description of Wine & Liquor Bottles" with other text related to glassworks, Fine and attractive.....(Photo Ex) E. 200-300
- 3176 ☒ **3c 1851-57 Issue, Cover Balance.** A large holding of more than 500 covers, many with original content, largely Nos. 11, 11A and 26, but we note some of the better 3c Scott numbers as well, large range of shades, cancels and other markings, plate varieties, sheet margins, pairs, etc., some of the covers are rather ordinary but a large number were selected by Mr. Wagshal because something caught his eye as unusual or attractive, some faults, but majority Fine-Very Fine.....Not illustrated E. 1,500-2,000

CHICAGO PERFORATION

The origin of the Chicago perforation was revealed in an article published by Jerry Wagshal in the *Chronicle* 130 (May 1986). To briefly summarize his revelations, the inventor of the machine used to create the Chicago Perf stamps was Dr. Elijah W. Hadley, a Chicago dentist. He probably constructed the machine in 1854. Over a two-year period, beginning in November 1854, Dr. Hadley's device was offered for sale to the Post Office Department thru R. K. Swift, a prominent Chicago banker and businessman. The distinctive 12½ gauge Chicago Perf was applied to sheets of the 1c (Plates 1 Late and 2) and 3c 1851 Issue, the former being considerably rarer. Wilson Hulme recorded 40 examples used on cover and 30 used off-cover in his 1997 census in *Chronicle* 175. Since that time a small number of additional examples have been discovered.



3177

3177 (★) 3c Dull Red, Ty. II, Chicago Perf 11 (11A var). Positions 54-56/64-66R2L, unused block of six (no gum), bright color, light staining mostly removed, some h.r. reinforced perf separations between two stamps, tiny tear in bottom right stamp

VERY FINE APPEARANCE. THE SECOND LARGEST OF FOUR RECORDED BLOCKS FROM THE 3-CENT "SAMPLE A" SHEET WITH THE HADLEY 11-GAUGE CHICAGO PERFORATIONS.

Jerome S. Wagshal established a connection between the "Sample A" Chicago Perf 11 stamps and the effort by R. K. Swift to sell the Hadley perforator to the U.S. Post Office Department in June 1855. W. Wilson Hulme II went into greater detail (*Chronicle* 174, May 1997), identifying the various known examples by their respective positions in the sheet and establishing that the ex-Chase block of 21 (since divided into smaller units) and the two known blocks of six originated from the same "Sample A" sheet, which Swift submitted to the Third Assistant Postmaster with his solicitation letter. The other pane submitted by Swift had different perforations, was marked "Sample B" and its whereabouts are unknown.

From the "Sample A" sheet, Hulme recorded the ex-Chase block of 21, which came from the estate of Mr. Madison Davis, formerly chief clerk to the Third Assistant Postmaster General. Dr. Chase obtained the block from J. M. Bartels, who purchased it from the Davis estate in 1910. This block of 21 has been broken up into a block of nine, a block of four (both sold in our Hulme Sale 964 in 2008), four singles (one of which is offered in this sale) and four contiguous stamps which have not been accounted for and may or may not still exist as a block. Adding the block of six offered here and one other block of six (ex Lakeshore, realized \$37,500 hammer in our Sale 888), a total of 33 "Sample A" Chicago Perf stamps are recorded. This block comes from the positions directly above the ex-Piller block of nine last sold in the Hulme sale. The examples from the Sample "A" sheet are the only known unused 3c stamps with Chicago perforations. There are no known unused examples with the gauge 12.5 perforations.

With 1975 and 1976 P.F. certificates..... 36,000.00



3178

- 3178 (★) **3c Dull Red, Ty. II, Chicago Perf 11 (11A var).** Position 98R2L with wide imperforate bottom sheet margin, unused (no gum), remarkably precise centering

EXTREMELY FINE. ONE OF THE BEST-CENTERED OF THE 33 RECORDED EXAMPLES FROM THE "SAMPLE A" SHEET WITH THE HADLEY 11-GAUGE CHICAGO PERFORATIONS.

This stamp was originally part of the Chase block of 21 and subsequently part of a pair. The other stamp in the pair (Position 97R2L) realized \$7,500 in our sale of the Lake Shore collection (Sale 888). A total of 33 "Sample A" Chicago Perf stamps are recorded, including a block of nine, two blocks of six (see lot 3177) and a block of four. There are four contiguous stamps from the Chase piece that have not been accounted for and may or may not still exist as a block. The examples from the Sample "A" sheet are the only known unused 3c stamps with Chicago perforations. There are no known unused examples with the gauge 12.5 perforations.

With 1979 P.F. certificate as a pair, stating genuine but declining opinion as to its origin from the Chase block. The pair is clearly from the bottom row of the Chase Sample "A" block..... 6,000.00

- 3179 **3c Dull Red, Ty. I, Chicago Perf 12½ (11 var).** Position 67R7, better centering than typically seen and with full perfs all around, neat strike of Chicago circular datestamp

VERY FINE. A CHOICE SOUND EXAMPLE OF THE 3-CENT CHICAGO PERFORATION.

The 3c Chicago Perfs are rarely encountered in sound condition with acceptable centering. With 1983 P.F. certificate..... 6,000.00



3179



3180

- 3180 **3c Dull Red, Ty. II, Chicago Perf 12½ (11A var).** Position 58L3, well-centered, scissors separated at bottom but with intact perfs, full perfs on other sides, rich color, "Chicago Ill. Jan. 12, 1857" circular datestamp

VERY FINE AND CHOICE. A BEAUTIFUL SOUND EXAMPLE OF THE 3-CENT CHICAGO PERFORATION.

The 3c Chicago Perfs are rarely encountered in sound condition with centering as nice as this example. An identifiable datestamp adds to the desirability of this example. With 1991 P.F. certificate 6,000.00

- 3181 **3c Red Brown, Ty. II, Chicago Perf 12½ (11A var).** Position 74L3, deep rich color and nicely centered, perforations all around but slightly blunted at bottom left and lower right, tied by bold strike of "Chicago Ill. Jan. 23, 1857" circular datestamp on small yellow piece

VERY FINE. AN ATTRACTIVE EXAMPLE OF THE 3-CENT CHICAGO PERFORATION IN A DISTINCTIVE DEEP SHADE.

With 1968 P.F. certificate 6,000.00



3181



3182

- 3182 ☒ **3c Dull Red, Ty. I, Chicago Perf 12½ (11 var).** Position 64L7, scissors-separated with intact perfs at top and bottom, blunted at lower right, tied by "Chicago Ill. Jul. 25, 1856" circular datestamp on cover to Norwich N.Y. with "Sherman House Chicago, J. A. Patmor & Co." cameo corner card, couple mended backflap tears

VERY FINE. A FRESH AND BEATIFUL EXAMPLE OF THE 3-CENT CHICAGO PERF USED ON A HOTEL CORNER CARD.

Wilson Hulme speculates in his article in *Chronicle* 175 that R. K. Swift distributed Chicago perf stamps to various businesses as a trial or to strengthen the possibility of selling the perforating machine to the post office. Many of the businesses, including the local Sherman House hotel, were in a straight path between Swift's bank and Elijah Hadley's (inventor of the machine) office (p. 167).

With 1983 P.F. certificate. Illustrated in *Chronicle* 175, p. 169 E. 4,000-5,000



3183

- 3183 ☒ **3c Brownish Carmine, Ty. II, Chicago Perf 12½ (11A var).** Choice centering with complete perfs all around, rich color, tied by neat strike of "Chicago Ill. Jul. 16, 1856" circular datestamp on cover to Poughkeepsie N.Y., **originated from R. K. Swift & Co.** based on handwriting match with other Swift covers, most of backflap missing, repaired corner tear at top right of cover

VERY FINE APPEARANCE. ONE OF ONLY TEN COVERS WITH THE 3-CENT CHICAGO PERF ORIGINATING FROM R. K. SWIFT, THE PROMOTER OF THE HADLEY PERFORATING MACHINE.

Wilson Hulme recorded five covers that do not bear the name of R. K. Swift, but can be tied to the company. One is the Tremont House corner card written by Swift himself. Four others, including the cover offered here, have handwriting which has been matched to writing on one of the two known Swift corner cards (offered as lot 179 in the Hulme sale). Hulme also had two additional non-Chicago perf covers in his collection from Swift & Co. with matching handwriting.

With 1980 P.F. certificate. Signed Ashbrook..... E. 2,000-3,000



3184

- 3184 ☒ **3c Dull Red, Ty. I, Chicago Perf 12½ (11 var).** Centered to right with portion of adjoining stamp at left, but perfs all around, tied by overlapping strikes of "Chicago Ill. Sep. ?" (1856) circular datestamp on cover to Evansville Ill., manuscript "Care Mr. Ferguson" at bottom

A FRESH AND FINE COVER WITH THE 3-CENT CHICAGO PERFORATION.

Wilson Hulme recorded 40 examples used on cover and 30 used off-cover in his 1997 census in *Chronicle* 175. Since that time a small number of additional examples have been discovered.

With 1970 P.F. certificate..... 9,000.00



3185

- 3185 ☒ **3c Dull Red, Ty. II, Chicago Perf 12½ (11A var).** Sheet margin at right, scissors-separated at bottom but perfs intact other sides, tied by “Rosedale Wis. Jan. 31” (1857) circular datestamp on cover to West Killingly Conn., small piece of backflap missing
- VERY FINE. THIS COVER IS ONE OF ONLY TWO KNOWN 3-CENT CHICAGO PERF COVERS ORIGINATING FROM OUTSIDE OF CHICAGO.
- Rosedale is approximately 175 miles from Chicago. Dr. Chase discusses this cover in his book (p. 175) and hypothesizes that the stamp or cover was carried to Rosedale from Chicago by a traveler.
- Ex Chase and Beals. Discussed in Wilson Hulme's article in *Chronicle* 175, p. 162..... E. 3,000-4,000



3186

- 3186 ☒ **3c Dull Red, Ty. II, Chicago Perf 12½ (11A var).** Centered to left but perfs intact on all sides, tied by “New-York May 23” circular datestamp on cover to Milton Mass., docketing at left “May 22/56” and original contents datelined “New York, May 22, 56.”, some minor cover edgewear
- VERY FINE. THIS COVER IS ONE OF ONLY TWO KNOWN 3-CENT CHICAGO PERF COVERS ORIGINATING FROM OUTSIDE OF CHICAGO.
- This cover was originally described in a May 20, 1940, article by Hollis Webster, the son of the writer, in *Mekeel's Weekly Stamp News*. It was discussed at length by Wilson Hulme in his second article on the Chicago Perfs in *Chronicle* 175, pp. 161-162. The writer was C. C. Langdell of the firm of Pierrepont, Stanley & Langdell in New York. Apparently, R.K. Swift sent samples of the Chicago Perf stamps to New York, where he had an office one street away from Langdell's office.
- With 1989 P.F. certificate. Accompanied by the *Mekeel's* article and correspondence from Mr. Wagshal related to expertizing the cover..... E. 3,000-4,000

1857 3-CENT PERFORATED ISSUE
TYPE I (PLATES 4, 6, 7, 8)



- 3187 **3c Rose, Ty. I & II, Part Plating Study (25-25A).** An impressive group of more than 350 plated stamps, including more than 260 of No. 25A (Scott Retail \$550.00 each), approximate breakdown includes Ty. I No. 25 — Plate 4 (25 stamps Left, 32 stamps Right), Plate 6 (10 stamps Left, 18 stamps Right, incl. recut bust Pos 47R6 — Scott Retail \$1,500.00), a handful from Plate 7, Plate 8 (10 stamps Left, 23 stamps Right), Ty. II No. 25A — Plate 2L (51 stamps Left, 35 stamps Right), Plate 3 (13 stamps Left, 55 stamps Right), Plate 5L (51 stamps Left, 58 stamps Right), some faults but many sound and attractive stamps to be found, a rare opportunity to acquire a vast number of the scarcer perforated types at one time, massive Scott Retail value (approximately \$155,000.00) *Not illustrated* E. 10,000-15,000
- 3188 (★) **3c Rose, Ty. I (25).** Unused (no gum), unusually choice centering for this tightly-spaced issue with perfs clear three sides, just slightly in at top, single shortish perf at bottom and unpunched perf at top, trivial natural inclusion, Very Fine appearance 1,050.00
- 3189 (★)田 **3c Rose, Ty. I (25).** Positions 5-6/15-16R4, block of four, unused (no gum), relatively nice centering for this tightly-spaced issue, some staining almost entirely confined to the back, Fine appearance, with 1984 P.F. certificate, Scott Retail as four no gum singles 4,200.00
- 3190 **3c Rose, Ty. I (25).** Brilliant color, beautifully centered with balanced margins, neat strike of town datestamp, Extremely Fine 125.00
- 3191 **3c Rose, Ty. I (25).** Position 91R7, **straddle-pane margin with centerline** at left, bright color, **blue** circular grid cancel, single irregular perf at top, Very Fine appearance 125.00
- 3192 **3c Rose, Ty. I, “Recut Bust” (25 var).** Position 47R6, clear recut of lines on bust and bottom of medallion circle, rich color, centered slightly to bottom right, neat strike of “Sep. 21, 1857” circular datestamp, Fine and attractive example of this scarce recut variety, with 1969 P.F. certificate 1,500.00
- 3193 FC **3c Rose, Ty. I (25).** Beautiful bold strike of **greenish blue negative “ST” in Star fancy cancel** of Coushatta Chute La. (Skinner-Eno ST-C 10), tiny corner crease of little consequence, Very Fine strike and an exceptionally rare example of this distinctive fancy cancel, we are aware of only one other, an on-cover example that was part of the Louis Grunin collection (Christie’s March 25, 1987, lot 89) E. 750-1,000



- 3194 **3c Rose, Ty. I (25).** Two horizontal pairs, both with choice centering and rich color, slightly different shades, town datestamps, Very Fine-Extremely Fine...**(Photo Ex)** 600.00
- 3195 **3c Rose, Ty. I-II (25-25A).** Vertical pair and single respectively, pair with clear strike of straightline "U. STATES" exchange handstamp, some staining on back and couple tiny tears in bottom stamp, Fine appearance, single with two part strikes of same handstamp, minor perf flaw, Very Fine appearance.....**(Photo Ex)** 850.00
- 3196 **3c Rose, Ty. I, "Star Crack" Study (25 var).** 13 items comprising an extensive study of the major Plate 7 "Star Crack", including four off-cover from Position 47R7 (two singles and two in vertical pairs), four singles of Position 48R7, large piece of a cover with five No. 25 singles incl. both Positions 47R and 48R7, covers with single examples of each position, also a vertical strip of three (Positions 28/38/48R7) and a vertical strip of five (Positions 7/17/27/37/47R7), each from an early impression **without the major plate crack**, couple of small flaws do not detract, overall Fine-Very Fine, a fascinating group of these two prominent positions and seldom offered in quantity, there are believed to be only a handful of each of the two positions known without the crack and the strip of five is the largest known multiple, Scott Retail for just the plate crack positions and not counting the additional stamps.....**(Photo Ex)** 9,750.00
- 3197 **3c Rose, Ty. I (25).** Three of No. 25 on separate covers, each stamp appears to be **part imperforate**, two with pen cancels, rough edges on the imperforate side caused by tearing from the sheet, few other small faults, also single of No. 25A on cover, perfs on this stamp complete or faint at left on top third of stamp, remainder of left side imperforate, torn from sheet below the incomplete perfs, Alum Spring circular datestamp, Fine appearing and interesting group**(Photo Ex)** E. 400-500
- 3198 **3c Rose, Ty. I (25).** Used with **Imperforate 3c Brownish Carmine, Ty. II (11A)**, Plate 5L, and tied by clear strike of blue "Eastern R.R. Ms. Jul. 29" route agent's circular datestamp on cover to Manchester Vt., receipt docketing at top, perforated stamp with small pre-use crease, minor cover edgewear and barely reduced at right, still a scarce and beautiful combination Imperforate and Perforated railroad usage E. 300-400



3199 front and back

- 3199 ☒ **3c Rose, Ty. I (25).** Block of nine and single, cancelled by red grids and affixed to back of buff cover **to Rome, Italy**, front with matching "Warrenton N.C. Jan. 2" (1859) circular datestamp, strikes of both black "New York Br. Pkt. 23 Jan. 11" (debit) and red "New York Br. Pkt. 7 Jan. 11" (credit) circular datestamps, docketed "*via the first steamer from N. York or Boston*", sent via Cunarder America and Prussian Closed Mail, red Aachen transit handstamp on reverse, 30c in U.S. postage paid the single Prussian Closed Mail rate but did not include the additional rate for mail going beyond the GAPU and was completely disregarded, manuscript "45" kreuzer due rating crossed out and in same pen manuscript "33" rating, Rome receiving datestamp ties the block of nine, cover slightly reduced at left and some edgewear, stamps with offset from rating marks

A FASCINATING AND EXTREMELY RARE COVER TO ROME WITH A BLOCK OF NINE OF THE PERFORATED 3-CENT 1857 TYPE I. THIS IS THE LARGEST KNOWN USED MULTIPLE.

This cover combines several interesting features. The presence of both the 23c debit to Prussia for an unpaid letter via Prussian Closed Mail and the 7c credit for a pre-paid letter is contradictory, and neither marking is crossed out. The New York foreign mail clerk may not have initially seen the franking on the reverse and therefore struck the black debit marking before correcting his mistake with the red credit, or he may have struck the red credit marking first and then realized that the letter would be short paid going to Rome and so struck the black marking as unpaid. In addition, despite the fact that under the Prussian convention letters could not be part paid, typically mail that was addressed beyond the borders of the GAPU was accepted as prepaid to the border with the 30c rate. This letter's prepayment was totally disregarded. Whatever the reasons for its handling, this is a rare and fascinating usage.

Signed Ashbrook..... E. 4,000-5,000

- 3200 ☒ **3c Rose, Ty. I (25).** 57 covers, huge range of towns, a number of better items incl. **strip of four on cover** sent within Maine (faults), strip of three with 1c 1857, pair, single with part imprint, illustrated design and corner cards, bold straightline "Paid", "Advertised", plate varieties incl. flaws and major cracks (47R7, 48R7, Scott Retail \$750.00 each), Plate 5 rust spots, April 9, 1857 usage, many others, some faults to be expected but many are sound and attractive, Scott Retail more than \$10,000.00*Not illustrated* E. 1,500-2,000

1857 3-CENT PERFORATED ISSUE—TYPE II (PLATES 2L, 3, 5L)



- 3201 (★) **3c Rose, Ty. II (25A).** Position 31R2L, unused (no gum), scissor separated leaving both vertical rows of perfs intact and with portions of adjoining stamps at sides, Fine, a rare unused perforated example from Plate 2 Late, Ty. II perforated stamps from Plates 2L and 3 are scarcer than from Plate 5L 2,200.00
- 3202 **3c Rose, Ty. II (25A).** Positions 67/77/87L5L, vertical strip of three, top stamp showing **rust marks along Washington's shoulder**, vivid color, choice centering with perfs as clear as is possible on this issue, tiny perf flaw at top, overall Very Fine, a choice strip vividly demonstrating the rust marks that Plate 5 acquired before it was put into use a second time 2,200.00
- 3203 **3c Rose, Ty. II, Better Plate Varieties (25A).** Five stamps, each with a prominent plate variety, incl. Position 9R5L with major plate crack, Position 96L5L with intermediate plate crack, Position 92L2 with triple transfer, Position 4R5L with plate rust marks and an unplated single with double transfer, mostly well-centered, Fine-Very Fine..... 4,400.00
- 3204 ☒ **3c Rose, Ty. II (25A).** Position 84L5L, deep rich color which perfectly highlights the **major plate crack** at lower right, tied by "Portland Me. Paid 22 Feb." circular datestamp on cover to East Longmeadow Mass., cover toning and a few tears confined mostly to the backflap, Fine appearance, Scott Retail as off-cover 1,100.00
- 3205 ☒ **3c Rose, Ty. II (25A).** Position 66R2L, clearly showing the **"Gents" double transfer**, a few irregular perfs, tied by "Pontiac Mic. Sep. 22" (1857) circular datestamp on cover to Delhi Iowa, receipt and answer docketing at top, backflap tears, Fine appearance and a scarce on-cover example of this major double transfer, Scott Retail as off-cover 1,350.00



- 3206 ☒ **3c Rose, Ty. II (25A).** Position 92R3, scissor separated at sides but perfs intact at right, tied by "Schenectady N.Y. Jul. 16, 1857" circular datestamp on cover to New York City, **the earliest known usage of a Plate 3 perforated stamp**, soiling confined mostly to back and part of backflap missing, otherwise Very Fine, Dr. Chase's notes on back, Scott Retail \$625.00 as normal..... E. 300-400
- 3207 ☒ **3c Rose, Ty. II (25A).** Tied by "Aug. 1" straightline, matching "Spuyten Duyvil N-Y." dateless handstamp on small cover to New York City, light toning and stamp with per faults, Fine appearance..... 625.00
- 3208 ☒ **3c Rose, Ty. II (25A).** Tied by **Three-Leaf Clover fancy cancel**, matching "Cloverport Ky. 13 Nov." woodcut rimless datestamp with date in manuscript on cover to New Orleans, minor backflap tear, Very Fine, a beautiful strike of this "rebus-like" fancy cancel on the much scarcer Ty. II stamp with recut inner lines, this full cover is illustrated in Simpson-Alexander on p. 132 and in *Chronicle* no. 86, p. 83, where it is described as unique, Cloverport is known for a variety of fancy townmarks during the 1851-57 period, this is the only example we have seen that incorporates the clover..... E. 500-750
- 3209 ☒ **3c Rose, Ty. II (25A).** Positions 46-49L3, strip of four, vivid color, the two right stamps showing wide spacing between from the first two of the "**Three Rows**" on Plate 3 Left, Position 49L with double frameline at left and 48L with the distinctive bending right inner line and split right frameline, the recuts on both of these positions done in an attempt to minimize the visual anomaly of the wide spacing, the strip tied by bold strikes of "Augusta Me. Apr. 12" circular datestamp on 1858 cover to Salem Mass., docketing at left, strip with a couple minor flaws, Very Fine appearance and an extremely rare perforated Ty. IV strip of four on cover from the "Three Rows", ex Wyer, Scott Retail for off-cover normal strip of three and single 2,900.00
- 3210 ☒ **3c Rose, Ty. II (25A).** Approximately 75 covers, all three plates that produced the perforated stamps with recut inner lines represented (Plates 2L, 3, 5L), variety of frame and other line recuts incl. two lines recut upper left diamond, huge range of towns, colored circular datestamps, other plate varieties, some faults but many are Very Fine, a wonderful opportunity to study a large group of these scarcer perforated issues and rarely offered in this quantity, Scott Retail with no premium for the varieties more than \$46,000.00 ...**(Photo Ex)** E. 4,000-5,000

1857 3-CENT PERFORATED ISSUE—TYPE III (PLATES 9, 12-28)



3211EX



3212EX

- 3211 ★ **3c Dull Red, Ty. III (26).** 13 singles, original gum, couple Mint N.H., several varieties incl. **Mint N.H. triple frameline at left**, two double rows of perfs, full corner selvage, flaw on shoulder (Position 34R20), another with part imprint, range of shades, couple small faults, overall Fine-Very Fine, interesting group, Scott Retail as all hinged and with no premium for the varieties.....(Photo Ex) 845.00

- 3212 ★田 **3c Dull Red, Ty. III (26).** Blocks of 10 and 12, first with original gum, multiple h.r., couple light creases, second traces of gum, scissors-separated into right vertical column, couple tiny flaws, Very Good-Fine appearance, Scott Retail as two blocks, pair and 12 no gum singles.....(Photo Ex) 1,470.00

- 3213 ★田 **3c Dull Red, Ty. III (26).** Right imprint and and plate no. 15 block of 14, full corner sheet selvage, original gum, small paper h.r. in selvage of plate block and in top margin (covering a tear, outside of the plate block), most stamps in the plate block **Mint N.H.**, one with tiny gum disturbance, couple gum bends, minor perf flaw in bottom left stamp

FINE APPEARANCE. A SCARCE LARGE PLATE BLOCK OF THE 1857 PERFORATED 3-CENT TYPE III.

Scott Retail for plate block, block of four and pair with no premium for Mint N.H. stamps..... 3,775.00



3213



3214

- 3214 **3c Dull Red, Ty. III (26).** Strip of four, multiple clear strikes of “Mobile Ala. Mar. 29, 1861” double-circle datestamp, couple small flaws and some perf separations, Fine appearance, a desirable and scarce Confederate Alabama use of U.S. stamps nearly two months after the Confederate government was formed at Montgomery E. 400-500

TYPE III — PLATE FLAWS AND VARIETIES



3215



3216



3217

- 3215 **3c Dull Red, Ty. III, Major Double Transfer (26 var).** Position 87R15 with clear double transfer and showing rosettes double and line thru “Postage” and “Three Cents”, wide margins three sides, Very Fine, scarce example of this distinctive variety 2,500.00
- 3216 **3c Dull Red, Ty. III (26).** Position 18L28, the “**Quadruple Plate Flaw**”, pen cancel leaves the flaws clearly visible, margins nicely balanced at sides, centered slightly to bottom, Fine, an attractive and scarce example of one of the most dramatic plate varieties found on any 1851-57 3c stamps 1,750.00
- 3217 **3c Dull Red, Ty. III (26).** Positions 18-20L28, horizontal strip of three, left stamp with the “**Quadruple Plate Flaw**”, pen cancel leaves the flaw completely visible, right stamp with small tear, plate flaw stamp about Fine, scarce example of one of the most dramatic plate varieties found on any 1851-57 3c stamps 1,750.00



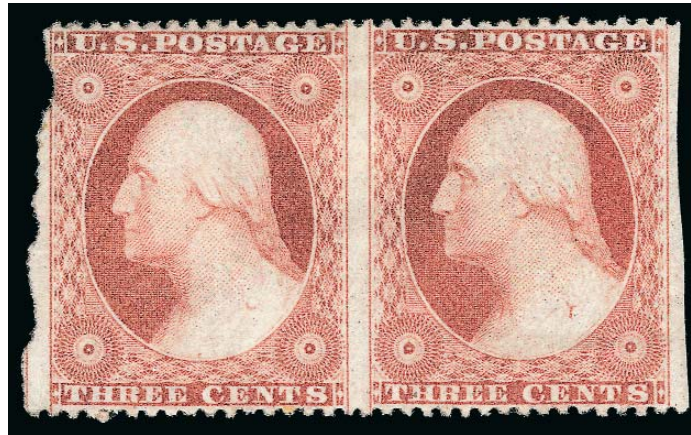
- 3218 ☒ **3c Dull Red, Ty. III, Plate Crack (26).** Nicely centered, clearly showing a crack in lower right rosette, tied by "Springfield, Ms. Aug. 3" circular datestamp and grid on cover to Little Compton R.I., "American Association for the Advance of Science, Springfield, Mass., August 3, 1859." imprint at top, Very Fine and choice, ex Amonette, accompanied by information compiled by Mr. Wagshal demonstrating that this was the location of the Association's 1859 annual meeting E. 300-400
- 3219 **3c Dull Red, Ty. III, Plate Cracks (26).** Ten stamps and one cover, incl. vertical pair with bottom row stamp showing crack thru the lower right rosette and into the sheet margin (illustrated in the *Chronicle* with photocopy included), four singles and the cover from Position 1L24, with a prominent crack at upper right, also Position 72L18 with crack thru "O" of "Postage", several others, couple small flaws and one with perfs trimmed, Fine-Very Fine appearance (Photo Ex) E. 500-750
- 3220 **3c Dull Red, Ty. III, Plate Flaw Study (26).** 21 stamps, wide variety of plate flaws plus a couple interesting recut varieties, incl. neck and head flaws, the distinctive "Quadruple Plate Flaw" (Position 15L28, Scott Retail \$1,750.00), Dr. Chase's **Type Q — Recut Inner Lines** position illustrated on p. 133 of his revised edition, others, some with small faults, overall Fine-Very Fine appearance and a worthy group for study Not illustrated E. 500-750

TYPE III — ORANGE BROWN

- 3221 ☒ **3c Orange Brown, Ty. III (26 var).** Four covers, each with vivid colors in the true Orange Brown shade, four different town datestamps, few minor cover faults and small stamp tear on one, Fine-Very Fine appearing group of this scarce shade, each with notes and signed on back by Dr. Amonette confirming the shades..... (Photo Ex) 3,800.00
- 3222 ☒ **3c Orange Red, Ty. III (26 var).** Beautiful vivid shade, tied by "Canaan Vt." double-circle datestamp, second strike to left has manuscript "May 10th" date, on small neat cover to Colebrook N.H., barely reduced at left, Very Fine, a pretty cover with this scarce shade, accompanied by a note from Dr. Amonette stating "matches exactly the orange red color in Dr. Chase's color chart" E. 200-300

TYPE III — PERFORATION VARIETIES

3223



- 3223 ★ **3c Dull Red, Ty. III, Imperforate Vertically (26b).** Horizontal pair, right stamp the “pendant under button” variety, large part original gum, warm color, separated a bit roughly at left, not surprising given the lack of perforations

FINE. THE ONLY RECORDED UNUSED EXAMPLE OF THIS MAJOR 3-CENT 1857 ISSUE RARITY.

Our review of the Philatelic Foundation records and a survey of auction catalogs failed to locate another example.

Ex Beals and Piller. With 1977 P.F. certificate 4,000.00



3224

- 3224 ☒ **3c Dull Red, Ty. III, Imperforate Horizontally (26c).** Vertical strip of three, tied by two strikes of “Griffin Ga. Jul. 11” circular datestamp on triple-rate legal-size cover to Lawrenceville Ga., the cover has skillfully repaired tears at right and upper left, strip with couple minor perf flaws

VERY FINE. THE UNIQUE ON-COVER USAGE OF THE 3-CENT 1857 ISSUE IMPERFORATE HORIZONTALLY. A MAGNIFICENT COVER AND ONE OF THE HIGHLIGHTS OF THE WAGSHAL 3-CENT COLLECTION.

A review of the Philatelic Foundation records and Power Search produced only two other examples of this rarity: a vertical pair and single on piece, also postmarked at Griffin Ga. (ex Twigg-Smith and Hulme); and a top-margin pair faintly cancelled (ex Hulme). This is the only known example on cover and is also the largest known multiple.

Ex Steele, Grunin and Piller. With 1964 P.F. Certificate. Scott Retail as pair off-cover, with no premium for the third stamp 13,000.00

TYPE III — DOUBLE IMPRESSION

3225

3c Dull Red, Ty. III, Double Impression (26e). Pronounced doubling of all four rosettes and labels, rich color, Virginia circular datestamp

THE FINER OF ONLY TWO KNOWN EXAMPLES OF THE 1857 3-CENT TYPE III WITH DOUBLE IMPRESSION. A GREAT RARITY OF THE ISSUE.

A review of the Philatelic Foundation records and Power Search located only this example and the one in the following lot as genuine double impressions. There are a couple of additional stamps that have been certified as partial “kiss impressions”, which typically show doubling of a small part of the design.

Ex Piller. With 1985 P.F. certificate. Scott Retail is based on the realization of this stamp in our 1993 Piller sale and has not changed since 1994..... 2,500.00



3225



3226

3226 ☒

3c Dull Red, Ty. III, Double Impression (26e). Strong doubling especially apparent in value label, tied by lightly struck “New Orleans La.” circular datestamp which barely cancels stamp, on 1859 folded letter to Boston, stamp with several margin nicks and faint creasing

FINE APPEARANCE. ONE OF ONLY TWO EXAMPLES KNOWN AND THE ONLY ON-COVER EXAMPLE OF THE 1857 3-CENT TYPE III WITH DOUBLE IMPRESSION.

A review of the Philatelic Foundation records and Power Search located only this example and the one in the previous lot as genuine double impressions. There are a couple of additional stamps that have been certified as partial “kiss impressions”, which typically show doubling of a small part of the design.

Ex Piller. With 1982 P.F. certificate..... 2,500.00

TYPE III — COVERS



- 3227 ☒ **3c Dull Red, Ty. III (26).** Two covers, both with “New-York” Norton-patent grid duplex with ‘61 year slug vertically at side of month and day, first dated “Feb. 11”, second “Mar. 5”, on folded letter to Richmond and on cover to Woodstock Vt. respectively, first also with “Brown Bro’s & Co. New York” double-oval handstamp on reverse, Very Fine, second with perfs in at left and light filing crease thru stamp, a scarce pair of covers with this duplex, used only from Jan. 22-Mar. 28, 1861(Photo Ex) E. 300-400
- 3228 ☒ **3c Dull Red, Ty. III (26).** Tied by blue “Chicago Supplementary Mail Feb. 1” circular datestamp on commission merchant return address cover to Williamstown Mass., opened a bit roughly at top, still Very Fine E. 200-300
- 3229 ☒ **3c Dull Red, Ty. III (26).** Slightly oxidized, tied by bold “Wenona (Ind.) Aug. 2, 1858” straightline datestamp on yellow cover to Springfield Ill., some minor soiling and back-flap tears, Fine strike and scarce, Simpson-Alexander Rarity 7 (p. 23) E. 150-200
- 3230 ☒ **3c Dull Red, Ty. III (26).** Nicely balanced margins for this tightly-spaced issue, manuscript cancel, green “Clover Port Ky. Dec. 10” horseshoe-shaped datestamp with date in manuscript, on “Breckenridge Coal and Oil Company” folded letter to Hardinsburg Ky., docketing at left, file fold does not affect the stamp or the town marking, Very Fine, Simpson-Alexander Rarity 8, ex Atkins and Beals, illustrated in *Chronicle* 86, p. 84 E. 300-400
- 3231 ☒ **3c Dull Red, Ty. III (26).** Manuscript cancel, green “Clover Port Ky. Aug 10” straight-line handstamp with date in manuscript, on yellow cover to Hardensburg Ky., original contents datelined “Cloverport 8th Aug. ‘60”, stamp defective and some small mended cover faults, still an Extremely Fine strike, an exceptionally rare example of a green straightline canceling an 1851-57 stamp, the only known green straightline of the period, this example is the basis for the tracing in Simpson-Alexander where it is rated Rarity 10, or unique, with 1984 P.F. certificate, illustrated in *Chronicle* 86, p. 83 E. 300-400



- 3232 ☒ **3c Dull Red, Ty. III (26).** Tied by two strikes of “**South Dover, Me.**” straightline handstamp with manuscript “June 28” on cover to Waterville Me., couple small cover tears and missing backflap, still Fine strikes and very rare, the basis for the illustration in Simpson-Alexander on p. 27 (Rarity 8)..... E. 300-400
- 3233 ☒ **3c Dull Red, Ty. III (26).** Tied by neat strike of “**Milton Ohio**” truncated octagon cancel on orange cover to Austintown O., faint postmark or docketing at top incl. “July 24”, stamp with small pre-use tear and cover with corner and back tears, still a Very Fine strike, scarce, illustrated in Simpson-Alexander on p. 21 (Rarity 7)..... E. 200-300
- 3234 ☒ **3c Dull Red, Ty. III (26).** Tied by bold strike of **blue Flag fancy cancel** (Skinner-Eno PT-F 23a), matching “Glendale Ms. May 18” circular datestamp on cover to Brownhelm O., mended cover tears, Very Fine strike of this rare cancel, ex Haas and Beals, with 1984 P.F. certificate and accompanied by a note from Thomas J. Alexander..... E. 400-500
- 3235 ☒ **3c Dull Red, Ty. III (26).** Tied by “Memphis Ten. Jan. 30” circular datestamp on cover to Canton Mass., misdirected to Canton Miss. where struck with “Canton Mi. Feb. 1” circular datestamp and fancy **Canton Lyre** cancel which ties the stamp, forwarded with pointing hand drawing containing “Massachusetts” in a long finger, some soiling and cover tears, still an attractive and fascinating forwarded cover, with 1981 P.F. certificate which incorrectly orders the progression of towns..... E. 750-1,000
- 3236 ☒ **3c Dull Red, Ty. III (26).** Strip of three, bottom row positions, tied by multiple strikes of fancy **Canton Lyre** cancel, matching “Canton Miss. Nov. 8, 1860” circular datestamp on blue cover to New Orleans, staple holes thru cover not affecting the stamps or postmark, Fine and scarce triple-rate cover with the distinctive Canton Lyre..... E. 750-1,000



- 3237 ☒ **3c Dull Red, Ty. III (26).** Position 42L24, plate flaw in margin at lower right, cancelled by beautiful strike of **Masonic Compass fancy cancel** (Skinner-Eno FR-M4c 11), matching "Chicopee Mass. Mar. 19, 1861" circular datestamp on cover to Vernon Vt., some toning around edges of stamp, cover with some pen indentations, otherwise Very Fine, scarce..... E. 200-300
- 3238 ☒ **3c Dull Red, Ty. III (26).** Pretty shade, tied by **lilac** circular grid with matching "Winchendon Mas. Feb. 28" circular datestamp on cover to Nashua N.H., Extremely Fine, a rare shade for an 1851-57 Issue cancel, in his book Dr. Chase discusses on p. 241 colored cancellations on the 3c stamp from Winchendon including lilac, signed by Chase with his notes on the cancellation color, accompanied by a letter from Mr. Wagshal about the cover..... E. 400-500
- 3239 ☒ **3c Dull Red, Ty. III (26).** Tied by "Adamstown B. & O. R.R. Jan. 1, 1861" route agent's oval datestamp on cover to Frederick Md., docketing at left, couple small stains on stamp, otherwise Fine, a very scarce example of this route agent handstamp on a 3c 1857 stamp, the Beals collection had three of this handstamp but all on 3c 1861 stamps, note on back indicates one of only three recorded E. 300-400
- 3240 ☒ **3c Dull Red, Ty. III (26).** Tied by "Adamstown B. & O. R.R. Jan. 15, 1861" route agent's oval datestamp on cover to Frederick Md., docketing at left, stamp with couple minor perf flaws, otherwise Fine, a very scarce example of this route agent handstamp on a 3c 1857 stamp, the Beals collection had three of this handstamp but all on 3c 1861 stamps, note on back indicates one of only three recorded E. 300-400
- 3241 ☒ **3c Dull Red, Ty. III (26).** S.e. at left, tied by "Adamstown B. & O. R.R. Dec. 19, 1860" route agent's oval datestamp on cover to Frederick Md., docketing at left, back of cover with tears from opening, stamp with couple short perfs, otherwise Fine, a very scarce example of this route agent handstamp on a 3c 1857 stamp, the Beals collection had three of this handstamp but all on 3c 1861 stamps, note on back indicates one of only three recorded E. 300-400



- 3242 ✉ **3c Dull Red, Ty. III (26).** Bright color, neat strike of blue circular grid just ties stamp, matching "Oberlin O. Oct. 3" circular datestamp on cover to Gustavis O. with **beardless Lincoln three-quarter portrait facing left**, Milgram AL-42, address written in beautiful fancy script, minor backflap tear from opening, Extremely Fine, a fresh and gorgeous Lincoln campaign cover, illustrated in Milgram Lincoln book (p. 26), with 1980 P.F. certificate..... E. 500-750
- 3243 ✉ **3c Dull Red, Ty. III (26).** Well-centered, tied by bold strike of "Pottstown Pa. Aug. 26" circular datestamp on cover to Princeton N.J., with "**Dis chile's CONTRABAN**" **anti-slavery political cartoon**, original enclosure "**Death to Traitors.**" lettersheet with lengthy contents, two sides with overlapping text written in two directions, cover with trivial edgewear, Very Fine example of this scarce design..... E. 750-1,000
- 3244 ✉ **3c Dull Red, Ty. III (26).** Margins mostly clear, slightly blunted corner at top right, tied by **green** circular grid with matching but blurry strike of Barnard Vt. circular datestamp, on **patriotic cover depicting a soldier waving an American flag** to Worcester Mass., same green cancelling ink offset on back, slightly reduced at right, Fine, an attractive combination E. 200-300
- 3245 ✉ **3c Brownish Carmine, Ty. III (26).** Rich color, tied by neat "Goshen N.Y. Oct. 27" circular datestamp on **illustrated Phonography** cover to New York City, Very Fine, a pretty cover E. 200-300
- 3246 ✉ **3c Dull Red, Ty. III (26).** Cancelled by grid (not tied), matching "Lockport N.Y. Apr. 8" circular datestamp on cover to Mechanicsburg Pa., docketed at left "**Recpt for Gargling Oil April 6 1861**", back with printed "**The Celebrated Gargling Oil Prepared by Merchant's Gargling Oil Company, Successors & Proprietors, Lockport N.Y.**", with single **2c No. RS179d** affixed at bottom, couple light scuffs, overall Fine and attractive E. 200-300

TYPE III — CARRIER AND LOCAL COMBINATIONS



3247

3248

- 3247 ☒ **3c Dull Red, Ty. III (26).** Rich color, wide margins to just in at bottom, tied by “U.S.P.O. Despatch Pre-Paid One Cent” double-oval carrier handstamp, “Philadelphia Pa. Sep. 6, 1859?” octagonal datestamp on cover to Sewickleyville Pa., minor backflap tears, overall Very Fine, scarce use of this carrier marking, Simpson-Alexander Rarity 7, with 1984 P.F. certificate E. 200-300
- 3248 ☒ **Baltimore Md., 1c Red (1LB9).** Large margins to clear, used with 3c Dull Red, Ty. III (26), both stamps tied by “Baltimore Md. Aug. 22” circular datestamp on cover to Newport R.I., 1859 docketing at left, tiny nick in margin of carrier stamp, Very Fine, ex Caspary 300.00



3249

- 3249 **Brown & McGill's U.S.P.O. Despatch, Louisville Ky., (2c) Blue (5LB2).** Large to huge margins, used with 3c Dull Red, Ty. III (26), both tied to small piece by blue “Louisville Ky. Apr. 12, 1860” circular datestamp, Very Fine, ex Sheriff, with 1986 P.F. certificate, Scott Retail for full cover \$6,250.00 E. 300-400



3250

- 3250 ☒ **Brown & McGill's U.S.P.O. Despatch, Louisville Ky., (2c) Blue (5LB2).** Huge margins to in where separated by hand and incl. sheet margin at right, used with 3c Dull Red, Ty. III (26) and both stamps tied by blue "Louisville Ky. Jun. 12, 1858" circular date-stamp on cover to Baltimore Md., faint vertical file fold affects 3c stamp

VERY FINE APPEARING EXAMPLE OF THE BROWN & MCGILL'S CARRIER STAMP TIED ON COVER. ONLY SIX OR SEVEN TIED EXAMPLES ARE BELIEVED TO EXIST.

With notes attesting to authenticity by Robert Myersburg and Richard Frajola. 6,250.00



3251

- 3251 ☒ **Brooklyn City Express Post, Brooklyn N.Y., 2c Black on Pink (28L4).** Margins just in at sides, close but clear at top and bottom, used with 3c Dull Red, Ty. II (26), both stamps tied by New-York Apr. 24" circular datestamp on cover to Boston, some cover faults incl. part of backflap missing and paper clip rust spot, still Fine and rare tied in this combination which is not listed in Scott Catalogue (the local tied with No. 65 priced at \$1,750.00) E. 500-750



- 3252 ☒ **3c 1857 Issue, Snow Patent Affixing Machine (26-26A).** Three covers and one stamp on piece, one cover with No. 26A, others No. 26, each with evidence of having been mechanically affixed by a Snow Patent machine or similar device, incl. clear blade cuts and stamps firmly stuck down as would be more likely with pre-moistened envelopes, a Fine and fascinating group for further study, each accompanied by a note from Ken Lawrence opining that they were machine affixed **(Photo Ex)** E. 400-500
- 3253 ☒ **3c Dull Red, Ty. III, Numeral "5" Cancels (26).** Three covers and one stamp, each with a bold central strike of a numeral "5" handstamp, slightly different styles and not tying the stamps, Very Fine and unusual, while postmasters in this period occasionally used their rating numerals as obliterations, this late in the life of the 3c 1851-57 issues the numeral "3" is the one most often seen, the "5" used here was long obsolete by 1857, the 5c single rate was lowered on to 3c on July 1, 1851 and the 5c unpaid rate was eliminated on April 1, 1855 **(Photo Ex)** E. 300-400
- 3254 ☒ **3c Dull Red, Ty. III, Star and Fancy Cancels on Cover (26).** Seven covers, first five with star cancels incl. Mazo Manie Wis. 6 pt. (Skinner-Eno ST-6P40), South Gardner Mass. (Skinner-Eno ST-O 38), Freehold N.J. 5 pt., Clappville Mass **blue** solid 5 pt. and Chateaugay N.Y. solid 5 pt., final two covers Vinton Iowa 4-leaf clover and Bergen N.Y. "J" in circular grid (illustrated in Simpson-Alexander p. 156), the strikes uniformly clear with several quite bold, Very Fine group **(Photo Ex)** E. 750-1,000
- 3255 ☒ **3c Dull Red, Ty. III, Revenue Usages (26).** Two separate revenue usages, first a **top sheet-margin pair**, Positions 2-3R25, uncancelled and affixed to a March 2, 1860 letter from Scranton Pa., in which was enclosed four bonds for \$1,000 each, second a **bottom sheet margin** single, uncancelled and affixed to a March 15, 1861 pre-printed Albany receiver notice, Very Fine, a fascinating pair *Not illustrated* E. 400-500
- 3256 ☒ **3c Dull Red, Ty. III, Better Covers (26).** Approximately 70+ covers, vast majority are better than the ordinary No. 26 usages, many interesting items incl. stamp with double perforations on all four sides (ex Alexander), "New York Ship" with "Due 3" straightline, Aug. 27, 1861 last day of legal use in Concord N.H., demonetized usage from 1943 on Southern Hotel corner card from Baltimore which was accepted, demonetized usage in Oct. 1861 which was not accepted, one correspondence of four covers showing the transition from the 1857 to the 1861 Issue, illustrated covers, scarcer towns, green cancel, also a number of better stamp varieties incl. a perf freak which created two-thirds of a stamp, defective transfers, repaired relief, part imprints, shades, couple with recut inner lines, etc., most of these were hand-picked by Mr. Wagshal in his quest for the unusual, overall Very Fine, a desirable group **(Photo Ex)** E. 1,000-1,500
- 3257 **3c 1857 Issue, Cover Balance (25/26).** 140+ covers, most are No. 26 but a number of No. 25 noted as well — a couple of Ty. I's with choice centering, several better items incl. plate varieties, double transfers, part imprints, shades, colored cancels, missent and forwarded markings, pairs and strips, couple patriotics and a Lincoln-Hamlin campaign cover (defective), territorial usages, many others, a treasure trove of 1857 Issue covers, many very attractive *Not illustrated* E. 750-1,000

1857 3-CENT PERFORATED ISSUE — TYPE IV (PLATES 10 AND 11)



3258EX



3259

- 3258 ★ **3c Dull Red, Ty. IV (26A).** Five, original gum, three lightly hinged, one large part original gum and one with h.r., attractive centering for this difficult issue, rich colors, one with tiny corner crease, otherwise Fine-Very Fine.....(Photo Ex) 2,750.00
- 3259 ★ **3c Dull Red, Ty. IV (26A).** Positions 99-100R10E, pair with **full corner selvage**, original gum, h.r., warm color, bottom row of perfs incompletely punched, fresh and Fine, an attractive and seldom seen corner-margin pair 1,150.00



3260

- 3260 ★★田 **3c Dull Red, Ty. IV (26A).** **Mint N.H.** block of four, choice centering, bottom pair particularly nice with perfs clear all around, fresh paper, positions 1 and 3 with bit of light soiling, one unpunched perf at left
- VERY FINE. AN EXTREMELY RARE MINT NEVER-HINGED BLOCK OF THE 1857 3-CENT PERFORATED TYPE IV. THIS IS THE FIRST WE HAVE ENCOUNTERED.
- A review using Power Search failed to find even a single Ty. IV in Mint N.H. condition and only seven blocks of four or larger of the much more common Ty. III (26). Unpriced in Scott as Mint N.H. Scott Retail as hinged block of four 5,000.00



- 3261 ★田 **3c Dull Red, Ty. IV (26A).** Positions 2-3/12-13L10L, top margin block of four with double transfer, original gum, h.r. mostly confined to selvage, color slightly oxidized, about Fine, scarce original-gum block, with 1983 P.F. certificate, outside of this sale we have offered only one other plus a large multiple since 2002 5,000.00
- 3262 ★田 **3c Dull Red, Ty. IV (26A).** Block of four, original gum, warm color, a few perf separations and a diagonal crease in position 3, Fine appearance and scarce, outside of this sale we have offered only one other original-gum block plus a large multiple since 2002 5,000.00
- 3263 (★)田 **3c Dull Red, Ty. IV (26A).** Positions 23-25/33-35L11i, block of six, unused (no gum), attractive centering, light vertical creases and left vertical pair rejoined, Fine-Very Fine appearance, a scarce unused block of the 3c Ty. IV, Scott Retail as singles 1,140.00
- 3264 ★田 **3c Dull Red, Ty. IV (26A).** Block of eight, original gum, several stamps **Mint N.H.**, positions 4, 6 and 8 showing double transfers, rich color, centered to left but perfs still generally clear, few perf faults along right edge and some separations in bottom pair, Fine appearing and a very scarce large multiple, Mint N.H. Ty. IV stamps are rare, Scott Retail as two hinged blocks of four \$10,000.00 E. 1,500-2,000
- 3265 ★田 **3c Dull Red, Ty. IV (26A).** Left margin block eight with **part imprint**, original gum, slightly disturbed on a few, some toning at top and horizontal perf separations, lower left stamp defective, Very Good-Fine appearance, still an extremely rare 3c Ty. IV part imprint large multiple, we record two complete plate blocks including the ex-Zoellner Plate 11 block, otherwise we found no other imprint multiples in Power Search, Scott Retail as two blocks of four with no premium for the imprint \$10,000.00 E. 1,000-1,500
- 3266 **3c Dull Red, Ty. IV, Double and Triple Transfers (26A var).** Three, first two from Position 98R10, the "**Phantom E**" **double transfer**, one a straddle-pane copy with with huge side margins and captured centerline (natural s.e.), both with bright color, last is from Position 97R11L, a **triple transfer** position, clearly evident in the the letters of "Three Cents" and the lower right rosette, Fine-Very Fine trio(Photo Ex) 2,325.00



- 3267 **3c Dull Red, Ty. IV, Double and Triple Transfers (26A var).** 20 items, incl. five stamps and 15 covers, nice range of Plates 10 and 11 double transfers and one triple transfer noted, both Scott Catalogue listed (several Position 91R11L) and unlisted positions, several stamps with four margins, range of shades, couple on corner cards, a few stamp and cover faults to be expected, many quite attractive and overall Fine-Very Fine, one cover signed by Chase, Scott Retail as all off-cover unnamed double transfers.....(Photo Ex) 4,000.00
- 3268 ☒ **3c Dull Red, Ty. IV, Double Transfers (26A var).** Three covers, first Positions 51/61R10, vertical pair, bottom stamp showing the major double transfer line thru the rosettes, tied by Burlington N.J. circular datestamp to neat buff cover to Troy N.Y., with manuscript instructions to deliver the letter Saturday night or Sunday morning, second also Position 61R10i, manuscript cancel on small pink lady's cover to Benton Centre N.Y., last Position 98R10i on yellow cover to Paris N.Y., missing backflap, overall Fine-Very Fine group demonstrating the so-called "Phantom E" double transfer, Scott Retail as off-cover.....(Photo Ex) 2,775.00
- 3269 ☒ **3c Dull Red, Ty. IV, Recut Inner Lines (26A var).** Large study group of the scarce Plates 10 and 11 recut inner line positions, incl. two covers and single from **Position 79L10, the only position from Plates 10 and 11 with the left inner line recut**, remaining 10 covers and five stamps showing the right inner line recut, Fine-Very Fine group, Scott Retail as off-cover.....(Photo Ex) 5,800.00
- 3270 **3c Rose Red, Ty. IV, Imperforate Vertically (26A var).** Position 74R11L, each vertical side showing bit of adjoining stamp, Fine, the discovery copy and still the only recorded example of Type IV imperforate vertically, Chase plating, ex Piller, with 1985 P.F. certificate..... E. 750-1,000
- 3271 **3c Dull Red, Brownish Carmine, Ty. IV (26A).** Two, one on piece, starkly different shades, both with true **green** circular datestamps, one from Napanoch N.Y., the other from Ottawa Ill., Very Fine and attractive, latter with 1986 P.F. certificate.....(Photo Ex) 600.00
- 3272 **3c Etruscan Red, Ty. IV (26A var).** Gorgeous rich color, neat **blue** circular grid cancel, choice centering with perfs clear of design all around, pulled perf at top left, Very Fine appearance, a beautiful example of this rare 1860 shade made even more desirable by its appearance on the much scarcer Ty. IV stamp, the last example we sold as part of the Wilson Hulme Sale 964 (Ty. III No. 26, on cover) brought \$4,250 despite a pen cancel, accompanied by a note from Dr. Amonette confirming the match to Dr. Chase's color chart E. 750-1,000
- 3273 **3c Experimental Orange Brown, Ty. IV (26A var).** Position 98R10, the "**Phantom E**" **double transfer**, beautiful bright color, choice centering, small manuscript cancel, Extremely Fine, a gorgeous example of this major double transfer and rare in the Orange Brown shade, accompanied by a 1980 note from Dr. Amonette confirming the shade and position, Scott Retail for the Dull Red shade from this position, with no premium for the scarcer shade 925.00
- 3274 **3c 1857 Issue, Ty. I-IV, Off-Cover Balance (25-26A).** More than 700 used stamps arranged on stock sheets and cards, not the usual perforated balance of average No. 26's, many plated, breakdown includes approximately 40 of No. 25, 46+ of No. 25A, 350+ of No. 26 and an impressive 260+ of No. 26A, better varieties abound with plate cracks, double transfers, recuts, plate flaws incl. the "**Quadruple Plate Flaw**" Position 18L28 (Scott Retail \$1,750.00, faults), five lines recut in upper left triangle, cancellations including green, red, blue, fancy stars and geometrics, numerals, wide range of "Paid" and "Paid 3", "Steam", "Way", "Free", imprints, perf varieties, multiples incl. a **horizontal strip of seven of No. 25**, strip of three of No. 26A, many others, most of these stamps were individually selected by Mr. Wagshal for interesting varieties that caught his eye, a number of stamps could have been individual lots, the sheer magnitude of this group makes viewing recommended, Scott Retail more than \$66,000.00.....Not illustrated E. 7,500-10,000

TYPE IV — COVERS



3275

- 3275 ☒ **3c Dull Red, Ty. IV (26A).** S.e. at left, tied by "Rome N.Y. Apr. 5, 1859" circular date-stamp on cover with **Professor Wise's illustrated hot-air balloon** with the imprint of the famous balloonist Mons. Carlincourt at left, addressed to Carlincourt in Utica N.Y., cover restored at left edge where opened, Very Fine appearance, a scarce and beautiful early balloon cover, Carlincourt was the name T. S. C. Lowe assumed early in his career as an aeronaut, his first flight was in Ottawa, Canada, in 1858, he made several flights in the northeast before twice attempting a transatlantic balloon flight, first in 1859 and again in 1860..... E. 1,000-1,500



3276

- 3276 ☒ **3c Dull Red, Ty. IV (26A).** Two singles, left stamp with major **double transfer**, line thru **rosettes**, both stamps tied by "Washington D.C. Mar. ? 1859" circular datestamp, right stamp also tied by red "New-York Br. Pkt. Mar. 16" circular datestamp on cover **to Hong Kong China**, transit and receiving backstamps, initial rating crossed out and up-rated, receipt docketing top left, some soiling and minor wear, a Fine and unusual use of 1857 3c stamps overpaying by 1c the British Open Mail rate..... E. 750-1,000



- 3277 ☒ **3c Dull Red, Ty. IV (26A var).** Position 44L10L, with **right inner line recut**, rich color and beautifully balanced margins, tied by "Hebron Conn. Apr. 20" circular datestamp on yellow cover to West Meriden Ct., fresh and Extremely Fine, Scott Retail for off-cover.... 325.00
- 3278 ☒ **3c Dull Red, Ty. IV (26A).** Position 91R11L, with **major double transfer** of rosettes and lower part of stamp, straddle-pane margin at left, tied by "Sykesville B. & O. R.R. Co. Jun. 2, 1859" route agent's oval datestamp on cover to Frederick Md., missing backflap and stamp with some gum soaks, still Very Fine example of this prominent double transfer, Scott Retail for off-cover..... 260.00
- 3279 ☒ **3c Dull Red, Ty. IV (26A).** Scissor separated, tied with indistinct N.Y. circular datestamp and used with slightly overlapping **10c Ty. III (15) and two 1c Ty. V (24)** on buff cover to Buffalo N.Y., ms notation "with care" at lower left, minor backflap tear, otherwise Fine, possibly a 5-times rate for a heavy enclosure, an interesting usage with the combination of the 1855 imperforate and 1857 perforated stamps E. 400-500
- 3280 ☒ **3c Dull Red, Ty. IV (26A).** 20 covers, culled from a larger group to find attractive margins, color, or early usage incl. a couple identified as possible earliest known usages from Plates 10i and 11L, few plate varieties and some contents included, mostly Very FineNot illustrated 3,230.00
- 3281 ☒ **3c Dull Red, Ty. IV (26A).** More than 100 covers and a couple stamps, a few scarcer towns represented, huge range of markings, two courthouse covers with pairs, some plate varieties to be found, forwarded handstamps, cover flaws to be expected on some, overall Fine-Very Fine appearing, an unusually large group of these relatively scarcer Plates 10 and 11 stamps, Scott Retail approximately \$17,850.00Not illustrated E. 1,000-1,500

END OF PART 3 — THANK YOU

Resources

siegelauctions.com



CATALOGUES AND PRICES REALIZED

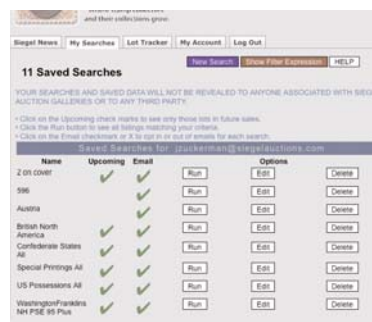
Images and descriptions for all current sale catalogues are available from our website, as well as all sales going back to 1992, our Rarities sales from 1964 and selected name sales.

POWER SEARCH™

Search by Scott number or keyword through all of the sales at our website. The best resource in philately for research.

MY SIEGEL™

Save your Power Searches as want lists. We will automatically notify you when a match is included in an upcoming sale, whether it's as broad as any Columbian issue, or as narrow as a 241 graded 98. The most powerful want list in philately.



LOT TRACKER™

Never miss another lot because you were away from your computer. Log into My Siegel™, then set up notifications to get texts and/or emails 10-30 lots before yours comes up (live bidding is still through Stamp Auction Network).

THE SIEGEL ENCYCLOPEDIA™

This feature of our website contains a wealth of information gleaned from decades of philatelic research by the dedicated philatelists at Siegel.

RARITIES CENSUS

The up-to-date census data for 19th and 20th century U.S. rarities are a valuable resource for buyers, sellers and researchers. Every recorded example of almost 40 different rare stamps is described and, in most cases, photographed.



EXHIBITS AND MOUNTED COLLECTIONS

Downloadable PDF files of some of the top exhibits ever formed. See how others collect and benefit from their original research.

VIDEO PRESENTATIONS

Downloadable video documentaries tell the stories of stamps and covers. This is the ideal way to introduce philately to others.

PRICES REALIZED FOR SALE 996---10/21/2010

The Wagshal Collection, Part 3: 3c 1851-57 Issues

Robert A. Siegel Auction Galleries, Inc.
60 East 56th Street, 4th Floor, New York, NY 10022
Tel (212) 753-6421 Fax (212) 753-6429

Lot#	Realized	Lot#	Realized	Lot#	Realized	Lot#	Realized	Lot#	Realized	Lot#	Realized	Lot#	Realized
3001	5,500	3043	750	3085	350	3127	750	3170	475	3213	2,600	3255	225
3002	4,000	3044	600	3086	2,500	3128	300	3171	4,000	3214	475	3256	1,900
3003	35,000	3045	1,400	3087	1,200	3129	600	3172	2,100	3215	550	3257	2,300
3004	11,000	3046	1,200	3088	350	3130	650	3173	1,600	3216	200	3258	700
3005	8,000	3047	225	3089	225	3131	1,700	3174	650	3217	325	3259	650
3006	3,250	3048	275	3090	180	3132	1,700	3175	225	3218	325	3260	3,750
3007	4,500	3049	475	3091	130	3133	250	3176	4,000	3219	650	3261	750
3008	5,250	3050	800	3092	350	3134	2,100	3177	15,000	3220	600	3262	500
3009	5,000	3051	1,100	3093	425	3135	170	3178	3,250	3221	900	3263	650
3010	475	3052	500	3094	425	3136	375	3179	2,500	3222	850	3264	1,600
3011	1,100	3053	400	3095	275	3137	475	3180	2,600	3223	12,500	3265	800
3012	1,200	3054	130	3096	425	3138	325	3181	1,200	3224	21,000	3266	650
3013	2,500	3055	170	3097	160	3139	425	3182	3,500	3225	13,500	3267	1,100
3014	2,100	3056	225	3098	4,500	3140	190	3183	3,250	3226	5,750	3268	450
3015	1,300	3057	275	3099	900	3141	130	3184	1,000	3227	160	3269	750
3016	1,900	3058	110	3100	4,000	3142	1,300	3186	1,600	3228	275	3270	375
3017	700	3059	225	3101	2,200	3143	600	3187	13,500	3229	100	3271	160
3018	700	3060	950	3102	2,300	3144	300	3188	225	3230	250	3272	950
3019	500	3061	900	3103	1,300	3145	275	3189	800	3231	110	3273	1,400
3020	650	3062	400	3104	2,800	3146	375	3190	850	3232	100	3274	7,500
3021	1,500	3063	850	3105	600	3148	225	3191	70	3233	180	3275	850
3022	425	3064	1,500	3106	325	3149	400	3192	225	3234	1,300	3276	5,750
3023	275	3065	7,500	3107	425	3150	750	3193	550	3235	1,600	3277	300
3024	500	3066	1,400	3108	300	3151	13,000	3194	325	3236	600	3278	225
3025	425	3067	600	3109	800	3152	3,750	3195	300	3237	160	3279	300
3026	1,200	3068	350	3110	600	3153	1,500	3196	2,000	3238	160	3280	450
3027	425	3069	475	3111	800	3154	120	3197	400	3239	550	3281	1,300
3028	450	3070	2,500	3112	425	3155	1,500	3198	450	3240	350		
3029	650	3071	2,100	3113	350	3156	850	3199	3,250	3241	350		
3030	325	3072	2,500	3114	750	3157	300	3200	1,700	3242	1,200		
3031	225	3073	750	3115	9,500	3158	550	3201	700	3243	2,000		
3032	900	3074	850	3116	475	3159	325	3202	1,100	3244	225		
3033	200	3075	850	3117	1,600	3160	4,000	3203	1,300	3245	120		
3034	3,500	3076	350	3118	375	3161	1,500	3204	325	3246	300		
3035	650	3077	850	3119	475	3162	1,600	3205	350	3247	650		
3036	750	3078	800	3120	475	3163	1,600	3206	250	3248	200		
3037	600	3079	2,500	3121	130	3164	750	3207	160	3249	200		
3038	1,300	3080	1,500	3122	375	3165	9,000	3208	850	3250	1,200		
3039	1,400	3081	1,100	3123	80	3166	1,400	3209	325	3251	275		
3040	425	3082	425	3124	200	3167	600	3210	3,250	3252	225		
3041	750	3083	3,250	3125	375	3168	1,900	3211	700	3253	250		
3042	11,500	3084	2,200	3126	650	3169	500	3212	600	3254	475		