

The "New Amsterdam" Collection of
City Despatch Post 1842-1852



Sale 1005
Wednesday, March 2, 2011

Robert A. Siegel
AUCTION GALLERIES, INC.

Sale 1005—Wednesday, March 2, 2011, at 1:30 p.m.

The “New Amsterdam” Collection of City Despatch Post 1842-1852

Live auction to be held at Siegel Auction Galleries,
60 East 56th Street (Park/Madison), 4th Floor, New York City

Lots are sold subject to a 15% buyer's premium and
any applicable sales tax (or customs duty for non-U.S. buyers)



Wednesday, March 2, at 1:30 p.m. (lots 201-317)

1842 Greig's City Despatch Post	lots 201-213
1842-46 United States City Despatch Post	214-253
1846-47 Mead's Post Office City Despatch	254-259
1847 Cummings & Wright's Post Office City Despatch	260-267
1847-52 Cole's Post Office City Despatch	268-315
Post-1852 City Despatch Post	316-317

Pre-Sale Viewing—Monday, February 28, 10-4 and by appointment

Robert A. Siegel

AUCTION GALLERIES, INC.

60 EAST 56TH STREET, 4TH FLOOR, NEW YORK, N.Y. 10022

Phone (212) 753-6421 • Fax (212) 753-6429 • E-mail: stamps@siegelauctions.com

Catalogues, internet bidding, resources, archives and the Siegel Encyclopedia at
siegelauctions.com



Robert A. Siegel

AUCTION GALLERIES, INC.

60 EAST 56TH STREET, 4TH FLOOR, NEW YORK, N.Y. 10022
 Phone (212) 753-6421 • Fax (212) 753-6429 • E-mail: stamps@siegelauctions.com
siegelauctions.com



Scott R. Trepel
 President
 strepel
 @siegelauctions.com



John P. Zuckerman
 Senior Vice President
 jzuckerman
 @siegelauctions.com



Corey Long
 Vice President
 clong
 @siegelauctions.com



Starr Tucker-Ortega
 Accounts
 stamps
 @siegelauctions.com



Laura Melvin
 Bids and Inquiries
 laura
 @siegelauctions.com



Carlene Okola
 Bids and Inquiries
 carlene
 @siegelauctions.com

Scott R. Trepel Principal Auctioneer (licensed by NYC Dept. of Consumer Affairs, #795952)
 Nathaniel Estes Catalogue and Digital Production

Information for Bidders

Bidding

The following means are available for placing bids:

- 1) Attending the Live Auction in Person:** All bidders must register for a paddle, and new bidders must provide references at least three business days in advance of the sale.
- 2) Live Internet Bidding:** Instructions for participating as a Live Internet Bidder are provided on the page opposite.
- 3) Phone Bidding:** Bidders can be connected to the sale by phone and bid through a member of staff. Requests for phone bidding are subject to approval (please contact our office at least 24 hours before the sale). A signed Bid Form is required.
- 4) Absentee Bids.** All bids received in advance of the sale, either by mail, fax, phone, e-mail or internet, are Absentee Bids, which instruct the auctioneer to bid up to a specific amount on one or more lots in the sale. Absentee Bids sent by phone, fax or e-mail should arrive at least one hour prior to the start of the sale session. Bids entered through Live Internet Bidding will be visible to the auctioneer during the sale. Written bids should be entered legibly on the Bid Form in the sale catalogue. E-mail and internet bids should be carefully typed and double-checked. All new bidders must provide references. We recommend calling or e-mailing to confirm that Absentee Bids sent by mail, fax or e-mail have been received and entered.

Pre-Sale Viewing

Subject to availability, certain lots (except group lots) can be sent to known clients for examination. Requests must be made no later than 7 days prior to the sale. Lots must be returned on the day received. Postage/insurance costs will be invoiced.

In addition to regular viewing, clients may view lots by appointment. Our staff will be pleased to answer questions or provide additional information about lots.

Expert Certification

Individual items offered without a current certificate (PF dated within the past five years of sale; PSE dated January 2004 or later) may be purchased subject to independent certification of genuineness and our description. **Please refer to the Conditions of Sale and Grading Terms for policies governing certification.**

Shipping and Delivery

Procedures and charges for shipping lots are printed on the back of the Bid Form. **Bidders are responsible for all prescribed shipping charges and any applicable sales tax or customs duties.**

Price Realized

Prices realized are sent with each invoice. Bidders with e-mail will receive a Bid Results report after the sale. Session results are posted immediately to **siegelauctions.com**

Live Internet Bidding at Siegel Auctions

BIDDING FROM YOUR COMPUTER LETS YOU BE PART OF THE LIVE AUCTION FROM ANYWHERE IN THE WORLD!

There's NO SUBSTITUTE for following the auction in real time.
Live Internet Bidding lets you bid and buy as though you were right there in the saleroom.
And it's easy.

This step-by-step guide will instruct you how to register, set your browser and use the bidding interface.

Start by following the simple steps to become a registered Live Internet Bidder.
Once you've been approved for bidding, you can listen to the auction and place bids with the click of a mouse.

Registering with STAMP AUCTION NETWORK & SIEGEL AUCTION GALLERIES

Live Internet Bidding is managed by Stamp Auction Network (SAN).
To bid, you must be registered and approved by *both* SAN and Siegel.
To decide what you need to do, choose the description below that best fits you.



I've already registered with SAN and have been approved by Siegel for internet bidding.

Live Internet Bidding works by allowing registered bidders to observe and place bids.

Live Internet Bidding will work with any browser on both PC and Mac operating systems.

Before bidding by internet for the first time, we recommend finding a sale in progress and listening to the public broadcast or logging in as a registered bidder. This will help you develop a feel for the sale tempo and bidding interface.

I'm a Siegel client, but I'm not registered with SAN.
Go to stampauctionnetwork.com/siegel and click on "Register" at the top. Check the box for Robert A. Siegel Auction Galleries (under "R") and submit the form, indicating you are a Siegel client. Once registered at SAN, you're ready for internet bidding.

Log on to the auction at stampauctionnetwork.com/siegel.

You can also log on at siegelauctions.com

When you're logged on as a Live Internet Bidder, the bidding interface shows a photo and description of the lot, the current bid (and your bidding status), options for placing competitive bids and buttons with bid increments.

- After you click on a bid amount, the auctioneer is immediately notified of your bid.
- Retracting a bid is usually not acceptable, so please bid carefully.
- If you bid and then decide to stop, the "Pass" button will tell the auctioneer you are no longer bidding.
- You can send messages to the auctioneer (for example, a request for extension).
- You can track prior realizations from the bidding screen.

I've bid through SAN before, but this is the first time I've bid in a Siegel sale.
Then you just need to be approved by Siegel. Go to stampauctionnetwork.com/siegel and click on "Update Registration" at the top. Your SAN account information will be sent to us for approval (you might be asked for other trade references). Once approved by Siegel for bidding, you're ready for internet bidding.

I've never bid with Siegel, nor registered with SAN.
Go to stampauctionnetwork.com/siegel and click on "Register" at the top. Check the box for Robert A. Siegel Auction Galleries (under "R") and submit the form with **your trade references** (please, no family members or credit card companies as references). Once registered at SAN and approved by Siegel for bidding, you're ready for internet bidding.



"System Down" or "Lost Connection" events do occasionally happen.

If you have any problems with Live Internet Bidding please call 212-753-6421 for immediate assistance.

Conditions of Sale (please read carefully before bidding)

The property described in this catalogue will be offered at public auction by Robert A. Siegel Auction Galleries, Inc. ("Galleries") on behalf of various consignors and itself or affiliated companies. By bidding on any lot, whether directly or by or through an agent, in person, or by telephone, facsimile or any other means, the bidder acknowledges and agrees to all of the following Conditions of Sale.

1. The highest bidder acknowledged by the auctioneer shall be the buyer. The term "final bid" means the last bid acknowledged by the auctioneer, which is normally the highest bid offered. **The purchase price payable by the buyer will be the sum of the final bid and a commission of 15% of the final bid ("buyer's premium"), together with any sales tax, use tax or customs duties due on the sale.**

2. The auctioneer has the right to reject any bid, to advance the bidding at his discretion and, in the event of a dispute between bidders, to determine the successful bidder, to continue the bidding or to reoffer and resell the lot in dispute. The Galleries' record of the final sale shall be conclusive.

3. All bids are per numbered lot in the catalogue unless otherwise announced by the auctioneer at the time of sale. The right is reserved to group two or more lots, to withdraw any lot or lots from the sale, or to act on behalf of the seller. The Galleries will execute bidding instructions on behalf of clients, but will not be responsible for the failure to execute such bids or for any errors in the execution of such bids.

4. **Lots with numbers followed by the symbol ° are offered subject to a confidential minimum bid ("reserve"), below which the lot will not be sold. The absence of the symbol ° means that the lot is offered without a reserve. If there is no reserve, the auctioneer has sole discretion to establish a minimum opening bid and may refuse an offer of less than half of the published estimate. Any lot that does not reach its reserve or opening bid requested by the auctioneer will be announced as "passed" and excluded from the prices realized lists after the sale. The Galleries may have a direct or indirect ownership interest in any or all lots in the sale resulting from an advance of monies or goods-in-trade or a guarantee of minimum net proceeds made by the Galleries to the seller.**

5. Subject to the exclusions listed in 5(A), the Galleries will accept the return of lots which have been misidentified or which have obvious faults that were present when the lot was in the Galleries' custody, but not so noted in the lot description. **All disputed lots must be received by the Galleries intact with the original packing material within 5 days of delivery to the buyer but no later than 30 days from the sale date. (5A) EXCLUSIONS:** The following lots may not be returned for any reason: lots containing 10 or more items; lots from buyers who registered for the pre-sale exhibition or received lots by postal viewing, thereby having had the opportunity to inspect them before the sale; any lot described with "faults," "defects" or a specific fault may not be returned because of any secondary fault. Photographed lots may not be returned because of centering, margins, short/nibbed perforations or other factors shown in the illustrations. Lots may not be returned for any of the following reasons: the color of the item does not match the color reproduction in the sale catalogue or website listing; the description contains inaccurate information about the quantity known or reported; or a certification service grades a stamp lower than the grade stated in the description.

6. Successful bidders, unless they have established credit with the Galleries prior to the sale, must make payment in full before the lots will be delivered. Buyers not known to the Galleries must make payment in full within 3 days from the date of sale. **The Galleries retains the right to demand a cash deposit from anyone prior to bidder registration and/or to demand payment at the time the lot is knocked down to the highest bidder, for any reason whatsoever.** In the event that any buyer refuses or fails to make payment in cash

for any lot at the time it is knocked down to him, the auctioneer reserves the right to reoffer the lot immediately for sale to the highest bidder. **Credit cards are not accepted as payment.**

7. If the purchase price has not been paid within the time limit specified above, nor lots taken up within 7 days from the date of sale, the lots will be resold by whatever means deemed appropriate by the Galleries, and any loss incurred from resale will be charged to the defaulting buyer. Any account more than 30 days in arrears will be subject to a late payment charge of 1½% per month as long as the account remains in arrears. Any expenses incurred in securing payment from delinquent accounts will be charged to the defaulter. A fee of \$250.00 per check will be charged for each check returned for insufficient funds.

8. All lots are sold as genuine. **Any lot accompanied by a certificate issued by The Philatelic Foundation within 5 years of the sale date or by Professional Stamp Experts since January 2004 is sold "as is" and in accordance with the description on the certificate. Such lots may not be returned for any reason, including but not limited to a contrary certificate of opinion.** Buyers who wish to obtain a certificate for any item that does not have a P.F. or P.S.E. certificate (dated as above) may do so, provided that the following conditions are met: (1) the purchase price must be paid in full, (2) the item must be submitted to an acceptable expertizing committee with a properly executed application form within 21 days of the sale, (3) a copy of the application form must be given to the Galleries, (4) in the event that an adverse opinion is received, the Galleries retain the right to resubmit the item on the buyer's behalf for reconsideration, without time limit or other restrictions, (5) unless written notification to the contrary is received, items submitted for certification will be considered cleared 90 days from the date of sale, and (6) in the event any item is determined to be "not as described", the buyer will be refunded the purchase price and the certification fee up to \$600.00 unless otherwise agreed.

9. Until paid for in full, all lots remain the property of the Galleries on behalf of the seller.

10. Agents executing bids on behalf of clients will be held responsible for all purchases made on behalf of clients unless otherwise arranged prior to the sale.

11. The buyer assumes all risk for delivery of purchased lots and agrees to pay for prescribed shipping costs. Buyers outside the U.S. are responsible for all customs duties.

12. **The bidder consents that any action or proceeding against it may be commenced and maintained in any court within the State of New York or in the United States District Court for the Southern District of New York, that the courts of the State of New York and United States District Court for the Southern District of New York shall have jurisdiction with respect to the subject matter hereof and the person of the bidder. The bidder agrees not to assert any defense to any action or proceeding initiated by Galleries based upon improper venue or inconvenient forum. The bidder agrees that any action brought by the bidder shall be commenced and maintained only in a Federal Court in the United States District Court for the Southern District of New York or the State Court in the county in which Galleries has its principal place of business in New York. These Terms and Conditions shall be governed by and construed in accordance with the substantive laws of the State of New York.**

SCOTT R. TREPEL, Principal Auctioneer

Auctioneer's License No. 795952
N.Y.C. Department of Consumer Affairs
80 Lafayette Street, New York, N.Y. 10013
Telephone (212) 577-0111

Revised 10/2010

Copyright Notice

© 2011, Robert A. Siegel Auction Galleries, Inc. This catalogue in all versions, printed and electronic, is protected by copyright. The descriptions, format, illustrations and information used herein may not be reprinted, distributed or copied in any form without the express written consent of Robert A. Siegel Auction Galleries. Application for permission may be made in writing.

Grades, Abbreviations and Values Used in Descriptions

Grades and Centering

Our descriptions contain detailed information and observations about each item's condition. We have also assigned grades to stamps and covers, which reflect our subjective assessment. For stamps, the margin width, centering and gum are described and graded according to generally-accepted standards (an approximate correlation to numeric grades is provided at right). Although we believe our grades are accurate, they are not always exactly aligned with third-party grading terms or standards for all issues. **A lot may not be returned because a certification service grades a stamp lower than the grade stated in the description. Information from the P.S.E. Stamp Market Quarterly and P.S.E. Population ReportSM is the most current available, but lots may not be returned due to errors or changes in statistics or data.**

Extremely Fine Gem (90-100): The term "Gem" describes condition that is the finest possible for the issue. This term is equivalent to "Superb" used by grading services.







Extremely Fine (80-90): Exceptionally large/wide margins or near perfect centering.

Very Fine (70-85): Normal-size margins for the issue and well-centered with the design a bit closer to one side. "Very Fine and choice" applies to stamps that have desirable traits such as rich color, sharp impression, freshness or clarity of cancel.

Fine (60-70): Smaller than usual margins or noticeably off center. Pre-1890 issues may have the design touched in places.

Very Good (below 60): Attractive appearance, but margins or perforations cut into the design.

Guide to Gum Condition

Gum Categories:	MINT N.H.	ORIGINAL GUM (O.G.)				NO GUM
	 Mint Never Hinged <i>Free from any disturbance</i>	 Lightly Hinged <i>Faint impression of a removed hinge over a small area</i>	 Hinge Mark or Remnant <i>Prominent hinged spot with part or all of the hinge remaining</i>	 Part o.g. <i>Approximately half or more of the gum intact</i>	 Small part o.g. <i>Approximately less than half of the gum intact</i>	 No gum <i>Only if issued with gum</i>
Catalogue Symbol:	★ ★	★	★	★	★	(★)
PRE-1890 ISSUES	<i>Pre-1890 stamps in these categories trade at a premium over Scott value</i>			Scott Value for “O.G.”		Scott “No Gum” Values thru No. 218
1890-1935 ISSUES	Scott “Never Hinged” Values for Nos. 219-771	Scott Value for “O.G.” (Actual value will be affected by the degree of hinging)		Disturbed Original Gum: Gum showing noticeable effects of humidity, climate or hinging over more than half of the gum. The significance of gum disturbance in valuing a stamp in any of the Original Gum categories depends on the degree of disturbance, the rarity and normal gum condition of the issue and other variables affecting quality. For example, stamps issued in tropical climates are expected to have some		
1935 TO DATE	Scott Value for “Unused”					

Covers

Minor nicks, short edge tears, flap tears and slight reduction at one side are normal conditions for 19th century envelopes. Folded letters should be expected to have at least one file fold. Light cleaning of covers and small mends along the edges are accepted forms of conservation. Unusual covers may have a common stamp with a slight crease or tiny tear. **These flaws exist in virtually all 19th century covers and are not always described. They are not grounds for return.**

Catalogue Values and Estimates

Unless otherwise noted, the currently available *Scott Catalogue* values are quoted in dollars with a decimal point. Other catalogues are often used for foreign countries or specialized areas and are referred to by their common name: *Stanley Gibbons* (SG), *Dietz*, *American Air Mail Catalogue* (AAMC), *Michel*, *Zumstein*, *Facit*, etc. Estimates are indicated with an "E." and reflect our conservative valuation in dollars. Reserves will never exceed the low end of the estimate range; they will sometimes exceed Scott Catalogue value for stamps in Extremely Fine condition.

Because of certain pricing inconsistencies in the *Scott Catalogue*—for example, blocks that have no gum, the absence of premiums for Mint N.H. items, etc.—we cannot guarantee the accuracy of values quoted for multiples, specialized items and collection lots. We generally try to be conservative, but buyers may not return a lot because of a discrepancy in catalogue value due to Scott pricing inconsistencies.

Symbols and Abbreviations (see chart above for gum symbols)

⊞	Block	E	Essay	pmk.	Postmark	No.	Scott Catalogue Number
⊞	Cover	P	Proof	cds	Circular Datestamp	hs	Handstamp
FC	Fancy Cancel	TC	Trial Color Proof	var.	Variety	ms.	Manuscript



Complete sheet of 42 of Greig's 3c stamp (40L1), the first adhesive stamp issued in the Western Hemisphere. (204)

THE “NEW AMSTERDAM” COLLECTION OF CITY DESPATCH POST 1842-1852

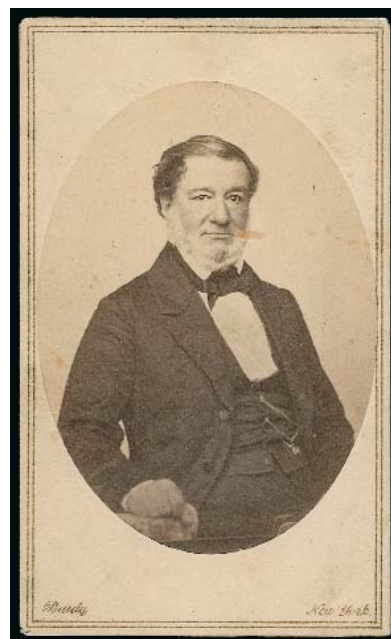
INTRODUCTION

THE CITY DESPATCH POST WAS ESTABLISHED IN New York City in February 1842. According to an account published in 1894 and provided by Charles Windsor, the post was founded by his father, Henry Thomas Windsor, a London merchant who at the time was living in Hoboken, New Jersey. Inspired by Rowland Hill’s postal reforms in Great Britain, Windsor and his friend, Alexander M. Greig, started operating the City Despatch Post during the first week of February 1842, in time for the busy Valentine season. Greig was advertised as the post’s “agent,” and his name is usually used alone by historians and philatelists when referring to the post’s proprietor.

The City Despatch Post was operated as a private letter-carrying firm briefly from February to August 1842. During this time, it introduced significant conveniences and services, such as letter boxes placed throughout the city; three daily mail deliveries for three cents per letter (postage could be prepaid or collected from the addressee); the use of “Free” stamps, the first adhesive stamps issued in the Western Hemisphere (with a discount for bulk purchase); free service for newspaper editors; delivery of large parcels and registration of valuable letters.

In August 1842 Greig’s City Despatch Post was acquired by the United States Post Office Department and re-established as a government carrier department on August 16. The U.S. City Despatch Post served New York City’s population until November 1846, when its assets were sold to a letter carrier named Abraham Mead, who re-named it the Post Office City Despatch. Mead and his successors ran the local post from 1846 until it vanished in 1852.

Over the 10-year lifespan of the City Despatch Post, it produced a philatelic legacy of “firsts” and a treasure trove of fascinating artifacts. A large number of extraordinary City Despatch Post stamps and covers, including many of the finest and most important pieces, have been gathered together in the “New Amsterdam” collection.



Alexander M. Greig pictured in a contemporary carte-de-visite. (201EX)



Greig’s 3c stamp (40L1) tied by “FREE” cancel on an embossed cover carried during the 1842 Valentine season. (211)



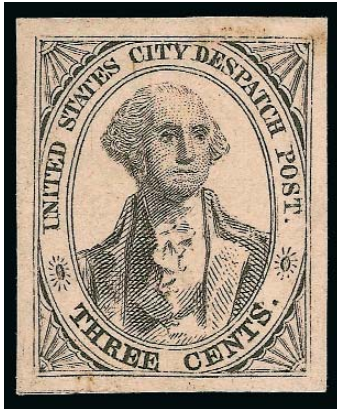
Greig's 3c Black on Grayish (40L1) on a letter carried to the post office and sent free by United States mail to the Simsbury Conn. postmaster. (212)

The 3-cent stamp issued by Greig's City Despatch Post in 1842 was the first adhesive stamp issued in the Western Hemisphere. It followed Great Britain's Penny Black and Two-Pence Blue by a mere 21 months and predated the U.S. 1845 Postmaster's Provisionals and 1847 General Issues by three and five years, respectively. The first City Despatch Post stamps were printed from a metal plate of 42 subjects. Five complete sheets of 42 survive, one of which is contained in the "New Amsterdam" collection (ex Caspary, Lilly, Boker, Klein, Golden and Gordon N. John). The stamp was used primarily on letters addressed within New York City limits, but in a few rare cases the stamp paid for delivery to the post office, from which point the letter entered the regular U.S. mail. One of these "to the mails" covers is shown above.

After the Post Office Department acquired the City Despatch Post in August 1842 and re-established it as a carrier department, Greig's stamps were honored in payment of the carrier fee. Examples of Greig's stamp used for carrier service, as evidenced by the "U.S." markings, are listed in Scott as 6LB1. Only fifteen 6LB1 full covers are confirmed as genuine, two of which are present in the "New Amsterdam" collection (shown below).



Two of the fifteen recorded full covers with Greig's 3c Black stamp accepted for payment of U.S. carrier fee after takeover by government in August 1842. The cover above is postmarked Aug. 20 (1842), before the new "United States City Despatch Post" issue was available. (214 AND 215)



The first U.S. City Despatch Post issues of 1842 on unsurfaced paper, 3c Black on Rose (6LB2) and 3c Black on Light Blue (6LB3). The extremely rare Rose stamp is only known in unused condition and is believed to be a trial printing. The unused pair of the Light Blue stamp is one of two recorded multiples, both unused pairs. (216 AND 218)

Shortly after the post was re-established as a government carrier department, stamps with the inscription "United States City Despatch Post" were printed from a new plate of 50 subjects (two panes of 25). Except for the wording, the old and new stamps were identical. The first printing from the new plate was made on unsurfaced colored paper (that is, paper without the enamel coating used for later printings). A few copies are known on Rose paper (6LB2), but all of these are unused and probably come from a trial printing (the collection contains two examples, one of which is shown above). The earliest used stamps from the new plate are on Light Blue unsurfaced paper (6LB3). The 6LB3 stamps are scarce in used condition and very rare unused. Only two multiples are recorded, both unused, one of which is contained in the "New Amsterdam" collection (shown above).

The 3c carrier stamp paid the 2c carrier fee and 1c drop-letter postage, which was required on intra-city mail. The stamp was used less frequently on letters carried to the post office for transmission to another office.



Examples of the 3c Black on Unsurfaced Light Blue (6LB3) used on covers to local street addresses. (224 AND 225)





Block of twelve 3c Black on Blue Glazed Paper (6LB5b) with original gum, Positions 8-10/13-15/18-20/23-25L—the only recorded block of any U.S. City Despatch Post issue. (242)

The use of an enamel-coated paper (“glazed”) for the U.S. City Despatch Post stamps evidently started at the end of 1842, based on covers dated in late November and early December of that year. With the exception of one recorded stamp on Pink glazed paper and a few unusual “Apple Green” shades, the coloring of the typical glazed paper progresses from Green to Bluish Green to Bright Blue. These are the most common of the various City Despatch Post issues, but multiples are rare, and the only recorded block of any kind is the original-gum block of twelve on Blue Glazed paper (6LB5), ex Hawkins, Caspary, Lilly, Hall and Gordon N. John, which is shown at left and now reposes in the “New Amsterdam” collection.

The U.S. City Despatch Post carrier department served a large and prospering New York City from 1842 until its discontinuance in 1846. Many covers date from this period of the post’s operation, and the “New Amsterdam” collection contains a variety of attractive and unusual examples. Of particular interest are the covers carried to the post office and sent by mail to other offices. Two representative examples of “to the mails” carrier covers are shown below. A remarkable “from the mails” cover from France to New York City is shown on the opposite page.

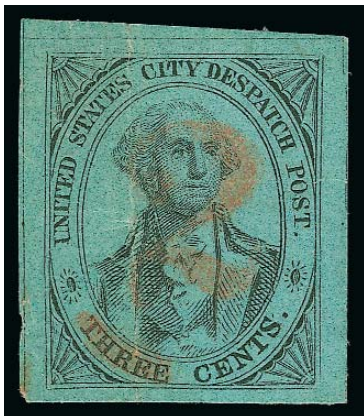


Examples of U.S. City Despatch Post 3c Black on Glazed Paper stamp used to pay carrier fee to the post office on letters to Philadelphia and Boston, with 12½c and 18½c postage rates. (235 AND 239)





U.S. City Despatch Post 3c used to pay carrier fee on a letter sent by mail from Paris, France, to Prime, Ward & King in New York City, who forwarded the letter to Mrs. Prime at 18 Bond Street. (240)



The 1845 postal reforms which created the new under and over-300 miles rates of 5c and 10c also increased the drop-letter rate from one to two cents (a drop letter is one that enters a post office, but is not transmitted to another office in order to reach the addressee). The U.S. City Despatch Post 3c rate included 2c for the carrier fee and 1c for the drop-letter postage. However, on July 1, 1845, the cost of a carrier letter rose to 4c. The higher rate made the U.S. City Despatch Post uncompetitive with local posts such as Boyd's, and by November 1846 it was no longer considered viable, causing the New York City postmaster to close it down and sell off the assets and good will.

The July 1845 postal reforms created a new 5c and 10c rate structure for inter-city mail and raised the drop-letter rate from 1c to 2c. These changes led to the creation of the world's first overprinted stamp, the "2" cents on 3c U.S. City Despatch Post (6LB7), of which four examples are recorded. After July 1, 1845, U.S. City Despatch Post covers sent by mail to other cities have rate markings indicating 5c or 10c postage. The cover at right was sent to Tallahassee, Florida. (252 AND 253)



The second period of private ownership of the City Despatch Post began on November 30, 1846, and continued until its unceremonious demise in 1852. The first proprietor of the post was a former government letter carrier named Abraham B. Mead, who advertised the reconstituted business as the Post Office City Despatch. Mead acquired the old Greig plate of 42 and had it reworked by Rawdon, Wright & Hatch, a New York engraving and printing firm. RW&H burnished out the word "THREE" from each subject and reengraved "TWO" in its place, creating a 2c stamp that conformed to the local post rate of 2c per letter (the drop-letter postage was not mandatory on mail carried by private firms). Mead's new stamps were printed on brilliant Green Glazed paper and delivered by RW&H in early December 1846.

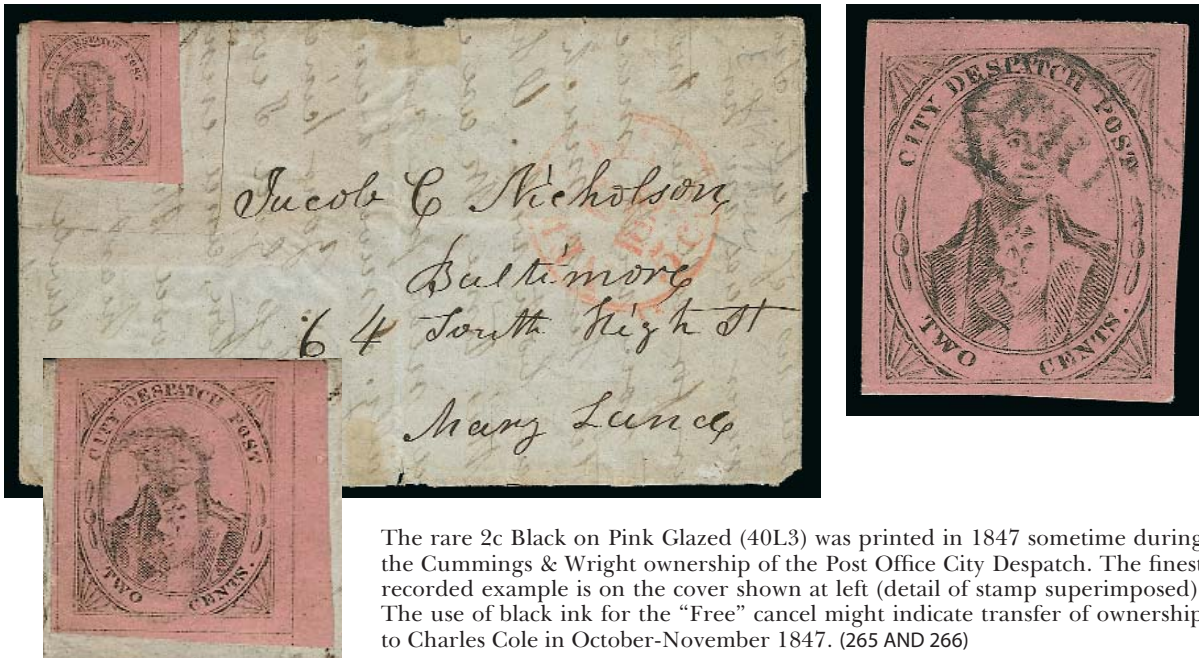
Mead stayed involved for the 1847 Valentine season and then sold out by March 1847. An example of a beautiful Valentine carried by the Post Office City Despatch under Mead's ownership is shown at right. The new owners were two experienced letter carriers named Alfred H. Cummings and Robert Wright. They continued to operate the post without interruption and sold the Green stamps. Cummings & Wright also used the Greig/Mead modified 2c plate to print more stamps on Pink Glazed paper, and they accepted their own Cummings City Post stamps for prepayment of the Post Office City Despatch rate.



Mead's 2c Black on Green Glazed stamp (40L2) from the modified Greig plate, used on a Valentine cover during the February 1847 Valentine season when Mead still operated the Post Office City Despatch local post. (256)



Examples of Mead's 2c Black on Green stamp (40L2) used after the Post Office City Despatch was taken over by Alfred H. Cummings and Robert Wright. The letter at top, which originated in Scotland, has the double strike of "Free" cancel, a postmarking pattern seen only after the Cummings & Wright takeover. The stamp at right has the manuscript "Cummings & Wright" overprint. The Cummings adhesive (55L3) is used on cover with Post Office City Despatch markings. (260, 261 AND 264)



The rare 2c Black on Pink Glazed (40L3) was printed in 1847 sometime during the Cummings & Wright ownership of the Post Office City Despatch. The finest recorded example is on the cover shown at left (detail of stamp superimposed). The use of black ink for the "Free" cancel might indicate transfer of ownership to Charles Cole in October-November 1847. (265 AND 266)

The transfer of ownership of the Post Office City Despatch from Cummings & Wright to a man named Charles Cole probably occurred sometime in October or November 1847, the point when black ink for the "Free" cancel comes into use. Examples of the rare Pink Glazed stamp (40L3) cancelled in black are featured in the collection and shown above.

Charles Cole made a third major modification to the Greig/Mead plate. Still working with the same piece of metal that started life in 1842 and had served three prior owners (Greig, Mead and Cummings & Wright), Cole had his initials "CC" incised into each of the 42 subjects. The modified "CC" plate was then used to print stamps on four kinds of paper: an unsurfaced Grayish White paper (40L5), and glazed paper in Green (40L4), Vermilion (40L6) and Buff (40L8). The "CC" stamps were issued and used from January 1848 through early 1852.

The "New Amsterdam" collection is the largest holding of these scarce to rare issues ever formed. It could only have been achieved after the dispersal of the Boker, Middendorf, Kapiloff, Schwartz, Golden, Hall and Kuphal collections, since virtually all known examples were tied up in those collections for decades. The "New Amsterdam" collection was used as the basis for the successful plate reconstruction documented in *The City Despatch Post 1842-1852 Issues: A Study of America's First and Most Versatile Stamp-Producing Plate* (Scott R. Trepel, Siegel Auction Galleries, 2003).



The second modification of the original Greig plate was made no later than January 1848 by Charles Cole, who had his initials "CC" punched or hand-etched into each of the 42 subjects. The "CC" stamps were printed on Green Glazed, Grayish (Unsurfaced), Vermilion Glazed and Buff Glazed papers from 1848 to 1852. (269, 285, 302)



Cole's 2c "CC" stamp on Grayish paper (40L5) showing use of "Paid" marking on two covers. The Aug. 1848 cover to another city (above) has the "Paid" crossed out by the post office. Starting in Sep. 1848 the post used the "Paid" on local mail only, probably due to complaints from postal officials. The cover at left is marked "Paid" for local delivery. (289 AND 292)

Two of the finest known covers with the "CC" on Grayish stamp (40L5) are shown above and illustrate an interesting conflict between the Post Office City Despatch and the New York Post Office. The August 26 (1848) cover at top is a "to the mails" use of the post with the company's "Paid" handstamp crossed out by the New York Post Office, because the 5c U.S. postage was not prepaid. The stamp on the locally-addressed cover dated September 2 (1848) is tied by the "Paid" cancel. Beginning in September 1848, the Post Office City Despatch stopped using the "Paid" handstamp on mail brought to the post office, probably by order of the New York postmaster, who may have received complaints about the word "Paid" appearing on letters which had no prepaid U.S. postage. From September 1848 on, only city-delivery covers have the "Paid" handstamp, as the covers shown above and below demonstrate.



2c "CC" on Vermilion (40L6) on an October 1848 folded letter to New York Postmaster Robert H. Morris, regarding two lost letters to Scotland which contained money (307).



Some of the “CC” stamps (only on Grayish paper) were initialled with the letter “C” in two different styles (simple and elaborate, shown at left). Nine examples of the Manuscript “C” stamp are recorded on covers, including the cover shown above, which is addressed to City Hall and has the large Cole double-circle datestamp. (ALL 293, 294, 295)

An interesting feature of the Cole “CC” stamps is the presence of a manuscript “C” initial on some copies of the Grayish 40L5 and its plate varieties. The initial is not found on any of the stamps on colored glazed paper, although use of the initialled stamps overlaps with glazed-paper stamp use. The initial “C” was apparently intended to serve as a control mark, since it was applied to the stamps before sale and use. Two varieties exist: a small simple “C” written at the bottom of the stamp between “Two” and “Cents”, and a larger more elaborate “C” written on the center of the stamp. Examples of either control mark are rare. The “New Amsterdam” collection contains four of the nine recorded covers, in addition to unused and used examples.

Starting in mid to late 1849, the Post Office City Despatch apparently underwent further management or operational changes, based on the return of postmarking patterns from the Cummings & Wright era and the exclusive use of manuscript cancellations on letters carried to the mails. Based on the surviving covers, it appears as if the post was split into two operations. It also seems that an eighteen-month hiatus in service occurred between June 1850 and late 1851. When the post reactivated—in late 1851 or early 1852—it was apparently a

mere shell of its former self. The January 1852 cover (ex Knapp and Hall, shown at left) with the finest known example of the “CC” stamp on Buff (40L8) is one of the few pieces of evidence extant proving that the post was still functioning in 1852.



The finest known example of the 2c Black on Buff Glazed, “CC” (40L8) on or off cover, used on a January 1852 letter to Philadelphia. (313)



Seven different positions along the perimeter of the plate show the Hand-Etched “C” at Left variety, which apparently was created when an effort was made to inscribe the letter “C” on the metal plate with an etching tool. Examples of the Hand-Etched “C” at Left variety are rare on any of the four papers, but the Vermilion and Buff papers are the rarest. (299, 311, 315)

The modification of the Greig/Mead plate by Cole was an exercise in amateur engraving. While Mead had Rawdon, Wright & Hatch rework the plate and print his stamps, Cole undoubtedly sought a cheaper method to put his “CC” initials on each stamp. The result was an aesthetic failure, but it was also the source of an array of varieties for future philatelists.

The first effort to put the “CC” initials on the plate was a failed attempt to inscribe the letters into the metal using a hand-etching tool. The letter “C” was etched once in each of seven positions around the perimeter of the plate with very poor results. Based on its crooked appearance, the Scott Catalogue lists the Hand-Etched “C” at Left positions as the “C” at Left Sideways” variety on the four different papers (40L4b, 40L5b, 40L6b and 40L8b). All of them are rare, with the Vermilion and Buff papers qualifying as extremely rare. The “New Amsterdam” collection contains the largest number of the Hand-Etched “C” at Left stamps ever assembled in one collection.

Another major rarity to come from the modified Cole plate is the so-called “Inverted ‘C’ at Right,” which was produced by Position 36, the last stamp at right in the sixth row. The right-hand “C” is actually not inverted, but is a mirror image from a right-reading engraved letter on the plate. In this one place, a different “C” letter punch instrument was used, which had the wrong orientation. Two examples are in the “New Amsterdam” collection: one on Green (40L4a) and another on Buff (40L8a).



One position on the plate (Position 36) furnished the so-called “Inverted C at Right” variety. In fact, the “C” was punched with a different tool that created a right-reading engraved “C” on the plate, which in turn printed a mirror-image “C” on the stamp. Very few examples of this variety are recorded, including the two shown above on Green and Buff papers (40L4a and 40L8a). (277 AND 314)



Examples of the Hand-Etched "C" at Left variety on covers carried to the post office: Green (40L4b) to Portchester N.Y.; Grayish (40L5b) to New Haven Conn.; and Vermilion (40L6b) to Farmington Me. (280, 300, 312)



Hand-Etched "C" at Left variety on Green paper (40L4b) used on June 27, 1850, folded letter to Germany. This is the only recorded Post Office City Despatch cover addressed to a foreign country. (282)



Big Pupil plate variety on Green paper (40L4) used on December 12, 1849, cover to Springfield Mass. When the "CC" initials were punched into the plate, Positions 5 and 6 were retouched by enlarging Washington's eye, creating the peculiar Big Pupil variety. Very few examples are recorded. (275)

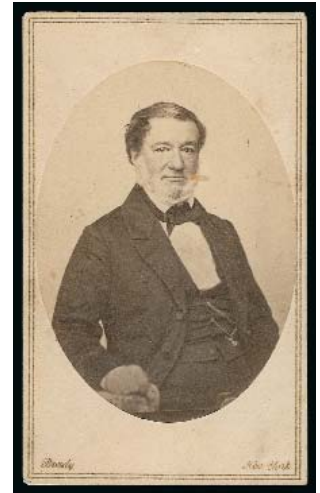
AFTERNOON SESSION (LOTS 201-317)
WEDNESDAY, MARCH 2, 2011, AT 1:30 P.M.

THE "NEW AMSTERDAM" COLLECTION OF
CITY DESPATCH POST 1842-1852

GREIG'S CITY DESPATCH POST—FEBRUARY-AUGUST 1842

201

Carte-de-Visite and Official Correspondence of Alexander M. Greig, Superintendent of the U.S. City Despatch Post. Four items of historical significance: 1) Carte-de-visite with three-quarter half-length portrait photograph of Alexander M. Greig with Matthew Brady imprint on front and back; 2) Letter on New York Post Office stationery dated Nov. 26, 1844, from Postmaster John Lorimer Graham to Alexander M. Greig acknowledging receipt of letter dated Nov. 25 tendering Greig's resignation as superintendent of the U.S. City Despatch Post, "*in consequence of having determined to make Cuba your future residence*"; 3) Letter datelined "New York Nov. 30th, 1844" to "Alexander M. Gregg" (note phonetic spelling of last name), which states in part, "*The undersigned, carriers in the 'Despatch' department of the New York Post Office, have learned, with regret, your determination to leave the service for foreign parts. They have, almost all of them, been connected with the Department since its formation, under You as their Chief, and they are not willing that the connexion should be severed without conveying to you their earnest sense of your uniform kindness, friendship, and faithful discharge of duty, towards them and the Government, whose servants they are.*", signed by fifteen letter carriers; and 4) Letter datelined "Brooklyn 2nd December 1844" from Greig "To the Carriers of the U.S. City Despatch Post", acknowledging with gratitude their Nov. 30th letter, the cross-outs, corrections and the fact that this letter is with the others suggest that it is Greig's retained draft; an outstanding group, we are unaware of any other examples of Greig's photograph or similar correspondence(Photo Ex) E. 750-1,000



201EX

202

City Despatch Post, New York N.Y., Collateral Items. Three: 1) proof of full-length standing portrait of Washington (the head portion was used on the City Despatch Post stamp); 2) Aug. 1, 1842 printed notice from 1st Asst. PMG Hobbie to New York Postmaster J. L. Graham authorizing establishment of U.S. City Despatch Post; and 3) Sep. 1842 circular from Graham notifying public that "Free" stamps must be affixed to all to-the-mails" letters deposited at stations, interesting and exhibitable collateral lot.....Not illustrated E. 200-300



203

203 ☒

City Despatch Post N.Y. Feb. 18, 9 O'Clock. Type I double-line circular datestamp with "N.Y." inverted, struck in deep carmine on 1842 folded printed invitation to officers of "Artillery and Infantry of this City" to attend a meeting of the Committee of Arrangements for a Grand Military Fete in honor of Washington's Birthday, addressed to Col. Samuel Jones Mumford, Extremely Fine, this is the first type of datestamp used by the City Despatch Post, which started delivering regular mail about one week earlier, examples of this short-lived datestamp with inverted "N.Y." are rare..... E. 400-500



- 204 ★田 (Greig's) City Despatch Post, New York N.Y., 3c Black on Grayish (40L1). Complete sheet of 42, original gum, some very minor paper adherence along right, large margins except frameline just touched at upper right, very fresh, sound except for a small sealed tear between stamps at upper left (Positions 7 and 13), a couple of stamps lightly soiled

EXTREMELY FINE. ONE OF FIVE RECORDED COMPLETE SHEETS OF THE 1842 3-CENT CITY DESPATCH POST STAMP — THE FIRST ADHESIVE STAMP ISSUED IN THE WESTERN HEMISPHERE. AN IMPORTANT AND WELL-PEDIGREED ARTIFACT OF AMERICAN POSTAL HISTORY.

This sheet was printed from the plate of 42 subjects that produced the first adhesive stamps issued in the Western hemisphere. The same plate was modified in 1846 by changing the denomination from "Three" to "Two" cents (under Abraham Mead's ownership) and again in late 1847 or early 1848 by letter-punching (or etching) the initials "CC" on each subject (under Charles Cole's ownership). No other single plate in American philately is believed to have produced such an unusual variety of stamps over such a long period (see *The City Despatch Post 1842-1852 Issues: A Study of America's First and Most Versatile Stamp-Producing Plate*, Scott R. Trepel).

Our records show five complete sheets of the City Despatch Post stamp issued by Alexander M. Greig in 1842. These are 1) the sheet offered here, ex Caspary, Lilly, Boker, Klein, Golden and Gordon N. John (Siegel Sale 868, lot 2001, realized \$26,000 hammer); 2) ex Middendorf; 3) ex Kapiloff, sold in our 1995 Rarities sale (lot 339, realized \$30,000 hammer); 4) ex Norvin Green; and 5) illustrated in Perry's *100 Years Ago*, ex Ackerman and Hall (Siegel Sale 830, realized \$25,000 hammer).

Ex Caspary, Lilly, Boker, Klein, Golden and Gordon N. John. Scott Retail \$27,500.00
..... E. 25,000-35,000



205

- 205 ★田 (Greig's) City Despatch Post, New York N.Y., 3c Black on Grayish (40L1). Positions 1-4/7-10, top left corner sheet margin block of eight, original gum, large margins all around, fresh and bright, negligible corner crease in sheet margin at extreme top left

EXTREMELY FINE. AN OUTSTANDING ORIGINAL-GUM SHEET-MARGIN BLOCK OF EIGHT OF GREIG'S CITY DESPATCH POST ISSUE — THE FIRST ADHESIVE STAMP ISSUED IN THE WESTERN HEMISPHERE.

Ex Chapin. With 1970 P.F. certificate (as No. 6LB1) 3,800.00



206

- 206 ★田 (Greig's) City Despatch Post, New York N.Y., 3c Black on Grayish (40L1). Positions 4-5/10-11, top sheet margin block of four, original gum, large margins all around, fresh and Extremely Fine, ex Chapin, with 1956 P.F. certificate..... 1,900.00



207

- 207 ★田 (Greig's) City Despatch Post, New York N.Y., 3c Black on Grayish (40L1). Positions 19-20/25-26, left sheet margin block of four, original gum, large margins all around, light natural paper wrinkle affects bottom left stamp (not mentioned on accompanying certificate), Extremely Fine, left stamps "W.H.P." backstamps, with 1991 P.F. certificate 1,900.00

- 208 ★田 (Greig's) City Despatch Post, New York N.Y., 3c Black on Grayish (40L1). Positions 5-6/11-12, top right corner sheet margin block of four, original gum, large margins other sides, small surface scrapes between top pair and two small surface scrapes in the bottom right stamp, penciled note in selvage "See letter of Son of Founder of this, the first post using stamps in the States, 17 Jun 1897", Extremely Fine appearance, a desirable position block, ex Caspary, Hart and Kuphal, with 1995 P.F. certificate 1,900.00



208



209

- 209 ★ (Greig's) City Despatch Post, New York N.Y., 3c Black on Grayish (40L1). Positions 19-20, horizontal pair with left sheet margin, original gum, large margins all around, Very Fine-Extremely Fine, with 1993 P.F. certificate .. 850.00

- 210 (Greig's) City Despatch Post, New York N.Y., 3c Black on Grayish (40L1). Position 42 from the bottom right corner of the sheet, huge margins, clear strike of red "Free" in frame cancel, Extremely Fine, a superb used example of this historic issue. 275.00



210



211 with enclosure

211 ☒ (Greig's) City Despatch Post, New York N.Y., 3c Black on Grayish (40L1). Position 18, large margins, tied by red "Free" in frame on embossed **Valentine** cover to local addressee, with original enclosure, stamp has faint gum toning

VERY FINE. A SPECTACULAR VALENTINE COVER WITH GREIG'S CITY DESPATCH POST STAMP TIED. THIS IS THE FIRST ADHESIVE STAMP ISSUED IN THE WESTERN HEMISPHERE.

Ex Caspary, Middendorf and Geisler. With 2009 P.F. certificate. Scott Retail \$2,500.00 without premium for Valentine usage E. 1,500-2,000



212

- 212 ☒ **(Greig's) City Despatch Post, New York N.Y., 3c Black on Grayish (40L1).** Position 34, large margins, tied by manuscript "X" cancel on 1842 folded letter addressed in blue to the Postmaster of Simsbury Conn., red "New-York Apl 21" circular datestamp, manuscript "f" for free delivery to a postmaster

EXTREMELY FINE. AN EXTREMELY RARE USE OF THE CITY DESPATCH POST ISSUE ON AN OUTBOUND LETTER. THIS IS THE ONLY RECORDED EXAMPLE USED ON "FREE" MAIL TO A POSTMASTER IN ANOTHER CITY.

This rare cover dates from the two-month period (April-May 1842) when letters carried by the City Despatch Post to the mails for delivery outside the city were cancelled in manuscript and received no local post markings. Very few examples of the City Despatch Post stamp are known on covers to other cities. This example has the added feature of the postmaster's franking privilege.

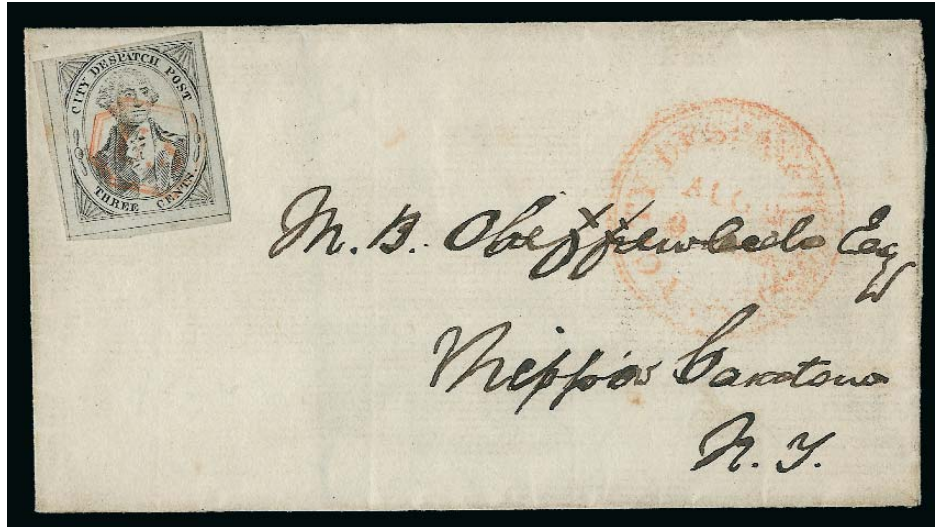
Ex Caspary and Meroni. With 2005 P.F. certificate E. 2,000-3,000



213

- 213 ☒ (Greig's) City Despatch Post, New York N.Y., 3c Black on Grayish (40L1). Position 28, large margins, cancelled by manuscript "X" and tied by red "New-York Jun. 1" circular datestamp on May 31, 1842 folded letter addressed in blue to New Brunswick N.J., magenta manuscript "10" due rate, vertical file fold thru stamp but does not significantly affect appearance, otherwise Very Fine, this rare cover dates from the two-month period (April-May 1842) when letters carried by the City Despatch Post to the mails for delivery outside the city were cancelled in manuscript and received no local post markings, very few examples (less than six) of the City Despatch Post stamp are known on covers to other cities, examples of this issue tied on cover are rare (especially tied with the post office datestamp, of which we record two)..... E. 500-750

UNITED STATES CITY DESPATCH POST CARRIER DEPARTMENT
AUGUST 16, 1842-NOVEMBER 28, 1846



214

- 214 ☒ **U.S. City Despatch Post, New York N.Y., 3c Black on Grayish (6LB1).** Position 17, three huge margins showing surrounding dividing lines, ample at top, cancelled by orange-red "U.S." in frame cancel, matching "U.S. City Despatch Post Aug. 20, 9 O'Clock" (1842) Type I double-line circular datestamp on small folded cover to local addressee (name and address altered in manuscript many years ago), one side panel missing

AN EXTREMELY RARE EXAMPLE OF GREIG'S 3-CENT STAMP USED FOR UNITED STATES CITY DESPATCH POST CARRIER SERVICE. ONLY NINETEEN 6LB1 COVERS/FRONTS ARE RECORDED IN LYONS CENSUS. THIS IS ONE OF FIVE RECORDED EXAMPLES DATED PRIOR TO THE SEPTEMBER 1842 FIRST "UNITED STATES CITY DESPATCH POST" ISSUE.

In August 1842 the privately-owned City Despatch Post was bought out and re-established as the carrier department of the New York City Post Office. Stamps sold by Greig for the City Despatch Post remained valid for prepayment of carrier fees and were used months after the buyout. In the period before U.S. City Despatch Post stamps were issued (August 16-31, 1842), the use of Greig's stamps has provisional status among collectors. By September 1842 Greig's stamps in public hands were accepted concurrently with the government carrier issues (6LB3 and 6LB5, primarily). The carrier stamp, 6LB1, can be distinguished from 40L1 only when cancelled with the "U.S."-designated cancel or postmark. Such examples are very rare, with 19 covers contained in the Lyons census, as well as ten off-cover stamps. Of the 19 6LB1 covers recorded by Lyons, only 15 are confirmed as genuine full covers (two are fronts or pieces, one is unconfirmed, and a fourth 6LB1 stamp is on an 1844 cover). There are five pre-Sep. 1 uses in the Lyons census, including one front only.

Lyons Census No. 11 (*Penny Post*, Oct. 2004). Ex Waterhouse, Middendorf and Kapiloff. With 1991 P.F. certificate 10,000.00



215

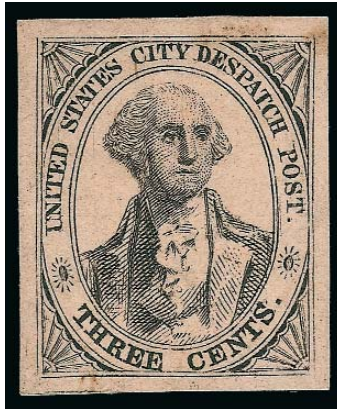
- 215 ☒ **U.S. City Despatch Post, New York N.Y., 3c Black on Grayish (6LB1).** Position 6 from upper right corner of sheet, tied by two strikes of orange-red "U.S." in frame cancel, matching "U.S. City Despatch Post Dec. 2 9 O'Clock" Type I double-line circular date-stamp on folded invoice to local street address, trivial ink erosion spots in address, light fold at center

AN EXTREMELY FINE TIED EXAMPLE OF GREIG'S 3-CENT STAMP USED FOR UNITED STATES CITY DESPATCH POST CARRIER SERVICE. ONLY NINETEEN 6LB1 COVERS/FRONTS ARE RECORDED IN LYONS CENSUS, OF WHICH ONLY SEVEN FULL COVERS HAVE A POSTMARK OR CANCEL TYING THE STAMP.

In August 1842 the privately-owned City Despatch Post was bought out and re-established as the carrier department of the New York City Post Office. Stamps sold by Greig for the City Despatch Post remained valid for prepayment of carrier fees and were used months after the buyout. In the period before U.S. City Despatch Post stamps were issued (August 16-31, 1842), the use of Greig's stamps has provisional status among collectors. By September 1842 Greig's stamps in public hands were accepted concurrently with the government carrier issues (6LB3 and 6LB5, primarily). The carrier stamp, 6LB1, can be distinguished from 40L1 only when cancelled with the "U.S."-designated cancel or postmark. Such examples are very rare, with 19 covers contained in the Lyons census, as well as ten off-cover stamps. Of the 19 6LB1 covers recorded by Lyons, only 15 are confirmed as genuine full covers (two are fronts or pieces, one is unconfirmed, and a fourth 6LB1 stamp is on an 1844 cover). There are eight *tied* examples, including one large piece and seven covers.

Lyons Census No. 6 (*Penny Post*, Oct. 2004). Ex Pope, Kapiloff and Kuphal. With copy of 1985 P.F. certificate. 11,500.00

FIRST ISSUE ON ROSY BUFF (UNSURFACED)



216

- 216 (★) **U.S. City Despatch Post, New York N.Y., 3c Black on Rosy Buff Unsurfaced (6LB2).** Position 21R, unused (no gum as always), large even margins, **without any thins**, beautiful impression on bright paper, certificate notes “tiny gum soiling in the margins at top right and bottom left” but this is of absolutely no significance

EXTREMELY FINE. THE FINEST OF THE APPROXIMATELY TEN KNOWN EXAMPLES OF THE 3-CENT ON ROSY BUFF PAPER.

We have tracked sales of the Rosy Buff paper for nearly 20 years, and this is the only example of this rare stamp we have encountered that is not thinned.

Ex Ferrary and Hall. “W.H.C.” (Colson) backstamp. With 2001 P.F. certificate 2,500.00



217

- 217 (★) **U.S. City Despatch Post, New York N.Y., 3c Black on Rosy Buff Unsurfaced (6LB2).** Position 19R, unused (no gum as always), large margins to clear, bright shade, small thin spots, Very Fine appearance, approximately ten examples of the 3c on Rosy Buff are known, almost all of which have thins (usually much more severe than the small thin spots in this stamp), with 2006 P.F. certificate 2,500.00

FIRST ISSUE ON LIGHT BLUE (UNSURFACED)



218

- 218 (★) **U.S. City Despatch Post, New York N.Y., 3c Black on Light Blue Unsurfaced (6LB3).** Positions 13-14R, horizontal pair, unused (no gum), full to large margins, tiny scissors cut at top between stamps, faint crease

VERY FINE APPEARANCE. ONE OF TWO RECORDED UNUSED PAIRS OF THE FIRST STAMP PRINTED AND ISSUED BY THE UNITED STATES POST OFFICE FOR THE NEW YORK CITY CARRIER DEPARTMENT.

The other recorded pair of 6LB3 (Pos. 4-5R) was last offered in our sale of the Kuphal collection (Sale 925, lot 1215), where it realized \$3,750 hammer. The Scott value was never changed to reflect that sale.

Ex Caspary and Hall. With 2005 P.F. certificate..... 2,250.00

- 219 (★) **U.S. City Despatch Post, New York N.Y., 3c Black on Light Blue Unsurfaced (6LB3).** Unused (no gum), three large margins, ample at bottom, Very Fine, the first issue on unsurfaced Light Blue paper is rare in unused condition, ex Golden, with 2000 P.F. certificate..... 550.00



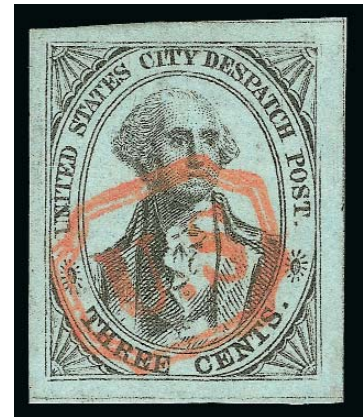
219



220

- 220 (★) **U.S. City Despatch Post, New York N.Y., 3c Black on Light Blue Unsurfaced (6LB3).** Unused (no gum), large margins all around, tiny pinhole at upper left is nearly invisible and not noted on accompanying certificate, Extremely Fine appearance, the first issue on unsurfaced Light Blue paper is rare in unused condition, with 1991 P.F. certificate..... 550.00

- 221 **U.S. City Despatch Post, New York N.Y., 3c Black on Light Blue Unsurfaced (6LB3).** Large margins all around, intense impression on bright paper, perfect bold strike of vivid orange-red "U.S." in frame cancel, Extremely Fine Gem, a superb example of the first stamp printed and issued by the United States government (Aug. 1842), ex Hall, with 2001 P.F. certificate 500.00



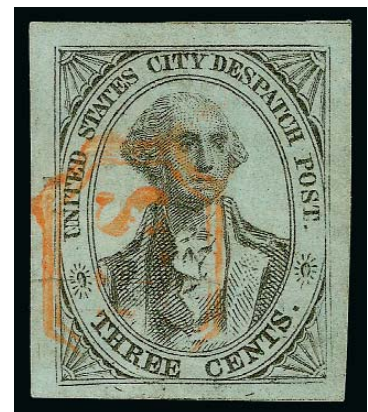
221



222

- 222 **U.S. City Despatch Post, New York N.Y., 3c Black on Light Blue Unsurfaced (6LB3).** Large margins all around, cancelled by clear strike of orange-red "U.S." in frame, bright and fresh, Extremely Fine Gem, a magnificent used example which still retains much of its original gum 500.00

- 223 **U.S. City Despatch Post, New York N.Y., 3c Black on Light Blue Unsurfaced (6LB3).** Position 25R with major double transfer at bottom, full to large margins, orange-red "U.S." in frame cancel, light horizontal crease at center, small corner creases, appears Very Fine, this is the largest double transfer on the U.S. City Despatch Post 3c plate, examples are rare, ex Schwartz, with 2004 P.F. certificate, unlisted in Scott (value for normal 6LB3 position)..... 500.00



223



224

- 224 ☒ **U.S. City Despatch Post, New York N.Y., 3c Black on Light Blue Unsurfaced (6LB3).** Large even margins, tied by orange-red "U.S. City Despatch Post Feb. 15, — O'Clock" Type I double-line circular datestamp on 1843 folded letter of condolence dated Feb. 14, 1843, to local street address, endorsed "P. Despatch Post"

EXTREMELY FINE. ONE OF THE FINEST COVERS KNOWN WITH THE UNITED STATES CITY DESPATCH POST FIRST ISSUE. EXAMPLES TIED BY THE CIRCULAR DATESTAMP ARE VERY RARE.

Ex Crocker, Mason, Duckworth and Golden. With 2000 P.F. certificate. Scott Retail \$2,000.00
..... E. 2,000-3,000



225

- 225 ☒ **U.S. City Despatch Post, New York N.Y., 3c Black on Light Blue Unsurfaced (6LB3).** Large even margins including **bottom sheet margin**, cancelled by orange-red "U.S." in frame and tied by matching "U.S. City Despatch Post Oct. 26, 9 O'Clock" Type I double-line circular datestamp on Oct. 15, 1842 folded printed notice to local street address, vertical file fold clear of stamp

EXTREMELY FINE. AN OUTSTANDING AND RARE EXAMPLE OF THE UNITED STATES CITY DESPATCH POST FIRST ISSUE TIED BY THE CIRCULAR DATESTAMP ON COVER.

Ex Kapiloff and Golden. With 1984 P.F. certificate. Scott Retail \$2,000.00..... E. 1,500-2,000



226

- 226 ☒ **U.S. City Despatch Post, New York N.Y., 3c Black on Light Blue Unsurfaced (6LB3).** Large margins all around, tied by three strikes of orange-red "U.S." in frame, matching "U.S. City Despatch Post Nov. 5, 9 O'Clock" Type I double-line circular datestamp on 1842 folded letter, an unsigned love poem begging for forgiveness from a Miss Fulton, lightly cleaned, Extremely Fine, Scott Retail \$2,000.00 E. 1,000-1,500



227

- 227 ☒ **U.S. City Despatch Post, New York N.Y., 3c Black on Light Blue Unsurfaced (6LB3).** Large margins, tied by two strikes of red "U.S." in frame, matching "U.S. City Despatch Post Nov. 24, 9 O'Clock" Type I double-line circular datestamp on 1842 folded letter to local street address, diagonal fold barely causes slight crease in corner of stamp, otherwise Very Fine, with 1994 A.P.S. certificate (does not mention crease), Scott Retail \$2,000.00 E. 500-750



228



229



230

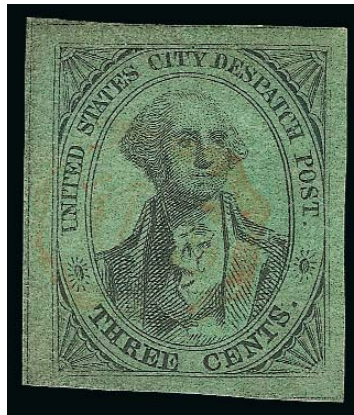
- 228 ☒ **U.S. City Despatch Post, New York N.Y., 3c Black on Light Blue Unsurfaced (6LB3).** Position 6L, large even margins including part of left sheet margin, orange-red "U.S." in frame cancel, matching "U.S. City Despatch Post Sep. 12, 1 O'Clock" Type I double-line circular datestamp on 1842 folded letter to local street address from a merchant stating his intention to declare bankruptcy, Extremely Fine Gem, a superb and early use of the scarce first printing on cover, ex Kapiloff, with 1991 P.F. certificate E. 1,000-1,500
- 229 ☒ **U.S. City Despatch Post, New York N.Y., 3c Black on Light Blue Unsurfaced (6LB3).** Large margins, cancelled by neat strike of orange-red "U.S." in frame, impression ties thru paper, matching "U.S. City Despatch Post Dec. 31, 4 O'Clock" Type I double-line circular datestamp on 1842 printed notice to local addressee, slight toning along horizontal file fold away from stamp, still Extremely Fine, a beautiful example of the scarce first issue on cover, with 1993 P.F. certificate..... E. 500-750
- 230 ☒ **U.S. City Despatch Post, New York N.Y., 3c Black on Light Blue Unsurfaced (6LB3).** Three large margins, touched at right, orange-red "U.S." in frame cancel, matching "U.S. City Despatch Post Sep. 8, 4 O'Clock" Type I double-line circular datestamp on 1842 folded letter datelined two days earlier at Cooperstown N.Y., evidently hand-carried to N.Y.C. and sent by carrier, Very Fine and scarce early use of the first government printing, ex Kapiloff..... E. 500-750

GLAZED PAPER ISSUE



231

- 231 **U.S. City Despatch Post, New York N.Y., 3c Black on Blue Green Glazed (6LB5, shades).** Five stamps representing a spectrum of 6LB5 shades on glazed paper including Moss Green (defective), Green, Blue Green and Greenish Blue (these have minor faults), a scarce group E. 500-750



232

- 232 **U.S. City Despatch Post, New York N.Y., 3c Black on "Apple Green" Glazed (6LB5d var).** Position 6L, distinctive "Apple Green" shade of paper, large margins, red "U.S." in frame cancel, tiny pinhole in bottom center
 EXTREMELY FINE APPEARANCE. AN EXTREMELY RARE SHADE VARIETY OF THE UNITED STATES CITY DESPATCH POST 3-CENT ON "APPLE GREEN" GLAZED PAPER.
 Ex Caspary and Hall. With 2001 P.F. certificate as 6LB5d "Apple Green" E. 1,500-2,000



233

- 233 ☒ **U.S. City Despatch Post, New York N.Y., 3c Black on Green Glazed (6LB5d).** Position 2R, large margins including part of top sheet margin, bold orange-red "U.S." in frame cancel, matching "U.S. City Despatch Post Aug. 31, 1 O'Clock" Type I double-line circular datestamp on small folded letter (ca. 1843), stamp has negligible corner crease in extreme top right margin, still Extremely Fine and rare use of the early Green Glazed paper, ex White, Knapp and Kapiloff, Scott Retail \$900.00 used off cover... E. 500-750



234

- 234 ☒ **U.S. City Despatch Post, New York N.Y., 3c Black on Green Glazed (6LB5d).** Large margins, extraordinary intense green shade, tied by orange-red "U.S." in frame cancel, matching "U.S. City Despatch Post Oct. 26, 9 O'Clock" Type I double-line circular datestamp on small cover (ca. 1843) to local street address, stamp has faint crease at lower left, otherwise Extremely Fine, very few known in this deep shade, Scott Retail \$900.00 used off cover..... E. 400-500



235

- 235 ☒ **U.S. City Despatch Post, New York N.Y., 3c Black on Green Glazed (6LB5d).** Large to huge margins, distinctive Moss Green paper shade, cancelled by red "U.S." in frame (impression ties thru paper), red "New-York Mar. 17" circular datestamp and blue ms. "12½" rate on folded letter to **Philadelphia street address**, datelined "768 Broadway, March 16th Thursday" (1843)

EXTREMELY FINE. A RARE USE OF THE UNITED STATES CITY DESPATCH POST 3-CENT GREEN ON INTER-CITY MAIL.

The shade of this stamp paper is a distinctive Moss Green, which was evidently used for an early printing on glazed paper. We have seen very few examples. This use of the early Moss Green on inter-city mail is exceedingly rare.

Ex Schwartz and Gordon N. John. Scott Retail \$900.00 used off cover... E. 1,500-2,000



236

- 236 ☒ **U.S. City Despatch Post, New York N.Y., 3c Black on Green Glazed (6LB5d).** Distinctive Moss Green shade, large margins, slight creasing and cracks in enamel, tied by red "U.S." in frame cancel and "New-York Mar. 19" circular datestamp on 1844 folded letter to **Canton, Illinois**, ms. "25" rate unpaid, Very Fine, the Moss Green stamp is very scarce, this example on a letter to Illinois is extremely rare, ex Kapiloff and Gordon N. John, Scott Retail \$900.00 used off cover... E. 750-1,000



237

- 237 ☒ **U.S. City Despatch Post, New York N.Y., 3c Black on Blue Green Glazed (6LB5).** Full to large margins, bright shade, tied by red "U.S." in frame cancel, red "New-York Aug. 9" circular datestamp on Aug. 8, 1843 folded letter to Newark N.J., blue ms. "6" rate, small tear at top center, stamp has faint creasing along top margin from placement along edge of letter, still Very Fine, scarce use of carrier stamp on letter to a nearby New Jersey post office E. 300-400



238

- 238 ☒ **U.S. City Despatch Post, New York N.Y., 3c Black on Blue Green Glazed (6LB5).** Ample to large margins, cancelled by red "U.S." in frame (impression ties thru paper), red "New-York Jun. 29" circular datestamp on folded letter to Stockbridge Mass., sender's note at top "Despatch Office June 29th Paid", the postal clerk was careful to cross out "Paid" and rate the letter "12½" due in blue, datelined "Saturday morning" (Jun. 29, 1844) and writer mentions sending letter to the "Despatch" office, Very Fine, scarce use on inter-city letter, ex Abt and Golden, with 2000 P.F. certificate..... E. 500-750



239

- 239 ☒ **U.S. City Despatch Post, New York N.Y., 3c Black on Blue Green Glazed (6LB5).** Distinctive intermediate Green/Blue-Green shade, large even margins, left uncanceled by the carrier department and **tied** by red "New-York Jun. 2" circular datestamp with matching "Paid" arc on 1843 folded letter **to Boston**, blue ms. "18³/₄" prepaid rate, ms. notation next to stamp "Postage 19", interesting contents re business with China, stamp has a couple minute surface blemishes endemic to the issue

EXTREMELY FINE. AN OUTSTANDING COVER SHOWING USE OF THE UNITED STATES CITY DESPATCH POST 3-CENT ON MAIL TO ANOTHER CITY. A WONDERFUL ARTIFACT FROM THE BEGINNINGS OF ADHESIVE STAMP USAGE IN THE UNITED STATES.

This cover is remarkable not only for its quality, but for the fact that inter-city postage was fully prepaid and the stamp is tied by the post office datestamp.

Ex Kapiloff. With 1995 P.F. certificate..... E. 2,000-3,000



240

- 240 ✉ **U.S. City Despatch Post, New York N.Y., 3c Black on Blue Green Glazed (6LB5).** Ample to large margins, bright and fresh, cancelled by red "U.S." in frame (impression ties thru paper), clear strike of matching "U.S. City Despatch Post Mar. 30, 1 O'Clock" Type II circular datestamp on folded letter **originating in Paris, France, and forwarded by carrier within New York City**, letter datelined "Paris, February 15th 1844" from Cornelia Ray (nee Prime) to her mother in care of the banking firm of Prime, Ward & King, red "Greene & Co. Paris" and "T. B. Green & C. Havre" oval handstamps on backflap, red "Bureau Maritime Havre 16 Fevr. 1844" double-circle datestamp and matching "P.P." (paid to port) framed handstamp, manuscript "6" private ship-letter rate crossed out, forwarding address reads "Lower Office 1/4 P. 9 AM 30 Mar 1844" and "No 18 Bond Street", immaculate condition

EXTREMELY FINE. A COLORFUL AND REMARKABLE FOLDED LETTER SENT FROM PARIS TO NEW YORK VIA HAVRE, THEN FORWARDED TO BOND STREET BY UNITED STATES CITY DESPATCH POST. THIS COVER ONLY RECENTLY CAME TO LIGHT.

Cornelia Ray was a member of the famous Prime family of New York, whose patriarch, Nathaniel, was the head of the preeminent banking firm, Prime, Ward & King. This letter was sent by Cornelia to her mother in February 1844, while she, her husband and their children were staying in Paris. Her letter mentions prior mailings by ships and expresses hope for an early departure of a "steamer." This letter was carried on a private vessel that sailed from Havre to New York. On arrival it was forwarded to 18 Bond Street by the U.S. City Despatch Post carrier at 1:00 p.m. on March 30.

With 2008 A.P.S. certificate..... E. 2,000-3,000



241

- 241 ☒ **U.S. City Despatch Post, New York N.Y., 3c Black on Blue Green Glazed (6LB5).** Large even margins, bright and fresh, cancelled by red "U.S." in frame (impression ties thru paper), clear strike of matching "U.S. City Despatch Post Mar. 25, 1 O'Clock" Type II circular datestamp on folded letter **originating in Paris, France, and forwarded by carrier within New York City**, the lettersheet is complete but there must have been an additional internal sheet with dateline, written from Cornelia Ray (nee Prime) to her mother in care of the banking firm of Prime, Ward & King, red "Greene & Co. Paris" oval handstamp on backflap, carried under cover to New York, forwarding address reads "No 18 Bond Street", immaculate condition, stamp has tiny corner crease at top right

EXTREMELY FINE. A COLORFUL AND REMARKABLE FOLDED LETTER SENT UNDER COVER FROM PARIS TO NEW YORK, THEN FORWARDED TO BOND STREET BY UNITED STATES CITY DESPATCH POST. THIS COVER ONLY RECENTLY CAME TO LIGHT.

Cornelia Ray was a member of the famous Prime family of New York, whose patriarch, Nathaniel, was the head of the preeminent banking firm, Prime, Ward & King. This letter was sent by Cornelia to her mother in February 1844, while she, her husband and their children were staying in Paris. This letter was carried under cover on a vessel that sailed from France to New York. On arrival it was forwarded to 18 Bond Street by the U.S. City Despatch Post carrier at 1:00 p.m. on March 25.

With 2008 A.P.S. certificate..... E. 1,000-1,500



242

- 242 ★田 **U.S. City Despatch Post, New York N.Y., 3c Black on Blue Glazed (6LB5b).** Positions 8-10/13-15/18-20/23-25L, block of twelve from the lower right corner of the left pane, original gum, full even margins except touched at lower left, beautiful impression on bright blue paper, four creases causing cracks in paper have been reinforced with hinges, small burn hole at lower right rebacked with paper, faint stain in two stamps at upper left VERY FINE APPEARANCE. THIS REMARKABLE BLOCK OF TWELVE IS THE LARGEST RECORDED MULTIPLE AND ONLY KNOWN BLOCK OF THE UNITED STATES CITY DESPATCH POST CARRIER ISSUE. AN IMPORTANT ARTIFACT OF UNITED STATES PHILATELY.

The United States City Despatch Post government carrier issues are extremely rare in multiples, either used or unused. The largest multiples of 6LB3 (unsurfaced Light Blue paper) are two unused pairs. There are a few used strips of the glazed surface-colored shades (Blue Green, Green, Blue) — a strip of five being the largest — and in unused condition there is at least one pair, one strip of three and this block of twelve, which is the only block extant. Sometime after Ezra D. Cole acquired this block for Josiah K. Lilly at the 1957 Caspary sale, its margins were trimmed slightly, and a small hole was burned through the paper at lower right.

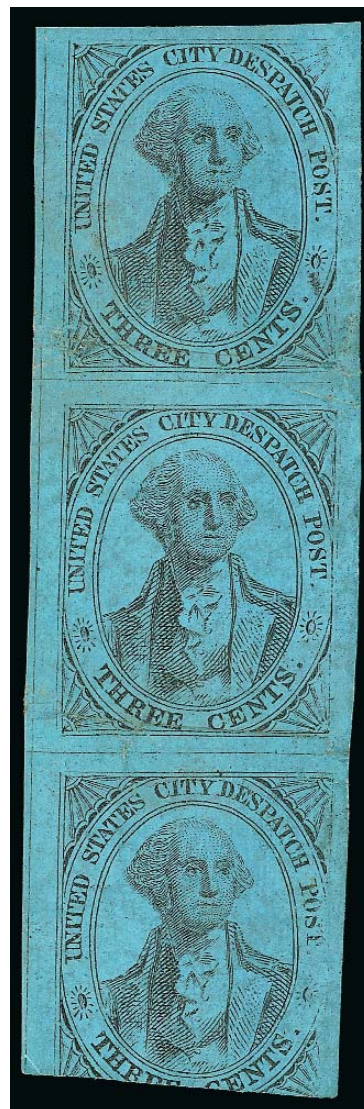
Ex Hawkins, Caspary, Lilly, Hall and Gordon N. John (realized \$21,000 hammer). Scott Retail \$23,000.00..... E. 20,000-30,000

- 243 ★ **U.S. City Despatch Post, New York N.Y., 3c Black on Blue Glazed (6LB5b).** Positions 5/10/15R, vertical strip of three from the upper right corner of right pane, original gum, large margins to cut in at bottom, horizontal creases

THE SECOND LARGEST UNUSED MULTIPLE OF THE UNITED STATES CITY DESPATCH POST CARRIER STAMP.

As noted in the description of the unique block (lot 242), unused multiples of any of the U.S. City Despatch Post government carrier issues are rare. This strip is identical in shade and gum color to the block, and it possibly originated from the upper right corner of the same sheet (the block from the left pane, and the strip from the right pane).

Ex Ackerman, Hall and Gordon N. John. With 2004 P.F. certificate. Scott Retail \$2,500.00 E. 750-1,000



243



244EX

- 244 **U.S. City Despatch Post, New York N.Y., 3c Black on Blue Glazed (6LB5b).** Three, one with part original gum and slight creases, other two cancelled by red "U.S." in frame on small pieces, large margins, one on piece has faint scratch in enamel, otherwise Very Fine-Extremely Fine(Photo Ex) 1,250.00



245

- 245 ☒ **U.S. City Despatch Post, New York N.Y., 3c Black on Blue Glazed (6LB5b).** Large margins, cancelled by red "U.S." in frame, matching "U.S. City Despatch Post Feb. 15, — O'Clock" Type II circular datestamp on small embossed Valentine cover to local street address, mended along bottom edge, some splits along embossing, otherwise Extremely Fine, illustrated in Perry's *100 Years Ago* (p. 36), ex Walcott and Hall E. 200-300



246

- 246 ☒ **U.S. City Despatch Post, New York N.Y., 3c Black on Blue Glazed (6LB5b).** Large margins, cancelled by red "U.S." in frame, matching "U.S. City Despatch Post Jan. 22, 9 O'Clock" Type II circular datestamp on 1845 folded letter to local street address, stamp has tiny corner crease at top left, otherwise Very Fine..... E. 200-300



247

- 247 ☒ **U.S. City Despatch Post, New York N.Y., 3c Black on Blue Glazed (6LB5b).** Cancelled by red "U.S." in frame, matching "U.S. City Despatch Post Oct. 21, 4 O'Clock" Type II circular datestamp, used to forward inbound letter from Ohio, faint blue town datestamp, stamp affixed over crossed-out rate, file fold away from stamp, stamp with light corner crease at top right, otherwise Very Fine, with 1985 P.F. certificate, Scott Retail \$750.00
..... E. 300-400



248

- 248 ☒ **U.S. City Despatch Post, New York N.Y., 3c Black on Blue Glazed (6LB5b).** Large margins to just touched, light shade, faults, red "U.S." in frame cancel (probably lifted and moved down), used on 1846 folded letter with local address, sender's endorsement "Paid at the Western Hotel", pencil "3", red "Paid" in arc, red "U.S. City Despatch Post May 7, 4 O'Clock" Type II circular datestamp, slightly toned, still Fine and rare usage, the red "Paid" arc and ms. "3" rate are indicative of cash prepayment, in this case the endorsement supports the theory that the writer was a guest at the hotel, ex Gordon N. John..... E. 200-300



249

- 249 ☒ **U.S. City Despatch Post, New York N.Y., 3c Black on Blue Glazed (6LB5).** Large margins, cancelled by "U.S." in frame on folded cover to Charleston S.C., red "New-York Feb. 17" (1845) circular datestamp, blue manuscript "25" rate, part of back panels removed, otherwise Very Fine, with 1991 P.F. certificate E. 300-400



250

- 250 ☒ **U.S. City Despatch Post, New York N.Y., 3c Black on Blue Glazed (6LB5b).** Full to large margins, tied by "U.S." in frame on folded cover to Charleston S.C., red "New-York Apl. 12" (1845) circular datestamp, blue manuscript "25" rate, stamp has couple tiny breaks in surface coating (endemic to the issue), otherwise Very Fine, with 1992 P.F. certificate as Blue Green E. 300-400



251

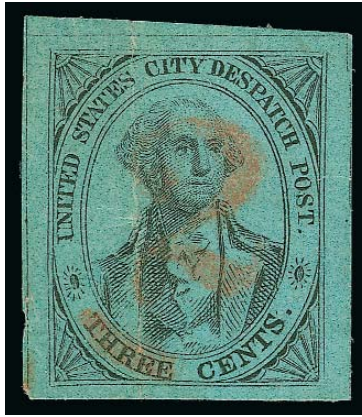
- 251 ☒ **U.S. City Despatch Post, New York N.Y., 3c Black on Blue Glazed (6LB5b).** Large margins, deep shade, red "U.S." in frame cancel struck twice, red "Paid" in arc and manuscript "6" rate on folded cover to **Paramus N.J.**, endorsed "Mail", no U.S. City Despatch Post or New York post office markings other than "U.S." and "Paid", Paramus is less than 25 miles west of New York City, flaps partly cut away, sealed opening tear into address is barely visible, otherwise Fine, unusual to-the-mails use of the U.S. City Despatch Post stamp, ex Kapiloff..... E. 400-500



252

- 252 ☒ **U.S. City Despatch Post, New York N.Y., 3c Black on Blue Glazed (6LB5b).** Large margins, cancelled by red "U.S." in frame on cover to **Tallahassee Fla.**, red "New-York 10cts Oct. 16" (1845) integral-rate circular datestamp struck on top of U.S. City Despatch Post circular datestamp, small cover edge tear at top right well away from stamp, stamp with small corner crease at bottom right, otherwise Very Fine and scarce to-the-mails use, the U.S. City Despatch Post stamps are rarely found on covers to other post offices at the July 1845 rates (the carrier operation closed in November 1846), with 1998 P.F. certificate as Blue Green..... E. 400-500

"2" SURCHARGE



253

253 **U.S. City Despatch Post, New York N.Y., 2c on 3c Black on Blue Green Glazed, Red Surcharge (6LB7).** Large to huge margins, clear overprint and deep paper shade, vertical crease

EXTREMELY FINE APPEARANCE. ONE OF FOUR RECORDED EXAMPLES OF THE WORLD'S FIRST GOVERNMENT-ISSUED OVERPRINTED STAMP. A MAJOR RARITY OF TREMENDOUS PHILATELIC SIGNIFICANCE AND APPEAL.

The world's first government-issued, overprinted stamp is the 2c on 3c U.S. City Despatch Post carrier issue, Scott 6LB7. It was overprinted in late 1845 or early 1846 to meet the need for a 2c stamp to prepay the carrier fee after the drop-letter rate was modified on July 1, 1845. Only four stamps are recorded, including three genuinely used on covers.

To understand why it was necessary to revalue U.S. City Despatch Post stamps from 3c to 2c, it is helpful to look at the effects of the July 1, 1845, postal reform (as per the Act of March 3, 1845). As is well-known to most U.S. stamp collectors, the July 1st reforms created the simplified 5c and 10c postage rates and laid the foundation for adhesive stamps to be used in this country. The postmasters' provisionals appeared first, followed in 1847 by the first General Issue (Scott 1 and 2). However, at the same time inter-city rates were lowered, Congress *raised* the drop-letter rate from 1c to 2c. A drop letter is one brought to a post office that is not transmitted to another post office. Congress raised the drop-letter rate out of fear that the new postage structure would cause a severe decline in postal revenues. By raising the intra-city rate, Congress hoped to offset some of the anticipated losses.

The consequences of this legislation for the U.S. City Despatch Post were immediate and dire. Prior to July 1, 1845, a drop letter could be taken by the carrier to or from the post office for 3c, which included 2c for the carrier department and 1c for the post office (drop postage). Beginning July 1, an extra cent was required for the drop postage, making the total amount equal to 4c. Although other classes of mail were unaffected by the drop-rate increase (including carrier letters that by-passed the main post office), the U.S. City Despatch found itself at a severe disadvantage competing with local posts, who generally charged 2c for a city letter. In the post-July 1 period, not only did Boyd flourish, but many smaller local posts entered the scene, hoping to capture a share of the market for intra-city letter delivery. By November 1846, the U.S. City Despatch Post was closed. Government carrier service would not appear again in New York City until 1849 under Robert Roberts' supervision.

The three recorded 6LB7 covers were mailed during the first eight months of the 2c drop-rate period. The covers are listed chronologically as follows: 1) Jan. 9, 1846 (red "New York 2 cts"), stamp cut in and tied by filing crease, addressee's name crossed out, no carrier markings, ex Ferrary, Hind, Waterhouse and Middendorf; 2) Feb. 14, 1846 (red "New-York 2 cts" and red carrier datestamp), stamp tied by filing crease, to Rev. R. S. Cook, Tract House, ex Hunter, Caspary, Boker, Golden and "D.K." (realized \$62,500 hammer); and 3) Mar. 2, 1846 (red carrier datestamp), stamp originally affixed on back over folds and torn in half upon opening, to W. A. Sesley, 213 Fulton St., no other markings, ex Caspary. This off-cover stamp was previously affixed to a cover dated Oct. 29 (1845 or 1846), but did not originate.

The rarity of the 2c on 3c stamp suggests that it was used on a very limited basis, during a period of decline for the U.S. City Despatch Post. By overlaying the "2" overprint on the "2" in the drop-rate datestamp, we have determined that they are identical in size and shape. The overprint was probably made from a modified integral-rate marker and struck by hand on each stamp.

Ex Grunin and Gordon N. John (Sale 868, lot 2045, realized \$15,500 hammer). With 1985 P.F. certificate..... E. 15,000-20,000

POST OFFICE CITY DESPATCH UNDER ABRAHAM B. MEAD
NOVEMBER 30, 1846-MARCH 1847



254

- 254 ☒ **(Mead's) Post Office City Despatch, New York N.Y. — November 30, 1846, First Day of Operation.** Red "P.O. City Despatch Post Nov. 30, 1 O'Clock" circular datestamp on 1846 light blue folded letter to local street address, Very Fine, **postmarked on the City Despatch Post's first day of operation under Abraham Mead's ownership**, the U.S. City Despatch carrier operation closed down on November 28, 1846, and two days later a former letter carrier, Abraham B. Mead, announced the opening of the "Post Office City Despatch" as a private post, this is the only recorded first day of the post, ex Hollowbush and Hahn E. 500-750



255

- 255 ☒ **(Mead's) Post Office City Despatch, New York N.Y., 2c Black on Green Glazed (40L2).** Position 19, large to huge margins, brilliant color and early impression from reworked plate, cancelled by neat strike of red "Free" in frame on gray folded cover to local street address, red **"P.O. City Despatch Post Dec. 9, 4 O'Clock"** (1846) circular datestamp, 1846 year-dated docketing on back, light vertical file fold away from stamp, small cover tears at bottom, otherwise Very Fine, Mead's new 2c stamps from the reworked plate were delivered by Rawdon, Wright & Hatch on Dec. 6, 1846, and the earliest documented use is Dec. 8 (this cover is one day later), with 2003 P.F. certificate E. 400-500



256

- 256 ✉ (Mead's) Post Office City Despatch, New York N.Y., 2c Black on Green Glazed (40L2). Position 8, full to large margins, couple tiny corner creases, red "Free" in frame cancel, impression ties thru paper, matching "P.O. City Despatch Post Feb. 15 — O'Clock" circular datestamp on silver and blue **decorative Valentine cover** to local street address, beautiful design on front and back, sealed with a small label (opened for display)

EXTREMELY FINE. ONE OF THE MOST BEAUTIFUL EXAMPLES OF MEAD'S 2-CENT GREEN STAMP ON COVER, USED IN FEBRUARY 1847, THE FIRST VALENTINE SEASON OF MEAD'S POST.

Abraham B. Mead, a New York City postal clerk, took control of the U.S. City Despatch Post carrier operation after it was discontinued. Mead announced the start of his "Post Office City Despatch" on November 30, 1846. Evidence indicates that Mead turned the post over to Alfred H. Cummings and Robert Wright, two New York City local post operators, as early as March 1847. Mead had the old City Despatch Post plate (used by Grieg to print 40L1) modified by changing "Three" to "Two" cents. Stamps were printed by Rawdon, Wright & Hatch on Green and Pink enameled paper.

Ex Kapiloff and Kuphal (Sale 925, lot 1227, realized \$5,750 hammer) E. 3,000-4,000



257



258



259

- 257 ☒ **(Mead's) Post Office City Despatch, New York N.Y., 2c Black on Green Glazed (40L2).** Position 28, huge margins all around, bright early shade and impression from reworked plate, red "Free" in frame cancel, impression ties thru paper, matching "P.O. City Despatch Post Feb. 2, 6 O'Clock" circular datestamp on 1847 folded letter to local street address, Extremely Fine, used during the brief period of Mead's ownership (the post was taken over by Cummings & Wright in March 1847), ex Caspary and Hall, with 2001 P.F. certificate..... E. 400-500
- 258 ☒ **(Mead's) Post Office City Despatch, New York N.Y., 2c Black on Green Glazed (40L2).** Position 22, large margins all around, brilliant color and early impression from reworked plate, cancelled by red "Free" in frame (impression ties thru paper), matching "P.O. City Despatch Post Jan. 29, 4 O'Clock" (1847) circular datestamp on cover to local street address, stamp has corner crease, otherwise Very Fine, used during the brief period of Mead's ownership (the post was taken over by Cummings & Wright in March 1847), with 1995 P.F. certificate..... E. 300-400
- 259 ☒ **(Mead's) Post Office City Despatch, New York N.Y., 2c Black on Green Glazed (40L2).** Large margins to a bit irregular but clear at right, brilliant color and early impression from reworked plate, tied by red "Free" in frame cancel, matching "P.O. City Despatch Post Jan. 15, 4 O'Clock" (1847) circular datestamp on small cover to local street address, Fine, used during the brief period of Mead's ownership (the post was taken over by Cummings & Wright in March 1847)..... E. 200-300

POST OFFICE CITY DESPATCH UNDER CUMMINGS & WRIGHT
MARCH-OCTOBER/NOVEMBER 1847



260

260 (Cummings and Wright) Post Office City Despatch, New York N.Y., 2c Black on Green Glazed, Manuscript "Cummings & Wright" Overprint (40L2 var). Mostly huge margins, ample at top, cancelled by part of red New York integral-rate circular datestamp, bold manuscript overprint, slightly thinned, horizontal crease at top

VERY FINE APPEARANCE. ONE OF TWO RECORDED EXAMPLES OF MEAD'S 2-CENT STAMP WITH THE CUMMINGS & WRIGHT OVERPRINT — THE ONLY ONE WITH THE NAMES FULLY SPELLED OUT. AN UNLISTED AND SIGNIFICANT ISSUE IN THE SEQUENCE OF OWNERSHIP OF THE CITY DESPATCH POST.

Abraham B. Mead took over the former U.S. City Despatch Post in November 1846 and had stamps printed from the altered plate ("Three" changed to "Two" cents) by Rawdon, Wright & Hatch on Dec. 5-6, 1846. About one year later (probably October-November 1847), Charles Cole acquired the post, and, by January 27, 1848, he issued stamps printed from the Mead plate with "CC" initials engraved or etched into each subject.

The existence of Mead stamps with the Cummings & Wright overprint was for many years the only available evidence suggesting that ownership of the City Despatch Post Office might have changed hands prior to the sale to Cole. Thomas C. Mazza, in his "Cummings' City Post Redux" *Collectors Club Philatelist* article (Sep.-Oct. 1995), revealed a new and documentary form of evidence: a receipt dated May 15, 1847, from the "P.O. City Despatch" signed "Cummings & Wright, Proprietors". Through the 1847-48 city directory, it has been established that Cummings was Alfred H. Cummings and Wright was Robert Wright, and that the two operated the Post Office City Despatch from 42½ Nassau Street. Covers are known that bear Cummings' City Post stamps in combination with the "P.O. City Despatch Post" and "Free" markings used by Mead, dated as early as March 25, 1847. The overprinted stamps, the Cummings/P.O. City Despatch covers, together with the Mazza receipt discovery, are solid evidence that Cummings and Wright were the successors to Abraham Mead, probably beginning in March 1847 and ending by November 1847.

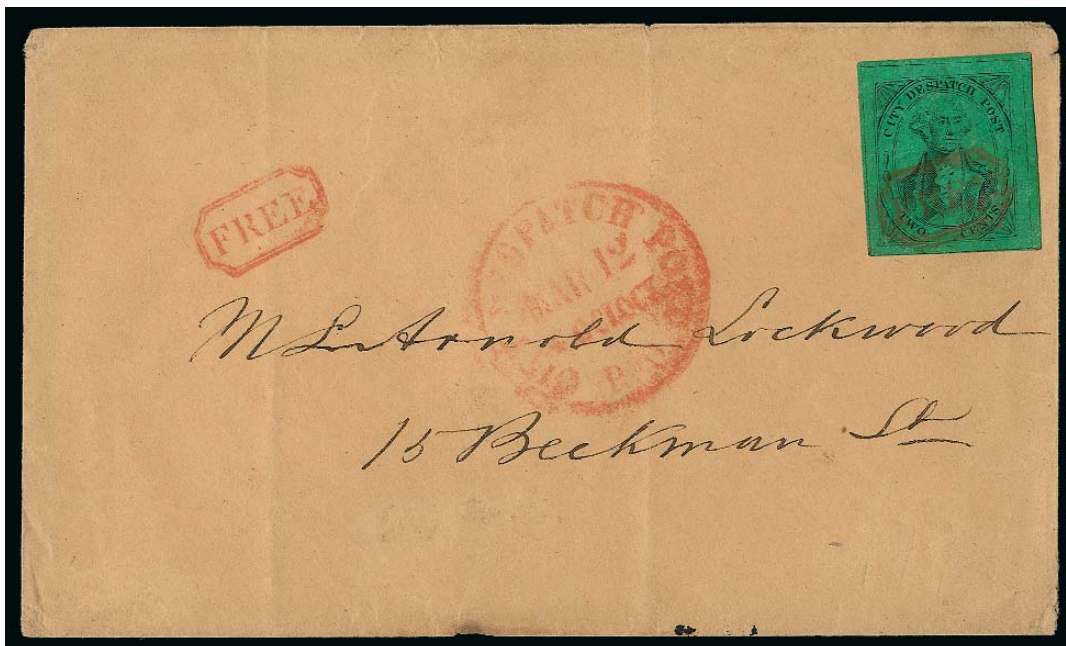
The Scott Catalogue lists overprinted stamps such as Blood's "D.O.B. & Co." on Philadelphia Despatch Post (15L4), "Bouton" on Franklin City Despatch Post (16L1a) and "Swarts" on Bouton (136L13). The Cummings & Wright overprints should be listed in the Scott Catalogue. The two recorded examples are the off-cover stamp offered here and a cover with the "C&W" manuscript overprint on a Mead 40L2 stamp.

Signed Sloane. Ex Patton and Golden (Sale 817, lot 999, realized \$4,000 hammer). With 2000 P.F. certificate E. 3,000-4,000



261

- 261 ☒ **(Cummings and Wright) Post Office City Despatch, New York N.Y., 2c Black on Green Glazed (40L2).** Position 26, huge margins all around, brilliant color, tied by vivid red "Free" in frame, second strike and matching "P.O. City Despatch Post Mar. 25, 4 O'Clock" circular datestamp on 1847 folded prices-current list **from Glasgow, Scotland, to local New York City address**, Extremely Fine, this March 25, 1847, use of the Mead 40L2 stamp falls into the Cummings and Wright period, this is one of the finest 40L2 covers in existence and shows the use of the Post Office City Despatch to deliver transatlantic mail that was brought into New York City outside the regular mails to save money, ex Hall, with 2001 P.F. certificate..... E. 750-1,000



262

- 262 ☒ **(Cummings and Wright) Post Office City Despatch, New York N.Y., 2c Black on Green Glazed (40L2).** Position 21, huge margins all around, brilliant color, cancelled by red "Free" in frame (impression ties thru paper), second strike and matching "P.O. City Despatch Post Mar. 12, 4 O'Clock" circular datestamp on 1847 buff cover to local New York City address, couple vertical folds clear of stamp, Extremely Fine, this March 12, 1847, cover is the earliest with the double strike of "Free", which is indicative of the change in ownership from Mead to Cummings & Wright E. 400-500



263

263

(Cummings and Wright) Post Office City Despatch, New York N.Y., 2c Black on Green Glazed (40L2). Full to large margins, manuscript "C&P" initials similar to the "C&W" initials indicating ownership of the City Despatch Post by Cummings and Wright after Mead's departure, a few other ink spots, small faults, otherwise Fine, this stamp only recently came to light after having been hidden in an album since the 1930's. E. 300-400



264

264 ☒ Cummings' City Post, New York N.Y., 2c Black on Yellow Glazed (55L3). Large margins to just in, cancelled by "Free" in frame, second strike to right of stamp, used on folded letter to local street address, red "P.O. City Despatch Post Mar. 25, 4 O'Clock" circular datestamp, stamp with surface rubs

VERY FINE. ONE OF TWO RECORDED COVERS SHOWING USE OF THE CUMMINGS' CITY POST STAMP IN CONJUNCTION WITH POST OFFICE CITY DESPATCH MARKINGS, WHICH OCCURRED AFTER CUMMINGS AND WRIGHT TOOK OVER THE CITY DESPATCH FROM ABRAHAM MEAD.

Abraham B. Mead operated the "Post Office City Despatch" only briefly after buying it from the New York carrier department on November 30, 1846. A "P.O. City Despatch" receipt dated May 15, 1847, is signed by "Cummings & Wright, Proprietors", so we know for certain that Alfred H. Cummings and Robert Wright bought out Mead by that date. The cover offered here, with the Cummings' City Post stamp used with Post Office City Despatch markings dated in March 1847, is evidence that Cummings and Wright took over by then.

Ex Geisler. With 2009 P.F. certificate E. 1,500-2,000



265

265 ✉ (Cummings and Wright) Post Office City Despatch, New York N.Y., 2c Black on Pink Glazed (40L3). Position 36, phenomenally huge margins including right sheet margin, cancelled by light strike of black "Free" in frame, used on undated folded cover (with letter written on inside) to Baltimore street address, red "New-York 5 Cts. 13 Dec." (1847) integral-rate circular datestamp, worn at edges, someone tried to cut out upper left corner of cover where the stamp is affixed, but this has been rejoined with paper tape on the inside — as foolish as this attempt to remove the stamp was, it helps to authenticate the usage (see lot 298, for another cover from this correspondence)

EXTREMELY FINE STAMP — WITHOUT QUESTION THE FINEST OF THE TWELVE RECORDED EXAMPLES OF 40L3 — AND ONE OF FOUR RECORDED COVERS. THIS IS THE LATEST RECORDED USE OF THE POST OFFICE CITY DESPATCH 2-CENT BEFORE COLE BEGAN ISSUING HIS OWN STAMPS AT THE BEGINNING OF 1848.

The Post Office City Despatch was operated by former government letter carrier Abraham B. Mead from November 30, 1846, until shortly after the 1847 Valentine season. By March 1847 the post was owned and managed by Cummings & Wright. Sometime in October-November 1847, the post's ownership changed again, and Charles Cole became the proprietor. The 2c on Pink glazed paper (Scott 40L3) was first issued by Cummings & Wright (the earliest documented use is May 15, 1847 — see Sale 830, lot 567). Examples cancelled in red were probably used during the Cummings & Wright period, while the use of black ink probably signifies the change in ownership to Cole (October-November 1847). The Pink 40L3 stamp is very rare, with approximately twelve known, including four on covers, of which only two are confirmed genuine uses. The four are listed here: 1) May 15, 1847 folded letter, red "P.O. City Despatch Post" datestamp and "Free" in frame, to Dr. Joslin, 7 Amity St., ex Ferrary, Needham, Caspary, Hall; 2) Aug. 31, 1847, New York datestamp on dated folded letter to Philadelphia, black "Free" cancel on stamp (not tied), PFC as genuine stamp but decline opinion as to usage, ex Sheriff (Siegel Sale 665); 3) Nov. 26 (1847) New York datestamp on cover to Newburgh N.Y., "Free" cancel (red or black?), not tied, ex Needham; and 4) Dec. 13 (1847) New York datestamp on folded cover to Baltimore, black "Free" cancel (not tied), cut out and replaced, the cover offered here, ex Ackerman, Hall.

Ex Ackerman and Hall. With 2001 P.F. certificate E. 3,000-4,000



266

266 **(Cummings and Wright) Post Office City Despatch, New York N.Y., 2c Black on Pink Glazed (40L3).** Large margins, lightly cancelled by black “Free” in frame, two minute pinholes and tiny thin speck, truly negligible flaws considering the rarity of 40L3

EXTREMELY FINE APPEARANCE. AN EXCEEDINGLY RARE STAMP AMONG THE VARIOUS SCOTT-LISTED ISSUES PRODUCED FROM THE ORIGINAL CITY DESPATCH POST PLATE. APPROXIMATELY TWELVE KNOWN, THIS BEING ONE OF THE FINEST KNOWN.

The Post Office City Despatch was operated by former government letter carrier Abraham B. Mead from November 30, 1846, until shortly after the 1847 Valentine season. By March 1847 the post was owned and managed by Cummings & Wright. Sometime in October-November 1847, the post’s ownership changed again, and Charles Cole became the proprietor. The 2c on Pink glazed paper (Scott 40L3) was first issued by Cummings & Wright (the earliest documented use is May 15, 1847 — see Sale 830, lot 567). Examples cancelled in red were probably used during the Cummings & Wright period, while the use of black ink probably signifies the change in ownership to Cole (October-November 1847). The Pink 40L3 stamp is very rare, with approximately twelve known, including four on covers. We have not offered an example since the 2000 Hall sale.

Illustrated on the cover of *The City Despatch Post 1842-1852 Issues*. Ex Hall. With 2001 P.F. certificate 2,250.00



267

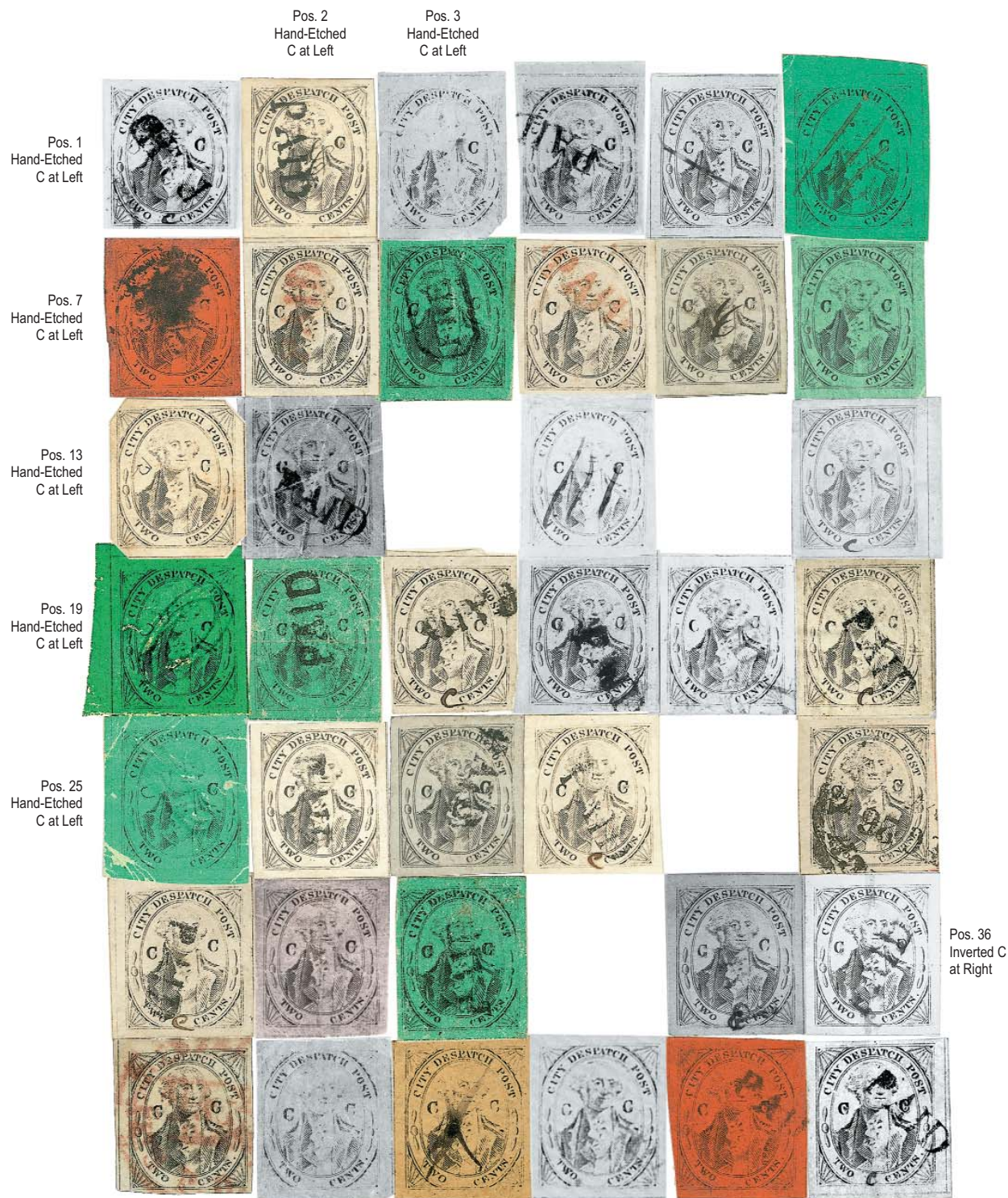
267 **Cummings’ City Post, New York N.Y., 2c Black on Rose Glazed (55L1).** Enormous margins all around — possibly a left sheet-margin position — manuscript “#” cancel, faint trace of red cancel at bottom right, minor abraded spot in top margin, otherwise Extremely Fine, the paper used for this stamp and the Post Office City Despatch 40L3 issued by Cummings & Wright are identical, the distinctive Cummings stamps picturing Cupid (55L4-55L5) and a letter sealed by a heart (55L1-55L3) tie the post’s activities to the Valentine season, all are very scarce, but the Rose 55L1 is the rarest of the Cummings “Letter & Heart” series — Caspary had only one, and Middendorf the same — ex Hall, with 2001 P.F. certificate not noting faults and showing stamp on cover on which it did not originate..... 1,000.00

POST OFFICE CITY DESPATCH UNDER CHARLES COLE
OCTOBER/NOVEMBER 1847 TO 1852



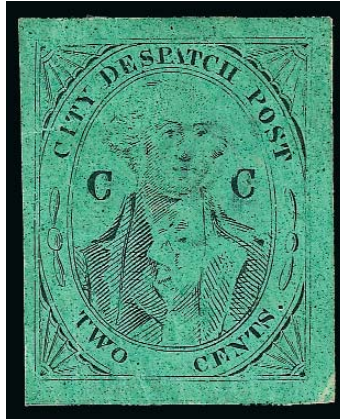
268

- 268 ☒ **Coles City Despatch P.O. Jul. 1** Red double-circle datestamp and red "New-York 10 cts. 1 Jul." integral-rate circular datestamp on blue 1848 folded letter to Geneva N.Y., Very Fine, ex Hahn E. 200-300



This compilation of digital scans shows 38 different “CC” stamps in their correct position on the sheet of 42. The Hand-Etched “C” at Left and Inverted “C” at Right varieties are identified. The location of the seven Hand-Etched “C” at Left positions along the left and upper left corner of the sheet indicates that the crude attempt to hand-etch letters started on the right side of the metal plate.

"CC" ISSUE ON GREEN GLAZED



269

- 269 ★ (Cole's) Post Office City Despatch, New York N.Y., 2c Black on Green Glazed, "CC" at Sides (40L4). Position 12, original gum, large margins, tiny thin spots, slight creases and negligible cracks in enamel

EXTREMELY FINE APPEARANCE. THIS IS THE ONLY RECORDED ORIGINAL-GUM EXAMPLE OF ANY OF THE COLE "CC" STAMPS. AN IMPORTANT RARITY PRODUCED FROM THE MODIFIED GREIG PLATE.

Illustrated on the cover of *The City Despatch Post 1842-1852 Issues*. Ex "German Sale", Caspary, Lilly and Golden. With 2000 P.F. certificate. The Scott value of \$350.00 for an unused example seems rather modest, considering that only three are known in unused condition (the others do not have original gum). E. 1,000-1,500



270

- 270 (★) (Cole's) Post Office City Despatch, New York N.Y., 2c Black on Green Glazed, "CC" at Sides (40L4). Position undetermined, unused (no gum), full margins, creased across top and minor faults, otherwise Fine, one of three recorded unused examples of the "CC" on Green paper, ex Ferrary, Scott value of \$350.00 for an unused example seems rather modest, considering that only three are known in unused condition E. 400-500

271



- 271 ☒ (Cole's) Post Office City Despatch, New York N.Y., 2c Black on Green Glazed, "CC" at Sides (40L4). Position 26, cancelled by "Free" in frame (used previously by Greig) on 1848 folded cover to Boston, overlapping red New York (Feb. 5) and City Despatch circular datestamps, stamp with some usual creasing, otherwise Very Fine, the earliest "CC" stamps are found on Green paper (earliest documented use is Jan. 27, 1848), ex Geisler, with 2009 P.F. certificate..... E. 500-750

272



- 272 ☒ (Cole's) Post Office City Despatch, New York N.Y., 2c Black on Green Glazed, "CC" at Sides (40L4). Position 9, large margins, slight creasing endemic to the issue, cancelled by black "Free" in frame (impression ties thru paper), also tied by red "New-York 10 cts. 8 Feb." integral-rate circular datestamp on 1848 folded letter to Bath N.Y., red "City Despatch Post P.O. Feb. 8 — O'Clock" circular datestamp on back, Very Fine, this is an early use of the Cole "CC" issue, ex Boker and Golden, with 2000 P.F. certificate..... E. 500-750



273

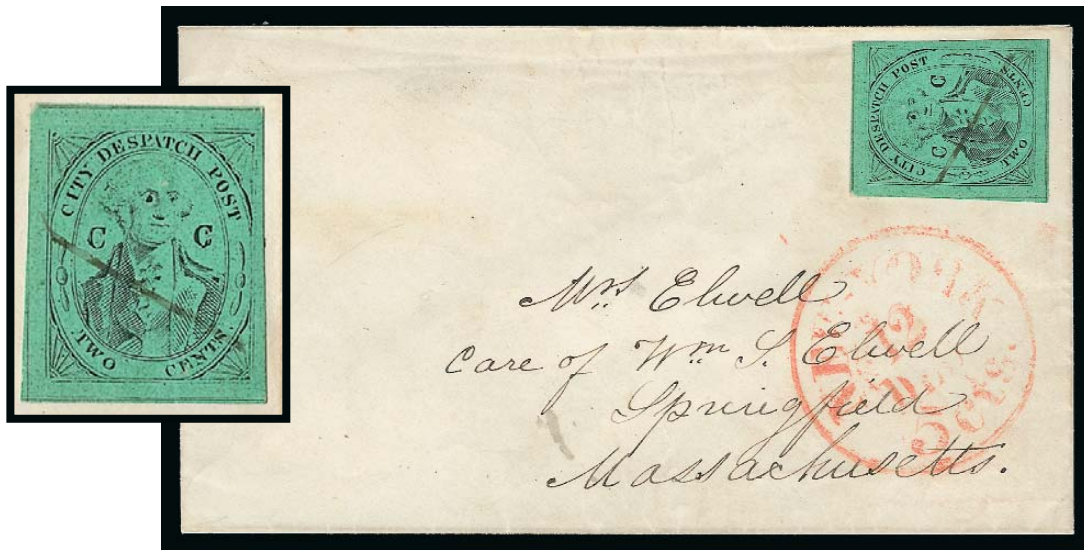
- 273 ☒ (Cole's) Post Office City Despatch, New York N.Y., 2c Black on Green Glazed, "CC" at Sides (40L4). Position undetermined, cancelled by pencil swirls and tied by red "New-York 5cts 27 May" integral-rate circular datestamp on blue 1850 folded letter addressed in blue to Providence R.I., stamp has slight creasing and enamel chips endemic to the issue, otherwise Very Fine, this cover dates from the period from April 1849 to June 1850 when the Green "CC" stamp is found cancelled in manuscript and used to the post office (see *The City Despatch Post 1842-1852 Issues*, pp. 22-23), ex Kapiloff E. 500-750



274

- 274 ☒ (Cole's) Post Office City Despatch, New York N.Y., 2c Black on Green Glazed, "CC" at Sides (40L4). Position 8, cancelled by pencil swirls, red "New-York 5cts 31 May" (1850) integral-rate circular datestamp on cover to Newark N.J., stamp has slight creasing and surface faults endemic to the issue, cover has corner nick and two small stains, otherwise Very Fine, this cover dates from the period from April 1849 to June 1850 when the Green "CC" stamp is found cancelled in manuscript and used to the post office (see *The City Despatch Post 1842-1852 Issues*, pp. 22-23), with 2009 P.F. certificate..... E. 400-500

THE "BIG PUPIL" RETOUCH



275 with detail of stamp

- 275 ☒ (Cole's) Post Office City Despatch, New York N.Y., 2c Black on Green Glazed, "CC" at Sides (40L4). Position 5, "Big Pupil" variety, ample to large margins, bright paper, neat manuscript cancel, red "New -York 5 cts. 12 Dec." (1849) integral-rate circular datestamp on small cover to Springfield Mass., Extremely Fine, only two positions on the reworked "CC" plate have the Big Pupil retouch (Positions 5 and 6), during the period from October 1849 until June 1850, the Post Office City Despatch stamps are found only on to-the-mails covers, all cancelled by hand in pen or pencil, ex Kapiloff and Kuphal..... E. 750-1,000



276 with detail of stamp

- 276 ☒ (Cole's) Post Office City Despatch, New York N.Y., 2c Black on Green Glazed, "CC" at Sides (40L4). Position 6, "Big Pupil" variety, enormous margins, manuscript cancel (not tied), used on small embossed cover to Newark N.J. street address, red "New York 5 cts. Oct. 21" (1849) integral-rate circular datestamp, trivial ink spot, stamp has corner crease and small chip in coating at left (these flaws endemic to the issue), still Extremely Fine, only two positions on the reworked "CC" plate have the Big Pupil retouch (Positions 5 and 6), during the period from October 1849 until June 1850, the Post Office City Despatch stamps are found only on to-the-mails covers, all cancelled by hand in pen or pencil, ex Ackerman, Mason and Hall..... E. 750-1,000

"C" AT RIGHT INVERTED



277

277

(Cole's) Post Office City Despatch, New York N.Y., 2c Black on Green Glazed, "C" at Right Inverted (40L4a). Position 36 with right "C" in mirror image (so-called "Inverted C"), large margins to touched at upper left, clear impression on bright green paper, neat manuscript cancel clear of "CC" initials, creases causing some cracks in enamel (endemic to this issue)

ONE OF FIVE RECORDED EXAMPLES OF THE POST OFFICE CITY DESPATCH 2-CENT "INVERTED C" PLATE VARIETY ON ANY TYPE OF PAPER. THIS IS THE ONLY CONFIRMED EXAMPLE ON GREEN PAPER. ONE OF THE GREAT RARITIES OF LOCAL POSTS.

Only one subject on the plate of 42 (Position 36) shows the so-called "Inverted C" variety, which was caused when a mirror-image letter punch was used to enter the righthand "C". The mirror-image punch left a right-reading engraved letter on the plate, which in turn produced a mirror-image printed letter "C". The Scott Catalogue lists this variety as "C at right inverted", but in fact it is a mirror image of the letter "C". We have photographs of five different examples of Position 36, including three we can positively identify by paper type: Green (40L4a, the stamp offered here), Grayish (40L5a on cover, Mazza collection) and Yellowish Buff (40L8a, the stamp offered in lot 314). Our records contain black-and-white photographs of two other examples, but we cannot identify the paper color (one off cover and another on a cover with 3c 1851 overlapping).

Ex Lilly and Cunliffe. With 2009 P.F. certificate. 3,500.00



As Printed

Inverted

Mirror Image

HAND-ETCHED SIDEWAYS "C" AT LEFT



278

- 278 ☒ (Cole's) Post Office City Despatch, New York N.Y., 2c Black on Green Glazed, Hand-Etched Sideways "C" at Left (40L4b). Position 25 with lefthand "C" etched into plate by hand (so-called "Sideways C" variety), strong impression (slightly doubled) on vivid Green paper, mostly huge margins including left sheet margin, cancelled by black "Free" in frame and tied by red "New-York 5 cts. 27 Jan." (1848) integral-rate circular date-stamp on large part folded letter (front with side flaps) to Newark N.J., file folds

EXTREMELY FINE STAMP AND THE EARLIEST RECORDED USE OF THE POST OFFICE CITY DESPATCH ISSUE WITH COLE'S "CC" INITIALS, PRINTED FROM THE MODIFIED PLATE OF 42. ONE OF SIX RECORDED COVERS WITH THE HAND-ETCHED "SIDEWAYS C" PLATE VARIETY ON GREEN PAPER.

This January 27, 1848, part cover represents the earliest recorded use of any stamp printed from the modified plate with Charles Cole's "CC" initials. Cole probably took over the post from Cummings & Wright in late 1847 and had the plate altered between December 1847 and January 1848. The three earliest "CC" covers are dated January 27 (40L4b), February 5 (40L4) and February 8 (40L4), all 1848 year dates with stamps printed on Green paper. This particular stamp comes from Position 25, one of seven subjects on the plate that have the "Sideways C" variety, which occurred when a failed attempt was made to hand-etch the letter "C" into the plate (Positions 1, 2, 3, 7, 13, 19 and 25 show this distinctive variety). There are six recorded covers with the "Sideways C" on Green paper (40L4b).

Ex Hall. With 2001 P.F. certificate. Listed but unpriced in Scott. E. 1,000-1,500



278 detail



279 front and back,
enclosure and detail of stamp

279 ☒ (Cole's) Post Office City Despatch, New York N.Y., 2c Black on Green Glazed, Hand-Etched Sideways "C" at Left (40L4b). Position 25 with lefthand "C" etched into plate by hand (so-called "Sideways C" variety), cancelled by one of three strikes of "Free" in frame in black (one on front, two on back with stamp; the strike on the stamp ties by impression thru paper), red "P.O. City Despatch Post Feb. 14 — O'Clock" circular datestamp also on back of **embossed Valentine** cover to local street address, with Valentine enclosure which may have originated, back cut open for display, faults on front, stamp has creases and chipped enamel

A FINE AND EXHIBIT-WORTHY COVER. ONLY SIX EXAMPLES OF THE POST OFFICE CITY DESPATCH HAND-ETCHED SIDEWAYS "C" VARIETY ON GREEN PAPER ARE RECORDED ON COVERS. THIS IS THE ONLY KNOWN VALENTINE.

This stamp comes from Position 25, one of seven subjects on the plate that have the "Sideways C" variety, which occurred when a failed attempt was made to hand-etch the letter "C" into the plate (Positions 1, 2, 3, 7, 13, 19 and 25 show this distinctive variety). There are six recorded covers with the "Sideways C" on Green paper (40L4b). This is the only Valentine cover.

The black "Free" in frame cancel was applied by Cole during the early stages of his operation of the post after Cummings and Wright. This is the only recorded city-delivery cover showing use of the "CC" stamp with black "Free" cancel (the others are to-the-mails covers; see *The City Despatch Post 1842-1852 Issues*, page 17, this cover was not known to the author).

Ex Eno and Kuphal. Listed but unpriced in Scott..... E. 1,000-1,500



280

- 280 ☒ **(Cole's) Post Office City Despatch, New York N.Y., 2c Black on Green Glazed, Hand-Etched Sideways "C" at Left (40L4b).** Position 19 with lefthand "C" etched into plate by hand (so-called "Sideways C" variety), large to huge margins including left sheet margin, a few scrapes in colored surface, pencil swirl cancel (impression ties thru paper), red "New York 5 cts 7 Mar." integral-rate circular datestamp on 1850 folded letter to Portchester N.Y.

VERY FINE. ONE OF SIX RECORDED COVERS WITH THE HAND-ETCHED "SIDEWAYS C" PLATE VARIETY ON GREEN PAPER.

This stamp comes from Position 19, one of seven subjects on the plate that have the "Sideways C" variety, which occurred when a failed attempt was made to hand-etch the letter "C" into the plate (Positions 1, 2, 3, 7, 13, 19 and 25 show this distinctive variety). There are six recorded covers with the "Sideways C" on Green paper (40L4b).

Ex Caspary and Golden. With 2000 P.F. certificate. Listed but unpriced in Scott. E. 1,000-1,500



281

- 281 ☒ **(Cole's) Post Office City Despatch, New York N.Y., 2c Black on Green Glazed, Hand-Etched Sideways "C" at Left (40L4b).** Position 13 with lefthand "C" etched into plate by hand (so-called "Sideways C" variety), ample to large margins, corner creases and small scrapes in surface color, faint pencil cancel (not tied), used on 1849 folded letter to Collinsville Conn., red "New-York 5 cts. 9 Jun." integral-rate circular datestamp

VERY FINE. ONE OF SIX RECORDED COVERS WITH THE HAND-ETCHED "SIDEWAYS C" PLATE VARIETY ON GREEN PAPER.

This stamp comes from Position 13, one of seven subjects on the plate that have the "Sideways C" variety, which occurred when a failed attempt was made to hand-etch the letter "C" into the plate (Positions 1, 2, 3, 7, 13, 19 and 25 show this distinctive variety). There are six recorded covers with the "Sideways C" on Green paper (40L4b).

Ex Middendorf and Golden. With 2000 P.F. certificate. Listed but unpriced in Scott E. 1,000-1,500



282

- 282 ☒ (Cole's) Post Office City Despatch, New York N.Y., 2c Black on Green Glazed, Hand-Etched Sideways "C" at Left (40L4b). Position 25 with lefthand "C" etched into plate by hand (so-called "Sideways C" variety), large to huge margins including part of left sheet margin, creases and scrapes in surface color, pencil cancel (impression ties thru paper), used on folded letter in Old German datelined "Williamsburgh 16 June 1850" from Brooklyn N.Y. to Germany, writer gives address in letter as "Hermann Wuller in Williamsburgh, Meserole St. No. 121, Adams County, New York, Nordamerika", sender's directive "per Havre", "New-York Jun. 27" (1850) ocean-mail circular datestamp, red "Outre-Mer Le Havre 28 Juil 50" transit datestamp, "Ligne-du-Havre 28 Juil 50" transit backstamp, "E.B. 31 Jul. 50/Cur. IV" Baden railroad backstamp ("Eisenbahn" is German for railroad, "Cur. IV" is the train route number), red and black manuscript due markings applied in German postal system, slight toning along folds

A REMARKABLE USE OF THE POST OFFICE CITY DESPATCH "CC" ISSUE ON A PRIVATE SHIP-LETTER COVER TO GERMANY VIA HAVRE. ONE OF SIX RECORDED COVERS WITH THE HAND-ETCHED "SIDEWAYS C" PLATE VARIETY ON GREEN PAPER AND THE ONLY RECORDED EXAMPLE OF ANY COLE "CC" STAMP ON A TRANSATLANTIC COVER.

This stamp comes from Position 25, one of seven subjects on the plate that have the "Sideways C" variety, which occurred when a failed attempt was made to hand-etch the letter "C" into the plate (Positions 1, 2, 3, 7, 13, 19 and 25 show this distinctive variety). There are six recorded covers with the "Sideways C" on Green paper (40L4b).

This cover was carried by private ship from New York (through the post office) to Havre. The U.S. post office did not mark the letter with any postage notations. The postage collected from the addressee in Germany included whatever was owed to France.

With 2000 P.F. certificate. Listed but unpriced in Scott E. 2,000-3,000



283

- 283 ☒ (Cole's) Post Office City Despatch, New York N.Y., 2c Black on Green Glazed, Hand-
Etched Sideways "C" at Left (40L4b). Position 3 with lefthand "C" etched into plate by
hand (so-called "Sideways C" variety), worn impression with barest trace of hand-entered
"C" at left — previously described in Middendorf collection as "C" at Right Only variety
(40L4c) and with 1991 P.F. certificate as such — large margins to slightly in, cancelled by
brownish-red "Free" in frame (not tied), matching strike with faint "P.O. City Despatch
Post Apr. 30 — O'Clock" (1850) circular datestamp on large part of folded cover to local
street address, stamp and cover have faults, still exhibitable, one of six recorded covers
with the Hand-Etched "C" at Left on Green paper, this city-delivery cover shows the
revived use of the old "P.O. City Despatch Post" circular datestamp and "Free" during
the period in 1849-50 when the "CC" stamps were typically used on covers taken to the
post office for regular mail (see *The City Despatch Post 1842-1852 Issues*, pages 23-24),
there are four such covers recorded and they bear a striking similarity to the 40L2 covers
from the Cummings & Wright period (with double strike of "Free"), ex Golden, with
1991 P.F. certificate as No 40L4c and 2000 P.F. certificate as No. 40L4b (correct), listed
but unpriced in Scott..... E. 500-750



284

- 284 (Cole's) Post Office City Despatch, New York N.Y., 2c Black on Green Glazed, "C at
Right Only", Hand-Etched Sideways "C" at Left (40L4c). Position 1 — this position has
the hand-etched "C" at left, but a few examples such as this are weak or worn impressions
which appear to be missing the left "C" (the basis of the Scott 40L4c "C at right only"
variety) — cancelled by three bars and affixed to small cover to Philadelphia, red "New-
York 20 Feb. 5 cts" integral-rate circular datestamp, "Edouard Bossange/New-York"
forwarder's blue backstamp, stamp has creases and small faults, probably did not origi-
nate on this cover (not counted in our cover census), still a very rare stamp, listed but
unpriced in Scott..... E. 500-750

"CC" ISSUE ON GRAYISH (UNSURFACED)

- 285 (Cole's) Post Office City Despatch, New York N.Y., 2c Black on Grayish, "CC" at Sides (40L5). Position 26, large even margins, "Paid" straightline cancel

EXTREMELY FINE GEM. ONE OF THE FINEST KNOWN EXAMPLES OF THE COLE "CC" STAMP ON ANY PAPER TYPE.

Ex Caspary, Middendorf and Golden. With 2000 P.F. certificate 500.00



285



286

- 286 (Cole's) Post Office City Despatch, New York N.Y., 2c Black on Grayish, "CC" at Sides (40L5). Position 27, large even margins, "Paid" straightline cancel

EXTREMELY FINE GEM. A SUPERB EXAMPLE OF THE COLE "CC" STAMP ON GRAYISH.

Ex Hall. With 2001 P.F. certificate 500.00

- 287 (Cole's) Post Office City Despatch, New York N.Y., 2c Black on Grayish, "CC" at Sides (40L5). Position 37, ample to huge margins, cancelled by brownish-red "Free" in frame and "City Despatch Post P.O." circular datestamp, faint yellowing caused by red ink (not mentioned on certificate), Very Fine, extremely rare, especially with red datestamp used as a cancel (four 40L4 covers and this one 40L5 stamp are recorded with these brownish-red markings), ex Mason and Hall, with 2001 P.F. certificate 500.00



287



288

- 288 (Cole's) Post Office City Despatch, New York N.Y., 2c Black on Grayish, "CC" at Sides (40L5). Position 8, full to large margins, cancelled by red "Paid" faint oily bleed from red ink, slight horizontal crease barely visible, still Extremely Fine, rare with a red cancel..... 500.00



289

- 289 ☒ (Cole's) Post Office City Despatch, New York N.Y., 2c Black on Grayish, "CC" at Sides (40L5). Position 38, strong impression and slightly doubled, cancelled by "Paid" with second strike and bold "P.O. City Despatch Post Sep. 2 — O'Clock" (1848) circular datestamp on blue folded cover to local street address

EXTREMELY FINE. A SUPERB STAMP ON A VERY ATTRACTIVE COVER. ONE OF THE FINEST EXAMPLES OF THE POST OFFICE CITY DESPATCH 2-CENT "CC" ISSUE ON COVER.

The use of the black circular datestamp and black "Paid" indicates 1848 usage. Beginning in September 1848, the Post Office City Despatch stopped using the "Paid" handstamp on mail brought to the post office, probably by order of the New York postmaster who may have received complaints about the word "Paid" appearing on letters which had no prepaid U.S. postage. From September 1848 on, only city-delivery covers have the "Paid" handstamp, as this example demonstrates.

Ex Kapiloff and Kuphal. With 1983 P.F. certificate E. 2,000-3,000



290

- 290 ☒ (Cole's) Post Office City Despatch, New York N.Y., 2c Black on Grayish, "CC" at Sides (40L5). Position 42, large even margins, slightly toned from gum, red "Paid" cancel, matching strike and "Cole's City Despatch P.O. Jul. 22" double-circle datestamp on blue printed folded cover to local street address (a circular dated Jun. 12, 1848, from a liquor dealer describing "persecution" by the inspector's office, is no longer with the cover)

VERY FINE. A CHOICE EXAMPLE OF THE POST OFFICE CITY DESPATCH 2-CENT "CC" STAMP ON COVER WITH THE RED COLE DOUBLE-CIRCLE DATESTAMP AND "PAID" CANCEL.

Ex Chapman, Caspary, Middendorf and Kuphal. With 1991 P.F. certificate.. E. 2,000-3,000



291

- 291 ☒ **(Cole's) Post Office City Despatch, New York N.Y., 2c Black on Grayish, "CC" at Sides (40L5).** Position 10, full to large margins, cancelled by red "Paid" straightline (not tied), red "New-York 5 cts. 2 Aug." (1848) integral-rate circular datestamp on folded cover (without side flaps) to Yonkers N.Y., sometime after the Waterhouse sale the stamp was lifted to trim margins slightly (not noted on certificate)

VERY FINE. A BEAUTIFUL EXAMPLE OF THE POST OFFICE CITY DESPATCH 2-CENT "CC" ON GRAYISH USED TO PREPAY DELIVERY TO THE POST OFFICE.

Ex Waterhouse. With 1995 P.F. certificate E. 1,500-2,000



292

- 292 ☒ (Cole's) Post Office City Despatch, New York N.Y., 2c Black on Grayish, "CC" at Sides (40L5). Position 30, large margins all around, tied by black "P.O. City Despatch Aug. 26 — O'Clock" circular datestamp, second strike and "Paid" handstamp at left on 1848 folded letter to Chelsea Mass., blue manuscript stroke thru "Paid" applied by post office, red "New-York 5 cts. 27 Aug." integral-rate circular datestamp, letter describes in detail the writer's journey from New England to New York City, description of Croton water works completed in 1848, etc., presumably the writer was lodging at a hotel that provided City Despatch Post service

EXTREMELY FINE STAMP AND ONE OF THE FINEST KNOWN COVERS BEARING THE POST OFFICE CITY DESPATCH "CC" ISSUE.

This superb cover is not only one of the finest examples of the 2c "CC" on cover, it also illustrates an interesting aspect of New York City local post mail brought to the post office. The presence of a private post's "Paid" marking on a letter carried to the post office for delivery through the regular mails, which did not have U.S. postage prepaid, must have caused trouble for the post office. One can imagine the New York postmaster receiving complaints from postmasters in receiving offices that the recipients objected to paying postage on a letter marked "Paid". This cover has the "Paid" crossed out in blue pen (blue ink was used at the New York post office). Subsequent covers delivered to the post office by the Post Office City Despatch do not have "Paid" markings (it was used exclusively on city-delivery letters starting in September 1848). We suspect that around this time all local posts in New York City were instructed not to mark post office letters "Paid" unless government postage had been prepaid.

Illustrated in Perry's *100 Years Ago* (p. 52). Ex Mason, Duckworth, Boker and Kapiloff
 E. 4,000-5,000

MANUSCRIPT "C" CONTROL MARK



293

- 293 (★) (Cole's) Post Office City Despatch, New York N.Y., 2c Black on Grayish, "CC" at Sides, Manuscript "C" Control Mark (40L5c). Position 4, unused (no gum), small "C" initial between "Two" and "Cents", three huge margins showing surrounding dividing lines, slightly in at right, Fine, only two of the approximately fifteen recorded examples of the 2c with Manuscript "C" Control Mark are unused — these are almost certainly truly unused, since the Grayish stamps were uniformly cancelled (usually with the "Paid" in black or red) E. 400-500



294

- 294 (Cole's) Post Office City Despatch, New York N.Y., 2c Black on Grayish, "CC" at Sides, Manuscript "C" Control Mark (40L5c). Position 11, large "C" initial at center, large margins, lightly cancelled by "Paid" straightline, small corner crease at top left, Extremely Fine appearance, an extremely rare stamp, approximately fifteen examples of the Manuscript "C" Control Mark are known to us on or off cover (large or small initial), ex Hall, with 2001 P.F. certificate..... 1,000.00



- 295 ☒ (Cole's) Post Office City Despatch, New York N.Y., 2c Black on Grayish, "CC" at Sides, Manuscript "C" Control Mark (40L5c). Position 21, small "C" initial between "Two" and "Cents", large margins to slightly in at lower left, just tied by "Paid" straightline, red "Coles City Despatch P.O. Mar. 27" (1848) double-circle datestamp and second strike of "Paid" on folded cover to City Hall, slight wear at bottom

VERY FINE. ONE OF NINE RECORDED COVERS WITH THE POST OFFICE CITY DESPATCH 2-CENT "CC" STAMP BEARING THE "C" CONTROL MARK. THIS IS THE EARLIEST RECORDED USE OF THE COLE DOUBLE-CIRCLE DATESTAMP.

The Manuscript "C" Control Mark was applied exclusively to the 2c "CC" stamps on Grayish paper. The initial comes in two styles: a small simple "C" between the words "Two" and "Cent", and a large cursive "C" at the center of the stamp. We record approximately 15 examples with the Manuscript "C", including two from positions showing the Hand-Enched "C" at Left and one from Position 36, the "Inverted C" at Right plate variety (on cover). The basic 40L5c stamps with the Manuscript "C" Control Mark include eight on covers. This is the only 40L5c cover to a local address, and it is also the earliest example of a Cole's stamp to prepay service to the post office.

Signed Perry. Ex Golden. With 2000 P.F. certificate E. 1,500-2,000



- 296 ☒ (Cole's) Post Office City Despatch, New York N.Y., 2c Black on Grayish, "CC" at Sides, Manuscript "C" Control Mark (40L5c). Position 31, small "C" initial between "Two" and "Cents", huge even margins, black "Paid" straightline cancel (not tied), used on small embossed **Valentine** cover to Syosset, Long Island, N.Y., red "New-York 5 cts. 13 Feb." (1848) integral-rate circular datestamp and "Paid" arc, red crayon "5" at upper left indicating prepayment of postage, long tear in cover at left not immediately noticeable

EXTREMELY FINE GEM STAMP ON A BEAUTIFUL VALENTINE COVER. ONE OF NINE RECORDED COVERS WITH THE POST OFFICE CITY DESPATCH 2-CENT "CC" STAMP BEARING THE "C" CONTROL MARK. THE STAMP ITSELF IS ONE OF THE FINEST KNOWN.

Ex Golden. Signed Sloane. With 2000 P.F. certificate..... E. 2,000-3,000



297

- 297 ☒ (Cole's) Post Office City Despatch, New York N.Y., 2c Black on Grayish, "CC" at Sides, Manuscript "C" Control Mark (40L5c). Position 28, small "C" initial between "Two" and "Cents", large margins all around, black "Paid" straightline cancel (not tied), used on Feb. 28, 1848 folded letter to Philadelphia, red "New-York 5 cts. Feb. 29" Leap Year integral-rate circular datestamp, file fold at center, stamp lifted and reaffixed

EXTREMELY FINE. ONE OF NINE RECORDED COVERS WITH THE POST OFFICE CITY DESPATCH 2-CENT "CC" STAMP BEARING THE "C" CONTROL MARK. THE STAMP ITSELF IS ONE OF THE FINEST KNOWN.

Ex Mason and Schwartz E. 2,000-3,000



298

- 298 ☒ (Cole's) Post Office City Despatch, New York N.Y., 2c Black on Grayish, "CC" at Sides, Manuscript "C" Control Mark (40L5c). Position 24, small "C" initial between "Two" and "Cents", large margins all around, "Paid" straightline cancel (not tied), faint red "City Despatch Post P.O. Mar. 23 — O'Clock" circular datestamp at left, red "New-York 5 cts. 23 Mar." integral-rate circular datestamp on 1848 folded letter to Baltimore, someone cut out right corner of letter with stamp, which has been rejoined with paper tape (from the same correspondence as lot 265), minor stains and edge wear, stamp has couple tiny creases and margin tears, Extremely Fine appearance, only nine covers are recorded with the Manuscript "C" Control Mark (eight are the basic 40L5c), ex Worthington and Hall, with 2001 P.F. certificate, Scott Retail \$1,900.00 for 40L5c used off cover E. 500-750

HAND-ETCHED SIDEWAYS "C" AT LEFT



299

299

(Cole's) Post Office City Despatch, New York N.Y., 2c Black on Grayish, Hand-Etched Sideways "C" at Left, Manuscript "C" Control Mark (40L5d). Position 2 with lefthand "C" etched into plate by hand (so-called "Sideways C" variety), large "C" initial at center, large margins, bold "Paid" straightline cancel, tiny pinhole at bottom right

EXTREMELY FINE APPEARANCE. ONE OF TWO RECORDED EXAMPLES OF THE "SIDEWAYS C" VARIETY WITH THE MANUSCRIPT "C" CONTROL MARK.

Seven subjects on the plate of 42 show the hand-etched "C" variety (Positions 1, 2, 3, 7, 13, 19, 25), which resulted from a crude attempt to inscribe the letter "C" rather than use a letter punch. These are listed in the Scott Catalogue as "C at left sideways." As a plate variety, it can be found on the four types of paper used for Cole's "CC" issue (Green, Grayish, Vermilion and Yellowish Buff). However, only the Grayish paper stamps are found with the manuscript "C" control initial (two types: large at center and small at bottom). This example shows a combination of the "Sideways C" plate variety and "C" control mark. Only two such stamps are known, both off cover. There are two additional examples of the "Sideways C" variety on Grayish paper without the control mark, both on cover.

Ex German Sale, Caspary and Golden. With 2000 P.F. certificate. Scott Retail \$1,900.00
 E. 1,500-2,000



300

300 ☒ (Cole's) Post Office City Despatch, New York N.Y., 2c Black on Grayish, Hand-Etched Sideways "C" at Left (40L5b). Position 13 with lefthand "C" etched into plate by hand (so-called "Sideways C" variety), huge even margins showing dividing lines all around, slightly doubled impression, cancelled by 4-bar grid (impression ties thru paper), red "New-York 5cts. 23 Nov." integral-rate circular datestamp on Nov. 22, 1848 folded letter to New Haven Conn., from the Pierpont Mallory & Co. correspondence

EXTREMELY FINE GEM STAMP AND BEAUTIFUL COVER. THE FINER OF TWO RECORDED COVERS WITH THE HAND-ETCHED "SIDEWAYS C" PLATE VARIETY ON GRAYISH PAPER.

This stamp comes from Position 2, one of seven subjects on the plate that have the "Sideways C" variety, which occurred when a failed attempt was made to hand-etch the letter "C" into the plate (Positions 1, 2, 3, 7, 13, 19 and 25 show this distinctive variety). This plate variety can be found on all four different papers, but we record only four examples on Grayish, including two off cover (each with Manuscript "C" Control Mark) and two on covers.

Ex Mason and Schwartz. Listed but unpriced in Scott. E. 3,000-4,000



301

- 301 ☒ **(Cole's) Post Office City Despatch, New York N.Y., 2c Black on Grayish, Hand-Etched Sideways "C" at Left (40L5b).** Position 13 with lefthand "C" etched into plate by hand (so-called "Sideways C" variety), large margins except at corners where truncated, uncanceled, used on July 8, 1848 folded letter to Kingston N.Y., orange-red "Cole's City Despatch P.O. Jul. 8" double-circle datestamp, matching "Paid" straightline, pencil and pen "Paid 5", red "New-York 5cts 8 Jul." integral-rate circular datestamp and matching "Paid" in arc, some glue stains surrounding stamp

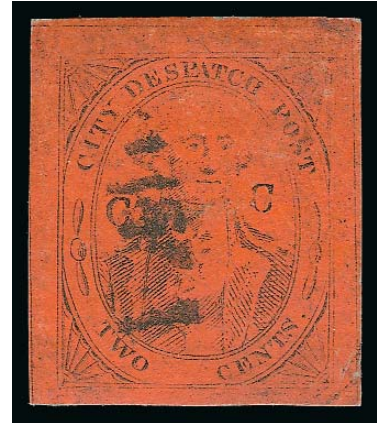
VERY FINE. ONE OF TWO RECORDED COVERS WITH THE HAND-ETCHED "SIDEWAYS C" PLATE VARIETY ON GRAYISH PAPER.

This stamp comes from Position 13, one of seven subjects on the plate that have the "Sideways C" variety, which occurred when a failed attempt was made to hand-etch the letter "C" into the plate (Positions 1, 2, 3, 7, 13, 19 and 25 show this distinctive variety). This plate variety can be found on all four different papers, but we record only four examples on Grayish, including two off cover (each with Manuscript "C" Control Mark) and two on covers.

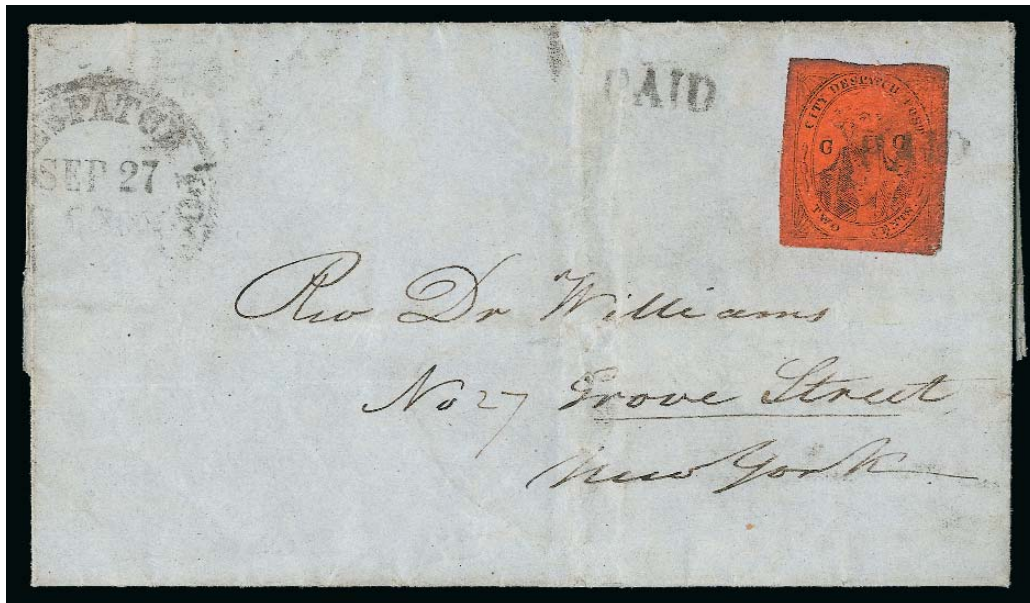
Ex Caspary, Patton (and illustrated in his book on p. 121), Meyersburg and Golden. With 2000 P.F. certificate. Listed but unpriced in Scott. E. 1,500-2,000

"CC" ISSUE ON VERMILION GLAZED

- 302 (Cole's) Post Office City Despatch, New York N.Y., 2c Black on Vermilion Glazed, "CC" at Sides (40L6). Position 30, huge margins all around, "Paid" straight-line cancel, tiny corner creases at top and bottom right, otherwise Extremely Fine, unusually bright color and light cancel for the Vermillion "CC" stamp, ex Hall, with 2001 P.F. certificate 300.00



302



303

- 303 ☒ (Cole's) Post Office City Despatch, New York N.Y., 2c Black on Vermilion Glazed, "CC" at Sides (40L6). Position undetermined, large margins, only slight oxidation (much less than usual), tied by "Paid" straightline, second strike and partly readable "P.O. City Despatch Post Sep. 27 — O'Clock" circular datestamp on 1848 folded letter to local street address, slight wear along file fold, still Extremely Fine, very scarce, ex Boker and Golden, with 2000 P.F. certificate E. 500-750



304



305



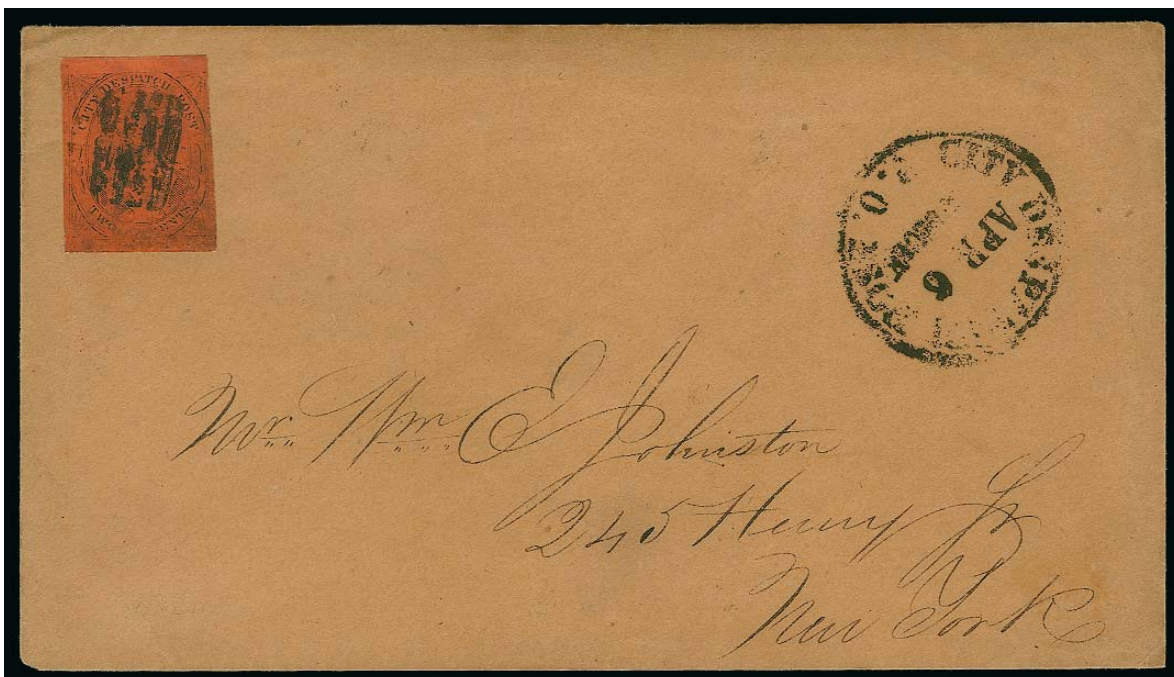
306

- 304 ☒ (Cole's) Post Office City Despatch, New York N.Y., 2c Black on Vermilion Glazed, "CC" at Sides (40L6). Position 26, large margins, bright color without oxidation, black cancel (not tied), faint red "P.O. City Despatch Post Oct. 21 — O'Clock" circular datestamp on folded letter to local street address, datelined "*Be(?)port Oct. 15, 1849*" and informing addressee that a shipment of empty liquor barrels has been placed on board the schooner *Eloise*, slight wrinkling, Extremely Fine stamp and attractive cover, ex Caspary, Middendorf and Golden E. 400-500
- 305 ☒ (Cole's) Post Office City Despatch, New York N.Y., 2c Black on Vermilion Glazed, "CC" at Sides (40L6). Position 40, large margins to close at bottom left, bright color without oxidation, black cancel (not tied), "P.O. City Despatch Post Oct. 3 — O'Clock" circular datestamp on Young Bachelors' Society printed circular with letter datelined Oct. 2, 1848, to local street address, slight wrinkling, Extremely Fine stamp and attractive cover, ex Norvin Green, with 1997 P.F. certificate..... E. 500-750
- 306 ☒ (Cole's) Post Office City Despatch, New York N.Y., 2c Black on Vermilion Glazed, "CC" at Sides (40L6). Position 33, large margins to just in, cancelled by "Paid" straight-line (rim of device around stamp), second strike and "P.O. City Despatch Post Sep. 25 — O'Clock" circular datestamp on 1848 folded letter to local addressee, stamp slightly oxidized, otherwise Fine, ex Sheriff..... E. 400-500



307

- 307 ☒ (Cole's) Post Office City Despatch, New York N.Y., 2c Black on Vermilion Glazed, "CC" at Sides (40L6). Position 26, large margins, bright shade with slight oxidation, "Paid" straightline cancel (impression ties thru paper), second strike and "P.O. City Despatch Post Oct. 4 — O'Clock" circular datestamp on 1848 blue folded letter to New York City Postmaster Robert H. Morris, regarding two lost letters to Scotland containing money, stamp has two light creases (one caused by file fold), otherwise Extremely Fine, ex Mason, Norvin Green, Middendorf and Golden E. 300-400



308

- 308 ☒ (Cole's) Post Office City Despatch, New York N.Y., 2c Black on Vermilion Glazed, "CC" at Sides (40L6). Position 23(?), large margins to just touched at upper right, bold 4-bar grid cancel (late use and well-worn by this point), "P.O. City Despatch Post Apr. 6 — O'Clock" (1849) circular datestamp on brown cover to local street address, stamp slightly oxidized, Very Fine, between the date of this cover (Apr. 6, 1849) and November 1849 there are no examples of city-delivery covers handled by the Post Office City Despatch — the recorded covers during the interim period were carried to the post office for regular mail — Sloane notes on back, with 1999 P.S.E. certificate..... E. 400-500



309

- 309 ☒ (Cole's) Post Office City Despatch, New York N.Y., 2c Black on Vermilion Glazed, "CC" at Sides (40L6). Position 11, large margins, cancelled by manuscript "X" (not tied), red "New York 5cts. 25 Jan." integral-rate circular datestamp struck over "New-York Jan. 25" circular datestamp without rate on 1849 folded letter to Peekskill N.Y., toned file fold clear of stamp, stamp is much brighter and fresh than usual, Very Fine, scarce use of "CC" Vermilion on a letter carried to the post office..... E. 500-750



310

- 310 ☒ (Cole's) Post Office City Despatch, New York N.Y., 2c Black on Vermilion Glazed, "CC" at Sides (40L6). Position 32(?), full to large margins, tied by 4-bar grid in black and red "New York 5cts. Mar. 10" (1849) integral-rate circular datestamp on blue folded cover to New Haven Conn., file fold clear of stamp, stamp itself slightly oxidized and tiny tear at top, otherwise Very Fine, scarce use of "CC" Vermilion on a letter carried to the post office E. 400-500

HAND-ETCHED SIDEWAYS "C" AT LEFT



311

- 311 (Cole's) Post Office City Despatch, New York N.Y., 2c Black on Vermilion Glazed, Hand-Etched Sideways "C" at Left (40L6b). Position 19 with lefthand "C" etched into plate by hand (so-called "Sideways C" variety), large to huge margins all around, bright color and clear impression showing "Sideways C", cancelled by black "P.O. City Despatch Post Aug. 31 — O'Clock" (1848) circular datestamp — earliest date of use of the Vermilion stamp — faint horizontal crease

EXTREMELY FINE APPEARANCE. ONLY THREE EXAMPLES OF THE POST OFFICE CITY DESPATCH 2-CENT SIDEWAYS "C" VARIETY ARE RECORDED, INCLUDING TWO ON COVERS AND THIS OFF-COVER STAMP.

Seven subjects on the plate of 42 show the hand-etched "C" variety (Positions 1, 2, 3, 7, 13, 19, 25), which resulted from a crude attempt to inscribe the letter "C" rather than use a letter punch. These are listed in the Scott Catalogue as "C at left sideways." As a plate variety, it can be found on the four types of paper used for Cole's "CC" issue (Green, Grayish, Vermilion and Yellowish Buff). Of the 16 recorded examples of the "Sideways C" variety in our census (all types of paper), only three are on Vermilion. The other two examples are used on covers.

Ex Schwartz..... 4,500.00



312

- 312 ☒ **(Cole's) Post Office City Despatch, New York N.Y., 2c Black on Vermilion Glazed, Hand-Etched Sideways "C" at Left (40L6b).** Position 25 with lefthand "C" etched into plate by hand (so-called "Sideways C" variety), large even margins, cancelled by 4-bar grid (impression ties thru paper), red "New-York 10 cts. 19 Nov." (1848) integral-rate circular datestamp on cover to Farmington Me.

EXTREMELY FINE. ONE OF TWO RECORDED COVERS BEARING THE RARE POST OFFICE CITY DESPATCH VERMILION STAMP WITH HAND-ETCHED SIDEWAYS "C" AT LEFT. A SUPERB STAMP AND COVER.

This stamp comes from Position 25, one of seven subjects on the plate that have the "Sideways C" variety, which occurred when a failed attempt was made to hand-etch the letter "C" into the plate (Positions 1, 2, 3, 7, 13, 19 and 25 show this distinctive variety). This plate variety can be found on all four different papers, but we record only three examples on Vermilion, including one off cover and two on covers (this being the finer).

Ex Hall. With 2001 P.F. certificate. Scott value \$4,500.00 off cover and \$4,750.00 on cover (not tied)..... E. 3,000-4,000

"CC" ISSUE ON YELLOWISH BUFF GLAZED



313

- 313 ☒ (Cole's) Post Office City Despatch, New York N.Y., 2c Black on Yellowish Buff Glazed, "CC" at Sides (40L8). Position 39, large even margins, bright color and perfect surface coating, cancelled by ms. "X", used on folded letter datelined New York, Jan. 26, 1852, to Philadelphia street address, black "New-York 5 Cts. Jan. 28" integral-rate circular datestamp, file fold

EXTREMELY FINE. THE FINEST RECORDED EXAMPLE OF THE COLE'S POST OFFICE CITY DESPATCH STAMP ON YELLOWISH BUFF PAPER, ON OR OFF COVER. ONLY FOUR COMPLETE COVERS ARE KNOWN.

The late period of the City Despatch Post is shrouded in mystery. By late 1851 and early 1852, the plate used to print the "CC" stamps had worn considerably, and impressions on Yellowish Buff paper show this wear. The rarity of the Yellowish Buff stamps — 15 recorded for 40L8 and varieties — together with the legitimate dated examples suggests that they were the last issue and a short-lived one.

There are four covers with complete stamps that are generally accepted as genuine Yellowish Buff uses, listed here in chronological order: 1) Sep. 7 (ca. 1851), pencil cancel, used on cover to Sarah B. Woolman, Burlington N.J., red New York 5c datestamp, ex Mason, Middendorf; 2) Jan. 28, 1852 folded letter to Caldwell & Ghirsky, Philadelphia, ms. "X" cancel, black New York 5c datestamp, discovered by a member of the Ghirsky family, ex Knapp, Hall, the cover offered here; 3) Feb. 14 (ca. 1852) cover to Peter Hall, Pomfret Conn., stamp described as repaired at top in 1951 Harmer, Rooke sale, tied by pencil squiggle cancel, black New York 5c datestamp, ex Ferrary, Needham, Boker; and 4) May 17 (ca. 1852) red New York 5c datestamp, ms. cancel, on cover to Mrs. Henry Wasserman, Southport Conn., ex Boker. In addition to these four complete covers, there is also an 1852 cover bearing a fragment of 40L8 over-written by the name "E. N. Barry" (lot 316 in this sale). There are also ten stamps off cover or at one point affixed to covers to which they did not belong.

This cover was acquired by Edward Knapp in the Jan. 21, 1936 sale held by Eugene Klein. A notation indicates that it was found by a member of the Ghirsky family in Philadelphia. The Halls acquired the cover at the 1941 Knapp sale.

Ex Hall. With 2001 P.F. certificate. Unlisted on cover in Scott..... E. 10,000-15,000

"C" AT RIGHT INVERTED



314

314 (Cole's) Post Office City Despatch, New York N.Y., 2c Black on Yellowish Buff Glazed, "C" at Right Inverted (40L8a). Position 36 with right "C" in mirror image (so-called "Inverted C"), three large margins, close to touching at left, pencil "X" cancel and small part of handstamp cancel at top right, tiny hole at top left and small thins at top

ONE OF FIVE RECORDED EXAMPLES OF THE POST OFFICE CITY DESPATCH 2-CENT "INVERTED C" PLATE VARIETY ON ANY TYPE OF PAPER. THIS IS THE ONLY CONFIRMED EXAMPLE ON YELLOWISH BUFF PAPER. ONE OF THE GREAT RARITIES OF LOCAL POSTS.

Only one subject on the plate of 42 (Position 36) shows the so-called "Inverted C" variety, which was caused when a mirror-image letter punch was used to enter the righthand "C". The mirror-image punch left a right-reading engraved letter on the plate, which in turn produced a mirror-image printed letter "C". The Scott Catalogue lists this variety as "C at right inverted", but in fact it is a mirror image of the letter "C". We have photographs of five different examples of Position 36, including three we can positively identify by paper type: Green (40L4a, the stamp offered in lot 277), Grayish (40L5a on cover, Mazza collection) and Yellowish Buff (40L8a, the stamp offered here). Our records contain black-and-white photographs of two other examples, but we cannot identify the paper color (one off cover and another on a cover with 3c 1851 overlapping).

Ex Cunliffe. With 1968 and 2009 P.F. certificates. Listed but unpriced in Scott
..... E. 7,500-10,000



As Printed

Inverted

Mirror Image

HAND-ETCHED SIDEWAYS "C" AT LEFT



315

315 (Cole's) Post Office City Despatch, New York N.Y., 2c Black on Yellowish Buff Glazed, Hand-Etched Sideways "C" at Left (40L8b). Position 13 with lefthand "C" etched into plate by hand (so-called "Sideways C" variety), large margins, clear impression, faint pencil cancel, barest trace of small diagonal crease in lower left margin

EXTREMELY FINE. THIS IS BY FAR THE FINER OF THE TWO RECORDED EXAMPLES OF THE SIDEWAYS "C" VARIETY ON BUFF PAPER (SCOTT 40L8b).

Seven subjects on the plate of 42 show the hand-etched "C" variety (Positions 1, 2, 3, 7, 13, 19, 25), which resulted from a crude attempt to inscribe the letter "C" rather than use a letter punch. These are listed in the Scott Catalogue as "C at left sideways." As a plate variety, it can be found on the four types of paper used for Cole's "CC" issue (Green, Grayish, Vermilion and Yellowish Buff). Of the 16 recorded examples of the "Sideways C" variety in our census (all types of paper), only two are on Yellowish Buff, the rarest of the paper types. The other known example of 40L8b is defective.

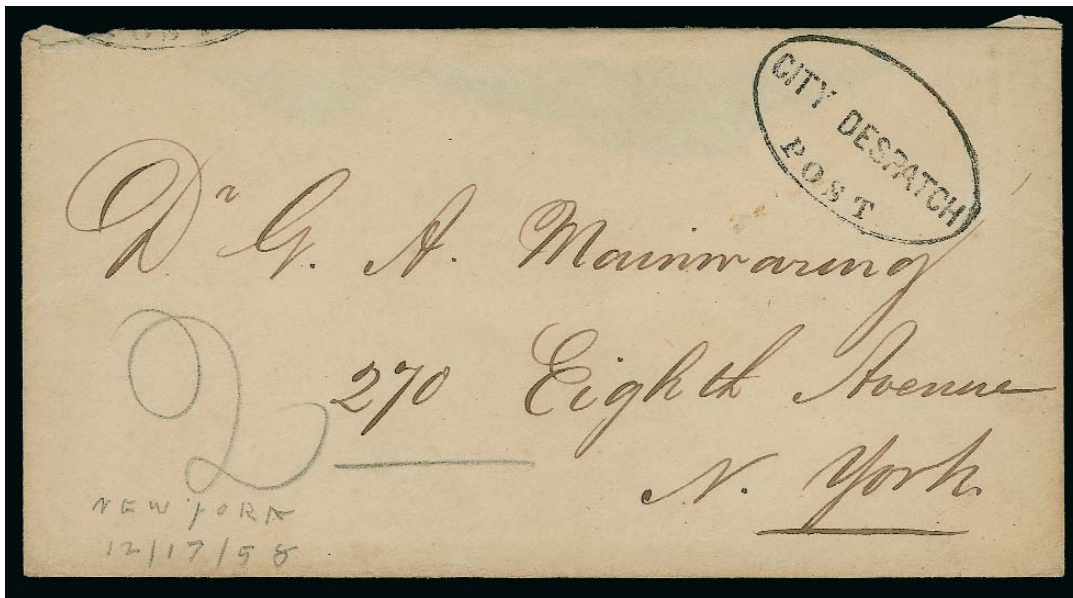
Ex Caspary. With 2000 P.F. certificate 12,000.00

POST-1852 CITY DESPATCH POST



316

- 316 ☒ (Cole's) **Post Office City Despatch, New York N.Y., 2c Black on Yellowish Buff Glazed (40L8)**. Remnant of stamp peeled off locally-addressed cover, apparently removed at the time of mailing and before "Paid E N Barry" was applied, Barry ran a local post in New York City, an intriguing cover, with 2009 P.F. certificate..... E. 500-750



317

- 317 ☒ **City Despatch Post.** Oval handstamp clearly struck on cover to Dr. G. A. Manwaring, 270 8th Ave., New York City, pencil "2" rate, enclosure is a part-printed marshal's notice ordering addressee to appear for a hearing on Apr. 17, 1858, about half of backflap removed and faint overall toning, otherwise Very Fine, one of four recorded covers with this oval marking, all addressed in the same hand, this 1858 year-dated usage places this post well past the years of the Mead-Cole operation and probably beyond Barry's involvement; see Perry's *100 Years Ago* and Jarrett article in *Chronicle* 122 (May 1984), ex Hollowbush and Hahn E. 1,000-1,500

END OF SALE — THANK YOU

The Carriers and Locals Society



The Carriers and Locals Society is a non-profit philatelic organization founded in 1991. The Society publishes a quarterly journal, *The Penny Post*. We are dedicated to the study of United States carriers, locals and express posts, as well as forgeries, reprints and fantasies created of them.

The aims of the Carriers and Locals Society are:

1. To further the understanding of the operation of private mail companies in the United States during the nineteenth century, who frequently made innovations copied by the Government postal service.
2. To study the government Carrier service that came into being largely to compete with the private companies.
3. To study and catalog the reprints, imitations and fantasies of these issues.

For information and membership application form,
please go to **www.pennypost.org**

Written inquiries may be made to:

Martin Richardson, Secretary-Treasurer
The Carriers and Locals Society
P.O. Box 74
Grosse Ile, MI 48138

The U.S. Philatelic Classics Society, Inc.

www.uspcs.org

Founded in 1948 by a dedicated group of 1851-1857 specialists, the **U. S. Philatelic Classics Society** has become a unique organization of collectors and students of the classic issues from the stampless period up to the first bureau issues. We are rich with prolific writers who publish the results of new studies each quarter in our award-winning, full-color magazine, *The Chronicle*, and other publications. Most of all, we are here to promote enjoyment and fun in the hobby which gives us so many hours of pleasure.



Now On-Line: *The Web Chronicle*TM

**Every issue of the country's foremost specialty philatelic journal
available to members at the push of a button!**

- An important tool for researchers, authors, speakers, judges and exhibitors.
- Over 60 years of award winning articles by the premier philatelists and students of the period.
- Encompassing U.S. stamps and postal history through the 19th century.
- A powerful and flexible search engine and download capability to help you find the exact information you need.
- A full-color copy of *The Chronicle of the U.S. Classics Postal Issues* mailed to you each quarter.

Additional USPCS member benefits:

- Contact with a select group of collectors, including many expert in their field of study.
- The *Chairman's Chatter*, a quarterly newsletter that reports Society activities.
- On-line access through the Members Domain to unpublished manuscripts, studies in progress, exhibits and other resources unique to the Society.
- Discounts for important and well-recognized books and CDs, among them:
 - *The United States 1847 Issue: A Cover Census*, by Tom Alexander
 - *United States Incoming Steamship Mail 1847-1875, 2nd Edition*, by Theron Wieringa
 - CD: *Six Lincoln Exhibits of U.S. Issues*, by William J. Ainsworth
 - CD: *The 30c Cent and 90 Cent U.S. 1861 Issue*, by Peter DuPuy;..... and many more

Visit www.USPCS.org today to see more of what membership in the U.S. Philatelic Classics Society can mean to you. You can join through the website, or write the membership chairman at 2913 Fulton, Everett WA, 98201-3733 for an application.

The Smithsonian National Postal Museum and The New York Public Library
are pleased to announce the new publication:

RARITY REVEALED

The Benjamin K. Miller Collection

SCOTT R. TREPEL
with Ken Lawrence

- Discover the story of Benjamin K. Miller and his legendary collection of United States stamps
- See the 1-cent Z grill, America's rarest postage stamp, and the inverted Jenny stamp
- Tour American philately from 1842 through 1926
- Learn what stamps are rare and why
- Explore a treasure trove of 400 color illustrations
- Study 20 chapters in 183 pages
- Absorb unpublished research by leading scholars
- Examine the appendix of unrecovered stolen stamps



Available online at
www.postalmuseum.si.edu

Order now while supplies last - Easy to order with PayPal
Softbound \$34 plus shipping
Hardcover \$80 plus shipping



Smithsonian
National Postal Museum



The New York Public Library
www.nypl.org

Resources

siegelauctions.com



THE SIEGEL ENCYCLOPEDIA™

This feature of our website contains a wealth of information gleaned from decades of philatelic research by the dedicated philatelists at Siegel.

RARITIES CENSUS

The up-to-date census data for 19th and 20th century U.S. rarities are a valuable resource for buyers, sellers and researchers. Every recorded example of almost 40 different rare stamps is described and, in most cases, photographed.



CATALOGUES AND PRICES REALIZED

Images and descriptions for all current sale catalogues are available from our website, as well as all sales going back to 1992, our Rarities sales from 1964 and selected name sales.

POWER SEARCH™

Search by Scott number or keyword through all of the sales at our website. The best resource in philately for research.

MY SIEGEL™

Save your Power Searches as want lists. We will automatically notify you when a match is included in an upcoming sale, whether it's as broad as any Columbian issue, or as narrow as a 241 graded 98. The most powerful want list in philately.



LOT TRACKER™

Never miss another lot because you were away from your computer. Log into My Siegel™, then set up notifications to get texts and/or emails 10-30 lots before yours comes up (live bidding is still through Stamp Auction Network).



EXHIBITS AND MOUNTED COLLECTIONS

Downloadable PDF files of some of the top exhibits ever formed. See how others collect and benefit from their original research.

VIDEO PRESENTATIONS

Downloadable video documentaries tell the stories of stamps and covers. This is the ideal way to introduce philately to others.

Live Internet Bidding at Siegel Auctions

BIDDING FROM YOUR COMPUTER LETS YOU BE PART OF THE LIVE AUCTION FROM ANYWHERE IN THE WORLD!

There's NO SUBSTITUTE for following the auction in real time.
Live Internet Bidding lets you bid and buy as though you were right there in the saleroom.
And it's easy.

This step-by-step guide will instruct you how to register, set your browser and use the bidding interface.

Start by following the simple steps to become a registered Live Internet Bidder.
Once you've been approved for bidding, you can listen to the auction and place bids with the click of a mouse.

Registering with STAMP AUCTION NETWORK & SIEGEL AUCTION GALLERIES

Live Internet Bidding is managed by Stamp Auction Network (SAN).
To bid, you must be registered and approved by *both* SAN and Siegel.
To decide what you need to do, choose the description below that best fits you.



I've already registered with SAN and have been approved by Siegel for internet bidding.

I'm a Siegel client, but I'm not registered with SAN.

Go to stampauctionnetwork.com/siegel and click on "Register" at the top. Check the box for Robert A. Siegel Auction Galleries (under "R") and submit the form, indicating you are a Siegel client. Once registered at SAN, you're ready for internet bidding.

I've bid through SAN before, but this is the first time I've bid in a Siegel sale.

Then you just need to be approved by Siegel. Go to stampauctionnetwork.com/siegel and click on "Update Registration" at the top. Your SAN account information will be sent to us for approval (you might be asked for other trade references). Once approved by Siegel for bidding, you're ready for internet bidding.

I've never bid with Siegel, nor registered with SAN.

Go to stampauctionnetwork.com/siegel and click on "Register" at the top. Check the box for Robert A. Siegel Auction Galleries (under "R") and submit the form **with your trade references** (please, no family members or credit card companies as references). Once registered at SAN and approved by Siegel for bidding, you're ready for internet bidding.

Live Internet Bidding works by allowing registered bidders to observe and place bids.

Live Internet Bidding will work with any browser on both PC and Mac operating systems.

Before bidding by internet for the first time, we recommend finding a sale in progress and listening to the public broadcast or logging in as a registered bidder. This will help you develop a feel for the sale tempo and bidding interface.

Log on to the auction at stampauctionnetwork.com/siegel.

You can also log on at siegelauctions.com

When you're logged on as a Live Internet Bidder, the bidding interface shows a photo and description of the lot, the current bid (and your bidding status), options for placing competitive bids and buttons with bid increments.

- After you click on a bid amount, the auctioneer is immediately notified of your bid.
- Retracting a bid is usually not acceptable, so please bid carefully.
- If you bid and then decide to stop, the "Pass" button will tell the auctioneer you are no longer bidding.
- You can send messages to the auctioneer (for example, a request for extension).
- You can track prior realizations from the bidding screen.



"System Down" or "Lost Connection" events do occasionally happen.

If you have any problems with Live Internet Bidding please call 212-753-6421 for immediate assistance.

Bid Form—15% Premium Sale

Sale 1005

Wednesday, March 2, 2011

1

Please provide the following information:

NAME.....

ADDRESS.....

CITY/STATE/ZIP

TEL. (DAY) FAX.....

E-MAIL.....

PADDLE #

Do not write in box

2

Have you purchased from us in the past 5 years? ☐ YES (if so, please go to Section 3)

☐ NO (please provide a trade reference and bank information)

References:

Stamp Firm:..... Telephone.....

Bank:..... Account #

3

In the space provided below, enter the **lot number** from **Sale 1005** and your corresponding bid. Please use **whole dollar amounts** only and enter the **maximum bid** you wish to have us execute on your behalf, according to the **bidding increments** on other side of this form. **Your bid will NOT include the 15% buyer's premium.** We will advance the bidding at one increment over the

next highest bid; therefore, you may be awarded the lot at less than your maximum bid. Please do not use "plus" bids or "buy" bids. If you wish to bid on one lot **or** the other, indicate your "or" bid between lot number/bid entries and bracket your choices. If you wish to place a **bidding limit** on the total amount of your bids, please enter your limit in the space marked "Limit Bids".

PLEASE NOTE BIDDING INCREMENTS AND SHIPPING CHARGES (ON BACK OF THIS PAGE)

☐ **LIMIT BIDS:** Check this box if you wish to limit the total amount of your bids (not including the **15% buyer's premium**) in this sale. Your bids will be executed until your bidding limit no longer allows for additional bids. **The total amount you wish to bid is:** \$

Lot	Bid	Lot	Bid	Lot	Bid
	\$		\$		\$

4

AGREEMENT: By signing this bid form, you agree to pay for purchases resulting from your bids, in accordance with the **Conditions of Sale** printed in the sale catalogue. You also agree to pay the **15% buyer's premium, shipping costs (see reverse), and sales tax or use tax or customs duty which may be due on the total invoiced amount.** It is

understood that these bids will be executed by Siegel Auction Galleries as a courtesy to absentee bidders, but you waive the right to make any claim against the auctioneer or the firm, arising from the these bids. **You are responsible for your written bids, including any errors on your part and any additions or changes to the bids herein.**

Payment must be made by cash, check, money order or wire transfer. Credit cards will not be accepted.



SIGNED..... TODAY'S DATE

5

Please submit your bids promptly (telephone bids must be confirmed in writing).

Mail to: **Robert A. Siegel Auction Galleries, Inc.**

60 E. 56th Street, 4th Floor, New York, N.Y. 10022

Telephone (212) 753-6421

OR FAX YOUR BIDS: (212) 753-6429

Shipping Instructions, Bidding Increments and space for additional bids on other side of form



Additional Bids

Sale 1005—March 2, 2011

Lot	Bid	Lot	Bid	Lot	Bid
	\$		\$		\$

Shipping and Transit Insurance

We will be pleased to arrange for shipping and transit insurance for purchases in this sale (except those described as “floor sale only”). To expedite billing and delivery of lots to hundreds of buyers per sale, we use standard charges for postage and insurance, based on the package weight and mailing requirements (see schedule). The standard charges are sometimes slightly more or less than the actual postage or Fedex fees, but we do not include any charge for our labor or packing costs. Therefore, we ask all buyers to remit the prescribed amount for shipping charges.

Transit insurance is provided in all cases, except when the buyer has furnished us with proof that insurance coverage is effective under another policy. Proof, in such cases, will be accepted in the form of a written certificate from the insurance carrier.

You are responsible for insurance charges, which will be added to your invoice. This coverage is provided for our mutual protection against theft or loss in transit.

Bidding Increments

The auctioneer may regulate the bidding at his discretion. However, to assist absentee bidders in establishing their maximum bid for each lot, the increments shown at right will be used in most cases. We recommend that written bids conform to these increments (those which do not will be reduced to the next level).

REVISED CHARGES FOR SHIPPING EFFECTIVE SEPTEMBER 1, 2010

We have reduced the Fedex Envelope charge to \$20, reflecting the elimination of the fuel surcharge. All other charges remain the same.

Current Postage & Insurance Charges

Weight/Class	Shipping Method	Charges
Up to 2 lbs.	Fedex Envelope	\$20.00
Over 2 lbs.	Fedex Box	\$35.00*
Non-U.S.	Fedex/Courier	\$50.00**
Bulk Lots	UPS Preferred	By weight and value
These fees reflect additional Fedex charges for residential delivery, signature and fuel surcharge. *Higher fees will be charged on packages weighing more than 5 lbs. or insured for more than \$75,000. **Buyers are liable for all customs duties and clearance charges. An accurate declaration of value will be made on all import/export documents.		

9/2009

Up to \$50	\$5	\$3,000-7,000	\$250
\$50-200	\$10	\$7,000-20,000	\$500
\$200-500	\$25	\$20,000-30,000	\$1,000
\$500-1,000	\$50	\$30,000-75,000	\$2,500
\$1,000-3,000	\$100	\$75,000 up	\$5,000

6/2008



PRICES REALIZED FOR SALE 1005---3/2/2011
The New Amsterdam Collection of City Despatch Post

Robert A. Siegel Auction Galleries, Inc.
60 East 56th Street, 4th Floor, New York, NY 10022
Tel (212) 753-6421 Fax (212) 753-6429

Lot#	Realized	Lot#	Realized	Lot#	Realized
201	1,700	243	2,100	286	2,000
202	2,200	244	550	287	425
203	2,000	245	750	288	750
204	23,000	246	650	289	3,500
205	4,250	247	425	290	1,900
206	3,500	248	350	291	2,800
207	650	249	350	292	6,500
208	900	250	500	293	1,100
209	600	251	400	294	1,000
210	3,500	252	400	295	1,600
211	2,700	253	12,000	296	2,300
212	2,500	254	2,200	297	2,700
213	2,600	255	550	298	850
214	15,500	256	4,750	299	4,000
215	10,500	257	550	300	3,750
216	4,500	258	400	301	1,100
217	5,250	259	375	302	850
218	4,500	260	2,500	303	850
219	1,400	261	750	304	475
220	900	262	475	305	500
221	5,250	263	325	306	300
222	1,500	264	1,200	307	800
223	750	265	2,600	308	275
224	4,250	266	2,600	309	325
225	3,250	267	1,400	310	300
226	1,000	268	475	311	4,000
227	900	269	1,400	312	2,800
228	1,900	270	750	313	15,500
229	850	271	550	314	7,500
230	900	272	800	315	7,500
231	1,300	273	500	316	375
232	1,900	274	300	317	1,200
233	550	275	5,250		
234	700	276	750		
235	1,900	277	3,500		
236	500	278	900		
237	650	279	800		
238	1,100	280	950		
239	6,000	281	650		
240	5,500	282	2,600		
241	2,300	283	550		
242	35,000	285	3,750		