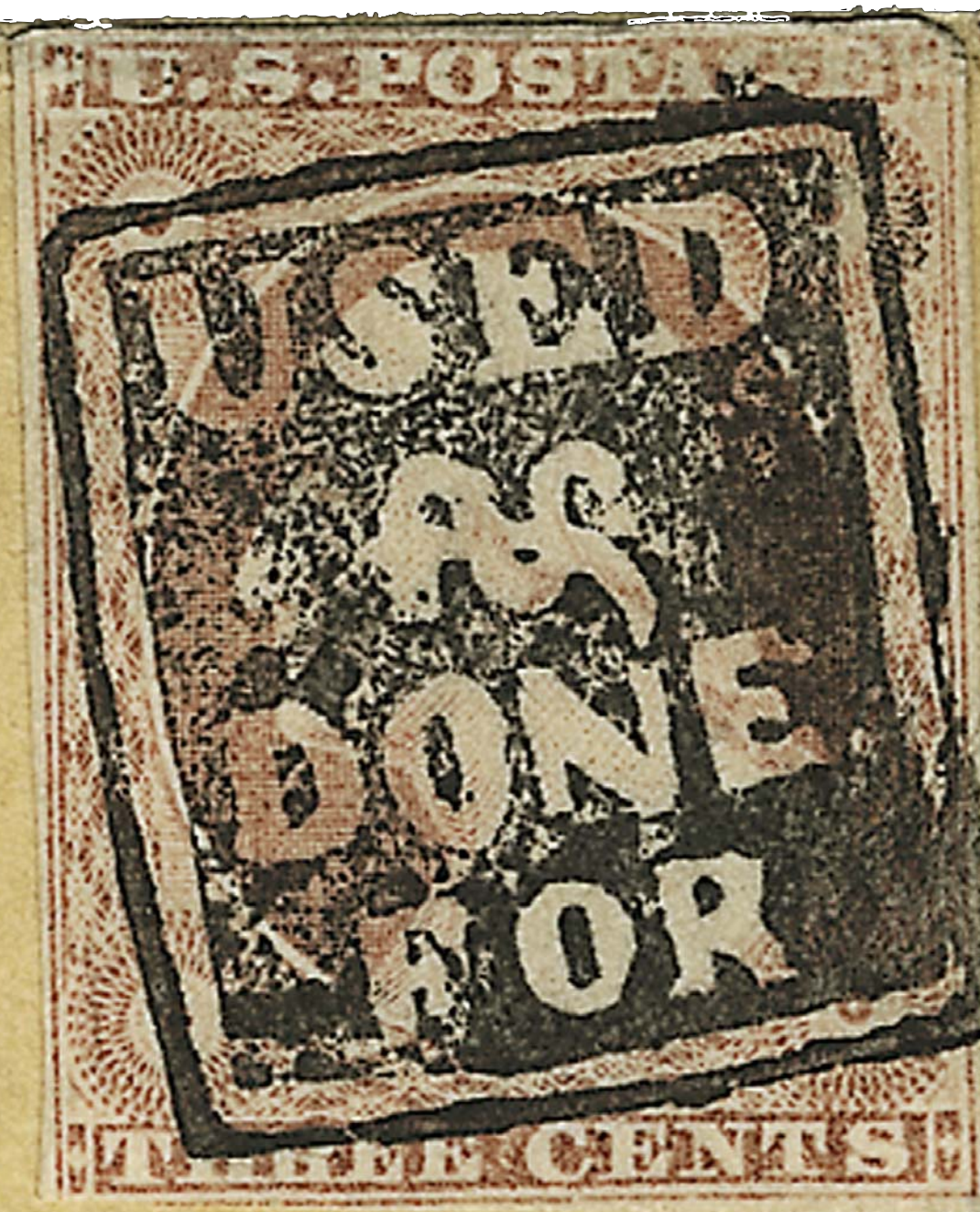


The
ARTEMIS
Collection

UNITED STATES
FANCY CANCELLATIONS
SALE 1012—OCTOBER 10, 2011



Robert A. Siegel
AUCTION GALLERIES, INC.

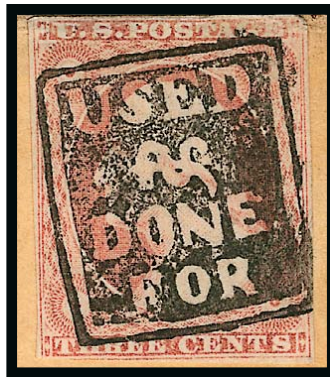
Sale 1012—Monday, October 10, 2011, at 1:30 p.m.

The “Artemis” Collection of United States Fancy Cancellations

Live auction to be held at Siegel Auction Galleries,
60 East 56th Street (Park/Madison), 4th Floor, New York City

To be offered without reserves

Lots are sold subject to a 15% buyer's premium and
any applicable sales tax (or customs duty for non-U.S. buyers)



Pre-Sale Viewing—Monday, October 10, 10-12 and by appointment

Robert A. Siegel

AUCTION GALLERIES, INC.

60 EAST 56TH STREET, 4TH FLOOR, NEW YORK, N.Y. 10022

Phone (212) 753-6421 • Fax (212) 753-6429 • E-mail: stamps@siegelauctions.com

Catalogues, internet bidding, resources, archives and the Siegel Encyclopedia at
siegelauctions.com



Robert A. Siegel

AUCTION GALLERIES, INC.

60 EAST 56TH STREET, 4TH FLOOR, NEW YORK, N.Y. 10022
 Phone (212) 753-6421 • Fax (212) 753-6429 • E-mail: stamps@siegelauctions.com
siegelauctions.com



Scott R. Trepel
 President
 strepel
[@siegelauctions.com](http://siegelauctions.com)



John P. Zuckerman
 Senior Vice President
 jzuckerman
[@siegelauctions.com](http://siegelauctions.com)



Corey Long
 Vice President
 clong
[@siegelauctions.com](http://siegelauctions.com)



Starr Tucker-Ortega
 Accounts
 stamps
[@siegelauctions.com](http://siegelauctions.com)



Laura Melvin
 Bids and Inquiries
 laura
[@siegelauctions.com](http://siegelauctions.com)

Scott R. Trepel Principal Auctioneer (licensed by NYC Dept. of Consumer Affairs, #795952)
 Nathaniel Estes Catalogue and Digital Production

Information for Bidders

Bidding

The following means are available for placing bids:

- 1) Attending the Live Auction in Person:** All bidders must register for a paddle, and new bidders must provide references at least three business days in advance of the sale.
- 2) Live Internet Bidding:** Instructions for participating as a Live Internet Bidder are provided on the page opposite.
- 3) Phone Bidding:** Bidders can be connected to the sale by phone and bid through a member of staff. Requests for phone bidding are subject to approval (please contact our office at least 24 hours before the sale). A signed Bid Form is required.
- 4) Absentee Bids.** All bids received in advance of the sale, either by mail, fax, phone, e-mail or internet, are Absentee Bids, which instruct the auctioneer to bid up to a specific amount on one or more lots in the sale. Absentee Bids sent by phone, fax or e-mail should arrive at least one hour prior to the start of the sale session. Bids entered through Live Internet Bidding will be visible to the auctioneer during the sale. Written bids should be entered legibly on the Bid Form in the sale catalogue. E-mail and internet bids should be carefully typed and double-checked. All new bidders must provide references. We recommend calling or e-mailing to confirm that Absentee Bids sent by mail, fax or e-mail have been received and entered.

Pre-Sale Viewing

Subject to availability, certain lots (except group lots) can be sent to known clients for examination. Requests must be made no later than 7 days prior to the sale. Lots must be returned on the day received. Postage/insurance costs will be invoiced.

In addition to regular viewing, clients may view lots by appointment. Our staff will be pleased to answer questions or provide additional information about lots.

Expert Certification

Individual items offered without a PF or PSE certificate dated within the past five years may be purchased subject to independent certification of genuineness and our description. **Please refer to the Conditions of Sale and Grading Terms for policies governing certification.**

Shipping and Delivery

Procedures and charges for shipping lots are printed on the back of the Bid Form. **Bidders are responsible for all prescribed shipping charges and any applicable sales tax or customs duties.**

Price Realized

Prices realized are sent with each invoice. Bidders with e-mail will receive a Bid Results report after the sale. Session results are posted immediately to siegelauctions.com

Live Internet Bidding at Siegel Auctions

BIDDING FROM YOUR COMPUTER LETS YOU BE PART OF THE LIVE AUCTION FROM ANYWHERE IN THE WORLD!

There's NO SUBSTITUTE for following the auction in real time.
Live Internet Bidding lets you bid and buy as though you were right there in the saleroom.
And it's easy.

This step-by-step guide will instruct you how to register, set your browser and use the bidding interface.

Start by following the simple steps to become a registered Live Internet Bidder.
Once you've been approved for bidding, you can listen to the auction and place bids with the click of a mouse.

Registering with STAMP AUCTION NETWORK & SIEGEL AUCTION GALLERIES

Live Internet Bidding is managed by Stamp Auction Network (SAN).
To bid, you must be registered and approved by *both* SAN and Siegel.
To decide what you need to do, choose the description below that best fits you.



I've already registered with SAN and have been approved by Siegel for internet bidding.

Live Internet Bidding works by allowing registered bidders to observe and place bids.

Live Internet Bidding will work with any browser on both PC and Mac operating systems.

Before bidding by internet for the first time, we recommend finding a sale in progress and listening to the public broadcast or logging in as a registered bidder. This will help you develop a feel for the sale tempo and bidding interface.

I'm a Siegel client, but I'm not registered with SAN.

Go to stampauctionnetwork.com/siegel and click on "Register" at the top. Check the box for Robert A. Siegel Auction Galleries (under "R") and submit the form, indicating you are a Siegel client. Once registered at SAN, you're ready for internet bidding.

Log on to the auction at stampauctionnetwork.com/siegel.

You can also log on at siegelauctions.com

When you're logged on as a Live Internet Bidder, the bidding interface shows a photo and description of the lot, the current bid (and your bidding status), options for placing competitive bids and buttons with bid increments.

- After you click on a bid amount, the auctioneer is immediately notified of your bid.
- Retracting a bid is usually not acceptable, so please bid carefully.
- If you bid and then decide to stop, the "Pass" button will tell the auctioneer you are no longer bidding.
- You can send messages to the auctioneer (for example, a request for extension).
- You can track prior realizations from the bidding screen.

I've bid through SAN before, but this is the first time I've bid in a Siegel sale.

Then you just need to be approved by Siegel. Go to stampauctionnetwork.com/siegel and click on "Update Registration" at the top. Your SAN account information will be sent to us for approval (you might be asked for other trade references). Once approved by Siegel for bidding, you're ready for internet bidding.

I've never bid with Siegel, nor registered with SAN.

Go to stampauctionnetwork.com/siegel and click on "Register" at the top. Check the box for Robert A. Siegel Auction Galleries (under "R") and submit the form **with your trade references** (please, no family members or credit card companies as references). Once registered at SAN and approved by Siegel for bidding, you're ready for internet bidding.



"System Down" or "Lost Connection" events do occasionally happen.

If you have any problems with Live Internet Bidding please call 212-753-6421 for immediate assistance.

Conditions of Sale (please read carefully before bidding)

The property described in this catalogue will be offered at public auction by Robert A. Siegel Auction Galleries, Inc. ("Galleries") on behalf of various consignors and itself or affiliated companies. By bidding on any lot, whether directly or by or through an agent, in person, or by telephone, facsimile or any other means, the bidder acknowledges and agrees to all of the following Conditions of Sale.

1. The highest bidder acknowledged by the auctioneer shall be the buyer. The term "final bid" means the last bid acknowledged by the auctioneer, which is normally the highest bid offered. **The purchase price payable by the buyer will be the sum of the final bid and a commission of 15% of the final bid ("buyer's premium"), together with any sales tax, use tax or customs duties due on the sale.**

2. The auctioneer has the right to reject any bid, to advance the bidding at his discretion and, in the event of a dispute between bidders, to determine the successful bidder, to continue the bidding or to reoffer and resell the lot in dispute. The Galleries' record of the final sale shall be conclusive.

3. All bids are per numbered lot in the catalogue unless otherwise announced by the auctioneer at the time of sale. The right is reserved to group two or more lots, to withdraw any lot or lots from the sale, or to act on behalf of the seller. The Galleries will execute bidding instructions on behalf of clients, but will not be responsible for the failure to execute such bids or for any errors in the execution of such bids.

4. **Lots with numbers followed by the symbol ° are offered subject to a confidential minimum bid ("reserve"), below which the lot will not be sold. The absence of the symbol ° means that the lot is offered without a reserve. If there is no reserve, the auctioneer has sole discretion to establish a minimum opening bid and may refuse an offer of less than half of the published estimate. Any lot that does not reach its reserve or opening bid requested by the auctioneer will be announced as "passed" and excluded from the prices realized lists after the sale. The Galleries may have a direct or indirect ownership interest in any or all lots in the sale resulting from an advance of monies or goods-in-trade or a guarantee of minimum net proceeds made by the Galleries to the seller.**

5. Subject to the exclusions listed in 5(A), the Galleries will accept the return of lots which have been misidentified or which have obvious faults that were present when the lot was in the Galleries' custody, but not so noted in the lot description. **All disputed lots must be received by the Galleries intact with the original packing material within 5 days of delivery to the buyer but no later than 30 days from the sale date. (5A) EXCLUSIONS:** The following lots may not be returned for any reason: lots containing 10 or more items; lots from buyers who registered for the pre-sale exhibition or received lots by postal viewing, thereby having had the opportunity to inspect them before the sale; any lot described with "faults," "defects" or a specific fault may not be returned because of any secondary fault. Photographed lots may not be returned because of centering, margins, short/nibbed perforations or other factors shown in the illustrations. Lots may not be returned for any of the following reasons: the color of the item does not match the color reproduction in the sale catalogue or website listing; the description contains inaccurate information about the quantity known or reported; or a certification service grades a stamp lower than the grade stated in the description.

6. Successful bidders, unless they have established credit with the Galleries prior to the sale, must make payment in full before the lots will be delivered. Buyers not known to the Galleries must make payment in full within 3 days from the date of sale. **The Galleries retains the right to demand a cash deposit from anyone prior to bidder registration and/or to demand payment at the time the lot is knocked down to the highest bidder, for any reason whatsoever.** In the event that any buyer refuses or fails to make payment in cash

for any lot at the time it is knocked down to him, the auctioneer reserves the right to reoffer the lot immediately for sale to the highest bidder. **Credit cards are not accepted as payment.**

7. If the purchase price has not been paid within the time limit specified above, nor lots taken up within 7 days from the date of sale, the lots will be resold by whatever means deemed appropriate by the Galleries, and any loss incurred from resale will be charged to the defaulting buyer. Any account more than 30 days in arrears will be subject to a late payment charge of 1½% per month as long as the account remains in arrears. Any expenses incurred in securing payment from delinquent accounts will be charged to the defaulter. A fee of \$250.00 per check will be charged for each check returned for insufficient funds.

8. All lots are sold as genuine. **Any lot accompanied by a certificate issued by The Philatelic Foundation or by Professional Stamp Experts within 5 years of the sale date is sold "as is" and in accordance with the description on the certificate. Such lots may not be returned for any reason, including but not limited to a contrary certificate of opinion.** Buyers who wish to obtain a certificate for any item that does not have a P.F. or P.S.E. certificate dated within 5 years of the sale date may do so, provided that the following conditions are met: (1) the purchase price must be paid in full, (2) the item must be submitted to an acceptable expertizing committee with a properly executed application form within 21 days of the sale, (3) a copy of the application form must be given to the Galleries, (4) in the event that an adverse opinion is received, the Galleries retain the right to resubmit the item on the buyer's behalf for reconsideration, without time limit or other restrictions, (5) unless written notification to the contrary is received, items submitted for certification will be considered cleared 90 days from the date of sale, and (6) in the event any item is determined to be "not as described", the buyer will be refunded the purchase price and the certification fee up to \$600.00 unless otherwise agreed.

9. Until paid for in full, all lots remain the property of the Galleries on behalf of the seller.

10. Agents executing bids on behalf of clients will be held responsible for all purchases made on behalf of clients unless otherwise arranged prior to the sale.

11. The buyer assumes all risk for delivery of purchased lots and agrees to pay for prescribed shipping costs. Buyers outside the U.S. are responsible for all customs duties.

12. **The bidder consents that any action or proceeding against it may be commenced and maintained in any court within the State of New York or in the United States District Court for the Southern District of New York, that the courts of the State of New York and United States District Court for the Southern District of New York shall have jurisdiction with respect to the subject matter hereof and the person of the bidder. The bidder agrees not to assert any defense to any action or proceeding initiated by Galleries based upon improper venue or inconvenient forum. The bidder agrees that any action brought by the bidder shall be commenced and maintained only in a Federal Court in the United States District Court for the Southern District of New York or the State Court in the county in which Galleries has its principal place of business in New York. These Terms and Conditions shall be governed by and construed in accordance with the substantive laws of the State of New York.**

SCOTT R. TREPEL, Principal Auctioneer

Auctioneer's License No. 795952
N.Y.C. Department of Consumer Affairs
80 Lafayette Street, New York, N.Y. 10013
Telephone (212) 577-0111

Revised 10/2011

Copyright Notice

© 2011, Robert A. Siegel Auction Galleries, Inc. This catalogue in all versions, printed and electronic, is protected by copyright. The descriptions, format, illustrations and information used herein may not be reprinted, distributed or copied in any form without the express written consent of Robert A. Siegel Auction Galleries. Application for permission may be made in writing.

Grades, Abbreviations and Values Used in Descriptions

Grades and Centering

Our descriptions contain detailed information and observations about each item's condition. We have also assigned grades to stamps and covers, which reflect our subjective assessment. For stamps, the margin width, centering and gum are described and graded according to generally-accepted standards (an approximate correlation to numeric grades is provided at right). Although we believe our grades are accurate, they are not always exactly aligned with third-party grading terms or standards for all issues. **A lot may not be returned because a certification service grades a stamp lower than the grade stated in the description. Information from the P.S.E. Stamp Market Quarterly and P.S.E. Population ReportSM is the most current available, but lots may not be returned due to errors or changes in statistics or data.**

Extremely Fine Gem (90-100): The term "Gem" describes condition that is the finest possible for the issue. This term is equivalent to "Superb" used by grading services.







Extremely Fine (80-90): Exceptionally large/wide margins or near perfect centering.

Very Fine (70-85): Normal-size margins for the issue and well-centered with the design a bit closer to one side. "Very Fine and choice" applies to stamps that have desirable traits such as rich color, sharp impression, freshness or clarity of cancel.

Fine (60-70): Smaller than usual margins or noticeably off center. Pre-1890 issues may have the design touched in places.

Very Good (below 60): Attractive appearance, but margins or perforations cut into the design.

Guide to Gum Condition

Gum Categories:	MINT N.H.	ORIGINAL GUM (O.G.)				NO GUM
	 Mint Never Hinged <i>Free from any disturbance</i>	 Lightly Hinged <i>Faint impression of a removed hinge over a small area</i>	 Hinge Mark or Remnant <i>Prominent hinged spot with part or all of the hinge remaining</i>	 Part o.g. <i>Approximately half or more of the gum intact</i>	 Small part o.g. <i>Approximately less than half of the gum intact</i>	 No gum <i>Only if issued with gum</i>
Catalogue Symbol:	★ ★	★	★	★	★	(★)
PRE-1890 ISSUES	<i>Pre-1890 stamps in these categories trade at a premium over Scott value</i>			Scott Value for “O.G.”		Scott “No Gum” Values thru No. 218
1890-1935 ISSUES	Scott “Never Hinged” Values for Nos. 219-771	Scott Value for “O.G.” (Actual value will be affected by the degree of hinging)		Disturbed Original Gum: Gum showing noticeable effects of humidity, climate or hinging over more than half of the gum. The significance of gum disturbance in valuing a stamp in any of the Original Gum categories depends on the degree of disturbance, the rarity and normal gum condition of the issue and other variables affecting quality. For example, stamps issued in tropical climates are expected to have some		
1935 TO DATE	Scott Value for “Unused”					

Covers

Minor nicks, short edge tears, flap tears and slight reduction at one side are normal conditions for 19th century envelopes. Folded letters should be expected to have at least one file fold. Light cleaning of covers and small mends along the edges are accepted forms of conservation. Unusual covers may have a common stamp with a slight crease or tiny tear. **These flaws exist in virtually all 19th century covers and are not always described. They are not grounds for return.**

Catalogue Values and Estimates

Unless otherwise noted, the currently available *Scott Catalogue* values are quoted in dollars with a decimal point. Other catalogues are often used for foreign countries or specialized areas and are referred to by their common name: *Stanley Gibbons* (SG), *Dietz*, *American Air Mail Catalogue* (AAMC), *Michel*, *Zumstein*, *Facit*, etc. Estimates are indicated with an "E." and reflect our conservative valuation in dollars. Reserves will never exceed the low end of the estimate range; they will sometimes exceed Scott Catalogue value for stamps in Extremely Fine condition.

Because of certain pricing inconsistencies in the *Scott Catalogue*—for example, blocks that have no gum, the absence of premiums for Mint N.H. items, etc.—we cannot guarantee the accuracy of values quoted for multiples, specialized items and collection lots. We generally try to be conservative, but buyers may not return a lot because of a discrepancy in catalogue value due to Scott pricing inconsistencies.

Symbols and Abbreviations (see chart above for gum symbols)

⊞	Block	E	Essay	pmk.	Postmark	No.	Scott Catalogue Number
⊞	Cover	P	Proof	cds	Circular Datestamp	hs	Handstamp
FC	Fancy Cancel	TC	Trial Color Proof	var.	Variety	ms.	Manuscript

Resources

siegelauctions.com



THE SIEGEL ENCYCLOPEDIA™

This feature of our website contains a wealth of information gleaned from decades of philatelic research by the dedicated philatelists at Siegel.

RARITIES CENSUS

The up-to-date census data for 19th and 20th century U.S. rarities are a valuable resource for buyers, sellers and researchers. Every recorded example of almost 40 different rare stamps is described and, in most cases, photographed.



CATALOGUES AND PRICES REALIZED

Images and descriptions for all current sale catalogues are available from our website, as well as all sales going back to 1992, our Rarities sales from 1964 and selected name sales.

POWER SEARCH™

Search by Scott number or keyword through all of the sales at our website. The best resource in philately for research.

MY SIEGEL™

Save your Power Searches as want lists. We will automatically notify you when a match is included in an upcoming sale, whether it's as broad as any Columbian issue, or as narrow as a 241 graded 98. The most powerful want list in philately.



LOT TRACKER™

Never miss another lot because you were away from your computer. Log into My Siegel™, then set up notifications to get texts and/or emails 10-30 lots before yours comes up (live bidding is still through Stamp Auction Network).



EXHIBITS AND MOUNTED COLLECTIONS

Downloadable PDF files of some of the top exhibits ever formed. See how others collect and benefit from their original research.

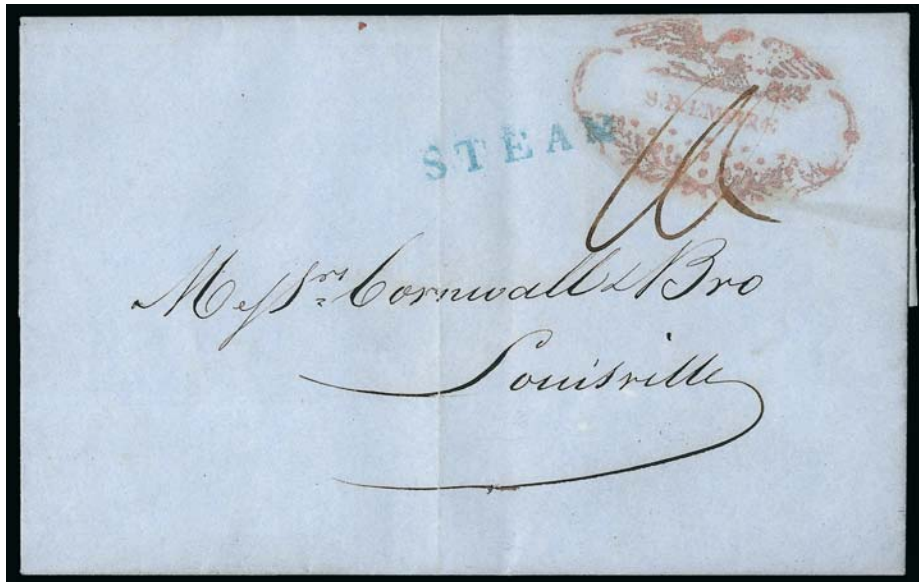
VIDEO PRESENTATIONS

Downloadable video documentaries tell the stories of stamps and covers. This is the ideal way to introduce philately to others.

AFTERNOON SESSION (LOTS 1-76)
MONDAY, OCTOBER 10, 2011, AT 1:30 P.M.

THE "ARTEMIS" COLLECTION OF
UNITED STATES FANCY CANCELLATIONS

STAMPLESS ERA ILLUSTRATED MARKINGS



1

- 1 ☒ **"S. B. Empire" Steamboat Handstamp.** Perfect bold red strike of elaborate vessel-named marking with spread eagle, arrows, stars and olive branches on blue folded letter date-lined "*New Orleans April 14th 1847*" and addressed to Louisville, blue "Steam" straightline handstamp, manuscript "10" rate, commodities business contents, light vertical file fold well away from marking

VERY FINE STRIKE OF THIS RARE MISSISSIPPI AND OHIO RIVERS ILLUSTRATED STEAM-BOAT MARKING.

Illustrated in Milgram. Ex Jarrett. E. 2,000-3,000



2

- 2 **Hanford's Pony Express Post 2 Cts.** Red Horse & Rider oval handstamp on Oct. 7, 1846 folded letter to local street address, Very Fine strike of this unusual local post marking, although Hanford adopted the name "Pony Express", he never used horses, its meaning was symbolic, ex Turner E. 300-400

1851-57 ISSUE

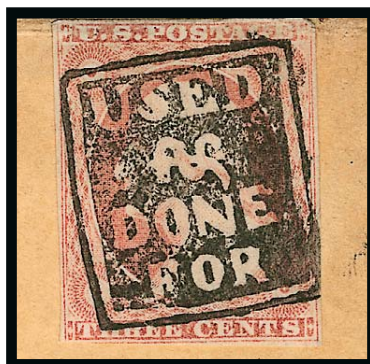


- 3 ☒ **3c Dull Red, Ty. II (11A).** Full margins to barely in, cancelled by perfect strike of **negative “Used & Done For” fancy cancel**, matching “Fair Haven Conn. Oct. 20” circular datestamp on cover to S. Hadley Mass., stamp with tiny corner crease at top right

EXTREMELY FINE. A SUPERB STRIKE OF THE RARE NEGATIVE “USED & DONE FOR” FANCY CANCELLATION. ONLY TWO ARE RECORDED ON COVER, AND THIS IS THE FINER OF THE TWO. ONE OF THE MOST OUTSTANDING FANCY CANCELLATIONS OF THE CLASSIC IMPERFORATE STAMP ERA.

This large, bold cancellation with its negative letters was intended to leave no doubt that the stamp was indeed “used and done for” and could not be reused.

From our 1987 Rarities of the World sale (probably ex Rust). With 1987 P.F. certificate
 E. 15,000-20,000



3 detail



4

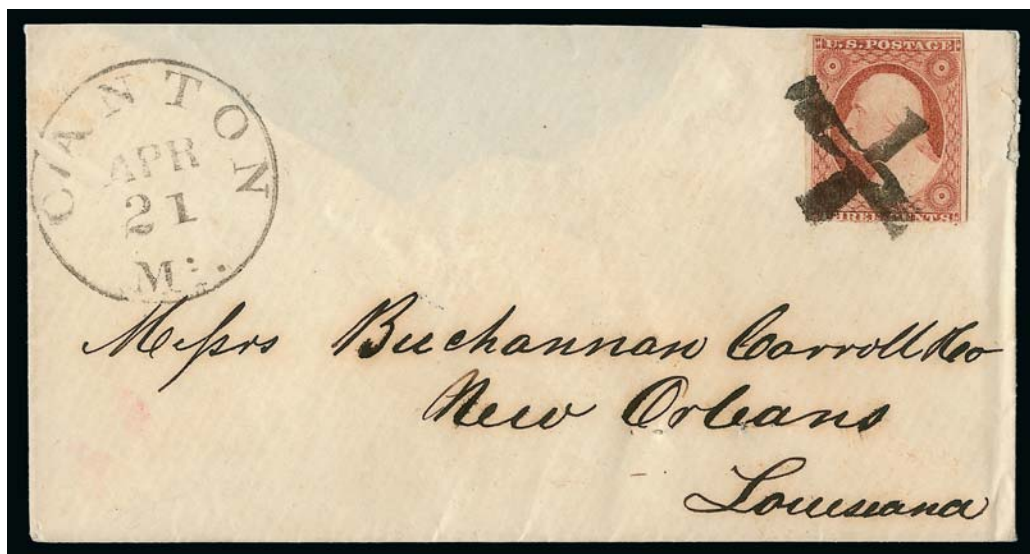
- 4 ☒ **3c Dull Red, Ty. I (11).** Full margins to just in, tiny scissors-cut in margin at lower left, tied by perfect strike of **Odd Fellows Three Links, Seeing Eye and Crossed Arrows fancy cancel**, matching "Canton Mi. Jul. 19" circular datestamp on cover to Dover Plains N.J., with original 1853-dated contents from Richland Miss.

EXTREMELY FINE. A SUPERB STRIKE OF THE CANTON MASONIC FANCY CANCEL. THIS IS THE ONE OF THE FINEST STRIKES WE HAVE ENCOUNTERED.

Canton's postmaster is well known for his fancy cancellations, including a Lyre, Star in Rope Circle, Negative Star, Negative "Paid 3", Christian Cross and an unusual Open Triangle, as well as the star used as a Confederate postmaster's provisional. This is the most elaborate of the Canton designs. E. 3,000-4,000



4 detail



5

- 5 ☒ **3c Dull Red, Ty. II (11A).** Large margins to in, tied by **Christian Cross fancy cancel**, "Canton Mi. Apr. 21" circular datestamp on cover to Buchanan Carroll & Co. in New Orleans, usual small filing holes, missing part of top flap, Very Fine strike, unlike typical "Cross" cancels with segments of equal length, this Canton Cross is clearly a representation of the Christian crucifix E. 1,000-1,500



6

- 6 ☒ **3c Dull Red, Ty. I (11).** Large margins to clear, bright color, affixed upside down and tied by beautiful strike of **negative "Paid 3" fancy cancel**, "Canton Mi. May 21" circular datestamp on 1853 folded cover to Buchanan Carroll & Co. in New Orleans, horizontal file fold well away from stamp, Extremely Fine strike of this rare marking, ex Grunin E. 500-750



7

- 7 ☒ **3c Dull Red, Ty. III (26).** Rich color, tied by perfectly struck **large Lyre fancy cancel**, "Canton Miss. Oct. 15, 1860" circular datestamp on light gray cover to Washington Ga., Extremely Fine strike, the postmaster at Canton made two versions of this design — one large and the other small — the large Lyre is known on a fair number of stamps and covers, but this strike is unsurpassed in clarity E. 1,500-2,000

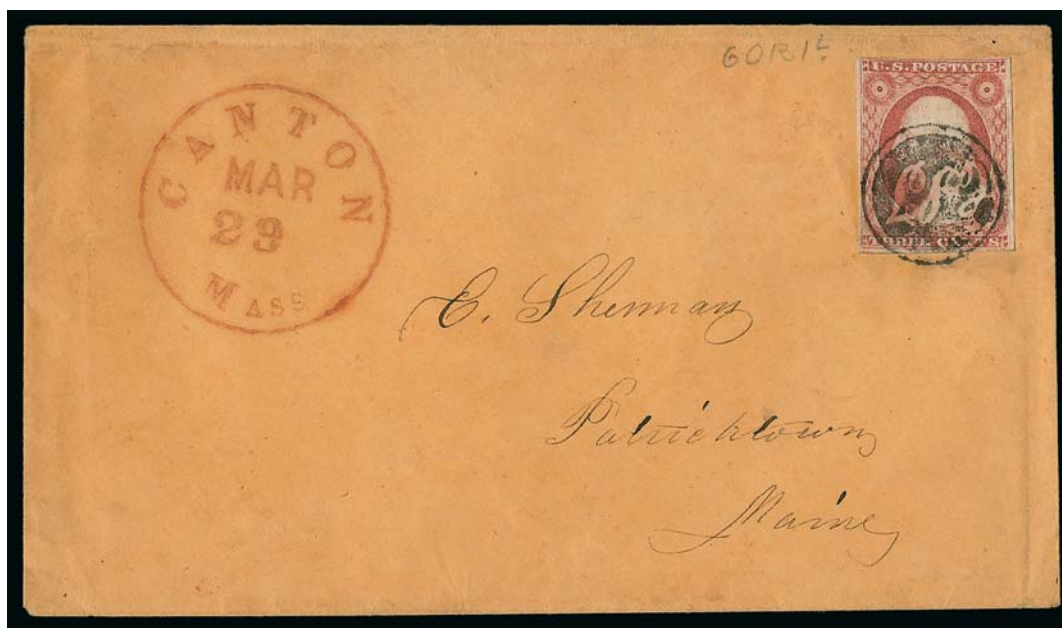


7 detail



8

- 8 ☒ **3c Dull Red, Ty. I (11).** Full to clear margins, cancelled by bold strike of **negative “A.H.”** postmaster’s initials cancel, ms. “West Charleston Ohio, Aug. 19” postmark on glazed cover to Springdale O., minor edge wear, Very Fine strike, scarce use of initialed cancel on 1851 Issue, the postmaster’s name was Andrew Hoagland..... E. 400-500



9

- 9 ☒ **3c Dull Red, Ty. I (11).** Position 60R1L, full margins to clear, tied by **elaborate “C S T”** initials in circle fancy cancel, red “Canton Mass. Mar. 29” circular datestamp on buff cover to Patricktown Me., minor cover wear, Very Fine example of this elaborate fancy cancel, the initials stand for Caleb S. Taft who was postmaster of Canton from June 15, 1853 thru 1856..... E. 400-500



10



11

12

- 10 ☒ **3c Dull Red, Ty. I (11).** Large margins to just in incl. part of adjoining stamp at right, tied by **outline 6-Point Star of David fancy cancel**, "Chicopee Mass. Feb. 23" circular datestamp on cover to Lynchburg Va., Very Fine strike of the Chicopee Star fancy cancel E. 300-400
- 11 ☒ **3c Dull Red, Ty. I (11).** Two, huge margins to in, each with **sheet margin** at right, tied by bold strikes of **Solid Star fancy cancels**, "Worcester Ms. Jan. 29, 1857" circular datestamp on buff cover to Barre Mass., reduced at left, some wear, right stamp with tear in sheet margin, still Very Fine E. 300-400
- 12 ☒ **3c Dull Red, Ty. II (11A).** Position 18L1L, full margins to in, tied by complete strike of **blue Star and Circle fancy cancel**, matching "New Alstead N.H. June 25" circular datestamp on orange cover to Cleveland O., expertly repaired along edges, still Very Fine strike E. 200-300



13

- 13 ☒ **3c Dull Red, Ty. III (26).** Bright color, tied by blue “ST” (Steamship Texas) in Star with Circles fancy cancel on triangular-shaped folded letter to New Orleans, datelined “Conchatta Chute, March 26th” (Conchatta or Coushatta is located in Louisiana), stamp with tiny tear and few minor perf flaws at left, minor splitting along folds

VERY FINE STRIKE OF THE RARE “ST” IN STAR FANCY CANCEL ON A TRIANGULAR-SHAPED FOLDED LETTER. A WONDERFUL EXHIBITION ITEM AND BELIEVED TO BE THE ONLY RECORDED COVER WITH THIS MARKING.

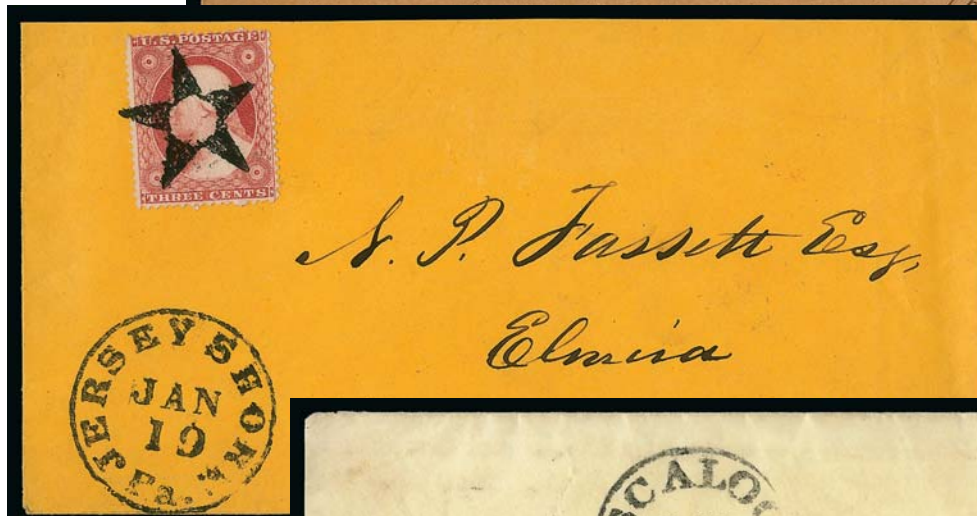
The *Texas* was a vessel of the Southern Steamship Company, which foundered in 1860 at Galveston. Another marking with a hollow star and “Steam Ship Texas” in circle is known used in April 1858 (illustrated in the Feldman book, p. 289). The more primitive “ST” Star cancel was probably used for a brief period of time prior to 1858..... E. 2,000-3,000



13 detail



14



15



16

- 14 ☒ **3c Dull Red, Ty. III (26).** Two horizontal pairs, bright color, tied by **Outline Star fancy cancels**, neat strike of "Downieville Cal. May 17, 1859" circular datestamp on buff cover to Boston, barely reduced at right, one stamp with few trivial clipped perfs at upper left, still Extremely Fine, a remarkable cover with four strikes of this scarce fancy cancel on all stamps used to pay the transcontinental rate (2c overpaid), ex Knapp and Chase..... E. 1,000-1,500
- 15 ☒ **3c Dull Red, Ty. III (26).** Rich color, tied by perfect strike of **blue Star and Circle fancy cancel**, matching "Jersey Shore Pa. Jan. 19" circular datestamp on orange cover to Elmira N.Y., missing top flap where barely reduced, Very Fine..... E. 300-400
- 16 ☒ **3c Dull Red, Ty. III (26).** Rich color, cancelled by well-struck **8-Point Star and Circle fancy cancel**, "Tuscaloosa Al. Jan. 15" circular datestamp on cover to Alleghany Spring Va., barely reduced at left, minor overall wear, Very Fine strike of this fancy cancel, which was used in 1861, although there is no yeardate, this cover was probably mailed after Alabama had voted to secede from the Union (Jan. 11) and prior to their admission to the Confederacy (Feb. 4)..... E. 300-400



17

- 17 ☒ **3c Dull Red, Ty. III (26).** Rich color, cancelled by well-struck **Man in the Moon** fancy cancel, not tied as always, matching "Mason Ohio July 31st" circular datestamp with date in manuscript on lady's small cover to Adamsville Pa., perfs trimmed at top, stamp with few creases and sealed tear which are not readily apparent, Very Fine strike of this attractive and rare fancy cancel..... E. 750-1,000



17 detail

CIVIL WAR ERA PRO-UNION DESIGNS



18

- 18 ☒ **3c Dull Red, Ty. III (26).** Tied by boldly-struck **Waving Flag fancy cancel**, "Penn Haven Pa. Sep. 5" circular datestamp on red and blue **Waving Flag** and **"God Save the Union"** **Patriotic** cover to Frenchtown N.J., with original 1861-dated enclosure, barely reduced at right, cover with small filing hole and few toned spots, stamp with small corner flaw at upper right

VERY FINE APPEARANCE. A BEAUTIFUL EXAMPLE OF THE WAVING FLAG FANCY CANCEL ON A WAVING FLAG PATRIOTIC COVER. BELIEVED TO BE THE ONLY SUCH COMBINATION OF CANCEL AND STATIONERY WITH PRO-UNION FLAG MOTIFS.

Undoubtedly the postmaster took great pride in applying his hand-carved Flag fancy cancel on this red, white and blue Flag patriotic envelope, which mirrors his design. We first encountered this cover 25 years ago and have never seen another like it.....

..... E. 3,000-4,000



18 detail



19

- 19 ☒ **3c Rose (65).** Intact perfs at top, tied by **Waving Flag fancy cancel** and “New York May 2” circular datestamp on 1866 folded letter to Hartford Conn., stamp with diagonal crease at bottom left, still Very Fine, one of the pro-Union designs used in the Spring of 1866..... E. 500-750



20

- 20 ☒ **3c Rose (65).** Bright color, tied by unusually clear strike of **Large Eagle and Shield fancy cancel** and “Corry Pa. Oct. 19” circular datestamp on light yellow cover to Ann Arbor Mich., slightly reduced at left, stamp with trivial corner perf crease, Extremely Fine strike of this beautiful cancel, the larger Corry Eagle and Shield is much rarer than the smaller version, ex Brown, Brooks and Stark, accompanied by 1955 note from Stanley Ashbrook describing this as “the well-known Steve Brown cover of the Corry Pa. Eagle” and offering it for \$250..... E. 1,500-2,000



21

- 21 ☒ **3c Rose (65).** Tied by clear strike of “Kingessing Pa. Dec. 10, 1861” **elaborate oval with Eagle, Arrow and Ornaments fancy cancel** on cover to Knoxville Pa., slightly reduced at right, some edgewear and overall soiling, still a Very Fine strike of this rare “linen marker” style cancel E. 1,000-1,500



22

- 22 ☒ **3c Rose (65).** Bright color, tied by **Eagle fancy cancel**, “Cambridge Mass. Dec. 12” circular datestamp on cover to Piqua O., stamp with tiny tear at top, Very Fine strike of this desirable fancy cancel E. 300-400



23



24



25

- 23 ☒ **3c Rose (65).** Bright color, tied by **2-Cent Coin fancy cancel**, "Marshall Mich. Feb. 4" circular datestamp on cover to Canandaigua N.Y., barely reduced at right, Extremely Fine strike of this unusual cancellation device, the postmaster used a 2c coin which he inked and impressed on the stamp and cover, the 1861 2c was the first coin minted with the motto "In God We Trust", ex Brooks, with 1983 P.F. certificate E. 1,000-1,500
- 24 ☒ **3c Rose (65).** Bright color, tied by **"U.S." and Stars in Shield fancy cancel**, "Boston Mass. Sep. 21" circular datestamp on cover to Waterville Vt., 1865 docketing at left, barely reduced at left, Extremely Fine strike of this pro-Union fancy cancel E. 300-400
- 25 ☒ **3c Deep Rose Red (65).** S.e. at top, intense color, tied by perfect strike of **"Union" in Star fancy cancel**, "West Hampton Mass. Feb. 10, 1863" circular datestamp on cover to Springfield Mass., stamp with slight toning, Extremely Fine strike of this attractive fancy cancel, with 1983 P.F. certificate specifically identifying this as the Deep Rose Red sub-shade..... E. 300-400



26



27

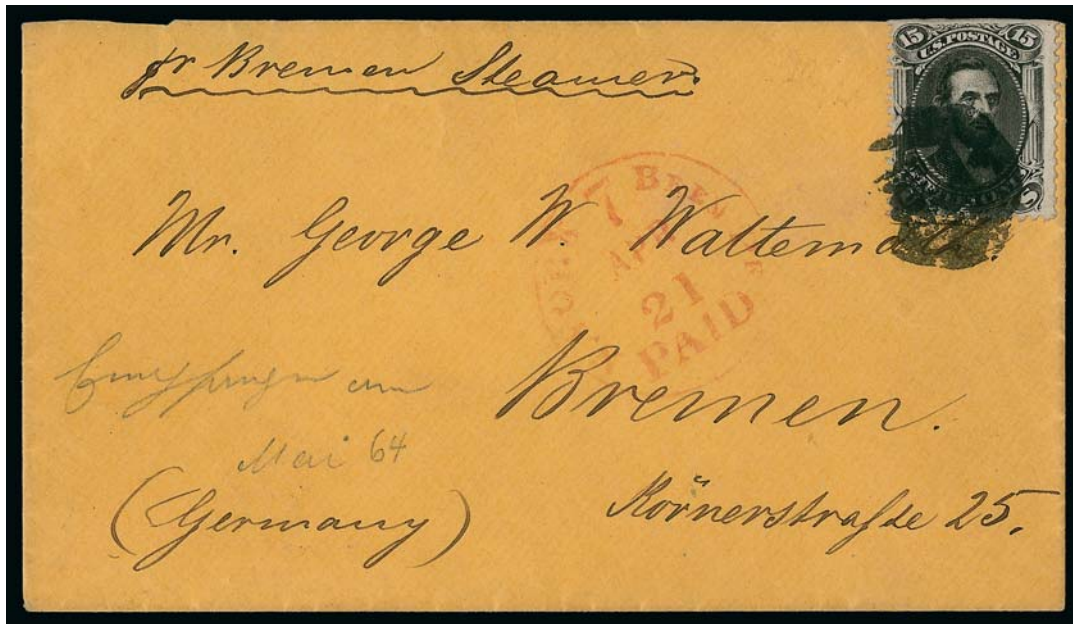


28

- 26 ☒ **3c Rose (65).** Radiant color, cancelled by “U.S.” Surrounded by 13 Stars fancy cancel, “Albany N.Y. Oct. 9” circular datestamp on cover to Porter’s Corners N.Y., with original 1865-dated enclosure, barely reduced at left, small piece out of stamp at right, Very Fine strike of this attractive fancy cancel E. 300-400
- 27 ☒ **3c Rose (65).** Choice centering, tied by well-struck “Paid” and Stars in Shield fancy cancel, “Dedham Mass. Aug. 8” circular datestamp on small cover to New York City, barely reduced at left, Very Fine and attractive, this cancel is also known on the 1869 Pictorial Issue E. 300-400
- 28 ☒ **3c Rose (65).** Centered to top right, tied by 5-Bar Shield and Crossed Branches in Circle fancy cancel and by indistinct “New-York Feb. 21” circular datestamp, second strike at right, on cover to Hartford Conn., slightly reduced at right and small piece out of back, small toned spot just affects stamp, Very Fine strike E. 200-300



- 29 ✉ **3c Rose (65).** Cancelled by **negative Shield in Circle fancy cancel**, "Leavenworth Kas. Nov. 12" circular datestamp on orange cover to St. Louis, missing small part of top flap, Very Fine strike, also accompanied by similar cancel on stampless cover with Nov. 13 circular datestamp to Brooklyn N.Y., Very Fine, highly exhibitable E. 200-300
- 30 ✉ **3c Rose (65).** Choice centering with wide and balanced margins, tied by well-struck **Hollow 6-Point Star with Rays fancy cancel** and "Kirkville Mo. Jul. 30" circular datestamp on red and blue **Standing Liberty with Sword and Flag Patriotic** cover to Logan O., slightly reduced at left, minor edgewear, stamp with toned spot at upper left, still Very Fine strike of this elaborate and scarce fancy cancel E. 400-500
- 31 ✉ **3c Rose (65).** Bright color, cancelled by **green Solid Star fancy cancel**, matching "Sharon Vt. Mar. 15" circular datestamp on cover to South Hadley Mass., trivial edgewear, few bent perfs at top, Very Fine strike in this distinctive green color E. 300-400



32

- 32 ☒ **15c Black (77).** Intense shade and impression, tied by full clear strike of **New York City Union Soldier's Head fancy cancel** on orange cover **to Bremen, Germany**, red "N. York Paid 7 Brem. Pkt. Apr. 21" (1866) credit datestamp (used in error, should be 12c), perfs trimmed at top where slightly reduced from opening, missing small part of top flap

VERY FINE. A BEAUTIFUL EXAMPLE OF THE FAMOUS UNION SOLDIER'S HEAD FANCY CANCELLATION OF NEW YORK CITY ON A COVER TO GERMANY. THIS IS THE EARLIEST DOCUMENTED USE OF THE NEWLY-ISSUED 15-CENT LINCOLN MEMORIAL STAMP.

The creation and use of this fancy cancel in the Spring of 1866 coincided with the return of soldiers from the Civil War. It is known on at least one domestic cover, but apparently the cancelling device migrated to the foreign-mail exchange office, where it was used to cancel stamps on mail to foreign countries. This explains why it is found on high values of the 1861-66 Issue, including the 10c, 12c, 15c, 24c, 30c and 90c denomination stamps off cover. Covers with this cancel are very rare, probably because European stamp collectors removed the high-value stamps from covers. We recently offered one to Italy in Part One of the Raymond Vogel collection (realized \$32,500 hammer).

This is the only 15c Lincoln cover with the Soldier's Head cancel known to us. There is no year-dated marking on the cover (the pencil note in German must refer to something other than content, such as enlistment date for a soldier). The Soldier's Head cancel was used only in 1866; therefore, this must be April 21, 1866. This cover moved up to become the earliest documented use of the 15c Lincoln stamp after the April 14 cover (ex Landau) received a negative certificate. However, we are not convinced that the stamp on the April 14 cover did not originate. Contemporary reports indicate that the 15c Lincoln stamps were issued in April 1866, coinciding with the one-year anniversary of Lincoln's assassination. This cover was probably carried on the North German Lloyd's *Hansa*, which departed New York on April 21, 1866, and arrived in Bremen on May 4.

Ex Haas and Eno. With 1987 P.F. certificate..... E. 10,000-15,000



32 detail



33

- 33 ☒ **3c Rose (65).** Tied by clear strike of **negative "Lincoln" and Stars in Circle fancy cancel**, matching "Albany N.Y. Oct. 6" (1866) circular datestamp on cover with **State of New York Comptroller's Office corner card** to Fayette N.Y., minor cover edgewear incl. small tear at upper right

VERY FINE. A BEAUTIFUL STRIKE OF THIS SCARCE LINCOLN MEMORIAL CANCELLATION.

Very few strikes of this Lincoln memorial cancellation are known on cover, and most are blurry or weak strikes. The New York State Comptroller in 1866 was Thomas Hillhouse. The Albany postmaster in 1866 was George Dawson. Both Hillhouse and Dawson were ardent pro-Union Republicans. E. 4,000-5,000



33 detail

1861-68 ISSUE



34

- 34 ☒ **3c Rose (65).** Centered to left, tied by exceptionally clear strike of **Man Smoking Pipe fancy cancel of Waterbury Conn.** (Rohloff E-1), light strike of "Waterbury Con. Sep. 20, '67" double-circle datestamp on cover to Blackstone Mass., barely reduced at left
 EXTREMELY FINE STRIKE OF THE DELICATELY-CARVED MAN SMOKING PIPE FANCY CANCELLATION OF WATERBURY, CONNECTICUT.
 Ex Matthies and Grunin. With 1980 P.F. certificate E. 15,000-20,000



34 detail



35

- 35 ☒ **3c Red, F. Grill (94).** Tied by bold strike of **Mortar & Pestle fancy cancel of Waterbury Conn.** (Rohloff O-6), neat "Waterbury Ct. Jun. 14" (1869) circular datestamp on cover to Meriden Conn., barely reduced at top and missing part of top flap, stamp with toned spots

VERY FINE STRIKE OF THIS RARE MORTAR & PESTLE FANCY CANCEL OF WATERBURY. THIS IS THE FIRST OF THIS TYPE ON COVER WE HAVE OFFERED SINCE KEEPING COMPUTERIZED RECORDS.

Full covers with this Waterbury Mortar & Pestle cancel are rare. We have offered one off cover since keeping computerized records, in our recent sale of the Gordon Eubanks collection. We also offered a Type 3 (Rohloff O-7) in our 2011 Rarities sale, which realized \$17,000 hammer.

Ex Matthies and Grunin. With 1980 P.F. certificate as Scott No. 65, which it is not.....
..... E. 4,000-5,000



35 detail



36

- 36 ☒ **3c Rose (65).** Tied by well-struck **Running Fox fancy cancel of Hockanum Conn.**, fox running to the right with rows of small squares above and below, "Hockanum Con. Dec. 17" circular datestamp on mourning cover to Westford Conn., perfs slightly in and shortish perf at left, cover slightly reduced at left

EXTREMELY FINE STRIKE OF THE HOCKANUM RUNNING FOX FANCY CANCEL, ONE OF THE RAREST OF ALL 1861 ISSUE ERA FANCY CANCELLATIONS.

A history of the fascinating Hockanum Running Fox cancel, written by Connecticut postal historian William J. Duffney, can be downloaded as a PDF file at http://web.me.com/ctpostroad1/CtPP/Postal_Markings_files/Dudley%27s%20Fox%20Story%20Dec%202010%20LR.pdf

The Running Fox cancel was carved by postmaster Dudley Fox, who was also a silver-smith, giving him the skills to carve an intricate fancy cancel. Duffney reports five covers with the Running Fox cancel (all types, facing right or left). This is one of the finest.
..... E. 4,000-5,000



36 detail



37

- 37 ✉ **3c Rose, E. Grill (88).** Three wide margins, s.e. at left, just in at top, tied by **Hand Pointing West fancy cancel of West Point Miss.**, "West Point Miss. Apr. 29" circular datestamp on orange cover to New Haven Conn.

EXTREMELY FINE. A MAGNIFICENT FANCY CANCELLATION SYMBOLIZING THE "HAND POINTING WEST" OF WEST POINT, MISSISSIPPI.

Ex Brigham and Haas. With 1980 P.F. certificate incorrectly identifying the stamp as Scott No. 65..... E. 1,500-2,000



37 detail



38

- 38 ☒ **3c Rose (65).** Bright color, tied by perfect strike of **blue Masonic Seeing Eye fancy cancel** and matching "Washington Ind. Jun. 6" circular datestamp on yellow cover to Dillsburg Penn., expertly repaired along right edge slightly affecting stamp, Very Fine strike of this desirable and scarce fancy cancel E. 1,000-1,500



39

- 39 ☒ **3c Rose (65).** Bright color, tied by well-struck **blue negative Masonic Square and Compass fancy cancel**, matching "Brattleboro Vt. Sep. 21" double-circle datestamp on cover to Boston, slightly reduced at right, Very Fine strike, Brattleboro postmaster Daniel Kellogg was responsible for most of the unusual fancy cancels during the 1861 Issue era E. 500-750



40

- 40 ☒ **3c Rose (65).** Centered to bottom right, cancelled by exceptionally clear strike of **Masonic Square and Compass in Circle fancy cancel**, very detailed design, "Cornish Me. Dec. 12" circular datestamp on orange cover to Kezar Falls Me., trivial edgewear, Very Fine strike of this elaborate Masonic fancy cancel, exceedingly skillful carving..... E. 1,000-1,500



41

- 41 ☒ **3c Rose (65).** Bright color, tied by **Masonic "G" in Square and Compass fancy cancel** and light strike of "Quincy Mass. 28 Mar." circular datestamp on cover to Marlboro Mass., missing top flap, Very Fine strike..... E. 200-300



42

- 42 ☒ **3c Rose (65).** Horizontal pair and single, tied by three clear strikes of **negative “Oct.” fancy cancel**, “Putnam Con. Oct. 10” circular datestamp on legal-size cover to Thompson Conn., slightly reduced at left, Very Fine strikes, this is the only multiple with this attractive fancy cancel we have encountered, with 1981 P.F. certificate E. 750-1,000



42 detail



43

- 43 ☒ **3c Rose (65).** Radiant color, tied by bold strike of **negative “Nov”** fancy cancel and “Putnam Con. Nov. 28” circular datestamp on cover to Fitzwilliam N.H., barely reduced at right, Extremely Fine strike, this is the finest known cover with the Putnam “Nov” cancel, ex Brigham and Haas, with 1980 P.F. certificate E. 1,000-1,500



44

- 44 ☒ **3c Rose (65).** Rich color, tied by bold strike of **negative “Dec”** fancy cancel, “Putnam Con. Dec. 8” circular datestamp on cover to Bristol R.I., reduced at right, Extremely Fine strike of this attractive and rare fancy cancel, much scarcer than than “Oct” and “Nov” designs, ex Brigham and Haas, with 1980 P.F. certificate E. 1,000-1,500



45

- 45 ☒ **3c Rose (65).** Choice centering, bright color, tied by perfect strike of **Stars and Dots in Pentagon fancy cancel**, matching "Putnam Con. May 8" circular datestamp on light pink cover to Galena O., barely reduced at right, Extremely Fine, a stunning cover, with 1986 P.F. certificate E. 500-750



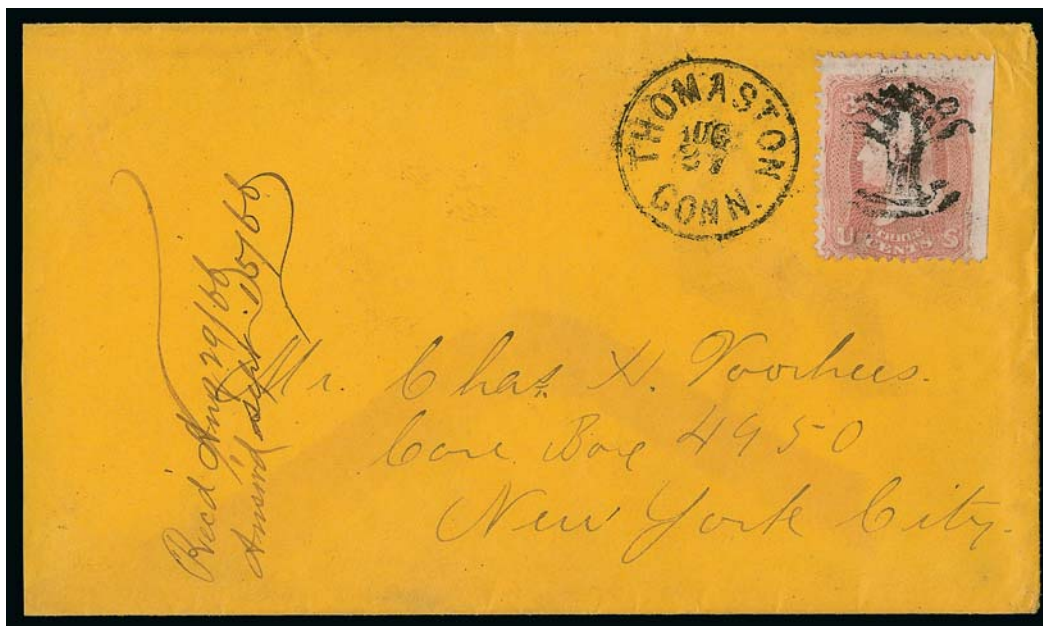
46

- 46 ☒ **3c Rose (65).** Radiant color, tied by **Anchor fancy cancel** and "Putnam Con. Aug. 16" circular datestamp on cover to Warwick Mass., barely reduced at right, Very Fine strike E. 300-400



47

- 47 ☒ **3c Rose (65).** Bright color, tiny corner perf crease at top right, tied by well-struck **Devil & Pitchfork fancy cancel**, matching "West Meriden Conn. Jun. 3" circular datestamp on small cover to Higganum Conn., cover with some toning and minor edgewear, Very Fine, an unusually clear strike of this desirable fancy cancel, for a history of the Devil & Pitchfork, go to http://web.me.com/ctpostroad1/CtPP/Postal_Markings_files/Devil%20Article%20FEB%202011%20LR.pdf, with 1994 P.F. certificate E. 750-1,000



48

- 48 ☒ **3c Rose (65).** Natural s.e. at right, cancelled by well-struck **Charter Oak fancy cancel**, "Thomaston Conn. Aug. 27" (1866) circular datestamp on buff cover to New York, receipt docketing at left, cover barely reduced at left, Extremely Fine strike of this distinctive fancy cancel, a similar example realized \$1,900 hammer in our 2007 sale of the Starnes collection E. 750-1,000



49

- 49 ☒ **3c Rose (65).** Centered to top left, tied by **Oil Barrel fancy cancel** and "Oil City Pa. Oct. 13" circular datestamp on cover to Pontiac Mich., Very Fine strike of this extremely rare fancy cancel, Oil City was one of the "petroleum" towns that thrived after Col. Drake drilled the first well in nearby Titusville in 1859..... E. 400-500



50

- 50 ☒ **3c Rose, E. Grill (88).** Rich color, clear grill, few small flaws, tied by well-struck **Fouled Anchor fancy cancel**, "Fayville Mass. Aug. 5, 1868" circular datestamp on cover with embossed "B" at left to West Westminster Vt., Very Fine strike..... E. 400-500



51



52

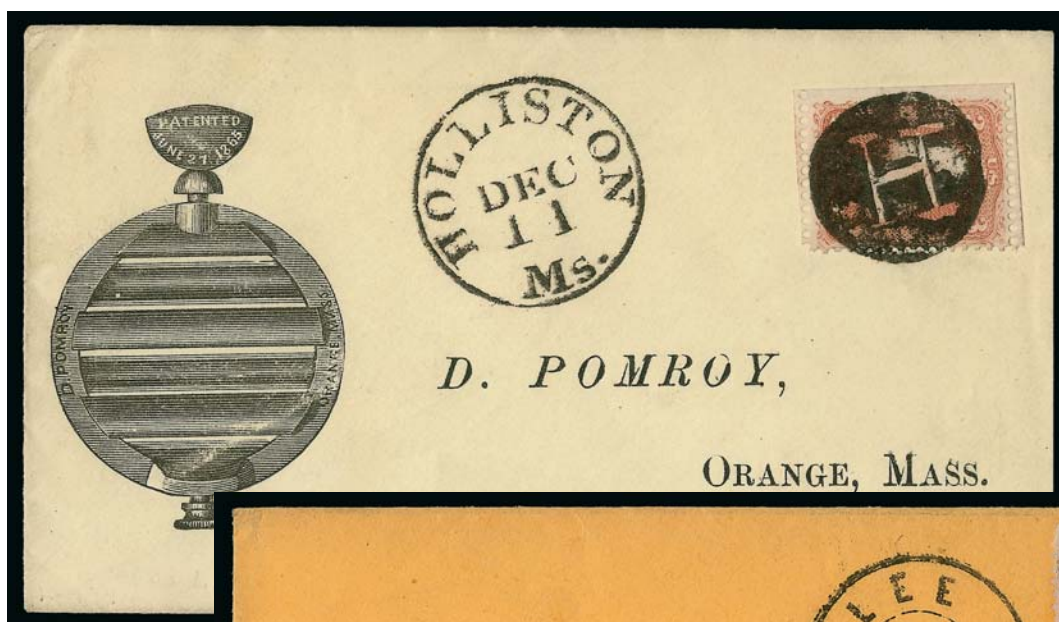


53



54

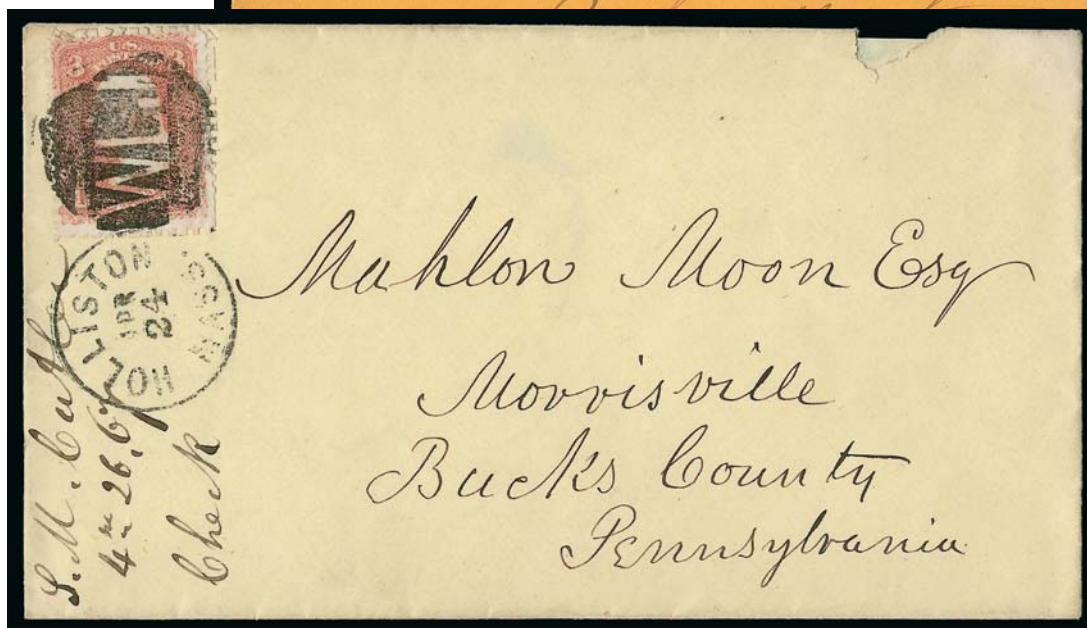
- 51 ☒ **3c Red, F. Grill (94).** Clearly-defined grill, tied by well-struck **Mask fancy cancel**, "Cleveland O. Oct. 12" circular datestamp on cover to Sandusky O., slightly reduced at right, Very Fine strike E. 300-400
- 52 ☒ **3c Rose (65).** Radiant color, tied by **blue Mask fancy cancel**, matching "Newark N.J. May 8" circular datestamp on orange cover to Newburgh N.Y., with original 1868-dated enclosure, Very Fine strike of this unusual fancy cancel E. 300-400
- 53 ☒ **3c Rose, E. Grill (88).** Clearly-defined grill, bright color, tied by **Mask fancy cancel**, "Phila. Pa. Mar. 29" circular datestamp on cover to Richmond Va., few perfs affected from placement at edge of cover, pulled perf at left, Very Fine strike E. 200-300
- 54 ☒ **3c Red, F. Grill (94).** Rich color, clear grill, tied by **Quince fancy cancel** and "Philada. Pa. Nov. 2" circular datestamp on cover to Easton Pa., minor edgewear, Very Fine strike, ex Gibson, there is a Quince Street in Philadelphia but we have no confirmation whether it was the inspiration for this design..... E. 200-300



55



56



57

- 55 ☒ **3c Rose (65).** Intact perfs at top and bottom and s.e. at left, tied by bold strike of **negative "H" fancy cancel**, "Holliston Ms. Dec. 11" circular datestamp on **illustrated** cover depicting a patented mechanical device, printed address to D. Pomroy in Orange Mass., slightly reduced at right, Very Fine strike..... E. 200-300
- 56 ☒ **3c Rose (65).** Rich color, tied by **negative "DPH" postmaster's initials fancy cancel**, "Lee Mass. Dec. 4, 1866" double-circle datestamp on orange cover to King's Ferry N.Y., barely reduced at right, Very Fine strike..... E. 200-300
- 57 ☒ **3c Rose (65).** Tied by bold strike of **negative "WLJ" postmaster's initials fancy cancel** and "Holliston Mass. Apr. 24" circular datestamp on cover to Morrisville Penn., 1867 docketing at left, small piece out of cover at upper right, Extremely Fine strike E. 200-300

1869 PICTORIAL ISSUE



58

- 58 **3c Ultramarine (114).** Two singles, tied on piece by two clear strikes of “**KKK**” **Skull & Crossbones fancy cancel of Union Mills Pa.**, trace of circular datestamp at bottom, right stamp short perf at top, left stamp single toned perf tip at upper left

EXTREMELY FINE STRIKES OF THE UNION MILLS “KKK” SKULL AND CROSSBONES FANCY CANCEL. A PHENOMENAL RARITY.

Union Mills, Pennsylvania, was the source of several remarkable fancy cancel designs in the 1869-71 period, including the “KKK” Skull & Crossbones, Kleagle Mask (two versions) and the Horse in Hat designs. All indicate Ku Klux Klan activity in this Western Pennsylvania town during the immediate post-war Reconstruction period. William C. Jackson was the postmaster around the time the “KKK” Skull & Crossbones cancel and other Klan-related cancels were created.

This is one of a small number of pieces salvaged from a correspondence. We know of three full covers with this cancel, one of which is in the Hirzel collection at the Swiss PTT Museum..... E. 5,000-7,500



59

- 59 ☒ **3c Ultramarine (114).** Rich color, tied by gorgeous strike of **Large Bee fancy cancel of Waterbury Conn.** (Rohloff A-13), "Waterbury Ct. Mar. 13" circular datestamp on cover to Aiken S.C., cover tear at left, single tiny perf imperfection at upper left

EXTREMELY FINE STRIKE OF THE RARE WATERBURY LARGE BEE FANCY CANCELLATION.

The Large Bee is considerably scarcer than the Small Bee. This (and the upcoming off-cover example in the Laehder Collection) is the first we have offered since keeping computerized records.

Ex Matthies and Grunin..... E. 15,000-20,000



59 detail



60

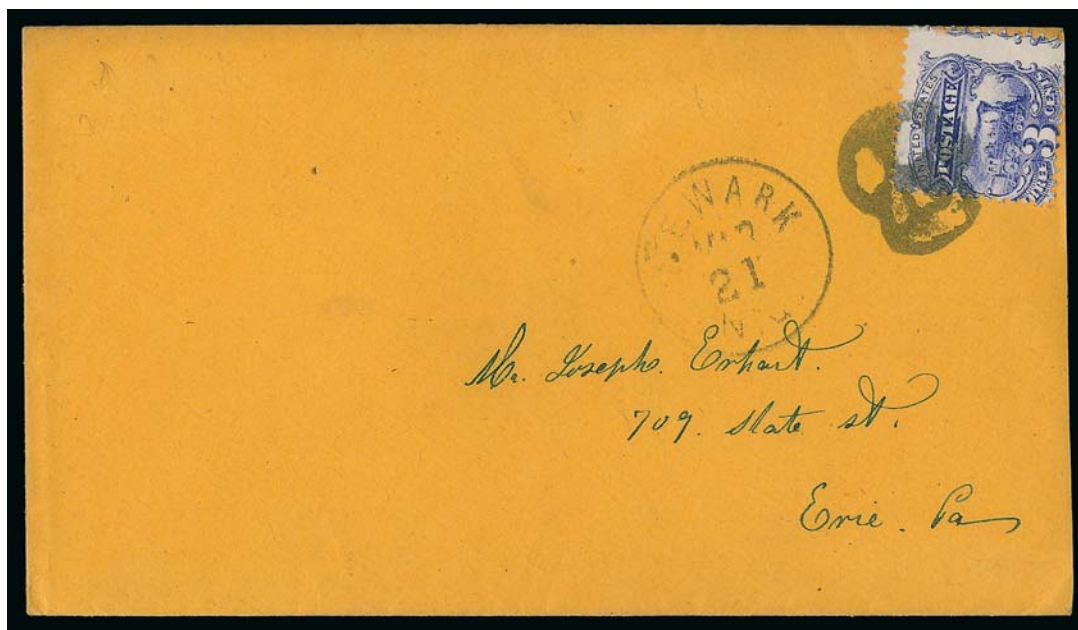
- 60 ☒ **3c Ultramarine (114).** Tied by clear and complete strike of **Three-Leaf Clover fancy cancel of Waterbury Conn.** (Rohloff F-13) and "Waterbury Ct. Dec. 25" (1869) **Christmas Day** circular datestamp on cover to Warren Conn., barely reduced at right

EXTREMELY FINE. AN OUTSTANDING EXAMPLE OF POSTMASTER JOHN W. HILL'S "THREE-LEAF CLOVER" FANCY CANCEL USED ON CHRISTMAS DAY 1869.

Ex Moody, Matthies and Haas..... E. 4,000-5,000



60 detail



61

- 61 ☒ **3c Ultramarine (114).** Bright color, centered to bottom left, tied by well-struck **Skull fancy cancel**, "Newark N.J. Mar. 21" circular datestamp on orange cover to Erie Pa., barely reduced at right, Very Fine strike, unusual and scarce cancel on the 1869 Pictorial Issue..... E. 750-1,000



62

- 62 ☒ **3c Ultramarine (114).** Wide margins and choice centering, tied by bold strike of **fancy Square Shield fancy cancel**, "Lansing Mich. Mar. 14" circular datestamp on cover to Kalamazoo Mich., Extremely Fine..... E. 300-400

BANK NOTE ISSUES



63

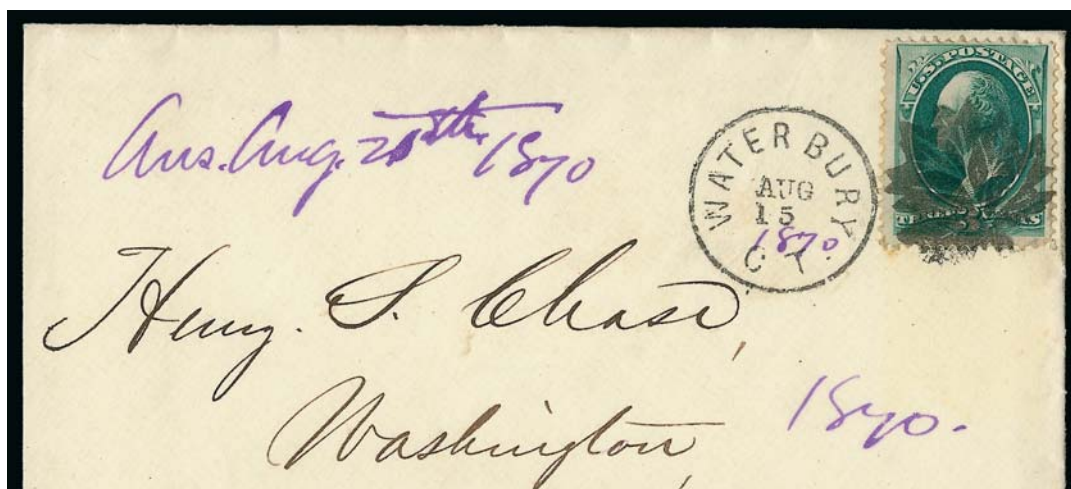
- 63 ☒ **1c Gray Blue (206).** Two, tied by two bold strikes of **Large Skull & Crossbones fancy cancel** and "Stoneham Mass. Jun. 20, 6PM 1887" circular datestamps on cover to Brockton Mass., receiving backstamp, stamps and cover with some slight toning

EXTREMELY FINE. CONSIDERED TO BE THE FINEST OF THE FEW KNOWN COVERS WITH THE STONEHAM LARGE SKULL & CROSSBONES CANCEL. A SPECTACULAR DOUBLE STRIKE OF THIS GRINNING SKULL DESIGN.

Ex Judd..... E. 3,000-4,000



63 detail



64



65



66

- 64 ☒ **3c Green (147).** Rich color, tied by well-struck **Maple Leaf fancy cancel of Waterbury Conn.** (Rohloff L-7), "Waterbury Ct. Aug. 15" circular datestamp on cover to Washington Conn., purple 1870 docketing, reduced at left, light corner crease at top right, Very Fine strike..... E. 300-400
- 65 ☒ **3c Green (158).** S.e. at left, tied by **Shield fancy cancel of Waterbury Conn.**, (Rohloff Q-7), "Waterbury Conn. Mar. 27 4PM" circular datestamp, on cover to Plymouth Conn., barely reduced at right, Very Fine strike of this scarce Waterbury fancy cancel E. 300-400
- 66 ☒ **3c Green (147).** Bold strike of **Winged Bug fancy cancel** with matching "Mount Vernon O. Aug. 15" circular datestamp on small neat cover to Coshocton O., stamp with small pre-use tear at left, otherwise Very Fine, a beautiful strike E. 400-500



67



68



69

- 67 ☒ **3c Green (184).** Cancelled by clear strike of **Skull & Crossbones fancy cancel**, matching "West Gardner Mass. Apr. 30" shield datestamp, barely reduced at right, Extremely Fine strike, this standard Skull & Crossbones is rarely seen with a fancy town marking..... E. 200-300
- 68 ☒ **3c Green (158).** Tied by two bold strikes of **negative "JJK" postmaster's initials fancy cancel**, matching part strike of "Geneva Ill. Jul. 27" circular datestamp on small bright blue cover to Alfred Me., Very Fine strikes, a gorgeous cover from the H.B. Shaw correspondence..... E. 200-300
- 69 ☒ **2c Red Brown (210).** Cancelled by **"MB" fancy cancel**, "Mystic Bridge Conn. 30 Sep." circular datestamp on cover to Springfield Mass., receiving backstamp, minor edgewear, some trivial soiling near perfs, Very Fine..... E. 100-150

POSTAL STATIONERY



- 70 ☒ **2c Brown, Entire (U277).** Cancelled by perfect strike of **Waving Flag fancy cancel**, "Enfield Conn. Aug. 2, 1886" duplex circular datestamp and **Star in Circle**, used to Farmington Ill., receiving backstamp, tiny edge reduction at lower right does not affect the stamp or markings, Extremely Fine strike, ex Knapp..... E. 300-400
- 71 ☒ **2c Brown, Entire (U277).** Clear strike of "Larkin's Fork Ala. Oct. 13, 1885" duplex with **Indian Head**, on 2c entire to Scottsboro Ala., day changed in ms. to "16", receiving backstamp, some overall soiling and edge faults, small staple hole, Very Fine strike of this desirable fancy cancel from a small Southern post office..... E. 200-300
- 72 ☒ **3c War, Red on Blue, Entire (UO54).** Bold strike of "West Berkeley Cal. Apr. 1, 1883" duplex cancel with **Boot fancy cancel**, War Department imprint and addressed to Chief Signal Officer, U.S. Army, Washington, receiving backstamp, Very Fine..... E. 400-500
- 73 ☒ **1c Brown on Buff, Postal Card (UX3).** Cancelled by **Laughing Head fancy cancel**, "New York P.O. Aug. 10 6PM" circular datestamp to Mt. Carmel Ct., 1874 docketing, small nick at top and light bend at bottom, still Very Fine strike E. 200-300



74EX

75EX

76EX

- 74 ☒ **Fancy Cancels Balance.** Nine covers, most with 3c Rose (65) with cancels such as three-leaf clover, geometric and Cross used from Boston, Leominster stovepipe, blue Star in Circle of Windsor N.Y., last three bear No. 114 incl. Leaf, target and Negative Star from Normal Ill., few flaws, every strike is Very Fine, attractive group.....(Photo Ex) E. 400-500
- 75 ☒ **Fancy Cancels on Bank Note Covers.** Four, incl. Skull & Crossbones from Coleville Pa., Star from Stepney Conn., boxed Geometric from St. Louis to Switzerland, last is straight-line with name of postal clerk, few minor flaws, overall Very Fine strikes.....(Photo Ex) E. 300-400
- 76 ☒ **Fancy Cancels on Postal Cards.** Six postal cards with cancels incl. negative Top Hat of Danbury Conn., Skull & Crossbones and negative "H R" of Pittsburgh, Insect from Macon Ga., negative "OK" of Beloit Wis., Maltese Cross of Buffalo Wy., some flaws, all are Very Fine strikes.....(Photo Ex) E. 500-750

END OF SALE — THANK YOU

Bid Form—15% Premium Sale

Sale 1012

Monday, October 10, 2011

1

Please provide the following information:

NAME.....

ADDRESS.....

CITY/STATE/ZIP

TEL. (DAY) FAX.....

E-MAIL.....

PADDLE #

Do not write in box

2

Have you purchased from us in the past 5 years? ☐ YES (if so, please go to Section 3)

☐ NO (please provide a trade reference and bank information)

References:

Stamp Firm:..... Telephone.....

Bank:..... Account #

3

In the space provided below, enter the **lot number** from **Sale 1012** and your corresponding bid. Please use **whole dollar amounts** only and enter the **maximum bid** you wish to have us execute on your behalf, according to the **bidding increments** on other side of this form. **Your bid will NOT include the 15% buyer's premium.** We will advance the bidding at one increment over the

next highest bid; therefore, you may be awarded the lot at less than your maximum bid. Please do not use "plus" bids or "buy" bids. If you wish to bid on one lot **or** the other, indicate your "or" bid between lot number/bid entries and bracket your choices. If you wish to place a **bidding limit** on the total amount of your bids, please enter your limit in the space marked "Limit Bids".

PLEASE NOTE BIDDING INCREMENTS AND SHIPPING CHARGES (ON BACK OF THIS PAGE)

☐ **LIMIT BIDS:** Check this box if you wish to limit the total amount of your bids (not including the **15% buyer's premium**) in this sale. Your bids will be executed until your bidding limit no longer allows for additional bids. **The total amount you wish to bid is:** \$

Lot	Bid	Lot	Bid	Lot	Bid
	\$		\$		\$

4

AGREEMENT: By signing this bid form, you agree to pay for purchases resulting from your bids, in accordance with the **Conditions of Sale** printed in the sale catalogue. You also agree to pay the **15% buyer's premium, shipping costs (see reverse), and sales tax or use tax or customs duty which may be due on the total invoiced amount.** It is

understood that these bids will be executed by Siegel Auction Galleries as a courtesy to absentee bidders, but you waive the right to make any claim against the auctioneer or the firm, arising from the these bids. **You are responsible for your written bids, including any errors on your part and any additions or changes to the bids herein.**

Payment must be made by cash, check, money order or wire transfer. Credit cards will not be accepted.



SIGNED..... TODAY'S DATE

5

Please submit your bids promptly (telephone bids must be confirmed in writing).

Mail to: **Robert A. Siegel Auction Galleries, Inc.**

60 E. 56th Street, 4th Floor, New York, N.Y. 10022

Telephone (212) 753-6421

OR FAX YOUR BIDS: (212) 753-6429

Shipping Instructions, Bidding Increments and space for additional bids on other side of form



Additional Bids

Sale 1012—October 10, 2011

Lot	Bid	Lot	Bid	Lot	Bid
	\$		\$		\$

Shipping and Transit Insurance

We will be pleased to arrange for shipping and transit insurance for purchases in this sale (except those described as “floor sale only”). To expedite billing and delivery of lots to hundreds of buyers per sale, we use standard charges for postage and insurance, based on the package weight and mailing requirements (see schedule). The standard charges are sometimes slightly more or less than the actual postage or Fedex fees, but we do not include any charge for our labor or packing costs. Therefore, we ask all buyers to remit the prescribed amount for shipping charges.

Transit insurance is provided in all cases, except when the buyer has furnished us with proof that insurance coverage is effective under another policy. Proof, in such cases, will be accepted in the form of a written certificate from the insurance carrier.

You are responsible for insurance charges, which will be added to your invoice. This coverage is provided for our mutual protection against theft or loss in transit.

Bidding Increments

The auctioneer may regulate the bidding at his discretion. However, to assist absentee bidders in establishing their maximum bid for each lot, the increments shown at right will be used in most cases. We recommend that written bids conform to these increments (those which do not will be reduced to the next level).

REVISED CHARGES FOR SHIPPING EFFECTIVE SEPTEMBER 1, 2010

We have reduced the Fedex Envelope charge to \$20, reflecting the elimination of the fuel surcharge. All other charges remain the same.

Current Postage & Insurance Charges

Weight/Class	Shipping Method	Charges
Up to 2 lbs.	Fedex Envelope	\$20.00
Over 2 lbs.	Fedex Box	\$35.00*
Non-U.S.	Fedex/Courier	\$50.00**
Bulk Lots	UPS Preferred	By weight and value
<p>These fees reflect additional Fedex charges for residential delivery, signature and fuel surcharge.</p> <p>*Higher fees will be charged on packages weighing more than 5 lbs. or insured for more than \$75,000.</p> <p>**Buyers are liable for all customs duties and clearance charges. An accurate declaration of value will be made on all import/export documents.</p>		

9/2009

Up to \$50	\$5	\$3,000-7,000	\$250
\$50-200	\$10	\$7,000-20,000	\$500
\$200-500	\$25	\$20,000-30,000	\$1,000
\$500-1,000	\$50	\$30,000-75,000	\$2,500
\$1,000-3,000	\$100	\$75,000 up	\$5,000

6/2008



PRICES REALIZED FOR SALE 1012---10/10/2011
The Artemis Collection of United States Fancy Cancellations

Robert A. Siegel Auction Galleries, Inc.
60 East 56th Street, 4th Floor, New York, NY 10022
Tel (212) 753-6421 Fax (212) 753-6429

Lot#	Realized	Lot#	Realized
1	1,900	43	4,500
2	425	44	6,500
3	60,000	45	2,500
4	4,250	46	500
5	1,100	47	2,200
6	1,300	48	1,100
7	3,250	49	1,800
8	1,100	50	1,400
9	1,200	51	375
10	250	52	200
11	1,900	53	250
12	950	54	140
13	6,500	55	850
14	8,000	56	225
15	1,000	57	250
16	1,000	58	13,000
17	2,100	59	20,000
18	8,500	60	5,250
19	2,700	61	550
20	3,750	62	425
21	1,400	63	6,000
22	1,300	64	600
23	3,250	65	200
24	1,400	66	375
25	450	67	250
26	300	68	350
27	225	69	60
28	300	70	300
29	400	71	550
30	2,800	72	900
31	700	73	1,700
32	15,000	74	1,300
33	9,000	75	450
34	17,500	76	900
35	6,250		
36	16,500		
37	5,250		
38	3,250		
39	425		
40	2,300		
41	140		
42	4,750		