

THE SCARSDALE COLLECTION



PART SEVEN—SALE 1018
WEDNESDAY, FEBRUARY 29, 2012

Robert A. Siegel

AUCTION GALLERIES, INC.

THE SCARSDALE COLLECTION

PART SEVEN—SALE 1018
WEDNESDAY, FEBRUARY 29, 2012
AT 1:30 P.M. (LOTS 1-254)

United States Beer Stamps

Offered at unreserved public auction by

Robert A. Siegel

AUCTION GALLERIES, INC.

60 EAST 56TH STREET, 4TH FLOOR
NEW YORK, NEW YORK 10022

Phone (212) 753-6421 Fax (212) 753-6429

E-mail: stamps@siegelauctions.com

www.siegelauctions.com

PRE-SALE EXHIBITION

Monday, February 27 — 10:00 a.m. to 4:00 p.m.
Tuesday, February 28 — 10:00 a.m. to 4:00 p.m.
or by appointment (please call 212-753-6421)

Lots in this sale will be sold subject to a 15% buyer's premium



Robert A. Siegel

AUCTION GALLERIES, INC.

60 EAST 56TH STREET, 4TH FLOOR, NEW YORK, N.Y. 10022

Phone (212) 753-6421 • Fax (212) 753-6429 • E-mail: stamps@siegelauctions.com

siegelauctions.com



Scott R. Trepel
President
strepel@siegelauctions.com



John P. Zuckerman
Senior Vice President
jzuckerman@siegelauctions.com



Corey Long
Vice President
clong@siegelauctions.com



Starr Tucker-Ortega
Accounts
stamps@siegelauctions.com



Laura Melvin
Bids and Inquiries
laura@siegelauctions.com

Scott R. Trepel Principal Auctioneer (licensed by NYC Dept. of Consumer Affairs, #795952)

Nathaniel Estes Catalogue and Digital Production

Information for Bidders

Bidding

The following means are available for placing bids:

1) Attending the Live Auction in Person: All bidders must register for a paddle, and new bidders must provide references at least three business days in advance of the sale.

2) Live Internet Bidding: Instructions for participating as a Live Internet Bidder are provided on the page opposite.

3) Phone Bidding: Bidders can be connected to the sale by phone and bid through a member of staff. Requests for phone bidding are subject to approval (please contact our office at least 24 hours before the sale). A signed Bid Form is required.

4) Absentee Bids. All bids received in advance of the sale, either by mail, fax, phone, e-mail or internet, are Absentee Bids, which instruct the auctioneer to bid up to a specific amount on one or more lots in the sale. Absentee Bids sent by phone, fax or e-mail should arrive at least one hour prior to the start of the sale session. Bids entered through Live Internet Bidding will be visible to the auctioneer during the sale. Written bids should be entered legibly on the Bid Form in the sale catalogue. E-mail and internet bids should be carefully typed and double-checked. All new bidders must provide references. We recommend calling or e-mailing to confirm that Absentee Bids sent by mail, fax or e-mail have been received and entered.

Pre-Sale Viewing

Subject to availability, certain lots (except group lots) can be sent to known clients for examination. Requests must be made no later than 7 days prior to the sale. Lots must be returned on the day received. Postage/insurance costs will be invoiced.

In addition to regular viewing, clients may view lots by appointment. Our staff will be pleased to answer questions or provide additional information about lots.

Expert Certification

Individual items offered without a PF or PSE certificate dated within the past five years may be purchased subject to independent certification of genuineness and our description. **Please refer to the Conditions of Sale and Grading Terms for policies governing certification.**

Shipping and Delivery

Procedures and charges for shipping lots are printed on the back of the Bid Form. **Bidders are responsible for all prescribed shipping charges and any applicable sales tax or customs duties.**

Price Realized

Prices realized are sent with each invoice. Bidders with e-mail will receive a Bid Results report after the sale. Session results are posted immediately to siegelauctions.com

Live Internet Bidding at Siegel Auctions

BIDDING FROM YOUR COMPUTER LETS YOU BE PART OF THE LIVE AUCTION FROM ANYWHERE IN THE WORLD!

There's NO SUBSTITUTE for following the auction in real time.
Live Internet Bidding lets you bid and buy as though you were right there in the saleroom.
And it's easy.

This step-by-step guide will instruct you how to register, set your browser and use the bidding interface.

Start by following the simple steps to become a registered Live Internet Bidder.
Once you've been approved for bidding, you can listen to the auction and place bids with the click of a mouse.

Registering with STAMP AUCTION NETWORK & SIEGEL AUCTION GALLERIES

Live Internet Bidding is managed by Stamp Auction Network (SAN).
To bid, you must be registered and approved by *both* SAN and Siegel.
To decide what you need to do, choose the description below that best fits you.



I've already registered with SAN and have been approved by Siegel for internet bidding.

I'm a Siegel client, but I'm not registered with SAN.

Go to stampauctionnetwork.com/siegel and click on "Register" at the top. Check the box for Robert A. Siegel Auction Galleries (under "R") and submit the form, indicating you are a Siegel client. Once registered at SAN, you're ready for internet bidding.

I've bid through SAN before, but this is the first time I've bid in a Siegel sale.

Then you just need to be approved by Siegel. Go to stampauctionnetwork.com/siegel and click on "Update Registration" at the top. Your SAN account information will be sent to us for approval (you might be asked for other trade references). Once approved by Siegel for bidding, you're ready for internet bidding.

I've never bid with Siegel, nor registered with SAN.

Go to stampauctionnetwork.com/siegel and click on "Register" at the top. Check the box for Robert A. Siegel Auction Galleries (under "R") and submit the form **with your trade references** (please, no family members or credit card companies as references). Once registered at SAN and approved by Siegel for bidding, you're ready for internet bidding.

Live Internet Bidding works by allowing registered bidders to observe and place bids.

Live Internet Bidding will work with any browser on both PC and Mac operating systems.

Before bidding by internet for the first time, we recommend finding a sale in progress and listening to the public broadcast or logging in as a registered bidder. This will help you develop a feel for the sale tempo and bidding interface.

Log on to the auction at stampauctionnetwork.com/siegel.

You can also log on at siegelauctions.com

When you're logged on as a Live Internet Bidder, the bidding interface shows a photo and description of the lot, the current bid (and your bidding status), options for placing competitive bids and buttons with bid increments.

- After you click on a bid amount, the auctioneer is immediately notified of your bid.
- Retracting a bid is usually not acceptable, so please bid carefully.
- If you bid and then decide to stop, the "Pass" button will tell the auctioneer you are no longer bidding.
- You can send messages to the auctioneer (for example, a request for extension).
- You can track prior realizations from the bidding screen.



"System Down" or "Lost Connection" events do occasionally happen.

If you have any problems with Live Internet Bidding please call **212-753-6421** for immediate assistance.

Conditions of Sale (please read carefully before bidding)

The property described in this catalogue will be offered at public auction by Robert A. Siegel Auction Galleries, Inc. ("Galleries") on behalf of various consignors and itself or affiliated companies. By bidding on any lot, whether directly or by or through an agent, in person, or by telephone, facsimile or any other means, the bidder acknowledges and agrees to all of the following Conditions of Sale.

1. The highest bidder acknowledged by the auctioneer shall be the buyer. The term "final bid" means the last bid acknowledged by the auctioneer, which is normally the highest bid offered. **The purchase price payable by the buyer will be the sum of the final bid and a commission of 15% of the final bid ("buyer's premium"), together with any sales tax, use tax or customs duties due on the sale.**

2. The auctioneer has the right to reject any bid, to advance the bidding at his discretion and, in the event of a dispute between bidders, to determine the successful bidder, to continue the bidding or to reoffer and resell the lot in dispute. The Galleries' record of the final sale shall be conclusive.

3. All bids are per numbered lot in the catalogue unless otherwise announced by the auctioneer at the time of sale. The right is reserved to group two or more lots, to withdraw any lot or lots from the sale, or to act on behalf of the seller. The Galleries will execute bidding instructions on behalf of clients, but will not be responsible for the failure to execute such bids or for any errors in the execution of such bids.

4. **Lots with numbers followed by the symbol ° are offered subject to a confidential minimum bid ("reserve"), below which the lot will not be sold. The absence of the symbol ° means that the lot is offered without a reserve. If there is no reserve, the auctioneer has sole discretion to establish a minimum opening bid and may refuse an offer of less than half of the published estimate. Any lot that does not reach its reserve or opening bid requested by the auctioneer will be announced as "passed" and excluded from the prices realized lists after the sale. The Galleries may have a direct or indirect ownership interest in any or all lots in the sale resulting from an advance of monies or goods-in-trade or a guarantee of minimum net proceeds made by the Galleries to the seller.**

5. Subject to the exclusions listed in 5(A), the Galleries will accept the return of lots which have been misidentified or which have obvious faults that were present when the lot was in the Galleries' custody, but not so noted in the lot description. **All disputed lots must be received by the Galleries intact with the original packing material within 5 days of delivery to the buyer but no later than 30 days from the sale date. (5A) EXCLUSIONS:** The following lots may not be returned for any reason: lots containing 10 or more items; lots from buyers who registered for the pre-sale exhibition or received lots by postal viewing, thereby having had the opportunity to inspect them before the sale; any lot described with "faults," "defects" or a specific fault may not be returned because of any secondary fault. Photographed lots may not be returned because of centering, margins, short/nibbed perforations or other factors shown in the illustrations. Lots may not be returned for any of the following reasons: the color of the item does not match the color reproduction in the sale catalogue or website listing; the description contains inaccurate information about the quantity known or reported; or a certification service grades a stamp lower than the grade stated in the description.

6. Successful bidders, unless they have established credit with the Galleries prior to the sale, must make payment in full before the lots will be delivered. Buyers not known to the Galleries must make payment in full within 3 days from the date of sale. **The Galleries retains the right to demand a cash deposit from anyone prior to bidder registration and/or to demand payment at the time the lot is knocked down to the highest bidder, for any reason whatsoever.** In the event that any buyer refuses or fails to make payment in cash

for any lot at the time it is knocked down to him, the auctioneer reserves the right to reoffer the lot immediately for sale to the highest bidder. **Credit cards are not accepted as payment.**

7. If the purchase price has not been paid within the time limit specified above, nor lots taken up within 7 days from the date of sale, the lots will be resold by whatever means deemed appropriate by the Galleries, and any loss incurred from resale will be charged to the defaulting buyer. Any account more than 30 days in arrears will be subject to a late payment charge of 1½% per month as long as the account remains in arrears. Any expenses incurred in securing payment from delinquent accounts will be charged to the defaulter. A fee of \$250.00 per check will be charged for each check returned for insufficient funds.

8. All lots are sold as genuine. **Any lot accompanied by a certificate issued by The Philatelic Foundation or by Professional Stamp Experts within 5 years of the sale date is sold "as is" and in accordance with the description on the certificate. Such lots may not be returned for any reason, including but not limited to a contrary certificate of opinion.** Buyers who wish to obtain a certificate for any item that does not have a P.F. or P.S.E. certificate (dated as above) may do so, provided that the following conditions are met: (1) the purchase price must be paid in full, (2) the item must be submitted to an acceptable expertizing committee with a properly executed application form within 21 days of the sale, (3) a copy of the application form must be given to the Galleries, (4) in the event that an adverse opinion is received, the Galleries retain the right to resubmit the item on the buyer's behalf for reconsideration, without time limit or other restrictions, (5) unless written notification to the contrary is received, items submitted for certification will be considered cleared 90 days from the date of sale, and (6) in the event any item is determined to be "not as described", the buyer will be refunded the purchase price and the certification fee up to \$600.00 unless otherwise agreed.

9. Until paid for in full, all lots remain the property of the Galleries on behalf of the seller.

10. Agents executing bids on behalf of clients will be held responsible for all purchases made on behalf of clients unless otherwise arranged prior to the sale.

11. The buyer assumes all risk for delivery of purchased lots and agrees to pay for prescribed shipping costs. Buyers outside the U.S. are responsible for all customs duties.

12. **The bidder consents that any action or proceeding against it may be commenced and maintained in any court within the State of New York or in the United States District Court for the Southern District of New York, that the courts of the State of New York and United States District Court for the Southern District of New York shall have jurisdiction with respect to the subject matter hereof and the person of the bidder. The bidder agrees not to assert any defense to any action or proceeding initiated by Galleries based upon improper venue or inconvenient forum. The bidder agrees that any action brought by the bidder shall be commenced and maintained only in a Federal Court in the United States District Court for the Southern District of New York or the State Court in the county in which Galleries has its principal place of business in New York. These Terms and Conditions shall be governed by and construed in accordance with the substantive laws of the State of New York.**

SCOTT R. TREPEL, Principal Auctioneer

Auctioneer's License No. 795952
N.Y.C. Department of Consumer Affairs
80 Lafayette Street, New York, N.Y. 10013
Telephone (212) 577-0111

Revised 1/2012

Copyright Notice

© 2012, Robert A. Siegel Auction Galleries, Inc. This catalogue in all versions, printed and electronic, is protected by copyright. The descriptions, format, illustrations and information used herein may not be reprinted, distributed or copied in any form without the express written consent of Robert A. Siegel Auction Galleries. Application for permission may be made in writing.

Grades, Abbreviations and Values Used in Descriptions

Grades and Centering

Our descriptions contain detailed information and observations about each item's condition. We have also assigned grades to stamps and covers, which reflect our subjective assessment. For stamps, the margin width, centering and gum are described and graded according to generally-accepted standards (an approximate correlation to numeric grades is provided at right). Although we believe our grades are accurate, they are not always exactly aligned with third-party grading terms or standards for all issues. **A lot may not be returned because a certification service grades a stamp lower than the grade stated in the description. Information from the P.S.E. Stamp Market Quarterly and P.S.E. Population ReportSM is the most current available, but lots may not be returned due to errors or changes in statistics or data.**

Extremely Fine Gem (90-100): The term "Gem" describes condition that is the finest possible for the issue. This term is equivalent to "Superb" used by grading services.







Extremely Fine (80-90): Exceptionally large/wide margins or near perfect centering.

Very Fine (70-85): Normal-size margins for the issue and well-centered with the design a bit closer to one side. "Very Fine and choice" applies to stamps that have desirable traits such as rich color, sharp impression, freshness or clarity of cancel.

Fine (60-70): Smaller than usual margins or noticeably off center. Pre-1890 issues may have the design touched in places.

Very Good (below 60): Attractive appearance, but margins or perforations cut into the design.

Guide to Gum Condition

Gum Categories:	MINT N.H.	ORIGINAL GUM (O.G.)				NO GUM
	 Mint Never Hinged <i>Free from any disturbance</i>	 Lightly Hinged <i>Faint impression of a removed hinge over a small area</i>	 Hinge Mark or Remnant <i>Prominent hinged spot with part or all of the hinge remaining</i>	 Part o.g. <i>Approximately half or more of the gum intact</i>	 Small part o.g. <i>Approximately less than half of the gum intact</i>	 No gum <i>Only if issued with gum</i>
Catalogue Symbol:	★ ★	★	★	★	★	(★)
PRE-1890 ISSUES	<i>Pre-1890 stamps in these categories trade at a premium over Scott value</i>			Scott Value for “O.G.”		Scott “No Gum” Values thru No. 218
1890-1935 ISSUES	Scott “Never Hinged” Values for Nos. 219-771	Scott Value for “O.G.” (Actual value will be affected by the degree of hinging)		Disturbed Original Gum: Gum showing noticeable effects of humidity, climate or hinging over more than half of the gum. The significance of gum disturbance in valuing a stamp in any of the Original Gum categories depends on the degree of disturbance, the rarity and normal gum condition of the issue and other variables affecting quality. For example, stamps issued in tropical climates are expected to have some		
1935 TO DATE	Scott Value for “Unused”					

Covers

Minor nicks, short edge tears, flap tears and slight reduction at one side are normal conditions for 19th century envelopes. Folded letters should be expected to have at least one file fold. Light cleaning of covers and small mends along the edges are accepted forms of conservation. Unusual covers may have a common stamp with a slight crease or tiny tear. **These flaws exist in virtually all 19th century covers and are not always described. They are not grounds for return.**

Catalogue Values and Estimates

Unless otherwise noted, the currently available *Scott Catalogue* values are quoted in dollars with a decimal point. Other catalogues are often used for foreign countries or specialized areas and are referred to by their common name: *Stanley Gibbons* (SG), *Dietz*, *American Air Mail Catalogue* (AAMC), *Michel*, *Zumstein*, *Facit*, etc. Estimates are indicated with an "E." and reflect our conservative valuation in dollars. Reserves will never exceed the low end of the estimate range; they will sometimes exceed Scott Catalogue value for stamps in Extremely Fine condition.

Because of certain pricing inconsistencies in the *Scott Catalogue*—for example, blocks that have no gum, the absence of premiums for Mint N.H. items, etc.—we cannot guarantee the accuracy of values quoted for multiples, specialized items and collection lots. We generally try to be conservative, but buyers may not return a lot because of a discrepancy in catalogue value due to Scott pricing inconsistencies.

Symbols and Abbreviations (see chart above for gum symbols)

田	Block	E	Essay	pmk.	Postmark	No.	Scott Catalogue Number
☒	Cover	P	Proof	cds	Circular Datestamp	hs	Handstamp
FC	Fancy Cancel	TC	Trial Color Proof	var.	Variety	ms.	Manuscript

The Allure of Beer

ANYONE WHO HAS SEEN THE STAMPS SOLD IN THE FIRST SIX AUCTION SALES of the Scarsdale collection will recognize the exceptionally high quality of the material contained in this collector's various collections.

Therefore, it might be surprising to learn that he has formed a comprehensive collection of United States Beer Stamps. For those of you not familiar with this area of United States Revenues, used Beer Stamps were affixed to barrels. Removing these stamps from the barrels almost always resulted in some damage to the stamp.

As any collector knows, the great joy of collecting is acquiring new items. This is particularly true for the owner of the Scarsdale collection. By 2003 the frequency of acquisition for his United States collection started to fall below a satisfying rate. Having already made strong inroads into collecting Revenue stamps contained in the Scott album, he began to look for another area to collect. Yet, the question still lingers as to why Beer Stamps would be his choice.

The Scarsdale collection of Revenues (Part 6) provides some insight into his willingness to add a stamp with a fault to his collection. The Revenues collection contained nearly every stamp that appears in the Scott album pages. In order to reach this degree of completion it was necessary to purchase a few stamps with a fault. Alan Cohen, who assisted in building the Scarsdale collections, related to me the story of how he had to convince the owner to purchase Scott R158B, the DuBois provisional. Every known copy of this stamp has a fault. Facing the crossroads, the collector had a choice. If this portion of his Revenue collection were to be completed, he would have to purchase his first faulty stamp. After much debate and discussion, the decision was made to purchase this Scott number despite the fault.

In September 2003 the Beer Stamps collection was started. The catalyst for moving forward was the availability of one of the most comprehensive Beer Stamp collections. He spent time studying the collection and was attracted to the elaborate large-format designs of these issues. He also was fascinated by the numerous tax-rate changes reflected in the use of surcharges, and surcharges on top of surcharges. The challenge of identifying the correct Scott number for a particular stamp intrigued him. Another exciting challenge to building a complete Beer Stamps collection was the existence of the same design on several different colored papers, along with die-cut and cut-to-shape varieties.

Yes, he said, Beer Stamps posed new and interesting challenges. The decision was made to purchase the collection intact.

Collecting Beer Stamps requires toleration of stamps with faults, but that did not stop the Scarsdale collector from relentlessly pursuing the best possible examples. To this end the collection was constantly upgraded. A four-margin example replaced a stamp with margins cutting into the design. A stamp with an unobtrusive flaw replaced a stamp with an obtrusive defect. A sound stamp replaced one with a flaw. The result of this ongoing process of upgrading is the collection you see presented in this auction catalogue.

Throughout the auction catalogue you will notice that Priester census figures are referenced. This census was compiled by Thomas W. Priester and presented in his seminal work on Beer Stamps published in 1990. Even though this census dates from 1990, it remains largely accurate today. The census was compiled using Priester's own collection, which was by far the largest of its day, along with the second and third largest collections. Very few new items have surfaced since its publication.

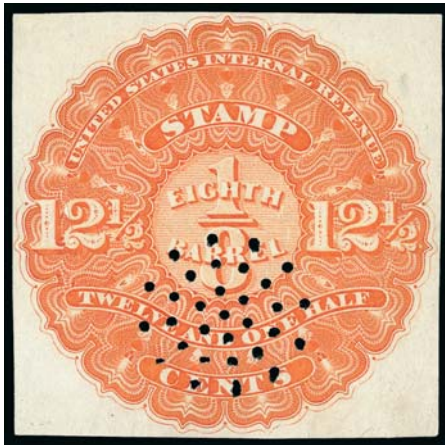
The sale of the Scarsdale Revenues attracted new collectors, and we are confident that this sale of Beer Stamps will add to the ranks of enthusiastic devotees.

—SCOTT R. TREPEL

AFTERNOON SESSION (LOTS 1-254)
WEDNESDAY, FEBRUARY 29, 2012, AT 1:30 P.M.

THE SCARSDALE COLLECTION — PART SEVEN
UNITED STATES BEER STAMPS

1866 ISSUE



1



2

- 1 (★) **1866, 12½c Orange, ½bbl., Beer (REA1; Priester 1A).** Unused (no gum), large margins to barely touched at top, radiant color, insignificant thin spot at upper right, Very Fine appearance, a pretty example of this issue..... 400.00
- 2 **1866, 12½c Orange, ½bbl., Beer (REA1; Priester 1B).** Large margins, light strike of blue cancel, few light creases, otherwise Extremely Fine, ex Joyce and Kingsley..... 625.00



3



4

- 3 (★) **1866, 12½c Orange, ½bbl., Beer, Die Cut (REA1a; Priester 1C).** Unused (no gum), brilliant color, wide margins, fresh and Extremely Fine unused example of this die cut Beer stamp..... 450.00
- 4 **1866, 12½c Orange, ½bbl., Beer, Die Cut (REA1a; Priester 1C).** Margins to in, rich color, neat strike of large purple "W & J" datestamp, trivial flaws at upper left, Very Fine appearance 300.00



5

- 5 **1866, 12½c Orange, ½bbl., Beer, Silk Paper (REA1b; Priester 1aB).** Large margins to just in, rich color, showing clear silk fibers in the paper, neat manuscript cancel, light creases

VERY FINE APPEARANCE. THE 1866 ONE-EIGHTH BARREL ON SILK PAPER IS ONE OF THE GREAT RARITIES OF THE FIRST ISSUE BEER STAMPS. ONLY ONE EXAMPLE IS REPORTED IN THE PRIESTER CENSUS.

With 2004 P.F. certificate. 2,000.00



6

- 6 **1866, 16⅔c Dark Green, ½bbl., Beer (REA2; Priester 2B).** Large margins all around, deep rich color, unobtrusive manuscript cancel at top, few creases, Very Fine appearance..... 275.00



8

- 7 **1866, 25c Blue, ¼bbl., Beer, Silk Paper (REA3b; Priester 3bB).** Large margins, clearly-evident silk fibers, rich color, neat strike of "Wackenhuth, Adam & Co. Newark N.J., Apr. 13, 1867" circular datestamp, light creases and some minor soiling are not very obvious

EXTREMELY FINE APPEARANCE. THIS 1866 QUARTER-BARREL FIRST ISSUE BEER STAMP ON SILK PAPER IS REPORTEDLY UNIQUE. ONE OF THE GREAT RARITIES OF THE ISSUE.

This stamp, with easily discernible silk paper, large margins, a clear handstamp cancel and no obviously visible flaws, is one of the great rarities of the First Issue Beers. 2,000.00



7

- 8 **1866, 50c Orange Brown ½bbl., Beer, Die Cut (REA4a; Priester 4C).** Large margins, deep rich color, light strike of double-circle datestamp at center, small thin spot at top, Extremely Fine appearance, surprisingly scarce given its modest catalogue value, the Priester census records only nine copies which are die cut and this is the first we have offered since keeping computerized records..... 75.00



9



10



11

- 9 (★) **1866, \$1.00 Black, 1bbl., Beer (REA5; Priester 5A).** Unused (no gum), large to huge margins, intense shade and proof-like impression, Extremely Fine, a beautiful stamp, scarce in such pristine condition, ex Kingsley 375.00
- 10 (★) **1866, \$2.00 Red, 1hhd., Beer (REA6; Priester 6A).** Unused (no gum), huge margins to full, deep rich color and proof-like impression, faint pressed-out crease, Very Fine appearance, scarce in unused condition, ex Joyce and Kingsley..... 1,200.00
- 11 **1866, \$2.00 Red, 1hhd., Beer (REA6; Priester 6B).** Large margins to just touched at top, pale shade, central strike of **blue** double-circle datestamp, few flaws incl. sealed tears, Very Fine appearance, surprisingly difficult to find in used condition, this is the first we have offered since keeping computerized records 1,600.00

1867 ISSUE



12

- 12 (★) **1867, 12½c Orange, ½bbl., Beer (REA7; Priester 7A).** Unused (no gum), full margins to clear, radiant color and detailed impression, faint creases

VERY FINE UNUSED EXAMPLE OF THE 1867 ONE-EIGHTH BARREL ORANGE WHICH IS CUT SQUARE. VERY FEW ARE KNOWN. ESPECIALLY DESIRABLE IN UNUSED CONDITION

The Priester census records a total of eight unused or used cut square. We do not know how many of the eight are unused. 2,400.00

- 13 **1867, 12½c Orange, ½bbl., Beer (REA7; Priester 7B).** Large to huge margins, radiant color, light strike of **blue** cancel at lower left, faint crease is barely evident
EXTREMELY FINE APPEARANCE. A RARE USED EXAMPLE OF THE 1867 ONE-EIGHTH BARREL ISSUE BEER STAMP.
Only eight total cut to shape are recorded in the Priester census. We have offered three unused since keeping computerized records but this is the first in used condition we have offered. 1,850.00



13



- 14 **1867, 12½c Orange, ¼bbl., Beer (REA7; Priester 7D).** Cut to shape, rich color, faint manuscript at top, few faults, Fine, scarce, only six are recorded trimmed to shape in Priester, ex Tolman 750.00
- 15 (★) **1867, 12½c Orange, ¼bbl., Beer, Die Cut (REA7a; Priester 7C).** Unused (no gum), brilliant color and detailed impression, faint pressed-out crease, Very Fine appearance, scarce, only six die cut are recorded in Priester, unlisted in Scott as unused, Scott Retail as used 1,250.00
- 16 **1867, 16⅔c Dark Green, ¼bbl., Beer (REA8; Priester 8B).** Large margins to clear, rich color, unobtrusive strike of **blue** handstamp at top, few flaws incl. repair, otherwise Very Fine, very scarce, only five total unused and used are recorded in the Priester census, we have offered only one other used example since keeping computerized records 2,500.00
- 17 **1867, 16⅔c Dark Green, ¼bbl., Beer (REA8; Priester 8A).** Margins to in, lightly cancelled at left, defective, a scarce example of this rarity, only five are recorded in the Priester census... 2,500.00
- 18 **1867, 16⅔c Dark Green, ¼bbl., Beer (REA8; Priester 8D).** Cut to shape, margins to in, deep rich color, neat manuscript cancel, trivial wrinkle at right, Very Fine, scarce, only ten cut to shape are recorded in the Priester census..... 525.00
- 19 (★) **1867, 25c Blue, ¼bbl., Beer (REA9; Priester 9A).** Unused (no gum), huge margins all around, showing **trace of imprint** at upper right, light crease at top, Extremely Fine appearance, a beautiful stamp 250.00
- 20 **1867, 25c Blue, ¼bbl., Beer, Die Cut (REA9a; Priester 9C).** Rich color and crisp impression, light strike of "Schaller & Co. Cin. O." double-circle datestamp, light creases, Fine appearance, scarce die cut, only three are recorded in the Priester census, none was offered in our Kingsley or Tolman sales, undercatalogued in Scott..... 250.00

- 21 **1867, 33 $\frac{1}{3}$ c Violet Brown, $\frac{1}{2}$ bbl., Beer (REA10; Priester 10D).** Cut to shape as always, margins to just in, neat "Lyon & Co. San Francisco" cancel, few creases and minor edge tears

VERY FINE APPEARANCE. A RARE EXAMPLE OF THE 1867 ONE-THIRD BARREL ISSUE. ONLY SEVEN ARE RECORDED.

The Priester census records a total of seven examples of this issue. All are cut to shape. This is the finer of the two we have offered since keeping computerized records..... 2,500.00



21



22

- 22 **1867, 33 $\frac{1}{3}$ c Violet Brown on Silk Paper, $\frac{1}{2}$ bbl., Beer, Cut to Shape (REA10b; Priester 10bB).** Margins to in, showing plentiful silk fibers, rich color, blue handstamp, some faults incl. piece out at top where repaired

FINE APPEARING EXAMPLE OF THE 1867 ONE-THIRD BARREL ON SILK PAPER. ONLY THREE ARE RECORDED ON THIS PAPER TYPE.

The Priester census records three examples on silk paper. One is cut square and two are cut to shape. Ex Tolman..... 3,500.00



23



24



25

- 23 **1867, 50c Orange Brown, $\frac{1}{2}$ bbl., Beer Stamp (REA11; Priester 11aB).** Neat printed "A. S. 1869" precancel, huge margins, rich color, light creases, Extremely Fine appearance, only 18 are recorded in the Priester census..... 400.00
- 24 **1867, \$1.00 Black, 1bbl., Beer (REA12; Priester 12B).** Large margins to full, intense shade and impression, cancelled by light strikes of blue double-circle datestamp, few flaws incl. repaired tear, Very Fine appearance, scarce, there are only nine recorded cut square in the Priester census and this is only the second we have offered since keeping computerized records, the example from the Tolman sale was in worse shape than the one offered here 1,350.00
- 25 **1867, \$1.00 Black, 1bbl., Beer (REA12; Priester 12D).** Cut to shape, clear of design almost all around, neat "H.B. 2/1/69" manuscript cancel, faults, appears Very Fine..... 350.00



26

- 26 (★) **1867, \$2.00 Red, 1hhd., Beer (REA13; Priester 13A).** Unused (no gum), large margins to clear, radiant color, few flaws incl. creases and sealed tear at upper left

FINE APPEARANCE. A RARE EXAMPLE OF THE 1867 ONE-HOGSHEAD ISSUE WHICH IS UNUSED AND CUT SQUARE.

The Priester census records only three examples cut square. We offered one, also unused, in our Tolman sale. We are unaware if the third is unused or used. 2,000.00



27



29



30

- 27 (★) **1867, \$2.00 Red, 1hhd., Beer (REA13; Priester 13D).** Cut to shape, unused (no gum), radiant color, light crease, Very Fine appearance, unlisted in Scott as unused, Scott Retail as used 500.00
- 28 **1866-67 Issue Beer Stamp Balance.** 21 unused and used stamps on homemade album pages, incl. unused Nos. REA2 (two, cut square and to shape), REA2a, REA3, REA11 with right sheet margin, used Nos. REA3, REA4 with printed "A.S. 1869", REA5a, REA6a (faulty), REA9, REA11, REA11a, each also identified by Priester no., few small faults to be expected, overall fresh and Fine-Very Fine *Not illustrated* 2,745.00

1870 ISSUE

- 29 (★) **1870, 12 1/2c Brown, Lilac Security Lines, 1/8bbl., Beer (REA14; Priester 14B).** Unused (no gum), large margins, rich colors, light creases, small tear at lower right, light stain at bottom, otherwise Very Fine, a presentable unused example of this issue 350.00
- 30 **1870, 12 1/2c Brown, Lilac Security Lines, 1/8bbl., Beer (REA14; Priester 14B).** Large margins, rich colors, light strike of Iowa double-circle datestamp, minor wrinkle at lower left, Very Fine appearance 250.00



31

- 31 **1870, 12 1/2c Brown, Yellow Security Lines, 1/8bbl., Beer (REA14a; Priester 14A).** Large margins all around, rich colors, neat manuscript cancel, horizontal and vertical creases

VERY FINE AND SCARCE EXAMPLE OF THE 1870 ONE-EIGHTH BARREL ISSUE. VERY FEW ARE KNOWN.

Only twelve are recorded in the Priester census and this is the first we have offered since keeping computerized records. Ex Tolman. With 2006 P.F. certificate 1,100.00



- 32 **1870, 16½c Yellow Orange, Lilac Security Lines, ⅙bbl., Beer (REA15; Priester 15B).** Large to full margins, rich colors, light strike of **blue** 1871 double-circle datestamp, Very Fine and choice, a pretty stamp..... 300.00
- 33 **1870, 16½c Yellow Orange, Yellow Security Lines, ⅙bbl., Beer (REA15a; Priester 15A).** Large margins to just in at bottom, neat 1872 manuscript cancel, small thins and creases, Fine appearance, only 22 are recorded in Priester and this is the second we have offered since keeping computerized records, with 2008 P.F. certificate 1,100.00

- 34 **1870, 16½c Yellow Ochre, Lilac Security Lines, ⅙bbl., Beer (REA15c; Priester 15aB).** Large margins to just in at left, rich colors, well-struck “C. Rivinius Morrisania Mar. 8, 1871” octagonal datestamp, several tiny staple holes
VERY FINE. A RARE EXAMPLE OF THE 1870 ONE-SIXTH BARREL ISSUE IN THE YELLOW OCHRE SHADE.

Only six examples of this shade are recorded in the Priester census, and this is the only example we have offered since keeping computerized records. This brewery is in Morrisania N.Y., which is now part of the Bronx. It later became the David Mayer's Centennial Lager Bier Brewery, which burned down in 1881, was rebuilt, and burned again in 1884.

Ex Tolman. With 2006 P.F. certificate. Undercatalogued in Scott. 1,000.00



34

- 35 (★) **1870, 50c Red, Lilac Security Lines, ½ bbl., Beer Stamp (REA17; Priester 18B).** Unused (no gum), large to huge margins incl. **sheet margin at left**, rich colors, light creases, Extremely Fine appearance, ex Joyce and Kingsley 300.00
- 36 **1870, 50c Red, Yellow Security Lines, ½ bbl., Beer (REA17a; Priester 18A).** Large to huge margins incl. **sheet margin at right**, barest trace of blue cancel at lower left, pretty color, few creases, small hole at top right, Very Fine appearance 500.00
- 37 (★) **1870, 50c Brick Red, Gray-Green and Yellow Security Lines, ⅙bbl., Beer (REA17b; Priester 18C).** Unused (no gum), large margins to in, deep rich colors, light vertical creases, small corner creases at bottom left and bottom right, Fine appearance, only four are recorded in the Priester census, we have offered one other since keeping computerized records (which had similar margins), with 2005 P.F. certificate..... 1,400.00



38

- 38 **1870, 50c Brick Red, Lilac Security Lines, ½ bbl., Beer Stamp (REA17c; Priester 18aB).** Full and even margins, rich colors in the distinctive Brick Red color, light strike of large double-circle date-stamp, light horizontal crease, small thin spot at bottom right, Very Fine, purple backstamp, only 18 are recorded in the Priester census, this is the first we have offered since keeping computerized records 800.00



Bergdoll Brewery Building

- 39 **1870, 50c Brick Red, Yellow Security Lines, ½ bbl., Beer (REA17d; Priester 18aA).** Die cut, margins to in, deep rich color, bold strike of "Bergdoll & Psotta, Phila. Aug. 19, 1870" datestamp, light creases and wrinkles

FINE APPEARANCE. ONLY TWO EXAMPLES OF THE 1870 HALF-BARREL IN THE BRICK RED COLOR ARE RECORDED. ONE OF THE GREAT RARITIES OF THE ISSUE.

The Priester census records only two examples of this issue in the Brick Red color with yellow safety lines. The other example, cut square and defective, was offered in our auction of the Tolman collection and was also used at a brewery in Philadelphia.

With 2005 P.F. certificate..... 2,500.00



39



40

- 40 (★) **1870, \$1.00 Blue, Lilac Security Lines, 1bbl., Beer (REA18; Priester 19B).** Unused (no gum), large to huge margins incl. **sheet margin at right**, deep rich colors, light creases

FRESH AND EXTREMELY FINE. A RARE UNUSED EXAMPLE OF THE 1870 ONE-BARREL BEER STAMP.

Only 15 are recorded in the Priester census, of which four are in an unused block. We do not know how many of the remaining ten examples are unused.

Ex Tolman. Undercatalogued in Scott considering the sale price of both the single and block in our Tolman sale..... 2,000.00



41



42



43



44

- 41 **1870, \$1.00 Blue, Lilac Security Lines, 1bbl., Beer (REA18; Priester 19B).** Large margins to clear, rich color, neat 1870 manuscript cancel, expert repair at top left, few small thin spots, Fine appearance, only 15 are recorded in the Priester census and this is the first used example we have offered since keeping computerized records..... 850.00
- 42 (★) **1870, \$1.00 Blue, Yellow Security Lines, 1bbl., Beer (REA18a; Priester 19A).** Unused (no gum), large and even margins, intense colors and detailed impressions, light creases, small flaw at upper right, Very Fine appearance, this is the first unused example we have offered since keeping computerized records, unlisted in Scott as unused, Scott Retail as used..... 350.00
- 43 (★) **1870, \$2.00 Black, Lilac Security Lines, 1hhd., Beer (REA19; Priester 20B).** Unused (no gum), clear to ample margins, intense colors, light creases, appears fresh and Fine, only 28 total unused and used are recorded in the Priester census, ex Joyce and Kingsley..... 1,000.00
- 44 **1870, \$2.00 Black, Lilac Security Lines, 1hhd., Beer (REA19; Priester 20B).** Large margins to full, intense colors, neat manuscript cancel, few flaws, otherwise Very Fine, only 28 are recorded in the Priester census 875.00



Massey Brewery



45

- 45 **1870, \$2.00 Black, Yellow Security Lines, 1hhd., Beer (REA19a; Priester 20A).** Large margins to clear, clear strike of red "Massey & Co. Phila. Jan. 17" oval datestamp, tack holes at left and right, additional tiny hole at left, small diagonal crease at top right, some faint toning
VERY FINE APPEARING EXAMPLE OF THE 1870 ONE-HOGSHEAD BLACK WITH YELLOW SECURITY LINES.
Priester records only eight examples of this issue with yellow security lines. Ex Tolman. With 2006 P.F. certificate..... 2,500.00

1871 ISSUE



- 46 **1871, 12½c Blue on Pinkish Gray Silk, ½bbl., Beer (REA20a; Priester 21B).** Large margins to full, rich colors, neat 1873 manuscript cancel, thin spot at bottom left, small filled hole at top right, otherwise Very Fine, only 17 are recorded in the Priester census, with 2006 P.F. certificate..... 200.00
- 47 (★) **1871, 12½c Blue on Green Silk, ½bbl., Beer (REA20c; Priester 21D).** Unused (no gum), huge margins incl. **sheet margin at top** and trace of adjoining stamp at right, intense colors, Extremely Fine Gem, a superb stamp in every respect, two backstamps 150.00
- 48 **1871, 16½c Vermilion, ½bbl., Beer (REA21; Priester 22A).** Large margins to clear, radiant colors, neat strike of blue “Adolph Meckert Guttenberg N.J. Feb. 2, 1873” double-circle datestamp, small thin spot at lower left, Very Fine appearance 350.00
- 49 **1871, 16½c Vermilion on Pinkish Gray Silk, ½bbl., Beer (REA21a; Priester 22B).** Large margins to clear, almost appears unused, few faults incl. some soiling, otherwise Fine, only 15 are recorded in the Priester census and this is only the second we have offered since keeping computerized records 375.00
- 50 **1871, 16½c Vermilion on Gray Silk, ½bbl., Beer (REA21b; Priester 22C).** Large and even margins, attractive colors and detailed impressions, neat strike of “Wackenhuth, Adam & Co. Newark N.J., Jul. 18, 1874” circular datestamp, small thin spot at top right, small flaw at top left, light crease at lower left, Very Fine appearance, this is the first used example we have offered since keeping computerized records..... 375.00
- 51 **1871, 16½c Vermilion on Green Silk, ½bbl., Beer (REA21c; Priester 22D).** Large margins to clear, intense colors, neat 1873 manuscript cancel, few small flaws, Very Fine appearance, this is the second we have offered since keeping computerized records..... 375.00

52



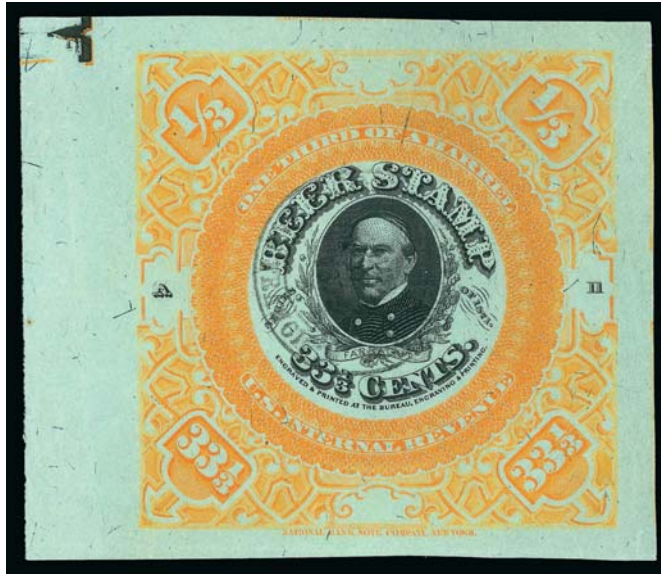
52

1871, 33½c Orange on Green Silk, ½bbl., Beer (REA23; Priester 25D). Large and even margins, brilliant colors, neat strike of “John Wieland * San Francisco * Mar. 13, 1875” datestamp, light wrinkles of little consequence

EXTREMELY FINE. A RARE EXAMPLE OF THE 1871 ONE-THIRD BARREL ON GREEN SILK PAPER WHICH IS ESSENTIALLY SOUND.

The Priester census records only nine examples of this issue on Green paper. This is the fourth we have offered since keeping computerized records, and the three with readable cancels were all used from this same brewery which operated from 1856-1920. It was one of the largest breweries on the West Coast. The founder, John Wieland, died in a tragic fire at his home in 1885, and the brewery was sold to a syndicate in 1890. In the incident which killed Wieland, his son caught fire while getting kerosene from an outer building at his property. Wieland went to help his son and caught fire himself. Then his daughter tried to extinguish the fire engulfing her father, and she also caught fire. He died several days later from the burns, as did his daughter, but his son survived.

Three backstamps..... 5,000.00



53

- 53 **1871, 33 $\frac{1}{3}$ c Orange on Green Silk, $\frac{1}{2}$ bbl., Beer (REA23; Priester 25D).** Huge margins all around incl. registration marks at top left, vibrant colors, light strike of "John Wieland * San Francisco * ??, 1872" datestamp, small thin spot

EXTREMELY FINE APPEARANCE. A RARE EXAMPLE OF THE 1871 ONE-THIRD BARREL ON GREEN SILK PAPER.

The Priester census records only nine examples of this issue on Green paper, of which we have offered four in our auctions. The three with readable cancels were all used from this same brewery which operated from 1856-1920. It was one of the largest breweries on the west coast. The founder, John Wieland, died in a fire at his home in 1885 and the brewery was sold to a syndicate in 1890.

Ex Joyce and Kingsley..... 5,000.00



54

- 54 **1871, 33 $\frac{1}{3}$ c Violet Brown on White Silk Paper, $\frac{1}{2}$ bbl., Beer (REA24; Priester 24A).** Large margins all around, rich colors, light strike of blue handstamp, couple minor imperfections

VERY FINE APPEARANCE. AN EXTREMELY RARE EXAMPLE OF THE 1871 ONE-THIRD BARREL VIOLET BROWN ON WHITE SILK PAPER. VERY FEW ARE KNOWN.

The Priester census records only twelve copies of this issue. This is the only example we have offered since keeping computerized records. Ex Tolman..... 6,250.00



- 55 (★) **1871, 50c Red, ½bbl., Beer (REA26; Priester 26A).** Unused (no gum), large margins all around, crisp impressions, Extremely Fine Gem, a beautiful stamp in every respect, unlisted in Scott as unused, Scott Retail as used..... 55.00
- 56 (★) **1871, \$1.00 Yellow Orange, 1bbl., Beer (REA27; Priester 28A).** Unused (no gum), large margins all around, brilliant colors, light creases, Very Fine and choice, ex Tolman, unlisted in Scott as unused, Scott Retail as used 250.00
- 57 **1871, \$1.00 Yellow Orange, 1bbl., Beer (REA27; Priester 28A).** Large margins all around, rich colors and proof-like impressions, bold strike of large “F. Jones, Portsmouth N.H. ? 17, 1872” datestamp, small thin spot and light wrinkle, Extremely Fine appearance, used at Franklin Jones Brewery, the founder was tragically killed in 1864 after being struck by a train while saving a young girl..... 250.00
- 58 **1871, \$1.00 Yellow Orange on Pinkish Gray Silk, 1bbl., Beer (REA27a; Priester 28B).** Large and even margins, pale shade, cancelled by bold strike of “F. Jones, Portsmouth N.H., Jun. 10, 1873” datestamp, small thin spots, some minor soiling, Very Fine appearance, only eight on this paper are recorded in the Priester census, at least one of which is seriously defective..... 1,100.00
- 59 **1871, \$1.00 Scarlet on Gray Silk, 1bbl., Beer (REA28; Priester 29C).** Large and even margins, intense shade and proof-like impressions, bold strike of large “F. Jones, Portsmouth, N.H. Sep. 2, 1873” datestamp, few creases and thin spots, Very Fine appearance, an attractive stamp... 175.00
- 60 **1871, \$1.00 Scarlet on Gray Silk, 1bbl., Beer (REA28; Priester 29C).** Large and even margins, intense color, neat strike of blue “Beadleston Price & Woerz, New York Jan. 23, 1872” oval datestamp, faint creases, small thin spot, some minor soiling, still Very Fine..... 175.00
- 61 **1871, \$1.00 Scarlet on Pinkish Gray Silk, 1bbl., Beer (REA28a; Priester 29B).** Large margins to full, intense colors, light strike of blue handstamp cancel, faults, otherwise Very Fine, scarce, only nine are recorded in the Priester census, we have offered only one other (in similar condition) since keeping computerized records..... 750.00
- 62 **1871, \$1.00 Scarlet on Green Silk, 1bbl., Beer (REA28c; Priester 29D).** Large margins to clear, rich colors, faint manuscript cancel, trivial imperfections, fresh and Very Fine..... 350.00
- 63 **1871, \$2.00 Red Brown, 1hhd., Beer (REA29; Priester 30A).** Large margins to full, cancelled by neat strike of blue “D. Jones, Sixth St. Bet. Ave. B & C, Oct. 21, 1872” double-circle datestamp, light crease, some soiling, still Very Fine and attractive example of this issue used at David Jones Brewery in New York, at the time of his death in 1881 Jones was one of the largest brewers in the country..... 200.00

- 64 **1871, \$2.00 Red Brown on Pinkish Gray Silk, 1hhd., Beer (REA29a; Priester 30B).** Large and even margins, rich colors, neat strike of large "Clausen & Baur, New York, Jan. 6, 1874" oval datestamp, small thin spot at top, two small tears at bottom left, light creases

VERY FINE APPEARANCE. A RARE EXAMPLE OF THE 1871 ONE-HOGSHEAD ON PINKISH GRAY SILK PAPER. ONLY SIX ARE RECORDED IN THE PRIESTER CENSUS.

This is the only example we have offered since keeping computerized records — the Tolman copy was found to be on Grayish paper. With 1995 P.F. certificate..... 1,450.00



64



- 65 **1871, \$2.00 Red Brown on Gray Silk, 1hhd., Beer (REA29b; Priester 30C).** Full margins to clear, intense shade, neat manuscript cancel, small thin spots and light crease, Fine appearance, only 30 are recorded in the Priester census 350.00
- 66 **1871, \$2.00 Red Brown on Green Silk, 1hhd., Beer (REA29c; Priester 30D).** Large margins to full, rich color, large purple handstamp, few flaws incl. thins, Very Fine appearance, only eleven are recorded in the Priester census 1,000.00

1875 ISSUE

- 67 **1875, 33 1/3c Violet, 1/2bbl., Beer (REA33; Priester 34).** Large and even margins all around, light strike of blue 1876 handstamp at center, some slight soiling, otherwise Very Fine, an attractive example of this scarce issue 1,250.00
- 68 (★) **1875, 50c Orange, 1/2bbl., Beer (REA34; Priester 35).** Unused (no gum), huge margins incl. **bottom right corner sheet margin**, radiant color, fresh and Extremely Fine, unlisted in Scott as unused, Scott Retail as used 100.00
- 69 (★) **1875, \$1.00 Red, 1bbl., Beer (REA35; Priester 36).** Large margins to clear, intense colors and impressions, light horizontal crease, tiny pinhole, small thin spot, Very Fine appearance, unlisted in Scott as unused, Scott Retail as used..... 225.00



70



71

- 70 **1875, \$1.00 Red, 1bbl., Beer (REA35; Priester 36).** Full margins, rich color, neat strike of **blue** "Belser & Co., Madison Brewery, Madison Ind." oval handstamp, light crease and small thin spot, Very Fine appearance, an attractive stamp used from this brewery which operated between 1859 and 1868 225.00
- 71 **1875, \$2.00 Brown, 1hhd., Beer (REA36; Priester 37).** Large margins, detailed impressions, neat strike of **purple** "10 NOV. 1876, Beadleston, Price & Woerz, New York" six-line datestamp, light crease and small thin spot, Very Fine appearance..... 400.00
- 72 **1870-75 Issue Beer Stamp Balance.** 23 unused and used stamps on home made pages, incl. unused Nos. REA20b, REA22, REA22a, REA22c, REA25c, used Nos. REA16 (2), REA16a (with 2004 PFC), REA17, REA20, REA20c, REA27b (faults, with 2005 PFC), REA31 (3), REA34, each also identified by Priester no., few faults to be expected but better condition than normally seen, Very Fine group, Scott Catalogue does not list unused, Scott Retail as all used.....*Not illustrated* 1,995.00

1878 ISSUE



73

- 73 **1878, 12½c Blue on Green Silk, ⅛bbl., Beer (REA37b; Priester 38A).** Large and even margins, rich colors and detailed impressions, neat strike of **blue** "C. Heurich. Washington D.C., Apr. 20, 1878" double-oval datestamp, light creases and thin spots

VERY FINE APPEARANCE. AN ATTRACTIVE EXAMPLE OF THE 1878 ONE-EIGHTH BARREL ISSUE ON GREEN SILK PAPER. VERY FEW ARE KNOWN.

The Priester census records a total of 14 of this issue. We have offered only one other since keeping computerized records, which was badly damaged. The example offered here was used at the C. Heurich Brewing Co., which was at one time the largest brewer in Washington D.C. Its owner was also the largest landowner in Washington D.C. (aside from the Federal government). His brewery burned down three times, prompting him to build both a fireproof brewery and mansion in 1894..... 1,250.00



74



75

- 74 **1878, 12½c Blue on Pale Green, ⅛bbl., Beer (REA37c var; Priester 38aC).** With plate no. 1612 and position 12, large margins to in at top, neat **purple** "Ziegele Brewing Co., Jun. 1?, 1887, Buffalo N.Y." four-line datestamp, certificate notes small faults which includes a small repair at lower left, otherwise Fine, rare, only three are recorded in the Priester census with plate no., with 2004 P.F. certificate 1,250.00
- 75 (★) **1878, 16c Light Brown on Green Silk, ⅛bbl., Beer, One Line Under "Cents" (REA38b; Priester 39bA).** Unused (no gum), full margins, detailed impressions, thin spot, Very Fine appearance, unlisted in Scott as unused, Scott Retail as used 140.00



76



77



78

- 76 **1878, 16 2/3c Light Brown on Pale Green, 1/8 bbl., Beer (REA38c var; Priester 39aC).** With plate no. 1836 and position 4, large margins to clear, **purple** 1887 San Francisco handstamp, horizontal crease, large vertical thin at right, long vertical tear, still appears Fine, rare, the Priester census records only one with the plate number, with 2010 P.F. certificate 500.00
- 77 **1878, 16 2/3c Light Brown on Blue, 1/8 bbl., Beer (REA38e var; Priester 39cE).** With plate no. 1979 and position 6, full margins to just in at right, intense colors, light strike of **purple** handstamp, Fine, extremely rare with the plate no. 250.00
- 78 **1878, 25c Green on Green Silk, 1/4 bbl., Beer (REA39b; Priester 40A).** Large margins, brilliant colors, light cancel, light creases and small thin spots, Very Fine appearance 200.00

- 79 **1878, 33 1/3c Violet on Green Silk, 1/8 bbl., Beer (REA40b; Priester 41A).** Three large margins, just in to clear at left, bright colors, neat strike of **purple** "John Wieland, Mar. 16, 1880, Philadelphia Brewery, S.F." four-line datestamp, light horizontal crease
- FINE APPEARANCE. AN ATTRACTIVE EXAMPLE OF THE 1878 ONE-THIRD BARREL ISSUE ON GREEN SILK PAPER.

Only nine are recorded in the Priester census. We have offered only one other since keeping computerized records. 2,000.00



79



80



81

- 80 **1878, 33 1/3c Violet on Pale Green, 1/8 bbl., Beer (REA40c; Priester 41C).** Large margins to barely touched incl. **sheet margin at bottom**, faint red crayon cancel, horizontal and vertical creases, some small staining on back shows thru at upper right, otherwise Fine, scarce as only 14 are recorded in the Priester census, with 2005 P.F. certificate 1,250.00
- 81 **1878, 33 1/3c Violet on Light Blue, 1/8 bbl., Beer (REA40d; Priester 41D).** With plate no. 1579 and position 5, large margins to clear, rich colors, bold strike of **purple** "Grass Valley Brewery, Grass Valley Cal. Mar. 5, 1888" oval datestamp, fresh and Very Fine 110.00



- 82 (★) 1878, 33½c Violet on Blue, ½bbl., No Plate/Position Number or Letter, Beer (REA40e; Priester 41E). Unused (no gum), large to huge margins incl. **bottom right corner sheet margin**, faint pressed-out crease, Extremely Fine appearance, unlisted in Scott as unused, Scott Retail as used 120.00
- 83 (★) 1878, 33½c Violet on Dark Blue, ½bbl., Beer, No Plate/Position Number or Letter (REA40f; Priester 41F). Unused (no gum), large to huge margins incl. **bottom right corner sheet margin**, rich colors, small tears in margin only at right, small blue ink mark just affects design, otherwise Very Fine 250.00
- 84 1878, 50c Orange on Pale Green, ½bbl., Beer, No Plate/Position Number or Letter (REA41c; Priester 42C). Full margins to in, light strike of **purple** handstamp cancel, faults, otherwise Fine, scarce, undercatalogued in Scott 100.00
- 85 (★) 1878, \$1.00 Red on Pale Green, 1bbl., Beer (REA42c; Priester 43C). Unused (no gum), large margins to clear, few flaws incl. tear and tape stain, otherwise Fine, only 27 are recorded in the Priester census, unlisted in Scott as unused, Scott Retail as used 200.00
- 86 (★) 1878, \$1.00 Red on Light Blue, 1bbl., Beer (REA42d; Priester 43D). With **plate no. 2651 and position no. 2**, unused (no gum), large margins to ample at left, trivial crease and tear at bottom left corner, Very Fine and attractive, ex Tolman, unlisted in Scott as unused, Scott Retail as used 175.00
- 87 1878, \$1.00 Red on Light Blue, 1bbl., Beer (REA42d; Priester 43D). Full margins to just in, cancelled by **purple** "John R. Alley, Mar. 6, 18??, Boston" three-line datestamp, few flaws, Fine appearance, this brewery was started in 1886 after John R. Alley left Reuter and Alley 175.00
- 88 (★) 1878, \$1.00 Red on Blue, 1bbl., Beer, No Plate/Position Number or Letter (REA42e; Priester 43E). Unused (no gum), large margins to full, deep shades, Very Fine and choice, unlisted in Scott as unused, Scott Retail as used 125.00
- 89 (★) 1878, \$2.00 Brown on Green, 1hhd., Beer, One Line Under "Dollars" (REA43 var; Priester 44aB). Unused (no gum), large margins to clear, deep rich colors and detailed impressions, Very Fine and choice, unlisted in Scott as unused, Scott Retail as used 100.00
- 90 1878, \$2.00 Brown on Green, 1hhd., Beer, One Line Under "Dollars" (REA43 var; Priester 44aB). Large margins to just in, light strike of **purple** handstamp cancel, trivial soiling and light crease, Fine appearance, undercatalogued in Scott 100.00



- 91 1878, \$2.00 Brown on Green Silk, 1hhd., Beer (REA43b; Priester 44A). Large margins to clear, some staining and thin spots, otherwise Fine, only 24 are recorded in the Priester census on silk paper..... 500.00
- 92 1878, \$2.00 Brown on Pale Green, 1hhd., Beer (REA43c; Priester 44C). Huge margins to clear incl. **sheet margin at top**, faint strike of **purple** handstamp cancel, few faults incl. soiling and pinhole, otherwise Very Fine, scarce, only 15 are recorded in the Priester census..... 900.00
- 93 1878, \$2.00 Brown on Blue, 1hhd., Beer, No Plate/Position Number or Letter (REA43e; Priester 44E). Full margins to clear, rich color, light strike of **purple** handstamp cancel, few trivial toned spots, Fine, only 37 are recorded in the Priester census..... 175.00
- 94 1878 Issue Beer Stamp Balance. 30 unused and used stamps on home made pages, incl. unused Nos. REA40, REA40d, REA43 (with 2010 PFC), used Nos. REA37c, REA38e, REA38f, REA39c (2, one with plate no.), REA41b, REA41c, REA42f, REA43f, each also identified by Priester no., some flaws to be expected but in far better condition than normally seen, Very Fine and desirable group, Scott Catalogue does not list unused, Scott Retail as all used*Not illustrated* 2,023.50

1898 PROVISIONAL ISSUE

- 95 1898, (25c) Ty. C Surcharge on 12½c Blue on Dark Blue, ½bbl, No. REA37f, Beer (REA44a; Priester 46C). Priester Type 15, margins clear to in, light **purple** handstamp cancel at top left, two tiny pinholes, Fine, scarce with the Type 15 surcharge..... 250.00
- 96 1898, (25c) Ty. D Surcharge on 12½c Blue on Dark Blue, ½bbl, No. REA37f, Beer (REA44b; Priester 46D). Priester Type 54, margins slightly in, faint purple oval datestamp, essentially sound with only small thin spots, Fine appearance, very rare, the Priester census reports five known for REA44b (all surcharge types), ex Tolman, with 2006 P.F. certificate..... 750.00
- 97 (★) 1898, (33½c) Ty. A Surcharge on 16½c Light Brown on Blue, ½bbl., No. REA38e, Beer (REA45; Priester 48A). Barely cancelled (if at all), small flaw at top, Very Fine appearance, only 35 are recorded in the Priester census..... 75.00
- 98 1898, (33½c) Ty. A Surcharge on 16½c Light Brown on Dark Blue, ½bbl., No. REA38f, Beer (REA45a; Priester 49A). Large margins to just in, light strike of **purple** handstamp cancel, fresh and Fine, only 22 are recorded in the Priester census, with 2004 P.F. certificate..... 175.00
- 99 1898, (33½c) Ty. C Surcharge on 16½c Light Brown on Dark Blue, ½bbl., No. REA38f, Beer (REA45b; Priester 49C). Priester Type 15A, large margins to just clear, light strike of **purple** boxed handstamp, few faults, otherwise Very Fine, only 25 are recorded in Priester for all the different serif types..... 250.00



- 100 (★) 1898, (33½c) Ty. D Surcharge on 16½c Light Brown on Dark Blue, ¼bbl., No. REA38f, Beer (REA45c; Priester 49D). Priester Type 50, unused (no gum), two large margins, in at bottom and left, small flaw at lower right is barely noticeable, Fine appearance, only ten are recorded in the Priester census for all the different serif types, unlisted in Scott as unused, Scott Retail as used 450.00
- 101 1898, (33½c) Ty. D Surcharge on 16½c Light Brown on Dark Blue, ¼bbl., No. REA38f, Beer (REA45c; Priester 49D). Priester Type 50, two large margins incl. part of adjoining stamp at right, in at top and left, light strike of **purple** oval handstamp, horizontal crease, small paper flaw at bottom, Fine appearance, only ten are recorded in the Priester census for all the different serif types 450.00
- 102 1898, (33½c) Ty. A Surcharge on 16½c Light Brown on Light Blue, ¼bbl., No. REA38d, Beer (REA45d; Priester 47A). Ample margins, to slightly in, faint purple cancel, essentially sound, Fine, only five are recorded in the Priester census, ex Tolman..... 750.00
- 103 1898, (50c) Ty. D Surcharge on 25c Green on Dark Blue, ¼bbl., No. REA39f, Beer (REA46b; Priester 52D). Priester Type 53, large margins to clear, intense shade and impression, light strike of **purple** 1889 cancel, reinforced horizontal crease, small toned spot at top right, otherwise Fine, extremely scarce, only five are recorded in the Priester census, with 2004 P.F. certificate.. 750.00
- 104 1898, (50c) on 25c Green on Blue, ¼bbl., Beer (REA46c; Priester 51A). Large margins to just in incl. part of adjoining stamp at bottom, neat strike of **purple** "V. Loewer Gambrinus Brwy., JU 29, 1897, New York" handstamp, small thin spot, appears Fine, only 19 are recorded in the Priester census, as a side note, according to a *New York Times* article of June 21, 1885, this brewer has the distinction of being the first brewery seized by federal officials for the use of counterfeit beer keg stamps, the warehouse was raided and more than 250 kegs were found with counterfeit stamps with another 600 counterfeit quarter-barrel stamps in sheets, the counterfeits were described as poor imitations, the owner of the brewery claimed he had been duped and had bought them all for \$50 (versus \$3,000 cost for genuine ones)..... 175.00



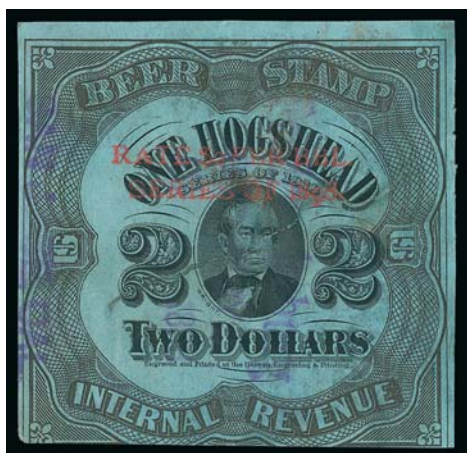
- 105 1898, (50c) Ty. C Surcharge on 25c Green on Green, ¼bbl., Beer (REA46d; Priester 50C). Priester Type 28, large margins to in incl. part of adjoining stamp at bottom, rich colors, defective with creases, stains and large areas of thinning breaking thru in two places

STILL APPEARS FINE. THIS EXAMPLE OF THE 1898 QUARTER-BARREL WITH TYPE C SURCHARGE ON GREEN PAPER IS REPORTEDLY UNIQUE. A GREAT RARITY.

Ex Tolman. With 2006 P.F. certificate. 4,000.00



- 106 1898, (66 $\frac{2}{3}$ c) Ty. A Surcharge on 33 $\frac{1}{3}$ c Violet on Green, $\frac{1}{2}$ bbl., No. REA40, Beer (REA47; Priester 53A). Cut in and repaired at top, yet presentable and very scarce, only ten are recorded in the Priester census, ex Tolman 500.00
- 107 1898, (\$1.00) Ty. C Surcharge on 50c Orange on Dark Blue, $\frac{1}{2}$ bbl, No. REA41f, Beer (REA48a; Priester 55C). Priester Type 15A, large margins to just in incl. part of adjoining stamp at left, few flaws incl. crease and internal tear, otherwise Fine, only 39 are recorded in the Priester census 150.00
- 108 1898, (\$1.00) Ty. D Surcharge on 50c Orange on Dark Blue, $\frac{1}{2}$ bbl, No. REA41f, Beer (REA48b; Priester 55D). Priester Type 53, large margins to barely in at left, faint purple cancel, thin spots, horizontal and vertical creases, still Fine and rare, Priester census reports ten known for REA48b (only three have the Type 53 surcharge), ex Tolman, with 2006 P.F. certificate 450.00
- 109 1898, (\$1.00) Ty. D Surcharge on 50c Orange on Dark Blue, $\frac{1}{2}$ bbl, No. REA41f, Beer (REA48b; Priester 55D). Priester Type 50, huge margins to slightly in, faint purple datestamp, horizontal and diagonal creases, small tear at left, still Very Good and rare, Priester census reports ten known for REA48b (only two have the Type 50 surcharge), ex Tolman, with 2006 P.F. certificate 450.00
- 110 1898, (\$1.00) Ty. D Surcharge on 50c Orange on Dark Blue, $\frac{1}{2}$ bbl, No. REA41f, Beer (REA48b; Priester 55D). Priester Type 54, full margins, faint purple Aug. 1898 datestamp, light creases, some staple holes, still Very Fine and extremely rare, the Priester census reports ten known for REA48b but this is the only example recorded with the Type 54 surcharge, ex Tolman, with 2006 P.F. certificate 450.00
- 111 1898, (\$2.00) Ty. C Surcharge on \$1.00 Red on Dark Blue, 1bbl, No. REA42f, Beer (REA49a; Priester 57C). Large and even margins, rich colors, bold multiple strikes of purple handstamps, minor paper flaws, Very Fine appearance, only 27 are recorded in the Priester census..... 175.00
- 112 1898, (\$2.00) Ty. C Surcharge on \$1.00 Red on Blue, 1bbl., Beer (REA49c; Priester 56C). Three large margins, just in at right, rich colors, fresh and Fine, a great rarity, only three are recorded in the Priester census, the other two known copies originally formed a pair which we believe have been reunited in a private collection, making this the only example currently available to collectors..... 1,250.00
- 113 1898, (\$4.00) Ty. A Surcharge on \$2.00 Brown on Dark Blue, 1hhd., No. REA43f, Beer (REA50; Priester 59A). Large margins to just in incl. part of adjoining stamp at right, rich colors, purple "Jul. 8, 1898" datestamp, light creases, small surface flaws, still Fine, the Priester book notes that the earliest reported use of the Type A surcharge is July 9 of 1898, the example offered here is the new earliest reported use of the Type A handstamp for all denominations, there are also only eleven copies recorded in the Priester census 500.00
- 114 1898, (\$4.00) Ty. C Surcharge on \$2.00 Brown on Dark Blue, 1hhd., No. REA43f, Beer (REA50a; Priester 59C). Priester Type 26, three large margins, in at left, bold 1899 handstamp cancel, some faults incl. repaired, still Fine example of this rare issue, only ten are recorded in the Priester census 500.00



115

115

1898, (\$4.00) Ty. D Surcharge on \$2.00 Brown on Dark Blue, 1hhd., No. REA43f, Beer (REA50b; Priester 59D). Priester Type 51, large margins to slightly in at bottom, **purple** "Fredericksburg Brewery, Aug. 7, 1898, San Jose Cal." four-line datestamp, long repaired internal tear

ONE OF ONLY TWO EXAMPLES OF THE TYPE D 1898 PROVISIONAL SURCHARGE ON THE ONE HOGSHEAD STAMP. A MAJOR BEER STAMP RARITY.

Priester census reports only two known for REA50b. This is the only example with the Type 51 surcharge.

Ex Tolman. With 2006 P.F. certificate. 2,500.00



116

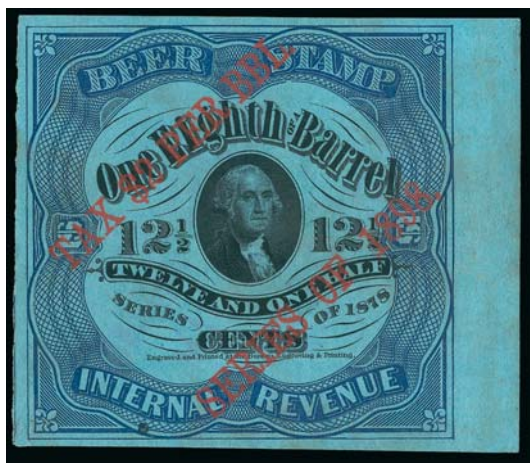
1898, (\$4.00) Ty. C Surcharge on \$2.00 Brown on Blue, 1hhd., No. REA43e, Beer (REA50c; Priester 58D). Priester Type 52, large margins to in, **purple** "San Jose Cal., Fredericksburg Brewery, 1898" four-line datestamp, defective incl. torn in half and repaired

FINE APPEARANCE. ONLY TWO EXAMPLES OF THE 1898 ONE-HOGSHEAD ON BLUE PAPER WITH TYPE C SURCHARGE ARE RECORDED.

The Priester book records only two examples of this issue. 2,500.00



116



117

117 (★) 1898, (33 1/3c) Ty. B Surcharge on 12 1/2c Blue on Dark Blue, 1/8bbl., No. REA37f, Beer (REA51a; Priester 45B). Unused (no gum), large to huge margins incl. **sheet margin at right**, some soiling, small tiny ink mark at bottom, Extremely Fine, unlisted as unused in Scott, Scott Retail as used 100.00

118

1898, (33 1/3c) Ty. C Surcharge on 12 1/2c Blue on Dark Blue, 1/8bbl., No. REA37f, Beer (REA51b; Priester 45C). Priester Type 3, large margins to barely in, deep rich colors, light strike of **purple** Jul. 17, 1898 brewery datestamp, few flaws incl. some creasing

FINE APPEARANCE. THIS EXAMPLE OF THE 1898 ONE-EIGHTH BARREL WITH TYPE C SURCHARGE IS REPORTEDLY UNIQUE.

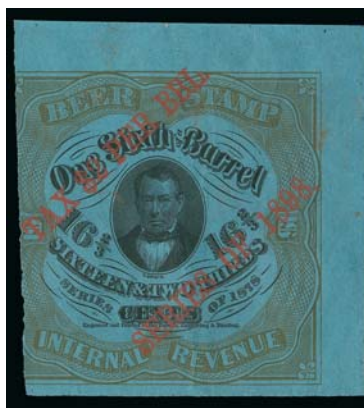
The date on the cancel might be July 16, which would make it the earliest documented use for the Type C surcharge 2,000.00



118



119



120

- 119 **1898, (33½c) Ty. B Surcharge on 16½c Light Brown on Light Blue, ½bbl., No. REA38d, Beer (REA52; Priester 47B).** Two large margins, others cut in, **purple** Portland Ore. brewer's Aug. 10, 1899 datestamp, faults, Very Good and scarce, only nine are recorded in the Priester census and this is the only example we have offered since keeping computerized records, ex Tolman 700.00
- 120 (★) **1898, (33½c) Ty. B Surcharge on 16½c Light Brown on Dark Blue, ½bbl., No. REA38f, Beer (REA52a; Priester 49B).** Unused (no gum), huge top right corner sheet margins, in at left, couple faint creases and tiny flaws, Fine and very scarce, only seven are recorded in the Priester census, ex Tolman, unlisted in Scott as unused, Scott Retail as used 700.00



121

- 121 **1898, (66½c) Ty. B Surcharge on 33½c Violet on Dark Blue, ½bbl., No. REA40f, Beer (REA54; Priester 54B).** With plate letter "B" and position "2", large margins to in, **red** "The San Francisco Breweries Ltd. Jan. 11, 1900" five-line datestamp, small wrinkles

ACCORDING TO PRIESTER CENSUS, THIS IS THE ONLY RECORDED EXAMPLE OF THE TYPE B 1898 PROVISIONAL SURCHARGE ON THE ONE-THIRD BARREL STAMP WITH PLATE LETTER AND POSITION NUMBER.

The Priester census records a total of two copies of this issue on blue paper. This is the only one with the plate letter and position designation.

Ex Tolman. With 2006 P.F. certificate which identifies this as REA54 and states that "it is genuine, with small wrinkles, and the plate letter and position no. designations usually found on the green paper Beer stamps." 9,000.00

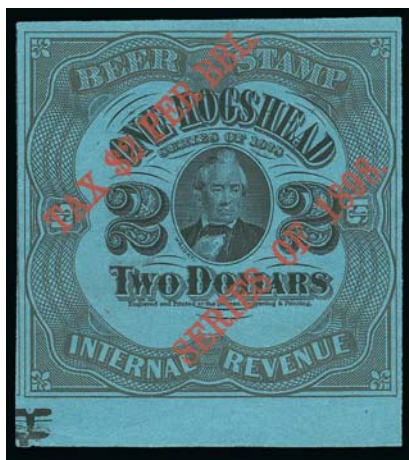


122

- 122 1898, (66 $\frac{2}{3}$ c) Ty. D Surcharge on 33 $\frac{1}{3}$ Violet on Dark Blue, $\frac{1}{2}$ bbl., Beer (REA54a; Priester 54D). Priester Type 50, faintly cancelled, large margins to clear, rich color, few small faults incl. vertical crease

VERY FINE APPEARANCE. A RARE EXAMPLE OF THE 1898 TYPE D PROVISIONAL SURCHARGE ON THE ONE-THIRD BARREL. ONLY TWO ARE RECORDED IN THE PRIESTER CENSUS.

Ex Tolman. With 2006 P.F. certificate. 7,500.00



123



124

- 123 (★) 1898, (\$4.00) Ty. B Surcharge on \$2.00 Brown on Dark Blue, 1hhd., No. REA43f, Beer (REA57; Priester 59B). Unused (no gum), with bottom sheet margin and large margins all around, couple negligible flaws, fresh and Extremely Fine for this scarce issue, only 15 are recorded in the Priester census, ex Tolman, unlisted in Scott as unused, Scott Retail as used..... 275.00
- 124 1898, (\$4.00) Ty. B Surcharge on \$2.00 Brown on Dark Blue, 1hhd., No. REA43f, Beer (REA57; Priester 59B). Large margins to in, rich color, large purple handstamp cancel, fresh and Fine, only 14 are recorded in the Priester census..... 275.00

1898 ISSUE

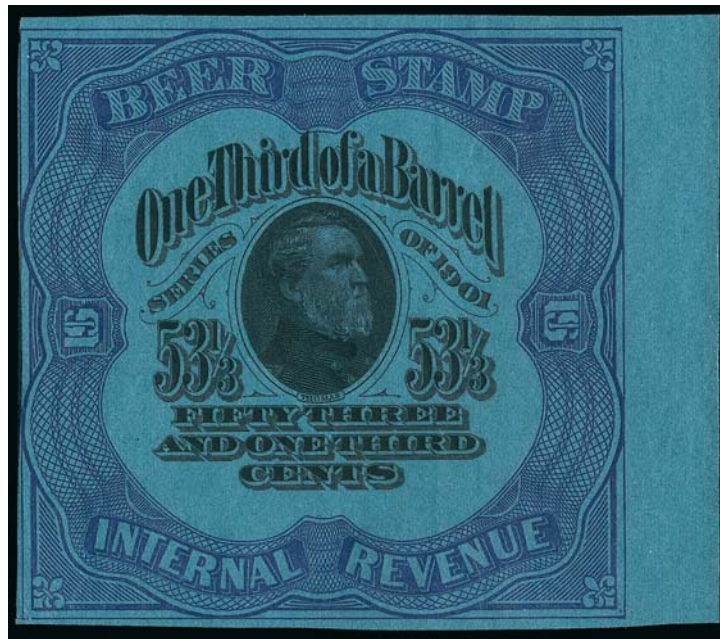


125

- 125 **1898, 66 $\frac{2}{3}$ c Violet on Dark Blue Paper, $\frac{1}{2}$ bbl., Beer (REA61; Priester 67).** Large margins to in incl. **sheet margin at left**, faintly cancelled, faults incl. creases and internal tear
 VERY FINE APPEARANCE. THE 1898 ONE-THIRD BARREL UNSURCHARGED ISSUE IS ONE OF THE RAREST OF ALL BEER STAMP ISSUES. ONLY TWO COPIES ARE RECORDED BY PRIESTER.
 The other example was offered in our 2006 sale of the Tolman collection. The example offered here has wider margins. Both are faulty. 10,500.00

- 126 **1898 Issue Beer Stamp Balance.** 17 used stamps on home made pages, incl. Nos. REA44, REA45, REA46, REA46a, REA49, REA51, REA58 (2000 PFC), REA59 and REA64, large margins, each identified by Priester no., few flaws but far better condition than normally seen, Very Fine and desirable group.....*Not illustrated* 1,522.50

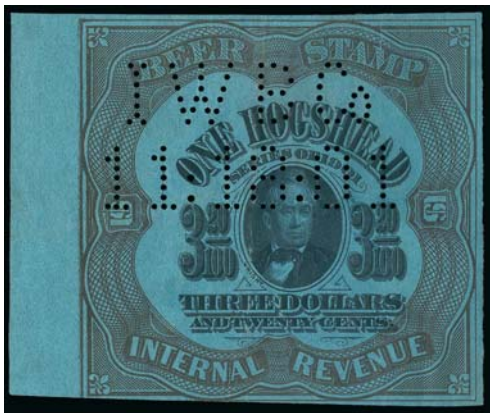
1901 ISSUE



127

- 127 (★) **1901, 53 $\frac{1}{3}$ c Violet on Dark Blue Paper, $\frac{1}{2}$ bbl., Beer (REA68; Priester 74).** Unused (no gum), huge margins to clear incl. **sheet margin at right**, rich colors, light creases are barely noticeable
 VERY FINE APPEARANCE. A RARE EXAMPLE OF THE 1901 ONE-THIRD BARREL BEER STAMP ISSUE. ESPECIALLY DESIRABLE IN UNUSED CONDITION.

The Priester census records five copies of this issue. We do not know if any others are unused. We have offered only one used copy since keeping computerized records. 7,000.00



128



129

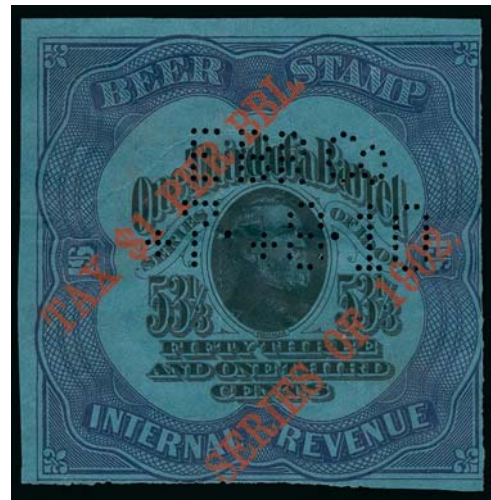
- 128 **1901, \$3.20 Dark Brown on Dark Blue Paper, 1hhd., Beer (REA71; Priester 77).** Huge margins to just touched incl. **sheet margin at left**, "I W B Co., 11:18:01" perforated cancel, faint creasing, Very Fine appearance, only 21 are recorded in the Priester census..... 275.00

1902 ISSUE

- 129 **1902, (16 $\frac{1}{3}$ c) Surcharge on 26 $\frac{1}{3}$ c Yellow Orange on Dark Blue, $\frac{1}{2}$ bbl, No. REA66, Beer (REA72; Priester 78).** Large margins to full incl. part of adjoining stamp at left, "N L B Co., + 8 + 4 : 02" perforated cancel, faint creasing, Extremely Fine appearance..... 150.00

- 130 **1902, (33½¢) on 53½¢ Violet on Dark Blue Paper, ½bbl., Beer (REA73; Priester 79).** Large margins to in, deep rich colors, "E B R Co. + 7 + 8 . 10" perforated cancel, few faults incl. creases FINE APPEARANCE. A RARE EXAMPLE OF THE 1902 ONE-THIRD BARREL PROVISIONAL ISSUE.

Only four are recorded in the Priester book. This is the only example we have offered since keeping computerized records. Ex Tolman.. 4,500.00



130



- 131 (★) **1902, (\$2.00) Surcharge on \$3.20 Dark Brown on Dark Blue, 1hhd., No. REA71, Beer (REA74; Priester 80).** Appears unused (no gum), three large margins, touched at top, essentially sound and Fine, very scarce as only 20 are listed in the Priester census, ex Tolman, unlisted in Scott as unused, Scott Retail as used 750.00
- 132 **1902, (\$2.00) Surcharge on \$3.20 Dark Brown on Dark Blue, 1hhd., No. REA71, Beer (REA74; Priester 80).** Large to huge margins incl. part of adjoining stamps on both sides and **sheet margin with plate no. 12294 at bottom**, "T C BRG Co., + 8 + 1 : 02" perforated cancel, light horizontal crease at bottom does not affect design, Extremely Fine appearance, especially desirable with the plate no., only 20 are recorded in the Priester census 750.00
- 133 **1902, 12½¢ Blue on Pale Green, ½bbl., Beer (REA75b; Priester 83B).** Large margins to full, rich color, "H BRG Co., 10 : 10 : 04" perforated cancel, lightly creased, some slight soiling at lower right, otherwise Very Fine, scarce as only 17 are recorded in the Priester census 350.00
- 134 **1902, 16½¢ Yellow Orange on Dark Blue, ½bbl., Beer (REA76a; Priester 84A).** Large margins, "PB Co. + 5.16.04" perforated cancel, trivial bends, Very Fine 250.00
- 135 **1902, 16½¢ Yellow Orange on Pale Green, ½bbl., Beer (REA76b; Priester 84B).** Large margins to clear, brilliant colors, "CAL BR Co., 4.9.11" perforated cancel, faint creases and minor toned spots, Fine appearance, only 21 are recorded in the Priester census 350.00
- 136 (★) **1902, 16½¢ Yellow Orange on Light Blue, ½bbl., Beer (REA76c; Priester 84C).** Unused (no gum), large margins, few flaws incl. creasing and pinholes, otherwise Very Fine, scarce in unused condition, perforated cancels were mandatory after August 31, 1901, unlisted in Scott as unused, Scott Retail as used 225.00



- 137 **1902, 16½c Yellow Orange on Bright Blue, ½bbl., Beer (REA76d; Priester 84D).** Three large margins incl. part of adjoining stamp at left, in at right, "W A H 2.29.09" perforated cancel, faint creasing of little consequence, Fine appearance, only 16 are recorded in the Priester census 400.00
- 138 **1902, 33½c Violet on Light Blue, ½bbl., Beer (REA78c; Priester 86C).** Ample margins to just touched, deep rich colors, "E BR Co., 5.11.07" perforated cancel, small faults, Fine, scarce, only 15 are reported in Priester census, ex Tolman 450.00
- 139 **1902, 33½c Violet on Bright Blue, ½bbl., Beer (REA78d; Priester 86D).** Large margins to just in at lower left, rich colors, "M NUNAN 4.25.09" perforated cancel from this San Francisco brewery, few creases, small sealed tear at bottom left, otherwise Fine, only 16 are recorded in the Priester census 450.00
- 140 **1902, \$1.00 Red on Pale Green, 1bbl., Beer (REA80b; Priester 88B).** Large margins to clear, bright colors, C & N B Co., "+8+1:04" perforated cancel, small sealed tear at lower left, Very Fine appearance 300.00
- 141 **1902, \$2.00 Dark Brown on Dark Blue, 1hhd., Beer (REA81a; Priester 89A).** Huge margins to full incl. part of adjoining stamp at top, "SB & M Co., 1.7.04" perforated cancel, minor wrinkles, Very Fine and choice, only 17 are recorded in the Priester census and we have offered only one other since keeping computerized records 750.00
- 142 **1902, \$2.00 Dark Brown on Pale Green, 1hhd., Beer (REA81b; Priester 89B).** Large margins to in at right, large "B & EB Co. 4.20.0?" perforated cancel, sealed internal tears, Fine appearance, rare as only eleven are reported in Priester census, this is the only example we have offered since keeping computerized records, ex Tolman 900.00
- 143 **1902, \$2.00 Dark Brown on Light Blue, 1hhd., Beer (REA81c; Priester 89C).** Huge margins to just in at right incl. bottom left corner sheet margin, rich colors, "T G B B Co., 12:30:07" perforated cancel, light horizontal crease, small tear in sheet margin only at left, Very Fine appearance, a beautiful example of this issue, only 23 are recorded in the Priester census 500.00
- 144 **1902, \$2.00 Dark Brown on Bright Blue, 1hhd., Beer (REA81d; Priester 89D).** Large margins to full, large "B & W, 1+6 11" perforated cancel, few small paper flaws, tin spot, appears Very Fine, only 23 are recorded in Priester census (same number as on Light Blue paper) 600.00
- 145 **1901-02 Issues Beer Stamp Balance.** 24 unused and used stamps on home made album pages, incl. unused Nos. REA75a, REA75c, REA78a, used Nos. REA65-REA67, REA69-REA70, REA75c, REA75d, REA80a, REA80c and REA80d, each also identified by Priester no., few flaws but in far better condition than normally seen, Very Fine group, Scott Catalogue does not list the unused stamps, Scott Retail as all used *Not illustrated* 1,427.50

1909-11 ISSUES

- 146 **1909, 12½c Black on Blue, ½bbl., Beer (REA82; Priester 90).** Large margins to in, intense shade and impression, "S B Co., 4:30:20" perforated cancel, Fine, only 16 are recorded in the Priester census 500.00
- 147 **1909, 25c Black on Blue, ¼bbl., Beer (REA84; Priester 92).** Three large margins, clear to just touched at top, detailed impression, "B & B, 3.23.10" perforated cancel, small hole at upper right, otherwise Fine example of this issue, only 23 are recorded in the Priester census..... 450.00



148

148 **1909, 33 $\frac{1}{3}$ c Black on Blue, $\frac{1}{2}$ bbl., Beer (REA85; Priester 93).** Large margins, intense color, "CAL BR Co. +4+3.14" perforated cancel, few small faults incl. light creases and small tear at bottom left

VERY FINE APPEARANCE. AN ATTRACTIVE EXAMPLE OF THE RARE ONE-THIRD BARREL 1909 ISSUE.

Only two examples are recorded in the Priester census. Ex Tolman. 20,000.00



- 149 **1909, \$1.00 Black on Blue, 1bbl., Beer (REA87; Priester 95).** Two large margins, clear to in on other sides, "T B & Co., 8.20.10" perforated cancel, few faults incl. horizontal crease, sealed tear and small hole, otherwise Fine, only 16 are recorded in the Priester census..... 750.00



- 150 **1909, \$2.00 Black on Blue, 1hhd., Beer (REA88; Priester 96).** Large and even margins, "F J B Co." perforated cancel with partial date, few faults incl. repaired at right adding part of design from another stamp

VERY FINE APPEARANCE. A RARE EXAMPLE OF THE ONE-HOGSHEAD 1909 ISSUE. ONLY FOUR ARE RECORDED IN THE PRIESTER CENSUS.

We have offered one other of the four, in our Tolman sale. That other copy was extensively repaired with portions of the central design painted in. The example offered here is a very presentable copy of this rarity..... 4,500.00

150

- 151 **1911, \$10.00 Black on Blue, 10bbl., Center Cutout (REA90; Priester 102).** Showing full denomination and most of central design, perforated cancel, Very Fine and scarce, the full stamp is not known to exist, according to the the Priester book these were used to pay tax on beer in vats drawn off for bottling, the center portion was punched out by the revenue collector and the brewer received the center portion as a receipt, the government retained the rest of the stamp and presumably destroyed them, undercatalogued in Scott as only eight are recorded in the Priester census 125.00
- 152 **1911, \$25.00 Black on Blue, 25bbl., Center Cutout (REA91; Priester 103).** Showing full denomination and most of central design, perforated cancel, Very Fine and scarce, the full stamp is not known to exist, according to the Priester book these were used to pay tax on beer in vats drawn off for bottling, the center portion was punched out by the revenue collector and the brewer received the center portion as a receipt, the government retained the rest of the stamp and presumably destroyed them, with 2008 P.F. certificate, undercatalogued in Scott as only 15 are recorded in the Priester census..... 100.00

1914 PROVISIONAL ISSUE

- 153 **1914, (37 1/2c) Surcharge and 50mm Signature on 25c Green on Blue, 1/4bbl., No. REA93, Beer (REA98a; Priester 110B).** Priester surcharge Type 71, large margins to just in, rich color, "J S B & M Co., 12:+2:14" perforated cancel (John Stanton Brewing & Malting Co., Troy N.Y.), some soiling, otherwise Fine, only nine are recorded in the Priester census 700.00
- 154 **1914, (50c) Surcharge on 33 1/3c Black on Blue, 1/4bbl., No. REA85, Beer (REA99; Priester 111A).** Priester Type 70 surcharge, large and even margins all around, detailed impression, light vertical crease, Very Fine appearance, an attractive example of this issue with yellow surcharge.... 225.00
- 155 **1914, (50c) Surcharge on 33 1/3c Violet on Bright Blue, 1/4bbl., No. REA78d, Beer (REA99A; Priester 104A).** Priester Type 70 surcharge, large margins to clear incl. part of adjoining stamps at left and bottom, "NAT B Co., 4:20:17" perforated cancel, some staining, light vertical crease, otherwise Very Fine, only 20 are recorded in the Priester census and this is only the second we have offered since keeping computerized records 900.00



156



157



158

- 156 1914, (75c) Surcharge on 50c Black on Blue, 1/2 bbl., No. REA86, 50mm Signature, Beer (REA100c; Priester 112B-71). Priester Type 71 surcharge, large to huge margins incl. bottom left corner margin with "J.P.P." and "M.R.G." siderographer's initials, intense shade and impression, "J S B & M Co., 11:20:14" perforated cancel (John Stanton Brewing & Malting Co., Troy N.Y.), trivial soiling and faint crease, Very Fine appearance, only 35 are recorded in the Priester census..... 175.00
- 157 1914, (75c) Surcharge on 50c Black on Blue, 1/2 bbl., No. REA86, 65mm Signature, Beer (REA100d; Priester 112B-72). Priester Type 72 surcharge, full and even margins all around, intense shade, "J S B & M Co., 11:30:14" perforated cancel (John Stanton Brewing & Malting Co., Troy N.Y.), minor soiling, Very Fine, only ten are recorded in the Priester census..... 325.00
- 158 1914, (75c) Surcharge on 50c Brown on Light Blue, 1/2 bbl., No. REA79c, Beer (REA100a; Priester 106A). Priester Type 70 surcharge, large to huge margins incl. sheet margin at bottom with brown "B" and "19279", large "CON B Co., 12+4 11, of NY LT(d)" perforated cancel, fresh and Very Fine, scarce and desirable as only 11 are recorded in the Priester census, small backstamp..... 1,000.00



159

- 159 1914, (75c) Surcharge on 50c Brown on Pale Green, 1/2 bbl., No. REA79b, Beer (REA100Ab; Priester 105A). Large margins to in incl. part of adjoining stamp at left, bright colors and clear overprint, large "FINK B Co., 3:18:15" perforated cancel (Fink Brewing Co. of Harrisburg Pa.), small faults

FINE. THIS IS THE ONLY RECORDED EXAMPLE OF THE HALF-BARREL 1914 ISSUE ON PALE GREEN PAPER. ONE OF THE GREAT RARITIES OF BEER STAMP COLLECTING.

During World War I, a surcharge of \$1.50 per barrel was added to reflect the new tax rate. For a half-barrel stamp, such as the one offered here, the surcharge would have been 75c. The underlying stamp used for most of the 75c surcharges was the 1909-11 Issue (REA86). A small number of the 1902 Issue (REA79) on Light Blue and Pale Green paper was also surcharged. This example on Pale Green is unique.

With 2004 P.F. certificate as the old Scott 100b. Scott Catalogue was changed to more correctly reflect the underlying stamp and this is now Scott 100Ab. 5,500.00



160



161



162



163

- 160 **1914, \$1.50 Handstamped Surcharge and 50mm Signature on \$1.00 Carmine on Blue, 1bbl., No. REA94, Beer (REA101a; Priester 113B-71).** Priester Type 71 surcharge, huge margins incl. **sheet margin at left** and part of adjoining stamp at right, "J S B & M Co., 10:26:14" perforated cancel (John Stanton Brewing & Malting Co., Troy N.Y.), faint bleached spot shows mostly on back, couple minute flaws, Extremely Fine, only five examples of the \$1.50 handstamped surcharge with 50mm signature are recorded in the Priester census, this rarity seems grossly undervalued in Scott, ex Tolman..... 700.00
- 161 **1914, (\$15.00) Surcharge on \$10.00 Black, 10bbl., Center Cutout Only, Beer (REA104; Priester 116A).** Priester Type 70 surcharge, showing full denomination, part of yellow surcharge and also with perforated cancel, Very Fine and choice, scarce, this does not exist as an entire stamp, according to the Priester book these were used to pay tax on beer in vats drawn off for bottling, the center portion was punched out by the revenue collector and the brewer received the center portion as a receipt, the government retained the rest of the stamp and presumably destroyed them, undercatalogued in Scott as only nine are recorded in the Priester census..... 160.00
- 162 **1914, (\$37.50) Surcharge on \$25.00 Black, 25bbl., Center Cutout Only, Beer (REA105; Priester 117A).** Priester Type 70 surcharge, showing most of denomination, part of yellow surcharge and also with trace of perforated cancel, Very Fine and choice, scarce, this does not exist as an entire stamp, according to the Priester book these were used to pay tax on beer in vats drawn off for bottling, the center portion was punched out by the revenue collector and the brewer received the center portion as a receipt, the government retained the rest of the stamp and presumably destroyed them, with 2003 P.F. certificate, undercatalogued in Scott as only five are recorded in the Priester census 225.00

1914 ISSUE

- 163 **1914, 25c Black on Blue, 1/6bbl., Beer (REA107; Priester 124).** Full margins all around, intense shade and impression, "F B Co., 6+2:17" perforated cancel, faint horizontal crease, Very Fine appearance, only 31 are recorded in the Priester census..... 175.00



164

- 164 **1914, 25c Violet Blue on Blue, 1/6bbl., Beer (REA107a; Priester 125).** Large and even margins, rich color, "R & GB Co. 9+8:17" perforated cancel, few faults incl. creases
- VERY FINE APPEARANCE. A CHOICE AND RARE EXAMPLE OF THE 1914 ONE-SIXTH BARREL IN THE TRUE VIOLET BLUE SHADE.
- The Priester census records only five examples of this issue printed in the Violet Blue color... 2,500.00

1917 PROVISIONAL ISSUE



165

- 165 **1917, (37½c) Ty. A Handstamped Surcharge on (18½c) Red Brown on Blue, ½bbl., No. REA96, Beer (REA117; unlisted in Priester).** Priester Type 102 handstamp, large margins to a bit close at upper left, "W C B Co. +9+3-18" perforated cancel (either Westchester County Brewing Co., Pelham N.Y., or Watertown Consumer's Brewing Co., Watertown N.Y.), tiny thin spot at left center, light diagonal crease at bottom left

VERY FINE APPEARANCE. THIS IS THE RECORDING COPY AND STILL THE ONLY KNOWN EXAMPLE OF THE ONE-EIGHTH BARREL 1914 SURCHARGED ISSUE WITH "ACT OF 1917" HANDSTAMPED PROVISIONAL SURCHARGE, SCOTT REA117. UNLISTED IN THE 1990 PRIESTER BOOK.

This stamp was reported in the July-August 1996 *American Revenuer*. It was acquired by Henry Tolman from the Joyce collection. With 2006 P.F. certificate..... 17,500.00

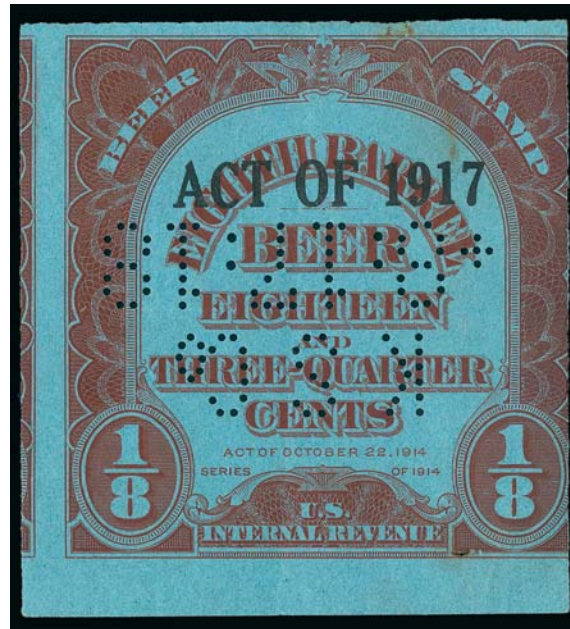


166



167

- 166 1917, (37½c) Ty. A Handstamped Surcharge on 18¾c Red Brown on Blue, ½bbl., No. REA106, Beer (REA118; Priester 141A). Priester Type 100 surcharge, large margins all around incl. sheet margin at bottom, "TON BRG Co., 6.8.18" perforated cancel, faint horizontal crease, Very Fine appearance, a beautiful stamp 325.00
- 167 1917, (37½c) Ty. A Handstamped Surcharge on 18¾c Red Brown on Blue, ½bbl., No. REA106, Beer (REA118; Priester 141A). Priester Type 86 surcharge, three huge margins incl. part arrow at upper left, in at right, gorgeous color, "E VOLLMER, 2:12:18" perforated cancel (from E. Vollmer Brewery in Philadelphia), fresh and Fine, small backstamp 325.00



168

- 168 1917, (37½c) Ty. B Surcharge on 18¾c Red Brown on Blue, ½bbl., No. REA106, Beer (REA118b; Priester 141B). Priester Type 141 surcharge, three large margins incl. sheet margin at bottom and part of adjoining stamp at left, in at right, "K S Co., 8:17:18" perforated cancel, faint creases and some slight soiling, small hole at lower right
FINE APPEARANCE, THIS IS THE ONLY RECORDED EXAMPLE OF THE 1917 EIGHTH-BARREL WITH TYPE B SURCHARGE. ONE OF THE GREAT RARITIES OF BEER STAMP COLLECTING.
This stamp is not listed in the Priester census. Listed but unpriced in Scott.
..... E. 7,500-10,000



- 169 (★) 1917, (37½c) Ty. C Surcharge on 18¾c Red Brown on Blue, ½bbl., No. REA106, Beer (REA118c; Priester 141C). Priester Type 149 surcharge, unused (no gum), large to huge margins incl. **sheet margin at top**, faint pressed-out crease, Extremely Fine appearance, scarce as only 13 are recorded in the Priester census, we have offered only one other (in used condition) since keeping computerized records, we do not know how many of the 13 are unused, unlisted in Scott as unused, Scott Retail as used 500.00
- 170 1917, (50c) Ty. D Manuscript Surcharge on (25c) Black on Blue, ½bbl., No. REA97, Beer (REA119 var; Priester 137D). Full and even margins, detailed impression, "N S B Co., 10:45:17" perforated cancel, repaired where torn in two, otherwise Very Fine, very scarce, only two are recorded in the Priester census, noted but unlisted in Scott, this should be given its own listing of 119d..... E. 500-750
- 171 (★) 1917, (50c) Ty. A Surcharge on 25c Violet Blue on Blue, ½bbl., No. REA107a, Beer (REA120; Priester 143A). Priester Type 88 surcharge, unused (no gum), full to huge margins incl. **sheet margin at bottom**, Very Fine and choice, a beautiful stamp and rare in sound unused condition, only 20 are recorded in the Priester census incl. nine with the Type 88 surcharge (we do not know how many of these are unused), unlisted in Scott as unused, Scott Retail as used..... 600.00
- 172 1917, (50c) Ty. A Surcharge on 25c Violet Blue on Blue, ½bbl., No. REA107a, Beer (REA120; Priester 143A). Unusual **negative letters of surcharge of a type unlisted in Priester**, large margins incl. **sheet margin at bottom**, "F F B C, 1:12:18" perforated cancel, light diagonal crease at top right, Very Fine appearance, a wonderful item bearing what may be a unique type of surcharge, with 2007 P.F. certificate..... 600.00
- 173 (★) 1917, (50c) Ty. A Surcharge on 25c Black on Blue, ½bbl., No. REA107, Beer (REA120a; Priester 142A). Priester Type 81 surcharge, unused (no gum), three large margins, just in at bottom, detailed impression, small corner crease at top left, Fine appearance, scarce, only nine are recorded in the Priester census (four with Type 81 surcharge), we do not know how many are unused, with 2008 P.F. certificate, unlisted in Scott as unused, Scott Retail as used..... 500.00
- 174 1917, (50c) Ty. A Surcharge on 25c Black on Blue, ½bbl., No. REA107, Beer (REA120a; Priester 142A). Priester Type 107 surcharge, large margins to in where bottom left corner missing, "N S B Co., 10:15:18" perforated cancel, somewhat defective, otherwise Fine, scarce, only nine are recorded in the Priester census (four of which are Type 81 surcharge) 500.00

- 175 1917, (50c) Type D Manuscript Surcharge on 25c Violet Blue on Blue, ½bbl., No. REA107a, Beer (REA120 var; Priester 143D). Huge margins all around incl. part arrow sheet margin at bottom left and “461” of plate no., clear red crayon surcharge, “TF BRG Co., 5.+4:18” perforated cancel, light vertical crease

EXTREMELY FINE APPEARANCE. A RARE EXAMPLE OF THE SIXTH-BARRELL 1917 ISSUE WITH TYPE D SURCHARGE. ONLY TWO ARE RECORDED IN THE PRIESTER CENSUS.

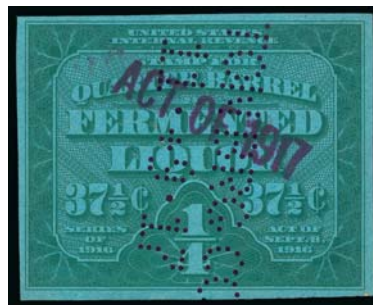
The manuscript Type D surcharges are noted but not listed in Scott. They should have their own Scott Catalogue number, such as REA120d. Scott Retail as normal Type A surcharge..... 600.00



175

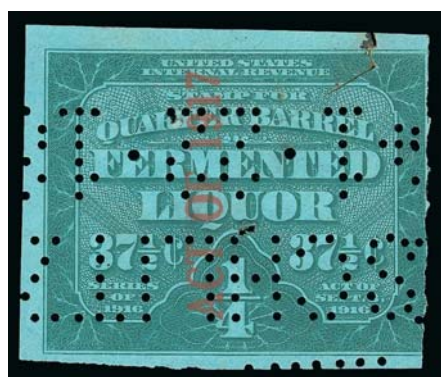


176



177EX

- 176 1917, (50c) Ty. A Surcharge on 37½c Green on Blue, ¼bbl., No. REA108, Beer (REA121; Priester 144A). Priester Type 97 surcharge, huge margins to clear incl. bottom left corner sheet margin with “J.A.M.” siderographer’s initials and “4618” of plate no., “N S B Co., 10:+9:17” perforated cancel, small tear at upper right just affects design, otherwise Very Fine, an impressive-looking stamp 140.00
- 177 1917, (75c) Ty. A Surcharge on 37-12c Green on Blue, ¼bbl., No. REA115, Beer (REA122; Priester 151A). Five used stamps, incl. four of No. REA122 with different surcharges incl. Priester Types 81, 86 (double inverted) and 88, also one of REA122c, large margins, perforated cancels, few minor flaws, Very Fine group(Photo Ex) 340.00



178

- 178 1917, (75c) Ty. B Surcharge on 37½c Green on Blue, ¼bbl., No. REA115, Beer (REA122b; Priester 151B). Priester Type 141 surcharge, large margins to in at right, large “Shlitz 1-22-18” perforated cancel, tear and rust mark at top right

FINE. ONE OF ONLY THREE REPORTED EXAMPLES OF THE TYPE B 1917 PROVISIONAL SURCHARGE ON THE QUARTER-BARREL 1916 ISSUE.

The three REA122b stamps reported in Priester census have different types of surcharges (Types 141, 142, 143). Ex Tolman. With 2006 P.F. certificate.. 5,500.00



179

- 179 **1917, (75c) Type D Manuscript Surcharge on 37½c Green on Blue, ¼bbl., No. REA115, Beer (REA122 var; Priester 151D).** With red crayon manuscript “Act of 1917”, large margins, “TF BR Co., 6:14:18” perforated cancel, light creases

VERY FINE APPEARANCE. AN EXTREMELY RARE EXAMPLE OF THE QUARTER-BARREL 1917 PROVISIONAL ISSUE WITH TYPE D SURCHARGE. ONLY TWO ARE RECORDED IN THE PRIESTER CENSUS.

With 2005 P.F. certificate. Scott Catalogue notes but does not list the manuscript surcharges — this should be listed as REA122d..... E. 5,000-7,500

- 180 **1917, (\$1.00), (\$1.50) Ty. A Surcharges, ½bbl., ½bbl., No. REA99, REA116, Beer (REA123-REA124).** Five used stamps, incl. one of No. REA123, three of No. REA124 with different Priester surcharges such as 92 and 107, last is REA124c, large margins, few small flaws to be expected, Very Fine group.....(Photo Ex) 475.00



180EX



181

- 181 **1917, (\$1.50) Ty. B Surcharge on 75c Black on Blue, ½bbl., No. REA116, Beer (REA124b; Priester 152B).** Priester Type 140 surcharge, large margins all around, “Shlitz 1-28-18” perforated cancel, repaired horizontal tear across stamp, piece added at upper left

ONE OF THREE REPORTED EXAMPLES OF THE TYPE B 1917 PROVISIONAL SURCHARGE ON THE HALF-BARREL 1916 ISSUE. A GREAT RARITY.

The three REA124b stamps reported in the Priester census have different types of surcharges (Types 140, 144, 145). Ex Tolman. With 2006 P.F. certificate. 6,000.00



182



183

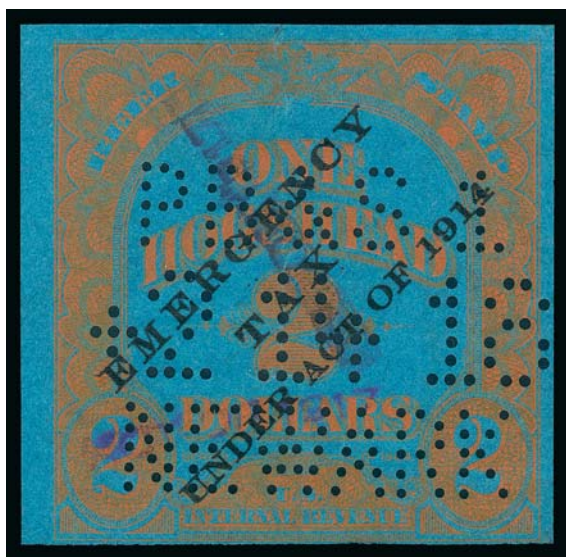


184



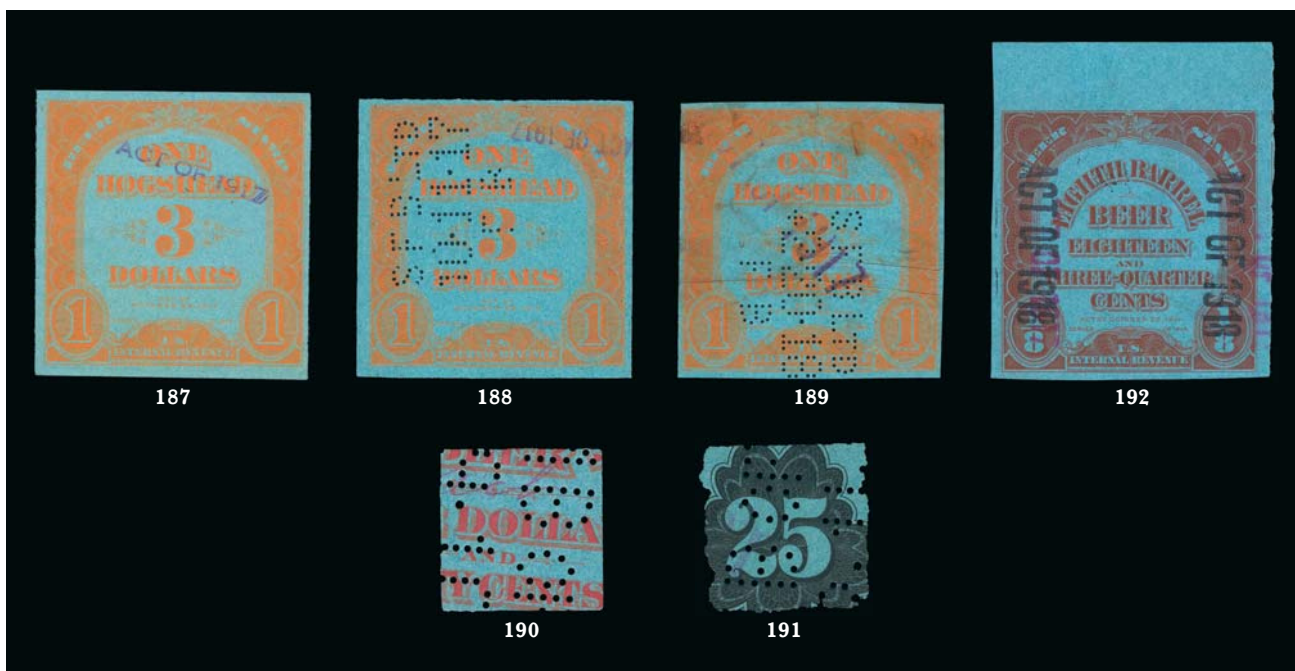
185EX

- 182 (★) 1917, (\$1.50) Ty. C Inverted Surcharge on 75c Black on Blue, ½bbl., No. REA116, Beer (REA124d; Priester 152aC). Priester Type 149 surcharge, unused (no gum), large and even margins, light vertical crease at left, Very Fine appearance, only 20 are recorded in the Priester census..... 1,750.00
- 183 1917, (\$1.50) Type D Manuscript Surcharge on 75c Black on Blue, ½bbl., No. REA109, Beer (REA124 var; Priester 145D). Manuscript surcharge reading down at center, large margins to full, "N S B Co., 10:+5:17" perforated cancel, repaired at center
THIS IS THE ONLY RECORDED EXAMPLE OF THE HALF-BARREL 1917 WITH MANUSCRIPT SURCHARGE. A GREAT RARITY.
Scott Catalogue gives this item a footnote. Technically, it should be listed as No. REA124Ad, since the underlying stamp is also different than the Scott listing (REA109 versus REA116 for normal).
..... E. 2,000-3,000
- 184 (★) 1917, (\$3.00) Ty. A Surcharge on (\$1.50) Red Orange on Blue, 1bbl., No. REA110, Beer (REA125; Priester 146A). Priester Type 86 surcharge applied diagonally and almost inverted, unused (no gum), three huge margins incl. **sheet margin at top**, just in at right, Fine, scarce in sound unused condition, purple "E.L. Green" backstamp, unlisted in Scott as unused, Scott Retail as used 100.00
- 185 1917, (\$3.00) Ty. A Surcharge on (\$1.50) Red Orange on Blue, 1bbl., No. REA110, Beer (REA125; Priester 146A). Four unused and one used, each with different surcharge incl., Priester Types 97, 99 (with part plate no., some soiling), 107 (unused), 108, last is Type C surcharge with Type 149, large margins, few small flaws, Very Fine appearing group, the unused is unlisted in Scott, Scott Retail as all used.....(Photo Ex) 500.00



186

- 186 1917, (\$6.00) Ty. A Surcharge on (\$3.00) Orange on Blue, 1hhd., No. REA102, Beer (REA126; Priester 139A). Priester Type 93 surcharge, large margins to clear, large "PB & S 1, 2 14 18, NEWARK" perforated cancel, tear at top center is barely noticeable
VERY FINE APPEARANCE. ONE OF ONLY TWO RECORDED EXAMPLES OF THIS ONE-HOGSHEAD 1917 TYPE A PROVISIONAL SURCHARGE.
The Priester census reports only two examples of REA126. Both have the Type 93 surcharge. The other was offered in our auction of the Tolman collection in 2006.
With 2005 P.F. certificate..... 2,750.00



- 187 (★) 1917, (\$6.00) Ty. A Surcharge on \$3.00 Orange on Blue, 1hhd., No. REA111, Beer (REA127; Priester 147A). Priester Type 82 surcharge, large and even margins, unused (no gum), tiny thin speck, Very Fine, only 22 are recorded in the Priester census, unlisted in Scott as unused, Scott Retail as used..... 500.00
- 188 1917, (\$6.00) Ty. A Inverted Surcharge on \$3.00 Orange on Blue, 1hhd., No. REA111, Beer (REA127 var; Priester 147A var). Priester Type 97 surcharge applied inverted at upper right, large margins to full, "S F B Ltd., 10.1.17" perforated cancel, tiny pinhole at top right, Very Fine appearance, this is the only example with inverted surcharge we have encountered, purple "E.L. Green" backstamp, to be consistent Scott Catalogue should give it a separate listing (REA127a) and it should also have its own Priester listing (147aA), unlisted in Scott, Scott Retail as normal..... 500.00
- 189 1917, (\$6.00) Ty. A Surcharge on \$3.00 Orange on Blue, 1hhd., No. REA111, Beer (REA127; Priester 147A). Priester Type 107 surcharge, large margins to full, "S F B Ltd., 2.20.18" perforated cancel, few creases and some stains mostly on back, otherwise Very Fine, scarce with this style of surcharge, with 2008 P.F. certificate..... 500.00
- 190 1917, (\$6.00) Type D Manuscript Surcharge on \$3.00 Orange on Blue, 1hhd., Center Cutout Only, No. REA111, Beer (REA127 var; Priester 146aD). Neat magenta manuscript surcharge at center, perforated cancel, few minor flaws, Very Fine appearance, the center cutout is unlisted in Scott for the one-hogshead size and none is recorded in the Priester census, according to the Priester book these were used to pay tax on beer in vats drawn off for bottling, the center portion was punched out by the revenue collector and the brewer received the center portion as a receipt, the government retained the rest of the stamp and presumably destroyed them, the other listed cutouts are for sizes larger than one-hogshead E. 500-750
- 191 1917, (\$75.00) Ty. A Surcharge on (\$37.50) Black on Blue, 25bbl., Center Cutout Only, No. REA114, Beer (REA131; Priester 150A). Showing entire denomination, light purple surcharge, perforated cancel, small flaw at lower right, Very Fine and scarce, only five are recorded in the Priester census, according to the Priester book these were used to pay tax on beer in vats drawn off for bottling, the center portion was punched out by the revenue collector and the brewer received the center portion as a receipt, the government retained the rest of the stamp and presumably destroyed them, undercatalogued in Scott 225.00

1918 PROVISIONAL ISSUE

- 192 (★) 1918, (75c) Ty. A Surcharge on (37½c) Red Brown on Blue, ½bbl., No. REA118, Beer (REA132; Priester 175A). Priester Type 160 surcharge, unused (no gum), large to huge margins incl. sheet margin at top and part of adjoining stamp at right, faint horizontal crease at bottom mostly in margin, Extremely Fine appearance, scarce, only eleven are recorded in the Priester census (including a block of four), unlisted in Scott as unused, Scott Retail as used..... 600.00



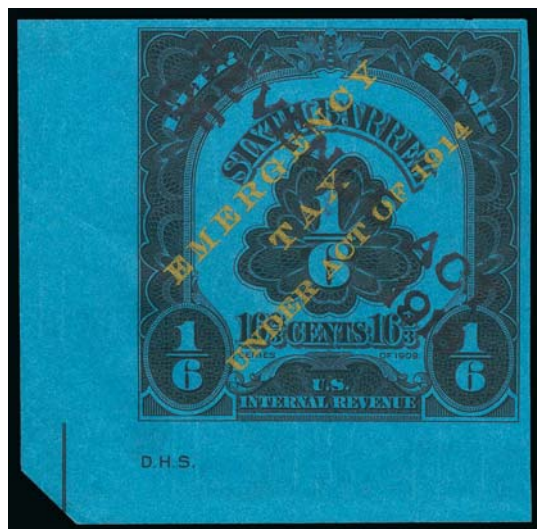
193

- 193 (★) 1918, (75c) Ty. A Surcharge on (37½c) Red Brown on Blue, ½bbl., Ty. C Surcharge, No. REA118c, Beer (REA132a; Priester 176A). Priester Type 169 surcharge, unused (no gum), huge margins to clear incl. **sheet margin at bottom**, fresh and Very Fine, scarce, the Priester census records only five known but our Tolman sale contained a block of four and a single (all unused), unlisted in Scott as unused, Scott Retail as used 1,200.00

- 194 1918, (75c) Ty. A Surcharge on (37½c) Red Brown on Blue, ½bbl., Ty. C Surcharge, No. REA118c, Beer (REA132a; Priester 176A). Priester Type 161 surcharge, large to huge margins incl. **sheet margin at bottom**, “?M BRG Co., 9” of perforated cancel, light diagonal crease, small hole and minor toned spots on back, still Very Fine and scarce, the Priester census records only five examples of this issue, an unused block of four and two unused singles are known to us, this may be scarcer in used condition 1,200.00



194



195

- 195 (★) 1918, (\$1.00) Ty. A Surcharge on (25c) Black on Blue, ½bbl., No. REA97, Beer (REA133; Priester 161A). Priester Type 154 surcharge, large to huge margins incl. **bottom left sheet margin with “D.H.S.” siderographer’s initials**, unused (no gum), completely sound

EXTREMELY FINE. ONLY SIX EXAMPLES OF THE SIXTH-BARREL “REVENUE ACT OF 1918” SURCHARGED ON THE “REVENUE ACT OF 1914” STAMP ARE RECORDED. A GREAT RARITY.

Only six examples of this issue are recorded in the Priester census. We have offered only one other since keeping computerized records, which had Priester Type 163 surcharge inverted. The example offered here is a true condition rarity.

With 2005 P.F. certificate 3,000.00



196

- 196 (★) 1918, (\$1.00) Ty. A Surcharge on 25c Black on Blue, $\frac{1}{6}$ bbl., No. REA107, Entire Stamp, Beer (REA134; Priester 177A). Priester Type 163 surcharge, unused (no gum), large margins all around

EXTREMELY FINE. A SPECTACULAR SOUND EXAMPLE OF THE SIXTH-BARREL 1918 PROVISIONAL SURCHARGE PRINTED IN BLACK.

The Priester census records six copies. The stamp offered here was the top copy in the pair offered in our Tolman sale. With 2006 P.F. certificate for pair. Unlisted in Scott as unused. Scott Retail as used 3,000.00



197

- 197 (★) 1918, (\$1.00) Ty. A Surcharge on 25c Black on Blue, $\frac{1}{6}$ bbl., No. REA107, Entire Stamp, Beer (REA134; Priester 163A). Priester Type 153 surcharge, large margins to in, intense shade, paper has a distinctly more greenish hue than the previous lot, light crease, almost Fine, scarce, only six are listed in the Priester census for the various surcharge types (we are aware of Types 150, 153 and two of Type 163), unlisted in Scott as used, Scott Retail as unused 3,000.00

- 198 1918, (\$1.50) Ty. A Surcharge on $37\frac{1}{2}$ c Green on Blue, $\frac{1}{4}$ bbl., No. REA108, Beer (REA137; Priester 166A). Priester Type 163 surcharge, large and even margins all around, "M B of SF, 3:19:19" perforated cancel, minor paper wrinkle at bottom left corner, Very Fine, scarce, only six are recorded in the Priester census, this is the second we have offered since keeping computerized records and the first in used condition..... 600.00



198



199

199

1918, (\$1.50) Ty. A Surcharge Dated "1919" on 37½c Green on Blue, ¼bbl., No. REA108, Beer (REA137a; Priester 166B). Priester Type 203 surcharge, large even margins, "MB of SF 3:~5:19" perforated cancel, completely sound

EXTREMELY FINE. THE FINER OF TWO EXAMPLES OF THIS ISSUE RECORDED IN THE PRIESTER CENSUS. THIS IS ALSO THE EARLIEST DATE OF USE OF THE "ACT OF 1919" SURCHARGE ON ANY QUARTER-BARREL 1914 ISSUE. A MAGNIFICENT BEER STAMP RARITY.

This stamp was the subject of an article in the *American Revenuer*, May 1982 (copy accompanies). Both of the two REA137a stamps reported in Priester are Type 203 surcharges.

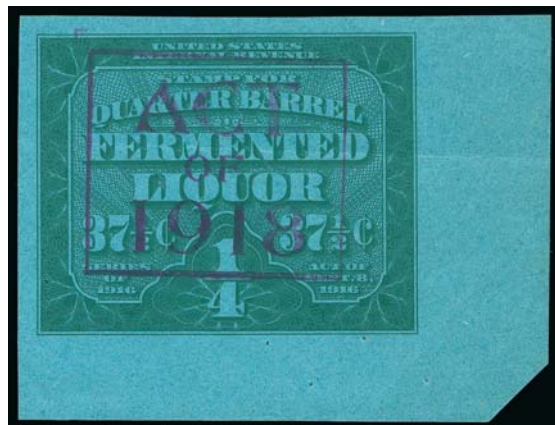
Ex Tolman 1,500.00

- 200 (★) **1918, (\$1.50) Ty. A Surcharge on 37½c Green on Blue, ¼bbl., No. REA115, Beer (REA138; Priester 171A).** Priester Type 156 surcharge, unused (no gum), large to huge margins incl. **bottom right corner sheet margin**, bright color, faint horizontal crease, four small staple holes at bottom

EXTREMELY FINE APPEARANCE. A RARE UNUSED EXAMPLE OF THE QUARTER-BARREL 1918 PROVISIONAL ISSUE. ONLY FOUR ARE RECORDED IN THE PRIESTER CENSUS.

The Priester census records four examples of this issue. Two are used copies with Type 165 surcharge. This unused example with Type 156 surcharge may be unique.

With 2005 P.F. certificate. Unlisted in Scott as unused. Scott Retail as used 1,250.00



200



201



202EX



203

- 201 **1918, (\$1.50) Ty. A Surcharge on 37½c Green on Blue, ¼bbl., No. REA115, Beer (REA138; Priester 171A).** Priester Type 165 surcharge. large and even margins all around, "TJFTEB, 5:~2:19" perforated cancel, completely sound, Very Fine and choice, only four are recorded incl. one other with Type 165 surcharge (offered in our Tolman sale) and the unused example offered in the preceding lot 1,250.00
- 202 **1918, (\$1.50) Ty. A Surcharge on (75c) Green on Blue, ¼bbl., Ty. C Surcharge, No. REA122c, Beer (REA139).** Two unused and one used, incl. unused of Nos. REA139 and REA139a, used of No. REA139, large margins to full, trivial flaws, Very Fine, the REA139 is unlisted in Scott as unused (REA139a is listed at \$350.00) (Photo Ex) E. 200-300
- 203 (★) **1918, (\$1.50) Ty. A Surcharge with "1919" date on (75c) Green on Blue, ¼bbl., Ty. C Surcharge, No. REA122c, Beer (REA139a; Priester 183B).** Priester Type 202 surcharge, unused (no gum), large and balanced margins, Extremely Fine Gem, a beautiful stamp 350.00



204



205



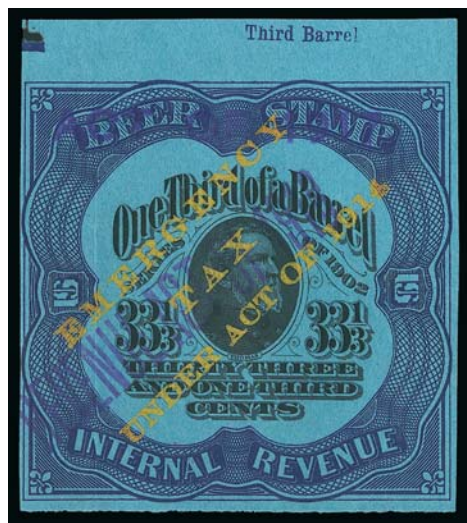
206

- 204 (★) 1918, (\$1.50) Ty. A Surcharge with “1919” date on (75c) Green on Blue, $\frac{1}{4}$ bbl., Ty. C Surcharge, No. REA122c, Beer (REA139a; Priester 183B). Priester Type 201 surcharge, unused (no gum), huge margins to full, faint pressed-out vertical crease, Very Fine appearance 350.00
- 205 (★) 1918, (\$1.50) Ty. A Surcharge on (75c) Green on Blue, $\frac{1}{4}$ bbl., No. REA122, Beer (REA139b; Priester 182A). Priester Type 160 surcharge, unused (no gum), large margins, fresh and Extremely Fine, a beautiful sound example of this issue, only 11 are recorded in the Priester census, with 2005 P.F. certificate, unlisted in Scott as unused, Scott Retail as used 350.00
- 206 1918, (\$2.00) Ty. A Surcharge on (50c) Black on Blue, $\frac{1}{4}$ bbl., No. REA99, Beer (REA140; Priester 162A). Priester Type 163 surcharge, full margins to clear, “Cal BAsN, 8:+4:19” perforated cancel, repaired diagonal tear, piece expertly added at top, otherwise Very Fine, scarce as only six are recorded in the Priester census, we have offered only one other since keeping computerized records, which was torn in half and repaired (ex Tolman), with 2005 P.F. certificate 1,000.00



207

- 207 (★) 1918, (\$2.00) Ty. A Surcharge on (50c) Violet on Bright Blue, $\frac{1}{4}$ bbl., No. REA99A, Beer (REA140A). Priester Type 163 surcharge (without additional Type 95 surcharge), unused (no gum), large margins to full, light creases at top left and bottom right
- VERY FINE APPEARANCE. AN EXTREMELY RARE EXAMPLE OF THIS 1918 PROVISIONAL SURCHARGE ISSUE. THE PRIESTER CENSUS REPORTS ONLY FIVE ARE KNOWN.
- The “Revenue Act of 1918” provisional surcharge (Priester Type 163) was applied to the One-Third Barrel value of the 1909 design type (with and without earlier provisional surcharges, REA123 and REA99, respectively) and, in this case, to the 1902 design type with printed 1914 surcharge (and, in the case of REA141, with the additional “Act of 1917” surcharge).
- The Priester census reports only five examples of REA140A. This is the third we have offered since keeping computerized records (all unused, one has inverted surcharge).
- With 2005 P.F. certificate. Scott Retail as used. 1,500.00



208

- 208 (★) 1918, (\$2.00) Ty. A Surcharge and 1917 (\$1.00) Ty. A Surcharge on (50c) Violet on Bright Blue, $\frac{1}{8}$ bbl., No. REA99a, Beer (REA141; Priester 172A). Priester Type 95 and 163 surcharges, unused (no gum), large to huge margins incl. **top sheet margin with "Third Barrel" barrel size inscription**, beautiful bright fresh colors and completely sound

EXTREMELY FINE GEM. CERTAINLY ONE OF THE FINEST EXAMPLES OF THIS RARE 1918 PROVISIONAL SURCHARGE ISSUE. THE PRIESTER CENSUS REPORTS ONLY TWO ARE KNOWN FOR REA141.

The "Revenue Act of 1918" provisional surcharge (Priester Ty. 163) was applied to the One-Third Barrel value of the 1909 design type (with and without earlier provisional surcharges, REA123 and REA99, respectively) and, in this case, to the 1902 design type with printed 1914 surcharge (and, in the case of REA141, with the additional "Act of 1917" surcharge).

The Priester census reports only two examples of REA141. Ex Tolman. With 2006 P.F. certificate. Scott Retail as used 3,500.00



209

- 209 (★) 1918, (\$2.00) Ty. A Surcharge on (\$1.00) Black on Blue, $\frac{1}{8}$ bbl., No. REA123, Beer (REA142; Priester 174A). Priester Type 95 and 163 surcharges, unused (no gum), large margins, completely sound

EXTREMELY FINE. THIS IS THE ONLY REPORTED EXAMPLE OF THE SCOTT REA142 — THE DUAL 1918 AND 1917 PROVISIONAL HANDSTAMPED SURCHARGES ON THE 1914 ONE-THIRD BARREL PROVISIONAL, 1909 DESIGN TYPE. ONE OF THE GREAT BEER STAMP RARITIES.

The Priester listing is based on this stamp. Ex Tolman. With 2006 P.F. certificate..... 10,000.00



- 210 (★) 1918, (\$3.00) Ty. A Surcharge on (\$1.50) Black on Blue, ½bbl., Ty. C Surcharge, No. REA124c, Beer (REA143; Priester 184A). Priester Type 150 surcharge, unused (no gum), large and even margins, Extremely Fine Gem, a superb stamp in every respect, purple "E.L. Green" backstamp 175.00
- 211 1918, (\$3.00) Ty. A Surcharge on (\$1.50) Black on Blue, ½bbl., Ty. C Surcharge, No. REA124c, Beer (REA143). Seven used stamps, range of Priester surcharge types incl. 154, 156, 165, 167 (2), 168 and 169, various perforated cancels, one with part plate no. at left, few flaws to be expected, overall fresh and Very Fine group.....(Photo Ex) 525.00
- 212 1918, (\$3.00) Ty. A Surcharge Dated "1919" on (\$1.50) Black on Blue, ½bbl., Ty. C Surcharge, No. REA124c, Beer (REA143a; Priester 184B). Priester Type 202 surcharge, large to huge margins incl. bottom right corner sheet margin, large "?Co CB Co., 4 25 19" perforated cancel, trivial soiling on back from barrel, Very Fine and choice, only six are recorded in the Priester census 600.00
- 213 1918, (\$6.00) Ty. A Surcharge on \$1.50 Red Orange on Blue, 1bbl., No. REA110, Beer (REA144; Priester 167A). Priester Type 152 surcharge, large margins to clear, "Hand Brg. Co., 8.22.19" perforated cancel (from Chicago), minor soiling, Very Fine, scarce, only nine are recorded in the Priester census 1,000.00
- 214 (★) 1918, (\$6.00) Ty. A Surcharge Dated "1919" on (\$3.00) Red Orange on Blue, 1bbl., Ty. C Surcharge, No. REA125c, Beer (REA145a; Priester 178B). Priester Type 202 surcharge, unused (no gum), large and even margins, completely sound, Extremely Fine, a rare example of this issue and especially desirable in unused condition, only five are recorded in the Priester census, we have offered only one since keeping computerized records (in used condition), with 2005 P.F. certificate, unlisted in Scott as unused, Scott Retail as used..... 500.00
- 215 1918, (\$12.00) Ty. A Surcharge on \$3.00 Orange on Blue, 1hhd., No. REA111, Beer (REA146; Priester 168A). Priester Type 163 surcharge, large margins to in at left, large "R B Co., 8.13" perforated cancel, some staining on back from barrel just shows thru at top and bottom, small repaired tack hole at bottom left, otherwise Fine, scarce, only nine are recorded in the Priester census, with 2005 P.F. certificate 700.00
- 216 1918, (\$60.00) Ty. A Surcharge on (\$30.00) Black on Blue, 10bbl., Ty. C Surcharge, No. 130c, Center Cutout Only, Beer (REA150; Priester 180A). Priester Type 163 surcharge, showing most of denomination, perforated cancel, fresh and Very Fine, only four are recorded in the Priester census, according to the the Priester book these were used to pay tax on beer in vats drawn off for bottling, the center portion was punched out by the revenue collector and the brewer received the center portion as a receipt, the government retained the rest of the stamp and presumably destroyed them, with 2003 P.F. certificate..... 300.00



217

- 217 (★) **1918, (\$60.00) Ty. C Surcharged on \$15.00 Black on Blue, 10bbl., Beer (REA150a; Priester 180aA).** Priester Type 169, entire stamp, unused (no gum), three wide margins, just in at left, two light creases, small staple holes at top

FINE APPEARANCE. A RARE EXAMPLE OF THE ENTIRE STAMP OF THE 1918 PROVISIONAL ISSUE.

Only five are recorded in Priester. Scott Retail as used. 3,500.00



218

- 218 (★) **1918, (\$150.00) Ty. C Surcharged on \$37.50 Black on Blue, 25bbl., Beer (REA151a; Priester 181aA).** Priester Type 169, entire stamp, unused (no gum), large margins to full incl. **sheet margin at top**, small staple holes, small translucency

VERY FINE. AN EXTREMELY RARE EXAMPLE OF THE \$150 25-BARREL 1918 PROVISIONAL ISSUE. ONLY THREE ENTIRE STAMPS ARE RECORDED IN THE PRIESTER CENSUS.

As another indication of rarity, none was offered in our 2006 sale of the Tolman collection, and this is the first we have offered since keeping computerized records..... 4,000.00

- 219 **1909-18 Issues Beer Stamp Balance.** 49 unused and used stamps and cutouts on home made album pages, incl. unused Nos. REA83, REA145 and REA147, used incl. Nos. REA87 (cutout only), REA92-REA95, REA96-REA98, REA102, REA106, REA111, REA115-REA116, REA118, REA119, REA121 (2), REA148 and REA149, also few cutouts not listed in Scott, all identified by Priester No., few flaws but in far better condition than normally seen, Very Fine and desirable group, some of the unused are unlisted as such in Scott, Scott Retail not including premium for these unused or for unlisted cutouts.....*Not illustrated* 2,752.00

1933 ISSUE

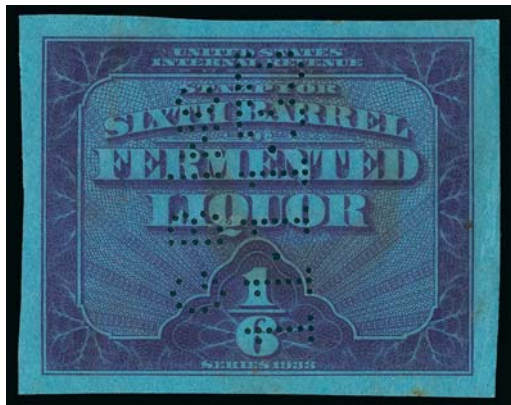
- 220 **1933, \$6.00 Handstamped Provisional Surcharge on $\frac{1}{8}$ bbl. Violet Red on Blue, Beer (REA152a; Priester 190C).** Priester Type 225 surcharge, large margins. "P. B. Co., 1.29.34" perforated cancel, rust stains, light vertical crease, scissors-cut at top left entirely in margin

VERY FINE. ONE OF ONLY THREE EXAMPLES OF THE \$6.00 SURCHARGE ON ONE-EIGHTH BARREL 1933 ISSUE RECORDED IN THE PRIESTER CENSUS.

We offered another of the three in our Tolman sale, which was in similar condition. With 2005 P.F. certificate. 1,500.00



220



221

- 221 **1933, $\frac{1}{8}$ bbl. Purple on Blue, Beer (REA153; Priester 191A).** Large margins all around, deep rich color, "G B Inc., 11.11.33" perforated cancel, some slight staining at center from barrel, tiny thin speck at top right in margin only, Extremely Fine appearance, only 14 are recorded in the Priester census and this is the second we have offered since keeping computerized records 450.00

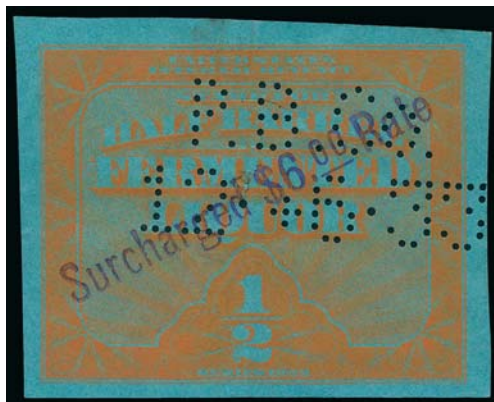
- 222 **1933, $\frac{1}{3}$ bbl. Brown Orange on Blue, Beer (REA155; Priester 193A).** Large margins, "P BRG Co., 5.11+3" perforated cancel, small blue crayon "8" at lower right, light creases, two small holes

VERY FINE APPEARANCE. A SCARCE EXAMPLE OF THE ONE-THIRD BARREL 1933 FIRST ISSUE BEER STAMP.

Only ten are recorded in the Priester census. The example offered in our Tolman sale was rebaked, and is the only other we have offered since keeping computerized records. 2,750.00

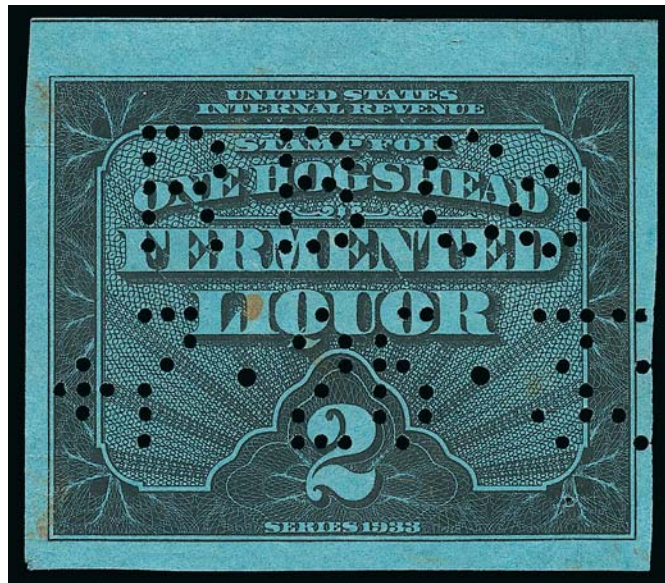


222



223

- 223 **1933, \$6.00 Handstamped Provisional Surcharge on $\frac{1}{8}$ bbl. Orange on Blue, Beer (REA156a; Priester 194C).** Priester Type 225 surcharge, large margins, rich color, "P. B. Co., 12.+6.33" perforated cancel, vertical crease, closed central spindle hole, otherwise Very Fine, scarce, only seven are recorded in the Priester census (about evenly divided between surcharge types), with 2005 P.F. certificate 1,750.00



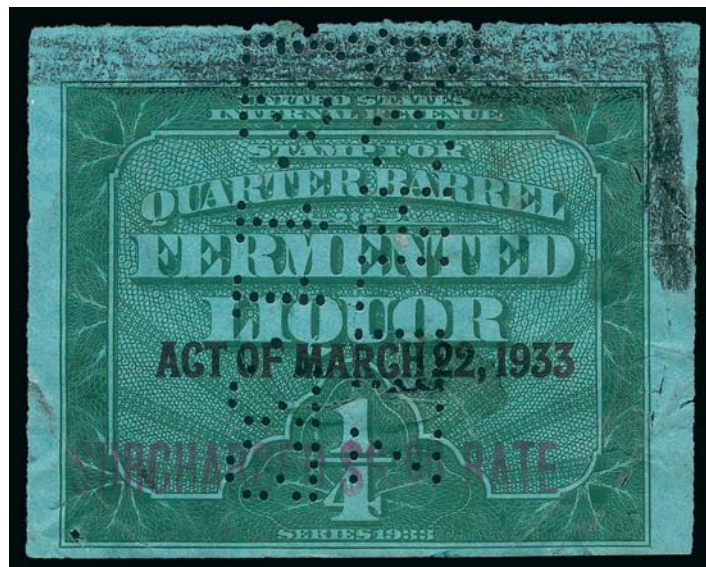
224

- 224 **1933, 1hhd. Black on Blue, Beer (REA158; Priester 196A).** Large margins, large “R B Co., 7.26.33” perforated cancel, couple faint stains and trivial faults

EXTREMELY FINE APPEARANCE. ONE OF TWO RECORDED EXAMPLES OF THE 1933 ONE HOGSHEAD IN BLACK, SCOTT REA158. ONE OF THE RAREST OF ALL REVENUE STAMPS.

The 1933 One Hogshead Black is known without overprint (REA158) and with overprint (REA168). Priester records two examples of the former (REA158) and one of the latter (REA168).

Ex Tolman. 7,500.00



225

- 225 **1933, Ty. B Handstamped Provisional Surcharge on \$6.00 Green on Blue, ¼bbl., Beer (REA164a; Priester 192aB).** Priester Type 122 surcharge, large margins to full, deep rich color, “SCHLITZ, 12.11.33” perforated cancel and also with manuscript at top, few flaws incl. indentation from barrel breaking paper in few spots

VERY FINE APPEARANCE. THIS IS THE ONLY RECORDED EXAMPLE OF THE QUARTER-BARREL 1933 WITH THE 1918 PROVISIONAL HANDSTAMPED SURCHARGE. ONE OF THE GREAT BEER STAMP RARITIES.

This is the only recorded example of this issue. Undercatalogued in Scott — other unique Beer Stamps catalogue 5-10 times as much..... 2,250.00

226

1933, Ty. A Surcharge on \$6.00 Green on Blue, ¼bbl., Beer (REA164b; Priester 192D). Priester Type 220 surcharge, large margins all around, rich color, large “P P C, 12+9.33” perforated cancel, tiny cuts in the paper from placement on the barrel

VERY FINE APPEARANCE. THIS IS THE FINER OF THE TWO RECORDED EXAMPLES OF THE QUARTER-BARREL 1933 SURCHARGE ISSUE WITH TYPE A SURCHARGE.

Only two examples of this type are recorded in the Priester census. The other was offered in our 2006 sale of the Tolman collection and is seriously defective.

With 2003 P.F. certificate..... 2,750.00



226



227

227

1933, Ty. A Surcharge on \$6.00 Orange on Blue, ½bbl., Beer (REA166a; Priester 194D). Priester Type 223 surcharge, rich color, “P.F.B. Co., 12*6*33” perforated cancel, some faults incl. trimmed at top where margin added (easily removed)

FINE APPEARANCE. THIS IS ONE OF ONLY TWO RECORDED EXAMPLES OF THE TYPE A SURCHARGE. IT IS ALSO THE EARLIEST REPORTED USE OF ANY STAMP FROM THE 1933 SURCHARGE SERIES WITH THE TYPE A SURCHARGE. A GREAT RARITY.

Ex Ward and Tolman. The other example was also offered in our 2006 Tolman sale, but it has a different type of surcharge which is unlisted in Priester.

Ex Tolman..... 3,000.00

228

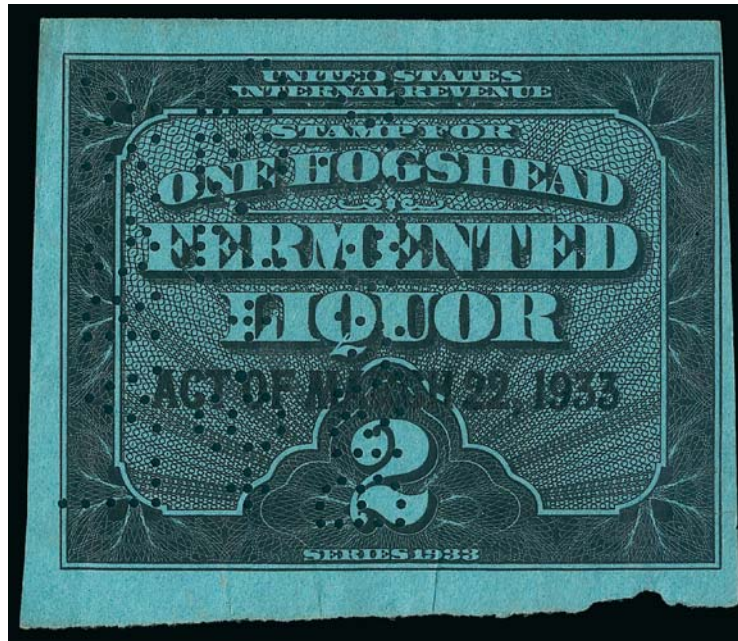
1933, Ty. B Surcharge on \$6.00 Orange on Blue, ½bbl., Beer (REA166b; Priester 194E). Clear red manuscript “Surcharge rate \$6.00 per Bbl.” and signed, also with “Evansville, Indiana” handstamp at bottom, “S B I, 12+5:33” perforated cancel, pieces missing at top right and bottom left (probably caused when removed from barrel)

VERY FINE APPEARANCE. A RARE EXAMPLE OF THE HALF-BARREL 1933 SURCHARGE ISSUE WITH MANUSCRIPT SURCHARGE. ONLY THREE ARE RECORDED IN THE PRIESTER CENSUS.

This is the first we have offered since keeping computerized records. Undercatalogued in Scott. 1,500.00



228



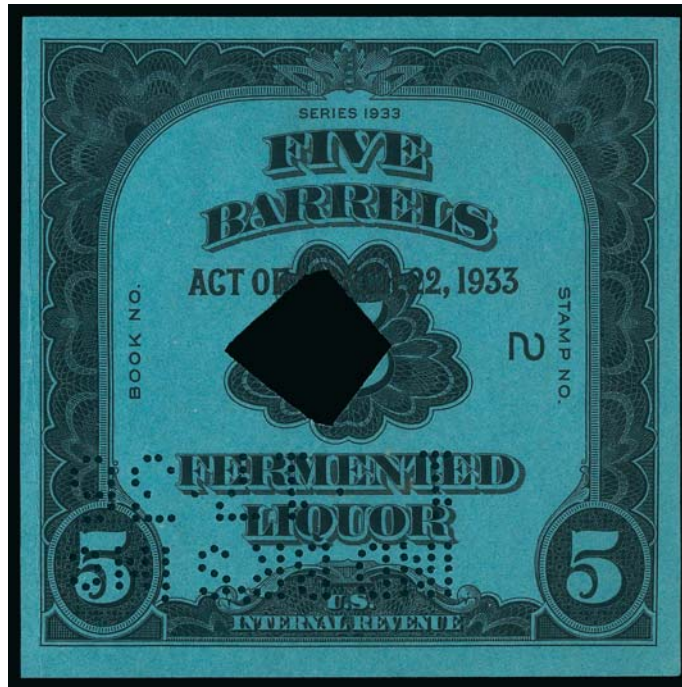
229

229 **1933, Ty. B Surcharge on 1hhd. Black on Blue, Beer (REA168; Priester 196B).** Large margins to clear, intense shade and impression, "Largay, 8+7.35, Brwg. Co." perforated cancel, light vertical crease

VERY FINE. THIS IS ONE OF ONLY TWO RECORDED EXAMPLES OF THE 1933 ONE HOGSHEAD IN BLACK WITH BUREAU SURCHARGE, SCOTT REA168. ONE OF THE RAREST OF ALL REVENUE STAMPS.

The Priester census records only one example, which is likely the one offered in our 2006 Tolman sale. The example offered here was likely unknown to the authors.

With 2004 P.F. certificate. 16,000.00



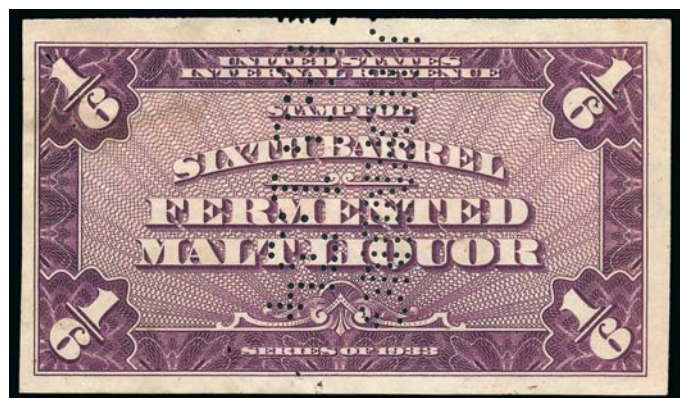
230

- 230 **1933, Ty. B Surcharge on 5bbl. Black on Blue, Beer (REA169; Priester 197c).** Priester Type 220 surcharge, large margins, center cut out, "IND BR'S Inc., 1.17.36" perforated cancel, light horizontal and vertical creases

VERY FINE APPEARANCE. THIS IS THE ONLY RECORDED EXAMPLE OF THE 5-BARREL BLACK 1933 ISSUE WITH THE TYPE B SURCHARGE. A PHENOMENAL RARITY.

With 2009 P.F. certificate..... 6,500.00

- 231 **1933, (\$6.00) Purple, 1/8bbl., Beer (REA172; Priester 201A).** Large margins, rich color, "Thornung 11.1.34" perforated cancel, small stain at upper left, few staple holes, otherwise Very Fine 500.00



231



232

- 232 **1933, \$5.00 Handstamped Provisional Surcharge on ¼bbl. Green, Beer (REA173a; Priester 202D).** Priester Type 240 surcharge, large margins, rich color, “K & SBG Co. 6-22-34” perforated cancel, lightly stained

VERY FINE. THIS SURCHARGE TYPE IS UNLISTED IN PRIESTER. THIS STAMP MIGHT WELL BE UNIQUE.

The Priester Type D surcharge, which includes this surcharge type, is only listed as existing on the Half-Barrel Brown Orange.

Ex Tolman. With 2006 P.F. certificate. 7,500.00



233

- 233 **1933, \$5.00 Handstamped Provisional Surcharge on ½bbl. Brown Orange, Beer (REA174a; Priester 204C).** Priester Type 240 surcharge, large margins, bright color, large “K & S BG Co., 3:27:34” perforated cancel, some staining, small hole at center, otherwise Very Fine, rare, only five are recorded in the Priester census (any type surcharge)..... 1,500.00



234

- 234 **1933, (\$6.00) Black, 1hhd., Beer (REA176; Priester 206A).** Large margins, "THB Co. 12-8-33" perforated cancel, few faults incl. small creases and soiling

VERY FINE APPEARANCE. A RARE EXAMPLE OF THE 1933 SECOND ISSUE ONE HOGSHEAD BLACK, OF WHICH ONLY FIVE ARE KNOWN.

The earliest reported use of any denomination is December 6, 1933, just two days prior to the date this stamp was used. It is believed that there are two additional copies outside of the Priester census, for a total of five known examples of this rarity.

Ex Tolman..... 6,500.00



235



236



237

- 235 (★) **1933, \$60.00 Black on Blue, 10bbl., Beer (REA178; Priester 198a).** Unused (no gum), large and even margins, fresh and Extremely Fine, only four are recorded in the Priester census with center uncut (at least one of which is used, offered in the following lot) 800.00
- 236 **1933, \$60.00 Black on Blue, 10bbl., Beer (REA178; Priester 198a).** Large margins, "Hoft Bev. Co. NJ U 367 A 9-22-44" perforated cancel, top right corner repaired, Very Fine appearance, scarce, only four are recorded in Priester with center uncut, ex Tolman..... 500.00
- 237 **1933, \$150.00 Black on Blue, 25bbl., Beer (REA178A; Priester 199a).** Large margins, intense shade and impression, "Wiedemann, 11.25.46" perforated cancel (from Kentucky), Very Fine and choice, a beautiful example of this issue, only six are recorded in Priester with center uncut..... 500.00

238



239



240



- 238 **1933, \$6.00 Handstamped Provisional Surchage on ¼bbl. Green, Beer (REA179a; Priester 202C).** Priester Type 223 surcharge, large margins to full except where small piece out at lower left, "Kochs Inc. 12.13.33" perforated cancel, few faults incl. light crease and some staining, otherwise Fine, rare, only five are recorded in the Priester census 2,750.00
- 239 **1933, \$6.00 Handstamped Provisional Surchage on ¼bbl. Green, Beer (REA179a; Priester 202C).** Priester Type 225 surcharge, large margins, "P.B. Co. 12-18-33" perforated cancel, few faults incl. rust spots, Fine, rare, the Priester census records only five known for REA179a (any surcharge type), ex Tolman 2,750.00
- 240 **1933, \$6.00 Handstamped Provisional Surchage on ¼bbl. Green, Beer (REA179a; Priester 202C var).** Two clear strikes of surcharge which is unlisted in Priester and reads "Surcharged \$6" in black, "W.E.B. Co. 12-6-33" perforated cancel, few faults incl. some toning, still Very Fine, a possibly unique example of this unlisted surcharge, which is also known on the ½bbl., ex Tolman 2,750.00

241



- 241 **1933, \$6.00 Handstamped Provisional Surchage on ½bbl. Brown Orange, Beer (REA180a; Priester 204D).** Priester Type 226 surcharge, "The GZBy 12-18-33" perforated cancel, bright color, small diagonal crease at center, small margin repair at right, sealed tears
- VERY FINE APPEARANCE. ONLY FIVE OR SIX EXAMPLES OF THE HALF-BARREL BROWN ORANGE WITH SURCHARGE.
- The Priester census records only five examples, which have several different surcharge types (including Types 226 and 227). A sixth copy with an unlisted surcharge type (known on the ¼ bbl.) is also recorded.
- Ex Tolman. With 2006 P.F. certificate. 2,500.00

1934-47 ISSUES



242

- 242 **1934, 1/3 bbl. Brown Orange (REA184; Priester 210a).** Serial No. 420, large margins except where small piece out at top right, "G B B Co., CALIFUN114, 4.11.35" perforated cancel, light crease, small tear at right, small tack holes in the corners
 VERY FINE APPEARANCE. THIS IS THE ONLY RECORDED EXAMPLE OF THE ONE-THIRD BARREL 1934 ISSUE. ONE OF THE GREATEST RARITIES OF BEER STAMP COLLECTING.
 With 2003 P.F. certificate. 20,000.00



- | | | |
|---------|---|----------|
| 243 | 1934, 1hhd. Black, Center Cutout, Beer (REA187; Priester 213). Small cutout at left, large margins to full, "Hoff Bev. Co., 7.5.44" perforated cancel, Very Fine, scarce, aside from Specimens, this is not known any other way except with the cut-out punch cancel, especially desirable in sound condition, with 2007 P.F. certificate..... | 500.00 |
| 244 | 1942, 100bbl. Carmine, Beer (REA188; Priester 214a). Complete stamp, large and even margins, radiant color, "Wiedemann, 11.13.46" perforated cancel, Very Fine and choice, desirable in sound condition, with 2003 P.F. certificate | 200.00 |
| 245 | 1942, 500bbl. Dark Brown, Center Cutout, Beer (REA189; Priester 215). Small hole cutout, at center below denomination, large margins, bright color, "??eiffer, 12.30.50" perforated cancel, fresh and Very Fine, only 20 are recorded in the Priester census, Scott or Priester do not differentiate between small hole and large hole cutouts (as seen in the following lot)..... | 500.00 |
| 246 | 1942, 500bbl. Dark Brown, Center Cutout, Beer (REA189; Priester 215). Large hole cutout at center, large margins, rich color, "Pabst M, 4.10.50" perforated cancel, fresh and Very Fine, with 2003 P.F. certificate, only 20 are recorded in the Priester census, Scott or Priester do not differentiate between small hole (as seen in previous lot) and large hole cutouts | 500.00 |
| 247 (★) | 1947, ⅓ bbl. Carmine, Beer (REA190; Priester 216a). Intact and uncut, serial No. 15199, unused (no gum), brilliant color, Very Fine and choice, scarce without the cutout missing, only 23 are recorded in the Priester census, undercatalogued in Scott | 125.00 |
| 248 (★) | 1947, 5bbl. Black on Blue, Beer (REA194; Priester 220a). Intact and uncut, unused (no gum), intense shade and impression, Very Fine and choice, undercatalogued in Scott..... | 100.00 |
| 249 (★) | 1947, 10bbl. Black on Blue, Beer (REA195; Priester 221a). Intact and uncut, large margins, detailed impression, Very Fine and choice, undercatalogued in Scott..... | 200.00 |
| 250 (★) | 1947, 25bbl. Black on Blue, Beer (REA196; Priester 222a). Intact and uncut, unused (no gum), large and even margins, Very Fine and choice, rare..... | 1,500.00 |
| 251 (★) | 1947, 100bbl. Carmine, Beer (REA197; Priester 223a). Intact and uncut, unused (no gum), brilliant color, trivial wrinkle at top, Very Fine appearance, scarce, undercatalogued in Scott. | 175.00 |
| 252 (★) | 1947, 500bbl. Dark Brown, Beer (REA198; Priester 224a). Intact and uncut, unused (no gum), large margins, rich color and detailed impression, Very Fine and choice..... | 550.00 |



253

- 253 (★) **1951, (\$225.00) Black on Bright Blue Paper, 25bbl., Beer (REA199; Priester 225a).**
Large margins, rich color, tiny soiled spot in margin at lower left

VERY FINE APPEARANCE. THIS WAS THE LAST BEER STAMP ISSUED—IT IS ALSO ONE OF THE RAREST. ONLY TWO EXAMPLES ARE RECORDED.

The tax rate represented by this stamp is \$9.00 per barrel (25 barrels x \$9 = \$225). It is one of the keys to a complete collection of Beer stamps.

Ex Tolman. With 2006 P.F. certificate. 20,000.00

- 254 **Post-Prohibition Beer Stamp Balance.** 92 unused and used stamps and cutouts on home made album pages, incl. unused Nos. REA173, REA174, REA181, REA190b, REA191, REA193, used incl. Nos. REA161a, REA163, REA175, REA178Ad, REA182, REA182a, REA189 (cutout pasted back into place), REA198 block of four with centers cut out, few other multiples, few faults to be expected but in far better condition than normally seen, overall fresh and Very Fine, Scott Catalogue value not including few unlisted cutouts.....
.....*Not illustrated* 3,099.00

END OF SALE — THANK YOU

Live Internet Bidding at Siegel Auctions

BIDDING FROM YOUR COMPUTER LETS YOU BE PART OF THE LIVE AUCTION FROM ANYWHERE IN THE WORLD!

There's NO SUBSTITUTE for following the auction in real time.
Live Internet Bidding lets you bid and buy as though you were right there in the saleroom.
And it's easy.

This step-by-step guide will instruct you how to register, set your browser and use the bidding interface.

Start by following the simple steps to become a registered Live Internet Bidder.
Once you've been approved for bidding, you can listen to the auction and place bids with the click of a mouse.

Registering with STAMP AUCTION NETWORK & SIEGEL AUCTION GALLERIES

Live Internet Bidding is managed by Stamp Auction Network (SAN).
To bid, you must be registered and approved by *both* SAN and Siegel.
To decide what you need to do, choose the description below that best fits you.



I've already registered with SAN and have been approved by Siegel for internet bidding.

I'm a Siegel client, but I'm not registered with SAN.

Go to stampauctionnetwork.com/siegel and click on "Register" at the top. Check the box for Robert A. Siegel Auction Galleries (under "R") and submit the form, indicating you are a Siegel client. Once registered at SAN, you're ready for internet bidding.

I've bid through SAN before, but this is the first time I've bid in a Siegel sale.

Then you just need to be approved by Siegel. Go to stampauctionnetwork.com/siegel and click on "Update Registration" at the top. Your SAN account information will be sent to us for approval (you might be asked for other trade references). Once approved by Siegel for bidding, you're ready for internet bidding.

I've never bid with Siegel, nor registered with SAN.

Go to stampauctionnetwork.com/siegel and click on "Register" at the top. Check the box for Robert A. Siegel Auction Galleries (under "R") and submit the form **with your trade references** (please, no family members or credit card companies as references). Once registered at SAN and approved by Siegel for bidding, you're ready for internet bidding.

Live Internet Bidding works by allowing registered bidders to observe and place bids.

Live Internet Bidding will work with any browser on both PC and Mac operating systems.

Before bidding by internet for the first time, we recommend finding a sale in progress and listening to the public broadcast or logging in as a registered bidder. This will help you develop a feel for the sale tempo and bidding interface.

Log on to the auction at stampauctionnetwork.com/siegel.

You can also log on at siegelauctions.com

When you're logged on as a Live Internet Bidder, the bidding interface shows a photo and description of the lot, the current bid (and your bidding status), options for placing competitive bids and buttons with bid increments.

- After you click on a bid amount, the auctioneer is immediately notified of your bid.
- Retracting a bid is usually not acceptable, so please bid carefully.
- If you bid and then decide to stop, the "Pass" button will tell the auctioneer you are no longer bidding.
- You can send messages to the auctioneer (for example, a request for extension).
- You can track prior realizations from the bidding screen.



"System Down" or "Lost Connection" events do occasionally happen.

If you have any problems with Live Internet Bidding please call **212-753-6421** for immediate assistance.

Bid Form—15% Premium Sale

Sale 1018
Wednesday, February 29, 2012

1

Please provide the following information:

NAME

ADDRESS

CITY/STATE/ZIP

TEL. (DAY)..... FAX

E-MAIL

PADDLE #

Do not write in box

2

Have you purchased from us in the past 5 years? ☐ YES (if so, please go to Section 3)

☐ NO (please provide a trade reference and bank

information)

References:

Stamp Firm: Telephone

3

In the space provided below, enter the **lot number** from **Sale 1018** and your corresponding bid. Please use **whole dollar amounts** only and enter the **maximum bid** you wish to have us execute on your behalf, according to the **bidding increments** on other side of this form. **Your bid will NOT include the 15% buyer's premium.** We will advance the bidding at one increment over the next highest bid;

therefore, you may be awarded the lot at less than your maximum bid. Please do not use "plus" bids or "buy" bids. If you wish to bid on one lot **or** the other, indicate your "or" bid between lot number/bid entries and bracket your choices. If you wish to place a **bidding limit** on the total amount of your bids, please enter your limit in the space marked "Limit Bids".

PLEASE NOTE BIDDING INCREMENTS AND SHIPPING CHARGES (ON BACK OF THIS PAGE)

☐ **LIMIT BIDS:** Check this box if you wish to limit the total amount of your bids (not including the **15% buyer's premium**) in this sale. Your bids will be executed until your bidding limit no longer allows for additional bids. **The total amount you wish to bid is:** \$.....

Lot	Bid	Lot	Bid	Lot	Bid
	\$		\$		\$

4

AGREEMENT: By signing this bid form, you agree to pay for purchases resulting from your bids, in accordance with the **Conditions of Sale** printed in the sale catalogue. You also agree to pay the **15% buyer's premium, shipping costs (see reverse), and sales tax or use tax or customs duty which may be due on the total invoiced amount.** It is understood

that these bids will be executed by Siegel Auction Galleries as a courtesy to absentee bidders, but you waive the right to make any claim against the auctioneer or the firm, arising from the these bids. **You are responsible for your written bids, including any errors on your part and any additions or changes to the bids herein.**

Payment must be made by cash, check, money order or wire transfer. Credit cards will not be accepted.



SIGNED TODAY'S DATE

5

Please submit your bids promptly (telephone bids must be confirmed in writing).

Mail to: Robert A. Siegel Auction Galleries, Inc.

60 E. 56th Street, 4th Floor, New York, N.Y. 10022

Telephone (212) 753-6421

OR FAX YOUR BIDS: (212) 753-6429

Shipping Instructions, Bidding Increments and space for additional bids on other side of form



Additional Bids

Sale 1018—February 29, 2012

Lot	Bid	Lot	Bid	Lot	Bid
	\$		\$		\$

Shipping and Transit Insurance

We will be pleased to arrange for shipping and transit insurance for purchases in this sale (except those described as “floor sale only”). To expedite billing and delivery of lots to hundreds of buyers per sale, we use standard charges for postage and insurance, based on the package weight and mailing requirements (see schedule). The standard charges are sometimes slightly more or less than the actual postage or FedEx fees, but we do not include any charge for our labor or packing costs. Therefore, we ask all buyers to remit the prescribed amount for shipping charges.

Transit insurance is provided in all cases, except when the buyer has furnished us with proof that insurance coverage is effective under another policy. Proof, in such cases, will be accepted in the form of a written certificate from the insurance carrier.

You are responsible for insurance charges, which will be added to your invoice. This coverage is provided for our mutual protection against theft or loss in transit.

Bidding Increments

The auctioneer may regulate the bidding at his discretion. However, to assist absentee bidders in establishing their maximum bid for each lot, the increments shown at right will be used in most cases. We recommend that written bids conform to these increments (those which do not will be reduced to the next level).

REVISED CHARGES FOR SHIPPING EFFECTIVE SEPTEMBER 1, 2010

We have reduced the FedEx Envelope charge to \$20, reflecting the elimination of the fuel surcharge. All other charges remain the same.

Current Postage & Insurance Charges

Weight/Class	Shipping Method	Charges
Up to 2 lbs.	Fedex Envelope	\$20.00
Over 2 lbs.	Fedex Box	\$35.00*
Non-U.S.	Fedex/Courier	\$50.00**
Bulk Lots	UPS Preferred	By weight and value
These fees reflect additional FedEx charges for residential delivery, signature and fuel surcharge. *Higher fees will be charged on packages weighing more than 5 lbs. or insured for more than \$75,000. **Buyers are liable for all customs duties and clearance charges. An accurate declaration of value will be made on all import/export documents.		

1/2012

Up to \$50	\$5	\$3,000-7,000	\$250
\$50-200	\$10	\$7,000-20,000	\$500
\$200-500	\$25	\$20,000-30,000	\$1,000
\$500-1,000	\$50	\$30,000-75,000	\$2,500
\$1,000-3,000	\$100	\$75,000 up	\$5,000

1/2012



PRICES REALIZED FOR SALE 1018---2/29/2012

The Scarsdale Collection, Part 7: U.S. Beer Stamps

Robert A. Siegel Auction Galleries, Inc.
60 East 56th Street, 4th Floor, New York, NY 10022
Tel (212) 753-6421 Fax (212) 753-6429

Lot#	Realized	Lot#	Realized	Lot#	Realized	Lot#	Realized	Lot#	Realized	Lot#	Realized	Lot#	Realized
1	400	43	1,100	85	400	127	8,500	169	300	211	350	253	25,000
2	1,000	44	800	86	275	128	475	170	1,100	212	450	254	1,600
3	350	45	5,500	87	150	129	110	171	1,000	213	425		
4	170	46	180	88	180	130	4,500	172	700	214	800		
5	1,900	47	700	89	200	131	900	173	250	215	650		
6	800	48	900	90	90	132	950	174	110	216	325		
7	4,250	49	500	91	350	133	160	175	1,200	217	5,500		
8	425	50	325	92	600	134	110	176	120	218	8,500		
9	475	51	275	93	425	135	225	177	425	219	1,300		
10	1,600	52	4,500	94	1,500	136	130	178	9,500	220	4,250		
11	800	53	4,250	95	425	137	160	179	5,250	221	600		
12	3,250	54	14,000	96	850	138	1,200	180	425	222	2,200		
13	2,600	55	650	97	160	139	1,400	181	10,000	223	800		
14	225	56	160	98	350	140	275	182	1,000	224	8,000		
15	650	57	450	99	475	141	1,500	183	1,100	225	1,500		
16	2,700	58	550	100	475	142	750	184	90	226	3,750		
17	1,400	59	475	101	550	143	500	185	325	227	2,800		
18	500	60	160	102	800	144	650	186	4,250	228	5,000		
19	150	61	750	103	2,000	145	900	187	1,200	229	8,000		
20	425	62	700	104	375	146	375	188	700	230	3,250		
21	2,500	63	325	105	5,000	147	250	189	225	231	225		
22	2,700	64	1,700	106	1,700	148	20,000	190	325	232	16,500		
23	375	65	650	107	475	149	375	191	180	233	1,200		
24	3,000	66	600	108	800	150	7,000	192	1,100	234	8,000		
25	180	67	1,000	109	650	151	80	193	950	235	325		
26	3,750	68	100	110	650	152	425	194	950	236	160		
27	325	69	225	111	550	153	275	195	2,700	237	425		
28	1,500	70	180	112	1,900	154	170	196	2,300	238	750		
29	400	71	850	113	425	155	650	197	800	239	1,200		
30	400	72	1,100	114	600	156	160	198	1,100	240	1,500		
31	1,700	73	1,100	115	2,400	157	300	199	3,500	241	3,000		
32	400	74	700	116	5,000	158	2,000	200	2,700	242	32,500		
33	500	75	225	117	425	159	10,000	201	700	243	500		
34	2,000	76	700	118	6,500	160	2,000	202	170	244	110		
35	400	77	140	119	1,100	161	110	203	325	245	325		
36	1,500	78	110	120	900	162	130	204	300	246	110		
37	2,000	79	2,300	121	8,000	163	110	205	650	247	110		
38	1,400	80	2,600	122	8,500	164	1,200	206	1,100	248	70		
39	2,900	81	140	123	550	165	24,000	207	1,200	249	110		
40	3,250	82	200	124	450	166	180	208	5,000	250	450		
41	475	83	450	125	12,000	167	140	209	25,000	251	110		
42	600	84	225	126	1,600	168	15,500	210	140	252	225		