



THE "CLOUDREST" COLLECTION  
OF UNITED STATES STAMPS



SALE 1033 — OCTOBER 25, 2012

*Robert A. Siegel*  
AUCTION GALLERIES, INC.

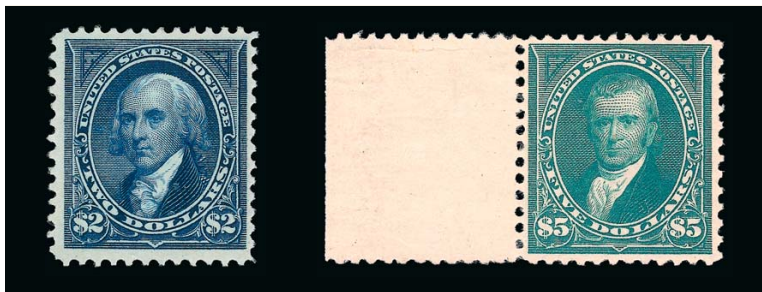
Sale 1033—Thursday, October 25, 2012

## The “Cloudrest” Collection of United States Stamps

Formed by a deceased collector and  
offered at unreserved auction by the trustee

Live auction to be held at Siegel Auction Galleries,  
60 East 56th Street (Park/Madison), 4th Floor, New York City

Lots are sold subject to a 15% buyer's premium and  
any applicable sales tax (or customs duty for non-U.S. buyers)



### THURSDAY, OCTOBER 25

#### Session One (lots 4001-4095) at 10:30 a.m.

Providence Postmaster's Provisional .....	4001
1847 Issue and Reproduction .....	4002-4005
1851-56 Issue .....	4006-4013
1857-60 Issue and 1875 Reprint .....	4014-4037
1861-66 Issue .....	4038-4043
1867-68 Grilled Issue, 1875 Re-Issue of 1861-66 Issue .....	4044-4057
1869 Pictorial Issue and Re-Issue .....	4058-4071
1870-73 Bank Note Issues .....	4072-4095

#### Session Two (lots 4096-4389) at 1:30 p.m.

1875 Continental Bank Note Co. Special Printing .....	4096-4104
1875-93 Bank Note Issues .....	4105-4128
Columbian Issue .....	4129-4136
1894-98 Bureau Issue .....	4137-4159
Trans-Mississippi Issue .....	4160-4167
Pan-American, 1902-08 Issues .....	4168-4181
Louisiana Purchase, 1908-12 Issues .....	4182-4214
Panama-Pacific, 1912-23 and Later Issues .....	4215-4253
Air Post, Special Delivery, Post Office Registry Seal .....	4254-4266
Postage Due .....	4267-4289
Offices in China .....	4290-4296
Officials .....	4297-4323
Newspapers and Periodicals .....	4324-4365
Parcel Post, Hunting Permits .....	4366-4369
Group Lots .....	4370-4389

Pre-Sale Viewing—Monday, October 22, 10-4 and by appointment

*Robert A. Siegel*

AUCTION GALLERIES, INC.

60 EAST 56TH STREET, 4TH FLOOR, NEW YORK, N.Y. 10022  
Phone (212) 753-6421 • Fax (212) 753-6429 • E-mail: [stamps@siegelauctions.com](mailto:stamps@siegelauctions.com)

Catalogues, internet bidding, resources, archives and the Siegel Encyclopedia at  
[siegelauctions.com](http://siegelauctions.com)



# Robert A. Siegel

## AUCTION GALLERIES, INC.

60 EAST 56TH STREET, 4TH FLOOR, NEW YORK, N.Y. 10022  
 Phone (212) 753-6421 • Fax (212) 753-6429 • E-mail: [stamps@siegelauctions.com](mailto:stamps@siegelauctions.com)  
[siegelauctions.com](http://siegelauctions.com)



Scott R. Trepel  
 President  
[strepel@siegelauctions.com](mailto:strepel@siegelauctions.com)



John P. Zuckerman  
 Senior Vice President  
[jzuckerman@siegelauctions.com](mailto:jzuckerman@siegelauctions.com)



Corey Long  
 Vice President  
[clong@siegelauctions.com](mailto:clong@siegelauctions.com)



Starr Tucker-Ortega  
 Accounts  
 stamps  
[siegelauctions.com](mailto:stamps@siegelauctions.com)



Laura Melvin  
 Bids and Inquiries  
 laura  
[siegelauctions.com](mailto:laura@siegelauctions.com)

Scott R. Trepel Principal Auctioneer (licensed by NYC Dept. of Consumer Affairs, #795952)  
 Nathaniel Estes Catalogue and Digital Production

## Information for Bidders

### Bidding

The following means are available for placing bids:

- 1) Attending the Live Auction in Person:** All bidders must register for a paddle, and new bidders must provide references at least three business days in advance of the sale.
- 2) Live Internet Bidding:** Instructions for participating as a Live Internet Bidder are provided on the page opposite.
- 3) Phone Bidding:** Bidders can be connected to the sale by phone and bid through a member of staff. Requests for phone bidding are subject to approval (please contact our office at least 24 hours before the sale). A signed Bid Form is required.
- 4) Absentee Bids.** All bids received in advance of the sale, either by mail, fax, phone, e-mail or internet, are Absentee Bids, which instruct the auctioneer to bid up to a specific amount on one or more lots in the sale. Absentee Bids sent by phone, fax or e-mail should arrive at least one hour prior to the start of the sale session. Bids entered through Live Internet Bidding will be visible to the auctioneer during the sale. Written bids should be entered legibly on the Bid Form in the sale catalogue. E-mail and internet bids should be carefully typed and double-checked. All new bidders must provide references. We recommend calling or e-mailing to confirm that Absentee Bids sent by mail, fax or e-mail have been received and entered.

### Pre-Sale Viewing

Subject to availability, certain lots (except group lots) can be sent to known clients for examination. Requests must be made no later than 7 days prior to the sale. Lots must be returned on the day received. Postage/insurance costs will be invoiced.

In addition to regular viewing, clients may view lots by appointment. Our staff will be pleased to answer questions or provide additional information about lots.

### Expert Certification

Individual items offered without a PF or PSE certificate dated within the past five years may be purchased subject to independent certification of genuineness and our description. **Please refer to the Conditions of Sale and Grading Terms for policies governing certification.**

### Shipping and Delivery

Procedures and charges for shipping lots are printed on the back of the Bid Form. **Bidders are responsible for all prescribed shipping charges and any applicable sales tax or customs duties.**

### Price Realized

Prices realized are sent with each invoice. Bidders with e-mail will receive a Bid Results report after the sale. Session results are posted immediately to [siegelauctions.com](http://siegelauctions.com)

# Live Internet Bidding at Siegel Auctions

## BIDDING FROM YOUR COMPUTER LETS YOU BE PART OF THE LIVE AUCTION FROM ANYWHERE IN THE WORLD!

There's **NO SUBSTITUTE** for following the auction in real time.

Live Internet Bidding lets you bid and buy as though you were right there in the saleroom.

And it's easy.

**This step-by-step guide will instruct you how to register, set your browser and use the bidding interface.**

Start by following the simple steps to become a registered Live Internet Bidder.

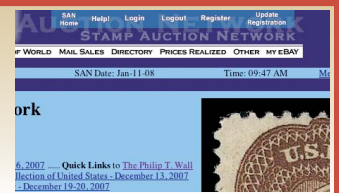
Once you've been approved for bidding, you can listen to the auction and place bids with the click of a mouse.

### Registering with STAMP AUCTION NETWORK & SIEGEL AUCTION GALLERIES

Live Internet Bidding is managed by Stamp Auction Network (SAN).

To bid, you must be registered and approved by *both* SAN and Siegel.

To decide what you need to do, choose the description below that best fits you.



I've already registered with SAN and have been approved by Siegel for internet bidding.

I'm a Siegel client, but I'm not registered with SAN.

Go to [stampauctionnetwork.com/siegel](http://stampauctionnetwork.com/siegel) and click on "Register" at the top. Check the box for Robert A. Siegel Auction Galleries (under "R") and submit the form, indicating you are a Siegel client. Once registered at SAN, you're ready for internet bidding.

I've bid through SAN before, but this is the first time I've bid in a Siegel sale.

Then you just need to be approved by Siegel. Go to [stampauctionnetwork.com/siegel](http://stampauctionnetwork.com/siegel) and click on "Update Registration" at the top. Your SAN account information will be sent to us for approval (you might be asked for other trade references). Once approved by Siegel for bidding, you're ready for internet bidding.

I've never bid with Siegel, nor registered with SAN.

Go to [stampauctionnetwork.com/siegel](http://stampauctionnetwork.com/siegel) and click on "Register" at the top. Check the box for Robert A. Siegel Auction Galleries (under "R") and submit the form **with your trade references** (please, no family members or credit card companies as references). Once registered at SAN and approved by Siegel for bidding, you're ready for internet bidding.

Live Internet Bidding works by allowing registered bidders to observe and place bids.

Live Internet Bidding will work with any browser on both PC and Mac operating systems.

Before bidding by internet for the first time, we recommend finding a sale in progress and listening to the public broadcast or logging in as a registered bidder. This will help you develop a feel for the sale tempo and bidding interface.

### Log on to the auction at [stampauctionnetwork.com/siegel](http://stampauctionnetwork.com/siegel).

You can also log on at [siegelauctions.com](http://siegelauctions.com)

When you're logged on as a Live Internet Bidder, the bidding interface shows a photo and description of the lot, the current bid (and your bidding status), options for placing competitive bids and buttons with bid increments.

- After you click on a bid amount, the auctioneer is immediately notified of your bid.
- Retracting a bid is usually not acceptable, so please bid carefully.
- If you bid and then decide to stop, the "Pass" button will tell the auctioneer you are no longer bidding.
- You can send messages to the auctioneer (for example, a request for extension).
- You can track prior realizations from the bidding screen.



"System Down" or "Lost Connection" events do occasionally happen.

If you have any problems with Live Internet Bidding please call **212-753-6421** for immediate assistance.



## Conditions of Sale (please read carefully before bidding)

The property described in this catalogue will be offered at public auction by Robert A. Siegel Auction Galleries, Inc. ("Galleries") on behalf of various consignors and itself or affiliated companies. By bidding on any lot, whether directly or by or through an agent, in person, or by telephone, facsimile or any other means, the bidder acknowledges and agrees to all of the following Conditions of Sale.

1. The highest bidder acknowledged by the auctioneer shall be the buyer. The term "final bid" means the last bid acknowledged by the auctioneer, which is normally the highest bid offered. **The purchase price payable by the buyer will be the sum of the final bid and a commission of 15% of the final bid ("buyer's premium"), together with any sales tax, use tax or customs duties due on the sale.**

2. The auctioneer has the right to reject any bid, to advance the bidding at his discretion and, in the event of a dispute between bidders, to determine the successful bidder, to continue the bidding or to reoffer and resell the lot in dispute. The Galleries' record of the final sale shall be conclusive.

3. All bids are per numbered lot in the catalogue unless otherwise announced by the auctioneer at the time of sale. The right is reserved to group two or more lots, to withdraw any lot or lots from the sale, or to act on behalf of the seller. The Galleries will execute bidding instructions on behalf of clients, but will not be responsible for the failure to execute such bids or for any errors in the execution of such bids.

4. **Lots with numbers followed by the symbol ° are offered subject to a confidential minimum bid ("reserve"), below which the lot will not be sold. The absence of the symbol ° means that the lot is offered without a reserve. If there is no reserve, the auctioneer has sole discretion to establish a minimum opening bid and may refuse an offer of less than half of the published estimate. Any lot that does not reach its reserve or opening bid requested by the auctioneer will be announced as "passed" and excluded from the prices realized lists after the sale. The Galleries may have a direct or indirect ownership interest in any or all lots in the sale resulting from an advance of monies or goods-in-trade or a guarantee of minimum net proceeds made by the Galleries to the seller.**

5. Subject to the exclusions listed in 5(A), the Galleries will accept the return of lots which have been misidentified or which have obvious faults that were present when the lot was in the Galleries' custody, but not so noted in the lot description. **All disputed lots must be received by the Galleries intact with the original packing material within 5 days of delivery to the buyer but no later than 30 days from the sale date. (5A) EXCLUSIONS:** The following lots may not be returned for any reason: lots containing 10 or more items; lots from buyers who registered for the pre-sale exhibition or received lots by postal viewing, thereby having had the opportunity to inspect them before the sale; any lot described with "faults," "defects" or a specific fault may not be returned because of any secondary fault. Photographed lots may not be returned because of centering, margins, short/nibbed perforations or other factors shown in the illustrations. Lots may not be returned for any of the following reasons: the color of the item does not match the color reproduction in the sale catalogue or website listing; the description contains inaccurate information about the quantity known or reported; or a certification service grades a stamp lower than the grade stated in the description.

6. Successful bidders, unless they have established credit with the Galleries prior to the sale, must make payment in full before the lots will be delivered. Buyers not known to the Galleries must make payment in full within 3 days from the date of sale. **The Galleries retains the right to demand a cash deposit from anyone prior to bidder registration and/or to demand payment at the time the lot is knocked down to the highest bidder, for any reason whatsoever.** In the event that any buyer refuses or fails to make payment in cash

for any lot at the time it is knocked down to him, the auctioneer reserves the right to reoffer the lot immediately for sale to the highest bidder. **Credit cards are not accepted as payment.**

7. If the purchase price has not been paid within the time limit specified above, nor lots taken up within 7 days from the date of sale, the lots will be resold by whatever means deemed appropriate by the Galleries, and any loss incurred from resale will be charged to the defaulting buyer. Any account more than 30 days in arrears will be subject to a late payment charge of 1½% per month as long as the account remains in arrears. Any expenses incurred in securing payment from delinquent accounts will be charged to the defaulter. A fee of \$250.00 per check will be charged for each check returned for insufficient funds.

8. All lots are sold as genuine. **Any lot accompanied by a certificate issued by The Philatelic Foundation or by Professional Stamp Experts within 5 years of the sale date is sold "as is" and in accordance with the description on the certificate. Such lots may not be returned for any reason, including but not limited to a contrary certificate of opinion.** Buyers who wish to obtain a certificate for any item that does not have a P.F. or P.S.E. certificate (dated as above) may do so, provided that the following conditions are met: (1) the purchase price must be paid in full, (2) the item must be submitted to an acceptable expertizing committee with a properly executed application form within 21 days of the sale, (3) a copy of the application form must be given to the Galleries, (4) in the event that an adverse opinion is received, the Galleries retain the right to resubmit the item on the buyer's behalf for reconsideration, without time limit or other restrictions, (5) unless written notification to the contrary is received, items submitted for certification will be considered cleared 90 days from the date of sale, and (6) in the event any item is determined to be "not as described", the buyer will be refunded the purchase price and the certification fee up to \$600.00 unless otherwise agreed.

9. Until paid for in full, all lots remain the property of the Galleries on behalf of the seller.

10. Agents executing bids on behalf of clients will be held responsible for all purchases made on behalf of clients unless otherwise arranged prior to the sale.

11. The buyer assumes all risk for delivery of purchased lots and agrees to pay for prescribed shipping costs. Buyers outside the U.S. are responsible for all customs duties.

12. **The bidder consents that any action or proceeding against it may be commenced and maintained in any court within the State of New York or in the United States District Court for the Southern District of New York, that the courts of the State of New York and United States District Court for the Southern District of New York shall have jurisdiction with respect to the subject matter hereof and the person of the bidder. The bidder agrees not to assert any defense to any action or proceeding initiated by Galleries based upon improper venue or inconvenient forum. The bidder agrees that any action brought by the bidder shall be commenced and maintained only in a Federal Court in the United States District Court for the Southern District of New York or the State Court in the county in which Galleries has its principal place of business in New York. These Terms and Conditions shall be governed by and construed in accordance with the substantive laws of the State of New York.**

SCOTT R. TREPEL, Principal Auctioneer

Auctioneer's License No. 795952  
N.Y.C. Department of Consumer Affairs  
80 Lafayette Street, New York, N.Y. 10013  
Telephone (212) 577-0111

*Revised 1/2012*

### Copyright Notice

© 2012, Robert A. Siegel Auction Galleries, Inc. This catalogue in all versions, printed and electronic, is protected by copyright. The descriptions, format, illustrations and information used herein may not be reprinted, distributed or copied in any form without the express written consent of Robert A. Siegel Auction Galleries. Application for permission may be made in writing.

## Grades, Abbreviations and Values Used in Descriptions

### Grades and Centering

Our descriptions contain detailed information and observations about each item's condition. We have also assigned grades to stamps and covers, which reflect our subjective assessment. For stamps, the margin width, centering and gum are described and graded according to generally-accepted standards (an approximate correlation to numeric grades is provided at right). Although we believe our grades are accurate, they are not always exactly aligned with third-party grading terms or standards for all issues. **A lot may not be returned because a certification service grades a stamp lower than the grade stated in the description. Information from the P.S.E. Stamp Market Quarterly and P.S.E. Population Report<sup>SM</sup> is the most current available, but lots may not be returned due to errors or changes in statistics or data.**

**Extremely Fine Gem (90-100):** The term "Gem" describes condition that is the finest possible for the issue. This term is equivalent to "Superb" used by grading services.







**Extremely Fine (80-90):** Exceptionally large/wide margins or near perfect centering.

**Very Fine (70-85):** Normal-size margins for the issue and well-centered with the design a bit closer to one side. "Very Fine and choice" applies to stamps that have desirable traits such as rich color, sharp impression, freshness or clarity of cancel.

**Fine (60-70):** Smaller than usual margins or noticeably off center. Pre-1890 issues may have the design touched in places.

**Very Good (below 60):** Attractive appearance, but margins or perforations cut into the design.

### Guide to Gum Condition

Gum Categories:	MINT N.H.	ORIGINAL GUM (O.G.)				NO GUM
	 <b>Mint Never Hinged</b> <i>Free from any disturbance</i>	 <b>Lightly Hinged</b> <i>Faint impression of a removed hinge over a small area</i>	 <b>Hinge Mark or Remnant</b> <i>Prominent hinged spot with part or all of the hinge remaining</i>	 <b>Part o.g.</b> <i>Approximately half or more of the gum intact</i>	 <b>Small part o.g.</b> <i>Approximately less than half of the gum intact</i>	 <b>No gum</b> <i>Only if issued with gum</i>
Catalogue Symbol:	★ ★	★	★	★	★	(★)
PRE-1890 ISSUES	<i>Pre-1890 stamps in these categories trade at a premium over Scott value</i>			Scott Value for “O.G.”		Scott “No Gum” Values thru No. 218
1890-1935 ISSUES	Scott “Never Hinged” Values for Nos. 219-771	Scott Value for “O.G.” (Actual value will be affected by the degree of hinging)		<b>Disturbed Original Gum:</b> Gum showing noticeable effects of humidity, climate or hinging over more than half of the gum. The significance of gum disturbance in valuing a stamp in any of the Original Gum categories depends on the degree of disturbance, the rarity and normal gum condition of the issue and other variables affecting quality. For example, stamps issued in tropical climates are expected to have some		
1935 TO DATE	Scott Value for “Unused”					

### Covers

Minor nicks, short edge tears, flap tears and slight reduction at one side are normal conditions for 19th century envelopes. Folded letters should be expected to have at least one file fold. Light cleaning of covers and small mends along the edges are accepted forms of conservation. Unusual covers may have a common stamp with a slight crease or tiny tear. **These flaws exist in virtually all 19th century covers and are not always described. They are not grounds for return.**

### Catalogue Values and Estimates

Unless otherwise noted, the currently available *Scott Catalogue* values are quoted in dollars with a decimal point. Other catalogues are often used for foreign countries or specialized areas and are referred to by their common name: *Stanley Gibbons* (SG), *Dietz*, *American Air Mail Catalogue* (AAMC), *Michel*, *Zumstein*, *Facit*, etc. Estimates are indicated with an "E." and reflect our conservative valuation in dollars. Reserves will never exceed the low end of the estimate range; they will sometimes exceed Scott Catalogue value for stamps in Extremely Fine condition.

Because of certain pricing inconsistencies in the *Scott Catalogue*—for example, blocks that have no gum, the absence of premiums for Mint N.H. items, etc.—we cannot guarantee the accuracy of values quoted for multiples, specialized items and collection lots. We generally try to be conservative, but buyers may not return a lot because of a discrepancy in catalogue value due to Scott pricing inconsistencies.

### Symbols and Abbreviations (see chart above for gum symbols)

⊞	Block	E	Essay	pmk.	Postmark	No.	Scott Catalogue Number
⊞	Cover	P	Proof	cds	Circular Datestamp	hs	Handstamp
FC	Fancy Cancel	TC	Trial Color Proof	var.	Variety	ms.	Manuscript

# Resources

## siegelauctions.com



### CATALOGUES AND PRICES REALIZED

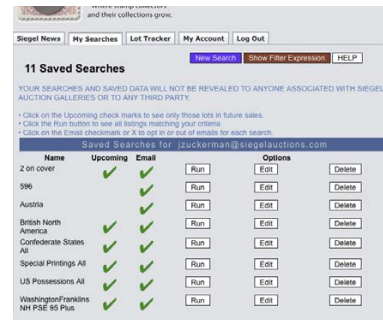
Images and descriptions for all current sale catalogues are available from our website, as well as all sales going back to 1992, our Rarities sales from 1964 and selected name sales.

### POWER SEARCH™

Search by Scott number or keyword through all of the sales at our website. The best resource in philately for research.

### MY SIEGEL™

Save your Power Searches as want lists. We will automatically notify you when a match is included in an upcoming sale, whether it's as broad as any Columbian issue, or as narrow as a 241 graded 98. The most powerful want list in philately.



### LOT TRACKER™

Never miss another lot because you were away from your computer. Log into My Siegel™, then set up notifications to get texts and/or emails 10-30 lots before yours comes up (live

### THE SIEGEL ENCYCLOPEDIA™

This feature of our website contains a wealth of information gleaned from decades of philatelic research by the dedicated philatelists at Siegel.

### RARITIES CENSUS

The up-to-date census data for 19th and 20th century U.S. rarities are a valuable resource for buyers, sellers and researchers. Every recorded example of almost 40 different rare stamps is described and, in most cases, photographed.



### siegel videos



#### 941 • The John F. Odeneal Collection

Auctioned by Siegel Auction Galleries on Wednesday, October 3, 2007

Download Scott Trepel's video preview:

[THE ODENEAL COLLECTION, A HISTORY OF U.S. STAMPS 1847-1930](#)

### EXHIBITS AND MOUNTED COLLECTIONS

Downloadable PDF files of some of the top exhibits ever formed. See how others collect and benefit from their original research.

### VIDEO PRESENTATIONS

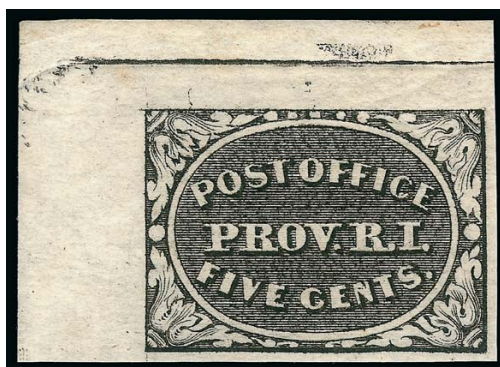
Downloadable video documentaries tell the stories of stamps and covers. This is the ideal way to introduce philately to others.



SESSION ONE (LOTS 4001-4095)  
THURSDAY, OCTOBER 25, 2012, AT 10:30 A.M.

THE "CLOUDREST" COLLECTION  
OF UNITED STATES STAMPS

PROVIDENCE, RHODE ISLAND, POSTMASTER'S PROVISIONAL



4001

- 4001 ★ **Providence R.I., 5c Gray Black (10X1).** Position 1, original gum, lightly hinged, large to huge margins including **top left corner sheet margins** showing edge of plate, intense shade and impression, fresh and Extremely Fine Gem quality, with 1996 P.F. certificate ..... 350.00

1847 ISSUE



4002



4003



4004



4005

- 4002 **5c Red Brown (1).** Large margins including part of adjoining stamp at top, pretty shade, light strike of **magenta grid** cancel, Extremely Fine ..... 500.00
- 4003 **10c Black, Double Transfer Ty. C (2-C).** Position 2R1, full even margins, intense shade and impression, neat strike of red grid cancel, Very Fine example of this scarce double transfer position, with 1982 P.F. certificate as on cover ..... 2,800.00
- 4004 ★ **5c Red Brown, Reproduction (3).** Without gum as issued, large margins to clear at upper right, pretty shade, Fine..... 825.00
- 4005 ★ **10c Black, Reproduction (4).** Without gum as issued, large margins, intense shade and proof-like impression, Extremely Fine ..... 1,000.00



## 1851-56 ISSUE



4006

4006

**1c Blue, Ty. II (7).** Plate 2, huge margins all around including parts of adjoining stamps at all four sides, crisp impression, neat strike of **blue grid** cancel, Extremely Fine Gem, with 2005 P.S.E. certificate (XF-Superb 95 Jumbo; SMQ \$800.00 as 95, \$1,850.00 as 98)..... 150.00

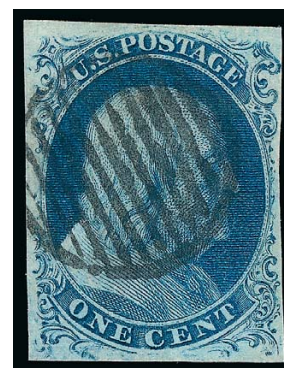
4007

**1c Blue, Ty. III (8).** Plate 4, large margins to clear, deep rich color and proof-like impression, bold-strike of **11-bar grid** hand-stamp

VERY FINE. A BEAUTIFUL USED EXAMPLE OF THE 1851 ONE-CENT TYPE III, SHOWING SUBSTANTIAL BREAKS AT BOTH TOP AND BOTTOM.

Type III is defined by breaks in the outer lines at both top and bottom. Many Type III stamps have breaks that were created or enlarged by plate wear. Since the wear occurred over a period of time, the majority of stamps of this type (both unused and used) has small breaks in at least one line. This example has a very wide break at top and a substantial 2.5mm+ break at bottom.

With 1998 P.F. certificate..... 3,000.00



4007



4008



4009



4010



4011

4008

**1c Blue, Ty. IIIa (8A).** Plate 4, wide break at top, large margins to just in at upper left, rich color on crisp paper, neat strike of circular datestamp, Fine, with 1988 P.F. certificate ..... 1,200.00

4009

**5c Red Brown (12).** Large even margins, bright shade, light strike of New Orleans circular datestamp, fresh and Very Fine, with 1991 P.F. certificate..... 750.00

4010

**10c Green, Ty. I (13).** Large margins to clear at right, bright shade, light strike of grid cancel, Fine ..... 900.00

4011

**10c Green, Ty. II (14).** Huge margins all around, deep rich color, light strike of circular datestamp and also with **French transit** at upper left, Extremely Fine Gem, a beautiful stamp ..... 170.00

4012

**10c Green, Ty. III (15).** Huge and balanced margins, rich color on bright paper, bold strike of large Boston "Paid" grid cancel, Extremely Fine Gem, with 2003 P.F. and 2005 P.S.E. certificates (XF-Superb 95; SMQ \$725.00)..... 170.00



4012

- 4013 **10c Green, Ty. IV (16).** Position 65L1, recut at top, huge margins to full at top, rich color, neat strike of San Francisco circular datestamp, Very Fine and choice, with 1986 P.F. Certificate..... 1,650.00



4013

## 1857-60 ISSUE



4014

- 4014 **1c Blue, Ty. I (18).** Plate 12, C Relief showing full design at top and bottom, pretty shade, neat open grid cancel, Very Fine, with 1993 P.F. certificate..... 600.00

- 4015 **1c Blue, Ty. Ia (19).** Position 95L4, showing clear Type Ia characteristics at bottom, deep rich color, **blue grid** cancel

A FINE AND ATTRACTIVE SOUND EXAMPLE OF THE 1857 ONE-CENT PERFORATED TYPE Ia.

With 1989 P.F. certificate ..... 10,000.00



4015



4016

- 4016 **1c Blue, Ty. III (21).** Plate 4, C Relief, rich color nicely complemented by **red New York City 2c integral-rate carrier** circular datestamp, fresh and Very Fine, a stamp with great visual appeal, with 1981 A.P.S. certificate ..... 2,500.00





4017



4018



4019



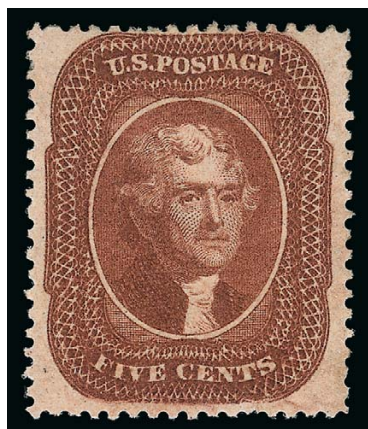
4020

- 4017 **1c Blue, Ty. IIIa (22).** Plate 12, wide margins, rich color, neat strike of New York circular datestamp, a few blunted perfs at bottom, still Very Fine, with 1983 P.F. certificate ... 525.00
- 4018 **1c Blue, Ty. IV (23).** Bright color, with **interpane sheet selvage and centerline** at left, unobtrusive strike of circular datestamp, Very Fine, with 1990 P.F. certificate for pair .... 950.00
- 4019 **5c Brick Red (27).** Brilliant color, partly scissors-separated with intact perfs, barely cancelled, Fine, with 1990 P.F. certificate ..... 1,650.00
- 4020 **5c Red Brown (28).** Crisp impression nicely complemented by circular datestamp and also by **red** transit circular datestamp, fresh and Fine, with 1985 P.F. certificate ..... 1,200.00

- 4021 **5c Indian Red (28A).** Deep rich color in the true Indian Red shade, neat strike of circular datestamp  
FRESH AND FINE EXAMPLE OF THE 1857 5-CENT INDIAN RED.  
With 1999 P.F. certificate ..... 3,500.00



4021



4022

- 4022 ★ **5c Orange Brown, Ty. II (30).** Original gum, intense shade, wide margins, fresh and Very Fine, with 1991 P.F. certificate ..... 1,250.00



4023



4024EX

- 4023 **10c Green, Ty. I (31).** Position 98R1, bright color, unobtrusive cancels, Very Fine, with 1990 P.F. certificate ..... 1,250.00
- 4024 **10c Green, Ty. II, III (32, 33).** One of each, choice centering, bright color, first barely cancelled, Ty. III neat strike of circular datestamp, Very Fine, with 2004 and 2005 P.F. certificates respectively.....(Photo Ex) 450.00

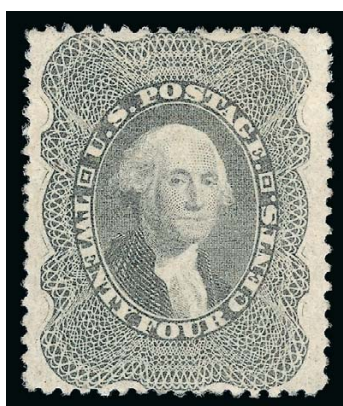
- 4025 **10c Green, Ty. IV (34).** Position 65L1, recut at top, rich color on bright paper, bold strike of 11-bar grid hand-stamp and trace of red cancel
- EXTREMELY FINE EXAMPLE OF THE 1857 PERFORATED 10-CENT TYPE IV.
- With 1989 P.S.E. certificate..... 2,400.00



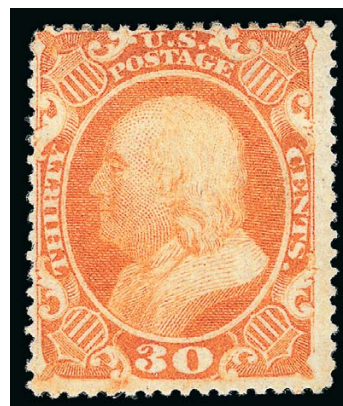
4025



4026



4027



4028

- 4026 ★ **12c Black, Plate 3 (36B).** Original gum, lightly hinged, intense shade and impression, fresh and Very Fine, a pretty stamp, with copy of 1993 P.F. certificate for block of four ..... 700.00
- 4027 ★ **24c Gray Lilac (37).** Original gum, lightly hinged, unusually choice centering for this difficult issue, Very Fine and choice, with 2004 P.F. certificate..... 1,400.00
- 4028 ★ **30c Orange (38).** Original gum, vibrant color, fresh and Fine, with 1987 P.F. certificate ..... 2,150.00





4029

- 4029 ★ **90c Blue (39).** Original gum, lightly hinged, deep rich color and detailed impression, balanced margins  
 VERY FINE AND CHOICE ORIGINAL-GUM EXAMPLE OF THE 90-CENT 1860 ISSUE.  
 With 1993 P.F. certificate..... 3,000.00

1875 REPRINT OF 1857-60 ISSUE



4030

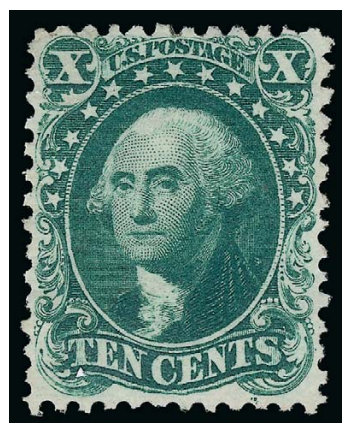


4031



4032

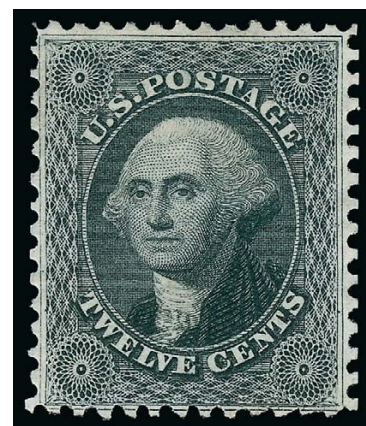
- 4030 ★ **1c Bright Blue, Reprint (40).** Without gum as issued, bright color, fresh and Very Fine, with 1990 P.F. certificate ..... 575.00
- 4031 ★ **3c Scarlet, Reprint (41).** Without gum as issued, well-centered, vibrant color, Very Fine, only 479 sold..... 2,750.00
- 4032 ★ **5c Orange Brown, Reprint (42).** Without gum as issued, wide natural s.e. at right with centerline, pretty shade, Very Fine, only 878 sold ..... 1,200.00



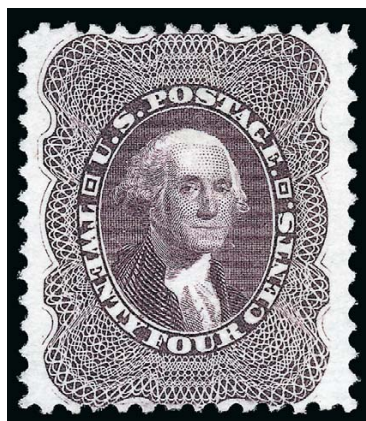
4033

- 4033 ★ **10c Blue Green, Reprint (43).** Without gum as issued, deep rich color on bright paper, evenly-proportioned margins  
 EXTREMELY FINE EXAMPLE OF THE 10-CENT 1857 REPRINT.  
 Only 516 sold. With 1998 P.F. certificate ..... 2,500.00

- 4034 ★ **12c Greenish Black, Reprint (44).** Without gum as issued, pretty shade, very strong Fine, an exceptionally well-centered example of the 12c 1857 Reprint, only 489 were sold..... 2,750.00



4034



4035

- 4035 ★ **24c Blackish Violet, Reprint (45).** Without gum as issued, deep rich color and detailed impression on bright paper, wide margins  
VERY FINE AND CHOICE EXAMPLE OF THE 24-CENT 1857 REPRINT.  
Only 479 sold. With 1985 and 2000 P.F. certificates..... 2,750.00

- 4036 ★ **30c Yellow Orange, Reprint (46).** Without gum as issued, vibrant color as fresh as the day it was printed  
VERY FINE EXAMPLE OF THE 30-CENT 1857 REPRINT.  
Only 480 sold. With 1978 P.F. certificate..... 3,000.00



4036

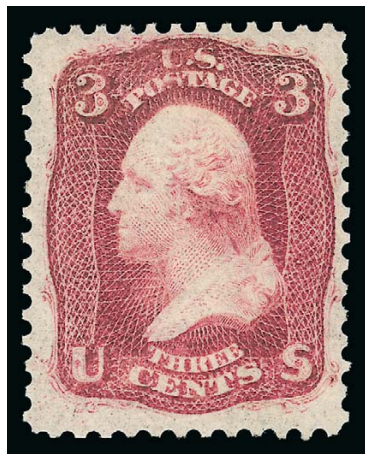


4037

- 4037 ★ **90c Deep Blue, Reprint (47).** Without gum as issued, rich color on bright paper, well-balanced margins  
VERY FINE AND CHOICE EXAMPLE OF THE 90-CENT 1857 REPRINT.  
Only 454 sold. With 1976 P.F. certificate..... 4,000.00



## 1861-66 ISSUE



4038

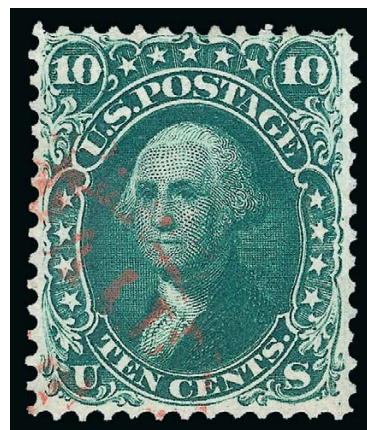
- 4038 ★ **3c Brown Rose, First Design (56).** Original gum, lightly hinged, intense shade, wide margins, Very Fine, with 1989 P.F. certificate ..... 550.00

- 4039 **10c Dark Green, First Design (62B).** Wonderful intense "August" color on bright white paper, light strike of red New York "Paid" credit datestamp

EXTREMELY FINE. A BEAUTIFUL USED EXAMPLE OF THE FIRST DESIGN 10-CENT 1861 ISSUE. ESPECIALLY DESIRABLE WITH THE RED CANCEL.

The 10c 1861 "First Design" (or Type I from Plate 4) is extremely difficult to find in well-centered and sound condition. This is partly due to the narrow spacing on Plate 4, which was used for the earliest printing.

With 1988 P.F. certificate ..... 1,710.00



4039



4040



4041



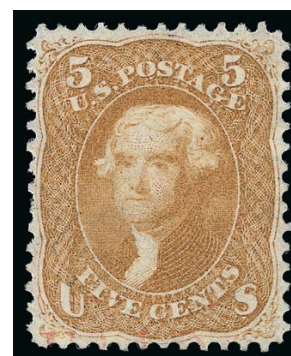
4042

- 4040 ★ **1c Blue (63).** Original gum, barely hinged, brilliant color, Very Fine, with copy of 1990 P.F. certificate for block of four ..... 300.00

- 4041 **3c Pink (64).** Brilliant color, neat strike of circular datestamp, tiny corner perf crease at top left, Very Fine ..... 900.00

- 4042 ★★ **3c Brown Red (65 var).** Mint N.H., bright color, Fine, a scarce Mint N.H. example of this shade variety, with 2001 P.F. certificate, Scott Retail as hinged ..... 125.00

- 4043 **5c Buff (67).** Pretty shade, unobtrusive strike of red circular datestamp at lower left, reperfed at right, Very Fine appearance ..... 1,100.00



4043

## 1867-68 GRILLED ISSUE



4044



4045

- 4044 **3c Rose, C. Grill (83).** Clear and sharp grill points, bright shade, unusual cogwheel cancel, Very Fine and choice, scarce in such pristine condition, with 2003 P.F. certificate ... 1,100.00
- 4045 **3c Rose, D. Grill (85).** Wide margins and beautifully centered, bright color, clearly-defined grill, neat strike of geometric cork cancel typically found on the 3c D Grill, tiny thin spot, Extremely Fine appearance ..... 1,100.00

- 4046 **3c Rose, Z. Grill (85C).** Bright shade, clearly-defined grill easily discernible from the front of the stamp, neat strike of target cancel  
 VERY FINE EXAMPLE OF THE 1868 3-CENT Z GRILL.  
 With 1992 P.F. certificate..... 3,500.00



4046



4047



4048



4049



4050

- 4047 **12c Black, Z. Grill (85E).** Intense shade and impression, bold strike of **negative Star of David** cancel, minor soiling on back not mentioned on accompanying certificate, Fine, with 1985 P.F. certificate..... 2,500.00
- 4048 **1c Blue, E. Grill (86).** Bright shade, clearly-defined grill, neat cork cancel, Very Fine 475.00
- 4049 **10c Green, E. Grill (89).** Deep shade on bright paper, strong grill impression, light target cancel, Very Fine and choice, with 2002 P.F. certificate..... 350.00
- 4050 **12c Black, E. Grill (90).** Wide margins, bold circle of V's cancel, clear grill, Extremely Fine, with 1993 P.S.E. certificate ..... 400.00





4051



4052



4053

- 4051 **15c Black, E. Grill (91).** Crisp impression, clear grill, neat cork cancel, Extremely Fine, with 1990 P.F. certificate ..... 700.00
- 4052 ★ **3c Red, F. Grill (94).** Original gum, lightly hinged, rich color, well-defined grill, Very Fine and choice, with 1979, 1999 and 2005 P.F. certificates..... 350.00
- 4053 **5c Brown, F. Grill (95).** Rich color, bold strike of **6-Point Star in Circle** and part of blue straightline cancel at bottom, Very Fine ..... 900.00



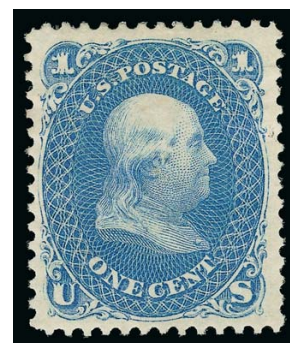
4054



4055



4056



4057

- 4054 **24c Gray, F. Grill (99 var).** Unusually wide margins and attractively centered, light cork cancel, Very Fine, surprisingly scarce in the Gray sub-shade which is not given any premium in Scott, with 2001 P.F. certificate ..... 1,600.00
- 4055 **30c Orange, F. Grill (100).** Vibrant color nicely complemented by **red** cork cancel, unusually wide margins at top and bottom, Very Fine, with 1991 P.S.E. certificate ..... 1,025.00
- 4056 **90c Blue, F. Grill (101).** Bright shade, clear grill, light cork and part of red cancel, Very Fine and choice, with 2001 P.F. certificate ..... 2,700.00

## 1875 RE-ISSUE OF 1861-66 ISSUE

- 4057 ★ **1c Blue, Re-Issue (102).** Original gum, lightly hinged, fresh color on bright white paper, Very Fine and choice, with 2003 P.F. certificate..... 850.00

## 1869 PICTORIAL ISSUE



4058



4059

- 4058 ★★ **2c Brown (113). Mint N.H.**, brilliant color, fresh and Fine, scarce in Mint N.H. condition, with 2007 P.F. certificate ..... 600.00
- 4059 ★ **3c Ultramarine (114).** Original gum, lightly hinged, with selvage at right showing **end roller grill**, rich color, Very Fine, with copy of 1988 P.F. certificate for block of twelve...  
..... 250.00

- 4060 **15c Brown & Blue, Ty. I (118).** Bright colors and crisp impressions, choice centering, bold strike of quartered cork cancel, Extremely Fine, with 2001 P.F. and 2005 P.S.E. certificates (XF 90; SMQ \$1,400.00) ..... 800.00



4060



4061



4062



4063

- 4061 **15c Brown & Blue, Ty. II (119).** Deep rich colors and detailed impressions, unobtrusive strike of cork cancel, Very Fine, with 1994 P.S.E. certificate ..... 250.00
- 4062 **24c Green & Violet (120).** Beautiful colors, cork cancel, fresh and Very Fine, with 2000 P.F. certificate ..... 700.00
- 4063 **30c Ultramarine & Carmine (121).** Bright colors, roller cancel and also with part of red cancel at top, Very Fine ..... 500.00



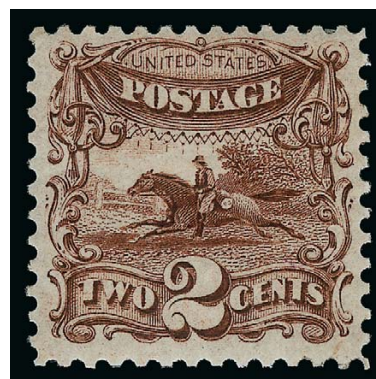


4064

- 4064 **90c Carmine & Black (122).** Rich colors, heavy cork cancel, well-balanced margins, Very Fine centering, with 2002 P.F. certificate..... 2,100.00

## 1875 RE-ISSUE OF 1869 PICTORIAL ISSUE

- 4065 ★ **2c Brown, Re-Issue (124).** Original gum, intense shade and proof-like impression on bright paper, fresh and Very Fine, with 1999 P.F. certificate..... 650.00



4065



4066

- 4066 ★ **6c Blue, Re-Issue (126).** Original gum, lightly hinged, bright color, wide margins, Very Fine, a fresh and attractive original-gum example of the 6c 1869 Re-Issue, with 1995 P.F. certificate..... 1,650.00

- 4067 ★ **10c Yellow, Re-Issue (127).** Original gum, lightly hinged, vibrant color, fresh and Very Fine, with 1994 P.F., 1995 and 2005 P.S.E. certificates..... 1,650.00



4067

- 4068 ★ **12c Green, Re-Issue (128).** Original gum, deep rich color and proof-like impression, a few trifle blunted perfs at right, still Very Fine, with 2002 P.F. certificate..... 2,250.00



4068



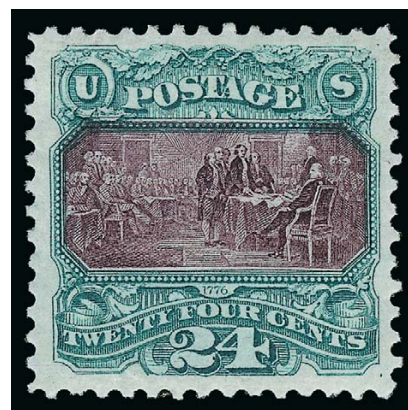
4069

- 4069 ★ **15c Brown & Blue, Re-Issue (129).** Original gum, rich colors and detailed impressions, vignette shifted slightly to right, Very Fine, with 1995 P.F. certificate ..... 1,350.00

- 4070 ★ **24c Green & Violet, Re-Issue (130).** Original gum, lightly hinged, rich colors and proof-like impressions on bright paper

EXTREMELY FINE. A REMARKABLY FRESH AND CHOICE ORIGINAL-GUM EXAMPLE OF THE 24-CENT 1869 PICTORIAL RE-ISSUE.

With 1989 P.F. certificate..... 2,100.00



4070

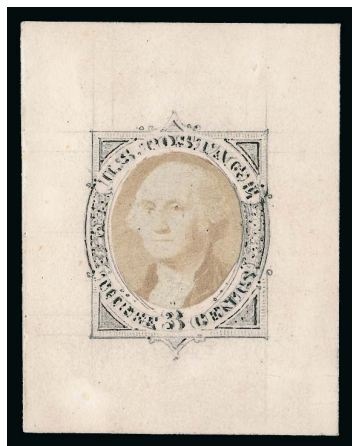


4071

- 4071 ★ **30c Blue & Carmine, Re-Issue (131).** Original gum, lightly hinged, rich colors on bright paper  
VERY FINE ORIGINAL-GUM EXAMPLE OF THE 30-CENT 1869 PICTORIAL RE-ISSUE.  
With 1988 P.F. certificate..... 2,500.00



## 1870-73 BANK NOTE ISSUES



4072

- 4072 E **3c Washington, Die Essay on White Card (184-E17b).** Silver photo print of vignette and pencil and ink drawing of frame on 38 x 50mm card, printed script on back "Elius Benedi" (Erasmus Cornelius Benedict?), Very Fine, probably unique, an excellent companion to lot 471 in the Lake Shore Part One sale..... 1,250.00



- 4073 ★ **1c Ultramarine, H. Grill (134).** Original gum, clearly-defined grill, brilliant color on bright paper, fresh and Very Fine, with 1990 P.F. certificate ..... 2,000.00
- 4074 ★ **2c Red Brown, I. Grill (135A).** Original gum, h.r., clear grill, pretty shade, well-balanced margins, Very Fine and choice, with 2001 P.F. certificate not specifying the grill type, Scott Retail as normal grill..... 1,000.00
- 4075 ★ **3c Green, Split I. Grill (136A var).** Grill split horizontally, original gum, lightly hinged, with selvage at top so split grill at top complete and carried over onto selvage, bright color, Fine, Scott Retail as old Scott 136 split grill..... 625.00
- 4076 **7c Vermilion, H. Grill (138).** Clearly-defined grill which is easily discernible on the front, bright color, neat cork cancel, fresh and Very Fine, with 1992 P.F. certificate ..... 550.00
- 4077 **10c Brown, H. Grill (139).** Rich color, many noticeable grill points, neat strike of **New York Steamship** circular datestamp, Very Fine, with 1993 P.F. certificate ..... 900.00

- 4078 **12c Dull Violet, H. Grill (140).** Pretty shade, several rows of clearly visible grill points, cork cancel  
FRESH AND FINE EXAMPLE OF THE 1870 12-CENT NATIONAL BANK NOTE COMPANY H GRILL.  
With 1999 P.F. certificate ..... 3,750.00



4078



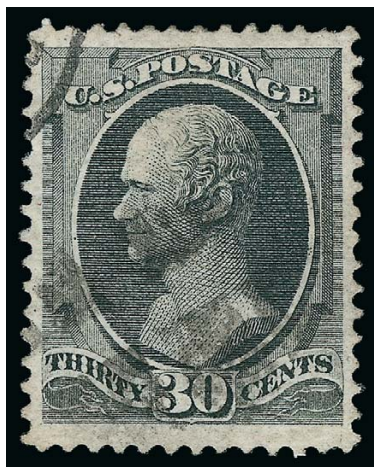
4079

- 4079 **15c Orange, Split H. Grill (141 var).** Grill split vertically, vibrant color, neat strike of target cancel, Very Fine, with 1997 P.F. certificate..... 1,500.00

- 4080 **24c Purple, H. Grill (142).** Bright shade typical of the National Bank Note Company grilled issue, several rows of easily discernible grill points at center, neat strike of circle of wedges cancel  
VERY FINE. AN ATTRACTIVE EXAMPLE OF THE 1870 24-CENT NATIONAL BANK NOTE COMPANY H GRILL.  
With 1998 P.F. certificate ..... 7,500.00



4080



4081

- 4081 **30c Black, H. Grill (143).** Intense shade and impression, many easily discernible grill points, cork cancel and also part of circular datestamp at upper left  
VERY FINE EXAMPLE OF THE 1870 30-CENT NATIONAL BANK NOTE COMPANY ISSUE WITH H GRILL.  
This is a difficult issue to obtain in such wonderful condition..... 4,000.00



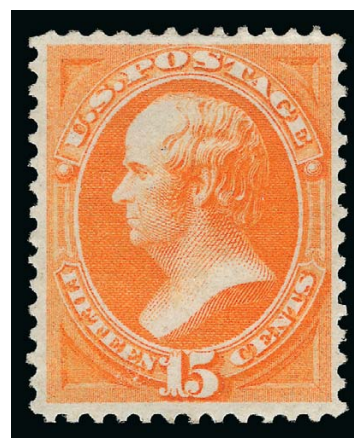


- 4082     **90c Carmine, H. Grill (144).** Rich color on bright paper, several noticeable grill points, unobtrusive cancel, fresh and Very Fine, with 2000 P.F. and P.S.E. certificates . 2,500.00
- 4083 ★     **1c Ultramarine (145).** Original gum, lightly hinged, brilliant color on crisp paper, Very Fine, with 1998 P.F. certificate ..... 675.00
- 4084 ★     **6c Carmine (148).** Original gum, h.r., intense shade and impression, reperfed at right (not mentioned on accompanying certificates), Very Fine appearance, with 1992 P.F. and 1993 P.S.E. certificates..... 1,000.00
- 4085 ★     **7c Vermilion (149).** Original gum, lightly hinged, rich color, small natural inclusion not mentioned on accompanying certificate, Very Fine, with 2001 P.F. certificate ... 1,000.00
- 4086 ★     **15c Bright Orange (152).** Original gum, lightly hinged, vivid color  
 VERY FINE ORIGINAL-GUM EXAMPLE OF THE 1870 15-CENT NATIONAL BANK NOTE COMPANY UNGRILLED ISSUE.  
 With 1989 P.F. certificate showing selvage at right..... 3,000.00
- 4087 ★     **24c Purple (153).** Original gum, single hinge mark, pretty shade, fresh and Very Fine, with 1997 P.F. certificate ..... 1,800.00



- 4088 ★ **1c Ultramarine (156).** Original gum, rich color on bright paper, Very Fine and choice, with 1986 and 2002 P.F. certificates..... 225.00
- 4089 ★★ **1c Ultramarine (156). Mint N.H.,** brilliant color, Very Fine, with 2002 P.F. certificate for block, Scott Retail as hinged ..... 225.00
- 4090 ★ **3c Green, With Grill (158e).** Original gum, lightly hinged, clearly-defined grill, rich color, fresh and Fine, scarce, with 1993 P.F. certificate ..... 500.00
- 4091 ★ **10c Brown (161).** Original gum, lightly hinged, pretty shade, reperfed, Very Fine appearance, with 1982 P.F. and 1994 P.S.E. certificates not mentioning reperfing ..... 1,000.00
- 4092 ★ **12c Blackish Violet (162).** Original gum, lightly hinged, intense shade and impression on bright paper, reperfed, Very Fine appearance..... 2,400.00

- 4093 ★ **15c Yellow Orange (163).** Original gum, lightly hinged, radiant color, well-balanced margins  
EXTREMELY FINE ORIGINAL-GUM EXAMPLE OF THE 1873  
15-CENT CONTINENTAL BANK NOTE COMPANY ISSUE.  
Ex Scarsdale. With 1992, 2000 and 2007 P.F. certificates. .... 2,500.00



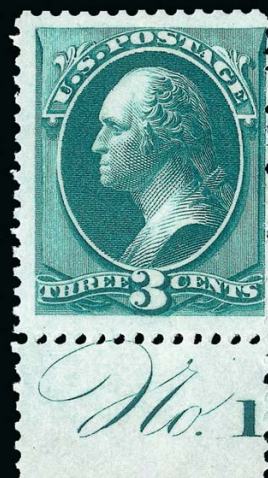
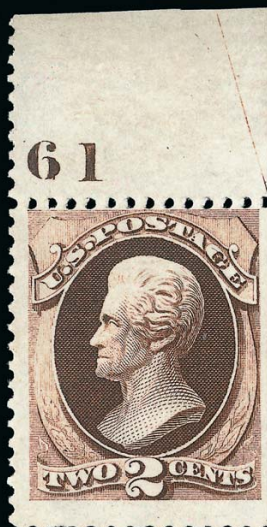
4093

- 4094 ★ **30c Gray Black (165).** Original gum, lightly hinged, rich color on bright paper, sharp impression, Fine, the 30c Continental is very rare in choice original-gum condition, with 2002 P.F. certificate ..... 3,250.00
- 4095 ★ **90c Rose Carmine (166).** Original gum, lightly hinged, brilliant color, fresh and Very Fine, with 1984 P.F. certificate for block..... 2,250.00

END OF SESSION ONE



1875 CONTINENTAL BANK NOTE COMPANY  
SPECIAL PRINTING



SESSION TWO (LOTS 4096-4389)

THURSDAY, OCTOBER 25, 2012, AT 1:30 P.M.

1875 CONTINENTAL BANK NOTE COMPANY SPECIAL PRINTING



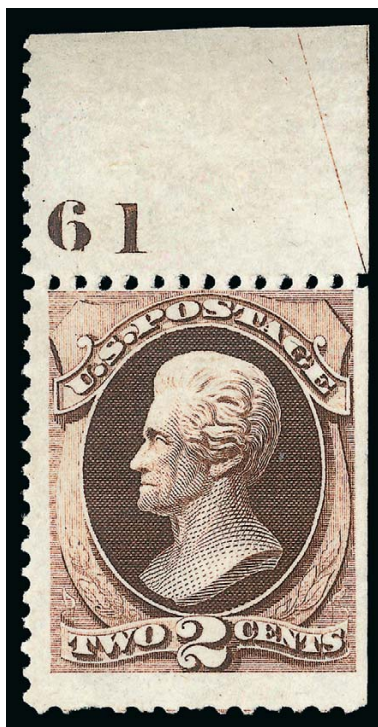
4096

4096 ★ **1c Ultramarine, Special Printing (167).** Without gum as issued, **full perforations all around and plate no. "127" in selvage at bottom**, rich color on bright paper  
VERY FINE. THE UNIQUE PLATE NUMBER EXAMPLE OF THE ONE-CENT 1875 CONTINENTAL SPECIAL PRINTING.

Our recently updated census records for Scott 167 contain 44 certified examples. Of these, fewer than ten have perforations all around, including the example offered here and one with part imprint selvage.

Ex Earl of Crawford and Ackerman. With 1996 P.F. certificate..... 17,500.00





4097

- 4097 ★ **2c Dark Brown, Special Printing (168).** Without gum as issued, with **plate no. “(1)61” in selvage at top**, natural s.e. with part guide arrow at right, full perforations on other sides, single short perf at bottom left

VERY FINE. THIS IS THE UNIQUE TOP POSITION PLATE NUMBER SINGLE OF THE 1875 2-CENT CONTINENTAL BANK NOTE COMPANY SPECIAL PRINTING.

Our recently updated census records for Scott 168 contain only 56 copies certified as genuine. A plate number single is also known from the bottom position (ex Earl of Crawford and Ackerman).

With 1957 P.F. certificate..... 8,500.00



4098

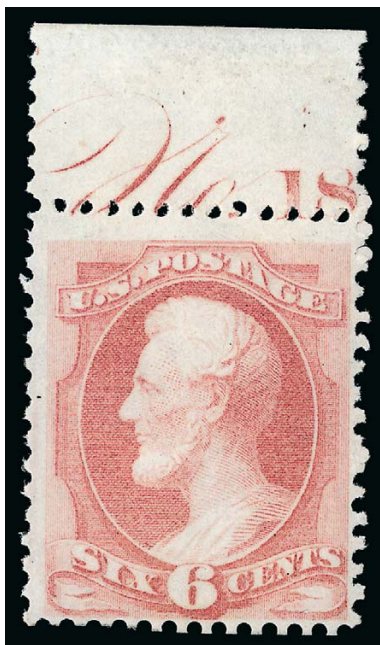
- 4098 ★ **3c Blue Green, Special Printing (169).** Without gum as issued, **full perforations all around and “No. 1” of imprint in selvage at bottom**, rich color on bright paper

VERY FINE. THIS IS THE ONLY RECORDED EXAMPLE OF THE 1875 3-CENT CONTINENTAL SPECIAL PRINTING SHOWING ANY PORTION OF THE PLATE NUMBER. A PHENOMENAL RARITY.

Our recently updated records for Scott 169 contain 35 examples that have been certified as genuine by the Philatelic Foundation (including one on cover). Only a dozen have perforations intact on all sides, including three others originally in a strip with this stamp. Our photo records show that the Earl of Crawford strip from which this originated had a part imprint on the left two stamps (one ex Whitman), the third stamp without imprint, and the righthand stamp offered here with “No. 1”.

Ex Earl of Crawford and Ackerman. With 1996 P.F. certificate..... 21,500.00





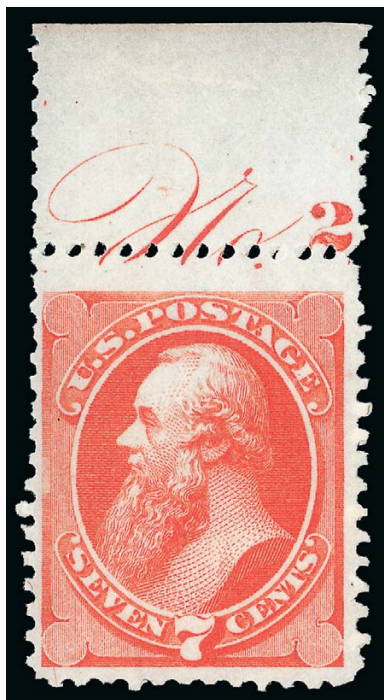
4099

- 4099 ★ **6c Dull Rose, Special Printing (170).** Without gum as issued, **full perforations all around and “No. 18” of imprint in selvage at top**, brilliant color

VERY FINE AND CHOICE. THE ONLY RECORDED TOP SHEET SELVAGE EXAMPLE WITH PLATE NUMBER OF THE 6-CENT 1875 CONTINENTAL BANK NOTE COMPANY SPECIAL PRINTING. FROM THE EARL OF CRAWFORD STRIP. THE 6-CENT IS AN EXTREMELY DIFFICULT DENOMINATION TO OBTAIN IN SUCH PRISTINE CONDITION AND WITH PERFORATIONS ON ALL SIDES.

Our recently updated census records for Scott 170 contain 35 certified examples. Of these, approximately half have full perforations on all sides, including several which are faulty. This stamp comes from the Earl of Crawford top selvage strip of four with plate number and imprint. This strip was spared the usual fate of scissors-separation.

Ex Earl of Crawford and Ackerman. With 1996 P.S.E. certificate. .... 21,000.00



4100

- 4100 ★ **7c Reddish Vermilion, Special Printing (171).** Without gum as issued, **full perforations on all sides and “No. 2(2)” of imprint in selvage at top**, brilliant color

VERY FINE AND CHOICE. THIS IS THE ONLY RECORDED EXAMPLE OF THE 7-CENT 1875 CONTINENTAL BANK NOTE COMPANY SPECIAL PRINTING WITH ANY PART OF THE PLATE NUMBER.

Many examples of the Continental Bank Note special printings were separated by scissors, and so are often found with perforations partly missing or entirely trimmed away. Our recently updated census records for Scott 171 contain 72 copies. This was the right-hand stamp in the Earl of Crawford top selvage strip of four with part plate number and part imprint. This strip was spared the usual fate of scissors-separation.

Ex Earl of Crawford and Ackerman. .... 5,500.00





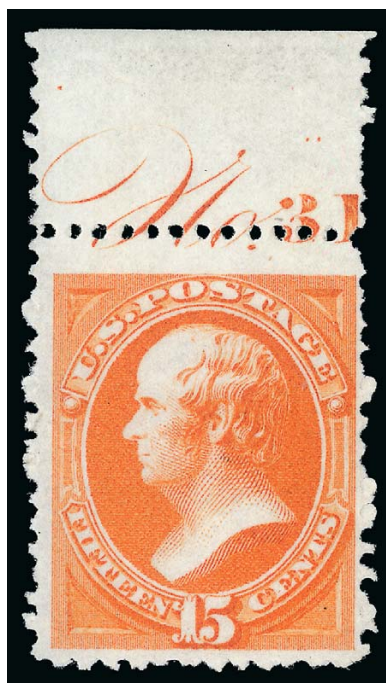
4101

4101 ★ **12c Dark Violet, Special Printing (173).** Without gum as issued, **full perforations all around and “No. 13(7)” of imprint in selvage at bottom**, intense shade and impression, shortish perf at top right

FINE. THIS PLATE NUMBER POSITION PIECE OF THE 12-CENT 1875 CONTINENTAL SPECIAL PRINTING IS UNIQUE.

Our recently updated census records for Scott 173 contain 70 certified examples.

Ex Earl of Crawford and Ackerman strips, which also contained the adjoining single with the rest of the plate number..... 7,000.00



4102

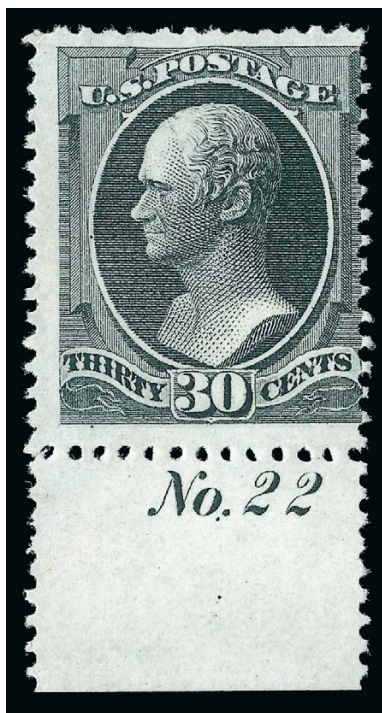
4102 ★ **15c Bright Orange, Special Printing (174).** Without gum as issued, **full perforations all around and “No. 31” of imprint in selvage at top**, vibrant color as fresh as the day it was printed, few shortish perfs at upper right

VERY FINE. THE ONLY RECORDED EXAMPLE OF THE 15-CENT 1875 CONTINENTAL BANK NOTE COMPANY SPECIAL PRINTING SHOWING ANY PART OF THE PLATE NUMBER.

Our recently updated census records for Scott 174 contain 40 certified examples. Of these, well over half have the perforations scissors-separated on at least one side.

Ex Earl of Crawford and Ackerman as the rightmost stamp in the strip of four. ....  
 ..... 20,000.00





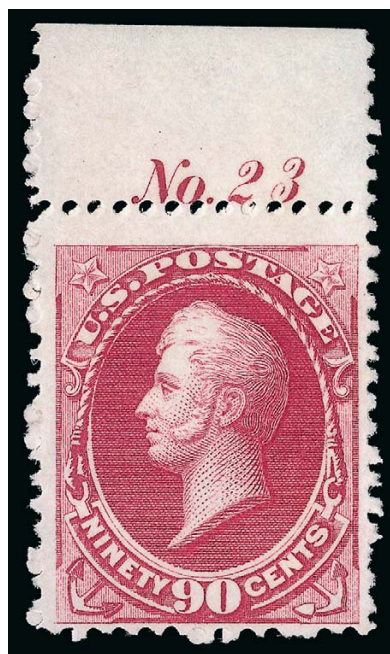
4103

- 4103 ★ **30c Greenish Black, Special Printing (176).** Without gum as issued, **full perforations all around and “No. 22” of imprint in selvage at bottom**, intense shade and impression

FRESH AND FINE. THIS IS THE ONLY RECORDED EXAMPLE OF THE 30-CENT 1875 CONTINENTAL BANK NOTE COMPANY SPECIAL PRINTING WITH THE PLATE NUMBER.

Many examples of the Continental Bank Note special printings were separated by scissors, and so are often found with perforations partly missing or entirely trimmed away. Our recently updated census records for Scott 176 contain 50 copies. Of these, approximately a dozen have perforations on all four sides. This stamp comes from the Earl of Crawford bottom selvage strip of four with plate number and imprint. This strip was spared the usual fate of scissors-separation.

Ex Earl of Crawford and Ackerman. With 1998 P.F. certificate..... 16,500.00



4104

- 4104 ★ **90c Violet Carmine, Special Printing (177).** Without gum as issued, **full perforations all around and "No. 23" of imprint in selvage at top**, rich color on bright paper, single shortish perf at lower right

VERY FINE. THIS IS THE ONLY RECORDED PLATE NUMBER EXAMPLE OF THE 90-CENT 1875 CONTINENTAL BANK NOTE COMPANY SPECIAL PRINTING. IT IS ALSO ESPECIALLY DESIRABLE WITH FULL PERFORATIONS ON ALL FOUR SIDES.

Many examples of the Continental Bank Note special printings were separated by scissors, and so are often found with perforations partly missing or entirely trimmed away. Our recently updated census records for Scott 177 contain 46 copies. Less than half have perforations on all four sides.

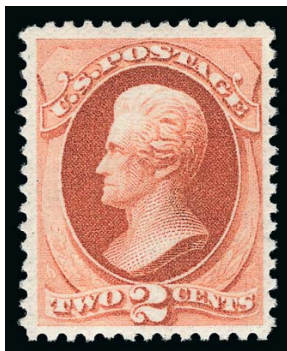
Ex Earl of Crawford and Ackerman..... 26,000.00



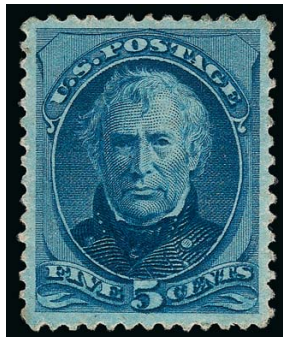
## 1875-93 BANK NOTE ISSUES



4105



4106



4107



4108

- 4105 ★ **5c Blue (179).** Original gum, bright shade, reperfed at left, Very Fine appearance, with 1997 P.F. certificate not mentioning reperfing ..... 700.00
- 4106 ★★ **2c Vermilion (183).** Mint N.H., rich color with a hint of oxidation not mentioned on accompanying certificate, well-balanced margins, Extremely Fine, with 1998 P.F. certificate ..... 370.00
- 4107 ★ **5c Blue (185).** Original gum, intense shade and impression, well-proportioned margins, Very Fine and choice ..... 450.00
- 4108 ★ **6c Pink (186).** Original gum, barely hinged, brilliant color, Extremely Fine, with 2003 P.F. certificate ..... 900.00
- 4109 ★ **6c Pink (186).** Original gum, lightly hinged, radiant color, fresh and Fine, with 1990 P.F. certificate ..... 900.00



4109



4110

- 4110 ★ **10c Brown, With and Without Secret Mark (187-188).** Horizontal pair, original gum, lightly hinged, deep rich color and impression clearly showing secret mark in right stamp FINE-VERY FINE. A CHOICE AND RARE ORIGINAL-GUM COMBINATION PAIR OF THE 10-CENT AMERICAN BANK NOTE ISSUE WITH AND WITHOUT SECRET MARK. With 1958 and 1994 P.F. certificates ..... 9,250.00



- 4111 (★) **30c Full Black (190)**. Unused (regummed), intense shade and impression, well-balanced margins, Very Fine, Scott Retail as no gum ..... 325.00
- 4112 ★ **90c Carmine (191)**. Original gum, lightly hinged, brilliant color, trivial natural inclusion not mentioned on accompanying certificate, Very Fine, with 1993 P.F. certificate ..... 2,000.00
- 4113 ★★ **1c Gray Blue (206)**. Mint N.H., pretty shade, well-balanced margins, fresh and Extremely Fine, with 1996 P.F. and 2007 P.S.E. certificates (XF 90; SMQ \$550.00) ..... 225.00
- 4114 ★ **6c Rose (208)**. Original gum, h.r., radiant color on bright paper, wide margins, Very Fine and choice ..... 775.00
- 4115 ★★ **10c Brown (209)**. Mint N.H., attractive margins and centering, beautiful color, clear impression, Very Fine and choice, with 2009 P.F. certificate (VF-XF 85) ..... 475.00
- 4116 ★★ **4c Blue Green (211)**. Mint N.H., intense shade and impression on bright paper, Very Fine, with 1995 P.S.E. certificate ..... 950.00
- 4117 ★ **2c Pale Red Brown, Special Printing (211B)**. Mint N.H., bright color, fresh and Fine, with 1962 P.F. certificate ..... 850.00
- 4118 ★★ **1c Ultramarine (212)**. Mint N.H. with selvage at top, brilliant color, Very Fine and choice, with copy of 1989 P.F. certificate for strip of four ..... 290.00
- 4119 ★★ **2c Green (213)**. Mint N.H., rich color on bright paper, gorgeous centering, Extremely Fine Gem ..... 225.00
- 4120 ★★ **3c Vermilion (214)**. Mint N.H., wonderfully well-centered with fiery color, Extremely Fine, with 1982 P.F. certificate ..... 200.00
- 4121 ★★ **5c Indigo (216)**. Mint N.H., rich color on bright paper, wide and balanced margins, long and full perforations, fresh and Extremely Fine, a stamp with tremendous visual appeal, ex Hampshire, with 2010 P.F. certificate (XF 90) ..... 700.00
- 4122 ★★ **30c Orange Brown (217)**. Mint N.H., gorgeous color on crisp paper, Very Fine and choice, with 1981, 1997 and 2007 P.F. certificates (XF 90) and 2007 P.S.E. certificate (XF 90; SMQ \$1,450.00) ..... 1,000.00
- 4123 ★ **90c Purple (218)**. Original gum, lightly hinged, deep rich color, wide margins, Very Fine, with 1983 P.F. certificate ..... 900.00





- 4124 ★★ **2c Lake (219D)**. Mint N.H., intense shade and impression, fresh and Very Fine, with copy of 1991 P.F. certificate for block ..... 600.00
- 4125 ★★ **3c Purple (221)**. Mint N.H., detailed impression on bright paper, well-proportioned margins, Extremely Fine, with 2002 P.F. certificate ..... 200.00
- 4126 ★★ **6c Brown Red (224)**. Mint N.H. with **plate no. 23 selvage** at top, brilliant color, fresh and Extremely Fine, with 1989 P.F. certificate..... 200.00
- 4127 ★★ **10c Green (226)**. Mint N.H., rich color on bright paper, Very Fine..... 525.00
- 4128 ★★ **30c Black (228)**. Mint N.H., intense shade and impression, Jumbo margins, trivial natural inclusion not mentioned on accompanying certificate, fresh and Extremely Fine, with 2003 P.S.E. certificate..... 1,050.00

### COLUMBIAN ISSUE

- 4129 ★★ **15c Columbian (238)**. Mint N.H., deep rich color and detailed impression on bright paper, fresh and Fine, with copy of 1990 P.F. certificate for block..... 700.00
- 4130 ★★ **30c Columbian (239)**. Mint N.H., almost perfectly balanced wide margins, pristine color on fresh paper, Extremely Fine, a very strong example of the 90 grade, with 2011 P.S.E. certificate (XF 90; SMQ \$1,300.00)..... 750.00
- 4131 ★★ **50c Columbian (240)**. Mint N.H., intense shade and impression, Fine, with 1992 P.F. certificate..... 1,500.00

4132 ★★ **\$1.00 Columbian (241).** Mint N.H., brilliant color, crisp impression

VERY FINE MINT NEVER-HINGED EXAMPLE OF THE \$1.00 COLUMBIAN ISSUE.

With 1986 and 1999 P.F. certificates..... 3,850.00



4132



4133

4133 ★★ **\$2.00 Columbian (242).** Mint N.H., rich color and detailed impression, fresh and bright paper

VERY FINE MINT NEVER-HINGED EXAMPLE OF THE \$2.00 COLUMBIAN.

With 1989 P.F. certificate.. 4,000.00



4134

4134 ★★ **\$3.00 Olive Green, Columbian (243a).** Mint N.H., lovely bright color, wide margins and nice centering for this difficult issue

VERY FINE. A RARE AND DESIRABLE MINT NEVER-HINGED EXAMPLE OF THE \$3.00 COLUMBIAN ISSUE. THIS IS ONE OF THE MOST DIFFICULT DENOMINATIONS TO OBTAIN IN MINT NEVER-HINGED CONDITION.

A review using Power Search shows that we have offered an average of one Mint N.H. example of the \$3.00 Columbian a year in any grade.

With 2000 P.S.E. certificate..... 5,250.00





4135

4135 ★★ **\$4.00 Columbian (244)**. Mint N.H., beautiful bright color and fine impression, remarkably fresh

VERY FINE AND EXCEEDINGLY SCARCE MINT NEVER-HINGED EXAMPLE OF THE \$4.00 COLUMBIAN.

With 2000 P.F. certificate..... 7,250.00



4136

4136 ★★ **\$5.00 Columbian (245)**. Mint N.H., sharp proof-like impression on crisp paper

VERY FINE. A SCARCE MINT NEVER-HINGED EXAMPLE OF THE \$5.00 COLUMBIAN ISSUE.

With copy of 2000 P.F. certificate for block and 2006 P.S.E. certificate as single ..... 10,500.00

## 1894-98 BUREAU ISSUE



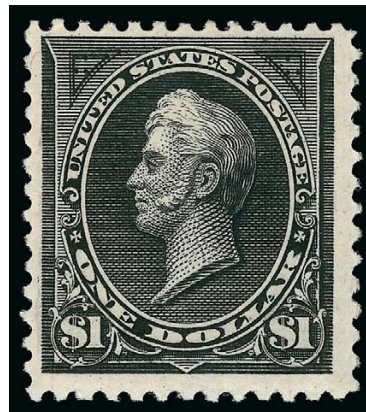
- 4137 ★★ **2c Carmine Lake, Ty. I (249).** Mint N.H., deep rich color, wide margins, post-office fresh, Very Fine and choice, ex Hoffman, with copy of 2002 P.F. certificate for block ..... 450.00
- 4138 ★★ **2c Carmine, Ty. II (251).** Mint N.H., brilliant color, well-balanced margins, natural perf disc inclusion not mentioned on accompanying certificate, Very Fine, with 1987 P.F. certificate ..... 975.00
- 4139 ★★ **2c Carmine, Ty. III (252).** Mint N.H. with **wide selvage** at top, radiant color, detailed impression, trivial natural inclusion not mentioned on accompanying certificate, Very Fine and choice, with copy of 1989 P.F. certificate for pair..... 375.00
- 4140 ★★ **2c Carmine, Ty. III (252).** Mint N.H. with **plate no. 142 selvage** at top, bright color, some overall toning not mentioned on accompanying certificate, otherwise Extremely Fine, with 2006 A.P.S. certificate ..... 375.00
- 4141 ★★ **3c Purple (253).** Mint N.H. with **plate no. 91 selvage** at top, rich color on bright paper, wide margins, Very Fine and choice, with copy of 1991 P.F. certificate for strip .. 325.00
- 4142 ★★ **4c Dark Brown (254).** Mint N.H. with **part imprint and extra wide selvage at top**, deep rich color and proof-like impression, Very Fine and choice, ex Hoffman, with 2000 P.F. certificate ..... 525.00
- 4143 ★★ **5c Chocolate (255).** Mint N.H., radiant color, long and full perforations all around, well-balanced margins, Extremely Fine, a beautiful stamp, ex Hoffman, with 2000 P.F. certificate..... 325.00
- 4144 ★★ **6c Dull Brown (256).** Mint N.H., pretty shade on bright paper, well-balanced margins, fresh and Extremely Fine, with 2001 P.S.E. certificate ..... 475.00
- 4145 ★★ **8c Violet Brown (257).** Mint N.H., rich color and proof-like impression, extra wide margins, Very Fine ..... 475.00
- 4146 ★★ **10c Dark Green (258).** Mint N.H. with **plate no. 55 selvage** at top, brilliant color, Very Fine, with 1995 P.F. certificate ..... 900.00
- 4147 ★★ **15c Dark Blue (259).** Mint N.H., deep rich color on bright paper, wide margins, Very Fine ..... 900.00





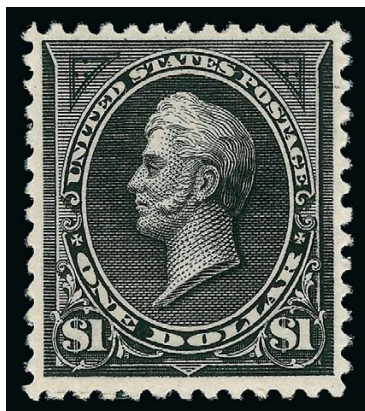
4148

- 4148 ★★ **50c Orange (260).** Mint N.H., vivid color as fresh as the day it was printed, minor natural gum wrinkles, Very Fine, with 2006 P.S.E. certificate ..... 1,500.00



4149

- 4149 ★★ **\$1.00 Black (261).** Mint N.H., detailed impression on bright paper, fresh and Fine, with 1988 P.F. certificate ... 3,150.00



4150

- 4150 ★★ **\$1.00 Black, Ty. II (261A).** Mint N.H., intense shade, proof-like impression showing every little detail of the engraving, choice centering with wide margins

VERY FINE AND CHOICE. A RARE MINT NEVER-HINGED EXAMPLE OF THE 1894 \$1.00 TYPE II UNWATERMARKED BUREAU ISSUE.

Collectors of this issue know that it is extremely difficult to find the first Bureau issue in centered, Mint Never-Hinged condition, particularly the higher denominations. This is mostly due to production problems as the Bureau of Engraving and Printing assumed responsibility for stamp production after the American Bank Note contract expired.

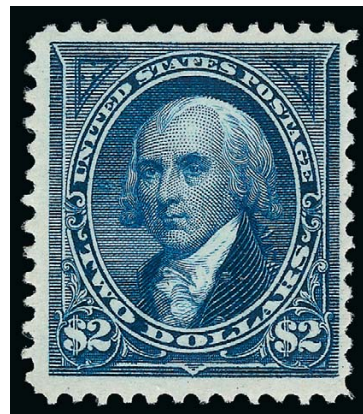
With 1999 P.F. certificate. .... 6,500.00

- 4151 ★★ **\$2.00 Bright Blue (262).** Mint N.H., bright color, detailed impression, wide margins

VERY FINE. A SCARCE MINT NEVER-HINGED EXAMPLE OF THE \$2.00 1894 UNWATERMARKED BUREAU ISSUE.

We have only sold five others in Mint N.H. condition since keeping computerized records. Of these, at least two only rated the grade of Fine. This value is often overlooked by collectors seeking the \$5.00 of the series in Mint N.H. condition.

Ex Odeneal. With 1991 P.F. certificate ..... 8,750.00



4151





4152

4152 ★★ **\$5.00 Dark Green (263)**. Mint N.H., with wide selvage at left, choice centering and balanced margins, beautiful deep rich color and incredibly detailed impression showing all of the finely-engraved lines in the background, bright and fresh paper, slight wrinkle in selvage only

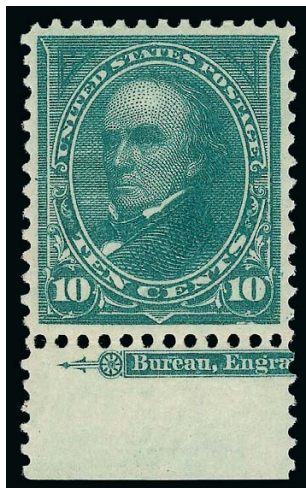
VERY FINE AND CHOICE. AN EXTREMELY RARE MINT NEVER-HINGED EXAMPLE OF THE \$5.00 1894 UNWATERMARKED BUREAU ISSUE.

Without question, the \$5.00 is the rarest of the 1894 Unwatermarked Bureau Issue in sound, well-centered Mint Never-Hinged condition. It is unlikely that more than three or four Extremely Fine Mint N.H. examples exist.

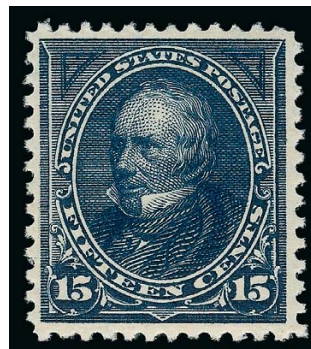
Ex Whitman. Ward handstamp in selvage. With copy of 1993 P.F. certificate for block and 1999 P.F. certificate for single ..... 15,000.00



4153



4154



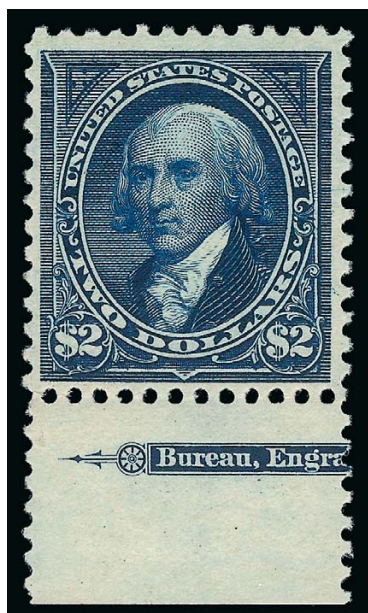
4155

- 4153 ★★ **2c Carmine, Ty. III, Imperforate (267a).** Mint N.H. with **part imprint selvage** at top, brilliant color, well-balanced margins, Extremely Fine ..... 75.00
- 4154 ★★ **10c Dark Green (273).** Mint N.H. with **part imprint selvage** at bottom, pretty shade, well-proportioned margins, fresh and Extremely Fine, with 2008 P.F. certificate ..... 280.00
- 4155 ★★ **15c Dark Blue (274).** Mint N.H., intense color and impression on bright paper, Very Fine and choice, with 1985 P.F. certificate for strip ..... 625.00

- 4156 ★★ **\$1.00 Black, Ty. I (276).** Mint N.H., intense shade on bright paper, fresh and Fine, scarce in Mint N.H. condition, with 1997 P.S.E. certificate ..... 1,800.00

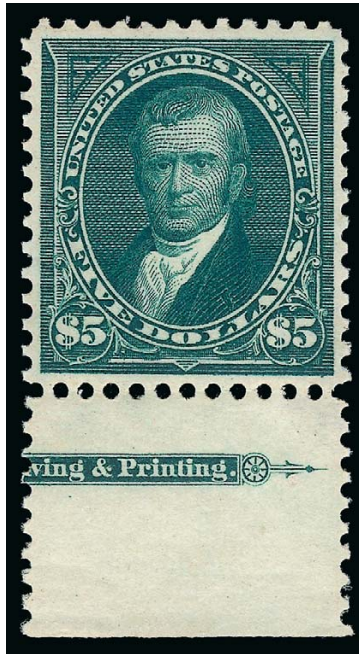


4156



4157

- 4157 ★★ **\$2.00 Dark Blue (277a).** Mint N.H. **bottom margin part imprint** single, deep rich color on bright paper
- VERY FINE AND CHOICE MINT NEVER-HINGED EXAMPLE OF THE \$2.00 WATERMARKED BUREAU ISSUE IN THE DARK BLUE SHADE.
- With 2001 P.S.E. certificate incorrectly describing color as Bright Blue. .... 3,000.00



4158

4158 ★★ **\$5.00 Dark Green (278).** Mint N.H. with **part imprint selvage** at bottom, deep rich color and proof-like impression on bright paper, well-balanced margins

EXTREMELY FINE. A BEAUTIFUL MINT NEVER-HINGED EXAMPLE OF THE 1895 \$5.00 WATER-MARKED BUREAU ISSUE.

With 1997 P.F. and 2007 P.S.E. certificates (VF-XF 85; SMQ \$9,200.00). Only two have graded higher to date..... 6,250.00





- 4159 ★★ **10c Orange Brown, Ty. II (283).** Mint N.H., pretty shade, well-balanced margins, short corner perf, otherwise Very Fine and choice, with copy of 1990 P.F. certificate for block ..... 450.00

### TRANS-MISSISSIPPI ISSUE

- 4160 ★★ **2c Trans-Mississippi (286).** Mint N.H. with **plate no. 597 wide selvage** at top, brilliant color, fresh and Extremely Fine, with copy of 2000 P.F. certificate for pair..... 72.50
- 4161 ★★ **4c Trans-Mississippi (287).** Mint N.H. with **imprint selvage** at bottom, brilliant color, well-balanced margins, Extremely Fine, with 2003 P.F. certificate ..... 330.00
- 4162 ★★ **5c Trans-Mississippi (288).** Mint N.H. with **plate no. 602 selvage** at top, bright shade on crisp paper, Very Fine and choice, with 1996 P.F. certificate ..... 330.00
- 4163 ★★ **8c Trans-Mississippi (289).** Top **imprint and plate no. 609** pair, stamps Mint N.H., intense shade and impression, Very Fine, Scott Retail as Mint N.H. singles ..... 1,000.00
- 4164 ★★ **50c Trans-Mississippi (291).** Mint N.H. with **right part arrow**, rich color, detailed impression, Fine ..... 1,900.00



4165

- 4165 ★★ **50c Trans-Mississippi (291).** Top imprint and plate no. 603 pair, Mint N.H. except lightly hinged at top of selvage where few perf separations expertly rejoined (easily trimmed), rich color and detailed impression  
 VERY FINE. A BEAUTIFUL IMPRINT AND PLATE NUMBER PAIR OF THE 50-CENT TRANS-MISSISSIPPI ISSUE.  
 Scott Retail as Mint N.H. .... 4,300.00



4166

- 4166 ★★ **\$1.00 Trans-Mississippi (292).** Mint N.H., sharp proof-like impression on bright paper, wide margins  
 VERY FINE AND CHOICE. A BEAUTIFUL MINT NEVER-HINGED EXAMPLE OF THE \$1.00 TRANS-MISSISSIPPI ISSUE.  
 The \$1.00 Trans-Mississippi issue has been called the most beautiful design in United States philately. .... 3,250.00

- 4167 ★★ **\$2.00 Trans-Mississippi (293).** Mint N.H., beautiful deep color and proof-like impression on bright paper  
 VERY FINE. A SCARCE MINT NEVER-HINGED EXAMPLE OF THE \$2.00 TRANS-MISSISSIPPI.  
 With 1999 P.F. certificate ..... 5,750.00



4167





## PAN-AMERICAN ISSUE

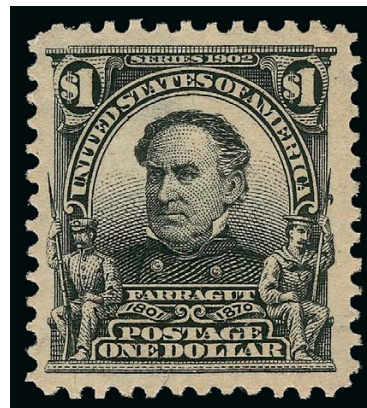
- 4168 ★★ **5c Pan-American (297)**. With siderographers' initials and denomination marker in top left corner selvage, stamp Mint N.H., h.r. in corner selvage, rich colors, Extremely Fine, with 1989 P.F. certificate, Scott Retail as Mint N.H. .... 190.00
- 4169 ★★ **8c Pan-American (298)**. Mint N.H., intense colors and impressions, well-balanced margins, Extremely Fine, with 2008 P.S.E. certificate (VF-XF 85; SMQ \$375.00) . 250.00

## 1902-08 ISSUE

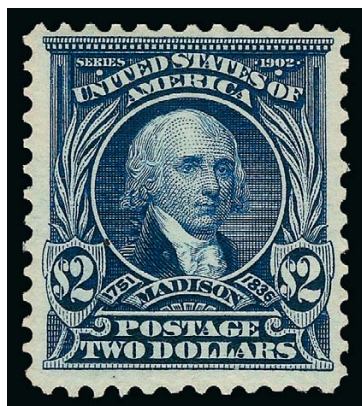
- 4170 S **\$1.00 Black, "Specimen" Ovpt. (311S-E)**. Barest trace of hinging, sharp proof-like impression, fresh and Very Fine, with 2005 P.F. certificate..... 250.00
- 4171 S **\$2.00 Dark Blue, "Specimen" Ovpt. (312S-E)**. Wonderfully well-centered, lightly hinged, Extremely Fine, "Specimen" overprints are almost never available in this exceptional condition, with 1992 P.F. certificate..... 375.00
- 4172 ★★ **6c Claret (305)**. Mint N.H., wonderful color, wide and balanced margins, Extremely Fine, with 1995 P.F. and 2007 P.S.E. certificates (XF 90; SMQ \$450.00) ..... 150.00
- 4173 ★★ **8c Violet Black (306)**. Mint N.H., crisp impression on bright paper, Jumbo margins, Extremely Fine, with 2008 P.S.E. certificate (XF 90 Jumbo; SMQ \$250.00 as 90, \$750.00 as 95)..... 100.00
- 4174 ★★ **15c Olive Green (309)**. Mint N.H., pretty shade, balanced margins, Very Fine and choice, with 2008 P.S.E. certificate (VF 80; SMQ \$400.00) ..... 475.00
- 4175 ★★ **50c Orange (310)**. Mint N.H., vivid color, Very Fine, with 1992 P.F. certificate 1,200.00



- 4176 ★★ **\$1.00 Black (311)**. Mint N.H., intense shade and impression, unusually wide margins, Very Fine and choice, a beautiful stamp ..... 1,900.00



4176



4177

- 4177 ★★ **\$2.00 Dark Blue (312)**. Mint N.H., rich color on bright paper, fresh and Fine, scarce in Mint N.H. condition, with 2003 P.S.E. certificate ..... 2,750.00

- 4178 ★★ **\$5.00 Dark Green (313)**. With **part imprint selvage** at top, stamp Mint N.H., lightly hinged in selvage only, rich color on post-office fresh paper

VERY FINE. A BEAUTIFUL EXAMPLE OF THE 1902 \$5.00 MARSHALL, WITH THE STAMP IN MINT NEVER-HINGED CONDITION.

With 1998 P.S.E. certificate for strip of three. Scott Retail as Mint N.H. .... 6,500.00



4178



4179

- 4179 ★★ **5c Blue, Imperforate (315).** Mint N.H., rich color,  
Very Fine..... 475.00

- 4180 ★ **1c Blue Green, Coil (318).** Lightly hinged, deep rich  
color and proof-like impression

VERY FINE AND CHOICE EXAMPLE OF THE ONE-CENT  
1908 COIL, SCOTT 318.

Ex Hoffman. With 1955 P.F. certificate for pair. This  
issue is rarely offered as a single..... 5,000.00



4180



4181

- 4181 ★ **2c Carmine, Coil (322).** Lightly hinged, brilliant  
color, crisp impression, unusually wide margins  
EXTREMELY FINE EXAMPLE OF THE RARE 1908 2-CENT  
HORIZONTAL COIL, SCOTT 322.  
With 1997 P.F. certificate for pair ..... 6,000.00





## LOUISIANA PURCHASE, 1908-12 ISSUES

- 4182 ★★ **10c Louisiana Purchase (327).** Mint N.H. with **bottom imprint selvage**, bright color, choice centering, single natural perf disc inclusion, Extremely Fine..... 350.00
- 4183 ★★ **10c Yellow (338).** Mint N.H. with **part imprint** at bottom, blazing color, well-balanced margins, Extremely Fine, ex Scarsdale, with 1983, 1986 and 2000 P.F. certificates..... 160.00
- 4184 ★★ **15c Pale Ultramarine (340).** Mint N.H., bright color and paper, well-balanced margins, fresh and Extremely Fine, a stunning stamp, ex Odeneal, with 1999 P.F. certificate..... 160.00
- 4185 ★★ **50c Violet (341).** Mint N.H., pretty shade on bright paper, fresh and Very Fine, with 1982 P.F. certificate..... 700.00
- 4186 ★★ **\$1.00 Violet Brown (342).** Mint N.H., deep shade and clear impression, wide margins, Very Fine and choice, with 1991 P.F. certificate..... 1,150.00
- 4187 ★★ **1c Green, Coil (348).** Mint N.H. guide line pair, rich color, choice centering with wide margins, Extremely Fine, a beautiful Mint N.H. guide line pair..... 600.00
- 4188 ★★ **2c Carmine, Coil (349).** Mint N.H. pair, brilliant color, wide and balanced margins, Extremely Fine, with 2001 P.S.E. certificate..... 575.00
- 4189 ★★ **4c Orange Brown, Coil (350).** Mint N.H. pair, radiant color, fresh and Very Fine, with 1988 P.F. certificate..... 775.00
- 4190 ★★ **4c Orange Brown, Coil (350).** Mint N.H., attractive color, Very Fine and choice, with 1993 and 2004 P.F. certificates as pair..... 325.00





- 4191 ★★ **5c Blue, Coil (351).** Mint N.H. pair, intense color on bright paper, Very Fine, with 1991 P.S.E. certificate for strip of three ..... 900.00
- 4192 ★★ **5c Blue, Coil (351).** Mint N.H., intense color, Very Fine, with copy of 1991 P.S.E. certificate for strip of three..... 350.00
- 4193 ★★ **1c Green, Coil (352).** Mint N.H. pair with 2mm spacing, detailed impression, Very Fine and choice, with 1980 and 1998 P.F. certificates..... 550.00
- 4194 ★★ **2c Carmine, Coil (353).** Mint N.H. pair with 3mm spacing, brilliant color, Very Fine, with 1998 P.F. certificate for strip of three ..... 525.00
- 4195 ★★ **2c Carmine, Coil (353).** Mint N.H., wide margins and perfectly centered, brilliant color, crisp impression, Extremely Fine Gem ..... 215.00
- 4196 ★★ **4c Orange Brown, Coil (354).** Mint N.H., detailed impression, Very Fine, with 2001 P.F. certificate ..... 425.00



- 4197 ★★ **4c Orange Brown, Coil (354).** Mint N.H. guide line pair, bright color, fresh and Very Fine, with 1993 P.F. certificate ..... 3,000.00

- 4198 ★★ **5c Blue, Coil (355).** Mint N.H. guide line pair, radiant color on bright paper

VERY FINE AND CHOICE MINT NEVER-HINGED GUIDE LINE PAIR OF THE 5-CENT HORIZONTAL COIL, SCOTT 355.

With 1976 P.F. certificate as guide line strip of four..... 3,250.00



4198



4199

- 4199 ★★ **10c Yellow, Coil (356).** Mint N.H., vivid color, balanced margins

VERY FINE. A SCARCE MINT NEVER-HINGED EXAMPLE OF THE 10-CENT HORIZONTAL COIL, SCOTT 356.

With 2006 P.S.E. certificate (VF 80; SMQ \$5,300.00). Only two Mint N.H. singles have been graded and this is the higher grade of the two..... 3,000.00

## BLuish PAPER

- 4200 ★ **1c Green, 2c Carmine, Bluish (357-358).** 2c with left plate no. 4860 selvage, 1c Mint N.H., 2c barely hinged, Very Fine and choice.....(Photo Ex) 260.00



4200EX



4201

- 4201 ★★ **3c Deep Violet, Bluish (359).** Mint N.H. with full selvage at right, deep rich color on deeply blued paper, wide margins

VERY FINE AND CHOICE MINT NEVER-HINGED EXAMPLE OF THE 3-CENT BLuish. AN EXCEEDINGLY RARE STAMP IN MINT NEVER-HINGED CONDITION.

A search of our records surprised us. This is only the second Mint N.H. example of this stamp we have offered since keeping computerized records.

With 1979 P.F. certificate .....  
..... 4,000.00





4202

- 4202 ★★ **6c Red Orange, Bluish (362).** Mint N.H. with **wide top selvage**, vibrant color on deeply blued paper  
 VERY FINE AND CHOICE. A BEAUTIFUL MINT NEVER-HINGED TOP SELVAGE EXAMPLE OF THE 6-CENT ON BLUISH.  
 With 1995 P.F. certificate..... 3,000.00



4203

- 4203 ★★ **15c Pale Ultramarine, Bluish (366).** Mint N.H., from the top right corner of the sheet with **full 23mm corner selvage**, the stamp itself is perfectly centered with long full perforations all around, rich color, remarkably fresh

EXTREMELY FINE GEM. AN EXTRAORDINARY STAMP — POST-OFFICE FRESH, PERFECTLY CENTERED, MINT NEVER-HINGED AND WITH FULL CORNER SHEET MARGINS. IN OUR EXPERIENCE, THIS IS QUITE POSSIBLY THE FINEST-QUALITY BLUISH PAPER STAMP IN EXISTENCE.

The 4c and 8c stamps are correctly recognized as the rarest of the Bluish Paper issue, but they were never sold over the post office counter and used by the public. Of the values that were regularly issued, the 5c is the rarest, followed by the 13c, and then by the 15c, 10c, 6c and 3c (the 1c and 2c are common). If Mint Never-Hinged stamps are isolated from the supply available to collectors, the rarity factors increase significantly for all of the values. The 15c is extremely rare in well-centered Mint N.H. condition.

This Mint Never-Hinged stamp, with full corner sheet margins and perfect centering, is not just the finest 15c Bluish Paper example we can locate in our extensive records — it is, in our opinion, the finest single example of any of the higher-denomination Bluish Paper stamps. There is simply nothing that compares to it. That said, the very slightly skewed perforations, which are often found in corner-margin positions, keeps this beautiful example from a grade of 90 or 95. However, stamps like this transcend numerical grading.

Ex Whitman. With 2000 P.F. and 2008 P.S.E. certificates (VF-XF 85; SMQ \$4,600.00). Only three have graded higher in the P.S.E. Population Report and only three others share this grade. .... 3,000.00





4204



4205



4206

- 4204 ★★ **3c Deep Violet (376).** Mint N.H. with **left part imprint selvage**, brilliant color, balanced margins, Extremely Fine Gem, with 2008 P.S.E. certificate (XF-Superb 95; SMQ \$325.00) .... 45.00
- 4205 ★★ **15c Pale Ultramarine (382).** Mint N.H., brilliant color, fresh and Fine, with 1991 P.F. certificate..... 550.00
- 4206 ★★ **2c Carmine, Coil (386).** Mint N.H. pair, brilliant color on bright paper, Extremely Fine, with 1991 and 2000 P.F. certificates..... 650.00



4207

- 4207 ★★ **2c Carmine, Coil (388).** Mint N.H., bright color on fresh paper, remarkably choice centering

VERY FINE. ONE OF THE FEW MINT NEVER-HINGED EXAMPLES OF THE 2-CENT 1910 PERF 12 COIL IN THIS GRADE.

With 1999 P.F. certificate ..... 3,300.00



4208



4209

- 4208 ★★ **2c Carmine, Coil (393).** Mint N.H. pair, bright color, post-office fresh and Very Fine, with 2004 P.F. certificate..... 275.00
- 4209 ★★ **2c Carmine, Coil (393).** Mint N.H. paste-up pair with **part imprint in the paste-up**, stamps are distinctly different shades, Fine, a fascinating item for the coil specialist, with 1989 P.F. certificate ..... 275.00
- 4210 ★★ **3c Violet, Coil (394 var).** Mint N.H. pair, radiant color in the Violet sub-shade, Very Fine and choice, an attractive pair, with 2003 P.F. certificate ..... 325.00



4210



- 4211 ★★ **3c Deep Violet, Coil (394).** Mint N.H., deep rich color and proof-like impression, wide and balanced margins, Extremely Fine Gem, with 2007 P.S.E. certificate (XF-Superb 95; SMQ \$600.00)..... 135.00
- 4212 ★★ **4c Brown, Coil (395).** Mint N.H. pair, bright shade, fresh and Fine..... 350.00
- 4213 ★★ **4c Brown, Coil (395).** Mint N.H., rich color, fresh and Extremely Fine, with 2007 P.F. certificate (XF 90)..... 140.00
- 4214 ★★ **5c Blue, Coil (396).** Mint N.H. pair, rich color and detailed impression, choice centering, Extremely Fine, a beautiful Mint N.H. pair ..... 375.00

#### PANAMA-PACIFIC AND 1912-23 ISSUES

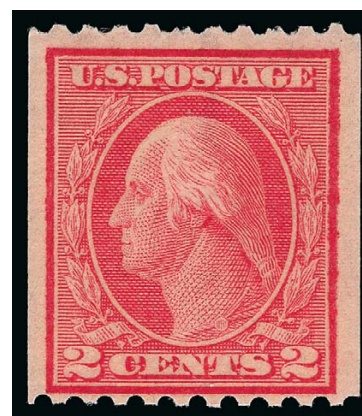
- 4215 ★★ **10c Orange Yellow, Panama-Pacific (400).** Mint N.H. with **bottom plate no. 6130 selvage**, choice margins and beautifully centered, Extremely Fine, with 2007 P.F. certificate (XF 90)..... 270.00
- 4216 ★★ **10c Orange, Panama-Pacific (400A).** Mint N.H., vivid color on crisp paper, Fine 400.00
- 4217 ★★ **10c Panama-Pacific, Perf 10 (404).** Mint N.H., vibrant post-office fresh color, Very Fine and choice, with 1992 P.F. certificate ..... 1,700.00
- 4218 ★★ **7c Black (407).** Mint N.H., intense shade on bright paper, well-proportioned margins, Extremely Fine, with 2007 P.F. and P.S.E. certificates (XF 90; SMQ \$400.00)..... 160.00
- 4219 ★★ **20c Ultramarine (419).** Mint N.H. with **plate no. 6920 selvage** at top, wide margins, intense shade, Very Fine and choice, ex "Laila", with 1991 P.F. certificate ..... 400.00
- 4220 ★ **\$1.00 Violet Brown (423).** Lightly hinged, intense shade and impression, Fine.... 475.00





- 4221 ★★ **30c Orange Red (439).** Mint N.H., intense color on bright white paper, Extremely Fine, ex Geisler, with 1991 and 2004 P.F. certificates and 2007 P.S.E. certificate (VF-XF 85; SMQ \$730.00)..... 525.00
- 4222 ★★ **50c Violet (440).** Mint N.H. with **plate no. 7042 selvage** at left, brilliant color, Very Fine ..... 1,150.00
- 4223 ★★ **3c Violet, Coil (445).** Mint N.H., detailed impression, well-balanced margins, Extremely Fine, with 1986 P.F. certificate ..... 575.00
- 4224 ★★ **4c Brown, Coil (446).** Mint N.H. strip of four with guide line between left stamps, radiant color, Very Fine, Scott Retail as guide line pair and normal pair ..... 2,350.00
- 4225 ★★ **5c Blue, Coil (447).** Mint N.H., rich color, Very Fine and choice, with 2001 P.F. and 2007 P.S.E. certificates (VF-XF 85; SMQ \$350.00)..... 325.00
- 4226 ★★ **5c Blue, Coil (447).** Mint N.H. pair, intense shade on bright paper, wide and balanced margins, right stamp trivial natural inclusion, Extremely Fine ..... 240.00

- 4227 ★★ **2c Red, Ty. I, Coil (449).** Mint N.H., bright color, wide margins at sides and at top  
FINE. A SCARCE MINT NEVER-HINGED EXAMPLE OF THE 2-CENT TYPE I ROTARY COIL, SCOTT 449.  
With copy of 1973 P.F. certificate as joint line strip of four and with copy of 2005 P.F. certificate as joint line strip of three..... 5,500.00



4227

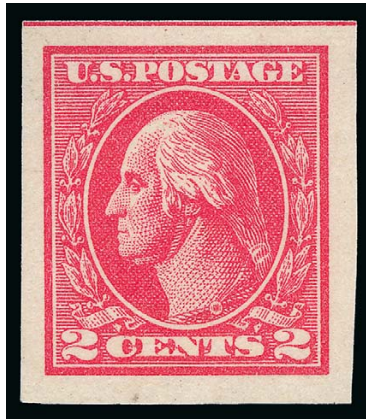


- 4228 ★★ **2c Carmine Rose, Ty. I, Coil (453).** Mint N.H. pair, brilliant color, Very Fine, with 1990 P.F. certificate ..... 675.00
- 4229 ★★ **2c Carmine Rose, Ty. I, Coil (453).** Mint N.H., bright shade and fresh paper, Very Fine and choice, with 1980 P.F. certificate ..... 325.00
- 4230 ★★ **2c Red, Ty. II, Coil (454).** Mint N.H. pair, radiant color, well-balanced margins, fresh and Very Fine, with 1990 P.F. certificate..... 375.00
- 4231 ★ **3c Violet, Coil (456).** Barest trace of hinging, radiant color, Extremely Fine, with 1998 P.F. certificate for pair describing this stamp as Mint N.H..... 250.00
- 4232 ★★ **2c Carmine, Ty. I, Imperforate Coil (459).** Mint N.H. joint line pair, **without crease between stamps**, Very Fine and choice, with 1975 P.F. certificate ..... 1,375.00
- 4233 ★★ **2c Carmine, Ty. I, Imperforate Coil (459).** Mint N.H., radiant color, Very Fine and choice, with 1992 P.F. certificate ..... 250.00
- 4234 ★ **\$1.00 Violet Black (460).** Lightly hinged, intense shade, faint natural gum wrinkle at right not mentioned on accompanying certificate, otherwise Very Fine, with 1993 P.F. certificate ..... 725.00
- 4235 ★★ **2c Pale Carmine Red, Ty. I (461).** Mint N.H. with right **plate no. 7261 selvage**, radiant color, Very Fine and choice, with 2007 P.S.E. certificate (VF-XF 85; SMQ \$420.00) ..... 290.00



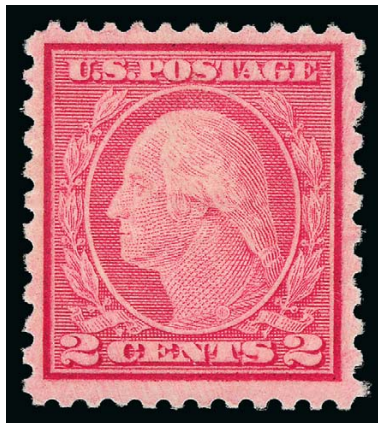


- 4236 ★★ **5c Carmine, Error (467).** Single error in Mint N.H. strip of three with two 2c stamps, brilliant color, Very Fine and choice, with 2006 P.S.E. certificate ..... 850.00
- 4237 ★★ **15c Gray (475).** Mint N.H., pretty shade, wide and balanced margins, Extremely Fine, with 2010 P.S.E. certificate (XF 90; SMQ \$825.00) ..... 400.00
- 4238 ★ **50c Light Violet (477).** Lightly hinged, pretty shade, fresh and Fine ..... 900.00
- 4239 ★★ **\$1.00 Violet Black (478).** With **wide top selvage**, stamp Mint N.H., h.r. in selvage, rich color, Very Fine, Scott Retail as Mint N.H. .... 1,400.00
- 4240 ★★ **2c Deep Rose, Ty. Ia (500).** Mint N.H., radiant color, fresh and Fine, with copy of 1985 P.F. certificate for pane of 100 ..... 550.00
- 4241 ★★ **5c Blue, 6c Red Orange (504, 506).** Mint N.H., 5c with right selvage, 6c with left selvage, **both dramatically misperforated**, 5c natural gum skip, Very Fine, very unusual freaks... .....(Photo Ex) E. 200-300
- 4242 ★★田 **5c Rose, Error (505).** Double error in Mint N.H. block of twelve, natural s.e. at bottom, few shortish perfs at upper left on 2c stamp, Fine-Very Fine block ..... 2,000.00
- 4243 ★★ **\$2.00 Orange Red & Black (523).** Mint N.H. with **bottom part arrow selvage**, intense shade, well-proportioned margins, Extremely Fine, a beautiful stamp ..... 1,200.00



4244

- 4244 ★★ **2c Carmine, Ty. VII, Imperforate (534B).** Mint N.H., bright color, faint pencil mark and fingerprint on gum not mentioned on accompanying certificate, Extremely Fine, with 2000 P.S.E. certificate, Scott Retail as Mint N.H. .... 3,250.00



4245

- 4245 ★ **2c Carmine Rose, Ty. II, Rotary Perf 11 x 10 (539).** Barely hinged, brilliant color, choice centering for this difficult issue  
 VERY FINE AND CHOICE. A BEAUTIFUL LIGHTLY-HINGED EXAMPLE OF THE 1919 2-CENT TYPE II ROTARY PRESS COIL WASTE ISSUE, SCOTT 539.  
 With 2006 and 2007 P.F. certificates (VF-XF 85) ..... 2,750.00





- 4246 ★★ **2c Carmine Rose, Ty. III, Rotary (546).** Mint N.H., rich color, Very Fine and choice, with 2011 P.S.E. certificate (VF-XF 85; SMQ \$335.00)..... 240.00
- 4247 ★★ **1c Green, 2c Carmine, Rotary (578-579).** Mint N.H., wonderful colors, fresh and Extremely Fine, 2c with 2008 P.S.E. certificate (XF 90).....(Photo Ex) 330.00
- 4248 ★★ **2c Carmine, Rotary, Perf 11 (595).** Mint N.H., well-centered for this difficult Coil Waste issue, fresh with crisp color, Very Fine, with 2003 P.F. certificate..... 500.00
- 4249 ★★ **2c Carmine, Ty. II, Coil (599A).** Mint N.H. pair, bright shade, Very Fine and choice, with 2008 P.S.E. certificate (VF-XF 85; SMQ \$460.00)..... 425.00
- 4250 ★★ **2c White Plains Souvenir Sheet (630).** Mint N.H., rich color, natural gum bends, Fine .....*Not illustrated* 600.00
- 4251 ★★ **2c Carmine, Ty. II (634A).** Mint N.H. with **top left corner plate no. 19644 selvage**, radiant color, wide and balanced margins, Extremely Fine, a stamp with wonderful visual appeal..... 650.00
- 4252 ★★ **1c-10c Kans. Overprints (658-668).** Mint N.H., deep rich colors, better centering than normally seen in intact sets, Very Fine-Extremely Fine.....(Photo Ex) 471.75
- 4253 ★★ **1c-10c Nebr. Overprints (669-679).** Mint N.H., rich colors, wonderful condition throughout, Very Fine-Extremely Fine, a rare opportunity to acquire a set in better condition than normally seen.....(Photo Ex) 582.50

## AIR POST

- 4254 ★★ **24c Carmine, 1923 Air Post (C6).** Mint N.H., bright color and detailed impression, wide and balanced margins, Extremely Fine..... 150.00
- 4255 ★★ **65c, \$1.30 Graf Zeppelin (C13-C14).** Mint N.H., bright colors, Very Fine..... 925.00



4256

- 4256 ★★ **\$2.60 Graf Zeppelin (C15).** Mint N.H. with **plate no. 20092** at top, bright color, Extremely Fine Gem, a beautiful stamp, with 2005 P.S.E. certificate (XF-Superb 95; SMQ \$1,900.00)..... 975.00



4257



4258



4259



4260



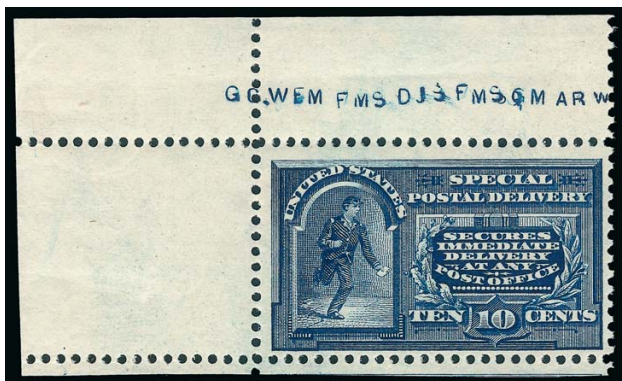
4261

- 4257 ★★ **\$2.60 Graf Zeppelin (C15).** Mint N.H. with bottom selvage, rich color, few tiny natural gum skips, Very Fine..... 975.00
- 4258 ★★ **6c Dark Blue & Carmine, Vertical Pair, Imperforate Horizontally (C23a).** Mint N.H. with **left sheet selvage**, rich colors, wide margins, Extremely Fine, with 2008 P.S.E. certificate ..... 325.00

### SPECIAL DELIVERY

- 4259 ★ **10c Blue, Special Delivery (E1).** Original gum, barely hinged, pretty shade, Extremely Fine, with 1984 P.F. certificate for block of four..... 550.00
- 4260 ★ **10c Blue, Special Delivery (E2).** Original gum, barely hinged, crisp impression, Very Fine..... 500.00
- 4261 ★★ **10c Blue, Special Delivery (E4).** Mint N.H., intense shade and proof-like impression on bright paper, Extremely Fine, with 1991 and 2002 P.F. certificates..... 1,100.00





4262



4263

- 4262 ★★ **10c Blue, Special Delivery (E5).** Mint N.H. with **top left corner selvage** with initials, scissors-separated at bottom leaving intact perforations, intense shade, Very Fine and choice, a stamp with wonderful visual appeal..... 475.00

- 4263 ★★ **10c Ultramarine, Special Delivery (E6).** Mint N.H. with **reprint plate no. 5240-09** in top selvage, rich color on bright paper, Extremely Fine, the 1902 Series Special Delivery stamp is the first "Messenger on Bicycle" issue, it was re-issued in 1909 (the "09" was added to plate numbers to help philatelists identify the later printing), this issue is extremely rare in choice Mint N.H. condition, ex Whitman, with 1997 P.F. and 2008 P.S.E. certificates (VF-XF 85; SMQ \$850.00) ..... 525.00



4264

- 4264 ★★ **10c Ultramarine (E9).** Mint N.H. with **plate no. 5857 at top**, brilliant color, wide margins, Extremely Fine, with 1985 P.F. certificate ..... 425.00

- 4265 ★★ **10c Pale Ultramarine, Special Delivery (E10).** Mint N.H. with **plate no. 5520 at bottom**, pretty shade, Very Fine and choice, with 1991 P.F. certificate for pair..... 700.00



4265

## POST OFFICE REGISTRY SEAL



4266

- 4266 ★ **Post Office Registry Seal, 1875 Special Printing (OXF2).** Without gum as issued, radiant color, Very Fine, scarce, with 1978 P.F. certificate as old OX2 ..... 3,000.00

POSTAGE DUE



- 4267 ★★ **2c Brown (J2).** Mint N.H., intense shade and impression, Very Fine, with 2002 P.S.E. certificate..... 1,100.00
- 4268 ★★ **5c Brown (J4).** Mint N.H., bright color, fresh and Fine, with 1987 P.F. certificate..... 2,100.00
- 4269 ★★ **30c Brown (J6).** Mint N.H., intense shade and detailed impression, gorgeous centering, Extremely Fine, a beautiful stamp ..... 900.00
- 4270 ★★ **50c Brown (J7).** Mint N.H., wonderfully fresh with rich color, Very Fine and attractive, with 1988 P.F. certificate ..... 1,750.00
- 4271 ★★ **5c Red Brown (J18).** Mint N.H., wonderful color, fresh and Very Fine, with 1996 P.F. certificate..... 1,500.00
- 4272 ★ **10c Red Brown (J19).** Original gum, barely hinged, warm shade, wide and balanced margins, Extremely Fine, with 1996 P.F. certificate as Mint N.H..... 625.00
- 4273 ★★ **30c Red Brown (J20).** Mint N.H., marvelous color and impression on fresh paper, Very Fine and choice, with 2009 P.F. certificate..... 550.00



4274

- 4274 ★★ **50c Red Brown (J21).** Mint N.H., rich color and detailed impression  
 VERY FINE. A SCARCE MINT NEVER-HINGED EXAMPLE  
 OF THE 50-CENT 1884 POSTAGE DUE ISSUE.  
 With 1982 and 2005 P.F. certificates..... 4,250.00





4275EX



4276

- 4275 ★★ **1c-5c Bright Claret (J22-J25).** Mint N.H., 1c with top selvage, outstanding colors and centering, Very Fine-Extremely Fine, J22 with 1989 P.F. certificate ....**(Photo Ex)** 720.00
- 4276 ★★ **30c Bright Claret (J27).** Mint N.H., brilliant color and detailed impression, beautiful centering with wide margins, Extremely Fine, we have offered only eight other Mint N.H. examples in the last ten years, ex Whitman, with 1993 P.F. certificate..... 1,900.00



4277

- 4277 ★★ **50c Bright Claret (J28).** Mint N.H., intense shade on crisp paper, long and full perforations, well-proportioned margins, fresh and Extremely Fine, with 2007 P.S.E. certificate (XF 90; SMQ \$2,000.00), only five have graded higher to date, a statistic that has not changed in at least two years..... 2,000.00

- 4278 ★★ **1c Vermilion (J29).** Mint N.H., brilliant color on bright paper  
VERY FINE. A RARE MINT NEVER-HINGED EXAMPLE OF THE  
ONE-CENT VERMILION 1894 UNWATERMARKED BUREAU POSTAGE  
DUE ISSUE.

We have offered only six other Mint N.H. examples since keeping  
computerized records.

With 1999 P.F. certificate..... 6,500.00



4278



4279

- 4279 ★★ **2c Vermilion (J30).** Mint N.H., radiant color, fresh and Fine, scarce in Mint N.H. condition, with 1995 P.F. certificate..... 2,100.00



- 4280 ★★ **3c Deep Claret (J33)**. Mint N.H., deep rich color on bright paper, fresh and Very Fine 675.00
- 4281 ★★ **5c Deep Claret (J34)**. Mint N.H., rich color and proof-like impression on bright paper, wide margins, Very Fine and choice, with 2010 P.S.E. certificate..... 1,000.00
- 4282 ★★ **10c Deep Claret (J35)**. Mint N.H., rich color on bright paper, Very Fine, with 2006 P.F. certificate..... 1,100.00
- 4283 ★★ **30c Pale Rose (J36b)**. Mint N.H., radiant color, Very Fine and choice, with 2006 P.S.E. certificate..... 1,250.00
- 4284 ★★ **5c Deep Claret (J48)**. Mint N.H., intense shade, well-balanced margins, Extremely Fine, with 2001 P.F. certificate for pair ..... 300.00
- 4285 ★★ **10c Rose Carmine (J49a)**. Mint N.H., brilliant color, bright paper, Very Fine and choice, with 2004 P.S.E. certificate ..... 360.00



4286

- 4286 ★★ **50c Deep Claret (J50)**. Mint N.H., rich color, wide margins, Very Fine, a scarce issue in Mint N.H. condition, with 2002 P.F. certificate..... 3,000.00

- 4287 ★★ **30c Carmine Lake (J57)**. Mint N.H., radiant color, well-balanced margins, Extremely Fine, with 1997 P.F. certificate..... 600.00





4288

- 4288 ★★ **1c Rose (J59).** Mint N.H. right margin plate no. single, pretty pastel shade, almost perfectly centered with wide and well-balanced margins, trivial natural inclusion at top left barely visible on front of stamp

EXTREMELY FINE GEM. AN EXCEEDINGLY RARE MINT NEVER-HINGED EXAMPLE OF THE 1916 ONE-CENT PERF 10 UNWATERMARKED POSTAGE DUE ISSUE. THIS IS ONE OF THE FINEST EXAMPLES IN EXISTENCE.

The Perf 10 Postage Due stamps were printed on unwatermarked paper for a brief time. Well-centered original-gum examples are exceedingly rare. This Mint Never-Hinged copy with the finest centering available for this stamp is a true condition rarity.

With 2001 P.F. certificate ..... 10,000.00



4289



4290



4291



4292

- 4289 ★★ **2c Rose (J60).** Mint N.H., brilliant color, wide margins, fresh and Extremely Fine, with 2007 P.S.E. certificate (XF 90; SMQ \$1,100.00) ..... 850.00

## OFFICES IN CHINA

- 4290 ★★ **4c on 2c Offices in China (K2).** Mint N.H., bright and post-office fresh, Extremely Fine, with photocopy of 2001 P.F. certificate for block of four, this being the bottom right stamp ..... 70.00
- 4291 ★★ **6c on 3c Offices in China (K3).** Mint N.H. with bottom selvage, wide margins and perfectly centered, beautiful color on crisp paper, Extremely Fine Gem, with 2009 P.S.E. certificate (XF-Superb 95; SMQ \$1,000.00) ..... 150.00
- 4292 ★★ **8c on 4c Offices in China (K4).** Mint N.H., pretty color and margins, fresh, Very Fine and choice, with 2008 P.S.E. certificate (VF-XF 85; SMQ \$235.00) ..... 150.00



- 4293 ★★ **20c on 10c Offices in China (K10).** Mint N.H., choice margins and centering, vivid color, Extremely Fine, with 2008 P.S.E. certificate (XF 90; SMQ \$450.00) ..... 160.00
- 4294 ★★ **24c on 12c Offices in China (K11).** Mint N.H., beautiful wide margins and well-centered, bright color on crisp paper, Very Fine and choice, with 1998 P.F. certificate..... 200.00
- 4295 ★★ **40c on 20c Offices in China (K13).** Mint N.H., attractive margins and centering, fresh, bright color, Very Fine and choice, with 2009 P.S.E. certificate (VF-XF 85; SMQ \$365.00) ..... 300.00
- 4296 ★★ **\$1.00 on 50c Offices in China (K15).** Mint N.H., pretty shade on bright paper, Fine .... 1,300.00

## OFFICIALS

- 4297 ★★ **1c Agriculture (O1).** Mint N.H., vibrant color, Fine, with 2004 P.F. certificate..... 600.00
- 4298 ★ **10c Agriculture (O5).** Original gum, lightly hinged, intense shade and impression, Very Fine and choice, with 1997 P.F. certificate..... 525.00
- 4299 ★ **12c Agriculture (O6).** Original gum, radiant color, wide margins, single shortish perf at right not mentioned on accompanying certificate, Very Fine appearance, with 1999 P.F. certificate . 450.00
- 4300 ★ **15c Agriculture (O7).** Original gum, barely hinged, pretty color, Very Fine, with 2004 P.S.E. certificate..... 425.00
- 4301 ★ **24c Agriculture (O8).** Original gum, lightly hinged, rich color, fresh and Very Fine, with 2005 P.F. certificate ..... 425.00
- 4302 ★ **30c Agriculture (O9).** Original gum, lightly hinged, with **left selvage**, intense shade, Fine, with 1992 P.F. certificate..... 550.00
- 4303 ★ **1c Executive (O10).** Original gum, single hinge mark, brilliant color, well-balanced margins, Extremely Fine, a beautiful stamp, with 2007 P.F. certificate..... 850.00
- 4304 ★ **6c Executive (O13).** Original gum, lightly hinged, bright shade, Very Fine, with 1995 P.F. and 2006 P.S.E. certificates (OGph, F-VF 75; SMQ \$570.00) ..... 900.00



- 4305 ★ **10c Executive (O14).** Original gum, beautifully centered, strong vivid color, Very Fine and choice, with 2009 P.S.E. certificate (OGph, VF-XF 85; SMQ \$1,550.00), the only example in this grade with just one higher, in fact, a total of only 39 Executive Department stamps have been submitted for grading for all values from 1c-10c, and only 13 of these received grades of 85 or higher in any category (used, no gum or original gum)..... 1,200.00



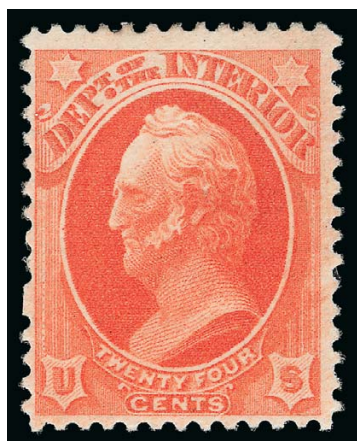
4305



- 4306 ★ **10c Justice (O29).** Original gum, radiant color, Very Fine and choice, with 1998 P.F. certificate ..... 310.00
- 4307 ★ **12c Justice (O30).** Original gum, pretty shade, nicely balanced margins, Very Fine and choice, with 2008 P.S.E. certificate (OGH, VF-XF 85; SMQ \$355.00)..... 260.00
- 4308 ★ **24c Justice (O32).** Original gum, crisp impression, reperfed at left (not mentioned on accompanying certificate), Very Fine appearance, with 1989 P.F. certificate..... 1,250.00
- 4309 ★★ **2c Navy (O36).** Mint N.H. with **selvage at bottom with trace of imprint**, bright shade, wide margins, Very Fine and choice, with 2008 P.S.E. certificate ..... 350.00
- 4310 ★ **24c Navy (O43).** Original gum, lightly hinged, attractive margins and centering, bright color, Very Fine, with 2006 P.F. certificate ..... 400.00
- 4311 ★ **90c Navy (O45).** Original gum, attractive color, Fine, with 1985 P.F. certificate 1,050.00



- 4312 ★ **90c Post Office (O56).** Original gum, lightly hinged, intense shade, wide margins, Very Fine and choice, with 2004 P.F. certificate..... 220.00
- 4313 ★ **7c State (O61).** Original gum, rich color on bright paper, Jumbo margins, Extremely Fine, with 2004 P.F. certificate..... 290.00
- 4314 ★ **24c State (O65).** Original gum, barest trace of hinging (appears Mint N.H.), attractively centered with unusually wide top and bottom margins, Very Fine, with 1994 P.F. certificate..... 525.00
- 4315 ★ **30c State (O66).** Original gum, deep rich color and proof-like impression, Jumbo margins, Extremely Fine, with 2007 P.S.E. certificate (OGh, VF-XF 85 Jumbo; SMQ \$580.00 as 85, \$780.00 as 90) ..... 500.00
- 4316 ★ **90c State (O67).** Original gum, choice centering, deep shade, Extremely Fine, with 2010 P.S.E. certificate (OGph, XF 90; SMQ \$1,600.00), this is the highest grade awarded and only two others share this grade..... 1,050.00
- 4317 ★ **10c Treasury (O77).** Original gum, lightly hinged, deep rich color, clear impression, almost perfectly centered, Extremely Fine, with 2008 P.S.E. certificate (OGph, XF-Superb 95; SMQ \$950.00), this is the highest grade awarded and the only example to achieve this grade..... 240.00
- 4318 ★ **1c Interior, Soft Paper (O96).** Original gum, lightly hinged, with **top plate no. 52 selva**, brilliant color, Very Fine, with copy of 1992 P.F. certificate for strip of six..... 300.00



4319

- 4319 ★ **24c Interior, Soft Paper (O103).** Original gum, single hinge mark, brilliant color, fresh and Fine, a surprisingly difficult issue to obtain in sound original-gum condition, ex Newport, with 2008 P.F. certificate..... 4,500.00





- 4320 ★ **6c Justice, Soft Paper (O107).** Original gum, h.r., bright color, Very Fine and choice..... 475.00
- 4321 ★★ **30c War, Soft Paper (O120).** Mint N.H., choice centering, brilliant color, Extremely Fine ..... 450.00
- 4322 S **1c-30c Agriculture, Specimen Ovpt. (O1S-O9S).** Complete set, without gum as issued, bright colors, few small flaws, Fine-Very Fine appearing set .....(Photo Ex) 2,887.50
- 4323 S **1c-10c Executive, Specimen Ovpt. (O10S-O14S).** Complete set, without gum as issued, few small flaws, Fine set .....(Photo Ex) 290.00

## NEWSPAPERS AND PERIODICALS

- 4324 ★ **5c Dark Blue, Colored Border (PR1).** Without gum as issued, rich color, Very Fine, scarce in sound condition ..... 750.00
- 4325 ★ **25c Orange Red, Colored Border (PR3).** Without gum as issued, bright color, light diagonal crease, Extremely Fine appearance ..... 400.00
- 4326 ★ **5c Dark Blue, White Border (PR8).** Without gum as issued, detailed impression, unusually choice centering, Extremely Fine, with 2006 P.F. and 2008 P.S.E. certificates (XF 90; SMQ \$810.00) ..... 775.00



4327

- 4327 ★ **72c Pale Rose, 1875 Issue (PR21).** Original gum, pretty shade, Very Fine example of this sub-shade, with 2003 P.F. certificate ..... 1,500.00

- 4328 ★ **\$9.00 Yellow, 1875 Issue (PR27).** Original gum, lightly hinged, nicely centered with vivid color

VERY FINE. A BEAUTIFUL ORIGINAL-GUM EXAMPLE OF THE RARE \$9.00 YELLOW 1875 NEWSPAPER ISSUE.

High values of this series are seldom found with nearly complete to full original gum and sound.

With 2010 P.S.E. certificate ..... 4,000.00



4328



4329

- 4329 ★ **\$24.00 Dark Gray Violet, 1875 Issue (PR29).** Original gum, single hinge mark, intense shade and impression

VERY FINE. AN ATTRACTIVE ORIGINAL-GUM EXAMPLE OF THE \$24.00 1875 CONTINENTAL NEWSPAPER ISSUE.

With 2010 P.F. certificate ..... 4,750.00

- 4330 ★ **\$48.00 Red Brown, 1875 Issue (PR31).** Original gum, lightly hinged, wonderful rich color

VERY FINE AND CHOICE ORIGINAL-GUM EXAMPLE OF THE \$48.00 1875 NEWSPAPER ISSUE.

The high-value 1875 Issue stamps are among the most difficult of all Newspapers & Periodicals to obtain in sound original-gum condition with any degree of choice centering.

With 1992 P.F. and 2008 P.S.E. certificates ..... 7,000.00



4330





- 4331 ★ **2c Gray Black, 1875 Special Printing (PR33).** Without gum as issued, bright shade, unusually wide margins, Extremely Fine, with 1991 P.F. certificate ..... 650.00
- 4332 ★ **3c Gray Black, 1875 Special Printing (PR34).** Without gum as issued, crisp impression, fresh and Fine..... 650.00
- 4333 ★ **4c Gray Black, 1875 Special Printing (PR35).** Without gum as issued, intense shade and impression, wide margins, Very Fine and choice ..... 700.00
- 4334 ★ **6c Gray Black, 1875 Special Printing (PR36).** Without gum as issued, detailed impression, wide margins, Very Fine and choice, with 1988 P.F. certificate..... 900.00
- 4335 ★ **8c Gray Black, 1875 Special Printing (PR37).** Without gum as issued, bright shade, fresh and Fine, with 1988 P.F. certificate..... 975.00
- 4336 ★ **9c Gray Black, 1875 Special Printing (PR38).** Without gum as issued, crisp impression, Fine, with 1992 P.F. certificate ..... 1,050.00

- 4337 ★ **12c Pale Rose, 1875 Special Printing (PR40).** Without gum as issued, radiant color, Very Fine and choice, with 1992 P.F. and P.S.E. certificates..... 1,500.00



4337



4338

- 4338 ★ **36c Pale Rose, 1875 Special Printing (PR42).** Without gum as issued, bright shade, Fine, only 330 were sold, with 1998 P.F. certificate..... 2,800.00

- 4339 ★ **48c Pale Rose, 1875 Special Printing (PR43).** Without gum as issued, bright and fresh color, Fine, with 2000 P.F. certificate..... 4,000.00



4339



4340

- 4340 ★ **72c Pale Rose, 1875 Special Printing (PR45).** Without gum as issued, rich color, reperfed at right (not mentioned on accompanying certificate), Extremely Fine appearance, scarce, only 174 were sold, with 1984 P.F. certificate..... 4,500.00

- 4341 ★ **84c Pale Rose, 1875 Special Printing (PR46).** Without gum as issued, wonderful color, fresh and Fine, rare in sound condition, only 164 were sold, with 1974 P.F. certificate..... 5,500.00



4341





- 4342 ★ **24c Red, 1879 Issue (PR64).** Original gum, barely hinged (if at all), intense color and impression, Very Fine ..... 500.00
- 4343 ★★ **84c Red, 1879 Issue (PR69) Mint N.H.,** rich color, Very Fine, rare in Mint N.H. condition, with 2000 P.F. certificate, Scott Retail as hinged ..... 1,250.00
- 4344 ★★ **\$3.00 Red Vermilion, 1879 Issue (PR72). Mint N.H.,** vivid color, Very Fine, scarce in Mint N.H. condition, with 2002 P.F. certificate, Scott Retail as hinged ..... 625.00
- 4345 ★★ **\$6.00 Blue, 1879 Issue (PR73). Mint N.H.,** pastel shade, exceptionally well-centered, couple faint toned specks on gum not mentioned on accompanying certificate, Very Fine and choice, rare in Mint N.H. condition, with 1993 P.S.E. and 2004 P.F. certificates, Scott Retail as hinged ..... 1,050.00
- 4346 ★★ **\$9.00 Orange, 1879 Issue (PR74). Mint N.H.,** vibrant color as fresh as the day it was printed, balanced margins, Very Fine and choice, a wonderful stamp which is scarce in Mint N.H. condition, ex Hoffman, with 2004 P.F. certificate, Scott Retail as hinged ..... 800.00
- 4347 ★ **\$12.00 Yellow Green, 1879 Issue (PR75).** Original gum, barely hinged, rich color on bright paper, fresh and Fine, with 1992 P.F. certificate ..... 850.00
- 4348 ★★ **\$24.00 Dark Violet, 1879 Issue (PR76). Mint N.H.,** rich color and detailed impression, Very Fine and choice, with 1992 and 2004 P.F. certificates, Scott Retail as hinged ..... 800.00
- 4349 ★★ **\$36.00 Indian Red, 1879 Issue (PR77). Mint N.H.,** intense shade, Very Fine, scarce in Mint N.H. condition, with 1993 P.F. certificate, Scott Retail as hinged ..... 850.00
- 4350 ★★ **\$48.00 Yellow Brown, 1879 Issue (PR78). Mint N.H.,** brilliant color, beautifully centered  
 EXTREMELY FINE. A RARE MINT NEVER-HINGED EXAMPLE OF THE \$48.00 1879 AMERICAN BANK NOTE COMPANY NEWS-PAPER ISSUE.  
 With 1992 and 2004 P.F. certificates. Scott Retail as hinged ..... 900.00



4350



- 4351 ★★ **\$60.00 Purple, 1879 Issue (PR79).** Mint N.H., pretty shade, Very Fine, scarce in Mint N.H. condition, with 1990 P.F. certificate, Scott Retail as hinged ..... 850.00
- 4352 ★ **2c Intense Black, 1883 Special Printing (PR80).** Without gum as issued, intense shade and proof-like impression, wide margins, Very Fine and choice, with 1998 P.F. certificate ..... 1,500.00
- 4353 ★★ **48c Carmine, 1885 Issue (PR85).** Mint N.H., crisp impression, light natural gum bends, Very Fine, with 2004 P.S.E. certificate for block of four, Scott Retail as hinged ... 425.00
- 4354 ★ **72c Carmine, 1885 Issue (PR87).** Original gum, barely hinged, intense shade, Very Fine and choice ..... 550.00
- 4355 ★★ **84c Carmine, 1885 Issue (PR88).** Mint N.H., intense shade, fresh and Fine, with 2002 P.S.E. certificate for block of four, Scott Retail as hinged ..... 850.00
- 4356 ★ **2c Intense Black, 1894 Issue (PR91).** Original gum, lightly hinged, incredibly deep shade, Very Fine ..... 500.00
- 4357 ★★ **4c Intense Black, 1894 Issue (PR92).** Mint N.H., detailed impression, Fine, with 2004 P.F. certificate ..... 1,400.00



- 4358 ★★ **6c Intense Black, 1894 Issue (PR93).** Mint N.H., wide margins and essentially perfect centering, pristine in all respects
- VERY FINE AND CHOICE MINT NEVER-HINGED EXAMPLE OF THE RARE 6-CENT 1894 FIRST BUREAU NEWSPAPER STAMP.
- With 2007 P.S.E. certificate ..... 10,000.00





- 4359 ★ **10c Intense Black, 1894 Issue (PR94).** Original gum, lightly hinged, remarkably detailed impression, wide margins, Very Fine and choice, with 1998 P.F. certificate ..... 1,200.00
- 4360 (★) **24c Pink, 1894 Issue (PR96).** Unused (regummed), bright color, Fine, with 1985 P.F. certificate as original gum..... 1,850.00
- 4361 ★★ **5c Black, 1895 Issue (PR104).** With **top part imprint selvage**, stamp Mint N.H., lightly hinged in selvage only, well-proportioned margins, Extremely Fine, with 2004 P.F. certificate, Scott Retail as Mint N.H. .... 650.00
- 4362 ★★ **1c Black, 1895 Issue (PR102).** Mint N.H. with **top part imprint and part arrow selvage**, bright shade, well-balanced margins, Extremely Fine, a beautiful stamp..... 500.00
- 4363 ★ **2c Black, 1895 Issue (PR103).** Bottom imprint, arrow and plate no. 100 strip of three, stamps Mint N.H., h.r. in selvage only, crisp impression, fresh and Fine-Very Fine, the right two stamps are especially nice, Scott Retail as singles with no premium for the position ..... 1,500.00

- 4364 ★★ **25c Carmine, 1895 Issue (PR106).** Mint N.H., rich color and detailed impression, Very Fine, with 2008 P.S.E. certificate ..... 1,650.00



4364



4365

- 4365 ★★ **50c Carmine, 1895 Issue (PR107).** Mint N.H. with **part imprint and part arrow bottom selvage**, brilliant color  
 VERY FINE. A SCARCE MINT NEVER-HINGED EXAMPLE OF THE 50-CENT 1895 UNWATERMARKED BUREAU NEWSPAPER ISSUE.  
 With 2010 P.F. certificate..... 5,750.00

PARCEL POST, HUNTING PERMITS



4366



4367



4368

- 4366 ★★ **50c Parcel Post (Q10).** Mint N.H. with **plate no. 6424** at bottom, rich color, wide and balanced margins, Extremely Fine, with 2007 P.F. certificate (VF-XF 85) ..... 700.00
- 4367 ★★ **\$1.00 1934 Hunting Permit (RW1).** Mint N.H. with **plate no. 129201** at bottom, bright color, light natural gum bend, Very Fine ..... 800.00
- 4368 ★★ **\$1.00 1936 Hunting Permit (RW3).** Mint N.H., rich color, wide and balanced margins, Extremely Fine, with 1991 P.F. certificate..... 375.00
- 4369 ★★ **\$1.00 1940 Hunting Permit (RW7).** Mint N.H. with **plate no. 143776** at bottom, gorgeous centering, Extremely Fine Gem, a beautiful stamp..... 275.00



4369



## GROUP LOTS

- 4370 **1851-57 Issue Balance.** Twelve stamps, including unused Nos. 24, 26, 35 and 37 (regummed), used Nos. 9, 11, 11A, 17, 20, 25, 29 and 30A, range of cancels, few small flaws including No. 35 regummed, Fine-Very Fine..... 2,281.00
- 4371 **1861-66 Issue Balance.** One unused and ten used stamps, unused No. 73, used Nos. 68, 69, 70, 71 (2), 72, 75, 76, 77 and 78, range of cancels including red on No. 75, few small flaws, appear Fine-Very Fine, two with P.F. certificates..... 3,045.00
- 4372 **1867-68 Grilled Issue Balance.** Nine used stamps, Nos. 87 (2), 88, 92, 93, 96 (2, one with blue cancel), 97 and 98 (red cancel), few faults, appear Fine-Very Fine ..... 2,082.00
- 4373 **1869 Issue and Re-Issue Balance.** Seven stamps, including unused Nos. 112, 123, 133 and 133a, used Nos. 115, 116 and 117, overall Fine-Very Fine..... 1,755.00
- 4374 **Bank Note Issues Balance.** 39 mostly unused stamps, including unused Nos. 147, 157, 158, 159, 160, 178, 189 (2), 205 (2), 210, 214, 215, 216, 217, 221 (2), 227, 229 used Nos. 151, 154, 155, few Mint N.H., few unused (no gum), few flaws, many Fine-Very Fine ..... E. 2,000-3,000
- 4375 ★ **Columbian Issue Balance.** Eight unused stamps, complete from 1c-10c, the 2c, 8c and 10c Mint N.H., others lightly hinged, 10c light natural gum creases, overall Fine-Very Fine, three with 2006-2008 P.S.E. certificates..... 810.00
- 4376 ★ **1894-98 Bureau Issue, Trans-Mississippi and Pan-American Balance.** 33 unused stamps, including Nos. 246, 247, 248, 255, 256, 268 (2), 269-273, 275, 282C, 284, 1c, 2c and 10c Trans-Mississippi, 1c-4c and 10c Pan-Americans, several Mint N.H., few flaws, most Fine-Very Fine..... E. 1,000-1,500
- 4377 ★ **20th Century Balance.** Wonderful comprehensive balance of unused stamps on Scott album pages, including Nos. 300-304, 307-308, few shades of the Shield issue, 323-326, 328-330, 331-337, 367-373, 374-381, 397-399, 401-403, 414-422, 424-438, 462-466, 468-473, 476, 479, 480, 506-517, 518 imprint pair, 519, 524, 545, 547, 551-573, some coil singles and pairs including pairs of Nos. 447, 455, few other better, several Mint N.H., few flaws, few coil reference, many Mint N.H., a fantastic group..... E. 5,000-7,500
- 4378 ★★ **(10c) Christmas, Imperforate (1580a).** Mint N.H. pane of 50 with plate nos. and Mr. Zip at bottom, bright colors, Very Fine and choice, Scott Retail as pairs..... 1,875.00
- 4379 ★ **Air Post Balance.** Scott album pages of mostly Mint N.H. stamps, including Nos. C1-C5, complete from C7-C68 except for C13-C15, mostly Mint N.H., Fine-Very Fine..... E. 500-750
- 4380 ★ **Special Delivery and Back-of-Book Balance.** 44 unused stamps, including Nos. E3, E6, E7, QE1-QE4, F1, R11-R113, LO3, LO5, C.S.A. No. 8, some Mint N.H., overall fresh and Fine-Very Fine.. E. 400-500
- 4381 ★ **Postage Due Balance.** 62 unused stamps, including Nos. J1, J3, J15-J16, J20, J26, J31-J32, J38-J42, J45-J46, J52-J53, J55-J56, J61-J67, J69-J103, mostly Mint N.H., mostly Fine-Very Fine, seven with certificates ..... E. 750-1,000
- 4382 ★ **Offices in China Balance.** Eleven unused stamps, Nos. K1, K5-K9, K12, K14, K16-K18, most Mint N.H., Fine-Very Fine, three with certificates..... 2,135.00
- 4383 ★ **Officials Balance.** Scott National pages of mostly unused stamps, including unused Nos. O2-O4, O15-O24, O25, O28, O35-O37, O44, O47-O52, O54-O55, O57, O59-O60, O62, O79, O81-O82, O84, O87-O93, O121-O126, several would retail for over \$200, some faults including few regummed, several Mint N.H., overall Fine-Very Fine, eleven with certificates..... E. 1,500-2,000
- 4384 P **1c-90c Official, Plate Proof on Card (O1P4-O93P4).** Complete set, large margins, bright colors, Fine-Very Fine, also including two Atlantas..... 969.00
- 4385 ★ **Newspapers and Periodicals Balance.** 35 unused stamps, including Nos. PR2, PR4, PR5-PR7, PR9-PR10, PR13, PR15, PR57, PR59, PR61-PR62, PR81-PR83, PR86, PR102 (2), PR114-PR125, several unused (regummed), few flaws, some Fine-Very Fine ..... E. 1,000-1,500
- 4386 ★ **Parcel Post Balance.** Scott album page of mostly Mint N.H. stamps, including Nos. Q1-Q9, Q11-Q12, also JQ1-JQ5, PN1-PN18, overall Fine-Very Fine, four Parcel Post with certificates..... E. 750-1,000
- 4387 ★ **Hunting Permits Balance.** 48, including Nos. RW2, RW4-RW5, RW7-RW51, most Mint N.H., Fine-Very Fine ..... E. 1,000-1,500
- 4388 ★田 **Danish West Indies, 1905, 1fr-5fr St. Thomas Harbor (37-39).** Top left corner selva blocks of four, lightly hinged, bright colors, natural gum bends, Fine-Very Fine ..... 600.00
- 4389 ★ **United States Possessions Balance.** 20 items, including few Canal Zone, Cuba E1, Guam Nos. 7 and 10 (both Mint N.H.), Philippines including Nos. 224, 228, 239, 385, E1, few small flaws, most Fine-Very Fine, four with certificates, Scott Retail over..... 1,700.00

END OF SALE — THANK YOU

# Live Internet Bidding at Siegel Auctions

## BIDDING FROM YOUR COMPUTER LETS YOU BE PART OF THE LIVE AUCTION FROM ANYWHERE IN THE WORLD!

There's **NO SUBSTITUTE** for following the auction in real time.

Live Internet Bidding lets you bid and buy as though you were right there in the saleroom.

And it's easy.

**This step-by-step guide will instruct you how to register, set your browser and use the bidding interface.**

Start by following the simple steps to become a registered Live Internet Bidder.

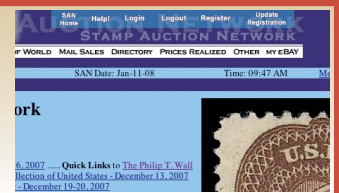
Once you've been approved for bidding, you can listen to the auction and place bids with the click of a mouse.

### Registering with STAMP AUCTION NETWORK & SIEGEL AUCTION GALLERIES

Live Internet Bidding is managed by Stamp Auction Network (SAN).

To bid, you must be registered and approved by *both* SAN and Siegel.

To decide what you need to do, choose the description below that best fits you.



I've already registered with SAN and have been approved by Siegel for internet bidding.

I'm a Siegel client, but I'm not registered with SAN.

Go to [stampauctionnetwork.com/siegel](http://stampauctionnetwork.com/siegel) and click on "Register" at the top. Check the box for Robert A. Siegel Auction Galleries (under "R") and submit the form, indicating you are a Siegel client. Once registered at SAN, you're ready for internet bidding.

I've bid through SAN before, but this is the first time I've bid in a Siegel sale.

Then you just need to be approved by Siegel. Go to [stampauctionnetwork.com/siegel](http://stampauctionnetwork.com/siegel) and click on "Update Registration" at the top. Your SAN account information will be sent to us for approval (you might be asked for other trade references). Once approved by Siegel for bidding, you're ready for internet bidding.

I've never bid with Siegel, nor registered with SAN.

Go to [stampauctionnetwork.com/siegel](http://stampauctionnetwork.com/siegel) and click on "Register" at the top. Check the box for Robert A. Siegel Auction Galleries (under "R") and submit the form **with your trade references** (please, no family members or credit card companies as references). Once registered at SAN and approved by Siegel for bidding, you're ready for internet bidding.

Live Internet Bidding works by allowing registered bidders to observe and place bids.

Live Internet Bidding will work with any browser on both PC and Mac operating systems.

Before bidding by internet for the first time, we recommend finding a sale in progress and listening to the public broadcast or logging in as a registered bidder. This will help you develop a feel for the sale tempo and bidding interface.

### Log on to the auction at [stampauctionnetwork.com/siegel](http://stampauctionnetwork.com/siegel).

You can also log on at [siegelauctions.com](http://siegelauctions.com)

When you're logged on as a Live Internet Bidder, the bidding interface shows a photo and description of the lot, the current bid (and your bidding status), options for placing competitive bids and buttons with bid increments.

- After you click on a bid amount, the auctioneer is immediately notified of your bid.
- Retracting a bid is usually not acceptable, so please bid carefully.
- If you bid and then decide to stop, the "Pass" button will tell the auctioneer you are no longer bidding.
- You can send messages to the auctioneer (for example, a request for extension).
- You can track prior realizations from the bidding screen.



**"System Down" or "Lost Connection"** events do occasionally happen.

If you have any problems with Live Internet Bidding please call **212-753-6421** for immediate assistance.



# Bid Form—15% Premium Sale

Sale 1033

Thursday, October 25, 2012

1

Please provide the following information:

NAME .....

ADDRESS .....

CITY/STATE/ZIP .....

TEL. (DAY) ..... FAX .....

E-MAIL .....

PADDLE #

*Do not write in box*

2

Have you purchased from us in the past 5 years? ☐ YES (if so, please go to Section 3)

☐ NO (please provide a trade reference and bank information)

References:

Stamp Firm: ..... Telephone .....

Bank: ..... Account # .....

3

In the space provided below, enter the **lot number** from **Sale 1033** and your corresponding bid. Please use **whole dollar amounts** only and enter the **maximum bid** you wish to have us execute on your behalf, according to the **bidding increments** on other side of this form. **Your bid will NOT include the 15% buyer's premium.** We will advance the bidding at one increment over the

next highest bid; therefore, you may be awarded the lot at less than your maximum bid. Please do not use "plus" bids or "buy" bids. If you wish to bid on one lot **or** the other, indicate your "or" bid between lot number/bid entries and bracket your choices. If you wish to place a **bidding limit** on the total amount of your bids, please enter your limit in the space marked "Limit Bids".

## PLEASE NOTE BIDDING INCREMENTS AND SHIPPING CHARGES (ON BACK OF THIS PAGE)

☐ **LIMIT BIDS:** Check this box if you wish to limit the total amount of your bids (not including the **15% buyer's premium**) in this sale. Your bids will be executed until your bidding limit no longer allows for additional bids. **The total amount you wish to bid is:** \$ .....

Lot	Bid	Lot	Bid	Lot	Bid
	\$		\$		\$

4

**AGREEMENT:** By signing this bid form, you agree to pay for purchases resulting from your bids, in accordance with the **Conditions of Sale** printed in the sale catalogue. You also agree to pay the **15% buyer's premium, shipping costs (see reverse), and sales tax or use tax or customs duty which may be due on the total invoiced amount.** It is

understood that these bids will be executed by Siegel Auction Galleries as a courtesy to absentee bidders, but you waive the right to make any claim against the auctioneer or the firm, arising from the these bids. **You are responsible for your written bids, including any errors on your part and any additions or changes to the bids herein.**

**Payment must be made by cash, check, money order or wire transfer. Credit cards will not be accepted.**



SIGNED ..... TODAY'S DATE .....

5

Please submit your bids promptly (telephone bids must be confirmed in writing).

Mail to: **Robert A. Siegel Auction Galleries, Inc.**

60 E. 56th Street, 4th Floor, New York, N.Y. 10022

Telephone (212) 753-6421

**OR FAX YOUR BIDS: (212) 753-6429**

**Shipping Instructions, Bidding Increments and space for additional bids on other side of form**



## Additional Bids

Sale 1033—October 25, 2012

Lot	Bid	Lot	Bid	Lot	Bid
	\$		\$		\$

### Shipping and Transit Insurance

We will be pleased to arrange for shipping and transit insurance for purchases in this sale (except those described as “floor sale only”). To expedite billing and delivery of lots to hundreds of buyers per sale, we use standard charges for postage and insurance, based on the package weight and mailing requirements (see schedule). The standard charges are sometimes slightly more or less than the actual postage or FedEx fees, but we do not include any charge for our labor or packing costs. Therefore, we ask all buyers to remit the prescribed amount for shipping charges.

Transit insurance is provided in all cases, except when the buyer has furnished us with proof that insurance coverage is effective under another policy. Proof, in such cases, will be accepted in the form of a written certificate from the insurance carrier.

You are responsible for insurance charges, which will be added to your invoice. This coverage is provided for our mutual protection against theft or loss in transit.

### Bidding Increments

The auctioneer may regulate the bidding at his discretion. However, to assist absentee bidders in establishing their maximum bid for each lot, the increments shown at right will be used in most cases. We recommend that written bids conform to these increments (those which do not will be reduced to the next level).

### REVISED CHARGES FOR SHIPPING EFFECTIVE SEPTEMBER 1, 2010

**We have reduced the FedEx Envelope charge to \$20, reflecting the elimination of the fuel surcharge. All other charges remain the same.**

#### Current Postage & Insurance Charges

Weight/Class	Shipping Method	Charges
Up to 2 lbs.	Fedex Envelope	\$20.00
Over 2 lbs.	Fedex Box	\$35.00*
Non-U.S.	Fedex/Courier	\$50.00**
Bulk Lots	UPS Preferred	By weight and value
<b>These fees reflect additional FedEx charges for residential delivery, signature and fuel surcharge.</b>		
<b>*Higher fees will be charged on packages weighing more than 5 lbs. or insured for more than \$75,000.</b>		
<b>**Buyers are liable for all customs duties and clearance charges. An accurate declaration of value will be made on all import/export documents.</b>		

1/2012

Up to \$50	\$5	\$3,000-7,000	\$250
\$50-200	\$10	\$7,000-20,000	\$500
\$200-500	\$25	\$20,000-30,000	\$1,000
\$500-1,000	\$50	\$30,000-75,000	\$2,500
\$1,000-3,000	\$100	\$75,000 up	\$5,000

1/2012

