

UNITED STATES

ESSAYS, PROOFS AND STAMPS

Featuring

A Midwestern Collector's Quality 19th & 20th Century Stamps



Sale 1044

Wednesday, May 22, 2013

Robert A. Siegel

AUCTION GALLERIES, INC.

Sale 1044—Wednesday, May 22, 2013

United States Essays, Proofs and Stamps

Featuring

A large and high-quality offering of 19th and 20th Century Essays and Proofs
and a Midwestern Collector's collection of Quality 19th and 20th Century Stamps

Live auction to be held at Siegel Auction Galleries,
60 East 56th Street (Park/Madison), 4th Floor, New York City

Lots are sold subject to a 15% buyer's premium and
any applicable sales tax (or customs duty for non-U.S. buyers)



Scott 292P1 (lot 64)



Scott 12 OG (lot 78)



Scott 139A OG (lot 130)



Scott 314A (lot 237)



Scott 482A (lot 297)

WEDNESDAY, MAY 22, 2013

SESSION ONE (LOTS 1-119)

at 10:30 a.m.

Essays and Proofs.....lots	1-75
1851-60 Issue and Reprint	76-85
1861-68 Issue and Re-Issue	86-97
1869 Pictorial Issue and Re-Issue.....	98-119

SESSION TWO (LOTS 120-349)

at 1:30 p.m.

1870-93 Bank Note Issues	lots	120-186
Columbian Issue		187-198
1894-98 Bureau Issues		199-225
Trans-Mississippi Issue		226-230
Pan-American & 1902-08 Issues.....		231-239
Louisiana Purchase & Jamestown Issues		240-241
1908-12 Issues		242-263
Panama-Pacific Issue.....		264-267
1912-22 and Later Issues		268-314
Air Post.....		315-318
Special Delivery		319-330
Parcel Post		331-337
Hunting Permits		338-344
Balance Lots		345-349

Pre-Sale Viewing—Monday & Tuesday, May 20-21, 10-4 and by appointment

Robert A. Siegel

AUCTION GALLERIES, INC.

60 EAST 56TH STREET, 4TH FLOOR, NEW YORK, N.Y. 10022
Phone (212) 753-6421 • Fax (212) 753-6429 • E-mail: stamps@siegelauctions.com

Catalogues, internet bidding, resources, archives and the Siegel Encyclopedia at
siegelauctions.com



Robert A. Siegel

AUCTION GALLERIES, INC.

60 EAST 56TH STREET, 4TH FLOOR, NEW YORK, N.Y. 10022

Phone (212) 753-6421 • Fax (212) 753-6429 • E-mail: stamps@siegelauctions.com

siegelauctions.com



Scott R. Trepel
President

strepel@siegelauctions.com



John P. Zuckerman
Senior Vice President

jzuckerman@siegelauctions.com



Corey Long
Vice President

clong@siegelauctions.com



Starr Tucker-Ortega
Accounts

stamps@siegelauctions.com



Laura Melvin
Bids and Inquiries

laura@siegelauctions.com



Charles F. Shreve
Siegel International

charles@siegelauctions.com



Chris Anderson
Siegel International

chris@siegelauctions.com



Andrew Titley
Siegel International

andrew@siegelauctions.com

Scott R. Trepel Principal Auctioneer (licensed by NYC Dept. of Consumer Affairs, #795952)

Nathaniel Estes Catalogue and Digital Production

Information for Bidders

Bidding

The following means are available for placing bids:

- 1) Attending the Live Auction in Person:** All bidders must register for a paddle, and new bidders must provide references at least three business days in advance of the sale.
- 2) Live Internet Bidding:** Instructions for participating as a Live Internet Bidder are provided on the page opposite.
- 3) Phone Bidding:** Bidders can be connected to the sale by phone and bid through a member of staff. Requests for phone bidding are subject to approval (please contact our office at least 24 hours before the sale). A signed Bid Form is required.
- 4) Absentee Bids.** All bids received in advance of the sale, either by mail, fax, phone, e-mail or internet, are Absentee Bids, which instruct the auctioneer to bid up to a specific amount on one or more lots in the sale. Absentee Bids sent by phone, fax or e-mail should arrive at least one hour prior to the start of the sale session. Bids entered through Live Internet Bidding will be visible to the auctioneer during the sale. Written bids should be entered legibly on the Bid Form in the sale catalogue. E-mail and internet bids should be carefully typed and double-checked. All new bidders must provide references. We recommend calling or e-mailing to confirm that Absentee Bids sent by mail, fax or e-mail have been received and entered.

Pre-Sale Viewing

Subject to availability, certain lots (except group lots) can be sent to known clients for examination. Requests must be made no later than 7 days prior to the sale. Lots must be returned on the day received. Postage/insurance costs will be invoiced.

In addition to regular viewing, clients may view lots by appointment. Our staff will be pleased to answer questions or provide additional information about lots.

Expert Certification

Individual items offered without a PF or PSE certificate dated within the past five years may be purchased subject to independent certification of genuineness and our description. **Please refer to the Conditions of Sale and Grading Terms for policies governing certification.**

Shipping and Delivery

Procedures and charges for shipping lots are printed on the back of the Bid Form. **Bidders are responsible for all prescribed shipping charges and any applicable sales tax or customs duties.**

Price Realized

Prices realized are sent with each invoice. Bidders with e-mail will receive a Bid Results report after the sale. Session results are posted immediately to siegelauctions.com

Live Internet Bidding at Siegel Auctions

BIDDING FROM YOUR COMPUTER LETS YOU BE PART OF THE LIVE AUCTION FROM ANYWHERE IN THE WORLD!

There's **NO SUBSTITUTE** for following the auction in real time.
Live Internet Bidding lets you bid and buy as though you were right there in the saleroom.
And it's easy.

This step-by-step guide will instruct you how to register, set your browser and use the bidding interface.

Start by following the simple steps to become a registered Live Internet Bidder.
Once you've been approved for bidding, you can listen to the auction and place bids with the click of a mouse.

Registering with STAMP AUCTION NETWORK & SIEGEL AUCTION GALLERIES

Live Internet Bidding is managed by Stamp Auction Network (SAN).
To bid, you must be registered and approved by *both* SAN and Siegel.
To decide what you need to do, choose the description below that best fits you.



I've already registered with SAN and have been approved by Siegel for internet bidding.

Live Internet Bidding works by allowing registered bidders to observe and place bids.

Live Internet Bidding will work with any browser on both PC and Mac operating systems.

I'm a Siegel client, but I'm not registered with SAN.

Go to stampauctionnetwork.com/siegel and click on "Register" at the top. Check the box for Robert A. Siegel Auction Galleries (under "R") and submit the form, indicating you are a Siegel client. Once registered at SAN, you're ready for internet bidding.

Before bidding by internet for the first time, we recommend finding a sale in progress and listening to the public broadcast or logging in as a registered bidder. This will help you develop a feel for the sale tempo and bidding interface.

I've bid through SAN before, but this is the first time I've bid in a Siegel sale.

Then you just need to be approved by Siegel. Go to stampauctionnetwork.com/siegel and click on "Update Registration" at the top. Your SAN account information will be sent to us for approval (you might be asked for other trade references). Once approved by Siegel for bidding, you're ready for internet bidding.

Log on to the auction at stampauctionnetwork.com/siegel.

You can also log on at siegelauctions.com

When you're logged on as a Live Internet Bidder, the bidding interface shows a photo and description of the lot, the current bid (and your bidding status), options for placing competitive bids and buttons with bid increments.

- After you click on a bid amount, the auctioneer is immediately notified of your bid.
- Retracting a bid is usually not acceptable, so please bid carefully.
- If you bid and then decide to stop, the "Pass" button will tell the auctioneer you are no longer bidding.
- You can send messages to the auctioneer (for example, a request for extension).
- You can track prior realizations from the bidding screen.

I've never bid with Siegel, nor registered with SAN.

Go to stampauctionnetwork.com/siegel and click on "Register" at the top. Check the box for Robert A. Siegel Auction Galleries (please, no family members or credit card companies as references). Once registered at SAN and approved by Siegel for bidding, you're ready for internet bidding.



"System Down" or "Lost Connection" events do occasionally happen.

If you have any problems with Live Internet Bidding please call **212-753-6421** for immediate assistance.

Conditions of Sale (please read carefully before bidding)

The property described in this catalogue will be offered at public auction by Robert A. Siegel Auction Galleries, Inc. ("Galleries") on behalf of various consignors and itself or affiliated companies. By bidding on any lot, whether directly or by or through an agent, in person, or by telephone, facsimile or any other means, the bidder acknowledges and agrees to all of the following Conditions of Sale.

1. The highest bidder acknowledged by the auctioneer shall be the buyer. The term "final bid" means the last bid acknowledged by the auctioneer, which is normally the highest bid offered. **The purchase price payable by the buyer will be the sum of the final bid and a commission of 15% of the final bid ("buyer's premium"), together with any sales tax, use tax or customs duties due on the sale.**

2. The auctioneer has the right to reject any bid, to advance the bidding at his discretion and, in the event of a dispute between bidders, to determine the successful bidder, to continue the bidding or to reoffer and resell the lot in dispute. The Galleries' record of the final sale shall be conclusive.

3. All bids are per numbered lot in the catalogue unless otherwise announced by the auctioneer at the time of sale. The right is reserved to group two or more lots, to withdraw any lot or lots from the sale, or to act on behalf of the seller. The Galleries will execute bidding instructions on behalf of clients, but will not be responsible for the failure to execute such bids or for any errors in the execution of such bids.

4. **Lots with numbers followed by the symbol ° are offered subject to a confidential minimum bid ("reserve"), below which the lot will not be sold. The absence of the symbol ° means that the lot is offered without a reserve. If there is no reserve, the auctioneer has sole discretion to establish a minimum opening bid and may refuse an offer of less than half of the published estimate. Any lot that does not reach its reserve or opening bid requested by the auctioneer will be announced as "passed" and excluded from the prices realized lists after the sale. The Galleries may have a direct or indirect ownership interest in any or all lots in the sale resulting from an advance of monies or goods-in-trade or a guarantee of minimum net proceeds made by the Galleries to the seller.**

5. Subject to the exclusions listed in 5(A), the Galleries will accept the return of lots which have been misidentified or which have obvious faults that were present when the lot was in the Galleries' custody, but not so noted in the lot description. **All disputed lots must be received by the Galleries intact with the original packing material within 5 days of delivery to the buyer but no later than 30 days from the sale date. (5A) EXCLUSIONS: The following lots may not be returned for any reason: lots containing 10 or more items; lots from buyers who registered for the pre-sale exhibition or received lots by postal viewing, thereby having had the opportunity to inspect them before the sale; any lot described with "faults," "defects" or a specific fault may not be returned because of any secondary fault. Photographed lots may not be returned because of centering, margins, short/nibbed perforations or other factors shown in the illustrations. Lots may not be returned for any of the following reasons: the color of the item does not match the color reproduction in the sale catalogue or website listing; the description contains inaccurate information about the quantity known or reported; or a certification service grades a stamp lower than the grade stated in the description.**

6. Successful bidders, unless they have established credit with the Galleries prior to the sale, must make payment in full before the lots will be delivered. Buyers not known to the Galleries must make payment in full within 3 days from the date of sale. **The Galleries retains the right to demand a cash deposit from anyone prior to bidder registration and/or to demand payment at the time the lot is knocked down to the highest bidder, for any reason whatsoever.** In the event that any buyer refuses or fails to make payment in cash for any lot at the time it is knocked down to him, the auctioneer reserves the right to reoffer the lot immediately for sale to the

highest bidder. **Credit cards (Visa, Mastercard and Discover only) can be accepted as payment but will be subject to a 3% Convenience Fee, which will be added to the total of the entire invoice (including hammer price, buyer's premium, shipping and transit insurance charges and any applicable taxes).**

7. If the purchase price has not been paid within the time limit specified above, nor lots taken up within 7 days from the date of sale, the lots will be resold by whatever means deemed appropriate by the Galleries, and any loss incurred from resale will be charged to the defaulting buyer. Any account more than 30 days in arrears will be subject to a late payment charge of 1½% per month as long as the account remains in arrears. Any expenses incurred in securing payment from delinquent accounts will be charged to the defaulter. A fee of \$250.00 per check will be charged for each check returned for insufficient funds.

8. All lots are sold as genuine. **Any lot accompanied by a certificate issued by The Philatelic Foundation or by Professional Stamp Experts within 5 years of the sale date is sold "as is" and in accordance with the description on the certificate. Such lots may not be returned for any reason, including but not limited to a contrary certificate of opinion.** Buyers who wish to obtain a certificate for any item that does not have a P.F. or P.S.E. certificate (dated as above) may do so, provided that the following conditions are met: (1) the purchase price must be paid in full, (2) the item must be submitted to an acceptable expertizing committee with a properly executed application form within 21 days of the sale, (3) a copy of the application form must be given to the Galleries, (4) in the event that an adverse opinion is received, the Galleries retain the right to resubmit the item on the buyer's behalf for reconsideration, without time limit or other restrictions, (5) unless written notification to the contrary is received, items submitted for certification will be considered cleared 90 days from the date of sale, and (6) in the event any item is determined to be "not as described", the buyer will be refunded the purchase price and the certification fee up to \$600.00 unless otherwise agreed.

9. Until paid for in full, all lots remain the property of the Galleries on behalf of the seller.

10. Agents executing bids on behalf of clients will be held responsible for all purchases made on behalf of clients unless otherwise arranged prior to the sale.

11. The buyer assumes all risk for delivery of purchased lots and agrees to pay for prescribed shipping costs. Buyers outside the U.S. are responsible for all customs duties.

12. **The bidder consents that any action or proceeding against it may be commenced and maintained in any court within the State of New York or in the United States District Court for the Southern District of New York, that the courts of the State of New York and United States District Court for the Southern District of New York shall have jurisdiction with respect to the subject matter hereof and the person of the bidder. The bidder agrees not to assert any defense to any action or proceeding initiated by Galleries based upon improper venue or inconvenient forum. The bidder agrees that any action brought by the bidder shall be commenced and maintained only in a Federal Court in the United States District Court for the Southern District of New York or the State Court in the county in which Galleries has its principal place of business in New York. These Terms and Conditions shall be governed by and construed in accordance with the substantive laws of the State of New York.**

SCOTT R. TREPEL, Principal Auctioneer

Auctioneer's License No. 795952
N.Y.C. Department of Consumer Affairs
80 Lafayette Street, New York, N.Y. 10013
Telephone (212) 577-0111

Revised 3/2013

Grades, Abbreviations and Values Used in Descriptions

Grades and Centering

Our descriptions contain detailed information and observations about each item's condition. We have also assigned grades to stamps and covers, which reflect our subjective assessment. For stamps, the margin width, centering and gum are described and graded according to generally-accepted standards (an approximate correlation to numeric grades is provided at right). Although we believe our grades are accurate, they are not always exactly aligned with third-party grading terms or standards for all issues. **A lot may not be returned because a certification service grades a stamp lower than the grade stated in the description. Information from the P.S.E. Stamp Market Quarterly and P.S.E. Population Report™ is the most current available, but lots may not be returned due to errors or changes in statistics or data.**

Extremely Fine Gem (90-100): The term “Gem” describes condition that is the finest possible for the issue. This term is equivalent to “Superb” used by grading services.







Extremely Fine (80-90): Exceptionally large/wide margins or near perfect centering.

Very Fine (70-85): Normal-size margins for the issue and well-centered with the design a bit closer to one side. “Very Fine and choice” applies to stamps that have desirable traits such as rich color, sharp impression, freshness or clarity of cancel.

Fine (60-70): Smaller than usual margins or noticeably off center. Pre-1890 issues may have the design touched in places.

Very Good (below 60): Attractive appearance, but margins or perforations cut into the design.

Guide to Gum Condition

Gum Categories:	MINT N.H.	ORIGINAL GUM (O.G.)				NO GUM
	 Mint Never Hinged <i>Free from any disturbance</i>	 Lightly Hinged <i>Faint impression of a removed hinge over a small area</i>	 Hinge Mark or Remnant <i>Prominent hinged spot with part or all of the hinge remaining</i>	 Part o.g. <i>Approximately half or more of the gum intact</i>	 Small part o.g. <i>Approximately less than half of the gum intact</i>	 No gum <i>Only if issued with gum</i>
Catalogue Symbol:	★ ★	★	★	★	★	(★)
PRE-1890 ISSUES	<i>Pre-1890 stamps in these categories trade at a premium over Scott value</i>			Scott Value for “O.G.”		Scott “No Gum” Values thru No. 218
1890-1935 ISSUES	Scott “Never Hinged” Values for Nos. 219-771	Scott Value for “O.G.” (Actual value will be affected by the degree of hinging)		Disturbed Original Gum: Gum showing noticeable effects of humidity, climate or hinging over more than half of the gum. The significance of gum disturbance in valuing a stamp in any of the Original Gum categories depends on the degree of disturbance, the rarity and normal gum condition of the issue and other variables affecting quality. For example, stamps issued in tropical climates are expected to have some		
1935 TO DATE	Scott Value for “Unused”					

Covers

Minor nicks, short edge tears, flap tears and slight reduction at one side are normal conditions for 19th century envelopes. Folded letters should be expected to have at least one file fold. Light cleaning of covers and small mends along the edges are accepted forms of conservation. Unusual covers may have a common stamp with a slight crease or tiny tear. **These flaws exist in virtually all 19th century covers and are not always described. They are not grounds for return.**

Catalogue Values and Estimates

Unless otherwise noted, the currently available *Scott Catalogue* values are quoted in dollars with a decimal point. Other catalogues are often used for foreign countries or specialized areas and are referred to by their common name: *Stanley Gibbons* (SG), *Dietz*, *American Air Mail Catalogue* (AAMC), *Michel*, *Zumstein*, *Facit*, etc. Estimates are indicated with an “E.” and reflect our conservative valuation in dollars. Reserves will never exceed the low end of the estimate range; they will sometimes exceed Scott Catalogue value for stamps in Extremely Fine condition.

Because of certain pricing inconsistencies in the *Scott Catalogue*—for example, blocks that have no gum, the absence of premiums for Mint N.H. items, etc.—we cannot guarantee the accuracy of values quoted for multiples, specialized items and collection lots. We generally try to be conservative, but buyers may not return a lot because of a discrepancy in catalogue value due to Scott pricing inconsistencies.

Symbols and Abbreviations (see chart above for gum symbols)

⊞	Block	E	Essay	pmk.	Postmark	No.	Scott Catalogue Number
⊞	Cover	P	Proof	cds	Circular Datestamp	hs	Handstamp
FC	Fancy Cancel	TC	Trial Color Proof	var.	Variety	ms.	Manuscript

Resources

siegelauctions.com



THE SIEGEL ENCYCLOPEDIA™

This feature of our website contains a wealth of information gleaned from decades of philatelic research by the dedicated philatelists at Siegel.

RARITIES CENSUS

The up-to-date census data for 19th and 20th century U.S. rarities are a valuable resource for buyers, sellers and researchers. Every recorded example of almost 40 different rare stamps is described and, in most cases, photographed.



CATALOGUES AND PRICES REALIZED

Images and descriptions for all current sale catalogues are available from our website, as well as all sales going back to 1992, our Rarities sales from 1964 and selected name sales.

POWER SEARCH™

Search by Scott number or keyword through all of the sales at our website. The best resource in philately for research.

MY SIEGEL™

Save your Power Searches as want lists. We will automatically notify you when a match is included in an upcoming sale, whether it's as broad as any Columbian issue, or as narrow as a 241 graded 98. The most powerful want list in philately.

LOT TRACKER™

Never miss another lot because you were away from your computer. Log into My Siegel™, then set up notifications to get texts and/or emails 10-30 lots before yours comes up (live bidding is still through Stamp Auction Network).



EXHIBITS AND MOUNTED COLLECTIONS

Downloadable PDF files of some of the top exhibits ever formed. See how others collect and benefit from their original research.

VIDEO PRESENTATIONS

Downloadable video documentaries tell the stories of stamps and covers. This is the ideal way to introduce philately to others.

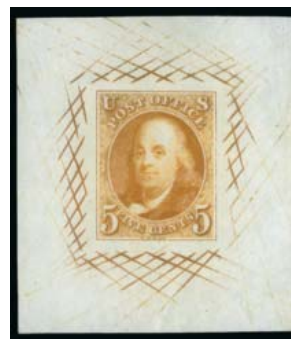
SESSION ONE (LOTS 1-119)
WEDNESDAY, MAY 22, 2013, AT 10:30 A.M.
UNITED STATES ESSAYS AND PROOFS
1847 ISSUE



1



2



3

- 1°TC **5c Blue, Large Die Trial Color Proof on India (1TC1af).** 42 x 53mm, with cross-hatching, wonderful depth of color, Extremely Fine 1,000.00
- 2 TC **5c Orange Yellow, Large Die Trial Color Proof on India (1TC1aj).** 42 x 51mm, with cross-hatching, radiant color, minor sealed tear at top of cross-hatching, otherwise Very Fine 1,000.00
- 3°TC **5c Orange Yellow, Large Die Trial Color Proof on India (1TC1aj).** 43 x 49mm, with cross-hatching, vivid color, Extremely Fine 1,000.00



4



5



6

- 4°TC **5c Black, Large Die Trial Color Proof on Thin Glazed Card (1TC1dh).** 44 x 53mm, gorgeous deep shade and impression, shows particularly well on the glazed card, Extremely Fine, a scarce and large-sized example of this trial color proof, this is the first we have offered in more than 10 years..... 1,000.00
- 5 P **5c Red Brown, Large Die Proof on India (1P1).** 51 x 61mm with full die sinkage and cross-hatching, deep rich color, Extremely Fine 800.00
- 6°P **5c Red Brown, Large Die Proof on White Bond (1P1a).** 37 x 43mm, with cross-hatching, fresh and Very Fine..... 800.00



7



8



9

- 7°P **5c Red Brown, Large Die Proof on Colored Bond (1P1b).** 42 x 52mm (full size for this), with cross-hatching, deep rich color, Extremely Fine..... 1,250.00
- 8°P **5c Red Brown, Large Die Proof on Yellowish Wove (1P1e).** 33 x 41mm, with cross-hatching, beautiful complementary impression and paper colors, Very Fine..... 800.00
- 9 TC **10c Orange Yellow, Large Die Trial Color Proof on India (2TC1ai).** 47 x 61mm, with cross-hatching, striking bright color, Extremely Fine..... 1,000.00



10



11

- 10 TC **10c Dark Brown, Large Die Trial Color Proof on India (2TC1am).** 44 x 56mm, with cross-hatching, intense color, Extremely Fine..... 1,000.00
- 11°P **5c Orange Brown, 10c Black, 1875 Reproduction, Small Die Proofs on Wove (3P2-4P2).** On original gray card backing, fresh colors, tiny card thin in left margin of 10c does not affect the wove paper, Very Fine, only 85 were produced 850.00



12

1851-57 ISSUE

- 12 E **24c Black, Large Die Essay on India (37-E1).** 46 x 60mm, crisp impression and deep shade, very trivial crease at top left edge not mentioned on accompanying certificate

VERY FINE. AN EXTREMELY RARE LARGE-SIZE EXAMPLE OF THE TOPPAN, CARPENTER, CASILEAR & CO. ESSAY FOR THE 24-CENT 1857 ISSUE.

This essay shows subtle differences from the die used to create the transfer roll for the issued 24c 1857 stamp. Apart from the color, the most noticeable difference is the much darker etching of the vignette background. We have offered only one other example of this rare essay since our 1999 Finkelburg sale, and it was cut down to a large stamp size (ex Lake Shore).

Ex Finkelburg. With 1999 P.F. certificate. Scott Retail value has not changed since at least 1999 2,500.00

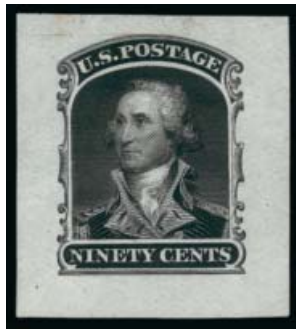
13°TC **30c Black, Large Die Trial Color Proof on India (38TC1).** 75 x 82mm and with full die sinkage, detailed impression, light diagonal crease

VERY FINE APPEARANCE. A RARE LARGE DIE TRIAL COLOR PROOF OF THE 30-CENT 1860 ISSUE, WHICH SHOWS FULL DIE SINKAGE.

Ex DuPuy. Scott Retail as on card.
..... 5,000.00

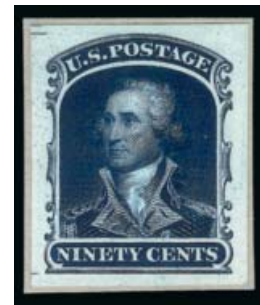
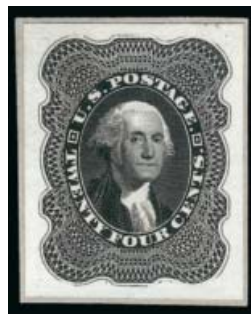


13



14

14°TC **90c Black, Small Die Trial Color Proof on India (39TC2b).** Deep shade, full margins, Very Fine and scarce, with 2012 P.F. certificate..... 1,250.00



15EX

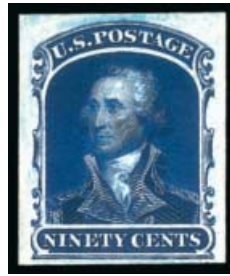
15°P **1c-90c 1857-60 Reprints, Small Die Proofs on Wove (40P2-47P2).** Each on original gray card backing, gorgeous fresh colors

EXTREMELY FINE. A RARE COMPLETE SET OF THE 1857 REPRINTS FROM A ROOSEVELT PRESENTATION ALBUM.

85 presentation albums were prepared in 1903. Scott Retail has not changed on this set in more than 12 years(Photo Ex) 2,800.00



16



17EX

- 16° P 1c Bright Blue, Reprint, Plate Proof on India (40P3). Bottom right corner margin block four, large margins other sides, deep rich color, Extremely Fine, an unusually choice block..... 550.00
- 17 P 1c-90c 1857 Reprints, Plate Proofs on Card (40P4-47P4). Large margins, rich colors, Very Fine and choice set.....(Photo Ex) 580.00
- 18° P 3c Scarlet, Reprint, Plate Proof on India (41P3). Top margin vertical block of 15, ample to clear margins other sides, spectacular color, Very Fine, a beautiful and scarce large multiple, this is the largest we have offered since our 2003 Rarities sale, the Wilson Hulme collection had only a block of ten, Scott Retail as two blocks of four and seven singles 1,730.00



18



19EX

1861-66 ISSUE

- 19° P 1c-90c 1861-66 Issue, Large Die Proofs on India (63P1, 65P1, 68P1, 69P1, 70P1, 71P1, 72P1, 73Pa1, 76P1, 77P1). Set of 10, on approximately 142 x 214mm cards with full die sinkage and gold trim at edges, also with album frontispiece from National Bank Note Co., some toned spots
- VERY FINE APPEARANCE. A SCARCE SET OF LARGE DIE PROOFS FOR THE 1861-66 ISSUE FROM A SAMPLE OR PRESENTATION BOOK. PERFECT FOR EXHIBITION.
- The 24c is listed but unpriced in Scott. Scott Retail does not include this rare proof. (Photo Ex) 8,650.00



20

- 20°E **5c Red Brown, First Design, Plate Essay on India (67-E9d; formerly 57P3).** Bottom part imprint and plate no. 3 strip of four, clear margins other sides to just touching design at left, vivid color, couple typical India paper translucencies, Very Fine, Scott Retail as singles with no premium for the plate number and part imprint 1,200.00



21



22



23

- 21°TC **5c Black, Large Die Trial Color Proof on India (67TC1ae).** Die sunk on 64 x 71mm card with full die sinkage, albino die no. 442 and imprint at bottom, deep shade with clear bluish tint, we would call this Bluish Black though Scott lists only Black, few trivial toning specks, still Very Fine, a scarce large die trial color proof..... 2,500.00
- 22°P **12c Black, Large Die Proof on India (69P1).** On 87 x 83mm card with full die sinkage, bright shade and impression, Very Fine and choice, ex Vogel 700.00
- 23°TC **24c Violet, Plate Proof on India (70TC3).** Brilliant color, detailed impression, fresh and Extremely Fine, this is the scarcest color of the 1861 Issue plate proofs and is usually missing from that set when offered..... 500.00



- 24° E **30c Black, First Design, Die Essay on India (71-E2a, formerly 61TC1).** Die sunk on 77 x 90mm card, intense shade, couple small toned spots incl. in lettering at top, otherwise Very Fine, scarce, with 2005 P.F. certificate 1,750.00
- 25° E **30c Violet Brown, First Design, Die Essay on India (71-E2a, formerly 61TC1).** Die sunk on 63 x 73mm card, rich color in a dark shade, mounting remnants on back, Very Fine and scarce large die essay 1,750.00
- 26° E **30c Black, First Design, Die Essay on India (71-E2a, formerly 61TC1).** Die sunk on 63 x 75mm card, intense shade, bit of faint toning on card outside of India paper, mounting remnants on back, Very Fine and scarce 1,750.00
- 27° E **30c Dull Rose, First Design, Die Essay on India (71-E2a, formerly 61TC1).** Die sunk on 61 x 74mm card, bright color and crisp impression, small faint scuff near bottom and couple toning specks, mounting remnants on back, Very Fine and scarce large die essay 1,750.00
- 28° E **30c Scarlet, First Design, Die Essay on India (71-E2a, formerly 61TC1).** Die sunk on 60 x 73mm card, spectacular color, mounting remnants on back, Very Fine and very scarce large die essay 1,750.00



29




30

- 29°E **30c Violet Brown, First Design, Die Essay on India (71-E2a, formerly 61TC1).** Die sunk on 61 x 74mm card, deep rich color, tiny scattered toning specks, mounting remnants on back, Very Fine and scarce large die essay 1,750.00
- 30°E **30c Dull Gray Blue, First Design, Die Essay on India (71-E2a, formerly 61TC1).** 33 x 37mm, lovely color, Very Fine and scarce 1,750.00



31

- 31° **30c Orange, Plate Proof on Card (71P4).** Block of 30 comprising the top three rows of the left pane of 100, showing full sheet margins at top and left, brilliant color
EXTREMELY FINE. A SPECTACULAR BLOCK OF 30 OF THE 30-CENT 1861 ISSUE CARD PROOFS FROM THE LILLY SHEETS, COMPRISING THE TOP THREE ROWS OF THE LEFT PANE.
The Siegel firm auctioned the Lilly India and card proof sheets in September 1967. One set of panes remains complete in a private collection. The other panes were broken up, and this top block of 30 originates from those panes.
Ex Earl of Crawford, Ackerman and Lilly E. 2,000-3,000



- 32° TC **90c Ultramarine, Large Die Trial Color Proof on India (72TC1af).** 38 x 48mm and mounted on slightly larger size card, brilliant color, light pencil arrows outside of India paper, Very Fine and scarce, we have not offered another example of the 90c 1861 Large Die Trial Color Proof since our 2005 Lake Shore sale, with 2005 P.F. certificate 2,500.00
- 33° TC **90c Violet Gray, Large Die Trial Color Proof on India (72TC1ah).** 43 x 57mm, affixed to original card backing, lovely shade and impression, mounting remnants on back, Very Fine and scarce, we have not offered another example of the 90c 1861 Large Die Trial Color Proof since our 2005 Lake Shore sale, with 2005 P.F. certificate..... 2,500.00
- 34° P **90c Blue, Large Die Proof on India (72P1).** 41 x 48mm, affixed to original card backing, deep rich color, certificate mentions small surface scuffs clear of design, Very Fine appearance, with 2004 P.F. certificate..... 500.00
- 35° P **90c Blue, Large Die Proof on India (72P1).** 42 x 49mm, brilliant color, couple small India paper translucencies as typical, Very Fine..... 500.00



- 36° P田 **90c Blue, Plate Proof on Card (72P4).** Block of 30 comprising the top three rows of the right pane of 100, showing full sheet margins at top and right, deep rich color on bright white card
- EXTREMELY FINE. A GORGEOUS BLOCK OF 30 OF THE 90-CENT 1861 ISSUE CARD PROOFS FROM THE LILLY SHEETS, COMPRISING THE TOP THREE ROWS OF THE RIGHT PANE.
- The Siegel firm auctioned the Lilly India and card proof sheets in September 1967. One set of panes remains complete in a private collection. The other panes were broken up, and this top block of 30 originates from those panes.
- Ex Earl of Crawford, Ackerman and Lilly..... E. 2,000-3,000

37°TC **2c Dark Orange, Large Die Trial Color Proof on India (73TC1aj).** 51 x 59mm, **albino die no. 1030 and imprint at bottom**, deep rich color, vertical crease at left edge of impression and small tear at right

VERY FINE APPEARANCE. AN EXTREMELY RARE LARGE DIE TRIAL COLOR PROOF OF THE 1861 BLACK JACK ISSUE.

Of the 2c Black Jack large die trial color proofs, no more than two examples of each color have been recorded. All known examples show the "star on cheek" die flaw. The rarity of these proofs is further demonstrated by the fact that none was contained in the classic Allen, Brazer or Rorke collections. The largest offering, from our auction of the Finkelburg collection (Sale 816), was purchased from John A. Klemann in 1936. We have not offered another in more than 10 years..... 8,000.00



37



38

38°TC **2c Dull Rose, Large Die Trial Color Proof on India (73TC1aj).** 50 x 60mm, affixed to original card backing, **die no. 1030 and imprint at bottom**, fresh and bright color, wonderful impression, tiny trivial scuff at bottom right

VERY FINE AND CHOICE. AN EXTREMELY RARE LARGE DIE TRIAL COLOR PROOF OF THE 1861 BLACK JACK ISSUE.

Of the 2c Black Jack large die trial color proofs, no more than two examples of each color have been recorded. All known examples show the "star on cheek" die flaw. The rarity of these proofs is further demonstrated by the fact that none was contained in the classic Allen, Brazer or Rorke collections. The largest offering, from our auction of the Finkelburg collection (Sale 816), was purchased from John A. Klemann in 1936. We have not offered another in more than 10 years.

Ex Burrows..... 8,000.00

39°P **2c Black, Die II, Small Die Proof on Wove (73P2).** From a Roosevelt presentation album, affixed to original gray card backing cut to generous proportions around the wove paper, Extremely Fine..... 1,300.00



39

40



40° P **5c Brown, Plate Proof on Card (76P4).** Block of 30 comprising the top three rows of the Re-Issue sheet of 100, showing **imprint at top** and full sheet margins at top and sides, fresh color and perfect impression

EXTREMELY FINE IMPRINT BLOCK OF 30 OF THE 5-CENT 1861 ISSUE CARD PROOFS FROM THE LILLY SHEETS, COMPRISING THE TOP THREE ROWS OF THE SHEET.

The Siegel firm auctioned the Lilly India and card proof sheets in September 1967. One set of panes remains complete in a private collection. The other panes were broken up, and this top block of 30 originates from those panes.

Ex Earl of Crawford, Ackerman and Lilly..... E. 2,000-3,000



41



43

41° TC **15c Deep Blue, Trial Color Plate Proof on India (77TC3).** Block of four, large margins all around, rich color, Extremely Fine, scarce as a block, a Power Search review found only one other, both ex Finkelburg..... 1,650.00

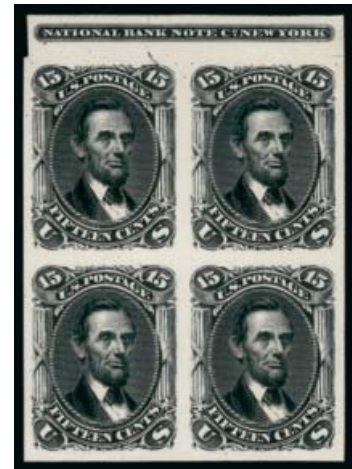
42° P **15c Black, Large Die Proof on India (77P1).** On 117 x 197mm card with full die sinkage, National Bank Note Co. imprint at bottom of die sinkage area, Extremely Fine 1,400.00

43° P **15c Black, Large Die Proof on India (77P1).** 59 x 71mm, with **imprint at bottom**, deep shade and perfect impression, Very Fine..... 1,400.00



42

44° P田 **15c Black, Plate Proof on Card (77P4).** Block of four with **imprint at top**, large margins all around, intense shade on bright paper, Very Fine and choice, desirable with the imprint, ex Hackett and Vogel, Scott Retail \$200.00 as normal block of four does not convey the scarcity of an imprint block..... E. 750-1,000



44



45

45° P田 **24c Lilac, Plate Proof on Card (78P4).** Block of 30 comprising the top three rows of the left pane of 100, showing **imprint at top** and full sheet margins at top and left, incredible depth of color

EXTREMELY FINE. A SPECTACULAR IMPRINT BLOCK OF 30 OF THE 24-CENT 1861 ISSUE CARD PROOFS FROM THE LILLY SHEETS, COMPRISING THE TOP THREE ROWS OF THE LEFT PANE.

The Siegel firm auctioned the Lilly India and card proof sheets in September 1967. One set of panes remains complete in a private collection. The other panes were broken up, and this top block of 30 originates from those panes.

Ex Earl of Crawford, Ackerman and Lilly..... E. 2,000-3,000



- 46° E (Unstated Value) Black, Vignette Die Essay on White Glazed (79-E35e). 41 x 43mm, deep shade, small thin spots, appears Very Fine, these were created in 1868 during experiments for bicolored printing 2,000.00
- 47° E (Unstated Value) Scarlet, Vignette Die Essay on White Glazed (79-E35e). 36 x 41mm, rich color, small thin spots, appears Very Fine, these were created in 1868 during experiments for bicolored printing 2,000.00

1869 PICTORIAL ISSUE

- 48° P 1c Buff, Large Die Proof on India (112P1). Die sunk on 139 x 164mm card with full die sinkage, Very Fine 750.00
- 49° P 1c-90c 1869 Pictorial Issue, Small Die Proofs on Wove (112P2-122P2, 129P2). Complete set, each on original gray card backing, rich colors, Very Fine and choice set, only approximately 85 sets were produced, ex Laeherder (Photo Ex) 4,575.00
- 50 P 1c-90c 1869 Pictorial Issue, Plate Proofs on Card (112P4-122P4). Lacking only the 24c to be complete, incl. four 1c, three each of 2c and 90c, two each of 6c, 10c, 12c and 30c, large margins, rich colors, some shade differences especially noticeable in 1c, 6c, 30c and 90c, Very Fine-Extremely Fine, a worthwhile group (Photo Ex) 1,875.00
- 51 E 3c Small Numeral, Plate Essays on Stamp Paper, Perforated 12, Ungrilled and Grilled (114-E6c, 114-E6d). Single example of the scarce without grill essay in Ultramarine, original gum, h.r., wide margins, Very Fine, eight singles of the grilled in different colors, overall fresh and Fine-Very Fine (Photo Ex) 1,140.00



- 52 E **3c Ultramarine, Plate Essay, Cancelled (114-E7b).** Horizontal pair, large margins, neat strikes of “National Bank Note Co. N.Y. Sep. 27, 1869” circular datestamp, Very Fine and choice, this is the first multiple we have offered since keeping computerized records, with 2006 P.S.E. certificate, Scott Retail as singles..... 2,200.00
- 53 P **3c Black, Large Die Trial Color Proof on India (114TC1e).** On 35 x 35mm card, detailed impression, Very Fine and choice, scarce, with 1976 P.F. certificate..... 2,500.00
- 54 P **3c Ultramarine, Plate Proof on India (114P3).** Top left corner margin block of four, on card and so free from the defects that can plague this fragile paper, Extremely Fine..... 190.00
- 55 P **3c-12c 1869 Pictorials, Plate Proofs on India or Card (114P3, 115P3, 116P4, 117P4).** Blocks of four, large margins, rich colors, 6c few thins break thru, otherwise Very Fine group(Photo Ex) 895.00

- 56° E **90c Lincoln, Dark Navy Blue, Large Die Essay on India (122-E4a).** With Lincoln vignette mounted in place, large margins to full, minor paper wrinkling
 VERY FINE APPEARANCE. A SCARCE 90-CENT LINCOLN ESSAY WITH VIGNETTE PASTED IN PLACE.
 Ex Lake Shore 3,000.00



56

- 57 TC **3c Black, Atlanta Trial Color Plate Proof (125TC4).** Block of four, large margins, Very Fine and choice, scarce multiple, Scott Retail as singles..... 700.00
- 58 P **15c Brown & Blue, Ty. III, Plate Proof on India (129P3).** Block of four, large margins incl. **part imprint at bottom**, deep rich colors and perfect impressions, tiny pinhole in right margin is natural for India paper and could be trimmed off, Extremely Fine, a desirable and rare part imprint block, Scott Retail for normal block of four 1,600.00

BANK NOTE AND BUREAU ISSUES



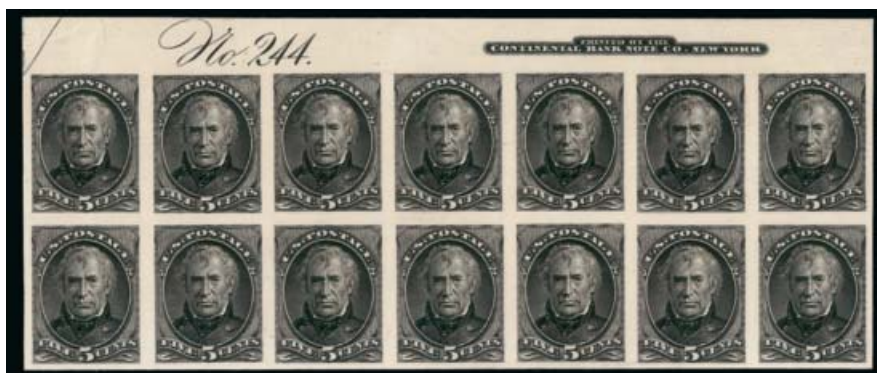
59

- 59 E **Continental Bank Note Co., 2c Black, "Impressment 1812", Large Die Essay on India (146-E1).** Cut close as always, detailed impression, blank oval for vignette, Very Fine and choice example of this rare and attractive essay, the "Impressment 1812" inscription commemorates the principal cause of the War of 1812 1,500.00



60

- 60 P田 **90c Rose Carmine, Plate Proof on Card (166P4).** Top imprint and plate no. block of 20 with sheet margin at left and part arrow at right, brilliant color, Extremely Fine, a stunning multiple, the plate block is unlisted in Scott, Scott Retail as five blocks of four 950.00



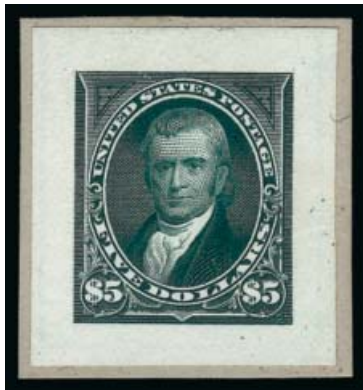
61

- 61°TC **5c Black, Trial Color Plate Proof on Card (179TC4).** Top imprint and plate no. 244 block of 14, part arrow at left, crisp shade and impression, some slight wrinkling at top left, Very Fine appearance, Scott does not list or price a plate block of this issue, but generally prices plate blocks of the Bank Note proofs at double the value as blocks of four, Scott Retail as blocks of four and singles with no premium for the position \$690.00 E. 1,500-2,000

62° P田 **1c-90c 1890-93 Issue, Plate Proofs on India (219P3-229P3).** Complete set of blocks of four with both 2c, several affixed to original card incl. 1c, 8c and 15c-90c (couple of these may in fact be card proofs which catalogue slightly higher than India proofs), large margins incl. couple with corner margins, brilliant colors, fresh and Very Fine, a beautiful and scarce high-quality set of blocks of four(Photo Ex) 3,440.00



62EX



63EX

63° P **1c-\$5.00 1894 Bureau Issue, Small Die Proofs on Wove (247P2-263P2).** Complete set of 13 proofs, on original gray card backing, bright colors

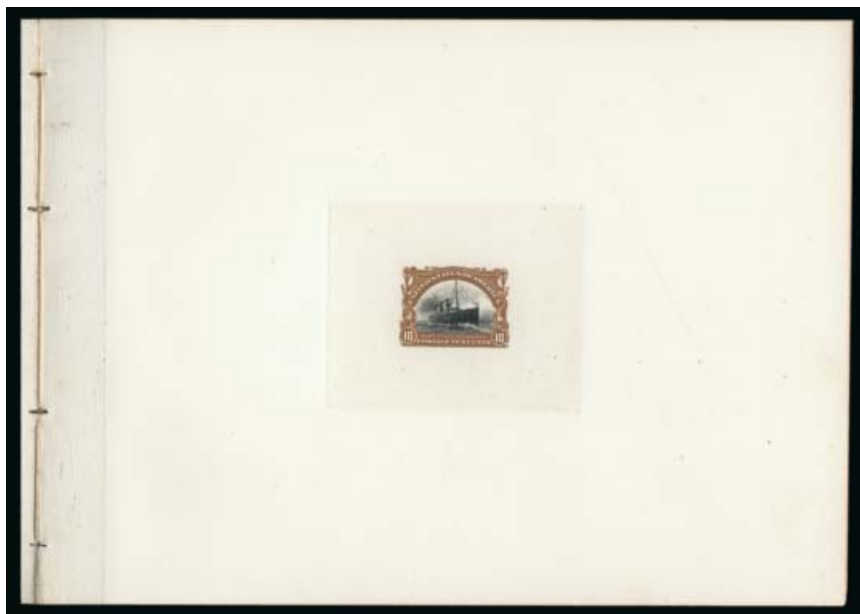
VERY FINE. A BEAUTIFUL AND SCARCE COMPLETE SET OF THE 1894 ISSUE SMALL DIE PROOFS FROM A ROOSEVELT PRESENTATION ALBUM.

Only 85 albums were produced(Photo Ex) 3,535.00



64

64 P **\$1.00 Trans-Mississippi, Large Die Proof on India (292P1).** 97 x 80mm with full die sinkage, detailed impression, Very Fine, an attractive Large Die Proof of what has been called the most beautiful stamp in United States philately 750.00



65EX

65°P **1c-10c Pan-American Issue, President McKinley Presentation Album of Large Die Proofs on India.** Black leatherbound **presentation album** containing complete set of Pan-American Large Die proofs on India, die sunk on card, control numbers on back (17737, 17930, 17914, 18024, 17949, 18029 — pulled in 1901), wear affects the spine and corners

THE UNIQUE PRESENTATION PROOF BOOK OF THE PAN-AMERICAN ISSUE PREPARED FOR PRESIDENT MCKINLEY AT THE PAN-AMERICAN EXPOSITION IN 1901, WHERE HE WAS FATAALLY SHOT.

In early September 1901, President William McKinley was standing in a receiving line at the Pan-American Exposition in Buffalo when he was shot twice by what the official White House website describes as “a deranged anarchist.” He died eight days later. The exhibition opened on May 1 and closed on Nov. 1, 1901. We are unsure whether this set of presentation proofs and the related Trans-Mississippi set had already been presented to President McKinley before he was assassinated, or whether they were prepared for him and his untimely demise prevented them from being presented. In either case, the proof album offered here is an important part of U.S. history.

From our 2001 Rarities sale and ex Livingston(Photo Ex) E. 6,000-8,000



66

66°TC **10c Carmine Lake, Panama-Pacific Issue, Small Die Trial Color Proof on India (400TC2b).** Striking deep color, mounted on watermarked paper which is probably not contemporary, Very Fine and rare, a Power Search review failed to find another example(Photo Ex) 1,100.00



67

67°P **3c Victory, Large Die Proof on India (537P1).** Die sunk on 197 x 146mm card, control no. 937430 and Jan. 31, 1919 handstamp on back, brilliant color, fresh and Very Fine, scarce example of this die proof 1,100.00



68

68°P **1c-5c Pilgrim Tercentenary, Large Die Proofs on Thick Wove (548P1-550P1).** Set of three, each approx. 65 x 54mm, brilliant colors, bright and fresh
EXTREMELY FINE SET OF DIE PROOFS FOR THE 1920 PILGRIM TERCENTENARY ISSUE.
The Scott Catalogue lists large die proofs on India and small die proofs on white wove for the Pilgrim Issue. This set is clearly on white wove but measures considerably larger than small die proofs. Scott Retail for both sets is nearly the same..... 3,750.00



69EX

69°P **1c-5c Huguenot-Walloon, Large Die Proofs on India (614P1-616P1).** Die sunk on approximately 203 x 154 mm cards, each signed by **Postmaster General Harry S. New**, with printed "Approved April 14, 1924", control numbers on back, rich colors, 2c with light adhesive visible thru India

VERY FINE COMPLETE SET OF THE HUGUENOT-WALLOON ISSUE LARGE DIE PROOFS, SIGNED BY POSTMASTER GENERAL HARRY S. NEW.

Scott Retail as die proofs without the signatures..... 2,250.00



70EX

70°P **1c-5c Lexington-Concord, Large Die Proofs on India (617P1-619P1).** Die sunk on approximately 203 x 152 mm cards, each signed by **Postmaster General Harry S. New**, first two with printed "Approved" and "March 2, 1925" dates, last with manuscript "Approved" and "March 3, 1925" date, also "P.M.G" under New's signature, control numbers on back, bright and fresh colors throughout

VERY FINE AND CHOICE. A BEAUTIFUL AND PRISTINE COMPLETE SET OF THE LEXINGTON-CONCORD ISSUE LARGE DIE PROOFS, SIGNED BY POSTMASTER GENERAL HARRY S. NEW.

Scott Retail as die proofs without the signatures.....(Photo Ex) 2,250.00



71



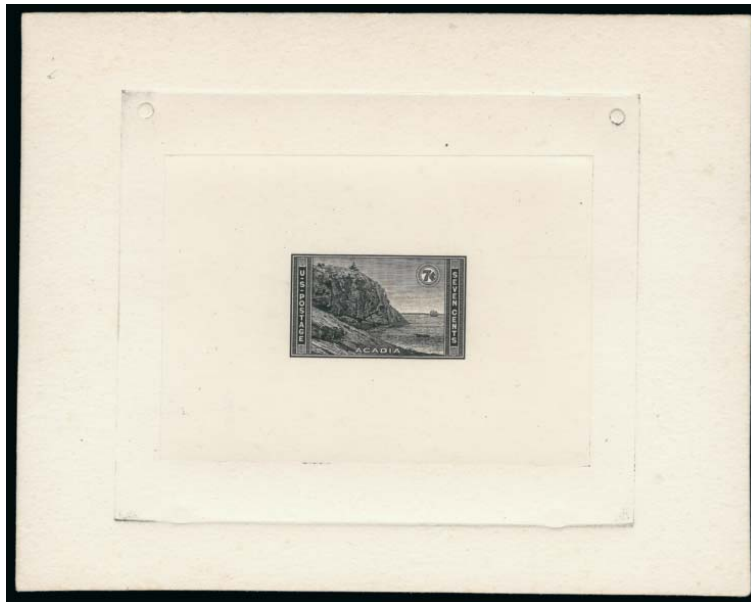
72

- 71° P **2c Burgoyne, Large Die Proof on White Wove (644P1a)**, Die sunk on 203 x 153mm card, signed by **Postmaster General Harry S. New**, with printed "Approved July 11, 1927", control number on back, gorgeous color, fresh and pristine, Extremely Fine, ex Livingston, Scott retail for normal die proof without signature 750.00
- 72° P **2c Valley Forge, Large Die Proof on India (645P1)**. Die sunk on 148 x 197mm card, signed by **Postmaster General Harry S. New**, with printed "Approved May 16, 1928", control number on back, vibrant color, Very Fine and choice, Scott Retail for normal die proof without signature..... 800.00



73EX

- 73° P **1c-10c National Parks, Small Die Proofs on White Wove (740P2-749P2)**. Complete set of 10 values, 28 x 43mm or 43 x 28mm, bright colors and clear impressions, 10c tiny toned spot VERY FINE AND CHOICE. THIS IS BELIEVED TO BE THE ONLY COMPLETE SET OF THE 1934 NATIONAL PARKS ISSUE SMALL DIE PROOFS.
- Dies from the 1934 National Parks Issue were used to pull both large and small die proofs. However, only four of the values are known as large die proofs so a complete set cannot be achieved. Noted essay and proof student and dealer James Lee records only one complete set of the small die proofs, offered here.
- Ex Livingston.....(Photo Ex) 6,500.00



74

74°P **7c Acadia, Large Die Proof on White Wove (746P1a).** Die sunk on 152 x 120mm card, deep shade and gorgeous impression showing every minute detail of the engraving, Extremely Fine, a very rare die proof, only four of the National Parks issues are listed in Scott as large die proofs, we are aware of only one other example of this denomination and it is cut down to an irregular small size, ex Livingston, underpriced in Scott given its rarity 800.00



75

75°P **9c Mt. Rockwell, Large Die Proof on White Wove (748P1a).** Die sunk on 204 x 152mm card, signed by Acting Postmaster General with "Approved, August 20, 1934" in combination of manuscript and type, control number on back, brilliant color, Extremely Fine, believed to be unique, Scott Retail for die proof with no mention of signature and underpriced given its rarity..... 800.00

UNITED STATES STAMPS

Featuring a Midwestern Collector's Choice 19th & 20th Century Stamps

1851-60 ISSUES



76

- 76 **1c Blue, Ty. Ib (5A).** Position 6R1E, huge margins to just in at lower left, including sheet margin at top, beautiful Plate 1 Early color, bold strike of **blue** Cincinnati O. circular datestamp

VERY FINE AND CHOICE. AN OUTSTANDING EXAMPLE OF ONE OF THE TWO MOST DISTINCT TYPE Ib POSITIONS FROM PLATE ONE EARLY, SHOWING THE COMPLETE DESIGN AT TOP AND NEARLY COMPLETE DESIGN AT BOTTOM.

Type Ib was produced only as an imperforate stamp. Six positions on Plate 1 Early furnished stamps qualifying as Type Ib — Positions 3-6R and 8-9R — distinguished by the complete design at top and nearly complete design at bottom. When first entered on the plate, these six positions (as well as 7R1E) had the complete design at top and bottom. However, unlike 7R, small portions of the bottoms were burnished away. Positions 6R and 8R had less of the bottom erased than the other Type Ib positions, particularly in the left plume, and for this reason they are more desirable examples of the type.

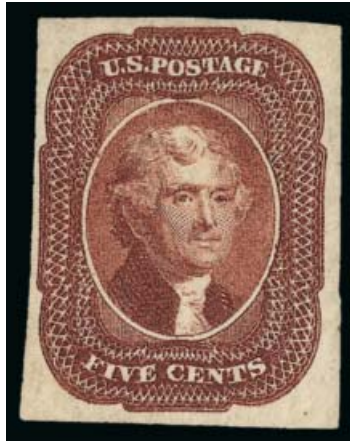
All Type Ib stamps are very scarce, and the two best examples (6R and 8R) are rare. These top-row positions usually have an ample top margin, but frequently the margins are close or cutting into the bottom. A Type Ib with large margins all around is a great rarity. With its wide bottom margin and sound condition, this is an unusually choice Type Ib.

With 1999 and 2006 P.F. and 2007 P.S.E. certificates (VF 80 Jumbo; SMQ no longer prices Positions 6R1E and 8R1E. SMQ for the lesser Ty. Ib positions \$9,750.00 for 80, \$13,500.00 for 85)..... 15,000.00

- 77 ★ **1c Blue, Ty. II (7).** Original gum, barest trace of hinging (almost appears Mint N.H.), full to large margins, Very Fine and choice, with 2004 P.S.E. certificate 1,000.00



77



78

- 78 ★ **5c Red Brown (12).** C Relief, original gum, barest trace of hinging, large to huge margins all around incl. part of adjoining stamp at right, intense color and proof-like impression

EXTREMELY FINE GEM. WITHOUT QUESTION ONE OF THE TWO FINEST ORIGINAL-GUM EXAMPLES OF THE 5-CENT 1856 ISSUE. THIS IS ONE OF THE MOST DIFFICULT FACE-DIFFERENT DESIGNS TO OBTAIN IN SUCH SUPERB ORIGINAL-GUM CONDITION.

The 5c stamp was issued in 1856, five years after the 1c, 3c and 12c values and one year after the 10c were issued. It was typically used to pay the 5c shore-to-ship rate for mail sent overseas and also in multiples for the 10c transcontinental or 15c U.S.-French treaty rates.

With the exception of some rare types of the 1c and 10c, such as Scott Nos. 5 and 16, the 5c stamp is the most difficult denomination to obtain with four margins in sound original-gum condition. The spacing between stamps was very narrow, leaving little margin for error when separating the stamps, which explains why so few examples are known with four margins. When other factors such as gum, color and impression are taken into consideration, the rarity and beauty of the stamp offered here may be fully appreciated. The only stamp that rivals this example was in our sale of the Scarsdale collection (Sale 918, lot 9, realized \$57,500 hammer).

Ex Seymour and Whitman. With 1985, 1990 and 2000 P.F. and 2008 P.S.E. certificates (OGph, XF 90; SMQ \$60,000.00). This is the highest grade awarded and the only original-gum example to achieve this grade (the next highest is VF 80). 30,000.00



79

- 79 (★) **10c Green, Ty. III (15).** Unused (no gum), large to huge margins, rich color, remarkably fresh and bright

EXTREMELY FINE. AN OUTSTANDING UNUSED EXAMPLE OF THE 1855 10-CENT TYPE III IMPERFORATE.

Ex Hansen. With 1990 and 2008 P.F. certificates..... 1,800.00



80

- 80 ★★ **1c Blue, Ty. II (20).** Mint N.H., from the top row of Plate 4, deep rich color on bright paper, unusually choice centering clearly showing the **complete design at top**

VERY FINE AND CHOICE. AN INCREDIBLY RARE MINT NEVER-HINGED EXAMPLE OF THE 1857 PERFORATED ONE-CENT TYPE II FROM THE TOP ROW OF PLATE 4. THIS IS THE ONLY MINT NEVER-HINGED COPY OF SCOTT 20 FROM PLATE 4 WE HAVE OFFERED. A GREAT RARITY.

When perforations were introduced in 1857, the plates used to print stamps at Toppan, Carpenter & Co. were laid out with narrow spaces between the subjects, because no thought had been given to the concept of perforation holes between the stamps. The imperforate sheets of 1c stamps on hand were printed from Plates 1 Late, 2 and 4, and the perforations on those stamps rarely clear the design all around. The example from Plate 4 offered here is not only extremely rare as a Mint Never-Hinged copy, it is also exceptionally well-centered.

Ex Odeneal. With 1990 and 2007 P.F. certificates, the former with selvage at top. Scott Retail as hinged. 3,500.00



81

- 81 ★ **1c Blue, Ty. IIIa (22).** Plate 4, original gum, lightly hinged, fresh and bright color, showing clear break at top and complete outer line at bottom (the defining characteristics of the type)

VERY FINE AND CHOICE ORIGINAL-GUM EXAMPLE OF THE 1857 PERFORATED ONE-CENT TYPE IIIA.

Ex Hoffman. With 1982 and 2006 P.F. certificates 2,400.00

- 82 ★ **3c Rose, Ty. I (25).** Original gum, single hinge mark, radiant color, detailed impression, single short perf at right not mentioned on accompanying certificate, fresh and Very Fine appearance, ex Geisler, with 2006 P.F. certificate 2,500.00



82



83

- 83 ★ **5c Brown, Ty. II (30A).** Original gum, crisp impression, three wide margins, long and full perforations all around
VERY FINE ORIGINAL-GUM EXAMPLE OF THE 1860 5-CENT BROWN TYPE II.

Ex "Laila". With 1996 and 2009 P.F. certificates 2,200.00

- 84 ★ **90c Blue (39).** Original gum, deep rich color, detailed impression, well-proportioned margins

EXTREMELY FINE ORIGINAL-GUM EXAMPLE OF THE 90-CENT 1860 ISSUE.

With 1995 P.F. certificate. 3,000.00



84

- 85 ★ **30c Yellow Orange, Reprint (46).** Without gum as issued, brilliant color on bright fresh paper, exceptionally choice centering

EXTREMELY FINE. A MAGNIFICENT EXAMPLE OF THE 30-CENT 1857 REPRINT. AN EXCEEDINGLY RARE STAMP WITH SUCH CHOICE CENTERING.

The 30c 1857 Reprint, of which 480 were sold, is one of the tightest-margined of the series. This is an extraordinary stamp, by virtue of its wide margins and choice centering.

Ex Hoffman. With 2007 P.S.E. certificate (XF 90; SMQ \$8,000.00). Only two have graded higher (at 90J) and only five others share this grade..... 3,000.00



85

1861-68 ISSUES



86

- 86 ★ **10c Yellow Green, "TAG" Double Transfer (68 var).** Original gum, deep shade on bright fresh paper, wide margins

VERY FINE AND CHOICE ORIGINAL-GUM EXAMPLE OF THE 10-CENT 1861 ISSUE WITH DOUBLE TRANSFER. AN EXTREMELY SCARCE STAMP IN THIS SUPERIOR GRADE.

Ex Hoffman. With 1994 P.F. certificate (not noting double transfer). Scott Retail as normal..... 1,200.00

- 87 ★ **3c Rose, E. Grill (88).** Original gum, lightly hinged, clearly-defined grill, brilliant color, fresh and Very Fine, ex Hoffman, with 2002 P.F. certificate 1,000.00



87

1875 RE-ISSUE OF 1861-66 ISSUE

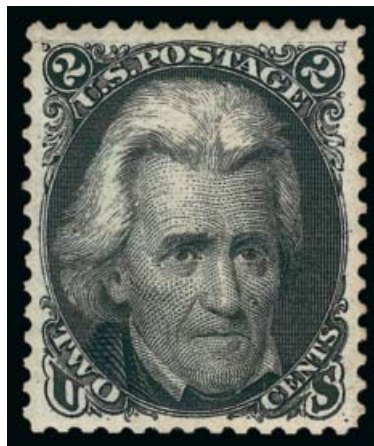


88

- 88 ★ **1c Blue, Re-Issue (102).** Original gum, lightly hinged, deep rich color on bright paper, perfectly centered with wide margins on all sides

EXTREMELY FINE GEM. A SUPERB ORIGINAL-GUM EXAMPLE OF THE ONE-CENT 1861 RE-ISSUE IN THE FINEST CONDITION ATTAINABLE. THIS EXCEPTIONAL STAMP HAS BEEN AWARDED THE GRADE OF SUPERB 98 BY P.S.E. — THIS IS THE HIGHEST GRADE AWARDED.

Ex Odeneal and "Beverly Hills". With 2009 P.S.E. certificate (OGph, Superb 98; SMQ \$5,750.00). This is the highest grade awarded in any gum category and it is shared by only two others 850.00



89

- 89 ★ **2c Black, Re-Issue (103).** Original gum, intense shade and impression on crisp paper, outstanding centering with wide and balanced margins

EXTREMELY FINE GEM. A SUPERB ORIGINAL-GUM EXAMPLE OF THE 2-CENT 1861 RE-ISSUE, WHICH HAS BEEN GRADED XF-SUPERB 95 BY P.S.E.

The 2c Re-Issue was printed from a new plate of 100 subjects, compared to the original plate of 200 in two panes. 10,000 stamps were printed (100 impressions). Only 979 of the 2c were sold; the remaining 9,021 were destroyed on July 16, 1884. The 2c plate can be easily identified by a spot on the cheek.

Ex Whitman. With 1995 P.F. and 2009 P.S.E. certificates (OGph, XF-Superb 95; SMQ \$12,000.00). This is the highest grade awarded to an original gum example, and it has been equaled by only four others. 3,750.00



90

- 90 ★ **3c Brown Red, Re-Issue (104).** Original gum, deep rich color and proof-like impression on crisp paper, choice centering with well-proportioned margins
EXTREMELY FINE. A BEAUTIFUL ORIGINAL-GUM EXAMPLE OF THE 3-CENT 1861 RE-ISSUE — ONE OF THE RAREST OF THE SET IN THIS CHOICE CONDITION.

The 3c Re-Issue was printed from the original plate, which contained 200 subjects in two panes. 10,000 were printed (50 impressions). Only 465 of the 3c were sold; the remaining 9,535 were destroyed on July 16, 1884.

With 2006 P.F. certificate (XF 90)..... 4,250.00



91

- 91 ★ **5c Brown, Re-Issue (105).** Original gum, lovely rich color, almost perfect centering with well-proportioned margins

EXTREMELY FINE GEM. A SUPERB ORIGINAL-GUM EXAMPLE OF THE 5-CENT 1861 RE-ISSUE.

The 5c Re-Issue was printed from a new plate of 100 subjects, compared to the original plate of 200 in two panes. The Re-Issue plate can be identified by a notch at bottom. 10,000 stamps were printed (100 impressions). Only 672 of the 5c were sold; the remaining 9,328 were destroyed on July 16, 1884.

P.S.E. encapsulated (OGph, XF-Superb 95; SMQ \$10,000.00). Only one has graded higher (at 95J) and only eight others share this grade..... 2,750.00



92

- 92 ★ **10c Green, Re-Issue (106).** Original gum, wide margins and choice centering, rich color and proof-like impression

EXTREMELY FINE. A BEAUTIFUL SOUND ORIGINAL-GUM EXAMPLE OF THE 10-CENT 1861 RE-ISSUE.

The 10c Re-Issue was printed from a new plate of 100 subjects, compared to the original plate of 200 in two panes. 10,000 stamps were printed (100 impressions). Only 451 of the 10c were sold; the remaining 9,549 were destroyed on July 16, 1884.

With 2008 and 2013 P.S.E. certificates (OGph, XF 90; SMQ \$6,900.00) 4,000.00



93

- 93 ★ **12c Black, Re-Issue (107).** Original gum, intense shade and proof-like impression on crisp paper, gorgeous centering with unusually wide margins

EXTREMELY FINE GEM. A MAGNIFICENT WIDE-MARGINED ORIGINAL-GUM EXAMPLE OF THE 12-CENT 1861 RE-ISSUE. SCARCE IN SUCH SUPERIOR CONDITION.

The 12c Re-Issue was printed from a new plate of 100 subjects, compared to the original plate of 200 in two panes. 10,000 stamps were printed (100 impressions). Only 389 of the 12c were sold; the remaining 9,611 were destroyed on July 16, 1884.

Ex Whitman. With 1966 and 1994 P.F. certificates. With 2009 P.S.E. certificate (OGh, XF-Superb 95; SMQ \$12,500.00). Only three have been graded higher (two at 95J, one at 98) and four share this grade 4,250.00



94

- 94 ★ **15c Black, Re-Issue (108).** Original gum, intense shade and detailed impression, choice centering

EXTREMELY FINE ORIGINAL-GUM EXAMPLE OF THE 15-CENT 1861 RE-ISSUE.

The 15c Re-Issue was printed from the original plate of 200 subjects. 10,000 stamps were printed (50 impressions). Only 397 of the 15c were sold; the remaining 9,603 were destroyed on July 16, 1884.

With 2008 P.S.E. certificate (OGph, XF 90; SMQ \$9,650.00). This is the highest grade awarded to an original gum example and it has been achieved by only four others..... 4,750.00



95

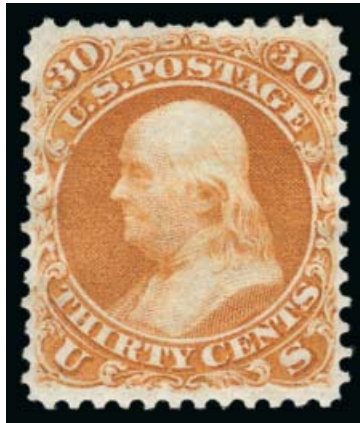
- 95 ★ **24c Deep Violet, Re-Issue (109).** Original gum, lightly hinged, dark color and sharp proof-like impression on crisp bright paper, well-centered with full perforations

EXTREMELY FINE. A WONDERFULLY CHOICE EXAMPLE OF ONE OF THE RAREST OF THE 1861-66 RE-ISSUES. THE 24-CENT IS EXCEEDINGLY DIFFICULT TO LOCATE IN THIS SUPERB ORIGINAL-GUM CONDITION.

The 24c Re-Issue was printed from the original plate of 200 subjects. A total of 10,000 was printed (50 impressions). Only 346 of the 24c were sold; the remaining 9,654 were destroyed on July 16, 1884.

The quantity issued for the 24c 1861 Re-Issue (346) is close in number to several lower values, including the 12c and 15c (389 and 397, respectively). However, the 24c is scarcer and appears less frequently at auction. It is also one of the three values most difficult to obtain in choice original-gum condition (the others are the 3c and 30c).

With 2002 P.F. certificate..... 6,000.00



96

- 96 ★ **30c Brownish Orange, Re-Issue (110).** Original gum, intense color, almost perfect centering

EXTREMELY FINE. A BEAUTIFUL ORIGINAL-GUM EXAMPLE OF THE 30-CENT 1861 RE-ISSUE.

The 30c Re-Issue was printed from the original plate of 200 subjects. 10,000 stamps were printed (50 impressions). Only 346 of the 30c were sold; the remaining 9,654 were destroyed on July 16, 1884.

Ex "Vineyard" and "Laila." With 1992 and 2000 P.F. certificates..... 6,250.00



97

- 97 ★ **90c Blue, Re-Issue (111).** Original gum, deep rich color on bright crisp paper, unusually choice centering

EXTREMELY FINE. AN OUTSTANDING ORIGINAL-GUM EXAMPLE OF THE 90-CENT 1861 RE-ISSUE.

The 90c Re-Issue was printed from the original plate of 200 subjects. 10,000 stamps were printed (50 impressions). Only 317 of the 90c were sold; the remaining 9,683 were destroyed on July 16, 1884. The example offered here, with original-gum, sound and well-centered, is a great rarity.

With 1973, 1991 and 2006 P.F. certificates..... 6,750.00

1869 PICTORIAL ISSUE



98



99



100

- 98 ★ **1c Buff (112).** Original gum, lightly hinged, wide margins and choice centering, Extremely Fine Gem, with 2001 P.F. certificate 650.00
- 99 ★ **2c Brown (113).** Original gum, lightly hinged, fresh and bright color, Extremely Fine, with 1994 P.F. certificate 550.00
- 100 ★★ **3c Ultramarine (114).** **Mint N.H.,** huge margins and outstanding centering, wonderfully fresh and bright, Extremely Fine Gem, a superb stamp, with 2002 P.F. certificate for block of twelve, this the finest stamp of the block (pos. 7), Scott Retail as hinged..... 250.00



101

- 101 ★ **6c Ultramarine (115).** Original gum, lightly hinged, rich color on crisp paper, wide and nicely balanced margins

VERY FINE AND CHOICE. A BEAUTIFUL SOUND AND CENTERED ORIGINAL-GUM EXAMPLE OF THE 6-CENT 1869 PICTORIAL ISSUE.

With 1985 and 2013 P.F. certificates 2,750.00

- 102 ★ **10c Yellow (116).** Large part original gum described on accompanying certificate as “previously hinged”, blazing color, Jumbo margins
- EXTREMELY FINE ORIGINAL GUM EXAMPLE OF THE 10-CENT 1869 PICTORIAL.
- The gum on this stamp is not disturbed, but the hinged portion covers most of the top half, which leads us to call it large part original gum. With 1989 P.F. certificate 2,000.00



102



103

- 103 ★ **12c Green (117).** Original gum, rich color on bright white paper, wide and nicely balanced margins, Extremely Fine, with 2001 P.F. certificate. 1,900.00

- 104 ★ **15c Brown & Blue, Ty. I (118).** Original gum, three huge margins, fresh colors, slight vignette shift

VERY FINE AND CHOICE. A STRIKING WIDE-MARGINED ORIGINAL-GUM EXAMPLE OF THE 15-CENT TYPE I 1869 PICTORIAL.

With 1998 P.F. certificate..... 9,500.00



104



105

- 105 ★ **15c Brown & Blue, Ty. II (119).** Original gum, h.r., incredible depth of color, choice margins and centering on bright paper

EXTREMELY FINE ORIGINAL-GUM EXAMPLE OF THE 15-CENT TYPE II 1869 PICTORIAL.

With 2000 P.S.E. certificate..... 3,250.00



106

- 106 ★ **24c Green & Violet (120).** Original gum, sharp proof-like impressions on crisp paper, wide margins and choice centering

EXTREMELY FINE. THIS IS EASILY ONE OF THE FINEST ORIGINAL-GUM EXAMPLES OF THE 24-CENT 1869 PICTORIAL ISSUE.

The 24c 1869 Pictorial, even in original-gum condition, is not a rare stamp. However, centering and soundness are elusive qualities among examples of this issue. This is one of the most difficult stamps of the series to obtain in such choice condition. The graded population of 24c 1869 Pictorials bears this out. Among original-gum examples, the P.S.E. Population Report records only three above the grade of 40 (one each at 75, 90 and 95).

With 2001 P.F. certificate..... 8,000.00

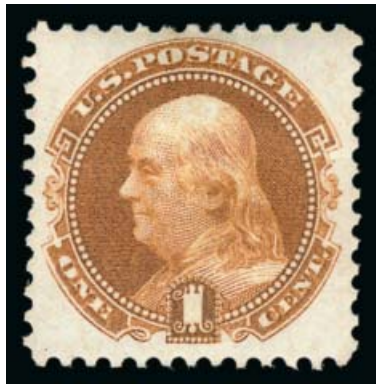
- 107 **No Lot.**



108

- 108 ★ **90c Carmine & Black (122).** Original gum, beautifully centered with extra wide top and bottom margins, crisp shades and impressions
EXTREMELY FINE. AN OUTSTANDING ORIGINAL-GUM EXAMPLE OF THE 90-CENT 1869 PICTORIAL ISSUE WITH CHOICE CENTERING AND COMPLETELY SOUND.
With 1971, 1995 and 2013 P.F. certificates..... 12,000.00

1875 RE-ISSUE OF 1869 PICTORIAL ISSUE



109



110

- 109 ★ **1c Buff, Re-Issue (123).** Original gum, rich color, Very Fine, with 1991 P.F. certificate 550.00
- 110 ★ **2c Brown, Re-Issue (124).** Original gum, lovely depth of color, proof-like impression, Extremely Fine, with 1997 P.F. certificate..... 650.00



111

- 111 ★ **3c Blue, Re-Issue (125).** Original gum, bright color and proof-like impression on crisp paper
 VERY FINE AND CHOICE. A RARE SOUND AND WELL-CENTERED ORIGINAL-GUM EXAMPLE OF THE 3-CENT 1869 RE-ISSUE.

Original sales figures show that among the 1869 Pictorial Re-Issues, the 3c and 90c stamps accounted for the smallest number sold (1,406 and 1,356, respectively). Overall, the 1869's were popular with stamp collectors, far outselling the 1851-60 and 1861-66 Re-Issue sets. However, the 90c stamp's high cost and the wide availability of ordinary 3c stamps limited demand for those denominations. Today, both are rare, and handling over the years has not been kind to most of the surviving examples. This is a rare sound original-gum copy.

With 2000 P.F. certificate..... 5,000.00



112

- 112 ★ **6c Blue, Re-Issue (126).** Original gum, well-centered with nicely balanced margins, rich color, Very Fine and choice, with 1999 P.F. certificate..... 1,650.00

- 113 ★ **10c Yellow, Re-Issue (127).** Original gum, lightly hinged, incredibly vivid color on crisp paper, well-centered

EXTREMELY FINE. A FRESH AND BEAUTIFUL ORIGINAL-GUM EXAMPLE OF THE 10-CENT 1869 PICTORIAL RE-ISSUE.

With 2000 P.F. certificate..... 1,900.00



113



114

- 114 ★ **12c Green, Re-Issue (128).** Original gum, proof-like impression and fresh color, well-balanced margins

EXTREMELY FINE ORIGINAL-GUM EXAMPLE OF THE 12-CENT 1869 PICTORIAL RE-ISSUE.

With 1998 P.F. certificate 2,250.00

- 115 ★ **15c Brown & Blue, Re-Issue (129).** Wide margins and choice centering, deep rich colors, bright and fresh

EXTREMELY FINE GEM. AN OUTSTANDING ORIGINAL-GUM EXAMPLE OF THE 15-CENT 1869 PICTORIAL RE-ISSUE.

With 1996 P.F. and 1997 P.S.E. certificates 1,350.00



115



116

- 116 ★ **24c Green & Violet, Re-Issue (130).** Original gum, wide beautifully balanced margins, bright colors on fresh paper
 EXTREMELY FINE GEM. A GORGEOUS WIDE-MARGINED ORIGINAL-GUM EXAMPLE OF THE 30-CENT 1869 PICTORIAL RE-ISSUE.
 With 1998 P.F. certificate..... 2,100.00



117

- 117 ★ **30c Blue & Carmine, Re-Issue (131).** Original gum, lightly hinged, huge balanced margins, gorgeous fresh colors on bright white paper
 EXTREMELY FINE GEM. A SUPERB LIGHTLY-HINGED EXAMPLE OF THE 30-CENT 1869 PICTORIAL RE-ISSUE.
 Ex Floyd. With 1984 P.F. certificate 2,500.00



118

- 118 ★ **90c Carmine & Black, Re-Issue (132).** Original gum, some gum loss near top, brilliant colors on bright white paper, wide and balanced margins
EXTREMELY FINE. AN OUTSTANDING ORIGINAL-GUM EXAMPLE OF THE 90-CENT 1869 PICTORIAL RE-ISSUE.
With 1999 P.F. and 2013 P.S.E. certificates (OGh, XF 90; SMQ \$7,600.00)..... 3,750.00



119

- 119 ★ **1c Buff, 1880 Re-Issue (133).** Original gum, lightly hinged, rich color, Very Fine, with 2000 P.S.E. certificate 325.00

END OF SESSION ONE

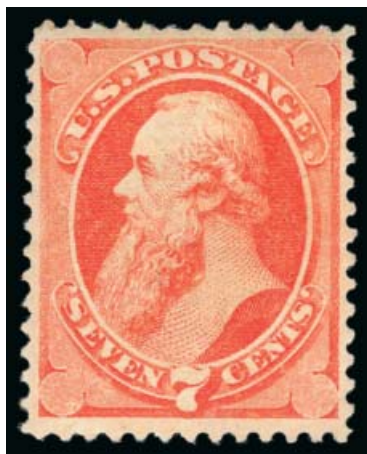
SESSION TWO (LOTS 120-349)
WEDNESDAY, MAY 22, 2013, AT 1:30 P.M.

1870-71 NATIONAL BANK NOTE COMPANY GRILLED ISSUE
H GRILL

- 120 ★ **3c Green, H. Grill (136).** Original gum, lightly hinged, outstanding centering, fresh and bright, Extremely Fine, we give this stamp "Gem" status despite very conservative P.S.E. grade of 90, with 2005 P.S.E. certificate (OGph, XF 90; SMQ \$1,450.00)..... 575.00



120



121

- 121 ★ **7c Vermilion, H. Grill (138).** Original gum, well-balanced margins, clear grill points, fresh and bright color

VERY FINE AND CHOICE ORIGINAL-GUM EXAMPLE OF THE 7-CENT NATIONAL BANK NOTE COMPANY GRILLED ISSUE.

With 1977 and 2004 P.F. certificates..... 4,250.00

- 122 ★ **12c Dull Violet, H. Grill (140).** Disturbed original gum, rich color, three balanced margins to just in or touching at right, clear grill points

FINE. AN EXCEEDINGLY RARE ORIGINAL-GUM EXAMPLE OF THE 1870 12-CENT NATIONAL BANK NOTE COMPANY GRILLED ISSUE.

There exist only a handful of original-gum examples of this issue. As a testimonial to its rarity, we have offered only two examples in the last 11 years — a disturbed part original-gum stamp from our 2002 Rarities sale and the unique Mint N.H. stamp from our 2009 Whitman sale.

With 1999 P.F. certificate..... 27,500.00



122



123

- 123 ★ **15c Orange, H. Grill (141).** Original gum, clear grill points across Webster's forehead, vivid color, wide and well-balanced margins

EXTREMELY FINE. A RARE SOUND AND BEAUTIFULLY CENTERED ORIGINAL-GUM EXAMPLE OF THE 1870 15-CENT NATIONAL BANK NOTE COMPANY GRILLED ISSUE.

The 15c Grilled Issue is one of the most difficult of all National Bank Note Company issues to find in well-centered, original-gum condition. This stamp is one of the finest original-gum examples extant.

With 1993 P.S.E. and 2002 P.F. certificates 7,500.00



124

- 124 **24c Purple, H. Grill (142).** Unusually deep rich color, several easily noticeable rows of grill points, bold strike of crossroads cancel, almost perfectly centered with wide and balanced margins

EXTREMELY FINE GEM. THIS REMARKABLE STAMP IS WITHOUT QUESTION ONE OF THE FINEST EXAMPLES, IF NOT THE FINEST, OF THE 1870 24-CENT NATIONAL BANK NOTE COMPANY GRILLED ISSUE IN EXISTENCE. ONE OF THE KEYS TO A SUPERB SET OF THIS ISSUE.

Scott 142 is not known in unused condition. Therefore, anyone wishing to complete this set must obtain this stamp in used condition. The example offered here, with rich color, clear grill, superb centering and bold cancel, is a truly stunning example of this rarity in the finest condition attainable.

With 1999 P.F. certificate 7,500.00



125

- 125 ★ **30c Black, H. Grill (143).** Original gum, h.r. near top, noticeable grill points along Hamilton's forehead, intense shade and impression

VERY FINE. THE 1870 30-CENT NATIONAL BANK NOTE GRILLED ISSUE IS ONE OF THE MOST DIFFICULT TO FIND IN SOUND, CENTERED AND ORIGINAL-GUM CONDITION.

The 30c 1870 Grilled Issue is notorious among collectors for its typical poor centering. Among original-gum examples, which are rare in any condition, only a few sound examples would grade Very Fine or better — our computerized records contain five others with centering that would grade Fine-Very Fine or Very Fine by current standards. A search through 60 years of past auction catalogues and name sales produced only two blocks of four, both poorly centered, which means that there have been no multiples from which choice singles could be harvested. In fact, even among the collections famed for quality Bank Note issues — Caspary, Lilly, Henry, Ambassador, Braus, Floyd, Whitman et al — we could not find *any* original-gum examples that would grade Very Fine or better. Further demonstrating just how rare Scott 143 is in this condition, the P.S.E. Population Report lists only one stamp in the "OG" category, which is graded Fine 70. The finest example we were able to locate was offered in our Scarsdale sale (Sale 924, lot 9).

Small pencil "*Grill J.M. Bartels*" signature on back. With 1999 P.S.E. and 2000 P.F. certificates 20,000.00

- 126 ★ **90c Carmine, H. Grill (144).** Original gum, clearly-defined grill easily visible on face of stamp without magnification, deep rich color

VERY FINE AND CHOICE. AN EXTREMELY RARE ORIGINAL-GUM EXAMPLE OF THE 1870 90-CENT GRILLED NATIONAL BANK NOTE ISSUE. THE 90-CENT IS THE THIRD MOST DIFFICULT STAMP OF THE NATIONAL BANK NOTE GRILLED ISSUE TO OBTAIN IN SOUND ORIGINAL-GUM CONDITION.

Considering original-gum examples only, after the extremely rare 12c and non-existent 24c, the 90c is the rarest of the 1870 National Grilled Issue.

Ex Drucker and Hoffman. With 1981 and 2008 P.F. certificates..... 20,000.00



126

I GRILL

The Scott Specialized Catalogue elevated the I Grills to major catalogue numbers beginning with the 2013 edition. For years we have differentiated between the two grill types in our auctions and pointed out the rarity of many of the I grills — especially in original gum condition. Now, with major catalogue listings, the I Grills have taken their rightful place alongside the 1867-68 Grilled Issues, which have long been differentiated in the Scott Catalogue.



127

- 127 ★ **1c Ultramarine, I Grill (134A).** Original gum, lightly hinged, attractive margins and exceptionally well-centered, beautiful bright pastel color

EXTREMELY FINE. A VERY DIFFICULT ISSUE TO FIND WITH THIS OUTSTANDING CENTERING, MARGINS AND ORIGINAL GUM.

With 1970 and 2006 P.F. certificates not specifying the grill type (XF 90)..... 2,750.00

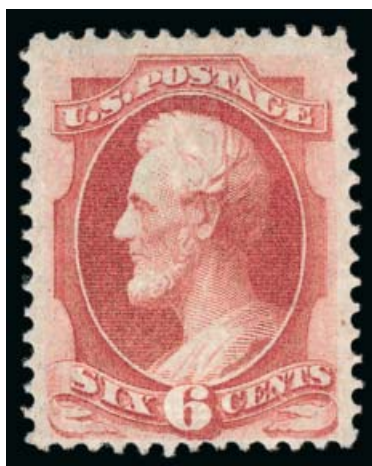
- 128 ★ **2c Red Brown, I. Grill (135A).** Original gum, well-balanced margins, beautiful fresh color, clear grill

VERY FINE AND CHOICE. A SCARCE ORIGINAL-GUM EXAMPLE OF THE 1870 2-CENT NATIONAL BANK NOTE COMPANY ISSUE WITH I GRILL.

With 1994 and 2000 P.F. certificates not specifying the grill type 1,750.00



128



129

- 129 ★ **6c Carmine, I. Grill (137A).** Original gum, clearly defined grill, vivid color, three wide margins, centered slightly to bottom but perfs clear

FINE. A RARE ORIGINAL-GUM EXAMPLE OF THE 1870 6-CENT I GRILL, WHICH HAS BEEN ELEVATED TO MAJOR CATALOGUE NUMBER STATUS.

The 6c I Grill is rare in original-gum condition. We have not offered another example identified as an I Grill since our 1999 sale of the Lewis F. Golin collection.

With 2006 P.F. certificate not specifying the grill type..... 7,000.00



130

- 130 ★ **10c Brown, I. Grill (139A).** Original gum, lightly hinged, bright color, the I grill is well-defined with several rows clearly visible and full dimensions are measurable

VERY FINE. THIS IS THE ONLY REPORTED EXAMPLE OF AN ORIGINAL-GUM 10-CENT I GRILL. A PHENOMENAL RARITY OF THE HIGHEST ORDER. THE I GRILLS HAVE JUST BEEN ELEVATED TO MAJOR CATALOGUE NUMBERS.

Starting with the 2013 Scott U.S. Specialized Catalogue, the I Grills have been elevated to major catalogue number status. Collectors will now have to acquire these I Grills in their quest for completeness. We anticipate that collector demand will be difficult to satisfy based on populations we have seen.

Ronald Burns, the foremost authority on the Bank Note grills, records ten used examples of the 10c I Grill, plus an additional two used on cover. This newly-certified copy is the only reported unused example.

With 2004 and 2013 P.F. certificates, the former not identifying the grill type. Unpriced in Scott as unused. Scott Retail \$6,000.00 as used. The 12c, with one unused example-known, catalogues \$35,000.00..... E. 10,000-15,000

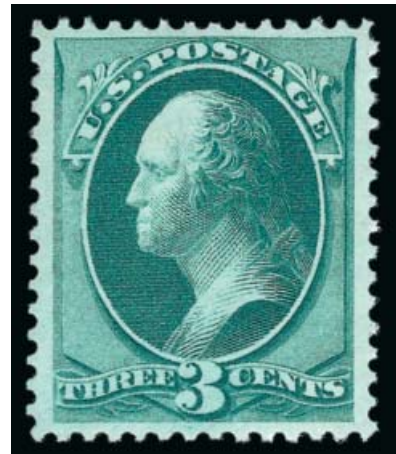
1870-71 NATIONAL BANK NOTE COMPANY UNGRILLED ISSUE



131

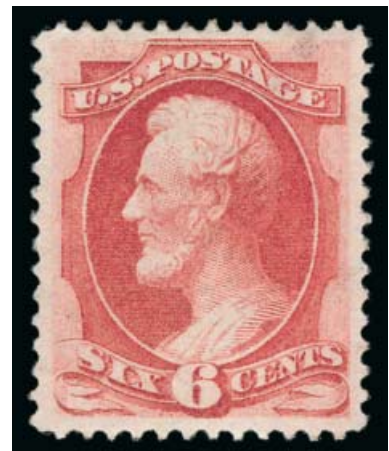


132

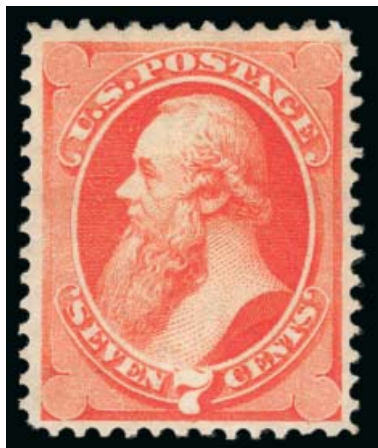


133

- 131 ★ **1c Ultramarine (145).** Original gum, lightly hinged, radiant color, well-balanced margins, Very Fine and choice, with 1979 (for block of four) and 2007 P.F. certificates (VF-XF 85) 675.00
- 132 ★ **2c Red Brown (146).** Original gum, deep rich color, balanced margins, Extremely Fine, with 1985 P.F. certificate 325.00
- 133 ★ **3c Green (147).** Original gum, lightly hinged, outstanding centering, rich color, Extremely Fine, an extremely difficult stamp to find unused in the higher grades, with 1988 P.F. (for block) and 2013 P.S.E. certificates (XF 90; SMQ \$650.00), this is the highest grade awarded and is shared by only three others, SMQ does not even price this issue above the grade of 90 225.00
- 134 ★ **6c Carmine (148).** Original gum, wide margins, bright color, small lightly soiled spot at top right not present on accompanying certificate photo, still Extremely Fine, with 1995 P.S.E. certificate..... 1,000.00



134



135

- 135 ★ **7c Vermilion (149).** Original gum, intense color, choice centering with balanced margins
EXTREMELY FINE ORIGINAL-GUM EXAMPLE OF THE 1870 7-CENT NATIONAL BANK NOTE ISSUE. AN EXCEEDINGLY RARE STAMP IN SUCH SUPERB CONDITION.
With 2000 P.F. certificate..... 1,000.00

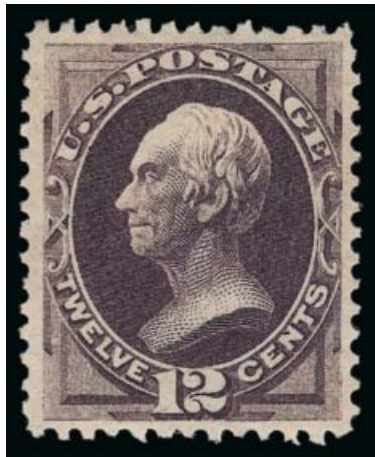
- 136 ★ **10c Brown (150).** Original gum, rich color and detailed impression, uncommonly wide margins of Jumbo proportions, choice centering

EXTREMELY FINE. A STRIKING JUMBO MARGINED ORIGINAL-GUM EXAMPLE OF THE 1870 10-CENT NATIONAL BANK NOTE COMPANY UNGRILLED ISSUE.

With 1989 P.F. and 2013 P.S.E. certificates (OGph, VF-XF 85; SMQ \$2,600.00 as 85, \$4,000.00 as 90). Only two have graded higher (both at 90). This is the only original gum stamp with a Jumbo appellation contained in the P.S.E. Population Report..... 2,250.00



136



137

- 137 ★ **12c Dull Violet (151).** Original gum, wide balanced margins, deep rich color

EXTREMELY FINE. A BEAUTIFUL ORIGINAL-GUM EXAMPLE OF THE 1870 12-CENT NATIONAL BANK NOTE ISSUE. A DIFFICULT STAMP TO FIND SOUND, CENTERED AND WITH FULL ORIGINAL GUM.

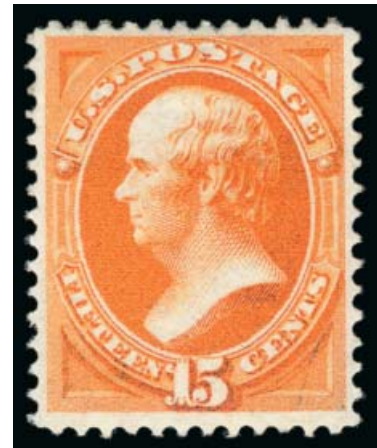
With 2003 P.F. certificate..... 2,750.00

- 138 ★ **15c Bright Orange (152).** Original gum, lightly hinged, choice centering with well-proportioned margins

VERY FINE AND CHOICE EXAMPLE OF THE 1870 15-CENT NATIONAL BANK NOTE ISSUE.

The 15c 1870 National Grilled Issue (Scott 141) is widely recognized as an extremely rare stamp in choice original-gum condition. Less well known is the fact that its ungrilled counterpart — Scott 152 — is comparably challenging to find in such condition. This stamp has all of the National printing characteristics, but it defies the norm by having exceptional centering and freshness.

Ex Alford. With 1987 and 1992 P.F. certificates 3,000.00



138

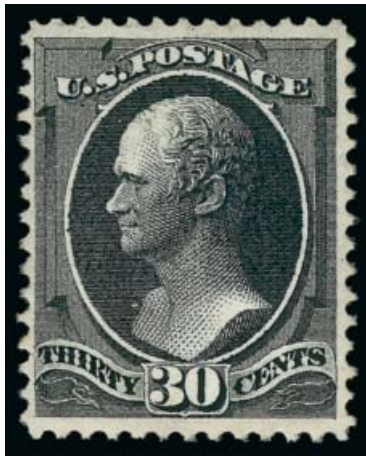


139

- 139 ★ **24c Purple (153).** Original gum, nicely balanced margins all around, beautiful depth of color, bright and fresh

EXTREMELY FINE ORIGINAL-GUM EXAMPLE OF THE 1870 24-CENT NATIONAL BANK NOTE COMPANY UNGRILLED ISSUE.

With 2003 P.F. and 2013 P.S.E. certificates (OGph, VF-XF 85; SMQ \$3,100.00)..... 1,800.00



140

- 140 ★ **30c Black (154).** Original gum, lightly hinged, choice centering with wide margins, beautiful deep charcoal shade and detailed impression

EXTREMELY FINE. THE 1870 30-CENT NATIONAL UNGRILLED ISSUE IS ONE OF THE MOST DIFFICULT OF ALL BANK NOTE ISSUES TO FIND IN SOUND, WELL-CENTERED, ORIGINAL-GUM CONDITION.

During the past 15 years, we have offered a few superb original-gum examples of National and Continental 30c Bank Notes (Scott 143, 154 and 165). Included in this total is a handful of the Continental printing, Scott 165, which is distinguished from its National Ungrilled counterpart by shade and the shape of the perforations. For the Ungrilled National printing, Scott 154, we have offered fewer than five stamps comparable to or exceeding the outstanding condition of the example offered here. This is one of the most difficult of all the Bank Note issues to find in such superb condition (please see lot 125 for a discussion of the 30c National Grilled Issue).

From our 1993 Rarities sale. With 2002 P.F. certificate 7,500.00



141

- 141 ★ **90c Carmine (155).** Original gum, outstanding centering with well-proportioned margins, radiant color and detailed impression

EXTREMELY FINE ORIGINAL-GUM EXAMPLE OF THE 1870 90-CENT UNGRILLED NATIONAL BANK NOTE ISSUE.

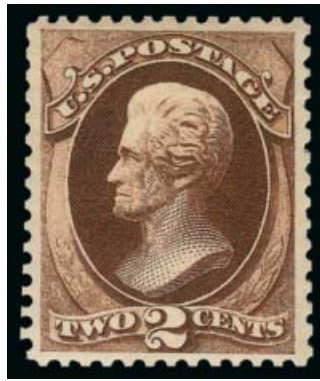
In general, the Grilled National Bank Note Issues in superb original-gum condition overshadow their ungrilled counterparts. This is also true for the 90c. However, in the case of the 90c, collectors are frequently misled by the availability of Scott 166, the 1873 Continental printing. The difference in shades is distinct, yet collectors have a tendency to under-rate the 1870 National printing. Most original-gum examples are poorly centered. This example is remarkable for its centering and freshness of color.

With 1998 P.F. and 2013 P.S.E. certificates (OGph, XF 90; SMQ \$10,800.00). Only two stamps have been graded higher (both at 95) and two others share this grade .. 5,000.00

1873-75 CONTINENTAL BANK NOTE COMPANY ISSUE



142



143



144

- 142 ★★ **1c Ultramarine (156).** Mint N.H., beautiful bright color on fresh paper, Very Fine and choice, with 2001 P.S.E. certificate, Scott Retail as hinged..... 225.00
- 143 ★★ **2c Brown (157).** Mint N.H., wide margins and precise centering, deep rich color, Extremely Fine, with 1998 P.F. certificate, Scott Retail as hinged..... 350.00
- 144 ★★ **3c Green (158).** Mint N.H., choice centering with well-proportioned margins, wonderful depth of color, Extremely Fine, with photocopy of 1997 P.F. certificate for block, Scott Retail as hinged..... 110.00
- 145 ★★ **6c Dull Pink (159).** Mint N.H., brilliant color, choice margins and centering on bright paper, Extremely Fine, a scarce sound and centered Mint N.H. example of this issue, with 1994 P.F. and 2013 P.S.E. certificates (VF-XF 85; unpriced in SMQ in Mint N.H. condition), only three stamps have been graded higher, Scott Retail as hinged..... 400.00



145



146

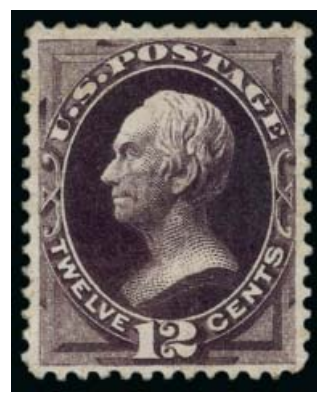
- 146 ★ **7c Orange Vermilion (160).** Original gum, intense color, essentially perfect centering with huge margins
EXTREMELY FINE GEM. AN OUTSTANDING ORIGINAL-GUM EXAMPLE OF THE 1873 7-CENT CONTINENTAL BANK NOTE PRINTING. A BEAUTIFUL STAMP.
Ex Golin. With 1991 P.F. certificate 1,150.00



147



148

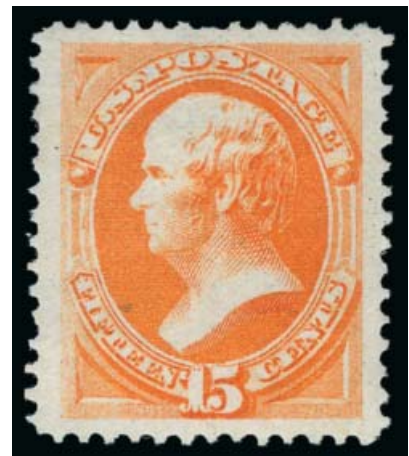


149

- 147 ★ **10c Brown (161).** Original gum, lightly hinged, rich color and detailed impression, three wide margins, Very Fine and choice, with 2013 P.F. certificate..... 1,000.00
- 148 ★ **10c Brown (161).** Original gum, wide margins, deep rich color, Extremely Fine, with 1987 and 1999 P.F. certificates 1,000.00
- 149 ★ **12c Blackish Violet (162).** Unused, regummed or significantly redistributed original gum, choice centering, deep color, Extremely Fine, with 1984 P.F. certificate as original gum, Scott Retail as no gum 800.00

- 150 ★ **15c Yellow Orange (163).** Original gum, Jumbo margins and choice centering, vibrant color on bright white paper, insignificant nibbed perf at top
EXTREMELY FINE. A STUNNING JUMBO-MARGINED ORIGINAL-GUM EXAMPLE OF THE 15-CENT 1873 CONTINENTAL BANK NOTE ISSUE.

From our 1992 Rarities sale and ex Floyd. With 1991 P.F. certificate..... 2,500.00



150



151

- 151 ★ **30c Gray Black (165).** Disturbed original gum, Jumbo margins, detailed impression and crisp shade
EXTREMELY FINE. A RARE WIDE-MARGINED ORIGINAL-GUM EXAMPLE OF THE 30-CENT CONTINENTAL PRINTING. A BEAUTIFUL AND ELUSIVE STAMP.

As discussed in the description for the 30c National printing in this sale (lots 125 and 140), the 30c Continental is exceedingly difficult to find in original gum condition with choice margins and centering. Blocks have always been rare — for example, Caspary did not have one; Lilly had one well-centered block of four and an off-center block of six — which means that singles could not be harvested from multiples.

With 1976 P.F. certificate 3,250.00

- 152 ★ **90c Rose Carmine (166).** Original gum, lightly hinged, almost perfect centering on fresh white paper

EXTREMELY FINE ORIGINAL-GUM EXAMPLE OF THE 90-CENT CONTINENTAL ISSUE.

Ex Hillmer. With 1987 P.F. certificate..... 2,250.00



- 153 ★ **2c Vermilion (178).** Original gum, brilliant color, well-proportioned margins, Very Fine and choice, with 1998 P.F. certificate 350.00

- 154 ★ **5c Blue (179).** Original gum, almost perfectly centered with wide margins all around, deep rich color on crisp paper

EXTREMELY FINE EXAMPLE OF THE 1875 5-CENT TAYLOR CONTINENTAL PRINTING. AN EXCEPTIONALLY DIFFICULT STAMP TO FIND IN SUCH CHOICE ORIGINAL-GUM CONDITION.

The addition of a 5c value was made necessary by the creation of the General Post Union in 1874, which specified a rate of 5c between member countries, effective July 1, 1875. Of the two regular-issue 5c Taylor stamps — Scott 179 (Continental) and Scott 185 (American) — the former is much more difficult to obtain in this superior original-gum condition. The P.S.E. Population Report does not record an example above the grade of 90J and SMQ does not even price the stamp above the grade of 90.

With 1999 P.F. certificate 700.00



1879-88 AMERICAN BANK NOTE COMPANY ISSUES



155



156



157

- 155 ★★ **1c Dark Ultramarine (182).** Mint N.H., beautiful deep color on fresh paper, well-proportioned margins, Extremely Fine, with 1984 and 1994 P.F. certificates..... 775.00
- 156 ★★ **2c Vermilion (183).** Mint N.H., wide margins all around, brilliant color, bright and fresh, Extremely Fine, with 1998 P.F. certificate. 370.00
- 157 ★★ **3c Green (184).** Mint N.H., almost perfect centering, rich color, Extremely Fine Gem, with 1997 P.F. certificate 330.00
- 158 ★ **5c Blue (185).** Original gum, lightly hinged, huge margins and outstanding centering, intense shade, Extremely Fine, with 1999 P.F. certificate. 450.00



158



159

- 159 ★ **6c Pink (186).** Original gum, lightly hinged, well-centered with beautifully balanced margins, unusually fresh color for this stamp
EXTREMELY FINE GEM. A SUPERB EXAMPLE OF THE 1879 6-CENT AMERICAN BANK NOTE COMPANY ISSUE.
With 2000 P.F. certificate 900.00

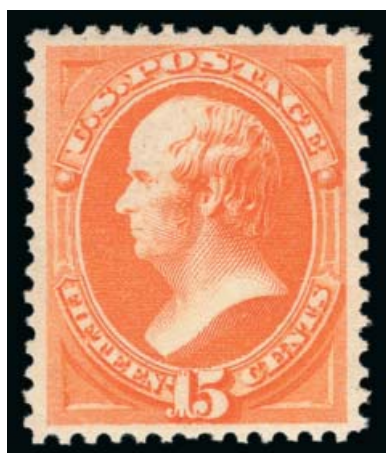
- 160 ★ **10c Brown, Without Secret Mark (187).** Original gum, wide to Jumbo margins, deep rich color

EXTREMELY FINE. A WIDE-MARGINED ORIGINAL-GUM EXAMPLE OF THE 10-CENT 1879 AMERICAN BANK NOTE COMPANY ISSUE, WITHOUT SECRET MARK.

This is a striking "tall" stamp. With 1975 and 2000 P.F. certificates 3,250.00

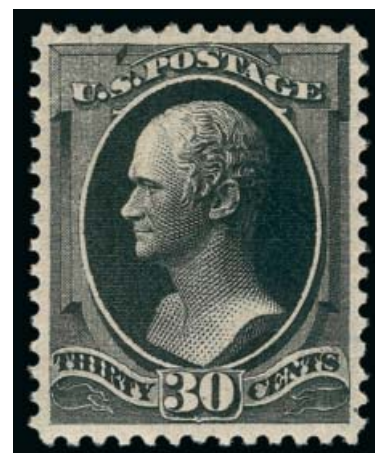


160



161

- 161 ★★ **15c Red Orange (189).** Mint N.H., balanced margins, vivid color on bright white paper, Extremely Fine, with 1997 P.F. certificate 675.00

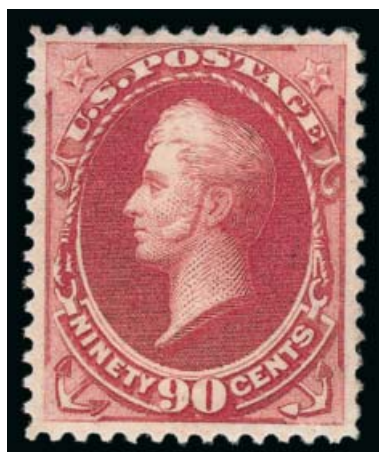


162

- 162 ★ **30c Full Black (190).** Original gum, barest trace of hinging at bottom right, wonderfully well-centered, intense shade and clear impression

EXTREMELY FINE GEM. A FRESH AND CHOICE LIGHTLY-HINGED EXAMPLE OF THE 1879 30-CENT AMERICAN BANK NOTE COMPANY ISSUE.

With 1998 and 2004 P.F. certificates 900.00



163

- 163 ★ **90c Carmine (191).** Original gum, choice centering with well-proportioned margins, rich color and proof-like impression

EXTREMELY FINE ORIGINAL-GUM EXAMPLE OF THE 90-CENT 1879 AMERICAN BANK NOTE ISSUE.

With 1988 P.F. certificate 2,000.00



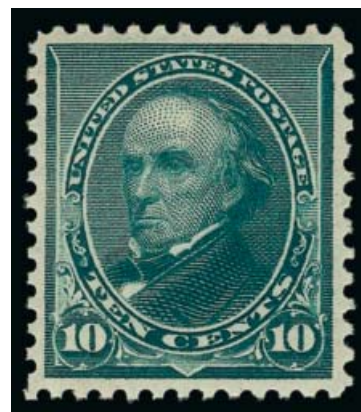
- 164 ★ **5c Yellow Brown (205).** Original gum, lightly hinged, choice centering and wide margins, rich color, Extremely Fine, with 1985 P.F. certificate..... 250.00
- 165 ★★ **1c Gray Blue (206).** Mint N.H., wide margins and perfect centering, fresh color, Extremely Fine Gem, a superb stamp, with 2004 P.F. certificate..... 225.00
- 166 ★★ **3c Blue Green (207).** Mint N.H. with couple small slightly darker areas of gum, intense shade, well-proportioned margins, Very Fine and choice, with 1998 P.F. certificate..... 240.00
- 167 ★ **6c Rose (208).** Original gum, brilliant color in the Rose shade, balanced margins, fresh and Extremely Fine, a beautiful stamp, ex Floyd, with 1995 P.F. certificate..... 775.00
- 168 ★★ **10c Brown (209).** Mint N.H., exceptional depth of color and proof-like impression, choice centering with wide margins, Extremely Fine, with copy of 1996 P.F. certificate for block of six, this the bottom center stamp 475.00
- 169 ★★ **2c Red Brown (210).** Mint N.H., rich color on bright white paper, post-office fresh and Extremely Fine, with 1999 P.F. certificate 130.00
- 170 ★★ **4c Blue Green (211).** Mint N.H., rich color, well-proportioned margins, Extremely Fine, with 1998 P.F. certificate..... 950.00
- 171 ★★ **1c-3c 1887 Issue (212-214).** Mint N.H., each with choice centering and fresh bright colors, 3c tiny natural inclusion in right margin, fresh and Extremely Fine trio, each with 1990's P.F. certificate (3c for block of four)..... **(Photo Ex)** 620.00
- 172 ★★ **4c Carmine (215).** Mint N.H., fresh bright color, wide margins and well-centered, Very Fine and choice, with 1995 P.F. certificate..... 600.00
- 173 ★ **5c Indigo (216).** Original gum, not hinged but couple tiny gum disturbances, one causes a thin speck, wide margins, rich color, Extremely Fine, with 1994 P.F. certificate as "Genuine, Never Hinged"..... 225.00
- 174 ★★ **30c Orange Brown (217).** Mint N.H., vibrant color on fresh paper, wide and nicely balanced margins, Very Fine and choice, with 1997 P.F. certificate..... 1,000.00
- 175 ★ **90c Purple (218).** Original gum, well-centered, deep rich color on fresh paper, Very Fine and choice, with 1969 and 1998 P.F. certificates 900.00

1890-93 ISSUE



- 176 ★★ **1c Dull Blue, 2c Carmine (219, 220).** Mint N.H., both with fresh colors and well-centered, the 2c particularly so, 1c Very Fine and choice and with 1996 P.F. certificate, 2c Extremely Fine and with 1991 P.S.E. certificate **(Photo Ex)** 125.00
- 177 ★★ **2c Lake (219D).** Mint N.H., deep rich color, balanced margins, Very Fine and choice..... 600.00
- 178 ★★ **3c Purple (221).** Mint N.H., wide margins and wonderfully well-centered, bright fresh color, Extremely Fine, with 1996 P.F. certificate..... 200.00
- 179 ★★ **4c Dark Brown (222).** Mint N.H., wonderful depth of color on crisp paper, wide margins, Extremely Fine, with 1995 P.F. certificate (showing selvage at top)..... 275.00
- 180 ★★ **5c Chocolate (223).** Mint N.H., deep rich color on post-office fresh paper, wide margins, Very Fine and choice, with 2004 P.F. certificate..... 220.00
- 181 ★★ **6c Brown Red (224).** Mint N.H., vibrant color, choice balanced margins, Extremely Fine, with 1996 P.F. certificate 200.00
- 182 ★★ **8c Lilac (225).** Mint N.H., Jumbo margins, fresh and crisp, Extremely Fine, with 1994 P.F. certificate (showing selvage at top)..... 150.00

- 183 ★★ **10c Green (226).** Mint N.H., choice centering with balanced margins, rich color
EXTREMELY FINE GEM. A BEAUTIFUL MINT NEVER-HINGED EXAMPLE OF THE 10-CENT 1890 ISSUE.
With 1995 P.F. certificate for block 525.00



183



184



185



186

- 184 ★★ **15c Indigo (227)**. Incredible depth of color on bright paper, Jumbo margins at sides and wide at top and bottom, well-centered, Extremely Fine, a beautiful stamp, with 1998 P.F. certificate 675.00
- 185 ★ **30c Black (228)**. Original gum, lightly hinged, wide margins and essentially perfect centering, Extremely Fine Gem, a superb stamp, with 1996 P.F. certificate 350.00
- 186 ★ **90c Orange (229)**. Original gum, barest trace of hinging in bottom corner, vibrant color on crisp paper, wide to huge margins, Extremely Fine, a striking stamp rarely seen with these dimensions, with 1994 and 2004 P.F. certificates..... 475.00

COLUMBIAN ISSUE



187EX



188

- 187 ★ **1c-8c Columbian (230-232, 234-236)**. 2c and 3c Mint N.H., others barest trace of hinging, several appear Mint N.H. at a glance, wide margins and well-centered, Very Fine and choice-Extremely Fine, four P.F. certificates accompany incl. "original gum genuine" (meaning Mint N.H.) for 3c, 6c (for block) and 8c **(Photo Ex)** 324.00
- 188 ★★ **4c Columbian (233)**. Mint N.H., outstanding centering with wide margins, pretty shade on post-office fresh paper, Extremely Fine Gem, with 1992 P.F. certificate 165.00
- 189 ★★ **10c Columbian (237)**. Mint N.H. with crackly white gum, vertical line of stray printer's ink on back, brilliant bright paper and detailed impression, wide and balanced margins, Extremely Fine, with copy of 1990 P.F. certificate for pair 300.00
- 190 ★★ **15c Columbian (238)**. Mint N.H., wide nicely balanced margins, rich color on crisp paper, Extremely Fine, with 2004 P.S.E. certificate (XF 90; SMQ \$1,350.00) 700.00



189



190



191



192



193

- 191 ★★ **30c Columbian (239).** Mint N.H., vibrant color on bright white paper, Extremely Fine, with 1990 P.F. certificate 750.00
- 192 ★ **50c Columbian (240).** Original gum, lightly hinged, wide and well-proportioned margins, intense shade, Very Fine and choice, with 1989 P.F. certificate 500.00
- 193 ★ **\$1.00 Columbian (241).** Original gum, barest trace of hinging, radiant color, well-balanced margins, Very Fine and choice, with 1981 and 2013 P.F. certificates .. 1,100.00



194

- 194 ★ **\$2.00 Columbian (242).** Original gum, lightly hinged, rich color, choice centering
EXTREMELY FINE ORIGINAL-GUM EXAMPLE OF THE \$2.00 COLUMBIAN ISSUE.
With 1986 P.F. certificate..... 1,150.00



195

- 195 ★ **\$3.00 Olive Green, Columbian (243a).** Barely disturbed original gum, well-centered, deep color in the Olive Green sub-shade, Very Fine and choice, with 1992 P.F. certificate for block of four, this the lower right stamp..... 1,600.00



196

- 196 ★ **\$4.00 Columbian (244).** Original gum, lightly hinged, vivid color on fresh paper, near perfect centering

EXTREMELY FINE GEM. A SUPERB ORIGINAL-GUM EXAMPLE OF THE \$4.00 COLUMBIAN ISSUE.

With 1986 P.F. and 2013 P.S.E. certificates (OGph, XF-Superb 95; SMQ \$6,300.00) 2,100.00

- 197 ★ **\$5.00 Columbian (245).** Original gum, single hinge mark at top, uncommonly wide margins all around, essentially Jumbo proportions and well-centered, intense shade
EXTREMELY FINE. AMONG THE WIDEST-MARGINED EXAMPLES OF THE \$5.00 COLUMBIAN WE HAVE SEEN. A HUGE AND STRIKING STAMP.

With 2006 P.S.E. certificate... 2,500.00



197



198

- 198 ★ **\$5.00 Columbian (245).** Original gum, lightly hinged, extra wide margins, bright shade, Very Fine and choice, with 1985 P.F. certificate..... 2,500.00

1894-98 BUREAU ISSUE



- 199 ★★ **1c Ultramarine (246).** Mint N.H., choice balanced margins, fresh color on bright white paper, Extremely Fine, with 2004 P.F. and 2013 P.S.E. certificates (VF-XF 85; SMQ \$150.00), deserving of a grade of at least 90 in our opinion 90.00
- 200 ★★ **2c Carmine Lake, Ty. I (249).** Mint N.H., brilliant color on post-office fresh paper, well-balanced margins, Extremely Fine, with 1999, 2004 P.F. and 2013 P.S.E. certificates (XF 90; SMQ \$1,200.00) 450.00
- 201 ★ **2c Carmine, Ty. II (251).** Original gum, barest trace of hinging, bright color, well-centered, Very Fine and choice, with 1986 P.F. certificate as “unused OG, genuine” (meaning Mint N.H.) 375.00
- 202 ★★ **2c Carmine, Ty. III (252).** Mint N.H., vibrant color on fresh paper, choice centering, Extremely Fine, with 1997 P.F. certificate for block 375.00
- 203 ★★ **4c Dark Brown (254).** Mint N.H., Jumbo margins and attractive centering, deep rich color, Extremely Fine, with 2005 P.S.E. certificate (VF-XF 85 Jumbo; SMQ \$750.00 as 85, \$1,150.00 as 90) 525.00
- 204 ★★ **5c Chocolate (255).** Mint N.H. with white crackly gum, wide and well-proportioned margins, beautiful bright color, Extremely Fine Gem, with 1997 P.F. certificate... 325.00
- 205 ★ **6c Dull Brown (256).** Original gum, barely hinged, rich color on bright white paper, Extremely Fine, with 1990 P.F. certificate as “unused OG, genuine” (meaning Mint N.H.) 160.00
- 206 ★★ **8c Violet Brown (257).** Mint N.H., wonderfully well-centered, rich color on crisp paper, Extremely Fine, with 1999 P.F. certificate 475.00
- 207 ★ **10c Dark Green (258).** Original gum. Jumbo margins, intense shade on bright paper, Extremely Fine, with 1986 and 1996 P.F. certificates 300.00



208

- 208 ★★ **15c Dark Blue (259).** Mint N.H., deep rich color on post-office fresh paper, choice balanced margins

EXTREMELY FINE. A BEAUTIFUL MINT NEVER-HINGED EXAMPLE OF THE 1894 15-CENT UNWATERMARKED BUREAU ISSUE. SCARCE IN SUCH PRISTINE CONDITION.

Ex Killien. With 1993 P.F. (for block of four) and 2006 P.S.E. certificates (XF 90; SMQ \$2,500.00). Only two stamps have been graded higher and only two others share this grade — statistics which have not changed in more than three years..... 900.00

- 209 ★★ **50c Orange (260).** Mint N.H. with bottom **plate no. selvage**, huge top and bottom margins, well-centered, rich color which shows some slight oxidation at bottom, perfs along selvage folded but intact, Very Fine and choice, a scarce Mint N.H. plate number single of the 50c Unwatermarked Bureau Issue, with 1998 P.F. certificate for imprint and plate number strip of three..... 1,500.00



209



210

- 210 ★ **\$1.00 Black (261).** Original gum, wide margins and outstanding centering, deep shade on crisp paper, Extremely Fine, a beautiful stamp, with 1979 and 1999 P.F. certificates 1,000.00

- 211 ★ **\$1.00 Black, Ty. II (261A).** Original gum, crisp shade and impression on bright paper, well-balanced margins
EXTREMELY FINE ORIGINAL-GUM EXAMPLE OF THE 1894 \$1.00 TYPE II UNWATERMARKED BUREAU ISSUE.
With 1998 P.F. certificate..... 2,100.00



211



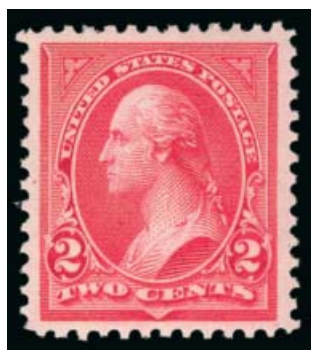
212

- 212 ★ **\$2.00 Bright Blue (262).** Original gum, lightly hinged, bright vivid color, beautiful margins and centering
 VERY FINE AND CHOICE ORIGINAL-GUM EXAMPLE OF THE 1894 \$2.00 UNWATERMARKED BUREAU ISSUE.
 With 1997 P.S.E. certificate..... 2,750.00



213

- 213 ★ **\$5.00 Dark Green (263).** Original gum, lightly hinged, rich color and detailed impression, wide and balanced margins
 EXTREMELY FINE. A BEAUTIFUL ORIGINAL-GUM EXAMPLE OF THE 1894 \$5.00 UNWATERMARKED BUREAU ISSUE.
 With 1979 and 2013 P.F. certificates. 4,500.00

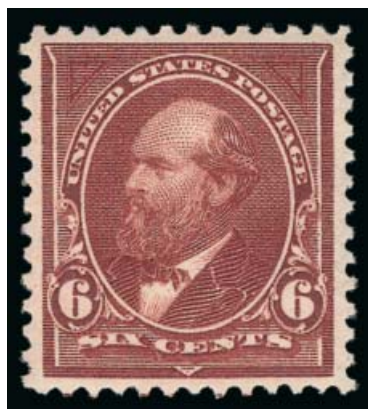


214



215

- 214 ★★ **2c Carmine, Ty. II (266)**. Mint N.H., Jumbo margins and choice centering, vibrant color on post-office fresh paper, Extremely Fine, with 2004 P.F. certificate 100.00
- 215 ★ **4c Dark Brown (269)**. Original gum, tiny trace of hinging in one corner, essentially perfect centering with wide margins, Extremely Fine Gem, with 1992 P.F. certificate as "O.G., Genuine" (meaning Mint N.H.)..... 42.50

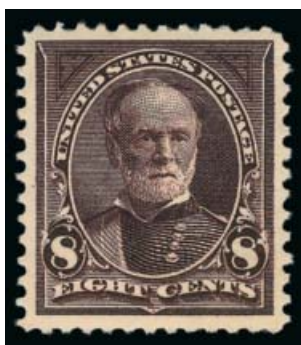


216

- 216 ★★ **6c Dull Brown (271)**. Mint N.H., wide margins and essentially perfect centering, proof-like impression on post-office fresh paper

EXTREMELY FINE GEM. A SUPERB MINT NEVER-HINGED EXAMPLE OF THE 1895 6-CENT WATERMARKED BUREAU ISSUE.

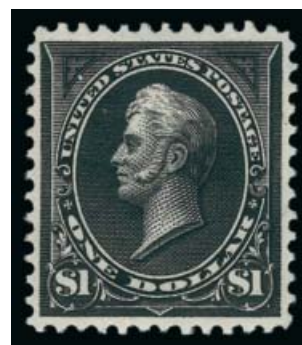
With 1996 P.F. and 2013 P.S.E. certificates (XF-Superb 95; SMQ \$4,000.00). Only one Mint N.H. stamp has graded higher (at 95J)..... 360.00



217



218



219

- 217 ★★ **8c Violet Brown (272)**. Mint N.H., wide margins and choice centering, clear impression, fresh color, Extremely Fine, with 2004 P.F. certificate..... 210.00
- 218 ★★ **50c Orange (275)**. Mint N.H., warm color, balanced margins, slightly nibbed perf at right, Very Fine appearance, with 1993 P.F. certificate for block of four..... 775.00
- 219 ★ **\$1.00 Black, Ty. I (276)**. Original gum, lightly hinged, balanced margins, deep shade, Extremely Fine, with 1992 P.F. certificate..... 600.00

- 220 ★ **\$1.00 Black, Ty. II (276A).** Original gum, wide margins and beautiful centering, Extremely Fine, with 1996 P.F. certificate..... 1,250.00



220



221

- 221 ★ **\$2.00 Bright Blue (277).** Original gum, barely hinged, nicely balanced margins, rich color, Very Fine and choice, with 1991 P.F. certificate for block of four which calls only the top stamps hinged, this the bottom right stamp..... 950.00

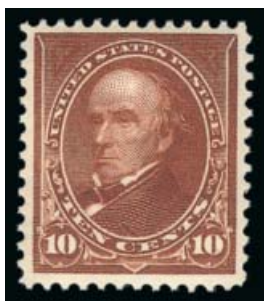


222

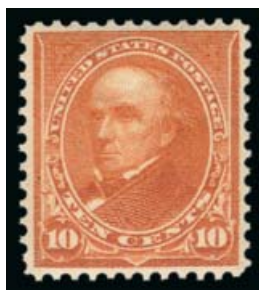
- 222 ★★ **\$5.00 Dark Green (278).** Mint N.H., deep rich color and sharp proof-like impression, well-balanced margins.

EXTREMELY FINE. A DESIRABLE SOUND AND CENTERED MINT NEVER-HINGED EXAMPLE OF THE \$5.00 1895 WATERMARKED BUREAU ISSUE.

This stamp was broken from a block of four sometime before 2004. Its partner to its left, with similar centering, realized \$15,500 in our 2004 Rarities sale. With copy of 1984 P.F. certificate for block of four, this the top right stamp. 6,000.00



223



224



225

- 223 ★★ **10c Brown, Ty. I (282C).** Mint N.H., wonderful depth of color on bright paper, nice margins and centering, Very Fine and choice, with 1992 P.F. certificate 525.00
- 224 ★★ **10c Orange Brown, Ty. II (283).** Mint N.H., vibrant color on crisp paper, choice margins and centering, Extremely Fine, with 1997 P.F. and 2013 P.S.E. certificates (VF-XF 85; SMQ \$675.00)..... 450.00
- 225 ★★ **15c Olive Green (284).** Mint N.H., intense color on bright paper, wide margins and well-centered, Very Fine and choice, with copy of 1996 P.F. certificate for block 500.00

TRANS-MISSISSIPPI ISSUE



226



227

- 226 ★★ **8c Trans-Mississippi (289).** Mint N.H., wide margins, rich color, Very Fine and choice, with 1993 P.F. certificate for pair 450.00
- 227 ★★ **10c Trans-Mississippi (290).** Mint N.H., wide margins and attractive centering, bright shade and crisp impression, Extremely Fine, with 1992 P.F. certificate showing selva at right 450.00



228

- 228 ★★ **50c Trans-Mississippi (291).** Mint N.H., rich color, wide margins, fresh, Very Fine and choice, with 1991 P.S.E. certificate..... 1,900.00



229

229 ★★ **\$1.00 Trans-Mississippi (292).** Mint N.H., detailed impression and deep shade, beautiful wide margins and choice centering

EXTREMELY FINE. AN OUTSTANDING MINT NEVER-HINGED EXAMPLE OF THE \$1.00 TRANS-MISSISSIPPI ISSUE IN A WONDERFUL STATE OF FRESHNESS. THIS IS WIDELY REGARDED AS THE MOST BEAUTIFUL UNITED STATES COMMEMORATIVE STAMP.

The \$1.00 Trans-Mississippi is supposed to portray cattle in the American West and is labelled "Western Cattle In Storm" at bottom. However, the subject of the original painting by J.A. MacWhirter, who specialized in romantic landscapes and first exhibited at the Royal Scottish Academy at the age of 14, was of cattle in the West Highlands of Scotland.

With 1993 P.F. certificate..... 3,500.00



230

230 **\$2.00 Trans-Mississippi (293).** Original gum, barest trace of hinging, wonderful depth of color on fresh paper, beautifully balanced margins

EXTREMELY FINE BARELY HINGED EXAMPLE OF THE \$2.00 TRANS-MISSISSIPPI ISSUE.

With 1984 and 2013 P.F. certificates 1,900.00

PAN-AMERICAN AND 1902-08 ISSUES



231



232



233

- 231 ★★ **10c Pan-American (299).** Mint N.H., selvage at top, choice margins and centering for this tightly-spaced issue, rich colors, natural inclusion does not show thru on an album page, Extremely Fine Gem, with 1992 P.F. certificate 325.00
- 232 ★★ **15c Olive Green (309).** Mint N.H., deep rich color, well-proportioned margins, Very Fine and choice, with 1991 P.F. certificate..... 475.00
- 233 ★★ **50c Orange (310).** Mint N.H., vivid color on crisp paper, balanced margins, tiny natural inclusion at lower right, Extremely Fine, with copy of 1992 P.F. certificate for block 1,200.00

- 234 ★★ **\$1.00 Black (311).** Mint N.H., nicely balanced margins, detailed impression, bright and fresh
VERY FINE AND CHOICE MINT NEVER-HINGED EXAMPLE
OF THE \$1.00 1902 ISSUE.
With 1981 P.F. certificate..... 1,900.00



234



235

- 235 ★★ **\$2.00 Dark Blue (312).** Mint N.H., wide and beautifully balanced margins, fresh color and paper, detailed impression
EXTREMELY FINE MINT NEVER-HINGED EXAMPLE
OF THE \$2.00 1902 ISSUE.
With 1980 P.F. certificate..... 2,750.00

- 236 ★ **\$5.00 Dark Green (313).** Lightly hinged, wonderful depth of color on bright paper, choice centering with wide margins
EXTREMELY FINE AND FRESH ORIGINAL-GUM EXAMPLE
OF THE \$5.00 1902 ISSUE.
With 1989 P.F. certificate 2,250.00



236



237

237 **4c Brown, Imperforate, Schermack Ty. III (314A).** Large margins to just clear of design at bottom left, full Schermack perforations on right side, part perforations at left, deep rich color, wavy-line cancel, two tiny toned specks in margin at bottom

FINE. A RARE EXAMPLE OF THE 4-CENT 1908 IMPERFORATE WITH SCHERMACK PERFORATIONS, SCOTT 314A. ONLY 31 USED SINGLES ARE CONTAINED IN OUR CENSUS.

With the rising popularity of vending and affixing machines, the Bureau of Engraving and Printing received numerous requests from manufacturers for supplies of imperforate stamps, which could then be privately perforated to conform to each firm's machine. In May 1908, a supply of 25 sheets (400 stamps per sheet) of the 4c 1902 Issue, without perforations, was delivered to the Schermack Mailing Machine Co. in Detroit. The entire supply was cut into coils with Schermack Type III perforations, designed for the firm's patented affixing machine and delivered to the Winfield Printing Co. for use on mass mailings of advertising material. Approximately 6,000 were used on a mailing for Hamilton Carhartt Manufacturer, and almost all of the 4,000 balance were used on a mailing for Burroughs Adding Machine Co.

Our recently-completed census of Scott 314A incorporates the records of the Philatelic Foundation, the Levi records (which represents over 40 years of auction sales) and our own computerized sales history, and is available at our website at <http://www.siegelauctions.com/dynamic/census/314A/314A.pdf>. The census reveals a startling fact — there are only 31 used singles (two on piece), a used strip of three and three covers (one of which bears a strip of three), for a total of 39 used stamps. Of these, most have faults.

From our 1973 Rarities sale. With 1972 P.F. certificate..... 50,000.00



238

238 ★★ **5c Blue, Imperforate (315).** Mint N.H., large even margins, Extremely Fine, with 2004 P.F. certificate 650.00



239

239 ★ **5c Blue, Coil (317).** Pair, lightly hinged, deep rich color and proof-like impression
 FRESH AND VERY FINE PAIR OF THE RARE 5-CENT 1908 VERTICAL COIL.
 The 5c 1908 Coil stamps, which were stripped by hand, are almost always strongly centered to one side.
 With 1990 P.S.E. and 1975 and 2006 P.F. certificates. 17,500.00

LOUISIANA PURCHASE AND JAMESTOWN ISSUES



240EX



241EX

- 240 ★★ **1c, 3c-10c Louisiana Purchase (323, 325-327).** Full set less the 2c value, Mint N.H., nice centering and margins, exceptionally fresh throughout, Very Fine and choice, each with 2004 P.F. certificate.....(Photo Ex) 780.00
- 241 ★★ **1c-5c Jamestown (328-330).** Mint N.H. set, nice margins and centering throughout, bright colors, Very Fine and choice, with 2004, 2004 and 1991 P.F. certificates respectively(Photo Ex) 450.00

1908-12 ISSUES



242



243



244

- 242 ★★ **6c Red Orange (336).** Mint N.H., vivid color, wide and balanced margins, Extremely Fine, with 2004 P.F. certificate 150.00
- 243 ★★ **15c Pale Ultramarine (340).** Mint N.H., bright color on post-office fresh paper, balanced margins, Extremely Fine, with 2004 P.F. certificate..... 150.00
- 244 ★ **50c Violet (341).** Wide margins and attractive centering, deep rich color, Very Fine and choice, with 2004 P.F. certificate 300.00
- 245 ★★ **\$1.00 Violet Brown (342).** Mint N.H., well-balanced margins, deep shade, fresh and Very Fine, with 1981 P.F. certificate 1,150.00



245



- 246 ★★ **2c Carmine, Coil (349).** Mint N.H., rich color and proof-like impression, gorgeous centering, Extremely Fine Gem, with 1996 P.S.E. certificate..... 210.00
- 247 ★★ **4c Orange Brown, Coil (350).** Mint N.H., intense shade and impression, well-proportioned margins, Extremely Fine, with 1992 P.F. certificate 325.00
- 248 ★★ **5c Blue, Coil (351).** Mint N.H., deep rich color, Very Fine and choice, with 1993 and 2004 P.F. certificates 325.00
- 249 ★ **1c Green, Coil (352).** Single hinge mark, intense shade and impression, well-balanced margins, Extremely Fine, with 1981 P.F. certificate 95.00
- 250 ★ **4c Orange Brown, Coil (354).** Lightly hinged, bright shade, wide and balanced margins, Extremely Fine, with 2004 P.F. certificate..... 190.00
- 251 ★★ **5c Blue, Coil (355).** Mint N.H., rich color, fresh and Very Fine, with 2005 P.S.E. certificate..... 475.00



252

- 252 ★ **10c Yellow, Coil (356).** Lightly hinged, vibrant color, well-proportioned margins
 VERY FINE AND CHOICE. AN ATTRACTIVE EXAMPLE OF
 THE 1909 10-CENT HORIZONTAL COIL, SCOTT 356.
 With 1996 P.F. certificate. 3,000.00



- 253 ★★ **2c Lincoln, Bluish (369).** Mint N.H., wide margins and near perfect centering, rich color on deeply blued paper, Extremely Fine Gem, with 2006 P.F. certificate (XF-Superb 95). 320.00
- 254 ★★ **2c Carmine (375).** Mint N.H., brilliant color on post-office fresh paper, Jumbo margins and near mathematically perfect centering, Extremely Fine Gem, a superb stamp, with 1996 P.F. and 2006 P.S.E. certificates (Superb 98 Jumbo; unpriced in SMQ above the grade of 98, SMQ \$450.00 as 98), this is one of only five to achieve this grade, which is the highest awarded 15.00
- 255 ★★ **3c Lilac (376 var).** Mint N.H., pretty shade, wide and balanced margins, Extremely Fine example of this shade variety, with 2004 P.F. certificate` 55.00
- 256 (★) **6c Red Orange (379).** Unused (regummed), mathematically perfect centering with Jumbo margins, vivid color, Extremely Fine Gem, with 2004 P.F. certificate as Mint N.H., with 2013 P.S.E. certificate as regummed (Gem 100 Jumbo), Scott Retail as original gum..... 35.00
- 257 ★★ **8c Olive Green (380).** Mint N.H., rich color, Very Fine and choice, with 2001 and 2004 P.F. certificates..... 225.00
- 258 ★★ **10c Yellow (381).** Mint N.H., vibrant color, wide and balanced margins, long and full perforations, Very Fine and choice, with 1993 P.F. certificate..... 220.00
- 259 ★ **1c Green, Coil (387).** Lightly hinged, rich color, Very Fine and choice, with 1980 and 1987 P.F. certificates..... 190.00

- 260 ★★ **2c Carmine, Coil (388).** Mint N.H., brilliant color, detailed impression
VERY FINE AND CHOICE MINT NEVER-HINGED EXAMPLE
OF THE SCARCE 2-CENT HORIZONTAL COIL, SCOTT 388.
With 1993 P.F. certificate for pair 3,250.00



260



261

261

3c Deep Violet, Orangeburg Coil (389). Deep rich color and sharp proof-like impression, neat strike of wavy-line machine cancel

FINE EXAMPLE OF THE RARE 3-CENT ORANGEBURG COIL.

The Orangeburg coil was made by the Post Office Department in 1911, specifically for use by the Bell Pharmaceutical Company. The 3c coil stamps were used to send samples of their products to physicians. Due to the quantity of mail, they were put through the first-class cancelling machine at Orangeburg, New York. The Orangeburg coil stamps' use on third-class mail, and the fact that philatelists were generally unaware of their production accounts for their rarity. Many have small faults such as corner creases or small tears.

With 1984 P.F. certificate 10,500.00



262

263

264

265

266

- 262 ★★ **2c Carmine, Coil (391).** Mint N.H., radiant color, beautiful centering with wide margins, Extremely Fine Gem, with 1996 P.S.E. certificate for strip of four..... 90.00
- 263 ★★ **3c Deep Violet, Coil (394).** Mint N.H., intense shade and impression, unusually wide and balanced margins, Extremely Fine, with 1993 P.F. certificate for pair 135.00

PANAMA-PACIFIC ISSUE

- 264 ★★ **1c Panama-Pacific (397).** Mint N.H., wide margins we would describe as Jumbo, bright color, choice centering, Extremely Fine Gem, with 2004 P.F. and 2013 P.S.E. certificates (XF-Superb 95; SMQ \$210.00)..... 40.00
- 265 ★★ **10c Orange, Panama-Pacific (400A).** Mint N.H., vibrant color, wide margins, Very Fine and choice, with copy of 1991 P.F. certificate for block 400.00
- 266 ★★ **5c Panama-Pacific, Perf 10 (403).** Mint N.H., intense shade and impression, well-balanced margins, fresh and Extremely Fine, with 1993 P.F. certificate..... 390.00

- 267 ★★ **10c Panama-Pacific, Perf 10 (404).** Mint N.H., vibrant color, well-balanced margins, long and full perforations

EXTREMELY FINE. A BEAUTIFUL MINT NEVER-HINGED EXAMPLE OF THE 10-CENT PERF 10 PANAMA-PACIFIC ISSUE.

With 1993 P.F. certificate..... 1,700.00



267

1912-22 AND LATER ISSUES



268

- 268 ★★ **9c Salmon Red (415).** Mint N.H., radiant color on bright paper, beautiful centering, Extremely Fine Gem, with 1994 P.F. certificate 120.00

- 269 ★★ **10c Orange Yellow (416).** Mint N.H., perfect centering with wide margins, vivid color on post-office fresh paper, Extremely Fine Gem, a superb stamp, with 2004 P.F. and 2013 P.S.E. certificates (Superb 98; SMQ \$2,400.00), only two have graded higher (at 98J) and only two others share this grade 100.00



269



270

- 270 ★★ **15c Gray (418).** Mint N.H., wide and balanced margins, intense shade, Extremely Fine Gem, with 1991 P.F. and 2013 P.S.E. certificates (XF-Superb 95; SMQ \$1,100.00) 190.00



271



272

- 271 ★★ **20c Ultramarine (419).** Mint N.H., rich color on bright paper, well-balanced margins, Extremely Fine, a pretty stamp, with 1991 P.F. certificate 400.00
- 272 ★★ **30c Orange Red (420).** Mint N.H., vibrant color on bright paper, Very Fine and choice, with copy of 1982 P.F. certificate for block 250.00



273

- 273 ★★ **50c Violet (421).** Mint N.H., brilliant color on bright white paper, choice centering with wide margins

EXTREMELY FINE. AN OUTSTANDING MINT NEVER-HINGED EXAMPLE OF THE 1914 50-CENT PERF 12 SINGLE-LINE WATERMARKED ISSUE.

This is a difficult stamp to find with such choice balanced margins, especially in Mint N.H. condition.

From our 2002 Rarities sale. With 1992 and 1997 P.F. and 2013 P.S.E. certificates (XF 90; SMQ \$1,800.00)..... 800.00



274



275

- 274 ★★ **50c Violet (422).** Mint N.H., pretty shade, wide margins, Very Fine, with 1996 P.F. certificate..... 525.00
- 275 ★★ **\$1.00 Violet Brown (423).** Mint N.H., deep rich color and sharp proof-like impression, well-proportioned margins, Very Fine and choice, with 1995 P.F. certificate..... 1,050.00



276



277

- 276 ★★ **15c Gray (437).** Mint N.H., rich color on bright paper, fresh and Very Fine, with 1995 P.F. certificate 280.00
- 277 ★★ **30c Orange Red (439).** Mint N.H., vibrant color on bright paper, long and full perforations, Very Fine, with copy of 1989 P.F. certificate for block of four 500.00

- 278 ★★ **50c Violet (440).** Mint N.H., radiant color, gorgeous centering with Jumbo margins all around

EXTREMELY FINE GEM. A SUPERB MINT NEVER-HINGED EXAMPLE OF THE 50-CENT PERF 10 WATERMARKED FRANKLIN, SCOTT 440. A DIFFICULT STAMP TO FIND IN THE HIGHER GRADES, THIS HAS BEEN GRADED XF-SUPERB 95 JUMBO BY P.S.E. — A STAMP OF GREAT BEAUTY.

With 1999 and 2008 P.S.E. certificates (XF-Superb 95 Jumbo; SMQ \$5,750.00 as 95, \$13,000.00 as 98). This is the only example awarded this grade, and only seven have graded higher 1,100.00



278



279



280

- 279 ★ **50c Violet (440).** Lightly hinged, bright shade, wide margins, Very Fine, with copy of 1993 P.F. certificate for block 475.00
- 280 ★★ **3c Violet, Coil (445).** Mint N.H., intense shade and impression on bright paper, Jumbo margins, Extremely Fine Gem, with 1985 P.F. certificate for pair 525.00



281

- 281 ★ **2c Red, Ty. I, Coil (449).** Barely hinged, bright color, fresh and Fine, with 1991 P.F. certificate 2,500.00



- 282 ★★ **2c Carmine Rose, Ty. I, Coil (453).** Mint N.H., bright color, Very Fine and choice, with 1995 P.F. certificate for pair 300.00
- 283 ★★ **2c Carmine, Ty. I, Imperforate Coil (459).** Mint N.H., radiant color, large margins, Very Fine and choice, with 2004 P.F. certificate..... 275.00
- 284 ★ **\$1.00 Violet Black (460).** Lightly hinged, deep rich color and sharp proof-like impression, wide margins, Very Fine, with 2004 P.F. certificate..... 675.00
- 285 ★★ **1c Green (462).** Mint N.H., intense shade and impression, perfectly centered with wide and balanced margins, long and full perforations, Extremely Fine Gem, a superb stamp in every respect, ex Killien, with 1999 P.F. and 2006 P.S.E. certificates (Superb 98; SMQ \$900.00), only four have graded higher and only for others equal this grade..... 16.00
- 286 ★★ **3c Violet (464).** Mint N.H., intense shade and impression on bright paper, wide margins, long and full perforations, Extremely Fine Gem, with 1991 P.F. certificate..... 160.00
- 287 ★★ **5c Carmine, Error (467).** Mint N.H., rich color and detailed impression, long and full perforations, Very Fine and choice, with 2004 P.F. certificate..... 850.00



288



289



290

288 ★★ **9c Salmon Red (471).** Mint N.H., brilliant color, well-balanced margins, Extremely Fine, with 1982 and 2004 P.F. certificates 125.00

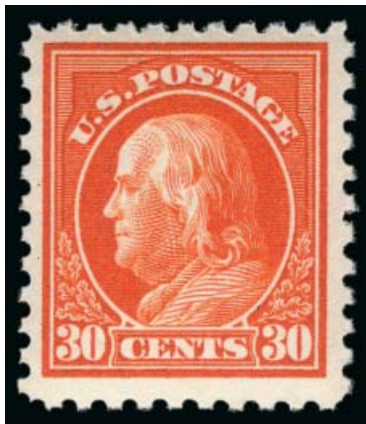
289 ★★ **10c Orange Yellow (472).** Mint N.H., vivid color, wide margins, Very Fine and choice, with 1993 P.S.E. certificate..... 230.00

290 ★★ **15c Gray (475).** Mint N.H., radiant color, fresh and Very Fine, with 1995 P.F. certificate 400.00

291 ★ **20c Light Ultramarine (476).** Barely hinged, pretty shade, wide and balanced margins, Extremely Fine, with copy of 1981 P.F. certificate for block 225.00



291



292

292 ★★ **30c Orange Red, Perf 10 (476A).** Position 44, Mint N.H., vibrant color on bright paper FRESH AND FINE. A BEAUTIFUL MINT NEVER-HINGED EXAMPLE OF THE VERY RARE 30-CENT PERF 10 WASHINGTON-FRANKLIN ON UNWATERMARKED PAPER.

The 30c Perf 10 Unwatermarked, Scott 476A, has no trace of the single-line watermark. Although one or two stamps from the discovery sheets have been found with “ghost” watermarks, the Scott Catalogue and The Philatelic Foundation continue to recognize Scott 476A.

With 1984 P.F. certificate..... 5,500.00



293

- 293 ★ **50c Light Violet (477).** Lightly hinged, pretty shade, wide margins, Very Fine and choice, with 1992 P.F. certificate stating that "It is genuine", implying Mint N.H. 900.00

- 294 ★ **\$1.00 Violet Black (478).** Lightly hinged, deep rich color on bright paper, long and full perforations, Extremely Fine, a beautiful stamp, with 1992 P.F. certificate 625.00



294



295

- 295 ★★ **\$2.00 Dark Blue (479).** Mint N.H., rich color and detailed impression, Very Fine and choice, with 1995 P.F. certificate 460.00

- 296 ★★ **\$5.00 Light Green (480).** Mint N.H., radiant color, crisp impression, well-balanced margins, Extremely Fine 375.00



296



297

297 **2c Deep Rose, Ty. Ia, Imperforate (482A).** Gorgeous color on crisp paper, with Schermack perforations clearly visible on both sides, wavy-line machine cancel leaves design clearly visible, small corner margin crease at top right well away from design

FINE APPEARANCE. ONE OF ONLY 43 RECORDED EXAMPLES OF THIS MAJOR 20TH CENTURY RARITY. ESPECIALLY RARE WITH THE SCHERMACK PERFORATIONS CLEARLY VISIBLE ON BOTH SIDES.

Scott 482A, like its more famous predecessor, Scott 314A, was issued imperforate by the Bureau of Engraving and Printing and sold to the Schermack Company for use in its patented stamp-affixing machines. The Schermack "Sealer and Stamper" machine typically applied stamps one at a time, and, in most cases, the hyphen-hole perfs on one side would be cut off. Unlike Scott 314A, the release of imperforate sheets printed from the experimental Type Ia plates escaped the notice of contemporary collectors, and, therefore, this stamp has a very small survival rate.

Our census of Scott 482A, available at our website at <http://siegelauctions.com/dynamic/census/482A/482A.pdf>, records three covers, one unused single, a used pair and 37 used singles for a total of 43 stamps. Most examples are either cut well into the design or have the Schermack perfs trimmed away on one side. Only 16 show the Schermack perforations on both sides.

Census No. 482A-CAN-24. With 1982 and 2008 P.F. certificates. 65,000.00



298

298 ★★田 **5c Carmine, Imperforate, Error (485).** Mint N.H. single error in block of nine, huge margins incl. part of all adjoining stamps, brilliant color

EXTREMELY FINE GEM. A STUNNING MINT NEVER-HINGED EXAMPLE OF THE 5-CENT CARMINE IMPERFORATE ERROR IN A BLOCK OF NINE.

During the course of production of the normal 2c plate No. 7942, three positions were noted to be defective. The plate was returned to the siderographer, who burnished out the three positions and mistakenly re-entered them using a transfer roll for the 5c stamp. The error passed unnoticed and the sheets were issued to the public Perf 10, Imperforate and Perf 11 (Scott 467, 485 and 505). The imperforate is by far the rarest of the three.

With 1983 P.F. certificate..... 30,000.00



299

- 299 ★ **2c Carmine, Ty. II, Coil (491).** Joint line pair, lightly hinged, radiant color, exceptionally well-centered, tiny corner crease at top right

EXTREMELY FINE APPEARANCE. A WELL-CENTERED JOINT LINE PAIR OF THE RARE 2-CENT TYPE II PERF 10 HORIZONTAL COIL ON UNWATERMARKED PAPER.

Unlike most other issues, the horizontal coil is actually scarcer than the vertical coil. It was in production for only a short period of time before being replaced by the Type III, Scott 492.

With 1965 and 2008 P.F. certificates..... 13,000.00



300

- 300 ★ **2c Carmine, Ty. II, Coil (491).** Pair, exceptionally well-centered, brilliant color

EXTREMELY FINE. A SUPERB PAIR OF THE RARE 2-CENT TYPE II PERF 10 HORIZONTAL COIL ON UNWATERMARKED PAPER.

Unlike most other issues, the horizontal coil is actually scarcer than the vertical coil. It was in production for only a short period of time before being replaced by the Type III, Scott 492.

With 1975 and 2008 P.F. certificates 5,750.00



301

301 ★ **2c Carmine, Ty. II, Coil (491).** Lightly hinged, vibrant color

FRESH AND VERY FINE EXAMPLE OF THE 2-CENT HORIZONTAL COIL, SCOTT 491.

With 1992 P.F. certificate for pair 2,500.00

302 ★★ **2c Deep Rose, Ty. Ia (500).** Mint N.H., intense shade and impression on bright paper, Very Fine and choice, with 1993 P.F. certificate..... 550.00



302



303

303 ★★ **5c Rose, Error (505).** Mint N.H., brilliant color, well-balanced margins, trivial natural inclusion on chin not mentioned on accompanying certificate, Extremely Fine, with 2004 P.F. certificate..... 625.00

304 ★★ **2c Carmine (519).** Mint N.H., brilliant color, choice centering with wide and balanced margins, long and full perforations, Extremely Fine, with 1993 P.F. certificate..... 850.00



304



305



306

- 305 ★ **\$2.00 Orange Red & Black (523).** Lightly hinged, bright colors, wide margins, Very Fine, with 1992 P.F. certificate 525.00
- 306 ★★ **\$5.00 Deep Green & Black (524).** Mint N.H., rich colors, well-balanced margins, Very Fine and choice, with copy of 2005 P.F. certificate for block..... 360.00



307

- 307 ★★ **2c Carmine, Ty. VII, Imperforate (534B).** Mint N.H., brilliant color on fresh paper, huge even margins all around

EXTREMELY FINE GEM. A SUPERB MINT NEVER-HINGED EXAMPLE OF THE SCARCE 2-CENT TYPE VII IMPERFORATE ISSUE.

With 1997 (for block) and 2013 P.S.E. certificates (XF-Superb 95; SMQ \$4,500.00)..... 3,250.00

- 308 ★ **2c Carmine Rose, Ty. II, Rotary Perf 11 x 10 (539).** Original gum, lightly hinged, intense shade, attractive margins and centering for this difficult issue
- VERY FINE LIGHTLY-HINGED EXAMPLE OF THE 1919 2-CENT TYPE II ROTARY PRESS COIL WASTE ISSUE, SCOTT 539.
- With 1959 P.F. certificate..... 2,750.00



308



309



310

- 309 ★★ **1c Green, Rotary (545).** Mint N.H., unusually well-centered for this issue with nicely proportioned margins, fresh color, Extremely Fine, scarce with such choice centering, with 2004 P.F. certificate 400.00
- 310 ★★ **2c Carmine Rose, Ty. III, Rotary (546).** Mint N.H., vivid color on fresh paper, Extremely Fine, with copy of 1978 P.F. certificate for block..... 230.00



311

- 311 ★★ **5c Pilgrim Tercentenary (550).** Mint N.H., intense shade on bright paper, mathematically precise centering with wide and balanced margins, long and full perforations all around, tiny inconsequential straw fiber inclusion
- EXTREMELY FINE GEM. A STUNNING MINT NEVER-HINGED EXAMPLE OF THE 5-CENT PILGRIM ISSUE WHICH HAS BEEN AWARDED THE PERFECT GRADE OF GEM 100 BY P.S.E.
- With 2004 P.F. and 2013 P.S.E. certificates (Gem 100; unpriced in SMQ above the grade of 98, SMQ \$1,700.00 as 98). This is the highest grade awarded and is shared by only three others..... 85.00



312



313



314

- 312 ★★ **2c Carmine, Rotary, Perf 11 (595).** Mint N.H., unusually precise centering, vibrant color, Very Fine and choice, with 1993 P.F. certificate..... 500.00
- 313 ★★ **2c Carmine, Ty. II, Coil (599A).** Mint N.H., vivid color, balanced margins, Extremely Fine Gem, with 2004 P.F. certificate 225.00
- 314 ★★ **2c Carmine, Ty. II (634A).** Mint N.H., brilliant color, long and full perforations, Very Fine and choice, with 2004 P.F. certificate..... 650.00

AIR POST



315



316



317



318

- 315 ★★ **16c Dark Blue, 1923 Air Post (C5).** Mint N.H., deep rich color and sharp proof-like impression, wide margins, Extremely Fine, with 1989 P.F. certificate..... 140.00
- 316 ★★ **65c Graf Zeppelin (C13).** Mint N.H., rich color, fresh and Very Fine, with 2004 P.F. certificate 275.00
- 317 ★★ **\$1.30 Graf Zeppelin (C14).** Mint N.H., detailed impression, choice centering with wide margins, Extremely Fine, with 2004 P.F. certificate 650.00
- 318 ★★ **\$2.60 Graf Zeppelin (C15).** Mint N.H., intense shade and impression, well-balanced margins, long and full perforations, Extremely Fine, with 2004 P.F. certificate 975.00

SPECIAL DELIVERY



319

- 319 ★★ **10c Blue, Special Delivery (E1).** Mint N.H., bright color on post-office fresh paper, choice centering with wide and balanced margins

EXTREMELY FINE. A GORGEOUS MINT NEVER-HINGED EXAMPLE OF THE FIRST SPECIAL DELIVERY ISSUE.

Ex Scarsdale. With 1991 and 2000 P.F. certificates. With 2004 P.S.E. certificate (XF 90; SMQ \$3,425.00) 1,250.00

- 320 ★★ **10c Blue, Special Delivery (E2).** Mint N.H., rich color and detailed impression, gorgeous centering with wide and balanced margins, long and full perforations all around

EXTREMELY FINE GEM. A SUPERB MINT NEVER-HINGED EXAMPLE OF THE SECOND SPECIAL DELIVERY ISSUE OF 1888.

With 1999 P.F. certificate..... 1,150.00



320



321

- 321 ★★ **10c Orange, Special Delivery (E3).** Mint N.H., vibrant color, Extremely Fine, with 1997 P.F. certificate 675.00

- 322 ★ **10c Blue, Special Delivery (E4).** Original gum, lightly hinged, intense shade and impression, wide margins, Very Fine and choice, with 1999 P.S.E. certificate 900.00



322



- 323 ★★ **10c Blue, Special Delivery (E5).** Mint N.H., intense shade and impression on bright paper, well-portioned margins, fresh and Extremely Fine, a stamp of great visual appeal, with 2004 P.F. certificate 500.00
- 324 ★★ **10c Ultramarine, Special Delivery (E6).** Mint N.H., bright shade on post-office fresh paper, well-balanced margins, Extremely Fine, ex Killien, with 2000 P.F. and 2006 P.S.E. certificates (VF-XF 85; SMQ \$850.00) 525.00
- 325 ★★ **10c Green, Special Delivery (E7).** Mint N.H., intense shade, well-balanced margins, Extremely Fine, with 1996 P.F. certificate 150.00
- 326 ★★ **10c Ultramarine, Special Delivery (E8).** Mint N.H., bright color and detailed impression on crisp paper, wide and balanced margins, Extremely Fine Gem, with 1991 P.F. certificate 240.00
- 327 ★★ **10c Ultramarine (E9).** Mint N.H., rich color and bright paper, gorgeous centering with wide margins, Extremely Fine, a beautiful stamp, with copy of 1986 P.F. certificate for block 425.00
- 328 ★★ **10c Pale Ultramarine, Special Delivery (E10).** Mint N.H., bright shade, wide margins, Extremely Fine, a pretty stamp, with 1997 P.F. certificate 700.00
- 329 ★★ **10c Ultramarine, Special Delivery (E11).** Mint N.H., precise centering with wide margins, deep rich color on bright white paper, Extremely Fine Gem, with 2004 P.F. and 2013 P.S.E. certificates (XF-Superb 95; SMQ \$275.00) 45.00
- 330 ★★ **10c Gray Violet, Special Delivery (E12).** Mint N.H., wide margins and exceptionally well-centered, rich color, Extremely Fine Gem, with 2004 P.F. certificate 95.00

PARCEL POST



- 331 ★★ **20c Parcel Post (Q8).** Mint N.H., deep rich color, well-centered, Very Fine and choice, with 1999 P.F. certificate 290.00
- 332 ★★ **25c Parcel Post (Q9).** Mint N.H., wide and well-balanced margins, fresh and Extremely Fine, a beautiful stamp, with 1998 P.F. certificate..... 170.00
- 333 ★★ **50c Parcel Post (Q10).** Mint N.H., choice centering with balanced margins, bright color on fresh crisp paper, Extremely Fine Gem, an outstanding example of this key Parcel Post value, with 1997 P.F. certificate..... 625.00
- 334 ★★ **75c Parcel Post (Q11).** Mint N.H., Jumbo margins, bright shade on fresh paper, Extremely Fine, a huge and striking stamp, with 2004 P.F. certificate..... 200.00
- 335 ★★ **\$1.00 Parcel Post (Q12).** Mint N.H., well-centered with nicely proportioned margins, deep rich color and sharp impression, Extremely Fine, a beautiful stamp, with 2000 P.F. certificate 700.00
- 336 ★★ **10c Dark Green, Parcel Post Postage Due (JQ4).** Mint N.H., vibrant color, nice margins and centering, Extremely Fine, with 1998 P.F. certificate 350.00
- 337 ★★ **25c Dark Green, Parcel Post Postage Due (JQ5).** Mint N.H., wide well-proportioned margins, bright and crisp, Extremely Fine, with 2004 P.F. certificate..... 210.00

HUNTING PERMITS



- 338 ★★ **\$1.00 1934 Hunting Permit (RW1).** Mint N.H., wide margins and choice centering, fresh color on bright white paper, Extremely Fine, with 2006 P.F. certificate (XF 90)... 800.00
- 339 ★★ **\$1.00 1935 Hunting Permit (RW2).** Mint N.H., wide margins and well-centered, vivid color on crisp paper, Extremely Fine, with 2005 P.S.E. certificate (XF 90; SMQ \$1,150.00) 800.00
- 340 ★★ **\$1.00 1936 Hunting Permit (RW3).** Mint N.H. with wide top selvage, rich color, wide margins and almost perfect centering, Extremely Fine Gem, with 2005 P.S.E. certificate (XF-Superb 95; SMQ \$1,000.00) 375.00
- 341 ★★ **\$1.00 1937 Hunting Permit (RW4).** Mint N.H., exceptionally well-centered, rich color, Extremely Fine Gem, with 2006 P.F. certificate (XF-Superb 95) 425.00
- 342 ★★ **\$1.00 1938 Hunting Permit (RW5).** Mint N.H., pretty color, choice balanced margins, Extremely Fine..... 475.00
- 343 ★★ **\$2.00 1950 Hunting Permit (RW17).** Mint N.H., wide margins and precise centering, rich color, Extremely Fine Gem, with 2005 P.S.E. certificate (XF-Superb 95; SMQ \$225.00)..... 95.00
- 344 ★★ **1941-93 Hunting Permits.** Choice Mint N.H. collection on hingeless Scott pages, complete from Nos. RW6 thru RW60 except missing RW17, well-centered throughout, fresh and Extremely Fine, worth careful review as many would grade very highly, No. RW24 with 2005 P.S.E. certificate (XF-Superb 95) *Not illustrated* 4,255.00

GROUP LOTS

- 345 ★ **1894-98 and 1902-08 Bureau Issues.** Approximately 38 stamps on hingeless Scott album pages, many Mint N.H. incl. Nos. 247-248, 250 (two), 253, 259 (hinged, reperfed), 264-265, 267-268 (latter lightly hinged), 270, 273-274 (both lightly hinged), 279-282 (5c lightly hinged), 279Bd blocks of four, 300-308 (3c, 5c, 6c, 10c lightly hinged), 314, 319-320, fresh colors and choice centering throughout, Very Fine-Extremely Fine, a nice group, 21 P.F. and two A.P.S. certificates accompany, Scott Retail approx. \$2,900.00 E. 1,000-1,500
- 346 ★★ **1898-1913 Commemoratives.** 19 stamps, largely Mint N.H. incl. Nos. 285-288 (5c lightly hinged), 294-298 (2c hinged), 324, 1909 Issue complete incl. 2c Lincoln on Bluish, 398-400 (10c lightly hinged), 401-402 (both lightly hinged), well-centered throughout, Very Fine-Extremely Fine, a fresh and choice group, 16 P.F. certificates accompany, Scott Retail more than \$2,200.00..... E. 1,000-1,500
- 347 ★★ **1908-21 Washington-Franklin Issues.** Large collection on hingeless Scott pages in an album, full range of issues incl. coils, the most valuable stamps have been removed and offered as individual lots, but what remains is largely Mint N.H. and very fresh, with well-centered stamps throughout and catalogue values up to \$240.00, flat plate coils nearly all accompanied by P.F. certificates, Very Fine-Extremely Fine, a desirable collection assembled with an eye for quality, also accompanied by a substantial investment of approximately 80 P.F. certificates which eliminates most of the condition guesswork, Scott Retail more than \$6,700.00..... E. 3,000-4,000
- 348 ★★ **20th Century United States Collection.** 1919-92 Issues, mounted in three Scott hingeless albums, essentially all Mint N.H., beginning with 1919-20 Commemoratives, 1922 Issue complete, 1923-32 Issues less No. 595, coils less No. 599A, White Plains Sheet, 1926-34 Rotary Issues less No. 634A, Kansas-Nebraska Issues complete, largely complete from there thru 1993, fresh stamps throughout selected with an eye for quality, Very Fine-Extremely Fine, several P.F. certificates accompany, Scott Retail for just the earlier sets more than \$3,200.00..... E. 2,000-3,000
- 349 ★★ **Back-of-Book Collection.** Group of choice Mint N.H. stamps on hingeless Scott pages, incl. Nos. C1-C4, C6-C12, C16-C131, E13-E23, F1, Q1-Q7, JQ1-JQ3, QE1-QE4, a few others, choice margins and centering throughout, a number on the cusp of individual lots, Very Fine-Extremely Fine, 17 P.F. certificates accompany (most from 2004), Scott Retail more than \$1,700.00..... E. 1,000-1,500

END OF SALE — THANK YOU

Bid Form—15% Premium Sale

Sale 1044
Wednesday, May 22, 2013

1

Please provide the following information:

NAME

ADDRESS.....

CITY/STATE/ZIP

TEL. (DAY) FAX

E-MAIL

PADDLE #

Do not write in box

2

Have you purchased from us in the past 5 years? ☐ YES (if so, please go to Section 3)

☐ NO (please provide a trade reference and bank information)

References:

Stamp Firm:..... Telephone

Bank:..... Account #

3

In the space provided below, enter the **lot number** from **Sale 1044** and your corresponding bid. Please use **whole dollar amounts** only and enter the **maximum bid** you wish to have us execute on your behalf, according to the **bidding increments** on other side of this form. **Your bid will NOT include the 15% buyer's premium.** We will advance the bidding at one increment over the

next highest bid; therefore, you may be awarded the lot at less than your maximum bid. Please do not use "plus" bids or "buy" bids. If you wish to bid on one lot **or** the other, indicate your "or" bid between lot number/bid entries and bracket your choices. If you wish to place a **bidding limit** on the total amount of your bids, please enter your limit in the space marked "Limit Bids".

PLEASE NOTE BIDDING INCREMENTS AND SHIPPING CHARGES (ON BACK OF THIS PAGE)

☐ **LIMIT BIDS:** Check this box if you wish to limit the total amount of your bids (not including the **15% buyer's premium**) in this sale. Your bids will be executed until your bidding limit no longer allows for additional bids. **The total amount you wish to bid is:**

\$.....

Lot	Bid	Lot	Bid	Lot	Bid
	\$		\$		\$

4

AGREEMENT: By signing this bid form, you agree to pay for purchases resulting from your bids, in accordance with the **Conditions of Sale** printed in the sale catalogue. You also agree to pay the **15% buyer's premium, shipping costs (see reverse), and sales tax or use tax or customs duty which may be due on the total invoiced amount.** It is

understood that these bids will be executed by Siegel Auction Galleries as a courtesy to absentee bidders, but you waive the right to make any claim against the auctioneer or the firm, arising from the these bids. **You are responsible for your written bids, including any errors on your part and any additions or changes to the bids herein.**

Payment must be made by cash, check, money order or wire transfer. Credit cards (Visa, Mastercard and Discover only) can be accepted as payment but will be subject to a 3% Convenience Fee, which will be added to the total of the entire invoice (including hammer price, buyer's premium, shipping and transit insurance charges and any applicable taxes).



SIGNED..... TODAY'S DATE.....

5

Please submit your bids promptly (telephone bids must be confirmed in writing).

Mail to: Robert A. Siegel Auction Galleries, Inc.

60 E. 56th Street, 4th Floor, New York, N.Y. 10022

Telephone (212) 753-6421

OR FAX YOUR BIDS: (212) 753-6429

Shipping Instructions, Bidding Increments and space for additional bids on other side of form



Additional Bids

Sale 1044—May 22, 2013

Lot	Bid	Lot	Bid	Lot	Bid
	\$		\$		\$

Shipping and Transit Insurance

We will be pleased to arrange for shipping and transit insurance for purchases in this sale (except those described as “floor sale only”). To expedite billing and delivery of lots to hundreds of buyers per sale, we use standard charges for postage and insurance, based on the package weight and mailing requirements (see schedule). The standard charges are sometimes slightly more or less than the actual postage or FedEx fees, but we do not include any charge for our labor or packing costs. Therefore, we ask all buyers to remit the prescribed amount for shipping charges.

Transit insurance is provided in all cases, except when the buyer has furnished us with proof that insurance coverage is effective under another policy. Proof, in such cases, will be accepted in the form of a written certificate from the insurance carrier.

You are responsible for insurance charges, which will be added to your invoice. This coverage is provided for our mutual protection against theft or loss in transit.

Bidding Increments

The auctioneer may regulate the bidding at his discretion. However, to assist absentee bidders in establishing their maximum bid for each lot, the increments shown at right will be used in most cases. We recommend that written bids conform to these increments (those which do not will be reduced to the next level).

REVISED CHARGES FOR SHIPPING EFFECTIVE SEPTEMBER 1, 2010

We have reduced the FedEx Envelope charge to \$20, reflecting the elimination of the fuel surcharge. All other charges remain the same.

Current Postage & Insurance Charges

Weight/Class	Shipping Method	Charges
Up to 2 lbs.	Fedex Envelope	\$20.00
Over 2 lbs.	Fedex Box	\$35.00*
Non-U.S.	Fedex/Courier	\$50.00**
Bulk Lots	UPS Preferred	By weight and value
<p>These fees reflect additional FedEx charges for residential delivery, signature and fuel surcharge.</p> <p>*Higher fees will be charged on packages weighing more than 5 lbs. or insured for more than \$75,000.</p> <p>**Buyers are liable for all customs duties and clearance charges. An accurate declaration of value will be made on all import/export documents.</p>		

1/2012

Up to \$50	\$5	\$3,000-7,000	\$250
\$50-200	\$10	\$7,000-20,000	\$500
\$200-500	\$25	\$20,000-30,000	\$1,000
\$500-1,000	\$50	\$30,000-75,000	\$2,500
\$1,000-3,000	\$100	\$75,000 up	\$5,000

1/2012

