

THE WORLD'S FAIR COLLECTION

1898 TRANS-MISSISSIPPI ISSUE



SALE 1056
WEDNESDAY, NOVEMBER 6, 2013

Robert A. Siegel
AUCTION GALLERIES, INC.

Offered in association with Columbian Stamp Company (H. Hagendorf)

THE WORLD'S FAIR COLLECTION

1898 TRANS-MISSISSIPPI ISSUE

Offered in association with Columbian Stamp Company (H. Hagendorf)



To be offered at auction on Wednesday, November 6, 2013,
no earlier than 3:30 p.m. (lots 301-448)

A 15% buyer's premium will be added to the hammer price of each lot sold

*Lots will be available for viewing on Monday and Tuesday, November 4-5, 10am to 4pm
and by appointment (please call 212-753-6421)*

Robert A. Siegel

AUCTION GALLERIES, INC.

60 EAST 56TH STREET, 4TH FLOOR, NEW YORK, N.Y. 10022

Phone (212) 753-6421 • Fax (212) 753-6429 • E-mail: stamps@siegelauctions.com

siegelauctions.com



Robert A. Siegel

AUCTION GALLERIES, INC.

60 EAST 56TH STREET, 4TH FLOOR, NEW YORK, N.Y. 10022

Phone (212) 753-6421 • Fax (212) 753-6429 • E-mail: stamps@siegelauctions.com

siegelauctions.com



Scott R. Trepel
President
strepel
@siegelauctions.com



John P. Zuckerman
Senior Vice President
jzuckerman
@siegelauctions.com



Corey Long
Vice President
clong
@siegelauctions.com



Starr Tucker-Ortega
Accounts
stamps
@siegelauctions.com



Laura Melvin
Bids and Inquiries
laura
@siegelauctions.com



Charles F. Shreve
Siegel International
charles
@siegelauctions.com



Chris Anderson
Siegel International
chris
@siegelauctions.com



Andrew Titley
Siegel International
andrew
@siegelauctions.com

Scott R. Trepel Principal Auctioneer (licensed by NYC Dept. of Consumer Affairs, #795952)

Nathaniel Estes Catalogue and Digital Production

Information for Bidders

Bidding

The following means are available for placing bids:

1) Attending the Live Auction in Person: All bidders must register for a paddle, and new bidders must provide references at least three business days in advance of the sale.

2) Live Internet Bidding: Instructions for participating as a Live Internet Bidder are provided on the page opposite.

3) Phone Bidding: Bidders can be connected to the sale by phone and bid through a member of staff. Requests for phone bidding are subject to approval (please contact our office at least 24 hours before the sale). A signed Bid Form is required.

4) Absentee Bids. All bids received in advance of the sale, either by mail, fax, phone, e-mail or internet, are Absentee Bids, which instruct the auctioneer to bid up to a specific amount on one or more lots in the sale. Absentee Bids sent by phone, fax or e-mail should arrive at least one hour prior to the start of the sale session. Bids entered through Live Internet Bidding will be visible to the auctioneer during the sale. Written bids should be entered legibly on the Bid Form in the sale catalogue. E-mail and internet bids should be carefully typed and double-checked. All new bidders must provide references. We recommend calling or e-mailing to confirm that Absentee Bids sent by mail, fax or e-mail have been received and entered.

Pre-Sale Viewing

Subject to availability, certain lots (except group lots) can be sent to known clients for examination. Requests must be made no later than 7 days prior to the sale. Lots must be returned on the day received. Postage/insurance costs will be invoiced.

In addition to regular viewing, clients may view lots by appointment. Our staff will be pleased to answer questions or provide additional information about lots.

Expert Certification

Individual items offered without a PF or PSE certificate dated within the past five years may be purchased subject to independent certification of genuineness and our description. **Please refer to the Conditions of Sale and Grading Terms for policies governing certification.**

Shipping and Delivery

Procedures and charges for shipping lots are printed on the back of the Bid Form. **Bidders are responsible for all prescribed shipping charges and any applicable sales tax or customs duties.**

Price Realized

Prices realized are sent with each invoice. Bidders with e-mail will receive a Bid Results report after the sale. Session results are posted immediately to **siegelauctions.com**

Live Internet Bidding at Siegel Auctions

BIDDING FROM YOUR COMPUTER LETS YOU BE PART OF THE LIVE AUCTION FROM ANYWHERE IN THE WORLD!

There's NO SUBSTITUTE for following the auction in real time.
Live Internet Bidding lets you bid and buy as though you were right there in the saleroom.
And it's easy.

This step-by-step guide will instruct you how to register, set your browser and use the bidding interface.

Start by following the simple steps to become a registered Live Internet Bidder.
Once you've been approved for bidding, you can listen to the auction and place bids with the click of a mouse.

Registering with STAMP AUCTION NETWORK & SIEGEL AUCTION GALLERIES

Live Internet Bidding is managed by Stamp Auction Network (SAN).
To bid, you must be registered and approved by *both* SAN and Siegel.
To decide what you need to do, choose the description below that best fits you.



I've already registered with SAN and have been approved by Siegel for internet bidding.

I'm a Siegel client, but I'm not registered with SAN.

Go to stampauctionnetwork.com/siegel and click on "Register" at the top. Check the box for Robert A. Siegel Auction Galleries (under "R") and submit the form, indicating you are a Siegel client. Once registered at SAN, you're ready for internet bidding.

I've bid through SAN before, but this is the first time I've bid in a Siegel sale.

Then you just need to be approved by Siegel. Go to stampauctionnetwork.com/siegel and click on "Update Registration" at the top. Your SAN account information will be sent to us for approval (you might be asked for other trade references). Once approved by Siegel for bidding, you're ready for internet bidding.

I've never bid with Siegel, nor registered with SAN.

Go to stampauctionnetwork.com/siegel and click on "Register" at the top. Check the box for Robert A. Siegel Auction Galleries (under "R") and submit the form **with your trade references** (please, no family members or credit card companies as references). Once registered at SAN and approved by Siegel for bidding, you're ready for internet bidding.

Live Internet Bidding works by allowing registered bidders to observe and place bids.

Live Internet Bidding will work with any browser on both PC and Mac operating systems.

Before bidding by internet for the first time, we recommend finding a sale in progress and listening to the public broadcast or logging in as a registered bidder. This will help you develop a feel for the sale tempo and bidding interface.

Log on to the auction at stampauctionnetwork.com/siegel.

You can also log on at siegelauctions.com

When you're logged on as a Live Internet Bidder, the bidding interface shows a photo and description of the lot, the current bid (and your bidding status), options for placing competitive bids and buttons with bid increments.

- After you click on a bid amount, the auctioneer is immediately notified of your bid.
- Retracting a bid is usually not acceptable, so please bid carefully.
- If you bid and then decide to stop, the "Pass" button will tell the auctioneer you are no longer bidding.
- You can send messages to the auctioneer (for example, a request for extension).
- You can track prior realizations from the bidding screen.



"System Down" or "Lost Connection" events do occasionally happen.

If you have any problems with Live Internet Bidding please call **212-753-6421** for immediate assistance.

Conditions of Sale (please read carefully before bidding)

The property described in this catalogue will be offered at public auction by Robert A. Siegel Auction Galleries, Inc. ("Galleries") on behalf of various consignors and itself or affiliated companies. By bidding on any lot, whether directly or by or through an agent, in person, or by telephone, facsimile or any other means, the bidder acknowledges and agrees to all of the following Conditions of Sale.

1. The highest bidder acknowledged by the auctioneer shall be the buyer. The term "final bid" means the last bid acknowledged by the auctioneer, which is normally the highest bid offered. **The purchase price payable by the buyer will be the sum of the final bid and a commission of 15% of the final bid ("buyer's premium"), together with any sales tax, use tax or customs duties due on the sale.**

2. The auctioneer has the right to reject any bid, to advance the bidding at his discretion and, in the event of a dispute between bidders, to determine the successful bidder, to continue the bidding or to reoffer and resell the lot in dispute. The Galleries' record of the final sale shall be conclusive.

3. All bids are per numbered lot in the catalogue unless otherwise announced by the auctioneer at the time of sale. The right is reserved to group two or more lots, to withdraw any lot or lots from the sale, or to act on behalf of the seller. The Galleries will execute bidding instructions on behalf of clients, but will not be responsible for the failure to execute such bids or for any errors in the execution of such bids.

4. **Lots with numbers followed by the symbol ° are offered subject to a confidential minimum bid ("reserve"), below which the lot will not be sold. The absence of the symbol ° means that the lot is offered without a reserve. If there is no reserve, the auctioneer has sole discretion to establish a minimum opening bid and may refuse an offer of less than half of the published estimate. Any lot that does not reach its reserve or opening bid requested by the auctioneer will be announced as "passed" and excluded from the prices realized lists after the sale. The Galleries may have a direct or indirect ownership interest in any or all lots in the sale resulting from an advance of monies or goods-in-trade or a guarantee of minimum net proceeds made by the Galleries to the seller.**

5. Subject to the exclusions listed in 5(A), the Galleries will accept the return of lots which have been misidentified or which have obvious faults that were present when the lot was in the Galleries' custody, but not so noted in the lot description. **All disputed lots must be received by the Galleries intact with the original packing material within 5 days of delivery to the buyer but no later than 30 days from the sale date. (5A) EXCLUSIONS: The following lots may not be returned for any reason: lots containing 10 or more items; lots from buyers who registered for the pre-sale exhibition or received lots by postal viewing, thereby having had the opportunity to inspect them before the sale; any lot described with "faults," "defects" or a specific fault may not be returned because of any secondary fault. Photographed lots may not be returned because of centering, margins, short/nibbed perforations or other factors shown in the illustrations. Lots may not be returned for any of the following reasons: the color of the item does not match the color reproduction in the sale catalogue or website listing; the description contains inaccurate information about the quantity known or reported; or a certification service grades a stamp lower than the grade stated in the description.**

6. Successful bidders, unless they have established credit with the Galleries prior to the sale, must make payment in full before the lots will be delivered. Buyers not known to the Galleries must make payment in full within 3 days from the date of sale. **The Galleries retains the right to demand a cash deposit from anyone prior to bidder registration and/or to demand payment at the time the lot is knocked down to the highest bidder, for any reason whatsoever.** In the event that any buyer refuses or fails to make payment in cash for any lot at the time it is knocked down to him, the auctioneer reserves the right to reoffer the lot immediately for sale to the

highest bidder. **Credit cards (Visa, Mastercard and Discover only) can be accepted as payment but will be subject to a 3% Convenience Fee, which will be added to the total of the entire invoice (including hammer price, buyer's premium, shipping and transit insurance charges and any applicable taxes).**

7. If the purchase price has not been paid within the time limit specified above, nor lots taken up within 7 days from the date of sale, the lots will be resold by whatever means deemed appropriate by the Galleries, and any loss incurred from resale will be charged to the defaulting buyer. Any account more than 30 days in arrears will be subject to a late payment charge of 1½% per month as long as the account remains in arrears. Any expenses incurred in securing payment from delinquent accounts will be charged to the defaulter. A fee of \$250.00 per check will be charged for each check returned for insufficient funds.

8. All lots are sold as genuine. **Any lot accompanied by a certificate issued by The Philatelic Foundation or by Professional Stamp Experts within 5 years of the sale date is sold "as is" and in accordance with the description on the certificate. Such lots may not be returned for any reason, including but not limited to a contrary certificate of opinion.** Buyers who wish to obtain a certificate for any item that does not have a P.F. or P.S.E. certificate (dated as above) may do so, provided that the following conditions are met: (1) the purchase price must be paid in full, (2) the item must be submitted to an acceptable expertizing committee with a properly executed application form within 21 days of the sale, (3) a copy of the application form must be given to the Galleries, (4) in the event that an adverse opinion is received, the Galleries retain the right to resubmit the item on the buyer's behalf for reconsideration, without time limit or other restrictions, (5) unless written notification to the contrary is received, items submitted for certification will be considered cleared 90 days from the date of sale, and (6) in the event any item is determined to be "not as described", the buyer will be refunded the purchase price and the certification fee up to \$600.00 unless otherwise agreed.

9. Until paid for in full, all lots remain the property of the Galleries on behalf of the seller.

10. Agents executing bids on behalf of clients will be held responsible for all purchases made on behalf of clients unless otherwise arranged prior to the sale.

11. The buyer assumes all risk for delivery of purchased lots and agrees to pay for prescribed shipping costs. Buyers outside the U.S. are responsible for all customs duties.

12. **The bidder consents that any action or proceeding against it may be commenced and maintained in any court within the State of New York or in the United States District Court for the Southern District of New York, that the courts of the State of New York and United States District Court for the Southern District of New York shall have jurisdiction with respect to the subject matter hereof and the person of the bidder. The bidder agrees not to assert any defense to any action or proceeding initiated by Galleries based upon improper venue or inconvenient forum. The bidder agrees that any action brought by the bidder shall be commenced and maintained only in a Federal Court in the United States District Court for the Southern District of New York or the State Court in the county in which Galleries has its principal place of business in New York. These Terms and Conditions shall be governed by and construed in accordance with the substantive laws of the State of New York.**

SCOTT R. TREPEL, Principal Auctioneer

Auctioneer's License No. 795952
N.Y.C. Department of Consumer Affairs
80 Lafayette Street, New York, N.Y. 10013
Telephone (212) 577-0111

Revised 3/2013

Grades, Abbreviations and Values Used in Descriptions

Grades and Centering

Our descriptions contain detailed information and observations about each item's condition. We have also assigned grades to stamps and covers, which reflect our subjective assessment. For stamps, the margin width, centering and gum are described and graded according to generally-accepted standards (an approximate correlation to numeric grades is provided at right). Although we believe our grades are accurate, they are not always exactly aligned with third-party grading terms or standards for all issues. **A lot may not be returned because a certification service grades a stamp lower than the grade stated in the description. Information from the P.S.E. Stamp Market Quarterly and P.S.E. Population ReportSM is the most current available, but lots may not be returned due to errors or changes in statistics or data.**

Extremely Fine Gem (90-100): The term "Gem" describes condition that is the finest possible for the issue. This term is equivalent to "Superb" used by grading services.







Extremely Fine (80-90): Exceptionally large/wide margins or near perfect centering.

Very Fine (70-85): Normal-size margins for the issue and well-centered with the design a bit closer to one side. "Very Fine and choice" applies to stamps that have desirable traits such as rich color, sharp impression, freshness or clarity of cancel.

Fine (60-70): Smaller than usual margins or noticeably off center. Pre-1890 issues may have the design touched in places.

Very Good (below 60): Attractive appearance, but margins or perforations cut into the design.

Guide to Gum Condition

Gum Categories:	MINT N.H.	ORIGINAL GUM (O.G.)				NO GUM
	 Mint Never Hinged <i>Free from any disturbance</i>	 Lightly Hinged <i>Faint impression of a removed hinge over a small area</i>	 Hinge Mark or Remnant <i>Prominent hinged spot with part or all of the hinge remaining</i>	 Part o.g. <i>Approximately half or more of the gum intact</i>	 Small part o.g. <i>Approximately less than half of the gum intact</i>	 No gum <i>Only if issued with gum</i>
Catalogue Symbol:	★ ★	★	★	★	★	(★)
PRE-1890 ISSUES	<i>Pre-1890 stamps in these categories trade at a premium over Scott value</i>			Scott Value for "O.G."		Scott "No Gum" Values thru No. 218
1890-1935 ISSUES	Scott "Never Hinged" Values for Nos. 219-771	Scott Value for "O.G." (Actual value will be affected by the degree of hinging)		Disturbed Original Gum: Gum showing noticeable effects of humidity, climate or hinging over more than half of the gum. The significance of gum disturbance in valuing a stamp in any of the Original Gum categories depends on the degree of disturbance, the rarity and normal gum condition of the issue and other variables affecting quality. For example, stamps issued in tropical climates are expected to have some		
1935 TO DATE	Scott Value for "Unused"					

Covers

Minor nicks, short edge tears, flap tears and slight reduction at one side are normal conditions for 19th century envelopes. Folded letters should be expected to have at least one file fold. Light cleaning of covers and small mends along the edges are accepted forms of conservation. Unusual covers may have a common stamp with a slight crease or tiny tear. **These flaws exist in virtually all 19th century covers and are not always described. They are not grounds for return.**

Catalogue Values and Estimates

Unless otherwise noted, the currently available *Scott Catalogue* values are quoted in dollars with a decimal point. Other catalogues are often used for foreign countries or specialized areas and are referred to by their common name: *Stanley Gibbons* (SG), *Dietz*, *American Air Mail Catalogue* (AAMC), *Michel*, *Zumstein*, *Facit*, etc. Estimates are indicated with an "E." and reflect our conservative valuation in dollars. Reserves will never exceed the low end of the estimate range; they will sometimes exceed Scott Catalogue value for stamps in Extremely Fine condition.

Because of certain pricing inconsistencies in the *Scott Catalogue*—for example, blocks that have no gum, the absence of premiums for Mint N.H. items, etc.—we cannot guarantee the accuracy of values quoted for multiples, specialized items and collection lots. We generally try to be conservative, but buyers may not return a lot because of a discrepancy in catalogue value due to Scott pricing inconsistencies.

Symbols and Abbreviations (see chart above for gum symbols)

⊞	Block	E	Essay	pmk.	Postmark	No.	Scott Catalogue Number
⊞	Cover	P	Proof	cds	Circular Datestamp	hs	Handstamp
FC	Fancy Cancel	TC	Trial Color Proof	var.	Variety	ms.	Manuscript



THE 1898 TRANS-MISSISSIPPI EXPOSITION ISSUE

INTRODUCTION

The Trans-Mississippi and International Exposition was held in Omaha, Nebraska, from June 1 through November 1, 1898. Over 154 days the Exposition drew an estimated 2.6 million visitors, who came to see more than 4,000 exhibits and attractions housed in 21 main buildings and hundreds of smaller structures erected on the 180-acre fairgrounds. The Exposition promoted the theme of economic and social development west of the Mississippi River. During the last three months of the Exposition, it was also the site of the Indian Congress, the largest gathering of Native American Indians in the ten years following the end of the Indian Wars.

The plan to hold an exposition to promote the American West was conceived in 1895 by a group of Omaha businessmen led by Gurdon Wallace Wattles (1855-1932), a successful banker who went on to finance the development of Hollywood, California. Among the other local promoters was Edward Rosewater (1841-1906), publisher of the *Omaha Daily Bee*, who had close ties to the Republican Party and was President McKinley's chosen delegate to the Universal Postal Congress in 1897. On December 10, 1897, Rosewater submitted his request to the Post Office Department, asking officials to issue a special commemorative stamp for the Trans-Mississippi Exposition. Two weeks later, on December 23, Postmaster General James A. Gary announced a set of five stamps, and his Third Assistant, General John A. Merritt, began soliciting design concepts from well-known artists. Around the same time, Postmaster General Gary asked Rosewater for his ideas, and in response Rosewater submitted five wash drawings of 1¢, 2¢, 5¢, 10¢ and \$1.00 designs depicting images of the West: a bison, Indian warrior, farmers plowing a field, a locomotive and Columbia standing on a globe, holding a torch.

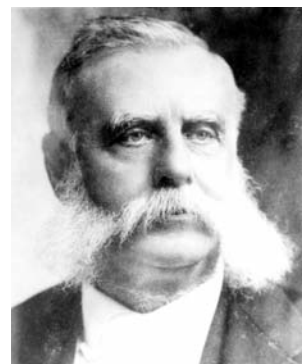
On January 13, 1898, the Post Office Department announced that a set of nine stamps would be issued, from 1¢ to \$2.00 values. The announcement listed the initial design choices, six of which were eventually used. The decision to issue another commemorative set, with a face value of \$3.80, aroused protests from the stamp collecting community, which still harbored resentment over the Columbian Issue five years earlier. Within days the newspapers reported philatelic groups' objections to costly stamps honoring what was perceived as a commercial enterprise, but postal officials were undeterred. Work on the stamps began immediately at the Bureau of Engraving and Printing (BEP).

The Trans-Mississippi Designs

The original concept for the Trans-Mississippi stamps envisioned bicolored designs, with each frame in a different color, and the vignettes printed in black. This grand plan for bicolored stamps had to be scrapped when the United States declared war on Spain, and the BEP was forced to dedicate its time and resources to increased production of revenue stamps needed for new taxes to finance the war effort. From start to finish, the design work and engraving underwent extensive revisions.



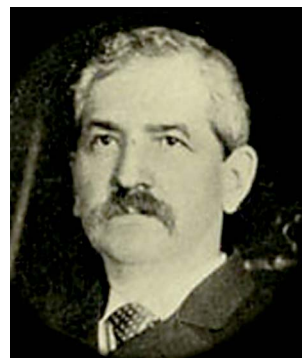
William McKinley
President 1897-1901



James A. Gary
Postmaster General
March 1897 – April 1898



Edward Rosewater, promoter of
the Trans-Mississippi Exposition
and commemorative stamps



Charles Emory Smith
Postmaster General
April 1898 – January 1902



Raymond Ostrander Smith



Douglas S. Ronaldson



George F. C. Smillie



Marcus W. Baldwin



Robert F. Ponickau

The preliminary design work and drawings were executed by Raymond Ostrander Smith (1873-1933). Smith started working at the American Bank Note Company in New York City at the age of 14. He later he joined the BEP and continued working there until the end of 1902, when he returned to employment with American. During his BEP years, Smith designed many of the most beautiful stamps ever produced by the United States.

The nine different denominations share a common frame design, which incorporates symbols of midwestern agriculture, wheat and corn, in an architecturally-based ornamental frame. Except for the 2¢, the frame engravings were the work of Marcus W. Baldwin (1853-1925), considered to be one of the most talented and accomplished security engravers of all time. He apprenticed at the American Bank Note Company under Alfred Jones and Luigi (Louis) Delnoce. In 1880 he formed his own engraving company, Baldwin, Gleason & Co., in New York City. Baldwin joined the BEP in 1897 and spent more than two decades there before returning to American.

The letters and numerals in the frames of all values were engraved by Douglas S. Ronaldson, who is also credited with all of the work on the 2¢ frame. There are, in fact, some stylistic differences between the 2¢ frame and the others, particularly in the bottom scrollwork and shading lines. Ronaldson was born in England in 1825. He came to Philadelphia in 1840 and worked in that city as an engraver until 1858. In 1860 he joined the American Bank Note Company. In 1897 Ronaldson joined the BEP and worked there until his death in 1902.

Marcus Baldwin engraved the vignettes for the 2¢ Farming in the West, 5¢ Fremont on Rocky Mountains, 10¢ Hardships of Emigration and, what is considered to be the most beautiful of all United States stamps, the \$1.00 Western Cattle in Storm. Baldwin also engraved the Indian Chief vignette, based on Frederic Remington's *Cheyenne Warrior*, but this striking depiction was replaced by the Indian Hunting Buffalo vignette.

Another renowned engraver who worked on the Trans-Mississippi Issue is George F. C. "Fred" Smillie (1854-1924), who studied under his uncle, James, and Alfred Jones. After engraving for the American Bank Note Company from 1871 to 1887, and for various other bank note printers from 1887 to 1894, Fred Smillie joined the BEP in March 1894 as chief engraver. He worked for the BEP until 1911, when he left to join American. His diary of work records approximately 300 portraits and 135 vignettes, including the vignettes for the 1¢ Marquette on the Mississippi, 4¢ Indian Hunting Buffalo, 50¢ Western Mining Prospector and \$2.00 Mississippi River Bridge.

The fifth and final engraver contributing to the issue is Robert F. Ponickau (1846-1920), who produced just one vignette, the 8¢ Troops Guarding Train. Ponickau subsequently engraved numerous stamp vignettes, including the 2¢ Jamestown.

1898 TRANS-MISSISSIPPI ISSUE DESIGNS, ENGRAVERS AND QUANTITIES



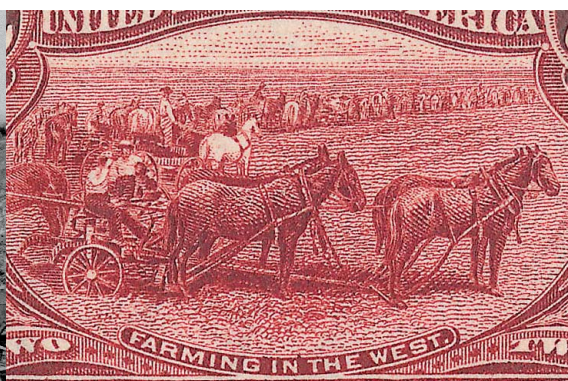
Source of Design for 1¢ “Marquette on the Mississippi”

Father Marquette and the Indians, painting by William Lamprecht, located at Haggarty Museum at Marquette University in Wisconsin, engraved from a photograph taken for the BEP

Note:

This depiction of Father Jacques Marquette is believed by some scholars to show him on the Wisconsin River, not the Mississippi.

Vignette	Frame	Lettering/Numerals	Quantity
G.F.C. Smillie	M. Baldwin	D. S. Ronaldson	70,993,400



Source of Design for 2¢ “Farming in the West”

Photograph taken on a farm owned by the Amenias and Sharon Land Co. in North Dakota, circa 1888

Note:

Three living persons—worker Ed Nybakken, field boss Elihu Barber, and foreman Sam White—are shown in the foreground from left front to back right. A gust of wind caught Nybakken’s hat just as the picture was being taken, covering his face. This vignette was originally selected for the \$2.00, but postal officials decided to use it for the more widely circulating 2¢ value.

Vignette	Frame	Lettering/Numerals	Quantity
M. Baldwin	M. Baldwin	D. S. Ronaldson	159,720,800



Source of Design for 4¢ “Indian Hunting Buffalo”

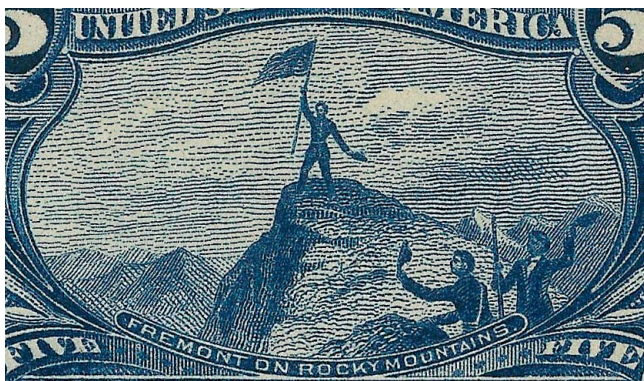
Buffalo Chase, an engraving by U.S. Army Capt. Seth Eastman, published in *Information Respecting the History, Condition and Prospects of the Indian Tribes of the United States* by Henry Rowe Schoolcraft, published in Philadelphia in 1854

Note:

This vignette replaced the first engraving by Baldwin of an Indian Warrior Chief, based on a Frederic Remington painting.

Vignette	Frame	Lettering/Numerals	Quantity
G.F.C. Smillie	M. Baldwin	D. S. Ronaldson	4,924,500*

*some destroyed



Source of Design for 5¢ “Fremont on Rocky Mountains”

Most similar to a woodcut engraving by J. W. Orr in *The Young American's Life of Fremont*, by F. C. Woodworth, published in 1856

Vignette

M. Baldwin

Frame

M. Baldwin

Lettering/Numerals

D. S. Ronaldson

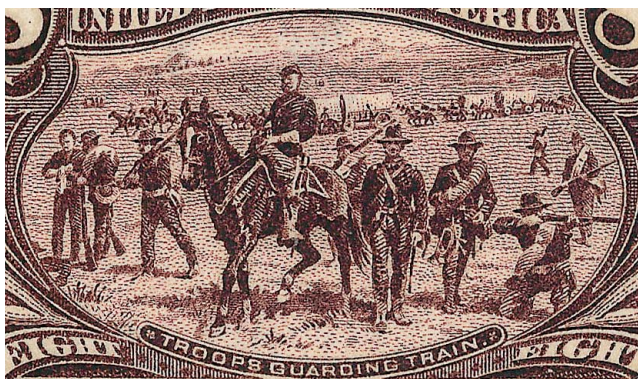
Quantity

7,694,180*

*some destroyed

Note:

Postal officials intended from the start to portray Col. John C. Frémont, the famed Western “pathfinder” and unsuccessful presidential candidate, on one of the stamps, but rejected the photographs provided by Frémont’s widow. Instead, they created an engraved depiction of Frémont’s flag raising on the Rocky Mountains summit, probably using Orr’s similar woodcut as a model.



Source of Design for 8¢ “Troops Guarding Train”

Federal Troops Convoying a Wagon Train, wash drawing by Frederic Remington, from *Drawings by Frederic Remington* published in 1897 by Robert Howard Russell

Vignette

R. Ponickau

Frame

M. Baldwin

Lettering/Numerals

D. S. Ronaldson

Quantity

2,927,200*

*some destroyed

Note:

This is one of the two Trans-Mississippi vignettes based on the work of Frederic Remington, a hugely popular artist of the time who created romantic depictions of life on the Western frontier (the other is the 50¢). This image of U.S. troops defending a wagon train—the soldier in the foreground at right actually takes aim—was placed on a stamp in the aftermath of the Indian Wars, which resulted in the defeat of the last remaining tribes. This was the only vignette engraved by Robert Ponickau.



Source of Design for 10¢ “Hardships of Emigration”

Hardships of Emigration, long-lost painting by Augustus Goodyear Heaton

Vignette

M. Baldwin

Frame

M. Baldwin

Lettering/Numerals

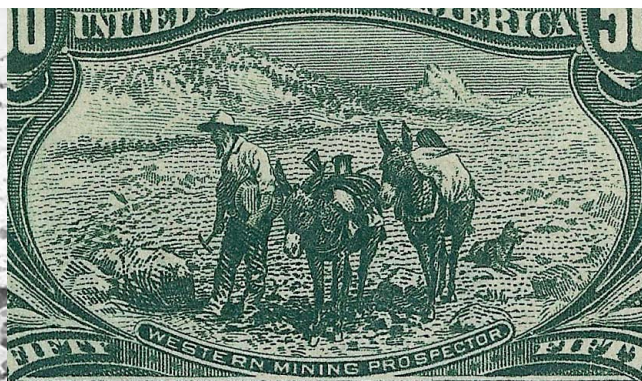
D. S. Ronaldson

Quantity

4,629,760

Note:

The original canvas painting by A. G. Heaton was irreparably damaged by fire and destroyed in 1931 by his heirs. The vignette was engraved from a retouched print, the original of which was discovered in 1992 in a desk drawer at the BEP by Gary Griffith and BEP archivists. This stark depiction of life on the Immigrant Trail is affectionately known as the “Dead Horse Stamp.”



Source of Design for 50¢ "Western Mining Prospector"

The Gold Bug, wash drawing by Frederic Remington, from *Drawings by Frederic Remington*, published in 1897 by Robert Howard Russell

Vignette	Frame	Lettering/Numerals	Quantity
G.F.C. Smillie	M. Baldwin	D. S. Ronaldson	530,400*

*some destroyed

Note:

This is one of the two Trans-Mississippi vignettes based on the work of Frederic Remington, a hugely popular artist of the time who created romantic depictions of life on the Western frontier (the other is the 8¢).



Source of Design for \$1.00 "Western Cattle in Storm"

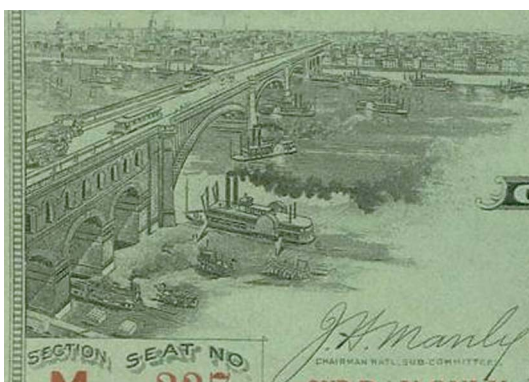
The Vanguard, painting by John A. MacWhirter, engraved reproduction by C. O. Murray

Vignette	Frame	Lettering/Numerals	Quantity
M. Baldwin	M. Baldwin	D. S. Ronaldson	56,900

*some destroyed

Note:

The image of cattle in a storm was shown to postal officials in the form of a cattle company's advertisement, and the C. O. Murray engraving was used by Marcus Baldwin to engrave what is today regarded as the most beautiful commemorative stamp ever issued by the U.S. Post Office. After the stamp was issued, officials were alerted to the fact that the engraving was based on a painting by a well-known Scottish artist, John A. MacWhirter, and it was likely that the cattle were from the Scottish highlands, not the American West (although MacWhirter traveled there in 1877). In 1898 the painting was owned by an Englishman, Lord Blythwood. Apologies were made through diplomatic channels, and Lord Blythwood was presented with a die proof.



Source of Design for \$2.00 "Mississippi Bridge"

Photograph of the Eads bridge across the Mississippi River in St. Louis

Vignette	Frame	Lettering/Numerals	Quantity
G.F.C. Smillie	M. Baldwin	D. S. Ronaldson	56,200*

*half destroyed

Note:

The Eads Bridge vignette was originally chosen for the 2¢ value, but it was switched with the \$2.00 when the decision was made that the Farming in the West vignette was better suited for the higher volume 2¢. A similar engraving appears on the 1896 Republican National Convention ticket.



Proofs of original bicolored designs (note the 2¢ and \$2 vignettes were transposed)

The decision to change from bicolored to monochrome designs involved considerable work to adjust the vignette dies, which had been sized for two-step bicolored printing. Baldwin retouched the dies (finishing on May 24, 1898), plates were made and the stamps were hastily produced, but not in time for the June 1 opening of the Exposition. Supplies reached post offices by June 15, and they were officially issued on June 17.

The issue was recalled from post offices in mid-December 1899, although sales of full sets continued in Washington D.C. until February 10, 1900. The unsold remainders were destroyed one month later, but no record was kept of the number of each denomination incinerated; therefore, some of the “issued” quantities include an indeterminable number of stamps that were returned and burned.



U.S. Post Office at the Trans-Mississippi Exposition, photograph by F. A. Rinehart

© Omaha Public Library, 1998

THE WORLD'S FAIR COLLECTION

1898 TRANS-MISSISSIPPI ISSUE

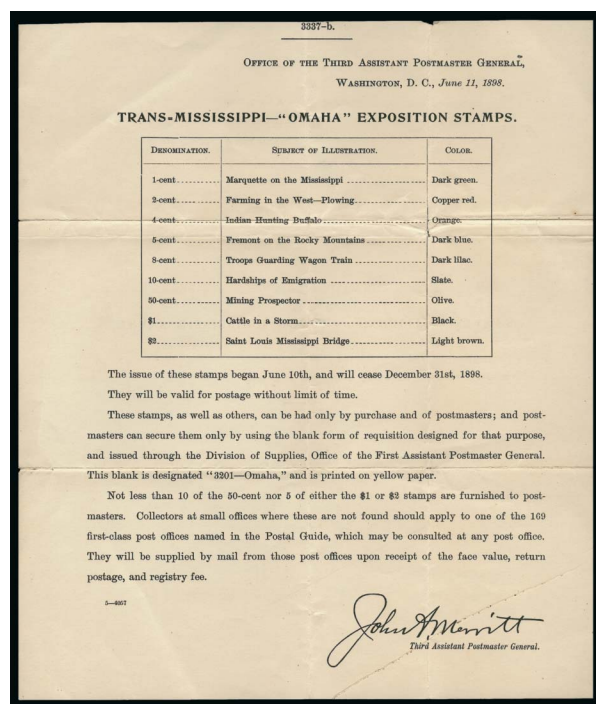
AFTERNOON SESSION (LOTS 301-448)
WEDNESDAY, NOVEMBER 6, 2013, FOLLOWING SALE 1055
BUT NO EARLIER THAN 3:30 P.M.

TRANS-MISSISSIPPI EXPOSITION EPHEMERA



- 301 **Trans-Mississippi International Exposition, Pass to Grounds.** Pass with green seal in background, made out to F.W. Bandhaus, signed on back by John Wakefield, secretary of the Exposition, an excellent frontispiece for a Trans-Mississippi collection or exhibit..... E. 100-150
- 302 ☒ **Trans-Mississippi/Exposition at Omaha/1898.** Large red three-line handstamp used as corner card on 2c entire cancelled by "Omaha Nebr. Oct. 9 7:30AM 96" duplex and used to Osborne Kans., clear strike of receiving backstamp, Very Fine, a scarce early Trans-Mississippi-related cover mailed two years before the Exposition — in 1895, two years after the Columbian Exposition, Congress stated its desire to hold an "exposition of all the products, industries, and civilization of the states west of the Mississippi River, made at some central gateway, where the world can behold the wonderful capabilities of these great wealth producing states..." E. 150-200
- 303 ☒ **Trans-Mississippi and International Exposition, June to November, 1898, Omaha Nebraska.** Five-line engraved advertisement on cover with 2c Bureau tied by light Omaha machine cancel to Howe Neb., 1897 receiving backstamp, slightly reduced at right, Very Fine, scarce pre-Exposition advertising cover..... E. 150-200
- 304 ☒ **Trans-Mississippi International Exposition, Omaha, June-November 1898.** Elaborate illustrated cover produced by *The Omaha Philatelist*, a monthly publication, with vertical pair of 1c Blue (264) tied by "Omaha Nebr. Sta. A Nov. 14 1:30PM 97" duplex and used to Howe Neb., clear strike of receiving backstamp, reduced at left, otherwise Fine E. 150-200

POST OFFICE DEPARTMENT NOTICE



305

Trans-Mississippi—“Omaha” Exposition Stamps. Printed notice from “Office of Third Assistant Postmaster General, Washington, D.C., June 11, 1898”, with table at top listing each denomination, its design and color, states “The issue of these stamps began June 10th, and will cease December 31st, 1898”, also details how postmasters can go about requisitioning the stamps, light file folds, Very Fine, a wonderful collateral item, the stamps were not actually issued until June 17, and this notice reflects the delay E. 150-200

BICOLORED ESSAYS



306EX

306 E **1c-\$2.00 Trans-Mississippi, Bi-Color Large Die Essays on India (285E8-293E7).** On approximately 98 x 83mm cards with full die sinkage, six are hybrids (incl. \$1.00 and \$2.00)

EXTREMELY FINE. A REMARKABLY PRISTINE SET OF THE TRANS-MISSISSIPPI BI-COLOR ESSAYS.

There were six different die proof printings from May 31, 1898, to August 4, 1899 — two were definitely bicolored (166 total), and it is possible the January 23, 1899, printing of 50 proofs was also bicolored (Photo Ex) 3,125.00

- 307 TC **50c Black, Small Die Trial Color Proof on Wove (291TC2b).** 40 x 29mm, crisp impression

VERY FINE. A RARE SMALL DIE TRIAL COLOR PROOF FOR THE 50-CENT TRANS-MISSISSIPPI.

This is the only trial color proof we have offered since keeping computerized records. The Scott Catalogue lists this on India, but it should be on wove, as all P2's are on wove 1,250.00



307



308EX



- 308 P **1c-\$2.00 Trans-Mississippi, Small Die Proofs on Wove (285P2-293P2).** Removed from original gray cards, \$1.00 slightly reduced, others large margins

A SCARCE SET OF THE 1898 TRANS-MISSISSIPPI SMALL DIE PROOFS FROM A ROOSEVELT PRESENTATION ALBUM.

Approximately 85 sets were produced.....(Photo Ex) 5,200.00

“SPECIMEN” OVERPRINTS



309



310

- 309 S **50c Trans-Mississippi, “Specimen” Ovpt. Ty. E (291S-E).** Purple “Specimen” overprint applied horizontally at bottom right, original gum, single hinge mark, fresh and Very Fine, rare, this is the first we have offered since keeping computerized records, undercatalogued in Scott 300.00
- 310 S **\$1.00 Trans-Mississippi, “Specimen” Ovpt. Ty. E (292S-E).** Clear purple “Specimen” overprint applied horizontally at bottom, original gum, lightly hinged, intense shade, Very Fine, scarce, this is the first we have offered since keeping computerized records, undercatalogued in Scott..... 600.00

UNUSED STAMPS



- 311 ★★ **8c Trans-Mississippi (289).** Mint N.H., rich color and proof-like impression, well-balanced margins, Very Fine and choice, with 1981 P.F. certificate 450.00
- 312 ★ **50c Trans-Mississippi (291).** Original gum, lightly hinged, choice centering with wide margins, long and full perforations, fresh and Extremely Fine, with 1970 P.F. certificate. 625.00
- 313 ★ **50c Trans-Mississippi (291).** Original gum, wide margins, fresh and Extremely Fine, with 1987 P.F. certificate 625.00
- 314 ★★ **\$1.00 Trans-Mississippi (292).** Mint N.H., proof-like impression, fresh and Very Fine, with 1980 P.F. certificate 3,500.00
- 315 ★ **\$1.00 Trans-Mississippi (292).** Original gum, lightly hinged, detailed impression on bright paper, Very Fine, with 1974 P.F. certificate..... 1,100.00
- 316 ★ **\$1.00 Trans-Mississippi (292).** Original gum, h.r., intense shade and impression, Very Fine, with 1974 P.F. certificate 1,100.00



317

- 317 ★★ **\$2.00 Trans-Mississippi (293).** Mint N.H., rich color, wide margins for this difficult issue EXTREMELY FINE. A SCARCE MINT NEVER-HINGED EXAMPLE OF THE \$2.00 TRANS-MISSISSIPPI ISSUE.
With 1980 P.F. certificate..... 6,000.00



318



319

- 318 ★ **\$2.00 Trans-Mississippi (293).** Original gum, intense shade and impression, unusually wide margins, Very Fine and choice, with 1973 P.F. certificate 1,900.00
- 319 ★ **\$2.00 Trans-Mississippi (293).** Original gum, lightly hinged, pretty shade, fresh and Very Fine, with 1973 P.F. certificate 1,900.00

USED STAMPS



- 320 **2c-10c Trans-Mississippi (286-290).** Four pieces, one with 4c and 2c, each tied by “Mil. Sta. No. 1, Manila, Phil. Isl., Sep. 21 9AM 99” duplex datestamp, 5c single toned perf, Fine-Very Fine and desirable group, one with 1979 P.F. certificate E. 300-400
- 321 **4c Trans-Mississippi (287).** Cancelled by intricately carved **Admiral Dewey fancy cancel** of East Clarendon Vt., small thin spot, Extremely Fine strike of this exceedingly rare cancel — Admiral Dewey was born in Montpelier Vt., he served in the Civil War and also distinguished himself in the Spanish-American War where on April 30, 1898, over the course of six hours, he sunk or captured the entire Spanish Pacific fleet in Manila Bay — our Sale 616 (lots 772 and 776) included a strike on cover with 2c 1898 dated Dec. 5, 1900, and another 4c Trans-Mississippi off cover, with 1995 P.F. certificate E. 500-750
- 322 **50c Trans-Mississippi (291).** Tied by neat strike of “Mil. Sta. No. 1, Manila Phil. Isl., Sep. 21 9AM 99” duplex datestamp on small piece, Fine, scarce cancel..... E. 200-300
- 323 **50c Trans-Mississippi (291).** Bottom imprint and plate no. 603 pair, rich color, tied by “Easttwo?? N.Y. Mar. 25 7PM 1902” circular datestamp on small green piece, light file folds do not affect stamps, Fine-Very Fine, scarce used imprint and plate number multiple, ex DuPuy, with 1973 P.F. certificate E. 200-300



324



325

- 324 **\$1.00 Trans-Mississippi (292).** Tied by neat strike of “Mil. Sta. No. 1, Manila Phil. Isls., Sep. 21 9AM 99” duplex datestamp on small piece, a few perfs torn off at bottom left from separation, otherwise Very Fine, scarce cancel..... E. 200-300
- 325 **\$2.00 Trans-Mississippi (293).** Natural s.e. at left, used with 8c Violet Brown (272), pair of 15c Olive Green (284) and 50c Trans-Mississippi (291), tied by New York registry ovals on blue piece, part of registry label, Very Fine, a colorful and unusual item, this must have been part of a large and heavy registered package, with 1985 P.F. certificate .. E. 500-750

IMPRINT AND PLATE NUMBER BLOCKS



326



327

- 326 ★田 **4c Trans-Mississippi (287).** Bottom imprint and plate no. 634 block of four, original gum, h.r. where few perf separations sensibly reinforced, vibrant color, Very Fine-Extremely Fine, the top right stamp is especially nice..... 950.00
- 327 ★田 **5c Trans-Mississippi (288).** Bottom imprint and plate no. 618 block of four, stamps Mint N.H., h.r. in selva where few perf separations sensibly reinforced, Fine-Very Fine, Scott Retail as singles..... 1,200.00



328

- 328 ★田 5c Trans-Mississippi (288). Top right corner imprint and plate no. 602 block of ten, natural s.e. and part arrow at left, original gum, few stamps Mint N.H., rich color, few perf separations at right sensibly reinforced, Fine-Very Fine, an attractive multiple 4,050.00



329

- 329 ★★田 8c Trans-Mississippi (289). Mint N.H. top imprint and plate no. 643 block of six with wide selvage, deep rich color and proof-like impression, choice centering throughout VERY FINE-EXTREMELY FINE. A STUNNING MINT NEVER-HINGED PLATE BLOCK OF THE 8-CENT TRANS-MISSISSIPPI ISSUE.
With 1983 P.F. certificate..... 5,500.00



8-CENT IMPERFORATE HORIZONTALLY ERROR

330 ★田 **8c Trans-Mississippi, Vertical Pair, Imperforate Horizontally (289a).** Top imprint and plate no. 609 block containing two error pairs, original gum, deep rich color, detailed impression, wide margins, light natural gum wrinkles, light horizontal crease at top above the stamps

VERY FINE. THE FINER OF TWO RECORDED IMPRINT AND PLATE NUMBER BLOCKS OF THE 8-CENT TRANS-MISSISSIPPI ISSUE IMPERFORATE HORIZONTALLY, AND THE ONLY EXAMPLE FROM THE TOP OF THE SHEET. THIS PLATE BLOCK IS ONE OF THE GREATEST RARITIES OF UNITED STATES PHILATELY.

According to the Neil-Rosenthal book (pp. 115-118), one pane of 50 was discovered by Robert Watts, a stamp clerk at one of the sales windows at the Philadelphia General Post Office, who found it between the wrapping paper of a bundle of stamps. He sold it for double face value (\$8.00) to Herman Lewis, a locksmith in Philadelphia. Lewis soon sold it to William S. F. Pierce, who broke it into three pieces: a vertical strip of ten with sheet margin and full arrow at right, a vertical block of 20 containing both plate blocks, and a vertical block of 20 with natural straight edge at left.

The block of ten was reportedly sold for \$15.00 and was taken to Europe when the owner moved there. It returned to the U.S. in the 1930's, when it was broken. The vertical block of 20 with straight edge at left was sold to Arthur E. Tuttle, a Philadelphia stamp dealer, who retailed them for \$10.00 per pair. The block of 20 with both plate numbers was retained by Pierce, who later sold the top and bottom plate blocks to Albert Batchelder of the New England Stamp Co. for \$175.00.

The bottom imprint and plate number block has original gum, narrow selvage and usual gum wrinkles — ex Colonel Green, Eno, Hetherington and Kobacker, currently in the William H. Gross collection. The wide top margin plate block offered here is in superior condition.

Ex Watts (discoverer), Pierce, New England Stamp Co., U.S. Trust Co. sale (H. R. Harmer, Feb. 17-18, 1970) and Rosenthal. Illustrated in the Neil-Rosenthal book on p. 117. With 1994 P.F. certificate. 125,000.00



331

- 331 ★田 8c Trans-Mississippi (289). Bottom imprint and plate no. 609 block of four, original gum, lightly hinged, unusual pale shade, fresh and Fine 1,950.00



332

- 332 ★★田 10c Trans-Mississippi (290). Mint N.H. top imprint and plate no. 620 block of four, intense shade and impression, fresh and Fine-Very Fine, with 1994 P.F. certificate 3,600.00



333

333 ★田 **50c Trans-Mississippi (291).** Top imprint and plate no. 603 block of four, original gum, lightly hinged, choice centering, radiant color

EXTREMELY FINE. A BEAUTIFUL AND RARE TOP IMPRINT AND PLATE NUMBER BLOCK OF FOUR OF THE 50-CENT TRANS-MISSISSIPPI ISSUE.

Plate number 603 is the only plate number recorded for this issue. As an indication of rarity, the last time we offered a plate block of this issue was in our 2009 auction of the MLG Collection. The example offered here, with superior centering and from the top position, should be considered highly desirable.

With 1985 P.F. certificate. 15,000.00



\$1.00 IMPRINT AND PLATE NUMBER BLOCK OF TEN

334 ★田 **\$1.00 Trans-Mississippi (292).** Top left corner imprint and plate no. 606 block of ten with wide selvage, natural s.e. at right with part arrow, top center and four corner stamps lightly hinged, others Mint N.H., detailed impression on crisp paper, few perf separations at right sensibly reinforced

VERY FINE AND CHOICE. A RARE IMPRINT AND PLATE NUMBER BLOCK OF TEN OF THE \$1.00 TRANS-MISSISSIPPI ISSUE, CONTAINING THE ENTIRE TOP TWO ROWS OF THE LEFT PANE OF THE PLATE.

The \$1.00 stamp issued for the Trans-Mississippi and International Exposition was based on an image of cattle in a storm from an engraving by C. O. Murray, a copy of which was loaned to the Bureau of Engraving and Printing by Mrs. C. B. Johnson. The engraving was used as a trademark by an American cattle company, but it was based on a painting by John A. MacWhirter entitled *The Vanguard*, which presumably depicts cattle in the West Highlands of Scotland (although MacWhirter did travel to the western United States in 1877). The Post Office Department was embarrassed to learn that the painting was the property of an Englishman, Lord Blythewood, who was sent a formal apology and die proof of the issued stamp through the British ambassador. The proof was donated to the Royal Philatelic Society by Lord Blythewood and hangs today on the walls of the Royal.

Three complete panes of 50 are recorded (we believe they are still intact). Apart from those panes, since keeping computerized records we have offered a block of 20 containing the full plate block (Siegel 2013 Rarities Sale, lot 336), and only one plate block of six with reduced selvage at top, thins and repaired tear, ex Saddleback (Siegel Sale 935, lot 28). The Wampler, Kobacker and MLG collections contained plate blocks of four.

With 1990 P.F. certificate. 54,400.00



\$2.00 IMPRINT AND PLATE NUMBER BLOCK OF FOUR

335 ★田 **\$2.00 Trans-Mississippi (293).** Top imprint and plate no. 613 block of four, original gum, lightly hinged with pristine gum, deep rich color and proof-like impression
 FINE. A BEAUTIFUL AND RARE TOP IMPRINT AND PLATE NUMBER BLOCK OF FOUR OF THE \$2.00 TRANS-MISSISSIPPI ISSUE.

The design of the \$2.00 Trans-Mississippi depicts the Eads bridge, which spans the Mississippi River at St. Louis. The original engraving was used on the admission ticket to the Republican Convention of 1896, which nominated McKinley as candidate for president. The stamp, issued during the McKinley Administration, illustrates the natural boundary between East and West and so was appropriate for the Trans-Mississippi Issue. All of the \$2.00 Trans-Mississippi stamps were printed in a single day's run on June 3, 1898.

There are perhaps three imprint and plate number blocks of six in existence. The imprint and plate number block of four format is also extremely scarce, especially from the top position.

With 1987 P.F. certificate. 90,000.00

IMPRINT AND PLATE NUMBER PAIRS AND STRIPS



- 336 ★ **1c, 2c Trans-Mississippi (285-286).** Stockbook of imprint and plate no. pairs, arranged in order of plate no. including 29 of 1c and a whopping 210 of the 2c, mostly complete for top and bottom positions from each plate represented with no duplication, few Mint N.H. but not counted as such in our catalogue value, mostly original gum, h.r. or lightly hinged, bright colors, better condition than normally seen in group lots but with few small flaws to be expected, Fine-Very Fine, a fantastic holding for the plate number specialist.....*Not illustrated* 14,820.00
- 337 ★ **4c Trans-Mississippi (287).** Top imprint and plate no. 634 pair, original gum, h.r., rich color, choice centering with wide margins, fresh and Extremely Fine..... 275.00
- 338 ★★ **5c Trans-Mississippi (288).** Mint N.H. top imprint and plate no. 618 pair, rich color, well-proportioned margins, Very Fine and choice 650.00
- 339 ★ **5c Trans-Mississippi (288).** Bottom imprint and plate no. 602 pair, original gum, lightly hinged, vibrant color, Very Fine and choice 250.00
- 340 ★★ **8c Trans-Mississippi (289).** Mint N.H. bottom imprint and plate no. 643 pair, bright color, right stamp small fingerprint on gum, Fine, unpriced in Scott in Mint N.H. condition, Scott Retail as singles with no premium for the position..... 900.00
- 341 ★ **8c Trans-Mississippi (289).** Top imprint and plate no. 643 pair with wide selvage, stamps Mint N.H., h.r. in selvage, pretty shade, tiny thin spot in selvage only, Fine, Scott Retail as singles 900.00
- 342 ★ **8c Trans-Mississippi (289).** Bottom imprint and plate no. 609 pair with wide selvage, right stamp Mint N.H., left stamp lightly hinged, rich color, choice centering, Very Fine, Scott Retail as singles.. 600.00



343



344

- 343 ★★ **10c Trans-Mississippi (290).** Mint N.H. bottom imprint and plate no. 620 pair, detailed impression on crisp paper, Very Fine and choice..... 1,125.00
- 344 ★ **10c Trans-Mississippi (290).** Top imprint and plate no. 604 pair, original gum, lightly hinged, rich color, Very Fine and choice..... 400.00



345

- 345 ★ **50c Trans-Mississippi (291).** Bottom imprint and plate no. 603 pair with wide selvage, original gum, lightly hinged, gorgeous centering, rich color
EXTREMELY FINE. A BEAUTIFUL IMPRINT AND PLATE NUMBER PAIR OF THE 50-CENT TRANS-MISSISSIPPI ISSUE. SCARCE WITH SUCH SUPERB CENTERING.
With 1987 P.F. certificate..... 1,775.00



346



347

346 ★ **50c Trans-Mississippi (291).** Top imprint and plate no. 603 pair with wide selvage, rich color, detailed impression, Very Fine and choice, the left stamp is especially nice, with 1973 P.F. certificate 1,775.00

347 ★ **50c Trans-Mississippi (291).** Bottom imprint and plate no. 603 pair, original gum, lightly hinged, detailed impression, Fine-Very Fine, with 1987 P.F. certificate . 1,775.00



348

348 ★★ **\$1.00 Trans-Mississippi (292).** Mint N.H. bottom imprint and plate no. 606 pair with wide selvage, crisp impression on bright paper, trivial crease in lower left selvage
 VERY FINE. AN ATTRACTIVE MINT NEVER-HINGED IMPRINT AND PLATE NUMBER PAIR OF THE \$1.00 TRANS-MISSISSIPPI ISSUE.
 With 1987 P.F. certificate..... 7,750.00



349

- 349 ★ **\$1.00 Trans-Mississippi (292).** Top imprint and plate no. 606 pair, original gum, lightly hinged, intense shade and impression, left stamp natural inclusion on back does not show thru and is not mentioned on accompanying certificate

EXTREMELY FINE TOP IMPRINT AND PLATE NUMBER PAIR OF THE \$1.00 TRANS-MISSISSIPPI ISSUE.

With 1987 P.F. certificate..... 3,000.00



350

- 350 ★ **\$2.00 Trans-Mississippi (293).** Top imprint and plate no. 613 pair with wide selvage, original gum, lightly hinged, rich color on bright paper

VERY FINE. A BEAUTIFUL AND RARE IMPRINT AND PLATE NUMBER PAIR OF THE \$2.00 TRANS-MISSISSIPPI ISSUE FROM THE TOP PLATE POSITION.

The Scott Catalogue premium for an imprint and plate number pair versus two singles seems inadequate (\$4,750.00 vs. \$3,800.00). The premium for a plate block of four versus a block of four is more than ten times. A review of Power Search found only three others offered since 1998, and all of those were from the bottom plate position.

With 1987 P.F. certificate..... 4,750.00



\$2.00 IMPRINT AND PLATE NUMBER STRIP OF FIVE

- 351 ★ **\$2.00 Trans-Mississippi (293).** Top left corner selvage imprint and plate no. 613 strip of five, natural s.e. with part arrow at right, original gum, barely hinged (a few appear Mint N.H.), choice centering, deep rich color and proof-like impression, few sensibly reinforced perf separations

VERY FINE. A RARE AND DESIRABLE IMPRINT AND PLATE NUMBER STRIP OF FIVE OF THE \$2.00 TRANS-MISSISSIPPI ISSUE.

The \$2.00 Trans-Mississippi Issue is very difficult to obtain in traditional plate block form. Only one plate block of six (ex Ambassador and Kobacker) and one contained in the half-pane of 25 are known. Collectors usually settle for an imprint and plate number block of four.

With 1995 P.F. certificate. Undercatalogued in Scott as an imprint and plate number strip of three at \$8,000.00; the plate block of four catalogues \$90,000.00, and the plate block of six catalogues \$175,000.00. This is the only imprint and plate number strip contained in Power Search, which covers all of our Rarities sales since 1964 and regular auctions since 1994..... E. 15,000-20,000

BLOCKS



352



353



354



355



356

- 352 ★田 **4c Trans-Mississippi (287)**. Block of four, bottom right stamp Mint N.H., others lightly hinged, vivid color, fresh and Very Fine, Scott Retail as singles 660.00
- 353 ★★田 **4c Trans-Mississippi (287)**. Mint N.H. block of four, rich color with a hint of oxidation, choice centering throughout, Extremely Fine, an attractive block, with 1974 P.F. certificate, Scott Retail as singles 1,320.00
- 354 ★田 **5c Trans-Mississippi (288)**. Block of four, original gum, lightly hinged, pretty shade, Very Fine 425.00
- 355 ★田 **5c Trans-Mississippi (288)**. Left arrow block of four, original gum, lightly hinged, rich color, top left stamp small translucency at lower right, Very Fine appearance 450.00
- 356 ★田 **8c Trans-Mississippi (289)**. Block of four, bottom stamps Mint N.H., top stamps lightly hinged, deep rich color and proof-like impression, fresh and Fine-Very Fine, Scott Retail as singles 1,200.00



357



358

- 357 ★田 **8c Trans-Mississippi (289).** Top left corner selvage block of four, bottom stamps Mint N.H., top stamps lightly hinged, intense shade and impression, top left stamp natural gum crease, Very Fine-Extremely Fine, the bottom stamps are especially nice, Scott Retail as singles..... 1,200.00

- 358 ★田 **10c Trans-Mississippi (290).** Block of four, bottom stamps Mint N.H., top stamps single h.r., intense shade and impression, Fine-Very Fine, Scott Retail as singles 1,200.00



359

- 359 ★田 **50c Trans-Mississippi (291).** Block of four, original gum, fresh color, few perf separations sensibly reinforced, top stamps light horizontal crease, otherwise Very Fine and choice, with 1987 P.F. certificate 2,900.00



360

360 ★田 **\$1.00 Trans-Mississippi (292).** Left selvage block of four, original gum, h.r. where few perf separations sensibly reinforced, crisp impression

FINE-VERY FINE ORIGINAL-GUM BLOCK OF FOUR OF THE \$1.00 TRANS-MISSISSIPPI ISSUE.

With 1973 P.F. certificate..... 5,250.00



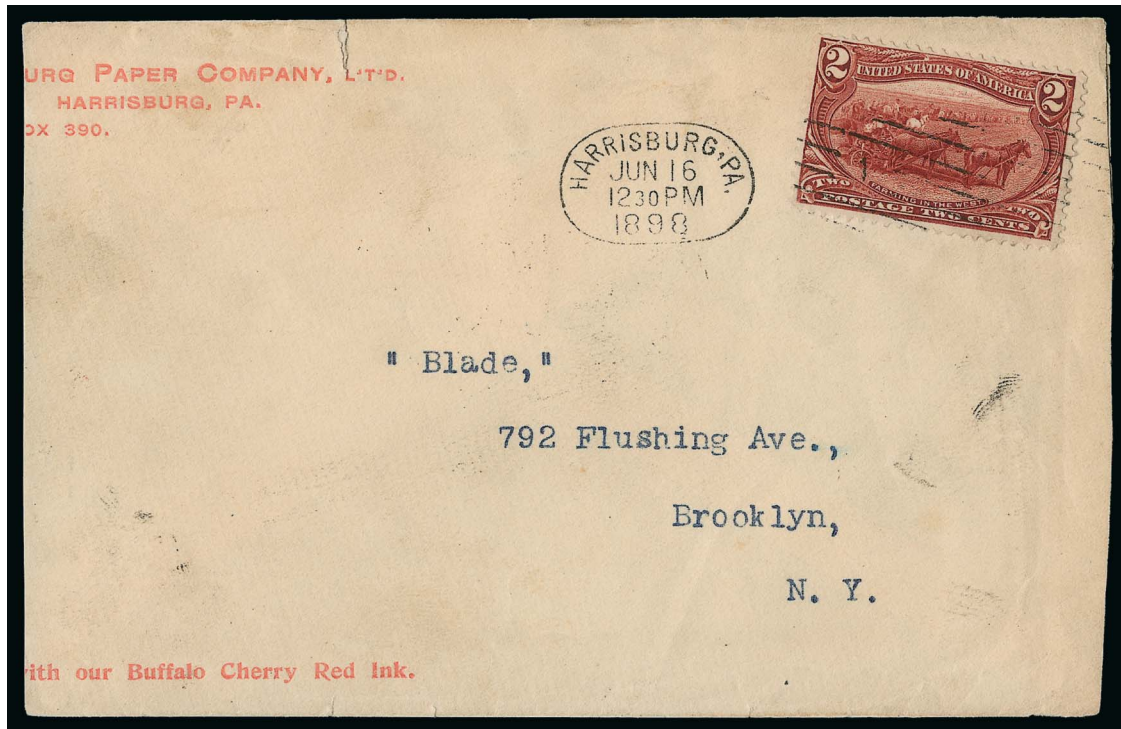
361

361 ★田 **\$2.00 Trans-Mississippi (293).** Block of four, original gum, h.r. at top, bottom stamps barely hinged (if at all), rich color

FINE. A SCARCE ORIGINAL-GUM BLOCK OF FOUR OF THE \$2.00 TRANS-MISSISSIPPI ISSUE.

With 1984 P.F. certificate..... 8,000.00

PRE-FIRST DAY USE
JUNE 16, 1898



362

- 362 ☒ **2c Trans-Mississippi (286).** Tied by **pre-date "Harrisburg Pa. Jun. 16 12:30 PM 1898"** machine cancel on cover to "Blade" in Brooklyn N.Y., Harrisburg Paper Company return address, receiving backstamps of June 16 and 17, reduced at left
- FINE. THIS IS ONE OF TWO RECORDED PRE-FIRST DAY COVERS OF THE 2-CENT TRANS-MISSISSIPPI ISSUE — JUNE 16, 1898, IS THE EARLIEST DOCUMENTED USE OF THE ISSUE.
- The official First Day of Issue of the Trans-Mississippi Issue was June 17, 1898. Two covers are known used on June 16: the cover offered here and one from Camden N.J. to Huntington Pa.
- Illustrated in the Neil-Rosenthal book (p. 62). With 1995 A.P.S. certificate.....
..... E. 7,500-10,000

Return in 3 Days to



702 14TH ST.



Herrn HERMANN APPEL

Römerstrasse 59.



REGISTERED
JUN 17 1893
WASHINGTON, D. C.
Sub-Station No. 29
No. 766

METZ
2485
GERMANY.



FIRST DAY OF ISSUE—JUNE 17, 1898
THE UNIQUE FIRST DAY COVER WITH SIX VALUES

363 ☒ **1c-10c Trans-Mississippi (285-290).** Bright colors, tied by “Washington D.C.” registry ovals, purple “**Registered, Jun. 17, 1898, Washington D.C. Sub-Station No. 29, No. 766**” five-line datestamp (with registry number in manuscript) on **First Day of Issue cover to Metz, Germany**, typewriter address to Hermann Appel, New York registry label, New York (June 18) and Metz (June 26) backstamps, barely reduced at left

VERY FINE. A COLORFUL FIRST DAY COVER BEARING ALL SIX VALUES OF TRANS-MISSISSIPPI ISSUE THROUGH THE 10-CENT. THIS IS THE ONLY RECORDED FIRST DAY COVER WITH ALL OF THESE DENOMINATIONS. A PHENOMENAL RARITY AND ONE OF THE MOST IMPORTANT CLASSIC COMMEMORATIVE FIRST DAY COVERS EXTANT.

The Trans-Mississippi Exposition was open to the public from June 1 to November 1, 1898. The stamps were not ready in time for the opening, and the official First Day of Issue was June 17. The cover offered here was prepared by J. Murray Bartels.

First Day covers with the Trans-Mississippi Issue are rare. The following quantities are recorded or estimated by Henry Scheuer:

1c: 4-5 used alone (plus 4 in combination)
2c: 12+ used alone (plus 3 in combination)
4c: One used alone (plus 3 in combination)
5c: One used alone (plus 3 in combination)
8c: Two used alone (plus one in combination)
10c: One used alone (plus one in combination)
50c: One (used alone)
\$1.00: One (used alone)
\$2.00: None known

Combinations on First Day Covers (one known of each):

1c and 2c
1c, 2c, 4c, 5c
1c, 4c, 5c
1c, 2c, 4c, 5c, 8c, 10c

Ex McCoy. With 1987 P.F. certificate. Scott Retail \$100,000.00 E. 50,000-75,000



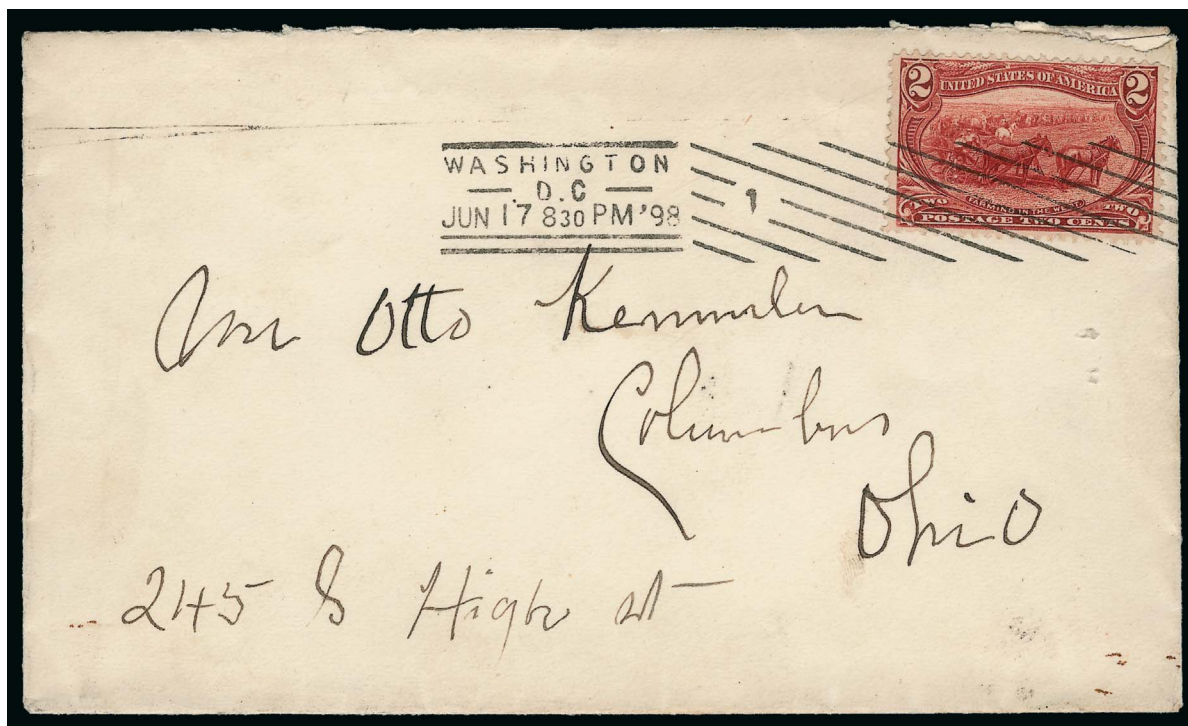
364

364 ☒ **1c Trans-Mississippi (285).** Straight edge at right, tied by “Pittsburgh Pa. Jun. 17 1-PM 1898” **First Day** machine cancel on 1c Columbian entire (U348) to Mrs. Charles L. Taylor in Spring Lake Beach N.J., receiving backstamp

VERY FINE. A RARE AND DESIRABLE FIRST DAY COVER OF THE ONE-CENT TRANS-MISSISSIPPI ISSUE. ONLY FOUR OR FIVE SINGLE FRANKINGS ARE RECORDED.

Henry Scheuer records 4-5 First Day Covers with single 1c stamps, plus 4 with the 1c used in combination with other values.

With 1972 P.F. certificate. Scott Retail \$15,000.00 E. 7,500-10,000



365

- 365 ☒ **2c Trans-Mississippi (286).** Tied by “Washington D.C. Jun. 17 8:30 PM ‘98” machine cancel on **First Day of Issue** cover to Otto Kemmler in Columbus Ohio, receiving back-stamp of the following day, trivial edgewear

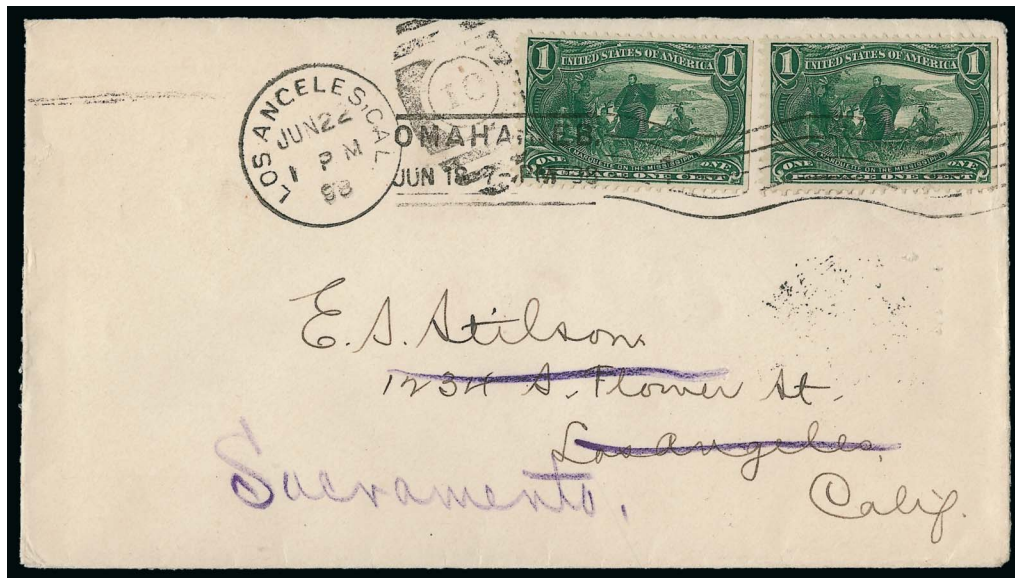
VERY FINE. A BEAUTIFUL AND RARE 2-CENT TRANS-MISSISSIPPI FIRST DAY OF ISSUE COVER.

The recipient, Otto Kemmler, was a former manager of the *Ohio Journal of Philately*. The cover has pencil notations on the back for all denominations of the series, which may have been enclosed.

Henry Scheuer estimates that 12-20 First Day covers are known with the 2c Trans-Mississippi Issue, plus three covers with the 2c used in combination with other denominations.

Illustrated in the Neil-Rosenthal book (p. 63). From the McCusker *Americover* ‘95 auction where illustrated on the front cover. With 1995 P.F. certificate. Scott Retail \$14,000.00...
..... E. 5,000-7,500

366

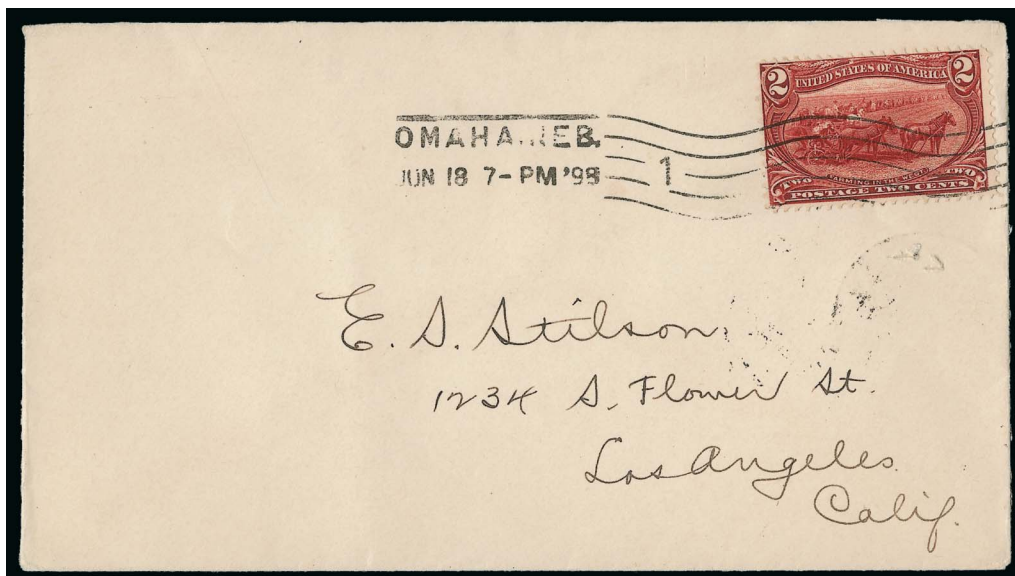


- 366 ☒ **1c Trans-Mississippi (285).** Two singles, s.e. at right, tied by “Omaha, Neb. Jun. 18 7-PM ‘98” machine cancel on cover to Los Angeles Cal. and forwarded to Sacramento, left stamp also tied by “Los Angeles Cal. Jun. 22 1PM 98” duplex, transit and receiving backstamps

VERY FINE. THIS IS THE EARLIEST REPORTED EXAMPLE OF THE ONE-CENT TRANS-MISSISSIPPI ISSUE USED FROM OMAHA, NEBRASKA, WHICH WAS THE HOME OF THE EXPOSITION. A WONDERFUL SHOWPIECE.

The Trans-Mississippi Exposition was open to the public from June 1 to November 1, 1898. The stamps were not ready in time for the opening, and the official First Day was June 17. The 1c June 17 First Day Covers are known from Washington D.C., New York and Pittsburgh, but none are known from Omaha, the home of the Exposition. The cover offered here, postmarked one day after the stamps were issued in Omaha, is a significant use..... E. 2,000-3,000

367



- 367 ☒ **2c Trans-Mississippi (286).** Rich color, tied by “Omaha, Neb. Jun. 18 7-PM ‘98” machine cancel on cover to Los Angeles Cal., receiving backstamp, Very Fine, the Trans-Mississippi Exposition was open to the public from June 1 to November 1, 1898; however, the stamps were not ready in time for the opening, and the official first day was June 17; one First Day Cover with the 2c stamp is known used from Omaha on the 17th — the cover offered here, postmarked in Omaha one day after the stamps were issued, is a great rarity E. 1,000-1,500

EXPOSITION POSTAL MARKINGS



- 368 ☒ **2c Pink, Ty. IV (279Bg).** Tied by well-struck "Exposition Sta., Omaha, Nebr., Jun. 9 6PM 98" duplex datestamp on **illustrated Trans-Mississippi Exposition Nebraska Commission corner card** cover to the Blind Institute in Nebraska City Nebr., receiving backstamp, Very Fine, the Exposition opened to the public on June 1 but the stamps were not ready until June 17, this was used in the period before the Trans-Mississippi stamps were available..... E. 200-300
- 369 ☒ **2c Trans-Mississippi (286).** Rich color, tied by "Exposition Sta., Omaha, Nebr., Aug. 5 1:30PM 98" duplex datestamp on blue **Trans-Mississippi Exposition illustrated corner card** cover depicting Montgomery Ward Building, to Lafayette Ind., receiving backstamp, stamp missing top left corner, otherwise Fine, attractive cover..... E. 200-300
- 370 ☒ **4c Trans-Mississippi (287).** Choice centering, tied by "Exposition Sta. Omaha Nebr. Aug. 3 4:30 PM 98" duplex cancel on cover to Springfield Mass., receiving backstamp, some toning affects stamp, otherwise Very Fine, desirable with the exposition cancel..... E. 400-500
- 371 ☒ **5c Trans-Mississippi (288).** Rich color, tied by "Exposition Sta. Omaha Nebr., Aug. 3 4:30 PM 98" duplex cancel on cover to Springfield Mass., receiving backstamp, some toning affects stamp which has corner crease at top right, Very Fine appearance, desirable with the exposition cancel.. E. 300-400
- 372 ☒ **10c Trans-Mississippi (290).** Tied by bold strike of "Exposition Sta., Omaha, Nebr. Aug. 3 4:30PM 98" duplex cancel on cover to Springfield Mass., some toning affects cover and stamp, otherwise Very Fine, scarce with the Exposition cancel..... E. 400-500
- 373 ☒ **2c Trans-Mississippi (286).** Tied by "Omaha, Neb. Aug. 11 7-PM '98" machine cancel addressed to "**Indian Camp, Transmississippi Ex.**", with enclosure dated Aug. 14 reading "Guard So. Gate, Pass (5) if they have interpreter" and signed with blue "Captain 8th Infantry U.S.A., Officer in Charge" handstamp, Very Fine and rare Indian-related Trans-Mississippi cover and enclosure, the Indian Congress was held at the Exposition from August to October..... E. 200-300

RETURN TO
G. B. CALMAN,
42 EAST 23rd STREET,
NEW YORK.



REGISTERED
RETURN RECEIPT.

Rückschein

27287

HR

Mr. Max Ruppert

Neuaußelstr. 10

München

Germany

COMPLETE SET OF NINE TRANS-MISSISSIPPI VALUES ON COVER

374 ☒ **1c-\$2.00 Trans-Mississippi (285-293).** Complete set, rich colors, tied by “Madison Square Branch” registry oval, purple “Registered, Jul. 18, 1898 Madison Square Branch, New York P.O.” five-line boxed datestamp on back of registered cover **to Munich, Germany,** G. B. Calman return address, horizontal file fold at bottom well away from stamps, minor edgewear, the 1c, 4c and 5c with negligible creases during use

FINE-VERY FINE CENTERING AND IN EXCELLENT CONDITION. ONE OF THREE RECORDED COVERS BEARING A COMPLETE SET OF THE TRANS-MISSISSIPPI ISSUE. A SPECTACULAR EXHIBITION ITEM AND ONE OF THE MOST SIGNIFICANT UNITED STATES COMMEMORATIVE ISSUE COVERS EXTANT.

Although it has been reported that four covers exist with all nine values of the Trans-Mississippi Issue, we have been able to locate only three covers. The Neil-Rosenthal book, *The Trans-Mississippi Issue of 1898*, states more than once that four covers are known, but the census on page 167 lists the October 7 cover to London twice among the four entries. While it is possible that a fourth cover exists, we do not have any record of it. The three we record are: 1) July 18, 1898, New York Madison Square Branch to Munich, Germany, G. B. Calman corner card, ex Rosenthal, the cover offered here; 2) Oct. 4, 1898, Exposition Sta. Omaha Neb. datestamp, to St. Johns, Newfoundland, ex Saffin, Christie’s Sep. 1982; and 3) Oct. 7, 1898, New York Sta. P to London, England, ex McCoy and Dr. Martin (Siegel Sale 893, lot 156, realized \$47,500 hammer).

Ex Rosenthal. Illustrated in the Neil-Rosenthal book (p. 160). With 1986 P.F. certificate.
 E. 30,000-40,000

DOMESTIC AND FOREIGN USES



- 375 ☒ **1c Trans-Mississippi (285).** Natural s.e. at right, tied by "Omaha, Neb. Jun. 1898" machine cancel on **Trans-Mississippi and International Exposition, 1898, Department of Publicity and Promotion** illustrated corner card cover to Osborne Kans., Very Fine, a beautiful cover..... E. 200-300
- 376 ☒ **1c Trans-Mississippi (285).** Two singles, tied by "Omaha Nebr. Jul. 31 4-PM 1898" machine cancel on blue **Trans-Mississippi Exposition illustrated corner card** cover depicting Liberty standing on top of the world, to North Adams Mass., beautiful illustration on back, slightly reduced at right, Very Fine, a gorgeous cover..... E. 300-400
- 377 ☒ **1c Trans-Mississippi (285).** Horizontal pair, cancelled by targets, "Koserefsky, Alaska Nov. 1, 1900" circular datestamp on cover to Anvik P.O. Alaska, receiving backstamp, Very Fine, a rare use from Alaska E. 150-200
- 378 ☒ **1c Trans-Mississippi (285).** Six covers each with pair on a colorful **Spanish-American War Patriotic**, designs incl. Commodore Watson with female sailor, Commodore Schley with standing Liberty, Colonel Roosevelt, all-over flag, each different, few minor flaws, a Fine-Very Fine and desirable group(Photo Ex) E. 300-400
- 379 ☒ **1c Trans-Mississippi (285).** Rich color, used with two 2c Pink, Ty. IV (279Bg), tied by "San Francisco Cala. Aug. 30 8-AM '98" machine cancel on multicolored **Spanish-American War Patriotic** cover for "Remember the Maine", to **Copenhagen, Denmark**, receiving backstamp, Very Fine and attractive use properly paying the 5c UPU rate..... E. 200-300
- 380 ☒ **1c Trans-Mississippi (285).** Rich color, used with **3c Columbian (232)** and **1c, 2c and 4c Pan-American (294-296)**, cancelled by corks on registered 2c entire to **Hell Bourg, Reunion** (spelling corrected in pencil), neat "Thompsonville Conn. Jul. 29 12AM 1902" circular datestamp, New York registry label, London registry transit marking, Marseilles, St. Denis and receiving backstamps, minor wear, Very Fine, a colorful use to a rare destination, Reunion is located off the east coast of Africa, east of Madagascar and southwest of Mauritius, Hell Bourg was a spa town known for its hot baths which were marketed widely as a cure to many of the health problems and diseases that afflicted Europeans in the colonial tropics E. 300-400



- 381 ✉ **1c Trans-Mississippi (285).** Horizontal pair and single, used with **8c Lilac (225)** on registered 2c entire, tied by "Cleveland Ohio" registry ovals, used to **St. Martin, West Indies**, purple "Cleveland, Ohio Reg. Div., Nov. 14, 1899" double-circle datestamp, New York registry label, receiving backstamp, slightly reduced at left, Very Fine, a colorful cover properly paying the 5c UPU rate plus 8c registry fee..... E. 150-200
- 382 ✉ **1c Trans-Mississippi (285).** Rich color, used with **2c Red Brown (210)**, **1c Dull Blue (219)**, **3c Purple (221)** and **5c Chocolate (223)**, tied by "Cleveland Ohio" registry ovals on 1c Columbian entire (U348) to **Tunis, Africa**, purple "Cleveland, Ohio Reg. Div. Nov. 18, 1899" double-circle datestamp, transit and receiving backstamps, manuscript "Please preserve this envelope" at left, Very Fine, a colorful use properly paying the 5c UPU rate plus 8c registry fee E. 300-400
- 383 ✉ **1c Trans-Mississippi (285).** Choice centering, used with **3c Purple (221)** and tied by "Cleveland Ohio Mar. 23 11:30 AM 99" machine cancel on 1c Columbian entire (U348) to **Warsaw, Russia**, blue "United States Consulate at Warsaw" straightline handstamp, receiving backstamp, manuscript "Please preserve this envelope" at left, fresh and Very Fine, attractive use to Warsaw, Poland as part of the Russian Empire E. 200-300
- 384 **2c Trans-Mississippi (286).** Tied by "8/26/1898" manuscript cancel and used as a Revenue stamp on National Bank of Commerce check from Kansas City Mo., perforated "Paid", Very Fine, scarce Revenue use during a shortage of Revenue stamps..... E. 200-300
- 385 ✉ **2c Trans-Mississippi (286).** Bright color, tied by "Pittsburgh Pa. Nov. 7 5:30 PM 1898" machine cancel on multicolored **DuPont Smokeless shells advertising** cover depicting a bird and farmland, to Boston, Very Fine, a beautiful cover E. 400-500
- 386 ✉ **2c Trans-Mississippi (286).** Tied by "Tenafly N.J. Aug. 22, 1898" circular datestamp and used as forwarding postage on red and blue illustrated postcard depicting Britannia, originating postage paid by **Canada, 1898**, **1c Gray Green (75)** tied by "Montreal Aug. 13 22-0 1898" machine cancel, forwarded to Highland N.J., receiving backstamp, some corner wear, Very Fine, a colorful use E. 150-200



- 387 ☒ **2c Trans-Mississippi (286).** Tied by "Mil. Sta. No. 2, Philippines, Cavite May 29 9AM 1899" duplex on soldier's cover to **Nagasaki, Japan**, neat "15 CTME T" due marking, with **Japan 2s** and **vertical pair of 5s** cancelled or tied by chops, Manila and receiving backstamps, tissue attachment on back, opened for display, Very Fine, scarce use sent short paid from the Philippines to Japan..... E. 200-300
- 388 ☒ **2c Trans-Mississippi (286).** Tied by "Mil. Sta., Havana Cuba, Dec. 15, 1898" duplex, second strike on back, on illustrated hotel cover, not mailed and with "This is the fourth American stamp sold in Havana Cuba by U.S. Post Office" and signed by several witnesses, some slight edgewear, Very Fine, interesting item E. 400-500
- 389 ☒ **2c Trans-Mississippi (286).** Tied by light strike of purple cancel on postcard **originating in Switzerland**, sent to **New York**, forwarded to **San Francisco** and **forwarded again to Yokohama, Japan** before returning to **Switzerland**, originating postage paid by 2fr and 3fr Swiss stamps tied by "Kriens 1.IX. 98" circular datestamps, U.S. 2c stamp applied in New York with Sep. 12 circular datestamp and "San Francisco Sep. 17 machine cancel, back of card with **San Francisco Dead Letter Office** triangular datestamp, sent to Japan where 4s stamp applied in Yokohama, endorsed "Via India" and "Via Suez", back of card reads (in three languages) "Please address this card so as to make the circuit of the world and back", some edge flaws and stamps with few flaws, still Very Fine and colorful use, a very unusual item as good-hearted postal workers must have applied the additional postage to make this trip happen, the voyage of this card almost ended in San Francisco E. 500-750
- 390 ☒ **2c Trans-Mississippi (286).** Tied by "New York U.S.A. 8-6 1898" oval datestamp on wrapper to **Paris, France**, purple "Marked Copy" handstamp, split along vertical fold, stamp with corner creases, still a Very Fine and scarce wrapper use..... E. 200-300
- 391 ☒ **4c Trans-Mississippi (287).** Vibrant color, s.e. at right, used with horizontal strip of four of **1c Deep Green (279)** and single **2c Red, Ty. IV (279B)**, tied by bold strikes of purple **Kicking Mule** fancy cancel on registered 2c entire to **Manila, Philippines**, blue "Registered May 8, 1900, Port Townsend, Wash." three-line datestamp, San Francisco (May 10) and Manila (June 14) backstamps, minor edgewear, Very Fine, a colorful use from the Gardner-Perry correspondence..... E. 300-400



- 392 ☒ **4c Trans-Mississippi (287)**. Vibrant color, used with **8c Columbian (236)** tied by New York registry ovals on registered 5c Blue entire to **Montevideo, Uruguay**, "New York U.S.A. Foreign 1-14, 1903" oval datestamp, New York and Montevideo registry labels, receiving backstamp, fresh and Very Fine, a colorful and scarce use..... E. 200-300
- 393 ☒ **4c Trans-Mississippi (287)**. Brilliant color, used with **1c Trans-Mississippi (285)**, tied by "New York May 5, 1899 11AM" duplex datestamps on red and blue **Spanish-American War Overall Flag Patriotic cover to Antwerp, Belgium**, receiving backstamp, Very Fine, a colorful use..... E. 200-300
- 394 ☒ **4c Trans-Mississippi (287)**. Vibrant color, used with **8c Lilac (272)** and **1c Trans-Mississippi (285)**, tied by indistinct duplex datestamps on red and blue "**Anglo Saxon, One Tongue, One Purpose**" **Canadian Friendship** illustrated cover to **Antwerp, Belgium**, bold "New York N.Y. Reg'y Div., 1-13 1898" double-oval datestamp, receiving backstamp, 4c one short perf at top, Very Fine a colorful and scarce use properly paying the 8c registry fee plus 5c UPU postage..... E. 200-300
- 395 ☒ **4c Trans-Mississippi (287)**. Vibrant color, tied by "Chicago Ill. Station ? Jan. 24 2:30PM" duplex datestamp on 2c Grant lettersheet to **Hamburg, Germany**, transit backstamp, Very Fine..... E. 150-200
- 396 ☒ **1c-4c Trans-Mississippi (285-287)**. Rich colors, used with **1c Columbian (230)** on 5c Columbian entire (U350), tied by "Madison Square Branch" registry ovals and used to **Kolding, Denmark**, New York registry label, purple "Registered, Oct. 5, 1898, Madison Square Branch, New York P.O." five-line boxed datestamp and two other New York markings on back, vertical file fold does not affect stamps, Very Fine, a colorful use properly paying the 8c registry fee plus 5c UPU rate . E. 300-400
- 397 ☒ **4c Trans-Mississippi (287)**. Bright color, used with **1c Trans-Mississippi (285)**, s.e. at right, tied by "New York N.Y. Oct. 26 12-30P 1898" machine cancel on mourning cover to **Karachi, India**, Sea Post Office and receiving backstamps, trivial toning, still Very Fine use paying the 5c UPU rate..... E. 200-300



- 398 ☒ **4c Trans-Mississippi (287)**. Vibrant color, used with **1c Deep Green (279)**, tied by "Dubuque, Iowa Jun. 29 10PM 99" duplex datestamps on cover to **Novorossisk, Russia**, deficiency handstamp and Russian due oval, receiving backstamp, vertical file fold well away from stamps which have few toned perfs, Very Fine E. 150-200
- 399 ☒ **4c Trans-Mississippi (287)**. Vibrant color, used with **8c Violet Brown (272)** on registered **1c Columbian entire (U348)** to **Quetta, Baluchistan**, stamps tied by light strikes of registry ovals, "New York N.Y. Reg'y. Div. 10-24 1899", manuscript "Please preserve this envelope" at left, transit and receiving backstamps, red London transit, filing hole affects 8c stamp, horizontal file fold well away from stamps, still Very Fine use properly paying the 8c registry fee plus 5c UPU rate to an unusual destination, Quetta is the capital of the Baluchistan province of what is now Pakistan E. 200-300
- 400 ☒ **4c Trans-Mississippi (287)**. Radiant color, used with **1c Green (279)**, tied by "New York N.Y. Mar. 31 7-PM '98" machine cancel on cover to **Padang, Sumatra**, transit and receiving backstamps, tiny cover tear at top, Very Fine, a rare use to Indonesia E. 400-500
- 401 ☒ **4c Trans-Mississippi (287)**. Bright color, used with **8c Columbian (236)** and **1c Trans-Mississippi (285)**, tied by penstrokes, purple "Registered, Lamar, Mo. Mar. 24, 1901" shield-style datestamp on registered cover to **Sydney, Australia** and forwarded to **Suva, Fiji**, San Francisco registry label, various backstamps incl. San Francisco, Newtown N.S.W. and Sydney, Very Fine, unusual use properly paying the 8c registry fee plus 5c UPU rate E. 400-500
- 402 ☒ **5c Trans-Mississippi (288)**. Tied by duplex, second strike of "Mil Sta. No. 1, Philippine Islands, Manila, Jun. 15, 1899 4PM" duplex at right, on cover to **Jerez de la Frontera, Spain**, receiving backstamp, vertical file fold well away from stamp which has some toning at upper left, Very Fine appearance, this is reported to be the first day of use of this Philippines military postmark E. 300-400
- 403 ☒ **5c Trans-Mississippi (288)**. Tied by "U.S. Postal Agency, Shanghai, ? Sep. 10AM 99" duplex datestamp on cover to **San Mateo Cal., San Francisco** and receiving backstamps, red "Canadian Pacific Railway, Royal Mail Steamships" on backflap, some toning affects stamp which is affected from placement at edge of cover, Fine appearance, scarce use E. 150-200



- 404 ☒ **5c Trans-Mississippi (288)**. Rich color, used with **1c and 4c Trans-Mississippi (285, 287)**, tied by "Washington D.C. Jul. 20 8:30PM '98" machine cancel on red and blue **Spanish-American War Overall Flag Patriotic cover to Schlesien, Germany**, New York and receiving backstamps, fresh and Very Fine, a colorful cover E. 300-400
- 405 ☒ **5c Trans-Mississippi (288)**. Rich color, used with **1c and 2c Trans-Mississippi (285-286)**, tied by light strikes of registry ovals on **10c Columbian entire (U351) to Weimea, Kauai, Hawaii**, purple "Registered, San Francisco Cal. Nov. 22, 1892" oval datestamp, receiving datestamp at left, some soiling affects stamps, 2c tiny indentation at top, Very Fine and attractive use paying the 8c registry fee plus double 5c UPU rate E. 150-200
- 406 ☒ **5c Trans-Mississippi (288)**. Rich color, used with **3c Columbian (232)**, tied by registry ovals, purple "Cleveland, Ohio Reg. Div., Nov. 1, 1899" double-circle datestamp on 5c Columbian entire (U350) to **Bagh, Baluchistan**, manuscript "Please preserve this envelope" at left, red London transit also ties 5c, back of cover with 16 postal markings incl. **Dead Letter Office** markings from Karachi and Bombay, red manuscript "Forwarded to D.L.O. Karachi" with "Bombay" written beneath, Very Fine, a very unusual use, Baluchistan is an arid region incorporating parts of Iran and Pakistan E. 300-400
- 407 ☒ **5c Trans-Mississippi (288)**. Rich color, used with **6c Red Violet, Columbian (235a)**, tied by Cleveland Ohio registry ovals on registered 2c entire to **Dyrefjord, Iceland**, purple "Cleveland, Ohio Reg. Div., Nov. 1, 1899" double-circle datestamp, New York registry label, Copenhagen, Reykjavik and receiving backstamps, manuscript "Please preserve this envelope" at left, sealed tear affects embossed stamp, otherwise Very Fine use properly paying the 8c registry fee plus 5c UPU rate E. 200-300
- 408 ☒ **5c Trans-Mississippi (288)**. Tied by "Boston Mass. Mar. 15 4-PM 1899 Roxbury Station" machine cancel on cover to **London England and forwarded to Kyoto, Japan**, London and receiving backstamps, forwarding label tied by Japanese manuscript, small filing holes at left, Very Fine, scarce use E. 300-400
- 409 ☒ **5c Trans-Mississippi (288)**. Used with **8c Lilac (225)** and tied by registry ovals on cover to **Dahai, Baluchistan**, purple "Cleveland Ohio, Reg. Div., Nov. 1, 1899" double-circle datestamp, manuscript "Please preserve this envelope" at left, New York registry label, red London transit also ties stamps, back of cover with twelve postal markings incl. **Dead Letter Office** markings from Bombay and Karachi, red manuscript "No such P.O., forwarded to D.L.O. Karachi for disposal", some edgewear, Very Fine and unusual use, Baluchistan is an arid region incorporating parts of Iran and Pakistan E. 200-300



- 410 ☒ **5c Trans-Mississippi (288)**. Rich color, tied by "Philadelphia Penn. Sep. 21 7-PM '98" manuscript on **The Philadelphia Museums** illustrated corner card cover to **Helsingfors, Finland**, receiving backstamp, fresh and Very Fine..... E. 100-150
- 411 ☒ **5c-8c Trans-Mississippi (288-289)**. Tied by light strikes of purple registry ovals, matching "Registered, Jul. 18, 1899, Station No. 51, Chicago Ill." four-line datestamp on red and blue **Waving Flag** and "U.S.A." of **Stars Patriotic cover** to **Austria**, New York registry label, receiving backstamp, few minor toned perf tips, still fresh and Very Fine, a colorful use..... E. 200-300
- 412 ☒ **8c Trans-Mississippi (289)**. Detailed impression, used with **5c Dark Blue (281)**, tied by criss-crossing strikes of purple "Foreign" straightline handstamp on registered 5c Blue entire (U378) to **London, England**, matching "Registered Helena, Mont. Nov. 15, 1899" three-line datestamp, New York registry label, receiving backstamp, Very Fine, attractive use properly paying the 8c registry fee plus double UPU rate, illustrated in the Luff book E. 200-300
- 413 ☒ **5c Trans-Mississippi (288)**. Rich color, used with **3c Columbian (232)** and **1c Trans-Mississippi (285)**, cancelled or tied by corks on registered 4c Green entire to **Rome, Italy**, neat "Flemington N.J. Dec. 3 7PM 1898" circular datestamp at top, bold strike of purple Flemington N.J. registry oval datestamp and "A.R." in octagon handstamp, New York and receiving backstamps, Very Fine, colorful use properly paying the 8c registry fee plus 5c UPU rate, sent by Hiram Deats to Emilio Diena, two prominent 19th century philatelists..... E. 150-200
- 414 ☒ **5c Trans-Mississippi (288)**. Choice centering, rich color, tied by "New York N.Y. Oct. 13 1-PM 1899" waving flag machine cancel on red and blue **Spanish-American War Overall Flag Patriotic cover** to **Antwerp, Belgium**, various postage due markings incl. **Belgium 50c Postage Due** tied by "Anvers Arrivee Octo. ?" circular datestamp, Very Fine, unusual postage due use E. 200-300
- 415 ☒ **8c Trans-Mississippi (289)**. Bottom imprint and plate no. 609 pair, tied (between perfs) by registry ovals on cover to **Pyrmont, Germany**, purple "Registered, Sep. 16, 1898, Branch P.O. Station K., New York P.O." five-line boxed datestamp and receiving backstamp, Very Fine, scarce position piece used on cover..... E. 300-400



- 416 ☒ **8c Trans-Mississippi (289).** Rich color, used with **4c Trans-Mississippi (287)**, tied by registry ovals on 1c Columbian entire (U348) to **Cape Hatien, Haiti**, purple "Registered Jun. 14, 1899 Branch P.O. Station P, New York P.O." boxed five-line datestamp, receiving backstamp, some overall toning affects stamps, still Very Fine and scarce use E. 200-300
- 417 ☒ **8c Trans-Mississippi (289).** Rich color, used with **5c Dark Blue (281)** and **1c and 4c Trans-Mississippi (285, 287)**, 1c natural s.e. at right, tied by registry ovals, "New York N.Y. Reg'y Div. 10-27 1899" double-oval datestamp on cover to **Antwerp, Belgium**, New York registry label, Anvers backstamp, minor edgewear, Very Fine and colorful use properly paying the 8c registry fee plus double UPU rate E. 200-300
- 418 ☒ **8c Trans-Mississippi (289).** Rich color, used with **4c Columbian (233)** and **1c Green (279)**, tied by registry ovals, purple "Baltimore Md. Reg. Div. Apr. 21, 1900" double-circle datestamp on cover to **Larnaca, Cyprus**, additional four-line Baltimore registry datestamp at right, purple London transit, receiving backstamp, missing top flap, 4c stamp defective at top from opening, otherwise Very Fine, colorful and scarce use E. 300-400
- 419 ☒ **5c-8c Trans-Mississippi (288-289).** Rich colors, 5c natural s.e. at left, 8c natural s.e. at right, tied by "Sterling Ill. Aug. 4 10AM 98" duplex datestamps on registered cover to **Larnaca, Cyprus**, New York registry label, Limassol and receiving backstamps, Very Fine, unusual destination E. 300-400
- 420 ☒ **1c, 4c-10c Trans-Mississippi (285, 287-290).** Two 4c, cancelled or tied by purple **Kicking Mule fancy cancel** of Port Townsend Wash. on cover used as a paste-up on a package to **Waveland Fla.**, Very Fine, a colorful and unusual cover E. 300-400



- 421 ☒ **10c Trans-Mississippi (290).** Natural s.e. at left, used with **1c and 2c Proprietary (RB24, RB27)**, tied by “Honolulu, H. Isls. Nov. 27 1PM 1900” duplex datestamps with year slug inverted on 2c Green on blue entire (U314) to New Bedford Mass., receiving backstamp, Very Fine, very unusual use, the U.S. annexed Hawaii in 1898 and it became a Territory on June 14, 1900, just a few months before this was sent E. 200-300
- 422 ☒ **10c Trans-Mississippi (290).** S.e. at left, tied by “Mil. Sta. No. 1, Philippines Islands, Manila, Apr. 7, 1899 12M” duplex, second clear strike at right, on cover to **Madrid, Spain**, receiving backstamp, missing part of top flap, some edgewear where partly refolded, Very Fine, scarce use from the Philippines to Spain just after the Spanish-American War E. 200-300
- 423 ☒ **10c Trans-Mississippi (290).** Rich color, used with **1c and 2c Trans-Mississippi (285-286)**, tied by grid cancels, purple “Ferry Sta., San Francisco Cal., Reg. Div., Mar. 26, 1903” double-circle datestamp on registered cover to **Bartelshof, Germany**, New York registry label, receiving backstamp, Very Fine, attractive franking for 8c registry fee plus 5c UPU rate E. 200-300
- 424 ☒ **10c Trans-Mississippi (290).** Tied by “Hoboken N.J. Dec. 7, 1898” duplex on postcard depicting Library of Congress and other Washington D.C. views, to **Germany**, receiving circular datestamp, some slight edgewear, Very Fine, also incl. additional postcard for Hotel Majestic in New York bearing **1c and 4c Trans-Mississippi (285, 287)** from New York to **Germany** in similar condition, a nice pair of cards (Photo Ex) E. 150-200
- 425 ☒ **1c-8c Trans-Mississippi (285-289).** Incl. two 1c and 2c, one 2c and 8c s.e. on one side, tied by registry ovals, purple “Registered Jun. 21, 1898, Branch P.O. Station P, New York P.O.” five-line boxed datestamp on cover to **London, England and forwarded to Chester, New York** registry label affixed over 5c, London oval datestamp, minor edgewear, Very Fine, a spectacular franking for 8c registry fee and triple UPU rate, this is also a very early use — the First Day of Issue was June 17 E. 300-400

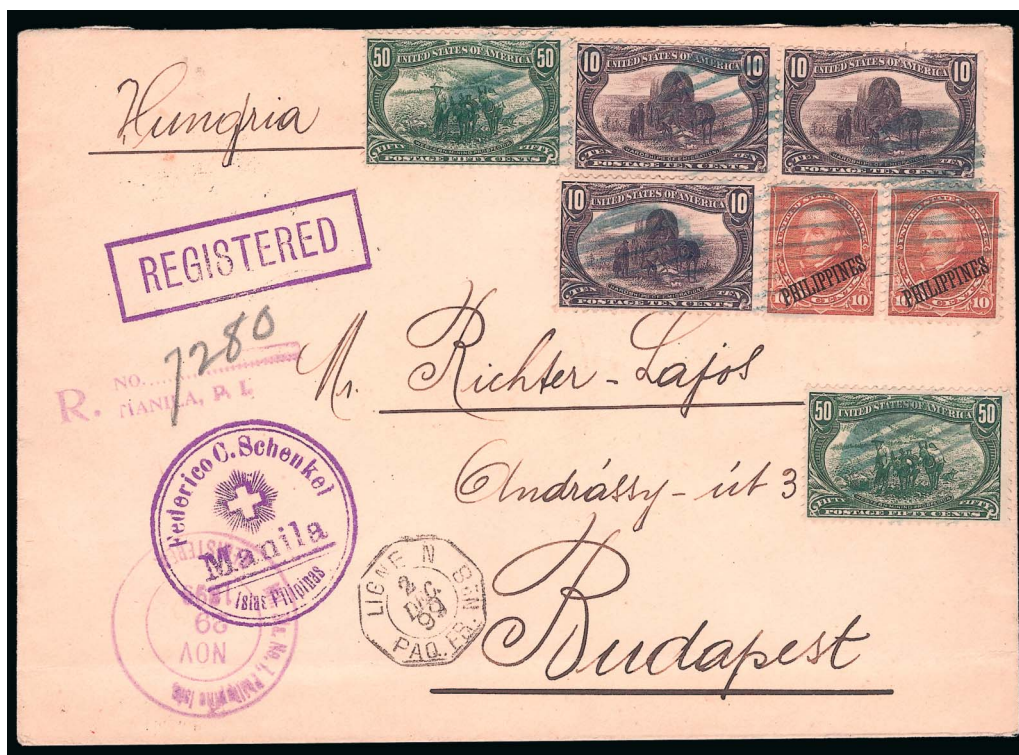


- 426 ✉ **10c Trans-Mississippi (290).** Detailed impression, used with **3c Purple (268)**, **6c Dull Brown (271)**, **15c Dark Blue (274)** and **4c Trans-Mississippi (287)**, each stamp tied by bold strike of “R” in rectangle handstamp, 15c tied by purple “Mil. Sta. No. 1, Philippine Isls, San Francisco Cal. Registered Apr. 12, 1899” double-circle datestamp on cover to **Basel, Switzerland**, endorsed “Via Hong Kong per first mail” at upper left, Brindisi and receiving backstamps, fresh and Very Fine, a very unusual cover properly paying the 8c registry fee plus 6-times 5c UPU rate..... E. 400-500
- 427 ✉ **8c-10c Trans-Mississippi (289-290).** 8c s.e. at right, tied by registry ovals on cover to **Hong Kong, China**, purple “Registered San Francisco Jul. 5, 1898” oval datestamp, San Francisco registry label at left (torn probably prior to use), receiving backstamp, Very Fine and scarce cover to Hong Kong E. 300-400
- 428 ✉ **50c Trans-Mississippi (291).** Rich color, tied by well-struck Omaha Nebr. registry oval on folded cover to **Fremont Nebr.**, neat purple “Registered, Omaha, Nebr. Jul. 18, 1899” three-line datestamp on back, Fine, unusual commercial use paying the 8c registry fee plus 21 times the 2c domestic rate E. 500-750
- 429 ✉ **50c Trans-Mississippi (291).** Deep rich color, used with horizontal pair of 2c Red, Ty. IV (279B), tied by light strikes of Omaha Nebr. registry ovals, purple “Registered, Omaha, Nebr. Jun. 7, 1899” three-line datestamp on folded cover to **Fremont Nebr.**, light horizontal file fold well away from stamps, Very Fine, unusual commercial use paying the 8c registry fee plus 23 times the 2c domestic rate E. 500-750



430

- 430 ☒ **50c Trans-Mississippi (291).** Horizontal pair, used with **block of six and strip of three of 1c Trans-Mississippi (285)**, tied by "Heron Mont. Jan. 9, 1899" circular datestamps on registered cover to **Nuremberg, Germany**, New York registry label, receiving backstamp, Very Fine, a very attractive cover, less than 40 covers are known with the 50c stamp, ex Rosenthal, illustrated in the Neil-Rosenthal book (p. 141) E. 1,000-1,500



431

- 431 ☒ **50c Trans-Mississippi (291).** Two, used with three **10c Trans-Mississippi (290)** and **horizontal pair of Philippines, 1899, 10c Brown, Ty. I (217)**, cancelled or tied by blue grids, purple "Mil. Sta. No. 1, Philippine Is., Registered, Nov. 29, 1899" double-circle datestamp on cover to **Budapest, Hungary**, French packet marking, receiving backstamp, light horizontal file fold at bottom well away from stamps, Very Fine, a colorful and rare use of the Philippine overprinted issue with the Trans-Mississippi stamps, less than 40 covers are known with the 50c stamp, ex Rosenthal, illustrated in the Neil-Rosenthal book (p. 141) E. 2,000-3,000



432

- 432 ☒ **50c Trans-Mississippi (291).** Choice centering with wide and balanced margins, tied by registry oval, purple "Registered Jan. 16, 1899 Branch P.O. Station ?, New York P.O." five-line boxed datestamp on cover from Constantin Witt to 1st Lieut. Maus in **Lichtenthal, Germany**, receiving datestamp also ties stamp, second strike on back, stamp with tiny perf tear at upper left, Extremely Fine appearance..... E. 750-1,000



433

- 433 ☒ **8c-50c Trans-Mississippi (289-291).** Rich colors, tied by registry ovals, purple "Baltimore, Md. Reg. Div. Feb. 6, 1899" double-circle datestamp on cover to **Brussels, Belgium**, purple "Registered" and "Return Receipt" handstamps, receiving backstamp, missing part of top flap, minor wear, Very Fine, attractive use paying the 8c registry fee plus 12-times 5c UPU rate..... E. 1,000-1,500

PREPARED BY DR. ERNST HEUSLER, POSTMASTER, HEUSLER, INDIANA



434

434 ☒ **1c-50c Trans-Mississippi (285-291).** Brilliant colors, tied by "Heusler Ind. Jul. 29, 1898" circular datestamps on registered cover from Dr. Ernst H. C. Heusler to Rev. K. Wiegmann, Mt. Vernon Ind., receiving backstamp

VERY FINE. A RARE AND DESIRABLE COVER BEARING THE FIRST SEVEN DENOMINATIONS OF THE TRANS-MISSISSIPPI ISSUE.

Less than 40 covers are known with the 50c Trans-Mississippi Issue. This cover is part of a group prepared by Dr. Ernst Heusler of Heusler, Indiana. According to web sources consulted, the town was probably named for Dr. Heusler, who was the first postmaster when the post office was established in 1893.

With 1987 P.F. certificate. E. 1,500-2,000



435

- 435 ☒ **1c-50c Trans-Mississippi (285-291).** Rich colors, tied by "Heusler Ind. Nov. 30, 1898" circular datestamp on registered cover from Dr. Ernst H. C. Heusler to Rev. Ferdinand Busser, Mansfield O., purple "Registered, Dec. 5, 1898, Mansfield Ohio" three-line receiving backstamp

VERY FINE. A BEAUTIFUL COVER BEARING THE FIRST SEVEN DENOMINATIONS OF THE TRANS-MISSISSIPPI ISSUE.

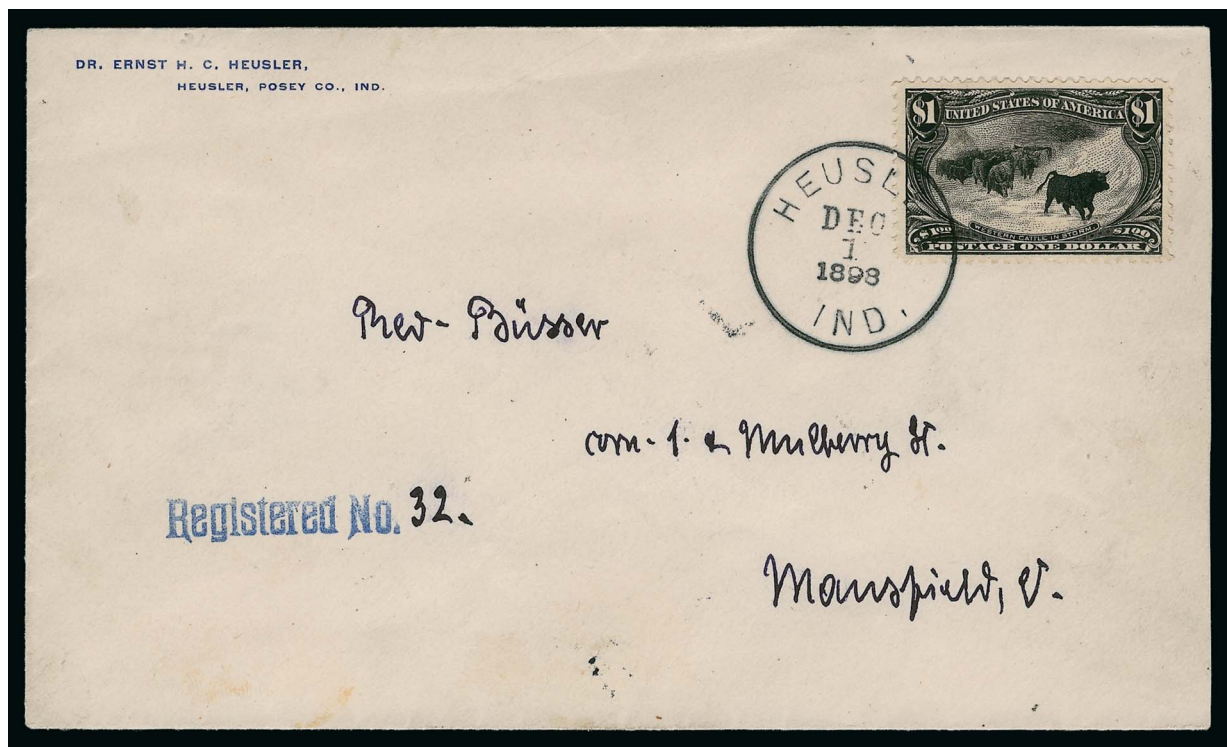
Less than 40 covers are known with the 50c Trans-Mississippi Issue. This cover is part of a group prepared by Dr. Ernst Heusler of Heusler, Indiana. According to web sources consulted, the town was probably named for Dr. Heusler, who was the first postmaster when the post office was established in 1893.

With 1983 P.F. certificate. E. 1,500-2,000



436

- 436 **\$1.00, \$2.00 Trans-Mississippi (292-293).** Tied by neat strike of "Heusler Ind. Jul. 1, 1898" circular datestamp on small piece, \$2.00 centered to top, Fine-Very Fine, part of a group prepared by Dr. Ernst Heusler of Heusler, Indiana, with 1985 P.F. certificate E. 2,000-3,000



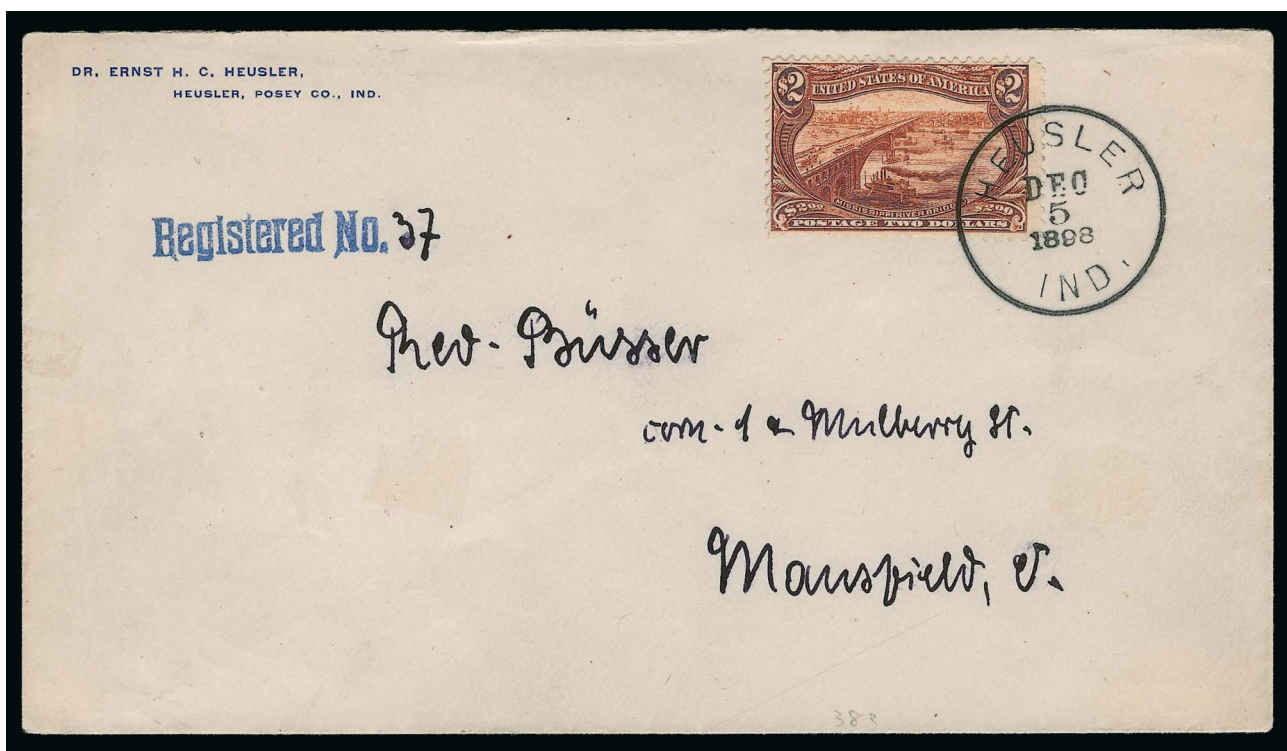
437

- 437 ☒ **\$1.00 Trans-Mississippi (292).** Choice centering, tied by "Heusler Ind. Dec. 1, 1898" circular datestamp on registered cover from Dr. Ernst H. C. Heusler to Rev. Ferdinand Busser, Mansfield O., purple "Registered, Dec. 5, 1898, Mansfield Ohio" three-line receiving backstamp

VERY FINE. A RARE SINGLE FRANKING OF THE \$1.00 TRANS-MISSISSIPPI ISSUE.

Perhaps 20 covers are known with the \$1.00 Trans-Mississippi Issue, including approximately 14 with single frankings. This cover is part of a group prepared by Dr. Ernst Heusler of Heusler, Indiana. According to web sources consulted, the town was probably named for Dr. Heusler, who was the first postmaster when the post office was established in 1893.

Ex Rosenthal. Illustrated in the Neil-Rosenthal book (p. 150). With 1987 P.F. certificate.
 E. 3,000-4,000



438

- 438 ☒ **\$2.00 Trans-Mississippi (293).** Rich color and proof-like impression, tied by "Heusler Ind. Dec. 5, 1898" circular datestamp on registered cover from Dr. Ernst H. C. Heusler to Rev. Ferdinand Busser, Mansfield O, purple "Registered, Dec. 10, 1898, Mansfield Ohio" three-line receiving backstamp

VERY FINE. A RARE SINGLE FRANKING OF THE \$2.00 TRANS-MISSISSIPPI ISSUE.

Our Levi records contain seven covers with single frankings of the \$2.00 Trans-Mississippi Issue. This cover is part of a group prepared by Dr. Ernst Heusler of Heusler, Indiana. According to web sources consulted, the town was probably named for Dr. Heusler, who was the first postmaster when the post office was established in 1893.

Our Levi records contain seven covers with single frankings of the \$2.00 Trans-Mississippi Issue.

Ex Rosenthal. Illustrated in the Neil-Rosenthal book (p. 161). With 1985 P.F. certificate.
..... E. 7,500-10,000



SMALL COVER WITH 8-CENT THROUGH \$2.00 TRANS-MISSISSIPPI

439 ☒ **4c, 8c-\$2.00 Trans-Mississippi (287, 289-293).** Tied by “Brooklyn N.Y. Sep. 22 9PM 98” duplexes on cover **to Berlin, Germany**, addressed to Ernst Wolff, additional machine cancel ties three stamps at top, New York and receiving backstamps, trivial edge tear at right

VERY FINE. A MARVELOUS AND COLORFUL COVER BEARING THE FIVE HIGHEST DENOMINATIONS OF THE TRANS-MISSISSIPPI ISSUE.

The Neil-Rosenthal book records approximately 20 examples of the \$2.00 on cover (one is on piece, one was used in 1964 and two may be duplicated). The Levi records contain 14 — seven are single frankings and three bear the entire set. This is closer to a full set than any of the other four.

Ex William West (Ward sale, April 29, 1943, lot 1600). With 1987 P.F. certificate
..... E. 10,000-15,000



440

- 440 **\$2.00 Trans-Mississippi (293)**. Rich color, used with **4c, 8c, 50c and \$1.00 Trans-Mississippi (287, 289, 291, 292)**, tied by registry ovals and "New York N.Y. Reg'y. Div. 12-9 1898" double-oval datestamp on cover front only **to Rio de Janeiro, Brazil**, addressed to Laemmert & Co. (publishers), 8c small faults from placement at edge of cover, slightly age toned

VERY FINE APPEARANCE. A COLORFUL AND RARE COMBINATION FRANKING, INCLUDING THE THREE HIGHEST DENOMINATIONS OF THE TRANS-MISSISSIPPI ISSUE.

This is the only example of the \$1.00 or \$2.00 used to South America. Virtually all foreign destinations known are in Europe.

With 1987 P.F. certificate. E. 5,000-7,500



441

- 441 ☒ **\$1.00 Trans-Mississippi (292).** Detailed impression, tied by New York registry oval on illustrated corner card cover for “Hensel, Bruckmann & Lorbacher, Parcel Agency for the German Mail” to Munich, Germany, addressed to D. Heinemann, purple “Registered, Jul. 22, 1898, Branch P.O. Station P., New York P.O.” five-line boxed date-stamp, New York registry label, receiving backstamp (Aug. 1)

EXTREMELY FINE. ONE OF THE MOST BEAUTIFUL TRANS-MISSISSIPPI ISSUE COVERS IN EXISTENCE.

The sender, Hensel Bruckmann & Lorbacher, is still in business as freight forwarders.

Ex Saffin and Rosenthal. Illustrated in the Neil-Rosenthal book (p. 151). E. 4,000-5,000



442

- 442 ☒ **\$1.00 Trans-Mississippi (292).** Tied by light strike of purple registry oval, matching "Registered, Dec. 28, 1898 1.00 P.M., Sub-Station No. 42, P.O. Boston, Mass." four-line datestamp on cover to **Freiburg, Germany**, receiving backstamp, trivial edgewear

VERY FINE. A SCARCE SINGLE FRANKING OF THE \$1.00 TRANS-MISSISSIPPI ISSUE.

Perhaps 20 covers are known with the \$1.00 Trans-Mississippi Issue, including approximately 14 with single frankings.

With 1986 P.F. certificate. E. 2,000-3,000



443

- 443 ☒ **\$1.00 Trans-Mississippi (292).** S.e. at right, used with two 1c Trans-Mississippi (285), tied by registry ovals, purple "Registered, Aug. 18, 1898, Branch P.O. Station S, New York P.O." five-line boxed datestamp on cover **to Muhlhausen, Germany**, part-printed "Per Steamer Campania" at upper left, receiving backstamp

VERY FINE. A RARE EXAMPLE OF THE \$1.00 TRANS-MISSISSIPPI ISSUE USED ON COVER.

Perhaps 20 covers are known with the \$1.00 Trans-Mississippi Issue.

Ex Rosenthal. Illustrated in the Neil-Rosenthal book (p. 148). With 1986 P.F. certificate .
..... E. 2,000-3,000



444

- 444 ☒ **\$2.00 Trans-Mississippi (293).** Cancelled by New York registry oval on cover to **Budapest, Hungary**, addressed to the famous Hungarian philatelist Lajos Richter in the hand of Constantin Witt, purple "Registered, Dec. 3, 1900, Branch P.O. Station K, New York P.O." five-line boxed datestamp on back, receiving backstamp

VERY FINE. A RARE SINGLE FRANKING OF THE \$2.00 TRANS-MISSISSIPPI ISSUE.

Our Levi records contain seven covers with single frankings of the \$2.00 Trans-Mississippi Issue.

Ex Rosenthal. Illustrated in the Neil-Rosenthal book (p. 161). With 1973 P.F. certificate .
 E. 7,500-10,000



445

- 445 ☒ **\$2.00 Trans-Mississippi (293).** Well-balanced margins, rich color, tied by registry oval, purple "Baltimore Md., Reg. Div. Aug. 26, 1898" double-circle datestamp on cover to **Basel, Switzerland**, Maryland Export & Commission Co. return address, New York registry label, receiving backstamp

VERY FINE. A RARE EXAMPLE OF THE \$2.00 TRANS-MISSISSIPPI ISSUE ON COVER. THIS IS THE ONLY RECORDED EXAMPLE USED TO SWITZERLAND.

Our Levi records contain seven covers with single frankings of the \$2.00 Trans-Mississippi Issue.

With 1994 P.F. certificate..... E. 7,500-10,000

BALANCE LOTS

- 446 ☒ **1898 Trans-Mississippi Issue, Domestic Cover Balance.** 43 cover mounted on pages with write-ups, wide range of frankings from 1c-10c incl. many with mixed values and Bureau regular issues, array of uses incl. Exposition, Registered, Patriotic, Alaska Territory, Advertising, others, most are illustrated incl. many beautiful designs, overall Very Fine, a useful and interesting group..... E. 2,000-3,000
- 447 ☒ **"Kicking Mule" Cancel Collection, Port Townsend Wash.** Approximately 15 covers and 10 stamps or pieces mounted on pages, each with the iconic "Kicking Mule" cancel of Port Townsend Wash., incl. cover sent to Warren H. Colson with copy of letter from A. Francis Learned, who used the cancel after taking charge of the Port Townsend Post Office in 1898, the letter refers to his father, William Henry Harrison Learned, who was the first person to use the cancel in 1880, the collection constitutes the "Second Series" of the cancel for use primarily on registered mail (and some favor cancels) and includes Columbians, Bureaus, a couple off-cover Postage Dues and Trans-Mississippi Issues, many with mixed frankings, corner cards, etc., Very Fine and wonderful study of this famous cancel, worth review or a scan request. E. 2,000-3,000
- 448 ☒ **1898 Trans-Mississippi Issue, Foreign Cover Balance.** 62 covers mounted on album pages, range of frankings from 1c-10c with many mixed-denominations, mixed-issue with Bureaus and mixed-country with a few foreign postage due, wide range of destinations incl. some scarcer such as North India and Pakistan (India at the time), also Puerto Rico and Philippines origin, lots of Registered uses, themes incl. Patriotics, illustrated, others, Very Fine, a wonderful collection with many choice and attractive covers..... E. 3,000-4,000

END OF SALE — THANK YOU

Live Internet Bidding at Siegel Auctions

BIDDING FROM YOUR COMPUTER LETS YOU BE PART OF THE LIVE AUCTION FROM ANYWHERE IN THE WORLD!

There's NO SUBSTITUTE for following the auction in real time.
Live Internet Bidding lets you bid and buy as though you were right there in the saleroom.
And it's easy.

This step-by-step guide will instruct you how to register, set your browser and use the bidding interface.

Start by following the simple steps to become a registered Live Internet Bidder.
Once you've been approved for bidding, you can listen to the auction and place bids with the click of a mouse.

Registering with STAMP AUCTION NETWORK & SIEGEL AUCTION GALLERIES

Live Internet Bidding is managed by Stamp Auction Network (SAN).
To bid, you must be registered and approved by *both* SAN and Siegel.
To decide what you need to do, choose the description below that best fits you.



I've already registered with SAN and have been approved by Siegel for internet bidding.

Live Internet Bidding works by allowing registered bidders to observe and place bids.

Live Internet Bidding will work with any browser on both PC and Mac operating systems.

Before bidding by internet for the first time, we recommend finding a sale in progress and listening to the public broadcast or logging in as a registered bidder. This will help you develop a feel for the sale tempo and bidding interface.

I'm a Siegel client, but I'm not registered with SAN.

Go to stampauctionnetwork.com/siegel and click on "Register" at the top. Check the box for Robert A. Siegel Auction Galleries (under "R") and submit the form, indicating you are a Siegel client. Once registered at SAN, you're ready for internet bidding.

Log on to the auction at stampauctionnetwork.com/siegel.

You can also log on at siegelauctions.com

When you're logged on as a Live Internet Bidder, the bidding interface shows a photo and description of the lot, the current bid (and your bidding status), options for placing competitive bids and buttons with bid increments.

- After you click on a bid amount, the auctioneer is immediately notified of your bid.
- Retracting a bid is usually not acceptable, so please bid carefully.
- If you bid and then decide to stop, the "Pass" button will tell the auctioneer you are no longer bidding.
- You can send messages to the auctioneer (for example, a request for extension).
- You can track prior realizations from the bidding screen.

I've bid through SAN before, but this is the first time I've bid in a Siegel sale.

Then you just need to be approved by Siegel. Go to stampauctionnetwork.com/siegel and click on "Update Registration" at the top. Your SAN account information will be sent to us for approval (you might be asked for other trade references). Once approved by Siegel for bidding, you're ready for internet bidding.

I've never bid with Siegel, nor registered with SAN.

Go to stampauctionnetwork.com/siegel and click on "Register" at the top. Check the box for Robert A. Siegel Auction Galleries (under "R") and submit the form **with your trade references** (please, no family members or credit card companies as references). Once registered at SAN and approved by Siegel for bidding, you're ready for internet bidding.



"System Down" or "Lost Connection" events do occasionally happen.

If you have any problems with Live Internet Bidding please call **212-753-6421** for immediate assistance.

Bid Form—15% Premium Sale

Sale 1056

Wednesday, November 6, 2013

1

Please provide the following information:

NAME

ADDRESS.....

CITY/STATE/ZIP

TEL. (DAY) FAX

E-MAIL

PADDLE #

Do not write in box

2

Have you purchased from us in the past 5 years? ☐ YES (if so, please go to Section 3)

☐ NO (please provide a trade reference and bank information)

References:

Stamp Firm:..... Telephone

Bank:..... Account #

3

In the space provided below, enter the **lot number** from **Sale 1056** and your corresponding bid. Please use **whole dollar amounts** only and enter the **maximum bid** you wish to have us execute on your behalf, according to the **bidding increments** on other side of this form. **Your bid will NOT include the 15% buyer's premium.** We will advance the bidding at one increment over the

next highest bid; therefore, you may be awarded the lot at less than your maximum bid. Please do not use "plus" bids or "buy" bids. If you wish to bid on one lot **or** the other, indicate your "or" bid between lot number/bid entries and bracket your choices. If you wish to place a **bidding limit** on the total amount of your bids, please enter your limit in the space marked "Limit Bids".

PLEASE NOTE BIDDING INCREMENTS AND SHIPPING CHARGES (ON BACK OF THIS PAGE)

☐ **LIMIT BIDS:** Check this box if you wish to limit the total amount of your bids (not including the **15% buyer's premium**) in this sale. Your bids will be executed until your bidding limit no longer allows for additional bids. **The total amount you wish to bid is:** \$.....

Lot	Bid	Lot	Bid	Lot	Bid
	\$		\$		\$

4

AGREEMENT: By signing this bid form, you agree to pay for purchases resulting from your bids, in accordance with the **Conditions of Sale** printed in the sale catalogue. You also agree to pay the **15% buyer's premium, shipping costs (see reverse), and sales tax or use tax or customs duty which may be due on the total invoiced amount.** It is

understood that these bids will be executed by Siegel Auction Galleries as a courtesy to absentee bidders, but you waive the right to make any claim against the auctioneer or the firm, arising from the these bids. **You are responsible for your written bids, including any errors on your part and any additions or changes to the bids herein.**

Payment must be made by cash, check, money order or wire transfer. Credit cards (Visa, Mastercard and Discover only) can be accepted as payment but will be subject to a 3% Convenience Fee, which will be added to the total of the entire invoice (including hammer price, buyer's premium, shipping and transit insurance charges and any applicable taxes).



SIGNED TODAY'S DATE.....

5

Please submit your bids promptly (telephone bids must be confirmed in writing).

Mail to: **Robert A. Siegel Auction Galleries, Inc.**

60 E. 56th Street, 4th Floor, New York, N.Y. 10022

Telephone (212) 753-6421

OR FAX YOUR BIDS: (212) 753-6429

Shipping Instructions, Bidding Increments and space for additional bids on other side of form



Additional Bids

Sale 1056—November 6, 2013

Lot	Bid	Lot	Bid	Lot	Bid
	\$		\$		\$

Shipping and Transit Insurance

We will be pleased to arrange for shipping and transit insurance for purchases in this sale (except those described as “floor sale only”). To expedite billing and delivery of lots to hundreds of buyers per sale, we use standard charges for postage and insurance, based on the package weight and mailing requirements (see schedule). The standard charges are sometimes slightly more or less than the actual postage or Fedex fees, but we do not include any charge for our labor or packing costs. Therefore, we ask all buyers to remit the prescribed amount for shipping charges.

Transit insurance is provided in all cases, except when the buyer has furnished us with proof that insurance coverage is effective under another policy. Proof, in such cases, will be accepted in the form of a written certificate from the insurance carrier.

You are responsible for insurance charges, which will be added to your invoice. This coverage is provided for our mutual protection against theft or loss in transit.

Bidding Increments

The auctioneer may regulate the bidding at his discretion. However, to assist absentee bidders in establishing their maximum bid for each lot, the increments shown at right will be used in most cases. We recommend that written bids conform to these increments (those which do not will be reduced to the next level).

REVISED CHARGES FOR SHIPPING EFFECTIVE SEPTEMBER 1, 2010

We have reduced the Fedex Envelope charge to \$20, reflecting the elimination of the fuel surcharge. All other charges remain the same.

Current Postage & Insurance Charges

Weight/Class	Shipping Method	Charges
Up to 2 lbs.	Fedex Envelope	\$20.00
Over 2 lbs.	Fedex Box	\$35.00*
Non-U.S.	Fedex/Courier	\$50.00**
Bulk Lots	UPS Preferred	By weight and value
These fees reflect additional Fedex charges for residential delivery, signature and fuel surcharge.		
*Higher fees will be charged on packages weighing more than 5 lbs. or insured for more than \$75,000.		
**Buyers are liable for all customs duties and clearance charges. An accurate declaration of value will be made on all import/export documents.		

1/2012

Up to \$50	\$5	\$3,000-7,000	\$250
\$50-200	\$10	\$7,000-20,000	\$500
\$200-500	\$25	\$20,000-30,000	\$1,000
\$500-1,000	\$50	\$30,000-75,000	\$2,500
\$1,000-3,000	\$100	\$75,000 up	\$5,000

1/2012



PRICES REALIZED FOR SALE 1056---11/6/2013
The World's Fair Collection - 1898 Trans-Mississippi Issue

Robert A. Siegel Auction Galleries, Inc.
60 East 56th Street, 4th Floor, New York, NY 10022
Tel (212) 753-6421 Fax (212) 753-6429

Lot#	Realized	Lot#	Realized	Lot#	Realized	Lot#	Realized
301	275	344	450	388	375	433	1,700
302	350	345	1,900	389	550	434	4,250
303	110	346	1,500	390	130	435	4,250
304	140	347	950	391	900	436	4,250
305	375	348	6,250	392	475	437	4,250
306	3,000	349	5,750	393	250	438	16,500
307	2,100	350	9,500	394	250	439	11,500
308	3,500	351	15,000	395	180	440	12,000
309	600	352	275	396	300	441	7,500
310	900	353	1,200	397	375	442	5,000
311	425	354	375	398	180	443	4,250
312	1,200	355	225	399	800	444	8,000
313	900	356	700	400	425	445	8,500
314	2,200	357	650	401	550	446	2,700
315	1,100	358	425	403	100	447	3,500
316	1,100	359	1,200	404	550	448	4,500
317	10,000	360	2,900	405	180		
318	1,300	361	2,300	406	800		
319	1,400	362	8,000	407	550		
321	600	363	52,500	408	160		
322	160	364	9,000	409	750		
323	350	365	3,000	410	130		
324	450	368	180	411	300		
325	650	369	180	414	225		
326	400	370	225	415	160		
327	650	371	375	416	425		
328	1,200	372	1,100	417	200		
329	14,500	373	475	418	300		
330	140,000	374	40,000	419	425		
331	475	375	170	420	850		
332	1,500	376	450	421	350		
333	24,000	377	200	422	300		
334	75,000	378	400	423	200		
335	80,000	379	200	424	275		
336	2,800	380	900	425	300		
337	750	381	250	426	950		
338	475	382	425	427	700		
339	250	383	375	428	550		
340	200	384	120	429	700		
341	350	385	425	430	1,300		
342	475	386	275	431	4,750		
343	550	387	550	432	950		