



THE DIAMOND COLLECTION OF UNITED STATES POSSESSIONS



PART ONE—SALE 1060
MONDAY, NOVEMBER 18, 2013

Robert A. Siegel
AUCTION GALLERIES, INC.



THE DIAMOND COLLECTION OF UNITED STATES POSSESSIONS



Sale 1060 — to be offered at auction on
Monday, November 18, 2013, at 1:30 p.m. (lots 3001-3164)

A 15% buyer's premium will be added to the hammer price of each lot sold

*Lots will be available for viewing on Monday, November 18, 10am to 1pm
and by appointment (please call 212-753-6421)*

Robert A. Siegel

AUCTION GALLERIES, INC.

60 EAST 56TH STREET, 4TH FLOOR, NEW YORK, N.Y. 10022

Phone (212) 753-6421 • Fax (212) 753-6429 • E-mail: stamps@siegelauctions.com

siegelauctions.com



Robert A. Siegel

AUCTION GALLERIES, INC.

60 EAST 56TH STREET, 4TH FLOOR, NEW YORK, N.Y. 10022

Phone (212) 753-6421 • Fax (212) 753-6429 • E-mail: stamps@siegelauctions.com
siegelauctions.com



Scott R. Trepel
President
[strepel](mailto:strepel@siegelauctions.com)
[@siegelauctions.com](mailto:strepel@siegelauctions.com)



John P. Zuckerman
Senior Vice President
[jzuckerman](mailto:jzuckerman@siegelauctions.com)
[@siegelauctions.com](mailto:jzuckerman@siegelauctions.com)



Corey Long
Vice President
[clong](mailto:clong@siegelauctions.com)
[@siegelauctions.com](mailto:clong@siegelauctions.com)



Starr Tucker-Ortega
Accounts
[stamps](mailto:stamps@siegelauctions.com)
[@siegelauctions.com](mailto:stamps@siegelauctions.com)



Laura Melvin
Bids and Inquiries
[laura](mailto:laura@siegelauctions.com)
[@siegelauctions.com](mailto:laura@siegelauctions.com)



Charles F. Shreve
Siegel International
[charles](mailto:charles@siegelauctions.com)
[@siegelauctions.com](mailto:charles@siegelauctions.com)



Chris Anderson
Siegel International
[chris](mailto:chris@siegelauctions.com)
[@siegelauctions.com](mailto:chris@siegelauctions.com)



Andrew Titley
Siegel International
[andrew](mailto:andrew@siegelauctions.com)
[@siegelauctions.com](mailto:andrew@siegelauctions.com)

Scott R. Trepel Principal Auctioneer (licensed by NYC Dept. of Consumer Affairs, #795952)

Nathaniel Estes Catalogue and Digital Production

Information for Bidders

Bidding

The following means are available for placing bids:

1) Attending the Live Auction in Person: All bidders must register for a paddle, and new bidders must provide references at least three business days in advance of the sale.

2) Live Internet Bidding: Instructions for participating as a Live Internet Bidder are provided on the page opposite.

3) Phone Bidding: Bidders can be connected to the sale by phone and bid through a member of staff. Requests for phone bidding are subject to approval (please contact our office at least 24 hours before the sale). A signed Bid Form is required.

4) Absentee Bids. All bids received in advance of the sale, either by mail, fax, phone, e-mail or internet, are Absentee Bids, which instruct the auctioneer to bid up to a specific amount on one or more lots in the sale. Absentee Bids sent by phone, fax or e-mail should arrive at least one hour prior to the start of the sale session. Bids entered through Live Internet Bidding will be visible to the auctioneer during the sale. Written bids should be entered legibly on the Bid Form in the sale catalogue. E-mail and internet bids should be carefully typed and double-checked. All new bidders must provide references. We recommend calling or e-mailing to confirm that Absentee Bids sent by mail, fax or e-mail have been received and entered.

Pre-Sale Viewing

Subject to availability, certain lots (except group lots) can be sent to known clients for examination. Requests must be made no later than 7 days prior to the sale. Lots must be returned on the day received. Postage/insurance costs will be invoiced.

In addition to regular viewing, clients may view lots by appointment. Our staff will be pleased to answer questions or provide additional information about lots.

Expert Certification

Individual items offered without a PF or PSE certificate dated within the past five years may be purchased subject to independent certification of genuineness and our description. **Please refer to the Conditions of Sale and Grading Terms for policies governing certification.**

Shipping and Delivery

Procedures and charges for shipping lots are printed on the back of the Bid Form. **Bidders are responsible for all prescribed shipping charges and any applicable sales tax or customs duties.**

Price Realized

Prices realized are sent with each invoice. Bidders with e-mail will receive a Bid Results report after the sale. Session results are posted immediately to siegelauctions.com

Live Internet Bidding at Siegel Auctions

BIDDING FROM YOUR COMPUTER LETS YOU BE PART OF THE LIVE AUCTION FROM ANYWHERE IN THE WORLD!

There's NO SUBSTITUTE for following the auction in real time.
Live Internet Bidding lets you bid and buy as though you were right there in the saleroom.
And it's easy.

This step-by-step guide will instruct you how to register, set your browser and use the bidding interface.

Start by following the simple steps to become a registered Live Internet Bidder.
Once you've been approved for bidding, you can listen to the auction and place bids with the click of a mouse.

Registering with STAMP AUCTION NETWORK & SIEGEL AUCTION GALLERIES

Live Internet Bidding is managed by Stamp Auction Network (SAN).
To bid, you must be registered and approved by *both* SAN and Siegel.
To decide what you need to do, choose the description below that best fits you.



I've already registered with SAN and have been approved by Siegel for internet bidding.

Live Internet Bidding works by allowing registered bidders to observe and place bids.

Live Internet Bidding will work with any browser on both PC and Mac operating systems.

Before bidding by internet for the first time, we recommend finding a sale in progress and listening to the public broadcast or logging in as a registered bidder. This will help you develop a feel for the sale tempo and bidding interface.

I'm a Siegel client, but I'm not registered with SAN.

Go to stampauctionnetwork.com/siegel and click on "Register" at the top. Check the box for Robert A. Siegel Auction Galleries (under "R") and submit the form, indicating you are a Siegel client. Once registered at SAN, you're ready for internet bidding.

Log on to the auction at stampauctionnetwork.com/siegel.

You can also log on at siegelauctions.com

When you're logged on as a Live Internet Bidder, the bidding interface shows a photo and description of the lot, the current bid (and your bidding status), options for placing competitive bids and buttons with bid increments.

- After you click on a bid amount, the auctioneer is immediately notified of your bid.
- Retracting a bid is usually not acceptable, so please bid carefully.
- If you bid and then decide to stop, the "Pass" button will tell the auctioneer you are no longer bidding.
- You can send messages to the auctioneer (for example, a request for extension).
- You can track prior realizations from the bidding screen.

I've bid through SAN before, but this is the first time I've bid in a Siegel sale.

Then you just need to be approved by Siegel. Go to stampauctionnetwork.com/siegel and click on "Update Registration" at the top. Your SAN account information will be sent to us for approval (you might be asked for other trade references). Once approved by Siegel for bidding, you're ready for internet bidding.

I've never bid with Siegel, nor registered with SAN.

Go to stampauctionnetwork.com/siegel and click on "Register" at the top. Check the box for Robert A. Siegel Auction Galleries (under "R") and submit the form **with your trade references** (please, no family members or credit card companies as references). Once registered at SAN and approved by Siegel for bidding, you're ready for internet bidding.



"System Down" or "Lost Connection" events do occasionally happen.

If you have any problems with Live Internet Bidding please call **212-753-6421** for immediate assistance.

Conditions of Sale (please read carefully before bidding)

The property described in this catalogue will be offered at public auction by Robert A. Siegel Auction Galleries, Inc. ("Galleries") on behalf of various consignors and itself or affiliated companies. By bidding on any lot, whether directly or by or through an agent, in person, or by telephone, facsimile or any other means, the bidder acknowledges and agrees to all of the following Conditions of Sale.

1. The highest bidder acknowledged by the auctioneer shall be the buyer. The term "final bid" means the last bid acknowledged by the auctioneer, which is normally the highest bid offered. **The purchase price payable by the buyer will be the sum of the final bid and a commission of 15% of the final bid ("buyer's premium"), together with any sales tax, use tax or customs duties due on the sale.**

2. The auctioneer has the right to reject any bid, to advance the bidding at his discretion and, in the event of a dispute between bidders, to determine the successful bidder, to continue the bidding or to reoffer and resell the lot in dispute. The Galleries' record of the final sale shall be conclusive.

3. All bids are per numbered lot in the catalogue unless otherwise announced by the auctioneer at the time of sale. The right is reserved to group two or more lots, to withdraw any lot or lots from the sale, or to act on behalf of the seller. The Galleries will execute bidding instructions on behalf of clients, but will not be responsible for the failure to execute such bids or for any errors in the execution of such bids.

4. **Lots with numbers followed by the symbol ° are offered subject to a confidential minimum bid ("reserve"), below which the lot will not be sold. The absence of the symbol ° means that the lot is offered without a reserve. If there is no reserve, the auctioneer has sole discretion to establish a minimum opening bid and may refuse an offer of less than half of the published estimate. Any lot that does not reach its reserve or opening bid requested by the auctioneer will be announced as "passed" and excluded from the prices realized lists after the sale. The Galleries may have a direct or indirect ownership interest in any or all lots in the sale resulting from an advance of monies or goods-in-trade or a guarantee of minimum net proceeds made by the Galleries to the seller.**

5. Subject to the exclusions listed in 5(A), the Galleries will accept the return of lots which have been misidentified or which have obvious faults that were present when the lot was in the Galleries' custody, but not so noted in the lot description. **All disputed lots must be received by the Galleries intact with the original packing material within 5 days of delivery to the buyer but no later than 30 days from the sale date. (5A) EXCLUSIONS: The following lots may not be returned for any reason: lots containing 10 or more items; lots from buyers who registered for the pre-sale exhibition or received lots by postal viewing, thereby having had the opportunity to inspect them before the sale; any lot described with "faults," "defects" or a specific fault may not be returned because of any secondary fault. Photographed lots may not be returned because of centering, margins, short/nibbed perforations or other factors shown in the illustrations. Lots may not be returned for any of the following reasons: the color of the item does not match the color reproduction in the sale catalogue or website listing; the description contains inaccurate information about the quantity known or reported; or a certification service grades a stamp lower than the grade stated in the description.**

6. Successful bidders, unless they have established credit with the Galleries prior to the sale, must make payment in full before the lots will be delivered. Buyers not known to the Galleries must make payment in full within 3 days from the date of sale. **The Galleries retains the right to demand a cash deposit from anyone prior to bidder registration and/or to demand payment at the time the lot is knocked down to the highest bidder, for any reason whatsoever.** In the event that any buyer refuses or fails to make payment in cash for any lot at the time it is knocked down to him, the auctioneer reserves the right to reoffer the lot immediately for sale to the

highest bidder. **Credit cards (Visa, Mastercard and Discover only) can be accepted as payment but will be subject to a 3% Convenience Fee, which will be added to the total of the entire invoice (including hammer price, buyer's premium, shipping and transit insurance charges and any applicable taxes).**

7. If the purchase price has not been paid within the time limit specified above, nor lots taken up within 7 days from the date of sale, the lots will be resold by whatever means deemed appropriate by the Galleries, and any loss incurred from resale will be charged to the defaulting buyer. Any account more than 30 days in arrears will be subject to a late payment charge of 1½% per month as long as the account remains in arrears. Any expenses incurred in securing payment from delinquent accounts will be charged to the defaulter. A fee of \$250.00 per check will be charged for each check returned for insufficient funds.

8. All lots are sold as genuine. **Any lot accompanied by a certificate issued by The Philatelic Foundation or by Professional Stamp Experts within 5 years of the sale date is sold "as is" and in accordance with the description on the certificate. Such lots may not be returned for any reason, including but not limited to a contrary certificate of opinion.** Buyers who wish to obtain a certificate for any item that does not have a P.F. or P.S.E. certificate (dated as above) may do so, provided that the following conditions are met: (1) the purchase price must be paid in full, (2) the item must be submitted to an acceptable expertizing committee with a properly executed application form within 21 days of the sale, (3) a copy of the application form must be given to the Galleries, (4) in the event that an adverse opinion is received, the Galleries retain the right to resubmit the item on the buyer's behalf for reconsideration, without time limit or other restrictions, (5) unless written notification to the contrary is received, items submitted for certification will be considered cleared 90 days from the date of sale, and (6) in the event any item is determined to be "not as described", the buyer will be refunded the purchase price and the certification fee up to \$600.00 unless otherwise agreed.

9. Until paid for in full, all lots remain the property of the Galleries on behalf of the seller.

10. Agents executing bids on behalf of clients will be held responsible for all purchases made on behalf of clients unless otherwise arranged prior to the sale.

11. The buyer assumes all risk for delivery of purchased lots and agrees to pay for prescribed shipping costs. Buyers outside the U.S. are responsible for all customs duties.

12. **The bidder consents that any action or proceeding against it may be commenced and maintained in any court within the State of New York or in the United States District Court for the Southern District of New York, that the courts of the State of New York and United States District Court for the Southern District of New York shall have jurisdiction with respect to the subject matter hereof and the person of the bidder. The bidder agrees not to assert any defense to any action or proceeding initiated by Galleries based upon improper venue or inconvenient forum. The bidder agrees that any action brought by the bidder shall be commenced and maintained only in a Federal Court in the United States District Court for the Southern District of New York or the State Court in the county in which Galleries has its principal place of business in New York. These Terms and Conditions shall be governed by and construed in accordance with the substantive laws of the State of New York.**

SCOTT R. TREPEL, Principal Auctioneer

Auctioneer's License No. 795952
N.Y.C. Department of Consumer Affairs
80 Lafayette Street, New York, N.Y. 10013
Telephone (212) 577-0111

Revised 3/2013

Grades, Abbreviations and Values Used in Descriptions

Grades and Centering

Our descriptions contain detailed information and observations about each item's condition. We have also assigned grades to stamps and covers, which reflect our subjective assessment. For stamps, the margin width, centering and gum are described and graded according to generally-accepted standards (an approximate correlation to numeric grades is provided at right). Although we believe our grades are accurate, they are not always exactly aligned with third-party grading terms or standards for all issues. **A lot may not be returned because a certification service grades a stamp lower than the grade stated in the description. Information from the P.S.E. Stamp Market Quarterly and P.S.E. Population ReportSM is the most current available, but lots may not be returned due to errors or changes in statistics or data.**

Extremely Fine Gem (90-100): The term "Gem" describes condition that is the finest possible for the issue. This term is equivalent to "Superb" used by grading services.







Extremely Fine (80-90): Exceptionally large/wide margins or near perfect centering.

Very Fine (70-85): Normal-size margins for the issue and well-centered with the design a bit closer to one side. "Very Fine and choice" applies to stamps that have desirable traits such as rich color, sharp impression, freshness or clarity of cancel.

Fine (60-70): Smaller than usual margins or noticeably off center. Pre-1890 issues may have the design touched in places.

Very Good (below 60): Attractive appearance, but margins or perforations cut into the design.

Guide to Gum Condition

Gum Categories:	MINT N.H.	ORIGINAL GUM (O.G.)				NO GUM
	 Mint Never Hinged <i>Free from any disturbance</i>	 Lightly Hinged <i>Faint impression of a removed hinge over a small area</i>	 Hinge Mark or Remnant <i>Prominent hinged spot with part or all of the hinge remaining</i>	 Part o.g. <i>Approximately half or more of the gum intact</i>	 Small part o.g. <i>Approximately less than half of the gum intact</i>	 No gum <i>Only if issued with gum</i>
Catalogue Symbol:	★ ★	★	★	★	★	(★)
PRE-1890 ISSUES	<i>Pre-1890 stamps in these categories trade at a premium over Scott value</i>			Scott Value for “O.G.”		Scott “No Gum” Values thru No. 218
1890-1935 ISSUES	Scott “Never Hinged” Values for Nos. 219-771	Scott Value for “O.G.” (Actual value will be affected by the degree of hinging)		Disturbed Original Gum: Gum showing noticeable effects of humidity, climate or hinging over more than half of the gum. The significance of gum disturbance in valuing a stamp in any of the Original Gum categories depends on the degree of disturbance, the rarity and normal gum condition of the issue and other variables affecting quality. For example, stamps issued in tropical climates are expected to have some gum disturbance due to humidity, and such condition is not considered a negative factor in pricing.		
1935 TO DATE	Scott Value for “Unused”					

Covers

Minor nicks, short edge tears, flap tears and slight reduction at one side are normal conditions for 19th century envelopes. Folded letters should be expected to have at least one file fold. Light cleaning of covers and small mends along the edges are accepted forms of conservation. Unusual covers may have a common stamp with a slight crease or tiny tear. **These flaws exist in virtually all 19th century covers and are not always described. They are not grounds for return.**

Catalogue Values and Estimates

Unless otherwise noted, the currently available *Scott Catalogue* values are quoted in dollars with a decimal point. Other catalogues are often used for foreign countries or specialized areas and are referred to by their common name: *Stanley Gibbons* (SG), *Dietz*, *American Air Mail Catalogue* (AAMC), *Michel*, *Zumstein*, *Facit*, etc. Estimates are indicated with an "E." and reflect our conservative valuation in dollars. Reserves will never exceed the low end of the estimate range; they will sometimes exceed Scott Catalogue value for stamps in Extremely Fine condition.

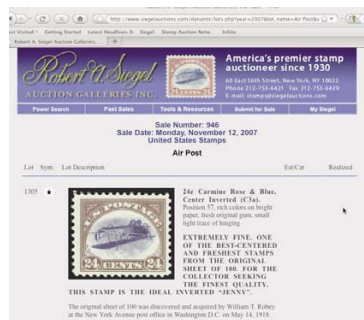
Because of certain pricing inconsistencies in the *Scott Catalogue*—for example, blocks that have no gum, the absence of premiums for Mint N.H. items, etc.—we cannot guarantee the accuracy of values quoted for multiples, specialized items and collection lots. We generally try to be conservative, but buyers may not return a lot because of a discrepancy in catalogue value due to Scott pricing inconsistencies.

Symbols and Abbreviations (see chart above for gum symbols)

⊞	Block	E	Essay	pmk.	Postmark	No.	Scott Catalogue Number
⊞	Cover	P	Proof	cds	Circular Datestamp	hs	Handstamp
FC	Fancy Cancel	TC	Trial Color Proof	var.	Variety	ms.	Manuscript

Resources

siegelauctions.com



THE SIEGEL ENCYCLOPEDIA™

This feature of our website contains a wealth of information gleaned from decades of philatelic research by the dedicated philatelists at Siegel.

RARITIES CENSUS

The up-to-date census data for 19th and 20th century U.S. rarities are a valuable resource for buyers, sellers and researchers. Every recorded example of almost 40 different rare stamps is described and, in most cases, photographed.



CATALOGUES AND PRICES REALIZED

Images and descriptions for all current sale catalogues are available from our website, as well as all sales going back to 1992, our Rarities sales from 1964 and selected name sales.

POWER SEARCH™

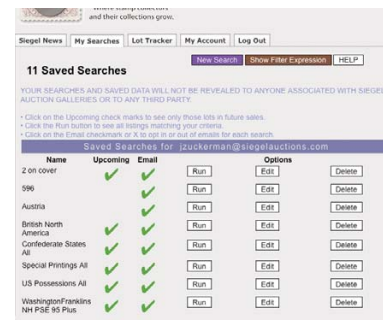
Search by Scott number or keyword through all of the sales at our website. The best resource in philately for research.

MY SIEGEL™

Save your Power Searches as want lists. We will automatically notify you when a match is included in an upcoming sale, whether it's as broad as any Columbian issue, or as narrow as a 241 graded 98. The most powerful want list in philately.

LOT TRACKER™

Never miss another lot because you were away from your computer. Log into My Siegel™, then set up notifications to get texts and/or emails 10-30 lots before yours comes up (live bidding is still through Stamp Auction Network).



EXHIBITS AND MOUNTED COLLECTIONS

Downloadable PDF files of some of the top exhibits ever formed. See how others collect and benefit from their original research.

VIDEO PRESENTATIONS

Downloadable video documentaries tell the stories of stamps and covers. This is the ideal way to introduce philately to others.

AFTERNOON SESSION (LOTS 3001-3164)
MONDAY, NOVEMBER 18, 2013, AT 1:30 P.M.

THE DIAMOND COLLECTION OF UNITED STATES POSSESSIONS

U.S. POSTAL AGENCY IN CHINA

DARRAH OVERPRINTS

According to philatelic lore, John Darrah, the U.S. postal agent in Shanghai, China, in 1913, colluded with some stamp collectors and overprinted one sheet each of the stamps in stock at the agency (we doubt this applies to the printed varieties). As this was unauthorized, he was ordered by Washington not to sell them. Darrah complied with the order, but some stamps had already reached collectors.



3001EX



3002EX



3003EX

- 3001 (★) **1902, 1908-14, 1894 Postage Due Issues, Darrah Ty. II Overprint (308/J39 var).** 11 unused stamps, including Nos. 308, 333-337, 405, 416, 421, F1 and J39, three with original gum, rest either no gum or tropicalized part original gum, margins to mostly close or touching on one side, No. 336 slightly oxidized, a couple small flaws, overall Fine or appear so, a scarce and desirable group, two with P.F. certificates,(Photo Ex) E. 1,500-2,000
- 3002 **1902, 1908-14, Special Delivery, 1894 Postage Due Issues, Darrah Ty. II Overprint (308/J39 var).** 13 stamps, including Nos. 308, 1c-10c Washington-Franklin, E6 (with Darrah Ty. III Ovpt.), F1 and J39, each tied on small piece by "U.S. Postal Agency Shanghai, China, Rec'd., Dec. 5, 1913" circular datestamp, many with better centering than normally encountered, Fine-Very Fine, a fresh and desirable group(Photo Ex) E. 1,500-2,000
- 3003 ★ **1c-8c 1910-11 Issue, Darrah Ty. II Overprint (374, 376-380 var).** Original gum, each with small h.r., 8c tropicalized gum and faint toning, others bright colors, 4c natural s.e. at right, Fine, each signed Bloch and with 1988 P.F. certificate.....(Photo Ex) E. 1,000-1,500
- 3004 ★ **1c-25c Parcel Post, Darrah Ty. III Overprint (Q1-Q9 var).** Complete set of the nine known values, tropicalized original gum, 4c no gum, several with wide margins, bright and fresh colors throughout
- FINE-VERY FINE. A RARE COMPLETE UNUSED SET OF THE ONE-CENT TO 25-CENT PARCEL POST ISSUE WITH DARRAH TYPE III OVERPRINTS.
- A Power Search review found no other complete unused sets.....(Photo Ex) E. 2,000-3,000



3004EX



3005EX



3006EX

- 3005 ★ **1c-20c Parcel Post, Darrah Ty. III Overprint (Q1, Q4-Q6, Q8 var).** 1c block of four, singles of 4c-10c and 20c, original gum, block and 20c tropicalized gum and natural s.e., 10c natural inclusion, overall Fine(Photo Ex) E. 750-1,000
- 3006 ★ **1c Parcel Post, Darrah Ty. III Inverted Overprint (Q1 var).** Two items with inverted overprints, including block of four with black overprint and single with **blue** overprint, tropicalized original gum, bright colors, typical centering for these issues, single with minor perf flaws at top, overall Fine, scarce and desirable with the inverted overprints.....(Photo Ex) E. 750-1,000



3007EX

- 3007 **1c-25c Parcel Post, Darrah Ty. III Overprint (Q1-Q9 var).** Complete set of the nine known values, each neatly tied on individual small pieces by full strikes of "U.S. Postal Agency, Shanghai, China, Rec'd, Dec. 9, 1913" circular datestamp, wide margins, fresh and bright throughout

FINE-VERY FINE. A RARE COMPLETE CANCELLED SET OF THE ONE-CENT TO 25-CENT PARCEL POST ISSUE WITH DARRAH TYPE III OVERPRINTS AND FULL STRIKES OF THE U.S. POSTAL AGENCY SHANGHAI DATESTAMP.

A Power Search review found only one other complete cancelled set, offered in our 2003 Drucker and 2009 Whitpain sales — though that set was not tied on pieces and therefore does not show the full U.S. Postal Agency Shanghai cancels(Photo Ex) E. 2,000-3,000



3008EX



3009EX



3010EX

- 3008 ★ **10c Special Delivery, 2c/25c Parcel Post Postage Due, Darrah Ty. II Overprint (E6, JQ2-JQ3, JQ5 var).** 2c No. JQ2 with red overprint, two copies of the 5c, tropicalized original gum, 2c, one 5c and 25c natural s.e., 10c Special Delivery thin spot, otherwise Fine-Very Fine and scarce(Photo Ex) E. 1,000-1,500
- 3009 **1c-25c Parcel Post Postage Due, Darrah Ty. III Overprint (JQ1-JQ5 var).** Complete set, each with neat oval datestamp cancels, 25c natural s.e. at left, 5c with faulty top margins, couple other small flaws incl. 25c slight thin and 10c tiny margin tear, otherwise Fine-Very Fine, scarce cancelled set(Photo Ex) E. 1,000-1,500
- 3010 **1c-50c 1902 Issue, "China" Overprint (300-310 var).** Each tied to individual small piece by "U.S. Postal Sta. Rec'd, Shanghai China, Sep. 23 9" circular datestamp, Fine and rare set, a fascinating handstamp overprint which is not part of the Darrah set and is unlisted in Scott(Photo Ex) E. 1,500-2,000

1919 SURCHARGES

As U.S. economic interests in China increased, the U.S. Postal Agency in China requested a supply of stamps that could be used at local post offices. At the time, the exchange rate between U.S. and Shanghai dollars was 2:1, and the Washington-Franklin stamps were officially overprinted by the Bureau of Engraving and Printing. These were placed on sale on July 1, 1919. After World War I, provisions were made to close almost all foreign post offices in China. The U.S. Postal Agency in China closed after December 31, 1922.

3011 ★★ **2c-\$2.00 Offices in China (K1-K18).** Mint N.H., beautiful colors, attractive margins and centering

FINE-VERY FINE COMPLETE SET OF THE OFFICES IN CHINA SURCHARGED ISSUE IN MINT NEVER-HINGED POST-OFFICE FRESH CONDITION.

This set was culled from a much larger group in order to create a fresh set with Mint N.H. gum
(Photo Ex) 5,610.00



3011EX



3012

3012 **2c-\$2.00 Offices in China (K1-K18).** Each tied by "U.S. Pos. Service, Shanghai, China, Dec. 31 11PM 1922" duplex datestamp on large sheet of paper, a few folds not affecting stamps

FINE-VERY FINE. A RARE COMPLETE SET OF THE OFFICES IN CHINA SURCHARGED ISSUE, POSTMARKED DURING THE LAST HOUR ON THE LAST DAY THE STAMPS WERE SOLD.

We offered a similar set in our 2009 sale of the Whitpain collection (also ex Drucker), but it was cancelled five hours before the sheet offered here and does not show the clear "2" in oval part of the duplex cancel

Scott Retail as used stamps..... 4,620.00



3013

- 3013 ☒ **2c-\$2.00 Offices in China (K1-K16).** Complete set, tied by "U.S. Postal Agency, Shanghai China, R.D." oval handstamp on 1919 registered cover to Ellsworth Pa., purple boxed registered handstamp with manuscript no., Shanghai (Oct. 11), Chicago (Nov. 12), and Ellsworth (Nov. 13) backstamps, vertical file fold at left well clear of stamps, No. K13 with small internal crease

VERY FINE. A RARE AND COLORFUL FRANKING OF THE ENTIRE SET OF SIXTEEN STAMPS OVERPRINTED BY THE BUREAU OF ENGRAVING AND PRINTING FOR USE AT THE UNITED STATES POSTAL AGENCY IN CHINA.

Complete sets on cover should be considered scarce. E. 4,000-5,000



3014EX

3015EX

- 3014 **2c-\$2.00 Offices in China (K1-K18).** Tied on separate pieces by "U.S. Pos. Service, Shanghai, China, Aug. 21, 1922" circular datestamp, Nos. K17-K18 with Nov. 11 duplexes (K17 a pair), Fine-Very Fine, a scarce used set (Photo Ex) 4,845.00
- 3015 ☒ **24c-60c Offices in China (K11-K14).** Each tied by "U.S. Postal Agency, Shanghai, China, R.D." oval handstamp on registered covers to Ohio, July to November 1922 uses, Chicago and receiving backstamps, three are from the Strasser correspondence and 24c addressed to Toledo Stamp Co. (minor cover scuffing on this one), Very Fine and attractive group of single frankings. (Photo Ex) E. 1,000-1,500



3016

3016 ★田 **\$1.00 on 50c Offices in China (K15)**. Block of four, three stamps Mint N.H., top left stamp narrow h.r., bright color, attractive margins and centering, Fine-Very Fine, the top right stamp particularly nice, Scott Retail as singles 4,475.00



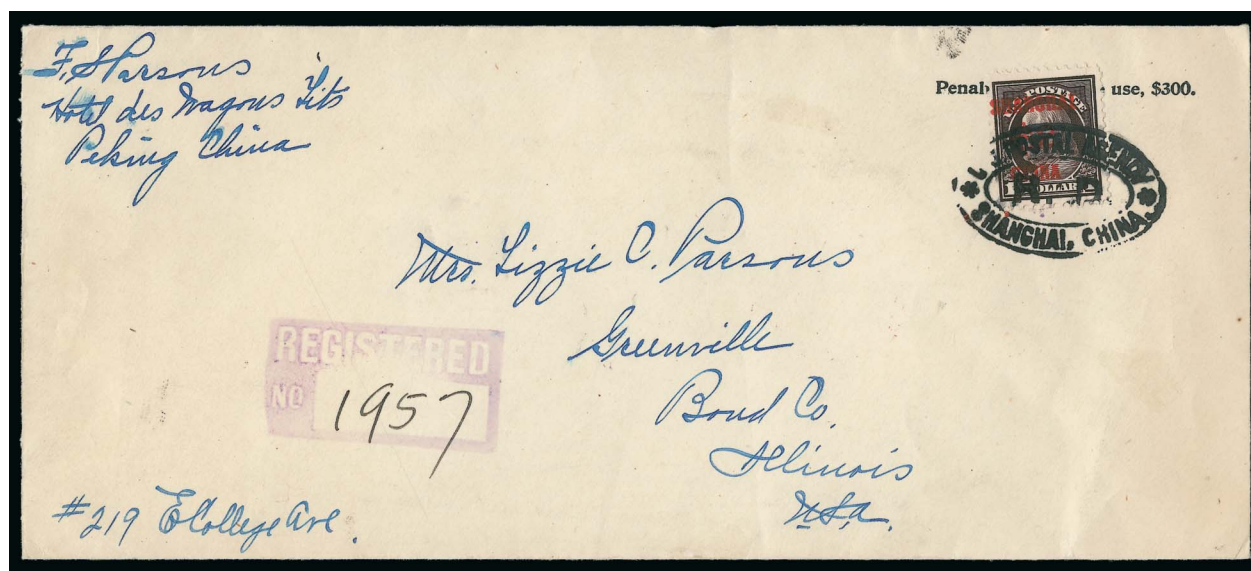
3017

3017 ☒ **\$1.00 on 50c Offices in China (K15)**. Tied by bold strike of "U.S. Postal Agency, Shanghai, China, R.D." oval handstamp on 1922 registered cover to Cleveland O., Strasser correspondence, Chicago (Nov. 20) and receiving backstamps, some minor staining around stamp from application of additional adhesive as often found with this correspondence, some minor corner wrinkles and nicks, Fine and scarce franking of the \$1.00 Offices in China issue E. 750-1,000



3018

- 3018 ★田 **\$2.00 on \$1.00 Offices in China (K16).** Block of four with horizontal guide line, three stamps Mint N.H., top left stamp lightly hinged, nice margins and centering, fresh and Very Fine, Scott Retail as singles 3,450.00



3019

- 3019 ☒ **\$2.00 on \$1.00 Offices in China (K16).** Tied by unusually clear strike of "U.S. Postal Agency, Shanghai, China" oval handstamp on 1922 registered cover to Greenville Ill., stamp affixed over penalty clause, purple registered handstamp, backstamps incl. Shanghai (Sep. 16), Chicago (Oct. 17) and Greenville (Oct. 18), Very Fine, a rare single franking of this top value Offices in China stamp on cover, Power Search located only one other single-franking cover..... E. 1,500-2,000

\$2.00 ON \$1.00 DOUBLE SURCHARGE

The Office in China double surcharge error occurred during the overprinting of stamps for use at the U.S. Postal Agency in Shanghai. It has been reported that the errors were among the last stamps to be put on sale before the agency closed on December 31, 1922. The Deputy Postal Agent, Mr. E. H. Murray, knew of the error but allowed it to be put on sale, as he was retiring and the Agency was closing.



3020

- 3020 ★ **\$2.00 on \$1.00 Offices in China, Double Surcharge (K16a).** With sheet selvage at left, intense color and impression, wide space between two overprints, light crease in selvage
FINE EXAMPLE OF THE RARE \$2.00 DOUBLE SURCHARGE ERROR. ESPECIALLY DESIRABLE WITH THE SELVAGE AND WIDE-SPACED OVERPRINTS.
Desirable with the sheet selvage. 10,500.00



3021

- 3021 **\$2.00 on \$1.00 Offices in China, Double Surcharge (K16a).** With wide sheet selvage at left, nice centering, well-displaced second surcharge, cancelled by bold strike of "U.S. Pos. Service, Shanghai, China, Dec. 4" duplex
VERY FINE. A RARE USED EXAMPLE OF THE \$2.00 OFFICES IN CHINA DOUBLE SURCHARGE. This stamp is far scarcer in used condition. Approximately six covers are known (at least one of which is dated Dec. 4).
Signed George B. Sloane and with 1968 P.F. certificate 10,000.00

CANAL ZONE



3022

- 3022 ★ **1904, 8c on 50c Bister Brown (15).** Original gum, central h.r. but undisturbed, well-proportioned margins and choice centering

EXTREMELY FINE ORIGINAL-GUM EXAMPLE OF THE 8-CENT ON 50-CENT BISTER BROWN, SCOTT 15.

According to the book *Canal Zone Stamps* only 500 of Scott No. 15 were issued, making it one of the rarest Canal Zone stamps. Most have disturbed original gum and a footnote in Scott states that they are valued this way.

Signed Bloch. With 1968 P.F. certificate..... 2,500.00

- 3023 ★ **1920, 2c Orange Vermilion & Black, Mt. Hope Ovpt (47).** Slightly tropicalized original gum, radiant color, three wide and balanced margins, attractive centering, clear overprint

VERY FINE ORIGINAL-GUM EXAMPLE OF THE 2-CENTESIMOS ORANGE VERMILION AND BLACK WITH MT. HOPE TYPE III OVERPRINT.

The rarity of this stamp in unused condition is reflected by the difference in Scott Catalogue values of \$3,250.00 unused versus \$130.00 used..... 3,250.00



3023



3024

- 3024 ★ **1920, 2c Orange Vermilion & Black, Mt. Hope Ovpt. (47).** Bright color, wide margins, clear overprint

VERY FINE ORIGINAL-GUM EXAMPLE OF THE 2-CENTESIMOS ORANGE VERMILION AND BLACK WITH MT. HOPE TYPE III OVERPRINT.

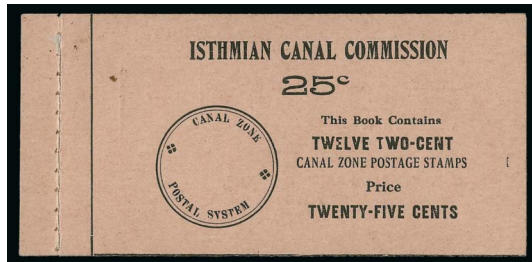
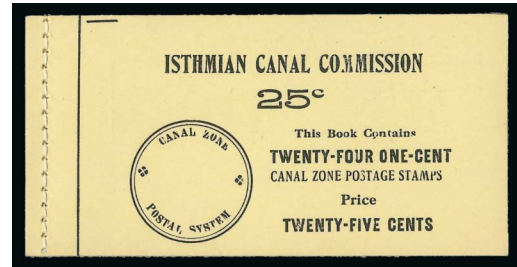
The rarity of this stamp in unused condition is reflected by the difference in Scott Catalogue values of \$3,250.00 unused versus \$130.00 used..... 3,250.00

BOOKLETS

- 3025 ★★ 1909, 1c Dark Green & Black, Ovpt. Reading Up, Booklet Pane of Six, Handmade, Perf Margins (31c). Complete booklet containing four Mint N.H. panes with interleaving, vertical format with tab at bottom, sewn into yellow or lemon colored booklet

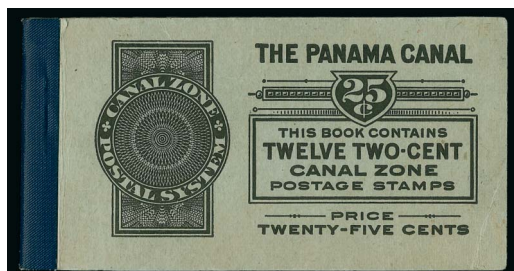
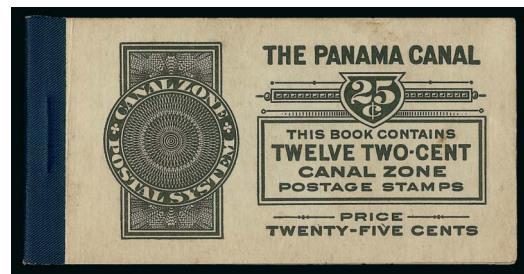
FRESH AND VERY FINE. A SCARCE COMPLETE BOOKLET OF THE 1909 ONE-CENT CANAL ZONE WITH OVERPRINT READING UP.

Scott Retail as four hinged panes..... 2,000.00



- 3026 ★★ 1909, 2c Vermilion & Black, Ovpt. Reading Up, Booklet Pane of Six, Handmade, Perf Margins (32c). Two Mint N.H. panes sewn into complete unexploded 25c booklet with interleaving, cover Ty. B, vertical format with tab at bottom, Very Fine, Scott Retail as two hinged panes of six 1,600.00

- 3027 ★★ 1918, 2c Vermilion & Black, Booklet Pane of Six (53c). Complete booklet of two panes with interleaving adhering to the panes, tab at top as always found on this machine-made issue, Very Fine, Scott Retail as two hinged panes.. 2,100.00



- 3028 ★★ 1920, 2c Orange Vermilion & Black, Booklet Pane of Six (56g). Complete unexploded booklet of two Mint N.H. panes with interleaving, top left stamp in top pane with tiny tear

VERY FINE APPEARANCE. AN EXTREMELY RARE COMPLETE 25-CENT BOOKLET OF THE 1920 2-CENT ORANGE VERMILION AND BLACK WITH TYPE V OVERPRINT. VERY FEW ARE KNOWN.

With 2000 P.F. certificate. Scott Retail as two hinged panes (\$1,700.00) does not convey the rarity of this complete booklet E. 1,500-2,000



3029



3030

- 3029 ★ **1921, 1c Green, Booklet Pane of Six (60b).** Lightly hinged, sharp proof-like impression, extra wide margins, Extremely Fine, a superb pane, ex Drucker, with 2003 P.F. certificate 900.00
- 3030 ★ **1921, 2c Carmine, Booklet Pane of Six (61f).** Tropicalized original gum, wide margins, accompanying certificate notes faint toning which is indeed minor, Very Fine appearance and rare, with 2007 P.F. certificate 2,000.00



3031EX



3032

- 3031 ★ **1924, 5c-1b Coat of Arms (69 var).** Seven stamps representing the complete set of the unissued Coat of Arms values above the 2c, tropicalized original gum, bright colors, nice margins and centering, Very Fine and scarce set, these were prepared but never issued as the use of overprinted U.S. stamps began in April 1925, 600 sets were sent to the Director General of Posts of Panama, ostensibly for transmission to the UPU in Switzerland, a small number of sets ended up in the hands of dealers, the balance of the supply was destroyed in 1937.....(Photo Ex) 2,450.00
- 3032 ★田 **1924, 50c Lilac, Ty. "A" Ovpt. (80).** Wide top plate no. F14042 block of six, barest trace of hinging (appears Mint N.H.), balanced margins, Extremely Fine, an outstanding quality plate block..... 3,000.00



3033

3033 ★田 1924, \$1.00 Violet Brown, Ty. "A" Ovpt. (81). Top plate no. F14268 block of six, tropicalized original gum, intense shade and impression

FINE-VERY FINE. A SCARCE PLATE BLOCK OF THE \$1.00 CANAL ZONE OVERPRINT WITH FLAT "A".

We have offered only two other plate blocks since keeping computerized records... 4,250.00



3034

3034 ★田 1925, 2c Carmine, Ty. "B" Ovpt. (84). Right 5-point star and plate no. 17890 block of nine, lightly hinged, Fine-Very Fine, ex Whitpain, Scott Retail as plate block of six 2,000.00



3035

- 3035 ★田 1925, \$1.00 Violet Brown, Ty. "B" Ovpt. (95). Top plate no. 14268 block of six, lightly hinged, Very Fine and scarce, a Power Search review found only one other plate block (bottom) offered in our sales since 1994, ex Wampler 2,000.00



3036EX



3038

- 3036 田 1941, 5c-40c Air Post Officials, "Panama Canal" 17mm Long (CO8-CO12). Complete set in blocks of four, fresh colors, Balboa Heights roller cancels, 5c small thin spot in one, 5c, Fine, 10c Fine-Very Fine, 20c-40c Very Fine, a beautiful and rare set of blocks with the Type II overprints.....(Photo Ex) 3,420.00

- 3037 1947, 6c Yellow Brown, Air Post Official, "Panama Canal" 19-20mm long, Inverted Ovpt. (CO14a). Roller precancel, original gum, natural s.e. at right, rich color, wide margins, Very Fine, only one pane of 50 reached the public, Kessler handstamp guarantee, with 1991 P.F. certificate..... 2,500.00

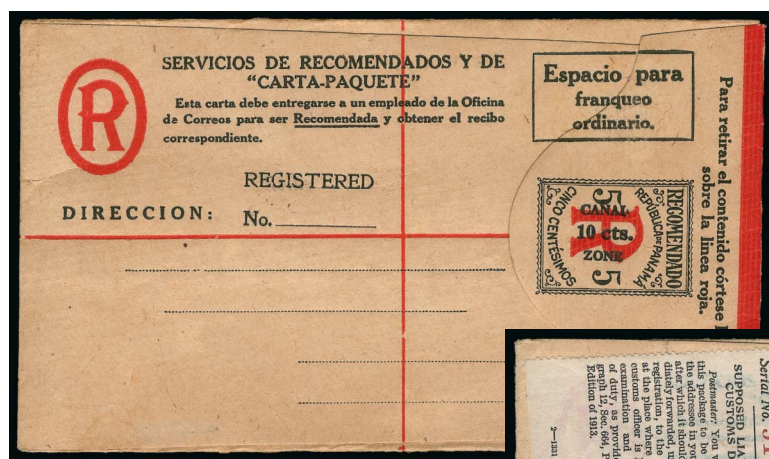


3037

- 3038 田 1941, 50c Rose Lilac, Official (O8). Block of four, original gum, Balboa Heights roller cancel, very slight toning mentioned on accompanying certificate which is more apparent on back than on front, Fine-Very Fine, an extremely rare block, only 1,000 were printed, we have sold only about one dozen examples over our last 400+ sales and no other blocks since our 1985 Rarities sale, with 1972 A.P.S. certificate, Scott Retail as singles 2,400.00



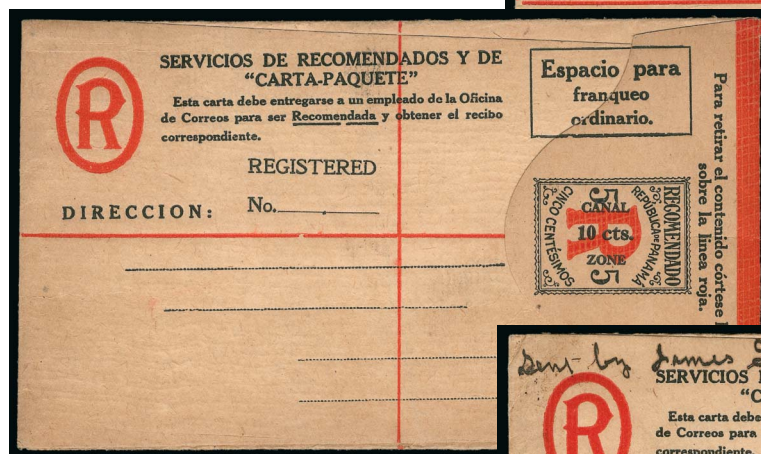
- 3039 ☒ **1916, (1c) Green & Black entire, Head and Overprint Only (U1a).** Addressed to Gen. E.B. Babbitt but not cancelled, light speckled toning, otherwise Very Fine and scarce, Babbitt was a Distinguished Service Medal winner in World War I and retired a major general in 1924 2,000.00
- 3040 ☒ **1916, (2c) Carmine & Black entire, Head and Overprint Only (U2b).** Unused, few faint toned spots, still Very Fine and rare, only six unused examples are recorded, with 2004 P.F. certificate 1,500.00
- 3041 ☒ **1916, (2c) Carmine & Black entire, Head and Overprint Only (U2b var).** Front of entire lacking the Carmine frame, inside with **complete printed design (U2)**, "Balboa C.Z. May 21, 1920" duplex cancel on William M. White corner card addressed to Quarry Heights C.Z., small tear at top and light crease, couple minor gum stains at sides, still Fine and extremely rare, only three examples are reported in unused condition (Power Search contains one other that was addressed but not cancelled), this used example may be unique, the Krieger Postal Stationery Catalogue for U.S. Possessions prices the unused entire at \$3,000.00 and lists the used entire as "not known", Scott Retail as the normal frame-missing error used 2,000.00
- 3042 ☒ **1916, 2c Carmine & Black entire, Frame Only (U2c).** Cancelled by "Pedro Miguel C.Z. Jul. 12, '20" duplex datestamp and oval, addressed to Paraiso C.Z., ms. "Dredging Division" at bottom left, fresh and Very Fine, an extremely rare used example of this error, only two are recorded (eight unused recorded), with 2009 P.F. certificate 2,000.00



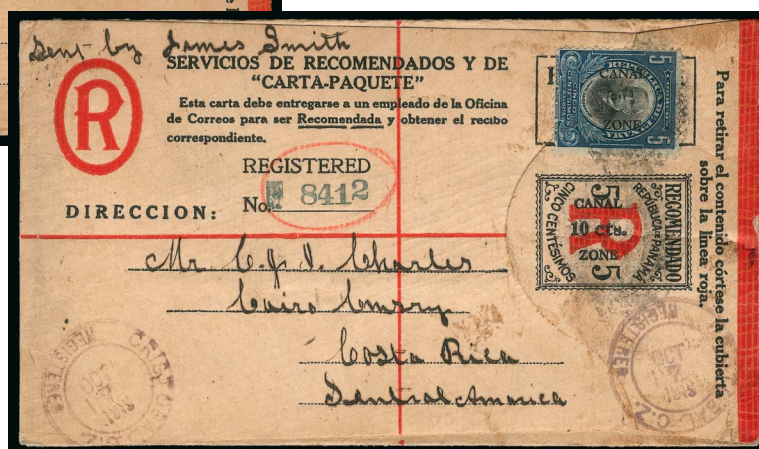
3043



3044



3045



3046

- 3043 ☒ **1919, 10c on 5c Black & Red on Cream, Registration (UF1).** Unused entire, Very Fine and scarce..... 1,750.00
- 3044 ☒ **1919, 10c on 5c Black & Red on Cream, Registration (UF1).** Used with two singles 2c Vermilion & Black (53), tied by target cancels, blue "Corozal. C.Z. Registered Nov. 11, 1919" circular datestamp, to Attleboro Mass., "Supposed Liable to Customs Duty" label at left, purple Collect Duty straightline handstamp, Cristobal and Attleboro registered backstamps, opened at sides for display, stamps with small faults, still Very Fine, a scarce and colorful use, the used entire catalogues \$2,000.00 in Scott..... E. 1,000-1,500
- 3045 ☒ **1919, 10c on 5c Black & Red on Cream, Registration, 9/4mm Between "Canal" and "Zone" (UF1a).** Unused entire, Very Fine, scarce..... 1,300.00
- 3046 ☒ **1919, 10c on 5c Black & Red on Cream, Registration, 9/4mm Between "Canal" and "Zone" (UF1a).** Used with 5c Deep Blue & Black (40), tied by smudged cancels, purple "Cristobal C.Z. Registered Oct. 7, 1919" circular datestamp, to **Costa Rica**, purple San Jose Costa Rica receiving backstamp, some slight soiling and minor creasing in flap just into registration stamp, still Very Fine, a scarce desirable use, with 1994 P.S.E. certificate not mentioning any faults, the used entire catalogues \$2,000.00 in Scott.. E. 1,000-1,500

CUBA



3047

- 3047 ☒ **Puerta Principe, 1898-99, 5c on 1m Orange Brown (182).** Tied by "Correo de Puerto Principe, Ysla de Cuba ?ENO 1899" double-circle datestamp on **illustrated red and blue Uncle Sam, Eagle, Shield and Cannon Patriotic cover** to Sturgis S.D., patriotic slogans in the design incl. "Monroe Doctrine", "Justice and Humanity" and "The Declaration of War", light partly clear strike of Havana backstamp, Sturgis Feb. 8 receiving backstamp, cover opened roughly at right but stamp mostly unaffected, some slight perf flaws at top from placement near edge, central file fold

A SPECTACULAR RARITY OF UNITED STATES AND CUBA POSTAL HISTORY. THIS IS BELIEVED TO BE THE ONLY KNOWN SPANISH-AMERICAN WAR PATRIOTIC COVER FRANKED WITH A CUBA PUERTO PRINCIPE ISSUE STAMP.

With 1973 P.F. certificate..... E. 7,500-10,000



3048

3048

1899, 2c on 2c Reddish Carmine, Inverted Overprint (222Ac). Clearly visible inverted overprint, neat strike of grid duplex cancel, bright color

VERY FINE AND CHOICE. A RARE USED EXAMPLE OF THE CUBA 1899 2-CENT WITH INVERTED OVERPRINT.

One sheet was found in the town of Placetas. Of these, 25 were unused and the remaining 75 were used. Only a very few of each survive today.

With 1975 P.F. certificate 5,000.00



3049

3049 ★★ **1899, 3c on 3c Purple (224).** Mint N.H. wide top imprint and plate no. 447 strip of three, **front side also with full original gum**, rich color, right stamp with couple tiny scrapes, Fine-Very Fine, an extremely unusual production anomaly, with 1986 P.F. certificate..... E. 400-500

3050 ★ **1899, 10c on 10c Brown, Ty. I, "Cuba" Omitted (226b).** Unused (regummed), rich color, small expert repair at bottom right corner, Very Fine appearance, a rare example of the 10c "Cuba" omitted error, this is only the second unused example we have offered since keeping computerized records, with 1978 A.P.S. certificate 5,500.00



3050

SPECIAL PRINTINGS

In March 1900 one pane of each denomination was prepared for the Paris and Pan-American Expositions. Many were backstamped "Special Surcharge" in red ink by a dealer, J. M. Bartels, or signed by him. Some, but not all of these guaranteed stamps also have the Type E "Specimen" handstamp applied by H. G. Mandel in preparation for mounting for the exhibition.

- 3051 ★ **1900, 10c on 10c Brown, Ty. II (226A).** Original gum, h.r., pretty shade

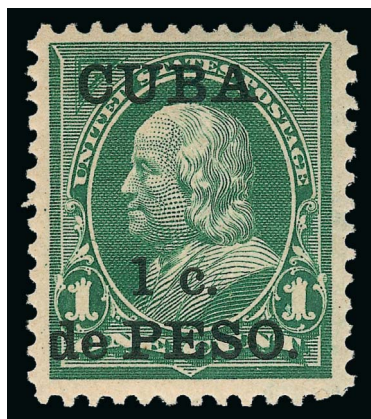
FRESH AND FINE EXAMPLE OF THE CUBA 10-CENT ON 10-CENT TYPE II SPECIAL PRINTING.

For the 10c the Type II design was used, and it is only known as a Special Printing.

Signed Bloch. With 1972 P.F. certificate 6,000.00



3051



3052EX

- 3052 ★ **1900, 1c-5c on 1c-5c Special Printing (221-225 var).** Five stamps, each with pencil "Spec. Surcharge J.M. Bartels" on back, lightly hinged, rich colors

FINE-VERY FINE. A RARE SET OF ONE-CENT TO 5-CENT MARCH 1900 SPECIAL PRINTING.

Signed by J. M. Bartels.(Photo Ex) 3,750.00



3053EX

- 3053 ★ **1900, 1c-5c on 1c-5c Special Printing (221-225 var).** Pairs of each of the five values from 1c-5c, "Special Surch." and item code written by J.M. Bartels on wide hinges attached to backs of each pair, bright and fresh

FINE AND EXTREMELY RARE SET OF PAIRS OF THE ONE-CENT TO 5-CENT MARCH 1900 SPECIAL PRINTING.

This set of pairs is the only one we have encountered.....(Photo Ex) 7,500.00



3054EX

- 3054 ★ **1900, 1c-10c Postage Due Special Printing, Ty. E “Specimen” Ovpt. (J1-J4 var).** Clear “Specimen” hand-stamps, 2c just touched at top margin, otherwise attractive margins and centering

FINE AND RARE SET THE ONE-CENT TO 10-CENT MARCH 1900 POSTAGE DUE SPECIAL PRINTING.

In March 1900 one pane of each denomination was prepared for the Paris and Pan-American Expositions. H.G. Mandel stamped “Specimen” in black ink on stamps that were mounted by him for the displays at the expositions.

Each with 1986 P.F. certificate(Photo Ex) 6,000.00

- 3055 ★ **1900, 10c on 10c Blue, Special Delivery, Special Printing (EISP).** Original gum, beautiful margins and centering, intense color, Very Fine, with 1980 P.F. certificate..... 2,500.00



3055

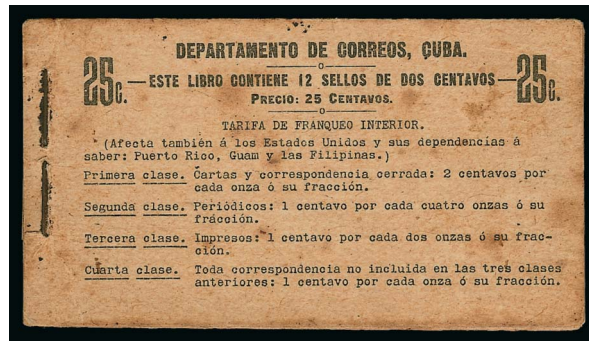


3056

- 3056 ★ **1899, 2c Carmine, Booklet Pane of Six (228b).** Original gum, h.r. along perfs sensibly reinforcing some separations, slight toning along edges, accompanied by original sheet of interleaving

FINE AND RARE. A SELDOM-OFFERED BOOKLET PANE OF THE 1899 2-CENT ROYAL PALMS ISSUE.

With 1996 P.F. certificate..... 5,000.00

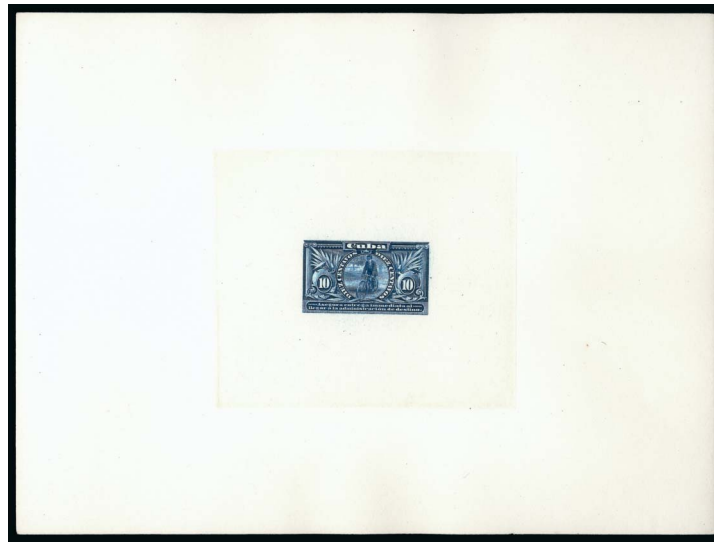


3057

- 3057 ★ **1899, 2c Carmine, Booklet Pane of Six (228b).** Two panes in **complete unexploded booklet**, original gum, perf separations on both panes, including bottom pair of top pane completely separated (reattached with h.r. slivers), covers with toning
FINE APPEARANCE AND A GREAT RARITY OF CUBA AND UNITED STATES POSSESSIONS COLLECTING.

This is the only complete booklet of the 1899 2c Royal Palms issue we have encountered. The individual panes themselves are rare, and this booklet is a remarkable artifact despite the condition.

With 1996 P.F. certificate. Scott Retail as two unused panes with no premium for the complete booklet..... 10,000.00



3058

- 3058 TC **1899, 10c Blue, Large Die Trial Color Proof on India (E2TC1a).** On 203 x 152mm card with full die sinkage, rich color, fresh and Very Fine, scarce, there are no E2 proofs in Orange..... 4,600.00

- 3059 **1899, 2c on 2c Deep Claret, Postage Due, Inverted Surcharge (J2a).** Rich color, unobtrusive cancel leaves the error clearly visible, small thin spot at center and small vertical crease at bottom

FINE APPEARING EXAMPLE OF THE CUBA 2-CENT ON 2-CENT POSTAGE DUE WITH INVERTED OVERPRINT. VERY FEW ARE KNOWN.

The example offered here is in better condition than most of the few other known examples of this U.S. Possessions rarity.

With 1997 P.F. certificate..... 4,000.00



3059



3060

DANISH WEST INDIES

- 3060 ★ **DANISH WEST INDIES, 1902, 2c on 3c Blue & Lake, Inverted Frame, Dark Green Surcharge (24d).** Original gum, brilliant colors on crisp paper, Fine, scarce example of this variety and seldom offered, ex Plass, 1968 P.F. certificate no longer accompanies..... 2,750.00

GUAM

- 3061 田 **1899, 1c-\$1.00 (1-2, 4-8, 10-12).** Blocks of four, complete for all values known in this format except 3c (10c Ty. II and \$1.00 Ty. II not known as used blocks), 4c with "Agana Island of Guam" circular datestamp, all others with blue "Agana" straightline cancels, fresh colors, couple minor flaws

FINE AND RARE SET OF USED BLOCKS OF FOUR OF THE 1899 GUAM OVERPRINTS.

A Power Search review failed to find another set of used blocks(Photo Ex) 8,250.00



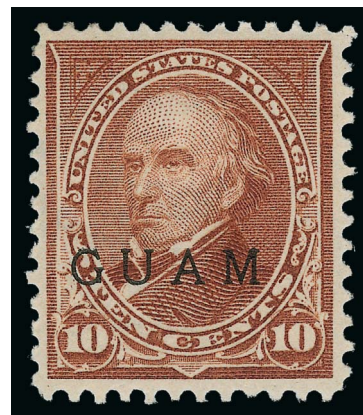
3061EX



3062

- 3062 ★田 **1899, 8c Violet Brown (7).** Wide bottom imprint and plate no. 929 block of six, original gum, Extremely Fine, an unusually fresh and choice plate block, with 2008 P.F. certificate 1,700.00

- 3063 ★ **1899, 10c Brown, Ty. II (9).** Original gum, deep rich color, well-balanced margins, Very Fine and choice, a beautiful stamp, with 1955 P.F. certificate 3,750.00



3063



3064

- 3064 ★田 **1899, 50c Orange (11).** Bottom imprint and plate no. 75 block of six, slightly tropicalized original gum, radiant color, some reinforced perf separations in selvage
FINE AND RARE PLATE BLOCK OF THE 1899 50-CENT GUAM OVERPRINT ISSUE.
Only 4,000 of the 50c stamps were issued. Our informal research found only five other plate blocks. None was offered in our 1989 specialized catalogue of Guam. 4,500.00



3065

- 3065 ★ 1899, \$1.00 Black, Ty. II (13). Original gum, h.r., crisp shade, fresh and Fine example of this rarity, with 1960 P.F. certificate..... 4,250.00



3066

- 3066 ★田 1899, 10c Blue, Special Delivery, Five Dots in Curved Frame Above Messenger's Head (E1a). Wide top imprint and plate no. 882 block of six, slight tropical original gum, deep rich color

FINE. AN EXTREMELY RARE IMPRINT AND PLATE NUMBER BLOCK OF THE 10-CENT SPECIAL DELIVERY WITH GUAM OVERPRINT FROM PLATE 882, THE PLATE CONTAINING THE "FIVE DOTS" VARIETY.

A Power Search review reveals that the only other examples we have offered from Plate 882 in the last 20 years were top and bottom plate blocks in our 2009 Whitpain sale... 4,250.00

PHILIPPINES



3067EX

3067 **1c-\$1.00 Trans-Mississippi (285-292).** Complete set through the \$1.00, each tied to small piece of notebook paper by “**Military Sta. No. 3 San Fran., Iloilo, Phil. Islands Apr. 19, 2 PM**” duplex cancel, three of the lower denomination stamps with some slight edge toning which does not affect the 50c or \$1.00 (latter with natural s.e.)

FINE-VERY FINE. AN EXTREMELY RARE SET OF THE 1898 TRANS-MISSISSIPPI ISSUE THROUGH THE \$1.00 WITH PHILIPPINES U.S. MILITARY STATION CANCELS.

We have not encountered another set similar to this one**(Photo Ex)** E. 2,000-3,000



3068EX

3068 S **1899, 1c-\$5.00 Ovpts., UPU Overseas Postal Administration “Specimen” Ovpts. (213S/225S var, E1S var, J1S-J7S var).** Complete set (10c Ty. II and \$1.00 Ty. II not known), mostly either no gum or small part disturbed original gum as these were stuck down in postal archive books, the removal from which also caused thins on some, bright colors, several below the \$1.00 with natural s.e.

FINE APPEARANCE. AN ALMOST CERTAINLY UNIQUE SET OF “SPECIMEN” STAMPS PROVIDED TO FOREIGN POSTAL ARCHIVES.

Stamps were first affixed to archive albums and then overprinted by the postal authorities upon receipt from the UPU. This set comes from a 1976 Robson Lowe sale and has not been offered to the market since then. A similar set with different “Specimen” overprints was offered in our 2009 Whitpain sale (realized \$5,750)**(Photo Ex)** E. 4,000-5,000



3069

3069 ★田 **1899, 50c Orange (212).** Bottom imprint and plate no. 75 block of six, very lightly tropicalized original gum, bright color, some minor perf separations

FINE AND EXTREMELY RARE PLATE BLOCK OF THE PHILIPPINES 1899 50-CENT UNWATER-MARKED ISSUE.

The only larger multiples we record are a top plate block of ten and a bottom plate block of eight..... 30,000.00

- 3070 ★ **1899, 2c Rose Carmine, Ty. IV, Double Ovpt., One Albino (214d var).** Clear second albino impression 4mm above printed "Philippines", back of stamp shows that it was impressed just as strongly but without ink, original gum, lightly hinged, Fine, a most unusual variety, with 1986 P.F. certificate E. 500-750



3070



3071

- 3071 ★田 **1901, 8c Violet Brown (222).** Top imprint and plate no. 930 block of six, stamps Mint N.H., small h.r. in top of selva reinforcing couple minor perf separations, nice margins and centering, Very Fine, a fresh plate block, ex Todd 1,000.00

- 3072 ★田 **1901, \$1.00 Black, Ty. II (223A).** Block of four, lightly hinged, bright shade and crisp impression, light diagonal gum bend
FINE AND EXTREMELY RARE BLOCK OF FOUR OF THE \$1.00 TYPE II 1901 PHILIPPINES OVERPRINT ISSUE.
A Power Search review of \$1.00 Ty. II multiples found only this block of four and a block of six (ex Todd and Whitpain) 8,750.00



3072



3073

- 3073 ★ **1901, \$5.00 Dark Green (225).** With plate no. 85 selvage at top, rich color, well-proportioned margins, tiny thin spot in watermark, Very Fine appearance, apart from the plate number strip offered in lot 3074 and two plate number strips offered in our 2009 Whitpain sale, this is the only plate number stamp located with Power Search 650.00



3074

- 3074 ★ **1901, \$5.00 Dark Green (225).** Bottom imprint and plate no. 85 strip of three, side stamps lightly hinged, center stamp disturbed original gum and h.r., fresh color, h.r. reinforcing perf separations in selvage, center stamp thin spot

FINE-VERY FINE APPEARANCE. A RARE ORIGINAL-GUM PLATE NUMBER STRIP OF THREE OF THE PHILIPPINES 1901 \$5.00 MARSHALL.

Ex Tows. The 1901 \$5.00 dollar Philippines issue is not known to exist as a full plate block — none was offered in Todd (where a strip of three was the largest multiple), Wampler or Whitpain..... 10,000.00

- 3075 ★田 **1901, \$5.00 Dark Green (225).** Block of four with horizontal guide line, original gum, h.r. at top and slivers at sides, deep rich color and proof-like impression, choice centering

VERY FINE-EXTREMELY FINE. A BEAUTIFUL ORIGINAL-GUM BLOCK OF FOUR OF THE PHILIPPINES \$5.00 1901 ISSUE.

Ex Todd. Only 782 were issued and no plate blocks are known. 3,250.00

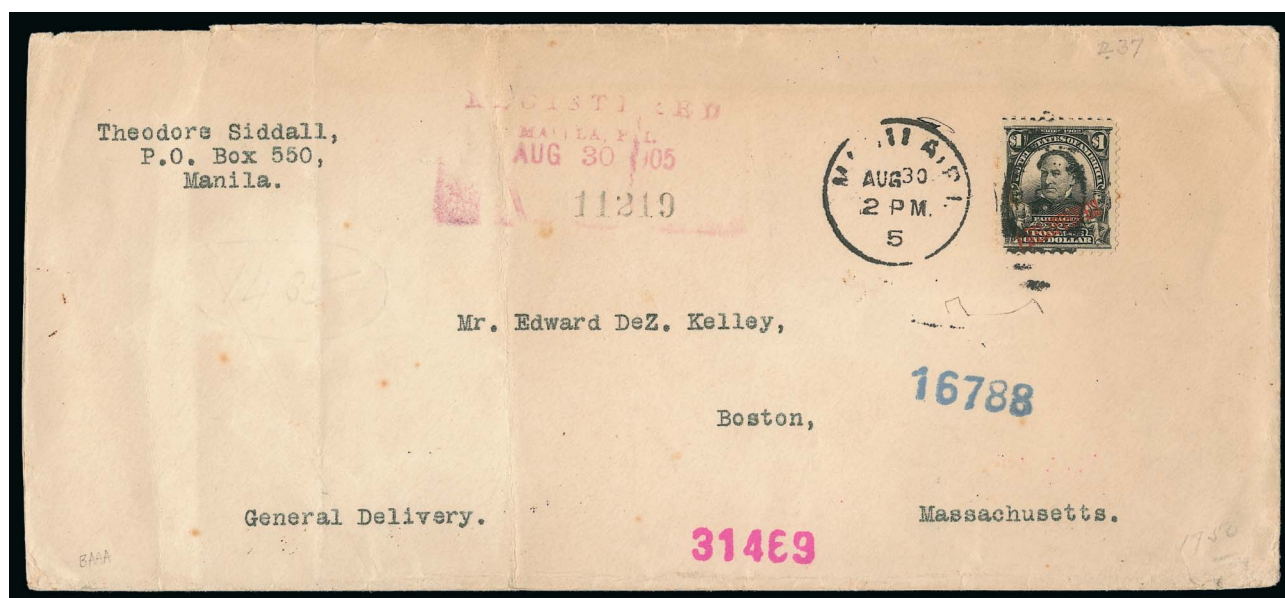


3075



3076

3076 (★)田 1903, \$1.00 Black (237). Bottom imprint and plate no. 1629 block of six, unused (no gum), some perf separations incl. rejoined between pos. 1 and 2, Fine appearing and affordable plate block, Scott Retail for original-gum plate block is \$8,500.00..... E. 750-1,000



3077

3077 ☒ 1903, \$1.00 Black (237). Tied by "Manila P.I. Aug. 30, 5 2PM" duplex datestamp on cover to Boston, magenta "Registered Manila P.I. Aug. 30, 1905" datestamp, New York and Boston registered backstamps, couple tiny toned specks on perfs, central file fold, Very Fine, a scarce on-cover use of the 1903 \$1.00 issue..... E. 1,000-1,500



3078

- 3078 ★田 **1903, \$2.00 Dark Blue (238).** Block of four with part imprint and plate no. 1630 top selvage, top left stamp Mint N.H., bottom pair h.r., vivid color, few perf separations in selvage, Fine-Very Fine, a scarce block with plate number, Scott Retail as singles 3,450.00

- 3079 ★ **1903, \$5.00 Dark Green (239).** Beautifully balanced margins, deep rich color, Extremely Fine Gem, a superb stamp 900.00



3079

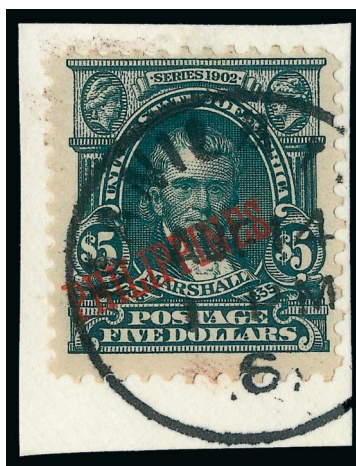


3080

- 3080 ★田 **1903, \$5.00 Dark Green (239).** Block of four, couple h.r. straddling the pairs, deep rich color

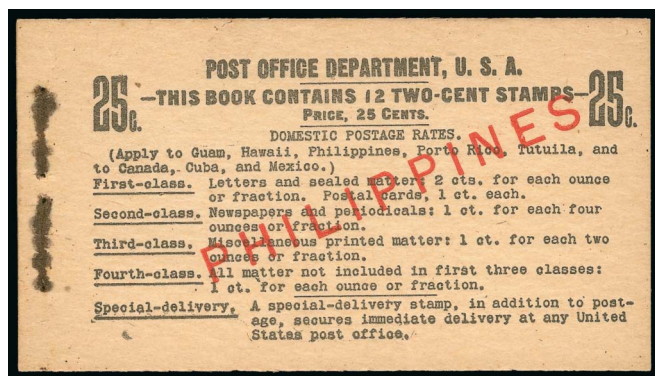
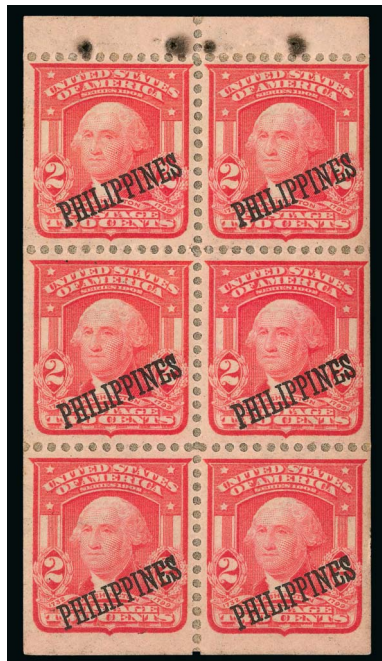
FRESH AND FINE BLOCK OF THE PHILIPPINES 1903 \$5.00 OVERPRINT.

Only 746 of the Philippines 1903 \$5.00 Overprint were sold. Blocks are scarce and only one plate block is known. The underlying stamp, U.S. Scott 313, catalogues \$11,000.00 as a block of four 3,750.00



3081

- 3081 **1903, \$5.00 Dark Green (239).** Deep rich color, tied to small piece by Manila 1906 circular datestamp
FRESH AND FINE. A RARE USED EXAMPLE OF THE PHILIPPINES 1905 \$5.00 DARK GREEN.
Only a small percentage of the 746 \$5.00 1903 Philippines Overprint issued were actually used. 3,750.00



3082

- 3082 ★ **1903, 2c Carmine, Booklet Pane of Six (240a).** Single pane with separated front and back booklet covers, Interleaving adhering to back, slight staple stain in tab, otherwise Very Fine, Scott Retail for single pane with no premium for the covers 2,000.00

1907 BUREAU OF INSULAR AFFAIRS SPECIAL PRINTING

As explained in a footnote in the Scott Catalogue, a set of the 1903-04 Issue was specially printed for the Bureau of Insular Affairs in 1907. They are on a brighter stock of paper than the regular issue.



3083EX

- 3083 ★ **1907, 1c-\$5.00, Bureau of Insular Affairs Special Printing (226 var, 228-240 var).** Complete set of 14 stamps, single hinge mark on each, bright white paper typical of the B.I.A. Special Printing, vivid colors, 4c-8c reperfed

FINE-VERY FINE. A RARE COMPLETE SET OF THE ONE-CENT TO \$5.00 1907 BUREAU OF INSULAR AFFAIRS SPECIAL PRINTING.

Ex Todd and offered to the market for the first time since 1978. 1c-15c blue backstamp and 50c-\$5.00 initialed in pencil "HHB". Each accompanied by 1980 P.F. certificate (only 4c and 8c called reperfed on certificates).(Photo Ex) 15,150.00



3084

- 3084 ★田 **1907, 13c Purple Black, Bureau of Insular Affairs Special Printing (234 var).** Bottom imprint and plate no. 1473 block of six, lightly hinged, detailed impression on bright white paper typical of the 1907 Special Printing, inconsequential perf tip thin at right of pos. 3

FINE. THIS PLATE BLOCK OF THE 13-CENT PHILIPPINES 1907 SPECIAL PRINTING IS REPORTED TO BE ONE OF TWO KNOWN. A GREAT RARITY OF PHILIPPINES PHILATELY.

Small backstamp on pos. 6. Scott Retail of \$4,650.00 for six singles does not convey the rarity of this full plate block E. 5,000-7,500



3085

- 3085 ★ **1907, 10c Ultramarine, Special Delivery, Red Ovpt., Bureau of Insular Affairs Special Printing (E2A).** Fresh and bright color, single hinge mark, Fine, a scarce example of this Special Printing made in 1907 for the Bureau of Insular affairs 2,750.00



3086

- 3086 ★田 **1907, 1c Deep Claret, Postage Due, Bureau of Insular Affairs Special Printing (J1SP).** Block of four, lightly hinged, bright color, bottom right stamp with pulled perf at bottom left
FINE. A RARE BLOCK OF FOUR OF THE PHILIPPINES ONE-CENT POSTAGE DUE 1907 SPECIAL PRINTING.
Ex Todd. With 1998 P.F. certificate. Scott Retail as singles 3,100.00



3087EX



3088

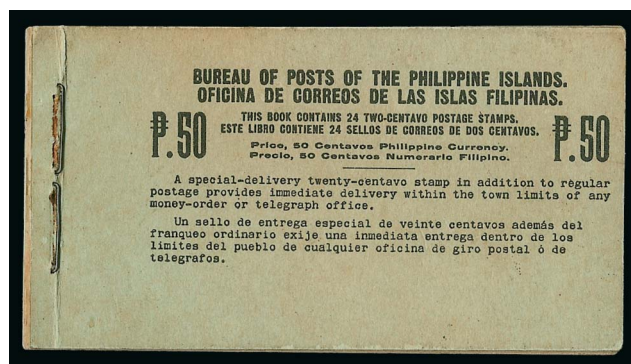
- 3087 ★田 1906, 2c-10p "Specimen" Ovpts. (241S-242S var, 244S var, 252S-254S var, 258S var). Seven denominations in blocks of four plus three extra singles, 3 x 18.5mm overprints in black Serifed Capitals, tropicalized original gum, few small flaws, overall Very Fine and scarce, ex Todd, unlisted in Scott which prices the underlying stamps at \$2,500.00..... (Photo Ex) E. 750-1,000
- 3088 匣 1906, 2c-10p (241-254). Complete set, tied by "Manila P.I. Nov. 6 '7 7AM" circular date-stamp cancels on registered cover to **Vienna, Austria**, purple Manila registered oval and straightline handstamps, purple "Julius Kinze Koetzchenbroda b. Dresden" backstamp, transit and receiving backstamps, cover with some edge wear, 2p stamp with one faulty corner, otherwise Very Fine, a rare complete set of the 1906 Issue on cover..... E. 750-1,000



3089

- 3089 (★)田 1911, 4p Deep Blue (273). Block of four with part imprint selvage at bottom, three stamps Mint N.H., top left stamp barely hinged, deep rich color, choice margins and centering
EXTREMELY FINE BLOCK OF THE ELUSIVE 4-PESO PERF 12 ISSUE WITH SINGLE-LINE WATERMARK, CONTAINING THREE MINT NEVER-HINGED STAMPS.
Scott Retail as singles 4,200.00

- 3090 ★ **1914, 2c Green, Booklet Pane of Six (276a).** Four panes in a complete unexploded booklet, interleaving adheres to the panes, cover with minor crease along staples, still Very Fine and extremely rare complete booklet, perhaps three or four exist, Scott Retail as four hinged panes with no premium for the complete booklet 3,000.00



3090



- 3091 ★田 **1918, 2c-1p Regular Issue (285-289D).** Complete set in blocks of four, all but one with selvage incl. three with plate nos. and two with either part imprint or initials, 8c and 10c tropicalized original gum, others lightly hinged (incl. some Mint N.H.) or small h.r., bright colors, 1p tiny insignificant thin spot, fresh and Very Fine group, ex Todd, Scott Retail as hinged blocks.....(Photo Ex) 3,692.50
- 3092 ★ **1917, 2c Yellow Green, Vertical Pair, Imperforate Horizontally (290b).** Slightly tropicalized original gum, beautifully centered, bright and fresh, Extremely Fine Gem, a rare example of this imperforate horizontally pair, we have not offered another in more than 20 years, P.F. certificate no. 119194 no longer accompanies..... 1,500.00
- 3093 ☒ **1917, 2c Yellow Green, Vertical Pair, Imperforate Between (290d).** Tied by "Manila P.I. Sep. 4, 1930?" duplex cancel on cover sent within Manila, top stamp with light pre-use crease, back of cover with some adhesive bleed-through from envelope flaps, Very Fine appearance, a rare example of this imperforate between issue on cover, we offered a cover front from the same correspondence (1930 use) in our Sale 872 (lot 2387), but we have not encountered another full cover, with 1978 P.F. certificate, Scott Retail as used pair off-cover 1,000.00
- 3094 ★★ **1917, 6c Deep Violet, Booklet Pane of Six (292c).** Complete unexploded booklet of two panes with interleaving, Mint N.H., crisp covers with just a couple small faint wrinkles, stamps with choice centering, Very Fine, a rare complete booklet with perhaps 2-3 known, we offered another in our 2009 Whitpain sale (realized \$3,500), Scott Retail as two Mint N.H. panes with no premium for the complete booklet..... 1,800.00



3095EX

- 3095 S **1926, 2c-1p Legislative Palace Issue, Imperforate on Glazed Cards, "Cancelled" Ovpt. (319S-S var-325S-S var).** Full set in horizontal pairs, each with right sheet margin, small h.r., fresh colors

VERY FINE AND CHOICE. AN INCREDIBLY RARE SET OF PAIRS OF THE IMPERFORATE LEGISLATIVE PALACE ISSUE ON GLAZED CARD.

Ex Todd.....(Photo Ex) 4,500.00

LAMBERT SALES COMPANY IMPERFORATES

In 1925, the Lambert Sales Company was denied permission by the Philippine Bureau of Post (BPO) to use perfins on Regular Issue stamps. As an alternative, they were allowed to order imperforate sheets, which they used on their packages of embroidered goods sent from the Philippines to New York from June 22 to October 26, 1925. By the time collectors became fully aware of these imperforates, most had been already been used. The BPO responded to collector pressure by issuing two more sets of imperforates in 1931, which differ in material ways from the 1925 Lamberts. These reprints have long confused collectors seeking out the much scarcer original Lamberts. Three of the plate numbers used for the Lamberts (2c no. 84679, 6c no. 21972 and 30c no. 21993) are unique to the 1925 Issue and were not used for the 1931 reprints. They can also be distinguished by shade, paper and gum. The outstanding website *The Philippine Philatelist* (www.philippinephilatelist.net) contains a copy of the definitive 5-frame exhibit of the Lambert Imperforates.



3096EX

- 3096 S **1925, 2c-10p, Lambert Sales Co. Imperforates, "Specimen" Ovpts. (340a-S-353a-S).** Complete set in horizontal pairs, 13 x 3mm "Specimen" overprints in red capitals, no gum as issued, vivid colors on bright white paper typical of the Lambert Issues, ample to large margins

VERY FINE. A CHOICE SET OF PAIRS OF THE 1925 PHILIPPINES LAMBERT SALES CO. IMPERFORATES WITH "SPECIMEN" OVERPRINT. ONLY 25 COMPLETE SETS EXIST.

One pane of 100 subjects of each denomination was handstamped with "Specimen" in red capital letters. The pane of the 2c Rizal Issue was severely damaged and as a result only 25 complete sets are possible. Imperforate "Specimen" overprints are unique to the Lamberts and are therefore an excellent reference for distinguishing the color differences between the Lamberts and the more common 1931 Issues.....(Photo Ex) 3,050.00



3097

- 3097 S 1925, 20c Violet Blue, Lambert Sales Co. Imperforate, "Specimen" Ovpt. (E6a-S). Block of four, 13 x 3mm "Specimen" overprint in red capitals, no gum as issued, rich color, ample to large margins, Very Fine and extremely rare, only 50 were issued making this the scarcest of the Lambert "Specimen" set (100 each of the others were issued), we are aware of only one other block, Scott Retail as singles 1,200.00



3098EX

- 3098 ★★ 1925, 2c-10p, Lambert Sales Co. Imperforates (340a-353a, E6a). Complete Mint N.H. set, all with sheet margin incl. 10p with top plate no. 22010, 20c with part initials and 1p with part imprint, vivid colors on bright white paper typical of the Lambert Issues, ample to large margins, 10p minor natural gum skips

VERY FINE AND CHOICE. A SPECTACULAR MINT NEVER-HINGED COMPLETE SET OF THE 1925 PHILIPPINES LAMBERT SALES CO. IMPERFORATES. THE 10-PESO PLATE NUMBER SINGLE IS ONE OF ONLY FOUR THAT CAN EXIST.

The outstanding website *The Philippine Philatelist* (<http://www.philippinephilatelist.net>) contains a copy of the definitive 5-frame exhibit of the Lambert Imperforates. The exhibit reports that only 24 unused copies of the 10p are known. It was printed in sheets of 200 and then divided into two panes of 100, with plate numbers at top and bottom. Only two panes were delivered to Lambert, so a maximum of four plate number singles can exist. With only 24 unused stamps recorded, it is probable that much fewer than four unused plate singles actually exist today(Photo Ex) 10,391.25

- 3099 ★ 1925, 10p Deep Green, Lambert Sales Co. Imperforate (353a). Bright color, large even margins, fresh and Very Fine, rare with only 24 unused examples recorded among 100 issued, with 2008 A.P.S. and 2009 P.F. certificates ... 3,000.00



3099



3100EX

3100 ★★田 1925, 2c-30c, Lambert Sales Co. Imperforates (340a-349a). Complete from the 2c through the 30c denominations in Mint N.H. plate no. blocks of 12, vivid colors on bright white paper typical of the Lambert Issues

VERY FINE. A BEAUTIFUL SET OF THE 2-CENT THROUGH 30-CENT 1925 PHILIPPINES LAMBERT SALES CO. IMPERFORATES IN PLATE BLOCKS OF 12.

Unpriced in Scott as plate blocks. Scott Retail as Mint N.H. singles with no premium for the plate blocks is \$5,290.00(Photo Ex) E. 3,000-4,000



3101

3101 ★★田 1925, 20c Violet Blue, Lambert Sales Co. Imperforate (E6a). Complete Mint N.H. left pane of 50 with top and bottom imprint and plate no. 22620 blocks of six, arrow at left and half arrows at top and bottom right, C.A.H. siderographer initials at bottom left (Charles A. Hall), deep rich color, typical gum bends

VERY FINE. A RARE COMPLETE LEFT PANE OF THE PHILIPPINES 1925 LAMBERT IMPERFORATE ISSUE. ONLY SEVEN FULL PANES ARE RECORDED.

A total of 40 panes were issued. Scott Retail as hinged plate blocks and Mint N.H. singles (Mint N.H. plate block unpriced in Scott) 4,540.00

3102

1925, 2c-4p, Lambert Sales Co. Imperforates (340a-352a). Used horizontal pairs, complete for all that exist as used multiples (10p not known as a used multiple), bright colors and paper, ample to large margins, Manila target cancels incl. large size target on 4p which also has a small cut at bottom between stamps

VERY FINE SET OF USED PAIRS OF THE 2-CENT THROUGH 4-PESO 1925 PHILIPPINES LAMBERT SALES CO. IMPERFORATES.

The 4p value is particularly scarce as a used multiple since only 300 were issued. Scott Retail as singles(Photo Ex) 3,321.50



3102EX

The Lambert Imperforates were used from June 22 to October 26, 1925, to mail packages of embroidery goods from the company's operations in the Philippines to New York. Two-package pairings were delivered to the post office with a primary label on the first package containing most or all of the postage. The second package contained a secondary label which typically had no postage or a small amount of postage.



3103

3103 ☒ **1925, 2p Violet Brown, Lambert Sales Co. Imperforate (351a).** Horizontal pair, used with pairs of 2c, 4c, 8c, 16c, 26c and 1p (340a, 341a, 343a, 346a, 348a, 350a), tied by blurry strikes of "New York, U.S.A. Foreign Mail, 7-22-25" oval handstamps on **First Day** registered primary label to New York, certificate of origin no. 1881-3 (see below for explanation), 9p-80c total postage for 40 lbs. total weight, (2p-68c on supplementary label affixed to other package, not included in lot), minor puckering or light wrinkling in stamps

VERY FINE. THIS IS THE EARLIEST RECORDED FIRST DAY COVER FOR THE PHILIPPINES 1925 LAMBERT IMPERFORATE ISSUE. A GREAT RARITY.

In the case of this two-package pair, the secondary label would have contained the additional 2p-68c postage.

This label is believed to be the earliest surviving First Day cover of the 1925 Lambert Issue. The certificate of origin no. 1881-3 at left indicates this was the third package prepared on June 22. Nos. 1881-1 and 1881-2 are believed to have been destroyed or are only partial labels. Any June 22 First Day cover is rare, with only nine primary labels recorded in total E. 1,500-2,000



3104



3105



3106

- 3104 ☒ **1925, 2p Violet Brown, Lambert Sales Co. Imperforate (351a).** Arrow block of four, used with horizontal pair 1p Violet (350a), also pairs of Nos. 340a, 342a and 343a, tied by target cancels on Lambert Sales Co. registered primary label for shipping two packages to New York, 10p-32c total postage, one 2c stamp small surface scuff

VERY FINE AND RARE. THIS IS THE LARGEST RECORDED USED MULTIPLE OF THE 2-PESO 1925 LAMBERT IMPERFORATE ISSUE.

In the case of this two-package pair, all the postage was paid by the primary label offered in this lot. A block of four is the largest used multiple of the 2p..... E. 1,500-2,000

- 3105 ☒ **1925, 4p Deep Blue, Lambert Sales Co. Imperforate (352a).** Vertical pair, used with two vertical strips of three and two pairs No. 340a plus margin pair of No. 346a, tied by target cancels on Lambert Sales Co. registered primary label for shipping two packages to New York, 9p-12c total postage for 38 lbs. total weight (60c on secondary label not included in lot), some wrinkling in the 2c stamps

VERY FINE AND RARE ON-COVER USE OF THE 4-PESO 1925 LAMBERT IMPERFORATE ISSUE.

In the case of this two-package pair, the secondary label would have contained 60c postage — the division between labels was most likely for the purpose of using up surplus low denominations on hand at the company. The 4p value is very uncommon on label

Scott Retail for two off-cover used singles of No. 352a \$2,000.00..... E. 1,500-2,000

- 3106 ☒ **1925, 10p Deep Green, Lambert Sales Co. Imperforate (353a).** Single, used with block of twelve No. 340a plus vertical pair of No. 341a, tied by target cancels on Lambert Sales Co. registered primary label for shipping two packages to New York, "Manila Registry Section P.I. Sep. 15, '25" handstamp, 10p-32c total postage for 43 lbs. total weight, small tear at top, wrinkling and surface scuff affects 2c block, 10p stamp completely sound

VERY FINE. A RARE ON-COVER USE OF THE 10-PESO 1925 LAMBERT IMPERFORATE ISSUE.

In the case of this two-package pair, all the postage was paid by the primary label offered in this lot. The 10p value is rare, with only 24 unused examples known, and no used multiples

Scott Retail for off-cover used single of No. 353a \$3,250.00..... E. 1,500-2,000



3109



3107



3108

- 3107 ★★ 1934, 6c Ultramarine, Vertical Pair, Imperforate Between (381a). Mint N.H. with bottom selvage, fresh color, perfect centering, Extremely Fine Gem..... 1,250.00
- 3108 ★★ 1934, 16c Violet Brown, Vertical Pair, Imperforate Horizontally (382a). Mint N.H. with large top margin, choice centering, deep rich color, Very Fine, scarce 1,750.00
- 3109 ★★ 1936, 6c Slate, Horizontal Pair, Imperforate Vertically (382a). Mint N.H. with bottom left corner margins, hinged in selvage only, fresh color, slight toning on back outside of stamp designs, Very Fine and rare, Power Search did not locate another example, ex Plass, with 1993 P.F. certificate 1,950.00

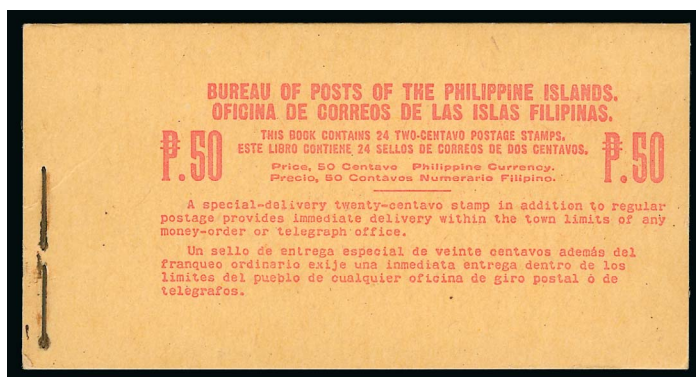
- 3110 ★★ 1939, 2c Rose, Booklet Pane of Six, Bottom Left Stamp "WEALTH COMMON-" Ovpt. Error (433b). Interleaving adhering to gum, bright color

FINE AND RARE BOOKLET PANE WITH BOTTOM LEFT STAMP CONTAINING THE "WEALTH COMMON-" ERROR.

Only 24 were issued, which would have been six complete booklets. We know that at least two booklets are intact, including the one offered in lot 3111, which reduces the number of panes available to collectors. With 1980 P.F. certificate. Scott Catalogue value has remained unchanged for at least 15 years. 4,000.00



3110



3111

- 3111 ★★ **1939, 2c Rose, Booklet Pane of Six, Bottom Left Stamp "WEALTH COMMON-" Ovpt. Error (433b).** Unexploded booklet containing four panes, each with bottom left stamp showing the error, Mint N.H. with interleaving, booklet cover free of creases near staples VERY FINE. AN EXTRAORDINARY COMPLETE BOOKLET CONTAINING ONE OF THE RAREST ERRORS OF THE PHILIPPINES.

Only 24 were issued, which would have been six complete booklets. At least one other booklet is intact.

Scott Retail as four panes 24,000.00

“VICTORY” OVERPRINTS

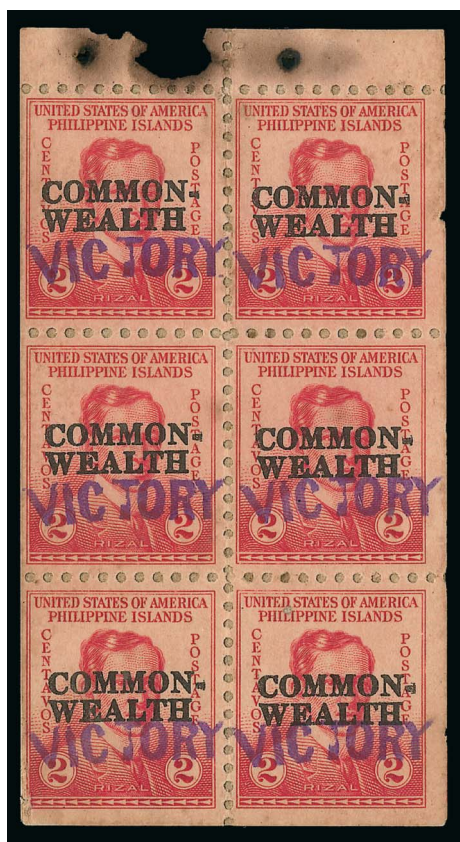


3112

- 3112 ✉ 1944, 16c Dark Blue, “Victory” Ovpt. (479). Natural s.e. at left, used with **eight other “Victory” overprints**, incl. Nos. 464 (pair), 465, 471, 472, 474, 477, 481 and E9, tied by Tacloban Nov. 8, 1944 **First Day of Issue** duplex datestamp and oval grid on legal-size cover to San Francisco, handstamped First Day cachet, 2c stamps at upper right slightly creased

VERY FINE. A SPECTACULAR AND RARE FIRST DAY COVER WITH NINE DIFFERENT “VICTORY” OVERPRINT STAMPS, INCLUDING THE 16-CENT SCOTT 479.

Ex Plass. With 1996 P.F. certificate..... E. 4,000-5,000



3113

- 3113 (★) **1944, 2c Rose, Booklet Pane of Six, "Victory" Ovpt. (463a).** Adhering to interleaving, rich color, tab with erosion hole and staining from staples

FINE APPEARING AND EXTREMELY RARE INTACT BOOKLET PANE OF SIX OF THE 2-CENT "VICTORY" OVERPRINT.

Only 28 panes were produced. The census compiled by Geoffrey Brewster and published in *Possessions* lists 18 known examples. We have not offered another example in almost ten years.

With 1995 P.F. certificate 12,500.00

- 3114 ★ **1944, 6c Dark Brown, "Victory" Ovpt. (466).** Paper adhering to gum as often found, rich color, well-centered, Very Fine, only 64 were produced, the census compiled by Geoffrey Brewster and published in *Possessions* lists 31 known examples, with 1996 P.F. certificate..... 2,000.00



3114



3115

- 3115 ★ **1944, 6c Dark Brown, "Victory" Ovpt. (468).** Tropicalized original gum, deep rich color, nice margins and centering.

VERY FINE. A BEAUTIFUL AND SCARCE EXAMPLE OF THE 6-CENTAVO DARK BROWN "VICTORY" OVERPRINT.

Only 206 were produced. Each of the few examples we have offered over the last 20 years had tropicalized gum or interleaving adhering to the gum. The census compiled by Geoffrey Brewster and published in *Possessions* lists 31 known examples.

With 1958 P.F. certificate 4,750.00

- 3116 ★ 1944, 6c Dark Brown, "Victory" Ovpt. (468). Wax paper adhering to gum, deep rich color FINE AND SCARCE EXAMPLE OF THE 6-CENTAVO DARK BROWN "VICTORY" OVERPRINT.

Only 206 were produced. The census compiled by Geoffrey Brewster and published in *Possessions* lists 31 known examples. With 1995 P.F. certificate 4,750.00



3116



3117



3118

- 3117 ☒ 1944, 10c Carmine Rose, "Victory" Ovpt. (474). Block of four with selvage at right, tied through perfs by "Tacloban Leyte Jan. 18 (1945)" duplex datestamp on local cover, slight overall toning, still Very Fine and rare multiple on cover E. 750-1,000
- 3118 ★ 1944, 12c Ultramarine, "Victory" Ovpt. (475). Tropicalized original gum described as "part o.g." on accompanying certificate, wonderfully fresh color, Fine, with 1986 P.F. certificate, only 221 were produced..... 1,100.00



3119

- 3119 ★ 1944, 12c Bright Blue, "Victory" Ovpt. (476). Lightly hinged gum which is far more intact than typically seen, rich color, small tear at bottom right

VERY FINE APPEARING ORIGINAL-GUM EXAMPLE OF ONE OF THE RAREST OF ALL "VICTORY" OVERPRINTS.

Only 36 were produced. The census compiled by Geoffrey Brewster and published in *Possessions* lists 26 known examples. The only scarcer "Victory" overprints in terms of number issued are the booklet pane of six, Scott 463a, and the 1p Red Orange & Black, Scott 484.

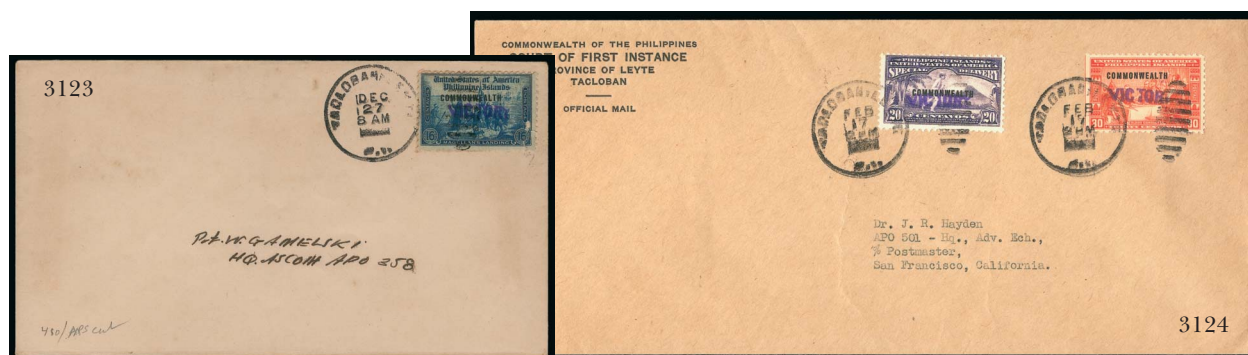
With 2008 P.F. certificate 6,000.00



3121

3122

- 3120 ✉ 1944, 12c Purple, "Victory" Ovpt. (477). Tied by clear strike of "Tacloban, Leyte Dec. 10 (1944)" duplex datestamp on cover to a U.S. Army private, Very Fine, only 221 were produced, with 2003 A.P.S. certificate E. 500-750
- 3121 ★ 1944, 16c Dark Blue, "Victory" Ovpt. (478). Deep rich color, wide margins and well-centered, Very Fine and choice, only 122 were produced but far fewer are believed to exist, the census compiled by Geoffrey Brewster and published in *Possessions* records only 28 known examples, with 1998 P.F. certificate 2,250.00
- 3122 ★ 1944, 16c Dark Blue, "Victory" Ovpt. (479). Tropicalized original gum, fresh color, Fine and scarce, only 200 were overprinted, the census compiled by Geoffrey Brewster and published in *Possessions* records 55 examples 1,250.00



- 3123 ☒ **1944, 16c Dark Blue, "Victory" Ovpt. (480).** Tied by "Tacloban, Leyte Dec. 27 (1944)" duplex datestamp on cover to a U.S. Army private, bottom right corner of stamp torn off and re-affixed, otherwise Very Fine and scarce use on cover, only 24 are recorded in the Brewster census, with 2003 A.P.S. certificate before the damage occurred E. 300-400
- 3124 ☒ **1944, 30c Orange Red, "Victory" Ovpt. (489).** Used with 20c Blue Violet, Special Delivery (E9), both tied by "Tacloban, Leyte Feb. 17 (1945)" duplex datestamps on legal size Court of First Instance corner card cover to San Francisco, fresh and Very Fine, a rare on-cover use, the Brewster census records only nine covers, with 1998 A.P.S. certificate..... 750.00



3125

- 3125 ☒ **1944, 1p "Victory" Ovpt. (484).** Used with six other "Victory" overprint stamps, incl. Nos. 467, 469, 475, 483 and 12c Bright Blue No. 476 and 4c Rose Carmine Air Post No. C63, all Ty. II overprints, tied by Dec. 16, 1944 Leyte duplex cancels on cover to a Lt. in the 6th. Naval Construction Battalion, 1p stamp with a few minor perf flaws and slight perf tip toning

VERY FINE. A SPECTACULAR COVER CONTAINING THREE OF THE RAREST "VICTORY" OVERPRINTS, INCLUDING THE ONE-PESO BARASOAIN CHURCH, THE 12-CENT TRIUMPHAL ARCH AND THE 4-CENT AIR POST.

The issue quantities for the three most important stamps on this cover were 36 for Scott 476, 21 for Scott 484 and 122 for Scott C63. Each of these three stamps, particularly the 1p and 12c, is rare by itself. To combine them on one cover with four other "Victory" overprints is truly remarkable. The census compiled by Geoffrey Brewster and published in *Possessions* lists 5 known examples used on cover (plus one stated to be possibly fake). One other cover (ex Plass) has this same combination of stamps.

From our 1978 and 1982 Rarities sales. Kessler backstamp guarantee. With 1993 A.P.S. certificate. Scott lists but does not price Nos. 476, 484 and C63 on cover. Total Scott Retail for the seven used stamps off-cover is \$10,800.00..... E. 5,000-7,500



3126

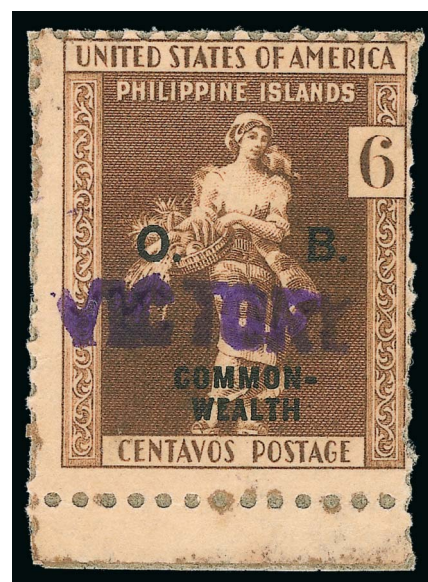
- 3126 (★) **1944, 4c Rose Carmine, Air Post, “Victory” Ovpt. (C63).** Unused (no gum), natural s.e. at top and left, choice centering, small nick at left center and tiny corner crease, Extremely Fine appearance, rare with 122 stamps overprinted and only 71 copies recorded in the Brewster census, with 1991 P.F. certificate 3,750.00

- 3127 ★ **1944, 6c Dark Brown, Official, “Victory” Ovpt. (O40).** With bottom selvage, adhering to interleaving, deep rich color, few minor pulled perfs at right

FINE APPEARANCE. AN EXTREMELY RARE EXAMPLE OF THE 6-CENTAVO DARK BROWN OFFICIAL WITH “VICTORY” OVERPRINT. ONE OF THE RAREST OF ALL OF THE PHILIPPINES VICTORY OVERPRINT ISSUES.

We have only sold four other singles in our computerized records, including Rarities of the World sales going back to 1964. The census compiled by Geoffrey Brewster and published in *Possessions* lists only 28 known examples

Signed Bloch. With 1978 Friedl and 1994 P.F. certificates 8,000.00



3127



3128

- 3128 ★ **1944, 20c Light Olive Green, Official, “Victory” Ovpt. (O43).** Tropicalized original gum, slight edge gum soaking, otherwise Fine, with 1975 P.F. certificate for pair...
..... 1,750.00

AIR POST



3129EX

- 3129 ★ **1926, 2c-10p Air Post Overprints (C1-C6, C9-C15, C17).** Complete set except for the two rare 16c Sampsons and the 26c perf 12, mounted on a photocopied letter from the Bureau of Posts to Leon J. Lambert (of the 1925 Lambert Imperforate Issue fame), Fine-Very Fine, a nice presentation set.....(Photo Ex) 3,755.00



3130

- 3130 ☒ **1926, 2c-10p Madrid-Manila Flight Air Post Overprints (C1-C6, C9-C15, C17, E6).** Complete set except for the two rare 16c Sampsons, tied by Manila Registered handstamp on legal-size corner card cover to local addressee, May 29, 1926 registered handstamps on front and back, central file fold passes between stamps

VERY FINE. A SCARCE COVER BEARING THE BASIC VALUES OF PHILIPPINES 1926 MADRID-MANILA OVERPRINT SET. VERY FEW SETS ON COVER ARE KNOWN.

Scott Retail more than \$3,000.00 for used off-cover stamps E. 1,500-2,000



3131

- 3131 (★) **1926, 2c Green, Air Post, Split Ovpt. (C1 var).** Tropicalized original gum, dark red split overprint, outstanding centering and margins, hint of toning, still Extremely Fine, only one pane of 100 was issued E. 750-1,000



3132

- 3132 ★ **1926, 4c Carmine, Air Post, Inverted Ovpt. (C2a).** Lightly hinged, brilliant color, bright and fresh

FINE AND RARE EXAMPLE OF THE PHILIPPINES 4-CENTAVOS 1926 AIR POST WITH INVERTED OVERPRINT. ONLY 100 WERE OVERPRINTED.

We have offered only five others since keeping computerized records 4,000.00



3133

- 3133 ★ **1926, 16c Light Olive Green, Violet Overprint (C7).** Vivid color, light vertical creasing at left, Very Fine appearance, scarce as only 300 were issued, Lissick N.Y. and W.B. Manila backstamps, with 1950 P.F. certificate 3,250.00



3134

- 3134 ★ **1926, 16c Olive Bister, Air Post (C8).** Slightly tropicalized original gum, radiant color, Fine example of this rare stamp, only 100 were issued, signed Bloch and with W.B. Manila backstamp 5,000.00



3135

- 3135 ★ **1926, 26c Blue Green, Wmk. PIPS, Perf 12 (C16).** Lightly hinged, deep rich color on bright paper, better centered than most examples of this issue

VERY FINE EXAMPLE OF THE RARE 26-CENTAVO PERF 12 SINGLE-LINE WATERMARK AIR POST ISSUE. ONLY 100 WERE OVERPRINTED.

Most examples of this stamp we have encountered are centered strongly to the left. Signed G. B. Sloane and with 1957 P.F. certificate issued to Raymond H. Weill 6,250.00

- 3136 ★田 1901, 10c Dark Blue, Special Delivery (E1). Block of 20 comprising the full left two vertical rows of the sheet, full selvage with arrow at left, small part of the imprints at top and bottom, tropicalized original gum, deep rich color, mostly Fine centering with a few Very Fine, Scott Retail as blocks of four..... 2,500.00



3136



3137

- 3137 P 1913, 20c Ultramarine, Panama-Pacific Small Die Proof on Wove (E2P2a). Large margins, toning which is more prominent in the bottom and right margins, ghost image of another E2 on back - probably from sitting in an acidic folder at the Bureau of Engraving and Printing, Very Fine appearance and rare, only 3-5 were produced, with 1987 P.F. certificate, undercatalogued in Scott..... 850.00

OFFICIAL BUSINESS OVERPRINTS

In May 1907, the director of the Philippines Constabulary, Brig. Gen. Harry Bandholtz, requested permission from the Bureau of Posts to use printed "OB" overprints on 1899-1904 stamps in order to control the expenses of his department. The Bandholtz "OB" letters were printed on the stamp, and so differ from other "OB" or "Official Business" overprints that were handstamped or written in manuscript. They are unlisted in Scott. The standard reference for their listing, rarity and pricing is the Coughlin catalog, last updated in 1989.



3138EX

3139EX

3140EX

3141

3142

- 3138 ★ **1907, Bandholtz Red "OB" Ovpts. on 1899 2c-15c (214/222 var, Coughlin OB-BA2-7, 10-R).** Seven stamps, underlying Scott numbers incl. 214-216, 218, 220-222, tropicalized original gum, fresh colors and clear printed overprints, couple small flaws incl. 4c diagonal crease, overall Fine, a rare and desirable group, the Coughlin catalog records only **four of the 5c and ten of the 15c**, 30 to 62 each of the others, Coughlin value(Photo Ex) 1,685.00
- 3139 ★ **1907, Bandholtz Red "OB" Ovpts. on 1903 1c-50c (226/240 var, Coughlin OB-BA15-16, 20-22, 25-27, 31-R).** Nine stamps, underlying Scott numbers incl. 226-227, 230-232, 234-236, 240, most with h.r., two without gum, strong red printed overprints, a couple minor flaws to be found, overall Fine except the 13c Extremely Fine, the Coughlin catalog records only **five each of the 5c and 6c and six of the 2c Shield**, Coughlin value.....(Photo Ex) 2,590.00
- 3140 ★ **1907, Bandholtz Blue "OB" Ovpts. on 1903 1c-13c (226/240 var, Coughlin OB-BA15-16, 20, 25, 31-BL).** Five stamps, underlying Scott numbers incl. 226-227, 230, 234, 240, h.r., vivid colors and strong blue printed overprints, No. 227 pulled perf, overall fresh and Fine, the Coughlin catalog records only **six each of the 5c and 2c Shield**, nine to 18 each of the others, Coughlin value...(Photo Ex) 1,750.00
- 3141 ★ **1907, Bandholtz Red "OB" Ovpt. on 1903 \$1.00 Black (237 var, Coughlin OB-BA28-R).** Slightly tropicalized original gum, wide margins, Very Fine example of \$1.00 1903 Issue with Red Bandholtz printed overprint, Coughlin value..... 2,500.00
- 3142 ★ **1907, Bandholtz Blue "OB" Ovpt. on 1903 \$1.00 Black (237 var, Coughlin OB-BA28-BL).** Tropicalized original gum, outstanding margins and centering, Extremely Fine, a beautiful example of \$1.00 1903 Issue with Blue Bandholtz printed overprint, Coughlin value 3,000.00



3143

- 3143 ★田 **1907, Bandholtz Blue "OB" Ovpt. on 1903 \$1.00 Black (237 var, Coughlin OB-BA28-BL).** Tropicalized original gum with interleaving adhering, wide margins

VERY FINE. AN EXCEPTIONALLY RARE BLOCK OF FOUR OF THE PHILIPPINES 1903 \$1.00 ISSUE WITH BANDHOLTZ BLUE "O B" PRINTED OVERPRINT. A GREAT RARITY OF UNITED STATES POSSESSIONS COLLECTING.

Coughlin value as singles 12,000.00

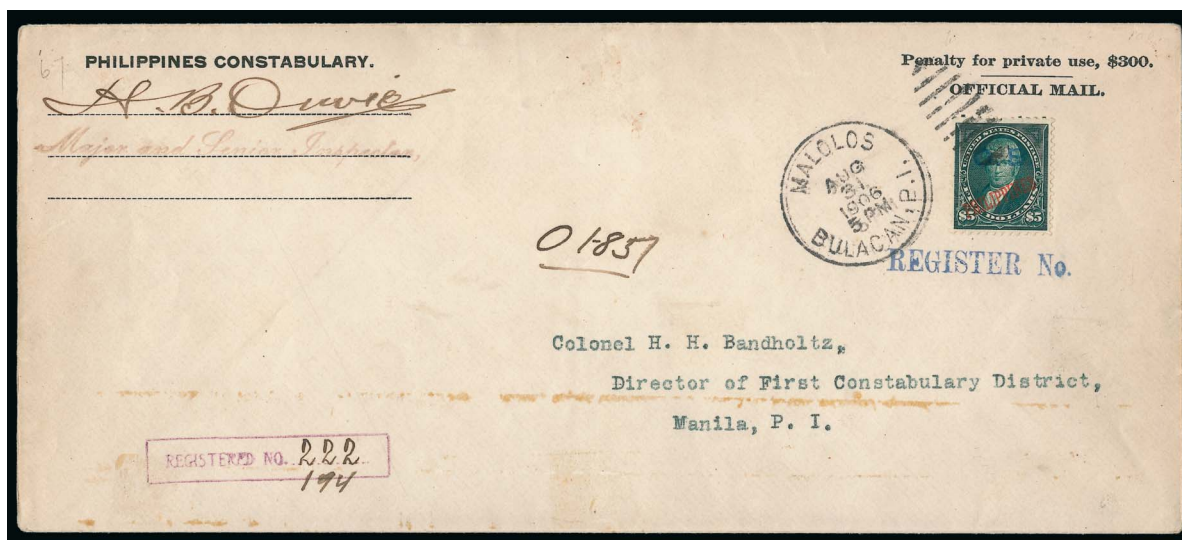


- 3144 ★ 1907, Bandholtz Red “OB” Ovpt. on 1903 \$2.00 Dark Blue (238 var, Coughlin OB-BA29-R). H.r., deep rich color, strong printed overprint, slight margin thin at right, Very Fine appearance, Coughlin value 3,500.00
- 3145 ★ 1907, Bandholtz Red “OB” Ovpt. on 1903 \$5.00 Dark Green (239 var, Coughlin OB-BA30-R). H.r., rich color, nice margins and centering, Very Fine, Coughlin value 4,500.00
- 3146 ★ 1907, Bandholtz Red “OB” Ovpt. on 1903 \$5.00 Dark Green (239 var, Coughlin OB-BA30-R). Small part original gum, rich color, Fine, with 1970 P.F. certificate, Coughlin value 4,500.00
- 3147 ★ 1907, Bandholtz Red “OB” Ovpt. on 1906 2c-1p (241-254 var, Coughlin OB-BA32-51-R). Complete set plus No. E2 single and block of four (last adhering to interleaving), fresh colors, attractive margins and centering, Fine-Very Fine, Coughlin value (Photo Ex) 2,142.00
- 3148 ★ 1911, Bandholtz Red “OB” Ovpt. on 4p Deep Blue (273 var, Coughlin OB-BU1-21-R). Choice centering, rich color, Very Fine, Coughlin value 2,500.00
- 3149 ★ 1911, Bandholtz Black “OB” Ovpt. on 4p Deep Blue (273 var, Coughlin OB-BU1-21-B). Well-centered, deep rich color, Very Fine, Coughlin value 2,500.00
- 3150 ★ 1911, Bandholtz Red “OB” Ovpt. on 10p Deep Green (274 var, Coughlin OB-BU1-22-R). Small h.r., well-proportioned margins, Very Fine and choice, Coughlin value 1,000.00
- 3151 ★ 1911, Bandholtz Black “OB” Ovpt. on 10p Deep Green (274 var, Coughlin OB-BU1-22-B). Fresh color, Fine, Coughlin value 1,000.00



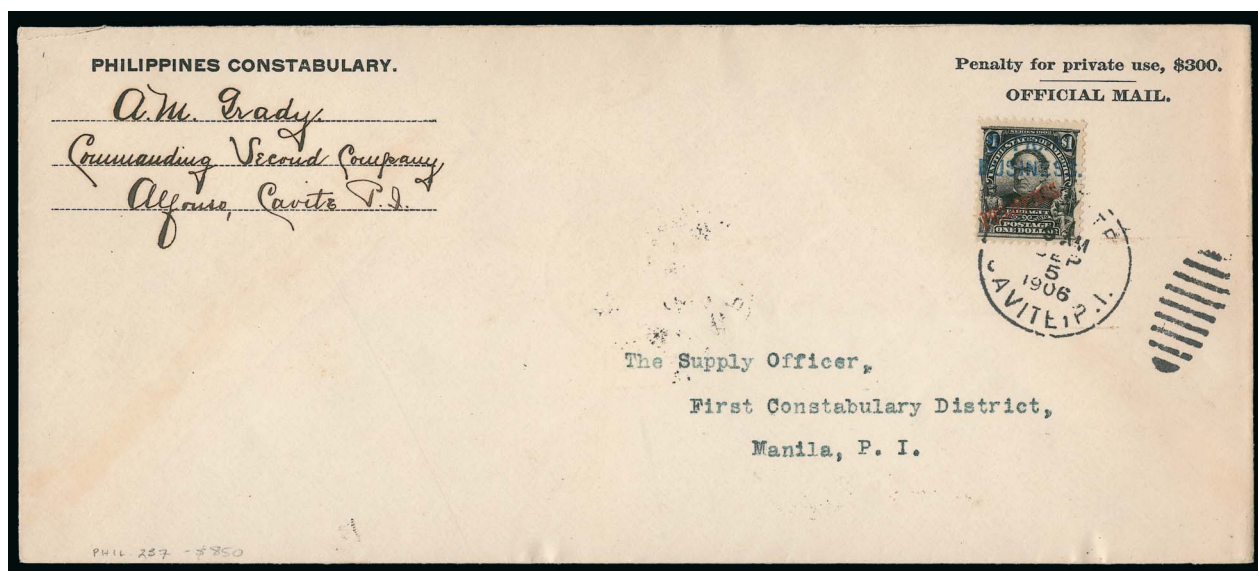
3152EX

- 3152 ☒ **1899-1903, Laguna Constabulary Black "O.B." Handstamped Ovpt. on 3c-\$2.00 (215/238 var).** Two covers, first with Nos. 221, 229 and 236-237, second with Nos. 215, 230, 236 and 238, Black "O.B." handstamped overprints, tied by "Santa Cruz Laguna P.I. Feb. 10, 1906" duplex cancels on Philippines Constabulary Official Mail paste-up labels to Manila, used on heavy packages, both signed by the supply officer, Very Fine, a wonderful and colorful pair of covers with "O.B." handstamped overprints (Photo Ex) E. 750-1,000



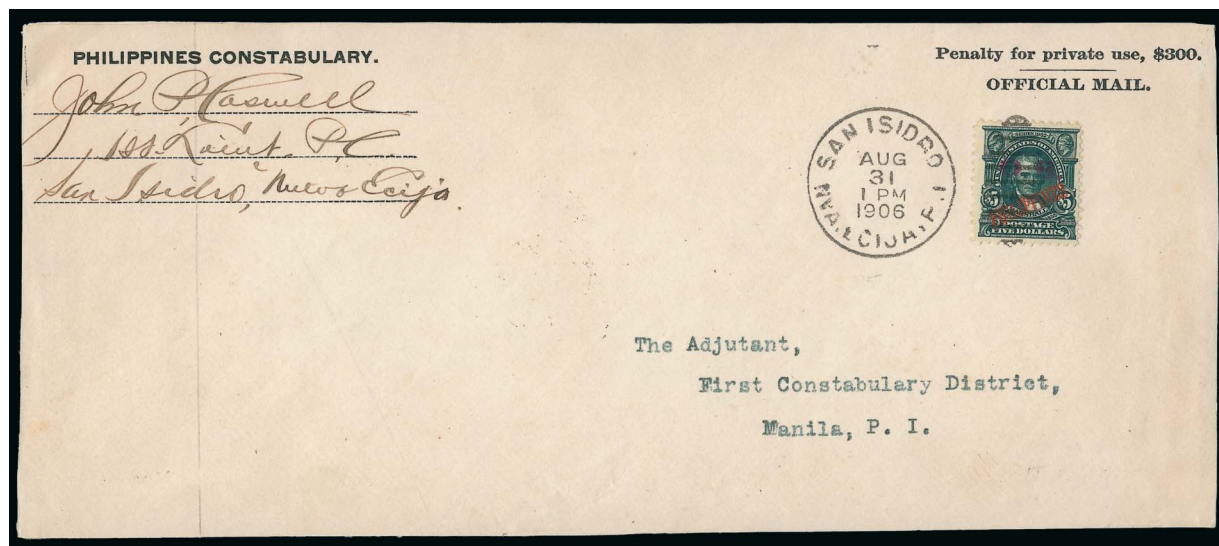
3153

- 3153 ☒ **1901, Malolos Constabulary Blue "O.B." Handstamped Ovpt. on \$5.00 Dark Dark Green (225 var).** Tied by "Malolos Bulacan P.I. Aug. 31, 1906" duplex datestamp on Philippines Constabulary Official Mail registered cover to Col. Bandholtz in Manila, signed by senior inspector at left, Manila Registry Division Aug. 31 backstamp, minor horizontal gum stain far from adhesive
- EXTREMELY FINE STAMP AND INCREDIBLY RARE ON-COVER USE OF THE 1901 \$5.00 ISSUE WITH BLUE "O.B." HANDSTAMPED OVERPRINT.
- A Power Search review failed to find another use of the 1901 \$5.00 on cover, either with out without "O.B." overprint. Scott Retail for No. 225 on cover 12,500.00



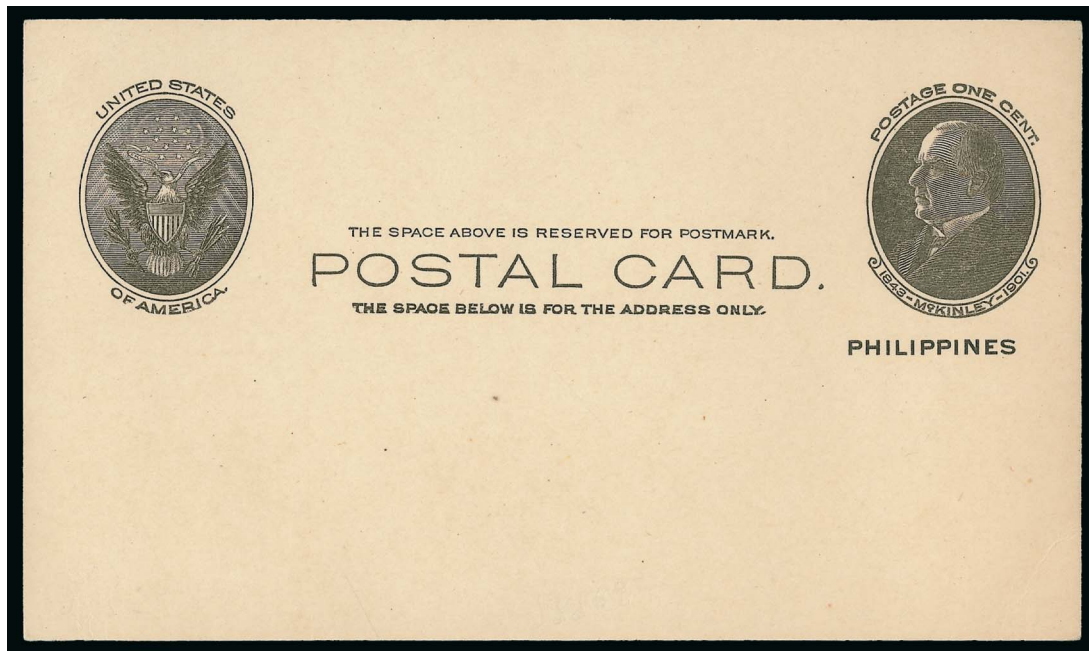
3154

- 3154 ☒ **1903, Alfonso, Cavite Constabulary Blue "Official Business." Handstamped Ovpt. on \$1.00 Black (237 var).** Two-line handstamp in capital letters, tied by Cavite P.I. Sep. 5, 1906 duplex datestamp on Philippines Constabulary Official Mail cover to Manila, signed by second company commander at left, Sep. 6 receiving backstamp, fresh and Very Fine stamp and cover..... E. 1,000-1,500



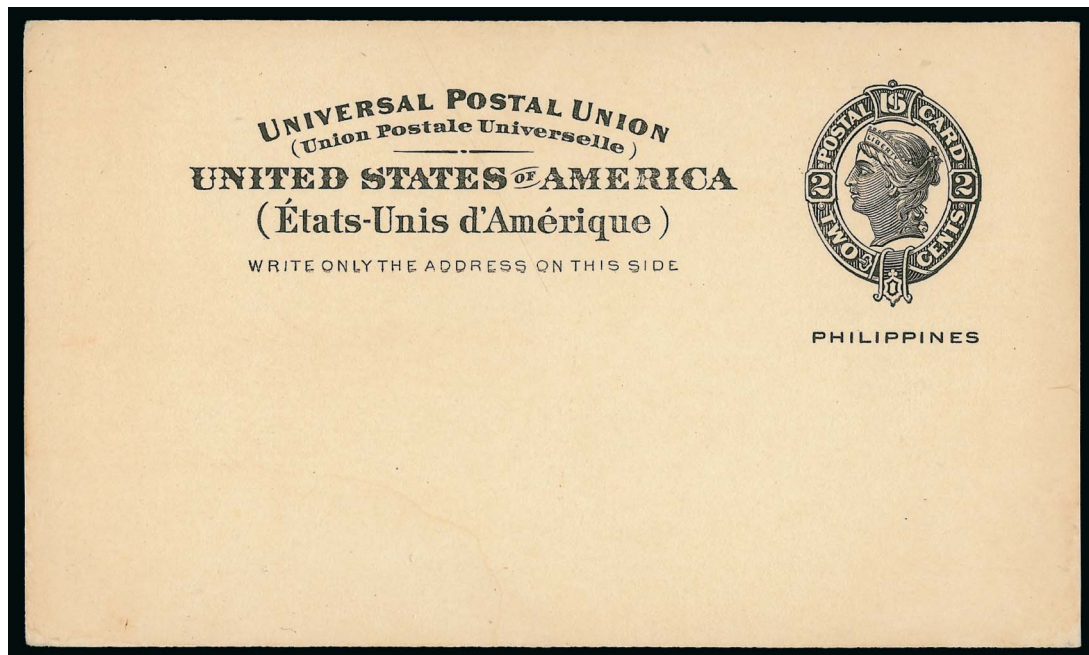
3155

- 3155 ☒ **1903, San Isidro Constabulary Red "O.B." Handstamped Ovpt. on \$5.00 Dark Green (239 var).** Tied by "San Isidro Nva. Ecija, P.I. Aug. 31, 1906" duplex datestamp on Philippines Constabulary Official Mail cover to Manila, signed by 1st. lieutenant left
FRESH AND VERY FINE. AN EXTREMELY RARE ON-COVER USE OF THE 1903 \$5.00 ISSUE WITH RED "O.B." HANDSTAMPED OVERPRINT.
A Power Search review failed to find another use of the 1903 \$5.00 on cover, either with or without "O.B." overprint..... E. 2,000-3,000



3156

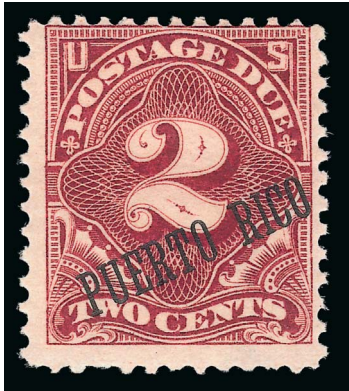
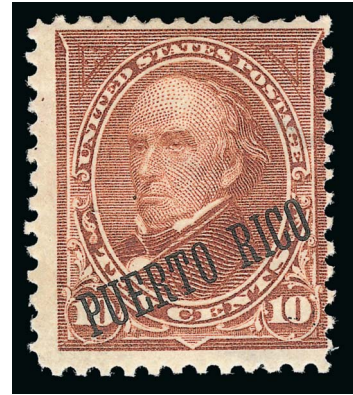
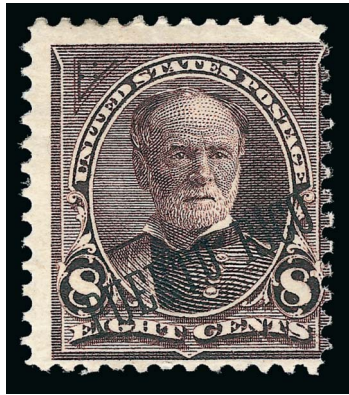
- 3156 ☒ **1903, 1c Black on Buff, Postal Card, Ty. "b" Ovpt. (UX3; UPSS S3).** Mint card, without printed view on back, two minor scuffs on back do not thin the card, Very Fine and rare 1,350.00



3157

- 3157 ☒ **1906, 2c Black on Buff, Postal Card, Ty. "d" Ovpt. (UX8; UPSS S8).** Mint Card
EXTREMELY FINE. REMARKABLY CLEAN EXAMPLE OF THIS PHILIPPINES POSTAL CARD
RARITY, OF WHICH ONLY A HANDFUL ARE KNOWN.
Ex Falberg. With 1985 P.F. certificate. UPSS value \$2,500.00..... 2,000.00

PUERTO RICO



3158

3158 ★ **1900, 5c-10c Regular and 1c-10c Postage Dues, “Puerto Rico” Ovpts., Special Printing (212SP-214SP, J1SP-J3SP).** Set of six representing the unissued values (1c and 2c were issued as both regular and Special Printings and are not included), minor h.r., 10c with “Special Surcharge” backstamp and tiny thin spot, 10c Postage Due small surface scrape

FINE APPEARANCE. A RARE SET OF THE “PUERTO RICO” 1900 SPECIAL PRINTINGS. ONLY 100 SETS WERE PRODUCED

In 1900 one pane of 100 stamps of each was prepared for display at the Paris and Pan-American Expositions. The 5c, 8c and 10c and the 1c-10c Postage Dues were never regularly issued with the “Puerto Rico” spelling and so are only known as Special Printings. Many were destroyed after the exhibitions.

Each with 1985 P.F. certificate..... 12,000.00



- 3159 ☒ **1899, 2c Carmine on Amber entire, Die 2 (U6, UPSS 7).** "Arecibo Sta., Porto Rico Oct. 5, 1900" duplex cancel on "Sucesores de Roses & Co., Arecibo, Puerto Rico" printed corner card cover to San Juan, receiving backstamp, Very Fine and extremely rare, only nine used entires are known, no mint are recorded (four addressed unused entires known), UPSS value \$1,500.00..... 1,250.00
- 3160 ☒ **1899, 2c Carmine on Oriental Buff entire, Die 2 (U7, UPSS 8).** "Arecibo Sta. Porto Rico Feb. 17 1900" duplex cancel on "Sucesores de Roses & Co., Arecibo, Puerto Rico" printed corner card cover to Mayaguez, receiving backstamp of same date, remarkably fresh and clean, Very Fine, there were 500 of this type overprint entire prepared yet there are **no surviving unused examples**, Sloane handstamp guarantee, UPSS value \$1,500.00.. 1,250.00
- 3161 ☒ **1899, 2c Carmine on Oriental Buff entire, Die 2 (U12, UPSS 14).** Unused, remarkably clean and fresh, Extremely Fine, Sloane handstamp guarantee, UPSS value \$1,500.00 1,200.00
- 3162 ☒ **1899, 2c Carmine on Oriental Buff entire, Die 2 (U12, UPSS 14).** "Arecibo Sta. Porto Rico Sep. 26 1900" duplex cancel on "Sucesores de Roses & Co., Arecibo, Puerto Rico" printed corner card cover to San Juan, receiving backstamp of same day, Very Fine and rare..... 1,300.00
- 3163 ☒ **1899, 2c Carmine on Oriental Buff entire, Die 3 (U13, UPSS 15).** "Arecibo Sta. Porto Rico Jun. 6, 1900" duplex cancel on "Sucesores de Roses & Co., Arecibo, Puerto Rico" printed corner card cover to San Juan, receiving backstamp of same day, expertly restored at right, Very Fine appearance and rare, not known as an unused entire 1,750.00
- 3164 ★★ **RYUKYU ISLANDS, 1952, 100y on 2y Rose Violet (17).** Mint N.H., wide margins, deep color on bright white paper, Very Fine, with 1982 Friedl certificate..... 2,250.00

END OF SALE — THANK YOU

Bid Form—15% Premium Sale

Sale 1060

Monday, November 18, 2013

1

Please provide the following information:

NAME

ADDRESS.....

CITY/STATE/ZIP

TEL. (DAY) FAX

E-MAIL

PADDLE #

Do not write in box

2

Have you purchased from us in the past 5 years? ☐ YES (if so, please go to Section 3)

☐ NO (please provide a trade reference and bank information)

References:

Stamp Firm:..... Telephone.....

Bank:..... Account #

3

In the space provided below, enter the **lot number** from **Sale 1060** and your corresponding bid. Please use **whole dollar amounts** only and enter the **maximum bid** you wish to have us execute on your behalf, according to the **bidding increments** on other side of this form. **Your bid will NOT include the 15% buyer's premium.** We will advance the bidding at one increment over the

next highest bid; therefore, you may be awarded the lot at less than your maximum bid. Please do not use "plus" bids or "buy" bids. If you wish to bid on one lot **or** the other, indicate your "or" bid between lot number/bid entries and bracket your choices. If you wish to place a **bidding limit** on the total amount of your bids, please enter your limit in the space marked "Limit Bids".

PLEASE NOTE BIDDING INCREMENTS AND SHIPPING CHARGES (ON BACK OF THIS PAGE)

☐ **LIMIT BIDS:** Check this box if you wish to limit the total amount of your bids (not including the **15% buyer's premium**) in this sale. Your bids will be executed until your bidding limit no longer allows for additional bids. **The total amount you wish to bid is:** \$.....

Lot	Bid	Lot	Bid	Lot	Bid
	\$		\$		\$

4

AGREEMENT: By signing this bid form, you agree to pay for purchases resulting from your bids, in accordance with the **Conditions of Sale** printed in the sale catalogue. You also agree to pay the **15% buyer's premium, shipping costs (see reverse), and sales tax or use tax or customs duty which may be due on the total invoiced amount.** It is

understood that these bids will be executed by Siegel Auction Galleries as a courtesy to absentee bidders, but you waive the right to make any claim against the auctioneer or the firm, arising from the these bids. **You are responsible for your written bids, including any errors on your part and any additions or changes to the bids herein.**

Payment must be made by cash, check, money order or wire transfer. Credit cards (Visa, Mastercard and Discover only) can be accepted as payment but will be subject to a 3% Convenience Fee, which will be added to the total of the entire invoice (including hammer price, buyer's premium, shipping and transit insurance charges and any applicable taxes).



SIGNED..... TODAY'S DATE.....

5

Please submit your bids promptly (telephone bids must be confirmed in writing).

Mail to: Robert A. Siegel Auction Galleries, Inc.

60 E. 56th Street, 4th Floor, New York, N.Y. 10022

Telephone (212) 753-6421

OR FAX YOUR BIDS: (212) 753-6429

Shipping Instructions, Bidding Increments and space for additional bids on other side of form



Additional Bids

Sale 1060—November 18, 2013

Lot	Bid	Lot	Bid	Lot	Bid
	\$		\$		\$

Shipping and Transit Insurance

We will be pleased to arrange for shipping and transit insurance for purchases in this sale (except those described as “floor sale only”). To expedite billing and delivery of lots to hundreds of buyers per sale, we use standard charges for postage and insurance, based on the package weight and mailing requirements (see schedule). The standard charges are sometimes slightly more or less than the actual postage or Fedex fees, but we do not include any charge for our labor or packing costs. Therefore, we ask all buyers to remit the prescribed amount for shipping charges.

Transit insurance is provided in all cases, except when the buyer has furnished us with proof that insurance coverage is effective under another policy. Proof, in such cases, will be accepted in the form of a written certificate from the insurance carrier.

You are responsible for insurance charges, which will be added to your invoice. This coverage is provided for our mutual protection against theft or loss in transit.

Bidding Increments

The auctioneer may regulate the bidding at his discretion. However, to assist absentee bidders in establishing their maximum bid for each lot, the increments shown at right will be used in most cases. We recommend that written bids conform to these increments (those which do not will be reduced to the next level).

REVISED CHARGES FOR SHIPPING EFFECTIVE SEPTEMBER 1, 2010

We have reduced the Fedex Envelope charge to \$20, reflecting the elimination of the fuel surcharge. All other charges remain the same.

Current Postage & Insurance Charges

Weight/Class	Shipping Method	Charges
Up to 2 lbs.	Fedex Envelope	\$20.00
Over 2 lbs.	Fedex Box	\$35.00*
Non-U.S.	Fedex/Courier	\$50.00**
Bulk Lots	UPS Preferred	By weight and value
These fees reflect additional Fedex charges for residential delivery, signature and fuel surcharge. *Higher fees will be charged on packages weighing more than 5 lbs. or insured for more than \$75,000. **Buyers are liable for all customs duties and clearance charges. An accurate declaration of value will be made on all import/export documents.		

1/2012

Up to \$50	\$5	\$3,000-7,000	\$250
\$50-200	\$10	\$7,000-20,000	\$500
\$200-500	\$25	\$20,000-30,000	\$1,000
\$500-1,000	\$50	\$30,000-75,000	\$2,500
\$1,000-3,000	\$100	\$75,000 up	\$5,000

1/2012



PRICES REALIZED FOR SALE 1060---11/18/2013
The Diamond Collection of United States Possessions
Robert A. Siegel Auction Galleries, Inc.
60 East 56th Street, 4th Floor, New York, NY 10022
Tel (212) 753-6421 Fax (212) 753-6429

Lot#	Realized	Lot#	Realized	Lot#	Realized	Lot#	Realized
3001	2,500	3044	1,900	3087	2,100	3133	1,800
3002	4,500	3045	800	3088	850	3134	2,200
3003	2,100	3046	1,200	3089	1,500	3135	3,750
3004	5,250	3047	5,000	3090	1,600	3137	500
3005	2,300	3048	2,100	3091	1,400	3138	4,750
3006	1,700	3050	2,300	3092	1,900	3139	2,300
3007	4,000	3051	1,800	3093	1,100	3140	1,900
3008	1,700	3052	2,800	3094	2,100	3141	650
3009	1,000	3053	3,500	3095	3,250	3142	800
3010	2,600	3054	2,700	3096	2,900	3143	5,750
3011	1,300	3055	1,900	3097	1,100	3144	700
3012	1,600	3056	4,000	3098	2,600	3145	1,100
3013	5,000	3057	7,000	3099	2,000	3146	600
3014	700	3058	1,900	3100	6,750	3148	1,000
3015	1,100	3059	550	3101	1,100	3149	1,200
3016	1,200	3060	1,100	3102	800	3150	1,000
3017	1,100	3061	3,500	3104	850	3151	1,000
3018	650	3062	950	3105	950	3152	9,000
3019	3,000	3063	950	3106	900	3153	7,500
3020	9,000	3064	1,100	3107	750	3154	2,600
3021	15,000	3065	1,600	3108	950	3155	5,750
3022	800	3066	2,200	3109	850	3157	1,000
3023	900	3067	2,200	3111	7,000	3158	2,400
3024	900	3068	8,000	3113	3,500	3161	650
3025	1,600	3069	4,500	3114	2,100	3163	325
3026	1,200	3070	550	3115	3,500	3164	850
3027	1,700	3071	475	3116	2,400		
3028	2,100	3072	3,250	3117	600		
3029	750	3073	800	3118	950		
3030	1,100	3074	2,000	3119	5,500		
3031	800	3075	2,000	3120	650		
3032	3,500	3076	4,500	3121	2,600		
3033	850	3077	1,300	3122	1,500		
3035	1,300	3078	2,300	3124	475		
3036	750	3079	1,000	3125	17,500		
3037	1,200	3080	1,600	3126	650		
3038	500	3081	1,100	3127	4,500		
3039	325	3082	1,600	3128	1,000		
3040	425	3083	10,500	3129	650		
3041	850	3084	10,000	3130	900		
3042	1,200	3085	1,200	3131	550		
3043	1,100	3086	1,200	3132	2,200		