

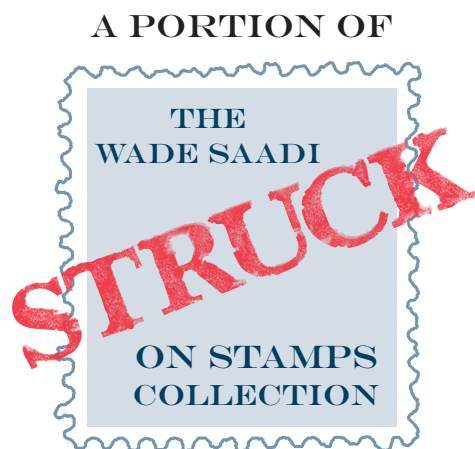
5¢-90¢ 1851-1866 ISSUES



SALE 1074 – WEDNESDAY, JUNE 25, 2014

*Robert A. Siegel*  
AUCTION GALLERIES, INC.





5¢-90¢ 1851-1866 ISSUES



Sale 1074

Wednesday, June 25, 2014  
at 10:30 a.m. (lots 501-658)  
and 1:30 p.m. (lots 659-915)

*A 15% buyer's premium will be added to the hammer price of each lot sold.*

*Lots will be available for viewing on Monday 10am-4pm, and Tuesday 10am-1pm,  
and by appointment (please call 212-753-6421)*

*Robert A. Siegel*

AUCTION GALLERIES, INC.

60 EAST 56TH STREET, 4TH FLOOR, NEW YORK, N.Y. 10022  
Phone (212) 753-6421 • Fax (212) 753-6429 • E-mail: [stamps@siegelauctions.com](mailto:stamps@siegelauctions.com)  
[siegelauctions.com](http://siegelauctions.com)



*Robert A. Siegel*

AUCTION GALLERIES, INC.

60 EAST 56TH STREET, 4TH FLOOR, NEW YORK, N.Y. 10022

Phone (212) 753-6421 • Fax (212) 753-6429 • E-mail: stamps@siegelauctions.com

siegelauctions.com



Scott R. Trepel  
President  
strepel  
@siegelauctions.com



John P. Zuckerman  
Senior Vice President  
jzuckerman  
@siegelauctions.com



Corey Long  
Vice President  
clong  
@siegelauctions.com



Starr Tucker-Ortega  
Vice President  
stamps  
@siegelauctions.com



Laura Melvin Kaplan  
Bids and Inquiries  
laura  
@siegelauctions.com



Charles F. Shreve  
Siegel International  
charles  
@siegelauctions.com



Chris Anderson  
Siegel International  
chris  
@siegelauctions.com



Andrew Titley  
Siegel International  
andrew  
@siegelauctions.com

Scott R. Trepel Principal Auctioneer (licensed by NYC Dept. of Consumer Affairs, #795952)

Nathaniel Estes Catalogue and Digital Production

## Information for Bidders

### Bidding

The following means are available for placing bids:

- 1) Attending the Live Auction in Person:** All bidders must register for a paddle, and new bidders must provide references at least three business days in advance of the sale.
- 2) Live Internet Bidding:** Instructions for participating as a Live Internet Bidder are provided on the page opposite.
- 3) Phone Bidding:** Bidders can be connected to the sale by phone and bid through a member of staff. Requests for phone bidding are subject to approval (please contact our office at least 24 hours before the sale). A signed Bid Form is required.
- 4) Absentee Bids.** All bids received in advance of the sale, either by mail, fax, phone, e-mail or internet, are Absentee Bids, which instruct the auctioneer to bid up to a specific amount on one or more lots in the sale. Absentee Bids sent by phone, fax or e-mail should arrive at least one hour prior to the start of the sale session. Bids entered through Live Internet Bidding will be visible to the auctioneer during the sale. Written bids should be entered legibly on the Bid Form in the sale catalogue. E-mail and internet bids should be carefully typed and double-checked. All new bidders must provide references. We recommend calling or e-mailing to confirm that Absentee Bids sent by mail, fax or e-mail have been received and entered.

### Pre-Sale Viewing

Subject to availability, certain lots (except group lots) can be sent to known clients for examination. Requests must be made no later than 7 days prior to the sale. Lots must be returned on the day received. Postage/insurance costs will be invoiced.

In addition to regular viewing, clients may view lots by appointment. Our staff will be pleased to answer questions or provide additional information about lots.

### Expert Certification

Individual items offered without a PF or PSE certificate dated within the past five years may be purchased subject to independent certification of genuineness and our description. **Please refer to the Conditions of Sale and Grading Terms for policies governing certification.**

### Shipping and Delivery

Procedures and charges for shipping lots are printed on the back of the Bid Form. **Bidders are responsible for all prescribed shipping charges and any applicable sales tax or customs duties.**

### Price Realized

Prices realized are sent with each invoice. Bidders with e-mail will receive a Bid Results report after the sale. Session results are posted immediately to **siegelauctions.com**

# Live Internet Bidding at Siegel Auctions

## BIDDING FROM YOUR COMPUTER LETS YOU BE PART OF THE LIVE AUCTION FROM ANYWHERE IN THE WORLD!

There's **NO SUBSTITUTE** for following the auction in real time.  
Live Internet Bidding lets you bid and buy as though you were right there in the saleroom.  
And it's easy.

This step-by-step guide will instruct you how to register, set your browser and use the bidding interface.

Start by following the simple steps to become a registered Live Internet Bidder.  
Once you've been approved for bidding, you can listen to the auction and place bids with the click of a mouse.

### Registering with STAMP AUCTION NETWORK & SIEGEL AUCTION GALLERIES

Live Internet Bidding is managed by Stamp Auction Network (SAN).  
To bid, you must be registered and approved by *both* SAN and Siegel.  
To decide what you need to do, choose the description below that best fits you.



I've already registered with SAN and have been approved by Siegel for internet bidding.

I'm a Siegel client, but I'm not registered with SAN.

Go to [stampauctionnetwork.com/siegel](http://stampauctionnetwork.com/siegel) and click on "Register" at the top. Check the box for Robert A. Siegel Auction Galleries (under "R") and submit the form, indicating you are a Siegel client. Once registered at SAN, you're ready for internet bidding.

I've bid through SAN before, but this is the first time I've bid in a Siegel sale.

Then you just need to be approved by Siegel. Go to [stampauctionnetwork.com/siegel](http://stampauctionnetwork.com/siegel) and click on "Update Registration" at the top. Your SAN account information will be sent to us for approval (you might be asked for other trade references). Once approved by Siegel for bidding, you're ready for internet bidding.

I've never bid with Siegel, nor registered with SAN.

Go to [stampauctionnetwork.com/siegel](http://stampauctionnetwork.com/siegel) and click on "Register" at the top. Check the box for Robert A. Siegel Auction Galleries (under "R") and submit the form **with your trade references** (please, no family members or credit card companies as references). Once registered at SAN and approved by Siegel for bidding, you're ready for internet bidding.

Live Internet Bidding works by allowing registered bidders to observe and place bids.

Live Internet Bidding will work with any browser on both PC and Mac operating systems.

Before bidding by internet for the first time, we recommend finding a sale in progress and listening to the public broadcast or logging in as a registered bidder. This will help you develop a feel for the sale tempo and bidding interface.

### Log on to the auction at [stampauctionnetwork.com/siegel](http://stampauctionnetwork.com/siegel).

You can also log on at [siegelauctions.com](http://siegelauctions.com)

When you're logged on as a Live Internet Bidder, the bidding interface shows a photo and description of the lot, the current bid (and your bidding status), options for placing competitive bids and buttons with bid increments.

- After you click on a bid amount, the auctioneer is immediately notified of your bid.
- Retracting a bid is usually not acceptable, so please bid carefully.
- If you bid and then decide to stop, the "Pass" button will tell the auctioneer you are no longer bidding.
- You can send messages to the auctioneer (for example, a request for extension).
- You can track prior realizations from the bidding screen.



"System Down" or "Lost Connection" events do occasionally happen.

If you have any problems with Live Internet Bidding please call **212-753-6421** for immediate assistance.



## Conditions of Sale (please read carefully before bidding)

The property described in this catalogue will be offered at public auction by Robert A. Siegel Auction Galleries, Inc. ("Galleries") on behalf of various consignors and itself or affiliated companies. By bidding on any lot, whether directly or by or through an agent, in person, or by telephone, facsimile or any other means, the bidder acknowledges and agrees to all of the following Conditions of Sale.

1. The highest bidder acknowledged by the auctioneer shall be the buyer. The term "final bid" means the last bid acknowledged by the auctioneer, which is normally the highest bid offered. **The purchase price payable by the buyer will be the sum of the final bid and a commission of 15% of the final bid ("buyer's premium"), together with any sales tax, use tax or customs duties due on the sale.**

2. The auctioneer has the right to reject any bid, to advance the bidding at his discretion and, in the event of a dispute between bidders, to determine the successful bidder, to continue the bidding or to reoffer and resell the lot in dispute. The Galleries' record of the final sale shall be conclusive.

3. All bids are per numbered lot in the catalogue unless otherwise announced by the auctioneer at the time of sale. The right is reserved to group two or more lots, to withdraw any lot or lots from the sale, or to act on behalf of the seller. The Galleries will execute bidding instructions on behalf of clients, but will not be responsible for the failure to execute such bids or for any errors in the execution of such bids.

4. **Lots with numbers followed by the symbol ° are offered subject to a confidential minimum bid ("reserve"), below which the lot will not be sold. The absence of the symbol ° means that the lot is offered without a reserve. If there is no reserve, the auctioneer has sole discretion to establish a minimum opening bid and may refuse an offer of less than half of the published estimate. Any lot that does not reach its reserve or opening bid requested by the auctioneer will be announced as "passed" and excluded from the prices realized lists after the sale. The Galleries may have a direct or indirect ownership interest in any or all lots in the sale resulting from an advance of monies or goods-in-trade or a guarantee of minimum net proceeds made by the Galleries to the seller.**

5. Subject to the exclusions listed in 5(A), the Galleries will accept the return of lots which have been misidentified or which have obvious faults that were present when the lot was in the Galleries' custody, but not so noted in the lot description. **All disputed lots must be received by the Galleries intact with the original packing material within 5 days of delivery to the buyer but no later than 30 days from the sale date. (5A) EXCLUSIONS:** The following lots may not be returned for any reason: lots containing 10 or more items; lots from buyers who registered for the pre-sale exhibition or received lots by postal viewing, thereby having had the opportunity to inspect them before the sale; any lot described with "faults," "defects" or a specific fault may not be returned because of any secondary fault. Photographed lots may not be returned because of centering, margins, short/nibbed perforations or other factors shown in the illustrations. Lots may not be returned for any of the following reasons: the color of the item does not match the color reproduction in the sale catalogue or website listing; the description contains inaccurate information about the quantity known or reported; or a certification service grades a stamp lower than the grade stated in the description.

6. Successful bidders, unless they have established credit with the Galleries prior to the sale, must make payment in full before the lots will be delivered. Buyers not known to the Galleries must make payment in full within 3 days from the date of sale. **The Galleries retains the right to demand a cash deposit from anyone prior to bidder registration and/or to demand payment at the time the lot is knocked down to the highest bidder, for any reason whatsoever.** In the event that any buyer refuses or fails to make payment in cash for any lot at the time it is knocked down to him, the auctioneer reserves the right to reoffer the lot immediately for sale to the highest bidder. **Credit cards (Visa, Mastercard and Discover only)**

can be accepted as payment but will be subject to a 3% Convenience Fee, which will be added to the total of the entire invoice (including hammer price, buyer's premium, shipping and transit insurance charges and any applicable taxes).

7. If the purchase price has not been paid within the time limit specified above, nor lots taken up within 7 days from the date of sale, the lots will be resold by whatever means deemed appropriate by the Galleries, and any loss incurred from resale will be charged to the defaulting buyer. Any account more than 30 days in arrears will be subject to a late payment charge of 1½% per month as long as the account remains in arrears. Any expenses incurred in securing payment from delinquent accounts will be charged to the defaulter. A fee of \$250.00 per check will be charged for each check returned for insufficient funds.

8. All lots are sold as genuine. **Any lot accompanied by a certificate issued by The Philatelic Foundation or by Professional Stamp Experts within 5 years of the sale date is sold "as is" and in accordance with the description on the certificate. Such lots may not be returned for any reason, including but not limited to a contrary certificate of opinion.** Buyers who wish to obtain a certificate for any item that does not have a P.F. or P.S.E. certificate (dated as above) may do so, provided that the following conditions are met: (1) the purchase price must be paid in full, (2) the item must be submitted to an acceptable expertizing committee with a properly executed application form within 21 days of the sale, (3) a copy of the application form must be given to the Galleries, (4) in the event that an adverse opinion is received, the Galleries retain the right to resubmit the item on the buyer's behalf for reconsideration, without time limit or other restrictions, (5) unless written notification to the contrary is received, items submitted for certification will be considered cleared 90 days from the date of sale, and (6) in the event any item is determined to be "not as described", the buyer will be refunded the purchase price and the certification fee up to \$600.00 unless otherwise agreed.

9. Until paid for in full, all lots remain the property of the Galleries on behalf of the seller.

10. Agents executing bids on behalf of clients will be held responsible for all purchases made on behalf of clients unless otherwise arranged prior to the sale.

11. The buyer assumes all risk for delivery of purchased lots and agrees to pay for prescribed shipping costs. Buyers outside the U.S. are responsible for all customs duties.

12. **The bidder consents that any action or proceeding against it may be commenced and maintained in any court within the State of New York or in the United States District Court for the Southern District of New York, that the courts of the State of New York and United States District Court for the Southern District of New York shall have jurisdiction with respect to the subject matter hereof and the person of the bidder. The bidder agrees not to assert any defense to any action or proceeding initiated by Galleries based upon improper venue or inconvenient forum. The bidder agrees that any action brought by the bidder shall be commenced and maintained only in a Federal Court in the United States District Court for the Southern District of New York or the State Court in the county in which Galleries has its principal place of business in New York. The bidder agrees not to use a public conflict resolution service and not to use any form of social media to publish comments or information about the Galleries and its employees which might harm the Galleries' reputation or business. These Terms and Conditions shall be governed by and construed in accordance with the substantive laws of the State of New York.**

SCOTT R. TREPEL, Principal Auctioneer  
Auctioneer's License No. 795952  
N.Y.C. Department of Consumer Affairs  
80 Lafayette Street, New York, N.Y. 10013  
Telephone (212) 577-0111

*Revised 1/2014*

## Grades, Abbreviations and Values Used in Descriptions

### Grades and Centering

Our descriptions contain detailed information and observations about each item's condition. We have also assigned grades to stamps and covers, which reflect our subjective assessment. For stamps, the margin width, centering and gum are described and graded according to generally-accepted standards (an approximate correlation to numeric grades is provided at right). Although we believe our grades are accurate, they are not always exactly aligned with third-party grading terms or standards for all issues. **A lot may not be returned because a certification service grades a stamp lower than the grade stated in the description. Information from the P.S.E. Stamp Market Quarterly and P.S.E. Population Report<sup>SM</sup> is the most current available, but lots may not be returned due to errors or changes in statistics or data.**

**Extremely Fine Gem (90-100):** The term "Gem" describes condition that is the finest possible for the issue. This term is equivalent to "Superb" used by grading services.







**Extremely Fine (80-90):** Exceptionally large/wide margins or near perfect centering.

**Very Fine (70-85):** Normal-size margins for the issue and well-centered with the design a bit closer to one side. "Very Fine and choice" applies to stamps that have desirable traits such as rich color, sharp impression, freshness or clarity of cancel.

**Fine (60-70):** Smaller than usual margins or noticeably off center. Pre-1890 issues may have the design touched in places.

**Very Good (below 60):** Attractive appearance, but margins or perforations cut into the design.

### Guide to Gum Condition

Gum Categories:	MINT N.H.	ORIGINAL GUM (O.G.)				NO GUM
	 <b>Mint Never Hinged</b> <i>Free from any disturbance</i>	 <b>Lightly Hinged</b> <i>Faint impression of a removed hinge over a small area</i>	 <b>Hinge Mark or Remnant</b> <i>Prominent hinged spot with part or all of the hinge remaining</i>	 <b>Part o.g.</b> <i>Approximately half or more of the gum intact</i>	 <b>Small part o.g.</b> <i>Approximately less than half of the gum intact</i>	 <b>No gum</b> <i>Only if issued with gum</i>
Catalogue Symbol:	★ ★	★	★	★	★	(★)
PRE-1890 ISSUES	<i>Pre-1890 stamps in these categories trade at a premium over Scott value</i>			Scott Value for “O.G.”		Scott “No Gum” Values thru No. 218
1890-1935 ISSUES	Scott “Never Hinged” Values for Nos. 219-771	Scott Value for “O.G.” (Actual value will be affected by the degree of hinging)		<b>Disturbed Original Gum:</b> Gum showing noticeable effects of humidity, climate or hinging over more than half of the gum. The significance of gum disturbance in valuing a stamp in any of the Original Gum categories depends on the degree of disturbance, the rarity and normal gum condition of the issue and other variables affecting quality. For example, stamps issued in tropical climates are expected to have some		
1935 TO DATE	Scott Value for “Unused”					

### Covers

Minor nicks, short edge tears, flap tears and slight reduction at one side are normal conditions for 19th century envelopes. Folded letters should be expected to have at least one file fold. Light cleaning of covers and small mends along the edges are accepted forms of conservation. Unusual covers may have a common stamp with a slight crease or tiny tear. **These flaws exist in virtually all 19th century covers and are not always described. They are not grounds for return.**

### Catalogue Values and Estimates

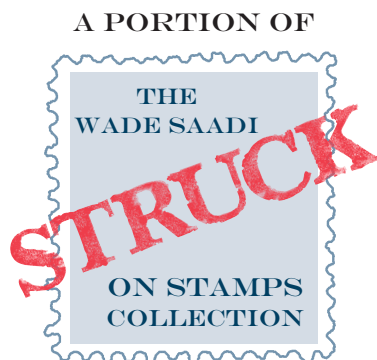
Unless otherwise noted, the currently available *Scott Catalogue* values are quoted in dollars with a decimal point. Other catalogues are often used for foreign countries or specialized areas and are referred to by their common name: *Stanley Gibbons* (SG), *Dietz*, *American Air Mail Catalogue* (AAMC), *Michel*, *Zumstein*, *Facit*, etc. Estimates are indicated with an "E." and reflect our conservative valuation in dollars. Reserves will never exceed the low end of the estimate range; they will sometimes exceed Scott Catalogue value for stamps in Extremely Fine condition.

Because of certain pricing inconsistencies in the *Scott Catalogue*—for example, blocks that have no gum, the absence of premiums for Mint N.H. items, etc.—we cannot guarantee the accuracy of values quoted for multiples, specialized items and collection lots. We generally try to be conservative, but buyers may not return a lot because of a discrepancy in catalogue value due to Scott pricing inconsistencies.

### Symbols and Abbreviations (see chart above for gum symbols)

⊞	Block	E	Essay	pmk.	Postmark	No.	Scott Catalogue Number
⊞	Cover	P	Proof	cds	Circular Datestamp	hs	Handstamp
FC	Fancy Cancel	TC	Trial Color Proof	var.	Variety	ms.	Manuscript





**5¢-90¢ 1851-1866 ISSUES**

The maturation of Wade Saadi as a collector and exhibitor has been nothing short of amazing to me. I have had the pleasure of knowing Wade for some 30-plus years. At the beginning of his collecting career, he was like many getting started in philately. He loved filling spaces in his printed United States stamp album with choice quality mint singles—a “one-of-kind” collector, if you will—and I admired how much enjoyment he got out of filling his album.

As Wade developed, his considerable intellect needed more of a challenge, and he started to assemble an impressive array of beautiful used stamps from 1847 through the 1869 Pictorial Issue. Seeking even more intellectual and visual stimulus, Wade then set out to build what is still regarded as the ultimate specialized collection of off-cover 1847 stamps ever formed—a magnificent array of colors and shades, varieties, and cancellations. That collection was sold intact several years ago to another one of the great collectors of our time, William Gross.

While concentrating on 1847's Wade continued to hone his collection of eye-arresting used stamps from the 1851 Issue through 1861-68 Issue, seeking to acquire the most visually stunning cancellations available. He eventually turned his collection into the award-winning and innovative exhibit, which he titled “Struck on Stamps.” Now, Wade has decided to focus on the lower denominations and sell the 5¢ through 90¢ values of the 1851 to 1866 Issues (plus a few grilled stamps). This portion of the collection is presented in this sale catalogue, and the auction will be held during Rarities Week at the end of June.

While the Siegel firm has offered several outstanding collections of used United States stamps during the past few years, none have emphasized cancellations. Wade's collection contains a dazzling group of cancellations of all kinds—different colored inks, unusual “killer” designs, straightline markings, foreign postmarks, pictorial fancy cancellations and private express company datestamps, to name a few of the broad categories.

Finding unusual cancellations on the lower-denomination “workhorse” stamps of the 1851 to 1866 Issue period is challenging enough, but Wade's success in acquiring special cancellations on the higher values—from the 5¢ through the 90¢—is miraculous. As experienced collectors know, the higher the denomination, the less interesting the typical cancellation. A scarce cancel on a 3¢ stamp is exponentially rarer on the higher values.

Choosing favorites in a collection like this is always difficult, but I have to say my eye is drawn to the beautiful dark shades with vivid red cancels (especially the “paint red” inks), the 30¢ bright orange stamps with patriotic fancy cancels (the 30¢ 1860 with “Union U.S.” star and the 30¢ 1861 with a New York City Soldier's Head fancy cancel), and the magnificent examples of green cancellations on almost every denomination.

I have been asked by many collectors why Wade is selling and if he will continue to collect. To answer the second question, yes! Wade is eager to continue building his “Struck on Stamps” collection with more 1¢, 2¢ and 3¢ 1851-68 Issue stamps. And, of course, he will remain a driving force in organized philately, selflessly dedicating his time and effort to improving our hobby for everyone. Wade's decision to sell the higher-denomination stamps from his collection is a matter of focus—for Wade, the cancellation is the thing, and now he will limit himself to examples on the lower values.

I am proud to call Wade Saadi one of my closest and most valued friends. To be associated with selling this remarkable portion of his well-known “Struck on Stamps” collection is just another example of the extraordinary trust both he and his wonderful wife Gail have placed in me over these past three decades. And what better venue to present these stunning stamps than in a Siegel auction catalogue during Rarities Week?

— CHARLES F. SHREVE

MORNING SESSION (LOTS 501-658)  
WEDNESDAY, JUNE 25, 2014, AT 10:30 A.M.

THE WADE SAADI “STRUCK ON STAMPS” COLLECTION  
5¢-90¢ 1851-1866 ISSUES

1856 5-CENT RED BROWN

- 501 **5c Red Brown (12).** Three huge margins including trace of adjoining stamp at bottom, ample at left, rich color, neat strike of **brown grid** cancel, Very Fine and choice, extremely rare with a brown grid cancel — this is the first we have ever encountered — with 1990 and 1991 P.F. certificates, unlisted in Scott with brown cancel, Scott Retail as with normal cancel ..... 700.00



501



502

- 502 **5c Red Brown (12).** Horizontal strip of three, large margins to full, rich color, neat strikes of “Wilmington Del. Sep. 4” circular datestamp  
VERY FINE. A SCARCE STRIP OF THREE OF THE 5-CENT 1856 ISSUE CANCELLED AT WILMINGTON, DELAWARE.  
The vast majority of this issue was used in New Orleans. A block of four on cover from Wilmington, dated Sep. 27, is also recorded.  
Ex Emerson. With 1983 (copy) and 1990 P.F. certificates..... 3,750.00



## 1855 10-CENT GREEN



503



504



505

- 503 **10c Green, Ty. II (14).** Large to huge margins, deep rich color and proof-like impression, bold strike of “PAID” **straightline** handstamp applied vertically, Extremely Fine Gem, with 1989 P.F. certificate..... E. 500-750
- 504 **10c Green, Ty. II (14).** Large margins all around, some gum residue, perfect strike of **fancy geometric cancel of 16 wedges in oval**, Extremely Fine, a very unusual cancel, with 1995 P.F. certificate ..... E. 400-500
- 505 **10c Green, Ty. II (14).** Horizontal strip of three, large and even margins, rich color, **blue grid** cancels and also with part of red cancel at lower left, tiny scissors-cut at top between right stamps, Extremely Fine, a beautiful multiple, ex Ishikawa, with 1993 P.F. certificate ..... 705.00



506

- 506 **10c Green, Ty. II (14).** Positions 31-34L1, horizontal strip of four, **left stamp with big shift at top**, huge margins all around, pretty shade, tied by “New Orleans La. Jan. 17, 1857” circular datestamps on piece, Extremely Fine, a beautiful strip and especially desirable with the plate variety, with 1991 P.F. certificate ..... E. 1,000-1,500



507

- 507 **10c Green, Ty. III-III-II (15-15-14).** Positions 1-3L1, horizontal strip of three, **left two stamps the misplaced relief B instead of A**, large to huge margins, neat “Red Sweet Spgs/Aug. 26” manuscript cancel, Extremely Fine, Red Sweet Springs in Alleghany County Va. was supposed to have healing waters due to its high iron content, with 2014 P.F. certificate ..... E. 500-750



508



509



510



511

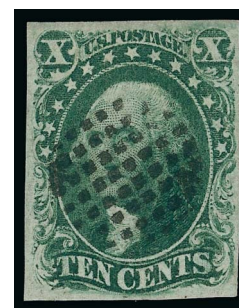
- 508 **10c Green, Ty. III (15).** Huge margins all around including part of adjoining stamps at sides, pretty shade, face-free strike of **red grid** cancel, Extremely Fine Gem, a phenomenal stamp in every respect, with 1988 and 1991 P.F. certificates..... E. 185-200
- 509 **10c Green, Ty. III (15).** Position 28R1, huge margins all around including significant portion of adjoining stamp at left, neat grid cancel and also **red framed "Aachen Franco"** handstamp, Extremely Fine Gem, a phenomenal stamp in every respect, with 1987 and 1992 P.F. certificates ..... E. 400-500
- 510 **10c Green, Ty. III (15).** Large even margins, multiple strikes of **"MAIL ROUTE" straightline handstamp** of Savannah Ga., fresh and Extremely Fine, a rare cancel, with 1984 and 1990 P.F. certificates ..... E. 500-750
- 511 **10c Green, Ty. III (15).** Large margins to full, deep rich color, perfect strike of **red "PAID" straightline** handstamp applied vertically, truly insignificant small ink spot on back at bottom, Very Fine and choice, a stamp with tremendous visual appeal, with 1989 P.F. certificate ..... E. 300-400



512

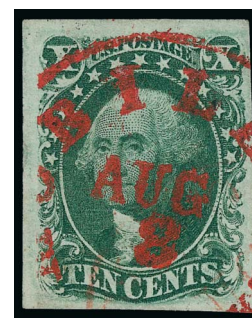


513



514

- 512 **10c Green, Ty. III (15).** Three large margins, clear to just in at right, tied by bold italic **"too late" straightline in rectangular frame** handstamp on small blue piece, stamp with vertical crease at right that looks to us more like a pre-printing paperfold, Extremely Fine strike of this marking, which is rarely seen tying a United States stamp, with 1995 P.F. certificate ..... E. 500-750
- 513 **10c Green, Ty. III (15).** Large margins to full, deep rich color, wonderful strike of **Hollow Star fancy cancel** beautifully frames Washington's eye, insignificant corner crease at top right, Very Fine appearance, a stamp with great eye appeal, with 1990 P.F. certificate ..... E. 150-200
- 514 **10c Green, Ty. III (15).** Large margins to full, intense shade, well-struck **circular grid of tiny diamonds** cancel, Very Fine and choice, an attractive stamp with a very unusual cancel, with 1991 P.F. certificate ..... E. 200-300
- 515 **10c Green, Ty. III (15).** Large margins all around, deep rich color, perfect strike of **"paint red" "Mobile Ala. Aug. 8"** circular datestamp, tiny tear at bottom is barely noticeable, Extremely Fine appearance, a stamp with wonderful visual appeal, with 1992 P.F. certificate..... E. 185-200



515





516



517

- 516 **10c Green, Ty. III (15).** Position 65R1, large to full margins, intense shade, tied by perfect strike of "Syracuse N.Y. Nov. 22, 1856" circular datestamp on small piece, Very Fine and choice, with 1991 P.F. certificate..... 160.00
- 517 **10c Green, Ty. III (15).** Horizontal pair, huge margins including significant portion of adjoining stamp at left, tied by perfect strike of "Black River Falls Wis. Dec. 15" circular datestamp on small piece, Extremely Fine Gem, a gorgeous pair used from Wisconsin, with 1990 P.F. certificate ..... 350.00



518



519

- 518 **10c Green, Ty. III (15).** Horizontal pair, large margins all around, deep rich color, neat strikes of red 11-bar grid cancel, fresh and Extremely Fine, a gorgeous pair, ex Koppersmith, with 1987 P.F. certificate..... 400.00
- 519 **10c Green, Ty. III (15).** Horizontal pair, large margins, intense shade and impression, "New Orleans La. Sep. 4" circular datestamp and part of red New York transit datestamp, Extremely Fine appearance, Brun backstamps, with 1981 and 1991 P.F. certificates ..... 400.00



520

- 520 **10c Green, Ty. III (15).** Horizontal pair, large margins, deep rich color, used with 1c Blue, Ty. IV (9), cancelled by grids, 10c pair tied by 1855 French transit datestamp, on blue piece to France, piece also with red New Orleans circular datestamp, 1c tied by "8" decimes due marking, Very Fine and choice, with 1991 P.F. certificate ... E. 400-500



521

521 **10c Green, Ty. IV (16).** Position 64L1, **recut at top and bottom**, huge margins all around including part of adjoining stamp at left, radiant color, neat San Francisco circular datestamp

EXTREMELY FINE GEM. A PHENOMENAL USED EXAMPLE OF THE 1855 10-CENT IMPERFORATE TYPE IV FROM POSITION 64L1 — THE ONLY POSITION RECUT AT BOTH TOP AND BOTTOM — WHICH HAS BEEN GRADED SUPERB 98 BY P.S.E. A WONDERFUL CONDITION RARITY IN THE HIGHEST GRADE AWARDED.

10c 1855 Type IV stamps are defined by the recut of one or both outer lines at the top or bottom of the design. Type IV stamps come from only seven scattered positions on the left pane and one position on the right pane of Plate 1. Therefore, only 4% of the stamps from Plate 1 are Type IV. Of these eight positions, this is the only one with recut lines at both top and bottom.

With 2014 P.S.E. certificate (Superb 98; SMQ \$12,250.00). This is the highest grade and only one other shares it (ex Kirke, from Position 65L1). ..... 2,200.00



522

522 **10c Green, Ty. III-IV (15-16).** Positions 63-64L1, horizontal pair, **right stamp recut at top and bottom**, huge margins all around including part of one adjoining stamp, neat strikes of **New York Ocean Mail** circular datestamp

EXTREMELY FINE GEM. A SUPERB COMBINATION PAIR OF THE 10-CENT 1857 ISSUE WITH ONE STAMP CONTAINING THE RARE TYPE IV RECUT AT BOTH TOP AND BOTTOM. ESPECIALLY DESIRABLE WITH THE NEW YORK OCEAN MAIL CANCELLATION.

With 1967 and 1989 P.F. certificates. Scott Retail as singles ..... 2,360.00





523

523

**10c Green, Ty. IV (16).** Position 3R1, the **misplaced relief** position showing breaks in lines above each "X", large to huge margins including top sheet margin, deep rich color on bright paper, neat strike of grid cancel

VERY FINE AND CHOICE. A BEAUTIFUL USED EXAMPLE OF THE IMPERFORATE TYPE IV 10-CENT 1855 ISSUE FROM THE MISPLACED RELIEF POSITION — THE ONLY RECUT POSITION ON THE RIGHT PANE OF THE PLATE.

The first 10c plate of 200 (left and right panes of 100) was laid down using a three-subject transfer roll with relief types A, B and C. The C Relief was used only for the bottom row (all Type I design). The A Relief (Type II design) was used to enter the entire second row, and the B Relief (Type III design) was used for the third row. This A/B alternating relief pattern was followed consistently for the fourth through ninth rows. The top row was entered with the A Relief, except for three positions: Positions 1 and 2 in the left pane, and Position 3 in the right pane. These "misplaced reliefs" are B Reliefs, and Positions 1L and 2L are Type III designs, while Position 3R was recut (Type IV).

Position 3R1, one of the three misplaced relief positions on the plate, is also one of eight recut (Type IV) positions and the only recut position on the entire right pane of the plate.

Ex Newbury and Grunin. With 1977 and 1991 P.F. certificates .....  
..... 1,650.00

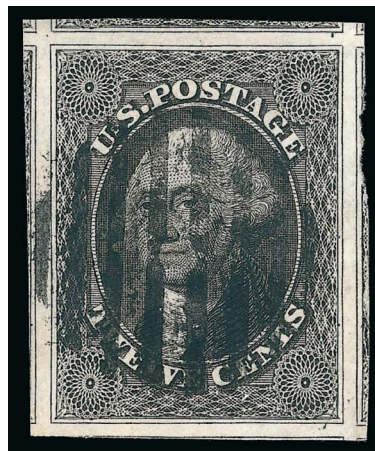
## 1851 12-CENT BLACK

524

**12c Black (17).** Stitch watermark, huge margins all around including part of seven adjoining stamps, intense shade and proof-like impression, bold strike of 8-bar open grid cancel

EXTREMELY FINE GEM. A SUPERB USED EXAMPLE OF THE 12-CENT 1851 ISSUE, WHICH HAS BEEN GRADED SUPERB 98 JUMBO BY P.S.E.

With 1981 and 1989 P.F. and 2014 P.S.E. certificates (Superb 98 Jumbo; unpriced in SMQ above the grade of 98, SMQ \$3,000.00 as 98). Only three have graded higher..... 260.00



524



525

525

**12c Black (17).** Position 9R1, huge margins including significant portions of side stamps, intense shade and impression, multiple strikes of **red and blue Cincinnati circular datestamps**, Extremely Fine Gem, a huge stamp, very unusual with red and blue cancels which were both applied at Cincinnati, with 1987 and 1991 P.F. certificates ..... 305.00



- 526 **12c Black (17).** Huge to large margins including part of adjoining stamps at sides, deep shade and proof-like impression, face-free strike of large **Boston "Paid" grid** cancel, Extremely Fine, a beautiful stamp, with 1988 P.F. certificate ..... 285.00
- 527 **12c Black (17).** Large margins to full, intense shade and impression nicely complemented by **red "N. York Am. Pkt. Jan. 21"** circular datestamp, Very Fine and choice, dealer's backstamp, with 1980 and 1991 P.F. certificates ..... 290.00
- 528 **12c Black (17).** Position 71R1, huge margins to clear including **left interpane margin with centerline**, bright shade nicely complemented by **blue Philadelphia circular datestamp** and **red "(3)8"** handstamp, Very Fine and scarce centerline margin single, with 1989 P.F. certificate ..... 305.00
- 529 **12c Black (17).** Large margins to full, detailed impression, **blue Nashua N.H. circular datestamp** and **orange-red transit marking**, Very Fine and choice, a pretty stamp, with 1990 P.F. certificate .. 275.00
- 530 **12c Black (17).** Large margins to full, crisp impression, bold strike of **twice-struck criss-crossing grid** cancel, Very Fine and choice, with 1991 and 1993 P.F. certificates ..... 260.00
- 531 **12c Black (17).** Large margins to full, intense shade and impression, cancelled by **deep brownish red circular datestamp** which accompanying certificate notes is "oxidized", which is ridiculous, since this is a mixture of ink found on other stamps and covers (several others are offered in this sale with clear certificates), Very Fine, with 1991 P.F. certificate..... 290.00
- 532 **12c Black (17).** Large margins to full including part of adjoining stamp at left, bright shade, neat strike of **"New-York Ship Jan. 9 (7cts.)"** circular datestamp, Very Fine strike of this scarce cancel, ex Cole, with 1988 and 1992 P.F. certificates..... E. 300-400
- 533 **12c Black (17).** Large margins to ample, incredibly deep shade, neat strike of **"Philadelphia Pa. Oct. 19" octagonal datestamp**, Very Fine and choice, this style of Philadelphia datestamp is very unusual on the imperforate 1851 Issue, it was used well into the perforated issue period, with 1991 P.F. certificate..... 260.00
- 534 **12c Black (17).** Huge margins to barely touched including significant portion of adjoining stamp at right, cancelled by bold strike of **red "38" credit handstamp** on blue piece with red "19" credit handstamp and British **"Paid in America"** circular datestamp, Very Fine and choice, a rare example of the "38" cents credit handstamp used to cancel stamps, with 1994 P.F. certificate .... E. 500-750





- 535 **12c Black (17).** Large margins to full, bright shade, cancelled by **dark brownish red Pittsburgh circular datestamp**, this datestamp color was caused by a combination of red and black inks, fresh and Very Fine, with 1993 P.F. certificate..... 290.00
- 536 **12c Black (17).** Margins to just in, cancelled by bold strike of **"Paid 3" in circle** hand-stamp of Marion N.Y. (Skinner-Eno PM-PNc 23), some slight overall toning, small tears at top and bottom, still a Very Fine strike of this scarce cancel..... E. 150-200
- 537 **12c Black (17).** Full margins to barely touched at upper left, deep shade, cancelled by **dark red non-standard circular segmented grid**, faint toning, Very Fine strike of this unusual cancel ..... 290.00
- 538 **12c Black (17).** Large margins to barely touched at upper right, bright shade, neat strike of **Canadian 7-ring target** cancel, Very Fine and choice, scarce cancel on a United States stamp, with 1992 P.F. certificate ..... E. 500-750
- 539 **12c Black (17).** Horizontal pair, large margins to ample, crisp impression, cancelled by **red grid, red circular datestamp and French transit datestamp**, Very Fine and choice, with 1985 and 1991 P.F. certificates..... 660.00
- 540 **12c Black (17).** Positions 44-45L1, horizontal pair, large margins to clear including part of adjoining stamps at sides, pretty shade, light strike of circular datestamp and bold strikes of **British "10" in oval grid** receiving cancels, Very Fine, scarce cancel, ex Matthies, Grunin and Koppersmith, with 1977 P.F. certificate ..... E. 500-750
- 541 **12c Black (17).** Positions 9-10L1, horizontal pair, huge margins to just touched including **top right corner interpane sheet margin** and part of three adjoining stamps, deep shade, large 5-bar grid cancel and also red circular datestamp at lower left, some creases, still Very Fine-Extremely Fine, corner-margin examples of the 12c 1851 Issue are very rare ..... E. 1,000-1,500
- 542 **12c Black (17).** Horizontal strip of three, huge margins to clear including part of six adjoining stamps, intense shade and impression, two neat strikes of **"paint red" Mobile Ala.** circular datestamp, small tear at top right is barely noticeable, Very Fine appearance, a gorgeous strip, with 1989 P.F. certificate ..... 950.00



- 543 **12c Black (17)**. Positions 71-75L1, horizontal strip of five, **Position 73L1 recut at bottom left corner**, large margins to barely in at right, neat strikes of grid cancels, light vertical creases affect four stamps, still Fine-Very Fine, scarce strip of five, with 1989 P.F. certificate, Scott Retail as two pairs and single ..... 1,575.00
- 544 ☒ **12c Black (17)**. Horizontal pair, clear to large margins, deep shade and sharp impression, tied by two red grids on 1856 cover **to London, England**, addressed to Charles Perkins, red "New York 19 Sep. 17" credit datestamp with large elongated "19" credit, orange red London Paid datestamp also ties pair, cover addressed in a large bold hand, Very Fine, exceptionally attractive, with 1995 P.F. certificate ..... E. 750-1,000

## 1857 5-CENT TYPE I



- 545 **5c Brick Red (27)**. Brilliant color, choice centering, bold strike of **New York Ocean Mail** circular datestamp with integral grid and December date, a very desirable strike with the complete grid showing
- EXTREMELY FINE. A BEAUTIFUL EXAMPLE OF THE 1858 5-CENT BRICK RED WITH THE NEW YORK OCEAN MAIL DATESTAMP.
- This distinctive cancel is normally seen on 10c stamps used to pay the transcontinental rate. Its use on a 5c stamp, especially on the desirable Brick Red shade, is remarkable.
- With 1996 P.S.E. certificate. Scott Retail with no premium for the cancel ..... 1,650.00

- 546 **5c Brick Red (27)**. Brilliant color, choice centering for this difficult issue, light strike of red "PAID" straightline handstamp
- VERY FINE AND CHOICE. A SCARCE EXAMPLE OF THE 5-CENT 1858 BRICK RED CANCELLED SOLELY BY A RED "PAID" HANDSTAMP.
- Ex Sheriff and Koppersmith. With 1986 and 1991 P.F. certificates..... 1,950.00



546





547



548



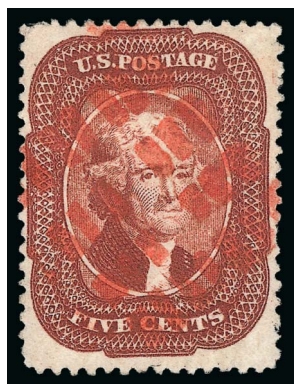
549

- 547 **5c Brick Red (27).** Radiant color on fresh natural paper, we state this confidently despite the incorrect observation expressed on the certificate "chemically treated" (in every kind of light, including UV, the color of the stamp and paper tone are perfectly normal), full and clear strike of **blue rectangular grid of tiny square dots** cancel, Very Fine, an outstanding stamp (and meaningless certificate), ex Newbury and Haas, with 1989 P.F. certificate ..... 1,875.00
- 548 **5c Brick Red (27).** Rich color on bright paper, bold strike of **blue Cincinnati circular datestamp**, Very Fine, colored town datestamps are very rare on this issue, the vast majority have a black New Orleans datestamp, with 1977 and 1991 P.F. certificates..... 1,875.00
- 549 **5c Brick Red (27).** Deep shade, neat strike of "**PAID**" **straightline** handstamp, small closed tear at top and small thin spots, Very Fine appearance, very scarce example of a "Paid" straightline on the 5c Brick Red, with 1994 P.F. certificate ..... 1,700.00



550

- 550 **5c Brick Red (27).** Horizontal strip of three, vivid Brick Red color, bold strikes of "New Orleans La. May 10, 1859" circular datestamp, better centering than most multiples of this narrowly-spaced issue  
VERY FINE AND CHOICE. A BEAUTIFUL AND SCARCE STRIP OF THREE OF THE 5-CENT 1858 BRICK RED ISSUE.  
Ex Grunin, Sheriff and Koppersmith. With 1986 and 1991 P.F. certificates..... 6,600.00



551

- 551 **5c Red Brown (28).** Brilliant color, wide margins, bold strike of **red grid of rectangles** cancel, insignificant nibbed perf at right, Very Fine and choice, the 5c Red Brown is almost always cancelled by a New Orleans datestamp, this red-colored non-standard cork cancel makes this stamp truly rare and spectacular, ex Caspary and Klein, with 1988 P.F. and 1991 P.S.E. certificates....  
..... E. 1,000-1,500



- 552 **5c Red Brown (28).** Wonderful rich color, perforations clear of projections on all sides and perfectly centered, neat strike of **"CATHLAMET/W.T."** **Washington Territory** handstamp (a tracing of this marking is shown in Simpson-Alexander book), certificates opine reperfed at right but our analysis does not concur (a couple of slightly misaligned holes as usual for this issue, but the gauge and hole circumference are dead on), Extremely Fine appearance, rare territorial cancel on this issue, with 1992 P.F. and P.S.E. certificates ..... E. 500-750
- 553 **5c Brown (29).** Rich color, choice centering, bold strikes of **magenta** cancel, fresh and Extremely Fine, unusual colored cancel on this issue and exceptionally fine quality, ex Renne, with 1989 and 1991 P.F. certificates ..... 525.00
- 554 **5c Brown (29).** Crisp shade and impression, beautiful centering with well-balanced margins, perfect strike of large **Boston "Paid" grid** cancel, Very Fine and choice, with 1991 P.F. certificate ..... 415.00
- 555 **5c Brown (29).** Rich color, bold strike of **8-Point Star and Circle fancy** cancel of Tuscaloosa Ala. (Skinner-Eno GE-P 42), Very Fine, extremely scarce example of 5c 1857 with a fancy cancel, with 1980 P.F. certificate..... E. 500-750
- 556 **5c Brown (29).** Bright shade, cancelled by circular datestamp and **ultramarine octagonal French circular datestamp**, Very Fine and attractive, with 1992 P.F. and P.S.E. certificates..... 550.00
- 557 **5c Brown (29).** Rich color and detailed impression, cancelled by well-struck **"Paid 3" in arc** of South Berwick Me. (Skinner-Eno PM-PNC 7), Extremely Fine strike, and unusual cancel on the 5c 1857 for obvious reasons, with 1994 P.F. certificate..... E. 300-400
- 558 **5c Brown (29).** Rich color, cancelled by bold strike of **"30" in circle handstamp** of San Francisco (Skinner-Eno NS-Z 3), also with San Francisco and red cancels, light diagonal crease at top left, Very Fine appearance, a scarce use of this San Francisco 30c debit marking on a 5c stamp, ex Caspary and Hill, with 1991 P.F. certificate..... E. 300-400
- 559 **5c Brown (29).** Vertical pair, rich color, cancelled by bold strike of **Aug. 2, 1859 Paris circular datestamp**, trace of origin datestamp at upper right but bottom stamp cancelled solely by the French marking, Very Fine and attractive..... E. 300-400
- 560 **5c Brown (29).** Horizontal pair, rich color, bold strike of **"STEAM/SHIP"** handstamp of New York, small repaired tear at bottom right, small stained spot at top, left stamp tiny toned spot at bottom left, still Very Fine strike of this desirable cancel, with 1990 P.F. certificate..... 1,050.00
- 561 **5c Brown (29).** Vertical strip of three, rich color, tied by unobtrusive strikes of New Orleans circular datestamp and **red "New York Paid" circular datestamp** on blue piece which also has red French transit marking, Very Fine and choice, a pretty multiple, with 1990 P.F. certificate..... 1,300.00



## 1860-61 5-CENT TYPE II



562

562

**5c Orange Brown, Ty. II (30).** Pretty shade nicely complemented by **green 13-bar grid** cancel, small thin spot, light vertical crease

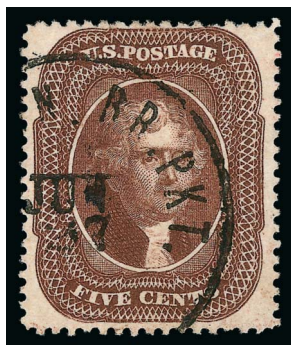
VERY FINE APPEARANCE. THE 1861 5-CENT ORANGE BROWN IS EXTREMELY RARE WITH A GREEN CANCELLATION. THIS IS THE FIRST WE HAVE OFFERED SINCE KEEPING COMPUTERIZED RECORDS.

The color of this grid cancel is true green, not a bluish-green or adulterated green. The use of green ink to cancel any 5c 1857-61 Issue stamp is very unusual, but its presence on a 5c Orange Brown, Scott 30, is extraordinarily serendipitous. A Power Search review failed to find another Scott 30 with a green cancel in all of our auctions from 1994 onwards plus all of our Rarities sales.

With 1986 P.F. certificate. Listed but unpriced in Scott with a green cancel. .... E. 1,500-2,000



563



564



565



566

563 **5c Orange Brown, Ty. II (30).** Warm shade, cancelled by **red grid** and "PAID 15" straightline, a few short or nibbed perfs at left, Fine appearance, scarce cancel, with 2014 P.F. certificate ..... 1,475.00

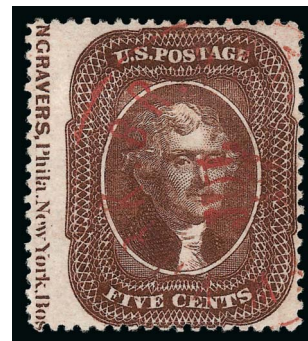
564 **5c Brown, Ty. II (30A).** Intense dark shade and proof-like impression, unusually wide margins, neat strike of "Boston Br. Pkt. Jun. 27" circular datestamp, fresh and Extremely Fine, with 1989 P.F. certificate ..... 300.00

565 **5c Brown, Ty. II (30A).** Deep rich color, detailed impression, gorgeous centering with wide and balanced margins, neat strike of **12-bar open grid** cancel, Extremely Fine, a phenomenal stamp, ex Emerson and Meyersburg, with 1991 P.F. certificate..... 300.00

566 **5c Brown, Ty. II (30A).** Rich color, wide margins, bold strike of **brown open grid** cancel, Extremely Fine, rare with a brown cancel, which was created by a combination of red and black inks, with 1992 P.F. certificate, the brown cancel is unlisted in Scott, Scott Retail with no premium for the cancel..... 300.00

567 **5c Brown, Ty. II (30A).** Position 51L2, extra wide left margin with **captured imprint**, shows the "(E)NGRAVERS, Phila. New York, Bos(ton)" portion of imprint, warm shade, neat strike of **red "Boston Br. Pkt. Jul. 12"** circular datestamp, Very Fine and choice, rare with such a wide margin capturing this much of the imprint, with 1989 P.F. certificate, Scott Retail with no premium for this rare position ..... 320.00

568 **5c Brown, Ty. II (30A).** Warm shade, cancelled by perfect socked-on-the-nose strike of "Paid 10" in circle handstamp, Extremely Fine strike, an amazing stamp, ex Cole and Koppersmith, with 1988 and 1992 P.F. certificates .. E. 400-500



567



568



569

- 569 **5c Brown, Ty. II (30A).** Horizontal pair, bright shade nicely complemented by blue “Louisville Ky. Aug. 18” double-circle datestamp, Very Fine and choice, we are reasonably certain this pair originated on an Adams Express Company thru-the-lines cover from a Confederate State, based on the date (August 18, probably 1861) and the few covers known with 5c 1860 stamps used in such a manner, impossible to prove, but that is our gut instinct, with 1989 P.F. certificate..... 635.00



570

- 570 **5c Brown, Ty. II (30A).** Vertical pair with right interpane margin with centerline, rich color, choice centering, unobtrusive strikes of red grid cancel, fresh and Extremely Fine, a beautiful pair, with 1990 P.F. certificate..... 665.00

- 571 **5c Brown, Ty. II (30A).** Vertical strip of three, rich color nicely complemented by New York red grid cancels, wide margins at sides, fresh and Very Fine, this grid with a “hole” at the center is known exclusively from New York City, with 1981 and 1991 P.F. certificates..... 1,060.00



571

## 1857 10-CENT GREEN



572

- 572 **10c Green, Ty. I (31).** Choice centering with wide and balanced margins, rich color, New Orleans town cancel

EXTREMELY FINE GEM USED EXAMPLE OF THE 1857 10-CENT TYPE I WITH REMARKABLE JUMBO MARGINS WHICH CLEARLY SHOW THE CHARACTERISTICS OF THE TYPE.

Type I stamps are only found on the 20 stamps that comprise the bottom row of the plate. Due to narrow spacing on the plate and difficulties in aligning the perforating machine, stamps at the bottom of the plate usually have perforations cutting into the bottom portion of the design. This is a serious drawback, because Type I is defined as having the design complete at bottom. The stamp offered here, which is very well-centered and clearly shows the type characteristics, is a true condition rarity.

With 1989 P.F. and 2014 P.S.E. certificates (XF 90 Jumbo; SMQ \$4,500.00 as 90, \$11,000.00 as 95). This is the only example to achieve this grade and only six have graded higher (all at 95)..... 1,250.00





- 573     **10c Green, Ty. II (32).** Positions 52-53L1, horizontal pair, rich color on bright paper, several cancels including **magenta grid**, **red New York circular datestamp** and **French transit datestamp**, well-balanced margins, fresh and Extremely Fine, a beautiful pair, with 1989 P.F. certificate, Scott Retail with no premium for the French cancel .... 340.00
- 574     **10c Green, Ty. II (32).** Horizontal pair, rich color, tied by perfect strike of "Biddeford Me. Jan. 12" circular datestamp on small buff piece, Very Fine and choice, with 1990 P.F. certificate ..... 425.00
- 575     **10c Green, Ty. III (33).** Deep rich color and proof-like impression, nicely complemented by **deep brownish-red "New-York Paid Apr. 27, 1859"** circular datestamp, color described on accompanying certificate as "blood red", choice centering with wide margins, Extremely Fine Gem, a beautiful stamp, with 1990 P.F. certificate ..... 235.00
- 576     **10c Green, Ty. III (33).** Intense shade and impression, well-balanced margins, neat strike of **blue Philadelphia large octagonal datestamp**, Very Fine and choice, with 1988 and 1991 P.F. certificates, the former as a pair..... 215.00
- 577     **10c Green, Ty. III (33).** Intense shade and impression, wide margins, bold strikes of **"PAID" straightline handstamp struck in criss-cross fashion**, nibbed perf at top, still Very Fine, ex Koppersmith, with 1987 and 1992 P.F. certificates ..... E. 200-300
- 578     **10c Green, Ty. III (33).** Rich color, tied by bold strike of "Staples Ranch Cal. Oct. 8" circular datestamp on small buff piece, light soiling at top right described as stain on accompanying certificate (really just a light gum soak), Extremely Fine strike of this attractive cancel, ex Watt White, with 1992 P.F. certificate ..... 200.00
- 579     **10c Green, Ty. III (33).** Horizontal strip of three, unusually choice centering for a multiple, tied by "Catskill N.Y. Oct. 19" circular datestamps on small yellow piece, Extremely Fine, a beautiful multiple, with 1988 P.F. certificate ..... 650.00



- 580 **10c Green, Ty. III (33).** Horizontal strip of four, intense color and detailed impression, wide and balanced margins throughout, neat San Francisco circular datestamps, third stamp pulled perf at bottom right, few perfs sensibly reinforced, Extremely Fine, a beautiful multiple, with 1990 P.F. certificate, Scott Retail as strip of three and single ..... 850.00
- 581 **10c Green, Ty. V (35).** Gorgeous centering with wide and balanced margins, cancelled solely by **Segmented Star fancy cancel** of Downieville Cal. (Skinner-Eno ST-D 42), Extremely Fine Gem, a phenomenal stamp, with 1989 P.F. certificate ..... E. 300-400
- 582 **10c Green, Ty. V (35).** Rich color, Jumbo margins, cancelled by socked-on-the-nose perfect strike of **red "Paid" in circle** cancel, Extremely Fine strike and a stamp with fantastic visual appeal, with 1985 and 1991 P.F. certificates ..... E. 200-300
- 583 **10c Green, Ty. V (35).** Deep rich color and proof-like impression, bold strike of **"PAID" in Honeycomb fancy cancel** either Dedham Mass. or Clayton N.Y., trace of red cancel at left, Jumbo margins, tiny toned spot at upper right, Extremely Fine strike of this very unusual cancellation, a marvelous stamp, with 1989 P.F. certificate ..... E. 750-1,000
- 584 **10c Green, Ty. V (35).** Jumbo margins, bright shade, light strike of circle of V's cancel and **red boxed "Aachen Franco"** datestamp, fresh and Extremely Fine, small purple backstamp, ex Koppersmith, with 1988 and 1992 P.F. certificates ..... E. 150-200
- 585 **10c Green, Ty. V (35).** Intense shade and impression, well-struck large 7-bar grid cancel that nicely frames Washington's eyes, Jumbo balanced margins, Extremely Fine Gem, a beautiful stamp, with 1991 P.F. certificate ..... E. 200-300
- 586 **10c Green, Ty. V (35).** Perfectly centered, tied by well-struck "San Francisco Cal. Sep. 29, 1859" double-circle datestamp on small piece, Extremely Fine Gem ..... 65.00
- 587 **10c Green, Ty. V (35).** Pretty shade, tied by perfect strike of **"New York Apr. 22" Ocean Mail** circular datestamp with integral grid on small blue piece (small tear not affecting stamp), Extremely Fine Gem, a beautiful stamp and piece, the grid perfectly covers Washington's face, with 1992 P.F. certificate ..... E. 300-400
- 588 **10c Green, Ty. V (35).** Rich color, wide margins, neat **New York Ocean Mail** circular datestamp with integral grid, Very Fine and choice, with 2014 P.F. certificate.. E. 200-300





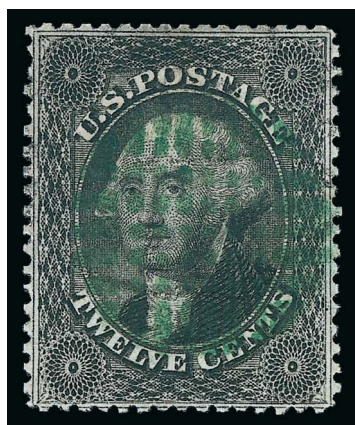
- 589 **10c Green, Ty. V (35).** Deep rich color and sharp proof-like impression, nicely complemented by **red New York Ocean Mail** circular datestamp with integral grid, also cancelled by separate red grid, s.e. at right, tiny corner crease at top right, Very Fine appearance, with 1995 P.F. certificate ..... E. 200-300
- 590 **10c Green, Ty. V (35).** Choice centering with wide margins, rich color, cancelled by well-struck **San Francisco cogwheel struck after demonetization**, the earliest reported use of the San Francisco cogwheel is Dec. 27, 1861, which is after this issue was demonetized, with 1994 P.F. certificate ..... E. 150-200
- 591 **10c Green, Ty. V (35).** Intense color and proof-like impression, wide margins at sides, well-struck **red large Circular Grid of Diamonds** cancel of New Haven Conn., Extremely Fine strike of this beautiful cancel, with 1991 P.F. certificate ..... E. 300-400
- 592 **10c Dark Green, Ty. V (35 var).** Intense shade and impression which is significantly darker than the normal shade, cancelled by **blue grid struck twice in criss-crossing fashion**, openings in the cancel nicely frame Washington's eyes, choice centering with balanced margins, Extremely Fine Gem, a gorgeous stamp in the Dark Green shade with a beautiful cancel, with 1991 P.F. certificate ..... E. 200-300
- 593 **10c Green, Ty. V (35).** Bright shade on crisp paper, well-struck **waffle-iron grid** cancel, barest hint of small toned spot at right, Very Fine and choice, a very unusual cancel, this is not a twice-struck criss-crossed grid, but an actual "waffle-iron" design ..... E. 150-200
- 594 **10c Green, Ty. V (35).** Position 32R2, pretty shade, well-struck **Circular Grid of Diamonds** similar to the one used at New Haven Conn., two tiny pinholes, Extremely Fine strike of this unusual cancel ..... E. 100-150
- 595 **10c Green, Ty. V (35).** Position 31L2 with **part captured imprint** at left, natural s.e. at left, pretty shade nicely complemented by **red "New York Paid Jun. 22"** circular datestamp, Extremely Fine, a gorgeous stamp and especially desirable with the captured imprint, with 1988 and 1990 P.F. certificates ..... 72.50
- 596 **10c Green, Ty. V (35).** Wide margins, pretty shade, neat strike of **large "PAID"** cancel, Very Fine and choice, a very unusual large sans-serif "Paid" and especially scarce on the 10c value ..... E. 150-200
- 597 **10c Green, Ty. V (35).** Position 93R2, deep shade and wide margins, bold strike of **blue "PAID" straightline** cancel, Very Fine ..... E. 100-150
- 598 **10c Green, Ty. V (35).** Position 50L2, rich color, bold strike of **small "Paid" in grid** cancel of New Ipswich N.H. (Skinner-Eno PM-PG 13), lightened manuscript cancel (very possibly a re-used stamp), Very Fine strike of this scarce cancel which looks similar to the small Boston "Paid" grid which was in use until mid-1851, Skinner-Eno book notes this cancel was in use from 1851-57 but we have rarely encountered it, with 1990 P.F. certificate ..... E. 300-400



- 599 **10c Green, Ty. V (35).** Rich color, cancelled by two strikes of “10” in circle handstamp (Skinner-Eno NS-J 31), also with trace of red cancel at lower right, Very Fine and choice, a beautiful stamp and cancel..... E. 150-200
- 600 **10c Green, Ty. V (35).** Pretty shade, wide margins, cancelled by bold strike of elongated “10” numeral cancel (Skinner-Eno NS-J 13), Very Fine and choice, a wonderful cancel on a 10c stamp ... E. 150-200
- 601 **10c Green, Ty. V (35).** Choice centering with Jumbo margins, intense shade and impression, cancelled solely by British “224” in oval grid of Cowbridge, Wales, light horizontal crease at the bottom, Extremely Fine appearance, rare cancelled solely by the British marking, with 1992 P.F. certificate..... E. 200-300
- 602 **10c Green, Ty. V (35).** Pretty shade, wide margins, neat strike of Canadian 8-ring target cancel, fresh and Extremely Fine, ex Koppersmith, with 1988 and 1992 P.F. certificates..... E. 300-400
- 603 **10c Green, Ty. V (35).** Vertical strip of three with left interpane margin and centerline, wide margins all around, cancelled by several strikes of blue Wells, Fargo & Co. large double-circle datestamp, Extremely Fine, a phenomenal strip, with 1990 and 1991 P.F. certificates..... E. 500-750
- 604 **10c Green, Ty. V (35).** Horizontal strip of four, brilliant color on bright paper, bold strikes of New York grid cancel (with “hole” at center) and trace of red cancel on second stamp, some perf separations sensibly reinforced, still Very Fine-Extremely Fine, with 1985 P.F. certificate, Scott Retail as two pairs..... 280.00
- 605 **10c Green, Ty. V (35).** Positions 53-57L2, horizontal strip of five, deep rich color, three neat strikes of New York Ocean Mail circular datestamp with integral grid, fourth stamp light vertical crease, Very Fine-Extremely Fine appearance, a desirable multiple, with 1990 P.F. certificate.. E. 500-750
- 606 **10c Green, Ty. V (35).** Positions 55-60L2, horizontal strip of six, tied by “Galveston Tex. ? 11, 1859” circular datestamp and red boxed “Aachen Franco” datestamp on piece, left stamp single short perf at upper left not mentioned on accompanying certificate, Very Fine, scarce strip of six which undoubtedly paid the double 30c Prussian Closed Mail rate to Germany, with 1991 P.F. certificate stating Georgia town cancel which it is not ..... E. 750-1,000



## 1857 12-CENT BLACK



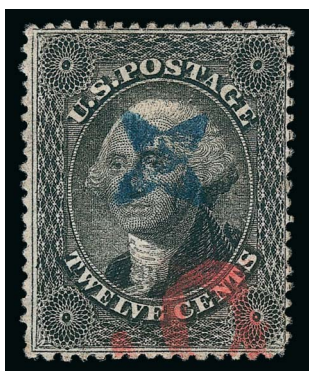
607

607 **12c Black, Plate 1 (36).** Well-balanced margins, cancelled by bold strike of **green circular grid of small squares and rectangles**

VERY FINE AND CHOICE. AN INCALCULABLY RARE EXAMPLE OF THE 12-CENT 1857 ISSUE FROM PLATE ONE WITH A GREEN CANCEL. THIS IS THE FIRST WE HAVE OFFERED SINCE KEEPING COMPUTERIZED RECORDS.

The cancel on this stamp is a true green color, not bluish-green or an adulterated green ink. The cancel's unusual configuration and distinctive green color make this 12c 1857 stamp one of the most striking we have ever encountered.

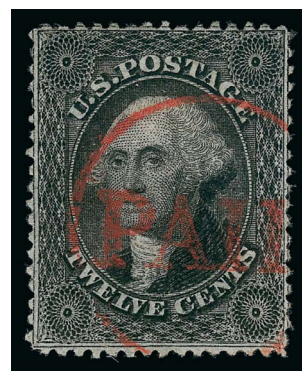
With 1994 P.F. certificate ..... E. 1,000-1,500



608



609



610

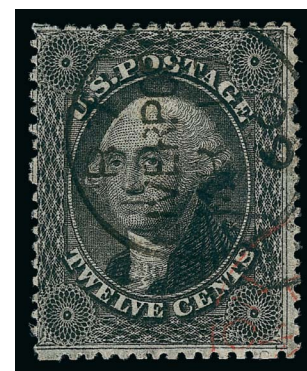
608 **12c Black, Plate 1 (36).** Detailed impression, bold central strike of **blue tiny 4-Point Star and Circle fancy cancel** of Hartford Wis. (Skinner-Eno ST-4P 5), and — as if more were needed to enhance the beauty of this stamp — there is a **red "19" credit handstamp**, Extremely Fine, simply perfection, with 1994 P.F. certificate..... E. 500-750

609 **12c Black, Plate 1 (36).** Detailed impression, bold strike of **8-Point Star and Circle fancy cancel** of Tuscaloosa Ala. (Skinner-Eno GE-P 42), Very Fine and choice, with 1983 P.F. certificate..... E. 400-500

610 **12c Black, Plate 1 (36).** Intense shade nicely complemented by **red "PAID" in circle cancel**, Very Fine and choice, a pretty stamp, with 1989 P.F. certificate.... 380.00

611 **12c Black, Plate 1 (36).** Detailed impression, **cancelled by March 1, 1860 Liverpool circular datestamp with red London transit handstamp** struck at lower right corner, Very Fine and choice, extremely unusual example of 12c 1857 with no U.S. cancel but cancelled on arrival in England ..... E. 300-400

612 **12c Black, Plate 1 (36).** Pretty shade, neat strike of **magenta grid cancel**, Very Fine and choice, with 1987 P.F. certificate ..... 370.00



611



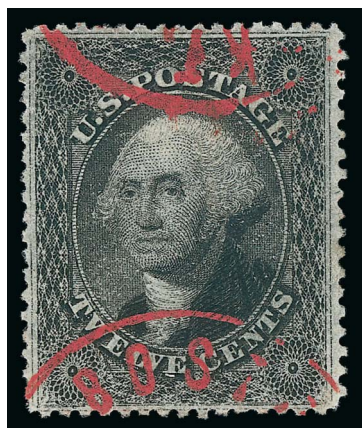
612





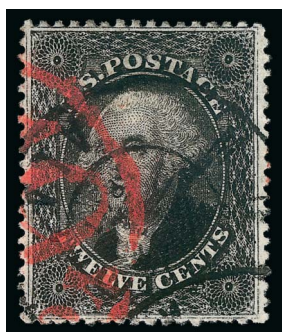
- 613 **12c Black, Plate 1 (36).** Vertical pair with **interpane margin and centerline at left**, wide margins, neat strikes of **"Boston Br. Pkt. Paid May 30"** circular datestamp, fresh and Extremely Fine, a very attractive pair, with 1988 P.F. certificate ..... 750.00
- 614 **12c Black, Plate 1 (36).** Vertical pair, intense shade and impression, each stamp cancelled by **blue grid struck twice in criss-crossing fashion**, bottom stamp single short perf at upper right, Very Fine and attractive pair, with 1994 P.F. certificate..... 770.00
- 615 **12c Black, Plate 1 (36).** Horizontal pair, bright shade, tied by grid cancels and **red "19" credit** handstamp on small piece, the piece also has a **"Paid 24" in arc** handstamp in a darker red color, Very Fine, an attractive piece, with 1992 P.F. certificate ..... 770.00
- 616 **12c Black, Plate 1 (36).** Horizontal pair, tied by **"CHARLESTOWN MD."** **straightline** handstamp on small piece, Very Fine and choice, straightline handstamps are rarely seen on this issue, with 1997 P.F. certificate..... E. 500-750
- 617 **12c Black, Plate 1 (36).** Horizontal pair, intense shade and impression, tied by **red "New-York Am. Pkt. 3 Feb. 11" credit datestamp** on small piece, right stamp light corner crease at upper right and pulled perf at lower right, still Very Fine..... 790.00
- 618 **12c Black, Plate 1 (36).** Rejoined horizontal pair, deep shade, perfectly struck large **Boston "Paid" grid** cancel, Very Fine and choice, with 1988 P.F. certificate not mentioning rejoined..... 770.00
- 619 **12c Black, Plate 1 (36).** Horizontal pair, bright shade, neat strikes of **New York red grid** cancels (with "hole" in center), left stamp single reattached perf (as it appears in certificate photo but not mentioned), still Very Fine and attractive pair, with 1991 P.F. certificate as sound ..... 790.00



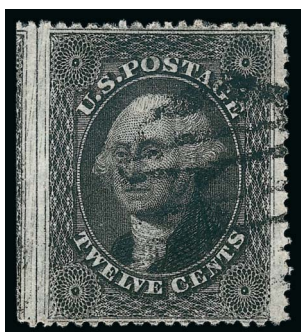


620

- 620 **12c Black, Plate 3 (36B).** Choice centering with balanced margins, face-free strikes of **vivid "paint red" Boston Br. Pkt. circular datestamp**, fresh and Extremely Fine, a stamp with phenomenal visual appeal, with 1988 P.S.E. and 1990 P.F. certificates ..... 295.00



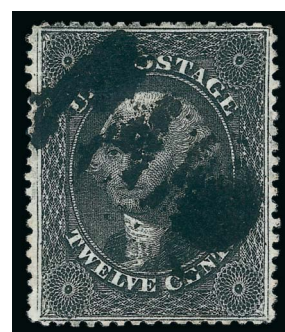
621



622



623



624

- 621 **12c Black, Plate 3 (36B).** Deep shade nicely complemented by **red New York 19c credit datestamp** and Mobile Ala. double-circle datestamp, well-balanced margins, Extremely Fine, a pretty stamp..... 295.00
- 622 **12c Black, Plate 3 (36B).** Wide margins including **left straddle-pane margin with center-line and part of stamp from adjacent pane**, neat strike of grid cancel, Extremely Fine, a beautiful stamp, with 1987 P.F. certificate ..... 275.00
- 623 **12c Black, Plate 3 (36B).** Detailed impression on bright paper, well-struck **"PAID" in circle** cancel, Very Fine, ex Ishikawa, with 1993 P.F. certificate ..... 287.00
- 624 **12c Black, Plate 3 (36B).** Intense shade and impression, wide and balanced margins, bold strike of **large "PAID" handstamp**, Very Fine and choice, with 1996 P.F. certificate ..... 287.00

- 625 **12c Black, Plate 3 (36B).** Horizontal pair, deep shade on bright paper, bold strikes of **dark red New York grid** cancel (with "hole" at center), wide and balanced margins, fresh and Extremely Fine, with 1977 and 1991 P.F. certificates ..... 690.00



625





626

- 626 **12c Black, Plate 3 (36B).** Horizontal pair, gorgeous impression and bright paper, neat strike of **blue "Philadelphia Pa." circular datestamp and part of red "3" credit handstamp**, rejoined with hinge slivers, Very Fine and choice, with 1991 P.F. certificate as pair, Scott Retail as singles..... 610.00

- 627 **12c Black, Plate 3, Double Frameline at Right (36B var).** Vertical strip of four, each stamp shows the variety, intense shade nicely complemented by **"paint red" grid cancels**, few sensibly reinforced perfs at top, second stamp single pulled perf, still Very Fine and scarce vertical strip of four, with 1985 and 1992 P.F. certificates, Scott Retail with no premium for the variety.... 1,340.00



627

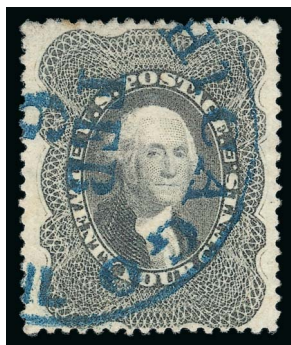


628

- 628 田 **12c Black, Plate 3 (36B).** Block of four, sharp proof-like impression on crisp paper, multiple strikes of **blue circular datestamp**, top left stamp small closed tear at top right, otherwise Very Fine, a scarce used block, especially with a colored cancellation, ex Ishikawa, with 1993 P.F. certificate..... 3,290.00



## 1860 24-CENT GRAY LILAC



629



630

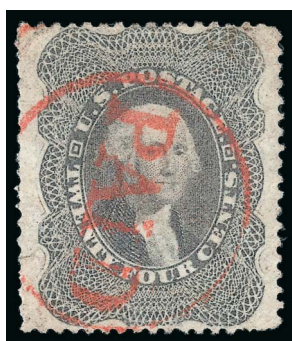


631

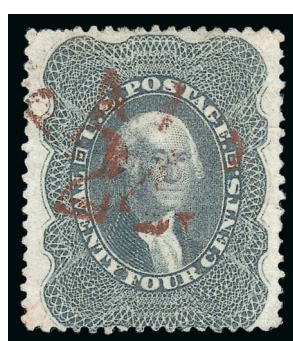
- 629 **24c Gray Lilac (37).** Fresh color and crisp impression nicely complemented by **blue** “Chicago Supplementary Mail Feb. 6” circular datestamp, accompanying certificate notes small stained spot at top left which is really just one slightly toned perf, Extremely Fine, a beautiful stamp, with 1990 P.F. certificate..... E. 500-750
- 630 **24c Gray Lilac (37).** Well-centered, bright shade, cancelled by **large Boston “Paid” grid struck in red**, Very Fine and choice, this marking is rarely seen struck in red, with 1992 P.F. certificate ..... E. 750-1,000
- 631 **24c Gray Lilac (37).** Bright shade, neat centrally-struck “PAID” in oval handstamp, also with trace of red cancel at upper left, Very Fine, with 1991 P.F. certificate ..... 465.00



632



633

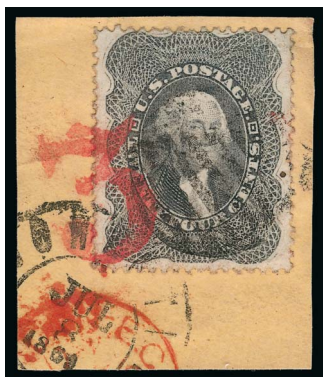


634



635

- 632 **24c Gray Lilac (37).** Rich color, neat strike of “Newburg B. & O. R. R. Dec. 22, 1860” Baltimore & Ohio Railroad route agent’s oval datestamp, small faults, still a rare cancel, with 1978 P.F. certificate ..... E. 500-750
- 633 **24c Gray Lilac (37).** Pretty shade nicely complemented by **red “PAID” in circle** cancel, small thin spot, small corner crease at top left, Very Fine appearance, a stamp with great visual appeal..... 465.00
- 634 **24c Gray (37a).** Intense shade and proof-like impression, wide margins at sides, **brownish-red “PAID 24” in arc** handstamp with color caused by mixing of red and black inks, thinned, Very Fine appearance, especially desirable with the 24c marking on a 24c stamp, ex Grunin, with 1991 P.F. certificate..... E. 400-500
- 635 **24c Gray (37a).** Rich color in the Gray shade, **oval Tabasco, Mexico cancel**, reperfed at left, Very Fine appearance, a rare cancel, with 2014 P.F. certificate..... E. 500-750



636



637



638

- 636 **24c Gray Lilac (37).** Tied on small piece by July 8, 1861 double-circle datestamp and grid cancel, also tied by **red "3" credit handstamp**, Very Fine and choice, a pretty stamp with nice markings ..... 480.00
- 637 **24c Gray Lilac (37).** Tied by "Mobile Ala. May 30, 1861" double-circle datestamp and **red "19" credit handstamp** on small blue piece, vertical crease at right, Very Fine appearance, scarce **Confederate State use** of 24c 1860 from Mobile, with 1994 P.S.E. certificate ..... E. 400-500
- 638 **24c Gray Lilac (37).** Rich color, s.e. at left, cancelled by red grid and tied by **blue "Cadiz Franco 18 Jun 61"** double-oval datestamp on piece, the piece with additional New York American Packet 3c credit datestamp and red oval "PD" handstamp, stamp with small corner crease at top right from placement at edge of piece, still Very Fine and attractive ... 460.00

## 1860 30-CENT ORANGE



639

- 639 **30c Orange (38).** Intense shade and impression, cancelled by perfect strike of **red large Circular Grid of Diamonds** of New Haven Conn.
- VERY FINE AND CHOICE. A PHENOMENAL EXAMPLE OF THE 30-CENT 1860 ISSUE CANCELLED BY THE NEW HAVEN GRID OF DIAMONDS.
- With 1991 P.F. certificate ..... E. 1,000-1,500

- 640 **30c Orange (38).** Vibrant color, cancelled by perfect strike of "UNION" surrounding 5-Point Hollow Star with "US" at center of Three Rivers, Michigan, the "S" of "US" reversed
- EXTREMELY FINE STRIKE OF THIS ELABORATE AND RARE PATRIOTIC FANCY CANCELLATION. PATRIOTIC CANCELS ARE ESPECIALLY RARE ON HIGH-DENOMINATION 1860 ISSUE STAMPS, WHICH WERE INFREQUENTLY USED AND DEMONETIZED SOON AFTER THE START OF THE CIVIL WAR.
- With 1995 P.F. certificate ..... E. 2,000-3,000



640





- 641 **30c Orange (38)**. Vivid color, unusually wide and balanced margins, neat strike of **blue 11-bar grid** cancel, fresh and Extremely Fine, a beautiful stamp, with 1988 P.F. certificate ..... 455.00
- 642 **30c Orange (38)**. Vivid color as fresh and the day it was printed, nicely complemented by **red grid** cancel, Very Fine and choice, a beautiful stamp, with 1991 P.F. certificate ..... 475.00
- 643 **30c Orange (38)**. Choice centering, vibrant color, neat strikes of grid and **red "Aachen Franco" boxed datestamp**, Extremely Fine, a beautiful stamp, with 1980 and 1991 P.F. certificates, Scott Retail with no premium for the boxed datestamp ..... 475.00
- 644 **30c Orange (38)**. Vibrant color, wide and balanced margins, well-struck target cancel, Extremely Fine, a beautiful stamp, with 1995 P.F. certificate ..... 425.00
- 645 **30c Orange (38)**. Position 52L1, **recut at bottom**, brilliant color beautifully complemented by **blue "Baltimore Md. Feb. 12"** circular datestamp, choice centering for this difficult issue, fresh and Very Fine example of this plate variety, with 1989 P.F. certificate ..... 580.00
- 646 **30c Orange (38)**. Vivid color, neat strike of **New York Ocean Mail** circular datestamp with integral grid, fresh and Very Fine, this cancel is rare on the 30c 1860 Issue, with 1992 P.F. certificate ..... E. 500-750
- 647 **30c Orange (38)**. Radiant color, neat strike of **"San Francisco Cal. Sep. 27, 1861"** double-circle datestamp, well-balanced margins, Very Fine and choice, very late use as San Francisco demonetized the stamps in October of 1861, ex Koppersmith, with 1987 P.S.E. and 1991 P.F. certificates ..... 425.00
- 648 **30c Orange (38)**. Rich color, **red "New York Paid City Delivery 1ct Dec. 10"** circular datestamp, wide margins at sides, Very Fine and choice, a rare use of the 30c with the red New York City carrier datestamp, with 1993 P.F. certificate ..... 455.00



- 649 **30c Orange (38).** Intense shade, two bold strikes of red **“Supplementary Mail” Type A** octagonal handstamp, tiny corner crease at top right is barely noticeable, Fine appearance, purple backstamp just shows thru, with 1996 P.F. certificate ..... 550.00
- 650 **30c Orange (38).** Rich color, neat strikes of circular datestamp and full strike of **March 4, 1861 French transit datestamp**, Fine ..... E. 400-500
- 651 **30c Orange (38).** Vivid color, wide margins, cancelled by **red grid and red German transit double-circle datestamp**, reperfed at left, Extremely Fine appearance, a beautiful stamp, with 1989 P.F. certificate ..... E. 400-500
- 652 **30c Orange (38).** Bright color, bold strike of **“PAID” straightline** cancel and part of circular datestamp, Very Fine and choice..... 460.00
- 653 **30c Orange (38).** Radiant color, choice centering for this difficult issue, bold strike of **large red grid** cancel, natural inclusion, short perf at left not mentioned on accompanying certificate, Very Fine appearance, with 1989 P.F. certificate ..... 475.00
- 654 **30c Orange (38).** Radiant color, with **left straddle-pane margin showing centerline and part of stamp in adjacent pane**, wide margins other sides, part of red circular datestamp, black grid cancel, single nibbed perf at right, Extremely Fine appearance, ex Ishikawa ..... 475.00

- 655 **30c Orange, Cracked Plate (38 var).** Showing significant plate crack in back of Franklin’s head, bold strike of large open grid leaves the plate crack clearly visible, Fine, a rare plate variety, Brookman illustrates what he says is a unique plate crack at lower left and questions whether that is a scratch, the stamp offered here with its different crack must have been unknown to him and is far more prominent than the one he was aware of, ex Koppersmith, with 1988 P.F. certificate, the variety is listed but unpriced in Scott and this stamp may well be unique ..... E. 750-1,000



655



## 1860 90-CENT BLUE



656

656 **90c Blue (39).** Deep rich color and proof-like impression on bright paper, choice centering with well-proportioned margins, neat strike of **blue circular datestamp** (probably Baltimore Md.)

EXTREMELY FINE. A STUNNING USED EXAMPLE OF THE 90-CENT 1860 ISSUE, WITH GORGEOUS CENTERING AND A BLUE CIRCULARE DATESTAMP CANCEL.

The 90c stamp was issued in 1860, along with the 24c and 30c values, all of which were needed to prepay high international letter rates established by various postal treaties. The basic 24c and 30c rates to England, France and Germany created a volume of mail franked with those values. However, the 90c saw much more limited use, partly due to the rates in effect, but more because of the American Civil War. When supplies of current postage stamps were declared invalid in the South and ultimately demonetized by the Federal government, the 90c had been in use for only one year. For this reason, genuinely cancelled copies are scarce, and covers bearing the 90c are extremely rare.

With 1991 P.F. certificate ..... 11,400.00



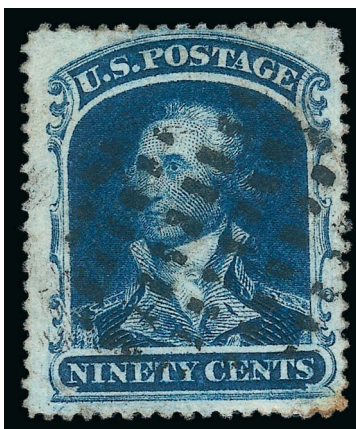
657

657 **90c Blue (39).** Rich color on bright paper, neat strike of “New York May 21” Ocean Mail circular datestamp with integral grid

FRESH AND FINE. A RARE SOUND USED EXAMPLE OF THE 90-CENT 1860 ISSUE WITH THE NEW YORK OCEAN MAIL CANCELLATION.

Approximately 180 used examples have been certified by The Philatelic Foundation, of which one-quarter are sound. The example offered here, with the New York Ocean Mail cancel, is extremely desirable.

With 1951 and 1989 P.F. certificates..... 11,000.00



658

658 **90c Blue (39).** Deep rich color, neat strike of **grid of small rectangles** cancel, tiny tear at top, small thin spot at top right, light toning at bottom right

FINE APPEARANCE. A SCARCE USED EXAMPLE OF THE 90-CENT 1860 ISSUE WITH WHAT IS ESSENTIALLY A FANCY CANCELLATION.

Most used examples of the 90c 1860 Issue have either a circular datestamp, standard killer or pen cancel. The stamp offered here, with an unusual cancel consisting of a grid of small rectangles, is an extremely unusual example of a non-standard killer cancel on the 90c 1860.

With 1973 and 1993 P.F. certificates..... 11,000.00

END OF MORNING SESSION



# Live Internet Bidding at Siegel Auctions

## BIDDING FROM YOUR COMPUTER LETS YOU BE PART OF THE LIVE AUCTION FROM ANYWHERE IN THE WORLD!

There's **NO SUBSTITUTE** for following the auction in real time.  
Live Internet Bidding lets you bid and buy as though you were right there in the saleroom.  
And it's easy.

This step-by-step guide will instruct you how to register, set your browser and use the bidding interface.

Start by following the simple steps to become a registered Live Internet Bidder.  
Once you've been approved for bidding, you can listen to the auction and place bids with the click of a mouse.

### Registering with STAMP AUCTION NETWORK & SIEGEL AUCTION GALLERIES

Live Internet Bidding is managed by Stamp Auction Network (SAN).  
To bid, you must be registered and approved by *both* SAN and Siegel.  
To decide what you need to do, choose the description below that best fits you.



I've already registered with SAN and have been approved by Siegel for internet bidding.

I'm a Siegel client, but I'm not registered with SAN.

Go to [stampauctionnetwork.com/siegel](http://stampauctionnetwork.com/siegel) and click on "Register" at the top. Check the box for Robert A. Siegel Auction Galleries (under "R") and submit the form, indicating you are a Siegel client. Once registered at SAN, you're ready for internet bidding.

I've bid through SAN before, but this is the first time I've bid in a Siegel sale.

Then you just need to be approved by Siegel. Go to [stampauctionnetwork.com/siegel](http://stampauctionnetwork.com/siegel) and click on "Update Registration" at the top. Your SAN account information will be sent to us for approval (you might be asked for other trade references). Once approved by Siegel for bidding, you're ready for internet bidding.

I've never bid with Siegel, nor registered with SAN.

Go to [stampauctionnetwork.com/siegel](http://stampauctionnetwork.com/siegel) and click on "Register" at the top. Check the box for Robert A. Siegel Auction Galleries (under "R") and submit the form **with your trade references** (please, no family members or credit card companies as references). Once registered at SAN and approved by Siegel for bidding, you're ready for internet bidding.

Live Internet Bidding works by allowing registered bidders to observe and place bids.

Live Internet Bidding will work with any browser on both PC and Mac operating systems.

Before bidding by internet for the first time, we recommend finding a sale in progress and listening to the public broadcast or logging in as a registered bidder. This will help you develop a feel for the sale tempo and bidding interface.

### Log on to the auction at [stampauctionnetwork.com/siegel](http://stampauctionnetwork.com/siegel).

You can also log on at [siegelauctions.com](http://siegelauctions.com)

When you're logged on as a Live Internet Bidder, the bidding interface shows a photo and description of the lot, the current bid (and your bidding status), options for placing competitive bids and buttons with bid increments.

- After you click on a bid amount, the auctioneer is immediately notified of your bid.
- Retracting a bid is usually not acceptable, so please bid carefully.
- If you bid and then decide to stop, the "Pass" button will tell the auctioneer you are no longer bidding.
- You can send messages to the auctioneer (for example, a request for extension).
- You can track prior realizations from the bidding screen.



**"System Down"** or **"Lost Connection"** events do occasionally happen.

If you have any problems with Live Internet Bidding please call **212-753-6421** for immediate assistance.

AFTERNOON SESSION (LOTS 659-915)  
WEDNESDAY, JUNE 25, 2014, AT 1:30 P.M.

## 1861 5-CENT BUFF AND BROWN YELLOW SHADES



659



660



661

- 659 **5c Buff (67).** Exceptionally dark shade, perfect centering, neat "Philadelphia Pa. Jun. 10, 1862" circular datestamp, Extremely Fine, with 1989 P.F. certificate as Scott 67a..... 1,000.00
- 660 **5c Buff (67).** Wonderful color nicely complemented by blue "Baltimore Md. Feb. 17" circular datestamp, well-proportioned margins, Very Fine and choice, with 1992 P.F. certificate..... 1,030.00
- 661 **5c Buff (67).** Radiant color, bold strike of San Francisco cogwheel cancel and part of red circular datestamp at upper right, Very Fine, with 1993 P.S.E. certificate..... 1,060.00



662



663



664

- 662 **5c Buff (67).** Rich color, cancelled by two strikes of blue "PAID" in lozenge cancel, Very Fine and choice, a remarkably pretty stamp with an unusual cancel, with 1989 and 1991 P.F. certificates ..... 1,055.00
- 663 **5c Buff (67).** Rich color, perfect strike of "PAID" straightline cancel, fresh and Fine, a stamp with wonderful visual appeal, with 1995 P.F. certificate ..... 1,025.00
- 664 **5c Buff (67).** Pretty shade, neat strike of blue "24" numeral handstamp, Very Fine and choice, scarce cancelled solely by the credit handstamp, with 1991 and 1992 P.F. certificates..... 1,110.00





665

- 665 **5c Buff (67).** Horizontal pair, tied by blue “Wells, Fargo & Co.s Express 21 Aug.” double-circle datestamp on small piece with part of red printed frank, stamps lifted and hinged in place

VERY FINE AND CHOICE. A BEAUTIFUL USED PAIR OF THE 1861 5-CENT BUFF AND EXTREMELY RARE EXAMPLE OF THIS ISSUE CANCELLED BY THE WELLS, FARGO & COMPANY DATESTAMP.

With 1989 and 2014 P.F. certificates, the former as 67a. Scott Retail \$2,960.00 .....  
..... E. 2,000-3,000

- 666 **5c Brown Yellow (67a).** Radiant color, neat strikes of San Francisco double-circle datestamp, red New York “Paid” credit datestamp and red French transit datestamp, fresh and Very Fine, a fantastic stamp bearing three different markings, with 1994 P.F. certificate ..... 1,310.00



666



667

- 667 **5c Brown Yellow (67a).** Brilliant color nicely complemented by red New York grid cancel, Very Fine and choice, a beautiful stamp, the “hole” at center distinguishes the New York grid from others, with 1986 and 1991 P.F. certificates..... 1,310.00



668



669



670

- 668 **5c Brown Yellow (67a).** Vibrant color, bold strike of **blue waffle-iron grid** cancel, trace of red cancel at lower right, small tear at right and corner crease at top right, short perf at right not mentioned on accompanying certificate, Fine appearance, an unusual cancel on this issue, this is a true waffle-iron grid, not a twice-struck criss-crossing grid, with 1987 P.F. certificate as Scott 67 .... E. 500-750

- 669 **5c Brown Yellow (67a).** Radiant color, well-balanced margins, neat strike of **5-Point Hollow Star fancy cancel**, possibly Munsonville N.H. (Skinner-Eno ST-O 8), light pressed-out horizontal crease at left, Very Fine appearance, with 1990 P.F. certificate..... E. 500-750

- 670 **5c Brown Yellow (67a).** Radiant color, perfect strike of **complex Geometric cancel** of Naperville Ill. (Skinner-Eno SD-G 123), rebacked adding top margin and perforations and with tears at top and bottom, for all that still an exceedingly rare cancel, with 1994 P.F. certificate..... E. 300-400

- 671 **5c Brown Yellow (67a).** Warm shade nicely complemented by **blue Star with Negative Pentagon fancy cancel** (Skinner-Eno ST-D 24), top left corner added and portions of design drawn in, still a rare cancel on this issue and a presentable stamp, with 1992 P.F. certificate ..... E. 300-400



671

- 672 **5c Olive Yellow (67b).** Brilliant color that is distinctly different from the other two Scott-listed shades, bold strike of grid cancel, trace of additional red cancel at top, well-balanced margins

EXTREMELY FINE EXAMPLE OF THE 1861 5-CENT IN THE DISTINCTIVE OLIVE YELLOW SHADE. THIS IS THE SCARCEST SHADE OF THE 5-CENT 1861 ISSUE, AND IT IS EXCEEDINGLY DIFFICULT TO FIND IN SUCH CHOICE CONDITION.

We have offered approximately a dozen unduplicated examples of the Olive Yellow shade in any condition since keeping computerized records. Of these two were unused. It is difficult to find in sound and centered condition.

With 1983 and 1989 P.F. certificates..... 4,000.00



672



## 1861 10-CENT GREEN



673



674



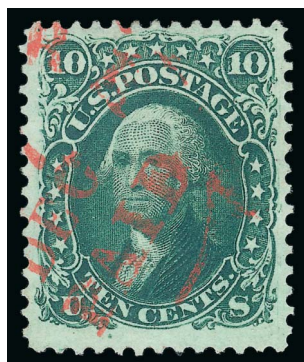
675

- 673 **10c Yellow Green (68).** Rich color, Jumbo margins, bold strike of **blue target** cancel, fresh and Extremely Fine, ex Meyersburg, with 1991 P.F. certificate ..... 65.00
- 674 **10c Yellow Green, "TAG" (68 var).** Clear double transfer, brilliant color, unusually wide and balanced margins, "New Orleans La. Sep. 30" double-circle datestamp, Extremely Fine, a beautiful stamp, with 1989 and 2014 P.S.E. certificates (XF 90; SMQ \$300.00 with no premium for the double transfer) ..... 65.00
- 675 **10c Yellow Green (68).** Jumbo margins with **straddle-pane margin at left** showing part of stamp in adjacent pane, tied by clear strike of "**N. York Steamship Apr. 25**" circular datestamp on small blue piece, Extremely Fine, with 1988 P.F. certificate ..... E. 150-200



676

- 676 **10c Yellow Green (68).** Rich color on bright paper, cancelled solely by **red "New York Supplementary Mail" Type D** circular datestamp, wide margins, Extremely Fine, a scarce cancel on this issue, this Supplementary Mail datestamp is recorded on covers dated in 1873-74, which makes this an earlier example or a late use of the stamp, ex Koppersmith, with 1980 P.F. certificate ..... E. 500-750



677



678

- 677 **10c Yellow Green (68).** Rich color on bright paper, **red New York credit datestamp with "Paid" at bottom**, well-balanced margins, Very Fine and choice, with 1989 P.F. certificate ..... 70.00
- 678 **10c Yellow Green (68).** Deep rich color and proof-like impression, clear strike of "**New Orleans La. Nov. 14, 1862**" double-circle datestamp, well-balanced margins, Extremely Fine use in **Union-occupied New Orleans**, ex Koppersmith, with 1987 and 1991 P.F. certificates ..... E. 150-200



- 679 **10c Yellow Green (68)**. Rich color, wide margins, perfect socked-on-the-nose strike of small "Phila. Pa. Apr. 28" circular datestamp, fresh and Very Fine, with 1992 P.F. certificate ..... 60.00
- 680 **10c Yellow Green (68)**. Intense shade on bright paper, tied by San Francisco cogwheel cancel on buff piece, "San Francisco Cal. Feb. 24, 1861" double-circle datestamp, Extremely Fine, with 1989 P.F. certificate ..... 60.00
- 681 **10c Yellow Green (68)**. Intense shade and impression, wide margins, bold **Flower Petals in Circle fancy cancel** of Alexandria Va. (Skinner-Eno GE-R 19), trace of red cancel at upper right, Very Fine and choice, a beautiful stamp, ex Koppersmith, with 1987 P.F. certificate..... E. 150-200
- 682 **10c Yellow Green (68)**. Bright color, bold strike of **4-Leaf Clover New York Foreign Mail cancel** (Skinner-Eno GE-M 20) and trace of red cancel at lower left, wide margins, Extremely Fine, ex Koppersmith, with 1989 P.F. certificate ..... E. 100-150
- 683 **10c Yellow Green (68)**. Pretty shade, bold strike of **segmented target** cancel of Cambridgeport Mass. (Skinner-Eno GE-P 33), Very Fine and choice, ex Newbury and Koppersmith, with 1992 P.F. certificate..... E. 100-150
- 684 **10c Yellow Green (68)**. Rich color nicely complemented by **red thin-line target** cancel, Very Fine, an unusual cancel, ex Koppersmith, with 1991 P.F. certificate ..... 70.00
- 685 **10c Yellow Green (68)**. Rich color on bright paper, well-balanced margins, bold **blue target** cancel, Extremely Fine, a beautiful stamp, ex Newbury, with 1991 P.F. certificate ..... 65.00
- 686 **10c Yellow Green (68)**. Warm shade, bold strike of **Negative Dot in Star in Circle fancy cancel**, Very Fine and choice, a stamp with great eye appeal, ex Koppersmith, with 1992 P.F. certificate ..... E. 150-200
- 687 **10c Yellow Green (68)**. Rich color on bright paper, neat strike of **blue Hollow Star fancy cancel**, inside of star nicely frames Washington's face, Very Fine strike, with 1994 P.F. certificate..... E. 150-200
- 688 **10c Yellow Green (68)**. Intense shade nicely complemented by **red Star in Circle** cancel, light corner crease at top right, single short perf at left, still Very Fine ..... E. 100-150
- 689 **10c Yellow Green (68)**. Deep shade, well-struck **red Shield fancy cancel**, stamp with faults, still a Very Fine strike ..... E. 150-200





- 690 **10c Yellow Green (68).** Rich color, bold strike of **Negative “PAID” in Shield fancy cancel** of Dedham Mass. (Skinner-Eno PS-C 13), Very Fine strike of this scarce cancel, with 1997 P.F. certificate ..... E. 200-300
- 691 **10c Yellow Green (68).** Intense shade nicely contrasted by **red circle of V’s** cancel, Very Fine..... 70.00
- 692 **10c Yellow Green (68).** Bright color, wide margins, bold strike of **blue Grid of Diamonds** cancel of Chicago, Very Fine and choice, ex Koppersmith, with 1992 P.F. certificate..... 65.00
- 693 **10c Yellow Green (68).** Rich color, cancelled by bold **“STEAM/SHIP”** handstamp, small thin spot, Very Fine appearance ..... 75.00
- 694 **10c Dark Green (68a).** Rich color, **blue “Wells, Fargo & Co., Victoria V.I.”** oval datestamp, reperfed at left, Very Fine appearance, with 1990 P.F. certificate..... E. 150-200
- 695 **10c Yellow Green (68).** Horizontal pair, tied by perfect strikes of **blue “Wells, Fargo & Co., San Francisco, Oct. 3”** oval datestamp on piece, Very Fine and choice, with 1984 and 1991 P.F. certificates..... E. 300-400
- 696 **10c Yellow Green (68).** Detailed impression on bright paper, bold **Canadian numeral in target** cancel, well-balanced margins, Very Fine and choice, with 1994 P.F. certificate ..... E. 150-200
- 697 **10c Yellow Green (68).** Horizontal pair, intense color and proof-like impression, choice centering, bold strikes of **Rosette** cancel, left stamp single nibbed perf at top, still Extremely Fine pair, with 1992 P.F. certificate..... 125.00



698



699



700

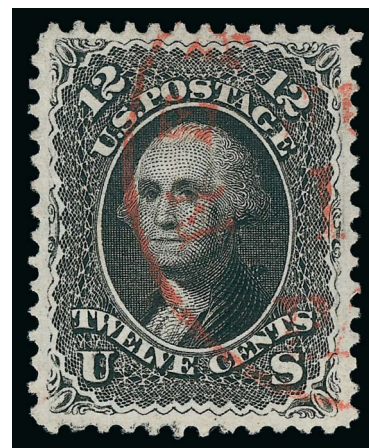
- 698 **10c Yellow Green (68).** Horizontal strip of three, choice centering, neat San Francisco cogwheel cancels, Very Fine and choice, attractive strip, with 1988 and 1991 P.F. certificates, Scott Retail as pair and single ..... 185.00
- 699 ☒ **10c Dark Green (68a).** Horizontal strip of four, intense color, each stamp cancelled by neat **straightline "PAID"**, Searsmont Me. circular datestamps, few expertly rejoined perfs not mentioned on accompanying certificate, Very Fine and attractive strip of four, ex Koppersmith, with 1988 and 1991 P.F. certificates..... E. 300-400
- 700 ☒ **10c Yellow Green (68).** Tied by **"PAID" straightline** cancel with red "Bowdoinham Me. Apr. 28" circular datestamp on cover to Pescadero Cal., slightly reduced at left, Very Fine, a pretty cover, with 1996 P.F. certificate..... E. 150-200

## 1861 12-CENT BLACK



701

- 701 **12c Black (69).** Gorgeous centering with wide and balanced margins, intense shade and impression, light strikes of target cancel and circular datestamp, also **red** circular datestamp with "Paid" clearly visible at top, Extremely Fine Gem, with 1990 P.F. certificate. 125.00



702

- 702 **12c Black (69).** Well-proportioned margins, deep shade and detailed impression, neat strike of **red circular datestamp**, Extremely Fine, ex White, with 1984 and 1991 P.F. certificates ..... 125.00





- 703 **12c Black (69).** Bright shade and paper, wide and balanced margins, neat strike of **red grid** cancel, fresh and Extremely Fine, a pretty stamp, with 1988 and 1989 P.F. certificates, the former as a pair ..... 125.00
- 704 **12c Black (69).** Intense shade and impression, gorgeous centering, light strike of **violet grid** cancel, Extremely Fine, rare with the violet cancel, with 1991 P.F. certificate ..... E. 200-300
- 705 **12c Black (69).** Well-balanced margins, bold strike of large **Boston "Paid" grid** cancel, fresh and Extremely Fine, ex Newbury and Koppersmith, with 1988 and 1992 P.F. certificates ..... 105.00
- 706 **12c Black (69).** Wide margins, detailed impression, neat strike of **Circular Patent cancel** of Buffalo N.Y. (Skinner-Eno PN-F 20), Extremely Fine, an unusual cancel, with 1993 P.F. certificate, Scott Retail with no premium for the patent cancel ..... 100.00
- 707 **12c Black (69).** Well-balanced margins, bold strike of **circle of 12 wedges** cancel and part of **red** circular datestamp at lower right, Very Fine and choice, with 1992 P.F. certificate ..... 125.00
- 708 **12c Black (69).** Intense shade and proof-like impression on crisp paper, bold strike of **blue target** cancel, Extremely Fine, a beautiful stamp, with 1988 and 1989 P.F. and 2014 P.S.E. certificates (XF 90; SMQ \$375.00) ..... 105.00
- 709 **12c Black (69).** Deep shade on bright paper, well-struck San Francisco cogwheel cancel, Very Fine and choice, ex Meyersburg, with 1987 and 1991 P.F. certificates ..... 100.00
- 710 **12c Black (69).** Radiant color, unusual **grid in double-line circle** cancel, Very Fine, with 1988 and 1992 P.F. certificates ..... 100.00
- 711 **12c Black (69).** Intense shade and impression, bold strikes of **blue crossroads** and **red circular datestamp** cancel, Very Fine and choice, with 1989 and 1991 P.F. certificates ..... 130.00
- 712 **12c Black (69).** Well-balanced margins, bold **magenta circle of wedges** cancel, Very Fine and choice, scarce with the magenta cancel, with 1991 P.F. certificate ..... 200.00
- 713 **12c Black (69).** Radiant color, bold strike of **blue quartered cork** cancel and trace of matching circular datestamp at left, Very Fine and choice, ex Koppersmith, with 1988 and 1991 P.F. certificates ..... 105.00
- 714 **12c Black (69).** Bright shade nicely complemented by **red Newark N.J. double-circle datestamp**, Very Fine and choice, scarce use of red datestamp to cancel 12c 1861, with 1989 P.F. certificate ..... 125.00





- 715 **12c Black (69).** Crisp impression, target cancels and red 12c New York credit circular datestamp, Very Fine and choice, with 1992 P.F. certificate..... 125.00
- 716 **12c Black (69).** Choice centering with balanced margins, intense shade, neat strike of “PAID” in lozenge handstamp, Very Fine and choice, with 1994 P.F. certificate ... 105.00
- 717 **12c Black (69).** Three Jumbo margins, bright shade, neat strike of “DUE 3” in circle handstamp and circular datestamp, Very Fine, unusual cancel on a 12c stamp .... 100.00
- 718 **12c Black (69).** Intense shade and detailed impression, bold strike of **solid 5-Point Star in Circle fancy cancel**, partial second strike at left, negligible corner perf crease at top left, still Extremely Fine and remarkably beautiful, a true collector would never let a trivial imperfection get between him and this stamp ..... E. 200-300
- 719 **12c Black (69).** Crisp impression, well-struck **outline 5-Point Star in Circle fancy cancel** on Norridgewock Me. struck in mix of red and black inks (Skinner-Eno ST-O 20), small corner crease at top right, Very Fine strike of this rare fancy cancel..... E. 200-300
- 720 **12c Black (69).** Intense shade nicely complemented by **blue German transit double-circle** datestamp, Very Fine and choice, with 1989 P.F. certificate, Scott Retail with no premium for the German cancel ..... 105.00
- 721 **12c Black (69).** Crisp impression, clear strike of **red “Supplementary Mail” Type A** cancel and part of additional cancel at top, small closed tear at bottom center is barely noticeable, Very Fine strike of this cancel, ex Keightley, with 1992 P.F. certificate ..... 170.00
- 722 **12c Black (69).** Horizontal pair, tied by “Shelbyville Mo. Sep. 21” circular datestamp on small piece, each stamp with “PAID” in lozenge handstamp, Very Fine, with 1997 P.F. certificate ..... 250.00

- 723 **12c Black (69).** Horizontal pair, radiant color nicely complemented by **dark green segmented grid** cancels, intact perfs at left, Very Fine strikes, the 12c 1861 is extremely rare cancelled in green, ex Ishikawa and Koppersmith, with 1988 and 1992 P.F. certificates..... 1,340.00



723





724

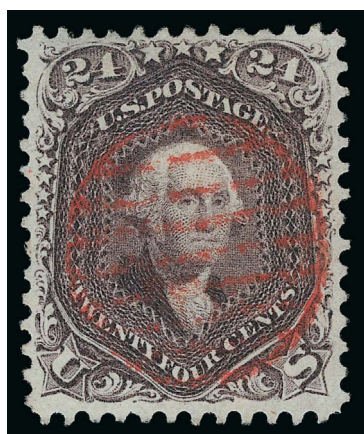
- 724 田 **12c Black (69).** Block of four, remarkably choice centering, proof-like impression, bold large grid cancels, light horizontal crease at top of top left stamp, few minor perf separations, still Very Fine, used blocks of the 12c 1861 are very rare, bottom left stamp red backstamp..... 1,100.00

## 1861 24-CENT LILAC SHADES

- 725 **24c Red Lilac (70).** Deep rich purplish color and proof-like impression, **red Boston British Packet** circular datestamp, gorgeous centering, Extremely Fine Gem, a superb stamp in every respect, with 1989 P.F. certificate ..... 325.00



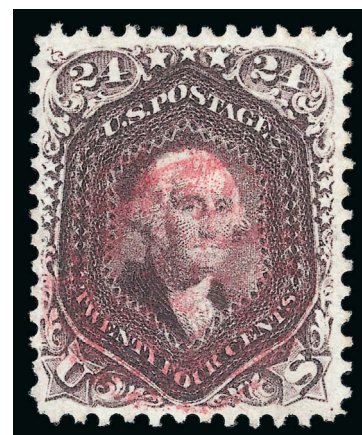
725



726

- 726 **24c Red Lilac (70).** Rich color and purplish shade, detailed impression, **red grid** cancel, Extremely Fine, ex Haas, with 1989 and 1991 P.F. certificates ..... 340.00

- 727 **24c Red Lilac (70).** Intense purplish color on bright paper, beautifully centered, **magenta grid** cancel, Extremely Fine, scarce with a magenta cancel, with 1990 and 1991 P.F. certificates ..... 340.00



727



- 728     **24c Red Lilac (70).** Intense shade and impression, **large “PAID” straightline** cancel, well-balanced margins, Extremely Fine, with 1985 and 1991 P.F. certificates..... 315.00
- 729     **24c Red Lilac (70).** Pretty shade, **bright red circle of V’s** cancel, well-balanced margins, Extremely Fine, a stamp with wonderful visual appeal, with 1990 P.F. and P.S.E. certificates ..... 340.00
- 730     **24c Red Lilac (70).** Intense shade and impression, bold large **Boston “Paid” grid** cancel, Very Fine, with 1985 and 1991 P.F. certificates as No. 70a ..... 315.00
- 731     **24c Red Lilac (70).** Rich color and proof-like impression, bold large **Boston “Paid” grid** cancel, fresh and Very Fine, with 1990 P.S.E. certificate..... 315.00
- 732     **24c Red Lilac (70).** Intense shade and impression, perfect socked-on-the-nose strike of **10 tiny wedges in circle** cancel, light diagonal creases, Very Fine strike of this very unusual cancel, with 1992 P.F. certificate as No. 70a ..... E. 300-400
- 733     **24c Red Lilac (70).** Light shade with violet hue (similar to No. 70d), bold **“PAID” in lozenge** cancel with tall and thin letters, few short perfs at bottom, Very Fine appearance ..... 315.00
- 734     **24c Red Lilac (70).** Rich color, perfect strike of **Flower Petals in Circle** cancel of Alexandria Va., repaired, reperfed at right and bottom, otherwise Very Fine strike of this unusual cancel, with 1992 P.F. certificate ..... 300.00
- 735     **24c Red Lilac (70).** Horizontal pair, radiant color, neat strikes of **red “Supplementary Mail” Type A** cancels, few perf separations sensibly reinforced (not noted on certificates), Very Fine and choice, with 1970 B.P.A. and 1988 P.F. certificates as No. 70a..... E. 750-1,000





- 736 **24c Brown Lilac (70a).** Rich color, bold “Smithville Ms. Jul. 10” circular datestamp, well-balanced margins, Extremely Fine, with 1995 P.F. certificate ..... 325.00
- 737 **24c Brown Lilac (70a).** Warm shade nicely complemented by **blue target** cancel, Very Fine and choice, purple backstamp, with 1991 P.F. certificate as No. 70 ..... 325.00
- 738 **24c Brown Lilac (70a).** Bright color and paper, neat San Francisco cogwheel cancel and **blue boxed “Aachen Franco”** datestamp, Very Fine and choice, ex Koppersmith, with 1987 and 1992 P.F. certificates ..... 350.00
- 739 **24c Brown Lilac (70a).** Rich color and proof-like impression on bright paper, neat **Shield with Stars and Bars fancy cancel** of Sacramento Cal. (Skinner-Eno PS-ST 43), Very Fine and choice, with 1992 P.F. certificate as No. 70 ..... E. 300-400
- 740 **24c Brown Lilac (70a).** Intense shade and impression, bold **Masonic Triangle** cancel of Bristol R.I. (Skinner-Eno GE-T 4), accompanying certificate notes small stain spot at top left which we fail to detect, we do see a nibbed perf at top right not mentioned on the certificate, still a Very Fine and attractive stamp, with 1990 P.F. certificate ... E. 200-300
- 741 **24c Brown Lilac (70a).** Warm shade, cancelled by perfect **5-Point Solid Star in Circle fancy cancel**, small corner crease at top left, a Very Fine strike and a stamp with great visual appeal, with 1992 P.F. certificate as No. 78 ..... E. 300-400
- 742 **24c Brown Lilac (70a).** Radiant color, gorgeous **red 5-Point Star in Circle fancy cancel**, tear at top, Very Fine appearance ..... E. 150-200
- 743 **24c Brown Lilac (70a).** Intense shade and impression, bold strike of **“9” in circle** handstamp of Chicago, tiny corner crease at bottom left, few short perfs at bottom not mentioned on accompanying certificate, Very Fine strike of this scarce cancel, with 1994 P.F. certificate ..... E. 300-400
- 744 **24c Brown Lilac (70a).** Warm shade, criss-cross grid cancel and **“561” oval grid cancel** of Newport, Monmouthshire, England, tiny corner crease at top left, some overall toning not mentioned on accompanying certificate, otherwise Very Fine, rare cancel, with 1992 P.F. certificate ..... E. 300-400

- 745 **24c Brown Lilac (70a).** Horizontal pair, brilliant color, beautiful strikes of **hollow 5-Point Stars in Two Circles fancy cancel**, couple toned perf tips, Very Fine and choice, a very attractive multiple with very unusual cancels, with 1986 and 1991 P.F. certificates, multiples are unlisted in Scott, Scott Retail as singles with no premium for the fancy cancel ..... E. 750-1,000



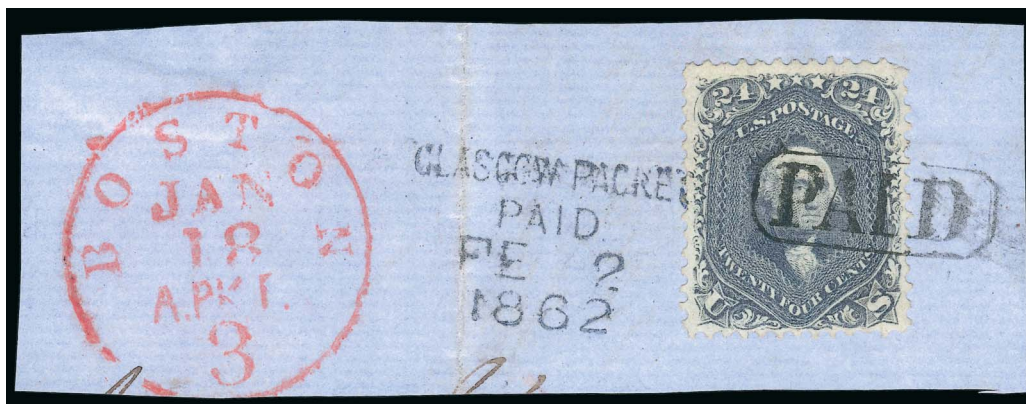
745



746

- 746 **24c Brown Lilac (70a).** Rejoined horizontal pair, rich color on bright paper, well-balanced margins, bold strikes of **New York Foreign Mail 8-Point Star in Circle** cancel, Very Fine and choice, with 1993 P.F. or P.S.E. certificate as single, Scott Retail as singles ..... 650.00

## 1861 24-CENT STEEL BLUE



747

- 747 **24c Steel Blue (70b).** Rich color, tied by **"PAID" lozenge** on blue piece, stamp also tied by "Glasgow Packet Paid FE 2 1862" four-line datestamp, red "Boston A. Pkt. 3 Jan. 18" integral-rate circular datestamp, piece with vertical file fold well away from stamp, Very Fine and pretty piece ..... 915.00

- 748 **24c Steel Blue (70b).** Rich color, bold grid cancel, part of red circular datestamp at upper right, well-balanced margins, Very Fine and choice, ex Sheriff, with 1965, 1987 and 1992 P.F. certificates ..... 940.00



748





- 749 **24c Steel Blue (70b).** Bright color, neat “Thomaston Me. Oct. 21, 1861” double-circle datestamp, short perf at upper right, otherwise Very Fine, scarce cancelled solely by the double-circle datestamp, with 1991 P.F. certificate..... 900.00
- 750 **24c Steel Blue (70b).** Bright color nicely complemented by **red New York British Packet** circular datestamp, light horizontal crease, small filled-in thin spots, Very Fine appearance, with 1991 P.F. certificate..... 940.00
- 751 **24c Steel Blue (70b).** Bright color clear strike of **red “PAID” in circle** cancel, small closed tear at bottom and small corner crease at top left, Very Fine appearance, with 1992 P.F. certificate ..... 955.00
- 752 **24c Steel Blue (70b).** Warm shade nicely complemented by **red grid cancel and red boxed “Aachen Franco”** handstamp, sealed tear at lower right, Very Fine appearance, ex Eno, with 1991 P.S.E. certificate..... 940.00
- 753 **24c Steel Blue (70b).** Colorful cancels, **blue “Baltimore Md. Jan. 14”** and **red “19” credit handstamp**, well-balanced margins, two pinholes at center, Extremely Fine appearance, with 2014 P.F. certificate ..... 1,055.00



- 754 **24c Steel Blue (70b).** Horizontal pair, deep shade and proof-like impression, **red grid** cancels, few perf separations sensibly reinforced  
 VERY FINE AND CHOICE PAIR OF THE 24-CENT 1861 STEEL BLUE WITH VIVID CONTRASTING RED GRID CANCELLATIONS.  
 With 1987 and 1992 P.F. certificates ..... 1,880.00

## 1861 24-CENT VIOLET SHADES



755

755 **24c Violet, Thin Paper (70c).** Deep rich color and proof-like impression on bright paper, perfectly centered with wide and balanced margins, neat strike of 7-bar grid in double-line circle cancel

EXTREMELY FINE GEM. THIS BEAUTIFUL EXAMPLE OF THE 1861 24-CENT VIOLET ON THIN PAPER HAS BEEN GRADED XF-SUPERB 95 BY P.S.E., WHICH IS THE HIGHEST GRADE AWARDED.

The 24c 1861 exists in four basic shades of Violet: Dark Violet (August 1861 trial printing, formerly Scott 60); Violet on Thin Paper (August-September 1861 regular issue, Scott 70c — the shade offered here); Pale Gray Violet (1861 regular issue, Scott 70d) and Blackish Violet (ca. 1863 printing, Scott 78c).

With 1991 and 1992 P.F. and 2014 P.S.E. certificates (XF-Superb 95; SMQ \$14,000.00). This is the highest grade awarded and only four others share it. .... 2,250.00



756

**24c Violet, Thin Paper (70c).** Warm shade nicely complemented by blue 6-bar open grid cancel of Cincinnati

VERY FINE USED EXAMPLE OF THE 1862 24-CENT VIOLET ON THIN PAPER.

This distinctive Violet shade is the so-called “Cincinnati Violet,” and it has the appropriate blue grid cancel used at that post office.

Purple backstamp. With 1985 and 1991 P.F. certificates ..... 2,275.00

757

**24c Violet, Thin Paper (70c).** Horizontal pair, intense shade and impression on bright paper, bold strikes of blue “Baltimore Md. Sep. 14” circular datestamp

EXTREMELY FINE GEM. A SUPERB USED PAIR OF THE 1861 24-CENT VIOLET ON THIN PAPER. MULTIPLES OF THIS SHADE ARE VIRTUALLY NON-EXISTENT.

A Power Search review indicates we have never offered a block, strip or another pair since keeping computerized records. Given the superior centering of the pair offered here, we wonder whether this rare intact artifact will survive another month.

With 1987 and 1991 P.F. certificates. Unlisted as a multiple in Scott. Scott Retail as singles ..... 4,550.00



757





758

758 **24c Violet, Thin Paper (70c).** Vertical pair, deep rich color, tied by **blue grid** cancels and matching "Cincinnati O. Sep. 30" double-circle datestamp on piece

VERY FINE. AN ATTRACTIVE PAIR OF THE 1861 24-CENT VIOLET ON THIN PAPER.

Ex Newbury. With 1987 and 1990 P.F. certificates ..... 4,550.00

759 **24c Pale Gray Violet, Thin Paper (70d).** Rich color and detailed impression, neat strike of thin-line 9-bar open grid cancel

VERY FINE AND CHOICE. A BEAUTIFUL USED EXAMPLE OF THE 1861 24-CENT PALE GRAY VIOLET ON THIN PAPER.

Ex Moody and Koppersmith. With two 1991 P.F. certificates, one on cover (cover accompanies) ..... 3,000.00



759



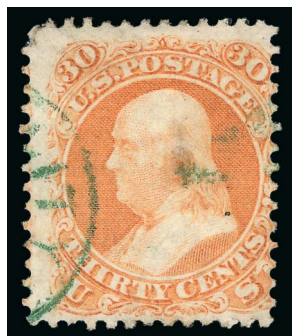
760

760 **24c Pale Gray Violet, Thin Paper (70d).** Intense color, tied by "Ann Arbor Mich. Jan. 27, 1862" circular datestamp on blue piece, red "Detroit Am. Pkt. 3 Paid Jan. 30" circular datestamp alongside

VERY FINE AND CHOICE EXAMPLE OF THE 1861 24-CENT PALE GRAY VIOLET ON THIN PAPER.

With 1990 P.F. certificate..... 3,000.00

## 1861 30-CENT ORANGE



761



762



763



764

- 761 **30c Orange (71).** Bright color, neat strike of **green circular datestamp**, small thin spot at center, Fine appearance, extremely rare with a green cancel, this is the first we have offered since keeping computerized records, with 1997 P.F. certificate, listed but unpriced in Scott with a green cancel, they assign a \$350.00 premium for the 24c and a \$750.00 premium for the 90c, it is probably unpriced because none have been offered on the market..... E. 400-500
- 762 **30c Orange (71).** Vivid color nicely complemented by **blue** "Cincinnati O. Mar. 2" circular datestamp, Extremely Fine ..... 195.00
- 763 **30c Orange (71).** Rich color, bold "**Cerro Gordo, Iowa Jan. 24**" circular datestamp, Very Fine, a scarce cancel, with 1995 P.F. certificate..... E. 200-300
- 764 **30c Orange (71).** Bright color, clear strike of "**New Orleans La. Jan. 30, 1865**" double-circle datestamp, Very Fine and choice **used from Union-occupied New Orleans**, ex Cole, with 1988 and 1991 P.F. certificates..... E. 300-400



765



766



767



768

- 765 **30c Orange (71).** Intense shade and impression, neat "**Brooklyn N.Y. Dec. 7**" circular datestamp, trace of blue cancel at lower right, Very Fine and choice, with 1992 P.F. certificate ..... 180.00
- 766 **30c Orange (71).** Vibrant color, bold **blue** "**Baltimore Md. Nov. 18**" circular datestamp, Very Fine and choice, with 1992 P.F. certificate ..... 195.00
- 767 **30c Orange (71).** Rich color, cancelled by **dark red** "**Newark N.J. Jul. 4, 1863**" double-circle datestamp, well-balanced margins, Very Fine and choice, the color of the cancelling ink almost looks magenta to us, with 1987 and 1990 P.F. certificates ..... 215.00
- 768 **30c Orange (71).** Vibrant color, well-struck **red New York "Paid" credit datestamp**, Very Fine, with 1992 P.F. certificate as carrier cancel which it is not ..... E. 300-400





769



770



771



772

- 769 **30c Orange (71).** Vivid color nicely complemented by grid cancel, small spot of blue ink on back just shows thru (not noted on certificate), Extremely Fine, with 1989 P.F. certificate..... 180.00
- 770 **30c Orange (71).** Bright early shade contrasted by **red grid** cancel, Very Fine, with 1991 P.F. certificate..... 215.00
- 771 **30c Deep Orange (71 var).** Intense shade and impression, bold **magenta grid** cancel, also part of black cancel, Very Fine and choice, scarce with the magenta cancel, with 1988 and 1989 P.F. certificates..... 325.00
- 772 **30c Orange (71).** Rich color, **two criss-crossing strikes of red grid** cancel creating waffle-iron pattern, fresh and Very Fine, ex Haas, with 1988 and 1991 P.F. certificates. 215.00



774



775



773

- 773 **30c Orange (71).** Pretty shade, tied by **circular grid of tiny squares** cancel on orange piece, the piece with blue boxed "Aachen Franco" datestamp, Extremely Fine, wonderful visual appeal, with 1993 P.F. certificate ..... E. 200-300
- 774 **30c Orange (71).** Vibrant color beautifully complemented by **blue grid** cancel, probably Louisville, Very Fine and choice, ex Koppersmith, with 1986 and 1991 P.F. certificates..... 195.00
- 775 **30c Deep Orange (71 var).** Intense shade, bold target cancel and part of red cancel at top, well-proportioned margins, Extremely Fine, with 1990 and 1991 P.F. certificates.... 260.00
- 776 **30c Orange (71).** Brilliant color nicely complemented by **blue target** cancel, Extremely Fine, with 1988 and 1990 P.F. certificates ..... E. 200-300



776



777



778



779

- 777 **30c Orange (71).** Vivid color, bold **circular grid of squares and lines** cancel, Very Fine and choice, ex Koppersmith, with 1988 and 1992 P.F. certificates .... 180.00
- 778 **30c Orange (71).** Warm shade nicely complemented by **blue circular grid of diamonds** cancel, single pulled perf at right, otherwise Fine, a beautiful cancel ..... 195.00
- 779 **30c Orange (71).** Rich color, perfect strike of **square grid of tiny squares fancy** cancel, small sealed tear at upper left, short perf at right, still Very Fine and very unusual cancel ..... 180.00
- 780 **30c Orange (71).** Vibrant color, neat large **Boston "Paid" grid** cancel, Very Fine and choice, ex Koppersmith, with 1986 and 1991 P.F. certificates .... 200.00



780



781



782



783

- 781 **30c Orange (71).** Intense shade and impression, well-struck **Wells, Fargo & Co. "PAID" in double-line oval** cancel, gently cleaned to lighten manuscript on back, still a Very Fine strike of this cancel, with 1991 P.F. certificate ..... E. 400-500
- 782 **30c Orange (71).** Vivid color, neat **"PAID" in circle** cancel, tiny sealed tear at top center, Very Fine appearance, an attractive stamp ..... 200.00
- 783 **30c Orange (71).** Rich color, well-struck **red "PAID 30" in circle** cancel (Skinner-Eno PM-PNz 1), additional red cancel at lower left, small corner crease at bottom right, small thin spot and pinhole not mentioned on accompanying certificate, still a Very Fine strike, the "PAID 30" cancel is rare and especially desirable struck on a 30c stamp, with 1991 P.F. certificate..... E. 400-500



784



- 784 **30c Orange (71).** Bright shade, phenomenal centering with wide margins, tied by **red segmented cork** and matching "New York Paid 24 Mar. 1" credit datestamp, also tied by **Wells, Fargo & Co. blue "THROUGH" straightline** handstamp, on piece, the piece with red boxed "P.D." handstamp, Extremely Fine Gem, a superb piece, with 1991 P.F. certificate as on cover to Paris, France..... E. 400-500



785



786



787

- 785 **30c Orange (71).** Rich color, **blue Wells, Fargo and Co. double-circle datestamp**, vertical crease and horizontal crease ending in tear at right, otherwise Fine, with 1991 P.F. certificate..... E. 200-300

- 786 **30c Orange (71).** Intense color, **red "Supplementary Mail" Type A** cancel, small corner crease at top left, small tear at bottom right, Very Fine appearance, scarce cancel, with 1992 P.F. certificate ..... 255.00

- 787 **30c Orange (71).** Brilliant color, **red "New York Supplementary Mail" Type D** circular datestamp, accompanying certificate notes repaired perf at bottom which has since been removed leaving one short perf, still Fine, rare with the Supplementary Mail Type D cancel, this marking is recorded on covers dated in 1873-74, but the existence of 1861 Issue stamps with this datestamp indicate earlier use (or late use of the stamps), ex Koppersmith, with 1980 P.F. certificate, this cancel is listed but unpriced in Scott ..... E. 300-400

- 788 **30c Orange (71).** Rich color, neat **New York "Steamship"** circular datestamp, Fine, with 1997 P.F. certificate..... E. 200-300

- 789 **30c Orange (71).** Intense shade, octagonal datestamp and **blue "Dead Letter Office"** cancel, Very Fine, a scarce cancel, with 1997 P.F. certificate..... E. 200-300



788



789



- 790 **30c Orange (71).** Radiant color, **magenta “24” credit handstamp** used as a cancel and part of additional cancels, Very Fine and choice, ex Koppersmith, purple backstamp, with 1986 and 1991 P.F. certificates ..... E. 300-400
- 791 **30c Orange (71).** Bright color, cancelled by bold strike of **“HIOGO/JAPAN”** double-circle cancel, bottom right corner repaired, still an Extremely Fine strike of this desirable marking ..... E. 200-300
- 792 **30c Orange (71).** Vivid color, neat strike of **French Anchor in Diamond of Dots** cancel, Very Fine and choice, especially desirable cancelled solely by the French marking, small purple backstamp, with 1991 P.F. certificate ..... E. 200-300
- 793 **30c Orange (71).** Detailed impression, bold **Leaf** cancel and **red London Paid** circular datestamp, fresh and Fine, with 1991 P.F. certificate ..... 215.00
- 794 **30c Orange (71).** Radiant color, **dark blue “Cincinnati O. Apr. 19”** circular datestamp and **blue boxed “Aachen Franco”** datestamp, Very Fine and choice, a beautiful stamp with two distinctly different blue cancels, with 1987 and 1992 P.F. certificates ..... E. 200-300
- 795 **30c Orange (71).** Rich color, light strike of quartered cork cancel, prominent **blue “AMERICA/UBER BREMEN/Franco”** three-line handstamp, Fine ..... E. 200-300
- 796 **30c Orange (71).** Bright color, circle of wedges and **blue “Reccomandirt” registered cancel**, few faults not readily apparent, Very Fine appearance ..... E. 150-200
- 797 **30c Orange (71).** Rich color, **5-Point Star in Circle** cancel and part of **British “Panama” circular datestamp** at bottom, Very Fine, scarce cancels, with 1987 and 1992 P.F. certificates. E. 300-400
- 798 **30c Orange (71).** Radiant color, quartered cork and **blue Calais transit** circular datestamp, additional red circular datestamp at top, fresh and Very Fine ..... 195.00
- 799 **30c Orange (71).** Bright color, unobtrusive circle of wedges cancel, multiple strikes of **blue octagonal cancels of Calcutta, India**, small tears at bottom right, Very Fine appearance, a startling stamp which stirs the imagination thinking about the cover from which it originated, with 1996 P.F. certificate ..... E. 300-400





800

- 800 **30c Orange (71).** Brilliant color, cancelled by well-struck **Union Soldier's Head fancy cancel** of New York City (Skinner-Eno PH-F 72), Extremely Fine strike of this desirable fancy cancel, the creation and use of this fancy cancel in the Spring of 1866 coincided with the return of soldiers from the Civil War—it is known on at least one domestic cover, but apparently the cancelling device migrated to the foreign-mail exchange office, where it was used to cancel stamps on mail to foreign countries—with 1988 and 1992 P.F. certificates ..... E. 1,000-1,500



801



802



803

- 801 **30c Orange (71).** Brilliant color, well-struck **Bat fancy cancel** of Hingham Mass. (Skinner-Eno PA-Bt 1), Very Fine and choice, a beautiful stamp, ex Koppersmith, with 1988 and 1991 P.F. certificates ..... E. 400-500
- 802 **30c Orange (71).** Vivid color, cancelled by perfect strike of **Masonic Square and Compass fancy cancel** (Skinner-Eno FR-M4a 4), Extremely Fine strike of this beautiful cancel, with 1991 P.F. certificate ..... E. 400-500
- 803 **30c Orange (71).** Pretty shade, well-struck **Shield with Stars and Bars fancy cancel** of Sacramento Cal. (Skinner-Eno PS-ST 43), centered to top left, light vertical crease, small corner creases, still a Very Fine strike of this attractive fancy cancel, with 1995 P.F. certificate..... E. 300-400
- 804 **30c Orange (71).** Intense shade and impression, well-struck **Shield with Stars and Bars fancy cancel** of Dayton O. (Skinner-Eno PS-ST 12), few short perfs, Very Fine strike, with 1997 P.F. certificate ..... E. 400-500
- 805 **30c Orange (71).** Vivid color, cancelled by red circular datestamp and **Rose in Circle fancy cancel** of Amherst Mass. (Skinner-Eno PP-FL 3), small tear and thin spots at top, an Extremely Fine strike of this beautiful and rare fancy cancel, with 1997 P.F. certificate..... E. 500-750



804



805



- 806 **30c Orange (71).** Bright color, gorgeous strike of **Circles Around Circle Geometric fancy cancel** of Stillwater Minn. (Skinner-Eno GE-C 4), tiny perf tear at bottom right corner, Very Fine strike and an unusual cancel..... E. 300-400
- 807 **30c Orange (71).** Rich color, perfect strike of **“Mummers” fraternal fancy cancel** of Philadelphia (Skinner-Eno FR-MNMc 1), Extremely Fine strike of this unusual cancel, mumming involves colorful costumes and folk plays, every year in Philadelphia mummers have a parade on New Year’s day..... E. 300-400
- 808 **30c Orange (71).** Rich color, well-struck **negative “H” in square cancel**, Very Fine and choice, an unusual cancel and a “must have” for anyone with an “H” for an initial, with 1996 P.F. certificate ..... E. 400-500
- 809 **30c Orange (71).** Rich color, neat **Square Cross fancy cancel**, part of circular datestamp, fresh and Very Fine..... E. 200-300
- 810 **30c Orange (71).** Rich color, bold strike of **Christian Cross fancy cancel** struck upside down, trace of red cancel at upper left, reperfed, Very Fine appearance, with 1993 P.S.E. certificate as sound ..... E. 300-400
- 811 **30c Orange (71).** Intense shade and impression, bold **Propeller fancy cancel**, additional red cancel at lower left, well-balanced margins, Very Fine and choice, with 1998 P.F. certificate..... E. 300-400
- 812 **30c Orange (71).** Rich color, tied by perfect strike of **6-Point Solid Star With Hollow Center Circle New York Foreign Mail cancel** on small piece, Extremely Fine strike and a beautiful stamp, with 1998 P.F. certificate ..... E. 400-500
- 813 **30c Orange (71).** Bright color, perfect strike of **elaborate Rosette within Circle of Triangles fancy cancel** of Bridgeport Conn. (Skinner-Eno GE-R 46), Very Fine and choice, small purple backstamp, with 1993 P.F. certificate ..... E. 300-400
- 814 **30c Orange (71).** Vivid color, perfect strike of **hollow 5-Point Star fancy cancel**, Very Fine and choice, with 1990 P.F. certificate..... E. 300-400





- 815 **30c Orange (71).** Rich color, well-struck **Star in Circle of Negative Diamonds New York Foreign Mail** cancel, short perf at upper left not mentioned on accompanying certificate, Very Fine strike, with 1997 P.F. certificate ..... E. 300-400
- 816 **30c Orange (71).** Rich color, bold **hollow 7-Point Star in Heptagon with "C" at Center fancy cancel** (Skinner-Eno GE-H 8), additional red cancel at upper left, small tear at top center, Very Fine appearance, with 1995 P.F. certificate ..... E. 150-200
- 817 **30c Orange (71).** Bright shade, bold **5-Point Star in Circle New York Foreign Mail** cancel, few perf flaws at bottom and left, Very Fine strike..... E. 200-300
- 818 **30c Orange (71).** Vivid color, bold **5-Point Star with Dot at Center fancy cancel**, reattached perf tip at top, Very Fine strike and a pretty stamp ..... E. 150-200
- 819 **30c Orange (71).** Rich color, bold **6-Point Star with Negative Square at Center fancy cancel**, possibly from Mobile Ala., Very Fine and choice, an attractive stamp, with 1993 P.S.E. certificate ..... E. 300-400
- 820 **30c Orange (71).** Vibrant color, well-struck **Small Solid Star Within Large Hollow Star in Circle New York Foreign Mail** cancel, small corner crease at top left, two small sealed tears at bottom, Very Fine appearance, with 1993 P.S.E. certificate ..... E. 200-300
- 821 **30c Orange (71).** Bright color nicely complemented by **blue Pinwheel fancy cancel**, fresh and Very Fine, an attractive stamp ..... E. 200-300
- 822 **30c Orange (71).** Vibrant color nicely complemented by **red 5-Point Solid Star in Circle fancy cancel**, Very Fine and choice, with 1992 P.F. certificate ..... E. 300-400
- 823 **30c Orange (71).** Rich color, well-struck **magenta 5-Point Hollow Star in Circle fancy cancel**, small tear at top right, light corner creases at top right and bottom right, otherwise Very Fine, scarce fancy cancel struck in magenta ink ..... E. 200-300



824



825



826



827

- 824 **30c Orange (71)**. Rich color, cancelled by unusual **quartered hollow crossroads New York Foreign Mail** cancel (Skinner-Eno CR-X 16), wide and balanced margins, Extremely Fine, ex Koppersmith, with 1989 and 1992 P.F. certificates ..... E. 300-400
- 825 **30c Orange (71)**. Rich color on bright paper, well-struck **Pinwheel of 6 Spokes fancy cancel** (Skinner-Eno GE-P 70), Very Fine and choice, a stamp with wonderful visual appeal, with 1988 and 1990 P.F. certificates..... E. 300-400
- 826 **30c Orange (71)**. Vibrant color, cancelled by well-struck **elaborate Geometric fancy cancel** of New York City (Skinner-Eno GE-E 33), Very Fine and choice, a phenomenal strike of this very unusual and elaborate geometric cancel, with 1997 P.F. certificate.... E. 500-750
- 827 **30c Orange (71)**. Rich color, bold **Circle of Thin V's** cancel, Very Fine and choice, with 1991 P.F. certificate ..... E. 200-300



828



829



830

- 828 **30c Orange (71)**. Bright color, neat **5-Spoke Radial** cancel, Very Fine and choice, with 1988 P.F. certificate .. E. 150-200
- 829 **30c Orange (71)**. Rich color, well-struck **Sawtooth target cancel** of New York City (Skinner-Eno GE-P 57), fresh and Very Fine, with 1992 P.F. certificate ..... E. 200-300
- 830 **30c Orange (71)**. Horizontal pair, mostly separated prior to use, used with **3c Rose (65)**, tied by bold **Hollow "Parentheses" fancy cancel** (Skinner-Eno SD-M 11) struck twice on small blue piece, few lightly toned perf tips not mentioned on accompanying certificate, Very Fine and attractive piece, with 1993 P.F. certificate ..... E. 500-750
- 831 **30c Orange (71)**. Radiant color, well-struck **Four Wedges in Segmented Circle** cancel, additional red cancel at lower left, few short perfs at left, Very Fine strike ..... E. 200-300



831





832



833



834

- 832 **30c Orange (71).** Detailed impression, bold strike of **negative "X" in Square** fancy cancel of Charlottesville Va. (Skinner-Eno GE-C 167), tiny thin spot at bottom right, Very Fine appearance ..... E. 150-200
- 833 **30c Orange (71).** Horizontal pair radiant color, bold **Circular Patent** cancel of Buffalo N.Y. (Skinner-Eno PN-F 20), few minor perf separations at top, patent cancel breaks paper fibers (as intended), Very Fine and attractive pair ..... E. 300-400
- 834 **30c Orange (71).** Horizontal pair, vivid color on bright paper, near "July 2, 1864" manuscript cancels, Very Fine and choice, scarce with the manuscript cancels (almost certainly a revenue use)..... 400.00
- 835 **30c Orange (71).** Vertical pair, bright color, neat San Francisco cogwheel cancel and part of red transit circular datestamp at left, bottom stamp two small internal tears at bottom left, Very Fine appearance, ex Newbury and Koppersmith, with 1988 and 1991 P.F. certificates ..... 470.00



835



836

- 836 **30c Orange (71).** Horizontal strip of four, rich color, cancelled by unusual **4-ring segmented target** cancels, few minor perf separations at top center, right stamp small corner crease at bottom right, Very Fine, scarce strip of four representing \$1.20 in postage, a block of four catalogues \$2,500.00, Scott Retail as two pairs ..... 800.00

## 1861 90-CENT BLUE

- 837 **90c Blue (72).** Radiant color, wide margins all around, face-free circle of wedges cancels, Extremely Fine Gem, an attractive stamp, with 1989 P.F. certificate..... 600.00



837



838

- 838 **90c Dark Blue (72a).** Deep rich color and detailed impression, wide margins, bold strike of **Cogwheel fancy cancel** of New York City (Skinner-Eno GE-P 39a), trace of red cancel at lower left, Extremely Fine, a beautiful stamp, the 90c is difficult to find with anything approaching a fancy cancel, with 1998 P.S.E. certificate as No. 72..... 600.00

- 839 **90c Blue (72).** Bright color and crisp paper nicely complemented by **red New York grid** cancel, well-balanced margins, Extremely Fine, a breathtakingly beautiful stamp, with 1991 P.F. certificate ..... 725.00



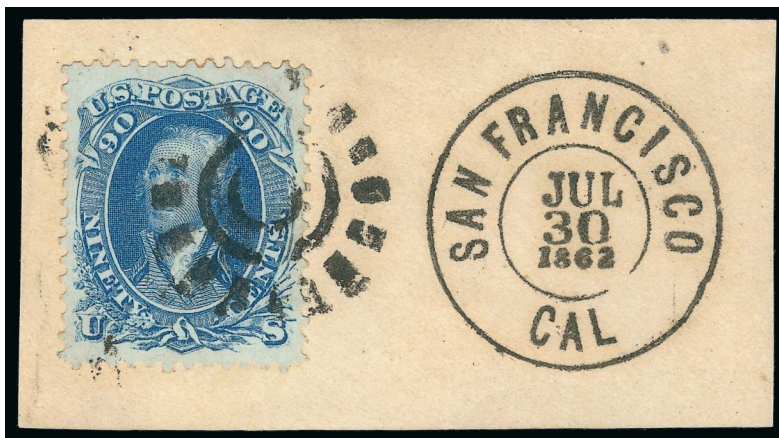
839



840

- 840 **90c Pale Blue (72a).** Radiant color nicely complemented by **red circle of wedges** cancel, Very Fine and choice, this well-centered stamp with a bright red cancel is one of the most attractive we have encountered, pencil "A.D." (A. Diena) initials on back, with 1991 P.F. certificate..... 775.00





841

- 841 **90c Pale Blue (72a).** Brilliant color, gorgeous centering, tied by cogwheel cancel on piece, "San Francisco Cal. Jul. 30, 1862" double-circle datestamp, Extremely Fine Gem, with 1992 P.F. certificate as No. 72..... 600.00

- 842 **90c Blue (72).** Rich color and proof-like impression, neat "PAID" in lozenge cancel, Very Fine and choice, with 1994 P.F. certificate ..... 625.00



842



843

- 843 **90c Dark Blue (72b).** Deep rich color and proof-like impression on bright paper, San Francisco cogwheel cancel, well-balanced margins, Very Fine and choice example of this desirable shade, with 1989 P.F. certificate ..... 600.00

- 844 **90c Pale Blue (72a).** Brilliant color, neat 5-Point Solid Star fancy cancel, centered to bottom, Fine, scarce with a fancy cancel..... 600.00



844



845

- 845 **90c Pale Blue (72a).** Rich color, Negative Star of David in Circle fancy cancel of New Haven Conn., repaired at bottom right, but Fine appearance and a perfectly exhibitable example of the 90c with New Haven Star of David fancy cancel.. 600.00

## 1862 5-CENT RED BROWN

- 846 **5c Red Brown (75).** Perfect centering, gorgeous rich fiery color nicely complemented by **red grid** cancel, Extremely Fine Gem, a magnificent stamp, with 1989 P.F. certificate ... 535.00



846



847

- 847 **5c Red Brown (75).** Intense shade on bright paper, bold strike of 11-bar closed grid cancel of San Francisco and **red "P.D."** handstamp, wide margins, Extremely Fine, ex Newbury and Koppersmith, with 1986 and 1991 P.F. certificates..... 535.00

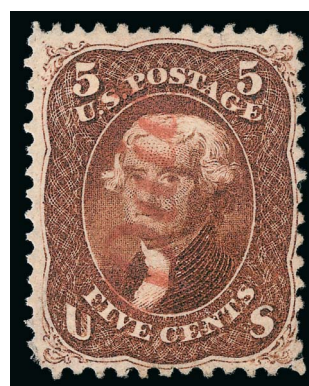


848

- 848 **5c Red Brown (75).** Warm shade, well-balanced margins, neat strike of 9-bar open grid cancel, Very Fine and choice, with 1987 and 1991 P.F. certificates..... 475.00



849



850

- 849 **5c Red Brown (75).** Horizontal pair partly separated and used on piece, incredible fiery red shade (the richest and most vibrant natural Red Brown we have encountered), tied by unusual segmented cork cancel, left stamp small tear at top, still Very Fine and spectacular, with 1988 P.F. certificate..... 950.00
- 850 **5c Red Brown (75).** Warm shade, **red "Paid" in script** cancel, small thin spot at bottom right, small tears at top left and bottom right, Fine appearance, the use of the script "Paid" marking is exceedingly rare, with 1995 P.F. certificate describing cancel as script . 560.00



## 1863 5-CENT BROWN



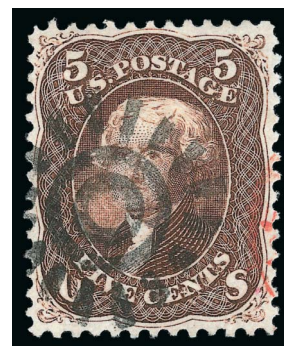
851



852



853



854

- 851 **5c Brown (76).** Perfectly centered, crisp shade and proof-like impression on bright paper, **blue target** cancel, Extremely Fine, ex Jennings, with 1991 P.F. certificate ..... 135.00
- 852 **5c Dark Brown (76a).** Intense shade and impression, two neat strikes of target cancel, Extremely Fine, a pretty example of the Dark Brown shade, with 1988 and 1989 P.F. certificates ..... 160.00
- 853 **5c Dark Brown (76a).** Rich color and proof-like impression on bright paper, bold strike of San Francisco cogwheel cancel, Extremely Fine, with 1991 P.F. certificate ..... 160.00
- 854 **5c Brown (76).** Bright shade, neat strike of San Francisco cogwheel cancel and part of red circular datestamp at right, Extremely Fine, ex Koppersmith, with 1986 and 1991 P.F. certificates ..... 170.00



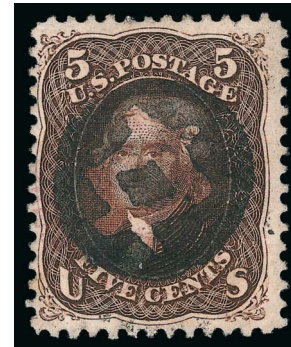
855



856



857



858

- 855 **5c Brown (76).** Rich color, crisp impression, bold strikes of **dark green cork** cancels, Very Fine, the 5c 1861-63 Issue is exceedingly rare with a green cancel, this is a true green (not bluish green) and it is the first we have offered since keeping computerized records, with 1991 P.F. certificate ..... 870.00
- 856 **5c Brown (76).** Rich color, detailed impression, bold strike of "**L**" **fancy cancel** of Litchfield Conn., Extremely Fine, a wonderful stamp, with 1987 P.F. certificate ..... E. 200-300
- 857 **5c Brown (76).** Rich color, cancelled by full clear strike of **New York Union Soldier's Head fancy cancel** (Skinner-Eno PH-F 73), centered slightly to right, Very Fine strike of this rare fancy cancel, this is the first we have offered on the 5c since keeping computerized records, the cancelling device made it way into the foreign-mail exchange office where it was used to cancel mail sent to foreign countries, the 5c stamp was not used as often as some other denominations to foreign destinations and so this is a true rarity, with 1997 P.F. certificate ..... E. 750-1,000
- 858 **5c Brown (76).** Rich color, bold strike of **negative Masonic Square and Compass fancy cancel** (Skinner-Eno FR-M3b 49), Extremely Fine strike of this scarce fancy cancel, with 1991 P.F. certificate ..... E. 300-400



- 859 **5c Brown (76).** Rich color on bright paper, bold strike of blue “Cincinnati O. Dec. 3” circular datestamp, Very Fine and choice, with 1989 and 1990 P.F. certificates.... 135.00
- 860 **5c Brown (76).** Rich color, **left straddle-pane margin** showing part of stamp in adjacent pane, bold strike of circle of wedges cancel, Extremely Fine, with 1986 P.F. certificate ..... 120.00
- 861 **5c Brown (76).** Rich color, **left interpane margin with guideline**, bold strike of San Francisco 11-bar grid in circle cancel, Very Fine, with 1992 P.F. certificate ..... 120.00
- 862 **5c Brown (76).** Rich color and detailed impression, bold strike of “PAID” straightline cancel, tiny tear at bottom left, small pressed-out diagonal crease at top left, Very Fine appearance, with 1996 P.F. certificate ..... 135.00
- 863 **5c Brown (76).** Rich color, neat strike of “PAID” in circle cancel and also blue boxed “Aachen Franco” datestamp at top, additional red cancel at upper right, reperfed at left, appears Very Fine, a beautiful stamp ..... 150.00
- 864 **5c Brown (76).** Vertical pair, bright color, multiple strikes of ultramarine target cancels, top stamp small tear at top right, bottom stamp nibbed perf at left, Fine appearance, rare with the ultramarine cancels, with 1994 P.F. certificate ..... E. 300-400

## 1866 15-CENT BLACK

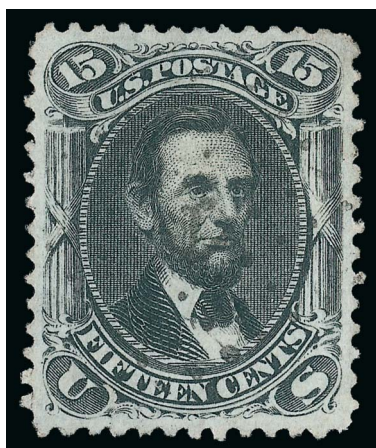


- 865 **15c Black (77).** Bright shade nicely complemented by blue 16-wedge geometric cancel and also red cancel at left, Very Fine and choice, a beautiful example of the 15c 1866 Issue, ex Koppersmith, with 1988 and 1991 P.F. certificates ..... 240.00
- 866 **15c Black (77).** Gorgeous centering with wide and balanced margins, quartered cork and brown New York “Paid” credit datestamp, Extremely Fine, a beautiful stamp, the “brown” ink is a mix of black and red at the New York exchange office where both were used, with 1987 and 1991 P.F. certificates, the former as on cover (cover accompanies) .... E. 200-300





867

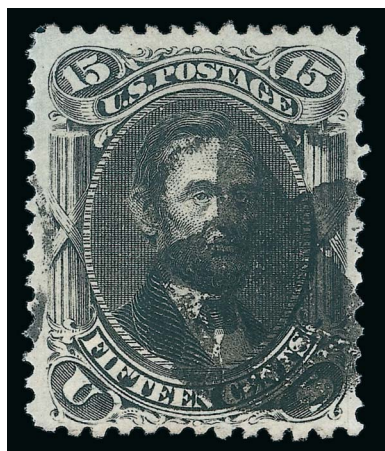


868

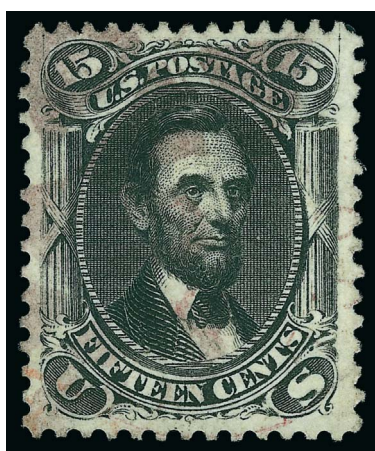


869

- 867 **15c Black (77).** Extra wide margins, cork cancel and **red** New York exchange circular datestamp, Extremely Fine, with 1989 and 1991 P.F. certificates ..... 225.00
- 868 **15c Black (77).** Bright shade, balanced margins, **cancelled solely by French Anchor in Diamond of Dots** cancel, Extremely Fine, a beautiful stamp, with 1989 and 1991 P.F. certificates, Scott Retail with no premium for the French cancel..... E. 200-300
- 869 **15c Black (77).** Well-proportioned margins, bright shade, neat **Cross in Circle** fancy cancel, fresh and Extremely Fine, with 1988 P.F. certificate ..... E. 300-400



870



871



872

- 870 **15c Black (77).** Bold strike of **Solid 5-Point Star in Circle** fancy cancel, Very Fine and choice, with 1994 P.F. certificate ..... E. 300-400
- 871 **15c Black (77).** Wide margins, intense shade, **magenta** cork cancel, Extremely Fine, scarce with the magenta cancel, with 1994 P.S.E. certificate..... 325.00
- 872 **15c Black (77).** Proof-like impression, segmented grid, **red** circular datestamp and trace of **blue** cancel at upper right, Very Fine and choice, with 1991 P.F. certificate .... 225.00





- 873 **15c Black (77)**. Intense shade, quartered cork and **orange circular datestamp**, Very Fine, with 1987 and 1992 P.F. certificates..... 225.00
- 874 **15c Black (77)**. Detailed impression, **blue target** cancel, Very Fine and choice, with 1986 and 1989 P.F. certificates..... 195.00
- 875 **15c Black (77)**. Crisp impression, bold **blue target** cancel and part of red circular datestamp, Very Fine and choice, with 1987 and 1989 P.F. certificates ..... 195.00
- 876 **15c Black (77)**. Intense shade on bright paper, well-struck **radial geometric** with multiple spokes, tiny thin speck at top left, Very Fine strike and an unusual cancel..... 180.00
- 877 **15c Black (77)**. Intense shade and impression, cork cancel and **red boxed "Hamburg Franco"** datestamp, small filled thin at top left, Very Fine appearance, with 1992 P.F. certificate..... E. 200-300
- 878 **15c Black (77)**. Horizontal strip of three, detailed impression on bright paper, large grid cancel and **red New York "Paid"** credit datestamp, Very Fine and choice, ex Hessel and Koppersmith, with 1989 and 1991 P.F. certificates ..... 695.00

## 1863 24-CENT LILAC SHADES



- 879 **24c Lilac (78)**. Brilliant color, Jumbo margins, neat strike of **Bat fancy cancel** of Hingham Mass. (Skinner-Eno PA-BT 1), trace of red circular datestamp at left, Extremely Fine, a huge stamp, with 1990 P.F. certificate ..... E. 400-500
- 880 **24c Grayish Lilac (78a)**. Horizontal pair, brilliant color, each with perfect strike of **Bat fancy cancel** of Hingham Mass. (Skinner-Eno PA-BT 1), Very Fine and choice, a gorgeous pair, with 1987 and 1992 P.F. certificates, the former as Scott 70a ..... E. 750-1,000





881

- 881 **24c Lilac (78).** Rich color nicely complemented by **Blue Bird fancy cancel** of Rockford Ill. (Skinner-Eno PA-B 18), Very Fine and choice, we have offered only a half-dozen unduplicated examples of this cancel since keeping computerized records but always on 3c stamps, this use on a 24c stamp is a phenomenal rarity, with 1995 P.F. certificate ..... E. 500-750

- 882 **24c Grayish Lilac (78a).** Wide margins, rich color, cancelled by perfect strike of **Horse Head fancy cancel** of New York City (Skinner-Eno PA-H 13), small diagonal crease at bottom right of little consequence

EXTREMELY FINE STRIKE OF THE HORSE HEAD FANCY CANCELLATION OF NEW YORK CITY.

The Horse Head and Union Soldier's Head cancellations are two of the more famous fancy cancellations to be used in New York City.

With 1997 P.F. certificate..... E. 1,000-1,500



882



883

- 883 **24c Grayish Lilac (78a).** Perfect strike of **Union Soldier's Head fancy cancel** of New York City (Skinner-Eno PH-F 73), Extremely Fine strike of this rare fancy cancel, ex Koppersmith, with 1988 and 1992 P.F. certificates ..... E. 500-750

- 884 **24c Dark Lilac (78 var).** Deep rich color in this distinct subshade, perfect strike of **Star and Rays fancy cancel** of Westborough Mass. (Skinner-Eno ST E 18a), Very Fine and choice, a beautiful stamp, with 1991 P.F. certificate.... E. 400-500



884



885

- 885 **24c Lilac (78).** Rich color and proof-like impression, bold **Skull fancy cancel** of Cambridge Mass. (Skinner-Eno PH-M 32), trace of red cancel at upper right, Very Fine strike, extremely rare pictorial fancy cancel on the 24c 1861-63 Issue ..... E. 500-750



- 886 **24c Lilac (78).** Pretty shade, bold large “L” letter fancy cancel of Lockport N.Y., Extremely Fine, a gorgeous stamp, with 1989 P.F. certificate..... E. 400-500
- 887 **24c Lilac (78).** Warm shade, clear strike of hollow 5-Point Star fancy cancel, additional red cancel at lower right, Very Fine and choice, with 1996 P.F. certificate..... E. 300-400
- 888 **24c Lilac (78).** Bright shade, perfect strike of “Paid” Shield with Stars and Stripes fancy cancel of Dedham Mass. (Skinner-Eno PM-PE 4), trace of red cancel at lower left, small corner crease at bottom left, small repairs at right, still an Extremely Fine strike of this attractive fancy cancel and very rare on a high-value stamp, with 1992 P.F. certificate.. E. 300-400
- 889 **24c Grayish Lilac (78a).** Radiant color beautifully complemented by red “PAID” in lozenge cancel, Very Fine strike, a pretty stamp, with 1977 P.F. certificate..... 465.00
- 890 **24c Grayish Lilac (78a).** Rich color, large “PAID” straightline cancel, Very Fine and choice, ex Koppersmith, with 1988 and 1991 P.F. certificates as No. 78..... 440.00
- 891 **24c Lilac (78).** Brilliant color, two clear strikes of red New York American Packet circular datestamp, well-proportioned margins, Very Fine and choice, ex Jennings, with 1991 P.F. certificate..... 375.00
- 892 **24c Lilac (78).** Bright color, clear “PAID” in lozenge cancel with small letters, well-balanced margins, Very Fine, ex Keightley, with 1991 P.F. certificate..... 365.00

- 893 **24c Grayish Lilac (78a).** Well-balanced margins, bright shade, neat strike of green 11-bar grid cancel with part of matching circular datestamp at left, true vivid green ink (not a bluish green), accompanying certificate comments on imaginary “lightened staining” which is simply not the case, tiny corner perf crease at top right not mentioned on certificate, inconsequential considering the rarity of this high-value 1861 Issue with a green cancel

VERY FINE APPEARANCE. AN OUTSTANDING AND EXTREMELY RARE HIGH-VALUE 1861 ISSUE STAMP WITH A TRUE GREEN CANCELLATION.

This is the only example of this shade we have offered with a green cancel since keeping computerized records.

Ex Ishikawa. With 1993 P.F. certificate..... E. 1,000-1,500



893





894

894 **24c Lilac (78).** Rich color, clear strike of **dark green 5-ring target** cancel, a true green ink (not bluish green), small corner creases at bottom right

VERY FINE APPEARANCE. A REMARKABLE EXAMPLE OF THE 24-CENT 1861-63 ISSUE WITH GREEN CANCELLATION.

We have offered only one other (in 1997) since keeping computerized records, and only two in the entire Scott 78 shade family (Lilac, Dark Lilac, Grayish Lilac, Gray or Blackish Violet) are contained in our computerized records.

With 1991 P.F. certificate ..... E. 1,000-1,500



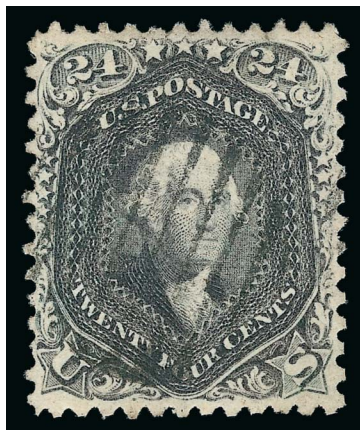
- 895 **24c Lilac (78).** Rich color, choice centering, large **3-bar segmented grid** and **red** circular datestamp, Extremely Fine, with 1997 P.F. certificate ..... 375.00
- 896 **24c Lilac (78).** Radiant color nicely complemented by **blue propeller-style** cancel, Very Fine and choice, ex Koppersmith, with 1988 and 1992 P.F. certificates..... 362.50
- 897 **24c Lilac (78).** Bright shade, socked-on-the-nose **magenta circle of V's** cancel, Very Fine and choice, with 1997 P.F. certificate ..... 440.00
- 898 **24c Lilac (78).** Intense shade and impression nicely complemented by **blue Shield in Circle fancy cancel** of Chicago (Skinner-Eno PS-FC 12), Very Fine strike, with 1990 P.F. certificate..... E. 400-500
- 899 **24c Lilac (78).** Bold strike of **blue Shield fancy cancel** of Memphis Tenn. (Skinner-Eno PS-FC 20), stamp with faults, still a Very Fine strike and very scarce on a high-value 1861 issue..... E. 300-400
- 900 **24c Gray (78b).** Bright color, **blue 6-Point Negative Star fancy cancel** of Louisville Ky. nicely frames Washington's face, tiny corner crease, Very Fine appearance, a stamp with wonderful visual appeal, with 1995 P.F. certificate..... E. 400-500
- 901 **24c Lilac (78).** Rich color, bold **Maltese Cross** cancel, Very Fine and choice, with 1992 P.F. certificate ..... E. 300-400



- 902     **24c Gray (78b).** Radiant color, bold strike of unusual large 4-bar grid in circle cancel, Very Fine and choice, with 1988 P.F. certificate..... 450.00
- 903     **24c Lilac (78).** Rich color, cancelled solely by **red "24" credit** handstamp, couple creased perf tips at top, some slight overall toning, otherwise Very Fine, attractive with the 24c stamp cancelled solely by the "24" cancel..... E. 200-300
- 904     **24c Lilac (78).** Jumbo margins, bright color, bold strike of **quartered cork with negative ornaments** (Skinner-Eno GE-M 15), also part of red circular datestamp at left, light vertical crease at right, Extremely Fine appearance, a very unusual cancel, with 1991 P.F. certificate..... E. 300-400
- 905     **24c Dark Lilac (78 var).** Intense shade and impression, bold **blue target** cancel, well-balanced margins, Very Fine and choice example of this subshade, small purple back-stamp, with 1974 and 1992 P.F. certificates ..... 412.50
- 906     **24c Dark Lilac (78 var).** Deep shade, neat **blue target** cancel, Very Fine and choice example of this subshade, with 1981 and 1992 P.F. certificates..... 412.50
- 907     **24c Gray (78b).** Horizontal pair, deep rich color, neat target cancels and also part of red circular datestamp, well-balanced margins, Extremely Fine, a pretty pair, with 1986 and 1990 P.F. certificates, unlisted in Scott as a multiple, Scott Retail as singles..... 950.00
- 908     **24c Lilac (78).** Horizontal pair, pretty shade, unusual **8-bar triangular grid** cancel, few short perfs at right, otherwise Fine-Very Fine..... 750.00



## 1863 24-CENT BLACKISH VIOLET



909

909      **24c Blackish Violet (78c).** Deep rich color and proof-like impression, well-balanced margins, neat 7-bar grid cancel, three tiny tears at top

VERY FINE APPEARANCE. A SCARCE USED EXAMPLE OF THE 1863 24-CENT BLACKISH VIOLET, WHICH IS ONE OF THE MOST DIFFICULT SHADES OF THE 1861-66 SERIES TO OBTAIN IN ANY CONDITION.

Our census of Scott 78c, available at our website at <http://www.siegelauctions.com/dynamic/census/78c/78c.pdf>, records a total of 36 used examples of this issue, of which only 31 have been certified as genuine by the Philatelic Foundation. We also record nine on covers, plus three unused, for a total of 48 potential examples. Several need to be reexamined to confirm the shade.

Census No. 78c-CAN-12. With 1988 and 2014 P.F. certificates..... 22,500.00

## 1868 GRILLED ISSUE



910



911



912

- 910      **2c Black (73).** Bright shade, small manuscript “X” and **British “904” in barred oval** cancels, fresh and Fine, scarce with the British cancel, with 2014 P.F. certificate..... E. 150-200
- 911      **10c Yellow Green, F. Grill (96).** Clearly-defined grill, rich color and proof-like impression, wide margins, **blue circle of wedges** cancel and also part of red circular date stamp at lower right, Very Fine and choice, ex Koppersmith, with 1989 P.F. certificate . 305.00
- 912      **10c Yellow Green, F. Grill (96).** Clear grill points, pretty shade, **dark red Negative Star in Large Star in Circle fancy cancel**, Very Fine strike of this most unusual cancel... E. 200-300



913



914



915

- 913      **12c Black, F. Grill (97).** Three wide margins, bold strike of **Segmented 5-Point Star fancy cancel**, small surface scrape at right center, Very Fine and choice appearance, with 1995 P.F. certificate..... 100.00
- 914      **30c Orange, F. Grill (100).** Rich color, clearly-defined grill, bold **blue framed “PAID”** cancel, tiny thin spot in grill not mentioned on accompanying certificate, Very Fine strike of this pretty cancel, with 1996 P.F. certificate..... 1,025.00
- 915      **30c Orange, F. Grill (100).** Brilliant color, clear grill, partial strike of **“Steamer/P.M.S.S. Co.” Pacific Mail Steam Ship Company** circular cancel, possibly from the *Costa Rica*, Very Fine, a very rare cancel which is also known on the 1869 Pictorial Issue, with 1992 P.F. certificate..... 950.00

END OF SALE — THANK YOU



# Live Internet Bidding at Siegel Auctions

## BIDDING FROM YOUR COMPUTER LETS YOU BE PART OF THE LIVE AUCTION FROM ANYWHERE IN THE WORLD!

There's **NO SUBSTITUTE** for following the auction in real time.  
Live Internet Bidding lets you bid and buy as though you were right there in the saleroom.  
And it's easy.

This step-by-step guide will instruct you how to register, set your browser and use the bidding interface.

Start by following the simple steps to become a registered Live Internet Bidder.  
Once you've been approved for bidding, you can listen to the auction and place bids with the click of a mouse.

### Registering with STAMP AUCTION NETWORK & SIEGEL AUCTION GALLERIES

Live Internet Bidding is managed by Stamp Auction Network (SAN).  
To bid, you must be registered and approved by *both* SAN and Siegel.  
To decide what you need to do, choose the description below that best fits you.



I've already registered with SAN and have been approved by Siegel for internet bidding.

I'm a Siegel client, but I'm not registered with SAN.

Go to [stampauctionnetwork.com/siegel](http://stampauctionnetwork.com/siegel) and click on "Register" at the top. Check the box for Robert A. Siegel Auction Galleries (under "R") and submit the form, indicating you are a Siegel client. Once registered at SAN, you're ready for internet bidding.

I've bid through SAN before, but this is the first time I've bid in a Siegel sale.

Then you just need to be approved by Siegel. Go to [stampauctionnetwork.com/siegel](http://stampauctionnetwork.com/siegel) and click on "Update Registration" at the top. Your SAN account information will be sent to us for approval (you might be asked for other trade references). Once approved by Siegel for bidding, you're ready for internet bidding.

I've never bid with Siegel, nor registered with SAN.

Go to [stampauctionnetwork.com/siegel](http://stampauctionnetwork.com/siegel) and click on "Register" at the top. Check the box for Robert A. Siegel Auction Galleries (under "R") and submit the form **with your trade references** (please, no family members or credit card companies as references). Once registered at SAN and approved by Siegel for bidding, you're ready for internet bidding.

Live Internet Bidding works by allowing registered bidders to observe and place bids.

Live Internet Bidding will work with any browser on both PC and Mac operating systems.

Before bidding by internet for the first time, we recommend finding a sale in progress and listening to the public broadcast or logging in as a registered bidder. This will help you develop a feel for the sale tempo and bidding interface.

### Log on to the auction at [stampauctionnetwork.com/siegel](http://stampauctionnetwork.com/siegel).

You can also log on at [siegelauctions.com](http://siegelauctions.com)

When you're logged on as a Live Internet Bidder, the bidding interface shows a photo and description of the lot, the current bid (and your bidding status), options for placing competitive bids and buttons with bid increments.

- After you click on a bid amount, the auctioneer is immediately notified of your bid.
- Retracting a bid is usually not acceptable, so please bid carefully.
- If you bid and then decide to stop, the "Pass" button will tell the auctioneer you are no longer bidding.
- You can send messages to the auctioneer (for example, a request for extension).
- You can track prior realizations from the bidding screen.



"System Down" or "Lost Connection" events do occasionally happen.

If you have any problems with Live Internet Bidding please call **212-753-6421** for immediate assistance.

# Bid Form—15% Premium Sale

Sale 1074  
Wednesday, June 25, 2014

1

Please provide the following information:

NAME .....

ADDRESS .....

CITY/STATE/ZIP .....

TEL. (DAY) ..... FAX .....

E-MAIL .....

PADDLE #

*Do not write in box*

2

Have you purchased from us in the past 5 years? ☐ YES (if so, please go to Section 3)  
☐ NO (please provide a trade reference and bank information)

References:

Stamp Firm: ..... Telephone .....

Bank: ..... Account # .....

3

In the space provided below, enter the **lot number** from **Sale 1074** and your corresponding bid. Please use **whole dollar amounts** only and enter the **maximum bid** you wish to have us execute on your behalf, according to the **bidding increments** on other side of this form. **Your bid will NOT include the 15% buyer's premium.** We will advance the bidding at one increment over the

next highest bid; therefore, you may be awarded the lot at less than your maximum bid. Please do not use "plus" bids or "buy" bids. If you wish to bid on one lot **or** the other, indicate your "or" bid between lot number/bid entries and bracket your choices. If you wish to place a **bidding limit** on the total amount of your bids, please enter your limit in the space marked "Limit Bids".

## PLEASE NOTE BIDDING INCREMENTS AND SHIPPING CHARGES (ON BACK OF THIS PAGE)

☐ **LIMIT BIDS:** Check this box if you wish to limit the total amount of your bids (not including the **15% buyer's premium**) in this sale. Your bids will be executed until your bidding limit no longer allows for additional bids. **The total amount you wish to bid is:** \$ .....

Lot	Bid	Lot	Bid	Lot	Bid
	\$		\$		\$

4

**AGREEMENT:** By signing this bid form, you agree to pay for purchases resulting from your bids, in accordance with the **Conditions of Sale** printed in the sale catalogue. You also agree to pay the **15% buyer's premium, shipping costs (see reverse), and sales tax or use tax or customs duty which may be due on the total invoiced amount.** It is

understood that these bids will be executed by Siegel Auction Galleries as a courtesy to absentee bidders, but you waive the right to make any claim against the auctioneer or the firm, arising from the these bids. **You are responsible for your written bids, including any errors on your part and any additions or changes to the bids herein.**

**Payment must be made by cash, check, money order or wire transfer. Credit cards (Visa, Mastercard and Discover only) can be accepted as payment but will be subject to a 3% Convenience Fee, which will be added to the total of the entire invoice (including hammer price, buyer's premium, shipping and transit insurance charges and any applicable taxes).**



SIGNED ..... TODAY'S DATE .....

5

Please submit your bids promptly (telephone bids must be confirmed in writing).

**Mail to: Robert A. Siegel Auction Galleries, Inc.**

**60 E. 56th Street, 4th Floor, New York, N.Y. 10022**  
**Telephone (212) 753-6421**

**OR FAX YOUR BIDS: (212) 753-6429**

**Shipping Instructions, Bidding Increments and space for additional bids on other side of form**





## Additional Bids

Sale 1074—June 25, 2014

Lot	Bid	Lot	Bid	Lot	Bid
	\$		\$		\$

## Shipping and Transit Insurance

We will be pleased to arrange for shipping and transit insurance for purchases in this sale (except those described as “floor sale only”). To expedite billing and delivery of lots to hundreds of buyers per sale, we use standard charges for postage and insurance, based on the package weight and mailing requirements (see schedule). The standard charges are sometimes slightly more or less than the actual postage or Fedex fees, but we do not include any charge for our labor or packing costs. Therefore, we ask all buyers to remit the prescribed amount for shipping charges.

Transit insurance is provided in all cases, except when the buyer has furnished us with proof that insurance coverage is effective under another policy. Proof, in such cases, will be accepted in the form of a written certificate from the insurance carrier.

You are responsible for insurance charges, which will be added to your invoice. This coverage is provided for our mutual protection against theft or loss in transit.

## Bidding Increments

The auctioneer may regulate the bidding at his discretion. However, to assist absentee bidders in establishing their maximum bid for each lot, the increments shown at right will be used in most cases. We recommend that written bids conform to these increments (those which do not will be reduced to the next level).

## Current Postage & Insurance Charges

Weight/Class	Shipping Method	Charges
Up to 2 lbs.	Fedex Envelope	\$20.00
Up to 2 lbs.	USPS Envelope	\$20.00
Up to 2 lbs.	USPS Box	\$50.00
Over 2 lbs.	Fedex Box	\$35.00*
Over 2 lbs.	USPS Box	\$50.00*
Non-U.S.	Fedex/Courier	\$50.00**
Bulk Lots		By weight and value
<b>These fees reflect additional Fedex charges for residential delivery, signature and fuel surcharge.</b> <b>*Higher fees will be charged on packages weighing more than 5 lbs. or insured for more than \$75,000.</b> <b>**Buyers are liable for all customs duties and clearance charges. An accurate declaration of value will be made on all import/export documents.</b>		

4/2014

Up to \$50	\$5	\$3,000-7,000	\$250
\$50-200	\$10	\$7,000-20,000	\$500
\$200-500	\$25	\$20,000-30,000	\$1,000
\$500-1,000	\$50	\$30,000-75,000	\$2,500
\$1,000-3,000	\$100	\$75,000 up	\$5,000

4/2014



**PRICES REALIZED FOR SALE 1074---6/25/2014**  
**A Portion of The Wade Saadi "Struck on Stamps" Collection**

Robert A. Siegel Auction Galleries, Inc.  
60 East 56th Street, 4th Floor, New York, NY 10022  
Tel (212) 753-6421 Fax (212) 753-6429

Lot#	Realized	Lot#	Realized	Lot#	Realized	Lot#	Realized	Lot#	Realized	Lot#	Realized	Lot#	Realized	Lot#	Realized
501	600	543	475	585	120	627	1,000	669	1,500	711	170	753	300	795	110
502	1,700	544	500	586	120	628	1,700	670	275	712	550	754	2,100	796	90
503	425	545	3,750	587	200	629	500	671	190	713	300	755	7,000	797	190
504	2,000	546	2,900	588	100	630	650	672	8,000	714	300	756	1,100	798	110
505	1,600	547	2,100	589	90	631	400	673	1,300	715	275	757	8,000	799	180
506	2,000	548	750	590	100	632	300	674	550	716	110	758	2,300	800	2,500
507	500	549	275	591	225	633	200	675	60	717	70	759	2,400	801	1,700
508	1,400	550	2,000	592	2,000	634	200	676	1,200	718	140	760	2,100	802	700
509	1,700	551	5,250	593	100	635	275	677	250	719	110	761	325	803	275
510	1,800	552	850	594	60	636	200	678	500	720	300	762	450	804	200
511	650	553	800	595	150	637	800	679	225	721	100	763	225	805	2,900
512	550	554	800	596	90	638	200	680	80	722	120	764	190	806	250
513	550	555	2,000	597	90	639	1,300	681	500	723	400	765	160	807	225
514	180	556	650	598	160	640	6,250	682	950	724	1,100	766	180	808	550
515	700	557	750	599	170	641	850	683	325	725	2,700	767	350	809	110
516	130	558	850	600	100	642	500	684	50	726	900	768	225	810	180
517	350	559	275	601	375	643	400	685	150	727	650	769	130	811	475
518	900	560	550	602	300	644	425	686	450	728	1,700	770	130	812	425
519	400	561	375	603	550	645	425	687	1,200	729	425	771	300	813	325
520	250	562	2,400	604	150	646	250	688	130	730	200	772	1,000	814	325
521	21,000	563	425	605	650	647	550	689	90	731	110	773	200	815	325
522	1,800	564	1,400	606	600	648	250	690	160	732	475	774	150	816	110
523	4,750	565	475	607	12,500	649	160	691	60	733	375	775	200	817	120
524	1,700	566	275	608	1,200	650	350	692	60	734	450	776	325	818	110
525	1,400	567	550	609	250	651	250	693	50	735	850	777	90	819	140
526	400	568	4,250	610	300	652	225	694	180	736	500	778	110	820	100
527	300	569	450	611	300	653	225	695	750	737	250	779	150	821	110
528	500	570	500	612	160	654	500	696	110	738	400	780	225	822	300
529	200	571	1,600	613	425	655	1,400	697	120	739	160	781	200	823	120
530	150	572	6,500	614	500	656	6,000	698	850	740	130	782	80	824	350
531	150	573	800	615	225	657	2,700	699	700	741	160	783	350	825	375
532	140	574	475	616	250	658	2,000	700	90	742	100	784	450	826	900
533	110	575	850	617	200	659	3,250	701	700	743	1,100	785	110	827	325
534	300	576	250	618	375	660	1,400	702	400	744	180	786	225	828	130
535	170	577	120	619	225	661	950	703	600	745	550	787	160	829	275
536	100	578	100	620	900	662	500	704	275	746	225	788	110	830	1,100
537	110	579	225	621	375	663	375	705	400	747	425	789	110	831	120
538	275	580	400	622	325	664	3,000	706	225	748	550	790	600	832	110
539	325	581	1,200	623	90	665	1,100	707	140	749	450	791	150	833	400
540	300	582	1,500	624	70	666	3,750	708	275	750	250	792	275	834	225
541	450	583	2,100	625	1,100	667	1,300	709	140	751	225	793	100	835	225
542	850	584	350	626	3,625	668	450	710	60	752	200	794	275	836	600



PRICES REALIZED FOR SALE 1074---6/25/2014  
A Portion of The Wade Saadi "Struck on Stamps" Collection

Robert A. Siegel Auction Galleries, Inc.  
60 East 56th Street, 4th Floor, New York, NY 10022  
Tel (212) 753-6421 Fax (212) 753-6429

Lot#	Realized	Lot#	Realized
837	3,500	879	2,800
838	1,800	880	3,250
839	2,300	881	1,700
840	950	882	5,500
841	3,000	883	3,500
842	800	884	1,300
843	1,800	885	375
844	350	886	600
845	300	887	475
846	2,700	888	300
847	750	889	800
848	300	890	350
849	300	891	475
850	350	892	1,600
851	550	893	1,100
852	550	894	750
853	950	895	225
854	120	896	250
855	550	897	700
856	1,500	898	275
857	700	899	140
858	1,500	900	1,900
859	170	901	150
860	120	902	160
861	60	903	120
862	90	904	225
863	80	905	325
864	180	906	850
865	600	907	400
866	350	908	250
867	300	909	4,500
868	1,000	910	110
869	550	911	225
870	325	912	120
871	400	913	90
872	250	914	375
873	425	915	2,600
874	190		
875	180		
876	120		
877	110		
878	900		