

Sale 1076 • June 26, 2014

The Daniel H. and Marcel V. Collection

BIRDS of the WORLD

I N T E R N A T I O N A L

Robert A. Siegel

IN ASSOCIATION WITH CHARLES F. SHREVE

Sale 1076—Thursday, June 26, 2014

The Daniel H. and Marcel V. Collection of Birds of the World

Live auction to be held at Siegel Auction Galleries,
60 East 56th Street (Park/Madison), 4th Floor, New York City

Lots are sold subject to a 15% buyer's premium and
any applicable sales tax (or customs duty for non-U.S. buyers)

Offered without reserves

Thursday, June 26

Lots 2001-2229 at approximately 4:00 p.m.

immediately following the 2014 Rarities of the World sale

United States incl. Modern Errors.....lots	2001-2014
United States Hunting Permit Singles.....	2015-2040
United States Hunting Permit Blocks.....	2041-2074
United States Other Issues.....	2075-2087

Worldwide (Alphabetically by Country):

Angola thru Chad.....	2088-2097
China.....	2098-2106
Colombia thru Ecuador.....	2107-2117
Ethiopia thru Germany.....	2118-2133
Great Britain thru Greenland.....	2134-2142
Guatemala.....	2143-2160
Hungary thru Korea.....	2161-2174
K.U.T. thru Monaco.....	2175-2187
Netherlands thru St. Pierre & Miquelon.....	2188-2200
San Marino thru Uruguay.....	2201-2211
Western Australia.....	2212-2220
Collection Balances by Region.....	2221-2229



Pre-Sale Viewing:

Monday, June 23, 10am-4pm

Tuesday, June 24, 10am-4pm

Wednesday, June 25, 10am-4pm

Additional viewing available by appointment

I N T E R N A T I O N A L
Robert A. Siegel
IN ASSOCIATION WITH CHARLES F. SHREVE

60 EAST 56TH STREET, 4TH FLOOR, NEW YORK, N.Y. 10022
Phone (212) 753-6421 • Fax (212) 753-6429 • E-mail: stamps@siegelauctions.com

Catalogues, internet bidding, resources, archives and the Siegel Encyclopedia at
siegelauctions.com



60 EAST 56TH STREET, 4TH FLOOR, NEW YORK, N.Y. 10022
 Phone (212) 753-6421 • Fax (212) 753-6429 • E-mail: stamps@siegelauctions.com
siegelauctions.com



Scott R. Trepel
 President
 strepel
@siegelauctions.com



John P. Zuckerman
 Senior Vice President
 jzuckerman
@siegelauctions.com



Corey Long
 Vice President
 clong
@siegelauctions.com



Starr Tucker-Ortega
 Vice President
 stamps
@siegelauctions.com



Laura Melvin Kaplan
 Bids and Inquiries
 laura
@siegelauctions.com



Charles F. Shreve
 Siegel International
 charles
@siegelauctions.com



Chris Anderson
 Siegel International
 chris
@siegelauctions.com



Andrew Titley
 Siegel International
 andrew
@siegelauctions.com

Scott R. Trepel Principal Auctioneer (licensed by NYC Dept. of Consumer Affairs, #795952)

Nathaniel Estes Catalogue and Digital Production

Information for Bidders

Bidding

The following means are available for placing bids:

- 1) **Attending the Live Auction in Person:** All bidders must register for a paddle, and new bidders must provide references at least three business days in advance of the sale.
- 2) **Live Internet Bidding:** Instructions for participating as a Live Internet Bidder are provided on the page opposite.
- 3) **Phone Bidding:** Bidders can be connected to the sale by phone and bid through a member of staff. Requests for phone bidding are subject to approval (please contact our office at least 24 hours before the sale). A signed Bid Form is required.
- 4) **Absentee Bids.** All bids received in advance of the sale, either by mail, fax, phone, e-mail or internet, are Absentee Bids, which instruct the auctioneer to bid up to a specific amount on one or more lots in the sale. Absentee Bids sent by phone, fax or e-mail should arrive at least one hour prior to the start of the sale session. Bids entered through Live Internet Bidding will be visible to the auctioneer during the sale. Written bids should be entered legibly on the Bid Form in the sale catalogue. E-mail and internet bids should be carefully typed and double-checked. All new bidders must provide references. We recommend calling or e-mailing to confirm that Absentee Bids sent by mail, fax or e-mail have been received and entered.

Pre-Sale Viewing

Subject to availability, certain lots (except group lots) can be sent to known clients for examination. Requests must be made no later than 7 days prior to the sale. Lots must be returned on the day received. Postage/insurance costs will be invoiced.

In addition to regular viewing, clients may view lots by appointment. Our staff will be pleased to answer questions or provide additional information about lots.

Expert Certification

Individual items offered without a certificate dated within the past five years may be purchased subject to independent certification of genuineness and our description. **Please refer to the Conditions of Sale and Grading Terms for policies governing certification.**

Shipping and Delivery

Procedures and charges for shipping lots are printed on the back of the Bid Form. **Bidders are responsible for all prescribed shipping charges and any applicable sales tax or customs duties.**

Price Realized

Prices realized are sent with each invoice. Bidders with e-mail will receive a Bid Results report after the sale. Session results are posted immediately to siegelauctions.com

Live Internet Bidding at Siegel Auctions

BIDDING FROM YOUR COMPUTER LETS YOU BE PART OF THE LIVE AUCTION FROM ANYWHERE IN THE WORLD!

There's NO SUBSTITUTE for following the auction in real time.
Live Internet Bidding lets you bid and buy as though you were right there in the saleroom.
And it's easy.

This step-by-step guide will instruct you how to register, set your browser and use the bidding interface.

Start by following the simple steps to become a registered Live Internet Bidder.
Once you've been approved for bidding, you can listen to the auction and place bids with the click of a mouse.

Registering with STAMP AUCTION NETWORK & SIEGEL AUCTION GALLERIES

Live Internet Bidding is managed by Stamp Auction Network (SAN).
To bid, you must be registered and approved by *both* SAN and Siegel.
To decide what you need to do, choose the description below that best fits you.



I've already registered with SAN and have been approved by Siegel for internet bidding.

I'm a Siegel client, but I'm not registered with SAN.

Go to stampauctionnetwork.com/siegel and click on "Register" at the top. Check the box for Robert A. Siegel Auction Galleries (under "R") and submit the form, indicating you are a Siegel client. Once registered at SAN, you're ready for internet bidding.

I've bid through SAN before, but this is the first time I've bid in a Siegel sale.

Then you just need to be approved by Siegel. Go to stampauctionnetwork.com/siegel and click on "Update Registration" at the top. Your SAN account information will be sent to us for approval (you might be asked for other trade references). Once approved by Siegel for bidding, you're ready for internet bidding.

I've never bid with Siegel, nor registered with SAN.

Go to stampauctionnetwork.com/siegel and click on "Register" at the top. Check the box for Robert A. Siegel Auction Galleries (please, no family members or credit card companies as references). Once registered at SAN and approved by Siegel for bidding, you're ready for internet bidding.

Live Internet Bidding works by allowing registered bidders to observe and place bids.

Live Internet Bidding will work with any browser on both PC and Mac operating systems.

Before bidding by internet for the first time, we recommend finding a sale in progress and listening to the public broadcast or logging in as a registered bidder. This will help you develop a feel for the sale tempo and bidding interface.

Log on to the auction at stampauctionnetwork.com/siegel.

You can also log on at siegelauctions.com

When you're logged on as a Live Internet Bidder, the bidding interface shows a photo and description of the lot, the current bid (and your bidding status), options for placing competitive bids and buttons with bid increments.

- After you click on a bid amount, the auctioneer is immediately notified of your bid.
- Retracting a bid is usually not acceptable, so please bid carefully.
- If you bid and then decide to stop, the "Pass" button will tell the auctioneer you are no longer bidding.
- You can send messages to the auctioneer (for example, a request for extension).
- You can track prior realizations from the bidding screen.



"System Down" or "Lost Connection" events do occasionally happen.

If you have any problems with Live Internet Bidding please call **212-753-6421** for immediate assistance.

Conditions of Sale (please read carefully before bidding)

The property described in this catalogue will be offered at public auction by Robert A. Siegel Auction Galleries, Inc. ("Galleries") on behalf of various consignors and itself or affiliated companies. By bidding on any lot, whether directly or by or through an agent, in person, or by telephone, facsimile or any other means, the bidder acknowledges and agrees to all of the following Conditions of Sale.

1. The highest bidder acknowledged by the auctioneer shall be the buyer. The term "final bid" means the last bid acknowledged by the auctioneer, which is normally the highest bid offered. **The purchase price payable by the buyer will be the sum of the final bid and a commission of 15% of the final bid ("buyer's premium"), together with any sales tax, use tax or customs duties due on the sale.**

2. The auctioneer has the right to reject any bid, to advance the bidding at his discretion and, in the event of a dispute between bidders, to determine the successful bidder, to continue the bidding or to reoffer and resell the lot in dispute. The Galleries' record of the final sale shall be conclusive.

3. All bids are per numbered lot in the catalogue unless otherwise announced by the auctioneer at the time of sale. The right is reserved to group two or more lots, to withdraw any lot or lots from the sale, or to act on behalf of the seller. The Galleries will execute bidding instructions on behalf of clients, but will not be responsible for the failure to execute such bids or for any errors in the execution of such bids.

4. **Lots with numbers followed by the symbol ° are offered subject to a confidential minimum bid ("reserve"), below which the lot will not be sold. The absence of the symbol ° means that the lot is offered without a reserve. If there is no reserve, the auctioneer has sole discretion to establish a minimum opening bid and may refuse an offer of less than half of the published estimate. Any lot that does not reach its reserve or opening bid requested by the auctioneer will be announced as "passed" and excluded from the prices realized lists after the sale. The Galleries may have a direct or indirect ownership interest in any or all lots in the sale resulting from an advance of monies or goods-in-trade or a guarantee of minimum net proceeds made by the Galleries to the seller.**

5. Subject to the exclusions listed in 5(A), the Galleries will accept the return of lots which have been misidentified or which have obvious faults that were present when the lot was in the Galleries' custody, but not so noted in the lot description. **All disputed lots must be received by the Galleries intact with the original packing material within 5 days of delivery to the buyer but no later than 30 days from the sale date. (5A) EXCLUSIONS: The following lots may not be returned for any reason: lots containing 10 or more items; lots from buyers who registered for the pre-sale exhibition or received lots by postal viewing, thereby having had the opportunity to inspect them before the sale; any lot described with "faults," "defects" or a specific fault may not be returned because of any secondary fault. Photographed lots may not be returned because of centering, margins, short/nibbed perforations or other factors shown in the illustrations. Lots may not be returned for any of the following reasons: the color of the item does not match the color reproduction in the sale catalogue or website listing; the description contains inaccurate information about the quantity known or reported; or a certification service grades a stamp lower than the grade stated in the description.**

6. Successful bidders, unless they have established credit with the Galleries prior to the sale, must make payment in full before the lots will be delivered. Buyers not known to the Galleries must make payment in full within 3 days from the date of sale. **The Galleries retains the right to demand a cash deposit from anyone prior to bidder registration and/or to demand payment at the time the lot is knocked down to the highest bidder, for any reason whatsoever.** In the event that any buyer refuses or fails to make payment in cash for any lot at the time it is knocked down to him, the auctioneer reserves the right to reoffer the lot immediately for sale to the highest bidder. **Credit cards (Visa, Mastercard and Discover only) can be accepted as payment but will be subject to a 3% Convenience**

Fee, which will be added to the total of the entire invoice (including hammer price, buyer's premium, shipping and transit insurance charges and any applicable taxes).

7. If the purchase price has not been paid within the time limit specified above, nor lots taken up within 7 days from the date of sale, the lots will be resold by whatever means deemed appropriate by the Galleries, and any loss incurred from resale will be charged to the defaulting buyer. Any account more than 30 days in arrears will be subject to a late payment charge of 1½% per month as long as the account remains in arrears. Any expenses incurred in securing payment from delinquent accounts will be charged to the defaulter. A fee of \$250.00 per check will be charged for each check returned for insufficient funds.

8. All lots are sold as genuine. **Any lot accompanied by a certificate issued by The Philatelic Foundation, British Philatelic Association, Royal Philatelic Society of London or any other authority recognized by the A.I.E.P. in a specific area of expertise, and dated within 5 years of the sale date, is sold "as is" and in accordance with the description on the certificate. Such lots may not be returned for any reason, including but not limited to a contrary certificate of opinion.** Buyers who wish to obtain a certificate for any item that does not have a certificate (dated as above) may do so, provided that the following conditions are met: (1) the purchase price must be paid in full, (2) the item must be submitted to an acceptable expertizing committee with a properly executed application form within 21 days of the sale, (3) a copy of the application form must be given to the Galleries, (4) in the event that an adverse opinion is received, the Galleries retain the right to resubmit the item on the buyer's behalf for reconsideration, without time limit or other restrictions, (5) unless written notification to the contrary is received, items submitted for certification will be considered cleared 90 days from the date of sale, and (6) in the event any item is determined to be "not as described", the buyer will be refunded the purchase price and the certification fee up to \$600.00 unless otherwise agreed.

9. Until paid for in full, all lots remain the property of the Galleries on behalf of the seller.

10. Agents executing bids on behalf of clients will be held responsible for all purchases made on behalf of clients unless otherwise arranged prior to the sale.

11. The buyer assumes all risk for delivery of purchased lots and agrees to pay for prescribed shipping costs. Buyers outside the U.S. are responsible for all customs duties.

12. **The bidder consents that any action or proceeding against it may be commenced and maintained in any court within the State of New York or in the United States District Court for the Southern District of New York, that the courts of the State of New York and United States District Court for the Southern District of New York shall have jurisdiction with respect to the subject matter hereof and the person of the bidder. The bidder agrees not to assert any defense to any action or proceeding initiated by Galleries based upon improper venue or inconvenient forum. The bidder agrees that any action brought by the bidder shall be commenced and maintained only in a Federal Court in the United States District Court for the Southern District of New York or the State Court in the county in which Galleries has its principal place of business in New York. The bidder agrees not to use a public conflict resolution service and not to use any form of social media to publish comments or information about the Galleries and its employees which might harm the Galleries' reputation or business. These Terms and Conditions shall be governed by and construed in accordance with the substantive laws of the State of New York.**

SCOTT R. TREPEL, Principal Auctioneer
Auctioneer's License No. 795952
N.Y.C. Department of Consumer Affairs
80 Lafayette Street, New York, N.Y. 10013
Telephone (212) 577-0111

Revised 4/2014

Grades, Abbreviations and Values Used in Descriptions

Grades and Centering

Our descriptions contain detailed information and observations about each item's condition. We have also assigned grades to stamps and covers, which reflect our subjective assessment. For stamps, the margin width, centering and gum are described and graded according to generally-accepted standards (an approximate correlation to numeric grades is provided at right). Although we believe our grades are accurate, they are not always exactly aligned with third-party grading terms or standards for all issues. **A lot may not be returned because a certification service grades a stamp lower than the grade stated in the description. Information from the P.S.E. Stamp Market Quarterly and P.S.E. Population ReportSM is the most current available, but lots may not be returned due to errors or changes in statistics or data.**

Extremely Fine Gem (90-100): The term "Gem" describes condition that is the finest possible for the issue. This term is equivalent to "Superb" used by grading services.







Extremely Fine (80-90): Exceptionally large/wide margins or near perfect centering.

Very Fine (70-85): Normal-size margins for the issue and well-centered with the design a bit closer to one side. "Very Fine and choice" applies to stamps that have desirable traits such as rich color, sharp impression, freshness or clarity of cancel.

Fine (60-70): Smaller than usual margins or noticeably off center. Pre-1890 issues may have the design touched in places.

Very Good (below 60): Attractive appearance, but margins or perforations cut into the design.

Guide to Gum Condition

Gum Categories:	MINT N.H.	ORIGINAL GUM (O.G.)				NO GUM
	 Mint Never Hinged <i>Free from any disturbance</i>	 Lightly Hinged <i>Faint impression of a removed hinge over a small area</i>	 Hinge Mark or Remnant <i>Prominent hinged spot with part or all of the hinge remaining</i>	 Part o.g. <i>Approximately half or more of the gum intact</i>	 Small part o.g. <i>Approximately less than half of the gum intact</i>	 No gum <i>Only if issued with gum</i>
Catalogue Symbol:	★ ★	★	★	★	★	(★)
PRE-1890 ISSUES	<i>Pre-1890 stamps in these categories trade at a premium over Scott value</i>			Scott Value for “O.G.”		Scott “No Gum” Values thru No. 218
1890-1935 ISSUES	Scott “Never Hinged” Values for Nos. 219-771	Scott Value for “O.G.” (Actual value will be affected by the degree of hinging)		Disturbed Original Gum: Gum showing noticeable effects of humidity, climate or hinging over more than half of the gum. The significance of gum disturbance in valuing a stamp in any of the Original Gum categories depends on the degree of disturbance, the rarity and normal gum condition of the issue and other variables affecting quality. For example, stamps issued in tropical climates are expected to have some		
1935 TO DATE	Scott Value for “Unused”					

Covers

Minor nicks, short edge tears, flap tears and slight reduction at one side are normal conditions for 19th century envelopes. Folded letters should be expected to have at least one file fold. Light cleaning of covers and small mends along the edges are accepted forms of conservation. Unusual covers may have a common stamp with a slight crease or tiny tear. **These flaws exist in virtually all 19th century covers and are not always described. They are not grounds for return.**

Catalogue Values and Estimates

Unless otherwise noted, the currently available *Scott Catalogue* values are quoted in dollars with a decimal point. Other catalogues are often used for foreign countries or specialized areas and are referred to by their common name: *Stanley Gibbons* (SG), *Dietz*, *American Air Mail Catalogue* (AAMC), *Michel*, *Zumstein*, *Facit*, etc. Estimates are indicated with an "E." and reflect our conservative valuation in dollars. Reserves will never exceed the low end of the estimate range; they will sometimes exceed Scott Catalogue value for stamps in Extremely Fine condition.

Because of certain pricing inconsistencies in the *Scott Catalogue*—for example, blocks that have no gum, the absence of premiums for Mint N.H. items, etc.—we cannot guarantee the accuracy of values quoted for multiples, specialized items and collection lots. We generally try to be conservative, but buyers may not return a lot because of a discrepancy in catalogue value due to Scott pricing inconsistencies.

Symbols and Abbreviations (see chart above for gum symbols)

⊞	Block	E	Essay	pmk.	Postmark	No.	Scott Catalogue Number
⊞	Cover	P	Proof	cds	Circular Datestamp	hs	Handstamp
FC	Fancy Cancel	TC	Trial Color Proof	var.	Variety	ms.	Manuscript

The Daniel H. and Marcel V. Collection of Birds of the World

Thematic stamp collecting, also known as topical collecting, has long been a great way to introduce people to the hobby. The plethora of topics depicted on stamps — dogs, cars, chess pieces, palm trees, coconuts, birds — virtually guarantees that there will be something of topical interest to any individual.

While collecting topicals is an extremely popular way to approach stamps, for many years it was not regarded as a “serious” method of collecting by many old-school philatelists. Some of the stigma attached to thematic collecting comes from the fact that a large number of stamp issues have been produced by postal authorities to market to collectors, without any other real purpose. Think Disney stamps (although there is an enthusiastic group of “Disneyites” who would vehemently disagree with me).

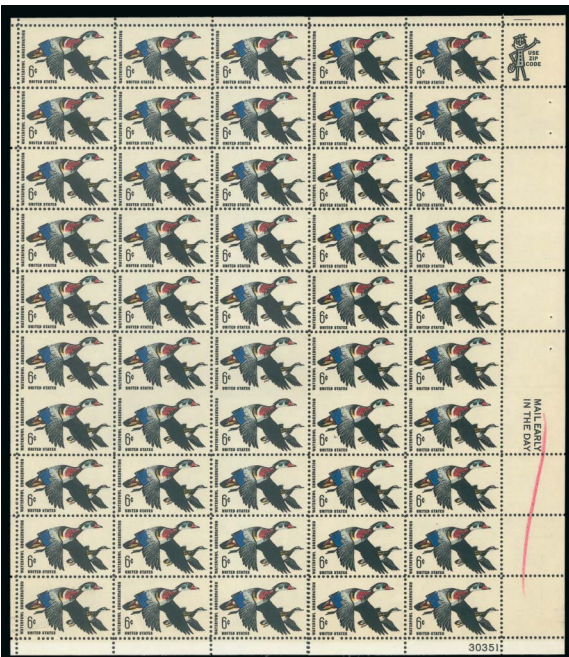
However, in recent years thematic collecting has gained respect and is now embraced as a very serious style of collecting and philatelic study. One significant sign of change is found in international philatelic exhibitions. Thematic exhibits are now among most popular categories, and collectors compete fiercely to win Large Gold and Gold medals.

The really challenging thematic collecting topics are those that encompass more than just beautiful modern issues. Design topics found on classic issues can be extremely scarce and difficult to acquire. One such topic is birds of the world.

Stamps from all corners of the world have long depicted birds, and some are the first postage issues of a particular country. Furthermore, the number of true philatelic rarities that depict birds is surprising. Simply by turning the pages of this catalogue, one will discover the diversity and rarity of philatelic birds.

The Daniel H. and Marcel V. Collection of Birds of the World, formed by two collectors with a passion for all things beautiful, is an excellent example of what can be accomplished by concentrating on a particular topic found on postage stamps. This fascinating collection contains the building blocks of an award-winning exhibit... beautiful stamps, elusive essays and proofs, spectacular errors and philatelic rarities. Whether you collect birds, one country or a specific issue, this flock of rare and unusual philatelic items will certainly have something of interest.

— CHARLES F. SHREVE



2004



2005

AFTERNOON SESSION (LOTS 2001-2229)

THURSDAY, JUNE 26, 2014, AT APPROXIMATELY 4:00 P.M.

THE DANIEL H. AND MARCEL V. COLLECTION
OF BIRDS OF THE WORLD

UNITED STATES

- 2001 ★ **10c Yellow, Re-Issue (127).** Original gum, lightly hinged, well-centered, Very Fine, with 2001 P.F. certificate..... 1,650.00



2001



2002EX

- 2002 TC **30c, 1869 Pictorial, Atlanta Trial Color Plate Proofs on Card (131TC4).** Seven, incl. black, scarlet, brown and blue frames, no duplication of colors, each with large to ample margins, one with light thin, fresh colors, Very Fine(Photo Ex) 2,625.00

- 2003 ★ **30c Blue & Carmine, Re-Issue (131).** Original gum, jumbo margins and outstanding centering, fabulous vivid colors on fresh paper

EXTREMELY FINE ORIGINAL GUM EXAMPLE OF THE 30-CENT 1869 PICTORIAL RE-ISSUE.

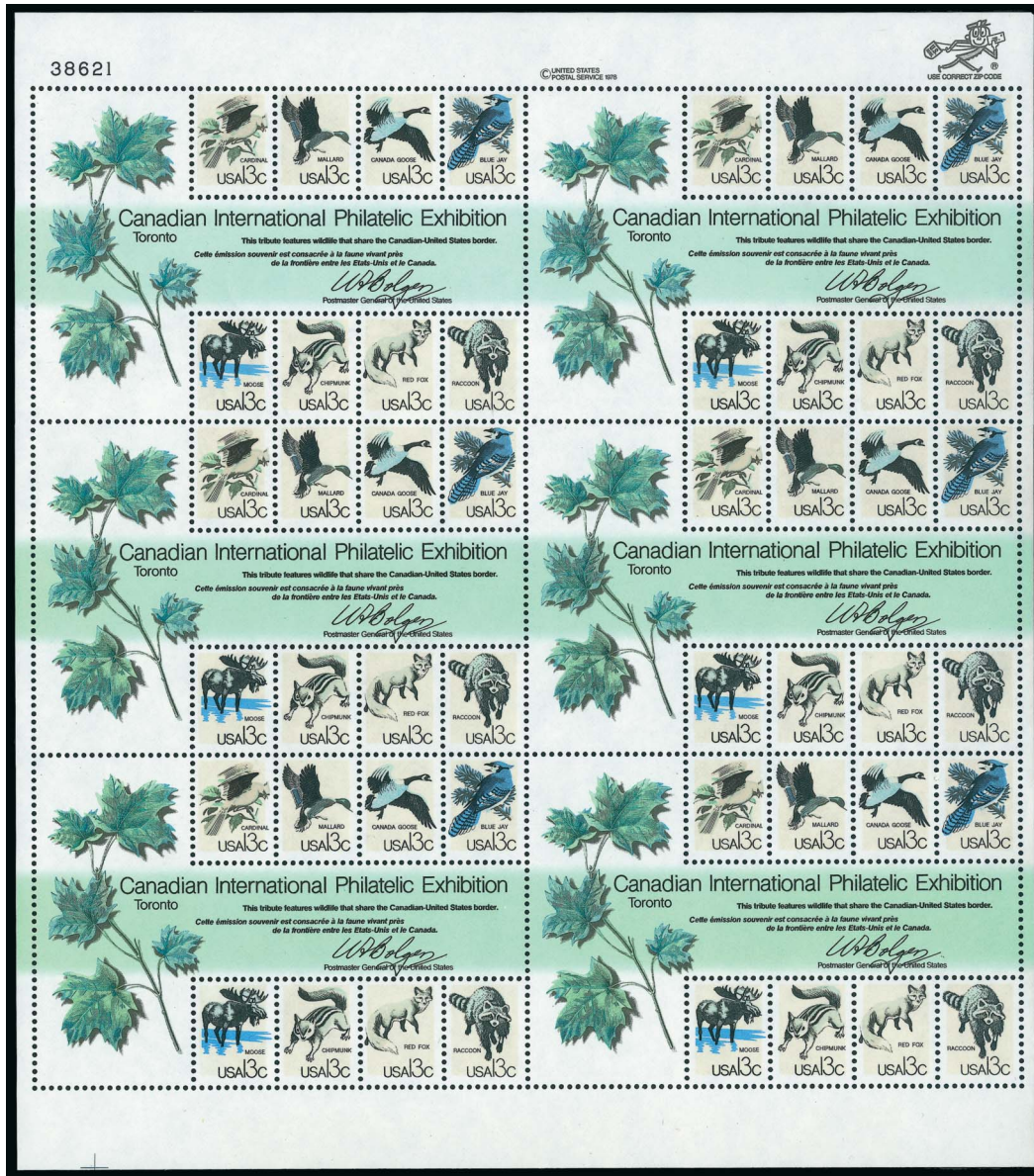
Since 1782, the Bald Eagle has been both the national bird and national animal of the United States. Being a symbolic part of American history, this bird is widely used to represent freedom.

With 1976 P.F. certificate 2,500.00



2003

- 2004 ★★田 **6c Waterfowl Conservation, Imperforate Between (1362a).** Complete bottom right pane of 50 with plate no. 30351 containing **five error pairs**, wonderfully fresh colors, red crayon line in selvage as is often the case (not affecting stamps), Very Fine, an impressive multiple, Scott Retail as five errors with no premium for the multiple..... 1,125.00
- 2005 ★★田 **6c Alabama Statehood, Dramatic Shift (1375 var).** Complete top left pane of 50 with plate no. 31291 with a **dramatic downward shift of the engraved colors** of about 5mm, lithographed colors with correct setting (rose-red and yellow), offset on gum and trivial separation in left selvage mentioned only for accuracy, a Very Fine showpiece and a striking “freak” printing E. 200-300



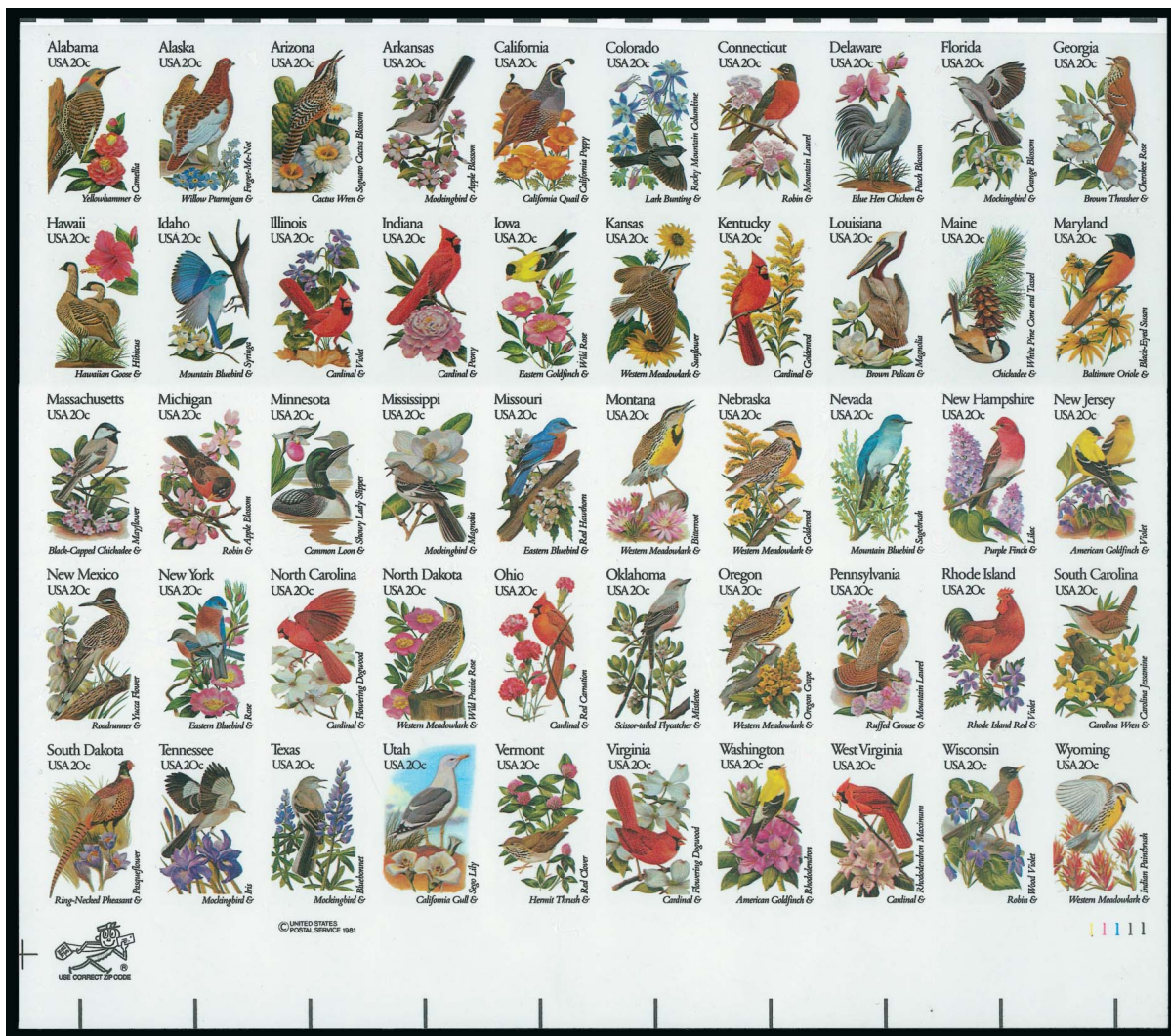
2006

2006 ★★田 13c CAPEX Issue, Yellow, Brown and Red Omitted (1757 var). Entire error sheet comprised of six panes with top left plate no. 38621, wonderfully fresh and pristine, Mint N.H.

EXTREMELY FINE. AN UNLISTED, UNRECORDED AND UNIQUE ERROR IN A COMPLETE SHEET WITH SIX PANES. A VIVID AND STRIKING COLOR OMITTED ERROR.

We have been unable to locate any other example, either as a single pane or complete sheet, with this combination of colors omitted. A rarity of the utmost degree and most deserving of a Scott listing of which we believe will occur at the conclusion of this auction. An opportunity for either a U.S. modern error collector or collector of Bird stamps to acquire this unlisted error which beautifully shows four different birds on each pane (Cardinal, Mallard, Canada Goose and Blue Jay).

With 2014 P.F. certificate..... E. 7,500-10,000



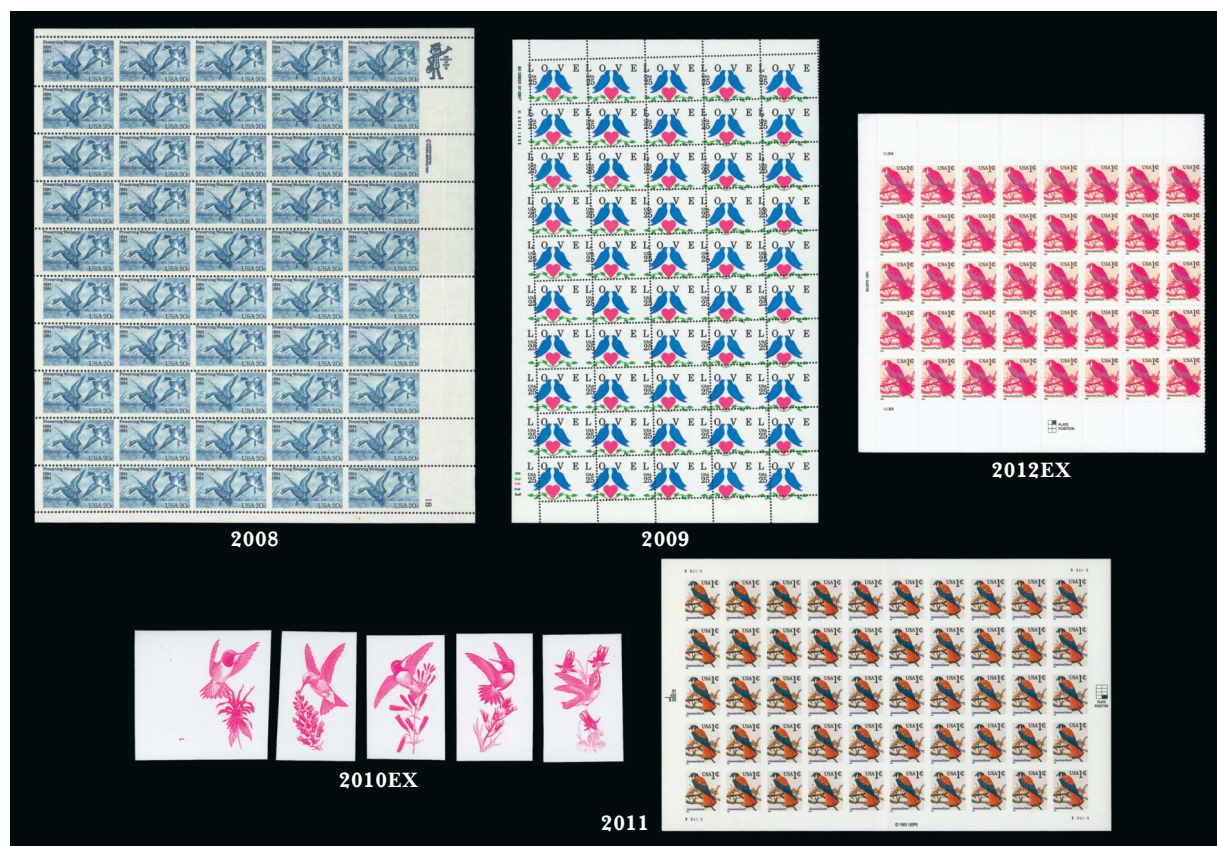
2007

2007 ★★田 20c State Birds and Flowers, Se-Tenant Sheet of 50, Completely Imperforate (2002d). Lower right plate no. 11111 pane of fifty, bright colors and incredibly fresh, Mint N.H.

EXTREMELY FINE. BELIEVED TO BE ONE OF TWO KNOWN COMPLETELY IMPERFORATE PANES. ONE OF THE MOST IMPORTANT MODERN ERRORS IN UNITED STATES PHILATELY, NOT TO MENTION A KEY PIECE FOR A BIRDS OF THE WORLD COLLECTION AND ONE OF THE HIGHLIGHTS OF THE MARCEL V. AND DANIEL H. COLLECTION.

This incredible rarity is one of the pinnacle items for both modern error and topical bird collectors as it features each of the 50 State Birds of the United States. The rarity of this sheet should not be underestimated as there were originally only four recorded panes - one of which has blind perforations and another that was inexplicably cut up by an investment firm which leaves two completely imperforate sheets. This particular sheet has only been offered twice before at auction, first in a 1988 Jacques C. Schiff, Jr. auction and once again in a 1997 Shreves Collector's Series Sale. The other known sheet has only been offered once in the 1983 Rarities of the World Sale and has yet to re-surface in the marketplace since.

No other examples have been found since 1989, therefore it is highly unlikely others will surface at this late date. It should then be assumed that the catalogue value listed for this item has little significance to its true potential value..... 27,500.00



2008 ★★田 **20c Waterfowl Preservation Act, Imperforate Vertically (2092a).** Complete lower right plate no. 18 pane of fifty, fresh color, Mint N.H.

VERY FINE. AN INCREDIBLY RARE AND MOST LIKELY UNIQUE COMPLETE PANE OF 50 OF THIS MODERN ERROR.

The Mallard duck design used on this stamp was adapted from the artwork by Jay N. "Ding" Darling that was used on the first issued Federal Hunting Permit Stamp in 1934 (No. RW1).

Datz notes that only 100-125 pairs of this error is known. Therefore, this pane of 50 alone comprises about 20% of the known examples of this error. Datz value for horizontal pairs and strips of three 7,500.00

2009 ★★田 **25c Love Issue, Dramatic Perforation Misalignment (2440 var).** Complete bottom left pane of 50 with plate no. U3223 with gradually **dramatic perforation misalignment**, Mint N.H., Very Fine E. 150-200

2010 P **29c Hummingbirds, Booklet Pane Different Color Proofs (2646aPb-i).** Booklets panes of five cut into singles, represents each of the seven colors used to print this issue separately incl. yellow, magenta, blue, brown (birds only), brown ("USA/29" only), green (frames), and orange (frames), also with the finished design as issued, only missing one blank frame, Mint N.H., Very Fine and scarce, Scott Retail as booklet panes **(Photo Ex)** 3,600.00

2011 ★★田 **1c American Kestrel, Die Cutting Omitted (3031Ab).** Complete pane of 50 with plate no. B555555 in each corner, "post office" fresh condition

EXTREMELY FINE. THE UNIQUE DIE CUT OMITTED PANE OF 50 OF THE 2000 1-CENT AMERICAN KESTREL. NO OTHER EXAMPLES HAVE BEEN FOUND TO DATE.

Another major modern error rarity of the highest degree. This complete pane comprises of all the known examples as only this single pane has been recorded since being issued in 2000. After the passage of 14 years, it is unlikely another example will surface.

This is a key item to both modern error collectors as well as bird collectors. The American Kestrel, often called the Sparrow Hawk, is the smallest and most commonly found falcon in North America. E. 3,000-4,000

2012 ★★田 **1c American Kestrel, Light Ink Applications (3031 var).** Two partial panes of 40, one having a very light application of yellow, cyan and black leaving the partial pane a very vivid magenta color, the other with a light application of yellow leaving the birds feathers a very vivid magenta color, Mint N.H., Very Fine, accompanied by a normal partial pane of 40, a very striking and noticeable pair, each with 2009 P.F. certificates for the complete pane..... **(Photo Ex)** E. 2,000-3,000



- 2013 ★★ **6c Dark Blue & Carmine, Vertical Pair, Imperforate Horizontally (C23a).** Mint N.H. pair, incredibly well-centered, rich colors and unusually fresh, Extremely Fine, with 1996 P.F. certificate..... 300.00
- 2014 ★★田 **10c Ultramarine, Registration (F1).** Mint N.H. right imprint, letter "A" and plate no. 5723 block of six, rich color, Fine-Very Fine block..... 2,750.00

HUNTING PERMIT SINGLES

- 2015 ★★ **\$1.00 1934 Hunting Permit (RW1).** Mint N.H., essentially perfect centering with exceptionally wide margins all around, wonderfully fresh color on bright paper

EXTREMELY FINE MINT NEVER-HINGED
EXAMPLE OF THE 1934 \$1.00 HUNTING
PERMIT, WHICH HAS BEEN GRADED SUPERB 98
BY P.S.E.

To date, this is the highest graded example
that we have offered in one of our sales.

With 2005 P.S.E. certificate (Superb 98; SMQ
\$4,800.00). Only three others are graded
higher..... 750.00



2015

- 2016 ★★ **\$1.00 1935 Hunting Permit (RW2).** Mint N.H., brilliant color, detailed impression, wide and balanced margins, Extremely Fine Gem, with 2003 P.S.E. certificate (XF-Superb 95; SMQ \$1,800.00) 750.00
- 2017 ★★ **\$1.00 1936 Hunting Permit (RW3).** Mint N.H. with huge top **plate no. 134318** selvage, wonderfully fresh with proof-like impression, perfectly centered with balanced margins, an Extremely Fine Gem, with 2005 P.S.E. certificate (Superb 98; SMQ \$1,500.00), only two others have graded higher..... 350.00
- 2018 ★★ **\$1.00 1937 Hunting Permit (RW4).** Mint N.H. with exceptionally large top **plate no. 136267** selvage, wonderfully fresh and well-centered, Extremely Fine Gem, with 2005 P.S.E. certificate (XF-Superb 95; SMQ \$900.00) 350.00
- 2019 ★★ **\$1.00 1938 Hunting Permit (RW5).** Mint N.H., beautifully centered, vivid color on fresh paper, Extremely Fine Gem, with 2002 and 2003 P.S.E. certificates (the latter graded XF-Superb 95; SMQ \$1,200.00)..... 425.00



- 2020 ★★ **\$1.00 1939 Hunting Permit (RW6).** Mint N.H., choice centering, rich color and a strong impression, Extremely Fine Gem, ex Dr. Killien, with 2006 P.S.E. certificate (XF-Superb 95; SMQ \$880.00) 250.00
- 2021 ★★ **\$1.00 1940 Hunting Permit (RW7).** Mint N.H., wonderfully well-centered, fresh color, Extremely Fine Gem, with 2006 P.F. certificate (XF-Superb 95) and 2006 P.S.E. certificate (XF-Superb 95; SMQ \$575.00)..... 225.00
- 2022 ★★ **\$1.00 1941 Hunting Permit (RW8).** Mint N.H. and with top **plate no. 146282** selva, perfectly centered, fresh color and a strong impression, Extremely Fine Gem, with 2007 P.S.E. certificate (Superb 98; SMQ \$1,200.00), only two examples have graded higher 225.00
- 2023 ★★ **\$1.00 1942 Hunting Permit (RW9).** Mint N.H. with top **plate no. F149600** selva, strong color, crisp impression on fresh paper, choice centering, Extremely Fine Gem, with 2006 P.S.E. certificate (XF-Superb 95; SMQ \$900.00) 225.00
- 2024 ★★ **\$1.00 1943 Hunting Permit (RW10).** Mint N.H. with bottom **plate no. 152826** selva, vibrant color and perfect centering, Extremely Fine Gem, with 2006 P.S.E. certificate (Superb 98; SMQ \$750.00), only one example has graded higher..... 125.00
- 2025 ★★ **\$1.00 1944 Hunting Permit (RW11).** Mint N.H., wonderfully fresh color, fabulous centering, strong impression, Extremely Fine Gem, with 2004 P.S.E. certificate (XF-Superb 95; SMQ \$600.00) 140.00
- 2026 ★★ **\$1.00 1947 Hunting Permit (RW14).** Mint N.H., bright shade, perfectly centered, Extremely Fine Gem, ex Dr. Killien, with 2006 P.S.E. certificate (Superb 98; SMQ \$475.00), only two examples have graded higher 60.00
- 2027 ★★ **\$2.00 1951 Hunting Permit (RW18).** Mint N.H., perfectly centered with balanced margins, strong impression, Extremely Fine Gem, with 2005 P.S.E. certificate (Superb 98; SMQ \$450.00)..... 90.00



- 2028 ★★ **\$2.00 1955 Hunting Permit (RW22).** Mint N.H. with top **plate no. 165283** selvage, strong color, large margins and perfect centering, Extremely Fine Gem, with 2006 P.S.E. certificate (Superb 98; SMQ \$300.00) 90.00
- 2029 ★★ **\$3.00 1963 Hunting Permit (RW30).** Mint N.H., mathematically precise centering, bright colors on fresh paper, Extremely Fine Gem, an incredibly choice example, with 2010 P.S.E. certificate (Gem 100; unpriced in SMQ above the grade of 98, SMQ \$350.00 as 98), **no other example has received a higher grade to date** 100.00
- 2030 ★★ **\$3.00 1965 Hunting Permit (RW32).** Mint N.H. with top right corner **plate no. 168790** selvage, wonderfully rich colors, perfect centering, Extremely Fine Gem, a wonderful stamp, with 2005 P.S.E. certificate (Superb 98; SMQ \$400.00), this is the highest grade awarded to date 100.00
- 2031 ★★ **\$3.00 1966 Hunting Permit (RW33).** Mint N.H. with selvage at left, strong colors and with mathematically precise centering, Extremely Fine Gem, an impressive example, with 2008 P.S.E. certificate (Gem 100; unpriced in SMQ above the grade of 98, SMQ \$400.00 as 98), only one example has been graded higher 100.00
- 2032 ★★ **\$3.00 1967 Hunting Permit (RW34).** Mint N.H., rich colors on bright paper, perfect centering, Extremely Fine Gem, with 2006 P.S.E. certificate (Superb 98; SMQ \$475.00), only three examples grade higher 110.00
- 2033 ★★ **\$7.50 1986 Hunting Permit, Black Omitted (RW53a).** Mint N.H. with selvage at left, fresh and bright, Very Fine, a choice example of which approximately 60 are believed to exist 2,000.00
- 2034 ★★ **\$12.50 1990 Hunting Permit, Black Printing Omitted (RW57a).** Mint N.H., Very Fine and choice, with 1995 P.F. certificate 300.00
- 2035 ★★ **\$15.00 1993 Hunting Permit, Black (Engr.) Omitted (RW60a).** Mint N.H. with selvage at right, wonderfully fresh, Very Fine, a scarce and striking error, ex Jeanette C. Rudy, with photocopy of 2006 P.F. certificate for the pane from which this came and a 2006 P.S.E. certificate for the single 2,250.00
- 2036 ★★ **\$15.00 1999 Hunting Permit (RW66).** Mint N.H., precisely centered amid large margins, Extremely Fine Gem, with 2006 P.S.E. certificate (Gem 100; SMQ \$400.00), this is the highest grade awarded and being only one of seven to reach this pinnacle level, no other examples grade higher 42.50



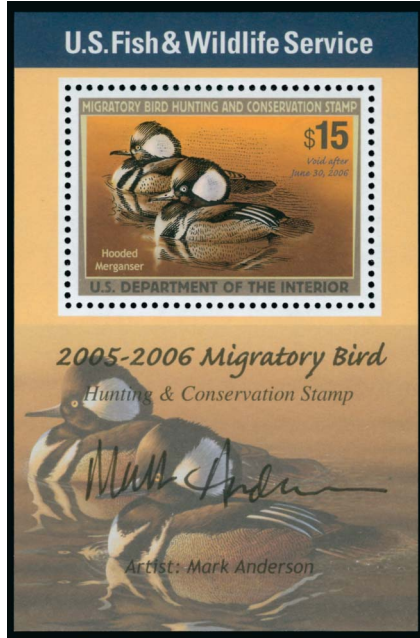
- 2037 ★★ **\$15.00 2003 Hunting Permit, Imperforate (RW70b).** Mint N.H. vertical pair with bottom selvage, large margins other sides, bright colors

EXTREMELY FINE. AN IMPORTANT HUNTING PERMIT ERROR RARITY, AS ONLY TWO IMPERFORATE PANES OF 20 EACH HAVE EVER BEEN DISCOVERED.

This stamp shows Snow Geese in flight. Also known as “Blue Goose”, this is a migrating goose found in North America. A mere two sheets of 20 are known of this error..... 7,000.00

2037

- 2038 ★★ **\$15.00 2005 Hunting Permit, Souvenir Sheet, Artist Signed in Black (RW72b).** Mint N.H., Extremely Fine, 1,000 souvenir sheets were printed and sold for \$20.00 each, all are artist signed, approximately 750 in black, 150 in blue and 100 in gold, with 2006 P.S.E. certificate (Superb 98; SMQ \$3,750.00), only four examples grade higher 2,000.00



2039

- 2039 ★★ **\$15.00 2006 Hunting Permit, Signed Souvenir Sheet (RW73b).** Mint N.H., with signatures of artist and engraver, Extremely Fine and choice, scarce, according to Scott Catalogue, no sheets were sold signed by the engraver but he did sign approximately 2,500 at the Washington 2006 Exhibition, with 2006 P.S.E. certificate (Gem 100; SMQ \$375.00 for the normal issue without engraver signature), this is the highest grade awarded to date..... 250.00



2038

- 2040 ★★ **Graded Hunting Permit Balance.** Neatly laid out in two Lighthouse albums, 55 single stamps with Mint N.H. P.S.E. graded certificates from Nos. RW13-73, grades mostly being either XF-Superb 95 or Superb 98, but also eight Gem 100, some are plate number singles, also No. RW12 (OG, XF-Superb 95), continues with Nos. RW74-RW77, RW74b-RW77b, RW67A-RW79A, RW51x (Special Printing) with 1987 P.F. certificate and RW53-RW54 with strong color shifts, the latter grouping not counted in the stated SMQ value of this lot, Extremely Fine, a few ex Dr. Killien, a wonderful opportunity and basis to continue collecting from, SMQ value.....Not illustrated 10,540.00

HUNTING PERMIT MULTIPLES



2041

2041 ★★田 \$1.00 1934 Hunting Permit (RW1). Mint N.H. bottom right plate no. 129202 block of six, deep rich color, phenomenally well-centered

EXTREMELY FINE. A BEAUTIFUL MINT NEVER-HINGED PLATE BLOCK OF THE FIRST FEDERAL DUCK STAMP. A TRUE RARITY IN THIS EXCEPTIONAL CONDITION AND CERTAINLY ONE OF THE FINEST KNOWN.

The design of this stamp was done by Jay "Ding" Darling based on the etching *Mallards Dropping In*. This is the ultimate Hunting Permit plate block as well as being a key item for a topical bird collector.

According to Bob Dumaine, dealer and noted authority on duck stamps, there are perhaps less than fifteen No. RW1 plate blocks of this caliber in existence. With 2002 P.S.E. certificate 16,500.00



2042

2042 ★★田 \$1.00 1935 Hunting Permit (RW2). Mint N.H. top right plate no. 131981 and letter "F" block of six, deep rich color, unusually fresh and marvelously well-centered

EXTREMELY FINE AND CHOICE. A SCARCE WELL-CENTERED MINT NEVER-HINGED PLATE BLOCK OF THE SECOND FEDERAL DUCK ISSUE.

Designed by Frank Weston Benson, this issue shows Canvasback Ducks taking flight. These ducks are a diving species which are highly migratory in the United States.

A beautiful plate block. With 2004 P.F. certificate 11,500.00



2045



2046



2047



2048



2049



2050



2051



2052



2043



2044

- 2043 ★★田 **\$1.00 1936 Hunting Permit (RW3)**. Mint N.H. top left corner plate no. 134318 and letter “F” block of six, detailed impression, fantastic centering throughout, typical faint natural gum bends not mentioned on accompanying certificate and of little consequence

EXTREMELY FINE AND CHOICE. A BEAUTIFUL MINT NEVER-HINGED PLATE BLOCK OF THE \$1.00 1936 HUNTING PERMIT.

This issue was designed by Richard E. Bishop and portrays Canadian Geese in flight. These geese are native to North America and breed in Canada and the northern United States.

With clear 2005 P.S.E. certificate 3,500.00

- 2044 ★★田 **\$1.00 1937 Hunting Permit (RW4)**. Mint N.H. top right plate no. 136267 and letter “F” block of six, rich color and a detailed impression, typical light natural gum bends

VERY FINE AND CHOICE MINT NEVER-HINGED PLATE BLOCK OF THE \$1.00 1937 HUNTING PERMIT.

Designed by Joseph D. Knap, the image shows Scaup Ducks in flight. Also known as a Little Bluebill for their distinctive blue bills, these are diving ducks that are known to migrate as far south as Central America.

This issue is known to be one of the most difficult to find with choice centering..... 3,250.00

- 2045 ★★田 **\$1.00 1938 Hunting Permit (RW5)**. Mint N.H. bottom right plate no. 138602 block of six, wonderfully well-centered throughout, bright color, single stamp with light natural bend mentioned for accuracy, Very Fine and exceptionally choice, far better condition than often found..... 4,500.00

- 2046 ★★田 **\$1.00 1939 Hunting Permit (RW6)**. Mint N.H. top left plate no. 141428 block of six, well-centered, deep rich color and a strong impression, usual natural gum bends and a small ink spot in bottom center stamp, Very Fine, an eye appealing example of this plate block 2,900.00

- 2047 ★★田 **\$1.00 1940 Hunting Permit (RW7)**. Mint N.H. bottom left plate no. 143776 block of six, sharp impression and a warm shade, incredibly well-centered, Extremely Fine and a particularly pristine Mint N.H. plate block..... 2,750.00

- 2048 ★★田 **\$1.00 1941 Hunting Permit (RW8)**. Mint N.H., top left plate no. 146282 block of six, rich shade and strong impression, well-centered throughout, with the usual light natural gum bends, Extremely Fine..... 2,750.00

- 2049 ★★田 **\$1.00 1942 Hunting Permit (RW9)**. Mint N.H. large top right plate no. 149599 and letter “F” block of six, strong color and well-centered, with the typical gum bends and skips, Very Fine 2,750.00

- 2050 ★★田 **\$1.00 1943 Hunting Permit (RW10)**. Mint N.H. top left plate no. 152826 block of six, vivid color and a strong impression, well-centered, light gum bends and skips as usual, Very Fine 750.00

- 2051 ★★田 **\$1.00 1944 Hunting Permit (RW11)**. Mint N.H. top right plate no. 155603 block of six, attractive centering with lovely radiant color, couple typical gum bends, Very Fine..... 850.00

- 2052 ★★田 **\$1.00 1945 Hunting Permit (RW12)**. Mint N.H. top right plate no. 157248 and letter “F” block of six, well-centered and bold color, Very Fine..... 575.00



2053



2054



2055



2056



2057



2058



2059



2060



2061



2062



2063



2064



2066

- 2053 ★★田 **\$1.00 1946 Hunting Permit (RW13).** Mint N.H. bottom left plate no. 158457 block of six, attractively centered, fresh color, Very Fine and choice..... 350.00
- 2054 ★★田 **\$1.00 1948 Hunting Permit (RW15).** Mint N.H. bottom left plate no. 160101 block of six, exceptionally choice centering, bright color and fresh, Extremely Fine and scarce in this high level of quality..... 400.00
- 2055 ★★田 **\$2.00 1951 Hunting Permit (RW18).** Mint N.H. top left plate no. 162126 block of six, remarkably choice centering throughout, Extremely Fine and choice..... 575.00
- 2056 ★★田 **\$2.00 1953 Hunting Permit (RW20).** Mint N.H. bottom right plate no. 163623 block of six, rich color, Very Fine and choice 600.00
- 2057 ★★田 **\$2.00 1954 Hunting Permit (RW21).** Mint N.H. top right corner plate no. 164747 block of six, intense shade and a detailed impression, Extremely Fine Gem 600.00
- 2058 ★★田 **\$2.00 1955 Hunting Permit (RW22).** Mint N.H. bottom left plate no. 165283 block of six, fresh color, Very Fine..... 600.00
- 2059 ★★田 **\$2.00 1956 Hunting Permit (RW23).** Mint N.H. top right plate no. 165827 block of six, fresh and crisp, Extremely Fine 625.00
- 2060 ★★田 **\$2.00 1958 Hunting Permit (RW25).** Mint N.H. bottom right plate no. 166754 block of six, perfect centering and strong color, Extremely Fine..... 600.00
- 2061 ★★田 **\$3.00 1959 Hunting Permit (RW26).** Mint N.H. top left plate no. block of six, bright colors, staple hole in top right selvage (clear of plate block), Very Fine, an outstanding plate block..... 600.00
- 2062 ★★田 **\$3.00 1960 Hunting Permit (RW27).** Mint N.H. bottom left plate no. 167503 block of four, fresh and Extremely Fine..... 475.00
- 2063 ★★田 **\$3.00 1961 Hunting Permit (RW28).** Mint N.H. top right plate no. 167768 block of four, precise centering, Extremely Fine..... 525.00
- 2064 ★★田 **\$3.00 1962 Hunting Permit (RW29).** Mint N.H. top right plate no. 168073 block of four, superb centering, incredibly fresh colors, Extremely Fine..... 575.00
- 2065 ★★田 **\$3.00 1963 Hunting Permit (RW30).** Mint N.H. bottom left plate no. 168273 block of four, wonderfully fresh and pristine, Extremely Fine 500.00
- 2066 ★★田 **\$3.00 1964 Hunting Permit (RW31).** Mint N.H. top left plate no. 168629 block of six, choice centering, Extremely Fine and fresh, this Duck plate block is scarce owing to the fact that collectors were accustomed to collecting these post-1958 issues in plate blocks of four, not realizing the correct format is six as offered here..... 1,900.00

- 2067 ★★田 **\$7.50 1984 Hunting Permit, Special Printing (RW51 var).** Mint N.H. center gutter block of four, pencil notation on gum denotes which sheet this originated from (No. 13)

EXTREMELY FINE. A RARE CENTER GUTTER BLOCK OF FOUR OF THIS SPECIAL PRINTING IN WHICH A MERE FOURTEEN EXAMPLES ARE AVAILABLE TO COLLECTORS.

The Scott Catalogue notes that fifteen uncut sheets of 120 were overprinted with the "50th Anniversary 1934-1984" and sold for \$2,000 apiece. Fourteen were sold and one was donated to the Smithsonian National Postal Museum. This is one of fourteen center gutter blocks available to collectors.

With 1987 P.F. certificate for the sheet stating that this came from sheet 13 of 15 and 1992 P.S.E. certificate for the block.. E. 2,000-3,000



2067

- 2068 ★★田 **\$15.00 2005 Hunting Permit, Press Sheet (RW72 var).** Complete press sheet of 80 stamps (four panes of 20) neatly framed for wall mounting, wonderfully fresh, Mint N.H., Very Fine, scarcely offered as complete panes as a mere 100 were issued, subsequently many were broken down into the positional pieces, buyer will be responsible for either pickup or the additional cost of FedEx shipping *Not illustrated* E. 2,000-3,000
- 2069 ★★田 **\$15.00 2005 Hunting Permit, Press Sheet (RW72 var).** Mint N.H., seven positional pieces and missing just the bottom left and right plate blocks of six for a complete sheet, incl. the center gutter block of four, Very Fine and scarce, only 100 press sheets were issued..... *Not illustrated* E. 500-750
- 2070 ★★田 **\$15.00 2006 Hunting Permit, Press Sheet (RW73 var).** Complete press sheet of 80 stamps (four panes of 20) neatly framed for wall mounting, Mint N.H., Very Fine, only 250 press sheets were printed and sold with a limited number still being intact sheets, buyer will be responsible for either pickup or the additional cost of FedEx shipping *Not illustrated* E. 1,000-1,500

- 2071 ★★田 **\$15.00 2006 Hunting Permit, Press Sheet (RW73 var).** Mint N.H., complete press sheet broken down into nine positional pieces, incl. the center gutter block of four, Very Fine and scarce, only 250 press sheets were issued*Not illustrated* E. 300-400
- 2072 ★★田 **\$15.00 2007 Hunting Permit, Press Sheet (RW74 var).** Complete press sheet of 80 stamps (four panes of 20) neatly framed for wall mounting, Mint N.H., Very Fine, a total of 500 press sheets were released and sold, buyer will be responsible for either pickup or the additional cost of FedEx shipping*Not illustrated* E. 750-1,000
- 2073 ★★田 **Hunting Permit Plate Block Balance.** Neatly arraigned in a Lighthouse album, incl. Nos. RW14, RW16-7, RW19, RW24, RW32-RW78, also with some additional material such as Nos. RW74 partial press sheet in positional pieces, 75th Anniversary sheetlet (RW75 footnote), and RW72A-RW73A, spot check shows all to be Mint N.H., some may have the typical light bend or skip but overwhelmingly Very Fine-Extremely Fine, what sets this balance apart from other collections is the overall high quality nature in which these were collected with a focus on centering and condition*Not illustrated* 9,300.00
- 2074 **Celebrating 50 Years of Waterfowl Conservation, 1934-84.** Large framed artistically arranged selection showing each of the first fifty Federal Hunting Permit stamps from Nos. RW1-RW51, each stamp appears unused but we have not checked condition except for that a few examples are slightly faded due to exposure from being displayed, also incl. two signed duck prints, frame does not include the glass, Fine, buyer will be responsible for either pickup or the additional cost of FedEx shipping*Not illustrated* E. 500-750

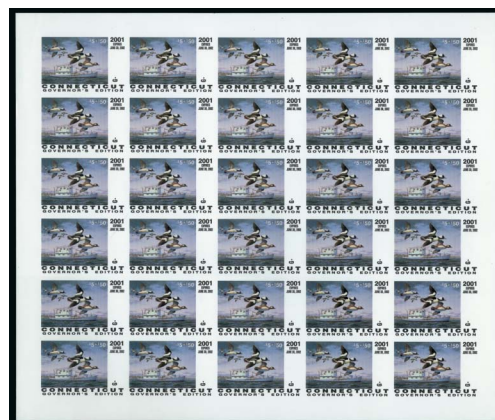
OTHER HUNTING PERMIT ISSUES



2075EX



2078



2079

- 2075 ★★田 **1993-2012 Junior Duck Stamps (JDS1-JDS20).** Mint N.H. with each in a plate number block of four, Nos. JDS1 signed by artist on each stamp (silver and gold pen), JDS8 signed by artist in selvage, JDS17 and JDS19 in blocks of six
VERY FINE. A SCARCE GROUPING AND COMPLETE RUN OF PLATE BLOCKS OF JUNIOR DUCK STAMPS TO 2012.
These stamps, which are not valid for hunting, are issued by the U.S. Fish and Wildlife Service. This is a yearly art competition among students. The national winner has their art used on the stamp and the funds raised go towards education. This is a rare opportunity to acquire an entire set in the form of plate blocks.
Scott Retail as singles**(Photo Ex)** 13,918.00
- 2076 ★★田 **2001-2012 Junior Duck Stamps (JDS9-JDS20).** Mint N.H. in **complete sheets of 30**, plate numbers on each of the four corners, pristine and fresh throughout, Very Fine, a scarce opportunity to pick up entire sheets of these Junior Duck Stamps*Not illustrated* 9,255.00
- 2077 ★★ **Junior Duck Stamp Balance, 1993-2011.** Mint N.H., with precursor sheet of nine, Nos. JDS1-2 imperforate pairs with right selvage, eleven plate no. singles incl. Nos. JDS5, JDS7-8 (JDS8 signed by artist), JDS10 plate no. block, JDS11 sheet of 30, Very Fine*Not illustrated* E. 500-750
- 2078 ★★ **\$1.00 1972 California Canvasbacks (Cal. 2).** Self-adhesive with backing paper, Very Fine and fresh, the key State Duck stamp to acquire 1,250.00
- 2079 ★★田 **\$5.00 + \$50.00 2001 Connecticut Buffleheads, Governor's Edition, Imperforate (Conn. 9a).** Complete sheet of 30, without gum as issued, Very Fine, we have been unable to locate any similar copies offered before, Scott catalogue mentions "imperforate varieties are proofs", Scott Retail for normal singles 12,750.00

- 2080 ★★田 **State Hunting Permit Sheet Balance.** Thirteen complete sheets of 30, seven of which are **Governors Editions** incl. Rhode Island Nos. 1a-3a, New Hampshire 7b-9b and Arizona 3b which calculates to \$15,300.00 alone as singles, balance consists of imperforate sheets from New Mexico, Utah, Connecticut and Rhode Island, Mint N.H., Very Fine, Scott Retail as normal singles*Not illustrated* 21,420.00
- 2081 ★★ **State Duck Collection.** Housed in four First Edition Harshman albums with additional pages for more recent items, a nearly complete and comprehensive collection comprising of all the Statewide issued stamps to 2013, incl. most of the better stamps such as California Nos. 1, 26a, Connecticut No. 5a, Florida No. 1-1a, Illinois Nos. 1-10, Iowa Nos. 1-8, Louisiana Nos. 1a-2a, 19a-20a, Michigan No. 2, Missouri No. 1, New Hampshire 1-3, 1a-3a, Oregon No. 2a, what separates this collection from others is the **additional material** such as sub-listed items and imperforates, artist signed, Governor's Editions, complete sheets, etc., Mint N.H., Very Fine, a truly difficult collection to replicate*Not illustrated* E. 3,000-4,000



- 2082 ★ **\$200.00 Dark Blue & Red, 1934 Issue, Firearms Transfer (RY2).** Serial no. 586, without gum as issued, deep rich color, wonderfully well-centered, trivial light corner crease, still Very Fine 2,000.00
- 2083 ★ **\$200.00 Dull Blue & Red, Ty. II, Firearms Transfer (RY4).** Serial no. 2022, without gum as issued, fresh color and wonderful centering, fresh and Very Fine 750.00
- 2084 ★ **Metropolitan Fair, New York, 10c Red (WV9).** Position 2, original gum, lightly hinged, large margins to clear, rich color
VERY FINE AND CHOICE. A SCARCE SOUND ORIGINAL-GUM EXAMPLE OF THE 10-CENT METROPOLITAN SANITARY FAIR ISSUE.
Fewer than 20 examples are recorded. With 2008 P.F. certificate.
..... 1,900.00



2084

- 2085 ★田 **Great Central Fair, Philadelphia, 20c Green (WV12).** Horizontal block of twelve, original gum, rejoined between two vertical rows and some additional separation, one stamp creased, a few short perfs at top right, fresh and Fine-Very Fine, one of the two largest blocks recorded, ex Steele (WS), Wray and Kantor 475.00
- 2086 ★★田 **United States Mint Sheets with Birds.** Dozens of sheets neatly laid out in a Lighthouse album, with some of the earlier 3c sheets up to recently issued resulting in a wide fluctuation of denominations, does incl. the Priority Mail stamps in sheets of 20 and plate blocks where well over half of the value in face alone is, with some booklets as well, Mint N.H., Very Fine, face value*Not illustrated* 2,200.00
- 2087 **United States Bird Collection Balance.** Eclectic mix of U.S. related birds on stamps, incl. a couple of modern imperforate errors, well-centered No. F1, \$200.00 Eagle Plate Essay on Stamp Paper (Turner Essay 10b), Sanitary Fair color trial blocks and proofs, and a fair amount of Private Die Proprietary singles and plate proofs, plus more, Very Fine
.....*Not illustrated* E. 200-300



2089EX



2092EX



2090



2091



2096EX



2099



2097



2098EX



2100EX



WORLDWIDE BIRDS

ALPHABETICALLY BY COUNTRY

- 2088 ★★ **ANGOLA, 1951, 5c-50a Birds (333-356).** Mint N.H., cplt. set of 24 values, incredibly bright and fresh, Very Fine and choice, an absolutely beautiful array of birds in their natural colors.....
.....(Photo Ex) 664.90
- 2089 ★ **ARGENTINA, 1930, 20c-3.60p Zeppelin, Blue and Green Overprints (C20-C29).** Cplt. sets of each overprint, blue overprints (Nos. C20-C24) lightly hinged, green overprints (Nos C25-C29) **Mint N.H.** and 90c with crease, Very Fine, stamps depicting either an Eagle or Condor, latter set each signed Elliott, Scott Retail for hinged.....(Photo Ex) 1,091.00
- 2090 (★)田 **BOLIVIA, 1867, 5c Green (2).** Block of eighteen (6x3), positions 2-7, 14-19, 26-31, unused (no gum), large margins all around, dark rich color and a sharp impression, with **four pre-printing paper folds** affecting eight stamps of the block, Very Fine, an interesting item for the specialist...
..... E. 150-200
- 2091 ★田 **BOLIVIA, 1867-68, 50c Orange (5).** Original gum, block of ten with huge to large margins all around, vivid shade, trivial gum bend at bottom right, Extremely Fine 350.00
- 2092 P **BOLIVIA, 1923 Coat of Arms Issue, Proofs (132P, 137P).** Four items, incl. 20c imperforate and gummed proof block of four, a 20c imperforate ungummed proof block of four on 'umbrella' watermarked paper with sheet margin at top and right, a 2b imperforate ungummed horizontal strip of three with selvage at left, and a 2b **master die proof** with "Dos Bolivianos" inscription missing, Very Fine and scarce(Photo Ex) E. 300-400
- 2093 P **CAMEROUN, 1947, 50fr Birds over Mountains, Artist Signed Die Sunk Proofs (C26P).** Three proofs incl. a 1st stage in black, the other two is in black and blue, each signed Barlangue, Very Fine(Photo Ex) E. 200-300



2094

- 2094 ★★ **CANADA, 1959, 5c Seaway Invert (387a; SG 513a).** Mint N.H., wonderfully well-centered, rich colors, free of the faults that often plague this stamp
EXTREMELY FINE EXAMPLE OF THE DESIRABLE CANADA SEAWAY INVERT.
The St. Lawrence Seaway provided for passage from the Atlantic Ocean to the Great Lakes. It was a collaboration between the United States and Canada. This is portrayed by the usage of the Bald Eagle and Maple Leaf, each national symbols, in rings together. Therefore, this is the key stamp of Canada for a collector of bird topicals.
With 2013 P.S.E. certificate. SG £9,000. Unitrade C\$16,000.00 12,000.00
- 2095 ★★田 **CANADA, Hunting Permit Stamps, 1986-1997.** Mint N.H., complete sheets of sixteen, incl. issues of 1986 (van Dam FWH2), 1988 (FWH4), 1990-94 (FWH6-10), and 1997 (FWH13), Very Fine, van Dam value.....*Not illustrated* C\$ 2,650.00
- 2096 ★★ **CAYMAN ISLANDS, 1935-36, ¼p-10sh King George V (85-96; SG 96-107).** Mint N.H., incredibly fresh and pristine, Very Fine, SG value as hinged £200(Photo Ex) 525.00
- 2097 ★★田 **CHAD, 1971, 1,000fr White Egret, Imperforate (C84 var).** Mint N.H. in a complete sheet of 25 with huge selvage at bottom and large margins on other sides, one stamp effected by slight crease, Very Fine, catalogue value as perforated singles 1,875.00
- 2098 ★ **CHINA, 1898, ½c-\$5.00 C.I.P., Watermarked (98-109).** Original gum, fresh colors, h.r. or l.h., 2c and 20c few slightly toned perfs, 50c with no gum, \$1.00 with crease, \$5.00 is l.h. and a particularly nice example, otherwise Fine(Photo Ex) 2,220.00
- 2099 ★ **CHINA, 1900-06, \$5.00 C.I.P., Unwatermarked (122).** Large part original gum, l.h., well-centered with bold color, Very Fine 650.00
- 2100 ★ **CHINA, 1912, ½c-\$5.00 C.I.P. with Shanghai Overprint (146-160).** Original gum, mostly h.r., 2c with small thin, some with slight toning seen on reverse only, otherwise Fine and scarce
.....(Photo Ex) 1,467.00



2101EX

- 2101 ★ **CHINA, Taiwan, 1950, \$1.00-\$20.00 Flying Geese Surcharges (1007-1011, 1007-1008 var).** Without gum as issued, unusually bright and fresh, also incl. **additional \$1.00 and \$2.00 in the Second Printing**

VERY FINE. THE RARE KEY SET TO COMPLETING TAIWAN IN ESPECIALLY CHOICE CONDITION.

These stamps are often plagued with slight toning on the reverse. This set happens to be uniformly fresh and without any tone marks(Photo Ex) 14,000.00



- 2102 ★ **CHINA, Taiwan, 1951, \$5.00-\$50.00 Flying Geese Surcharges (1042-1045).** Without gum as issued, particularly well-centered throughout, bold colors, \$10.00 with part inscription selvage at left, \$20.00 with selvage at right, \$50.00 with small natural inclusion in top margin, Very Fine(Photo Ex) 2,885.00
- 2103 ★ **CHINA, Taiwan, 1951, \$10.00-\$50.00 Flying Geese Surcharges (1061-1063).** Without gum as issued, each well-centered, \$10.00 with small natural inclusion, Very Fine(Photo Ex) 3,150.00
- 2104 ★★田 **CHINA, Taiwan, 1966, \$2.50-\$5.00 Paintings (1479-1482).** Blocks of four, Mint N.H., Very Fine and fresh, Scott Retail as singles(Photo Ex) 556.00
- 2105 ★ **CHINA, Offices in Tibet, 1911, 3p on 1c to 2r on \$2.00 (1-11).** Original gum, either small h.r. or l.h., fresh colors, Very Fine and choice set of these popular stamps.....(Photo Ex) 3,255.00
- 2106 ★★ **China, Taiwan and People's Republic Mint Bird Collection.** Beautifully laid out in a Lighthouse album, begins with some early Taiwan such as 1949 Flying Geese set, incl. 10c an 16c unissued values, P.R.C. with some early sets, each area continues thru to modern period and incl. sets, souvenir sheets, booklets (incl. 1981 New Year) and sheets, also with East China Nos. 5LQ17-5LQ26, Mint N.H., Very Fine, one of the most eye-appealing countries to collect birds fromNot illustrated E. 500-750



- 2107 ★★ **COLOMBIA, 1935, 2c-10p Olympics (421-436).** Mint N.H. set of the sixteen issued values, wonderfully fresh, Very Fine and choice, seldom seen as a set with each value never hinged, the high value of this set (10p) depicts a Condor, Scott Retail as hinged(Photo Ex) 1,350.00
- 2108 P **COLOMBIA, 1916 “Timbre Nacional” Revenues, Renumbered Black Die Proofs.** Cplt. set of the sixteen issued values mounted on card measuring as large as 30 x 45mm, each being renumbered at top, also incl. the **master die** proof with value tablets blank, Very Fine, rare and most likely unique set of these proofs, ex American Bank Note Archives(Photo Ex) E. 500-750
- 2109 P **COLOMBIA, 1916 “Timbre Nacional” Revenues, Proofs.** Cplt. set of the sixteen issued values printed on card measuring as large as 40 x 38mm, each with either July or Aug 1916 in red manuscript at top, margins huge to clear at bottom on a few, Very Fine, an incredibly rare set of these revenue proofs on card, ex American Bank Note Archives.....(Photo Ex) E. 400-500
- 2110 S **COLOMBIA, 1916 “Timbre Nacional” Revenues, Specimens.** A few dozen **cross-gutter pair** examples with values to 2p, each stamp with typical hole punch and “Specimen” overprint in either red, blue or black with some in different sizes, incl. some singles with values to 20p, some pairs with hinge reinforcements, Very Fine, cross-gutter pairs are particularly rare to find, ex American Bank Note Archives*Not illustrated* E. 300-400
- 2111 P **COLOMBIA, Antioquia, 1896, 2c-5p Coat of Arms, Imperforate Proofs (97P-116P, F1P-F2P).** Complete set of twenty values plus the two issued Registration stamps, each in horizontal pairs (Registration stamps vertical) with huge to large margins all around, most with sheet margin incl. some corner sheet margins, 2c Lilac Rose with crease breaking paper, 5p Red Violet with crease and 5p Purple with pinhole, each effecting only one stamp of the pair, a Very Fine and scarce grouping of pairs.....(Photo Ex) E. 500-750
- 2112 田 **COSTA RICA, 1984, 10c-10col Local Birds, Imperforate Glossy Cards (287-292 var).** Cplt. set of six values, each being imperforate blocks of four printed in thick glossy card, Very Fine(Photo Ex) E. 200-300
- 2113 P **CUBA, 1956, 8c-1p Green on Cream, Imperforate Proofs (C136-C146P).** Either in horizontal or vertical pairs, large margins all around, Very Fine, we been unable to locate any other sets with the two high values which leaves us to believe they possibly do not exist, ex American Bank Note Archives.....(Photo Ex) E. 400-500
- 2114 ★★ **DUBAI, 1963, 20np-1r Peregrine Falcon, Imperforate (C1-C8 var).** Mint N.H., each with selvage at left or top, large to full margins all around, also accompanied by regularly issued set, Very Fine, scarce as these were issued in limited quantity(Photo Ex) E. 150-200



2115EX



2116EX



2118EX



2120EX



2121



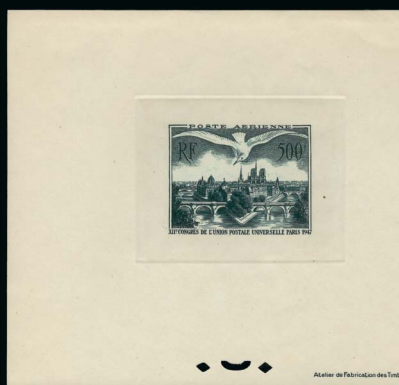
2122



2123EX



2124EX



2125



2127EX



2128EX



2126



2129EX



2130EX



2131EX



2132EX



2133EX

- 2115 P **ECUADOR, 1938, 2c-2s U.S. Constitution, Progressive Numbered Die Proofs (366P-372P, C57P-C63P).** Cplt. set of the fourteen issued values mounted on card measuring about 55 x 45mm, each lacking the color of the flags and background, most being in black but a few in other colors, Very Fine, rare and a most attractive set of proofs, ex American Bank Note Archives**(Photo Ex)** E. 750-1,000
- 2116 S **ECUADOR, 1938, 2c-2s U.S. Constitution, "Specimen" Overprints (C57S-C63S).** Cplt. set with each a corner sheet margin block of four, most with "W.L.G. Gripper" and "Side Guide" inscriptions in selva, vivid colors, Very Fine, ex American Banknote Archives ..
.....**(Photo Ex)** E. 300-400
- 2117 P **ECUADOR, Revenues, Numbered Die Proofs.** Total of 34 numbered die proofs mounted on card with values from 10c-300s, most being numbered at top with a few at the bottom with American Bank Note Company inscription, about half measuring 24 x 47mm and the others 27 x 44mm, incl. "Moviles", "Telegrafos", "Judicial" and "Region Oriental", various colors and also incl. four master die proofs with value tablets blank, Very Fine, ex American Bank Note Archives*Not illustrated* E. 750-1,000
- 2118 E **ETHIOPIA, Native Birds Original Artwork, 1962.** Grouping of six artist paintings on thick cardboard, two birds identified as being a Secretary Bird and Shoebill, two have "Ethiopia" incorporated into the design, each with artist Lawrence Froehlich of Maywood, NJ name on reverse, Very Fine, an attractive group**(Photo Ex)** E. 300-400
- 2119 P **ETHIOPIA, 1989, 10c-1b Birds, Progressive Trial Color Proofs (1249-1252 var).** Small sheetlet of the entire issue (four stamps) in nine different stages of printing in different colors, incl. frame only, design only and both, Very Fine.....**(Photo Ex)** E. 200-300
- 2120 ★★ **FALKLAND ISLANDS, 1929-31, ½p-£1 George V (54-64; SG 116-126).** Mint N.H., wonderfully bright and fresh, well-centered throughout, 4p with selva at right, Very Fine and a choice set, catalogue values for hinged, SG £700.....**(Photo Ex)** 815.00
- 2121 ★★ **FALKLAND ISLANDS, 1933, 5sh Yellow & Black, Centenary (74; SG 136).** Mint N.H., attractive centering, slightly toned o.g., Very Fine, SG £900..... 840.00
- 2122 ★ **FALKLAND ISLANDS, 1933, 5sh Yellow Orange & Black, Centenary (74a; SG 136a).** Lightly hinged, fresh color of this scarce and distinctive shade, Very Fine, SG £2,750
..... 2,400.00
- 2123 ★★ **FALKLAND ISLANDS, 1938-46, ½p-£1 King George VI Pictorials (84-96; SG 146-163).** Mint N.H., wonderfully fresh set, 10sh and £1 with selva at left and top respectively, Very Fine, SG £475**(Photo Ex)** 600.00
- 2124 P **FRANCE, 1984, 1fr-5fr Birds, Artist Signed Die Sunk Proofs (1938P-1941P).** Seven proofs total, partial set of 2fr-5fr in black with issued stamp below cancelled on the first day of issuance, another cplt. set of four with reversed dies of each value in black, each signed Betemps, Very Fine**(Photo Ex)** E. 200-300
- 2125 P **FRANCE, 1947, 500Fr Air Post, Deluxe Proof (C22P; Maury A20).** Without gum as issued, interleaving still attached, Very Fine, Maury value € 600
- 2126 ★ **FRANCE, 1868, 1f Orange, Telegraph Stamp (Yvert TT3).** H.r., margins close to ample all around, bold color, Yvert value € 1,250
- 2127 P **FRENCH EQUATORIAL AFRICA, 1953, 500fr Anhinga Bird, Artist Signed Die Sunk Proofs (C37P).** Two proofs, one in black and the other in green, each signed Gandon, Very Fine, the Anhinga is often called the Snakebird and is a water bird found in sub-Saharan Africa**(Photo Ex)** E. 150-200
- 2128 P **FRENCH GUIANA, 1947, 20fr Toucan, Deluxe Proofs (206P).** Twelve deluxe proofs of varying colors and shades, Very Fine, scarce set of these proofs....**(Photo Ex)** E. 300-400

GERMANY

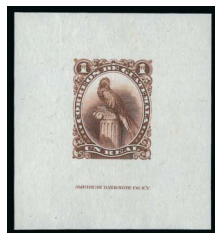
- 2129 ★★ **1912, 10pf-20pf Brown Orange, with "E.E.L.P." overprint (Michel V-VI).** Mint N.H., warm color, the key 10pf stamp especially fresh and well-centered, Very Fine, Michel value**(Photo Ex)** € 2,650
- 2130 ★★ **1924, 5pf-300pf Carrier Pigeon (C20-C26; Michel 344-350).** Mint N.H., a pristine set, 20pf with part inscription selva at right, Very Fine, each stamp signed Buhler and accompanied by his 1994 certificate for the set, Michel €1,500.....**(Photo Ex)** 1,130.00
- 2131 ★★ **1926-27, 5pf-3m German Eagle (C27-C34; Michel 378-384).** Mint N.H., wonderfully fresh with vibrant colors, Very Fine and choice, Michel €1,200**(Photo Ex)** 935.00
- 2132 ★★ **1934, 5pf-3m Air Post (C46-C56; Michel 529-539).** Mint N.H., particularly fresh set, Very Fine, Michel €750**(Photo Ex)** 535.00
- 2133 ★★ **Berlin, 1948, 2pf-5m "Berlin" Overprint in Black (9N1-9N20; Michel 1-20).** Mint N.H., cplt. set of twenty values, fresh and pristine, Fine-Very Fine, with 1999 Schlegel certificate for the set, Michel €360**(Photo Ex)** 350.00

GREAT BRITAIN

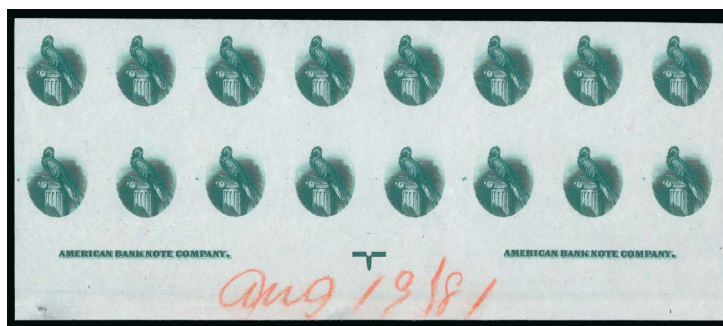


- 2134 ★★田 1966, 4p Birds, Red Omitted (464a var; SG 696e, 698e). Mint N.H., se-tenant block of four with selva at bottom, left vertical pair the error stamps (Gull and Robin), pristine condition, red color guide in selva also missing, Very Fine, the normal block accompanies for comparison, SG value..... £ 2,200
- 2135 ★★田 1966, 4p Birds, Bright Blue Omitted (464a var; SG 696g, 697g). Mint N.H., se-tenant block of four with selva at left, top horizontal pair the error stamps (Gull and Blue Tit), bright and fresh, Very Fine, the normal block accompanies for comparison, SG value..... £ 1,400
- 2136 ★★田 1966, 4p Birds, Emerald Green Omitted (464a var; SG 696f, 697f, 698f). Mint N.H., se-tenant block of four with selva at left, all with the exception of the Blackbird the error, Very Fine, the normal block accompanies for comparison, SG value £ 600
- 2137 ★★田 1966, 4p Birds, Reddish Brown Omitted (464a var; SG 698j, 699j). Mint N.H., se-tenant block of four with selva at right, bottom horizontal pair the error stamps (Robin and Blackbird), wonderfully fresh, Very Fine, the normal block accompanies for comparison, SG value £ 250
- 2138 ★★田 1966, 4p Birds, Phosphor Bands, Reddish Brown Omitted (464a var; SG 698pj, 699pj). Mint N.H., se-tenant block of four with selva at top and left, bottom horizontal pair the error stamps (Robin and Blackbird), Very Fine, the normal block accompanies for comparison, SG value £ 350
- 2139 ★★田 Specialized 1966 Bird Issue Study (464a vars; SG 696a vars). Various se-tenant blocks, both with and without the phosphor bands, showing a wide range of different positions on the sheet, various color displacements, inverted watermark, additional phosphor lines, plate varieties and more, all neatly written up and described, Very Fine, a great lot for the specialist.....*Not illustrated* E. 150-200
- 2140 ★★ Great Britain Modern Bird Collection. Housed on stock pages in an album from the 1970s to modern new issues in sets, souvenir sheets, booklets and sheets, incl. Alderney, Guernsey, Jersey, and Isle of Man incl. Calf of Man imperforates, Mint N.H., Very Fine.*Not illustrated* E. 150-200
- 2141 ★★ GREENLAND, 1945, 1o-5k Pictorials (10-18; Facit 10-18). Mint N.H., well-centered throughout, fresh colors, 10o with mark on gum, Very Fine, the 5k showing a Eider duck, Facit SK3,000.....(Photo Ex) 550.00
- 2142 ★★ GREENLAND, 1945, 1o-5kr Liberation (19-27; Facit 19-27). Mint N.H., well-centered throughout, Very Fine and fresh, the Eider duck is the top value of the set, Facit SK10,000.....(Photo Ex) 1,450.00

GUATEMALA



2143



2144EX

- 2143 P **1879, 1r Quetzal, Die Proof (16P).** Measuring 55 x 50mm, single printed on thin paper in an unissued deep brown with American Banknote imprint at bottom, incredibly fresh color, Extremely Fine and scarce, ex American Bank Note Archives E. 400-500
- 2144 P田 **1881 Quetzal Proof, Vignette Only.** Block of sixteen with sheet margin at bottom with **American Bank Note Company** inscription at both bottom left and right, orange pencil manuscript marking of "Aug 19/81" at bottom (these stamps were issued on Nov. 7, 1881), small pinhole thin in bottom margin well away from stamps, also accompanied by a horizontal strip of three, Extremely Fine, a scarce proof multiple of the vignette of these popular Quetzal stamps(Photo Ex) E. 500-750

- 2145 P田 **1881, 1c Black & Green, Proof, Center Inverted (21P var).** Block of four on thin paper, vivid colors, sharp impression

EXTREMELY FINE. AN INCREDIBLY RARE BLOCK WITH INVERTED CENTER AS ONLY ONE SHEET IS KNOWN.

The Quetzal is synonymous with Guatemala. Not only is it the national bird of Guatemala and graces numerous issues of their stamps but since 1925, it has been used to name the Guatemalan currency.

Unlike other denominations of this issue, the 1c was not issued with an inverted center. We have been unable to find similar examples in multiples of this size..... E. 1,500-2,000



2145



2146

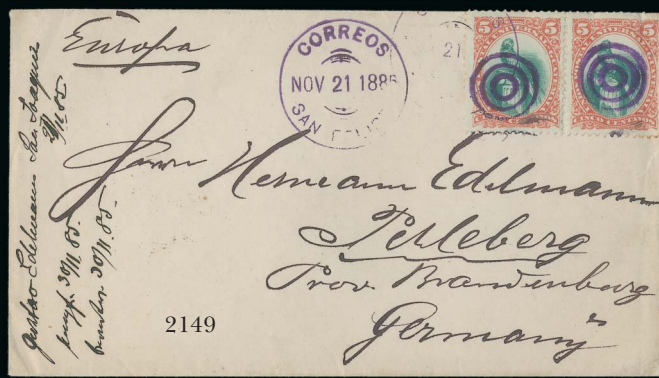


2147

- 2146 P田 **1881, 2c Brown & Green, Plate Proof (22P).** Top right sheet-margin block of ten (5x2) with **American Banknote Company** inscription at top, margins huge to large all around, wonderfully fresh, two light creases at top right with one just affecting the top right stamp, Very Fine, multiples of any size are incredibly rare as Goodman doesn't record any size beyond four E. 500-750
- 2147 P田 **1881, 10c Grey Violet & Green, Plate Proof (24P).** Top right sheet-margin block of ten (5x2) with **American Banknote Company** inscription at top, margins huge to large all around, strong color, sharp impression on bright paper, Very Fine, multiples of any size are incredibly rare as Goodman doesn't record any size beyond four..... E. 500-750



2148



2149



2150



2151

2152



2156EX



2153

2154



2157EX



2155



2159



2160EX



2161EX



2162EX



2163EX



2164EX

- 2148 ★★ **1881, 2c Brown & Green, Center Inverted (22a).** Mint N.H., uncharacteristically well-centered within wide margins, bold colors, Extremely Fine and choice, an undervalued error, particularly in this premium condition, Scott Retail as hinged 400.00
- 2149 ☒ **1881, 5c Red & Green (23).** Horizontal pair each being cancelled by **violet** target cancels with two corresponding "Correos, San Felipe, NOV 21 1885" circular datestamps, one of which ties the pair on cover, addressed to **Perleberg, Germany**, Guatemala despatch, London transit and Perleberg arrival backstamps, few trivial perf faults and light crease at right due to the stamps being placed at edge of cover, still Very Fine and attractive, this franking paid the double foreign letter rate E. 300-400
- 2150 ☒ **1881, 5c Red & Green (23).** Single tied on folded letter by both a **violet** target cancel and corresponding "Correos de Antigua, JUN 18 1886" double-circle handstamp, sent locally, cover with small disinfection hole punches one of which affects the top right of the stamp, Very Fine, an attractive usage paying the 5c internal rate E. 200-300
- 2151 ☒ **1881, 20c Yellow & Green (25).** Single tied on folded letter by strike of a **violet** handstamp with well-struck corresponding "Correos, ABR 26 1883" octagonal datestamp at right, addressed to **Bordeaux, France**, French arrival backstamp, light horizontal file fold not affecting stamp, Very Fine, signed Calves, the 20c paid the double foreign letter rate and is a particularly scarce franking as **less than ten are known on cover**, the letter is written by Arthur Roudier who was the Consul for Venezuela at Boston and is discussing the shipment of cases of wine E. 500-750
- 2152 P **1886, 20c Emerald, Renumbered Proof (35P).** Measuring 62 x 60mm, single printed in issued color with American Bank Note Co. inscription at bottom and renumbered "26187", strong impression, Very Fine and fresh, ex American Bank Note Archives E. 150-200
- 2153 ★★ **1894, 10c on 75c Carmine Rose (54).** Positions 7-10, horizontal strip of four, each stamp Mint N.H. but with fingerprints on gum, bright fresh color, Fine, an incredibly rare multiple, Scott Retail as hinged singles 2,200.00
- 2154 ★ **1903, 25c on 200c Yellow, Missing "S" in "Centavos" (130 var).** Horizontal strip of four with the error being the second stamp, bright color, gum with some adhesions, Fine, a rare variety being seldom offered E. 200-300
- 2155 P田 **1946, 3c Deep Blue, Reversed Proof on Cloth (317P).** Complete sheet of 50 stamps printed on thick cloth-like fabric with impression reversed, Fine, we have been unable to find any information regarding this item, a great collateral item for the specialist E. 150-200
- 2156 TC **1954, 1c Quetzal, Large Die Trial Color Proofs (354P).** Twelve proofs measuring between 58 x 55mm and 59 x 69mm on card, various shades of color from different reds, orange, greens and blues incl. one that closely resembles the issued color of Deep Violet Blue, Very Fine .(Photo Ex) E. 400-500
- 2157 E **1946, 40c Carlos Sierra Franco Air Post Essay.** Two essays of the same design, one being in violet and printed on large card (measuring 185 x 138mm), the other being light blue on thin paper measuring 95 x 85mm and adhering to large die-sunk card (measuring 200 x 150mm), the latter with tone spots that only affect the large card, each essay signed Franco, Fine-Very Fine .(Photo Ex) E. 200-300
- 2158 P **1950, 5c-1q National Hospital Fund Issue, Proofs and Progressive Die Proofs (C177-C180P).** Set of the normal and reversed colors in unused blocks of four, also with set of imperforate reversed colors with sheet margin at left or right in blocks of four, issued souvenir sheet (toned), there are also **thirteen progressive single die proofs** (measuring approx. 150 x 120mm) being on imperforate gummed paper, showing various stages of printing incl. complete designs, quetzal missing, vignette only and frame only, each with blocks of color at top showing the colors used for printing, Very Fine, a beautiful and key component to any specialized collection of Guatemala, quetzal or bird collector(Photo Ex) E. 1,500-2,000
- 2159 ★★ **1953, 1q Quetzal, Imperforate Vertically (C196 var).** Bottom right sheet-margin horizontal strip of three, Mint N.H., fresh colors, Very Fine E. 150-200
- 2160 ★★ **1969, 5c-15c "Aereo" Overprint Errors (C432-C434 vars).** 4c, 8c and 15c vertical se-tenant pairs each with **missing "Aereo" overprint** on bottom stamp, also a 5c double overprint with one **inverted** with selvage at top, Mint N.H., Very Fine(Photo Ex) E. 150-200
- 2161 ★★田 **HUNGARY, 1908, 1f-5k Definitives, Imperforate (67-73 var, 75-83 var).** Mint N.H., cplt. set of sixteen values, blocks of four, most with corner sheet margins, Extremely Fine, a rare and impressive set of imperforate blocks, all but the three top values depict the Turul bird which is the most significant bird to the Hungarian people, ex World Traveler, Scott Retail as singles(Photo Ex) 4,000.00
- 2162 ★★田 **HUNGARY, 1913-16, 1f-5k Definitives, Imperforate (84-96 var, 98-103 var).** Mint N.H., cplt. set of nineteen values, with each value as block of four with sheet margin at right, Very Fine and rare, one of the scarcest imperforate variety sets to find, ex World Traveler, Scott Retail as singles..(Photo Ex) 4,800.00
- 2163 ★★田 **HUNGARY, 1914, 1f-5k Military Aid (B18-B34; Michel 145-161).** Mint N.H., cplt. set of seventeen values in blocks of four, bright and fresh, 1f a bottom left sheet margin block, Very Fine, catalogue values for hinged singles, Michel €560(Photo Ex) 551.80
- 2164 ★★田 **HUNGARY, 1914, 1f + 2f - 5k + 2f War Widows and Orphans Relief, Imperforate (B18-B34 var).** Mint N.H., cplt. set of seventeen values, blocks of four, each with sheet margin at left, rich colors, Extremely Fine and pristine, ex World Traveler, Scott Retail as singles(Photo Ex) 3,400.00



2165



2169EX



2166EX



2170EX



2167EX



2168EX



2171EX



2175EX



2172EX



2173EX



2176EX



2178EX



2177



2179EX



2180



2181EX

- 2165 ★★田 **INDIA, 1994, 1r-11r Endangered Waterbirds, Se-tenant Block, Yellow Omitted (1504a var).** Mint N.H. with selvage at top, Very Fine, a striking error, this set was quickly withdrawn from sale shortly after issuance as it was discovered that the ink is water soluble, accompanied by a normal block for comparison E. 300-400
- 2166 ☒ **IRAN, Cover Group from 1930s.** Ten covers from 1930-34, each with a colorful variety of adhesives incl. different Airpost Issues, about half are registered airmail covers with most going to either Germany or England, mostly Very Fine, an attractive grouping of covers(Photo Ex) E. 400-500
- 2167 ★★ **IRAN, 1930-35, 1c-3t Shah Pahlavi and Eagle (C34-C67).** Two cplt. sets, with and without "Iran" overprint, Mint N.H. (with the exception of No. C52 with h.r.), bright colors, Very Fine.....(Photo Ex) 814.50
- 2168 ★★ **ITALY, 1930, 15c-10l + 2.50l Birth of Virgil (248-256, C23-C26; Sassone 282-290, A21-A24).** Mint N.H., cplt. set of thirteen values incl. the Air Posts, Very Fine, Sassone €1,000(Photo Ex) 835.00
- 2169 P **IVORY COAST, 1965-66, 1fr-5fr, 15fr-90fr Birds, Artist Signed Die Sunk Proofs (231P-233P, 235P-239P).** Eight proofs total, just missing the 10fr to complete the set, 1fr-2fr multicolored (different from issued stamp), 30fr in magenta, rest are in black, each signed by their respective engraver, Very Fine(Photo Ex) E. 500-750
- 2170 ★ **KOREA, 1903, 2re-2wn Falcon Issue (39-51).** Original gum, cplt. set of thirteen values, 1ch with minor gum disturbance, 15ch-20ch with trivial adhesion on gum, otherwise Fine-Very Fine set, a particularly difficult set to find(Photo Ex) 1,575.00
- 2171 ★★ **KOREA, 1951-52, 500wn Flags (132-173).** Mint N.H., cplt. set incl. the 1952 Italian Flag without crown (Nos. 154a-55a), 500wn Green from Great Britain with natural paper crease, otherwise a Very Fine and attractive set, the blue issued stamps depict two doves above the U.N. emblem.....(Photo Ex) 1,065.00
- 2172 ★ **KOREA, 1951-52, 500wm Flags, Imperforate (132-173 vars).** Without gum as issued (with no hinge marks), cplt. set of 42 issued stamps plus the 1952 Italian Flag without crown (Nos. 154a-55a vars), with each in **sheet margin horizontal pairs**, Very Fine(Photo Ex) E. 400-500
- 2173 ★★田 **KOREA, 1951, 500wn Flags, Imperforate Souvenir Sheets of Two (132-173 Footnote).** Without gum as issued and no traces of hinges present, cplt. set of the 22 issued sheets, incredibly fresh and pristine, Very Fine(Photo Ex) 1,300.00
- 2174 **North Korea Bird Collection.** Housed on stock pages in a Lighthouse album, begins with 20 early deluxe proofs from 1958-64 of which no more than 30 of each were printed, also with nine other more modern deluxe proofs from 2009, collection with singles, sets, souvenir sheets, sheets, with a number of imperforates and various errors and proofs noted to 2011, also with some South Korea at the back, mostly Mint N.H., Very Fine, a collection that would be nearly impossible to replicate*Not illustrated* E. 750-1,000
- 2175 ★★ **KENYA, UGANDA and TANGANYIKA, 1935, 1c-£1 King George V Pictorials (46-59; SG 110-123).** Mint N.H., cplt. set of fourteen values, bright and fresh, Very Fine, this set was collected due to the presence of the Kavirondo Cranes on the 1c, 20c and 10sh values, SG £375 for hinged(Photo Ex) 800.00
- 2176 ★★ **LAOS, 1966, 5k-45k Birds (122-125 vars).** Consisting of a set of deluxe proofs, imperforate blocks of four, imperforate singles and a regular set, all Mint N.H., Very Fine(Photo Ex) E. 150-200
- 2177 ★★ **LATVIA, German Occupation, 1945, 12pf Red Brown, Double Surcharge (1N23; Michel 4ADD).** Mint N.H., clear double surcharge, well-centered, Very Fine and choice, signed Van Loo BPP, Michel €320..... 275.00
- 2178 TC **LESOTHO, 1981, 1s-5m Birds, Progressive Trial Colors (321-334 vars).** Cplt. set of fourteen values, being in blocks of four with sheet-margin on one side, a few with partial inscription, each value with five progressive states of color trials, also incl. two sets of imperforate blocks, one set of imperforate pairs (1m is two singles), and the regular issued set, Very Fine.....(Photo Ex) E. 200-300
- 2179 P **MAURITANIA, 1963, 50c-25fr Birds, Artist Signed Die Sunk Proofs (J27aP-J41aP).** Eight proofs of the pairs in each denomination, printed in the issued color and signed by Betemps, Very Fine.....(Photo Ex) E. 400-500
- 2180 P田 **MEXICO, 1994, 1.30p Wildlife Conservation, Imperforate Proof on Grayish Paper (1875P).** Complete proof sheet of 24 on imperforate grayish paper, value and country **inscriptions omitted**, without gum, Very Fine, a rarely offered sheet E. 400-500
- 2181 P田 **MEXICO, 1994, 1.30p Wildlife Conservation, Imperforate Proof on White Paper (1875P).** Complete proof sheet of 24 on imperforate white paper, value and country **inscriptions omitted**, also accompanied by the normal issued sheet, Mint N.H., Very Fine, an excellent accompaniment to the previous lot.....(Photo Ex) E. 400-500



2182EX



2183EX



2184EX

Atelier de Fabrication des Timbres-Poste, Paris



12.7.57

2185EX



2186EX



2189EX



2188EX



2190EX

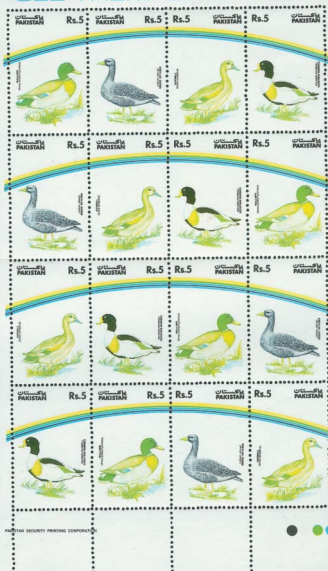


2192EX



2191EX

SEE THEM - SAVE THEM



2194



2187EX



2193



2197



2196



2198

- 2182 P **MONACO, 1962, 5c-1fr Protection of Birds, Artist Signed Die Sunk Proofs (511P-520P).** Ten proofs total, each printed in black, signed by the various artists incl. Cottet, Betemps, Durrens, Munier, Piel and others, Very Fine.....(Photo Ex) E. 400-500
- 2183 TC **MONACO, 1962, 5c-1fr Birds, Trial Color Proofs (511P-520P).** Cplt. set of ten, each being horizontal pairs in different colors on gummed imperforate paper with "Musée du Timbre-Post, Palais de Monaco" handstamps on reverse, Mint N.H., Very Fine and pristine.....(Photo Ex) E. 200-300
- 2184 P田 **MONACO, 1949-50, 25fr-100fr UPU, Collective Large Deluxe Proof, Perforate and Imperforate (C30-C33 var; Maury BS1, BS3-BS4).** Four total, No. BS1 perforated and imperforate, BS3 imperforate and BS4 perforated, Mint N.H., Very Fine, Maury value(Photo Ex) € 1,200
- 2185 ★★ **MONACO, 1955-57, 100fr-1,000fr Birds, Perforated 11 and 13 (C41-C44, C41a-C42a, C44a).** Mint N.H., incl. both perf. varieties and with perf. 13 being "coins dates" singles, Extremely Fine and choice(Photo Ex) 982.50
- 2186 P **MONACO, 1955-57, 100fr-1,000fr Sea Birds, Artist Signed Die Sunk Proofs (C41P-C44P).** Four proofs of this beautiful set, 100fr in red, 200f in blue, 500f and 1,000fr in black, each signed Gandon, Very Fine(Photo Ex) E. 400-500
- 2187 TC **MONACO, 1955-57, 100fr-1,000fr Birds, Trial Color Proofs (C41P-C44P).** Set of values on gummed imperforate paper, 100fr in grey, 200f in red with sheet margin at left, 500fr in purple and bluish green with sheet margin at left, and 1,000fr in dark blue, Mint N.H., Very Fine(Photo Ex) E. 200-300
- 2188 ★★ **NETHERLANDS, 1951, 15g-25g Seagull (C13-C14; NVPH LP12-LP13).** Mint N.H., wonderfully fresh, Very Fine, NVPH €700.....(Photo Ex) 460.00
- 2189 P **NEW CALEDONIA, 1944, 100fr Eagle, Artist Signed Die Sunk Proofs (C13AP).** Eight proofs in different colors, all but yellow signed by Dufresne, Very Fine, a colorful set of proofs, these stamps were issued by the Vichy government in France but were never placed on sale in New Caledonia.....(Photo Ex) E. 400-500
- 2190 ★ **NEW GUINEA, 1931-34, 1p-£1 Bird of Paradise (31-45, 46-47, C14-43, O12-O35; SG 163-203, 206-207, O31-O54).** Six complete sets, most of which are Mint N.H., some either l.h. or small h.r., Fine-Very Fine, SG £1,304(Photo Ex) 1,570.00
- 2191 P **NIGER, 1959-60, 1fr, 5fr Birds, Artist Signed Die Sunk Proofs (91P, 93P).** Two proofs of each value, one of each in black and the other multicolored (different from the issued stamp), each signed Betemps, Very Fine(Photo Ex) E. 200-300
- 2192 P **NIGER, 1967, 2fr, 30fr, 70fr Birds, Artist Signed Die Sunk Proofs (185P-186P, 189P).** Four proofs, all in black except an additional 30f in green, signed Gauthier and Fenneteaux, Very Fine.....(Photo Ex) E. 300-400
- 2193 ★ **NIUE, 1903, 1sh Brown Red, "Taha" and "e" Combined (13c; SG 15).** Part original gum, distinctive shade that this error is only known on, small pencil mark at left, Fine, once this error was noticed, the stock was quickly withdrawn as "Taha e Sileni" means "One Shilling" but the error "Tahae Sileni" means "Shilling Thief" in Polynesian, 96 examples had already sold, an undervalued error, with 2001 B.P.A. certificate.... 750.00
- 2194 ★★ **PAKISTAN, 1992, 5r Ducks, Sheet of 16, Red Omitted (790 var).** Light crease in selvaige from being folded along middle of little consequence, red color dot missing at bottom right indicating the entire sheet is missing color, Mint N.H., Very Fine, a vivid error that is accompanied by the normal sheet for comparison E. 200-300
- 2195 ★★田 **RUSSIA, Hunting Permit Stamps, 1989-2005.** Eighteen sheets of nine, also incl. the 1991 sheet with "1992" overprint, Mint N.H., Very Fine*Not illustrated* E. 200-300
- 2196 ★★ **ST. PIERRE & MIQUELON, 1942, 30c Red Brown & Blue, F.N.F.L. Ovpt. (206D; Yvert 233).** Mint N.H., deeply rich colors, Very Fine, only 276 issued, with 2002 A.P.S. certificate, Yvert €2,800, Scott Retail for hinged..... 1,600.00
- 2197 ★★ **ST. PIERRE & MIQUELON, 1942, 5c Violet & Dark Brown, F.N.F.L. Ovpt. (208A; Yvert 236).** Position 22, Mint N.H., vibrant colors, Fine, only 306 issued, signed Bloch, Yvert €1,820, Scott Retail for hinged 1,000.00
- 2198 ★★ **ST. PIERRE & MIQUELON, 1942, 1fr Orange Brown & Orange Red, F.N.F.L. Ovpt. (213; Yvert 241).** Mint N.H., fresh and pristine, Very Fine, signed Bloch, Yvert €840, Scott Retail for hinged 450.00



2199EX



2200EX



2203EX



2201EX



2202EX



2204EX



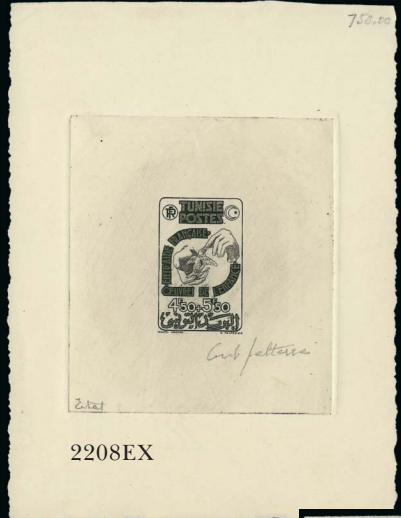
2205EX



2206EX



2207EX



2208EX



2209EX



2210EX



2211EX



2212



2213EX



2214



2215



2216

- 2199 P **ST. PIERRE & MIQUELON, 1963, 50c-6fr Birds, Artist Signed Die Sunk Proofs (362P-365P).** Four proofs, 40c in brown, 1f and 2fr in green, 6fr multicolored (different from the issued stamp), each signed Mazelin or Pheulpin, Very Fine(Photo Ex) E. 300-400
- 2200 P **ST. PIERRE & MIQUELON, 1973, 6c-90c Birds, Deluxe Proofs (423P-428P).** Cplt. set of each value in the issued colors, bright and fresh, Very Fine, this set is entirely birds with Oldsquaws, Puffins and Snow owl.....(Photo Ex) E. 100-150
- 2201 ★★ **SAN MARINO, 1931, 50c-10l View of San Marino (C1-C10; Sassone A1-A10).** Mint N.H. set of ten values, bright and fresh, Very Fine and choice, Sassone €2,000.....(Photo Ex) 1,625.00
- 2202 ★★ **SAN MARINO, 1933, 3l on 50c to 20l on 3l Graf Zeppelin (C11-C16; Sassone A11-A16).** Mint N.H., incredibly fresh colors and pristine, Very Fine, 20l on 3l signed Bolaffi, Sassone €600(Photo Ex) 600.00
- 2203 P **SOMALI COAST, 1960, 10fr, 30fr-75fr Birds, Artist Signed Die Sunk Proofs (283P, 285P-286P).** Three proofs in black, each signed Durrens, Very Fine, designs show the flamingo, ibis and pelican.....(Photo Ex) E. 200-300
- 2204 ★★ **SWEDEN, 1924, 5o-5k U.P.U. (213-28; Facit 196-210, 197cx).** Mint N.H. set of sixteen values, lovely colors, Very Fine, a particularly scarce set to find in this condition, the top three values (1k-5k) show a Carrier Pigeon, Facit SK13,800.....(Photo Ex) 1,800.00
- 2205 P **TOGO, 1957, 500fr Great White Egret, Artist Signed Die Sunk Proofs (C25P).** Eight proofs, with six solid colors and two multicolored (different than the issued stamp), each signed Gandon, Very Fine, an attractive and beautiful array of proofs.....(Photo Ex) E. 400-500
- 2206 ★★ **TONGA, 2002-10 Surcharged Birds (1077A/1155).** Total of 31 stamps of these popular stamps, incl. Nos. 1077A-B, 2003-04 Issue missing just Nos. 1106 and 1110, 1126, 1147, 1150 and 1155, two best items of the group is Nos. 1100 and 1107 which are particularly rare, also with a few Niuafu'ou "Stamp Duty" revenues (Barefoot listed at over £170), items still on retail dealer cards priced at \$1,885.00, Mint N.H., Very Fine, a rarely offered grouping of these scarce surcharges which were only issued locally.....(Photo Ex) E. 500-750
- 2207 P **TUNISIA, 1926 Woman and Dove, Artist Signed Die Sunk Proofs.** Three proofs, two 25fr with one in black and the other multicolored (not in the issued colors), the other a 30fr in black of this design, each signed Decaris, Very Fine, an interesting group as this stamp was not issued in the 25fr denomination.....(Photo Ex) E. 150-200
- 2208 P **TUNISIA, 1947, 4.50fr + 5.50fr Feeding Young Bird, Artist Signed Die Sunk Proofs (B99P).** Four proofs incl. two in a dark red color, one in black and the other a negative print, each signed Feltesse, Very Fine.....(Photo Ex) E. 200-300
- 2209 P **TUNISIA, 1949-51, 200fr Bird, Artist Signed Die Sunk Proofs (C14P, C16P).** Four proofs, No. C14P in dark blue and C16P in red brown and two in blue, each signed by engraver, Very Fine.....(Photo Ex) E. 300-400
- 2210 ★★ **UPPER SILESIA, 1921, 10pf-1m "Plebiscite" Overprint (32-42; Michel 30-40).** Mint N.H. set of eleven values, Very Fine, a scarcely encountered set, each stamp with a Dove carrying an olive branch, each value signed Dr. Landre, Michel €800 .(Photo Ex) 625.00
- 2211 ★★ **URUGUAY, 1928, 10c-3.80p Albatross (C14-C25).** Mint N.H., bright fresh colors, Very Fine, Scott Retail for hinged.....(Photo Ex) 476.50

WESTERN AUSTRALIA

- 2212 (★) **1854, 1p Black (1; SG 1).** Unused (no gum), full to very large margins incl. part of adjoining stamp at left, bold color and a sharp impression, Very Fine and choice, SG £1,200..... 1,350.00
- 2213 P **1854, 1p Black and 1861, 6p Purple Brown, Proofs (1P, 23P; SG 1P, 42P).** Imperforate plate proofs in the issued colors, on unwatermarked paper, 1p with sheet margin at top, Very Fine.....(Photo Ex) E. 200-300
- 2214 ★ **1855, 1sh Pale Brown (5; SG 4c).** Large part original gum, small h.r., large to full margins all around, fresh color, Very Fine, a scarce stamp which is rarely found with original gum, catalogue values are for stamps with no gum, SG £475 550.00
- 2215 (★) **1860, 6p Dull Green (16; SG 28).** Unused (no gum), ample margins all around, Very Fine, SG £2,250..... 1,200.00
- 2216 **1860, 6p Dull Green, Rouletted (19; SG 32).** Roulettes on all but right side, design clear of perforations, relatively light cancel, Very Fine, SG £650..... 750.00



2217

- 2217 ★ **1879, 2p Lilac, Error of Color (31a; SG 55b).** Large part original gum, uncharacteristically well-centered, attractive color

VERY FINE. AN EXTRAORDINARILY RARE ERROR OF COLOR THAT IS SELDOM OFFERED IN SUCH PREMIUM ORIGINAL-GUM CONDITION.

A desirable error and one of the rarest errors of the Australian States that is often missing in even the most advanced British Commonwealth collections, not to mention it being a key stamp for the topical bird collector.

Nearly all unused examples are without gum, having come from a half sheet of 60 that was purchased by Stanley Gibbons in 1879. There were also a tiny number with original gum that emanated from a different source (possibly the rest of the sheet), where all of the used examples also came from.

With 1977 R.P.S. certificate 20,000.00



2218EX



2219EX

- 2218 ★ **1902-05, 1p-£1 Definitives (76-88; SG 117-128).** Cplt. set of the twelve values with the exception of the low value 1p being the later wmk. (90; SG 139), mostly h.r., Very Fine, the values from 1p-10p all feature the iconic Western Australian swan, SG £1,106 (Photo Ex) 1,449.00

- 2219 ★ **1905-12, ½p-5s Definitives (89-98; SG 138-148).** Cplt. set of the ten values, mostly h.r., Very Fine, SG £396 (Photo Ex) 494.00

- 2220 ★ **Western Australia Unused Collection.** On hingeless pages to 1912, wonderful selection of early Swan classics beginning with the imperforate issues, then roulettes and perforated issues, incl. revenue issues with small punches to the £50, also a few unused post cards, condition is above average and most examples with original gum, Fine-Very Fine. *Not illustrated* E. 1,500-2,000

COLLECTION BALANCES BY REGION

- 2221 **Africa Bird Collection Balance.** Incredibly colorful and vivid collection housed on stock pages in four Lighthouse albums, an in-depth collection dedicated to birds incl. singles, sets, souvenir sheets, sheets, imperforates, deluxe proofs, errors and more, contains most African countries from just post-independence thru to modern new issues, some items of particular mention is Biafra Nos. 4-16, some better Burundi sets, Liberia errors, and more, most, if not all, is Mint N.H., Very Fine, we feel that the cost of the new issues alone is multiples of our estimate and is a great foundation to build upon for the collector of birds on stamps..... E. 1,000-1,500
- 2222 **Asia Bird Collection Balance.** Five Lighthouse albums with collection on stock pages, visually beautiful layout with a myriad of listed and unlisted material from throughout Asia, with standard singles, sets, souvenir sheets but also proofs, imperforates, progressive color trials and more, some areas with better material noticed incl. Bhutan, Macau, Malaysia No. 26 imperforate pair, Nepal Nos. 104-17, Thailand and Vietnam, one album dedicated solely to Japan with better items such as No. 479a, C9-C13, plus Mihn overprints (Specimens) and another to Micronesia, Palau and Marshall Islands, vast majority Mint N.H., Very Fine..... E. 1,000-1,500
- 2223 **British Commonwealth Bird Collection Balance.** Twelve Lighthouse albums with collection on stock pages with countries from Aitutaki to Zimbabwe, impressively extensive collection with a gorgeous array of various material incl. straightforward singles, sets, souvenir sheets but also with imperforates, proofs, Specimen overprints, errors and more, collection continues straight thru modern new issues, careful inspection will reveal better sets nestled amongst more modern material incl. many King George VI and early Queen Elizabeth II sets in Mint N.H. condition, multitudes of better cataloguing sets from \$50.00-\$275.00 scattered throughout, one key point to mention is that if a set only contains one bird on a stamp, the entire set was collected and not just the single stamp, therefore making this collection ideal for a bird topical collector or being highly saleable to the retailer, just about all Mint N.H., Very Fine, this collection highlights the staggering amount of birds that were issued on British Commonwealth stamps... E. 2,000-3,000
- 2224 **Europe Bird Collection Balance.** Comprising of seven Lighthouse albums with items in stock pages solely dedicated to birds on stamps from Aland to Yugoslavia and areas in-between, an encompassing collection containing singles, sets, imperforates, souvenir sheets, sheets, booklets and more, careful inspection will reveal a high number of medium priced classic sets hidden amongst modern new issues such as Austria Nos. C54-C60, Rhodes Nos. 64-73, Liechtenstein Nos. C9-C13, Saar No. C12, collection contains a few specialized sub-collections of Czechoslovakia Newspaper stamps, Germany and area related stamps and covers and a few Ukrainian proofs, one album alone is dedicated to United Nations with much of it being Geneva and Vienna incl. some trial color proofs, mostly Mint N.H., Very Fine, a collection with high retail potential E. 1,000-1,500
- 2225 **France and Colonies Bird Balance.** In a Lighthouse album on stockpages, wide range of material from early straight thru modern issues incl. singles, sets, imperforate, souvenir sheets, a few deluxe proofs and more with plenty of medium-priced items throughout, some highlights noted were France with 25c Telegraph (Yvert No. 1, €700), French Colonies (incl. No. 9a strip of three), French Equatorial Africa Liberation Resistance Semi-Postal sets, F.S.A.T., St. Pierre & Miquelon, and more, majority appears to be **Mint N.H.**, Very Fine..... E. 750-1,000
- 2226 **Middle East Bird Balance.** Housed on stock pages in two Lighthouse albums, highly picturesque collection incl. a wide range of countries from Afghanistan to Yemen with singles, sets, souvenir sheets, imperforates, deluxe proofs and more, incl. Trucial States thru the United Arab Emirates incl. the 1990 Bird set, Iran specialized plate varieties of the 1930 and 1935 Air Post sets, Israel incl. Freedom from Hunger sheet and Bale-listed meter stamps, better Jordan incl. the 1964 Air Post, and more, most of it appearing Mint N.H., Very Fine E. 300-400

- 2227 **South and Central America Bird Collection Balance.** On stock pages within three Lighthouse albums, contains issued singles, sets, souvenir sheets, etc., also with multi-tudes of more specialized material incl. Specimens (ex ABNCo), various die proofs, imperforates, among much more, a few better countries noticed were Bolivia (incl. First Issues), Colombia, Cuba, Ecuador, Guatemala and Mexico, incredibly vivid and fresh throughout with much being Mint N.H., Very Fine, careful inspection is advised as there is plenty of better items in amongst modern new issues E. 1,000-1,500
- 2228 P **Worldwide Bird Proofs Balance.** Total of 135 items housed in a Lighthouse album, consisting of a wide range of French Colonies or those newly independent from the 1950s-70s with some a bit more modern all relating to birds, a large portion being artist signed die sunk proofs as well as some deluxe proofs, incl. countries such as Algeria, Central African Republic, Congo, Gabon, Guinee, French Guyana, Morocco, Monaco, St. Pierre & Miquelon, Somali Coast and more, Very Fine, a huge retail potential with much being worth \$100.00-\$200.00 a piece E. 1,500-2,000
- 2229 ★★ **Worldwide Hunting Permit Collection.** Neatly organized in a Lighthouse album, features mostly 1990s issues of Hunting Permit stamps from around the world incl. Australia, Canada, Denmark, Italy, Mexico, New Zealand, Russia, Sweden and United Kingdom, various formats incl. singles, souvenir sheets, booklets, sheets (especially Australia and United Kingdom), couple artist signed, Mint N.H., Very Fine, the retail value alone far exceeds our estimate E. 300-400

END OF SALE — THANK YOU



NOTICE TO BUYERS

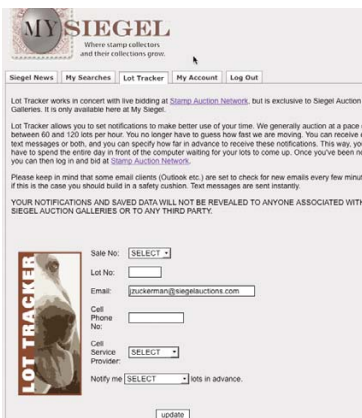
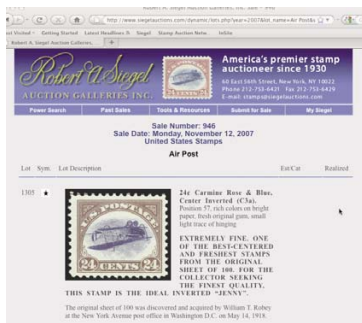
Robert A. Siegel Auction Galleries, Inc. and Robert A. Siegel International are pleased to announce that we can now accept credit cards as payment for purchases made in our auctions, subject to a 3% Convenience Fee.

Only VISA, MasterCard and Discover cards can be accepted. Convenience Fee will be added to the total of the entire invoice (including hammer price, buyer's premium, shipping and transit insurance charges and any applicable taxes).

We believe our clients, particularly those living outside of the United States, will find this to be an especially convenient way to pay for their auction purchases, without having to get international currency drafts or make wire transfer payments. For assistance with a credit card payment please call our New York City office at 212-753-6421.

Resources

siegelauctions.com



CATALOGUES AND PRICES REALIZED

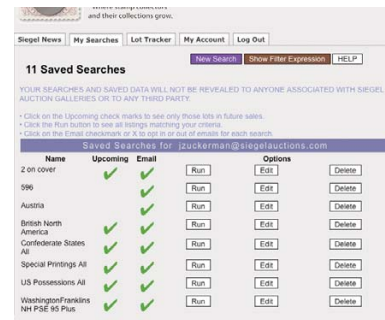
Images and descriptions for all current sale catalogues are available from our website, as well as all sales going back to 1992, our Rarities sales from 1964 and selected name sales.

POWER SEARCH™

Search by Scott number or keyword through all of the sales at our website. The best resource in philately for research.

MY SIEGEL™

Save your Power Searches as want lists. We will automatically notify you when a match is included in an upcoming sale, whether it's as broad as any Columbian issue, or as narrow as a 241 graded 98. The most powerful want list in philately.



LOT TRACKER™

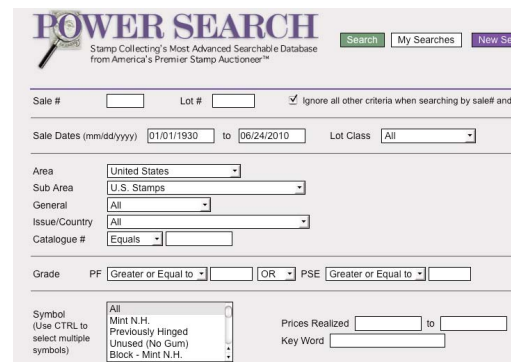
Never miss another lot because you were away from your computer. Log into My Siegel™, then set up notifications to get texts and/or emails 10-30 lots before yours comes up (live bidding is still through Stamp Auction Network).

THE SIEGEL ENCYCLOPEDIA™

This feature of our website contains a wealth of information gleaned from decades of philatelic research by the dedicated philatelists at Siegel.

RARITIES CENSUS

The up-to-date census data for 19th and 20th century U.S. rarities are a valuable resource for buyers, sellers and researchers. Every recorded example of almost 40 different rare stamps is described and, in most cases, photographed.



EXHIBITS AND MOUNTED COLLECTIONS

Downloadable PDF files of some of the top exhibits ever formed. See how others collect and benefit from their original research.

VIDEO PRESENTATIONS

Downloadable video documentaries tell the stories of stamps and covers. This is the ideal way to introduce philately to others.

Live Internet Bidding at Siegel Auctions

BIDDING FROM YOUR COMPUTER LETS YOU BE PART OF THE LIVE AUCTION FROM ANYWHERE IN THE WORLD!

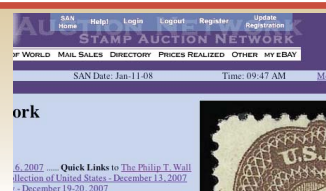
There's NO SUBSTITUTE for following the auction in real time.
Live Internet Bidding lets you bid and buy as though you were right there in the saleroom.
And it's easy.

This step-by-step guide will instruct you how to register, set your browser and use the bidding interface.

Start by following the simple steps to become a registered Live Internet Bidder.
Once you've been approved for bidding, you can listen to the auction and place bids with the click of a mouse.

Registering with STAMP AUCTION NETWORK & SIEGEL AUCTION GALLERIES

Live Internet Bidding is managed by Stamp Auction Network (SAN).
To bid, you must be registered and approved by *both* SAN and Siegel.
To decide what you need to do, choose the description below that best fits you.



I've already registered with SAN and have been approved by Siegel for internet bidding.

I'm a Siegel client, but I'm not registered with SAN.

Go to stampauctionnetwork.com/siegel and click on "Register" at the top. Check the box for Robert A. Siegel Auction Galleries (under "R") and submit the form, indicating you are a Siegel client. Once registered at SAN, you're ready for internet bidding.

I've bid through SAN before, but this is the first time I've bid in a Siegel sale.

Then you just need to be approved by Siegel. Go to stampauctionnetwork.com/siegel and click on "Update Registration" at the top. Your SAN account information will be sent to us for approval (you might be asked for other trade references). Once approved by Siegel for bidding, you're ready for internet bidding.

I've never bid with Siegel, nor registered with SAN.

Go to stampauctionnetwork.com/siegel and click on "Register" at the top. Check the box for Robert A. Siegel Auction Galleries (please, no family members or credit card companies as references). Once registered at SAN and approved by Siegel for bidding, you're ready for internet bidding.

Live Internet Bidding works by allowing registered bidders to observe and place bids.

Live Internet Bidding will work with any browser on both PC and Mac operating systems.

Before bidding by internet for the first time, we recommend finding a sale in progress and listening to the public broadcast or logging in as a registered bidder. This will help you develop a feel for the sale tempo and bidding interface.

Log on to the auction at stampauctionnetwork.com/siegel.

You can also log on at siegelauctions.com

When you're logged on as a Live Internet Bidder, the bidding interface shows a photo and description of the lot, the current bid (and your bidding status), options for placing competitive bids and buttons with bid increments.

- After you click on a bid amount, the auctioneer is immediately notified of your bid.
- Retracting a bid is usually not acceptable, so please bid carefully.
- If you bid and then decide to stop, the "Pass" button will tell the auctioneer you are no longer bidding.
- You can send messages to the auctioneer (for example, a request for extension).
- You can track prior realizations from the bidding screen.



"System Down" or "Lost Connection" events do occasionally happen.

If you have any problems with Live Internet Bidding please call **212-753-6421** for immediate assistance.

Bid Form—15% Premium Sale

Sale 1076

Thursday, June 26, 2014

1

Please provide the following information:

NAME

ADDRESS

CITY/STATE/ZIP

TEL. (DAY) FAX

E-MAIL

PADDLE #

Do not write in box

2

Have you purchased from us in the past 5 years? ☐ YES (if so, please go to Section 3)

☐ NO (please provide a trade reference and bank information)

References:

Stamp Firm: Telephone

Bank: Account #

3

In the space provided below, enter the **lot number** from **Sale 1076** and your corresponding bid. Please use **whole dollar amounts** only and enter the **maximum bid** you wish to have us execute on your behalf, according to the **bidding increments** on other side of this form. **Your bid will NOT include the 15% buyer's premium.** We will advance the bidding at one increment over the

next highest bid; therefore, you may be awarded the lot at less than your maximum bid. Please do not use "plus" bids or "buy" bids. If you wish to bid on one lot **or** the other, indicate your "or" bid between lot number/bid entries and bracket your choices. If you wish to place a **bidding limit** on the total amount of your bids, please enter your limit in the space marked "Limit Bids".

PLEASE NOTE BIDDING INCREMENTS AND SHIPPING CHARGES (ON BACK OF THIS PAGE)

☐ **LIMIT BIDS:** Check this box if you wish to limit the total amount of your bids (not including the **15% buyer's premium**) in this sale. Your bids will be executed until your bidding limit no longer allows for additional bids. **The total amount you wish to bid is:** \$

Lot	Bid	Lot	Bid	Lot	Bid
	\$		\$		\$

4

AGREEMENT: By signing this bid form, you agree to pay for purchases resulting from your bids, in accordance with the **Conditions of Sale** printed in the sale catalogue. You also agree to pay the **15% buyer's premium, shipping costs (see reverse), and sales tax or use tax or customs duty** which may be due on the total invoiced amount. It is

understood that these bids will be executed by Siegel Auction Galleries as a courtesy to absentee bidders, but you waive the right to make any claim against the auctioneer or the firm, arising from the these bids. **You are responsible for your written bids, including any errors on your part and any additions or changes to the bids herein.**

Payment must be made by cash, check, money order or wire transfer. Credit cards (Visa, Mastercard and Discover only) can be accepted as payment but will be subject to a 3% Convenience Fee, which will be added to the total of the entire invoice (including hammer price, buyer's premium, shipping and transit insurance charges and any applicable taxes).



SIGNED TODAY'S DATE

5

Please submit your bids promptly (telephone bids must be confirmed in writing).

Mail to: Robert A. Siegel Auction Galleries, Inc.

60 E. 56th Street, 4th Floor, New York, N.Y. 10022

Telephone (212) 753-6421

OR FAX YOUR BIDS: (212) 753-6429

Shipping Instructions, Bidding Increments and space for additional bids on other side of form



Additional Bids

Sale 1076—June 26, 2014

Lot	Bid	Lot	Bid	Lot	Bid
	\$		\$		\$

Shipping and Transit Insurance

We will be pleased to arrange for shipping and transit insurance for purchases in this sale (except those described as “floor sale only”). To expedite billing and delivery of lots to hundreds of buyers per sale, we use standard charges for postage and insurance, based on the package weight and mailing requirements (see schedule). The standard charges are sometimes slightly more or less than the actual postage or Fedex fees, but we do not include any charge for our labor or packing costs. Therefore, we ask all buyers to remit the prescribed amount for shipping charges.

Transit insurance is provided in all cases, except when the buyer has furnished us with proof that insurance coverage is effective under another policy. Proof, in such cases, will be accepted in the form of a written certificate from the insurance carrier.

You are responsible for insurance charges, which will be added to your invoice. This coverage is provided for our mutual protection against theft or loss in transit.

Bidding Increments

The auctioneer may regulate the bidding at his discretion. However, to assist absentee bidders in establishing their maximum bid for each lot, the increments shown at right will be used in most cases. We recommend that written bids conform to these increments (those which do not will be reduced to the next level).

Current Postage & Insurance Charges

Weight/Class	Shipping Method	Charges
Up to 2 lbs.	Fedex Envelope	\$20.00
Up to 2 lbs.	USPS Envelope	\$20.00
Up to 2 lbs.	USPS Box	\$50.00
Over 2 lbs.	Fedex Box	\$35.00*
Over 2 lbs.	USPS Box	\$50.00*
Non-U.S.	Fedex/Courier	\$50.00**
Bulk Lots		By weight and value
These fees reflect additional Fedex charges for residential delivery, signature and fuel surcharge. *Higher fees will be charged on packages weighing more than 5 lbs. or insured for more than \$75,000. **Buyers are liable for all customs duties and clearance charges. An accurate declaration of value will be made on all import/export documents.		

4/2014

Up to \$50	\$5	\$3,000-7,000	\$250
\$50-200	\$10	\$7,000-20,000	\$500
\$200-500	\$25	\$20,000-30,000	\$1,000
\$500-1,000	\$50	\$30,000-75,000	\$2,500
\$1,000-3,000	\$100	\$75,000 up	\$5,000

4/2014



PRICES REALIZED FOR SALE 1076---6/26/2014
The Daniel H. and Marcel V. Collection of Birds of the World

Robert A. Siegel Auction Galleries, Inc.
60 East 56th Street, 4th Floor, New York, NY 10022
Tel (212) 753-6421 Fax (212) 753-6429

Lot#	Realized	Lot#	Realized	Lot#	Realized	Lot#	Realized	Lot#	Realized
2001	1,400	2045	1,800	2089	325	2138	190	2195	100
2002	2,700	2046	850	2090	110	2139	190	2196	850
2003	3,250	2047	750	2091	120	2140	225	2197	650
2004	800	2048	1,500	2092	160	2141	110	2198	190
2005	550	2049	550	2093	150	2142	300	2199	150
2006	8,500	2050	300	2094	8,500	2143	400	2200	80
2007	18,500	2051	300	2095	200	2144	250	2201	350
2009	300	2052	180	2096	250	2145	2,600	2202	200
2011	5,250	2053	225	2098	950	2148	550	2203	100
2012	650	2054	225	2099	425	2149	130	2205	325
2013	950	2055	250	2100	1,100	2150	100	2206	1,100
2014	425	2056	300	2101	5,750	2151	450	2209	150
2015	3,000	2057	325	2102	1,400	2152	70	2210	375
2016	950	2058	225	2103	1,600	2153	600	2211	400
2017	1,900	2059	300	2104	120	2155	180	2212	600
2018	500	2060	300	2105	2,400	2156	275	2213	275
2019	1,100	2061	225	2106	1,500	2157	180	2215	600
2020	700	2062	200	2107	850	2158	700	2216	300
2021	300	2063	200	2108	300	2159	80	2217	11,500
2022	600	2064	225	2109	225	2160	70	2218	650
2023	425	2065	200	2110	150	2161	800	2219	130
2024	400	2066	1,600	2111	200	2162	900	2220	2,200
2025	450	2067	2,400	2112	80	2163	400	2221	2,800
2026	350	2068	900	2113	400	2164	800	2222	3,500
2027	500	2069	600	2114	70	2166	425	2223	7,000
2028	275	2070	600	2115	450	2167	325	2224	2,600
2029	600	2071	375	2116	225	2170	600	2225	1,400
2030	225	2072	550	2117	500	2171	200	2226	1,100
2031	250	2073	2,900	2118	160	2172	600	2227	2,500
2032	225	2074	225	2120	750	2173	300	2228	2,300
2033	800	2075	5,750	2121	425	2174	1,800	2229	700
2034	110	2076	1,200	2122	750	2175	375		
2035	850	2077	600	2123	180	2176	100		
2036	190	2078	700	2125	110	2177	70		
2037	2,200	2081	3,500	2127	120	2183	100		
2038	1,800	2082	1,400	2128	200	2185	300		
2039	180	2083	700	2129	475	2186	250		
2040	3,500	2084	1,200	2131	200	2187	325		
2041	8,500	2085	325	2134	1,100	2188	225		
2042	13,000	2086	1,300	2135	750	2189	200		
2043	4,500	2087	1,200	2136	325	2190	750		
2044	1,400	2088	275	2137	150	2193	300		