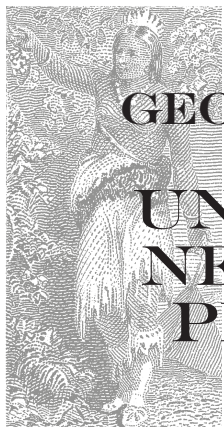


THE
GEORGE A. SCHWENK
COLLECTION OF
UNITED STATES
NEWSPAPERS &
PERIODICALS
ISSUES



SALE 1079 – THURSDAY, SEPTEMBER 18, 2014

Robert A. Siegel



THE
GEORGE A. SCHWENK
COLLECTION OF
UNITED STATES
NEWSPAPERS &
PERIODICALS
ISSUES



Sale 1079

Thursday, September 18, 2014, at 1:30 p.m.

Lots 2001-2232

A 15% buyer's premium will be added to the hammer price of each lot sold.

*Lots will be available for viewing on Monday 10am-4pm
and by appointment (please call 212-753-6421).*

Robert A. Siegel

AUCTION GALLERIES, INC.

60 EAST 56TH STREET, 4TH FLOOR, NEW YORK, N.Y. 10022

Phone (212) 753-6421 • Fax (212) 753-6429 • E-mail: stamps@siegelauctions.com

siegelauctions.com



Robert A. Siegel

AUCTION GALLERIES, INC.

60 EAST 56TH STREET, 4TH FLOOR, NEW YORK, N.Y. 10022

Phone (212) 753-6421 • Fax (212) 753-6429 • E-mail: stamps@siegelauctions.com

siegelauctions.com



Scott R. Trepel
President
strepel
@siegelauctions.com



John P. Zuckerman
Senior Vice President
jzuckerman
@siegelauctions.com



Corey Long
Vice President
clong
@siegelauctions.com



Colleen Stellato
Accounts
stamps
@siegelauctions.com



Laura Melvin Kaplan
Bids and Inquiries
laura
@siegelauctions.com



Charles F. Shreve
Siegel International
charles
@siegelauctions.com



Chris Anderson
Siegel International
chris
@siegelauctions.com



Andrew Titley
Siegel International
andrew
@siegelauctions.com

Scott R. Trepel Principal Auctioneer (licensed by NYC Dept. of Consumer Affairs, #795952)

Nathaniel Estes Catalogue and Digital Production

Information for Bidders

Bidding

The following means are available for placing bids:

- 1) Attending the Live Auction in Person:** All bidders must register for a paddle, and new bidders must provide references at least three business days in advance of the sale.
- 2) Live Internet Bidding:** Instructions for participating as a Live Internet Bidder are provided on the page opposite.
- 3) Phone Bidding:** Bidders can be connected to the sale by phone and bid through a member of staff. Requests for phone bidding are subject to approval (please contact our office at least 24 hours before the sale). A signed Bid Form is required.
- 4) Absentee Bids.** All bids received in advance of the sale, either by mail, fax, phone, e-mail or internet, are Absentee Bids, which instruct the auctioneer to bid up to a specific amount on one or more lots in the sale. Absentee Bids sent by phone, fax or e-mail should arrive at least one hour prior to the start of the sale session. Bids entered through Live Internet Bidding will be visible to the auctioneer during the sale. Written bids should be entered legibly on the Bid Form in the sale catalogue. E-mail and internet bids should be carefully typed and double-checked. All new bidders must provide references. We recommend calling or e-mailing to confirm that Absentee Bids sent by mail, fax or e-mail have been received and entered.

Pre-Sale Viewing

Subject to availability, certain lots (except group lots) can be sent to known clients for examination. Requests must be made no later than 7 days prior to the sale. Lots must be returned on the day received. Postage/insurance costs will be invoiced.

In addition to regular viewing, clients may view lots by appointment. Our staff will be pleased to answer questions or provide additional information about lots.

Expert Certification

Individual items offered without a PF or PSE certificate dated within the past five years may be purchased subject to independent certification of genuineness and our description. **Please refer to the Conditions of Sale and Grading Terms for policies governing certification.**

Shipping and Delivery

Procedures and charges for shipping lots are printed on the back of the Bid Form. **Bidders are responsible for all prescribed shipping charges and any applicable sales tax or customs duties.**

Price Realized

Prices realized are sent with each invoice. Bidders with e-mail will receive a Bid Results report after the sale. Session results are posted immediately to **siegelauctions.com**

Live Internet Bidding at Siegel Auctions

BIDDING FROM YOUR COMPUTER LETS YOU BE PART OF THE LIVE AUCTION FROM ANYWHERE IN THE WORLD!

There's **NO SUBSTITUTE** for following the auction in real time.
Live Internet Bidding lets you bid and buy as though you were right there in the saleroom.
And it's easy.

This step-by-step guide will instruct you how to register, set your browser and use the bidding interface.

Start by following the simple steps to become a registered Live Internet Bidder.
Once you've been approved for bidding, you can listen to the auction and place bids with the click of a mouse.

Registering with STAMP AUCTION NETWORK & SIEGEL AUCTION GALLERIES

Live Internet Bidding is managed by Stamp Auction Network (SAN).
To bid, you must be registered and approved by *both* SAN and Siegel.
To decide what you need to do, choose the description below that best fits you.



I've already registered with SAN and have been approved by Siegel for internet bidding.

I'm a Siegel client, but I'm not registered with SAN.

Go to stampauctionnetwork.com/siegel and click on "Register" at the top. Check the box for Robert A. Siegel Auction Galleries (under "R") and submit the form, indicating you are a Siegel client. Once registered at SAN, you're ready for internet bidding.

I've bid through SAN before, but this is the first time I've bid in a Siegel sale.

Then you just need to be approved by Siegel. Go to stampauctionnetwork.com/siegel and click on "Update Registration" at the top. Your SAN account information will be sent to us for approval (you might be asked for other trade references). Once approved by Siegel for bidding, you're ready for internet bidding.

I've never bid with Siegel, nor registered with SAN.

Go to stampauctionnetwork.com/siegel and click on "Register" at the top. Check the box for Robert A. Siegel Auction Galleries (under "R") and submit the form **with your trade references** (please, no family members or credit card companies as references). Once registered at SAN and approved by Siegel for bidding, you're ready for internet bidding.

Live Internet Bidding works by allowing registered bidders to observe and place bids.

Live Internet Bidding will work with any browser on both PC and Mac operating systems.

Before bidding by internet for the first time, we recommend finding a sale in progress and listening to the public broadcast or logging in as a registered bidder. This will help you develop a feel for the sale tempo and bidding interface.

Log on to the auction at stampauctionnetwork.com/siegel.

You can also log on at siegelauctions.com

When you're logged on as a Live Internet Bidder, the bidding interface shows a photo and description of the lot, the current bid (and your bidding status), options for placing competitive bids and buttons with bid increments.

- After you click on a bid amount, the auctioneer is immediately notified of your bid.
- Retracting a bid is usually not acceptable, so please bid carefully.
- If you bid and then decide to stop, the "Pass" button will tell the auctioneer you are no longer bidding.
- You can send messages to the auctioneer (for example, a request for extension).
- You can track prior realizations from the bidding screen.



"System Down" or "Lost Connection" events do occasionally happen.

If you have any problems with Live Internet Bidding please call **212-753-6421** for immediate assistance.

Conditions of Sale (please read carefully before bidding)

The property described in this catalogue will be offered at public auction by Robert A. Siegel Auction Galleries, Inc. ("Galleries") on behalf of various consignors and itself or affiliated companies. By bidding on any lot, whether directly or by or through an agent, in person, or by telephone, facsimile or any other means, the bidder acknowledges and agrees to all of the following Conditions of Sale.

1. The highest bidder acknowledged by the auctioneer shall be the buyer. The term "final bid" means the last bid acknowledged by the auctioneer, which is normally the highest bid offered. **The purchase price payable by the buyer will be the sum of the final bid and a commission of 15% of the final bid ("buyer's premium"), together with any sales tax, use tax or customs duties due on the sale.**

2. The auctioneer has the right to reject any bid, to advance the bidding at his discretion and, in the event of a dispute between bidders, to determine the successful bidder, to continue the bidding or to reoffer and resell the lot in dispute. The Galleries' record of the final sale shall be conclusive.

3. All bids are per numbered lot in the catalogue unless otherwise announced by the auctioneer at the time of sale. The right is reserved to group two or more lots, to withdraw any lot or lots from the sale, or to act on behalf of the seller. The Galleries will execute bidding instructions on behalf of clients, but will not be responsible for the failure to execute such bids or for any errors in the execution of such bids.

4. **Lots with numbers followed by the symbol ° are offered subject to a confidential minimum bid ("reserve"), below which the lot will not be sold. The absence of the symbol ° means that the lot is offered without a reserve. If there is no reserve, the auctioneer has sole discretion to establish a minimum opening bid and may refuse an offer of less than half of the published estimate. Any lot that does not reach its reserve or opening bid requested by the auctioneer will be announced as "passed" and excluded from the prices realized lists after the sale. The Galleries may have a direct or indirect ownership interest in any or all lots in the sale resulting from an advance of monies or goods-in-trade or a guarantee of minimum net proceeds made by the Galleries to the seller.**

5. Subject to the exclusions listed in 5(A), the Galleries will accept the return of lots which have been misidentified or which have obvious faults that were present when the lot was in the Galleries' custody, but not so noted in the lot description. **All disputed lots must be received by the Galleries intact with the original packing material within 5 days of delivery to the buyer but no later than 30 days from the sale date. (5A) EXCLUSIONS:** The following lots may not be returned for any reason: lots containing 10 or more items; lots from buyers who registered for the pre-sale exhibition or received lots by postal viewing, thereby having had the opportunity to inspect them before the sale; any lot described with "faults," "defects" or a specific fault may not be returned because of any secondary fault. Photographed lots may not be returned because of centering, margins, short/nibbed perforations or other factors shown in the illustrations. Lots may not be returned for any of the following reasons: the color of the item does not match the color reproduction in the sale catalogue or website listing; the description contains inaccurate information about the quantity known or reported; or a certification service grades a stamp lower than the grade stated in the description.

6. Successful bidders, unless they have established credit with the Galleries prior to the sale, must make payment in full before the lots will be delivered. Buyers not known to the Galleries must make payment in full within 3 days from the date of sale. **The Galleries retains the right to demand a cash deposit from anyone prior to bidder registration and/or to demand payment at the time the lot is knocked down to the highest bidder, for any reason whatsoever.** In the event that any buyer refuses or fails to make payment in cash for any lot at the time it is knocked down to him, the auctioneer reserves the right to reoffer the lot immediately for sale to the highest bidder. **Credit cards (Visa, Mastercard and Discover only)**

can be accepted as payment but will be subject to a 3% Convenience Fee, which will be added to the total of the entire invoice (including hammer price, buyer's premium, shipping and transit insurance charges and any applicable taxes).

7. If the purchase price has not been paid within the time limit specified above, nor lots taken up within 7 days from the date of sale, the lots will be resold by whatever means deemed appropriate by the Galleries, and any loss incurred from resale will be charged to the defaulting buyer. Any account more than 30 days in arrears will be subject to a late payment charge of 1½% per month as long as the account remains in arrears. Any expenses incurred in securing payment from delinquent accounts will be charged to the defaulter. A fee of \$250.00 per check will be charged for each check returned for insufficient funds.

8. All lots are sold as genuine. **Any lot accompanied by a certificate issued by The Philatelic Foundation or by Professional Stamp Experts within 5 years of the sale date is sold "as is" and in accordance with the description on the certificate. Such lots may not be returned for any reason, including but not limited to a contrary certificate of opinion.** Buyers who wish to obtain a certificate for any item that does not have a P.F. or P.S.E. certificate (dated as above) may do so, provided that the following conditions are met: (1) the purchase price must be paid in full, (2) the item must be submitted to an acceptable expertizing committee with a properly executed application form within 21 days of the sale, (3) a copy of the application form must be given to the Galleries, (4) in the event that an adverse opinion is received, the Galleries retain the right to resubmit the item on the buyer's behalf for reconsideration, without time limit or other restrictions, (5) unless written notification to the contrary is received, items submitted for certification will be considered cleared 90 days from the date of sale, and (6) in the event any item is determined to be "not as described", the buyer will be refunded the purchase price and the certification fee up to \$600.00 unless otherwise agreed.

9. Until paid for in full, all lots remain the property of the Galleries on behalf of the seller.

10. Agents executing bids on behalf of clients will be held responsible for all purchases made on behalf of clients unless otherwise arranged prior to the sale.

11. The buyer assumes all risk for delivery of purchased lots and agrees to pay for prescribed shipping costs. Buyers outside the U.S. are responsible for all customs duties.

12. **The bidder consents that any action or proceeding against it may be commenced and maintained in any court within the State of New York or in the United States District Court for the Southern District of New York, that the courts of the State of New York and United States District Court for the Southern District of New York shall have jurisdiction with respect to the subject matter hereof and the person of the bidder. The bidder agrees not to assert any defense to any action or proceeding initiated by Galleries based upon improper venue or inconvenient forum. The bidder agrees that any action brought by the bidder shall be commenced and maintained only in a Federal Court in the United States District Court for the Southern District of New York or the State Court in the county in which Galleries has its principal place of business in New York. The bidder agrees not to use a public conflict resolution service and not to use any form of social media to publish comments or information about the Galleries and its employees which might harm the Galleries' reputation or business. These Terms and Conditions shall be governed by and construed in accordance with the substantive laws of the State of New York.**

SCOTT R. TREPEL, Principal Auctioneer
Auctioneer's License No. 795952
N.Y.C. Department of Consumer Affairs
80 Lafayette Street, New York, N.Y. 10013
Telephone (212) 577-0111

Revised 1/2014

Grades, Abbreviations and Values Used in Descriptions

Grades and Centering

Our descriptions contain detailed information and observations about each item's condition. We have also assigned grades to stamps and covers, which reflect our subjective assessment. For stamps, the margin width, centering and gum are described and graded according to generally-accepted standards (an approximate correlation to numeric grades is provided at right). Although we believe our grades are accurate, they are not always exactly aligned with third-party grading terms or standards for all issues. **A lot may not be returned because a certification service grades a stamp lower than the grade stated in the description. Information from the P.S.E. Stamp Market Quarterly and P.S.E. Population ReportSM is the most current available, but lots may not be returned due to errors or changes in statistics or data.**

Extremely Fine Gem (90-100): The term "Gem" describes condition that is the finest possible for the issue. This term is equivalent to "Superb" used by grading services.







Extremely Fine (80-90): Exceptionally large/wide margins or near perfect centering.

Very Fine (70-85): Normal-size margins for the issue and well-centered with the design a bit closer to one side. "Very Fine and choice" applies to stamps that have desirable traits such as rich color, sharp impression, freshness or clarity of cancel.

Fine (60-70): Smaller than usual margins or noticeably off center. Pre-1890 issues may have the design touched in places.

Very Good (below 60): Attractive appearance, but margins or perforations cut into the design.

Guide to Gum Condition

Gum Categories:	MINT N.H.	ORIGINAL GUM (O.G.)				NO GUM
	 Mint Never Hinged <i>Free from any disturbance</i>	 Lightly Hinged <i>Faint impression of a removed hinge over a small area</i>	 Hinge Mark or Remnant <i>Prominent hinged spot with part or all of the hinge remaining</i>	 Part o.g. <i>Approximately half or more of the gum intact</i>	 Small part o.g. <i>Approximately less than half of the gum intact</i>	 No gum <i>Only if issued with gum</i>
Catalogue Symbol:	★ ★	★	★	★	★	(★)
PRE-1890 ISSUES	<i>Pre-1890 stamps in these categories trade at a premium over Scott value</i>			Scott Value for “O.G.”		Scott “No Gum” Values thru No. 218
1890-1935 ISSUES	Scott “Never Hinged” Values for Nos. 219-771	Scott Value for “O.G.” (Actual value will be affected by the degree of hinging)		Disturbed Original Gum: Gum showing noticeable effects of humidity, climate or hinging over more than half of the gum. The significance of gum disturbance in valuing a stamp in any of the Original Gum categories depends on the degree of disturbance, the rarity and normal gum condition of the issue and other variables affecting quality. For example, stamps issued in tropical climates are expected to have some		
1935 TO DATE	Scott Value for “Unused”					

Covers

Minor nicks, short edge tears, flap tears and slight reduction at one side are normal conditions for 19th century envelopes. Folded letters should be expected to have at least one file fold. Light cleaning of covers and small mends along the edges are accepted forms of conservation. Unusual covers may have a common stamp with a slight crease or tiny tear. **These flaws exist in virtually all 19th century covers and are not always described. They are not grounds for return.**

Catalogue Values and Estimates

Unless otherwise noted, the currently available *Scott Catalogue* values are quoted in dollars with a decimal point. Other catalogues are often used for foreign countries or specialized areas and are referred to by their common name: *Stanley Gibbons* (SG), *Dietz*, *American Air Mail Catalogue* (AAMC), *Michel*, *Zumstein*, *Facit*, etc. Estimates are indicated with an "E." and reflect our conservative valuation in dollars. Reserves will never exceed the low end of the estimate range; they will sometimes exceed Scott Catalogue value for stamps in Extremely Fine condition.

Because of certain pricing inconsistencies in the *Scott Catalogue*—for example, blocks that have no gum, the absence of premiums for Mint N.H. items, etc.—we cannot guarantee the accuracy of values quoted for multiples, specialized items and collection lots. We generally try to be conservative, but buyers may not return a lot because of a discrepancy in catalogue value due to Scott pricing inconsistencies.

Symbols and Abbreviations (see chart above for gum symbols)

⊞	Block	E	Essay	pmk.	Postmark	No.	Scott Catalogue Number
⊞	Cover	P	Proof	cds	Circular Datestamp	hs	Handstamp
FC	Fancy Cancel	TC	Trial Color Proof	var.	Variety	ms.	Manuscript

Resources

siegelauctions.com



CATALOGUES AND PRICES REALIZED

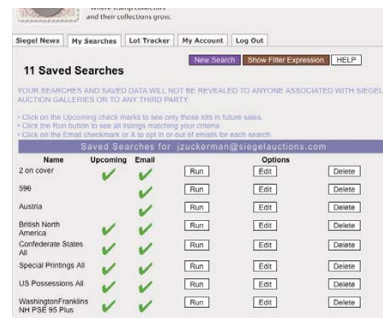
Images and descriptions for all current sale catalogues are available from our website, as well as all sales going back to 1992, our Rarities sales from 1964 and selected name sales.

POWER SEARCH™

Search by Scott number or keyword through all of the sales at our website. The best resource in philately for research.

MY SIEGEL™

Save your Power Searches as want lists. We will automatically notify you when a match is included in an upcoming sale, whether it's as broad as any Columbian issue, or as narrow as a 241 graded 98. The most powerful want list in philately.



LOT TRACKER™

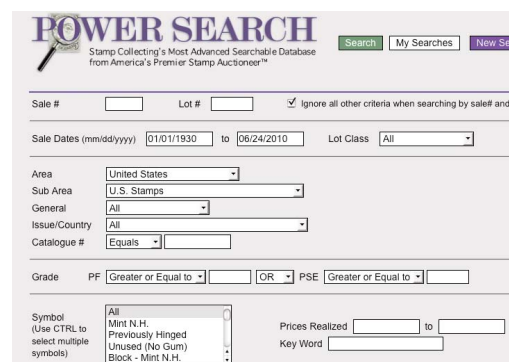
Never miss another lot because you were away from your computer. Log into My Siegel™, then set up notifications to get texts and/or emails 10-30 lots before yours comes up (live bidding is still through Stamp Auction Network).

THE SIEGEL ENCYCLOPEDIA™

This feature of our website contains a wealth of information gleaned from decades of philatelic research by the dedicated philatelists at Siegel.

RARITIES CENSUS

The up-to-date census data for 19th and 20th century U.S. rarities are a valuable resource for buyers, sellers and researchers. Every recorded example of almost 40 different rare stamps is described and, in most cases, photographed.



EXHIBITS AND MOUNTED COLLECTIONS

Downloadable PDF files of some of the top exhibits ever formed. See how others collect and benefit from their original research.

VIDEO PRESENTATIONS

Downloadable video documentaries tell the stories of stamps and covers. This is the ideal way to introduce philately to others.

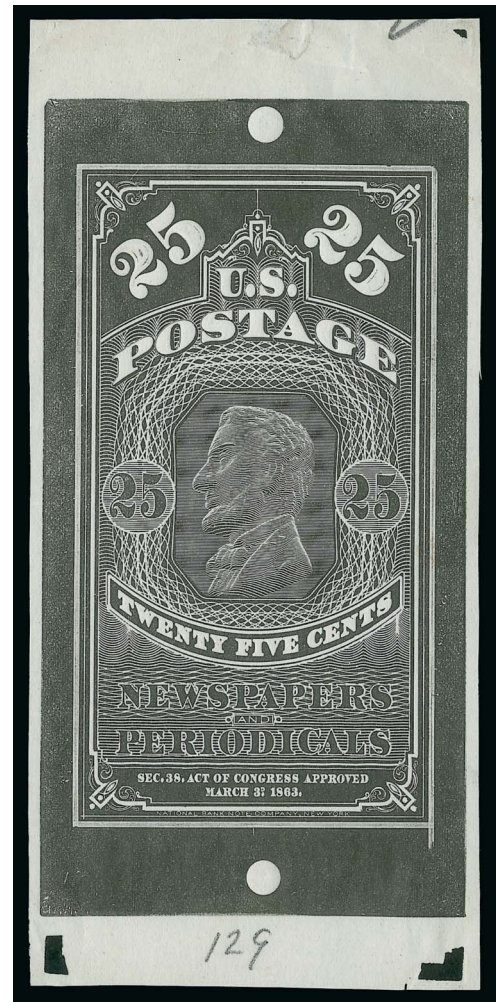
AFTERNOON SESSION (LOTS 2001-2232)
THURSDAY, SEPTEMBER 18, 2014, AT 1:30 P.M.

THE GEORGE A. SCHWENK COLLECTION OF
UNITED STATES NEWSPAPERS AND PERIODICALS ISSUES

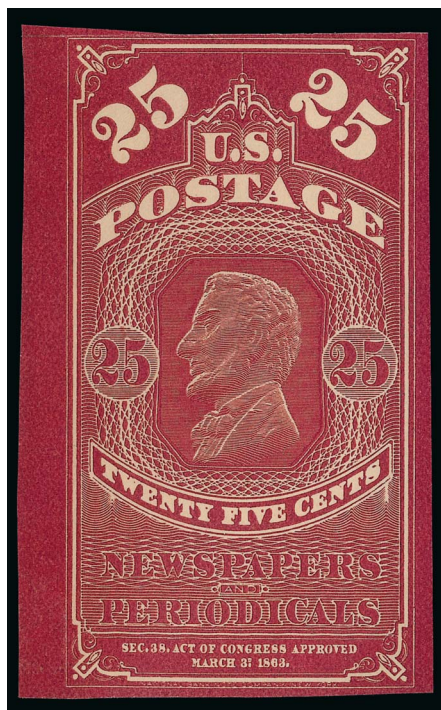
ESSAYS AND PROOFS

1865 ISSUE

2001 TC 25c Black, 1865 Issue, Large Die Trial Color Essay on Wove (PR3TCP1). 145 x 166mm showing full size of the uncleaned die and mounting holes for attaching to press, pencil "129" at bottom and marks at top, light horizontal crease, small corner crease at top right outside of design, small flaws from mounting, still Very Fine, this is reportedly unique, a distinctive essay showing the full uncleaned die and a wonderful exhibition item, ex Kotanchik, listed but unpriced in Scott..... E. 750-1,000



2001

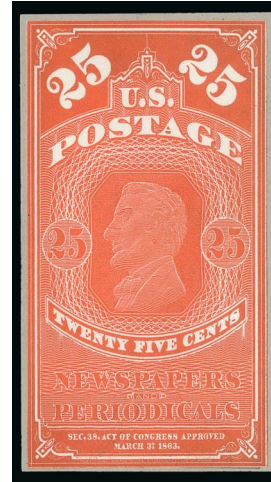


2002EX

2002 TC 5c-25c 1865 Issue, Trial Color Proofs on Thick Cream Wove (PR2TC5-PR4TC5). Four of each, complete for all Scott-listed colors, large margins incl. few with sheet margin, Very Fine and scarce set(Photo Ex) 840.00



2003EX



2004EX

2003 TC **5c Black, Blue Green, 1865 Issue, Trial Color Plate Proofs on Thick Cream Wove (PR4TC5).** Imprint and plate no. 38 blocks of six, Black bottom, Blue Green top, large margins, fresh and Very Fine, also incl. 5c, 10c and 25c hybrid large die proofs (not counted in catalogue value).....(Photo Ex) 840.00

2004 P **5c-25c 1865 Issue, Small Die Proofs (PR2P2-PR4P2).** Each affixed to original gray card from a Roosevelt presentation album, rich colors, Very Fine, approximately 85 albums were produced.....(Photo Ex) 675.00



2005

2005 P **5c-25c 1865 Issue, Panama-Pacific Small Die Proofs on Wove (PR1P2a-PR3P2a).** Full margins, bright colors

VERY FINE. AN EXTREMELY RARE SET OF PANAMA-PACIFIC SMALL DIE PROOFS FOR THE FIRST NEWSPAPER ISSUE.

Prepared in 1915 for the Panama-Pacific Exposition, it is believed that no more than five examples of each stamp were produced. This is the first set we have offered since keeping computerized records. No singles or sets were offered in either the Warm-Griffiths or Kotanchik auctions.

Each with 2007 P.F. certificate..... 10,500.00



2006EX

2006 P **5c-25c 1865 Issue, Plate Proofs on Thin Card (PR2P4 var-PR4P4 var).** Large margins, on card that is noticeably thinner than normal P4's, large margins, few thin spots at corners, Very Fine appearance, unusual
.....(Photo Ex) E. 200-300

2007 P田 **5c-25c 1875 Reprints, Plate Proofs on Card (PR5P4-PR7P4).** Complete sheets of 20 with National Bank Note Co. imprints and plate nos. at top and bottom, wide margins, rich colors, 10c and 25c some slight corner flaws well away from printed designs, Very Fine, a rare and desirable set of the three denominations, 10c and 25c with 2008 P.F. certificates(Photo Ex) 3,900.00



2007EX

1875 ISSUE ESSAYS AND PROOFS

2008 E **\$12.00 Black, 1875 Issue, Die Essay on India (PR28-E2).** On 76 x 91mm card with full die sinkage, pencil "Model" at bottom, with pencil additions to design at top and bottom, Very Fine, an exceedingly rare essay, listed but unpriced in Scott
..... E. 1,000-1,500



2008



2009EX



2010EX

- 2009 P **2c-\$60.00 1875 Issue, Large Die Proofs on India (PR9P1-PR32P1).** On approximately 144 x 230mm cards with full die sinkage, detailed impressions, fresh and Very Fine, scarce complete set, also incl. PR63P1 signed by Skinner(Photo Ex) 2,500.00
- 2010 P **2c-\$60.00 1875 Issue, Small Die Proofs on Wove (PR9P2-PR32P2).** Complete set of 24 on original gray card backing from a Roosevelt presentation album, fresh and Very Fine set, approximately 85 albums were produced.....(Photo Ex) 1,200.00



2011EX

- 2011 P **2c-\$60.00 1875 Issue, Panama-Pacific Small Die Proofs on Wove (PR9P2a-PR32P2a).** Complete set of 24 denominations, large margins, rich colors, few with toning as often seen on these issues
- VERY FINE AND CHOICE. AN EXTREMELY RARE COMPLETE SET OF PANAMA-PACIFIC SMALL DIE PROOFS FOR THE 1875 NEWSPAPER ISSUE.
- Prepared in 1915 for the Panama-Pacific Exposition, it is believed that no more than five examples of each were produced.....(Photo Ex) 6,000.00

2012 TC **\$60.00 Black, 1875 Issue, Trial Color Plate Proof on India (PR32TC3k).** Block of eight with arrow at right, large margins, crisp impression, Very Fine, Scott Retail as singles 280.00



2012



2013EX

2013 TC **2c-\$60.00 1875 Issue, Atlanta Trial Color Plate Proofs (PR9TC4-PR32TC4).** Complete set of 120 proofs in all five issued colors, full to large margins throughout, characteristic vivid colors

VERY FINE-EXTREMELY FINE. A RARE COMPLETE SET OF ATLANTA TRIAL COLOR PROOFS FOR THE 1875 NEWSPAPER ISSUE.

The Atlanta trial color plate proofs on card were prepared for display at the 1881 International Cotton Exposition in Atlanta. Very few complete sets are known to exist intact

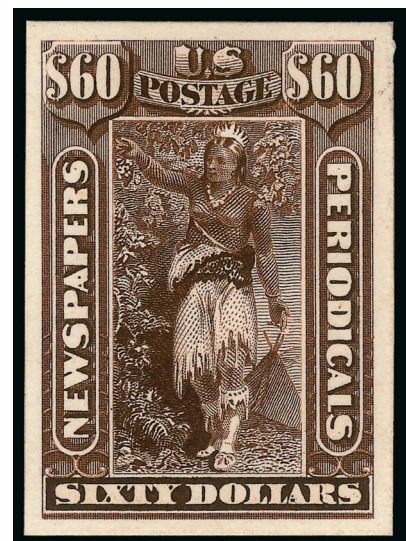
.....(Photo Ex) 5,160.00

2014 TC **2c-\$60.00 1875 Issue, Atlanta Trial Color Plate Proofs (PR9TC4-PR32TC4).** Complete set of 120 proofs in all five issued colors, full to large margins throughout, characteristic vivid colors

VERY FINE-EXTREMELY FINE. A RARE COMPLETE SET OF ATLANTA TRIAL COLOR PROOFS FOR THE 1875 NEWSPAPER ISSUE.

The Atlanta trial color plate proofs on card were prepared for display at the 1881 International Cotton Exposition in Atlanta. Very few complete sets are known to exist intact.

.....(Photo Ex) 5,160.00

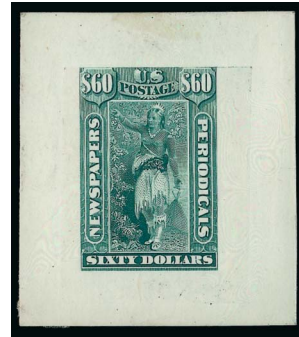


2014EX



2015 TC **24c Black, 1875 Issue, Atlanta Trial Color Plate Proof (PR17TC4).** Block of 40, large margins, detailed impression, Very Fine, a rare large multiple, Scott Retail as singles... 2,200.00

2015



2016EX

2016 TC **2c-\$60.00 1875 Issue, Goodall Trial Color Small Die Proofs (PR9TC-PR32TC).** Complete set of 24 values in five colors: Black, Deep Green, Dull Gray Blue, Deep Brown and Dull Red, generally 35 x 40mm India on 45 x 55mm card, the 60c smaller, rich colors, very few with few toned spots

VERY FINE AND EXTREMELY RARE COMPLETE SET OF GOODALL TRIAL COLOR SMALL DIE PROOFS. PROBABLY FEWER THAN A HALF-DOZEN SETS EXIST.

In 1879, President Albert G. Goodall of the American Bank Note Company, successor to the Continental Bank Note Company, ordered sets of small die proofs for display purposes. Complete sets are rare — the last we offered was in 1998.

Scott Retail value has not changed in over 15 years.(Photo Ex) 15,600.00

- 2017 P田 **1c-\$60.00 1875-85 Issues, Plate Proofs on India (PR9P3-PR23P3, PR26P3-PR32P3, PR81P3).** Blocks of twelve, on card and so free from the usual defects which can plague this fragile paper, large margins, Very Fine and choice, a scarce and desirable group of blocks(Photo Ex) 4,774.00



2017EX

1879-85 ISSUES ESSAYS AND PROOFS



2018EX

- 2018 E **25c 1879 Continental Bank Note Co. Newspaper Issue, Die Essays on India, White Ivory (PR9-E2a, PR9-E2b).** First in Scarlet, removed from card and stamp size, two of latter in Blue and Black Brown, large margins to full, Fine and scarce(Photo Ex) 4,050.00

- 2019 E **1c Black, Scarlet, 1885 American Bank Note Co. Newspaper Issue, Die Essay on White Ivory Paper (PR81-E1a).** Each approximately 65 x 77mm, bright colors, "S-A" imprints at bottom, Scarlet small toned spot, small thin spots from mount removal, still Very Fine, scarce..... (Photo Ex) 1,200.00



2019EX



2020EX

- 2020 P **1c-96c 1885 Issue, Panama-Pacific Small Die Proofs (PR81P2a-PR89P2a).** Bright colors throughout, a few display a bit of the typical light toning, 96c small nick, overall fresh
VERY FINE AND RARE COMPLETE SET OF THE 1885 NEWSPAPER ISSUE PANAMA-PACIFIC SMALL DIE PROOFS.
Each with 2006 P.F. certificate. Undercatalogued in Scott — this set brought \$4,500 hammer in one of our auctions in 2013.....(Photo Ex) 2,250.00

1895 ISSUE ESSAYS AND PROOFS

- 2021 E **\$20.00 Black, 1895 Issue, Large Die Essay on India (PR111-E1).** 52 x 64mm, completely missing bottom part of design as well as substantial portions at sides, detailed impression of parts that are printed, tiny pinhole at lower right, few translucencies, otherwise Fine, scarce.. 1,250.00



2021



- 2022 P **1c-\$100.00 1895 Issue, Large Die Proofs on India (PR102P1-PR113P1).** On approximately 151 x 200mm cards with full die sinkage, bright colors, fresh and Very Fine set(Photo Ex) 1,500.00

2022EX



2023

2023 P **1c-\$100.00 1895 Issue, Small Die Proofs (PR102P2-PR113P2).** Intact page from the Roosevelt album with "1894" label at center, pencil "1895" written below label, scuff on gray card does not affect the proofs, still fresh and Very Fine set, ex Whitpain .. 1,380.00



2024EX

2024 P **1c-\$100.00 1895 Issue, Panama-Pacific Small Die Proofs on Wove (PR102P2a-PR113P2a).** Complete set of 12 values, large margins, few with light toning as normally seen on these issue

VERY FINE AND CHOICE. A RARE COMPLETE SET OF PANAMA-PACIFIC SMALL DIE PROOFS FOR THE BUREAU OF ENGRAVING & PRINTING'S 1895 NEWSPAPER ISSUE.

Prepared in 1915 for the Panama-Pacific Exposition, it is believed that no more than five examples of each were produced.(Photo Ex) 4,200.00

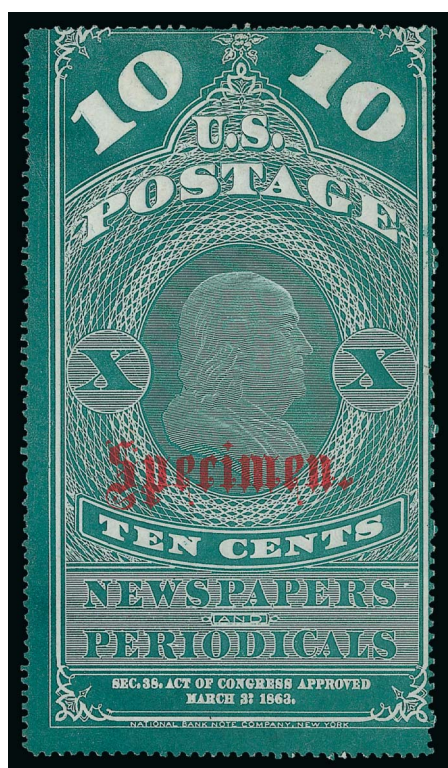
2025 P **25c, 50c 1895 Issue, Panama-Pacific Small Die Proofs on Wove (PR106P2a, PR107P2a).** Large margins to full, distinctly different shades, Very Fine, scarce, perhaps 3-5 of each were printed.(Photo Ex) 700.00



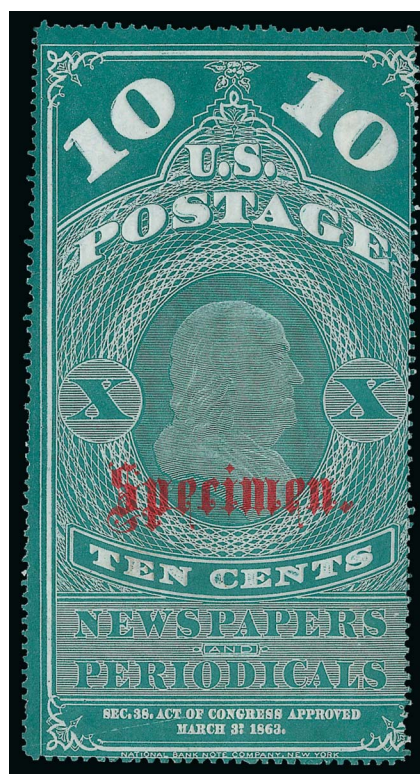
2025EX

- 2026 P **Newspapers & Periodicals Trial Color Plate Proofs on India.** 99, incl. Nos. PR9TC3 (12), PR16TC3 (14), PR24TC3 (13), PR25TC3 (16), PR26TC3 (17), PR27TC3 (14), PR32TC3 (6), wide range of colors, large margins, few small faults to be expected, a Very Fine and very desirable group.....*Not illustrated* 3,570.00
- 2027 P **Newspapers & Periodicals Plate Proofs on India.** 50, incl. Nos. PR9P3-PR32P3, PR57P3-PR68P3, PR70P3-PR79P3, five others, bright colors, overall fresh and Very Fine.....*Not illustrated* 1,020.00
- 2028 P田 **Newspapers & Periodicals Trial Color Plate Proofs on India Multiples.** 40, mostly blocks of four incl. many higher denominations such as \$3.00 (2), \$6.00 (6), \$9.00 (6), \$48.00, \$60.00, also nice group of 12c-96c in Black, range of other colors, few small faults to be expected, Very Fine and desirable group*Not illustrated* 5,810.00
- 2029 P田 **Newspapers & Periodicals Plate Proofs on India Multiples.** 23, incl. blocks of four with denominations to \$60.00, block of eight of \$6.00 with full top imprint, some mounted on card, overall fresh and Very Fine group.....*Not illustrated* 2,325.00
- 2030 P **Newspapers & Periodicals Plate Proofs on Card.** 80, incl. six of the early large-format, other denominations to \$60.00, incl. original sales envelope for 1874 Issue, overall fresh and Very Fine group*Not illustrated* 1,515.00

SPECIMEN OVERPRINTS



2031



2032EX

- 2031 S **10c Blue Green, 1865 Issue, Red Specimen Ovpt. Ty. C (PR2S-C).** Radiant color, crisp impression, centered to upper right, light creases are barely noticeable, Fine, although listed in Scott as PR2S the underlying stamp is the 1875 Reprint (PR6) 500.00
- 2032 S **5c-10c 1865 Issue, Red Specimen Ovpt. Ty. C (PR2S-C, PR5S-C).** Bright colors, 5c s.e. at bottom, 10c centered to right, few light paper wrinkles, Fine-Very Fine and attractive, the underlying stamps are 1875 Reprints.....**(Photo Ex)** 900.00



2033EX



2034EX

- 2033 S **1c-\$60.00 1875-81 Issues, Specimen Ovpt. Ty. D (PR14S-D to PR81S-D).** Complete set of 25, original gum, h.r., few small faults incl. thin spots, still Fine-Very Fine, a scarce complete set of this overprint type.....(Photo Ex) 1,855.00
- 2034 S **2c-\$60.00 1875-79 Issues, Specimen Ovpt. Ty. D (PR14S-D, PR57S-D to PR60S-D, PR62S-D to PR79S-D).** 23 of the 25 denominations, mostly unused (no gum), nine s.e. on one side, few small faults, overall Fine-Very Fine and scarce group..(Photo Ex) 1,755.00



2035

- 2035 S **10c Black, 1879 Issue, Double Red Specimen Overprint Ty. D (PR62D-Sa).** Without gum as issued, intense shade and proof-like impression, clear doubling of the overprint, wide margins

VERY FINE AND CHOICE EXAMPLE OF THE 10-CENT 1879 NEWSPAPER ISSUE WITH DOUBLE SPECIMEN OVERPRINT.

This is the first we have offered since keeping computerized records. With 2002 P.F. certificate....
..... 2,000.00

- 2036 S **1c-\$100.00 1895-97 Issue, Handstamped Specimen Ovpt. Ty. E (114S-E thru 125S-E).** Original gum, h.r., deep rich colors, fresh and Fine-Very Fine, a pretty complete set(Photo Ex) 1,500.00

2036EX





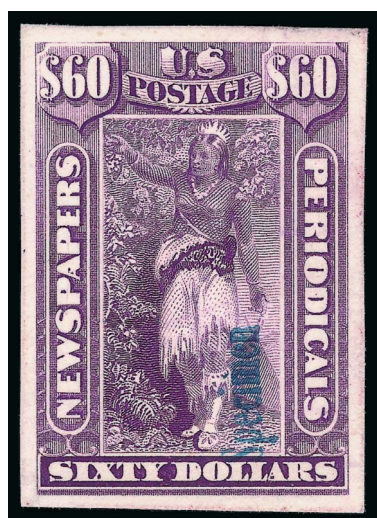
2037EX

- 2037 S **1c-\$100.00 1895-97 Issue, Handstamped Specimen Ovpt. Ty. E (114S-E thru 125S-E).** Original gum, h.r., few small faults incl. \$10.00 thinned, Fine-Very Fine appearance(Photo Ex) 1,500.00

- 2038 S **1c-\$100.00 1895-97 Issue, Universal Postal Congress Ovpt. Ty. O (114S-O thru 125S-O).** Complete set, rich colors, unused (regummed), Fine-Very Fine set(Photo Ex) 2,700.00



2038EX



2039EX

- 2039 S **2c-\$60.00 1875 Issue, Plate Proofs on Card, Blue Handstamped Specimen Ovpt. (PR9P4S-PR21P4S, PR23P4S-PR26P4S, PR28P4S-PR32P4S).** Large margins to just touched on two, bright colors, each with blue 10.5mm "Specimen" ovpt. (Plett Type 3), applied reading up on most values, Very Fine, extremely rare, this overprint type is unlisted in Scott, it is believed to be the only recorded set of the handstamped Type 3 overprints (see articles by Michael J. Plett, *Chronicle* 224, August 2010, and *Chronicle* 234, May 2012)(Photo Ex) E. 1,500-2,000



2040EX



2041EX



2042EX

- 2040 S **9c-\$60.00 1875 Issue, Blue Handstamped Specimen Ovpt. (PR14S, PR16S-PR18S, PR20S, PR32S).** Six different values, each with unlisted blue handstamped "Specimen" overprint in Old English type (similar to Type A), part original gum or disturbed original gum, h.r., four s.e. on one side, appear Fine-Very Fine, each with 2008 P.F. certificate(Photo Ex) E. 1,000-1,500
- 2041 S **48c-96c 1875 Issue, Blue Handstamped Specimen Ovpt. (PR19S, PR21S-PR23S).** Four denominations — 48c, 72c, 84c and 96c — each with blue handstamped "Specimen" in Old English type (similar to Scott-listed Ty. A) and small manuscript "x", defective with most perfs trimmed and faded, still very unusual and probably unique(Photo Ex) E. 500-750
- 2042 S **2c-24c 1879 Issue, Purple Handstamped Specimen Ovpt. (PR57S-PR64S).** Nine, incl. the unsued 9c, each with large purple "SPECIMEN" overprint, several with manuscript "X", some faults, appear Fine, very unusual, this overprint is unlisted in Scott.....(Photo Ex) E. 1,000-1,500

- 2043 S **1c-\$100.00, 1895 Issue, Natal Specimen Ovpt. (PR114S-PR125S).** On five pieces, 5c, 10c, \$5.00, \$10.00 and \$50.00 s.e. on one side, \$100.00 s.e. at right and bottom, rich colors, \$100.00 small flaw at top where adherence, Fine-Very Fine, unique, these stamps were received without Specimen overprints by the U.P.U. offices in Bern, Switzerland., they were sent to Natal where the local post office applied the overprint (Samuel type NA2), with 1981 B.P.A. certificate(Photo Ex) E. 1,000-1,500



2043EX



2044EX



2045EX

- 2044 S **\$2.00-\$100.00 1895-97 Issue, Spain "Muestra" Ovpt. (PR120S-PR125S).** Original gum, h.r., each with clear blue "Muestra" overprint, \$20.00 and \$100.00 s.e. at either top or bottom, \$100.00 small thin spot, Fine-Very Fine appearance, scarce, the overprint was applied by the Spanish authorities for their U.P.U. reference, ex Braceland, \$2.00 and \$50.00 with 2003 P.F. certificates, unlisted in Scott.....(Photo Ex) E. 750-1,000
- 2045 S **1c-\$50.00 1895-97 Issue, Portugal "Ultramar" Ovpt. (PR114S-PR119S, PR121S-PR122S, PR124S).** Unused (no gum), rich colors, 1c slight toning, otherwise Fine-Very Fine, rare, the blue "Ultramar" overprint was applied to stamps arriving from the U.P.U. headquarters in Berne, for the reference of the Portuguese empire, it is believed that only two partial sets have reached the marketplace, with 2003 Sismondo certificate, unlisted in Scott.....(Photo Ex) E. 750-1,000

ISSUED STAMPS
1865 ISSUE – UNUSED



- 2046 ★ **5c Dark Blue, Colored Border, 1865 Issue (PR1).** Without gum as issued, deep rich color, choice centering with wide margins, Extremely Fine Gem, scarce in sound and centered condition, ex Vineyard, with 2002 P.F. certificate 750.00
- 2047 ★ **10c Blue Green, Colored Border, 1865 Issue (PR2).** Without gum as issued, bright color, well-centered with wide margins, Extremely Fine, a beautiful example of this issue, ex Vineyard, with 2002 P.F. certificate 300.00
- 2048 ★ **10c Blue Green, Colored Border, Pelure Paper, 1865 Issue (PR2b).** Without gum as issued, choice centering with wide margins, natural s.e. at bottom, Very Fine and choice, a scarce example of this variety, with 2008 P.S.E. certificate 400.00
- 2049 ★ **10c Blue Green, Colored Border, Pelure Paper, 1865 Issue (PR2b).** Without gum as issued, wide margins, bright shade, lightly soiled at left, otherwise Very Fine example of this variety, with 2007 P.F. certificate 400.00
- 2050 ★ **25c Carmine Red, Colored Border, 1865 Issue (PR3a).** Without gum as issued, wide margins, brilliant color, Very Fine and choice example of this shade variety, with 1994 A.P.S. certificate 425.00
- 2051 ★ **25c Orange Red, Colored Border, Pelure Paper, 1865 Issue (PR3b).** Without gum as issued, brilliant color, centered slightly to top but sound, Very Fine example of this scarce and distinct shade, with 2011 Weiss certificate..... 450.00

1865 ISSUE – USED



2052

- 2052 **5c Dark Blue, Colored Border, 1865 Issue (PR1).** Without gum as issued, **attached to piece of newspaper**, blue brushstroke cancel, perfs partly trimmed away, tear at top left. VERY FINE APPEARANCE. A RARE EXAMPLE OF THE FIRST NEWSPAPER ISSUE STILL ATTACHED TO PART OF A NEWSPAPER. ONLY A HANDFUL ARE KNOWN.

When a wrapper wasn't used, the stamp was affixed to the outermost newspaper in the stack to indicate payment. Most were destroyed or soaked off the newspaper. The example offered here, with virtually intact newspaper on back, is a great rarity.

Ex Kotanchik and Collier. With 2004 P.F. certificate..... 2,000.00



2053



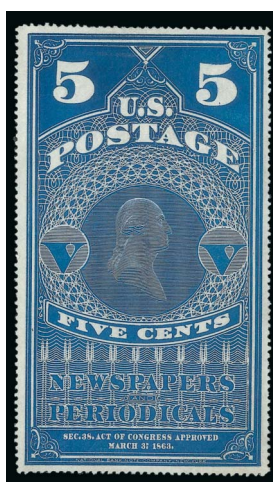
2054

- 2053 **10c Blue Green, Colored Border, 1865 Issue (PR2).** Without gum as issued, rich color, blue brushstroke cancel, typical faults incl. missing pieces at lower right, otherwise Fine, a rare used example of this issue, with 2008 P.S.E. certificate 1,800.00
- 2054 **25c Orange Red, Colored Border, 1865 Issue (PR3).** Without gum as issued, blue brushstroke cancel, defective as usual, a rare used example of this issue, ex Collier, with 2009 P.S.E. certificate 2,500.00

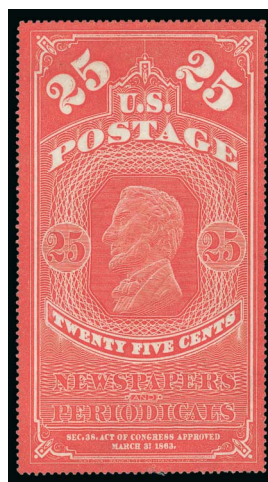
1875 REPRINT OF 1865 ISSUE



2055



2056



2057EX

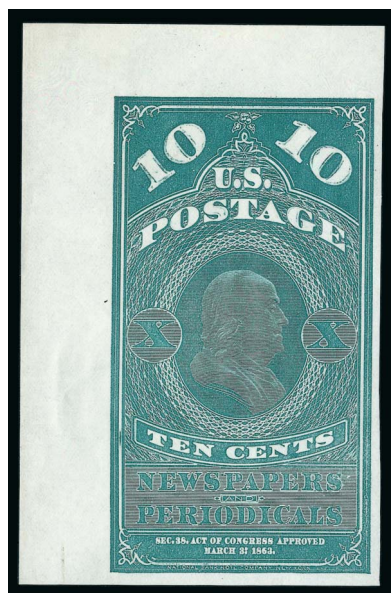
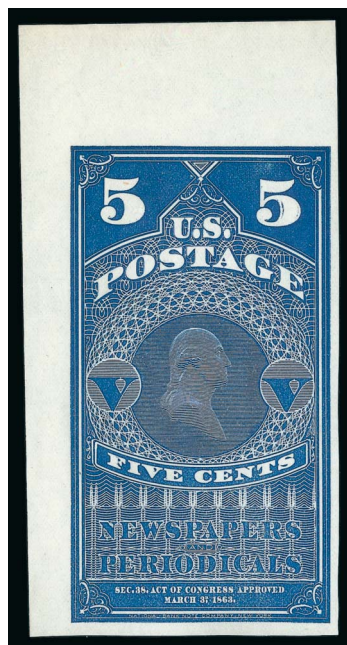
- 2055 ★ **5c Light Blue, White Border, 1865 Issue (PR4).** Without gum as issued, bright shade, wide margins, Very Fine and choice, ex Vineyard, with 2002 P.F. certificate 550.00
- 2056 **5c Light Blue, White Border, Pelure Paper, 1865 Issue (PR4b).** Without gum as issued, rich color on bright paper, well-balanced margins, single short perf at top, otherwise Very Fine, with 2013 PSAG certificate..... 660.00
- 2057 ★ **5c-25c 1875 Reprints (PR5-PR7).** Without gum as issued, bright colors, 10c small corner crease at bottom right, still Very Fine set of the three 1875 Reprints, 25c light purple backstamp, each with Weiss or A.P.S. certificate.....(Photo Ex) 775.00



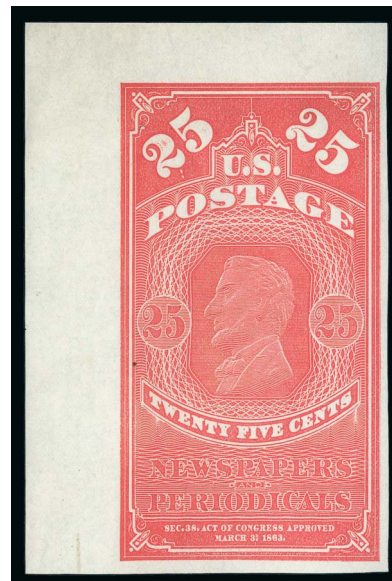
2058

- 2058 ★田 **5c Dull Blue, 1875 Reprint (PR5).** Without gum as issued, **pane of ten** from the upper half of the original sheet of 20 with selvage on three sides and natural s.e. at bottom, with imprint and plate no. 38 at top, brilliant color, pristine condition, Very Fine and choice, a scarce pane, Scott Retail as two blocks of four and two singles with no premium for the imprint and plate no. position 2,450.00

- 2059 ★田 5c Dull Blue, 1875 Reprint (PR5). Without gum as issued, top imprint and plate no. 38 block of six, intact perforations at bottom (which is normally s.e.), bottom right stamp small ink mark, Fine-Very Fine, Scott Retail as block of four and two singles with no premium for the position..... 1,450.00



2060



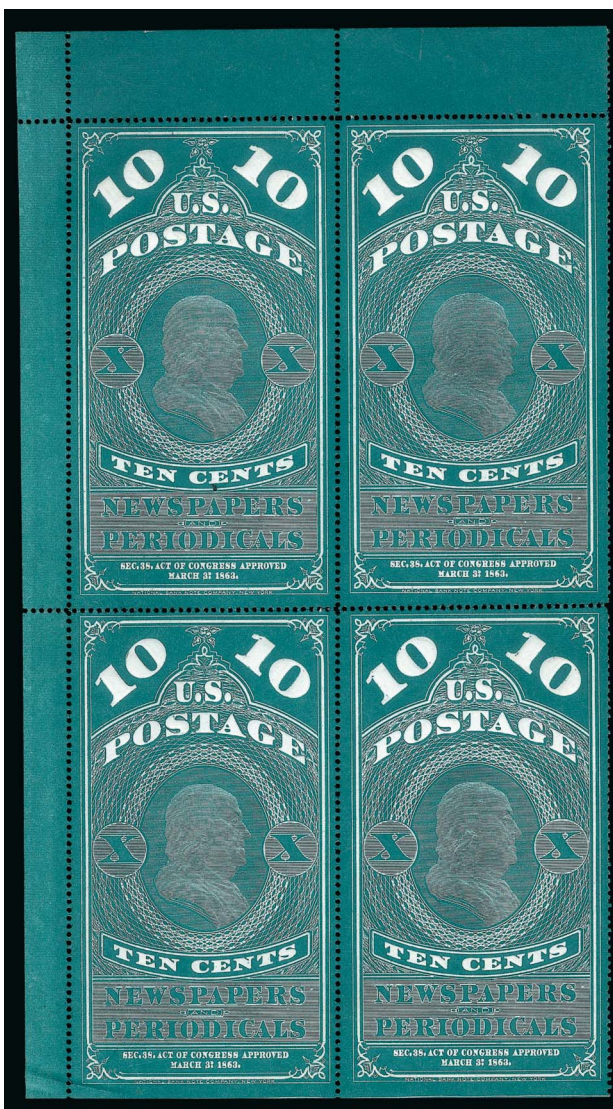
- 2060 5c-25c Newspaper, 1875 Special Printing (PR5 var-PR7 var). Without gum as issued, each with top left sheet margin, huge margins other sides, brilliant colors
EXTREMELY FINE. A RARE AND DESIRABLE SET OF THE 1875 CONTINENTAL BANK NOTE COMPANY SPECIAL PRINTING OF THE FIRST NEWSPAPER ISSUE.
According to Scott Catalogue, Continental Bank Note Co. made a special printing from new plates, which did not have the colored border. They exist both perforated and imperforate, and were not regularly issued.
Each with 2006 P.S.E. certificate.(Photo Ex) E. 2,000-3,000



2061

- 2061 ★ 5c Dull Blue, 1875 Reprint, Imperforate (PR5 var). Horizontal pair, large margins incl. right sheet margin, light natural diagonal paperfolds, light creases, Very Fine appearance, listed in footnote in Scott which prices the set of three denominations at \$3,750.00, with 2006 P.S.E. certificate E. 750-1,000

- 2062 ★田 10c Dark Bluish Green, 1875 Reprint (PR6). Without gum as issued, top left corner selvage block of four, rich color, light corner crease at lower left, few trivial perf separations, Fine-Very Fine block 1,075.00



2062



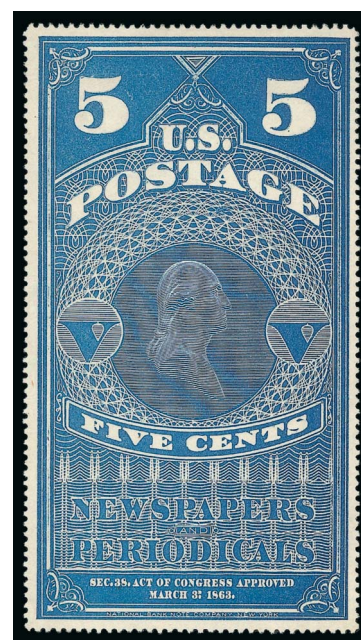
2063

- 2063 ★田 **25c Dark Carmine, 1875 Reprint (PR7).** Without gum as issued, complete pane of ten, from the bottom half of the original sheet of 20, with selvage on three sides and imprint and plate no. 40 at bottom, natural s.e. at top, rich color, trivial tear in extreme bottom right edge well away from anything

VERY FINE. A RARE COMPLETE PANE OF TEN OF THE 25-CENT 1875 NEWSPAPER REPRINT, SCOTT PR7.

Scott Retail as two blocks of four and two singles with no premium for the imprint and plate no. 3,300.00

- 2064 ★ **5c Dark Blue, White Border, 1881 Special Printing (PR8).** Without gum as issued, detailed impression, wide margins, fresh and Very Fine, with 2010 A.P.S. certificate 700.00



2064

1875 ISSUE – UNUSED



- 2065 ★ **2c-60c 1875 Issue (PR9PR13, PR15, PR18, PR20).** First four original gum, h.r., last four unused (no gum), bright colors, few small faults, Fine-Very Fine group, six with certificates(Photo Ex) 2,270.00
- 2066 ★田 **2c Black, 1875 Issue (PR9).** Block of four with **full Continental Bank Note Co. imprint in bottom selvage**, original gum, h.r., top right stamp slightly disturbed, bottom stamps natural horizontal gum crease at bottom, Fine appearance, with 2011 Weiss certificate ... 1,350.00
- 2067 ★ **9c Black, 1875 Issue (PR14).** Original gum, h.r., pretty shade, wide margins, single nibbed perf at lower left not mentioned on accompanying certificate, otherwise Very Fine, with 2004 P.F. certificate 500.00
- 2068 (★) **12c Rose, 1875 Issue (PR16).** Unused (no gum), radiant color, well-balanced margins, Extremely Fine Gem, with 2002 P.F. and 2010 P.S.E. certificates (XF-Superb 95; SMQ \$725.00) 325.00
- 2069 ★ **24c Rose, 1875 Issue (PR17).** Original gum, radiant color, fresh and Very Fine. 850.00
- 2070 ★ **36c Rose, 1875 Issue (PR18).** Original gum, lightly hinged, rich color and detailed impression, natural pre-printing paperfold at center, Very Fine, with 2013 PSAG certificate..... 850.00
- 2071 (★) **48c Rose, 1875 Issue (PR19).** Unused (no gum), intense shade and detailed impression, Very Fine and choice, with 1998 P.S.E. certificate 450.00



- 2072 ★ **72c Rose, 1875 Issue (PR21).** Original gum, lightly hinged, radiant color, unusually wide margins, Very Fine and choice, with 2004 P.F. certificate 1,500.00
- 2073 ★ **84c Rose, 1875 Issue (PR22).** Original gum, bright shade, Very Fine, a pretty stamp, with 2006 P.F. certificate 1,850.00
- 2074 (★) **96c Rose, 1875 Issue (PR23).** Unused (no gum), rich color on fresh paper, Very Fine, with 2003 P.S.E. certificate 525.00
- 2075 ★ **\$1.92 Dark Brown, 1875 Issue (PR24).** Original gum, h.r., deep rich color, Fine, with 2004 P.F. certificate 1,650.00
- 2076 ★ **\$3.00 Vermilion, 1875 Issue (PR25).** Original gum, vibrant color, fresh and Very Fine, with 2003 P.F. certificate 1,800.00
- 2077 (★) **\$6.00 Ultramarine, 1875 Issue (PR26).** Unused (no gum), deep shade on bright paper, fresh and Fine, with 2002 P.S.E. certificate 1,400.00
- 2078 ★ **\$9.00 Yellow, 1875 Issue (PR27).** Slightly disturbed original gum, vibrant color, fresh and Fine, with 1998 P.F. certificate 4,000.00
- 2079 (★) **\$12.00 Blue Green, 1875 Issue (PR28).** Unused (no gum), deep rich color, fresh and Fine, with 2001 A.P.S. certificate, Scott Retail as no gum 1,750.00



2080

2080 ★ **\$24.00 Dark Gray Violet, 1875 Issue (PR29).** Original gum, h.r., rich color, detailed impression

VERY FINE. AN ATTRACTIVE ORIGINAL-GUM EXAMPLE OF THE \$24.00 1875 CONTINENTAL NEWSPAPER ISSUE.

With 2006 P.F. certificate..... 4,750.00

2081 ★ **\$36.00 Brown Rose, 1875 Issue (PR30).** Original gum with slight hinge removal mark, radiant color

FRESH AND FINE. A RARE SOUND ORIGINAL-GUM EXAMPLE OF THE \$36.00 1875 CONTINENTAL NEWSPAPER ISSUE.

This is the first example we have offered since 2008. A review using Power Search shows how rare this issue is in sound condition. Most examples we have offered have faults or tend to be very off-center

With 1980 and 2000 P.F. certificates..... 5,000.00



2081

2082 ★ **\$48.00 Red Brown, 1875 Issue (PR31).** Original gum, deep rich color and detailed impression, tiny natural gum bend at bottom not mentioned on accompanying certificate

VERY FINE AND CHOICE ORIGINAL-GUM EXAMPLE OF THE \$48.00 1875 NEWSPAPER ISSUE.

This is one of the most difficult issues to obtain in choice, sound condition.

With 1989 P.F. certificate..... 7,000.00



2082

2083 ★ **\$60.00 Violet, 1875 Issue (PR32).** Original gum, lightly hinged, brilliant color

FRESH AND VERY FINE ORIGINAL-GUM EXAMPLE OF THE \$60.00 1875 CONTINENTAL NEWSPAPER ISSUE.

With 1998 P.F. certificate..... 6,500.00



2083

1875 ISSUE – USED



- 2084 **2c-96c 1875 Issue (PR9-PR14, PR20, PR23).** Used, incl. additional 6c and 9c and block of four of 4c, 6c with purple “Lockport” straightline handstamp, few other cancels incl. target and handstamp, few brushstroke, mostly Fine-Very Fine, block, 6c, 8c and one 9c with certificates**(Photo Ex)** 2,115.00
- 2085 **10c Black, 1875 Issue (PR15).** Bright shade, unusual cork cancel, well-balanced margins, Extremely Fine, with 2007 P.F. certificate 150.00
- 2086 **12c Rose, 1875 Issue (PR16).** Bright color, bold target and circular datestamp cancels, Very Fine and choice, with 2004 P.F. certificate 275.00
- 2087 **24c Rose, 1875 Issue (PR17).** Radiant color, black cancel, Very Fine, scarce used, with 2001 P.S.E. certificate E. 150-200
- 2088 **36c Rose, 1875 Issue (PR18).** Deep shade, blue brushstroke cancel at right leaves entire design clearly visible, fresh and Very Fine, a pretty used example of this issue, with 2006 P.F. certificate..... 275.00
- 2089 **48c Rose, 1875 Issue (PR19).** Vibrant color, single penstroke cancel, corner crease at bottom right, Very Fine appearance 400.00
- 2090 **72c Rose, 1875 Issue (PR21).** Rich color, handstamped cork cancel, small thin spot at bottom and small tear at upper left, Very Fine appearance, blue crayon “100” on back... 750.00
- 2091 **84c Rose, 1875 Issue (PR22).** Rich color, criss-crossing penstroke cancel, Fine and attractive 375.00
- 2092 **96c Rose, 1875 Issue (PR23).** Bright shade, bold handstamp cancel, two perf tips added at bottom, Very Fine appearance, with 2013 Weiss certificate 850.00



2093

2093

\$1.92 Dark Brown, 1875 Issue (PR24). Deep rich color nicely complemented by blue brushstroke cancel, Very Fine and attractive, with 2004 P.F. certificate..... 650.00

2094

\$3.00 Vermilion, 1875 Issue (PR25). Blue brush stroke cancels, brilliant color, vivid impression on pristine paper, Very Fine and handsome, ex Golden Oak, with 1999 P.F. certificate 1,000.00



2094



2095

2095

\$3.00 Vermilion, 1875 Issue (PR25). Vivid color nicely complemented by blue brushstroke cancel which leaves entire design clearly visible, Very Fine, small blue back-stamp 1,000.00

2096

\$3.00 Vermilion, 1875 Issue (PR25). Vibrant color, neat blue brushstroke cancel at upper right leaves entire design clearly visible, Very Fine, with 2003 P.F. certificate 1,000.00



2096

- 2097 **\$6.00 Ultramarine, 1875 Issue (PR26).** Blue brush stroke cancel, bright color on fresh paper, well-centered

VERY FINE. A BEAUTIFUL USED EXAMPLE OF THE \$6.00 1875 CONTINENTAL NEWSPAPER ISSUE.

Ex Golden Oak. With 1991 and 2003 P.F. certificates
..... 1,250.00



2097



2098

- 2098 **\$6.00 Ultramarine, 1875 Issue (PR26).** Wonderful color on crisp paper, blue brushstroke cancel at right, Very Fine, scarce used example of this high-value 1875 Newspaper issue..... 1,250.00

- 2099 **\$6.00 Ultramarine, 1875 Issue (PR26).** Rich color, blue brushstroke cancel, two short perfs at right, otherwise Fine, with 2006 P.S.E. certificate..... 1,250.00



2099



2100

- 2100 **\$60.00 Violet, 1875 Issue (PR32).** Rich color, neat strikes of quartered cork cancel, tiny tear at top, reperfed at top and bottom, Very Fine appearance, with 2003 P.F. certificate, unpriced in Scott with handstamp cancel 1,750.00

1875 SPECIAL PRINTING



- 2101 ★ **2c Gray Black, 1875 Special Printing, Horizontally Ribbed Paper (PR33a).** Without gum as issued, bright shade, detailed impression, fresh and Fine, only the 2c, 3c and 4c are known on this paper, with 2003 P.F. certificate..... 500.00
- 2102 ★ **3c Gray Black, 1875 Special Printing (PR34).** Without gum as issued, deep shade, Fine, with 2007 P.F. certificate..... 650.00
- 2103 ★ **3c Gray Black, 1875 Special Printing, Horizontally Ribbed Paper (PR34a).** Without gum as issued, detailed impression, wide margins, fresh and Extremely Fine, only the 2c, 3c and 4c are known on this paper, with 2007 P.F. certificate..... 500.00
- 2104 ★ **3c Gray Black, 1875 Special Printing, Horizontally Ribbed Paper (PR34a).** Without gum as issued, clear ribbed lines, bright shade and crisp impression, wide margins, fresh and Extremely Fine, only the 2c, 3c and 4c are known on this paper, ex Vineyard and Hoffman, with 2002 P.F. certificate..... 500.00
- 2105 ★ **3c Gray Black, 1875 Special Printing, Horizontally Ribbed Paper (PR34a).** Without gum as issued, proof-like impression, Very Fine and choice, only the 2c, 3c and 4c are known on this paper, with 2004 P.F. certificate..... 500.00
- 2106 ★田 **3c Gray Black, 1875 Special Printing, Horizontally Ribbed Paper (PR34a).** Without gum as issued, right selvage block of four, natural s.e. at top with part arrow, crisp impression, top left stamp small corner crease at top left, Fine appearance, only the 2c, 3c and 4c are known on this paper, with 2008 P.F. certificate, Scott Retail as singles..... 2,000.00



2107

- 2107 ★ 4c Gray Black, 1875 Special Printing (PR35). Without gum as issued, intense shade, three wide margins, Very Fine, ex Vineyard, with 1988 P.F. certificate..... 700.00

- 2108 ★田 4c Gray Black, 1875 Special Printing (PR35). Without gum as issued, block of four with **part top imprint selvage**, intense shade and impression, right selvage with light diagonal crease, Fine-Very Fine, scarce block, with 2008 P.F. certificate..... 3,250.00



2108



2109



2110



2111

- 2109 ★ 6c Gray Black, 1875 Special Printing (PR36). Without gum as issued, deep shade, proof-like impression, balanced margins, Very Fine and choice, a stamp with great visual appeal, with 2004 P.F. certificate..... 900.00

- 2110 ★ 8c Gray Black, 1875 Special Printing (PR37). Without gum as issued, crisp impression, single short perf at right not mentioned on accompanying certificate, otherwise Very Fine, with 2002 P.S.E. certificate..... 975.00

- 2111 ★ 9c Gray Black, 1875 Special Printing (PR38). Without gum as issued, detailed impression, fresh and Fine, with 2003 P.F. certificate..... 1,050.00

- 2112 ★ 10c Gray Black, 1875 Special Printing (PR39). Without gum as issued, well-balanced margins, crisp impression, Very Fine and choice, a pretty stamp, with 2003 P.F. certificate..... 1,400.00



2112



2113

- 2113 ★ **12c Pale Rose, 1875 Special Printing (PR40).** Without gum as issued, brilliant color, gorgeous centering with wide and balanced margins

EXTREMELY FINE EXAMPLE OF THE 1875 12-CENT NEWSPAPER SPECIAL PRINTING.

With 2001 P.F. certificate..... 1,500.00

- 2114 ★ **24c Pale Rose, 1875 Special Printing (PR41).** Without gum as issued, intense color, wide margins

VERY FINE EXAMPLE OF THE SCARCE 24-CENT 1875 CONTINENTAL NEWSPAPER SPECIAL PRINTING.

Only 411 sold. Ex Vineyard. With 1997 P.F. certificate..
..... 2,100.00



2114



2115

- 2115 ★ **36c Pale Rose, 1875 Special Printing (PR42).** Without gum as issued, brilliant color in a pretty pastel shade

VERY FINE AND CHOICE EXAMPLE OF THE 36-CENT 1875 CONTINENTAL NEWSPAPER SPECIAL PRINTING.

Only 330 sold. Ex Vineyard. With 1992 P.F. certificate..
..... 2,800.00

- 2116 ★ **48c Pale Rose, 1875 Special Printing (PR43).** Without gum as issued, rich color

VERY FINE EXAMPLE OF THE 48-CENT 1875 CONTINENTAL NEWSPAPER SPECIAL PRINTING. A NOTORIOUSLY DIFFICULT ISSUE TO FIND IN SUCH NICE CONDITION.

Only 268 sold. The last time we offered a decent copy was in 2009. With 1988 and 2002 P.F. certificates.....
..... 4,000.00



2116

- 2117 ★ **60c Pale Rose, 1875 Special Printing (PR44).** Without gum as issued, bright color

VERY FINE EXAMPLE OF THE 60-CENT 1875 CONTINENTAL NEWSPAPER SPECIAL PRINTING.

Only 222 sold. This is the only sound example with acceptable centering we have offered since 2004. With 2004 P.F. certificate..... 4,000.00



2117



2118

- 2118 ★ **72c Pale Rose, 1875 Special Printing (PR45).** Without gum as issued, brilliant color on bright paper

VERY FINE AND CHOICE EXAMPLE OF THE 72-CENT 1875 CONTINENTAL SPECIAL PRINTING.

Only 174 sold. Ex Vineyard. Small backstamp barely shows thru. With 1998 P.F. certificate 4,500.00

- 2119 ★ **84c Pale Rose, 1875 Special Printing (PR46).** Without gum as issued, radiant color, well-balanced margins

EXTREMELY FINE GEM. A RARE SOUND AND CENTERED EXAMPLE OF THE 84-CENT 1875 CONTINENTAL NEWSPAPER SPECIAL PRINTING.

Only 164 sold. Ex Vineyard. With 1997 P.F. certificate 5,500.00



2119



2120

- 2120 ★ **96c Pale Rose, 1875 Special Printing (PR47).** Without gum as issued, brilliant color, wide margins

VERY FINE AND CHOICE. A BEAUTIFUL EXAMPLE OF THE RARE 96-CENT 1875 CONTINENTAL NEWSPAPER SPECIAL PRINTING, OF WHICH A MERE 141 WERE SOLD.

Among all of the outstanding Newspapers and Periodicals collections we have sold since 1997, we have only offered two other copies of this rarity, including one in Very Good condition. None was offered in the Floyd sale, and the Lyons copy had a light crease. This stamp, the ex-Lessin and ex-Silver Lake copies are the only sound examples we have been able to locate in any major recent sales.

Ex Vineyard. With 1993 P.S.E. and 1999 P.F. certificates. 8,500.00



2121

\$1.92 1875 SPECIAL PRINTING

- 2121 ★ **\$1.92 Dark Brown, 1875 Special Printing (PR48).** Without gum as issued, intense color and proof-like impression, beautifully centered with choice balanced margins
- AN EXTREMELY FINE EXAMPLE OF THE RARE 96-CENT 1875 CONTINENTAL NEWSPAPER SPECIAL PRINTING. ONLY 41 WERE SOLD.
- No examples of this rarity were offered in either the Floyd or Lessin sales, and the Lyons copy was not as well centered. This is only the fourth example we have offered since keeping computerized records.
- Ex Vineyard. With 1988 and 2002 P.F. certificates 22,500.00



2122

\$6.00 1875 SPECIAL PRINTING

2122 ★ **\$6.00 Ultramarine, 1875 Special Printing (PR50).** Without gum as issued, rich color on bright paper

FRESH AND FINE. ONLY FOURTEEN WERE SOLD, AND ONLY FIVE HAVE BEEN CERTIFIED AS GENUINE. ONE OF THE RAREST STAMPS IN UNITED STATES PHILATELY.

According to official figures for sales of the 1875 Newspaper Special Printings, 500 of the \$6.00 were printed and received by the Post Office in 1875. On July 16, 1884, they were withdrawn from sale and the remaining supply was destroyed. Official records state that only 14 were sold during this nine-year period.

Our records contain only five copies certified as genuine: four by The Philatelic Foundation and this example certified by P.S.E. This is only the second we have offered since keeping computerized records; the last we offered was in our 2003 Rarities sale.

Census No. PR50-UNC-05. With 2003 P.S.E. certificate 80,000.00

CERTIFIED EXAMPLES OF SCOTT PR50



PR50-UNC-01
PFC 393820 "Genuine"
RAS 2003 Rarities,
lot 614



PR50-UNC-02
PFC 47674 "Genuine,
reperf at bottom"
PFC 29342 "Genuine"



PR50-UNC-03
PFC 259918 "Genuine"
Ex Engel
Ex "Connoisseur"
Ex Weissman



PR50-UNC-04
PFC 189694 "Genuine"



PR50-UNC-05
PSE "Genuine"
RAS S1079 Schwenk
The lot offered here

1879-83 COLMAN SPECIAL PRINTING



2123 ★★ 1c-\$60.00 1879-83 Newspaper Issue, Colman Special Printing (PR57 var-PR79 var, PR81 var). Privately perforated and gummed, **complete set of all denominations, including the unissued 9c**, Mint N.H. except \$60.00 lightly hinged, 12c few perfs scissors-trimmed at bottom, \$60.00 light diagonal crease at top right

VERY FINE-EXTREMELY FINE. A RARE COMPLETE SET OF THE 1894 COLMAN SPECIAL PRINTINGS OF THE 1879-83 NEWSPAPER ISSUE.

In 1894, this set was ordered by the Bureau of Engraving and Printing from the American Bank Note Co., to serve as samples. The stamps were printed from the original Continental Bank Note Co. plates. Washington stamp dealer Henry F. Colman obtained a set of imperforate panes of 50. He kept five sets imperforate and privately perforated the other 45. Colman was later indicted for illegal possession of these stamps but was acquitted.

Each with 2005 P.S.E. certificate..... E. 5,000-7,500

1879 ISSUE – UNUSED



- 2124 ★ 2c-10c 1879 Issue (PR57-PR62). Incl. two 2c (one Mint N.H.), 3c unused (no gum), intense shades, fresh and Fine-Very Fine group, each with certificate...(Photo Ex) 665.00
- 2125 ★田 2c Black, 1879 Issue (PR57). Block of four, left stamps Mint N.H., right stamps lightly hinged, deep shade, fresh and Fine-Very Fine, Scott Retail as hinged block of four 350.00
- 2126 ★田 6c Black, 1879 Issue (PR60). Bottom right corner selvage block of four, bottom stamps Mint N.H., top stamps lightly hinged, bright shade, bottom right stamp light creases, others light natural gum creases, Fine-Very Fine corner selvage block..... 600.00
- 2127 ★田 8c Black, 1879 Issue (PR61). Block of four, bottom stamps Mint N.H., top stamps small h.r., intense shade and impression, Fine-Very Fine, the top right stamp is especially nice, Scott Retail as block with no premium for the two Mint N.H. stamps 625.00
- 2128 ★★田 10c Black, 1879 Issue (PR62). Mint N.H. block of eight, intense shade and impression, bottom right three stamps horizontal crease, Fine-Very Fine appearance, Scott Retail as two blocks of four with no premium for the eight Mint N.H. stamps 1,250.00
- 2129 ★ 12c Red, 1879 Issue (PR63). Original gum, h.r., brilliant color, fresh and Fine, small backstamp, with 2004 P.F. certificate 500.00



- 2130 ★ **12c Red, 1879 Issue (PR63).** Block of four, original gum, h.r., radiant color, few creases and thin spots, Fine-Very Fine appearance 2,250.00
- 2131 ★ **24c Red, 1879 Issue (PR64).** Original gum, deep rich color, wide margins, printer's ink mark at lower left, Very Fine and choice, with 2001 P.F. certificate..... 500.00
- 2132 (★)田 **24c Red, 1879 Issue (PR64).** Block of four, unused (no gum), deep rich color on bright paper, few minor perf separations at top, Fine-Very Fine, Scott Retail as no gum singles 840.00
- 2133 ★ **36c Red, 1879 Issue (PR65).** Original gum, lightly hinged, rich color, Very Fine, ex Vineyard, with 2003 P.F. certificate..... 1,000.00
- 2134 ★ **48c Red, 1879 Issue (PR66).** Original gum, single hinge mark, brilliant color, fresh and Fine, a pretty stamp, with 2006 P.F. certificate..... 1,000.00
- 2135 ★ **60c Red, 1879 Issue (PR67).** Original gum, lightly hinged, pretty shade, three wide margins, natural gum crease at top, Very Fine, with 2013 Weiss certificate..... 1,000.00
- 2136 (★) **60c Red, 1879 Issue (PR67).** Unused (no gum), deep rich color and proof-like impression, fresh and Very Fine, with 2005 P.S.E. certificate, Scott Retail as no gum.... 450.00
- 2137 ★ **72c Red, 1879 Issue (PR68).** Original gum, lightly hinged, radiant color, gorgeous centering with balanced margins, fresh and Extremely Fine, with 2004 P.S.E. certificate 1,250.00



2138



2139



2140

- 2138 (★) **84c Red, 1879 Issue (PR69).** Unused (no gum), deep rich color, fresh and Very Fine, with 2002 P.S.E. certificate, Scott Retail as no gum..... 575.00
- 2139 ★ **96c Red, 1879 Issue (PR70).** Original gum, barest trace of hinging, unusually deep shade, Fine, ex Vineyard, with 1993 P.F. certificate 1,200.00
- 2140 ★ **\$1.92 Pale Brown, 1879 Issue (PR71).** Original gum, h.r., rich color and proof-like impression, Very Fine and choice, with 2005 P.S.E. certificate (OGh, VF 80; SMQ \$495.00)..... 550.00



2141



2142



2143

- 2141 ★ **\$3.00 Red Vermilion, 1879 Issue (PR72).** Original gum, vibrant color, well-proportioned margins, Very Fine and choice, a beautiful stamp, with 2004 P.F. certificate 625.00
- 2142 ★ **\$6.00 Blue, 1879 Issue (PR73).** Original gum, lightly hinged, rich color and detailed impression on bright paper, wide margins, Very Fine, a pretty stamp, with 1998 P.F. certificate..... 1,050.00
- 2143 ★ **\$9.00 Orange, 1879 Issue (PR74).** Original gum, h.r., choice margins and well-centered, vivid color, Extremely Fine, with 2014 P.S.E. certificate (OGh, XF 90; SMQ \$1,600.00)... 800.00



2144



2145



2146

- 2144 ★ **\$12.00 Yellow Green, 1879 Issue (PR75).** Original gum, lightly hinged, deep rich color and proof-like impression, well-proportioned margins, Very Fine and choice, a stamp with great visual appeal, with 1998 P.F. certificate 850.00
- 2145 ★ **\$24.00 Dark Violet, 1879 Issue (PR76).** Original gum, lightly hinged, deep rich color on bright paper, wide and balanced margins, Extremely Fine, with 2014 P.S.E. certificate (OGph, XF 90; SMQ \$1,400.00) 800.00
- 2146 ★★ **\$36.00 Indian Red, 1879 Issue (PR77).** Mint N.H., incredibly fresh with beautiful color, Extremely Fine, difficult to find in Mint N.H. condition, with 2009 P.F. certificate for pair, Scott Retail as hinged 850.00



2147



2148



2149

- 2147 ★ **\$48.00 Yellow Brown, 1879 Issue (PR78).** Original gum, pretty shade, small perf flaw at upper left not mentioned on accompanying certificate, otherwise Fine, with 2001 A.P.S. certificate 900.00
- 2148 ★★ **\$60.00 Purple, 1879 Issue (PR79).** Mint N.H., deep rich color on crisp paper, Very Fine, with 1990 A.P.S. certificate, Scott Retail as hinged 850.00
- 2149 ★ **\$60.00 Purple, 1879 Issue (PR79).** Original gum, lightly hinged, pretty color, almost perfectly centered with well-balanced margins, fresh and Extremely Fine, a beautiful stamp, with 2014 P.S.E. certificate (OGph, XF 90; SMQ \$1,650.00) 850.00

1879 ISSUE – USED



2150EX



2151



2152

- 2150 **2c-\$6.00 1879 Issue (PR57, PR59-PR63, PR73).** Includes pair and single of 2c and two 10c, range of cancels incl. duplex, circular datestamp, blue brushstroke, few faults, appear Fine-Very Fine, 12c with 2006 P.S.E. certificate.....**(Photo Ex)** 1,250.00
- 2151 **\$1.92 Pale Brown, 1879 Issue (PR71).** Deep rich color, neat blue brushstroke cancel at right, wide margins, Very Fine and choice, with 2003 P.F. certificate 175.00
- 2152 **\$9.00 Orange, 1879 Issue (PR74).** Intense color, bold handstamp cancel, Very Fine, with 2004 P.F. certificate 750.00



2153



2154

- 2153 **\$12.00 Yellow Green, 1879 Issue (PR75).** Rich color, unobtrusive handstamp cancel leaves design clearly visible, Very Fine and choice..... 900.00
- 2154 **\$36.00 Indian Red, 1879 Issue (PR77).** Unusual shade, light strike of “Paid” in circle handstamp cancel, Very Fine, a scarce cancel..... 1,100.00

1883 SPECIAL PRINTING



2155

- 2155 ★ **2c Intense Black, 1883 Special Printing (PR80).** Without gum as issued, intense shade and impression, fresh and Fine, with 2005 P.S.E. certificate (F 70; SMQ \$670.00) 1,700.00

1885 ISSUE



2156EX



2157EX



2158



2159

- 2156 ★ **1c-24c 1885 Issue (PR81-PR83).** Original gum, lightly hinged, rich colors, first small natural gum bend not mentioned on accompanying certificate, last nibbed corner perf at upper left, Very Fine, each with 2005 or 2008 P.S.E. certificate (first graded 80, second graded 80J) **(Photo Ex)** 495.00
- 2157 ★★ **1c Black, 1885 Issue (PR81).** Four Mint N.H. singles, two distinct shades, Fine-Very Fine, each with certificate (mostly PSAG) **(Photo Ex)** 380.00
- 2158 ★★田 **1c Black, 1885 Issue (PR81).** Mint N.H. bottom right corner selva block of four, deep shade and proof-like impression, Very Fine and choice, a beautiful corner selva block, with 2011 Weiss certificate, Scott Retail as hinged block of four 425.00
- 2159 ★田 **1c Black, 1885 Issue (PR81).** Block of four, original gum, h.r., deep shade, detailed impression, well-proportioned margins, Very Fine-Extremely Fine 425.00



- 2160 ★ **36c Carmine, 1885 Issue (PR84).** Original gum, lightly hinged, rich color, trivial natural inclusion, Very Fine, ex Vineyard, with clear 1998 P.S.E. certificate..... 300.00
- 2161 ★ **48c Carmine, 1885 Issue (PR85).** Original gum, lightly hinged, deep rich color, gorgeous centering, Extremely Fine Gem, a superb stamp in every respect, with 1998 P.F. certificate..... 425.00
- 2162 ★ **60c Carmine, 1885 Issue (PR86).** Original gum, h.r., deep rich color, wide margins and exceptionally well-centered, fresh and Extremely Fine, with 2008 P.S.E. certificate (XF 90; SMQ \$1,150.00), this is the highest grade awarded (the next highest is 75, a statistic that has not changed in five years) 550.00
- 2163 ★ **60c Carmine, 1885 Issue (PR86).** Horizontal pair with full **top imprint selvage**, original gum, exceptionally well-centered, beautiful color, Very Fine and choice, with 2006 P.F. certificate..... 1,100.00
- 2164 **1c-84c 1885 Issue (PR81-PR83, PR86-PR88).** Includes two 60c, range of cancels incl. purple target, duplex, blue brushstroke, circular datestamps, three-line handstamp, few faults, appear Fine-Very Fine, one 60c with 2008 P.S.E. certificate (repaired margin fault)**(Photo Ex)** 2,375.00
- 2165 ★ **72c Carmine, 1885 Issue (PR87).** Original gum, lightly hinged, crisp impression, well-balanced margins, Extremely Fine, a beautiful stamp, with 1996 P.F. certificate.. 550.00



2166

- 2166 ★ **84c Carmine, 1885 Issue (PR88).** Original gum, vibrant color on bright paper, exceptionally well-centered with wide margins

EXTREMELY FINE GEM. A SUPERB EXAMPLE OF THE 1885 84-CENT NEWSPAPER ISSUE, GRADED XF-SUPERB 95 BY P.S.E.

Ex Beverly Hills. With 2014 P.S.E. certificate (OGph, XF-Superb 95; SMQ \$2,900.00). This is the only stamp to achieve this grade among just four examples in the P.S.E. Population Report..... 850.00



2167

- 2167 ★★ **96c Carmine, 1885 Issue (PR89).** Mint N.H., deep rich color, well-balanced margins, Extremely Fine, with 1994 P.F. certificate, Scott Retail as hinged 750.00

1894 ISSUE



2168

- 2168 ★ **1c Intense Black, 1894 Issue (PR90).** Original gum, single h.r., deep dark shade, wide margins, Very Fine and choice, with 2004 P.S.E. certificate 425.00

- 2169 ★田 **1c Intense Black, 1894 Issue (PR90).** Block of four, bottom stamps Mint N.H., top stamps lightly hinged, proof-like impression, few perf separations not mentioned on accompanying certificate, Very Fine, with 2004 P.F. certificate 2,850.00



2169



2170

- 2170 ★ **2c Intense Black, 1894 Issue (PR91).** Original gum, lightly hinged, deep shade, wide and balanced margins, Extremely Fine, with 2004 P.F. certificate..... 500.00

- 2171 ★ **4c Intense Black, 1894 Issue (PR92).** Original gum, lightly hinged, intense shade, fresh and Very Fine, ex Vineyard, with 2002 P.F. certificate 550.00



2171

- 2172 ★★田 **4c Intense Black, 1894 Issue (PR92).** Mint N.H. block of four, intense shade and impression, few perf separations between right vertical pair, Fine-Very Fine, a scarce and desirable multiple, with 2005 P.F. certificate, Scott Retail as singles 5,600.00



2172



2173

- 2173 ★ **6c Intense Black, 1894 Issue (PR93).** Original gum, small h.r., intense shade and detailed impression, Fine, scarce 1894 Bureau Issue, with 2002 P.S.E. certificate 4,500.00



2174

- 2174 ★★ **10c Intense Black, 1894 Issue (PR94).** Mint N.H., sharp proof-like impression, unusually wide margin at left (from the left column of the sheet), Very Fine and choice, a stamp with wonderful visual appeal, with 2004 P.F. certificate, Scott Retail as hinged 1,200.00

- 2175 ★ **12c Pink, 1894 Issue (PR95).** Original gum, lightly hinged, vibrant color, fresh and Fine, with 2003 P.S.E. certificate (OGph, F 70; SMQ \$1,250.00)..... 2,600.00



2175



2176



2177

- 2176 ★ **12c Pink, 1894 Issue (PR95).** Original gum, paper h.r., rich color, small thin spot at bottom, Fine appearance, with 2002 P.F. certificate 2,600.00
- 2177 **12c Pink, 1894 Issue (PR95).** Bold strike of quartered cork cancel, brilliant color, choice centering with balanced margins, inverted "U"-shaped tear around the cancel, small thin spot at top of vignette, small crease and tear at left, otherwise Extremely Fine, perhaps three or four used examples are known, with 2006 P.F. certificate 4,500.00

- 2178 ★ **24c Pink, 1894 Issue (PR96).** Original gum, lightly hinged, precise centering, lovely pastel shade

EXTREMELY FINE ORIGINAL-GUM EXAMPLE OF THE 24-CENT 1894 FIRST BUREAU ISSUE.

The high-denomination 1894 Unwatermarked Bureau issues are extremely rare and often plagued with poor centering and faults. If a "condition census" for PR96 were compiled we believe this stamp would rank among the finest extant.

Ex Vineyard and Hoffman. With 1992 and 2005 P.F. certificates. 3,750.00



2178



2179

- 2179 ★田 **24c Pink, 1894 Issue (PR96).** Block of four with imprint at bottom, original gum, lightly hinged, brilliant color, bottom stamps trivial natural inclusions, bottom right stamp trivial natural gum bend

FINE. AN EXTREMELY RARE ORIGINAL-GUM BLOCK OF FOUR OF THE 1894 24-CENT UNWATERMARKED BUREAU NEWSPAPER ISSUE.

As this marvelous position multiple shows, the 1894 Bureau printing was made from the old plates of the American and Continental Bank Note Companies. The plates were re-entered, and there are also other differences in the printings, including the paper and gum. This issue was not in service for very long before the new plates were ready for the Bureau-produced issue of 1895.

Ex Whitpain. 17,500.00



2180

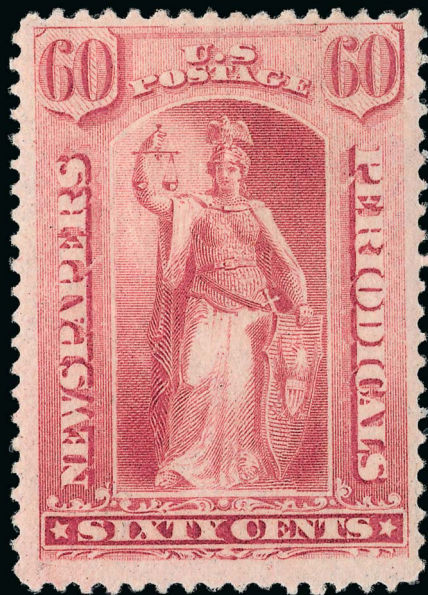
36-CENT 1894 ISSUE

- 2180 ★ **36c Pink, 1894 Issue (PR97).** Original gum, h.r., brilliant color, reperfed at right, small thin spot at top

VERY FINE APPEARANCE. THIS IS THE FIRST EXAMPLE OF THE 36-CENT 1894 UNWATER-MARKED BUREAU NEWSPAPER ISSUE WE HAVE OFFERED SINCE KEEPING COMPUTERIZED RECORDS. ONLY NINE ARE CONTAINED IN OUR RECORDS, AND NONE ARE SOUND.

Our recently updated census of PR97 (available at <http://siegelauctions.com/dynamic/census/PR98/PR97.pdf>) contains nine unused examples, all with original gum. None are sound — most have thin spots or creases.

Census No. PR97-OG-09. With 1980 P.F. and 2007 P.S.E. certificates..... 50,000.00



2181

60-CENT 1894 ISSUE

- 2181 ★ **60c Pink, 1894 Issue (PR98).** Original gum, h.r., radiant color, better centering than normally seen on this difficult issue, small thin spot

VERY FINE APPEARANCE. AN EXTREMELY RARE ORIGINAL-GUM EXAMPLE OF THE 60-CENT 1894 UNWATERMARKED BUREAU NEWSPAPER ISSUE — ONE OF THE RAREST OF ALL NEWSPAPER STAMPS. ONLY SEVENTEEN UNUSED EXAMPLES ARE RECORDED IN OUR CENSUS.

Our recently updated census of PR98 (available at <http://siegelauctions.com/dynamic/census/PR98/PR98.pdf>) contains seventeen unused and three used copies. Of these, only two of the original-gum copies are confirmed as sound (one has a s.e. and the other has perfs touching at left). Three others are possibly sound: one has selvaige adhering to back, another has not been seen since 1960, and a third from 1980 may not have gum. The example offered here, with superior centering and a small fault, should be considered highly desirable.

Census No. PR98-OG-02. With 1991 P.F. certificate. 55,000.00



2182

96-CENT 1894 ISSUE

- 2182 ★ **96c Pink, 1894 Issue (PR99).** Original gum, rich color, small thin spot at top
- FINE APPEARING EXAMPLE OF THE 1894 96-CENT UNWATERMARKED BUREAU NEWSPAPER ISSUE. ONE OF THE GREATEST OF ALL NEWSPAPER ISSUE RARITIES — ONLY NINE ARE CONTAINED IN OUR CENSUS.
- Our recently updated census of PR99 (available at <http://siegelauctions.com/dynamic/census/PR99/PR99.pdf>) contains nine unused copies. Of these only four are confirmed as having gum. This is only the second we have offered since our 1993 Rarities sale. None was offered in the Floyd, Lessin or Lyons sales.
- Census No. PR99-OG-07. Ex Whitpain. Signed in pencil “Bureau J.M. Bartels”. With 1979 and 2010 P.F. certificates..... 52,500.00



2183

\$3.00 1894 ISSUE

- 2183 ★ **\$3.00 Scarlet, 1894 Issue (PR100).** Original gum, h.r. at top and bottom, vivid color, well-balanced margins, small thins and small tear at top

VERY FINE APPEARANCE. A RARE ORIGINAL-GUM EXAMPLE OF THE 1894 \$3.00 UNWATER-MARKED BUREAU NEWSPAPERS AND PERIODICALS ISSUE. OUR RECENTLY COMPLETED CENSUS CONTAINS ONLY ELEVEN EXAMPLES.

Our recently updated census of PR100 (available at <http://siegelauctions.com/dynamic/census/PR100/PR100.pdf>) contains only eleven copies. Of these, only four are potentially sound, and only nine are confirmed as having gum. As another indication of rarity, we have offered only one other since 1994. None was offered in Lyons, Floyd or Lessin, all of whom had copies of the \$6.00, PR101.

Census No. PR100-OG-09. With 1976 P.F. and 2007 P.S.E. certificates..... 60,000.00



2184

\$6.00 1894 ISSUE

2184 ★ **\$6.00 Pale Blue, 1894 Issue (PR101).** Original gum, lightly hinged, pretty pastel color, small corner crease at top left, small thins at top and right

ESSENTIALLY VERY FINE APPEARANCE. THE \$6.00 1894 UNWATERMARKED BUREAU ISSUE IS ONE OF THE RAREST OF THE REGULARLY-ISSUED NEWSPAPER STAMPS. ONLY FIFTEEN UNUSED EXAMPLES HAVE BEEN CERTIFIED AS GENUINE BY THE PHILATELIC FOUNDATION, MOST OF WHICH HAVE VARYING DEGREES OF FAULTS.

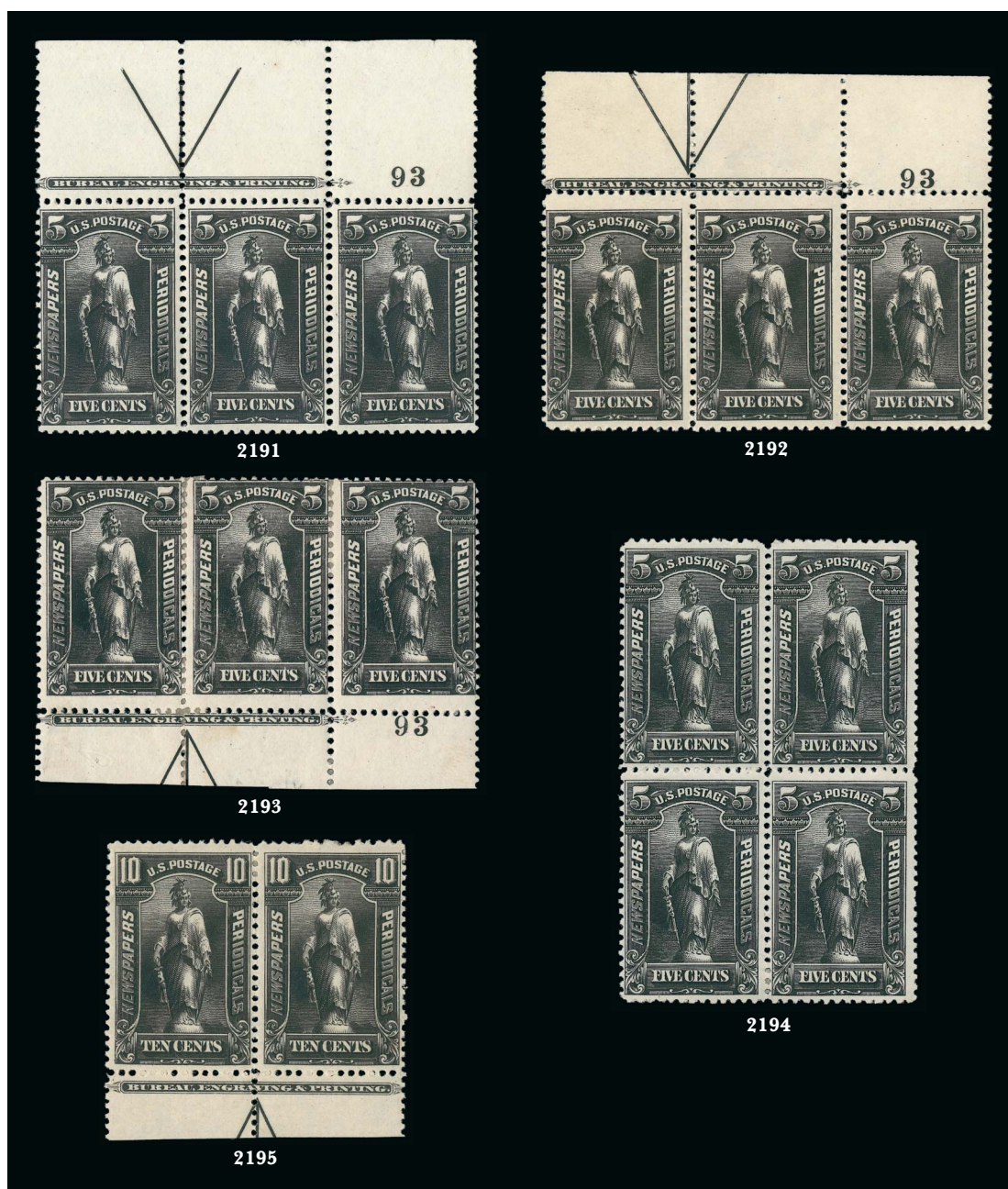
Our recently updated census of PR101 (available at <http://siegelauctions.com/dynamic/census/PR101/PR101.pdf>) contains fifteen unused and one used copy of this rarity. Only five are potentially sound.

Census No. PR101-OG-01. From the Weill sale and ex Vineyard. With 1960 and 1999 P.F. certificates..... 60,000.00

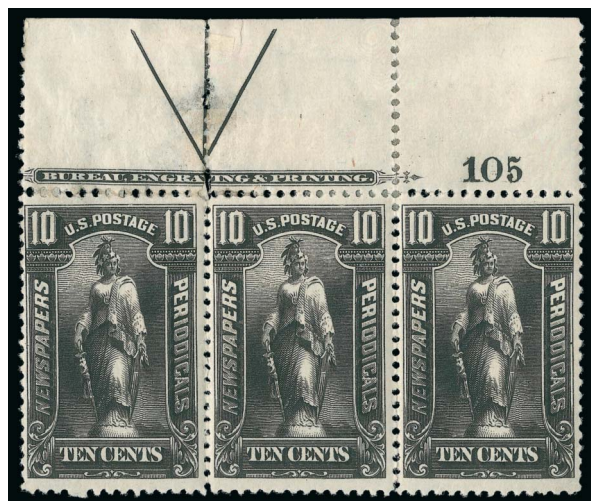
1895 UNWATERMARKED ISSUE – UNUSED



- 2185 ★ **1c-10c 1895 Unwatermarked Issue (PR102-PR103, PR105).** 2c unused (no gum), others original gum, 1c with bottom selvage, Fine, 1c and 10c with certificates....(Photo Ex) 870.00
- 2186 ★ **1c Black, 1895 Unwatermarked Issue (PR102).** Top imprint, arrow and plate no. 90 strip of three, original gum, h.r., intense shade and impression, Fine-Very Fine, the center stamp is especially nice, ex Whitpain, with 2013 PSAG certificate, Scott Retail as singles with no premium for the position 1,000.00
- 2187 ★田 **1c Black, 1895 Unwatermarked Issue (PR102).** Block of four, original gum, lightly hinged, intense shade and impression, Fine-Very Fine, ex Whitpain..... 1,050.00
- 2188 ★ **2c Black, 1895 Unwatermarked Issue (PR103).** Top imprint, arrow and plate no. 100 strip of three, stamps Mint N.H., h.r. in top center selvage where also a thin spot, bright shade, Fine, ex Whitpain, with 2013 PSAG certificate, Scott Retail as singles with no premium for the position..... 1,500.00
- 2189 ★田 **2c Black, 1895 Unwatermarked Issue (PR103).** Block of four, original gum, h.r., bright shade, fresh and Fine, ex Whitpain..... 1,050.00
- 2190 ★★ **5c Black, 1895 Unwatermarked Issue (PR104).** Mint N.H., intense shade and impression, fresh and Very Fine, with 2001 and 2003 P.F. certificates, the former for strip of three .. 650.00



- 2191 ★★ **5c Black, 1895 Unwatermarked Issue (PR104).** Mint N.H. top wide selvage imprint and plate no. 93 strip of three, some light offset on gum, detailed impression, right stamp small corner crease at bottom right, Fine-Very Fine appearance, with 2006 P.S.E. certificate, Scott Retail as singles with no premium for the three Mint N.H. stamps or the position..... 1,950.00
- 2192 ★ **5c Black, 1895 Unwatermarked Issue (PR104).** Top imprint, arrow and plate no. 93 strip of three, side stamps Mint N.H., center stamp single hinge mark, intense shade, Fine, ex Whitpain, with 2013 PSAG certificate, Scott Retail as singles with no premium for the position 1,600.00
- 2193 ★ **5c Black, 1895 Unwatermarked Issue (PR104).** Bottom imprint, arrow and plate no. 93 strip of three, original gum, bit heavy h.r. where some perf separations reinforced, intense shade and impression, Fine, ex Whitpain, with 2013 PSAG certificate ... 1,300.00
- 2194 ★田 **5c Black, 1895 Unwatermarked Issue (PR104).** Block of four, original gum, h.r., detailed impression on bright paper, fresh and Fine, ex Whitpain 1,350.00
- 2195 ★ **10c Black, 1895 Unwatermarked Issue (PR105).** Bottom imprint and arrow selvage pair, original gum, h.r., deep shade, small thin spot at top of right stamp, Very Fine appearance, with 2013 PSAG certificate..... 1,100.00



2196



2197

- 2196 ★ **10c Black, 1895 Unwatermarked Issue (PR105).** Top imprint and plate no. 105 strip of three, original gum, h.r. where few perf separations sensibly reinforced causing light gum soak, some offset on back from black mount, small thin spots in selvage only, otherwise Very Fine, with 2013 PSAG certificate. 2,350.00
- 2197 ★ **10c Black, 1895 Unwatermarked Issue (PR105).** Bottom imprint and plate no. 105 strip of three, original gum, h.r., left stamp small perf flaw at top not mentioned on accompanying certificate, Fine appearance, with 2013 PSAG certificate 2,350.00
- 2198 ★ **25c Carmine, 1895 Unwatermarked Issue (PR106).** Original gum, tiny trace of hinging in one corner, fresh and Fine, an especially difficult stamp to find in sound condition, with 2005 P.F. certificate..... 750.00



2198



2199

- 2199 ★田 **25c Carmine, 1895 Unwatermarked Issue (PR106).** Top imprint, arrow and plate no. 123 block of six, original gum, h.r., some black offset from mount and few red spots on gum, few sensibly reinforced perf separations VERY FINE. AN INCREDIBLY RARE IMPRINT, ARROW AND PLATE NUMBER BLOCK OF THE 1895 25-CENT CARMINE NEWSPAPERS AND PERIODICALS ISSUE.
- We have offered only one other since keeping computerized records. With 2007 P.S.E. certificate 6,250.00

- 2200 ★ **50c Carmine, 1895 Unwatermarked Issue (PR107).**
Original gum, fresh, bright color, Fine, with 2003 P.F.
certificate..... 2,750.00



2200



2201

- 2201 ★ **\$2.00 Scarlet, 1895 Unwatermarked Issue (PR108).**
Original gum, lightly hinged, brilliant color, gorgeous
centering with wide and balanced margins, Extremely
Fine Gem, a superb stamp in every respect, with 1979
P.F. certificate..... 1,500.00

- 2202 ★ **\$5.00 Ultramarine, 1895 Unwatermarked Issue (PR109).** Original gum, h.r., intense shade on bright
paper, wide margins, Very Fine, with 2003 P.S.E.
certificate (F-VF 75; SMQ \$990.00 as 70, \$1,450.00 as
80) 2,100.00



2202



2203

- 2203 ★ **\$10.00 Green, 1895 Unwatermarked Issue (PR110).**
Original gum, lightly hinged, rich color, three wide
margins, small corner crease at bottom left, Fine
appearance, with 1986 P.F. certificate..... 2,500.00



2204

- 2204 (★) **\$10.00 Green, 1895 Unwatermarked Issue (PR110).**
 Unused (no gum), bright shade, Very Fine, a pretty stamp, Scott Retail as no gum..... 900.00

- 2205 (★) **\$20.00 Slate, 1895 Unwatermarked Issue (PR111).**
 Unused (no gum), deep rich color and proof-like impression, light natural paper wrinkle, Very Fine, with 2003 P.S.E. certificate, Scott Retail as no gum..... 1,200.00



2205



2206

- 2206 ★ **\$50.00 Dull Rose, 1895 Unwatermarked Issue (PR112).** Original gum, barely hinged, faint natural gum bend not mentioned on accompanying certificate, brilliant color on bright paper, well-balanced margins
 EXTREMELY FINE. A BEAUTIFUL ORIGINAL-GUM EXAMPLE OF THE \$50.00 1895 UNWATERMARKED NEWSPAPER ISSUE.
 With 2004 P.F. certificate..... 2,900.00

- 2207 ★ **\$100.00 Purple, 1895 Unwatermarked Issue (PR113).**
 Original gum, lightly hinged, deep rich color on bright paper
 VERY FINE AND CHOICE. A BEAUTIFUL ORIGINAL-GUM EXAMPLE OF THE \$100.00 1895 UNWATERMARKED NEWSPAPER ISSUE.
 With 2001 P.F. certificate 3,500.00



2207

1895 UNWATERMARKED ISSUE – USED

- 2208 **1c-\$100.00 1895-97 Issue (PR102, PR104, PR114-PR117, PR118-PR120, PR123-PR124).** Incl. two of PR117, range of cancels incl. purple "H" in circle, three-line handstamp, few others, few small faults, Fine-Very Fine appearance, Nos. PR120 and PR123 with P.S.E. certificates(Photo Ex) 1,095.00



2208EX



2209

- 2209 **\$2.00 Scarlet, 1895 Unwatermarked Issue (PR108).** Vibrant color, choice centering with wide and balanced margins, neat oval handstamp cancels
EXTREMELY FINE. A BEAUTIFUL USED EXAMPLE OF THE \$2.00 1895 UNWATERMARKED BUREAU ISSUE.
Ex Collier. 1,100.00

- 2210 **\$2.00 Scarlet, 1895 Unwatermarked Issue (PR108).** Vibrant color, bold handstamp cancel, few light creases, Very Fine appearance 1,100.00



2210



2211

- 2211 **\$5.00 Ultramarine, 1895 Unwatermarked Issue (PR109).** Rich color on bright paper, neat target cancel, well-balanced margins, three thin spots at top, Very Fine appearance, with 2008 P.S.E. certificate..... 1,750.00

- 2212 **\$10.00 Green, 1895 Unwatermarked Issue (PR110).** Unobtrusive cancel leaves most of design clearly visible, beautifully centered with wide margins, rich color, Very Fine, used examples are very scarce, ex Whitpain, with 2009 P.F. certificate..... 2,000.00



2212



2213

- 2213 **\$50.00 Dull Rose, 1895 Unwatermarked Issue (PR112).** Intense shade and impression, light strike of large St. Louis oval datestamp, Very Fine, with 2003 P.F. certificate 750.00

1895-97 WATERMARKED ISSUE – UNUSED

- 2214 ★ **1c-\$100.00 1895 Watermarked Issue (PR114-PR125).** \$10.00-\$100.00 Mint N.H., others original gum, few h.r., rich colors, fresh and Very Fine-Extremely Fine set, top three denominations with certificates (\$20.00 VF-XF 85, \$50.00 VF 80, \$100.00 XF 90).....
(Photo Ex) 692.00



2214EX



2215EX

- 2215 ★田 **1c-\$100.00 1895 Watermarked Issue (PR114-PR125).** Top or bottom imprint and arrow blocks of four, many stamps Mint N.H. incl. 10c block and two stamps each of the other blocks, guide lines present on each, vibrant colors throughout, \$50.00 top pair separated vertically, few others with minor separations, Fine-Extremely Fine, Scott Retail as hinged and Mint N.H. singles, with no premium for positions.....
(Photo Ex) 2,608.00



2216EX

- 2216 ★ **1c-\$100.00 1895 Watermarked Issue (PR114-PR125).** 25 imprint and plate no. strips of three with guidelines, incl. Four 1c, two 2c, two 5c, two 10c, 25c, two 50c, two \$2.00, two \$5.00, two \$10.00, two \$20.00, two \$50.00 and two \$100.00, most with two are matched top and bottom positions, some stamps Mint N.H., bright colors, couple small flaws to be expected, Fine-Very Fine and desirable group, Scott Catalogue does not even list imprint and plate no. strips or blocks.....(Photo Ex) E. 1,000-1,500



2217

2217 ★★田 \$5.00 Dark Blue, 1895 Watermarked Issue (PR121). Mint N.H. block of four, intense color and impression on bright paper, well-balanced margins, fresh and Extremely Fine, a gorgeous block, with 2004 P.F. certificate, Scott Retail as singles 400.00



2218

2218 ★★田 \$10.00 Green, 1895 Watermarked Issue (PR122). Mint N.H. bottom arrow, imprint and plate no. 138 block of ten, wonderfully fresh and crisp, Fine-Very Fine, beautiful position multiple, Scott Retail as ten Mint N.H. singles..... 1,050.00

- 2219 ★★田 \$20.00 Slate, 1895 Watermarked Issue (PR123). Mint N.H. left imprint and plate no. 139 block of six, lovely impression, Fine-Very Fine, Scott Retail as hinged plate block..... 800.00



2219



2220

- 2220 ★★田 \$50.00 Dull Rose, 1895 Watermarked Issue (PR124). Mint N.H. right imprint and plate no. 135 block of six, fresh and attractively centered, small selvage perf separations, Very Fine, Scott Retail as hinged plate block .. 1,250.00



2221

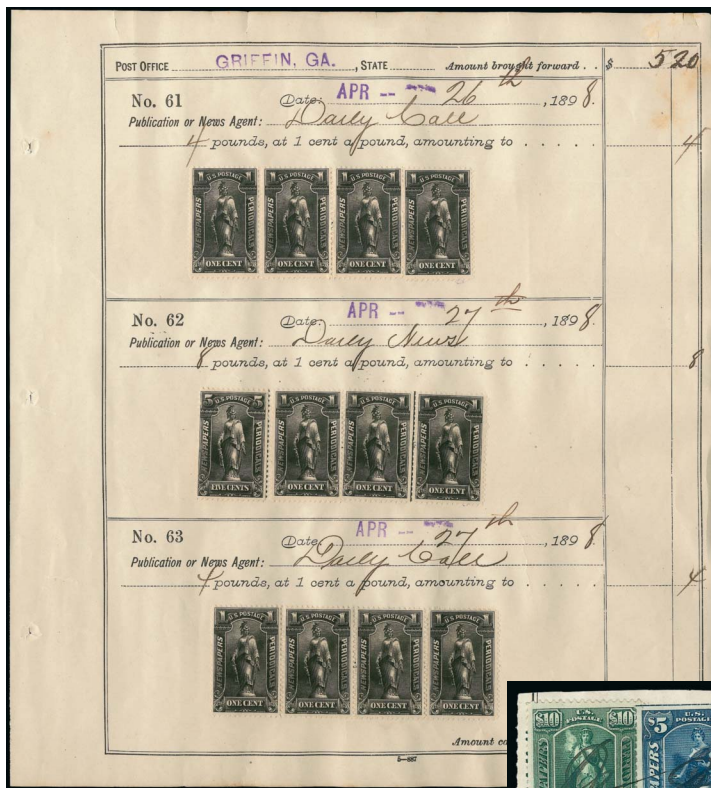
2221 ★田 **\$100.00 Purple, 1895 Watermarked Issue (PR125).** Left imprint and plate no. 140 block of six, original gum, lightly hinged, radiant color, fresh and Fine-Very Fine plate block ... 1,150.00



2222

2222 **\$100.00 Purple, 1895 Watermarked Issue (PR125).** Light target cancel at bottom right, perfectly centered with Jumbo margins, detailed impression
 EXTREMELY FINE GEM. A SUPERB USED EXAMPLE OF THE \$100.00 1895 WATERMARKED NEWSPAPER AND PERIODICALS ISSUE, WHICH HAS BEEN GRADED XF 95 JUMBO BY P.S.E.
 With 2010 P.S.E. certificate (XF-Superb 95 Jumbo; SMQ \$1,950.00 as 95, unpriced as 98). Only one has graded higher (at 98J) and one other shares this grade. 240.00

1895-97 WATERMARKED ISSUE – USED



2223



2224EX



2225

- 2223 **1c Black, 1895 Watermarked Issue (PR114).** Strip of four, strip of three, pair and two singles, with **5c Black (PR116)**, affixed to page from Griffin Ga. post office ledger for April 26 and 27, 1898 for the *Daily News* and *Daily Call* publications, manuscript notations specify weight for the day's publication, some slight edgewear, Very Fine, a fascinating page which clearly displays how these issues were used..... E. 300-400
- 2224 **2c-\$10.00 1895 Watermarked Issue (PR115, PR117 four, PR118 two, PR119 eight, PR121 two, PR122).** Presence of watermark unconfirmed so catalogued as the less expensive watermarked, four pieces evidently from post office accounting book, two with manuscript cancels, one with three strikes of negative "B" handstamp, last with quartered corks, \$2.00 and one \$5.00 s.e. at top, Fine-Very Fine, colorful pieces worthy of exhibition(Photo Ex) E. 300-400
- 2225 **1c-\$100.00 1895 Watermarked Issue (PR114/PR125).** Seven different values incl. 1c, 2c, 10c (2), 50c (3), \$2.00, \$20.00 (2) and \$100.00, affixed to piece of bottom of Post Office ledger page, 11 strikes of "Saint Louis Mo." oval handstamp, Fine and unusual item that paid bulk postage for 14,373 pounds of newspapers, perfect for exhibition, ex Whitpain E. 1,000-1,500



- 2226 **\$5.00 Dark Blue, 1895 Watermarked Issue (PR121).** Intense color on bright paper, well-balanced margins, unobtrusive cancel, Extremely Fine Gem, a superb stamp in every respect, with 2006 P.F. certificate 175.00
- 2227 **\$10.00 Green, 1895 Watermarked Issue (PR122).** Deep rich color, Jumbo margins, neat quartered cork cancel, Very Fine and choice, scarce with such wide margins, with 2006 P.F. certificate 160.00
- 2228 **\$100.00 Purple, 1895 Watermarked Issue (PR125).** Rich color, proof-like impression, neat oval cancel, wide margins, Extremely Fine, with 2006 P.F. certificate 240.00
- 2229 田 **\$100.00 Purple, 1895 Watermarked Issue (PR125).** Block of four, purple ms. cancel, bright color, wide margins throughout, perf separations hinge reinforced, Very Fine and choice, very scarce used multiple, ex Whitpain, Scott Retail as singles 960.00
- 2230 **2c-\$100.00 1895 Watermarked Issue (PR115/PR125).** 67 used stamps, incl. 2c (3), 5c (2), 10c (2), 25c (7), 50c (27), \$2.00 (8), \$5.00 (12), \$10.00, \$20.00, \$50.00, three \$100.00, range of cancels incl. pen, "H" in circle, brushstrokes, oval town, handstamps, some faults, some Fine-Very Fine, a nice group *Not illustrated* 6,950.00

BALANCE LOTS

- 2231 ★田 **1c-\$20.00 Newspaper and Periodicals Issues (PR57/PR123).** Fourteen blocks of four, pair, two plate blocks of six of PR118 and plate block of eight of PR116, blocks of four of PR57, PR58 (2), PR59 (2), PR119 (2), PR123 (with part imprint and plate no.), most Fine-Very Fine, a nice group *Not illustrated* 4,000.00
- 2232 ★ **Newspapers and Periodicals Balance.** Schaubek hingeless album pages of mostly unused stamps, incl. Nos. PR2-PR4, PR6, PR9-PR16, PR76, PR78, PR81, PR114-PR125, mixed condition with some regummed or unused, overall appear Fine-Very Fine, few with PSAG certificates *Not illustrated* E. 400-500

END OF SALE — THANK YOU

Bid Form—15% Premium Sale

Sale 1079

Thursday, September 18, 2014

1

Please provide the following information:

NAME

ADDRESS

CITY/STATE/ZIP

TEL. (DAY) FAX

E-MAIL

PADDLE #

Do not write in box

2

Have you purchased from us in the past 5 years? ☐ YES (if so, please go to Section 3)

☐ NO (please provide a trade reference and bank information)

References:

Stamp Firm: Telephone

Bank: Account #

3

In the space provided below, enter the **lot number** from **Sale 1079** and your corresponding bid. Please use **whole dollar amounts** only and enter the **maximum bid** you wish to have us execute on your behalf, according to the **bidding increments** on other side of this form. **Your bid will NOT include the 15% buyer's premium.** We will advance the bidding at one increment over the

next highest bid; therefore, you may be awarded the lot at less than your maximum bid. Please do not use "plus" bids or "buy" bids. If you wish to bid on one lot **or** the other, indicate your "or" bid between lot number/bid entries and bracket your choices. If you wish to place a **bidding limit** on the total amount of your bids, please enter your limit in the space marked "Limit Bids".

PLEASE NOTE BIDDING INCREMENTS AND SHIPPING CHARGES (ON BACK OF THIS PAGE)

☐ **LIMIT BIDS:** Check this box if you wish to limit the total amount of your bids (not including the **15% buyer's premium**) in this sale. Your bids will be executed until your bidding limit no longer allows for additional bids. **The total amount you wish to bid is:** \$

Lot	Bid	Lot	Bid	Lot	Bid
	\$		\$		\$

4

AGREEMENT: By signing this bid form, you agree to pay for purchases resulting from your bids, in accordance with the **Conditions of Sale** printed in the sale catalogue. You also agree to pay the **15% buyer's premium, shipping costs (see reverse), and sales tax or use tax or customs duty** which may be due on the total invoiced amount. It is

understood that these bids will be executed by Siegel Auction Galleries as a courtesy to absentee bidders, but you waive the right to make any claim against the auctioneer or the firm, arising from the these bids. **You are responsible for your written bids, including any errors on your part and any additions or changes to the bids herein.**

Payment must be made by cash, check, money order or wire transfer. Credit cards (Visa, Mastercard and Discover only) can be accepted as payment but will be subject to a 3% Convenience Fee, which will be added to the total of the entire invoice (including hammer price, buyer's premium, shipping and transit insurance charges and any applicable taxes).



SIGNED TODAY'S DATE

5

Please submit your bids promptly (telephone bids must be confirmed in writing).

Mail to: Robert A. Siegel Auction Galleries, Inc.

60 E. 56th Street, 4th Floor, New York, N.Y. 10022

Telephone (212) 753-6421

OR FAX YOUR BIDS: (212) 753-6429

Shipping Instructions, Bidding Increments and space for additional bids on other side of form



Additional Bids

Sale 1079—September 18, 2014

Lot	Bid	Lot	Bid	Lot	Bid
	\$		\$		\$

Shipping and Transit Insurance

We will be pleased to arrange for shipping and transit insurance for purchases in this sale (except those described as “floor sale only”). To expedite billing and delivery of lots to hundreds of buyers per sale, we use standard charges for postage and insurance, based on the package weight and mailing requirements (see schedule). The standard charges are sometimes slightly more or less than the actual postage or Fedex fees, but we do not include any charge for our labor or packing costs. Therefore, we ask all buyers to remit the prescribed amount for shipping charges.

Transit insurance is provided in all cases, except when the buyer has furnished us with proof that insurance coverage is effective under another policy. Proof, in such cases, will be accepted in the form of a written certificate from the insurance carrier.

You are responsible for insurance charges, which will be added to your invoice. This coverage is provided for our mutual protection against theft or loss in transit.

Bidding Increments

The auctioneer may regulate the bidding at his discretion. However, to assist absentee bidders in establishing their maximum bid for each lot, the increments shown at right will be used in most cases. We recommend that written bids conform to these increments (those which do not will be reduced to the next level).

REVISED CHARGES FOR SHIPPING EFFECTIVE SEPTEMBER 1, 2010

We have reduced the Fedex Envelope charge to \$20, reflecting the elimination of the fuel surcharge. All other charges remain the same.

Current Postage & Insurance Charges

Weight/Class	Shipping Method	Charges
Up to 2 lbs.	Fedex Envelope	\$20.00
Over 2 lbs.	Fedex Box	\$35.00*
Non-U.S.	Fedex/Courier	\$50.00**
Bulk Lots	UPS Preferred	By weight and value
<p>These fees reflect additional Fedex charges for residential delivery, signature and fuel surcharge.</p> <p>*Higher fees will be charged on packages weighing more than 5 lbs. or insured for more than \$75,000.</p> <p>**Buyers are liable for all customs duties and clearance charges. An accurate declaration of value will be made on all import/export documents.</p>		

1/2014

Up to \$50	\$5	\$3,000-7,000	\$250
\$50-200	\$10	\$7,000-20,000	\$500
\$200-500	\$25	\$20,000-30,000	\$1,000
\$500-1,000	\$50	\$30,000-75,000	\$2,500
\$1,000-3,000	\$100	\$75,000 up	\$5,000

1/2014



PRICES REALIZED FOR SALE 1079---9/18/2014
The George A. Schwenk Collection of Newspapers & Periodicals
Robert A. Siegel Auction Galleries, Inc.
60 East 56th Street, 4th Floor, New York, NY 10022
Tel (212) 753-6421 Fax (212) 753-6429

Lot#	Realized	Lot#	Realized	Lot#	Realized	Lot#	Realized	Lot#	Realized	Lot#	Realized
2001	1,300	2043	1,000	2085	800	2127	110	2169	450	2212	2,100
2002	850	2044	850	2086	70	2128	200	2170	300	2213	850
2003	900	2045	1,000	2087	80	2129	150	2171	150	2214	600
2004	475	2046	625	2088	110	2130	275	2172	750	2215	1,300
2005	9,500	2047	750	2089	140	2131	900	2173	1,100	2216	1,200
2006	275	2048	275	2090	110	2132	160	2174	1,000	2217	200
2007	3,500	2049	275	2091	100	2133	850	2175	425	2218	800
2008	1,000	2050	400	2092	225	2134	375	2176	300	2219	500
2009	1,000	2051	600	2093	350	2135	425	2177	2,800	2220	700
2010	700	2052	1,800	2094	650	2136	375	2178	7,000	2221	550
2011	12,000	2053	400	2095	425	2137	2,000	2179	7,500	2222	750
2012	180	2054	275	2096	350	2138	325	2180	57,500	2223	475
2013	3,000	2055	1,600	2097	1,700	2139	550	2181	13,500	2224	550
2014	3,250	2056	1,000	2098	1,100	2140	450	2182	32,500	2225	1,600
2015	425	2057	400	2099	200	2141	425	2183	29,000	2226	400
2016	11,000	2058	1,800	2100	850	2142	500	2184	18,000	2227	250
2017	1,700	2059	750	2101	300	2143	1,000	2185	225	2228	150
2018	1,400	2060	2,800	2102	160	2144	600	2186	425	2229	275
2019	450	2061	750	2103	350	2145	1,200	2187	250	2230	400
2020	4,750	2062	900	2104	325	2146	1,200	2188	325	2231	1,500
2021	475	2063	2,900	2105	375	2147	300	2189	150	2232	400
2022	1,000	2064	1,200	2106	850	2148	450	2190	350		
2023	800	2065	700	2107	450	2149	2,400	2191	275		
2024	5,750	2066	350	2108	1,300	2150	2,200	2192	275		
2025	650	2067	900	2109	500	2151	550	2193	110		
2026	2,600	2068	450	2110	450	2152	300	2194	200		
2027	650	2069	475	2111	300	2153	2,200	2195	160		
2028	2,500	2070	250	2112	950	2154	2,600	2196	300		
2029	1,200	2071	375	2113	2,100	2155	375	2197	250		
2030	850	2072	650	2114	1,500	2156	200	2198	400		
2031	250	2073	1,500	2115	1,800	2157	120	2199	1,700		
2032	600	2074	350	2116	2,600	2158	325	2200	1,000		
2033	475	2075	1,700	2117	9,500	2159	100	2201	1,600		
2034	325	2076	1,500	2118	3,250	2160	550	2202	950		
2035	1,200	2077	900	2119	2,100	2161	850	2203	400		
2036	900	2078	750	2120	4,500	2162	1,400	2205	250		
2037	450	2079	400	2121	17,000	2163	1,400	2206	1,800		
2038	1,100	2080	1,800	2122	75,000	2164	1,900	2207	2,500		
2039	1,400	2081	1,300	2123	5,500	2165	700	2208	800		
2040	1,400	2082	3,500	2124	450	2166	1,300	2209	2,400		
2041	1,200	2083	7,000	2125	150	2167	950	2210	150		
2042	1,100	2084	1,300	2126	100	2168	150	2211	650		