

# THE "GOLDFARM" COLLECTION OF AUSTRALIAN KANGAROO AND MAP SERIES POSTAGE STAMPS



SALE 1081 • TUESDAY, OCTOBER 7, 2014

I N T E R N A T I O N A L

*Robert A. Siegel*

IN ASSOCIATION WITH CHARLES F. SHREVE

# THE "GOLDFARM" COLLECTION OF AUSTRALIAN KANGAROO AND MAP SERIES POSTAGE STAMPS

Offered at unreserved auction



Sale 1081

Tuesday, October 7, 2014, at 4:00 p.m.

Lots 3001-3190

Lots are sold subject to a 15% buyer's premium and  
any applicable sales tax (or customs duty for non-U.S. buyers)

SPECIAL VIEWING SEPTEMBER 17-20, 2014

Visit our booth (Stand 94) at Stampex in London  
The Business Design Center, Islington, London, U.K.

Lots will be available for regular viewing on Monday, October 6, 10am-4pm  
and by appointment (please call 212-753-6421)

I N T E R N A T I O N A L  
*Robert A. Siegel*  
IN ASSOCIATION WITH CHARLES F. SHREVE

60 EAST 56TH STREET, 4TH FLOOR, NEW YORK, N.Y. 10022  
Phone (212) 753-6421 • Fax (212) 753-6429 • E-mail: [stamps@siegelauctions.com](mailto:stamps@siegelauctions.com)

Catalogues, internet bidding, resources, archives and the Siegel Encyclopedia at  
[siegelauctions.com](http://siegelauctions.com)



60 EAST 56TH STREET, 4TH FLOOR, NEW YORK, N.Y. 10022  
 Phone (212) 753-6421 • Fax (212) 753-6429 • E-mail: stamps@siegelauctions.com  
 siegelauctions.com



Scott R. Trepel  
 President  
 strepel  
 @siegelauctions.com



John P. Zuckerman  
 Senior Vice President  
 jzuckerman  
 @siegelauctions.com



Corey Long  
 Vice President  
 clong  
 @siegelauctions.com



Colleen Stellato  
 Accounts  
 stamps  
 @siegelauctions.com



Laura Melvin Kaplan  
 Bids and Inquiries  
 laura  
 @siegelauctions.com



Charles F. Shreve  
 Siegel International  
 charles  
 @siegelauctions.com



Chris Anderson  
 Siegel International  
 chris  
 @siegelauctions.com



Andrew Titley  
 Siegel International  
 andrew  
 @siegelauctions.com

Scott R. Trepel Principal Auctioneer (licensed by NYC Dept. of Consumer Affairs, #795952)

Nathaniel Estes Catalogue and Digital Production

## Information for Bidders

### Bidding

The following means are available for placing bids:

- 1) **Attending the Live Auction in Person:** All bidders must register for a paddle, and new bidders must provide references at least three business days in advance of the sale.
- 2) **Live Internet Bidding:** Instructions for participating as a Live Internet Bidder are provided on the page opposite.
- 3) **Phone Bidding:** Bidders can be connected to the sale by phone and bid through a member of staff. Requests for phone bidding are subject to approval (please contact our office at least 24 hours before the sale). A signed Bid Form is required.
- 4) **Absentee Bids.** All bids received in advance of the sale, either by mail, fax, phone, e-mail or internet, are Absentee Bids, which instruct the auctioneer to bid up to a specific amount on one or more lots in the sale. Absentee Bids sent by phone, fax or e-mail should arrive at least one hour prior to the start of the sale session. Bids entered through Live Internet Bidding will be visible to the auctioneer during the sale. Written bids should be entered legibly on the Bid Form in the sale catalogue. E-mail and internet bids should be carefully typed and double-checked. All new bidders must provide references. We recommend calling or e-mailing to confirm that Absentee Bids sent by mail, fax or e-mail have been received and entered.

### Pre-Sale Viewing

Subject to availability, certain lots (except group lots) can be sent to known clients for examination. Requests must be made no later than 7 days prior to the sale. Lots must be returned on the day received. Postage/insurance costs will be invoiced.

In addition to regular viewing, clients may view lots by appointment. Our staff will be pleased to answer questions or provide additional information about lots.

### Expert Certification

Individual items offered without a certificate dated within the past five years may be purchased subject to independent certification of genuineness and our description. **Please refer to the Conditions of Sale and Grading Terms for policies governing certification.**

### Shipping and Delivery

Procedures and charges for shipping lots are printed on the back of the Bid Form. **Bidders are responsible for all prescribed shipping charges and any applicable sales tax or customs duties.**

### Price Realized

Prices realized are sent with each invoice. Bidders with e-mail will receive a Bid Results report after the sale. Session results are posted immediately to **siegelauctions.com**

# Live Internet Bidding at Siegel Auctions

## BIDDING FROM YOUR COMPUTER LETS YOU BE PART OF THE LIVE AUCTION FROM ANYWHERE IN THE WORLD!

**There's NO SUBSTITUTE for following the auction in real time.**  
**Live Internet Bidding lets you bid and buy as though you were right there in the saleroom.**  
**And it's easy.**

**This step-by-step guide will instruct you how to register, set your browser and use the bidding interface.**

**Start by following the simple steps to become a registered Live Internet Bidder.**  
**Once you've been approved for bidding, you can listen to the auction and place bids with the click of a mouse.**

### Registering with STAMP AUCTION NETWORK & SIEGEL AUCTION GALLERIES

Live Internet Bidding is managed by Stamp Auction Network (SAN).  
To bid, you must be registered and approved by *both* SAN and Siegel.  
To decide what you need to do, choose the description below that best fits you.



**I've already registered with SAN and have been approved by Siegel for internet bidding.**

**I'm a Siegel client, but I'm not registered with SAN.**

Go to [stampauctionnetwork.com/siegel](http://stampauctionnetwork.com/siegel) and click on "Register" at the top. Check the box for Robert A. Siegel Auction Galleries (under "R") and submit the form, indicating you are a Siegel client. Once registered at SAN, you're ready for internet bidding.

**I've bid through SAN before, but this is the first time I've bid in a Siegel sale.**

Then you just need to be approved by Siegel. Go to [stampauctionnetwork.com/siegel](http://stampauctionnetwork.com/siegel) and click on "Update Registration" at the top. Your SAN account information will be sent to us for approval (you might be asked for other trade references). Once approved by Siegel for bidding, you're ready for internet bidding.

**I've never bid with Siegel, nor registered with SAN.**

Go to [stampauctionnetwork.com/siegel](http://stampauctionnetwork.com/siegel) and click on "Register" at the top. Check the box for Robert A. Siegel Auction Galleries (please, no family members or credit card companies as references). Once registered at SAN and approved by Siegel for bidding, you're ready for internet bidding.

Live Internet Bidding works by allowing registered bidders to observe and place bids.

Live Internet Bidding will work with any browser on both PC and Mac operating systems.

Before bidding by internet for the first time, we recommend finding a sale in progress and listening to the public broadcast or logging in as a registered bidder. This will help you develop a feel for the sale tempo and bidding interface.

### Log on to the auction at [stampauctionnetwork.com/siegel](http://stampauctionnetwork.com/siegel).

You can also log on at [siegelauctions.com](http://siegelauctions.com)

When you're logged on as a Live Internet Bidder, the bidding interface shows a photo and description of the lot, the current bid (and your bidding status), options for placing competitive bids and buttons with bid increments.

- After you click on a bid amount, the auctioneer is immediately notified of your bid.
- Retracting a bid is usually not acceptable, so please bid carefully.
- If you bid and then decide to stop, the "Pass" button will tell the auctioneer you are no longer bidding.
- You can send messages to the auctioneer (for example, a request for extension).
- You can track prior realizations from the bidding screen.



**"System Down" or "Lost Connection" events do occasionally happen.**

If you have any problems with Live Internet Bidding please call **212-753-6421** for immediate assistance.

## Conditions of Sale (please read carefully before bidding)

The property described in this catalogue will be offered at public auction by Robert A. Siegel Auction Galleries, Inc. ("Galleries") on behalf of various consignors and itself or affiliated companies. By bidding on any lot, whether directly or by or through an agent, in person, or by telephone, facsimile or any other means, the bidder acknowledges and agrees to all of the following Conditions of Sale.

1. The highest bidder acknowledged by the auctioneer shall be the buyer. The term "final bid" means the last bid acknowledged by the auctioneer, which is normally the highest bid offered. **The purchase price payable by the buyer will be the sum of the final bid and a commission of 15% of the final bid ("buyer's premium"), together with any sales tax, use tax or customs duties due on the sale.**

2. The auctioneer has the right to reject any bid, to advance the bidding at his discretion and, in the event of a dispute between bidders, to determine the successful bidder, to continue the bidding or to reoffer and resell the lot in dispute. The Galleries' record of the final sale shall be conclusive.

3. All bids are per numbered lot in the catalogue unless otherwise announced by the auctioneer at the time of sale. The right is reserved to group two or more lots, to withdraw any lot or lots from the sale, or to act on behalf of the seller. The Galleries will execute bidding instructions on behalf of clients, but will not be responsible for the failure to execute such bids or for any errors in the execution of such bids.

4. **Lots with numbers followed by the symbol ° are offered subject to a confidential minimum bid ("reserve"), below which the lot will not be sold. The absence of the symbol ° means that the lot is offered without a reserve. If there is no reserve, the auctioneer has sole discretion to establish a minimum opening bid and may refuse an offer of less than half of the published estimate. Any lot that does not reach its reserve or opening bid requested by the auctioneer will be announced as "passed" and excluded from the prices realized lists after the sale. The Galleries may have a direct or indirect ownership interest in any or all lots in the sale resulting from an advance of monies or goods-in-trade or a guarantee of minimum net proceeds made by the Galleries to the seller.**

5. Subject to the exclusions listed in 5(A), the Galleries will accept the return of lots which have been misidentified or which have obvious faults that were present when the lot was in the Galleries' custody, but not so noted in the lot description. **All disputed lots must be received by the Galleries intact with the original packing material within 5 days of delivery to the buyer but no later than 30 days from the sale date. (5A) EXCLUSIONS: The following lots may not be returned for any reason: lots containing 10 or more items; lots from buyers who registered for the pre-sale exhibition or received lots by postal viewing, thereby having had the opportunity to inspect them before the sale; any lot described with "faults," "defects" or a specific fault may not be returned because of any secondary fault. Photographed lots may not be returned because of centering, margins, short/nibbed perforations or other factors shown in the illustrations. Lots may not be returned for any of the following reasons: the color of the item does not match the color reproduction in the sale catalogue or website listing; the description contains inaccurate information about the quantity known or reported; or a certification service grades a stamp lower than the grade stated in the description.**

6. Successful bidders, unless they have established credit with the Galleries prior to the sale, must make payment in full before the lots will be delivered. Buyers not known to the Galleries must make payment in full within 3 days from the date of sale. **The Galleries retains the right to demand a cash deposit from anyone prior to bidder registration and/or to demand payment at the time the lot is knocked down to the highest bidder, for any reason whatsoever.** In the event that any buyer refuses or fails to make payment in cash for any lot at the time it is knocked down to him, the auctioneer reserves the right to reoffer the lot immediately for sale to the highest bidder. **Credit cards (Visa, Mastercard and Discover only) can be accepted as payment but will be subject to a 3% Convenience**

**Fee, which will be added to the total of the entire invoice (including hammer price, buyer's premium, shipping and transit insurance charges and any applicable taxes).**

7. If the purchase price has not been paid within the time limit specified above, nor lots taken up within 7 days from the date of sale, the lots will be resold by whatever means deemed appropriate by the Galleries, and any loss incurred from resale will be charged to the defaulting buyer. Any account more than 30 days in arrears will be subject to a late payment charge of 1½% per month as long as the account remains in arrears. Any expenses incurred in securing payment from delinquent accounts will be charged to the defaulter. A fee of \$250.00 per check will be charged for each check returned for insufficient funds.

8. All lots are sold as genuine. **Any lot accompanied by a certificate issued by The Philatelic Foundation, British Philatelic Association, Royal Philatelic Society of London or any other authority recognized by the A.I.E.P. in a specific area of expertise, and dated within 5 years of the sale date, is sold "as is" and in accordance with the description on the certificate. Such lots may not be returned for any reason, including but not limited to a contrary certificate of opinion.** Buyers who wish to obtain a certificate for any item that does not have a certificate (dated as above) may do so, provided that the following conditions are met: (1) the purchase price must be paid in full, (2) the item must be submitted to an acceptable expertizing committee with a properly executed application form within 21 days of the sale, (3) a copy of the application form must be given to the Galleries, (4) in the event that an adverse opinion is received, the Galleries retain the right to resubmit the item on the buyer's behalf for reconsideration, without time limit or other restrictions, (5) unless written notification to the contrary is received, items submitted for certification will be considered cleared 90 days from the date of sale, and (6) in the event any item is determined to be "not as described", the buyer will be refunded the purchase price and the certification fee up to \$600.00 unless otherwise agreed.

9. Until paid for in full, all lots remain the property of the Galleries on behalf of the seller.

10. Agents executing bids on behalf of clients will be held responsible for all purchases made on behalf of clients unless otherwise arranged prior to the sale.

11. The buyer assumes all risk for delivery of purchased lots and agrees to pay for prescribed shipping costs. Buyers outside the U.S. are responsible for all customs duties.

12. **The bidder consents that any action or proceeding against it may be commenced and maintained in any court within the State of New York or in the United States District Court for the Southern District of New York, that the courts of the State of New York and United States District Court for the Southern District of New York shall have jurisdiction with respect to the subject matter hereof and the person of the bidder. The bidder agrees not to assert any defense to any action or proceeding initiated by Galleries based upon improper venue or inconvenient forum. The bidder agrees that any action brought by the bidder shall be commenced and maintained only in a Federal Court in the United States District Court for the Southern District of New York or the State Court in the county in which Galleries has its principal place of business in New York. The bidder agrees not to use a public conflict resolution service and not to use any form of social media to publish comments or information about the Galleries and its employees which might harm the Galleries' reputation or business. These Terms and Conditions shall be governed by and construed in accordance with the substantive laws of the State of New York.**

SCOTT R. TREPEL, Principal Auctioneer  
Auctioneer's License No. 795952  
N.Y.C. Department of Consumer Affairs  
80 Lafayette Street, New York, N.Y. 10013  
Telephone (212) 577-0111

*Revised 4/2014*

## Grades, Abbreviations and Values Used in Descriptions

### Grades and Centering

Our descriptions contain detailed information and observations about each item's condition. We have also assigned grades to stamps and covers, which reflect our subjective assessment. For stamps, the margin width, centering and gum are described and graded according to generally-accepted standards (an approximate correlation to numeric grades is provided at right). Although we believe our grades are accurate, they are not always exactly aligned with third-party grading terms or standards for all issues. **A lot may not be returned because a certification service grades a stamp lower than the grade stated in the description. Information from the P.S.E. Stamp Market Quarterly and P.S.E. Population Report<sup>SM</sup> is the most current available, but lots may not be returned due to errors or changes in statistics or data.**

**Extremely Fine Gem (90-100):** The term "Gem" describes condition that is the finest possible for the issue. This term is equivalent to "Superb" used by grading services.







**Extremely Fine (80-90):** Exceptionally large/wide margins or near perfect centering.

**Very Fine (70-85):** Normal-size margins for the issue and well-centered with the design a bit closer to one side. "Very Fine and choice" applies to stamps that have desirable traits such as rich color, sharp impression, freshness or clarity of cancel.

**Fine (60-70):** Smaller than usual margins or noticeably off center. Pre-1890 issues may have the design touched in places.

**Very Good (below 60):** Attractive appearance, but margins or perforations cut into the design.

### Guide to Gum Condition

Gum Categories:	MINT N.H.	ORIGINAL GUM (O.G.)				NO GUM
	 <b>Mint Never Hinged</b> <i>Free from any disturbance</i>	 <b>Lightly Hinged</b> <i>Faint impression of a removed hinge over a small area</i>	 <b>Hinge Mark or Remnant</b> <i>Prominent hinged spot with part or all of the hinge remaining</i>	 <b>Part o.g.</b> <i>Approximately half or more of the gum intact</i>	 <b>Small part o.g.</b> <i>Approximately less than half of the gum intact</i>	 <b>No gum</b> <i>Only if issued with gum</i>
Catalogue Symbol:	★ ★	★	★	★	★	(★)
PRE-1890 ISSUES	<i>Pre-1890 stamps in these categories trade at a premium over Scott value</i>			Scott Value for “O.G.”		Scott “No Gum” Values thru No. 218
1890-1935 ISSUES	Scott “Never Hinged” Values for Nos. 219-771	Scott Value for “O.G.” (Actual value will be affected by the degree of hinging)		<b>Disturbed Original Gum:</b> Gum showing noticeable effects of humidity, climate or hinging over more than half of the gum. The significance of gum disturbance in valuing a stamp in any of the Original Gum categories depends on the degree of disturbance, the rarity and normal gum condition of the issue and other variables affecting quality. For example, stamps issued in tropical climates are expected to have some		
1935 TO DATE	Scott Value for “Unused”					

### Covers

Minor nicks, short edge tears, flap tears and slight reduction at one side are normal conditions for 19th century envelopes. Folded letters should be expected to have at least one file fold. Light cleaning of covers and small mends along the edges are accepted forms of conservation. Unusual covers may have a common stamp with a slight crease or tiny tear. **These flaws exist in virtually all 19th century covers and are not always described. They are not grounds for return.**

### Catalogue Values and Estimates

Unless otherwise noted, the currently available *Scott Catalogue* values are quoted in dollars with a decimal point. Other catalogues are often used for foreign countries or specialized areas and are referred to by their common name: *Stanley Gibbons* (SG), *Dietz*, *American Air Mail Catalogue* (AAMC), *Michel*, *Zumstein*, *Facit*, etc. Estimates are indicated with an "E." and reflect our conservative valuation in dollars. Reserves will never exceed the low end of the estimate range; they will sometimes exceed Scott Catalogue value for stamps in Extremely Fine condition.

Because of certain pricing inconsistencies in the *Scott Catalogue*—for example, blocks that have no gum, the absence of premiums for Mint N.H. items, etc.—we cannot guarantee the accuracy of values quoted for multiples, specialized items and collection lots. We generally try to be conservative, but buyers may not return a lot because of a discrepancy in catalogue value due to Scott pricing inconsistencies.

### Symbols and Abbreviations (see chart above for gum symbols)

⊞	Block	E	Essay	pmk.	Postmark	No.	Scott Catalogue Number
⊞	Cover	P	Proof	cds	Circular Datestamp	hs	Handstamp
FC	Fancy Cancel	TC	Trial Color Proof	var.	Variety	ms.	Manuscript



## THE “GOLDFARM” COLLECTION OF AUSTRALIAN KANGAROO AND MAP SERIES POSTAGE STAMPS

I have a confession. There was a time, not too long ago, when I could be accused of a certain amount of philatelic snobbery. After many years as a stamp auctioneer, having handled so many wonderful collections, I grew to believe that the only “serious” collections were traditional classic collections.

My personal bias was reinforced by philatelic exhibitions, where the 19th century classic stamps and postal history were given more attention by the public and higher scores by judges. However, as many of you know, there is a sea-change occurring in competitive philately, with so-called modern (20th century) material gaining popularity among collectors and commanding greater respect from judges.

One memorable exhibit in an FIP show changed my perspective on classic versus modern material. At the World Stamp Championship in Singapore in 2004, I had the opportunity to see Arthur Gray's exhibit of the Kangaroo and Map Series stamps of Australia. I was truly awestruck. There were eight frames exclusively devoted to Kangaroo stamps. *Eight frames of modern stamps?* I was mesmerized by the fantastic array of varieties, errors, monogram multiples, specimen overprints, shades, “OS” punctures and the like. I said to myself at the time, *I think this is the greatest single-issue collection I have ever seen.*

I had the privilege to auction Arthur Gray's legendary collection of Kangaroo stamps in 2007 for record prices. Its dispersal opened the door for collectors to begin collecting a new fascinating area that is filled with exciting and challenging items to seek and acquire. The owner of the “Goldfarm” Collection offered here thought the same thing and was motivated to embark on a new collecting area. He, too, sought out as many of the interesting monogram singles and multiples, varieties and specimens as he could find. He participated in several of the important sales of the past decade including the Arthur Gray sale, as well as the sales of the Lord Leonard Steinberg, Hugh Morgan and Stuart Hardy collections. In relatively short order he built a most impressive collection.

The “Goldfarm” collector has now decided to sell his Kangaroos and move on to another new and exciting collecting challenge. This sale opens the door for others to discover the joys of collecting perhaps the most popular stamps of the entire “classic” modern era.

— CHARLES F. SHREVE

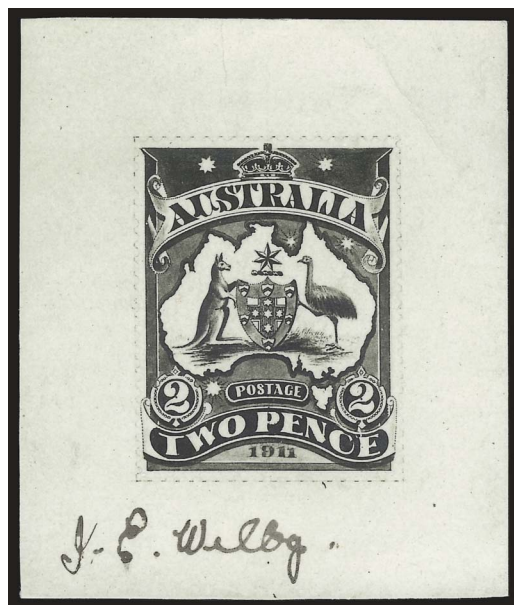
### Special Note Concerning the “Goldfarm” Collection

One of the frequent challenges in collecting a highly specialized area is the lack of readily available information in a single handbook or catalogue. Fortunately, Australian philately does not suffer from that problem. In fact, the catalogues produced by Brusden-White on all areas of Australian philately are, in our opinion, among the best in the world. The amount of detail, with virtually every known item listed, is remarkable, and the pricing is extremely accurate. Because of the specialized nature of the “Goldfarm” Collection, we have used the *The Australian Commonwealth Specialists' Catalogue/Kangaroos*, 2013 edition, published by Brusden-White, for all identifications and catalogue values (in Australian dollars — at press time the Australian dollar is approximately .93 per U.S. dollar).

AFTERNOON SESSION (LOTS 3001-3190)  
TUESDAY, OCTOBER 7, 2014, AT 4:00 P.M.

THE “GOLDFARM” COLLECTION OF AUSTRALIAN  
KANGAROO AND MAP SERIES POSTAGE STAMPS

ESSAYS



3001

- 3001 E    **1911 Stamp Design Competition Essay Entry by J.E. Wilby.** Photographic stamp-sized essay of a 2p design featuring a kangaroo, ostrich and Coat-of-Arms within a crudely drawn map, with larger than usual margins around the design and signed “J.E. Wilby” of the Victorian Government Printing Office, Very Fine, ex Gray ..... E. 400-500



3002

- 3002 E **2p Yellow Green on Unwatermarked Wove Paper, Kangaroo and Map Third Essay, with Only One Value Circle at Top, the Map Redrawn and Tasmania included (BW KE22D).** Measuring 31 x 44mm, quite bright and fresh, couple of unimportant hinge thins  
 VERY FINE. AN EXTREMELY RARE KANGAROO ESSAY OF WHICH ONLY NINE TWO-PENCE DESIGNS EXIST AND THIS BEING THE ONLY RECORDED EXAMPLE IN THIS COLOR.  
 A historically important essay whose design was unacceptable due to controversial “rabbit” in front of the kangaroo. Ex Kilfoyle and Morgan ..... A\$ 18,000



3003

- 3003 E **3p Yellow Green on Unwatermarked Wove Paper, Kangaroo and Map Third Essay, with Only One Value Circle at Top, the Map Redrawn and Tasmania included (BW KE23D).** Measuring 30 x 35mm, quite bright and fresh, unimportant hinge thin  
 VERY FINE. AN EXTREMELY RARE KANGAROO ESSAY OF WHICH ONLY SEVEN THREE-PENCE DESIGNS EXIST AND THIS BEING THE ONLY RECORDED EXAMPLE IN THIS COLOR.  
 Another historically important essay whose design was unacceptable due to controversial “rabbit” in front of the kangaroo. Ex Kilfoyle and Morgan ..... A\$ 18,000

## FIRST WATERMARK ISSUE

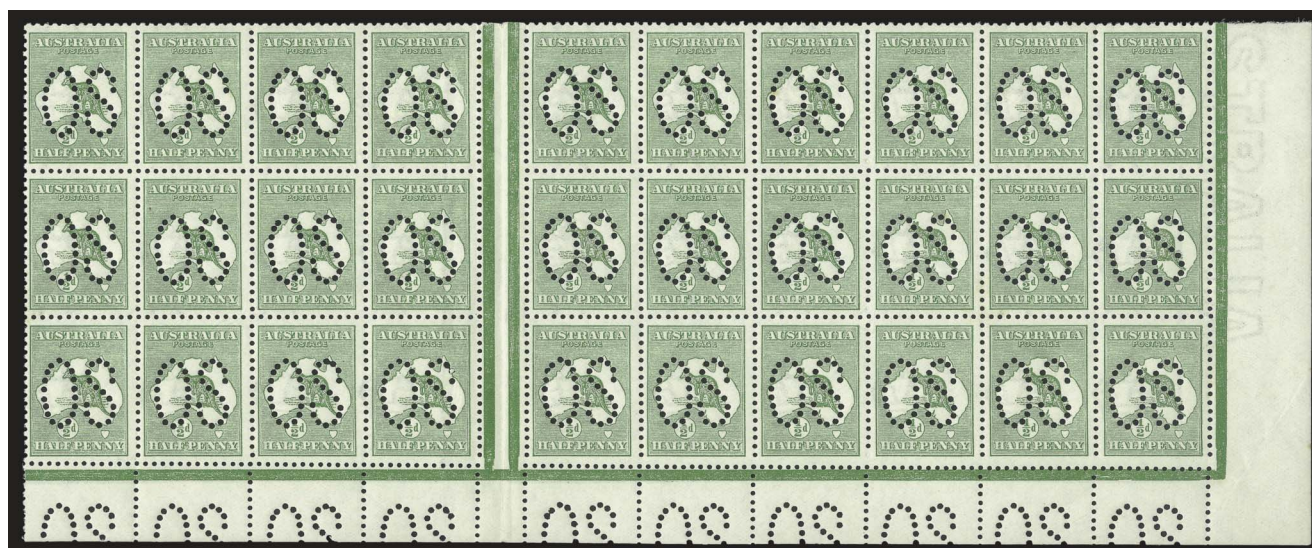


3004

3004 ★田 ½p Green, Imperforate at Base (BW 1b). Bottom left corner margin **CA monogram block of six**, the bottom three stamps being the error, as they are completely imperforate between the stamps and sheet selvage, top three stamps lightly hinged, bottom three stamps Mint N.H., single mild h.r. in bottom sheet selvage, lightly folded along center row of horizontal perforations

FINE-VERY FINE. AN IMMENSELY RARE AND IMPORTANT CA MONOGRAM BLOCK OF SIX DISPLAYING THE IMPERFORATE AT BASE ERROR. OF THE FOUR RECORDED MONOGRAM PIECES WITH THIS ERROR, ONLY TWO REMAIN IN PRIVATE HANDS — THE BLOCK OFFERED HERE FROM THE FAMOUS ARTHUR GRAY COLLECTION AND THE BLOCK SOLD IN THE 2005 SIR GAWAINE BAILLIE SALE.

Ex Gray and Lord Steinberg ..... A\$ 42,500



3005

3005 ★★田 ½p Green, Large “OS” (BW 1bc). Bottom right corner sheet-margin block of 30 (10x3) from Plate 1 (upper), being a block of 16 from the left side of the sheet and the full bottom three rows from the right side and with interpanneau gutter between, which incorporates a full no monogram strip (BW 1bc/za), Mint N.H., marvelously well-centered for such a large multiple, bright and fresh overall, Very Fine, an impressive “OS” multiple in outstanding condition..... E. 1,000-1,500



3006

3006 ★★田 ½p Green, Small “OS” (BW 1bd). Bottom margin interpanneau block of twelve, stamps Mint N.H., a couple of h.r.’s reinforcing a few separated perforations in the sheet selvage, well-centered, usual vertical crease in the central gutter, two vertical rows lightly folded along perforations, Very Fine, a scarce small “OS” positional multiple ..... A\$ 720



3007

- 3007 ★田 ½p Green (BW 1z). Bottom right corner margin **no monogram block of twelve**, from the upper pane of Plate 1, showing distinctive small hole perforations, as well as position 55 displaying a plate flaw (vertical scratch left of the value circle), lightly hinged, several stamps Mint N.H. incl. the monogram strip of three, quite well-centered, a few separated perforations in the bottom selvage and a light marginal crease in selvage at bottom right, overall Very Fine and handsome, ex Gray..... A\$ 1,382



3008

- 3008 ★田 ½p Green (BW 1z). Bottom left corner margin **CA Monogram Block of Twelve**, from Plate 2, with position 2L55 showing the break in shading over the "U" of "AUSTRALIA", stamps Mint N.H., small h.r. at center of bottom selvage reinforcing just a couple separated perforations, exceptional centering, bright color, Very Fine, ex Gray (as a larger multiple with the extraneous stamps removed) ..... A\$ 1,180



3009

3009 ★★田 ½p Green, Large “OS” (BW 1bc/z). Bottom right corner margin **CA monogram block of eight**, from the lower pane of Plate 2, Mint N.H., wonderfully fresh and intact, nicely centered, strong color, Very Fine, a very scarce monogram multiple with the perforated large “OS” ..... E. 500-750



3010

3010 ★田 ½p Green (BW 1zc). Bottom right corner margin **JBC Monogram block of ten**, from Plate 2, stamps Mint N.H., couple of h.r.'s in bottom sheet selvage where there are a few trivial toning specks on the reverse only, exceedingly well-centered and margined throughout, lightly folded along horizontal perforations, still Very Fine, ex Gray..... A\$ 1,140



3011

- 3011 ★ ½p Green, Small “OS” (BW 1bd/zc). Bottom right corner margin **JBC monogram strip of three**, from the lower pane of Plate 2, couple of minor h.r.’s, exceptionally well-centered, fresh color, Very Fine, a choice example of this scarce JBC monogram strip of three with perforated small “OS” ..... E. 500-750



3012

- 3012 ★★田 ½p Green (BW 1 var). Block of eighteen (6x3) with **each stamp with “T” perfin for use in Tasmania**, from Plate 2, being the upper three rows from the left hand pane, sheet selvage at right, displaying two highly collectible varieties, the first (Position 2L7; BW 1d) shows a break to the right leg of “A” of “AUSTRALIA”, the second (Position 2L12; BW 1e) is the “ROSTAGE” variety, Mint N.H., bright color, well-centered throughout, top right stamp with gum crease, overall a Very Fine multiple for the specialist, ex Gray ..... E. 400-500

- 3013 ★ ½p Green Coil (BW 1 var). Vertical coil strip of four with the paste-up in the center incorporating the **CA monogram**, lightly hinged on the top stamp, the other three Mint N.H., well-centered, showing guillotined perforations characteristic of the coils, Very Fine ..... E. 200-300

- 3014 ★★ ½p Green Coil (BW 1 var). Two vertical coil paste-up strips of eleven, plus a vertical coil strip of four, couple of the stamps displaying collectible plate varieties, all Mint N.H., all showing characteristics distinctive to genuine coil stamps, Fine-Very Fine ..... *Not illustrated* E. 400-500



3013

3015



3016



- 3015 P **1p Red, Die I, Imperforate Plate Proof on Thick Buff Manila Paper (BW 2PP(1)A).** Horizontal pair with sheet selvage at left showing inter-sheet Jubilee lines, large to very large margins all around, strong rich color, couple of trivial paper wrinkles endemic to these proofs, Very Fine..... A\$ 650
- 3016 P **1p Red, Die I, Imperforate Plate Proof on Thick Buff Manila Paper (BW 2PP(1)A).** Horizontal interpanneau strip of four, displaying Jubilee lines in the central gutter, four large and well-balanced margins, usual vertical crease in the central gutter, second stamp with mild hinge thin, otherwise Very Fine, a very scarce positional piece from the plate proof sheet of 480 that was discovered in 1964 and cut up into collectible position multiples, catalogued simply as four single proofs with no premium added for the interpanneau position ..... A\$ 1,300

- 3017 P **1p Red, Die I, Imperforate Plate Proof on Thick Buff Manila Paper (BW 2PP(1)A).** Block of four from the top right corner of the proof sheet, showing Jubilee lines in the sheet margins, well-margined, with usual wrinkles/creases found on almost all of these scarce proofs, Very Fine appearance, ex Fordwater, catalogued as four proof singles ..... A\$ 1,300

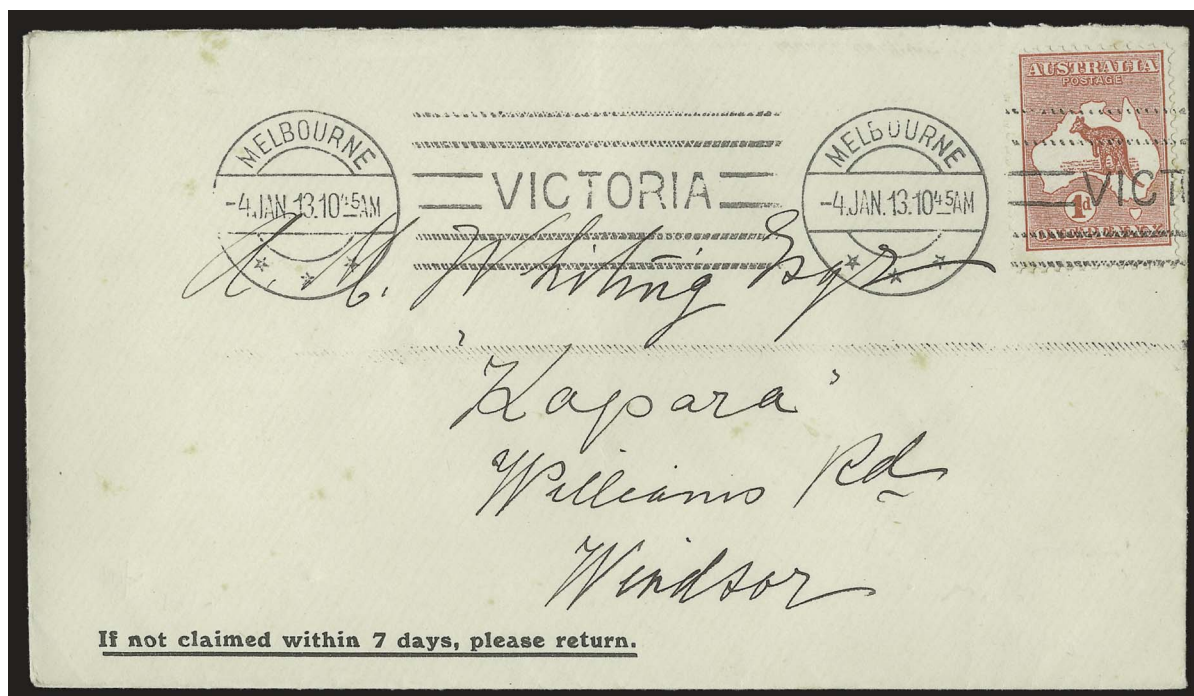


3017



3018

- 3018 P **1p Red, Die II, Imperforate Plate Proof on Thick Buff Manila Paper (BW 3PP(1)).** Highly select proof single from the scarcer Die II, huge margins incl. a sheet margin at right showing Jubilee lines, without any of the faults that plague most of these proofs, Extremely Fine, from the proof sheet of 480 examples found in 1964, only 120 examples within the sheet were Die II, with the remaining 360 examples being Die I, ex Fordwater, with 2002 Ceremuga certificate .. A\$ 750



3019

- 3019 ☒ **1p Red, Die I (BW 2y).** Fresh single tied on neat and clean cover self-addressed to well-known collector, A.M. Whiting, in Windsor, Victoria by clear "Melbourne/4.Jan.13" machine cancel, **this being the first day of issue in Melbourne**, Very Fine, one of only three such Melbourne first day of issue covers known, all of the recorded Melbourne first day usages were prepared by Mr. Whiting, who also received a number of January 2, 1913 Sydney covers prepared by Frederick Hagen, a very similar cover realized \$1,500.00 hammer, plus the buyer's premium, in the 2007 sale of Arthur Gray's collection..... E. 1,000-1,500



3020

3020 ★★田 1p Red, Die I, Plate C (BW 2(C)). Complete pane of 60 from the left side of the sheet, with full sheet selvages all around and with CA monogram in the bottom sheet selvage (BW 2(C)z), Mint N.H., in an unusually fresh state of preservation, excellent centering throughout the pane, deep rich color, sheet folded along two rows of horizontal perforations, just the faintest trace of toning at extreme edge of bottom sheet selvage, insignificant corner sheet selvage crease at bottom right, overall Very Fine, a perfect multiple for the One-Penny Kangaroo specialist, catalogued simply as a hinged CA imprint strip of three and 57 Mint N.H. singles..... A\$ 2,425



3021

- 3021 ★★田 1p Red, Die I, Small “OS” (BW 2bb). Right interpanneau margin block of 36 (6x6), from the left pane of plate B, multiple displays some interesting plate varieties incl. “1” flaw west of Tasmania, Mint N.H., folded along most horizontal perforations with some separating at top left, gum is slightly toned on two horizontal rows as a result of how the multiple was stored, still Fine-Very Fine, catalogued simply as 36 Mint N.H. examples, with no premium for the varieties ..... A\$ 1,800



3022 front and back

- 3022 ★★ 1p Red, Die I, Offset Variety (BW 2cb). Horizontal pair, each stamp showing partial but extremely strong offsets on the gum side, the left stamp showing much more of the design, Mint N.H., one stamp with small perf. disc indentation, Fine, this pair displays much more pronounced offset printing than typically seen ..... A\$ 800



3023 front and back

- 3023 ★ **1p Red, Die I, Large “OS”, Offset Variety (BW 2ba/cb).** Fresh single with pronounced full offset on the reverse, lightly hinged, Fine ..... E. 300-400



3024

- 3024 ★ **1p Red, Die I, Large “OS” Double (BW 2ba var).** Lightly hinged, with the second “OS” shifted dramatically to the lower left by 6mm, deep rich color

FINE. AN EXTREMELY RARE VARIETY SHOWING THE DOUBLE LARGE “OS” PUNCTURES. UNLISTED IN THE BRUSDEN-WHITE SPECIALIZED CATALOGUE AND THE FIRST SUCH EXAMPLE WE HAVE SEEN. NOT EVEN THE LEGENDARY ARTHUR GRAY COLLECTION OF KANGAROOS HAD AN EXAMPLE OF THIS VARIETY.

Accompanied by a 2011 Ceremuga certificate which states “(an) extremely rare error with only a strip of three known to me (from which this stamp originates), so probably only one row of twelve existed” ..... E. 1,500-2,000



3025

- 3025 ★ **1p Red, Die I, Large “OS” (BW 2ba/z).** Bottom left corner margin **no monogram strip of three**, from the left pane, two stamps lightly hinged, one stamp Mint N.H., quite fresh and intact, Very Fine, a very scarce no monogram strip, especially with the large “OS” official perforations ..... E. 750-1,000
- 3026 ★★ **1p Red Coil, Die I (BW 2 var).** A trio of vertical coil items, incl. a vertical coil strip of five, a paste-up vertical coil strip of eleven, and a vertical pair with small “OS” punctures, all with guillotined perforations characteristic of the coils, Mint N.H., most quite well-centered and with rich color, Fine-Very Fine, scarce group.....*Not illustrated* E. 500-750



3027

3027 ★田 1p Red, Die II, Plate F (BW 3(F)). Complete pane of 60 from the right side of the sheet, but with no sheet selvages around the edges, stamps ranging from Mint N.H. to a few with h.r.'s, fairly well-centered throughout, deep rich color, some separated perforations and folding along horizontal perforations, couple rows with creases through the stamps, other various small flaws, still of Fine-Very Fine appearance, useful for positioning and identifying consistent plate flaws, catalogued simply as 60 hinged stamps..... A\$ 1,200

3028 ★田 1p Red, Die II, Extra Island Variety - Two Tasmania's (BW #3(E)d). Block of four from the upper position of plate E, with the top left stamp (Position L25) displaying this distinctive and highly collectible variety, mild h.r., deep rich color, quite well-centered, Very Fine..... A\$ 410



3028



3029

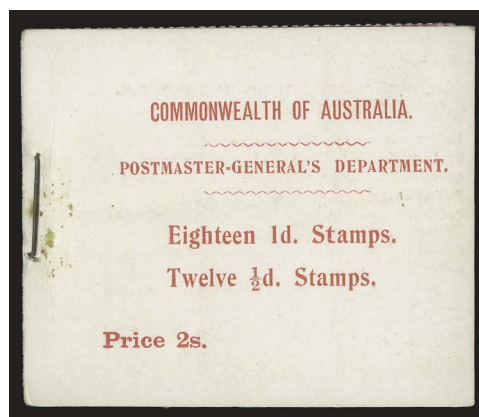
- 3029 ★★田 1p Red, Die II, Large “OS” (BW 3ba/zb). Bottom right corner **JBC monogram block of 30**, from the lower right position of plate F, with interpanneau selvage at left, stamps are all **Mint N.H.**, single h.r. in right selvage (not part of JBC monogram block of ten) used to seal a tear confined to the selvage, near perfect centering throughout the multiple, bright fresh color, folded along horizontal perforations between third and fourth row, Very Fine, a choice large perforated “OS” monogram multiple..... E. 2,000-3,000



3030

- 3030 ★田 1p Red, Die IIA (BW 4(H)z). Bottom left corner margin **CA monogram block of ten**, from the lower position of plate H, with the second stamp in the bottom row displaying the white flaw off the Western Australian coast, couple of trivial h.r.'s, natural gum loss from edge of sheet affecting two stamps, wonderfully well-centered throughout, deep rich color, Very Fine ..... A\$ 1,460

- 3031 ★★ **1p Red Coil, Die IIA, Small "OS" (BW 4ba var).** Vertical coil paste-up strip of ten from the third column of the left pane of Electro K, displaying perforations at sides characteristic of the coils, Mint N.H., brilliant color, rather well-centered, Very Fine, a most remarkable coil strip..... E. 750-1,000



3032

- 3032 ★★田 **1913, 2sh Red on Pink, Complete Booklet (SG SB1).** Comprised of eighteen 1/2p Green stamps and twelve 1p Red stamps, with original interleaving, stamps themselves are Mint N.H., the booklet covers are unusually clean and fresh, with just traces of usual rust specks around the staple, Very Fine, very few intact examples of Australia's first stamp booklet are found this choice ..... £ 2,000



3033



3034



3031

- 3033 ★ **2p Gray, Watermark Inverted (BW 5a).** Lightly hinged, choice well-centered example, Very Fine..... A\$ 200
- 3034 ★ **2p Gray (BW5za).** Bottom margin **CA monogram horizontal pair**, from the lower pane of Plate 2, central h.r. at top, fresh color, monogram trimmed by naturally shorter selva at bottom, Fine ..... A\$ 1,075



3035

- 3035 ★★ 2p Gray, Large “OS” (BW 5bb/zb). Bottom right corner **JBC monogram strip of three**, from the lower position of Plate 2, Mint N.H., strong color, attractively centered, small crease at far corner of bottom right selvage

FINE-VERY FINE. A DESIRABLE JBC MONOGRAM STRIP OF THREE OF THE TWO-PENCE FIRST WATERMARK ISSUE. ESPECIALLY RARE WITH THE LARGE “OS” OFFICIAL PUNCTURES.

Very few monogram strips of this value exist with the “OS” punctures .... E. 2,000-3,000



3036

- 3036 ★★ 2½p Indigo, Large “OS”, Double Perforations both **Horizontally and Vertically** (BW 9b/ba). Vertical strip of three with double perforations horizontally between first and second stamp (rows of perforations widely spaced) and the same central stamp with double perforations vertically at both left and right sides (both rows almost placed on top of one another), error stamp **Mint N.H.**, others lightly hinged, lightly folded along horizontal perforations between second and third stamp, Fine, a rare and possibly unique item in this configuration, with 2013 Ceremuga certificate ..... E. 1,500-2,000



3037

- 3037 ★田 2½p Light Bluish-Indigo (BW 9z). Bottom left corner margin **no monogram block of eight**, from the left pane of Plate 1, displaying the heavy coastline varieties on the two left stamps, couple of minor h.r.'s mostly in the selvage, several stamps Mint N.H., some separated perforations

FINE-VERY FINE. A VERY SCARCE AND SELDOM OFFERED NO MONOGRAM MULTIPLE OF THIS VALUE.

Catalogued as a hinged no monogram strip of three, plus two hinged and three Mint N.H. singles ..... A\$ 10,125



3038

- 3038 ★田 2½p Indigo (BW 9za). Bottom right corner margin **no monogram block of six**, from the right pane of Plate 1, lightly hinged on one stamp only and once in the bottom selvage, attractively centered, deep rich color, couple of small extraneous ink strokes on reverse of right sheet selvage

VERY FINE. A HANDSOME EXAMPLE OF THIS RARE NO MONOGRAM MULTIPLE.

Quite similar in quality to the no monogram block of six offered in the 2007 Arthur Gray sale, which realized \$4,250.00 hammer, plus the buyer's premium ..... A\$ 9,650



3039

- 3039 ★ **2½p Indigo (BW 9z).** Bottom right corner margin **JBC monogram strip of three**, from the lower pane of Plate 2, lightly hinged, quite well-centered, deep rich color, couple of minor natural gum bends

VERY FINE. A HIGHLY SELECT EXAMPLE OF THE RARE FIRST WATERMARK TWO AND ONE-HALF PENNY INDIGO JBC MONOGRAM STRIP.

One of the finest quality examples of the very few that have appeared on the auction market in recent years ..... A\$ 4,500

- 3040 P **3p Black, Die I, Imperforate Trial Color Proof on Blue Unwatermarked Wove Paper (BW 12PP(1)A).** Right sheet-margin horizontal pair, with the right stamp displaying a large void area of printing along the right edge, exceptionally large margins all around, couple of natural microscopic pinholes, plus edge flaws along extreme right edge of sheet margin, Very Fine for this scarce trial color plate proof, according to the Brusden-White catalogue "these are poorly printed and are apparently make-ready printer's proofs.... approximately 40 survive," ex Gray and this pair is the one illustrated in the BW catalog ..



3040

..... A\$ 2,500



3041

- 3041 ★田 **3p Olive, Die I (BW 12Aac).** Bottom margin **JBC monogram block of six**, from Plate 2 (lower), lightly hinged, excellent centering throughout, bright color, two tiny thin specks from hinge removal in the bottom strip, otherwise Very Fine, a corner margin JBC monogram strip of three catalogues A\$5,000.00, this bottom margin block has been catalogued simply as a monogram single and five extra stamps, ex Lord Steinberg..... A\$ 2,750

- 3042 ★田 4p Orange (BW15z). Bottom left corner margin **JBC monogram block of nine**, from the left pane of Plate 2 (lower), several stamps Mint N.H., rest lightly hinged, wonderfully bright and intact, small marginal hinge thin coinciding with the monogram

FINE-VERY FINE EXAMPLE OF THE RARE FIRST WATERMARK FOUR-PENCE ORANGE JBC MONOGRAM BLOCK. VERY FEW JBC MONOGRAM MULTIPLES OF THIS VALUE EXIST THIS LARGE.

Ex Lord Steinberg .. A\$ 13,225



3042



3043

- 3043 ☒ 4p Orange (BW 15). Single franking uprating a New South Wales 3p Registration envelope and used to Melbourne, stamp tied by "Wagga Wagga/11.SE.14" circular datestamp, blue crayon manuscript "622" in lieu of a registration label, Fine, a most attractive and unusual usage of the 4p First Watermark issue, which is scarce on any cover, ex Nelson .....

E. 500-750



3044

- 3044 ★ 5p Chestnut (BW 16z). Bottom left corner margin **JBC monogram block of six**, from the left pane of Plate 2 (lower), stamps themselves Mint N.H., lightly hinged in the left sheet selvage only, a few separated perforations at bottom of the third vertical row

VERY FINE EXAMPLE OF THE ELUSIVE FIRST WATERMARK FIVE-PENCE CHESTNUT JBC MONOGRAM. FEW EXIST IN THIS CHOICE CONDITION.

Catalogued as a hinged monogram strip of three and three Mint N.H. singles. Ex Gray and Lord Steinberg..... A\$ 9,650



3045

- 3045 ★ 6p Ultramarine (BW 17zb). Bottom right corner margin **JBC monogram strip of three**, from the lower pane of Plate 2, gum on each stamp a bit disturbed from hinge removal, well-centered, strong color on fresh paper

FINE-VERY FINE EXAMPLE OF THE FIRST WATERMARK SIX-PENCE JBC MONOGRAM STRIP OF THREE. AMONG THE MORE CHALLENGING FIRST ISSUE VALUES TO FIND IN A MONOGRAM STRIP.

Actually among the various important Kangaroo sales of the past decade, this is one of the finest examples to have been offered..... A\$ 8,500



- 3046 ★ **1sh Blue Green (BW 30zc).** Bottom margin **JBC monogram single**, from the lower position of Plate 2, stamp Mint N.H., faintly hinged in sheet selvage, distinctive shade, Fine, a very difficult value to find as a monogram single..... A\$ 4,500
- 3047 ☒ **½p, 3p and 1sh First Watermark Issues (BW 1, 12 and 30).** Used in combination with 1p and 4p King George V issues on a large linen-line cover (280 x 130mm) by blue "Registered/23.SE.15/Brisbane" circular datestamp, addressed to Chicago, with registration label and violet "Registered" handstamp, red "Passed by Censor/Brisbane" circular datestamp, San Francisco transit and Chicago arrival bkst. on reverse, small perforation flaws to the stamps, central fold to the cover, Fine, a scarce five-color franking, ex Nelson ..... E. 750-1,000



3048

- 3048 ★ **2sh Brown, JBC Monogram (BW 35zc).** From Plate 2, lightly hinged, attractively centered, rich color, central horizontal crease
- VERY FINE APPEARANCE. THE TWO-SHILLING FIRST WATERMARK ISSUE WITH EITHER A CA OR JBC MONOGRAM IS A MAJOR RARITY AS VERY FEW EXIST. ONLY ONE EACH EXIST IN PRIVATE HANDS AS A MINT MONOGRAM STRIP OF THREE, SO A MONOGRAM SINGLE IS VIRTUALLY THE ONLY WAY ONE CAN OWN A MONOGRAM EXAMPLE OF THIS VALUE.
- A very similar quality JBC monogram single (also with a crease) realized £8,500 (plus the buyer's premium) in the 2012 Spink sale of the Morgan Collection ..... A\$ 27,500



3049

- 3049 ★ **5sh Gray and Chrome, “Shorter Spencer’s Gulf” Variety (BW 42(D)j).** Lightly hinged, brilliantly fresh, well-centered, Very Fine, a choice example of this collectible variety, signed Holcombe ..... A\$ 1,350

- 3050 ★★ **10sh Gray and Pink (BW 47; Scott 13; SG 14).** Mint N.H., lovely fresh colors and paper, well-centered  
VERY FINE. A CHOICE NEVER-HINGED EXAMPLE OF THE FIRST WATERMARK TEN-SHILLING KANGAROO.  
Seldom encountered in this pristine state of preservation ..... A\$ 7,500



3050



3051

- 3051 ★ **£1 Brown and Blue (BW 51A; Scott 14; SG 15).** Lightly hinged, strong fresh colors on bright paper, attractive centering, Very Fine ..... A\$ 4,000

- 3052 ★ **£1 Red Brown and Blue (BW 51B; Scott 14a; SG 15 var).** Relatively lightly hinged, deep rich colors in a distinctively different shade than the previous stamp, well-centered, Very Fine..... A\$ 4,000



3052



3053

- 3053 ★ **£2 Black and Rose, Broken Value Circle at Right Variety (BW 55(D)m; Scott 15a var; SG 16 var).** Position L49, very lightly hinged, bright and fresh, strong rich colors

FINE. THE FIRST WATERMARK TWO-POUND BLACK AND ROSE IS SCARCE IN AND OF ITSELF, BUT DISTINCT PLATE VARIETIES ARE EVEN MORE ELUSIVE AND HIGHLY DESIRABLE. THIS PARTICULAR VARIETY OF THE BROKEN VALUE CIRCLE AT RIGHT IS ONE OF THE MORE PROMINENT DUTY PLATE VARIETIES FOUND ON THIS HIGH VALUE.

Signed A. Diena..... A\$ 17,500



3054

- 3054 ★ **£2 Black and Rose, Break in West Coast of Gulf of Carpentaria Variety (BW 55(D)v; Scott 15a var; SG 16 var).** Position R45, relatively lightly hinged, quite well-centered, deep rich colors

VERY FINE. A WONDERFULLY CHOICE EXAMPLE OF THIS DISTINCT DUTY PLATE VARIETY FOUND ON ONLY ONE POSITION ON THE SHEET.

Signed Holcombe and with his 1993 certificate (not noting the variety) ..... A\$ 17,500.00

## SPERATI FORGERY

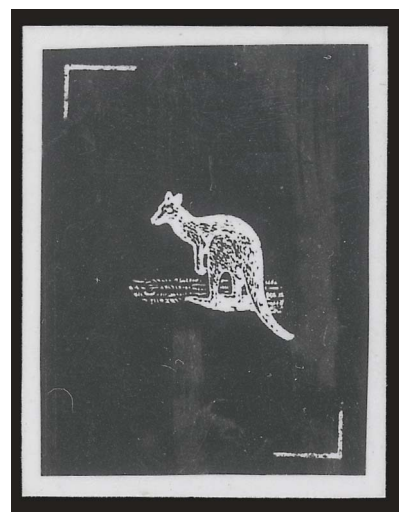


3055

3055 **£2 Black and Rose, Sperati Forgery (BW 55c).** Partial September 22, 1913 Queensland town postmark, particularly well-centered within large margins, fresh colors

VERY FINE. AN ESPECIALLY CHOICE "USED" EXAMPLE OF THE REMARKABLE FORGERY CREATED BY THE MASTER FORGER, JEAN DE SPERATI. IT IS ESTIMATED THAT ONLY TWO "MINT" COPIES AND ABOUT TWO DOZEN "USED" COPIES ARE KNOWN.

An amazing forgery created by "fading out" genuine used lower values (so that the stamp will have a genuine watermark and cancellation) and printing the forged impression by photolithography. With 2008 Ceremuga certificate..... A\$ 7,500



3056

3056 **£2 Black and Rose Sperati Forgery Photographic Prints (BW 55c).** A trio of photographic prints from negatives used by Sperati to produce his master forgeries, each in stamp size, one with the "stamp" missing the Kangaroo, and a positive and a negative print each of the Kangaroo only, all three with "Sperati/Reproduction" handstamp applied by the British Philatelic Association when they acquired Sperati's entire stock, Very Fine, marvelous collateral items..... E. 500-750

## SECOND WATERMARK ISSUE



3057

- 3057 ★ 田 2½p Indigo (BW 10z). Bottom left corner margin **CA monogram block of twelve**, from the lower position of Plate 2, positions 43, 49 and 55 displaying distinctive heavy coastline to Western Australia on the three left stamps, lightly hinged on two stamps in top row and in selvage only, rest Mint N.H., near perfect centering throughout the multiple, fresh color, lightly folded along first row of horizontal perforations, small selvage tear at bottom (not monogram single)

EXTREMELY FINE. ONE OF THE FINEST QUALITY CA MONOGRAM MULTIPLES KNOWN OF THE SECOND WATERMARK TWO AND ONE-HALF PENNY INDIGO.

Ex Gray and Lord Steinberg. Catalogued as a hinged monogram strip of three, two hinged and seven Mint N.H. stamps..... A\$ 8,450



3058



3059

- 3058 ★ 2½p Indigo (BW 10za). Bottom margin **inserted CA monogram single**, from the upper position of Plate 1, h.r., well-centered, intense color, Very Fine and quite scarce..... A\$ 2,250
- 3059 ★ 2½p Indigo (BW 10zc). Bottom margin **inserted JBC monogram horizontal pair**, from the upper position of Plate 1, lightly hinged, especially well-centered and with deep rich color, Very Fine..... A\$ 2,425



3060

- 3060 ★ **1sh Blue Green (BW 31zc).** Bottom margin **JBC monogram single**, from the lower position of Plate 2, very faintly hinged, rather well-centered for this, with large margins, distinctive color, small facial thin in sheet selvage

VERY FINE APPEARANCE. MONOGRAM PIECES, WHETHER SINGLES OR MULTIPLES, OF THE SECOND WATERMARK ONE-SHILLING VALUES ARE VERY RARE.

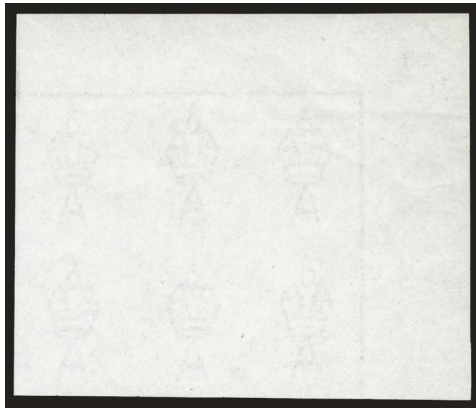
Few specialized collections of Kangaroos have an example of this monogram single ..... A\$ 9,000



3061

- 3061 ★ **5sh Deep Gray and Yellow, Watermark Inverted (BW 43a; Scott 44a; SG 42w).** Relatively lightly hinged, exceptionally well-centered, intense colors, Extremely Fine, a choice example of this watermark variety ..... A\$ 2,000

## THIRD WATERMARK ISSUE



3062EX

- 3062 田 **Third Watermark Paper Samples Assemblage.** Small group of various sizes of watermarked paper samples likely used for ordering new consignments, incl. two pairs, a block of six and a block of twelve, plus a block of eight of the Second Watermark, about half the pieces are gummed, some with sheet margins, overall Very Fine, excellent collateral items for the specialist ..... (Photo Ex) A\$ 1,000



3063

- 3063 ★★田 **2p Gray, Die IIA (BW 8).** Bottom right corner margin block of 32 (4x8), displaying four pronounced plate varieties, all stamps Mint N.H., there is a strip of original card interleaving slightly adhering only to the sheet selvage at right, slight gum toning on the top four stamps, some split vertical perforations at bottom, overall a Fine and impressive large multiple, ex Pope and Lord Steinberg ..... A\$ 4,800



3064

- 3064 ★ **2p Gray, Die I, Small “OS” (BW 7ba/za).** Bottom margin **CA monogram single**, from Plate 2 (lower), lightly hinged, faint overall gum toning, well-centered, Very Fine, a particularly scarce CA monogram single with “OS” perforations ..... E. 400-500



3065

- 3065 ★★ **2p Gray Black, Die I (BW 7zc).** Bottom margin **JBC monogram single**, from Plate 2 (lower), Mint N.H., especially fresh, strong color, Fine ..... A\$ 900



3066

- 3066 ★ **2p Gray, Die IIA (BW 8z).** Bottom left corner margin **inserted CA monogram strip of three**, from Plate 3, lightly hinged, fresh color, Fine-Very Fine, a particularly elusive monogram strip ..... A\$ 3,500



3067

- 3067 ★田 2p Gray, Die IIA (BW 8zb). Bottom right corner margin JBC monogram block of ten, from Plate 3, position R54 showing plate deterioration around "AUSTRALIA" and "POSTAGE", most stamps Mint N.H., others lightly hinged and a couple of h.r.'s in bottom sheet selvage reinforcing some separated perforations, light overall gum toning on reverse, nicely centered, Fine-Very Fine, ex Lord Steinberg, catalogued as a hinged monogram strip of three and seven hinged singles..... A\$ 3,920



3068

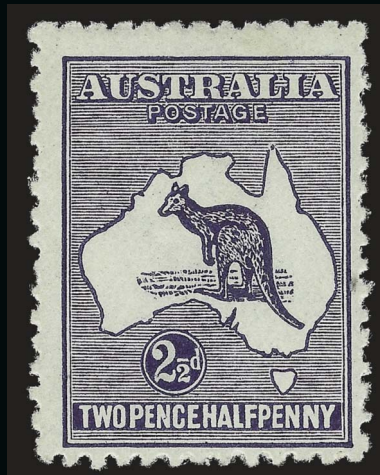


3069



3070

- 3068 ★田 2½p Intense Indigo (BW 11D). Top right corner margin block of four, with interpanneau sheet selvage at right, bottom two stamps N.H., top two very lightly hinged, spectacularly deep color characteristic of this elusive shade variety, extraordinarily well-centered, Very Fine, a particularly choice block with great eye appeal..... A\$ 2,500
- 3069 ★★田 2½p Blue, Watermark Inverted (BW 11a). Top right corner margin block of four, Mint N.H., wonderfully fresh and bright, few light pencil notations in top sheet selvage, Fine-Very Fine..... A\$ 1,800
- 3070 ★田 2½p Indigo, Offset (BW 11Cc). Block of four, two stamps Mint N.H., other two lightly hinged, displaying an unusually strong offset on the gum side, deep rich color, Very Fine, most offset examples of this are far less prominent than what is seen on this block, quite likely only one sheet was found with this offset, catalogued by Brusden-White as hinged only ..... A\$ 1,600



3071

MISSING “1” IN FRACTION ON 2½ PENCE KANGAROO  
AN ENORMOUSLY RARE MINT EXAMPLE

3071 ★ **2½p Indigo, Missing “1” in “½” Fraction (BW 11(2)j; Scott 46a; SG 36ba).** Barest trace of hinging, brilliantly fresh, with deep luxuriant color and impression on bright paper, attractively centered, tiny natural wood pulp inclusion at right

VERY FINE FOR THIS FAMOUS ERROR. THE MISSING “1” in “½” FRACTION ON THE TWO PENCE-HALF PENNY KANGAROO ISSUE OF AUSTRALIA IS ONE OF THE MOST IMPORTANT RARITIES OF THE BRITISH EMPIRE — AND FOR THAT MATTER OF THE ENTIRE WORLD. WHILE ONLY TWELVE USED EXAMPLES ARE RECORDED, MINT EXAMPLES ARE EVEN MORE RARE, WITH ONLY THREE KNOWN. THIS EXAMPLE FROM THE “GOLDFARM” COLLECTION IS WELL KNOWN, INCLUDING HAVING BEEN ILLUSTRATED IN THE PREVIOUS (1993) EDITION OF THE BRUSDEN-WHITE CATALOGUE.

According to the Brusden-White catalogue, this error “comes from the 1919 indigo printing, with dated examples ranging from July 1919 to March 1920. The variety was caused by a temporary ink clog flaw that was quickly corrected. This, and the fact that a portion of the relevant sheets was overprinted “N.W. PACIFIC ISLANDS”, accounts for its rarity.”

In our opinion, the various major catalogues undervalue mint examples of this rarity versus used ones given there are four times as many used examples. The Brusden-White catalogues a mint example at A\$62,500.00, versus A\$25,000.00 used. The Scott catalogue values a mint example at \$45,000.00 and a used one at \$14,500.00. And the more relevant Stanley Gibbons catalogue has mint examples valued at £50,000, versus £25,000 for used.

With a 1967 B.P.A. certificate ..... A\$ 62,500.00



3072



3073

- 3072 ★ **2½p Blue (BW 11z).** Bottom left corner margin **CA monogram strip of three**, from the upper position of Plate 1, large part o.g. (some gum loss from hinge removal), well-centered, couple of h.r.'s in selvage reinforcing some separated perforations, Very Fine and scarce ..... A\$ 3,250
- 3073 ★ **2½p Blue (BW 11zb).** Bottom right corner margin **JBC monogram strip of three**, from the upper position of Plate 1, couple of trivial h.r.'s at top, exceptionally well-centered, strong proof-like color and impression, Very Fine, an especially choice example of this scarce JBC monogram multiple..... A\$ 3,250



3074

- 3074 ★田 **2½p Blue (BW 11zd).** Bottom margin **T.S. Harrison imprint block of four**, from Plate 1, stamps Mint N.H., single small h.r. at top of central gutter, marvelously fresh and intact, bright color, well-centered
- VERY FINE. A HIGHLY SELECT EXAMPLE OF THIS SCARCE T.S. HARRISON IMPRINT BLOCK.
- Comparing this imprint block to others found in such important Kangaroo sales as Gray, Morgan and Hardy, this block is in far better condition..... A\$ 3,750



3075



3076

- 3075 ★ 2½p Blue (BW 11ze). Bottom margin **T.S. Harrison imprint pair**, from Plate 1, lightly hinged, quite well-centered, deep rich color, a Very Fine example of this scarcer imprint pair ..... A\$ 2,000
- 3076 ★★田 3p Olive, Die II, "T" Perfin for use in Tasmania (BW 13E var). Bottom left corner margin block of four from Plate 2, with the bottom left stamp (position L55) showing color flaw (an "island") off the Queensland coast, stamps themselves Mint N.H., couple of h.r.'s in the sheet selvage, wonderfully fresh, attractive centering, Very Fine, a block with a most unusual combination of scarce factors on an already scarce Die II block, the catalogue value alone for Mint N.H. Die II stamps is A\$3,200.00, without any premium for the variety and "T" punctures, a great item for the specialist..... E. 1,000-1,500



3077



3078

- 3077 ★ 3p Yellow Olive, Die II (BW 13Bza). Bottom margin **CA monogram single**, from Plate 1 (upper), lightly hinged, bright and fresh, attractively centered, Very Fine..... A\$ 2,250
- 3078 ★田 3p Olive, Die I (BW 13Eza). Bottom margin **CA monogram block of four**, from Plate 2 (lower), lightly hinged on top pair, bottom pair Mint N.H., although gum with light over-all toning, top right stamp with gum bend, Fine ..... A\$ 1,475



3079

- 3079 ★★田 3p Pale Olive, Die I (BW 13Czb). Bottom right corner margin **JBC monogram block of six**, from Plate 1 (upper), Mint N.H., although gum with light overall toning, wonderfully well-centered, Very Fine for this elusive monogram multiple, ex Lord Steinberg..... A\$ 4,375

- 3080 ★ 3p Olive, Die I, Punctured "OS/NSW" (BW 13Ezc var). Bottom margin **JBC monogram single**, from Plate 2 (lower), lightly hinged, faint trace of overall gum toning, well-centered, Very Fine, a particularly scarce monogram single with the "OS/NSW" punctures, very few exist .... E. 500-750



3080



3081

- 3081 ★田 3p Yellow Olive, Die I (BW 13Azd). Bottom margin **T.S. Harrison imprint block of eight**, from Plate 2 (with vertical lines in central gutter), lightly hinged on top four stamps, bottom four are Mint N.H., particularly well-centered, single pulled perforation at top of top left stamp in the multiple, otherwise Very Fine, ex Kilfoyle and Lord Steinberg ..... A\$ 3,600.00

- 3082 ★★田 **6p Milky Grayish-Blue, Die II (BW 19F).** Top right corner sheet margin block of four, stamps Mint N.H., lightly hinged in selvage, outstanding centering, bright and fresh, Extremely Fine, a particularly handsome and choice Mint N.H. block of this scarce and distinctive shade ..... A\$ 2,300



3082



3083



3084



3085

- 3083 ★ **6p Ultramarine, Die II (BW 19za).** Bottom margin **CA monogram single**, from Plate 1 (upper), lightly hinged, nicely centered, fresh color, couple of trivial nibbed perforations, Very Fine and scarce ..... A\$ 3,000.00
- 3084 ★ **6p Blue, Die II (BW 19Bzc).** Bottom margin **JBC monogram horizontal pair**, from Plate 1 (upper), h.r. at top center, fairly well-centered, pale shade, small tone spot on reverse of monogram single, Fine-Very Fine ..... A\$ 3,200.00
- 3085 ★ **6p Ultramarine, Die II (BW 19zc).** Bottom margin **JBC monogram single**, from Plate 2 (lower), mild h.r., attractive centering, bright color, lightly folded along horizontal perforations, Very Fine ..... A\$ 3,000.00



3086

- 3086 ★田 **6p Ultramarine, Die II, Small "OS" (BW 18ba/zc).** Bottom margin **JBC monogram block of four**, barest trace of hinging in top pair and in sheet selvage, bottom stamps Mint N.H., marvelously well-centered throughout, bright fresh color

VERY FINE. A VERY RARE JBC MONOGRAM BLOCK OF THE SECOND WATERMARK SIX-PENCE ULTRAMARINE, PARTICULARLY WITH THE SMALL "OS" OFFICIAL PUNCTURES.

We are aware of only one other similar block that was once in the Hardy collection.....  
 ..... E. 4,000-5,000



3087

- 3087 ★ **6p Pale Ultramarine, Die IIB, Broken Leg on Kangaroo, Small "OS" (BW 20Cd).** Horizontal pair with sheet selvage at top, right stamp being the popular variety (Position 3L6), some gum loss due to hinge removal, pale shade distinctive to the Harrison printings, centered to bottom, Fine for this, especially scarce both in a pair with normal and having "OS" official punctures, catalogue value quoted is simply for the broken leg variety and with no premium added for the "OS" punctures ..... A\$ 2,750



3088



3089



3090

- 3088 ★ 6p Chestnut (BW 21z). Bottom margin **T.S. Harrison imprint block of four**, from Plate 3 (upper), with “N” over “MP” (as had existed on the preceding 6p Blue), h.r. in top pair, bottom pair Mint N.H., faint overall gum toning, rather well-centered, a few separated perforations in the bottom selvage, Fine-Very Fine ..... A\$ 900
- 3089 ★ 6p Chestnut (BW 21zb). Bottom margin **A.J. Mullett imprint block of four**, from Plate 4 (lower), h.r. at top center, bottom pair Mint N.H. rich color, Fine-Very Fine..... A\$ 600
- 3090 ★ 6p Chestnut (BW 21zf). Bottom margin **John Ash imprint block of four**, from Plate 3 (upper), displaying “white hairline from value circle to map” variety (Position 3L54), trivial h.r. at top, bottom pair Mint N.H., quite fresh, Fine-Very Fine ..... A\$ 450



3091



3092

- 3091 ★ 6p Violet, Die IIB (BW 27za). Bottom margin **T.S. Harrison one-line imprint pair**, from Plate 4 (upper), faintly hinged, bright and fresh, strong color, Fine-Very Fine, a select example of this rare single line imprint pair ..... A\$ 2,000
- 3092 ★ 6p Violet, Die IIB (BW 27zc). Bottom margin **T.S. Harrison two-line imprint pair**, from Plate 4 (upper), lightly hinged, fresh color, Fine-Very Fine..... A\$ 550



3093



3094

- 3093 ★田 6p Violet, Die IIB (BW 27zd). Bottom margin A.J. Mullett imprint block of four, from Plate 4 (upper), lightly hinged, pretty pastel color, bottom right stamp with trivial tone spot on gum, Fine-Very Fine and quite scarce ..... A\$ 1,100
- 3094 ★田 6p Violet, Die IIB (BW 27zf). Bottom margin John Ash imprint block of four, from Plate 4 (upper), lightly hinged, especially fresh, bright color, Fine-Very Fine ..... A\$ 1,000



3095

- 3095 ★★ 6p Violet, Die IIB (BW 27zh). Bottom margin John Ash imprint pair, from Plate 4 (lower), Mint N.H., quite fresh, bright color, Fine-Very Fine..... A\$ 400
- 3096 ★★田 1sh Blue Green, Die II, Small "OS" (BW 32b). Vertical block of twelve (2x6) with sheet selvage at top, Mint N.H., most stamps particularly well-centered, deep rich color, two stamps with faint soiling, folded along horizontal perforations between rows four and five, Very Fine, an impressive punctured "OS" official multiple ..... A\$ 2,700



3096

- 3097 ★ **1sh Blue Green, Die II (BW 32za).** Bottom margin **CA monogram single**, from Plate 2 (lower), lightly hinged, rich color, quite well-centered, small natural inclusion, Very Fine for this rare monogram single..... A\$ 3,250



3097



3098

- 3098 ★田 **1sh Bright Blue Green, Die IIB, Watermark Sideways (BW 33Baa/zb).** Bottom margin **A.J. Mullett imprint block of eight**, from Plate 3 (upper), showing break in northern coast of Tasmania variety (Position 3R49), lightly hinged on top stamps, bottom unit Mint N.H., marvelously well-centered, fresh color, Very Fine, an exceedingly choice example of this rare sideways watermark imprint pair, catalogued as a hinged imprint block of four and four hinged singles..... A\$ 2,800



3099



3100

- 3099 ★ **1sh Blue Green, Die IIB (BW 33za).** Bottom margin **T.S. Harrison imprint pair**, from Plate 3 (upper), with stop after "PRINTER", small h.r., uncharacteristically well-centered, bright color, Very Fine..... A\$ 750
- 3100 ★ **1sh Blue Green, Die IIB (BW 33ze).** Bottom margin **A.J. Mullett imprint pair**, from Plate 4 (lower), faint trace of hinging, especially bright and fresh, Fine-Very Fine ..... A\$ 450



3101

- 3101 ★田 **2sh Brown (BW 37).** Block of four with sheet selvage at bottom showing partial **T.S. (Harrison) two-line imprint**, top pair of stamps lightly hinged, while the bottom stamps are Mint N.H., extraordinarily well-centered, deep luxuriant color, Extremely Fine, a wonderfully choice block and a practical alternative to owning a full two-line imprint block, of which only one is recorded (cataloging A\$120,000.00), and the Royal Collection has only an imprint pair, catalogued as two hinged and two Mint N.H. singles..... A\$ 5,800

- 3102 **2sh Brown, Watermark Inverted (BW 37a; SG 41w).** Light N.S.W. town postmark, rich color, well-centered, Very Fine, quite scarce ..... A\$ 1,500



3102



3103

- 3103 ★ **2sh Brown (BW 37ze).** Bottom left corner margin partial **one-line T.S. Harrison imprint single**, Mint N.H., hinged in the selvage only, deep luxuriant color, attractively centered, Very Fine and quite scarce, the single-line T.S. Harrison imprint is exceptionally rare, with only one full imprint block of four recorded, which is in the Royal Collection, and scant few full imprint pairs are known ..... E. 1,000-1,500



3104

- 3104 ★ **2sh Brown (BW 37za).** Bottom margin **CA monogram single**, from Plate 1 (upper), large part o.g. with some gum loss due to hinge removal, strong rich color and impression

VERY FINE. A DESIRABLE EXAMPLE OF THE THIRD WATERMARK TWO-SHILLING BROWN CA MONOGRAM SINGLE. AMONG THE MOST CHALLENGING OF ALL KANGAROO MONOGRAMS TO FIND IN ANY CONDITION.

According to the Brusden-White catalogue, "only five CA monograms from Plate 1 can be traced, comprising a mint pair (ex Gray), three mint singles (one in the R.T.P. Chapman collection, now part of the Australia Post archival collection), and one used single." .....

..... A\$ 15,000

### Special Note Concerning the "Goldfarm" Collection

One of the frequent challenges in collecting a highly specialized area is the lack of readily available information in a single handbook or catalogue. Fortunately, Australian philately does not suffer from that problem. In fact, the catalogues produced by Brusden-White on all areas of Australian philately are, in our opinion, among the best in the world. The amount of detail, with virtually every known item listed, is remarkable, and the pricing is extremely accurate. Because of the specialized nature of the "Goldfarm" Collection, we have used the *The Australian Commonwealth Specialists' Catalogue/Kangaroos*, 2013 edition, published by Brusden-White, for all identifications and catalogue values (in Australian dollars — at press time the Australian dollar is approximately .93 per U.S. dollar).



3105

- 3105 ★ **2sh Brown (BW 37zb).** Bottom margin **JBC monogram single**, from Plate 1 (upper), very lightly hinged, with tiny hinge reinforcement between stamp and bottom margin, virtually perfectly centered, deep rich color

EXTREMELY FINE. QUITE LIKELY THE FINEST QUALITY THIRD WATERMARK TWO-SHILLING BROWN JBC MONOGRAM IN EXISTENCE. A MAJOR KANGAROO RARITY AND ONE OF THE HIGHLIGHTS OF THE "GOLDFARM" COLLECTION.

Scant few JBC monograms exist of this value. According to the Brusden-White catalogue, "six JBC monograms are recorded from Plate 1, comprising a mint rejoined strip of six (and therefore technically not a monogram strip of 3), two mint pairs and three mint singles (one wmk. inverted), plus a used block of 12 with punctured OS."

Ex Fordwater ..... A\$ 15,000

- 3106 ★★ **2sh Maroon, Watermark Inverted (BW 38a; SG 74w).** Mint N.H., brilliantly fresh, strong color and impression, attractively centered, especially compared to most existing examples

VERY FINE FOR THIS RARE STAMP. FEW EXIST BOTH THIS CHOICE AND MINT NEVER-HINGED.

The watermark inverted errors are from the Mullett printing ..... A\$ 5,000



3106



3107



3108

- 3107 ★ **2sh Maroon (BW 38za).** Bottom margin **T.S. Harrison imprint pair**, from Plate 1 (upper), lightly hinged, extraordinarily well-centered and margined, fresh color, Extremely Fine, an unusually high quality example of this scarce imprint pair . A\$ 2,000
- 3108 ★ **2sh Maroon (BW 38zc).** Bottom margin **T.J. Mullett imprint pair**, from Plate 1 (upper), h.r.'s, particularly well-centered, rich color, Very Fine..... A\$ 1,000



3109

- 3109 ★★ **5sh Gray and Pale Yellow (BW 44D).** Mint N.H., brilliantly fresh, strong distinctive colors, well-centered, Very Fine, an especially scarce Mint N.H. example of this shade..... A\$ 2,000



3110

- 3110 ★田 **5sh Gray Black and Chrome, Watermark Inverted (BW 44Aa; SG 42w).** Block of four, Positions L51-52/57-58, with Position L52 displaying the scarce kangaroo's foot broken and with pointed tail variety, top left stamp with mild h.r., other three stamps lightly hinged, exceedingly well-centered, bright colors, couple of nibbed perforations

VERY FINE. A HANDSOME BLOCK OF FOUR OF THE THIRD WATERMARK FIVE-SHILLING WITH WATERMARK INVERTED.

A very scarce and desirable block of this rare watermark error. Very few blocks are recorded..... A\$ 10,000



3111



3112



3113

- 3111 ★ **5sh Gray Black and Chrome, Misplaced (Downward) Kangaroo (similar to BW 44ca).** Displaying a strongly shifted kangaroo vignette downward to the top of the value circle, barest trace of hinging, fresh colors, mild horizontal bend, Very Fine, a scarce and popular variety, ex Gray..... E. 1,000-1,500
- 3112 ★ **5sh Gray Black and Chrome, Misplaced (Upward) Kangaroo (similar to BW 44ca).** Displaying a strongly shifted kangaroo vignette upward so that the kangaroo's head breaks the upper coastline, h.r., brilliant colors, well-centered, Very Fine, another desirable example, this one in the opposite direction than the previous lot..... E. 1,000-1,500
- 3113 ★ **10sh Gray and Deep Aniline Pink (BW 48B; Scott 55 var; SG 43a).** Lightly hinged, extraordinarily well-centered within large balanced margins, deep rich colors, Extremely Fine ..... A\$ 750



3114

3114 ★田 **10sh Gray and Deep Aniline Pink, Watermark Inverted (BW 48Ba; Scott 55 var; SG 43aw).** Block of four with sheet selvage at right, couple of minor h.r.'s, exceptionally well-centered throughout the block, deep luxuriant colors

VERY FINE. A CHOICE BLOCK OF FOUR OF THE RARE INVERTED WATERMARK VARIETY ON THE THIRD WATERMARK TEN-SHILLING. VERY FEW BLOCKS ARE KNOWN.

With 2003 Royal Philatelic Society of Victoria certificate. Ex Lord Steinberg .. A\$ 18,000



3115

- 3115 ★ **10sh Gray and Deep Aniline Pink, Treble Kiss Print of the Frame (similar to BW 48ca).** Top sheet margin single, stamp with barest trace of hinging, quite well-centered, rich colors

VERY FINE. AN EXTREMELY RARE EXAMPLE OF THE THIRD WATERMARK TEN-SHILLING DISPLAYING TWO PRONOUNCED ADDITIONAL KISS PRINTS OF THE FRAME, IN ADDITION TO THE BASIC DESIGN.

This fascinating stamp shows a marked vertical kiss print extending virtually the full height of the pink colored design. And there is also a second kiss print 1.5mm to the left of the other kiss print. While less pronounced, this additional kiss print can easily be seen both above and below the coastlines and below the value circle. The only other examples of this variety we have ever seen are incorporated into the famous ex Arthur Gray JBC monogram block of six with small "OS" punctures. The right four stamps within the Gray monogram block show traces of the additional kiss prints, with the bottom right stamp in that block being most pronounced. The stamp offered here could possibly be the only known mint non-"OS" kiss print recorded..... E. 4,000-5,000



3116



3117

- 3116 ★ **£1 Chocolate and Dull Blue (BW 52A; Scott 56a; SG 44).** Lightly hinged, quite well-centered, deep rich colors, Very Fine, a choice example of this popular value ..... A\$ 3,500
- 3117 ★ **£1 Chestnut and Blue (BW 52B; Scott 56; SG 44a).** Faint trace of hinging, bright and fresh, strong colors, attractive centering, Very Fine, stamp displays interesting trace of a second impression of the frame at the top left corner and along top frame line, a variety which is not listed in the Brusden-White catalogue ..... A\$ 3,500



3118

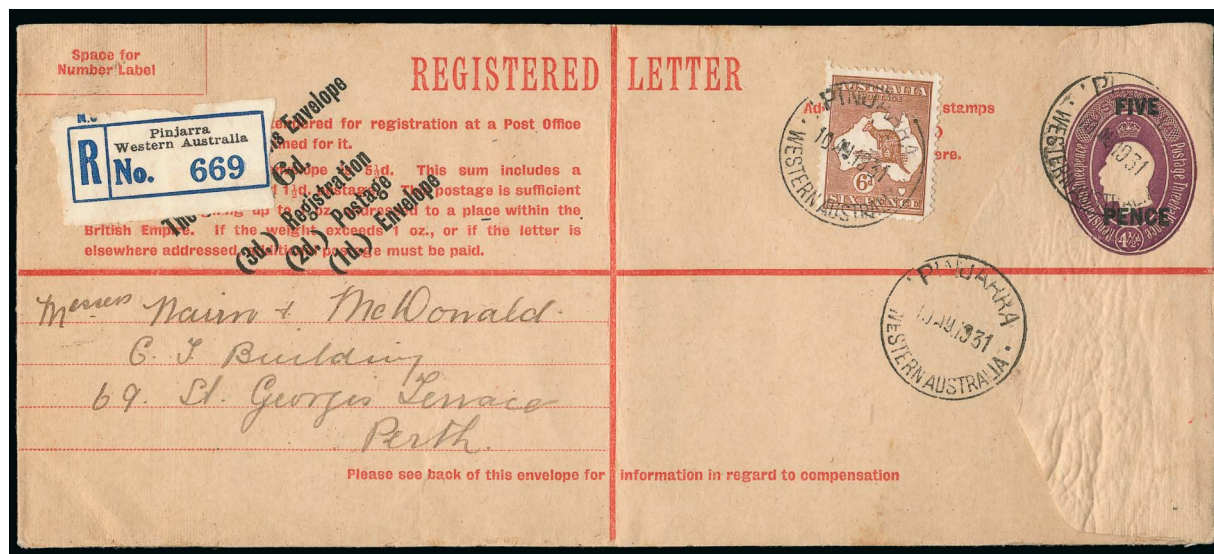
- 3118 ★ **£1 Chocolate and Milky Blue (BW 52F).** Lightly hinged, wonderfully well-centered within large margins, fresh distinctive colors  
EXTREMELY FINE. AN EXCEPTIONAL EXAMPLE OF THE RAREST SHADE VARIETY OF THE THIRD WATERMARK ONE-POUND KANGAROO.  
The rarity of this distinctive shade is largely due to the fact that most of this Harrison printing were overprinted for use in the N.W. Pacific Islands..... A\$ 7,000



3119

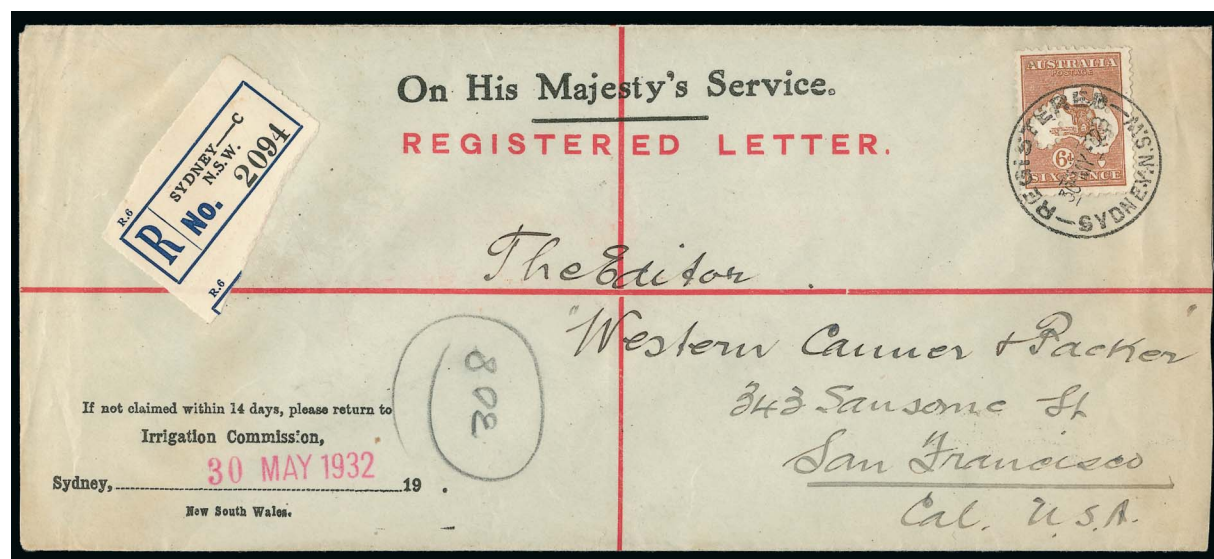
- 3119 ★ **£1 Chocolate and Dull Blue, Broken Tail Variety (BW 52A(V)e; Scott 56a var; SG 44 var).** Relatively lightly hinged, intense colors on bright fresh paper, well-centered  
VERY FINE. A SELECT EXAMPLE OF THE POPULAR BROKEN TAIL VARIETY ON THE THIRD WATERMARK ONE-POUND VALUE.  
Only four positions on the sheet (L4, 9,12 and R27) yield this variety ..... A\$ 4,500

## SMALL MULTIPLE WATERMARK ISSUE



3120

- 3120 ☒ **6p Chestnut (BW 22).** Single franking uprating "Five/Pence." on 4½p King George V Registration envelope and used to Perth, stamp and envelope canceled by "Pinjarra/10.AU.31/Western Australia" circular datestamp, blue Perth registration label at top left, Perth arrival backstamp, stamp with rounded corner perforation and envelope with central vertical fold, Fine, a scarce quintuple rate usage, ex Nelson..... E. 300-400



3121

- 3121 ☒ **6p Chestnut, Small "OS" (BW 22b).** Well-centered single franking on an attractive OHMS registered cover to San Francisco by "Registered/30.MY.32/Sydney" circular datestamp, cover with "irrigation Commission" imprint at bottom left, San Pedro transit and San Francisco arrival postmarks on reverse, Very Fine, a scarce usage on cover, ex Nelson..... E. 300-400



- 3122 ★★ 6p Chestnut, Small “OS” (BW 22b/za). Bottom margin **John Ash imprint pair**, from Plate 4 (lower), with “N” over “A”, Mint N.H., exceptionally well-centered, bright and fresh, Extremely Fine, a scarcer imprint pair with the “OS” official punctures..... E. 200-300
- 3123 ★田 6p Chestnut, Overprinted “OS” (BW 22(OS)z). Bottom margin **John Ash imprint block of four**, from Plate 3 (upper), with “N” over “N”, and showing white hairline from map to value circle variety (Position 3L54), faintly hinged at top, bottom unit Mint N.H., well-centered, rich color, Very Fine, a premium example of this scarcer imprint block..... A\$ 1,200
- 3124 ★田 9p Violet (BW 28z). Bottom margin **John Ash imprint block of four**, from Plate 3 (upper), with “N” over “N”, lightly hinged in top pair, bottom unit Mint N.H., fresh color, nicely centered, Fine-Very Fine..... A\$ 1,500
- 3125 ★田 1sh Emerald (BW 34A; Scott 98; SG 109). Block of four, very lightly hinged, deep rich color, well-centered, Very Fine, a choice block ..... A\$ 300
- 3126 ★田 1sh Emerald (BW 34Az). Bottom margin **John Ash imprint block of eight**, from Plate 4, with “N” over “A”, lightly hinged in selvage and one stamp only, rest Mint N.H., quite well-centered, vibrant color, Very Fine and handsome, catalogued as a hinged imprint block of four, one hinged single and three Mint N.H. singles ..... A\$ 1,475
- 3127 ★ 1sh Emerald (BW 34Aza). Bottom margin **John Ash imprint pair**, from Plate 3 (upper), with “N” over “N”, barest trace of a hinge mark, brilliantly fresh, exceptionally well-centered, Very Fine ..... A\$ 300



3128

3128 ★★ **2sh Maroon (BW 39za).** Bottom margin **John Ash imprint pair**, from Plate 1 (upper), with "N" over "A", Mint N.H., exceptionally bright and fresh, uncharacteristically well-centered, Very Fine, a premium Mint N.H. example of this scarce imprint pair..... A\$ 1,000



3129

3129 ★田 **10sh Gray and Pale Pink (BW 49z).** Bottom margin **John Ash imprint block of four**, relatively lightly hinged at top, bottom unit Mint N.H., wonderfully bright and fresh, well-centered

VERY FINE. AN EXCEPTIONALLY CHOICE JOHN ASH IMPRINT BLOCK OF THE SMALL MULTIPLE WATERMARK TEN-SHILLING KANGAROO. AMONG THE FINEST KNOWN OF THIS RARE IMPRINT BLOCK.

An elusive imprint block that is almost never seen offered at auction. In fact, the massive holding of Kangaroos assembled by Sir Gawaine Baille (Sotheby's, July 2005) only had imprint pairs of this value, and even the Col. Evans, Nelson, Pope and Morgan collections of Kangaroos did not have an imprint block.

With 2011 Ceremuga certificate..... A\$ 12,500

## C OF A WATERMARK ISSUE

- 3130 ★★田 6p Chestnut (BW 23z). Bottom margin John Ash imprint block of four, from Plate 3 (upper), with "N" over "N" and displaying white hairline variety from circle to map on top left stamp, Mint N.H., particularly well-centered, rich color, Very Fine and quite choice ..... A\$ 550



3130



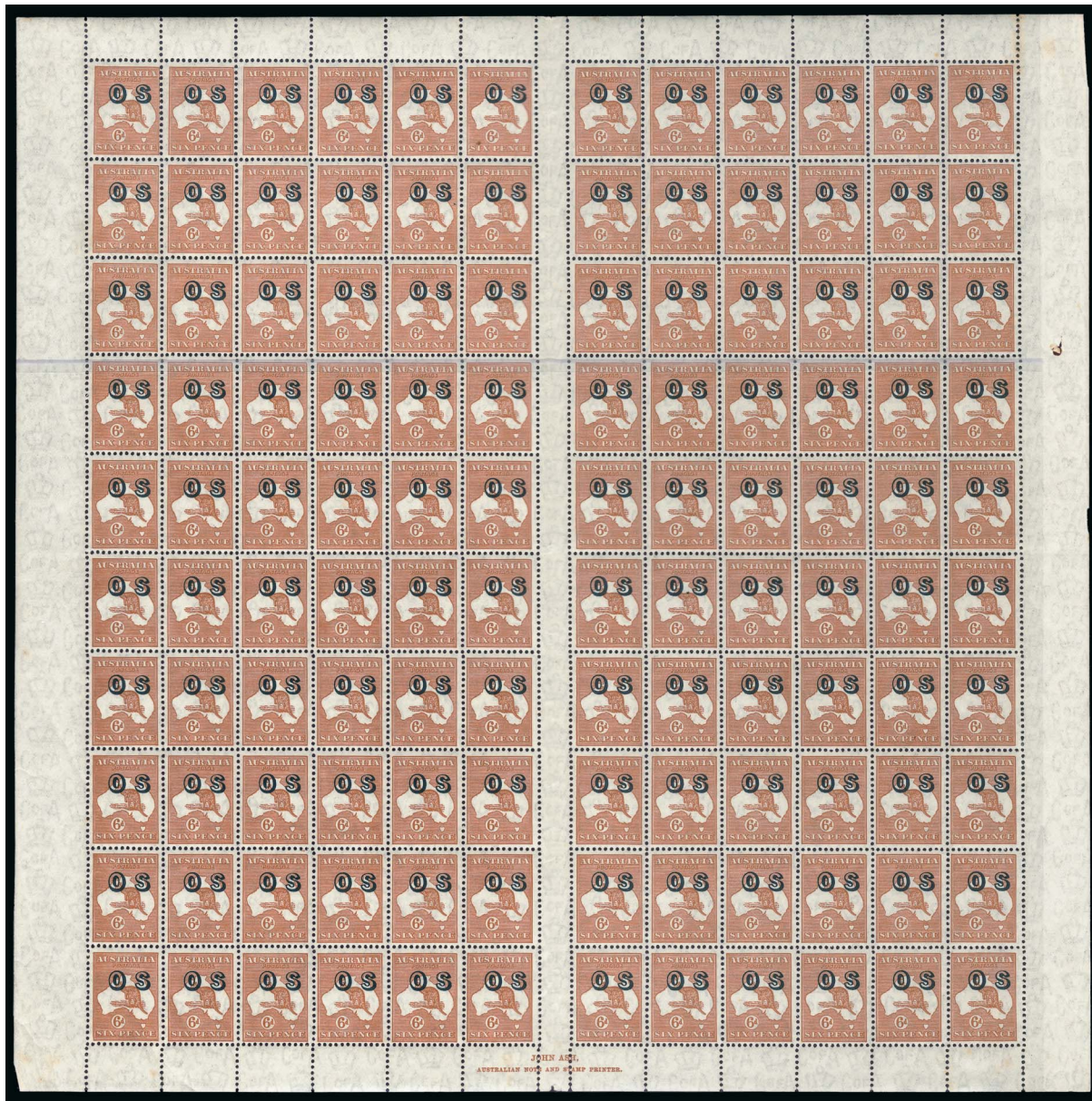
3131

- 3131 ★★田 6p Chestnut (BW 23z). Bottom margin John Ash imprint block of four, from Plate 3 (upper), with "N" over "N" and displaying white hairline variety from circle to map on top left stamp, Mint N.H., attractive centering, quite fresh, Very Fine ..... A\$ 550



3132

- 3132 ★田 6p Chestnut (BW 23z). Bottom margin John Ash imprint block of four, from Plate 4 (lower), with "N" over "A", lightly hinged on top pair, lower unit Mint N.H., well-centered, strong color, Very Fine ..... A\$ 500

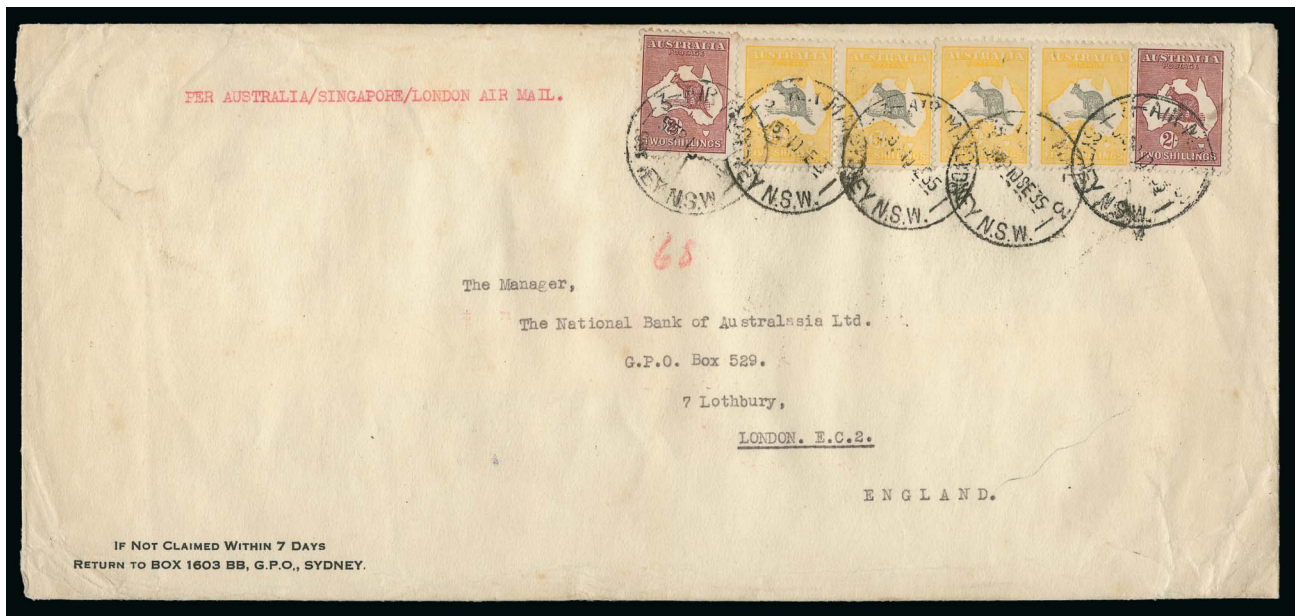


3133

- 3133 ★★田 6p Chestnut, Overprinted "OS" (BW 23(OS)). Remarkable complete sheet of 120 from Plate 3 (upper), consisting of the left and right panes of 60 separated by a vertical gutter and with scarce **John Ash imprint at bottom (BW 23(OS)z)**, "N" over "N", Mint N.H., exceptionally well-centered as an entire sheet, strong fresh color, few separated perforations mostly in bottom selvage, plus a few really trivial tone spots on just a few small areas, Very Fine overall, there is no doubt that few intact sheets such as this remain, catalogued simply as a hinged imprint block of four and 116 Mint N.H. singles... A\$ 12,400



- 3134 ★田 6p Chestnut, Overprinted “OS” (BW 23(OS)z). Bottom margin **John Ash imprint block of four**, from Plate 4 (lower), with “N” over “A”, h.r. on top stamps, quite well-centered, couple of trivial flaws, Very Fine appearance ..... A\$ 750
- 3135 ★田 9p Violet, Double Perforations (BW 29b). Block of four with sheet selvage at bottom, displaying spectacular double perforations in the horizontal row between the stamps and in the vertical row only between the two stamps in the bottom row, lightly hinged, exceptionally fresh color, Very Fine, a scarce block with great eye appeal ..... E. 500-750
- 3136 ★田 9p Violet (BW 29z). Bottom margin **John Ash imprint block of four**, from Plate 3 (upper), being the first state, faintly hinged in the top pair, bottom unit Mint N.H., fresh color, Fine-Very Fine ..... A\$ 650
- 3137 ★田 9p Violet (BW 29z). Bottom margin **John Ash imprint block of four**, from Plate 4 (upper), being the first state and displaying the Die II substitution in Position 4R49 (BW 29q), lightly hinged, rich color, Fine-Very Fine ..... A\$ 700
- 3138 ★田 9p Violet (BW 29z). Bottom margin **John Ash imprint block of eight**, from Plate 4 (upper), being the first state and displaying the Die II substitution in Position 4R49 (BW 29q), lightly hinged, rich color, attractive centering, Very Fine, a very scarce imprint block, catalogued as a hinged imprint block and four hinged singles ..... A\$ 940
- 3139 ★田 9p Violet (BW 29zb). Bottom margin **John Ash imprint block of four**, from Plate 3 (upper), being the second state and displaying the screw inserted in the central gutter and marginal rule broken away, barest trace of hinging in the top pair, lower unit Mint N.H., strong rich color, Fine-Very Fine ..... A\$ 650



3140

- 3140 ☒ **2sh Maroon and 5sh Gray and Yellow (BW 40, 46).** Two singles of the former and two pairs of the latter, tied on a large (275 x 126mm) cover addressed to London by multiple strikes of "Sydney 10.SE. 35" circular datestamp, with typewritten endorsement "per Australia/Singapore/London Air Mail", one 2sh stamp with minor flaws, overall Very Fine, a most impressive high denomination commercial franking, ex Nelson ..... E. 1,500-2,000
- 3141 ★★田 **2sh Maroon, Redrawn Die (BW 41).** Complete sheet of 120 of the lower plate, consisting of left and right panes of 60 separated by 25mm gutter and with two "Authority" imprints (BW 41z) at bottom, several listed positional plate flaws noted, Mint N.H., outstanding centering throughout, strong rich color, horizontal perforations separated through central row of right pane, still Extremely Fine and impressive, catalogued simply as 120 Mint N.H. singles.....*Not illustrated* A\$ 2,400



3142

- 3142 ★ **5sh Gray and Yellow (BW 46Bza).** Bottom margin **John Ash imprint pair, with right stamp displaying the open-mouth kangaroo variety**, barest trace of hinging, brilliant colors, attractively centered, Fine-Very Fine, a handsome imprint pair..... A\$ 1,750



3143

3143 ★田 **10sh Gray and Pink (BW 50A; Scott 127; SG 136).** Block of twelve (6x2), being the bottom two rows of the left pane with sheet selvage on three sides and a partial John Ash imprint at bottom right, eleven stamps are Mint N.H., lightly hinged on twelfth stamp and in sheet selvage, gum just faintly toned overall, exceptional color, particularly well-centered for a multiple of this size, small marginal tear at bottom left, few minor separated perforations at edge of bottom sheet selvage

VERY FINE. A MOST IMPRESSIVE MULTIPLE OF THE "C OF A" WATERMARK TEN-SHILLING. AMONG THE LARGEST SURVIVING MULTIPLES OF THIS SCARCE STAMP.

Signed Enzo Diena and accompanied by his clear 1988 certificate. Ex Lord Steinberg ..... A\$ 28,200



3144

- 3144 ★ **10sh Gray and Pink (BW 50Azb).** Bottom margin **John Ash imprint pair**, lightly hinged, bright colors, attractively centered, Very Fine for this scarce imprint pair.... A\$ 2,750

- 3145 ★★ **£1 Gray (BW 54za).** Bottom margin **John Ash imprint pair**, bottom left stamp being the retouched bottom frame variety (Position L60), Mint N.H., quite fresh, strong color, nicely centered, Fine-Very Fine, a pristine example of this very scarce imprint pair..... A\$ 5,000



3145



3146

- 3146 **£2 Gray and Rose Crimson, "O of A" Watermark Error instead of "C of A" (BW 58A var).** Used, light and unobtrusive town postmark, fresh colors, faint trace of a horizontal crease

FINE. A REMARKABLE WATERMARK ERROR ON THE "C OF A" WATERMARK TWO-POUND VALUE, WITH ONE OF THE REPEATING WATERMARKS CLEARLY SHOWING "O" INSTEAD OF "C" IN "C OF A". UNLISTED IN THE BRUSDEN-WHITE CATALOGUE AND, TO OUR KNOWLEDGE, THIS IS THE ONLY EXAMPLE THAT HAS EVER BEEN FOUND.

With clear 2006 Royal Philatelic Society of Victoria certificate ..... E. 1,500-2,000



3147

- 3147 ★★ **£2 Gray and Rose Crimson, Broken Coast in Bight Variety (BW 58A(D)h).** Mint N.H., strong fresh colors

FINE. A DESIRABLE MINT NEVER-HINGED EXAMPLE OF THIS DISTINCTIVE DUTY PLATE VARIETY ON THE "C OF A" WATERMARK TWO-POUND VALUE.

Only one position on the sheet produced this variety, Position L20, which shows a clear break in the coast of Bight. Catalogue value quoted is for a hinged example.... A\$ 7,500



3148

- 3148 ★★ **£2 Gray and Rose Crimson, Broken Value Circle at Right Variety (BW 58A(D)m).** Left sheet-margin single, Mint N.H., stamp clearly showing large break at the right of the value circle (Position L49), deep luxuriant colors on bright paper

FINE. A PRISTINE MINT NEVER-HINGED EXAMPLE OF THIS RARE DUTY PLATE VARIETY ON THE "C OF A" WATERMARK TWO-POUND VALUE.

Only one position on the sheet produced this distinctive variety. Catalogue value quoted is for a hinged example..... A\$ 7,500



3149

## £2 GRAY AND ROSE CRIMSON

## ONE OF THE FINEST OF SIX RECORDED IMPRINT BLOCKS

3149 ★田 **£2 Gray and Rose Crimson (BW 58Az).** Bottom margin **John Ash imprint block of four, with the bottom right stamp displaying the opened-mouthed kangaroo variety**, lightly hinged on the top pair, while the bottom two stamps are Mint N.H. and hinged just lightly in the bottom selvage, in a brilliant state of preservation, exceptionally well-centered throughout, full perforations all around, deep rich colors on bright fresh paper  
EXTREMELY FINE. ONE OF THE FINEST OF ONLY SIX RECORDED IMPRINT BLOCKS OF FOUR OF THE “C OF A” WATERMARK TWO-POUND KANGAROO. ONE OF THE HIGHLIGHTS OF THE “GOLDFARM” COLLECTION.

It is believed that only six imprint blocks of four still exist of this value. One of the six is in the R.T.P. Chapman collection, which is now part of the Australia Post archival collection.

Ex Lord Steinberg ..... A\$ 70,000



3150

3150 ★ **£2 Gray and Rose Crimson (BW 58Aza).** Bottom margin **John Ash imprint pair, with the right stamp displaying the opened-mouthed kangaroo variety**, lightly hinged, well-centered, deep luxuriant colors on bright paper

VERY FINE. A HANDSOME AND CHOICE JOHN ASH IMPRINT PAIR OF THE "C OF A" WATER-MARK TWO-POUND KANGAROO.

This premium quality pair is among the nicer to be found ..... A\$ 22,500



3151

- 3151 ☒ **£2 Gray and Rose Crimson (BW 58).** Single well-centered example, **used in combination with 5sh Gray and Yellow, 10sh Gray and Pink and £1 Gray (all C of A Watermarks, BW 46, 50, 54),** as well as a pair of 5p King George V stamps, all tied on a registered linen gold bullion parcel tag addressed to the “United States of America Mint/San Francisco, U.S.A.” by “Perth/14.FE.39” circular datestamp, blue Perth registration label at bottom left, all stamps with bright colors and most well-centered, £1 Gray with rounded corner perforation, couple of transit wrinkles to tag

VERY FINE. A MARVELOUS AND RARE FRANKING OF A COMPLETE “SET” OF HIGH VALUE “C OF A” WATERMARK KANGAROOS ON ONE TAG, INCL. THE RARE TWO-POUND VALUE.

The shipment accompanying this tag was mailed from Perth on February 14, 1939 and was probably one of the last exported, as during 1939 the export of gold was restricted and then from then on all gold produced within Australia was required to be lodged in a refined state with the Australia Commonwealth Bank ..... E. 3,000-4,000

## SPECIMEN STAMPS

## FIRST ISSUE COLLECTOR'S SET



3152EX

- 3152 S    **½p to £2 First Watermark Issue, Special Collector's Set Prepared by the Post Office (BW 1wb/55x).** Fifteen values in all, denominations to the 5sh, each an issued stamp cancelled-to-order with special half portions of "Melbourne DE 3 13" circular datestamp (full circular datestamp was applied to horizontal pairs that were separated), and the 10sh, £1 and £2 values each with "Specimen" handstamps type A, all with bright fresh colors and each still retaining their original gum, h.r.'s, Fine-Very Fine, such sets were prepared and sold by the Australian Post Office to meet the high collector demand for sets.....**(Photo Ex)** A\$ 3,960

## THIRD WATERMARK



3153



3154



3155

- 3153 S    **10sh Gray and Deep Aniline Pink, "SPECIMEN" Type B Overprint (BW 48x).** Lightly hinged, well-centered within large margins, bright colors, Extremely Fine..... A\$ 600
- 3154 S    **10sh Gray and Deep Aniline Pink, "SPECIMEN" Type B Overprint (BW 48x).** Lightly hinged, intense colors, attractive centering, couple of nibbed perforations, still Very Fine ..... A\$ 600
- 3155 S    **10sh Gray and Pale Aniline Pink, "SPECIMEN" Type C Overprint (BW 48xb).** Lightly hinged, rather well-centered, diagonal crease at bottom right, Very Fine appearance, a scarce type..... A\$ 3,250



3156

- 3156 S    **10sh Gray and Pale Aniline Pink, Broken Coast near Sydney and with Flaw after "I" of "AUSTRALIA" Variety, "SPECIMEN" Type C1 Overprint, with Damaged "C" in "SPECIMEN" (BW 48(D)j/xd).** Large h.r., exceptionally well-centered, bright colors, several nibbed/short perforations at top, Very Fine appearance, the type C1 "SPECIMEN" overprint is rare on a "normal" variety of the 10sh value, but is especially rare on an example that displays this distinctive duty plate variety, with only three examples possible ..... A\$ 7,500



3157

- 3157 S    **10sh Gray and Pale Aniline Pink, "SPECIMEN" Type C2 Overprint, with Shaved "P" Variety (BW 48xf).** Lightly hinged, typical pale shade, fairly well-centered, fresh and Very Fine, an extremely rare "SPECIMEN" variety..... A\$ 7,500

- 3158 S    **£1 Light Brown and Pale Blue, "SPECIMEN" Type B Overprint (BW 52Dx).** Lightly hinged, nicely centered, characteristic pale shades seen on all type B specimens of this value, Very Fine and quite scarce... ..... A\$ 900



3158



3159

- 3159 S田 **£1 Light Brown and Pale Blue, “SPECIMEN” Type B Overprint (BW 52Dxa).** Block of four, top pair very lightly hinged, bottom pair Mint N.H., extraordinarily well-centered, very light color shades which are characteristic type B specimens of this value  
 VERY FINE. A CHOICE BLOCK OF FOUR OF THE THIRD WATERMARK ONE-POUND KANGAROO WITH THE VERY SCARCE TYPE B “SPECIMEN” OVERPRINT.

A very rare specimen multiple. It is believed that only two blocks of nine and six blocks of four exist..... A\$ 15,000.00



3160

- 3160 S **£1 Gray, “SPECIMEN” Type B Overprint (BW 53x).** Mild h.r., well-centered, strong fresh color

VERY FINE. A PREMIUM QUALITY EXAMPLE OF ONE OF THE RAREST SPECIMEN STAMPS OF AUSTRALIA — THE THIRD WATERMARK ONE-POUND GRAY WITH TYPE B OVERPRINT.

As few as 360 of this specimen may have been issued ..... A\$ 4,500.00



- 3161 S    **£1 Gray, “SPECIMEN” Type C Overprint (BW 53xb).** Very lightly hinged, virtually perfect centering, strong fresh color, Extremely Fine ..... A\$ 375
- 3162 S    **£1 Gray, “SPECIMEN” Type C1 Overprint, with Damaged “C” in “SPECIMEN” (BW 53xd).** Barest trace of hinging (if at all), wonderfully bright and fresh, well-centered, Very Fine, a choice example of this specimen ..... A\$ 1,000
- 3163 S    **£1 Gray, “SPECIMEN” Type C1a Overprint, with Damaged “S” and “C” in “SPECIMEN” (BW 53xe).** H.r., attractively centered, strong color, Very Fine, the rarest of the “SPECIMEN” types ..... A\$ 3,750
- 3164 S    **£1 Gray, “SPECIMEN” Type C2 Overprint, with Shaved “P” Variety (BW 53xf).** Relatively lightly hinged, well-centered, deep color, gum just slightly toned, Very Fine ...  
..... A\$ 1,000
- 3165 S    **£2 Purple Black and Rose, “SPECIMEN” Type B Overprint (BW 56Cx).** H.r., attractively centered, deep luxuriant colors, Very Fine..... A\$ 500.00
- 3166 S    **£2 Purple Black and Rose, White Flaw in Bight Variety, “SPECIMEN” Type B Overprint (BW 56(D)f/x).** Lightly hinged, quite well-centered within large margins, bright and fresh, Very Fine, an especially scarce “SPECIMEN” being on a listed duty plate variety ..... A\$ 500
- 3167 S    **£2 Purple Black and Rose, “SPECIMEN” Type C Overprint (BW 56Cxb).** Lightly hinged, well-centered, deep luxuriant colors, Very Fine ..... A\$ 375
- 3168 S    **£2 Purple Black and Rose, Red Line on Map North of Bight Variety, “SPECIMEN” Type C1 Overprint, with Damaged “C” in “SPECIMEN” (BW 56(D)n/x).** Mild h.r., strong fresh colors, Fine, an especially scarce “SPECIMEN” being on a listed duty plate variety..... A\$ 1,000



- 3169 S    £2 Purple Black and Rose, "SPECIMEN" Type C1 Overprint, with Damaged "C" in "SPECIMEN" (BW 56Cxd). H.r., strong colors, fairly well-centered, gum just faintly toned, Fine and scarce ..... A\$ 1,000
- 3170 S    £2 Purple Black and Rose, "SPECIMEN" Type C2 Overprint, with Shaved "P" Variety (BW 56Cxf). H.r., gum just slightly disturbed, particularly well-centered, rich colors, Very Fine ..... A\$ 1,000

### SMALL MULTIPLE WATERMARK

- 3171 S    10sh Gray and Pale Pink, "SPECIMEN" Type C Overprint (BW 49x). Lightly hinged, quite fresh, nicely centered, Very Fine ..... A\$ 375
- 3172 S    10sh Gray and Pale Pink, "SPECIMEN" Type C1 Overprint, with Damaged "C" in "SPECIMEN" (BW 49xb). H.r., fairly well-centered, typical pale shade, Fine, a particularly scarce variety of this specimen ..... A\$ 1,750
- 3173 S    10sh Gray and Pale Pink, "SPECIMEN" Type C1a Overprint, with Damaged "S" and "C" in "SPECIMEN" (BW 49xc). Lightly hinged, exceptionally well-centered, typical pale shade, Very Fine, an especially choice example of this, the rarest variety of the "SPECIMEN" overprint on the Small Multiple Watermark Ten Shillings value ..... A\$ 5,000
- 3174 S    10sh Gray and Pale Pink, "SPECIMEN" Type C2 Overprint, with Shaved "P" Variety (BW 49xd). Mild h.r., fairly well-centered, typical pale shade, Very Fine and scarce ..... A\$ 1,750
- 3175 S    £2 Gray and Rose Crimson, "SPECIMEN" Type D Overprint (BW 57x). Mint N.H., particularly well-centered, strong fresh colors, Very Fine, a choice example of this high value specimen ..... A\$ 900
- 3176 S    £2 Gray and Rose Crimson, "SPECIMEN" Type D Overprint (BW 57x). Mint N.H., well-centered, rich colors, Very Fine ..... A\$ 900

- 3177 S    **£2 Gray and Rose Crimson, Broken Coast in Bight Variety, "SPECIMEN" Type D Overprint (BW 57(D)r/x).** Very lightly hinged, strong rich colors, Fine, especially scarce having this listed duty plate variety ..... A\$ 900



3177

## C OF A WATERMARK



3178

- 3178 S    **10sh Gray and Pink, Broken Coast near Sydney and White Flaw after "I" of "AUSTRALIA" Variety, "SPECIMEN" Overprint Type C1, with Damaged "C" in "SPECIMEN" (BW 50(D)j/xb).** Lightly hinged, bright colors, nicely centered, couple of nibbed perforations, Very Fine, a scarce specimen, particularly with the listed duty plate variety, ex Hardy ..... A\$ 2,000



3179

- 3179 S    **10sh Gray and Pink, "SPECIMEN" Type C2 Overprint, with Shaved "P" Variety (BW 50xd).** Lightly hinged, fresh colors, nicely centered, Very Fine ..... A\$ 2,000



3180

- 3180 S    **10sh Gray and Pink, Vertical White Lines through Grass Variety, "SPECIMEN" Type C2 Overprint, with Shaved "P" Variety (BW 50xd var).** Lightly hinged, well-centered, fresh colors, Very Fine, a scarce variety of the "SPECIMEN" overprint on a stamp displaying an unlisted vignette plate variety, ex Hardy ..... A\$ 2,000




3181

- 3181 S    **10sh Gray and Pink, "SPECIMEN" Type C Overprint, with Damaged "N" Variety (BW 50x var).** Mint N.H., typical pale shade, attractively centered, couple of minor gum bends, Very Fine, this variety with the distinctive malformed "N" of "SPECIMEN" is unlisted in the Brusden-White catalogue..... E. 400-500




3182

- 3182  **10sh Gray and Pink, “SPECIMEN” Type D Overprint (BW 50xf).** Block of four, with the bottom right stamp being the fox-faced kangaroo variety, top pair lightly hinged, bottom pair Mint N.H., strong colors, Fine-Very Fine, a scarce specimen block of four, especially desirable containing the listed vignette plate variety..... A\$ 1,000




3183

- 3183  **10sh Gray and Pink, “SPECIMEN” Type D Overprint (BW 50xf).** Impressive block of 18 (6x3), representing the first three rows of a forme of 30 (Positions RI-18), several of the stamps displaying listed varieties including elongated tail, very short Spencer's Gulf and a white spot before “P” of “POSTAGE”, lightly hinged mostly along top row, nine stamps Mint N.H., rather well centered, strong fresh colors, Fine-Very Fine, an important specimen multiple ..... E. 2,000-3,000



3184

- 3184  **£2 Gray and Rose Crimson, “SPECIMEN” Type D Overprint (BW 58xa).** Block of four, with the top left stamp displaying the white flaw in Bight variety (BW 58(D)f), bottom left stamp lightly hinged, other three Mint N.H., deep luxuriant colors, fairly well-centered, Fine-Very Fine..... A\$ 3,000

POSTAL STATIONERY



3185

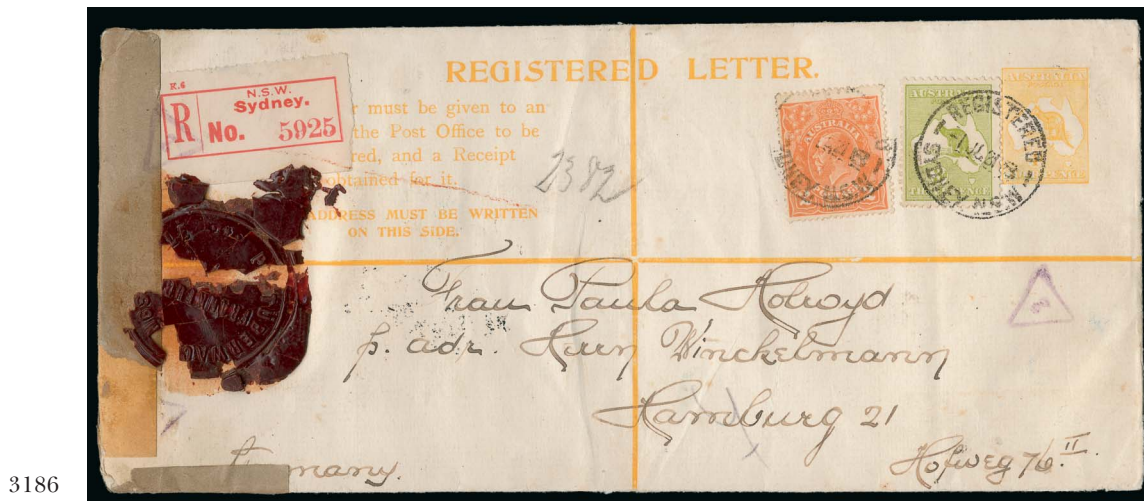
3185 ☒ **1916-20, 6p Blue Stamped-to-Order "Wool Sample" Envelope (BW ES10).** Large envelope (230 x 178mm) lined with a linen pouch, with 6p Kangaroo imprint at top right, "Wool Sample only." imprint at top left and with printed address of Kreglinger & Fernau in London, minor wrinkling to envelope and some marginal toning

FINE. ONE OF ONLY SIX INTACT "WOOL SAMPLE" SIX-PENCE KANGAROO STAMPED-TO-ORDER ENVELOPES KNOWN, ALL OF WHICH ARE UNUSED.

One of the rarest pieces of Australian postal stationery and the first we have ever seen of this unique envelope configuration designed to send wool samples by mail..... A\$ 6,000



detail



3186

- 3186 ☒ **1913, 4p Yellow Registration Envelope, Long Format (BW RE2).** Up-rated with 3p Olive Kangaroo and 2p Orange King George V, used to Hamburg, Germany and with stamps and imprint tied by "Registered/1.JL.21" circular date stamp, red Sydney registration label, with two different German Currency Control labels tied by red wax seals both on the front and reverse (some deterioration), central file fold, Fine, a scarce and unusual usage of this 4p Registration envelope, ex Nelson ..... E. 500-750

## GROUP LOTS

- 3187 ☒ **Kangaroo Postal Stationery Collection.** Desirable group of 25 items, both mint and used, all with Kangaroo and Map imprints, incl. two mint 1p postal cards, two mint and three used 1p Letter Cards (one of the used examples up-rated with ½p and 1p adhesives), three used 1p stamped envelopes, three scarce 4p Registration envelopes (mint, c.t.o. and used), four very scarce 1p Official stamped envelopes, three of which are up-rated with additional KGV stamps, two mint and four used ½p wrappers, and concluding with two 1p mint wrappers, largely Fine-Very Fine, an exceptional group ..... E. 1,500-2,000
- 3188 **Small, but useful, Balance of the "Goldfarm" Collection of "Kangaroo and Map" Postage Stamps.** Neatly arranged in a stockbook containing 69 items, including singles, pairs and blocks from the ½p value through the 5sh, largely being low to middle values, we note some monogram and imprint singles, pairs and blocks, varieties such as double perforations, some items with unusual perfins, and concluding with a nice group of "SPECIMEN" overprints (ten in all, a couple of which have no gum), hinging ranges from some with h.r.'s to many being Mint N.H., Fine-Very Fine, the Brusden-White catalogue value is undoubtedly considerably higher than our modest estimate ..... E. 2,000-3,000
- 3189 **Kangaroo High Values with Telegraph Punctures.** An especially comprehensive collection/accumulation of Kangaroo high values all with varying sized punch holes used to cancel the stamps on telegraph receipts, proper protocol for these receipts was to hold them for at least a year then burn them under supervision, nonetheless a number of these were saved by collectors from this fate and have become increasingly popular to collect, this assemblage contains 66 singles, four pairs, one strip of three, a block of six (a very scarce block of the 10sh) and a block of eight (5sh value), there are no less than a dozen £2 values, ranging from the First Watermark issues to the "C of A" Watermarks, we even note a number of stamps have been noted with duty and vignette plate varieties, concludes with six low to mid-denomination stamps with handstamp telegraph cancels and no punch holes, condition a bit mixed as to be expected, but overall a Fine and valuable group perfect for continuation ..... E. 4,000-5,000
- 3190 ☒ **Kangaroo Issues Postal History Selection.** A fascinating and desirable group of 49 covers all franked with a variety of Kangaroo issues, virtually all are commercial usages and most are not your "run-of-the-mill" common usages, values to 2sh denominations noted, there are scarce destinations, frankings up-rating registered stamped envelopes, better markings and cancellations, censored usages, some in combination with later issues, one even addressed to the famous silent movie actor Charlie Chaplin, only a few are larger bank-sized envelopes, with most being the size perfect for exhibition page display, some with typical cover faults, but mostly Fine-Very Fine, a few of the better covers were acquired as individual lots in the 2010 sale of Kevin Nelson ..... E. 1,500-2,000

END OF SALE — THANK YOU

# THE ROYAL PHILATELIC SOCIETY LONDON



The world's oldest and most prestigious philatelic society, established 1869, with over 2,000 members in more than 70 countries.

Extensive premises in central London house the Society's superlative library, plus Museum and Archive, and provide first-class meeting facilities.

The Society's Online Catalogue provides access to three-quarters of a million philatelic indices to members world-wide.

A fascinating programme of displays and meetings throughout the year, supplemented by regional meetings and gatherings at major international events.

The Society publishes ten times a year its own journal, *The London Philatelist*, containing articles of outstanding philatelic research, in addition to publishing major philatelic works.

We are honoured to have Her Majesty Queen Elizabeth II as our Royal Patron.

We are pleased to receive proposals for membership of the Society, which is through election.

If you are interested in membership, please contact us at [secretary@rpsl.org.uk](mailto:secretary@rpsl.org.uk).

If you have no proposer or seconder, please contact us for further information.

Membership is open to all who share an interest in philately, and all applications are subject to review.

**The Royal Philatelic Society London**  
41 Devonshire Place, London W1G 6JY, United Kingdom  
Website: [www.rpsl.org.uk](http://www.rpsl.org.uk) - Telephone: +44 (0)20 7486 1044

# Live Internet Bidding at Siegel Auctions

## BIDDING FROM YOUR COMPUTER LETS YOU BE PART OF THE LIVE AUCTION FROM ANYWHERE IN THE WORLD!

**There's NO SUBSTITUTE for following the auction in real time.**  
**Live Internet Bidding lets you bid and buy as though you were right there in the saleroom.**  
**And it's easy.**

**This step-by-step guide will instruct you how to register, set your browser and use the bidding interface.**

**Start by following the simple steps to become a registered Live Internet Bidder.**  
**Once you've been approved for bidding, you can listen to the auction and place bids with the click of a mouse.**

### Registering with STAMP AUCTION NETWORK & SIEGEL AUCTION GALLERIES

Live Internet Bidding is managed by Stamp Auction Network (SAN).  
To bid, you must be registered and approved by *both* SAN and Siegel.  
To decide what you need to do, choose the description below that best fits you.



**I've already registered with SAN and have been approved by Siegel for internet bidding.**

**I'm a Siegel client, but I'm not registered with SAN.**

Go to [stampauctionnetwork.com/siegel](http://stampauctionnetwork.com/siegel) and click on "Register" at the top. Check the box for Robert A. Siegel Auction Galleries (under "R") and submit the form, indicating you are a Siegel client. Once registered at SAN, you're ready for internet bidding.

**I've bid through SAN before, but this is the first time I've bid in a Siegel sale.**

Then you just need to be approved by Siegel. Go to [stampauctionnetwork.com/siegel](http://stampauctionnetwork.com/siegel) and click on "Update Registration" at the top. Your SAN account information will be sent to us for approval (you might be asked for other trade references). Once approved by Siegel for bidding, you're ready for internet bidding.

**I've never bid with Siegel, nor registered with SAN.**

Go to [stampauctionnetwork.com/siegel](http://stampauctionnetwork.com/siegel) and click on "Register" at the top. Check the box for Robert A. Siegel Auction Galleries (please, no family members or credit card companies as references). Once registered at SAN and approved by Siegel for bidding, you're ready for internet bidding.

Live Internet Bidding works by allowing registered bidders to observe and place bids.

Live Internet Bidding will work with any browser on both PC and Mac operating systems.

Before bidding by internet for the first time, we recommend finding a sale in progress and listening to the public broadcast or logging in as a registered bidder. This will help you develop a feel for the sale tempo and bidding interface.

### Log on to the auction at [stampauctionnetwork.com/siegel](http://stampauctionnetwork.com/siegel).

You can also log on at [siegelauctions.com](http://siegelauctions.com)

When you're logged on as a Live Internet Bidder, the bidding interface shows a photo and description of the lot, the current bid (and your bidding status), options for placing competitive bids and buttons with bid increments.

- After you click on a bid amount, the auctioneer is immediately notified of your bid.
- Retracting a bid is usually not acceptable, so please bid carefully.
- If you bid and then decide to stop, the "Pass" button will tell the auctioneer you are no longer bidding.
- You can send messages to the auctioneer (for example, a request for extension).
- You can track prior realizations from the bidding screen.



**"System Down" or "Lost Connection" events do occasionally happen.**

If you have any problems with Live Internet Bidding please call **212-753-6421** for immediate assistance.

# Bid Form—15% Premium Sale

Sale 1081  
Tuesday, October 7, 2014

# 1

Please provide the following information:

NAME .....

ADDRESS.....

CITY/STATE/ZIP .....

TEL. (DAY) ..... FAX .....

E-MAIL .....

PADDLE #

*Do not write in box*

# 2

Have you purchased from us in the past 5 years? ☐ YES (if so, please go to Section 3)

☐ NO (please provide a trade reference and bank information)

References:

Stamp Firm:..... Telephone .....

Bank:..... Account # .....

# 3

In the space provided below, enter the **lot number** from **Sale 1081** and your corresponding bid. Please use **whole dollar amounts** only and enter the **maximum bid** you wish to have us execute on your behalf, according to the **bidding increments** on other side of this form. **Your bid will NOT include the 15% buyer's premium.** We will advance the bidding at one increment over the

next highest bid; therefore, you may be awarded the lot at less than your maximum bid. Please do not use "plus" bids or "buy" bids. If you wish to bid on one lot **or** the other, indicate your "or" bid between lot number/bid entries and bracket your choices. If you wish to place a **bidding limit** on the total amount of your bids, please enter your limit in the space marked "Limit Bids".

## PLEASE NOTE BIDDING INCREMENTS AND SHIPPING CHARGES (ON BACK OF THIS PAGE)

☐ **LIMIT BIDS:** Check this box if you wish to limit the total amount of your bids (not including the **15% buyer's premium**) in this sale. Your bids will be executed until your bidding limit no longer allows for additional bids. **The total amount you wish to bid is:** \$.....

Lot	Bid	Lot	Bid	Lot	Bid
	\$		\$		\$

# 4

**AGREEMENT:** By signing this bid form, you agree to pay for purchases resulting from your bids, in accordance with the **Conditions of Sale** printed in the sale catalogue. You also agree to pay the **15% buyer's premium, shipping costs (see reverse), and sales tax or use tax or customs duty** which may be due on the total invoiced amount. It is

understood that these bids will be executed by Siegel Auction Galleries as a courtesy to absentee bidders, but you waive the right to make any claim against the auctioneer or the firm, arising from the these bids. **You are responsible for your written bids, including any errors on your part and any additions or changes to the bids herein.**

**Payment must be made by cash, check, money order or wire transfer. Credit cards (Visa, Mastercard and Discover only) can be accepted as payment but will be subject to a 3% Convenience Fee, which will be added to the total of the entire invoice (including hammer price, buyer's premium, shipping and transit insurance charges and any applicable taxes).**



SIGNED..... TODAY'S DATE.....

# 5

Please submit your bids promptly (telephone bids must be confirmed in writing).

**Mail to: Robert A. Siegel Auction Galleries, Inc.**

**60 E. 56th Street, 4th Floor, New York, N.Y. 10022**

**Telephone (212) 753-6421**

**OR FAX YOUR BIDS: (212) 753-6429**

**Shipping Instructions, Bidding Increments and space for additional bids on other side of form**



## Additional Bids

Sale 1081—October 7, 2014

Lot	Bid	Lot	Bid	Lot	Bid
	\$		\$		\$

## Shipping and Transit Insurance

We will be pleased to arrange for shipping and transit insurance for purchases in this sale (except those described as “floor sale only”). To expedite billing and delivery of lots to hundreds of buyers per sale, we use standard charges for postage and insurance, based on the package weight and mailing requirements (see schedule). The standard charges are sometimes slightly more or less than the actual postage or Fedex fees, but we do not include any charge for our labor or packing costs. Therefore, we ask all buyers to remit the prescribed amount for shipping charges.

Transit insurance is provided in all cases, except when the buyer has furnished us with proof that insurance coverage is effective under another policy. Proof, in such cases, will be accepted in the form of a written certificate from the insurance carrier.

You are responsible for insurance charges, which will be added to your invoice. This coverage is provided for our mutual protection against theft or loss in transit.

## Bidding Increments

The auctioneer may regulate the bidding at his discretion. However, to assist absentee bidders in establishing their maximum bid for each lot, the increments shown at right will be used in most cases. We recommend that written bids conform to these increments (those which do not will be reduced to the next level).

## REVISED CHARGES FOR SHIPPING EFFECTIVE SEPTEMBER 1, 2010

We have reduced the Fedex Envelope charge to \$20, reflecting the elimination of the fuel surcharge. All other charges remain the same.

## Current Postage & Insurance Charges

Weight/Class	Shipping Method	Charges
Up to 2 lbs.	Fedex Envelope	\$20.00
Over 2 lbs.	Fedex Box	\$35.00*
Non-U.S.	Fedex/Courier	\$50.00**
Bulk Lots		By weight and value
<b>These fees reflect additional Fedex charges for residential delivery, signature and fuel surcharge.</b> <b>*Higher fees will be charged on packages weighing more than 5 lbs. or insured for more than \$75,000.</b> <b>**Buyers are liable for all customs duties and clearance charges. An accurate declaration of value will be made on all import/export documents.</b>		

1/2014

Up to \$50	\$5	\$3,000-7,000	\$250
\$50-200	\$10	\$7,000-20,000	\$500
\$200-500	\$25	\$20,000-30,000	\$1,000
\$500-1,000	\$50	\$30,000-75,000	\$2,500
\$1,000-3,000	\$100	\$75,000 up	\$5,000

1/2014



Robert A. Siegel Auction Galleries, Inc.  
Prices Realized for

Sale 1081 10/7/2014 The Goldfarm Collection of Australia Kangaroo and Map Series

Lot#	Realized	Lot#	Realized	Lot#	Realized	Lot#	Realized	Lot#	Realized
3001	200	3038	2,900	3076	550	3121	475	3164	160
3002	8,000	3039	2,700	3077	500	3122	100	3165	160
3003	9,500	3040	900	3079	700	3123	300	3166	160
3004	35,000	3041	850	3080	275	3125	80	3167	140
3005	1,000	3042	5,750	3081	900	3126	550	3168	500
3006	150	3043	550	3082	1,900	3129	6,250	3169	200
3007	325	3044	6,000	3083	600	3133	2,100	3170	200
3008	700	3045	4,250	3084	400	3134	100	3171	120
3009	750	3046	1,900	3085	425	3135	650	3172	400
3010	425	3047	425	3086	3,750	3137	325	3173	1,500
3011	250	3048	5,250	3087	750	3138	700	3174	475
3012	225	3049	300	3090	275	3139	150	3175	400
3013	110	3050	2,300	3091	450	3140	1,200	3176	500
3014	325	3051	1,800	3096	550	3141	300	3177	200
3015	225	3052	1,800	3097	500	3142	500	3178	400
3016	475	3053	2,400	3098	850	3143	8,000	3179	375
3017	400	3054	4,750	3101	2,400	3144	900	3180	450
3018	300	3055	3,750	3102	275	3145	3,750	3181	250
3019	2,000	3056	350	3103	425	3146	1,100	3182	350
3020	3,000	3057	5,500	3104	4,250	3147	2,400	3183	1,500
3021	1,600	3058	650	3105	4,500	3148	1,700	3184	1,000
3022	160	3059	700	3106	2,200	3149	40,000	3185	1,600
3023	150	3060	2,100	3107	400	3150	9,500	3186	325
3024	1,900	3061	1,200	3108	600	3151	3,500	3187	800
3025	700	3063	475	3109	425	3152	850	3188	3,500
3026	325	3065	350	3110	3,000	3153	150	3189	4,500
3027	1,500	3066	1,800	3111	1,900	3154	150	3190	2,600
3028	275	3067	650	3112	2,500	3155	375		
3029	2,900	3068	400	3113	425	3156	900		
3030	450	3069	1,100	3114	8,000	3157	1,500		
3031	600	3070	225	3115	2,000	3158	275		
3032	850	3071	42,500	3116	2,800	3159	10,500		
3033	190	3072	425	3117	2,000	3160	1,900		
3035	1,500	3073	1,500	3118	1,800	3161	100		
3036	850	3074	850	3119	3,000	3162	225		
3037	2,600	3075	500	3120	300	3163	550		