

Hawaiian Stamps and Covers

Featuring items from the collections formed by
George A. Schwenk and William Fekete



Sale 1083 – October 22, 2014

Robert A. Siegel
AUCTION GALLERIES, INC.

Sale 1083 — Wednesday, October 22, 2014, at 2:30 p.m.

Hawaiian Stamps and Covers

Featuring items from the collections formed by
George A. Schwenk and William Fekete

Live auction to be held at Siegel Auction Galleries,
60 East 56th Street (Park/Madison), 4th Floor, New York City

Lots are sold subject to a 15% buyer's premium and
any applicable sales tax (or customs duty for non-U.S. buyers)

Offered without reserves (with the exception of lot 1003)

Please read the revised Conditions of Sale



Pre-Sale Viewing

Monday, October 20, 10am-4pm

and by appointment (please call 212-753-6421)

Robert A. Siegel

AUCTION GALLERIES, INC.

60 EAST 56TH STREET, 4TH FLOOR, NEW YORK, N.Y. 10022

Phone (212) 753-6421 • Fax (212) 753-6429 • E-mail: stamps@siegelauctions.com

Catalogues, internet bidding, resources, archives and the Siegel Encyclopedia at
siegelauctions.com



Robert A. Siegel

AUCTION GALLERIES, INC.

60 EAST 56TH STREET, 4TH FLOOR, NEW YORK, N.Y. 10022

Phone (212) 753-6421 • Fax (212) 753-6429 • E-mail: stamps@siegelauctions.com

siegelauctions.com



Scott R. Trepel
President
strepel
@siegelauctions.com



John P. Zuckerman
Senior Vice President
jzuckerman
@siegelauctions.com



Corey Long
Vice President
clong
@siegelauctions.com



Colleen Stellato
Accounts
colleen
@siegelauctions.com



Laura Melvin Kaplan
Bids and Inquiries
laura
@siegelauctions.com



Charles F. Shreve
Siegel International
charles
@siegelauctions.com



Chris Anderson
Siegel International
chris
@siegelauctions.com



Andrew Titley
Siegel International
andrew
@siegelauctions.com

Scott R. Trepel Principal Auctioneer (licensed by NYC Dept. of Consumer Affairs, #795952)

Nathaniel Estes Catalogue and Digital Production

Information for Bidders

Bidding

The following means are available for placing bids:

- 1) Attending the Live Auction in Person:** All bidders must register for a paddle, and new bidders must provide references at least three business days in advance of the sale.
- 2) Live Internet Bidding:** Instructions for participating as a Live Internet Bidder are provided on the page opposite.
- 3) Phone Bidding:** Bidders can be connected to the sale by phone and bid through a member of staff. Requests for phone bidding are subject to approval (please contact our office at least 24 hours before the sale). A signed Bid Form is required.
- 4) Absentee Bids.** All bids received in advance of the sale, either by mail, fax, phone, e-mail or internet, are Absentee Bids, which instruct the auctioneer to bid up to a specific amount on one or more lots in the sale. Absentee Bids sent by phone, fax or e-mail should arrive at least one hour prior to the start of the sale session. Bids entered through Live Internet Bidding will be visible to the auctioneer during the sale. Written bids should be entered legibly on the Bid Form in the sale catalogue. E-mail and internet bids should be carefully typed and double-checked. All new bidders must provide references. We recommend calling or e-mailing to confirm that Absentee Bids sent by mail, fax or e-mail have been received and entered.

Pre-Sale Viewing

Subject to availability, certain lots (except group lots) can be sent to known clients for examination. Requests must be made no later than 7 days prior to the sale. Lots must be returned on the day received. Postage/insurance costs will be invoiced.

In addition to regular viewing, clients may view lots by appointment. Our staff will be pleased to answer questions or provide additional information about lots.

Expert Certification

Individual items offered without a PF or PSE certificate dated within the past five years may be purchased subject to independent certification of genuineness and our description. **Please refer to the Conditions of Sale and Grading Terms for policies governing certification.**

Shipping and Delivery

Procedures and charges for shipping lots are printed on the back of the Bid Form. **Bidders are responsible for all prescribed shipping charges and any applicable sales tax or customs duties.**

Price Realized

Prices realized are sent with each invoice. Bidders with e-mail will receive a Bid Results report after the sale. Session results are posted immediately to siegelauctions.com

Live Internet Bidding at Siegel Auctions

BIDDING FROM YOUR COMPUTER LETS YOU BE PART OF THE LIVE AUCTION FROM ANYWHERE IN THE WORLD!

There's **NO SUBSTITUTE** for following the auction in real time.
Live Internet Bidding lets you bid and buy as though you were right there in the saleroom.
And it's easy.

This step-by-step guide will instruct you how to register, set your browser and use the bidding interface.

Start by following the simple steps to become a registered Live Internet Bidder.
Once you've been approved for bidding, you can listen to the auction and place bids with the click of a mouse.

Registering with STAMP AUCTION NETWORK & SIEGEL AUCTION GALLERIES

Live Internet Bidding is managed by Stamp Auction Network (SAN).
To bid, you must be registered and approved by *both* SAN and Siegel.
To decide what you need to do, choose the description below that best fits you.



I've already registered with SAN and have been approved by Siegel for internet bidding.

I'm a Siegel client, but I'm not registered with SAN.

Go to stampauctionnetwork.com/siegel and click on "Register" at the top. Check the box for Robert A. Siegel Auction Galleries (under "R") and submit the form, indicating you are a Siegel client. Once registered at SAN, you're ready for internet bidding.

I've bid through SAN before, but this is the first time I've bid in a Siegel sale.

Then you just need to be approved by Siegel. Go to stampauctionnetwork.com/siegel and click on "Update Registration" at the top. Your SAN account information will be sent to us for approval (you might be asked for other trade references). Once approved by Siegel for bidding, you're ready for internet bidding.

I've never bid with Siegel, nor registered with SAN.

Go to stampauctionnetwork.com/siegel and click on "Register" at the top. Check the box for Robert A. Siegel Auction Galleries (under "R") and submit the form **with your trade references** (please, no family members or credit card companies as references). Once registered at SAN and approved by Siegel for bidding, you're ready for internet bidding.

Live Internet Bidding works by allowing registered bidders to observe and place bids.

Live Internet Bidding will work with any browser on both PC and Mac operating systems.

Before bidding by internet for the first time, we recommend finding a sale in progress and listening to the public broadcast or logging in as a registered bidder. This will help you develop a feel for the sale tempo and bidding interface.

Log on to the auction at stampauctionnetwork.com/siegel.

You can also log on at siegelauctions.com

When you're logged on as a Live Internet Bidder, the bidding interface shows a photo and description of the lot, the current bid (and your bidding status), options for placing competitive bids and buttons with bid increments.

- After you click on a bid amount, the auctioneer is immediately notified of your bid.
- Retracting a bid is usually not acceptable, so please bid carefully.
- If you bid and then decide to stop, the "Pass" button will tell the auctioneer you are no longer bidding.
- You can send messages to the auctioneer (for example, a request for extension).
- You can track prior realizations from the bidding screen.



"System Down" or **"Lost Connection"** events do occasionally happen.

If you have any problems with Live Internet Bidding please call **212-753-6421** for immediate assistance.

Conditions of Sale (please read carefully before bidding)

THE PROPERTY DESCRIBED IN THIS CATALOGUE WILL BE OFFERED AT PUBLIC AUCTION BY ROBERT A. SIEGEL AUCTION GALLERIES, INC. ("GALLERIES") ON BEHALF OF VARIOUS CONSIGNORS AND ITSELF OR AFFILIATED COMPANIES. BY BIDDING ON ANY LOT, WHETHER DIRECTLY OR BY OR THROUGH AN AGENT, IN PERSON, OR BY TELEPHONE, FACSIMILE OR ANY OTHER MEANS, THE BIDDER ACKNOWLEDGES AND AGREES TO ALL OF THE FOLLOWING CONDITIONS OF SALE.

1. The highest bidder acknowledged by the auctioneer shall be the buyer. The term "final bid" means the last bid acknowledged by the auctioneer, which is normally the highest bid offered. **The purchase price payable by the buyer will be the sum of the final bid and a commission of 15% of the final bid ("buyer's premium"), together with any sales tax, use tax or customs duties due on the sale.**
2. The auctioneer has the right to reject any bid, to advance the bidding at his discretion and, in the event of a dispute, to determine the successful bidder, to continue the bidding or to reoffer and resell the lot in dispute. The Galleries' record of the final sale shall be conclusive.
3. All bids are per numbered lot in the catalogue unless otherwise announced by the auctioneer at the time of sale. The right is reserved to group two or more lots, to withdraw any lot or lots from the sale, or to act on behalf of the seller. The Galleries will execute bidding instructions on behalf of clients, but will not be responsible for the failure to execute such bids or for any errors in the execution of such bids.
4. **Lots with numbers followed by the symbol ° are offered subject to a confidential minimum bid ("reserve"), below which the lot will not be sold. The absence of the symbol ° means that the lot is offered without a reserve. If there is no reserve, the auctioneer has sole discretion to establish a minimum opening bid and may refuse an offer of less than half of the published estimate. Any lot that does not reach its reserve or opening bid requested by the auctioneer will be announced as "passed" and excluded from the prices realized lists after the sale. The Galleries may have a direct or indirect ownership interest in any or all lots in the sale resulting from an advance of monies or goods-in-trade or a guarantee of minimum net proceeds made by the Galleries to the seller.**
5. Subject to the exclusions listed in 5(A), the Galleries will accept the return of lots which have been misidentified or which have obvious faults that were present when the lot was in the Galleries' custody, but not so noted in the lot description. **All disputed lots must be received by the Galleries intact with the original packing material within 5 days of delivery to the buyer but no later than 30 days from the sale date.** (5A) **EXCLUSIONS:** The following lots may not be returned for any reason, or may not be returned for the reasons stated: i) lots containing 10 or more items; ii) lots from buyers who registered for the pre-sale exhibition or received lots by postal viewing, thereby having had the opportunity to inspect them before the sale; iii) any lot described with "faults," "defects" or a specific fault may not be returned because of any secondary fault; iv) photographed lots may not be returned because of centering, margins, short/nibbed perforations or other factors shown in the illustrations; v) the color of the item does not match the color reproduction in the sale catalogue or website listing; vi) the description contains inaccurate information about the quantity known or reported; or vii) a certification service grades a stamp lower than the grade stated in the description.
6. Successful bidders, unless they have established credit with the Galleries prior to the sale, must make payment in full before the lots will be delivered. Buyers not known to the Galleries must make payment in full within 3 days from the date of sale. **The Galleries retains the right to demand a cash deposit from anyone prior to bidder registration and/or to demand payment at the time the lot is knocked down to the highest bidder, for any reason whatsoever.** In the event that any buyer refuses or fails to make payment in cash for any lot at the time it is knocked down to him, the auctioneer reserves the right to reoffer the lot immediately for sale to the highest bidder. **Credit cards (Visa, Mastercard and Discover only) can be accepted as payment but will be subject to a 3% Convenience Fee, which will be added to the total of the entire invoice (including hammer price, buyer's premium, shipping and transit insurance charges and any applicable taxes).**

7. If the purchase price has not been paid within the time limit specified above, nor lots taken up within 7 days from the date of sale, the lots will be resold by whatever means deemed appropriate by the Galleries, and any loss incurred from resale will be charged to the defaulting buyer. **Any account more than 30 days in arrears will be subject to a late payment charge of 1½% per month as long as the account remains in arrears. Any expenses incurred in securing payment from delinquent accounts will be charged to the defaulter.** A fee of \$250.00 per check will be charged for each check returned for insufficient funds.

8. All lots are sold as genuine. **Any lot accompanied by a certificate issued by The Philatelic Foundation or by Professional Stamp Experts within 5 years of the sale date is sold "as is" and in accordance with the description on the certificate. Such lots may not be returned for any reason, including but not limited to a contrary certificate of opinion.** Buyers who wish to obtain a certificate for any item that does not have a P.F. or P.S.E. certificate (dated as above) may do so, provided that the following conditions are met: (1) the purchase price must be paid in full, (2) the item must be submitted to an acceptable expertizing committee with a properly executed application form within 21 days of the sale, (3) a copy of the application form must be given to the Galleries, (4) in the event that an adverse opinion is received, the Galleries retain the right to resubmit the item on the buyer's behalf for reconsideration, without time limit or other restrictions, (5) unless written notification to the contrary is received, items submitted for certification will be considered cleared 90 days from the date of sale, and (6) in the event any item is determined to be "not as described", the buyer will be refunded the purchase price and the certification fee up to \$800.00 unless otherwise agreed to in writing.

9. Until paid for in full, all lots remain the property of the Galleries on behalf of the seller.

10. Agents executing bids on behalf of clients will be held responsible for all purchases made on behalf of clients unless otherwise arranged prior to the sale.

11. The buyer assumes all risk for delivery of purchased lots and agrees to pay for prescribed shipping costs. **Buyers who receive lots in the U.S. are obligated to pay whatever sales tax or compensating use tax might be due, and buyers outside the U.S. are responsible for all customs duties.**

12. **The bidder consents that any action or proceeding against it may be commenced and maintained in any court within the State of New York or in the United States District Court for the Southern District of New York, that the courts of the State of New York and United States District Court for the Southern District of New York shall have jurisdiction with respect to the subject matter hereof and the person of the bidder. The bidder agrees not to assert any defense to any action or proceeding initiated by Galleries based upon improper venue or inconvenient forum. The bidder agrees that any action brought by the bidder shall be commenced and maintained only in a Federal Court in the United States District Court for the Southern District of New York or the State Court in the county in which Galleries has its principal place of business in New York. The bidder agrees not to use a public conflict resolution service and not to use any form of social media to publish comments or information about the Galleries and its employees which might harm the Galleries' reputation or business. These Conditions of Sale shall be governed by and construed in accordance with the substantive laws of the State of New York, and shall constitute an agreement that shall be binding on the parties, and their respective heirs, administrators, distributees, successors and assignees.**

SCOTT R. TREPEL, Principal Auctioneer
Auctioneer's License No. 795952
N.Y.C. Department of Consumer Affairs
80 Lafayette Street, New York, N.Y. 10013
Telephone (212) 577-0111

Revised 9/2014

Grades, Abbreviations and Values Used in Descriptions

Grades and Centering

Our descriptions contain detailed information and observations about each item's condition. We have also assigned grades to stamps and covers, which reflect our subjective assessment. For stamps, the margin width, centering and gum are described and graded according to generally-accepted standards (an approximate correlation to numeric grades is provided at right). Although we believe our grades are accurate, they are not always exactly aligned with third-party grading terms or standards for all issues. **A lot may not be returned because a certification service grades a stamp lower than the grade stated in the description. Information from the P.S.E. Stamp Market Quarterly and P.S.E. Population ReportSM is the most current available, but lots may not be returned due to errors or changes in statistics or data.**

Extremely Fine Gem (90-100): The term "Gem" describes condition that is the finest possible for the issue. This term is equivalent to "Superb" used by grading services.







Extremely Fine (80-90): Exceptionally large/wide margins or near perfect centering.

Very Fine (70-85): Normal-size margins for the issue and well-centered with the design a bit closer to one side. "Very Fine and choice" applies to stamps that have desirable traits such as rich color, sharp impression, freshness or clarity of cancel.

Fine (60-70): Smaller than usual margins or noticeably off center. Pre-1890 issues may have the design touched in places.

Very Good (below 60): Attractive appearance, but margins or perforations cut into the design.

Guide to Gum Condition

Gum Categories:	MINT N.H.	ORIGINAL GUM (O.G.)				NO GUM
	 Mint Never Hinged <i>Free from any disturbance</i>	 Lightly Hinged <i>Faint impression of a removed hinge over a small area</i>	 Hinge Mark or Remnant <i>Prominent hinged spot with part or all of the hinge remaining</i>	 Part o.g. <i>Approximately half or more of the gum intact</i>	 Small part o.g. <i>Approximately less than half of the gum intact</i>	 No gum <i>Only if issued with gum</i>
Catalogue Symbol:	★ ★	★	★	★	★	(★)
PRE-1890 ISSUES	<i>Pre-1890 stamps in these categories trade at a premium over Scott value</i>			Scott Value for “O.G.”		Scott “No Gum” Values thru No. 218
1890-1935 ISSUES	Scott “Never Hinged” Values for Nos. 219-771	Scott Value for “O.G.” (Actual value will be affected by the degree of hinging)		Disturbed Original Gum: Gum showing noticeable effects of humidity, climate or hinging over more than half of the gum. The significance of gum disturbance in valuing a stamp in any of the Original Gum categories depends on the degree of disturbance, the rarity and normal gum condition of the issue and other variables affecting quality. For example, stamps issued in tropical climates are expected to have some		
1935 TO DATE	Scott Value for “Unused”					

Covers

Minor nicks, short edge tears, flap tears and slight reduction at one side are normal conditions for 19th century envelopes. Folded letters should be expected to have at least one file fold. Light cleaning of covers and small mends along the edges are accepted forms of conservation. Unusual covers may have a common stamp with a slight crease or tiny tear. **These flaws exist in virtually all 19th century covers and are not always described. They are not grounds for return.**

Catalogue Values and Estimates

Unless otherwise noted, the currently available *Scott Catalogue* values are quoted in dollars with a decimal point. Other catalogues are often used for foreign countries or specialized areas and are referred to by their common name: *Stanley Gibbons* (SG), *Dietz*, *American Air Mail Catalogue* (AAMC), *Michel*, *Zumstein*, *Facit*, etc. Estimates are indicated with an "E." and reflect our conservative valuation in dollars. Reserves will never exceed the low end of the estimate range; they will sometimes exceed Scott Catalogue value for stamps in Extremely Fine condition.

Because of certain pricing inconsistencies in the *Scott Catalogue*—for example, blocks that have no gum, the absence of premiums for Mint N.H. items, etc.—we cannot guarantee the accuracy of values quoted for multiples, specialized items and collection lots. We generally try to be conservative, but buyers may not return a lot because of a discrepancy in catalogue value due to Scott pricing inconsistencies.

Symbols and Abbreviations (see chart above for gum symbols)

⊞	Block	E	Essay	pmk.	Postmark	No.	Scott Catalogue Number
⊞	Cover	P	Proof	cds	Circular Datestamp	hs	Handstamp
FC	Fancy Cancel	TC	Trial Color Proof	var.	Variety	ms.	Manuscript

THE MISSIONARIES OF 1851-1852

The First Postage Stamps of Hawaii

In December 1850 the Hawaiian government created the first official post office and established postage rates on inbound and outbound mail (inter-island mail was carried free until 1859). In June 1851 the first postmaster, Henry M. Whitney, was authorized by the privy council to issue stamps to prepay the new rates. Whitney used the printing press at the office of the government newspaper, *The Polynesian*, to print the first issue, known to philatelists as the Missionaries.

The Missionaries were issued in three denominations that prepaid the Second Treaty Period rates within Hawaii and to the United States: 2¢ for newspapers to the U.S.; 5¢ for the Hawaiian postage; and 13¢ for the rate to the U.S. East Coast (5¢ Hawaiian, 2¢ ship fee, and 6¢ transcontinental U.S. postage).

The dual nature of the 13¢ stamps—comprising the postage of two different countries—is most remarkable and makes these stamps, in part, United States postage stamps. The second version of the 13¢ Missionary clarifies this point with the legend at top that reads “H.I. & U.S. Postage.” Whitney was compelled to make this change in April 1852 after patrons complained for months that the first 13¢ “Hawaiian Postage” stamps were ambiguous to them and to post offices in the United States. The earliest recorded use of the “H.I. & U.S. Postage” Missionary is April 23, 1852.

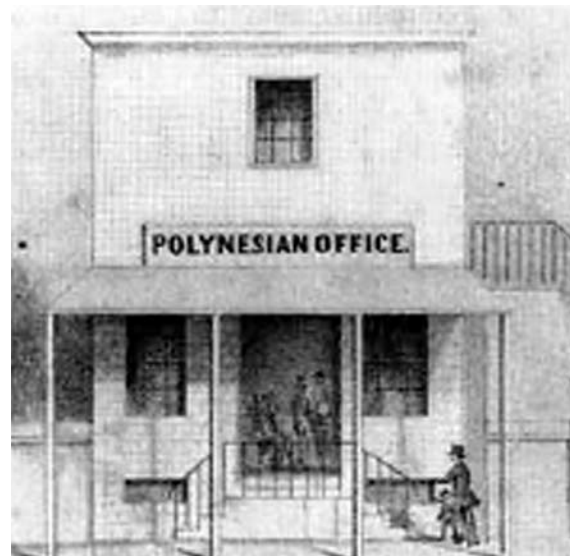
The Missionary stamps were issued on October 1, 1851, and remained in use as Hawaii’s only postage stamps until the Kamehameha III issue was placed on sale in May 1853. The Missionaries continued to be used in 1853 and 1854, and examples have been found dated as late as March 1856, when the 5¢ Kamehameha III stamps first began to run out.

The earliest dated Missionary is a fragment adhering to a December 30, 1851, folded letter datelined at Kahului and addressed to Connecticut. At this date it appears that the cancellers ordered by Whitney in May 1851 had still not arrived; this December 1851 cover has no Hawaiian markings other than a pen cancel tying the Missionary, and all known circular datestamps are dated from and after February 10, 1852.

The Missionaries were printed on a small hand-operated press. The designs were created by assembling type and ornaments into two nearly-identical side-by-side settings. Sheets of an unknown number of stamps were made by making multiple impressions from these dual settings. The lefthand stamp in the setting (as printed) is known as Type I, and the righthand stamp is Type II. On Type I the “P” of “Postage” in the top label is slightly indented; on Type II, the “P” is flush left with the “H” of “Hawaiian.” There are other small differences between the two types, but the “H” over “P” alignment is most obvious.

THE POLYNESIAN.
SATURDAY, OCTOBER 4, 1851.

Postage Stamps of the Denomination of 2, 5, and thirteen cents have been prepared and can now be obtained at the Post-office. As all letters for foreign ports are required to be prepaid, they will be found convenient.



Notice announcing the first postage stamps in Hawaii
(*The Polynesian*, October 4, 1851) and
Paul Emmert drawing of *The Polynesian* office where the
Missionary stamps were printed
Courtesy of the Bishop Museum

SETTINGS OF THE MISSIONARY STAMPS

TYPE I "P" INDENTED

TYPE II "H" & "P" ALIGNED



FIRST SETTING—5¢

Small "n"



SECOND SETTING—2¢

Normal "n"



THIRD SETTING—13¢ "HAWAIIAN POSTAGE"



Missing period

FOURTH SETTING—13¢ "H.I. & U.S. POSTAGE"

The relative positions of the two types was a mystery until the Dawson find in 1904, which included the cover bearing a strip of three 13¢ "Hawaiian Postage" Missionaries, proving beyond doubt that Type I ("P" indented) was on the left and Type II ("H" and "P" aligned) was on the right, as printed. The Tapling collection at the British Library still shows the two types reversed, conforming to the pre-1905 body of knowledge. At left we illustrate both types in their correct positions for each of the four settings of Missionaries. Although the 2¢ is classified by philatelists as Hawaii Number 1, the first setting was probably the 5¢ stamp. The small "n" of "Cents" (a font of smaller dimensions) appears in Type II of the 5¢ setting, but not in the 2¢ or 13¢ settings. It is the consensus among philatelists that this flaw was corrected when the type was changed for the 2¢ and 13¢ printings.

Another flaw unique to one setting is the missing period after "U" of "U.S." in Type II of Scott 4, the fourth setting. It is interesting that the consistent variation between Types I and II—the indentation of the letter "P" of "Postage" in Type I—remained throughout all four settings, even after the complete revision of the top label in the fourth setting (Scott 4).

The ornaments surrounding the numeral value come from a stock font sold by several 19th century type foundries. Remarkably, these ornaments show little change between settings.

The ink used to print the Missionaries is a consistent shade of cold metallic blue. The ink and paper are very similar to those used to print the first Carrier Department stamps of Boston, Massachusetts, in 1849 (Scott 3LB1). The paper is called pelure and has a very thin tissue-like texture. Without gum it is soft and flexible, but prone to tears. With gum it can become brittle. For these reasons 90% of all Missionaries have faults to some degree, and more than 60% have serious defects or repairs. Examples of Missionaries have been found as fragments or with pieces missing before they were cancelled in Honolulu, proving that the peculiar paper was difficult to handle even at the time of issue. One wonders if the stout card stock used for the 1853 Kamehameha III issue was specifically requested by Postmaster Whitney as a reaction to his experience with the Missionaries.



1001

AFTERNOON SESSION (LOTS 1001-1149)
WEDNESDAY, OCTOBER 22, 2014, AT 2:30 P.M.

HAWAIIAN STAMPS AND COVERS

1851 5-CENT MISSIONARY

- 1001 **1851, 5c Blue (2).** Type II—the righthand position in the setting of two with the distinctive small “n” in “Cents” (found only on the 5c Type II)—full margins to barely in along frameline at right, 7-bar grid cancel struck twice in criss-cross fashion, trace of red cancel, light horizontal crease and tiny thin at top
- A FINE AND CHOICE APPEARING EXAMPLE OF THE HAWAIIAN 5-CENT MISSIONARY. CONSIDERING THE TYPICAL CONDITION OF THE FRAGILE MISSIONARY STAMPS, THIS IS ESSENTIALLY A SOUND USED EXAMPLE OF THIS MAJOR PHILATELIC RARITY.
- Our census of Hawaii No. 2, published in Part 1 of the Honolulu Advertiser catalogue, is available at our website at <http://www.siegelauctions.com/dynamic/census/HI2/HI2.pdf>. The example offered here, neatly cancelled with no major repairs, is a great condition rarity. Our census records only eleven 5c Missionaries off cover that are sound or have only minor faults, such as this example
- Siegel Census No. 2-II-CAN-59 (as sound). Ex Atherton. With 1995 P.F. certificate.....
..... 35,000.00



1002

1851 5-CENT MISSIONARY

1002 **1851, 5c Blue (2).** Type II—the righthand position in the setting of two with the distinctive small “n” in “Cents” (found only on the 5c Type II)—bold strike of 7-bar grid cancel, expertly repaired along left side adding most of left frameline and part of the cancel, light horizontal creases

FINE APPEARANCE. AN ATTRACTIVE EXAMPLE OF THE RARE 5-CENT HAWAIIAN MISSIONARY.

Our census of Hawaii No. 2, published in Part 1 of the Honolulu Advertiser catalogue, is available at our website at <http://www.siegelauctions.com/dynamic/census/HI2/HI2.pdf>.

Siegel Census No. 2-II-CAN-52. Ex Isleham. With 2001 P.F. certificate 35,000.00



1003



Detail

1851 5-CENT MISSIONARY

THE GILMAN FORWARDER COVER

One of Two Hawaiian Missionary Covers with Forwarder Markings

Lot 1003°

1851, 5c Blue (2). Type I—the lefthand position in the setting of two—full margins, deep shade and clear impression, corner crease and small tears, but free of any repairs or serious faults, tied by bold 7-bar grid cancel, red “Honolulu * Hawaiian-Islands * Oct. 4” (1852) circular datestamp on bluish folded cover to “Mr. John Camwells[?], Care Mr. Leml. Gooding, Portland Me., U.S. America”, Lahaina forwarder's red handstamp “**FORWARDED Via S. FRANCISCO/By G. D. GILMAN/LAHAINA.**” in three lines within truncated frame, surrounded by large outer frame of handstamping device, black “San Francisco Cal. 1 Nov.” circular datestamp, “12” due handstamp (10c U.S. collect rate plus 2c ship letter fee), some ink smears on cover have been lightened, part of side panel removed

ONE OF THE FINEST OF THE EIGHT AVAILABLE COVERS BEARING A SINGLE 5-CENT HAWAIIAN MISSIONARY STAMP AND ONE OF TWO RECORDED MISSIONARY COVERS WITH A FORWARDER'S HANDSTAMPED MARKING.

Ten 5c Missionary covers are recorded in our census and the Gregory census. Included in this total are the Dawson 2c/5c cover and the 5c cover acquired by the Smithsonian National Postal Museum in the Honolulu Advertiser sale, leaving eight 5c covers for collectors. Of the 28 recorded intact Missionary covers, only two were handstamped by forwarders: the Porter & Ogden cover (ex Honolulu Advertiser, offered in the 2013 Rarities of the World sale) and the G. D. Gilman cover offered here. This is the only recorded example of this “G. D. Gilman” handstamp.

Gorham D. Gilman (1822-1909) was a prominent Hawaiian businessman who returned to the U.S. in 1862 and served as Hawaiian Consul in Boston. After applying the forwarder marking, Gilman mailed this cover at Lahaina. It was datestamped at Honolulu on October 4 (1852), the same day as the Dawson cover and a 13c Missionary cover (3-I-COV-142). All of the October 4 mail was probably carried from Honolulu to San Francisco on the *Mary A. Jones*, which cleared customs on October 4, 1852 (*The Friend*, October 8), and sailed the following day. The ship arrived in San Francisco on October 26, after a reported journey of 21 days (*Daily Alta California*, October 27).

According to the *Daily Alta California* (October 27, 1852), the PMSC *Northerner* and *California* were brought down from Benicia in “newly painted” condition on October 26 and 27, respectively. The *Northerner* was scheduled to depart on Saturday, October 30, and the *California* on Monday, November 1. This and the 13c Missionary cover with the October 4 Honolulu datestamp have San Francisco November 1 datestamps, whereas the Dawson cover with the U.S. 3c 1851 pair has an October 27 San Francisco datestamp. The two Missionary covers without U.S. stamps affixed required an extra step to account for U.S. postage and the ship letter fee. After making the necessary accounting entries, they were datestamped and bagged for the Panama departure. The November 1 date was inserted into the San Francisco datestamp to correspond with the sailing of the *California*, but the actual application of the marking could have occurred days earlier.

The *California* arrived on November 16. All of the mail was carried across the isthmus to Aspinwall, and from there it left on the U.S. Mail Steamship Company's *Georgia*, which departed Aspinwall on November 18 and arrived in New York on November 28, after stopping at Kingston, Jamaica. According to the *Weekly Herald* report, the *Georgia* arrived in New York with the largest load of California gold ever transported. The *Georgia* was under the command of the famous American naval officer, Admiral David Dixon Porter, who at the time held the rank of lieutenant and worked as a civilian for the U.S. Mail Steamship Company.

Ex George H. Worthington (pencil code “3/15/93 Scott Auction UHN SS”), Alfred F. Lichtenstein, Frank Godden, Emmerson C. Krug, Adm. Frederic R. Harris, Charles F. Meroni, David Golden, Guido Craveri, Tito Giamporcaro, “Lake Shore” and Walske. Red “Kohler” handstamp at bottom right.

Siegel Census No. 2-I-COV-70. Gregory Census No. 5c-3 (Figure 19-10). With 1994 P.F. certificate.....
..... E. 100,000-150,000



1004

1851 13-CENT “HAWAIIAN POSTAGE” MISSIONARY

- 1004 ★ **1851, 13c Blue, “Hawaiian Postage” (3).** Type I—the lefthand position in the setting of two—unused, a beautiful stamp with large to huge margins, bright shade on fresh paper, an internal tear extends vertically between “a” and “w” of “Hawaiian”, this has been sealed but the stamp is free of any paper addition or painting in

A VERY FINE UNUSED EXAMPLE OF THE 13-CENT “HAWAIIAN POSTAGE” MISSIONARY.

There are seven unused examples of the 13c “Hawaiian Postage” Missionary recorded in our census, which is available at <http://siegelauctions.com/dynamic/census/HI3/HI3.pdf>, including four that have repairs. Although we count this stamp among the repaired examples, the sealed tear is very minor and does not involve any paper restoration or painting in of the design — the other three repaired copies have paper addition and repainting.

Ex Bowers, Hind, Lichtenstein, Ostheimer III and Honolulu Advertiser. Siegel Census No. 3-I-UNC-78. With 1967 and 1995 P.F. certificates (former no longer accompanies). Scott value for an unused example with minor repair..... 37,000.00



1005

1851 13-CENT “HAWAIIAN POSTAGE” MISSIONARY

- 1005 **1851, 13c Blue, “Hawaiian Postage” (3).** Type II—the righthand position in the setting of two—rich color nicely complemented by **red crayon cross-hatch lines cancel**, repaired at top and bottom adding portions of the margins and parts of design painted in, other defects
- VERY FINE APPEARANCE. A DESIRABLE EXAMPLE OF THE 1851 13-CENT “HAWAIIAN POSTAGE” MISSIONARY STAMP WITH A RED CANCELLATION.
- Our census of Hawaii No. 3, published in Part I of the Honolulu Advertiser catalogue, is available at our website at <http://www.siegelauctions.com/dynamic/census/HI3/HI3.pdf>.
- Siegel Census No. 3-II-CAN-93. Ex Wilson. With 1997 P.F. certificate..... 28,000.00



1006

1852 13-CENT “H.I. & U.S. POSTAGE” MISSIONARY

- 1006 **1852, 13c Blue, “H.I. & U.S. Postage” (4).** Type II—the righthand position in the setting of two—indistinct cancel leaves entire design clearly visible (certificate states cancelled in red), repaired at top adding portions of the inner and outer framelines, repaired above “13”, certificate states discolored from oxidation but this is probably traces of staining from mucilage used to affix the stamp
- FINE APPEARANCE. AN ATTRACTIVE EXAMPLE OF THE 1852 13-CENT “H.I. & U.S. POSTAGE” MISSIONARY.
- Our census of Hawaii No. 4, published in Part 1 of the Honolulu Advertiser catalogue and available at our website at <http://www.siegelauctions.com/dynamic/census/HI4/HI4.pdf>, contains 35 used stamps off cover or on piece plus nine covers.
- Siegel Census No. 4-II-CAN-155. Ex Isleham. With 2001 P.F. certificate. 35,000.00

1853 KAMEHAMEHA III ISSUE



1007

- 1007 ★ **1853, 5c Blue, Thick White Wove (5).** Positions 19-20, horizontal pair with **bottom right corner sheet margins**, original gum, full to large margins all around, vertical creases (one in left stamp, other in right sheet margin), light staining, scuffed at lower right, mostly in margin but just touching stamp at corner

VERY FINE APPEARANCE. MULTIPLES OF THE 5-CENT FIRST PRINTING ARE EXTREMELY RARE, AND NONE IS LARGER THAN A PAIR.

Ex Ostheimer and Honolulu Advertiser. With 1954 P.F. certificate 4,000.00



1009



1010



1011



1012



1013

- 1008 No Lot
- 1009 **1853, 5c Blue, Thick White Wove (5).** Position 20, full margins to clear, rich color, neat strike of red Honolulu Jan. 6 circular datestamp, small thin spot at center, Fine appearance, with 2010 Sismondo certificate 1,900.00
- 1010 ★ **1853, 13c Dark Red, Thick White Wove (6).** Original gum, large and balanced margins, deep rich color, Very Fine and choice..... 850.00
- 1011 ★ **1853, 13c Dark Red, Thick White Wove (6).** Original gum, h.r., large margins to ample, radiant color, light natural vertical gum crease, Very Fine and choice, blue backstamp, with 2010 Weiss certificate..... 850.00
- 1012 (★) **1853, 13c Dark Red, Thick White Wove (6).** Traces of original gum, full margins, radiant color, Very Fine 850.00
- 1013 (★) **1853, 13c Dark Red, Thick White Wove (6).** Three items, unused (no gum), two are decent counterfeits, few faults, Fine-Very Fine E. 300-400

1857 5-CENT ON 13-CENT PROVISIONAL ISSUE

The 5c provisional surcharge was necessary due to a shortage of 5c stamps just after the transition from Postmaster Whitney to Jackson. Most were made by Jackson's clerk, Alvah Clark, around the start of 1857. New supplies of the 5c stamp (Scott No. 8) were received at the end of June 1857.



1014

1014 (★) **1857, 5c on 13c Dark Red (7).** Type I (Clark) numeral, unused (no gum), large margins to clear, deep rich color and detailed impression on bright paper

VERY FINE AND CHOICE. A RARE SOUND UNUSED AND FOUR-MARGIN EXAMPLE OF THE 1857 5-CENT ON 13-CENT PROVISIONAL SURCHARGE.

With 2006 P.F. certificate..... 7,000.00



1015

1015 (★) **1857, 5c on 13c Dark Red (7).** Type I (Clark) numeral, unused (no gum), large margins to clear, deep rich color, small toned spot at left

VERY FINE APPEARING UNUSED EXAMPLE OF THE 1857 5-CENT ON 13-CENT PROVISIONAL SURCHARGE.

With 2003 P.F. certificate..... 7,000.00



1016

- 1016 (★) **1857, 5c on 13c Dark Red (7).** Type I (Clark) numeral, unused (no gum), full margins to clear except where small nick at top center, rich color
FINE APPEARING UNUSED EXAMPLE OF THE 1857 5-CENT ON 13-CENT PROVISIONAL SURCHARGE.
With 1980 H.P.S. certificate 7,000.00



1017

- 1017 **1857, 5c on 13c Dark Red (7).** Type II (Jackson) numeral, large margins to clear, intense shade, neat strike of circular datestamp, few thin specks and corner crease at bottom left, light soiling
FINE APPEARANCE. A RARE USED EXAMPLE OF THE 1857 5-CENT ON 13-CENT PROVISIONAL SURCHARGE APPLIED BY POSTMASTER JACKSON.
The Type II numeral with short flag, applied by postmaster Jackson, is much rarer than the Type I numeral with long flag applied by his clerk, Alvah Clark. Gregory reports ten examples (none on cover).
With 1990 A.P.S. certificate 10,000.00

1857 5-CENT BLUE ON THIN WHITE WOVE



1018

- 1018 ☒ **1857, 5c Blue, Thin White Wove (8).** Large margins to full, bright shade, used with **United States 12c Black (17)**, margins to in due to insect damage, both tied by red "Honolulu U.S. Postage Paid Oct. 3" (1859) circular datestamp on cover to Mrs. Maria P. Chamberlain in Parkesburgh Penn., stamps also tied by manuscript squiggles and "San Francisco Cal. Oct. 24, 1859" circular datestamp, bold strike of "OVERLAND" straightline handstamp (with small "R"), 5c light crease at bottom right in margin only, stamps with some toning, cover with some wear including small tear at bottom

FINE APPEARANCE. A RARE MIXED-FRANKING COVER WITH THE 1857 5-CENT KAMEHAMEHA III ISSUE AND UNITED STATES 12-CENT 1851 ISSUE. ONLY A FEW ARE KNOWN WITH THE "OVERLAND" HANDSTAMP, WHICH WAS APPLIED IN SAN FRANCISCO TO INDICATE THE TRANSCONTINENTAL ROUTE.

The recipient, Mrs. Maria Chamberlain (nee Maria Patton) left Boston on November 3, 1827, and arrived in Honolulu on March 30, 1828. She was released from the mission in 1855 and visited the U.S. before returning to Hawaii.

This cover was carried on the bark *Yankee*, which departed Honolulu on Oct. 3, 1859, and arrived in San Francisco on Oct. 21. It arrived one day too late for the regular twice-monthly sailing for Panama and was marked with the "OVERLAND" handstamp to indicate its late arrival and alternate routing on the next Butterfield stagecoach. The San Francisco Oct. 24 postmark date corresponds with the regular Monday stagecoach departure. The Perlman-Frajola census records 14 covers from Hawaii with the "OVERLAND" handstamp, including six with U.S.-Hawaii mixed frankings (all 5c and 12c 1851).

With 1992 P.F. certificate E. 4,000-5,000



1019



1020



1021



1022



1024EX



1023

- 1019 (★) **1857, 5c Blue, Thin White Wove (8).** Unused (no gum), large even margins, rich color, thin spot, Extremely Fine appearance..... 700.00
- 1020 ★ **1861, 5c Blue, Thin Bluish Wove (9).** Original gum, small h.r., large even margins, deep rich color, fresh and Extremely Fine, with 2010 P.F. certificate..... 375.00
- 1021 (★) **1861, 5c Blue, Thin Bluish Wove (9).** Unused (no gum), full margins, rich color on nicely blued paper, Very Fine and choice, with 1982 P.F. certificate..... 375.00
- 1022 ★田 **1868, 5c Blue, Re-Issue (10).** Complete sheet of 20, half Mint N.H., half lightly hinged, rich color, four with small surface scuffs, otherwise Very Fine, with 2010 P.F. certificate, Scott Retail as four blocks of four and singles with no premium for Mint N.H. stamps 630.00
- 1023 ★田 **1868, 5c Blue, Re-Issue (10).** Complete sheet of 20 with sheet margin all around, original gum, few h.r., few flaws incl. creases and toned spots, otherwise Very Fine, Scott Retail as four blocks of four and four singles 630.00
- 1024 ★田 **1889, 5c Blue, Reprint (10R).** Three blocks of four, incl. 10R, 10RS and 10Sa with one stamp line thru "Honolulu", original gum, few small faults, mostly on "Specimen", Very Fine.....(Photo Ex) 705.00



- 1025 ★田 1868, 13c Dull Rose, Re-Issue, Black "Specimen" Ovpt. (11Sa). Complete sheet of 20 with sheet margin all around, original gum, lightly hinged, some thinning and creasing mostly in margin, Very Fine, Scott Retail as four blocks of four and four singles . 600.00
- 1026 S 1868, 13c Dull Rose, Re-Issue, "Specimen" and "Reprint" Ovpts. (11Sa, 11RS). Three of first and two of second, mostly large margins incl. two with sheet margin, few faults, Very Fine group(Photo Ex) 525.00
- 1027 S田 1868, 13c Dull Rose, Re-Issue, Black "Specimen" Ovpt. Ty. B (11Sb). Top left corner margin block of four, original gum, tiny thin speck in one, Very Fine appearance, ex Honolulu Advertiser..... 1,250.00
- 1028 S 1889, 13c Orange Red, Black "Reprint" Ovpt. (11RS). Left sheet margin pair, original gum, crease in selvage, Extremely Fine, Scott Retail as singles..... 450.00

1859-65 NUMERAL ISSUES



1029

- 1029 (★) **1859, 1c Light Blue, Bluish White (12).** Plate 2-A, Type V (Westerberg Position 5), unused (no gum), clear margins all around, thin spot at top, tiny thin speck at right, light vertical crease

VERY FINE APPEARANCE. A RARE UNUSED EXAMPLE OF THE 1859 ONE-CENT BLUE HAWAIIAN NUMERAL ISSUE.

The tiny flaws do not detract from the beautiful appearance of this scarce unused 1c Light Blue Numeral stamp, and they will certainly make it more affordable for most collectors.

With 2013 P.F. certificate..... 17,500.00



1030

- 1030 **1859, 2c Dark Blue, Bluish White (13).** Plate 3-B, Type X (Westerberg Position 10), large margins all around, dark shade, neat strike of red "Honolulu Hawaiian-Islands Sep. 3" circular datestamp, small thin and tiny tear at top right (mostly in margin), tiny pinhole
EXTREMELY FINE APPEARING EXAMPLE OF THE 1859 2-CENT BLUE HAWAIIAN NUMERAL ISSUE.

Examples of the 2c Blue Numeral with handstamped cancellations are considerably more desirable than pen-cancelled copies.

Ex Caspary, Ishikawa and Golden. With 2011 H.P.S. certificate 5,000.00

- 1031 (★) **1862, 2c Black, Greenish Blue (14).** Plate 3-Gx, Type V (Westerberg Position 5), unused (no gum), full even margins, small corner crease at top right, horizontal crease at left center, tiny thin at top

VERY FINE APPEARING UNUSED EXAMPLE OF THE 1862 2-CENT NUMERAL ON GREENISH BLUE PAPER. A SUPERB STAMP IN EVERY RESPECT.

Our Honolulu Advertiser sale contained only three unused examples of this stamp, none with original gum, and only one was sound. The Pietsch sale contained two sound copies, both without gum. We have only offered two with original gum since keeping computerized records.

With 2006 P.F. certificate..... 8,000.00



1031



1032

- 1032 **1859-63, 2c Black, Grayish (16).** Plate 3-E, **reconstruction of nine of the ten positions**, lacking only Position 9, five used incl. one with red Honolulu circular datestamp and two with "POSTAGE PAID" oval handstamp, Position 8 manuscript cancel, Position 1 cancel removed, others unused (no gum), mixed condition but all are easily plateable, Fine-Very Fine appearance, a scarce reconstruction of nine of the ten positions, each with 2001-2011 H.P.S. certificate confirming plating and condition..... 8,250.00

- 1033 No Lot.



1034

- 1034 (★) **1863, 2c Black, Grayish (16).** Plate 3-G, Type I (Westerberg Position 3), unused (no gum), margins to clear, faint horizontal crease, Fine appearance, with 1995 H.P.S. certificate 1,000.00



1035

- 1035 (★) **1863, 2c Black, Blue Gray (18).** Plate 5-A, Type III (Westerberg Position 3), unused (no gum), full to large margins all around, detailed impression

VERY FINE AND CHOICE. A RARE SOUND UNUSED EXAMPLE OF THE 1863 2-CENT BLACK FIFTH-SETTING NUMERAL ISSUE ON BLuish GRAY PAPER.

Small backstamp. With 2003 P.F. certificate.. 3,500.00

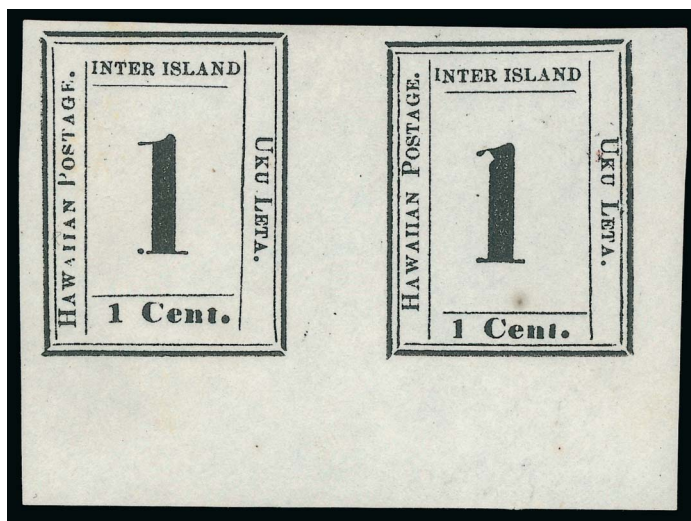
- 1036 (★) **1863, 2c Black, Blue Gray (18).** Plate 5-A, Type IV (Westerberg Position 4), unused (no gum), showing missing toe of "2", clear margins to just touched, fresh and Fine, Scott Retail with no premium for this striking variety..... 3,500.00



1036



1037



1038

- 1037 (★) **1864, 1c Black (19).** Plate 6-A, Type IX (Westerberg Position 9), unused (no gum), large margins, Extremely Fine 550.00
- 1038 (★) **1864, 1c Black (19).** Plate 6-A, Type IX-X (Westerberg Positions 9-10), horizontal pair, unused (no gum), huge margins incl. **bottom sheet margin**, right stamp trivial small toned spot, still Extremely Fine, with 2011 PSAG certificate..... 1,150.00

- 1039 (★) **1864, 2c Black (20).** Plate 5-C, **complete reconstruction of all ten positions**, incl. two of Position 2, unused (no gum), eight with four margins incl. few very ample, Position 4 with **broken toe of “2”**, some faults to be expected but overall appear fresh and Fine-Very Fine, a rare assemblage in better condition than normally seen, each with 2009-2012 H.P.S. certificate confirming plating and condition 8,525.00



1040



1040A



1041



1042



1039

- 1040 (★) **1864, 2c Black (20).** Plate 5-G, Type VI (Westerberg Position 6), unused (no gum), full margins, intense shade, Very Fine, with 2007 P.F. certificate..... 775.00
- 1040A (★) **1864, 2c Black, Raised “I” in “Inter” (20).** Plate 5-C, Ty. VII (Westerberg Position 7), unused (no gum), ample margins, faint thin spot at left, Very Fine appearance, scarce variety 725.00
- 1041 (★) **1864, 2c Black (20).** Plate 5-C, Type IX (Westerberg Position 9), unused (no gum), large margins to full at right, bright shade, Very Fine, with 2006 P.F. certificate..... 775.00
- 1042 (★) **1864, 2c Black (20).** Plate 5-C, Type IV (Westerberg Position 4), showing clear **broken toe of “2”**, unused (no gum), clear margins, small thin spots at top, Fine appearing example of this striking variety, Scott Retail with no premium for the variety 775.00
- 1043 ★ **1865, 5c Blue on Blue, “Hawaiian Postage” (21).** Plate 9-A, Type VII (Westerberg Position 3), original gum, large margins to clear, tiny thin speck at top left, Very Fine appearance..... 900.00
- 1044 **1865, 5c Blue on Blue, “Hawaiian Postage” (21).** Plate 9-A, Type III (Westerberg Position 7), large margins to full at lower left, bold strike of square grid cancel, Very Fine and choice, with 2008 P.F. certificate..... 700.00



1043



1044



1045

1045 ★田 1865, 5c Blue on Blue, "Interisland" (22). Plate 12-A, Ty. I-X, (Westerberg Positions 1-10), **complete pane of ten**, original gum, h.r., large margins to touched at bottom frame-line, light horizontal creases

VERY FINE APPEARANCE. A SCARCE ORIGINAL-GUM PANE OF THE 1865 5-CENT "INTERISLAND" NUMERAL ISSUE.

With 1989 P.F. certificate. Scott Retail as two blocks of four and two singles..... 6,350.00

- 1046 ★田 1865, 5c Blue on Blue, "Interisland" (22). Plate 12-A, Types VIII-III/V-I (Westerberg Positions 7-10), original gum, h.r., large margins to just in at top right, vertical crease partly between rows affects left stamps, Fine-Very Fine and attractive appearing multiple..... 2,600.00



1046



1047

- 1047 1865, 5c Blue on Blue, "Interisland" (22). Plate 12-A, complete reconstruction of all ten positions, Position 5 with target cancel, others unused incl. two with original gum, all have four margins incl. some large, few faults to be expected but five are sound, overall a very fresh and Fine-Very Fine assemblage and a scarce complete reconstruction, each with 2010-2013 H.P.S. certificate confirming plating and condition..... 6,075.00



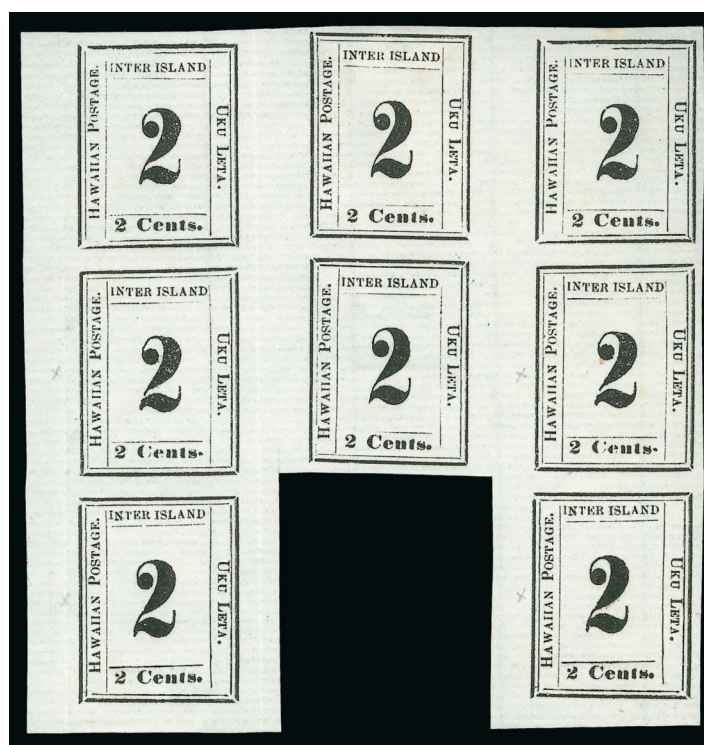
1048

- 1048 (★) 1865, 5c Blue on Blue, "Interisland" (22). Plate 12-A, Type I (Westerberg Position 10), unused (no gum), large margins to full, fresh and Very Fine, with 2001 P.F. certificate..... 575.00



1049

1049 (★) 1864, 2c Black, Laid (24). Plate 7-A, Types I-X (Westerberg Positions 1-10), **complete pane of ten**, unused (no gum), large margins, unusual extraneous ink at top in gutter and on top right stamp, faint horizontal creases are barely noticeable, Very Fine and choice complete pane, Scott Retail as two blocks of four and two singles 3,350.00



1050

1050 (★) 1864, 2c Black, Laid (24). Plate 7-A, Types VI-V-VI/VIII-VII-VIII/X-X (Westerberg Positions 6-5-6/8-7-8/10-10), **interpane block of eight** containing three stamps at left from one pane and five stamps at right from another pane, unused (no gum), large margins, vertical crease between panes and in left margin, center stamp small scissors-cuts in margin only

VERY FINE. AN IMPRESSIVE 1864 2-CENT NUMERAL MULTIPLE CONTAINING THREE STAMPS FROM ONE PANE AND FIVE FROM ANOTHER.

Ex Taylor and Golden. With 2011 P.F. certificate. Scott Retail as block of four and four singles 2,650.00



1051

- 1051 (★) **1864, 2c Black, Laid (24).** Plate 7-A, Types III-IV (Westerberg Positions 3-4), unused (no gum), large margins, Very Fine and choice, with 1988 H.P.S. certificate, Scott Retail as singles 650.00

- 1052 (★) **1864, 2c Black, Laid (24).** Complete reconstruction of Plate 7-A, unused (no gum) except two with traces of original gum, all have four margins except one just barely touched, few flaws incl. Position 10 extraneous blue manuscript, Fine-Very Fine appearance, desirable plate reconstruction, ex Golden 3,250.00



1052



1053



1054



1055

- 1053 (★) **1864, 2c Black, Laid (24).** Plate 7-A, Type IV (Westerberg Position 4), unused (no gum), large margins, dark shade, Extremely Fine, small red backstamp, with 2002 P.F. certificate..... 325.00
- 1054 (★) **1864, 2c Black, Laid (24).** Plate 7-A, Type I (Westerberg Position 1), unused (no gum), large margins, Extremely Fine, with 2011 PSAG certificate..... 325.00
- 1055 (★) **1864, 2c Black, Laid (24).** Plate 7-A, Type III (Westerberg Position 3), unused (no gum), large to huge margins, Extremely Fine, with 2011 PSAG certificate 325.00



1056

- 1056 (★) **1864, 2c Black, Laid, “NTER” (24a).** Plate 7-A, Type III (Westerberg Position 3), unused (no gum), full margins

VERY FINE UNUSED EXAMPLE OF THE 2-CENT NUMERAL ON LAID PAPER WITH THE RARE “NTER” VARIETY FROM PLATE 7-A.

With 2011 P.F. certificate 3,500.00



1057



1059



1060

- 1057 (★) **1864, 2c Black, Laid, “S” Omitted (24b).** Plate 7-A, Type IX (Westerberg Position 9), unused (no gum), large margins, Very Fine, signed twice in pencil 1,500.00

- 1058 (★) **1865, 1c Dark Blue (25).** Complete reconstruction of Plate 11-A, unused (no gum), large margins to just in on a few but all are easily plateable, few flaws to be expected, Fine-Very Fine, ex Golden 3,500.00

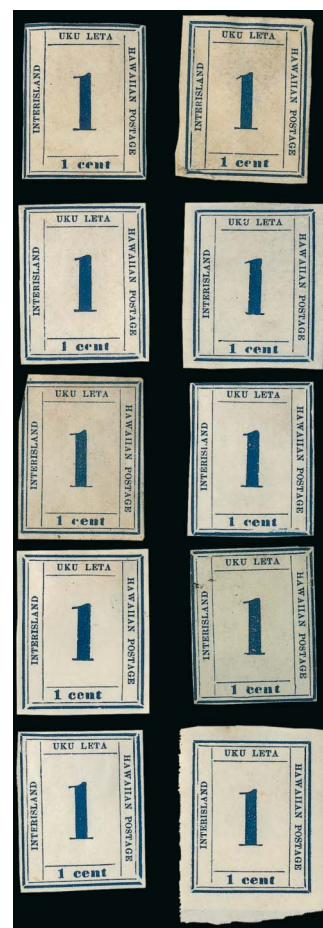
- 1059 (★) **1865, 1c Dark Blue (25).** Plate 11-A, Type I (Westerberg Position 9), unused (no gum), large even margins, fresh and Extremely Fine, with 2011 PSAG certificate 350.00

- 1060 (★) **1865, 1c Dark Blue (25).** Plate 11-A, Type II (Westerberg Position 10), unused (no gum), full even margins, Very Fine and choice, with 2000 A.P.S. certificate 350.00

- 1061 (★) **1865, 2c Dark Blue (26).** Reconstruction of six of the ten positions on Plate 10-A, lacking Positions 2, 5, 9 and 10, unused (no gum), large margins to just touched on one, few small flaws, Fine-Very Fine and attractive group, ex Golden 2,100.00



1061



1058



1062



1063



1064

- 1062 (★) **1865, 2c Dark Blue (26).** Plate 10-A, Type V (Westerberg Position 5), unused (no gum), large margins, bright color, unusual "production smear at left" (as described on accompanying certificate) which is nothing more than some excess printer's ink, Extremely Fine, with 2011 PSAG certificate 350.00
- 1063 (★) **1865, 2c Dark Blue (26).** Plate 10-A, Type III (Westerberg Position 7), unused (no gum), large margins, rich color, tiny thin spot in top margin, Very Fine appearance..... 350.00
- 1064 **1c Numeral, Sperati Imitation (15 var).** 49 x 65mm, signed by Sperati, fresh and Very Fine, purple "Sperati Reproduction" on back and numbered "138" E. 300-400

1860 ESSAY



1065



1066



1067EX



1068EX

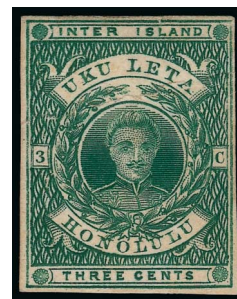
- 1065 E **1860, 2c Green, Die Essay on Thin Pale Buff Card.** 31 x 37mm, deep rich color, Very Fine, scarce with such wide margins E. 400-500
- 1066 E **1860, 2c Blue, Die Essay on Thin Pale Buff Card.** 36 x 40mm, crisp shade, Very Fine, scarce with such wide margins, small purple backstamp E. 400-500
- 1067 E **1860, 1c, 2c Die Essays on Thin Pale Buff Card.** Three, incl. 1c in Orange and 2c in Green and Dull Purple, margins approximately 26 x 31mm, fresh and Very Fine..... (Photo Ex) E. 500-750
- 1068 E **1860, 1c-3c Orange, Die Essays on Thin Pale Buff Card.** Three, 1c and 3c others close, small faults, Fine appearance, very scarce set of the three denominations in the same color, ex Honolulu Advertiser.....(Photo Ex) E. 400-500



1069EX



1070EX



1071EX

- 1069 E **1860, 1c-3c Dull Purple, Die Essays on Thin Pale Buff Card.** First two cut close to in, 3c 36 x 39mm, rich colors, 1c thinned, 2c scuff, otherwise Fine-Very Fine set of three denominations in Dull Purple, 3c with purple backstamp.....(Photo Ex) E. 500-750
- 1070 E **1860, 1c-3c Die Essays on Thin Pale Buff Card.** Four, incl. 1c in Orange and Brown, 2c in Carmine, 3c in Green, cut close, thin spots, Fine-Very Fine appearance, a nice group(Photo Ex) E. 400-500
- 1071 E **1860, 3c Die Essays on Thin Pale Buff Card.** Four, in Orange, Blue, Dull Purple and Green, cut close to just in, rich colors, one with crease and one with thin, Fine appearance, a nice group of 3c essays in four different colors(Photo Ex) E. 500-750

KAMEHAMEHA IV ISSUE



1072

- 1072 ☒ **1861, 2c Pale Rose, Horizontally Laid (27).** Clear to large margins, just tied by red square grid cancel on buff cover to Hana, Maui, red "Honolulu Hawaiian-Islands Aug. 15" circular datestamp and greenish blue "Lahaina Hawaiian-Islands Aug. 19" circular datestamp, 1862 docketing, repaired tears and edge nicks, Fine appearance, ex Honolulu Advertiser 1,000.00



1073

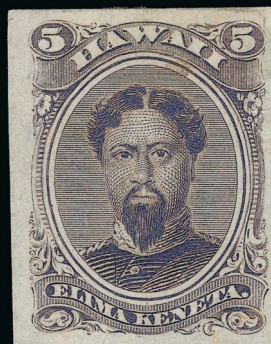


1074

1077



1075EX



1076EX



- 1073 ★田 **1869, 2c Red, Re-Issue (29).** Complete sheet of 15, original gum, most Mint N.H., rich color, light creases, Very Fine appearance, Scott Retail as two blocks of four and singles 795.00
- 1074 ★田 **1869, 2c Red, Re-Issue (29).** Complete sheet of 15, original gum, rich color, small corner margin crease and slight gum toning, Very Fine appearance, with 1978 P.F. certificate 705.00

1864-86 ROYAL PORTRAITS ISSUE

- 1075 P **1864-86, 1c-18c Royal Portraits, Plate Proofs.** Seven, incl. Nos. 30P3, 31P3, 31P4, 34P3, 36P3 and 41P3 (2), large margins to clear, few small faults as often associated with this fragile paper, Fine-Very Fine (Photo Ex) 2,130.00
- 1076 P **Royal Portraits Proofs.** Five, incl. Nos. 30P3, 32TC3 in Dark Violet, 37P3, 40P3 and 49P3, large margins to in, several defective, otherwise Fine (Photo Ex) 1,750.00
- 1077 P **1871, 1c Purple, Large Die Proof on India (30P1).** On 149 x 102mm card with full die sinkage, rich color, Very Fine 900.00



1079



1080



1081



1082EX



1083

- 1078 ★ **1864-91, 1c-18c Royal Portraits (30-52C).** Complete set of these issues, incl. few shade varieties such as 30a and 30b, some unused (no gum) or regummed), overall Fine-Very Fine *Not illustrated* 1,814.00
- 1079 ☒ **1871, 1c Purple (30).** Tied by large segmented 4-ring target cancel of Honolulu on **United States 1c Brown on Buff Postal Card (UX1)** to Lahaina, Maui, reverse with printed 1873 ad from A. B. Forbes, San Francisco agent for the Mutual Life Insurance Co. of New York — sent from Honolulu — the U.S. postage was wasted — and while the absence of a datestamp is unusual, this unquestionably went through the Hawaiian mails, very minor soiling, Fine, ex Honolulu Advertiser..... E. 750-1,000
- 1080 P **1864, 2c Rose Vermilion, Large Die Proof on India (31P1).** On 146 x 102mm card with full die sinkage, imprint at lower right of die sinkage area, rich color, Very Fine. 900.00
- 1081 P **1864, 2c Rose Vermilion, Plate Proof on India (31P3).** Right sheet margin horizontal pair, large margins, radiant color, Very Fine and choice 700.00
- 1082 TC **1866, 5c Kamehameha V, Trial Color Plate Proofs on India (32TC3).** Five, all different colors, lacking the Orange Red to be complete, large margins, Very Fine, also incl. 32P3 (Photo Ex) 2,100.00
- 1083 S **1866, 5c Blue, Black Handstamped "Specimen" Overprint (32S).** Clear overprint, original gum, centered to top right, light crease at top right, few toned spots on back, Very Good, scarce, with 1981 P.F. certificate E. 300-400

- 1084 S **1864-86, 1c-12c Royal Portraits, Specimen Ovpts. (31S, 32S, 35S, 37S, 40S, 44S, 46S).** Horizontal pairs of 31S, 35S, 40S, 44S and 46S, strip of three of 32S, single of 37S, four with selvage, each with clear large red "SPECIMEN" overprint, 2c Vermilion and 12c san-serif type, others serif, original gum, few small faults, Fine-Very Fine, a scarce group of Specimen overprints, unlisted in Scott(Photo Ex) E. 2,000-3,000



1084EX



1086

1085

1087

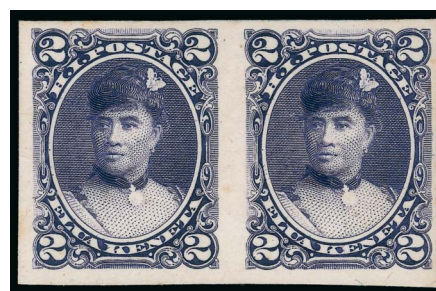
1088

- 1085 P **1871, 6c Green, Large Die Proof on India (33P1).** On 38 x 46mm card, deep rich color, Very Fine 900.00
- 1086 ☒ **1871, 6c Yellow Green (33).** Bright color, tied by segmented 3-ring target cancel, red "G.P.O. Hawn. Islnds Paid All 1-13-77" circular datestamp on cover to San Francisco, magenta receiving circular datestamp (Jan. 29), Very Fine E. 200-300
- 1087 P **1875, 2c Brown, Large Die Proof on India (35P1).** On 91 x 103mm card with full die sinkage, rich color, Very Fine 900.00
- 1088 S田 **1883, 12c Red Lilac, Red Specimen Ovpt, (46S).** Block of four, each horizontal pair with red 25mm sans-serif overprint, original gum, lightly hinged, Very Fine and choice, rare, unlisted in Scott..... E. 750-1,000



1089

- 1089 ★田 1886, 2c Orange Vermilion, Reproduction (50). Half sheet of 25, original gum, three h.r., several stamps Mint N.H., large to clear margins and rich color, horizontal crease between second and third rows, overall Very Fine, a scarce large multiple, ex Golden, Scott Retail as four blocks of four and singles 4,640.00



1091



1090



1092

- 1090 ★★田 1889, 2c Carmine, "Reprint" Ovpt. (51S). Complete Mint N.H. sheet of 15, trimmed at top but margin still clear, huge margins other sides, Very Fine, ex Richards and Golden, Scott Retail as blocks and singles 510.00
- 1091 P 1891, 2c Dull Violet, Large Die Proof on India (52P1). Horizontal pair, large margins, rich color, Very Fine, Scott Retail as singles 1,000.00
- 1092 ★田 1890, 5c Deep Indigo (52C). Block of six, original gum, five stamps Mint N.H., top center stamp lightly hinged, top left stamp small natural paper wrinkle, Fine-Very Fine, Scott Retail as block of four and two singles 815.00

1893 PROVISIONAL GOVERNMENT OVERPRINTS



1093

1093 S 1893, 1c-25c Red Provisional Government Ovpts., "Specimen" Ovpts. (53S-61S, 62S, 64S). Unused (no gum), overprints applied diagonally reading down, first 2c s.e. at right, few faults

OVERALL FINE. A RARE SET OF SPECIMEN OVERPRINTS FOR THE 1893 PROVISIONAL RED OVERPRINTS ISSUE.

From our Sale 530 (May 1978)..... E. 2,000-3,000



1094

1094 S 1893, 2c-\$1.00 Black Ovpts., "Specimen" Ovpts. (65S-73S). Unused (no gum), overprints applied diagonally reading down, rich colors

FINE. A RARE SET OF SPECIMEN OVERPRINTS FOR THE 1893 PROVISIONAL BLACK OVERPRINTS ISSUE.

From our Sale 530 (May 1978). With 1977 B.P.A. certificate for 2c E. 2,000-3,000



- 1095 P **1893, 2c Brown, Red Ovpt., Plate Proof on Stamp Paper (56P var).** Large margins, Very Fine and choice, scarce, only one sheet of 50 was printed..... E. 200-300
- 1096 ☒ **1893, 5c Deep Indigo, Red Ovpt. (58).** Bold overprint which may be double due to its strength, tied by small purple target, "Sprecklesville, Maui, Aug. 5, 1893" circular dates-tamp on cover to Honolulu, centered to right, cover with some slight toning, still Fine, worth additional research E. 200-300



1097

- 1097 ★ **1893, 5c Ultramarine, Inverted Red Ovpt. (59g).** Original gum, Hawaiian language part imprint selva at left, wide to ample margins, rich color and clear inverted overprint, Very Fine, a rare part imprint example of this error, ex Golden, with 2011 P.F. certificate..... 1,500.00

- 1098 ☒ **1893, 6c Green, Red Ovpt. (60).** Tied by purple target cancel, matching "Naalehu Hawaii Sep. 13, 1893" double-circle datestamp on cover used to Honolulu, receiving backstamp, Very Fine inter-island use E. 200-300
- 1099 **1893, 6c Green, Red Ovpt., Category III Double Red Ovpt. (60f).** Original gum, rich color, light strike of second overprint, fresh and Fine, the Type III is unlisted in Scott (Type II is priced at \$1,000.00)..... E. 300-400



1100

1100 ★ **1893, 10c Red Brown, Red Overprint Error (61B).** Original gum, h.r., bright color
FRESH AND FINE. A RARE SOUND ORIGINAL-GUM EXAMPLE OF THE 1893 10-CENT RED
OVERPRINT ERROR. ONLY ONE SHEET OF FIFTY WAS ISSUED.

Two errors of the 1893 Provisional Government Overprint Issues were made. One sheet of the 10c Red Brown, normally overprinted in black, was overprinted in red (Scott 61B). One sheet of the 6c Green, normally overprinted in red, was overprinted in black (Scott 66C). According to an affidavit by Louis T. Kenake, clerk of the Stamp Division of the Republic of the 10c sheet was issued to the postmaster at Kahuka, Oahu (Meyer-Harris, p. 240). The 6c sheet was purchased by Postmaster Jos. M. Oat and sometime around 1901 most of it was sold to dealer J. H. Makins, probably on behalf of Henry J. Crocker. The San Francisco earthquake is said to have destroyed a number of examples of both the overprint errors.

Dealer's backstamp. Signed Bloch. With 1968 and 2013 P.F. certificates. 17,500.00



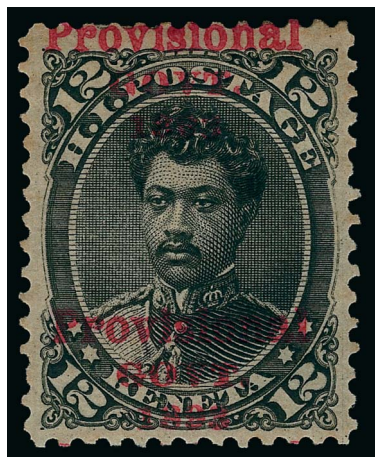
1101

- 1101 (★) **1893, 12c Black, Double Ovpt. (62d).** Traces of original gum, with right selvage, strong second overprint which is split horizontally, choice centering, Extremely Fine example of this variety 2,000.00

- 1102 ★ **1893, 12c Black, Double Ovpt. (62d).** Original gum, h.r., intense shade and impression, clear second overprint, trace of overprint ink at upper left, wide margins, tiny corner crease at bottom right, Very Fine, only two sheets were printed 2,000.00



1102



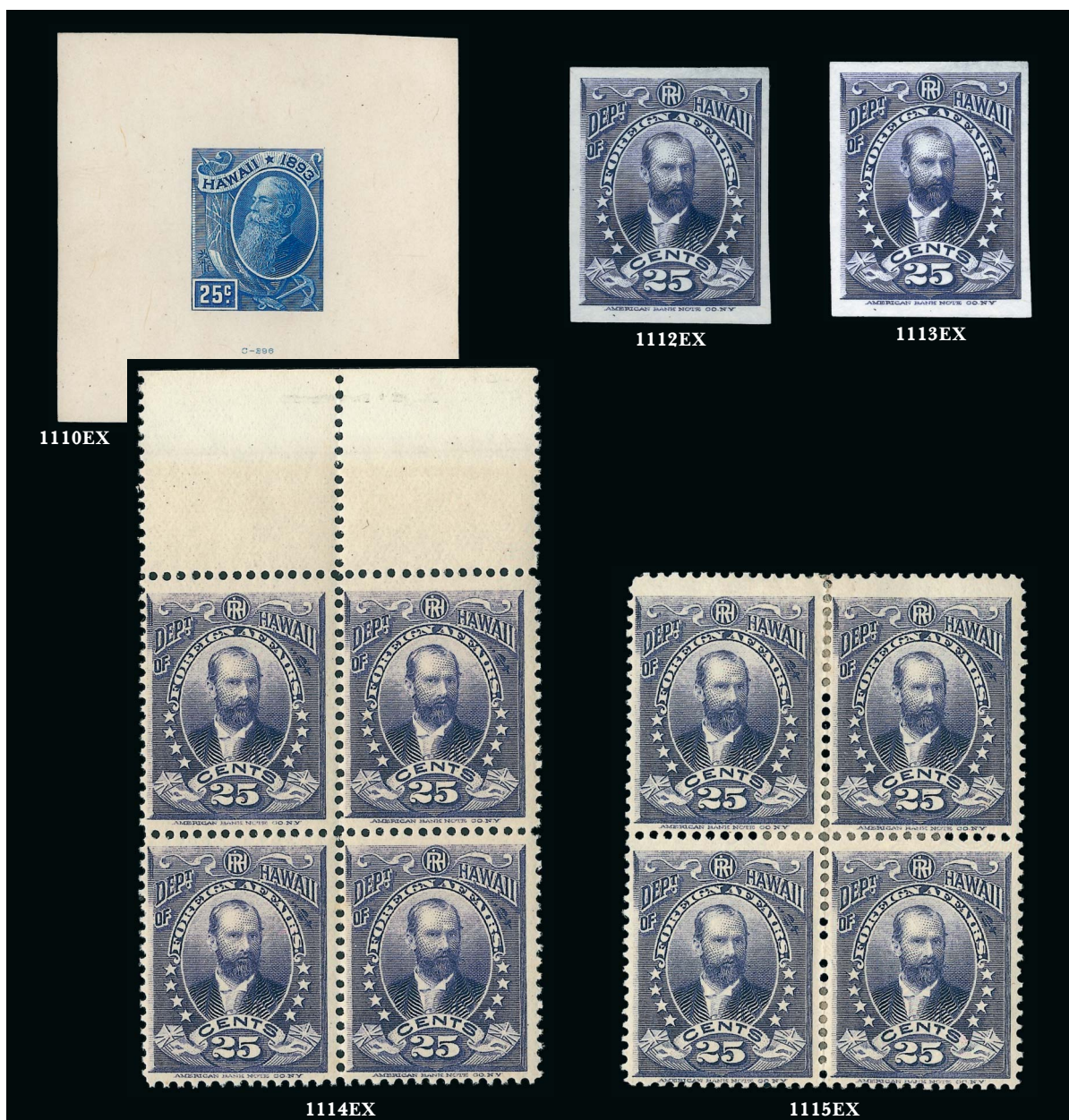
1103

- 1103 ★ **1893, 12c Black, Double Ovpt. (62d).** Slightly toned original gum, h.r., bold second overprint which is split horizontally, tiny thin spot at upper right, Very Fine appearance, with 1985 PESA certificate 2,000.00



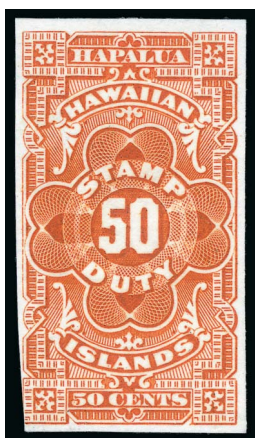
- 1104 ★ 1893, 25c Dark Violet, Red Ovpt., No Period After "Govt" (64b). In pair with normal, left stamp the variety, original gum, h.r., fresh and Fine, an attractive pair..... 382.00
- 1105 ★田 1893, 2c Rose Vermilion, Black Ovpt. (65). Block of four, original gum, top stamps h.r., vibrant color, well-balanced margins, Extremely Fine 350.00
- 1106 ★田 1893, 12c Red Lilac, Black Ovpt. (69). Block of four, original gum, top left stamp tiny pinhole, Very Fine appearance..... 1,550.00
- 1107 (★) 1893, 50c Red, Category III Double Black Ovpt. (72f). Unused (no gum), vibrant color, fresh and Fine, this is only known with a Category III (faint) second overprint. 1,000.00
- 1108 ★ 1893, \$1.00 Rose Red, Black Ovpt. (73). Horizontal strip of five, slightly glazed original gum, with selvage on sides, center stamp two small toned spots, Fine-Very Fine appearance, Scott Retail as singles..... 750.00
- 1109 ★ 1893, Provisional Government Horizontally Split Overprints. Three, incl. Nos. 53, 66 and 71, original gum, Very Fine, each with certificate(Photo Ex) E. 200-300

1894 FINAL AND 1896 OFFICIAL ISSUES

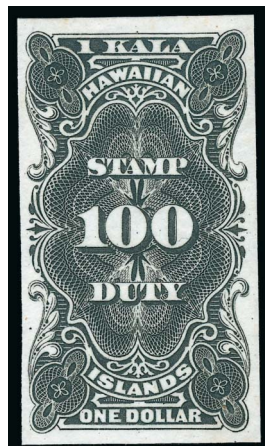


- 1110 P **1894, 1c-25c Final Issue, Large Die Proofs (74P1-77P1, 79P1).** On approximately 62 x 64mm cards, rich colors, fresh and Very Fine, scarce group(Photo Ex) 5,000.00
- 1111 **1894, 2c Brown (75).** Between 2,000 and 3,000 used examples, in two stockbooks and glassines, range of cancels but majority are from Honolulu or other major towns, some faults to be expected, some Fine-Very Fine, an excellent opportunity for weekend sorting*Not illustrated* E. 300-400
- 1112 P **1896, 2c-25c Officials, Plate Proofs on India (O1P3-O6P3).** Large margins all around, deep rich colors, Extremely Fine set(Photo Ex) 3,000.00
- 1113 ★ **1896, 2c-25c Officials (O1-O6).** Set of unused, also six additional unused and five used, overall Fine-Very Fine(Photo Ex) 730.00
- 1114 ★★田 **1896, 2c-25c Officials (O1-O6).** Mint N.H. blocks of four, each with top selvage except for 5c, rich colors, fresh and Very Fine set of blocks, Scott Retail as singles.....(Photo Ex) 2,940.00
- 1115 ★田 **1896, 2c-25c Officials (O1-O6).** Blocks of four, original gum, mostly heavy h.r., few perf separations sensibly reinforced, 12c one stamp small thin spot, Fine-Very Fine set of blocks.....(Photo Ex) 1,360.00

REVENUES



1116



1117



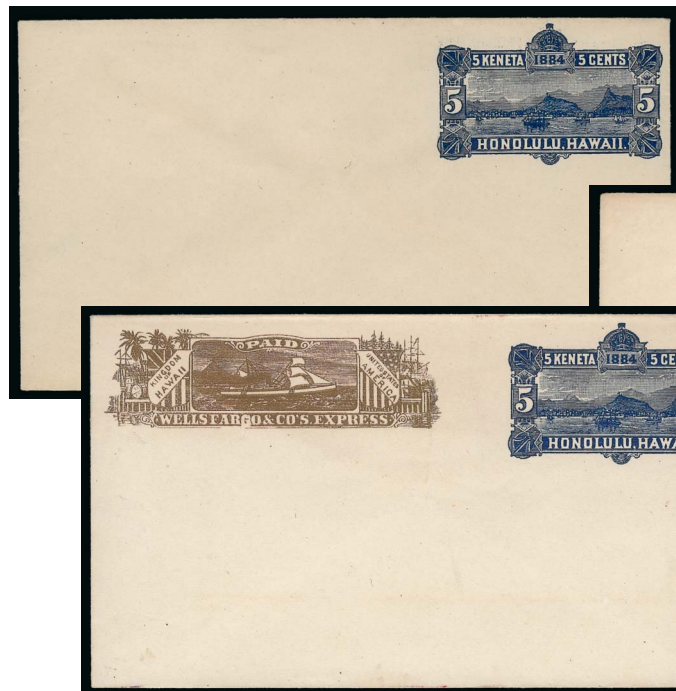
1118



1119

- 1116 P 1877, 50c Yellow Orange, Plate Proof on India (R2P3). Large margins to just in at lower left, rich color, fresh and Fine..... 600.00
- 1117 P 1877, \$1.00 Black, Plate Proof on India (R3P3). Large margins, detailed impression, fresh and Very Fine..... 600.00
- 1118 ★ 1893, 20c on 25c Green, Inverted Surcharge (R7a). Original gum, wide margins, few toned spots, Very Fine appearance 1,250.00
- 1119 1894, 25c Violet Brown (R10). Rich color, perfect bold strike of blue “STAMP DUTY/PAID/HONOLULU” handstamp dated Jul. 16, 1894, Very Fine and choice. 1,000.00

POSTAL STATIONERY



1120



1121

1122

- 1120 ☒ 1884, 5c Blue entire, Blue Inside (U8). Rich color, fresh and Very Fine 600.00
- 1121 ☒ Wells, Fargo & Co. Hawaii-U.S. Express. Printed frank in brown (Haller WF-HA) on 5c Brown entire (U222), Very Fine E. 200-300
- 1122 ☒ Wells, Fargo & Co. Hawaii-U.S. Express. Printed frank in brown (Haller WF-HA) with flaw in “G” of “FARGO”, on unused 1884 5c Blue entire (U4), fresh and Very Fine.... E. 300-400

PLAYING CARD ESSAY



1123



1124

- 1123 E **1892, 25c Black, Playing Card Essay on Grayish Wove.** 7¼ x 1¼ in., original gum, toning mostly at bottom which is found on all genuine examples, Very Fine, scarce with approximately 25 known, intended for use on packs of playing cards but never put into use, unlisted in Scott E. 300-400
- 1124 E **1892, 25c Black, Playing Card Essay on Grayish Wove.** 12 x 1¼", original gum, toning mostly at top which is found on all genuine examples, light vertical creases, nick at bottom, still Very Fine, scarce with approximately 25 known, intended for use on packs of playing cards but never put into use, unlisted in Scott E. 400-500

GROUP LOTS

- 1125 P **Proofs.** Four items, incl. Nos. 40P3, 50P3, 78P3 and O1P3, each mounted on three progressively larger cards and with acetate over top, some of the cards are likely not contemporary but all are Very Fine and interesting E. 400-500
- 1126 ★ **5c Kamehameha III.** 13 items, incl. Nos. 8, 9, 10 (3), 10S (4), 10R, 10RS, used Nos. 8 and 9, mostly four margins, few small faults to be expected, Fine-Very Fine 2,507.50
- 1127 ★ **5c Kamehameha III.** 13 items, incl. unused Nos. 9 (2, shades), 9a, 10, 10a, 11, 10R, 11R, used No. 8, three with Specimen ovpt. incl. corner margin pair with 11S-B, few small faults, appear Fine-Very Fine 3,790.00
- 1128 (★) **Numerals.** Six unused stamps, Nos. 15 (2), 19, 22, 23 and 26 with broken toe of "2", unused (no gum), all have four margins, few faults, appear Fine-Very Fine, each with certificate, Scott Retail with no premium for the variety of No. 26 3,075.00
- 1129 (★) **Numerals.** Five unused and one used, incl. unused Nos. 15, 23 (2), 24, 25, used defective and not counted, few faults, appear Fine-Very Fine 1,925.00
- 1130 ★ **1861-89, 2c Kamehameha IV (27-29, 50-51).** Mostly unused (no gum), two with sheet margins, Fine group 885.00
- 1131 ★ **1861-86, 2c Kamehameha IV.** 17 items, incl. Nos. 28 (2), 29 (3), 51 strip of four and pair, 29S, 50S and 51S, overall Fine-Very Fine 1,435.00
- 1132 ★田 **1864-91, 1c-18c Royal Portraits (31/45).** Five unused and one used multiples, incl. unused blocks of ten of Nos. 31 and 34, block of fifteen of No. 35, block of six of No. 45, overall Fine-Very Fine 2,304.00
- 1133 **1864-86, 1c-18c Royal Portraits.** Approximately 75 unused and used stamps, incl. unused Nos. 34 (4 singles and block of four), 38 (2), also 36P3, some faults, many Fine-Very Fine 3,613.00
- 1134 **1883-86, 1c-50c Royal Portraits (42-48).** 45 unused and used stamps, incl. block of four of No. 45, unused No. 46 (6), 47, 48 (3), mostly Fine-Very Fine 1,843.00
- 1135 ★田 **1893, 1c-12c Provisional Government Overprints (54/68).** Twelve multiples, incl. block of 25 of 54, block of ten of Nos. 55, 56, 57, 60, block of fifteen of No. 59, block of eight of No. 66 with one stamp missing period, overall fresh and Very Fine group 1,390.00
- 1136 ★ **1893, Provisional Government Overprints incl. Varieties.** 47 items, incl. Nos. 53-61, 62-64, 65-66, 67-73, 53b (2), 54b, 55f, 56b, 58b, 66b, 66f, 71b, 71f, eight with horizontally split overprints, few others, some faults, many Fine-Very Fine, Scott Retail for listed stamps and varieties \$3,700.00 E. 1,500-2,000

- 1137 **1893, 1c-25c Provisionals, Red Ovpt. (53-64).** 65 unused and used stamps and four covers, incl. unused Nos. 53 (4 with star punches), 55d (toned), 61 (two with split overprints), 63, covers incl. No. 60, some faults, some Fine-Very Fine..... 1,668.00
- 1138 ★田 **1893, 1c-25c Provisionals, Red Ovpt. (54/64).** Twelve blocks of four, incl. Nos. 63, 64 (2, one with stamp missing period after "GOVT"), few small faults, mostly Fine-Very Fine 1,409.50
- 1139 **1893, 2c-50c Provisionals, Black Ovpt. (66/72).** 37 unused and used stamps, incl. unused Nos. 66b, 69 (5), 72 (6 incl. 2 with partly missing letters), used No. 66b, overall Fine-Very Fine 2,737.00
- 1140 ★田 **1893, 2c-50c Provisionals, Black Ovpt. (65/72).** Eight blocks, incl. blocks of four of Nos. 65, 70, 71 and 72, few small faults, appear Fine-Very Fine 1,005.00
- 1141 ★ **1894-99, 1c-25c Final Issue (74-82).** Group of mostly unused singles and some blocks, incl. 2c Brown flying goose flaw (used) and 2c Rose flying goose flaw unused, also block of ten of No. 78 with captured imprint, some faults, some Fine-Very Fine, Scott Retail in excess of 1,400.00
- 1142 ☒ **Postal Stationery, Postal Cards and Covers.** Group of unused entires, Postal Cards and Reply Cards, incl. Nos. U5, UE1 (2, one toned), also few covers used from Hawaii with one to Japan bearing 5c 1898 Issue, some faults, many Fine-Very Fine..... E. 300-400
- 1143 ☒ **Postal Cards.** 18 items, incl. unused Nos. UX1-UX9, also UX5 used to Belgium, UX8 to Germany (2), two entires incl. U4 to Norway, overall Very Fine..... E. 300-400
- 1144 **Revenues.** Stock pages of unused and used stamps, incl. unused Nos. R1, R6, R9 (2), R12, R13 (7), R14 (15), R15 (2), R16, used incl. Nos. R2 (2), R3 (7), R4, R5 (2), R6-R8, also port pass out of Honolulu, some faults, most Fine-Very Fine, Scott Retail approximately 3,000.00
- 1145 ★田 **Revenue Multiples.** Five, incl. R1 blocks of four and eighteen, R7 blocks of four and sixteen, last is R15 block of eight, few small flaws, Fine-Very Fine group 1,705.00
- 1146 **Kahului Railroad Issues.** Stockpage of unused and used singles and blocks, incl. corner margin block of four and corner margin strip of three of 6c, corner margin block of four of 18c, used blocks of four of 10c and 50c, used strip of three of \$1.00, some faults, most Fine-Very Fine E. 500-750
- 1147 ★ **Balance.** Stock pages of unused singles and blocks, incl. singles of Nos. 74-82, 75 with flying goose flaw, O1-O6, several multiples incl. blocks of four of No. 31, 34 (2), 44, 52C (2), 65, 72, also No. 79 block of twelve, few small faults, most Fine-Very Fine, Scott Retail approximately 5,700.00
- 1148 **Forgeries.** 8 items, including crude 2c and 13c Missionaries in different colors, some Numerals including four Sperati, also Kamehameha, Royal Portraits, several with cancels, overall a Fine-Very Fine group E. 1,000-1,500
- 1149 **Fakes and Forgeries.** 18 items, incl. twelve Numerals (one 13c, two very clever but don't plate), others Kamehameha, interesting group E. 300-400

END OF SALE — THANK YOU

Live Internet Bidding at Siegel Auctions

BIDDING FROM YOUR COMPUTER LETS YOU BE PART OF THE LIVE AUCTION FROM ANYWHERE IN THE WORLD!

There's **NO SUBSTITUTE** for following the auction in real time.
Live Internet Bidding lets you bid and buy as though you were right there in the saleroom.
And it's easy.

This step-by-step guide will instruct you how to register, set your browser and use the bidding interface.

Start by following the simple steps to become a registered Live Internet Bidder.
Once you've been approved for bidding, you can listen to the auction and place bids with the click of a mouse.

Registering with STAMP AUCTION NETWORK & SIEGEL AUCTION GALLERIES

Live Internet Bidding is managed by Stamp Auction Network (SAN).
To bid, you must be registered and approved by *both* SAN and Siegel.
To decide what you need to do, choose the description below that best fits you.



I've already registered with SAN and have been approved by Siegel for internet bidding.

I'm a Siegel client, but I'm not registered with SAN.

Go to stampauctionnetwork.com/siegel and click on "Register" at the top. Check the box for Robert A. Siegel Auction Galleries (under "R") and submit the form, indicating you are a Siegel client. Once registered at SAN, you're ready for internet bidding.

I've bid through SAN before, but this is the first time I've bid in a Siegel sale.

Then you just need to be approved by Siegel. Go to stampauctionnetwork.com/siegel and click on "Update Registration" at the top. Your SAN account information will be sent to us for approval (you might be asked for other trade references). Once approved by Siegel for bidding, you're ready for internet bidding.

I've never bid with Siegel, nor registered with SAN.

Go to stampauctionnetwork.com/siegel and click on "Register" at the top. Check the box for Robert A. Siegel Auction Galleries (under "R") and submit the form **with your trade references** (please, no family members or credit card companies as references). Once registered at SAN and approved by Siegel for bidding, you're ready for internet bidding.

Live Internet Bidding works by allowing registered bidders to observe and place bids.

Live Internet Bidding will work with any browser on both PC and Mac operating systems.

Before bidding by internet for the first time, we recommend finding a sale in progress and listening to the public broadcast or logging in as a registered bidder. This will help you develop a feel for the sale tempo and bidding interface.

Log on to the auction at stampauctionnetwork.com/siegel.

You can also log on at siegelauctions.com

When you're logged on as a Live Internet Bidder, the bidding interface shows a photo and description of the lot, the current bid (and your bidding status), options for placing competitive bids and buttons with bid increments.

- After you click on a bid amount, the auctioneer is immediately notified of your bid.
- Retracting a bid is usually not acceptable, so please bid carefully.
- If you bid and then decide to stop, the "Pass" button will tell the auctioneer you are no longer bidding.
- You can send messages to the auctioneer (for example, a request for extension).
- You can track prior realizations from the bidding screen.



"System Down" or "Lost Connection" events do occasionally happen.

If you have any problems with Live Internet Bidding please call **212-753-6421** for immediate assistance.

Bid Form—15% Premium Sale

Sale 1083

Wednesday, October 22, 2014

1

Please provide the following information:

NAME

ADDRESS

CITY/STATE/ZIP

TEL. (DAY) FAX

E-MAIL

PADDLE #

Do not write in box

2

Have you purchased from us in the past 5 years? ☐ YES (if so, please go to Section 3)

☐ NO (please provide a trade reference and bank information)

References:

Stamp Firm: Telephone

Bank: Account #

3

In the space provided below, enter the **lot number** from **Sale 1083** and your corresponding bid. Please use **whole dollar amounts** only and enter the **maximum bid** you wish to have us execute on your behalf, according to the **bidding increments** on other side of this form. **Your bid will NOT include the 15% buyer's premium.** We will advance the bidding at one increment over the

next highest bid; therefore, you may be awarded the lot at less than your maximum bid. Please do not use "plus" bids or "buy" bids. If you wish to bid on one lot **or** the other, indicate your "or" bid between lot number/bid entries and bracket your choices. If you wish to place a **bidding limit** on the total amount of your bids, please enter your limit in the space marked "Limit Bids".

PLEASE NOTE BIDDING INCREMENTS AND SHIPPING CHARGES (ON BACK OF THIS PAGE)

☐ **LIMIT BIDS:** Check this box if you wish to limit the total amount of your bids (not including the **15% buyer's premium**) in this sale. Your bids will be executed until your bidding limit no longer allows for additional bids. **The total amount you wish to bid is:** \$

Lot	Bid	Lot	Bid	Lot	Bid
	\$		\$		\$

4

AGREEMENT: By signing this bid form, you agree to pay for purchases resulting from your bids, in accordance with the **Conditions of Sale** printed in the sale catalogue. You also agree to pay the **15% buyer's premium, shipping costs (see reverse), and sales tax or use tax or customs duty** which may be due on the total invoiced amount. It is

understood that these bids will be executed by Siegel Auction Galleries as a courtesy to absentee bidders, but you waive the right to make any claim against the auctioneer or the firm, arising from the these bids. **You are responsible for your written bids, including any errors on your part and any additions or changes to the bids herein.**

Payment must be made by cash, check, money order or wire transfer. Credit cards (Visa, Mastercard and Discover only) can be accepted as payment but will be subject to a 3% Convenience Fee, which will be added to the total of the entire invoice (including hammer price, buyer's premium, shipping and transit insurance charges and any applicable taxes).



SIGNED TODAY'S DATE

5

Please submit your bids promptly (telephone bids must be confirmed in writing).

Mail to: Robert A. Siegel Auction Galleries, Inc.

60 E. 56th Street, 4th Floor, New York, N.Y. 10022

Telephone (212) 753-6421

OR FAX YOUR BIDS: (212) 753-6429

Shipping Instructions, Bidding Increments and space for additional bids on other side of form



Additional Bids

Sale 1083—October 22, 2014

Lot	Bid	Lot	Bid	Lot	Bid
	\$		\$		\$

Shipping and Transit Insurance

We will be pleased to arrange for shipping and transit insurance for purchases in this sale (except those described as “floor sale only”). To expedite billing and delivery of lots to hundreds of buyers per sale, we use standard charges for postage and insurance, based on the package weight and mailing requirements (see schedule). The standard charges are sometimes slightly more or less than the actual postage or Fedex fees, but we do not include any charge for our labor or packing costs. Therefore, we ask all buyers to remit the prescribed amount for shipping charges.

Transit insurance is provided in all cases, except when the buyer has furnished us with proof that insurance coverage is effective under another policy. Proof, in such cases, will be accepted in the form of a written certificate from the insurance carrier.

You are responsible for insurance charges, which will be added to your invoice. This coverage is provided for our mutual protection against theft or loss in transit.

Bidding Increments

The auctioneer may regulate the bidding at his discretion. However, to assist absentee bidders in establishing their maximum bid for each lot, the increments shown at right will be used in most cases. We recommend that written bids conform to these increments (those which do not will be reduced to the next level).

REVISED CHARGES FOR SHIPPING EFFECTIVE SEPTEMBER 1, 2010

We have reduced the Fedex Envelope charge to \$20, reflecting the elimination of the fuel surcharge. All other charges remain the same.

Current Postage & Insurance Charges

Weight/Class	Shipping Method	Charges
Up to 2 lbs.	Fedex Envelope	\$20.00
Over 2 lbs.	Fedex Box	\$35.00*
Non-U.S.	Fedex/Courier	\$50.00**
Bulk Lots	UPS Preferred	By weight and value
<p>These fees reflect additional Fedex charges for residential delivery, signature and fuel surcharge.</p> <p>*Higher fees will be charged on packages weighing more than 5 lbs. or insured for more than \$75,000.</p> <p>**Buyers are liable for all customs duties and clearance charges. An accurate declaration of value will be made on all import/export documents.</p>		

1/2014

Up to \$50	\$5	\$3,000-7,000	\$250
\$50-200	\$10	\$7,000-20,000	\$500
\$200-500	\$25	\$20,000-30,000	\$1,000
\$500-1,000	\$50	\$30,000-75,000	\$2,500
\$1,000-3,000	\$100	\$75,000 up	\$5,000

1/2014



PRICES REALIZED FOR SALE 1083---10/22/2014

Hawaiian Stamps and Covers

Robert A. Siegel Auction Galleries, Inc.
60 East 56th Street, 4th Floor, New York, NY 10022
Tel (212) 753-6421 Fax (212) 753-6429

Lot#	Realized	Lot#	Realized	Lot#	Realized	Lot#	Realized
1001	22,000	1044	375	1086	275	1132	325
1002	18,500	1045	3,750	1087	350	1134	300
1003	110,000	1046	800	1088	750	1135	275
1004	25,000	1047	1,900	1089	1,500	1136	1,200
1005	16,000	1048	450	1090	225	1137	475
1006	21,000	1049	1,800	1091	425	1138	400
1007	2,100	1050	1,300	1093	1,700	1139	425
1009	450	1051	250	1094	1,800	1140	300
1010	600	1052	850	1095	200	1141	450
1011	200	1053	150	1096	275	1142	550
1012	275	1054	140	1097	750	1143	600
1013	160	1055	325	1098	225	1144	1,100
1014	4,000	1056	1,900	1099	200	1145	425
1015	2,200	1057	850	1100	12,500	1146	2,000
1016	1,800	1058	550	1101	400	1147	1,200
1017	3,500	1059	350	1102	600	1148	650
1018	7,500	1060	225	1103	375	1149	225
1019	300	1061	550	1104	160		
1020	425	1062	250	1105	120		
1021	225	1063	180	1106	400		
1022	275	1064	325	1107	225		
1023	350	1065	375	1108	130		
1024	800	1066	600	1109	225		
1025	350	1067	600	1110	2,000		
1026	475	1068	500	1111	325		
1027	650	1069	475	1112	950		
1028	250	1070	600	1115	225		
1029	3,750	1071	500	1116	375		
1030	3,750	1072	600	1117	275		
1031	2,000	1073	225	1118	325		
1032	2,000	1074	200	1119	650		
1034	375	1075	700	1120	350		
1035	2,000	1076	450	1121	275		
1036	1,900	1077	550	1122	350		
1037	400	1078	350	1123	325		
1038	600	1079	700	1124	475		
1039	2,000	1080	225	1125	300		
1040	325	1081	225	1126	550		
1040	275	1082	650	1127	650		
1041	250	1083	250	1128	850		
1042	325	1084	1,400	1129	375		
1043	325	1085	475	1130	150		