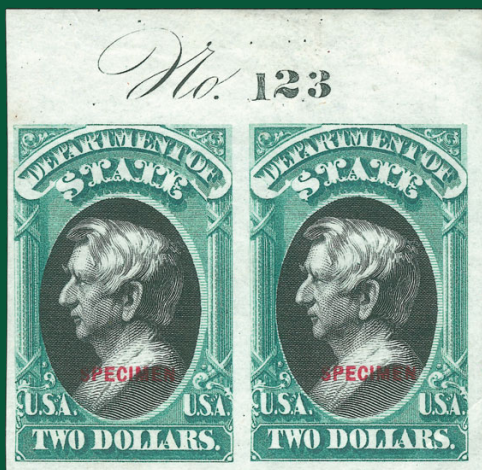


THE GOLDEN COLLECTION OF UNITED STATES
OFFICIAL SPECIAL PRINTINGS



SALE 1095
THURSDAY, MARCH 26, 2015

Robert A. Siegel

AUCTION GALLERIES, INC.

Thursday, March 26, 2015, at 1:30 P.M.

THE GOLDEN COLLECTION OF UNITED STATES OFFICIAL SPECIAL PRINTINGS

Live auction to be held at Siegel Auction Galleries,
60 East 56th Street (Park/Madison), 4th Floor, New York City

Lots are sold subject to a 15% buyer's premium and
any applicable sales tax (or customs duty for non-U.S. buyers)

Please carefully read the Conditions of Sale before bidding



THURSDAY, MARCH 26, 2015
Afternoon Session at 1:30 p.m.—Lots 501-671

Unique Set of Imperforate Pairs	Lots 501
Agriculture Department	502-524
Executive Department	525-532
Interior Department	533-550
Justice Department	551-568
Navy Department	569-584
Post Office Department	585-606
State Department	607-627
Treasury Department	628-643
War Department	644-663
American Bank Note Co. Printings on Soft Paper	664-671

Lots will be available for viewing on
Monday and Tuesday, March 23-24, 10am-12 noon, and by appointment

Robert A. Siegel
AUCTION GALLERIES, INC.

60 EAST 56TH STREET, 4TH FLOOR, NEW YORK, N.Y. 10022
Phone (212) 753-6421 • Fax (212) 753-6429 • E-mail: stamps@siegelauctions.com

Catalogues, internet bidding, resources, archives and the Siegel Encyclopedia at
www.siegelauctions.com



Robert A. Siegel

AUCTION GALLERIES, INC.

60 EAST 56TH STREET, 4TH FLOOR, NEW YORK, N.Y. 10022

Phone (212) 753-6421 • Fax (212) 753-6429 • E-mail: stamps@siegelauctions.com

siegelauctions.com



Scott R. Trepel
President
strepel
@siegelauctions.com



John P. Zuckerman
Senior Vice President
jzuckerman
@siegelauctions.com



Corey Long
Vice President
clong
@siegelauctions.com



Charles F. Shreve
Director, Siegel International
charles
@siegelauctions.com



Colleen Stellato
Accounts
colleen
@siegelauctions.com



Helen Stewart
Bids and Inquiries
helen
@siegelauctions.com



Aleecia Kaloustian
Administrative Assistant
aleecia
@siegelauctions.com



Chris Anderson
Siegel International
chris
@siegelauctions.com



Andrew Titley
Siegel International
andrew
@siegelauctions.com

Scott R. Trepel Principal Auctioneer (licensed by NYC Dept. of Consumer Affairs, #795952)

Nathaniel Estes Catalogue and Digital Production

Information for Bidders

Bidding

The following means are available for placing bids:

- 1) Attending the Live Auction in Person:** All bidders must register for a paddle, and new bidders must provide references at least three business days in advance of the sale.
- 2) Live Internet Bidding:** Instructions for participating as a Live Internet Bidder are provided on the page opposite.
- 3) Phone Bidding:** Bidders can be connected to the sale by phone and bid through a member of staff. Requests for phone bidding are subject to approval (please contact our office at least 24 hours before the sale). A signed Bid Form is required.
- 4) Absentee Bids.** All bids received in advance of the sale, either by mail, fax, phone, e-mail or internet, are Absentee Bids, which instruct the auctioneer to bid up to a specific amount on one or more lots in the sale. Absentee Bids sent by phone, fax or e-mail should arrive at least one hour prior to the start of the sale session. Bids entered through Live Internet Bidding will be visible to the auctioneer during the sale. Written bids should be entered legibly on the Bid Form in the sale catalogue. E-mail and internet bids should be carefully typed and double-checked. All new bidders must provide references. We recommend calling or e-mailing to confirm that Absentee Bids sent by mail, fax or e-mail have been received and entered.

Pre-Sale Viewing

Subject to availability, certain lots (except group lots) can be sent to known clients for examination. Requests must be made no later than 7 days prior to the sale. Lots must be returned on the day received. Postage/insurance costs will be invoiced.

In addition to regular viewing, clients may view lots by appointment. Our staff will be pleased to answer questions or provide additional information about lots.

Expert Certification

Individual items offered without a PF or PSE certificate dated within the past five years may be purchased subject to independent certification of genuineness and our description. **Please refer to the Conditions of Sale and Grading Terms for policies governing certification.**

Shipping and Delivery

Procedures and charges for shipping lots are printed on the back of the Bid Form. **Bidders are responsible for all prescribed shipping charges and any applicable sales tax or customs duties.**

Price Realized

Prices realized are sent with each invoice. Bidders with e-mail will receive a Bid Results report after the sale. Session results are posted immediately to siegelauctions.com

Live Internet Bidding at Siegel Auctions

BIDDING FROM YOUR COMPUTER LETS YOU BE PART OF THE LIVE AUCTION FROM ANYWHERE IN THE WORLD!

There's NO SUBSTITUTE for following the auction in real time.

Live Internet Bidding lets you bid and buy as though you were right there in the saleroom.

And it's easy.

This step-by-step guide will instruct you how to register, set your browser and use the bidding interface.

Start by following the simple steps to become a registered Live Internet Bidder.

Once you've been approved for bidding, you can listen to the auction and place bids with the click of a mouse.

Registering with STAMP AUCTION NETWORK & SIEGEL AUCTION GALLERIES

Live Internet Bidding is managed by Stamp Auction Network (SAN).

To bid, you must be registered and approved by *both* SAN and Siegel.

To decide what you need to do, choose the description below that best fits you.



I've already registered with SAN and have been approved by Siegel for internet bidding.

I'm a Siegel client, but I'm not registered with SAN.

Go to stampauctionnetwork.com/siegel and click on "Register" at the top. Check the box for Robert A. Siegel Auction Galleries (under "R") and submit the form, indicating you are a Siegel client. Once registered at SAN, you're ready for internet bidding.

I've bid through SAN before, but this is the first time I've bid in a Siegel sale.

Then you just need to be approved by Siegel. Go to stampauctionnetwork.com/siegel and click on "Update Registration" at the top. Your SAN account information will be sent to us for approval (you might be asked for other trade references). Once approved by Siegel for bidding, you're ready for internet bidding.

I've never bid with Siegel, nor registered with SAN.

Go to stampauctionnetwork.com/siegel and click on "Register" at the top. Check the box for Robert A. Siegel Auction Galleries (under "R") and submit the form **with your trade references** (please, no family members or credit card companies as references). Once registered at SAN and approved by Siegel for bidding, you're ready for internet bidding.

Live Internet Bidding works by allowing registered bidders to observe and place bids.

Live Internet Bidding will work with any browser on both PC and Mac operating systems.

Before bidding by internet for the first time, we recommend finding a sale in progress and listening to the public broadcast or logging in as a registered bidder. This will help you develop a feel for the sale tempo and bidding interface.

Log on to the auction at stampauctionnetwork.com/siegel.

You can also log on at siegelauctions.com

When you're logged on as a Live Internet Bidder, the bidding interface shows a photo and description of the lot, the current bid (and your bidding status), options for placing competitive bids and buttons with bid increments.

- After you click on a bid amount, the auctioneer is immediately notified of your bid.
- Retracting a bid is usually not acceptable, so please bid carefully.
- If you bid and then decide to stop, the "Pass" button will tell the auctioneer you are no longer bidding.
- You can send messages to the auctioneer (for example, a request for extension).
- You can track prior realizations from the bidding screen.



"System Down" or "Lost Connection" events do occasionally happen.

If you have any problems with Live Internet Bidding please call **212-753-6421** for immediate assistance.

Conditions of Sale (please read carefully before bidding)

THE PROPERTY DESCRIBED IN THIS CATALOGUE WILL BE OFFERED AT PUBLIC AUCTION BY ROBERT A. SIEGEL AUCTION GALLERIES, INC. ("GALLERIES") ON BEHALF OF VARIOUS CONSIGNORS AND ITSELF OR AFFILIATED COMPANIES. BY BIDDING ON ANY LOT, WHETHER DIRECTLY OR BY OR THROUGH AN AGENT, IN PERSON, OR BY TELEPHONE, FACSIMILE OR ANY OTHER MEANS, THE BIDDER ACKNOWLEDGES AND AGREES TO ALL OF THE FOLLOWING CONDITIONS OF SALE.

1. The highest bidder acknowledged by the auctioneer shall be the buyer. The term "final bid" means the last bid acknowledged by the auctioneer, which is normally the highest bid offered. **The purchase price payable by the buyer will be the sum of the final bid and a commission of 15% of the final bid ("buyer's premium"), together with any sales tax, use tax or customs duties due on the sale.**
2. The auctioneer has the right to reject any bid, to advance the bidding at his discretion and, in the event of a dispute, to determine the successful bidder, to continue the bidding or to reoffer and resell the lot in dispute. The Galleries' record of the final sale shall be conclusive.
3. All bids are per numbered lot in the catalogue unless otherwise announced by the auctioneer at the time of sale. The right is reserved to group two or more lots, to withdraw any lot or lots from the sale, or to act on behalf of the seller. The Galleries will execute bidding instructions on behalf of clients, but will not be responsible for the failure to execute such bids or for any errors in the execution of such bids.
4. **Lots with numbers followed by the symbol ° are offered subject to a confidential minimum bid ("reserve"), below which the lot will not be sold. The absence of the symbol ° means that the lot is offered without a reserve. If there is no reserve, the auctioneer has sole discretion to establish a minimum opening bid and may refuse an offer of less than half of the published estimate. Any lot that does not reach its reserve or opening bid requested by the auctioneer will be announced as "passed" and excluded from the prices realized lists after the sale. The Galleries may have a direct or indirect ownership interest in any or all lots in the sale resulting from an advance of monies or goods-in-trade or a guarantee of minimum net proceeds made by the Galleries to the seller.**
5. Subject to the exclusions listed in 5(A), the Galleries will accept the return of lots which have been misidentified or which have obvious faults that were present when the lot was in the Galleries' custody, but not so noted in the lot description. **All disputed lots must be received by the Galleries intact with the original packing material within 5 days of delivery to the buyer but no later than 30 days from the sale date.**
(5A) EXCLUSIONS: The following lots may not be returned for any reason, or may not be returned for the reasons stated: i) lots containing 10 or more items; ii) lots from buyers who registered for the pre-sale exhibition or received lots by postal viewing, thereby having had the opportunity to inspect them before the sale; iii) any lot described with "faults," "defects" or a specific fault may not be returned because of any secondary fault; iv) photographed lots may not be returned because of centering, margins, short/nibbed perforations or other factors shown in the illustrations; v) the color of the item does not match the color reproduction in the sale catalogue or website listing; vi) the description contains inaccurate information about the quantity known or reported; or vii) a certification service grades a stamp lower than the grade stated in the description.
6. Successful bidders, unless they have established credit with the Galleries prior to the sale, must make payment in full before the lots will be delivered. Buyers not known to the Galleries must make payment in full within 3 days from the date of sale. **The Galleries retains the right to demand a cash deposit from anyone prior to bidder registration and/or to demand payment at the time the lot is knocked down to the highest bidder, for any reason whatsoever.** In the event that any buyer refuses or fails to make payment in cash for any lot at the time it is knocked down to him, the auctioneer reserves the right to reoffer the lot immediately for sale to the highest bidder. **Credit cards (Visa, Mastercard and Discover only) can be accepted as payment but will be subject to a 3% Convenience Fee, which will be added to the total of the entire invoice (including hammer price, buyer's premium, shipping and transit insurance charges and any applicable taxes).**
7. If the purchase price has not been paid within the time limit specified above, nor lots taken up within 7 days from the date of sale, the lots will be resold by whatever means deemed appropriate by the Galleries, and any loss incurred from resale will be charged to the defaulting buyer. **Any account more than 30 days in arrears will be subject to a late payment charge of 1½% per month as long as the account remains in arrears. Any expenses incurred in securing payment from delinquent accounts will be charged to the defaulter.** A fee of \$250.00 per check will be charged for each check returned for insufficient funds.
8. All lots are sold as genuine. **Any lot accompanied by a certificate issued by The Philatelic Foundation or by Professional Stamp Experts within 5 years of the sale date is sold "as is" and in accordance with the description on the certificate. Such lots may not be returned for any reason, including but not limited to a contrary certificate of opinion.** Buyers who wish to obtain a certificate for any item that does not have a P.F. or P.S.E. certificate (dated as above) may do so, provided that the following conditions are met: (1) the purchase price must be paid in full, (2) the item must be submitted to an acceptable expertizing committee with a properly executed application form within 21 days of the sale, (3) a copy of the application form must be given to the Galleries, (4) in the event that an adverse opinion is received, the Galleries retain the right to resubmit the item on the buyer's behalf for reconsideration, without time limit or other restrictions, (5) unless written notification to the contrary is received, items submitted for certification will be considered cleared 90 days from the date of sale, and (6) in the event any item is determined to be "not as described", the buyer will be refunded the purchase price and the certification fee up to \$800.00 unless otherwise agreed to in writing.
9. Until paid for in full, all lots remain the property of the Galleries on behalf of the seller.
10. Agents executing bids on behalf of clients will be held responsible for all purchases made on behalf of clients unless otherwise arranged prior to the sale.
11. The buyer assumes all risk for delivery of purchased lots and agrees to pay for prescribed shipping costs. **Buyers who receive lots in the U.S. are obligated to pay whatever sales tax or compensating use tax might be due, and buyers outside the U.S. are responsible for all customs duties.**
12. **The bidder consents that any action or proceeding against it may be commenced and maintained in any court within the State of New York or in the United States District Court for the Southern District of New York, that the courts of the State of New York and United States District Court for the Southern District of New York shall have jurisdiction with respect to the subject matter hereof and the person of the bidder. The bidder agrees not to assert any defense to any action or proceeding initiated by Galleries based upon improper venue or inconvenient forum. The bidder agrees that any action brought by the bidder shall be commenced and maintained only in a Federal Court in the United States District Court for the Southern District of New York or the State Court in the county in which Galleries has its principal place of business in New York. The bidder agrees not to use a public conflict resolution service and not to use any form of social media to publish comments or information about the Galleries and its employees which might harm the Galleries' reputation or business. These Conditions of Sale shall be governed by and construed in accordance with the substantive laws of the State of New York, and shall constitute an agreement that shall be binding on the parties, and their respective heirs, administrators, distributees, successors and assignees.**

SCOTT R. TREPEL, Principal Auctioneer
Auctioneer's License No. 795952
N.Y.C. Department of Consumer Affairs
80 Lafayette Street, New York, N.Y. 10013
Telephone (212) 577-0111

Revised 1/2015

Grades, Abbreviations and Values Used in Descriptions

Grades and Centering

Our descriptions contain detailed information and observations about each item's condition. We have also assigned grades to stamps and covers, which reflect our subjective assessment. For stamps, the margin width, centering and gum are described and graded according to generally-accepted standards (an approximate correlation to numeric grades is provided at right). Although we believe our grades are accurate, they are not always exactly aligned with third-party grading terms or standards for all issues. **A lot may not be returned because a certification service grades a stamp lower than the grade stated in the description. Information from the P.S.E. Stamp Market Quarterly and P.S.E. Population ReportSM is the most current available, but lots may not be returned due to errors or changes in statistics or data.**

Extremely Fine Gem (90-100): The term "Gem" describes condition that is the finest possible for the issue. This term is equivalent to "Superb" used by grading services.







Extremely Fine (80-90): Exceptionally large/wide margins or near perfect centering.

Very Fine (70-85): Normal-size margins for the issue and well-centered with the design a bit closer to one side. "Very Fine and choice" applies to stamps that have desirable traits such as rich color, sharp impression, freshness or clarity of cancel.

Fine (60-70): Smaller than usual margins or noticeably off center. Pre-1890 issues may have the design touched in places.

Very Good (below 60): Attractive appearance, but margins or perforations cut into the design.

Guide to Gum Condition

Gum Categories:	MINT N.H.	ORIGINAL GUM (O.G.)				NO GUM
	 Mint Never Hinged <i>Free from any disturbance</i>	 Lightly Hinged <i>Faint impression of a removed hinge over a small area</i>	 Hinge Mark or Remnant <i>Prominent hinged spot with part or all of the hinge remaining</i>	 Part o.g. <i>Approximately half or more of the gum intact</i>	 Small part o.g. <i>Approximately less than half of the gum intact</i>	 No gum <i>Only if issued with gum</i>
Catalogue Symbol:	★ ★	★	★	★	★	(★)
PRE-1890 ISSUES	<i>Pre-1890 stamps in these categories trade at a premium over Scott value</i>			Scott Value for “O.G.”		Scott “No Gum” Values thru No. 218
1890-1935 ISSUES	Scott “Never Hinged” Values for Nos. 219-771	Scott Value for “O.G.” (Actual value will be affected by the degree of hinging)		Disturbed Original Gum: Gum showing noticeable effects of humidity, climate or hinging over more than half of the gum. The significance of gum disturbance in valuing a stamp in any of the Original Gum categories depends on the degree of disturbance, the rarity and normal gum condition of the issue and other variables affecting quality. For example, stamps issued in tropical climates are expected to have some		
1935 TO DATE	Scott Value for “Unused”					

Covers

Minor nicks, short edge tears, flap tears and slight reduction at one side are normal conditions for 19th century envelopes. Folded letters should be expected to have at least one file fold. Light cleaning of covers and small mends along the edges are accepted forms of conservation. Unusual covers may have a common stamp with a slight crease or tiny tear. **These flaws exist in virtually all 19th century covers and are not always described. They are not grounds for return.**

Catalogue Values and Estimates

Unless otherwise noted, the currently available *Scott Catalogue* values are quoted in dollars with a decimal point. Other catalogues are often used for foreign countries or specialized areas and are referred to by their common name: *Stanley Gibbons* (SG), *Dietz*, *American Air Mail Catalogue* (AAMC), *Michel*, *Zumstein*, *Facit*, etc. Estimates are indicated with an "E." and reflect our conservative valuation in dollars. Reserves will never exceed the low end of the estimate range; they will sometimes exceed Scott Catalogue value for stamps in Extremely Fine condition.

Because of certain pricing inconsistencies in the *Scott Catalogue*—for example, blocks that have no gum, the absence of premiums for Mint N.H. items, etc.—we cannot guarantee the accuracy of values quoted for multiples, specialized items and collection lots. We generally try to be conservative, but buyers may not return a lot because of a discrepancy in catalogue value due to Scott pricing inconsistencies.

Symbols and Abbreviations (see chart above for gum symbols)

⊞	Block	E	Essay	pmk.	Postmark	No.	Scott Catalogue Number
⊞	Cover	P	Proof	cds	Circular Datestamp	hs	Handstamp
FC	Fancy Cancel	TC	Trial Color Proof	var.	Variety	ms.	Manuscript

United States Official Special Printings

In March 1875 the Post Office Department initiated a program to make reproductions, reprints, re-issues and special printings of all past and present issues available for purchase at face value through the office of the Third Assistant Postmaster General in Washington, D.C.

Among the stamps to be recreated were the then-current Official issues, which were used by nine executive branch government departments on official mail. Since Official stamps were not intended for public use, the USPOD announcement of the stamp program stated:

"The official stamps cannot be used except for the official business of the particular Department for which provided... All of the specimens will be *ungummed*; and the official stamps will have printed across the face the word 'Specimen,' in small type. It will be useless to apply for *gummed* stamps, or for official stamps with the word 'Specimen' omitted." (March 27, 1875)

The 1¢ to 90¢ Official Special Printings were intended to be purchased in sets (with face value up to \$2), and the dollar-value State Department stamps were available individually. Other individual Official stamps could be purchased, subject to a minimum order of \$2.

To prepare for sales fulfillment the USPOD ordered and received 100 sheets of each of the 92 different Official stamps from the Continental Bank Note Company. The values from 1¢ through 90¢ were provided in sheets of 100 (10,000 total of each). The dollar-value State Department stamps were printed in sheets of ten (1,000 total of each). All of the stamps from this initial order were printed on hard white paper with a smooth surface, and they were sold without gum. With the exception of at least one set of imperforate sheets, the stamps were perforated.

Continental made a second printing of the Agriculture, Executive, Justice and State Department 1¢ stamps, using ribbed paper (100 sheets—10,000 stamps—of each). Additional printings of certain 1¢ departmental stamps were made by the American Bank Note Company, some of which were sold and survive as evidence that American used soft porous paper (1¢ Executive—O10xS, Navy—O35xS, and State—O57xS).

USPOD records show that additional 1¢ Agriculture and War Department stamps were also ordered, but the sale and destruction records indicate that only 234 of the

1¢ Agriculture stamps were needed in addition to the 20,000 from the two earlier Continental printings, and that none of the 5,000 1¢ War Department stamps printed by American were necessary to fill orders. Without examples of these two Official Special Printings, specialists can only speculate about the type of paper used or what they looked like.

An incomplete record of sales has been located in the government archives, dating from May 1879 through July 1882. The great majority of orders came from stamp dealers. Large quantities of the 1¢ and 2¢ values of all departments were purchased, including complete sheets. Orders of full sets, including the 3¢ to 90¢ values, were much more limited. The Executive Department stamps were the most numerous (the smallest number sold was 3,461 of the 10¢). The Treasury Department stamps drew the fewest orders among the 1¢-90¢ sets (only 72 of the 90¢ were sold). The State Department dollar values were evidently too expensive for most budgets, and sales were extremely small (only seven of the \$20 were sold).

The stamp program was discontinued on July 16, 1884. For many of the 130 years since the program ended the Official Special Printings were second cousins to their special-printing counterparts without the "Specimen" overprint, because stamps marked "Specimen" were usually discounted or given away. That was *not* the case with the Officials. As awareness of this fact has spread and appreciation of their significance has increased, the Official stamps have finally started to achieve equal status with special printings of the 1847 to 1883 regular postage, Postage Due and Newspapers & Periodicals issues.

Rear Admiral W. V. Combs published his important treatise on Official Special Printings in 1965 and lamented the lack of appreciation of the stamps. Around the same time, David Golden—who was always enamored with under-appreciated avenues of philately—formed the collection presented in this sale catalogue.

In 1994 and 1995, William E. Mooz published a series of articles on Official Special Printings in the U.S. Classics Society's *Chronicle* (Nos. 154, 166 and 168). We appreciate his contributions and guidance in this subject area, as well as the assistance of Lester Lanphear, a respected specialist, exhibitor and author on Officials.

The table that follows provides statistics for the manufacture and sale of Official Special Printings. The lot descriptions in this catalogue refer to the quantities sold and relative scarcity, based on the information in this table.

Department	Den ¢	Sc. No.	Plate # (Size)	1st CBNC Hard	2nd CBNC Ribbed	3rd ABNC Soft	4th ABNC Soft	5th ABNC Soft(?)	Total	Destroyed	Sold
Agriculture	1	O1S	65 (100)	10,000	10,000	0	0	5,000	25,000	4,766	20,234
Agriculture	2	O2S	64 (100)	10,000	0	0	0	0	10,000	5,808	4,192
Agriculture	3	O3S	57 (100)	10,000	0	0	0	0	10,000	9,611	389
Agriculture	6	O4S	72 (100)	10,000	0	0	0	0	10,000	9,627	373
Agriculture	10	O5S	114 (100)	10,000	0	0	0	0	10,000	9,610	390
Agriculture	12	O6S	73 (100)	10,000	0	0	0	0	10,000	9,621	379
Agriculture	15	O7S	105 (100)	10,000	0	0	0	0	10,000	9,630	370
Agriculture	24	O8S	145 (100)	10,000	0	0	0	0	10,000	9,648	352
Agriculture	30	O9S	100 (100)	10,000	0	0	0	0	10,000	9,646	354
Executive	1	O10S,O10xS	82 (100)	10,000	10,000	5,000	0	5,000	30,000	5,348	24,652
Executive	2	O11S	75 (100)	10,000	0	0	0	0	10,000	2,570	7,430
Executive	3	O12S	63 (100)	10,000	0	0	0	0	10,000	6,265	3,735
Executive	6	O13S	76 (100)	10,000	0	0	0	0	10,000	6,515	3,485
Executive	10	O14S	111 (100)	10,000	0	0	0	0	10,000	6,539	3,461
Interior	1	O15S	52 (100)	10,000	0	0	0	0	10,000	2,806	7,194
Interior	2	O16S	45 (100)	10,000	0	0	0	0	10,000	8,737	1,263
Interior	3	O17S	27 (100)	10,000	0	0	0	0	10,000	9,912	88
Interior	6	O18S	56 (100)	10,000	0	0	0	0	10,000	9,917	83
Interior	10	O19S	109 (100)	10,000	0	0	0	0	10,000	9,918	82

Department	Den ¢	Sc. No.	Plate # (Size)	1st CBNC Hard	2nd CBNC Ribbed	3rd ABNC Soft	4th ABNC Soft	5th ABNC Soft(?)	Total	Destroyed	Sold
Interior	12	O20S	49 (100)	10,000	0	0	0	0	10,000	9,925	75
Interior	15	O21S	93 (100)	10,000	0	0	0	0	10,000	9,922	78
Interior	24	O22S	104 (100)	10,000	0	0	0	0	10,000	9,923	77
Interior	30	O23S	95 (100)	10,000	0	0	0	0	10,000	9,925	75
Interior	90	O24S	108 (100)	10,000	0	0	0	0	10,000	9,923	77
Justice	1	O25S	85 (100)	10,000	10,000	0	0	0	20,000	271	19,729
Justice	2	O26S	90 (100)	10,000	0	0	0	0	10,000	6,605	3,395
Justice	3	O27S	28 (100)	10,000	0	0	0	0	10,000	9,822	178
Justice	6	O28S	77 (100)	10,000	0	0	0	0	10,000	9,837	163
Justice	10	O29S	97 (100)	10,000	0	0	0	0	10,000	9,837	163
Justice	12	O30S	91 (100)	10,000	0	0	0	0	10,000	9,846	154
Justice	15	O31S	99 (100)	10,000	0	0	0	0	10,000	9,843	157
Justice	24	O32S	115 (100)	10,000	0	0	0	0	10,000	9,850	150
Justice	30	O33S	110 (100)	10,000	0	0	0	0	10,000	9,850	150
Justice	90	O34S	113 (100)	10,000	0	0	0	0	10,000	9,848	152
Navy	1	O35S,O35xS	80 (100)	10,000	0	5,000	0	0	15,000	818	14,182
Navy	2	O36S	50 (100)	10,000	0	0	0	0	10,000	8,252	1,748
Navy	3	O37S	34 (100)	10,000	0	0	0	0	10,000	9,874	126
Navy	6	O38S	53 (100)	10,000	0	0	0	0	10,000	9,884	116
Navy	7	O39S	119 (100)	10,000	0	0	0	0	10,000	9,499	501
Navy	10	O40S	101 (100)	10,000	0	0	0	0	10,000	9,888	112
Navy	12	O41S	92 (100)	10,000	0	0	0	0	10,000	9,893	107
Navy	15	O42S	94 (100)	10,000	0	0	0	0	10,000	9,893	107
Navy	24	O43S	107 (100)	10,000	0	0	0	0	10,000	9,894	106
Navy	30	O44S	96 (100)	10,000	0	0	0	0	10,000	9,896	104
Navy	90	O45S	106 (100)	10,000	0	0	0	0	10,000	9,898	102
Post Office	1	O47S	43 (200)	10,000	0	0	0	0	10,000	3,985	6,015
Post Office	2	O48S	37 (100)	10,000	0	0	0	0	10,000	9,410	590
Post Office	3	O49S	36 (200)	10,000	0	0	0	0	10,000	9,909	91
Post Office	6	O50S	47 (200)	10,000	0	0	0	0	10,000	9,913	87
Post Office	10	O51S	62 (100)	10,000	0	0	0	0	10,000	9,823	177
Post Office	12	O52S	71 (100)	10,000	0	0	0	0	10,000	9,907	93
Post Office	15	O53S	66 (100)	10,000	0	0	0	0	10,000	9,918	82
Post Office	24	O54S	74 (100)	10,000	0	0	0	0	10,000	9,916	84
Post Office	30	O55S	68 (100)	10,000	0	0	0	0	10,000	9,919	81
Post Office	90	O56S	88 (100)	10,000	0	0	0	0	10,000	9,918	82
State	1	O57S,O57xS	55 (100)	10,000	10,000	0	5,000	0	25,000	3,328	21,672
State	2	O58S	59 (100)	10,000	0	0	0	0	10,000	4,855	5,145
State	3	O59S	70 (100)	10,000	0	0	0	0	10,000	9,207	793
State	6	O60S	83 (100)	10,000	0	0	0	0	10,000	9,533	467
State	7	O61S	112 (100)	10,000	0	0	0	0	10,000	9,209	791
State	10	O62S	98 (100)	10,000	0	0	0	0	10,000	9,654	346
State	12	O63S	78 (100)	10,000	0	0	0	0	10,000	9,720	280
State	15	O64S	118 (100)	10,000	0	0	0	0	10,000	9,743	257
State	24	O65S	117 (100)	10,000	0	0	0	0	10,000	9,747	253
State	30	O66S	116 (100)	10,000	0	0	0	0	10,000	9,751	249
State	90	O67S	67 (100)	10,000	0	0	0	0	10,000	9,755	245
State	\$2	O68S	121 (10)	1,000	0	0	0	0	1,000	968	32
State	\$5	O69S	120 (10)	1,000	0	0	0	0	1,000	988	12
State	\$10	O70S	122 (10)	1,000	0	0	0	0	1,000	992	8
State	\$20	O71S	124 (10)	1,000	0	0	0	0	1,000	993	7
Treasury	1	O72S	44 (200)	10,000	0	0	0	0	10,000	7,815	2,185
Treasury	2	O73S	42 (200)	10,000	0	0	0	0	10,000	9,691	309
Treasury	3	O74S	29 or 33 (200)	10,000	0	0	0	0	10,000	9,916	84
Treasury	6	O75S	51 (100)	10,000	0	0	0	0	10,000	9,915	85
Treasury	7	O76S	103 (100)	10,000	0	0	0	0	10,000	9,802	198
Treasury	10	O77S	58 (100)	10,000	0	0	0	0	10,000	9,918	82
Treasury	12	O78S	46 (100)	10,000	0	0	0	0	10,000	9,925	75
Treasury	15	O79S	84 (100)	10,000	0	0	0	0	10,000	9,925	75
Treasury	24	O80S	134 (100)	10,000	0	0	0	0	10,000	9,901	99
Treasury	30	O81S	69 (100)	10,000	0	0	0	0	10,000	9,926	74
Treasury	90	O82S	61 (100)	10,000	0	0	0	0	10,000	9,928	72
War	1	O83S	48 (100)	10,000	0	5,000	0	0	15,000	5,390	9,610
War	2	O84S	35 (200)	10,000	0	0	0	0	10,000	8,382	1,618
War	3	O85S	32 (200)	10,000	0	0	0	0	10,000	9,882	118
War	6	O86S	60 (100)	10,000	0	0	0	0	10,000	9,889	111
War	7	O87S	102 (100)	10,000	0	0	0	0	10,000	9,461	539
War	10	O88S	79 (100)	10,000	0	0	0	0	10,000	9,881	119
War	12	O89S	54 (100)	10,000	0	0	0	0	10,000	9,895	105
War	15	O90S	87 (100)	10,000	0	0	0	0	10,000	9,895	105
War	24	O91S	86 (100)	10,000	0	0	0	0	10,000	9,894	106
War	30	O92S	81 (100)	10,000	0	0	0	0	10,000	9,896	104
War	90	O93S	89 (100)	10,000	0	0	0	0	10,000	9,894	106



501EX

Photographs of lot 501 continue on pages 10 and 12-19

AFTERNOON SESSION (LOTS 501-671)
THURSDAY, MARCH 26, 2015, AT 1:30 P.M.

THE GOLDEN COLLECTION OF UNITED STATES OFFICIAL SPECIAL PRINTINGS

THE UNIQUE SET OF IMPERFORATE PAIRS FROM THE EARL OF CRAWFORD STRIPS

501°★ **1c-\$20.00 Officials, 1875 Special Printing, Specimen Overprint, Imperforate (O1S var - O93S var).** The only extant set of Departmental Special Printings in **imperforate pairs**, a total of 92 sheet-margin pairs cut from the Earl of Crawford's set of strips of five (87 top and 5 bottom positions), nearly complete Continental Bank Note Company imprints on four of the pairs (2c Agriculture, 12c Post Office, 7c State and 24c Treasury), part imprints or plate numbers on five others (see details below — included is the 1c Executive Positions 8-9 with "82" corrected plate number over Position 8), the dollar-value State Department pairs are from Positions 3-4 and have full plate numbers (\$2.00 with "No. 123" Black vignette plate number; others with "No. 120", "No. 122" and "No. 124" Green frame plate numbers and "No." in Black), the 3c State is a corner-margin pair (Positions 9-10), all have full to large margins, proof-like colors and impressions, bright and fresh paper, 24c Agriculture with two trivial creases, a couple of others with slight crease in margin, one or two with a faint toned spot

EXTREMELY FINE. THIS IS THE ONLY EXTANT SET OF PAIRS OF THE IMPERFORATE OFFICIAL SPECIAL PRINTINGS, WHICH WERE CUT FROM THE ORIGINAL STRIPS OF FIVE FROM THE EARL OF CRAWFORD COLLECTION. THE OTHER STAMPS FROM THE EARL OF CRAWFORD STRIPS WERE DIVIDED INTO SINGLES, AND IT IS LIKELY THAT ONLY FIVE COMPLETE IMPERFORATE SETS EXIST. ONE OF THE MOST IMPORTANT AND SPECTACULAR SETS OF UNITED STATES SPECIAL PRINTINGS, REPRINTS OR RE-ISSUES.

Nearly all known genuine examples of the imperforate Official Special Printing stamps come from the set of strips of five sold to James Ludovic Lindsay, the 26th Earl of Crawford, one of the great collectors of stamps, essays, proofs and philatelic literature at the turn of the 20th Century. Lord Crawford died on January 31, 1914, and his estate executors eventually agreed to sell the entire United States collection for \$60,000 to John A. Klemann of the Nassau Stamp Company. Klemann reported his acquisition of the Earl of Crawford's collection in the November 1915 edition of *The Philatelic Gazette*. Among the spectacular array of items owned by Lord Crawford were strips of the 1875 1c-90c Continental Bank Note Company Special Printings with intact selvage (Scott 167-177) and the set of Official Special Printing imperforate strips.

Klemann is almost certainly the person responsible for cutting up the Earl of Crawford strips into one set of pairs and three sets of singles, because one of the sets of singles was sold to Benjamin K. Miller, who was an active collector from 1917 to 1924 (his collection was donated to The New York Public Library and is now on long-term loan to the Smithsonian National Postal Museum). Miller probably acquired the imperforate set directly from Nassau Stamp Company, one of his dealer sources. We will refer to stamps from this set as the Miller singles (they can be seen on the National Postal Museum's website).

Another set of singles, most of which have plate numbers in the margins, was sold to Colonel Edward H. R. Green. This set was subsequently acquired by the physicist Serge A. Korff and, in turn, by the late Robert Zoellner. We will refer to stamps from this set as the Zoellner singles (last sold in Siegel Sale 804, lot 894).

Combining the pairs with the Miller and Zoellner singles, we are able to account for four of the five stamps in the original Earl of Crawford strips. The fifth set of singles was described, but not photographed, in the Phillips-Kennett auction catalogue of the Arthur Hind United States collection (November 20-24, 1933, lot 1041). At the time of the Hind sale, the dollar-value State Department singles were missing, and the remaining 1c-90c stamps had sheet margins. This incomplete set, with the sheet margins trimmed away, later appeared in the 1972 Rarities sale (Sale 409, lot 204) and in Sotheby's November 20, 1978 sale (lot 562). We will refer to stamps from this part set as the Hind singles. We have not been able to locate the four State Department dollar-value stamps (all Position 1) that would complete this fifth set.

To the best of our knowledge, the set of pairs offered here first appeared at auction as lot 1040 in the aforementioned Phillips-Kennett sale of the Hind collection. We next record the set of pairs in the John A. Fox July 8, 1966, auction of the Frank A. Hollowbush estate (lot 311),

continued on page 11



501EX

Photographs of lot 501 continue on pages 12-19

Lot 501 continued

where it was acquired by David Golden for \$7,750 (the original invoice accompanies this lot). Hollowbush probably acquired the set at or sometime after the 1933 Hind sale. It has been clearly established that the pairs are unique, so they will be referred to simply as “pairs” without provenance.

We compared the set of pairs with the Hind, Miller and Zoellner sets of imperforate singles. The following observations will be of interest to specialists:

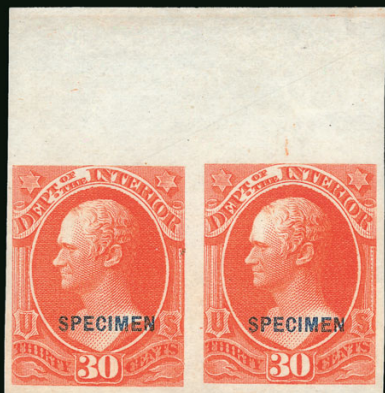
- The 1c Executive top-margin pair from Positions 8-9 with plate number “82” above Position 8 adjoins the Zoellner Position 7 single with etched-out number 81 and the Miller corner-margin Position 10. The first stamp in the strip (Position 6) is the Hind single.
- The 1c Post Office top-margin pair with most of the “No. 43” adjoins the Zoellner single with a small part of the numeral “3” and left half of the guide arrow (they are Positions 8-9 Left and 10 Left on the 200-subject plate). The Miller single has part of the imprint and comes from Position 6 Left. The Hind single Position 7 Left has had the margin with a trace of the imprint trimmed off.
- The 6c Post Office bottom-margin pair has part of the imprint from Positions 94-95 Right on the 200-subject plate. The Zoellner Position 92 Right single has the plate number “47”, which adjoins the Miller Position 91 Right single with the right half of the guide arrow. The Hind single Position 93 Right has had the margin with small parts of the plate number and imprint trimmed off.
- The 12c Post Office bottom-margin pair comes from Positions 92-93 with the imprint, a small part of which shows on the Zoellner Position 91 single. The Miller Position 95 single has the “N” of “No.” (the original strip of five did not include Position 96 with the plate number). Position 94 is the Hind single.
- The 3c State top-margin pair comes from Positions 9-10 and has large top-right corner sheet margins, while the Zoellner single comes from Position 6 and shows the “70” plate number; they are the beginning and end positions of the original strip of five. The Miller single comes from Position 7, and Position 8 is the Hind single.
- The 7c State bottom-margin pair comes from Positions 92-93 and shows most of the imprint, while the Miller single comes from Position 91 (showing a bit of the left end of the imprint). The Zoellner single comes from Position 95 and shows just the “N” of “No.” (the original strip of five did not include Position 96 with the plate number). Position 94 is the Hind single.
- The State Department dollar-value pairs come from Positions 3-4 (10-subject plate), directly adjoining the set of Zoellner singles from Position 5, which combine to show the “No.” and plate numbers of the vignette and frame plates in their respective black and green colors. The Miller singles come from Position 2 and show part of the imprint. The Position 1 singles (with part imprint) were missing from the Hind set of singles and have not been located.
- The 1c and 2c Treasury top-margin pairs both come from Positions 8-9 Left and show the “No.” above Position 9 (2c with “4” of “42”), while the corresponding Zoellner singles come from Position 10 Left and show the plate number “44” (1c) and “2” of “42” (2c) along with the left half guide arrow. The Miller singles come from Position 6 and show the right half of the imprint. The 1c and 2c Treasury Position 7 stamps are the Hind singles.
- The 3c Treasury top-margin pair shows a small part of the imprint, which adjoins with the Miller single with the right half of the imprint; these must come from Positions 6 and 7-8 Right on one of the 200-subject plates (Plate 29 or 33). The Zoellner single is the corner-margin Position 10 Right. Position 9 Right is the Hind single.
- The 24c Treasury pair from Positions 7-8 has a large part of the imprint, and the Zoellner single Position 6 adjoins to the left with a nearly complete plate number “64” and a small part of the imprint (in this unusual configuration, the plate number is to the left of the imprint). The Miller single is a corner-margin Position 10. The Hind Position 9 single has had the margin with the right end of the imprint trimmed off.
- The 2c War pair comes from Positions 7-8 Right (200-subject plate) and shows the right end of the imprint that joins with the part imprint on the Zoellner single from Position 6 Right; together they form the first three stamps of the original strip. The Miller single comes from the corner-margin Position 10 Right. Position 9 Right is the Hind single.
- The 3c War pair comes from Positions 7-8 Left (200-subject plate) and shows the right end of the imprint, which adjoins the Miller Position 6 Left single with the imprint. The Zoellner single comes from Position 10 Left, which shows the left half guide arrow and “2” of plate number “32.” The Hind Position 9 Left single has had the margin with the “No. 3[2]” portion of the imprint trimmed off.

Provenance of the pairs: Ex Earl of Crawford, Arthur Hind and Frank A. Hollowbush (with David Golden's original invoice from the John A. Fox sale, July 8, 1966).

The Scott value for an entire set of normally perforated Official Special Printings (1st Printing) is \$303,162.50 for singles, including \$215,000.00 for the four dollar-value State Department stamps. In addition to the great rarity and significance of this imperforate set, it is also a more practical and visually-appealing means of showing the complete Official Special Printings.

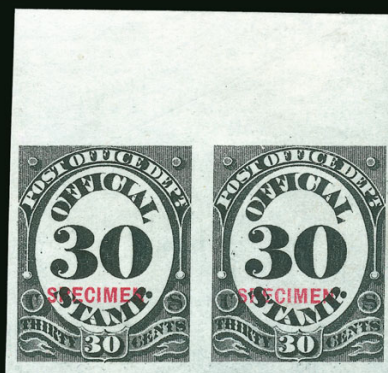
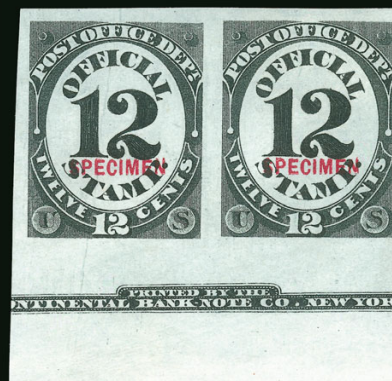
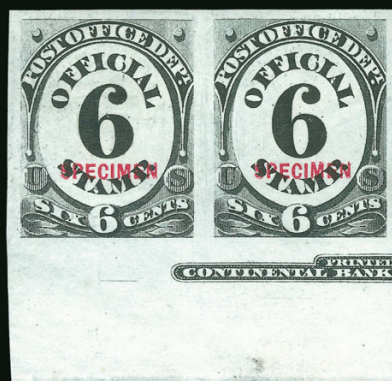
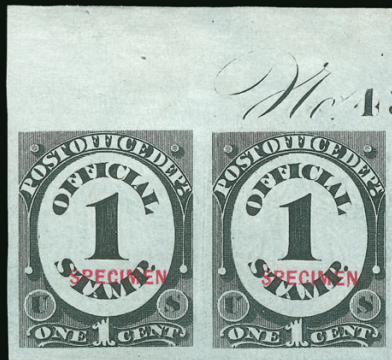
Estimate \$75,000-100,000

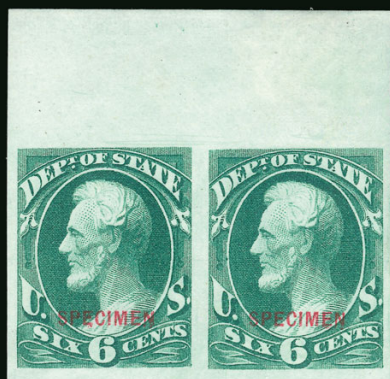


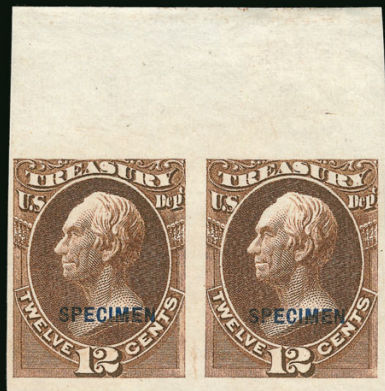
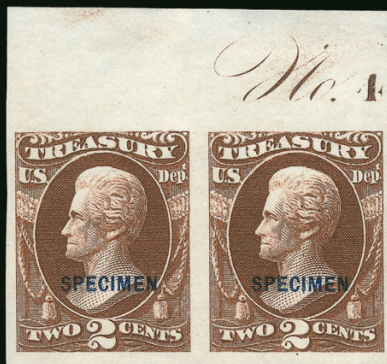


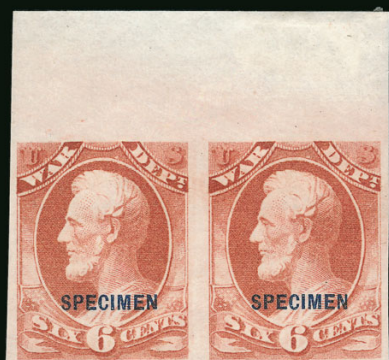












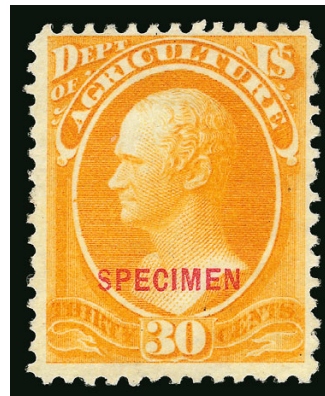
AGRICULTURE DEPARTMENT



502EX



503EX

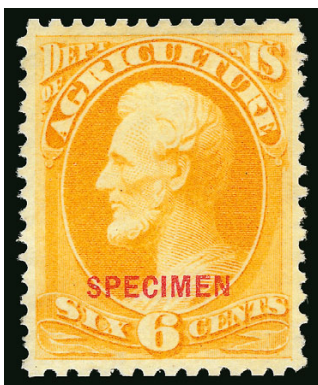


504EX

- 502 S **1c-30c Agriculture, Specimen Ovpt. (O1S-O9S).** Complete set, without gum as issued, vibrant colors, attractive margins and centering with only a couple minor flaws (2c light crease), Fine, a very attractive set, of the 3c to 30c values a range of 352 to 390 each were sold(Photo Ex) 2,187.50
- 503 S **1c-24c Agriculture, Specimen Ovpt. (O1S/O8S).** Three 1c, two 2c, single 3c, 12c, 15c and 24c, without gum as issued, vivid colors, 24c with minor hinge stain on back, Fine-Very Fine, the values from 3c up are scarce (as few as 352 24c were sold)...(Photo Ex) 1,807.50
- 504 S **10c-30c Agriculture, Specimen Ovpt. (O5S-O9S).** Set of the five highest values, without gum as issued, bright colors on fresh paper, Fine-Very Fine, a choice set, 352 to 390 of each sold(Photo Ex) 2,000.00



505



506

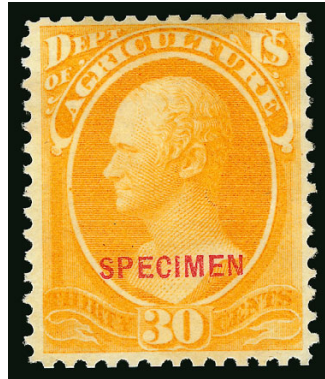


507

- 505 S **3c Agriculture, Specimen Ovpt. (O3S).** Without gum as issued, vivid color, wide margins and well-centered, Extremely Fine, an unusually choice example of the 3c Agriculture Special Printing, only 389 sold 400.00
- 506 S **6c Agriculture, Specimen Ovpt. (O4S).** Without gum as issued, outstanding margins and centering, vivid color on fresh paper, Extremely Fine, a beautiful stamp and rare in this condition, only 373 sold 400.00
- 507 S **6c Agriculture, Specimen Ovpt. (O4S).** Without gum as issued, Jumbo margins and well-centered, fiery color, Very Fine and choice, only 373 sold..... 400.00



508



509



510EX

- 508 S **10c Agriculture, Specimen Ovpt. (O5S).** Without gum as issued, outstanding centering, fresh color, Extremely Fine example of this challenging issue, only 390 sold 400.00
- 509 S **30c Agriculture, Specimen Ovpt. (O9S).** Without gum as issued, balanced margins, vivid color, Very Fine and choice, only 354 sold 400.00
- 510 S **1c Official Special Printings, Specimen Ovpt., Horizontally Ribbed Paper (O1Sb/O57Sb).** Group of nine 1c stamps from the 2nd Printing, two each of Agriculture (O1Sb), Executive (O10Sa), Justice incl. a part imprint pair (O25Sb) and State (O57Sb), without gum as issued, all but one Agriculture and Justice single with at least clear margins, couple small flaws incl. indentations in one of the stamps in the Justice pair, overall Fine group, Scott Retail without regard to the part imprint(Photo Ex) 330.00
- 511 S **1c Official Special Printings, Specimen Ovpt., Horizontally Ribbed Paper, Small Dotted "i" (O1Sc, O10Sb, O57Sc).** Group of four 1c stamps from the 2nd Printing, two Agriculture (O1Sc), singles of Executive (O10Sb) and State (O57Sc), without gum as issued, Fine and scarce, these varieties come only from the 2nd Printing on ribbed paper(Photo Ex) 1,950.00



511EX



512

- 512 S **1c Agriculture, Specimen Ovpt., Horizontally Ribbed Paper (O1Sb).** 2nd Printing, bottom left corner imprint and plate no. 65 strip of six, without gum as issued, vibrant color, Fine-Very Fine, a lovely and scarce imprint and plate number multiple..... E. 500-750



513

- 513 S **1c Agriculture, Specimen Ovpt., Horizontally Ribbed Paper (O1Sb).** 2nd Printing, top selvage strip of five with most of imprint (missing only "C") and plate no. 65, each portion of selvage with extra vertical perforations, without gum as issued, gorgeous color, Fine-Very Fine E. 400-500



514

- 514 S **1c Agriculture, Specimen Ovpt., Horizontally Ribbed Paper (O1Sb).** 2nd Printing, block of nine, without gum as issued, fresh color, centered to bottom, Fine, Scott Retail as block of four and five singles..... 612.50

- 515 S **1c Agriculture, Specimen Ovpt., Horizontally Ribbed Paper, Small Dotted "i" (O1Sc).** 2nd Printing, block of four, the variety in the top right stamp, without gum as issued, top pair horizontal crease near top, otherwise Fine-Very Fine, Scott Retail as singles..... 612.50

- 516 S **1c-2c Agriculture, Specimen Ovpt. (O1Sb-O2S).** Blocks of four, 1c ribbed paper (2nd Printing) without gum as issued, vivid colors, 1c Fine, 2c with tiny margin tear at bottom left and small toned spot on back of same stamp, Very Fine appearance, scarce blocks..... (Photo Ex) 1,050.00

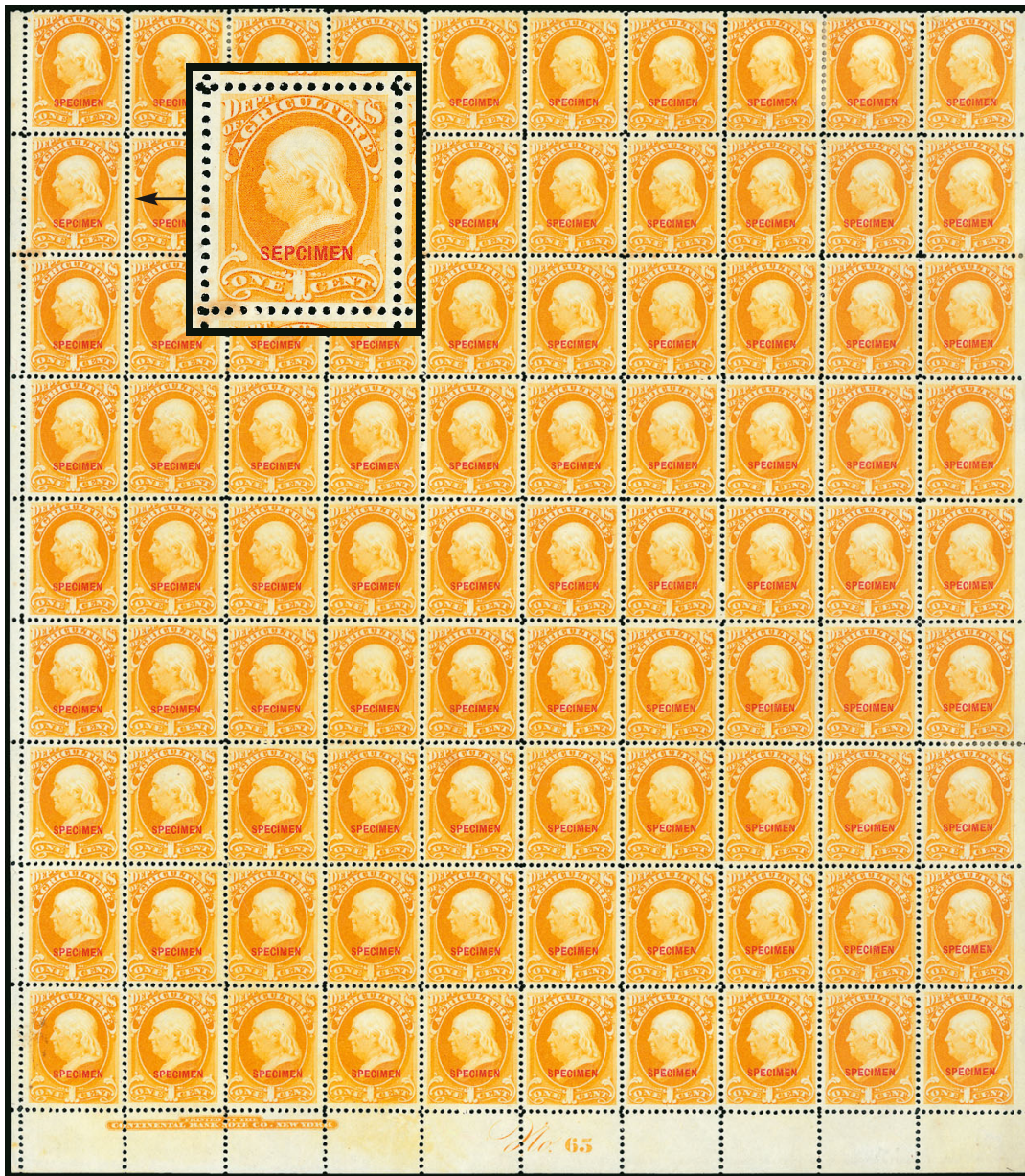


515




516EX

AGRICULTURE “SEPCIMEN” ERROR



517

- 517  **1c Agriculture, Specimen Ovpt. and “Sepcimen” Error (OS1, O1Sa). Block of 90**, comprising the full sheet less the top row, the error in Position 21 (left stamp in second row of this block), without gum as issued, selvage at left, **imprint and plate no. 65** at bottom, natural s.e. at right, bright color, outstanding centering nearly throughout, a few lightly toned perfs including at the bottom of the error stamp, slight soiling bottom left stamp, some minor reinforced perf separations at edges

FINE-VERY FINE. THE LARGEST RECORDED MULTIPLE OF THE ONE-CENT AGRICULTURE SPECIAL PRINTING ON HARD PAPER WITH THE “SEPCIMEN” ERROR IN POSITION 21.

All nine denominations of the Agriculture Issue were printed from plates of 100 subjects. 10,000 of the 1c Special Printing were sold from the 1st Printing. Multiples from the 1st Printing showing the “Sepcimen” error are very rare. This is believed to be the largest extant. The Lewenthal collection contained a complete sheet of 100 on ribbed paper from the 2nd Printing without the “Sepcimen” error.

Ex Senator Ernest R. Ackerman (noted in Combs booklet, page 16). Scott Retail \$9,572.50 as blocks of four and singles, without regard to the imprint and plate number ... E. 4,000-5,000



518



519



520

- 518 S **1c Agriculture, "Sepcimen" Error (O1Sa).** Without gum as issued, well-centered, faint hinge stain on back shows very slightly on face, otherwise Very Fine, only approximately 20 are known ... 2,500.00
- 519 S **1c Agriculture, "Sepcimen" Error (O1Sa).** Without gum as issued, bright color, Fine, only approximately 20 are known 2,500.00
- 520 S **1c Agriculture, "Sepcimen" Error (O1Sa).** Without gum as issued, brilliant color, wide margins, tiny tear between perfs at bottom, tiny corner perf crease at top right, Very Fine appearance, scarce with approximately 20 known 2,500.00
- 521 S **2c Agriculture, "Sepcimen" Error (O2Sa).** Without gum as issued, radiant color, fresh and Fine, approximately 10 are known, curiously several are centered to lower right 3,000.00



521



522

- 522 S **15c Agriculture, "Sepcimen" Error (O7Sa).** Without gum as issued, deep rich color, attractive margins which are wide and balanced on three sides and well clear of the perfs at top
VERY FINE. AN EXTREMELY RARE EXAMPLE OF THE 15-CENT AGRICULTURE "SEPCIMEN" ERROR. ONLY TWO OR THREE ARE KNOWN.
Robert Markovits recorded only two examples of the 15c Agriculture "Sepcimen" error (2004 Bennett sale), but it is not clear if his census included this stamp. Only 370 of the 15c Agriculture Special Printing were sold, but it is not known how the stamps were taken from the sheets or if full sheets were exhausted before breaking a subsequent sheet. The ex-Lewenthal and Markovits copy, last sold in a Siegel sale in 2005, is scissors-separated into the perfs at top. The stamp offered here is far superior in quality. . 12,500.00



523

- 523 S **24c Agriculture, “Sepcimen” Error (O8Sa).** Without gum as issued, brilliant color, choice margins and centering, exceptionally fresh

VERY FINE. THIS IS THE FINEST OF ONLY THREE RECORDED EXAMPLES OF THE 24-CENT AGRICULTURE “SEPCIMEN” ERROR.

Robert Markovits recorded only three examples of the 24c Agriculture “Sepcimen” error (2004 Bennett sale). Only 352 copies of the 24c Agriculture Special Printing were sold, but it is not known how the stamps were taken from the sheets or if full sheets were exhausted before breaking a subsequent sheet. The ex-Markovits copy, last sold in a Siegel sale in 2005, is faulty and scissors-separated into the perfs at top. The ex-Sheriff copy (Siegel Sale 752, lot 484) is not as well-centered as the example offered here. 12,500.00



524

- 524 S **30c Agriculture, “Sepcimen” Error (O9Sa).** Without gum as issued, vivid color, wonderfully well-centered with wide margins, bright and fresh

EXTREMELY FINE. THIS IS THE FINEST OF ONLY THREE RECORDED EXAMPLES OF THE 30-CENT AGRICULTURE “SEPCIMEN” ERROR.

Robert Markovits recorded only three examples of the 30c Agriculture “Sepcimen” error (2004 Bennett sale). Only 354 copies of the 30c Agriculture Special Printing were sold, but it is not known how the stamps were taken from the sheets or if full sheets were exhausted before breaking a subsequent sheet. The ex-Sheriff and Markovits copy and the example sold in Siegel Sale 913 are not nearly as well-centered as the stamp offered here.

Ex Lewenthal and pictured in Combs booklet on page 36. Signed Bloch..... 13,500.00

EXECUTIVE DEPARTMENT



525EX



526EX



527EX

- 525 S **1c-10c Executive, Specimen Ovpt. (O10S-O14S, O10xS).** 1st and 3rd Printings, without gum as issued, few minor perf flaws, O10xS thin spot, otherwise Fine-Very Fine.....
.....(Photo Ex) 425.00
- 526 S **1c-10c Executive, Specimen Ovpt. (O10S-O14S, O10xS).** 1st and 3rd Printings, without gum as issued, bright colors, few small flaws not readily apparent, Fine-Very Fine
.....(Photo Ex) 425.00
- 527 S **1c-10c Executive, Specimen Ovpt. (O10S-O14S, O10xS).** 1st and 3rd Printings, without gum as issued, few with perf flaws, 6c and 10c light creases, still Fine-Very Fine
.....(Photo Ex) 425.00



528

- 528 S **1c Executive, Specimen Ovpt., Ribbed Paper (O10Sa).** 2nd Printing, bottom right corner imprint and plate no. 82 strip of ten with **plate no. 81 etched out**, bright color, few minor perf separations sensibly reinforced
VERY FINE. A RARE AND DESIRABLE IMPRINT AND PLATE NUMBER STRIP OF TEN OF THE ONE-CENT EXECUTIVE SPECIAL PRINTING ON RIBBED PAPER FROM THE SECOND PRINTING.
Imprint and plate number multiples are unlisted in Scott on ribbed paper. The plate block of 14 on hard paper from the 1st Printing, with the same quantity sold, catalogues \$18,000.00 E. 2,000-3,000



529

- 529 S **1c Executive, Ribbed Paper, Specimen Ovpt., Dotted “i” in “Specimen” (O10Sb).** 2nd Printing, top left corner imprint and plate no. 82 strip of seven comprising separated strips of four and three (reduced selvage on strip of four), with **plate no. 81 etched out**, right stamp the variety, without gum as issued, light diagonal crease affects Positions 2 and 3



FINE. A RARE RECONSTRUCTED IMPRINT AND PLATE NUMBER STRIP OF THE ONE-CENT EXECUTIVE SPECIAL PRINTING ON RIBBED PAPER, SHOWING BOTH THE PLATE NUMBER ETCHED OUT AND THE SMALL “i” IN “SPECIMEN”.

Ex Earl of Crawford. Imprint and plate number multiples are unlisted in Scott on ribbed paper. The plate block of 14 on hard paper from the 1st Printing, with the same quantity sold, catalogues \$18,000.00..... E. 1,500-2,000



530



531



532

- 530 S **1c Executive, Specimen Ovpt., Ribbed Paper (O10Sa).** 2nd Printing, block of four, without gum as issued, rich color, few minor perf flaws typical of this printing, Fine-Very Fine..... 375.00
- 531 S **2c Executive, Specimen Ovpt. (O11S).** Block of four, without gum as issued, brilliant color, beautifully centered and well-balanced margins, Very Fine and attractive block 650.00
- 532 S **2c Executive, Specimen Ovpt. (O11S).** Block of four, without gum as issued, rich color, fresh and Fine-Very Fine..... 650.00

INTERIOR DEPARTMENT



533

- 533 S **1c-90c Interior, Specimen Ovpt. (O15S-O24S).** Complete set, without gum as issued, several with perfs scissors-separated causing few short perfs, bright colors, few flaws
FINE-VERY FINE. A RARE COMPLETE SET OF THE INTERIOR DEPARTMENT SPECIAL PRINTING.
Of the 3c to 90c values, between 75 and 88 were sold, making the Interior Department set the second rarest of the 1c-90c Special Printings..... 20,200.00



534

- 534 S **1c-90c Interior, Specimen Ovpt. (O15S-O24S).** Complete set, without gum as issued, most with perfs scissors-separated but with most perfs intact, 3c s.e. at right, bright colors, few flaws
FINE-VERY FINE. A RARE COMPLETE SET OF THE INTERIOR DEPARTMENT SPECIAL PRINTING.
Of the 3c to 90c values, between 75 and 88 were sold, making the Interior Department set the second rarest of the 1c-90c Special Printings.
The 6c and 12c-90c with purple "FK" backstamps..... 20,200.00



535

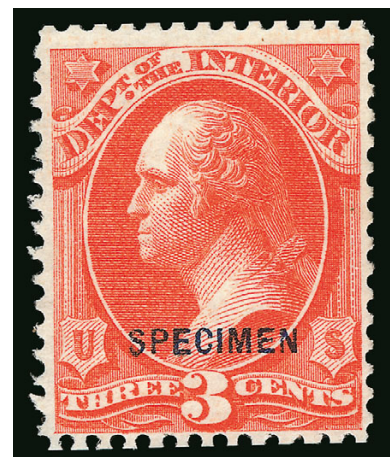
- 535 S **1c-90c Interior, Specimen Ovpt. (O15S-O24S).** Complete set, without gum as issued, several with perfs scissors-separated causing some short perfs or s.e., bright colors, few flaws
FINE-VERY FINE. A RARE COMPLETE SET OF THE INTERIOR DEPARTMENT SPECIAL PRINTING.
Of the 3c to 90c values, between 75 and 88 were sold, making the Interior Department set the second rarest of the 1c-90c Special Printings..... 20,200.00



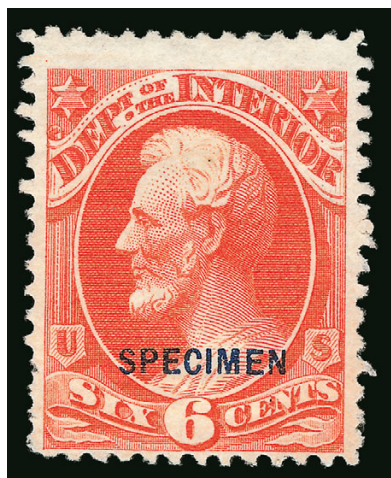
536

- 536 S **1c-2c Interior, Specimen Ovpt. (O15S-O16S).** Without gum as issued, brilliant colors, 2c single short perf at right, still Extremely Fine....
.....(Photo Ex) 200.00

- 537 S **3c Interior, Specimen Ovpt. (O17S).** Without gum as issued, brilliant color, reperfed at right, appears Fine, very scarce, only 88 sold..... 2,500.00



537



538

- 538 S **6c Interior, Specimen Ovpt. (O18S).** Without gum as issued, radiant color, few short perfs at lower left, otherwise Fine, very scarce, only 83 sold..... 2,500.00

- 539 S **10c Interior, Specimen Ovpt. (O19S).** Without gum as issued, brilliant color, wide margins, Very Fine and choice, very scarce and seldom encountered in this quality, only 82 sold, small red backstamp..... 2,500.00



539



540

- 540 S **12c Interior, Specimen Ovpt. (O20S).** Without gum as issued, vibrant color, perfs scissors-separated but intact, Very Fine, very scarce, only 75 sold . 2,500.00

- 541 S **15c Interior, Specimen Ovpt. (O21S).** Without gum as issued, intense shade and impression, few nibbed perfs, still Fine, very scarce, only 78 sold.. 2,500.00

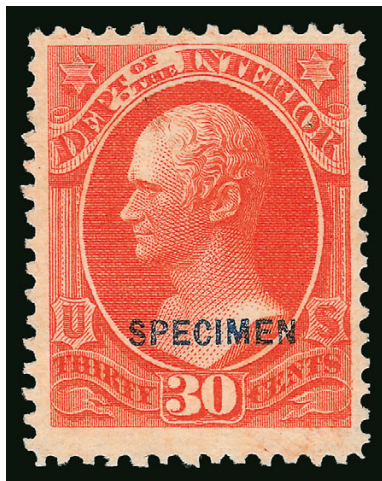


541

- 542 S **24c Interior, Specimen Ovpt. (O22S).** Without gum as issued, radiant color, scissors-separated but perfs intact, fresh and Very Fine, certainly one of the finest examples of this very scarce Special Printing, only 77 sold..... 2,500.00



542



543

- 543 S **30c Interior, Specimen Ovpt. (O23S).** Without gum as issued, vibrant color, Very Fine and choice, one of the finest known examples of the very scarce 30c Interior Special Printing, only 75 sold 2,500.00

- 544 S **90c Interior, Specimen Ovpt. (O24S).** Without gum as issued, detailed impression, wide and balanced margins, few nibbed perfs, still Extremely Fine, very scarce, this is one of the most spectacular examples we have ever encountered, only 77 sold.... 2,500.00



544



545



546



547

- 545 S# **1c Interior, Specimen Ovpt. (O15S).** Block of four, without gum as issued, radiant color, well-balanced margins, Very Fine and choice..... 650.00
- 546 S# **1c Interior, Specimen Ovpt. (O15S).** Block of four, without gum as issued, radiant color, fresh and Fine..... 650.00
- 547 S# **1c Interior, Specimen Ovpt. (O15S).** Block of four, without gum as issued, brilliant color, Fine-Very Fine..... 650.00

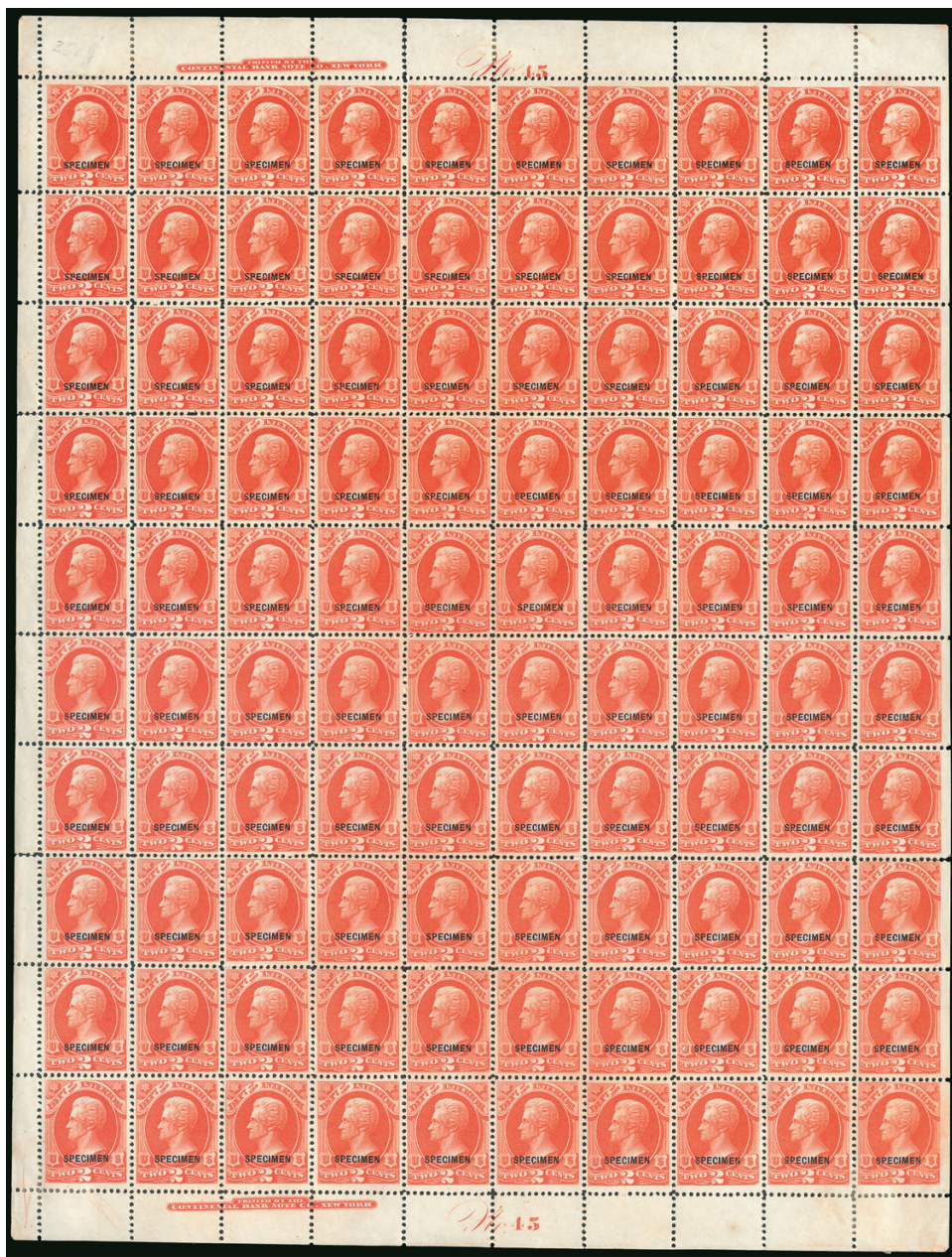


548




549

- 548 S# **1c Interior, Specimen Ovpt. (O15S).** Block of 16, without gum as issued, natural s.e. at right, few light creases, Fine-Very Fine, an impressive multiple, Scott Retail as four blocks of four..... 2,600.00
- 549 S# **2c Interior, Specimen Ovpt. (O16S).** Block of four, without gum as issued, brilliant color, fresh and Very Fine, a scarce block..... 1,500.00



550

550  **2c Interior, Specimen Ovpt. (O16S).** Complete sheet of 100, without gum as issued, “Specimen” corrected spelling on Position 21, imprint and plate no. 45 selvage at top and bottom, s.e. at right, remarkably pristine condition except for a few perf separations and few light bends on some stamps at right

VERY FINE. A PHENOMENAL INTACT SHEET OF 100 OF THE 2-CENT INTERIOR SPECIAL PRINTING, SHOWING THE CORRECTED SPELLING OF THE “SEPCIMEN” ERROR. AN IMPORTANT SHOWPIECE AND ALSO THE LARGEST RECORDED MULTIPLE.

When production of the Officials Special Printings started, Position 21 of the “Specimen” overprint setting was misspelled “Sepcimen.” This was subsequently noticed and corrected. 53 different “Sepcimen” errors are listed in Scott, and 39 denominations from various departments are not known with the variety.

The variety was first corrected during the printing of the 2c Interior. The existence of this pane is proof of this, because there was only one printing of 10,000 stamps (100 sheets), and two examples of Position 21 with the “Sepcimen” error are known.

Scott Retail as two plate blocks of twelve and nineteen blocks of four. 48,500.00

JUSTICE DEPARTMENT



551

551 S **1c-90c Justice, Specimen Ovpt. (O25S-O34S).** Complete set, without gum as issued, each stamp with attractive centering and margins clear of perfs on all sides, bright colors, 3c single nibbed perf

FINE-VERY FINE. A CHOICE COMPLETE SET OF THE JUSTICE DEPARTMENT SPECIAL PRINTING.

Sold quantities of the 3c to 90c Justice Department Special Printing range from 150 to 178. Complete sets are scarce and invariably contain at least a few stamps with scissors-trimmed perfs. This set, without any trimmed stamps, is exceptional..... 10,087.50



552

552 S **1c-90c Justice, Specimen Ovpt. (O25S-O34S).** Complete set, without gum as issued, each decent centering and margins throughout, only the 24c scissors-separated but with intact perfs, fresh colors, 3c light horizontal crease

FINE. A BEAUTIFUL COMPLETE SET OF THE JUSTICE DEPARTMENT SPECIAL PRINTINGS.

Sold quantities of the 3c to 90c Justice Department Special Printing range from 150 to 178. Complete sets are scarce and invariably contain at least a few stamps with scissors-trimmed perfs. This set, without any stamps cut into the perfs, is desirable..... 10,087.50



553EX



554

- 553 S **1c, 2c, 30c Justice, Specimen Ovpt. (O25S, O26S, O33S).** Without gum as issued, rich colors, 2c faint diagonal bend, Fine-Very Fine(Photo Ex) 1,337.50
- 554 S **3c Justice, Specimen Ovpt. (O27S).** Without gum as issued, wide margins at top and bottom, rich color, Very Fine, only 178 sold 1,250.00



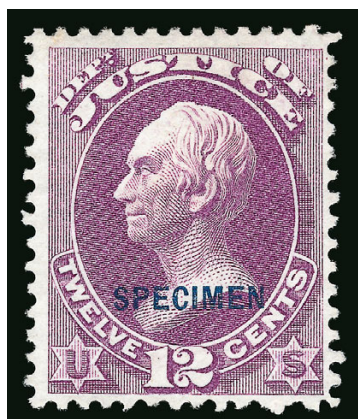
555

- 555 S **6c Justice, Specimen Ovpt. (O28S).** Without gum as issued, incredibly well-centered, scissors-separated at sides but with full perforations, beautiful color, fresh and Extremely Fine, scarce with such choice centering, only 163 sold 1,250.00

- 556 S **10c Justice, Specimen Ovpt. (O29S).** Without gum as issued, exceptional centering and margins, wonderful depth of color, Extremely Fine, a beautiful stamp, only 163 sold, tiny purple "FK" backstamp 1,250.00



556



557

- 557 S **12c Justice, Specimen Ovpt. (O30S).** Without gum as issued, rich color, well-centered, Very Fine, only 154 sold, tiny purple "FK" backstamp 1,250.00



558

- 558 S **15c Justice, Specimen Ovpt. (O31S).** Without gum as issued, essentially perfect centering, fresh color and paper, Extremely Fine, wonderful quality for this issue, only 157 sold 1,250.00



559

- 559 S **24c Justice, Specimen Ovpt. (O32S).** Without gum as issued, deep shade, choice balanced margins, Extremely Fine, a scarce stamp, especially in this quality, only 150 sold 1,250.00



560

- 560 S **30c Justice, Specimen Ovpt. (O33S).** Without gum as issued, deep rich color, Very Fine and scarce, only 150 sold 1,250.00



561

- 561 S **90c Justice, Specimen Ovpt. (O34S).** Without gum as issued, balanced margins, rich color, few nibbed perfs at right, still Extremely Fine, only 152 sold 1,250.00



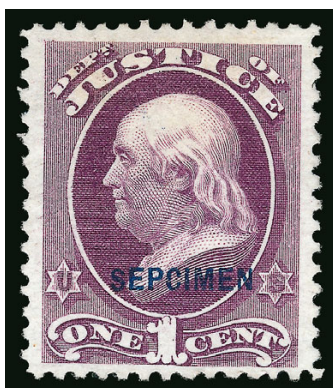
562EX



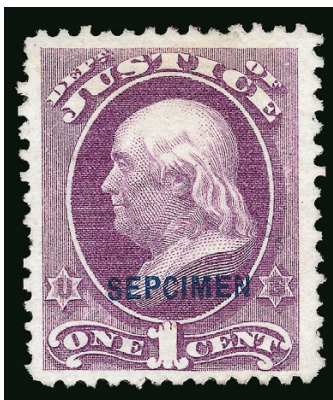
563

- 562 S 1c-2c Justice, Specimen Ovpt. (O25S-O26S). Blocks of four, without gum as issued, rich colors, both with attractive margins and centering, 1c natural pre-printing paper fold at bottom, Very Fine(Photo Ex) 1,000.00
- 563 S 1c Justice, Specimen Ovpt., Horizontally Ribbed Paper (O25Sb). 2nd Printing, block of four, without gum as issued, well-balanced margins, Very Fine..... 550.00

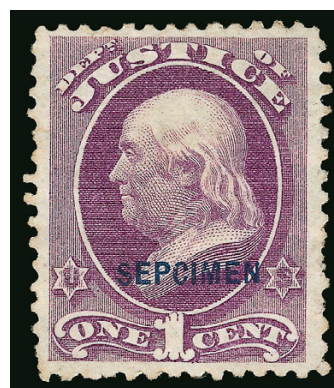
JUSTICE DEPARTMENT "SEPCIMEN" ERROR



564



565

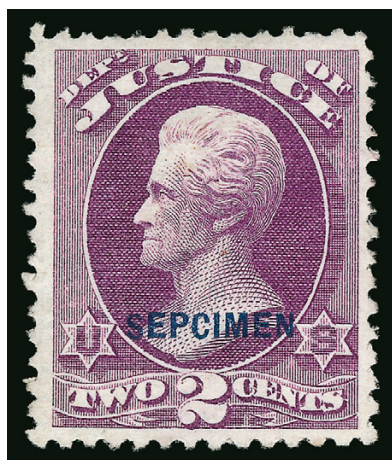


566

- 564 S 1c Justice, "Sepcimen" Error (O25Sa). Without gum as issued, extra wide margins, faint hinge glue stain is not very evident on front, otherwise Very Fine 1,900.00
- 565 S 1c Justice, "Sepcimen" Error (O25Sa). Without gum as issued, wide margins and choice centering, faint hinge glue stain is not very evident on front, pulled perf at left, otherwise Very Fine 1,900.00
- 566 S 1c Justice, "Sepcimen" Error (O25Sa). Without gum as issued, balanced margins, just a hint of toning, a few short perfs, otherwise Very Fine 1,900.00
- 567 S 1c Justice, "Sepcimen" Error (O25Sa). Without gum as issued, manuscript writing (old but not postal in origin), light horizontal crease and overall toning, otherwise Very Fine, Scott Retail as normal 1,900.00



567



568

568 S **2c Justice, “Sepcimen” Error (O26Sa).** Without gum as issued, well-centered, deep rich color, couple barely nibbed perfs at top

VERY FINE AND CHOICE. A WELL-CENTERED AND FRESH EXAMPLE OF THE RARE 2-CENT JUSTICE DEPARTMENT SPECIAL PRINTING WITH “SEPCIMEN” ERROR.

Although the volume of sales of the 2c Justice Special Printing (3,395) indicates that stamps from 34 sheets were sold, including 34 “Sepcimen” errors, we actually do not know how sheets were separated or if an entire sheet was sold before the next sequential sheet. The rarity of the 2c Justice “Sepcimen” error — with perhaps six or seven examples known — does not accord with the quantity of stamps sold. Combs was perplexed by its rarity (see page 38) and wondered if the error was corrected during the press run, as it was for the 2c Interior, based on the report of a sheet with Position 21 showing the corrected error..... 2,500.00

NAVY DEPARTMENT



569

569 S **1c-90c Navy, Specimen Ovpt. (O35S-O45S).** Without gum as issued, incl. two each of 1c and 2c, brilliant colors, few perfs scissors-separated causing some s.e., few small faults

FINE-VERY FINE. A RARE COMPLETE SET OF THE NAVY DEPARTMENT SPECIAL PRINTING.

Other than the 1c, 2c and 7c values, the Navy Department is very scarce, with sales of the 90c value limiting the possible number of sets to 102. 11,970.00

- 570 S **1c-2c Navy, Specimen Ovpt. (O35S-O36S).** Without gum as issued, rich colors on bright paper, better centering than normally seen, Very Fine-Extremely Fine.....
(Photo Ex) 110.00

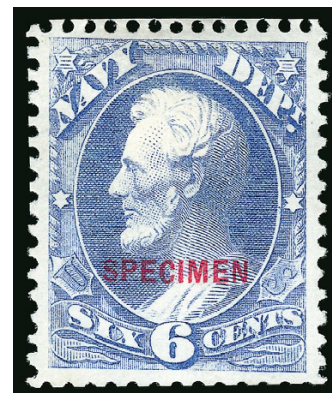


570EX



571

- 571 S **3c Navy, Specimen Ovpt. (O37S).** Without gum as issued, brilliant color, fresh and Very Fine, scarce in sound condition, only 126 sold..... 1,400.00



572

- 572 S **6c Navy, Specimen Ovpt. (O38S).** Without gum as issued, brilliant color, perfs scissors-separated but intact, well-balanced margins, Extremely Fine, only 116 sold.....
 1,400.00



573

- 573 S **7c Navy, Specimen Ovpt. (O39S).** Without gum as issued, rich color, fresh and Very Fine 550.00



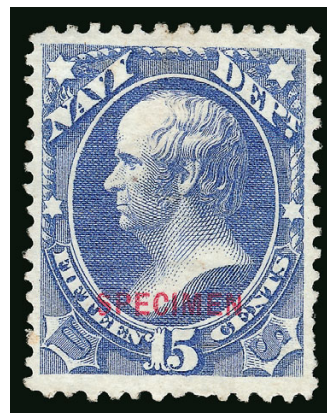
574

- 574 S **10c Navy, Specimen Ovpt. (O40S).** Without gum as issued, bright color, perfs scissors-separated but intact, single short perf at top, still Very Fine, only 112 sold..... 1,400.00



575

- 575 S **12c Navy, Specimen Ovpt. (O41S).** Without gum as issued, radiant color, fresh and Fine, only 107 sold 1,400.00



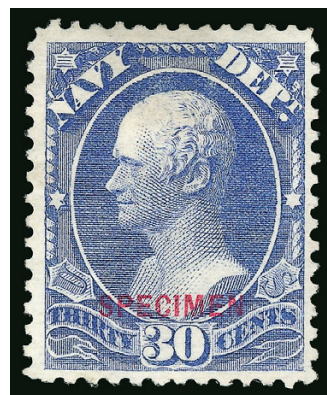
576

- 576 S **15c Navy, Specimen Ovpt. (O42S).** Without gum as issued, deep shade on bright paper, unusually wide margins, few short perfs at lower right, otherwise Very Fine, only 107 sold 1,400.00



577

- 577 S **24c Navy, Specimen Ovpt. (O43S).** Without gum as issued, intense color and detailed impression on bright paper, Very Fine example of this scarce Specimen overprint, only 106 sold 1,400.00



578

- 578 S **30c Navy, Specimen Ovpt. (O44S).** Without gum as issued, radiant color, tiny thin speck, Very Fine appearance, blue "A.R." backstamp, only 104 sold 1,400.00



579

- 579 S **90c Navy, Specimen Ovpt. (O45S).** Without gum as issued, rich color, fresh and Very Fine, this is the scarcest value of the Navy Department Special Printing, only 102 sold 1,400.00



580



581

- 580 S田 **2c Navy, Specimen Ovpt. (O36S).** Block of four, without gum as issued, rich color on bright paper, Very Fine-Extremely Fine multiple 750.00
- 581 S田 **2c Navy, Specimen Ovpt. (O36S).** Block of four, without gum as issued, rich color, top stamps faint toned spot, Fine-Very Fine appearance 750.00



582

- 582 S田 **7c Navy, Specimen Ovpt. (O39S).** Block of four, without gum as issued, radiant color, top left stamp light corner crease at top left
 VERY FINE APPEARANCE. A RARE BLOCK OF FOUR OF THE 7-CENT NAVY DEPARTMENT SPECIAL PRINTING.
 Only 501 sold. Very few blocks are known. 5,000.00

NAVY DEPARTMENT "SEPCIMEN" ERROR



583

- 583 S **1c Navy, "Sepcimen" Error (O35Sa).** Positions 11-20/21-30/31-40, block of 30, without gum as issued, Position 21 the "Sepcimen" error, others normal, with left selvage and natural s.e. at right, some toned spots

VERY FINE CENTERING AND A WONDERFUL LARGE BLOCK OF THE ONE-CENT NAVY SPECIAL PRINTING, CONTAINING THE "SEPCIMEN" SPELLING ERROR.

Scott Retail as the variety, four blocks of four and thirteen singles 4,455.00



584

- 584 S **2c Navy, "Sepcimen" Error (O36Sa).** Without gum as issued, bright color, faint pressed-out horizontal crease, tiny thin speck at bottom

FINE CENTERING. AN EXTREMELY RARE EXAMPLE OF THE 2-CENT NAVY DEPARTMENT "SEPCIMEN" ERROR.

Although the sold quantity would suggest a fair number of "Sepcimen" errors were sold (1,748 stamps, or 18 sheets), the 2c Navy "Sepcimen" is very rare. In addition to the single offered here, we located two copies in the Miller collection (on extended loan by The New York Public Library to the Smithsonian National Postal Museum), one in the Sheriff sale (Siegel Sale 752, lot 495, stamp trimmed at top), and one in the Lewenthal collection (light toning). The Markovits collection was missing this error. Therefore, of the five copies known to us, only three are available to collectors. Combs also observed its rarity and commented that "there should be some more copies around some place" (page 39) — apparently not. 3,250.00

POST OFFICE DEPARTMENT



585

585 S **1c-90c Post Office, Specimen Ovpt. (O47S-O56S).** Complete set, without gum as issued, few scissors-separated but with virtually all perfs intact, couple tiny perf flaws of no great consequence

FINE-VERY FINE. A RARE COMPLETE SET OF THE POST OFFICE DEPARTMENT SPECIAL PRINTING.

Only 81 of the 30c Post Office Special Printing were sold, which gives the Post Office set third-place ranking in rarity among the 1c to 90c Official Special Printings.

30c and 90c with small purple backstamps. 12,670.00



586

586 S **1c-90c Post Office, Specimen Ovpt. (O47S-O56S).** Complete set, without gum as issued, most scissors-separated, most perfs intact except 90c s.e. at top, couple tiny flaws of no great consequence

FINE-VERY FINE. A RARE COMPLETE SET OF THE POST OFFICE DEPARTMENT SPECIAL PRINTING.

Only 81 of the 30c Post Office Special Printing were sold, which gives the Post Office set third-place ranking in rarity among the 1c to 90c Official Special Printings.

15c with purple backstamp. 12,670.00



587EX

- 587 S **1c-2c Post Office, Specimen Ovpt. (O47S-O48S).** Without gum as issued, bright shades, fresh and Very Fine
(Photo Ex) 370.00

- 588 S **3c Post Office, Specimen Ovpt. (O49S).** Without gum as issued, crisp impression, Very Fine and choice, a scarce Special Printing, especially in this quality, only 91 sold.....
 1,600.00



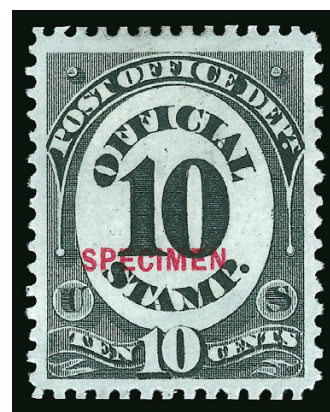
588



589

- 589 S **6c Post Office, Specimen Ovpt. (O50S).** Without gum as issued, perfs scissors-separated but essentially intact, Extremely Fine, remarkably choice centering for this scarce Special Printing, only 87 sold..... 1,600.00

- 590 S **10c Post Office, Specimen Ovpt. (O51S).** Without gum as issued, intense shade and impression, choice centering with wide and balanced margins, fresh and Extremely Fine, a beautiful stamp, one of the finest known examples, only 177 sold 1,100.00



590



591

- 591 S **12c Post Office, Specimen Ovpt. (O52S).** Without gum as issued, deep shade and bright paper, wide margins, small thin spot at center, Very Fine and choice appearance, only 93 sold..... 1,600.00

- 592 S **15c Post Office, Specimen Ovpt. (O53S).** Without gum as issued, gorgeous centering, fresh and bright, full perforations all around, Extremely Fine, probably the finest existing example of this scarce Official Special Printing, of which only 82 were sold. 1,600.00



592



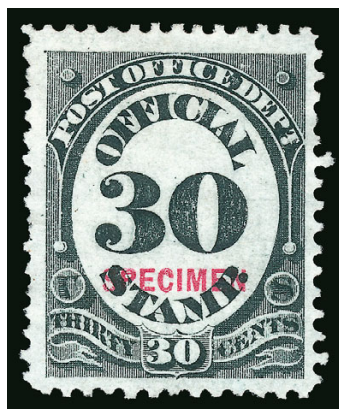
593

- 593 S **15c Post Office, Specimen Ovpt. (O53S).** Without gum as issued, detailed impression, Fine, only 82 sold ... 1,600.00



594

- 594 S **24c Post Office, Specimen Ovpt. (O54S).** Without gum as issued, wide margins, fresh and Very Fine, only 84 sold... 1,600.00



595

- 595 S **30c Post Office, Specimen Ovpt. (O55S).** Without gum as issued, deep shade, unusually wide margins, short perf at left, otherwise Very Fine, scarce, this value has the lowest sale quantity of the Post Office Department Special Printing with only 81 sold 1,600.00



596

- 596 S **90c Post Office, Specimen Ovpt. (O56S).** Without gum as issued, crisp impression, wide and balanced margins, few nibbed perfs, still Very Fine and choice, only 82 sold 1,600.00



597EX



598

- 597 田 **1c-2c Post Office, Specimen Ovpt. (O47S-O48S).** Blocks of four, without gum as issued, 1c faint crease along perfs at upper left, the 2c is especially nice (and catalogues \$3,250.00), Fine-Very Fine, scarce blocks(Photo Ex) 3,725.00
- 598 田 **1c Post Office, Specimen Ovpt. (O47S).** Block of four, without gum as issued, natural s.e. at right, Fine-Very Fine 475.00



599

- 599 田 **2c Post Office, Specimen Ovpt. (O48S).** Block of six with **nearly complete top imprint** in selvage, without gum as issued, intact perfs at left, bright shade
FINE-VERY FINE. A VERY RARE BLOCK OF THE 2-CENT POST OFFICE SPECIAL PRINTING, SHOWING MOST OF THE IMPRINT AT TOP.
Scott Retail as block of four and two singles with no premium for the better position.....
..... 3,900.00

ONE-CENT POST OFFICE DEPARTMENT
INVERTED "SPECIMEN"

600 S **1c Post Office, Specimen Ovpt., Inverted Ovpt. (O47Sb).** Without gum as issued, wide margins and well-centered

VERY FINE AND CHOICE. AN OUTSTANDING EXAMPLE OF THE RARE INVERTED "SPECIMEN" OVERPRINT ON THE ONE-CENT POST OFFICE SPECIAL PRINTING. THIS IS THE ONLY INVERT ERROR AMONG THE SPECIAL PRINTINGS.

Although the 1c Post Office stamps were printed from a 200-subject plate, the sheets were divided into panes of 100 before overprinting. Therefore, only 100 of the inverted "Specimen" overprints could have been produced, and we do not know how many were sold. Only a small fraction of the number printed has been located..... 2,750.00



600



601

601 S **1c Post Office, Specimen Ovpt., Inverted Ovpt. (O47Sb).** Without gum as issued, well-centered, detailed impression

VERY FINE EXAMPLE OF THE RARE INVERTED "SPECIMEN" OVERPRINT ON THE ONE-CENT POST OFFICE SPECIAL PRINTING. THIS IS THE ONLY INVERT ERROR AMONG THE SPECIAL PRINTINGS.

Only a small fraction of the number printed has been located 2,750.00

602 S **1c Post Office, Specimen Ovpt., Inverted Ovpt. (O47Sb).** Without gum as issued, crisp impression. Fine, purple "H" backstamp, only one pane of 100 inverts was produced, far fewer examples have been reported..... 2,750.00



602



603

603 S **1c Post Office, Specimen Ovpt., Inverted Ovpt. (O47Sb).** Without gum as issued, intense shade, Fine, only one pane of 100 inverts was produced, far fewer examples have been reported..... 2,750.00

POST OFFICE DEPARTMENT "SEPCIMEN" ERROR



604

604 S **1c Post Office, "Sepcimen" Error (O47Sa).** Without gum as issued, intense shade, unusually fresh

FINE. A SOUND AND UNUSUALLY PRISTINE EXAMPLE OF THE ONE-CENT POST OFFICE DEPARTMENT "SEPCIMEN" ERROR.

With a sold quantity of 6,015, it is possible that 60 "Sepcimen" errors were released, but we do not know how the sheets were divided and sold, nor do we know if the entire print run had the error in Position 21. Reports of known examples are fewer than a dozen. This example is sound and much fresher than most we have seen. 2,750.00



605

605 S **1c Post Office, "Sepcimen" Error (O47Sa).** Without gum as issued, intense shade

FINE. A RARE EXAMPLE OF THE ONE-CENT POST OFFICE DEPARTMENT "SEPCIMEN" ERROR.

With a sold quantity of 6,015, it is possible that 60 "Sepcimen" errors were released, but we do not know how the sheets were divided and sold, nor do we know if the entire print run had the error in Position 21. Reports of known examples are fewer than a dozen.

Ex Lewenthal and Kharash 2,750.00



606

606 S **3c Post Office, “Sepcimen” Error (O49Sa).** Without gum as issued, scissors-separated but perforations are mostly intact except for a few at top

THE ONLY RECORDED EXAMPLE OF THE 3-CENT POST OFFICE DEPARTMENT SPECIAL PRINTING WITH “SEPCIMEN” ERROR. ONE OF THE GREAT RARITIES OF SPECIAL PRINTINGS.

Only 91 copies of the 3c Post Office Special Printing were sold. Assuming that one sheet was divided and sold before starting on the next sequential sheet (we do not know if that, in fact, was the practice), then no more than one 3c Post Office “Sepcimen” error (Position 21) was sold. According to Combs, the existence of a 3c Post Office “Sepcimen” was reported by Konwiser in 1925 (see page 40 in Combs booklet), but it was not listed in the Scott Catalogue until 1971, two years after it was certified by Herbert Bloch of the Friedl Expert Committee.

With 1969 Friedl certificate..... E. 15,000-20,000

STATE DEPARTMENT



607EX

- 607 S **1c-90c State, Specimen Ovpt. (O57S-O67S).** Complete for the "Cents" values, without gum as issued, bright colors, nice margins and centering, a couple with slight hinge stain on back or h.r., 6c couple tiny thins

FINE-VERY FINE SET OF THE ONE-CENT TO 90-CENT STATE DEPARTMENT SPECIAL PRINTING.

The 90c value has the lowest sold quantity of the "Cents" State Department Special Printing set, at 245. Each of the stamps in this set was selected for centering, appearance and freshness.(Photo Ex) 4,252.50

- 608 S **1c-90c State, Specimen Ovpt. (O57S-O67S).** Complete for the "Cents" values, without gum as issued, fresh colors, a few minor perf flaws and a couple sides reperfed, Fine-Very Fine appearance.(Photo Ex) 4,252.50



608EX



609EX

- 609 S **1c-7c State, Specimen Ovpt. (O57S-O61S).** Without gum as issued, 2c with couple tiny perf flaws, Fine group(Photo Ex) 752.50

- 610 S **2c State, Specimen Ovpt., Double Transfer (O57S).** Position 98 with bottom sheet margin, showing **major double transfer** in the letters at bottom, without gum as issued, rich color, Fine and rare, this and the example offered in the part sheet in lot 619 are the only examples located with Power Search, unlisted in Scott but noted in Combs booklet. E. 300-400



610



611

- 611 S **\$2.00 State, “Specimen” Overprint (O68S).** Without gum as issued, deep rich colors, attractive centering with perfs well clear of design all around
 VERY FINE. AN EXTREMELY RARE SOUND EXAMPLE OF THE \$2.00 STATE DEPARTMENT SPECIAL PRINTING. ONLY 32 WERE SOLD.
 Of the 32 sold, Markovits estimated that approximately 20 are known (Bennett sale).
 With 1969 Friedl certificate 25,000.00



612

- 612 S **\$2.00 State, "Specimen" Overprint (O68S).** Without gum as issued, bright colors and paper, wide margins clear of design all around, natural straw fiber inclusion
 VERY FINE. AN EXTREMELY RARE SOUND EXAMPLE OF THE \$2.00 STATE DEPARTMENT SPECIAL PRINTING. ONLY 32 WERE SOLD.
 Of the 32 sold, Markovits estimated that approximately 20 are known (Bennett sale).
 25,000.00



613

- 613 S **\$2.00 State, "Specimen" Overprint (O68S).** Without gum as issued, margins to touched at left, a couple of letters in overprint slightly rubbed
 FINE CENTERING. AN AFFORDABLE AND ATTRACTIVE EXAMPLE OF THE \$2.00 STATE DEPARTMENT SPECIAL PRINTING. ONLY 32 WERE SOLD.
 Of the 32 sold, Markovits estimated that approximately 20 are known (Bennett sale).
 With 1969 Friedl certificate 25,000.00



614



615



616

- 614 S田 **1c State, Specimen Ovpt., Horizontally Ribbed Paper (O57Sb).** 2nd Printing, block of four, without gum as issued, choice centering throughout, bright color, couple slightly nibbed perfs at right, still Extremely Fine 425.00
- 615 S田 **1c State, Specimen Ovpt., Horizontally Ribbed Paper (O57Sb).** 2nd Printing, block of four, without gum as issued, fresh color, slightly nibbed perf at right as often seen, Fine-Very Fine appearance 425.00
- 616 S田 **1c State, Specimen Ovpt., Horizontally Ribbed Paper (O57Sb).** 2nd Printing, block of four, without gum as issued, vivid color, wide margins and attractive centering, Fine-Very Fine 425.00

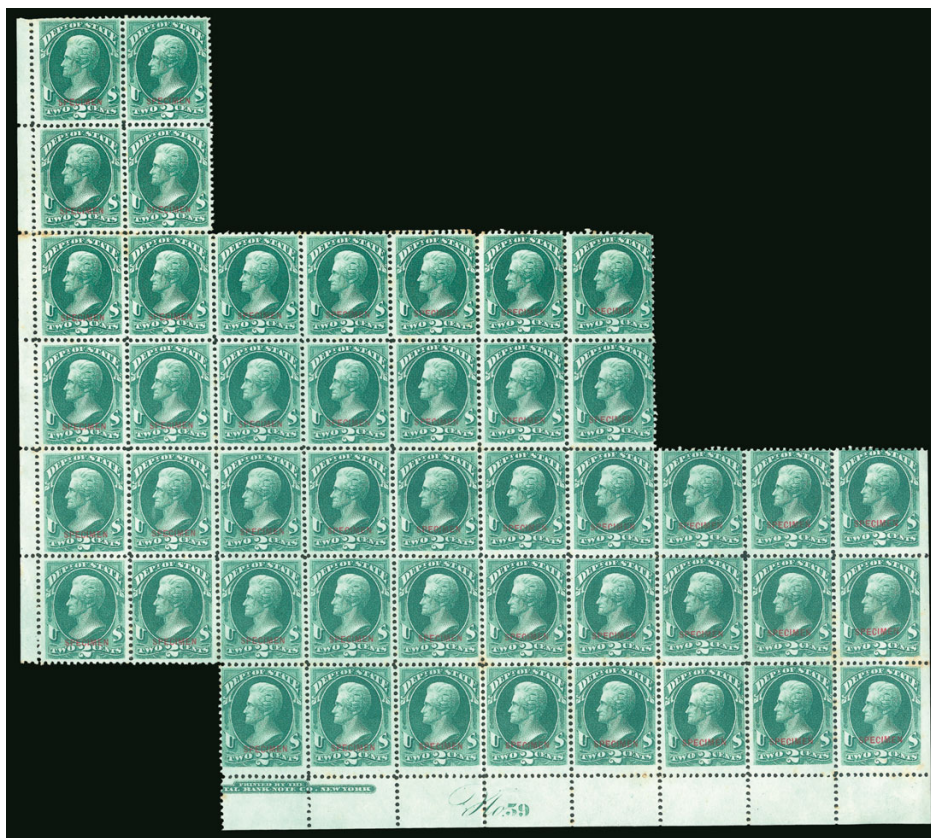


617




618

- 617 S田 **2c State, Specimen Ovpt. (O58S).** Block of four, without gum as issued, well-centered with balanced margins, fresh color and paper, tiny perf tip crease at bottom right, still Very Fine and choice block..... 850.00
- 618 S田 **2c State, Specimen Ovpt. (O58S).** Block of four, without gum as issued, well-proportioned margins, few minor perf separations at top, Very Fine and choice block ... 850.00




619

- 619  **2c State, Specimen Ovpt. (O58S).** Positions 31-32/81-82, 53-57/93-97, 78-80/98-100, part sheet of 46 (from rejoined vertical blocks of 12, 25 and 9), without gum as issued, bottom with **part imprint and plate no. 59 as well as the Position 98 major double transfer**, most stamps with perfs at least clear of design, some toning between perfs in a few places and some minor perf separations as would be expected in such a multiple

FINE-VERY FINE. AN EXTREMELY RARE PART IMPRINT AND PLATE NUMBER MULTIPLE OF THE 2-CENT STATE DEPARTMENT SPECIAL PRINTING. ESPECIALLY DESIRABLE SHOWING THE MAJOR DOUBLE TRANSFER IN POSITION 98.

All the State Department issues below the dollar denominations were printed from sheets of 100 stamps. Position 98 on the 2c plate contains one of the most pronounced double transfers of any Official issue. Combining it with a multiple which also shows the part imprint and plate number makes this one of the most outstanding Official Special Printing items extant.

Scott Retail as blocks and singles without regard to the premium positions or double transfer..... 8,550.00

- 620  **7c State, Specimen Ovpt. (O61Sa).** Block of four, without gum as issued, bright color, fresh and Fine, a scarce block..
..... 1,500.00



620

STATE DEPARTMENT "SEPCIMEN" ERROR



621



622



623

- 621 S **1c State, "Sepcimen" Error (O57Sa).** Without gum as issued, deep rich color on bright paper, Fine and attractive, ex Stephen Brown with his hinge and pencil code still affixed 1,900.00
- 622 S **1c State, "Sepcimen" Error (O57Sa).** Without gum as issued, deep color, balanced margins, light hinge stain at top on back barely shows thru, otherwise Extremely Fine.... 1,900.00
- 623 S **1c State, "Sepcimen" Error (O57Sa).** Without gum as issued, rich color, faint horizontal crease and single short perf at left, appears Fine 1,900.00

- 624 S **2c State, "Sepcimen" Error (O58Sa).** Without gum as issued, rich color, trivial faint corner crease at bottom left

VERY FINE APPEARANCE. A VERY SCARCE EXAMPLE OF THE 2-CENT STATE DEPARTMENT SPECIAL PRINTING WITH "SEPCIMEN" ERROR.

Although the sold quantity of 5,145 (52 sheets) would suggest a fairly plentiful supply of the "Sepcimen" error, Markovits estimated only 7 to 10 extant, which may or may not include two copies in the Miller collection (on extended loan by The New York Public Library to the Smithsonian National Postal Museum). 2,500.00



624



625

- 625 S **2c State, "Sepcimen" Error (O58Sa).** Without gum as issued, balanced margins three sides, perfs touched at top where there is a tiny bit of soiling, still Fine and rare, Markovits estimated only 7 to 10 extant, which may or may not include two copies in the Miller collection (on extended loan by The New York Public Library to the Smithsonian National Postal Museum)..... 2,500.00



626

- 626 S **3c State, “Sepcimen” Error (O59Sa).** Without gum as issued, distinctive shade, outstanding margins and centering — very unusual for this rare issue as many Official Special Printings come with scissors-separated perfs — just a hint of toning in bottom perfs at right

EXTREMELY FINE. A BEAUTIFUL EXAMPLE OF THE RARE 3-CENT STATE DEPARTMENT “SEPCIMEN” ERROR. ONLY APPROXIMATELY FIVE EXAMPLES ARE KNOWN.

Only 793 of the 3c State Department Special Printing were sold, which indicates no more than eight “Sepcimen” errors were sold. Only five were recorded by Markovits (2004 Bennett sale). There is one in the Miller collection (on extended loan by The New York Public Library to the Smithsonian National Postal Museum). We are aware of five privately-owned examples: the Lewenthal, Combs, Sheriff, Markovits and Golden copies. This is the first example to appear in our auctions since we offered the ex-Markovits copy in 2005, which has a straight edge from scissors-separations. 6,000.00



627

- 627 S **7c State, “Sepcimen” Error (O61Sa).** Without gum as issued, rich color, nice margins with perfs clear of design all around

FINE AND RARE EXAMPLE OF THE 7-CENT STATE DEPARTMENT “SEPCIMEN” ERROR. FEWER THAN SEVEN ARE KNOWN.

This is the only example we have offered in more than 20 years of auctions and Rarities sales since 1964. Markovits recorded only five known (2004 Bennett sale). There is one in the Miller collection (on extended loan by The New York Public Library to the Smithsonian National Postal Museum). We are aware of only three privately-owned examples: the Lewenthal/Sheriff, Markovits and Golden copies, although other collections no doubt contain a few more examples.

With 1985 P.F. certificate 8,250.00

TREASURY DEPARTMENT



628

628 S **1c-90c Treasury, Specimen Ovpt. (O72S-O82S).** Without gum as issued, deep rich colors, few small flaws mostly affecting a few perfs

FINE-VERY FINE APPEARANCE. A SELDOM-OFFERED COMPLETE SET OF THE TREASURY DEPARTMENT SPECIAL PRINTING. THIS IS THE RAREST SET OF THE "CENTS" VALUES AMONG THE DEPARTMENTAL SPECIAL PRINTINGS.

Only 72 of the 90c were sold, and 74 to 99 of the other values (excluding the 1c, 2c and 7c) were sold, making the Treasury Department Special Printing the rarest of the 1c to 90c sets. 14,330.00



629

629 S **1c-90c Treasury, Specimen Ovpt. (O72S-O82S).** Without gum as issued, deep rich colors, 10c s.e. at right, few small flaws but overall in better condition than many

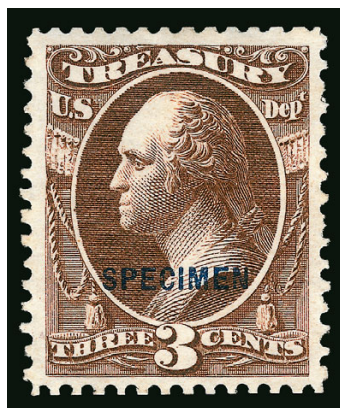
FINE-VERY FINE APPEARANCE. A REMARKABLE COMPLETE SET OF THE TREASURY DEPARTMENT SPECIAL PRINTING. THIS IS THE RAREST SET OF THE "CENTS" VALUES AMONG THE DEPARTMENTAL SPECIAL PRINTINGS.

Only 72 of the 90c were sold, and 74 to 99 of the other values (excluding the 1c, 2c and 7c) were sold, making the Treasury Department Special Printing the rarest of the 1c to 90c sets. 14,330.00

- 630 S **1c-2c Treasury, Specimen Ovpt. (O72S-O73S).** Without gum as issued, rich color, well-proportioned margins, Extremely Fine(Photo Ex) 540.00



630EX



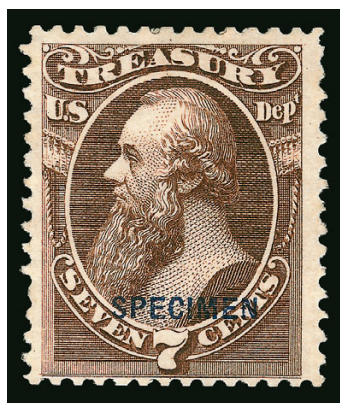
631

- 631 S **3c Treasury, Specimen Ovpt. (O74S).** Without gum as issued, rich color on bright paper, gorgeous centering
EXTREMELY FINE. A MAGNIFICENT EXAMPLE OF THE 3-CENT TREASURY DEPARTMENT SPECIAL PRINTING. ALMOST CERTAINLY THE FINEST EXTANT.
Only 84 sold. 1,600.00

- 632 S **6c Treasury, Specimen Ovpt. (O75S).** Without gum as issued, bright shade, wide margins, Very Fine and choice, only 85 sold 1,600.00



632



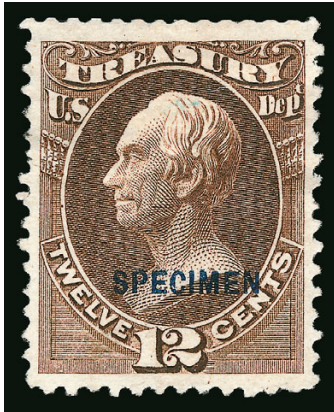
633

- 633 S **7c Treasury, Specimen Ovpt. (O76S).** Without gum as issued, detailed impression, three wide margins, Very Fine, only 198 sold..... 950.00



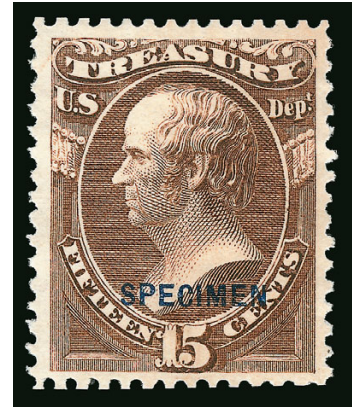
634

- 634 S **10c Treasury, Specimen Ovpt. (O77S).** Without gum as issued, deep rich color, extra wide top and bottom margins, Very Fine, rare, only 82 sold 1,600.00



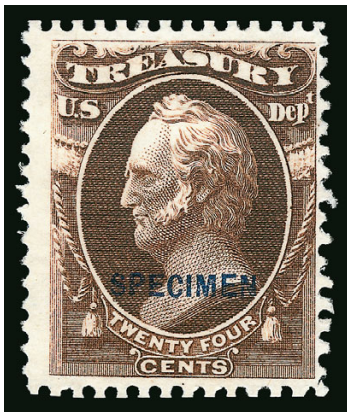
635

- 635 S **12c Treasury, Specimen Ovpt. (O78S).** Without gum as issued, bright shade, scissors-separated at top but perfs essentially intact, few barely nibbed perfs at left, still Extremely Fine, rare, especially in this choice quality, only 75 sold 1,600.00



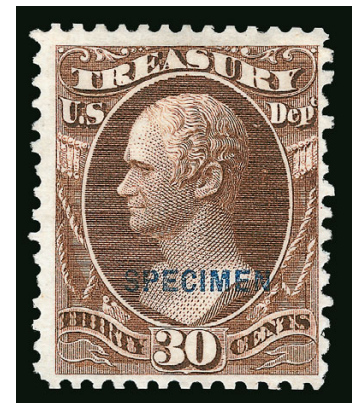
636

- 636 S **15c Treasury, Specimen Ovpt. (O79S).** Without gum as issued, crisp impression, well-balanced margins, scissors-separated with full intact perfs, Very Fine and choice, rare, only 75 sold 1,600.00



637

- 637 S **24c Treasury, Specimen Ovpt. (O80S).** Without gum as issued, intense shade and impression, intact perfs all around, fresh and Very Fine, only 99 sold 1,600.00



638

- 638 S **30c Treasury, Specimen Ovpt. (O81S).** Without gum as issued, pretty shade, Very Fine, small backstamp, rare, only 74 sold 1,600.00




639

- 639 S **90c Treasury, Specimen Ovpt. (O82S).** Without gum as issued, rich color and detailed impression, single nibbed perf at right, still Very Fine and choice, only 72 sold 1,650.00



640

- 640  **1c Treasury, Specimen Ovpt. (O72S).** Block of 74, without gum as issued, rich color, natural s.e. at sides, some toned spots

FINE-VERY FINE APPEARANCE. A MAGNIFICENT AND EXTREMELY RARE BLOCK OF 74 OF THE ONE-CENT TREASURY SPECIAL PRINTING.

Position 21 showed the "Specimen" error in the early production of the Official Special Printings. It was evidently corrected *during* the printing of the 2c Interior, since that stamp comes with and without the error. None of the Treasury Special Printing values are known with the "Specimen" error, as this block containing Position 21 demonstrates.


Scott Retail as 18 blocks of four and two singles 17,710.00



641




642

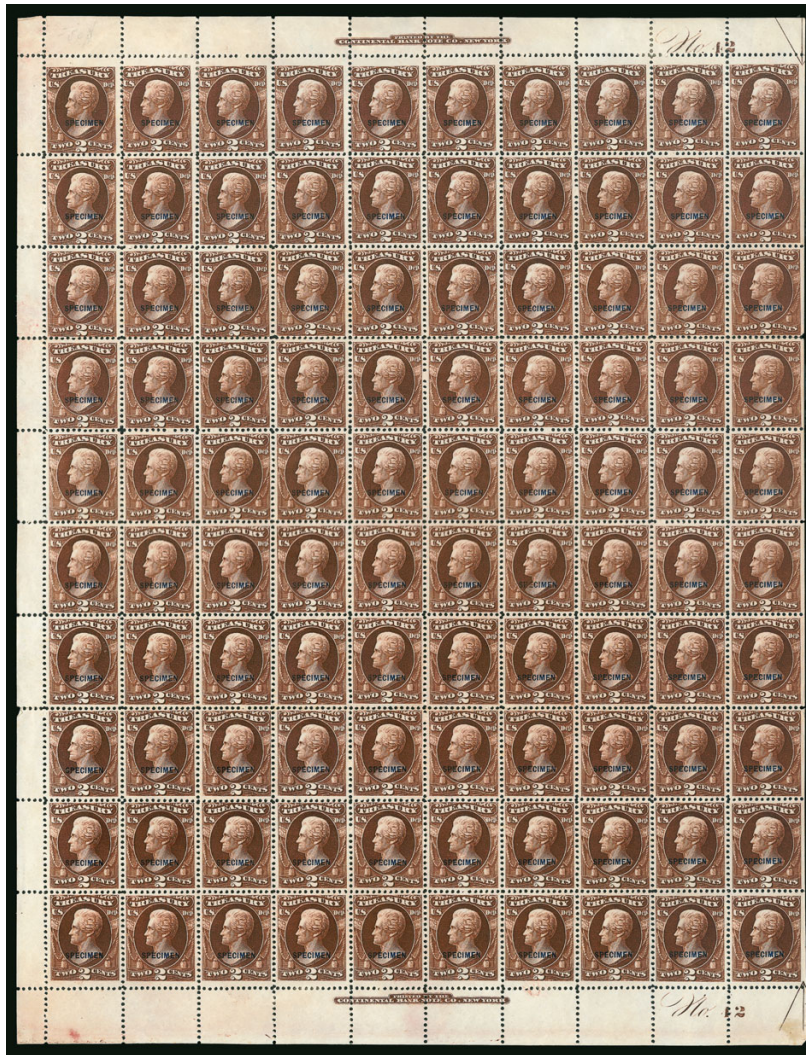
- 641  **2c Treasury, Specimen Ovpt. (O73S).** Block of four, without gum as issued, bright shade, well-centered


FINE-VERY FINE. A RARE BLOCK OF FOUR OF THE 2-CENT TREASURY SPECIAL PRINTING.

Multiples are of the 2c Treasury Department Special Printing are rare. 4,250.00

- 642  **2c Treasury, Specimen Ovpt. (O73S).** Block of four, without gum as issued, radiant color, s.e. at right, few shortish perfs at left, otherwise Fine-Very Fine, multiples are rare 4,250.00

643



643  **2c Treasury, Specimen Ovpt. (O73S).** Complete pane of 100, the left half of the printed sheet of 200, including imprint and plate no. 42 selvage at top and bottom, guide arrows at top and bottom right, selvage at left and natural s.e. at right, without gum as issued, few stamps at top right faint crease (looks more like a bend)

FINE-VERY FINE. THIS PHENOMENAL COMPLETE PANE OF 100 OF THE 2-CENT TREASURY SPECIAL PRINTING, WITH IMPRINTS AND PLATE NUMBERS AT TOP AND BOTTOM, IS SURELY UNIQUE. THIS PANE CONTAINS ALMOST A THIRD OF THE KNOWN SUPPLY OF THIS ISSUE. A PHENOMENAL RARITY AND ONE OF THE HIGHLIGHTS OF THE GOLDEN COLLECTION.

Official records indicate that 10,000 2c Treasury Department Special Printings were delivered (100 panes of 100). The Official Special Printings were offered as complete sets by Department (1c-90c). Specific stamps could be ordered, provided the minimum face value was \$2. The State Department dollar values were offered individually with no restrictions.

In common with other Special Printings, Reprints and Re-Issues (for example Scott 102-111), the sale of these issues was discontinued on July 15, 1884. Official sales figures indicate only 309 of the 2c Treasury were sold. The remaining stock of 9,691 on hand was counted and destroyed on July 23 of that same year under closely monitored conditions.

Position 21, the "Specimen" error in early production, was corrected during the printing of the 2c Interior. It does not appear on the Treasury Special Printings.

This pane of 100 represents almost one-third of the 309 2c Treasury Special Printings sold (three panes). We are unaware of any other plate blocks. The one known 7c Treasury Special Printing plate block is contained in a half-sheet of 50 — the Scott Catalogue values the plate block of 14 in this multiple at \$30,000.00.

This pane of 100 has a total Scott Retail value of \$106,250.00 as 25 blocks of four. If one counts 17 blocks of four at \$72,250.00 plus two plate blocks of 14 at the equivalent of the 7c, then this would catalogue \$132,250.00..... E. 20,000-30,000

WAR DEPARTMENT



644

644 S **1c-90c War, Specimen Ovpt. (O83S-O93S).** Complete set, without gum as issued, bright colors, few with small flaws

FINE-VERY FINE. AN ATTRACTIVE COMPLETE SET OF THE WAR DEPARTMENT SPECIAL PRINTING.

Other than the 1c, 2c and 7c values, between 104 and 119 copies of the War Department Special Printings were sold (the 30c has the smallest sale quantity). It ranks fifth in rarity, just after the Navy Department set. 11,585.00



645

645 S **1c-90c War, Specimen Ovpt. (O83S-O93S).** Complete set, without gum as issued, 12c with bottom part imprint selva, few small faults incl. 12c pulled perf at right

FINE-VERY FINE. AN ATTRACTIVE COMPLETE SET OF THE WAR DEPARTMENT SPECIAL PRINTING.

Other than the 1c, 2c and 7c values, between 104 and 119 copies of the War Department Special Printings were sold (the 30c has the smallest sale quantity). It ranks fifth in rarity, just after the Navy Department set. 11,585.00



646EX

- 646 S **1c-2c War, Specimen Ovpt. (O83S-O84S).** Without gum as issued, distinctly different shades, choice centering with wide and balanced margins, 1c light horizontal crease along top perfs (catalogues \$35.00), Extremely Fine
(Photo Ex) 160.00

- 647 S **3c War, Specimen Ovpt. (O85S).** Without gum as issued, radiant color, Very Fine and choice, only 118 sold
 1,300.00



647



648

- 648 S **6c War, Specimen Ovpt. (O86S).** Without gum as issued, bright color, choice centering, fresh and Extremely Fine Gem, very scarce and possibly the finest extant, only 111 sold..... 1,300.00

- 649 S **7c War, Specimen Ovpt. (O87S).** Without gum as issued, brilliant color, well-proportioned margins, nibbed perf at left, still Very Fine and choice, 539 sold..... 425.00



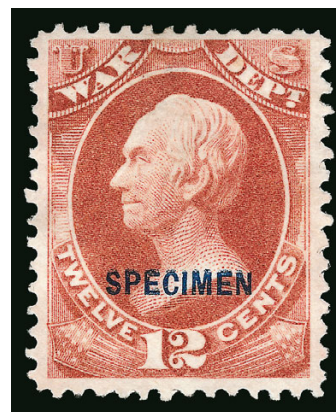
649



650

- 650 S **10c War, Specimen Ovpt. (O88S).** Without gum as issued, detailed impression, well-balanced margins, nibbed perfs at left, still Extremely Fine, only 119 sold 1,400.00

- 651 S **12c War, Specimen Ovpt. (O89S).** Without gum as issued, rich color, small thin spot at top, Very Fine appearance, only 105 sold..... 1,400.00



651



652

- 652 S **15c War, Specimen Ovpt. (O90S).** Without gum as issued, bright color, wide margins, Very Fine and choice, only 105 sold, small blue backstamp 1,400.00



653

- 653 S **24c War, Specimen Ovpt. (O91S).** Without gum as issued, radiant color, well-balanced margins, Extremely Fine, a beautiful and rare stamp, only 106 sold, small blue backstamp 1,400.00



654

- 654 S **30c War, Specimen Ovpt. (O92S).** Without gum as issued, brilliant color, fresh, Very Fine, only 104 sold, small blue backstamp..... 1,400.00




655

- 655 S **90c War, Specimen Ovpt. (O93S).** Without gum as issued, brilliant color, faint horizontal crease at top, Very Fine appearance, only 106 sold..... 1,400.00



656



- 656  **1c War, Specimen Ovpt. (O83S).** Bottom imprint and plate no. 48 strip of six, without gum as issued, brilliant color, few minor perf separations at center sensibly reinforced, left stamp faint crease, small flaw in bottom left selvage, still Very Fine, an extremely rare imprint and plate number strip E. 750-1,000



657



658



- 657  **1c War, Specimen Ovpt. (O83S).** Block of four, without gum as issued, bright color, Very Fine-Extremely Fine 375.00
- 658  **1c War, Specimen Ovpt. (O83S).** Block of eight with top plate no. 48 and part of imprint, without gum as issued, radiant color, well-balanced margins throughout, Very Fine-Extremely Fine, a scarce multiple with the plate number E. 750-1,000



659



660



- 659  **2c War, Specimen Ovpt. (O84S).** Block of four, without gum as issued, rich color, top stamps light horizontal bend and few minor perf separations, Very Fine-Extremely Fine 1,400.00
- 660  **2c War, Specimen Ovpt. (O84S).** Block of four, without gum as issued, rich color, fresh and Very Fine 1,400.00



661



662

- 661  **7c War, Specimen Ovpt. (O87S).** Block of four, without gum as issued, bright color, fresh and Very Fine, an attractive and rare block 2,750.00
- 662  **7c War, Specimen Ovpt. (O87S).** Block of four, without gum as issued, bright shade, Fine-Very Fine and rare block..... 2,750.00

WAR DEPARTMENT “SEPCIMEN” ERROR

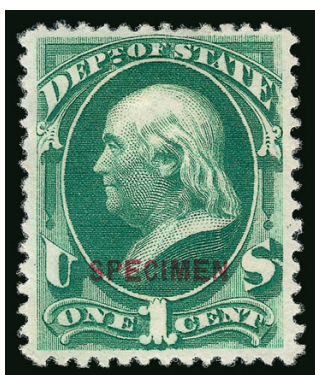


663

663 S **2c War, “Sepcimen” Error (O84Sa).** Without gum as issued, bright color, single short perf at top

FINE CENTERING. A RARE EXAMPLE OF THE 2-CENT WAR DEPARTMENT SPECIAL PRINTING WITH “SEPCIMEN” ERROR FROM THE LEFT PANE AND FULLY PERFORATED.

The 2c War Department Special Printing was made from printed sheets of 200 (Plate 35), which were divided into panes of 100 before overprinting. Position 21, the “Sepcimen” error, is found on stamps with and without a straight edge, depending on whether the underlying stamp was in the left or right pane (Position 21 Right has a straight edge at left). As rare as the 2c War “Sepcimen” error is in any form, this fully-perforated example is extremely rare and desirable. 3,250.00

AMERICAN BANK NOTE COMPANY PRINTINGS
ON SOFT POROUS PAPER

664EX



665

- 664 S **1c Executive, Navy, State on Soft Porous Paper, Specimen Ovpt. (O10xS, O35xS, O57xS).** American Bank Note Co. printings, incl. two Navy and three State, without gum as issued, couple small flaws, still Fine-Very Fine and desirable group of all three issues known on this paper**(Photo Ex)** 855.00
- 665 S **1c Executive on Soft Porous Paper, Specimen Ovpt. (O10xS).** American Bank Note Co. printing, block of four, without gum as issued, bright color, perf separations at right, bottom left stamp small natural inclusion, Fine-Very Fine, scarce block..... 1,100.00



666EX



667



668

- 666 S **1c Executive, Navy on Soft Porous Paper, Specimen Ovpt. (O10xS, O35xS).** American Bank Note Co. printing, blocks of four, without gum as issued, rich colors, light creases at top, few minor perf separations, Fine-Very Fine appearance.....**(Photo Ex)** 2,250.00
- 667 S **1c Navy on Soft Porous Paper, Specimen Ovpt. (O35xS).** American Bank Note Co. printing, block of four, without gum as issued, brilliant color, top right stamp corner crease at top right, Fine-Very Fine appearance..... 1,150.00
- 668 S **1c Navy on Soft Porous Paper, Specimen Ovpt. (O35xS).** American Bank Note Co. printing, block of four, without gum as issued, deep rich color, few small toned spots, Very Fine appearance 1,150.00



669

- 669 S **1c State on Soft Porous Paper, Specimen Ovpt. (O57xS).** American Bank Note Co. printing, top left corner imprint and plate no. 55 strip of seven, without gum as issued, rich color, left stamp rounded corner at bottom right, few toned spots, otherwise Very Fine, a rare imprint and plate number strip, unlisted in Scott, a plate number and imprint strip of eight is also known (ex Sheriff, Siegel Sale 752 lot 534) which is the largest known multiple, the 1c Navy from the same printing is listed and catalogues \$4,000.00..... E. 2,000-3,000



670



671

- 670 S **1c State on Soft Porous Paper, Specimen Ovpt. (O57xS).** American Bank Note Co. printing, block of four with **top plate no. 55 selvage**, without gum as issued, bright color, top right stamp small thin spot at right, bottom right stamp tiny pinhole, still Very Fine and scarce, the Markovits sale contained a similar block from the bottom position, Scott Retail as normal block of four with no premium for the position..... 2,500.00
- 671 S **1c State on Soft Porous Paper, Specimen Ovpt. (O57xS).** American Bank Note Co. printing with **mixed font**, showing large and small letters, block of four, without gum as issued, ink spots at bottom mostly on left stamp, otherwise Fine-Very Fine and unusual variety, Scott Retail as normal block of four..... 2,500.00

END OF SALE—THANK YOU



BIDS

Use this form to submit absentee bids
or to confirm telephone bids

Sale 1095

Thursday, March 26, 2015

PADDLE #

1

Please provide the following information:

NAME

ADDRESS

CITY/STATE/ZIP

PHONE MOBILE

EMAIL

2

Have you purchased from us in the past 5 years? ☐ Yes (please go to Section 3)
☐ No (references required below)

STAMP FIRM PHONE

STAMP FIRM PHONE

Please submit references at least **2 business days** before the sale. Bids from new clients will not be executed if satisfactory references are not received in time to be contacted.

3

- Enter the lot number and your corresponding maximum bid in the space below
- Use whole dollar amounts and bid according to the increments (see back of form)
- Bids do not include the 15% Buyer's Premium, taxes, duty or shipping charges
- Absentee bids will advance at one increment over the next highest competing bid
- "Plus", "Break Tie" or "Buy" bids will not be executed
- Indicate any "Or" bids between lot number/bid entries and bracket your choices
- If you wish to limit the total amount of your bids, follow the instructions below

Lot #	Bid \$	Lot #	Bid \$	Lot #	Bid \$

☐ **Limit Bids:** Check this box if you wish to limit the total hammer price of your bids (excluding 15% Buyer's Premium, taxes, duty and shipping costs). Your bids will be executed until your bidding limit has been reached. The total amount you wish to bid is \$

4

By signing this form, you agree to all of the Conditions of Sale printed in the sale catalogue (printed and digital), including but not limited to a) payment in the manner demanded by the Siegel firm, and b) payment of the 15% Buyer's Premium, any sales tax or customs duty, shipping costs, late charges and

other prescribed charges. You agree that your bids will be executed as a courtesy by Siegel, but you waive the right to make any claim against Siegel or its employees arising from these bids or your participation in the sale. You agree to honor all bids as submitted, regardless of any errors or omissions.

SIGNED DATE

Mail the signed form to Siegel Bid Department, 60 East 56th St., New York, NY 10022
or email to stamps@siegelauctions.com
or fax to 212-753-6429



Additional Bids

Sale 1095

March 26, 2015

PADDLE #

Lot #	Bid \$	Lot #	Bid \$	Lot #	Bid \$

Shipping & Insurance

We will be pleased to arrange for shipping and transit insurance for purchases in this sale, except for lots marked or announced as "floor sale only." To expedite billing and delivery to hundreds of buyers in each sale, we use standard charges for postage and insurance under our policy. These charges are based on the package weight and mailing requirements, according to the schedule shown here. Our standard charges do not include a fee for our services, and they may be slightly more or less than the actual postage or FedEx fee. We ask all buyers to remit the invoiced amount for shipping and insurance.

Transit insurance is provided in all cases, except when the buyer has furnished us with documentation that insurance is effective under the buyer's own policy.

There will be no added insurance charge for shipments of less than \$75,000 value. Shipments valued in excess of \$75,000 may require supplemental insurance and/or special courier service, the estimated cost of which will be furnished to the buyer prior to shipment. If the buyer refuses to pay the estimated charges or furnish proof of self-insured coverage, the buyer will be responsible for picking up the lots at our office and any resulting sales tax.

Bidding Increments

The auctioneer may regulate the bidding at his discretion. However, to assist absentee bidders in establishing their maximum bids, the increments shown here will be used in most cases. We recommend that written bids conform to these increments—bids that do not will be reduced accordingly.

Standard Shipping Charges

Weight Class	Shipping Method	Charge
Up to 2 lbs.	Fedex Envelope	\$20
Over 2 lbs.	Fedex Box	\$35 - \$50*
Outside US	Fedex	\$50 - \$100**
Bulky Lots	Fedex Ground or Express	By weight

* Up to \$75,000 value and up to 5 lbs; additional charge may apply to packages exceeding limits

** Buyers outside United States are liable for any applicable customs duty and clearance charges. An accurate declaration of contents and value will be made on all packages and import/export documents. **Siegel may refuse to ship lots to certain countries with a high risk factor.**

2/2015

Bid	Increment	Bid	Increment
Up to \$200	\$10	\$7,000-20,000	\$500
\$200-500	\$25	\$20,000-30,000	\$1,000
\$500-1,000	\$50	\$30,000-75,000	\$2,500
\$1,000-3,000	\$100	\$75,000-140,000	\$5,000
\$3,000-7,000	\$250	\$140,000-300,000	\$10,000

PRICES REALIZED FOR SALE 1095---3/26/2015
The Golden Collection of U.S. Official Special Printings

Robert A. Siegel Auction Galleries, Inc.
60 East 56th Street, 4th Floor, New York, NY 10022
Tel (212) 753-6421 Fax (212) 753-6429

Lot#	Realized	Lot#	Realized	Lot#	Realized	Lot#	Realized	Lot#	Realized
501	115,000	543	2,800	585	4,500	627	9,000	669	2,000
502	800	544	4,250	586	3,000	628	5,250	670	650
503	500	545	425	587	550	629	3,500	671	500
504	900	546	130	588	2,600	630	1,200		
505	500	547	180	589	1,900	631	4,500		
506	800	548	1,600	590	2,700	632	1,900		
507	550	549	1,400	591	1,700	633	225		
508	375	550	12,000	592	4,500	634	650		
509	275	551	4,000	593	1,100	635	2,100		
510	200	552	2,600	594	2,200	636	5,000		
511	750	553	300	595	2,000	637	1,200		
512	900	554	425	596	2,100	638	700		
513	650	555	1,700	597	2,500	639	850		
514	650	556	2,100	598	160	640	6,500		
515	325	557	1,200	599	2,700	641	2,100		
516	650	558	2,000	600	1,300	642	2,100		
517	6,000	559	3,750	601	1,000	643	37,500		
518	800	560	750	602	550	644	3,500		
519	500	561	1,200	603	550	645	2,900		
520	375	562	850	604	2,400	646	100		
521	2,400	563	250	605	2,300	647	1,200		
522	10,500	564	1,300	606	35,000	648	2,000		
523	11,000	565	800	607	1,900	649	300		
524	29,000	566	375	608	850	650	1,100		
525	110	567	250	609	160	651	1,300		
526	100	568	3,500	610	650	652	1,800		
527	100	569	4,250	611	35,000	653	2,300		
528	2,800	570	100	612	15,000	654	1,300		
529	3,250	571	2,400	613	6,250	655	550		
530	160	572	5,750	614	325	656	1,100		
531	375	573	200	615	150	657	300		
532	130	574	1,900	616	160	658	850		
533	6,500	575	2,400	617	600	659	650		
534	5,500	576	400	618	450	660	350		
535	3,500	577	1,700	619	5,500	661	1,300		
536	110	578	1,500	620	1,400	662	800		
537	700	579	850	621	750	663	3,250		
538	1,100	580	500	622	500	664	325		
539	2,100	581	225	623	500	665	800		
540	650	582	3,250	624	1,000	666	275		
541	650	583	3,250	625	750	667	275		
542	2,100	584	2,400	626	7,000	668	160		