

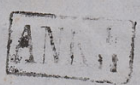


P. Kratzer & Comp

Memo Sur.



Jose Bernardino Teix.



16



THE RICHARD C. FRAJOLA COLLECTION OF CLASSIC WORLDWIDE COVERS, 1840-1860

*P. Hibernia
from Boston*



*Messrs. Bailey, Brothers & Co
Liverpool*

Sor D.



Sebastian Mendola



*Chenere, Bailey & Co
Crown Street*

*Augustine Heard & Co
Boston*

SALE 1097 • TUESDAY, MAY 19, 2015

INTERNATIONAL

Robert A. Siegel

IN ASSOCIATION WITH CHARLES F. SHREVE

Sale 1097— Tuesday, May 19, 2015, at 10:30 a.m. and 1:30 p.m.

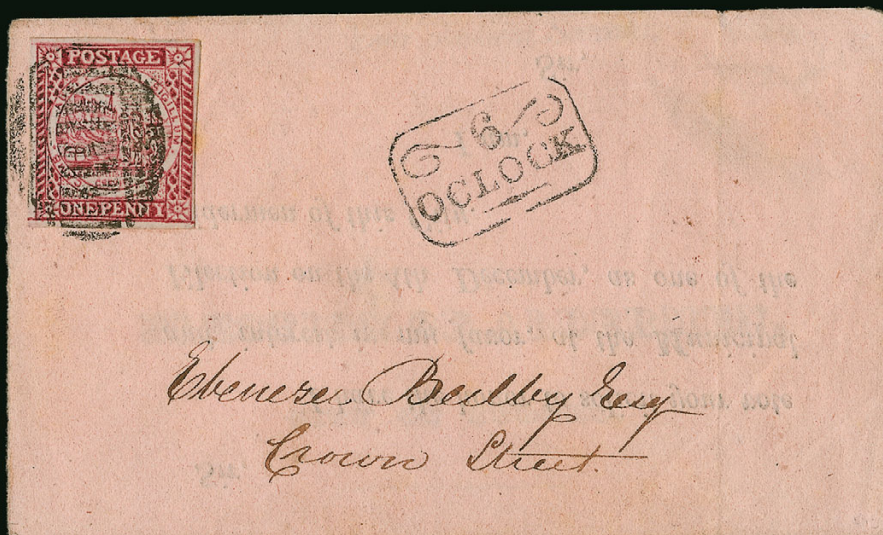


THE RICHARD C. FRAJOLA COLLECTION OF CLASSIC WORLDWIDE COVERS, 1840-1860

Live auction to be held at Siegel Auction Galleries,
60 East 56th Street (Park/Madison), 4th Floor, New York City

Lots are sold subject to a 15% buyer's premium and
any applicable sales tax (or customs duty for non-U.S. buyers)

All lots are offered without reserves



Viewing in New York: Monday, May 18, 10am-4pm, and by appointment

Viewing at London 2015 EUROPHILEX, May 13-16
Business Design Centre, Islington, England

I N T E R N A T I O N A L

Robert A. Siegel

IN ASSOCIATION WITH CHARLES F. SHREVE

60 EAST 56TH STREET, 4TH FLOOR, NEW YORK, N.Y. 10022
Phone (212) 753-6421 • Fax (212) 753-6429 • E-mail: stamps@siegelauctions.com

Catalogues, internet bidding, resources, archives and the Siegel Encyclopedia at
siegelauctions.com



60 EAST 56TH STREET, 4TH FLOOR, NEW YORK, N.Y. 10022
 Phone (212) 753-6421 • Fax (212) 753-6429 • E-mail: stamps@siegelauctions.com
siegelinternational.com



Scott R. Trepel
 President
 strepel
 @siegelauctions.com



John P. Zuckerman
 Senior Vice President
 jzuckerman
 @siegelauctions.com



Corey Long
 Vice President
 clong
 @siegelauctions.com



Charles F. Shreve
 Director, Siegel International
 charles
 @siegelauctions.com



Colleen Stellato
 Accounts
 colleen
 @siegelauctions.com



Helen Stewart
 Bids and Inquiries
 helen
 @siegelauctions.com



Chris Anderson
 Siegel International
 chris
 @siegelauctions.com



Andrew Titley
 Siegel International
 andrew
 @siegelauctions.com

Scott R. Trepel Principal Auctioneer (licensed by NYC Dept. of Consumer Affairs, #795952)
 Nathaniel Estes Catalogue and Digital Production

Information for Bidders

Bidding

The following means are available for placing bids:

- 1) Attending the Live Auction in Person:** All bidders must register for a paddle, and new bidders must provide references at least three business days in advance of the sale.
- 2) Live Internet Bidding:** Instructions for participating as a Live Internet Bidder are provided on the page opposite.
- 3) Phone Bidding:** Bidders can be connected to the sale by phone and bid through a member of staff. Requests for phone bidding are subject to approval (please contact our office at least 24 hours before the sale). A signed Bid Form is required.
- 4) Absentee Bids.** All bids received in advance of the sale, either by mail, fax, phone, e-mail or internet, are Absentee Bids, which instruct the auctioneer to bid up to a specific amount on one or more lots in the sale. Absentee Bids sent by phone, fax or e-mail should arrive at least one hour prior to the start of the sale session. Bids entered through Live Internet Bidding will be visible to the auctioneer during the sale. Written bids should be entered legibly on the Bid Form in the sale catalogue. E-mail and internet bids should be carefully typed and double-checked. All new bidders must provide references. We recommend calling or e-mailing to confirm that Absentee Bids sent by mail, fax or e-mail have been received and entered.

Pre-Sale Viewing

Subject to availability, certain lots (except group lots) can be sent to known clients for examination. Requests must be made no later than 7 days prior to the sale. Lots must be returned on the day received. Postage/insurance costs will be invoiced.

In addition to regular viewing, clients may view lots by appointment. Our staff will be pleased to answer questions or provide additional information about lots.

Expert Certification

Individual items offered without a PF or PSE certificate dated within the past five years may be purchased subject to independent certification of genuineness and our description. **Please refer to the Conditions of Sale and Grading Terms for policies governing certification.**

Shipping and Delivery

Procedures and charges for shipping lots are printed on the back of the Bid Form. **Bidders are responsible for all prescribed shipping charges and any applicable sales tax or customs duties.**

Price Realized

Prices realized are sent with each invoice. Bidders with e-mail will receive a Bid Results report after the sale. Session results are posted immediately to **siegelauctions.com**

Live Internet Bidding at Siegel Auctions

BIDDING FROM YOUR COMPUTER LETS YOU BE PART OF THE LIVE AUCTION FROM ANYWHERE IN THE WORLD!

There's NO SUBSTITUTE for following the auction in real time.

Live Internet Bidding lets you bid and buy as though you were right there in the saleroom.

And it's easy.

This step-by-step guide will instruct you how to register, set your browser and use the bidding interface.

Start by following the simple steps to become a registered Live Internet Bidder.

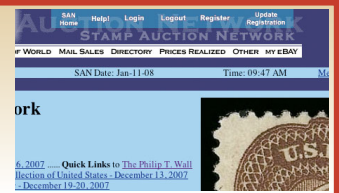
Once you've been approved for bidding, you can listen to the auction and place bids with the click of a mouse.

Registering with STAMP AUCTION NETWORK & SIEGEL AUCTION GALLERIES

Live Internet Bidding is managed by Stamp Auction Network (SAN).

To bid, you must be registered and approved by *both* SAN and Siegel.

To decide what you need to do, choose the description below that best fits you.



I've already registered with SAN and have been approved by Siegel for internet bidding.

Live Internet Bidding works by allowing registered bidders to observe and place bids.

Live Internet Bidding will work with any browser on both PC and Mac operating systems.

Before bidding by internet for the first time, we recommend finding a sale in progress and listening to the public broadcast or logging in as a registered bidder. This will help you develop a feel for the sale tempo and bidding interface.

I'm a Siegel client, but I'm not registered with SAN.

Go to stampauctionnetwork.com/siegel and click on "Register" at the top. Check the box for Robert A. Siegel Auction Galleries (under "R") and submit the form, indicating you are a Siegel client. Once registered at SAN, you're ready for internet bidding.

Log on to the auction at stampauctionnetwork.com/siegel.

You can also log on at siegelauctions.com

When you're logged on as a Live Internet Bidder, the bidding interface shows a photo and description of the lot, the current bid (and your bidding status), options for placing competitive bids and buttons with bid increments.

- After you click on a bid amount, the auctioneer is immediately notified of your bid.
- Retracting a bid is usually not acceptable, so please bid carefully.
- If you bid and then decide to stop, the "Pass" button will tell the auctioneer you are no longer bidding.
- You can send messages to the auctioneer (for example, a request for extension).
- You can track prior realizations from the bidding screen.

I've bid through SAN before, but this is the first time I've bid in a Siegel sale.

Then you just need to be approved by Siegel. Go to stampauctionnetwork.com/siegel and click on "Update Registration" at the top. Your SAN account information will be sent to us for approval (you might be asked for other trade references). Once approved by Siegel for bidding, you're ready for internet bidding.

I've never bid with Siegel, nor registered with SAN.

Go to stampauctionnetwork.com/siegel and click on "Register" at the top. Check the box for Robert A. Siegel Auction Galleries (under "R") and submit the form **with your trade references** (please, no family members or credit card companies as references). Once registered at SAN and approved by Siegel for bidding, you're ready for internet bidding.



"System Down" or "Lost Connection" events do occasionally happen.

If you have any problems with Live Internet Bidding please call **212-753-6421** for immediate assistance.

Conditions of Sale (please read carefully before bidding)

THE PROPERTY DESCRIBED IN THIS CATALOGUE WILL BE OFFERED AT PUBLIC AUCTION BY ROBERT A. SIEGEL AUCTION GALLERIES, INC. ("GALLERIES") ON BEHALF OF VARIOUS CONSIGNORS AND ITSELF OR AFFILIATED COMPANIES. BY BIDDING ON ANY LOT, WHETHER DIRECTLY OR BY OR THROUGH AN AGENT, IN PERSON, OR BY TELEPHONE, FACSIMILE OR ANY OTHER MEANS, THE BIDDER ACKNOWLEDGES AND AGREES TO ALL OF THE FOLLOWING CONDITIONS OF SALE.

11. The highest bidder acknowledged by the auctioneer shall be the buyer. The term "final bid" means the last bid acknowledged by the auctioneer, which is normally the highest bid offered. **The purchase price payable by the buyer will be the sum of the final bid and a commission of 15% of the final bid ("buyer's premium"), together with any sales tax, use tax or customs duties due on the sale.**

2. The auctioneer has the right to reject any bid, to advance the bidding at his discretion and, in the event of a dispute, to determine the successful bidder, to continue the bidding or to reoffer and resell the lot in dispute. The Galleries' record of the final sale shall be conclusive.

3. All bids are per numbered lot in the catalogue unless otherwise announced by the auctioneer at the time of sale. The right is reserved to group two or more lots, to withdraw any lot or lots from the sale, or to act on behalf of the seller. The Galleries will execute bidding instructions on behalf of clients, but will not be responsible for the failure to execute such bids or for any errors in the execution of such bids.

4. Lots with numbers followed by the symbol ° are offered subject to a confidential minimum bid ("reserve"), below which the lot will not be sold. The absence of the symbol ° means that the lot is offered without a reserve. If there is no reserve, the auctioneer has sole discretion to establish a minimum opening bid and may refuse an offer of less than half of the published estimate. Any lot that does not reach its reserve or opening bid requested by the auctioneer will be announced as "passed" and excluded from the prices realized lists after the sale. The Galleries may have a direct or indirect ownership interest in any or all lots in the sale resulting from an advance of monies or goods-in-trade or a guarantee of minimum net proceeds made by the Galleries to the seller.

5. Subject to the exclusions listed in 5(A), the Galleries will accept the return of lots which have been misidentified or which have obvious faults that were present when the lot was in the Galleries' custody, but not so noted in the lot description. **All disputed lots must be received by the Galleries intact with the original packing material within 5 days of delivery to the buyer but no later than 30 days from the sale date.** (5A) EXCLUSIONS: The following lots may not be returned for any reason, or may not be returned for the reasons stated: i) lots containing 10 or more items; ii) lots from buyers who registered for the pre-sale exhibition or received lots by postal viewing, thereby having had the opportunity to inspect them before the sale; iii) any lot described with "faults," "defects" or a specific fault may not be returned because of any secondary fault; iv) photographed lots may not be returned because of centering, margins, short/nibbed perforations or other factors shown in the illustrations; v) the color of the item does not match the color reproduction in the sale catalogue or website listing; vi) the description contains inaccurate information about the quantity known or reported; or vii) a certification service grades a stamp lower than the grade stated in the description.

6. Successful bidders, unless they have established credit with the Galleries prior to the sale, must make payment in full before the lots will be delivered. Buyers not known to the Galleries must make payment in full within 3 days from the date of sale. **The Galleries retains the right to demand a cash deposit from anyone prior to bidder registration and/or to demand payment at the time the lot is knocked down to the highest bidder, for any reason whatsoever.** In the event that any buyer refuses or fails to make payment in cash for any lot at the time it is knocked down to him, the auctioneer reserves the right to reoffer the lot immediately for sale to the highest bidder. **Credit cards (Visa, Mastercard and Discover only) can be accepted as payment but will be subject to a 3% Convenience Fee, which will be added to the total of the entire invoice (including hammer price, buyer's premium, shipping and transit insurance charges and any applicable taxes).**

7. If the purchase price has not been paid within the time limit specified above, nor lots taken up within 7 days from the date of sale, the lots will be resold by whatever means deemed appropriate by the Galleries, and any loss incurred from resale will be charged to the defaulting buyer. **Any account more than 30 days in arrears will be subject to a late payment charge of 1½% per month as long as the account remains in arrears. Any expenses incurred in securing payment from delinquent accounts will be charged to the defaulter.** A fee of \$250.00 per check will be charged for each check returned for insufficient funds.

8. All lots are sold as genuine. **Any lot accompanied by a certificate issued by The Philatelic Foundation, British Philatelic Association, Royal Philatelic Society of London or any other authority recognized by the A.I.E.P. in a specific area of expertise, and dated within 5 years of the sale date, is sold "as is" and in accordance with the description on the certificate. Such lots may not be returned for any reason, including but not limited to a contrary certificate of opinion.** Buyers who wish to obtain a certificate for any item that does not have a certificate (dated as above) may do so, provided that the following conditions are met: (1) the purchase price must be paid in full, (2) the item must be submitted to an acceptable expertizing committee with a properly executed application form within 21 days of the sale, (3) a copy of the application form must be given to the Galleries, (4) in the event that an adverse opinion is received, the Galleries retain the right to resubmit the item on the buyer's behalf for reconsideration, without time limit or other restrictions, (5) unless written notification to the contrary is received, items submitted for certification will be considered cleared 90 days from the date of sale, and (6) in the event any item is determined to be "not as described", the buyer will be refunded the purchase price and the certification fee up to \$800.00 unless otherwise agreed.

9. Until paid for in full, all lots remain the property of the Galleries on behalf of the seller.

10. Agents executing bids on behalf of clients will be held responsible for all purchases made on behalf of clients unless otherwise arranged prior to the sale.

11. The buyer assumes all risk for delivery of purchased lots and agrees to pay for prescribed shipping costs. **Buyers who receive lots in the U.S. are obligated to pay whatever sales tax or compensating use tax might be due, and buyers outside the U.S. are responsible for all customs duties.**

12. **The bidder consents that any action or proceeding against it may be commenced and maintained in any court within the State of New York or in the United States District Court for the Southern District of New York, that the courts of the State of New York and United States District Court for the Southern District of New York shall have jurisdiction with respect to the subject matter hereof and the person of the bidder. The bidder agrees not to assert any defense to any action or proceeding initiated by Galleries based upon improper venue or inconvenient forum. The bidder agrees that any action brought by the bidder shall be commenced and maintained only in a Federal Court in the United States District Court for the Southern District of New York or the State Court in the county in which Galleries has its principal place of business in New York. The bidder agrees not to use a public conflict resolution service and not to use any form of social media to publish comments or information about the Galleries and its employees which might harm the Galleries' reputation or business. These Conditions of Sale shall be governed by and construed in accordance with the substantive laws of the State of New York, and shall constitute an agreement that shall be binding on the parties, and their respective heirs, administrators, distributees, successors and assignees.**

SCOTT R. TREPEL, Principal Auctioneer
Auctioneer's License No. 795952
N.Y.C. Department of Consumer Affairs
80 Lafayette Street, New York, N.Y. 10013
Telephone (212) 577-0111

Revised 9/2014

Grades, Abbreviations and Values Used in Descriptions

Grades and Centering

Our descriptions contain detailed information and observations about each item's condition. We have also assigned grades to stamps and covers, which reflect our subjective assessment. For stamps, the margin width, centering and gum are described and graded according to generally-accepted standards (an approximate correlation to numeric grades is provided at right). Although we believe our grades are accurate, they are not always exactly aligned with third-party grading terms or standards for all issues. **A lot may not be returned because a certification service grades a stamp lower than the grade stated in the description. Information from the P.S.E. Stamp Market Quarterly and P.S.E. Population ReportSM is the most current available, but lots may not be returned due to errors or changes in statistics or data.**

Extremely Fine Gem (90-100): The term "Gem" describes condition that is the finest possible for the issue. This term is equivalent to "Superb" used by grading services.







Extremely Fine (80-90): Exceptionally large/wide margins or near perfect centering.

Very Fine (70-85): Normal-size margins for the issue and well-centered with the design a bit closer to one side. "Very Fine and choice" applies to stamps that have desirable traits such as rich color, sharp impression, freshness or clarity of cancel.

Fine (60-70): Smaller than usual margins or noticeably off center. Pre-1890 issues may have the design touched in places.

Very Good (below 60): Attractive appearance, but margins or perforations cut into the design.

Guide to Gum Condition

Gum Categories:	MINT N.H.	ORIGINAL GUM (O.G.)				NO GUM
	 Mint Never Hinged <i>Free from any disturbance</i>	 Lightly Hinged <i>Faint impression of a removed hinge over a small area</i>	 Hinge Mark or Remnant <i>Prominent hinged spot with part or all of the hinge remaining</i>	 Part o.g. <i>Approximately half or more of the gum intact</i>	 Small part o.g. <i>Approximately less than half of the gum intact</i>	 No gum <i>Only if issued with gum</i>
Catalogue Symbol:	★ ★	★	★	★	★	(★)
PRE-1890 ISSUES	Pre-1890 stamps in these categories trade at a premium over Scott value			Scott Value for “O.G.”		Scott “No Gum” Values thru No. 218
1890-1935 ISSUES	Scott “Never Hinged” Values for Nos. 219-771	Scott Value for “O.G.” (Actual value will be affected by the degree of hinging)		Disturbed Original Gum: Gum showing noticeable effects of humidity, climate or hinging over more than half of the gum. The significance of gum disturbance in valuing a stamp in any of the Original Gum categories depends on the degree of disturbance, the rarity and normal gum condition of the issue and other variables affecting quality. For example, stamps issued in tropical climates are expected to have some gum disturbance due to humidity, and such condition is not considered a negative factor in pricing.		
1935 TO DATE	Scott Value for “Unused”					

Covers

Minor nicks, short edge tears, flap tears and slight reduction at one side are normal conditions for 19th century envelopes. Folded letters should be expected to have at least one file fold. Light cleaning of covers and small mends along the edges are accepted forms of conservation. Unusual covers may have a common stamp with a slight crease or tiny tear. **These flaws exist in virtually all 19th century covers and are not always described. They are not grounds for return.**

Catalogue Values and Estimates

Unless otherwise noted, the currently available *Scott Catalogue* values are quoted in dollars with a decimal point. Other catalogues are often used for foreign countries or specialized areas and are referred to by their common name: *Stanley Gibbons* (SG), *Dietz*, *American Air Mail Catalogue* (AAMC), *Michel*, *Zumstein*, *Facit*, etc. Estimates are indicated with an "E." and reflect our conservative valuation in dollars. Reserves will never exceed the low end of the estimate range; they will sometimes exceed Scott Catalogue value for stamps in Extremely Fine condition.

Because of certain pricing inconsistencies in the *Scott Catalogue*—for example, blocks that have no gum, the absence of premiums for Mint N.H. items, etc.—we cannot guarantee the accuracy of values quoted for multiples, specialized items and collection lots. We generally try to be conservative, but buyers may not return a lot because of a discrepancy in catalogue value due to Scott pricing inconsistencies.

Symbols and Abbreviations (see chart above for gum symbols)

⊞	Block	E	Essay	pmk.	Postmark	No.	Scott Catalogue Number
⊞	Cover	P	Proof	cds	Circular Datestamp	hs	Handstamp
FC	Fancy Cancel	TC	Trial Color Proof	var.	Variety	ms.	Manuscript

Revised 1/2012



THE RICHARD C. FRAJOLA COLLECTION OF CLASSIC WORLDWIDE COVERS, 1840-1860

When Great Britain issued the first stamps in May 1840, a new era in postal communication was launched. The simplified rates, the incentives to prepay postage, the convenience of adhesive postage stamps—all of these fundamental aspects of Rowland Hill's postal reforms succeeded in expanding correspondence and use of the mails, while maintaining postal revenue. The Penny Black, Two-Pence Blue and Mulready lettersheets paved the way for other nations to implement similar reforms and to issue postage stamps. For the next two decades, many countries followed the same road and issued the plethora of stamps that collectors hold in esteem as the "classics."

Upon this simple fact of history Richard C. Frajola based the concept of his collection of worldwide covers. As a postal historian, Richard views stamps as tools within a mail system, each of which had an intended purpose when issued. As an experienced philatelist, he defines the *Classics* as the stamps issued in each country before perforations were introduced. And, as a professional who has handled many outstanding collections over decades of service, he has an eye for quality.

A single imperforate stamp, issued from 1840 to 1860, paying a simple rate in the intended manner, in condition that is both pleasing to the eye and in accordance with the philatelic definition of *superb*.

That statement is the definition of Richard's collection. In my opinion, it is one of the most aesthetically pleasing and exciting collections of worldwide covers I have seen. From little "gems"—relatively common items in exceedingly uncommon high quality—to major classic rarities, such as the Basel Dove and Saxony First Issue, each item in the collection causes one to pause in admiration.

European collectors have traditionally placed a premium on covers with a single-stamp franking paying the proper rate. Richard had to overcome significant competition from European collectors in major auctions, in order to acquire items for this collection. Our estimates are quite conservative in comparison to the prices these covers realized in their previous auction appearances. Richard believes that the market will take its natural course and strongly advocated conservative estimates in this sale.

To give prospective buyers the opportunity to see the lots in this sale, we will show them at our stand during London 2015 EUROPHILEX on May 13-16. Andrew Titley and I look forward to greeting old friends and meeting new ones at the exhibition.

As much as we have tried to convey the beauty and rarity of the items contained in this catalogue, I assure you that the actual items, in their resplendent quality, will make even the best color photo and effusive description look inadequate.

Sincerely,

Charles F. Shreve
Director
Siegel International

SESSION ONE (LOTS 1-123)
TUESDAY, MAY 19, 2015, AT 10:30 A.M.

THE RICHARD C. FRAJOLA COLLECTION OF
CLASSIC WORLDWIDE COVERS, 1840-1860

ARGENTINA



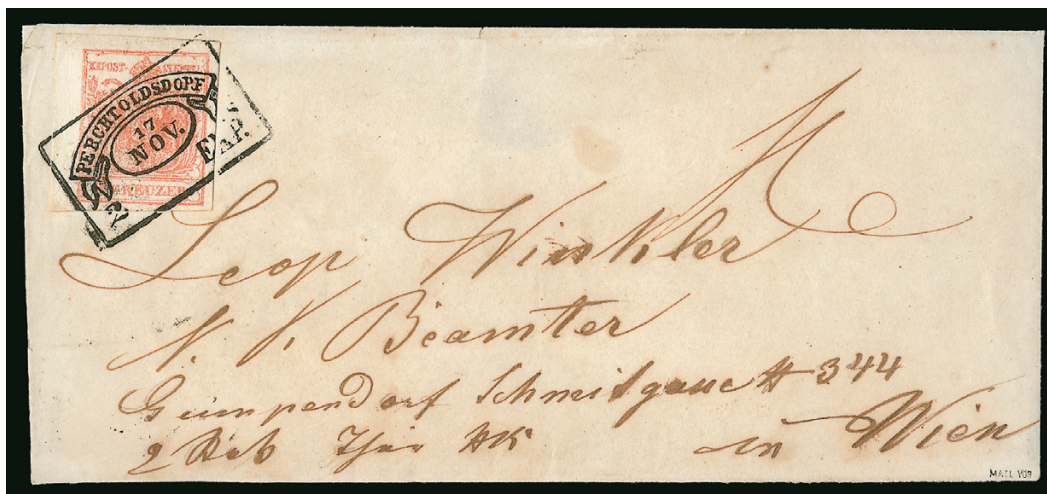
1

- 1 ☒ **BUENOS AIRES, 1859, 1p ("In Ps") Blue (7).** Ample margins to just touched, beautiful crisp shade and impression, tied by clear blue "Estafeta Central" oval grid on blue folded cover **to Goya**, receipt docketing with Nov. 12, 1859 origin date

VERY FINE. A CHOICE USE OF THE ONE-PESO "IN PS" BLUE *BARQUITOS* ISSUE IN MUCH BETTER QUALITY THAN TYPICALLY FOUND.

Ex Schatzkes and Islander (where it realized \$5,000 hammer, plus the buyer's premium in 2008).

Paying the foreign letter rate to Argentina..... E. 3,000-4,000



5

- 5 ☒ **1854, 3kr Red, Ty. III, Machine-Made Paper (3e; Michel 3y).** Gem example with four large to huge margins including sheet margin at left, rich color, tied by a superb strike of **fancy boxed "Perchtoldsdorf 17 Nov., 2 EXP." datestamp** (Mueller 2102a) on petite 1854 cover to Vienna, receiving backstamp, tear in backflap which barely extends to top of cover

VERY FINE. A GORGEOUS USE OF THE DESIRABLE FANCY PERCHTOLDSDORF POSTMARK ON A COVER BEARING A SUPERB EXAMPLE OF THE 3-KREUZER 1854 ISSUE. A CHARMING AND HIGHLY EXHIBITABLE COVER.

With 1982 Matl certificate.

Paying domestic letter rate for distance of 10 meilen from June 1, 1850 to October 31, 1858, per loth E. 2,000-3,000



6

- 6 ☒ **1850, 9kr Pale Blue, Ty. I, Hand-Made Paper (5f; Michel 5x).** Four large and wonderfully well-balanced margins, bright color and impression, tied by an absolutely perfect strike of **"NEUPACKA" italicized straightline handstamp** in deep blue (Mueller 1898b) on 1850 folded cover to Vienna, red boxed "24/7 Wien 1/Exp" receiving backstamp

EXTREMELY FINE. A TRULY STUNNING USE OF THIS RARE STRAIGHTLINE TOWN HANDSTAMP TYING A PERFECT 1850 9-KREUZER ISSUE TO A MOST EYE-APPEALING COVER.

Ex Wyler. Signed Raybaudi and with 2003 Puschmann certificate.

Paying domestic letter rate for distance over 20 meilen from June 1, 1850 to October 31, 1858, per loth E. 3,000-4,000



7



8



9

- 7 ☒ **1850, 9kr Blue, Ty. I, Hand-Made Paper (5a; Michel 5x).** Four large to very large margins, strong color, used on 1851 folded letter from Banjaluka (**Turkish Bosnia**) to Trieste, entered the mails at the Austrian border town of Kostainiza (Croatia) and tied by italicized two-line “KOSTAINIZA/17 NOV.” datestamp, Angram transit circular datestamp and Trieste receiving datestamp on back, a Very Fine and scarce use, signed Ferchenbauer

Paying domestic letter rate for distance over 20 meilen from June 1, 1850 to October 31, 1858, per loth.....
 E. 750-1,000

AUSTRIA USED IN LOMBARDY-VENETIA

- 8 ☒ **Austria Used in Lombardy-Venetia, 1850, 3kr Red, Hand-Made Paper (3; Michel 3x).** Choice example with four very large margins and deep luxuriant color, tied by superb strike of italicized two-line “VENEZIA/25 MAGO.” datestamp on 1851 bluish green folded letter to Treviso, “Distribuzione 2” handstamp on back, Extremely Fine, a beautiful illegal use of Austrian stamps in Lombardy-Venetia used after the May 7, 1851 decree stating Austrian stamps were no longer valid for use in Lombardy-Venetia, signed A. Diena

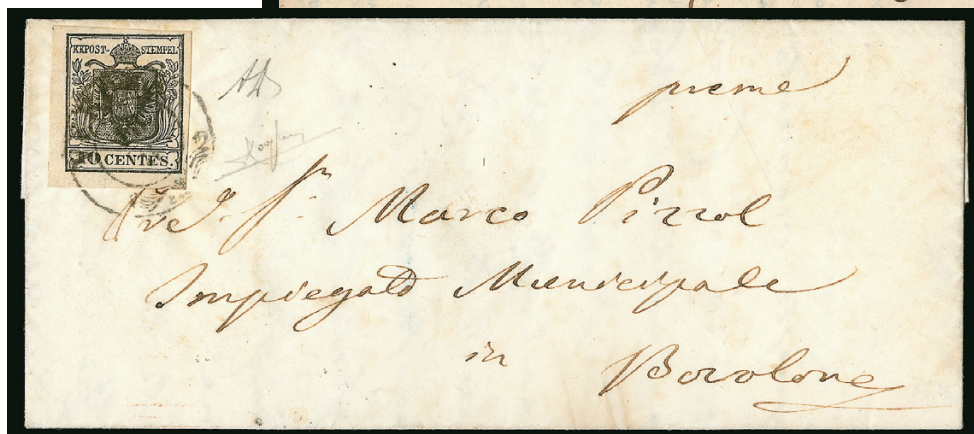
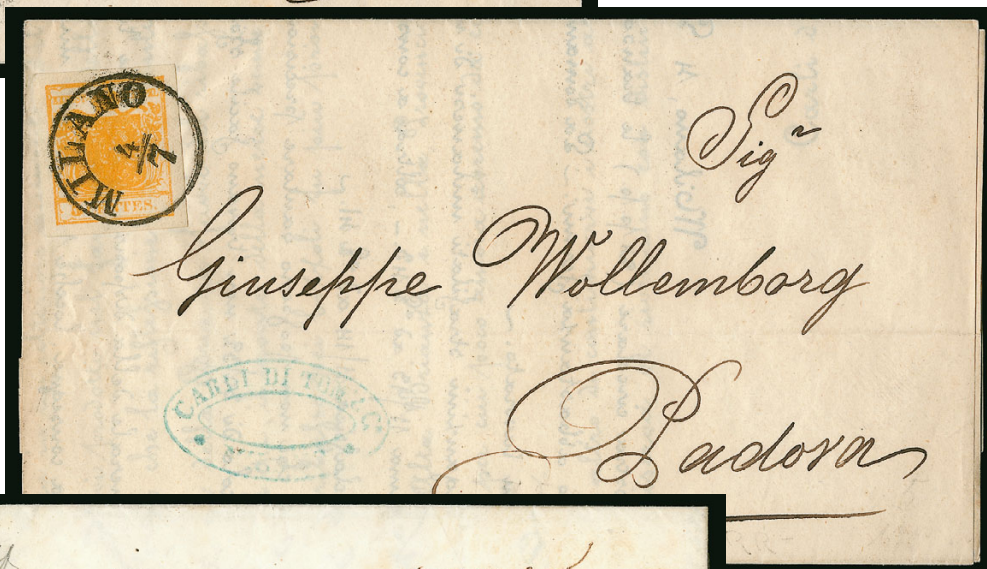
Paying domestic letter rate for distance to 10 meilen from June 1, 1850 to October 31, 1858, per loth.....
 E. 300-400

- 9 ☒ **Austria Used in Lombardy-Venetia, 1850, 6kr Brown, Hand-Made Paper (4; Michel 4x).** Attractive four-margin example with rich color and impression, tied by two-line “VENEZIA/18 MAGO.” datestamp on 1851 folded entire from to Verona, “Distribuzione 1” handstamp on front, Verona receiving circular datestamp on back, Very Fine, a scarce illegal use of Austrian stamps in Lombardy-Venetia following May 7, 1851 decree

Paying domestic letter rate for 10 to 20 meilen distance from June 1, 1850 to October 31, 1858, per loth ...
 E. 400-500



10



11

12

- 10 ☒ **Austria Used in Lombardy-Venetia, 1851, (.6kr) Blue, Ty. I, Newspaper (P1a; Michel 6).** Four large to very large margins, deep rich color, tied by “Padovia 12/9” circular datestamp on especially clean (1851) newspaper band used within Padova, Lombardy-Venetia, Very Fine, an unusually choice and attractive use, signed Oliva and Raybaudi

Paying newspaper rate when 10 stamps purchased from June 1, 1850 to October 31, 1858, any distance
 E. 400-500

LOMBARDY-VENETIA

- 11 ☒ **1850, 5c Orange, Hand-Made Paper (1c; Sassone 1).** Choice four-margin example with uniformly balanced margins and especially rich color, tied by perfect strike of “Milano 4/7” circular datestamp on 1857 printed circular to Padova, receiving backstamp, Extremely Fine and quite pretty

Paying domestic printed circular rate to any distance from June 1, 1850 to October 31, 1858, per loth
 E. 300-400

- 12 ☒ **1850, 10c Black, Hand-Made Paper (3; Sassone 2).** Four large to mostly very large margins, strong color and impression, tied by “Verona 18/8” double-circle datestamp on immaculate petite 1854 folded entire to Borolone (within city district), Very Fine and attractive, signed A. Diena

Paying domestic letter rate within district from June 1, 1850 to October 31, 1858, any weight E. 400-500



13

- 13 ☒ **1850, 15c Red, Ty. I, Hand-Made Paper (4b; Sassone 3b).** Superb example featuring huge margins all around including a bit of the adjoining stamp at bottom (pre-affixing scissor cut in ample margin at bottom), striking vivid color, tied by lovely strike of two-line "ROVIGO/27 GIUG" datestamp in blue on 1850 greenish folded letter to Dolo, a **first-month use**, fancy Dolo receiving datestamp on back

VERY FINE. AN INCREDIBLY SCARCE AND VISUALLY APPEALING FIRST-MONTH USE OF THE 1850 15-CENTESIMI ISSUE OF LOMBARDY-VENETIA. FURTHER ENHANCED BY A CHOICE STRIKE OF A ROVIGO STRAIGHTLINE.

With 2010 Bottacchi certificate.

Paying domestic letter rate for distance to 10 meilen from June 1, 1850 to October 31, 1858, per loth.....
..... E. 2,000-3,000



14

15

16

- 14 ☒ **1850, 15c Red, Ty. I, Hand-Made Paper (4b; Sassone 3).** Four large to huge margins, brilliant color, tied by outstanding strike of boxed "ROVIGO, 5-9, 50" straightline datestamp on 1850 folded letter to Venezia, receiving backstamp, tear on top back panel, Very Fine, a lovely and scarce very early 1850 use of the 15c Red First Issue

Paying domestic letter rate for distance to 10 meilen from June 1, 1850 to October 31, 1858, per loth.....
..... E. 500-750

- 15 ☒ **1850, 30c Brown, Hand-Made Paper (5; Sassone 7).** Four exceptionally large and wonderfully well-balanced margins, deep rich color, tied by boxed "TREVISO 23. OCT. 50" straightline datestamp on especially neat 1850 petite folded cover to Montova, distribution mark on back as well as Montova receiving datestamp, Extremely Fine, a particularly handsome solo use of the 30c Brown

Paying domestic letter rate for 10 to 20 meilen distance from June 1, 1850 to October 31, 1858, per loth ...
..... E. 400-500

- 16 ☒ **1850, 30c Brown, Hand-Made Paper (5; Sassone 7).** Large to very large margins all around, especially deep shade, tied by bold strikes of "Cologna 3/9" circular datestamp on an 1853 return receipt form that accompanied a registered letter from Cologna to Legnago, Cologna return backstamp dated next day, light horizontal crease to form, Very Fine, with 1977 Klambauer certificate

Paying fee for domestic return receipt that accompanied a registered letter from June 1, 1850 E. 200-300



17

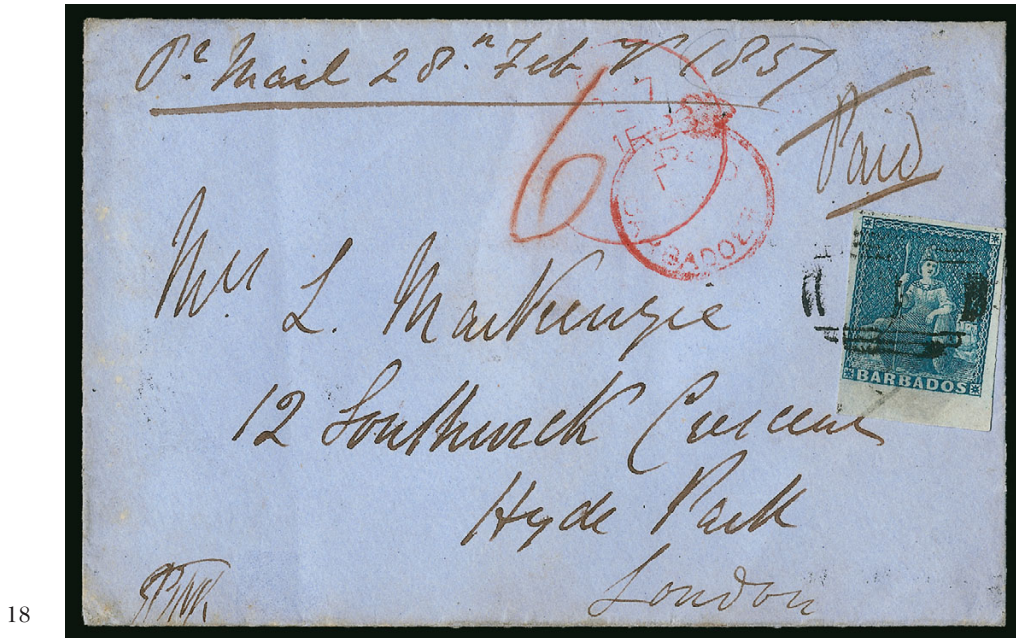
- 17 ☒ **1850, 45c Sky Blue, Hand-Made Paper (6h; Sassone 10c).** Select four-margin example with distinctive color, tied by rare three-concentric ring mute cancel with a "V" in the center, matching italicized two-line "VENEZIA 2. GENO." datestamp on an exceptionally clean bluish-green 1851 folded letter from Venezia (Lombardy) to Klagenfurt (Austria) both markings unusually well-struck

EXTREMELY FINE. AN EXEMPLARY EXAMPLE OF THE RARE "MUTE" CANCEL OF VENEZIA ON A PERFECTLY LOVELY COVER.

Ex Jerger. Signed Colla and Ferchenbauer. With 2003 Bottacchi certificate.

Paying domestic letter rate for distance over 20 meilen from June 1, 1850 to October 31, 1858, per loth..... E. 2,000-3,000

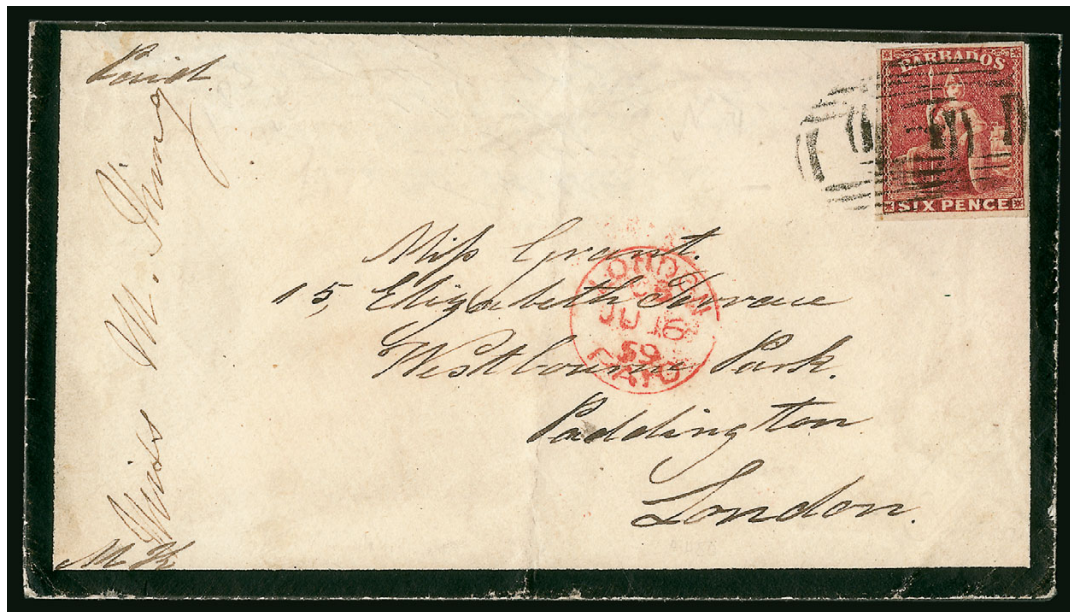
BARBADOS



18

- 18 ☒ **1855, (1p) Blue (6; SG 9).** Uncommonly choice example with four large to huge margins including sheet margin at bottom, bright color, tied by barred numeral "1" cancel on attractive 1857 blue cover **to London, England**, small circle datestamp and "Barbados FE 28, 1857" split-ring circular datestamp on back, cover also bears fairly complete light strike of red "Paid at Barbados" crowned circle handstamp (A1; SG CC1), overstruck by red London receiving cancel, red crayon "6"(d) packet rate marking, overall a Very Fine and handsome use, ex Deakin

One-penny stamp paying colonial letter rate, plus 6-pence packet rate (from August 1, 1854) paid in cash..... E. 750-1,000



19

- 19 ☒ **1859, 6p Pale Rose Red (8; SG 11).** Four mostly large margins just a bit close at top left, attractive color and impression, tied by two strikes of barred numeral "1" handstamp on 1859 mourning cover **to London, England**, split-ring "Barbados My 26, 1859" circular datestamp on back, red London receiving datestamp on front, Very Fine, ex Deakin

Paying British packet rate from August 1, 1854, to ½ ounce..... E. 300-400

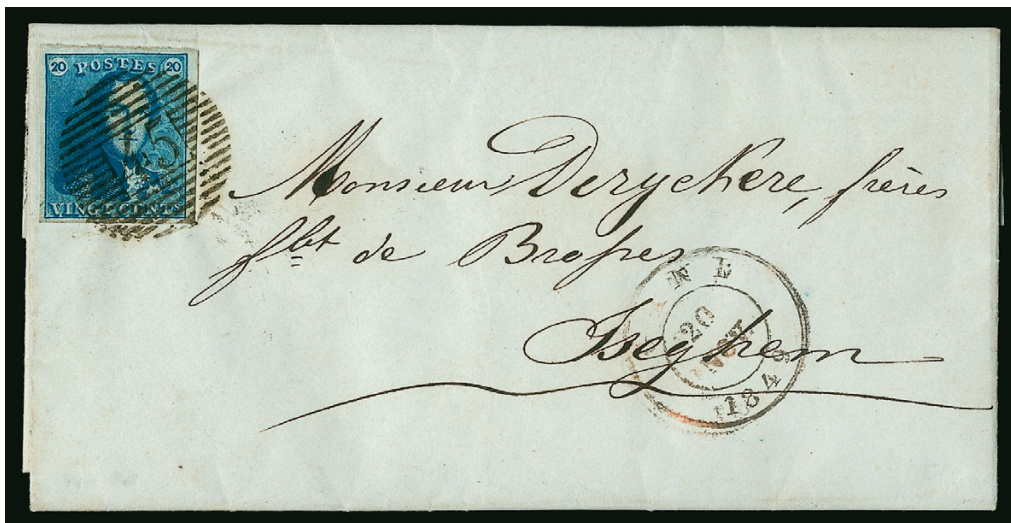
BELGIUM



20

- 20 ☒ **1849, 10c Brown (1; COB 1).** Choice example with four margins and strong color, tied by a perfect strike of barred numeral Bureau de Perception "109" cancel on 1849 folded letter from Berzele to Steenhuysen, rural box "K" in circle and red "CC" handstamps, red "Sotteghem 3 Aout" circular datestamp, all neatly struck on front, Extremely Fine, a truly choice First Issue cover, ex Fryer

Paying domestic letter rate for distance to 30km from July 1, 1849, to 10 grams.... E. 750-1,000



21

- 21 ☒ **1850, 20c Blue (2; COB 2).** Gem example featuring four exceptionally large margins including part sheet margins at top and right, stunning deep color, tied by clear barred numeral Bureau de Perception "45" cancel on immaculate 1849 folded letter from Gand to Iseghem, "Gand 20 Nov. 1849" circular datestamp at right, red receiving backstamp, Extremely Fine, a superb cover, ex Karpov

Paying domestic letter rate for distance over 30km from July 1, 1849, to 10 grams ... E. 500-750



22



23



24

- 22 ☒ **1849-50, 10c Brown (3; COB 3).** Handsome **right sheet-margin** example, other margins mostly large to just touching at bottom left, tied by centrally struck ambulant "M. VI" in vertical bars cancel on 1851 folded letter to Thuin, red "Gosselies 17 Oct." circular datestamp at right, Thuin receiving backstamp in red, Very Fine, ex Karpov
Paying domestic letter rate to 30km from July 1, 1849, to 10 grams E. 300-400
- 23 ☒ **1849-50, 20c Blue (4; COB 4-V1).** Top left **corner sheet-margin** example, with other margins large as well, strikingly intense color and impression, displaying vertical dash by first "5" of "Postes" (Position 1) variety, tied by barred numeral Bureau de Perception "45" cancel on 1850 folded letter to Bruxelles, "Gand 13 Nov. 1850" red circular datestamp at right, blue Bruxelles receiving backstamp, Very Fine and wonderfully choice, ex Karpov
Paying domestic letter rate for distance over 30km from July 1, 1849, to 10 grams E. 300-400
- 24 ☒ **1849-50, 40c Carmine Rose (5; COB 5).** Four mostly large to very large margins, deep rich color, tied by a superb strike of barred numeral Bureau de Perception "24" cancel on immaculate and petite 1852 folded letter to **Nismes, France**, blue "Bruxelles 28 Janv. 1852" circular datestamp, boxed "PD" and red transit circular datestamp, Nismes backstamp, Very Fine, an exceedingly choice and eye-appealing cover
Paying foreign letter rate to France from October 1, 1849, to 7.5 grams..... E. 400-500

BRAZIL



25

- 25 ☒ **BRAZIL, 1843, 60c Black, Early Impression (2; RHM 2).** A select quality single from the first composition of the plate, State A, Position 7, featuring four large to very large margins, sharp detailed impression, tied by "S. JOAO DEL REI" straightline handstamp on attractive 1844 folded letter to Rio de Janeiro, this pre-adhesive straightline is rated as "scarce"

EXTREMELY FINE. AN OUTSTANDING SINGLE-FRANKING USE OF THE 60-REIS EARLY IMPRESSION, UNUSUALLY CANCELLED BY A PRE-ADHESIVE PERIOD STRAIGHTLINE TOWN MARKING ON THE ADDRESS SIDE OF THE COVER.

The Bull's Eye stamps were often affixed to the backs of covers. Examples tied on the face of the cover are much more desirable and scarce.

Ex Newbury, Ratchsoff and Meyer.

Paying domestic letter rate for interior mail by land to May 17, 1849 to 4 oitavas weight.....
..... E. 5,000-7,500

CANADA



26

- 26 ☒ **1851, 6p Brown Purple, Laid Paper (2b; SG 3);** Huge even margins all around, rich color, cancelled by perfectly struck target on blue folded letter to Portland Me., bold red "Cornwall U.C. Jun. 9, 1851" datestamp, well-struck red "Canada" in arc, red "Ogdensburgh N.Y. Jun. 11" exchange circular datestamp, faint red Canadian transit backstamp (June 10), light file fold well clear of stamp and markings

EXTREMELY FINE. A REMARKABLY FRESH COVER BEARING A SUPERB EXAMPLE OF THE 6-PENCE IN THE BROWN PURPLE SHADE ON LAID PAPER.

Used 23 days after the stamp was issued. With 2000 P.F. certificate.

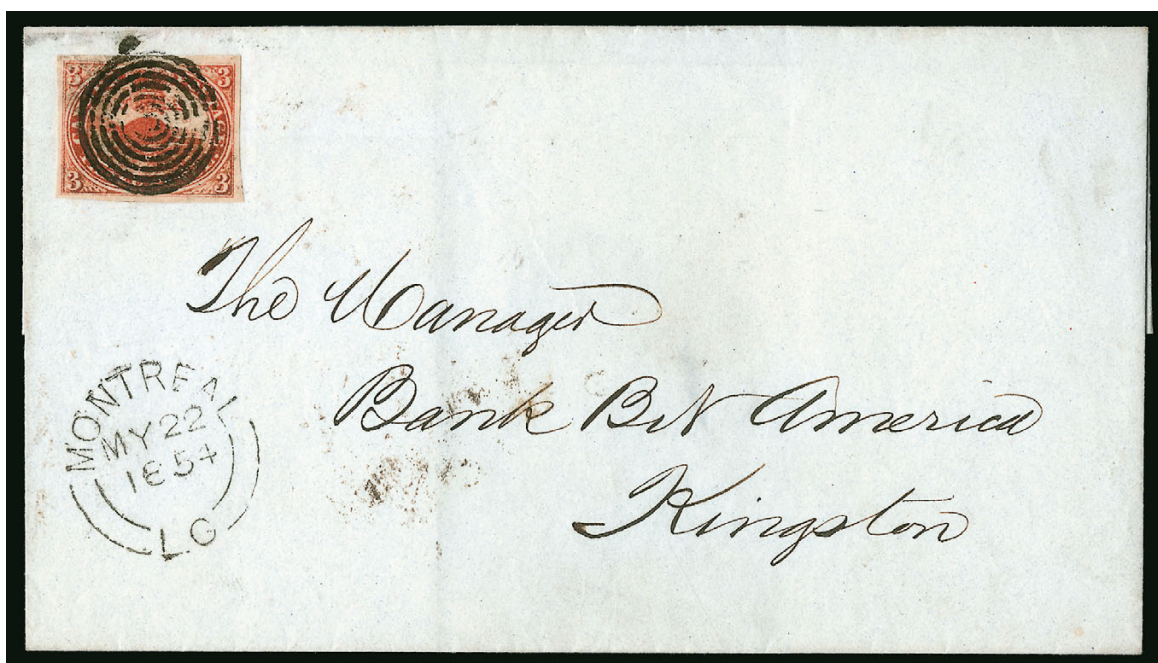
Paying foreign treaty letter rate to United States from April 6, 1851, per ½ ounce E. 2,000-3,000



27

- 27 ☒ **1852, 3p Red (4; SG 5).** Gem quality example with four exceptionally large margins, deep luxuriant color and impression, neatly tied by concentric rings cancel on 1854 blue folded local cover to Kingston, "Steam Boat Letter, Kingston Oc. 19 1854" rimless circular datestamp at left (this letter was picked up by the steamboat at one of its ports of call for delivery at Kingston), red Kingston backstamp, Extremely Fine, a wonderfully choice cover, ex V. Greene and Cantor

Paying the domestic letter rate to any distance from April 6, 1851, per ½ ounce E. 750-1,000



28

- 28 ☒ **1852, 3p Red, Thin Paper (4d; SG 5).** Large even margins, deep rich color, tied by seven-ring target cancel on 1854 folded cover to Kingston, matching "Montreal MY 22 1854" split-ring circular datestamp, Kingston backstamp, Very Fine, ex Hackmey
Paying the domestic letter rate to any distance from April 6, 1851 per ½ ounce..... E. 150-200



29

- 29 ☒ **1855, 6p Slate Gray, Wove Paper (5; SG 9).** Large and uniformly balanced margins all around, deep proof-like color and impression on bright fresh paper, neatly tied by "21" target cancel on a handsome blue 1857 folded cover from Montreal to Bellevue, matching "Montreal, L.C. Oc. 10 1857" circular datestamp at bottom left, Bellevue receiving backstamp, cover without side panels
EXTREMELY FINE. AN EXTRAORDINARILY CHOICE AND DESIRABLE 1855 6-PENCE COVER.
 Ex Dale-Lichtenstein, Nickle and Gross. Signed Bloch and with 1974 B.P.A. and 2010 Greene Foundation certificates.
Paying domestic double weight letter rate to any distance from April 6, 1851, per ½ ounce.... E. 2,000-3,000

CHILE



30

- 30 ☒ **1854, 10c Deep Blue, Desmadril (Santiago) Printing (5).** A fantastic single from the top right corner with **large sheet margin and part imprint at top and sheet margin at right**, full to large margins on other sides, marvelous deep rich color and proof-like impression, tied by neatly struck four-ring cancel, "Concepcion 22 Dbre. 55" circular datestamp on folded cover to Valparaiso

EXTREMELY FINE IN EVERY REGARD. CORNER-MARGIN EXAMPLES OF THE EARLY "COLON" ISSUES IN THIS SUPERB CONDITION ARE RARELY FOUND ON COVER.

Ex Caspary and Hall.

Paying domestic letter rate for interior mail by water..... E. 3,000-4,000

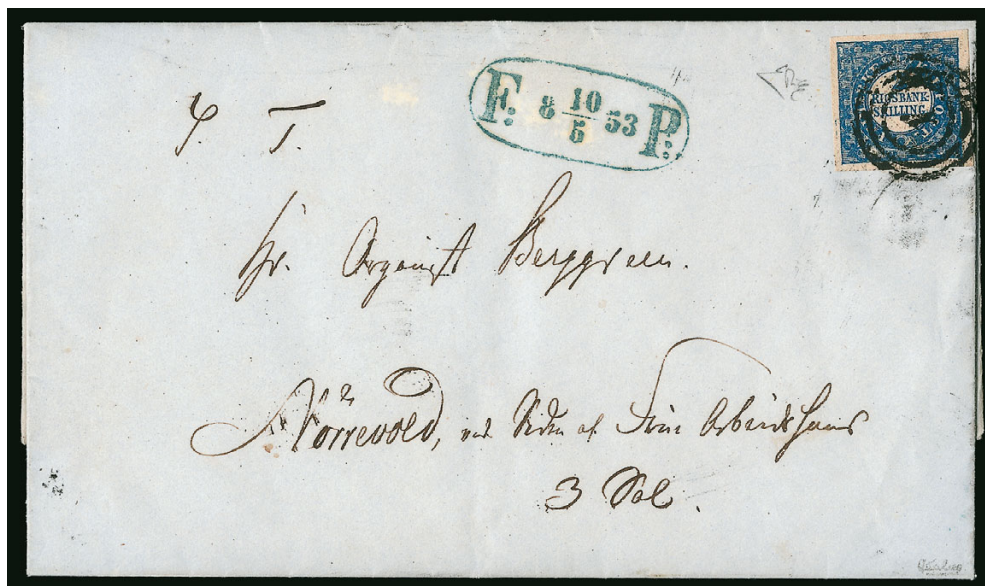


31

- 31 ☒ **1854, 5c Red Brown, Lithograph (7a).** Large margins nearly all around to just clear at top right, beautiful rich color, tied by four-ring cancel on 1854 folded letter to Valparaiso red "Santiago 14 Sbre. 54" circular datestamp, Very Fine, a particularly choice stamp and cover, ex Caspary and Islander, signed Holcombe

Paying domestic letter rate for interior mail by land..... E. 1,000-1,500

DENMARK



32

- 32 ☒ **1851, 2rs Blue, Thiele Printing (1; Facit III).** Four large and wonderfully well balanced margins, deep rich color, tied by "1" in target cancel on local Copenhagen 1853 folded letter, superb strike of Foot Post "F: 8 10/5 53 P." oval datestamp at top center, Extremely Fine, seldom encountered in such choice condition, ex Fryer, signed E. Diena, Facit Retail for "top quality" is SK25,000

Paying domestic letter rate for mail within local district from April 1, 1850, any weight E. 1,000-1,500



33

34

- 33 ☒ **1851, 4rs Chocolate Brown, First Printing (Ferslew), Unretouched Design (2a; Facit 2I).** Plate 1, Position 60, superb example with four large margins and outstanding color, tied by crisp strike of four-ring target cancel with dot in center on petite 1851 folded letter from Kjøge to Slagelse, matching "Kjøge 21/6 1851" circular datestamp at far left, Very Fine and exceedingly choice, with 1994 Møller certificate

Paying domestic letter rate any distance from April 1, 1850, per loth E. 500-750

- 34 ☒ **1854, 16sk Gray Lilac (6; Facit 6).** A perfect single with four large and well-balanced margins, bright fresh color, tied by clear strike of numeral "1" cancel within three concentric circles on immaculate blue 1858 folded printed market report from Copenhagen to Ystad, beautiful strike of Copenhagen compass clock postmark dated August 12, 1858 at bottom left, Extremely Fine, the "perfect" example of the 1854 16-Skilling Gray Lilac solo franking, with 2003 Nielsen certificate

Paying foreign letter rate to Sweden after currency was renamed on February 10, 1854, per loth.....

..... E. 1,000-1,500

FINLAND



35

- 35 ☒ **1845, 10k Black Coat of Arms Entire, Ty. I (Facit FK1).** Choice used example of this scarce stamped envelope, Abo straightline of origin, addressed to Heinola, exceptionally fresh and well-preserved, Very Fine

Paying the domestic letter rate 10 kopecks per lod from January 1, 1845 E. 500-750



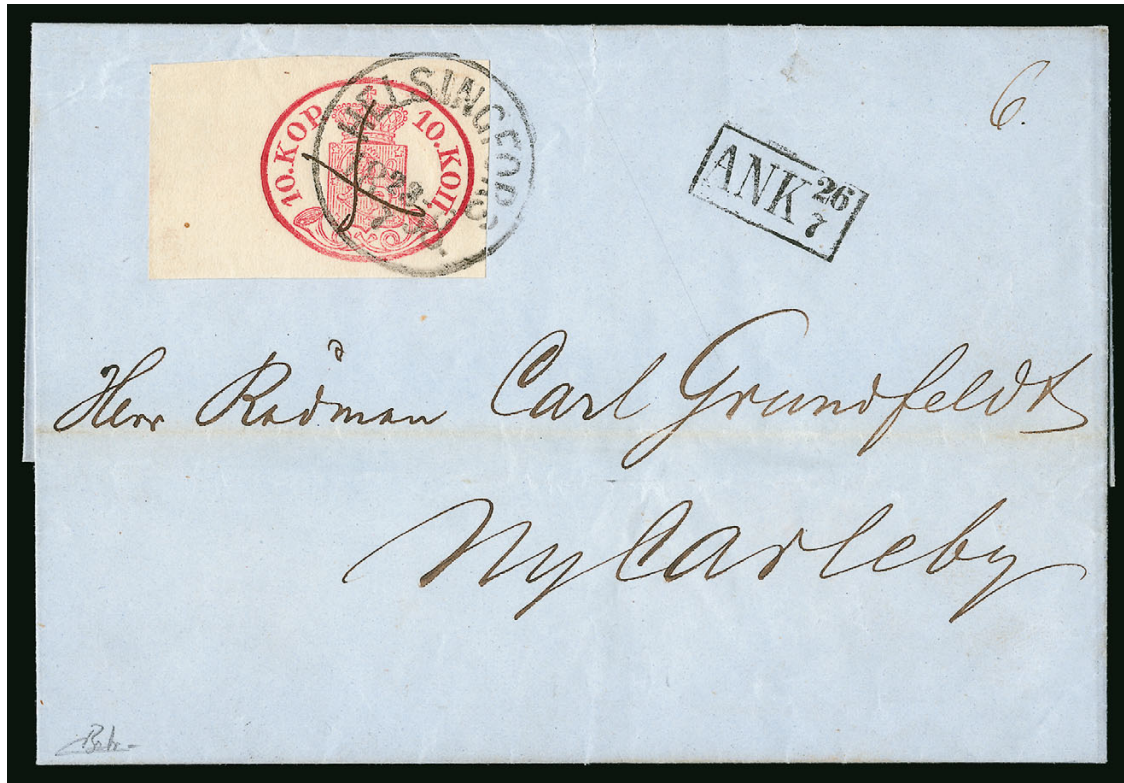
36

- 36 ☒ **1858, 5k Blue, Large Pearls in Post Horns (3; Facit 111).** A select example with four large and well-balanced margins, bright and fresh, neatly tied by large "Helsingfors 31/10 1859" circular datestamp on blue 1859 folded letter to Tavastehus, stamp additionally cancelled with small central manuscript "X", boxed "ANK" receiving datestamp at top right

EXTREMELY FINE. AN OUTSTANDING QUALITY USE OF THE FINLAND 1858 5-KOPECK STAMP CANCELLED BY BOTH A TOWN DATESTAMP AND MANUSCRIPT "X".

Finland Posthorn Coat of Arms covers are seldom encountered in this premium condition.

Paying domestic letter rate to 125 verst distance from January 1, 1850, to 1.5 loth.... E. 4,000-5,000



37

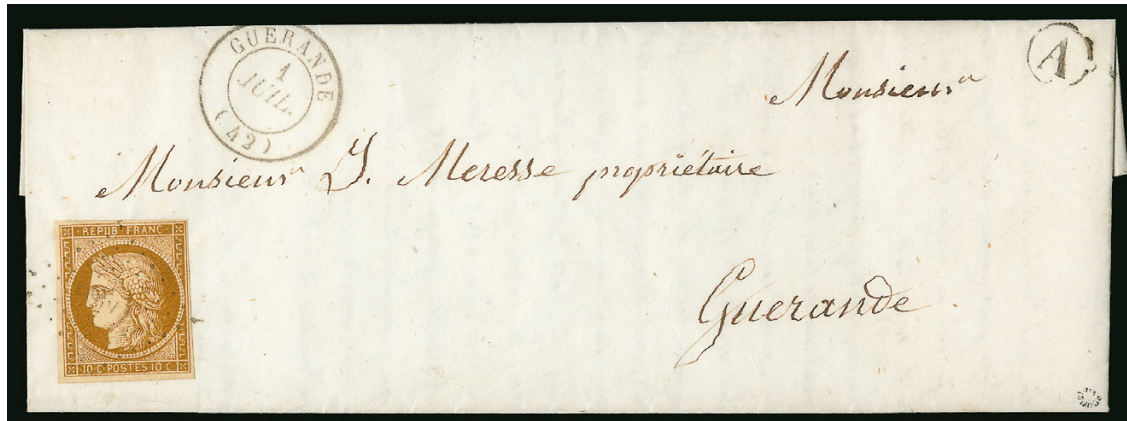
- 37 ☒ **1856, 10k Rose, Small Pearls in Post Horns (2; Facit 2).** A remarkable quality example boasting huge margins all around including an enormous **sheet margin** at left, in addition this stamp displays incredible color and freshness, beautifully tied by large “Helsingfors 23/7 1856” circular datestamp on an immaculate blue 1856 folded letter to Ny Karleby, stamp additionally cancelled with small central manuscript “X”, boxed “ANK” receiving datestamp at right

EXTREMELY FINE IN EVERY REGARD. AN ABSOLUTELY SUPERB FINLAND 1856 10-KOPECK COAT OF ARMS ISSUE COVER FOR THE PERFECTIONIST.

With 2007 Behr certificate.

Paying domestic letter rate over 125 verst distance from January 1, 1850, to 1.5 loth.....
 E. 1,500-2,000

FRANCE



38



39



40

- 38 ☒ **1850, 10c Bister on Yellowish (1; Yvert 1).** Four full to mostly large margins, fresh color and impression, tied by "1464" numeral lozenge cancel on especially clean 1853 Guerande locally addressed folded letter, matching "Guerande 1 Juil." circular datestamp, rural bureau "A" in circle handstamp (Feriace) at top right, Very Fine, an interesting and select late use of France No. 1, with 2011 Roumet certificate

Paying domestic letter rate other than Paris from January 1, 1849 to June 30, 1853, to 7.5 grams and domestic letter rate for all cities from July 1, 1853 E. 500-750

- 39 ☒ **1849, 15c Green on Greenish (2; Yvert 2).** Handsome single featuring four ample to mostly large margins and with especially intense color, neatly tied by diamond grill cancel on blue 1851 local folded letter, "Paris 24 Mai 51" circular datestamp on back, Very Fine, not often seen on a cover this choice, signed Calves and Goebel

Paying domestic letter rate within Paris only from January 1, 1849 to June 30, 1853 to 7.5 grams E. 750-1,000

- 40 ☒ **1849, 20c Black on Yellowish (3; Yvert 3).** Three large margins, fourth at left close but clear, deep color, tied on petite 1850 folded letter **used from Algeria to Elbeuf, France**, diamond grill postmark, clear "Mascara, Algerie 30 Mars 50" circular datestamp at top left, Elbeuf receiving backstamp, some faint and trivial toning, Very Fine

Paying domestic letter rate, including Algeria, from January 1, 1849 to June 30, 1850 to 7.5 grams E. 400-500



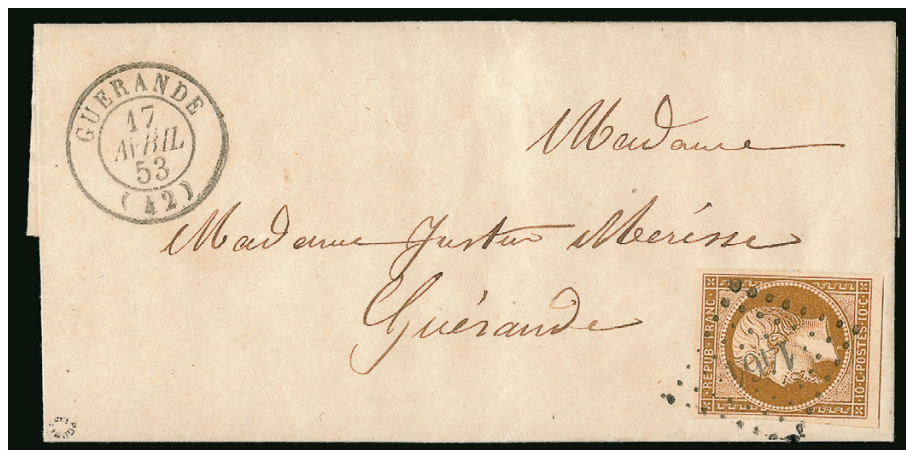
41

- 41 ☒ **1849, 25c Light Blue on Bluish (6; Yvert 4).** Four ample (at top) to mostly large margins, deep rich color, tied by diamond grill cancel on 1850 folded letter from Axat to Montpellier, clear "Axat 1 Jul. 50" **first day** circular datestamp at top center, small piece of front address sheet missing at top right barely detracting

VERY FINE. AN ATTRACTIVE AND RARE FIRST DAY OF USE OF THE 1849 25-CENTIMES ISSUE. IN ADDITION TO BEING THE FIRST DAY OF THE 25-CENTIMES POSTAGE RATE.

Signed Calves.

Paying domestic letter rate from July 1, 1849 to June 30, 1854, to 7.5 grams.... E. 1,500-2,000



42

- 42 ☒ **1852, 10c Pale Bister on Yellowish (10; Yvert 9).** Choice four-margin example with strong rich color and impression, tied by "1464" numeral lozenge cancel on petite 1853 Guerande locally addressed folded letter, "Guerande 17 Avril 53" circular datestamp at left, both markings quite clear, Extremely Fine, an immaculate cover, with 2011 Roumet certificate

Paying domestic letter rate for towns other than Paris, from January 1, 1849 to June 30, 1853, to 7.5 grams E. 500-750



43



44



45

- 43 ☒ **1853, 40c Orange on Yellowish, Ty. I (18; Yvert 16).** Four ample to large margins, rich color, tied by diamond grill cancel on most attractive 1860 blue folded letter to **Bilbao, Spain**, matching "Bayonne 27 Mars 60" circular datestamp, merchant's oval handstamp at top left, red boxed "PD", Bilbao backstamp, Very Fine, a scarce and eye-appealing use to Spain, signed Calves and with 2014 Roumet certificate

Paying foreign letter mail rate to Spain E. 300-400

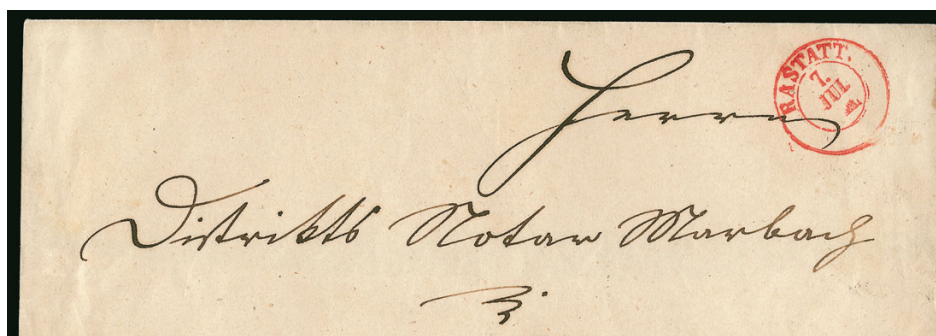
- 44 ☒ **1859, 10c Black Postage Due (J1; Yvert TT1).** Choice example with four large margins and deep shade, tied by "Chalon-Saone 24 Fevr. 59" circular datestamp struck twice on neat 1859 folded tax due notice to local addressee, missed local delivery and hand-stamped "Apres le Depart" in small box, Very Fine, an especially attractive use, signed Goebel

Paying postage due domestic letter rate after January 1, 1859 to 7.5 grams E. 300-400

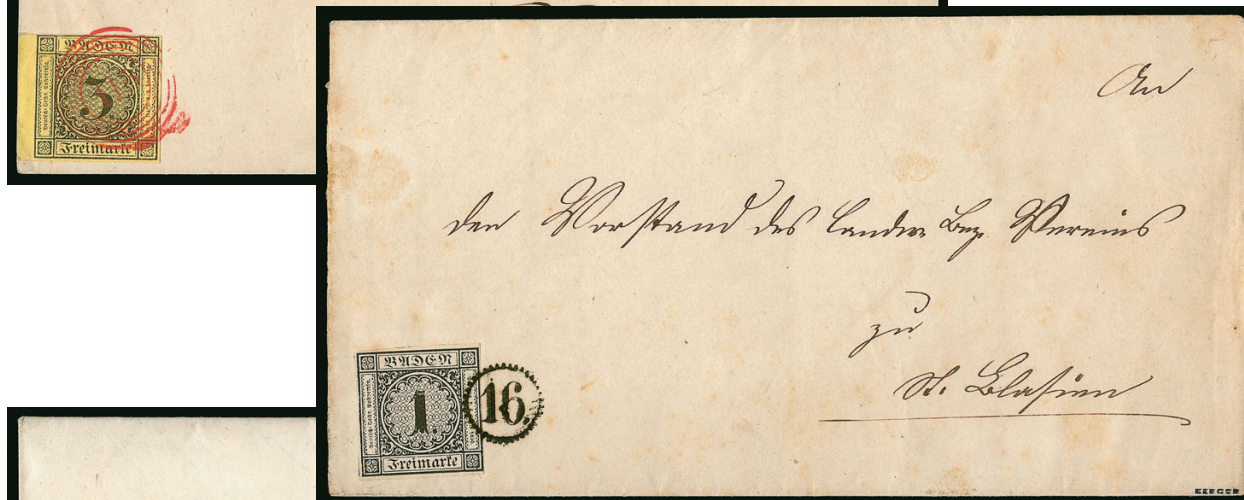
- 45 ☒ **1859, 10c Black Postage Due (J1; Yvert TT1).** Exceptionally well-margined example, tied by central strike of "Rennes 10 Juil 61" double-ring circular datestamp on 1861 local cover, additional strike to right, Very Fine

Paying postage due domestic letter rate after January 11, 1859, to 7.5 grams E. 200-300

GERMAN STATES



46



47



48

- 46 ☒ **BADEN, 1851, 3kr Black on Yellow (2; Michel 2b).** Wonderfully fresh example, with ample to mostly large margins all around including sheet margin at left, tied by striking red numeral “115” in rings cancel, matching “Rastatt 7 Jul.” circular datestamp at top right on 1852 mostly complete folded cover to Sinsheim, Very Fine, a choice use

Paying domestic letter rate to 10 meilen from May 1, 1851, per loth..... E. 400-500

- 47 ☒ **BADEN, 1853, 1k Black on White (6; Michel 5).** Four close to full margins, tied by choice strike of cogged numeral “16” mail box cancel on 1859 folded letter from Bernau to St. Blasien, local district use, Very Fine, signed Seeger

Paying domestic letter rate within local district from May 1, 1851, per loth..... E. 200-300

- 48 ☒ **BADEN, 1858, 3kr Black on Blue (8; Michel 8).** A striking top sheet-margin example, other margins close to large, deep rich color, tied by numeral “87” in rings postmark (cancelled beautifully in the huge sheet margin) on 1859 folded letter to Frankfurt, boxed “Mannheim 9 Nov.” datestamp, Very Fine, an especially handsome cover

Paying foreign letter rate to German-Austrian Postal Union (GAPU) to 10 meilen from July 1, 1851, per loth..... E. 400-500



- 49 ☒ **BAVARIA, 1849, 6kr Brown, Ty. I (3; Michel 4I).** Handsome example with four large margins showing dividing lines on three sides, rich color, tied by horseshoe Bamberg framed datestamp dated November 2, 1849, a **second day of use** of this value, on 1849 folded cover to Regensburg, receiving backstamp, Very Fine, scarce stamp on cover, particularly when cancelled solely by a town postmark
Paying domestic letter rate over 12 meilen from July 1, 1849 to June 30, 1850, to 1 loth..... E. 200-300
- 50 ☒ **BRUNSWICK, 1852, 3sgr Vermilion (3; Michel 3).** Four uniformly large margins, bright color, tied by "Braunschweig 6/11" rimless semi-circle town postmark in blue, additional strike at right on 1854 blue folded letter to Bramsche, tiny bit of lettersheet at bottom right missing, overall Very Fine, a difficult value to find on cover paying the correct rate, with 2008 Lange certificate
Paying domestic letter rate over 20 meilen from January 1, 1852 to February 3, 1856, to 1 loth... E. 400-500
- 51 ☒ **HANOVER, 1851, 10th Black on Salmon (3; Michel 3).** An absolutely superb single with huge **top right corner sheet margins**, other margins very large, **displaying "10" plate number imprint in top sheet-margin**, lovely color and impression, centrally tied by a blue "Glandorf 1/9" circular datestamp with additional strike just above on an 1852 folded cover to Munster, Prussia, receiving backstamp, Extremely Fine in every regard, a gem cover for the perfectionist, signed Berger (BPP)
Paying foreign letter rate to 10 meilen from June 1, 1850 to September 30, 1858, per loth..... E. 500-750
- 52 ☒ **HANOVER, 1851, 3rd Black on Salmon (3; Michel 3).** Choice example featuring large margins all around and uncommonly bright colored paper, neatly tied by "SCHLADEN" straightline handstamp struck twice on 1853 folded cover to Wolfenbuttel, Brunswick, sender's handstamped cachet in blue, Wolfenbuttel receiving backstamp, tiny insignificant cover edge tear at bottom, Extremely Fine, a lovely quality cover, ex Fryer
Paying foreign letter rate to GAPU to 10 meilen from June 1, 1850 to September 30, 1858, per loth . E. 300-400
- 53 ☒ **HANOVER, 1851, 6th Black on Yellow (6; Michel 5).** A gem example featuring four wonderfully well-balanced margins, remarkable color and freshness, tied by a central strike of "Gottingen 3/3" circular datestamp with additional strike directly below on an immaculate 1853 cover to Frankfurt am Main, receiving backstamp, Extremely Fine, a perfectly lovely little cover
Paying foreign letter rate to GAPU over 20 meilen from June 1, 1850 to September 30, 1858, per loth.....
..... E. 200-300



- 54 ☒ **OLDENBURG, 1859, 1g Black on Blue, Broken Frame Line Plate Flaw at Bottom (6 var; Michel 6aII).** Choice example with four large to mostly huge margins, strong color and impression showing the variety quite well, neatly tied by blue boxed "STEINHAUSEN 9/8" town datestamp struck twice on 1855 folded cover to Varel, Saxony, receiving backstamp, Extremely Fine and choice, with 2011 Berger certificate

Paying foreign letter rate to GAPS to 10 meilen from January 1, 1852 to September 30, 1858, per loth.....
 E. 200-300

- 55 ☒ **PRUSSIA, 1850, 6pf (1/2sg) Red Orange (2; Michel 1).** Four large to very large margins, strong color, tied by a lovely central strike of "Coelin 19/7 8-9A." circular datestamp on blue 1859 locally addressed folded cover, Very Fine, a handsome and exceedingly choice cover, signed Grobe and with 1986 Kastaun certificate

Paying domestic letter rate from November 15, 1850..... E. 200-300

- 56 ☒ **PRUSSIA, 1857, 3sg Yellow (8a; Michel 8b).** Ample to mostly large margins all around, in the scarcer and distinctive Yellow shade which is quite bright, wonderfully tied by a perfect strike of numeral "1" in four concentric rings cancel, matching "Aachen 18 5" circular datestamp on blue 1858 folded cover to **Brussels, Belgium**, central red "PD" handstamp, Brussels receiving backstamp, stamp lifted for examination and replaced, Very Fine, a most eye-appealing cover in exceptional condition, with 2012 Flemming certificate

Paying foreign letter rate to Belgium 10 to 20 meilen from January 1, 1852, per loth..... E. 200-300

- 57 ☒ **PRUSSIA, 1857, 2sg Blue (7; Michel 7a).** Superb example featuring huge margins all around incl. a portion of the adjoining stamp at right, proof-like color and impression on bright paper, attractively tied by "GREIFSWALD 31.12.11-12" boxed datestamp on pristine 1857 cover to Gustrow, Mecklenburg-Schwerin, railway and Rostock transit backstamps, Extremely Fine, German State covers bearing truly superb stamps on immaculate covers such as this are few and far between, signed Meier (BPP) and Pfenninger

Paying foreign letter rate to GAPS 10 to 20 meilen from June 1, 1850 to September 30, 1858, per loth.....
 E. 400-500



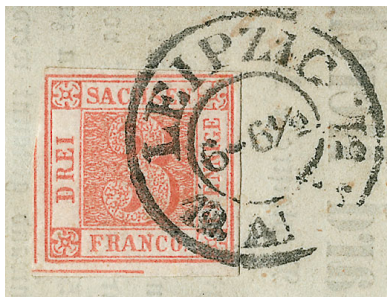
58

- 58 ☒ **SAXONY, 1850, 3pf Light Red (1; Michel 1a).** Plate V, Position 10, an exceptionally choice example of this rarity, full to mostly large margins all around including part of the dividing lines at left and bottom, bright fresh color and impression, beautifully tied by "Leipzig 6-6½ 12. Apr. 51" double-circle datestamp on outer wrapper with contents (part-printed commercial notice) with original complete address band to Chemnitz

VERY FINE AND CHOICE IN EVERY REGARD. EASILY ONE OF THE FINEST EXISTING EXAMPLES OF THE 1850 3-PFENNIG ISSUE OF SAXONY USED ON AN IMMACULATE COMPLETE WRAPPER. A CLASSIC POSTAL HISTORY RARITY OF THE WORLD IN OUTSTANDING EXHIBITION QUALITY.

Ex Tomasini. Signed Starauschek, Kruschel and Ressel. With 1985 Proschold and 2008 Eichele certificates. Scott Retail \$20,000.00. Michel €25,000.

Paying printed matter rate per loth for any distance..... E. 7,500-10,000



58 Detail



59

- 59 ☒ **THURN AND TAXIS, 1852, 2sgr Black on Rose (6; Michel 5a).** Lovely example with huge right sheet margin, other margins ample and balanced, exceptionally fresh, tied by "Cassel 13 Nov. 1852" circular double-circle datestamp on 1853 folded cover to Frankfurt, additional strike at top right, minor sealed cover tear at upper right, Very Fine, an unusually choice cover bearing an exceptional quality single, ex Fryer

Paying domestic letter rate between 10 and 20 meilen from January 1, 1852, per loth E. 500-750

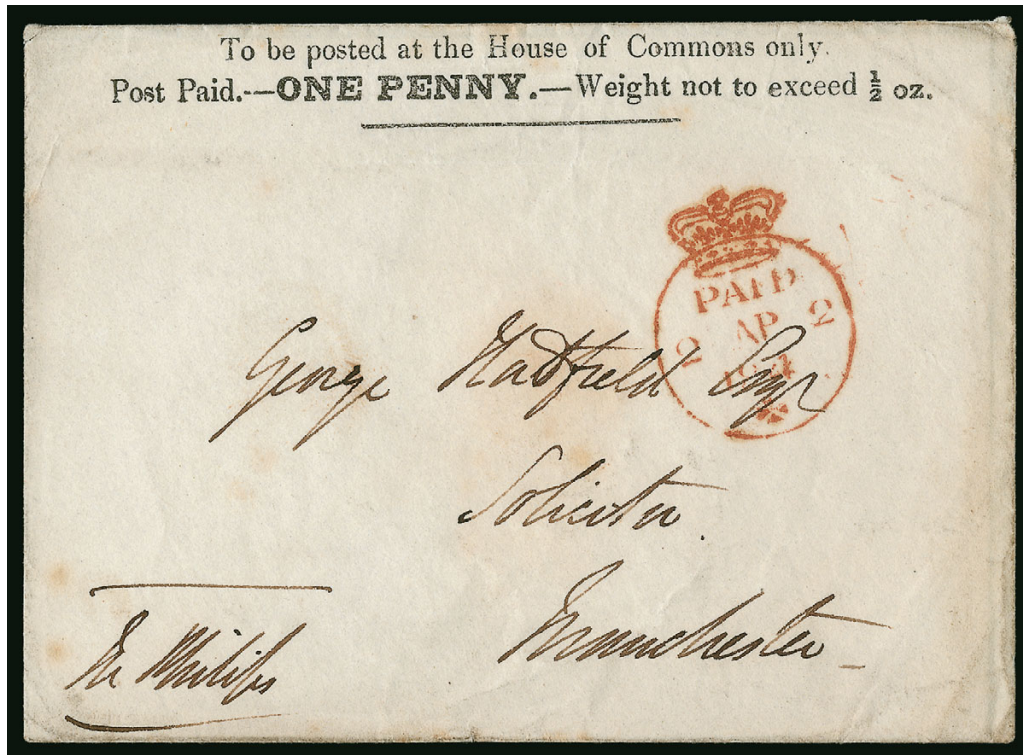


60

- 60 ☒ **THURN AND TAXIS, 1852, 3sgr Black on Brownish Yellow (7; Michel 6a).** A spectacular quality single boasting huge balanced margins all around including portions of eight adjoining stamps, uncharacteristically bright and fresh, nicely tied by numeral "291" in four concentric rings cancel, matching "Gera 5/12" circular datestamp at right on 1857 folded letter to Cologne, Prussia, receiving backstamp, Extremely Fine, German States covers bearing truly superb stamps such as this are few and far between, signed Buhler

Paying foreign letter rate to GAPS over 20 meilen from January 1, 1852, per loth E. 750-1,000

GREAT BRITAIN



61

- 61 ☒ **1840, House of Commons, 1p Red on White entire (SG PE9).** Printed "To be posted at the House of Commons only. Post Paid.—ONE PENNY.—Weight not to exceed ½ oz." at top of Parliamentary envelope, clear strike of red "Paid 2 Ap. 2 1840" crowned circle datestamp, addressed to Manchester, signed at bottom left "Mark Philips" (MP)

VERY FINE. A BEAUTIFUL AND SCARCE EXAMPLE OF THE HOUSE OF COMMONS ONE-PENNY PARLIAMENTARY ENVELOPE. THE HOUSES OF PARLIAMENT ENVELOPES ARE NOW LISTED IN THE STANLEY GIBBONS CATALOGUE.

According to *British Pictorial Envelopes of the 19th Century*, "Free frank privileges for members of the Houses of Parliament ceased with the introduction of Uniform Penny Postage on the 10th of January. After consultation, Rowland Hill arranged for plain printed envelopes to be supplied, probably free, to members of both houses in their stationery racks. When posted in the official boxes in Parliament they would incur no postal charges. They ceased to be available from the 5th of May 1840."

As official envelopes, these have now rightly been given their own catalogue listings in the Stanley Gibbons Stamp Catalogue. Unlisted in Scott. Stanley Gibbons value from £6,000.

Paying domestic letter rate to ½ ounce from January 10, 1840, any distance E. 2,000-3,000



62 front and back

- 62 ☒ **1840, 1p Black, Mulready (U1).** Stereo A178, cancelled by orange red Maltese Cross, matching **Liverpool MY 6, 1840 F" First Day** circular datestamp and used to Durham University, first day postmark on back and quite well struck, intact handsome small black wax seal

VERY FINE. A RARE EXAMPLE OF THE ONE-PENNY MULREADY USED ON THE FIRST DAY OF ISSUE. PARTICULARLY DESIRABLE IN THIS CHOICE CONDITION AND WITH THE FIRST DAY POSTMARK SO CLEARLY STRUCK.

A wonderful exhibition piece. SG from £18,000.

Paying domestic letter rate to ½ ounce from January 10, 1840, any distance..... E. 5,000-7,500



63

- 63 ☒ **1840, 1p Black, Mulready Letter Sheet (U3; SG Spec. ME1h).** Displaced Stereo "A68", cancelled by orange red Maltese Cross and matching "Hull JU 16, 1840" circular datestamp, addressed to Walworth, London, clear red receiving marking on back, Very Fine example of the One Penny Mulready Letter Sheet with a displaced stereo, ex Vestey, SG £600

Paying domestic letter rate ½ ounce from January 10, 1840, any distance E. 200-300



64

- 64 ☒ **1840, 2 Blue, Mulready (U2).** Stereo a198, cancelled by attractive red Maltese Cross, originating from Keighley with its undated postmark on back, light manuscript "Keighley 3 August 1840" at left, red "Bradford Yorks AU 3, 1840" transit circular datestamp on front, addressed to Huddersfield, small part of backflap cut away, Very Fine, Two-Pence Blue Mulready Envelopes are much scarcer and more colorful with red Maltese Cross cancellations

Paying domestic letter rate from ½ to 1 ounce from January 10, 1840, any distance..... E. 750-1,000



- 65 ☒ **1840, 1p Black (1; SG 2).** Plate 2, lettered F-I, handsome example with ample to mostly large margins, tied by red Maltese Cross cancel on unusual 1840 folded part-printed insurance renewal notice to Gray's Inn, entire bearing printed "Law Life-Assurance Society" imprint at top, London June 12, 1840 originating cancel on back, Very Fine and quite choice, Penny Blacks are seldom seen on covers with printed merchant's or advertising imprints
Paying domestic letter rate to ½ ounce from January 10, 1840 to any distance..... E. 500-750
- 66 ☒ **1840, 1p Black (1; SG 2).** Plate 8, lettered E-G, gem example with four very large and even margins, intense color, tied by light strike of black Maltese Cross cancel, matching "Stroud AP 17, 1841" circular datestamp alongside on unusually clean 1841 folded cover to Sheffield sent via Nailsworth with its undated circle handstamp on front and back, red receiving backstamp, Extremely Fine, an exceptional and perfectly lovely Penny Black cover
Paying domestic letter rate to ½ ounce from January 10, 1840, to any distance E. 750-1,000
- 67 ☒ **1840, 2p Blue (2; SG 5).** Plate 1, lettered Q-R, three large margins, ample fourth margin at left, strong color and impression, tied by pretty Maltese Cross in red on 1840 folded cover to London, originating Settle circular datestamp on back along with London receiving datestamp, Very Fine
Paying domestic letter rate ½ to 1 ounce from January 10, 1840, any distance E. 500-750
- 68 ☒ **1841, 1p Red Brown on Bluish (3; SG 8).** Plate 14, lettered C-G, four-margined example tied by scarce Leamington distinctive Maltese Cross cancel (SG Spec. from £800), with "Leamington SE 21, 1841" circular datestamp alongside on the inside of a re-used (turned) 1p Pink stamped envelope addressed to Lincolnshire, original use of stamped envelope was dated September 17, 1841 from Market Rasen to Leamington, some minor edgewear, Very Fine, a most unusual turned use of the scarce and distinctive Maltese Cross cancellation of Leamington
Paying domestic letter rate to ½ ounce from January 10, 1840, any distance E. 750-1,000



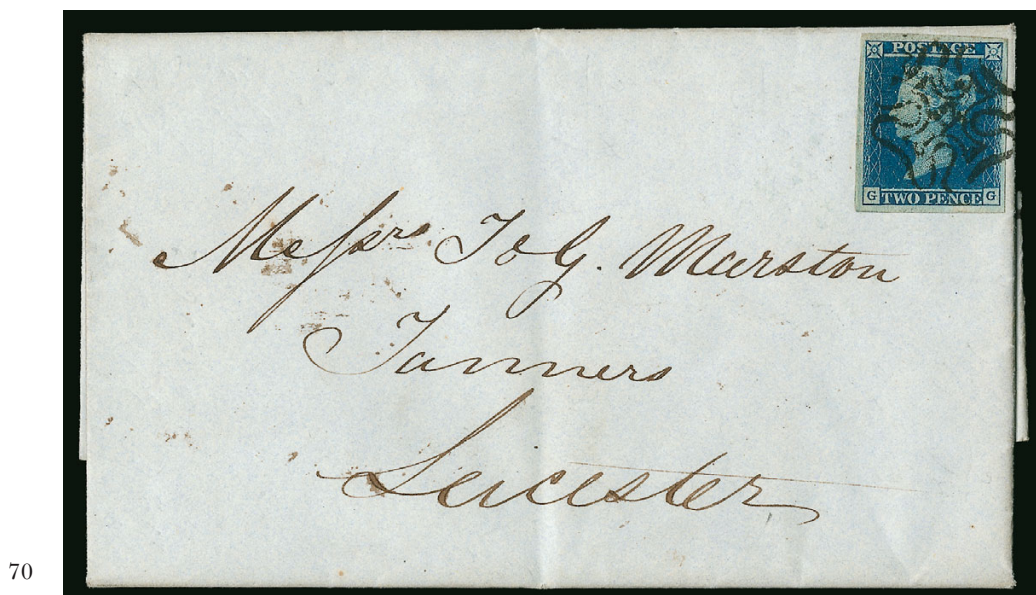
69

- 69 ☒ **1841, 1p Red Brown on Bluish (3; SG 8).** Plate 93, lettered I-G, four very large and well-balanced margins, tied by barred numeral "976" handstamp on beautiful J. Valentine's **Ocean Penny Postage illustrated propaganda design** cover, "Acklington JY 3, 1851" originating circular datestamp on back, along with Warkworth transit and Newcastle-on-Tyne receiving postmarks

EXTREMELY FINE. A GORGEOUS OCEAN PENNY POSTAGE ILLUSTRATED PROPAGANDA COVER IN OUTSTANDING QUALITY.

A fabulous design incorporating images of various modes of transportation and "Ocean Penny Postage" facsimile stamp at upper left. Ex Jarrett and Levy. Signed Bloch and with a 2009 B.P.A. certificate.

Paying domestic letter rate to ½ ounce from January 10, 1840, any distance E. 2,000-3,000



70

- 70 ☒ **1841, 2p Blue (4; SG 14).** Plate 3, lettered G-G, superb example with four very large and wonderfully well-balanced margins, luxuriant color, tied by excellent strike of number "12" in Maltese Cross cancellation (SG from £1,600) on an immaculate 1843 folded letter to Leicester, light "Leicester JU 28, 1848" originating circular datestamp on back, Extremely Fine, a highly desirable cover not only for its condition but its elusive numeral Maltese Cross cancellation as well

Paying domestic letter rate from ½ to 1 ounce from January 10, 1840, any distance .. E. 750-1,000



71

- 71 ☒ **1841, 2p Blue Stamped Envelope.** Locally addressed with black Maltese Cross cancelling embossed stamp, matching “Exeter MR 13 1842” circular datestamp to left, both markings quite well-struck and most desirable both being on the front versus the back, Very Fine, an extremely rare use of this seldom seen envelope, ex Yates

Dr. A.K. Huggins in *British Postal Stationery* (1970 Edition) states “used examples of this envelope exceed in rarity those of its Mulready counterpart, and early examples, with Maltese Cross cancellation are very scarce indeed.”

Paying domestic letter rate from ½ to 1 ounce from January 10, 1840, any distance.... E. 1,000-1,500



73

72

- 72 ☒ **1847, 1sh Pale Green, Embossed (5; SG 54).** Margins just touching or full all around, pretty color, neatly tied by choice strike of barred numeral “12” cancel on August 11, 1848 blue folded cover from London to New York, carried by Cunard steamer *Britannia* to Boston, cover arrived late and mail was processed down-stream at New York, “29” retaliatory rate due handstamp, Very Fine and choice

Paying foreign letter rate to the United States, per ½ ounce from June 17, 1848 through December 16, 1848, U.S. retaliatory postage due was charged..... E. 500-750

- 73 ☒ **1847, 1sh Pale Green, Embossed (5; SG 54).** Lovely four-margin example with bright color and paper, tied by perfect strike of barred numeral “12” cancel on blue 1848 folded cover from London to New York, carried by Cunard steamer *Hibernia* which departed August 26, 1848 and arrived in Boston, red “Boston Ms. Ship Sep 8” entry datestamp and matching bold “29” retaliatory rate due handstamp, all markings clear on a clean folded cover, Extremely Fine and most desirable

Paying foreign letter rate to United States during Retaliatory Period, June 17 to December 16, 1848, per ½ ounce, U.S. retaliatory postage due was charged..... E. 500-750



74

- 74 ☒ **1847, 1sh Green, Embossed (5a; SG 55).** Four close to mostly full margins, perfect central strike of blue “266” numeral in grid cancel, matching blue “Dunstable AU 13, 1852” circular datestamp on back of petite 1852 cover **to Cape Town, Cape of Good Hope**, Toddington transit, manuscript “4” (pence) due for carriage beyond Cape Town, addressed to the Royal Observatory at Grahams Town

VERY FINE. A RARE AND ATTRACTIVE SINGLE USE OF THE 1847 ONE-SHILLING GREEN EMBOSSED ISSUE TO A MOST DESIRABLE DESTINATION, THE ROYAL OBSERVATORY OUTSIDE OF CAPE TOWN IN THE CAPE OF GOOD HOPE.

With 1997 B.P.A. certificate.

Paying foreign letter rate to Cape of Good Hope from December 14, 1850 to April 1, 1857, per ½ ounce
 E. 2,000-3,000



75

- 75 ☒ **1848, 10p Red Brown, Embossed (6; SG 57).** Margins just touching to full and well-balanced, rich color, cancelled by barred numeral, London November 17, 1848 origin backstamp on 1848 folded letter **to Barcelona, Spain**, Calais entry and Perpignan exit datestamps, orange “PD” in oval handstamp, stamp tied by pretty blue “10Rs” due rate marking, Barcelona backstamp, Very Fine, a most attractive and desirable single 10p franking

Paying foreign letter rate to Spain from June 1, 1843 to January 1, 1857, per ¼ ounce. . E. 500-750



76

- 76 ☒ **1848, 10p Red Brown, Embossed (6; SG 57).** Choice example with four full to large margins, deep rich color, tied by barred numeral cancel on blue 1854 folded cover from London to **Carentan, France**, Calais transit circular datestamp just ties stamp as well, red "PD" in oval handstamp, various transit and receiving markings on back, Very Fine, single-franking uses of the 1848 10p Red Brown are seldom found so choice

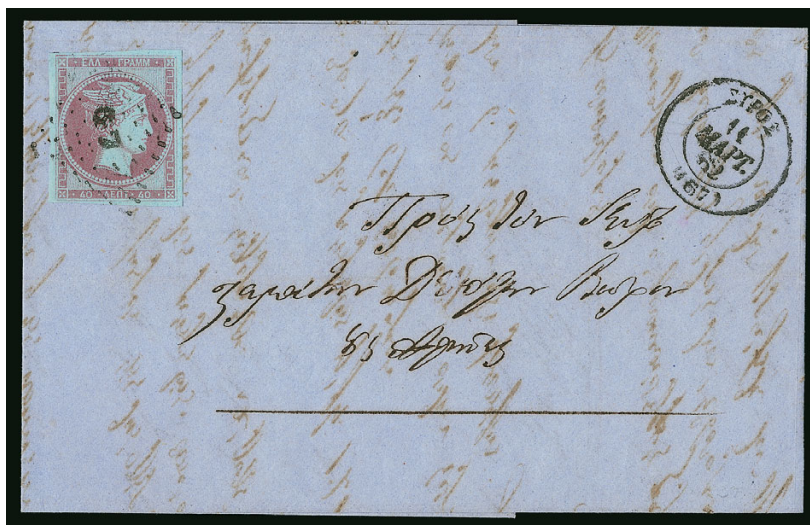
Paying foreign letter rate to France from June 1, 1843 to December 31, 1854, per ¼ ounce
 E. 750-1,000



77

- 77 ☒ **1854, 6p Red Violet, Embossed (7; SG 59).** Four close to mostly large margins, strong color, tied by barred numeral cancel on petite 1856 mourning cover from London to **Sydney, New South Wales**, London August 19, 1856 origin backstamp, carried by clipper ship *White Star* to Melbourne and onward to Sydney per steamer *Yarra Yarra*, large black "Ship Letter Sydney Nov. 10, 1856" receiving backstamp, red "1d" Colonial credit handstamp, Very Fine

Paying sea route rate to New South Wales in effect from October 1, 1854 to January 1, 1857, per ½ ounce
 E. 400-500

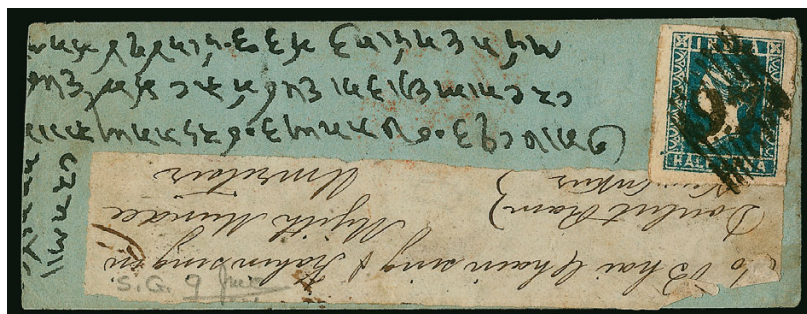


78

- 78 ☒ **GREECE, 1861, 401 Violet on Bluish (5).** Exceptional single with four large to very large margins, bright color and impression, tied by numeral “67” in dots cancel, matching Syros March 11, 1862 circular datestamp on blue folded letter to Athens receiving backstamp, Extremely Fine, a choice First Issue Hermes Head cover of Greece

Paying domestic letter rate 15 to 30 grams from October 1, 1861, any distance E. 200-300

INDIA



80



79

- 79 ☒ **1855, 1/2a Greenish Blue, Die III (2; SG 9).** Huge margins all around, tied by “97” in diamond grid cancel on petite 1856 native cover to Amristar, red “Sukkor 13/9/56 Paid” originating circular datestamp on back, Amristar backstamp, ex Sapphire, signed Jal Cooper

Paying domestic letter rate any distance from October 1, 1854, to quarter tola rate E. 400-500

- 80 ☒ **1854, 2a Green (5; SG 31).** Four full to large margins, deep color, tied by barred numeral “1” cancel on back of native 1857 cover from Bombay to Ahmednuggur, red “Bombay 2 Se 57 Paid” circular datestamp and red Ahmednuggur receiving datestamp all on back, backflap torn around stamp to preserve franking, faint trace of toning, Fine

Paying domestic letter rate any distance from October 1, 1854 to one tola weight E. 200-300

INDIA USED IN STRAITS SETTLEMENTS



81 front and back

- 81 ☒ **1854, 4a Red & Blue, Fifth Printing (6 var; SG 25).** Gem cut-square example with four large to huge margins, showing portion of dividing line at top, wonderfully fresh colors on bright paper, cancelled by diamond of dots on clean 1856 folded letter **originating in Singapore (Straits Settlements) and sent to Canton, China**, orange red "Singapore P.O." originating circular datestamp on back, along with "Hong Kong 28 SE 1856" transit circular datestamp VERY FINE IN EVERY RESPECT. A MARVELOUS USE OF THE 1854 FOUR-ANNA ISSUE FROM SINGAPORE TO CANTON, CHINA.

A remarkable exhibition quality cover emanating from the famous Heard correspondence.

Paying foreign letter rates as India to China from February 1, 1856, to ½ ounce.... E. 7,500-10,000



82

- 82 ☒ **1854, 4a Red & Blue, Fourth Printing (6 var; SG 23).** Cut square with four large and well-balanced margins, tied by diamond of dots cancel on attractive 1856 cover to **Edinburgh, Scotland**, red "Madras 1856 Oc 29" circular datestamp below, red "India Paid" in crescent moon handstamp at top center, London Paid red transit circular datestamp also ties stamp, receiving backstamp

VERY FINE. A MOST ATTRACTIVE SINGLE FRANKING USE OF THE 1854 FOUR-ANNA ISSUE, CUT SQUARE, WITH FOUR LARGE MARGINS, FROM MADRAS TO EDINBURGH.

Covers of this quality bearing the 1854 Four-Anna issue are very scarce and highly sought after.

Paying foreign letter rate to Great Britain from February 1, 1856, to ½ ounce.... E. 3,000-4,000

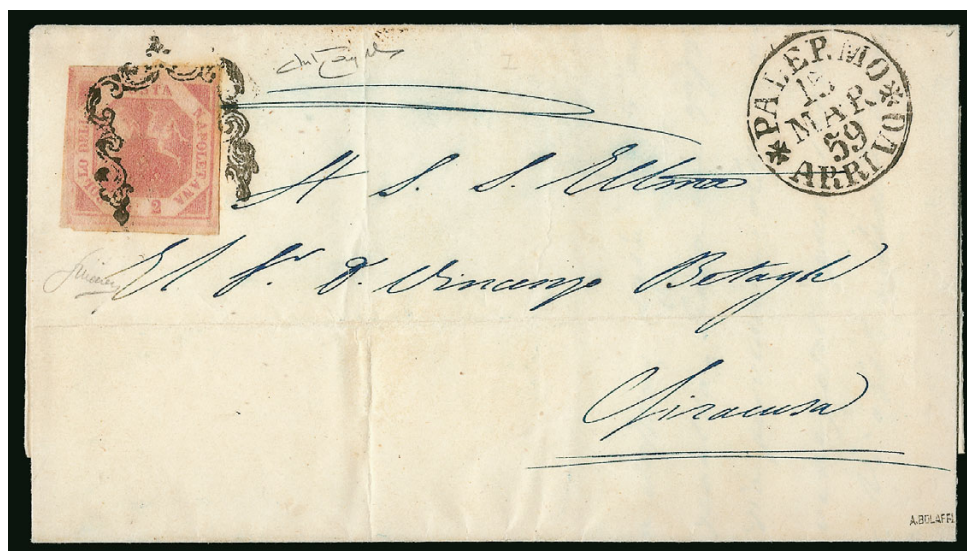
ITALIAN STATES
MODENA



- 83 ☒ **1852, 5c Black on Green, First Composition, No Period After Value (1; Sassone 1).** A beautiful example with **top left corner sheet margins**, other margins large to huge except a bit closer at top right, strong color, neatly tied by blue bars cancel on clean 1855 folded cover from Modena to Reggio, partly clear January 6, 1855 circular datestamp alongside, Extremely Fine, a lovely cover bearing a desirable corner-margin single, signed Raybaudi
Paying domestic letter rate to 10 leghe from June 1, 1852 to October 31, 1859, per 8.75 grams.....
..... E. 400-500
- 84 ☒ **1852, 10c Black on Rose, First Composition, No Period After Value (2; Sassone 2).** Choice four-margin example, bright and fresh, tied by light strike of black bars cancel, originating "Reggio 5. Oct" handstamp to left on 1853 folded cover to Modena, receiving backstamp, Very Fine, uncommonly choice
Paying domestic letter rate 10 to 20 leghe from June 1, 1852 to October 31, 1859, per 8.75 grams
..... E. 200-300
- 85 ☒ **1852, 15c Black on Yellow, First Composition, No Period After Value (3; Sassone 3).** Gem example with **top sheet margin**, other three sides very large showing full dividing lines, tied by black bars cancel on neat 1859 folded cover from Modena to Bologna (Papal States), partly readable Modena March 12, 1859 circular datestamp, Bologna backstamp, Extremely Fine, a lovely cover bearing a superb stamp
Paying foreign letter rate to Papal States, to 10 leghe from June 1, 1852, per 17.5 grams... E. 150-200
- 86 ☒ **1852, 40c Black on Blue, First Composition, No Period After Value (5; Sassone 6).** Large and well-balanced margins showing dividing lines on all four sides, deep color, neatly tied by blue bars cancel, matching "Modena 12 Apr. 55" circular datestamp on 1855 folded cover to Villaco (Villach), Austria Sanguinetto transit and Villach receiving backstamps, Extremely Fine, with 1975 A. Diena certificate
Paying foreign letter rate to Austrian Empire over 20 leghe, from June 1, 1852, per 17.5 grams.....
..... E. 500-750



- 87 ☒ **1852, 5c Black on Olive Green, Second Composition, Period After Value (6a; Sassone 8).** An extraordinary **right sheet-margin example** in the rare Olive Green shade, mostly large margins with an enormous sheet margin measuring over 17mm, tied by black bars cancel, "REGGIO/16 MARO" two-line datestamp on 1857 folded cover to Modena, receiving backstamp, Very Fine and striking, signed Colla and Raybaudi, with 1977 E. Diena certificate
Paying domestic letter rate to 10 leghe from June 1, 1852 to October 31, 1859, per 8.75 grams E. 500-750
- 88 ☒ **1859, 20c Slate Violet (12a var; Sassone 15).** Three very large margins, fourth at top ample, neatly tied by black bars cancel, Modena December 1, 1859 circular datestamp at upper right on 1859 folded letter to Ferrara, lightly struck receiving backstamp, Very Fine, a very scarce value when found on cover, signed A. Diena and with 2009 Sorani certificate
Paying domestic letter rate for the Kingdom from October 15, 1859, per 8.75 grams E. 400-500
- 89 ☒ **NAPLES, 1858, 1a Pale Lake (2; Sassone 3).** Plate 1, Position 3, choice example with large margins, tied by boxed "Annulato" cancel, matching "Castrovillari 22 Dic 1859" circular datestamp on 1859 greenish folded letter to Cerchiara, Very Fine and wonderfully choice
Paying domestic letter rate within district from January 1, 1858, to 3 sheets E. 200-300
- 90 ☒ **NAPLES, 1858, 2g Rose Lilac, Double Transfer Variety (3a var; Sassone 5).** Plate I, four large to huge margins, displaying double transfer predominately in bottom margin, tied by boxed "Annulatto" cancel on 1858 folded cover to Campobasso, originating Naples January 16 two-line datestamp on back, Extremely Fine, signed A. Diena and with 1986 E. Diena certificate
Paying domestic letter rate from January 1, 1858, one sheet E. 400-500



91

- 91 ☒ **NAPLES, 1858, 2g Rose Carmine (3a; Sassone 5).** Large to huge margins, used on 1859 folded letter from Naples to Siracusa via Palermo, stamp cancelled at Palermo by distinctive ornately framed "horseshoe" cancel usually found on stamps of Sicily, clear "Palermo 15 Mar 59 Arrivo" circular datestamp at top right

VERY FINE AND STRIKING. AN EXTREMELY RARE AND DESIRABLE USE OF THE DISTINCTIVE FANCY "HORSESHOE" CANCEL OF SICILY CANCELLING A STAMP OF NAPLES WHILE IN TRANSIT TO SIRACUSA.

A highly exhibitable and important cover showing use of the distinctive "horseshoe" framed cancel on a Naples stamp. This handstamp was intended to cancel the stamps of Sicily without obliterating the portrait of King Ferdinand II, nicknamed King "Bomba."

Signed Bolaffi and with 2000 Raybaudi certificate.

Paying domestic letter rate from January 1, 1858, one sheet E. 2,000-3,000



93

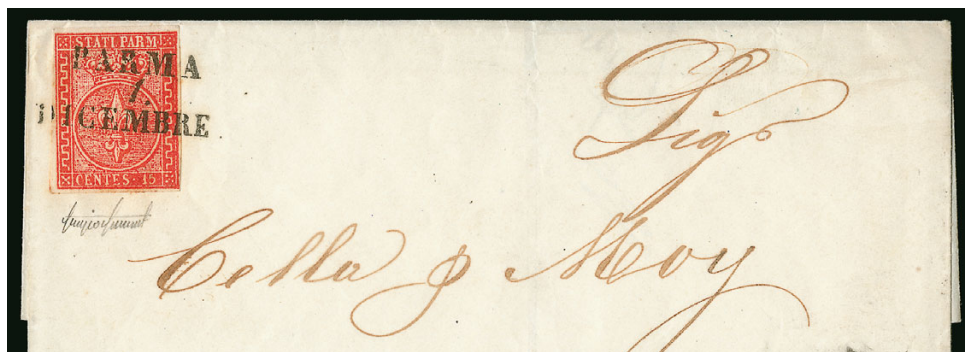
92

- 92 ☒ **ROMAN STATES, 1852, 3b Black on Brown (6; Sassone 4).** Four close to large margins with dividing lines showing all around, part of **bottom sheet margin**, tied by clear boxed "MONTALBADO" straightline handstamp, "Senigallia 26 Mag 55" transit datestamp at right on remarkably small 1855 folded letter to Urbino, Very Fine, a wonderfully choice and visually appealing single-franking use on the front of the cover, as opposed to the more typical use on the back as postage due, signed A. Diena and Raybaudi

Paying domestic letter rate to non-adjointing postal district in same region from October 1, 1852.... E. 400-500

- 93 ☒ **ROMAN STATES, 1852, 4b Black on Yellow (5a; Sassone 5A).** Choice **bottom sheet-margin example** with other margins close to very large, dividing lines all around, tied by "FANO" straightline handstamp on attractive blue 1855 folded letter to Spoleto (Marche region to Umbria region), "Spoleto 23 Mag 55" receiving backstamp, Very Fine, a most appealing single franking, signed Bolaffi and Colla

Paying domestic letter rate to adjoining region second postal district from October 1, 1852 E. 400-500



94



95



96

- 94 ☒ **PARMA, 1852, 15c Red (7; Sassone 7).** Ample to full margins all around, particularly vibrant color, beautifully tied by perfect strike of “PARMA/1/DICEMBRE” three-line datestamp on 1854 folded cover to Piacenza, Sardinia Piacenza receiving backstamp, Very Fine and quite pretty, with 2006 Sismondo certificate
- Paying foreign letter rate to Sardinia to 10 leghe, from June 1, 1852 to July 31, 1859, per 8.75 grams*
..... E. 150-200
- 95 ☒ **PARMA, 1859, 25c Red Brown (10; Sassone 10).** Select example with four large to huge margins, tied by distinctive “mute” grill cancel, “Fiorenzuola 10 Maggio 1859” circular datestamp on 1859 folded cover to Milano, Lombardy-Venetia, boxed “Distribuzione” backstamp, Extremely Fine, a cover in beautiful condition and with great eye appeal, signed A. Diena and with 1998 Sorani certificate
- Paying foreign letter rate to Austrian Empire, 10 to 20 leghe, to July 31, 1859, per 17.5 grams.. E. 750-1,000*
- 96 ☒ **PARMA, 1859, 20c Dark Blue (14a; Sassone 15).** A superb single featuring four large and perfectly balanced margins, strong color as well, tied by nice strike of “Piacenza 28 Dic 59” circular datestamp on immaculate 1859 folded cover to Milan, receiving backstamp, Extremely Fine, a gem single-franking cover for the finest collection, signed A. Diena and with 2009 Sorani certificate
- Paying domestic letter rate for the Kingdom from August 27, 1859, per 8.75 grams..... E. 750-1,000*



97

- 97 ☒ **ROMAGNA, 1859, 1b Black on Drab (2; Sassone 2).** Impressive bottom right corner sheet-margin example with margins ranging from full to mostly enormous, wonderfully fresh as well, tied by diamond grid cancel on petite October 15, 1859 folded letter from Copparo to Ferrara, addressed in blue

EXTREMELY FINE. A GORGEOUS FRANKING WITH A CORNER SHEET-MARGIN EXAMPLE OF THE 1859 ONE-BAJOCCHI BLACK ON DRAB ON A SMALL FOLDED LETTER.

A cover perfect for exhibition. With 1987 E. Diena certificate.

Paying domestic letter rate within same district from September 1 to October 31, 1859, per sheet ...
..... E. 1,500-2,000



98

- 98 ☒ **ROMAGNA, 1859, 3b Black on Dark Green (5; Sassone 4).** Select example with four large to huge margins, deep color, tied by light strike of diamond grid cancel, "Firenze 15 Set 59" circular datestamp on 1859 folded letter to Bologna, receiving backstamp, Very Fine, an uncommonly choice single-franking use, signed Colla and Friedl, with 1999 Sorani certificate

Paying domestic letter rate non-adjointing postal district in same region from September 1 to October 31, 1859 E. 1,000-1,500

SARDINIA



- 99 ☒ **1851, 20c Deep Blue (2a; Sassone 2d).** Large and nicely balanced margins, deep rich color, tied by mute grid of diamonds cancel, "Chambery 22 Jul 53" circular datestamp on 1853 folded letter to Samoens, receiving backstamp, Very Fine, a late use of this issue as it was valid only until September 30, 1853, with 1997 Bottacchi certificate
- Paying domestic letter rate for any distance from January 1, 1851, per 7.5 grams..... E. 500-750*
- 100 ☒ **1853, 20c Dull Blue (5; Sassone 5).** Impressive example with large to huge margins, embossed design remains highly detailed, beautifully tied by complete "Torino 10 Giu 54" circular datestamp on 1854 folded letter to Chiusa de Cuneo with fancy red merchants cachet on back, receiving backstamp, Very Fine, these embossed issues are seldom encountered this choice on attractive covers, with 1995 Raybaudi certificate
- Paying domestic letter rate for any distance from January 1, 1851, per 7.5 grams..... E. 500-750*
- 101 ☒ **1854, 20c Blue (8; Sassone 8).** Large and well-balanced margins, rich color and strong embossing, beautifully tied by clear "Pontestura 23 Dic 55" circular datestamp on 1855 folded cover to Vercelli, receiving backstamp, Very Fine, a select quality single use, signed by several experts including A. Diena
- Paying domestic letter rate for any distance from January 1, 1851, per 7.5 grams..... E. 500-750*
- 102 ☒ **1855, 5c Bright Yellow Green (10c var; Sassone 13B).** Large to very large margins, brilliantly fresh and distinctive color, tied by "Torino 1 Gen 60" circular datestamp struck twice on blue 1860 folded letter locally addressed, Torino backstamp, a Very Fine and choice example of this single franking use of the 5-centesimi value, signed A. Diena and with 1988 E. Diena certificate
- Paying domestic letter rate within local district from January 1, 1851, per 7.5 grams..... E. 300-400*
- 103 ☒ **1855, 20c Sky Blue (12e; Sassone 15f).** Full to mostly large margins, lovely color and embossing, superbly tied by socked-on-the-nose "Levanto 1 Apr 57" circular datestamp, additional strike perfectly positioned in opposite corner on petite 1857 folded cover to Torino, various receiving backstamps, Extremely Fine, a gorgeous cover in optimal quality, signed Bettini and with 1996 Raybaudi certificate
- Paying domestic letter rate for any distance from January 1, 1851, per 7.5 grams..... E. 400-500*



- 104 ☒ **SICILY, 1859, 2g Dull Blue (13 var; Sassone 6e).** Choice four-margined example with fresh color, tied by distinctive ornately framed “horseshoe” cancel (designed specifically not to deface portrait of King Ferdinand II), matching “Palermo, Partenza 15 Feb 59” circular datestamp just to left on clean 1859 folded cover to Messina, two-line receiving backstamp, Extremely Fine, single franking uses of this value are quite scarce, particularly in this outstanding condition, with 2004 Colla and Sorani certificates

Paying domestic letter rate from January 1, 1858, one sheet..... E. 500-750

- 105 ☒ **TUSCANY, 1851, 1cr Carmine (4; Sassone 4d).** Mostly full margins, rich color, tied by “Firenze 13 Giu 1854” ribbon-banded circular datestamp on 1854 folded printed circular wrapper (missing bottom panel on back) to San Giovanni (with part-printed address), boxed “PD” handstamp below, Very Fine, another scarce single franking use, with 2007 Sorani certificate

Paying printed circular rate from April 1, 1851 to December 31, 1859 E. 500-750

- 106 ☒ **TUSCANY, 1851, 2cr Bright Blue (5; Sassone 5b).** Select example with uniformly large margins, deep luxuriant color, tied by grid of diamonds cancel, “Livorno 2 Lug 1852” ribbon-banded circular datestamp on greenish 1852 folded cover to Massa Carrara, receiving backstamp, Very Fine, a wonderfully choice example of the 2-crazie Bright Blue on an attractive folded cover, with 1998 Sorani certificate

Paying domestic letter rate to 40 miglia from April 1, 1851 to December 31, 1859, per 12 denar (13.8 grams) E. 500-750

- 107 ☒ **TUSCANY, 1851, 4cr Bluish Green (6a; Sassone 6b).** Handsome example with four margins, close at top right to mostly large, deep luxuriant color, tied by perfect “Pomerance 14 Mar 1853” double-circle datestamp on attractive narrow 1853 folded letter to Pontremoli, “PD” handstamp to right, receiving backstamp, Very Fine, unusually choice quality for a cover bearing the first issue of Tuscany

Paying domestic letter rate 40 to 80 miglia from April 1, 1851 to December 31, 1859, per 12 denari..... E. 750-1,000

- 108 ☒ **TUSCANY, 1851, 6cr Dark Blue (7; Sassone 7c).** An outstanding quality single featuring large to huge margins all around including small portions of adjoining stamps at sides, intense color, tied by hollow letter “PD” handstamp (additional strike at top center), clear “Livorno 15 Set 1855” ribbon-banded circular datestamp on elongated 1855 folded letter to Genova, Sardinia, “VIA DI/SARZANA” two-line handstamp, Very Fine, an extraordinarily choice and rare cover, with 2007 Sorani and 2010 Zenaria certificates

Paying foreign letter rate over 150km, from April 1, 1851 to December 31, 1859, per 17.6 denari..... E. 1,000-1,500

LUXEMBOURG



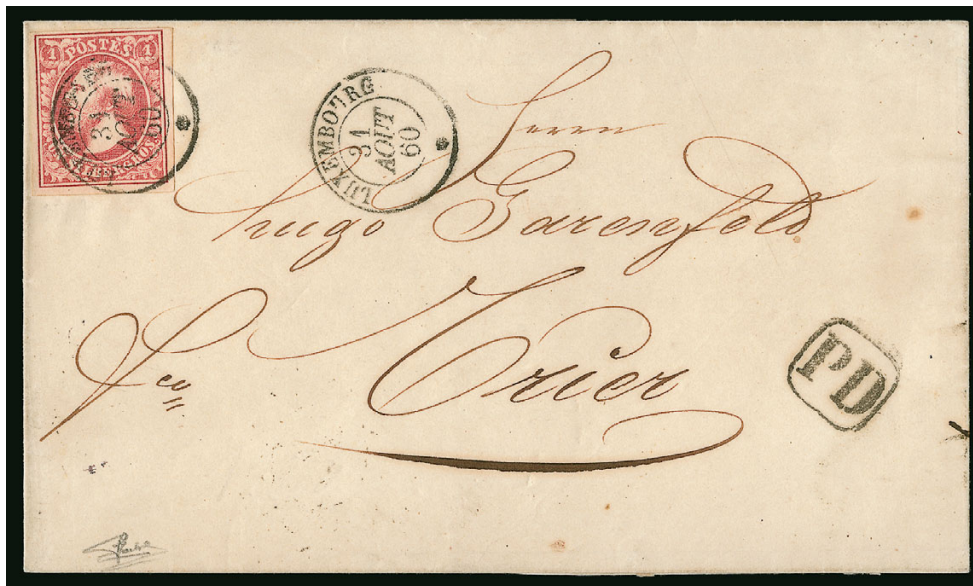
109

- 109 ☒ **1852, 10c Black, First Printing (1b; Prefix 1a).** Select quality example from the scarce first printing, large to huge margins, neatly tied by elusive **Remich three-ring mute cancel with dot in center**, matching “Remich 14 VI 1853” double circle Belgian type circular datestamp on clean 1853 folded letter to Luxembourg City, small boxed “PD” handstamp, red Luxembourg backstamp

EXTREMELY FINE. A CHOICE AND DESIRABLE 10-CENTIMES FIRST ISSUE COVER AND THE EARLIEST KNOWN USE OF THIS ISSUE FROM REMICH.

With 2008 Soluphil certificate.

Paying domestic letter rate from January 1, 1849, per 10 grams E. 1,500-2,000



110

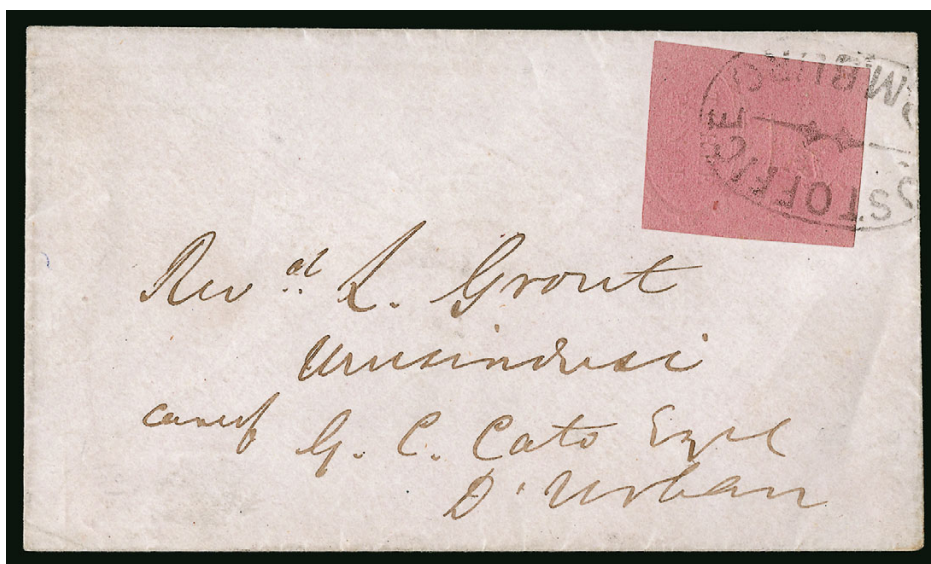
- 110 ☒ **1852, 1sg Rose Carmine, Eighth Printing (3a; Prefix 2h).** Lovely four-margin example with part **right sheet margin**, rich color, neatly tied by “Luxembourg 31 Aout 60” French type datestamp (not the usual grid postmarks) struck twice on 1860 folded cover to Thier, Germany, large boxed “PD” handstamp, receiving backstamp, Very Fine, a scarce and exceptional choice single franking of the One-silbergroschen First Issue, with 2013 Soluphil certificate

Paying foreign letter rate to GAPU countries from January 1, 1852, per 10 grams E. 750-1,000

MEXICO



- 111 ☒ **1856, ½r Blue (1).** Three enormous margins, fourth at left large, bright color, tied by Mexico City circular datestamp on bluish December 17, 1856 folded cover to Puebla, Very Fine, used three days prior to rate increase
Paying domestic letter rate for interior mail before December 20, 1856 E. 200-300
- 112 ☒ **1856, 1r Yellow (2).** Ample to mostly large margins, intense color, tied by choice strike of "FRANCO/SOYANIQUELPA" two-line handstamp on bluish 1859 folded letter to Mexico City, oval "Correos, Mexico 29 Jul. 859" datestamp on back, Very Fine, a striking cover
Paying domestic letter rate for interior mail from December 20, 1856 E. 200-300
- 113 ☒ **1856, 2r Yellow Green, Morelia District Overprint (3).** Large to huge margins including **top sheet margin**, fresh color, handsomely tied by large two-line "FRANCO EN XIQUELPA" handstamp on 1857 folded cover to Mexico City, Very Fine and quite choice
Paying domestic letter rate for interior mail, double weight, from December 20, 1856 E. 400-500
- 114 ☒ **1856, 4r Red, Puebla District Overprint (4).** Attractive example with four large to huge margins, bright color, tied by two-line "PUEBLA/NOVIEMBRE 12" datestamp on neat bluish 1859 folded cover to Vera Cruz, Very Fine, quite scarce when found so choice, with 1994 MEPSI certificate
Paying domestic letter rate for interior mail, quadruple rate, from December 20, 1856 E. 400-500
- 115 ☒ **1861, 2r Black on Pink, Morelia District Overprint (8).** Plate III, three large margins, fourth close at left, tied by spectacular strike of large "Franco en Sahuayo" rimless circle handstamp on December 1, 1862 folded letter to Guzman, Very Fine, a most eye-appealing cover
Paying domestic letter rate for interior mail, double weight, from December 20, 1856 E. 200-300



116

- 116 ☒ **NATAL, 1857, 3p Rose (1; SG 4).** Margins clear to just slightly in, fresh color, tied by mostly complete undated "Post Office, P.M. Burg" (Pietermaritzburg) oval handstamp on circa 1857 cover to Durban cover is especially neat and clean for a first issue cover from Natal, Fine and scarce, with 1990 Holcombe certificate

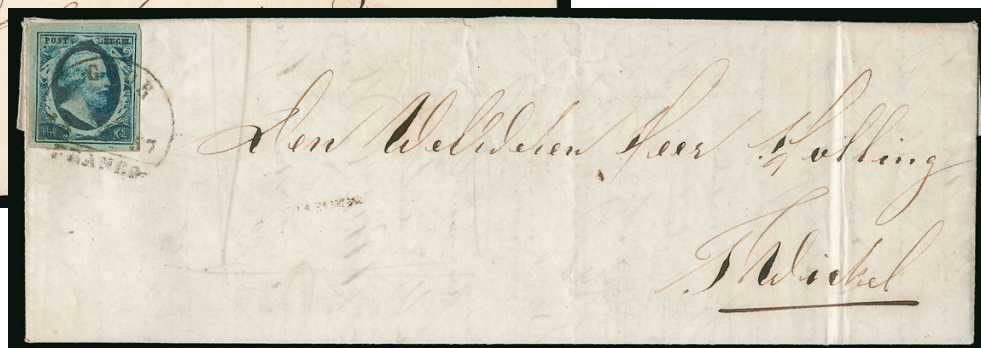
Paying domestic letter rate from January 1, 1856, per ½ ounce E. 500-750

NETHERLANDS



117

118



- 117 ☒ **1852, 5c Light Blue (1a; Michel 1a).** Plate III, superb **left sheet-margin** example with huge margins all around including trace of adjoining stamp at top, proof-like color and impression, neatly tied by "Haarlem 9/10 1858 Franco" datestamp on 1858 folded cover to Wormerveer, red receiving backstamp, Extremely Fine, a perfect single-franking 5-cent First Issue cover

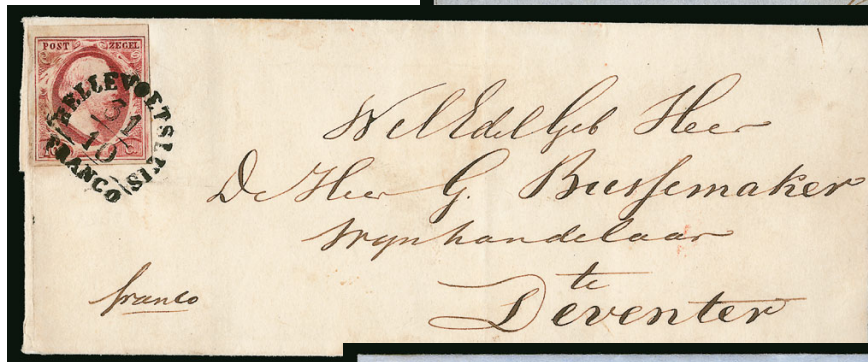
Paying domestic letter rate to 30 Dutch miles from January 1, 1852..... E. 200-300

- 118 ☒ **1852, 5a Dark Blue (1c; Michel 1a).** Plate III, four large to huge margins, deep rich color, tied by "Goor 4/7 1857 Franco" datestamp on elongated 1857 folded letter to Twickel Estate (near Delden), Very Fine

Paying domestic letter rate to 30 Dutch miles from January 1, 1852..... E. 150-200



119



120



121

- 119 ☒ **1852, 10c Lake (2; Michel 2).** Plate I, handsome example with large margins and bright color, tied by upright central strike of "Amsterdam 28/2 Franco" datestamp on 1852 folded letter to Rotterdam, receiving backstamp, Extremely Fine
Paying domestic letter rate for 30 to 100 Dutch miles from January 1, 1852 to August 31, 1855.....
 E. 150-200
- 120 ☒ **1852, 10c Lake (2; Michel 2).** Four large margins, rich color, tied by superb strike of "Hellevoetsluis 31/10 Franco" datestamp on petite 1858 folded cover to Deventer, red receiving backstamp, Very Fine, a pretty First Issue cover
Paying domestic letter rate for 30 to 100 Dutch miles from January 1, 1852 to August 31, 1855.....
 E. 150-200
- 121 ☒ **1852, 15c Orange Yellow (3; Michel 3a).** Large margins to ample at bottom left, strikingly intense color, beautifully tied by clear strike of "Goor 3/7 1854 Franco" datestamp on bluish 1854 folded cover to Amsterdam, red receiving backstamp, Very Fine, a particularly choice cover
Paying domestic letter rate for over 100 Dutch miles from January 1, 1852 to August 31, 1855.....
 E. 500-750

NETHERLANDS INDIES



- 122 ✉ **1846, “Duiten” Postage Due Label (J1; NVPH II).** Applied on 1846 folded letter from Arnhem to Semarang, Java (Netherlands Indies) with manuscript “216” and “13 Nov 1846”, ample margins all around, blue Arnhem originating datestamp under the label, red French departure circular datestamp

VERY FINE. A RARE AND PROPER USE OF ONE OF THE WORLD'S FIRST POSTAGE DUE STAMPS. IN USE FOR ONLY FOUR MONTHS AND THE ONLY EXAMPLE WE HAVE SEEN ON COVER.

Ex World Traveler. Signed Friedl.

Paying letter rate for unpaid letters received at Batavia from abroad E. 3,000-4,000



- 123 ✉ **1845, “Koper” Postage Due Label (J2; NVPH I).** Applied on 1846 folded letter from Gravenhage to Batavia, Java (Netherlands Indies) with manuscript “2-16” and “13 Aug 1846” added, ample margins all around, blue Gravenhage originating circular datestamp, manuscript “per overland via Marseilles”, label with insignificant faint toned spots

VERY FINE. A RARE AND ATTRACTIVE PROPER USE OF THE WORLD'S FIRST POSTAGE DUE STAMP. AN ESSENTIAL COVER FOR THE EXHIBITOR OF POSTAGE DUE STAMPS OF THE WORLD.

Ex World Traveler. Signed Friedl.

Paying letter rate for unpaid letters received at Batavia from abroad E. 3,000-4,000

END OF SESSION ONE

SESSION TWO (LOTS 124-184)
TUESDAY, MAY 19, 2015, AT 1:30 P.M.

NEW SOUTH WALES



124

- 124 ☒ **1850, 1p Dull Carmine, No Clouds Variety (2ck; SG 11c).** Plate II, Position 15, select single with large and well-balanced margins, rich color and clear impression, tied by light oval grid cancel on neat pinkish November 28, 1851 folded printed circular to local Sydney address, wonderful strike of fancy boxed "6 O Clock" delivery handstamp at center, light strike of Sydney origin circular datestamp on back

EXTREMELY FINE. BELIEVED TO BE THE ONLY KNOWN SINGLE USE OF THE 1850 ONE-PENNY SYDNEY VIEW ISSUE ON A COVER. A HIGHLY IMPORTANT CLASSIC NEW SOUTH WALES COVER IN EXCEPTIONALLY CHOICE CONDITION.

This extraordinary cover was once part of the famous "Manwood" (Dale Forster) collection of New South Wales, sold at auction by the Siegel firm in 1995 (Sale 770). However, this cover was sold privately to Richard Frajola, as he believed it was an essential addition to his personal exhibition collection of single (solo) uses of the world paying the exact postage as intended.

Ex Boker and Forster.

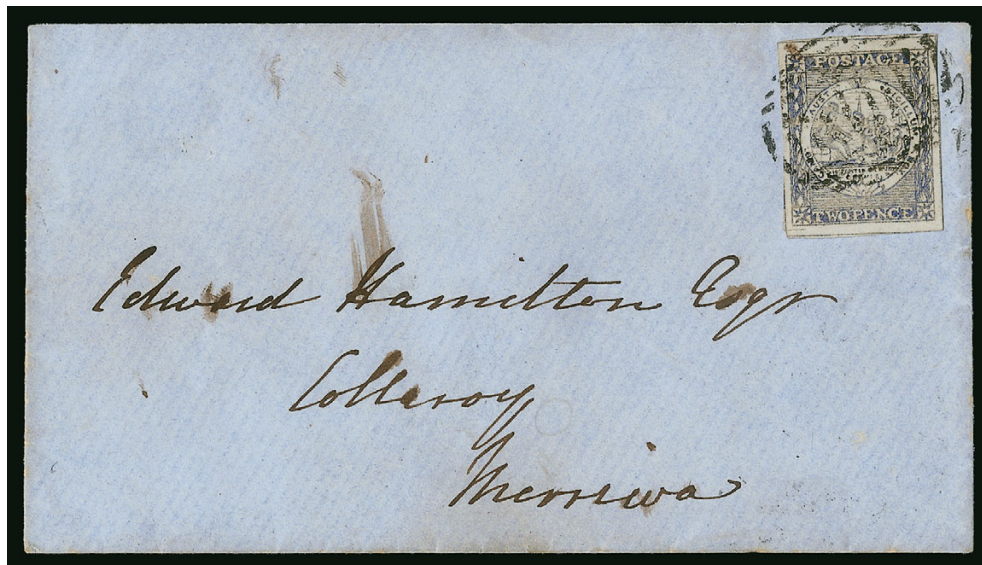
Paying domestic letter rate from January 1, 1851 E. 7,500-10,000



125

- 125 ☒ **1850, 2p Gray Blue (5h; SG 23).** Plate II Early (Dated Bale), large to huge margins showing dividing lines on three sides, rich color, neatly tied by oval grid cancel on 1850 cover from Sydney to Wollongong, "Sydney Ap 26 1850 New South Wales" rimless circular datestamp on back, backflap with couple of tears, Very Fine, a very early use of a stamp from Plate II, ex Dankin

Paying domestic letter rate from January 1, 1851, to ½ ounce..... E. 400-500



126

- 126 ☒ **1850, 2p Pale Ultramarine (6d; SG 29).** Plate III, early impression, Position 11, large margins all around showing parts of dividing lines on all four sides, small scissor cut in large margin at bottom left, tied by barred oval grid cancel on blue 1850 cover to Merriwa, "Sydney DE 7 1850 New South Wales" crown circle datestamp on back, Extremely Fine, ex Dankin

Paying domestic letter rate from January 1, 1851, to ½ ounce..... E. 400-500



127

- 127 ☒ **1850, 3p Emerald Green (9h; SG 41).** Mostly large margins to ample at right, beautiful deep shade, tied by sharp strike of oval grid cancel on 1853 folded letter from Sydney to London, England, perfect strike of "Ship Letter Ap 27 1853 Sydney" rimless circular datestamp on back, manuscript directive "per Washington Irving", manuscript "8" pence due, red London backstamp, tear in back panel extends just slightly to top of entire, a Very Fine and attractive use, with 2004 B.P.A. certificate

Paying outbound ship letter rate from January 1, 1850 to October 19, 1853, to ½ ounce E. 500-750



128

129

- 128 ☒ **1854, 3p Green (25; SG 87).** Four full margins, deep rich color, tied by grid cancel on blue 1855 folded cover from Sydney to Melbourne, Sydney circular datestamp dated January 27, 1855 on back, overstruck by red Victoria Ship Letter postmark, Very Fine, an elusive single-franking use of the watermarked 1854 3-Pence Green, ex Dankin

Paying foreign letter rate to Victoria and neighboring colonies from October 20, 1853, to ½ ounce E. 400-500

- 129 ☒ **1854, 6p Gray (29; SG 94).** Handsome example with large to huge margins all around, rich color and strong impression, central strike of barred oval cancel, used on 1856 cover to London, England, "Sydney No 25 1856" rimless circular datestamp on back, Plymouth Ship Letter backstamp, red London Paid tombstone datestamp ties stamp, manuscript directive "pr 'Maid of Judah'", Extremely Fine, a most handsome cover, ex Dankin

Paying foreign letter rate to Great Britain from 1854, to ½ ounce E. 300-400



130

- 130 ☒ **1856, (6p) Orange & Blue Registration (F1; SG 102).** Three huge margins, fourth margin at left close but clear, used in an attractive combination with **1854 6p Gray (29; SG 94)**, three large margins, fourth at right close, tied together by barred oval cancels on petite 1857 registered cover to **Farringdon, England**, Registration stamp also just tied by red "Registered Ju 18, 1857 Sydney" oval datestamp, manuscript directive "*pr European*" at top left, red London registered split double-oval below stamps, Farringdon receiving backstamp

VERY FINE. A MOST ATTRACTIVE AND CHOICE USE OF THE NEW SOUTH WALES 1856 6-PENCE REGISTRATION STAMP.

The scarce bicolored New South Wales Registration stamp is rarely found on covers of such neat and clean quality.

Paying registry rate of 6p plus foreign letter rate to Great Britain, to ½ ounce E. 2,000-3,000

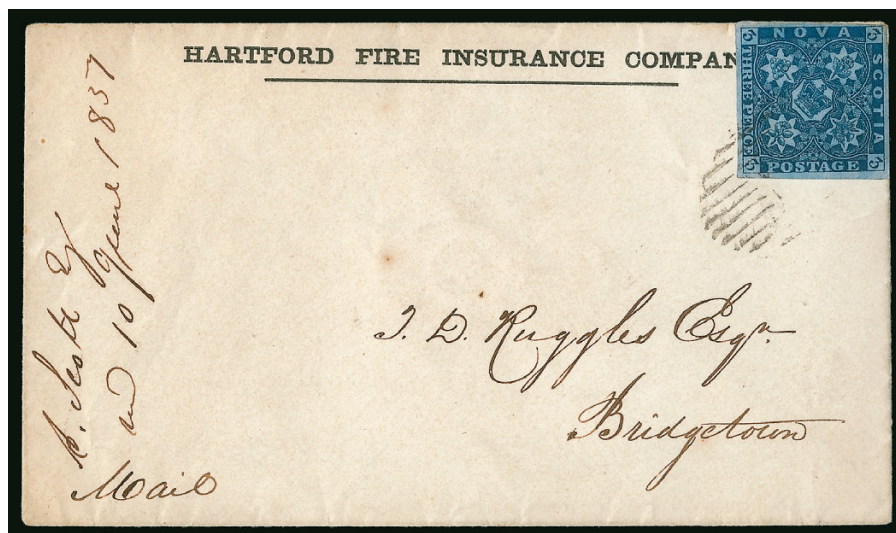


131

- 131 ☒ **NORWAY, 1855, 4s Blue (1; Facit 1).** Full to large margins, bright color and clear impression, neatly tied by "Trondhjem 29/2 1856" circular datestamp on blue 1856 folded letter to Steinkjer, clean and fresh, Very Fine and choice, ex Fryer

Paying domestic letter rate from January 1, 1855 E. 200-300

NOVA SCOTIA



132

- 132 ✉ **1851, 3p Bright Blue (2; SG 3).** Large margins, just a bit closer at top right, intense color, tied by light oval grid cancel on neat 1851 “Hartford Fire Insurance Company” imprint cover to Bridgetown, “Halifax Ju 6 1857” circular datestamp on back, part Bridgetown receiving datestamp, stamp with negligible corner crease, Very Fine, ex Mayer

Paying domestic letter rate from July 6, 1851, per ½ ounce E. 300-400



133

- 133 ✉ **1851, 6p Yellow Green (4; SG 5).** A beautiful example with ample to mostly large margins, wonderfully bright color and impression, tied by neat and clear strike of oval grid cancel on bluish 1851 folded cover to New York City, manuscript directive “*pr Land Mai*”, clear “Halifax-Nova-Scotia Oc 25 1851” split-ring circular datestamp on back, red “Paid” handstamp at top center, blue New Brunswick circular transit (on front) and St. John transit (on back)

EXTREMELY FINE. A MARVELOUS GEM QUALITY SINGLE FRANKING OF THE 1851 6-PENCE YELLOW GREEN ON A SCARCE OVERLAND MAIL COVER TO THE UNITED STATES.

In addition to the beauty of the stamp and the scarce overland mail use, this is a very early use of the 6p stamp. Described in *The Postage Stamps of New Brunswick and Nova Scotia* by Nicolas Argenti (pg. 108).

Ex Caspary, Schneider, Mayer and Forster. With 1987 B.P.A. certificate.

Paying foreign letter rate by land to United States from July 6, 1851, per ½ ounce E. 3,000-4,000



- 134 ✉ **PERU, 1858, 1d Deep Blue (3).** Large margins, bright and fresh, neatly tied by Tacna October 12, 1859 circular datestamp on bluish folded cover to Valparaiso, Chile, dated September 23, 1859 and carried privately overland from La Paz, Bolivia via Peru, entering the mails in Tacna, manuscript directive "*per Vapor*" for onward carriage to destination, small bit of back panel missing, Very Fine, a most unusual use

Paying interior domestic letter rate prepaid to any distance E. 400-500

- 135 ✉ **PERU, 1858, 1p Red (8).** Choice example with large to enormous margins, vivid color, tied by fancy framed "**Cuzco**" handstamp in blue (Lamy & Rinck fig. 48) on 1859 folded cover to Lima, Extremely Fine, a most eye appealing and scarce classic cover of Peru, ex J. L. Badaracco, with 1992 Holcombe certificate

Paying double weight domestic letter rate prepaid to any distance E. 500-750



- 136 ✉ **PORTUGAL, 1853, 25r Blue (2; Michel 2b).** Uniformly large and balanced margins all around, tied by bold "26" barred numeral cancel, blue "LEIRIA" straightline handstamp (pre-stamp style marking) on 1853 folded letter from Leiria to Porto, boxed receiving backstamp, Very Fine and quite choice

Paying domestic letter rate to any distance from July 1, 1853, to ¾ ounce E. 300-400

- 137 ✉ **PORTUGAL, 1853, 25r Blue (2; Michel 2b).** Superb quality example with four huge margins including **right sheet margin**, tied by "1" barred numeral cancel, "Lisboa 10/1 55" circular datestamp on bluish 1853 folded letter to **Genoa, Sardinia**, via Spain and France, "Espana" blue italic handstamp, red Badam transit datestamp on back, "VIA DI NIZZA" straightline handstamp, manuscript 14c due, Very Fine, a wonderfully choice and scarce use to Sardinia

Paying domestic letter rate to any distance from July 1, 1853, to ¾ ounce E. 300-400

PUERTO RICO



138

- 138 ☒ **Spanish Colonies (Cuba), 1855, ½p Blue Green (1).** Ample to mostly large margins tied by fancy oval cancel on greenish 1856 folded letter to Lanman Kemp, New York, perfect strike of blue “Guayama, Puerto Rico, 1 Oct 56” double-circle datestamp, blue Admon Gral, Puerto Rico and Havana transit backstamps, carried by Spanish mail packet *Valesco* to Havana, then by American steamer *Black Warrior*, entered U.S. mails with “Steamship 10” due handstamp of New York, Very Fine, a handsome use illustrated in Wierenga (fig. 382)
Paying letter rate for outbound ship mail at port E. 750-1,000



139

- 139 ☒ **Spanish Colonies (Cuba), 1857, ½p Blue (12).** Ample to mostly large margins, tied on arrival by blue oval grid cancel on 1858 folded letter from San Juan to **Madrid, Spain**, via London and France, sent via the British Post Office with “San Juan, Puerto Rico My 29 1858” split-circle circular datestamp on back and excellent strike of **black “Paid at San Juan Porto Rico” crowned circle** handstamp (SG CC1) on front, manuscript “1/1” British rate, red London Paid transit, French transit datestamp, stamp cancelled at Madrid, Very Fine in every respect, not only is this a scarce and unusual use, but the condition is exceptional with all markings, both front and back, are well-struck and attractive, with 2012 COMEX certificate
Paying foreign letter rate for outbound ship mail at port E. 750-1,000

RUSSIA



140

- 140 ☒ **1848, 10k plus 1k Black Stamped Envelope (Zagorsky WK4).** Eagle with narrow tail in the indicia, used in 1854 from Grodno via Opoczno to Radoszyce (Poland), cancelled in pen, with "Grodno Nov 14 1854" two-line departure datestamp, with "Opoczno" transit also in red, small bit of tip of envelope flap missing, Fine, a rare use of a Russian stationery entire in the Kingdom of Poland, with 2000 Mikulski certificate

Paying domestic letter rate to any distance from January 1, 1848, per 1.5 loth E. 750-1,000



141

- 141 ☒ **1857, 10k Brown & Blue (1; Zagorsky 1).** Four margins, three large and one ample, wonderfully rich colors, tied by central strike of distinctive segmented cancel of Kovno (now Lithuania) on neat bluish folded cover to St. Petersburg, excellent strike of originating town circular datestamp on back dated June 23, 1858

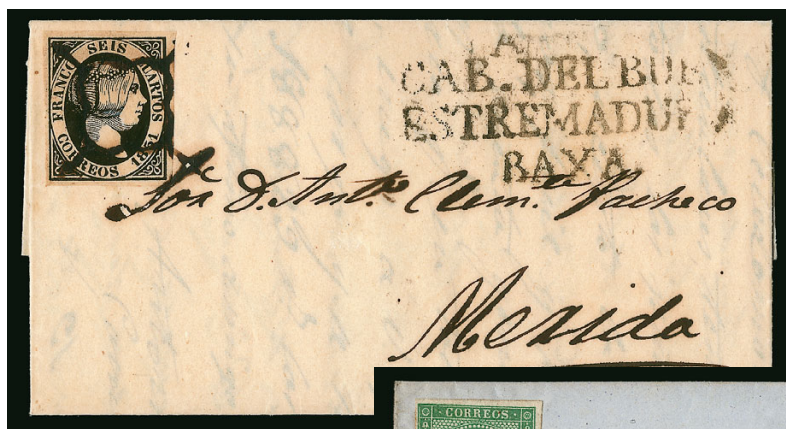
VERY FINE. AN ATTRACTIVE AND SCARCE USE OF THE RUSSIA 1857 10-KOPECK BROWN & BLUE FIRST ISSUE FROM KOVNO.

Covers bearing the First Issue of Russia are especially rare and desirable when cancelled by a town handstamp without a pen cancellation.

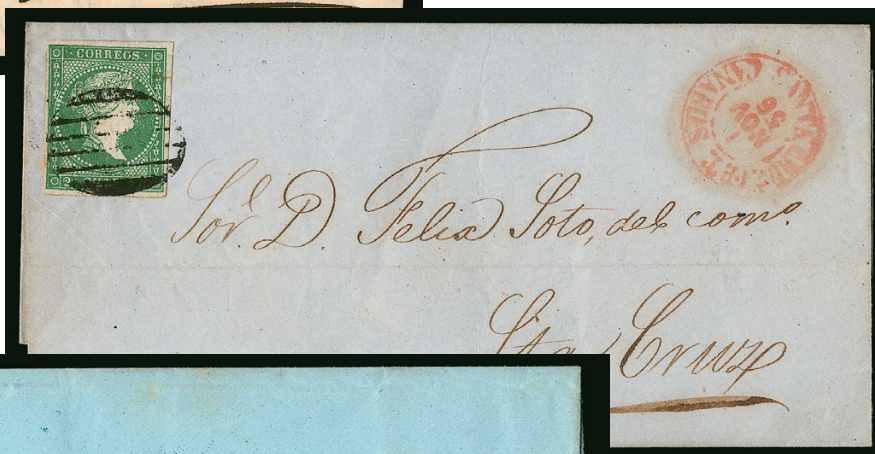
Ex Mikulski.

Paying domestic letter rate to any distance from January 1, 1848, per 1.5 loth ... E. 2,000-3,000

SPAIN



142



143



144

- 142 ☒ **1851, 6c Black (6; Michel 6).** Choice example with four uniformly large margins, intense shade, tied by central “spider” cancel on small 1851 folded letter to Merida, wonderful strike of originating “CABA DEL BUEY/ESTREMADURA/BAXA” three-line handstamp, Extremely Fine, a little gem, with 1984 C.E.M. certificate

Paying domestic letter rate from January 1, 1850 to October 31, 1854, to ¼ ounce ... E. 150-200

- 143 ☒ **1856, 2c Green (40; Michel 35).** Full to large margins, rich color, tied by oval grid cancel, bold red Santa Cruz De Tenerife, Canary Islands, November 1, 1856 circular datestamp on neat folded cover to local addressee, Very Fine, a scarce and choice single-franking use, ex Simon

Paying Canary Islands inter-island letter rate from November 1, 1854, to ½ ounce ... E. 300-400

- 144 ☒ **1856, 4c Rose (41; Michel 36).** Select example with large margins all around, bright color, tied by oval grid cancel on blue 1856 cover from Barcelona to Vich, perfect central strike of blue “Barcelona 1 Ene 56” double-ring circular datestamp, **first day of issue of the 4-cuartos Rose**, merchant’s fancy ribbon cachet at bottom left, Vich backstamp, Very Fine, a marvelous classic first day of issue cover in outstanding condition, with undated Graus certificate

Paying domestic letter rate from November 1, 1854, to ½ ounce E. 750-1,000



145 ☒ **ZURICH, 1843, 6r Black, Vertical Red Lines (1L2; Zumstein 2S.3.01)** Type I, Position 71 (with retouch of links to left of numeral), marvelous quality example with four large and well-balanced margins, proof-like color and impression, beautifully tied by central strike of red rosette cancel, matching “Zurich 10/12 44” circular datestamp on immaculate 1844 folded letter to Bauma, receiving backstamp

With 1995 Renggli certificate.

<i>Paying Cantonal letter rate from March 1, 1843 to September 30, 1854, to ½ loth</i>	E. 3,000-4,000
--	----------------



146

- 146 ✉ **GENEVA, 1846, 5c Black on Yellow Green, Large Eagle (2L3; Zumstein 6).** An exceptional example with large margins all around showing a trace of the adjoining stamp at bottom, incredibly fresh color, central strike of red rosette cancel, matching "Geneve 27 Janv 47" circular datestamp perfectly struck on a small 1847 folded letter to local addressee

EXTREMELY FINE IN EVERY RESPECT. A LOVELY EYE-APPEALING COVER BEARING A PREMIUM QUALITY EXAMPLE OF THE GENEVA 1846 5-CENTIMES LARGE EAGLE.

Signed Bolaffi. With 1968 Hunziker and 1976 Nussbaum certificates.

Paying Cantonal letter rate from April 1, 1845 to September 30, 1849, per ½ loth E. 3,000-4,000



147

- 147 ✉ **GENEVA, 1850, 5c Black & Red (2L6; Zumstein 10).** Four uniformly large margins showing all or portions of dividing lines on all four sides, tied by light neat strike of red rosette cancel, matching "Geneve Dece 50" circular datestamp on European-size tissue cover to local addressee

VERY FINE AND CHOICE COVER BEARING A HIGH-QUALITY EXAMPLE OF THE GENEVA 1850 5-CENTIMES TRANSITIONAL ISSUE.

With 1949 Fulpius and 1991 von der Weid certificates.

Paying local letter rate from January 22, 1850 to September 30, 1854, to ½ loth E. 1,000-1,500



148

- 148 ☒ **BASEL, 1845, 2½r Dove of Basel (3L1; Zumstein 8a).** Lovely large and balanced margins all around, deep rich colors and unusually strong embossing, used on unusual and petite 1849 tissue-paper printed circular (cotton exchange) from Liverpool, carried privately out of the mails to Basel, then stamped and postmarked with light red “Basel 11 Dece 49” circular datestamp which ties Basel Dove, emanating from a famous business correspondence of Sarasin & Hensler in Basel (trading house) discovered over 100 years ago

VERY FINE. A RARE AND DESIRABLE COVER WITH THE FAMOUS “BASEL DOVE” SWISS CANTONAL. SELDOM ENCOUNTERED IN THIS OUTSTANDING CONDITION ON SUCH AN EYE-APPEALING ENTIRE. POSSIBLY THE MOST BEAUTIFUL CLASSIC IMPERFORATE EVER ISSUED FROM THE INFANCY OF MULTICOLORED PRINTING.

One of the highlights of Richard Frajola’s personal exhibit of classic covers of the world. With 1959 A. Diena and 2009 von der Weid certificates.

Paying Cantonal letter rate from July 1, 1845 to September 30, 1854, per ½ loth
..... E. 15,000-20,000



148 Detail



150



149

- 149 ☒ **1850, 5r Black & Red on Dark Blue, Rayon I, Without Frame Around Cross (7a; Zumstein 15II).** Large to huge margins all around showing dividing lines at left and bottom, deep luxuriant colors, lightly tied by diamond grid cancel, matching "Lausanne 18 Nov 51" circular datestamp on clean 1851 folded letter to Moudon, receiving backstamp, Very Fine, unusually nice quality for a Rayon cover, ex Fryer, with 1984 Nussbaum certificate

Paying domestic letter rate within Rayon I distance from October 1, 1850 to September 30, 1854, to ½ loth
..... E. 500-750

- 150 ☒ **1850, 10r Black & Red on Yellow, Rayon II, Without Frame Around Cross (8; Zumstein 16II.1.08).** Type 6, ample to mostly large margins, brilliantly fresh, beautifully tied by rare **red diamond grid** cancel, matching "Altorf 10 Avril 53" circular datestamp just to right on 1853 folded cover to Luzern, blue receiving backstamp, one back panel removed, Very Fine, a lovely cover bearing an eye-arresting and elusive red diamond grid cancel, with 2013 Hermann certificate

Paying domestic letter rate within Rayon II distance from October 1, 1850 to September 30, 1854 .. E. 400-500



151

- 151 ☒ **1851, 5r Light Blue & Red, Rayon I, Without Frame Around Cross (10; Zumstein 17II).** Type 40, Printing C2-LU, gem quality example with four large to huge margins including part of **right sheet margin**, other margins show dividing lines, nicely tied by choice strike of blue diamond grid cancel, extremely rare matching "KEISERSTUHL/ROUTE" two-line handstamp on May 24, 1854 folded letter to Zurzach

EXTREMELY FINE. AN EXTRAORDINARY QUALITY COVER FRANKED WITH AN 1851 5-RAPPEN ISSUE CARRIED ON THE KEISERSTUHL ROUTE AND BEARING THE RARE CORRESPONDENCE HANDSTAMP.

Ex Seebub. Signed A. Diena. With 2002 Renggli certificate.

Paying domestic letter rate within Rayon I distance from October 1, 1850 to September 30, 1854, to ½ loth
..... E. 3,000-4,000



- 152 ☒ **1852, 15r Vermilion, Rayon III (12; Zumstein 20).** Lovely quality example with four exceptionally wide and well-balanced margins showing dividing lines nearly all around, tied by clear strike of diamond grid cancel, pretty red "Basel 24 Sept 52" circular datestamp on blue 1852 folded letter to Bern, merchant's blue oval cachet adds to this cover's excellent overall eye-appeal, Bern backstamp, Extremely Fine, signed Bolaffi and with 1989 Rellstab certificate
- Paying domestic letter rate within Rayon III distance from October 1, 1850 to September 30, 1854, to ½ loth E. 150-200*
- 153 **1854, 5r Red Brown, Second Munich Printing (15; Zumstein 22A).** Uncommonly large margins, fresh color and impression, perfectly tied by blue "P.P." in circle, matching "Marin 27 Avril 55" circular datestamp below on a cover front to Neuchatel, Extremely Fine and pretty, with 1986 Rellstab certificate
- Paying domestic letter rate for Rayon I distance from October 1, 1854, to ½ loth E. 200-300*
- 154 ☒ **1854, 15r Rose, Second Munich Printing (17; Zumstein 24A).** Four ample to mostly large margins, attractively tied by socked-on-the-nose blue diamond grid cancel, matching "Chur v. M., 18 Mai. 55" boxed handstamp equally well struck on greenish 1855 folded letter to Brigels, Very Fine and wonderfully choice, with 1986 Rellstab certificate
- Paying domestic letter rate for Rayon III distance from October 1, 1854, to ½ loth E. 400-500*
- 155 ☒ **1854, 40r Yellow Green, Bern Printing (19; Zumstein 26A).** Four ample to mostly large margins, bright color, neatly tied by diamond grid cancel, matching "Bern 28 Marz 57" circular datestamp on petite blue 1857 folded cover to **Havre, France**, "PD" handstamp, red St. Louis French entry datestamp on front, various backstamps, Very Fine, a particularly attractive Seated Helvetia cover
- Paying letter treaty rate to France from October 1, 1854, to ½ loth E. 200-300*
- 156 **1854, 20r Pale Orange, Bern Printing (23; Zumstein 25B).** Four nearly full margins all around, impressively tied by perfect strike of "CHARGE" (registered) straightline handstamp, "Burrn 23 Dec 54" circular datestamp on 1854 cover front to Frauchwil Very Fine, with 1999 Rellstab certificate
- Paying domestic registered letter rate for Rayon II distance from October 1, 1854, to ½ loth E. 200-300*

TRINIDAD



157

- 157 ☒ **1857, (1p) Brown Red (6; SG 12).** Choice four-margin example, tied by barred numeral "1" cancel on handsome bluish 1859 folded letter (missing side panels) to **Philadelphia Pa.**, via St. Thomas and Havana, excellent strike of scarce **"Paid at Trinidad" crowned circle handstamp** (A1; SG CC1), red crayon "8" pence, "Trinidad SP 9 1859" split-ring circular datestamp on back, clear strike of "Steamship 20" circular datestamp applied in at New York (double-rate postage due), Very Fine, a marvelous cover perfect for exhibition, illustrated in Wierenga (fig. 145)

Paid 4 pence packet and ship rate from January 5, 1844, 1 pence interior letter rate
 E. 1,500-2,000

UNITED STATES



158

- 158 ☒ **Hale & Co., 1844, (5c) Blue, Street Address Omitted (75L5).** Large margins to just touched at bottom, red "W" (Worcester) control initial, tied by "Forwarded Through/Hale & Co.'s/Letter Office [blank] Boston" four-line framed handstamp (with Hale's old address removed) on folded letter datelined "Worcester July 27, 1844" to Boston, vertical file fold well away from stamp, Very Fine, scarce use from Worcester with a tied stamp and control initial, ex Middendorf and Wink Brown

Paying inter-city mail, select cities, rate from May 1844 to June 30, 1845, per ½ ounce E. 400-500



159

- 159 ☒ **1847, 5c Deep Red Brown (1 var).** An exceptional quality example with four large to huge margins including part **bottom sheet margin**, outstanding color and impression, tied by blue grid cancel, matching "Syracuse N.Y. Aug. 30" (1847) circular datestamp on a bluish folded cover, Extremely Fine, a gem early use of the 5c 1847 Issue at a time when prepayment using stamps was an uncommon practice, ex Baker and Boker, with 2003 P.F. certificate

Paying domestic letter rate to 300 miles from July 1, 1845 to June 30, 1851, per ½ ounce ... E. 750-1,000



160

- 160 ☒ **1847, 5c Dark Brown (1a).** With **Dot in "S" variety** (from ninth vertical row of left pane), beautiful intense "Chocolate" shade and First Printing impression, full margins, tiny bleached spot at lower right corner, tied by **blue numeral "10" in oval handstamp** with matching "Baltimore Md. Aug. 30" circular datestamp on 1847 cover to Philadelphia, Extremely Fine, ex Boker, Gross and from our 1964 and 1988 Rarities sales

Paying domestic letter rate to 300 miles from July 1, 1845 to June 30, 1851, per ½ ounce E. 1,000-1,500



161

- 161 ☒ **1847, 5c Dark Brown (1a).** Intense color, large margins all around, tied by well-struck **blue "5" in circle handstamp**, matching "Baltimore Md. May 30" circular datestamp struck partly off of 1849 blue folded letter to Livingston Va., light vertical file fold well away from stamp, stamp with trivial stain spot at upper left, still Extremely Fine, ex Haas, Saadi (who considered this to be the Deep Chestnut Brown shade) and Gross, with 1992 P.F. certificate

Paying domestic letter rate to 300 miles from July 1, 1845 to June 30, 1851, per ½ ounce ... E. 1,000-1,500



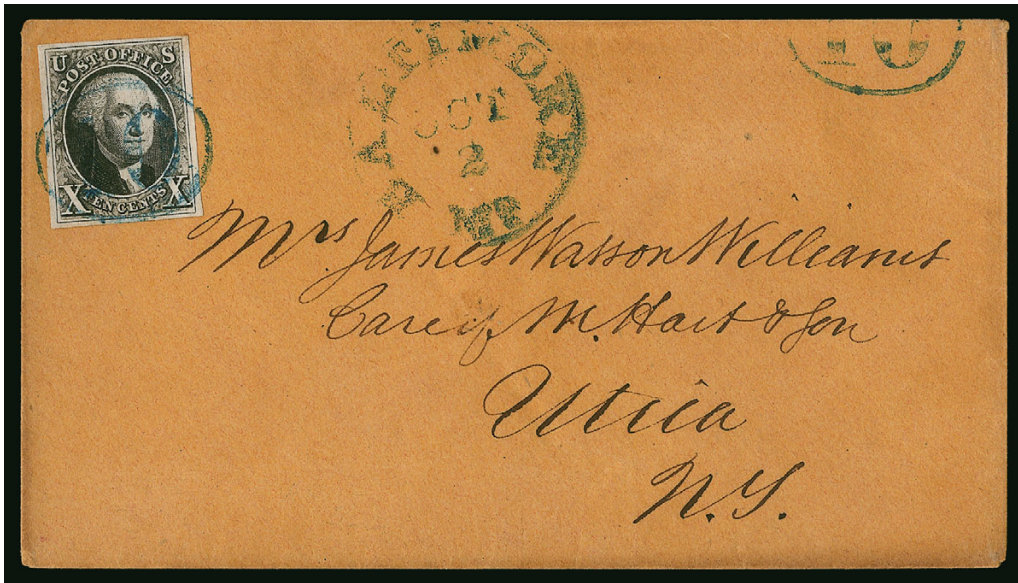
162

- 162 ☒ **1847, 5c Red Brown, Double Transfer Ty. B (1-B).** Position 90R1, full to mostly large margins, gorgeous rich color and impression from the First Printing, **striking pre-printing paper fold** across entire stamp, tied by red square grid cancel, matching "New York Aug. 14" circular datestamp on 1847 folded letter **to Liverpool, England**, sender's directive "*Pr Hibernia from Boston*" (Cunard steamer), bold "1/-" one-shilling due handstamp, clear Liverpool Aug. 28, 1847 backstamp

VERY FINE. A CHOICE EXAMPLE OF THE 5-CENT 1847 ISSUE PAYING THE UNDER-300 MILES RATE ON TRANS-ATLANTIC BRITISH PACKET MAIL LEAVING FROM BOSTON.

Ex Pope and Kapiloff.

Paying pre-treaty rate to port within 300 miles from July 1, 1845 to June 30, 1851, per ½ ounce
 E. 2,000-3,000



163

- 163 ☒ **1847, 10c Black (2).** Full even margins all around, deep shade and proof-like impression, tied by well-struck **blue numeral "10" in oval** handstamp with second part strike at right, matching "Baltimore Md. Oct. 2" circular datestamp on brown cover to Utica N.Y., Extremely Fine, a beautiful cover, ex Boker and Gross, with 1992 P.F. certificate

Paying domestic letter rate over 300 miles from July 1, 1845 to June 30, 1851, per ½ ounce
..... E. 1,000-1,500



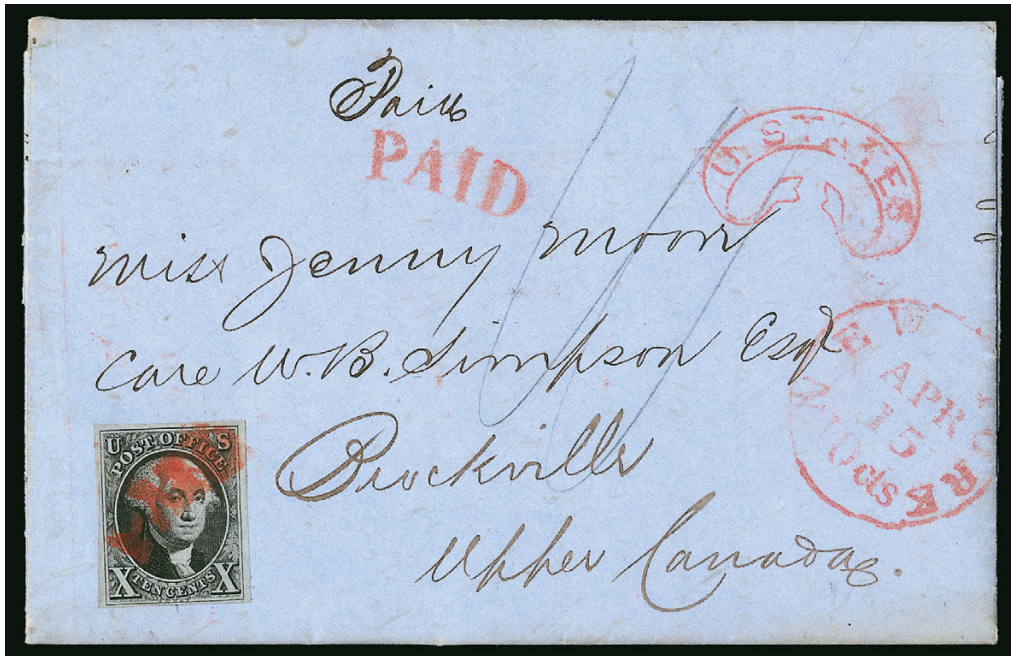
164

- 164 ☒ **1847, 10c Black (2).** Three large margins, just touching frameline at bottom, sharp impression, tied by red square grid cancel, matching "New-York Apr. 26" circular datestamp on clean 1851 cover to **Brockville, Canada**, via Morristown N.Y. red "**Morristown N.Y. Apr. 30**" exchange office datestamp with month at bottom of cancel and manuscript date, perfect strike of red "**U. States**" ribbon-frame handstamp of **Morristown** (still showing traces of shading in the scroll), red Brockville backstamp

VERY FINE AND WONDERFULLY CHOICE. THE ONLY RECORDED EXAMPLE OF AN 1847 ISSUE COVER BEARING THE MORRISTOWN, NEW YORK, EXCHANGE OFFICE HANDSTAMP.

A very scarce routing because Brockville was opposite the U.S. exchange office, this short route did not require any Canadian postage due.

Paying foreign treaty rate to Canada from April 6, 1851 (1847 issue demonetized July 1, 1851), per ½ ounce E. 3,000-4,000



165

- 165 ☒ **1847, 10c Black (2).** Full to large margins, deep shade and impression, tied by red "Paid" cancel, struck a second time at top, matching "New-York 10 cts Apr. 15" integral-rate circular datestamp on blue 1851 folded letter to **Brockville, Canada**, red "U. States" ribbon-frame handstamp of New York quite well-struck, red Brockville backstamp

VERY FINE. AN EYE-APPEALING AND HIGHLY EXHIBITABLE 10-CENT 1847 COVER TO CANADA BEARING A CHOICE STRIKE OF THE NEW YORK EXCHANGE OFFICE RIBBON HANDSTAMP.

A perfect companion cover to the previous lot. Both are from the same correspondence from New York City to Brockville, Canada. However, this one bears the New York City exchange office handstamp, while the previous one has the unique exchange marking attributed to Morristown N.Y.

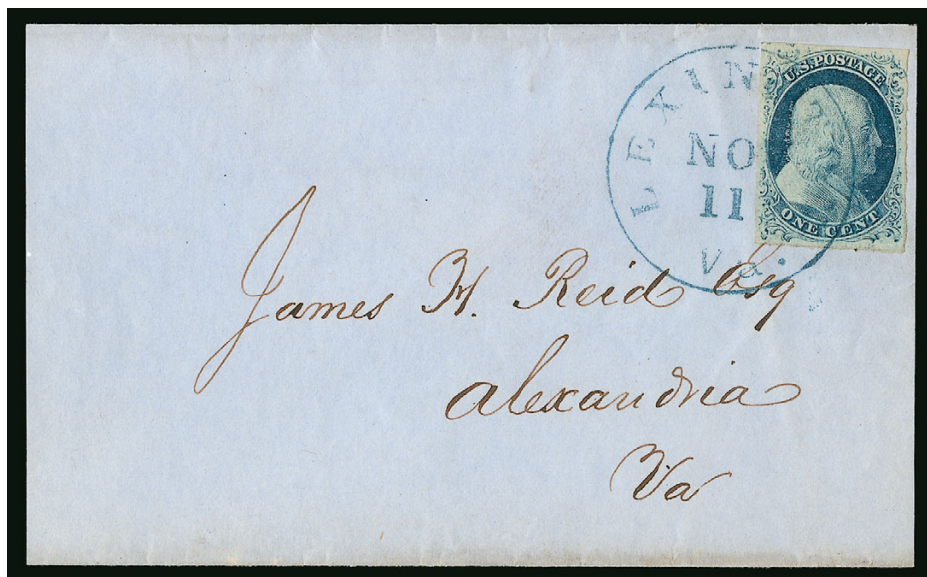
With 2002 P.F. certificate.

Paying foreign treaty rate to Canada from April 6, 1851 (1847 issue demonetized July 1, 1851), per ½ ounce E. 1,500-2,000



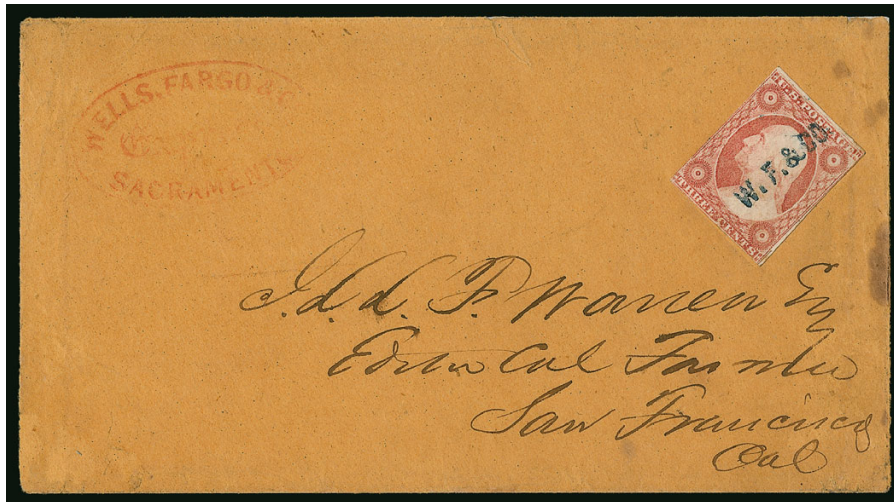
166

- 166 ✉ **1851, 1c Blue, Ty. IV (9).** Position 61R1L, recut once at top, huge margins to full including part of two adjoining stamps and **left interpane margin**, tied by red **"Paid/U.S. Mail/City Delivery/1"** New York City carrier department circular datestamp on buff cover to local street address with **"Erastus W. Smith, Engineer"** blue cameo corner card with illustration of steamship, Extremely Fine, a beautiful cover, ex Caspary, Judd and Vogel
Paying drop letter rate from July 1, 1851..... E. 1,000-1,500



167

- 167 ✉ **1851, 1c Blue, Ty. IV (9).** Position 99L1L, gem example with four large and wonderfully well-balanced margins, beautifully tied by blue **"Lexington Va. Nov. 11"** circular datestamp on an immaculate folded wrapper to Alexandria Va., Extremely Fine, with 2009 P.F. certificate
Paying printed matter rate from July 1, 1851, to three ounces..... E. 150-200



168

- 168 ☒ **1851, 3c Dull Red, Ty. II (11A).** Ample margins to slightly in, small scissors-cut in bottom right margin, "W.F. & CO." Wells, Fargo & Co. blue precancel, red "Wells, Fargo & Co. Express Sacramento" oval handstamp on circa 1854 buff cover to editor of *California Farmer* in San Francisco, couple stain spots at right, small piece of backflap missing, otherwise Fine, very rare example of the 3c 1851 used on a Wells, Fargo & Co. cover to comply with the January 1854 U.S. Post Office Dept. order requiring postage to be paid on all mail, the conversion to postal stationery entires occurred shortly thereafter, but precancelled stamps were used briefly in 1854 (ten examples reported), ex Vogel, Walske and New Helvetia, with 1981 P.F. certificate

Private express required to pay equivalent postage from September 20, 1852, enforced from January 1854...
 E. 1,000-1,500



169

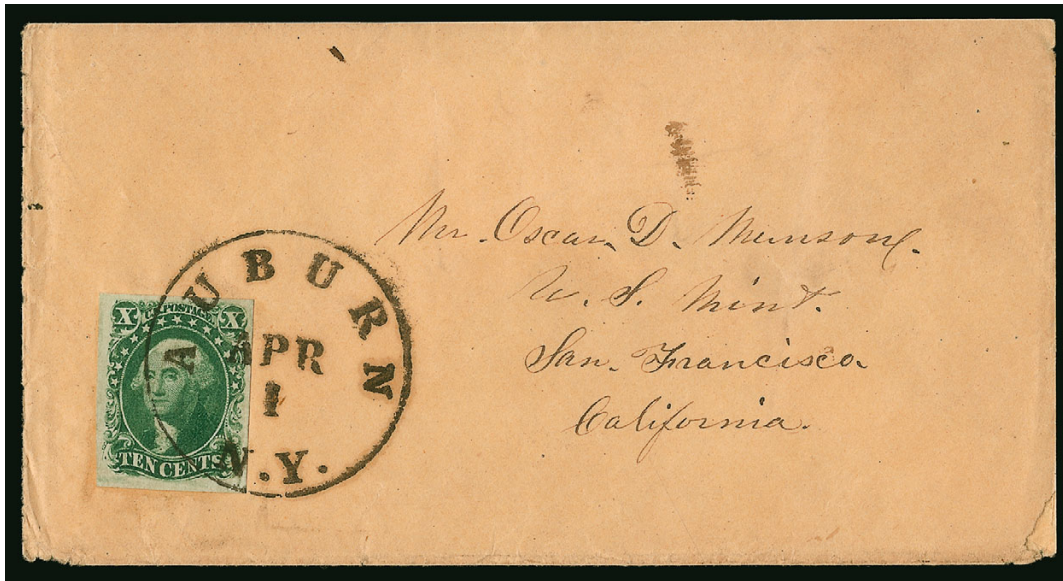
- 169 ☒ **1856, 5c Red Brown (12).** Full to large margins, proof-like color and impression, tied by large "New Orleans La., Jul. 20" "variant" circular datestamp on blue 1856 folded cover to Paris, France red "New-York Br. Pkt. Jul. 29" exchange office circular datestamp, sent to Boston for Cunard sailing of *Niagara*, "26" decimes double-weight due handstamp, Paris backstamp, two mild vertical file folds

VERY FINE. A CHOICE AND HANDSOME 1856 5-CENT COVER TO FRANCE CANCELLED BY THE RARE AND DISTINCTIVE VARIANT CIRCULAR DATESTAMP OF NEW ORLEANS.

The New Orleans variant circular datestamp is distinguished by its larger diameter circle and with two dots below "La" abbreviation. It was in use only for a very short period of time.

Ex Hubbard and Mayer.

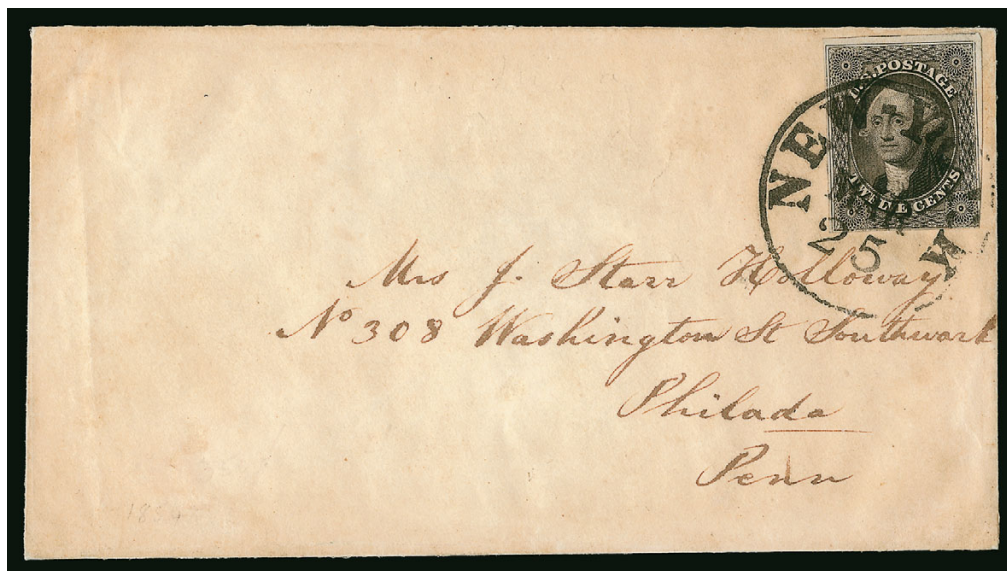
British open mail rate from July 1, 1851 to January 1, 1857 for service to the British mail steamer, to ½ ounce E. 3,000-4,000



170

- 170 ☒ **1855, 10c Green, Ty. II (14).** Large to huge margins, intense color, tied by clear “Auburn N.Y. Apr. 1” circular datestamp on circa 1856 cover to the U.S. Mint in San Francisco minor edgewear, the stamp itself is an Extremely Fine Gem

Paying domestic letter rate for distance over 3,000 miles from April 1, 1855, per ½ ounce.....
..... E. 200-300



171

- 171 ☒ **1851, 12c Black (17).** Huge margins to just in, tied by neat strike of “New-York Mar. 25” circular datestamp on cover to Philadelphia, tiny corner crease at top right, Fine appearance, scarce quadruple-rate use, ex Wagshal, with 1982 P.F. certificate

Paying domestic letter rate for distances to 3,000 miles from July 1, 1851, to 2 ounces.....
..... E. 400-500



- 172 ☒ **1854, 3c Red on Buff, Nesbitt entire (U10).** 1856 use from Marysville Cal. to San Francisco, **Wells, Fargo & Co.** printed frank (first style with "Over our California and Coast Routes"), blue oval "Wells, Fargo & Co., Express, Marysville" handstamp, unusually neat and fresh, Very Fine, ex Schaefer
Private expresses required to pay equivalent postage from September 20, 1852, enforced from January 1854
 E. 150-200
- 173 ☒ **1853, 6c Green on White, Nesbitt entire (U13).** August 16, 1854 use from San Francisco to Philadelphia by private mails, "**Via Nicaragua**" with manuscript endorsement and carried by non-contract steamer *Cortes* and arrived in New York (Sep. 8) circular datestamp on the *Star of the West*, Very Fine, ex Ellingson
Paying domestic letter rate for distances over 3,000 miles from July 1, 1851 to March 31, 1855
 E. 200-300
- 174 ☒ **1853, 6c Green on Buff, Nesbitt entire (U14).** 1854 use from San Francisco to New Bedford Mass., manuscript directive **via Panama** by PMSS Steamer "*John L. Stephens*, 2 Nov 28, 1854", clear "San Francisco Cal. 1 Mar." circular datestamp, quite clean, Very Fine
Paying domestic letter rate for distance over 3,000 miles from July 1, 1851 to March 31, 1855
 E. 500-750
- 175 ☒ **1855, 10c Green on Buff, Nesbitt entire (U16).** August 8, 1857 use (docketing on back) from unknown mining camp to Bidwell's Bar Cal., carried privately with "**Whiting & Co's Feather River Express, Paid**" boxed frank, then placed in the mails to East Longmeadow Mass. with "Bidwells Bars Cal. Sep. 18" circular datestamp, minor edgewear, Very Fine, only four reported examples of this frank on 10c Nesbitt entires, ex Dale-Lichtenstein and Whittington
Paying domestic letter rate for distances over 3,000 miles from April 1, 1855, per ½ ounce E. 300-400

HAWAII



176

- 176 ☒ **1859-63, 2c Black, Grayish (16).** Plate 3-D, Type III (Westerberg Position 1) with **raised "I"** of "INTER", large margins, tied by red "**Postage Paid**" oval (applied on arrival) on cover to Bishop Maigret at the Catholic Mission in Honolulu, unusual lengthy address and European size envelope, cover tear at top and some edgewear

VERY FINE APPEARANCE. A BEAUTIFUL EXAMPLE OF THE 1859-63 2-CENT HAWAIIAN NUMERAL TIED BY THE HONOLULU RED "POSTAGE PAID" OVAL ON COVER TO THE CATHOLIC BISHOP.

Louis Maigret (1804-82) served as the first vicar apostolic of the Vicariate Apostolic of the Hawaiian Islands, now the Roman Catholic Diocese of Honolulu. Born in France, Maigret was ordained to the priesthood as a member of the Congregation of the Sacred Hearts of Jesus and Mary in September 1828 at the age of 24. As part of his missionary work, Father Maigret sailed to the Kingdom of Hawaii to help build its Catholic community of native Hawaiians. When the Vicar Apostolic of Oriental Oceania, Etienne Jerome Rouchouze, was lost at sea on board the ill-fated *Marie Joseph*, the Holy See appointed Father Maigret as the first vicar apostolic of the Sandwich Islands in September 1846 at the age of 42. He was officially ordained as a bishop in November 1847. As bishop, Maigret oversaw the construction of what would become his most lasting legacy, the Cathedral of Our Lady of Peace. After his death, Bishop Maigret was entombed in the crypt below the sanctuary (source: Wikipedia).

Ex Caspary, Burrus and Golden. With 2011 P.F. certificate.

Paying domestic letter rate from August 1, 1859, per ½ ounce E. 3,000-4,000



177

- 177 ☒ **TASMANIA, 1863, 6p Gray Lilac (14; SG 46).** Gem example with four large margins, strong color, tied by superb strike of "52" barred oval cancel, lovely red "Post-Office, Launceston, 25 SP 1866" diamond framed crown datestamp on 1866 mourning cover to **London, England**, red London Paid receiving datestamp also ties stamp, trivial backflap tear, Extremely Fine, an extraordinarily choice and eye-appealing cover, signed Holcombe

Paying foreign letter rate to Great Britain from 1854, to ½ ounce..... E. 400-500

URUGUAY



179

178

- 178 ☒ **1859, 60c Gray Lilac, Thin Numerals (7a).** Large margins, fresh color, tied by choice strike of scarce fancy "scarab" cancel of Salto, matching "Renta de Correos, 11 Obre 1859, Salto" circular datestamp on blue 1859 folded cover to Montevideo, Very Fine, a particularly attractive cover

Paying domestic letter rate to any distance from June 11, 1859, per ¼ ounce..... E. 400-500

- 179 ☒ **1859, 60c Gray Lilac, Thin Numerals (7a).** Large to huge margins (roughly separated at left but mostly huge margins), fresh color, tied by purple intertwined double-oval handstamp of Paysandu, which is quite scarce used in purple, on November 18, 1859 folded letter to Montevideo, Very Fine, a wonderfully eye-appealing combination of colors, ex Sciarra and Tito, signed Bolaffi, A. Diena and with 2008 Rocha certificate

Paying domestic letter rate to any distance from June 11, 1859, per ¼ ounce..... E. 500-750



180

- 180 ☒ **1859, 80c Orange, Thin Numerals (8).** Large even margins all around, vibrant color, tied by scarce fancy “scarab” cancel of Salto, matching “Renta de Correos, 21 Dece 1859, Salto” circular datestamp on blue 1859 folded cover to Montevideo, Very Fine, a scarce and attractive cover, ex Diaz/Mercedes, Hubbard and Tito, with 2008 Rocha certificate

Paying domestic letter rate to any distance from June 11, 1859, per ¼ ounce E. 500-750



181

- 181 ☒ **1859, 100c Brown Lake, Thin Numerals (9).** Choice example possessing large even margins and strong fresh color, beautifully tied by “Admon de Correos, Mercedes, Rep O del Uruguay” intertwined oval handstamp on blue 1859 folded cover to Montevideo, cancel just a bit oily

VERY FINE. A RARE AND ATTRACTIVE SINGLE FRANKING OF THE 1859 100-CENTESIMOS, REPRESENTING A TRIPLE-RATE USE.

This is one of the scarcest single frankings among the Thin and Thick Numeral issues of 1859 and 1860.

Ex Sciarra and Tito. Signed Bolaffi and A. Diena. With 2008 Rocha certificate.

Paying domestic letter rate to any distance from June 11, 1859, per ¼ ounce E. 2,000-3,000



182

- 182 ☒ **VENEZUELA, 1859, 1r Blue (2).** Full to mostly large margins, deep shade, tied by bold numeral "0" handstamp from the pre-adhesive period on bluish 1859 folded letter from Valencia to Caracas, quite clean and attractive, Very Fine, a choice first issue cover of Venezuela, **used only the second month after issuance**, ex Hubbard, signed Holcombe and with 2010 Moorhouse certificate

Paying domestic letter rate for any distance by land from January 1, 1859..... E. 500-750



183

- 183 ☒ **VICTORIA, 1850, 2p Gray Lilac, Type II, Second State (7a; SG 6).** Highly select example with mostly large to huge margins including part of **left sheet margin**, bright color, cancelled with perfectly positioned "15" butterfly cancel, used on a petite 1850 cover from Geelong to Melbourne, back displays lovely strikes of "Geelong AP 18 1850, Port Phillip" rimless circular datestamp and crowned Melbourne backstamp

EXTREMELY FINE. AN ABSOLUTELY BEAUTIFUL AND IMMACULATE 1850 2-PENCE "HALF LENGTH" COVER.

Ex Wawn, Purves, Perry and Barelli.

Paying domestic letter rate for any distance from January 1, 1850, per ½ ounce..... E. 1,000-1,500



184EX

- 184 ☒ **The Exceptional Balance of the Richard C. Frajola Collection of Worldwide Classic Covers, 1840-1860.** A total of 41 covers, 35 of which are mounted and well-described on his attractive exhibition pages, consisting of items of more modest value (typically in the \$75 to \$300 range), but the condition is anything but ordinary, each cover was carefully selected to display a solo franking with the postage representing a specific rate as intended, also nearly all have select quality stamps (there are a few stationery entires), with clear postal markings, a variety of regions and countries are found, with greatest strength in Western Europe (better German States and Italian States), but some nice British, Scandinavian and even a few U.S. covers, condition with very few exceptions is well above average with only a very small occasional flaw, mostly Very Fine or better, a marvelous opportunity for either a collector or dealer of worldwide postal history, scans of the entire collection (4MB) can be found on our website beneath the description.....
(Photo Ex) E. 3,000-4,000

END OF SALE — THANK YOU

Live Internet Bidding at Siegel Auctions

BIDDING FROM YOUR COMPUTER LETS YOU BE PART OF THE LIVE AUCTION FROM ANYWHERE IN THE WORLD!

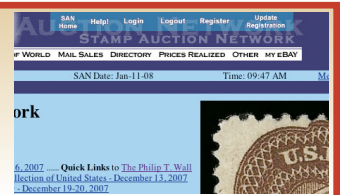
There's NO SUBSTITUTE for following the auction in real time.
Live Internet Bidding lets you bid and buy as though you were right there in the saleroom.
And it's easy.

This step-by-step guide will instruct you how to register, set your browser and use the bidding interface.

Start by following the simple steps to become a registered Live Internet Bidder.
Once you've been approved for bidding, you can listen to the auction and place bids with the click of a mouse.

Registering with STAMP AUCTION NETWORK & SIEGEL AUCTION GALLERIES

Live Internet Bidding is managed by Stamp Auction Network (SAN).
To bid, you must be registered and approved by *both* SAN and Siegel.
To decide what you need to do, choose the description below that best fits you.



I've already registered with SAN and have been approved by Siegel for internet bidding.

I'm a Siegel client, but I'm not registered with SAN.

Go to stampauctionnetwork.com/siegel and click on "Register" at the top. Check the box for Robert A. Siegel Auction Galleries (under "R") and submit the form, indicating you are a Siegel client. Once registered at SAN, you're ready for internet bidding.

I've bid through SAN before, but this is the first time I've bid in a Siegel sale.

Then you just need to be approved by Siegel. Go to stampauctionnetwork.com/siegel and click on "Update Registration" at the top. Your SAN account information will be sent to us for approval (you might be asked for other trade references). Once approved by Siegel for bidding, you're ready for internet bidding.

I've never bid with Siegel, nor registered with SAN.

Go to stampauctionnetwork.com/siegel and click on "Register" at the top. Check the box for Robert A. Siegel Auction Galleries (under "R") and submit the form **with your trade references** (please, no family members or credit card companies as references). Once registered at SAN and approved by Siegel for bidding, you're ready for internet bidding.

Live Internet Bidding works by allowing registered bidders to observe and place bids.

Live Internet Bidding will work with any browser on both PC and Mac operating systems.

Before bidding by internet for the first time, we recommend finding a sale in progress and listening to the public broadcast or logging in as a registered bidder. This will help you develop a feel for the sale tempo and bidding interface.

Log on to the auction at stampauctionnetwork.com/siegel.

You can also log on at siegelauctions.com

When you're logged on as a Live Internet Bidder, the bidding interface shows a photo and description of the lot, the current bid (and your bidding status), options for placing competitive bids and buttons with bid increments.

- After you click on a bid amount, the auctioneer is immediately notified of your bid.
- Retracting a bid is usually not acceptable, so please bid carefully.
- If you bid and then decide to stop, the "Pass" button will tell the auctioneer you are no longer bidding.
- You can send messages to the auctioneer (for example, a request for extension).
- You can track prior realizations from the bidding screen.



"System Down" or "Lost Connection" events do occasionally happen.

If you have any problems with Live Internet Bidding please call **212-753-6421** for immediate assistance.



BIDS

Use this form to submit absentee bids
or to confirm telephone bids

Sale 1097

Tuesday, May 19, 2015

PADDLE #

1

Please provide the following information:

NAME

ADDRESS

CITY/STATE/ZIP

PHONE MOBILE

EMAIL

2

Have you purchased from us in the past 5 years? ☐ Yes (please go to Section 3)
☐ No (references required below)

STAMP FIRM PHONE

STAMP FIRM PHONE

Please submit references at least **2 business days** before the sale. Bids from new clients will not be executed if satisfactory references are not received in time to be contacted.

3

- Enter the lot number and your corresponding maximum bid in the space below
- Use whole dollar amounts and bid according to the increments (see back of form)
- Bids do not include the 15% Buyer's Premium, taxes, duty or shipping charges
- Absentee bids will advance at one increment over the next highest competing bid
- "Plus", "Break Tie" or "Buy" bids will not be executed
- Indicate any "Or" bids between lot number/bid entries and bracket your choices
- If you wish to limit the total amount of your bids, follow the instructions below

Lot #	Bid \$	Lot #	Bid \$	Lot #	Bid \$

☐ **Limit Bids:** Check this box if you wish to limit the total hammer price of your bids (excluding 15% Buyer's Premium, taxes, duty and shipping costs). Your bids will be executed until your bidding limit has been reached. The total amount you wish to bid is \$

4

By signing this form, you agree to all of the Conditions of Sale printed in the sale catalogue (printed and digital), including but not limited to a) payment in the manner demanded by the Siegel firm, and b) payment of the 15% Buyer's Premium, any sales tax or customs duty, shipping costs, late charges and

other prescribed charges. You agree that your bids will be executed as courtesy by Siegel, but you waive the right to make any claim against Siegel or its employees arising from these bids or your participation in the sale. You agree to honor all bids as submitted, regardless of any errors or omissions.

SIGNED DATE

Mail the signed form to Siegel Bid Department, 60 East 56th St., 4th Floor, New York, NY 10022
or email to stamps@siegelauctions.com
or fax to 212-753-6429

Additional Bids

Sale 1097
Tuesday, May 19, 2015

PADDLE #

Lot #	Bid \$	Lot #	Bid \$	Lot #	Bid \$

Shipping & Insurance

We will be pleased to arrange for shipping and transit insurance for purchases in this sale, except for lots marked or announced as "floor sale only." To expedite billing and delivery to hundreds of buyers in each sale, we use standard charges for postage and insurance under our policy. These charges are based on the package weight and mailing requirements, according to the schedule shown here. Our standard charges do not include a fee for our services, and they may be slightly more or less than the actual postage or Fedex fee. We ask all buyers to remit the invoiced amount for shipping and insurance.

Transit insurance is provided in all cases, except when the buyer has furnished us with documentation that insurance is effective under the buyer's own policy.

There will be no added insurance charge for shipments of less than \$75,000 value. Shipments valued in excess of \$75,000 may require supplemental insurance and/or special courier service, the estimated cost of which will be furnished to the buyer prior to shipment. If the buyer refuses to pay the estimated charges or furnish proof of self-insured coverage, the buyer will be responsible for picking up the lots at our office and any resulting sales tax.

Standard Shipping Charges

Weight Class	Shipping Method	Charge
Up to 2 lbs.	Fedex Envelope	\$20
Over 2 lbs.	Fedex Box	\$35 - \$50*
Outside US	Fedex	\$50 - \$100**
Bulky Lots	Fedex Ground or Express	By weight

* Up to \$75,000 value and up to 5 lbs; additional charge may apply to packages exceeding limits

** Buyers outside United States are liable for any applicable customs duty and clearance charges. An accurate declaration of contents and value will be made on all packages and import/export documents. **Siegel may refuse to ship lots to certain countries with a high risk factor.**

2/2015

Bidding Increments

The auctioneer may regulate the bidding at his discretion. However, to assist absentee bidders in establishing their maximum bids, the increments shown here will be used in most cases. We recommend that written bids conform to these increments—bids that do not will be reduced accordingly.

Bid	Increment	Bid	Increment
Up to \$200	\$10	\$7,000-20,000	\$500
\$200-500	\$25	\$20,000-30,000	\$1,000
\$500-1,000	\$50	\$30,000-75,000	\$2,500
\$1,000-3,000	\$100	\$75,000-140,000	\$5,000
\$3,000-7,000	\$250	\$140,000-300,000	\$10,000

PRICES REALIZED FOR SALE 1097---5/19/2015
The Richard C. Frajola Coll. of Worldwide Classic Covers 1840-60

Robert A. Siegel Auction Galleries, Inc.
60 East 56th Street, 4th Floor, New York, NY 10022
Tel (212) 753-6421 Fax (212) 753-6429

Lot#	Realized	Lot#	Realized	Lot#	Realized	Lot#	Realized	Lot#	Realized
1	2,700	46	325	94	200	136	600	180	600
2	400	47	325	95	700	137	375	181	3,750
3	800	48	275	96	500	138	3,250	182	650
4	225	49	325	97	1,100	139	850	183	4,250
5	3,000	51	425	98	1,500	141	3,750	184	4,750
6	2,900	52	300	99	1,200	142	250		
7	950	53	225	100	400	143	275		
8	500	55	375	101	1,000	144	800		
9	450	56	225	102	225	145	4,000		
10	400	57	425	103	650	146	5,000		
11	475	58	6,500	104	1,600	147	1,800		
12	400	59	850	105	550	148	22,000		
13	2,400	60	800	106	550	149	275		
14	500	61	1,600	107	850	150	475		
15	300	62	4,250	108	850	151	2,400		
16	130	63	225	109	1,700	152	225		
17	2,400	64	700	110	1,200	153	550		
18	700	65	700	111	160	154	200		
20	1,300	66	1,600	112	850	155	300		
21	400	67	550	113	375	156	120		
22	600	68	475	114	1,300	157	2,500		
23	250	69	2,300	115	225	158	900		
24	375	70	1,300	116	1,300	159	750		
25	11,500	71	1,200	117	375	160	1,400		
26	3,000	72	650	118	100	161	2,300		
27	1,100	73	700	119	450	162	2,000		
28	100	76	1,000	120	375	163	2,500		
29	2,000	77	550	121	3,500	164	5,750		
30	5,000	78	375	122	7,000	165	3,500		
31	1,600	79	350	123	6,500	166	2,200		
32	600	80	350	124	13,000	167	250		
33	375	81	17,500	125	500	168	1,700		
34	850	82	5,500	126	375	170	325		
35	750	83	350	127	1,700	171	375		
36	2,500	84	350	128	250	172	250		
37	2,800	85	80	129	1,200	173	450		
38	400	86	475	130	3,500	174	700		
39	600	87	400	131	400	175	750		
41	2,900	89	1,000	132	325	176	2,200		
42	475	90	800	133	4,500	177	750		
43	375	91	1,700	134	300	178	1,200		
45	180	93	1,500	135	500	179	600		