

UNITED STATES STAMPS AND COVERS

Lots from Sales 1084, 1085, 1089 and 1090 reoffered on behalf of 38 consignors, in accordance with Conditions of Sale paragraph 7, which gives Siegel Auction Galleries the right to resell lots in the event a buyer fails to pay for purchases. Clear title will pass to all new buyers in this resale. Siegel Auction Galleries will continue its pending legal action to seek damages from the defaulting buyer.



SALE 1100
MONDAY, JUNE 22, 2015

Robert A. Siegel
AUCTION GALLERIES, INC.

Sale 1100 — Monday, June 22, 2015

United States Stamps and Covers

Lots from Sales 1084, 1085, 1089 and 1090 are being reoffered on behalf of 38 consignors, in accordance with Conditions of Sale paragraph 7, which gives Siegel Auction Galleries the right to resell lots in the event a buyer fails to pay for purchases. Clear title will pass to all new buyers in this resale. Siegel Auction Galleries will continue its pending legal action to seek damages from the defaulting buyer.

All lots offered without reserves

Live auction to be held at Siegel Auction Galleries,
60 East 56th Street (Park/Madison), 4th Floor, New York City

Lots are sold subject to a 15% buyer's premium and
any applicable sales tax (or customs duty for non-U.S. buyers)

Please carefully read the Conditions of Sale before bidding

Afternoon Session
Monday, June 22, at 1:30 P.M.
Lots 1-250

Stamps:

1857-181 Issues and Re-Issues.....	1-29
1869 Pictorial Issue and Re-Issues.....	30-32
1870-90 Bank Note Issues	33-43
Columbian Issue	44-55
1894-98 thru Louisiana Purchase Issues	56-79
1908-23 Issues, Air Post, Postage Due	80-91
Officials	92-120
Eagle Carrier, Sanitary Fairs	121-128
Telegraph Stamps.....	129-136
First Issue Revenues	137-174
Second Issue Revenues, Later Issues.....	175-189

Covers:

Revolutionary War, Western Mails	190-198
1851-68 Issues, Later Issues.....	199-224
Civil War	225-234
Confederate States	235-250



Pre-Sale Viewing

Monday, June 22, 10am-1pm, and by appointment

Robert A. Siegel

AUCTION GALLERIES, INC.

60 EAST 56TH STREET, 4TH FLOOR, NEW YORK, N.Y. 10022

Phone (212) 753-6421 • Fax (212) 753-6429 • E-mail: stamps@siegelauctions.com

Catalogues, internet bidding, resources, archives and the Siegel Encyclopedia at
siegelauctions.com



Robert A. Siegel

AUCTION GALLERIES, INC.

60 EAST 56TH STREET, 4TH FLOOR, NEW YORK, N.Y. 10022

Phone (212) 753-6421 • Fax (212) 753-6429 • E-mail: stamps@siegelauctions.com

siegelauctions.com



Scott R. Trepel
President
strepel@siegelauctions.com



John P. Zuckerman
Senior Vice President
jzuckerman@siegelauctions.com



Corey Long
Vice President
clong@siegelauctions.com



Charles F. Shreve
Director, Siegel International
charles@siegelauctions.com



Colleen Stellato
Accounts
colleen@siegelauctions.com



Helen Stewart
Bids and Inquiries
helen@siegelauctions.com



Chris Anderson
Siegel International
chris@siegelauctions.com



Andrew Titley
Siegel International
andrew@siegelauctions.com

Scott R. Trepel Principal Auctioneer (licensed by NYC Dept. of Consumer Affairs, #795952)

Nathaniel Estes Catalogue and Digital Production

Information for Bidders

Bidding

The following means are available for placing bids:

- 1) Attending the Live Auction in Person:** All bidders must register for a paddle, and new bidders must provide references at least three business days in advance of the sale.
- 2) Live Internet Bidding:** Instructions for participating as a Live Internet Bidder are provided on the page opposite.
- 3) Phone Bidding:** Bidders can be connected to the sale by phone and bid through a member of staff. Requests for phone bidding are subject to approval (please contact our office at least 24 hours before the sale). A signed Bid Form is required.
- 4) Absentee Bids.** All bids received in advance of the sale, either by mail, fax, phone, e-mail or internet, are Absentee Bids, which instruct the auctioneer to bid up to a specific amount on one or more lots in the sale. Absentee Bids sent by phone, fax or e-mail should arrive at least one hour prior to the start of the sale session. Bids entered through Live Internet Bidding will be visible to the auctioneer during the sale. Written bids should be entered legibly on the Bid Form in the sale catalogue. E-mail and internet bids should be carefully typed and double-checked. All new bidders must provide references. We recommend calling or e-mailing to confirm that Absentee Bids sent by mail, fax or e-mail have been received and entered.

Pre-Sale Viewing

Subject to availability, certain lots (except group lots) can be sent to known clients for examination. Requests must be made no later than 7 days prior to the sale. Lots must be returned on the day received. Postage/insurance costs will be invoiced.

In addition to regular viewing, clients may view lots by appointment. Our staff will be pleased to answer questions or provide additional information about lots.

Expert Certification

Individual items offered without a PF or PSE certificate dated within the past five years may be purchased subject to independent certification of genuineness and our description. **Please refer to the Conditions of Sale and Grading Terms for policies governing certification.**

Shipping and Delivery

Procedures and charges for shipping lots are printed on the back of the Bid Form. **Bidders are responsible for all prescribed shipping charges and any applicable sales tax or customs duties.**

Price Realized

Prices realized are sent with each invoice. Bidders with e-mail will receive a Bid Results report after the sale. Session results are posted immediately to siegelauctions.com

Live Internet Bidding at Siegel Auctions

BIDDING FROM YOUR COMPUTER LETS YOU BE PART OF THE LIVE AUCTION FROM ANYWHERE IN THE WORLD!

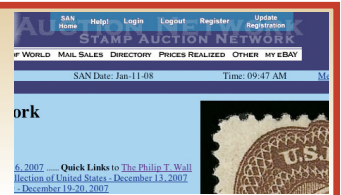
There's NO SUBSTITUTE for following the auction in real time.
Live Internet Bidding lets you bid and buy as though you were right there in the saleroom.
And it's easy.

This step-by-step guide will instruct you how to register, set your browser and use the bidding interface.

Start by following the simple steps to become a registered Live Internet Bidder.
Once you've been approved for bidding, you can listen to the auction and place bids with the click of a mouse.

Registering with STAMP AUCTION NETWORK & SIEGEL AUCTION GALLERIES

Live Internet Bidding is managed by Stamp Auction Network (SAN).
To bid, you must be registered and approved by *both* SAN and Siegel.
To decide what you need to do, choose the description below that best fits you.



I've already registered with SAN and have been approved by Siegel for internet bidding.

I'm a Siegel client, but I'm not registered with SAN.

Go to stampauctionnetwork.com/siegel and click on "Register" at the top. Check the box for Robert A. Siegel Auction Galleries (under "R") and submit the form, indicating you are a Siegel client. Once registered at SAN, you're ready for internet bidding.

I've bid through SAN before, but this is the first time I've bid in a Siegel sale.

Then you just need to be approved by Siegel. Go to stampauctionnetwork.com/siegel and click on "Update Registration" at the top. Your SAN account information will be sent to us for approval (you might be asked for other trade references). Once approved by Siegel for bidding, you're ready for internet bidding.

I've never bid with Siegel, nor registered with SAN.

Go to stampauctionnetwork.com/siegel and click on "Register" at the top. Check the box for Robert A. Siegel Auction Galleries (under "R") and submit the form **with your trade references** (please, no family members or credit card companies as references). Once registered at SAN and approved by Siegel for bidding, you're ready for internet bidding.

Live Internet Bidding works by allowing registered bidders to observe and place bids.

Live Internet Bidding will work with any browser on both PC and Mac operating systems.

Before bidding by internet for the first time, we recommend finding a sale in progress and listening to the public broadcast or logging in as a registered bidder. This will help you develop a feel for the sale tempo and bidding interface.

Log on to the auction at stampauctionnetwork.com/siegel.

You can also log on at siegelauctions.com

When you're logged on as a Live Internet Bidder, the bidding interface shows a photo and description of the lot, the current bid (and your bidding status), options for placing competitive bids and buttons with bid increments.

- After you click on a bid amount, the auctioneer is immediately notified of your bid.
- Retracting a bid is usually not acceptable, so please bid carefully.
- If you bid and then decide to stop, the "Pass" button will tell the auctioneer you are no longer bidding.
- You can send messages to the auctioneer (for example, a request for extension).
- You can track prior realizations from the bidding screen.



"System Down" or "Lost Connection" events do occasionally happen.

If you have any problems with Live Internet Bidding please call **212-753-6421** for immediate assistance.

Conditions of Sale (please read carefully before bidding)

THE PROPERTY DESCRIBED IN THIS CATALOGUE WILL BE OFFERED AT PUBLIC AUCTION BY ROBERT A. SIEGEL AUCTION GALLERIES, INC. ("GALLERIES") ON BEHALF OF VARIOUS CONSIGNORS AND ITSELF OR AFFILIATED COMPANIES. BY BIDDING ON ANY LOT, WHETHER DIRECTLY OR BY OR THROUGH AN AGENT, IN PERSON, OR BY TELEPHONE, FACSIMILE OR ANY OTHER MEANS, THE BIDDER ACKNOWLEDGES AND AGREES TO ALL OF THE FOLLOWING CONDITIONS OF SALE.

1. The highest bidder acknowledged by the auctioneer shall be the buyer. The term "final bid" means the last bid acknowledged by the auctioneer, which is normally the highest bid offered. **The purchase price payable by the buyer will be the sum of the final bid and a commission of 15% of the final bid ("buyer's premium"), together with any sales tax, use tax or customs duties due on the sale.**
2. The auctioneer has the right to reject any bid, to advance the bidding at his discretion and, in the event of a dispute, to determine the successful bidder, to continue the bidding or to reoffer and resell the lot in dispute. The Galleries' record of the final sale shall be conclusive.
3. All bids are per numbered lot in the catalogue unless otherwise announced by the auctioneer at the time of sale. The right is reserved to group two or more lots, to withdraw any lot or lots from the sale, or to act on behalf of the seller. The Galleries will execute bidding instructions on behalf of clients, but will not be responsible for the failure to execute such bids or for any errors in the execution of such bids.
4. **Lots with numbers followed by the symbol ° are offered subject to a confidential minimum bid ("reserve"), below which the lot will not be sold. The absence of the symbol ° means that the lot is offered without a reserve. If there is no reserve, the auctioneer has sole discretion to establish a minimum opening bid and may refuse an offer of less than half of the published estimate. Any lot that does not reach its reserve or opening bid requested by the auctioneer will be announced as "passed" and excluded from the prices realized lists after the sale. The Galleries may have a direct or indirect ownership interest in any or all lots in the sale resulting from an advance of monies or goods-in-trade or a guarantee of minimum net proceeds made by the Galleries to the seller.**
5. Subject to the exclusions listed in 5(A), the Galleries will accept the return of lots which have been misidentified or which have obvious faults that were present when the lot was in the Galleries' custody, but not so noted in the lot description. **All disputed lots must be received by the Galleries intact with the original packing material within 5 days of delivery to the buyer but no later than 30 days from the sale date.**
(5A) EXCLUSIONS: The following lots may not be returned for any reason, or may not be returned for the reasons stated: i) lots containing 10 or more items; ii) lots from buyers who registered for the pre-sale exhibition or received lots by postal viewing, thereby having had the opportunity to inspect them before the sale; iii) any lot described with "faults," "defects" or a specific fault may not be returned because of any secondary fault; iv) photographed lots may not be returned because of centering, margins, short/nibbed perforations or other factors shown in the illustrations; v) the color of the item does not match the color reproduction in the sale catalogue or website listing; vi) the description contains inaccurate information about the quantity known or reported; or vii) a certification service grades a stamp lower than the grade stated in the description.
6. Successful bidders, unless they have established credit with the Galleries prior to the sale, must make payment in full before the lots will be delivered. Buyers not known to the Galleries must make payment in full within 3 days from the date of sale. **The Galleries retains the right to demand a cash deposit from anyone prior to bidder registration and/or to demand payment at the time the lot is knocked down to the highest bidder, for any reason whatsoever.** In the event that any buyer refuses or fails to make payment in cash for any lot at the time it is knocked down to him, the auctioneer reserves the right to reoffer the lot immediately for sale to the highest bidder. **Credit cards (Visa, Mastercard and Discover only) can be accepted as payment but will be subject to a 3% Convenience Fee, which will be added to the total of the entire invoice (including hammer price, buyer's premium, shipping and transit insurance charges and any applicable taxes).**
7. If the purchase price has not been paid within the time limit specified above, nor lots taken up within 7 days from the date of sale, the lots will be resold by whatever means deemed appropriate by the Galleries, and any loss incurred from resale will be charged to the defaulting buyer. **Any account more than 30 days in arrears will be subject to a late payment charge of 1½% per month as long as the account remains in arrears. Any expenses incurred in securing payment from delinquent accounts will be charged to the defaulter.** A fee of \$250.00 per check will be charged for each check returned for insufficient funds.
8. All lots are sold as genuine. **Any lot accompanied by a certificate issued by The Philatelic Foundation or by Professional Stamp Experts within 5 years of the sale date is sold "as is" and in accordance with the description on the certificate. Such lots may not be returned for any reason, including but not limited to a contrary certificate of opinion.** Buyers who wish to obtain a certificate for any item that does not have a P.F. or P.S.E. certificate (dated as above) may do so, provided that the following conditions are met: (1) the purchase price must be paid in full, (2) the item must be submitted to an acceptable expertizing committee with a properly executed application form within 21 days of the sale, (3) a copy of the application form must be given to the Galleries, (4) in the event that an adverse opinion is received, the Galleries retain the right to resubmit the item on the buyer's behalf for reconsideration, without time limit or other restrictions, (5) unless written notification to the contrary is received, items submitted for certification will be considered cleared 90 days from the date of sale, and (6) in the event any item is determined to be "not as described", the buyer will be refunded the purchase price and the certification fee up to \$800.00 unless otherwise agreed to in writing.
9. Until paid for in full, all lots remain the property of the Galleries on behalf of the seller.
10. Agents executing bids on behalf of clients will be held responsible for all purchases made on behalf of clients unless otherwise arranged prior to the sale.
11. The buyer assumes all risk for delivery of purchased lots and agrees to pay for prescribed shipping costs. **Buyers who receive lots in the U.S. are obligated to pay whatever sales tax or compensating use tax might be due, and buyers outside the U.S. are responsible for all customs duties.**
12. **The bidder consents that any action or proceeding against it may be commenced and maintained in any court within the State of New York or in the United States District Court for the Southern District of New York, that the courts of the State of New York and United States District Court for the Southern District of New York shall have jurisdiction with respect to the subject matter hereof and the person of the bidder. The bidder agrees not to assert any defense to any action or proceeding initiated by Galleries based upon improper venue or inconvenient forum. The bidder agrees that any action brought by the bidder shall be commenced and maintained only in a Federal Court in the United States District Court for the Southern District of New York or the State Court in the county in which Galleries has its principal place of business in New York. The bidder agrees not to use a public conflict resolution service and not to use any form of social media to publish comments or information about the Galleries and its employees which might harm the Galleries' reputation or business. These Conditions of Sale shall be governed by and construed in accordance with the substantive laws of the State of New York, and shall constitute an agreement that shall be binding on the parties, and their respective heirs, administrators, distributees, successors and assignees.**

SCOTT R. TREPEL, Principal Auctioneer
Auctioneer's License No. 795952
N.Y.C. Department of Consumer Affairs
80 Lafayette Street, New York, N.Y. 10013
Telephone (212) 577-0111

Revised 1/2015

Grades, Abbreviations and Values Used in Descriptions

Grades and Centering

Our descriptions contain detailed information and observations about each item's condition. We have also assigned grades to stamps and covers, which reflect our subjective assessment. For stamps, the margin width, centering and gum are described and graded according to generally-accepted standards (an approximate correlation to numeric grades is provided at right). Although we believe our grades are accurate, they are not always exactly aligned with third-party grading terms or standards for all issues. **A lot may not be returned because a certification service grades a stamp lower than the grade stated in the description. Information from the P.S.E. Stamp Market Quarterly and P.S.E. Population ReportSM is the most current available, but lots may not be returned due to errors or changes in statistics or data.**

Extremely Fine Gem (90-100): The term "Gem" describes condition that is the finest possible for the issue. This term is equivalent to "Superb" used by grading services.







Extremely Fine (80-90): Exceptionally large/wide margins or near perfect centering.

Very Fine (70-85): Normal-size margins for the issue and well-centered with the design a bit closer to one side. "Very Fine and choice" applies to stamps that have desirable traits such as rich color, sharp impression, freshness or clarity of cancel.

Fine (60-70): Smaller than usual margins or noticeably off center. Pre-1890 issues may have the design touched in places.

Very Good (below 60): Attractive appearance, but margins or perforations cut into the design.

Guide to Gum Condition

Gum Categories:	MINT N.H.	ORIGINAL GUM (O.G.)				NO GUM
	 Mint Never Hinged <i>Free from any disturbance</i>	 Lightly Hinged <i>Faint impression of a removed hinge over a small area</i>	 Hinge Mark or Remnant <i>Prominent hinged spot with part or all of the hinge remaining</i>	 Part o.g. <i>Approximately half or more of the gum intact</i>	 Small part o.g. <i>Approximately less than half of the gum intact</i>	 No gum <i>Only if issued with gum</i>
Catalogue Symbol:	★ ★	★	★	★	★	(★)
PRE-1890 ISSUES	<i>Pre-1890 stamps in these categories trade at a premium over Scott value</i>			Scott Value for “O.G.”		Scott “No Gum” Values thru No. 218
1890-1935 ISSUES	Scott “Never Hinged” Values for Nos. 219-771	Scott Value for “O.G.” (Actual value will be affected by the degree of hinging)		Disturbed Original Gum: Gum showing noticeable effects of humidity, climate or hinging over more than half of the gum. The significance of gum disturbance in valuing a stamp in any of the Original Gum categories depends on the degree of disturbance, the rarity and normal gum condition of the issue and other variables affecting quality. For example, stamps issued in tropical climates are expected to have some gum disturbance due to humidity, and such condition is not considered a negative factor in pricing.		
1935 TO DATE	Scott Value for “Unused”					

Covers

Minor nicks, short edge tears, flap tears and slight reduction at one side are normal conditions for 19th century envelopes. Folded letters should be expected to have at least one file fold. Light cleaning of covers and small mends along the edges are accepted forms of conservation. Unusual covers may have a common stamp with a slight crease or tiny tear. **These flaws exist in virtually all 19th century covers and are not always described. They are not grounds for return.**

Catalogue Values and Estimates

Unless otherwise noted, the currently available *Scott Catalogue* values are quoted in dollars with a decimal point. Other catalogues are often used for foreign countries or specialized areas and are referred to by their common name: *Stanley Gibbons* (SG), *Dietz*, *American Air Mail Catalogue* (AAMC), *Michel*, *Zumstein*, *Facit*, etc. Estimates are indicated with an "E." and reflect our conservative valuation in dollars. Reserves will never exceed the low end of the estimate range; they will sometimes exceed Scott Catalogue value for stamps in Extremely Fine condition.

Because of certain pricing inconsistencies in the *Scott Catalogue*—for example, blocks that have no gum, the absence of premiums for Mint N.H. items, etc.—we cannot guarantee the accuracy of values quoted for multiples, specialized items and collection lots. We generally try to be conservative, but buyers may not return a lot because of a discrepancy in catalogue value due to Scott pricing inconsistencies.

Symbols and Abbreviations (see chart above for gum symbols)

⊞ Block	E Essay	pmk. Postmark	No. Scott Catalogue Number
⊞ Cover	P Proof	cds Circular Datestamp	hs Handstamp
FC Fancy Cancel	TC Trial Color Proof	var. Variety	ms. Manuscript

Resources

siegelauctions.com



THE SIEGEL ENCYCLOPEDIA™

This feature of our website contains a wealth of information gleaned from decades of philatelic research by the dedicated philatelists at Siegel.

RARITIES CENSUS

The up-to-date census data for 19th and 20th century U.S. rarities are a valuable resource for buyers, sellers and researchers. Every recorded example of almost 40 different rare stamps is described and, in most cases, photographed.



CATALOGUES AND PRICES REALIZED

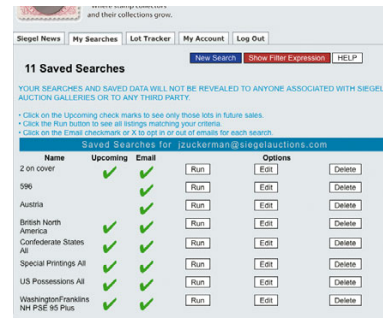
Images and descriptions for all current sale catalogues are available from our website, as well as all sales going back to 1992, our Rarities sales from 1964 and selected name sales.

POWER SEARCH™

Search by Scott number or keyword through all of the sales at our website. The best resource in philately for research.

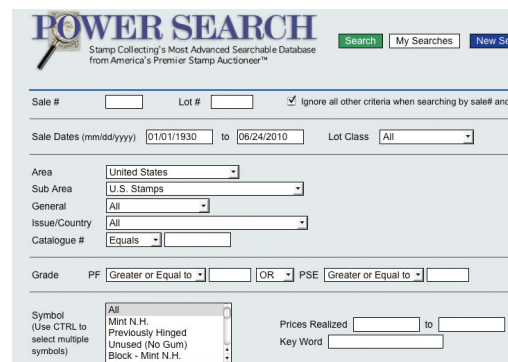
MY SIEGEL™

Save your Power Searches as want lists. We will automatically notify you when a match is included in an upcoming sale, whether it's as broad as any Columbian issue, or as narrow as a 241 graded 98. The most powerful want list in philately.



LOT TRACKER™

Never miss another lot because you were away from your computer. Log into My Siegel™, then set up notifications to get texts and/or emails 10-30 lots before yours comes up (live bidding is still through Stamp Auction Network).



EXHIBITS AND MOUNTED COLLECTIONS

Downloadable PDF files of some of the top exhibits ever formed. See how others collect and benefit from their original research.

VIDEO PRESENTATIONS

Downloadable video documentaries tell the stories of stamps and covers. This is the ideal way to introduce philately to others.

AFTERNOON SESSION (LOTS 1-250)
MONDAY, JUNE 22, 2015, AT 1:30 P.M.

UNITED STATES STAMPS AND COVERS

1857-60 ISSUE



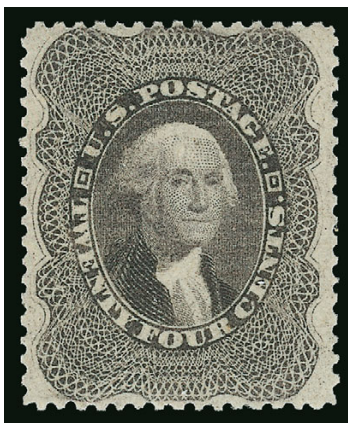
1

- 1 (★) **10c Green, Ty. III (33).** Unused (no gum), deeply rich color and highly detailed impression, Fine, a scarce unused stamp, with 2000 P.F. certificate 2,150.00



2

- 2 ★ **10c Green, Ty. III (33).** Original gum, rich color and crisp impression
FRESH AND FINE. AN ATTRACTIVE ORIGINAL-GUM EXAMPLE OF THE 1857 10-CENT TYPE III.
With 1991 P.F. certificate 6,000.00



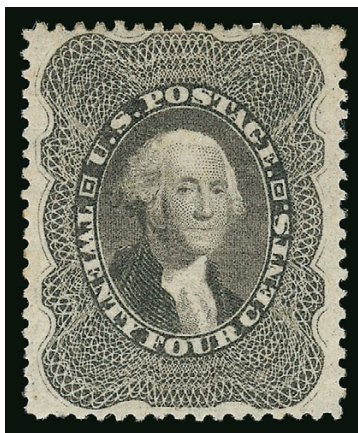
3

- 3 ★★ **24c Gray Lilac (37). Mint N.H.**, choice centering for this tightly spaced issue, rich color on post office fresh paper

VERY FINE AND CHOICE. THE 1860 24-CENT GRAY LILAC IS EXTREMELY RARE IN MINT NEVER-HINGED CONDITION. TO FIND A SOUND WELL-CENTERED EXAMPLE IS VASTLY MORE DIFFICULT.

Aside from five Mint N.H. stamps contained in the block of twelve offered in our Sevenoaks sale (Sale 831) and one single contained in another block of twelve offered in our 2010 Rarities sale, we have offered only three others in Mint N.H. condition since keeping computerized records.

With 2014 P.S.E. certificate (VF 80; unpriced in SMQ in Mint N.H. condition). Unpriced in Scott as Mint N.H. Scott Retail as hinged..... 1,400.00



4

- 4 ★ **24c Gray Lilac (37).** Original gum, lightly hinged, lovely rich color and crisp impression, wide margins

EXTREMELY FINE. A BEAUTIFUL ORIGINAL-GUM EXAMPLE OF THE 1860 24-CENT GRAY LILAC.

With 2012 P.S.E. certificate (OGph, XF 90; SMQ \$3,250.00). Only three stamps have grade higher. 1,400.00



5

- 5 ★田 **24c Gray Lilac (37)**. Vertical block of 20 with full original gum, **four stamps Mint N.H.** (positions 6, 11, 14 and 15), rich color and remarkably bright and fresh, well-centered for a large multiple, small manuscript note on back shows thru slightly on upper right pair, few perf separations, faint bend in fourth row, two stamps (positions 4 and 16) with small thin spot

FINE-VERY FINE. AN OUTSTANDING 24-CENT 1860 BLOCK — ONE OF THE LARGEST AND ARGUABLY THE FINEST MULTIPLE EXTANT.

Ex Caspary, Klein, Zoellner and DuPuy. With 2011 P.F. certificate. Scott Retail for four blocks and two pairs with no premium for the Mint N.H. stamps..... 44,300.00

1875 REPRINT OF 1857-60 ISSUE



6

- 6 ★ **3c Scarlet, Reprint (41).** Without gum as issued, vivid color as fresh as the day it was printed, bright paper, wide margins for this difficult issue

VERY FINE AND CHOICE. A BEAUTIFUL AND REMARKABLY FRESH EXAMPLE OF THE 3-CENT 1857 REPRINT.

The Continental Bank Note Company made a new plate for the 3c 1857 Reprint, consisting of 100 subjects. 10,000 stamps were printed (100 impressions). 479 of the 3c were sold, and the remaining 9,521 were destroyed on July 23, 1884, by order of the Postmaster General.

A review using Power Search shows that virtually all are off center to some degree, and many have perforations touching on one or more sides due to the narrow spacing on the plate. The example offered here is one of the rare exceptions.

Ex Gorham. With 1998 P.F. certificate..... 3,000.00

- 7 ★ **10c Blue Green, Reprint (43).** Without gum as issued, intense shade and impression on bright paper, well-balanced margins

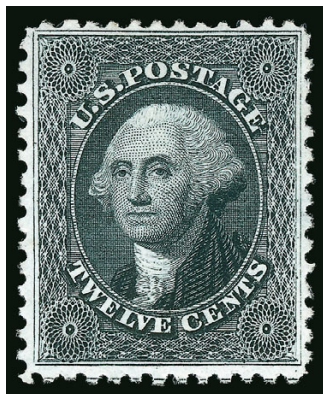
EXTREMELY FINE. A BEAUTIFUL EXAMPLE OF THE 10-CENT 1857 REPRINT.

The Continental Bank Note Company made a new plate for the 10c 1857 Reprint, consisting of 100 subjects, using an original transfer roll. 10,000 stamps were printed (100 impressions). All are Type I stamps. 516 of the 10c were sold, and the remaining 9,484 were destroyed on July 23, 1884, by order of the Postmaster General.

Ex Gorham. With 1976 and 2000 P.F. certificates..... 2,500.00



7



8

- 8 ★ **12c Greenish Black, Reprint (44).** Without gum as issued, beautifully centered with wide margins, deep shade and sharp impression on bright paper, full intact perforations all around

EXTREMELY FINE GEM. ONE OF THE FINEST 12-CENT 1857 REPRINTS EXTANT.

The narrow spaces between stamps on the 12c 1857 Reprint plate allowed almost no room for large 12-gauge perforations, and the Reprints were generally perforated into parts of the design. Examples such as this, with the framelines complete on all four sides, are extremely rare.

With 2004 P.F. and 2012 P.S.E. certificates (XF 90 Jumbo; SMQ \$11,000.00). This is the highest grade awarded by P.S.E. and it is shared by no others..... 2,750.00

- 9 ★ **90c Deep Blue, Reprint (47).** Without gum as issued, deep rich color on bright paper, unusually wide margins

EXTREMELY FINE GEM. THIS IS WITHOUT QUESTION ONE OF THE FINEST AND WIDEST-MARGINED EXAMPLES OF THE 90-CENT 1860 REPRINT IN EXISTENCE.

The Continental Bank Note Company reprinted the 90c stamp from the original plate of 200 subjects. 10,000 were printed (50 impressions). Only 454 were sold; the remaining 9,546 were destroyed on July 23, 1884, by order of the Postmaster General.

This is one of the few 90c 1860 Reprint stamps we have seen with wide margins at the top and bottom.

Ex Gorham. With 1979, 1992 and 2004 P.F. certificates. . 4,000.00



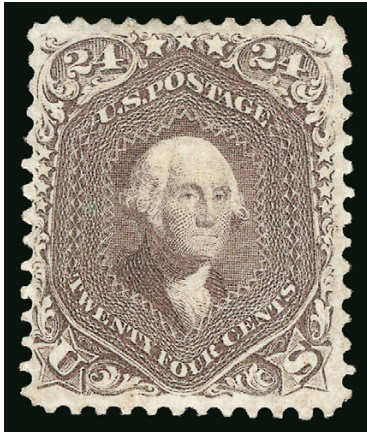
9

1861-68 ISSUES

- 10 ★ **3c Rose (65).** Original gum, faintly hinged (actually just a fingerprint), fresh color, Very Fine and choice, with 1994 P.F. certificate 125.00



10



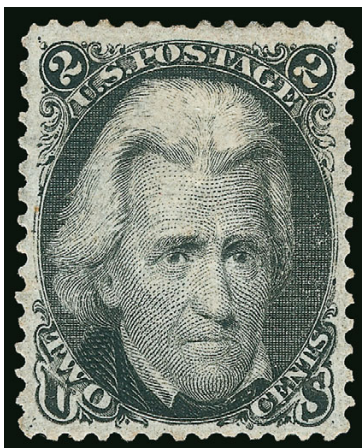
11

- 11 ★ **24c Brown Lilac (70a).** Original gum, lightly hinged, well-centered, fresh color, Very Fine, attractive original-gum example of the 24c Brown Lilac shade, with 1998 and 2013 P.F. certificates (VF 80) 3,250.00

- 12 ★ **24c Brown Lilac (70a).** Original gum, lightly hinged, choice centering, bright shade and detailed impression, exceptionally fresh and Very Fine, ex Curtis, with copy of 2001 P.F. certificate for pair and 2007 P.S.E. certificate (OGph, F-VF 75; SMQ \$2,200.00), only two stamps have graded higher 3,250.00



12



13

- 13 ★ **2c Black (73).** Original gum, wide margins, rich shade, crisp impression, Extremely Fine, with 1999 P.F. certificate 375.00



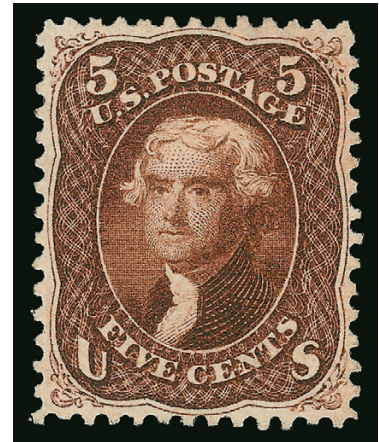
14

- 14 (★) **3c Scarlet (74).** Unused (no gum), radiant color, small repair at right, Very Fine appearance, ex Curtis, with 1986 P.F. certificate, Scott Retail as with gum .. 7,000.00

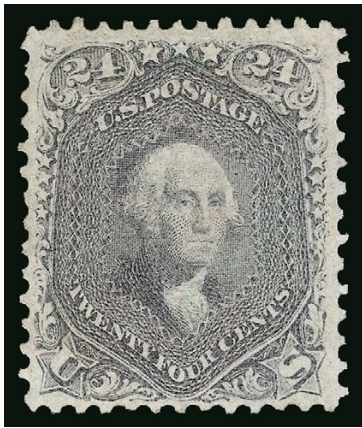
- 15 (★) **5c Dark Red Brown (75 var).** Unused (no gum), deep rich color in the Dark Red Brown shade and proof-like impression, almost perfectly centered with perfs clear of outer lines

EXTREMELY FINE UNUSED EXAMPLE OF THE 5-CENT DARK RED BROWN 1862 ISSUE.

With 1974 and 2005 P.F. certificates 2,200.00



15



16

- 16 ★ **24c Grayish Lilac (78a).** Original gum, small h.r., radiant color and detailed impression, Very Fine, ex Laila, Hampshire and Curtis, with 2000 and 2014 P.F. certificates (F-VF 75) 2,900.00

- 17 ★ **3c Rose, A. Grill (79).** Large part original gum, intense shade and impression, lighter than usual grill impression which leaves **perforations on all sides completely intact**, faint horizontal crease

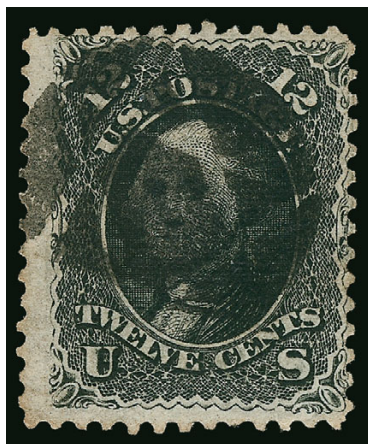
FINE APPEARANCE. A SCARCE ORIGINAL-GUM EXAMPLE OF THE 1867 3-CENT A GRILL. ESPECIALLY DESIRABLE WITH THE PERFORATIONS INTACT.

Due to the nature of the grilling machine and the overall grill, most examples of this issue have missing or ragged perfs. The example offered here, with intact perfs all around, is a condition rarity.

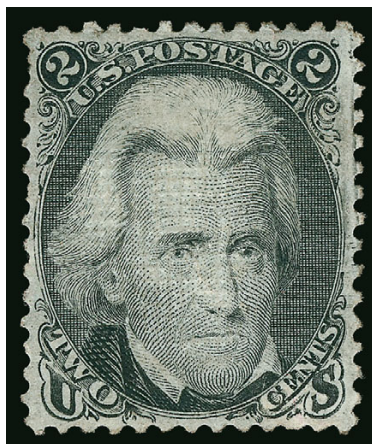
Ex Geisler and Curtis. With 1986, 1990 P.F. and 2007 P.S.E. certificates..... 8,500.00



17



18



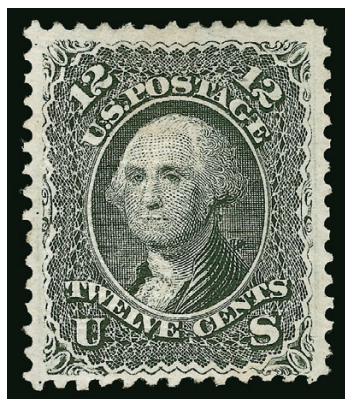
19

- 18 **12c Black, Z. Grill (85E).** Intense shade and impression, bold strike of **negative Star of David cancel**, minor soiling on back not mentioned on accompanying certificate, Fine, with 1985 P.F. certificate 2,500.00
- 19 ★ **2c Black, E. Grill (87).** Original gum, prominent grill, attractive centering, couple short perfs at upper left, Extremely Fine appearance, an exceedingly difficult stamp to find with original gum and decent centering, ex Curtis, with 2009 P.S.E. certificate (OGh, F 70; SMQ \$1,000.00), we are sure this would have graded much higher if not for the short perf..... 1,750.00



20

- 20 ★田 **2c Black, E. Grill (87).** Block of six with **part imprint and plate no. 51** at bottom, original gum, lightly hinged, clearly-defined grills, centered strongly to top left
 THE ONLY RECORDED UNUSED BLACK JACK MULTIPLE SHOWING THE RARE PLATE NUMBER 51. THIS IS ALSO THE LARGEST RECORDED MULTIPLE OF THE 2-CENT E GRILL.
 Ex Allen, Metzger and Hansen. As an indication of rarity, the Scott Catalogue lists a plate number and imprint block of four, but does not list any larger plate block. Scott Retail \$12,500.00 as block of four and pair..... E. 1,500-2,000



21

- 21 ★ **12c Black, E. Grill (90).** Original gum, lightly hinged, bright shade and detailed impression, wide margins

VERY FINE AND CHOICE ORIGINAL-GUM EXAMPLE OF THE 1868 12-CENT E GRILL.

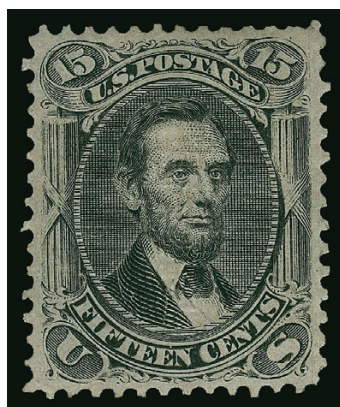
As collectors who have been searching for a superb original-gum copy of the 12c E Grill can attest, it is rarely seen in choice condition. One reason is that there have been far fewer multiples of the 12c E Grill than other grilled issues, and, therefore, fewer singles from broken blocks. No blocks were offered in sales of great classic collections, such as Crocker, Caspary, Eno, Lilly, Moody, West or Ishikawa. The Zoellner block was broken into Fine-Very Fine singles. The singles in most of the important U.S. collections offered during the past 25 years have been unsatisfactory in one way or another.

Ex Curtis. With 1999 P.S.E. certificate and 2014 P.F. certificate (F-VF 75)..... 4,750.00

- 22 ★ **1c Blue, F. Grill (92).** Original gum, lightly hinged, bright color, well-centered, fresh and Very Fine, with 1998 P.F., 1998 and 2007 P.S.E. certificates (OGph VF 80; SMQ \$3,500.00). 3,000.00



22



23

- 23 ★ **15c Black, F. Grill (98).** Original gum, lightly hinged, bright shade and clearly-defined grill, choice centering with wide margins

EXTREMELY FINE. A RARE SOUND AND CENTERED ORIGINAL-GUM EXAMPLE OF THE 1868 15-CENT F GRILL.

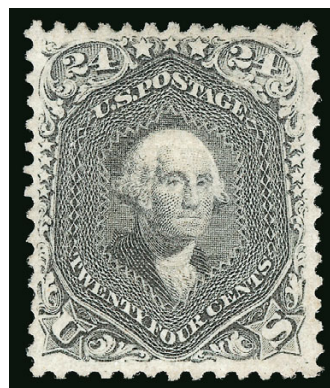
The ungrilled version of this issue was released in 1866, about one year after President Lincoln was assassinated. It is regarded by many to be America's first commemorative issue, memorializing the martyred president as the nation started to heal from the wounds of the Civil War. In 1868 it was issued with two grill types, the E Grill (Scott 91) and F Grill (Scott 98). 15c usually paid the registration fee on domestic mail or the U.S.-French treaty rate.

With 2014 P.F. certificate (VF-XF 85) 4,250.00

- 24 ★ **24c Gray Lilac, F. Grill (99).** Original gum, lightly hinged, clearly-defined grill, rich color and crisp impression

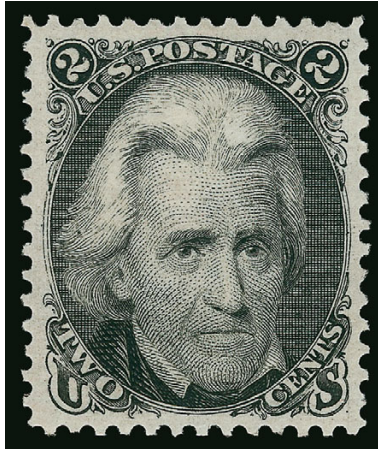
VERY FINE. A SCARCE ORIGINAL-GUM EXAMPLE OF THE 1868 24-CENT F GRILL.

With 2005 and 2012 P.F. certificates (VF 80)..... 8,500.00



24

1875 RE-ISSUE OF 1861-66 ISSUE



25

25 ★★ **2c Black, Re-Issue (103). Mint N.H.,** wide balanced margins all around, rich shade and sharp detailed impression on fresh paper

EXTREMELY FINE GEM. THE ONLY 2-CENT "BLACK JACK" RE-ISSUE CERTIFIED AS MINT-NEVER HINGED BY EITHER THE PHILATELIC FOUNDATION OR PROFESSIONAL STAMP EXPERTS.

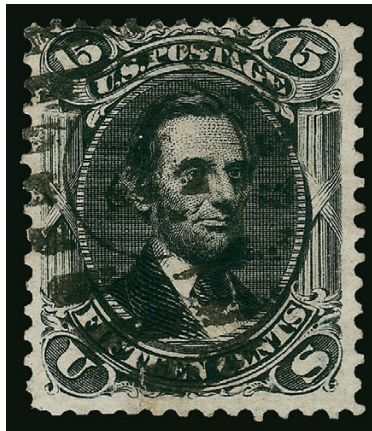
This remarkable stamp is graded XF-Superb 95 by P.S.E., which is the highest grade awarded to any original-gum No. 103.

With 2007 P.S.E. certificate (OGnh, XF-Superb 95). P.S.E. does not price this issue Mint N.H.. SMQ for *hinged* 95 is \$13,000.00. E. 15,000-20,000



26

- 26 ★ **15c Black, Re-Issue (108).** Original gum, lightly hinged, intense shade and crisp impression, Fine and attractive, only 397 sold, with 1975 and 1998 P.F. certificates 4,500.00



27

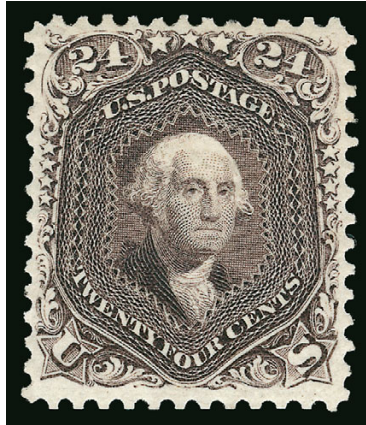
- 27 **15c Black, Re-Issue (108).** Intense shade and impression on bright paper, bold strike of New York oval grid cancel, small sealed tear at bottom

FINE APPEARING AND RARE USED EXAMPLE OF THE 15-CENT 1866 RE-ISSUE. ONLY SIXTEEN ARE RECORDED IN OUR CENSUS.

The 15c Re-Issue was printed from the original plate of 200 subjects. 10,000 stamps were printed (50 impressions). Only 397 of the 15c were sold; the remaining 9,603 were destroyed on July 16, 1884.

Our census of Scott 108 used, available at our website at <http://siegelauctions.com/dynamic/census/108/108.pdf>, records only 16 examples.

Census No. 108-CAN-16. This is a new entry. With 2014 P.F. certificate..... 35,000.00



28

- 28 ★ **24c Deep Violet, Re-Issue (109).** Original gum, deep intense color and proof-like impression
 VERY FINE AND CHOICE ORIGINAL-GUM EXAMPLE OF THE 24-CENT 1861 RE-ISSUE.
 Only 346 sold. With 1992, 2002 and 2014 P.F. certificates (F-VF 75) 5,750.00



29

- 29 ★ **90c Blue, Re-Issue (111).** Original gum, deep rich color on bright crisp paper, unusually
 choice centering
 EXTREMELY FINE. AN OUTSTANDING ORIGINAL-GUM EXAMPLE OF THE 90-CENT 1861 RE-ISSUE.
 The 90c Re-Issue was printed from the original plate of 200 subjects. 10,000 stamps were
 printed (50 impressions). Only 317 of the 90c were sold; the remaining 9,683 were destroyed
 on July 16, 1884. The example offered here, with original-gum, sound and well-centered, is a
 great rarity.
 With 1973, 1991, 2006 and 2013 P.F. certificates (latter grading VF-XF 85)..... 6,750.00

No. 28

NATIONAL BANK NOTE CO. NEW YORK



1869 PICTORIAL ISSUE

2-CENT IMPRINT AND PLATE NUMBER BLOCK OF TWELVE

- 30 ★田 **2c Brown (113)**. Top imprint and plate no. 28 block of 12, Positions 5-6 and 8-10 **Mint N.H.**, other positions lightly hinged, gorgeous rich color, choice centering and margins incl. portions of all 12 surrounding stamps, bright and fresh

VERY FINE-EXTREMELY FINE. A SPECTACULAR AND EXCEPTIONALLY RARE TOP POSITION IMPRINT AND PLATE NUMBER BLOCK OF 12 OF THE 2-CENT 1869 ISSUE WITH FOUR MINT NEVER-HINGED STAMPS. ONE OF THE MOST OUTSTANDING CLASSIC UNITED STATES PLATE BLOCKS.

Apart from a block of 70, we have offered only two other plate number blocks of Scott 113 since we began keeping computerized records in 1992 — both were blocks of six without the imprint and had only Very-Good-Fine centering.

With 2012 P.F. certificate. A plate block of ten is listed in Scott but is unpriced. This format of 12 is unlisted..... E. 50,000-75,000

1875 RE-ISSUE OF 1869 PICTORIAL ISSUE



31

- 31 ★ **3c Blue, Re-Issue (125).** Original gum, lightly hinged, well-centered, crisp impression
VERY FINE ORIGINAL-GUM EXAMPLE OF THE 3-CENT 1869 PICTORIAL RE-ISSUE.
Only 1,406 were sold. With 2001 and 2009 P.F. certificates (VF 80)..... 5,000.00



32

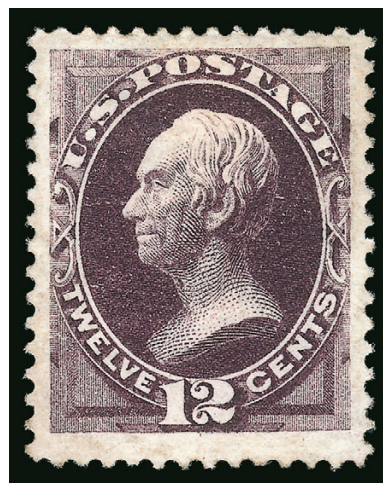
- 32 ★ **90c Carmine & Black, Re-Issue (132).** Original gum, lightly hinged, deep rich colors and
proof-like impressions, well-balanced margins
VERY FINE AND CHOICE. A BEAUTIFUL ORIGINAL-GUM EXAMPLE OF THE 90-CENT 1869
PICTORIAL RE-ISSUE.
With 1996 and 2013 P.F. certificates (VF 80) 3,750.00

1870-90 BANK NOTE ISSUES

- 33 ★ **12c Blackish Violet (162).** Original gum, wonderful depth of color in the distinctive shade of the Continental printing, wide margins

EXTREMELY FINE ORIGINAL-GUM EXAMPLE OF THE 1873 12-CENT CONTINENTAL BANK NOTE COMPANY ISSUE.

With 2014 P.F. certificate (VF-XF 85)..... 2,400.00



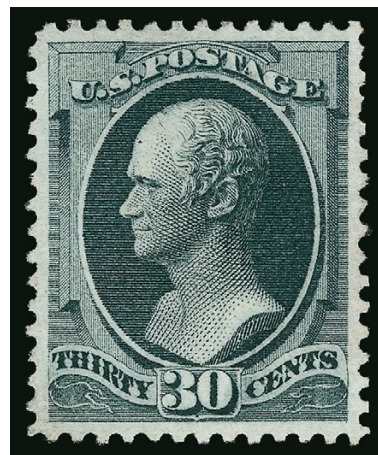
33



34

- 34 ★ **15c Yellow Orange (163).** Original gum, rich color, Fine, with 2004 P.F. certificate 2,250.00

- 35 (★) **30c Gray Black (165).** Unused (no gum), choice centering, bright shade, Extremely Fine Gem, with 2010 P.F. and P.S.E. certificates (XF-Superb 95; SMQ \$2,800.00), this is the highest grade awarded to an unused example of this issue (also two original-gum stamps graded 95)..... 1,300.00



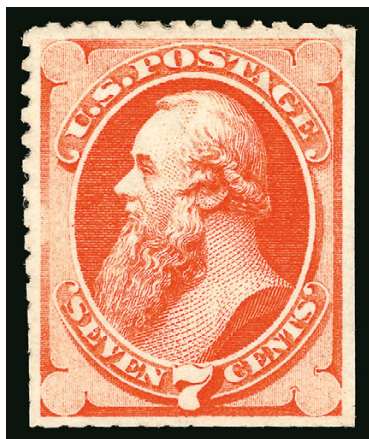
35



36

- 36 ★ **90c Rose Carmine (166).** Large part original gum, wide and balanced margins, fresh color, most recent certificate notes "a few perforations enlarged at upper right", Extremely Fine appearance, with 1982 and 2013 P.F. certificates..... 2,250.00

1875 CONTINENTAL BANK NOTE COMPANY SPECIAL PRINTING



37

- 37 ★ **7c Reddish Vermilion, Special Printing (171).** Without gum as issued, bright color, scissors-separated as usual but showing part of perfs on three sides

VERY FINE EXAMPLE OF THE 7-CENT 1875 CONTINENTAL BANK NOTE COMPANY SPECIAL PRINTING.

Our recently updated census records for Scott 171 contain 70 certified examples. Most stamps were scissors-separated, affecting the perforations on at least one side.

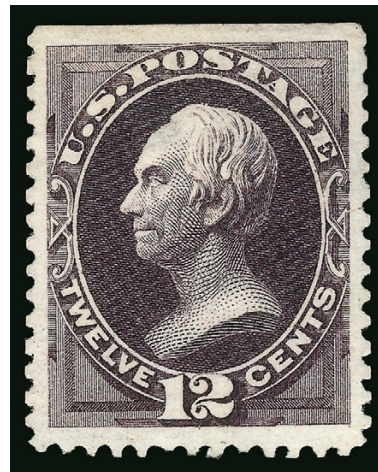
With 1948 and 2002 P.F. certificates..... 4,750.00

- 38 ★ **12c Dark Violet, Special Printing (173).** Without gum as issued, rich color, scissors-separated at top as usual but other three sides with full perforations, wide margins, tiny hinge thin

EXTREMELY FINE APPEARING EXAMPLE OF THE 12-CENT 1875 CONTINENTAL BANK NOTE SPECIAL PRINTING.

Our recently updated census records for Scott 173 contain 71 certified examples.

With 1993 P.S.E. and 2013 P.F. certificates ... 6,750.00



38



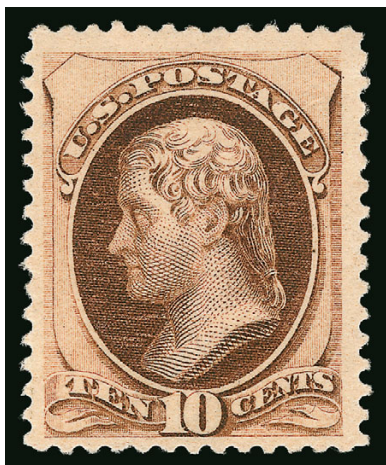
39

- 39 ★ **24c Dull Purple, Special Printing (175).** Without gum as issued, rich color on bright paper **full perforations on all four sides**, bright color

EXTREMELY FINE. A BEAUTIFUL EXAMPLE OF THE 24-CENT 1875 CONTINENTAL BANK NOTE COMPANY SPECIAL PRINTING. THIS IS ONE OF THE FINEST EXAMPLES IN EXISTENCE.

Our recently updated census records for Scott 175 contain approximately 100 examples. This is certainly one of the finest.

Unpublished Census No. 175-UNC-37. Ex T. Charlton Henry and Gorham. With 1975 and 2005 P.F. certificates. 4,500.00



40



41

- 40 ★ **10c Brown, Without Secret Mark (187).** Original gum, lightly hinged, wide margins, Very Fine, with 2012 P.S.A.G. certificate 3,250.00
- 41 ★ **90c Carmine (191).** Original gum, lightly hinged, attractive fresh color, Very Fine, with 1998 and 2013 P.F. certificates (F-VF 75) 2,000.00

1880 AMERICAN BANK NOTE COMPANY SPECIAL PRINTING



42

- 42 ★ **24c Dark Violet, Special Printing (200).** Without gum as issued, rich color and sharp impression, reperfed at bottom and trivial corner perf tear
FRESH AND FINE APPEARING EXAMPLE OF THE 1880 24-CENT AMERICAN BANK NOTE COMPANY SPECIAL PRINTING.
Our recent review of records at the Philatelic Foundation found 67 certified copies of Scott 200, 24 of which have faults (usually a thin spot). A few exist outside of that population, including the example offered here.
With 2013 P.S.A.G. certificate 10,500.00



- 43 田 **90c Orange (229).** Block of four, bright shade, light Boston registry oval cancels, Fine, a scarce used block 800.00

43

COLUMBIAN ISSUE



44

- 44 (★) **1c-\$5.00 Columbian (230-245).** Complete unused set, artfully mounted in a large frame with engraved scenes of Columbus and allegorical figures surrounding, two 50c 1892 Columbian silver commemorative coins included in the mounting, colors on some stamps are a bit faded and no doubt some small flaws would be found if disassembled, still Very Fine appearing and a striking display piece, Scott Retail for just the 50c-\$5.00 stamps (assuming no gum) \$4,200.00 E. 1,000-1,500



45



46



47



48

- 45 ★★田 **1c Columbian (230)**. Mint N.H. block of four, wide margins and outstanding centering, wonderful bright color and impression, Extremely Fine, bottom pair exceptionally choice, with 2006 P.S.E. certificate, Scott Retail as four Mint N.H. singles 140.00
- 46 ★★田 **6c Columbian (235)**. Mint N.H. bottom left corner selvaige imprint, plate no. 104 and letter "Z" block of fifteen, intense shade and impression, stamp above letter small thin spot, bottom left stamp small mark on gum, Fine-Very Fine appearance, Scott Retail as plate block of eight and singles..... 4,295.00
- 47 ★田 **8c Columbian (236)**. Bottom left corner selvaige imprint, plate no. 133 and letter "I I" block of ten, original gum, lightly hinged, h.r. in bottom selvaige where some perf separations sensibly reinforced, Very Fine appearance 1,880.00
- 48 ★田 **10c Columbian (237)**. Top imprint, plate no. 100 and letter Y block of ten with corner selvaige, lightly hinged on the second stamp in the bottom row and a small hinge reinforcement in the top left selvaige, otherwise Mint N.H., fresh and Fine, catalogued as a hinged plate block of eight and two Mint N.H. singles 6,070.00



49

- 49 ★★田 10c Columbian (237). Mint N.H. top imprint, plate no. 99 and letter "Y" block of eight, deep rich color and proof-like impression, top left stamp small thin spot, bottom stamps natural gum creases, Fine appearance, a scarce Mint N.H. plate block 9,500.00



50

- 50 ★★田 15c Columbian (238). Mint N.H. block of four, deep color on fresh paper, bottom right stamp with trivial small natural gum crease, Very Fine and choice, Scott Retail as Mint N.H. singles, with 2014 P.F. certificate 2,700.00



51

- 51 ★田 **15c Columbian (238)**. Bottom imprint, plate no. 58 and letter "M" block of eight, original gum, lightly hinged, brilliant color and detailed impression, beautiful centering throughout, position 7 small surface scuff and crease at bottom
 EXTREMELY FINE APPEARANCE. A SCARCE PLATE BLOCK OF EIGHT OF THE 15-CENT COLUMBIAN ISSUE.

The plate number block of eight is more desirable than the plate block of six configuration, which lacks the letter.

Ex "Saddleback". With 2007 P.F. certificate 6,500.00



52

52 ★★ **50c Columbian (240).** Mint N.H. with wide bottom sheet selvage, colossal Jumbo margins and gorgeous centering, intense color and proof-like impression on fresh paper

EXTREMELY FINE GEM. THIS SUPERB MINT NEVER-HINGED EXAMPLE OF THE 50-CENT COLUMBIAN IS, IN OUR OPINION, THE FINEST EXTANT. A STAMP WITH TREMENDOUS VISUAL APPEAL.

While we have long been a supporter of numerical grading and often quote P.S.E. Population Report statistics, there are certain stamps that defy numerical grading. This sheet-margin example of the 50c Columbian is such a stamp. The conservative grade of XF 90 Jumbo assigned to this magnificent gem is a prime example of the limitation of numerical grading when applied to sheet-margin stamps. We have offered 50c Columbians in grades of 95 and 98, but, in our opinion, none of those exceeds the beauty of this stamp.

Ex "Westchester". With 1998 P.F. and 2007 P.S.E. certificates (XF 90 Jumbo; SMQ \$3,750.00 as 90, \$9,500.00 as 95)..... 1,450.00



53

- 53 ★田 50c Columbian (240). Bottom imprint and plate no. 77 block of six, original gum, lightly hinged, paper slightly toned, a few reinforced perfs at left, Fine appearance, a very scarce plate block 14,500.00



54



55

- 54 田 50c Columbian (240). Block of four, light duplex cancels, sensibly reinforced perfs and bottom left stamp with light bend, otherwise Fine-Very Fine, a scarce used block 2,000.00
- 55 ★★ \$1.00 Columbian (241). Mint N.H., wonderfully bright and fresh, Very Fine, with photo-copy of a 2013 P.F. certificate for a block of four, this the bottom right stamp.. 3,750.00

1894-98 BUREAU ISSUE



56

- 56 ★田 **\$5.00 Dark Green (263).** Block of four, original gum, h.r. where few perf separations sensibly reinforced, rich color, natural gum bends and creases not mentioned on accompanying certificate

FINE-VERY FINE. A RARE ORIGINAL-GUM BLOCK OF FOUR OF THE 1894 \$5.00 UNWATER-MARKED BUREAU ISSUE.

Very few blocks remain intact, as most have been broken to feed collector demand for singles. We have offered only two others, both with similar centering, in over a decade.

Ex Frelinghuysen. With 2012 P.F. certificate 22,000.00



57

- 57 ★田 **\$5.00 Dark Green (278).** Block of four, slightly disturbed original gum, deep rich color and proof-like impression, bottom right stamp small toned spot on one perf at top not mentioned on accompanying certificates

VERY FINE APPEARANCE. AN EXCEEDINGLY RARE BLOCK OF FOUR OF THE 1895 \$5.00 WATERMARKED BUREAU ISSUE. VERY FEW ARE KNOWN.

Apart from the block sold in the Whitpain collection (Siegel 977), this is the only other block of four we have offered in the past ten years. Only one full plate block exists. The Scott Catalogue assigns a paltry \$1,000.00 premium for the block versus four singles, which in no way reflects its rarity.

With 1972 and 2008 P.F. certificates..... 10,000.00



58



59

- 58 ★ **50c Orange (275).** Original gum, lightly hinged, gorgeous fiery color, Very Fine and choice, with 2000 P.F. certificate 260.00
- 59 ★田 **5c Dark Blue (281).** Top imprint and plate no. 1199 block of six, original gum, top center stamp lightly hinged, others Mint N.H., deep rich color, gorgeous centering, Extremely Fine Gem, a beautiful plate block..... 650.00

TRANS-MISSISSIPPI ISSUE

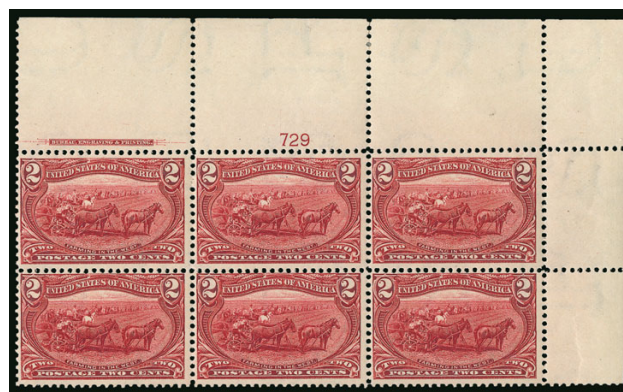


60EX

- 60 ★田 **1c Trans-Mississippi (285).** Wide top left imprint and plate no. 601 block of ten, stamps Mint N.H., rich color, minor perf separations and strengthening in selvage only, Fine-Very Fine.....(Photo Ex) 740.00



61EX



62

- 61 ★田 **1c, 2c Trans-Mississippi (285-286).** 1c bottom imprint and plate no. 598 block of six, 2c Mint N.H. top right corner imprint and plate no. 690 block of ten, few minor perf separations, Fine-Very Fine**(Photo Ex)** 1,190.00
- 62 ★★田 **2c Trans-Mississippi (286).** Mint N.H. top right corner imprint and plate no. 729 block of four two extra stamps, radiant color, fresh and Fine, attractive position multiple, ex MLG, with 2004 P.F. certificate, Scott Retail as plate block of four and two singles 535.00

- 63 ★ **50c Trans-Mississippi (291).** Original gum, lightly hinged, extraordinarily wide and well-balanced margins, proof-like color and impression

EXTREMELY FINE GEM. A SUPERB JUMBO-MARGINED ORIGINAL-GUM EXAMPLE OF THE 50-CENT TRANS-MISSISSIPPI ISSUE.

With 1988 and 2014 P.F. certificates .. 600.00



63



64

- 64 ★ **\$1.00 Trans-Mississippi (292).** Original gum, lightly hinged, wide margins and attractively centered, Very Fine and choice, with 2008 P.S.E. certificate (VF-XF 85; SMQ \$1,400.00)..... 1,400.00

- 65 ★ **\$1.00 Trans-Mississippi (292).** Original gum, top imprint selvage, crisp impression, Fine 1,400.00



65

- 66 **\$1.00 Trans-Mississippi (292).** Choice centering with balanced margins, detailed impression, unobtrusive strike of duplex cancel, Extremely Fine Gem, a beautiful stamp, with 2009 P.F. certificate.... 725.00



66



67

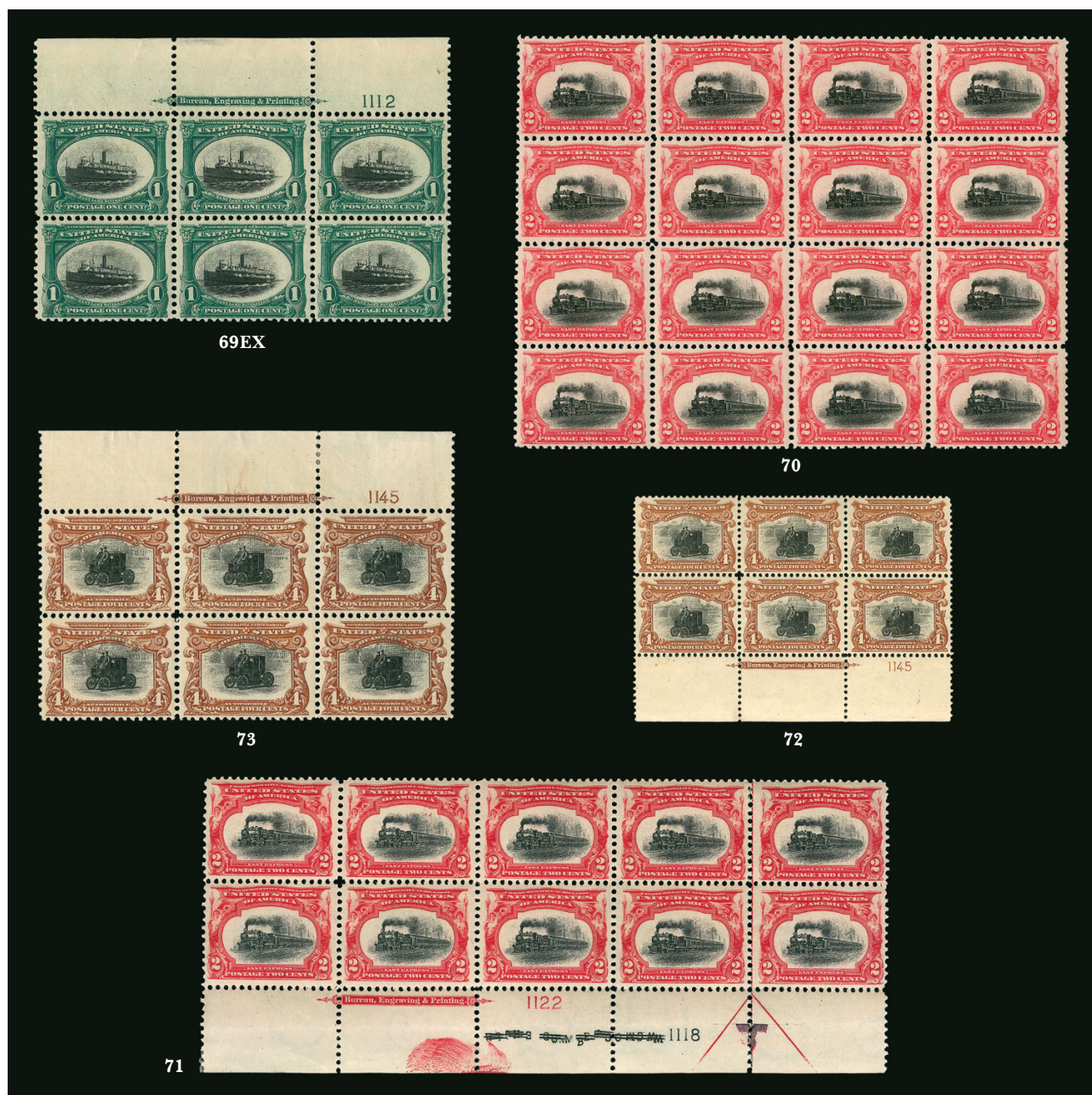
- 67 ★ **\$2.00 Trans-Mississippi (293).** Original gum, lightly hinged, outstanding centering with exceedingly wide margins, beautiful rich color
EXTREMELY FINE GEM. THE \$2.00 IS THE MOST CHALLENGING OF THE TRANS-MISSISSIPPI ISSUE TO OBTAIN IN THIS SUPERB ORIGINAL-GUM CONDITION.
With 1987 and 2014 P.F. certificates 1,900.00



68

- 68 ★★ **\$2.00 Trans-Mississippi (293).** Mint N.H. bottom imprint and plate no. 613 pair, rich color and detailed impression
FINE-VERY FINE. A RARE MINT-NEVER HINGED PLATE NUMBER PAIR OF THE \$2.00 TRANS-MISSISSIPPI.
This issue is unpriced as a plate number pair in Mint N.H. condition. Scott Retail as two singles 12,000.00

PAN-AMERICAN ISSUE



- 69 ★★田 1c, 2c Pan-American (294-295). Mint N.H. imprint and plate no. blocks of six, 1c top, 2c bottom, 1c narrow natural gum skip on top stamps, 2c natural short gum at bottom right, Fine-Very Fine.....(Photo Ex) 950.00
- 70 ★★田 2c Pan-American (295). Mint N.H. block of sixteen, well-centered (especially some of the stamps in the middle), bright color, Very Fine, Scott Retail as singles..... 640.00
- 71 ★田 2c Pan-American (295). Bottom imprint, plate nos. 1122/1118 and arrow block of ten, Mint N.H. except between Pos. 4 and 5 where few small perf separations reattached, rich colors, unusual red ink in selva in color of the vignette and which is probably the pressman's blurry fingerprint, unusually well-centered, Very Fine-Extremely Fine, the plate no. singles are especially nice, ex MLG 700.00
- 72 ★田 4c Pan-American (296). Bottom imprint and plate no. 1145 block of six, barest trace of hinge, rich colors, remarkably well-centered, usual few light natural gum creases, Extremely Fine, an outstanding plate block..... 2,100.00
- 73 ★田 4c Pan-American (296). Top imprint and plate no. 1145 block of six, lightly hinged, rich colors, diagonal crease affects four stamps, Very Fine appearance 2,250.00



74

- 74 ★田 **8c Pan-American (298)**. Bottom imprint, plate nos. 1150/1143 and arrow block of ten, few h.r. slivers in selvage, two stamps light h.r., deep rich colors, choice centering, small nick in bottom margin at "T" marker is barely noticeable

EXTREMELY FINE PLATE NUMBER BLOCK OF TEN OF THE 8-CENT PAN-AMERICAN ISSUE.

Bottom plate blocks are particularly desirable as they are the only positions to show both plate numbers. This issue is very scarce with such superb centering..... 7,000.00



75

- 75 ★★田 **10c Pan-American (299)**. Mint N.H. top imprint and plate no. 1151 block of six, deep rich colors, selvage slightly reduced, pos. 3 tiny spot of gum disturbance

FINE AND SCARCE MINT NEVER-HINGED PLATE BLOCK OF THE 10-CENT PAN-AMERICAN ISSUE.

The 10c is especially difficult to find in sound, Mint N.H. condition. Scott Retail as Mint N.H..... 9,000.00



76

76 ★ **1c Pan-American, Center Inverted (294a).** Rich color and strong impressions, choice centering with wide margins, two short perfs at left

VERY FINE CENTERING AND AN ATTRACTIVE ORIGINAL-GUM EXAMPLE OF THE ONE-CENT PAN-AMERICAN INVERT.

With 1944 A.P.S. and 2014 P.S.E. certificates (OGh, F 70; SMQ \$8,000.00)..... 12,500.00



77

77 S **4c Pan-American, Center Inverted, Specimen Overprint (296aS).** Clear strike of “Specimen” handstamp reading down at left, with **plate no. 1145** and portion of plate letter imprint in black at bottom (from the left pane), h.r. in selvage only, warm rich color, completely sound

FINE. ONE OF FOUR RECORDED PLATE NUMBER AND PLATE LETTER SINGLES OF THE 4-CENT PAN-AMERICAN INVERT. ONLY THIS EXAMPLE HAS THE “SPECIMEN” OVERPRINT.

The production and distribution of the 4c Pan-American Invert occurred under extraordinary circumstances. After the 1c and 2c Inverts were discovered, rumors of a 4c Invert caused the Post Office Department to order a special printing of 4c Inverts to retain as specimens. It was reported that two sheets of 200 were printed, for a total of 400 stamps; however, as we shall describe further on, at least four plate impressions were made. It appears that only the lower halves of the sheets were finished with gum and perforations.

If the reported quantities are correct, 203 4c Inverts were released with or without the small “Specimen” overprint. Some examples, both with and without the overprint, were given away by Third Asst. Postmaster General Edwin C. Madden. When postal authorities learned of the practice, they destroyed 194 copies and put one pane of 100 into the official archives. At a later date, 97 of these were traded for rarities missing from the archives.

We have been studying this fascinating Invert “Special Printing” for several years and have recorded imprint and plate number examples of the 4c Pan-American Invert from the bottoms of four different sheets of 100, each comprising left and right panes of 50 (six of the eight panes are represented by at least one bottom-margin position). The sequence of vignette plate letters in the bottom selvage, which were normally printed in the top selvage, can be used to identify Left or Right pane positions. These letters were applied each time the vignette plate was used, and the 4c Invert has the longest sequence of letters we can find on any 4c Pan-American, presumably because the plate was used for the last time to make the Invert “Special Printing” after the regular stamps were printed. There are at least 48 separate entries of the two or three-letter initials on the 4c Invert vignette plate.

For the purpose of identification, we will refer to these four sheets as S1, S2, S3 and S4 (Left/Right for each). From S1 Left we record three singles with plate letters and the unique plate block of four with the imprint and plate number. None of the S1 Left imprint stamps have a “Specimen” overprint. From S1 Right we record the imprint and plate number strip of four sold in the Cunliffe auction by Spink-Shreves. It, too, does not have a “Specimen” overprint. From S2 we record only one imprint and plate number single, from the Right pane and without overprint, ex Odeneal (Siegel Sale 941, lot 1207). From S3 we record an imprint and plate number single from the Left pane (Siegel Sale 745, lot 717) and another from the Right pane, neither with overprint. Finally, from S4 we record the imprint and plate number single offered here, from the Left pane and with “Specimen” overprint, ex Green and Cunliffe.

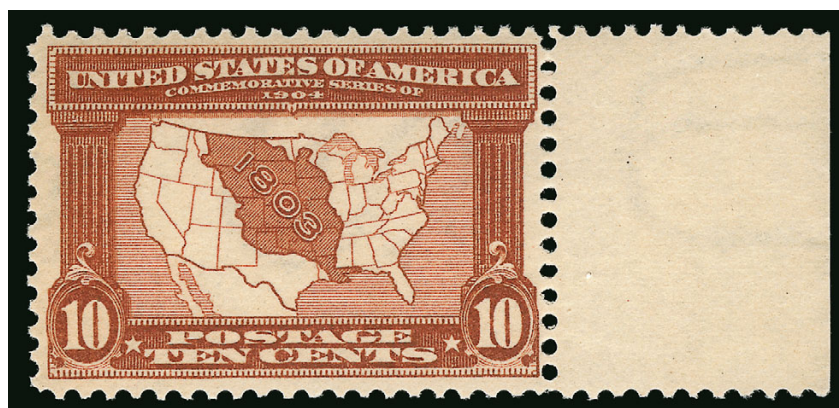
Ex Colonel Green and Cunliffe. With 1996 P.F. and 2009 P.S.E. certificates..... 11,500.00

LOUISIANA PURCHASE ISSUE



78

- 78 ★★田 2c Louisiana Purchase (324). Mint N.H. wide top imprint and plate no. 2093 block of six, brilliant color, choice margins and centering, Extremely Fine, a superb wide top plate block, with 2000 P.F. certificate..... 550.00



79

- 79 ★★ 10c Louisiana Purchase (327). Mint N.H., selvage at right, rich color, Very Fine and choice, with photocopy of a 1991 P.F. certificate for a block of four 310.00

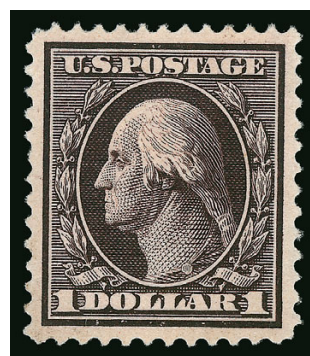
1908 ISSUE



80



81



82

- 80 ★★ **6c Red Orange (336).** Mint N.H. except for small spot of disturbance, strong color, unusually choice centering with well-proportioned margins, Extremely Fine Gem, with 1999 P.F. and 2007 P.S.E. certificates (XF-Superb 95; SMQ \$1,000.00)..... 150.00
- 81 **15c Pale Ultramarine (340).** Brilliant color, Jumbo margins and mathematically perfect centering, light town cancel, Extremely Fine Gem, an absolutely superb example of this issue, ex Kirke, with 2010 P.S.A.G certificate (Gem 100 Jumbo), with 2011 P.F. and 2010 P.S.E. certificates (Superb 98 Jumbo; SMQ \$385.00 as 98, unpriced in higher grade), as a 98J this is the highest grade awarded in the P.S.E. Population Report with no others equal, whether P.S.A.G. is correct in its call of 100J or P.S.E. is correct is academic, as this is quite likely the finest used example extant 6.50
- 82 ★★ **\$1.00 Violet Brown (342).** Mint N.H., unusually wide margins, excellent centering, rich color and a crisp impression, Extremely Fine Gem, a very scarce stamp in this choice quality, with 1997 P.F. certificate 1,150.00

PANAMA-PACIFIC ISSUE



83



84

- 83 ★★ **5c Panama-Pacific (399).** Mint N.H., wide margins, deep color, Extremely Fine.. 160.00
- 84 ★★ **10c Orange Yellow, Panama-Pacific (400).** Mint N.H., choice centering, wide margins, bright color, Extremely Fine Gem, with 1995 P.F. certificate 270.00

- 85 ★★ **10c Orange, Panama-Pacific (400A).** Mint N.H., intensely rich color, detailed impression, outstanding centering with wide and balanced margins
EXTREMELY FINE GEM. A SUPERB MINT NEVER-HINGED EXAMPLE OF THE 10-CENT ORANGE PERF 12 PANAMA-PACIFIC ISSUE.

With 2008 P.S.E. certificate (Superb 98; SMQ \$4,250.00). Only three have graded higher.. 400.00



85



86

- 86 ★ **10c Panama-Pacific, Perf 10 (404).** Lightly hinged, perfectly centered within wide margins, brilliant color

EXTREMELY FINE GEM. A SUPERB STAMP WHICH HAS BEEN GRADED GEM 100 BY P.S.E.

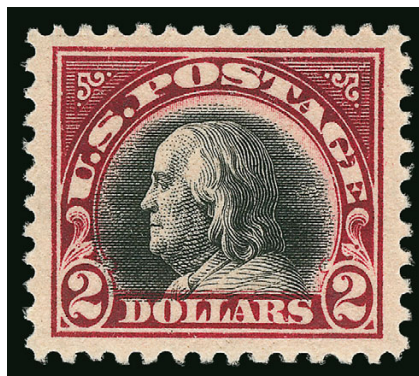
With 2002 P.F. and 2014 P.S.E. certificates (OGph, Gem 100; SMQ \$2,850.00). This is the highest grade P.S.E. has assigned to Scott. 404; two others share this grade..... 700.00

1912-23 ISSUES



87

- 87 ★★田 **\$1.00 Violet Brown (518).** Mint N.H. block of 60 with imprint and plate no. A 5782 at top and bottom, centering ranges from Fine to Extremely Fine, with several choice well-centered stamps, rich color, overall Very Fine, catalogued as two plate blocks of six and 48 singles 8,760.00



88

- 88 ★★ **\$5.00 Lake & Black (547a).** Mint N.H., intense proof-like color and impression, outstanding centering amid wide margins, Extremely Fine Gem, with 2008 P.S.E. certificate (XF-Superb 95; SMQ \$1,750.00), only two stamps grade higher 425.00



89

- 89 ★★ **2c White Plains Souvenir Sheet (630).** Mint N.H., with **freak perforations** at bottom left from foldover, well-centered, Very Fine, printing varieties of the White Plains sheet are rarely encountered 600.00

AIR POST



90

- 90 ★★ **65c-\$2.60 Graf Zeppelin (C13-C15).** Mint N.H., well-centered and fresh, Very Fine and choice set 1,900.00
- 91 **Postage Due Collection.** Parallel unused and used collection hinged on old album pages, appears to be complete both unused and used, from the First Issue up to No. J101 (no Special Printings), incl. **No. J58 with original gum**, most of the unused with original gum, mixed centering and condition, toning is a problem, high catalogue value *Not illustrated* E. 4,000-5,000

OFFICIALS



- 92 ★★田 **1c Justice (O25)**. Block of four, **Mint N.H.**, bright color, Fine-Very Fine, Scott Retail as singles 2,200.00
- 93 (★)田 **1c Justice (O25)**. Horizontal block of ten, unused (no gum), couple sensible hinge reinforcements, Fine, a scarce block which we believe to be the largest known multiple of the 1c Justice, Scott Retail as unused singles 1,000.00
- 94 ★田 **2c Justice (O26)**. Horizontal block of eight, original gum, some slight perf separation, bottom middle pair **Mint N.H.** with light fingerprint marks, one stamp with minute thin at top, still Fine-Very Fine, believed to be the largest known block of the 2c Justice, Scott Retail as two blocks of four 2,800.00
- 95 ★ **3c Treasury (O74)**. Original gum, lightly hinged, Jumbo margins, pleasing shade, light vertical gum bend at right, otherwise Extremely Fine, Jumbo examples of Official Issues are seldom encountered, with 1993 P.S.E. certificate 110.00
- 96 ★ **7c Treasury (O76)**. Original gum, wide margins, dark shade, Very Fine and choice, with 1995 P.F. certificate 250.00



- 97 ★田 **10c Treasury (O77)**. Block of four, original gum, h.r.'s, bold color, Fine..... 1,075.00
- 98 **24c Treasury (O80)**. Horizontal strip of four, lightly cancelled, Fine-Very Fine, other than a block of 14 this is the only other used multiple of the 24c Treasury, ex Stone, Scott Retail for used singles 400.00
- 99 田 **90c Treasury (O82)**. Block of six, deep rich color, neat strikes of cork cancels, fresh and Very Fine-Extremely Fine, an exceedingly scarce block, especially in such choice condition, ex Twigg-Smith..... E. 300-400
- 100 ★田 **1c War (O83)**. Block of four with selvage at left, bright color, few minor perf separations, otherwise Fine 1,050.00



- 101 ★田 **2c War (O84)**. Bottom margin imprint and plate no. 35 block of fourteen, natural s.e. and guide arrow at left, six stamps Mint N.H. (one with natural gum skip), fresh color, some perf separations reinforced incl. small piece of scotch tape in selvage
- FINE-VERY FINE. A VERY SCARCE PLATE NUMBER BLOCK OF THE 2-CENT WAR DEPARTMENT.
- Plate blocks of the 2c and 3c consist of fourteen stamps, whereas other denominations are ten or twelve. The 2c War Department was not extensively remaindered after the discontinuance of Officials; therefore, plate blocks are rare. 3,750.00



103



102EX



104



105

- 102 ★田 7c-12c, 24c-30c War (O87-O89, O91-O92). Blocks of four, original gum, h.r., 12c **Mint N.H.**, fresh colors, Fine, an attractive set of blocks(Photo Ex) 3,475.00
- 103 10c War (O88). Horizontal strip of three cancelled by bold **Fort McKinney, Wyoming Terr.** circular datestamp and duplex target cancel, trivial fault on right stamp, Fine, ex Markovits E. 200-300
- 104 ★田 15c War (O90). Block of four, original gum, top pair lightly hinged, **bottom pair Mint N.H.** and particularly well-centered, rich color, choice centering, Extremely Fine, with 2002 P.F. certificate 375.00
- 105 ★田 24c War (O91). Top margin imprint and plate no. 86 block of ten, slightly disturbed original gum, warm pastel color, Fine 1,300.00



106



107



108

- 106 ★田 **24c War (O91)**. Bottom left corner imprint and plate no. 86 block of twelve, original gum, few h.r., bright color, attractive centering, Very Fine, ex Wampler, Scott Retail for a plate block and two singles..... 1,470.00
- 107 ★田 **30c War (O92)**. Bottom imprint and plate no. 81 block of twelve, original gum, three Mint N.H., few h.r., rich color, Very Good 1,850.00
- 108 ★田 **90c War (O93)**. Block of six, original gum, lightly hinged except for two stamps which are Mint N.H., deep shade and strong impression, Fine, Scott Retail as singles. 1,900.00

- 109 ★ **1c Agriculture, Soft Paper (O94)**. Without gum as issued, incredibly bright color, trivial light thin, Fine, an attractive collectible example of this rare Official Soft Paper issue, with 2001 P.F. certificate 6,000.00



109



- 110 ★ **3c Agriculture, Soft Paper (O95).** Original gum, bright fresh color, single unpunched perf at top left, Very Fine, with 2008 P.S.E. certificate (OGh, VF 80; SMQ \$570.00) 550.00
- 111 ★ **1c Interior, Soft Paper (O96).** Original gum, lightly hinged and attractively centered, classic soft pastel shade of the Interior Department Soft Paper issue, Extremely Fine, with 1990 P.F. certificate for block from which this came and 2008 P.S.E. certificate (VF-XF 85; SMQ \$390.00) 300.00
- 112 ★ **10c Interior, Soft Paper (O100).** Original gum, lightly hinged, stunning Jumbo margins all around, fresh color, Extremely Fine, a massive stamp, with 2000 P.F. certificate 110.00
- 113 ★★田 **10c Interior, Soft Paper (O100).** Mint N.H. block of four, bright color on fresh white paper, Fine, Scott Retail as Mint N.H. singles 1,000.00
- 114 ★ **15c Interior, Soft Paper (O102).** Original gum, well-centered, incredibly wide margins, Very Fine 400.00



- 115 ★田 **15c Interior, Soft Paper (O102).** Block of four, original gum, couple hinge reinforcements, Fine.. 1,750.00
- 116 ★田 **6c Justice, Soft Paper (O107).** Block of four, original gum, h.r., two stamps with light crease and minor perf separation, Fine..... 2,250.00
- 117 (★) **30c Treasury, Soft Paper (O112).** Unused (no gum), well-centered amid incredible Jumbo margins, deep rich color on fresh paper, Extremely Fine, a stunning stamp with wonderful eye-appeal, with 1989 P.F. certificate 875.00
- 118 **30c Treasury, Soft Paper (O112).** Neat cancels, rich color, small corner crease ending in a tear at top right, appears Extremely Fine, scarce in used condition, with 2003 P.F. certificate..... 425.00
- 119 **3c War, Soft Paper (O116).** Tied on piece by "Fort Snelling, Minn., Feb 28, 1884" circular date-stamp, Very Fine strike..... E. 150-200
- 120 **Fancy Cancels on Official Stamps.** Group of eleven items, some of the better items incl. Skull and Crossbones on 3c Agriculture (O95), Kicking Mule on 6c War (O86 — a wonderful strike), Fort Leavenworth Honeycomb on 1c War (O114), violet Anchor on 12c Agriculture (O6), among others, in addition there is a 6c Dull Pink (159) with green Star in double-circle of dots, some stamps with trivial faults, Fine-Very Fine strikes.....(Photo Ex) E. 400-500

EAGLE CARRIER ISSUE



- 121 P **1c Blue, Eagle Carrier, Plate Proof on India (LO2P3).** Block of 72, sheet margins at top and left, other margins ample to large except slightly in at bottom center, creases, small tears and a few thins typical of India paper
FINE-VERY FINE APPEARANCE. A RARE LARGE MULTIPLE OF THE ONE-CENT EAGLE CARRIER PLATE PROOF ON INDIA.

This is the largest multiple we have encountered. Ex Joyce and Golden. Scott Retail as blocks of four and singles 3,760.00

SANITARY FAIRS



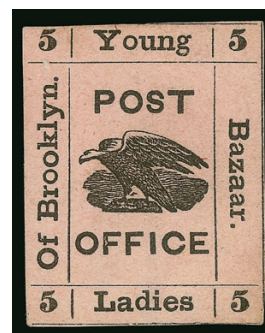
122



123

- 122 ★ **Army Relief Bazaar, Albany N.Y., 10c Black (WV2).** Original gum, h.r., showing large portions of the outer frameline on each side, Very Fine, a particularly scarce stamp with original gum, about 30 examples are believed to exist, ex Lyons, with 2000 P.S.E. certificate..... 700.00
- 123 ★ **Brooklyn and Long Island Sanitary Fair, (15c) Green (WV4).** Original gum, h.r., full margins to just touching at left, rich color, small thins, appears Fine, with 2004 A.P.S. certificate..... 1,000.00

- 124 (★) **Brooklyn Sanitary Fair, 5c Black on Rosy Buff (WV6).** Unused (no gum), margins slightly cutting into framelines, thin, appears Fine 800.00



124



125

- 125 (★) **Brooklyn Sanitary Fair, 10c Green (WV7).** Unused (no gum), margins cut evenly along framelines, faint paper wrinkle at top right, otherwise Fine and scarce, only 25-30 examples are thought to exist, ex Lyons, with 2000 P.S.E. certificate 1,100.00

- 126 ★ **Metropolitan Fair, New York N.Y., 10c Red (WV9).** Part original gum, h.r., large margins to clear of frameline at top, creased and thinned, appears Fine, rare with fewer than 20 examples believed to exist, with 2005 A.P.S. certificate 1,900.00



126



127EX

- 127 P **Great Central Fair, Philadelphia, Schernikow Reprint Die Proofs on Glazed Card (WV12R).** Six of the 20 values, all different with a range of colors and card tinting, bright and fresh colors, Very Fine(Photo Ex) E. 300-400

- 128 **Sanitary Fairs Balance.** Small balance of six items, incl. WV1 unused (ex Lyons), WV3 original gum, WV8 pair unused, WV8 unused, WV11 and WV13 used each with 2005 A.P.S. certificates, some minor faults, Fine-Very Fine appearance, a nice group, Scott Retail more than \$2,400.00(Photo Ex) E. 750-1,000



128EX

TELEGRAPH STAMPS

The Siegel firm will offer the Wilson Born Collection of U.S. Telegraph Stamps on Tuesday, June 23—please see separate catalogue (Sale 1102)



129



130EX

- 129 田 **American Telegraph Typewriter Co., 1910, Orange Essay (unlisted in Scott).** Pane of four, left vertical pair has full gum (bottom stamp Mint N.H.), right pair part disturbed gum from being stuck down, toned spots affect top pair, thin in top right stamp, otherwise Fine-Very Fine, this unissued complimentary frank stamp is considered to be an essay, it is scarce as a single and very rare as a full pane..... E. 400-500
- 130 ★田 **Baltimore & Ohio Telegraph Co., 1886, 1c-10c Kendall, Hoen Imprints (3T8, 3T9, 3T14-3T16, 3T15a).** Panes of six, all with original gum, one or two in each h.r., others Mint N.H., pane of 3T15a imperf without gum, staple holes in selvage as usual (enlarged on a couple), 3T15 with stain spots in two stamps, otherwise Fine-Very Fine, 3T15a ex Lilly and Scott Retail \$157.50 as three pairs, others approximately \$450.00 Scott Retail(Photo Ex) E. 300-400



131

- 131 ★田 **California State Telegraph Co., 1870, Blue & Black (5T1).** Complete sheet of 12 comprising two panes of six with horizontal interpane gutter, original gum (brownish as always), handstamped serial no. 104 on all stamps (doubled at top center), slightly toned, creased along gutter between panes and crimped with small puncture at center (as usual since these were folded and stapled into booklets), top right corner slightly clipped

FINE APPEARANCE. ONE OF TWO COMPLETE SHEETS OF THE CALIFORNIA STATE TELGRAPH COMPANY 1870 BLUE & BLACK "BUSINESS" FRANK WE HAVE BEEN ABLE TO LOCATE.

The California Telegraph Company was the product of the 1861 consolidation of four companies responsible for the first transcontinental telegraph line. The 1870 Blue & Black type-set "Business" frank was the first issue. The black type was printed from a setting of six subjects repeated twice in a sheet of 12, with a blue background of ornaments also arranged in six subjects repeated twice in a sheet. Position 1 (top left in each pane of six) has an inverted ornament in the blue background at lower left (bottom row, second ornament), which breaks the pattern of diamond shapes. Position 3 has a repeating flaw in the "F" of "Free".

Booklets of 100 stamps were made by inserting 16 panes of 6 (96 stamps total) plus four additional stamps. The Kramer book speculates that stamps with red crayon serial numbers were added to the the booklets to make up the 100 count. The sheet offered here is one of two full sheets of 12 we have encountered. It is the largest possible multiple. 10,000.00

COLUSA, LAKE & MENDOCINO TELEGRAPH COMPANY

5-CENT BLACK—THE ONLY RECORDED COMPLETE PANE



132

- 132 (★)田 **Colusa, Lake & Mendocino Telegraph Co., 1876, 5c Black (7T1).** Complete pane of ten, "P.L.W." handstamp in blue, unused (no gum), Pos. 1 with sealed tear at top, faint stain affects three stamps in the top row

VERY FINE APPEARANCE. THIS IS THE UNIQUE FULL PANE OF THE COLUSA, LAKE & MENDOCINO FIVE-CENT TELEGRAPH STAMP. ONE OF THE GREATEST RARITIES OF TELEGRAPH STAMP COLLECTING.

The Colusa, Lake & Mendocino was incorporated in 1875, with 260 miles of line extended through the counties of Colusa, Lake, Mendocino and Napa. Three stamps were issued for prepayment — 5c, 10c and 25c. Only one example each of the 10c and 25c is known, and the 5c is very scarce. This unique pane of ten is an important Telegraph stamp rarity.

Ex Lilly (where acquired by the collector) 13,500.00



133



134

- 133 ★田 **North American Telegraph Co., 1899, Violet (10T1).** Pane of four, original gum, lightly hinged in the top tab, serial no. 1086, fresh, left pair Fine, right pair Extremely Fine, a scarce pane 1,350.00
- 134 ★田 **North American Telegraph Co., 1904, Violet (10T5).** Pane of four, original gum, h.r. in the top tab, serial no. 1066, bright color, Very Fine and scarce..... 900.00



135

- 135 ★ **Postal Telegraph Co., 1916, Violet (15T47A).** Original gum, h.r., well-centered and fresh
VERY FINE AND CHOICE. THE POSTAL TELEGRAPH CO. 1916 VIOLET IS MISSING FROM NEARLY ALL COLLECTIONS.
This is the first example we have offered since keeping computerized records. Signed Stern ...
..... 2,750.00



136

- 136 ★田 **Postal Telegraph Co., 1912, Yellow, El Paso Southwestern Railroad, Official (15TO28).** Pane of four, disturbed original gum, light gum crease affects top pair, a Very Fine example of this rare pane 2,750.00

REVENUE STAMPS

FIRST ISSUE



137

- 137 田 **1c Express, Imperforate (R1a).** Block of 20, large margins, manuscript cancels, some creases and repaired where split, otherwise Very Fine, this is **the largest recorded multiple off document**, Scott Retail as blocks of four and pairs \$3,200.00..... E. 400-500



138

- 138 田 **1c Express, Part Perforated (R1b).** Block of 48, neat manuscript cancels, horizontal creases causing some splitting in spots, some perf separations, Fine appearance, this is by far **the largest recorded multiple**, the next largest is a block of 24, ex Cunliffe, Scott Retail as twelve blocks of four \$9,000.00 E. 2,000-3,000



140

- 139 田 **2c Bank Check, Blue, Imperforate (R5a).** Block of 21 which has been rejoined in two places, large margins, each stamp with neat manuscript cancel, faint crease, Very Fine appearance, this is **the second largest recorded multiple**, the largest is a reconstructed block of 54, ex Joyce and Halstead, Scott Retail as blocks of four and pairs \$647.50....
..... E. 150-200

- 140 ★田 **2c Proprietary, Ultramarine, Perforated (R13e).** Block of ten, **original gum**, h.r., intense color, few flaws including separated and rejoined horizontally, Fine-Very Fine appearance, this is **the largest recorded multiple**, the next largest is a block of six, ex Dean and Joyce, Scott Retail as used pairs and singles \$3,250.00 .. E. 1,000-1,500

139



141

- 141 ★田 **3c Telegraph, Part Perforated (R19b).** Block of 50 with **top right corner selvage and original gum**, few h.r. where minor perf separations sensibly reinforced, few creases, one or two small flaws at center, still Very Fine and impressive multiple, this is **the largest recorded multiple** and one other is known (from the bottom right corner position), ex Cunliffe, Scott Retail as used blocks and pairs \$3,912.50 E. 1,500-2,000



142

- 142 田 **4c Playing Cards, Perforated (R21c).** Block of nine, bright color, neat strikes of "H.C. Peck, Booksellers, New Haven Conn." handstamp cancels, bottom right stamp separated and reattached

FINE-VERY FINE. THIS IS THE LARGEST RECORDED MULTIPLE OF THE PERFORATED 4-CENT PLAYING CARDS ISSUE.

The next largest multiple is a block of six. Ex Cunliffe. Scott Retail as block of four, two pairs and a single \$8,300.00 E. 3,000-4,000



143

- 143 (★)田 **4c Proprietary, Part Perforated (R22b).** Block of four, **unused (no gum)**, brilliant color, perf separations sensibly reinforced

VERY FINE. THIS IS THE ONLY RECORDED BLOCK OF THE PERFORATED 4-CENT PROPRIETARY ISSUE AND THE FINEST OF THE FEW KNOWN MULTIPLES.

The largest unit of the 4c Proprietary Perforated stamp is a repaired strip of six. This block of four is the only recorded block. In addition, there is a rejoined strip of four and a strip of three.

Ex Joyce 3,250.00



144

- 144 ★ **4c Proprietary, Part Perforated (R22b).** Vertical pair, **original gum**, h.r., intense shade and impression, light horizontal crease at bottom of top stamp, bottom stamp small piece out at upper left, otherwise Very Fine, multiples of this issue are scarce, Scott Retail as used..... 1,500.00

- 145 田 **5c Certificate, Imperforate (R24a).** Block of 12, large margins, Feb. 14, 1863 manuscript cancels, few light creases, Very Fine appearance, this is **the largest recorded multiple**, one other block of twelve is known but it is reconstructed, ex Cunliffe, Scott Retail as blocks of four and pairs \$570.00..... E. 300-400



145



146

- 146 田 **5c Express, Imperforate (R25a).** Block of 72, huge margins to just in at top including significant portion of adjoining stamps at right, each with neat manuscript cancel, radiant color, few faults including creases with minor splitting, few edge tears, still Very Fine, this is **the largest recorded multiple**, the next largest is a reconstructed block of 60, Scott Retail as blocks and pairs \$3,840.00 E. 1,500-2,000



147

147

20c Foreign Exchange, Imperforate (R41a). Reconstructed block of eleven made from strips of five and six, Feb. 28, 1863 manuscript cancels, few light creases, small tear at top left, minor soiling at center, Very Fine appearance, this is **the largest recorded multiple**, the largest intact multiple is the block of nine, ex Cunliffe, Scott Retail as pairs and single \$2,095.00 E. 400-500



148

148 田 **20c Inland Exchange, Imperforate (R42a).** Block of 25, large margins, bright color, Feb. 13, 1863 manuscript cancels, few faults including split along horizontal crease where reattached, otherwise Very Fine, this is **the largest recorded multiple**, the next largest is a block of twelve, ex Cunliffe, Scott Retail as blocks of four and pairs \$1,417.00 E. 400-500

- 149 **25c Warehouse Receipt, Part Perforated (R50b).** Vertical pair, detailed impression, neat "New York Life Ins. Co. Feb. 25, 1863" circular dates-tamp cancels, fresh and Fine, a pair is **the largest recorded multiple** and only eight are known 2,750.00



149



150

- 150 **30c Foreign Exchange, Imperforate (R51a).** Horizontal strip of 12, large margins to just in at a few spots at top, rich color, Aug. 3, 1864 manuscript cancels, few light natural pre-printing paperfolds, pos. 10 small tear at top, Fine-Very Fine appearance, this is **the largest recorded multiple**, ex Weill sale and Cunliffe, Scott Retail as pairs \$3,900.00 E. 750-1,000



151

- 151 **30c Inland Exchange, Imperforate (R52a).** Reconstructed block of four comprising two rejoined horizontal pairs, huge margins to clear, neat manuscript cancel, Fine-Very Fine, one larger block is known (of six) and five blocks of four are recorded, Scott Retail as two pairs 1,000.00



152

- 152 田 **50c Conveyance, Imperforate (R54a).** Block of 32, large margins to clear, bright color, neat Dec. 1, 1862 manuscript cancels, few creases to be expected, bottom right horizontal pair separated and hinged in place, few sealed tears, overall Very Fine, this is **the largest recorded multiple**, the next largest is a block of 20, ex Cunliffe, Scott Retail as blocks of four \$4,800.00 E. 750-1,000



153

- 153 **50c Surety Bond, Imperforate (R63a).** Horizontal strip of four, huge margins all around, detailed impression, 1863 manuscript cancel, scissors-cut at bottom of second stamp, Extremely Fine, this is **the largest recorded multiple** of this issue, three strips of four are known and no blocks are recorded, ex Cunliffe, Scott Retail as two pairs \$2,400.00 E. 1,000-1,500



- 154 田 **\$1.50 Inland Exchange, Imperforate (R78a).** Block of 58 comprising two blocks of 24 and a block of ten, large margins to just in at bottom of bottom block of 24, faint manuscript cancels indicate all were likely used on the same document or on the same day, few flaws including creases and small tears, otherwise Fine-Very Fine, this is **the largest recorded multiple**, the next largest is a block of ten, the block of ten and one block of 24 ex Cunliffe, the other block of 24 ex Weill sale, reunited by Mr. Curtis, Scott Retail as blocks of four and pairs \$6,250.00 .. E. 2,000-3,000

154

- 155 田 **\$1.90 Foreign Exchange, Perforated (R80c).** Block of 18, deep rich color, Aug. 16, 1872 manuscript cancels, split vertically at center and rejoined, few other perf separations sensibly reinforced, few light creases, vertical crease at right causing splitting in top stamp, otherwise Very Fine, this is **the largest recorded multiple**, the next largest is a strip of five and then block of four, ex Weill sale, Scott Retail as two blocks of four, four pairs and two singles \$4,800.00 E. 1,500-2,000



155



156



157

- 156 **\$2.00 Conveyance, Imperforate (R81a).** Huge margins including **sheet margin at bottom** and part of adjoining stamp at top, bright color, neat 1863 manuscript cancel, Extremely Fine Gem, ex Kingsley, with 2003 P.F. certificate 225.00
- 157 **\$2.00 Conveyance, Part Perforated (R81b).** Radiant color, perfect strike of "Illinois Central R.R., Land Dept., Jun. 18, 1863" circular datestamp, small tear at top left, Fine appearance, a difficult issue to obtain, the last we offered was in a 1996 sale, with 1996 P.F. certificate 2,750.00



158



159

- 158 田 **\$3.00 Manifest, Imperforate (R86a).** Block of four, large margins to full, deep rich color, Aug. 12, 1864 manuscript cancels, small scissors-cut at right between stamps, Very Fine and choice, this is **the largest recorded multiple** and only one other is known, ex Joyce and Cunliffe..... 3,500.00
- 159 田 **\$3.50 Inland Exchange, Perforated (R87c).** Block of four, bright and fresh color, 1867 manuscript cancels, couple small hinge reinforcements, Fine, a scarce block of which there is only one larger multiple known, ex Joyce 450.00



160

160 田 **\$5.00 Probate of Will, Imperforate (R92a).** Block of 21, large margins, bright color, neat April 1, 1864 manuscript cancels, few minor faults and expertly restored along split folds VERY FINE APPEARANCE. THIS IS THE LARGEST RECORDED MULTIPLE OF THE \$5.00 PROBATE OF WILL FIRST ISSUE IMPERFORATE.

The next largest multiple is a block of 18, followed by a block of six.

From the Weill sale and ex Cunliffe. Scott Retail as blocks of four and pairs \$18,400.00
 E. 3,000-4,000



161



162

- 161 田 **\$10.00 Charter Party, Perforated (R93c).** Block of four with **left selvage**, detailed impression, 1867 manuscript cancels, bottom stamps light horizontal crease, few sensibly reinforced perf separations, Very Fine appearance, a rare block of four..... 450.00
- 162 **\$10.00 Mortgage, Imperforate (R95a).** Horizontal pair, large margins, unobtrusive Aug. 7, 1863 manuscript cancels, left stamp small sealed tear at left, Very Fine appearance, there are only three multiples larger than a pair..... 2,500.00

- 163 **\$15.00 Mortgage, Imperforate (R97a).** Block of six reconstructed from two vertical pairs and two singles, used on the same document with red March 28, 1863 manuscript cancels, few flaws including repaired tear at bottom right and translucency at bottom left

FINE-VERY FINE APPEARANCE. THIS IS THE LARGEST RECORDED MULTIPLE OF THE \$15.00 MORTGAGE IMPERFORATE FIRST REVENUE.

Ex Cunliffe. Scott Retail as two pairs and two singles \$23,500.00.....
..... E. 2,000-3,000



163



164



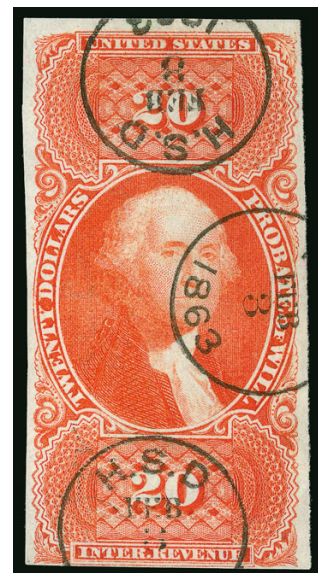
165

- 164 ★ **\$15.00 Mortgage, Perforated (R97c).** Part disturbed original gum, deep rich color, detailed impression, light horizontal crease at top, Very Fine appearance, Scott Retail as used..... 300.00
- 165 ★ **\$20.00 Conveyance, Imperforate (R98a).** Horizontal pair, large part original gum, h.r., large margins to full including top sheet margin, vivid color, Extremely Fine, a rare original-gum pair in superb condition, with 2010 P.F. certificate, Scott Retail as used 450.00



166

- 166 田 **\$20.00 Conveyance, Imperforate (R98a).** Block of four, large balanced margins, remarkably vivid color, each with neat Jan. 28, 1864 manuscript cancel, Extremely Fine, striking scarce First Issue multiple in exceptionally desirable condition, ex Tolman 1,200.00



167

- 167 **\$20.00 Probate of Will, Imperforate (R99a).** Large margins to just clear at bottom, vibrant color, well-struck Feb. 3, 1863 datestamp cancels, faint corner crease at top right visible only in fluid, Very Fine appearance, ex Cunliffe..... 3,250.00



168

- 168 田 **\$20.00 Probate of Will, Imperforate (R99a).** Block of 27, large margins to barely touched in one or two spots, neat Oct. 27, 1863 manuscript cancels, radiant color, few wrinkles and creases to be expected on such a large multiple, one stamp with 18mm tear

VERY FINE APPEARANCE. THIS HALF-SHEET OF 27 OF THE \$20.00 PROBATE OF WILL IS BY FAR THE LARGEST RECORDED MULTIPLE. THIS IS ONE OF THE MOST IMPORTANT PIECES IN ALL OF REVENUE COLLECTING.

This spectacular block is accompanied by a 6-page manuscript indenture (deed) for the Almaden Quicksilver Mine, selling the mine to the Quicksilver Mining Co. for \$1,750,000. The multiple was originally affixed to the document.

Ex Joyce and on his exhibit page. Scott Retail as four blocks of four, five pairs and a single \$98,250.00 E. 20,000-30,000



169



170

- 169 **\$20.00 Probate of Will, Perforated (R99c).** Intense shade, neat 1864 manuscript cancel, horizontal creases, Very Fine appearance 3,000.00
- 170 **\$20.00 Probate of Will, Perforated (R99c).** Horizontal pair, vibrant color, each with neat 1864 handstamp cancels, both stamps with pre-printing paperfolds, few sensibly reinforced perfs at top, Very Fine appearance, a rare pair (8 pairs and two blocks recorded in Curtis census), ex Cunliffe 6,500.00



171

- 171 田 **\$50.00 U.S.I.R., Imperforate (R101a).** Block of 12, large margins to barely in, bold "Lehigh O & N Co., Phila. Apr. 1, 1864" circular datestamps (strongly impressed on some causing paper indentations), light creases, pos. 2 small repair, otherwise Very Fine, this is **the largest recorded multiple** and two others are known, Scott Retail as three blocks of four \$7,200.00 E. 1,500-2,000



172

- 172 ☒ **\$200.00 U.S.I.R., Imperforate (R102a).** Large even margins, rich colors, neat manuscript cancel, tiny corner crease at top right, vertical crease at right, Very Fine and choice appearance, with 1980 P.F. certificate 3,000.00



173

- 173 **\$200.00 U.S.I.R., Perforated (R102c).** Vertical pair, rich colors, light 1866 manuscript cancels, still retaining much of its original gum (disturbed), some slight toning, otherwise Fine and attractive multiple of this colorful issue 2,500.00



174

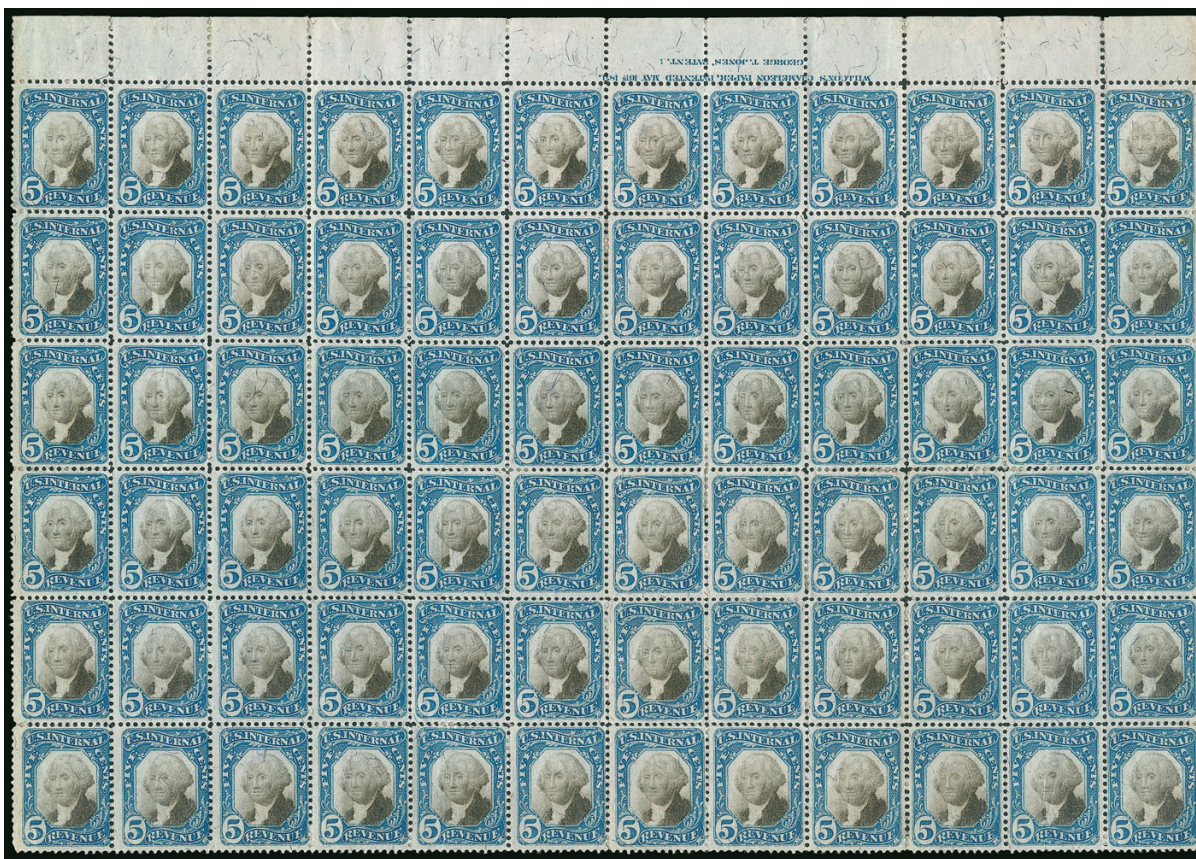
- 174 田 **\$200.00 U.S.I.R., Perforated (R102c).** Sheet of eight, bright colors and detailed impressions, neat June 1, 1868 manuscript cancels, some perf separations reinforced between top two rows, light creases but in far better condition than one would expect for such a large multiple

VERY FINE APPEARANCE. A RARE COMPLETE SHEET OF EIGHT OF THE \$200.00 FIRST REVENUE ISSUE.

Seven sheets are recorded in the Curtis census, including one repaired and one heavily reinforced. A Power Search review of our past sales failed to locate another sheet offered in our digital records.

Ex Mayer. Scott Retail as two blocks of four \$14,000.00 E. 5,000-7,500

SECOND ISSUE



175

- 175 ★田 5c Blue & Black, Second Issue (R107). Block of 72 with **top imprint selvage**, **original gum**, few h.r., some perf separations sensibly reinforced, few wrinkles and creases to be expected, Very Fine appearance, this is **the largest recorded multiple**, especially desirable with the imprint, ex Joyce, Scott Retail as used blocks of four \$405.00... E. 300-400



176

- 176 田 6c Blue & Black, Second Issue (R108). Block of four with **double vertical perforations**, bright colors, blue July 16, 1872 double-circle datestamp cancels, light creases at left, Very Fine appearance, a block of four is **the largest recorded multiple**, three are known including one with normal perfs and one with double horizontal perfs, ex Joyce and Halstead 1,150.00

- 177 ★田 15c Blue & Black, Second Issue (R110). Block of 16 with top part inverted imprint selvage, original gum, h.r., rich colors, light natural gum bends, top left stamp and selvage with small thin specks, Fine-Very Fine appearance, this is **the largest recorded multiple**, ex Cunliffe, Scott Retail as used blocks of four \$1,500.00 E. 400-500



177



178

- 178 30c Blue & Black, Second Issue (R113). Horizontal strip of seven, detailed impressions, light cut cancels, fresh and Fine-Very Fine, this is **the largest recorded multiple**, the next largest is a block of four, ex Joyce and Halstead, Scott Retail as pairs with normal cancels \$1,150.00..... E. 200-300



179

- 179 **\$1.60 Blue & Black, Second Issue (R121).** Horizontal strip of three, detailed impressions, neat blue Aug. 9, 1872 double-oval datestamps, fresh and Fine, this is **the largest recorded multiple** and the only one larger than a pair, ex Eagle, Joyce and Halstead..... 2,550.00



180

- 180 **\$20.00 Blue & Black, Second Issue (R129).** Horizontal strip of four, neat 1872 manuscript cancels, rich colors and detailed impressions, fresh and Fine-Very Fine, this is **the largest recorded multiple**, one block of four is also known (on document, ex Tolman, realized \$8,000 hammer in Siegel Sale 915), Scott Retail as pairs \$5,000.00..... E. 1,500-2,000



181

- 181 **\$200.00 Red, Blue & Black, Second Issue, "Small Persian Rug" (R132).** Bright fresh colors, choice centering and margins, manuscript "MSS 10 May 1872" cancel
 EXTREMELY FINE. A RARE SOUND AND CENTERED EXAMPLE OF THE \$200.00 "SMALL PERSIAN RUG" — ONE OF THE MOST COLORFUL STAMPS IN UNITED STATES PHILATELY.
 With 1984 and 2012 P.F. certificates 9,000.00



182

182 **\$500.00 Red Orange, Green & Black, Second Issue, "Large Persian Rug" (R133).** Rich colors and detailed impressions, choice centering with wide and balanced margins, unobtrusive handstamped cut cancels barely break paper

VERY FINE AND CHOICE. A BEAUTIFUL AND RARE SOUND EXAMPLE OF THE CELEBRATED \$500.00 "LARGE PERSIAN RUG," WHICH IS ONE OF THE MOST COLORFUL AND ELABORATELY ENGRAVED STAMPS IN ALL OF PHILATELY.

Only 210 were issued, and it is safe to say that most examples are faulty to some degree. A document exists from July 24, 1874, detailing the purchaser of each. The Kingsley census records 76 copies, and a handful are known outside of the census.

Kingsley Census No. 28-7. Ex "Connoisseur". With 1974 P.F. certificate. Scott Retail is for a "very fine appearing example with a light circular cut cancel or with minor flaws".
 17,500.00

SECOND ISSUE INVERTS

- 183 **2c Blue & Black, Second Issue, Center Inverted (R104a).** Rich colors, light strike of cut cancel handstamp, small closed tear at upper left, Fine appearance, with 1982 P.F. certificate..... 5,000.00



183



184

- 184 (★) **10c Blue & Black, Second Issue, Center Inverted (R109a).** Unused (traces of original gum), rich colors, light gum staining on a few perfs, still Fine, rare in unused condition, with 2001 P.F. certificate, Scott Retail as used 2,000.00

- 185 **25c Blue & Black, Second Issue, Center Inverted (R112a).** Deep rich colors and proof-like impressions, neat "A.P. Dec. 19, 1871" manuscript cancel, thin spot at bottom right
VERY FINE APPEARING EXAMPLE OF THE 25-CENT SECOND ISSUE REVENUE INVERT. ONLY 16 ARE RECORDED. ONE OF THE GREAT RARITIES OF THE ISSUE.

In his privately published census, Larry Lyons records sixteen examples of the 25c Second Issue Invert, three of which are unused. Virtually all have faults including two repaired, one defective and one reperfed. The example offered here, with rich colors, choice centering and only a minor thin spot, is highly desirable.

With 1986 P.F. certificate..... 12,500.00



185



186

THIRD ISSUE

- 186 ★ **2c Vermilion & Black, Third Issue (R135a).** Large part original gum, brilliant color and perfectly aligned vignette, added perf at top left, otherwise Very Fine, reported to be the only known unused example of this stamp, with 2001 P.F. certificate, Scott Retail as used..... 800.00



187

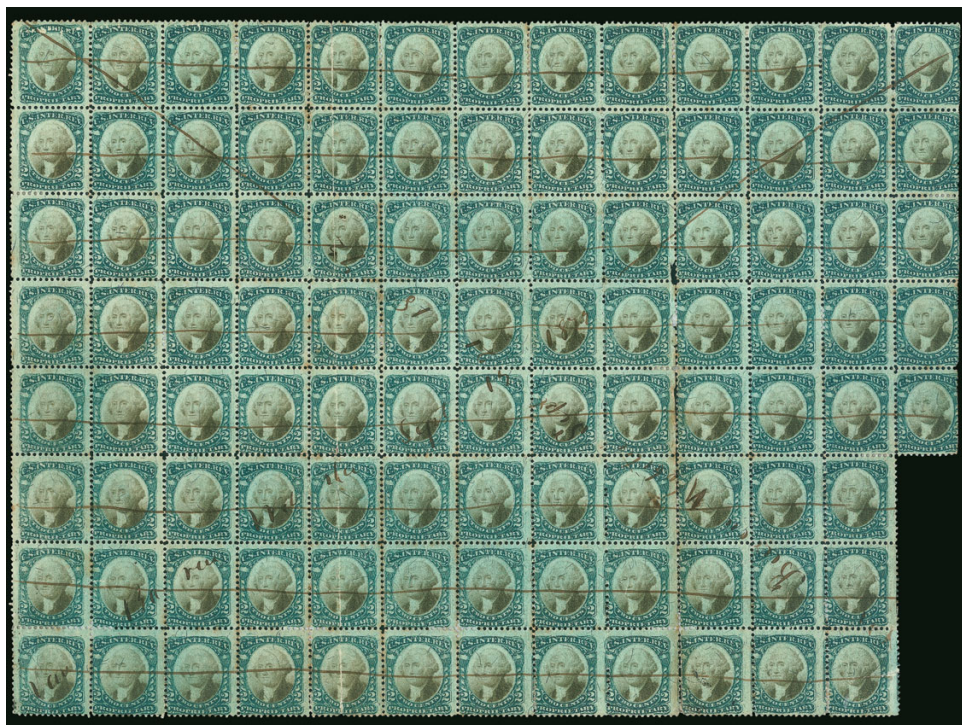
187 **\$2.50 Claret & Black, Third Issue, Center Inverted (R146a).** With wide top sheet margin (imperforate horizontally at top), rich colors, almost uncut herringbone cancel, some soiling, tiny thin speck at top mostly in margin

FINE APPEARANCE. A RARE EXAMPLE OF THE \$2.50 THIRD ISSUE REVENUE INVERT. ONLY FOURTEEN ARE RECORDED.

Larry Lyons in his privately published census records only fourteen copies of this invert rarity. Two are repaired and one has perfs trimmed away on two sides.

Ex Cunliffe. With 1967 P.F. certificate. 22,500.00

PROPRIETARY



188

- 188 田 **2c Green & Black on Violet Paper, Proprietary (RB2a).** Block of 101, deep rich colors, Sept. 21, 1872 manuscript cancels, few faults to be expected including some perf separations reinforced, creases and toned spots, Fine-Very Fine appearance, this is **the largest recorded multiple**, the next largest is a block of 24, Scott Retail as blocks and pairs \$1,066.75..... E. 300-400



189

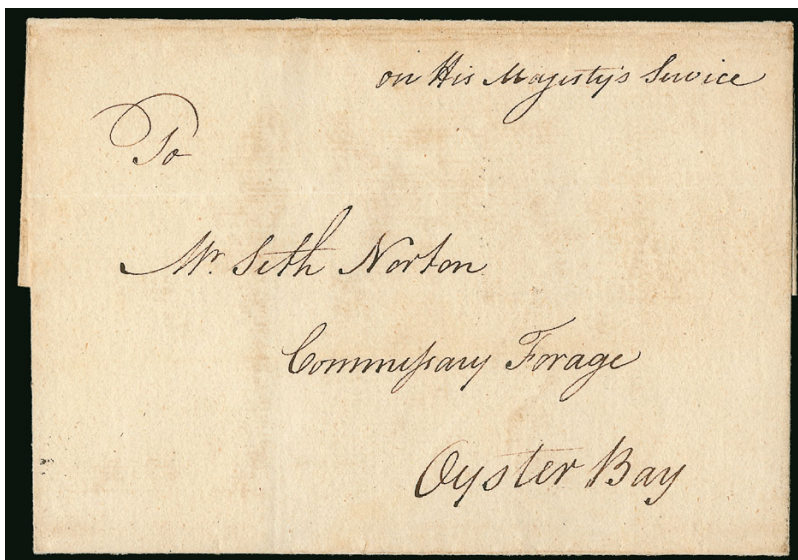
- 189 ★田 **6c Green & Black on Violet Paper, Proprietary (RB6a).** Block of 36 with **bottom imprint and plate no. selvage with both plate nos.**, original gum, few h.r. including some perf separations sensibly reinforced, few adherences, few small faults as often seen on large multiples, Fine-Very Fine appearance, this is **the largest recorded multiple** for this issue, the next largest is a block of 24, ex Joyce and Wampler, Scott Retail \$3,050.00 as used blocks of four and pairs with no premium for the plate block..... E. 1,000-1,500

UNITED STATES POSTAL HISTORY
REVOLUTIONARY WAR



190

- 190 ☒ **(Battle of Long Island, Sep. 1776) "New York Sept 1st 1776"**. Dateline on 3pp folded letter from Moses Gaylord, a member of Major Roger Newberry's 1st Regiment, Connecticut Militia, to his wife in Hartford Conn., carried privately "*pr. favour Mr. Steel*", Moses writes instructions on back for addressing letters: "*Subscribe my Letters to Mr. Moses Gaylord in Lieut. Charles Simons Company, Major Newberrys Regt. of Militia in Little Dock Street, N.York*", a fascinating letter written shortly after the British forced the Continental Army to flee Long Island, some excerpts "*Our Army is retreated from Long Island & Governors Island... as to particulars respecting the fite on Long Island...great numbers are slain & taken prisoners...*" (names of killed or wounded with injuries described), stains and wear, still Fine and a very rare soldier's letter from New York City in the aftermath of the Battle of Long Island — Washington was enraged by the conduct of the Connecticut militia during the British assault..... E. 750-1,000



191

- 191 ☒ **(Revolutionary War — British Occupation of New York) "Brooklyn 22d April 1779"**. Dateline on folded letter from Richard William Parkin to Seth Norton, Commissary Forage, Oyster Bay (Long Island), endorsed "*On His Majesty's Service*", letter orders Norton to take charge of the provisions at Oyster Bay and continue to issue forage and provisions, Very Fine, extremely scarce British military letter carried by express from occupied Brooklyn to Oyster Bay on Long Island, discussed in an article by Calvet M. Hahn in *CCP* March-April 1991 E. 1,000-1,500

WESTERN MAILS

*Names of those going for Winter up to and to June 1854
H. A. Nelson Captain*

Names		\$	C.	Names		\$	C.
1.	Anderson Andrew	6	70	21.	Rehström Peter	8	70
2.	Anderson Jens	27	28	22.	Arvén Emil	4	62
3.	Anderson Peter	11	10	23.	Rehström Peter	3	70
4.	Anderson Jens	10	94	24.	Arvén Emil	47	42
5.	Rehström Peter	3	58	25.	Arvén Emil	70	"
6.	Anderson Christian	"	72	26.	Arvén Emil	14	60
7.	Anderson Christian	15	2	27.	Arvén Emil	26	60
8.	Christensen Peter	69	30	28.	Arvén Emil	12	59
9.	Christensen Jens	16	20	29.	Arvén Emil	13	20
10.	Christensen Peter	23	56	30.	Arvén Emil	8	76
11.	Christensen Peter	6	30	31.	Arvén Emil	18	57
12.	Christensen Michel	12	30	32.	Arvén Emil	6	30
13.	Christensen Christian	2	30	33.	Arvén Emil	18	30
14.	Christensen Peter	8	"	34.	Arvén Emil	37	10
15.	Christensen Peter	13	95	35.	Arvén Emil	10	30
16.	Christensen Michel	10	22	36.	Arvén Emil	8	54
17.	Christensen Peter	26	26	37.	Arvén Emil	9	70
18.	Christensen Peter	10	22	38.	Arvén Emil	13	38
19.	Christensen Jens	39	80	39.	Arvén Emil	3	20
20.	Christensen Johanna	8	70	40.	Arvén Emil	10	20
21.	Christensen Anders	10	50	41.	Arvén Emil	32	32
22.	Christensen Johannes	16	37	42.	Arvén Emil	7	70
23.	Christensen Peter	24	29	43.	Arvén Emil	10	66
24.	Christensen Peter	6	96	44.	Arvén Emil	9	72
25.	Christensen Peter	5	42	45.	Arvén Emil	1	70
26.	Christensen Peter	32	53	46.	Arvén Emil	33	10

192EX

192

Original Orders to Outfit a Mormon Wagon Train, 1854-55. Group of 56 original documents, comprising 74 written pages involving the **Perpetual Emigration Fund Co.**, a corporation established by The Church of Jesus Christ of Latter-day Saints in 1849, to provide economic assistance to more than 30,000 individuals who sought to emigrate to Utah and surrounding regions, some expected age-related wear and faults

AN OUTSTANDING AND HISTORICAL GROUP OF DOCUMENTS REALTED TO THE PERPETUAL EMIGRATION FUND, DURING THE EARLY HISTORY OF THE MORMON CHURCH.

This group was offered in a Siegel postal history sale in 1975. During a time when auction descriptions for even the most important items rarely took up more than three lines, we wrote a half-page description for this lot. It is quoted verbatim here.:

"This Fund financed an extensive Mormon Church directed program based on missionaries promising wondrous opportunities in Utah Territory; to poor European converts who would sign a bond promising repayment of emigration costs to the Church. Included are 43 different orders varying from \$80 to \$848 for delivery of oxen, wagons, and provisions for a wagon train leaving Atchison, Kansas Terr., on an 1855 Overland Trail trip to Salt Lake City. Several are A.L.S. by Erastus Snow, and eight are signed by him, including one shipping a yoke of cattle "if they live to go through" to his wife. Another has Snow's appendage relating to shipping "Doc Bernhisel's store and fixtures" on the wagon train. One is a scarce substitution order, another a rare receipt for team and provisions to be used as an order. Three orders provide for passage of lone women on the wagon train. Also four extensive lists of settlers indebted to the P. E. Fund showing wagon entry dates, those who married (several polygamous), etc. One long list of personal debts transferred to Brigham Young, Trustee, as a donation in 1860. Three estate records showing passage and freight emigration balances settled by transfer of decedent's clothing and sundries to the Fund. List of individuals payments not credited to Fund, 1862. List of 109 persons made by captain of wagon train in 1854, of indebtedness to Fund for flour supplied on the western trek. An 11 page trial balance sheet for P. E. Fund in 1857. And an 1871 letter soliciting funds for passage of federal law lowering emigration tax."

Extensive holdings of early original Mormon documents are seldom available, and this is a most unusual opportunity to acquire a well rounded group involving a fascinating and little known area of wagon train emigration to our western frontier...(Photo Ex) E. 10,000-15,000

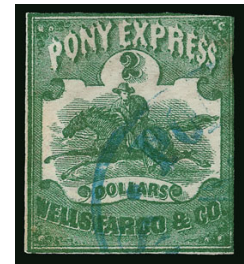
PONY EXPRESS



193EX



194



195

- 193 **Wells, Fargo & Co. Pony Express, \$2.00, \$1.00 Horse & Rider Issues (143L1, 143L3).** Each cancelled by blue San Francisco Running Pony oval datestamp, margins to cut in, faults incl. crease on first and small thins on second, scarce genuinely used ..(Photo Ex) 1,700.00
- 194 **Wells, Fargo & Co. Pony Express, \$2.00, \$1.00 Horse & Rider Issues (143L1, 143L3).** Each cancelled by blue San Francisco Running Pony oval datestamp, \$1.00 faintly, clear margins to slightly in, both with thin spots, Fine appearing and attractive genuinely used examples..... 1,700.00
- 195 **Wells, Fargo & Co. Pony Express, \$2.00 Green (143L4).** Clear margins to touched at right, strongly struck blue San Francisco Running Pony oval datestamp slightly indents stamp, manuscript offset on back from cover incl "Pony", Fine and rare, we have seen fewer than 10 genuinely used stamps plus the two recorded covers 3,500.00



196

- 196 ☒ **Wells, Fargo & Co. Virginia City Pony Express, 10c Brown (143L7).** Large margins to just touching frameline at bottom left, stamp with trivial corner crease, tied by blue "Wells, Fargo & Co., Virginia City N.T., Sep. 23" oval datestamp with an additional strike at right on 3c Pink on Buff entire (U35) with printed frank to San Francisco, 1862 docking at left, reduced at left, cover with opening tear at top right

VERY FINE. A BEAUTIFUL AND SCARCE COVER WITH THE VIRGINIA CITY PONY EXPRESS 10-CENT BROWN.

The Virginia City Pony Express was established by Wells, Fargo and Co. in August 1862. This particular cover was taken by a rider to Placerville where it was taken by rail to Sacramento. From there, it was taken by steam boat to San Francisco. This reduced transit times from 44 hours to the advertised 24 hours.

Ex Moody and Risvold. E. 5,000-7,500

- 197 **Wells, Fargo & Co. Virginia City Pony Express, 25c Red (143L9).** Large margins all around incl. frameline of adjoining stamp at right, bright color, blue Wells Fargo cancels, Extremely Fine, with 1991 A.P.S. certificate..... 80.00



197



198

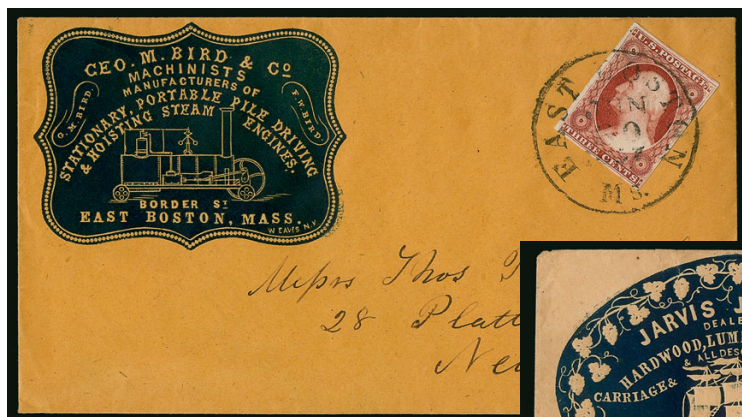
- 198 ☒ **Wells, Fargo & Co. Virginia City Pony Express, 25c Red (143L9).** Large margins to just touching frameline at left and bottom, tied by blue "Wells, Fargo & Co., Virginia City N.T., May 25" oval datestamp with an additional strike at right on 3c Pink on Buff entire (U35) with Wells, Fargo & Co. printed frank to San Francisco, cover with some opening faults incl. small piece reattached at right

FINE. A BEAUTIFUL 25-CENT RED VIRGINIA CITY PONY EXPRESS COVER.

Most of the 25-cent Red covers originate from the famous Crittenden correspondence. This cover, on the other hand, originates from the Shattuck correspondence.

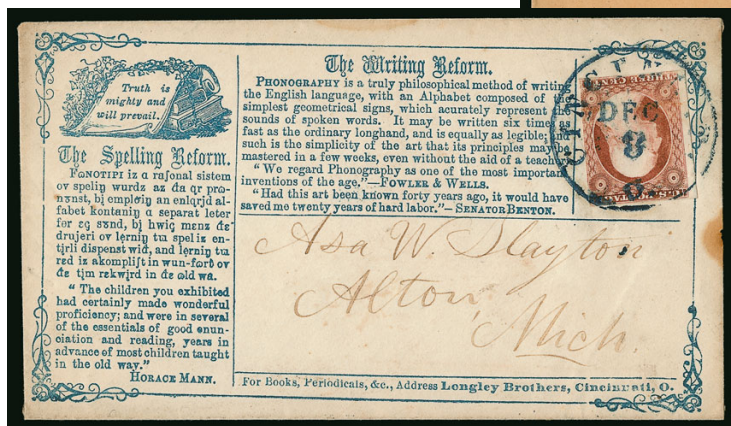
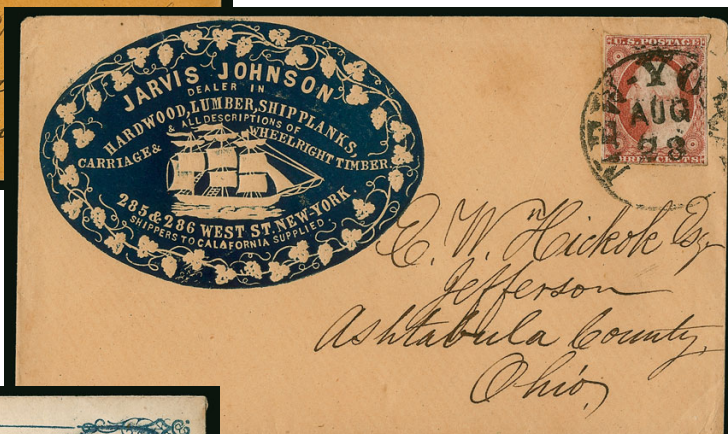
With 2008 P.F. certificate. E. 3,000-4,000

1851-68 ISSUES



199

200



201

202EX



- 199 ☒ **3c Dull Red, Ty. I (11).** Position 97R6 with **plate flaw on neck**, large margins, rich color on bright paper, tied by well-struck "East Boston Ms. Jun. 20, 1857" circular datestamp on orange cover with blue **Geo. M. Bird, Machinist**, illustrated cameo corner card to New York, Extremely Fine, a superb cover in every respect..... E. 500-750
- 200 ☒ **3c Dull Red, Ty. II (11A).** Rich color, full margins to touched at bottom, tied by bold "New York Aug. 28" circular datestamp on buff cover to Jefferson O. with **Jarvis Johnson, Dealer in Hardwood, Lumber and Ship Planks**, blue cameo corner card with illustration of three-masted ship, misspelling in inscription reads "Shippers to Calafornia supplied", fresh and Very Fine, a spectacular Eaves cameo design E. 400-500
- 201 ☒ **3c Dull Red, Ty. II (11A).** Large margins to touched, tied by blue "Cincinnati O. Dec. 8" circular datestamp on blue "**The Spelling Reform**" and "**The Writing Reform**" advertising cover to Alton Mich., famed educator Horace Mann and Senator Thomas Hart Benton quotes, backflap with additional advertisement for "Type of the Times" newspaper, small toned spot at right, Very Fine., a beautiful design E. 200-300
- 202 ☒ **3c Experimental Orange Brown, Ty. II (11A var).** Two covers, first Position 37L1L, exceptional depth of color, large margins to just cutting at bottom, tied by bold blue strike of "Richfield O. Jan. 2" (1852) circular datestamp on buff cover to Oberlin O., original contents datelined "*Dec. 28th 1851*", some cover wrinkling, still Very Fine, signed by Dr. Amonette and accompanied by a 1990 note from him where he states, "as fine an example of the Plate 1L Experimental O.B. as I have seen", second cover from same correspondence with same markings except postmarked "Jan. 22", equally beautiful color, margins clear to touching with a slightly irregular corner at upper left, signed on back by Dr. Amonette with same quote as first cover, ex Wagshal.....(Photo Ex) 1,800.00



203

- 203 ☒ **5c Red Brown (12).** Large margins to clear incl. part of adjoining stamp at top, used with **10c Green, Ty. II (14)**, tied by "New Orleans La. Aug. 18" circular datestamp on orange cover to Catahoula Parish La., 1856 docketing at left, cover refolded, Very Fine appearance, scarce domestic use of the 5c stamp, especially on a 5-times domestic rate cover, signed Ashbrook, ex Krug and Mayer..... E. 750-1,000



204

- 204 ☒ **10c Green, Ty. IV-III (16-15).** Positions 65-66L1, left stamp **recut at top**, large margins to slightly in, scissors-cut at top between stamps, deep rich color, used with **1c Blue, Ty. IV (9)**, margins a bit close to slightly in, tied by criss-crossing strikes of **blue grid**, matching "Nashua N.H. May 16, 1857" circular datestamp on yellow cover to **Paris, France**, pair also tied by faint red "New-York Am. Pkt. May 30" circular datestamp, "Boston Br. Pkt. 20 May" backstamp, Calais transit (Jun. 12) and Paris receiving backstamp, the cover has been very lightly cleaned, Very Fine and colorful use to pay the 21c American packet rate, evidently carried on the Havre Line's *Arago*, which departed New York on May 30, 1857, and arrived at Southampton on June 11 (reaching Calais on the following day), ex White, with 2007 P.F. certificate..... E. 1,000-1,500



- 205 ☒ **3c Rose, Ty. I, II (25, 25A).** Two covers with local post stamps, No. 25 tied by grid with "Philadelphia Pa. Jan. 1" circular datestamp, used with **Blood's City Despatch, 1c Bronze on Lilac (15L4)**, uncanceled, on cover to Westtown School Pa., original enclosure, slightly reduced at right, still Very Fine, No. 25A tied by "Philadelphia Pa. Aug. 31" circular datestamp, used with **Blood's City Despatch, 1c Bronze on Lilac (15L4)**, acid tied on cover to Bridgeton N.J., missing backflap, still Very Fine, a rare combination of which no other examples were found in Power Search, Scott Retail for No. 25A on cover alone \$1,000.00 E. 500-750
- 206 ☒ **3c Dull Red, Ty. III (26).** Tied by well-struck "Saint Louis Mo. Jan. 7, 1858" circular datestamp on orange cover to Newark Valley N.Y. with **Wilcus, Noble & Co., House, Sign, Steamboat and Ornamental Painters blue illustrated cameo corner card**, shows a house and steamboat, Eaves imprint, light vertical file fold and minor edgewear, Very Fine and beautiful design, ex Corwith Wagner and Risvold E. 500-750
- 207 ☒ **5c Brick Red (27).** Used with **10c Green, Ty. V (35)**, tied by well-struck "San Francisco Cal. Sep. 11, 1860" circular datestamp on buff cover to **Paris, France**, red "New York Paid Oct. 16" and French transit, receiving backstamp, Extremely Fine, a choice and eye-appealing cover, ex Haas E. 750-1,000



- 208 ☒ **5c Brown, Ty. II (30A).** Two, artfully arranged with singles **1c Blue, Ty. V (24)** and **10c Green, Ty. V (35)**, tied by large Boston "Paid" grid cancels on blue 1860 folded letter to **Calcutta, India**, "Boston Am. Pkt. Oct. 12" and red London transit backstamps, incredibly bold strike of "Calcutta Steam Letter 1860 Nov. 29" backstamp, bright and fresh
EXTREMELY FINE. A COLORFUL AND BEAUTIFUL THREE-COLOR FRANKING FROM THE GODDARD CORRESPONDENCE, PAYING THE 21-CENT RATE VIA OPEN MAIL AMERICAN PACKET TO BRITAIN AND THENCE BY BRITISH MAILES.
With 1980 and 2012 P.F. certificates..... E. 3,000-4,000



209



210



211

- 209 ☒ **5c Orange Brown, Ty. II (30).** Used with 1c Blue, Ty. V (24), tied by grid cancels, indistinct strike of West Point N.Y. circular datestamp on cover to Lansing Mich., with original contents datelined July 23, 1861, and discussing the opening of an Army surgical college (scotch tape repairs along splits at folds), cover with some toned spots and edge wear, 5c stamp with small tear, otherwise Fine, ex Kapiloff, with 1980 and 2007 P.F. certificates..... 2,400-00
- 210 ☒ **1c Blue (63).** Used with three 3c Rose (65), tied by "15" in circle handstamps, red "Boston Mass. Sep. 27" double-circle datestamp on **Furniture and Upholstery Dealer's blue cameo corner card cover to Prince Edward Island, Sep. 27, 1862** receiving backstamp, 1c with crease and one 3c with tear, Very Fine use to a scarce destination, ex Emerson and Blake..... E. 400-500
- 211 ☒ **3c Rose (65).** Tied by grid cancel, "Utica N.Y. Jul. 28, 1862" double-circle datestamp on **Stephen Sherwood Cigars, Tobacco, Snuff blue cameo corner card cover to Schuyler Lake N.Y., illustration of Indian maiden, Eaves imprint, slightly reduced at left, Very Fine** E. 300-400



212

- 212 ☒ **3c Rose (65).** Cancelled by target, "Newark O." double-circle datestamp on **Blandy's Newark Machine Works overall illustrated advertising cover showing a steam engine, addressed to Morrisdale Pa., Very Fine and attractive**..... E. 400-500



213

- 213 ☒ **30c Orange (71).** Vibrant color, used with **15c Black (77)**, tied by grid cancels, "Salem Mass. Jul. 19" circular datestamp on blue cover with printed address to **Zanzibar, East Coast of Africa**, printed route directive "Via Marseilles" and "Care Adumally Sultannally, Esq., Merchant, Aden, Arabia", red "Boston Am. Pkt. 24 Paid 20 Jul." (1866) credit datestamp, red London Paid transit, red crayon "1" British Colonial credit, Aden receiving backstamp, slightly reduced at left, part of address strengthened, Very Fine appearance, an attractive cover from the Goodhue correspondence, the 15c and 30c stamps pay the 45c British Mail via Marseilles rate for a letter up to a half-ounce, the addressee, Albert P. Goodhue, was a ship chandler and businessman from Salem, Massachusetts, he is probably related to Benjamin Goodhue, who served in the state senate from 1784-89 and then as Massachusetts representative in the first U.S. congress, Benjamin was a commercial merchant instrumental in establishing many of this country's revenue laws, and his son, Jonathan, was a prominent commercial merchant, ex Gibson, No. 7 in census published in *Chronicle* 234 E. 1,000-1,500



214

- 214 ☒ **30c Orange (71).** Used with **3c Rose (65)**, tied by target and small "Philadelphia Pa. Mar. 20" circular datestamp on 1866 **overall illustrated cover to Geneva, Switzerland**, advertisement for Kline's Emporium and mentioning postage stamps, red "N.York Br. Pkt. Paid Mar. ?" circular datestamp, red "12" credit handstamp, blue boxed "Aachen Franco" handstamp, transit and receiving backstamps

VERY FINE. A BEAUTIFUL AND RARE USE OF AN EARLY STAMP DEALER'S ADVERTISING COVER TO SWITZERLAND.

According to research by the late Steven R. Belasco, Kline's Emporium was run by John W. Klein (spelling differs from how it is printed on the cover). Under the name A.C. Klein, he published the first stamp catalogue in the United States in 1862.

Ex "Sevenoaks" B and Belasco E. 2,000-3,000



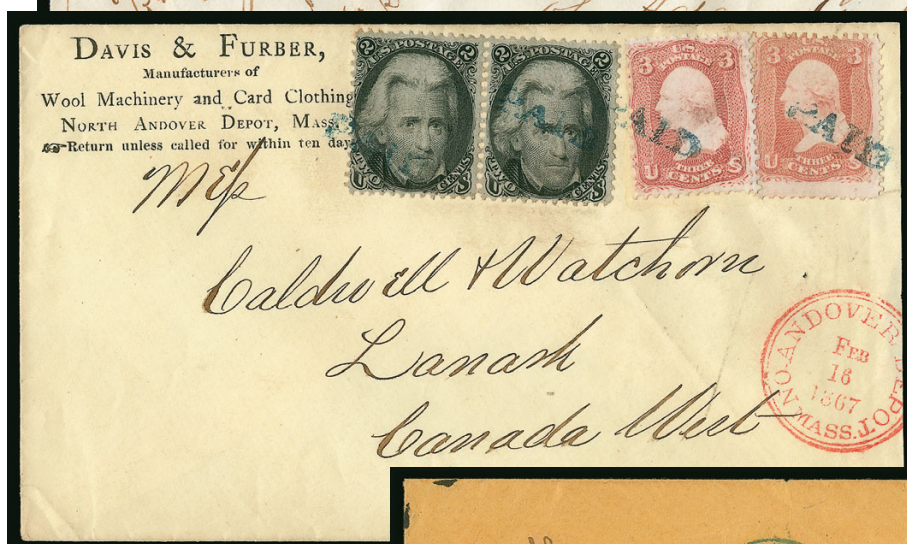
215

- 215 ☒ **2c Black (73).** Well-centered, tied by New York **4-point Star in Circle** fancy cancel on “The Great American Tea Company” overall illustrated advertising cover showing Chinese tortures to Hurly N.Y., Reagles & Co. imprint, Very Fine, a striking advertising cover, with 2002 P.F. certificate..... E. 500-750



216

- 216 ☒ **2c Black (73).** Tied by **4-point Star in Circle** fancy cancel, “New York City Aug. 16” circular date stamp on **hand-crafted Union Patriotic** cover with glued-on eagle, American flags and small cut-out busts, addressed locally, Very Fine, extremely unusual, with 2007 A.P.S. certificate E. 1,000-1,500



217

218



219

- 217 ☒ **2c Black (73).** Used with **3c Rose (65)** and **10c Green (68)**, two singles of each, tied by crossroads cancels, "New Orleans Jan. 5" circular datestamp on 1868 legal-size cover to Natchez Miss., right 10c stamp with defective corner, couple other minor stamp flaws, Fine and appearing and colorful franking for 10-times the 3c rate, ex Russo, with 1979 P.F. certificate E. 300-400
- 218 ☒ **2c Black (73).** Horizontal pair used with two singles of **3c Rose (65)**, tied by blue "Paid" straightline cancel, red "No Andover Depot, Mass. Feb. 16, 1867" double-line circular datestamp on Wool Machinery and Card Clothing corner card cover to **Lanark, Canada West**, Feb. 21 receiving backstamp, Very Fine..... E. 300-400
- 219 ☒ **2c Black, Vertical Half Used as 1c (73d).** Right half with an additional full stamp at left, tied by indistinct **blue** cancel, matching "Sugar Run Pa. Feb. 12" double-circle datestamp on cover to Laporte Pa., 1866 docketing at left, original contents accompany, full stamp with crease and cover with small nick at bottom right, Fine and scarce, signed by Bartels in 1937 and with 1980 P.F. certificate 2,000.00



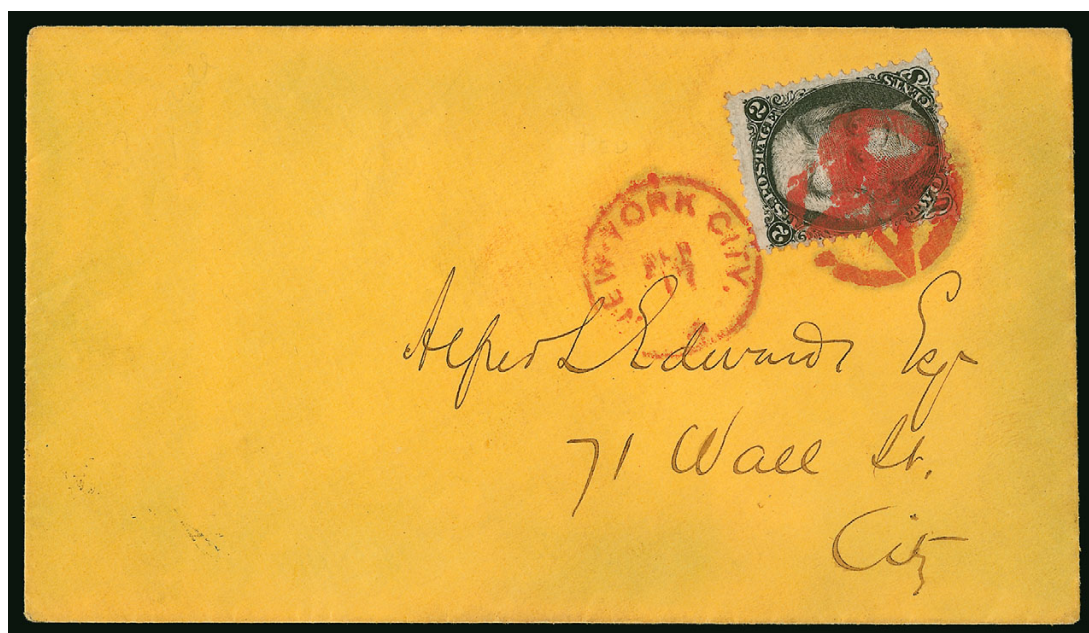
220

- 220 ☒ **24c Lilac (78).** Horizontal strip of three, deep shade, tied by target cancels and "San Jose Cal. Dec. 31, '64" double-circle datestamp on cover **to Bombay, India**, sender's directive "Via Marseilles" and apparently franked to pay the double (72c) rate for Bremen-Hamburg mail via Marseilles, red crayon "Paid 72" crossed out with magenta pen and matching "24" credit, red "N. York Am. Pkt. Paid Jan. 20" circular datestamp, red London transit, "1" British colonial credit, red Bombay receiving backstamp (Mar. 14)

VERY FINE AND RARE. AN OUTSTANDING USE OF A STRIP OF THREE OF THE 1861 24-CENT LILAC ON A COVER FROM CALIFORNIA TO BOMBAY VIA NEW YORK AND LONDON.

The 24c credit and New York datestamp indicate that despite the sender's payment and directive, the cover was sent by American packet via London.

Ex "Patrick Henry" collection. With 2012 P.F. certificate..... E. 4,000-5,000



221

- 221 ☒ **2c Black, Z. Grill (85B).** Tied by bold red 4-point Star in Circle cancel and matching "New York City Feb. 17" circular datestamp on local drop rate cover, a magnificent strike and Very Fine, truly spectacular, with 2002 P.F. certificate E. 1,000-1,500



222

- 222 ☒ **12c Black, Z. Grill (85E).** Clearly-defined grill, tied by bold Rosette cancel, red "N. York Pkt. Paid Feb. 15" circular datestamp on red and blue **Waving Flag Patriotic** cover to **Bray, Ireland**, clear strike of 1868 receiving backstamp

VERY FINE. A RARE USE OF THE 1868 12-CENT Z GRILL ON A PATRIOTIC COVER TO IRELAND. THIS IS THE SECOND-EARLIEST RECORDED USE OF THIS STAMP.

Grilled issues on patriotic covers are extremely rare, since the war was over for three years before regular grilled stamp production.

With 1996 P.F. and 2002 A.P.S. certificates..... E. 3,000-4,000

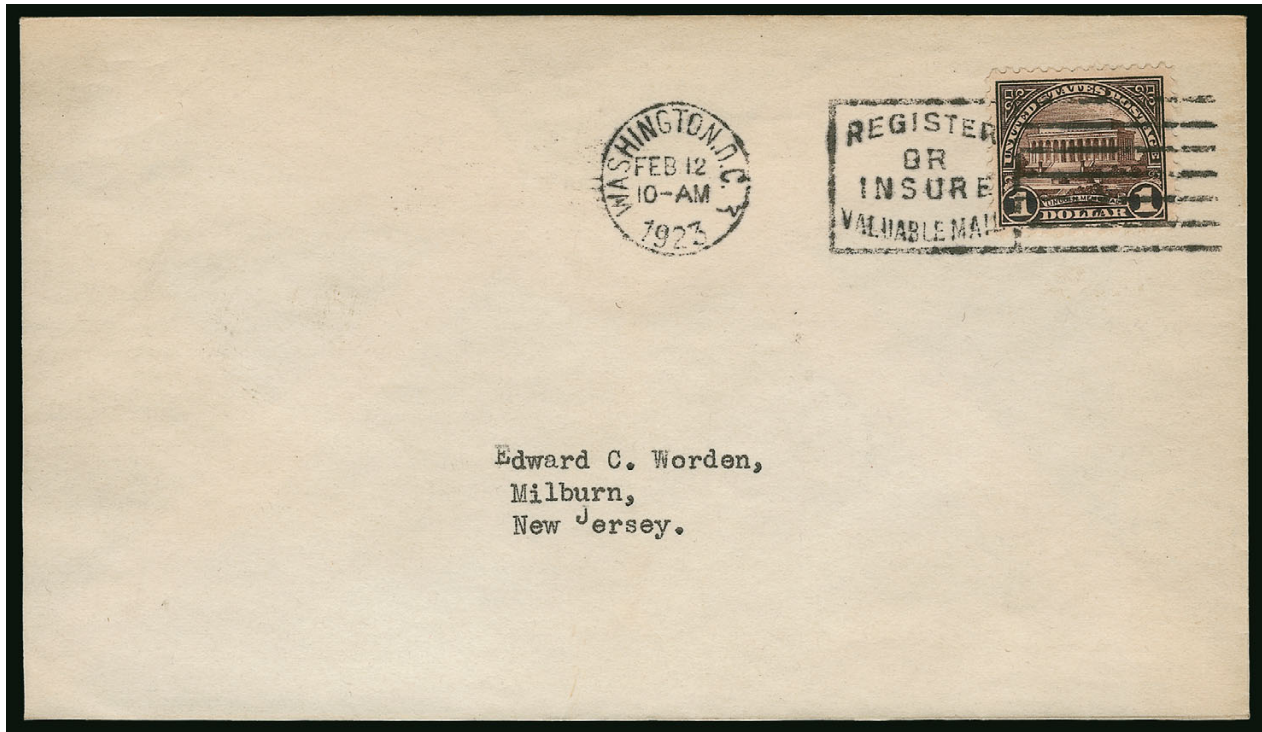
20TH CENTURY



223 front and back

- 223 ☒ **2c Pan-American (295).** Tied by "Buffalo N.Y. May 1 1901" **First Day** machine cancel on Engraver's corner card cover to Boston Mass., **back of cover with five different Exposition labels**, receiving backstamp, some edge tears, stamp with minor defects, cover with some toning at edges, otherwise Very Fine, attractive and scarce First Day cover.....

..... 2,750.00



224

224 ☒ **\$1.00 Violet Black (571).** Rich color, tied by bold “**Washington D.C. Feb. 12 10-AM 1923**” slogan machine cancel on **First Day** cover to Edward C. Worden in Millburn N.J., barely reduced at right which is utterly inconsequential

FRESH AND VERY FINE. A PRISTINE FIRST DAY COVER OF THE \$1.00 1923 ISSUE USED FROM WASHINGTON D.C.

The dollar-value 1922 Issues are exceedingly rare on First Day covers..... 7,000.00

CIVIL WAR POSTAL HISTORY
LINCOLN COVERS

225



226



227

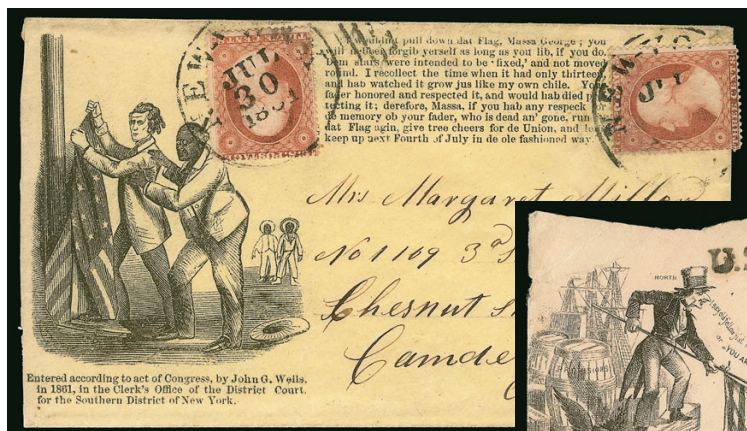
- 225 ☒ **3c Rose (65).** Tied by target cancel, "Alexandria Va. Jul. 2" circular datestamp on **vivid orange** cover to Island Falls Me. with **beardless Lincoln three-quarter portrait facing left**, R. B. Nichol imprint beneath stamp advertising song and ballad sheets, Milgram AL-42, fresh and Very Fine, reported to be unique on the orange envelope, ex Walcott and Jarrett, with 1981 P.F. certificate..... E. 500-750
- 226 ☒ **10c Yellow Green (68).** Bright shade, tied by target, light strike of "Philadelphia Pa. Dec. ?, 1861" circular datestamp on cover to **Nova Scotia with red and blue President Lincoln and His Cabinet Patriotic design**, transit and receiving backstamps, slightly reduced at left, cover somewhat defective but still an extremely rare use of the 10c 1861 Issue on a patriotic to Nova Scotia..... E. 750-1,000
- 227 ☒ **3c Rose (65).** S.e. at left, cancelled by target, "Alexandria Va. Jul. 8" circular datestamp on **blue envelope** to Quincy Mich. with **Lincoln portrait in oval frame with uncleared surround mourning design**, Milgram AL-361, stamp with small tear at top, otherwise Very Fine, scarce and desirable especially on the blue cover, later versions of this design have the surrounding black area cleared, ex Walcott and Jarrett..... E. 1,000-1,500

UNION PATRIOTICS



228

- 228 ☒ **3c Dull Red, Ty. III (26).** Bright color, tied by "New-York May 16" duplex datestamp and grid cancel on "**J. D. His Marque**" **Pirate Flag Union Patriotic** cover to Kingston Mass., Extremely Fine, an outstanding design in choice condition, ex Chase, with 1999 P.F. certificate E. 1,000-1,500



229

- 229 ☒ **3c Dull Red, Ty. III (26).** Two singles, each tied by "New York Jul. 30, 1861" circular datestamp on **Cartoon Patriotic** cover showing **Jefferson Davis Pulling Down Flag with slave** warning him not to, addressed to Camden N.J., right stamp significantly repaired with another example and just slightly reduced at left, otherwise a Fine cover, incredibly rare and fascinating design E. 500-750

- 230 ☒ **N. York Steamship.** Dateless circle and "25" rate handstamps on cover with **Berlin & Jones** cartoon depicting "**North**" Uncle Sam saving the "**South**" who has fallen into "**secession**" alligator waters, addressed to **Stirling, Canada**, "**U. STATES**" straightline handstamp, manuscript "**Pd**" indicating 10c steamship rate and 15c postage prepaid, May 16 and 17 (1862) backstamps, with original letter datelined "**Steam Ship Champion, April 30th 1862**" from a man on his way to San Francisco and Victoria B.C. via Panama, mentions that mail cannot be sent from Panama so he is giving letter to ship purser, cover roughly opened at top, but all of the essentials are intact, paper could easily be restored if so desired, otherwise Very Fine with clear markings, a fantastic use of this rare cartoon design E. 500-750



230



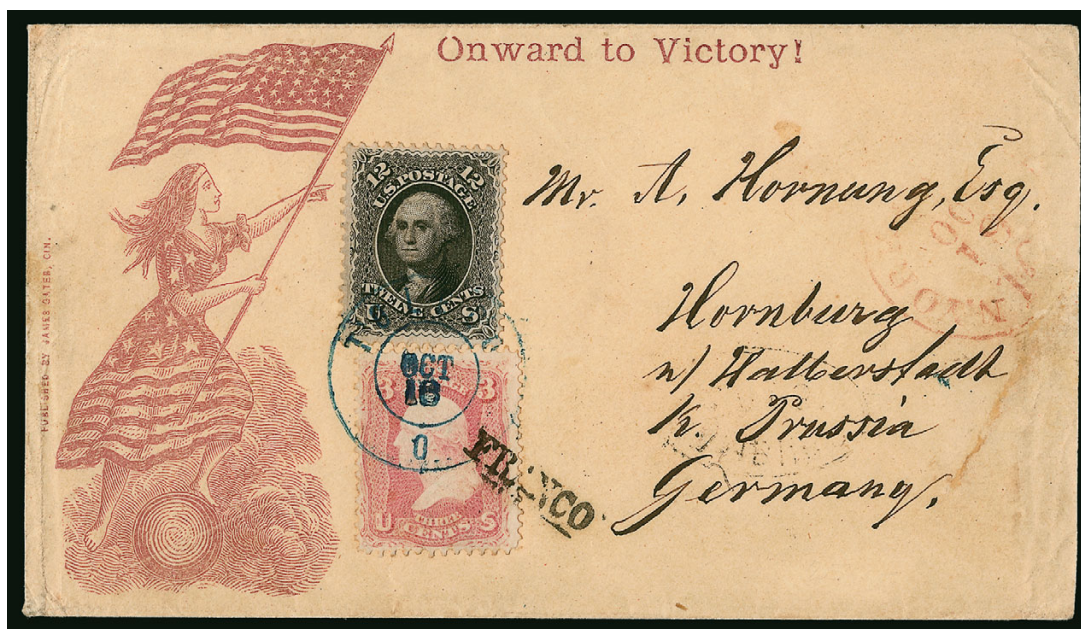
231

- 231 ✉ 3c Rose (65). Tied by "Warsaw O. Aug. 9" circular datestamp on red **James Gates "The House that Uncle Sam built" Patriotic** cover to Manchester Ia., cover with some faults along edges, barely reduced at right, Fine, one of the rarest and most unusual Civil War cartoon designs E. 500-750



232

- 232 ✉ 3c Rose (65). Tied by partly clear strike of Washington D.C. double-circle datestamp on red and blue **N.H. Fifth Regiment Patriotic** cover to Shrewsbury Mass., spectacular design depicting eagle and lady liberty draped in the American flag, with names of engagements listed, McFarland & Jenks imprint, Very Fine, a very rare regimental design and particularly desirable listing the battles in which the "Fighting Fifth" participated E. 500-750

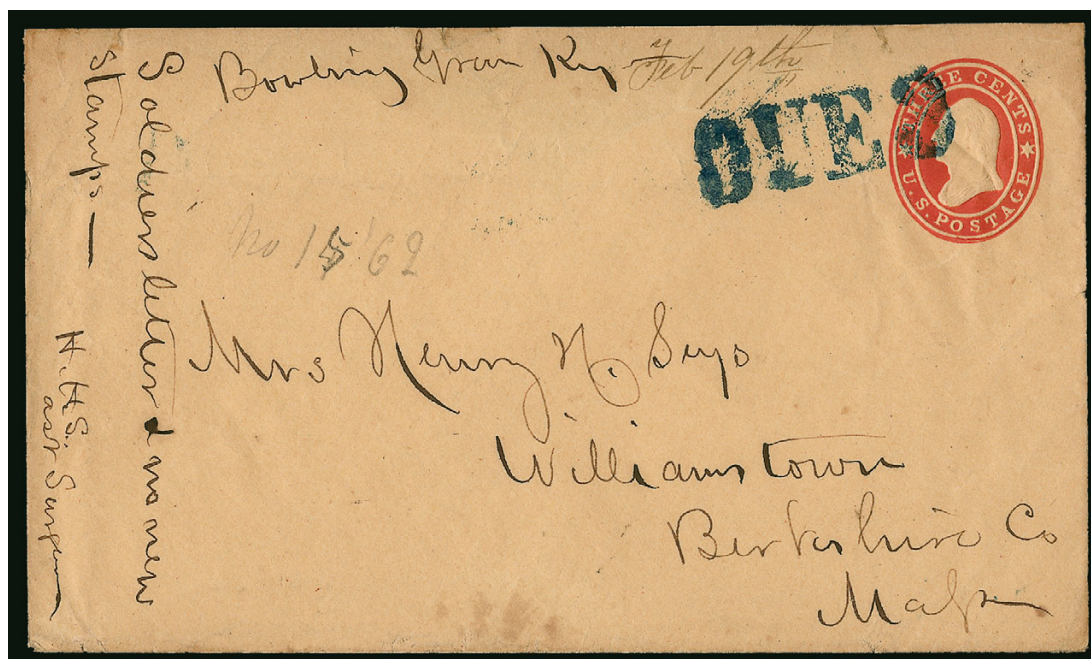


233

- 233 ☒ **3c Pink (64).** Bright shade, used with **12c Black (69)**, tied by neat strike of "Toledo O. Oct. 18" (1861) double-circle datestamp on red "Onward to Victory" Patriotic cover to **Prussia, Germany**, with Gates of Cincinnati imprint, 3c also tied by "Franco" handstamp, red New York credit datestamp at right, barely reduced at right and with sealed tear, some other slight edgewear

VERY FINE. A RARE USE OF THE 3-CENT PINK ON CIVIL WAR PATRIOTIC COVER TO GERMANY VIA BREMEN-HAMBURG MAIL.

Ex Gibson and Vogel. With 2010 P.F. certificate E. 2,000-3,000



234

- 234 ☒ **"Bowling Green Ky. Feb. 19th" (1862) — Earliest Reported Federal Use After Occupation.** Manuscript postmark on U.S. 3c Red Star Die entire to Williamstown Mass., endorsed "Soldiers letter & no new stamps — H.H.S. Ast Surgeon", obsolete embossed stamp cancelled by Louisville "DUE 3" straightline handstamp applied in transit, backflap removed, Very Fine, ex Schwartz, this is the earliest reported cover posted at Bowling Green after U.S. occupation, the Confederates evacuated completely by February 14, 1862, this was mailed just five days later..... E. 750-1,000

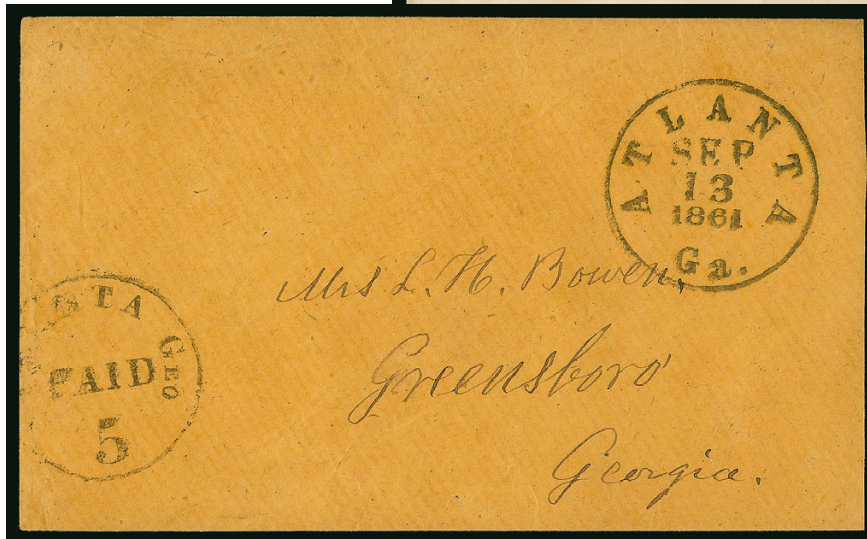
CONFEDERATE STATES



235



236



237

- 235 ☒ **Savannah Geo. Feb. 11 (1861).** Circular datestamp and matching "5" in circle rate handstamp on "American Telegraph Company, Washington and New Orleans Line" embossed belt-framed shield corner card cover to Apalachicola Fla., some minor wear and soiling, Very Fine and scarce design, even more desirable as a Confederate use E. 500-750
- 236 ☒ **Confederate Soldier's Patriotic Cover.** Red and blue Confederate 11-Star Flag Patriotic cover from a soldier in the 7th S.C. Regiment in Richmond Va. to Augusta Ga., trivial toning, Fine E. 400-500
- 237 ☒ **Atlanta Ga., 5c Black entire (6XU2).** Clear strike at bottom left of provisional handstamp and "Atlanta Ga. Sep. 13, 1861" circular datestamp on buff cover to Greensboro Ga., slightly reduced at right, Fine 1,000.00



238

- 238 ☒ **Nashville Tenn., 5c Carmine (61X2).** Large margins to full at upper left, beautiful intense shade, tied by blue "Nashville Ten. Aug. 9, 1861" circular datestamp on cover to Bellfonte Ala., backflap added

VERY FINE. A BEAUTIFUL EXAMPLE OF THE NASHVILLE 5-CENT CARMINE PROVISIONAL NEATLY TIED ON COVER.

Most of the used Carmine stamps are dated in August 1861.

From the Brandon collection. With 2014 P.F. certificate. 3,500.00



239

- 239 ☒ **Nashville Tenn., 5c Violet Brown (61X5).** Large margins to just touched at top, wonderful rich color, tied by blue "Nashville Ten. Dec. 25, 1861" circular datestamp used on Christmas day on cover to Shelbyville Tenn., addressee's name crossed out

VERY FINE EXAMPLE OF THE NASHVILLE 5-CENT VIOLET BROWN ON COVER USED ON CHRISTMAS DAY.

Signed "Dietz" on reverse. 4,250.00



240

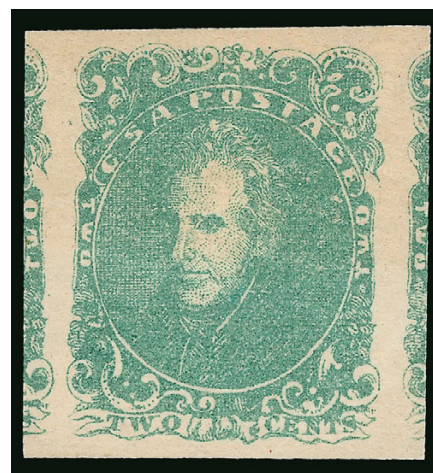
- 240 **5c Green, Stone 1-2 (1).** Horizontal pair, large even margins, neat strike of "Darien Ga. Sep. 29" circular datestamp cancel, trace of blue ink at left, Extremely Fine Gem pair, with 2014 P.F. certificate 425.00

- 241 ★ **2c Green (3).** Original gum, lightly hinged, enormous margins all around incl. large portions of adjoining stamps at sides, brilliant color, fresh

EXTREMELY FINE GEM. A SUPERB ORIGINAL-GUM EXAMPLE OF THE CONFEDERATE STATES 2-CENT LITHOGRAPH ISSUE IN THE FINEST CONDITION ATTAINABLE.

Collectors of superb classic stamps are advised to carefully consider this stamp. While the typographed and majority of the engraved Confederate issues (Scott 6-7, 8, 11-13) are available in high grades due to the supply of large multiples and sheets, the same is not true for the Lithographed issues (Scott 1-5). Large multiples of the 2c Lithograph are scarce and expensive — and therefore not conducive to harvesting superb singles.

With 2014 P.S.E. certificate (OGph, XF-Superb 95 Jumbo; SMQ \$6,300.00 as 95, \$12,600.00 as 98). This is the highest grade awarded by P.S.E. to Scott No. 3 with original gum. Only one other shares this grade ...
..... 950.00



241



242

- 242 ★田 **5c Blue, Stone 2 (4).** Positions 17-20/27-30/37-40/47-50, block of 16, disturbed original gum which is heavy, slightly toned and streaked as typically the case, margins all around incl. sheet margin at right, top left corner reattached, two stamps with small pinhole (one with ink splotch), and another with a thin, Very Fine appearance, Scott Retail as four blocks of four 5,200.00



243



244EX

- 243 **2c Red (8).** Block of five, carefully cut with ample even margins all around, tied by "Gainesville Ga. Jan. 13" circular datestamp on piece of brown cover, pos. 1 and 2 with light creases, pos. 3 tiny corner abrasion at bottom left, still Extremely Fine for such a rare multiple, the 2c Reds were typically cut into strips of five and singles for the prevailing 10c and 2c rates, blocks for the 10c rate — because of their odd configuration — were rarely used, ex Judd and Everett, with 1975 C.S.A., 1994 A.P.S. and 2014 P.F. certificates E. 1,000-1,500
- 244 ★田 **10c Blue, Die A (11).** Three bottom imprint and plate no. blocks of 20, two Keatinge & Ball, plates 1 and 2, third Archer & Daly with Daly crossed out, one original gum, other two no gum, minor flaws, Very Fine appearance (Photo Ex) 1,300.00



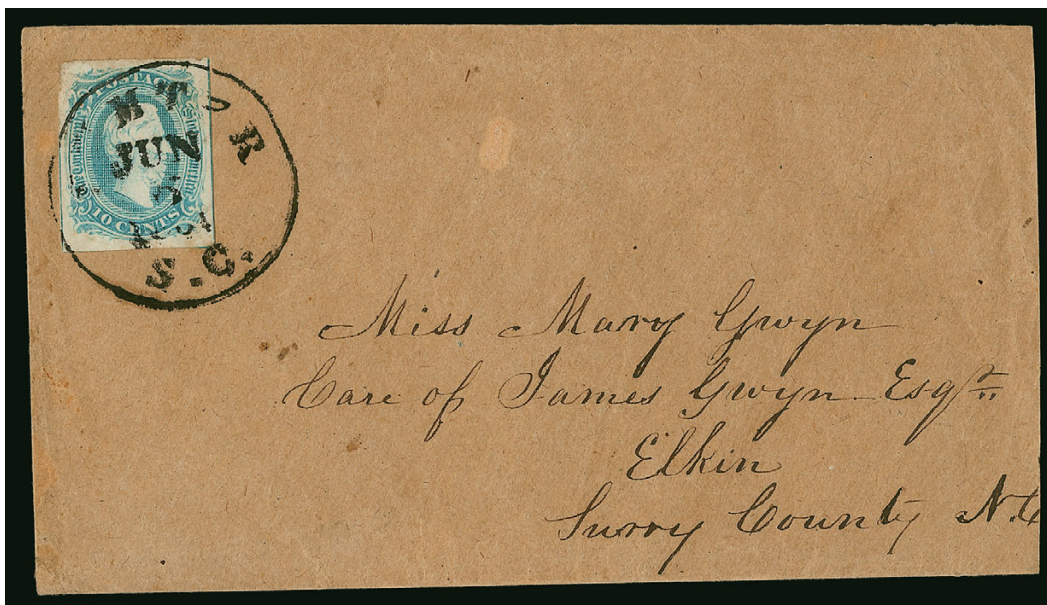
245

- 245 ☒ **5c Green, Stone 1, Baton Rouge Roulette (1 var).** Vertical pair, large margins to just in, tied by light red "Ponchatoula La. Oct. 1" (1862) circular datestamp on cover to Tangipahoe La., some soiling at left, small cover repairs at top corners
FINE. ONE OF FIVE UNSEVERED PAIRS OF THE 5-CENT BATON ROUGE ROULETTE KNOWN ON COVER. AN EXCEEDINGLY RARE GENERAL ISSUE COVER.
What makes this use even scarcer is the fact that it was not mailed out of Baton Rouge but rather nearby Ponchatoula - a scarce datestamp in its own right. Scott Retail for pair on cover 3,750.00



246

- 246 ☒ **10c Light Blue, Paterson (2a).** Large to full margins, tied by **blue** "Lynchburg Va. Nov. 5" circular datestamp on **bright yellow-lined** cover to Buckingham C.H. Va., Very Fine, with 2014 P.F. certificate E. 200-300



247

- 247 ☒ **10c Milky Blue, Frameline (10a).** Large margins all around showing full frameline at right, large part at left and small part at bottom, wonderful bright color, tied by bold "Sumter S.C. Jun. 6, 1861" circular datestamp with **error of year in datestamp** which should most likely be 1863, on homemade cover to Elkin N.C., slightly reduced at right
VERY FINE. A CHOICE 10-CENT FRAMELINE ON AN ATTRACTIVE COVER WITH DATESTAMP YEAR ERROR.
 Ex Matz. Signed Dietz and with 2008 C.S.A. certificate calling it a No. 10 (Blue) and mentioning the date error..... 3,000.00



248

- 248 ☒ **20c Green (13).** Horizontal pair, slightly irregular but mostly large margins except just touching at right, right stamp with pre-use vertical crease ending in a tear, tied by small "Shreveport La. Jul. 6, 1864" double-circle datestamp on **40c Trans-Mississippi Express** buff cover to Sumpter, Tex., manuscript docketing at top "J.B. Sexton MC" and "politeness of Col Sexton" below, cover with trivial edge tears including one sealed at top

VERY FINE APPEARANCE. AN EXTREMELY RARE EAST-TO-WEST TRANS-MISSISSIPPI EXPRESS COVER, BEARING A PAIR OF THE 20-CENT GENERAL ISSUE.

No more than twenty covers with a pair of the 20c Green paying the 40c Trans-Mississippi Express rate are known. A majority of the known covers are heavily stained and damaged. It is believed that this particular cover was hand carried from Richmond to Shreveport where it was placed in the mails - possibly by Franklin Sexton. Sexton was a wealthy Texas planter and lawyer who represented Texas 4th District in the Confederate Congress.

Illustrated in Krieger book (No. E27). With 1982 C.S.A. certificate..... E. 3,000-4,000



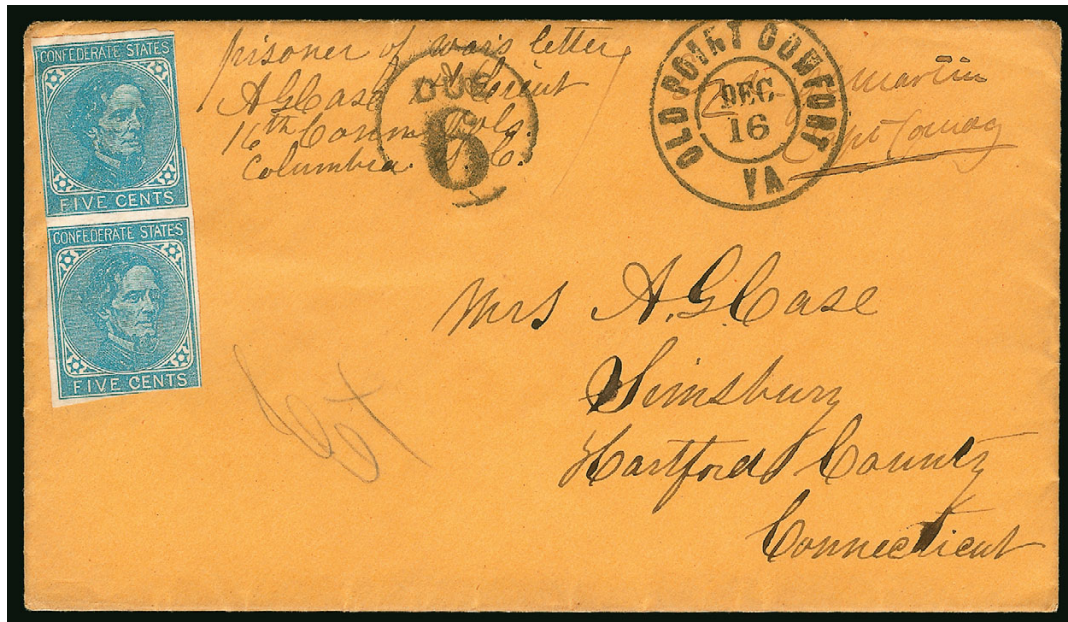
249

- 249 ☒ **21 Rampart Street, New Orleans La.** Prisoner-of-war cover addressed to a lady at No. 93 Camp Street in New Orleans, censored twice by Federal officers, "Respect forward Z.K. Wood Lt Commdg Prison", on reverse and "Exd. & forwarded Wm Sterling Capt. 1st U.S. Infy. Comy of Prisoners" on front, clear "New Orleans May 23" (1865) circular datestamp and "3" due handstamp, small erosion hole in address panel

VERY FINE. A RARE PRISONER-OF-WAR COVER FROM 21 RAMPART STREET, WHICH WAS USED AS A UNION PRISON FROM 1863 TO 1865. FEWER THAN FIVE COVERS ARE RECORDED.

21 Rampart street was a residence that was used to hold Confederate officers, including those captured at Fort Hudson in July 1863 (Harrison p. 143). Captain William H. Sterling was Commissary of Prisoners in 1865 when this cover was sent.

Ex Walske..... E. 1,500-2,000



250EX

- 250 ☒ **Prisoner-of-War Correspondence of Union Lt. Alonzo G. Case, 1864.** Collection of six covers and letters with extensive content from Union prisoner-of-war Alonzo G. Case to his wife Julia in Simsbury Conn., incl. May 4 and May 29 from **Camp Oglethorpe for Officers** in Macon Ga., Sep. 20 and 26 from **City Jail** in Charleston S.C. (only eight recorded in Harrison), Oct. 30 and Nov. 18 from **Camp Sorghum** in Columbia S.C., two of the covers exchanged through **Port Royal and Pocotaligo** (much scarcer than Old Point Comfort), appropriate prisoner endorsements and censor markings, frankings incl. C.S.A. Nos. 7, 11 and stampless, some minor flaws but overall nice condition

VERY FINE PRISONER-OF-WAR CORRESPONDENCE FROM A UNION PRISONER AT THREE DIFFERENT CONFEDERATE PRISONS IN 1864.

Lieutenant Case was a member of Company E of the 16th Connecticut Volunteer Infantry. He was captured April 20, 1864, in Plymouth, North Carolina, and paroled nearly a year later on March 7, 1865. During that year he was moved between prisons in Macon and Savanna Ga., Charleston and Columbia S.C. and also served a stint at the infamous Andersonville prison. A certificate issued to him by the National Union of Andersonville Survivors can be seen on the Internet (source: <http://manuscripts.wordpress.com/2014/06/04/he-survived-andersonville-prison/#more-7082>).....

.....(Photo Ex) E. 2,000-3,000

END OF SALE — THANK YOU



BIDS

Use this form to submit absentee bids
or to confirm telephone bids

Sale 1100

Monday, June 22, 2015

PADDLE #

1

Please provide the following information:

NAME

ADDRESS

CITY/STATE/ZIP

PHONE MOBILE

EMAIL

2

Have you purchased from us in the past 5 years? ☐ Yes (please go to Section 3)
☐ No (references required below)

STAMP FIRM PHONE

STAMP FIRM PHONE

Please submit references at least **2 business days** before the sale. Bids from new clients will not be executed if satisfactory references are not received in time to be contacted.

3

- Enter the lot number and your corresponding maximum bid in the space below
- Use whole dollar amounts and bid according to the increments (see back of form)
- Bids do not include the 15% Buyer's Premium, taxes, duty or shipping charges
- Absentee bids will advance at one increment over the next highest competing bid
- "Plus", "Break Tie" or "Buy" bids will not be executed
- Indicate any "Or" bids between lot number/bid entries and bracket your choices
- If you wish to limit the total amount of your bids, follow the instructions below

Lot #	Bid \$	Lot #	Bid \$	Lot #	Bid \$

☐ **Limit Bids:** Check this box if you wish to limit the total hammer price of your bids (excluding 15% Buyer's Premium, taxes, duty and shipping costs). Your bids will be executed until your bidding limit has been reached. The total amount you wish to bid is \$

4

By signing this form, you agree to all of the Conditions of Sale printed in the sale catalogue (printed and digital), including but not limited to a) payment in the manner demanded by the Siegel firm, and b) payment of the 15% Buyer's Premium, any sales tax or customs duty, shipping costs, late charges and

other prescribed charges. You agree that your bids will be executed as a courtesy by Siegel, but you waive the right to make any claim against Siegel or its employees arising from these bids or your participation in the sale. You agree to honor all bids as submitted, regardless of any errors or omissions.

SIGNED DATE

Mail the signed form to Siegel Bid Department, 60 East 56th St., 4th Floor, New York, NY 10022
or email to stamps@siegelauctions.com
or fax to 212-753-6429

Additional Bids

Sale 1100
Monday, June 22, 2015

PADDLE #

Lot #	Bid \$	Lot #	Bid \$	Lot #	Bid \$

Shipping & Insurance

We will be pleased to arrange for shipping and transit insurance for purchases in this sale, except for lots marked or announced as "floor sale only." To expedite billing and delivery to hundreds of buyers in each sale, we use standard charges for postage and insurance under our policy. These charges are based on the package weight and mailing requirements, according to the schedule shown here. Our standard charges do not include a fee for our services, and they may be slightly more or less than the actual postage or Fedex fee. We ask all buyers to remit the invoiced amount for shipping and insurance.

Transit insurance is provided in all cases, except when the buyer has furnished us with documentation that insurance is effective under the buyer's own policy.

There will be no added insurance charge for shipments of less than \$75,000 value. Shipments valued in excess of \$75,000 may require supplemental insurance and/or special courier service, the estimated cost of which will be furnished to the buyer prior to shipment. If the buyer refuses to pay the estimated charges or furnish proof of self-insured coverage, the buyer will be responsible for picking up the lots at our office and any resulting sales tax.

Standard Shipping Charges

Weight Class	Shipping Method	Charge
Up to 2 lbs.	Fedex Envelope	\$20
Over 2 lbs.	Fedex Box	\$35 - \$50*
Outside US	Fedex	\$50 - \$100**
Bulky Lots	Fedex Ground or Express	By weight

* Up to \$75,000 value and up to 5 lbs; additional charge may apply to packages exceeding limits

** Buyers outside United States are liable for any applicable customs duty and clearance charges. An accurate declaration of contents and value will be made on all packages and import/export documents. **Siegel may refuse to ship lots to certain countries with a high risk factor.**

2/2015

Bidding Increments

The auctioneer may regulate the bidding at his discretion. However, to assist absentee bidders in establishing their maximum bids, the increments shown here will be used in most cases. We recommend that written bids conform to these increments—bids that do not will be reduced accordingly.

Bid	Increment	Bid	Increment
Up to \$200	\$10	\$7,000-20,000	\$500
\$200-500	\$25	\$20,000-30,000	\$1,000
\$500-1,000	\$50	\$30,000-75,000	\$2,500
\$1,000-3,000	\$100	\$75,000-140,000	\$5,000
\$3,000-7,000	\$250	\$140,000-300,000	\$10,000

PRICES REALIZED FOR SALE 1100---6/22/2015

United States Stamps and Covers

Robert A. Siegel Auction Galleries, Inc.
60 East 56th Street, 4th Floor, New York, NY 10022
Tel (212) 753-6421 Fax (212) 753-6429

Lot#	Realized	Lot#	Realized	Lot#	Realized	Lot#	Realized	Lot#	Realized	Lot#	Realized
1	1,300	43	275	85	2,800	127	550	169	550	211	425
2	2,700	44	2,000	86	2,200	128	1,000	170	1,100	212	600
3	4,500	45	180	87	3,750	129	225	171	1,700	213	1,600
4	2,800	46	900	88	1,600	130	375	172	1,800	214	2,500
5	13,500	47	650	89	400	131	5,750	173	750	215	550
6	3,750	48	1,600	90	1,100	132	12,000	174	7,500	216	550
7	2,600	49	1,300	91	4,500	133	500	175	750	217	325
8	6,750	50	650	92	425	134	375	176	425	218	170
9	9,000	51	3,250	93	300	135	2,100	177	375	219	500
10	150	52	22,000	94	700	136	700	178	350	220	6,000
11	2,300	53	2,500	95	250	137	650	179	475	221	1,800
12	1,600	54	200	96	300	138	1,700	180	1,900	222	2,500
13	550	55	1,900	97	130	139	190	181	4,750	223	800
14	1,700	56	6,250	98	300	140	1,100	182	20,000	224	2,100
15	5,000	57	4,500	99	300	141	1,500	183	1,100	225	1,900
16	1,700	58	325	100	100	142	2,400	184	1,000	226	800
17	3,750	59	850	101	2,100	143	1,900	185	12,000	227	5,250
18	325	60	375	102	325	144	375	186	450	228	1,200
19	1,300	61	275	103	300	145	325	187	10,000	229	850
20	2,100	62	170	104	250	146	800	188	275	230	1,100
21	3,250	63	2,700	105	250	147	350	189	1,000	231	1,700
22	2,800	64	1,600	106	475	148	400	190	2,500	232	2,200
23	6,500	65	900	107	700	149	2,600	191	2,600	233	3,000
24	6,750	66	2,200	108	225	150	550	192	10,500	234	225
25	28,000	67	5,500	109	1,000	151	325	193	275	235	200
26	1,600	68	3,750	110	750	152	2,100	194	550	236	550
27	6,000	69	275	111	300	153	1,250	195	1,700	237	160
28	4,250	70	350	112	225	154	2,000	196	4,250	238	4,750
29	9,000	71	450	113	120	155	2,000	197	325	239	750
30	55,000	72	500	114	300	156	275	198	3,250	240	1,600
31	4,500	73	285	115	160	157	10,500	199	550	241	4,250
32	3,000	74	1,800	116	225	158	1,300	200	450	242	650
33	3,250	75	3,500	117	1,100	159	90	201	400	243	1,100
34	325	76	5,750	118	200	160	2,600	202	225	244	950
35	2,700	77	17,500	119	80	161	200	203	400	245	1,200
36	1,100	78	2,300	120	900	162	450	204	850	246	900
37	2,300	79	225	121	1,600	163	1,800	205	275	247	1,500
38	2,800	80	750	122	550	164	150	206	700	248	2,300
39	6,500	81	1,200	123	475	165	1,100	207	400	249	2,500
40	2,200	82	2,900	124	350	166	2,100	208	3,750	250	2,800
41	1,300	83	225	125	450	167	1,300	209	130		
42	2,200	84	800	126	325	168	15,500	210	500		