



The Wilson Born Collection of United States Telegraph Stamps



Sale 1102
Tuesday, June 23, 2015

Robert A. Siegel
AUCTION GALLERIES, INC.

Sale 1102 — Tuesday, June 23, 2015, at 4:30 p.m.

The Wilson Born Collection of United States Telegraph Stamps

Offered by order of the trustee of the Wilson Born Trust

All lots offered without reserves

Live auction to be held at Siegel Auction Galleries,
60 East 56th Street (Park/Madison), 4th Floor, New York City

Lots are sold subject to a 15% buyer's premium and
any applicable sales tax (or customs duty for non-U.S. buyers)

Please carefully read the Conditions of Sale before bidding



Pre-Sale Viewing

Monday, June 22, 10am-1pm, and by appointment

Robert A. Siegel

AUCTION GALLERIES, INC.

60 EAST 56TH STREET, 4TH FLOOR, NEW YORK, N.Y. 10022

Phone (212) 753-6421 • Fax (212) 753-6429 • E-mail: stamps@siegelauctions.com

Catalogues, internet bidding, resources, archives and the Siegel Encyclopedia at
siegelauctions.com



Robert A. Siegel

AUCTION GALLERIES, INC.

60 EAST 56TH STREET, 4TH FLOOR, NEW YORK, N.Y. 10022

Phone (212) 753-6421 • Fax (212) 753-6429 • E-mail: stamps@siegelauctions.com

siegelauctions.com



Scott R. Trepel
President
strepel
@siegelauctions.com



John P. Zuckerman
Senior Vice President
jzuckerman
@siegelauctions.com



Corey Long
Vice President
clong
@siegelauctions.com



Charles F. Shreve
Director, Siegel International
charles
@siegelauctions.com



Colleen Stellato
Accounts
colleen
@siegelauctions.com



Helen Stewart
Bids and Inquiries
helen
@siegelauctions.com



Chris Anderson
Siegel International
chris
@siegelauctions.com



Andrew Titley
Siegel International
andrew
@siegelauctions.com

Scott R. Trepel Principal Auctioneer (licensed by NYC Dept. of Consumer Affairs, #795952)

Nathaniel Estes Catalogue and Digital Production

Information for Bidders

Bidding

The following means are available for placing bids:

- 1) Attending the Live Auction in Person:** All bidders must register for a paddle, and new bidders must provide references at least three business days in advance of the sale.
- 2) Live Internet Bidding:** Instructions for participating as a Live Internet Bidder are provided on the page opposite.
- 3) Phone Bidding:** Bidders can be connected to the sale by phone and bid through a member of staff. Requests for phone bidding are subject to approval (please contact our office at least 24 hours before the sale). A signed Bid Form is required.
- 4) Absentee Bids.** All bids received in advance of the sale, either by mail, fax, phone, e-mail or internet, are Absentee Bids, which instruct the auctioneer to bid up to a specific amount on one or more lots in the sale. Absentee Bids sent by phone, fax or e-mail should arrive at least one hour prior to the start of the sale session. Bids entered through Live Internet Bidding will be visible to the auctioneer during the sale. Written bids should be entered legibly on the Bid Form in the sale catalogue. E-mail and internet bids should be carefully typed and double-checked. All new bidders must provide references. We recommend calling or e-mailing to confirm that Absentee Bids sent by mail, fax or e-mail have been received and entered.

Pre-Sale Viewing

Subject to availability, certain lots (except group lots) can be sent to known clients for examination. Requests must be made no later than 7 days prior to the sale. Lots must be returned on the day received. Postage/insurance costs will be invoiced.

In addition to regular viewing, clients may view lots by appointment. Our staff will be pleased to answer questions or provide additional information about lots.

Expert Certification

Individual items offered without a PF or PSE certificate dated within the past five years may be purchased subject to independent certification of genuineness and our description. **Please refer to the Conditions of Sale and Grading Terms for policies governing certification.**

Shipping and Delivery

Procedures and charges for shipping lots are printed on the back of the Bid Form. **Bidders are responsible for all prescribed shipping charges and any applicable sales tax or customs duties.**

Price Realized

Prices realized are sent with each invoice. Bidders with e-mail will receive a Bid Results report after the sale. Session results are posted immediately to **siegelauctions.com**

Live Internet Bidding at Siegel Auctions

BIDDING FROM YOUR COMPUTER LETS YOU BE PART OF THE LIVE AUCTION FROM ANYWHERE IN THE WORLD!

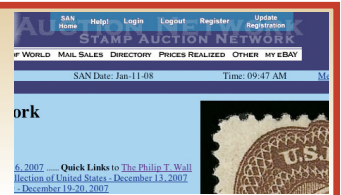
There's NO SUBSTITUTE for following the auction in real time.
Live Internet Bidding lets you bid and buy as though you were right there in the saleroom.
And it's easy.

This step-by-step guide will instruct you how to register, set your browser and use the bidding interface.

Start by following the simple steps to become a registered Live Internet Bidder.
Once you've been approved for bidding, you can listen to the auction and place bids with the click of a mouse.

Registering with STAMP AUCTION NETWORK & SIEGEL AUCTION GALLERIES

Live Internet Bidding is managed by Stamp Auction Network (SAN).
To bid, you must be registered and approved by *both* SAN and Siegel.
To decide what you need to do, choose the description below that best fits you.



I've already registered with SAN and have been approved by Siegel for internet bidding.

I'm a Siegel client, but I'm not registered with SAN.

Go to stampauctionnetwork.com/siegel and click on "Register" at the top. Check the box for Robert A. Siegel Auction Galleries (under "R") and submit the form, indicating you are a Siegel client. Once registered at SAN, you're ready for internet bidding.

I've bid through SAN before, but this is the first time I've bid in a Siegel sale.

Then you just need to be approved by Siegel. Go to stampauctionnetwork.com/siegel and click on "Update Registration" at the top. Your SAN account information will be sent to us for approval (you might be asked for other trade references). Once approved by Siegel for bidding, you're ready for internet bidding.

I've never bid with Siegel, nor registered with SAN.

Go to stampauctionnetwork.com/siegel and click on "Register" at the top. Check the box for Robert A. Siegel Auction Galleries (under "R") and submit the form **with your trade references** (please, no family members or credit card companies as references). Once registered at SAN and approved by Siegel for bidding, you're ready for internet bidding.

Live Internet Bidding works by allowing registered bidders to observe and place bids.

Live Internet Bidding will work with any browser on both PC and Mac operating systems.

Before bidding by internet for the first time, we recommend finding a sale in progress and listening to the public broadcast or logging in as a registered bidder. This will help you develop a feel for the sale tempo and bidding interface.

Log on to the auction at stampauctionnetwork.com/siegel.

You can also log on at siegelauctions.com

When you're logged on as a Live Internet Bidder, the bidding interface shows a photo and description of the lot, the current bid (and your bidding status), options for placing competitive bids and buttons with bid increments.

- After you click on a bid amount, the auctioneer is immediately notified of your bid.
- Retracting a bid is usually not acceptable, so please bid carefully.
- If you bid and then decide to stop, the "Pass" button will tell the auctioneer you are no longer bidding.
- You can send messages to the auctioneer (for example, a request for extension).
- You can track prior realizations from the bidding screen.



"System Down" or "Lost Connection" events do occasionally happen.

If you have any problems with Live Internet Bidding please call **212-753-6421** for immediate assistance.

Conditions of Sale (please read carefully before bidding)

THE PROPERTY DESCRIBED IN THIS CATALOGUE WILL BE OFFERED AT PUBLIC AUCTION BY ROBERT A. SIEGEL AUCTION GALLERIES, INC. ("GALLERIES") ON BEHALF OF VARIOUS CONSIGNORS AND ITSELF OR AFFILIATED COMPANIES. BY BIDDING ON ANY LOT, WHETHER DIRECTLY OR BY OR THROUGH AN AGENT, IN PERSON, OR BY TELEPHONE, FACSIMILE OR ANY OTHER MEANS, THE BIDDER ACKNOWLEDGES AND AGREES TO ALL OF THE FOLLOWING CONDITIONS OF SALE.

1. The highest bidder acknowledged by the auctioneer shall be the buyer. The term "final bid" means the last bid acknowledged by the auctioneer, which is normally the highest bid offered. **The purchase price payable by the buyer will be the sum of the final bid and a commission of 15% of the final bid ("buyer's premium"), together with any sales tax, use tax or customs duties due on the sale.**
2. The auctioneer has the right to reject any bid, to advance the bidding at his discretion and, in the event of a dispute, to determine the successful bidder, to continue the bidding or to reoffer and resell the lot in dispute. The Galleries' record of the final sale shall be conclusive.
3. All bids are per numbered lot in the catalogue unless otherwise announced by the auctioneer at the time of sale. The right is reserved to group two or more lots, to withdraw any lot or lots from the sale, or to act on behalf of the seller. The Galleries will execute bidding instructions on behalf of clients, but will not be responsible for the failure to execute such bids or for any errors in the execution of such bids.
4. **Lots with numbers followed by the symbol ° are offered subject to a confidential minimum bid ("reserve"), below which the lot will not be sold. The absence of the symbol ° means that the lot is offered without a reserve. If there is no reserve, the auctioneer has sole discretion to establish a minimum opening bid and may refuse an offer of less than half of the published estimate. Any lot that does not reach its reserve or opening bid requested by the auctioneer will be announced as "passed" and excluded from the prices realized lists after the sale. The Galleries may have a direct or indirect ownership interest in any or all lots in the sale resulting from an advance of monies or goods-in-trade or a guarantee of minimum net proceeds made by the Galleries to the seller.**
5. Subject to the exclusions listed in 5(A), the Galleries will accept the return of lots which have been misidentified or which have obvious faults that were present when the lot was in the Galleries' custody, but not so noted in the lot description. **All disputed lots must be received by the Galleries intact with the original packing material within 5 days of delivery to the buyer but no later than 30 days from the sale date.**
(5A) EXCLUSIONS: The following lots may not be returned for any reason, or may not be returned for the reasons stated: i) lots containing 10 or more items; ii) lots from buyers who registered for the pre-sale exhibition or received lots by postal viewing, thereby having had the opportunity to inspect them before the sale; iii) any lot described with "faults," "defects" or a specific fault may not be returned because of any secondary fault; iv) photographed lots may not be returned because of centering, margins, short/nibbed perforations or other factors shown in the illustrations; v) the color of the item does not match the color reproduction in the sale catalogue or website listing; vi) the description contains inaccurate information about the quantity known or reported; or vii) a certification service grades a stamp lower than the grade stated in the description.
6. Successful bidders, unless they have established credit with the Galleries prior to the sale, must make payment in full before the lots will be delivered. Buyers not known to the Galleries must make payment in full within 3 days from the date of sale. **The Galleries retains the right to demand a cash deposit from anyone prior to bidder registration and/or to demand payment at the time the lot is knocked down to the highest bidder, for any reason whatsoever.** In the event that any buyer refuses or fails to make payment in cash for any lot at the time it is knocked down to him, the auctioneer reserves the right to reoffer the lot immediately for sale to the highest bidder. **Credit cards (Visa, Mastercard and Discover only) can be accepted as payment but will be subject to a 3% Convenience Fee, which will be added to the total of the entire invoice (including hammer price, buyer's premium, shipping and transit insurance charges and any applicable taxes).**
7. If the purchase price has not been paid within the time limit specified above, nor lots taken up within 7 days from the date of sale, the lots will be resold by whatever means deemed appropriate by the Galleries, and any loss incurred from resale will be charged to the defaulting buyer. **Any account more than 30 days in arrears will be subject to a late payment charge of 1½% per month as long as the account remains in arrears. Any expenses incurred in securing payment from delinquent accounts will be charged to the defaulter.** A fee of \$250.00 per check will be charged for each check returned for insufficient funds.
8. All lots are sold as genuine. **Any lot accompanied by a certificate issued by The Philatelic Foundation or by Professional Stamp Experts within 5 years of the sale date is sold "as is" and in accordance with the description on the certificate. Such lots may not be returned for any reason, including but not limited to a contrary certificate of opinion.** Buyers who wish to obtain a certificate for any item that does not have a P.F. or P.S.E. certificate (dated as above) may do so, provided that the following conditions are met: (1) the purchase price must be paid in full, (2) the item must be submitted to an acceptable expertizing committee with a properly executed application form within 21 days of the sale, (3) a copy of the application form must be given to the Galleries, (4) in the event that an adverse opinion is received, the Galleries retain the right to resubmit the item on the buyer's behalf for reconsideration, without time limit or other restrictions, (5) unless written notification to the contrary is received, items submitted for certification will be considered cleared 90 days from the date of sale, and (6) in the event any item is determined to be "not as described", the buyer will be refunded the purchase price and the certification fee up to \$800.00 unless otherwise agreed to in writing.
9. Until paid for in full, all lots remain the property of the Galleries on behalf of the seller.
10. Agents executing bids on behalf of clients will be held responsible for all purchases made on behalf of clients unless otherwise arranged prior to the sale.
11. The buyer assumes all risk for delivery of purchased lots and agrees to pay for prescribed shipping costs. **Buyers who receive lots in the U.S. are obligated to pay whatever sales tax or compensating use tax might be due, and buyers outside the U.S. are responsible for all customs duties.**
12. **The bidder consents that any action or proceeding against it may be commenced and maintained in any court within the State of New York or in the United States District Court for the Southern District of New York, that the courts of the State of New York and United States District Court for the Southern District of New York shall have jurisdiction with respect to the subject matter hereof and the person of the bidder. The bidder agrees not to assert any defense to any action or proceeding initiated by Galleries based upon improper venue or inconvenient forum. The bidder agrees that any action brought by the bidder shall be commenced and maintained only in a Federal Court in the United States District Court for the Southern District of New York or the State Court in the county in which Galleries has its principal place of business in New York. The bidder agrees not to use a public conflict resolution service and not to use any form of social media to publish comments or information about the Galleries and its employees which might harm the Galleries' reputation or business. These Conditions of Sale shall be governed by and construed in accordance with the substantive laws of the State of New York, and shall constitute an agreement that shall be binding on the parties, and their respective heirs, administrators, distributees, successors and assignees.**

SCOTT R. TREPEL, Principal Auctioneer
Auctioneer's License No. 795952
N.Y.C. Department of Consumer Affairs
80 Lafayette Street, New York, N.Y. 10013
Telephone (212) 577-0111

Revised 1/2015

Grades, Abbreviations and Values Used in Descriptions

Grades and Centering

Our descriptions contain detailed information and observations about each item's condition. We have also assigned grades to stamps and covers, which reflect our subjective assessment. For stamps, the margin width, centering and gum are described and graded according to generally-accepted standards (an approximate correlation to numeric grades is provided at right). Although we believe our grades are accurate, they are not always exactly aligned with third-party grading terms or standards for all issues. **A lot may not be returned because a certification service grades a stamp lower than the grade stated in the description. Information from the P.S.E. Stamp Market Quarterly and P.S.E. Population ReportSM is the most current available, but lots may not be returned due to errors or changes in statistics or data.**

Extremely Fine Gem (90-100): The term "Gem" describes condition that is the finest possible for the issue. This term is equivalent to "Superb" used by grading services.







Extremely Fine (80-90): Exceptionally large/wide margins or near perfect centering.

Very Fine (70-85): Normal-size margins for the issue and well-centered with the design a bit closer to one side. "Very Fine and choice" applies to stamps that have desirable traits such as rich color, sharp impression, freshness or clarity of cancel.

Fine (60-70): Smaller than usual margins or noticeably off center. Pre-1890 issues may have the design touched in places.

Very Good (below 60): Attractive appearance, but margins or perforations cut into the design.

Guide to Gum Condition

Gum Categories:	MINT N.H.	ORIGINAL GUM (O.G.)				NO GUM
	 Mint Never Hinged <i>Free from any disturbance</i>	 Lightly Hinged <i>Faint impression of a removed hinge over a small area</i>	 Hinge Mark or Remnant <i>Prominent hinged spot with part or all of the hinge remaining</i>	 Part o.g. <i>Approximately half or more of the gum intact</i>	 Small part o.g. <i>Approximately less than half of the gum intact</i>	 No gum <i>Only if issued with gum</i>
Catalogue Symbol:	★ ★	★	★	★	★	(★)
PRE-1890 ISSUES	<i>Pre-1890 stamps in these categories trade at a premium over Scott value</i>			Scott Value for “O.G.”		Scott “No Gum” Values thru No. 218
1890-1935 ISSUES	Scott “Never Hinged” Values for Nos. 219-771	Scott Value for “O.G.” (Actual value will be affected by the degree of hinging)		Disturbed Original Gum: Gum showing noticeable effects of humidity, climate or hinging over more than half of the gum. The significance of gum disturbance in valuing a stamp in any of the Original Gum categories depends on the degree of disturbance, the rarity and normal gum condition of the issue and other variables affecting quality. For example, stamps issued in tropical climates are expected to have some gum disturbance due to humidity, and such condition is not considered a negative factor in pricing.		
1935 TO DATE	Scott Value for “Unused”					

Covers

Minor nicks, short edge tears, flap tears and slight reduction at one side are normal conditions for 19th century envelopes. Folded letters should be expected to have at least one file fold. Light cleaning of covers and small mends along the edges are accepted forms of conservation. Unusual covers may have a common stamp with a slight crease or tiny tear. **These flaws exist in virtually all 19th century covers and are not always described. They are not grounds for return.**

Catalogue Values and Estimates

Unless otherwise noted, the currently available *Scott Catalogue* values are quoted in dollars with a decimal point. Other catalogues are often used for foreign countries or specialized areas and are referred to by their common name: *Stanley Gibbons* (SG), *Dietz*, *American Air Mail Catalogue* (AAMC), *Michel*, *Zumstein*, *Facit*, etc. Estimates are indicated with an "E." and reflect our conservative valuation in dollars. Reserves will never exceed the low end of the estimate range; they will sometimes exceed Scott Catalogue value for stamps in Extremely Fine condition.

Because of certain pricing inconsistencies in the *Scott Catalogue*—for example, blocks that have no gum, the absence of premiums for Mint N.H. items, etc.—we cannot guarantee the accuracy of values quoted for multiples, specialized items and collection lots. We generally try to be conservative, but buyers may not return a lot because of a discrepancy in catalogue value due to Scott pricing inconsistencies.

Symbols and Abbreviations (see chart above for gum symbols)

⊞ Block	E Essay	pmk. Postmark	No. Scott Catalogue Number
⊞ Cover	P Proof	cds Circular Datestamp	hs Handstamp
FC Fancy Cancel	TC Trial Color Proof	var. Variety	ms. Manuscript

Introduction to The Wilson Born Collection

THE DIGITAL AGE IS FUNDAMENTALLY ROOTED IN THE USE OF ELECTROMagnetic waves in communication technology. and it began with the first electronic message transmitted by Morse's patented telegraph line. When the words, "What hath God wrought," were sent by wire on May 24, 1844, the world became a much smaller place. In short time it became possible to link regions separated by thousands of miles of land and water. After completion of the first transcontinental telegraph line in 1861, what was news in the East could be heard in the West almost simultaneously.

With the advent of the telegraph, the business of communication was no longer the exclusive domain of railroad, stagecoach and shipping companies. The telegraph created many new companies whose efforts to profit from this new technology resulted in a patchwork of independent lines. Many of these small companies foundered and were bought out by larger and better-organized firms. Consolidation continued until, almost a century after the first telegraph message, the Postal Telegraph Company was finally absorbed into Western Union Telegraph Company. As the cable and media behemoths created in the Digital Age compete for global domination, the history of nineteenth-century telegraph companies repeats itself.

The late Wilson Born was a student of telegraph history and an ardent collector of telegraph company stamps and covers. In building his collection Mr. Born combined the technical aspects of philately—printing and production varieties—with research into the history of each company. Factoring in his lengthy and determined pursuit of rarities, in a field consumed with scarcity, the result is a collection of extraordinary depth and importance. We dare say this is the largest offering of stamps and covers in this field ever made, eclipsing our 1994 sale of George J. Kramer's collection, which did not include his covers.

Many of the items in Mr. Born's collection are illustrated in the Kramer book on the subject, *United States Telegraph Stamps and Franks*, which expanded on Joseph and Stephen Rich's earlier published work. Many of the illustrations in the *American Stampless Cover Catalogue* of telegraph covers show items from Mr. Born's collection. Much of the information from these books has been used in this sale catalogue.

On a personal note, Mr. Born's participation in auctions containing telegraph items will be dearly missed. He was a smart, confident, straight-speaking man, and when he bid, usually by phone during the auction, he rarely gave up. His last purchases were made in our December 2014 sale, when he knew he was losing his battle with cancer. Sadly, he never had the opportunity to open the Federal Express package containing his purchases.

Robson Lowe often referred to collectors who totally dominate a collecting field as a *Yew Tree*, a tree so old, big and wide that almost nothing can grow beneath it. Mr. Born would probably fit Robson Lowe's analogy. His collection is awesomely wide and deep in content. He made life for competing collectors very difficult. And Mr. Born's fascination with the City & Suburban and Colusa, Lake & Mendocino issues compelled him to amass an astounding number of examples, which he used to gain a better understanding of how these rare stamps were produced.

With this sale, the Yew Tree gives way to make room for a new generation of collectors. The opportunity to acquire rare or unique stamps and multiples should not be squandered. Before a sale Mr. Born used to say, "I'm not going to let that one go. I don't care what it takes"—good advice for bidders in this sale.

— SCOTT R. TREPEL

AFTERNOON SESSION (LOTS 1001-1282)

TUESDAY, JUNE 23, 2015, AT 4:30 P.M.

THE WILSON BORN COLLECTION OF UNITED STATES TELEGRAPH STAMPS

TELEGRAPH COMPANY STAMPS (IN ALPHABETICAL ORDER)



- 1001 (★) **American District Telegraph Co., Pale Lilac Rose, Ty. I Frank (unlisted in Scott).** Unused (no gum), clearly from a booklet pane, handstamped serial no. A41, rich color, short perf at lower left is insignificant, Fine and rare, discussed but unpriced in Kramer book, which dates this to late 1870's or early 1880's..... E. 750-1,000
- 1002 **American District Telegraph Co., Ty. II-IV Franks (unlisted in Scott).** Group of seven items, incl. three Ty. II "Parcel Delivery" franks, three Ty. III "Special Delivery" franks in 5c, 10c and 12c denominations, also Ty. IV 5c ticket for "Stock Exchange Messenger Service", a few minor flaws, the last item with heart-shaped punch cancel and piece out at left from removal from a booklet (as usual), a Fine and scarce group, we have seen the Ty. IV Stock Exchange frank alone sold at retail for \$1,000, although the Kramer pricing guide values the Ty. II and III franks higher than the Ty. IV...(Photo Ex) E. 750-1,000
- 1003 E田 **American Telegraph Typewriter Co., 1910, Orange Essay Frank (unlisted in Scott).** Pane of four and four singles, pane and one single original gum, other three no gum, Very Fine, this unissued complimentary frank stamp is considered to be an essay, it is scarce as a single and rare as a full pane, we offered another pane in our Sale 1090 but this one is far superior as it is sound and well-centered.....(Photo Ex) E. 400-500
- 1004 P **Baltimore & Ohio Telegraph Co., Essays and Proofs (3T7-E1, 3T10TC4, 3T12P3).** Six of No. 3T7-E1, different colors, two singles in Black of 3T10TC4, block of six and pair of No. 3T12P3, Very Fine group(Photo Ex) E. 400-500
- 1005 **Baltimore & Ohio Telegraph Co., 1c-10c, 1886 Issue (3T11-3T16).** 37 franked telegram sending forms, each with written message, many with multiple stamps and combination frankings, bold large square grid cancels tie the stamps, some minor flaws to be expected, overall Fine, a scarce and fascinating groupNot illustrated E. 1,000-1,500

CALIFORNIA STATE TELEGRAPH COMPANY

In 1852 the California state legislature granted an exclusive 15-year license to the California Telegraph Company to operate a telegraph line between San Francisco and Marysville via San Jose, Stockton and Sacramento. The CTC failed in its first year as a result of the great San Francisco fire, but was reorganized in 1853 as the California State Telegraph Company. In 1861 they consolidated with three other California telegraph companies under their own name. The CSTC played an important role in the completion of the transcontinental telegraph line on October 24, 1861. From 1867 the "Cal. State," as it was called, was leased by Western Union, until 1876 when it was purchased by them.



- 1006 ★ **California State Telegraph Co., 1870-75 Issues (5T1-5T8).** Complete less No. 5T3 with extra used 5T2, No. 5T4 without blue no., mostly original gum with some disturbed, Nos. 5T4 and 5T7 no gum, a few flaws except No. 5T7 defective, Fine-Very Fine appearance.....(Photo Ex) 3,365.00
- 1007 ★ **California State Telegraph Co., 1870, Blue & Black (5T1).** Original gum (brownish as always), h.r., handstamped serial no. 104, fresh and bright color, exceptionally wide margins, Very Fine and choice, a beautiful example of this scarce stamp 800.00
- 1008 ★ **California State Telegraph Co., 1870, Blue & Black (5T1).** Original gum (brownish as always), small h.r., **double handstamped** serial no. 104, Fine, a scarce double handstamped original-gum example of this California State Telegraph issue, one of two recorded full sheets also contains a double handstamp on one stamp 800.00
- 1009 ★ **California State Telegraph Co., 1870, Blue & Black (5T1).** Original gum slightly brownish as always, handstamped serial no. 104, Very Fine..... 800.00
- 1010 ★ **California State Telegraph Co., 1870, Blue & Black (5T1).** Two, original gum, usual brownish and with just a hint of toning, both handstamped serial no. 104, Fine.....(Photo Ex) 1,600.00
- 1011 ★ **California State Telegraph Co., 1870, Blue & Black (5T1).** Original gum, h.r., red crayon serial no. 104, bright color and attractive margins, Very Fine..... 800.00
- 1012 ★ **California State Telegraph Co., 1870, Blue & Black (5T1).** Original gum, lightly hinged, h.r., red crayon serial no. 104, bright color, choice margins and centering, Very Fine..... 800.00
- 1013 ★ **California State Telegraph Co., 1870, Black & Red, Without Number (5T2).** Original gum, exceptional wide margins and near perfect centering, light horizontal bend, still Extremely Fine Gem, easily the widest margined example we have encountered 390.00
- 1014 **California State Telegraph Co., 1870, Black & Red, With Number (5T2 var).** Two, each with **blue serial no.** (140 and 100), first unused (no gum), second used with blue handstamp cancel, both with creases and used stamp with edge tears, Fine-Very Fine appearance, the 1870 issue is unlisted in Scott with serial number, Scott Retail for normal..... 640.00

- 1015 ★ **California State Telegraph Co., 1871, Black & Red on Thick Wove, Without Number, Imperforate (5T3a).** Unused (no gum), large margins, slight creasing

EXTREMELY FINE APPEARING EXAMPLE OF ONE OF THE MAJOR RARITIES OF TELEGRAPH STAMPS.

This design is identical to the 1870 Issue, except that the year in the red oval has been changed to 1871. It is known perforated and imperforate, the latter being far rarer. The Scott Catalogue lists the imperforate stamp as a pair, although the existence of a multiple could never be confirmed by George Kramer or Wilson Born during their many years researching the subject. This example resided for decades in the collection formed by Governor Pierre S. du Pont IV and came to the market in a 1991 Christie's sale.

Ex du Pont and Kramer and illustrated in his book. 5,000.00



1015



- 1016 ★ **California State Telegraph Co., 1871, Black & Salmon, Blue Number (5T4).** Original gum, blue serial no. 104, wide margins and choice centering, bright and crisp, Extremely Fine Gem 950.00
- 1017 ★ **California State Telegraph Co., 1871, Black & Salmon, Blue Number (5T4).** Unused (no gum), blue serial no. 118, exceptionally wide margins and choice centering, Extremely Fine Gem 950.00
- 1018 ★ **California State Telegraph Co., 1871, Black & Salmon, Blue Number (5T4).** Six stamps, serial nos. 12, 22, 103 and 118, original gum except serial no. 12 no gum, also unused stamp without no. and stamp with no. 103 that appears to have a light blue cancel (counted as used), a few small flaws, Fine-Very Fine appearance, a scarce group as this issue is rarely offered even as singles (Photo Ex) 4,375.00
- 1019 (★) **California State Telegraph Co., 1871, Black & Salmon, Inverted Blue Number (5T4 var).** Serial no. 2 **inverted**, faulty and rebacked, an extremely rare serial number invert, the only example we have encountered, Scott Retail as normal \$950.00 E. 750-1,000
- 1020 **California State Telegraph Co., 1871 "Business" Frank Booklet Cover (for 5T4).** Intact booklet cover (without stamps), manuscript endorsement to "P. & S.V. R.R. Co." for messages between "Sacramento & Shingle Springs", handstamped serial no. 104, in excellent condition, scarce early California State Telegraph Co. booklet cover E. 400-500



- 1021 ★ **California State Telegraph Co., 1872, Green & Red, Red Number (5T5).** Original gum, h.r. and adherence from the front of another stamp, huge margins, Very Fine.... 475.00
- 1022 ★ **California State Telegraph Co., 1872, Green & Red, Red Number (5T5).** Original gum, couple small h.r., vivid color, fresh and Fine 475.00
- 1023 ★ **California State Telegraph Co., 1872, Green & Red, Blue Number (5T5 var).** Two with blue serial nos. 125 and 114, first original gum, h.r., wide margins, second unused (no gum), couple thin specks, Fine-Very Fine appearance, unlisted in Scott with blue numbers, Scott Retail as red numbers 950.00
- 1024 (★) **California State Telegraph Co., 1873, Red & Salmon, Blue Number (5T6).** Two, unused (no gum), serial nos. 131 and 129, former in purple, bright colors, Fine-Very Fine, only the blue is listed in Scott(Photo Ex) 1,200.00
- 1025 ★ **California State Telegraph Co., 1873, Red & Salmon, Inverted Blue Number (5T6 var).** Serial no. 114 inverted, large part original gum, Fine and rare, unlisted in Scott which prices the normal stamp at \$600.00 E. 500-750
- 1026 ★ **California State Telegraph Co., 1874, Blue & Salmon, Black Number (5T7).** Original gum, serial no. 129, wide margins, Extremely Fine..... 675.00
- 1027 ★ **California State Telegraph Co., 1874, Blue & Salmon, Black Number (5T7).** Original gum, h.r., serial no. 129, wide margins, bit of ink on perfs on back not visible from front, Extremely Fine..... 675.00
- 1028 ★ **California State Telegraph Co., 1874, Blue & Salmon, Black Number (5T7).** Two, original gum, both slightly disturbed, serial nos. 104 (vertical) and 114 (horizontal), wide nicely balanced margins, both with small thin spots, appear Extremely Fine..... (Photo Ex) 1,350.00
- 1029 ★ **California State Telegraph Co., 1874, Blue & Salmon, Inverted Black Number (5T7 var).** Serial no. 124 inverted, original gum, h.r. and paper adherence, perfs trimmed at right, otherwise wide margins, small bit of soiling in left margin, Very Fine appearance and rare, unlisted in Scott which prices the normal issue at \$675.00 E. 750-1,000
- 1030 ★ **California State Telegraph Co., 1875, Brown & Green, Black Number (5T8).** Slightly brownish original gum, serial no. 110, exceptional wide margins, rich colors, a few perf indents in right margin, still Extremely Fine Gem..... 575.00
- 1031 ★ **California State Telegraph Co., 1875, Brown & Green, Black Number (5T8).** Original gum, h.r., serial no. 103, fresh and Fine 575.00
- 1032 ★ **California State Telegraph Co., 1875, Brown & Green, Without Number (5T8).** Original gum, slight gum soak in right margin, otherwise Fine, unlisted in Scott without number, Scott Retail as normal 575.00
- 1033 ★ **California State Telegraph Co., 1870-75 Issues (5T2-5T8).** Balance of 15 stamps, Nos. 5T2 (two), 5T3 (three), 5T6 (three), 5T7 (three) and 5T8 (four incl. one without serial number, defective), others generally with small flaws, Fine appearance.....
.....Not illustrated 8,330.00

(NEW YORK) CITY & SUBURBAN TELEGRAPH COMPANY

The New York City & Suburban Printing Telegraph Co., organized in 1855, was the first private telegraph company in the world to issue stamps. According to the Kramer book, it was not profitable and its line was leased to Henry Bentley (of Bentley's Dispatch). Bentley experimented with a system of message depositories, for which these stamps were intended. The concept quickly failed and the stamps went unused for the most part.



1034

- 1034 ★ **City & Suburban Telegraph Co., 1c-3c Black, Se-Tenant Strip (6T1-6T3).** Strip of six with 2c-1c-1c-1c-2c-3c denominations, representing a **complete row from the sheet of 60**, without gum as issued, full to large margins all around, couple light vertical creases (as always), pos. 1 small margin nick at left, pos. 3 small scuff

VERY FINE APPEARANCE. AN EXCEPTIONAL RARITY OF TELEGRAPH AND CLASSICAL PHILATELY. THIS CITY & SUBURBAN TELEGRAPH COMPANY STRIP REPRESENTS A FULL HORIZONTAL ROW FROM THE SHEET OF 60 STAMPS, AND IS THE LARGEST KNOWN MULTIPLE. ONE OF THE HIGHLIGHTS OF THE BORN COLLECTION.

In 1935 the Economist Stamp Company acquired a complete sheet of 60 stamps (\$1.00 face value) and divided it into strips and singles, including a multiple of the bottom two rows (ex Stephen Rich), which reportedly has since been broken up. There was an often repeated story that this sheet was the only source of the City & Suburban stamps. However, the Born collection proves this was not the case. The rows comprise 2c-1c-1c-1c-2c-3c denominations, meaning one sheet would contain only ten 3c stamps. The Born collection contains ten 3c stamps and there are examples outside the collection, so clearly more than one sheet was found. All denominations are scarce and se-tenant multiples are quite rare. This is the only complete row located in Power Search.

Scott Retail as 1c-2c-3c strip, 2c-1c pair and 1c single (\$7,000.00) does not remotely convey the rarity of this issue..... E. 5,000-7,500



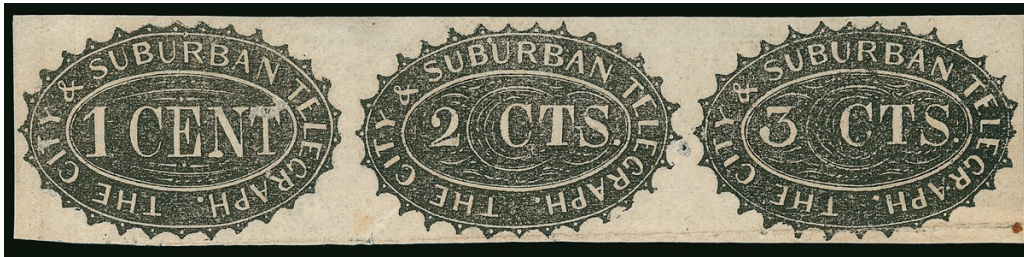
1035

- 1035 ★ **City & Suburban Telegraph Co., 1c-3c Black, Se-Tenant Strip (6T1-6T3).** Strip of all three values, without gum as issued, ample to large margins all around, sharp impression, just a single vertical crease thru the middle stamp

VERY FINE. A RARE ESSENTIALLY SOUND SE-TENANT STRIP OF ALL THREE VALUES OF THE CITY & SUBURBAN TELEGRAPH COMPANY ISSUE.

As the preceding lot notes, se-tenant multiples of all three values are rare — particularly with full margins in any condition approaching soundness. While this strip has a vertical crease, that is normal for the soft wove paper used for this issue. The rows of the New York City & Suburban issue comprise 2c-1c-1c-1c-2c-3c denominations. This multiple comes from the right three positions in the row of six stamps — the only positions that can yield a se-tenant multiple of all three denominations.

Ex Kramer and illustrated on the front cover of his 1992 book *United States Telegraph Stamps*. With 1974 P.F. certificate..... 3,900.00



1036

- 1036 ★ **City & Suburban Telegraph Co., 1c-3c Black, Se-Tenant Strip (6T1-6T3).** Strip of all three values, without gum as issued, ample to large margins all around, sharp impression, couple light creases and tiny thins as typical, horizontal crease at bottom of center and right stamps reinforced at bottom right

VERY FINE APPEARANCE. A RARE SE-TENANT STRIP OF ALL THREE VALUES OF THE CITY & SUBURBAN TELEGRAPH COMPANY ISSUE.

Se-tenant multiples of all three values are rare. This multiple comes from the right three positions in the row — the only positions that can yield a se-tenant multiple of all three denominations. 3,900.00



1037

- 1037 ★ **City & Suburban Telegraph Co., 1c-2c Black, Se-Tenant Pair (6T1-6T2).** Pair in 2c-1c configuration, without gum as issued, ample to full margins, small flaws including horizontal creases (as usual), 2c with faint thins

VERY FINE APPEARING SE-TENANT PAIR OF THE ONE-CENT AND 2-CENT CITY & SUBURBAN TELEGRAPH COMPANY ISSUE.

The rows of the New York City & Suburban issue comprise 2c-1c-1c-1c-2c-3c denominations. This pair comes from the left two positions in the row of six stamps.

Ex Kramer. With 2011 P.F. certificate 2,250.00



1038

- 1038 ★ **City & Suburban Telegraph Co., 1c-2c Black, Se-Tenant Pair (6T1-6T2).** Pair in 2c-1c configuration, without gum as issued, full margins to large with sheet margin at left and trace of 2c stamp above, light creases (as usual), 1c with thin spot

VERY FINE APPEARING SE-TENANT PAIR OF THE ONE-CENT AND 2-CENT CITY & SUBURBAN TELEGRAPH COMPANY ISSUE.

The rows of the New York City & Suburban issue comprise 2c-1c-1c-1c-2c-3c denominations. This pair comes from the left two positions in the row of six stamps. 2,250.00



1039EX



1040EX



1041EX

- 1039 ★ **City & Suburban Telegraph Co., 1c-3c Black (6T1-6T3).** Without gum as issued, ample margins to touched on 3c and just in at top of 1c, each with small flaws including thin spots, tiny edge tears or light creases, otherwise Fine and attractive complete set, 1c and 2c with 2006 P.F. certificates.....(Photo Ex) 3,100.00
- 1040 ★ **City & Suburban Telegraph Co., 1c-3c Black (6T1-6T3).** Without gum as issued, 1c with three margins, in at left, other two cut to shape, small faults, a desirable set of these rare Telegraph stamps(Photo Ex) 3,100.00
- 1041 **City & Suburban Telegraph Co., 1c-3c Black (6T1-6T3).** 1c and 3c with ample to large margins, 2c just in at right, 1c and 2c with what appear to be light red cancels, 3c with small purple handstamp (likely not a cancel), small faults, Fine-Very Fine appearance, Scott prices all three issues used, though we are unsure as to the true nature of these red cancels, Scott Retail as used(Photo Ex) 1,650.00



1042



1043



1044

- 1042 ★ **City & Suburban Telegraph Co., 1c Black (6T1).** Without gum as issued, large margins to just touched, normal creasing and small thin spot, Fine appearance, ex Schauss, with 1979 P.F. certificate 850.00
- 1043 ★ **City & Suburban Telegraph Co., 1c Black (6T1).** Without gum as issued, ample to large margins, faint creasing and small thin spot, appears Very Fine..... 850.00
- 1044 ★ **City & Suburban Telegraph Co., 1c Black (6T1).** Without gum as issued, ample even margins, horizontal crease, Very Fine appearance 850.00



1045



1046

- 1045 ★ **City & Suburban Telegraph Co., 2c Black (6T2).** Without gum as issued, large margins to just in incl. part of adjoining stamp at bottom, faint diagonal crease at bottom right, Fine appearance and better condition than normally encountered, ex "Scarsdale", with 2004 P.F. certificate 1,300.00
- 1046 ★ **City & Suburban Telegraph Co., 2c Black (6T2).** Without gum as issued, large margins to just touched, intense shade, light horizontal creases, Fine appearance, a nice example of this scarce stamp, ex Schauss..... 1,300.00



1047



1048



1049

- 1047 ★ **City & Suburban Telegraph Co., 2c Black (6T2).** Without gum as issued, full margins to just touched at left, tiny thin spot, Fine appearance and essentially sound for this issue which is nearly always encountered with flaws, most of a more serious nature .. 1,300.00
- 1048 ★ **City & Suburban Telegraph Co., 2c Black (6T2).** Without gum as issued, ample to full margins all around, small corner crease at top left, Very Fine appearance, far above average condition for this, with 1978 A.P.S. certificate 1,300.00
- 1049 ★ **City & Suburban Telegraph Co., 2c Black (6T2).** Without gum as issued, huge margins at top and left, full other sides, intense shade, tiny thin at right just breaks thru paper, otherwise Very Fine and attractive..... 1,300.00



1050



1051



1052EX

- 1050 ★ **City & Suburban Telegraph Co., 3c Black (6T3).** Without gum as issued, ample margins to barely touched, intense shade, couple tiny thin spots, Fine appearance, a choice example of the rarest of the City & Suburban stamps, a sheet of 60 contained 30 1c stamps, 20 2c stamps and only 10 3c stamps, therefore it is unclear why the Scott Catalogue prices the 3c lower than the 2c..... 950.00
- 1051 ★ **City & Suburban Telegraph Co., 3c Black (6T3).** Cut to shape, sound and Fine, ex "Scarsdale", with 2008 P.F. certificate which states "used" but we see no evidence of a cancel, the 3c is the rarest denomination of the City & Suburban stamps, a sheet of 60 contained 30 1c stamps, 20 2c stamps and only 10 3c stamps, therefore it is unclear why the Scott Catalogue prices the 3c lower than the 2c, Scott Retail as used..... 950.00
- 1052 ★ **City & Suburban Telegraph Co., 1c-3c Black (6T1-6T3).** Balance of the Born collection, three 1c and single example of the 2c and 3c, without gum as issued, one of the 1c with trace of red cancel (described as "partially removed" on accompanying 2004 P.F. certificate), generally small faults with the 3c repaired, Fine appearance...(Photo Ex) 4,450.00

COLUSA, LAKE & MENDOCINO TELEGRAPH COMPANY

The Colusa, Lake & Mendocino was incorporated in 1875, with 260 miles of line extended through the counties of Colusa, Lake, Mendocino and Napa. Three stamps were issued for prepayment — 5c, 10c and 25c denominations. Only one example each of the 10c and 25c is known (both offered in this sale) and the 5c is scarce — particularly in multiples.



1053

- 1053 ★ **Colusa, Lake & Mendocino Telegraph Co., 1876, 5c Black (7T1).** Positions 7-8 from the bottom row, horizontal pair, with "P.L.W." handstamp in blue, original gum, h.r., crisp impression on fresh paper, tiny thin speck on right stamp

FINE-VERY FINE APPEARANCE. A SCARCE PAIR OF THE COLUSA, LAKE & MENDOCINO FIVE-CENT TELEGRAPH STAMP.

This pair comes from Positions 7-8. Position 7 is one of only two Type B positions ("5" unconnected to the floral design below) from the pane of 10 2,600.00

A complete pane of the 5c will be offered on Monday, June 22, in Sale 1100 (lot 132)



1054

- 1054 ★ **Colusa, Lake & Mendocino Telegraph Co., 1876, 5c Black (7T1).** Position 2 from the top row, blue handstamp ("P.L.W."), original gum, small h.r. at top but lighter hinging than normally encountered, fresh and Fine, a scarce stamp in several respects, the 5c CL&M Telegraph Co. is rarely found in sound condition with decent gum, also Positions 2 and 7 are the only Type B positions ("5" unconnected to the floral design below) from the pane of 10 1,300.00

- 1055 ★ **Colusa, Lake & Mendocino Telegraph Co., 1876, 5c Black (7T1).** Position 5 from the top row, blue handstamp ("P.L.W."), original gum, small h.r. at top but much lighter hinging than normally encountered, fresh and Fine, a scarce sound example of the 5c CL&M Telegraph Co. 1,300.00



1056

- 1056 ★ **Colusa, Lake & Mendocino Telegraph Co., 1876, 5c Black (7T1).** From the bottom row, blue handstamp ("P.L.W."), original gum, h.r., well-centered, Very Fine, a choice sound example of this scarce issue 1,300.00



1055



1057



1058



1059



1060

- 1057 ★ **Colusa, Lake & Mendocino Telegraph Co., 1876, 5c Black (7T1).** From the bottom row, blue handstamp ("P.L.W."), original gum, h.r., well-centered, fresh and Very Fine, a scarce sound example of the 5c Colusa, Lake & Mendocino 1,300.00
- 1058 ★ **Colusa, Lake & Mendocino Telegraph Co., 1876, 5c Black (7T1).** From the top row, blue handstamp ("P.L.W."), original gum, h.r., nicely centered, small thin spots at top, Very Fine appearance, ex Schauss, purple backstamp 1,300.00
- 1059 ★ **Colusa, Lake & Mendocino Telegraph Co., 1876, 5c Black (7T1).** From the top row, blue handstamp ("P.L.W."), original gum, small h.r., intense shade, vertical crease near top (likely natural), appears Fine..... 1,300.00
- 1060 ★ **Colusa, Lake & Mendocino Telegraph Co., 1876, 5c Black (7T1).** From the top row, blue handstamp ("P.L.W."), original gum, bright paper, small edge tear at top, Very Fine appearance, with clear 1992 A.P.S. certificate 1,300.00



1061



1062



1063



1064EX

- 1061 (★) **Colusa, Lake & Mendocino Telegraph Co., 1876, 5c Black (7T1).** From the bottom row, blue handstamp ("P.L.W."), unused (no gum), bright and fresh, Fine, scarce in sound condition 1,300.00
- 1062 (★) **Colusa, Lake & Mendocino Telegraph Co., 1876, 5c Black (7T1).** From the bottom row, blue handstamp ("P.L.W."), probably unused (no gum) but accompanying certificates states "used", slightly rough perfs as frequently seen and light area of toning at top left, Very Fine appearance, with 2006 P.F. certificate (not mentioning perfs), Scott Retail as unused 1,300.00
- 1063 ★ **Colusa, Lake & Mendocino Telegraph Co., 1876, 5c Black (7T1).** Position 5 from the top row, blue handstamp ("P.L.W.") and magenta manuscript "Colusa, Lake & Mendocino Tel. Co.," , original gum, h.r., minute thin speck, Very Fine appearance, ex Kramer .. 1,300.00
- 1064 ★ **Colusa, Lake & Mendocino Telegraph Co., 1876, 5c Black (7T1).** Balance of four singles, two each from the top and bottom rows, blue handstamps ("P.L.W."), three original gum, one no gum, each with minor faults incl. toning or a small tear, one reperfed at bottom (a strange thing to do since *all* CL&M Telegraph Co. stamps must have at least one straight edge), Fine appearance and very rarely offered as a group, prior to this sale Power Search contained only five other singles, the great depth of the Born collection affords this opportunity to offer a collector several positions at once with small flaws, two certificates accompany.....(Photo Ex) 5,200.00



1065



1066

- 1065 ★ **Colusa, Lake & Mendocino Telegraph Co., 1876, 10c Black (7T2).** From the top right corner of the pane, original gum, h.r., blue handstamp ("P.L.W."), crisp shade and impression

VERY FINE. THIS IS THE UNIQUE 10-CENT VALUE OF THE COLUSA, LAKE & MENDOCINO TELEGRAPH ISSUE. ALONG WITH THE 25-CENT OFFERED IN THE FOLLOWING LOT, THIS IS ONE OF THE TWO GREATEST RARITIES OF TELEGRAPH STAMP COLLECTING.

The story of the Colusa, Lake & Mendocino Telegraph Co. issues is told in the Kramer book on page 51, quoting in part from the 1947 Rich monograph. Rich reported that four examples of the 10c stamp were known in collections prior to 1916 and stated that one may have been destroyed in the 1923 Berkeley fire (along with the second 25c example, see following lot for details). The stamp offered here is the only illustrated copy and the only reported copy for nearly 100 years and is believed to be unique. It was offered by Siegel Auction Galleries as part of the single-owner Carl W. Schedler sale in 1975 (Sale 476, lot 478, illustrated on front cover). Edward N. Lipson was the buyer of both the 10c and the 25c offered in the following lot. George Kramer acquired both stamps in 1988, and they were sold to Wilson Born in the Siegel firm's 1994 auction of the Kramer Telegraph Stamps collection (Sale 758).

Ex Schedler, Lipson and Kramer (illustrated in his book, page 53). 9,250.00

- 1066 ★ **Colusa, Lake & Mendocino Telegraph Co., 1876, 25c Red (7T3).** From the top right corner of the pane, original gum, h.r., brilliant color

VERY FINE. THIS IS THE UNIQUE 25-CENT VALUE OF THE COLUSA, LAKE & MENDOCINO TELEGRAPH ISSUE. ALONG WITH THE 10-CENT OFFERED IN THE PREVIOUS LOT, THIS IS ONE OF THE TWO GREATEST RARITIES OF TELEGRAPH STAMP COLLECTING.

The story of the 25c Colusa, Lake issue is told in the Kramer book on page 51, quoting in part from the 1947 Rich monograph. Two examples of the 25c stamp were discovered in 1902 and chronicled by Joseph P. Rich in the *American Journal of Philately* in 1903. Rich bought one of the copies and sold it to the Nassau Stamp Company in 1916. It was subsequently placed with A. H. Weber of Berkeley, California, and destroyed in the great Berkeley fire of 1923. The second copy, offered here, was purchased by Hiram Deats, passed through other unknown hands and was eventually sold in 1943 by Spencer Anderson as part of the John H. Clapp collection. Carl W. Schedler acquired the stamp in the Anderson sale and 32 years later Siegel Auction Galleries offered the stamp as part of the single-owner Schedler sale (Sale 476, lot 479, illustrated on front cover). Edward N. Lipson was the buyer of both the 25c and the 10c offered in the previous lot in the Schedler sale. George Kramer acquired both stamps in 1988, and they were sold to Wilson Born in the Siegel firm's 1994 auction of the Kramer Telegraph Stamps collection (Sale 758).

Ex Deats, Clapp, Schedler, Lipson and Kramer (illustrated in his book, page 53). This lot also includes a Colusa, Lake & Mendocino imprint cover with its original telegram sending slip (ex Kramer), which is a rare item worth \$750-1,000, but together with the stamp rarities will make an impressive exhibit or album page..... 9,250.00

CONTINENTAL TELEGRAPH COMPANY

According to the Kramer book, Continental Telegraph Co. operated between New York and Philadelphia from 1878 until 1882, when the company was sold to Western Union. These essays were produced but no actual stamps followed.



1067EX

- 1067 E **Continental Telegraph Co., 1c-50c, Plate Essays on India (unlisted in Scott).** Complete set of six values, all but the 1c with bottom "American Bank Note Company, New York." imprint, ample to large margins, deep rich colors, typical India paper translucencies

VERY FINE AND CHOICE. A SCARCE COMPLETE SET OF ESSAYS ON INDIA FOR THE UNISSUED CONTINENTAL TELEGRAPH COMPANY STAMPS.

Ex Kramer.....(Photo Ex) E. 2,000-3,000

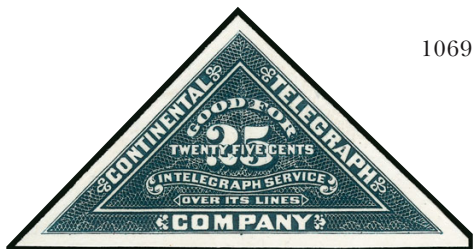
- 1068 E **Continental Telegraph Co., 1c-50c, Plate Essays on Card (unlisted in Scott).** Complete set of six values, large margins, deep rich colors, detailed impressions

VERY FINE AND CHOICE. A SCARCE COMPLETE SET OF ESSAYS ON CARD FOR THE UNISSUED CONTINENTAL TELEGRAPH COMPANY STAMPS.

.....(Photo Ex) E. 1,500-2,000



1068EX



1069EX

- 1069 E **Continental Telegraph Co., 1c-50c, Plate Essays on India and Card (unlisted in Scott).** Complete set of six values on India, set on card less the 2c value (1c is on India), card proofs with large margins, India proofs with full to large margins, minor India paper translucencies

FINE-VERY FINE GROUP OF ESSAYS ON INDIA AND CARD FOR THE UNISSUED CONTINENTAL TELEGRAPH COMPANY STAMPS.

.....(Photo Ex) E. 2,000-3,000

- 1070 E **Continental Telegraph Co., 1878-81, 50c-\$5.00 Franks (unlisted in Scott).** Five franks printed on banknote paper with portions of currency designs on back, each inscribed "Will accept this coupon during the year stamped thereon, or thereafter as equivalent to (Five Dollars) for said Company's proportion of tolls for telegrams over its lines", overprinted in large numerals in red, blue or orange, 1878 (50c), 1880 (50c), 1880 (\$5.00), 1881 (\$2.50) and 1881 (\$5.00), some small flaws incl. corner of one torn and sealed, Fine and undoubtedly rare, not mentioned in Kramer book (Born notes indicate discovered in 1986), unlisted in Scott.....

.....(Photo Ex) E. 1,000-1,500



1070EX

- 1071 E **Los Angeles & San Gabriel Valley Railroad, 1886, Grayish White (unlisted in Scott).** Frank perforated on three sides, original gum, h.r., red manuscript "C5", back with pencil notation "\$35.00 Deats", Fine, the only recorded example of this company's franking stamp, the 21-mile line of the railroad between Los Angeles and Duarte was started in 1883 and completed in 1887, the company was then sold to the Santa Fe Railroad, ex Kramer and illustrated in his book on page 61 E. 1,000-1,500



1071



1072EX

- 1072 ★田 **Marconi Wireless Telegraph Co., 1913, Brown (unlisted in Scott).** Complete pane of four with tab and three singles, pane original gum, singles disturbed or without gum, serial no. C68 on the pane, one of the singles without serial no. and defective, the others Very Fine, accompanied by a photo postcard of Guglielmo Marconi..... (Photo Ex) E. 300-400



1073

- 1073 **Mercantile Telegraph Co., 1892, Blue on Lilac (unlisted in Scott).** "J. H. Townsend, Prest." at bottom, used (very lightly), small faults

VERY FINE APPEARANCE. AN EXTREMELY RARE FRANK FOR THIS SHORT-LIVED TELEGRAPH COMPANY, THE PRIMARY BUSINESS OF WHICH WAS ILLEGAL BOOKMAKING FOR HORSE RACES. HEREINAFTER TO BE KNOWN AS THE TELEGRAPH "BOOKIE" STAMP.

The short-lived Mercantile Telegraph Co. was incorporated in 1892, had offices in St. Louis, Chicago and St. Paul and leased telegraph lines from other companies. Using *Google Books*, we located an 1892 appeal of a criminal complaint by the State of Missouri against J. H. Townsend, President of the Mercantile Telegraph Co., in which Townsend was accused of running an interstate bookmaking operation for horse races. F. N. Shaw, named on the stamp as the addressee for "ten word messages" was a co-conspirator. In fact, the complaint states that the telegraph office business consisted almost exclusively in taking money orders for bets on horses. Townsend was convicted, appealed and had his conviction affirmed. E. 2,000-3,000

NORTH AMERICAN TELEGRAPH CO.

Incorporated in 1885, the North American operated from Chicago to Minneapolis and eventually throughout the Dakotas. It was absorbed by the Postal-Cable Telegraph Company in 1929.



- 1074 ★ **North American Telegraph Co., 1899-1907 Issues (10T1-10T8).** Complete set including the **rare 1907 issue** (10T8), original gum, mostly h.r. and one with interleaving affixed, selected from a larger group for wide margins (except No. 10T1 close one side), a couple minor flaws incl. 10T3 and 10T8 small thins, 10T4 slight toning, overall a Very Fine appearing and attractive set.....(Photo Ex) 5,700.00
- 1075 ★ **North American Telegraph Co., 1899-1907 Issues (10T1-10T8).** Complete set including the **rare 1907 issue** (10T8), original gum with h.r. or some part gum, 10T8 no gum, some small flaws except No. 10T6 defective, Fine appearance.....(Photo Ex) 5,700.00
- 1076 ★ **North American Telegraph Co., 1899, Violet (10T1).** Two, original gum, one lightly hinged at top and other small h.r. at top, otherwise pristine gum on both, serial nos. 1085 and 1086, extra wide margins, bright colors, Very Fine and choice(Photo Ex) 650.00
- 1077 ★田 **North American Telegraph Co., 1899, Violet (10T1).** Pane of four, original gum with interleaving adhering, serial no. 1146, small staple stain in tab, left pair Fine, right pair Extremely Fine, a scarce pane 1,350.00
- 1078 ★ **North American Telegraph Co., 1901, Green (10T2).** Original gum, lightly hinged, serial no. 1123, perfect centering, Extremely Fine Gem..... 350.00
- 1079 ★ **North American Telegraph Co., 1902, Dark Brown (10T3).** Original gum, serial no. 1715, wide margins, Very Fine..... 600.00



- 1080 ★ **North American Telegraph Co., 1903, Blue (10T4).** Original gum, serial no. 2162, shallow thinning at top, appears Very Fine 600.00
- 1081 ★ **North American Telegraph Co., 1904, Violet (10T5).** Original gum, lightly hinged at top, serial no. 1004, radiant color, well-centered, Very Fine and choice 225.00
- 1082 ★ **North American Telegraph Co., 1905, Red Brown (10T6).** Original gum, h.r., serial no. 1273, wide margins, Very Fine and choice 400.00
- 1083 ★ **North American Telegraph Co., 1905, Red Brown, Imperforate (10T6 var).** Original gum, serial no. 1302, large top sheet margin with pencil "Error. 16 only that was unperforated", vertical crease at left (from prior fold of a multiple), some slight thinning in top margin and small tear in design at top right, otherwise Very Fine and rare, with 1990 P.F. certificate, unlisted in Scott E. 400-500
- 1084 ★ **North American Telegraph Co., 1906, Rose (10T7).** Unused (regummed), serial no. 1465, fresh color, Very Fine 450.00
- 1085 ★ **North American Telegraph Co., 1907, Green (10T8).** Original gum, serial no. 1799, nicely centered, Very Fine and choice, a nice example of one of the rarest regularly issued Telegraph stamps 2,750.00

- 1086 ★ **North American Telegraph Co., 1907, Green (10T8).** Original gum, h.r., serial no. 1799, wide margins, rich color, Very Fine, one of the rarest regularly issued Telegraph stamps 2,750.00



1086



1087EX

- 1087 (★) **Northern New York Telegraph Co., 1894-95 (12T1-12T4).** Group of four each, unused (no gum), one each of Nos. 12T1 and 12T2 without overprints, eight stamps with full corner sheet margins, several with part imprints, Fine-Very Fine, an attractive group(Photo Ex) 1,970.00



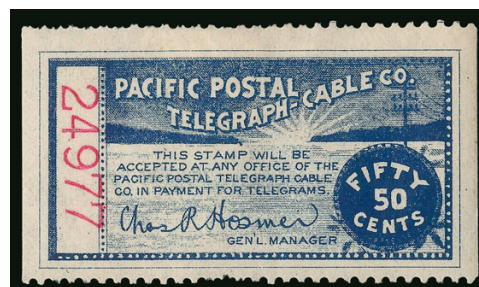
1088EX



1089EX

- 1088 ★ **Pacific Postal Telegraph-Cable Co., 1883, 10c-50c Issues (14T1-14T5).** Panes of five except 15c a strip of four, 10c, 15c and 50c with original gum (disturbed on 50c), other two no gum, a couple with minor toned spot in top tab, Fine-Very Fine(Photo Ex) 3,990.00
- 1089 **Pacific Postal Telegraph-Cable Co., 10c-50c Issues, Study Collection (14T1-14T5).** Approximately 38 stamps mounted on album pages with descriptions incl. panes of five of 15c and 25c, unused and used, range of serial nos. and cancels, some flaws to be found but many are Fine-Very Fine(Photo Ex) 4,910.00

- 1090 **Pacific Postal Telegraph-Cable Co., 10c-50c Issues, Accumulation (14T1-14T5).** More than 60 stamps on stock pages, unused and used, wide range of serial nos. and cancels, some flaws to be expected, overall Fine with some Very Fine(Photo Ex) 8,440.00



1090EX

POSTAL TELEGRAPH COMPANY

This company was organized in New York in 1881 and was reorganized in 1891 as the Postal Telegraph-Cable Company. Financial difficulties subsequently arose and in 1938 the company was reincorporated as the Postal Telegraph Company. They were finally absorbed by Western Union in 1943.



1091EX



1092EX



1093EX

- 1091 (★) **Postal Telegraph Co., 1895-98 Issues (15T12, 15T14, 15T16, 15T18).** Second and fourth original gum, other two no gum, nice margins and centering, a few creases, Very Fine appearing group of all four of the better "Good for One Message" values.....(Photo Ex) 1,375.00
- 1092 ★ **Postal Telegraph Co., 1908-14 Issues (15T29-15T39).** Complete set of the "Good for One Telegram of Ten Words" design, mostly original gum with h.r., couple no gum incl. 10T36 and 10T37, fresh colors, some small flaws to be found, the key No. 15T38 with a tiny thin, Fine-Very Fine or appear so, scarce complete set(Photo Ex) 4,045.00
- 1093 (★) **Postal Telegraph Co., 1908 Yellow, 1911, Violet (15T30, 15T36).** Both unused (no gum), first Very Fine, second almost perfectly centered and Extremely Fine(Photo Ex) 825.00

- 1094 ★ **Postal Telegraph Co., 1908-09, Brown, Se-Tenant Pair with "1908" Error (15T32, 15T32a).** Horizontal pair with top tab, right stamp "1908" in error, disturbed original gum, serial no. 3668, rich color

FINE-VERY FINE. A RARE EXAMPLE OF THE "1908" ERROR IN A PAIR WITH THE CORRECT "1909" ISSUE. THIS SE-TENANT PAIR IS THE MOST DESIRABLE FORM OF THE 1908 DATE ERROR.

The normal 1908 dates were issued in Blue, Yellow and Black (15T29-15T31), but not in Brown. In 1946 George Sloane noted (as quoted in Kramer book): "An error exists on certain upper right franks reading "1908", it occurs on the yellow brown printing and was quickly corrected." Also, "from the fact that the yellow browns differ from the medium browns in clearer, thinner lettering and absence of many minor flaws, a new stone was laid down for this printing. The error would then presumably have been due to using an old pull from the 1908 die or cut instead of one from the 1909 original."

The Kramer book illustrates a single. The pair offered here, which clearly shows the different year dates, is a remarkable item.

Scott Retail as singles..... 2,045.00



1094

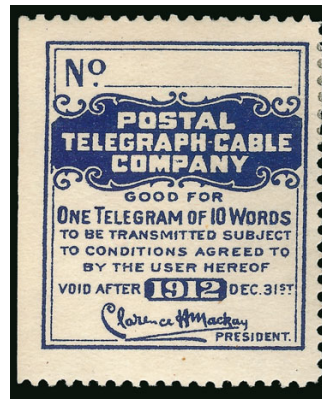
- 1095 ★ **Postal Telegraph Co., "1908" Brown, Error (15T32a).** Unused (no gum), serial no. 3518, light internal wrinkle, still Very Fine and rare, the normal 1908 dates were issued in Blue, Yellow and Black (15T29-15T31) but not in Brown, in 1946 George Sloane noted (as quoted in the Kramer book) that the error exists on certain upper right franks reading "1908," occurs on the yellow brown printing and was apparently quickly corrected, ex Kramer and illustrated in his book on page 93..... 2,000.00



1095



1096EX



1097

- 1096 ★ **Postal Telegraph Co., 1912, Blue (15T37).** Two, with (no. 1531) and without serial numbers, original gum, serial number stamp has thin spot, non-serial number stamp has tiny surface scuffs, appear Fine-Very Fine, scarce.....(Photo Ex) 2,100.00
- 1097 ★ **Postal Telegraph Co., 1912, Blue (15T37).** Original gum, small h.r. at upper right, deep rich color, Fine..... 1,050.00

- 1098 ★ **Postal Telegraph Co., 1913, Violet (15T38).** Original gum, serial no. 1654, outstanding wide balanced margins, Extremely Fine, a beautiful example of this scarce Telegraph stamp 1,500.00



1098



1099

- 1099 ★ **Postal Telegraph Co., 1913, Violet (15T38).** Original gum, lightly hinged, serial no. 1689, wide margins and choice centering, Extremely Fine example of this key Telegraph stamp..... 1,500.00

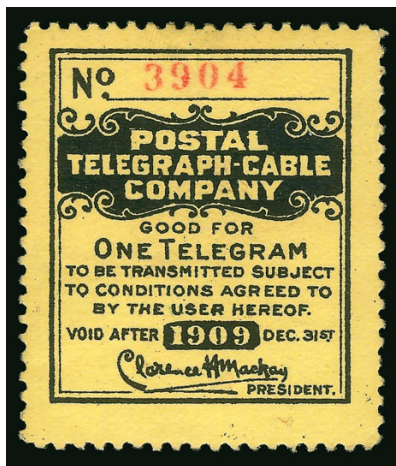
- 1100 ★ **Postal Telegraph Co., 1913, Violet (15T38).** Original gum, h.r., without serial no., fresh color, Very Fine example of one of the key stamps of the Postal Telegraph Company..... 1,500.00



1100



- 1101 ★ **Postal Telegraph Co., (1914), Violet, Red Violet (15T39-15T39a).** Five stamps, three original gum, two without gum, two with serial numbers, one non-serial number stamp with purple manuscript "Cancelled", one no-gum stamp with faint thins, all but one with wide margins and Very Fine.....(Photo Ex) 1,875.00
- 1102 ★★田 **Postal Telegraph Co., 1908, Blue, Horizontal Pair, Imperforate Between (15T40a).** Gutter pane of four with additional pair below, original gum, adherence from another sheet on gum, few small flaws incl. tiny edge tear at top, light corner crease at top left and two small jagged indentations not very noticeable (one affects left stamp of middle pair), Very Fine appearance and scarce, Scott Retail as three pairs..... 1,050.00
- 1103 ★★田 **Postal Telegraph Co., 1909, Lilac (15T41).** Complete booklet of 10 panes, Mint N.H. with interleaving, cover and panes serial no. 1331, slight band of edge toning on covers (back depicts building and "1909"), also incl. additional pane with interleaving and serial no. 1338 for display next to the booklet, fresh and Very Fine, a nice display piece, Scott Retail as individual panes.....(Photo Ex) 1,210.00
- 1104 (★) **Postal Telegraph Co., 1910, Black on Yellow Laid (15T42).** Unused (no gum), serial no. 2310, wide and balanced margins, Extremely Fine 700.00
- 1105 ★ **Postal Telegraph Co., 1910, Black on Yellow Laid (15T42).** Original gum, couple h.r., serial no. 2230, fresh and Very Fine 700.00
- 1106 ★ **Postal Telegraph Co., 1910, Black on Yellow Laid (15T42).** Original gum, h.r., serial no. 2230, Very Fine 700.00



1107

- 1107 ★ **Postal Telegraph Co., "1909", Black on Yellow Laid (15T42a).** Original gum, h.r., serial no. 3904, intense shade

VERY FINE AND EXTREMELY RARE EXAMPLE OF THE 1910 POSTAL TELEGRAPH COMPANY BLACK ON YELLOW LAID WITH "1909" DATE.

The Postal Telegraph-Cable Co. Black on Yellow Laid was issued with a "1910" date. This "1909" date is apparently an error and was reportedly discovered in 1990. It also has a different font for the serial number. It is listed but unpriced in Scott and noted without comment in the Kramer book. This is the first example we have encountered E. 1,500-2,000

- 1108 ★ **Postal Telegraph Co., 1916, Violet (15T47A).** Original gum with light pencil marks, without serial number, fresh colors, "1916" nicely positioned horizontally

VERY FINE EXAMPLE OF THE RARE POSTAL TELEGRAPH COMPANY 1916 VIOLET. MISSING FROM NEARLY ALL COLLECTIONS.

This is only the second example we have offered since keeping computerized records. The other, offered in our Sale 1090 (realized \$4,750 hammer), had the "1916" positioned diagonally (that stamp will be reoffered in Sale 1100 on June 22, 2015, due to buyer's default on payment) 2,750.00



1108



1109

- 1109 ★ **Postal Telegraph Co., 1917, Dark Blue (15T48).** Original gum, h.r., wide margins, diagonal tear at top into "No.", otherwise Very Fine, scarce with no other examples contained in Power Search, ex Kramer and illustrated in his book on page 96 1,500.00

- 1110 ★ **Postal Telegraph Co., 1918, Dark Blue (15T49).** Large part tropicalized original gum (from adhering to interleaving as normal for this issue), rich color, wide margins and well-centered, tiny toned spot near bottom

VERY FINE AND RARE EXAMPLE OF THE 1918 POSTAL TELEGRAPH COMPANY ISSUE WITH LARGE HANDSTAMPED YEAR-DATE.

This is only the third example of this issue we have offered since keeping computerized records. The last was in our "Scarsdale" sale in 2011 2,000.00



1110



- 1111 ★田 Postal Telegraph Co., 1919, Blue (15T49A). Pane of eight, original gum with interleaving adhering as normal, Very Fine 975.00
- 1112 ★ Postal Telegraph Co., 1908-14, Carmine, Chicago Great Western Official (15TO2-15TO8). Complete set, all but two original gum, few small flaws incl. pinhole on one, small thins on another, Very Fine or appear so (Photo Ex) 1,865.50
- 1113 ★ Postal Telegraph Co., 1913, Carmine, Chicago Great Western Official (15TO7). Original gum, h.r., fresh and bright, Extremely Fine 600.00
- 1114 ★ Postal Telegraph Co., 1913, Carmine, Chicago Great Western Official (15TO7). Original gum, h.r., bright color, wide and balanced margins, light gum bends, Very Fine and choice..... 600.00
- 1115 ★ Postal Telegraph Co., 1908, Orange, El Paso and Northeastern Railroad, Official, Imperforate Between (15TO9 var). Two pairs imperforate between (from cross-gutter), one full original gum, other large part original gum, both faulty with thinning on front, still these must be rare and are unlisted in Scott, accompanied by normal stamp, Scott Retail for five normal stamps (Photo Ex) 1,625.00
- 1116 ★田 Postal Telegraph Co., 1909-11, Yellow Green and Dark Green, Illinois Central Railroad, Official (15TO11-15TO13). No. 15TO11 in a pane of eight and a pane of four (unlisted as such), former original gum, h.r., latter interleaving adhering and faintly toned, small staple stain in tab, No. 15TO12 in a pane of four and No. 15TO13 in a pane of eight, original gum, Fine-Very Fine group, Scott Retail not counting No. 15TO11 pane of four (Photo Ex) 1,650.00
- 1117 ★ Postal Telegraph Co., 1912-13, Dark Green, Illinois Central Railroad, Official (15TO14-15TO15). Both with slightly tropicalized original gum, choice centering and margins, first with particularly intense color and tiny thin spot, Very Fine appearance (Photo Ex) 3,000.00
- 1118 ★ Postal Telegraph Co., 1912, Dark Green, Illinois Central Railroad, Official (15TO14). Original gum, h.r., well-centered, tiny natural inclusion bottom margin, Very Fine, a scarce Telegraph stamp 1,500.00



1119

- 1119 ★ **Postal Telegraph Co., 1908, Violet, Old Dominion Steamship Co., Official (15TO17).** Original gum, h.r., pretty pastel color, attractive margins and centering, free of the gum bends normally seen

VERY FINE AND CHOICE. A BEAUTIFUL ORIGINAL-GUM EXAMPLE OF THE POSTAL TELEGRAPH COMPANY'S "O.D." OFFICIAL ISSUE FOR USE BY OLD DOMINION STEAMSHIP COMPANY.

This is the key rarity of the Postal Telegraph Company Official issues (and is equaled in Scott Retail value only by the 1916 Violet, 15T47A)....
..... 2,750.00

- 1120 ★ **Postal Telegraph Co., 1908, Violet, Old Dominion Steamship Co., Official (15TO17).** Original gum, h.r., natural gum bends, rich color on fresh paper

VERY FINE AND CHOICE ORIGINAL-GUM EXAMPLE OF THE POSTAL TELEGRAPH COMPANY'S "O.D." OFFICIAL ISSUE FOR USE BY OLD DOMINION STEAMSHIP COMPANY.

This is the key rarity of the Postal Telegraph Company Official issues (and is equaled in Scott Retail value only by the 1916 Violet, 15T47A)....
..... 2,750.00



1120

- 1121 ★ **Postal Telegraph Co., 1908, Violet, Old Dominion Steamship Co., Official (15TO17).** Original gum, h.r., bit heavy gum bends just visible on face

VERY FINE APPEARING ORIGINAL-GUM EXAMPLE OF THE POSTAL TELEGRAPH COMPANY'S "O.D." OFFICIAL ISSUE FOR USE BY OLD DOMINION STEAMSHIP COMPANY.

This is the key rarity of the Postal Telegraph Company Official issues (and is equaled in Scott Retail value only by the 1916 Violet, 15T47A)....
..... 2,750.00



1121



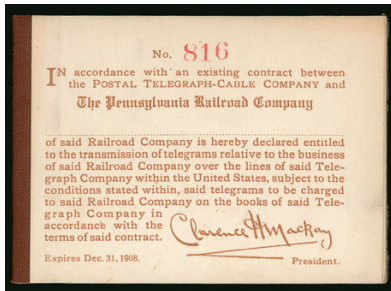
1122

- 1122 ★田 Postal Telegraph Co., 1908, Violet, Old Dominion Steamship Co., Official (15TO17). Complete pane of four, slightly tropicalized original gum, particularly wide margins in right vertical row, the bottom right stamp is a huge Jumbo

FINE-EXTREMELY FINE. AN EXCEPTIONALLY RARE COMPLETE PANE OF FOUR OF THE 1908 POSTAL TELEGRAPH COMPANY'S "O.D." OFFICIAL ISSUE FOR USE BY OLD DOMINION STEAMSHIP COMPANY.

This is the key rarity of the Postal Telegraph Company Official issues (and is equaled in Scott Retail value only by the 1916 Violet, 15T47A). It is rarely offered at auction even as a single. This complete pane of four is one of the highlights of the Born collection.

Unlisted as a pane. Scott Retail as four singles..... 11,000.00



1123EX



1124EX



1125EX

- 1123 ★★田 Postal Telegraph Co., 1908, Orange Brown, Old Dominion Steamship Co., Official (15TO18). Complete booklet of 10 panes, Mint N.H. with interleaving, also a block of four imperforate between (from cross-gutter), disturbed original gum, Very Fine, Scott Retail as ten single panes(Photo Ex) 1,500.00
- 1124 ★ Postal Telegraph Co., 1909-12, Yellow, El Paso Southwestern Railroad, Official (15TO25-15TO28). Complete set with the key 1910 issue, original gum, 1909 with adherence, 1910 disturbed, 1911 h.r. and 1912 disturbed but with enormous margins, 1910 issue with couple small thin spots, Fine-Very Fine or appear so, rarely offered as a complete set.....(Photo Ex) 3,350.00
- 1125 ★ Postal Telegraph Co., 1910-12, Yellow, El Paso Southwestern Railroad, Official (15TO26-15TO28). Six original gum stamps including the key 1910 issue, three of 1911 issue (incl. one Mint N.H., small inclusion but otherwise sound), three of 1912 issue, all with wide margins, mostly with small flaws, Very Fine appearance(Photo Ex) 5,350.00
- 1126 ★ Postal Telegraph Co., 1909, Yellow, El Paso Southwestern Railroad, Official (15TO25). Original gum, small h.r., pretty shade, Very Fine and choice..... 400.00



1126



1127

- 1127 ★ Postal Telegraph Co., 1910, Yellow, El Paso Southwestern Railroad, Official (15TO26). Original gum, h.r. and pencil notations, vivid color, balanced margins, Very Fine and choice 1,750.00

- 1128 (★) Postal Telegraph Co., 1910, Yellow, El Paso Southwestern Railroad, Official, Watermarked (15TO26 var). Clear watermark at top, unused (no gum), vibrant color, Very Fine, ex Kramer and illustrated in his book on page 101, Scott Retail as normal..... 1,750.00



1128



1129



1130

- 1129 ★田 **Postal Telegraph Co., 1911, Yellow, El Paso Southwestern Railroad, Official (15TO27).** Complete pane of eight, original gum, some slight disturbances in central block of four and bottom left stamp, right pair with disturbed gum, top left stamp was partially stuck down at one time and lifting resulted in gum loss and thinning at top left corner, fresh color and well-centered throughout

VERY FINE AND CHOICE. A RARE COMPLETE PANE OF EIGHT OF THE 1911 POSTAL TELEGRAPH COMPANY'S "S.W." OFFICIAL ISSUE FOR USE BY THE EL PASO SOUTHWESTERN RAILROAD.

Despite the one problem stamp, this is a beautiful and extremely rare complete pane of this issue. Power Search did not locate another, and there was none in our 1994 Kramer sale.

Unlisted as a full pane. Scott Retail for eight singles..... 4,800.00

- 1130 ★ **Postal Telegraph Co., 1911, Yellow, El Paso Southwestern Railroad, Official (15TO27).** Original gum with interleaving partially adhering, intense shade, wonderfully balanced margins, Extremely Fine 600.00



1131



1132

- 1131 ★田 **Postal Telegraph Co., 1912, Yellow, El Paso Southwestern Railroad, Official (15TO28).** Complete pane of eight, original gum, some slight disturbances in central block of four, side pairs were partially stuck down at one time and lifting resulted in some gum loss and narrow thinning along edges, fresh color

FINE-VERY FINE APPEARANCE. A RARE COMPLETE PANE OF EIGHT OF THE 1912 POSTAL TELEGRAPH COMPANY'S "S.W." OFFICIAL ISSUE FOR USE BY THE EL PASO SOUTHWESTERN RAILROAD.

This is a rare complete pane of this issue. Power Search did not locate another, and there was none in our 1994 Kramer sale.

Unlisted as a full pane. Scott Retail for eight singles..... 4,800.00

- 1132 ★ **Postal Telegraph Co., 1912, Yellow, El Paso Southwestern Railroad, Official (15TO28).** Original gum, h.r., nice margins and centering, Very Fine..... 600.00

- 1133 **Postal Telegraph Co., 1885-1942, Collection Balance (15T1-15TO30).** Large stamp balance in a thick album on Mr. Born's original album pages plus a second album of more than 15 covers and telegrams, full range of issues through the Officials (less the rarest items which are offered individually), unused and used singles, pairs, blocks, imprint blocks, a number of complete booklets, labels, all presented in a study format with typed descriptions, a number of higher catalogue value items including Nos. 15T12 (punched), 15T16, 15T18 (two, ms. initials and unused), 15T31 pane of four, 15T40a imperf between (two pairs), 15T49A (two), 15T49B, 15TO9, many others, a substantial and interesting collection balance, Scott Retail more than \$6,500.00*Not illustrated* E. 1,000-1,500



1134EX

- 1134 **Telepost Co., 1908-09, Black on Gray Rouletted, "Telestamp" Franks (unlisted in Scott).** Outstanding collection of 30 stamps plus two advertising postal cards, nine Ty. I designs and the balance Ty. II designs, singles, pairs, and two Ty. II proofs (one a pair, imperforate), **two cancelled stamps**, one a Ty. I and the other a Ty. II, both with violet rectangle handstamp which is described in Kramer book as "very rare", a few minor flaws

VERY FINE ASSEMBLAGE OF "TELESTAMP" FRANKS FROM THE TELEPOST COMPANY. THESE ARE VERY RARELY SEEN IN THE DEPTH OFFERED HERE.

We have seen dealer retail prices for the Ty. I and II stamps at \$750 for a pair and \$350 for a single. The two cancelled stamps could easily have been offered singly but are included here for completeness of the collection. The lot also includes a circular describing "What Telepost will do for You". A few ex Kramer.(Photo Ex) E. 3,000-4,000

- 1135 ★ **Tropical Radio Telegraph Co., 1914, 1926, United Fruit Co., 1910-13 (unlisted in Scott).** Group of ten items, Tropical Radio 1914 franks including imperforate pane of four without serial no., original gum, h.r., two perforated singles with serial nos. 130 and 134, original gum, one with interleaving adhering and thinned, 1926 franks with two 5c Red and single 25c Green, original gum, h.r., one 5c with small thins, Very Fine or appear so, United Fruit "Wireless Service" with four, incl. one from each year, 1910 with part imprint at bottom, original gum, h.r., one tropicalized, bright colors, couple small thins, Very Fine appearance and scarce, according to the Kramer book Tropical Radio was formed in 1904 to handle radio communications between South and Central American banana plantations and the U.S., in 1913 it became a subsidiary of United Fruit Co., a few items ex Kramer(Photo Ex) E. 750-1,000



1135EX



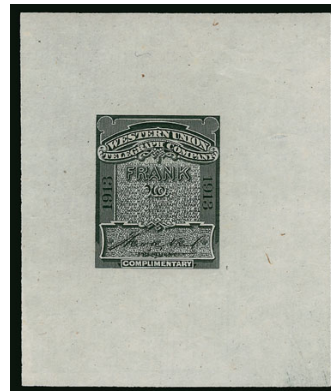
- 1136 ★ **United Wireless Telegraph Co., 1908-11 (unlisted in Scott).** Large collection of more than 160 stamps, including singles, pairs and blocks, lots of variety in colors, imperfs, with and without serial numbers, etc., Fine-Very Fine and a fascinating collection for study, according to the Kramer book there are more varieties of perforation for this telegraph company than for any other(Photo Ex) E. 1,000-1,500

1136EX

WESTERN UNION TELEGRAPH COMPANY

Organized in 1851, Western Union emerged as the winner in the consolidation of numerous telegraph companies into one huge monopoly. Through a series of key alliances and amalgamations during the 1850's and 1860's, and helped by excellent management through the 1870's, Western Union became the largest corporation in the world, giving it the capability to acquire or wipe out all competition during the next 70 years. Postal Telegraph Company was the last competitor to be absorbed into Western Union in 1943.

- 1137 TC **Western Union Telegraph Co., 1871-1913, Trial Color Proofs (16T1TC-16T4TC, 16T44TC).** Approximately 100 items containing more than 160 proofs, mostly trial color plate proofs with a few large die proofs as well, many of the plate proofs in pairs or blocks, wide range of colors, overall fresh and Very Fine, a fascinating group ..
(Photo Ex) E. 1,000-1,500



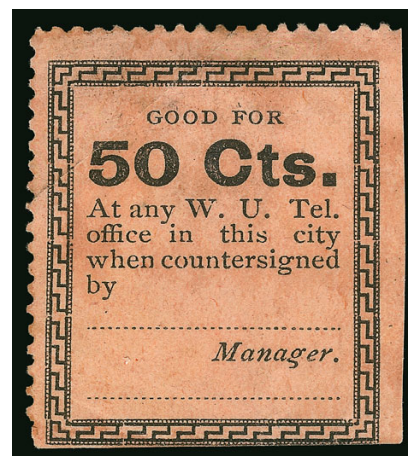
1137EX



1138EX

- 1138 TC **Western Union Telegraph Co., 1913, Trial Color Plate Proofs (16T44TC).** Ten sheets of 16, four different colors with duplication, one with slight toning, overall Very Fine group
(Photo Ex) E. 750-1,000

- 1139 E **Western Union Telegraph Co., 1875, 5c-50c "New Form of Frank", Perforated Essays on Salmon Colored Paper.** Complete set of four values, 5c, 10c, 25c and 50c, middle two values with original gum, h.r., other two no gum, 5c and 50c each with diagonal crease, Fine appearance and scarce, these are discussed in the Kramer book on pages 138-139 (50c offered here is illustrated), it is hypothesized that these were the "new form of frank" stamps essayed in 1875 but were never put to use, ex Kramer
(Photo Ex) E. 500-750



1139EX



1140EX

- 1140 (★) **Western Union Telegraph Co., 1898-1915, Imperforate Between Pairs (16T28a, 16T37a, 16T45b, 16T47 var).** Five items, first pair 16T28a, unused (no gum), small indentations, Very Fine appearance, listed but unpriced in Scott, No. 16T37a block of four, original gum, faint horizontal scoring thru bottom pair appears natural to the paper, Fine and scarce, No. 16T45b, original gum, fresh and Fine, listed but unpriced in Scott, finally two multiples of No. 16T47 showing imperforate between, one a block of six with normal pair at right, other a strip of three with normal stamp at right, original gum, block h.r., strip thinned, Fine-Very Fine, unlisted in Scott**(Photo Ex)** E. 500-750

- 1141 **Western Union Telegraph Co., 1871-1946, Collection (16T1-16T115).** The Born collection of Western Union stamps mounted on his typed album pages in three large binders, plus an additional album and two stock books with duplication, virtually completely intact with just a small handful of imperf between items removed, upwards of 3,000 stamps, each issue studied with unused, used, blocks, panes, serial number varieties, etc., there are no high catalogue value stamps for this most famous of all telegraph companies, but there is plenty of value to be found in this extensive collection*Not illustrated* E. 1,000-1,500

- 1142 ★田 **United States Telegraph-Cable-Radio Carriers, 1947, 5c, 10c Olive Bister (17T1-17T2).** Two panes of nine, eight stamps are 5c, bottom right stamp of each pane is 10c, first pane tropicalized original gum, toning around staple holes, second pane missing tab, original gum, the 10c stamp Mint N.H., Fine-Very Fine, Scott Retail as complete combination pane plus single 10c and eight 5c.....**(Photo Ex)** 2,006.00



1142EX

- 1143 ★★田 **United States Telegraph-Cable-Radio Carriers, 1947, 5c, 50c Olive Bister (17T1, 17T3).** Accumulation on album and stock pages, 21 booklet panes, a couple singles and booklet covers, some of the panes with toning around staple holes, some slightly telescoped perfs, overall Fine-Very Fine, Scott Retail more than \$1,700.00.....*Not illustrated* E. 400-500

TELEGRAPH COMPANY STAMP COLLECTION BALANCES

- 1144 ★ **Telegraph Stamp Collection.** Mounted on album pages, full range of issues with a high degree of completion, a large number of premium stamps, incl. Cal. State Nos. 5T1-5T2, 5T4 with and without serial no., 5T6-5T7, City & Suburban Nos. 6T1-6T2 (2c rebacked with part of design drawn in), Colusa, Lake & Mendocino No. 7T1, North American Nos. 10T1-10T7, Pacific Postal Nos. 14T1-14T5, Postal Telegraph Nos. 15T12, 15T14, 15T30, 15T39, 15T46, Officials Nos. 15TO4, 15TO9, 15TO21-22, 15TO27-28, Western Union No. 16T37a, some flaws to be found on some of the better stamps, overall a very fresh and desirable collection in above average condition, Fine-Very Fine, Scott Retail more than \$16,000.00 E. 4,000-5,000
- 1145 ★ **Telegraph Stamp Collection.** Over 250 different, lacking only a small number for completion, many cataloging hundreds of dollars each including Cal. State (5T1) and all three **City & Suburban issues (6T1-6T3)**, these three accompanied by 2014 P.F. certificates with faults, most issues are unused, many with original gum, some (usually small) faults to be expected, Fine-Very Fine appearance, a substantial collection balance which was once part of the estate of Norman W. Flinn, Scott Retail approximately \$17,000.00 E. 3,000-4,000
- 1146 ★ **Balance of Telegraph Stamp Collection.** Nearly 200 items on album pages and a stock sheet, mostly singles, but some multiples incl. full panes, strongest is the Postal Telegraph Co., with catalogue values to about \$180.00, a few unlisted items such as two United Wireless Co. imperforate between pairs and blue frank of Tropical Radio Telegram Co., some small faults, the majority Fine-Very Fine, decent balance with Scott Retail in excess of \$5,000.00..... E. 1,000-1,500
- 1147 ★ **Balance of Telegraph Stamp Collection (1T-13T).** Single album from the main part of the Born collection, many issues present from American Rapid Telegraph thru Pacific Mutual Telegraph, less the rare companies, better items incl. three stamped telegrams from American Rapid as well as set of punched "Collect" and "Office Coupon" imprint blocks of eight, two complete booklets from Atlantic Telegraph Co., other issues with serial number varieties marked as "rare" or "unique" by Mr. Born, Fine balance..... E. 500-750
- 1148 ★ **Telephone and Telegraph Stamp Collection.** Two thick binders of album pages, large number of singles, blocks and panes from a wide range of companies, incl. American Telephone and Telegraph Co., Bell Telephone of Buffalo, Central District Printing Co., Central N.Y. Telegraph and Telephone, Central Union, Colorado Telephone, Hudson River, Iowa, Milwaukee, Missouri & Kansas, Moore's, Mountain States, New York Telephone, New England Telephone, U.S. Telegraph, Pacific Telephone, Southern New England, a few others, this is a relatively untapped collecting area, we are informed by an active dealer that a catalogue may be forthcoming, which will no doubt increase popularity of telephone stamps E. 500-750
- 1149 ★ **Telegraph Stamp Accumulation.** Massive accumulation neatly arranged on black stock sheets in a binder, significant duplication with more than 20 of some stamps, great strength in Postal Telegraph issues with high numbers of some cataloguing \$50.00 or more, several with duplication in the \$300.00-\$400.00 range, singles of Nos. 15TO14 (Scott Retail \$1,500.00), **15TO17** (original gum, staple holes, one of the rarest telegraph issues, Scott Retail \$2,750.00), 15TO28, a great many others plus another binder with some booklets and many more stamps incl. 12 United Fruit unlisted stamps, mixed condition with some flaws to be expected, especially on the better stamps, a huge amount of useful material representing a lifetime of accumulation by Mr. Born, Scott Retail more than \$30,000.00 E. 4,000-5,000
- 1150 **Telegraph Stamp and Cover Accumulation.** In three boxes, thousands of items incl. covers, telegrams (forms and tape), some old documents (some may not be telegraph related) and a small amount of research, a large quantity of Western Union related material but also other companies, many stamped covers incl. from 1860's forward plus a few 1850's, very mixed condition but many items with retail sticker prices of \$10-\$50 and a few higher E. 1,000-1,500

TELEGRAPH COVERS



1151

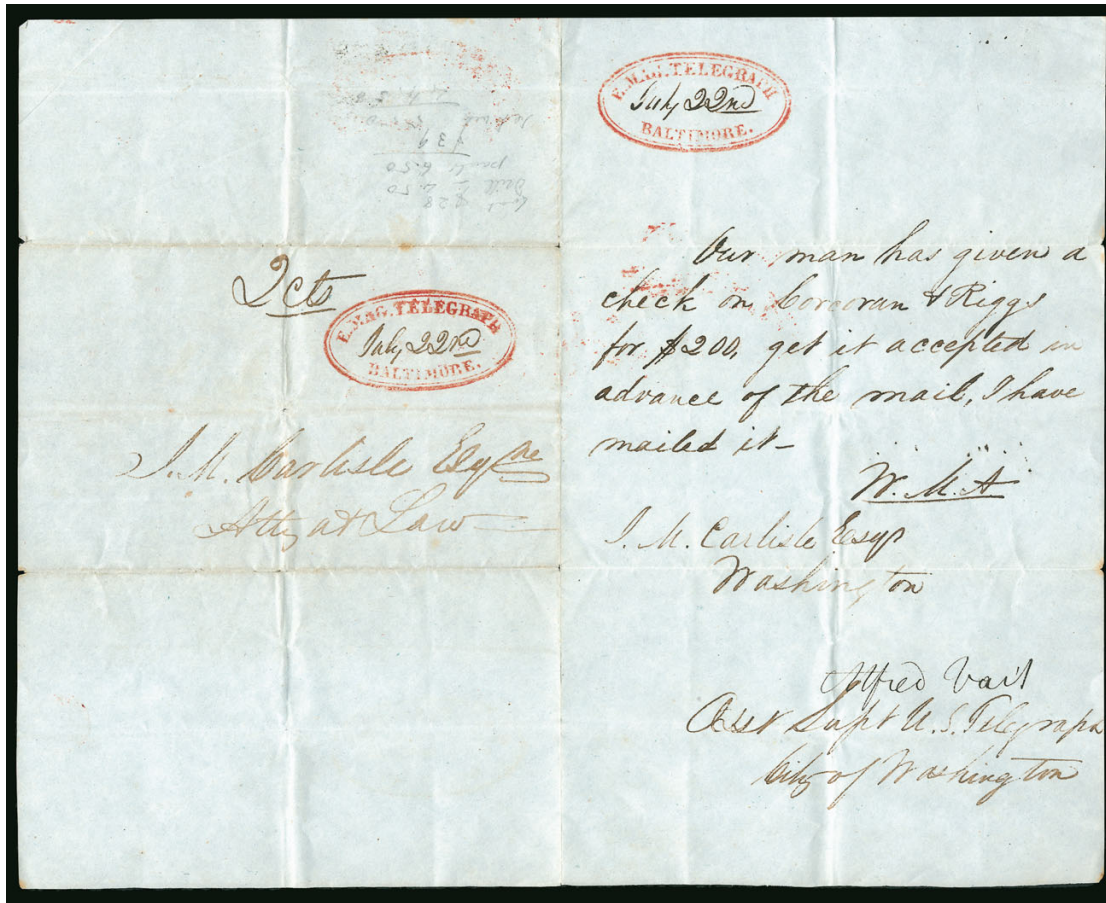
- 1151 **Samuel F. B. Morse, Father of the Commercial Telegraph System.** Signature "Sam. F.B. Morse." on clipped piece mounted on card, minor gum staining around edges of clip, Very Fine signature from this famous early telegraph pioneer and inventor of Morse code..... E. 200-300



1152

- 1152 ☒ **1c Blue, Ty. IV (9).** Huge left margin with large portion of adjoining stamp, cut in at right, tied by "Louisville & Cincinnati Mail Line, Oct. 28" route agent's circular datestamp on ca. 1854 folded "Prospectus of the Comic Pictorial Life and Adventures of a Telegrapher", published by G. V. Rutherford in Louisville, addressed to Shelburn Falls Mass., back panel with slight toning, Fine and attractive use, also the 1c 1851 is scarce with this route agent datestamp E. 500-750

EARLIEST RECORDED TELEGRAPH COVER



1153

- 1153 ☒ **United States Electromagnetic Telegraph, "E. Mag. Telegraph/ Baltimore July 22nd".**
Two clear strikes of red double-line oval handstamp with date in manuscript, one on front of circa 1845 cover addressed to an attorney, manuscript "2cts." charge for delivery, second strike on telegraphic message side which is signed "Alfred Vail" of the Washington D.C. office and a major early pioneer in the telegraph business

VERY FINE. THIS IS ONE OF ONLY THREE RECORDED EXAMPLES OF THE RARE UNITED STATES ELECTROMAGNETIC TELEGRAPH COMPANY "E. MAG. TELEGRAPH" HANDSTAMP. IT IS BELIEVED TO BE THE EARLIEST OF THE THREE AND THEREFORE THE EARLIEST TELEGRAPH COVER RECORDED. ONE OF THE HIGHLIGHTS OF THE WILSON BORN COLLECTION.

The 1993 American Stampless Cover Catalog states the United States Electromagnetic Telegraph line opened for experimental use on May 24, 1844, and for public business from April 1, 1845. It was administered by the Post Office Department until December 1846 when it was leased to private parties and then to the Magnetic Telegraph Co., to comprise a portion of its line between Washington and New York, in April 1847.

The ASCC and Mr. Born's records record only three examples of this earliest telegraph company handstamp. None are year dated, but based on ink color changes and the Alfred Vail signature, Robert Harris surmised that this cover is from 1845 (ASCC page 6). One of the others is the ex-Hahn Washington office handstamp on a faulty cover front only, dated March 5 (ca. 1846), last offered in Siegel Sale 980, lot 3078. The other is dated May 5 (ca. 1846). While we cannot guarantee that a P.F. opinion would confirm the 1845 year date, the clear strikes and condition of this cover make it one of the most outstanding telegraph covers extant.

ASCC No. 1, rarity 10 - the highest rarity level. Illustrated in ASCC on page 5
..... E. 3,000-4,000

Alta California Telegraph Company,

HAVING OFFICES AT

Santa Clara,
San Jose,
San Leandro,
Martinez,

Berkeley,
Vallejo,
Napa,
Suisun,

Sacramento,
El Dorado,
Grass Valley,
Placerville,

Coloma,
Auburn,
Forest City,
Nevada,

San Juan,
Camptonville,
Forest City,
Downsville,

Iowa Hill,
Yankee Jim,
Todd's Valley,
Georgetown,

Volcano,
Jackson,
McKelum Hill,
San Andreas,

Murphy's,
Columbia,
Sonoma,
Folsom,

CONNECTING DIRECTLY WITH THE

PLACERVILLE AND ST. JOSEPH OVERLAND LINE to all the CARSON VALLEY SILVER MINING TOWNS.

The PONY EXPRESS leaves our Office every FRIDAY, at 4, P. M.; and Dispatches for all parts of the Atlantic States will be received until 6, P. M. each Saturday, and will be delivered by telegraph from St. Joseph in EIGHT DAYS. Letters forwarded through in TWELVE DAYS.

OFFICE, NO. 158 MONTGOMERY STREET, CORNER OF MERCHANT.

OPEN FROM 8, A. M. TO 9, P. M. SUNDAYS, 9 TO 11, A. M.

Sac May 13 1860.
To Gov Downy 8 45 minutes P. M.

*The Sutter Rifles
and City Guards of Sacramento
and the Marysville rifles
are ready to march at any
moment they await orders
The Nevada Rifles and a
company at Placerville
and the Coloma grays
are also ready.*

*Yours
N Green Curtis
Maj Gen H Division 4th*

PONY EXPRESS AND PAIUTE INDIAN WAR

TELEGRAM TO CALIFORNIA GOVERNOR DOWNEY
AFTER FIRST BATTLE OF PYRAMID LAKE

1154

Alta California Telegraph Company, May 13, 1860, Telegram to Governor Downey Regarding Paiute Indian War. Red printed Alta California Telegraph Co. form with schedule for the **Pony Express** in the masthead, datelined at Sacramento, May 13, 1860, 8:45 p.m., to California Governor John G. Downey from Major General Nathaniel Green Curtis, 4th Division, California Militia, stating that "*The Sutter rifles and City Guards of Sacramento and the Marysville Rifles are ready to march at any moment they await orders. The Nevada Rifles and a company at Placerville and the Cololma grays are also ready*", receipt dock-eting on back, slight toning, several folds

A RARE TELEGRAPH MESSAGE TO CALIFORNIA GOVERNOR DOWNEY FROM GENERAL CURTIS, ANNOUNCING THE PREPAREDNESS OF CALIFORNIA STATE MILITIA TO MARCH TO CARSON VALLEY TO DEFEND AGAINST ATTACKS BY PAIUTE AND SHOSHONE INDIANS. DATED THE DAY AFTER PAIUTE WAR CHIEF NUMAGA ANNIHILATED MAJOR ORMSBY'S MILITIA AT THE THE FIRST BATTLE OF PYRAMID LAKE.

Following the Paiute Indian attack on Williams Station on May 7, 1860, a militia force of 105 men was assembled from towns in the Washoe mining region of what is present-day Nevada. This force was placed under the command of Major William Ormsby, a former Pioneer Stage agent and previously a member of William Walker's filibustering expedition into Central America. On the morning of May 10, Ormsby led his men northeast along the Carson River toward Williams Station. After two days and nights of extremely harsh weather, the ragtag army followed a path from the Truckee River to a place just a few miles south of Pyramid Lake. It was precisely where Pauite War Chief Numaga wanted to meet his enemy. The ambush quickly turned from a fight to slaughter. Three quarters of Ormsby's men were killed, including Ormsby himself. Another 29 were wounded. Scalps were taken, bodies mutilated and horses stolen. News of the disastrous battle was brought to Virginia City by a volunteer on horseback who had deserted his post. As reports of the First Battle of Pyramid Lake spread, fears of an Indian Armageddon caused widespread panic. Families took refuge in secure buildings. The residents of Silver City built a wooden cannon, but fortunately for them never fired it. Officials sent desperate pleas to California and Washington to send troops.

This telegram, sent from Sacramento the day after Ormsby's defeat, was in direct response to the news. The California militia and U.S. Army regulars were eventually combined under the command of Colonel John Coffee "Jack" Hays, a former Texas Ranger and experienced Indian fighter. In his message to Governor Downey, General Curtis confidently states that the various militia groups are ready to march "at any moment."

Original documents related to the Paiute Indian War are extremely scarce, and this is of particular interest to Pony Express students and collectors, because the message is written on the Alta California Telegraph Company form. It was prepared at the San Francisco office from a telegram transmitted by wire from Sacramento. This office was the home base of the Pony Express in San Francisco, from which point the messengers would depart and arrive.

Ex "New Helvetia" collection. Described in Nathan-Boggs Pony Express book (pp. 9-10).
..... E. 3,000-4,000



- 1155 ☒ **Alta California Telegraph Company.** Both of the ASCC-listed styles, in fact these are the two covers illustrated in catalogue on page 136, first cameo design corner card in brown, with original telegram form with eagle design, dated Jan. 30, 1857, Very Fine, second with illustrated woodcut of Zeus throwing lightning bolts (Wade imprint), addressed to Stockton messenger for the Boat Benicia, back panel with tears, still Very Fine, ASCC Nos. 272-273(Photo Ex) E. 500-750
- 1156 ☒ **Alta California Telegraph Company.** Imprint and illustrated woodcut of Zeus throwing lightning bolts (Wade imprint) on buff cover to Mokelumne Hill with original message form on printed letterhead, datelined San Francisco, July 30, 1859, Extremely Fine, immaculate condition, the Alta California Telegraph office is where the Pony Express had it home base in San Francisco, ex "New Helvetia", ASCC No. 273..... E. 1,000-1,500
- 1157 ☒ **Alta California Telegraph Company.** Imprint and illustrated woodcut of Zeus throwing lightning bolts (Wade imprint), different heading than prior lot with "To San Francisco and all the principal towns in the state: also, Carson Valley.", on cover to Union Hotel, backflap tear extends just into front at top, appears Very Fine, the Alta California Telegraph office is where the Pony Express had it home base in San Francisco, ASCC No. 273 var..... E. 300-400
- 1158 ☒ **Alta Telegraph Company.** One cover and 13 original telegrams, cover with the beautiful Zeus and lightning bolt design, some soiling, telegrams incl. three with eagle design at top (two different), some flaws, overall Fine(Photo Ex) E. 300-400

AMERICAN TELEGRAPH COMPANY



- 1159 ☒ **American Telegraph Company, New York.** Three covers, two with albino embossed corner cards, both of the ASCC-listed styles (Nos. 280 and 283), each sent **through the mails**, round "Boston & Maine District" design with 3c Dull Red, Ty. I (11), tied by blue "Eastern R.R. Aug. 6" circular datestamp, addressed to Philadelphia, with original letter, stamp minor corner bend, Very Fine, second with eagle design and 3c Rose (65), grid cancel (not tied), West Cornwall Ct. circular datestamp, stamp with small edge tear, otherwise Fine, also third cover with American Telegraph Company Southern District "Under Control and Supervision of United States Military Telegraph", 2c Black (73), tied by fancy star in circle, addressed to a Colonel, stamp with small faults, some erosion in address, Very Fine appearance.....(Photo Ex) E. 400-500
- 1160 ☒ **American Telegraph Company, New York.** Red 1861 lithographed envelope with ornate design of Morse key and register framed by flags and flanked by telegraph machines, constellation of stars and lightning emanating from an eagle at top and 34 state or territory shields around edges, "Cambridge Livingston, Secy." and "E.S. Sanford, Pres." imprints (Sanford was a prominent express operator and was associated with Adams and Harnden), addressed locally with 1861 dock-eting on front, few faults on backflap, otherwise Very Fine and very scarce, particularly in red, 1993 ASCC No. 284, rarity 8, ex Hahn..... E. 400-500
- 1161 ☒ **American Telegraph Company, New York.** Blue 1861 lithographed envelope with ornate design of Morse key and register framed by flags and flanked by telegraph machines, constellation of stars and lightning emanating from an eagle at top and 34 state or territory shields around edges, addressed locally, Very Fine and pristine, scarce especially in this condition, 1993 ASCC No. 284, rarity 8 E. 400-500
- 1162 ☒ **American Telegraph Company, New York.** Blue 1861 lithographed envelope with ornate design of Morse key and register framed by flags and flanked by telegraph machines, constellation of stars and lightning emanating from an eagle at top and 34 state or territory shields around edges, "Cambridge Livingston, Secy." and "E.S. Sanford, Pres." imprints (Sanford was a prominent express operator and was associated with Adams and Harnden), addressed locally, original telegraph form dated Aug. 23, 1861, Very Fine and scarce, 1993 ASCC No. 284, rarity 8, illustrated on page 140..... E. 300-400



- 1163 ☒ **American Telegraph Company, New York.** Blue 1861 lithographed envelope with ornate design of Morse key and register framed by flags and flanked by telegraph machines, constellation of stars and lightning emanating from an eagle at top and 34 state or territory shields around edges, addressed locally, **with original telegraph tape**, staple holes at left, still Very Fine and scarce, 1993 ASCC No. 284, rarity 8..... E. 300-400
- 1164 ☒ **American Telegraph Company, New York.** Three 1862 lithographed envelopes with ornate design of Morse key and register framed by flags and flanked by telegraph machines (machinery raised and without the constellation of eagle and stars as in other design), "No Charges" and "City Offices at the Principal Hotels" imprints, one each in blue (with "Answer by Bearer", which is crossed out), red and black, addressed locally, blue with with original telegraph form and few faults on backflap, red small backflap repair, still Very Fine and most attractive trio, 1993 ASCC No. 285, Rarity 7.....**(Photo Ex)** E. 500-750
- 1165 ☒ **American Telegraph Company, New York.** Three 1862 lithographed envelopes with ornate design of Morse key and register framed by flags and flanked by telegraph machines (machinery raised and without the constellation of eagle and stars as in other design), "No Charges" and "City Offices at the Principal Hotels" imprints, two in red (with and without "Answer by Bearer", which is crossed out), one in black, addressed locally, one red missing piece of backflap, black with small edge nick, Very Fine or appear so, 1993 ASCC No. 285, Rarity 7.....**(Photo Ex)** E. 400-500
- 1166 ☒ **American Telegraph Company.** Substantial collection in four binders, first two contain covers and telegrams, second two telegrams only, more than 130 covers in first two volumes from 1850's-60's, designs as listed in ASCC on pp. 139-142, including five of the elaborately illustrated shield and telegraph machine in black, (ASCC No. 285, rarity 7, one faulty), color and albino embossed, printed, etc., a good number entered the mails with 3c 1851-57 Issues or 1861 Issue, the telegram volumes include ten with 3c Telegraph Part Perforated (R19b), the final volume with all Civil War period telegrams, some faulty covers to be found (incl. with 1c and 2c 1861 issue stamp), but overall Fine and fascinating collection, American Telegraph was formed in 1856 through the consolidation of several companies, after the Civil War it was merged with Western Union in Nov. 1865.....**(Photo Ex)** E. 2,000-3,000



- 1167 ☒ **Atlantic Lake & Mississippi Telegraph, Dayton, St. Louis.** Two items, first 31mm black Dayton circular handstamp on 1848 buff cover to local recipient, original telegram enclosed, "Pittsburgh, Cincinnati & Louisville Telegraph/ Dayton Office, Corner Main and Third Streets" at top, message "Home tomorrow all well", couple small edge splits, still Very Fine and rare, ex Hahn, second 27mm black "Atlantic Lake & Mississippi Telegraph St. Louis" circular handstamp struck on Jan. 8, 1849 letter from New York to Livermore & Cooley from Mailand Phelps & Co., Very Fine and rare, both of these are unlisted in the 1993 ASCC(Photo Ex) E. 500-750
- 1168 ☒ **O'Reilly's Atlantic, Lake & Mississippi Lines.** Substantial collection of 65 covers plus an approximately equal number of telegrams, bringing together independent lines intended by Henry O'Reilly (sometime spelled "O'Reilly") as a loose confederation to compete in the western telegraph business, many covers and telegrams with O'Reilly's name, lots of better and rare incl. Atlantic & Ohio ASCC Nos. 105 (faulty at top) and 106 (two), various pictorial designs incl. eagles on covers and Zeus on telegrams, a nice group of nine color embossed O'Reilly corner card covers incl. some sent through the mails, a binder of Illinois & Mississippi Telegraph Co. covers incl. one pictured on page 123 of ASCC, several unlisted designs, some inevitable flaws but most covers are presentable and attractive, an outstanding group which should be reviewed to be appreciated(Photo Ex) E. 2,000-3,000
- 1169 ☒ **Atlantic & Ohio Telegraph, Philadelphia.** Two covers showing the two scarcest designs, first negative octagonal framed handstamp boldly struck on ca. 1847 brown cover to local address, letter "X" handstamp of unknown significance ("Z" is also known), cover slightly darkened as with all other known examples, wax seal on back, Very Fine and scarce, 1993 ASCC No. 105, rarity 8, second with cursive printed "from the office of" design at top, manuscript due docketing, with original telegram form, slight vertical toning at center, otherwise Very Fine, ASCC No. 106, rarity 7(Photo Ex) E. 400-500
- 1170 ☒ **Atlantic & Ohio Telegraph, Philadelphia.** Negative octagonal framed handstamp boldly struck on ca. 1847 brown cover to Broadalbin N.Y., Feb. 7 town cancel, letter "X" handstamp of unknown significance ("Z" is also known), cover slightly darkened as with all other known examples, Very Fine and particularly rare with a town datestamp, we have seen one other struck in such a way other but it was very faded, 1993 ASCC No. 105, rarity 8 E. 400-500
- 1171 ☒ **Atlantic & Ohio Telegraph, Philadelphia.** Cursive printed "from the office of the Atlantic & Ohio Telegraph Company, Merchants Exchange Phila.," large "Paid" straightline handstamp at right, addressed locally, Oct. 26, 1848 docketing at left, light horizontal file fold near top, still Very Fine, ASCC No. 106, rarity 7 E. 300-400
- 1172 ☒ **Atlantic & Ohio Telegraph, Company.** 3c Rose (65), bright color, tied by blue circular grid with matching "Hagerstown Md. Jul. 2, 1864" double-circle datestamp on boldly printed "National Telegraph" buff cover to Maryland, original telegram form used as a letter, pristine and Extremely Fine, a choice telegraph cover sent through the mails E. 300-400



- 1173 ☒ **Atlantic & Pacific Telegraph Company** Large binder of more than 30 covers and 70+ telegrams, many with the elaborate United States map printed design, a few telegrams with Ben Franklin design, 1860's-70's so after the time period covered by the ASCC, some flaws to be expected but many are Very Fine, an interesting collection, owner's cost on adding machine tape in back of album appears to be more than \$4,000 (Photo Ex) E. 750-1,000
- 1174 ☒ **Astor House Telegraph and People's Telegraph, New York.** Two unlisted New York City telegraph covers, first Red printed "Astor House Telegraph," listing connections and office address, file fold near top, Very Fine, second green printed "People's Telegraph Lines," listing connections and addresses, 1854 docketing, Very Fine pair of unlisted companies (Photo Ex) E. 300-400
- 1175 ☒ **Bain's Eastern Telegraph.** Buff cover with 76 State Street (Boston) address, two 3c Orange Brown, Ty. II (10A), plating notations 17R0 and 7R0, cancelled by small "Paid" in grid and right stamp tied by red "Boston 8 Jan. 6cts." integral-rate circular datestamp, addressed to San Francisco, some mended tears not affecting stamps, Very Fine appearance, an outstanding and rare combination of 3c 1851 Orange Brown stamps on a transcontinental telegraph cover, paying the 6c over-3,000 miles rate, ASCC No. 73 E. 750-1,000
- 1176 ☒ **Bain's Western Telegraph.** Two covers, both with Boston 76 State Street address but in different styles, one is ASCC No. 74, the other unlisted, both franked with 3c Dull Red, Ty. II (11A), tied by Portland Me. circular datestamp and addressed to "Superintendent, Newburyport Mass.", July 22 1853 and July 7th 1854 docketing respectively, 1853 cover with light file fold and minor corner nick, Very Fine pair of matched covers showing different Bain's Eastern/Western designs, the listed design illustrated in ASCC on page 43 (Photo Ex) E. 500-750
- 1177 ☒ **Bain's Eastern/Western Telegraph.** Seven covers and three telegrams, all but one of the covers sent through the mails with 3c 1851 Issue (11A), both of the ASCC-listed designs plus one not listed, few flaws incl. file folds thru two of the stamps, Fine-Very Fine, desirable examples showing postal use (Photo Ex) E. 500-750

CALIFORNIA STATE TELEGRAPH COMPANY



- 1178 ☒ **By Telegraph. Office (California State Telegraph Company).** Bold blue four-line notched corner rectangular handstamp continuing "No. 159 Clay St. San Francisco. Cal." on ca. 1854 cover to local address, Very Fine, scarce Western use, ASCC No. 266, rarity 7 E. 300-400
- 1179 ☒ **By Telegraph. Office (California State Telegraph Company).** Light strike of red four-line notched corner rectangular handstamp continuing "No. 159 Clay St. San Francisco. Cal." on ca. 1854 cover to local address, Very Fine, scarce Western use, ASCC No. 266, rarity 7, ex Hahn..... E. 300-400
- 1180 ☒ **California State Telegraph Company.** Three covers, each of the ASCC-listed different design types (Nos. 267-269, two Zeus on globe) on buff or orange-buff covers, two with original telegrams, nice condition, Very Fine trio.....**(Photo Ex)** E. 400-500
- 1181 ☒ **California State Telegraph Company.** 45 covers and numerous telegrams in a binder, each of the ASCC-listed designs from Nos. 267-270, one sent through the mails with Genoa Nevada circular datestamp and "Due 6" handstamp (reduced at left), also a variety of No. 267 showing an albino embossed corner card of same design, about one-third of the covers are reduced or opened roughly with edge problems, still many Fine-Very Fine are present, an attractive group with the Zeus and lightning bolt designs**(Photo Ex)** E. 1,000-1,500



- 1182 ☒ **Cape Cod Telegraph Company.** 1c Blue, Ty. IV (9), huge right margin showing centerline, other sides ample to in at top, tied by indistinct town cancel on Cape Cod Telegraph Co. shareholder meeting notice to Kingston Mass., stamp with light diagonal crease, Very Fine appearance..... E. 200-300
- 1183 ☒ **Cape Cod Telegraph Company.** Blue circular printed design with 31 State St. Boston address, **3c Dull Red, Ty. II (11A)** tied by blurry strike of "Paid" in grid, red "Boston Mass. 19 Jul." circular datestamp on 1856 cover to Gorham Mass., original telegram message with attractive company heading, announces tying of Cape Cod to the mainland and opening the line to Boston, Very Fine and desirable sent through the mails, ASCC No. 61 E. 300-400
- 1184 ☒ **Catskill Telegraph & Express Office (New York State Merchant's Telegraph Company).** Printed design with "Also Book & Variety Store. Opposite Catskill Bank." on 1852 cover sent **through the mails** with rimless blue "Catskill N.Y. Jan. 27" circular datestamp and matching "5" unpaid rate, addressed to Jefferson N.Y., original letter enclosure, Very Fine and scarce design, ASCC No. 177, rarity 7, illustrated on page 92 E. 300-400
- 1185 ☒ **Cleveland & Cincinnati Telegraph Company (Wade's Office).** Four covers and 13 telegrams, each of the three listed designs on pp. 130-131 of ASCC, in fact the three examples illustrated are each offered here, beautiful albino embossed eagle design and the other two printed, one ornately, most of the telegrams also with multiple detailed engravings, incl. the Toppan, Carpenter & Co. Eagle engraving used on the U.S. 1851 Eagle Carrier (LO2), one cover with some edgewear, overall a Very Fine group, each of these designs is scarce. **(Photo Ex)** E. 500-750
- 1186 ☒ **Electric Marine Telegraphs of Boston.** Bold strike of black 24mm "By Telegraph" handstamp on May 7, 1859 cover to "Hallowell & Howland", original telegram form enclosed, imprinted "Electric Marine Telegraphs, Comprising the Following Lines: Cape Ann, Cape Cod, Cape Cod Marine, Commercial and Palmer's, Hull, Cohasset and Scituate", backflap missing and couple small tears, still Fine and scarce, ASCC No. 63, rarity 7, ex Hahn..... E. 300-400
- 1187 ☒ **Erie and Michigan Telegraph.** Perfect bold strike of black oval handstamp continuing "Office/over Farmers & Mechanics/ Bank/ Detroit." on brown cover addressed locally, tiny nick in top just into handstamp, Extremely Fine and rare strike, 1993 ASCC No. 250, illustrated on page 125 E. 400-500
- 1188 ☒ **Hannibal Telegraphery (Illinois and Mississippi Telegraph Company).** Circular 26mm handstamp on 1848 cover to Alton, Ill., "Hannibal Mo. Feb 2" circular datestamp, manuscript "5" rate marking, interesting original contents detail the first receipt of mail in ten days, which was brought by private express from Bowling Green due to the inability of the U.S. Mail contractor to cross a high stream, slight edge tear, otherwise Very Fine and rare, Calvet Hahn recorded only two examples, this is listing example and is illustrated in ASCC, No. 240, rarity 9, ex Hahn..... E. 500-750

HOUSE'S PRINTING TELEGRAPH COMPANY



- 1189 ☒ **House's Printing Telegraph (New York & Washington Printing Telegraph Company).** Printed design with pointing hand and New York address, to local recipient, Jan. 17 1850 docketing, Very Fine and rare, ASCC No. 21 and illustrated on page 21, this is the earliest design for the New York and Washington Printing Telegraph Co. E. 200-300
- 1190 ☒ **House's Printing Telegraph (New York State Printing Telegraph Company).** Printed 1850 illustrated design with Zeus enthroned on a globe, American flag and lightning bolts in his hands, pointing hand at top and Arcade Hall Rochester address, sent **through the mails** with red "Rochester N.Y. Jul. 30 5" integral-rate circular datestamp, to Albion N.Y., Very Fine, a wonderful design and scarce sent through the mails, ASCC No. 182, rarity 7 E. 400-500
- 1191 ☒ **House's Printing Telegraph (New York State Printing Telegraph Company).** Printed 1850 illustrated design with Zeus enthroned on a globe, American flag and lightning bolts in his hands, pointing hand at top and Arcade Hall Rochester address, sent **through the mails** with red "Rochester N.Y. Aug. 1 5" integral-rate circular datestamp, to Albion N.Y., original letter enclosed, faint soiling, still Very Fine, a wonderful design and scarce sent through the mails, ASCC No. 182, rarity 7 E. 300-400
- 1192 ☒ **House's Printing Telegraph (New York & Washington Printing Telegraph Company).** Printed illustrated design of House's office building and 21 Wall Street address, sent **through the mails** with "New-York Nov. 20 5cts." integral-rate circular datestamp to Albion N.Y., original telegram tape enclosed, Very Fine, a beautiful design, desirable sent through the mails, ASCC No. 25, rarity 6 E. 300-400
- 1193 ☒ **House's Printing Telegraph (New York & Washington Printing Telegraph Company).** Illustrated printed design featuring a telegraph machine and tape, Philadelphia office, addressed locally with original ca. 1855 telegram tape from a Rev. Curtis to Mrs. Curtis, states in part, "I come Wednesday. Berths Arranged. TF Curtis.", unfortunately Rev. Curtis never made it to his wife in Philadelphia, after boarding the steamer *North Carolina* a fire broke out en route to Norfolk, below Smith's Island, all of the passengers and crew were rescued except for Rev. Curtis and "a colored waiter named Walters", both of whom perished attempting to reach the shore, Very Fine, a poignant telegraph cover and message, accompanied by an article from the *Baltimore Clipper* newspaper describing the accident, ASCC No. 28 E. 300-400



- 1194 ☒ **House's Printing Telegraph (New York State Printing Telegraph Company).** Four covers, three unlisted printed designs and one illustrated in ASCC on page 95, each sent through the mails, one stampless from Albion N.Y., other three franked with 3c 1851 (11A), tied by Boston, Cleveland and Albany circular datestamps, two with original letters and another with telegram, ca. 1853, a couple minor toned spots, Very Fine group and desirable with all sent through the mails.....(Photo Ex) E. 500-750
- 1195 ☒ **House's Printing Telegraph (New York & Washington Printing Telegraph Company).** Printed design with **Louisville office** address and pointing hand at bottom left, **entered mails** with blue "Louisville Ky. Sep. 21" circular datestamp, addressed locally, red crayon marking of unknown nature, manuscript "1"(c) for drop rate, some faint soiling, Fine and rare example of this House Office's stationery entering the mails, unlisted in ASCC..... E. 300-400
- 1196 ☒ **House's Printing Telegraph, Pictorial Designs.** Nine covers, each of the designs shown in 1993 ASCC on pp. 22-25 and 95-96 (New York & Washington Printing Telegraph Co. and New York State Printing Telegraph Co.), designs incl. Zeus with flag in black (illustrated on page 22) and red, House's building in New York and telegraph machines (three types), two covers accompanied by telegraph tape and another with letter, two sent through the mails with Utica N.Y. circular datestamps, Very Fine group of these desirable pictorial designs(Photo Ex) E. 750-1,000
- 1197 ☒ **House's Printing Telegraph.** Large accumulation in two thick binders, more than 140 covers, most accompanied by original telegram tapes, designs shown in 1993 ASCC on pp. 22-25 and 95-96 (New York & Washington Printing Telegraph Co. and New York State Printing Telegraph Co.), plus some unlisted, pictorial design covers incl. one Zeus and Flag, approximately ten telegraph office and a few telegraph machine designs, most are "The Reliable" design, or printed letterhead variety, many of the "Canada Lines" at left type, a few sent through the mails, Fine-Very Fine(Photo Ex) E. 1,000-1,500
- 1198 ☒ **Illinois & Mississippi Telegraph, Quincy.** Clear strike of 28mm circular handstamp on Jan. 30, 1850 folded letter to Quincy, Very Fine and rare, ASCC No. 242, rarity 8..... E. 300-400

MAGNETIC TELEGRAPH COMPANY



- 1199 ☒ **Magnetic Telegraph Co., "Amos Kendall, Agent for S.F.B. Morse."** Signature on June 22, 1846 folded letter to J. C. Brodhead in Boston, neat strikes of red "New York 10cts 25 Jun." integral-rate circular datestamp and straightline "BALTIMORE R.R." handstamp, transcript of letter included and states in part, "Sir, in accordance with the Articles of Agreement and Specifications constituting the Magnetic Telegraph Company...it has become my duty to inform you that funds are wanted to put up another substantial wire from Washington City or Baltimore to Jersey City opposite New York...", Very Fine, Kendall was a prominent Jacksonian politician and served as postmaster general under Jackson, after returning to private life he was a major promoter and investor with Samuel Morse, founding the Magnetic Telegraph Co., the first privately owned telegraph line in the United States E. 500-750
- 1200 ☒ **Magnetic Telegraph Office. Phila., Wilmington.** Three covers, black and red oval handstamps from Philadelphia office on brown and buff covers, ca. 1846-1848 and 1847 respectively, addressed locally, one with original telegram form, couple folds do not detract, also clear black Wilmington office handstamp on orange-buff cover addressed locally, Very Fine and scarce trio from this pioneer company — the first privately owned telegraph line, 1993 ASCC No. 2, Rarity 8, first two ex Hahn.....**(Photo Ex)** E. 500-750
- 1201 ☒ **Magnetic Telegraph Office. Phila., Baltimore.** Two covers which entered the mails, first oval Philadelphia office handstamp on 1847 buff cover to Lancaster Pa., "Philada Pa. 5cts Sep. 11" integral-rate circular datestamp, original letter on company embossed letterhead enclosed, Very Fine and scarce, second ca. 1846 cover front only with Baltimore office handstamp, blue "Baltimore Md. Feb. 6" with second strike over Magnetic handstamp, matching "10" in circle handstamp, couple small holes, otherwise Fine, ASCC No. 2, Rarity 8, front illustrated on page 10.....**(Photo Ex)** E. 300-400



1202 with
enclosure

OFFICE OF
NEW YORK & WASHINGTON TELEGRAPH,
CORNER OF LOUISIANA AVENUE AND SIXTH STREET,
WASHINGTON, D. C.

Despatches forwarded to BALTIMORE, HAVRE DE GRACE, WILMINGTON, PHILADELPHIA,
TRENTON, PRINCETON, NEW BRUNSWICK, and NEW YORK, and all the
Telegraph Stations in the Northern and Eastern States.

The following Message was received at this Office at 9
o'clock, 45 minutes, a M.

Dated, Buffalo May 23d 1849.

For The President

*I learn with surprise that
Mr. S. Paulling has telegraphed
that Allen is Collector. His
appointment could not, I
think have been directed
except under a misapprehen-
sion, and I desire the ap-
pointment may be withdrawn
until Judge Hall or Lane
Representative, reaches Washington
Early next week. Please
answer.*

Millard Fillmore

- 1202 ☒ **Magnetic Telegraph Co., Vice President Millard Fillmore to President Zachary Taylor.**
President Taylor's autograph endorsement "Referred to Mr. Meredith to be acted on as he may think best. Respectfully Z.T." on buff cover addressed to "The President", circular bronze on black glazed seal of "Magnetic Telegraph Company/Office/Cor. Louisiana/avenue [sic] & Six St./Washington", with original enclosure on printed New York & Washington Telegraph form, received at Washington D.C. office, datelined "Buffalo May 23d 1849" from **Vice President Millard Fillmore** to President Taylor, expressing his surprise at the appointment of a collector and using influence to have the appointment withdrawn until Fillmore's colleagues reach the capital, Fillmore's name is signed in the telegraph operator's hand at bottom

EXTREMELY FINE. AN OUTSTANDING PRESIDENTIAL AUTOGRAPH ON A MAGNETIC TELEGRAPH CO. COVER DURING THE EARLIEST YEARS OF THE TELEGRAPH.

Zachary Taylor died only two years after assuming office. His presidential documents are scarce in any form. This telegraph related use, from Vice President and future President Millard Fillmore, is an outstanding combination of American history and telegraph postal history and is one of the highlights of the Born collection..... E. 3,000-4,000



- 1203 ☒ **Magnetic Telegraph Company.** Collection of more than 40 covers and a far greater number of telegrams plus a few letters in a thick binder, full range of designs as listed in 1993 ASCC on pp. 9-15 including **four of the "Magnetic Telegraph Office Phila."** handstamp (ASCC No. 2, rarity 8), which are rarely seen at all never mind as a group, good representation of the pictorial Eagle and Morse designs, some flaws to be found incl. one of the ASCC No. 2 covers acidified, Fine-Very Fine collection of this early telegraph, Magnetic Telegraph Co. was begun in 1845 by Morse patentees incl. Amos Kendall as the first privately owned telegraph line, it absorbed the North American Telegraph Co. and was eventually consolidated into the American Telegraph Co. in Jan. 1860 **(Photo Ex)** E. 1,000-1,500
- 1204 ☒ **Maine Telegraphs.** Collection of 25 covers, many with original telegrams, nice Maine Telegraph Co. embossed design with No. 11A from Boston, several others from this company with letterhead designs incl. one in red sent through the mails from Bangor with red due 5 handstamp, Kennebec Telegraph Hallowell Co. printed design, six other Kennebec handstamped covers, also Bangor & Castine Telegraph and Bangor, Bucksport and Castine Telegraph printed designs, several of the covers offered here are illustrated in 1993 ASCC, typical flaws, overall Very Fine **(Photo Ex)** E. 1,000-1,500
- 1205 ☒ **Midwestern Telegraph Companies.** Group of nine covers and five telegrams, five Wisconsin incl. clear strike of blue "Wisconsin State Telegraph" oval handstamp on cover to local addressee, manuscript "96c", couple small nicks and short fold split, otherwise Fine and rare, unlisted in ASCC, ex Hahn, other Wisconsin covers with printed letterhead, also Electro-Magnetic from Indiana with 3c 1851 issue, Kanawha & Gallipolis Telegraph blind embossed (perhaps Cincinnati), couple others, some flaws incl. one missing stamp, Fine **(Photo Ex)** E. 400-500
- 1206 **Morse & Bain Telegraph Line.** Red embossed corner card from this side line of the New York, Albany & Buffalo line, sent through the mails with **3c Dull Red, Ty. II (11A)**, tied by "Oswego N. York Apr. 12" circular datestamp to Watertown N.Y., tiny corner nicks at left, Very Fine, a scarce example of this design used with the 3c 1851 issue, ASCC No. 164, rarity 6 (without a stamp) E. 400-500
- 1207 ☒ **Morse & Bain Telegraph Line.** Seven covers and 12 telegrams, each of the covers with colored embossed corner card in blue or red (ASCC No. 164, rarity 6), one blue with some wear and one red with soiling, Fine-Very Fine group of these attractive telegraph covers, from a side line of the New York, Albany & Buffalo line..... **(Photo Ex)** E. 500-750



- 1208 ☒ **Morse's N.O. & O. Telegraph Co. Marietta, Ohio.** Three-line black on yellow label with smaller "Morse's", on buff cover with original Oct. 31, 1850 telegram form, file fold thru label, otherwise Very Fine, extremely rare example of this label from the New Orleans & Ohio Telegraph Company, ASCC No. 207, rarity 9, illustrated on page 207 E. 400-500
- 1209 ☒ **Morse's N.O. & O. Telegraph Co. Marietta, Ohio.** Three-line black on yellow label with larger "Morse's" than the ASCC listing example, on brown cover with original Jul. 8, 1850 telegram form, cover with staining, label with light bends but still Very Fine, extremely rare example of this label from the New Orleans & Ohio Telegraph Company, ASCC No. 207 var., rarity 9 E. 300-400
- 1210 ☒ **Morse's Magnetic, Morse's American Telegraph, St. Louis & New Orleans Telegraph Company.** Two covers, first imprint with Clarksville Tenn. address and pointing hand, entered mails with "Clarksville Te. Dec. 31" circular datestamp and "5" due handstamp on brown pre-1851 cover to Memphis, Very Fine and scarce, ASCC No. 218, illustrated on page 110, second with fancy embossed eagle design around central red "Morse American Telegraph Shaffner Lines, Nashville" oval, outer design albino, on cover addressed locally with original May 21, 1852 telegram, overall staining but still Fine appearing and exceptional design, undoubtedly rare, unlisted in ASCC... (Photo Ex) E. 300-400
- 1211 ☒ **National Telegraph.** Binder of 27 covers plus many telegrams, range of designs and lines incl. Pennsylvania, New York & Philadelphia, New Orleans & Ohio, many albino embossed incl. one sent through the mails with 3c No. 11A, several of the striking lightning bolt designs (ASCC No. 117), others, Fine-Very Fine group (Photo Ex) E. 750-1,000
- 1212 ☒ **New England Telegraphs.** Group of 11 covers accompanied by original telegrams, nice range of companies and designs, Connecticut incl. Wilson's Conversational, Connecticut River, Smiths Basin, Waterbury & New Haven embossed design, Massachusetts incl. Cape Cod, Electric Telegraph Lines, International Ocean Telegraph Co. to Mass., Rhode Island incl. Providence and Pascoag, more than one of some, typical flaws, Fine-Very Fine group (Photo Ex) E. 500-750
- 1213 ☒ **New Orleans & Ohio Telegraph Company (Morse's Line).** 12 covers and 18 original telegrams, many matched with their covers, nice range of designs as shown in 1993 ASCC, rarest item is "Morse's N.O. & O. Telegraph Co. Marietta Ohio" yellow label (ASCC No. 207, rarity 9), affixed to badly acidified cover to Marietta with original telegram, the label has some pen marks in border but is otherwise Very Fine, others with rarity ratings of 5-6, incl. blue embossed, albino embossed, printed, telegrams with wide variety of designs as well, some flaws or staining, Fine-Very Fine or appear so (Photo Ex) E. 500-750



- 1214 ☒ **Morse's American Telegraph, N. York, & Western Line (New York, Albany and Buffalo Telegraph Company).** Imprint on buff cover to New York City, 3c Dull Red, Ty. II (11A), light pre-use creases, tied by "Minneapolis M.T. Jun. 16" territorial circular datestamp, slight soiling, Fine and attractive telegraph cover used from Minnesota Territory, which existed only from 1849 to 1858, ASCC No. 155 var. E. 300-400
- 1215 ☒ **New York, Albany and Buffalo Telegraph Company.** Illustrated Zeus enthroned on a globe with eagle staff and lightning bolts in his hands, no company imprint (ASCC No. 150 var.), addressed to Congress Hall (Albany), original company letter enclosed dated April 11, 1855 with beautiful engraved depiction of Congress Hall by James L. Mitchell, Richard H. Pease, Albany imprint, Very Fine, an outstanding combination of cover and letter designs E. 400-500
- 1216 ☒ **New York, Albany & Buffalo Telegraph Co. (Morse's American).** Accumulation in two binders from this major line plus side lines, more than 100 covers plus a greater number of telegrams, range of types with lots of duplication of some, a few illustrated, several sent through the mails either stampless or with 1851-57 3c stamps, toning or edgewear on some, overall Fine-Very Fine, some illustrated in 1993 ASCC (Photo Ex) E. 1,000-1,500
- 1217 ☒ **N.Y. & B. Telegraph/ Hartford, Conn (New York & Boston).** Clear strike of red rectangular framed handstamp dated "April 19, 1847", entered mails with red "Hartford Ct. Apr. 19" circular datestamp, manuscript "5" due rate, on folded letter to Harwinton Conn., numerous mathematical notations on back and inside, file folds, Very Fine strike of this scarce telegraph company handstamp, particularly rare sent through the mails, ASCC No. 34, rarity 8, illustrated on page 27 E. 500-750
- 1218 ☒ **New York & Boston Magnetic Telegraph Association.** 11 covers and 12 telegrams, many of the telegrams with their original covers, several different ASCC-listed designs incl. Nos. 35, 38, 39, 40 and 46, one entered mails as a drop letter, at least one is the illustrated example in 1993 ASCC, Very Fine group (Photo Ex) E. 500-750



- 1219 ☒ **Bain's Merchants' Line (New York & New England Telegraph Co.)** Fancy cameo design in green, depicting a telegraph machine with 29 Wall Street New York address, addressed to Astor House, couple insignificant small stains, Very Fine, this design is rare in green (see lot 1224 for the more common examples in red and blue), ASCC No. 52, rarity 7 (we presume for the red and blue) E. 300-400
- 1220 ☒ **Bain's Chemical Telegraph. O'Rielly's New-York State Line (New York Merchant's State Telegraph Co.)** Beautiful illustrated cover with vignettes of Benjamin Franklin, flying-kite electricity conduction experiment and harbor scene, on brown cover which **entered mails** with "Herkimer N.Y. Jul. 1" circular datestamp, original telegram form dated July 1, 1852, Very Fine, a scarce design that is among the most elaborate of all telegraph cover designs, desirable sent through the mails, ASCC No. 173, rarity 8 E. 400-500
- 1221 ☒ **Bain's Chemical Telegraph. O'Rielly's New-York State Line (New York Merchant's State Telegraph Co.)** Wonderfully illustrated cover with vignettes of Benjamin Franklin, flying-kite electricity conduction experiment and harbor scene, **entered mails** with "West Troy N.Y. Dec. 19 5" integral-rate circular datestamp, addressed to North Bennington Vt., some overall wear, Very Fine appearance, a scarce design that is among the most elaborate of all telegraph cover designs, rare and much more desirable sent through the mails, ASCC No. 173, rarity 8, illustrated on page 90 E. 400-500
- 1222 ☒ **Bain's Chemical Telegraph. O'Rielly's New-York State Line (New York Merchant's State Telegraph Co.)** Two covers, both with beautiful illustrated vignettes of Benjamin Franklin, flying-kite electricity conduction experiment and harbor scene, two different types with "O'Rielly's" and other text in red and no mention of Bain's patent, on white cover, other with text in black on brown cover, Very Fine, a scarce design that is among the most elaborate of all telegraph cover designs, ASCC No. 173 and 173 var., rarity 8 (Photo Ex) E. 400-500
- 1223 ☒ **Bain's Electro-Chemical Telegraph (New York State Merchant's Line).** Fancy printed design in red, **entered mails** with bold strike of blue "Troy N.Y. 25 Oct. (1852) 3cts." integral-rate circular datestamp, matching "Paid" in banner, addressed to Williamstown Mass, some faint toning, Fine and attractive red design with blue postal markings, ASCC No. 176, illustrated on page 92 E. 200-300
- 1224 ☒ **Bain's Merchants' Line (New York & New England Telegraph Co.)** Binder of 25 covers and 10 telegrams, 16 of the design "By Telegraph" (ASCC No. 47), most with the small red or yellow Merchant's Line labels used to seal the covers, also nine of the colored cameo designs (ASCC Nos. 51-52, latter rarity 7), flaws to be found on many, Fine appearing group and rarely seen with this many of the attractive colored cameo ovals (Photo Ex) E. 1,000-1,500



- 1225 ☒ **New York Merchant's State Telegraph Co. (Bain's Patent).** Eight covers and 14 telegrams, many with their original covers, one with No. 10A sent through the mails (stamp faulty), range of designs, several telegrams with O'Rielly heading, some flaws, at least one illustrated in 1993 ASCC, Fine-Very Fine(Photo Ex) E. 400-500
- 1226 ☒ **New York & Mississippi Valley Telegraph Company.** Small group of covers and one telegram, one with printed "N.Y. & M.V.P." and Mt. Vernon O. address, Very Fine and rare, ASCC No. 292 (rarity 7), illustrated on page 144, elaborate designs Nos. 294-295, second sent **through the mails with 3c Dull Red (11A)**, Chicago circular datestamp ties stamp which has slight oxidation, one illustrated on page 144 (small corner mend), a front only with 3c Dull Red (11A), tied by Sandusky O. circular datestamp on Sandusky office cover (unlisted design), small flaws, finally a Union Telegraph/New -York & Mississippi telegram dated Aug. 7, 1855, described by Mr. Born as the first appearance of what was to become Western Union, Fine-Very Fine group of this progenitor of Western Union Co.(Photo Ex) E. 500-750
- 1227 ☒ **New York & New England Union Telegraph Co.** Substantial collection of 48 covers and a larger number of telegrams, range of designs as listed in ASCC, incl. color embossed, albino embossed and printed, nine sent through the mails (seven with 3c 1851 issue, one with 3c 1861 issue, one stampless), flaws or soiling to be found on some, Fine-Very Fine group worth review.....(Photo Ex) E. 1,500-2,000
- 1228 ☒ **North American Telegraph, Bain's New Line.** Eight covers and four telegrams, each of the ASCC-listed printed designs (pp. 18-19), eagle design covers including Washington, Baltimore, Philadelphia and New York in varying styles, also the corner card "Deliver Free" design, one entered mails in New York, couple with slight toning or edge tears, still Very Fine group of these outstanding Eagle design telegraph covers, all are scarce with ASCC rarity of 6 or 7, the three catalogue illustrated examples are each included here.....(Photo Ex) E. 750-1,000
- 1229 ☒ **O'Rielly's Pittsburgh, Cincinnati & Louisville Telegraph Company.** Two covers, first wonderfully elaborate design with central "By Lightning" illustration, Kilgore Street address (Steubenville O.) and also addressed to "Hon. Kilgore", accompanied by original blue telegram form dated Aug. 19, 1851 with detailed eagle and flag illustration, docketed at left, both Extremely Fine, a wonderful telegraph cover and form, unlisted in ASCC and undoubtedly rare, second "Telegraphic" with lightning in clouds design, with original 1852 telegram, mathematical notations and small stained spot on cover, otherwise Very Fine, ASCC No. 225, rarity 7, illustrated on page 113.....(Photo Ex) E. 500-750
- 1230 ☒ **Osteo Telegraph Company.** Three covers from this New York, Albany and Buffalo Telegraph Co. side line, each of the ASCC-listed designs (Nos. 159-161, rarity 6), in fact these are the three covers illustrated on pp. 83-84, "Osteo Telegraph Company Morse Line", "Morse's American Telegraph. Osteo Line. Cooperstown," and handstamped "Telegraph", each on buff cover with original 1852-61 telegram forms, fresh and Very Fine trio(Photo Ex) E. 400-500



- 1231 ☒ **Pennsylvania Printing Telegraph Company.** Elaborate engraved design at left depicting a telegraph machine and electricity emanating from it, "House Patent" and office address, on cover to States Union Hotel, manuscript "25 cts to pay", and "25 Collect answer", with original telegram tape from Lancaster Pa., cover with some slight wrinkling, still Very Fine, an outstanding and rare design, unlisted in ASCC..... E. 400-500
- 1232 ☒ **Pennsylvania Telegraphs.** Group of nine covers plus several telegrams, Philadelphia and Wilkes Barre Telegraph Co. incl. the scarce Eagle design (ASCC No. 136, rarity 7), "From the Office of" design (ASCC No. 135, rarity 7, this the illustrated example), two of the red ribbon design (ASCC No. 138, rarity 6), also several others including Susquehanna River North & West Branch sent through mails with 3c 1851 (11A), Delaware & Lackawanna stampless with manuscript "Per Telegraph", Philadelphia & Norristown printed design in blue, Inland Co. Harrisburg, finally Hagerstown Telegraph Co. from neighboring Maryland with 3c 1857 (26), some flaws but overall Fine-Very Fine group with some very scarce covers(Photo Ex) E. 500-750
- 1233 ☒ **People's Telegraph Company.** Clear red "Peoples Telegraph Line Nashville. T" corner card on brown cover addressed to Nashville, accompanied by original "O'Rielly's Line" telegram form dated April 11, 1850, bright and fresh, Very Fine and extremely rare, ASCC No. 206, rarity 9, illustrated on page 105, O'Rielly's People's Line served New Orleans from March 1849, it was incorporated into the New Orleans and Ohio line in 1853 E. 500-750
- 1234 ☒ **People's Telegraph Company.** Red "Peoples Telegraph Line Nashville. T" corner card on brown cover addressed to Nashville, accompanied by original "O'Rielly's Line" telegram form dated Feb. 8, 1851 as well as a second telegram "People's Line" and an additional cover with "the Office of the People's Telegraph" imprint (Bardstown Ky.), some minor edgewear on the main cover, Fine and extremely rare, ASCC No. 206, rarity 9, O'Rielly's People's Line served New Orleans from March 1849, it was incorporated into the New Orleans and Ohio line in 1853 E. 300-400
- 1235 ☒ **1c Blue, Eagle Carrier (LO2).** Affixed to bottom left corner of **Philadelphia and Cape Island Telegraph** corner card cover to Keeseville P.O. N.Y., red "Philadelphia May 30 3cts Paid" circular datestamp and manuscript "Paid 3cts.", reduced at right into datestamp, Fine and scarce use of Eagle Carrier on a telegraph cover, impossible to determine if the stamp originated, but under UV the area under corner of stamp shows it has been on the cover for many years, offered on its own merits E. 300-400
- 1236 ☒ **Philadelphia, Reading & Pottsville Telegraph Co.** Large collection of approximately 57 covers and an even larger number of telegrams, range of designs incl. ten of the heretofore scarce "Philad'a, Reading & Pottsville Telegraph" early company handstamp on covers or letters (ASCC No. 123, rarity 7, the example illustrated in catalogue included here), dates range from 1848 through 1919, several covers with letters, a handful are faulty from opening and are not counted in the total, Fine-Very Fine, the ultimate collection of this long-lived company which connected with Western Union after the consolidation(Photo Ex) E. 1,000-1,500



- 1237 ☒ **Quincy Telegraphery (Illinois & Mississippi Telegraph Company).** Black straightline handstamp on buff cover to Alton Ill, entered mails with "Quincy Ills. Mar 27" (1849) circular datestamp, matching "5" rate handstamp, original contents refer to fatal cases of cholera, cover with some splits at folds from thick enclosure, few nicks and small stain, still Fine and extremely rare, the listing example and illustrated in 1993 ASCC, No. 241, rarity 9, though incorrectly showing the date as May 25, meaning the earliest known use should be moved back two months, ex Hahn..... E. 400-500
- 1238 ☒ **Railroad Telegraph Offices.** Collection of more than 40 covers, each with a railroad in the name and some with train designs, several companies and lines represented with the largest number from New York & Erie Railroad, a few sent through the mails, flaws to be found and a handful are defective but many are Fine-Very Fine(Photo Ex) E. 750-1,000
- 1239 ☒ **Rhode Island Magnetic Telegraph Company.** Printed design with small eagle at top, Providence R.I. office, addressed locally, fresh and Very Fine, scarce design, ASCC No. 44, rarity 7, illustrated on page 30 E. 200-300
- 1240 ☒ **San Juan & Santa Cruz Telegraph Company.** Red imprint and illustration of Zeus enthroned on top of a globe, with eagle staff and lightning bolts in his hands, "To all Parts of the State", addressed to Sheriff of Santa Cruz, some minor edgewear, Fine and scarce California company cover, ASCC No. 277, rarity 7, illustrated on page 137 E. 300-400
- 1241 ☒ **Scioto Telegraph Co.** Five covers and five letters from this company which ran a canal and a telegraph line from Columbus to Portsmouth O., all three designs listed in 1993 ASCC (pp. 114-115, each rarity 6), incl. Zeus enthroned on a globe with lightning bolts, printed corner card and albino embossed corner cards, each of the letters also with the albino embossed design, Zeus cover with horizontal file fold, one other cover with edge fault, still a Fine-Very Fine and scarce group, each of the three illustrated examples in ASCC is included here(Photo Ex) E. 500-750
- 1242 ☒ **Stebbins Line (St. Louis and Missouri Telegraph Company).** Orange-buff cover to Liberty Mo. with "TELEGRAM BY THE STEBBINS LINE." imprint at top, 3c Dull Red, Ty. III (26), slight oxidation, tied by "Lexington Mo. Jul. 11, 1859" circular datestamp, slightly reduced at left, appears Very Fine, accompanied by a Very Fine second cover of the same design that did not go through the mails, this telegraph company (which was leased in Sep. 1860 to the Missouri & Western Telegraph Co.) with its line over the Central Route was closely linked to the Pony Express, one of the most famous Pony Express covers — free franked by William H. Russell and addressed to Ben Holladay — is on the same Stebbins Line envelope, ASCC No. 265, rarity 7, the second cover illustrated on page 131 E. 500-750



- 1243 ☒ **Speed's Telegraph Lines.** 11 covers and six telegrams, designs cover Speed's Erie & Michigan Telegraph Lines, Speed's Telegraph Office Detroit (different types), Speed's Western Telegraph Office and Speed's Buffalo to Milwaukee, three sent through mails with 3c 1851 issues (11-11A), one with bottom sheet margin, some wear on a couple, Fine-Very Fine group, two illustrated in 1993 ASCC (see pp. 126-127), at least one other is unlisted.....(Photo Ex) E. 750-1,000
- 1244 ☒ **Troy & Canada Junction Telegraph.** Three covers and eight telegrams from this side line of the New York, Albany & Buffalo Co., incl. the ASCC-listed example on page 82 (this the illustrated example), the other two covers unlisted, one with albino embossed corner card, sent through mails with 3c 1851 (11) tied by Burlington Vt. circular datestamp, original 1855 letter enclosure, the other unlisted design similar to ASCC No. 225, Very Fine and scarce group.....(Photo Ex) E. 400-500
- 1245 ☒ **United States and Mexico Telegraph Company.** Imprint on orange-buff cover addressed to Denver, no postal markings, fresh and Very Fine, a rare design which is unlisted in the 1993 ASCC, according to *The Telegraph Age* (Vol. 24, 1906), B. F. Woodward of Denver organized the United States and Mexico Telegraph Company and built the line from Denver to Santa Fe, although it was projected to extend to Mexico City the line was sold to Western Union before completion E. 500-750
- 1246 ☒ **United States Military Telegraph.** Large imprint at top, 3c Rose (65) tied by target and and blue "Baldwin's Southern La. Express M.R. 8154" circular handstamp on yellow cover to New Orleans, slightly reduced at left, Very Fine and scarce, U.S. mail route 8154 on the New Orleans, Opelousas & Great Western Railroad line between New Orleans (Algiers) and Brashear La. was under U.S. military control from July 1, 1862, until February 1, 1866; its operation, with a steamboat connection between Berwick Bay and Galveston, was essential to mail service; the U.S. mail contract with Baldwin as agent was awarded to the NOO&GW on May 26, 1866, at \$100 per mile per year, the circular handstamp is found on covers carried on the NOO&GW line between January and May 1866 E. 500-750
- 1247 ☒ **U.S. Military Telegraph.** Thick binder of mostly telegrams plus about a dozen covers, mostly from the Civil War, many are mundane but a few better telegrams or names incl. one from Brig. Gen. Andrews, another from Commodore A. A. Harwood to Secretary of the Navy, two telegrams with red U.S. Military Telegraph oval datestamp incl. one from Rear Admiral Charles H. Davis, mixed condition and some are a bit war torn, overall an interesting group(Photo Ex) E. 500-750

VERMONT & BOSTON TELEGRAPH COMPANY



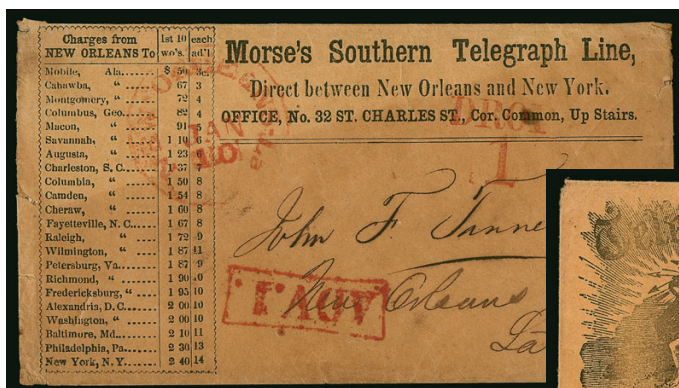
- 1248 ☒ **Vermont & Boston Telegraph Company.** Oval illustrated corner card depicting “slower” modes of communication in order of speed (including a turtle overtaking a locomotive), the telegraph represented by an electric bolt emanating from a disembodied hand writing with a quill, with “No Charge” on brown locally addressed cover, manuscript “25/29(=) 54” back with some minor wrinkling, Very Fine example of this wonderful and highly symbolic design, one of our favorite telegraph cover designs, ASCC No. 193, rarity 7..... E. 300-400
- 1249 ☒ **Vermont & Boston Telegraph Company.** Oval illustrated corner card depicting “slower” modes of communication in order of speed (including a turtle overtaking a locomotive), the telegraph represented by an electric bolt emanating from a disembodied hand writing with a quill, with “No Charge” on brown cover to St. Albans, pen “1852” at bottom, fresh and Very Fine example of this wonderful and highly symbolic design, one of our favorite telegraph cover designs, ASCC No. 193, rarity 7..... E. 300-400
- 1250 ☒ **Vermont & Boston Telegraph Company.** Oval illustrated corner card depicting “slower” modes of communication in order of speed (including a turtle overtaking a locomotive), the telegraph represented by an electric bolt emanating from a disembodied hand writing with a quill, with “No Charge” to Bernardston Mass., manuscript “by Ward’s Telegraph”, and “C.C.C. Opin” free frank, minor wrinkling and few small cuts and corner nicks, otherwise a Fine example of this beautiful and highly symbolic design, ASCC No. 193, rarity 7, ex Hahn..... E. 300-400
- 1251 ☒ **Vermont & Boston Telegraph Company.** Oval illustrated corner card depicting “slower” modes of communication in order of speed (including a turtle overtaking a locomotive), the telegraph represented by an electric bolt emanating from a disembodied hand writing with a quill, style without “No Charge” and manuscript “50 to pay” on cover to Claremont N.H., original Feb. 23, 1852 telegram (split along fold), some edgewear, otherwise Fine, ASCC No. 193, rarity 7, illustrated on page 99..... E. 200-300



- 1252 ☒ **Vermont & Boston Telegraph Company.** Five covers with the ornate angels surrounding globe, eagle and star corner card design, each a different format incl. **blue** on white, black on orange-buff, yellow and white, albino embossed on orange-buff, two with H. W. Brickett ticket agent handstamps in different styles, three telegrams accompany, Very Fine group selected from among a larger group for variety and appearance, ASCC No. 203(Photo Ex) E. 500-750
- 1253 ☒ **Vermont & Boston Telegraph Company.** Two covers with albino embossed corner cards, both sent **through the mails**, first with 3c Dull Red, Ty. II (11A), tied by "Sullivan & Passumpsic R.R. Dec. 20" route agent's circular datestamp, addressed to Wells River Vt., second with 3c Dull Red, Ty. III (26) tied by "Greenfield Ms. Aug. 1" circular datestamp to Orange Mass., with original telegram form, Very Fine, a nice pair of covers, ASCC No. 200, the first illustrated on page 102(Photo Ex) E. 500-750
- 1254 ☒ **Vermont & Boston Telegraph Company.** 44 covers and a greater number of telegrams, all the ASCC-listed designs from pp. 99-103 incl. two of the wonderful "slower modes of communication" illustrated design (with a turtle beating a train), printed, embossed and handstamp designs, a large number of the angels and eagle around the globe design, a few entered the mails, some wear or other flaws incl. both of the No. 193 designs, overall Fine collection with lots of covers in the ASCC 5-7 rarity range, a couple illustrated in catalogue, we believe Vermont & Boston produced some of the best cover designs of any company(Photo Ex) E. 1,000-1,500
- 1255 ☒ **Virginia Telegraphs.** Six covers and two telegrams, incl. both of the illustrated examples on page 56 of 1993 ASCC, beautiful albino embossed star design corner card for Richmond, Charlottesville & Staunton Co. with No. 26 tied by Staunton Va. circular datestamp, addressed to Lexington Va., three blue embossed corner card covers from Lynchburg & Abingdon Co., also albino embossed Norfolk & Petersburg corner card cover and finally Magnetic Telegraph Office Fredericksburg, two with corner wear, Fine-Very Fine, an attractive group from the Old Dominion state(Photo Ex) E. 400-500
- 1256 ☒ **Washington & New Orleans Telegraph Co.** Neat small printed "From the Office of the Southern Telegraph, New-Orleans", manuscript "5" at top right, Extremely Fine, ASCC No. 85, illustrated on page 50 E. 200-300
- 1257 ☒ **"W. & N.O. Tel. N.O. Office" (Washington & New Orleans Telegraph Co.)** Bold strike of small **red** oval handstamp at top right of brown cover to New Orleans, May 15, 1850 docketing, Very Fine and rare, ASCC No. 86, rarity 8, illustrated on page 50 E. 300-400



- 1258 ☒ **TELEGRAPHIC (Washington & New Orleans Telegraph Co., Montgomery Ala.).** Bold strike of blue straightline on Oct., 1851 cover to Montgomery Ala., original telegram sheet with company masthead dated "*Mobile Oct 9th, 1851*", Extremely Fine, very scarce early Southern use, ASCC No. 90, rarity 7, ex Jarrett and Hahn..... E. 500-750
- 1259 ☒ **TELEGRAPHIC (Washington & New Orleans Telegraph Co., New York).** Perfect diagonal strike of blue straightline on 1851 cover to Burling Slip (New York), original telegram sheet with "New Orleans & New York" company masthead dated "*New Orleans 30 May, 1851*", faint soling, scarce and Extremely Fine strike, one of two listed in 1993 ASCC under New York office, (No. 90, rarity 7), ex Jarrett and Hahn..... E. 400-500
- 1260 ☒ **TELEGRAPHIC (Washington & New Orleans Telegraph Co., Montgomery Ala., Charleston S.C.)** Two covers, first vertical strike of straightline handstamp in **black**, slightly off cover at left, on Nov. 1851 cover with original telegram from Charleston office, dated Nov. 24, 1851, unlisted in ASCC in black or from Charleston, second with clear blue strike at top right, Sep. 27, 1851 telegram with company masthead from Montgomery Ala., Very Fine pair of covers, ASCC No. 90 var. and 90, rarity 7 (Photo Ex) E. 500-750
- 1261 ☒ **TELEGRAPHIC (Washington & New Orleans Telegraph Co., New York).** Diagonal strike of **red** straightline on Feb. 1851 cover to Merchants Exchange (New York), original telegram sheet with New Orleans & New York company masthead dated "*New Orleans Feb 10th, 1851*", message reads "*Atlantic Insurance Co. Autocrat for Memphis sunk. Cossit Howard & Hill have two hundred packages on board.*", light filing folds, scarce and Very Fine, the other of two listed in 1993 ASCC under New York office (No. 90, rarity 7), ex Hahn..... E. 300-400



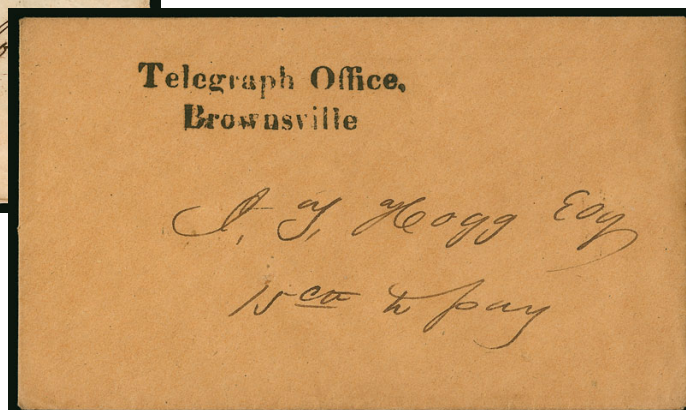
1262



1263

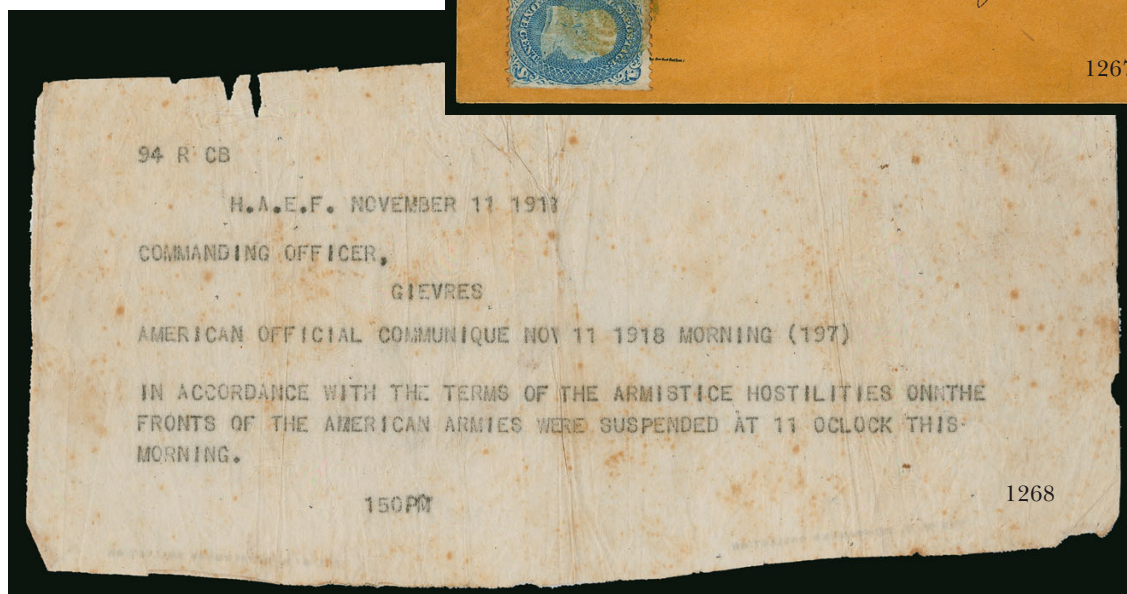
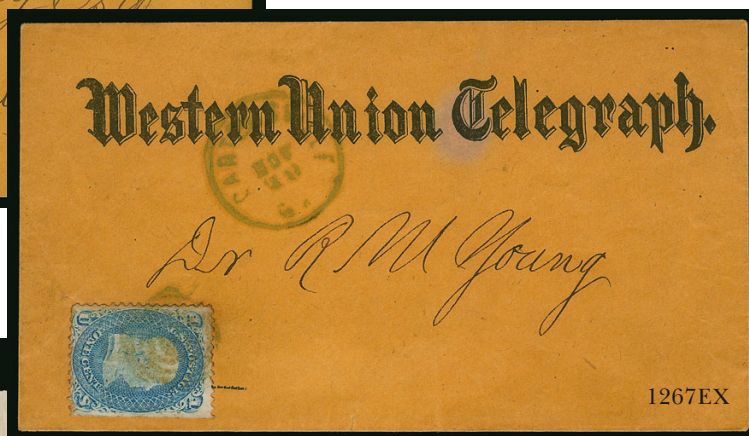
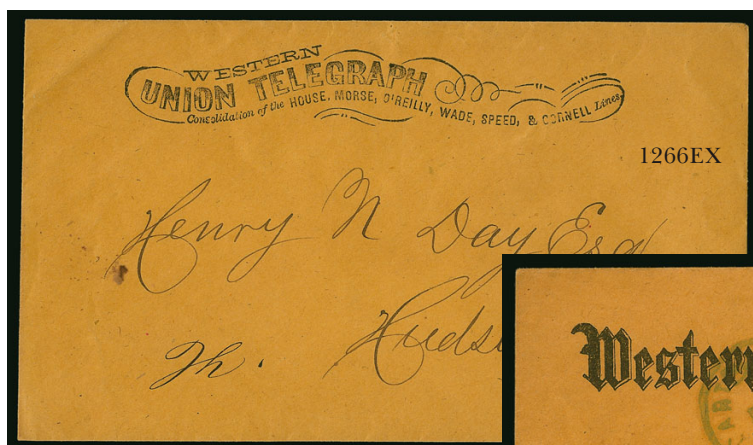


1264EX



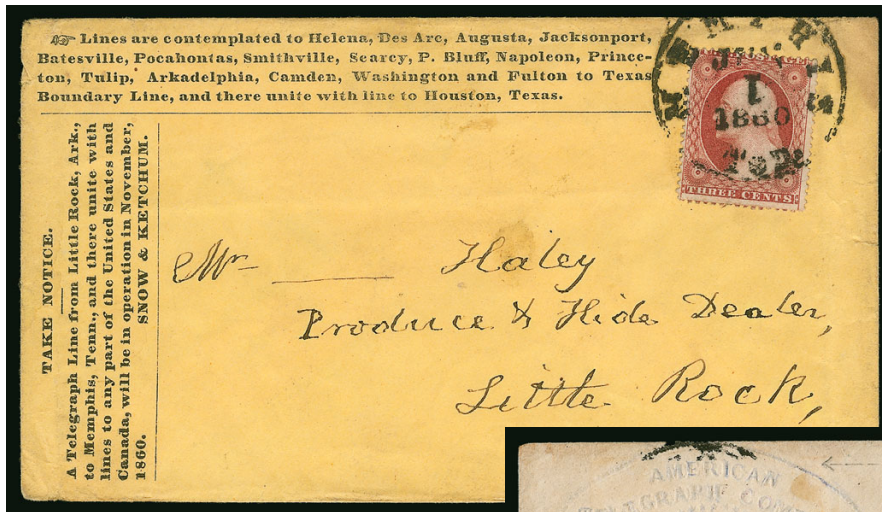
1265EX

- 1262 ☒ **Morse's Southern Telegraph Line (Washington & New Orleans Telegraph Co.)** Brown printed cover with list of destinations and charges for telegrams from New Orleans, addressed locally with red "New Orleans La. Jan. 10" circular datestamp, matching "Drop 1" handstamp, apparently went unclaimed so struck with "Adv. 1." boxed handstamp, some edgewear and slight acidification, otherwise Very Fine and nice combination of cover and markings..... E. 300-400
- 1263 ☒ **Telegraphic. Washington & New Orleans Telegraph Co.** Brown cover with illustration of Zeus enthroned on a globe with an eagle staff and lightning bolts in his hands, **entered mails** with "Montgomery Ala. 1? Jul. 5" integral-rate circular datestamp, addressed to Florence Ala., Very Fine, ASCC No. 92, rarity 6, illustrated on page 52..... E. 200-300
- 1264 ☒ **Washington & New Orleans Telegraph Co.** Large album with 21 covers and 44 telegrams, many with their original covers, wide range of designs incl. ASCC Nos. 89 (rarity 7, this the illustrated example), No. 92 Zeus design, Nos. 94, 95, 96, etc., with varieties, albino embossed, printed, pointing hand illustrated and manuscript, a couple sent through the mails with 3c 1857 (26), some staining and wear on several telegrams and a few covers but most are Fine-Very Fine with some pristine, a worthwhile group..... (Photo Ex) E. 750-1,000
- 1265 ☒ **Western Telegraph Company.** Two covers, first with perfect strike of the rare "Telegraph Office, Brownsville" two-line handstamp on buff cover addressed to a lawyer with "15ct to pay", Extremely Fine, ASCC No. 143, rarity 8, illustrated on page 74, second with "National Telegraph Morse Western Line" with illustrated soaring Hermes pointing to lightning, pre-printed Washington D.C. address, some wear and small tear at top, otherwise Fine and scarce, ASCC No. 146, illustrated on page 75..... (Photo Ex) E. 500-750



- 1266 ☒ **Western Union Early Telegraph Covers.** Seven covers and several original telegrams, these are the 1850's-60's early franks listed in ASCC and not the more common later designs, several of the listed designs included plus a couple not listed, Very Fine group of covers from the early days of telegraph company consolidation(Photo Ex) E. 300-400
- 1267 ☒ **Western Union.** More than 50 covers and a greater number of telegrams, primarily from the mid 1860's-70's with some later, variety of designs, a few entered the mails with stamps, mixed condition with some Fine-Very Fine(Photo Ex) E. 500-750
- 1268 **World War I Armistice Telegram.** Carbon copy of Nov. 11, 1918 telegram from Headquarters American Expeditionary Forces, states "Commanding Officer, Gievres, American Official Communique Nov. 11, 1918 morning, In accordance with the terms of the armistice hostilities on the fronts of the American Armies were suspended at 11 o'clock this morning. 150PM.," scattered toned spots and typical wrinkling, Fine and rare, reportedly only 20 carbon copies were made..... E. 400-500
- 1269 ☒ **Telegraph Cover Balance, 1860's-1900's.** Huge balance of covers and telegrams in nine full binders, many hundreds of items, largely alphabetical after the first volume, essentially all from the post-consolidation period so none listed in ASCC, some covers entered the mails so a range of stamp issues to be found from 1860's forward incl. some telegraphy stamps, huge variety of illustrated and colorful designs, mixed condition and flaws will be found — especially on the 1860's-70's stamped covers, but overall a Fine-Very Fine holding, Mr. Born focused much effort on these later periods of telegraphic postal history so some of these are no doubt scarceNot illustrated E. 2,000-3,000

CONFEDERATE STATES TELEGRAPH COMPANIES



1270

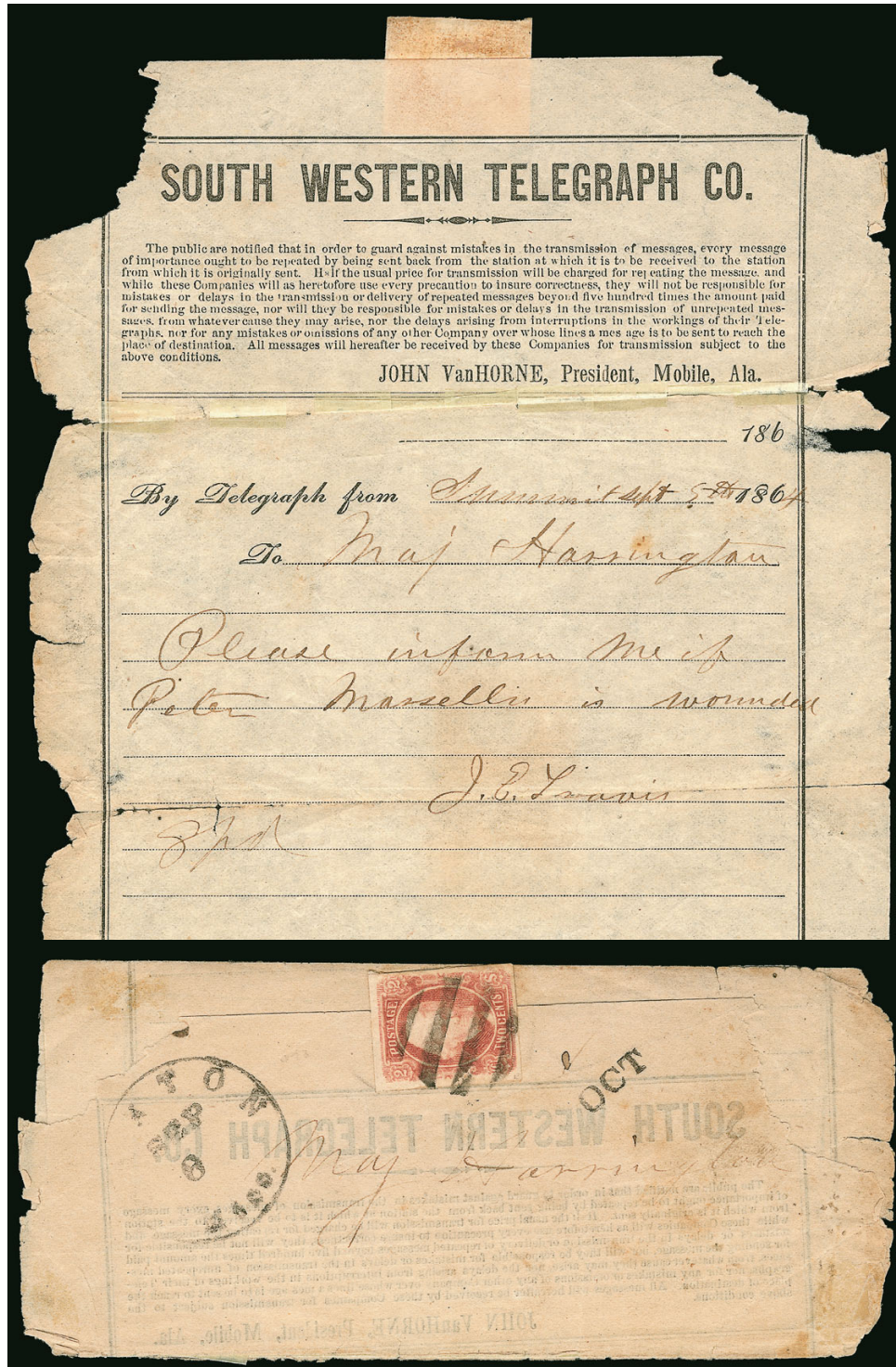


1271



1272

- 1270 ☒ **Pine Bluff Telegraph Co.** 3c Dull Red, Ty. III (26), tied by "Memphis Ten. Jun. 1, 1860" circular datestamp on advertising cover from Snow & Ketchum for **Pine Bluff Telegraph Co.**, two boxes of text describing the forthcoming business, the line from Little Rock to Memphis, connections and contemplated future lines, minor edgewear, Very Fine, antebellum use from Arkansas..... E. 300-400
- 1271 ☒ **American Telegraph Company.** Horizontal pair **5c Blue, Local, "White Tie" Variety (7 var)**, right stamp the variety, large margins to barely in, tied by bold "Woodstock Va. Aug. 16" circular datestamp on albino embossed corner card cover to Augusta Geo., stamp moved to show corner card, reduced at right, minor wear, Fine, scarce use of this variety on a **captured Northern telegraph** cover, ex Hart and Dr. Brandon.. E. 300-400
- 1272 ☒ **American Telegraph Company.** Embossed design depicting an eagle and lightning bolts on cover to Brems Bluff Va., horizontal pair of **5c Blue, Local (7)**, large margins to just in at right, tied by indistinct strikes of circular datestamp, some adherences and water-staining, light horizontal file fold affects stamps, otherwise Fine and scarce **use of this captured design**, ex Kohn and Dr. Brandon..... E. 200-300



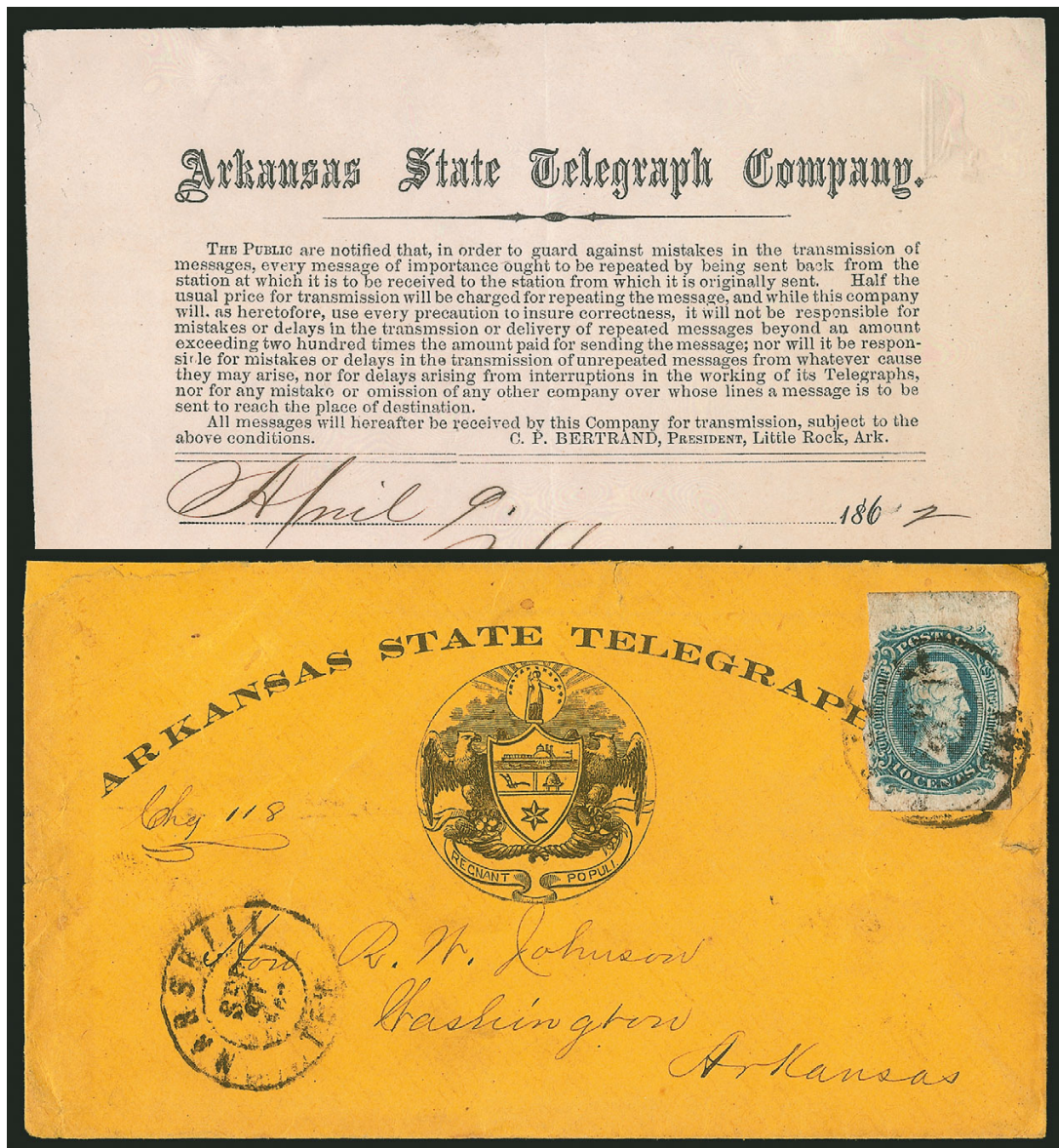
1273 and inside

1273 ☒ **2c Brown Red (8)**. Large even margins, tied by bold **4-bar cork grid** cancel of Canton Miss., small "OCT" straightline handstamp on printed **South Western Telegraph Co.** form with written telegraph message sent from Selma Ala. on Sep. 25, 1864, minor splits along folds

VERY FINE AND EXTREMELY RARE USE OF THE 2-CENT ENGRAVED ISSUE ON A TELEGRAM DELIVERED LOCALLY IN CANTON, MISSISSIPPI.

Confederate telegrams are extremely scarce, particularly with the 2c Engraved.

Ex Keeling and Dr. Brandon E. 3,000-4,000

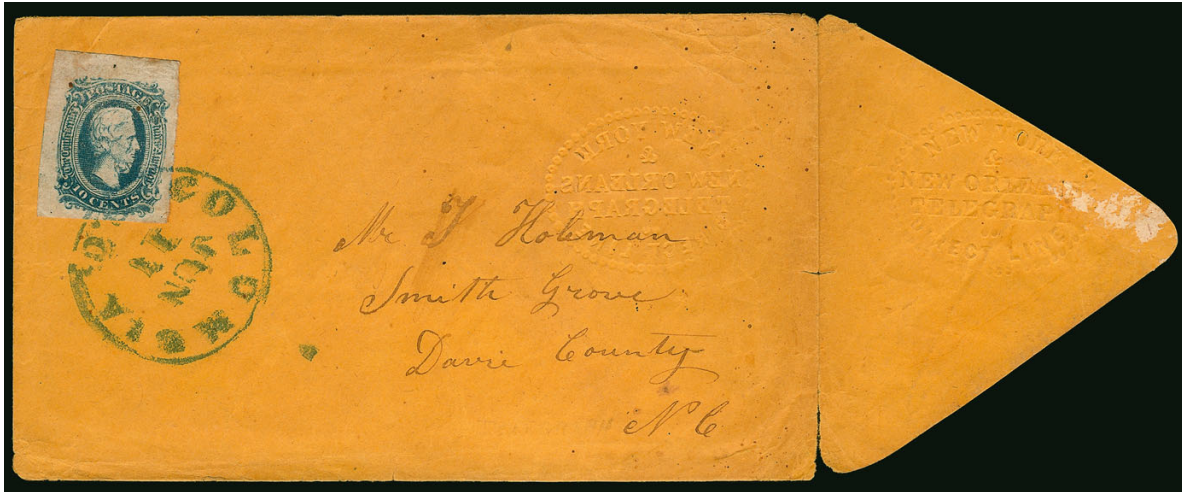


1274

- 1274 ☒ **Arkansas State Telegraph.** Illustrated design on bright orange-buff cover to Washington Ark. with 10c Blue, Die A (11), large margins to clear including top sheet margin, tied by "Marshall Tex. Sep. 15, 1862" double-circle datestamp, second strike at left, with original enclosure written by Superintendent of the Arkansas State Telegraph Co. asking his local representative to clarify the status of telegraph workers — superintendents and operators were originally given exemption from military service, but later legislation did not specify their status and so they were branded as conscripts and unpatriotic citizens — cover with some edgewear including small mended opening nick at top left

VERY FINE APPEARANCE. A RARE AND DESIRABLE ILLUSTRATED COVER FROM THE ARKANSAS STATE TELEGRAPH COMPANY, WITH FASCINATING CONTENT REGARDING THE STATUS OF TELEGRAPH WORKERS DURING THE WAR.

Also accompanied by unrelated telegraph form from same company. Cover illustrated in *Confederate Philatelist* No. 65, Nov. 1961. Ex Lemley and Dr. Brandon E. 3,000-4,000



1275

- 1275 ☒ **New York & New Orleans Telegraph Co., Direct Line.** Two covers, first 10c Blue, Die A (11), huge top left corner sheet margins, tied by blue "Columbia S.C. Jun. 11" circular datestamp on buff cover with albino embossed imprint of **New York & New Orleans Telegraph Co.**, addressed to Smith Grove N.C., stamp with couple tiny toned specks, side flap opened for display (cover was unused and then turned for CSA use), Very Fine, second same embossed oval corner card on stampless buff cover to Marion Ala., "Paid" and "5" handstamps of Selma Ala. lightly struck, with original Southern Telegraph Co. form with message, datelined at Selma telegraph office from "Navy Yard", Aug. 18, 1861, small scuff spot on cover, tape adherence on telegram, still Very Fine, a scarce pair of **captured Northern telegraph covers** E. 750-1,000



1276

- 1276 ☒ **Southern Express Company Telegraph.** Printed design on blue cover to Pendleton S.C. with 10c Blue, Die A (11), large margins, cancelled by manuscript and tied by blue "Columbia S.C. Dec. 19" circular datestamp, stamp with some slight toning, still Very Fine and attractive use, ex Dr. Brandon E. 500-750

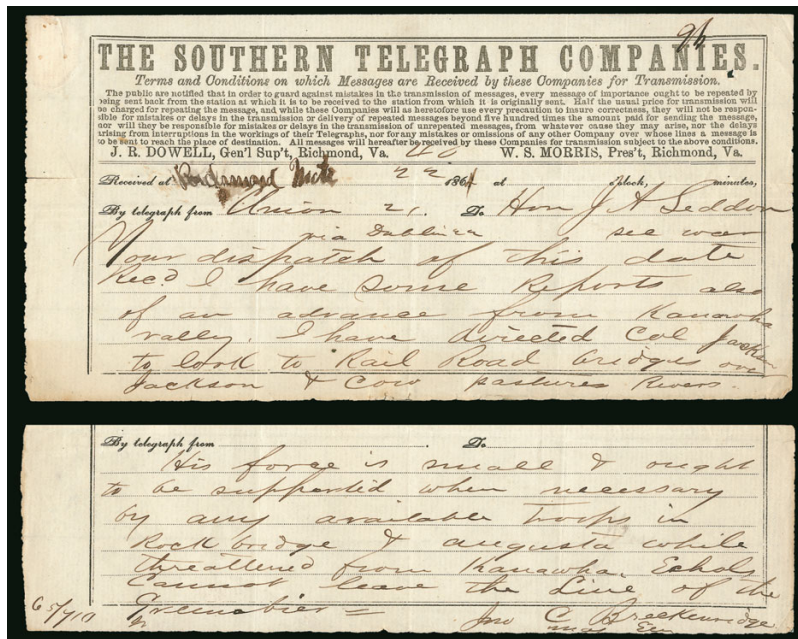


1277 with enclosure

- 1277 ✉ **Southern Express Company Telegraph Department.** Printed letterhead datelined "Charlotte N.C. Apr. 11, 1865", two days after Lee's surrender, letter states "We hear conflicting rumors that the Yankees are moving on Salisbury. We have no news of Gen. Lee or Johnson. The rail and telegraph lines are cut to Greensboro.", with homemade transmittal envelope franked by 10c Blue, Die A (11), manuscript "X" cancel, addressed to Rock Hill S.C., Very Fine E. 500-750

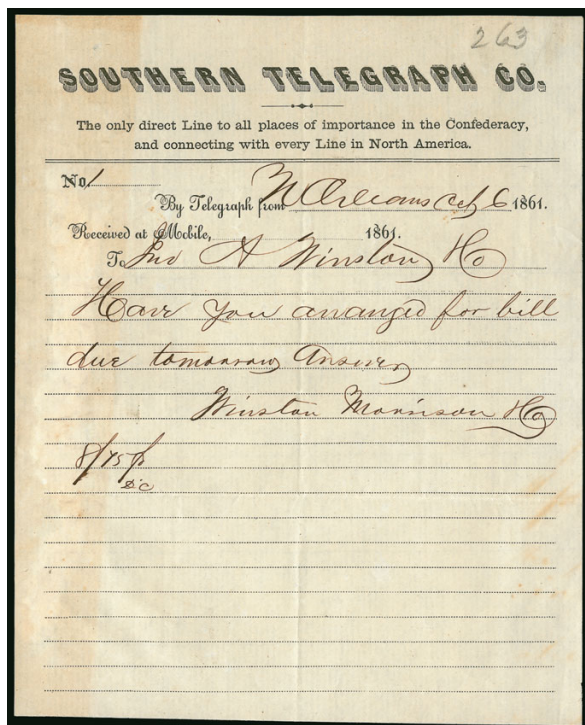


- 1278 ✉ **Southern Telegraph Companies.** 10c Blue, Die A (11), large margins and beautiful color, tied by "Selma Ala. Aug. 6" circular datestamp on homemade cover to Greensboro Ala., original telegram form with "The Southern Telegraph Companies" imprint from Richmond office, dated Aug. 5, 1863 to Col. R. B. Walter, stating "I will be at the plantation tomorrow", Extremely Fine stamp and a fresh telegram, an outstanding Confederate telegraph use E. 500-750
- 1279 **Confederate Governors' Telegrams, 1861-65.** Outstanding collection of more than 40 telegrams organized by state plus a few Southern Express or Southern Telegraph Co. telegrams, the vast majority sent by a Confederate governor, a great many to **General P. G. T. Beauregard**, of these approximately 15 are initialed with handwritten notes by **General Beauregard**, a few flaws to be found but this group contains the sound or close to sound governor telegrams from the Born collection (see lot 1280 for the faulty telegrams)
- VERY FINE. A RARE AND HISTORICAL COLLECTION OF CONFEDERATE STATES GOVERNOR TELEGRAMS, MANY SIGNED AND WITH NOTES BY THE RECIPIENT, GENERAL PIERRE GUSTAVE TOUTANT BEAUREGARD.
- The following state governors are included in this collection: Alabama — Gov. John G. Shorter; Georgia — Gov. Joseph E. Brown; Louisiana — Gov. Thomas O. Moore; Mississippi — Gov. Charles Clark; North Carolina — Gov. Zebulon B. Vance; South Carolina — Former Gov. John L. Manning (officer on Beauregard's staff), Gov. Francis W. Pickens, Gov. Andrew G. Magrath; Tennessee — Gov. Isham G. Harris; Virginia — Gov. William "Extra Billy" Smith(Photo Ex) E. 5,000-7,500
- 1280 **Confederate Governors' Telegrams, 1861-65.** 39 telegrams sent by Confederate Governors Thomas O. Moore (Louisiana) and John J. Pettus (Mississippi), all to **General P. G. T. Beauregard**, of these approximately 20 are initialed with handwritten notes by **General Beauregard**, unfortunately all are faulty to a greater or sometimes severe degree, with staining at the edges and more often parts of the interior (nearly all are lacquered onto a type of wax paper), still many of the Beauregard initials and notes are legible, a scarce assemblage despite the condition.....(Photo Ex) E. 750-1,000



1281EX

- 1281 **Confederate Military Telegrams.** Binder of 38 items, telegrams and a couple covers, all to and from a military officer, several better names incl. one from Gen. P. G. T. Beauregard (not signed in his hand), another from Gen. John C. Breckenridge to Secretary of War James Seddon, from Gen. Leonidis Polk to Sec. Seddon, telegram from Gen. W.J. Hardee to Gen. Beauregard, also telegrams to Gens. Ruggles, Semmes, Martin L. Smith, Tupper, Thomas Jordan, finally one Union item — a telegram sent by Gen. Ambrose E. Burnside (not signed in his hand) with 3c Foreign Exchange (R16c), Very Fine, a fascinating and historical group(Photo Ex) E. 1,500-2,000



1282EX

- 1282 **Southern and Confederate Telegrams.** Collection of more than 20 telegrams and five covers, Southern Telegraph Companies, American Telegraph Company uses in 1861, South-Western Telegraph Company (one with cover), Southern Express Company (one with cover), one cover with 10c Blue, Die A (11), also Arkansas State Telegraph Company stock certificate, mixed condition with edge erosion or other problems on many, Fine appearing group(Photo Ex) E. 300-400

END OF SALE — THANK YOU



BIDS

Use this form to submit absentee bids
or to confirm telephone bids

Sale 1102

Tuesday, June 23, 2015

PADDLE #

1

Please provide the following information:

NAME

ADDRESS

CITY/STATE/ZIP

PHONE MOBILE

EMAIL

2

Have you purchased from us in the past 5 years? ☐ Yes (please go to Section 3)
☐ No (references required below)

STAMP FIRM PHONE

STAMP FIRM PHONE

Please submit references at least **2 business days** before the sale. Bids from new clients will not be executed if satisfactory references are not received in time to be contacted.

3

- Enter the lot number and your corresponding maximum bid in the space below
- Use whole dollar amounts and bid according to the increments (see back of form)
- Bids do not include the 15% Buyer's Premium, taxes, duty or shipping charges
- Absentee bids will advance at one increment over the next highest competing bid
- "Plus", "Break Tie" or "Buy" bids will not be executed
- Indicate any "Or" bids between lot number/bid entries and bracket your choices
- If you wish to limit the total amount of your bids, follow the instructions below

Lot #	Bid \$	Lot #	Bid \$	Lot #	Bid \$

☐ **Limit Bids:** Check this box if you wish to limit the total hammer price of your bids (excluding 15% Buyer's Premium, taxes, duty and shipping costs). Your bids will be executed until your bidding limit has been reached. The total amount you wish to bid is \$

4

By signing this form, you agree to all of the Conditions of Sale printed in the sale catalogue (printed and digital), including but not limited to a) payment in the manner demanded by the Siegel firm, and b) payment of the 15% Buyer's Premium, any sales tax or customs duty, shipping costs, late charges and

other prescribed charges. You agree that your bids will be executed as a courtesy by Siegel, but you waive the right to make any claim against Siegel or its employees arising from these bids or your participation in the sale. You agree to honor all bids as submitted, regardless of any errors or omissions.

SIGNED DATE

Mail the signed form to Siegel Bid Department, 60 East 56th St., 4th Floor, New York, NY 10022
or email to stamps@siegelauctions.com
or fax to 212-753-6429

Additional Bids

Sale 1102
Tuesday, June 23, 2015

PADDLE #

Lot #	Bid \$	Lot #	Bid \$	Lot #	Bid \$

Shipping & Insurance

We will be pleased to arrange for shipping and transit insurance for purchases in this sale, except for lots marked or announced as "floor sale only." To expedite billing and delivery to hundreds of buyers in each sale, we use standard charges for postage and insurance under our policy. These charges are based on the package weight and mailing requirements, according to the schedule shown here. Our standard charges do not include a fee for our services, and they may be slightly more or less than the actual postage or Fedex fee. We ask all buyers to remit the invoiced amount for shipping and insurance.

Transit insurance is provided in all cases, except when the buyer has furnished us with documentation that insurance is effective under the buyer's own policy.

There will be no added insurance charge for shipments of less than \$75,000 value. Shipments valued in excess of \$75,000 may require supplemental insurance and/or special courier service, the estimated cost of which will be furnished to the buyer prior to shipment. If the buyer refuses to pay the estimated charges or furnish proof of self-insured coverage, the buyer will be responsible for picking up the lots at our office and any resulting sales tax.

Standard Shipping Charges

Weight Class	Shipping Method	Charge
Up to 2 lbs.	Fedex Envelope	\$20
Over 2 lbs.	Fedex Box	\$35 - \$50*
Outside US	Fedex	\$50 - \$100**
Bulky Lots	Fedex Ground or Express	By weight

* Up to \$75,000 value and up to 5 lbs; additional charge may apply to packages exceeding limits

** Buyers outside United States are liable for any applicable customs duty and clearance charges. An accurate declaration of contents and value will be made on all packages and import/export documents. **Siegel may refuse to ship lots to certain countries with a high risk factor.**

2/2015

Bidding Increments

The auctioneer may regulate the bidding at his discretion. However, to assist absentee bidders in establishing their maximum bids, the increments shown here will be used in most cases. We recommend that written bids conform to these increments—bids that do not will be reduced accordingly.

Bid	Increment	Bid	Increment
Up to \$200	\$10	\$7,000-20,000	\$500
\$200-500	\$25	\$20,000-30,000	\$1,000
\$500-1,000	\$50	\$30,000-75,000	\$2,500
\$1,000-3,000	\$100	\$75,000-140,000	\$5,000
\$3,000-7,000	\$250	\$140,000-300,000	\$10,000

PRICES REALIZED FOR SALE 1102---6/23/2015
The Wilson Born Collection of United States Telegraphs

Robert A. Siegel Auction Galleries, Inc.
60 East 56th Street, 4th Floor, New York, NY 10022
Tel (212) 753-6421 Fax (212) 753-6429

Lot#	Realized	Lot#	Realized	Lot#	Realized	Lot#	Realized	Lot#	Realized	Lot#	Realized	Lot#	Realized
1001	400	1043	350	1085	1,300	1127	650	1169	550	1211	650	1253	325
1002	650	1044	400	1086	1,300	1128	600	1170	550	1212	450	1254	1,000
1003	400	1045	550	1087	550	1129	1,100	1171	325	1213	800	1255	500
1004	500	1046	750	1088	1,700	1130	200	1172	325	1214	250	1256	250
1005	700	1047	500	1089	1,600	1131	1,300	1173	700	1215	325	1257	250
1006	700	1048	600	1090	1,700	1132	225	1174	150	1216	650	1258	325
1007	300	1049	475	1091	475	1133	2,800	1175	375	1217	1,100	1259	225
1008	200	1050	1,000	1092	1,000	1134	1,600	1176	325	1218	900	1260	275
1009	200	1051	375	1093	200	1135	900	1177	400	1219	900	1261	160
1010	375	1052	1,100	1094	2,000	1136	1,500	1178	325	1220	550	1262	350
1011	300	1053	1,800	1095	1,000	1137	2,100	1179	325	1221	600	1263	225
1012	300	1054	550	1096	325	1138	600	1180	350	1222	300	1264	800
1013	300	1055	500	1097	425	1139	550	1181	1,700	1223	375	1265	275
1014	225	1056	425	1098	750	1140	450	1182	130	1224	1,500	1266	160
1015	2,000	1057	450	1099	750	1141	2,200	1183	475	1225	200	1267	275
1016	425	1058	375	1100	800	1142	800	1184	400	1226	250	1269	1,500
1017	225	1059	325	1101	425	1143	400	1185	650	1227	1,700	1270	700
1018	750	1060	300	1102	400	1144	4,250	1186	225	1228	475	1271	180
1019	500	1061	400	1103	425	1145	3,000	1187	250	1229	250	1272	325
1020	250	1062	350	1104	250	1146	1,600	1188	350	1230	200	1273	2,500
1021	200	1063	350	1105	225	1147	1,000	1189	150	1231	1,200	1274	7,500
1022	250	1064	1,000	1106	225	1148	3,750	1190	550	1232	950	1275	400
1023	400	1065	9,500	1107	2,100	1149	4,750	1191	375	1233	400	1276	425
1024	450	1066	10,500	1108	2,000	1150	2,000	1192	375	1234	100	1277	1,500
1025	550	1067	1,400	1109	1,000	1151	160	1193	300	1235	150	1278	325
1026	250	1068	950	1110	1,900	1152	325	1194	600	1236	1,400	1281	1,300
1027	250	1069	1,000	1111	250	1153	5,000	1195	200	1237	200	1282	275
1028	300	1070	1,100	1112	600	1154	2,600	1196	750	1238	2,000		
1029	700	1071	1,200	1113	425	1155	300	1197	1,000	1239	130		
1030	300	1072	600	1114	325	1156	600	1198	150	1240	425		
1031	180	1073	2,100	1115	500	1157	325	1199	1,700	1241	425		
1032	160	1074	1,300	1116	1,100	1158	425	1200	800	1242	375		
1033	1,100	1075	1,100	1117	850	1159	225	1201	550	1243	400		
1034	7,500	1076	180	1118	700	1160	200	1202	4,250	1244	225		
1035	3,500	1077	550	1119	1,700	1161	200	1203	1,700	1245	550		
1036	2,800	1078	225	1120	1,300	1162	225	1204	400	1246	650		
1037	1,400	1079	250	1121	750	1163	170	1205	275	1247	700		
1038	1,500	1080	110	1122	6,000	1164	275	1206	250	1248	160		
1039	900	1081	90	1123	450	1165	225	1207	425	1249	160		
1040	500	1082	200	1124	800	1166	2,500	1208	325	1250	200		
1041	800	1083	500	1125	650	1167	300	1209	225	1251	140		
1042	400	1084	110	1126	160	1168	2,100	1210	275	1252	275		