



THE HANOVER COLLECTION
OF
Superb-Quality
UNITED STATES STAMPS

PART ONE: 1845-1898 ISSUES



Sale 1122

THURSDAY, APRIL 7, 2016

Robert A. Siegel
AUCTION GALLERIES, INC.
siegelauctions.com

THE HANOVER COLLECTION
OF
Superb-Quality
UNITED STATES STAMPS

PART ONE: 1845-1898 Issues
SALE 1122—Thursday, April 7, 2016, at 1:30 p.m.



Live auction at 60 East 56th Street (Park/Madison), 4th Floor, New York City

All lots sold subject to a 15% buyer's premium and
applicable sales tax or customs duty

Please carefully read the Conditions of Sale before bidding

Presale Viewing—Monday-Wednesday, April 4-6, 10am-4pm
and by appointment

Robert A. Siegel
AUCTION GALLERIES, INC.

60 EAST 56TH STREET, 4TH FLOOR, NEW YORK, N.Y. 10022
Phone (212) 753-6421 • Fax (212) 753-6429 • E-mail: stamps@siegelauctions.com

Catalogues, internet bidding, resources, archives and the Siegel Encyclopedia at
siegelauctions.com



Robert A. Siegel

AUCTION GALLERIES, INC.

60 EAST 56TH STREET, 4TH FLOOR, NEW YORK, N.Y. 10022

Phone (212) 753-6421 • Fax (212) 753-6429 • E-mail: stamps@siegelauctions.com
siegelauctions.com



Scott R. Trepel
President
strepel
@siegelauctions.com



John P. Zuckerman
Senior Vice President
jzuckerman
@siegelauctions.com



Corey Long
Senior Vice President
clong
@siegelauctions.com



Colleen Stellato
Vice President–Accounts
colleen
@siegelauctions.com



Charles F. Shreve
Director, Siegel International
charles
@siegelauctions.com



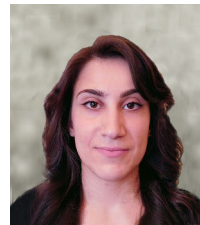
Andrew Titley
International Specialist
andrew
@siegelauctions.com



Helen Stewart
Bids and Inquiries
helen
@siegelauctions.com



Danielle Lenard
Bids and Inquiries
danielle
@siegelauctions.com



Jocelyn Weibel
Digital Production
jocelyn
@siegelauctions.com



Chris Anderson
Siegel International
chris
@siegelauctions.com

Scott R. Trepel Principal Auctioneer (licensed by NYC Dept. of Consumer Affairs, #795952)

Information for Bidders

Bidding

The following means are available for placing bids:

- 1) Attending the Live Auction in Person:** All bidders must register for a paddle, and new bidders must provide references at least three business days in advance of the sale.
- 2) Live Internet Bidding:** Instructions for participating as a Live Internet Bidder are provided on the page opposite.
- 3) Phone Bidding:** Bidders can be connected to the sale by phone and bid through a member of staff. Requests for phone bidding are subject to approval (please contact our office at least 24 hours before the sale). A signed Bid Form is required.
- 4) Absentee Bids.** All bids received in advance of the sale, either by mail, fax, phone, e-mail or internet, are Absentee Bids, which instruct the auctioneer to bid up to a specific amount on one or more lots in the sale. Absentee Bids sent by phone, fax or e-mail should arrive at least one hour prior to the start of the sale session. Bids entered through Live Internet Bidding will be visible to the auctioneer during the sale. Written bids should be entered legibly on the Bid Form in the sale catalogue. E-mail and internet bids should be carefully typed and double-checked. All new bidders must provide references. We recommend calling or e-mailing to confirm that Absentee Bids sent by mail, fax or e-mail have been received and entered.

Pre-Sale Viewing

Subject to availability, certain lots (except group lots) can be sent to known clients for examination. Requests must be made no later than 7 days prior to the sale. Lots must be returned on the day received. Postage/insurance costs will be invoiced.

In addition to regular viewing, clients may view lots by appointment. Our staff will be pleased to answer questions or provide additional information about lots.

Expert Certification

Individual items offered without a PF or PSE certificate dated within the past five years may be purchased subject to independent certification of genuineness and our description. **Please refer to the Conditions of Sale and Grading Terms for policies governing certification.**

Shipping and Delivery

Procedures and charges for shipping lots are printed on the back of the Bid Form. **Bidders are responsible for all prescribed shipping charges and any applicable sales tax or customs duties.**

Price Realized

Prices realized are sent with each invoice. Bidders with e-mail will receive a Bid Results report after the sale. Session results are posted immediately to siegelauctions.com

Live Internet Bidding at Siegel Auctions

BIDDING FROM YOUR COMPUTER LETS YOU BE PART OF THE LIVE AUCTION FROM ANYWHERE IN THE WORLD!

There's **NO SUBSTITUTE** for following the auction in real time.
Live Internet Bidding lets you bid and buy as though you were right there in the saleroom.
And it's easy.

This step-by-step guide will instruct you how to register, set your browser and use the bidding interface.

Start by following the simple steps to become a registered Live Internet Bidder.
Once you've been approved for bidding, you can listen to the auction and place bids with the click of a mouse.

Registering with **STAMP AUCTION NETWORK & SIEGEL AUCTION GALLERIES**

Live Internet Bidding is managed by Stamp Auction Network (SAN).
To bid, you must be registered and approved by *both* SAN and Siegel.
To decide what you need to do, choose the description below that best fits you.



I've already registered with SAN and have been approved by Siegel for internet bidding.

I'm a Siegel client, but I'm not registered with SAN.

Go to stampauctionnetwork.com/siegel and click on "Register" at the top. Check the box for Robert A. Siegel Auction Galleries (under "R") and submit the form, indicating you are a Siegel client. Once registered at SAN, you're ready for internet bidding.

I've bid through SAN before, but this is the first time I've bid in a Siegel sale.

Then you just need to be approved by Siegel. Go to stampauctionnetwork.com/siegel and click on "Update Registration" at the top. Your SAN account information will be sent to us for approval (you might be asked for other trade references). Once approved by Siegel for bidding, you're ready for internet bidding.

I've never bid with Siegel, nor registered with SAN.

Go to stampauctionnetwork.com/siegel and click on "Register" at the top. Check the box for Robert A. Siegel Auction Galleries (under "R") and submit the form **with your trade references** (please, no family members or credit card companies as references). Once registered at SAN and approved by Siegel for bidding, you're ready for internet bidding.

Live Internet Bidding works by allowing registered bidders to observe and place bids.

Live Internet Bidding will work with any browser on both PC and Mac operating systems.

Before bidding by internet for the first time, we recommend finding a sale in progress and listening to the public broadcast or logging in as a registered bidder. This will help you develop a feel for the sale tempo and bidding interface.

Log on to the auction at stampauctionnetwork.com/siegel.

You can also log on at siegelauctions.com

When you're logged on as a Live Internet Bidder, the bidding interface shows a photo and description of the lot, the current bid (and your bidding status), options for placing competitive bids and buttons with bid increments.

- After you click on a bid amount, the auctioneer is immediately notified of your bid.
- Retracting a bid is usually not acceptable, so please bid carefully.
- If you bid and then decide to stop, the "Pass" button will tell the auctioneer you are no longer bidding.
- You can send messages to the auctioneer (for example, a request for extension).
- You can track prior realizations from the bidding screen.



"System Down" or "Lost Connection" events do occasionally happen.

If you have any problems with Live Internet Bidding please call **212-753-6421** for immediate assistance.

Conditions of Sale (please read carefully before bidding)

THE PROPERTY DESCRIBED IN THIS CATALOGUE WILL BE OFFERED AT PUBLIC AUCTION BY ROBERT A. SIEGEL AUCTION GALLERIES, INC. ("GALLERIES") ON BEHALF OF VARIOUS CONSIGNORS AND ITSELF OR AFFILIATED COMPANIES. BY BIDDING ON ANY LOT, WHETHER DIRECTLY OR BY OR THROUGH AN AGENT, IN PERSON, OR BY TELEPHONE, FACSIMILE OR ANY OTHER MEANS, THE BIDDER ACKNOWLEDGES AND AGREES TO ALL OF THE FOLLOWING CONDITIONS OF SALE.

1. The highest bidder acknowledged by the auctioneer shall be the buyer. The term "final bid" means the last bid acknowledged by the auctioneer, which is normally the highest bid offered. **The purchase price payable by the buyer will be the sum of the final bid and a commission of 15% of the final bid ("buyer's premium"), together with any sales tax, use tax or customs duties due on the sale.**
2. The auctioneer has the right to reject any bid, to advance the bidding at his discretion and, in the event of a dispute, to determine the successful bidder, to continue the bidding or to reoffer and resell the lot in dispute. The Galleries' record of the final sale shall be conclusive.
3. All bids are per numbered lot in the catalogue unless otherwise announced by the auctioneer at the time of sale. The right is reserved to group two or more lots, to withdraw any lot or lots from the sale, or to act on behalf of the seller. The Galleries will execute bidding instructions on behalf of clients, but will not be responsible for the failure to execute such bids or for any errors in the execution of such bids.
4. **Lots with numbers followed by the symbol ° are offered subject to a confidential minimum bid ("reserve"), below which the lot will not be sold. The absence of the symbol ° means that the lot is offered without a reserve. If there is no reserve, the auctioneer has sole discretion to establish a minimum opening bid and may refuse an offer of less than half of the published estimate. Any lot that does not reach its reserve or opening bid requested by the auctioneer will be announced as "passed" and excluded from the prices realized lists after the sale. The Galleries may have a direct or indirect ownership interest in any or all lots in the sale resulting from an advance of monies or goods-in-trade or a guarantee of minimum net proceeds made by the Galleries to the seller.**
5. Subject to the exclusions listed in 5(A), the Galleries will accept the return of lots which have been misidentified or which have obvious faults that were present when the lot was in the Galleries' custody, but not so noted in the lot description. **All disputed lots must be received by the Galleries intact with the original packing material within 5 days of delivery to the buyer but no later than 30 days from the sale date.** (5A) **EXCLUSIONS:** The following lots may not be returned for any reason, or may not be returned for the reasons stated: i) lots containing 10 or more items; ii) lots from buyers who registered for the pre-sale exhibition or received lots by postal viewing, thereby having had the opportunity to inspect them before the sale; iii) any lot described with "faults," "defects" or a specific fault may not be returned because of any secondary fault; iv) photographed lots may not be returned because of centering, margins, short/nibbed perforations or other factors shown in the illustrations; v) the color of the item does not match the color reproduction in the sale catalogue or website listing; vi) the description contains inaccurate information about the quantity known or reported; or vii) a certification service grades a stamp lower than the grade stated in the description.
6. Successful bidders, unless they have established credit with the Galleries prior to the sale, must make payment in full before the lots will be delivered. Buyers not known to the Galleries must make payment in full within 3 days from the date of sale. **The Galleries retains the right to demand a cash deposit from anyone prior to bidder registration and/or to demand payment at the time the lot is knocked down to the highest bidder, for any reason whatsoever.** In the event that any buyer refuses or fails to make payment in cash for any lot at the time it is knocked down to him, the auctioneer reserves the right to reoffer the lot immediately for sale to the highest bidder. **Credit cards (Visa, Mastercard and Discover only) can be accepted as payment but will be subject to a 3% Convenience Fee, which will be added to the total of the entire invoice (including hammer price, buyer's premium, shipping and transit insurance charges and any applicable taxes).**

7. If the purchase price has not been paid within the time limit specified above, nor lots taken up within 7 days from the date of sale, the lots will be resold by whatever means deemed appropriate by the Galleries, and any loss incurred from resale will be charged to the defaulting buyer. **Any account more than 30 days in arrears will be subject to a late payment charge of 1½% per month as long as the account remains in arrears. Any expenses incurred in securing payment from delinquent accounts will be charged to the defaulter.** A fee of \$250.00 per check will be charged for each check returned for insufficient funds.
8. All lots are sold as genuine. **Any lot accompanied by a certificate issued by The Philatelic Foundation or by Professional Stamp Experts within 5 years of the sale date is sold "as is" and in accordance with the description on the certificate. Such lots may not be returned for any reason, including but not limited to a contrary certificate of opinion.** Buyers who wish to obtain a certificate for any item that does not have a P.F. or P.S.E. certificate (dated as above) may do so, provided that the following conditions are met: (1) the purchase price must be paid in full, (2) the item must be submitted to an acceptable expertizing committee with a properly executed application form within 21 days of the sale, (3) a copy of the application form must be given to the Galleries, (4) in the event that an adverse opinion is received, the Galleries retain the right to resubmit the item on the buyer's behalf for reconsideration, without time limit or other restrictions, (5) unless written notification to the contrary is received, items submitted for certification will be considered cleared 90 days from the date of sale, and (6) in the event any item is determined to be "not as described", the buyer will be refunded the purchase price and the certification fee up to \$800.00 unless otherwise agreed to in writing.
9. Until paid for in full, all lots remain the property of the Galleries on behalf of the seller.
10. Agents executing bids on behalf of clients will be held responsible for all purchases made on behalf of clients unless otherwise arranged prior to the sale.
11. The buyer assumes all risk for delivery of purchased lots and agrees to pay for prescribed shipping costs. **Buyers who receive lots in the U.S. are obligated to pay whatever sales tax or compensating use tax might be due, and buyers outside the U.S. are responsible for all customs duties.**
12. **The bidder consents that any action or proceeding against it may be commenced and maintained in any court within the State of New York or in the United States District Court for the Southern District of New York, that the courts of the State of New York and United States District Court for the Southern District of New York shall have jurisdiction with respect to the subject matter hereof and the person of the bidder. The bidder agrees not to assert any defense to any action or proceeding initiated by Galleries based upon improper venue or inconvenient forum. The bidder agrees that any action brought by the bidder shall be commenced and maintained only in a Federal Court in the United States District Court for the Southern District of New York or the State Court in the county in which Galleries has its principal place of business in New York. The bidder agrees not to use a public conflict resolution service and not to use any form of social media to publish comments or information about the Galleries and its employees which might harm the Galleries' reputation or business. These Conditions of Sale shall be governed by and construed in accordance with the substantive laws of the State of New York, and shall constitute an agreement that shall be binding on the parties, and their respective heirs, administrators, distributees, successors and assignees.**

SCOTT R. TREPEL, Principal Auctioneer
Auctioneer's License No. 795952
N.Y.C. Department of Consumer Affairs
80 Lafayette Street, New York, N.Y. 10013
Telephone (212) 577-0111

Revised 1/2016

Grades, Abbreviations and Values Used in Descriptions

Grades and Centering

Our descriptions contain detailed information and observations about each item's condition. We have also assigned grades to stamps and covers, which reflect our subjective assessment. For stamps, the margin width, centering and gum are described and graded according to generally-accepted standards (an approximate correlation to numeric grades is provided at right). Although we believe our grades are accurate, they are not always exactly aligned with third-party grading terms or standards for all issues. **A lot may not be returned because a certification service grades a stamp lower than the grade stated in the description. Information from the P.S.E. Stamp Market Quarterly and P.S.E. Population ReportSM is the most current available, but lots may not be returned due to errors or changes in statistics or data.**

Extremely Fine Gem (90-100): The term "Gem" describes condition that is the finest possible for the issue. This term is equivalent to "Superb" used by grading services.







Extremely Fine (80-90): Exceptionally large/wide margins or near perfect centering.

Very Fine (70-85): Normal-size margins for the issue and well-centered with the design a bit closer to one side. "Very Fine and choice" applies to stamps that have desirable traits such as rich color, sharp impression, freshness or clarity of cancel.

Fine (60-70): Smaller than usual margins or noticeably off center. Pre-1890 issues may have the design touched in places.

Very Good (below 60): Attractive appearance, but margins or perforations cut into the design.

Guide to Gum Condition

Gum Categories:	MINT N.H.	ORIGINAL GUM (O.G.)				NO GUM
	 Mint Never Hinged <i>Free from any disturbance</i>	 Lightly Hinged <i>Faint impression of a removed hinge over a small area</i>	 Hinge Mark or Remnant <i>Prominent hinged spot with part or all of the hinge remaining</i>	 Part o.g. <i>Approximately half or more of the gum intact</i>	 Small part o.g. <i>Approximately less than half of the gum intact</i>	 No gum <i>Only if issued with gum</i>
Catalogue Symbol:	★ ★	★	★	★	★	(★)
PRE-1890 ISSUES	<i>Pre-1890 stamps in these categories trade at a premium over Scott value</i>			Scott Value for “O.G.”		Scott “No Gum” Values thru No. 218
1890-1935 ISSUES	Scott “Never Hinged” Values for Nos. 219-771	Scott Value for “O.G.” (Actual value will be affected by the degree of hinging)		Disturbed Original Gum: Gum showing noticeable effects of humidity, climate or hinging over more than half of the gum. The significance of gum disturbance in valuing a stamp in any of the Original Gum categories depends on the degree of disturbance, the rarity and normal gum condition of the issue and other variables affecting quality. For example, stamps issued in tropical climates are expected to have some		
1935 TO DATE	Scott Value for “Unused”					

Covers

Minor nicks, short edge tears, flap tears and slight reduction at one side are normal conditions for 19th century envelopes. Folded letters should be expected to have at least one file fold. Light cleaning of covers and small mends along the edges are accepted forms of conservation. Unusual covers may have a common stamp with a slight crease or tiny tear. **These flaws exist in virtually all 19th century covers and are not always described. They are not grounds for return.**

Catalogue Values and Estimates

Unless otherwise noted, the currently available *Scott Catalogue* values are quoted in dollars with a decimal point. Other catalogues are often used for foreign countries or specialized areas and are referred to by their common name: *Stanley Gibbons* (SG), *Dietz*, *American Air Mail Catalogue* (AAMC), *Michel*, *Zumstein*, *Facit*, etc. Estimates are indicated with an "E." and reflect our conservative valuation in dollars. Reserves will never exceed the low end of the estimate range; they will sometimes exceed Scott Catalogue value for stamps in Extremely Fine condition.

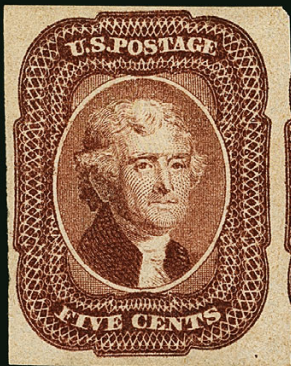
Because of certain pricing inconsistencies in the *Scott Catalogue*—for example, blocks that have no gum, the absence of premiums for Mint N.H. items, etc.—we cannot guarantee the accuracy of values quoted for multiples, specialized items and collection lots. We generally try to be conservative, but buyers may not return a lot because of a discrepancy in catalogue value due to Scott pricing inconsistencies.

Symbols and Abbreviations (see chart above for gum symbols)

⊞	Block	E	Essay	pmk.	Postmark	No.	Scott Catalogue Number
⊞	Cover	P	Proof	cds	Circular Datestamp	hs	Handstamp
FC	Fancy Cancel	TC	Trial Color Proof	var.	Variety	ms.	Manuscript



4



9



10



18



33



55



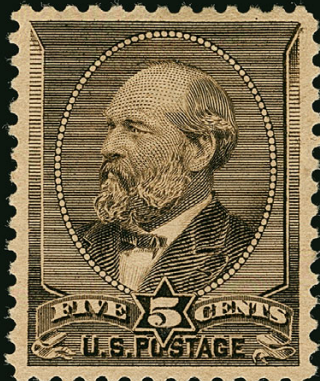
70



71



72



103



172



There are many different approaches to collecting stamps. For some, the goal is completion. When budget considerations or the urge to finish are the principal motivating factors, condition standards are usually the first to be adjusted. A collector who enjoys stamps without worrying too much about condition has his place in the hobby. In fact, those collectors and collections are philately's vast majority.

And then there is the HANOVER collection.

In my experience, and knowing how easily a reputation for accuracy can be undermined by overstatement, I will say that the HANOVER collection, judged purely for condition, is one of the top dozen of its kind in the annals of philately. That list includes some of the most famous collections ever sold.

The collector who formed this spectacular collection of United States nineteenth and twentieth century issues started by engaging his son in the hobby. After a short time, the son's interests turned elsewhere, but the father became thoroughly captivated by these miniature forms of art, especially the finely engraved issues of the classic era.

Rather than simply satisfy himself with examples in ordinary condition, our collector decided early on to establish rigid standards of quality. He further refined his objectives and required each stamp to be the finest example, or at least one of the top-ranking examples. To ensure his choices were on solid footing, our collector engaged the services of Alan E. Cohen, the professional philatelist who had assisted another great collector in building the famed "Scarsdale" collection.

The stamps in the HANOVER collection are, for the most part, unused with original gum and, whenever possible, Mint Never Hinged. Almost all have certificates from the leading expertizing groups, and in many cases they have been numerically graded. Needless to say, many of the graded stamps rank at the very top of the P.S.E. Population Report or The Philatelic Foundation's on-line database.

The HANOVER collection will be offered in two parts. The first is presented in this catalogue, comprising stamps issued from 1845 through the 1898 Trans-Mississippi Issue, including a small group issued by the Confederate States during the Civil War. The second part, to be offered in the fall of 2016, will be dedicated to twentieth century issues and special purpose stamps known as "back-of-book" issues.

Lots from the second part will be on view at the Siegel firm's Superbooth 1229 at World Stamp Show-NY, May 28-June 4, at the Jacob Javits Center. We look forward to seeing old friends and meeting new ones at this event.

— SCOTT R. TREPEL

GRADING INDEX TO THE HANOVER COLLECTION–PART ONE

The boldfaced lots are graded stamps that are the top-ranking examples in the P.S.E. Population Report or The Philatelic Foundation on-line database.

Grade	Scott	Lot	Year/Service/Grade
100J	9	7	2007 PSE 100J NH
100J	11	8	2011 PSE 100J NH
100J CS	4	40	2013 PSE 100J NH
100J CS	6	41	2013 PSE 100J NH
100J CS	8	42	2013 PSE 100J NH
100J CS	11c	44	2013 PSE 100J NH
100J CS	12	45	2013 PSE 100J NH
100J	205	104	2010 PSE 100J OGph
100J	223	120	2005 PSE 100J NH
100	7	5	2006 PF 100 OGph
			2014 PSE 100 OGph
100	98	55	2012 PSE 100 USED
100	282	164	2008 PSE 100 NH
98J	17	11	2012 PSE 98J OGph
98J	213	111	2009 PSE 98J NH
98J	225	122	2010 PSE 98J NH
98J	231	126	2010 PSE 98J NH
98J	246	137	2009 PSE 98J NH
98J	249	140	2006 PF 98J NH
98	14	10	2010 PSE 98 OGph
98	26	17	2012 PSE 98 NH
98	85C	48	2013 PSE 98 USED
98	90	51	2009 PSE 98 USED
98	102	57	2009 PSE 98 OGph
98	128	75	2011 PSE 98 OGph
98	133	78	2006 PSE 98 NH
98	208	107	2009 PSE 98 OGph
98	217	114	2006 PF 98 NH
98	222	119	2011 PSE 98 NH
98	224	121	2008 PSE 98 NH
98	230	125	2010 PSE 98 NH
98	232	127	2007 PSE 98 NH
98	233	128	2010 PSE 98 NH
98	234	129	2006 PF 98 NH
98	236	130	2010 PSE 98 NH
98	238	132	2008 PSE 98 NH
98	266	151	2012 PSE 98 NH
98	269	152	2009 PSE 98 NH
98	280a	162	2010 PSE 98 NH
98	283	166	2012 PSE 98 NH
98	286	169	2008 PSE 98 NH
98	290	170	2011 PSE 98 NH

Grade	Scott	Lot	Year/Service/Grade
98	291	171	2009 PSE 98 NH
98	292	172	2009 PSE 98 NH
95XQ	241	133	2011 PF 95XQ NH
95J	157	87	2008 PSE 95J OGh
95J	220	117	2007 PSE 95J NH
95J	254	145	2004 PSE 95J NH
95J	282C	165	2009 PSE 95J NH
95	3	3	2007 PSE 95 NGAI
95	10X1	1	2005 PSE 95 NH
95	18	12	2007 PSE 95 NH
95	24	15	2006 PSE 95 NH
95	30	19	2011 PSE 95 OGph
95	35	21	2006 PSE 95 OGph
95	37	22	2008 PSE 95 OGph
95	42	24	2008 PSE 95 NGAI
95	65	31	2008 PSE 95 NH
95	73	35	2007 PF 95 NH
95	CS 10	43	2013 PSE 95 USED
95	83	46	2008 PSE 95 OGph
95	104	59	2008 PSE 95 OGph
95	105	60	2005 PSE 95 Mint OG
95	112	63	2008 PF 95 OGph
95	114	65	2007 PF 95 NH
95	115	66	2007 PF 95 OGph
95	121	70	2006 PF 95 OGph
95	122	71	2006 PSE 95 OGph
95	124	73	2011 PSE 95 OGph
95	132	77	2007 PSE 95 OGh
95	153	85	2011 PSE 95 OGph
95	165	91	2008 PSE 95 OGph
95	175	94	2005 PSE 95 NGAI
95	179	95	2013 PSE 95 OGh
95	182	96	2010 PSE 95 NH
95	185	97	2006 PF 95 NH
95	191	102	2006 PSE 95 NH
95	205C	103	2009 PSE 95 NGAI
95	206	105	2005 PSE 95 NH
95	212	110	2005 PSE 95 NH
95	215	112	2004 PSE 95 NH
95	216	113	2012 PF 95 NH
95	219D	116	2005 PSE 95 NH
95	220a	118	2007 PF 95 NH

Grade	Scott	Lot	Year/Service/Grade
95	226	123	2006 PF 95 NH
95	228	124	2004 PSE 95 NH
95	237	131	2006 PSE 95 NH
95	247	138	2005 PF 95 NH
95	248	139	2006 PSE 95 NH
95	250	141	2004 PSE 95 NH
95	255	146	2005 PSE 95 NH
95	256	147	2005 PSE 95 NH
95	264	150	2006 PF 95 NH
95	271	154	2014 PSE 95 NH
95	272	155	2006 PF 95 NH
95	272a	157	2009 PSE 95 USED
95	273	158	2004 PSE 95 NH
95	274	159	2006 PSE 95 NH
95	276A	160	2007 PSE 95 OGph
95	279Bc	161	2006 PF 95 NH
95	281	163	2004 PSE 95 NH
95	284	167	2006 PSE 95 NH
95	285	168	2005 PSE 95 NH
90J	5	4	2008 PSE 90J USED
90	25	16	2007 PF 90 OG
			2007 PSE 90 OGph
90	44	26	2005 PSE 90 NGAI
90	63a	30	2007 PSE 90 NH
90	70a	32	2007 PSE 90 OGph
90	78a	37	2008 PSE 90 OGph
90	89	49	2011 PSE 90 OGph
90	96	53	2006 PF 90 OGph
90	103	58	2005 PSE 90 OGph
90	109	62	2007 PF 90 OGph
90	125	74	2007 PF 90 OGph
90	154	86	2005 PSE 90 OGph
90	172	93	2013 PF 90 NGAI
90	244	135	2004 PSE 90 NH
90	245	136	2004 PSE 90 NH
90	270	153	2005 PSE 90 NH
90	271a	156	2009 PSE 90 USED
90	293	173	2011 PF 90 NH
85	87	50	2007 PF 85 OGph
85	242	134	2011 PF 85 NH
80	27	18	2012 PF 80 OGph

THE HANOVER COLLECTION
OF
Superb-Quality
UNITED STATES STAMPS

AFTERNOON SESSION (LOTS 1-173)
THURSDAY, APRIL 7, 2016, AT 1:30 P.M.

PROVIDENCE, R.I., POSTMASTER'S PROVISIONAL



1

- 1 ★★ **Providence, Rhode Island, 5c Gray Black (10X1).** Position 9, **Mint N.H.**, huge margins including **right sheet margin**, intense shade and impression, Extremely Fine Gem, with 1991 P.F. and 2005 P.S.E. certificates (XF-Superb 95; Postmasters' Provisionals are unpriced in SMQ)..... 350.00

1847 ISSUE



2

- 2 ★ **5c Red Brown (1).** Original gum, lightly hinged, large even margins all around, dark shade and crisp impression
EXTREMELY FINE. A BEAUTIFUL ORIGINAL-GUM EXAMPLE OF THE 5-CENT 1847 ISSUE.
With 2004 P.F. certificate 6,750.00

- 3 ★ **5c Red Brown, Reproduction (3).** Without gum as issued, large margins all around, brilliant color and proof-like impression, Extremely Fine Gem, outstanding quality, with 2007 P.S.E. certificate (XF-Superb 95; SMQ \$1,800.00) 850.00



3



1851-56 ISSUE

ONE-CENT TYPE I — POSITION 7R1E

GRADED XF 90 JUMBO BY P.S.E.

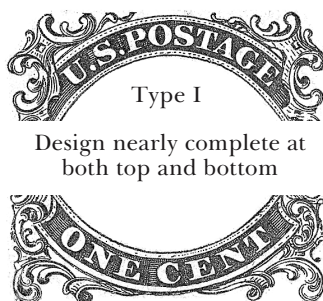
4° **1c Blue, Ty. I (5).** Position 7R1E, huge margins to barely touched at bottom, including **large sheet margin at top**, with significant parts of adjoining stamps at sides (both of which are Type Ib, Scott 5A), very lightly cancelled by North Cumberland Pa. circular datestamp, all of the type characteristics are clearly visible, gorgeous early color and impression

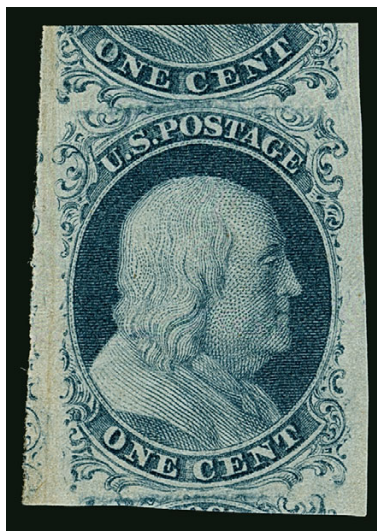
EXTREMELY FINE GEM. AN EXCEEDINGLY RARE SOUND FOUR-MARGIN EXAMPLE OF THE ONE-CENT 1851 TYPE I, POSITION 7R1E, WHICH IS THE ONLY ONE OF THE 1,000 POSITIONS USED TO PRINT IMPERFORATE ONE-CENT STAMPS THAT SHOWS THE COMPLETE DESIGN. THIS IS WITHOUT QUESTION ONE OF THE FINEST IN EXISTENCE, AND IT IS ONE OF TWO GRADED XF 90 JUMBO BY P.S.E. — THE HIGHEST GRADE AWARDED.

The published census compiled by Jerome S. Wagshal contains 90 unduplicated records of Scott 5. There have been one or two additions to the Wagshal census, and there are probably no more than a few examples existing outside of the census population. Therefore, the 1c 1851 Type I is the rarest of all United States stamps regularly issued prior to the 1868 Grills.

Because of the significance attached to the outer portions of the 1c 1851 design, rare types that have been carefully cut apart, so as not to impinge on any part of the design, are extremely desirable. The narrow spacing between stamps in the sheet and the users' indifference to the outlying ornamentation during separation are factors that contributed to the great rarity of four-margin copies. The example offered here comes from a strip of three, Positions 6-8R1E, that was removed from a cover. Examples of Position 7R1E (Scott 5) with large side and bottom margins, where there was very little space between it and the adjoining stamps, are true rarities. In fact, using the census data, it is clear that this stamp is among the two or three finest sound off-cover examples known. The ex-Newbury strip on cover and the ex-Vogel single on cover are among the finest examples of Position 7R1E on cover.

Wagshal Census 5-COV-82. Ex Jacobs, Krug and Kapiloff as part of a strip on cover. With 2008 P.S.E. certificate (XF 90 Jumbo; SMQ \$525,000.00). This is the highest grade awarded and one other shares it (cancelled in red, ex Merlin). Scott Catalog notes "Values for No. 5 are for examples with margins touching or cutting slightly into the design, or for examples with four margins and minor faults. Very few examples with the design untouched exist, and these sell for much more than the values shown" 67,500.00





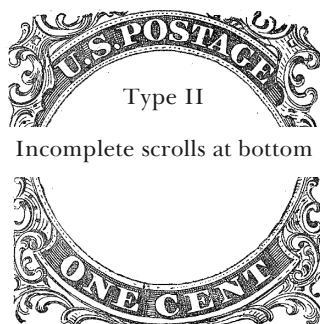
5

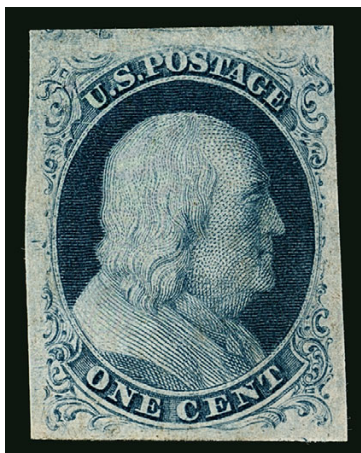
- 5 ★ **1c Blue, Ty. II (7).** Plate 2, original gum, lightly hinged, enormous margins all around including significant portions of adjoining stamps on three sides (almost a third of the stamp above), rich color, detailed impression

EXTREMELY FINE GEM. THIS IS WITHOUT QUESTION ONE OF THE FINEST ORIGINAL-GUM EXAMPLES OF THE 1851 ONE-CENT TYPE II. THIS STAMP IS GRADED GEM 100 BY BOTH THE P.F. AND P.S.E.

As the gaps between positions visible on this remarkable single demonstrate, the spacing between stamps left very little room for separation. Most examples have margins either just clear or touching, or into the design. The relative paucity of large multiples in sound condition also contributes to its scarcity with such wide margins.

With 2002 and 2006 P.F. and 2014 P.S.E. certificates (OGph, Gem 100; SMQ \$19,000.00). Only one has graded higher and one other shares this grade. This is the highest grade for an original-gum example we have offered in any of our sales..... 1,050.00





6

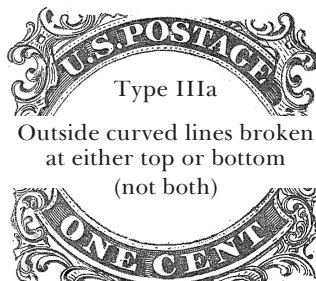
- 6 ★ **1c Blue, Ty. IIIa (8A).** Plate 4, original gum, lightly hinged, huge even margins all around with wide break at top and showing part of adjoining stamp at top, deep rich Plate 4 color and proof-like impression

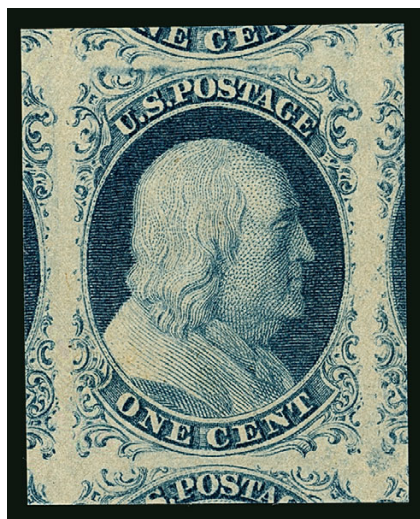
EXTREMELY FINE GEM. A MAGNIFICENT ORIGINAL-GUM EXAMPLE OF THE 1851 IMPERFORATE ONE-CENT TYPE IIIA. SUPERB IN EVERY RESPECT.

Stamps printed from Plate 4 were issued in April-June 1857 before perforations were introduced. The relatively small number of imperforate Plate 4 stamps issued during this period explains the rarity and desirability of any of the imperforate stamp types produced from this plate.

The Type IIIa from Plate 4 with original gum is extremely rare. We have offered only a handful in similar condition over the past 15 years. A look at the P.S.E. Population Report also gives an indication of its rarity in better condition — only one has graded higher than 50 (graded 90 and offered in our 2015 European Connoisseur's Collection, realized \$17,500 hammer)

Ex "Scarsdale". With 2002 P.F. certificate 6,000.00





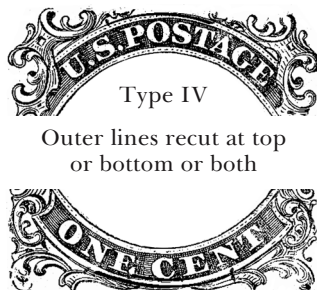
7

- 7 ★★ **1c Blue, Ty. IV (9).** Plate 1 Late, **Mint N.H.**, recut once at top and bottom, enormous margins all around including **parts of all nine surrounding stamps**, deep rich color and proof-like impression

EXTREMELY FINE GEM. THIS MAGNIFICENT MINT NEVER-HINGED EXAMPLE OF THE 1851 ONE-CENT TYPE IV IS GRADED GEM 100 JUMBO BY P.S.E., WHICH IS THE HIGHEST GRADE ATTAINABLE. THE ESSENCE OF PERFECTION.

Many collectors have a tendency to discount how difficult it is to find imperforate classics in such superb condition. The assumption is that there are multiples which can be split to “make” perfect singles. However, to produce the Gem offered here, one would have to find a block of nine with no hinging in the surrounding stamps. For all of the imperforate issues (Scott 1-17), only four stamps in total have achieved this ultimate grade in Mint N.H. condition — two of Scott 9 and two of Scott 11.

With 2015 P.S.E. certificate (Gem 100 Jumbo; unpriced in SMQ in Mint N.H. condition). Scott 9 is priced at \$11,000.00 for a hinged stamp graded 100. This does not take into consideration any multiplier for Mint N.H. condition or for the higher grade. Scott Retail as hinged..... 750.00





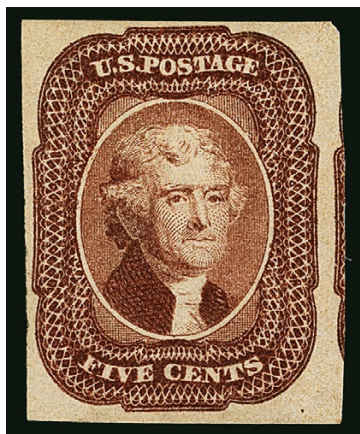
8

8 ★★ **3c Dull Red, Ty. I (11). Mint N.H., huge margins all around including top sheet margin and parts of five surrounding stamps, radiant color on bright paper, crisp impression**

EXTREMELY FINE GEM. AN ABSOLUTELY PHENOMENAL MINT NEVER-HINGED EXAMPLE OF THE 1851 3-CENT DULL RED TYPE I IMPERFORATE, WHICH IS GRADED GEM 100 JUMBO BY P.S.E. — THIS IS THE HIGHEST GRADE POSSIBLE.

As our comments in the previous lot make clear, it is virtually impossible to find multiples that can be split to make such a perfect Mint Never-Hinged single. The presence of the sheet margin also gives this stamp significant eye appeal.

With 2011 P.S.E. certificate (Mint N.H. Gem 100 Jumbo; unpriced in SMQ above the grade of 100 or as Mint NH; SMQ \$5,000.00 as a hinged stamp graded 100). This is the highest grade possible on the grading chart. For all of the imperforate issues (Scott 1-17), only four stamps in total have achieved this ultimate grade in Mint N.H. condition — two of Scott 9 and two of Scott 11. Scott Retail as hinged..... 275.00



9

9° ★ **5c Red Brown (12).** D Relief from either the fourth or eighth row of the plate, original gum, single hinge mark at bottom, large to huge margins all around including significant portion of the adjoining stamp at right, radiant color

EXTREMELY FINE GEM. EASILY ONE OF THE FINEST ORIGINAL-GUM EXAMPLES OF THE 5-CENT 1856 ISSUE. THIS IS ONE OF THE MOST DIFFICULT FACE-DIFFERENT DESIGNS TO OBTAIN IN SUCH SUPERB CONDITION.

The 5c stamp was issued in 1856, five years after the 1c, 3c and 12c values and one year after the 10c were issued. It was typically used to pay the 5c shore-to-ship rate for mail sent overseas and also in multiples for the 10c transcontinental or 15c U.S.-French treaty rates.

With the exception of some rare types of the 1c and 10c, such as Scott Nos. 5 and 16, the 5c stamp is the most difficult denomination to obtain with four margins in sound and original-gum condition. As the stamp offered here demonstrates, the spacing between stamps was very narrow. We measured the gap between the stamp and the portion of the adjoining design, and the space is only 1.2 millimeters wide. This left little margin for error when separating the stamps, and it explains why so few examples are known with four margins. When other factors such as gum, color and impression are taken into consideration, the rarity and beauty of the stamp offered here may be fully appreciated.

Ex "Scarsdale". With 2000 and 2006 P.F. certificates. 30,000.00



10

- 10 ★ **10c Green, Ty. II (14).** Original gum, lightly hinged, enormous margins all around which frame the design like a small die proof, deep rich color and proof-like impression

EXTREMELY FINE GEM. THIS STAMP IS ONE OF THE FINEST ORIGINAL-GUM EXAMPLES OF THE 10-CENT TYPE II 1855 ISSUE IN EXISTENCE. A MAGNIFICENT CLASSIC STAMP IN ALL RESPECTS — FRESHNESS OF GUM, SIZE OF MARGINS, COLOR, IMPRESSION AND OVERALL APPEAL.

The prepaid transcontinental rate was raised from 6c to 10c in April 1855, which prompted the Post Office Department to add a 10c value to the current series. Toppan, Carpenter, Casilear & Company produced one plate of 200 subjects for the imperforate issue, which was also used when perforations were introduced in 1857. Although the subjects were spaced further apart than they had been on the 1c, 3c and 12c plates, there were still variations in the designs. Four design types are recorded for the first plate (Plate 1): Type I with the full bottom shell (from the bottom row only); Type II with the top part of the design nearly complete; Type III with the design at top incomplete; and Type IV with recut lines at top and/or bottom.

Although the wider spacing on the 10c plate provided more room for separation, this stamp has remarkably huge margins all around, each of which goes well beyond the mid-point between stamps.

Ex “Connoisseur”, Dr. Morris and “Scarsdale”. With 2010 P.S.E. certificate (OGph, Superb 98; SMQ \$35,000.00). Only one has graded higher and only one other shares this grade. This is the highest grade we have offered in our auctions..... 5,000.00



11

11°★ **12c Black (17).** Horizontal pair, original gum, barest faint trace of hinging (if at all), incredibly huge margins all around including **sheet margin at right and significant parts of four adjacent stamps**, proof-like impression in a beautiful grayish black shade on bright fresh paper

EXTREMELY FINE GEM PAIR. A SUPERB ORIGINAL-GUM HORIZONTAL PAIR OF THE 12-CENT 1851 ISSUE WITH COLOSSAL MARGINS AND EXTRAORDINARY FRESHNESS.

As this pair amply demonstrates, the spacing between stamps on the plate is very narrow. Most examples (unused and used) have either narrow margins or are cutting into the frame-lines. This pair, with full original gum and with such large margins, is a remarkable rarity. In fact, we feel confident saying this is the finest original-gum pair of this stamp extant.

A 2000 P.F. certificate no longer accompanies. With 2012 P.S.E. certificate (OGph, Superb 98 Jumbo; unpriced in SMQ as a pair, SMQ \$65,000.00 *as a single*). Only one single and this pair have achieved the grade of 98 Jumbo, which is the highest awarded.

..... 17,500.00

1857-60 ISSUE



12

12°★★ **1c Blue, Ty. I (18).** Plate 12, C Relief, **Mint N.H.**, radiant color and crisp impression, choice centering for this difficult issue with the type characteristics clearly visible

EXTREMELY FINE GEM. THIS IS QUITE PROBABLY THE FINEST MINT NEVER-HINGED EXAMPLE OF THE 1857 PERFORATED ONE-CENT TYPE I, WHICH COMES ONLY FROM PLATE 12. THIS MAGNIFICENT STAMP IS GRADED XF-SUPERB 95 BY P.S.E. — THIS IS THE ONLY GRADED MINT NEVER-HINGED STAMP IN THE P.S.E. POPULATION REPORT, AND THIS IS THE HIGHEST GRADE AWARDED IN ANY CATEGORY.

The defining characteristic of Type I is that the entire design is printed, including the scrolls and plumes at bottom. Among the plates used to print imperforate stamps, only one position out of 1,000 can claim that honor (Position 7R1E, Scott No. 5, offered as lot 4 in this sale). Type I perforated stamps are only known from certain positions on Plate 12. Due to the narrow spacing between perforations and difficulties of production, this issue is usually found with part of the design cut off by the perforations. The wide margins of this stamp leave the Type I characteristics around the perimeter almost completely intact.

With 2007 P.S.E. certificate (XF-Superb 95; unpriced in SMQ in Mint N.H. condition. The highest price in SMQ is for a hinged 90, which is not even remotely relevant.). The highest grade awarded in any category is 95 (eight used plus this N.H. example). We have offered only five other Mint N.H. examples since keeping computerized records, and probably none would grade higher than 75 or 80. Scott Retail as hinged 2,100.00



13

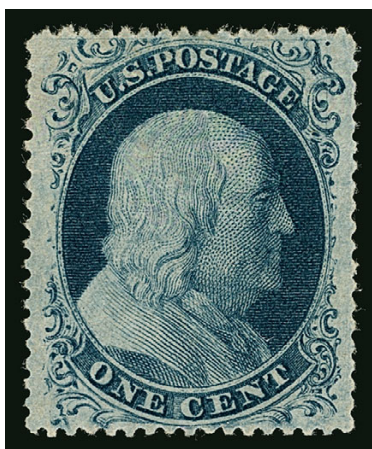
- 13 ★ **1c Blue, Ty. Ic (19b).** Plate 4, E Relief, deep rich color on crisp paper, choice centering, full perforations

EXTREMELY FINE GEM. THE 1857 ONE-CENT TYPE Ic IS AN EXTREMELY DIFFICULT ISSUE TO OBTAIN IN SOUND AND CENTERED ORIGINAL-GUM CONDITION. THIS IS THE ONLY SOUND ORIGINAL-GUM SINGLE WE HAVE OFFERED SINCE KEEPING COMPUTERIZED RECORDS.

Type Ic is similar to Type Ia, which has the design complete at bottom, but the bottom right plume of Type Ic is incomplete. Two Type Ic positions are in the bottom row of Plate 4 (91R and 96R4, F Relief) and are listed under Scott 19b as the "best examples." Six or seven Type Ic positions are from E Relief positions on the plate, and these are listed in Scott as "less distinct" examples.

This stamp is far scarcer than its catalogue value would suggest, especially in sound well-centered condition. Power Search found only two singles, one with perfs partly trimmed and the other with faults. The on-line P.F. records contain only one other that compares favorably to the example offered here.

With 2006 P.F. certificate 4,250.00



14

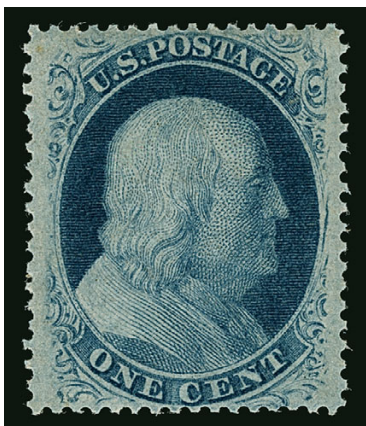
- 14 ★ **1c Blue, Ty. II (20).** Top row of Plate 11, T Relief, original gum, lightly hinged, perfectly centered with wide margins all around, deep rich color and proof-like impression

EXTREMELY FINE GEM. AN EXTRAORDINARY 1857 PERFORATED ONE-CENT STAMP WITH IMMENSE MARGIN WIDTH. SUPERB IN EVERY RESPECT AND WITHOUT QUESTION ONE OF THE FINEST EXAMPLES OF A TYPE II PLATE 11 STAMP IN EXISTENCE.

According to Neinken, Toppan, Carpenter produced Plates 11 and 12 in November 1860 to replace plates that had become too worn for use. In laying down the new plates, Toppan Carpenter evidently abandoned the six-relief transfer roll and used two different three-relief rolls. With recent scholarship revising some of the old accepted concepts about 1851-57 plate production, we will go no further in explaining the mechanics of Plate 11, from which this stamp was printed.

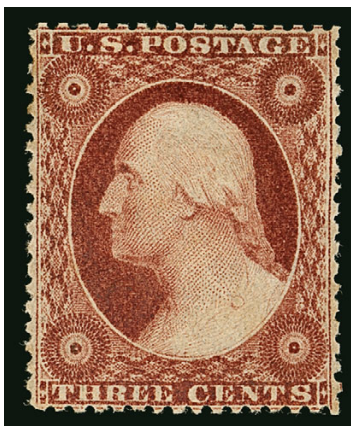
Some of the unusual features of Type II stamps from the top row of Plate 11 are seen in this example. The strong horizontal and vertical guidelines and guide dots are visible at the upper right. The enormous margins show the complete T Relief (Type II) characteristics. This relief was used to enter only the top row (20 subjects), and the Neinken book (p. 467) notes, "The design of the T relief was a perfect example of Type II, and in this respect, none of the plates furnished finer examples of this type than those from the top row of Plate 11. They are quite scarce, as the plate was only in use slightly over six months. In addition, each sheet of 200 stamps only furnished 20 of these scarce top row Type II stamps."

Ex "Scarsdale". With 2002 P.F. certificate. The Scott Catalogue premium for an unused Type II stamp from Plate 11 is insufficient, in our opinion. 1,750.00



15

- 15 ★★ **1c Blue, Ty. V (24). Mint N.H.**, rich color, unusually wide and balanced margins, Extremely Fine Gem, a beautiful stamp, with 1989 P.F. (as a pair) and 2006 P.S.E. certificates (XF-Superb 95; SMQ \$1,700.00), Scott Retail as hinged 140.00



16

- 16 ★ **3c Claret, Ty. I (25 var).** Original gum, barest trace of what may be hinging, deep rich color and proof-like impression, unusually choice centering for this difficult issue
EXTREMELY FINE GEM. A SUPERB ORIGINAL-GUM EXAMPLE OF THE 3-CENT 1857 ISSUE IN THE CLARET SHADE.

Until Toppan Carpenter made new 3c plates with wider spaces between stamps to accommodate the perforations, they simply perforated sheets printed from the earlier Type I plates, beginning in early 1857. Unlike its Type II counterpart, examples of 3c perforated Type I stamps are rare in original-gum condition. These stamps are extremely difficult to obtain with precise centering, due to the narrow spacing on the plate.

Ex Odeneal. With 2007 P.F. and P.S.E. certificates (both graded XF 90; SMQ \$8,000.00 as the basic Rose shade). This is the highest grade awarded and only one other shares it..... 3,000.00

- 17 ★★ **3c Dull Red, Ty. III (26). Mint N.H.**, brilliant color, gorgeous centering with wide and balanced margins
EXTREMELY FINE GEM. A STUNNING MINT NEVER-HINGED EXAMPLE OF THE 1857 3-CENT TYPE III, WHICH IS GRADED SUPERB 98 BY P.S.E. — THIS IS THE HIGHEST GRADE ON RECORD.

With 2012 P.S.E. certificate (Superb 98; SMQ \$3,400.00). This is the highest grade awarded and only two others share it. This is the only example in this grade we have offered in one of our auctions. Scott Retail as hinged 65.00



17



1858 5-CENT BRICK RED

18°★ **5c Brick Red (27).** Original gum which is very lightly hinged along the perfs at bottom left, radiant color in the true Brick Red shade, unusually choice centering with perfs clear of outer projections on all four sides

VERY FINE AND CHOICE. THIS IS EASILY ONE OF THE FINEST ORIGINAL-GUM EXAMPLES OF THE 1858 5-CENT BRICK RED IN EXISTENCE.

Many collectors know this issue by type and shade, but few are aware of the order of production (or release). This state of confusion is partly due to the Scott Catalogue. The distinctive Brick Red shade of the 5c 1857 Issue comes first in the series of Scott-listed perforated 5c issues, but its true release date comes later in the sequence.

Based on dated covers, the 5c Type I shades were released in the following order: 1) Red Brown, Scott 28, EDU 8/23/1857; 2) Indian Red, Scott 28A, EDU 3/31/1858; 3) Brick Red, Scott 27, EDU 10/6/1858; and 4) Brown, Scott 29, EDU 3/21/1859, almost certainly the last printing from the first 5c plate. The second 5c plate was made from a new six-relief transfer roll with the design projections cut away at top and bottom, to varying degrees. The Type II Brown was issued first (Scott 30A, EDU 5/4/1860), and the Orange Brown printing from the same plate followed about one year later (Scott 30, EDU 5/8/1861).

After surveying dozens of classic United States sale catalogues, we found approximately twenty examples of Scott 27 with original gum, allowing for duplicate offerings and excluding the one known original-gum block. Of the stamps we counted, about half had perfs touching on two sides or were deeply cut into on one side. Almost two-thirds had stains or small faults.

We are confident that this stamp is one of the two finest original-gum examples of the 5c Brick Red. Compared with every other we located using Power Search, it has superior centering, and of course it is sound and fresh.

With 2012 P.F. certificate (VF 80). By way of comparison, the highest grade awarded by P.S.E. to an original-gum copy is 70 (only two are graded, the other is graded below 50)..... 80,000.00



19

- 19 ★ **5c Orange Brown, Ty. II (30).** Original gum, lovely warm shade, unusually wide and balanced margins

EXTREMELY FINE GEM. A STUNNING ORIGINAL-GUM EXAMPLE OF THE 1861 5-CENT ORANGE BROWN, WHICH IS GRADED XF-SUPERB 95 BY P.S.E.

5c stamps in the Orange Brown shade (Scott 30) were printed from Plate 2 in 1861. They were the last stamps of the 1857 Issue distributed before the U.S. Post Office Department demonetized all circulating stamps in August 1861. Unused remainders were discovered in the South after the war, and so unused copies are readily available. However, it is difficult to find this issue in sound and centered original-gum condition.

With 1982 P.F. and 2011 P.S.E. certificates (OGph, XF-Superb 95; SMQ \$9,000.00). Only one has graded higher (at 95J, offered in our Curtis sale) and only one other shares this grade..... 1,250.00



20

- 20 ★ **10c Green, Ty. III (33).** Original gum, lightly hinged, wonderful centering with wide margins, rich color on bright fresh paper, intact perfs at bottom

EXTREMELY FINE. ONE OF THE FINEST KNOWN ORIGINAL-GUM EXAMPLES OF THE 1857 PERFORATED 10-CENT TYPE III. A SPECTACULAR STAMP IN TERMS OF CENTERING, COLOR, IMPRESSION AND GUM.

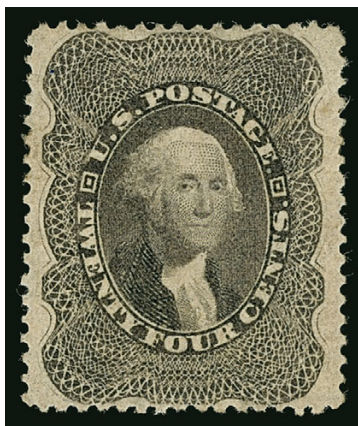
The first perforated 10c stamps produced by Toppan Carpenter from sheets printed from Plate 1 are notorious among collectors for their poor centering. They are also very scarce in original-gum condition because, unlike 10c Plate 2 stamps (Scott 35), there were no supplies on hand in 1861 when the issue was demonetized due to the outbreak of the Civil War.

Ex "Scarsdale". With 1992 and 2002 P.F. certificates..... 6,000.00



21

- 21 ★ **10c Green, Ty. V (35).** Original gum, lightly hinged, intense shade and impression, unusually choice centering with wide and balanced margins, Extremely Fine Gem, ex "Empire", with 1986 P.F. and 2006 P.S.E. certificates (OGph, XF-Superb 95; SMQ \$1,200.00), only one has graded higher (at 98) 225.00



22

- 22 ★ **24c Gray Lilac (37).** Original gum, lightly hinged, deep rich color and proof-like impression, unusually choice centering with balanced margins that are completely clear of outer projections

EXTREMELY FINE GEM. A SUPERB ORIGINAL-GUM EXAMPLE OF THE 1860 24-CENT GRAY LILAC. ONE OF ONLY TWO EXAMPLES GRADED XF-SUPERB 95 BY P.S.E., THE HIGHEST GRADED AWARDED.

Collectors looking for Gem-quality stamps (unused and used) from the 1857 perforated issue know that one of the most difficult denominations to obtain is the 24c value. The margins are often narrow, with the design almost always touched (if not in) at top or bottom. This is one of the finest original-gum examples we have ever offered.

With 2003 P.F. and 2008 P.S.E. certificates (OGph, XF-Superb 95; SMQ \$7,000.00). This is the highest grade awarded and only one other shares this grade..... 1,500.00

1875 REPRINT OF 1857-60 ISSUE



23

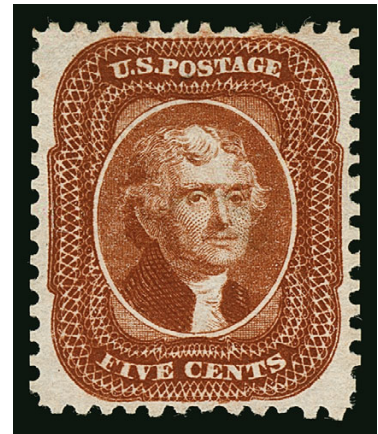
- 23 ★ **1c Bright Blue, Reprint (40).** Without gum as issued, rich color, choice centering with wide margins, Extremely Fine, a beautiful stamp, the 1c 1857 Reprint was made from a new plate and shows the nearly complete design, with 2003 P.F. certificate..... 575.00

- 24 ★ **5c Orange Brown, Reprint (42).** Without gum as issued, rich color on bright paper, detailed impression, gorgeous centering

EXTREMELY FINE GEM EXAMPLE OF THE 5-CENT 1857 REPRINT. THIS STUNNING STAMP IS GRADED XF-SUPERB 95 BY P.S.E., WHICH IS THE HIGHEST GRADE AWARDED.

As collectors of high-grade stamps know only too well, the 5c 1857 Reprint (878 sold) is notorious for its typically tight margins and poor centering. Before seeing this stamp, we doubted that any example could achieve the coveted XF-Superb 95 grade.

Ex Whitman and Merlin. With 2011 P.S.E. certificate (XF-Superb 95; SMQ \$11,500.00). This is the highest grade awarded and the only example to achieve this grade. The next-highest grade is a 90 (one stamp) which was offered in our Sale 967..... 1,200.00



24



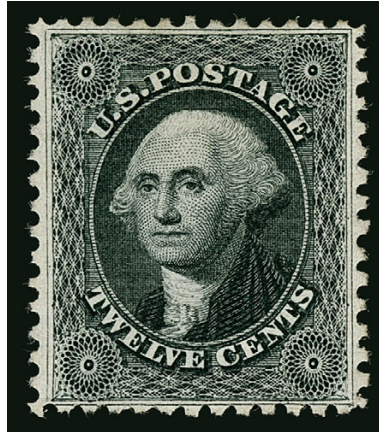
25

- 25 ★ **10c Blue Green, Reprint (43).** Without gum as issued, deep rich color on bright paper, choice centering for this difficult issue

EXTREMELY FINE EXAMPLE OF THE 10-CENT 1857 REPRINT.

The Continental Bank Note Company made a new plate for the 10c 1857 Reprint, consisting of 100 subjects, using an original transfer roll. 10,000 stamps were printed (100 impressions). All are Type I stamps. 516 of the 10c were sold, and the remaining 9,484 were destroyed on July 23, 1884, by order of the Postmaster General.

With 2007 P.F. certificate 2,750.00



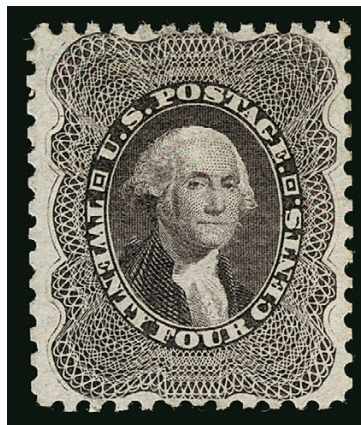
26

- 26 ★ **12c Greenish Black, Reprint (44).** Without gum as issued, intense shade and detailed impression on bright paper, choice centering for this difficult issue

EXTREMELY FINE. A MARVELOUS EXAMPLE OF THE 12-CENT 1857 REPRINT, IN THE FINEST CONDITION ATTAINABLE. THE P.S.E. GRADE OF XF 90 IS MATCHED BY ONLY ONE OTHER EXAMPLE AND SLIGHTLY SURPASSED BY ONE GRADED 90J.

The narrow spaces between stamps on the 12c 1857 Reprint plate allowed almost no room for large 12-gauge perforations, and the Reprints were generally perforated into parts of the design. Only 489 were sold, and examples such as this, with the framelines complete on all four sides, are extremely rare.

With 2002 P.F. and 2005 P.S.E. certificates (XF 90; SMQ \$9,500.00). Only one has graded higher (at 90J) and only one other shares this grade. 3,000.00



27

- 27 ★ **24c Blackish Violet, Reprint (45).** Without gum as issued, intense shade and impression on bright paper, almost perfectly centered

EXTREMELY FINE. A GORGEOUS EXAMPLE OF THE 24-CENT 1860 REPRINT. THIS IS ONE OF THE FINEST WE HAVE EVER ENCOUNTERED.

The Continental Bank Note Company reprinted the 24c stamp from the original plate of 200 subjects. 10,000 were printed (50 impressions). Only 479 were sold; the remaining 9,521 were destroyed on July 23, 1884, by order of the Postmaster General. Due to the narrow spacing between subjects, many have perforations touching the design at either top or bottom. The example offered here is one of the finest.

With 1992 and 2004 P.F. certificates. 3,250.00



28

- 28 ★ **30c Yellow Orange, Reprint (46).** Without gum as issued, intense shade and detailed impression, choice centering for this narrowly-spaced issue

EXTREMELY FINE GEM. A BEAUTIFUL EXAMPLE OF THE 30-CENT 1860 REPRINT. THIS IS ONE OF THE MOST DIFFICULT VALUES TO OBTAIN WITH SUCH CHOICE CENTERING. THIS IS ONE OF THE FINEST WE HAVE EVER OFFERED.

The Continental Bank Note Company reprinted the 30c stamp from the original plate of 200 subjects. 10,000 were printed (50 impressions). Only 480 were sold; the remaining 9,520 were destroyed on July 23, 1884, by order of the Postmaster General.

With 1972, 1989 and 2005 P.F. certificates..... 3,250.00



29

- 29 ★ **90c Deep Blue, Reprint (47).** Without gum as issued, deep rich color on bright paper, well-balanced margins

EXTREMELY FINE. A BEAUTIFUL EXAMPLE OF THE 90-CENT 1860 REPRINT.

The Continental Bank Note Company reprinted the 90c stamp from the original plate of 200 subjects. 10,000 were printed (50 impressions). Only 454 were sold; the remaining 9,546 were destroyed on July 23, 1884, by order of the Postmaster General.

With 2004 P.F. certificate..... 4,000.00

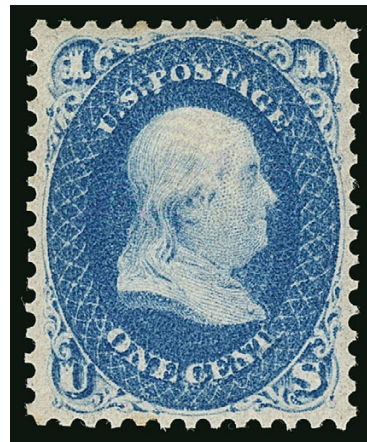
1861-66 ISSUE

- 30 ★★ **1c Ultramarine (63a). Mint N.H.**, radiant color in the distinctive Ultramarine shade, bright paper, long and full perforations, beautiful centering

EXTREMELY FINE. A STUNNING MINT NEVER-HINGED EXAMPLE OF THE ONE-CENT 1861 ISSUE IN THE SCARCE ULTRAMARINE SHADE.

In his 1c book, Don Evans devotes almost an entire column on p. 33 to a discussion of the Ultramarine shade. He notes that it is “extremely scarce”. He notes that apart from the Ultramarine and Indigo shades, “the remaining shades are comparatively plentiful.”

With 2007 P.S.E. certificate (XF 90; unpriced in SMQ as unused in any state). This is the highest grade awarded and the only one to achieve it.....
..... E. 4,000-5,000



30



31

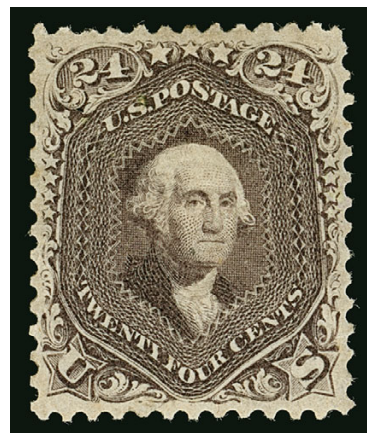
- 31 ★★ **3c Rose (65). Mint N.H.**, rich color and proof-like impression, unusually wide and balanced margins, Extremely Fine Gem, with 2008 P.S.E. certificate (XF-Superb 95; SMQ \$1,750.00), only one has graded higher (at 98), Scott Retail as hinged 125.00

- 32 ★ **24c Brown Lilac (70a).** Original gum, lightly hinged, beautiful color and detailed impression, unusually choice centering with wide and balanced margins

EXTREMELY FINE GEM. A GORGEOUS ORIGINAL-GUM EXAMPLE OF THE 1861 24-CENT BROWNISH LILAC. AN EXTREMELY DIFFICULT SHADE TO OBTAIN IN SUCH PRISTINE CENTERED CONDITION.

The color is a soft brownish shade, which is quite distinctive and much different than the Red Lilac (1862) or later Lilac (1863-66) printings. It is particularly difficult to obtain in sound, centered and original-gum condition, which is also demonstrated by the P.S.E. Population Report numbers — this is the only example to grade above 80.

With 2007 P.S.E. certificate (OGph, XF 90; SMQ \$7,250.00). This is the highest grade awarded and no others share it. 3,250.00



32



1861 24-CENT VIOLET (SCOTT 70c)

33°★ **24c Violet, Thin Paper (70c).** Original gum, lightly hinged, deep rich color and proof-like impression, remarkably choice centering for this difficult issue

EXTREMELY FINE GEM. THIS IS WITHOUT QUESTION ONE OF THE FINEST ORIGINAL-GUM EXAMPLES OF THE 1861 24-CENT VIOLET ON THIN PAPER WE HAVE EVER ENCOUNTERED. THIS IS ONE OF THE RAREST STAMPS IN SOUND, CENTERED AND ORIGINAL-GUM CONDITION.

The 24c 1861 exists in four basic shades of Violet: Dark Violet (August 1861 trial printing, formerly Scott 60); Violet on Thin Paper (August-September 1861 regular issue, Scott 70c — the shade offered here); Pale Gray Violet (1861 regular issue, Scott 70d) and Blackish Violet (ca. 1863 printing, Scott 78c). All four are rare, especially in sound original-gum condition. We feel this is nearly as rare as the Blackish Violet, which has a catalogue value of \$100,000.00.

With 2006 P.F. certificate. This stamp and the ex-Whitman copy (Siegel Sale 968, lot 89, realized \$90,000 hammer) are the two finest we have encountered. 35,000.00

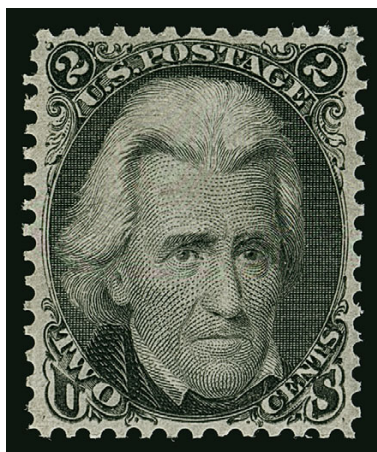


34

34 ★ **90c Blue (72).** Original gum, lightly hinged, warm shade, wide and balanced margins
EXTREMELY FINE GEM. A SUPERB ORIGINAL-GUM EXAMPLE OF THE 90-CENT 1861 ISSUE
WHICH IS VERY LIGHTLY HINGED.

We have encountered perhaps a half-dozen sound 90c 1861 stamps with original gum
and Very Fine or Extremely Fine centering. The multiples that were broken to furnish
singles were generally off center.

Ex Hetherington and Senchuk as top stamp in a vertical pair. 1961 P.F. certificate as pair
no longer accompanies. With 2011 P.S.A.G. certificate (XF-Superb 95). By way of
comparison, only one is graded 95 at P.S.E. 3,250.00



35

35 ★★ **2c Black (73).** Mint N.H., intense shade and proof-like impression, gorgeous centering
with wide margins for this difficult issue

EXTREMELY FINE GEM. A SUPERB MINT NEVER-HINGED EXAMPLE OF THE 1863 2-CENT
BLACK JACK ISSUE. SCARCE IN SUCH PRISTINE CONDITION.

With 2007 P.F. certificate (XF-Superb 95). Only two have achieved this grade at the P.F.,
and the highest grade awarded by P.S.E. is a 90. Scott Retail as hinged 375.00



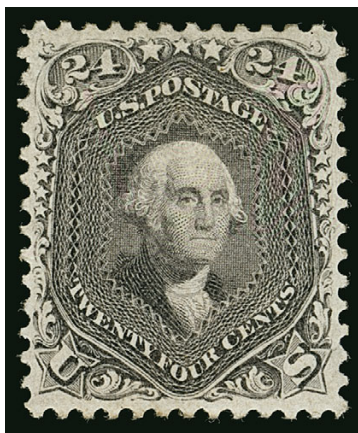
36

- 36 ★ **5c Brown (76).** Original gum, lightly hinged, rich color and detailed impression, wide and well-balanced margins which are completely clear of the design on all four sides

EXTREMELY FINE GEM. A BEAUTIFULLY CENTERED AND UNUSUALLY FRESH ORIGINAL-GUM EXAMPLE OF THE 1863 5-CENT BROWN. AN EXCEEDINGLY DIFFICULT STAMP TO FIND IN SUCH SUPERB CONDITION.

The 5c 1861-68 Issue was printed from plates with closely-spaced subjects that left little room for the large 12-gauge perforations. The Brown shade, Scott 76, is scarce in original-gum condition, and truly rare in this high grade.

Ex "Scarsdale". With 1999 P.F. certificate 1,400.00



37

- 37 ★ **24c Grayish Lilac (78a).** Original gum, lightly hinged, lovely warm shade on bright paper, far better centering than normally seen on this difficult issue

EXTREMELY FINE GEM. A BEAUTIFUL ORIGINAL-GUM EXAMPLE OF THE 24-CENT 1863 ISSUE IN THE GRAYISH LILAC SHADE.

This shade is particularly difficult to obtain in sound, centered and original-gum condition. A Power Search of our sale records and a review of P.S.E. Population Report numbers will confirm this statement.

With 2008 P.S.E. certificate (OGph, XF 90; SMQ \$7,000.00). This is the highest grade awarded and the only example to achieve it. It is also the only example graded above 75.
..... 2,900.00

1861-64 CONFEDERATE STATES GENERAL ISSUES

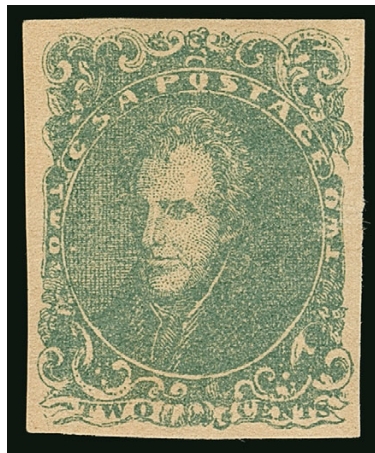


38

- 38 ★★ **Confederate States, 10c Blue, Paterson (2). Mint N.H.**, huge margins all around including left sheet margin, brilliant color

EXTREMELY FINE GEM. A GORGEOUS MINT NEVER-HINGED EXAMPLE OF THE CONFEDERATE STATES 10-CENT BLUE LITHOGRAPH ISSUE.

With 2011 P.F. certificate. Scott Retail as hinged..... 275.00



39

- 39 ★★ **Confederate States, 2c Green (3). Mint N.H.**, large margins all around, radiant color

EXTREMELY FINE. A BEAUTIFUL MINT NEVER-HINGED EXAMPLE OF THE CONFEDERATE STATES 2-CENT JACKSON LITHOGRAPHED ISSUE.

We have offered only three other singles in Mint N.H. condition since keeping computerized records. With 1995 P.S.E. certificate. Scott Retail as hinged..... 950.00

- 40 ★★ **Confederate States, 5c Blue, Stone 2 (4).** Mint N.H., huge Jumbo “picture frame” margins showing parts of all eight adjoining stamps, fresh color and paper

EXTREMELY FINE GEM. AN EXCEPTIONALLY BEAUTIFUL MINT NEVER-HINGED EXAMPLE OF THE CONFEDERATE STATES 5-CENT BLUE LITHOGRAPHED ISSUE, GRADED GEM 100 JUMBO BY P.S.E.

With 2013 P.S.E. certificate (Gem 100 Jumbo; SMQ \$5,900.00 as 100, unpriced in higher grade). Scott Retail as hinged..... 225.00



40



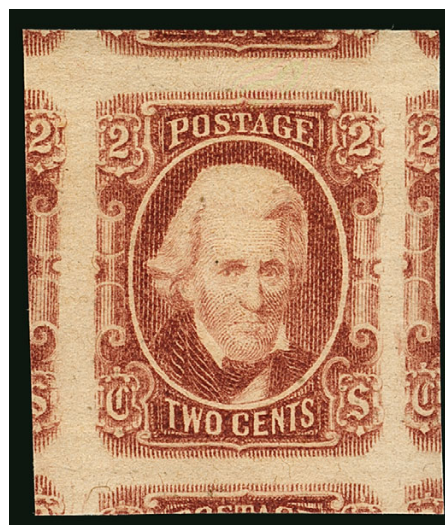
41

- 41 ★★ **Confederate States, 5c Light Blue, De La Rue (6).** Mint N.H., enormous margins all around including part of all eight adjoining stamps, brilliant color, Extremely Fine Gem, with 2013 P.S.E. certificate (Gem 100 Jumbo; SMQ \$400.00 as 100, unpriced as 100J), this is the highest grade possible on the grading chart, Scott Retail as hinged 16.00

- 42 ★★ **Confederate States, 2c Brown Red (8).** Mint N.H., enormous margins all around including significant portions of all eight adjoining stamps, rich color

EXTREMELY FINE GEM. A STUNNING MINT NEVER-HINGED EXAMPLE OF THE 2-CENT JACKSON ISSUE, GRADED GEM 100 JUMBO BY P.S.E.

With 2013 P.S.E. certificate (Gem 100 Jumbo; SMQ \$1,900.00 as 100, unpriced as 100J). This is the highest grade possible on the grading chart and the first we have offered in this grade. Scott Retail as hinged 75.00



42



43

- 43 **Confederate States, 10c Blue, Frameline (10).** Large margins showing virtually complete framelines on three sides and part of bottom frameline, neat strike of circular datestamp

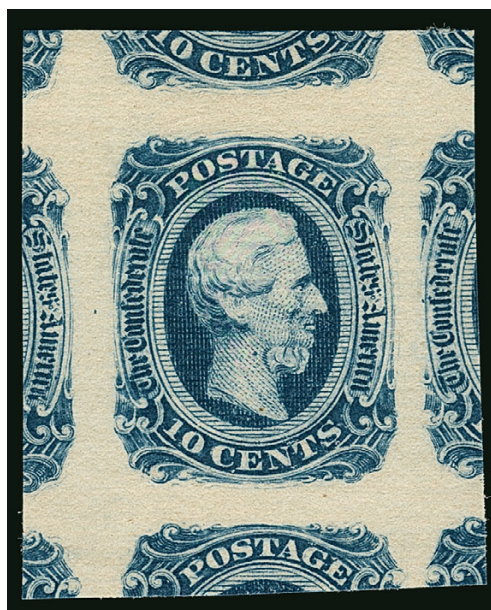
EXTREMELY FINE. A BEAUTIFUL EXAMPLE OF THE CONFEDERATE STATES 10-CENT FRAMELINE ISSUE, GRADED XF-SUPERB 95 BY P.S.E.

The defining characteristic of Scott 10 is the frameline between the stamps. The lines were engraved on the plate and served as a guide for the siderographer when aligning the transfers to make the plate. Each stamp shares framelines with the adjoining positions, so four-frameline copies are exceedingly rare.

With 2013 P.S.E. certificate (XF-Superb 95; SMQ \$8,250.00)..... 1,900.00



44



45

- 44 ★★ **Confederate States, 10c Greenish Blue, Die A (11c).** Mint N.H., enormous margins all around including significant parts of all eight adjoining stamps, pretty shade, Extremely Fine Gem, with 2013 P.S.E. certificate (Gem 100 Jumbo; SMQ \$550.00 as 100, unpriced as 100J), this is the highest grade possible on the grading chart, Scott Retail as hinged 30.00
- 45 ★★ **Confederate States, 10c Blue, Die B (12).** Mint N.H., massive margins including significant portions of all eight adjoining stamps, deep rich collar and proof-like impression, Extremely Fine Gem, with 2013 P.S.E. certificate (Gem 100 Jumbo; SMQ \$700.00 as 100, unpriced as 100J), this is the highest grade possible on the grading chart, Scott Retail as hinged.... 20.00

1867-68 GRILLED ISSUE



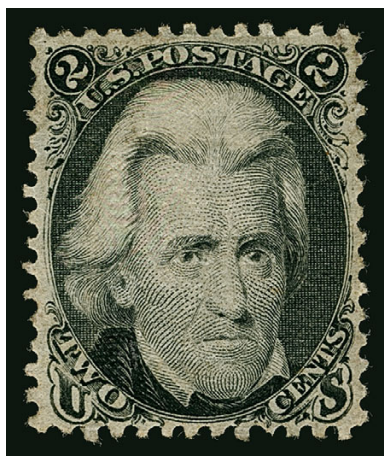
46

- 46 ★ **3c Rose, C. Grill (83).** Original gum, lightly hinged, clearly-defined grill which is easily visible on the face of the stamp, radiant color on post-office fresh paper, gorgeous centering with wide and balanced margins

EXTREMELY FINE GEM. A STUNNING ORIGINAL-GUM EXAMPLE OF THE 1867 3-CENT C GRILL, GRADED XF-SUPERB 95 BY P.S.E.

The 3c is the only denomination that comes with the distinctive C Grill, with the grill points facing up instead of down. The few high-grade original-gum examples owe their existence to the division of blocks of four.

Ex Whitman and "Hampshire". With 1967, 1989 and 1997 P.F. and 2008 P.S.E. certificates (OGph, XF-Superb 95; SMQ \$28,500.00). Only one has graded higher (at 98) and only two others share this desirable grade..... 6,000.00



47

- 47 ★ **2c Black, Z. Grill (85B).** Original gum, lightly hinged, clearly-defined grill, detailed impression, well-balanced margins

EXTREMELY FINE. THE 1868 2-CENT Z GRILL IS ONE OF THE MOST DIFFICULT GRILLED ISSUES TO OBTAIN IN SOUND, CENTERED ORIGINAL-GUM CONDITION. A TRUE CONDITION RARITY. THIS IS WITHOUT QUESTION ONE OF THE FINEST IN EXISTENCE.

To form our assessment of this 2c Z Grill, we conducted a survey of approximately 100 auction catalogues for major United States collections sold over the past 60 years. The majority of these collections contained only used or very poor unused examples of 85B. In general, many accomplished collectors, such as Sheriff, Klein and Seymour, evidently were unable to acquire a well-centered, original-gum 2c Z Grill. Power Search produced only a very few, along with some near-misses — the most common flaw being faint creases. A Power Search review turned up perhaps 2-3 sound copies, but the centering was off side-to-side, as on the Whitman copy and one in our 2010 Rarities sale. Finally, the P.S.E. Population Report lists only five OG stamps, graded 10 (two), 20, 30 and 50.

With 2006 P.S.E. certificate 17,500.00



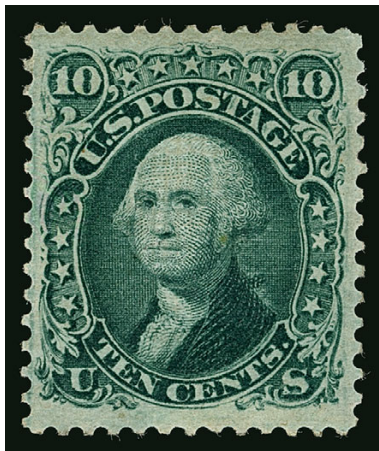
48

- 48 **3c Rose, Z. Grill (85C).** Huge margins with almost mathematically perfect centering, long and full perforations all around and clearly-defined grill, rich color, cancelled by "Peoria Ill. May 4" circular datestamp and bold **letter "B"** (postmaster was George C. Bestor)

EXTREMELY FINE GEM. A SUPERB USED EXAMPLE OF THE 1868 3-CENT Z GRILL IN THE FINEST CONDITION ATTAINABLE — MADE MORE DESIRABLE BY THE STRIKING "B" CANCEL. P.S.E. HAS AWARDED THIS STAMP THE GRADE OF SUPERB 98, WHICH IS THE HIGHEST GRADE, AND THIS IS THE ONLY EXAMPLE TO ACHIEVE IT.

The 3c Z Grill was in production for only a short period of time before the device was replaced with the F Grill. Only a small number of 3c sheets were fed thru the Z Grill, which accounts for the rarity of surviving examples. Our review of past auctions, including Power Search, found precious few sound copies with Extremely Fine centering, and none that rival this stamp.

Ex Merlin. With 2013 P.S.E. certificate (Superb 98; SMQ \$35,000.00). This is the highest grade awarded and the only example to achieve it..... 3,500.00



49

- 49 ★ **10c Green, E. Grill (89).** Original gum, lightly hinged, with “TAG” transfer variety, warm shade, unusually wide and balanced margins

EXTREMELY FINE. A WONDERFUL ORIGINAL-GUM EXAMPLE OF THE 1868 10-CENT E GRILL. THIS STAMP IS THE ONLY ONE TO ACHIEVE A P.S.E. GRADE OF 90, WHICH IS THE HIGHEST GRADE ON RECORD.

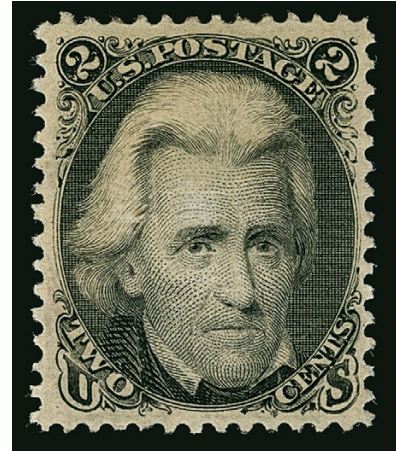
A Power Search review shows how difficult it is to find this issue in sound, centered original-gum condition. Most have one margin significantly larger than the others, or are poorly centered.

With 1997 P.F. and 2011 P.S.E. certificates (OGph, XF 90; SMQ \$16,500.00). This is the highest grade awarded and the only example to achieve it..... 5,250.00

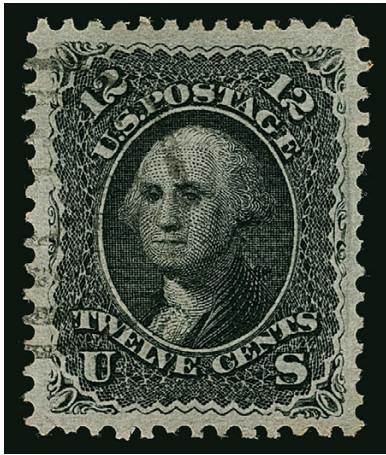
- 50 ★ **2c Black, E. Grill (87).** Original gum, single hinge mark, clearly-defined grill, detailed impression, wide and balanced margins

EXTREMELY FINE ORIGINAL-GUM EXAMPLE OF THE 1868 2-CENT E GRILL.

With 2007 P.F. certificate (VF-XF 85). Only two have achieved this grade at the P.F. and the highest grade awarded by P.S.E. is 80..... 1,750.00



50



51

- 51 **12c Black, E. Grill (90).** Perfectly centered with wide margins, beautiful shade and impression shows the intricate detail of the engraving, long and full perforations all around, unobtrusive yet clearly visible target cancel at left

EXTREMELY FINE GEM. A PHENOMENAL USED EXAMPLE OF THE 1868 12-CENT E GRILL, GRADED SUPERB 98 BY P.S.E. — THIS IS THE HIGHEST GRADE ON RECORD AND THE ONLY EXAMPLE TO ACHIEVE IT.

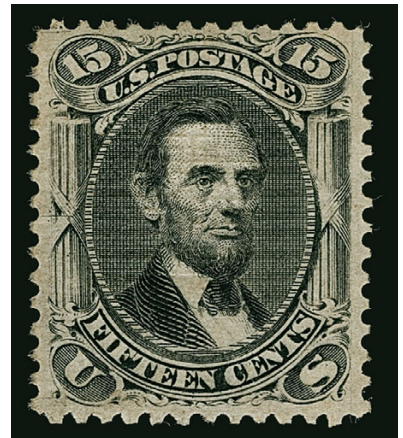
Ex Zoellner and "Natalee Grace". With 1989 and 1998 P.F. certificates. With 2009 P.S.E. certificate (Superb 98; SMQ \$9,000.00). This is the highest grade awarded and the only example to achieve this grade..... 400.00

- 52 ★ **15c Black, E. Grill (91).** Original gum, lightly hinged, strong grill impression, soft charcoal shade on fresh paper

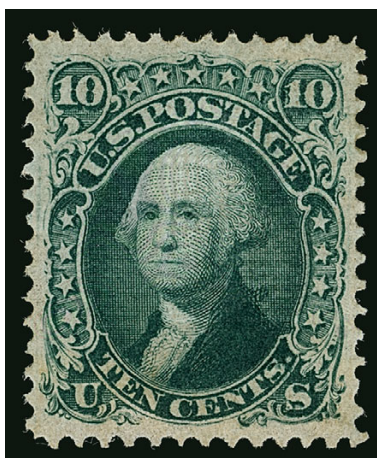
EXTREMELY FINE AND FRESH ORIGINAL-GUM EXAMPLE OF THE 1868 15-CENT E GRILL.

Although at least one block of four of the 15c E Grill has been split in recent years, few of the stamps harvested from broken blocks have the centering and well-preserved gum and paper of this example. As an indication of rarity, Scott Catalogue values Scott 91 at \$4,500.00 without gum, and \$12,500.00 with original gum.

Ex "Silver Lake". With 2002 P.F. certificate 12,500.00



52



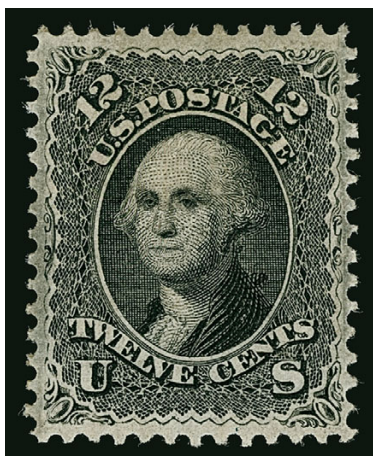
53

53 ★ **10c Yellow Green, F. Grill (96).** Original gum, lightly hinged, well-defined grill, rich color, crisp impression, gorgeous centering with wide and balanced margins

EXTREMELY FINE GEM. THIS IS WITHOUT QUESTION ONE OF THE FINEST ORIGINAL-GUM EXAMPLES OF THE 1868 10-CENT F GRILL. A SURPRISINGLY DIFFICULT ISSUE TO OBTAIN IN SUCH SUPERB CONDITION.

Over the years several multiples have been broken to feed collector demand for singles, so the overall number of original-gum copies is relatively high. However, virtually all original gum-copies seem to have at least one margin that is larger than the others. The stamp offered here, perfectly centered with four wide and balanced margins, is a true condition rarity.

With 2005 and 2006 P.F. certificates, the latter graded (XF 90). By way of comparison, the highest grade in P.S.E.'s Population Report is 70. 2,750.00



54

- 54 ★ **12c Black, F. Grill (97).** Original gum, lightly hinged, almost perfectly centered with remarkably wide margins all around capturing the characteristic plate burrs of 12c 1868 grills, intense shade and impression, clearly-defined grill

EXTREMELY FINE GEM. A SUPERB ORIGINAL-GUM EXAMPLE OF THE 1868 12-CENT F GRILL. AN EXTRAORDINARY STAMP AND CERTAINLY AMONG THE FINEST IN EXISTENCE.

We acknowledge the past existence of original-gum 12c F Grill multiples, which in recent years have been broken to furnish choice singles. However, the quality of this particular stamp — its centering and margins, shade and overall freshness — qualify it as one of the three or four finest in existence.

Ex “Scarsdale”. With 1997 P.S.E. and 1998 P.F. certificates..... 3,000.00



55

55 **15c Black, F. Grill (98).** Mathematically perfect centering with unusually wide and balanced margins, bright shade and crisp impression, clear grill points, light strike of target cancel leaves entire design clearly visible, long and full perforations all around

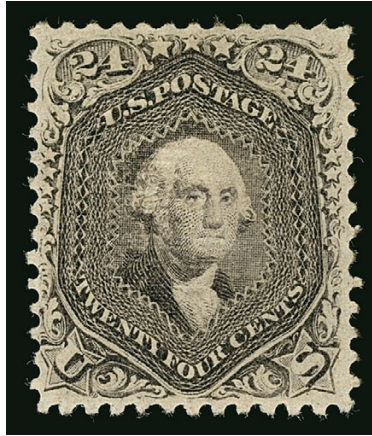
EXTREMELY FINE GEM. THIS MAGNIFICENT STAMP HAS BEEN AWARDED THE ULTIMATE GRADE OF GEM 100 BY P.S.E. THIS USED 1868 15-CENT F GRILL IS UNDENIABLY THE PERFECT STAMP, POSSESSING EVERY QUALITY ONE COULD POSSIBLY HOPE FOR — CENTERING, IMPRESSION, STRONG GRILL, FULL PERFORATIONS AND A LIGHT CANCEL.

We created Power Search for occasions like this, when superlatives fail to do justice to an extraordinary stamp. To see the centering, margins and cancellations on typical used examples of the 15c Lincoln — ungrilled or not — please use our website's Power Search feature to find Scott 77, 91 and 98 (three different searches). You will see that the 15c Lincoln is almost always a stamp of compromise. Great centering and margins, but heavy cancel. Light or colored cancel, but small margins or not quite centered. Great looking, but small faults. Then look at the “name” collections and see which 15c Lincoln stamps were included. No one — and there are great collector names on this list — managed to obtain this stamp or one even remotely like it.

When numerical grading started, the 15c Lincoln was on our list of “Try to Find a 100” stamps. We did not believe one existed. When this 15c F Grill was presented to us, we knew it was perfect without even looking at the grade. The Gem 100 grade and a note of praise from master grader Dr. William A. Litle confirmed our gut reaction.

The ungrilled version of this issue was released in 1866, about one year after President Lincoln was assassinated. It is regarded by many to be America's first commemorative issue, memorializing the martyred president as the nation started to heal from the wounds of the Civil War. In 1868 it was issued with two grill types, the E Grill (Scott 91) and F Grill (Scott 98). 15c usually paid the registration fee on domestic mail or the U.S.-French treaty rate. The 15c stamps used on transatlantic mail passed through foreign-mail exchange offices, where clerks were zealous about cancelling high-value stamps. For this reason, the 15c Lincoln usually has a heavy cancel or large cancel over the portrait. This stamp, with its light target cancel, is the rare exception.

With 2012 P.S.E. certificate (Gem 100; SMQ \$21,500.00). This is the highest grade awarded and the only example to achieve this grade. 275.00



56

56 ★ **24c Gray Lilac, F. Grill (99).** Original gum, clearly-defined grill, precise centering with well-balanced margins

EXTREMELY FINE. A BEAUTIFUL ORIGINAL-GUM EXAMPLE OF THE 1868 24-CENT F GRILL.

The high-value F Grill stamps are scarce in original-gum condition and rarely seen with the centering of this superb example.

With 2003 P.F. certificate..... 8,500.00

1875 RE-ISSUE OF 1861-66 ISSUE



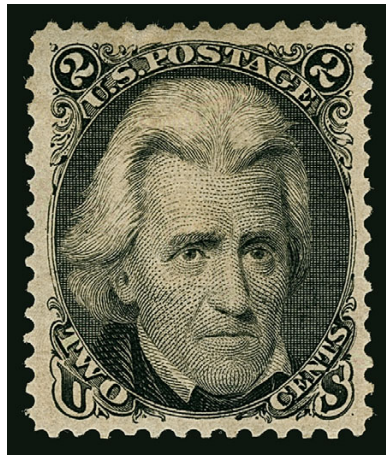
57

- 57 ★ **1c Blue, Re-Issue (102).** Original gum, lightly hinged, deep rich color, crisp paper, perfectly centered with unusually wide and balanced margins

EXTREMELY FINE GEM. THIS IS EASILY ONE OF THE FINEST ORIGINAL-GUM EXAMPLES OF THE ONE-CENT 1861 RE-ISSUE IN EXISTENCE. IT IS GRADED SUPERB 98 BY P.S.E., WHICH IS THE HIGHEST GRADE AWARDED.

The 1c Re-Issue was printed from a new plate of 100 subjects, compared to the original plate of 200 in two panes. 10,000 stamps were printed (100 impressions). 3,195 of the 1c were sold, by far the largest quantity of any denomination of the set. However, almost none would grade as highly as the example offered here, which is lightly hinged and with wide balanced margins all around. The remaining 6,805 were destroyed on July 16, 1884.

With 2009 P.S.E. certificate (OGph, Superb 98; SMQ \$5,750.00). This is the highest grade awarded and only two others share it. 800.00



58

- 58 ★ **2c Black, Re-Issue (103).** Original gum, intense shade and impression on bright paper, choice centering with wide margins

FRESH AND EXTREMELY FINE. A BEAUTIFUL ORIGINAL-GUM EXAMPLE OF THE 2-CENT 1861 RE-ISSUE.

Only 979 were sold. With 2005 P.S.E. certificate (XF 90; SMQ \$7,750.00) 3,500.00



59

- 59 ★ **3c Brown Red, Re-Issue (104).** Original gum, lightly hinged, intense shade and impression which shows every detail of the intricate lathework engraving, gorgeous centering with wide and balanced margins

EXTREMELY FINE GEM. THIS IS EASILY ONE OF THE FINEST ORIGINAL-GUM EXAMPLES OF THE 3-CENT 1861 RE-ISSUE, AND IT IS GRADED XF-SUPERB 95 BY P.S.E. — THIS IS THE HIGHEST GRADE AWARDED AND THE ONLY EXAMPLE TO ACHIEVE IT.

The 3c Re-Issue was printed from the original plate, which contained 200 subjects in two panes. 10,000 were printed (50 impressions). Only 465 of the 3c were sold; the remaining 9,535 were destroyed on July 16, 1884. The 3c is one of the three most difficult stamps in the set to obtain in this Extremely Fine Gem original-gum condition (the others are the 24c and 30c).

With 2008 P.S.E. certificate (OGph, XF-Superb 95; SMQ \$15,000.00). This is the highest grade awarded and the only example to achieve it..... 4,000.00



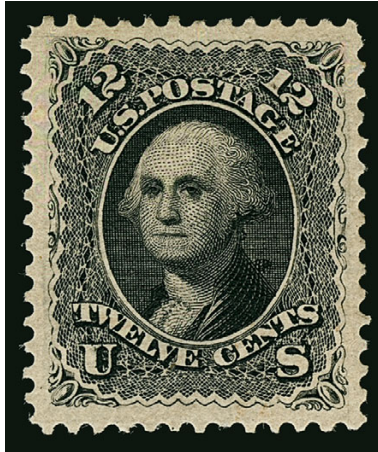
60

- 60 ★ **5c Brown, Re-Issue (105).** Original gum, rich color and proof-like impression, choice centering with wide and balanced margins

EXTREMELY FINE GEM. A SUPERB ORIGINAL-GUM EXAMPLE OF THE 5-CENT 1861 RE-ISSUE.

The 5c Re-Issue was printed from a new plate of 100 subjects, compared to the original plate of 200 in two panes. The Re-Issue plate can be identified by a notch at bottom. 10,000 stamps were printed (100 impressions). Only 672 of the 5c were sold; the remaining 9,328 were destroyed on July 16, 1884.

With 2005 P.F. and 2005 P.S.E. certificates (latter graded Mint OG, XF-Superb 95; SMQ \$11,500.00). Only one has graded higher (at 95J)..... 2,600.00



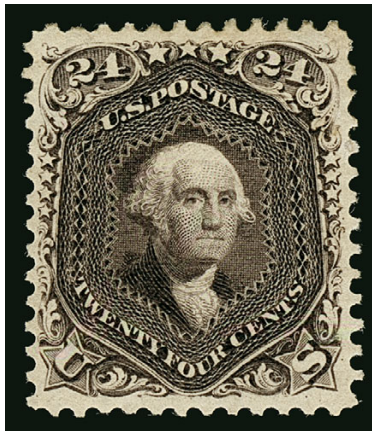
61

- 61 ★ **12c Black, Re-Issue (107).** Original gum, lightly hinged, intense shade and proof-like impression, beautiful centering with unusually wide margins

EXTREMELY FINE GEM. A BEAUTIFUL ORIGINAL-GUM EXAMPLE OF THE 12-CENT 1861 RE-ISSUE. SCARCE WITH SUCH WIDE AND BALANCED MARGINS. AN ABSOLUTELY STUNNING STAMP AND ONE OF THE FINEST IN EXISTENCE.

The 12c Re-Issue was printed from a new plate of 100 subjects, compared to the original plate of 200 in two panes. 10,000 stamps were printed (100 impressions). Only 389 of the 12c were sold; the remaining 9,611 were destroyed on July 16, 1884.

With 1977 and 2005 P.F. certificates 3,750.00



62

- 62 ★ **24c Deep Violet, Re-Issue (109).** Original gum, lightly hinged, deep rich color and detailed impression on bright paper, unusually choice centering with balanced margins

EXTREMELY FINE GEM. A BEAUTIFUL ORIGINAL-GUM EXAMPLE OF THE 24-CENT 1861 RE-ISSUE. THIS IS ONE OF THE MOST DIFFICULT DENOMINATIONS TO OBTAIN IN SUCH CHOICE CONDITION.

The 24c Re-Issue was printed from the original plate of 200 subjects. A total of 10,000 was printed (50 impressions). Only 346 of the 24c were sold; the remaining 9,654 were destroyed on July 16, 1884.

Ex Golin and Gorham. With 1985, 1999 and 2007 P.F. certificates (XF 90)..... 5,750.00

1869 PICTORIAL ISSUE

- 63 ★ **1c Buff (112).** Original gum, single hinge mark, radiant color, clearly-defined grill, choice centering with wide margins

EXTREMELY FINE GEM. A SUPERB ORIGINAL-GUM EXAMPLE OF THE ONE-CENT 1869 PICTORIAL ISSUE, GRADED XF-SUPERB 95 BY THE PHILATELIC FOUNDATION.

With 2008 P.F. certificate (XF-Superb 95). This is the highest grade awarded by the P.F. and the only to achieve it. By way of comparison, P.S.E. has only graded two higher (highest is a 98) and only one at this grade. 650.00



63



64

- 64 ★★ **2c Brown (113).** Mint N.H., brilliant color, choice centering with wide margins

EXTREMELY FINE MINT NEVER-HINGED EXAMPLE OF THE 2-CENT 1869 PICTORIAL ISSUE. THIS IS A DIFFICULT ISSUE TO OBTAIN IN MINT NEVER-HINGED CONDITION WITH SUCH WIDE MARGINS.

With 2003 P.F. certificate. Scott Retail as hinged 550.00

- 65 ★★ **3c Ultramarine (114).** Mint N.H., brilliant color on bright paper, beautifully centered with wide margins

EXTREMELY FINE GEM. A SUPERB MINT NEVER-HINGED EXAMPLE OF THE 3-CENT 1869 PICTORIAL ISSUE, GRADED XF-SUPERB 95 BY THE PHILATELIC FOUNDATION.

With 2007 P.F. certificate (XF-Superb 95). By way of comparison, only two have graded higher (at 98) in either the P.F. or P.S.E.'s Population Reports. Scott Retail as hinged 250.00



65



66

66 ★ **6c Ultramarine (115).** Original gum, lightly hinged, deep shade and impression on bright paper, gorgeous centering

EXTREMELY FINE GEM. A STUNNING ORIGINAL-GUM EXAMPLE OF THE 6-CENT 1869 PICTORIAL ISSUE, GRADED XF-SUPERB 95 BY THE PHILATELIC FOUNDATION.

With 2007 P.F. certificate (XF-Superb 95). This is the only example to achieve this grade at the P.F.; P.S.E. has graded four at this grade with none higher..... 2,750.00



67

- 67 ★ **12c Green (117).** Original gum, lightly hinged, near perfect centering with wide margins all around, deep rich color and intense proof-like impression

EXTREMELY FINE GEM. AN OUTSTANDING EXAMPLE OF THE 12-CENT 1869 STAMP — ONE OF THE MORE DIFFICULT 1869 PICTORIAL ISSUES TO FIND IN THIS CHOICE ORIGINAL-GUM CONDITION.

With 1997 P.F. certificate..... 1,900.00



68

- 68 ★ **15c Brown & Blue, Ty. II (119).** Original gum, lightly hinged, pretty shade with vignette perfectly aligned to the frame, choice centering with well-balanced margins

EXTREMELY FINE. A BEAUTIFUL ORIGINAL-GUM EXAMPLE OF THE 15-CENT TYPE II 1869 PICTORIAL ISSUE.

With 2006 P.F. certificate..... 3,250.00



69

- 69 ★ **24c Green & Violet (120).** Original gum, clearly-defined grill, rich colors on bright paper, choice centering with wide margins

EXTREMELY FINE. A BEAUTIFUL ORIGINAL-GUM EXAMPLE OF THE 24-CENT 1869 PICTORIAL ISSUE.

The 24c 1869 Pictorial, even in original-gum condition, is not a rare stamp. However, centering and soundness are elusive qualities among examples of this issue. This stamp has color, centering and margins that appear more like its re-issue counterpart.

With 1998 P.F. certificate..... 8,000.00





70

70° ★ **30c Ultramarine & Carmine (121).** Original gum, rich colors on bright paper, unusually choice centering with wide and balanced margins

EXTREMELY FINE GEM. A STUNNING ORIGINAL-GUM EXAMPLE OF THE 30-CENT 1869 PICTORIAL ISSUE, GRADED XF-SUPERB 95 BY THE PHILATELIC FOUNDATION.

The rarity of centered original-gum examples of the 30c 1869 with grill is somewhat obscured by the availability of off-center copies of the 30c with and without grill. If the scope were narrowed to Scott 121 only, and only grades of Very Fine or Extremely Fine were considered, we estimate that fewer than 15 examples would be counted. Among the qualifying stamps, this is without a doubt one of the finest two or three.

With 2006 P.F. certificate (XF-Superb 95). Only two others share this grade in the P.F. on-line records. The P.S.E. Population Report lists two graded 95 and none higher.....
 5,000.00



71

90-CENT 1869 PICTORIAL ISSUE
GRADED XF-SUPERB 95 BY P.S.E.

71°★ **90c Carmine & Black (122).** Original gum, deep rich colors and proof-like impressions, unusually choice centering with wide and balanced margins

EXTREMELY FINE GEM. A SUPERB ORIGINAL-GUM EXAMPLE OF THE 90-CENT 1869 PICTORIAL ISSUE, WHICH IS GRADED XF-SUPERB 95 BY P.S.E. — THIS IS THE HIGHEST GRADE FOR AN ORIGINAL-GUM SCOTT 122, AND ONLY ONE OTHER HAS ACHIEVED IT.

The 90c 1869 Pictorial is widely admired for its beautiful engraving and dignified portrait of Abraham Lincoln. However, collectors have been frustrated in their efforts to acquire choice examples of this issue. Used 90c stamps are typically heavily cancelled, because the high denomination was cause for postal clerks to thoroughly obliterate any chance for re-use. Naturally, the significant monetary value of 90c in 1869 limited the number of unused stamps that would be saved for future collectors. Therefore, the collector ideals of “well-centered with original gum” and “lightly cancelled” are seldom obtainable in the available supply of 90c 1869’s. The stamp offered here, with lightly hinged original gum and choice centering, probably ranks among the top 1% of surviving 90c 1869’s in unused state.

Ex “Hampshire”. With 1991 P.F. and 1991 and 2008 P.S.E. certificates (OGph, XF-Superb 95; SMQ \$77,500.00). This is the highest grade awarded. Only one other stamp has equaled this grade (from our 2006 “Scarsdale” sale) 12,000.00





30-CENT 1869 PICTORIAL—FLAGS INVERTED UNUSED

72°(★) **30c Ultramarine & Carmine, Flags Inverted (121b).** Unused (no gum), deep rich colors and proof-like impressions, nearly perfect centering with well-balanced margins

EXTREMELY FINE. ONE OF SEVEN RECORDED UNUSED EXAMPLES OF THE 30-CENT 1869 PICTORIAL INVERT, ONLY TWO OR THREE OF WHICH ARE SOUND. ONE OF THE GREATEST RARITIES OF UNITED STATES PHILATELY.

Only seven unused examples of the 30c 1869 Pictorial Issue with inverted flags are known. Only one has original gum (recently sold in our auction of the “Beverly Hills” collection for \$600,000 hammer). The other six have no gum. Of the seven unused copies, the original-gum example is sound, as is the example offered here. One other is potentially sound, but has not been seen since 1960. Therefore, it is possible that this and the original-gum example are the only two completely sound unused examples of the 30c 1869 Pictorial Invert.

Census No. 121b-UNC-02. Ex Colonel Stillwell (Siegel Sale 413, sold by order of U.S. Trust Company). With 2014 P.F. certificate.

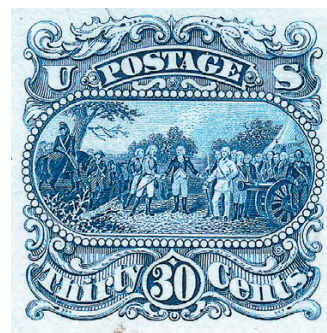
Our census of the unused 30c 1869 Pictorial Issue Inverts is available at <http://siegel-auctions.com/dynamic/census/121b/121b.pdf>. 300,000.00

Design of the 30¢ 1869 Pictorial Issue

The original unadopted 30¢ design was similar to the 15¢ and 24¢. The vignette was a detailed miniature engraving from the oil painting *The Surrender of General Burgoyne* by Trumbull. The Burgoyne vignette was masterfully engraved by James Smillie. A similar engraving was made by Frederick Girsch for the 1863 \$500 First Charter note.

It has been said that U.S. postal officials rejected the Burgoyne design out of sensitivity to Great Britain. Whether or not this is true can never be known with certainty, but it seems odd that postal officials would be concerned about offending the British with this depiction on a 30¢ stamp, while they were apparently unconcerned about the Declaration of Independence scene on the 24¢ stamp, which was much more likely to be used on mail to Great Britain (the basic rate was 12¢ when the 1869 stamps were issued).

continued



Die proof of 30¢ essay with Smillie's vignette depicting Burgoyne's surrender, which was not used for any of the 1869 Pictorials—the 30¢ was redesigned with Eagle & Shield

Lot 72 continued

Whatever the reason, the 30¢ Burgoyne design was discarded, and James MacDonough is credited with its replacement, the Eagle-and-Shield with Flags-and-Stars design. This was the first time the American flag appeared on a stamp, and the choice of patriotic red and blue colors on white paper was deliberate. The similar Eagle-and-Shield design without flags was used for the 10¢ 1869 stamp.

There is an unresolved debate over the engravers responsible for the 30¢. Some have attributed the engraving of both the central Eagle-and-Shield and the surrounding Flags-and-Stars to Douglas S. Ronaldson. Others credit another engraver, Luigi (Louis) Delnoce, with execution of the Flags-and-Stars die.

There will probably never be a final answer to this conflicting artist attribution, but stylistically, the delicate engraving of the draped flags fits into Delnoce's body of work.

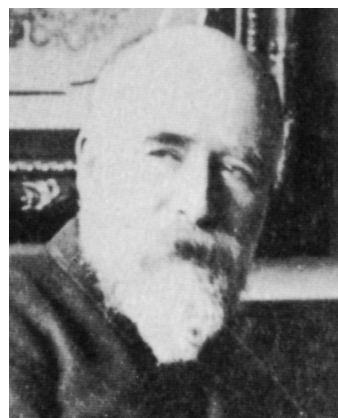


Luigi (Louis) Delnoce, the engraver who probably engraved the 30¢ flags and stars

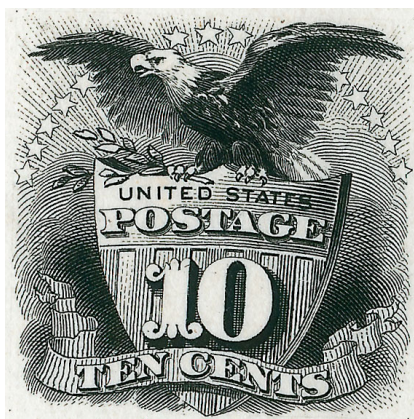
Luigi Delnoce (1822-1890) was an Italian-born master engraver who studied with John W. Casilear in the early 1850's and produced numerous engravings for use on stamps and bank notes. His son, Louis Jr., also became a security engraver.

Delnoce is best known for engraving the "Lazy Deuce" \$2 currency note, so named because the large numeral "2" is on its side, rather than upright. The same note bears a beautiful engraving of Stars-and-Stripes, a female allegorical design with a strong stylistic connection to the 30¢ 1869.

The photographs here show a proof of the Stars-and-Stripes vignette on the Lazy Deuce note and a comparison of the draped flags in that engraving with the 30¢ 1869 flag, as well as with the ribbons and stars on the 10¢ stamp. The engraving of the folds in the flags on the 30¢ more closely resembles Delnoce's flags.



James MacDonough, founder of National Bank Note Co. and designer of 30¢ Eagle & Shield



At right: Proof of Stars-and-Stripes vignette engraved by Luigi Delnoce for use on the "Lazy Deuce" \$2 note, and a comparison of the flag with the draped flag on the 30¢ 1869 stamp

The 10¢ 1869 (above), engraved by Douglas S. Ronaldson, lacks the delicate shading of Delnoce's work



1875 RE-ISSUE OF 1869 PICTORIAL ISSUE



73

- 73 ★ **2c Brown, Re-Issue (124).** Original gum, beautiful deep rich color on bright paper, well-centered with wide well-balanced margins

EXTREMELY FINE GEM. AN OUTSTANDING EXAMPLE OF THE 2-CENT 1869 PICTORIAL RE-ISSUE.

Ex "Laila". With 1971 P.F. and 2011 P.S.E. certificates (OGph, XF-Superb 95; SMQ \$3,450.00). This is the highest grade awarded by either P.F. or P.S.E. 650.00



74

- 74 ★ **3c Blue, Re-Issue (125).** Original gum, lightly hinged, deep rich color and proof-like impression on bright paper, choice centering with well-balanced margins

EXTREMELY FINE. A SUPERB ORIGINAL-GUM EXAMPLE OF THE 3-CENT 1869 PICTORIAL RE-ISSUE. AN EXTREMELY DIFFICULT ISSUE TO OBTAIN IN SUCH PRISTINE CONDITION.

Original sales figures show that among the 1869 Pictorial Re-Issues, the 3c and 90c stamps accounted for the smallest number of units sold (1,406 and 1,356, respectively). Overall, the 1869's were popular with stamp collectors, far outselling the 1851-60 and 1861-66 Re-Issue sets. However, the 90c stamp's high denomination and the availability of ordinary 3c stamps limited demand. Today, both are rare, and handling over the years has not been kind to most of the surviving examples. The stamp offered here is one of the finest we have ever encountered.

With 1985, 2003 and 2007 P.F. certificates (XF 90)..... 5,000.00



75

75 ★ **12c Green, Re-Issue (128).** Original gum, lightly hinged, deep rich color and sharp proof-like impression, gorgeous centering with wide and balanced margins

EXTREMELY FINE GEM. A STUNNING ORIGINAL-GUM EXAMPLE OF THE 12-CENT 1869 PICTORIAL RE-ISSUE, WHICH IS GRADED SUPERB 98 BY P.S.E. — THIS IS THE HIGHEST GRADE AWARDED. THIS IS EASILY ONE OF THE FINEST IN EXISTENCE.

With 1980 P.F. and 2011 P.S.E. certificates (OGph, Superb 98; SMQ \$19,000.00). This is the highest grade awarded and only three others share it. The last we offered was in our 2009 Whitman sale..... 2,250.00



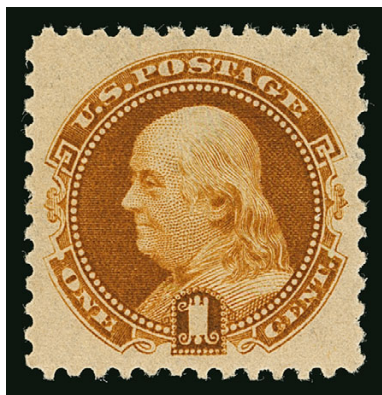
76

- 76 ★ **30c Blue & Carmine, Re-Issue (131).** Original gum, beautiful color and proof-like impressions on bright paper, almost perfect centering with wide margins all around
EXTREMELY FINE GEM. A SUPERB ORIGINAL-GUM EXAMPLE OF THE 30-CENT 1869 PICTORIAL RE-ISSUE.
With 2001 P.F. certificate..... 2,500.00



77

- 77 ★ **90c Carmine & Black, Re-Issue (132).** Original gum, deep rich colors and proof-like impressions, unusually choice centering with wide and balanced margins
EXTREMELY FINE GEM. A BEAUTIFUL ORIGINAL-GUM EXAMPLE OF THE 90-CENT 1869 PICTORIAL RE-ISSUE, GRADED XF-SUPERB 95 BY P.S.E.
With 2007 P.S.E. certificate (OGh, XF-Superb 95; SMQ \$12,500.00). Only four have graded higher..... 3,750.00



78

78 ★★ **1c Buff, 1880 Re-Issue (133). Mint N.H.,** rich color, perfectly centered with wide and balanced margins

EXTREMELY FINE GEM. THIS IS WITHOUT QUESTION THE FINEST MINT NEVER-HINGED EXAMPLE OF THE ONE-CENT 1880 RE-ISSUE WE HAVE EVER ENCOUNTERED. THIS REMARKABLE STAMP IS GRADED SUPERB 98 BY P.S.E. — THIS IS THE HIGHEST GRADE AWARDED AND THE ONLY TO ACHIEVE IT.

We have offered only seven unduplicated Mint N.H. examples of this issue since keeping computerized records. None are as nice as the example offered here.

With 2006 P.S.E. certificate (Superb 98; unpriced in SMQ in Mint N.H. condition. It is also unpriced in hinged condition above the grade of 95. The SMQ of \$1,400.00 as hinged 95 is completely irrelevant). This is the highest grade awarded in any category and the only example to achieve it. The next-highest is a 90 (one known, offered in our Sale 930) 325.00

1870-71 NATIONAL BANK NOTE COMPANY GRILLED ISSUE



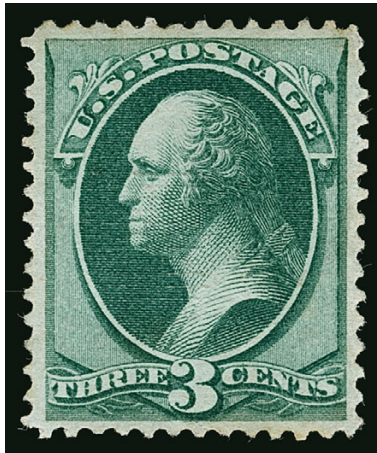
79

- 79 ★ **6c Carmine, H. Grill (137).** Original gum, lightly hinged, several rows of clear grill points, rich color, balanced margins

EXTREMELY FINE. A BEAUTIFUL ORIGINAL-GUM EXAMPLE OF THE 6-CENT NATIONAL BANK NOTE COMPANY H GRILL.

Examples of the 6c National Bank Note Co. Grilled issue with original gum are rarely well-centered and sound. This example is one of the finest original-gum copies that we have ever offered

With 2006 P.F. certificate..... 5,000.00



80

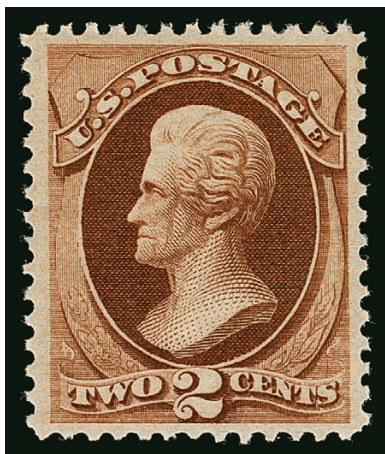
- 80 ★ **3c Green, I. Grill (136A).** Clearly twelve horizontal rows in height, easily visible on the face of the stamp, original gum, lightly hinged, rich color, choice centering, subtle diagonal scoring line not mentioned on accompanying certificates, otherwise Extremely Fine, a pretty stamp and especially desirable with the I Grill, ex "Scarsdale", with 1998 and 2007 P.F. certificates, the latter identifying the grill type 800.00

1870-71 NATIONAL BANK NOTE COMPANY UNGRILLED ISSUE



81

- 81 ★ **1c Ultramarine (145).** Original gum, lightly hinged, brilliant color, choice centering with wide margins, Extremely Fine Gem, with 2001 P.F. certificate 675.00



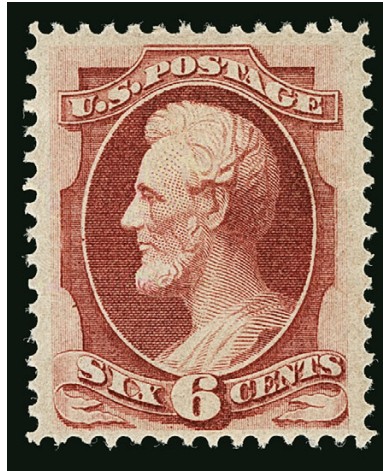
82

- 82 ★★ **2c Red Brown (146).** Pristine original gum in **Mint N.H.** state, beautifully centered with wide margins, wonderful rich color and sharp proof-like impression

EXTREMELY FINE GEM. A PERFECTLY-CENTERED MINT NEVER-HINGED EXAMPLE OF THE UNGRILLED 2-CENT 1870 NATIONAL BANK NOTE ISSUE. A TRUE CONDITION RARITY WITH SUCH SUPERB COLOR, CENTERING, FRESHNESS, IMPRESSION AND GUM.

As scarce as the 2c 1873 Continental stamp (Scott 157) is in Mint N.H. condition, the 2c 1870 National (Scott 146) is rarely obtainable in this state. The stamp offered here is easily one of the finest — if not *the* finest — we have encountered. Collectors on a quest to acquire the Bank Note issues in Extremely Fine Mint N.H. condition will be hard-pressed to locate a stamp of comparable quality. We have offered only four others since 2006, and none approach the quality of the example offered here.

Ex “Scarsdale”. With 2000 and 2007 P.F. certificates. Scott Retail as hinged. 325.00



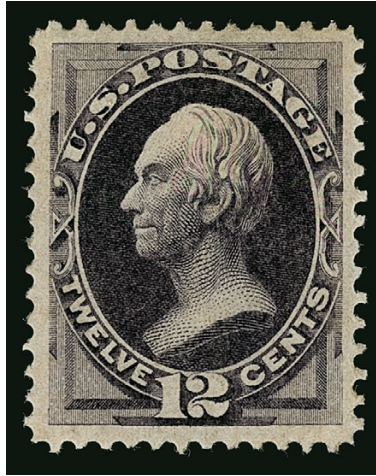
83

83 ★★ **6c Carmine (148). Mint N.H.**, choice centering and long full perforations all around, deep rich color on bright paper

EXTREMELY FINE. AN ENORMOUSLY RARE MINT NEVER-HINGED EXAMPLE OF THE 6-CENT 1870 NATIONAL BANK NOTE ISSUE.

Only two Mint N.H. examples of this issue can be found with Power Search. One was offered in our Sale 829 in 2000; the other was offered in our Sale 992 in 2010. Our sale records are corroborated by the P.S.E. Population Report, which does not list any. The online records of the Philatelic Foundation contain only one, certified in 1992 as "genuine"; it should be reexamined for condition. With grading and the demand for Mint N.H. copies having compelled dealers to break multiples, it is unlikely that any blocks containing Mint N.H. stamps with decent centering still exist. For the collector of Mint N.H. classics, this is a rare opportunity for acquisition.

With 2010 P.S.E. certificate. Scott Retail as hinged 1,000.00



84

84 ★ **12c Dull Violet (151).** Original gum, single hinge mark, deep rich color and proof-like impression, wide margins

EXTREMELY FINE. A BEAUTIFUL ORIGINAL-GUM EXAMPLE OF THE 1870 12-CENT NATIONAL BANK NOTE COMPANY UNGRILLED ISSUE.

Very few others in Power Search compare favorably with the example offered here.

With 2007 P.F. certificate..... 3,000.00

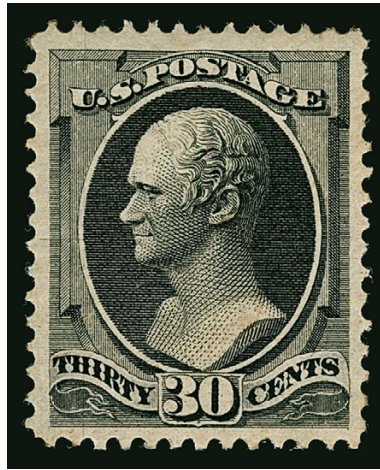


85

- 85 ★ **24c Purple (153).** Original gum, single hinge mark, deep rich color on crisp paper, gorgeous centering with wide margins

EXTREMELY FINE GEM. A SUPERB ORIGINAL-GUM EXAMPLE OF THE 1870 24-CENT NATIONAL BANK NOTE COMPANY UNGRILLED ISSUE. A DIFFICULT ISSUE TO FIND IN SUCH SUPERB CONDITION.

With 2003 P.F. and 2011 P.S.E. certificates (OGph, XF-Superb 95; SMQ \$9,250.00). Only one has graded higher (at 95J) and only three others share this desirable grade.....
..... 1,800.00



86

- 86 ★ **30c Black (154).** Original gum, wide margins and exceptional centering, intense shade and proof-like impression

EXTREMELY FINE. THE 1870 30-CENT NATIONAL UNGRILLED ISSUE IS ONE OF THE MOST DIFFICULT OF ALL BANK NOTE ISSUES TO FIND IN SOUND, WELL-CENTERED, ORIGINAL-GUM CONDITION. A REMARKABLE STAMP.

During the past 15 years, we have offered a few superb original-gum examples of National and Continental 30c Bank Notes (Scott 143, 154 and 165). Included in this total is a handful of the Continental printing, Scott 165, which is distinguished from its National Ungrilled counterpart by shade and the shape of the perforations. For the Ungrilled National printing, Scott 154, we have offered fewer than five hinged stamps comparable to the condition of the example offered here. This is one of the most difficult of all the Bank Note issues to find in such superb condition.

With 2005 P.S.E. certificate (OGph, XF 90; SMQ \$14,500.00). This is the only hinged example of this issue graded 90 in the P.S.E. Population Report. There is also one graded 95 (offered in our 2014 Rarities sale, realized \$37,500 hammer), as well as the unique Mint N.H. example graded 90 from our 2009 Whitman sale (realized \$67,500 hammer).
 7,500.00

1873-75 CONTINENTAL BANK NOTE COMPANY ISSUE

- 87 ★ **2c Brown (157).** Original gum, single hinge mark with gum covering the entire back of the stamp, deep rich color and proof-like impression, perfectly centered with Jumbo margins

EXTREMELY FINE GEM. A SUPERB ORIGINAL-GUM EXAMPLE OF THE 1873 2-CENT CONTINENTAL BANK NOTE COMPANY ISSUE IN THE FINEST CONDITION ATTAINABLE.

With 2008 P.S.E. certificate (OGh, XF-Superb 95 Jumbo; SMQ \$2,400.00). This is the highest grade awarded and only two others share it. By way of comparison, the highest grade awarded to a Mint N.H. example is a 90J (one copy). 350.00



87



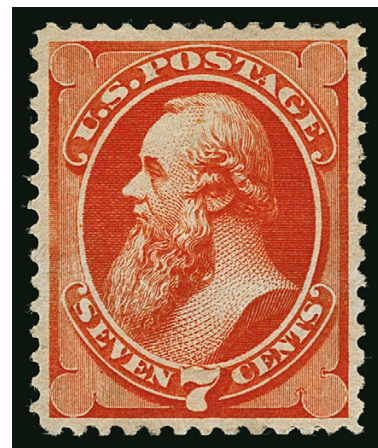
88

- 88 ★★ **3c Green (158).** Mint N.H., pretty shade, choice centering with well-proportioned margins, Extremely Fine, with 2004 P.F. certificate, Scott Retail as hinged 110.00

- 89 ★ **7c Orange Vermilion (160).** Original gum, brilliant color, almost perfectly centered

EXTREMELY FINE ORIGINAL-GUM EXAMPLE OF THE 1873 7-CENT CONTINENTAL BANK NOTE COMPANY ISSUE.

Ex "Scarsdale". With 1998 and 2007 P.F. certificates 1,150.00



89



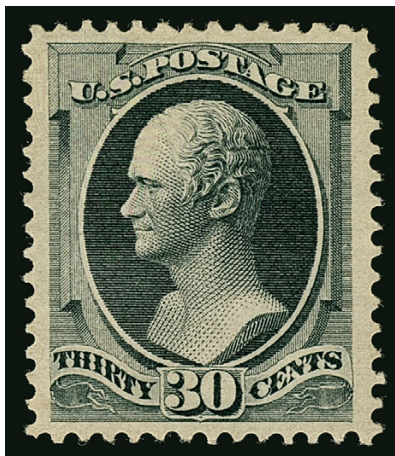
90

90 ★★ **10c Brown (161). Mint N.H.**, beautiful deep rich shade, well-proportioned margins

EXTREMELY FINE. AN EXCEEDINGLY RARE MINT NEVER-HINGED EXAMPLE OF THE 1873 10-CENT CONTINENTAL BANK NOTE ISSUE. VERY FEW ARE KNOWN IN MINT NEVER-HINGED CONDITION.

We have offered only three others in Mint N.H. condition since keeping computerized records.

With 2005 P.F. certificate. Scott Retail as hinged..... 900.00



91

- 91 ★ **30c Greenish Black (165 var).** Original gum, lightly hinged, soft charcoal gray shade with a greenish cast that is unique to the Continental printing, crisp impression on fresh paper

EXTREMELY FINE GEM. ONE OF THE MOST OUTSTANDING ORIGINAL-GUM EXAMPLES OF THE 30-CENT 1873 CONTINENTAL WE HAVE EVER ENCOUNTERED. ESPECIALLY DESIRABLE IN THE GREENISH BLACK SHADE.

The 30c Continental is extremely rare in any original-gum condition that approaches this example. Blocks have always been rare — for example, Caspary did not have one; Lilly had one well-centered block of four and an off-center block of six — which means that singles could not be harvested from multiples.

With 1983 and 1990 P.F. and 2008 P.S.E. certificates (OGph, XF-Superb 95; SMQ \$16,000.00). This is the highest grade awarded and only one other shares this grade, a statistic that has not changed in half a decade. 4,000.00



92

- 92 ★ **90c Rose Carmine (166).** Original gum, barest trace of hinging, brilliant color, choice centering with well-balanced margins
EXTREMELY FINE. A BEAUTIFUL LIGHTLY-HINGED EXAMPLE OF THE 1873 90-CENT CONTINENTAL BANK NOTE COMPANY ISSUE.
With 2000 P.F. certificate..... 2,250.00

1875 CONTINENTAL BANK NOTE COMPANY SPECIAL PRINTING



93

- 93 ★ **10c Pale Brown, Special Printing (172).** Without gum as issued, deep rich color and detailed impression, **intact perforations all around**, well-centered

EXTREMELY FINE. ONE OF THE FINEST EXAMPLES OF THE 10-CENT 1875 CONTINENTAL BANK NOTE COMPANY SPECIAL PRINTING IN EXISTENCE. A BEAUTIFUL STAMP IN EVERY RESPECT.

Our recently updated census records for Scott 172 contain 36 certified examples. A majority of these have been scissors-separated into the perforations on at least one side. Of the eleven copies with full perforations, most have either pulled perforations or are not centered. Only four qualify as having decent centering, one of which was offered in our 2012 sale of the David W. Gorham collection.

Unpublished Census No. 172-UNC-31. Ex Curtis. With 1947, 1989 and 2013 P.F. certificates (NGAI, XF 90) 20,000.00



94

- 94 ★ **24c Dull Purple, Special Printing (175).** Without gum as issued, deep rich color, wide margins

EXTREMELY FINE GEM. A SUPERB EXAMPLE OF THE 1875 24-CENT CONTINENTAL BANK NOTE COMPANY SPECIAL PRINTING, WHICH IS GRADED XF-SUPERB 95 BY P.S.E.

Our recently updated census records for Scott 175 contain approximately 100 examples. This is certainly one of the finest.

Unpublished Census No. 175-UNC-04. Ex Chapin. With 1953 and 2003 P.F. and 2005 P.S.E. certificates (NGAI, XF-Superb 95; SMQ \$25,000.00). This is the highest grade awarded and no other stamp shares it. 4,000.00



95

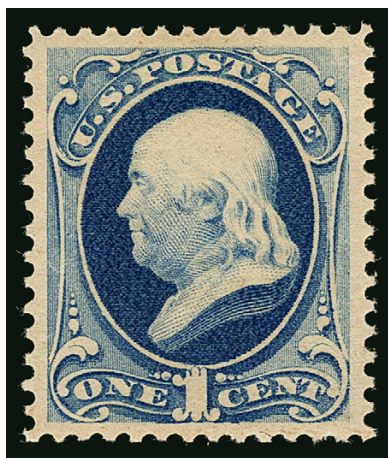
- 95 ★ **5c Blue (179).** Original gum, deep rich color and proof-like impression, choice centering for this difficult issue with wide and balanced margins

EXTREMELY FINE GEM. A SUPERB ORIGINAL-GUM EXAMPLE OF THE 1875 5-CENT TAYLOR, SCOTT 179, GRADED XF-SUPERB 95 BY P.S.E. — THIS IS THE HIGHEST GRADE ON RECORD AND THE ONLY STAMP TO ACHIEVE IT.

The 1875 printing, Scott 179, is often overlooked by collectors who put it into the same category as its 1879 counterpart, Scott 185, which is more readily available. For Mint N.H. copies, we have offered only five unduplicated since keeping computerized records. The example offered here, while hinged, has the best centering of any we have encountered.

With 2013 P.S.E. certificate (OGh, XF-Superb 95; SMQ \$2,500.00). This is the highest grade awarded and the only one to achieve it. 700.00

1879 AMERICAN BANK NOTE COMPANY ISSUE



96

- 96 ★★ **1c Dark Ultramarine (182).** Mint N.H., deep rich color on bright paper, beautiful centering with wide margins

EXTREMELY FINE GEM. THIS IS WITHOUT QUESTION ONE OF THE FINEST MINT NEVER-HINGED EXAMPLES OF THE 1879 ONE-CENT AMERICAN BANK NOTE COMPANY ISSUE. A WONDERFUL STAMP.

With 2010 P.S.E. certificate (XF-Superb 95; SMQ \$6,300.00). This is the highest grade awarded and only two others share it. This is also the first in this grade we have offered. 775.00



97

- 97 ★★ **5c Blue (185).** Mint N.H., rich color and crisp impression, beautiful centering with well-proportioned margins

EXTREMELY FINE GEM. A SUPERB MINT NEVER-HINGED EXAMPLE OF THE 1879 5-CENT TAYLOR, SCOTT 185, WHICH IS GRADED XF-SUPERB 95 BY THE PHILATELIC FOUNDATION.

With 1985 and 2006 P.F. certificates (XF-Superb 95). By way of comparison, the highest grade awarded by P.S.E. is a 90J (one). 1,500.00



98

- 98 ★ **6c Pink (186).** Original gum, lightly hinged, brilliant color, choice centering for this difficult issue

EXTREMELY FINE. A BEAUTIFUL ORIGINAL-GUM EXAMPLE OF THE 6-CENT 1879 AMERICAN BANK NOTE ISSUE.

This is a difficult issue to find in such choice condition. Collectors who are waiting for a similarly-centered Mint N.H. copy are advised to consider the stamp offered here.

Ex "Scarsdale". With 1995 and 2002 P.F. certificates 900.00



99

- 99 ★ **10c Brown, Without Secret Mark (187).** Original gum, barest trace of hinging, deep rich color and proof-like impression, choice centering with wide margins

EXTREMELY FINE. A BEAUTIFUL LIGHTLY-HINGED EXAMPLE OF THE 10-CENT 1879 AMERICAN BANK NOTE COMPANY ISSUE WITHOUT SECRET MARK.

Scott 187 without secret mark is significantly more difficult than Scott 188 to find in such superb condition.

Ex "Scarsdale". With 1973, 2000 and 2007 P.F. certificates 3,500.00



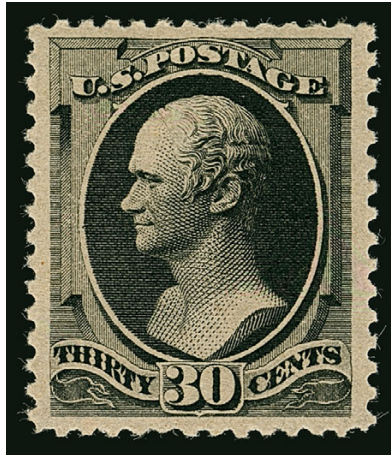
100

- 100 ★★ **10c Brown, With Secret Mark (188). Mint N.H.,** rich color and sharp proof-like impression, choice centering with wide margins

EXTREMELY FINE GEM. A SUPERB MINT NEVER-HINGED 10-CENT 1879 AMERICAN ISSUE WITH SECRET MARK.

Unlike other values of the 1879 Issue, there are virtually no 10c stamps in Mint Never-Hinged condition. A thorough review of auction catalogues, including sales of the Caspary, Close, Sinkler, Col. Green, Lilly, Braus, Wunderlich and Klein collections, among others, produced no Mint N.H. singles and no blocks containing Mint N.H. stamps. We doubt that more than four or five Mint N.H. copies exist in total.

Ex Drucker (our Sale 851, where it realized \$11,500 hammer). Ex "Scarsdale" (our Sale 924, where it realized \$13,000 hammer). With 2002 P.F. certificate. This is the first in Mint N.H. condition we have offered since 2009..... 6,500.00



101

- 101 ★★ **30c Full Black (190).** Mint N.H., intense shade and sharp proof-like impression, beautifully centered with enormous margins, single perf disc at bottom rests lightly on gum

EXTREMELY FINE GEM. AN EXTRAORDINARY MINT NEVER-HINGED 30-CENT 1879 AMERICAN BANK NOTE ISSUE. THIS ISSUE IS RARELY OBTAINABLE IN CHOICE NEVER-HINGED CONDITION.

The 30c 1879 American Bank Note Company issue is surprisingly difficult to obtain in choice Mint N.H. condition. It is surprising because the 15c (Scott 189) is readily available. However, a survey of our photo records and auction library revealed the scarcity of well-centered 30c blocks from which singles could be harvested. The blocks in the Green sales were off center. Caspary had a well-centered hinged block of four, and Lilly had a block of nine with problems. The Moody block of six was well-centered, but appears to have had hinge remnants on all stamps. The Todd collection had two blocks, including one with a Mint N.H. pair at bottom (this has probably been broken, furnishing at least two Mint N.H. stamps). The Close collection had a well-centered block of four (with reinforcing) and a large plate block. The Siegel firm's three major Bank Note Issue sales (Braus, Hirschfield, Wunderlich) contained blocks, but all were either off center or had hinge remnants. A well-centered block of four appeared in our 1982 Rarities sale, but it was hinged.

For the collector who desires only Mint Never-Hinged stamps, this offering is significant. As a guide to relative value, a Mint N.H. example of this stamp in the Fox collection (Sale 829) realized \$12,000 hammer. The four in Mint N.H. condition we have offered since our 2006 "Scarsdale" sale have inferior centering.

Ex "Scarsdale". With 1997 and 2007 P.F. certificate. 3,000.00



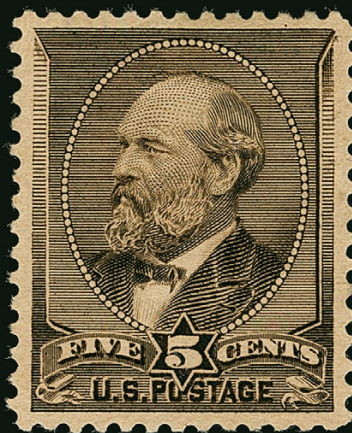
102

102°★★ **90c Rose (191).** Mint N.H., brilliant color in the Rose sub-shade, very well-centered

EXTREMELY FINE GEM. ONE OF THE FINEST MINT NEVER-HINGED EXAMPLES OF THE 90-CENT AMERICAN BANK NOTE CO. 1879 ISSUE IN EXISTENCE, WHICH IS GRADED XF-SUPERB 95 BY P.S.E. — THE HIGHEST GRADE ON RECORD AND ONE OF ONLY TWO STAMPS TO ACHIEVE IT.

The 90c 1879 American Bank Note Co. Issue is extremely difficult to obtain in choice Mint Never-Hinged condition, because of the small supply of well-centered blocks from which Mint N.H. singles could be harvested. We have offered only a few Mint N.H. examples of Scott 191, and none of them can rival the superb quality of this stamp.

With 2006 P.S.E. certificate (XF-Superb 95; SMQ \$43,500.00). This is the highest grade awarded, and only one other has achieved it. 7,000.00



103

1882 AMERICAN BANK NOTE COMPANY SPECIAL PRINTING
 5-CENT GARFIELD (SCOTT 205C)
 GRADED XF-SUPERB 95 BY P.S.E.

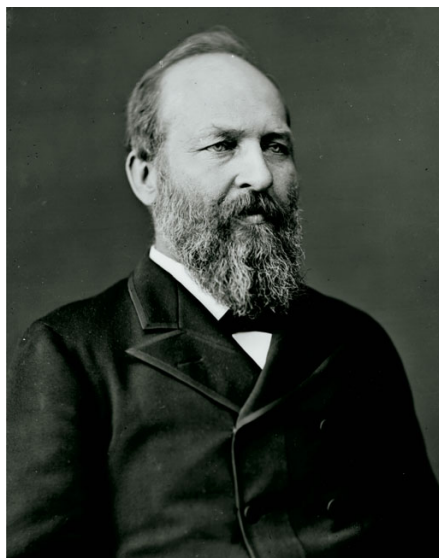
103°★ **5c Gray Brown, Special Printing (205C).** Without gum as issued, deep rich color and proof-like impression, almost perfectly centered

EXTREMELY FINE GEM. ONE OF THE FINEST OF THE 21 RECORDED EXAMPLES OF THE 5-CENT GARFIELD 1882 SPECIAL PRINTING.

This elusive Special Printing was the subject of an informative article by William E. Mooz in the *Chronicle*, February 1992. His research provides strong evidence that the stamps recognized as Scott 205C are a small part of the 2,463 sold as Special Printings through the Third Asst. PMG, and that regular issues were used to fill the backlog of orders for the 5c Garfield.

Our census of Scott 205C (available at <http://www.siegelauctions.com/dynamic/census/205C/205C.pdf>) illustrates the 21 recorded examples (only three have faults).

Census No. 205C-UNC-13. Ex "Vineyard" and "Laila". Signed in pencil "SA" (Spencer Anderson). With 1993 and 2004 P.F. and 2009 P.S.E. certificates (XF-Superb 95; SMQ \$120,000.00). This is the highest grade awarded and it is shared by only one other.
 70,000.00



1881-82 AMERICAN BANK NOTE COMPANY ISSUE

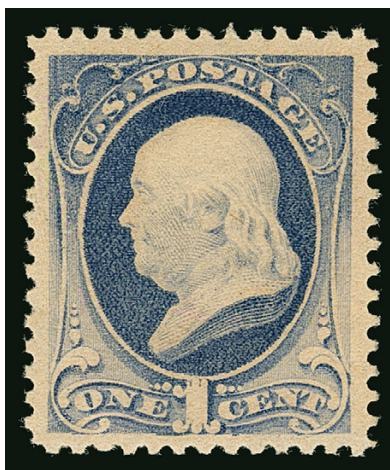


104

- 104 ★ **5c Yellow Brown (205).** Original gum, lightly hinged, mathematically perfect centering with Jumbo margins, detailed impression, long and full perforations

EXTREMELY FINE GEM. THIS MAGNIFICENT STAMP IS GRADED GEM 100 JUMBO BY P.S.E., WHICH IS THE HIGHEST GRADE POSSIBLE. IT IS THE ONLY EXAMPLE TO ACHIEVE THIS ULTIMATE GRADE.

With 2010 P.S.E. certificate (OGph, Gem 100 Jumbo; unpriced in SMQ above the grade of 100, SMQ \$6,000.00 as 100). This is the highest grade possible on the grading chart and it is the only example in *any* category to receive it..... 240.00



105

105 ★★ **1c Gray Blue (206).** Mint N.H., brilliant color on bright paper, choice centering with wide margins

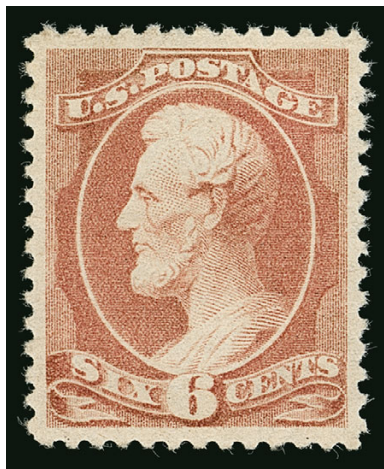
EXTREMELY FINE MINT NEVER-HINGED EXAMPLE OF THE 1881 ONE-CENT RE-ENGRAVED ISSUE, SCOTT 206.

With 1996 P.F. and 2005 P.S.E. certificates (XF-Superb 95; SMQ \$2,000.00). This is the highest grade awarded and only seven others share it..... 225.00



106

106 ★★ **3c Blue Green (207).** Mint N.H. with "No." of plate no. at bottom, bright color, perfectly centered with wide margins at top and bottom, pencil notation on back in ungummed part of selvage, Extremely Fine Gem, a superb stamp in every respect, with copy of 1984 P.F. certificate for strip of three and 1999 and 2007 P.F. certificates as singles 225.00



107

- 107 ★ **6c Rose (208).** Original gum, very lightly hinged, bright color, perfectly centered with wide margins

EXTREMELY FINE GEM. THE 1882 RE-ENGRAVED 6-CENT ROSE IS ONE OF THE MOST DIFFICULT ISSUES TO OBTAIN IN SUCH SUPERB CONDITION. A REMARKABLE CONDITION RARITY.

Despite being the major Scott listing, the Rose shade is far rarer than the Brown Red subshade, Scott 208a. Power Search located only one Mint N.H. example offered in our sales since 1993, and that is off-center with perfs almost touching the design. We have offered no multiples with Mint N.H. stamps. The online records of the Philatelic Foundation contain only two in Mint N.H. condition, but we doubt they would even grade 90. For the collector who values centering, a hinged copy is all there is. The example offered here, with light hinging and perfect centering, is a true condition rarity.

With 2009 P.S.E. certificate (OGph, Superb 98; SMQ \$7,000.00). This is the highest grade awarded and no others share it. P.S.E. has never graded a Mint N.H. copy. This is also the only graded example of this issue we have offered..... 775.00



108

- 108 ★★ **10c Brown (209).** Mint N.H., rich color and proof-like impression, almost perfectly centered with unusually wide margins

EXTREMELY FINE GEM. A SUPERB MINT NEVER-HINGED EXAMPLE OF THE 1882 10-CENT RE-ENGRAVED ISSUE IN THE HIGHEST ATTAINABLE CONDITION.

Ex "Scarsdale". With 2004 P.F. certificate..... 425.00

- 109 ★★ **2c Red Brown (210).** Mint N.H., wonderful deep rich color on brilliant paper, choice centering with wide and balanced margins, Extremely Fine Gem, with 2005 P.F. certificate 130.00



109

1887-88 AMERICAN BANK NOTE COMPANY ISSUE



110

- 110 ★★ **1c Ultramarine (212).** Mint N.H., rich color on bright paper, choice centering with well-proportioned margins, Extremely Fine Gem, a beautiful stamp, with 1997 P.F. and 2005 P.S.E. certificates (XF-Superb 95; SMQ \$2,500.00)..... 290.00

- 111 ★★ **2c Green (213).** Mint N.H. with top part imprint selvage, intense shade and impression, perfectly centered with Jumbo margins

EXTREMELY FINE GEM. THIS IS WITHOUT QUESTION ONE OF THE FINEST MINT NEVER-HINGED EXAMPLES OF THE 1887 2-CENT AMERICAN BANK NOTE COMPANY ISSUE. THIS REMARKABLE STAMP IS GRADED SUPERB 98 JUMBO BY P.S.E. — THIS IS THE HIGHEST GRADE AWARDED AND THE ONLY STAMP TO ACHIEVE IT.

With 2009 P.S.E. certificate (Superb 98 Jumbo; SMQ \$5,100.00). This is the highest grade awarded and the only example to achieve it. The next-highest grade is a 95. 120.00



111



112

- 112 ★★ **4c Carmine (215).** Mint N.H., deep rich color and sharp proof-like impression, perfectly centered with wide and balanced margins

EXTREMELY FINE GEM. A MAGNIFICENT MINT NEVER-HINGED EXAMPLE OF THE 1888 4-CENT CARMINE AMERICAN BANK NOTE COMPANY ISSUE. THIS IS ONE OF THE MOST DIFFICULT VALUES OF THE SERIES TO OBTAIN IN SUCH SUPERB CONDITION.

Ex "Scarsdale". With 2004 P.S.E. certificate (XF-Superb 95; SMQ \$4,250.00). Only two have graded higher (at 98) 550.00



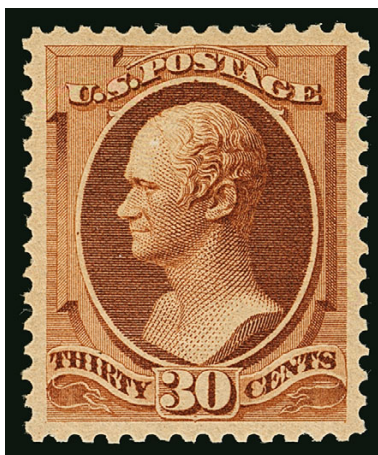
113

- 113 ★★ **5c Indigo (216).** Mint N.H., rich color and proof-like impression on crisp paper, gorgeous centering with wide margins

EXTREMELY FINE GEM. A SUPERB MINT NEVER-HINGED EXAMPLE OF THE 1888 5-CENT GARFIELD, GRADED XF-SUPERB 95 BY THE PHILATELIC FOUNDATION.

The 5c Garfield was first issued in 1882 in shades of Brown. When the colors were changed in 1888, the 5c was released in a beautiful Indigo shade. Although unused copies are by no means scarce, Mint N.H. examples are very scarce, and higher grades in Mint N.H. condition are exceedingly rare.

With 1994 and 2012 P.F. certificates (XF-Superb 95) 700.00



114

114 ★★ **30c Orange Brown (217).** Mint N.H., brilliant color, perfectly centered with wide margins
EXTREMELY FINE GEM. A STUNNING MINT NEVER-HINGED EXAMPLE OF THE 1888 30-CENT
AMERICAN BANK NOTE COMPANY ISSUE, WHICH IS GRADED SUPERB 98 BY THE
PHILATELIC FOUNDATION.

While the 90c value from this series is often found with wide margins, the 30c is very
scarce with such wide margins and choice centering. As a Mint N.H. stamp, it is truly a
condition rarity.

Ex Gorham. With 1997 and 2006 P.F. certificates (Superb 98). This is the highest grade
awarded by the P.F. and no others share it. By way of comparison, P.S.E.'s highest grade
awarded is also 98, with two examples achieving that grade..... 900.00



1890-93 ISSUE



115

- 115 ★★ **1c Dull Blue (219).** Mint N.H., brilliant color on bright paper, Jumbo margins, fresh and Extremely Fine, with 2004 and 2006 P.F. certificates, the former as a block
..... 65.00

- 116 ★★ **2c Lake (219D).** Mint N.H., deep rich color in the true Lake shade, bright paper, wide and balanced margins

EXTREMELY FINE GEM. A GORGEOUS MINT NEVER-HINGED EXAMPLE OF THE 1890 2-CENT SMALL BANK NOTE ISSUE IN THE LAKE SHADE.

With 1985 and 2003 P.F. and 2005 P.S.E. certificates (XF-Superb 95; SMQ \$5,000.00). Only one has graded higher (at 98) 550.00



116



117

- 117 ★★ **2c Carmine (220).** Mint N.H., brilliant color on bright paper, choice centering with Jumbo margins, Extremely Fine Gem, a gorgeous stamp, with 2007 P.S.E. certificate (XF-Superb 95 Jumbo; SMQ \$1,100.00) 60.00

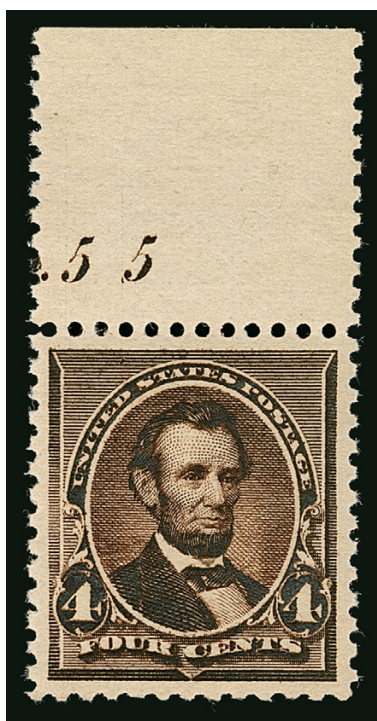


118

- 118 ★★ **2c Carmine, Cap on Left "2" (220a).** Mint N.H., brilliant color on bright paper, perfectly centered with wide margins, sharp impression which clearly shows the variety

EXTREMELY FINE. A BEAUTIFUL MINT NEVER-HINGED EXAMPLE OF THE 2-CENT SMALL BANK NOTE ISSUE WITH CAP ON THE LEFT "2"

Ex "Scarsdale". With copy of 1990 P.F. certificate for block of six and with 2000 and 2007 P.F. certificates as single (XF-Superb 95). This is the highest grade awarded by the P.F., and P.S.E. has only graded one higher at 95J 425.00



119

- 119 ★★ **4c Dark Brown (222).** Mint N.H. with wide top plate no. selvage, deep rich color and proof-like impression, perfectly centered with wide margins

EXTREMELY FINE GEM. AN ABSOLUTELY STUNNING MINT NEVER-HINGED EXAMPLE OF THE 4-CENT 1890 ISSUE, WHICH IS GRADED SUPERB 98 BY P.S.E. — THIS IS THE HIGHEST GRADE ON RECORD AND THE ONLY EXAMPLE TO ACHIEVE IT.

With 2011 P.S.E. certificate (Superb 98; SMQ \$7,750.00). This is the highest grade awarded and the only example to achieve it..... 275.00

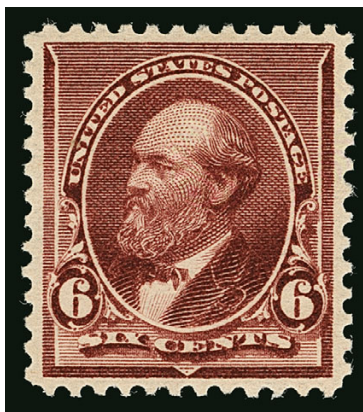


120

120 ★★ **5c Chocolate (223).** Mint N.H., mathematically perfect centering with Jumbo margins, deep rich color on crisp paper, long and full perforations

EXTREMELY FINE GEM. THIS MAGNIFICENT MINT NEVER-HINGED EXAMPLE OF THE 5-CENT 1890 ISSUE IS GRADED GEM 100 JUMBO BY P.S.E. — THIS IS THE HIGHEST GRADE POSSIBLE ON THE GRADING CHART. TRULY A CONDITION RARITY.

With 1992 P.F. and 2005 P.S.E. certificates (Gem 100 Jumbo; unpriced in SMQ above the grade of 100, SMQ \$14,500.00 as 100). This is the highest grade possible on the grading chart and only one other shares this grade. For the entire 1890-93 Issue, only four stamps have this top grade — two 1c and two 5c. This is the first time we have offered a 5c 1890 in this grade in our auctions. 200.00

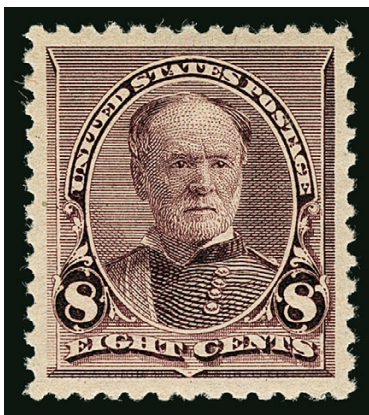


121

121 ★★ **6c Brown Red (224).** Mint N.H., deep rich color and proof-like impression on bright paper, well-balanced margins

EXTREMELY FINE GEM. A SUPERB MINT NEVER-HINGED EXAMPLE OF THE 6-CENT 1890 ISSUE, GRADED SUPERB 98 BY P.S.E.

With 2008 P.S.E. certificate (Superb 98; SMQ \$4,900.00). Only one has graded higher (at 100) and three others share this grade..... 190.00

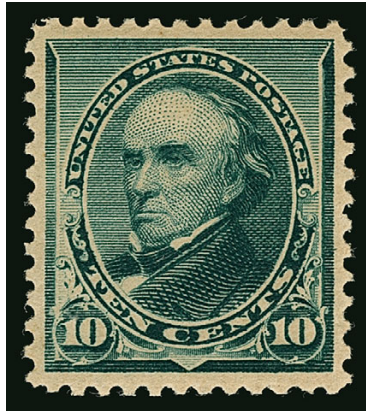


122

122 ★★ **8c Lilac (225).** Mint N.H., perfectly centered with Jumbo margins, radiant color and detailed impression

EXTREMELY FINE GEM. THIS STUNNING MINT NEVER-HINGED EXAMPLE OF THE 8-CENT 1890 ISSUE IS GRADED SUPERB 98 JUMBO BY P.S.E., WHICH IS THE HIGHEST GRADE AWARDED.

With 1990 P.F. and 2010 P.S.E. certificates (Superb 98 Jumbo; SMQ \$5,000.00). This is the highest grade awarded and only one other shares it (offered in our 2009 "Beverly Hills" sale)..... 150.00



123

- 123 ★★ **10c Green (226).** Mint N.H., deep rich color and proof-like impression, gorgeous centering
 EXTREMELY FINE GEM. A SUPERB MINT NEVER-HINGED EXAMPLE OF THE 10-CENT 1890
 ISSUE.
 Ex Gorham. With 1998 and 2006 P.F. certificates (XF-Superb 95)..... 525.00



124

- 124 ★★ **30c Black (228).** Mint N.H., almost perfectly centered with well-balanced margins, sharp
 proof-like impression
 EXTREMELY FINE GEM. A SUPERB MINT NEVER-HINGED EXAMPLE OF THE 30-CENT 1890
 SMALL BANK NOTE ISSUE.
 Ex Drucker and "Scarsdale". With 1976 and 2002 P.F. certificates and with 2004 P.S.E.
 certificate (XF-Superb 95; SMQ \$7,500.00). Only three have graded higher (highest is a
 98)..... 900.00

COLUMBIAN ISSUE

- 125 ★★ **1c Columbian (230).** Mint N.H., rich color on brilliant paper, gorgeous centering with wide margins, Extremely Fine Gem, a superb stamp in every respect, with 2010 P.S.E. certificate (Superb 98; SMQ \$1,150.00) 35.00



125



126

- 126 ★★ **2c Columbian (231).** Mint N.H., intense shade and impression, perfectly centered with Jumbo margins, Extremely Fine Gem, a huge stamp, with 2010 P.S.E. certificate (Superb 98 Jumbo; SMQ \$1,850.00), only three have graded higher 35.00

- 127 ★★ **3c Columbian (232).** Mint N.H., beautifully centered, exceedingly fresh, gorgeous deep color on bright paper, long and full perforations, Extremely Fine Gem, a beautiful stamp, with 2007 P.S.E. certificate (Superb 98; SMQ \$2,000.00) 105.00



127



128

- 128 ★★ **4c Columbian (233).** Mint N.H., deep rich color and proof-like impression on crisp paper, unusually choice centering with wide margins

EXTREMELY FINE GEM. A SUPERB MINT NEVER-HINGED EXAMPLE OF THE 4-CENT COLUMBIAN ISSUE.

With 2010 P.S.E. certificate (Superb 98; SMQ \$2,500.00). Only four have graded higher. 160.00



129

- 129 ★★ **5c Columbian (234).** Mint N.H., intense shade and impression on bright paper, choice centering with wide and balanced margins

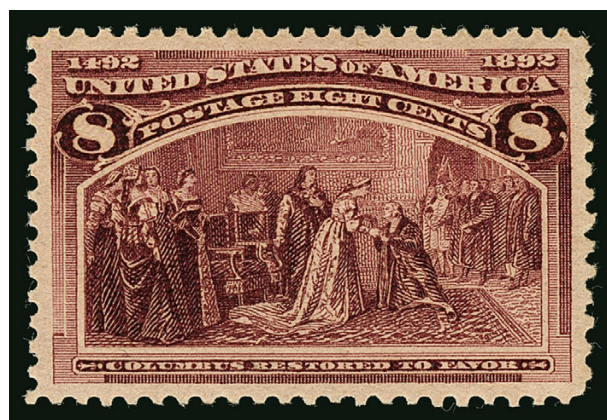
EXTREMELY FINE GEM MINT NEVER-HINGED EXAMPLE OF THE 5-CENT COLUMBIAN ISSUE.

Ex Gorham. With 1996 and 2006 P.F. certificates (Superb 98) 160.00

- 130 ★★ **8c Columbian (236).** Mint N.H., extraordinarily well-balanced margins, deep rich color and proof-like impression

EXTREMELY FINE GEM. A GORGEOUS MINT NEVER-HINGED EXAMPLE OF THE 8-CENT COLUMBIAN.

Ex Gorham. With 2010 P.S.E. certificate (Superb 98; SMQ \$5,250.00). Only three grade higher..... 160.00

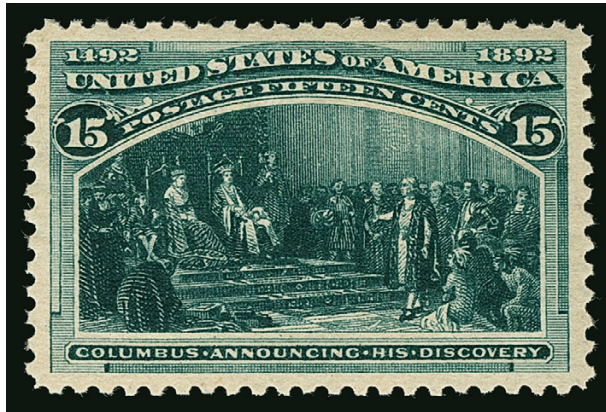


130



131

- 131 ★★ **10c Columbian (237).** Mint N.H., remarkably detailed impression, beautiful centering, Extremely Fine Gem, a superb stamp in every respect, with 2006 P.S.E. certificate (XF-Superb 95; SMQ \$1,425.00)..... 285.00



132

132 ★★ **15c Columbian (238).** Mint N.H., deep rich color and proof-like impression on bright paper, well-balanced margins

EXTREMELY FINE GEM. A SUPERB MINT NEVER-HINGED EXAMPLE OF THE 15-CENT COLUMBIAN, WHICH IS GRADED SUPERB 98 BY P.S.E.

Along with the 10c value, this is among the couple most difficult of the non-dollar value Columbians to find in superb Mint N.H. condition.

With 2008 P.S.E. certificate (Superb 98; SMQ \$11,500.00). Only one has graded higher (at 98J) and only five others share this grade..... 675.00



133

- 133 ★★ **\$1.00 Columbian (241)**. Mint N.H. with **part imprint selvage at left**, radiant color as fresh as the day it was printed, wide and balanced margins on all sides, long and full perforations all around

EXTREMELY FINE GEM. THIS IS WITHOUT QUESTION ONE OF THE FINEST MINT NEVER-HINGED EXAMPLES OF THE \$1.00 COLUMBIAN, WHICH DEPICTS THE FAMOUS SCENE OF QUEEN ISABELLA PLEDGING HER JEWELS. THIS STAMP IS GRADED XF-SUPERB 95 XQ BY THE PHILATELIC FOUNDATION.

According to Brookman, only 55,050 copies of the \$1.00 Columbian were issued. It was sold out before all of the other dollar-values, probably because it was the most affordable of the dollar-value stamps. Speculation soon drove the price to \$5.00 but it soon fell again, to about \$1.50.

The theme of the stamp, Isabella pledging her jewels to finance Columbus's voyage, is known to most fifth-grade students who study the voyage of Columbus. However, the offer was never accepted, as financing was found elsewhere.

With 2011 P.F. certificate (XF-Superb 95 XQ). The "XQ" is a term used by the Philatelic Foundation to denote stamps of "Extraordinary Quality". None are graded equal or higher at the P.F., and P.S.E. also has not graded any higher (3 equal)..... 3,750.00



134

- 134 ★★ **\$2.00 Columbian (242)**. Mint N.H., brilliant color, crisp impression

VERY FINE AND CHOICE MINT NEVER-HINGED EXAMPLE OF THE \$2.00 COLUMBIAN ISSUE.

With 2005 and 2011 P.F. certificates (VF-XF 85) 3,800.00



135

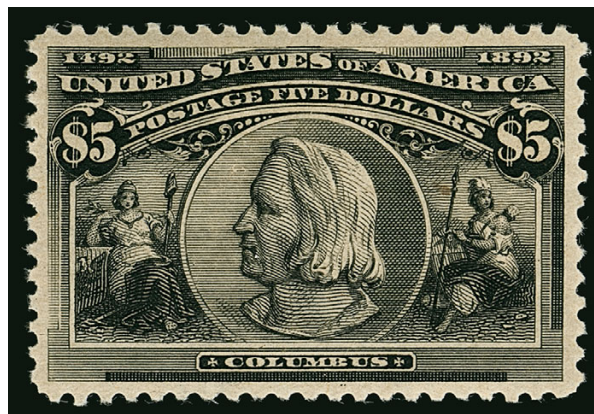
135°★★ **\$4.00 Columbian (244).** Mint N.H. with **plate letters “C C” in bottom selvage**, deep rich Crimson Lake shade and proof-like impression, beautifully centered with wide and well-proportioned margins, post-office fresh

EXTREMELY FINE GEM. A MAGNIFICENT MINT NEVER-HINGED EXAMPLE OF THE \$4.00 COLUMBIAN ISSUE. THIS IS ARGUABLY THE FINEST EXAMPLE IN EXISTENCE. A SUPERB STAMP IN EVERY RESPECT — COLOR, IMPRESSION, FRESHNESS OF PAPER AND GUM AND CENTERING.

The P.S.E. Population Report lists ten Mint N.H. \$4.00 Columbian stamps above the grade of 85 (nine No. 244 and one No. 244a) in grades of XF 90 (four) or XF-Superb 95 (five, one is 244a). Although this stamp did not attain a 95 grade, in our opinion it is a peer of, if not better than, the higher-graded examples. We justify our opinion with three reasons: first, its beautifully-preserved intense color is the desirable rich Crimson Lake shade; second, the paper and gum are fresh and bright, without any of the toning that often affects the Crimson Lake stamps (No. 244a is characteristically brighter); and, third, the “C C” plate selvage is unique to this example, which adds a dimension of rarity and significance lacking in the other 90 and 95 stamps.

This \$4.00 Columbian is legendary among knowledgeable collectors and dealers, and its appearance in the marketplace has always established a new benchmark value for the issue. For the collector attempting to assemble the finest set of Mint Never-Hinged Columbian stamps in existence, the \$4.00 is a major obstacle to completion. This extraordinary example will become the keystone to perfection.

Ex “Scarsdale”. With 2000 P.F. certificate. With 1991, 1998 and 2004 P.S.E. certificates (XF 90; SMQ \$16,000.00). 7,000.00



136

136 ★★ **\$5.00 Columbian (245).** Mint N.H., detailed impression with every nuance of the design clearly etched, beautiful centering with wide and balanced margins all around, crisp paper as fresh as the day it was made, tiny natural fiber inclusion within design mentioned only for total accuracy and correctly ignored on all accompanying certificates

EXTREMELY FINE GEM. ONLY THREE MINT NEVER-HINGED \$5.00 COLUMBIAN STAMPS HAVE BEEN CERTIFIED IN GRADES OF 90 OR 95 BY PROFESSIONAL STAMP EXPERTS, AND WE REGARD THIS EXAMPLE AS AN EQUAL AMONG THEM.

The P.S.E. Population Report lists three Mint N.H. examples of the \$5.00 Columbian: one XF 90 and two XF-Superb 95. We know of three other Mint N.H. stamps that might achieve comparable grades when certified, but none have been certified in the past ten years.

Comparing this stamp with the two previously graded XF-Superb 95, we have difficulty reconciling why this stamp did not achieve a 95 grade. Its margins are wide and balanced, the perforations are fully formed, and the shade and paper are extraordinarily fresh. While microscopic measurements might show a very slight difference between the left and right margins, we still feel strongly that this stamp meets all criteria for XF-Superb 95.

Ex "Scarsdale". With 1992 and 2000 P.F. certificates. With 2004 P.S.E. certificate (XF 90; SMQ \$30,000.00) 9,000.00



To celebrate Columbus' discovery and the exposition, a half-dollar coin was designed by sculptor U. S. J. Dunbar, who prepared a plaster model of the Columbus obverse based on a 1512 portrait painted by Lorenzo Lotto.

1894-98 BUREAU ISSUE

- 137 ★★ **1c Ultramarine (246).** Mint N.H., Jumbo margins and perfectly centered, pretty pastel color

EXTREMELY FINE GEM. AN OUTSTANDING MINT NEVER-HINGED ONE-CENT 1894 BUREAU ISSUE, GRADED SUPERB 98 JUMBO BY P.S.E. — THIS IS THE HIGHEST GRADE ON RECORD.

With 2009 P.S.E. certificate (Superb 98 Jumbo; SMQ \$4,750.00). This is the highest grade awarded and only two others share it..... 90.00



137



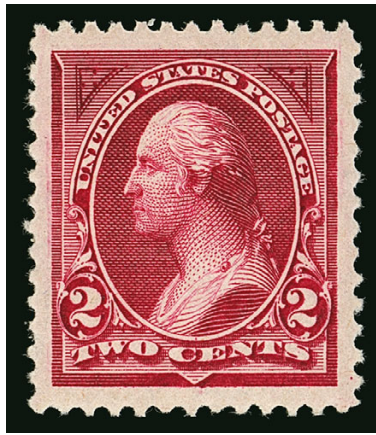
138

- 138 ★★ **1c Blue (247).** Mint N.H., intense color in the deeper end of the color spectrum, on bright paper, choice centering with wide margins, Extremely Fine Gem, with 2005 P.F. certificate (XF-Superb 95) 190.00

- 139 ★★ **2c Pink, Ty. I (248).** Mint N.H., vibrant color on fresh paper, choice centering with wide and balanced margins, Extremely Fine Gem, according to Brookman the color of this issue (like the 1c, Scott 246) proved unsatisfactory and so it was in production for only a few months before the color was changed, with 2006 P.S.E. certificate (XF-Superb 95; SMQ \$1,000.00), only five have graded higher (highest is a 98) 90.00



139



140

140 ★★ **2c Carmine Lake, Ty. I (249).** Mint N.H., deep rich color and proof-like impression on bright paper, perfectly centered with Jumbo margins

EXTREMELY FINE GEM. A PHENOMENAL MINT NEVER-HINGED EXAMPLE OF THE UNWATERMARKED 2-CENT TYPE I 1894 ISSUE IN THE CARMINE LAKE SHADE. THIS MAGNIFICENT STAMP HAS BEEN GRADED SUPERB 98 JUMBO BY THE PHILATELIC FOUNDATION.

As collectors of the First Bureau Issue know, great difficulty was experienced in perforating the stamps, either due to poor equipment or improper operation. Choppy, ragged perfs and poor centering are so common on this issue that it is often possible to separate the 1894 unwatermarked stamps from the 1895 watermarked stamps by the appearance of the perforations alone. Examples with desirable centering tend to have Jumbo margins at either sides or top and bottom, but rarely on all four sides. This example, with precise centering, Jumbo margins and perfectly formed perforations is an extreme condition rarity.

Ex Gorham. With 2000 and 2006 P.F. certificates (Superb 98 Jumbo). By way of comparison, P.S.E. has graded one at 98 Jumbo and one at 100 Jumbo. We have never offered the P.S.E. 98 Jumbo in one of our auctions, but the stamp offered here compares very favorably to the 100 Jumbo we offered in our Whitman and Merlin sales..... 450.00



141

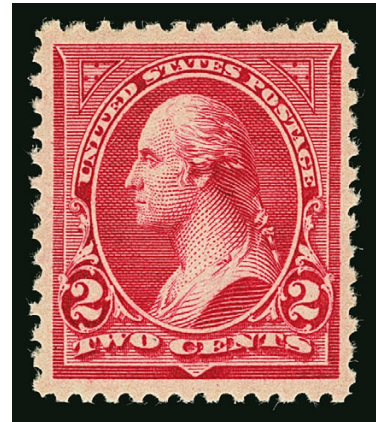
- 141 ★★ **2c Carmine, Ty. I (250).** Mint N.H. with **wide right plate no. 4 selvage**, rich color, unusually wide and balanced margins, Extremely Fine Gem, with 2004 P.S.E. certificate (XF-Superb 95; SMQ \$900.00), especially desirable in this high grade with the plate number selvage..... 90.00



142

- 142 ★★ **2c Carmine, Ty. II (251).** Mint N.H., radiant color, wide and balanced margins, Extremely Fine, with 2002 P.S.E. certificate 1,100.00

- 143 ★★ **2c Carmine, Ty. III (252).** Mint N.H. rich color and detailed impression, wide and balanced margins, fresh and Extremely Fine, with 2004 P.F. certificate 375.00



143



144

- 144 ★★ **3c Purple (253).** Mint N.H., intense shade and impression on bright paper, well-proportioned margins, fresh and Extremely Fine, with 1988 and 2001 P.F. certificates, the former as a block ... 325.00



145

- 145 ★★ **4c Dark Brown (254).** Mint N.H., deep rich color on bright paper, proof-like impression, absolutely enormous margins all around

EXTREMELY FINE GEM. A HUGE MINT NEVER-HINGED EXAMPLE OF THE 1894 4-CENT UNWATERMARKED BUREAU ISSUE. A STUNNING STAMP, NOTEWORTHY FOR THE IMPOSING SIZE OF ITS MARGINS, PRISTINE GUM, LONG PERFORATIONS AND INTENSE COLOR.

Ex "Scarsdale". With 1984 and 1999 P.F. certificates. With 2004 P.S.E. certificate (XF-Superb 95 Jumbo; SMQ \$5,750.00). Only two have graded higher (at 98J, one was offered in our Merlin sale) 550.00

- 146 ★★ **5c Chocolate (255).** Mint N.H., intense shade, gorgeous centering with wide and balanced margins

EXTREMELY FINE GEM. A STUNNING MINT NEVER-HINGED EXAMPLE OF THE 1894 5-CENT UNWATERMARKED BUREAU ISSUE.

With 2005 P.S.E. certificate (XF-Superb 95; SMQ \$2,900.00). Only three have graded higher (highest is a 98)..... 325.00

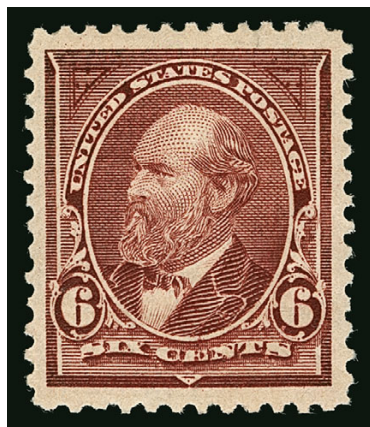


146

- 147 ★★ **6c Dull Brown (256).** Mint N.H., intense shade and proof-like impression, beautiful centering with unusually wide margins

EXTREMELY FINE GEM. A GORGEOUS MINT NEVER-HINGED EXAMPLE OF THE 1894 6-CENT UNWATERMARKED BUREAU ISSUE.

Ex Beckley. With 2003 P.F. and 2005 P.S.E. certificates (XF-Superb 95; SMQ \$3,200.00). We are surprised this did not receive a Jumbo designation. Only four have graded higher (two 95J and two 98)..... 475.00



147

- 148 No Lot.



149

149 ★★ **\$1.00 Black, Ty. II (261A). Mint N.H.,** intense shade on bright paper, choice centering
EXTREMELY FINE GEM. A SUPERB MINT NEVER-HINGED EXAMPLE OF THE \$1.00 1894
UNWATERMARKED TYPE II BUREAU ISSUE. ONE OF THE FINEST COPIES IN EXISTENCE.

Collectors of this issue know that it is extremely difficult to find the first Bureau issue in
centered, Mint Never-Hinged condition, particularly the higher denominations. This is
mostly due to production problems as the Bureau of Engraving and Printing assumed
responsibility for stamp production after the American Bank Note contract expired.

With 1998 P.F. certificate for pair and 2006 P.F. certificate for single. 6,500.00



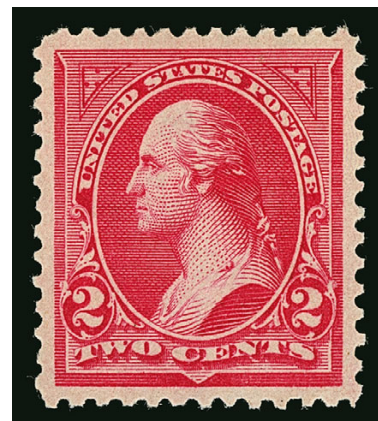
150

- 150 ★★ **1c Blue (264).** Mint N.H., intense shade and proof-like impression, well-proportioned margins, Extremely Fine Gem, with 2006 P.F. certificate (XF-Superb 95)... 17.50

- 151 ★★ **2c Carmine, Ty. II (266).** Mint N.H., perfect centering with wide margins, brilliant color, long and full perforations

EXTREMELY FINE GEM. A GORGEOUS MINT NEVER-HINGED EXAMPLE OF THE 2-CENT 1895 TY. II WATER-MARKED BUREAU ISSUE, GRADED SUPERB 98 BY P.S.E. THIS IS THE HIGHEST GRADE ON RECORD.

With 2012 P.S.E. certificate (Superb 98; SMQ \$4,000.00). This is the highest grade awarded and only five others share it. 100.00



151



152

- 152 ★★ **4c Dark Brown (269).** Mint N.H. with wide bottom selvage, intense color and proof-like impression, perfectly centered with wide margins

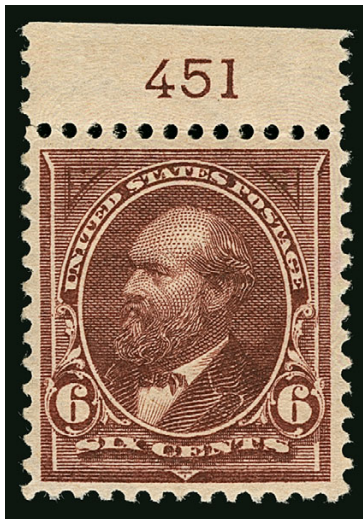
EXTREMELY FINE GEM. THIS MAGNIFICENT MINT NEVER-HINGED EXAMPLE OF THE 1898 4-CENT WATER-MARKED BUREAU ISSUE IS GRADED SUPERB 98 BY P.S.E. — THIS IS THE HIGHEST GRADE, SHARED BY ONLY ONE OTHER STAMP.

With 2009 P.S.E. certificate (Superb 98; SMQ \$4,250.00). This is the highest grade awarded and only one other shares it. This is the first time we have offered this grade in one of our auctions..... 125.00

- 153 ★★ **5c Chocolate (270).** Mint N.H., attractive warm shade, wide and balanced margins, Extremely Fine, with 2005 P.S.E. certificate (XF 90; SMQ \$300.00)...
..... 105.00



153



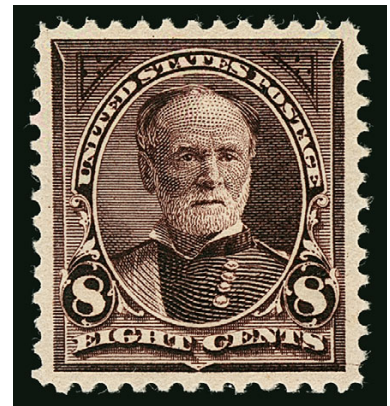
154

- 154 ★★ **6c Dull Brown (271).** Mint N.H. with **top plate no. 451 selvage**, rich color, well-balanced margins

EXTREMELY FINE GEM MINT NEVER-HINGED EXAMPLE OF THE 1895 6-CENT WATERMARKED BUREAU ISSUE. ESPECIALLY DESIRABLE WITH THE TOP POSITION PLATE NUMBER SELVAGE.

With 2014 P.S.E. certificate (XF-Superb 95; SMQ \$4,000.00). Only two have graded higher (both 95J). ..
..... 360.00

- 155 ★★ **8c Violet Brown (272).** Mint N.H., absolutely stunning deep color contrasted by bright paper, gorgeous centering, Extremely Fine Gem, a stamp with wonderful visual appeal, with 2006 P.F. certificate (XF-Superb 95)
..... 210.00



155

“USIR” WATERMARK

The “USIR” (United States Internal Revenue) watermark error occurred when a supply of paper reserved for revenue stamp production was used for printing the 6c and 8c postage stamps.



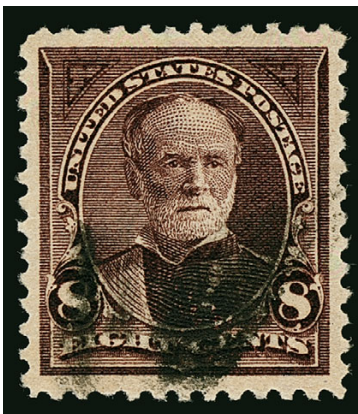
156

- 156 **6c Dull Brown, USIR Watermark (271a).** Showing clear “R” of watermark, unusually choice centering for this difficult variety, radiant color, neat cork cancel

EXTREMELY FINE GEM. A BEAUTIFUL AND RARE USED EXAMPLE OF THE 1895 6-CENT WITH THE “R” OF “USIR” WATERMARK. ONLY 27 USED EXAMPLES ARE KNOWN TO US, AND THIS IS ONE OF THE FINEST IN EXISTENCE.

Unlike its more common 8c counterpart, the 6c is an extremely rare stamp. Our updated census of this issue, published at <http://www.siegelauctions.com/dynamic/census/271a/271a.pdf>, records only 24 used copies certified as genuine by The Philatelic Foundation, plus three uncertified copies. Fifteen of those certified do not specify which letter is present. The other twelve are split exactly equally between the “I” and “R” of the watermark. Many examples have perfs either close or touching the design.

Census No. 271a-CAN-08. Ex Hoffner, Rubin and “Natalee Grace”. With 1988 P.F. and 2009 P.S.E. certificates (XF 90; SMQ \$30,000.00). This is the highest grade awarded and the only example to achieve this grade. 12,500.00



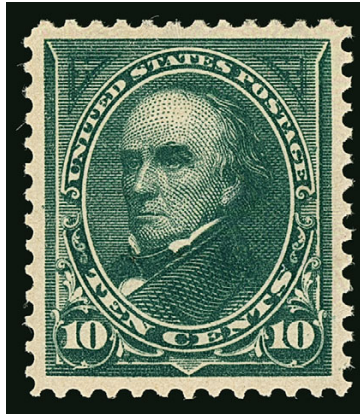
157

- 157 **8c Violet Brown, USIR Watermark (272a).** Showing clear “R” of “USIR” watermark, beautiful centering with wide and balanced margins, intense color and detailed impression, face-free strike of cancel

EXTREMELY FINE GEM. A SUPERB USED EXAMPLE OF THE 1895 8-CENT WATERMARKED BUREAU ISSUE ON THE “USIR” WATERMARKED PAPER. THIS STAMP HAS ALL THE QUALITIES ONE COULD HOPE TO FIND — WIDE MARGINS, RICH COLOR, BRIGHT PAPER, FULL PERFORATIONS AND AN UNOBTRUSIVE CANCEL.

There are approximately 75 known of the 8c, but many are either off-center or have flaws.

Ex Hoffner, Rubin and “Natalee Grace”. With 1986 and 1999 P.F. and 2009 P.S.E. certificates (XF-Superb 95; SMQ \$4,750.00). Only one has graded higher (at 95J) and only one other shares this grade. One could also argue that this is the highest grade awarded showing the “R” of the “USIR” watermark. 1,000.00



158

- 158 ★★ **10c Dark Green (273).** Mint N.H., intense shade on bright paper which gives this a stunning appearance, perfectly centered

EXTREMELY FINE GEM. A MAGNIFICENT MINT NEVER-HINGED EXAMPLE OF THE 1895 10-CENT WATERMARKED BUREAU ISSUE. AN EXTREMELY DIFFICULT STAMP TO FIND IN SUCH SUPERB CONDITION AND A TRUE CONDITION RARITY.

Ex "Scarsdale". With 1984 and 1999 P.F. certificates. With 2004 P.S.E. certificate (XF-Superb 95; SMQ \$3,000.00). Only two are graded higher in the P.S.E. Population Report (one 95J and one 98)..... 280.00

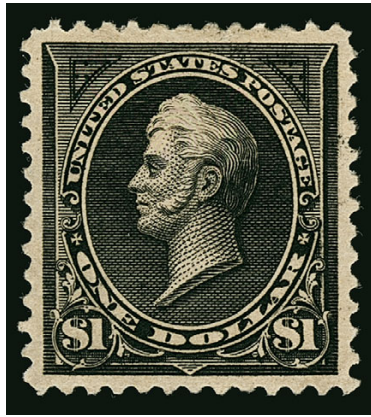


159

- 159 ★★ **15c Dark Blue (274).** Mint N.H., intense shade on bright paper, choice centering with wide and balanced margins

EXTREMELY FINE GEM. A BEAUTIFUL MINT NEVER-HINGED EXAMPLE OF THE 1895 15-CENT WATERMARKED BUREAU ISSUE.

Ex Dr. Killien. With 2001 P.F. and 2001 and 2006 P.S.E. certificates (XF-Superb 95; unpriced in SMQ above the grade of 90, SMQ \$1,450.00 as 90). We are aware of only two others graded higher. 625.00



160

- 160 ★ **\$1.00 Black, Ty. II (276A).** Original gum, lightly hinged, deep shade and detailed impression, wide and balanced margins

EXTREMELY FINE GEM. A GORGEOUS ORIGINAL-GUM EXAMPLE OF THE 1895 \$1.00 TYPE II WATERMARKED BUREAU ISSUE, WHICH IS GRADED XF-SUPERB 95 BY P.S.E. — THIS IS THE HIGHEST GRADE AWARDED IN ANY CATEGORY.

With 2007 P.S.E. certificate (OGph, XF-Superb 95; SMQ \$4,500.00). This is the highest grade awarded and only one other shares it. No other categories (Used, No Gum or Mint N.H.) have graded higher. We have offered only four Mint N.H. copies in total since the mid-1990's (the highest grade for Mint N.H. is a single copy at 90), so collectors should view this lightly-hinged example graded XF-Superb 95 as a true condition rarity. 1,250.00



161

- 161 ★★ **2c Rose Carmine, Ty. IV (279Bc).** Mint N.H., vibrant color, choice centering with wide margins, long and full perforations

EXTREMELY FINE GEM. A GORGEOUS MINT NEVER-HINGED EXAMPLE OF THE 1898 2-CENT TYPE IV IN THE ROSE CARMINE SHADE. A DIFFICULT ISSUE TO FIND IN SUCH SUPERB CONDITION.

The Type IV Rose Carmine offered here should not be confused with its more common brethren. According to Brookman, "The really scarce shade of the 1898 2c is the Rose Carmine. It is a shade not too unlike the Pink of the 1861 Series except that it is considerably darker."

Ex Gorham. With 1999 and 2006 P.F. certificates (XF-Superb 95). This is the highest grade awarded by the P.F. and none share it. By way of comparison, only one has graded higher at P.S.E. and only one shares this grade..... 850.00



162

162 ★★ **4c Lilac Brown (280a).** Mint N.H., pretty shade, wide margins

EXTREMELY FINE. THIS GORGEOUS STAMP IS GRADED SUPERB 98 BY P.S.E. — THIS IS THE HIGHEST GRADE ON RECORD AND THE ONLY EXAMPLE TO ACHIEVE IT.

With 2010 P.S.E. certificate (Superb 98; SMQ \$3,500.00). This is the highest grade awarded and the only example to achieve this grade. 75.00



163

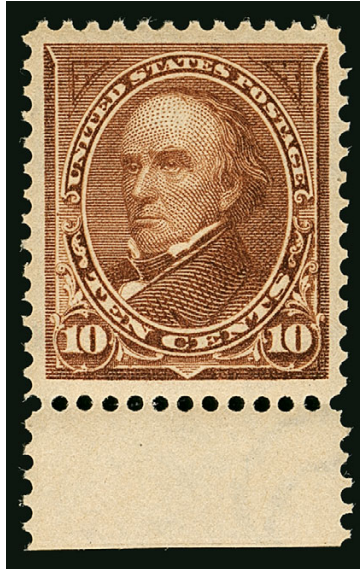
163 ★★ **5c Dark Blue (281).** Mint N.H., intense shade and impression, beautiful centering with unusually wide margins, Extremely Fine Gem, a superb stamp in every respect, ex "Scarsdale", with 1986 and 2000 P.F. and 2004 P.S.E. certificates (XF-Superb 95; SMQ \$1,250.00), only four have graded higher (one 98J and three 98) 100.00



164

164 ★★ **6c Lake (282).** Mint N.H. with selvage at top, brilliant color, sharp proof-like impression on bright paper, long and full perforations all around, mathematically perfect centering
EXTREMELY FINE GEM. THIS SUPERB STAMP IS GRADED GEM 100 BY P.S.E. — THIS IS BY FAR THE HIGHEST GRADE AWARDED AND THE ONLY STAMP TO ACHIEVE IT.

With 2008 P.S.E. certificate (Gem 100; SMQ \$9,100.00). As an indication of how rare the 6c 1898 is in higher grades, the next-highest grade awarded is a 95, and only three stamps in *any* condition (used, hinged etc.) have graded higher than a 95 (two used, both 98, and the 100-graded stamp offered here) 140.00



165

- 165 ★★ **10c Brown, Ty. I (282C).** Mint N.H. with bottom selvage, radiant color, perfectly centered with Jumbo margins

EXTREMELY FINE. A BEAUTIFUL MINT NEVER-HINGED EXAMPLE OF THE 1898 10-CENT BROWN TYPE I ISSUE. THIS STAMP IS GRADED XF-SUPERB 95 BY P.S.E. — ONLY ONE IS GRADED HIGHER AND NO OTHERS SHARE THIS GRADE.

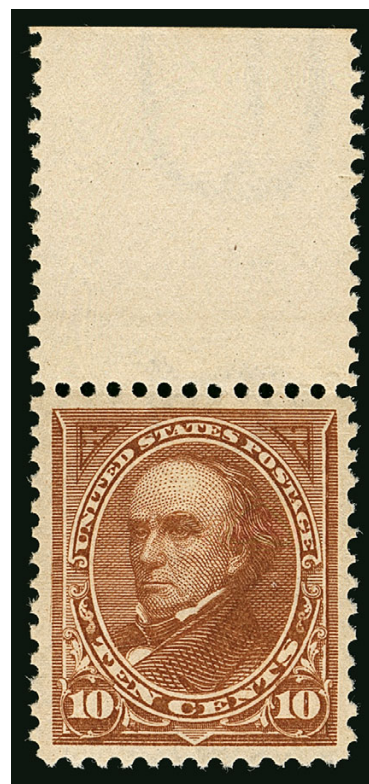
The 10c was changed from Green (Scott No. 273) to Brown because the 1c denomination (Scott No. 279) was changed to Green to meet the UPU color scheme.

With 2009 P.S.E. certificate (XF-Superb 95 Jumbo; SMQ \$7,000.00). Only one has graded higher (at 98) and none share this grade. This is the highest graded example in Mint N.H. condition we have ever offered in one of our auctions. 525.00

- 166 ★★ **10c Orange Brown, Ty. II (283).** Mint N.H. with wide top selvage, radiant color, perfectly centered with wide margins

EXTREMELY FINE GEM. A MAGNIFICENT MINT NEVER-HINGED EXAMPLE OF THE 10-CENT TYPE II 1898 ISSUE. THIS AMAZING STAMP IS GRADED SUPERB 98 BY P.S.E. — THIS IS THE HIGHEST GRADE ON RECORD, SHARED BY ONLY ONE OTHER STAMP.

With 2012 P.S.E. certificate (Superb 98; SMQ \$14,000.00). This is the highest graded and one of only two to achieve this grade. The next-highest is a single copy at 95. The other 98 was offered in our 2007 Rarities sale where it realized \$15,500 versus \$15,200 SMQ at the time. The other example does not have the sheet selvage..... 450.00



166



167

- 167 ★★ **15c Olive Green (284).** Mint N.H., intense shade and detailed impression, well-centered with wide and balanced margins

EXTREMELY FINE GEM. A SUPERB MINT NEVER-HINGED EXAMPLE OF THE 1898 15-CENT OLIVE GREEN. THIS STAMP IS GRADED XF-SUPERB 95 BY P.S.E. — ONLY ONE HAS GRADED HIGHER.

Ex Dr. Killien. With 1995 P.F. and 2006 P.S.E. certificates (XF-Superb 95; SMQ \$4,500.00). Only one has graded higher (at 98, realized \$13,500 hammer in our Merlin sale) and only three others share this grade. This is the first in this grade we have offered. 475.00

TRANS-MISSISSIPPI ISSUE



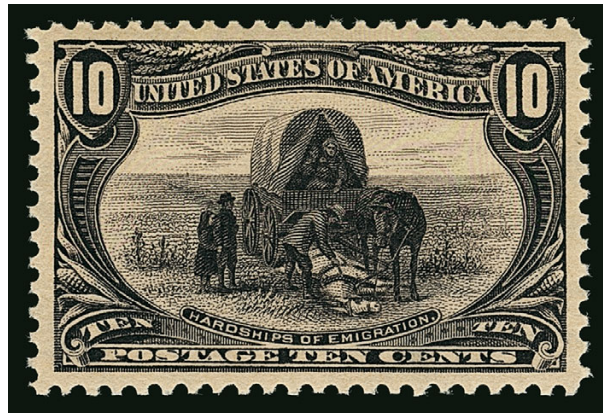
168

- 168 ★★ **1c Trans-Mississippi (285).** Mint N.H., deep shade and detailed impression, beautiful centering with wide margins, Extremely Fine Gem, with 2005 P.S.E. certificate (XF-Superb 95; SMQ \$625.00) 67.50



169

- 169 ★★ **2c Trans-Mississippi (286).** Mint N.H., radiant color, perfectly centered with wide margins, Extremely Fine Gem, a surprisingly difficult issue to find in such a high grade, with 2008 P.S.E. certificate (Superb 98; SMQ \$2,500.00), only five have graded higher (four at 98J and one at 100) and only six others share this grade, this is a very small population of high-grade stamps considering how plentiful the 2c stamps are; this demonstrates how difficult they are to find in such superb condition 67.50



170

170 ★★ **10c Trans-Mississippi (290).** Mint N.H., deep shade and marvelous impression, perfectly centered with wide margins

EXTREMELY FINE GEM. THIS IS WITHOUT QUESTION ONE OF THE FINEST MINT NEVER-HINGED EXAMPLES OF THE 10-CENT TRANS-MISSISSIPPI ISSUE. A SUPERB STAMP IN EVERY RESPECT.

With 2011 P.S.E. certificate (Superb 98; SMQ \$11,750.00). This is the highest grade awarded and only six others share it. This is the first we have offered since our 2012 Merlin sale..... 425.00





171

171°★★ **50c Trans-Mississippi (291).** Mint N.H., rich color, proof-like impression, perfectly centered

EXTREMELY FINE GEM. THIS MAY WELL BE THE FINEST MINT NEVER-HINGED EXAMPLE OF THE 50-CENT TRANS-MISSISSIPPI ISSUE IN EXISTENCE. THIS REMARKABLE STAMP IS GRADED SUPERB 98 BY P.S.E. — THIS IS THE HIGHEST GRADE ON RECORD AND ONLY THIS STAMP HAS ACHIEVED IT.

The design of the 50c Trans-Mississippi is based on a drawing by Frederic Remington titled *Gold Bug*, which was published in 1897 in New York as part of a series of drawings. It depicts a single prospector in a barren landscape, hammer in one hand and a gold prospecting pan in the other, with his dog and two pack mules. The design was originally considered for the \$2.00 (an essay is known) but it was ultimately used for the 50c.

The 50c Trans-Mississippi is extremely scarce in well-centered condition. It also seems that fewer 50c stamps exist in Mint N.H. condition, relative to the dollar values of the set. The combination of Extremely Fine centering and Mint N.H. condition is exponentially rarer.

With 2009 P.S.E. certificate (Superb 98; SMQ \$57,500.00). This is the highest grade awarded, and this is the only stamp to achieve it. 1,800.00





172

172°★★ **\$1.00 Trans-Mississippi (292).** Mint N.H., detailed impression on post-office fresh paper, unusually wide and balanced margins, long and full perforations

EXTREMELY FINE GEM. AN ABSOLUTELY STUNNING MINT NEVER-HINGED EXAMPLE OF THE \$1.00 TRANS-MISSISSIPPI ISSUE, WHICH IS GRADED SUPERB 98 BY P.S.E. — THIS IS THE HIGHEST GRADE AWARDED TO A MINT NEVER-HINGED COPY. THIS IS WIDELY REGARDED AS THE MOST BEAUTIFUL UNITED STATES COMMEMORATIVE STAMP EVER ISSUED..

The \$1.00 Trans-Mississippi is widely considered to be the most beautiful design in U.S. philately. According to Brookman, the picture is supposed to portray cattle in the American West and is labelled “Western Cattle In Storm” at bottom. However, the subject of the original painting by J.A. MacWhirter, who specialized in romantic landscapes and first exhibited at the Royal Scottish Academy at the age of 14, was of cattle in the West Highlands of Scotland.

With 2009 P.S.E. certificate (Superb 98; SMQ \$75,000.00). This is the highest grade awarded and only one other shares this grade (the other was offered in our Merlin sale). Accompanied by note from master grader William A. Little “After ten years finally a 98 NH 292. Yea!! Pretty safe to assume there won’t be a bunch of these” 3,500.00



*Original painting by MacWhirter,
depicting Scottish cattle in the Western Highlands*



173

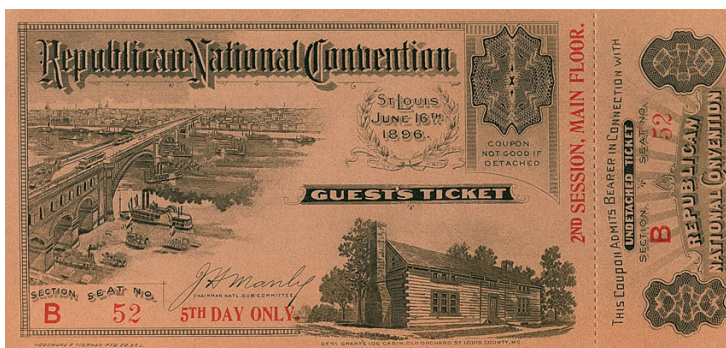
173 ★★ **\$2.00 Trans-Mississippi (293).** Mint N.H., deep rich color, choice centering for this difficult issue

FRESH AND EXTREMELY FINE. A BEAUTIFUL MINT NEVER-HINGED EXAMPLE OF THE \$2.00 TRANS-MISSISSIPPI ISSUE.

According to Brookman, the design is based on the famed Eads Bridge that spans the Mississippi River at St. Louis. The river has long been considered the dividing line between East and West, and is a fitting theme for this issue.

All of the \$2.00 Trans-Mississippi stamps were printed in a single day's run on June 3, 1898. The \$2.00 was printed in sheets that have narrower spacing between the horizontal rows than between the vertical columns. For this reason, it is extremely difficult to obtain stamps with top and bottom margins that equal the sides. This makes it difficult to fit the collecting criteria of most Gem-quality collectors. The stamp offered here, which is Mint Never-Hinged with choice centering and fresh color, is a true condition rarity.

Ex "Piedmont" where it realized \$9,000 hammer in our Sale 842 in 2002. With 2005 P.S.E. certificate. With 1989, 1998 and 2011 P.F. certificates (XF 90)..... 6,000.00



Ticket for the Republican National Convention of 1896, with the same engraving of the Eads Bridge (at right) used for the vignette of the 1898 \$2.00 Trans-Mississippi

END OF SALE—THANK YOU

Live Internet Bidding at Siegel Auctions

BIDDING FROM YOUR COMPUTER LETS YOU BE PART OF THE LIVE AUCTION FROM ANYWHERE IN THE WORLD!

There's **NO SUBSTITUTE** for following the auction in real time.
Live Internet Bidding lets you bid and buy as though you were right there in the saleroom.
And it's easy.

This step-by-step guide will instruct you how to register, set your browser and use the bidding interface.

Start by following the simple steps to become a registered Live Internet Bidder.
Once you've been approved for bidding, you can listen to the auction and place bids with the click of a mouse.

Registering with **STAMP AUCTION NETWORK & SIEGEL AUCTION GALLERIES**

Live Internet Bidding is managed by Stamp Auction Network (SAN).
To bid, you must be registered and approved by *both* SAN and Siegel.
To decide what you need to do, choose the description below that best fits you.



I've already registered with SAN and have been approved by Siegel for internet bidding.

I'm a Siegel client, but I'm not registered with SAN.

Go to stampauctionnetwork.com/siegel and click on "Register" at the top. Check the box for Robert A. Siegel Auction Galleries (under "R") and submit the form, indicating you are a Siegel client. Once registered at SAN, you're ready for internet bidding.

I've bid through SAN before, but this is the first time I've bid in a Siegel sale.

Then you just need to be approved by Siegel. Go to stampauctionnetwork.com/siegel and click on "Update Registration" at the top. Your SAN account information will be sent to us for approval (you might be asked for other trade references). Once approved by Siegel for bidding, you're ready for internet bidding.

I've never bid with Siegel, nor registered with SAN.

Go to stampauctionnetwork.com/siegel and click on "Register" at the top. Check the box for Robert A. Siegel Auction Galleries (under "R") and submit the form **with your trade references** (please, no family members or credit card companies as references). Once registered at SAN and approved by Siegel for bidding, you're ready for internet bidding.

Live Internet Bidding works by allowing registered bidders to observe and place bids.

Live Internet Bidding will work with any browser on both PC and Mac operating systems.

Before bidding by internet for the first time, we recommend finding a sale in progress and listening to the public broadcast or logging in as a registered bidder. This will help you develop a feel for the sale tempo and bidding interface.

Log on to the auction at stampauctionnetwork.com/siegel.

You can also log on at siegelauctions.com

When you're logged on as a Live Internet Bidder, the bidding interface shows a photo and description of the lot, the current bid (and your bidding status), options for placing competitive bids and buttons with bid increments.

- After you click on a bid amount, the auctioneer is immediately notified of your bid.
- Retracting a bid is usually not acceptable, so please bid carefully.
- If you bid and then decide to stop, the "Pass" button will tell the auctioneer you are no longer bidding.
- You can send messages to the auctioneer (for example, a request for extension).
- You can track prior realizations from the bidding screen.



"System Down" or "Lost Connection" events do occasionally happen.

If you have any problems with Live Internet Bidding please call **212-753-6421** for immediate assistance.



BIDS

Use this form to submit absentee bids
or to confirm telephone bids

Sale1122

April 7, 2016

PADDLE #

1

Please provide the following information:

NAME

ADDRESS

CITY/STATE/ZIP

PHONE MOBILE

EMAIL

2

Have you purchased from us in the past 5 years? ☐ Yes (please go to Section 3)
☐ No (references required below)

STAMP FIRM PHONE

STAMP FIRM PHONE

Please submit references at least **2 business days** before the sale. Bids from new clients will not be executed if satisfactory references are not received in time to be contacted.

3

- Enter the lot number and your corresponding maximum bid in the space below
- Use whole dollar amounts and bid according to the increments (see back of form)
- Bids do not include the 15% Buyer's Premium, taxes, duty or shipping charges
- Absentee bids will advance at one increment over the next highest competing bid
- "Plus", "Break Tie" or "Buy" bids will not be executed
- Indicate any "Or" bids between lot number/bid entries and bracket your choices
- If you wish to limit the total amount of your bids, follow the instructions below

Lot #	Bid \$	Lot #	Bid \$	Lot #	Bid \$

☐ **Limit Bids:** Check this box if you wish to limit the total hammer price of your bids (excluding 15% Buyer's Premium, taxes, duty and shipping costs). Your bids will be executed until your bidding limit has been reached. The total amount you wish to bid is \$

4

By signing this form, you agree to all of the Conditions of Sale printed in the sale catalogue (printed and digital), including but not limited to a) payment in the manner demanded by the Siegel firm, and b) payment of the 15% Buyer's Premium, any sales tax or customs duty, shipping costs, late charges and

other prescribed charges. You agree that your bids will be executed as a courtesy by Siegel, but you waive the right to make any claim against Siegel or its employees arising from these bids or your participation in the sale. You agree to honor all bids as submitted, regardless of any errors or omissions.

SIGNED DATE

Mail the signed form to Siegel Bid Department, 60 East 56th St., New York, NY 10022
or email to stamps@siegelauctions.com
or fax to 212-753-6429



Additional Bids

Sale1122

April 7, 2016

PADDLE #

Lot #	Bid \$	Lot #	Bid \$	Lot #	Bid \$

Shipping & Insurance

We will be pleased to arrange for shipping and transit insurance for purchases in this sale, except for lots marked or announced as "floor sale only." To expedite billing and delivery to hundreds of buyers in each sale, we use standard charges for postage and insurance under our policy. These charges are based on the package weight and mailing requirements, according to the schedule shown here. Our standard charges do not include a fee for our services, and they may be slightly more or less than the actual postage or Fedex fee. We ask all buyers to remit the invoiced amount for shipping and insurance.

Transit insurance is provided in all cases, except when the buyer has furnished us with documentation that insurance is effective under the buyer's own policy.

There will be no added insurance charge for shipments of less than \$75,000 value. Shipments valued in excess of \$75,000 may require supplemental insurance and/or special courier service, the estimated cost of which will be furnished to the buyer prior to shipment. If the buyer refuses to pay the estimated charges or furnish proof of self-insured coverage, the buyer will be responsible for picking up the lots at our office and any resulting sales tax.

Standard Shipping Charges

Weight Class	Shipping Method	Charge
Up to 2 lbs.	Fedex Envelope	\$20
Over 2 lbs.	Fedex Box	\$35 - \$50*
Outside US	Fedex	\$50 - \$100**
Bulky Lots	Fedex Ground or Express	By weight

* Up to \$75,000 value and up to 5 lbs; additional charge may apply to packages exceeding limits

** Buyers outside United States are liable for any applicable customs duty and clearance charges. An accurate declaration of contents and value will be made on all packages and import/export documents. **Siegel may refuse to ship lots to certain countries with a high risk factor.**

2/2015

Bidding Increments

The auctioneer may regulate the bidding at his discretion. However, to assist absentee bidders in establishing their maximum bids, the increments shown here will be used in most cases. We recommend that written bids conform to these increments—bids that do not will be reduced accordingly.

Bid	Increment	Bid	Increment
Up to \$200	\$10	\$7,000-20,000	\$500
\$200-500	\$25	\$20,000-30,000	\$1,000
\$500-1,000	\$50	\$30,000-75,000	\$2,500
\$1,000-3,000	\$100	\$75,000-140,000	\$5,000
\$3,000-7,000	\$250	\$140,000-300,000	\$10,000

Robert A. Siegel Auction Galleries, Inc.

Sale 1122 4/7/2016 The Hanover Collection of Superb-Quality U.S. Stamps-Part One

Lot#	Sold	Cat No	Lot#	Sold	Cat No	Lot#	Sold	Cat No
3	1600	3	92	5000	166	151	3250	266
13	20000	19b	94	19000	175	152	5750	269
15	1800	24	95	5750	179	153	300	270
16	8500	25	96	6750	182	154	3250	271
17	3250	26	97	11000	185	155	1700	272
21	1300	35	98	1600	186	157	2900	272a
23	800	40	100	13000	188	158	3000	273
24	10500	42	101	10500	190	159	4250	274
26	9000	44	105	2100	206	160	6500	276A
27	8500	45	107	7500	208	161	5250	279Bc
28	7000	46	109	475	210	162	3750	280a
31	1800	65	111	6000	213	163	1100	281
35	8500	73	112	4500	215	164	11500	282
37	8500	78a	113	5250	216	167	4250	284
38	1200	2(P)	114	15500	217	168	700	285
39	1400	3	115	300	219	169	2700	286
40	3500	4	116	4000	219D	170	9000	290
41	475	6	117	1300	220	171	47500	291
46	24000	83	118	2500	220a	172	62500	292
50	3750	87	119	10000	222	173	16500	293
51	9500	90	121	5000	224			
55	17500	98	122	6250	225			
57	5250	102	123	3500	226			
59	13500	104	125	1000	230			
60	10000	105	126	1500	231			
62	10000	109	127	1700	232			
63	3250	112	128	1900	233			
65	3000	114	129	2100	234			
66	12000	115	130	5000	236			
70	35000	121	131	1700	237			
72	270000	121b	132	10000	238			
73	3500	124	134	6250	242			
74	12000	125	135	21000	244			
75	16500	128	136	35000	245			
78	13500	133	137	3250	246			
80	1800	136A	138	2800	247			
81	2100	145	139	1300	248			
82	4250	146	140	15000	249			
85	8000	153	141	1300	250			
86	11000	154	142	1200	251			
87	2000	157	143	650	252			
88	350	158	146	3000	255			
89	3500	160	147	4250	256			
91	16500	165	150	300	264			