

THE STEVEN WALSKÉ COLLECTION OF UNITED STATES-FRANCE TRANSATLANTIC MAIL



PART TWO: FRANCE ♦ SALE 1127 ♦ SUNDAY, MAY 29, 2016 ♦ WORLD STAMP SHOW-NY



Robert A. Siegel  
AUCTION GALLERIES, INC.

# THE STEVEN WALSKE COLLECTION OF UNITED STATES-FRANCE TRANSATLANTIC MAIL



PART TWO: FRANCE ♦ SALE 1127 ♦ SUNDAY, MAY 29, 2016, AT 3:00 P.M.



Live auction at World Stamp Show–NY 2016

Jacob K. Javits Convention Center, Room 1E03 (two levels below show floor)

All lots sold subject to a 15% buyer's premium and  
applicable sales tax or customs duty

Please carefully read the Conditions of Sale before bidding

Presale Viewing:

PARIS: Wednesday and Thursday, May 18-19 at the offices of  
Roumet Histoire Postale, 15 Rue Drouot, 2nd Floor, Paris

Phone +33 (0)1 40 16 02 42    [www.roumethp.fr](http://www.roumethp.fr)    email: [contact@roumethp.fr](mailto:contact@roumethp.fr)

NEW YORK: Saturday, May 28, 10:30am-6pm, and Sunday, May 29, 10am-12 noon,  
at our Superbooth 1229, and before May 28 in our offices by appointment

*Robert A. Siegel*

AUCTION GALLERIES, INC.

60 EAST 56TH STREET, 4TH FLOOR, NEW YORK, N.Y. 10022

Phone (212) 753-6421 • Fax (212) 753-6429 • E-mail: [stamps@siegelauctions.com](mailto:stamps@siegelauctions.com)



*Robert A. Siegel*

AUCTION GALLERIES, INC.

60 EAST 56TH STREET, 4TH FLOOR, NEW YORK, N.Y. 10022

Phone (212) 753-6421 • Fax (212) 753-6429 • E-mail: [stamps@siegelauctions.com](mailto:stamps@siegelauctions.com)  
[siegelauctions.com](http://siegelauctions.com)



Scott R. Trepel  
President  
strepel  
@siegelauctions.com



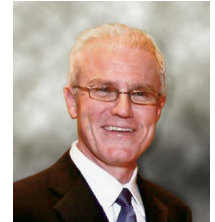
John P. Zuckerman  
Senior Vice President  
jzuckerman  
@siegelauctions.com



Corey Long  
Senior Vice President  
clong  
@siegelauctions.com



Colleen Stellato  
Vice President–Accounts  
colleen  
@siegelauctions.com



Charles F. Shreve  
Director, Siegel International  
charles  
@siegelauctions.com



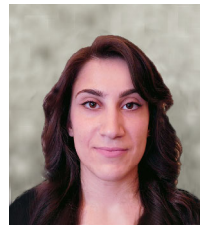
Andrew Titley  
Specialist  
andrew  
@siegelauctions.com



Helen Stewart  
Bids and Inquiries  
helen  
@siegelauctions.com



Danielle Lenard  
Bids and Inquiries  
danielle  
@siegelauctions.com



Jocelyn Weibel  
Digital Production  
jocelyn  
@siegelauctions.com



Chris Anderson  
Siegel International  
chris  
@siegelauctions.com

Scott R. Trepel Principal Auctioneer (licensed by NYC Dept. of Consumer Affairs, #795952)

## Information for Bidders

### Bidding

The following means are available for placing bids:

- 1) Attending the Live Auction in Person:** All bidders must register for a paddle, and new bidders must provide references at least three business days in advance of the sale.
- 2) Live Internet Bidding:** Instructions for participating as a Live Internet Bidder are provided on the page opposite.
- 3) Phone Bidding:** Bidders can be connected to the sale by phone and bid through a member of staff. Requests for phone bidding are subject to approval (please contact our office at least 24 hours before the sale). A signed Bid Form is required.
- 4) Absentee Bids.** All bids received in advance of the sale, either by mail, fax, phone, e-mail or internet, are Absentee Bids, which instruct the auctioneer to bid up to a specific amount on one or more lots in the sale. Absentee Bids sent by phone, fax or e-mail should arrive at least one hour prior to the start of the sale session. Bids entered through Live Internet Bidding will be visible to the auctioneer during the sale. Written bids should be entered legibly on the Bid Form in the sale catalogue. E-mail and internet bids should be carefully typed and double-checked. All new bidders must provide references. We recommend calling or e-mailing to confirm that Absentee Bids sent by mail, fax or e-mail have been received and entered.

### Pre-Sale Viewing

Subject to availability, certain lots (except group lots) can be sent to known clients for examination. Requests must be made no later than 7 days prior to the sale. Lots must be returned on the day received. Postage/insurance costs will be invoiced.

In addition to regular viewing, clients may view lots by appointment. Our staff will be pleased to answer questions or provide additional information about lots.

### Expert Certification

Individual items offered without a PF or PSE certificate dated within the past five years may be purchased subject to independent certification of genuineness and our description. **Please refer to the Conditions of Sale and Grading Terms for policies governing certification.**

### Shipping and Delivery

Procedures and charges for shipping lots are printed on the back of the Bid Form. **Bidders are responsible for all prescribed shipping charges and any applicable sales tax or customs duties.**

### Price Realized

Prices realized are sent with each invoice. Bidders with e-mail will receive a Bid Results report after the sale. Session results are posted immediately to [siegelauctions.com](http://siegelauctions.com)

# Live Internet Bidding at Siegel Auctions

## BIDDING FROM YOUR COMPUTER LETS YOU BE PART OF THE LIVE AUCTION FROM ANYWHERE IN THE WORLD!

**There's NO SUBSTITUTE for following the auction in real time.**  
**Live Internet Bidding lets you bid and buy as though you were right there in the saleroom.**  
**And it's easy.**

**This step-by-step guide will instruct you how to register, set your browser and use the bidding interface.**

**Start by following the simple steps to become a registered Live Internet Bidder.**  
**Once you've been approved for bidding, you can listen to the auction and place bids with the click of a mouse.**

### Registering with STAMP AUCTION NETWORK & SIEGEL AUCTION GALLERIES

Live Internet Bidding is managed by Stamp Auction Network (SAN).  
To bid, you must be registered and approved by *both* SAN and Siegel.  
To decide what you need to do, choose the description below that best fits you.



**I've already registered with SAN and have been approved by Siegel for internet bidding.**

**I'm a Siegel client, but I'm not registered with SAN.**

Go to [stampauctionnetwork.com/siegel](http://stampauctionnetwork.com/siegel) and click on "Register" at the top. Check the box for Robert A. Siegel Auction Galleries (under "R") and submit the form, indicating you are a Siegel client. Once registered at SAN, you're ready for internet bidding.

**I've bid through SAN before, but this is the first time I've bid in a Siegel sale.**

Then you just need to be approved by Siegel. Go to [stampauctionnetwork.com/siegel](http://stampauctionnetwork.com/siegel) and click on "Update Registration" at the top. Your SAN account information will be sent to us for approval (you might be asked for other trade references). Once approved by Siegel for bidding, you're ready for internet bidding.

**I've never bid with Siegel, nor registered with SAN.**

Go to [stampauctionnetwork.com/siegel](http://stampauctionnetwork.com/siegel) and click on "Register" at the top. Check the box for Robert A. Siegel Auction Galleries (under "R") and submit the form **with your trade references** (please, no family members or credit card companies as references). Once registered at SAN and approved by Siegel for bidding, you're ready for internet bidding.

Live Internet Bidding works by allowing registered bidders to observe and place bids.

Live Internet Bidding will work with any browser on both PC and Mac operating systems.

Before bidding by internet for the first time, we recommend finding a sale in progress and listening to the public broadcast or logging in as a registered bidder. This will help you develop a feel for the sale tempo and bidding interface.

### Log on to the auction at [stampauctionnetwork.com/siegel](http://stampauctionnetwork.com/siegel).

You can also log on at [siegelauctions.com](http://siegelauctions.com)

When you're logged on as a Live Internet Bidder, the bidding interface shows a photo and description of the lot, the current bid (and your bidding status), options for placing competitive bids and buttons with bid increments.

- After you click on a bid amount, the auctioneer is immediately notified of your bid.
- Retracting a bid is usually not acceptable, so please bid carefully.
- If you bid and then decide to stop, the "Pass" button will tell the auctioneer you are no longer bidding.
- You can send messages to the auctioneer (for example, a request for extension).
- You can track prior realizations from the bidding screen.



**"System Down" or "Lost Connection" events do occasionally happen.**

If you have any problems with Live Internet Bidding please call **212-753-6421** for immediate assistance.

## Conditions of Sale (please read carefully before bidding)

**THE PROPERTY DESCRIBED IN THIS CATALOGUE WILL BE OFFERED AT PUBLIC AUCTION BY ROBERT A. SIEGEL AUCTION GALLERIES, INC. ("GALLERIES") ON BEHALF OF VARIOUS CONSIGNORS AND ITSELF OR AFFILIATED COMPANIES. BY BIDDING ON ANY LOT, WHETHER DIRECTLY OR BY OR THROUGH AN AGENT, IN PERSON, OR BY TELEPHONE, FACSIMILE OR ANY OTHER MEANS, THE BIDDER ACKNOWLEDGES AND AGREES TO ALL OF THE FOLLOWING CONDITIONS OF SALE.**

1. The highest bidder acknowledged by the auctioneer shall be the buyer. The term "final bid" means the last bid acknowledged by the auctioneer, which is normally the highest bid offered. **The purchase price payable by the buyer will be the sum of the final bid and a commission of 15% of the final bid ("buyer's premium"), together with any sales tax, use tax or customs duties due on the sale.**
2. The auctioneer has the right to reject any bid, to advance the bidding at his discretion and, in the event of a dispute, to determine the successful bidder, to continue the bidding or to reoffer and resell the lot in dispute. The Galleries' record of the final sale shall be conclusive.
3. All bids are per numbered lot in the catalogue unless otherwise announced by the auctioneer at the time of sale. The right is reserved to group two or more lots, to withdraw any lot or lots from the sale, or to act on behalf of the seller. The Galleries will execute bidding instructions on behalf of clients, but will not be responsible for the failure to execute such bids or for any errors in the execution of such bids.
4. **Lots with numbers followed by the symbol ° are offered subject to a confidential minimum bid ("reserve"), below which the lot will not be sold. The absence of the symbol ° means that the lot is offered without a reserve. If there is no reserve, the auctioneer has sole discretion to establish a minimum opening bid and may refuse an offer of less than half of the published estimate. Any lot that does not reach its reserve or opening bid requested by the auctioneer will be announced as "passed" and excluded from the prices realized lists after the sale. The Galleries may have a direct or indirect ownership interest in any or all lots in the sale resulting from an advance of monies or goods-in-trade or a guarantee of minimum net proceeds made by the Galleries to the seller.**
5. Subject to the exclusions listed in 5(A), the Galleries will accept the return of lots which have been misidentified or which have obvious faults that were present when the lot was in the Galleries' custody, but not so noted in the lot description. **All disputed lots must be received by the Galleries intact with the original packing material within 5 days of delivery to the buyer but no later than 30 days from the sale date.** (5A) **EXCLUSIONS:** The following lots may not be returned for any reason, or may not be returned for the reasons stated: i) lots containing 10 or more items; ii) lots from buyers who registered for the pre-sale exhibition or received lots by postal viewing, thereby having had the opportunity to inspect them before the sale; iii) any lot described with "faults," "defects" or a specific fault may not be returned because of any secondary fault; iv) photographed lots may not be returned because of centering, margins, short/nibbed perforations or other factors shown in the illustrations; v) the color of the item does not match the color reproduction in the sale catalogue or website listing; vi) the description contains inaccurate information about the quantity known or reported; or vii) a certification service grades a stamp lower than the grade stated in the description.
6. Successful bidders, unless they have established credit with the Galleries prior to the sale, must make payment in full before the lots will be delivered. Buyers not known to the Galleries must make payment in full within 3 days from the date of sale. **The Galleries retains the right to demand a cash deposit from anyone prior to bidder registration and/or to demand payment at the time the lot is knocked down to the highest bidder, for any reason whatsoever.** In the event that any buyer refuses or fails to make payment in cash for any lot at the time it is knocked down to him, the auctioneer reserves the right to reoffer the lot immediately for sale to the highest bidder. **Credit cards (Visa, Mastercard and Discover only) can be accepted as payment but will be subject to a 3% Convenience Fee, which will be added to the total of the entire invoice (including hammer price, buyer's premium, shipping and transit insurance charges and any applicable taxes).**

7. If the purchase price has not been paid within the time limit specified above, nor lots taken up within 7 days from the date of sale, the lots will be resold by whatever means deemed appropriate by the Galleries, and any loss incurred from resale will be charged to the defaulting buyer. **Any account more than 30 days in arrears will be subject to a late payment charge of 1½% per month as long as the account remains in arrears. Any expenses incurred in securing payment from delinquent accounts will be charged to the defaulter.** A fee of \$250.00 per check will be charged for each check returned for insufficient funds.
8. All lots are sold as genuine. **Any lot accompanied by a certificate issued by The Philatelic Foundation or by Professional Stamp Experts within 5 years of the sale date is sold "as is" and in accordance with the description on the certificate. Such lots may not be returned for any reason, including but not limited to a contrary certificate of opinion.** Buyers who wish to obtain a certificate for any item that does not have a P.F. or P.S.E. certificate (dated as above) may do so, provided that the following conditions are met: (1) the purchase price must be paid in full, (2) the item must be submitted to an acceptable expertizing committee with a properly executed application form within 21 days of the sale, (3) a copy of the application form must be given to the Galleries, (4) in the event that an adverse opinion is received, the Galleries retain the right to resubmit the item on the buyer's behalf for reconsideration, without time limit or other restrictions, (5) unless written notification to the contrary is received, items submitted for certification will be considered cleared 90 days from the date of sale, and (6) in the event any item is determined to be "not as described", the buyer will be refunded the purchase price and the certification fee up to \$800.00 unless otherwise agreed to in writing.
9. Until paid for in full, all lots remain the property of the Galleries on behalf of the seller.
10. Agents executing bids on behalf of clients will be held responsible for all purchases made on behalf of clients unless otherwise arranged prior to the sale.
11. The buyer assumes all risk for delivery of purchased lots and agrees to pay for prescribed shipping costs. **Buyers who receive lots in the U.S. are obligated to pay whatever sales tax or compensating use tax might be due, and buyers outside the U.S. are responsible for all customs duties.**
12. **The bidder consents that any action or proceeding against it may be commenced and maintained in any court within the State of New York or in the United States District Court for the Southern District of New York, that the courts of the State of New York and United States District Court for the Southern District of New York shall have jurisdiction with respect to the subject matter hereof and the person of the bidder. The bidder agrees not to assert any defense to any action or proceeding initiated by Galleries based upon improper venue or inconvenient forum. The bidder agrees that any action brought by the bidder shall be commenced and maintained only in a Federal Court in the United States District Court for the Southern District of New York or the State Court in the county in which Galleries has its principal place of business in New York. The bidder agrees not to use a public conflict resolution service and not to use any form of social media to publish comments or information about the Galleries and its employees which might harm the Galleries' reputation or business. These Conditions of Sale shall be governed by and construed in accordance with the substantive laws of the State of New York, and shall constitute an agreement that shall be binding on the parties, and their respective heirs, administrators, distributees, successors and assignees.**

SCOTT R. TREPEL, Principal Auctioneer  
Auctioneer's License No. 795952  
N.Y.C. Department of Consumer Affairs  
80 Lafayette Street, New York, N.Y. 10013  
Telephone (212) 577-0111

*Revised 1/2016*

## Grades, Abbreviations and Values Used in Descriptions

### Grades and Centering

Our descriptions contain detailed information and observations about each item's condition. We have also assigned grades to stamps and covers, which reflect our subjective assessment. For stamps, the margin width, centering and gum are described and graded according to generally-accepted standards (an approximate correlation to numeric grades is provided at right). Although we believe our grades are accurate, they are not always exactly aligned with third-party grading terms or standards for all issues. **A lot may not be returned because a certification service grades a stamp lower than the grade stated in the description. Information from the P.S.E. Stamp Market Quarterly and P.S.E. Population Report<sup>SM</sup> is the most current available, but lots may not be returned due to errors or changes in statistics or data.**

**Extremely Fine Gem (90-100):** The term "Gem" describes condition that is the finest possible for the issue. This term is equivalent to "Superb" used by grading services.







**Extremely Fine (80-90):** Exceptionally large/wide margins or near perfect centering.

**Very Fine (70-85):** Normal-size margins for the issue and well-centered with the design a bit closer to one side. "Very Fine and choice" applies to stamps that have desirable traits such as rich color, sharp impression, freshness or clarity of cancel.

**Fine (60-70):** Smaller than usual margins or noticeably off center. Pre-1890 issues may have the design touched in places.

**Very Good (below 60):** Attractive appearance, but margins or perforations cut into the design.

### Guide to Gum Condition

Gum Categories:	MINT N.H.	ORIGINAL GUM (O.G.)				NO GUM
	 <b>Mint Never Hinged</b> <i>Free from any disturbance</i>	 <b>Lightly Hinged</b> <i>Faint impression of a removed hinge over a small area</i>	 <b>Hinge Mark or Remnant</b> <i>Prominent hinged spot with part or all of the hinge remaining</i>	 <b>Part o.g.</b> <i>Approximately half or more of the gum intact</i>	 <b>Small part o.g.</b> <i>Approximately less than half of the gum intact</i>	 <b>No gum</b> <i>Only if issued with gum</i>
Catalogue Symbol:	★ ★	★	★	★	★	(★)
PRE-1890 ISSUES	<i>Pre-1890 stamps in these categories trade at a premium over Scott value</i>			Scott Value for “O.G.”		Scott “No Gum” Values thru No. 218
1890-1935 ISSUES	Scott “Never Hinged” Values for Nos. 219-771	Scott Value for “O.G.” (Actual value will be affected by the degree of hinging)		<b>Disturbed Original Gum:</b> Gum showing noticeable effects of humidity, climate or hinging over more than half of the gum. The significance of gum disturbance in valuing a stamp in any of the Original Gum categories depends on the degree of disturbance, the rarity and normal gum condition of the issue and other variables affecting quality. For example, stamps issued in tropical climates are expected to have some		
1935 TO DATE	Scott Value for “Unused”					

### Covers

Minor nicks, short edge tears, flap tears and slight reduction at one side are normal conditions for 19th century envelopes. Folded letters should be expected to have at least one file fold. Light cleaning of covers and small mends along the edges are accepted forms of conservation. Unusual covers may have a common stamp with a slight crease or tiny tear. **These flaws exist in virtually all 19th century covers and are not always described. They are not grounds for return.**

### Catalogue Values and Estimates

Unless otherwise noted, the currently available *Scott Catalogue* values are quoted in dollars with a decimal point. Other catalogues are often used for foreign countries or specialized areas and are referred to by their common name: *Stanley Gibbons* (SG), *Dietz*, *American Air Mail Catalogue* (AAMC), *Michel*, *Zumstein*, *Facit*, etc. Estimates are indicated with an "E." and reflect our conservative valuation in dollars. Reserves will never exceed the low end of the estimate range; they will sometimes exceed Scott Catalogue value for stamps in Extremely Fine condition.

Because of certain pricing inconsistencies in the *Scott Catalogue*—for example, blocks that have no gum, the absence of premiums for Mint N.H. items, etc.—we cannot guarantee the accuracy of values quoted for multiples, specialized items and collection lots. We generally try to be conservative, but buyers may not return a lot because of a discrepancy in catalogue value due to Scott pricing inconsistencies.

### Symbols and Abbreviations (see chart above for gum symbols)

⊞	Block	E	Essay	pmk.	Postmark	No.	Scott Catalogue Number
⊞	Cover	P	Proof	cds	Circular Datestamp	hs	Handstamp
FC	Fancy Cancel	TC	Trial Color Proof	var.	Variety	ms.	Manuscript



## THE STEVEN WALSKE COLLECTION OF UNITED STATES-FRANCE TRANSATLANTIC MAIL



STEVEN WALSKE'S COLLECTION OF TRANSATLANTIC MAIL BETWEEN THE UNITED STATES and France may be characterized as one of his earliest and most accomplished collecting pursuits. He began focusing on the subject at an early stage of his development as a postal historian, and working in concert with leading scholars and professionals on both sides of the Atlantic, Steve has helped unravel many of the mysterious and misunderstood aspects of pre-UPU mail exchange between the U.S. and France. His articles have made valuable contributions to our knowledge of the subject, and his willingness to exhibit his collection has raised the collecting community's awareness and appreciation of the many scarce and rare covers.

The mail exchanged between the U.S. and France was subject to numerous postal arrangements and conventions. Steve set out to create a comprehensive survey collection of the postal rates, routes and markings on steamship packet mail during the period from July 1840 to December 1875. He also acquired noteworthy covers from the UPU period and a group of unusual private ship letters, which were not subject to the same conditions that governed packet mail.

Prior to the first U.S.-France postal treaty in April 1857, packet mail between the two countries was exchanged principally via Great Britain (G.B.), and was facilitated by the 1836, 1843 and 1856 postal treaties between G.B. and France. U.S.-G.B. treaties and changing inland postages also affected rates. On packet mail carried directly between France and the U.S. before 1857, each country was required to collect its share of the postage on each letter. However, the 1857 U.S.-France Treaty governed packet mail on all routes between the two countries. When it expired in 1870, rates were again determined by a series of G.B.-France and U.S.-G.B. postal treaties until the August 1874 U.S.-France Treaty.

Steve arranged his collection and exhibit according to the seven major categories listed below, which generally follow a chronological order. These categories may be further divided into sub-periods, which are defined by changing rates and/or routes. A detailed table of these rate periods is presented in the Appendix to the Part One catalogue (Sale 1119) and available at [www.siegelauctions.com](http://www.siegelauctions.com)

- Mail exchanged under the 1836 G.B.-France Treaty (July 1840-May 1843)
- Mail exchanged under the 1843 G.B.-France Treaty (June 1843-December 1856)
- Mail exchanged under the 1856 G.B.-France Treaty (January-March 1857)
- 1847-57 direct packet mail
- Mail exchanged under the 1857 U.S.-France Treaty (April 1857-December 1869)
- 1870-74 interim non-treaty mail
- Mail exchanged under the 1874 U.S.-France Treaty (August 1874-December 1875), followed by UPU period

Steve's exhibit won an International Large Gold Medal at Italia '97. Having completed all possible rate/route combinations—the only time this has been achieved—Steve made the decision to sell.

On March 16, 2016, we offered the first part of Steve's collection (Sale 1119). That sale emphasized the United States frankings. In conjunction with World Stamp Show-NY 2016, we are offering the second part, comprising covers with greater French appeal. The sale will be held on Sunday, May 29, at 3:00 p.m., immediately following the Siegel-Shreve sale of the William H. Gross collection of Hawaii.

To build his important collections of France and French postal history, Steve has had longstanding relationships with almost every major dealer and auctioneer in France. For this auction, Steve and our firm have made special viewing arrangements with our *estimés collègues* in Paris, the firm of Roumet Histoire Postale, located at 15 Rue Drouot. Mr. Christian Pagnoux, a director of the Roumet firm's postal history division, has been kind enough to facilitate viewing, which coincides with Paris-Philex 2016. We hope that collectors in Europe will avail themselves of the opportunity to examine the items at Roumet Histoire Postale on May 18-19. The firm's website is [www.roumethp.fr](http://www.roumethp.fr)

— SCOTT R. TREPEL



Joseph Morlent, *Album du voyage au Havre et aux environs* (1841)

THE STEVEN WALSKE COLLECTION OF  
UNITED STATES-FRANCE TRANSATLANTIC MAIL



SUNDAY, MAY 29, 2016, AT 3:00 P.M. (LOTS 101-234)  
AT WORLD STAMP SHOW-NY 2016,  
ROOM 1E03 (TWO LEVELS BELOW SHOW FLOOR)

1849-50 CERES ISSUE



101

101° ☒ **1850, 10c Bister-Brown on Yellowish (1 var; Yvert 1a).** Horizontal strip of six, cancelled and end stamps tied by diamond grids, “Collioure 9 Dec. 1851” “cachet moyen” (medium size) circular datestamp on folded cover to New York, Paris and red “Bureau Maritime Havre 12 Dec. ‘51” backstamps, “20” cents due handstamp struck in New York, light file fold creases position 2

VERY FINE. AN IMPRESSIVE AND RARE STRIP OF SIX OF THE 1850 10-CENTIMES ISSUE IN THE BISTER-BROWN SHADE ON COVER TO NEW YORK.

The 60-centimes franking on this cover paid the rate per 7.5 grams from beyond the departure point and was due 20c direct packet postage in the U.S. This was carried on the N.Y. & Havre Line's *Franklin*, departing Le Havre Dec. 21, 1851 and arriving New York Jan. 3, 1852..... E. 10,000-15,000



102

- 102 ☒ **1850, 10c Bister on Yellowish (1; Yvert 1).** Two singles, used with **1850, 40c Orange on Yellowish, Ty. I (7; Yvert 5),** all tied by neat strikes of diamond grid cancel, Guebwiller Apr. 14, 1851 double-circle datestamp on folded cover to Constableville N.Y., Paris and Le Havre "Maritime" backstamps, "New York Ship 12cts. May 22" due circular datestamp, some minor wear and soiling, still Very Fine and attractive First Issue cover, carried by private ship at the 60-centimes rate for origination beyond the port of departure ..... E. 2,000-3,000



103

- 103 ☒ **1850, 10c Bister on Yellowish (1; Yvert 1).** Used with horizontal pair **1849, 25c Light Blue on Bluish (6; Yvert 4),** tied by large open grid cancels and by Paris Oct. 16, 1851 double-circle datestamp on narrow cover to Philadelphia Pa., red Le Havre "Maritime" backstamp, "New York Ship 7cts. Nov. 14" circular datestamp ties 25c pair, minor soiling and backflap tear, Very Fine use, carried by private ship at the 60-centimes rate for origination beyond the port of departure ..... E. 750-1,000



104

- 104 ☒ **1849, 15c Green on Greenish (2; Yvert 2).** Horizontal strip of four, large margins to in on right stamp, tied by large open grid cancel, Paris Jul. 23, 1852 double-circle datestamp on folded cover to New York, red "Bureau Maritime Havre 24 Jul. '52" backstamp and strikes of boxed "P.P." and "PD", "20" cents due handstamp struck in New York

VERY FINE. A RARE STRIP OF FOUR OF THE 1849 15-CENTIMES ISSUE ON COVER TO NEW YORK.

The 15c 1849 Issue was sold only in Paris and is very uncommon to find in multiples. This transatlantic use of a strip of four is remarkable. The 60-centimes franking paid the rate per 7.5 grams from beyond the port of departure and was due 20c direct packet postage in the U.S. This was carried on the N.Y. & Havre Line's *Franklin*, departing Le Havre on Aug. 4, 1852 and arriving New York Aug. 16..... E. 5,000-7,500



105

- 105 ☒ **1849, 15c Green on Greenish (2; Yvert 2).** Two singles, both with ample to large margins, used with vertical pair 1852, 25c Blue on Bluish (11; Yvert 10), ample margins to just in, both pairs tied by open grid cancels, "Paris 14 Mai '53" double-circle datestamp on small 1853 folded letter to Easton, Maryland, manuscript directive "Per American Steamer via Liverpool", red boxed "PD" handstamp "N. York Am. Pkt. 21 May 29" due circular datestamp (16c sea plus 5c inland postage)

FRESH AND EXTREMELY FINE. A BEAUTIFUL COVER FROM FRANCE TO THE UNITED STATES, FRANKED WITH THE 1849 15-CENTIMES AND 1852 25-CENTIMES ISSUES AND SENT BY AMERICAN PACKET.

This was carried on the Collins Line steamer *Arctic*, departing Liverpool May 18 and arriving New York May 28.

Ex Dubus..... E. 5,000-7,500

106



- 106° ☒ **1849, 20c Black (3; Yvert 3).** Three singles, two at left affixed as a vertical pair and one at right, all tied by diamond grid cancels on narrow 1849 cover datelined Paris Oct. 14 to New York, red Oct. 15 London transit datestamp and "P.P." (part paid) handstamp, carried by Cunarder *Hibernia* from Liverpool on Oct. 20, arriving New York Nov. 5 with "5" in circle due handstamp

VERY FINE. A RARE USE OF THE 1849 20-CENTIMES CERES FIRST ISSUE OF FRANCE ON AN UNDERPAID TRANSATLANTIC COVER TO NEW YORK. A WONDERFUL SHOWPIECE.

The sender apparently intended to have this cover to go by private ship or by American Packet—the Ocean Line's *Washington* sailed from Southampton on Oct. 20—however, the cover was not endorsed to go by any particular route, so the default was by British Packet via London and Liverpool. A letter sent by this route should have been prepaid 1fr50c (50-centimes inland plus 10-decimes British sea transit). The 60-centimes was accepted as full prepayment for French inland and British transit. This represents an extremely rare franking for French-U.S. transatlantic mail. The 20c Ceres issue was never intended for external use and is very rarely found on covers to foreign destinations..... E. 7,500-10,000

107



- 107 ☒ **1849, 20c Black on Yellowish (3; Yvert 3).** Used with 1850, 40c Orange on Yellowish, Ty. I (7; Yvert 5), tied by diamond grid cancels, Montpellier Jun. 3, 1850 double-circle datestamp on folded letter to Ipswich Mass., Paris and red Le Havre "Maritime" double-circle datestamps, red "New York Ship 7cts. Jul. 17" due circular datestamp

VERY FINE AND RARE USE OF THE 1849 20-CENTIMES STAMP ON COVER TO A FOREIGN DESTINATION.

The 20c Ceres Issue was never intended for external mail and is rare on covers to foreign destinations. This was carried by private ship at the 60-centimes rate for origination beyond the port of departure..... E. 3,000-4,000



108

- 108 ☒ **1850, 40c Orange on Yellowish, Ty. I (7; Yvert 5).** Horizontal pair, bright color and large margins all around, tied by open grid cancel, Paris Sep. 16, 1852 double-circle datestamp on cover **to Lancaster Pa.**, red boxed "PD" handstamp, "New York 21 Oct. 2" due circular datestamp (16c sea plus 5c inland postage), Very Fine, carried on the Collins Line steamer *Atlantic*, departing Liverpool Sep. 22 and arriving New York Oct. 2 ..... E. 2,000-3,000



109

- 109 ☒ **1850, 40c Orange on Yellowish, Ty. I (7; Yvert 5).** Used with **horizontal pair 1849, 10c Bister on Yellowish (1; Yvert 1)**, boldly cancelled by diamond grids, "Paris 3 Jun. '51" double-circle datestamp on folded letter to Boston Mass., manuscript "Via Havre" and carried on **maiden voyage of N.Y. & Havre Line Humboldt**, arrived Jun. 17 and struck with "New-York Ship 29 Jun. 18" circular datestamp, 10c stamps with minor bends and cover refolded at top, Very Fine American Packet direct cover, only four sailings occurred during this period ..... E. 1,000-1,500



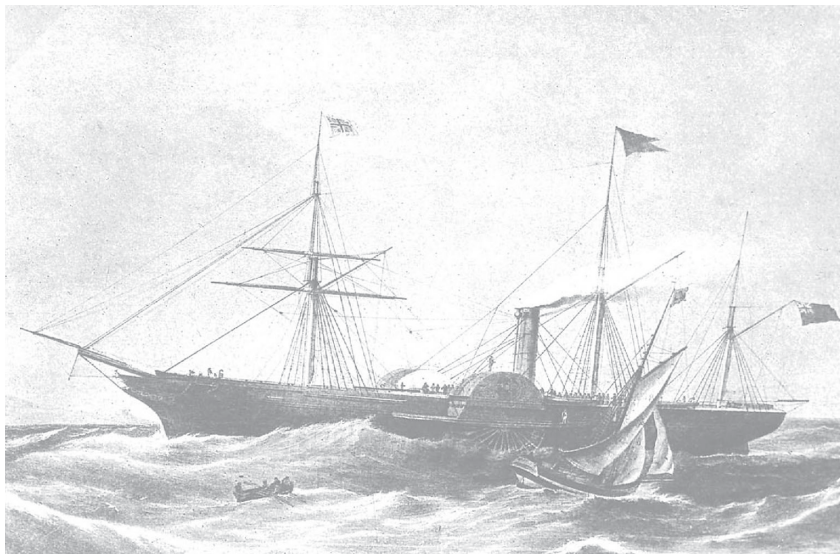
## 1849 ONE-FRANC "CERISE" (CHERRY) SHADE

110°☒ **1849, 1fr Cerise (Cherry) on Yellowish (9 var; Yvert 6d).** Horizontal strip of six, used with **vertical pair 1852, 25c Blue on Bluish (11; Yvert 10)**, both tied by large grid of dots cancels and strip by red boxed "PD" handstamps and Paris Aug. 23 (1853) double-circle datestamp on cover to **Groton Mass.**, carried on the Cunarder *Asia*, from Liverpool on Aug. 27, 1853, arriving New York Sep. 8, "New-York Br. Pkt. Sep. 9" circular datestamp ties pair, "20" cents due handstamp ties strip, left stamp in strip roughly separated into frameline, minor envelope corner flaws including nicked at bottom left

VERY FINE. THIS IS THE LARGEST RECORDED MULTIPLE OF THE RARE ONE-FRANC 1849 ISSUE IN THE DISTINCTIVE "CERISE" SHADE.

This shade is recorded used in Paris only during August 1853. The cover was franked for five-times the 13-decimes rate in France, and rated in the U.S. as a quadruple-rate cover, demonstrating the non-parallel weight progressions for French-U.S. mails. The 20 cents postage due in the U.S. is also an example of the 5c Open Mail "Restored Rate," which followed the brief Second Retaliatory Rate period of early 1853.

Ex Caspary..... E. 30,000-40,000



Cunarder Asia



111

111° ☒ **1849, 1fr Dark Carmine (9; Yvert 6).** 13 stamps affixed as three strips of three and four singles, most stamps tied by large open grid cancels, "Paris 24 Nov. '52" double-circle datestamp on legal-size folded letter to business address in New York, red boxed "PD" handstamp, "Boston Br. Pkt. Dec. 12" circular datestamp and "40" cents due, cover wear and light staining, some stamps with faults including file fold and one stamp in a strip torn prior to use, all to be expected on such a heavy letter, which probably contained an enclosure

VERY FINE APPEARANCE. A STRIKING AND EXTREMELY RARE 10-TIMES FRANKING WITH THIRTEEN EXAMPLES OF THE 1849 ONE-FRANC ISSUE ON COVER TO NEW YORK.

This was carried on the Cunarder *Niagara*, departing Liverpool Nov. 27 and arriving Boston Dec. 11. The 10-times rating in France nicely demonstrates the non-parallel weight progressions for French and U.S. mails, as it was rated in Boston for eight-times the 5c rate ..... E. 7,500-10,000



112

- 112 ☒ **1849, 1fr Carmine (9; Yvert 6).** Horizontal strip of five and two horizontal pairs, mostly ample to full margins, tied by multiple strikes of diamond grid cancel, red "Paris 8 Aout '49" double-circle datestamp on 1849 cover to Philadelphia, bold red London transit datestamp of Aug. 9, small boxed "PD" handstamp, carried on Cunarder *Canada* from Liverpool on Aug. 11, arriving New York Aug. 25, blue pen "20" cents due for quadruple 5c U.S. inland postage, a few minor issues including top left stamp in strip with scissors-cut, right stamp in strip with internal tear, left stamp in bottom pair with some creases, none of these flaws are obvious

VERY FINE APPEARANCE. A RARE SIX-TIMES FRANKING OF THE ONE-FRANC 50-CENTIMES RATE VIA BRITISH PACKET TO PHILADELPHIA, PREPAID WITH MULTIPLES OF THE ONE-FRANC 1849 ISSUE.

This cover was sent only one week after French postal regulations began to allow covers to the United States to be prepaid with postage stamps. The nine copies of the 1fr Carmine paid six-times the rate for French inland and British Packet postage (1fr50c per rate)..... E. 5,000-7,500



113

- 113° ☒ **1849, 1fr Carmine (9; Yvert 6).** Horizontal strip of four and pair, strip with large to full margins all around, pair with large margins to touched at top right, both tied by large open grid cancel, "Paris 26 Jun '51" double-circle datestamp on 1851 folded letter to New York, red "PD" handstamp, sent through Great Britain via closed mail so no transit markings, carried on Cunarder *Canada* from Liverpool on Jun. 28, arriving Boston Jul. 8 with "Br. Packet Boston 9 Jul" circular datestamp which ties the strip, "10" handstamp for double-rate U.S. inland postage

VERY FINE. A RARE QUADRUPLE-RATE COVER FROM PARIS TO NEW YORK VIA BRITISH PACKET, PREPAID WITH A STRIP OF FOUR AND A PAIR OF THE ONE-FRANC 1849 ISSUE.

This outstanding cover demonstrates the non-parallel weight progressions in France and the United States. While it was prepaid for the quadruple rate via British packet (50-centimes French inland plus 10-decimes British sea postage per rate), it was only rated as a double-rate cover in the U.S. .... E. 7,500-10,000



114

- 114 ☒ **1849, 1fr Carmine (9; Yvert 6).** Horizontal strip of three, huge margins including portion of adjoining stamp at bottom right, tied by large open grid cancel, "Paris 14 May '51" double-circle datestamp on 1851 folded cover to New York, red "PD" handstamp, sent through Great Britain via closed mail so no transit markings, carried on Cunarder *Canada* from Liverpool on May 17, arriving Boston May 28 with "Br. Packet Boston 28 May 5" due datestamp which ties the strip

EXTREMELY FINE STRIP OF THREE OF THE ONE-FRANC 1849 ISSUE ON A DOUBLE-RATE COVER FROM PARIS TO NEW YORK VIA BRITISH PACKET.

This is a choice quality strip on cover, and it also demonstrates the non-parallel weight progressions in France and the United States. While it was prepaid for the double-rate via British packet (50-centimes French inland plus 10-decimes British sea postage per rate), it was rated only as a single-rate cover in the U.S. .... E. 5,000-7,500



115

- 115 ☒ **1849, 1fr Carmine (9; Yvert 6).** Horizontal strip of three, large to ample margins all around, tied by three strikes of diamond grid cancel, red "Paris 11 Oct. '49" double-circle datestamp on small 1849 cover to New York, red London transit datestamp ties strip, matching boxed "PD" handstamp, "10" cents due handstamp for double-rate struck in New York also ties strip, minor central wax seal stain

VERY FINE. A CHOICE AND SCARCE USE OF A STRIP OF THREE OF THE FRANCE ONE-FRANC 1849 ISSUE ON A DOUBLE-WEIGHT COVER TO NEW YORK VIA BRITISH PACKET.

This cover was franked for double the 50-centimes uniform French inland postage plus 10-decimes sea postage. It was carried on the Cunarder *Europa*, arriving Boston Oct. 25 ..... E. 5,000-7,500

116



- 116 ☒ **1850, 1fr Brown Carmine (9b; Yvert 6B).** Horizontal strip of three, large margins to clear all around, tied by three neat strikes of diamond grid cancel on 1850 cover from Paris to Cambridge Mass., partly clear Paris Batignolles double-circle datestamp, Calais Dec. 11, 1850 backstamp, red London transit datestamp and matching boxed "PD" handstamp, "New York 21 Jan. 1" due circular datestamp, missing about three-fourths of back panel but top flap is intact as are edges of back panel VERY FINE. A BEAUTIFUL AND SCARCE USE OF A STRIP OF THREE OF THE FRANCE ONE-FRANC 1849 ISSUE ON A DOUBLE-WEIGHT COVER TO MASSACHUSETTS VIA AMERICAN PACKET.

This cover was franked for the double 50-centimes uniform French inland postage plus 10-decimes **discriminatory sea postage**, despite carriage by American Packet. It was carried on the Collins Line steamer *Baltic*, departing Liverpool Dec. 14, 1850. The mails were unloaded at Provincetown on Dec. 29 and taken to Boston. The cover arrived at New York on Jan. 1. The discriminatory sea postage charge made this route expensive and this example with a strip of three of the 1fr 1849 Issue is rare..... E. 3,000-4,000

117



- 117 ☒ **1849, 1fr Dark Carmine (9; Yvert 6).** Margins to just in, used with **1850, 10c Bister and 40c Orange on Yellowish (1, 7; Yvert 1, 5)**, 10c with particularly large margins, tied by partly clear strikes of "Affranchissement Insuffisant" boxed handstamps (in error as postage was actually overpaid), Paris Oct. 6, 1852 double-circle datestamp on folded cover to New York, red boxed "PD" handstamp, "5" in circle handstamp struck in New York for U.S. internal postage

VERY FINE THREE-COLOR FRANKING OF THE 1849 ISSUE ON COVER FROM PARIS TO NEW YORK. THIS IS ALSO A LIKELY UNIQUE USE OF THE "INSUFFICIENT POSTAGE" CANCEL TO TIE STAMPS OF THE FIRST ISSUE.

This cover was prepaid for the obsolete 15-decimes rate (20-centimes overpayment of the new 13-decimes rate). It was carried on the Cunarder *Europa*, departing Liverpool Oct. 9, arriving New York Oct. 21. Steven Walske records only this cover with stamps of the First Issue tied by the "Affranchissement Insuffisant" boxed handstamp..... E. 3,000-4,000



118

- 118 ☒ **1849, 1fr Dark Carmine (9; Yvert 6).** Used with **horizontal pair of 1849, 15c Green on Greenish (2; Yvert 2)**, large margins all around, tied by large open grid cancels, Paris May 19, 1853 double-circle datestamp on blue folded letter to New York, Calais backstamp, red boxed "PD" handstamp, bold strike of "N. York Br. Pkt. 5 May 31" circular datestamp ties stamps, 1fr stamp tiny margin nick

VERY FINE. A BEAUTIFUL COVER FROM PARIS TO NEW YORK WITH THE 15-CENTIMES AND ONE-FRANC 1849 ISSUE.

This was carried on the Cunarder *Arabia*, leaving Liverpool May 21, 1853 and arriving New York May 31..... E. 4,000-5,000



119

- 119 ☒ **1849, 1fr Dark Carmine (9; Yvert 6).** Used with **horizontal pair of 1849, 15c Green on Greenish (2; Yvert 2)**, tied by large open grid cancel, "Paris 12 Janv. '53" double-circle datestamp on folded letter to New York, manuscript "Per Liverpool Steamer of 15 January 1853" and carried on Cunarder *Africa*, arriving New York Jan. 30, struck in New York with bold "21" cents **Second Retaliatory Rate due handstamp**, file folds including one thru right 15c stamp, backflap tears

VERY FINE COVER TO NEW YORK, PREPAID IN FRANCE FOR BRITISH PACKET CARRIAGE, BUT CHARGED AMERICAN PACKET POSTAGE IN NEW YORK DURING THE "SECOND RETALIATORY RATE" PERIOD.

The U.S. Post Office Department, unaware that the continued discriminatory rates charged on American Packet mail to France after the 1848 treaty were rescinded in September 1851, briefly charged retaliatory packet postage of 16c (plus the normal 5c) on French mail via British Packet. This lasted only from Jan. 24 to Feb. 9, 1853. On Feb. 10 the Post Office Department issued a notice rescinding the extra sea charge and restoring the 5c Open Mail rate for letters sent to France via British Packet. There were only two westbound sailings during this period.

Ex Noel..... E. 2,000-3,000



120

- 120 ✉ **1849, 1fr Dark Carmine (9; Yvert 6).** Used with **horizontal pair of 1849, 15c Green on Greenish (2; Yvert 2)**, margins to slightly in, tied by large open grid cancel, "Paris 7 Janv. '53" double-circle datestamp on folded letter to Fall River Mass., manuscript "*Per Steamer via Liverpool*" and carried on Cunarder *Africa*, arriving New York Jan. 30, "**New York 21 Jan. 31**" **due circular datestamp for Second Retaliatory Rate**, 1fr stamp with corner tear, right 15c stamp tiny edge tear, Very Fine appearance, the U.S. Post Office Department, unaware that the continued discriminatory rates charged on American Packet mail to France after the 1848 treaty were rescinded in September 1851, briefly charged retaliatory packet postage of 16c (plus the normal 5c) on French mail via British Packet, this lasted only from Jan. 24 to Feb. 9, 1853, there were only two westbound sailings during this period ..... E. 1,000-1,500



121

- 121 **1849, 1fr Dark Carmine (9; Yvert 6).** Vertical pair, large margins to touched, light filing crease thru top stamp, used with **two vertical pairs of 1849, 15c Green on Greenish (2; Yvert 2)**, each pair tied by diamond of dots cancels, red Paris Jan. 30, 1852 double-circle datestamp on cover front only to **New Orleans, Louisiana**, manuscript "*Per England and Liverpool Steamer*" at top, red boxed "PD" handstamp, faint strike of New York circular datestamp ties 15c pair at right, two strikes of "5" cents handstamp for U.S. internal postage (one cancels left 15c pair)

VERY FINE. A BEAUTIFUL DOUBLE-RATE USE OF THE FRANCE 15-CENTIMES AND ONE-FRANC 1849 ISSUE ON A COVER FRONT TO NEW ORLEANS.

French prepayments were reduced to 1fr30c per 7.5 grams, with 80-centimes credit to Great Britain, effective Dec. 1, 1851. This was carried by British packet on the Cunarder *Canada*, departing Liverpool on Jan. 31 and arriving New York Feb. 18.

Ex Ferrary ..... E. 4,000-5,000



122

- 122 ☒ **1849, 1fr Carmine (9; Yvert 6).** Huge margins to just in at right, used with horizontal pair 1852, 25c Blue on Bluish (6; Yvert 4), huge to ample margins including traces of adjoining stamp at top left, all stamps tied by diamond grid cancel, "**Assemblée Nationale Postes 21 Aout '51**" double-circle datestamp on European-size 1851 cover to Boston Mass., clear strike of "Ligne-De-Calais 24 Aout '51" backstamp, boxed "PD" handstamp, sent through Great Britain via closed mail so no transit markings, carried on Cunarder *America* from Liverpool Aug. 23, arriving Boston Sep. 4, "5" due handstamp

EXTREMELY FINE. A BEAUTIFUL USE OF THE 1849 ISSUE ONE-FRANC AND PAIR OF THE 25-CENTIMES ON COVER TO BOSTON VIA BRITISH PACKET.

This franking paid the 50-centimes French inland plus 10-decimes sea postage for carriage via British Packet ..... E. 2,000-3,000



123

- 123 ☒ **1849, 1fr Carmine (9; Yvert 6).** Horizontal pair, large to full margins, used with horizontal pair **1852, 25c Blue on Bluish (6; Yvert 4)**, large to full margins, all stamps tied by large open grid cancels, Paris May 15, 1852 double-circle datestamp on folded letter to **San Francisco**, red London transit datestamp, "20" due handstamp struck in San Francisco (in error), 25c pair with light horizontal crease

VERY FINE. A BEAUTIFUL ONE-FRANC AND 25-CENTIMES 1849 ISSUE FRANKING FROM PARIS TO SAN FRANCISCO VIA BRITISH WEST INDIES PACKET.

French Circular #67 set 25-decimes per 7.5 grams fully-paid rate to California by the Royal Mail Steam Packet Co. via St. Thomas and Chagres, effective Sep. 1, 1851. The U.S. erroneously collected 20c due on this mail. This cover was carried on RMSP steamer *Magdalena* from Southampton on May 17, arriving St. Thomas Jun. 1, then by RMSP *Trent* to Chagres, arriving Jun. 10. It was carried to California by the PMSC steamer *Tennessee* from Panama on Jun. 24, arriving San Francisco July 10.

With 1991 Calves certificate ..... E. 3,000-4,000



124

- 124 ☒ **1849, 1fr Carmine (9; Yvert 6).** Horizontal pair, large margins to clear at bottom right corner, used with vertical pair **1852, 25c Blue on Bluish (11; Yvert 10)**, large margins to just in at right, all stamps tied by large grid of dots cancels, Paris Aug. 31, 1853 double-circle datestamps on folded letter **to Stockton Cal.**, red London transit tombstone datestamp, "20" due handstamp struck in San Francisco (in error), bottom 25c stamp with light creases

VERY FINE AND COLORFUL MIXED-ISSUE FRANKING FROM PARIS TO SAN FRANCISCO VIA BRITISH WEST INDIES PACKET.

French Circular #67 established a 25-decimes per 7.5 grams fully-paid rate to California by the Royal Mail Steam Packet Co. via St. Thomas and Chagres, effective Sep. 1, 1851. The U.S. erroneously collected 20c due on this mail. This cover was carried on RMSP steamer *La Plata* from Southampton on Sep. 25, arriving St. Thomas Sep. 15, then by RMSP *Medway* to Chagres, arriving Sep. 24. It was carried to California by the PMSC steamer *John L. Stephens* from Panama, arriving San Francisco Oct. 17.

Ex Caspary ..... E. 2,000-3,000



125

- 125 ☒ **1849, 1fr Dark Carmine (9; Yvert 6).** Two singles, large margins, used with **horizontal pair and single of 1852, 25c Light Blue on Bluish (6; Yvert 4)**, all tied by diamond of dots cancels, "Mulhouse 17 Jun. '52" double-circle datestamp on folded letter **to Houston Texas**, red boxed "PD" handstamp, "Boston Br. Packet 8 Jul." circular datestamp ties 25c stamps, manuscript "5" cents for U.S. internal rate

VERY FINE. A BEAUTIFUL COVER FROM FRANCE TO TEXAS WITH THE 25-CENTIMES AND ONE-FRANC 1849 ISSUE.

This franking overpaid by 15-centimes the double (26-decimes) rate via British packet. The cover was carried on the Cunarder *Canada*, departing Liverpool Jun. 26, arriving Boston Jul. 7. French mail to Texas in this period is rare..... E. 3,000-4,000



126

- 126 ☒ 1849, 1fr Carmine (9; Yvert 6). Large to full margins, used with horizontal pair 1852, 25c Blue on Bluish (6; Yvert 4), huge to ample margins including traces of adjoining stamps at top and left, all stamps tied by bold strikes of diamond grid cancel, "Paris 19 Jul. '50" double-circle datestamp on blue 1850 cover to **Tusculumbia Ala.**, Calais backstamp, red London transit datestamp (Jul. 20) and boxed "PD" handstamp, carried on Cunarder *Cambria* from Liverpool Jul. 27, arriving Boston Aug. 8, "Br. Packet Boston 8 Aug." circular datestamp and "5" due handstamp, small mended hole from opening, Very Fine, a lovely cover from France to Alabama sent via British Open Mail ..... E. 1,000-1,500



127

- 127 ☒ 1849, 1fr Carmine (9; Yvert 6). Huge margins to full at top, used with two singles 1852, 25c Blue on Bluish (6; Yvert 4), affixed slightly overlapping, all stamps tied by large open grid cancel, "Paris 3 Sept. '51" double-circle datestamp on 1851 folded letter to New York, red "PD" handstamp, sent through Great Britain via closed mail so no transit markings, carried on Cunarder *Europa* from Liverpool on Sep. 6, arriving Boston Sep. 17, "Br. Packet Boston 17 Sep. 5" due datestamp, Very Fine and colorful E. 1,000-1,500



128



130

- 128 ☒ **1849, 1fr Carmine (9; Yvert 6).** Margins to in at right, used with two singles **1852, 25c Blue on Bluish (6; Yvert 4)**, tied by diamond grid cancels, "La Ferte-S-Jouarre 30 Dec. '50" double-circle datestamp on 1850 folded letter to Philadelphia Pa., red London transit ties 25c stamps, boxed "PD" handstamp, carried on Havre Line steamer *Franklin* from Southampton on Jan. 1, 1851, arriving New York Jan. 16 with bold "New York 21 Jan. 16" due circular datestamp which also ties the 25c stamps, some minor silk repairs of edge splitting, 1fr stamp with small fault at right from placement near edge, still Very Fine and attractive cover paying 50-centimes for French inland postage plus 10-decimes **discriminatory sea postage**, despite carriage by American Packet, ex Noel ..... E. 1,000-1,500
- 129 **1849, 1fr Carmine (9; Yvert 6).** Large margins to touched, used with **horizontal pair of 1852, 25c Blue on Bluish (6; Yvert 4)**, tied by diamond grid cancels, perfect strike of "Paris 26 Dec. '50" double-circle datestamp on 1850 cover front only to New York, red London transit and boxed "PD" handstamp, carried on Collins Line steamer *Atlantic* from Liverpool on Dec. 28, ship was disabled and the mails transferred to Cunarder *Africa*, departing Liverpool Feb. 1, 1851 and arriving New York Feb. 15, "21" due handstamp for American Packet postage ties 25c pair, Very Fine use paying 50-centimes for French inland postage plus 10-decimes **discriminatory sea postage**, despite carriage by American Packet ..... E. 500-750
- 130 ☒ **1849, 1fr Carmine (9; Yvert 6).** Ample margins to touched, used with **horizontal pair of 1852, 25c Blue on Bluish (6; Yvert 4)**, affixed slightly overlapping 1fr and tied by diamond grid cancels, clear strike of "Tours 18 Dec. '50" double-circle datestamp on 1850 folded letter to Boston, Paris backstamp (Dec. 19), red London transit (Dec. 20) and boxed "PD" handstamp, carried on Ocean Line steamer *Washington* from Southampton Dec. 21 (though not specifically endorsed to the Ocean Line), arrived New York with "New York 21 Jan. 8" due circular datestamp for American Packet postage plus inland, file fold slightly creases left 25c stamp, Very Fine use paying 50-centimes for French inland postage plus 10-decimes **discriminatory sea postage**, despite carriage by American Packet, with 1981 Calves certificate ..... E. 500-750



131



131 detail

# 1849 ONE-FRANC CERES TÊTE-BÊCHE PAIR ON AMERICAN PACKET COVER

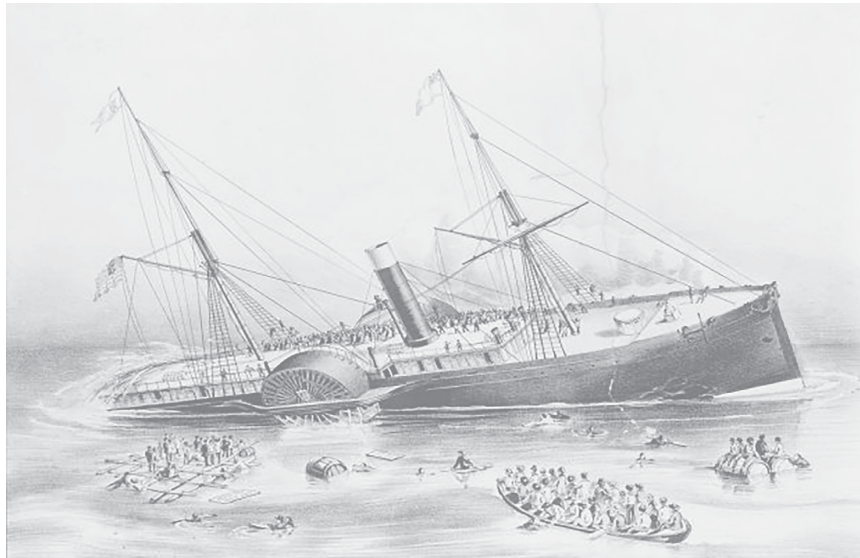
131° ☒ **1849, 1fr Dark Carmine on Yellowish, Tête-Bêche Pair (9a; Yvert 6e).** Large margins to clear of framelines all around, used with **1850, 40c Orange on Yellowish (7; Yvert 5),** both tied by grid of dots cancels which slightly indent the stamps, "Paris 16 Mai '53" double-circle datestamps on folded cover to New York, manuscript "*via Liverpool per 'Arctic'*" at top, Calais backstamp of May 16, red boxed "PD" handstamp, bold strike of "New-York Am. Pkt. May 29" circular datestamp ties the stamps, "42" cents due for double rate (16c sea plus 5c inland postage per rate), central file fold well below stamps

VERY FINE. AN EXCEPTIONAL AND RARE USE OF A TÊTE-BÊCHE PAIR OF THE 1849 ONE-FRANC CERES ISSUE ON AN AMERICAN PACKET COVER FROM FRANCE TO THE UNITED STATES. ONLY TWO ARE RECORDED.

This was carried on the Collins Line's *Arctic*, departing Liverpool May 18 and arriving New York May 28, the same trip that carried the cover in lot 105. This cover also nicely demonstrates the non-parallel weight progressions for French and U.S. mails, as it is franked for triple the 80c rate in France, but was rated as double-rate cover in the United States. Only two 1f Carmine tête-bêche covers to the U.S. are recorded, the other offered in lot 132.

The *Arctic*, the largest of the four Collins steamers, sank on September 27, 1854, fifty miles off the coast of Newfoundland, after colliding with a smaller vessel. Only 88 of the 400 passengers and crew survived.

Ex Caspary..... E. 50,000-75,000



Sinking of the Collins Line *Arctic* in 1854



132



132 detail

## 1849 ONE-FRANC CERES TÊTE-BÊCHE PAIR ON BRITISH PACKET COVER

132° ☒ **1849, 1fr Dark Carmine, Tête-Bêche Pair (9a; Yvert 6e).** Two large margins to slightly in on other sides, small scissors-cut in one stamp, used with **horizontal pair of 1849, 10c Bister and single 1850, 40c Orange on Yellowish (1, 7; Yvert 1, 5),** all tied by large open grid cancels, "Paris 15 Juil. '52" double-circle datestamp on cover **to Newport R.I.,** red boxed "PD" handstamp, "New-York 5-cts. Jul. 29" integral-rate due circular datestamp ties 10c pair, some minor cover edge flaws from thick enclosure (which accompanies), error pair with couple tiny margin nicks from placement near edge

VERY FINE. A COLORFUL AND RARE USE OF A TÊTE-BÊCHE PAIR OF THE 1849 ONE-FRANC CERES ISSUE ON A BRITISH PACKET COVER FROM FRANCE TO THE UNITED STATES. ONLY TWO ARE RECORDED.

This was carried on the Cunarder *Europa*, departing Liverpool Jul. 17 and arriving New York Jul. 29. This cover also nicely demonstrates the non-parallel weight progressions for French and U.S. mails, as it is franked for double the 13-decimes rate in France, but was rated as single-rate in the United States. Only two 1f Carmine tête-bêche covers to the U.S. are recorded, the offered in lot 131.

From our 1980 Rarities sale ..... E. 10,000-15,000



Cunarder *Europa* in dock—one of the earliest photographs of a mid-19th century steamship





## 1849 ONE-FRANC CERES VERMILION ON BRITISH PACKET COVER

133°✉ **1849, 1fr Dull Vermilion on Yellowish (8 var; Yvert 7b).** Horizontal strip of three, large margins all around, rich color in the rare Vermilion shade, tied by four strikes of diamond grid cancel, red "Paris 9 Aout '49" double-circle datestamp on 1849 cover to Philadelphia Pa., sender's directive "*1st British Steamer*" and "*Via Liverpool*", "Ligne de Boulogne 9 Aout '49" backstamp, red London transit (Aug. 10), two strikes of matching small "PD" boxed handstamp including one which ties strip, carried on Cunarder *Canada* from Liverpool on Aug. 11, arriving New York Aug. 25 where "5" in circle handstamp struck for U.S. inland postage (also ties strip)

EXTREMELY FINE GEM STRIP OF THE RARE 1849 ONE-FRANC VERMILION ON A TRANS-ATLANTIC COVER TO PHILADELPHIA, PAYING THE DOUBLE RATE VIA BRITISH PACKET. THIS IS THE ONLY ONE-FRANC VERMILION ON COVER TO THE UNITED STATES AND THE HIGHLIGHT OF THE WALSKE COLLECTION.

Only 250,000 of the 1fr Vermilion were printed, all between December 30, 1848, and January 7, 1849. The stamps were recalled in December 1849 and more than 100,000 were destroyed at that time. The 1fr stamp was intended for triple internal postage. The regulations that allowed international mail to be prepaid with stamps only became effective on August 1, 1849, leaving a short four-month period when it was possible to use this stamp on foreign mail. Multiples, either used or unused, of any of the 1fr Vermilion shades are extremely rare. This is the second largest recorded multiple on cover, and the largest to a foreign destination among the tiny population of covers that exist (fewer than five mailed outside of France). The only larger multiple on cover is a strip of four with margins to in and small faults, used on a wrapper sent within France (ex "Lafayette"). The strip of three on this cover paid double the 50-centimes French inland rate plus 10-decimes sea postage for carriage to the U.S. via British Packet.

Signed von der Weid. With 2003 Brun and 2007 Calves certificates..... E. 100,000-150,000

FROM BOSTON.
FROM NEW YORK.

**THE BRITISH AND NORTH AMERICAN ROYAL  
MAIL STEAMSHIPS.**

BETWEEN NEW YORK AND LIVERPOOL, DIRECT, and between Boston and LIVERPOOL, calling at Halifax to land and receive mails and passengers.

<b>ASIA,</b> <b>AMERICA,</b> <b>CANADA,</b>	<b>CAMBRIA,</b> <b>AFRICA,</b> <b>EUROPA,</b>	<b>NIAGARA,</b> <b>IBERNIA,</b> <b>CALEDONIA.</b>
---	---	---

**ASIA,** Judkins, from New York, September 25th.  
**CANADA,** Harrison, from Boston, October 2d.  
**NIAGARA,** Stone, from New York, October 9th.  
**CAMBRIA,** Leitch, from Boston, October 16th.  
**EUROPA,** Lott, from New York, Wednesday, October 23d  
**AMERICA,** Shannon, from Boston, October 30.  
**ASIA,** Judkins, from New York, November 6th.  
**CANADA,** Harrison, from Boston, Nov. 13th.  
**AFRICA,** Ryrie, from New York, Nov. 20th.  
 An experienced surgeon on board.  
 No berth secured until paid for.  
 Freight will be charged on specie beyond an amount for personal expenses.  
 All Letters and Newspapers must pass through the Post Office.  
 Passage from New York or Boston to Liverpool, first cabin, \$120; second cabin, \$70.  
 For freight or passage apply to  
**E. CUNARD, JR., 28 Broadway.**  
 FRENCH, GERMAN, AND OTHER FOREIGN GOODS received and brought in common with British goods.  
 Through bills of lading are given in Havre for New York, and the same will be done in New York for Havre.  
 After the first of April next, the rate of freight by the above Steamers from Liverpool will be materially reduced.

Cunard sailing schedule 1850

## 1852-54 NAPOLEON III ISSUE



134

- 134 ☒ **1852, 10c Pale Bister on Yellowish (10; Yvert 9).** Used with three singles **1850, 40c Orange on Yellowish, Ty. I (7; Yvert 5)**, large to full margins, all cancelled or tied by diamond of dots cancel, "Guebwiller 23 Aout. '53" double-circle datestamp on narrow cover **to Lansing, Iowa**, Paris backstamp, "N. York Br. Pkt. 5 Sep. 9" circular datestamp, with original contents

VERY FINE. A COLORFUL COMBINATION OF THE 1850 40-CENTIMES ISSUE AND THE RARE 1852 10-CENTIMES NAPOLEON "PRESIDENCE" ISSUE ON COVER TO THE UNITED STATES.

This franking paid the 13-decimes rate and was carried on the Cunarder *Asia*. The 10c 1852 Napoleon "Presidence" Issue is very rare on an overseas cover ..... E. 3,000-4,000



135

- 135 ☒ **1852, 10c Pale Bister on Yellowish, 25c Blue on Bluish (10, 11; Yvert 9, 10).** Horizontal pair of 25c, tied by six-point star of dots cancels, Paris Sep. 29, 1853 double-circle datestamp on folded letter to New York, back with red "Bureau Maritime Le Havre 30 Sep. '53" double-circle datestamp, "N. York Am. Pkt 20 Sep. 15" due circular datestamp (in error, should be Oct.), Very Fine, a scarce on-cover use of **both 1852 Issue values to New York by American packet**, carried by N.Y. & Havre Line steamer *Humboldt* .. E. 750-1,000



136



137



138

- 136 **1852, 10c Pale Bister on Yellowish (10; Yvert 9).** Large to clear margins, used with two singles **1852, 25c Blue on Bluish (11; Yvert 10)**, neatly tied by large open grid of dots cancel, Paris Dec. 8, 1853 double-circle datestamp on large part of cover front only to Charleston S.C., "New York Ship 7 Jan. 10" (1854) due circular datestamp ties two stamps, boxed "Advertised One Cent" handstamp, Very Fine, a rare use of **both 1852 Issue values** on cover..... E. 500-750
- 137 ✉ **1853, 10c Bister, 40c Orange Ty. I, Yellowish (14, 18; Yvert 13A, 16).** Tied by diamond of dots cancels, "Paris 16 Fevr. '57" double-circle datestamp on cover to New York, red boxed "P.P." (part paid) handstamp, "N. York Am. Pkt. 21 Mar. 6" due circular datestamp, Very Fine an extremely rare **"Three Months" Period cover by American Packet**, with fewer than four known, per the 1856 France-Great Britain Treaty, France credited 40-centimes per 30 grams to GB and collected 10-centimes inland for a total prepayment of 50-centimes, these rates were in effect for only three months before the U.S.-France Treaty commenced (allowing for full prepayment), covers sent by American packet during the Three Months Period are rare due to the higher cost versus British packets and few sailings (only seven westbound sailings during the period), this was carried on the Collins Line steamer *Atlantic*, arriving New York Mar. 5, ex Noel..... E. 1,000-1,500
- 138 ✉ **1853, 10c Bister on Yellowish, 20c Blue on Bluish (14, 15; Yvert 13A, 14A).** Tied by red diamond of dots cancel, matching "Bureau Maritime Le Havre 1 Aout. '54" double-circle datestamp and boxed "PD" on cover from Paris to Boston, neat blue "Greene & Co." forwarder's handstamps on front and back (Paris and Havre), "N. York Am. Pkt. 20 Aug. 16" due circular datestamp, fresh and Extremely Fine American packet direct cover with all markings exceptionally well-struck, a gorgeous cover, carried by the N.Y. & Havre Line's *Union* on its first of nine voyages..... E. 1,000-1,500

C. ROSENLECHER  
 AU HAMBURG

J. Union

Messieurs  
 Hiemann & Co.

New York

20 DEC 90

PD

2c

4c

Paris Washington.  
Messieurs Robt. Leavitt  
44 Maiden Lane  
New-York.

MAY 29, 2016



142

- 142 ☒ **1853, 40c Orange on Yellowish, Ty. I (18; Yvert 16).** Horizontal strip of six, large margins to touched in a few places, used with **1853, 10c Bister on Yellowish (14; Yvert 13A)**, all tied by diamond of dots cancels, "Savigny-S-Orge 17 Fevr. '55" double-circle datestamp on cover to post office box in **San Francisco**, sender's directive "*Via Southampton and Panama by Steamer*" at bottom, red boxed "PD" and London transit datestamp, "20" due handstamp struck in San Francisco (in error), left 40c stamp and 10c small faults from placement near edge of cover, still a colorful and Very Fine late use for the 25-decimes per 7.5 grams fully-paid rate to California by the Royal Mail Steam Packet Co., carried on RMSP steamer *La Plata* from Southampton on Mar. 2, arriving St. Thomas Mar. 17, then by RMSP *Conway* to Colon, arriving Mar. 27, carried to California by the PMSC steamer *Golden Gate*, arriving San Francisco Apr. 12 ..... E. 750-1,000



143

- 143 **1854, 80c Dark Vermilion (19 var; Yvert 17Ad var).** Horizontal pair, gorgeous color in this better shade, right stamp light pre-use crease, tied by diamond of dots cancels with Paris May 7, 1857 double-circle datestamp on cover front only to New York, pen "6" cents credit to U.S., boxed "PD" and red "Br. Service" octagonal handstamps, red "New York Paid 30 May 21" circular datestamp restates the paid rate, Very Fine double-rate use of this rare shade to New York, carried on Cunarder *Niagara*..... E. 750-1,000



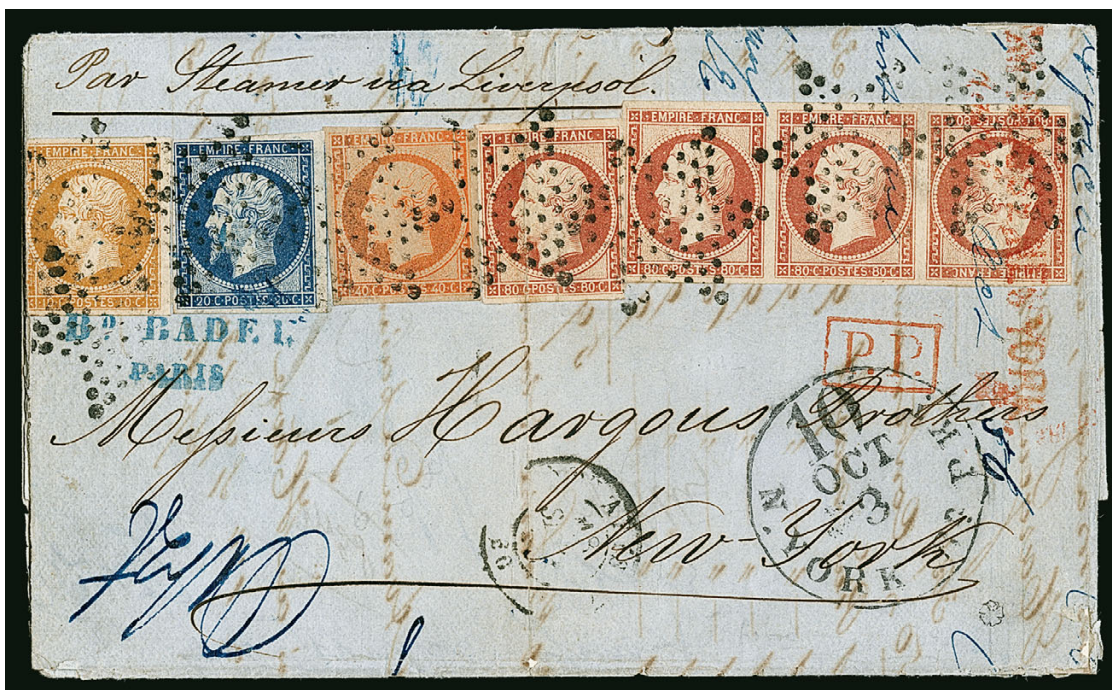
M. Arago  
 M. Baron de B.  
 New York

PARIS 21 JUNE 1855  
 PARIS 21 JUNE 1855

1 FRANC  
 1 FRANC

MAY 29, 2016

1854 80-CENTIMES NAPOLEON III TÊTE-BÊCHE MULTIPLE  
ON BRITISH PACKET COVER



147

- 147 ☒ **1854, 80c Carmine on Yellowish, Tête-Bêche Pair (19a; Yvert 17Af).** Back-to-back arrangement in a strip of three, right stamp torn and repaired, additional single to left and used with **10c, 20c and 40c 1853 Napoleon Issue (14, 15, 18)**, tied by six-point star of dots cancels and by forwarder's handstamp, also by red New York customs straightline handstamp at right, Paris Sep. 18, 1856 double-circle datestamp on folded letter to New York, "N. York Br. Pkt. 10 Oct. 3" due circular datestamp, various docketing on front and back, single 80c and 40c stamps creased from file folds, cover edge flaws

FINE APPEARANCE DESPITE THE REPAIR. A RARE TÊTE-BÊCHE PAIR OF THE 1854 80-CENTIMES NAPOLEON III ISSUE ON COVER TO NEW YORK.

This cover was prepaid with a total of 3fr90c for triple the 13-decimes rate, but due 10c for the double-rate in New York (non-parallel weight progressions between France and the U.S.). It was carried by the Cunarder *Africa*, departing Liverpool Sep. 20, 1856 and arriving New York Oct. 3.

Scott value \$42,000.00 for the tête-bêche pair on cover..... E. 2,000-3,000



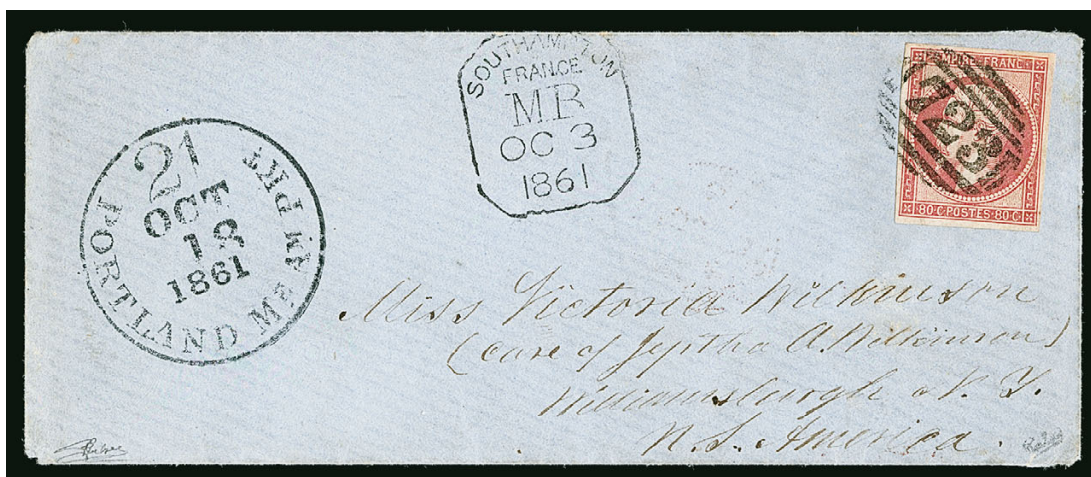
148

- 148 **1854, 80c Carmine on Yellowish, Tête-Bêche Pair (19a; Yvert 17Af).** Left stamp large margins, right stamp just touched at right, tied by red “New York Paid 30 Dec. 28” circular datestamp, “Castillon-Dordogne 5 Dec. ‘58” origination double-circle datestamp on faulty cover front only **to New Orleans**, red “Br. Service” octagonal handstamp and boxed “PD”, blue forwarder’s handstamp, “N.O.U.S. City Post Jan. 3” (1859) circular datestamp applied by New Orleans U.S. City Post carrier department, left stamp in pair with two vertical creases, otherwise Fine and rare tête-bêche pair of the 80c 1854 Issue, carried on Cunarder *Asia*, arriving New York Dec. 27, with 1993 von der Weid certificate, Scott value for tête-bêche pair on full cover \$42,500.00..... E. 750-1,000



149

- 149 **1859, 80c Rose, Private “Susse” Perforations (20 var; Yvert 17B var).** Two singles with private perforations, both tied by diamond of dots cancels, Paris Oct. 18, 1861 double-circle datestamp on cover to New York City address, carried on Cunarder *Europa* from Liverpool on Oct. 19, arriving Boston Nov. 1, red manuscript “6” cents credit for double rate, red “New York Paid Nov. 1” circular datestamp, Very Fine, the “Susse” private perforations originate with a French stationery firm, Susse Freres, which perforated stamps for their customers in a large 7-gauge perf from January 1861 until mid-December, their perforating machine was later sold to Arthur Maury, who repaired it and perforated singles and blocks for collectors, the pair on this cover is from the genuine group perforated by Susse Freres..... E. 1,500-2,000



150

- 150 ✉ **1860, 80c Rose (20; Yvert 17B).** Ample to full margins all around, tied by “723” in grid British cancel with “Southampton France MB (Mobile Box) OC 3, 1861” octagonal datestamp on narrow blue cover to Williamsburgh N.Y., clear strike of “Portland Me. Am. Pkt 21 Oct. 18, 1861” exchange office due datestamp

VERY FINE. A FRESH AND CHOICE COVER FROM FRANCE TO NEW YORK WITH THE RARE BRITISH SOUTHAMPTON MOBILE BOX CANCEL AND A PORTLAND, MAINE, EXCHANGE OFFICE DATESTAMP.

This was carried on the Allan Line's *North American* to Quebec, arriving Oct. 16 (an Apr. 1, 1859 amendment to the 1848 US-GB treaty added the Allan Line as an American Packet). In addition to the triple-rarity of a British marking used to cancel the stamp, the Southampton Mobile Box and Portland Maine office datestamp, this is also an unusual cover directed via open mail during the French-U.S. Treaty period, and therefore due 21c for American Packet service (arrived in London as a loose ship letter). This was a more expensive routing and therefore seldom used. .... E. 2,000-3,000



151



152



153

- 151 ☒ **1860, 80c Rose on Pinkish (20; Yvert 17B).** Tied by diamond of dots cancel, Bordeaux Jan. 22, 1861 double-circle datestamp on blue tissue-paper folded cover **to New Orleans in Confederate State of Louisiana**, manuscript "3" credit for British Packet service (in error), carried by Allan Line steamer *Anglo-Saxon* via Portland Me., red "Boston Paid 15 Feb. 7" circular datestamp and "Am. Service" octagonal handstamp, stamp with tiny nick bottom right corner, Very Fine, an Apr. 1, 1859 amendment to the 1848 US-GB treaty added the Allan Line as an American Packet, this mail was consistently misrated for 3c British Packet, Louisiana seceded from the Union on Jan. 26, 1861, this cover arrived just after the formation of the Confederacy ..... E. 300-400
- 152 ☒ **1860, 80c Rose on Pinkish (20; Yvert 17B).** Tied by diamond of dots cancel, Le Havre Dec. 23, 1860 double-circle datestamp on folded letter to New York, prepaid at the 80c 1857 Treaty rate but carried on Inman Line steamer *Glasgow* and processed as a ship letter, bold "Ship Letter Liverpool DE 27 1860" Crown circular datestamp struck on flap, red London transit and boxed "P.P." (part paid), "6" due handstamp ties stamp, Very Fine and choice use with the scarce English Crown datestamp ..... E. 200-300
- 153 ☒ **UNITED STATES, 1851, 1c Blue, Ty. IV (9).** Horizontal pair, cut well in at top, red grid cancel, used with 3c Dull Red, Ty. II (11A) with bottom left corner margins, tied together by "New-York Oct. 18" circular datestamp on 1854 folded cover **to Boulogne-sur-Mer, France**, red "New York Br. Pkt. Oct. 18" circular datestamp, London transit backstamp, clear strike of red "Etats-Unis Paq. Brit. Calais 1 Nov. 54" entry datestamp and "13"-decimes due, light file folds slightly crease left 1c stamp, otherwise Fine, according to Noel this is the **only recorded example of this Calais entry datestamp** which was used only on mail addressed to the region around Calais and Boulogne, ex Noel ..... E. 400-500



154

154° ☒ **1853, 1fr Lake on Yellowish (21; Yvert 18).** Vertical pair, top stamp large to huge margins, bottom stamp margins to clear, used with vertical pair **1852, 25c Blue on Bluish (11; Yvert 10)**, large to clear margins, both pairs tied by grid of dots cancels, Paris Oct. 31, 1853 double-circle datestamp on folded letter to **Stockton Cal.**, sender's directive "*Steamer voie de Panama*" at top, Oct. 31 Calais double-circle backstamp, red boxed "PD" and London transit datestamp, "20" due handstamp struck in San Francisco (in error)

EXTREMELY FINE. A SUPERB MIXED-ISSUE COVER TO CALIFORNIA FROM FRANCE WITH PAIRS OF THE 1853 ONE-FRANC AND 1852 25-CENTIMES NAPOLEON III ISSUES, VIA BRITISH WEST INDIES PACKET.

French Circular #67 established a 25-decimes per 7.5 grams fully-paid rate to California by the Royal Mail Steam Packet Co. via St. Thomas and Chagres, effective Sep. 1, 1851. The U.S. erroneously collected 20c due on this mail. This cover was carried on RMSP steamer *La Plata* from Southampton on Nov. 2, arriving St. Thomas Nov. 16, then by RMSP *Avon* to Chagres, arriving Nov. 24. It was carried to California by the PMSC steamer *John L. Stephens* from Panama on Dec. 3, arriving San Francisco Dec. 16 ..... E. 10,000-15,000



155

- 155 ☒ **1853, 1fr Lake on Yellowish (21; Yvert 18).** Horizontal strip of six, expert repair is all but undetectable, used with **horizontal pair 1853, 25c Blue on Bluish (17; Yvert 15)**, tied by large grid of dots cancels, "Paris 22 Dec. '53" double-circle datestamp on folded letter to **New Orleans**, red boxed "PD" handstamp, "Boston Br. Packet 6 Jan." (1854) circular datestamp and "20" cents due, file fold thru position 5 in the strip, pair with minor margin flaws from placement near edge

VERY FINE. A SPECTACULAR AND RARE FRANKING TO NEW ORLEANS WITH A STRIP OF SIX OF THE 1853 ONE-FRANC NAPOLEON III ISSUE.

This cover was prepaid with a total of 6fr50c, five-times the 13-decimes rate, but due 20c for the quadruple rate in New York (non-parallel weight progressions between France and the U.S.) It was carried by the Cunarder *Canada*, departing Liverpool Dec. 24, 1853 and arriving New York Jan. 6..... E. 4,000-5,000



156

- 156 ☒ **1853, 1fr Lake on Yellowish (21; Yvert 18).** Used with **horizontal strip of three 1853, 10c Bister on Yellowish (14; Yvert 13A)**, margins all around on both, tied by large grid of dots cancels, "Paris 8 Juin '54" double-circle datestamp on folded letter to New York, red boxed "PD" handstamp, lightly struck "Boston Br. Packet 22 Jun." circular datestamp ties strip

EXTREMELY FINE. A SUPERB COVER FROM PARIS TO NEW YORK WITH THE 1853 ONE-FRANC AND 10-CENTIMES NAPOLEON III ISSUE.

This was carried on the Cunarder *Canada*, departing Liverpool Jun. 10 and arriving Boston Jun. 22.

With 1980 Behr certificate as Dark Carmine ..... E. 4,000-5,000



157

- 157 ☒ **1853, 1fr Lake on Yellowish (21; Yvert 18).** Horizontal pair, expert repair at top is all but undetectable, large to ample margins, used with **1853, 40c Orange on Yellowish (18; Yvert 16)**, both tied by diamond of dots cancels, blurry strike of Paris Dec. 12 (1853) double-circle datestamp on folded cover to 16 Wall Street in New York, Paris forwarder's and Calais backstamp of Dec. 12, red boxed "PD" handstamp, "New-York Am. Pkt. Dec. 26" circular datestamp and "42" cents due handstamp for U.S. double rate (16c sea plus 5c inland postage per rate), Very Fine appearance, carried on the Collins Line *Pacific*, departing Liverpool Dec. 14 and arriving New York Dec. 26, this demonstrates the non-parallel weight progressions for French and U.S. mails, as it is franked for triple 80c rate in France, but was rated as double-rate cover in the United States ..... E. 1,500-2,000

## 1862-69 NAPOLEON III LAUREATE ISSUE



158

- 158 ☒ **1862, 80c Rose (28; Yvert 24).** Tied by “723” in grid British cancel with “Southampton France MB (Mobile Box) SP 8, 1866” octagonal datestamp on folded letter to New York, “N. York Am. Pkt. 21 Sep. 26” circular datestamp, London transit backstamp, Very Fine and rare with the stamp canceled by a British marking and the Southampton Mobile Box, carried on NGL *Hansa* from Southampton, arriving New York Sep. 26, also an unusual cover directed via open mail during the French-U.S. Treaty and due 21c for American Packet service (arrived in London as a loose ship letter), this was a more a more expensive routing and therefore seldom used. .... E. 2,000-3,000



159

- 159 ☒ **1862, 80c Rose on Pinkish (28; Yvert 24).** Tied by “723” British numeral grid cancel with “Southampton France MB (Mobile Box) OC 23 1866” octagonal datestamp on folded letter to New York, London backstamp, “New York Ship Letter 4 Nov. 6” due circular datestamp, fresh and Very Fine private ship letter with rare markings, posted aboard the steamer en route to Southampton and then carried on NGL *Hansa*, arriving New York Nov. 16. .... E. 500-750



160

- 160 ☒ **1862, 80c Rose (28; Yvert 24).** Cancelled by British “723” in grid and tied by “Southampton France MB (Mobile Box) MY 5, 1866” octagonal handstamp on cover to New York, red “London Ship Letter Paid MY 5, ‘66” circular datestamp, New York May 16 circular datestamp with integral “5” cents due, stamp with two small tears at top, Very Fine appearance and rare markings, prepaid 80-centimes under the French-U.S. treaty and posted on a Havre-Southampton steamer but rated as a loose ship letter in London and sent via British Open Mail, therefore due 5c in New York, very little mail was directed via this more expensive option during the treaty period..... E. 500-750



161

- 161 ☒ **1862, 80c Rose (28; Yvert 24).** Horizontal strip of seven and single, tied by diamond of dots cancels, Le Havre May 26, 1864 double-circle datestamp on folded letter to New York, carried on Cunarder *China*, arriving Boston June 7, manuscript “24” cents credit, red boxed “P.D.” handstamp, “N. York Br. Pkt. Paid Jun. 7” circular datestamp, Very Fine, a striking eight-times treaty rate cover to New York..... E. 1,000-1,500



162EX



163



164

- 162 ☒ **1862, 80c Rose (28; Yvert 24).** Horizontal pair and single, tied by diamond of dots cancels, Le Havre May 9, 1864 double-circle datestamp on folded letter to New York, London transit datestamp, "New York Am. Pkt. 42 May 25" due circular datestamp, Very Fine double-rate consignee letter sent by open mail, unusual as this was more expensive than the French-U.S. treaty fully prepaid rate, accompanied by a similar use with two singles 40c Orange on Yellowish (18), on cover front only to Manchester Conn., one tied by bold "21" cents due for American Packet, Very Fine and unusual treaty period front sent instead by open mail ..... **(Photo Ex)** E. 400-500
- 163 ☒ **1862, 80c Rose (28; Yvert 24).** Tied by "Philadelphia Am. Pkt. Nov. 16" circular datestamp, "Le Havre 23 Oct. '63" origination double-circle datestamp on folded letter to Philadelphia, London transit datestamp, carried by Inman Line's *Edinburgh*, arriving New York Nov. 15, "21" cents due handstamp, Very Fine and unusual, prepaid 80-centimes for French-U.S. treaty but sent via open mail and due 21c in the U.S. .... E. 300-400
- 164 ☒ **1862, 80c Rose (28; Yvert 24).** Four singles, two slightly overlapping, tied by diamond of dots cancels, Le Havre Feb. 27, 1865 double-circle datestamp on blue folded letter to New York, red boxed "P.P." (part paid), carried on NGL *Hansa*, "New York Ship Letter Mar. 13" circular datestamp with "8" due handstamp struck overlapping, file fold creases third stamp, fourth stamp also with light crease, Very Fine appearance, a scarce usage prepaid as a quadruple-rate 1857 Treaty letter in France and rated as a double-rate ship letter in the U.S. .... E. 200-300

1862 80-CENTIMES NAPOLEON III LAUREATE TÊTE-BÊCHE PAIR  
ON TREATY RATE COVER



165

165° ☒ **1862, 80c Pale Rose, Tête-Bêche Pair (28c; Yvert 24b).** Tied by six-point star of dots cancel and by red "6" credit handstamp, Paris Oct. 14, 1864 double-circle datestamp on small cover to New York City address, red "N. York Br. Pkt. Paid Oct. 30" circular datestamp

VERY FINE. A RARE AND OUTSTANDING USE OF A TÊTE-BÊCHE PAIR OF THE 1862 80-CENTIMES NAPOLEON III LAUREATE ISSUE ON A DOUBLE-RATE COVER TO NEW YORK.

This was carried under the French-U.S. Treaty on the Cunarder *Canada* from Liverpool on Oct. 15, 1864, arriving in Boston Oct. 29.

Scott value for tête-bêche pair on cover is \$20,500.00 ..... E. 7,500-10,000



165 detail



- 166 ☒ **1867, 30c Brown on Yellowish (34; Yvert 30).** Used with **1863, 40c Pale Orange on Yellowish (35; Yvert 31)**, tied by six-point star of dots cancels and 30c by red transit datestamp on Feb. 28, 1870 cover from Paris to Pawtucket R.I., Paris double-circle datestamp, red "VOIE D'ANGLETERRE" straight-line struck by Bowles & Co. forwarder, London and New York circular datestamps, "2 Cents" credit handstamp, fresh and Very Fine 70-centimes post-treaty prepaid rate via British mail (replaced 80c Treaty rate), carried on Inman Line's *City of Washington* from Liverpool on Mar. 14..... E. 300-400
- 167 ☒ **1863, 40c Pale Orange on Yellowish (35; Yvert 31).** Tied by "723" British numeral grid, with "Southampton France MB (Mobile Box) JY 5 1870" octagonal handstamp on cover to Clinton N.J., "PAID-ONLY TO ENGLAND" two-line handstamp, "2c" and "5c" (due) in U.S. (2c GB plus 3c U.S. inland), corner nicked and some minor staining, otherwise Fine post-Treaty cover with the rare Southampton Mobile Box datestamp, mailed aboard the NGL *Weser II* on its second-to-last voyage before the interruption of the Franco-Prussian War..... E. 300-400
- 168 ☒ **1863, 40c Pale Orange on Yellowish (35; Yvert 31).** Tied by diamond of dots and manuscript receipt docketing of Jul. 5, 1872, Vezelay June 3, 1872 circular datestamp on cover to **San Francisco**, underpaid for the 12-decimes rate so struck with "\*FR/2F" domed handstamp (10c debit to GB), red London backstamp and manuscript "14" cents debit from GB to US, carried on Cunard *Parthia*, "San Francisco Cal. Jun 23" circular datestamp with "17" cents depreciated currency due marking, backstamped with "Return Address Cannot be Found Jun. 24", Very Fine..... E. 500-750
- 169 ☒ **1863, 40c Pale Orange on Yellowish (35; Yvert 31).** Used with **1867, 20c Blue (33; Yvert 29A)**, tied by diamond of dots cancels and by Le Havre May 7, 1870 double-circle datestamp on blue folded letter to New York, red boxed "P.P." handstamp, "N.Y. Steamship 10 May 20" due circular datestamp, 40c stamp with couple small internal creases, Very Fine post-treaty use by American packet, carried on the HAPAG *Allemania* from Le Havre on May 7, arriving New York May 20.... E. 400-500
- 170 ☒ **1869, 5fr Napoleon Laureated (37; Yvert 33).** Horizontal pair, used with two 80c and single 40c (36, 59; Yvert 32, 38), tied by diamond of dots cancels on oversized cover to Philadelphia Pa., Bordeaux Jan. 26, 1872 double-circle datestamp, Paris backstamps, red London transit datestamp, refolded at right, all stamps and cover with faults from heavy contents and handling, otherwise Fine, a rare 12-franc 10-times rate to the United States, our estimate factors in condition, but this is a desirable franking ..... E. 300-400



171

171 ☒ **1869, 5fr Napoleon Laureate (37; Yvert 33).** Used with **four 1871-73 Issue denominations** including two 10c, singles of 15c and 25c, two 80c (55, 58, 61, 63), tied by six-point star of dots cancels or by manuscript, Paris Jul. 20, 1874 double-circle datestamp on **registered** cover to New York, red registry oval and octagonal table backstamp, various crayon rates and credits between France and Great Britain, red New York Registry Division double-circle datestamp of Aug. 1, some stamp flaws from placement or wrapping around edges of cover which has some wear, wax seals on back

VERY FINE APPEARANCE. A COLORFUL AND RARE FIVE-COLOR FRANKING WITH THE 1869 5-FRANC NAPOLEON III LAUREATE ISSUE ON A REGISTERED COVER TO NEW YORK. A WONDERFUL SHOWPIECE.

This cover was prepaid for the triple 12-decimes rate plus 36-decimes registration. It was carried on the Cunarder *Java* from Queenstown, arriving New York Jul. 31, 1874.....  
..... E. 7,500-10,000

FRENCH MARITIME MAILS AND  
COMPAGNIE GÉNÉRALE TRANSATLANTIQUE (CGT) PACKETS  
BETWEEN LE HAVRE AND NEW YORK — 1864-1872

One of the outstanding features of the Walske collection of U.S.-France transatlantic mails is an important group covers carried by the French steamship packets. This section includes several unique French maritime markings, which Mr. Walske acquired over many years from different collections and discoveries. A brief introduction follows, which is excerpted from Mr. Walske's two-part article on the subject in the *Chronicle* (Nos. 246 and 247, May and August 2015).

From 1864 through 1872, French mail steamers of the Compagnie Générale Transatlantique (CGT) carried postal agents on the North Atlantic route between New York and Le Havre. These agents processed mail on board the steamships and were supplied with special maritime postal devices. Their work produced a rich and fascinating postal history legacy.

The mail handled by CGT agents may be divided into two periods, characterized by different rates and frankings, divided between the pre- and post-1857 U.S.-French Treaty, which expired on December 31, 1869.

The Crimean War of 1854-56 exposed the weak condition of France's commercial and naval shipping capabilities. Louis Napoléon had ambitions to establish his Third Empire as the leading power in Europe, and naval capacity was an important element of his objective. Rather than building capacity directly, he decided to rely on commercial firms to build the steamships and to incentivize them with state subsidies. A mail contract for a line of French transatlantic steamships was authorized on June 17, 1857, and was established with the name Compagnie Générale Maritime (CGM) in October 1860. The brothers Emile and Isaac Pereire, French financiers, had formed the CGM in February 1855 for "the building, equipping and chartering of all kinds of ships, and in general, all operations linked to maritime trade."

CGM changed its name to the Compagnie Générale Transatlantique, purchased four steamships and began preparations for the New York line. Their initial contract called for trips in eleven days each way. It also called for twice-monthly sailings, but that would not be achieved until March 1866 due to the slowness in constructing new steamships. In June 1863 the *Washington* was the first to be delivered, followed by the *Lafayette* in late 1863, and then the *Europe*. It was not until February 1866 that there were enough CGT steamships to fully service the route.

In March 1866 the New York line became known as Ligne H (Line H) in accordance with the new general nomenclature applied to all French packet lines. In a general cost-cutting move, the French General Assembly voted on December 20, 1872, to eliminate postal agents on steamships, effective January 1, 1873. The January 1873 *Bulletin des Postes No. 46* confirmed this, bringing the French Maritime period to an end, and drawing the curtain on a fascinating era in postal history.

In the following section of French Maritime and CGT Packets are covers with specific French appeal from both periods of the line's operation, including name-of-ship postmarks for each of the first three vessels (two of which are unique), rare military postmarks, Ligne H markings and CGT entry markings. Several show evidence of posting on board the vessels, with the distinctive "Ancre" cancels applied by the ship postal agents.

## HEROUT &amp; HANDEL LINE

EARLIEST RECORDED USE OF U.S. 1847 ISSUE TO FRANCE AND  
THE ONLY HEROUT & HANDEL ADHESIVE-STAMPED COVER

172

172°✉ **UNITED STATES, 1847, 5c Dark Red Brown (1).** Large margins to barely touching frameline at top left, gorgeous early impression and dark shade, neat manuscript cancel and tied by two strikes of blue framed "Paid" handstamps with "Philada. Pa. 5cts. Aug. 28" integral-rate circular datestamp on 1847 folded letter to **Cognac, France**, addressed to Hennessey & Co., ship-name directive "*Missouri*" at bottom left and carried on that **Herout & Handel Line** steamer from New York on August 31, arriving Cherbourg on September 15, clear strike of "Le Havre 2 Paq. Reg. 17 Sept. '47" double-circle datestamp, "38"-decimes due for 10-15 grams weight including 20-decimes sea postage and 16-decimes inland (should have been "36"), Cognac receiving backstamp, two file folds do not affect stamp

VERY FINE. THIS IS THE EARLIEST RECORDED 1847 ISSUE COVER TO FRANCE AND THE ONLY HEROUT & HANDEL LINE COVER FRANKED WITH A STAMP. AN OUTSTANDING RARITY OF THE 1847 ISSUE AND OF UNITED STATES-FRANCE TRANSATLANTIC MAILS.

In *Chronicle* 234, Steven Walske analyzed the comprehensive census of 1847 Issue covers to France, including the five routes that were available at some point during the four years the stamps were in use (British Packet via England, American Packet via England, American Packet Direct, French Packet Direct and by private ship). The option of French Packet Direct was available only from June 22, 1847, to February 6, 1848, via one of nine trips of the Herout & Handel line. This is the *only* recorded 1847 Issue cover from one of those trips and therefore the only Herout & Handel Line cover franked with a stamp. As the United States and France had no postal treaty, this cover had to be prepaid for U.S. under-300 miles postage to New York and then collect from the recipient for French Packet and inland service. The addressee, Hennessey & Co. has been producing cognac for 250 years and is today the largest producer in the world.

Illustrated in *Chronicle* 234 on p. 112..... E. 15,000-20,000



173

- 173 ☒ **Herout & Handel Line, New York to Cognac, France, First French Packet Direct.** July 15, 1847 datelined folded letter from New York to Cognac, France, ship-name directive "Steamer Union" at top, hand-carried to docks (no U.S. postage paid) and sent via that Herout & Handel Line steamer on **its first eastbound voyage on July 24**, arrived Le Havre Aug. 7 where mail offloaded, red "Outre-Mer Le Havre 8 Aout '47" double-circle datestamp used only on this first sailing, red manuscript "10"-decimes for French Packet service and "18"-decimes due for combined packet and inland postage to Cognac, transit and receiving back-stamps, fresh and Extremely Fine, this is **the only recorded letter to France from this first packet sailing of the Union**..... E. 1,000-1,500



174

- 174 ☒ **1862, 80c Rose (28; Yvert 24).** Horizontal pair, partly separated at top and overlapping, tied by diamond of dots cancels, "Bordeaux 14 Juin '64" double-circle datestamp on blue folded cover to San Francisco, red "6" cents credit handstamp, "New York Paid 30 Jun. 28" circular datestamp (in error, should be Jun. 29) and "**Fr. Service**" octagonal handstamp, Jul. 19 receipt docketing, right stamp perfs affected from placement over edge, otherwise Very Fine and extremely rare, carried on the **maiden voyage of the Washington** and the first sailing of the Compagnie Générale Transatlantique Line, departed Le Havre Jun. 15, 1864 and arrived New York Jun. 29, this is the **only surviving cover from the first CGT sailing**, ex Winter, illustrated and discussed in *Chronicle* 246 on p. 175..... E. 750-1,000



175

175° 1862, 80c Rose (28; Yvert 24). Six stamps that are mostly separated but likely were intact strips before application, tied by diamond of dots cancels, Le Havre Jul. 27, 1864 double-circle datestamp with "Washington Paq. Fr. 27 Jul. '64" octagonal name-of-ship datestamp struck on flap of folded cover, addressed to New York where "Fr. Service" octagonal handstamp struck in blue, manuscript "18" cents credit to U.S. (six-times rate), file fold affects two stamps

VERY FINE. THIS IS THE ONLY RECORDED EXAMPLE OF THE "WASHINGTON PAQ. FR." NAME-OF-SHIP EMBARKATION DATESTAMP. AN OUTSTANDING COVER BY FRENCH PACKET DIRECT.

This was carried on the Compagnie Générale Transatlantique steamer *Washington* (second sailing of the line) from Le Havre on Jul. 27, 1864, arriving New York Aug. 9. In addition to the only recorded example of the "Washington Paq. Fr." marking, the "Fr. Service" handstamp is also rare (struck in blue to signify direct service).

Illustrated and discussed in *Chronicle* 246 on p. 177..... E. 7,500-10,000



176

- 176 ☒ **1862, 80c Rose (28; Yvert 24).** Horizontal pair, tied by diamond of dots cancels, Le Havre May 3, 1865 double-circle datestamp with **"Europe Paq. Fr. 3 Mai '65" octagonal name-of-ship datestamp** struck on flap of folded cover addressed to New York, red boxed "PD" and small manuscript "6" cents credit for double rate, red "N. York Am. Pkt. Paid 1863 May 15" circular datestamp (struck in error, as this was a French packet)

VERY FINE. THIS IS THE ONLY RECORDED EXAMPLE OF THE "EUROPE PAQ. FR." NAME-OF-SHIP EMBARKATION DATESTAMP.

This was carried on the Compagnie Générale Transatlantique steamer *Europe* on its maiden voyage. It departed Le Havre on May 3, 1865 and arrived New York May 14. This is the only recorded example of this marking.

Ex Noel. Illustrated and discussed in *Chronicle* 246 on p. 178 ..... E. 4,000-5,000



177

- 177 ☒ **1862, 80c Rose (28; Yvert 24).** Four, affixed slightly overlapping, tied by diamond of dots cancels, Le Havre Feb. 8, 1865 double-circle datestamp with **"Lafayette Paq. Fr. 8 Fevr. '65" octagonal name-of-ship datestamp** struck on flap of folded cover addressed to New York, manuscript "12" cents credit for quadruple rate, red "New York Paid Feb 21" circular datestamp, file fold slightly affects margins of two right stamps, one with tiny edge tear **VERY FINE. THIS IS ONE OF ONLY THREE RECORDED EXAMPLES OF THE "LAFAYETTE PAQ. FR." NAME-OF-SHIP EMBARKATION DATESTAMP.**

This was carried on the Compagnie Générale Transatlantique steamer *Lafayette* from Le Havre on Feb. 8, 1865, arriving New York Feb. 20. This is one of only three recorded examples of this marking.

Ex Noel. For a discussion of CGT packets see Steven Walske's two-part article in *Chronicle* 246-247 ..... E. 4,000-5,000



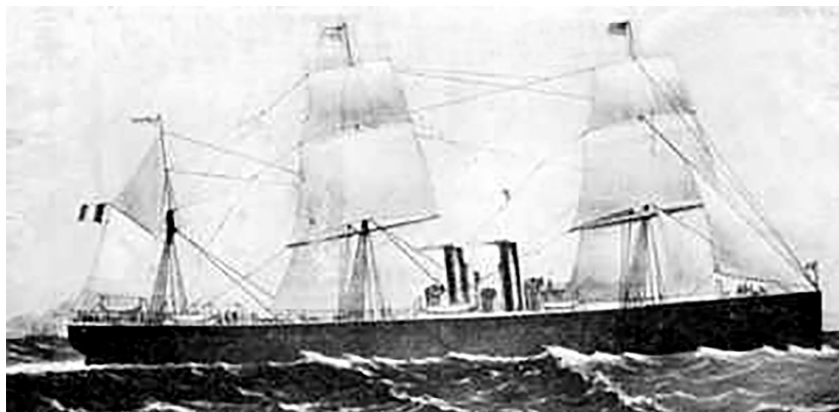
178

- 178 ☒ **Cor. D. Armees Lafayette 9 Nov. '64.** Clear strike of **name-of-steamship military postmark**, large "30" handstamp for 20-centimes military concession rate plus 50% unpaid fee on small 1864 cover from a French sailor in New York Harbor **to Cusset, France**, transferred to the Compagnie Générale Transatlantique steamer *Lafayette* on Nov. 9, which was nearby the sailor's ship in New York harbor, arrived Le Havre Nov. 22, Paris Nov. 23 and Cusset Nov. 24 backstamps, missing half of backflap

VERY FINE. THIS IS THE UNIQUE EXAMPLE OF THE "COR. D. ARMEES LAFAYETTE" STEAMSHIP NAME POSTMARK, APPLIED TO THIS COVER TO CONFIRM MILITARY USE.

This unique marking was unknown to Salles when he published his seminal work on French maritime mail.

With 2012 Roumet certificate. Illustrated and discussed in *Chronicle* 246 on p. 179 .....  
..... E. 5,000-7,500



CGT steamer *Lafayette*



179

- 179 ☒ **1862, 20c Blue (26; Yvert 22).** Tied by **anchor in diamond of dots cancel**, clear strike of red **“Corr. D. Arm. Lig. H Paq. F, No. 4 19 Mai ‘66”** double-circle datestamp on small cover to France, missing backflap and small nick at top of cover

VERY FINE. AN EXTREMELY RARE COVER FROM THE CAPTAIN OF THE CRUISER *LAURIER* IN NEW YORK HARBOR, POSTED ON BOARD THE NEARBY LIGNE H STEAMER *NAPOLEON III*, WITH A UNIQUE MILITARY DATESTAMP AND ANCHOR CANCEL.

This was carried from New York harbor by the Ligne H steamer *Napoleon III* on its maiden voyage, departing New York May 19, 1866. The 20-centimes stamp paid the concession rate for naval mail. The “Corr. D. Arm.” military datestamp is the only recorded example from this period.

In 1871 the paddle-steamer *Napoleon III* was converted to a screw-propulsion steamer and renamed *Ville du Havre*, following Napoleon’s defeat. On November 22, 1873, the ship collided with the Scottish three-masted iron clipper, *Loch Earn*, and sank in minutes. 226 on board perished, and only 61 passengers and 26 crew members survived, rescued by *Loch Earn* and an American vessel, the *Tremountain*.

Illustrated and discussed in *Chronicle* 246 on p. 183..... E. 5,000-7,500



Sinking of the steamer *Ville du Havre*, formerly the *Napoleon III*



180

- 180 ☒ **1862, 80c Rose (28; Yvert 24).** Bright color, tied by **anchor in diamond of dots cancel** and by **"Ligne H Paq. Fr. No. 2 6 Juin '67"** double-circle datestamp, red "Etats-Unis Paq. Fr" octagonal datestamp of same date also struck (unusual — normally seen on eastbound mail) on folded letter to Boston Mass., manuscript "3" cents credit to U.S., red boxed "PD" struck underneath blue **"Fr. Service"** in octagon handstamp, red "Boston Paid Jun. 18" circular datestamp, all markings beautifully clear

VERY FINE. A COLORFUL AND CHOICE FRENCH PACKET DIRECT COVER TO BOSTON, POSTED ON BOARD AND PROCESSED BY THE MAIL AGENT OF THE LIGNE H STEAMER *PEREIRE* AT LE HAVRE.

This was posted on board the Ligne H steamer *Pereire* (manuscript directive at top), departing Le Havre on June 6, 1867 and arriving New York June 17, then carried in a closed mail bag to Boston. Walske records fewer than ten covers with maritime postmarks and French Anchor cancels from this period. The "Fr. Service" handstamp is also rare (struck in blue to signify direct service).

Illustrated and discussed in *Chronicle* 246 on p. 181 ..... E. 3,000-4,000



181

- 181 ☒ **1868, 20c Blue (33; Yvert 29A).** Horizontal strip of four, right stamp small piece out, tied by **anchor in diamond of dots cancels**, **"Ligne H Paq. Fr. No. 4 8 Oct. '68"** double-circle datestamp on folded letter docketed "Brest, October 10th" to New York, red "3" cents handstamp credit to U.S., red "New York Paid All Oct. 21" circular datestamp, file fold thru third stamp, Very Fine appearance, a rare cover **posted on board** and processed by the mail agent for the Ligne H steamer *Pereire* at Brest (manuscript directive at top), the ship departed Le Havre on Oct. 8, 1868 and after transiting Brest to pick up this and other mail, arrived in New York Oct. 21, Walske records fewer than ten covers with maritime postmarks and French Anchor cancels from this period, ex Schatzkes, with 1986 Robineau certificate, illustrated and discussed in *Chronicle* 246 on p. 181 ..... E. 2,000-3,000



182

182° ☒ **1867, 20c Blue (33; Yvert 29A).** Two vertical strips of three, tied by six neat strikes of anchor in diamond of dots cancel, blue Cazade & Crook's Feb. 18, 1870 forwarders oval datestamp, perfect strike of "Ligne H Paq. Fr. No. 3 19 Fevr. '70" double-circle datestamp on blue folded cover mailed on board the steamer *Ville de Paris* in New York Harbor and addressed to Cognac, France, red crayon "2" for double-rate, boxed "P.P." handstamp (though fully paid), Cognac arrival backstamp

VERY FINE. THIS FAMOUS COVER IS AN EXTREMELY RARE EXAMPLE OF AN EASTBOUND LETTER FROM THE UNITED STATES TO FRANCE PREPAID WITH FRENCH STAMPS AND POSTED ON BOARD A FRENCH STEAMER. FEWER THAN FIVE ARE RECORDED.

This cover was handed to the postal agent aboard the Ligne H steamer *Ville de Paris* in New York Harbor and never entered the U.S. mails. French decrees specifically allowed the posting and prepayment of such letters, treating the steamers as an extension of French soil. The single rate was 60-centimes and this was prepaid for the double rate. The mail agent struck the stamps with the "Ancre" cancels and the Ligne H double-circle datestamp — which was used only on shipboard covers and is much rarer than the usual octagon. The *Ville de Paris* departed on Feb. 19 and arrived Brest on Feb. 28.

Ex Schatzkes. Illustrated and discussed in Michael Laurence's *10-Cent 1869 Covers: A Postal Historical Survey* on pp. 169-170. Illustrated and discussed in *Chronicle* 247 on p. 276.....  
..... E. 7,500-10,000



183

- 183 ✉ **1863, 40c Pale Orange on Yellowish (35; Yvert 31).** Used with **1867, 20c Blue (33; Yvert 29A),** both tied by **anchor in diamond of dots cancel,** blue forwarders oval datestamp, **"Ligne H Paq. Fr. No. 1 17 Juin '70" double-circle datestamp** struck twice, the second, on flap, dated Jun. 18th (struck in Brest), on blue folded cover **mailed aboard the steamer *Pereire*** in Le Havre Harbor and addressed to New York, red boxed "P.P." handstamp, "N.Y. Steamship 10 Jun. 27" due circular datestamp

VERY FINE AND RARE COVER FROM FRANCE TO THE UNITED STATES, POSTED ABOARD THE LIGNE H STEAMER *PEREIRE* IN LE HAVRE HARBOR. FEWER THAN FIVE ARE RECORDED FROM THIS PERIOD.

The Ligne H double-circle datestamp was used only on shipboard covers and is rarer than the usual octagon. The *Pereire* departed Le Havre June 17, 1870, stopped at Brest and arrived in New York on June 17.

Ex Roberts. Illustrated and discussed in *Chronicle* 247 on p. 272 ..... E. 3,000-4,000



184

- 184 ☒ **1868, 80c Rose on Pinkish (36; Yvert 32).** Used with **1862, 5c Yellow Green and 1871 15c Bister (23, 56; Yvert 20, 55),** tied by **anchor in diamond of dots cancel,** forwarder's blue oval datestamp, clear strike of **"Ligne H Paq. Fr. No. 6 Juil. '72"** double-circle datestamp on blue folded letter mailed aboard the steamer *St. Laurent* in Le Havre Harbor and addressed to New York, red boxed "P.P." handstamp, blurry strike of "N.Y. Steamship 10 Jul. 19" due circular datestamp, 15c stamp slightly affected by light fold

VERY FINE. A COLORFUL AND RARE THREE-ISSUE DOUBLE-RATE FRANKING FROM FRANCE TO THE UNITED STATES, POSTED ON BOARD THE LIGNE H STEAMER *ST. LAURENT* IN LE HAVRE HARBOR.

The Ligne H double-circle datestamp was used only on shipboard covers and is rarer than the usual octagon. The *St. Laurent* departed Le Havre Jul. 4, 1872, stopped at Brest where the maritime markings were struck and arrived in New York on Jul. 19.

Ex Schatzkes. Illustrated and discussed in *Chronicle* 247 on p. 273 ..... E. 4,000-5,000



Crew aboard CGT steamer *St. Laurent*



187

185

- 185 ☒ **UNITED STATES, 1861, 30c Orange (71).** Tied by segmented cork cancel with matching "New Orleans Oct. 27" (1866) circular datestamp, red "New York Paid 24 Nov. 3" (1866) credit datestamp on yellow cover to Rennes, France, carried on **Ligne H maiden voyage of the St. Laurent** with red Nov. 3 embarkation datestamp applied in New York Harbor, red "**Etats-Unis Paq. Fr. Brest 13 Nov. '66'**" entry datestamp struck on flap, opened for display, some edge wear, still Fine, this Brest entry marking is extremely rare with likely fewer than three known, it was applied only to mail addressed to the region around Brest, ex Noel, illustrated and discussed in *Chronicle* 246 on p. 185 where it is stated that this is the only known example..... E. 750-1,000
- 186 ☒ **1871, 25c Blue (58; Yvert 60A).** Two singles, left stamp faulty with piece missing, tied by anchor in diamond of dots cancel on 1872 blue folded cover to New York, posted aboard **Ligne H steamer France** where struck with provisional "Ligne H Paq. Fr. No. 2 6 Oct. '72" octagonal datestamp, ship lost a paddle wheel off Cherbourg and returned to port, then carried by *Ville de Paris* which departed Le Havre Oct. 5 and arrived N.Y. Oct. 16, "N.Y. Steamship 10 Oct. 16" due circular datestamp, Very Fine appearance and rare, only three examples of this this Ligne H marking are recorded, ex Martin, illustrated and discussed in *Chronicle* 247 on p. 274 ..... E. 500-750
- 187 ☒ **1867, 30c Brown on Yellowish (34; Yvert 30).** Vertical pair, tied by diamond of dots cancels, Bordeaux Jan. 27, 1870 double-circle datestamp, clear strike of "**Ligne H Paq. Fr. No. 3 29 Janv '70'**" double-circle datestamp on flap of blue folded letter to New Orleans, red boxed "P.P." handstamp, Paris backstamp, "N.Y. Steamship 10 Feb. 14" due circular datestamp, Very Fine, carried on Ligne H steamer *Ville de Paris*, departing Brest Jan. 29 and arriving New York Feb. 13, illustrated and discussed in *Chronicle* 247 on p. 271 ..... E. 500-750



- 188 ☒ **1870, 30c Brown on Yellowish (46; Yvert 47).** Four singles, noted as Positions 2, 1, 6 and 3, used with 1871, 20c Blue on Bluish, Ty. III, Report 2 (45; Yvert 46B), Position 15, all tied by diamond of dots cancels, Le Havre May 11, 1871 double-circle datestamp on blue folded letter to New York, "N.Y. Steamship 10 May 24" due circular datestamp, file fold creases two stamps, one other with minor corner crease, Very Fine appearance and rare use of the Bordeaux Issue on an overseas cover, apparently prepaid for double the 70-centimes rate via British mails but sent by French Packet direct (overpaid 20-centimes), carried on the Ligne H steamer *St. Laurent* on its third sailing after the Franco-Prussian War, illustrated in *Chronicle* 246 on p. 283 ..... E. 500-750
- 189 ☒ **1871, 25c Blue (58; Yvert 60A).** Two singles, tied by diamond of dots cancels, Nantes Oct. 18, 1872 double-circle datestamp, flap struck with clear "**Ligne H. Paq. Fr. No. 3 26 Oct. '72**" double-circle transit datestamp on blue folded letter to New York, carried on Ligne H steamer *St. Laurent*, departing Le Havre Oct. 24, transiting Brest Oct. 26 and arriving New York Nov. 11, "N.Y. Steamship 10 Nov. 11" due circular datestamp ties stamps, Very Fine use by French Packet direct ..... E. 300-400
- 190 ☒ **1871, 25c Blue (58; Yvert 60A).** Two singles, tied by bold diamond of dots cancels, Bordeaux Jul. 3, 1872 double-circle datestamp on blue folded letter to New Orleans, routed via Paris to Brest where posted aboard the Ligne H steamer *St. Laurent* after its arrival from Le Havre, flap struck with "**Corr. d. Arm. Lig. H Paq. F. 6 Juil. '72**" transit datestamp, departed Brest on Jul. 8 and arrived New York Jul. 18, "N.Y. Steamship 10 Jul. 18" circular datestamp, pencil "due 10", Very Fine, the **only recorded example of this Ligne H marking**, illustrated and discussed in *Chronicle* 247 on p. 275 ..... E. 500-750



191



192



193

- 191 ☒ **1871, 25c Blue (58; Yvert 60A).** Horizontal pair, tied by six-point star of dots cancel, Paris Dec. 8, 1874 double-circle datestamp on cover to New York, Munroe & Co. forwarder's oval, carried on Ligne H steamer *Pereire*, red New York "Paid All" Dec. 18 backstamp, Very Fine, sent under the Apr. 28, 1874 U.S.-French treaty, 50-centimes fully prepaid rate..... E. 200-300
- 192 ☒ **1872, 80c Rose on Pinkish (63; Yvert 57).** Used with vertical pair **1873, 10c Bister on Rose (55; Yvert 58)**, tied by six-point star of dots cancels, Paris Nov. 5, 1873 double-circle datestamp on folded letter to New Orleans, carried on Ligne H steamer *St. Laurent*, departing Le Havre Nov. 7, transiting Brest Nov. 8 and arriving New York Nov. 21, bottom 10c stamp crease from file fold, still Very Fine double-rate use by French Packet direct ..... E. 300-400
- 193 ☒ **UNITED STATES, 1870, 10c Brown (150).** Used with two **3c Green (147)**, affixed overlapping and tied by cork cancels with "New Orleans Jun. 23" circular datestamp, red "New York Jun. 28" circular datestamp on 1873 blue folded letter to **Bordeaux, France**, carried on CGT Ligne H steamer *Pereire*, Brest arrival datestamp (Jul. 8) and "5"-decimes due, some slight perf toning, still Very Fine, overpaid by 6c for the U.S. 10c rate ... E. 100-150

## 1870-71 FRANCO-PRUSSIAN WAR



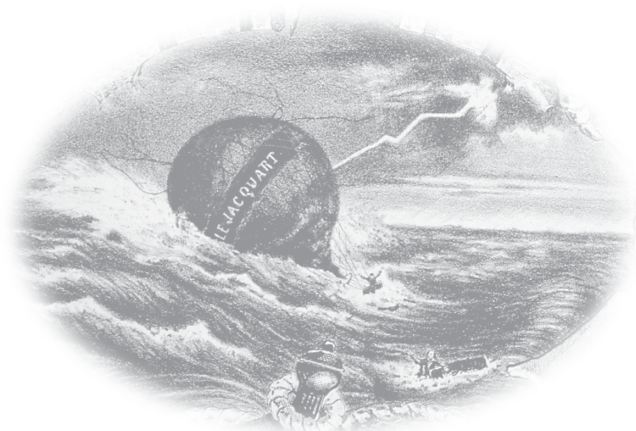
194

- 194 ☒ **"Par Ballon Monte via Queenstown"**. Manuscript directive at top left of Oct. 28, 1870 datelined folded letter to **New York**, franked with **1863, 10c, 20c and 40c Napoleon III Laureate (32, 33, 35; Yvert 28B, 29B, 31)** tied by star of dots cancels, rare **"Paris \*29 Oct. '70\*" double-circle datestamp**, flown out of Paris by balloon *Colonel Charras*, Lille-Calais Nov. 3 railroad bureau backstamp, red London transit datestamp ties 10c stamp, "2 cents" credit handstamp to U.S., red "New York Paid All Nov. 14" circular datestamp, some perfs slightly affected from placement at edge of cover

VERY FINE. AN OUTSTANDING "BALLON MONTE" COVER TO THE UNITED STATES, FLOWN OUT OF UNDER-SIEGE PARIS DURING THE FRANCO-PRUSSIAN WAR.

After carriage by manned balloon out of Paris, landing in occupied France east of Paris, carriage to a part of free France and routing around the occupation area, this cover sailed from Queenstown on the Inman Line steamer *City of London*, prepaid at the 70-centimes post-treaty rate via British mails. The letter contents are from a war correspondent reporting on the Oct. 21 battle at Malmaison.

Illustrated and discussed in *Chronicle* 247 on p. 281..... E. 5,000-7,500





195



196



197

- 195 "Par Ballon Monte". Manuscript directive at top left of large part of Jan. 12, 1871 cover front only to Riggs & Co. Bank in Washington D.C., franked with 1870 Siege Issue, 10c Bister and 20c Dull Blue (54, 57; Yvert 36, 37), two each affixed overlapping and tied by red London and New York circular datestamps, Paris double-circle datestamps, red Insufficient Postage two-line handstamp but accepted for 70c rate via British mails, stamps and front with some small flaws, otherwise Fine, the **only balloon cover mailed from besieged Paris and prepaid for the direct route**, carried out of Paris on the manned balloon *General Faidherbe* on Jan. 14, which landed near Bordeaux, the Ligne H sailing had just left from St. Nazaire on Jan. 6 and another would not occur until Feb. 3, so instead this was sent via England and not charged for the 10c deficiency, carried from Liverpool by Cunarder *China* on Jan. 21, illustrated in *Chronicle* 247 on p. 282 ..... E. 400-500
- 196 ☒ 1867, 10c Bister on Yellowish (32; Yvert 28B). Used with three 1870, 20c Dull Blue on Blue (57; Yvert 37), middle stamp repaired with small piece added at left, tied by Maisons-Alfort circular datestamps on May 18, 1871 cover (datelined contents) **mailed during the Paris Commune and hand-carried out of besieged Paris**, addressed to New York, red London transit datestamp of May 22 with "2 Cents" credit handstamp, carried on Cunarder *Algeria* from Liverpool on May 23, arriving New York June 3, opened on three sides, Very Fine appearance..... E. 1,000-1,500
- 197 ☒ 1867, 20c Blue (33; Yvert 29A). Three singles, neatly tied by "723" British numeral grids, with bold strike of "Southampton France MB (Mobile Box) NO 12 1870" octagonal datestamp on small tissue paper cover to Cambridge Mass., posted aboard the Havre-Southampton steamer (unpaid), red London transit and "2 cents" credit handstamp to U.S., carried on Cunarder *Siberia* to Boston where accepted as fully prepaid in Great Britain, docketed on back, Very Fine, a beautiful and rare cover with the Southampton Mobile Box datestamp which was **detoured by sea during the Franco-Prussian War** ..... E. 1,500-2,000



198



199



200

- 198 ☒ **1863, 40c Pale Orange on Yellowish (35; Yvert 31).** Used with **1867, 20c Blue (33; Yvert 29A),** tied by star of dots cancels, Paris R. D'Antin Aug. 30, 1870 double-circle datestamp on cover to Boston Mass., boxed "P.P." (part paid) handstamp, rare "**Boston Am. Pkt. 10 18 Sep.**" due circular datestamp, Very Fine and most unusual post-treaty cover by American packet, the HAPAG Line had stopped sailings due to the Franco-Prussian War and the Ligne H steamer had departed on Aug. 25 (another was not scheduled until Sep. 8), fortunately the Liverpool based National Steamship Company's *Erin* had arrived in Le Havre from Southampton and took the letter direct to New York, departing Sep. 1 and arriving Sep. 17, illustrated and discussed in *Chronicle* 247 on p. 280 ..... E. 400-500
- 199 ☒ **1867, 30c Brown on Yellowish (34; Yvert 30).** Vertical pair, used with **1863, 10c Bister on Yellowish (32; Yvert 28B),** tied by diamond of dots cancels and by Le Havre double-circle datestamp on Dec. 14, 1870 cover originating in Le Havre and addressed to Fairfield Iowa, **carried by direct steamer to Great Britain as Le Havre was cut off by the Prussians,** Chicago transit date-stamp, minor edge flaws and small stained spot, appears Fine ..... E. 200-300
- 200 ☒ **1868, 80c Rose on Pinkish (36; Yvert 32).** Tied by diamond of dots cancel on cover originating on Nov. 7, 1870 in Bordeaux, **took sea detour around besieged Paris via St. Nazaire,** addressed to San Francisco, numerous datestamps and manuscript on front and back trace its journey including "ADVERTISED" after arrival, slight soiling and stamp with minor corner crease, Fine appearance, carried on Allan Line's *Austrian* to Portland Me. .... E. 300-400



201

- 201 ☒ **1871, 10c "Citron" (Lemon), Report 2 (42 var; Yvert 43Bc).** Position 3, brilliant color, large to ample margins, used with **horizontal strip of three, 1871 Bordeaux Issue, 20c Blue on Bluish, Ty. III, Report 2 (45; Yvert 46B),** Positions 11-13, large margins, all tied by diamond grid cancels and strip by Bordeaux May 17, 1871 double-circle datestamp on blue folded cover to New York, red London May 20 transit datestamp, red "New York Paid All May 31" circular datestamp, "2 cents" credit handstamp to U.S., fresh and Very Fine 70-centimes post-treaty prepaid rate with the Bordeaux Issue via British mail, **detoured around Paris Commune** and carried on Cunarder *Scotia* from Liverpool, also a rare and choice example of the "Citron" shade ..... E. 1,500-2,000



202

- 202 **1870, 40c Orange (47; Yvert 48).** Used with **1870 Bordeaux Issue, 10c Bister, Report 1 and 20c Blue, Ty. III, Report 2 (42, 45; Yvert 43A, 46B),** tied by diamond of dots cancels, Montpellier Apr. 5, 1871 double-circle datestamp on cover front only to New York, red London transit and New York datestamps, "2 Cents" credit handstamp to U.S., 40c light file crease, still Very Fine and colorful use which was **detoured around Paris Commune**, carried from Liverpool on Cunarder *Batavia* ..... E. 500-750



203

- 203 ☒ **1870, 80c Rose on Pinkish (48; Yvert 49).** Used with **1863, 20c Blue and 40c Pale Orange (33, 35; Yvert 29A, 31)**, tied by diamond of dots cancels, Nice April 27, 1871 origination double-circle datestamp on cover to Vermont, **took sea detour around Paris Commune via St. Nazaire**, backstamped with Marseilles-Paris Apr. 28 double-circle datestamp and St. Nazaire Apr. 30 double-circle datestamp, red "Insufficient Postage" two-line handstamp (underpaid for triple-rate — the double-rate 1fr 40c franking disregarded), "\*FR\*/2F" oval handstamp, red London transit backstamp of May 8, carried on NGL *Weser II*, departing Southampton May 9 and arriving New York May 19, manuscript "38" cents GB debit to U.S. crossed out and manuscript "47" cents due in U.S. notes (42c in coin)

VERY FINE AND FASCINATING COVER TO THE UNITED STATES, DETOURED AROUND PARIS BY SEA DURING THE FRANCO-PRUSSIAN WAR 1871 COMMUNE PERIOD.

In addition to the desirability of the three-color franking and sea detour, transatlantic covers are rarely encountered with the 1870 Bordeaux Issue.

With 1992 von der Weid certificate..... E. 2,000-3,000



204

- 204 ☒ **1867, 20c Blue (33; Yvert 29A).** Tied by light strike of star of dots cancel, Paris Taitbout Feb. 8, 1871 double-circle datestamp on folded letter to New York, **sent unsealed to Versailles for censor by occupying Prussians**, red London backstamp of Feb. 13, "\*FR\*/2F" oval handstamp (unpaid to England), light strike of "14" handstamp, carried by Cunarder *Parthia* arriving Boston Feb. 26, "New York U.S. Notes 18 Feb. 27" depreciated currency circular datestamp ties stamp, letter includes a newspaper clipping from *London Times*, Very Fine and rare use from the **Franco-Prussian War armistice period**, the 20-centimes stamp paid for carriage only to Versailles..... E. 1,500-2,000



205

- 205 ☒ **ALSACE AND LORRAINE, 1870, 10c Yellow Brown, 20c Ultramarine (N5, N6).** Two of 10c, tied by Muhlhausen Sep. 3, 1871 circular datestamps on folded letter **from German-occupied Mulhouse to New Orleans**, "Franco" straightline, carried on HAPAG Line steamer *Thuringia* from Hamburg on Sep. 6, stopping at Plymouth and then arriving at New York on Sep. 19, red New York circular datestamp ties left stamp, bottom 10c stamp defective and 20c stamp small perf faults, Fine appearing and very rare use and routing via North German Direct mail from Hamburg, fully paid direct from Alsace-Lorraine per the Jul. 1870 U.S.-German treaty ..... E. 1,500-2,000



206

- 206 ☒ **ALSACE AND LORRAINE, 1870, 20c Ultramarine, Ty. II (N6).** Horizontal strip of three, tied by **French diamond of dots cancels**, Pfaffenhoffen Nov. 5, 1870 double-circle datestamp on cover **from German-annexed Alsace-Lorraine to Indiana**, red "Franco" straightline, "New York Paid All Nov. 19" circular datestamp, reduced at right, Fine overpaid cover from annexed territory in France (only required 50c), also rare cancelled with French markings rather than the replacement German markings normally seen, carried on Cunarder *Calabria*, arriving Boston Nov. 18 ..... E. 2,000-3,000



207

- 207 ☒ **ALSACE AND LORRAINE, 1870, 20c Ultramarine, Ty. III (N6).** Three singles, tied by "K.P.R. Feld-Post/Relais No. 25/ 10/12" (1870) boxed datestamp on cover from **German-occupied Reims to New York**, carried on Inman Line's *City of Brooklyn*, red "New York Paid All Br. Transit Dec. 29" circular datestamp, small cover tear at top, one corner of one stamp affixed over top of cover, Very Fine use paying the 60-centimes rate from occupation area via Great Britain during the Franco-Prussian War ..... E. 1,500-2,000



208

- 208 ☒ **ALSACE AND LORRAINE, 1870, 25c Brown, Ty. II, Network with Points Down (N14).** Two singles, tied by blue Ober-Sulz Dec. 21, 1870 circular datestamps on cover **from German-annexed French territory to New York**, red "Franco" straightline, red "New York Paid All Jan. 11" (1871) circular datestamp, Very Fine and rare use of the 25-centimes "Burelage Renverse" (Network Reversed) stamps, paying the 50c rate from annexed Alsace-Lorraine via Great Britain during the Franco-Prussian War ..... E. 2,000-3,000

209EX



- 209 ☒ **Montpellier to New York via Switzerland, 1871.** Jan. 7, 1871 folded letter from Montpellier, France to New York, **privately carried to Switzerland to avoid German occupation**, franked with horizontal pair **Switzerland, 1867, 25c Blue Green (55)**, tied by Geneva circular datestamps with Basel backstamp, red New York Jan. 28 circular datestamp, Very Fine **detoured use due to the Franco-Prussian War**, carried by Inman Line's *City of London* from Liverpool, accompanied by a similar detoured cover from the same correspondence with 20c and 30c stamps and numerous markings, 30c stamp did not originate but still a useful example for study .....(Photo Ex) E. 500-750

210



- 210 ☒ **Strasbourg (Alsace-Lorraine) to New York, 1874.** Germany 1872, 1gr Rose, Large Shield (17; Michel 19) tied by "Strasbourg" Jan. 16, 1874 datestamp on Deutsche Reichspost post card to New York, carried from Bremen on NGL *Hermann* on Jan. 17, red "New York Paid All Feb. 2" circular datestamp, Very Fine cover from **German-occupied Alsace-Lorraine** ..... E. 500-750

## 1870-75 BORDEAUX ISSUES



211

- 211 ☒ **1870, 30c Brown on Yellowish (46; Yvert 47).** Four singles, identified as Positions 3, 1, 4 and 2, tied by diamond of dots cancels, Bellegarde Oct. 9, 1872 scalloped datestamp on small cover to New York, red London transit, "2 Cents" credit handstamp to U.S., carried on Inman Line's *City of Brooklyn* from Liverpool, arriving New York Oct. 21 where struck with red circular datestamp which ties stamps, several transit datestamps front and back, Very Fine, a choice use of the 30-centimes Bordeaux Issue on cover to the United States, paying the 12-decimes rate, ex Blanc ..... E. 1,000-1,500



212

- 212 ☒ **1870, 30c Pale Brown on Yellowish (46 var; Yvert 47a).** Horizontal pair, used with **1870, 40c Orange on Yellowish (47; Yvert 48),** tied by diamond of dots cancels and by Cette Nov. 11, 1871 double-circle datestamp on folded letter to New Orleans, boxed "P.P." handstamp (part paid), red "Insufficient Postage" handstamp struck in error (correct 1fr prepayment for double-rate under Jul. 1, 1871 reduced postage rates for direct service), carried on HAPAG *Westphalia* from Le Havre on Nov. 18, "N. York Steamship 10 Nov. 30" due handstamp, repeated with scarce **New Orleans "Steamship 10" handstamp,** Very Fine, an outstanding cover with the Bordeaux Issue stamps and this New Orleans marking..... E. 2,000-3,000



213

- 213 ✉ **1870, 40c Orange (47; Yvert 48).** Positions 8-10, horizontal strip of three, bright color and large margins, left margin light crease from placement over edge, tied by diamond of dots cancels, Tours Aug. 28, 1871 double-circle datestamp on small cover to New Orleans, red London transit and "2 Cents" credit handstamp to U.S., carried on Inman Line's *City of Brussels*, departing Liverpool Aug. 31 and arriving New York Sep. 10 where struck with "Paid All" circular datestamp of Sep. 11, opened at bottom, Very Fine, ex Blanc..... E. 1,000-1,500



214

- 214 **1870, 40c "Rouge-Sang" (Pale Blood-Red, 47g var; Yvert 48d var).** Three singles, mostly large margins, brilliant colors, plated on back as Positions 14, 14 and 11, used with **1867, 20c Blue on Bluish (33; Yvert 29A)**, all tied by diamond of dots cancels, partly clear strike of Villefranche-S-Mer May 6, 1871 circular datestamp on cover front only to Burlington Vt., red London transit and "2 cents" credit handstamp to U.S., red New York circular datestamp, Very Fine and scarce use of 40c Bordeaux Issue on a double-rate post-treaty cover fully prepaid via British mails, carried on Inman Line's *City of Brussels*, arriving New York May 21, with 1990 Behr certificate..... E. 1,500-2,000



215

- 215 ☒ **1870, 80c Rose on Pinkish (48; Yvert 49).** Horizontal pair, used with four additional 1867-72 denominations including 5c pair, 15c, 25c and 30c (34, 53, 56, 58), tied by diamond of dots cancels, clear strike of Marseilles Aug. 26, 1872 double-circle datestamp on blue folded letter to New York, red London transit, "2 Cents" credit handstamp to U.S., carried on Guion steamer *Idaho* from Queenstown, arriving New York Sep. 9, red "New York Paid All Sep. 10" circular datestamp, a couple stamps with very light creasing from file folds, 25c stamp with rounded corner, still Very Fine, a desirable five-color double-rate use to New York including the 80c Bordeaux Issue..... E. 2,000-3,000



216

- 216 ☒ **1870, 80c Rose on Pinkish (48; Yvert 49).** Used with 1870 Siege Issue, 20c Dull Blue (57; Yvert 37), tied by light strikes of diamond of dots cancel, Bordeaux Aug. 28, 1871 double-circle datestamp on folded letter to New Orleans, underpaid and struck with red boxed insufficient postage handstamp and "\*FR/2F" domed handstamp (10c debit to GB), "14" cents debit handstamp from Great Britain to U.S., carried on Inman Line's *City of Baltimore* from Queenstown, New York Sep. 11 18c due handstamp in depreciated currency (16c in coin), 20c stamp with some gum toning along perfs, still Very Fine underpaid cover to New Orleans which was treated as completely unpaid, with 1993 Robineau certificate ..... E. 500-750



217

- 217 1870, 80c Rose on Pinkish, "88c" Variety (48 var; Yvert 49 var). Position 4, large margins, "88c" at right, used with 1870, 40c Orange (47; Yvert 48), Position 5, tied by diamond of dots cancels, Cognac Oct. 5, 1871 double-circle datestamp on cover front only to New York, red London transit and "2 Cents" credit handstamp to U.S., carried on *City of Brussels* from Queenstown on Oct. 6, arriving New York Oct. 15 with red "Paid All" circular datestamp, Very Fine, an extremely rare use of the 1870 Bordeaux Issue "88c" variety, **fewer than four examples on cover are recorded** ..... E. 1,000-1,500



218

- 218 1872, 5c Yellow Green (53; Yvert 53). Used with 1872, 15c Bister (61; Yvert 55), tied by red crayon strokes, Paris Jun. 16, 1876 docketing on postcard to Brooklyn N.Y., Brooklyn Jun. 29 circular datestamp, red New York "Paid All" backstamp, one corner clipped and minor gum staining on 15c at right, still Very Fine and unusual use ..... E. 200-300



- 219 ☒ **1871, 25c Blue (58; Yvert 60A).** Horizontal pair, tied by diamond of dots cancels, Bordeaux Aug. 16, 1873 double-circle datestamp on folded letter to New Orleans, carried **direct from Bordeaux on State Line steamer Minnesota**, departing Aug. 19 and arriving Sep. 12, "New Orleans Sep. 12" circular datestamp ties pair, bold strike of scarce **"Steamship 10"** due marking, Very Fine and rarely seen routing direct to New Orleans..... E. 500-750
- 220 ☒ **1871, 25c Blue (58; Yvert 60A).** Horizontal pair, tied by six-point star of dots cancel, Paris Dec. 30, 1874 double-circle datestamp on small cover to Philadelphia Pa. with original contents, blue Drexel Harjes & Co. forwarder's datestamp, "Voie d'Angleterre" straightline, carried on Inman Line's *City of Baltimore*, arriving New York Jan. 25, 1875 where red "Paid All" circular datestamp struck over pair, Philadelphia receiving backstamp, Very Fine, sent under the Apr. 28, 1874 U.S.-French treaty, 50-centimes fully prepaid rate ..... E. 200-300
- 221 ☒ **1871, 25c Blue (58; Yvert 60A).** Horizontal pair and two singles affixed overlapping, tied by diamond of dots cancels, Meulan Jul. 23, 1872 double-circle datestamp on folded letter to Philadelphia Pa., blue "In U.S. Notes 10" depreciated currency handstamp ties stamps, top stamps with some slight creasing and cover corner toning at top right, Very Fine appearing double-rate cover carried by HAPAG steamer *Hammonia II*..... E. 200-300
- 222 ☒ **1870, 40c Orange on Yellowish, Ty. I (59; Yvert 38).** Tied by bold strike of **"723" British numeral grid cancel**, Jan. 24, 1876 blue forwarder's circular datestamp on folded letter to New York, posted aboard Havre-Southampton steamer where struck with **"Southampton France MB (Mobile Box) JA 25 1876"** octagonal datestamp, carried on NGL *Donau*, arriving New York Feb. 7, New York "Paid All" backstamp, Very Fine and rare with the stamp cancelled by a British marking and the Southampton Mobile Box datestamp ..... E. 300-400



223

- 223 ✉ **1870, 40c Orange on Yellowish, Ty. II, Pair with Retouched "4"** (59e; Yvert 38f). Positions 146-147, horizontal pair, both showing **retouched "4"**, used with normal single 40c (59; Yvert 38) affixed wrapping around bottom edge of cover, tied by diamond of dots cancels and by red London transit, Biarrits Apr. 6, 1874 double-circle datestamp on cover to Washington D.C., several transit and receiving backstamps, Very Fine and rare, carried on Inman Line's *City of Richmond*, with 1972 Diena certificate, Scott Retail for pair on cover \$4,100.00..... E. 1,500-2,000



225



224

- 224 ✉ **1872, 30c Brown on Yellowish (62; Yvert 56)**. Horizontal pair, tied by star of dots cancels, Paris Apr. 1, 1873 double-circle datestamp on small cover to Philadelphia Pa., "In U.S. Notes 10" depreciated currency handstamp ties pair, Very Fine overpaid rate by American Packet, carried on HAPAG *Frisia*..... E. 200-300
- 225 ✉ **1872, 80c Rose on Pinkish (63; Yvert 57)**. Vertical strip of three, tied by diamond of dots cancels, Paris Jul. 18, 1876 double-circle datestamp on **registered** cover to New York, red "CHARGE" straightline, octagonal table backstamp and London registry oval, various crayon and registration markings, red "New York Jul. 30" circular datestamp, wax seals on back, some cover edge faults and missing backflap, otherwise Fine and unusual use ..... E. 300-400

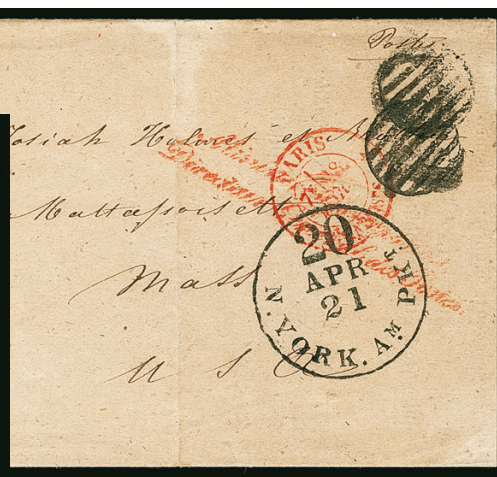
## STAMPLESS MARKINGS



- 226 ☒ **Cayenne, French Guiana, to Bordeaux, France via Boston.** Mar. 17, 1742 datelined folded letter from **Cayenne to Bordeaux, France**, manuscript "*par Boston*", "ANGLETERRE" (England) straightline handstamp, "17" sols due including 10 sols transit to GB and 7 sols internal rate from Paris to Bordeaux, Jul. 21 receipt docketing, some internal erosion affects corner of letter but front and back are intact, one side flap torn slightly into front at bottom, still Very Fine ..... E. 200-300
- 227 ☒ **New Orleans to Bordeaux.** "New Orleans 1st November, 1815" dateline on folded letter to Bordeaux, France, clear strike of "**Colonies Par La Flotte**" serrated oval handstamp with fleurons, manuscript "21" due, some minor soiling, still Very Fine, this ship marking was used from 1765-1830 and is normally poorly struck and often illegible, ex Noel ..... E. 300-400



- 228 ☒ **Rome to Washington D.C. via Paris** Clear strike of "**Corps Expeditionnaire d' Italie 1st Division 20 Oct. '53**" double-circle datestamp on folded letter from Rome to the Minister for France in Washington D.C., fancy oval "Rebuts" (dead letter) handstamp and part strike of script backstamp which translates to "General Direction of the Posts, Opened for Information" (arguably a form of censorship), after a two-month delay letter was re-mailed with manuscript "26" paid (double-rate) on back, red boxed "PD" handstamp, "Boston Br. Pkt. 5 Jan. 25" due circular datestamp, Very Fine and fascinating usage, the French Expeditionary Force was in Rome protecting the Pope..... E. 1,000-1,500



- 229 ☒ **Paris to Narragansett Mass.** Red Paris Mar. 28, 1857 double-circle datestamp on buff cover to Narragansett Mass., free-franked with two line red script “**Ministere des Finances Directeur General des Postes**” handstamp, “N. York Am. Pkt. 20 Apr. 21” due circular datestamp, Very Fine, carried on N.Y. & Havre Line’s *Fulton*..... E. 100-150
- 230 ☒ **New York to Cognac, France.** “New York Br. Transit Feb. 19” circular datestamp on back of 1870 folded letter to **Cognac, France**, carried by NGL Line steamer *Donau*, arriving Southampton Mar. 1, two strikes of “**G.B./Art. 38**” **Anglo-French accountancy handstamp**, Calais and Bordeaux transit datestamps and charged “10”-decimes due for double-rate, Bordeaux and Cognac backstamps, Very Fine, the “G.B./Art. 38” marking was used only from January to March 1870 and is very rare with fewer than five examples known, ex Noel ..... E. 500-750

## GROUP LOTS

- 231 ☒ **France-United States, Stampless Private Ship Letters.** 21 stampless folded letters or covers traveling in both directions, many from 1840’s with a few 1830’s or later, wide range of markings, one carried on *Great Western* with U.S. freight money charge, another carried on first sailing of the New York & Havre Line’s *Humboldt*, other name-of-ship designations, several “Pays D’outremer Par Le Havre” in both red and black, “red Colonies Par Le Havre,” incoming U.S. markings including Buffalo N.Y., New Orleans and New York, Very Fine group, many ex Arnell or Noel, full scan available here .....(Website PDF) E. 500-750
- 232 ☒ **France-United States, Stamped Private Ship Letters.** 10 covers, franked with 1852-63 Issues, 10c, 20c, 25c 40c and 80c stamps, nice range of markings including red diamond of dots cancels and Le Havre “Maritime” datestamp on one, various “Ship” handstamps, one with “Insufficient Postage” and strip of 20c 1852 Issue (staining), forwarder’s handstamps, range of steamer lines represented, some other minor flaws but overall a Very Fine and interesting group, copies of exhibit pages with Steven Walske’s notes accompanies .....(Website PDF) E. 500-750
- 233 ☒ **France-United States Stampless Packet Mail.** Seven covers between France and the United States in both directions, range of markings and uses, including exchanges under 1836 GB-France Treaty, red “Colonies/&c Art. 12”, Three Months period use by American Packet, others, each interesting, Very Fine group, compete descriptions for each cover and scans available here .....(Website PDF) E. 400-500
- 234 ☒ **France-United States 1857 Treaty Rate Covers.** 12 covers from the 1857 French-U.S. Treaty period sent in both directions, both stamped and stampless, including U.S. 1857 Issue 5c Brown, Ty. I (29) strip of three on cover to Menton, group of four carried on CGT Ligne H steamers including maiden voyage of *Lafayette*, four with 80c stamps paying the single Treaty rate, a couple other stampless, some minor flaws but overall a Very Fine and interesting group, compete descriptions for each cover and scans available here .....(Website PDF) E. 500-750

END OF SALE — THANK YOU



# BIDS

Use this form to submit absentee bids  
or to confirm telephone bids

# Sale 1127

May 29, 2016

PADDLE #

# 1

Please provide the following information:

NAME .....

ADDRESS .....

CITY/STATE/ZIP .....

PHONE ..... MOBILE .....

EMAIL .....

# 2

Have you purchased from us in the past 5 years? ☐ Yes (please go to Section 3)  
☐ No (references required below)

STAMP FIRM ..... PHONE .....

STAMP FIRM ..... PHONE .....

Please submit references at least **2 business days** before the sale. Bids from new clients will not be executed if satisfactory references are not received in time to be contacted.

# 3

- Enter the lot number and your corresponding maximum bid in the space below
- Use whole dollar amounts and bid according to the increments (see back of form)
- Bids do not include the 15% Buyer's Premium, taxes, duty or shipping charges
- Absentee bids will advance at one increment over the next highest competing bid
- "Plus", "Break Tie" or "Buy" bids will not be executed
- Indicate any "Or" bids between lot number/bid entries and bracket your choices
- If you wish to limit the total amount of your bids, follow the instructions below

Lot #	Bid \$	Lot #	Bid \$	Lot #	Bid \$

☐ **Limit Bids:** Check this box if you wish to limit the total hammer price of your bids (excluding 15% Buyer's Premium, taxes, duty and shipping costs). Your bids will be executed until your bidding limit has been reached. The total amount you wish to bid is \$ .....

# 4

By signing this form, you agree to all of the Conditions of Sale printed in the sale catalogue (printed and digital), including but not limited to a) payment in the manner demanded by the Siegel firm, and b) payment of the 15% Buyer's Premium, any sales tax or customs duty, shipping costs, late charges and

other prescribed charges. You agree that your bids will be executed as courtesy by Siegel, but you waive the right to make any claim against Siegel or its employees arising from these bids or your participation in the sale. You agree to honor all bids as submitted, regardless of any errors or omissions.

SIGNED ..... DATE .....

Mail the signed form to Siegel Bid Department, 60 East 56th St., New York, NY 10022  
or email to [stamps@siegelauctions.com](mailto:stamps@siegelauctions.com)  
or fax to 212-753-6429



# Additional Bids

## Sale 1127

May 29, 2016

PADDLE #

Lot #	Bid \$	Lot #	Bid \$	Lot #	Bid \$

## Shipping & Insurance

We will be pleased to arrange for shipping and transit insurance for purchases in this sale, except for lots marked or announced as "floor sale only." To expedite billing and delivery to hundreds of buyers in each sale, we use standard charges for postage and insurance under our policy. These charges are based on the package weight and mailing requirements, according to the schedule shown here. Our standard charges do not include a fee for our services, and they may be slightly more or less than the actual postage or Fedex fee. We ask all buyers to remit the invoiced amount for shipping and insurance.

Transit insurance is provided in all cases, except when the buyer has furnished us with documentation that insurance is effective under the buyer's own policy.

There will be no added insurance charge for shipments of less than \$75,000 value. Shipments valued in excess of \$75,000 may require supplemental insurance and/or special courier service, the estimated cost of which will be furnished to the buyer prior to shipment. If the buyer refuses to pay the estimated charges or furnish proof of self-insured coverage, the buyer will be responsible for picking up the lots at our office and any resulting sales tax.

### Standard Shipping Charges

Weight Class	Shipping Method	Charge
Up to 2 lbs.	Fedex Envelope	\$20
Over 2 lbs.	Fedex Box	\$35 - \$50*
Outside US	Fedex	\$50 - \$100**
Bulky Lots	Fedex Ground or Express	By weight

\* Up to \$75,000 value and up to 5 lbs; additional charge may apply to packages exceeding limits

\*\* Buyers outside United States are liable for any applicable customs duty and clearance charges. An accurate declaration of contents and value will be made on all packages and import/export documents. **Siegel may refuse to ship lots to certain countries with a high risk factor.**

2/2015

## Bidding Increments

The auctioneer may regulate the bidding at his discretion. However, to assist absentee bidders in establishing their maximum bids, the increments shown here will be used in most cases. We recommend that written bids conform to these increments—bids that do not will be reduced accordingly.

Bid	Increment	Bid	Increment
Up to \$200	\$10	\$7,000-20,000	\$500
\$200-500	\$25	\$20,000-30,000	\$1,000
\$500-1,000	\$50	\$30,000-75,000	\$2,500
\$1,000-3,000	\$100	\$75,000-140,000	\$5,000
\$3,000-7,000	\$250	\$140,000-300,000	\$10,000

Robert A. Siegel Auction Galleries, Inc.  
Prices Realized for

Sale 1127 5/29/2016 The Steven Walske Collection of US-France Transatlantic Mail, Pt2

Lot#	Realized	Lot#	Realized	Lot#	Realized	Lot#	Realized
102	1,100	140	275	181	4,000	224	600
103	950	141	400	182	12,000	225	325
104	4,500	142	2,600	183	1,600	226	275
105	3,250	143	400	184	3,500	228	1,100
106	10,500	144	900	185	1,100	229	60
107	4,000	145	700	186	650	230	275
108	1,100	146	375	187	500	231	275
109	3,000	147	3,500	188	500	232	275
110	30,000	148	1,600	189	160	233	225
111	7,000	149	1,300	190	900	234	900
112	3,750	150	7,000	191	130		
113	7,500	152	425	192	160		
115	3,500	153	400	193	90		
116	2,000	154	10,000	194	4,500		
117	1,600	155	4,250	195	750		
118	3,250	156	2,400	197	2,000		
119	1,400	157	1,300	198	450		
120	1,200	158	1,800	199	150		
121	2,100	159	800	200	160		
123	4,500	160	1,700	201	2,100		
124	2,300	161	550	202	1,000		
125	1,800	162	550	203	2,400		
126	2,000	163	1,100	207	3,000		
127	750	164	300	208	1,000		
128	800	165	8,000	209	300		
129	500	167	1,100	210	750		
130	900	168	375	211	2,100		
131	55,000	170	350	212	1,000		
132	10,000	173	550	213	650		
133	85,000	174	3,250	215	1,000		
134	4,000	175	8,000	217	3,500		
135	650	176	6,250	218	110		
136	500	177	2,100	219	275		
137	2,500	178	8,500	220	110		
138	650	179	3,250	221	110		
139	400	180	3,250	222	1,100		