

THE  
GRANT INMAN COLLECTION

---

PART 1 — NEWSPAPERS & PERIODICALS



SALE 1131

---

TUESDAY, JUNE 21, 2016

*Robert A. Siegel*  
AUCTION GALLERIES, INC.

# THE GRANT INMAN COLLECTION

## PART 1 — NEWSPAPERS & PERIODICALS

SALE 1131 — TUESDAY, JUNE 21, 2016



Live auction at 60 East 56th Street (Park/Madison), 4th Floor, New York City

All lots sold subject to a 15% buyer's premium and  
applicable sales tax or customs duty

Please carefully read the Conditions of Sale before bidding

**Special Viewing at World Stamp Show—NY 2016**

**Javits Center—Superbooth 1229**

**Saturday, May 28, 10:30am-6pm**

**Sunday-Friday, May 29-June 3, 10am-6pm**

Regular viewing on Monday, June 20, 10am-4pm, and by appointment

*Robert A. Siegel*

AUCTION GALLERIES, INC.

60 EAST 56TH STREET, 4TH FLOOR, NEW YORK, N.Y. 10022

Phone (212) 753-6421 • Fax (212) 753-6429 • E-mail: [stamps@siegelauctions.com](mailto:stamps@siegelauctions.com)

Catalogues, internet bidding, resources, archives and the Siegel Encyclopedia at  
[siegelauctions.com](http://siegelauctions.com)



*Robert A. Siegel*

AUCTION GALLERIES, INC.

60 EAST 56TH STREET, 4TH FLOOR, NEW YORK, N.Y. 10022

Phone (212) 753-6421 • Fax (212) 753-6429 • E-mail: stamps@siegelauctions.com

siegelauctions.com



Scott R. Trepel  
President  
strepel  
@siegelauctions.com



John P. Zuckerman  
Senior Vice President  
jzuckerman  
@siegelauctions.com



Corey Long  
Senior Vice President  
clong  
@siegelauctions.com



Colleen Stellato  
Vice President–Accounts  
colleen  
@siegelauctions.com



Charles F. Shreve  
Director, Siegel International  
charles  
@siegelauctions.com



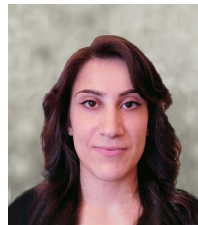
Andrew Titley  
International Specialist  
andrew  
@siegelauctions.com



Helen Stewart  
Bids and Inquiries  
helen  
@siegelauctions.com



Danielle Lenard  
Bids and Inquiries  
danielle  
@siegelauctions.com



Jocelyn Weibel  
Digital Production  
jocelyn  
@siegelauctions.com



Chris Anderson  
Siegel International  
chris  
@siegelauctions.com

Scott R. Trepel Principal Auctioneer (licensed by NYC Dept. of Consumer Affairs, #795952)

## Information for Bidders

### Bidding

The following means are available for placing bids:

- 1) **Attending the Live Auction in Person:** All bidders must register for a paddle, and new bidders must provide references at least three business days in advance of the sale.
- 2) **Live Internet Bidding:** Instructions for participating as a Live Internet Bidder are provided on the page opposite.
- 3) **Phone Bidding:** Bidders can be connected to the sale by phone and bid through a member of staff. Requests for phone bidding are subject to approval (please contact our office at least 24 hours before the sale). A signed Bid Form is required.
- 4) **Absentee Bids.** All bids received in advance of the sale, either by mail, fax, phone, e-mail or internet, are Absentee Bids, which instruct the auctioneer to bid up to a specific amount on one or more lots in the sale. Absentee Bids sent by phone, fax or e-mail should arrive at least one hour prior to the start of the sale session. Bids entered through Live Internet Bidding will be visible to the auctioneer during the sale. Written bids should be entered legibly on the Bid Form in the sale catalogue. E-mail and internet bids should be carefully typed and double-checked. All new bidders must provide references. We recommend calling or e-mailing to confirm that Absentee Bids sent by mail, fax or e-mail have been received and entered.

### Pre-Sale Viewing

Subject to availability, certain lots (except group lots) can be sent to known clients for examination. Requests must be made no later than 7 days prior to the sale. Lots must be returned on the day received. Postage/insurance costs will be invoiced.

In addition to regular viewing, clients may view lots by appointment. Our staff will be pleased to answer questions or provide additional information about lots.

### Expert Certification

Individual items offered without a PF or PSE certificate dated within the past five years may be purchased subject to independent certification of genuineness and our description. **Please refer to the Conditions of Sale and Grading Terms for policies governing certification.**

### Shipping and Delivery

Procedures and charges for shipping lots are printed on the back of the Bid Form. **Bidders are responsible for all prescribed shipping charges and any applicable sales tax or customs duties.**

### Price Realized

Prices realized are sent with each invoice. Bidders with e-mail will receive a Bid Results report after the sale. Session results are posted immediately to **siegelauctions.com**



# Live Internet Bidding at Siegel Auctions

## BIDDING FROM YOUR COMPUTER LETS YOU BE PART OF THE LIVE AUCTION FROM ANYWHERE IN THE WORLD!

**There's NO SUBSTITUTE for following the auction in real time.**  
**Live Internet Bidding lets you bid and buy as though you were right there in the saleroom.**  
**And it's easy.**

**This step-by-step guide will instruct you how to register, set your browser and use the bidding interface.**

**Start by following the simple steps to become a registered Live Internet Bidder.**  
**Once you've been approved for bidding, you can listen to the auction and place bids with the click of a mouse.**

### Registering with STAMP AUCTION NETWORK & SIEGEL AUCTION GALLERIES

Live Internet Bidding is managed by Stamp Auction Network (SAN).  
To bid, you must be registered and approved by *both* SAN and Siegel.  
To decide what you need to do, choose the description below that best fits you.



**I've already registered with SAN and have been approved by Siegel for internet bidding.**

**I'm a Siegel client, but I'm not registered with SAN.**  
Go to [stampauctionnetwork.com/siegel](http://stampauctionnetwork.com/siegel) and click on "Register" at the top. Check the box for Robert A. Siegel Auction Galleries (under "R") and submit the form, indicating you are a Siegel client. Once registered at SAN, you're ready for internet bidding.

**I've bid through SAN before, but this is the first time I've bid in a Siegel sale.**  
Then you just need to be approved by Siegel. Go to [stampauctionnetwork.com/siegel](http://stampauctionnetwork.com/siegel) and click on "Update Registration" at the top. Your SAN account information will be sent to us for approval (you might be asked for other trade references). Once approved by Siegel for bidding, you're ready for internet bidding.

**I've never bid with Siegel, nor registered with SAN.**  
Go to [stampauctionnetwork.com/siegel](http://stampauctionnetwork.com/siegel) and click on "Register" at the top. Check the box for Robert A. Siegel Auction Galleries (under "R") and submit the form **with your trade references** (please, no family members or credit card companies as references). Once registered at SAN and approved by Siegel for bidding, you're ready for internet bidding.

Live Internet Bidding works by allowing registered bidders to observe and place bids.

Live Internet Bidding will work with any browser on both PC and Mac operating systems.

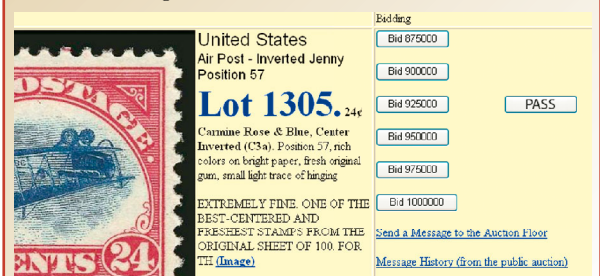
Before bidding by internet for the first time, we recommend finding a sale in progress and listening to the public broadcast or logging in as a registered bidder. This will help you develop a feel for the sale tempo and bidding interface.

### Log on to the auction at [stampauctionnetwork.com/siegel](http://stampauctionnetwork.com/siegel).

You can also log on at [siegelauctions.com](http://siegelauctions.com)

When you're logged on as a Live Internet Bidder, the bidding interface shows a photo and description of the lot, the current bid (and your bidding status), options for placing competitive bids and buttons with bid increments.

- After you click on a bid amount, the auctioneer is immediately notified of your bid.
- Retracting a bid is usually not acceptable, so please bid carefully.
- If you bid and then decide to stop, the "Pass" button will tell the auctioneer you are no longer bidding.
- You can send messages to the auctioneer (for example, a request for extension).
- You can track prior realizations from the bidding screen.



**"System Down" or "Lost Connection" events do occasionally happen.**

If you have any problems with Live Internet Bidding please call **212-753-6421** for immediate assistance.



## Conditions of Sale (please read carefully before bidding)

THE PROPERTY DESCRIBED IN THIS CATALOGUE WILL BE OFFERED AT PUBLIC AUCTION BY ROBERT A. SIEGEL AUCTION GALLERIES, INC. ("GALLERIES") ON BEHALF OF VARIOUS CONSIGNORS AND ITSELF OR AFFILIATED COMPANIES, BY BIDDING ON ANY LOT, WHETHER DIRECTLY OR BY OR THROUGH AN AGENT, IN PERSON, OR BY TELEPHONE, FACSIMILE OR ANY OTHER MEANS, THE BIDDER ACKNOWLEDGES AND AGREES TO ALL OF THE FOLLOWING CONDITIONS OF SALE.

1. The highest bidder acknowledged by the auctioneer shall be the buyer. The term "final bid" means the last bid acknowledged by the auctioneer, which is normally the highest bid offered. **The purchase price payable by the buyer will be the sum of the final bid and a commission of 15% of the final bid ("buyer's premium"), together with any sales tax, use tax or customs duties due on the sale.**

2. The auctioneer has the right to reject any bid, to advance the bidding at his discretion and, in the event of a dispute, to determine the successful bidder, to continue the bidding or to reoffer and resell the lot in dispute. The Galleries' record of the final sale shall be conclusive.

3. All bids are per numbered lot in the catalogue unless otherwise announced by the auctioneer at the time of sale. The right is reserved to group two or more lots, to withdraw any lot or lots from the sale, or to act on behalf of the seller. The Galleries will execute bidding instructions on behalf of clients, but will not be responsible for the failure to execute such bids or for any errors in the execution of such bids.

4. **Lots with numbers followed by the symbol ° are offered subject to a confidential minimum bid ("reserve"), below which the lot will not be sold. The absence of the symbol ° means that the lot is offered without a reserve. If there is no reserve, the auctioneer has sole discretion to establish a minimum opening bid and may refuse an offer of less than half of the published estimate. Any lot that does not reach its reserve or opening bid requested by the auctioneer will be announced as "passed" and excluded from the prices realized lists after the sale. The Galleries may have a direct or indirect ownership interest in any or all lots in the sale resulting from an advance of monies or goods-in-trade or a guarantee of minimum net proceeds made by the Galleries to the seller.**

5. Subject to the exclusions listed in 5(A), the Galleries will accept the return of lots which have been misidentified or which have obvious faults that were present when the lot was in the Galleries' custody, but not so noted in the lot description. **All disputed lots must be received by the Galleries intact with the original packing material within 5 days of delivery to the buyer but no later than 30 days from the sale date.**

**(5A) EXCLUSIONS:** The following lots may not be returned for any reason, or may not be returned for the reasons stated: i) lots containing 10 or more items; ii) lots from buyers who registered for the pre-sale exhibition or received lots by postal viewing, thereby having had the opportunity to inspect them before the sale; iii) any lot described with "faults," "defects" or a specific fault may not be returned because of any secondary fault; iv) photographed lots may not be returned because of centering, margins, short/nibbed perforations or other factors shown in the illustrations; v) the color of the item does not match the color reproduction in the sale catalogue or website listing; vi) the description contains inaccurate information about the quantity known or reported; or vii) a certification service grades a stamp lower than the grade stated in the description.

6. Successful bidders, unless they have established credit with the Galleries prior to the sale, must make payment in full before the lots will be delivered. Buyers not known to the Galleries must make payment in full within 3 days from the date of sale. **The Galleries retains the right to demand a cash deposit from anyone prior to bidder registration and/or to demand payment at the time the lot is knocked down to the highest bidder, for any reason whatsoever.** In the event that any buyer refuses or fails to make payment in cash for any lot at the time it is knocked down to him, the auctioneer reserves the right to reoffer the lot immediately for sale to the highest bidder. **Credit cards (Visa, Mastercard and Discover only) can be accepted as payment but will be subject to a 3% Convenience Fee, which will be added to the total of the entire invoice (including hammer price, buyer's premium, shipping**

**and transit insurance charges and any applicable taxes).**

7. If the purchase price has not been paid within the time limit specified above, nor lots taken up within 7 days from the date of sale, the lots will be resold by whatever means deemed appropriate by the Galleries, and any loss incurred from resale will be charged to the defaulting buyer. **Any account more than 30 days in arrears will be subject to a late payment charge of 1½% per month as long as the account remains in arrears. Any expenses incurred in securing payment from delinquent accounts will be charged to the defaulter.** A fee of \$250.00 per check will be charged for each check returned for insufficient funds.

8. All lots are sold as genuine. **Any lot accompanied by a certificate issued by The Philatelic Foundation or by Professional Stamp Experts within 5 years of the sale date is sold "as is" and in accordance with the description on the certificate. Such lots may not be returned for any reason, including but not limited to a contrary certificate of opinion.** Buyers who wish to obtain a certificate for any item that does not have a P.F. or P.S.E. certificate (dated as above) may do so, provided that the following conditions are met: (1) the purchase price must be paid in full, (2) the item must be submitted to an acceptable expertizing committee with a properly executed application form within 21 days of the sale, (3) a copy of the application form must be given to the Galleries, (4) in the event that an adverse opinion is received, the Galleries retain the right to resubmit the item on the buyer's behalf for reconsideration, without time limit or other restrictions, (5) unless written notification to the contrary is received, items submitted for certification will be considered cleared 90 days from the date of sale, and (6) in the event any item is determined to be "not as described", the buyer will be refunded the purchase price and the certification fee up to \$800.00 unless otherwise agreed to in writing.

9. Until paid for in full, all lots remain the property of the Galleries on behalf of the seller.

10. Agents executing bids on behalf of clients will be held responsible for all purchases made on behalf of clients unless otherwise arranged prior to the sale.

11. The buyer assumes all risk for delivery of purchased lots and agrees to pay for prescribed shipping costs. **Buyers who receive lots in the U.S. are obligated to pay whatever sales tax or compensating use tax might be due, and buyers outside the U.S. are responsible for all customs duties.**

12. **The bidder consents that any action or proceeding against it may be commenced and maintained in any court within the State of New York or in the United States District Court for the Southern District of New York, that the courts of the State of New York and United States District Court for the Southern District of New York shall have jurisdiction with respect to the subject matter hereof and the person of the bidder. The bidder agrees not to assert any defense to any action or proceeding initiated by Galleries based upon improper venue or inconvenient forum. The bidder agrees that any action brought by the bidder shall be commenced and maintained only in a Federal Court in the United States District Court for the Southern District of New York or the State Court in the county in which Galleries has its principal place of business in New York. The bidder agrees not to use a public conflict resolution service and not to use any form of social media to publish comments or information about the Galleries and its employees which might harm the Galleries' reputation or business. These Conditions of Sale shall be governed by and construed in accordance with the substantive laws of the State of New York, and shall constitute an agreement that shall be binding on the parties, and their respective heirs, administrators, distributees, successors and assignees.**

SCOTT R. TREPEL, Principal Auctioneer  
Auctioneer's License No. 795952  
N.Y.C. Department of Consumer Affairs  
80 Lafayette Street, New York, N.Y. 10013  
Telephone (212) 577-0111

*Revised 1/2016*

# Grades, Abbreviations and Values Used in Descriptions

## Grades and Centering

Our descriptions contain detailed information and observations about each item's condition. We have also assigned grades to stamps and covers, which reflect our subjective assessment. For stamps, the margin width, centering and gum are described and graded according to generally-accepted standards (an approximate correlation to numeric grades is provided at right). Although we believe our grades are accurate, they are not always exactly aligned with third-party grading terms or standards for all issues. **A lot may not be returned because a certification service grades a stamp lower than the grade stated in the description. Information from the P.S.E. Stamp Market Quarterly and P.S.E. Population Report<sup>SM</sup> is the most current available, but lots may not be returned due to errors or changes in statistics or data.**

**Extremely Fine Gem (90-100):** The term "Gem" describes condition that is the finest possible for the issue. This term is equivalent to "Superb" used by grading services.







**Extremely Fine (80-90):** Exceptionally large/wide margins or near perfect centering.

**Very Fine (70-85):** Normal-size margins for the issue and well-centered with the design a bit closer to one side. "Very Fine and choice" applies to stamps that have desirable traits such as rich color, sharp impression, freshness or clarity of cancel.

**Fine (60-70):** Smaller than usual margins or noticeably off center. Pre-1890 issues may have the design touched in places.

**Very Good (below 60):** Attractive appearance, but margins or perforations cut into the design.

## Guide to Gum Condition

Gum Categories:	MINT N.H.	ORIGINAL GUM (O.G.)				NO GUM
	 <b>Mint Never Hinged</b> <i>Free from any disturbance</i>	 <b>Lightly Hinged</b> <i>Faint impression of a removed hinge over a small area</i>	 <b>Hinge Mark or Remnant</b> <i>Prominent hinged spot with part or all of the hinge remaining</i>	 <b>Part o.g.</b> <i>Approximately half or more of the gum intact</i>	 <b>Small part o.g.</b> <i>Approximately less than half of the gum intact</i>	 <b>No gum</b> <i>Only if issued with gum</i>
Catalogue Symbol:	★ ★	★	★	★	★	(★)
PRE-1890 ISSUES	<i>Pre-1890 stamps in these categories trade at a premium over Scott value</i>			Scott Value for “O.G.”		Scott “No Gum” Values thru No. 218
1890-1935 ISSUES	Scott “Never Hinged” Values for Nos. 219-771	Scott Value for “O.G.” (Actual value will be affected by the degree of hinging)		<b>Disturbed Original Gum:</b> Gum showing noticeable effects of humidity, climate or hinging over more than half of the gum. The significance of gum disturbance in valuing a stamp in any of the Original Gum categories depends on the degree of disturbance, the rarity and normal gum condition of the issue and other variables affecting quality. For example, stamps issued in tropical climates are expected to have some		
1935 TO DATE	Scott Value for “Unused”					

## Covers

Minor nicks, short edge tears, flap tears and slight reduction at one side are normal conditions for 19th century envelopes. Folded letters should be expected to have at least one file fold. Light cleaning of covers and small mends along the edges are accepted forms of conservation. Unusual covers may have a common stamp with a slight crease or tiny tear. **These flaws exist in virtually all 19th century covers and are not always described. They are not grounds for return.**

## Catalogue Values and Estimates

Unless otherwise noted, the currently available *Scott Catalogue* values are quoted in dollars with a decimal point. Other catalogues are often used for foreign countries or specialized areas and are referred to by their common name: *Stanley Gibbons* (SG), *Dietz*, *American Air Mail Catalogue* (AAMC), *Michel*, *Zumstein*, *Facit*, etc. Estimates are indicated with an "E." and reflect our conservative valuation in dollars. Reserves will never exceed the low end of the estimate range; they will sometimes exceed Scott Catalogue value for stamps in Extremely Fine condition.












Because of certain pricing inconsistencies in the *Scott Catalogue*—for example, blocks that have no gum, the absence of premiums for Mint N.H. items, etc.—we cannot guarantee the accuracy of values quoted for multiples, specialized items and collection lots. We generally try to be conservative, but buyers may not return a lot because of a discrepancy in catalogue value due to Scott pricing inconsistencies.

## Symbols and Abbreviations (see chart above for gum symbols)

⊞	Block	E	Essay	pmk.	Postmark	No.	Scott Catalogue Number
⊞	Cover	P	Proof	cds	Circular Datestamp	hs	Handstamp
FC	Fancy Cancel	TC	Trial Color Proof	var.	Variety	ms.	Manuscript

# NEWSPAPERS & PERIODICALS ISSUES AND CORRESPONDING REGULAR ISSUES

This table lists each Newspapers & Periodicals issue with the regular postage issue produced by the same printer and with similar characteristics.

Year	Designs	Scott Nos.	Newspaper Series	Printer	Paper/Gum	Corresponding Regular Issue
1865		PR1-PR4	1865 Issue	National	Thin hard, without gum	1861-68 Issue
1875	 	PR9-PR32 PR5-PR7 PR33-PR56	1875 New Design 1875 Reprint of 1865 1875 Special Printing	Continental Continental Continental	Thin hard, gummed Hard white, without gum Hard white, without gum	1873 Bank Note Issue 1875 Special Printing
1879	 	PR57-PR79 PR8	1879 Issue 1881 Reprint	American American	Soft porous, gummed Soft porous, without gum	1879 Bank Note Issue 1880 Special Printing
1883	 	PR81-PR89 PR80	1883 Issue 1883 Special Printing	American American	Soft porous, gummed Soft porous, without gum	1882-83 Bank Note Issue 1882 Special Printing
1894		PR90-PR101	1894 Issue	Bureau	Unwatermarked	1894 Bureau Unwatermarked
1895	 	PR102-PR113	1895 New Designs	Bureau	Unwatermarked	1894 Bureau Unwatermarked
1895		PR114-PR125	1895 New Designs	Bureau	Watermarked	1895 Bureau Watermarked



# THE GRANT INMAN COLLECTION

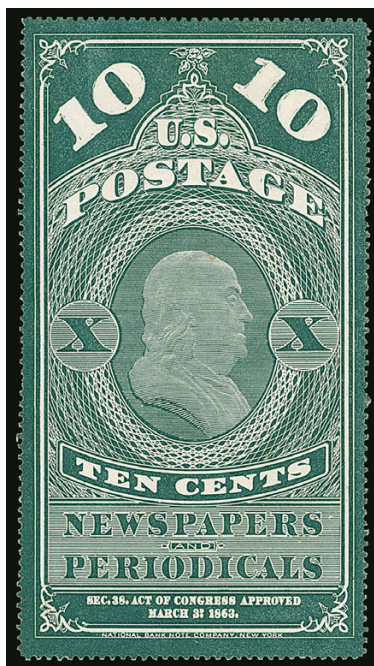
## PART 1 — NEWSPAPERS & PERIODICALS

AFTERNOON SESSION (LOTS 2501-2610)  
TUESDAY, JUNE 21, 2016, AT 1:30 P.M.

1865 NATIONAL BANK NOTE COMPANY ISSUE



2501



2502

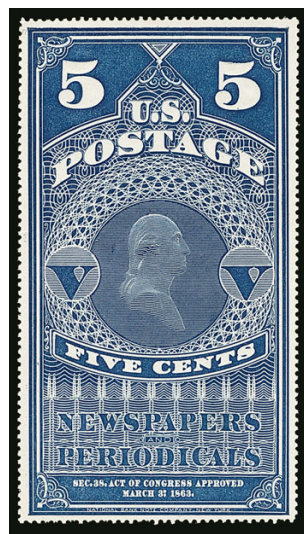


2503

- 2501 ★ **5c Dark Blue, Colored Border, 1865 Issue (PR1).** Without gum as issued, wide margins, Very Fine and choice..... 750.00
- 2502 ★ **10c Blue Green, Colored Border, 1865 Issue (PR2).** Without gum as issued, deep rich color, outstanding centering, Extremely Fine..... 300.00
- 2503 ★ **25c Orange Red, Colored Border, 1865 Issue (PR3).** Without gum as issued, three wide margins, intense color with distinct orange cast, Very Fine..... 400.00



2504

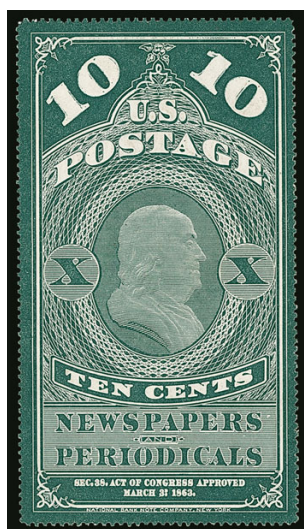


2505EX

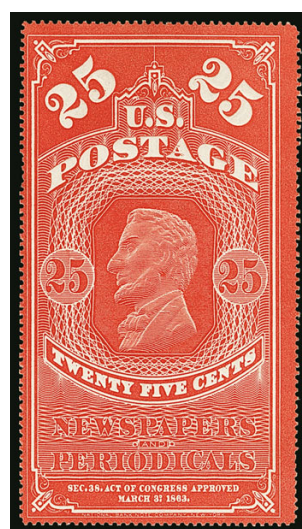
- 2504 ★ **5c Light Blue, White Border, 1865 Issue (PR4).** Without gum as issued, selvage at top, bright color, shortish perfs at bottom and perf separations in selvage which are partly hinge reinforced, appears Very Fine..... 700.00

## 1875 CONTINENTAL BANK NOTE COMPANY REPRINT OF 1865 ISSUE

- 2505 ★ **5c Dull Blue, 1875 Reprint, 5c Dark Blue, 1881 American Bank Note Co. Issue (PR5, PR8).** Without gum as issued, both with rich color, first with a few short perfs at bottom, appears Very Fine, second with corner perf thin and small central thin, Very Fine appearance.....(Photo Ex) 875.00



2506



2507

- 2506 ★ **10c Dark Bluish Green, 1875 Reprint (PR6).** Without gum as issued, wide margins and choice centering, strong color, Extremely Fine..... 250.00
- 2507 ★ **25c Dark Carmine, 1875 Reprint (PR7).** Without gum as issued, rich Carmine color, Fine ..... 300.00



- 2508 S    **5c Dark Blue, 1875 Reprint, Red Specimen Ovpt. Ty. C (PR5S-C var).** Clear strike of blue “National Bank Note Co. New York Jun. 24, 1875” double-oval datestamp struck at center, faint horizontal crease and couple small perf flaws at left, Very Fine appearance, the **only recorded example** of the National Bank Note Co. cancel on the 5c Ty. C Specimen overprint (the underlying stamp is the 1875 Reprint), possibly a presentation example, ex Braceland and Kotanchik, with 2006 P.F. certificate .....

..... E. 1,000-1,500



2508



2509

- 2509 S    **10c Dark Bluish Green, 1875 Reprint, Red Specimen Ovpt. Ty. C (PR6S-C var).** Clear strike of blue “National Bank Note Co. New York Jun. 24, 1875” double-oval datestamp struck at center, small black mark on back barely shows thru at right, corner perf crease at top left and tiny tear at right, Fine appearance, the **only recorded example** of the National Bank Note Co. cancel on the 10c Ty. C Specimen overprint (the underlying stamp is the 1875 Reprint), possibly a presentation example, the normal Specimen is listed only under PR2S (1865 Issue), but we feel this is the 1875 Reprint shade, PFC 446658 no longer accompanies, but identifies this as PR2S-C, ex Braceland and Kotanchik .....

..... E. 1,000-1,500



1875 CONTINENTAL BANK NOTE COMPANY  
IMPERFORATE SPECIAL PRINTING



2510

2510 ★ **5c-25c Newspaper, 1875 Special Printing, Imperforate (PR5 var- PR7 var).** Without gum as issued, each with **bottom right corner sheet margins**, brilliant colors, 25c with trivial natural inclusion to left of portrait

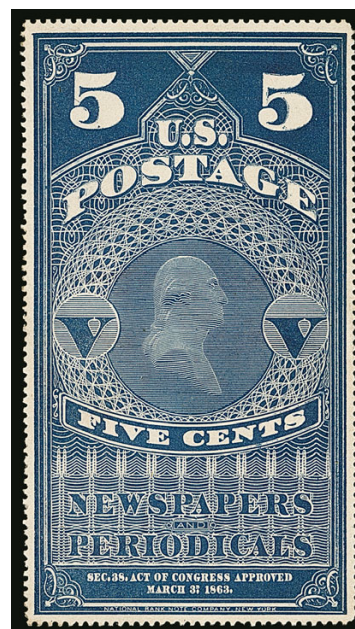
EXTREMELY FINE SET OF THE 1875 CONTINENTAL BANK NOTE COMPANY IMPERFORATE SPECIAL PRINTING OF THE FIRST NEWSPAPER ISSUE. VERY RARE IN THIS CHOICE CONDITION.

According to the Scott Catalogue, Continental Bank Note Co. made a second special printing from new plates, which did not have the colored border. They exist both perforated and imperforate, and were not regularly issued.

Each with 2006 P.S.E. certificate. Scott Retail for the set..... 3,750.00

1881 AMERICAN BANK NOTE CO. REPRINT

- 2511 ★ **5c Dark Blue, White Border, 1881 Reprint (PR8).** Without gum as issued, deep rich color, well-centered, Very Fine..... 650.00



2511

1875 CONTINENTAL BANK NOTE COMPANY ISSUE



2512



2513



2514

- 2512 ★ **2c Black, 1875 Issue (PR9).** Original gum, h.r. at top, intense shade, wide margins, fresh and Very Fine..... 300.00
- 2513 ★ **3c Black, 1875 Issue (PR10).** Original gum, lightly hinged, intense shade, almost perfectly centered with wide margins, Extremely Fine Gem, ex "Vineyard", with 2001 P.F. certificate ..... 300.00
- 2514 ★ **4c Black, 1875 Issue (PR11).** Original gum, choice centering with well-balanced margins, crisp impression, Extremely Fine, with 2004 P.F. certificate..... 300.00





2515EX



2516



2517



2518

- 2515 (★) **6c-10c Black, 1875 Issue (PR12-PR13, PR15).** First and last unused (no gum), No. PR13 original gum, markedly different shades, Very Fine-Extremely Fine and attractive ..... (Photo Ex) 605.00
- 2516 ★ **9c Black, 1875 Issue (PR14).** Original gum, h.r., pretty shade, wide margins, single nibbed perf at lower left not mentioned on accompanying certificate, Very Fine appearance, ex Schwenk, with 2004 P.F. certificate ..... 600.00
- 2517 ★ **12c Rose, 1875 Issue (PR16).** Original gum, bright color, light diagonal wrinkle at top left not mentioned on accompanying certificate, appears Very Fine, with 2002 P.F. certificate..... 800.00
- 2518 ★ **24c Rose, 1875 Issue (PR17).** Disturbed original gum, bright color, choice centering with balanced margins, Very Fine and choice, with 2002 P.F. certificate ..... 850.00



2519

- 2519 ★ **36c Rose, 1875 Issue (PR18).** Original gum, lightly hinged, deep shade and detailed impression on brilliant white paper, perfectly centered with balanced margins, small natural inclusion  
EXTREMELY FINE GEM. A SUPERB 36-CENT CONTINENTAL BANK NOTE CO. NEWSPAPER ISSUE.  
With 2003 P.F. certificate not mentioning natural inclusion ..... 850.00



- 2520 ★ **48c Rose, 1875 Issue (PR19).** Original gum, well-balanced margins, vivid color, Very Fine and choice, with 1987 P.F. and 1995 P.S.E. certificates.. 1,250.00



2520



2521

- 2521 ★ **60c Rose, 1875 Issue (PR20).** Slightly disturbed original gum with tiny paper h.r., brilliant color, nicely centered, Very Fine and choice..... 1,250.00

- 2522 ★ **72c Rose, 1875 Issue (PR21).** Original gum, lightly hinged with adherences from sheet of stamps underneath during production, essentially perfectly centered on bright white paper, sharp impression

EXTREMELY FINE EXAMPLE OF THE 72-CENT 1875 CONTINENTAL NEWSPAPER ISSUE.

Ex Drucker. With 2002 P.F. certificate stating only "it is genuine, previously hinged"..... 1,500.00



2522



2523

- 2523 ★ **84c Rose (PR22).** Original gum, detailed impression on bright white paper, near perfect centering

EXTREMELY FINE. A BEAUTIFUL EXAMPLE OF THE 84-CENT 1875 CONTINENTAL NEWSPAPER ISSUE.

Ex Drucker. With 2002 P.F. certificate..... 1,850.00



2524

- 2524 ★ **96c Rose, 1875 Issue (PR23).** Original gum, lightly hinged, vibrant color and detailed impression

VERY FINE. THE 96-CENT 1875 CONTINENTAL NEWSPAPER ISSUE IS VERY RARE IN SOUND ORIGINAL-GUM CONDITION. THIS IS THE FIRST EXAMPLE WE HAVE OFFERED SINCE 2004.

Prior to the example offered here, the last original gum PR23 we offered was in our 2004 sale of the "Vineyard" collection.

With 2000 P.F. certificate. In our opinion, this issue is undercatalogued in Scott in original-gum condition.....  
..... 1,350.00



2525

- 2525 ★ **\$1.92 Dark Brown, 1875 Issue (PR24).** Original gum, deep rich color and sharp proof-like impression, unusually wide margins

EXTREMELY FINE. A VERY SCARCE NEWSPAPER ISSUE IN THIS SUPERB CONDITION.

Ex "Vineyard". Small red backstamp. With 1996 and 2004 P.F. certificates ..... 1,750.00



2526

- 2526 ★ **\$3.00 Vermilion, 1875 Issue (PR25).** Original gum, vivid color, near perfect centering with wide margins

EXTREMELY FINE. AN OUTSTANDING EXAMPLE OF THE \$3.00 1875 CONTINENTAL NEWSPAPER ISSUE. ONE OF THE MOST DIFFICULT DENOMINATIONS OF THE SERIES TO OBTAIN IN SOUND, CENTERED, ORIGINAL-GUM CONDITION. THIS MAY BE THE FINEST EXAMPLE WE HAVE EVER OFFERED.

When we last offered this stamp in our 2004 sale of the "Vineyard" collection, we conducted a review of our records and stated that this is a notoriously difficult stamp to find with original gum in Extremely Fine condition. We found only one comparable example, with part original gum (which was subsequently offered in the Floyd sale). Since 2004 our views remain unchanged, and we have not encountered another example comparable to this.

Ex "Vineyard". With 1983 and 2002 P.F. certificates .....  
..... 1,800.00



- 2527 ★ **\$6.00 Ultramarine (PR26).** Original gum, lightly hinged, bright color and detailed impression, choice centering

EXTREMELY FINE. A BEAUTIFUL EXAMPLE OF THE \$6.00 1875 CONTINENTAL NEWSPAPER ISSUE. THIS IS ONE OF THE SCARCEST NEWSPAPER STAMPS IN SOUND, CENTERED, ORIGINAL-GUM CONDITION.

Sound, original-gum and centered examples of high-denomination Newspaper stamps printed by the Continental Bank Note Co. are incredibly rare. A search of several collections containing superb offerings of Newspaper stamps, such as Lutwak, Cole, Lyons, Floyd and Lessin, has failed to find its equal. We have offered only one in comparable condition, in our 2004 sale of the "Vineyard" collection.

Ex Drucker. With 1983 and 2002 P.F. certificates .....  
..... 3,600.00



2527



2528

- 2528 ★ **\$9.00 Yellow, 1875 Issue (PR27).** Original gum, vibrant color on bright paper, outstanding centering with well-proportioned margins

EXTREMELY FINE. A BEAUTIFUL ORIGINAL-GUM EXAMPLE OF THE \$9.00 1875 NEWSPAPER ISSUE.

Sound, original-gum and centered examples of high-denomination Newspaper stamps, particularly of the First Issue, are incredibly rare. Only a handful of PR27's exist in this grade.

With 2001 P.F. certificate ..... 1,900.00



2529

- 2529 ★ **\$12.00 Blue Green, 1875 Issue (PR28).** Original gum, deep rich color, well-centered for this difficult issue

FINE. AN EXTREMELY RARE SOUND, ORIGINAL-GUM EXAMPLE OF THE \$12.00 1875 NEWSPAPER ISSUE.

A review of our records from past auctions found very few sound, original-gum examples of this issue. The highest graded stamp contained in the P.S.E. Population Report is only Fine 70 (ex Curtis).

Ex "Vineyard". With 2003 P.F. certificate. .... 4,500.00





2530

- 2530 ★ **\$24.00 Dark Gray Violet, 1875 Issue (PR29).** Original gum, exceptional depth of color on bright white paper, outstanding centering with extra wide margins  
EXTREMELY FINE ORIGINAL-GUM EXAMPLE OF THE \$24.00 1875 CONTINENTAL NEWSPAPER ISSUE. RARELY SEEN IN THIS CHOICE WIDE-MARGINED CONDITION.  
With 1979 and 2000 P.F. certificates ..... 4,750.00



2531

2531 ★ **\$36.00 Brown Rose, 1875 Issue (PR30).** Original gum, lightly hinged, deep rich color, beautifully centered

EXTREMELY FINE. A RARE SOUND, ORIGINAL GUM, CENTERED EXAMPLE OF THE \$36.00 1875 NEWSPAPER ISSUE.

This is the first sound, original-gum, centered example of this issue we have offered since our 2004 sale of the "Vineyard" collection. Very few exist in this choice condition.

With 1987 P.F. certificate..... 5,000.00





2532

- 2532 ★ **\$48.00 Red Brown, 1875 Issue (PR31).** Original gum, h.r., gorgeous rich color and proof-like impression, attractive centering and margins  
 VERY FINE. A RARE SOUND, ORIGINAL-GUM EXAMPLE OF THE \$48.00 1875 NEWSPAPER ISSUE.  
 This is one of the most difficult issues to obtain in choice, sound condition.  
 With 2004 P.F. certificate..... 7,000.00



2533

- 2533 ★ **\$60.00 Violet, 1875 Issue (PR32).** Original gum, bright color and proof-like impression, almost perfectly centered  
EXTREMELY FINE. AN EXCEPTIONALLY CHOICE ORIGINAL-GUM EXAMPLE OF THE \$60.00 1875 CONTINENTAL NEWSPAPER ISSUE.  
Ex "Vineyard". With 1992 P.S.E., 1999 and 2004 P.F. certificates..... 7,000.00



## 1875 CONTINENTAL BANK NOTE COMPANY SPECIAL PRINTING



2534

- 2534 ★ **2c Gray Black, 1875 Special Printing (PR33).** Without gum as issued, wide margins and choice centering, intense shade, Extremely Fine, a beautiful stamp, with 2002 P.F. certificate ..... 650.00



2535

- 2535 ★ **3c Gray Black, 1875 Special Printing (PR34).** Without gum as issued, crisp impression, fresh and Extremely Fine, ex "Silver Lake", with 1991 P.F. certificate..... 650.00



2536

- 2536 ★ **4c Gray Black, 1875 Special Printing (PR35).** Without gum as issued, bright shade, extra wide margins, Very Fine, with 2001 P.F. certificate..... 400.00



2537

- 2537 ★ **6c Gray Black, 1875 Special Printing (PR36).** Without gum as issued, detailed impression on bright white paper, attractive centering and margins, Very Fine, with 1997 P.F. certificate ..... 900.00

- 2538 ★ **8c Gray Black, 1875 Special Printing (PR37).** Without gum as issued, proof-like impression, three extra wide margins, Very Fine, with 2001 P.F. certificate..... 975.00



2538



2539

- 2539 ★ **9c Gray Black, 1875 Special Printing (PR38).** Without gum as issued, intense shade, Fine, with 1986 P.F. certificate..... 1,050.00

- 2540 ★ **10c Gray Black, 1875 Special Printing (PR39).** Without gum as issued, exceptionally wide margins, outstanding centering, crisp impression on bright paper

EXTREMELY FINE GEM EXAMPLE OF THE 10-CENT 1875 NEWSPAPER SPECIAL PRINTING.

Ex Lutwak. With 1982 P.F. certificate..... 1,400.00



2540



2541

- 2541 ★ **12c Pale Rose, 1875 Special Printing (PR40).** Without gum as issued, choice centering with wide margins, bright color

EXTREMELY FINE EXAMPLE OF THE 12-CENT 1875 CONTINENTAL NEWSPAPER SPECIAL PRINTING.

1,313 sold. With 1986 P.S.E. certificate..... 1,500.00





2542

- 2542 ★ **24c Pale Rose, 1875 Special Printing (PR41).** Without gum as issued, brilliant color, well-centered, single short perf at left, Very Fine appearance, only 411 sold, with 1986 P.F. certificate ..... 2,100.00



2543

- 2543 ★ **36c Pale Rose, 1875 Special Printing (PR42).** Without gum as issued, well-centered, pretty pastel shade, full perforations not often seen on this issue  
 VERY FINE AND CHOICE EXAMPLE OF THE 36-CENT 1875 CONTINENTAL NEWSPAPER SPECIAL PRINTING.  
 Only 330 sold. Ex Curtis. 2003 P.F. certificate no longer accompanies..... 2,800.00



2544

2544 ★ **48c Pale Rose, 1875 Special Printing (PR43).** Without gum as issued, bright color, attractive margins and centering

FRESH AND VERY FINE EXAMPLE OF THE 48-CENT 1875 CONTINENTAL NEWSPAPER SPECIAL PRINTING.

Only 268 sold. Ex Lutwak. With 2001 P.F. certificate ..... 4,000.00



2545

2545 ★ **60c Pale Rose, 1875 Special Printing (PR44).** Without gum as issued, brilliant color, detailed impression, well-centered

VERY FINE AND CHOICE. A BEAUTIFUL EXAMPLE OF THE 60-CENT 1875 CONTINENTAL NEWSPAPER SPECIAL PRINTING.

Only 222 sold. Ex Lutwak. With 1982 P.F. certificate ..... 4,000.00





2546

- 2546 ★ **72c Pale Rose, 1875 Special Printing (PR45).** Without gum as issued, fresh color, Fine, only 174 sold, with 1978 P.F. certificate ..... 4,000.00



2547

- 2547 ★ **84c Pale Rose, 1875 Special Printing (PR46).** Without gum as issued, radiant color, three wide margins to clear of design at right  
FINE AND SCARCE SOUND EXAMPLE OF THE 84-CENT 1875 CONTINENTAL NEWSPAPER SPECIAL PRINTING.  
Only 164 sold. With 1986 P.F. certificate ..... 5,500.00



2548

- 2548 ★ **96c Pale Rose, 1875 Special Printing (PR47).** Without gum as issued, brilliant color, wide and well-balanced margins, single slightly nibbed perf at top  
 VERY FINE APPEARANCE. A RARE EXAMPLE OF THE 96-CENT 1875 CONTINENTAL NEWSPAPER SPECIAL PRINTING.  
 Only 141 sold. With 1970 and 2005 P.F. certificates not mentioning the nibbed perf.....  
 ..... 8,500.00



2549



**\$1.92 1875 CONTINENTAL BANK NOTE CO. SPECIAL PRINTING**

- 2549 ★ **\$1.92 Dark Brown, 1875 Special Printing (PR48).** Without gum as issued, deep rich color on bright paper, attractive margins and centering
- VERY FINE. A RARE EXAMPLE OF THE \$1.92 1875 CONTINENTAL NEWSPAPER SPECIAL PRINTING. ONLY 41 WERE SOLD.
- The \$1.92 value of the 1875 Continental Newspaper Special Printing marks the start of the rarities of the set. Each stamp through the \$12.00 is represented in the Inman collection. We have offered only approximately half a dozen unduplicated examples of the \$1.92 Special Printing since keeping computerized records.
- With 1982 P.F. certificate ..... 22,500.00



2550

**\$3.00 1875 CONTINENTAL BANK NOTE CO. SPECIAL PRINTING**

**ONE OF EIGHT RECORDED EXAMPLES**

2550 ★ **\$3.00 Vermilion, 1875 Special Printing (PR49).** Without gum as issued, fiery color on fresh paper, three wide margins to clear of design at right

A FINE AND SOUND EXAMPLE OF THE RARE \$3.00 1875 CONTINENTAL NEWSPAPER SPECIAL PRINTING. ONLY 20 WERE SOLD, AND ONLY EIGHT HAVE BEEN CERTIFIED AS GENUINE. THIS IS THE FIRST WE HAVE OFFERED SINCE OUR 1990 RARITIES SALE.

According to sale records of the 1875 Newspaper Special Printings, 20 of the \$3.00 were sold and delivered. On July 16, 1884, the Special Printings were withdrawn from sale, and the remaining supply was destroyed.

The online records of The Philatelic Foundation contain only eight copies certified as genuine. Of those, three have faults. This is the first example we have offered since our 1990 Rarities sale.

With 1990 P.F. certificate ..... 45,000.00





2551

**\$6.00 1875 CONTINENTAL BANK NOTE CO. SPECIAL PRINTING****ONE OF FIVE RECORDED EXAMPLES**

2551 ★ **\$6.00 Ultramarine, 1875 Special Printing (PR50).** Without gum as issued, rich color on bright paper

FRESH AND FINE. THE \$6.00 1875 CONTINENTAL NEWSPAPER SPECIAL PRINTING IS ONE OF THE RAREST UNITED STATES STAMPS. ONLY FOURTEEN WERE SOLD, AND ONLY FIVE HAVE BEEN CERTIFIED AS GENUINE.

According to sale records of the 1875 Newspaper Special Printings, 14 of the \$6.00 were sold and delivered. On July 16, 1884, the Special Printings were withdrawn from sale, and the remaining supply was destroyed.

Our records contain only five copies certified as genuine: four by The Philatelic Foundation and one certified by P.S.E. This is only the third we have offered since keeping computerized records.

Ex Engel, "Connoisseur" and Weisman. With 1960 and 1992 P.F. certificates. With 1992 P.S.E. certificate ..... 85,000.00

**CERTIFIED EXAMPLES OF SCOTT PR50**

PR50-UNC-01  
PFC 393820 "Genuine"  
RAS 2003 Rarities



PR50-UNC-02  
PFC 476374 "Genuine,  
reperfed at bottom"  
PFC 29342 "Genuine"



PR50-UNC-03  
PFC 259918 "Genuine"  
Ex Engel  
Ex "Connoisseur"  
Ex Weissman  
**The stamp offered here**



PR50-UNC-04  
PFC 189694 "Genuine"



PR50-UNC-05  
PSE "Genuine"  
Ex Schwenk





2552

**\$9.00 1875 CONTINENTAL BANK NOTE CO. SPECIAL PRINTING**

**THE ONLY RECORDED EXAMPLE**

2552 ★ **\$9.00 Yellow Orange, 1875 Special Printing (PR51).** Without gum as issued, brilliant color on bright white paper, detailed impression, choice centering with wide margins

EXTREMELY FINE. THIS STAMP IS THE ONLY RECORDED EXAMPLE OF THE \$9.00 1875 CONTINENTAL NEWSPAPER SPECIAL PRINTING. THE HIGHLIGHT OF THE INMAN NEWSPAPERS & PERIODICALS COLLECTION AND ONE OF THE RAREST OF ALL UNITED STATES STAMPS.

Official records of the Special Printings indicate that a total of 500 of the \$9.00 stamps were received in 1875. On July 16, 1884, 496 were still on hand. Only four copies were sold in a nine-year period, including two to German collector/dealer Paul Lietzow, who was also the buyer of the only recorded example of the \$24.00, which realized \$430,000 hammer in our 2014 Rarities of the World sale. The other two buyers of the \$9.00 Special Printing were David H. Anthony and Stanley Gibbons (London). This is the only example known to have survived from the original four that were sold.

Ex "Troy", Lutwak and Drucker. With 1982 and 2002 P.F. certificates. .... 250,000.00





2553

**\$12.00 1875 CONTINENTAL BANK NOTE CO. SPECIAL PRINTING****ONE OF TWO RECORDED EXAMPLES**

2553 ★ **\$12.00 Blue Green, 1875 Special Printing (PR52).** Without gum as issued, deep rich color on fresh paper, proof-like impression

FINE. AN EXTREMELY RARE EXAMPLE OF THE \$12.00 1875 CONTINENTAL NEWSPAPER SPECIAL PRINTING. ONLY FIVE WERE SOLD AND THIS IS ONE OF ONLY TWO EXAMPLES CERTIFIED BY THE PHILATELIC FOUNDATION.

Official records of the Special Printings indicate that a total of 500 of the \$12.00 stamps were received in 1875. On July 16, 1884, 495 were still on hand. Only five copies were sold in a nine-year period, including two to German collector/dealer Paul Lietzow, who was also the buyer of the only recorded example of the \$24.00, which realized \$430,000 hammer in our 2014 Rarities of the World sale, and two of the \$9.00 (the only recorded example is offered in the previous lot). Two of the other three \$12.00 Special Printing were sold to David H. Anthony and Stanley Gibbons (London). The two recorded examples were originally a pair (shown below in their left and right positions).

With 1990 P.S.E. certificate. With 1970 P.F. and 2003 P.F. certificates..... 125,000.00

**CERTIFIED EXAMPLES OF SCOTT PR52**

PR52-UNC-01  
1990 PSE  
1970 PFC  
PFC 393992 "Genuine"  
**The stamp offered here**



PR52-UNC-02  
PFC  
RAS 1976 Rarities  
RAS 1980 Rarities  
RAS 1985 Rarities







1875 CONTINENTAL BANK NOTE COMPANY SPECIAL PRINTING  
SET OF DOLLAR-VALUE IMPERFORATE STAMPS FROM  
THE EARL OF CRAWFORD STRIPS OF FIVE

- 2554 ★ **\$1.92-\$60.00 1875 Special Printing, Imperforate (PR48 var-PR56 var).** Without gum as issued, bright colors on fresh paper, \$9.00 close at right, \$48.00 just touching at right, otherwise with large even margins, \$12.00 two tiny indentations

VERY FINE-EXTREMELY FINE. A RARE SET OF THE IMPERFORATE DOLLAR VALUES OF THE CONTINENTAL 1875 NEWSPAPER SPECIAL PRINTING, WHICH WERE CUT FROM THE ORIGINAL STRIPS OF FIVE FROM THE EARL OF CRAWFORD COLLECTION.

All known genuine examples of the imperforate Newspapers & Periodicals 1875 Special Printing stamps come from the set of strips of five sold to James Ludovic Lindsay, the 26th Earl of Crawford, one of the great collectors of stamps, essays, proofs and philatelic literature at the turn of the 20th Century. Lord Crawford died on January 31, 1914, and his estate executors eventually agreed to sell the entire United States collection for \$60,000 to John A. Klemann of the Nassau Stamp Company. Klemann reported his acquisition of the Earl of Crawford's collection in the November 1915 edition of *The Philatelic Gazette*. Among the spectacular array of items owned by Lord Crawford were strips of the 1875 1c-90c Continental Bank Note Company Special Printings with intact selvage (Scott 167-177), the set of Official Special Printing imperforate strips and the set of Newspapers & Periodicals 1875 Special Printing imperforate strips of five.

Klemann is almost certainly the person responsible for cutting up the Earl of Crawford strips, because sets of Officials and Newspapers & Periodicals singles were sold to Benjamin K. Miller, who was an active collector from 1917 to 1924 (his collection was donated to The New York Public Library and is now on long-term loan to the Smithsonian National Postal Museum). Miller probably acquired the imperforate set directly from Nassau Stamp Company, one of his dealer sources.

A complete set from the 2c value was recently offered in our 2016 Rarities of the World sale (from the David Golden collection). Another complete set was described in an article by William E. Mooz ("Finding the Yellow Thumbprint," *The American Philatelist*, November 1984). In that article, Mr. Mooz also pictured and described this part set, consisting of the \$1.92 to \$60.00 values. Combining the three complete sets (Miller, Mooz and Golden) with this part set of dollar values, we can account for four of the five dollar value stamps in the original Earl of Crawford strips. The whereabouts of the fifth set of singles is unknown.

The perforated 1875 Special Printing, Scott PR33-PR56, is the rarest set of all Newspapers & Periodicals stamps with two of the only verifiably unique stamps in philately, which unfortunately have never been seen. Only one copy each of the \$48.00 and \$60.00 perforated Special Printing stamps were sold through the Special Printing program to Paul Lietzow of Germany, and they have never been identified (the Scott Catalogue lists them without values). The next four high values have Scott values of \$250,000, \$125,000, \$500,000 and \$250,000, respectively, for a total of \$1,125,000. With a Scott value of \$60,000 for a complete set and only five in existence, this imperforate set of dollar values seems undervalued.

Ex Drucker. Each signed Sloane and with 1982 P.F. certificate. Listed as a footnote in Scott with a catalogue value of \$60,000.00 for the full set (\$2,500.00 each if the value is allocated equally across all denominations, but of course the dollar denominations are always more desirable). Scott Retail at \$2,500.00 each ..... 22,500.00

## 1879 AMERICAN BANK NOTE COMPANY ISSUE



2555



2556EX

- 2555 ★ **2c Black, 1879 Issue (PR57).** Slightly disturbed original gum, exceptionally wide margins and choice centering, intense shade, Extremely Fine Gem, with 2000 P.F. certificate as “previously hinged” ..... 75.00
- 2556 ★ **1c-8c Black, 1879, 1885 Issues (PR58, PR60, PR61, PR81).** Original gum, first two h.r., detailed impressions, last with small ink spot, wide margins, Very Fine-Extremely Fine group of these American Bank Note Company issues .....(Photo Ex) 440.00



2557



2558



2559

- 2557 ★★ **4c Black, 1879 Issue (PR59).** Mint N.H., deep shade and proof-like impression, Extremely Fine Gem, a superb stamp, with 2001 P.F. certificate for a block of four, this the top left stamp, Scott Retail as hinged ..... 85.00
- 2558 ★★ **10c Black, 1879 Issue (PR62).** Mint N.H., beautifully centered, proof-like impression, Extremely Fine Gem, a superb stamp, with 2001 P.F. certificate, Scott Retail as hinged ... 135.00
- 2559 ★ **12c Red, 1879 Issue (PR63).** Original gum, lightly hinged, deep rich color, perfect centering, Extremely Fine Gem, a beautiful stamp, with 2004 P.F. certificate..... 500.00



- 2560 ★ **24c Red, 1879 Issue (PR64).** Original gum, small h.r., rich color, crisp impression, unusually choice centering for this issue, bright and fresh  
EXTREMELY FINE EXAMPLE OF THE 24-CENT 1879 AMERICAN BANK NOTE CO. NEWSPAPER ISSUE.  
Ex Hoffman. With 2004 P.F. certificate ..... 500.00



2560



2561

- 2561 ★ **36c Red, 1879 Issue (PR65).** Original gum, Jumbo margins, fresh color, Extremely Fine, scarce in this condition, with 2001 P.F. certificate ..... 500.00

- 2562 ★ **48c Red, 1879 Issue (PR66).** Original gum, hinged at top and with some gum loss in bottom right corner, outstanding centering and margins, bright shade, Extremely Fine Gem, with 2001 P.F. certificate as "previously hinged" ..... 1,000.00



2562



2563

- 2563 ★ **60c Red, 1879 Issue (PR67).** Original gum, vivid color, choice balanced margins, fresh and Extremely Fine, with 1995 P.F. certificate..... 1,000.00





2564

- 2564 ★ **72c Red, 1879 Issue (PR68).** Original gum, lightly hinged, rich color and proof-like impression, almost perfectly centered with wide and well-proportioned margins

EXTREMELY FINE GEM. A SUPERB EXAMPLE OF THIS SCARCE NEWSPAPER ISSUE.

Ex "Vineyard". With 1991 and 2004 P.F. certificates..  
..... 1,250.00

- 2565 ★★ **84c Red, 1879 Issue (PR69).** Mint N.H., intense shade and proof-like impression on bright paper, deep rich color

VERY FINE. A SCARCE MINT NEVER-HINGED EXAMPLE OF THE 84-CENT 1879 AMERICAN BANK NOTE CO. NEWSPAPER ISSUE.

Ex Hoffman. With 2006 P.F. certificate. Scott Retail as hinged..... 1,250.00



2565



2566

- 2566 ★ **96c Red, 1879 Issue (PR70).** Original gum, single hinge mark at top, vibrant color, attractive centering and margins, Very Fine, with 1999 P.F. certificate.....  
..... 1,200.00

- 2567 ★★ **\$1.92 Pale Brown, 1879 Issue (PR71).** Mint N.H., exceptional depth of color, perfectly centered with wide margins

EXTREMELY FINE GEM. A SUPERB EXAMPLE OF THE \$1.92 1879 NEWSPAPER ISSUE IN MINT NEVER-HINGED CONDITION. A WONDERFUL CONDITION RARITY.

We have offered only one other Mint N.H. example of this issue since keeping computerized records. With 2001 P.F. certificate. Scott Retail as hinged.....  
..... 550.00



2567

- 2568 ★ **\$3.00 Red Vermilion, 1879 Issue (PR72).** Original gum, h.r. and some pencil notation on gum, vivid color, wide margins, Very Fine and choice, with 2000 P.F. certificate as "previously hinged" ..... 625.00



2568



2569

- 2569 ★ **\$6.00 Blue, 1879 Issue (PR73).** Original gum, pretty pastel color, fresh and Very Fine, with 1991 P.F. certificate ..... 1,010.00



2570

- 2570 ★★ **\$9.00 Orange, 1879 Issue (PR74).** Mint N.H., vibrant color, attractive margins and centering, Very Fine, scarce in Mint N.H. condition, with 2001 P.F. certificate, Scott Retail as hinged ..... 800.00



2571

- 2571 ★★ **\$12.00 Yellow Green, 1879 Issue (PR75).** Mint N.H., wide margins and choice centering, deep rich color

EXTREMELY FINE. A REMARKABLY RARE MINT NEVER-HINGED EXAMPLE OF THE \$12.00 1879 AMERICAN BANK NOTE COMPANY NEWSPAPER ISSUE. THIS MAY WELL BE THE FINEST IN EXISTENCE.

Power Search located only two others in Mint N.H. condition, and the online records of The Philatelic Foundation contain only four. The stamp offered here is clearly superior to the others, by virtue of margin size and balance.

With 1985 and 2007 P.F. certificates (XF 90) . 850.00





2572

- 2572 ★ **\$24.00 Dark Violet, 1879 Issue (PR76).** Original gum, lightly hinged, deep rich color and proof-like impression, balanced margins, Very Fine and choice, a beautiful stamp, with 1999 P.F. certificate ..... 800.00



2573

- 2573 ★ **\$36.00 Indian Red, 1879 Issue (PR77).** Original gum, lightly hinged, bright color, small corner crease at bottom right not mentioned on accompanying certificate, appears Very Fine, with 2001 P.F. certificate..... 850.00



2574

- 2574 ★ **\$48.00 Yellow Brown, 1879 Issue (PR78).** Original gum, lightly hinged, well-centered, fresh, lovely bright color, Very Fine and choice, with 2006 P.F. certificate .. ..... 900.00



2575

- 2575 ★ **\$60.00 Purple, 1879 Issue (PR79).** Original gum, exceptionally well-centered, fresh and bright, proof-like impression, tiny natural inclusion at top in margin is barely visible, Very Fine and choice, with 2006 P.F. certificate ..... 850.00



1879-83 COLMAN SPECIAL PRINTING  
PRIVATELY PERFORATED AND GUMMED



2576

2576 ★ 1c-\$60.00 1879-83 Newspaper Issue, Colman Special Printing (PR57 var-PR79 var, PR81 var). Privately perforated and gummed, **complete set of all 25 denominations, including the unissued 9c**, original gum, most lightly hinged, few with small h.r., 2c few short perfs at top, otherwise completely sound

VERY FINE-EXTREMELY FINE. A RARE COMPLETE SET OF THE 1894 COLMAN SPECIAL PRINTING OF THE 1879-83 NEWSPAPER ISSUE.

In 1894 this set was ordered by the Bureau of Engraving and Printing from the American Bank Note Co. to serve as samples. The stamps were printed from the original Continental Bank Note Co. plates. Washington D.C. stamp dealer Hamilton F. Colman obtained a set of imperforate panes of 50. He kept five sets imperforate and privately perforated the other 45. Colman was later indicted for illegal possession of these stamps, but was acquitted..... E. 5,000-7,500



## 1883 AMERICAN BANK NOTE COMPANY SPECIAL PRINTING



2577

2577 ★ **2c Intense Black, 1883 Special Printing (PR80).** Without gum as issued, intense shade and impression on bright paper, unusually wide margins

EXTREMELY FINE. A BEAUTIFUL EXAMPLE OF THE 2-CENT 1883 SPECIAL PRINTING.

With 1997 P.F. certificate..... 1,700.00

## 1885 AMERICAN BANK NOTE COMPANY ISSUE



2578



2579



2580

2578 ★ **12c Carmine, 1885 Issue (PR82).** Original gum, single light hinge mark, deep shade, unusually wide margins, Extremely Fine Gem, a huge stamp, with 2001 P.F. certificate...  
..... 200.00

2579 ★ **24c Carmine, 1885 Issue (PR83).** Original gum, small h.r., intense shade and impression, well-balanced margins, Extremely Fine, with 1999 P.F. certificate ..... 200.00

2580 ★ **36c Carmine, 1885 Issue (PR84).** Original gum, barely hinged, intense shade and impression, Very Fine and choice, ex "Vineyard", with 2002 P.S.E. and 2004 P.F. certificates ..... 300.00

- 2581 ★ **48c Carmine, 1885 Issue (PR85).** Original gum, lightly hinged, bright color, nicely balanced margins, Extremely Fine, with 1999 P.F. certificate..... 425.00



2581

- 2582 ★ **60c Carmine, 1885 Issue (PR86).** Original gum, essentially perfect centering, rich color and sharp impression, Extremely Fine Gem, with 2001 P.F. certificate .... 550.00



2582

- 2583 ★★ **72c Carmine, 1885 Issue (PR87).** Mint N.H., beautifully balanced margins, vivid color, bright and fresh, Extremely Fine and very rare in this choice Mint N.H. condition, Power Search does not list another Mint N.H. example of PR87, with 1997 P.F. certificate, Scott Retail as hinged ..... 550.00



2583

- 2584 ★ **84c Carmine, 1885 Issue (PR88).** Original gum, lightly hinged, precise centering with well-proportioned margins, deep rich color, Extremely Fine Gem, with 1998 P.S.E. and 2002 P.F. certificates..... 850.00



2584





2585

- 2585 ★ **96c Carmine, 1885 Issue (PR89).** Original gum, lightly hinged, vivid color on bright paper, Very Fine, with 1987 P.F. certificate as "genuine" (meaning Mint N.H.) ..... 750.00

1894 UNWATERMARKED BUREAU ISSUE

- 2586 ★★ **1c Intense Black, 1894 Issue (PR90).** Mint N.H., deep shade and detailed impression, Jumbo margins, fresh and Extremely Fine, a massive stamp, with 2008 P.F. certificate (XF 90), we are very surprised this did not receive a Jumbo designation ..... 1,000.00



2586



2587

- 2587 ★ **2c Intense Black, 1894 Issue (PR91).** Original gum, lightly hinged, intense shade and impression, wide and balanced margins, Extremely Fine Gem, a beautiful stamp in every respect, with 1999 P.F. certificate ..... 500.00



2588

- 2588 ★ **4c Intense Black, 1894 Issue (PR92).** Original gum, lightly hinged, showing unusual gripper marks on back, detailed impression, wide margins, Very Fine and choice, with 2006 P.F. certificate (VF 80) ..... 600.00

- 2589 ★ **6c Intense Black, 1894 Issue (PR93).** Original gum, small h.r., deep shade and proof-like impression

VERY FINE EXAMPLE OF THE 6-CENT 1894 UNWATERMARKED NEWSPAPER ISSUE. IN OUR OPINION THIS ISSUE IS SEVERELY UNDERCATALOGUED.

With 1991 P.F. certificate ..... 4,500.00



2589



2590

- 2590 ★★ **10c Intense Black, 1894 Issue (PR94).** Mint N.H., choice centering with unusually wide margins on all sides, intense shade and detailed impression

EXTREMELY FINE. A BEAUTIFUL MINT NEVER-HINGED EXAMPLE OF THE 10-CENT 1894 UNWATERMARKED NEWSPAPER ISSUE.

Only three other Mint N.H. examples are contained in Power Search, and this has the finest centering.

With 2006 P.S.E. certificate. Scott Catalogue only prices the set in Mint N.H. condition up to the 6c. Scott Retail as hinged .... 1,250.00

- 2591 ★ **12c Pink, 1894 Issue (PR95).** Original gum, lightly hinged, brilliant color, choice centering with enormous Jumbo margins

EXTREMELY FINE GEM. A BEAUTIFUL AND PRISTINE EXAMPLE OF THE 12-CENT 1894 UNWATERMARKED NEWSPAPER ISSUE.

This is a difficult issue to obtain in sound condition with such choice centering. We would rank this among the top two or three we have encountered.

With 2001 P.F. certificate ..... 2,600.00



2591



2592

- 2592 ★ **24c Pink, 1894 Issue (PR96).** Original gum, lightly hinged, radiant color, natural wrinkles at bottom not mentioned on most recent certificate, Fine, scarce, with 1981 and 2002 P.F. certificates ..... 3,750.00





2593



36-CENT 1894 UNWATERMARKED BUREAU ISSUE

ONE OF NINE RECORDED EXAMPLES

2593 ★ **36c Pink, 1894 Issue (PR97).** Original gum, h.r., brilliant color, reperfed at right, small thin spot at top

VERY FINE APPEARANCE. WE HAVE OFFERED ONLY TWO EXAMPLES SINCE KEEPING COMPUTERIZED RECORDS. ONLY NINE ARE CONTAINED IN OUR CENSUS OF THIS RARITY, AND NONE ARE SOUND.

Our recently updated census of PR97 (available at <http://siegelauctions.com/dynamic/census/PR97/PR97.pdf>) contains nine unused examples, all with original gum. None are sound — most have thin spots or creases.

Census No. PR97-OG-09. Ex Schwenk. With 1980 P.F. and 2007 P.S.E. certificates. ....  
..... 60,000.00



2594

60-CENT 1894 UNWATERMARKED BUREAU ISSUE

ONE OF THE BEST-CENTERED OF THE 17 RECORDED UNUSED EXAMPLES

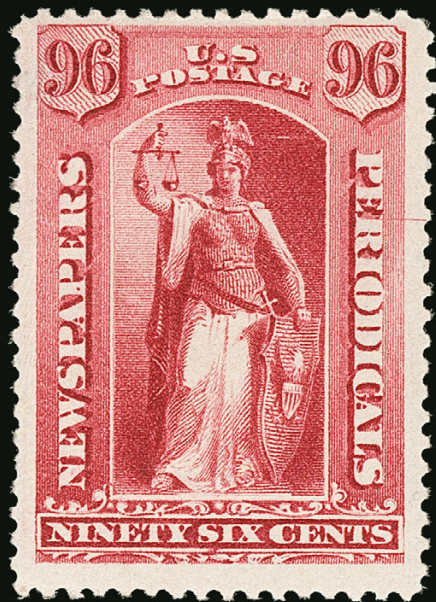
2594 ★ **60c Pink, 1894 Issue (PR98).** Original gum, natural vertical gum crease at left, tiny filled in hole to the right of “RS”

VERY FINE APPEARANCE. THE 60-CENT 1894 NEWSPAPER ISSUE IS ONE OF THE RAREST OF ALL NEWSPAPER STAMPS. ONLY SEVENTEEN UNUSED EXAMPLES ARE CONTAINED IN OUR RECORDS.

Our census of PR98 is available at <http://siegelauctions.com/dynamic/census/PR98/PR98.pdf>. Of the seventeen unused and four used copies contained in our records, only two are potentially sound, and neither is as well-centered as this example.

Census No. PR98-OG-09. With 1990 P.S.E. and 2005 P.F. certificates, the latter not mentioning the gum crease ..... 40,000.00





2595

96-CENT 1894 UNWATERMARKED BUREAU ISSUE

ONE OF TWO SOUND EXAMPLES AMONG THE TEN RECORDED

2595 ★ **96c Pink, 1894 Issue (PR99).** Original gum, lightly hinged, deep rich color on bright paper, choice centering for this difficult issue.

VERY FINE AND CHOICE. THIS IS UNQUESTIONABLY ONE OF THE FINEST EXAMPLES OF THE 1894 96-CENT UNWATERMARKED BUREAU ISSUES IN EXISTENCE. THIS IS ONE OF ONLY TWO CONFIRMED SOUND COPIES. A PHENOMENAL RARITY.

Our recently updated census of PR99 (available at <http://siegelauctions.com/dynamic/census/PR99/PR99.pdf>) contains ten unused copies and none used. Of these only two are confirmed as sound (two others need to be re-examined for condition). Only five are confirmed as having gum. We have offered only two unduplicated copies since keeping computerized records; both have faults.

Census No. PR99-OG-03. With 2001 P.F. certificate ..... 55,000.00



2596



**\$3.00 1894 UNWATERMARKED BUREAU ISSUE**

**ONE OF ELEVEN RECORDED EXAMPLES AND  
THE FINER OF THE TWO IN SOUND CONDITION**

2596 ★ **\$3.00 Scarlet, 1894 Issue (PR100).** Original gum, h.r., brilliant color, choice centering, completely sound

VERY FINE AND CHOICE. THIS IS THE FINEST EXAMPLE OF THE 1894 \$3.00 UNWATERMARKED BUREAU ISSUE IN EXISTENCE. IT IS ONE OF ONLY TWO CONFIRMED SOUND COPIES. A RARITY OF THE HIGHEST ORDER.

Our recently updated census of PR100, available at <http://siegelauctions.com/dynamic/census/PR100/PR100.pdf>, contains only eleven copies. Only two are confirmed as sound — Census No. 03 (offered here) and No. 06 — but the other has perfs touching the design at right. Two need to be reexamined for condition, but neither is as well-centered as the example offered here.

Census No. PR100-OG-03. Ex A. Richard Engel. Signed in pencil on back. With 1967, 1992 and 2003 P.F. certificates ..... 55,000.00



2597

---

\$6.00 1894 UNWATERMARKED BUREAU ISSUE

THE FINEST OF THE 15 RECORDED UNUSED EXAMPLES

2597 ★ **\$6.00 Pale Blue, 1894 Issue (PR101).** Original gum, paper h.r., radiant color, choice centering for this difficult issue, completely sound

EXTREMELY FINE. THIS IS WITHOUT QUESTION THE FINEST ORIGINAL-GUM EXAMPLE OF THE \$6.00 1894 UNWATERMARKED BUREAU ISSUE, PR101, IN EXISTENCE. ONE OF THE HIGHLIGHTS OF THE INMAN NEWSPAPERS & PERIODICALS COLLECTION.

Our recently updated census of PR101, available at <http://siegelauctions.com/dynamic/census/PR101/PR101.pdf>, contains fifteen unused and one used copy of this rarity. The ensuing years have not been kind to these stamps. Only six have original gum and of these only one other is sound (No. OG-04). The stamp offered here has far superior centering.

Census No. PR101-OG-03. Pencil notations on back. With 1994 and 2003 P.F. certificates.  
..... 55,000.00



## 1895 UNWATERMARKED BUREAU ISSUE



2598



2599

2598 ★★ **1c Black, 1895 Issue (PR102).** Mint N.H., intense shade and remarkably detailed impression, almost perfectly centered, Extremely Fine, with 2003 P.F. certificate ..... 500.00

2599 ★★ **2c Black, 1895 Issue (PR103).** Mint N.H., choice centering with wide margins, sharp proof-like impression, Extremely Fine Gem, with 2003 P.S.E. and 2004 P.F. certificates...  
..... 270.00



2600



2601



2602

2600 ★ **5c Black, 1895 Issue (PR104).** Original gum, single h.r., intense shade on bright paper, Jumbo margins, fresh and Extremely Fine, a huge stamp..... 300.00

2601 ★★ **10c Black, 1895 Issue (PR105).** Mint N.H., crisp impression on bright paper, choice centering with wide and balanced margins, fresh and Extremely Fine, a beautiful stamp, with 2000 P.F. certificate with top plate no. selva (the selva accompanies)... 1,300.00

2602 ★ **25c Carmine, 1895 Issue (PR106).** Original gum, lightly hinged, well-centered with wide margins at sides, dark color and sharp impression, Extremely Fine Gem, ex Drucker, with 2002 P.F. certificate..... 750.00



2603

2603 ★★ **50c Carmine, 1895 Issue (PR107).** Mint N.H., brilliant color and detailed impression, choice centering with wide margins

EXTREMELY FINE GEM. A SUPERB MINT NEVER-HINGED EXAMPLE OF THE 50-CENT 1895 UNWATERMARKED NEWSPAPER ISSUE. EASILY ONE OF THE FINEST COPIES IN EXISTENCE.

The only other Mint N.H. examples contained in Power Search are in a strip of three which was subsequently broken. The online records of The Philatelic Foundation also contain only these four examples in Mint N.H. condition.

Ex "Silver Lake". With 1992 and 2004 P.F. certificates. .... 6,250.00



2604

2604 ★★ **\$2.00 Scarlet, 1895 Issue (PR108).** Mint N.H., radiant color, choice centering with extra wide margins at sides

EXTREMELY FINE GEM. AN OUTSTANDING MINT NEVER-HINGED EXAMPLE OF THE \$2.00 1895 UNWATERMARKED NEWSPAPER ISSUE. THIS IS ONE OF THE MOST DIFFICULT ISSUES TO OBTAIN IN MINT NEVER-HINGED CONDITION. THIS MAY WELL BE THE FINEST EXAMPLE IN EXISTENCE.

A Power Search review found only one other in Mint N.H. condition. A review of the online records of The Philatelic Foundation failed to find any additional examples. The example offered here has slightly better centering than the other recorded example.

Ex "Silver Lake". With 1988 and 2004 P.F. certificates. .... 3,250.00





2605

- 2605 ★ **\$5.00 Ultramarine, 1895 Issue (PR109).** Original gum, lightly hinged, brilliant color, well-balanced margins, natural perf disc inclusion not mentioned on accompanying certificate, Extremely Fine, it is curious that we have never offered an example in Mint N.H. condition since keeping computerized records and none have been certified as such in the online records of The Philatelic Foundation, the Mint N.H. price should be removed from Scott Catalogue, with 2002 P.F. certificate..... 2,100.00



2606

- 2606 ★ **\$10.00 Green, 1895 Issue (PR110).** Original gum, lightly hinged, rich color, well-balanced and wide margins, long and full perforations  
EXTREMELY FINE. POSSIBLY THE FINEST ORIGINAL-GUM EXAMPLE OF THE \$10.00 1895 UNWATERMARKED BUREAU ISSUE IN EXISTENCE.

A Power Search review shows we have never offered a Mint N.H. example since keeping computerized records. None are contained in the online records of The Philatelic Foundation. It may not exist as a Mint N.H. stamp. Most hinged examples tend to have faults or are off-center. The stamp offered here, in lightly hinged condition with gum covering the entire back of the stamp, and with such choice centering, is truly remarkable.

With 1989 and 2004 P.F. certificates. The Mint N.H. price should be removed from Scott Catalogue..... 2,500.00





2607

- 2607 ★ **\$20.00 Slate, 1895 Issue (PR111).** Barely disturbed original gum which looks pristine to us, rich color and proof-like impression, choice centering with especially wide margins at sides

EXTREMELY FINE EXAMPLE OF THE \$20.00 1895 UNWATERMARKED NEWSPAPER ISSUE.

None have been certified by The Philatelic Foundation in Mint N.H. condition. The Mint N.H. price should be removed from Scott Catalogue. Small red backstamp. With 2001 P.F. certificate as "slightly disturbed o.g." ..... 3,250.00



2608

- 2608 ★ **\$50.00 Dull Rose, 1895 Issue (PR112).** Original gum, lightly hinged, unusually well-centered, vivid color and proof-like impression on bright fresh paper

EXTREMELY FINE GEM. INCALCULABLY RARE IN THIS CHOICE CONDITION.

We have never offered a PR112 in Mint N.H. condition since keeping computerized records, and only two have been certified as such in the online records of The Philatelic Foundation (they are older certificates from 1986 and should be re-examined). Among hinged examples, many tend to have small faults or gum problems. The example offered here, with pristine gum and centering, is a condition rarity.

With 2000 P.F. certificate ..... 2,900.00



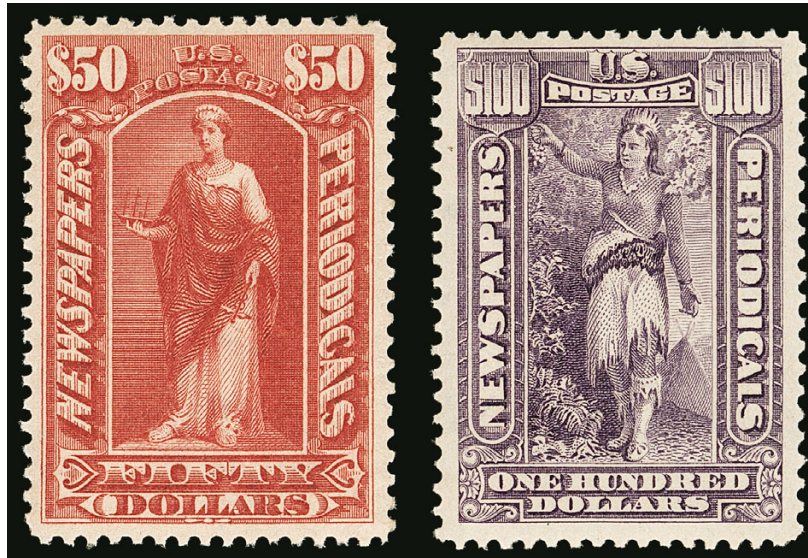
2609

- 2609 ★ **\$100.00 Purple, 1895 Issue (PR113).** Original gum, lightly hinged, rich color and detailed impression on bright paper, unusually wide margins, long and full perforations EXTREMELY FINE. A BEAUTIFUL LIGHTLY-HINGED EXAMPLE OF THE \$100.00 1895 UNWATERMARKED BUREAU ISSUE.

A Review of Power Search and the online records of The Philatelic Foundation did not find any in Mint N.H. condition. Scott Catalogue should remove the price for Mint N.H. condition. This is one of the finest we have ever encountered.

With 1999 P.F. certificate..... 3,500.00

## 1895-97 WATERMARKED BUREAU ISSUE



2610EX

- 2610 ★★ **1c-\$100.00 1895-97 Watermarked Issue (PR114-PR125).** Mint N.H. except \$100.00 possibly hinged at lower right, fresh colors, choice centering, Extremely Fine Gems, a superb set.....(Photo Ex/Website PDF) 820.00

END OF SALE — THANK YOU



# BIDS

Use this form to submit absentee bids  
or to confirm telephone bids

# Sale 1131

June 21, 2016

PADDLE #

# 1

Please provide the following information:

NAME .....

ADDRESS .....

CITY/STATE/ZIP .....

PHONE ..... MOBILE .....

EMAIL .....

# 2

Have you purchased from us in the past 5 years? ☐ Yes (please go to Section 3)  
☐ No (references required below)

STAMP FIRM ..... PHONE .....

STAMP FIRM ..... PHONE .....

Please submit references at least **2 business days** before the sale. Bids from new clients will not be executed if satisfactory references are not received in time to be contacted.

# 3

- Enter the lot number and your corresponding maximum bid in the space below
- Use whole dollar amounts and bid according to the increments (see back of form)
- Bids do not include the 15% Buyer's Premium, taxes, duty or shipping charges
- Absentee bids will advance at one increment over the next highest competing bid
- "Plus", "Break Tie" or "Buy" bids will not be executed
- Indicate any "Or" bids between lot number/bid entries and bracket your choices
- If you wish to limit the total amount of your bids, follow the instructions below

Lot #	Bid \$	Lot #	Bid \$	Lot #	Bid \$

☐ **Limit Bids:** Check this box if you wish to limit the total hammer price of your bids (excluding 15% Buyer's Premium, taxes, duty and shipping costs). Your bids will be executed until your bidding limit has been reached. The total amount you wish to bid is \$ .....

# 4

By signing this form, you agree to all of the Conditions of Sale printed in the sale catalogue (printed and digital), including but not limited to a) payment in the manner demanded by the Siegel firm, and b) payment of the 15% Buyer's Premium, any sales tax or customs duty, shipping costs, late charges and

other prescribed charges. You agree that your bids will be executed as a courtesy by Siegel, but you waive the right to make any claim against Siegel or its employees arising from these bids or your participation in the sale. You agree to honor all bids as submitted, regardless of any errors or omissions.

SIGNED ..... DATE .....

Mail the signed form to Siegel Bid Department, 60 East 56th St., New York, NY 10022  
or email to [stamps@siegelauctions.com](mailto:stamps@siegelauctions.com)  
or fax to 212-753-6429





# Additional Bids

## Sale 1131

June 21, 2016

PADDLE #

Lot #	Bid \$	Lot #	Bid \$	Lot #	Bid \$

## Shipping & Insurance

We will be pleased to arrange for shipping and transit insurance for purchases in this sale, except for lots marked or announced as "floor sale only." To expedite billing and delivery to hundreds of buyers in each sale, we use standard charges for postage and insurance under our policy. These charges are based on the package weight and mailing requirements, according to the schedule shown here. Our standard charges do not include a fee for our services, and they may be slightly more or less than the actual postage or Fedex fee. We ask all buyers to remit the invoiced amount for shipping and insurance.

Transit insurance is provided in all cases, except when the buyer has furnished us with documentation that insurance is effective under the buyer's own policy.

There will be no added insurance charge for shipments of less than \$75,000 value. Shipments valued in excess of \$75,000 may require supplemental insurance and/or special courier service, the estimated cost of which will be furnished to the buyer prior to shipment. If the buyer refuses to pay the estimated charges or furnish proof of self-insured coverage, the buyer will be responsible for picking up the lots at our office and any resulting sales tax.

### Standard Shipping Charges

Weight Class	Shipping Method	Charge
Up to 2 lbs.	Fedex Envelope	\$20
Over 2 lbs.	Fedex Box	\$35 - \$50*
Outside US	Fedex	\$50 - \$100**
Bulky Lots	Fedex Ground or Express	By weight

\* Up to \$75,000 value and up to 5 lbs; additional charge may apply to packages exceeding limits

\*\* Buyers outside United States are liable for any applicable customs duty and clearance charges. An accurate declaration of contents and value will be made on all packages and import/export documents. **Siegel may refuse to ship lots to certain countries with a high risk factor.**

2/2015

## Bidding Increments

The auctioneer may regulate the bidding at his discretion. However, to assist absentee bidders in establishing their maximum bids, the increments shown here will be used in most cases. We recommend that written bids conform to these increments—bids that do not will be reduced accordingly.

Bid	Increment	Bid	Increment
Up to \$200	\$10	\$7,000-20,000	\$500
\$200-500	\$25	\$20,000-30,000	\$1,000
\$500-1,000	\$50	\$30,000-75,000	\$2,500
\$1,000-3,000	\$100	\$75,000-140,000	\$5,000
\$3,000-7,000	\$250	\$140,000-300,000	\$10,000



ROBERT A. SIEGEL AUCTION GALLERIES, INC.

60 EAST 56th STREET, 4th FLOOR, NEW YORK, NEW YORK 10022

Phone (212) 753-6421 Fax (212) 753-6429 E-mail: [stamps@siegelauctions.com](mailto:stamps@siegelauctions.com)

[siegelauctions.com](http://siegelauctions.com)



## Robert A. Siegel Auction Galleries, Inc.

## Sale 1131 6/21/2016 The Grant Inman Collection, Part I: Newspapers and Periodicals

Lot#	Sold	Cat No.	Lot#	Sold	Cat No.	Lot#	Sold	Cat No.
2501	500	PR1	2545	2800	PR44	2589	1900	PR93
2502	550	PR2	2546	1100	PR45	2590	2000	PR94
2503	250	PR3	2547	1600	PR46	2591	3250	PR95
2504	300	PR4	2548	2500	PR47	2592	1100	PR96
2505	140	PR5, P	2549	8000	PR48	2593	0	PR97
2506	400	PR6	2550	17500	PR49	2594	0	PR98
2507	130	PR7	2551	0	PR50	2595	0	PR99
2508	650	PR5S	2552	310000	PR51	2596	24000	PR100
2509	1100	PR6S	2553	150000	PR52	2597	25000	PR101
2510	1800	PR5 va	2554	25000	PR48-	2598	250	PR102
2511	650	PR8	2555	110	PR57	2599	1100	PR103
2512	160	PR9	2556	325	PR58,	2600	150	PR104
2513	550	PR10	2557	375	PR59	2601	1100	PR105
2514	550	PR11	2558	400	PR62	2602	750	PR106
2515	550	PR12-	2559	800	PR63	2603	6750	PR107
2516	225	PR14	2560	1000	PR64	2604	6250	PR108
2517	450	PR16	2561	750	PR65	2605	1700	PR109
2518	650	PR17	2562	750	PR66	2606	3250	PR110
2519	1100	PR18	2563	1900	PR67	2607	0	PR111
2520	1000	PR19	2564	4000	PR68	2608	2100	PR112
2521	800	PR20	2565	850	PR69	2609	3500	PR113
2522	1200	PR21	2566	800	PR70	2610	1200	PR114-
2523	2100	PR22	2567	2600	PR71			
2524	2300	PR23	2568	325	PR72			
2525	0	PR24	2569	750	PR73			
2526	2800	PR25	2570	750	PR74			
2527	4000	PR26	2571	5000	PR75			
2528	1800	PR27	2572	650	PR76			
2529	3750	PR28	2573	200	PR77			
2530	4000	PR29	2574	300	PR78			
2531	5000	PR30	2575	325	PR79			
2532	3250	PR31	2576	3000	PR57-			
2533	4250	PR32	2577	1600	PR80			
2534	375	PR33	2578	1600	PR82			
2535	0	PR34	2579	225	PR83			
2536	450	PR35	2580	425	PR84			
2537	500	PR36	2581	375	PR85			
2538	425	PR37	2582	650	PR86			
2539	200	PR38	2583	1000	PR87			
2540	2000	PR39	2584	850	PR88			
2541	0	PR40	2585	500	PR89			
2542	500	PR41	2586	400	PR90			
2543	1300	PR42	2587	225	PR91			
2544	1500	PR43	2588	160	PR92			