

THE
GRANT INMAN COLLECTION

PART 2 — OFFICIALS



SALE 1135

THURSDAY, SEPTEMBER 15, 2016

Robert A. Siegel
AUCTION GALLERIES, INC.

THE GRANT INMAN COLLECTION

PART 2 — OFFICIALS

SALE 1135 — THURSDAY, SEPTEMBER 15, 2016



Live auction at 60 East 56th Street (Park/Madison), 4th Floor, New York City

All lots sold subject to a 15% buyer's premium and
applicable sales tax or customs duty

Please carefully read the Conditions of Sale before bidding

Presale Viewing:

Monday and Tuesday, September 12-13, 10am-4pm
and by appointment (please call 212-753-6421)

Robert A. Siegel

AUCTION GALLERIES, INC.

60 EAST 56TH STREET, 4TH FLOOR, NEW YORK, N.Y. 10022

Phone (212) 753-6421 • Fax (212) 753-6429 • E-mail: stamps@siegelauctions.com

Catalogues, internet bidding, resources, archives and the Siegel Encyclopedia at
siegelauctions.com



Robert A. Siegel

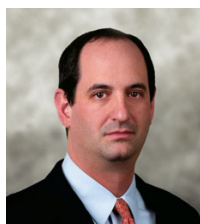
AUCTION GALLERIES, INC.

60 EAST 56TH STREET, 4TH FLOOR, NEW YORK, N.Y. 10022

Phone (212) 753-6421 • Fax (212) 753-6429 • E-mail: stamps@siegelauctions.com
siegelauctions.com



Scott R. Trepel
President
strepel@siegelauctions.com



John P. Zuckerman
Senior Vice President
jzuckerman@siegelauctions.com



Corey Long
Senior Vice President
clong@siegelauctions.com



Colleen Stellato
Vice President—Accounts
colleen@siegelauctions.com



Charles F. Shreve
Director, Siegel International
charles@siegelauctions.com



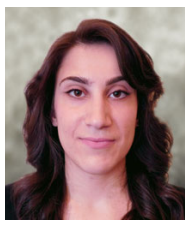
Andrew Titley
International Specialist
andrew@siegelauctions.com



Helen Stewart
Bids and Inquiries
helen@siegelauctions.com



Danielle Lenard
Bids and Inquiries
danielle@siegelauctions.com



Jocelyn Weibel
Digital Production
jocelyn@siegelauctions.com



Chris Anderson
Siegel International
chris@siegelauctions.com

Scott R. Trepel Principal Auctioneer (licensed by NYC Dept. of Consumer Affairs, #795952)

Information for Bidders

Bidding

The following means are available for placing bids:

- 1) Attending the Live Auction in Person:** All bidders must register for a paddle, and new bidders must provide references at least three business days in advance of the sale.
- 2) Live Internet Bidding:** Instructions for participating as a Live Internet Bidder are provided on the page opposite.
- 3) Phone Bidding:** Bidders can be connected to the sale by phone and bid through a member of staff. Requests for phone bidding are subject to approval (please contact our office at least 24 hours before the sale). A signed Bid Form is required.
- 4) Absentee Bids.** All bids received in advance of the sale, either by mail, fax, phone, e-mail or internet, are Absentee Bids, which instruct the auctioneer to bid up to a specific amount on one or more lots in the sale. Absentee Bids sent by phone, fax or e-mail should arrive at least one hour prior to the start of the sale session. Bids entered through Live Internet Bidding will be visible to the auctioneer during the sale. Written bids should be entered legibly on the Bid Form in the sale catalogue. E-mail and internet bids should be carefully typed and double-checked. All new bidders must provide references. We recommend calling or e-mailing to confirm that Absentee Bids sent by mail, fax or e-mail have been received and entered.

Pre-Sale Viewing

Subject to availability, certain lots (except group lots) can be sent to known clients for examination. Requests must be made no later than 7 days prior to the sale. Lots must be returned on the day received. Postage/insurance costs will be invoiced.

In addition to regular viewing, clients may view lots by appointment. Our staff will be pleased to answer questions or provide additional information about lots.

Expert Certification

Individual items offered without a PF or PSE certificate dated within the past five years may be purchased subject to independent certification of genuineness and our description. **Please refer to the Conditions of Sale and Grading Terms for policies governing certification.**

Shipping and Delivery

Procedures and charges for shipping lots are printed on the back of the Bid Form. **Bidders are responsible for all prescribed shipping charges and any applicable sales tax or customs duties.**

Price Realized

Prices realized are sent with each invoice. Bidders with e-mail will receive a Bid Results report after the sale. Session results are posted immediately to siegelauctions.com

Live Internet Bidding at Siegel Auctions

BIDDING FROM YOUR COMPUTER LETS YOU BE PART OF THE LIVE AUCTION FROM ANYWHERE IN THE WORLD!

There's **NO SUBSTITUTE** for following the auction in real time.
Live Internet Bidding lets you bid and buy as though you were right there in the saleroom.
And it's easy.

This step-by-step guide will instruct you how to register, set your browser and use the bidding interface.

Start by following the simple steps to become a registered Live Internet Bidder.
Once you've been approved for bidding, you can listen to the auction and place bids with the click of a mouse.

Registering with STAMP AUCTION NETWORK & SIEGEL AUCTION GALLERIES

Live Internet Bidding is managed by Stamp Auction Network (SAN).
To bid, you must be registered and approved by *both* SAN and Siegel.
To decide what you need to do, choose the description below that best fits you.



I've already registered with SAN and have been approved by Siegel for internet bidding.

I'm a Siegel client, but I'm not registered with SAN.

Go to stampauctionnetwork.com/siegel and click on "Register" at the top. Check the box for Robert A. Siegel Auction Galleries (under "R") and submit the form, indicating you are a Siegel client. Once registered at SAN, you're ready for internet bidding.

I've bid through SAN before, but this is the first time I've bid in a Siegel sale.

Then you just need to be approved by Siegel. Go to stampauctionnetwork.com/siegel and click on "Update Registration" at the top. Your SAN account information will be sent to us for approval (you might be asked for other trade references). Once approved by Siegel for bidding, you're ready for internet bidding.

I've never bid with Siegel, nor registered with SAN.

Go to stampauctionnetwork.com/siegel and click on "Register" at the top. Check the box for Robert A. Siegel Auction Galleries (under "R") and submit the form with **your trade references** (please, no family members or credit card companies as references). Once registered at SAN and approved by Siegel for bidding, you're ready for internet bidding.

Live Internet Bidding works by allowing registered bidders to observe and place bids.

Live Internet Bidding will work with any browser on both PC and Mac operating systems.

Before bidding by internet for the first time, we recommend finding a sale in progress and listening to the public broadcast or logging in as a registered bidder. This will help you develop a feel for the sale tempo and bidding interface.

Log on to the auction at stampauctionnetwork.com/siegel.

You can also log on at siegelauctions.com

When you're logged on as a Live Internet Bidder, the bidding interface shows a photo and description of the lot, the current bid (and your bidding status), options for placing competitive bids and buttons with bid increments.

- After you click on a bid amount, the auctioneer is immediately notified of your bid.
- Retracting a bid is usually not acceptable, so please bid carefully.
- If you bid and then decide to stop, the "Pass" button will tell the auctioneer you are no longer bidding.
- You can send messages to the auctioneer (for example, a request for extension).
- You can track prior realizations from the bidding screen.



"System Down" or "Lost Connection" events do occasionally happen.

If you have any problems with Live Internet Bidding please call **212-753-6421** for immediate assistance.

Conditions of Sale (please read carefully before bidding)

THE PROPERTY DESCRIBED IN THIS CATALOGUE WILL BE OFFERED AT PUBLIC AUCTION BY ROBERT A. SIEGEL AUCTION GALLERIES, INC. ("GALLERIES") ON BEHALF OF VARIOUS CONSIGNORS AND ITSELF OR AFFILIATED COMPANIES. BY BIDDING ON ANY LOT, WHETHER DIRECTLY OR BY OR THROUGH AN AGENT, IN PERSON, OR BY TELEPHONE, FACSIMILE OR ANY OTHER MEANS, THE BIDDER ACKNOWLEDGES AND AGREES TO ALL OF THE FOLLOWING CONDITIONS OF SALE.

1. The highest bidder acknowledged by the auctioneer shall be the buyer. The term "final bid" means the last bid acknowledged by the auctioneer, which is normally the highest bid offered. **The purchase price payable by the buyer will be the sum of the final bid and a commission of 15% of the final bid ("buyer's premium"), together with any sales tax, use tax or customs duties due on the sale.**
2. The auctioneer has the right to reject any bid, to advance the bidding at his discretion and, in the event of a dispute, to determine the successful bidder, to continue the bidding or to reoffer and resell the lot in dispute. The Galleries' record of the final sale shall be conclusive.
3. All bids are per numbered lot in the catalogue unless otherwise announced by the auctioneer at the time of sale. The right is reserved to group two or more lots, to withdraw any lot or lots from the sale, or to act on behalf of the seller. The Galleries will execute bidding instructions on behalf of clients, but will not be responsible for the failure to execute such bids or for any errors in the execution of such bids.
4. **Lots with numbers followed by the symbol ° are offered subject to a confidential minimum bid ("reserve"), below which the lot will not be sold. The absence of the symbol ° means that the lot is offered without a reserve. If there is no reserve, the auctioneer has sole discretion to establish a minimum opening bid and may refuse an offer of less than half of the published estimate. Any lot that does not reach its reserve or opening bid requested by the auctioneer will be announced as "passed" and excluded from the prices realized lists after the sale. The Galleries may have a direct or indirect ownership interest in any or all lots in the sale resulting from an advance of monies or goods-in-trade or a guarantee of minimum net proceeds made by the Galleries to the seller.**
5. Subject to the exclusions listed in 5(A), the Galleries will accept the return of lots which have been misidentified or which have obvious faults that were present when the lot was in the Galleries' custody, but not so noted in the lot description. **All disputed lots must be received by the Galleries intact with the original packing material within 5 days of delivery to the buyer but no later than 30 days from the sale date.**
(5A) EXCLUSIONS: The following lots may not be returned for any reason, or may not be returned for the reasons stated: i) lots containing 10 or more items; ii) lots from buyers who registered for the pre-sale exhibition or received lots by postal viewing, thereby having had the opportunity to inspect them before the sale; iii) any lot described with "faults," "defects" or a specific fault may not be returned because of any secondary fault; iv) photographed lots may not be returned because of centering, margins, short/nibbed perforations or other factors shown in the illustrations; v) the color of the item does not match the color reproduction in the sale catalogue or website listing; vi) the description contains inaccurate information about the quantity known or reported; or vii) a certification service grades a stamp lower than the grade stated in the description.
6. Successful bidders, unless they have established credit with the Galleries prior to the sale, must make payment in full before the lots will be delivered. Buyers not known to the Galleries must make payment in full within 3 days from the date of sale. **The Galleries retains the right to demand a cash deposit from anyone prior to bidder registration and/or to demand payment at the time the lot is knocked down to the highest bidder, for any reason whatsoever.** In the event that any buyer refuses or fails to make payment in cash for any lot at the time it is knocked down to him, the auctioneer reserves the right to reoffer the lot immediately for sale to the highest bidder. **Credit cards (Visa, Mastercard and Discover only) can be accepted as payment but will be subject to a 3% Convenience Fee, which will be added to the total of the entire invoice (including hammer price, buyer's premium, shipping**

and transit insurance charges and any applicable taxes).

7. If the purchase price has not been paid within the time limit specified above, nor lots taken up within 7 days from the date of sale, the lots will be resold by whatever means deemed appropriate by the Galleries, and any loss incurred from resale will be charged to the defaulting buyer. **Any account more than 30 days in arrears will be subject to a late payment charge of 1½% per month as long as the account remains in arrears. Any expenses incurred in securing payment from delinquent accounts will be charged to the defaulter.** A fee of \$250.00 per check will be charged for each check returned for insufficient funds.
8. All lots are sold as genuine. **Any lot accompanied by a certificate issued by The Philatelic Foundation or by Professional Stamp Experts within 5 years of the sale date is sold "as is" and in accordance with the description on the certificate. Such lots may not be returned for any reason, including but not limited to a contrary certificate of opinion.** Buyers who wish to obtain a certificate for any item that does not have a P.F. or P.S.E. certificate (dated as above) may do so, provided that the following conditions are met: (1) the purchase price must be paid in full, (2) the item must be submitted to an acceptable expertizing committee with a properly executed application form within 21 days of the sale, (3) a copy of the application form must be given to the Galleries, (4) in the event that an adverse opinion is received, the Galleries retain the right to resubmit the item on the buyer's behalf for reconsideration, without time limit or other restrictions, (5) unless written notification to the contrary is received, items submitted for certification will be considered cleared 90 days from the date of sale, and (6) in the event any item is determined to be "not as described", the buyer will be refunded the purchase price and the certification fee up to \$800.00 unless otherwise agreed to in writing.
9. Until paid for in full, all lots remain the property of the Galleries on behalf of the seller.
10. Agents executing bids on behalf of clients will be held responsible for all purchases made on behalf of clients unless otherwise arranged prior to the sale.
11. The buyer assumes all risk for delivery of purchased lots and agrees to pay for prescribed shipping costs. **Buyers who receive lots in the U.S. are obligated to pay whatever sales tax or compensating use tax might be due, and buyers outside the U.S. are responsible for all customs duties.**
12. **The bidder consents that any action or proceeding against it may be commenced and maintained in any court within the State of New York or in the United States District Court for the Southern District of New York, that the courts of the State of New York and United States District Court for the Southern District of New York shall have jurisdiction with respect to the subject matter hereof and the person of the bidder. The bidder agrees not to assert any defense to any action or proceeding initiated by Galleries based upon improper venue or inconvenient forum. The bidder agrees that any action brought by the bidder shall be commenced and maintained only in a Federal Court in the United States District Court for the Southern District of New York or the State Court in the county in which Galleries has its principal place of business in New York. The bidder agrees not to use a public conflict resolution service and not to use any form of social media to publish comments or information about the Galleries and its employees which might harm the Galleries' reputation or business. These Conditions of Sale shall be governed by and construed in accordance with the substantive laws of the State of New York, and shall constitute an agreement that shall be binding on the parties, and their respective heirs, administrators, distributees, successors and assignees.**

SCOTT R. TREPEL, Principal Auctioneer
Auctioneer's License No. 795952
N.Y.C. Department of Consumer Affairs
80 Lafayette Street, New York, N.Y. 10013
Telephone (212) 577-0111

Revised 1/2016

Grades, Abbreviations and Values Used in Descriptions

Grades and Centering

Our descriptions contain detailed information and observations about each item's condition. We have also assigned grades to stamps and covers, which reflect our subjective assessment. For stamps, the margin width, centering and gum are described and graded according to generally-accepted standards (an approximate correlation to numeric grades is provided at right). Although we believe our grades are accurate, they are not always exactly aligned with third-party grading terms or standards for all issues. **A lot may not be returned because a certification service grades a stamp lower than the grade stated in the description. Information from the P.S.E. Stamp Market Quarterly and P.S.E. Population ReportSM is the most current available, but lots may not be returned due to errors or changes in statistics or data.**

Extremely Fine Gem (90-100): The term “Gem” describes condition that is the finest possible for the issue. This term is equivalent to “Superb” used by grading services.







Extremely Fine (80-90): Exceptionally large/wide margins or near perfect centering.

Very Fine (70-85): Normal-size margins for the issue and well-centered with the design a bit closer to one side. “Very Fine and choice” applies to stamps that have desirable traits such as rich color, sharp impression, freshness or clarity of cancel.

Fine (60-70): Smaller than usual margins or noticeably off center. Pre-1890 issues may have the design touched in places.

Very Good (below 60): Attractive appearance, but margins or perforations cut into the design.

Guide to Gum Condition

Gum Categories:	MINT N.H.	ORIGINAL GUM (O.G.)				NO GUM
	 Mint Never Hinged <i>Free from any disturbance</i>	 Lightly Hinged <i>Faint impression of a removed hinge over a small area</i>	 Hinge Mark or Remnant <i>Prominent hinged spot with part or all of the hinge remaining</i>	 Part o.g. <i>Approximately half or more of the gum intact</i>	 Small part o.g. <i>Approximately less than half of the gum intact</i>	 No gum <i>Only if issued with gum</i>
Catalogue Symbol:	★ ★	★	★	★	★	(★)
PRE-1890 ISSUES	<i>Pre-1890 stamps in these categories trade at a premium over Scott value</i>			Scott Value for “O.G.”		Scott “No Gum” Values thru No. 218
1890-1935 ISSUES	Scott “Never Hinged” Values for Nos. 219-771	Scott Value for “O.G.” (Actual value will be affected by the degree of hinging)		Disturbed Original Gum: Gum showing noticeable effects of humidity, climate or hinging over more than half of the gum. The significance of gum disturbance in valuing a stamp in any of the Original Gum categories depends on the degree of disturbance, the rarity and normal gum condition of the issue and other variables affecting quality. For example, stamps issued in tropical climates are expected to have some gum disturbance due to humidity, and such condition is not considered a negative factor in pricing.		
1935 TO DATE	Scott Value for “Unused”					

Covers

Minor nicks, short edge tears, flap tears and slight reduction at one side are normal conditions for 19th century envelopes. Folded letters should be expected to have at least one file fold. Light cleaning of covers and small mends along the edges are accepted forms of conservation. Unusual covers may have a common stamp with a slight crease or tiny tear. **These flaws exist in virtually all 19th century covers and are not always described. They are not grounds for return.**

Catalogue Values and Estimates

Unless otherwise noted, the currently available *Scott Catalogue* values are quoted in dollars with a decimal point. Other catalogues are often used for foreign countries or specialized areas and are referred to by their common name: *Stanley Gibbons* (SG), *Dietz*, *American Air Mail Catalogue* (AAMC), *Michel*, *Zumstein*, *Facit*, etc. Estimates are indicated with an “E.” and reflect our conservative valuation in dollars. Reserves will never exceed the low end of the estimate range; they will sometimes exceed Scott Catalogue value for stamps in Extremely Fine condition.

Because of certain pricing inconsistencies in the *Scott Catalogue*—for example, blocks that have no gum, the absence of premiums for Mint N.H. items, etc.—we cannot guarantee the accuracy of values quoted for multiples, specialized items and collection lots. We generally try to be conservative, but buyers may not return a lot because of a discrepancy in catalogue value due to Scott pricing inconsistencies.

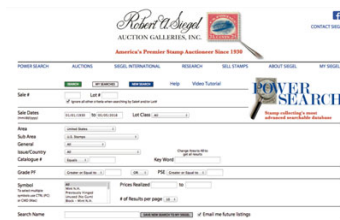
Symbols and Abbreviations (see chart above for gum symbols)

⊞	Block	E	Essay	pmk.	Postmark	No.	Scott Catalogue Number
⊞	Cover	P	Proof	cds	Circular Datestamp	hs	Handstamp
FC	Fancy Cancel	TC	Trial Color Proof	var.	Variety	ms.	Manuscript

R@ siegelauctions.com

CATALOGUES AND PRICES REALIZED

Images and descriptions for all sales going back to 1992, our Rarities sales from 1964 and selected older name sales. PDF catalogues go back to our first sale in 1931.

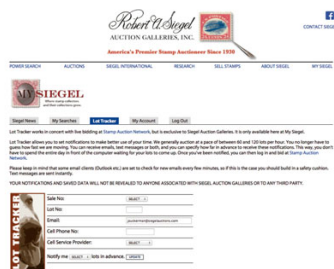


POWER SEARCH™

Search by Scott number or keyword through all of the sales at our website. The best resource in philately for research.

MY SIEGEL™

Save your Power Searches as want lists. We will automatically notify you when a match is included in an upcoming sale, whether it's as broad as any Columbian issue, or as narrow as a 241 graded 98. The most powerful want list in philately.

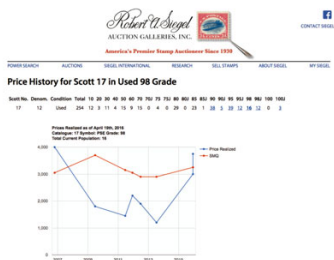


LOT TRACKER™

Never miss another lot because you were away from your computer. Log into My Siegel™, then set up notifications to get texts and/or emails 10-30 lots before yours comes up (live bidding is still through Stamp Auction Network).

CENSUS DATA FOR RARITIES

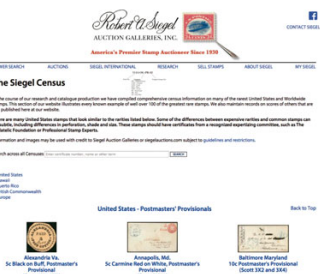
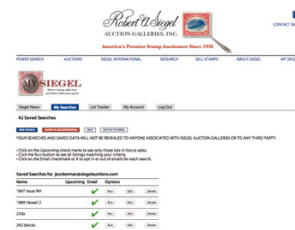
The up-to-date census data for U.S. and select International rarities are a valuable resource for buyers, sellers and researchers. Every recorded example of almost 150 different rare stamps is described and, in most cases, photographed.



GRADED PRICE HISTORY

Graphs show the realizations of each grade over time in our auctions. The data points are easily visible for independent analysis.

We have several other important features of our website, such as the Siegel Encyclopedia, Exhibits, Today in History and a Perpetual Calendar. Go to siegelauctions.com for the most comprehensive website in philately.



THE GRANT INMAN COLLECTION

PART 2 — OFFICIALS

AFTERNOON SESSION (LOTS 501-722)
THURSDAY, SEPTEMBER 15, 2016, AT 1:30 P.M.

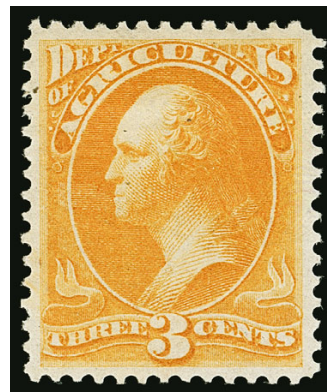
AGRICULTURE DEPARTMENT



501



502



503

- 501 ★ **1c Agriculture (O1).** Original gum, vibrant color, trivial natural inclusion at right not mentioned on accompanying certificate, Very Fine and choice, ex Zoellner, with 1998 P.F. certificate 280.00
- 502 ★ **2c Agriculture (O2).** Original gum, lightly hinged, intense shade, Very Fine and choice, with 2003 P.F. certificate 240.00
- 503 ★ **3c Agriculture (O3).** Original gum, deep shade, choice centering with wide margins, few small natural coal speck inclusions typical for this issue, Extremely Fine, a pretty stamp.. 220.00



504



505



506

- 504 ★ **6c Agriculture (O4).** Original gum, lightly hinged, vivid shade on fresh paper, wide margins and choice centering, Extremely Fine, ex Drucker, with 2002 P.F. certificate 260.00
- 505 ★ **10c Agriculture (O5).** Original gum, h.r., bright color, well-centered with wide margins, Extremely Fine, a huge stamp, ex Zoellner, with 1998 P.F. certificate 525.00
- 506 ★ **12c Agriculture (O6).** Original gum, lightly hinged, bright color, choice centering with wide and balanced margins, Extremely Fine, a gorgeous stamp, with 1987 P.F. certificate for block 450.00



507



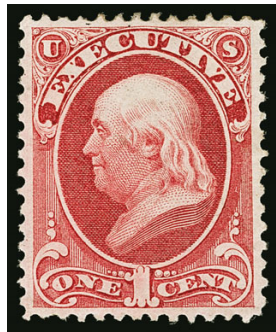
508



509

- 507 ★ **15c Agriculture (O7).** Original gum, single hinge mark, intense shade and impression, well-proportioned margins, Extremely Fine, with 1992 P.F. certificate 425.00
- 508 ★ **24c Agriculture (O8).** Original gum, lightly hinged, bright color, nicely balanced margins, Extremely Fine, a stamp with great visual appeal, with 1988 P.F. certificate 425.00
- 509 ★ **30c Agriculture (O9).** Original gum, slightly dry print, well-proportioned margins, Extremely Fine, small backstamp, with 1991 P.F. certificate 550.00

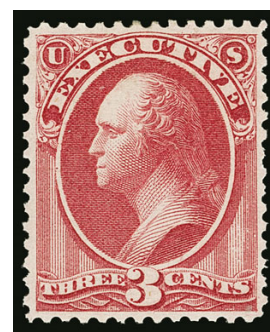
EXECUTIVE DEPARTMENT



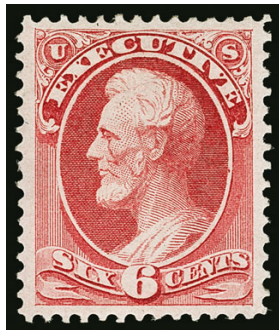
510



511



512



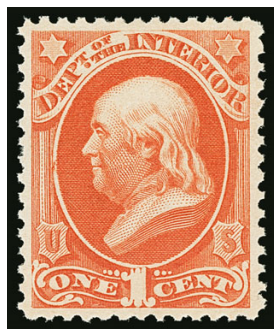
513



514

- 510 ★ **1c Executive (O10).** Original gum, rich color, well-balanced margins, Extremely Fine, a pretty stamp, with 1993 P.F. certificate 850.00
- 511 ★ **2c Executive (O11).** Original gum, crisp impression, wide margins, Very Fine and choice, with 1985 P.F. certificate 550.00
- 512 ★ **3c Executive (O12).** Original gum, lightly hinged, perfectly centered with balanced margins, Extremely Fine, ex Hillmer, with 1999 P.F. certificate 700.00
- 513 ★ **6c Executive (O13).** Slightly disturbed original gum, h.r., rich color, wide margins, Extremely Fine Gem, with 1996 P.F. certificate 900.00
- 514 ★ **10c Executive (O14).** Original gum, lightly hinged, deep shade, Very Fine and choice, with 1989 P.F. certificate 1,200.00

INTERIOR DEPARTMENT



515



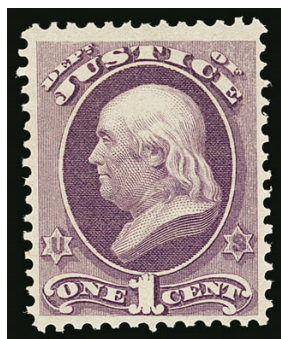
516EX



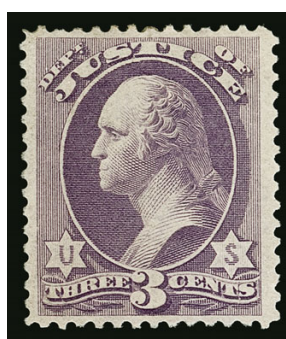
517

- 515 ★★ **1c Interior (O15).** Mint N.H., brilliant color, unusually choice centering with well-balanced margins, Extremely Fine Gem, a superb stamp in every respect, with 2006 P.S.E. certificate (XF-Superb 95; SMQ does not price this issue in Mint N.H. condition, SMQ \$325.00 as hinged 95), only one has graded higher (at 98J, with top right corner selvage, realized \$1,700 hammer in our Sale 975) and no others share this grade 170.00
- 516 ★ **1c-30c Interior (O16-O23, O97-O99).** Original gum, radiant colors, generally with superior centering than normally seen in a group lot, Very Fine-Extremely Fine, an attractive and desirable group, Nos. O16, O19 and O23 with P.F. certificates...(Photo Ex) 1,080.00
- 517 ★ **90c Interior (O24).** Original gum, lightly hinged, brilliant color, wide margins, Extremely Fine, scarce with such wide margins, with 1993 P.F. certificate 325.00

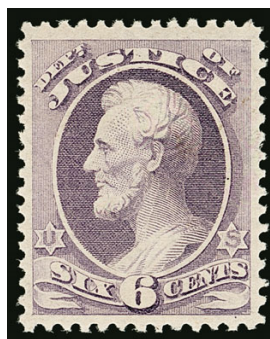
JUSTICE DEPARTMENT



518



519EX

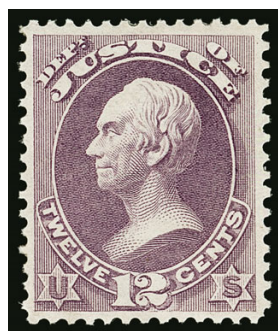


520

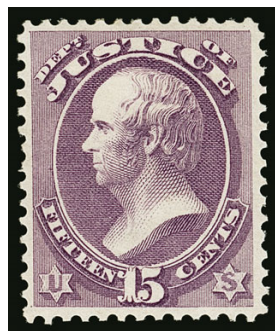


521

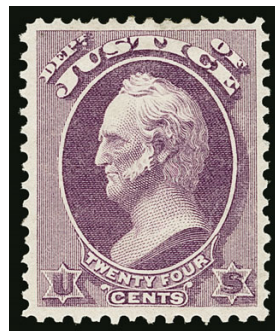
- 518 ★★ **1c Justice (O25).** Mint N.H., intense shade on bright paper, Very Fine and choice, scarce in Mint N.H. condition, we have offered only two others since keeping computerized records 550.00
- 519 ★ **2c-3c Justice (O26-O27).** Original gum, intense shade and impression, wide margins, 3c reperfed at left, still Very Fine and choice, 3c with 2016 P.F. certificate .(Photo Ex) 630.00
- 520 ★★ **6c Justice (O28).** Mint N.H., radiant color, wide margins, Extremely Fine, ex “Silver Lake”, with 1993 and 2004 P.F. certificates, the former as a block 700.00
- 521 ★ **10c Justice (O29).** Original gum, lightly hinged, remarkably well-centered with Jumbo margins, bright color on brilliant paper, Extremely Fine Gem, an outstanding stamp, ex Drucker, with 2002 P.F. certificate 310.00



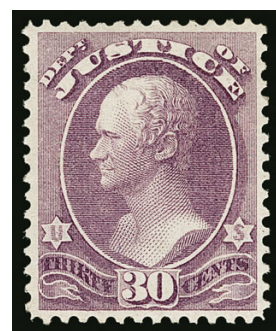
522



523



524



525

- 522 ★ **12c Justice (O30).** Original gum, pretty shade, nicely balanced margins, Very Fine and choice, ex “Cloudrest”, 2008 P.S.E. certificate (OGh, VF-XF 85; SMQ \$350.00) no longer accompanies..... 260.00
- 523 ★ **15c Justice (O31).** Original gum, deep shade on bright paper, well-proportioned margins, Very Fine and choice, a pretty stamp, with 1988 P.F. certificate 475.00
- 524 ★ **24c Justice (O32).** Original gum, detailed impression, wide margins, Extremely Fine, an attractive stamp, with 1998 P.F. certificate 1,250.00
- 525 ★ **30c Justice (O33).** Original gum, radiant color on bright paper, well-balanced margins, fresh and Extremely Fine, with 1992 and 2004 P.F. certificates 1,300.00



526

- 526 ★ **90c Justice (O34).** Original gum, h.r., bright shade, well-centered with wide margins, Extremely Fine, difficult to find this choice, ex Zoellner, signed and with small purple owner's backstamp, with 1998 P.F. certificate..... 1,900.00

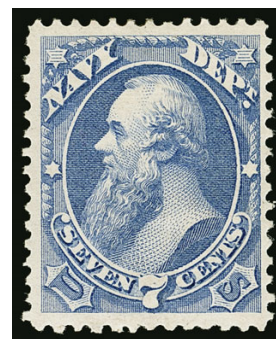
NAVY DEPARTMENT



527EX

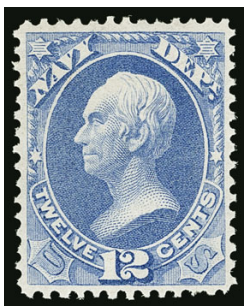


528



529

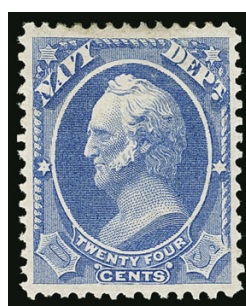
- 527 ★ **1c-10c Navy (O35, O37-O38, O40).** Original gum, virtually all lightly hinged, bright colors, selected for superior centering, Very Fine-Extremely Fine, 1c and 6c with 1993 or 1994 P.F. certificate.....(Photo Ex) 690.00
- 528 ★★ **2c Navy (O36).** Mint N.H., rich color on bright paper, choice centering, fresh and Extremely Fine, with 2008 P.S.E. certificate (VF-XF 85; unpriced in SMQ as Mint N.H., SMQ \$225.00 as hinged), only one has graded higher (at 90) and one other shares this grade 350.00
- 529 ★ **7c Navy (O39).** Original gum, lightly hinged, bright color and proof-like impression on fresh paper, Extremely Fine, ex Drucker, with 1986 and 2002 P.F. certificates 650.00



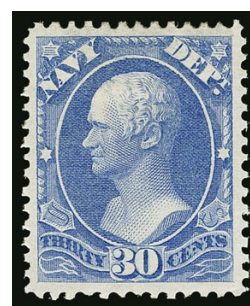
530



531



532



533

- 530 ★ **12c Navy (O41).** Original gum, lightly hinged, radiant color, well-balanced margins, Extremely Fine, with 1993 P.F. certificate..... 220.00
- 531 ★ **15c Navy (O42).** Original gum, pretty color, well-centered, Very Fine and choice, ex Zoellner, with 1986 and 1998 P.F. certificates 375.00
- 532 ★ **24c Navy (O43).** Original gum, small h.r., intense shade and proof-like impression on bright paper, wide and balanced margins, Extremely Fine Gem, ex Zoellner, with 1998 P.F. certificate 400.00
- 533 ★ **30c Navy (O44).** Original gum, h.r., rich color, choice centering with unusually wide margins, Extremely Fine Gem, a huge stamp, with 1988 P.F. certificate 325.00

- 534 ★ **90c Navy (O45).** Original gum, radiant color, Jumbo margins all around

EXTREMELY FINE GEM. A HUGE EXAMPLE OF THE 90-CENT NAVY. THIS IS THE WIDEST-MARGINED EXAMPLE WE HAVE EVER ENCOUNTERED.

With 2006 P.F. certificate (XF 90 Jumbo). By way of comparison, the highest grade awarded by P.S.E. is an 80..... 1,050.00



534

POST OFFICE DEPARTMENT



535EX



536



537



538

- 535 ★ **1c-15c Post Office (O47-O53, O108).** Original gum, 6c Gray Black shade, selected for superior centering, Very Fine-Extremely Fine, 12c with 2006 P.S.E. certificate (Photo Ex) 525.00
- 536 ★ **24c Post Office (O54).** Original gum, lightly hinged, wonderfully well-centered, Extremely Fine, ex "Vineyard", with 2004 P.F. certificate..... 200.00
- 537 ★ **30c Post Office (O55).** Original gum, intense shade, beautiful centering with unusually wide and balanced margins, Extremely Fine Gem, small blue backstamp, with 2000 P.F. certificate..... 200.00
- 538 ★ **90c Post Office (O56).** Original gum, bright shade and detailed impression, unusually wide margins, fresh and Extremely Fine, with 2004 P.F. certificate 220.00

STATE DEPARTMENT



539

- 539 ★ **1c State (O57).** Original gum, lightly hinged, dark color and crisp impression, well-centered with Jumbo margins, Extremely Fine, with 2003 P.F. certificate 260.00



540

- 540 ★ **2c State (O58).** Original gum, lightly hinged, deep shade and detailed impression, wide margins, Very Fine and choice, with 1993 P.F. certificate 310.00



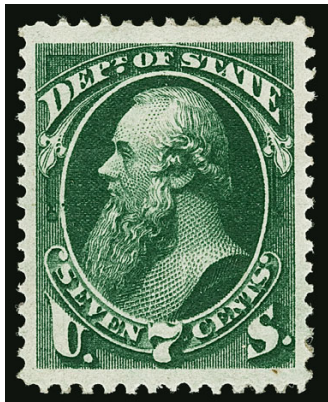
541

- 541 ★ **3c State (O59).** Large part original gum, h.r., bright color, well-centered with wide margins, Extremely Fine, scarce with such wide margins, ex Zoellner, with 1998 P.F. certificate 220.00



542

- 542 ★ **6c State (O60).** Original gum, bright color, fresh and Very Fine, with 1999 P.F. certificate 220.00



543

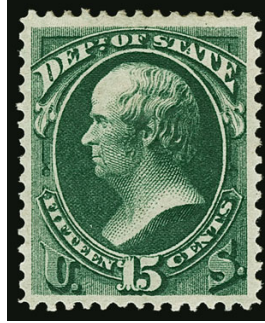
- 543 ★ **7c State (O61).** Original gum, lightly hinged, deep shade on crisp paper, Jumbo margins, Extremely Fine Gem, a huge stamp 290.00



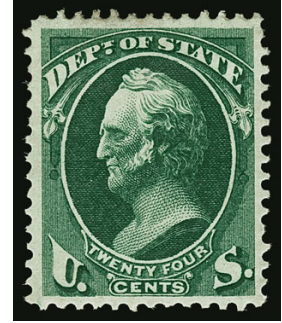
544



545



546



547

- 544 ★★ **10c State (O62).** Mint N.H., rich color, well-proportioned margins, Very Fine and choice, scarce in Mint N.H. condition, we have offered only two others since keeping computerized records, with 1991 and 2000 P.F. certificates, the former as a block..... 525.00
- 545 ★ **12c State (O63).** Original gum, small h.r., deep shade, wide margins, Extremely Fine, with 2002 P.F. certificate 310.00
- 546 ★ **15c State (O64).** Original gum, few hinge marks, rich color, wide margins, Very Fine and choice, ex Zoellner, with 1998 P.F. certificate..... 320.00
- 547 ★ **24c State (O65).** Large part original gum, h.r., rich color, wide margins, Extremely Fine, ex Zoellner, with 1998 P.F. certificate 525.00



548

- 548 ★ **30c State (O66).** Original gum, rich color, gorgeous centering with wide and balanced margins, Extremely Fine Gem, purple backstamp, with 2004 P.S.E. certificate (OGh, XF-Superb 95; SMQ \$1,800.00), only one grades higher (at 98) and none share this desirable grade 500.00

- 549 ★ **90c State (O67).** Original gum, choice centering, deep shade, Extremely Fine, ex "Cloudrest", 2010 P.S.E. certificate no longer accompanies (OGph, XF 90; SMQ \$2,000.00), only one grades higher (at 90J) and three others share this grade..... 1,050.00



549



550

550 ★ **\$2.00 State (O68).** Original gum, bright colors and crisp impressions, choice centering with well-balanced margins

EXTREMELY FINE GEM. A SUPERB ORIGINAL-GUM EXAMPLE OF THE \$2.00 STATE DEPARTMENT.

With 1987 and 2004 P.F. certificates. 1,600.00



551

551 ★ **\$5.00 State (O69).** Original gum, lightly hinged, intense colors and detailed impressions

EXTREMELY FINE. A MAGNIFICENT ORIGINAL-GUM EXAMPLE OF THE \$5.00 STATE DEPARTMENT. A DIFFICULT ISSUE TO OBTAIN IN SUCH SUPERB CONDITION.

With 1991 P.F. and 1992 P.S.E. certificates 7,500.00



552

- 552 ★ **\$10.00 State (O70).** Original gum, lightly hinged, intense shades and impressions, well-balanced margins
 VERY FINE AND CHOICE. A FRESH AND WELL-CENTERED ORIGINAL-GUM EXAMPLE OF THE \$10.00 STATE DEPARTMENT.
 With 1988 P.F. certificate..... 4,500.00



553

- 553 ★ **\$20.00 State (O71).** Original gum, small h.r., bright colors, crisp impressions, choice centering
 EXTREMELY FINE. A BEAUTIFUL ORIGINAL-GUM EXAMPLE OF THE \$20.00 STATE DEPARTMENT ISSUE.
 Ex Drucker. With 1989 P.S.E. and 2002 P.F. certificates..... 5,000.00

TREASURY DEPARTMENT



- 554 ★ **1c-7c Treasury (O72, O74, O76, O109).** Original gum, 1c barely hinged, few small h.r., bright colors, fresh and Fine-Very Fine group.....(Photo Ex) 560.00
- 555 ★ **2c Treasury (O73).** Original gum, deep rich color, wonderfully centered with wide even margins, Extremely Fine Gem, ex "Vineyard", with 2004 P.F. certificate..... 125.00
- 556 ★ **6c Treasury (O75).** Original gum, lightly hinged, bright color, beautifully centered, Extremely Fine, ex Zoellner, with 1998 P.F. certificate..... 120.00
- 557 ★ **10c Treasury (O77).** Original gum, h.r., bright color and crisp impression, wide margins, Very Fine and choice, with 2000 P.F. certificate..... 240.00
- 558 ★ **12c Treasury (O78).** Original gum, lightly hinged, bright shade and detailed impression, Very Fine and choice, with 1990 P.F. certificate..... 300.00
- 559 ★ **15c Treasury (O79).** Original gum, lightly hinged, bright color, choice centering, fresh and Extremely Fine, with 2004 P.F. certificate..... 300.00
- 560 ★ **24c Treasury (O80).** Original gum, h.r., detailed impression, well-balanced margins, Very Fine and choice, a pretty stamp, with 2004 P.F. certificate..... 675.00
- 561 ★ **30c Treasury (O81).** Part original gum, bright color, wide margins, Extremely Fine 400.00
- 562 ★ **90c Treasury (O82).** Original gum, rich color, wide margins, fresh and Extremely Fine, a pretty stamp, with 1992 P.F. certificate..... 475.00

WAR DEPARTMENT



- 563 ★★ **1c War (O83).** Mint N.H., brilliant color, wide and balanced margins, Extremely Fine Gem, scarce in Mint N.H. condition, the only other example located with Power Search was offered in our 1998 Zoellner sale, with 1992 and 2004 P.F. certificates, the former as a block 525.00
- 564 ★★ **2c War (O84).** Mint N.H., deep color, well-centered, Extremely Fine, a beautiful stamp, ex Zoellner, with 1998 P.F. certificate, we have offered only one other Mint N.H. single since keeping computerized records 525.00
- 565 ★ **3c War (O85).** Original gum, brilliant color, wide margins, Very Fine and choice, a pretty stamp 240.00
- 566 ★ **6c War (O86).** Original gum, lightly hinged, vibrant color, wide and balanced margins, fresh and Very Fine and choice, with 1988 P.F. certificate 625.00
- 567 ★ **7c War (O87).** Original gum, bright color, wide margins, Very Fine and choice, ex Zoellner, with 1998 P.F. certificate 160.00
- 568 ★ **10c-90c War (O88-O93).** Original gum, 12c, 24c and 90c h.r., 15c Mint N.H. (perf disc inclusion), 10c with left selvage, brilliant colors, Very Fine group, 24c with 2004 P.F. certificate (Photo Ex) 1,045.00

1879 AMERICAN BANK NOTE COMPANY PRINTING ON SOFT PAPER

- 569 ★ **1c Agriculture, Soft Paper (O94).** Without gum as issued, brilliant color, excellent centering, bright and fresh

EXTREMELY FINE. THE ONE-CENT AGRICULTURE ON SOFT PAPER IS VERY RARE IN THIS OUTSTANDING SOUND AND CENTERED CONDITION.

As discerning collectors know, the Officials are extremely difficult to obtain in sound, centered condition — particularly among the American printings on soft porous paper. The example offered here is a condition rarity.

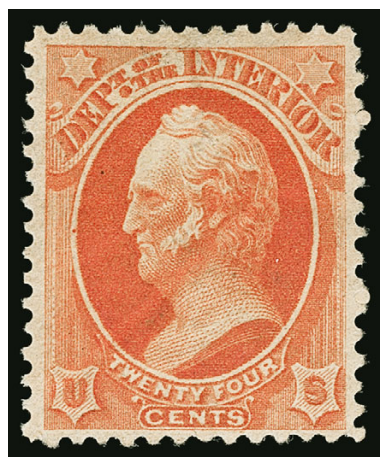
With 1988 P.F. certificate 6,000.00



569



- 570 ★ **3c Agriculture, Soft Paper (O95).** Original gum, lightly hinged, vibrant color, wide margins, Very Fine and choice, with 1990 P.F. certificate..... 550.00
- 571 ★ **1c Interior, Soft Paper (O96).** Original gum, lightly hinged, brilliant color wide margins all around, fresh and Extremely Fine, with 1988 P.F. certificate..... 300.00
- 572 ★★ **10c Interior, Soft Paper (O100).** Mint N.H., deep shade, unusually wide margins, Extremely Fine, with 2004 P.F. certificate..... 250.00
- 573 ★ **12c Interior, Soft Paper (O101).** Large part original gum, bright color, exceptionally well-centered with wide even margins, Extremely Fine, with 1987 P.F. certificate 230.00
- 574 ★ **15c Interior, Soft Paper (O102).** Original gum, h.r., intense shade and impression, fresh and Very Fine, with 1983 P.F. certificate..... 400.00



575

- 575 ★ **24c Interior, Soft Paper (O103).** Original gum, h.r., rich color, choice centering for this difficult issue, few unpunched perfs, faint diagonal bend not mentioned on accompanying certificate

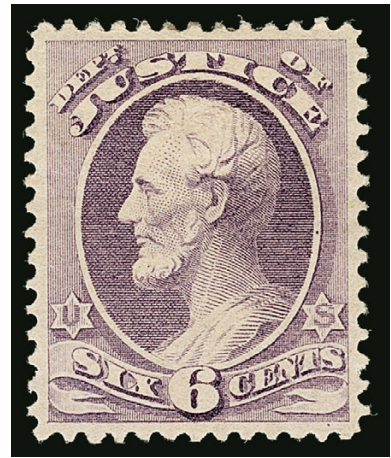
VERY FINE. THE 24-CENT INTERIOR AMERICAN BANK NOTE PRINTING IS A DIFFICULT ISSUE TO OBTAIN WITH SUCH CHOICE CENTERING.

A Power Search review at our website confirms that many examples of this issue are either off-center or have faults of varying degree. Perhaps two or three others compare favorably to the example offered here.

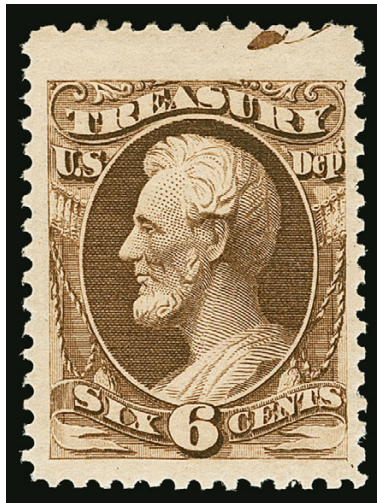
With 1988 P.F. certificate..... 4,500.00

- 576 ★ **3c Justice, Soft Paper (O106).** Original gum, intense shade and impression, balanced margins, Extremely Fine, a pretty stamp 190.00

- 577 ★ **6c Justice, Soft Paper (O107).** Original gum, brilliant color and crisp impression, unusually choice centering with wide and balanced margins, Extremely Fine Gem, a superb stamp, with 1992 P.F. and 2008 P.S.E. certificates (OGh, XF-Superb 95; SMQ \$1,650.00), this is the highest grade awarded and the only to achieve it..... 475.00



577

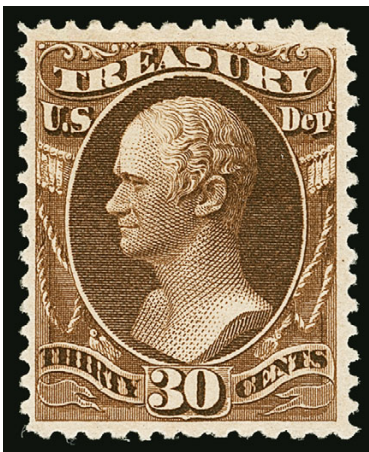


578



579

- 578 ★★ **6c Treasury, Soft Paper (O110).** Mint N.H., Jumbo margins incl. ink at top which may be from imprint or plate no., Extremely Fine Gem, a huge stamp, with 1998 P.S.E. certificate..... 450.00
- 579 ★ **10c Treasury, Soft Paper (O111).** Original gum, lightly hinged, radiant color, crisp impression, well-proportioned margins, Extremely Fine, with 1997 P.S.E. and 2004 P.F. certificates 260.00



580

- 580 ★ **30c Treasury, Soft Paper (O112).** Plate 69, Position 45 with **short transfer at top right**, original gum, Very Fine example of this interesting variety which is unlisted in Scott, with 1980 and 2000 P.F. certificates, Scott Retail as normal..... 2,400.00



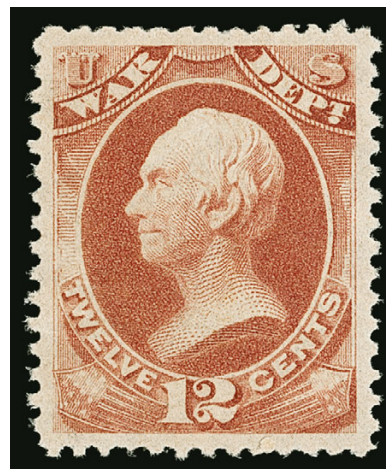
581

581 ★ **90c Treasury, Soft Paper (O113).** Original gum, h.r., deep rich color and proof-like impression, choice centering for this difficult issue

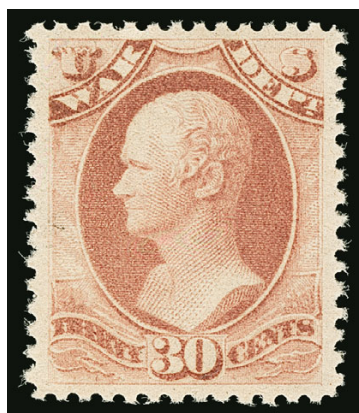
VERY FINE AND CHOICE. AN OUTSTANDING ORIGINAL-GUM EXAMPLE OF THE 90-CENT TREASURY AMERICAN BANK NOTE PRINTING ON SOFT PAPER. AN EXTREMELY RARE ISSUE IN SOUND CONDITION.

Ex Markovits. With 2004 P.F. certificate 9,000.00

- 582 ★ **1c-12c War, Soft Paper (O114-O119).** Original gum, most lightly hinged, bright colors, 12c light bend, Very Fine group(Photo Ex) 166.00



582EX



583

- 583 ★★ **30c War, Soft Paper (O120).** Mint N.H., radiant color, gorgeous centering with wide and balanced margins, Extremely Fine Gem, a superb stamp in every respect, with 2005 P.S.E. certificate (XF-Superb 95; unpriced in SMQ as Mint N.H., the highest price in SMQ is for a hinged 90 (at \$525.00), this is the highest grade awarded and the only to achieve it..... 450.00



584EX



585



586



587

- 584 ★★ **2c, 1c, 10c Postal Savings (O121, O124, O126).** Mint N.H., brilliant colors, choice centering, Extremely Fine.....(Photo Ex) 112.50
- 585 ★★ **50c Postal Savings (O122).** Mint N.H., deep shade, wide margins, post-office fresh and Extremely Fine, ex Drucker, with 1986 and 2002 P.F. certificates 375.00
- 586 ★★ **\$1.00 Postal Savings (O123).** Mint N.H., brilliant color, wide margins, Very Fine and choice, with 1997 P.F. certificate 450.00
- 587 ★★ **2c Postal Savings (O125).** Mint N.H., wide margins, sharp impression, Extremely Fine Gem, ex Drucker, with 2002 P.F. certificate..... 135.00

United States Official Special Printings

In March 1875 the Post Office Department initiated a program to make reproductions, reprints, re-issues and special printings of all past and present issues available for purchase at face value through the office of the Third Assistant Postmaster General in Washington, D.C.

Among the stamps to be recreated were the then-current Official issues, which were used by nine executive branch government departments on official mail. Since Official stamps were not intended for public use, the USPOD announcement of the stamp program stated:

"The official stamps cannot be used except for the official business of the particular Department for which provided... All of the specimens will be *ungummed*; and the official stamps will have printed across the face the word 'Specimen,' in small type. It will be useless to apply for *gummed* stamps, or for official stamps with the word 'Specimen' omitted." (March 27, 1875)

The 1¢ to 90¢ Official Special Printings were intended to be purchased in sets (with face value up to \$2), and the dollar-value State Department stamps were available individually. Other individual Official stamps could be purchased, subject to a minimum order of \$2.

To prepare for sales fulfillment the USPOD ordered and received 100 sheets of each of the 92 different Official stamps from the Continental Bank Note Company. The values from 1¢ through 90¢ were provided in sheets of 100 (10,000 total of each). The dollar-value State Department stamps were printed in sheets of ten (1,000 total of each). All of the stamps from this initial order were printed on hard white paper with a smooth surface, and they were sold without gum. With the exception of at least one set of imperforate sheets, the stamps were perforated.

Continental made a second printing of the Agriculture, Executive, Justice and State Department 1¢ stamps, using ribbed paper (100 sheets–10,000 stamps–of each). Additional printings of certain 1¢ departmental stamps were made by the American Bank Note Company, some of which were sold and survive as evidence that American used soft porous paper (1¢ Executive–O10xS, Navy–O35xS, and State–O57xS).

USPOD records show that additional 1¢ Agriculture and War Department stamps were also ordered, but the

sale and destruction records indicate that only 234 of the 1¢ Agriculture stamps were needed in addition to the 20,000 from the two earlier Continental printings, and that none of the 5,000 1¢ War Department stamps printed by American were necessary to fill orders. Without examples of these two Official Special Printings, specialists can only speculate about the type of paper used or what they looked like.

An incomplete record of sales has been located in the government archives, dating from May 1879 through July 1882. The great majority of orders came from stamp dealers. Large quantities of the 1¢ and 2¢ values of all departments were purchased, including complete sheets. Orders of full sets, including the 3¢ to 90¢ values, were much more limited. The Executive Department stamps were the most numerous (the smallest number sold was 3,461 of the 10¢). The Treasury Department stamps drew the fewest orders among the 1¢-90¢ sets (only 72 of the 90¢ were sold). The State Department dollar values were evidently too expensive for most budgets, and sales were extremely small (only seven of the \$20 were sold).

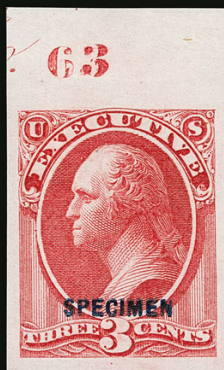
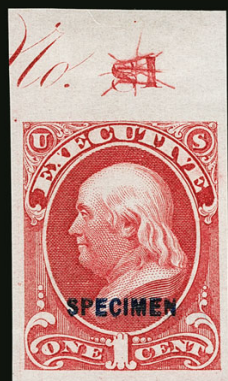
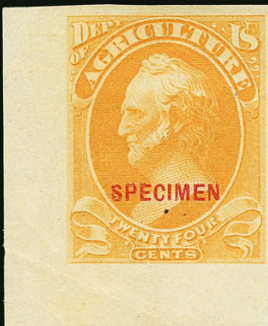
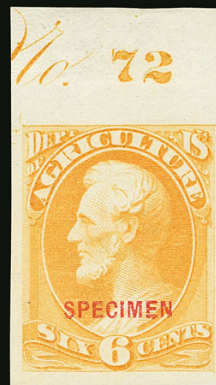
The stamp program was discontinued on July 16, 1884. For many years since the program ended, the Official Special Printings were second cousins to their special-printing counterparts without the "Specimen" overprint, because stamps marked "Specimen" were usually discounted or given away. That was *not* the case with the Officials. As awareness of this fact has spread and appreciation of their significance has increased, the Official stamps have achieved nearly equal status with special printings of the 1847 to 1883 regular postage, Postage Due and Newspapers & Periodicals issues.

Rear Admiral W. V. Combs published his important treatise on Official Special Printings in 1965 and lamented the lack of appreciation of the stamps. In 1994 and 1995, William E. Mooz published a series of articles on Official Special Printings in the U.S. Classics Society's *Chronicle* (Nos. 154, 166 and 168). We appreciate his contributions and guidance in this subject area, as well as the contributions of Lester Lanphear, a respected specialist, exhibitor and author on Officials.

The table that follows provides statistics for the manufacture and sale of Official Special Printings. The lot descriptions in this catalogue refer to the quantities sold and relative scarcity, based on the information in this table.

Department	Den ¢	Sc. No.	Plate # (Size)	1st CBNC Hard	2nd CBNC Ribbed	3rd ABNC Soft	4th ABNC Soft	5th ABNC Soft(?)	Total	Destroyed	Sold
Agriculture	1	O1S	65 (100)	10,000	10,000	0	0	5,000	25,000	4,766	20,234
Agriculture	2	O2S	64 (100)	10,000	0	0	0	0	10,000	5,808	4,192
Agriculture	3	O3S	57 (100)	10,000	0	0	0	0	10,000	9,611	389
Agriculture	6	O4S	72 (100)	10,000	0	0	0	0	10,000	9,627	373
Agriculture	10	O5S	114 (100)	10,000	0	0	0	0	10,000	9,610	390
Agriculture	12	O6S	73 (100)	10,000	0	0	0	0	10,000	9,621	379
Agriculture	15	O7S	105 (100)	10,000	0	0	0	0	10,000	9,630	370
Agriculture	24	O8S	145 (100)	10,000	0	0	0	0	10,000	9,648	352
Agriculture	30	O9S	100 (100)	10,000	0	0	0	0	10,000	9,646	354
Executive	1	O10S,O10xS	82 (100)	10,000	10,000	5,000	0	5,000	30,000	5,348	24,652
Executive	2	O11S	75 (100)	10,000	0	0	0	0	10,000	2,570	7,430
Executive	3	O12S	63 (100)	10,000	0	0	0	0	10,000	6,265	3,735
Executive	6	O13S	76 (100)	10,000	0	0	0	0	10,000	6,515	3,485
Executive	10	O14S	111 (100)	10,000	0	0	0	0	10,000	6,539	3,461
Interior	1	O15S	52 (100)	10,000	0	0	0	0	10,000	2,806	7,194
Interior	2	O16S	45 (100)	10,000	0	0	0	0	10,000	8,737	1,263
Interior	3	O17S	27 (100)	10,000	0	0	0	0	10,000	9,912	88
Interior	6	O18S	56 (100)	10,000	0	0	0	0	10,000	9,917	83
Interior	10	O19S	109 (100)	10,000	0	0	0	0	10,000	9,918	82

Department	Den ¢	Sc. No.	Plate # (Size)	1st CBNC Hard	2nd CBNC Ribbed	3rd ABNC Soft	4th ABNC Soft	5th ABNC Soft(?)	Total	Destroyed	Sold
Interior	12	O20S	49 (100)	10,000	0	0	0	0	10,000	9,925	75
Interior	15	O21S	93 (100)	10,000	0	0	0	0	10,000	9,922	78
Interior	24	O22S	104 (100)	10,000	0	0	0	0	10,000	9,923	77
Interior	30	O23S	95 (100)	10,000	0	0	0	0	10,000	9,925	75
Interior	90	O24S	108 (100)	10,000	0	0	0	0	10,000	9,923	77
Justice	1	O25S	85 (100)	10,000	10,000	0	0	0	20,000	271	19,729
Justice	2	O26S	90 (100)	10,000	0	0	0	0	10,000	6,605	3,395
Justice	3	O27S	28 (100)	10,000	0	0	0	0	10,000	9,822	178
Justice	6	O28S	77 (100)	10,000	0	0	0	0	10,000	9,837	163
Justice	10	O29S	97 (100)	10,000	0	0	0	0	10,000	9,837	163
Justice	12	O30S	91 (100)	10,000	0	0	0	0	10,000	9,846	154
Justice	15	O31S	99 (100)	10,000	0	0	0	0	10,000	9,843	157
Justice	24	O32S	115 (100)	10,000	0	0	0	0	10,000	9,850	150
Justice	30	O33S	110 (100)	10,000	0	0	0	0	10,000	9,850	150
Justice	90	O34S	113 (100)	10,000	0	0	0	0	10,000	9,848	152
Navy	1	O35S,O35xS	80 (100)	10,000	0	5,000	0	0	15,000	818	14,182
Navy	2	O36S	50 (100)	10,000	0	0	0	0	10,000	8,252	1,748
Navy	3	O37S	34 (100)	10,000	0	0	0	0	10,000	9,874	126
Navy	6	O38S	53 (100)	10,000	0	0	0	0	10,000	9,884	116
Navy	7	O39S	119 (100)	10,000	0	0	0	0	10,000	9,499	501
Navy	10	O40S	101 (100)	10,000	0	0	0	0	10,000	9,888	112
Navy	12	O41S	92 (100)	10,000	0	0	0	0	10,000	9,893	107
Navy	15	O42S	94 (100)	10,000	0	0	0	0	10,000	9,893	107
Navy	24	O43S	107 (100)	10,000	0	0	0	0	10,000	9,894	106
Navy	30	O44S	96 (100)	10,000	0	0	0	0	10,000	9,896	104
Navy	90	O45S	106 (100)	10,000	0	0	0	0	10,000	9,898	102
Post Office	1	O47S	43 (200)	10,000	0	0	0	0	10,000	3,985	6,015
Post Office	2	O48S	37 (100)	10,000	0	0	0	0	10,000	9,410	590
Post Office	3	O49S	36 (200)	10,000	0	0	0	0	10,000	9,909	91
Post Office	6	O50S	47 (200)	10,000	0	0	0	0	10,000	9,913	87
Post Office	10	O51S	62 (100)	10,000	0	0	0	0	10,000	9,823	177
Post Office	12	O52S	71 (100)	10,000	0	0	0	0	10,000	9,907	93
Post Office	15	O53S	66 (100)	10,000	0	0	0	0	10,000	9,918	82
Post Office	24	O54S	74 (100)	10,000	0	0	0	0	10,000	9,916	84
Post Office	30	O55S	68 (100)	10,000	0	0	0	0	10,000	9,919	81
Post Office	90	O56S	88 (100)	10,000	0	0	0	0	10,000	9,918	82
State	1	O57S,O57xS	55 (100)	10,000	10,000	0	5,000	0	25,000	3,328	21,672
State	2	O58S	59 (100)	10,000	0	0	0	0	10,000	4,855	5,145
State	3	O59S	70 (100)	10,000	0	0	0	0	10,000	9,207	793
State	6	O60S	83 (100)	10,000	0	0	0	0	10,000	9,533	467
State	7	O61S	112 (100)	10,000	0	0	0	0	10,000	9,209	791
State	10	O62S	98 (100)	10,000	0	0	0	0	10,000	9,654	346
State	12	O63S	78 (100)	10,000	0	0	0	0	10,000	9,720	280
State	15	O64S	118 (100)	10,000	0	0	0	0	10,000	9,743	257
State	24	O65S	117 (100)	10,000	0	0	0	0	10,000	9,747	253
State	30	O66S	116 (100)	10,000	0	0	0	0	10,000	9,751	249
State	90	O67S	67 (100)	10,000	0	0	0	0	10,000	9,755	245
State	\$2	O68S	121 (10)	1,000	0	0	0	0	1,000	968	32
State	\$5	O69S	120 (10)	1,000	0	0	0	0	1,000	988	12
State	\$10	O70S	122 (10)	1,000	0	0	0	0	1,000	992	8
State	\$20	O71S	124 (10)	1,000	0	0	0	0	1,000	993	7
Treasury	1	O72S	44 (200)	10,000	0	0	0	0	10,000	7,815	2,185
Treasury	2	O73S	42 (200)	10,000	0	0	0	0	10,000	9,691	309
Treasury	3	O74S	29 or 33 (200)	10,000	0	0	0	0	10,000	9,916	84
Treasury	6	O75S	51 (100)	10,000	0	0	0	0	10,000	9,915	85
Treasury	7	O76S	103 (100)	10,000	0	0	0	0	10,000	9,802	198
Treasury	10	O77S	58 (100)	10,000	0	0	0	0	10,000	9,918	82
Treasury	12	O78S	46 (100)	10,000	0	0	0	0	10,000	9,925	75
Treasury	15	O79S	84 (100)	10,000	0	0	0	0	10,000	9,925	75
Treasury	24	O80S	134 (100)	10,000	0	0	0	0	10,000	9,901	99
Treasury	30	O81S	69 (100)	10,000	0	0	0	0	10,000	9,926	74
Treasury	90	O82S	61 (100)	10,000	0	0	0	0	10,000	9,928	72
War	1	O83S	48 (100)	10,000	0	5,000	0	0	15,000	5,390	9,610
War	2	O84S	35 (200)	10,000	0	0	0	0	10,000	8,382	1,618
War	3	O85S	32 (200)	10,000	0	0	0	0	10,000	9,882	118
War	6	O86S	60 (100)	10,000	0	0	0	0	10,000	9,889	111
War	7	O87S	102 (100)	10,000	0	0	0	0	10,000	9,461	539
War	10	O88S	79 (100)	10,000	0	0	0	0	10,000	9,881	119
War	12	O89S	54 (100)	10,000	0	0	0	0	10,000	9,895	105
War	15	O90S	87 (100)	10,000	0	0	0	0	10,000	9,895	105
War	24	O91S	86 (100)	10,000	0	0	0	0	10,000	9,894	106
War	30	O92S	81 (100)	10,000	0	0	0	0	10,000	9,896	104
War	90	O93S	89 (100)	10,000	0	0	0	0	10,000	9,894	106



UNITED STATES OFFICIAL SPECIAL PRINTINGS

A SET OF IMPERFORATE SINGLES, MOST WITH PLATE NUMBERS
FROM THE EARL OF CRAWFORD STRIPS

588 S **1c-\$20.00 Officials, 1875 Special Printing, Specimen Overprint, Imperforate (OIS var - O93S var).** Complete set of 92, all have large margins and selvage (mostly at top) **virtually all show plate numbers or part of imprint** including the State Department dollar values, the colors are remarkably fresh and impressions are very strong, a few low denominations have trivial corner crease or thin speck

EXTREMELY FINE. THESE IMPERFORATE OFFICIAL SPECIAL PRINTING STAMPS WERE CUT FROM STRIPS OF FIVE ORIGINATING IN THE EARL OF CRAWFORD COLLECTION, WHICH WERE DIVIDED A CENTURY EARLIER INTO THREE SETS OF SINGLES AND ONE SET OF PAIRS. ONLY TWO INTACT SETS OF SINGLES ARE KNOWN TO EXIST—THE SET IN THE NEW YORK PUBLIC LIBRARY'S MILLER COLLECTION AND THE SET OFFERED HERE.

Nearly all known genuine examples of the imperforate Official Special Printing stamps come from the set of strips of five sold to James Ludovic Lindsay, the 26th Earl of Crawford, one of the great collectors of stamps, essays, proofs and philatelic literature at the turn of the 20th Century. Lord Crawford died on January 31, 1914, and his estate executors eventually agreed to sell the entire United States collection for \$60,000 to John A. Klemann of the Nassau Stamp Company. Klemann reported his acquisition of the Earl of Crawford's collection in the November 1915 edition of *The Philatelic Gazette*. Among the spectacular array of items owned by Lord Crawford were strips of the 1875 1c-90c Continental Bank Note Company Special Printings with intact selvage (Scott 167-177), the set of Official Special Printing imperforate strips of five and a similar set of Newspapers & Periodicals Special Printing imperforate strips.

Klemann is almost certainly the person responsible for cutting up the Earl of Crawford strips into one set of pairs and three sets of singles, because one of the sets of singles was sold to Benjamin K. Miller, who was an active collector from 1917 to 1924 (his collection was donated to The New York Public Library and is now on long-term loan to the Smithsonian National Postal Museum). Miller probably acquired the imperforate set directly from Nassau Stamp Company, one of his dealer sources. We will refer to stamps from this set as the Miller singles (they can be seen on the National Postal Museum's website).

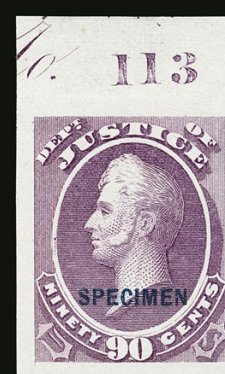
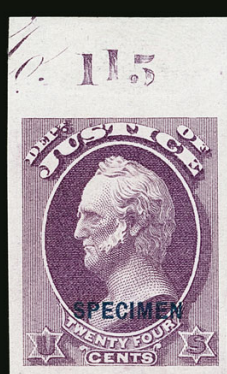
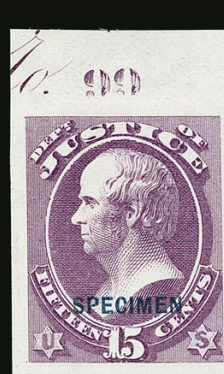
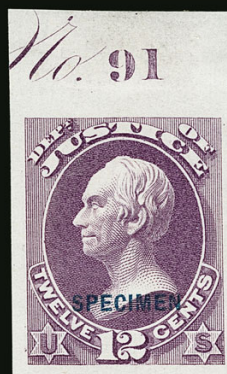
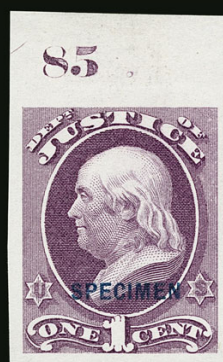
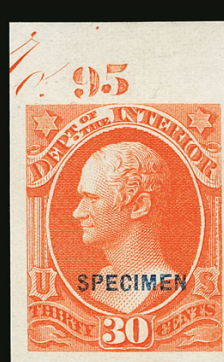
The set of singles offered here, most of which have plate numbers in the margins, was sold to Colonel Edward H. R. Green. This set was subsequently acquired by the physicist Serge A. Korff and, in turn, by the late Robert Zoellner. In our sale of the Zoellner collection (Siegel Sale 804, lot 894), this set was acquired by Mr. Inman with Stanley M. Piller as his agent. We will refer to stamps from this set as the Inman singles.

The unique set of pairs was recently offered in our sale of the Golden collection on March 26, 2015 (Siegel Sale 1095, lot 501). The pairs were previously in the Hind and Sinkler collections before Mr. Golden acquired them in the July 8, 1966, John A. Fox sale of the Hollowbush collection.

Combining the pairs with the Miller and Inman singles, we can account for four of the five stamps in the original Earl of Crawford strips. The fifth set of singles was described, but not photographed, in the Phillips-Kennett auction catalogue of the Arthur Hind United States collection (November 20-24, 1933, lot 1041). At the time of the Hind sale, the dollar-value State Department singles were missing, and the remaining 1c-90c stamps had sheet margins. The incomplete set, with the sheet margins trimmed away, later appeared in the 1972 Rarities sale (Sale 409, lot 204) and in Sotheby's November 20, 1978 sale (lot 562). We will refer to stamps from this part set as the Hind singles. We have not been able to locate the four State Department dollar-value stamps (all Position 1) that would complete this fifth set.

The Scott value for an entire set of normally perforated Official Special Printings (1st Printing) is \$318,662.50 for singles, including \$227,500.00 for the four dollar-value State Department stamps.....(Photo) E. 40,000-50,000

Photographs of all stamps in this lot and additional notes of interest to specialists appear on pages 26-33 of this sale catalogue.



Lot 588 notes:

We compared the Inman set of singles with the other singles and the set of pairs. The following observations will be of interest to specialists:

— The set offered here has only four stamps that do not show the plate numbers. They are: 2c and 24c Agriculture (top left and bottom left corner sheet margins respectively), 12c Post Office (part imprint) and 2c War (part imprint).

— The 2c Agriculture Inman single shows top left corner sheet margin and is Position 1. The pair shows most of the imprint and is Positions 2-3. The Hind copy must show the remaining imprint from Position 4. The Miller copy shows “N” of the plate number and must be Position 5, so this is not known with a plate number.

— The 24c Agriculture Inman copy has bottom left corner sheet margins and is from Position 1. The pair has bottom sheet margin and no imprint or plate number. The Miller copy shows “N” of plate number. The Hind single has had the margin trimmed off.

— The 1c Executive is from Position 7 with etched-out number 81. It adjoins the pair which is from Positions 8-9 with plate number “82” above Position 8. The Miller copy is corner-margin Position 10. The first stamp in the strip (Position 6) is the Hind single.

— The 1c Post Office Inman single shows part of the plate number and also the left half of the guide arrow, and adjoins the top-margin pair, which has most of the “No. 43” at right (they are Positions 8-9 Left and 10 Left on the 200-subject plate). The Miller single has part of the imprint and comes from Position 6 Left. The Hind single Position 7 Left has had the margin with a trace of the imprint trimmed off.

— The 6c Post Office bottom-margin pair has part of the imprint from Positions 94-95 Right on the 200-subject plate. The Inman Position 92 Right single has the plate number “47”, which adjoins the Miller Position 91 Right single with the right half of the guide arrow. The Hind single Position 93 Right has had the margin with small parts of the plate number and imprint trimmed off.

— The 12c Post Office Inman single shows a small part of the imprint at bottom right and comes from Position 91. The bottom-margin pair comes from Positions 92-93 with the majority of the imprint. The Miller Position 95 single has the “N” of “No.” (the original strip of five did not include Position 96 with the plate number). Position 94 is the Hind single.

— The 3c State shows the plate number. The top-margin pair comes from Positions 9-10 and has large top-right corner sheet margins; they are the beginning and end positions of the original strip of five. The Miller single comes from Position 7, and Position 8 is the Hind single.

— The 7c State Inman single comes from Position 95 and shows just the “N” of “No.” (the original strip of five did not include Position 96 with the plate number). The bottom-margin pair comes from Positions 92-93 and shows most of the imprint, while the Miller single comes from Position 91 (showing a bit of the left end of the imprint). Position 94 is the Hind single.

— The State Department dollar-value pairs come from Positions 3-4 (10-subject plate), directly adjoining the set of Inman singles from Position 5, which combine to show the “No.” and plate numbers of the vignette and frame plates in their respective black and green colors. The Miller singles come from Position 2 and show part of the imprint. The Position 1 singles (with part imprint) were missing from the Hind set of singles and have not been located.

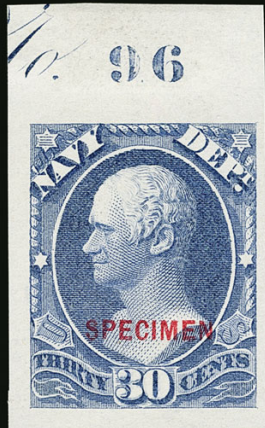
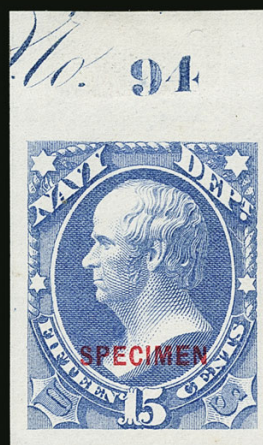
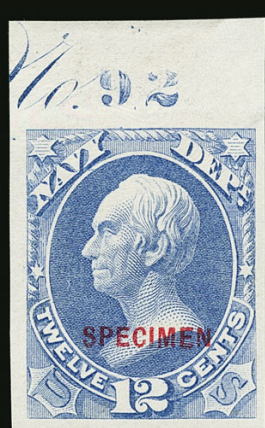
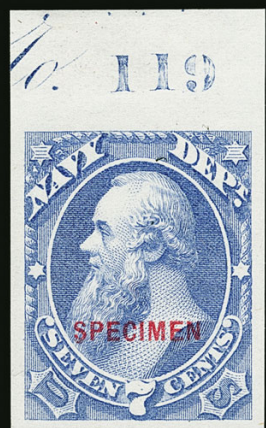
— The 1c and 2c Treasury Inman singles both come from Position 10 Left and show the plate number “44” (1c) and “2” of “42” (2c) along with the left half guide arrow. The top-margin pairs both come from Positions 8-9 Left and show the “No.” above Position 9 (2c with “4” of “42”). The Miller singles come from Position 6 and show the right half of the imprint. The 1c and 2c Treasury Position 7 stamps are the Hind singles.

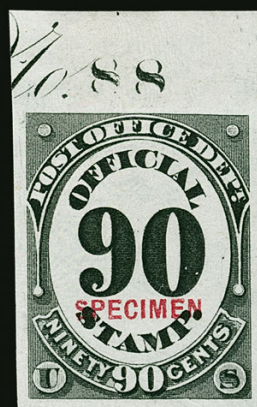
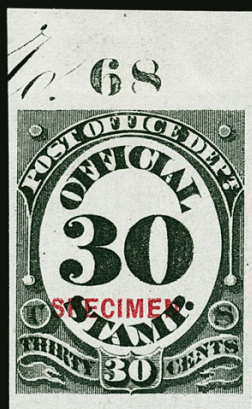
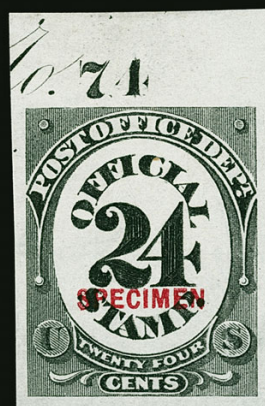
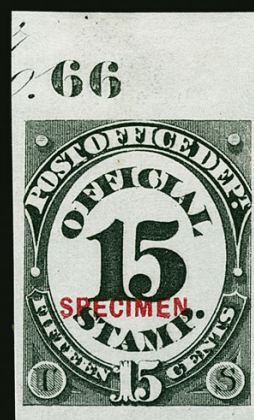
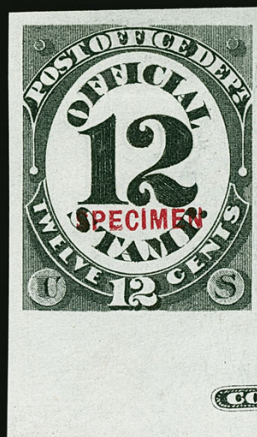
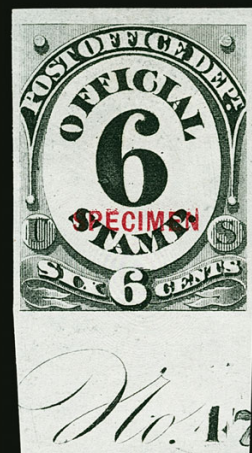
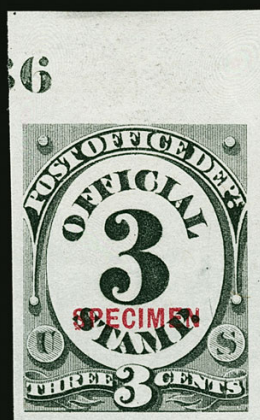
— The 3c Treasury Inman single is the corner margin Position 10 Right. Position 9 Right is the Hind single. The top-margin pair shows a small part of the imprint, which adjoins with the Miller single with the right half of the imprint; these must come from Positions 6 and 7-8 Right on one of the 200-subject plates (Plate 29 or 33).

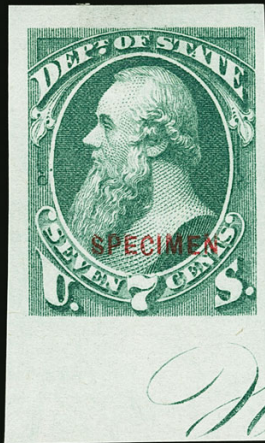
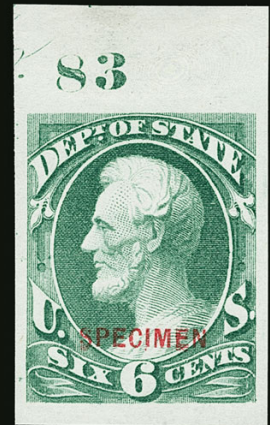
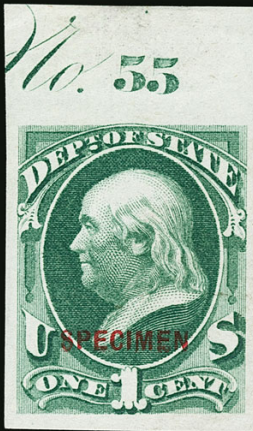
— The 24c Treasury Inman single is Position 6, with a nearly complete plate number “64” and a small part of the imprint (in this unusual configuration, the plate number is to the left of the imprint). The pair is from Positions 7-8 and has a large part of the imprint. The Miller single is a corner-margin Position 10. The Hind Position 9 single has had the margin with the right end of the imprint trimmed off.

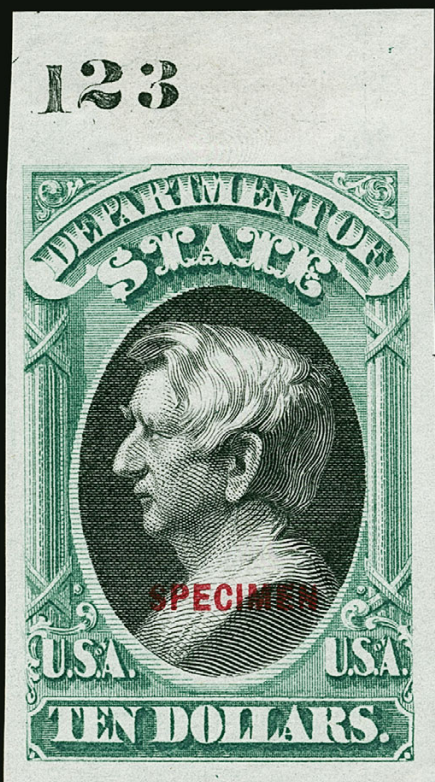
— The 2c War Inman single is from Position 6 Right and has a significant portion of the imprint. The pair comes from Positions 7-8 Right (200-subject plate) and shows the right end of the imprint; together they form the first three stamps of the original strip. The Miller single comes from the corner-margin Position 10 Right. Position 9 Right is the Hind single. None show the plate number.

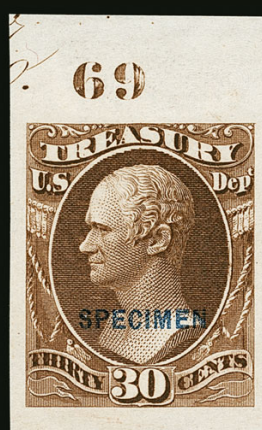
— The 3c War Inman single comes from Position 10 Left, which shows the left half guide arrow and “2” of plate number “32.” The Hind Position 9 Left single has had the margin with the “No. 3[2]” portion of the imprint trimmed off. The pair comes from Positions 7-8 Left (200-subject plate) and shows the right end of the imprint, which adjoins the Miller Position 6 Left single with the imprint.

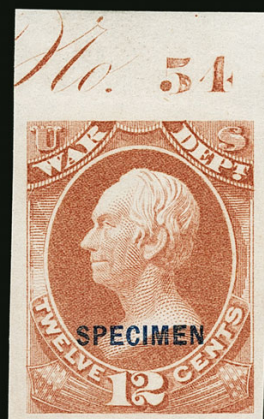












AGRICULTURE DEPARTMENT



589EX



590EX

- 589 S **1c-30c Agriculture, Specimen Ovpt. (O1S-O9S).** Without gum as issued, rich colors, 10c small thin spot, overall a Very Fine and desirable set, ex Sheriff.....(Photo Ex) 2,887.50
- 590 ★ **1c Agriculture, Specimen Ovpt., Dotted “i” in “Specimen”, Ribbed (O1Sb, O1Sc).** Without gum as issued, first with Jumbo margins and gorgeous centering, second with bright color and clearly showing the variety, few minor perf flaws, Very Fine-Extremely Fine.....(Photo Ex) 537.50

AGRICULTURE DEPARTMENT “SEPCIMEN” ERRORS

- 591 S **1c Agriculture, “Sepcimen” Error (O1Sa).** Without gum as issued, bright color, few perf flaws, otherwise Fine, scarce, only approximately 20 are known 2,500.00



591



592

- 592 S **2c Agriculture, “Sepcimen” Error (O2Sa).** Without gum as issued, rich color, typical centering for this issue, few natural inclusions, few perf flaws, otherwise Fine and scarce, only approximately ten are known to exist 3,000.00



593

- 593 S **3c Agriculture, “Sepcimen” Error (O3Sa).** Without gum as issued, scissors separated sides but perfs largely intact, fresh and bright

VERY FINE. AN IMPORTANT OFFICIAL SPECIAL PRINTING RARITY. ONLY TWO EXAMPLES OF THE 3-CENT AGRICULTURE “SEPCIMEN” ERROR ARE KNOWN.

Only 389 copies of the 3c Agriculture Special Printing were sold, but it is not known how the stamps were taken from the sheets or if full sheets were exhausted before breaking a subsequent sheet. If full sheets were used, then at most four can possibly exist. Only one other is recorded (ex Sheriff, Markovits and our Sale 905) and it has similar scissors-separated perfs..... 12,500.00



594

- 594 S **6c Agriculture, “Sepcimen Error” (O4Sa).** Without gum as issued, vibrant color, perfs scissors-separated but intact

FRESH AND FINE. THIS IS THE ONLY RECORDED EXAMPLE OF THE 6-CENT AGRICULTURE SPECIAL PRINTING WITH “SEPCIMEN” ERROR.

Only 373 copies of the 6c Agriculture Special Printing were sold, but it is not known how the stamps were taken from the sheets or if full sheets were exhausted before breaking a subsequent sheet. If full sheets were used, then at most four can possibly exist. The Combs book does not record an example.

Ex Stone, Sheriff and Markovits. With 1952 and 2004 P.F. certificates..... 20,000.00



595

- 595 S **10c Agriculture, "Sepcimen" Error (O5Sa).** Without gum as issued, brilliant color, wide margin at left (as does the only other recorded example)

FRESH AND FINE. ONE OF ONLY TWO RECORDED EXAMPLES OF THE 10-CENT AGRICULTURE SPECIAL PRINTING WITH THE "SEPCIMEN" SPELLING ERROR. A PHENOMENAL RARITY.

Only 390 copies of the 10c Agriculture Special Printing were sold, but it is not known how the stamps were taken from the sheets or if full sheets were exhausted before breaking a subsequent sheet. If full sheets were used, then at most four can possibly exist. None were known to Combs. The other example known to us, ex Stone, Sheriff and Markovits, has similar centering but is closer at bottom. It was incorrectly described in the 2004 Markovits sale as the only recorded example.

With 1971 P.F. certificate. 17,500.00



596

- 596 S **12c Agriculture, "Sepcimen" Error (O6Sa).** Without gum as issued, brilliant color, typical centering for this issue

FINE. AN EXTREMELY RARE SOUND EXAMPLE OF THE 12-CENT AGRICULTURE WITH "SEPCIMEN" SPELLING ERROR. FEWER THAN FIVE ARE KNOWN, AND THIS IS UNDOUBTEDLY THE FINEST.

Only 379 copies of the 12c Agriculture Special Printing were sold, but it is not known how the stamps were taken from the sheets or if full sheets were exhausted before breaking a subsequent sheet. If full sheets were used, then at most four can possibly exist. Robert Markovits recorded only three examples (2004 Bennett sale). We are aware of four, including the used example offered in the following lot, one offered in our 2016 sale of the Rollin C. Huggins Jr. collection, and one offered in our Sale 1017 that had a large stained repair.

Ex Lewenthal, Sheriff and Markovits. Signed Bloch. With 2004 P.F. certificate. 12,500.00

- 597 S **12c Agriculture, "Sepcimen" Error (O6Sa).** Rich color, bold target cancel described on accompanying certificate as counterfeit, Fine, an unusual item, the "SEPCIMEN" error is genuine (only four are known) but this must be offered on its own merits due to the cancel, illustrated in the Combs book on page 36, ex Worthington, Lewenthal (where illustrated on front cover) and Sheriff, with 1999 P.F. certificate, Scott Retail as unused \$12,500.00 E. 1,000-1,500



597



598

- 598 S **15c Agriculture, "Sepcimen" Error (O7Sa).** Without gum as issued, rich color, wide margins

VERY FINE AND CHOICE. AN EXTREMELY RARE EXAMPLE OF THE 15-CENT AGRICULTURE WITH THE "SEPCIMEN" ERROR. ONLY THREE ARE KNOWN.

Only 370 of the 15c Agriculture Special Printing were sold, but it is not known how the stamps were taken from the sheets or if full sheets were exhausted before breaking a subsequent sheet. If full sheets were used, then at most four can possibly exist. Robert Markovits recorded only two examples (2004 Bennett sale), but it is not clear if his census included the Golden example. We record three: 1) intact perfs, sound, ex Golden (Siegel Sale 1095, lot 522, realized \$10,500 hammer); 2) the example offered here, and 3) ex Lewenthal and Markovits, last sold in Siegel Sale 905, scissors-separated into the perfs at top

Small purple backstamp. With 2016 P.F. certificate 12,500.00



599

- 599 S **24c Agriculture, “Sepcimen” Error (O8Sa).** Without gum as issued, brilliant color, scissors-separated at left but with intact perfs, tiny corner perf tear at top right

VERY FINE APPEARING EXAMPLE OF THE 24-CENT AGRICULTURE WITH THE “SEPCIMEN” SPELLING ERROR. ONLY FOUR ARE KNOWN. A GREAT RARITY.

Only 352 of the 24c Agriculture Special Printing were sold, but it is not known how the stamps were taken from the sheets or if full sheets were exhausted before breaking a subsequent sheet. If full sheets were used then at most four can possibly exist. Robert Markovits recorded only three examples. We record the following four examples: 1) ex Golden, intact perfs, sound (Siegel Sale 1095, lot 523, realized \$11,000 hammer); 2) the example offered here, wide left margin; 3) similar centering, ex Pickard, Stone and Sheriff (Siegel Sale 752, lot 484); and 4) similar left margin, reperfed at top, thins and tear, ex Markovits.

With 2002 A.P.S. and 2016 P.F. certificates, the former not mentioning the tiny fault . 12,500.00



600

- 600 S **30c Agriculture, “Sepcimen” Error (O9Sa).** Without gum as issued, vivid color, wonderfully well-centered with wide margins, bright and fresh

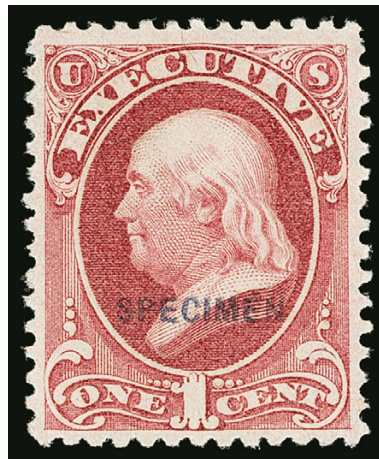
EXTREMELY FINE. THIS IS THE FINEST OF ONLY THREE RECORDED EXAMPLES OF THE 30-CENT AGRICULTURE “SEPCIMEN” ERROR.

Only 354 of the 30c Agriculture Special Printing were sold, but it is not known how the stamps were taken from the sheets or if full sheets were exhausted before breaking a subsequent sheet. If full sheets were used, then at most four can possibly exist. Robert Markovits recorded only three examples, which accords with our records. The ex-Sheriff and Markovits copy and the example sold in Siegel Sale 913 are not nearly as well-centered as the stamp offered here.

Ex Lewenthal and pictured in Combs book on page 36. Signed Bloch 13,500.00

EXECUTIVE DEPARTMENT

- 601 S **1c-10c Executive, Specimen Ovpt. (O10S-O14S).** Incl. 1c on horizontally ribbed paper (O10Sa), dotted "i" (O10Sb) and soft paper (O10Xs), without gum as issued, better centering than normally seen in a set except O10Sb in at bottom, Very Fine-Extremely Fine group(Photo Ex) 925.00



601EX

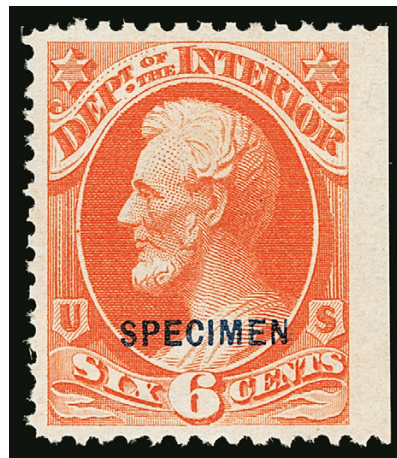
INTERIOR DEPARTMENT



602

- 602 S **3c Interior, Specimen Ovpt. (O17S).** Without gum as issued, brilliant color, perfs scissors-trimmed as usual but intact on all sides, Very Fine and choice, scarce as only 88 sold..... 2,500.00

- 603 S **6c Interior, Specimen Ovpt. (O18S).** Without gum as issued, brilliant color, choice centering incl. wide margin at right with natural s.e., Extremely Fine, a beautiful example of this rarity, only 83 sold..... 2,500.00

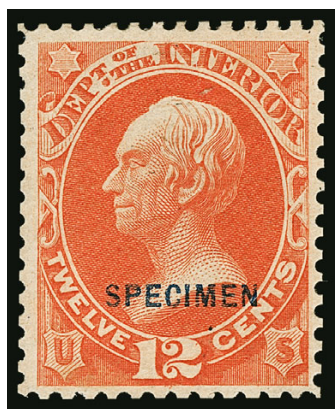


603



604

- 604 S **10c Interior, Specimen Ovpt. (O19S).** Without gum as issued, brilliant color, wide margins, perfs scissors-separated at top and bottom affecting some bottom perfs, still Very Fine and scarce with such wide margins, only 82 sold 2,500.00



605

- 605 S **12c Interior, Specimen Ovpt. (O20S).** Without gum as issued, intense shade and impression, perfs scissors-separated as usual for this issue but intact on all sides, Very Fine and choice, this is one of the finest we have encountered, a Power Search review found six others, which are all scissors-separated but mostly off-center, perhaps one other compares favorably to the example offered here, only 75 sold..... 2,500.00

- 606 S **15c Interior, Specimen Ovpt. (O21S).** Without gum as issued, radiant color, perfs scissors-separated but mostly intact, Very Fine, scarce as only 78 sold..... 2,500.00



607

- 607 S **24c Interior, Specimen Ovpt. (O22S).** Without gum as issued, brilliant color, wide margins, light soiling on face, otherwise Very Fine and choice, scarce with such wide margins, only 77 sold, Ebel backstamp 2,500.00

- 608 S **30c Interior, Specimen Ovpt. (O23S).** Without gum as issued, near perfect centering with unusually wide and balanced margins, single pulled perf at right, otherwise Extremely Fine, scarce with such superb centering, only 75 sold, Ebel backstamp 2,500.00



609

- 609 S **90c Interior, Specimen Ovpt. (O24S).** Without gum as issued, radiant color, wide margins, Fine, only 77 sold, Ebel backstamp..... 2,500.00



606



608

INTERIOR DEPARTMENT “SEPCIMEN” ERROR



610

610 S **2c Interior, “Sepcimen” Error (O16a).** Without gum as issued, brilliant color, three wide margins, perfs just in at top

FRESH AND FINE. ONLY ONE OR TWO EXAMPLES OF THE 2-CENT INTERIOR WITH THE “SEPCIMEN” SPELLING ERROR ARE RECORDED. THIS IS THE ONLY INTERIOR DEPARTMENT ISSUE WITH THE SPELLING ERROR — IT WAS CAUGHT AND CORRECTED DURING PRODUCTION OF THIS INTERIOR DEPARTMENT VALUE.

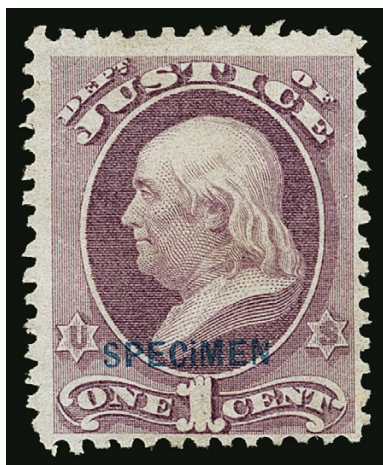
The “Sepcimen” error occurred on Position 21 of the overprint setting. Stamps printed from sheets of 200 were separated into panes of 100, so depending on whether the underlying stamp was from the left or right pane it would have perforations on all sides (left pane) or a straight edge at left (right pane).

An intact pane of the 2c Interior, once owned by Elliott Perry, is known without the “Sepcimen” spelling error. Combs also notes that Perry had seen one pane *with* the spelling error, so this would indicate it was corrected during printing of the 2c Interior. Markovits (2004 Bennett sale) noted two are known; we assume the other is contained in the pane noted in the Combs book, but it is possible that pane was divided. We do not know the whereabouts of the potential second copy.

No other denomination of the Interior department is known with the spelling error. For the 1c Interior, a large quantity was sold (7,194) but none have been recorded with the error, so it is highly likely it was discovered before the 1c denomination was printed. Quantities sold for the 3c thru 90c are all under 100. We do not know the order of overprinting; therefore, it is possible other “Sepcimen” errors exist (one of each is possible) but have never been seen. The Executive and Treasury departments must have been the last to be printed, because the overprint error is not known on any of those issues.

Ex Sheriff and Markovits. With 2004 P.F. certificate..... 12,500.00

JUSTICE DEPARTMENT



611

- 611 S **1c Justice, Specimen Ovpt., Ribbed Paper, Small Dotted "i" in Specimen (O25Sc).** Without gum as issued, rich color, fresh and Fine, scarce, the small dotted "i" occurs only on the second printing on ribbed paper and is found on Positions 7 and 26..... 500.00



612

- 612 S **3c Justice, Specimen Ovpt. (O27S).** Without gum as issued, brilliant color, fresh and Very Fine, only 178 sold 1,250.00



613

- 613 S **6c Justice, Specimen Ovpt. (O28S).** Without gum as issued, incredibly well-centered, scissors-separated at sides but with full perforations, beautiful color, fresh and Extremely Fine, scarce with such choice centering, only 163 sold, ex Golden 1,250.00



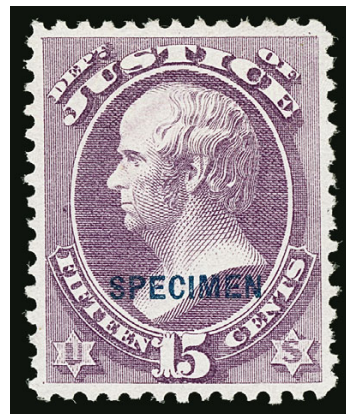
614

- 614 S **10c Justice, Specimen Ovpt. (O29S).** Without gum as issued, detailed impression on bright paper, gorgeous centering, Extremely Fine Gem, a beautiful stamp, only 163 sold..... 1,250.00



615

- 615 S **12c Justice, Specimen Ovpt. (O30S).** Without gum as issued, rich color, wide and balanced margins, Extremely Fine, only 154 sold 1,250.00



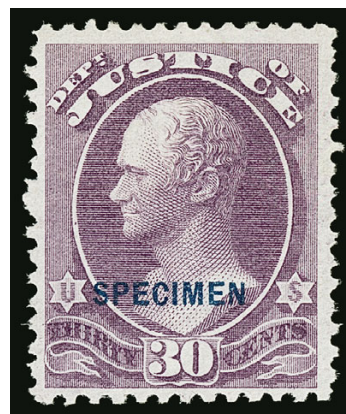
616

- 616 S **15c Justice, Specimen Ovpt. (O31S).** Without gum as issued, radiant color, almost perfectly centered, Extremely Fine Gem, a stunning example of this "Specimen" overprint, only 157 sold 1,250.00



617

- 617 S **24c Justice, Specimen Ovpt. (O32S).** Without gum as issued, intense shade on bright paper, fresh and Very Fine, only 150 sold 1,250.00



618

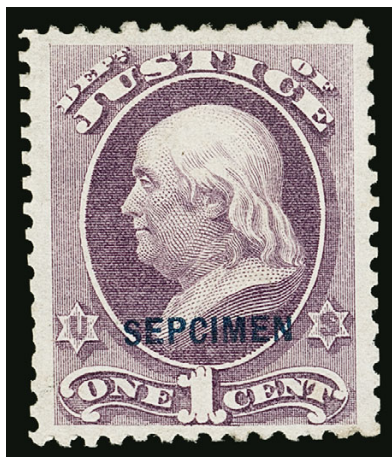
- 618 S **30c Justice, Specimen Ovpt. (O33S).** Without gum as issued, radiant color, wide margins, Very Fine and choice, only 150 sold, small purple backstamp.. 1,250.00



619

- 619 S **90c Justice, Specimen Ovpt. (O34S).** Without gum as issued, bright shade, fresh and Fine, only 150 sold..... 1,250.00

JUSTICE DEPARTMENT "SEPCIMEN" ERROR



620

- 620 S **1c Justice, "Sepcimen" Error (O25Sa).** Without gum as issued, radiant color, wide margins, perfs scissors-separated but essentially intact, Very Fine and choice, with 2004 P.F. certificate 1,900.00

- 621 S **2c Justice, "Sepcimen" Error (O26Sa).** Without gum as issued, rich color on bright paper

VERY FINE. A RARE EXAMPLE OF THE 2-CENT JUSTICE DEPARTMENT SPECIAL PRINTING WITH "SEPCIMEN" ERROR.

Although the volume of sales of the 2c Justice Special Printing (3,395) indicates that stamps from 34 sheets were sold, including 34 "Sepcimen" errors, we actually do not know how sheets were separated or if an entire sheet was sold before the next sequential sheet. The rarity of the 2c Justice "Sepcimen" error — with perhaps six or seven examples known — does not accord with the quantity of stamps sold. Combs was perplexed by its rarity (see page 38) and wondered if the error was corrected during the press run, as it was for the 2c Interior, based on the report of a sheet with Position 21 showing the corrected error. 3,500.00



621



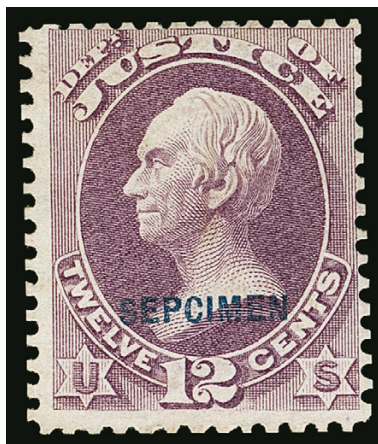
622

- 622 S **3c Justice, "Sepcimen" Error (O27Sa).** Without gum as issued, brilliant color, small thin spot at top left

VERY FINE APPEARANCE. ONLY THREE EXAMPLES OF THE 3-CENT JUSTICE WITH "SEPCIMEN" SPELLING ERROR WERE RECORDED BY MARKOVITS. A GREAT RARITY.

Only 178 copies of the 3c Justice Special Printing were sold, but it is not known how the stamps were taken from the sheets or if full sheets were exhausted before breaking a subsequent sheet. If full sheets were used, then only two can possibly exist. Robert Markovits recorded three examples of this rarity (2004 Bennett sale). One other is ex Lewenthal and Lockyear.

Ex Markovits. With 2004 P.F. certificate 11,000.00



623

623 S **12c Justice, “Sepcimen” Error (O30Sa).** Without gum as issued, radiant color, tiny perf tear at top left

FINE APPEARANCE. THE 12-CENT JUSTICE WITH “SEPCIMEN” SPELLING ERROR IS ONE OF THE RAREST OFFICIAL SPECIAL PRINTINGS. THIS IS THE ONLY EXAMPLE WE HAVE BEEN ABLE TO LOCATE.

Only 154 copies of the 12c Justice Special Printing were sold, but it is not known how the stamps were taken from the sheets or if full sheets were exhausted before breaking a subsequent sheet. If full sheets were used, then only two can possibly exist. None was offered in the Markovits or Golden sales, and the Combs book does not record any.

Ex Stone, Sheriff and Lockyear. With 2004 P.F. certificate 17,500.00



624

624 S **15c Justice, “Sepcimen” Error (O31Sa).** Without gum as issued, brilliant color, choice centering

FRESH AND VERY FINE. THIS IS THE FINER OF THE TWO RECORDED EXAMPLES OF THE 15-CENT JUSTICE DEPARTMENT WITH THE “SEPCIMEN” SPELLING ERROR. A BEAUTIFUL STAMP.

Only 157 copies of the 15c Justice Special Printing were sold, but it is not known how the stamps were taken from the sheets or if full sheets were exhausted before breaking a subsequent sheet. If full sheets were used, then only two can possibly exist. One other is known (ex Hays, Lewenthal and Sheriff) which is centered to top right with scissors-separated perfs that are intact.

Ex Stone and Lockyear. With 2004 P.F. certificate 17,500.00



625

625 S **24c Justice, “Sepcimen” Error (O32Sa).** Without gum as issued, bright color, perfs scissors-separated but mostly intact except for a few at top

FINE. THIS EXAMPLE OF THE 24-CENT JUSTICE DEPARTMENT WITH “SEPCIMEN” SPELLING ERROR MAY WELL BE UNIQUE. A PHENOMENAL RARITY.

Only 150 copies of the 24c Justice Special Printing were sold, but it is not known how the stamps were taken from the sheets or if full sheets were exhausted before breaking a subsequent sheet. If full sheets were used, then only two can possibly exist. The Combs book does not record any, and this is the only example known to us.

Ex Pickard, Stone, Sheriff and Lockyear. With 2004 P.F. certificate 20,000.00

NAVY DEPARTMENT



626

- 626 S **3c Navy, Specimen Ovpt. (O37S).** Without gum as issued, radiant color, scissors-separated at top and bottom but all perfs are intact, choice centering, Extremely Fine, scarce in such choice condition, only 126 sold..... 1,400.00



627

- 627 S **6c Navy, Specimen Ovpt. (O38S).** Without gum as issued, brilliant color, perfs scissors-separated at top and bottom but completely intact, Very Fine, a rare example of the 6c Navy Special Printing, only 116 were sold but they rarely make an appearance at auction, the Markovits collection did not contain one and only two are contained in Power Search..... 1,400.00



628

- 628 S **7c Navy, Specimen Ovpt. (O39S).** Without gum as issued, crisp impression, Very Fine and choice. 1,400.00



629

- 629 S **10c Navy, Specimen Ovpt. (O40S).** Without gum as issued, brilliant color, well-balanced margins, perfs scissors-separated at top and bottom affecting those at top, still Extremely Fine, only 112 sold..... 1,400.00



630

- 630 S **12c Navy, Specimen Ovpt. (O41S).** Without gum as issued, bright color, perfs scissors-separated at unusual angles, Fine, only 107 sold..... 1,400.00



631

- 631 S **15c Navy, Specimen Ovpt. (O42S).** Without gum as issued, deep shade on bright paper, perfs scissors-separated but intact on all sides, fresh and Fine, only 107 sold 1,400.00

- 632 S **24c Navy, Specimen Ovpt. (O43S).** Without gum as issued, rich color, detailed impression, Fine, only 106 sold 1,400.00



632



633

- 633 S **30c Navy, Specimen Ovpt. (O44S).** Without gum as issued, intense shade and impression on bright paper, gorgeous centering with unusually wide and balanced margins

EXTREMELY FINE GEM. A STUNNING EXAMPLE OF THE 30-CENT NAVY DEPARTMENT SPECIAL PRINTING.

Only 104 sold. 1,400.00

- 634 S **90c Navy, Specimen Ovpt. (O45S).** Without gum as issued, pretty shade, perfs scissors-separated but intact, fresh and Fine, only 102 sold 1,400.00



634

NAVY DEPARTMENT "SEPCIMEN" ERRORS

- 635 S **1c Navy, "Sepcimen" Error (O35Sa).** Without gum as issued, rich color and detailed impression, beautiful centering with wide and balanced margins

EXTREMELY FINE GEM. AN ABSOLUTELY STUNNING EXAMPLE OF THE ONE-CENT NAVY DEPARTMENT WITH THE "SEPCIMEN" SPELLING ERROR.

10,000 examples of the 1c Navy Special Printing were sold. This means at most that 100 examples of the "Sepcimen" error can exist. Power Search located fewer than a dozen, and this is the finest we have encountered. 2,750.00



635



636

- 636 S **2c Navy, "Sepcimen" Error (O36Sa).** Without gum as issued, bright color, perfs scissors-separated but mostly intact as seen in accompanying photo, two tiny toned spots, minor surface rub, otherwise Fine, scarce, although the sold quantity of the 2c Navy Special Printing would suggest a fair number of "Sepcimen" errors were sold (1,748 stamps, or 18 sheets), the truth is this error is very rare, most of the handful of copies available to collectors have faults to varying degrees (two additional copies are in the Miller collection on extended loan by The New York Public Library to the Smithsonian National Postal Museum), Admiral Combs observed its rarity in his book and commented that "there should be some more copies around some place" (page 39) — apparently not..... 3,250.00

- 637 S **7c Navy, "Sepcimen" Error (O39Sa).** Without gum as issued, brilliant color, perfs scissors-separated affecting a few at bottom

VERY FINE. AN EXTREMELY RARE EXAMPE OF THE 7-CENT NAVY DEPARTMENT WITH THE "SEPCIMEN" SPELLING ERROR. ONLY FOUR ARE RECORDED.

Only 501 copies of the 7c Navy Special Printing were sold, but it is not known how the stamps were taken from the sheets or if full sheets were exhausted before breaking a subsequent sheet. If full sheets were used, then only five can possibly exist. Robert Markovits recorded only four examples of this rarity (2004 Bennett sale). This is the first we have sold since our 1993 Sheriff sale.

Ex Lewenthal and Sheriff. Illustrated in Combs pamphlet on p. 39. With 1999 P.F. certificate. 10,000.00



637



638

- 638 S **12c Navy, “Sepcimen” Error (O41Sa).** Without gum as issued, deep rich color, perfs scissors-separated but intact, tiny perf hole tear at top

VERY FINE APPEARANCE. THIS IS ONE OF ONLY TWO RECORDED EXAMPLES OF THE 12-CENT NAVY DEPARTMENT WITH THE “SEPCIMEN” SPELLING ERROR. ONE OF THE GREATEST RARITIES OF THE ISSUE.

Only 107 copies of the 12c Special Printing was sold. It is not known how the stamps were taken from the sheets or if full sheets were exhausted before breaking a subsequent sheet. If full sheets were used, then no more than two can exist. The Combs book (p. 39) notes that the Worthington collection contained one with a dot in the “1” of “12” and a break in the fifth line of the upper right corner, traits that are exhibited on the example offered here. The book also notes a second example, centered to top right, was offered in a 1946 Harmer sale — it has traits that match the Sheriff copy.

Ex Worthington and Pickard. With 2016 P.F. certificate 17,500.00



639

- 639 S **15c Navy, “Sepcimen” Error (O42Sa).** Without gum as issued, radiant color, perfs scissors-separated but mostly intact, tiny thin spot at top left and small tears at right

FINE APPEARANCE. THIS EXAMPLE OF THE 15-CENT NAVY DEPARTMENT WITH “SEPCIMEN” SPELLING ERROR IS REPORTEDLY UNIQUE. ONE OF THE GREATEST RARITIES OF THE ISSUE.

Only 107 copies of the 15c Navy Special Printing were sold, but it is not known how the stamps were taken from the sheets or if full sheets were exhausted before breaking a subsequent sheet. If full sheets were used then no more than two can exist. This is the only recorded example.

Ex F. W. Gilbert (according to Combs book), Lewenthal (where illustrated on front cover) and Sheriff. With 1999 P.F. certificate 15,000.00

POST OFFICE DEPARTMENT



640



641



642

- 640 S **1c Post Office, Specimen Ovpt., Inverted Ovpt. (O47Sb).** Without gum as issued, deep shade, some age spotting at center, otherwise Very Fine, scarce as it is believed only one sheet of 100 was printed with the overprint inverted, it is possible that a "Specimen" inverted exists but it has never been seen, normal accompanies for comparison... 2,795.00
- 641 S **2c Post Office, Specimen Ovpt. (O48S).** Without gum as issued, detailed impression, wide margins, Fine 325.00
- 642 S **3c Post Office, Specimen Ovpt. (O49S).** Without gum as issued, intense shade and impression, perfs scissors-separated but intact on all sides, Very Fine, only 91 sold 1,600.00



643



644



645

- 643 S **6c Post Office, Specimen Ovpt. (O50S).** Without gum as issued, wide bottom margin and full perforations all around, fresh and Fine, scarce as only 87 sold 1,600.00
- 644 S **10c Post Office, Specimen Ovpt. (O51S).** Without gum as issued, deep shade, wide margins, Very Fine and choice, only 177 sold 1,100.00
- 645 S **12c Post Office, Specimen Ovpt. (O52S).** Without gum as issued, detailed impression, well-proportioned margins, perfs scissors-separated but intact on all four sides, Very Fine and choice, an attractive stamp, only 93 sold 1,600.00



646

- 646 S **15c Post Office, Specimen Ovpt. (O53S).** Without gum as issued, deep shade and detailed impression, almost perfectly centered with full perforations all around

EXTREMELY FINE GEM. THIS IS EASILY ONE OF THE FINEST EXAMPLES OF THE 15-CENT POST OFFICE SPECIAL PRINTING IN EXISTENCE.

Only 82 sold. This example compares favorably with the ex-Golden copy, which realized \$4,500 hammer in our Sale 1095. These two are by far the finest we have ever encountered. 1,600.00



647



648



649

- 647 S **24c Post Office, Specimen Ovpt. (O54S).** Without gum as issued, deep shade, perfs scissors-separated but intact, Very Fine, only 84 sold 1,600.00
- 648 S **30c Post Office, Specimen Ovpt. (O55S).** Without gum as issued, detailed impression, full perforations, Very Fine, this value has the lowest sale quantity of the Post Office Department Special Printings with only 81 sold..... 1,600.00
- 649 S **90c Post Office, Specimen Ovpt. (O56S).** Without gum as issued, pretty shade, perfs scissors-separated but intact on all sides, Very Fine, only 82 sold 1,600.00

POST OFFICE DEPARTMENT "SEPCIMEN" ERRORS

- 650 S **1c Post Office, "Sepcimen" Error (O47Sa).** Without gum as issued, intense shade, intact perforations on all sides, fresh and Fine, scarce example of this "Sepcimen" error, with a sold quantity of 6,015, it is possible that 60 "Sepcimen" errors were released, but we do not know how the sheets were divided and sold, nor do we know if the entire print run had the error in Position 21, reports of known examples are fewer than a dozen 3,000.00



650



651

651 S **3c Post Office, “Sepcimen” Error (O49Sa).** Without gum as issued, scissors-separated but perforations are mostly intact except for a few at top

THE ONLY RECORDED EXAMPLE OF THE 3-CENT POST OFFICE DEPARTMENT SPECIAL PRINTING WITH “SEPCIMEN” ERROR. ONE OF THE GREAT RARITIES OF SPECIAL PRINTINGS.

Only 91 copies of the 3c Post Office Special Printing were sold. Assuming that one sheet was divided and sold before starting on the next sequential sheet (we do not know if that, in fact, was the practice), then no more than one 3c Post Office “Sepcimen” error (Position 21) was sold. According to Combs, the existence of a 3c Post Office “Sepcimen” was reported by Konwiser in 1925 (see page 40 of Combs book), but it was not listed in the Scott Catalogue until 1971, two years after it was certified by Herbert Bloch of the Friedl Expert Committee.

Ex Golden. With 1969 Friedl certificate. 40,000.00



652

652 S **15c Post Office, “Sepcimen” Error (O53Sa).** Without gum as issued, intense shade on bright paper, three wide margins, perfs clear at top

VERY FINE. THIS IS THE ONLY RECORDED EXAMPLE OF THE 15-CENT POST OFFICE DEPARTMENT WITH THE “SEPCIMEN” SPELLING ERROR. ONE OF THE GREAT RARITIES OF THE ISSUE.

Only 82 copies of the 15c Post Office Special Printing were sold, but it is not known how the stamps were taken from the sheets or if full sheets were exhausted before breaking a subsequent sheet. If full sheets were used, then only one can possibly exist. The Combs book notes an example sold for \$310 in a 1934 Sanabria sale, which must have been the stamp offered here. At the time, it was the second-highest price paid for any “Sepcimen” error — the highest was for a 30c Agriculture at \$330.

Ex Stone, Sheriff and Markovits. With 2004 P.F. certificate..... 20,000.00



653

653 S **24c Post Office, “Sepcimen” Error (O54Sa).** Without gum as issued, intense shade and impression, perfs scissors-separated but intact on all sides

FINE. THIS IS ONE OF ONLY TWO RECORDED EXAMPLES OF THE 24-CENT POST OFFICE DEPARTMENT WITH THE “SEPCIMEN” SPELLING ERROR. ONE OF THE GREAT RARITIES OF THE ISSUE, THIS IS THE FIRST TO COME TO MARKET SINCE OUR 1992 SHERIFF SALE.

Only 84 copies of the 24c Post Office Special Printing were sold, but it is not known how the stamps were taken from the sheets or if full sheets were exhausted before breaking a subsequent sheet. Two examples are known, lending credence to the theory that in some instances sheets were cut apart in advance and were sold before each sheet was exhausted. The scissors separations on the example offered here also indicates this method was used, as least for this issue.

The other recorded example of this error, ex Lewenthal and Sheriff and illustrated in the Combs book, has remained in a private collection since our 1992 auction of the Sheriff collection.

With 2016 P.F. certificate 20,000.00



654

654 S **90c Post Office, “Sepcimen” Error (O56Sa).** Without gum as issued, detailed impression, wide margins, perfs scissors-separated but intact on three sides, reperfed at top

VERY FINE APPEARANCE. THIS IS THE ONLY RECORDED EXAMPLE OF THE 90-CENT POST OFFICE DEPARTMENT WITH THE “SEPCIMEN” SPELLING ERROR. ONE OF THE GREAT RARITIES OF THE ISSUE.

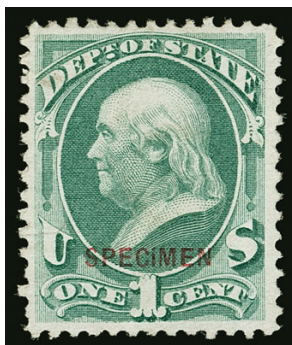
Only 82 copies of the 90c Post Office Special Printing were sold, but it is not known how the stamps were taken from the sheets or if full sheets were exhausted before breaking a subsequent sheet. If full sheets were used, then only one can exist. The Combs book notes a copy was sold in a 1949 Laurence & Stryker sale, which must be the example offered here.

Signed Sloane in pencil. With 2016 P.F. certificate 20,000.00

STATE DEPARTMENT



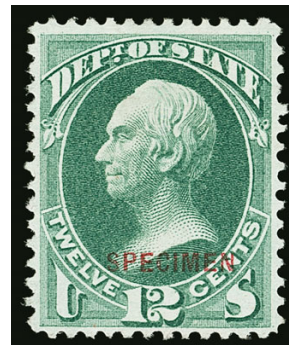
655EX



656



657



658

- 655 S **1c-7c State, Specimen Ovpt. (O57S-O61S. O57Sb, O57xS).** Without gum as issued, bright colors, choice centering, few faults incl. 7c diagonal crease, O57Sb thin spot and pinhole and O57xS light crease, Very Fine appearance(Photo Ex) 967.50
- 656 S **1c State, Specimen Ovpt., Horizontally Ribbed Paper, Dotted "i" in "Specimen" (O57Sc; formerly O57Sb).** Without gum as issued, radiant color, trivial soiling at top left not mentioned on accompanying certificates, Very Fine, with 2007 Weiss and 2008 P.S.E. certificates 550.00
- 657 S **10c State, Specimen Ovpt. (O62S).** Without gum as issued, intense shade and impression, fresh and Fine, only 346 sold..... 550.00
- 658 S **12c State, Specimen Ovpt. (O63S).** Without gum as issued, bright color, Very Fine, a pretty stamp, only 280 sold..... 550.00



659



660



661



662

- 659 S **15c State, Specimen Ovpt. (O64S).** Without gum as issued, radiant color, Very Fine and choice, only 257 sold..... 600.00
- 660 S **24c State, Specimen Ovpt. (O65S).** Without gum as issued, bright color, wide margins, Very Fine, only 253 sold 600.00
- 661 S **30c State, Specimen Ovpt. (O66S).** Without gum as issued, radiant color, fresh and Fine, only 249 sold 600.00
- 662 S **90c State, Specimen Ovpt. (O67S).** Without gum as issued, brilliant color, wide margins, Very Fine, only 245 sold 600.00



663

\$2.00 DEPARTMENT OF STATE

663 S **\$2.00 State, Specimen Ovpt. (O68S).** Without gum as issued, bright colors, unusually wide margins for this difficult issue

VERY FINE AND CHOICE. THIS IS ONE OF THE FINEST EXAMPLES OF THE \$2.00 STATE DEPARTMENT SPECIAL PRINTING WITH "SPECIMEN" OVERPRINT THAT WE HAVE EVER ENCOUNTERED. A BEAUTIFUL STAMP.

Of the 32 sold, Markovits estimated that approximately 20 are known (2004 Bennett sale). Most seem to be strongly centered to one side.

From our 1993 Rarities sale. With 1974 and 1990 P.F. certificates 27,500.00



664

**\$5.00 DEPARTMENT OF STATE
THE LIETZOW COPY**

664 S **\$5.00 State, Specimen Ovpt. (O69S).** Without gum as issued, bright color, detailed impression, choice centering

VERY FINE. A PHENOMENAL EXAMPLE OF THE \$5.00 STATE DEPARTMENT SPECIAL PRINTING WITH AN IMPECCABLE PROVENANCE. THIS EXAMPLE WAS PART OF THE SET PURCHASED FROM THE THIRD ASSISTANT POSTMASTER GENERAL'S OFFICE BY PAUL LIETZOW OF GERMANY, AND WAS BOUGHT BY ROBERT LEWENTHAL IN 1953. ONLY TWELVE WERE SOLD AND IT IS ESTIMATED THAT ONLY EIGHT STILL EXIST.

Paul Lietzow was a German collector/dealer who displayed his collection in one of the first philatelic exhibitions in Germany. The first was held in April 1870 and featured one person's collection. Lietzow exhibited his collection in July 1877 in Berlin for the benefit of wounded soldiers. His collection at the time comprised 6,200 stamps housed in six large volumes, quite an achievement for the time. In 1880 and 1882 he published handbooks on philately, one of which was a precursor to the Scott Catalogue. The idea of exhibitions and handbooks was to increase the appeal of stamp collecting, which was widely seen as suitable only for schoolboys and not worthy of serious pursuit.

Lietzow was an enthusiastic purchaser of high-denomination stamps thru the Special Printing program. He is the only purchaser of the \$36.00 (two), \$48.00 and \$60.00 Newspaper special printings, and also purchased two each of the \$9.00 and \$12.00 values. The Combs book notes the Lietzow set of dollar-value State departments was purchased by Lewenthal from a German dealer in 1953. They were offered as single lots and then as a set in the 1978 Simmy's auction of the Lewenthal collection, where they were acquired by Leonard Sheriff. They were offered individually in the 1993 Sheriff sale, where they were dispersed to different buyers.

Although the Scott Specialized states that twelve \$5.00 State "Specimen" stamps were sold, the description for the Markovits example states that eight are recorded, presumably based on Markovits's original research.

Ex Lietzow, Lewenthal and Sheriff. With 1993 P.F. certificate 40,000.00



665

**\$10.00 DEPARTMENT OF STATE
ONE OF FIVE RECORDED EXAMPLES**

665 S **\$10.00 State, Specimen Ovpt. (O70S).** Without gum as issued, bright colors, detailed impressions

FRESH AND FINE. AN EXTREMELY RARE EXAMPLE OF THE \$10.00 STATE DEPARTMENT SPECIAL PRINTING. ONLY EIGHT WERE SOLD, OF WHICH FIVE ARE RECORDED. ONE OF THE KEYS TO ASSEMBLING A COMPLETE SET OF THE OFFICIAL SPECIAL PRINTINGS.

Although the Scott Specialized states that eight \$10.00 State “Specimen” stamps were sold, the description for the Markovits example (2004 Bennett sale) states that five are recorded, presumably based on Markovits’s original research. Our numbers concur with Markovits — our census is available at our website.

With copy of 1991 P.F. certificate, obtained after this was offered in a June 1991 Christie’s auction featuring the Governor Pierre S. duPont IV collection and property from the Frank G. Back stock. 60,000.00



666

**\$20.00 DEPARTMENT OF STATE
ONE OF FOUR RECORDED EXAMPLES**

666 S **\$20.00 State, Specimen Ovpt. (O71S).** Without gum as issued, fresh colors, detailed impressions, choice centering with perfs clear of the design on all sides

VERY FINE. THE \$20.00 STATE DEPARTMENT IS ONE OF THE RAREST OF ALL SPECIAL PRINTINGS. ONLY SEVEN WERE SOLD, AND PERHAPS FOUR ARE KNOWN. THIS IS THE KEY TO A COMPLETE SET OF OFFICIAL PRINTINGS.

Official records note that seven of the \$20.00 State Department Special Printings were sold. The Combs book did not have any sale histories and noted that in February 1960 Philip Ward wrote in *Mekeel's Weekly* that he was aware of two copies each of the \$10.00 and \$20.00. We are aware of four examples of the \$20.00 (in order of condition):

- 1) The example offered here, last sold in a June 1991 Christie's auction featuring the Governor Pierre S. duPont IV collection and property from the Frank G. Back stock, with other dollar-value State Department stamps. PFC 241742 stating "it is genuine"
- 2) The ex Lietzow, Lewenthal and Sheriff copy, centered to top left, single pulled perf at bottom
- 3) Perfs clear all around, small stain spots, small thin and short perf, last offered in Siegel Sale 728 (Sept. 14, 1990), currently in the collection of a Southern gentleman
- 4) Ex Sinkler and Siegel Sale 623 (Sept. 21, 1983), centered to top left, PFC 437782 stating "faint horizontal thin at lower left"

With 1991 (copy) and 2016 P.F. certificates 100,000.00

STATE DEPARTMENT "SEPCIMEN" ERRORS



667

- 667 S **1c State, "Sepcimen" Error (O57Sa).** Without gum as issued, bright shade, single nibbed perf at right, Fine appearance 1,900.00

- 668 S **2c State, "Sepcimen" Error (O58Sa).** Without gum as issued, three extra wide margins, top perfs just touching, light creases at bottom left and top right, tiny ink mark in forehead, otherwise Fine, Markovits (2004 Bennett sale) estimated perhaps 7-10 exist, ex Sheriff..... 2,500.00



668



669

- 669 S **3c State, "Sepcimen" Error (O59Sa).** Without gum as issued, bright color, three wide margins, perfs just in at top

FINE. A RARE EXAMPLE OF THE 3-CENT STATE DEPARTMENT "SEPCIMEN" ERROR. ONLY APPROXIMATELY FIVE EXAMPLES ARE KNOWN.

Only 793 copies of the 3c State Special Printing were sold, but it is not known how the stamps were taken from the sheets or if full sheets were exhausted before breaking a subsequent sheet. If full sheets were used, then only eight can possibly exist. Only five were recorded by Markovits (2004 Bennett sale). There is one in the Miller collection (on extended loan by The New York Public Library to the Smithsonian National Postal Museum). We are aware of five privately-owned examples: the Lewenthal, Combs, Sheriff, Markovits and Golden copies.

Ex Sheriff. Sloane backstamp. With 2016 P.F. certificate..... 7,000.00



670

- 670 S **6c State, “Sepcimen” Error (O60Sa).** Without gum as issued, brilliant color, unusually choice centering

VERY FINE. AN ABSOLUTELY STUNNING EXAMPLE OF THE 6-CENT STATE DEPARTMENT SPECIAL PRINTING WITH THE “SEPCIMEN” SPELLING ERROR. ONLY THREE ARE RECORDED, INCLUDING ONE IN AN INSTITUTION.

Only 467 copies of the 6c State Special Printing were sold, but it is not known how the stamps were taken from the sheets or if full sheets were exhausted before breaking a subsequent sheet. If full sheets were used, then only five can possibly exist. Only three were recorded by Markovits (2004 Bennett sale). The Combs book notes an example in the Miller collection (on extended loan by The New York Public Library to the Smithsonian National Postal Museum), and the copy offered here. We are unaware of the third copy. This is the first we have offered since our 1993 Sheriff sale — it was not present in the Golden collection.

Ex Lewenthal, Sheriff and Markovits. With 2004 P.F. certificate. 11,000.00



671

- 671 S **7c State, “Sepcimen” Error (O61Sa).** Without gum as issued, bright color, tiny tear at upper right affects the third perf tip

FINE APPEARANCE. A RARE EXAMPLE OF THE 7-CENT STATE DEPARTMENT “SEPCIMEN” ERROR. FEWER THAN SEVEN ARE KNOWN.

Only 791 copies of the 7c State Special Printing were sold, but it is not known how the stamps were taken from the sheets or if full sheets were exhausted before breaking a subsequent sheet. If full sheets were used, then only eight can possibly exist. Only six were recorded by Markovits (2004 Bennett sale). We are aware of five outside of public institutions—an example is in the Miller collection (on extended loan by The New York Public Library to the Smithsonian National Postal Museum). The others are ex Markovits, Sheriff, Golden, Rollin C. Huggins, Jr. and the example offered here.

With 2016 P.F. certificate..... 9,000.00



672

672 S **10c State, “Sepcimen” Error (O62Sa).** Without gum as issued, bright color, wide margins
 VERY FINE AND CHOICE. THIS IS THE ONLY RECORDED EXAMPLE OF THE 10-CENT STATE
 DEPARTMENT WITH THE “SEPCIMEN” SPELLING ERROR. ONE OF THE GREATEST RARITIES
 OF THE OFFICIAL ISSUES.

Only 346 copies of the 10c State Special Printing were sold, but it is not known how the
 stamps were taken from the sheets or if full sheets were exhausted before breaking a
 subsequent sheet. If full sheets were used, then only four can possibly exist. The Combs
 book does not record any, and the Miller collection, which has copies of most Official
 Special Printing rarities, does not contain one.

Ex Markovits. With 1937 R.P.S. and 1991 P.F. certificates..... 17,500.00



673

673 S **12c State, “Sepcimen” Error (O63Sa).** Without gum as issued, brilliant color, choice centering, small thins at top

VERY FINE APPEARANCE. THIS IS ONE OF TWO RECORDED EXAMPLES OF THE 12-CENT STATE DEPARTMENT WITH THE “SEPCIMEN” ERROR. A PHENOMENAL RARITY.

Only 280 copies of the 12c State Special Printing were sold, but it is not known how the stamps were taken from the sheets or if full sheets were exhausted before breaking a subsequent sheet. If full sheets were used, then only three can possibly exist. Only two were recorded by Markovits (2004 Bennett sale). Both are ex Lewenthal; the other is also ex Combs.

Ex Lewenthal, Sheriff and Markovits. Illustrated in Combs book on page 42. With 2004 P.F. certificate..... 17,500.00



674

674 S **24c State, “Sepcimen” Error (O65Sa).** Without gum as issued, bright color, choice centering with wide margins

EXTREMELY FINE. THE FINER OF ONLY TWO RECORDED EXAMPLES OF THE 24-CENT STATE DEPARTMENT WITH THE “SEPCIMEN” ERROR. A PHENOMENAL RARITY.

Only 253 copies of the 24c State Special Printing were sold, but it is not known how the stamps were taken from the sheets or if full sheets were exhausted before breaking a subsequent sheet. If full sheets were used, then only three can possibly exist. Only two were recorded by Markovits (2004 Bennett sale). The other, ex Markovits, has perfs trimmed at top.

Ex Sheriff..... 17,500.00



675

- 675 S **30c State, “Sepcimen” Error (O66Sa).** Without gum as issued, brilliant color
 VERY FINE. THE FINER OF ONLY TWO RECORDED EXAMPLE OF THE 30-CENT STATE
 DEPARTMENT WITH THE “SEPCIMEN” ERROR. A GREAT RARITY.
 Only 249 copies of the 30c State Special Printing were sold, but it is not known how the
 stamps were taken from the sheets or if full sheets were exhausted before breaking a
 subsequent sheet. If full sheets were used, then only three can possibly exist. Only two
 were recorded by Markovits (2004 Bennett sale). The other, ex Sheriff, has perfs just in
 at right and is scissors-separated.
 Ex Markovits. With 2004 P.F. certificate..... 17,500.00



676

676 S **90c State, “Sepcimen” Error (O67Sa).** Without gum as issued, radiant color, perfs scissors-separated but intact

FINE. ONLY TWO EXAMPLES OF THE 90-CENT STATE DEPARTMENT WITH THE “SEPCIMEN” ERROR ARE RECORDED. A WONDERFUL RARITY.

Only 245 copies of the 90c State Special Printing were sold, but it is not known how the stamps were taken from the sheets or if full sheets were exhausted before breaking a subsequent sheet. If full sheets were used, then only three can possibly exist. Only two were recorded by Markovits (2004 Bennett sale), and we not know the whereabouts of the second copy. The Combs book did not record any sales.

Ex Stone, Sheriff and Markovits. With 2004 P.F. certificate 15,000.00

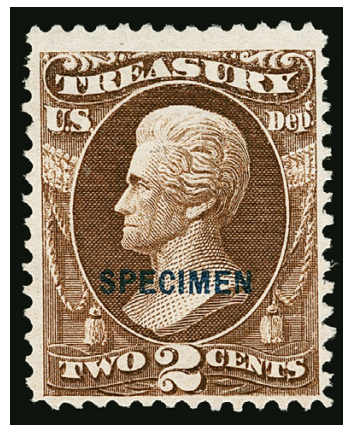
TREASURY DEPARTMENT

- 677 S **1c-2c Treasury, Specimen Ovpt. (O72S-O73S).** Without gum as issued, rich colors, wide margins, Very Fine, ex Sheriff.....(Photo Ex) 530.00



678

- 678 S **3c Treasury, Specimen Ovpt. (O74S).** Without gum as issued, crisp impression, choice centering with well-balanced margins, Extremely Fine, only 84 sold, ex Sheriff..... 1,600.00



677EX

- 679 S **6c Treasury, Specimen Ovpt. (O75S).** Without gum as issued, brilliant color, unusually wide margins, Extremely Fine Gem, a huge stamp, only 85 sold, ex Sheriff..... 1,600.00



680

- 680 S **7c Treasury, Specimen Ovpt. (O76S).** Without gum as issued, intense shade and impression, unusually wide and balanced margins, Extremely Fine, a beautiful example of this Special Printing, only 198 sold, ex Sheriff..... 950.00



679

- 681 S **10c Treasury, Specimen Ovpt. (O77S).** Without gum as issued, intense shade and impression, adherence on back, Very Fine, only 82 sold 1,600.00

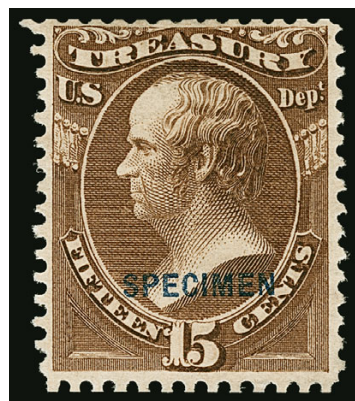


681



682

- 682 S **12c Treasury, Specimen Ovpt. (O78S).** Without gum as issued, bright shade, three Jumbo margins, stubborn adherence on back, Very Fine, only 75 sold 1,600.00



683

- 683 S **15c Treasury, Specimen Ovpt. (O79S).** Without gum as issued, intense shade and impression, perfs scissors-separated but intact, Very Fine, only 75 sold... 1,600.00



684

- 684 S **24c Treasury, Specimen Ovpt. (O80S).** Without gum as issued, rich color, perfs scissors-separated but mostly intact, Fine, only 99 sold..... 1,600.00



685

- 685 S **30c Treasury, Specimen Ovpt. (O81S).** Without gum as issued, deep rich color, choice centering, small natural wood fiber inclusion at left, Extremely Fine, only 74 sold 1,600.00



686

- 686 S **90c Treasury, Specimen Ovpt. (O82S).** Without gum as issued, rich color, unusually wide margins, few nibbed perfs at right, otherwise Very Fine, only 72 sold 1,650.00

WAR DEPARTMENT



- 687 S 1c, 2c, 7c War, Specimen Ovpt. (O83S, O84S, O87S). Without gum as issued, bright colors, fresh and Fine-Very Fine(Photo Ex) 585.00
- 688 S 3c War, Specimen Ovpt. (O85S). Without gum as issued, radiant color, fresh and Fine, only 118 sold, light Ebel backstamp 1,300.00
- 689 S 6c War, Specimen Ovpt. (O86S). Without gum as issued, brilliant color, Fine, only 111 sold 1,300.00
- 690 S 10c War, Specimen Ovpt. (O88S). Without gum as issued, brilliant color, well-balanced margins, fresh and Extremely Fine, only 119 sold 1,400.00
- 691 S 12c War, Specimen Ovpt. (O89S). Without gum as issued, rich color with some faint toning, otherwise Very Fine, only 105 sold 1,400.00
- 692 S 15c War, Specimen Ovpt. (O90S). Without gum as issued, bright color, choice centering, few minor soiling spots on cheek, otherwise Extremely Fine, only 105 sold, small red backstamp 1,400.00
- 693 S 24c War, Specimen Ovpt. (O91S). Without gum as issued, rich color, three wide margins, Fine, only 106 sold 1,400.00



694



695

- 694 S **30c War, Specimen Ovpt. (O92S).** Without gum as issued, brilliant color, well-balanced margins, Very Fine and choice, the 104 sold represents the fewest of any War Department denomination 1,400.00
- 695 S **90c War, Specimen Ovpt. (O93S).** Without gum as issued, brilliant color, wide margins, fresh and Very Fine, only 106 sold 1,400.00

WAR DEPARTMENT “SEPCIMEN” ERRORS



696

- 696 S **1c War, “Sepcimen” Error (O83Sa).** Rich color, remarkably choice centering, fresh and Extremely Fine, it is estimated only 96 were sold..... 2,750.00

- 697 S **2c War, “Sepcimen” Error (O84Sa).** Without gum as issued, natural s.e. at left, single pulled perf at right, tiny thins at top, otherwise Very Fine, ex Brazer and Burrows, it is estimated that only 16 exist, the 2c War Department Special Printing was made from printed sheets of 200 (Plate 35), which were divided into panes of 100 before overprinting, Position 21, the “Sepcimen” error, is found on stamps with and without a straight edge, depending on whether the underlying stamp was in the left or right pane (Position 21 Right has a straight edge at left), with 2004 P.F. certificate 3,500.00



697



698

- 698 S **3c War, “Sepcimen” Error (O85Sa).** Without gum as issued, s.e. at left, color slightly faded (not noted on accompanying certificate), the certificate does note perfs trimmed at left (which we believe to be incorrect)

VERY FINE. THIS IS ONE OF TWO RECORDED EXAMPLES OF THE 3-CENT WAR DEPARTMENT WITH THE “SEPCIMEN” ERROR. A PHENOMENAL RARITY.

The 3c War Department Special Printing was made from printed sheets of 200, which were divided into panes of 100 before overprinting. Position 21, the “Sepcimen” error, could conceivably come with or without a straight edge, depending on whether the underlying stamp was in the left or right pane (Position 21 Right has a straight edge at left).

The other recorded example, from the Framingham Find and ex Sheriff, has perfs on all sides and was most recently offered in our Sale 1003 of 2010 (lot 5548, realized \$21,000 hammer).

Ex Markovits. With 2004 P.F. certificate 25,000.00

THE FRAMINGHAM FIND

According to the Combs book (pp. 41-42), Elmer F. Gould, a mover in Framingham Mass., accepted as part payment on a moving job several pictures of horses and a framed group of stamps. He liked the framed stamps and hung them in his house. Later, a friend suggested they might be valuable.

The frame contained a significant number of 1875 Special Printings and a complete set of War Department “Sepcimen” errors, including the discovery copies of the 6c, 12c and 15c. Stamps from this display frame are somewhat faded from their exposure to light.

The presence of “Sepcimen” errors in the Framingham set indicates that the spelling error was known at the time the Special Printings were on sale. Combs theorized that the set was assembled with the assistance of someone in the office of the Third Assistant Postmaster General.



699

699 S **6c War, “Sepcimen” Error (O86Sa).** Without gum as issued, pretty pale shade, three wide margins

VERY FINE. THIS IS THE DISCOVERY COPY OF THE 6-CENT WAR DEPARTMENT WITH THE “SEPCIMEN” SPELLING ERROR. IT IS REPORTEDLY UNIQUE.

Markovits (2004 Bennett sale) stated this is one of possibly two recorded. The other has never been seen, and what they probably meant is that this is one of two *possible* examples.

From the Framingham Find and ex Markovits. With 2004 P.F. certificate..... 27,500.00



700

700 S **7c War, “Sepcimen” Error (O87Sa).** Without gum as issued, rich color, three wide margins, in at top, light horizontal crease and few ink stained perfs at top

FINE APPEARING AND RARE EXAMPLE OF THE 7-CENT WAR DEPARTMENT SPECIAL PRINTING WITH THE “SEPCIMEN” OVERPRINT ERROR.

Only 539 copies of the 7c War Special Printing were sold, but it is not known how the stamps were taken from the sheets or if full sheets were exhausted before breaking a subsequent sheet. If full sheets were used, then only seven can possibly exist (five or six from sheets plus the Framingham Find example). Perhaps two or three are known. None was offered in the Combs, Sheriff or Markovits sales and this is the only example located in Power Search or the online records of the P.F.

From the Framingham Find and ex Dr. Lobdell. With 2010 P.F. certificate 17,500.00



701

701 S **10c War, “Sepcimen” Error (O88Sa).** Without gum as issued, bright color, choice centering, two small thins at center

EXTREMELY FINE APPEARANCE. AN EXCEEDINGLY RARE EXAMPLE OF THE 10-CENT WAR DEPARTMENT WITH THE “SEPCIMEN” OVERPRINT SPELLING ERROR. WE ARE AWARE OF ONLY ONE OTHER EXAMPLE.

Only 119 copies of the 10c War Special Printing were sold, but it is not known how the stamps were taken from the sheets or if full sheets were exhausted before breaking a subsequent sheet. If full sheets were used, then no more than two can exist from sold sheets (plus the Framingham Find example). The Framingham Find example was offered in our December 2010 sale (Sale 1003, lot 5551, realized \$21,000 hammer).

With 2016 P.F. certificate 30,000.00



702

702 S **12c War, “Sepcimen” Error (O89Sa).** Without gum as issued, deep rich color, margins wide to clear at right, toned spot on back does not show through on front

VERY FINE. THIS IS THE ONLY RECORDED EXAMPLE OF THE 12-CENT WAR DEPARTMENT ISSUE WITH THE “SEPCIMEN” OVERPRINT ERROR.

Only 105 copies of the 12c War Special Printing were sold, but it is not known how the stamps were taken from the sheets or if full sheets were exhausted before breaking a subsequent sheet. If full sheets were used, then no more than two can exist from sold sheets. This stamp comes from the Framingham Find and is the only recorded example. No others have ever been seen.

From the Framingham Find and ex Dr. Lobdell. With 2010 P.F. certificate 30,000.00



703

703 S **15c War, “Sepcimen” Error (O90Sa).** Without gum as issued, soft shade, choice centering, pulled perf at left

VERY FINE APPEARANCE. THIS IS THE ONLY RECORDED EXAMPLE OF THE 15-CENT WAR DEPARTMENT ISSUE WITH THE “SEPCIMEN” OVERPRINT ERROR. A PHENOMENAL RARITY.

Only 105 copies of the 15c War Special Printing were sold, but it is not known how the stamps were taken from the sheets or if full sheets were exhausted before breaking a subsequent sheet. If full sheets were used, then no more than two can exist from sold sheets. This stamp comes from the Framingham Find and is the only recorded example. No others have ever been seen.

From the Framingham Find and ex Dr. Lobdell. With 2010 P.F. certificate 30,000.00



704

704 S **24c War, “Sepcimen” Error (O91Sa).** Without gum as issued, rich color, clear margins, slightly pulled perf at left and couple small tears at lower left and bottom

FINE APPEARANCE. THIS IS THE ONLY RECORDED EXAMPLE OF THE 24-CENT WAR DEPARTMENT ISSUE WITH THE “SEPCIMEN” SPELLING ERROR. A GREAT OFFICIAL RARITY.

Only 106 copies of the 24c War Special Printing were sold, but it is not known how the stamps were taken from the sheets or if full sheets were exhausted before breaking a subsequent sheet. If full sheets were used, then no more than two can exist from sold sheets. This stamp comes from the Framingham Find and is the only recorded example. No others have ever been seen.

From the Framingham Find and ex Dr. Lobdell. With 2010 P.F. certificate mentioning the small tears but not the pulled perf..... 30,000.00



705

705 S **30c War, “Sepcimen” Error (O92Sa).** Without gum as issued, rich color, centered to lower right, pulled perf at upper left and short perf at lower left

FINE APPEARANCE. THIS IS THE ONLY RECORDED EXAMPLE OF THE 30-CENT WAR DEPARTMENT ISSUE WITH THE “SEPCIMEN” OVERPRINT ERROR. AN IMPORTANT OFFICIAL RARITY.

Only 104 copies of the 30c War Special Printing were sold, but it is not known how the stamps were taken from the sheets or if full sheets were exhausted before breaking a subsequent sheet. If full sheets were used, then no more than two can exist from sold sheets. This stamp comes from the Framingham Find and is the only recorded example. No others have ever been seen.

From the Framingham Find and ex Dr. Lobdell. With 2010 P.F. certificate 30,000.00



706

706 S **90c War, “Sepcimen” Error (O93Sa).** Without gum as issued, light color which the P.F. calls slightly faded, nice centering for this difficult issue

FINE APPEARANCE. THIS IS THE ONLY RECORDED EXAMPLE OF THE 90-CENT WAR DEPARTMENT ISSUE WITH THE “SEPCIMEN” OVERPRINT ERROR. A MAJOR OFFICIAL RARITY.

Only 106 copies of the 90c War Special Printing were sold, but it is not known how the stamps were taken from the sheets or if full sheets were exhausted before breaking a subsequent sheet. If full sheets were used, then no more than two can exist from sold sheets. This stamp comes from the Framingham Find and is the only recorded example. No others have ever been seen.

From the Framingham Find and ex Dr. Lobdell. With 2010 P.F. certificate 30,000.00



707EX

SPECIAL PRINTING BALANCE

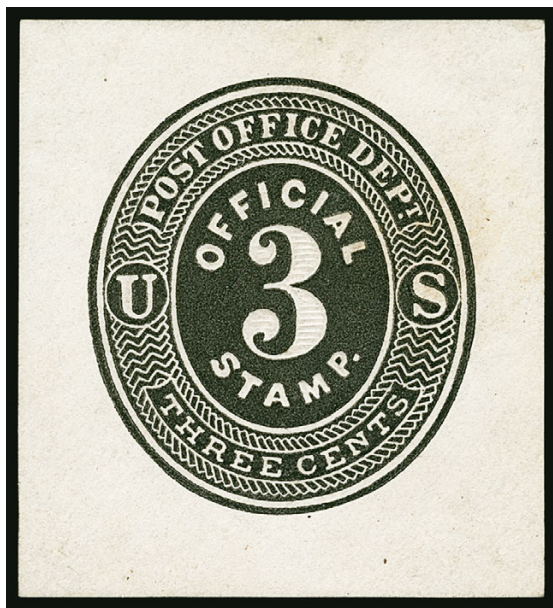
707 S **Official Specimens Balance.** Eight, Nos. O15S, O16S, O25S, O25Sb, O26S, O35S, O36S and O35xS, without gum as issued, generally fresh and Very Fine(Photo Ex) 527.50

OFFICIAL POSTAL STATIONERY COMPREHENSIVE BALANCE OF THE COLLECTION



708EX

708 ★ **Official Full Corners.** 77 full corners attractively arranged and identified on stock pages, incl. Nos. UO6, UO9, UO15, UO16, UO18, UO22, UO23, UO26-UO45, UO47-UO59, UO61-UO67, UO71, individually selected for superior condition, a fresh and Very Fine-Extremely Fine group, an excellent opportunity to acquire the foundation of a collection of these issues, 24 with P.F. certificates (mostly from 2000)(Photo Ex/Website PDF) 12,090.15



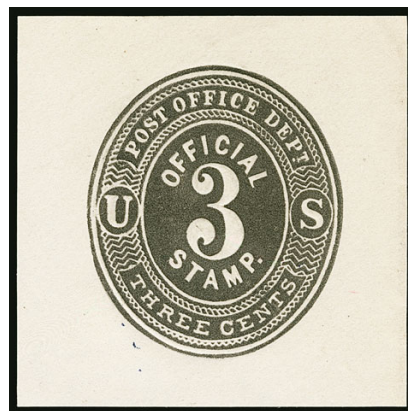
709

- 709 ★ **3c Black on White, Post Office Official, Die PD2, Cut Square (UO3; UPSS PD13).**
Unused, 35 x 38mm, bright and fresh

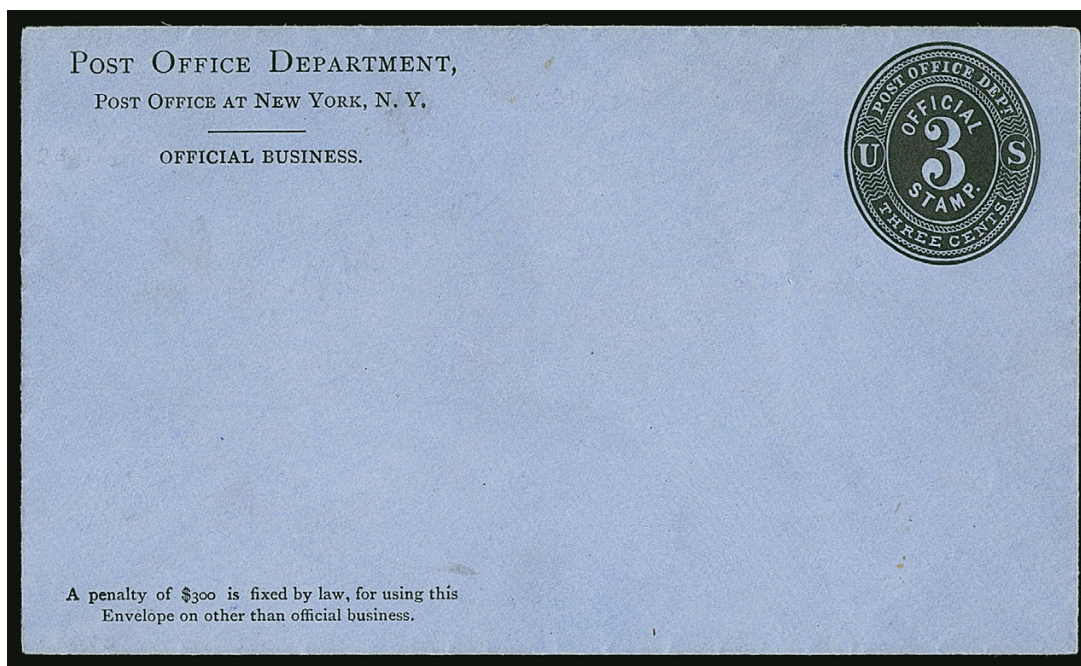
VERY FINE. A RARE EXAMPLE OF THE 3-CENT BLACK ON WHITE OFFICIAL CUT SQUARE, WHICH IS NOT KNOWN IN USED CONDITION.

Only one full entire is known and it is torn across the indicia. Ex Meisel and "Scarsdale".
With 1955 and 2006 P.F. certificates..... 27,500.00

- 710 ★ **3c Black on White, Post Office Official, Die PD5, Cut Square (UO8; UPSS PD42).** Unused, 40 x 40mm, bright shade, Very Fine and choice, with 2000 P.F. certificate..... 2,250.00



710



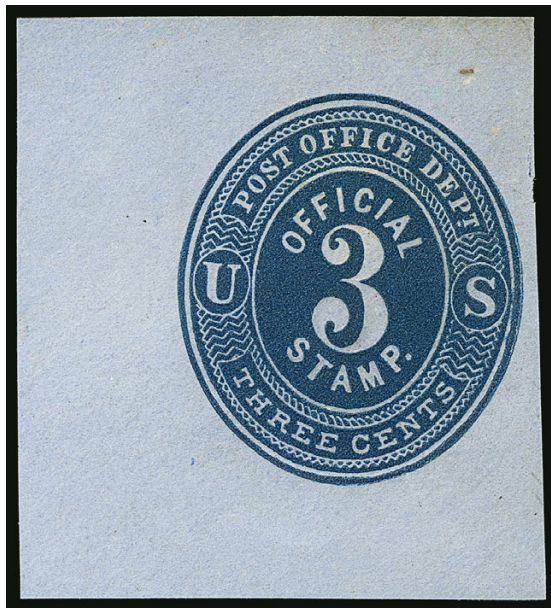
711

711 ☒ **3c Black on Blue, Post Office Official, Die PD 5, entire (UO10; UPSS PD45).** Size 7, knife 30, watermark 2, unused, deep embossing clear through to back, striking paper color

EXTREMELY FINE. A SUPERB AND EXCEPTIONALLY RARE EXAMPLE OF THE 3-CENT BLACK ON BLUE POST OFFICE DEPARTMENT OFFICIAL ENTIRE. ONLY THREE EXIST IN THIS SIZE.

The 2012 UPSS catalogue reports three mint entires in this size, as well as two in the much larger size 21, both of which are stained. This is one of the key items to a superb postal stationery or Officials collection.

Ex Close, Lilly, Wampler and "Scarsdale". With 2000 P.F. certificate. "R.H.W. Co." (Raymond Weill) backstamp. UPSS value \$60,000.00..... 42,500.00



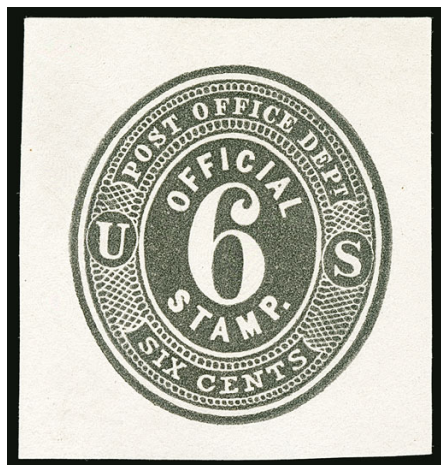
712

712 ★ **3c Blue on Blue Post Office Dept., Die PD5, Cut Square (UO11; UPSS PD50).** Unused, 40 x 44mm, deep rich color

VERY FINE. AN EXTREMELY RARE EXAMPLE OF THE 3-CENT BLUE ON BLUE POST OFFICE DEPARTMENT OFFICIAL. THIS IS THE ONLY EXAMPLE CUT SQUARE WE HAVE OFFERED SINCE KEEPING COMPUTERIZED RECORDS.

The 2012 UPSS catalogue records six entires in four different sizes. The example offered here was sold in Shreves 1998 Wampler sale as an entire (size 25, knife 122, wmk. 2) with edge faults and was turned into this sound cut square shortly afterwards. We have never encountered this as a cut square, only as an entire. Collectors of cut squares may never have another opportunity to acquire this in cut square format.

Ex Wampler as an entire. With 2002 P.F. certificate as cut square..... 27,500.00



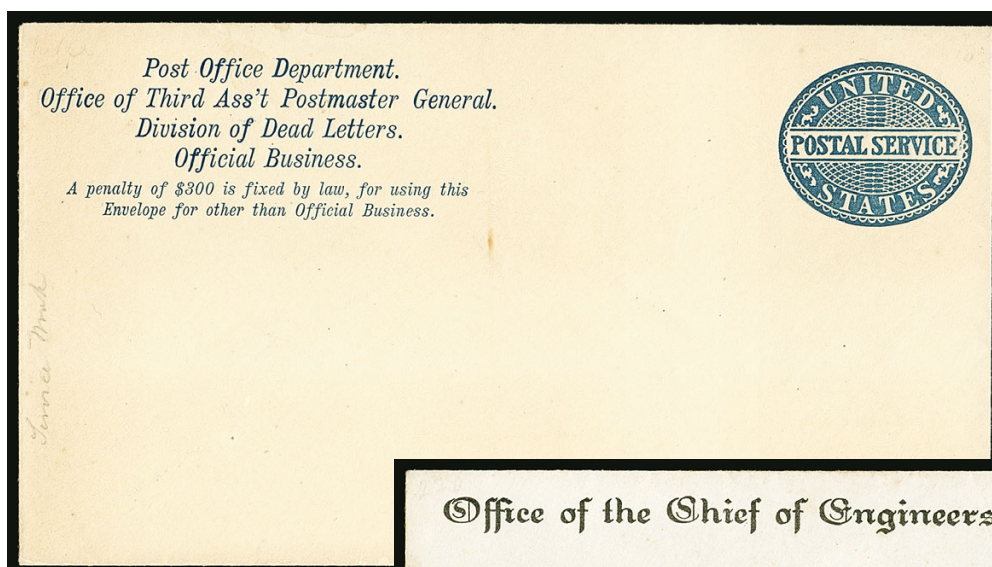
713

713 ★ **6c Black on White, Post Office Official, Die PD 6, Cut Square (UO13; UPSS PD60).** 39 x 38mm, bright color

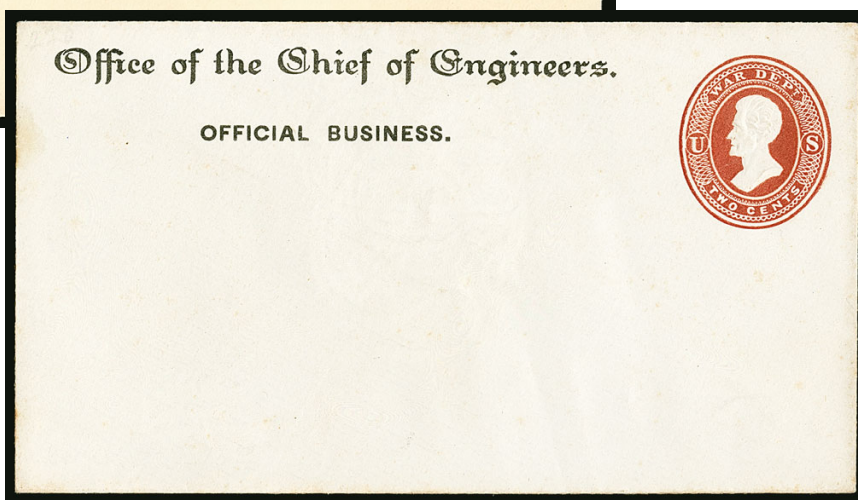
FRESH AND VERY FINE. ONE OF THE "KEYS" TO A COMPLETE COLLECTION OF DEPARTMENTAL CUT SQUARES.

UPSS estimates that no more than five entires exist. It appears to be equally rare as a cut square.

With 2003 P.F. certificate..... 2,000.00



714



715

714 ☒ **(No denomination), Dark Blue on Amber, Postal Service Official, Die PD7, entire (UO16; UPSS PS7a).** Size 10, knife 53, watermark 4, unused, Very Fine, ex Barkhausen and "Scarsdale", with 2001 P.F. certificate..... 650.00

715 ☒ **2c Dark Red on White, War Department Official, Die WD2, Entire (UO19; UPSS WD2).** Unused, size 2, knife 27, "Office of the Chief of Engineers. Official Business" two-line imprint at top, slight toning at upper left and along edges, otherwise Very Fine, ex Stone and Dr. Lobdell, with 2011 P.F. certificate..... 2,250.00

- 716 ★ **10c Dark Red on White, War Department Official, Die WD5, Full Corner (UO25; UPSS WD16).** Unused, 51 x 99mm, comprising nearly the full right quarter of the entire, fresh color and clear embossing

EXTREMELY FINE. A SPECTACULAR AND RARE LARGE SIZED FULL CORNER OF THE 10-CENT DARK RED ON WHITE WAR DEPARTMENT REAY ISSUE.

The 2012 UPSS catalogue records just one mint entire of the 10c Dark Red on White, though experts we have consulted question the existence of a full entire. This is the largest corner recorded by Porter Venn and is unusual in its vertical dimension which captures the full height of the size 21 entire. Only 500 were issued.

Ex "Scarsdale". With 1997 P.F. certificate. Scott Retail as cut square 15,000.00

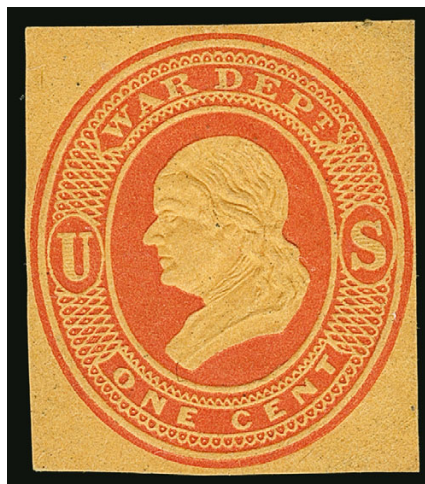


716



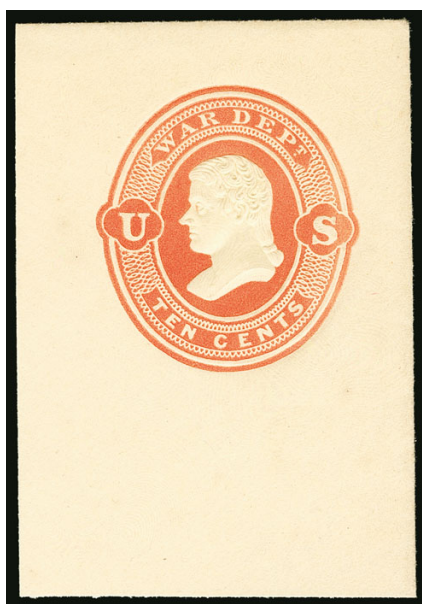
717

- 717 ★ **2c Vermilion, War Department Official, Die WD2, Full Corner (UO32; UPSS WD25).** Unused, 41 x 48mm, bright color, Very Fine and choice, an excellent alternative to the entire which catalogs \$22,500.00, ex "Scarsdale", with 2000 P.F. certificate, Scott Retail as cut square..... 375.00



718

- 718 ★ **1c Red on Orange, War Department Official, Die WD10, Cut Square (UO45A; UPSS WD52).** Unused, 26 x 29.5mm, cut close to indicia but all parts of the embossing are completely intact, beautiful color, small thin spot at right and tiny thin in Franklin's hair FINE APPEARANCE. ONLY THREE MINT CUT SQUARES AND NO ENTIRES ARE RECORDED OF THE ONE-CENT RED ON ORANGE WAR DEPARTMENT PLIMPTON ISSUE. A GREAT RARITY.
Ex Ballman and "Scarsdale". With 2002 P.F. certificate stating "small thin spot"
..... 37,500.00

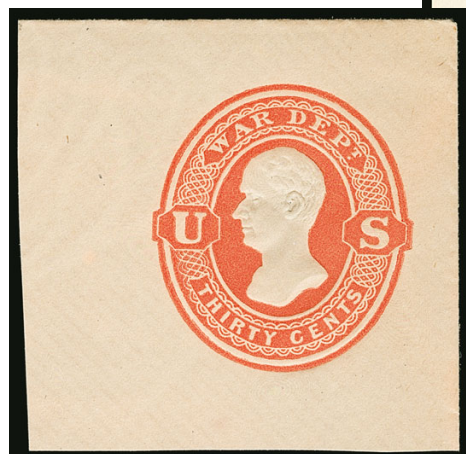


719

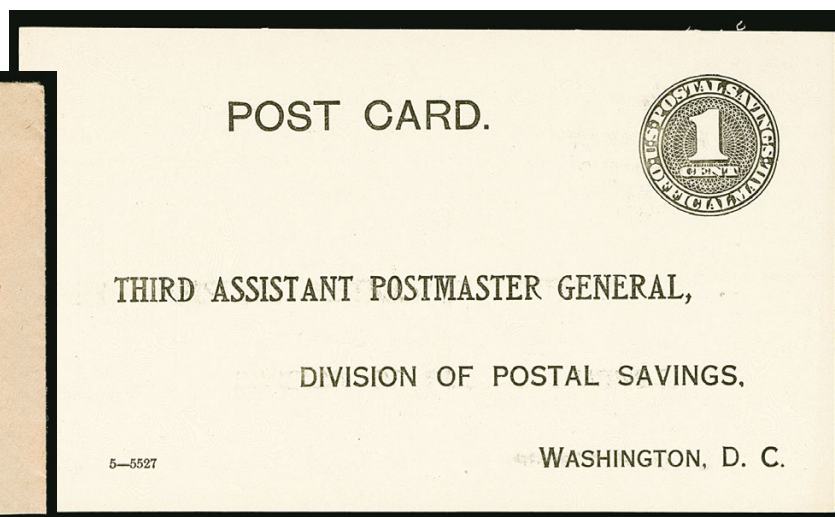


720

- 719 ★ **10c Red on Amber, War Department Official, Die WD14, Full Corner (UO60; UPSS WD118 or WD119).** 40 x 58mm, brilliant color, Extremely Fine, with 2003 P.F. certificate, Scott Retail as cut square 950.00
- 720 ★ **30c Red on Amber, War Department Official, Die WD17, Full Corner (UO68; UPSS WD136 or WD137).** Unused, 48 x 51mm, brilliant color, Extremely Fine, the UPSS catalog notes only 210 of both sizes were issued, with 2000 P.F. certificate, Scott Retail as cut square 600.00



721



722

- 721 ★ **30c Red on Cream, War Department Official, Die WD17, Full Corner (UO69; UPSS WD138).** Unused, 44 x 44mm, radiant color, Extremely Fine, UPSS catalog notes only 75 were issued, with 2008 P.F. certificate, Scott Retail as cut square 700.00
- 722 ☒ **1c Black on White, Official Postal Savings Postal Card (UZ1, USPCC O1b).** Mint card with shorter second "A" of "Assistant", preprinted back as always, faint ink bleeding in address, Very Fine, ex "Scarsdale", with 2000 P.F. certificate, Scott Retail as normal, USPCC value for this variety \$725.00 800.00

END OF SALE — THANK YOU

Live Internet Bidding at Siegel Auctions

BIDDING FROM YOUR COMPUTER LETS YOU BE PART OF THE LIVE AUCTION FROM ANYWHERE IN THE WORLD!

There's **NO SUBSTITUTE** for following the auction in real time.
Live Internet Bidding lets you bid and buy as though you were right there in the saleroom.
And it's easy.

This step-by-step guide will instruct you how to register, set your browser and use the bidding interface.

Start by following the simple steps to become a registered Live Internet Bidder.
Once you've been approved for bidding, you can listen to the auction and place bids with the click of a mouse.

Registering with STAMP AUCTION NETWORK & SIEGEL AUCTION GALLERIES

Live Internet Bidding is managed by Stamp Auction Network (SAN).
To bid, you must be registered and approved by *both* SAN and Siegel.
To decide what you need to do, choose the description below that best fits you.



I've already registered with SAN and have been approved by Siegel for internet bidding.

Live Internet Bidding works by allowing registered bidders to observe and place bids.

Live Internet Bidding will work with any browser on both PC and Mac operating systems.

Before bidding by internet for the first time, we recommend finding a sale in progress and listening to the public broadcast or logging in as a registered bidder. This will help you develop a feel for the sale tempo and bidding interface.

I'm a Siegel client, but I'm not registered with SAN.
Go to stampauctionnetwork.com/siegel and click on "Register" at the top. Check the box for Robert A. Siegel Auction Galleries (under "R") and submit the form, indicating you are a Siegel client. Once registered at SAN, you're ready for internet bidding.

Log on to the auction at stampauctionnetwork.com/siegel.

You can also log on at siegelauctions.com

When you're logged on as a Live Internet Bidder, the bidding interface shows a photo and description of the lot, the current bid (and your bidding status), options for placing competitive bids and buttons with bid increments.

- After you click on a bid amount, the auctioneer is immediately notified of your bid.
- Retracting a bid is usually not acceptable, so please bid carefully.
- If you bid and then decide to stop, the "Pass" button will tell the auctioneer you are no longer bidding.
- You can send messages to the auctioneer (for example, a request for extension).
- You can track prior realizations from the bidding screen.

I've bid through SAN before, but this is the first time I've bid in a Siegel sale.
Then you just need to be approved by Siegel. Go to stampauctionnetwork.com/siegel and click on "Update Registration" at the top. Your SAN account information will be sent to us for approval (you might be asked for other trade references). Once approved by Siegel for bidding, you're ready for internet bidding.

I've never bid with Siegel, nor registered with SAN.
Go to stampauctionnetwork.com/siegel and click on "Register" at the top. Check the box for Robert A. Siegel Auction Galleries (under "R") and submit the form **with your trade references** (please, no family members or credit card companies as references). Once registered at SAN and approved by Siegel for bidding, you're ready for internet bidding.



"System Down" or "Lost Connection" events do occasionally happen.

If you have any problems with Live Internet Bidding please call **212-753-6421** for immediate assistance.



BIDS

Use this form to submit absentee bids
or to confirm telephone bids

Sale 1135

September 15, 2016

PADDLE #

1

Please provide the following information:

NAME

ADDRESS

CITY/STATE/ZIP

PHONE MOBILE

EMAIL

2

Have you purchased from us in the past 5 years? ☐ Yes (please go to Section 3)
☐ No (references required below)

STAMP FIRM PHONE

STAMP FIRM PHONE

Please submit references at least **2 business days** before the sale. Bids from new clients will not be executed if satisfactory references are not received in time to be contacted.

3

- Enter the lot number and your corresponding maximum bid in the space below
- Use whole dollar amounts and bid according to the increments (see back of form)
- Bids do not include the 15% Buyer's Premium, taxes, duty or shipping charges
- Absentee bids will advance at one increment over the next highest competing bid
- "Plus", "Break Tie" or "Buy" bids will not be executed
- Indicate any "Or" bids between lot number/bid entries and bracket your choices
- If you wish to limit the total amount of your bids, follow the instructions below

Lot #	Bid \$	Lot #	Bid \$	Lot #	Bid \$

☐ **Limit Bids:** Check this box if you wish to limit the total hammer price of your bids (excluding 15% Buyer's Premium, taxes, duty and shipping costs). Your bids will be executed until your bidding limit has been reached. The total amount you wish to bid is \$

4

By signing this form, you agree to all of the Conditions of Sale printed in the sale catalogue (printed and digital), including but not limited to a) payment in the manner demanded by the Siegel firm, and b) payment of the 15% Buyer's Premium, any sales tax or customs duty, shipping costs, late charges and

other prescribed charges. You agree that your bids will be executed as courtesy by Siegel, but you waive the right to make any claim against Siegel or its employees arising from these bids or your participation in the sale. You agree to honor all bids as submitted, regardless of any errors or omissions.

SIGNED DATE

Mail the signed form to Siegel Bid Department, 60 East 56th St., New York, NY 10022
or email to stamps@siegelauctions.com
or fax to 212-753-6429



Additional Bids

Sale 1135
September 15, 2016

PADDLE #

Lot #	Bid \$	Lot #	Bid \$	Lot #	Bid \$

Shipping & Insurance

We will be pleased to arrange for shipping and transit insurance for purchases in this sale, except for lots marked or announced as "floor sale only." To expedite billing and delivery to hundreds of buyers in each sale, we use standard charges for postage and insurance under our policy. These charges are based on the package weight and mailing requirements, according to the schedule shown here. Our standard charges do not include a fee for our services, and they may be slightly more or less than the actual postage or Fedex fee. We ask all buyers to remit the invoiced amount for shipping and insurance.

Transit insurance is provided in all cases, except when the buyer has furnished us with documentation that insurance is effective under the buyer's own policy.

There will be no added insurance charge for shipments of less than \$75,000 value. Shipments valued in excess of \$75,000 may require supplemental insurance and/or special courier service, the estimated cost of which will be furnished to the buyer prior to shipment. If the buyer refuses to pay the estimated charges or furnish proof of self-insured coverage, the buyer will be responsible for picking up the lots at our office and any resulting sales tax.

Standard Shipping Charges

Weight Class	Shipping Method	Charge
Up to 2 lbs.	Fedex Envelope	\$20
Over 2 lbs.	Fedex Box	\$35 - \$50*
Outside US	Fedex	\$50 - \$100**
Bulky Lots	Fedex Ground or Express	By weight

* Up to \$75,000 value and up to 5 lbs; additional charge may apply to packages exceeding limits

** Buyers outside United States are liable for any applicable customs duty and clearance charges. An accurate declaration of contents and value will be made on all packages and import/export documents. **Siegel may refuse to ship lots to certain countries with a high risk factor.**

2/2015

Bidding Increments

The auctioneer may regulate the bidding at his discretion. However, to assist absentee bidders in establishing their maximum bids, the increments shown here will be used in most cases. We recommend that written bids conform to these increments—bids that do not will be reduced accordingly.

Bid	Increment	Bid	Increment
Up to \$200	\$10	\$7,000-20,000	\$500
\$200-500	\$25	\$20,000-30,000	\$1,000
\$500-1,000	\$50	\$30,000-75,000	\$2,500
\$1,000-3,000	\$100	\$75,000-140,000	\$5,000
\$3,000-7,000	\$250	\$140,000-300,000	\$10,000



ROBERT A. SIEGEL AUCTION GALLERIES, INC.

60 EAST 56th STREET, 4th FLOOR, NEW YORK, NEW YORK 10022

Phone (212) 753-6421 Fax (212) 753-6429 E-mail: stamps@siegelauctions.com

siegelauctions.com

Robert A. Siegel Auction Galleries, Inc.
Prices Realized for
Sale 1135 9/15/2016 The Grant Inman Collection, Part 2: U.S. Officials

Lot#	Realized	Lot#	Realized	Lot#	Realized	Lot#	Realized	Lot#	Realized
501	425	537	700	573	250	609	800	645	1,800
502	350	538	700	574	350	610	10,000	646	3,875
503	250	539	800	575	2,600	611	400	647	950
504	300	540	850	576	275	612	550	648	700
505	275	541	375	577	1,200	613	1,300	649	1,500
506	700	542	275	578	550	614	1,700	650	2,900
507	325	543	900	579	550	615	1,700	651	32,500
508	325	544	600	580	1,800	616	950	652	23,000
509	300	545	325	581	4,750	617	750	653	19,000
510	1,000	546	375	582	300	618	800	654	22,000
511	500	547	275	583	750	619	400	655	180
512	1,000	548	1,000	584	700	620	1,100	656	600
513	475	549	1,300	585	1,400	621	1,200	657	550
514	1,000	550	2,700	586	550	622	10,000	658	300
515	600	551	8,500	587	550	623	17,000	659	500
516	1,100	552	3,750	588	90,000	624	22,000	660	450
517	700	553	4,000	589	800	625	17,500	661	450
518	350	554	300	590	200	626	3,500	662	450
519	325	555	350	591	475	627	1,700	663	9,000
520	1,400	556	350	592	450	628	1,000	664	50,000
521	800	557	225	593	16,500	629	550	665	100,000
522	375	558	450	594	20,000	630	500	666	150,000
523	475	559	550	595	15,500	631	650	667	550
524	1,100	560	750	596	13,500	632	550	668	650
525	1,300	561	350	597	1,500	633	2,600	669	3,750
526	1,500	562	550	598	7,500	634	600	670	14,000
527	850	563	1,500	599	7,500	635	3,250	671	3,250
528	400	564	600	600	19,500	636	600	672	25,000
529	700	565	325	601	425	637	8,000	673	17,000
530	375	566	950	602	4,000	638	19,000	674	25,000
531	550	567	200	603	1,300	639	14,000	675	20,000
532	550	568	700	604	550	640	650	676	26,500
533	500	569	5,250	605	1,900	641	100	677	325
534	3,500	570	600	606	550	642	1,500	678	2,600
535	475	571	300	607	800	643	600	679	3,750
536	375	572	375	608	1,300	644	750	680	3,000

Robert A. Siegel Auction Galleries, Inc.
Prices Realized for
Sale 1135 9/15/2016 The Grant Inman Collection, Part 2: U.S. Officials

Lot#	Realized	Lot#	Realized
681	550	717	225
682	400	718	17,000
683	550	719	375
684	700	720	300
685	850	721	375
686	550	722	325
687	130		
688	425		
689	425		
690	2,600		
691	375		
692	250		
693	350		
694	600		
695	650		
696	4,500		
697	2,700		
698	18,000		
699	28,000		
700	9,500		
701	24,000		
702	28,000		
703	26,000		
704	25,000		
705	26,000		
706	29,000		
707	170		
708	3,750		
709	12,500		
710	600		
711	25,000		
712	9,000		
713	950		
714	850		
715	325		
716	5,250		