



L. E.

*Mr Samuel Thompson
273. Pearl St
New York*



10

*Basow Whiting Esq
Binghamton
Isham Co*

The Peter Sharrer Collection of United States Classic Postal Markings



SALE 1136

Lots 1001-1107 to be offered at unreserved auction on
Wednesday, October 5, 2016, at 10:30 a.m.

All lots sold subject to a 15% buyer's premium and applicable sales tax or customs duty

Please carefully read the Conditions of Sale before bidding

*Lots will be available for viewing on
Monday and Tuesday, October 3-4, from 10am to 4pm
and by appointment (please call 212-753-6421).*

Robert A. Siegel

AUCTION GALLERIES, INC.

60 EAST 56TH STREET, 4TH FLOOR, NEW YORK, N.Y. 10022
Phone (212) 753-6421 • Fax (212) 753-6429 • E-mail: stamps@siegelauctions.com
siegelauctions.com



Robert A. Siegel

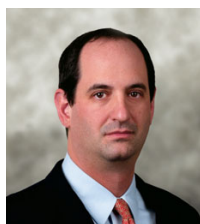
AUCTION GALLERIES, INC.

60 EAST 56TH STREET, 4TH FLOOR, NEW YORK, N.Y. 10022

Phone (212) 753-6421 • Fax (212) 753-6429 • E-mail: stamps@siegelauctions.com
siegelauctions.com



Scott R. Trepel
President
strepel@siegelauctions.com



John P. Zuckerman
Senior Vice President
jzuckerman@siegelauctions.com



Corey Long
Senior Vice President
clong@siegelauctions.com



Colleen Stellato
Vice President—Accounts
colleen@siegelauctions.com



Charles F. Shreve
Director, Siegel International
charles@siegelauctions.com



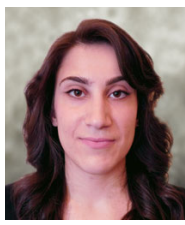
Andrew Titley
International Specialist
andrew@siegelauctions.com



Helen Stewart
Bids and Inquiries
helen@siegelauctions.com



Danielle Lenard
Bids and Inquiries
danielle@siegelauctions.com



Jocelyn Weibel
Digital Production
jocelyn@siegelauctions.com



Chris Anderson
Siegel International
chris@siegelauctions.com

Scott R. Trepel Principal Auctioneer (licensed by NYC Dept. of Consumer Affairs, #795952)

Information for Bidders

Bidding

The following means are available for placing bids:

- 1) Attending the Live Auction in Person:** All bidders must register for a paddle, and new bidders must provide references at least three business days in advance of the sale.
- 2) Live Internet Bidding:** Instructions for participating as a Live Internet Bidder are provided on the page opposite.
- 3) Phone Bidding:** Bidders can be connected to the sale by phone and bid through a member of staff. Requests for phone bidding are subject to approval (please contact our office at least 24 hours before the sale). A signed Bid Form is required.
- 4) Absentee Bids.** All bids received in advance of the sale, either by mail, fax, phone, e-mail or internet, are Absentee Bids, which instruct the auctioneer to bid up to a specific amount on one or more lots in the sale. Absentee Bids sent by phone, fax or e-mail should arrive at least one hour prior to the start of the sale session. Bids entered through Live Internet Bidding will be visible to the auctioneer during the sale. Written bids should be entered legibly on the Bid Form in the sale catalogue. E-mail and internet bids should be carefully typed and double-checked. All new bidders must provide references. We recommend calling or e-mailing to confirm that Absentee Bids sent by mail, fax or e-mail have been received and entered.

Pre-Sale Viewing

Subject to availability, certain lots (except group lots) can be sent to known clients for examination. Requests must be made no later than 7 days prior to the sale. Lots must be returned on the day received. Postage/insurance costs will be invoiced.

In addition to regular viewing, clients may view lots by appointment. Our staff will be pleased to answer questions or provide additional information about lots.

Expert Certification

Individual items offered without a PF or PSE certificate dated within the past five years may be purchased subject to independent certification of genuineness and our description. **Please refer to the Conditions of Sale and Grading Terms for policies governing certification.**

Shipping and Delivery

Procedures and charges for shipping lots are printed on the back of the Bid Form. **Bidders are responsible for all prescribed shipping charges and any applicable sales tax or customs duties.**

Price Realized

Prices realized are sent with each invoice. Bidders with e-mail will receive a Bid Results report after the sale. Session results are posted immediately to siegelauctions.com

Live Internet Bidding at Siegel Auctions

BIDDING FROM YOUR COMPUTER LETS YOU BE PART OF THE LIVE AUCTION FROM ANYWHERE IN THE WORLD!

There's **NO SUBSTITUTE** for following the auction in real time.
Live Internet Bidding lets you bid and buy as though you were right there in the saleroom.
And it's easy.

This step-by-step guide will instruct you how to register, set your browser and use the bidding interface.

Start by following the simple steps to become a registered Live Internet Bidder.
Once you've been approved for bidding, you can listen to the auction and place bids with the click of a mouse.

Registering with STAMP AUCTION NETWORK & SIEGEL AUCTION GALLERIES

Live Internet Bidding is managed by Stamp Auction Network (SAN).
To bid, you must be registered and approved by *both* SAN and Siegel.
To decide what you need to do, choose the description below that best fits you.



I've already registered with SAN and have been approved by Siegel for internet bidding.

I'm a Siegel client, but I'm not registered with SAN.

Go to stampauctionnetwork.com/siegel and click on "Register" at the top. Check the box for Robert A. Siegel Auction Galleries (under "R") and submit the form, indicating you are a Siegel client. Once registered at SAN, you're ready for internet bidding.

I've bid through SAN before, but this is the first time I've bid in a Siegel sale.

Then you just need to be approved by Siegel. Go to stampauctionnetwork.com/siegel and click on "Update Registration" at the top. Your SAN account information will be sent to us for approval (you might be asked for other trade references). Once approved by Siegel for bidding, you're ready for internet bidding.

I've never bid with Siegel, nor registered with SAN.

Go to stampauctionnetwork.com/siegel and click on "Register" at the top. Check the box for Robert A. Siegel Auction Galleries (under "R") and submit the form **with your trade references** (please, no family members or credit card companies as references). Once registered at SAN and approved by Siegel for bidding, you're ready for internet bidding.

Live Internet Bidding works by allowing registered bidders to observe and place bids.

Live Internet Bidding will work with any browser on both PC and Mac operating systems.

Before bidding by internet for the first time, we recommend finding a sale in progress and listening to the public broadcast or logging in as a registered bidder. This will help you develop a feel for the sale tempo and bidding interface.

Log on to the auction at stampauctionnetwork.com/siegel.

You can also log on at siegelauctions.com

When you're logged on as a Live Internet Bidder, the bidding interface shows a photo and description of the lot, the current bid (and your bidding status), options for placing competitive bids and buttons with bid increments.

- After you click on a bid amount, the auctioneer is immediately notified of your bid.
- Retracting a bid is usually not acceptable, so please bid carefully.
- If you bid and then decide to stop, the "Pass" button will tell the auctioneer you are no longer bidding.
- You can send messages to the auctioneer (for example, a request for extension).
- You can track prior realizations from the bidding screen.



"System Down" or "Lost Connection" events do occasionally happen.

If you have any problems with Live Internet Bidding please call **212-753-6421** for immediate assistance.

Conditions of Sale (please read carefully before bidding)

THE PROPERTY DESCRIBED IN THIS CATALOGUE WILL BE OFFERED AT PUBLIC AUCTION BY ROBERT A. SIEGEL AUCTION GALLERIES, INC. ("GALLERIES") ON BEHALF OF VARIOUS CONSIGNORS AND ITSELF OR AFFILIATED COMPANIES. BY BIDDING ON ANY LOT, WHETHER DIRECTLY OR BY OR THROUGH AN AGENT, IN PERSON, OR BY TELEPHONE, FACSIMILE OR ANY OTHER MEANS, THE BIDDER ACKNOWLEDGES AND AGREES TO ALL OF THE FOLLOWING CONDITIONS OF SALE.

1. The highest bidder acknowledged by the auctioneer shall be the buyer. The term "final bid" means the last bid acknowledged by the auctioneer, which is normally the highest bid offered. **The purchase price payable by the buyer will be the sum of the final bid and a commission of 15% of the final bid ("buyer's premium"), together with any sales tax, use tax or customs duties due on the sale.**
2. The auctioneer has the right to reject any bid, to advance the bidding at his discretion and, in the event of a dispute, to determine the successful bidder, to continue the bidding or to reoffer and resell the lot in dispute. The Galleries' record of the final sale shall be conclusive.
3. All bids are per numbered lot in the catalogue unless otherwise announced by the auctioneer at the time of sale. The right is reserved to group two or more lots, to withdraw any lot or lots from the sale, or to act on behalf of the seller. The Galleries will execute bidding instructions on behalf of clients, but will not be responsible for the failure to execute such bids or for any errors in the execution of such bids.
4. **Lots with numbers followed by the symbol ° are offered subject to a confidential minimum bid ("reserve"), below which the lot will not be sold. The absence of the symbol ° means that the lot is offered without a reserve. If there is no reserve, the auctioneer has sole discretion to establish a minimum opening bid and may refuse an offer of less than half of the published estimate. Any lot that does not reach its reserve or opening bid requested by the auctioneer will be announced as "passed" and excluded from the prices realized lists after the sale. The Galleries may have a direct or indirect ownership interest in any or all lots in the sale resulting from an advance of monies or goods-in-trade or a guarantee of minimum net proceeds made by the Galleries to the seller.**
5. Subject to the exclusions listed in 5(A), the Galleries will accept the return of lots which have been misidentified or which have obvious faults that were present when the lot was in the Galleries' custody, but not so noted in the lot description. **All disputed lots must be received by the Galleries intact with the original packing material within 5 days of delivery to the buyer but no later than 30 days from the sale date.**
(5A) EXCLUSIONS: The following lots may not be returned for any reason, or may not be returned for the reasons stated: i) lots containing 10 or more items; ii) lots from buyers who registered for the pre-sale exhibition or received lots by postal viewing, thereby having had the opportunity to inspect them before the sale; iii) any lot described with "faults," "defects" or a specific fault may not be returned because of any secondary fault; iv) photographed lots may not be returned because of centering, margins, short/nibbed perforations or other factors shown in the illustrations; v) the color of the item does not match the color reproduction in the sale catalogue or website listing; vi) the description contains inaccurate information about the quantity known or reported; or vii) a certification service grades a stamp lower than the grade stated in the description.
6. Successful bidders, unless they have established credit with the Galleries prior to the sale, must make payment in full before the lots will be delivered. Buyers not known to the Galleries must make payment in full within 3 days from the date of sale. **The Galleries retains the right to demand a cash deposit from anyone prior to bidder registration and/or to demand payment at the time the lot is knocked down to the highest bidder, for any reason whatsoever.** In the event that any buyer refuses or fails to make payment in cash for any lot at the time it is knocked down to him, the auctioneer reserves the right to reoffer the lot immediately for sale to the highest bidder. **Credit cards (Visa, Mastercard and Discover only) can be accepted as payment but will be subject to a 3% Convenience Fee, which will be added to the total of the entire invoice (including hammer price, buyer's premium, shipping**

and transit insurance charges and any applicable taxes).

7. If the purchase price has not been paid within the time limit specified above, nor lots taken up within 7 days from the date of sale, the lots will be resold by whatever means deemed appropriate by the Galleries, and any loss incurred from resale will be charged to the defaulting buyer. **Any account more than 30 days in arrears will be subject to a late payment charge of 1½% per month as long as the account remains in arrears. Any expenses incurred in securing payment from delinquent accounts will be charged to the defaulter.** A fee of \$250.00 per check will be charged for each check returned for insufficient funds.
8. All lots are sold as genuine. **Any lot accompanied by a certificate issued by The Philatelic Foundation or by Professional Stamp Experts within 5 years of the sale date is sold "as is" and in accordance with the description on the certificate. Such lots may not be returned for any reason, including but not limited to a contrary certificate of opinion.** Buyers who wish to obtain a certificate for any item that does not have a P.F. or P.S.E. certificate (dated as above) may do so, provided that the following conditions are met: (1) the purchase price must be paid in full, (2) the item must be submitted to an acceptable expertizing committee with a properly executed application form within 21 days of the sale, (3) a copy of the application form must be given to the Galleries, (4) in the event that an adverse opinion is received, the Galleries retain the right to resubmit the item on the buyer's behalf for reconsideration, without time limit or other restrictions, (5) unless written notification to the contrary is received, items submitted for certification will be considered cleared 90 days from the date of sale, and (6) in the event any item is determined to be "not as described", the buyer will be refunded the purchase price and the certification fee up to \$800.00 unless otherwise agreed to in writing.
9. Until paid for in full, all lots remain the property of the Galleries on behalf of the seller.
10. Agents executing bids on behalf of clients will be held responsible for all purchases made on behalf of clients unless otherwise arranged prior to the sale.
11. The buyer assumes all risk for delivery of purchased lots and agrees to pay for prescribed shipping costs. **Buyers who receive lots in the U.S. are obligated to pay whatever sales tax or compensating use tax might be due, and buyers outside the U.S. are responsible for all customs duties.**
12. **The bidder consents that any action or proceeding against it may be commenced and maintained in any court within the State of New York or in the United States District Court for the Southern District of New York, that the courts of the State of New York and United States District Court for the Southern District of New York shall have jurisdiction with respect to the subject matter hereof and the person of the bidder. The bidder agrees not to assert any defense to any action or proceeding initiated by Galleries based upon improper venue or inconvenient forum. The bidder agrees that any action brought by the bidder shall be commenced and maintained only in a Federal Court in the United States District Court for the Southern District of New York or the State Court in the county in which Galleries has its principal place of business in New York. The bidder agrees not to use a public conflict resolution service and not to use any form of social media to publish comments or information about the Galleries and its employees which might harm the Galleries' reputation or business. These Conditions of Sale shall be governed by and construed in accordance with the substantive laws of the State of New York, and shall constitute an agreement that shall be binding on the parties, and their respective heirs, administrators, distributees, successors and assignees.**

SCOTT R. TREPEL, Principal Auctioneer
Auctioneer's License No. 795952
N.Y.C. Department of Consumer Affairs
80 Lafayette Street, New York, N.Y. 10013
Telephone (212) 577-0111

Revised 1/2016

Grades, Abbreviations and Values Used in Descriptions

Grades and Centering

Our descriptions contain detailed information and observations about each item's condition. We have also assigned grades to stamps and covers, which reflect our subjective assessment. For stamps, the margin width, centering and gum are described and graded according to generally-accepted standards (an approximate correlation to numeric grades is provided at right). Although we believe our grades are accurate, they are not always exactly aligned with third-party grading terms or standards for all issues. **A lot may not be returned because a certification service grades a stamp lower than the grade stated in the description. Information from the P.S.E. Stamp Market Quarterly and P.S.E. Population ReportSM is the most current available, but lots may not be returned due to errors or changes in statistics or data.**

Extremely Fine Gem (90-100): The term “Gem” describes condition that is the finest possible for the issue. This term is equivalent to “Superb” used by grading services.







Extremely Fine (80-90): Exceptionally large/wide margins or near perfect centering.

Very Fine (70-85): Normal-size margins for the issue and well-centered with the design a bit closer to one side. “Very Fine and choice” applies to stamps that have desirable traits such as rich color, sharp impression, freshness or clarity of cancel.

Fine (60-70): Smaller than usual margins or noticeably off center. Pre-1890 issues may have the design touched in places.

Very Good (below 60): Attractive appearance, but margins or perforations cut into the design.

Guide to Gum Condition

Gum Categories:	MINT N.H.	ORIGINAL GUM (O.G.)				NO GUM
	 Mint Never Hinged <i>Free from any disturbance</i>	 Lightly Hinged <i>Faint impression of a removed hinge over a small area</i>	 Hinge Mark or Remnant <i>Prominent hinged spot with part or all of the hinge remaining</i>	 Part o.g. <i>Approximately half or more of the gum intact</i>	 Small part o.g. <i>Approximately less than half of the gum intact</i>	 No gum <i>Only if issued with gum</i>
Catalogue Symbol:	★ ★	★	★	★	★	(★)
PRE-1890 ISSUES	<i>Pre-1890 stamps in these categories trade at a premium over Scott value</i>			Scott Value for “O.G.”		Scott “No Gum” Values thru No. 218
1890-1935 ISSUES	Scott “Never Hinged” Values for Nos. 219-771	Scott Value for “O.G.” (Actual value will be affected by the degree of hinging)		Disturbed Original Gum: Gum showing noticeable effects of humidity, climate or hinging over more than half of the gum. The significance of gum disturbance in valuing a stamp in any of the Original Gum categories depends on the degree of disturbance, the rarity and normal gum condition of the issue and other variables affecting quality. For example, stamps issued in tropical climates are expected to have some gum disturbance due to humidity, and such condition is not considered a negative factor in pricing.		
1935 TO DATE	Scott Value for “Unused”					

Covers

Minor nicks, short edge tears, flap tears and slight reduction at one side are normal conditions for 19th century envelopes. Folded letters should be expected to have at least one file fold. Light cleaning of covers and small mends along the edges are accepted forms of conservation. Unusual covers may have a common stamp with a slight crease or tiny tear. **These flaws exist in virtually all 19th century covers and are not always described. They are not grounds for return.**

Catalogue Values and Estimates

Unless otherwise noted, the currently available *Scott Catalogue* values are quoted in dollars with a decimal point. Other catalogues are often used for foreign countries or specialized areas and are referred to by their common name: *Stanley Gibbons* (SG), *Dietz*, *American Air Mail Catalogue* (AAMC), *Michel*, *Zumstein*, *Facit*, etc. Estimates are indicated with an “E.” and reflect our conservative valuation in dollars. Reserves will never exceed the low end of the estimate range; they will sometimes exceed Scott Catalogue value for stamps in Extremely Fine condition.

Because of certain pricing inconsistencies in the *Scott Catalogue*—for example, blocks that have no gum, the absence of premiums for Mint N.H. items, etc.—we cannot guarantee the accuracy of values quoted for multiples, specialized items and collection lots. We generally try to be conservative, but buyers may not return a lot because of a discrepancy in catalogue value due to Scott pricing inconsistencies.

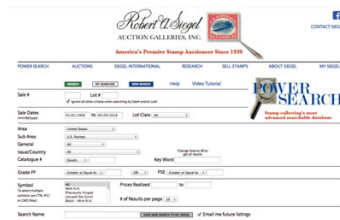
Symbols and Abbreviations (see chart above for gum symbols)

⊞	Block	E	Essay	pmk.	Postmark	No.	Scott Catalogue Number
⊞	Cover	P	Proof	cds	Circular Datestamp	hs	Handstamp
FC	Fancy Cancel	TC	Trial Color Proof	var.	Variety	ms.	Manuscript

Resources @ siegelauctions.com

CATALOGUES AND PRICES REALIZED

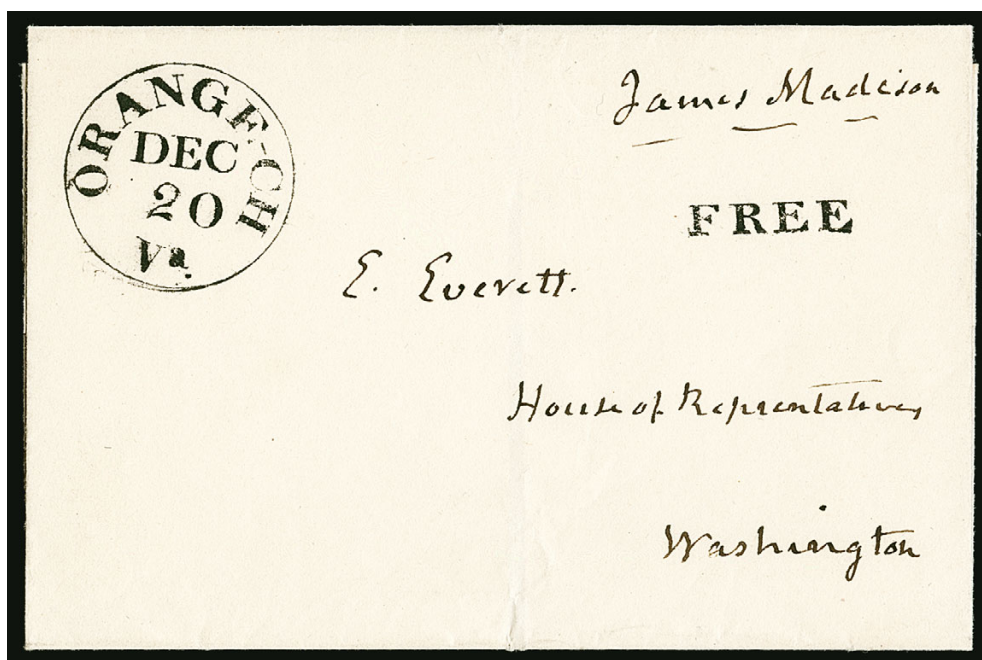
Images and descriptions for all sales going back to 1992, our Rarities sales from 1964 and selected older name sales. pdfcatalogs go back to our first sale in 1931.



MORNING SESSION (LOTS 1001-1107)
WEDNESDAY, OCTOBER 5, 2016, AT 10:30 A.M.

THE PETER SHARRER COLLECTION OF
UNITED STATES CLASSIC POSTAL MARKINGS

JAMES MADISON FREE FRANK



1001

- 1001 ☒ **James Madison.** Bold free frank "*James Madison*" as ex-President on undated folded cover addressed in his diminutive hand to Edward Everett (famous orator who preceded Lincoln at Gettysburg) in the House of Representatives, Washington D.C., perfect bold strike of "Orange-CH Va. Dec. 20" circular datestamp and "Free" straightline handstamp, Extremely Fine, a magnificent example of this Founding Father's free frank, one of the finest we have ever encountered, with 2013 P.F. certificate E. 1,000-1,500

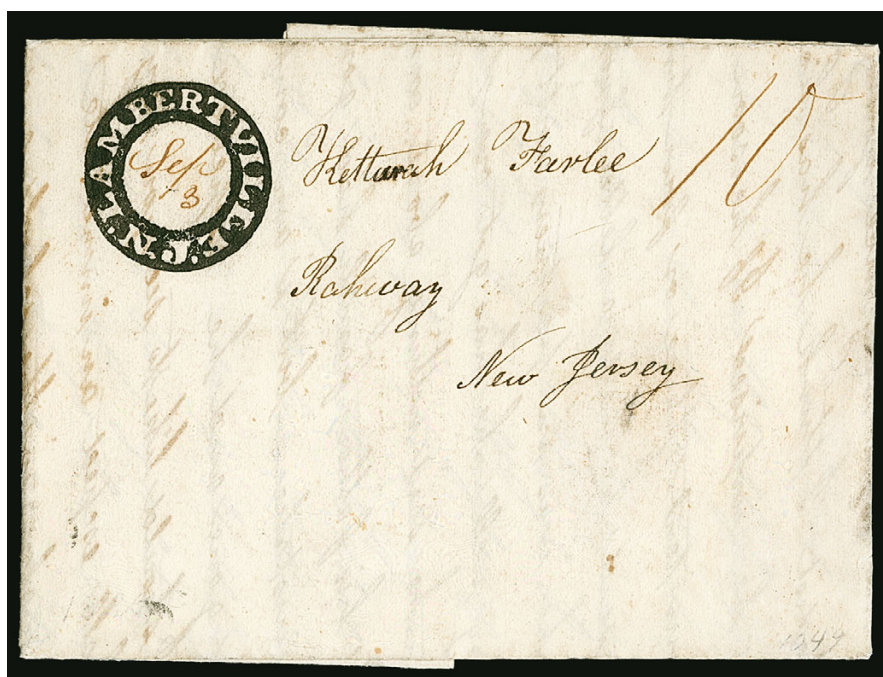
FANCY AND ILLUSTRATED TOWN MARKINGS

1002

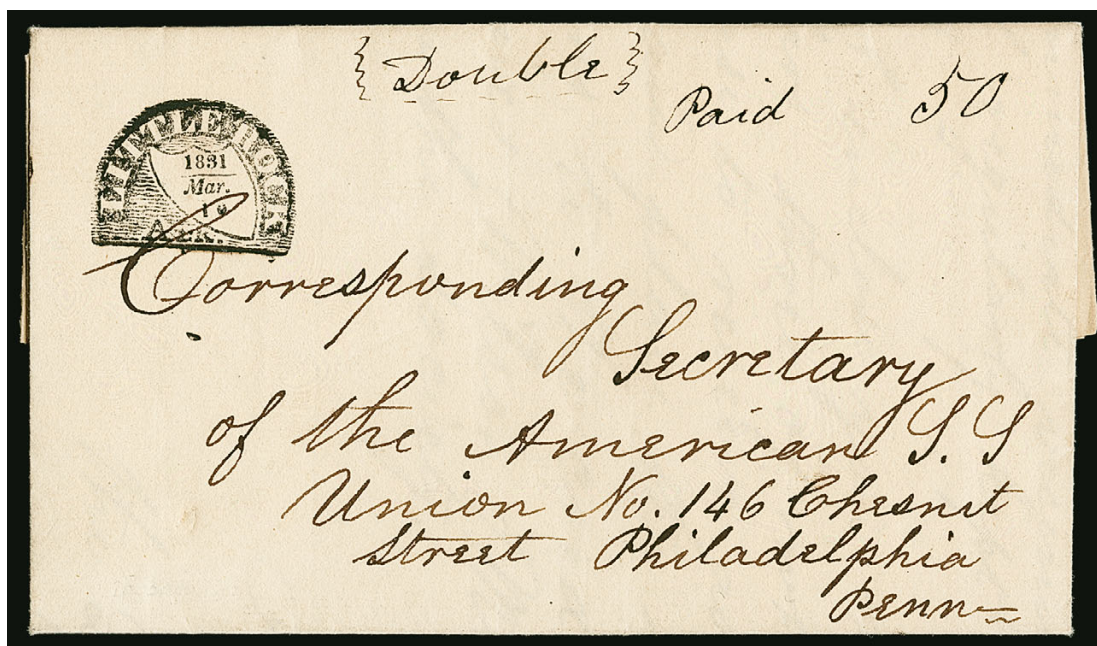


- 1002 ☒ **CANANDAIGUA, June 12.** Absolutely perfect “proof-like” strike of this marking with floral spray at bottom, on 1803 folded letter to Hartford Conn., sender is Oliver Phelps (of Phelps Gorham Purchase fame) who asks recipient to endorse his \$4,000 note and pledges a note signed by both himself and Gorham, Extremely Fine strike which is illustrated on page 238 of the *American Stampless Cover Catalog*, ex Jarrett and Hahn, a history of the Phelps-Gorham purchase can be found here: http://en.wikipedia.org/wiki/Phelps_and_Gorham_Purchase E. 1,000-1,500

1003



- 1003 ☒ **Lambertville N.J. Sep. 3.** Intense dark black strike of town circle handstamp with negative lettering — every detail perfectly clear — with manuscript date and matching “10” rate on Sep. 2, 1839 folded letter to Rahway N.J., Extremely Fine, believed to be the finest of the few known examples of this distinctive New Jersey town marking E. 1,500-2,000



1004

- 1004 ★★ **Little Rock Ark. 1831/Mar. 10.** Perfect strike of fancy Shield in semi-circle datestamp showing every detail of the design, manuscript "(Double) Paid 50" rate on folded letter from the secretary of the Little Rock Sunday School to the secretary of the American Sunday School Union in Philadelphia, Extremely Fine, a magnificent strike of this fancy town marking..... E. 1,500-2,000



Detail

WINDSOR LOCKS, CONNECTICUT — TYPE I



1005

- 1005 ☒ **WINDSOR-LOCKS CT.** Type I with scrolls under "CT" and "KS", beautiful detailed strike in red with manuscript "Nov. 21" date and "12½" rate on 1837 folded letter to New York, matching perfect strike of "Paid" in scroll

EXTREMELY FINE. THIS IS ONE OF THE FINEST STRIKES OF THE ELABORATE WINDSOR LOCKS POSTAL MARKING WE HAVE EVER ENCOUNTERED.

Windsor Locks is named for a set of canal locks that opened in 1829. Windsor Locks is situated just south of the first large falls in the Connecticut River, the Enfield Falls, which is the northernmost point that seagoing vessels can reach on the Connecticut River before transferring to smaller ships. The post office used two different pictorial handstamps showing the steamer in locks. The example offered here is the first type (see Duffney census at http://www.ctpostalhistory.com/CtPP/Postal_Markings_files/W-L2013LR.pdf). Richard B. Graham wrote that the Windsor Locks "Boat-in-Canal" pictorial postmark is "possibly the most distinctive early handstamp of them all."

Ex Jarrett, Houser and Kramer..... E. 7,500-10,000



Detail

WINDSOR LOCKS, CONNECTICUT — TYPE II



1006

- 1006 ☒ **WINDSOR-LOCKS CT.** Type II with different font and other design differences, perfect and remarkably detailed strike of red pictorial handstamp with “Apl 8” date in manuscript and “6” rate on 1844 folded letter to North Granby Conn.

EXTREMELY FINE. THIS IS THE FINEST STRIKE OF THE PICTORIAL WINDSOR LOCKS HANDSTAMP WE HAVE ENCOUNTERED. A WONDERFUL EXAMPLE OF 19TH CENTURY AMERICAN POSTAL ART.

Windsor Locks is named for a set of canal locks that opened in 1829. Windsor Locks is situated just south of the first large falls in the Connecticut River, the Enfield Falls, which is the northernmost point that seagoing vessels can reach on the Connecticut River before transferring to smaller ships. The post office used two different pictorial handstamps showing the steamer in locks. The example offered here is the second type, which is much scarcer than the first (more than 2:1 ratio, according to Duffney census at http://www.ctpostalhistory.com/CtPP/Postal_Markings_files/W-L2013LR.pdf). Richard B. Graham wrote that the Windsor Locks “Boat-in-Canal” pictorial postmark is “possibly the most distinctive early handstamp of them all.”

Ex Haas, Risvold and Dr. Robertson E. 5,000-7,500



Detail

NEWARK VALLEY, N.Y., KISSING DOVES HANDSTAMP



1007

- 1007 ☒ **“NEWARK VALLEY, N.Y.” Kissing Doves.** Single straightline with “Feb. 24” blue manuscript date surrounded by ornate floral frame with entwined hearts and two kissing doves, blue manuscript “10” rate on 1844 folded letter to Binghamton N.Y. addressed and written in blue, **turned use** of lettersheet with other side addressed to Troy, red “Binghamton N.Y. Feb. 27” circular datestamp and ms. “10”, message inside indicates letter was forwarded, light fold at top

EXTREMELY FINE. THE FINEST STRIKE OF THIS BEAUTIFUL AND EXCEEDINGLY RARE ROMANCE-INSPIRED POSTAL MARKING. CONSIDERED BY MANY TO BE ONE OF THE MOST BEAUTIFUL HANDSTAMPED MARKINGS APPLIED TO 19TH CENTURY MAIL.

Illustrated in *American Stampless Cover Catalog and Chronicle* (No. 220, p. 321). Ex Mayer, Dunsmoor, Moskow and Jarrett. E. 10,000-15,000

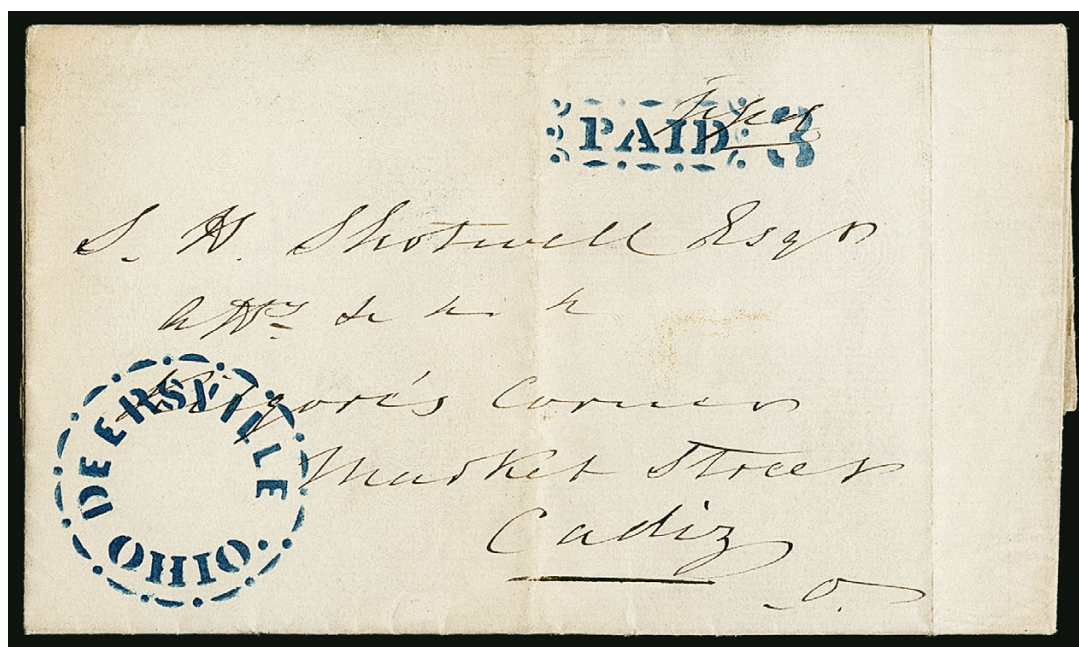


- 1008 ☒ **HECKTOWN/JULY 20/PENNA.** Well-struck **brown** handstamp with “20” date in manuscript, matching “Paid” in octagon and “5” in double circle handstamps on 1846 blue folded letter to a doctor at the Pennsylvania Hospital for the Insane at Philadelphia, neatly docketed, accompanied by a similar but different datestamp dated Apr. 24 with manuscript “12½” rate on 1843 folded letter addressed in blue to New York City, small arithmetic notation, both Extremely Fine, very rare markings and a lovely matched pair..... E. 750-1,000
- 1009 ☒ **DOVER MILLS [Va.] J. 24.** Large blue handstamp with date in manuscript clearly struck on light green 1847 folded cover to Richmond Va., blue manuscript “5” rate, additional manuscript “1” for carrier fee in Richmond, some minor wear, Very Fine strike, possibly the only example of this unusual marking extant, ex Knapp, with 1997 P.F. certificate..... E. 1,000-1,500
- 1010 ☒ **Aaronsburg Pa. Feb. 1.** Boldly struck ornate blue datestamp with matching “Paid 3” handstamp on 1854 folded letter to Philadelphia, Extremely Fine, one of three examples of this marking that came to light in 2003 (Sale 860 — this was lot 705, which realized \$2,600 hammer), the style is extraordinary and this strike is perfect..... E. 1,000-1,500



1011

- 1011 ☒ **Burkesville Ky. Feb. 6.** Brownish-black town marking in **stencil circle with rim of dots** and manuscript date and "Paid 25" rate on 1831 folded letter to Richmond Va., Extremely Fine, believed to be the only known example of this Kentucky stencil marking, ex Knapp, Haas (his source notation indicates it was bought from Seymour Kaplan in 1978 for \$765) and Jarrett..... E. 1,500-2,000



1012

- 1012 ☒ **Deersville Ohio.** Bold blue town marking without date in **stencil circle with rim of dots and dashes** with matching "PAID" and "3" stencil rate markings ("Paid" in frame of dots and dashes) on Jan. 13, 1852 folded letter to Cadiz O., Extremely Fine, extraordinarily beautiful example of this stencil marking, the Deersville stencil circle is known on several covers dated during the late 1840s, but the "Paid 3" stencil rate (post-July 1, 1851) is extremely rare, this is almost certainly the finest known of all known Deersville covers ... E. 1,000-1,500

FANCY RATE MARKINGS



1013

- 1013 ☒ **Eutaw Ala. Mar. 20.** Clearly struck black circular datestamp with perfect strike of blue “HALF DIME” coin rate handstamp on Mar. 18, 1846 grayish blue folded letter to Aberdeen Miss., faint and inconsequential toning, Extremely Fine, one of the clearest strikes known of this distinctive and scarce rate marking, accompanied by a note from the Eutaw postmaster in October 1882 identifying the postmasters of Eutaw in 1841 and 1845 (both named Chiles), ex Salzer..... E. 750-1,000



1014

- 1014 ☒ **Eutaw Ala. Feb. 6.** Perfect strike of black circular datestamp and equally bold strike of “ONE DIME” coin rate handstamp on blue Feb. 5, 1846 folded letter to New York City street address, Extremely Fine, the “One Dime” handstamp of Eutaw is much rarer than its “Half Dime” counterpart, this is quite likely the finest of the few in existence..... E. 1,000-1,500



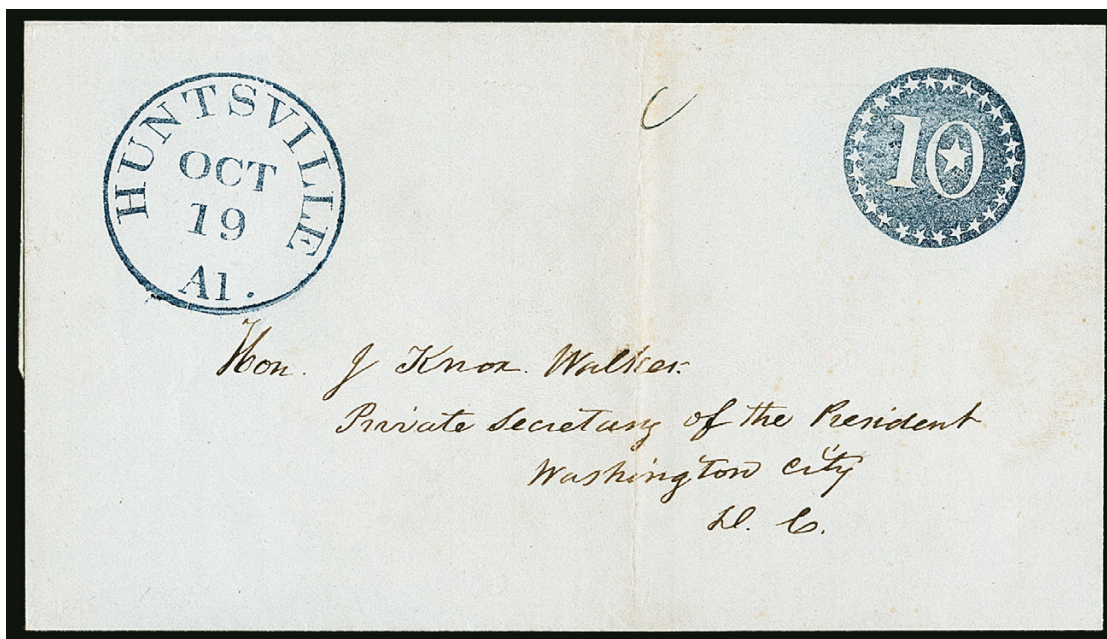
1015

- 1015 ☒ **Eutaw Ala. Feb. 9.** Circular datestamp in black with manuscript "9" date, clear strike of "HALF DIME" coin rate handstamp in red on folded letter datelined Burton's Hill, Feb. 9, 1846 to Mobile Ala., Very Fine, the Eutaw "Half Dime" and "One Dime" coin handstamps are usually struck in blue and rarely in black, but this is the **only reported example in red**, ex Ferrary and Knapp, accompanied by an actual half-dime coin, upon which the rate marking is based..... E. 1,000-1,500



1016

- 1016 ☒ **Huntsville Al. Jul. 31.** Blue circular datestamp and **negative "5" and Stars within Star** fancy rate handstamp on twice-forwarded 1848 folded letter (with printed notice) from Baltimore to New Market Ala., then to Huntsville, and finally to Bellefonte Ala., blue "Baltimore Md. Jul. 18" circular datestamp, "Paid" and "10" in oval rate handstamp for distance over 300 miles, manuscript "New Market Ala. July 24th" and "Forwarded 5" markings, "Paid" crossed out, Huntsville markings presumably applied for postage due, Very Fine, an unusual use of the Huntsville Star handstamp on a forwarded cover with two different 1845 rates..... E. 500-750



1017

- 1017 ☒ **Huntsville Al. Oct. 19.** Absolutely perfect strike of blue circular datestamp with equally perfect strike of **negative "10" and Star in Circle of Stars** rate handstamp on 1845 blue folded cover to J. Knox Walker, nephew of and secretary to President James K. Polk, in Washington D.C., Extremely Fine, it is impossible to imagine a finer example of this distinctive marking, ex Emerson E. 750-1,000



1018

1019



1020

1021



- 1018 ☒ **Big Lick Va. Mar.** Double-circle datestamp without the day, mostly clear strike with perfect strike of **negative "5" with Four Stars in Circle of Stars** rate handstamp on bluish folded letter datelined "Oak Lands, Mar. 15, 1847" to Grove Hill Va., Very Fine, ex Meroni and Haas E. 500-750
- 1019 ☒ **Frankfort N.Y. Mar. 29.** Neat strike of blue circular datestamp with matching "Paid" straightline and **fancy negative "5" in field of stars in circle** on 1847 folded letter to Albany, Extremely Fine, a fresh and attractive cover, ex Hahn, with 2011 P.F. certificate. E. 300-400
- 1020 ☒ **Aberdeen Mi. Aug. 19.** Clear strike of red circular datestamp with full sharp strike of matching **negative "5" and Stars in Outline Star** rate handstamp on Aug. 12, 1847 part-printed Masonic lodge notice to Liberty Miss., Extremely Fine, very scarce ... E. 300-400
- 1021 ☒ **Aberdeen Mi. Sep. 9.** Partly clear red circular datestamp with well-struck matching "Paid" and **negative "5" in Star** rate handstamp on blue folded letter to Middleton Miss., Very Fine, scarce E. 300-400



1022

- 1022 ☒ **Lovington Va.** A beautiful matching pair of folded covers, each with circular datestamp (month in type and day in manuscript), first in **brown** with Aug. 5 date and matching “Paid 5 Cts.” woodcut double-circle rate handstamp, to Warminster Va., second in **greenish-blue** with May 1 date and matching “Paid” and “X Cts” in circle rate handstamp, to Philadelphia, former missing one side panel, otherwise Extremely Fine, choice strikes of scarce and unusual markings..... E. 400-500

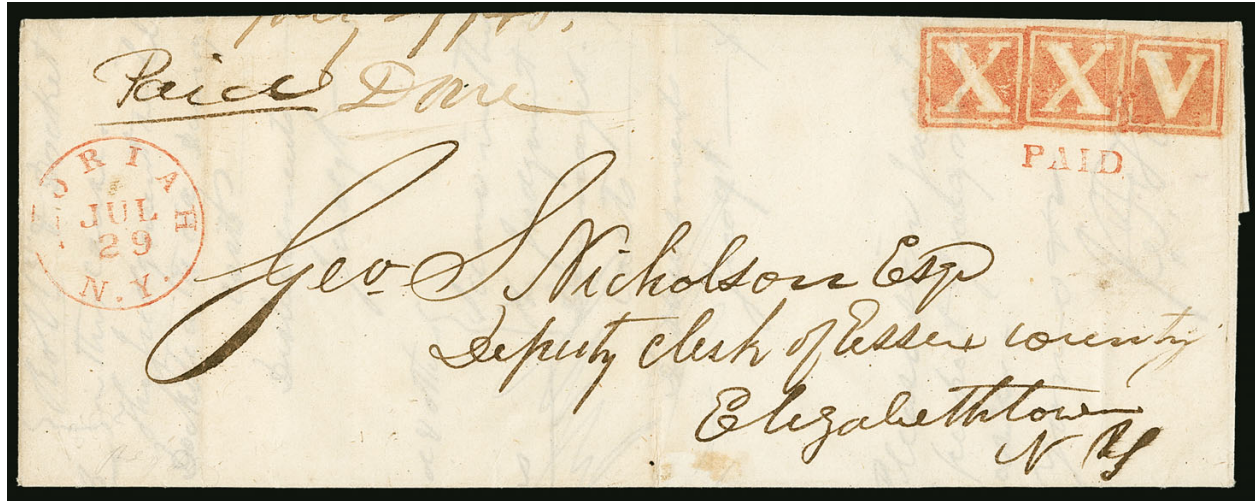


1023

1024

- 1023 ☒ **Berlin N.Y. 5 cts. Dec. 8.** Perfect bold strike of oval handstamp without date on July 2, 1846 folded letter addressed in blue to Wirt N.Y., Extremely Fine..... E. 300-400
- 1024 ☒ **Savannah * Geo. * Oct. 6.** Red circular datestamp and matching “20” in double-line circle rate handstamp on blue 1849 folded letter to Boston, Extremely Fine, remarkable quality..... E. 150-200

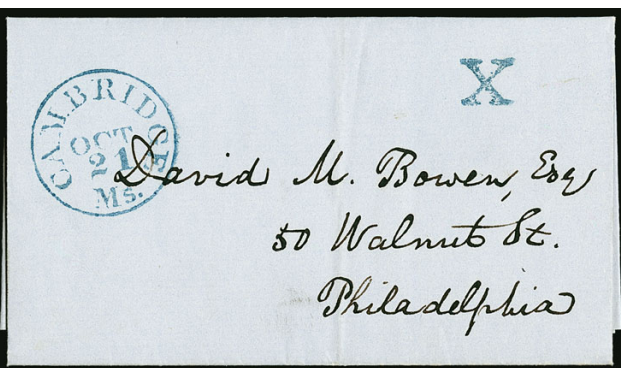
MORIAH, N.Y., "XXV" 25-CENT RATE



1025

- 1025 ☒ **Moriah N.Y. Jul. 29.** Clear strike of red circular datestamp with matching “Paid” and negative “X”, “X” and “V” in square frame handstamps struck in combination for 25c quintuple rate on 1848 courthouse folded letter to Elizabethtown N.Y., neatly docketed EXTREMELY FINE. ONE OF THE MOST SPECTACULAR STAMPLESS COVERS WITH A UNIQUE COMBINATION OF ROMAN NUMERAL RATE MARKINGS USED TO INDICATE PREPAYMENT OF 25-CENT QUINTUPLE RATE.

This well-known cover was last sold at auction in a Richard C. Frajola sale more than 23 years ago for \$1,350 hammer (Feb. 5, 1983, lot 187). It is regarded among stampless postal markings specialists as one of the most remarkable examples of numeral rate markings..... E. 2,000-3,000



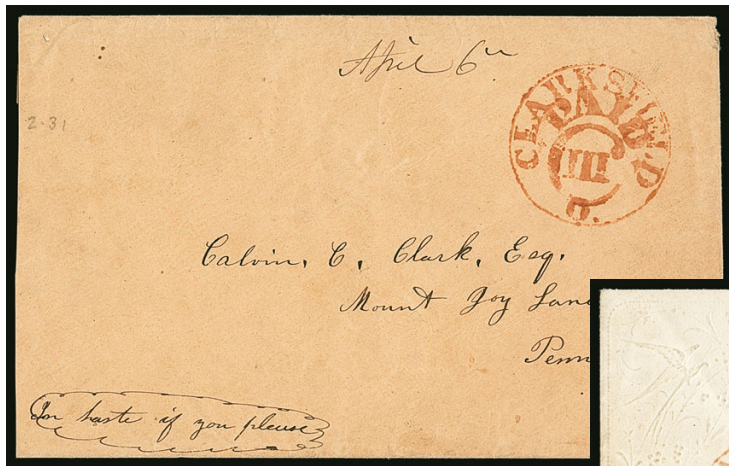
- 1026 ☒ **Roman Numeral Rate Markings.** Three different markings, red "Plymouth Hollow Ct." circular datestamp and large "V" handstamp on Jan. 13, 1846 part-printed notice from an insane asylum, red "Great Barrington Ma. Nov. 16" circular datestamp and large "V" outline handstamp on envelope, and blue "Cambridge Ms. Oct. 21" circular datestamp and "X" handstamp on 1848 blue folded letter, Extremely Fine E. 500-750



1028

1027

- 1027 ☒ **Cleveland O. Jan. 29.** Clear strike of red circular datestamp and matching "X" in circle repeated for 20c rate with black "Paid" on cover to Cayuga Bridge N.Y., Extremely Fine, very unusual rate markings in pristine condition E. 200-300
- 1028 ☒ **Bellevue O. Aug. 12.** Mostly clear strike of brownish-red circular datestamp with matching "Paid" and negative "III" in circle rate handstamp on cover to New York City street address, few offset ink spots, Very Fine, scarce, ex Mayer E. 300-400



1029



1030

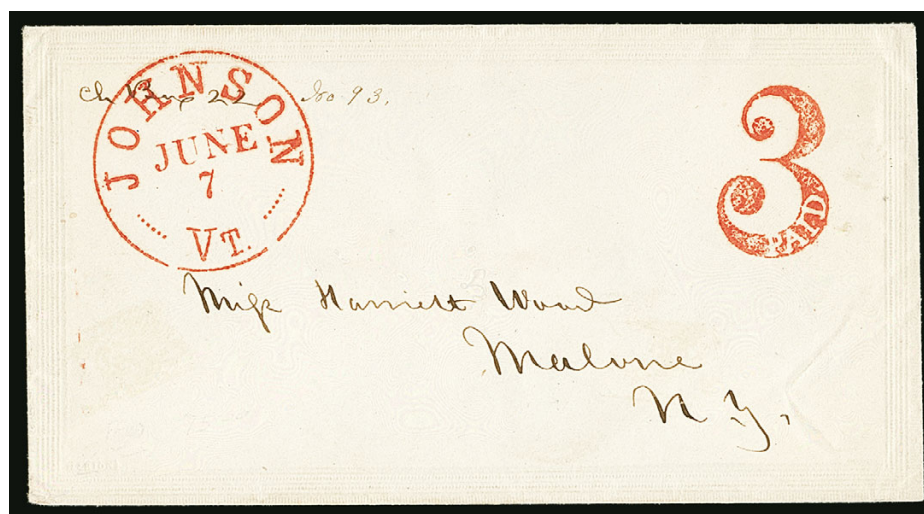
- 1029 ☒ **Clarksfield O.** Red circular town handstamp with matching “Paid C III” rate handstamp struck inside circle where date would normally appear on brown cover to Mount Joy Pa., manuscript “April 6” date, reduced about one-half inch at left, otherwise Very Fine, rare and unusual..... E. 400-500
- 1030 ☒ **Clarksfield O. July 11th.** Red circular datestamp with manuscript date and matching “Paid C III” rate handstamp on lady’s small embossed cover to Litchfield Conn., Very Fine, scarce and exceptionally attractive, ex Mayer..... E. 400-500



1031

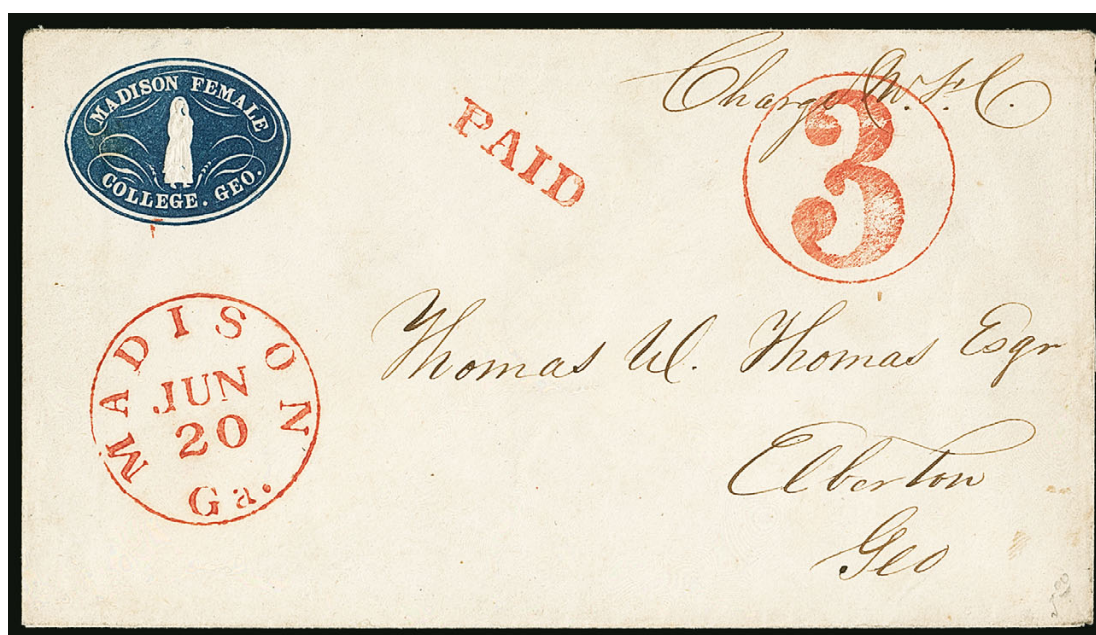


- 1031 ☒ **“Paid C III” Rate Handstamps.** Two different, first with “Dalton O. Oct. 3” circular datestamp and rate handstamp perfectly struck on brown cover to Napoleon O., minor toning, second with blue “Hardwick Vt.” ornamental circular datestamp and matching rate handstamp (in circle) on buff cover to Bradford Vt., Very Fine..... E. 400-500



1032

- 1032 ☒ **Johnson Vt. June 7.** Perfect strike of red ornamental circular datestamp with matching “3 Paid” fancy numeral handstamp, tiny box charge notation on lady’s small embossed envelope to Malone N.Y., Extremely Fine, magnificent quality, with 2011 P.F. certificate. E. 300-400



1033

- 1033 ☒ **Madison Ga. Jun. 20.** Stunning vivid orange-red circular datestamp with matching “Paid” and large “3” in circle rate handstamp on cover to Elberton Ga. with **Madison Female College blue cameo corner card**, pretty design with female figure, box charge notation, Extremely Fine, one of the most attractive stampless covers we have encountered from the Antebellum South, with 2010 P.F. certificate E. 1,000-1,500



- 1034 ☒ **Aldie Va. Oct. 27.** Clearly struck **red** circular datestamp and matching **"3" and negative "Paid"** in **semi-circle** rate handstamp on 1851 folded letter to Washington D.C., Extremely Fine, ex Mayer..... E. 300-400
- 1035 ☒ **Walpole N.H. Feb. 23.** Absolutely perfect strike of **blue** circular datestamp and equally sharp strike of matching **"3" with negative "Paid"** rate handstamp on 1852 folded letter to Brookline Mass., Extremely Fine, magnificent quality..... E. 300-400
- 1036 ☒ **North Branch N.H. Mar. 28.** Perfectly struck **blue** circular datestamp and matching **"Paid 3"** in circle handstamp on 1853 folded voting report printed on blue paper and addressed to Concord N.H., neatly docketed in red, Extremely Fine E. 200-300
- 1037 ☒ **Amherst N.H. Nov. 9.** Clear strike of blue circular datestamp with matching **"Circular PAID"** negative handstamp on small folded printed 1857 circular for cucumber seeds to Woodstock Vt., Extremely Fine, rare and attractive, ex DuPuy, with 2011 P.F. certificate E. 500-750
- 1038 ☒ **Hackettstown N.J. Jan. 17.** Clear strike of **blue** circular datestamp with matching **"10"** rate handstamp on 1850 folded letter to Ann Arbor Mich., lightly struck blue Feb. 1 circular datestamp and matching **"2", sum bar and "12" rate handstamps** for total of 12c due, lightly toned and some wear, Very Fine, unusual markings and rate combination.... E. 200-300



- 1039 ☒ **Ann Arbor Mich.** Two folded letters to Ann Arbor and forwarded, 1847 with “New-York 10 cts. 26 Oct.” integral-rate circular datestamp and red “Ann Arbor Mic. Nov. 2” circular datestamp, matching “5” and “15” (total) rate handstamps for forwarding to Jackson Mich., and 1850 with red “Chicago Ill. 18 Jul.” circular datestamp and “5” in serrated oval handstamp, blue “Ann Arbor Mic. Jul. 19” circular datestamp and matching “5” and “10” (total) rate handstamp for forwarding but no town indicated, Very Fine, a colorful pair of covers E. 400-500
- 1040 ☒ **Amherst N.H. May 28.** Clearly struck circular datestamp and “5” rate handstamp on cover to Dover N.H., forwarded to Lauren Mass. with blue “Dover N.H. May 29” circular datestamp with matching “Forwarded” straightline and “10” rate struck over “5”, Very Fine E. 200-300

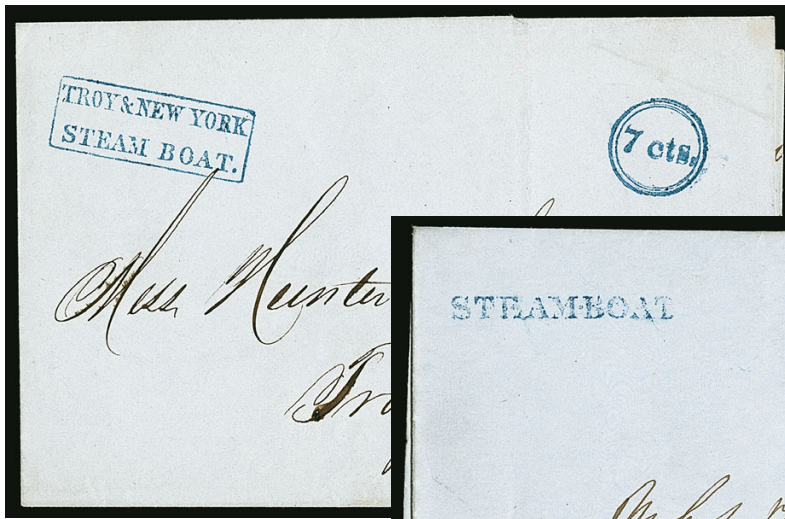
RAILROAD



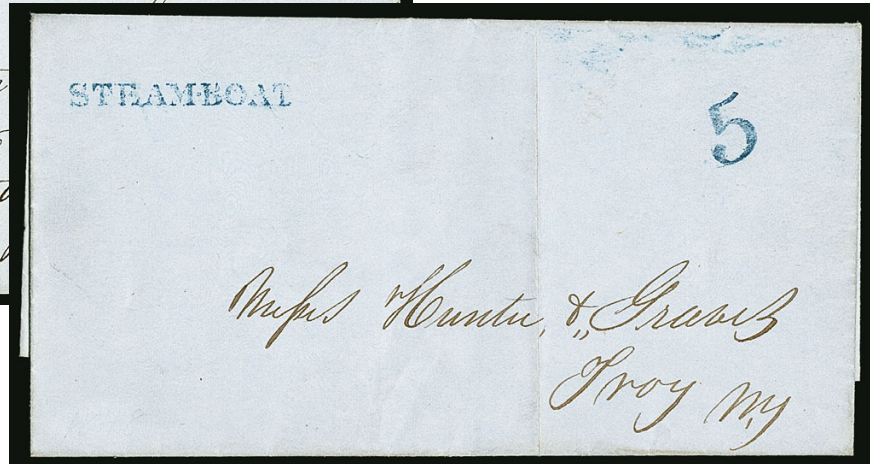
1041

- 1041 ☒ **“HRR/MAIL” (Housatonic Railroad).** Bold strike of red two-line handstamp and matching large “5” rate handstamp on light blue folded letter datelined “Fall Village Apl 23d 1847” (Connecticut) to Honesdale Pa., Extremely Fine, this marking with “Mail” is much scarcer than the “HRR” version without the second line, this is probably the finest example extant, with 2011 P.F. certificate..... E. 750-1,000

WATERWAY AND SHIP MARKINGS



1042



1043

- 1042 ☒ **TROY & NEW YORK/STEAM BOAT.** Perfect strike of blue framed handstamp and matching “7 cts.” in double-line circle rate handstamp (5c plus 2c captain’s fee) on blue folded cover to Troy N.Y., docketed with Apr. 2, 1852 origin date, Extremely Fine, remarkable quality E. 400-500
- 1043 ☒ **“STEAM-BOAT” (Troy N.Y.).** Blue straightline and “5” rate handstamps applied on arrival on blue folded letter to Troy N.Y., docketed with June 2, 1848 origin date, Extremely Fine E. 200-300



1044

- 1044 ☒ **Ouachita Packet/Princeton.** Sharp and detailed strike of this rare Ouachita River name-of-boat handstamp in blue with illustration of **cotton bale** at center on light blue folded letter datelined “Beach Hills, Feby 26th, 1848” to New Orleans, letter lists goods sent by steamboat including cotton bales, light file fold and small sealed slit
EXTREMELY FINE. REPORTED TO BE THE FINEST EXAMPLE OF THIS STEAMBOAT MARKING, WHICH DEPICTS A COTTON BALE, THE STAPLE OF SOUTHERN COMMERCE.
Ex “Chicago Collection” E. 2,000-3,000



1045



1046



1047

- 1045 ☒ **Gloucester Ms. May 26.** Vivid red circular datestamp and matching large “SHIP” straightline handstamp with manuscript “14” rate changed to “8” on blue folded letter in French datelined “Cayenne 6 Avril 1840” (Surinam) and addressed to Salem Mass., forwarding agent’s blue manuscript endorsement on back “Forwarded by Your most Obt Sevt. Moses A. Wittering, Paramaribo, April 25th, 1840” and directive on front in same hand “fwd by Capt. Jer. Foster, Bark Jane”, Extremely Fine..... E. 400-500
- 1046 ☒ **San Francisco/40/1 June.** Perfect bold strike of red integral 40c rate circular datestamp on blue folded letter to Taunton Mass., datelined “San Francisco 30th May, 1850” with interesting content — “...I am now in command of the steamer Major Tompkins on the Sacramento river — We make our first trip tomorrow.” — sender’s ship-name directive “Steamer Oregon June 1st”, Extremely Fine, this is the earliest known use of this San Francisco 40c integral-rate datestamp, sent via Pacific Mail Steamship Co. Oregon, departing San Francisco on June 1 and arriving in Panama on June 21, then by U.S. Mail Steamship Co. Georgia, departing Chagres on June 26 and arriving in New York on July 8, pictured in Wiltsee’s *Gold Rush Steamers of the Pacific* (p. 380), ex Walske E. 750-1,000
- 1047 ☒ **TOO LATE.** Clear slanted straightline handstamp in red, apparently applied to an inland waterways folded cover to Milledgeville Ga. with matching “Savannah *Geo.* Oct. 25” circular datestamp and matching large “PAID” straightline handstamp, magenta manuscript “37½” for double rate with sender’s “2” and charge box notation in upper left corner, Extremely Fine, this is the recording example of this marking, which came to light in archival material offered in our Sale 764..... E. 500-750

ANNAPOLIS, MARYLAND, RED EAGLE HANDSTAMP



1048

1048 ☒ **Annapolis, Maryland, (2c) Red Handstamp (2XU1 var).** Perfect bold strike on cover locally addressed to "W. B. Stephenson Esq., A. of D., Present", matching "2" drop rate handstamp at upper right, missing most of backflaps

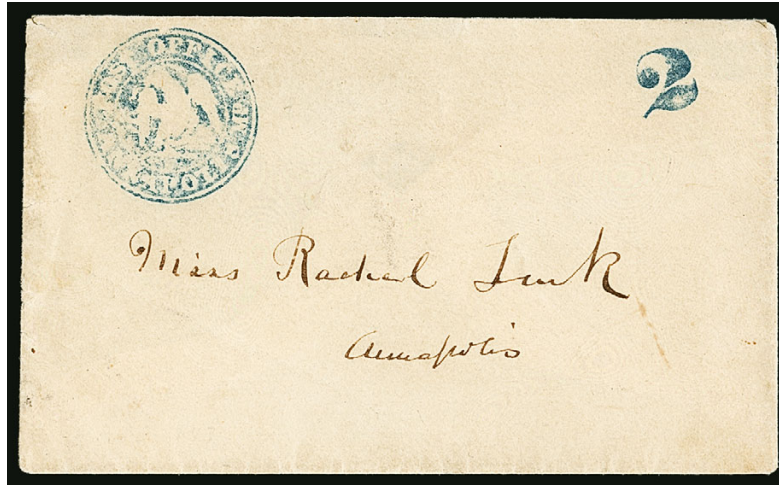
A SUPERB STRIKE ON A FINE APPEARING COVER. A RARE EXAMPLE OF THE ANNAPOLIS POSTMASTER'S SEAL, WHICH WAS USED TO MAKE THE FAMOUS POSTMASTER PROVISIONAL ENVELOPES AND ALSO WAS RARELY APPLIED AS A POSTMARK. IT IS ESPECIALLY SCARCE STRUCK IN RED.

Ex Meroni, Dr. Maffeo and "Golden Oak". With 1956 P.F. certificate. Scott value for red handstamp and "2" rate is \$30,000.00 (footnote to No. 2XU1) E. 15,000-20,000



Detail

ANNAPOLIS, MARYLAND, BLUE EAGLE HANDSTAMP



1049

- 1049 ☒ **Annapolis, Maryland, (2c) Blue Handstamp (2XU1 var).** Clear strike on lady's small cover with matching "2" drop rate handstamp addressed locally to Miss Rachel Turk, immaculate condition

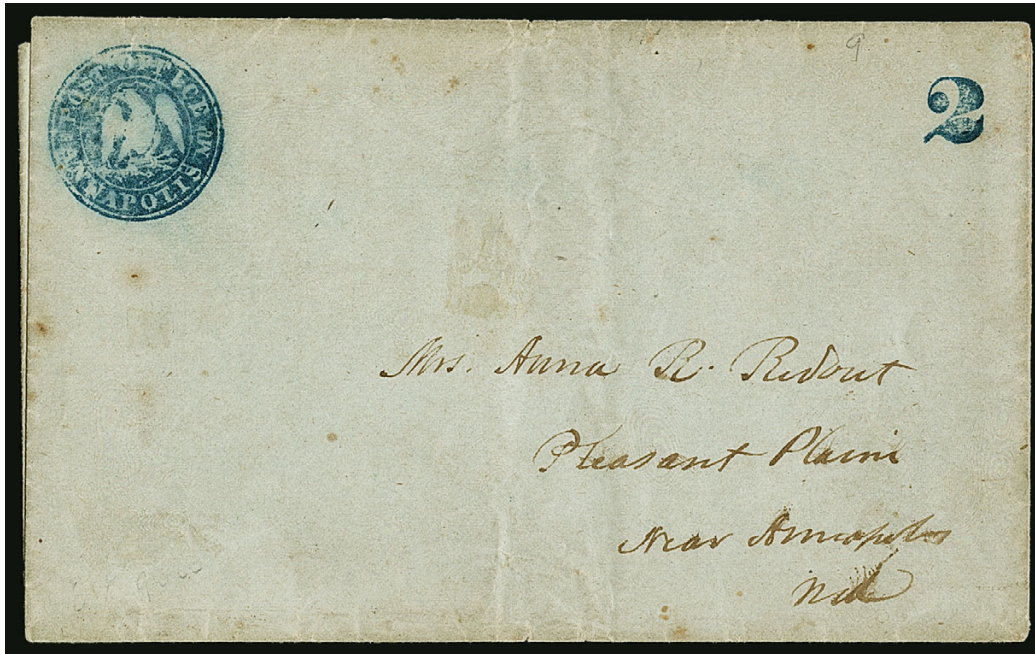
VERY FINE. A BEAUTIFUL CLEAR STRIKE OF THE ANNAPOLIS POSTMASTER'S SEAL, WHICH WAS USED TO MAKE THE FAMOUS POSTMASTER PROVISIONAL ENVELOPES AND ALSO WAS RARELY APPLIED AS A POSTMARK.

Ex Meroni, Hayes, Haas, Beals, Dr. Maffeo and "Golden Oak". With 1970 P.F. certificate. Scott value for blue handstamp and "2" rate is \$20,000.00 (footnote to No. 2XU1)
..... E. 10,000-15,000



Detail

ANNAPOLIS, MARYLAND, BLUE EAGLE HANDSTAMP



1050

1050 ☒ **Annapolis, Maryland, (2c) Blue Handstamp (2XU1 var).** Gorgeous strike of Eagle post office handstamp with matching "2" drop-rate handstamp on blue folded cover addressed to "Mrs. Anna R. Redout, Pleasant Plains near Annapolis Md.", trivial edgewear

VERY FINE. A BEAUTIFUL CLEAR STRIKE OF THE ANNAPOLIS POSTMASTER'S SEAL, WHICH WAS USED TO MAKE THE FAMOUS POSTMASTER PROVISIONAL ENVELOPES AND ALSO WAS RARELY APPLIED AS A POSTMARK.

With 1990 P.F. certificate. Scott value for blue handstamp and "2" rate is \$20,000.00 (footnote to No. 2XU1)..... E. 10,000-15,000



Detail

1847 ISSUE

5-CENT TIED BY PHILADELPHIA "R" HANDSTAMP



1051

- 1051 ☒ **5c Red Brown (1).** Large even margins, rich color on deeply blued paper, cancelled by small manuscript "X", blue "Baltimore Md. Mar. 27" circular datestamp on folded letter datelined at Emmitsburg Md., Mar. 26, 1849, enclosing annual dues to The American Association for the Advancement of Science and addressed to Philadelphia, on arrival the Philadelphia post office applied **two strikes of large blue "R" (Recorded) handstamp, one cancelling and tying 5c 1847 stamp**, fresh and pristine

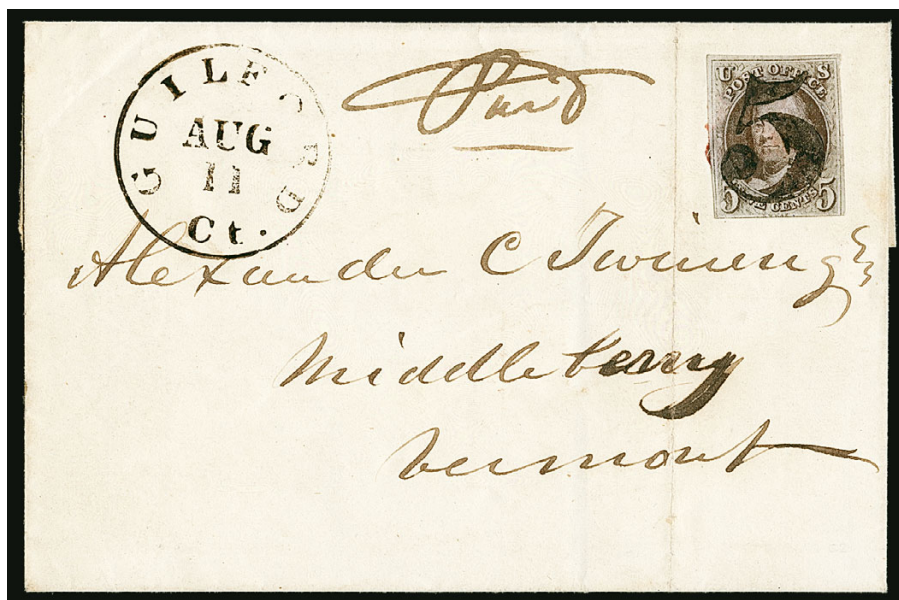
EXTREMELY FINE. THIS 1847 ISSUE COVER — FROM A RECENT FIND — IS THE ONLY RECORDED EXAMPLE OF THE PHILADELPHIA "R" REGISTRATION HANDSTAMP USED TO CANCEL AN ADHESIVE STAMP. A MARVELOUS 1847 COVER.

This letter is addressed to Dr. Alfred L. Elwyn as treasurer of the American Association for the Advancement of Science. Dr. Elwyn was a philanthropist and leader in the care of the mentally disabled.

Philadelphia's post office was the first to apply a marking to indicate that a letter was registered. The "R" marking was only applied to incoming letters. The large "R" was used until October 1849, at which point it was replaced with a smaller "R". A list of 1847 Issue covers with registration markings appears in an article by Dr. James W. Milgram in *Chronicle* 249, where this cover is illustrated and described. It is the only Philadelphia "R" cover with the stamp cancelled by the registration marking. Presumably, the Philadelphia postal clerk felt that the Baltimore office did not sufficiently cancel the 5c stamp with the small manuscript "X".

This letter surfaced in 2013 in a New England antiques auction. It is offered in the philatelic market for the first time in this auction..... E. 2,000-3,000

GUILFORD, CONNECTICUT, "5" RATE HANDSTAMP



1052

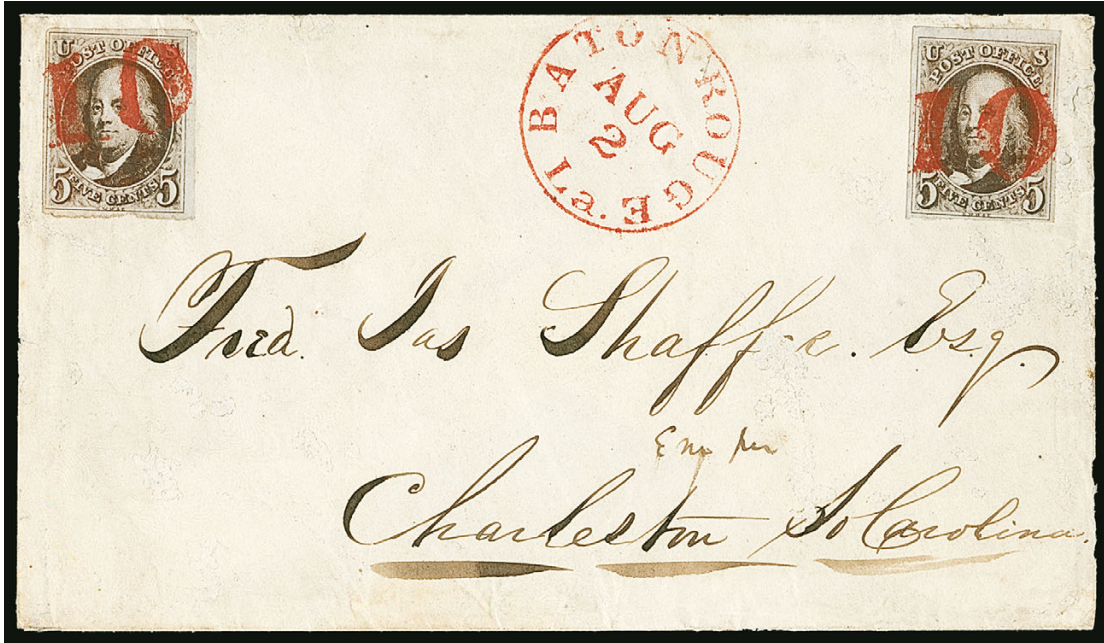
1052
Stampless covers

- 1052 ☒ **5c Brown (1).** Three full to large margins, close to barely touching bottom frameline, dark shade, affixed with red wax wafer, cancelled by perfect strike of **large bold "5" numeral rate handstamp** in brownish-black ink, matching "Guilford Ct. Aug. 11" (ca. 1848) circular datestamp on folded cover to Middlebury Vt., sender's "Paid" notation (which, together with the red wax wafer used to affix the stamp, indicates a degree of caution about using adhesive stamps), vertical file fold clear of stamp, accompanied by two related stampless covers from Guilford, one with same "5" handstamp on folded letter to Collinsville Conn., other with woodcut "10" on brown envelope to Burlington Iowa

EXTREMELY FINE. A SPECTACULAR COVER FROM GUILFORD, CONNECTICUT, WITH THE 1847 ISSUE CANCELLED BY THE 5-CENT RATE HANDSTAMP OF THE PRE-STAMP ERA, WHICH FORMS A WONDERFUL TRIO WITH 5-CENT AND 10-CENT STAMPLESS COVERS FROM GUILFORD.

Illustrated in 1851 Sesquicentennial book (p. 221). Ex Dr. Kapiloff. E. 5,000-7,500

BATON ROUGE, LOUISIANA, "10" RATE HANDSTAMP



1053

- 1053 ☒ **5c Red Brown (1).** Two, each with full to large margins, deep shade, affixed at upper left and right corners of envelope and each cancelled by **bold vivid red "10" rate handstamp** with matching "Baton Rouge La. Aug. 2" (ca. 1848-49) circular datestamp, addressed to Charleston S.C. (10c rate for distance over 300 miles), slight edgewear and small scuffed spots in address area not affecting stamps or appearance

EXTREMELY FINE. A TRULY REMARKABLE 1847 ISSUE COVER WITH STAMPS CANCELLED BY THE BRILLIANT RED "10" RATE HANDSTAMP OF BATON ROUGE, LOUISIANA.

Source notations on back indicate this was sold by Hugh Barr on Jan. 14, 1948, and Irwin Heiman in 1968. E. 7,500-10,000



1054

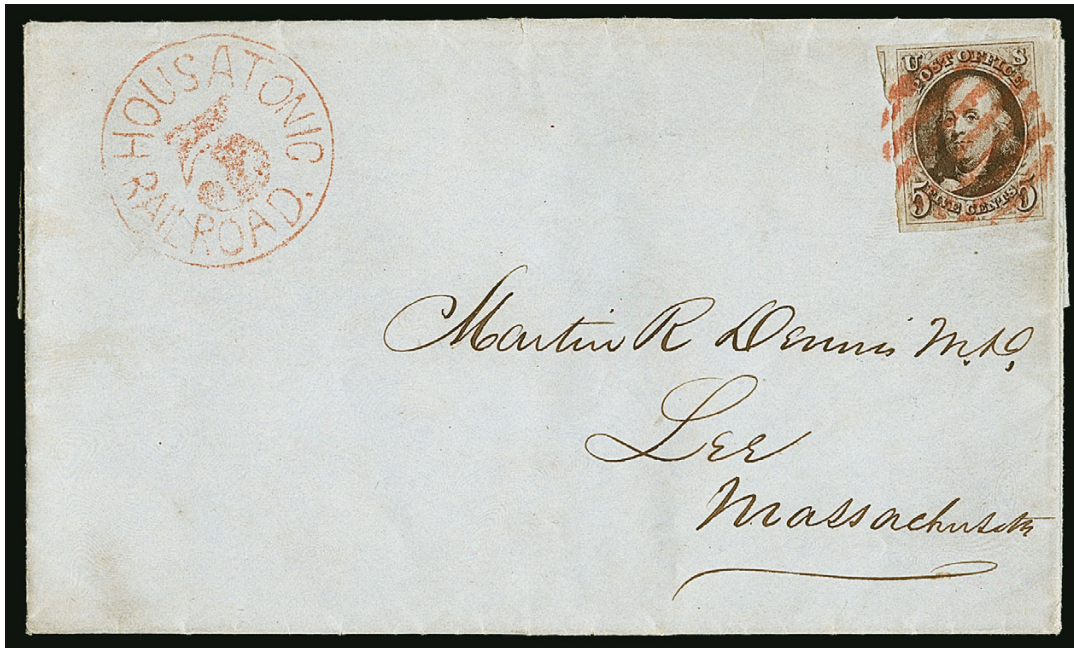
1056



1055

- 1054 ☒ **Baton Rouge La. Mar. 16.** Absolutely perfect bold **vivid red** strike of circular datestamp with equally perfect matching strikes of "PAID", large "10" and "STEAM" handstamps on light blue folded 1849 folded letter datelined at Baton Rouge and addressed to Hagerstown Md., from the Beatty correspondence, Extremely Fine, magnificent quality and a perfect companion to the 1847 Issue cover with the same "10" handstamp offered in lot 1053, ex Hollowbush..... E. 750-1,000
- 1055 ☒ **Baton Rouge La. Nov. 19.** Vivid **red** circular datestamp with "9" corrected to "6" in pencil, matching "5" and "10" (total) rate handstamps on **forwarded** greenish folded letter, datelined at Montrose Miss. Oct. 29, 1848, with lightly struck red "Woodville Mi. Nov. 1" circular datestamp, manuscript "5" rate, manuscript "forward" and rate notations for forwarding from Baton Rouge to Rodney Miss., Extremely Fine, another colorful companion to lots 1053 and 1054 E. 300-400
- 1056 ☒ **Baton Rouge La. "STEAM" and "ADVERTISED 2".** Straightline handstamps and bold "5" rate handstamp with manuscript "7" cents total on greenish blue folded letter datelined "Baton Rouge, Dec. 22, 1847", to local addressee, regarding delivery of goods on wharf boat, written and addressed in blue, Extremely Fine, very unusual..... E. 300-400

HOUSATONIC RAILROAD



1057

- 1057 ☒ **5c Red Brown (1).** Large margins all around including part of adjoining stamp at left (small separation tear entirely in margin between stamps), tied by bold strike of red 7-bar large open grid cancel, matching "Housatonic Railroad 5" in circle route agent's handstamp on blue folded letter datelined "Newark Fri. Ev" to Lee Mass.

EXTREMELY FINE AND RARE HOUSATONIC RAILROAD 1847 ISSUE COVER.

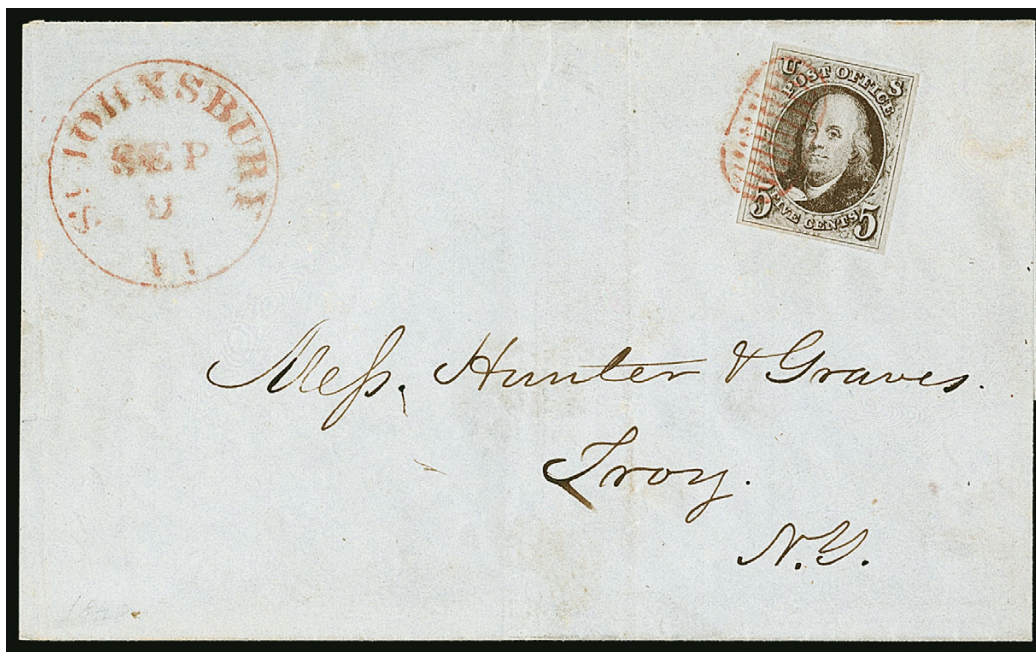
Ex Chase, Ackerman, Hall, Hackmey and Gross. With 2000 and 2013 P.F. certificates.....
 E. 5,000-7,500



1058

- 1058 ☒ **Housatonic Rail Road 5.** Extraordinarily clear strike of red handstamp on immaculate white cover to Stapleton N.Y. on Staten Island, Extremely Fine, a beautiful and very scarce marking, ex Grunin and Kramer E. 750-1,000

ST. JOHNSBURY, VERMONT, SCARAB FANCY CANCEL



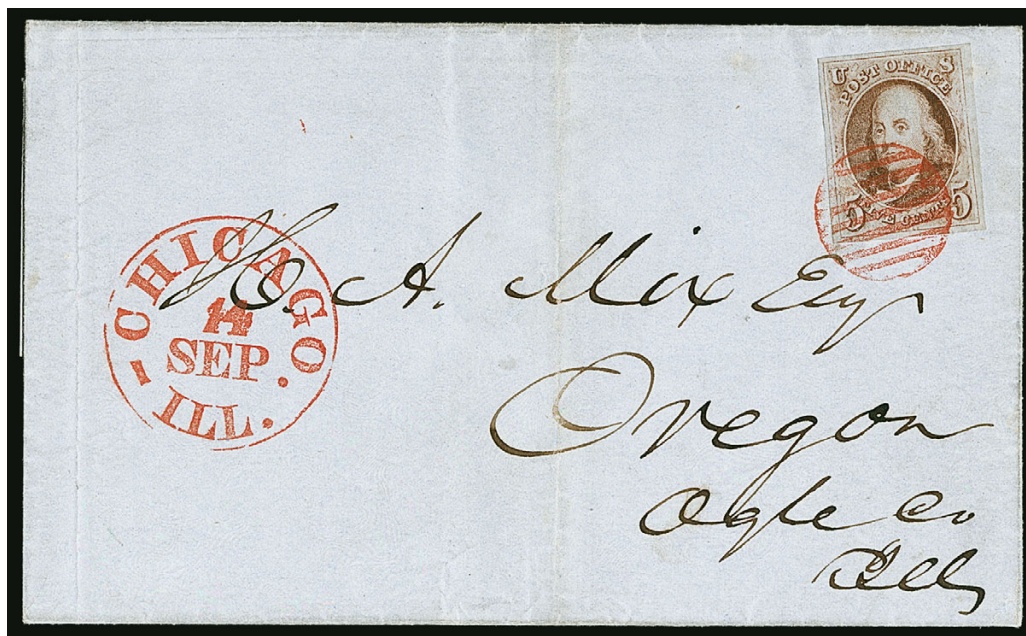
1059

- 1059 ☒ **5c Grayish Brown (1a).** Large margins, wonderful dark color, tied by perfect strike of **red Scarab fancy cancel**, matching clear strike of "St. Johnsbury Vt. Sep. 9" circular date-stamp on blue 1848 folded cover to Troy N.Y., light vertical file folds well clear of stamp and markings, without left side flap

EXTREMELY FINE. A MAGNIFICENT EXAMPLE OF THE FAMOUS ST. JOHNSBURY "SCARAB" FANCY CANCELLATION TYING A SUPERB 5-CENT 1847 STAMP ON AN IMMACULATE COVER.

Fancy "killer" cancels are extremely rare in the 1847-51 period. The term "killer" to describe the cancel was actually used by New York Postmaster Robert H. Morris. Although fancy rate markings from the pre-stamp era were used to cancel 1847 stamps, fancy cancels created for the specific purpose of "killing" stamps did not become popular until the 1850's. The more distinctive designs are the St. Johnsbury Vt. Scarab, Trenton N.J. Star and Binghamton N.Y. Herringbone. The Alexander book lists eight genuine uses of the 5c on cover with this cancel.

Illustrated in *Chronicle* 50 (p. 94). Ex Brown, Bingham, Floyd T. Starr, Ishikawa, Boker and Gross. With 2013 P.F. certificate..... E. 15,000-20,000

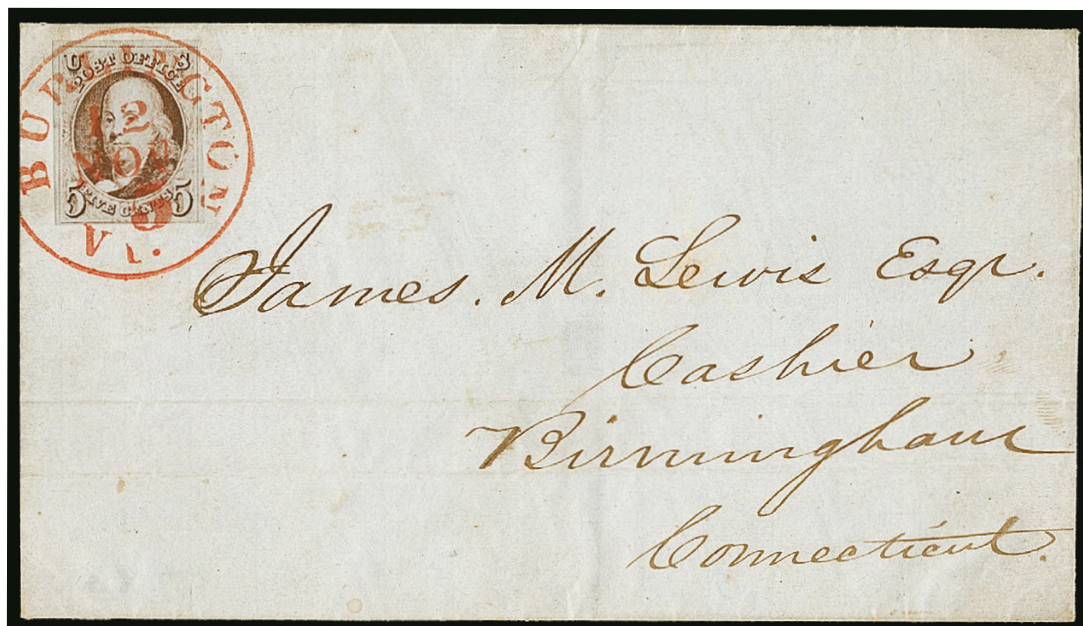


1060

- 1060 ☒ **5c Red Brown (1).** Large margins, beautiful bright shade with strong reddish hue, tied by perfect strike of red grid cancel, matching and equally perfect strike of "Chicago Ill. 14 Sep." circular datestamp on blue folded cover to Oregon Ill.

EXTREMELY FINE GEM STAMP AND COVER. ONE OF THE MOST BEAUTIFUL EXAMPLES OF THE 1847 ISSUE USED FROM CHICAGO WE HAVE EVER ENCOUNTERED.

Ex Newbury, Hart, Boker and Gross. With 2013 P.F. certificate..... E. 1,500-2,000



1061

- 1061 ☒ **5c Red Brown (1).** Large margins to well clear at bottom, bright shade, tied by perfect strike of red "Burlington Vt. 5 Nov. 12" integral-rate circular datestamp on blue 1850 folded cover to Birmingham Conn., light file folds well away from stamp, Very Fine, a beautiful cover, ex Boker and Gross, with 2013 P.F. certificate..... E. 750-1,000



1062

- 1062 ☒ **5c Red Brown (1).** Vertical pair, large even margins, beautiful bright shade and sharp impression, tied by four overlapping strikes of red **"Paid"** straightline handstamp with matching "Charleston S.C. 10 Oct. 7" integral-rate circular datestamp on blue folded cover to Philadelphia, from the Ludlow, Beebe & Co. correspondence

EXTREMELY FINE GEM PAIR ON A PRISTINE COVER WITH PERFECTLY STRUCK CHARLESTON S.C. DATESTAMP AND QUADRUPLE "PAID" CANCELLATION.

Ex "European Connoisseur". With 2015 P.F. certificate..... E. 3,000-4,000

MAD RIVER AND LAKE ERIE RAILROAD



1063

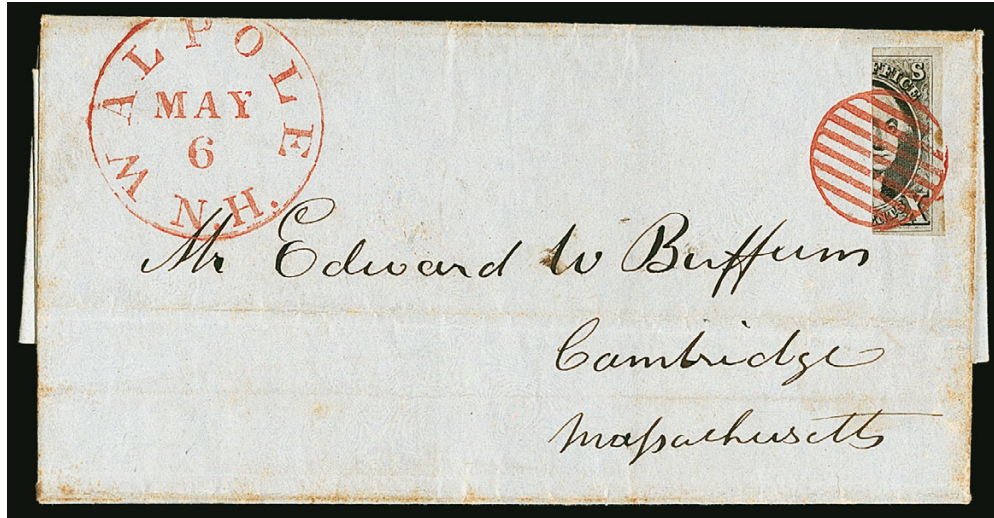
- 1063 ☒ **5c Brown Orange (1b).** Huge margins to full including part of adjoining stamp at bottom, cancelled by well-struck blue **"PAID"** handstamp and tied by matching **"Mad Riv. & Lak. Erie R.R. May 16"** route agent's circular datestamp on blue folded letter datelined **"Dayton May 15, 1851"** to Sandusky O.

EXTREMELY FINE. A MAGNIFICENT 1847 ISSUE COVER WITH THE 5-CENT BROWN ORANGE TIED BY THE MAD RIVER AND LAKE ERIE RAILROAD ROUTE AGENT'S DATESTAMP.

This railroad route ran from Sandusky to Bellefontaine, Ohio. In 1848 it was extended to Springfield. The trains ran six trips per week and connected with the Little Miami Railroad for Cincinnati via Xenia. There are perhaps a half-dozen examples of this marking known on the 1847 Issue, and this is most definitely the finest.

Ex Boker and Gross. With 2013 P.F. certificate E. 3,000-4,000

10-CENT 1847 VERTICAL BISECT



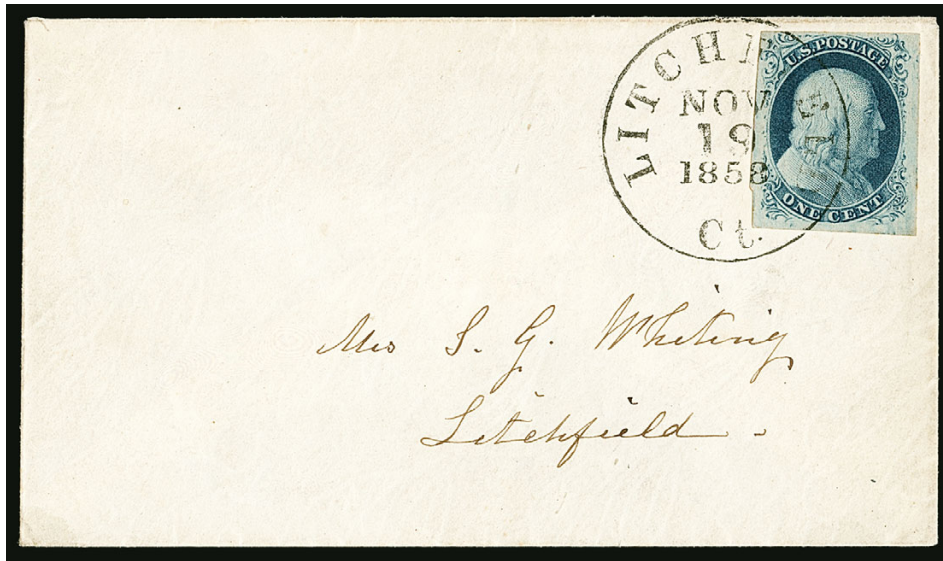
1064

- 1064 ☒ **10c Black, Vertical Half Used as 5c (2b).** Right vertical half, large margins, tied across the cut by perfect strike of **bright red** grid cancel, matching "Walpole N.H. May 6" circular datestamp on blue 1851 folded letter to Edward W. Buffum in Cambridge Mass., horizontal file fold well away from bisect, few scattered spots of cover toning barely touch stamp (not mentioned on accompanying certificates)

EXTREMELY FINE. THIS IS ARGUABLY THE FINEST OF ALL EXAMPLES OF THE 10-CENT 1847 ISSUE VERTICAL BISECT. A SPECTACULAR COVER.

This is the only recorded bisect used from Walpole, New Hampshire. The brilliance and care taken in applying the cancel and circular datestamp remind us of other iconic 1847 covers, such as those from Waukegan, Illinois.

Ex Boker and Gross. With 1988 and 2013 P.F. certificates. E. 20,000-30,000



1067

- 1067 ☒ **1c Blue, Ty. III (8).** Plate 4, a strong Type III with huge break in bottom line and a formidable break in top line, three huge margins and full at top, intense shade and impression, tied by perfectly clear strike of "Litchfield Ct. Nov. 19, 1858" circular date-stamp on lady's small cover to a local addressee

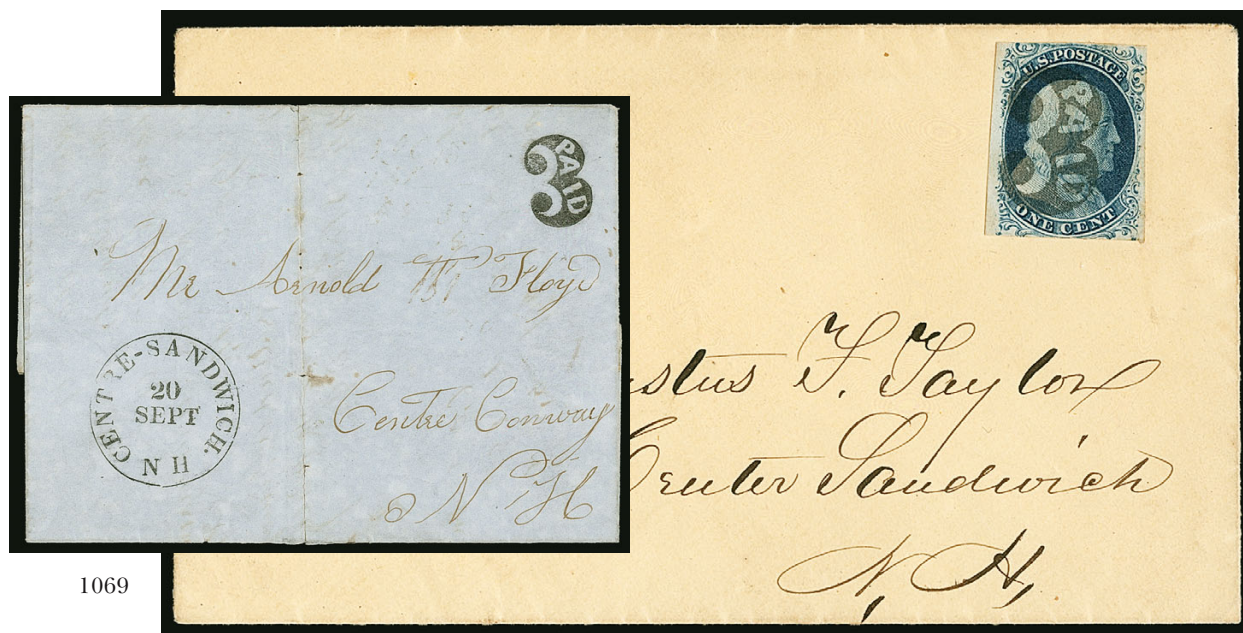
EXTREMELY FINE. A SPLENDID EXAMPLE OF THE SCARCE 1851 ONE-CENT TYPE III IMPERFORATE ON A DROP-RATE COVER. ONE OF THE GEMS OF THE COLLECTION.

Ex Newbury and "European Connoisseur". With 2016 P.F. certificate. The Scott value for a 1c Type III on cover is only \$250 more than the value for a used stamp off cover, which by no means reflects the scarcity and desirability of the short-lived imperforate 1c Type III on cover, especially in this quality. E. 4,000-5,000



1068

- 1068 ☒ **1c Blue, Ty. IIIa (8A).** Position 88L4, huge margins to in, tied by "Albany N.Y. Paid" handstamp on folded printed circular for Astronomical Journal dated Cambridge, July 23, 1857 announcing discovery of a new planet the month prior, addressed to Edward Everett, the renowned orator who spoke for two hours at Gettysburg before Lincoln gave his two-minute address, Fine stamp on a bright fresh cover, ex Curtis, with 2004 A.P.S. certificate..... E. 400-500



1069

- 1069 ☒ **1c Blue, Ty. II (7).** Position 62L2, ample margins to slightly in, cancelled by perfect socked-on-the-nose **negative "Paid" in numeral "3" rate handstamp** of Centre Sandwich N.H. on unsealed yellow envelope to local addressee, Extremely Fine, accompanied by blue stampless folded letter with same rate handstamp and "Centre-Sandwich N.H. 20 Sept." circular datestamp, bleached spots, split along file fold, but markings are sharp and clear, and the cover makes an ideal companion to the gem-quality 1c 1851 Issue cover, both covers illustrated in 1851 Sesquicentennial book (pp. 279-280), see also Ashbrook Vol. II (p. 87), ex Malcolm and Grunin E. 2,000-3,000



1070

- 1070 ☒ **1c Blue, Ty. IV (9).** Recut once at top and bottom, large margins including part of adjoining stamp at bottom, barely touched at upper left, tied by perfect strike of **blue 8-Point Rosette fancy cancel**, matching "Amherst N.H. Mar. 26" circular datestamp on locally-addressed buff cover, cover with few trivial age spots
EXTREMELY FINE. A SUPERB STRIKE OF THIS EXCEEDINGLY RARE 1851 ISSUE ERA FANCY CANCELLATION. A TRULY SPECTACULAR CLASSIC COVER.
Ex Haas, Rogers, Hackmey and Gross. With 1993 and 2013 P.F. certificates
..... E. 3,000-4,000



1071

- 1071 ☒ **1c Blue, Ty. IV (9).** Position 66R1L, recut once at top, tied by blue “Paid 1ct.” in circle handstamp, second strike at left, on 1854 printed Prices Current from Augusta Ga. to Providence R.I., light vertical file folds well away from stamp, Very Fine, ex Vogel, accompanied by a stampless folded printed notice from Burlington Vt., Sep. 20, 1855, with perfect strike of red “Paid 1” in circle handstamp for circular rate, Extremely Fine, a beautiful pair of covers from the same era showing stamped and stampless versions of the printed matter rate..... E. 750-1,000



1072

- 1072 ☒ **1c Blue, Ty. IV (9).** Position 31L1L, recut once at top and once at bottom, **double transfer**, three huge margins showing parts of adjoining stamps and sheet margin at left, clear at bottom, deep shade, tied by clear strike of red “Paid/U.S. Mail/City Delivery/1/Oct. 15” New York City carrier department circular datestamp on banking firm’s 1857 printed notice to local addressee, Extremely Fine, with 2011 P.F. certificate..... E. 400-500



1073

1074

- 1073 ✉ **1c Blue, Ty. IV (9).** Position 69L1L, recut once at top, twice at bottom, full to huge margins including part of adjoining stamp at right, tied by neat strike of "Wilmington Del. 24 Mar." circular datestamp on buff cover to Milton Del. with **Bennett & Brother's medicine bottle corner card**, arithmetic notes on back, Extremely Fine stamp and unusual advertising cover, ex Vogel and "Golden Oak"..... E. 500-750
- 1074 ✉ **1c Blue, Ty. IV (9).** Position 49R1L, recut once at top and once at bottom, full even margins, tied by clear strike of "Northampton Ms. Aug. 1" (1857) circular datestamp on buff cover to local addressee, Extremely Fine..... E. 150-200



1075

1076

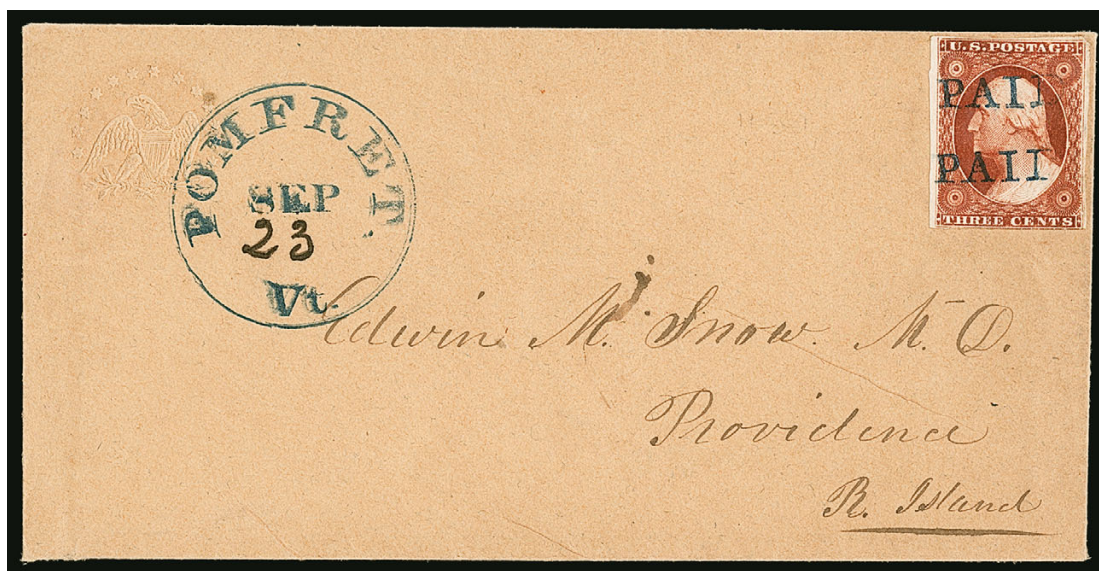
1077

- 1075 ✉ **Keene N.H. Paid Jan. 3.** Blue circular datestamp with matching "Paid" and "1" drop rate handstamps (deliberately overlapping strikes) on lady's small embossed cover to local addressee, Extremely Fine E. 200-300
- 1076 ✉ **1c Blue, Ty. IV (9).** Recut once at top and once at bottom, full margins to touching, bright shade, tied by blue "Keene N.H. Feb. 14" **Valentine's Day** circular datestamp on cover to local addressee (a young unmarried lady), Extremely Fine E. 200-300
- 1077 ✉ **1c Blue, Ty. IIIa (22).** Plate 4, break in outer line at top, intense shade and impression, tied by incredibly bold pitch-black strike of "Keene N.H. Paid" dateless-circle handstamp on unsealed cover to Dublin N.H., with printed advertising enclosure for wholesale and retail dealers in hats, caps, furs, robes, gloves and other accessories, Very Fine, outstanding quality, this cover and lots 1075 and 1076 form a perfect trio of Keene N.H. one-cent rate covers E. 400-500



1078

- 1078 ☒ **3c Orange Brown, Ty. II (10A).** Position 91R1E, large margins including **bottom left corner interpane margins and centerline**, rich color and early impression, manuscript “#” cancel and tied by **red grid** cancels, matching “New London Conn. Jul. 14” (1851) circular datestamp on buff cover to Hadlyme Conn., **printed two-line return address** “**From S. A. WEAVER & Co. New-London Ct. CIRCULAR**” with stamp affixed over the word “Circular” since it was an ordinary first-class letter, small edge tears at bottom and some slight wear, still Very Fine, an early use of the 1851 Issue and very rare corner-margin 3c Orange Brown, the use of a return address envelope at this early date is also unusual E. 1,000-1,500



1079

- 1079 ☒ **3c Orange Brown, Ty. I (10).** Large margins to just clear at bottom right, extraordinary intense color, cancelled by two bold strikes of **blue “PAID”** handstamp, matching “Pomfret Vt. Sep. 23” circular datestamp with date in manuscript on **blind embossed 13-Star, Eagle and Shield** corner card cover to Providence R.I., Extremely Fine, a beautiful and striking cover, with 2011 P.F. certificate which states “the stamp in the ‘intense’ Orange Brown shade” (a very unusual comment for a P.F. certificate)..... E. 500-750



1080

- 1080 ☒ **3c Copper Brown, Ty. II (10A).** Position 20L5E, large margins including **right interpane margin with centerline**, part of adjoining stamps at top and left, intense Copper Brown shade (confirmed by accompanying certificate), tied by perfect strike of **blue** "Woonsocket R.I. Aug. 19" (1851) circular datestamp on pristine cover to Worcester Mass., Extremely Fine Gem stamp on an immaculate cover, ex Grunin, with 1987 P.F. certificate..... E. 1,000-1,500



1081

- 1081 ☒ **3c Orange Brown, Ty. II (10A).** Position 49L1i, three ample margins to slightly in at top, rich color, cancelled by clear strike of **blue** "FREE" handstamp, matching "Mad Riv. & Lak. Erie R.R." route agent's circular datestamp with pencil "July 18" date on blue folded cover to Cincinnati, Very Fine, an outstanding 1851 Issue railroad cover, Dr. Chase's notes on back including description of this as a "very early use of Plate 1 [intermediate]", illustrated in 1851 Sesquicentennial book (p. 239), ex Dr. Chase and Newbury E. 750-1,000

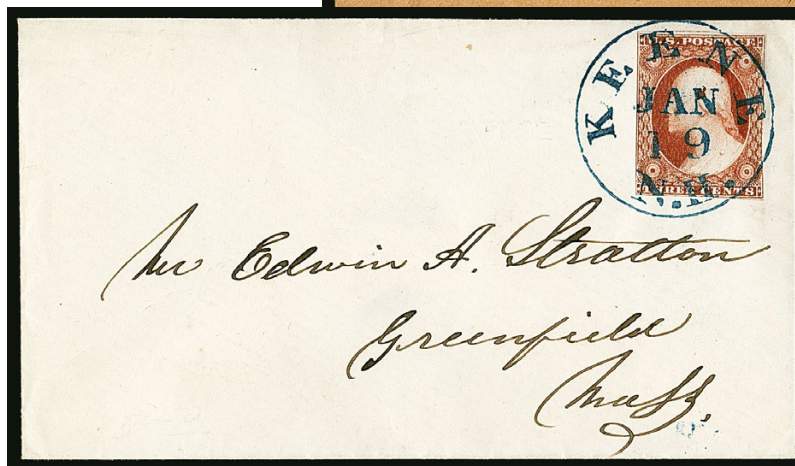
1083



1082

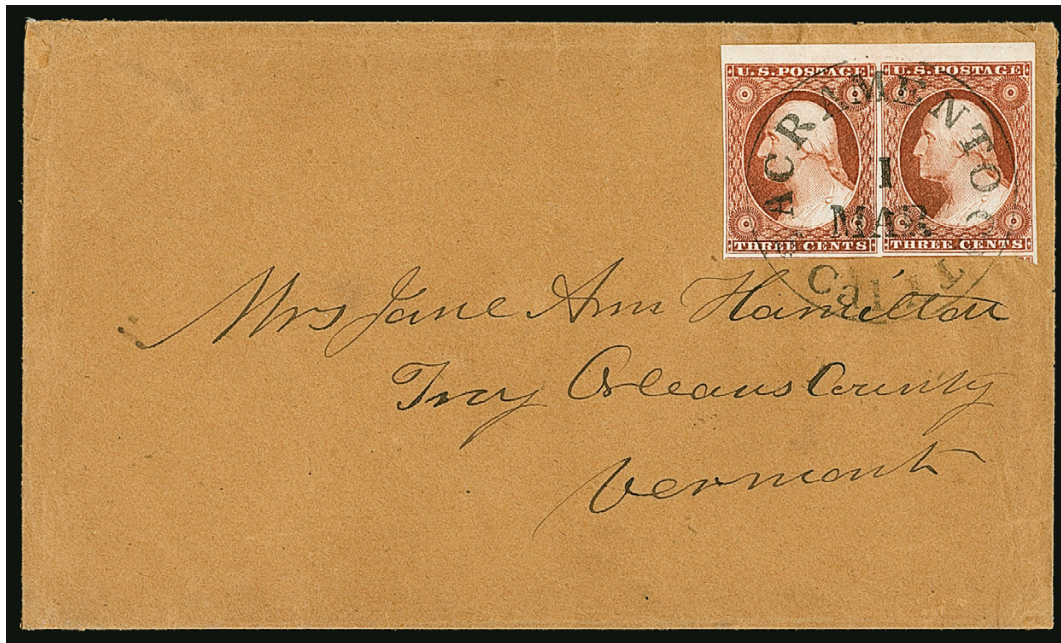


1084



1085

- 1082 ☒ **3c Orange Brown, Ty. II (10A).** Ample margins to slightly in, bright shade, tied by **red** grid cancel, bold matching strike of "Cleveland O. Jul. 26" (1851) circular datestamp on cover to Northampton Mass., Very Fine, colorful cover..... E. 200-300
- 1083 ☒ **3c Orange Brown, Ty. I (10).** Ample to full margins, gorgeous rich color, tied by perfect bold strike of **vivid red** "Lancaster Pa. Oct. 10" (1851) circular datestamp on buff cover to Philadelphia, two small pieces missing from backflaps, otherwise Extremely Fine, ex Grunin, with 2010 P.F. certificate..... E. 200-300
- 1084 ☒ **3c Orange Brown, Ty. II (10A).** Full margins, bright color, tied by **blue** "Concord & Montreal R. R. Sep. 29" route agent's circular datestamp on cover to Warren N.H., fresh and Very Fine, with 1988 and 2007 P.F. certificates..... E. 200-300
- 1085 ☒ **3c Experimental Orange Brown, Ty. II (11A var).** Position 58L1L, margins close to touching, rich color, tied by absolutely perfect bold strike of **dark blue** "Keene N.H. Jan. 19" circular datestamp on small cover to Greenfield Mass., Very Fine, with Dr. Amonette's plate and shade identification slip as "Plate 1L Deep experimental O.B." E. 400-500



1086

- 1086 ☒ **3c Orange Brown, Ty. II (10A).** Horizontal pair, large even margins including **top sheet margin**, right stamp has **double transfer**, intense shade and proof-like impression, tied by clear strike of "Sacramento City Cal. 1 Mar." (1852) circular datestamp on brown cover to Troy Vt., Extremely Fine Gem pair on a beautiful 6c transcontinental rate cover, ex Brown, with 1989 P.F. certificate..... E. 1,000-1,500



1087

- 1087 ☒ **3c Dull Red, Ty. II (11A).** Full to ample margins, tied by two strikes of "III" in "C" **Trime** fancy cancel with matching "**Green Island, N.Y./MAR 19**" two-line datestamp on cover to Meriden N.H.

EXTREMELY FINE. A REMARKABLE 1851 ISSUE COVER WITH THE STAMP TIED BY THE GREEN ISLAND 3-CENT FANCY CANCELLATION, IN CONJUNCTION WITH THE STRAIGHT-LINE TOWN MARKING.

Illustrated and discussed in 1851 Sesquicentennial book (pages 269 and 283), where Frank Mandel notes that this marking is not known to him as a stampless rate marking. Therefore, it is apparently a distinctive and rare "Trime" fancy cancellation of the 1851 Issue era.

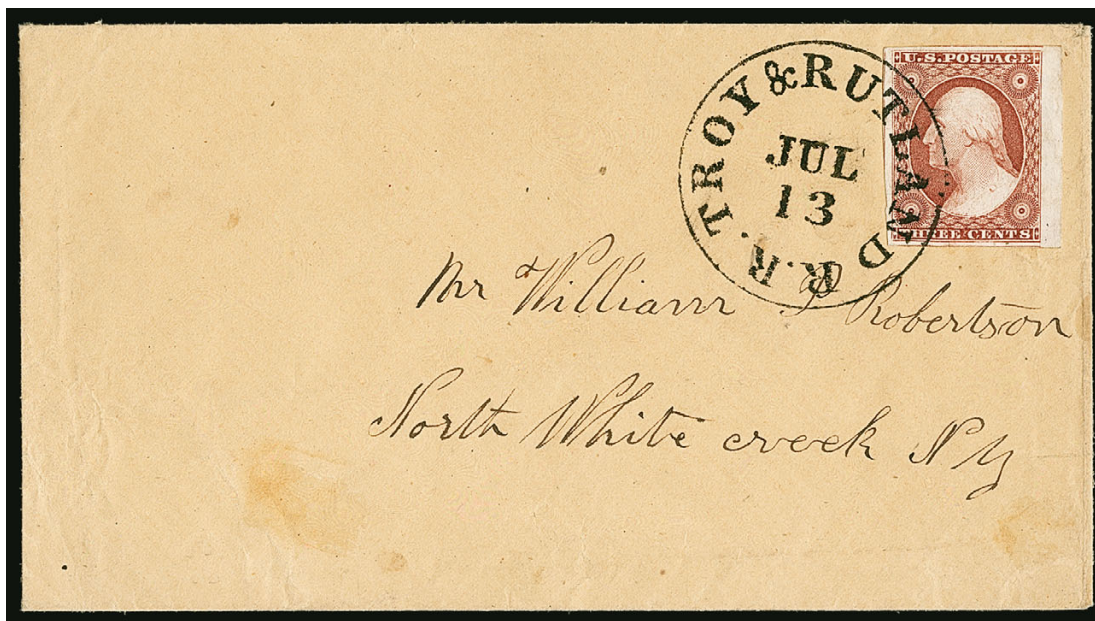
Ex Grunin E. 2,000-3,000



- 1088 ☒ **3c Dull Red, Ty. II (11A).** Large margins including **top left corner sheet margins**, rich color, tied by **red** "Marlow N.H. Jan. 23" circular datestamp on buff cover to Newport N.H., faint water spots, slightly reduced at right and tiny tear in cover, Extremely Fine Gem stamp and exceptionally attractive tied by a red town datestamp E. 400-500
- 1089 ☒ **3c Dull Red, Ty. I (11).** Plate 8, huge margins including **left interpane margin and centerline**, parts of adjoining stamps at top and right, beautiful shade, tied by **red** "Rutland Vt. Jun. 13, 1856" circular datestamp on buff cover to Springfield Vt., Extremely Fine, ex Brown and Emerson E. 200-300
- 1090 ☒ **3c Deep Claret, Ty. II (11A var).** Wonderful depth of color, margins all around, tied by perfect strike of "Woonsocket R.I. Jul. 24" circular datestamp on cover to Providence R.I., Extremely Fine, a beautiful cover with this deep shade of the 1851 Issue, with 2005 P.F. certificate E. 200-300
- 1091 ☒ **3c Dull Red, Ty. II (11A).** Three full margins, barely in at bottom, tied by **red** "West Berkshire Vt. Oct. 22" balloon-style circular datestamp on light buff cover to Fairfax Vt., Extremely Fine and beautiful E. 200-300
- 1092 ☒ **3c Dull Red, Ty. II (11A).** Large margins to slightly in at top, tied by **green** "South Framingham Mass. Nov. 16" circular datestamp on cover to Boston, Very Fine, a beautiful true green town marking E. 200-300



- 1093 ☒ **3c Dull Red, Ty. II (11A).** Mostly large margins, touched at upper left, tied by extraordinarily bold strike of "Roscoe Station Ill. Jul. 14" circular datestamp on small blue cover to Jenksville Mass., Very Fine, the marking is struck so perfectly it almost looks unreal E. 100-150
- 1094 ☒ **3c Dull Red, Ty. II (11A).** Position 5L1L, large even margins, tied by "Georgetown Cal. Aug. 25" circular datestamp on buff cover to Columbia Cal., Extremely Fine, Dr. Chase note on back "One of the prettiest local Californias I've seen", ex Chase and Haas, with 2009 P.F. certificate E. 150-200
- 1095 ☒ **3c Dull Red, Ty. II (11A).** Two, mostly ample to full margins, affixed at upper left and right corners and cancelled or tied by "6" in double-line circle rate handstamp, "Manchester N.H. Nov. 18" circular datestamp on light buff cover to San Francisco, 1854 docketing, some edgewear, Very Fine, the use of "6" cent rate markings on a 6c transcontinental rate cover with the 1851 Issue is very unusual..... E. 300-400
- 1096 ☒ **3c Rose Red, Ty. II (11A).** Positions 85-86/95-96R3, block of four, large margins to barely touched at lower right, bright color, cancelled by multiple strikes of blue grid, two tie the block, perfect matching "Haverhill N.H. Apr. 26" circular datestamp on outer folded cover to Rumney N.H., contents refers to business enclosures which would have required the multiple rate, two light file folds well clear of block, fresh and Extremely Fine, blocks of this issue on cover are seldom encountered in the pristine condition of this block and cover, ex Wagshal, with 2010 P.F. certificate..... E. 1,000-1,500



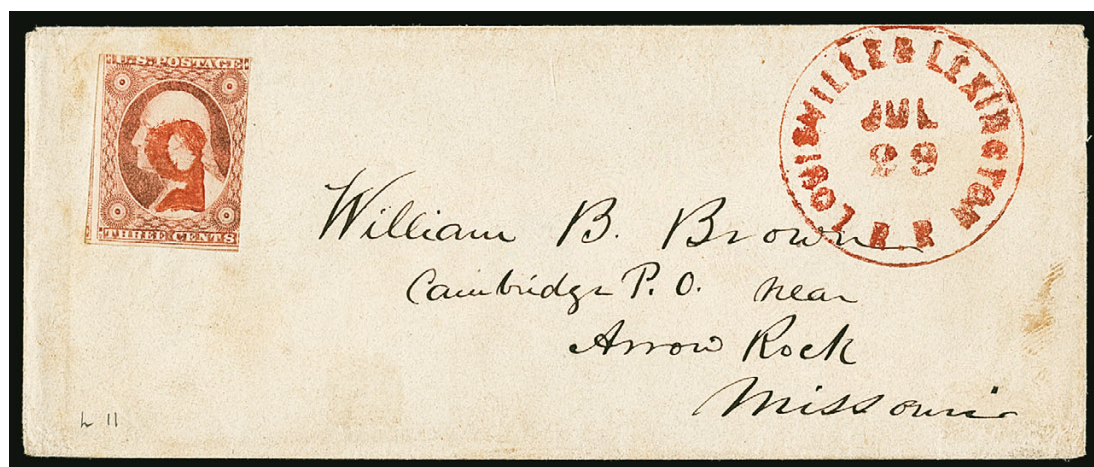
1097

- 1097 ☒ **3c Brownish Claret, Ty. II (11A).** Huge margins all around including **right sheet margin** and traces of adjoining stamps on three other sides, gorgeous deep rich color and proof-like impression, tied by **"Troy & Rutland R.R. Jul. 13"** railroad route agent's circular datestamp on cover to North White Creek N.Y.

EXTREMELY FINE GEM. A PERFECT COVER IN EVERY RESPECT — QUALITY OF STAMP, CLARITY OF MARKING AND OVERALL PRISTINE CONDITION.

Ex Newbury and "European Connoisseur." As a measure of this cover's desirability, in our 1961 sale of the Newbury collection (Sale 244, lot 209) it realized \$400, selling to the European Connoisseur, and in the sale of his collection (Sale 1115, lot 2091), it fetched \$6,750 hammer after fiercely competitive bidding.

With 2015 P.F. certificate E. 2,000-3,000



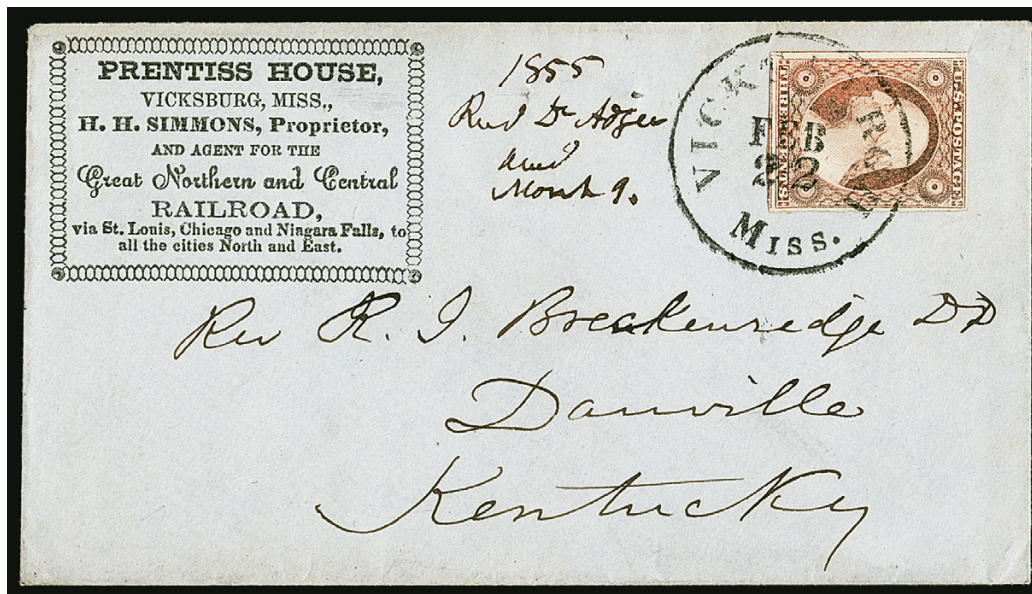
1098

- 1098 ☒ **3c Dull Red, Ty. II (11A).** Two large margins, in at top and right, bright shade, cancelled by red **"5"** rate handstamp with matching **"Louisville & Lexington R.R. Jul. 29"** railroad route agent's circular datestamp on small cover to Cambridge Miss., Very Fine, an extremely rare and beautiful railroad cover with red markings, illustrated in 1851 Sesquicentennial book (p. 239) E. 750-1,000



1099

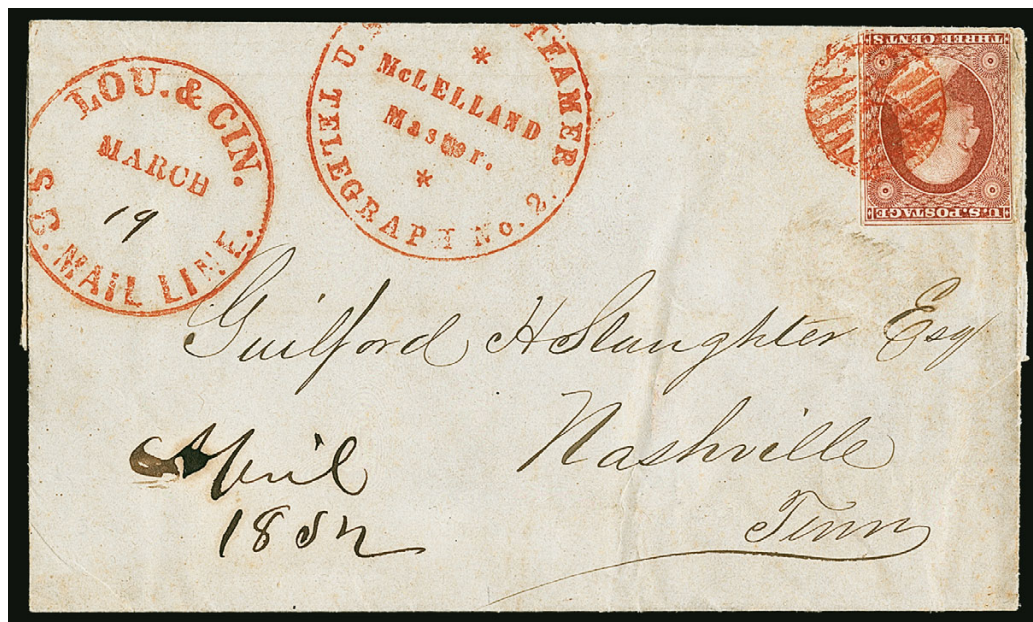
- 1099 ☒ **3c Dull Red, Ty. II (11A).** Large margins to clear at bottom, rich color, tied by "Cleveland & Pittsbh. R.R. Jul. 20" railroad route agent's circular datestamp on small cover to New Haven Conn., Extremely Fine, with 2009 P.F. certificate E. 500-750



1100

- 1100 ☒ **3c Dull Red, Ty. II (11A).** Full to large margins, tied by "Vicksburgh Miss. Feb. 22" (1855) circular datestamp on blue cover to Danville Ky. with **Prentiss House, "Agent for the Great Northern and Central Railroad"** corner card, neatly docketed, Very Fine, with 2010 P.F. certificate E. 200-300

LOUISVILLE & CINCINNATI MAIL LINE



1101

- 1101 ☒ **3c Brownish Carmine, Ty. II (11A).** Large margins to barely in along bottom outer frameline, tied by **vivid red grid** cancel, matching red “**Lou. & Cin. S. B. Mail Line March 19**” circular datestamp and “**U.S. (Mail) Steamer Telegraph No. 2 * McLelland, Master ***” route agent’s handstamp on 1852 folded letter from Cincinnati to Nashville Tenn., neatly docketed

EXTREMELY FINE. A REMARKABLY BEAUTIFUL LOUISVILLE & CINCINNATI MAIL LINE CONTRACT STEAMBOAT COVER WITH THE 3-CENT 1851 ISSUE.

According to Hugh Feldman (Rumsey sale catalogue), “In July 1842, C. M. Strader, President of the U.S. Mail Line of Cincinnati contracted for the Cincinnati to Louisville route. Renewed every four years until 1870, in the period 1846 to 1858 the route was designated as 5032 with a daily trip each way paying \$3,850 a year. Amongst the many steamboats owned by the company were the Telegraph No. 2 and 3. Both were used on Route 5032 as shown by combinations with the route agent cds.” The Feldman catalogue lists three examples of these markings (March 19, March 27 and April 9, 1852 — the last is a rebacked front offered in lot 1103).

Ex Grunin, Milgram, Schwartz and Feldman. E. 5,000-7,500

LOUISVILLE & CINCINNATI MAIL LINE

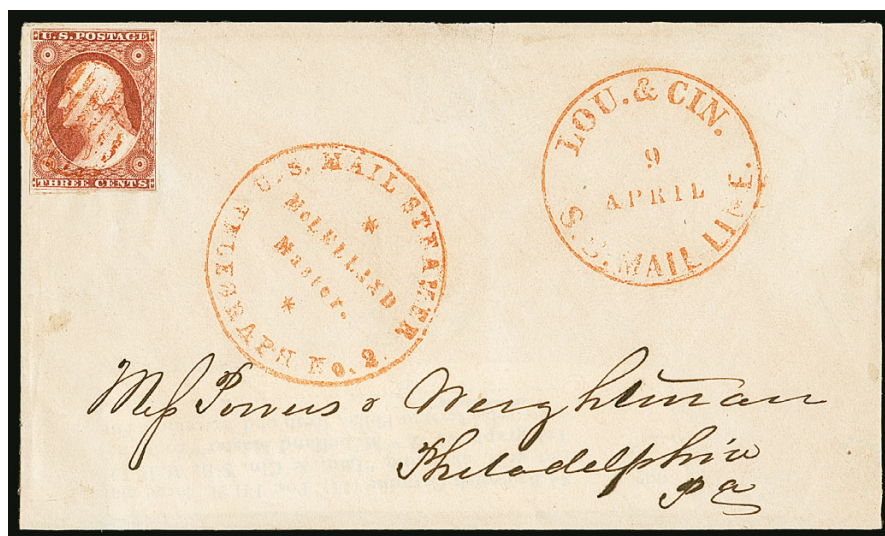


1102

- 1102 ☒ **3c Dull Red, Ty. II (11A).** Full to large margins including **left interpane margin with centerline**, tied by perfect strike of “**Louisville & Cincinnati Mail Line Nov. 7**” circular datestamp in intense jet-black ink on brown cover to New Albany Ind.

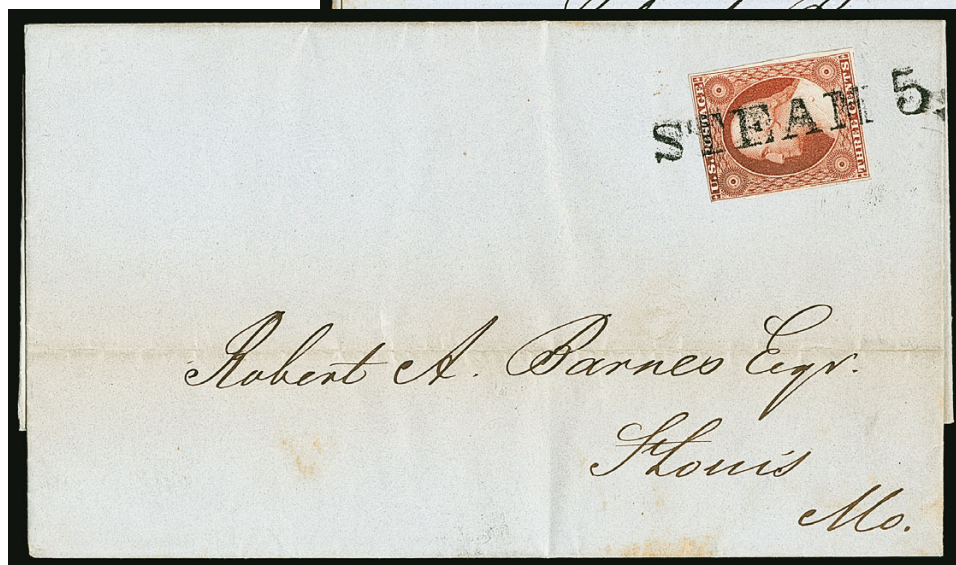
EXTREMELY FINE. AN ABSOLUTELY SUPERB EXAMPLE OF THE 3-CENT 1851 ON COVER WITH THE SCARCE LOUISVILLE & CINCINNATI MAIL LINE ROUTE AGENT'S DATESTAMP.

Ex Moody, Haas, “Sevenoaks” and Schwartz. With 2009 P.F. certificate ... E. 3,000-4,000



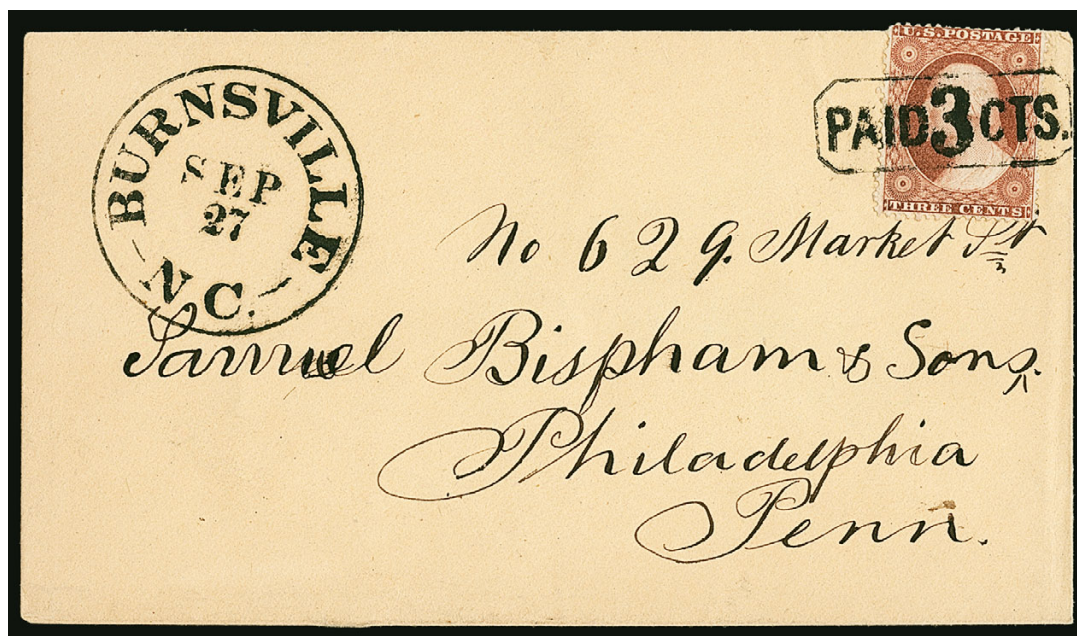
1103

1104



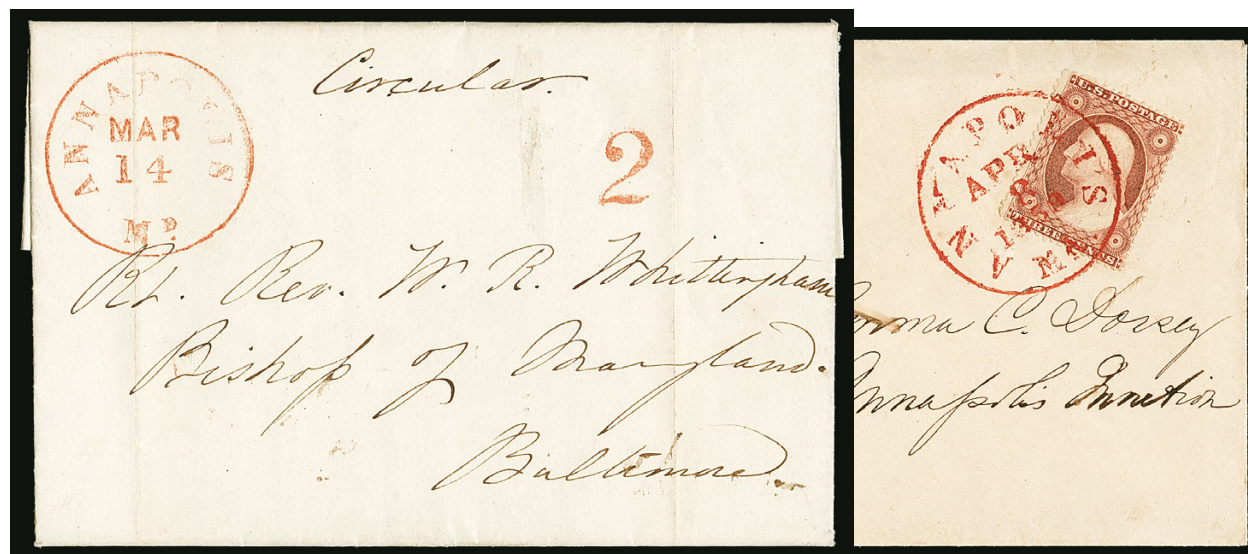
1105

- 1103 **3c Brownish Carmine, Ty. II (11A).** Position 14L2L, large margins to clear at left, rich color, tied by red grid cancel, matching “Lou. & Cin. S.B. Mail Line 9 April” and “U.S. Mail Steamer Telegraph No. 2 * McLelland Master” route agent circular datestamp on cover front only (expertly rebacked) to Philadelphia, fresh and Extremely Fine appearance, rare, ex Haas E. 400-500
- 1104 **3c Dull Red, Ty. II (11A).** Position 39R2L, bright color and full margins, tied by unusually bold “STEAM” straightline handstamp of St. Louis, letter datelined June 1, 1853, from New Orleans to Robert A. Barnes in St. Louis and endorsed on dateline “Collier”, faint toning not mentioned on certificate, Very Fine, with 1996 P.S.E. and 2011 P.F. certificates E. 200-300
- 1105 **3c Brownish Carmine Ty. II (11A).** Ample to full margins, deep shade, tied by perfect bold strike of “STEAM 5” straightline handstamp of St. Louis, letter datelined Mar. 26, 1852, from New Orleans to Robert A. Barnes in St. Louis, light toning not mentioned on certificate, Extremely Fine, with 2011 P.F. certificate E. 300-400



1106

- 1106 ☒ **3c Dull Red, Ty. III (26).** Well-centered, tied by bold pitch-black strike of “PAID 3 CTS.” in octagonal frame handstamp with equally perfect strike of “Burnsville N.C. Sep. 27” circular datestamp on light buff cover to Philadelphia, Extremely Fine, a spectacular cover from the 1857 Issue era, ex Grunin E. 1,500-2,000



1107

- 1107 ☒ **3c Dull Red, Ty. III (26).** Tied by red “Annapolis Md. Apr. 8, 1859” circular datestamp on cover to Annapolis Junction Md., accompanied by Mar. 14, 1855 folded circular to Baltimore with red “Annapolis Md. Mar. 14” circular datestamp and “2” rate handstamp, file folds, Very Fine pair of covers E. 400-500

END OF SALE — THANK YOU

Live Internet Bidding at Siegel Auctions

BIDDING FROM YOUR COMPUTER LETS YOU BE PART OF THE LIVE AUCTION FROM ANYWHERE IN THE WORLD!

There's **NO SUBSTITUTE** for following the auction in real time.
Live Internet Bidding lets you bid and buy as though you were right there in the saleroom.
And it's easy.

This step-by-step guide will instruct you how to register, set your browser and use the bidding interface.

Start by following the simple steps to become a registered Live Internet Bidder.
Once you've been approved for bidding, you can listen to the auction and place bids with the click of a mouse.

Registering with STAMP AUCTION NETWORK & SIEGEL AUCTION GALLERIES

Live Internet Bidding is managed by Stamp Auction Network (SAN).
To bid, you must be registered and approved by *both* SAN and Siegel.
To decide what you need to do, choose the description below that best fits you.



I've already registered with SAN and have been approved by Siegel for internet bidding.

I'm a Siegel client, but I'm not registered with SAN.

Go to stampauctionnetwork.com/siegel and click on "Register" at the top. Check the box for Robert A. Siegel Auction Galleries (under "R") and submit the form, indicating you are a Siegel client. Once registered at SAN, you're ready for internet bidding.

I've bid through SAN before, but this is the first time I've bid in a Siegel sale.

Then you just need to be approved by Siegel. Go to stampauctionnetwork.com/siegel and click on "Update Registration" at the top. Your SAN account information will be sent to us for approval (you might be asked for other trade references). Once approved by Siegel for bidding, you're ready for internet bidding.

I've never bid with Siegel, nor registered with SAN.

Go to stampauctionnetwork.com/siegel and click on "Register" at the top. Check the box for Robert A. Siegel Auction Galleries (under "R") and submit the form **with your trade references** (please, no family members or credit card companies as references). Once registered at SAN and approved by Siegel for bidding, you're ready for internet bidding.

Live Internet Bidding works by allowing registered bidders to observe and place bids.

Live Internet Bidding will work with any browser on both PC and Mac operating systems.

Before bidding by internet for the first time, we recommend finding a sale in progress and listening to the public broadcast or logging in as a registered bidder. This will help you develop a feel for the sale tempo and bidding interface.

Log on to the auction at stampauctionnetwork.com/siegel.

You can also log on at siegelauctions.com

When you're logged on as a Live Internet Bidder, the bidding interface shows a photo and description of the lot, the current bid (and your bidding status), options for placing competitive bids and buttons with bid increments.

- After you click on a bid amount, the auctioneer is immediately notified of your bid.
- Retracting a bid is usually not acceptable, so please bid carefully.
- If you bid and then decide to stop, the "Pass" button will tell the auctioneer you are no longer bidding.
- You can send messages to the auctioneer (for example, a request for extension).
- You can track prior realizations from the bidding screen.



"System Down" or "Lost Connection" events do occasionally happen.

If you have any problems with Live Internet Bidding please call **212-753-6421** for immediate assistance.



BIDS

Use this form to submit absentee bids
or to confirm telephone bids

Sale 1136

October 5, 2016

PADDLE #

1

Please provide the following information:

NAME

ADDRESS

CITY/STATE/ZIP

PHONE MOBILE

EMAIL

2

Have you purchased from us in the past 5 years? ☐ Yes (please go to Section 3)
☐ No (references required below)

STAMP FIRM PHONE

STAMP FIRM PHONE

Please submit references at least **2 business days** before the sale. Bids from new clients will not be executed if satisfactory references are not received in time to be contacted.

3

- Enter the lot number and your corresponding maximum bid in the space below
- Use whole dollar amounts and bid according to the increments (see back of form)
- Bids do not include the 15% Buyer's Premium, taxes, duty or shipping charges
- Absentee bids will advance at one increment over the next highest competing bid
- "Plus", "Break Tie" or "Buy" bids will not be executed
- Indicate any "Or" bids between lot number/bid entries and bracket your choices
- If you wish to limit the total amount of your bids, follow the instructions below

Lot #	Bid \$	Lot #	Bid \$	Lot #	Bid \$

☐ **Limit Bids:** Check this box if you wish to limit the total hammer price of your bids (excluding 15% Buyer's Premium, taxes, duty and shipping costs). Your bids will be executed until your bidding limit has been reached. The total amount you wish to bid is \$

4

By signing this form, you agree to all of the Conditions of Sale printed in the sale catalogue (printed and digital), including but not limited to a) payment in the manner demanded by the Siegel firm, and b) payment of the 15% Buyer's Premium, any sales tax or customs duty, shipping costs, late charges and

other prescribed charges. You agree that your bids will be executed as courtesy by Siegel, but you waive the right to make any claim against Siegel or its employees arising from these bids or your participation in the sale. You agree to honor all bids as submitted, regardless of any errors or omissions.

SIGNED DATE

Mail the signed form to Siegel Bid Department, 60 East 56th St., New York, NY 10022
or email to stamps@siegelauctions.com
or fax to 212-753-6429



Additional Bids

Sale 1136

October 5, 2016

PADDLE #

Lot #	Bid \$	Lot #	Bid \$	Lot #	Bid \$

Shipping & Insurance

We will be pleased to arrange for shipping and transit insurance for purchases in this sale, except for lots marked or announced as "floor sale only." To expedite billing and delivery to hundreds of buyers in each sale, we use standard charges for postage and insurance under our policy. These charges are based on the package weight and mailing requirements, according to the schedule shown here. Our standard charges do not include a fee for our services, and they may be slightly more or less than the actual postage or Fedex fee. We ask all buyers to remit the invoiced amount for shipping and insurance.

Transit insurance is provided in all cases, except when the buyer has furnished us with documentation that insurance is effective under the buyer's own policy.

There will be no added insurance charge for shipments of less than \$75,000 value. Shipments valued in excess of \$75,000 may require supplemental insurance and/or special courier service, the estimated cost of which will be furnished to the buyer prior to shipment. If the buyer refuses to pay the estimated charges or furnish proof of self-insured coverage, the buyer will be responsible for picking up the lots at our office and any resulting sales tax.

Standard Shipping Charges

Weight Class	Shipping Method	Charge
Up to 2 lbs.	Fedex Envelope	\$20
Over 2 lbs.	Fedex Box	\$35 - \$50*
Outside US	Fedex	\$50 - \$100**
Bulky Lots	Fedex Ground or Express	By weight

* Up to \$75,000 value and up to 5 lbs; additional charge may apply to packages exceeding limits

** Buyers outside United States are liable for any applicable customs duty and clearance charges. An accurate declaration of contents and value will be made on all packages and import/export documents. **Siegel may refuse to ship lots to certain countries with a high risk factor.**

2/2015

Bidding Increments

The auctioneer may regulate the bidding at his discretion. However, to assist absentee bidders in establishing their maximum bids, the increments shown here will be used in most cases. We recommend that written bids conform to these increments—bids that do not will be reduced accordingly.

Bid	Increment	Bid	Increment
Up to \$200	\$10	\$7,000-20,000	\$500
\$200-500	\$25	\$20,000-30,000	\$1,000
\$500-1,000	\$50	\$30,000-75,000	\$2,500
\$1,000-3,000	\$100	\$75,000-140,000	\$5,000
\$3,000-7,000	\$250	\$140,000-300,000	\$10,000

Robert A. Siegel Auction Galleries, Inc.
 Prices Realized for
 Sale 1136 10/5/2016 The Peter Sharrer Collection of United States Postal Markings

Lot#	Realized	Lot#	Realized	Lot#	Realized
1001	4,000	1037	1,400	1073	450
1002	3,500	1038	325	1074	80
1003	5,750	1039	225	1075	325
1004	4,750	1040	700	1076	160
1005	8,000	1041	2,800	1077	325
1006	5,750	1042	750	1078	1,000
1007	22,000	1043	475	1079	800
1008	1,700	1044	5,000	1080	1,400
1009	750	1045	1,800	1081	700
1010	2,500	1046	550	1082	275
1011	4,750	1047	1,300	1083	475
1012	3,500	1048	25,000	1084	375
1013	2,200	1049	13,500	1085	400
1014	3,750	1050	13,000	1086	2,500
1015	1,300	1051	5,500	1087	8,500
1016	1,100	1052	5,250	1088	250
1017	6,500	1053	55,000	1089	160
1018	425	1054	2,600	1090	150
1019	900	1055	600	1091	100
1020	650	1056	1,700	1092	100
1021	250	1057	13,500	1093	60
1022	600	1058	3,250	1094	170
1023	450	1059	32,500	1095	550
1024	750	1060	5,500	1096	1,200
1025	18,500	1061	1,700	1097	2,800
1026	400	1062	13,500	1098	750
1027	450	1063	7,000	1099	1,700
1028	300	1064	24,000	1100	325
1029	550	1065	1,600	1101	12,000
1030	325	1066	2,300	1102	5,000
1031	225	1067	3,500	1103	450
1032	2,300	1068	650	1104	325
1033	6,500	1069	6,000	1105	325
1034	650	1070	5,750	1106	8,000
1035	1,700	1071	600	1107	225
1036	200	1072	1,200		