

# THE GRANT INMAN COLLECTION

---

## PART 3 — FIRST, SECOND AND THIRD ISSUE REVENUES



SALE 1137

---

WEDNESDAY, OCTOBER 5, 2016

*Robert A. Siegel*  
AUCTION GALLERIES, INC.

# THE GRANT INMAN COLLECTION

PART 3 — FIRST, SECOND AND THIRD ISSUE REVENUES

SALE 1137 — WEDNESDAY, OCTOBER 5, 2016



Live auction at 60 East 56th Street (Park/Madison), 4th Floor, New York City

All lots sold subject to a 15% buyer's premium and  
applicable sales tax or customs duty

Please carefully read the Conditions of Sale before bidding

Presale Viewing:

Monday and Tuesday, October 3-4, 10am-4pm  
and by appointment (please call 212-753-6421)

*Robert A. Siegel*

AUCTION GALLERIES, INC.

60 EAST 56TH STREET, 4TH FLOOR, NEW YORK, N.Y. 10022  
Phone (212) 753-6421 • Fax (212) 753-6429 • E-mail: [stamps@siegelauctions.com](mailto:stamps@siegelauctions.com)

Catalogues, internet bidding, resources, archives and the Siegel Encyclopedia at  
[siegelauctions.com](http://siegelauctions.com)



*Robert A. Siegel*

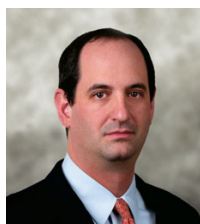
AUCTION GALLERIES, INC.

60 EAST 56TH STREET, 4TH FLOOR, NEW YORK, N.Y. 10022

Phone (212) 753-6421 • Fax (212) 753-6429 • E-mail: [stamps@siegelauctions.com](mailto:stamps@siegelauctions.com)  
[siegelauctions.com](http://siegelauctions.com)



Scott R. Trepel  
President  
[strepel@siegelauctions.com](mailto:strepel@siegelauctions.com)



John P. Zuckerman  
Senior Vice President  
[jzuckerman@siegelauctions.com](mailto:jzuckerman@siegelauctions.com)



Corey Long  
Senior Vice President  
[clong@siegelauctions.com](mailto:clong@siegelauctions.com)



Colleen Stellato  
Vice President—Accounts  
[colleen@siegelauctions.com](mailto:colleen@siegelauctions.com)



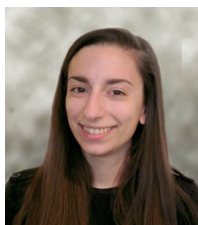
Charles F. Shreve  
Director, Siegel International  
[charles@siegelauctions.com](mailto:charles@siegelauctions.com)



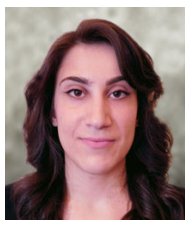
Andrew Titley  
International Specialist  
[andrew@siegelauctions.com](mailto:andrew@siegelauctions.com)



Helen Stewart  
Bids and Inquiries  
[helen@siegelauctions.com](mailto:helen@siegelauctions.com)



Danielle Lenard  
Bids and Inquiries  
[danielle@siegelauctions.com](mailto:danielle@siegelauctions.com)



Jocelyn Weibel  
Digital Production  
[jocelyn@siegelauctions.com](mailto:jocelyn@siegelauctions.com)



Chris Anderson  
Siegel International  
[chris@siegelauctions.com](mailto:chris@siegelauctions.com)

Scott R. Trepel Principal Auctioneer (licensed by NYC Dept. of Consumer Affairs, #795952)

## Information for Bidders

### Bidding

The following means are available for placing bids:

- 1) Attending the Live Auction in Person:** All bidders must register for a paddle, and new bidders must provide references at least three business days in advance of the sale.
- 2) Live Internet Bidding:** Instructions for participating as a Live Internet Bidder are provided on the page opposite.
- 3) Phone Bidding:** Bidders can be connected to the sale by phone and bid through a member of staff. Requests for phone bidding are subject to approval (please contact our office at least 24 hours before the sale). A signed Bid Form is required.
- 4) Absentee Bids.** All bids received in advance of the sale, either by mail, fax, phone, e-mail or internet, are Absentee Bids, which instruct the auctioneer to bid up to a specific amount on one or more lots in the sale. Absentee Bids sent by phone, fax or e-mail should arrive at least one hour prior to the start of the sale session. Bids entered through Live Internet Bidding will be visible to the auctioneer during the sale. Written bids should be entered legibly on the Bid Form in the sale catalogue. E-mail and internet bids should be carefully typed and double-checked. All new bidders must provide references. We recommend calling or e-mailing to confirm that Absentee Bids sent by mail, fax or e-mail have been received and entered.

### Pre-Sale Viewing

Subject to availability, certain lots (except group lots) can be sent to known clients for examination. Requests must be made no later than 7 days prior to the sale. Lots must be returned on the day received. Postage/insurance costs will be invoiced.

In addition to regular viewing, clients may view lots by appointment. Our staff will be pleased to answer questions or provide additional information about lots.

### Expert Certification

Individual items offered without a PF or PSE certificate dated within the past five years may be purchased subject to independent certification of genuineness and our description. **Please refer to the Conditions of Sale and Grading Terms for policies governing certification.**

### Shipping and Delivery

Procedures and charges for shipping lots are printed on the back of the Bid Form. **Bidders are responsible for all prescribed shipping charges and any applicable sales tax or customs duties.**

### Price Realized

Prices realized are sent with each invoice. Bidders with e-mail will receive a Bid Results report after the sale. Session results are posted immediately to [siegelauctions.com](http://siegelauctions.com)



# Live Internet Bidding at Siegel Auctions

## BIDDING FROM YOUR COMPUTER LETS YOU BE PART OF THE LIVE AUCTION FROM ANYWHERE IN THE WORLD!

There's **NO SUBSTITUTE** for following the auction in real time.  
Live Internet Bidding lets you bid and buy as though you were right there in the saleroom.  
And it's easy.

This step-by-step guide will instruct you how to register, set your browser and use the bidding interface.

Start by following the simple steps to become a registered Live Internet Bidder.  
Once you've been approved for bidding, you can listen to the auction and place bids with the click of a mouse.

### Registering with STAMP AUCTION NETWORK & SIEGEL AUCTION GALLERIES

Live Internet Bidding is managed by Stamp Auction Network (SAN).  
To bid, you must be registered and approved by *both* SAN and Siegel.  
To decide what you need to do, choose the description below that best fits you.



I've already registered with SAN and have been approved by Siegel for internet bidding.

I'm a Siegel client, but I'm not registered with SAN.

Go to [stampauctionnetwork.com/siegel](http://stampauctionnetwork.com/siegel) and click on "Register" at the top. Check the box for Robert A. Siegel Auction Galleries (under "R") and submit the form, indicating you are a Siegel client. Once registered at SAN, you're ready for internet bidding.

I've bid through SAN before, but this is the first time I've bid in a Siegel sale.

Then you just need to be approved by Siegel. Go to [stampauctionnetwork.com/siegel](http://stampauctionnetwork.com/siegel) and click on "Update Registration" at the top. Your SAN account information will be sent to us for approval (you might be asked for other trade references). Once approved by Siegel for bidding, you're ready for internet bidding.

I've never bid with Siegel, nor registered with SAN.

Go to [stampauctionnetwork.com/siegel](http://stampauctionnetwork.com/siegel) and click on "Register" at the top. Check the box for Robert A. Siegel Auction Galleries (under "R") and submit the form **with your trade references** (please, no family members or credit card companies as references). Once registered at SAN and approved by Siegel for bidding, you're ready for internet bidding.

Live Internet Bidding works by allowing registered bidders to observe and place bids.

Live Internet Bidding will work with any browser on both PC and Mac operating systems.

Before bidding by internet for the first time, we recommend finding a sale in progress and listening to the public broadcast or logging in as a registered bidder. This will help you develop a feel for the sale tempo and bidding interface.

### Log on to the auction at [stampauctionnetwork.com/siegel](http://stampauctionnetwork.com/siegel).

You can also log on at [siegelauctions.com](http://siegelauctions.com)

When you're logged on as a Live Internet Bidder, the bidding interface shows a photo and description of the lot, the current bid (and your bidding status), options for placing competitive bids and buttons with bid increments.

- After you click on a bid amount, the auctioneer is immediately notified of your bid.
- Retracting a bid is usually not acceptable, so please bid carefully.
- If you bid and then decide to stop, the "Pass" button will tell the auctioneer you are no longer bidding.
- You can send messages to the auctioneer (for example, a request for extension).
- You can track prior realizations from the bidding screen.



**"System Down" or "Lost Connection"** events do occasionally happen.

If you have any problems with Live Internet Bidding please call **212-753-6421** for immediate assistance.



## Conditions of Sale (please read carefully before bidding)

**THE PROPERTY DESCRIBED IN THIS CATALOGUE WILL BE OFFERED AT PUBLIC AUCTION BY ROBERT A. SIEGEL AUCTION GALLERIES, INC. ("GALLERIES") ON BEHALF OF VARIOUS CONSIGNORS AND ITSELF OR AFFILIATED COMPANIES. BY BIDDING ON ANY LOT, WHETHER DIRECTLY OR BY OR THROUGH AN AGENT, IN PERSON, OR BY TELEPHONE, FACSIMILE OR ANY OTHER MEANS, THE BIDDER ACKNOWLEDGES AND AGREES TO ALL OF THE FOLLOWING CONDITIONS OF SALE.**

1. The highest bidder acknowledged by the auctioneer shall be the buyer. The term "final bid" means the last bid acknowledged by the auctioneer, which is normally the highest bid offered. **The purchase price payable by the buyer will be the sum of the final bid and a commission of 15% of the final bid ("buyer's premium"), together with any sales tax, use tax or customs duties due on the sale.**

2. The auctioneer has the right to reject any bid, to advance the bidding at his discretion and, in the event of a dispute, to determine the successful bidder, to continue the bidding or to reoffer and resell the lot in dispute. The Galleries' record of the final sale shall be conclusive.

3. All bids are per numbered lot in the catalogue unless otherwise announced by the auctioneer at the time of sale. The right is reserved to group two or more lots, to withdraw any lot or lots from the sale, or to act on behalf of the seller. The Galleries will execute bidding instructions on behalf of clients, but will not be responsible for the failure to execute such bids or for any errors in the execution of such bids.

**4. Lots with numbers followed by the symbol ° are offered subject to a confidential minimum bid ("reserve"), below which the lot will not be sold. The absence of the symbol ° means that the lot is offered without a reserve. If there is no reserve, the auctioneer has sole discretion to establish a minimum opening bid and may refuse an offer of less than half of the published estimate. Any lot that does not reach its reserve or opening bid requested by the auctioneer will be announced as "passed" and excluded from the prices realized lists after the sale. The Galleries may have a direct or indirect ownership interest in any or all lots in the sale resulting from an advance of monies or goods-in-trade or a guarantee of minimum net proceeds made by the Galleries to the seller.**

5. Subject to the exclusions listed in 5(A), the Galleries will accept the return of lots which have been misidentified or which have obvious faults that were present when the lot was in the Galleries' custody, but not so noted in the lot description. **All disputed lots must be received by the Galleries intact with the original packing material within 5 days of delivery to the buyer but no later than 30 days from the sale date.** (5A) **EXCLUSIONS:** The following lots may not be returned for any reason, or may not be returned for the reasons stated: i) lots containing 10 or more items; ii) lots from buyers who registered for the pre-sale exhibition or received lots by postal viewing, thereby having had the opportunity to inspect them before the sale; iii) any lot described with "faults," "defects" or a specific fault may not be returned because of any secondary fault; iv) photographed lots may not be returned because of centering, margins, short/nibbed perforations or other factors shown in the illustrations; v) the color of the item does not match the color reproduction in the sale catalogue or website listing; vi) the description contains inaccurate information about the quantity known or reported; or vii) a certification service grades a stamp lower than the grade stated in the description.

6. Successful bidders, unless they have established credit with the Galleries prior to the sale, must make payment in full before the lots will be delivered. Buyers not known to the Galleries must make payment in full within 3 days from the date of sale. **The Galleries retains the right to demand a cash deposit from anyone prior to bidder registration and/or to demand payment at the time the lot is knocked down to the highest bidder, for any reason whatsoever.** In the event that any buyer refuses or fails to make payment in cash for any lot at the time it is knocked down to him, the auctioneer reserves the right to reoffer the lot immediately for sale to the highest bidder. **Credit cards (Visa, Mastercard and Discover only) can be accepted as payment but will be subject to a 3% Convenience Fee, which will be added to the total of the entire invoice (including hammer price, buyer's premium, shipping**

**and transit insurance charges and any applicable taxes).**

7. If the purchase price has not been paid within the time limit specified above, nor lots taken up within 7 days from the date of sale, the lots will be resold by whatever means deemed appropriate by the Galleries, and any loss incurred from resale will be charged to the defaulting buyer. **Any account more than 30 days in arrears will be subject to a late payment charge of 1½% per month as long as the account remains in arrears. Any expenses incurred in securing payment from delinquent accounts will be charged to the defaulter.** A fee of \$250.00 per check will be charged for each check returned for insufficient funds.

8. All lots are sold as genuine. **Any lot accompanied by a certificate issued by The Philatelic Foundation or by Professional Stamp Experts within 5 years of the sale date is sold "as is" and in accordance with the description on the certificate. Such lots may not be returned for any reason, including but not limited to a contrary certificate of opinion.** Buyers who wish to obtain a certificate for any item that does not have a P.F. or P.S.E. certificate (dated as above) may do so, provided that the following conditions are met: (1) the purchase price must be paid in full, (2) the item must be submitted to an acceptable expertizing committee with a properly executed application form within 21 days of the sale, (3) a copy of the application form must be given to the Galleries, (4) in the event that an adverse opinion is received, the Galleries retain the right to resubmit the item on the buyer's behalf for reconsideration, without time limit or other restrictions, (5) unless written notification to the contrary is received, items submitted for certification will be considered cleared 90 days from the date of sale, and (6) in the event any item is determined to be "not as described", the buyer will be refunded the purchase price and the certification fee up to \$800.00 unless otherwise agreed to in writing.

9. Until paid for in full, all lots remain the property of the Galleries on behalf of the seller.

10. Agents executing bids on behalf of clients will be held responsible for all purchases made on behalf of clients unless otherwise arranged prior to the sale.

11. The buyer assumes all risk for delivery of purchased lots and agrees to pay for prescribed shipping costs. **Buyers who receive lots in the U.S. are obligated to pay whatever sales tax or compensating use tax might be due, and buyers outside the U.S. are responsible for all customs duties.**

12. **The bidder consents that any action or proceeding against it may be commenced and maintained in any court within the State of New York or in the United States District Court for the Southern District of New York, that the courts of the State of New York and United States District Court for the Southern District of New York shall have jurisdiction with respect to the subject matter hereof and the person of the bidder. The bidder agrees not to assert any defense to any action or proceeding initiated by Galleries based upon improper venue or inconvenient forum. The bidder agrees that any action brought by the bidder shall be commenced and maintained only in a Federal Court in the United States District Court for the Southern District of New York or the State Court in the county in which Galleries has its principal place of business in New York. The bidder agrees not to use a public conflict resolution service and not to use any form of social media to publish comments or information about the Galleries and its employees which might harm the Galleries' reputation or business. These Conditions of Sale shall be governed by and construed in accordance with the substantive laws of the State of New York, and shall constitute an agreement that shall be binding on the parties, and their respective heirs, administrators, distributees, successors and assignees.**

SCOTT R. TREPEL, Principal Auctioneer

Auctioneer's License No. 795952

N.Y.C. Department of Consumer Affairs

80 Lafayette Street, New York, N.Y. 10013

Telephone (212) 577-0111

*Revised 1/2016*

## Grades, Abbreviations and Values Used in Descriptions

### Grades and Centering

Our descriptions contain detailed information and observations about each item's condition. We have also assigned grades to stamps and covers, which reflect our subjective assessment. For stamps, the margin width, centering and gum are described and graded according to generally-accepted standards (an approximate correlation to numeric grades is provided at right). Although we believe our grades are accurate, they are not always exactly aligned with third-party grading terms or standards for all issues. **A lot may not be returned because a certification service grades a stamp lower than the grade stated in the description. Information from the P.S.E. Stamp Market Quarterly and P.S.E. Population Report<sup>SM</sup> is the most current available, but lots may not be returned due to errors or changes in statistics or data.**

**Extremely Fine Gem (90-100):** The term “Gem” describes condition that is the finest possible for the issue. This term is equivalent to “Superb” used by grading services.







**Extremely Fine (80-90):** Exceptionally large/wide margins or near perfect centering.

**Very Fine (70-85):** Normal-size margins for the issue and well-centered with the design a bit closer to one side. “Very Fine and choice” applies to stamps that have desirable traits such as rich color, sharp impression, freshness or clarity of cancel.

**Fine (60-70):** Smaller than usual margins or noticeably off center. Pre-1890 issues may have the design touched in places.

**Very Good (below 60):** Attractive appearance, but margins or perforations cut into the design.

### Guide to Gum Condition

Gum Categories:	MINT N.H.	ORIGINAL GUM (O.G.)				NO GUM
	 <b>Mint Never Hinged</b> <i>Free from any disturbance</i>	 <b>Lightly Hinged</b> <i>Faint impression of a removed hinge over a small area</i>	 <b>Hinge Mark or Remnant</b> <i>Prominent hinged spot with part or all of the hinge remaining</i>	 <b>Part o.g.</b> <i>Approximately half or more of the gum intact</i>	 <b>Small part o.g.</b> <i>Approximately less than half of the gum intact</i>	 <b>No gum</b> <i>Only if issued with gum</i>
Catalogue Symbol:	★ ★	★	★	★	★	(★)
PRE-1890 ISSUES	Pre-1890 stamps in these categories trade at a premium over Scott value			Scott Value for “O.G.”		Scott “No Gum” Values thru No. 218
1890-1935 ISSUES	Scott “Never Hinged” Values for Nos. 219-771	Scott Value for “O.G.” (Actual value will be affected by the degree of hinging)		<b>Disturbed Original Gum:</b> Gum showing noticeable effects of humidity, climate or hinging over more than half of the gum. The significance of gum disturbance in valuing a stamp in any of the Original Gum categories depends on the degree of disturbance, the rarity and normal gum condition of the issue and other variables affecting quality. For example, stamps issued in tropical climates are expected to have some gum disturbance due to humidity, and such condition is not considered a negative factor in pricing.		
1935 TO DATE	Scott Value for “Unused”					

### Covers

Minor nicks, short edge tears, flap tears and slight reduction at one side are normal conditions for 19th century envelopes. Folded letters should be expected to have at least one file fold. Light cleaning of covers and small mends along the edges are accepted forms of conservation. Unusual covers may have a common stamp with a slight crease or tiny tear. **These flaws exist in virtually all 19th century covers and are not always described. They are not grounds for return.**

### Catalogue Values and Estimates

Unless otherwise noted, the currently available *Scott Catalogue* values are quoted in dollars with a decimal point. Other catalogues are often used for foreign countries or specialized areas and are referred to by their common name: *Stanley Gibbons* (SG), *Dietz*, *American Air Mail Catalogue* (AAMC), *Michel*, *Zumstein*, *Facit*, etc. Estimates are indicated with an “E.” and reflect our conservative valuation in dollars. Reserves will never exceed the low end of the estimate range; they will sometimes exceed Scott Catalogue value for stamps in Extremely Fine condition.

Because of certain pricing inconsistencies in the *Scott Catalogue*—for example, blocks that have no gum, the absence of premiums for Mint N.H. items, etc.—we cannot guarantee the accuracy of values quoted for multiples, specialized items and collection lots. We generally try to be conservative, but buyers may not return a lot because of a discrepancy in catalogue value due to Scott pricing inconsistencies.

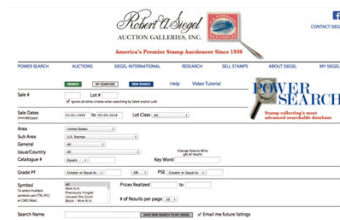
### Symbols and Abbreviations (see chart above for gum symbols)

⊞	Block	E	Essay	pmk.	Postmark	No.	Scott Catalogue Number
⊞	Cover	P	Proof	cds	Circular Datestamp	hs	Handstamp
FC	Fancy Cancel	TC	Trial Color Proof	var.	Variety	ms.	Manuscript

# R@ siegelauctions.com

## CATALOGUES AND PRICES REALIZED

Images and descriptions for all sales going back to 1992, our Rarities sales from 1964 and selected older name sales. PDF catalogues go back to our first sale in 1931.

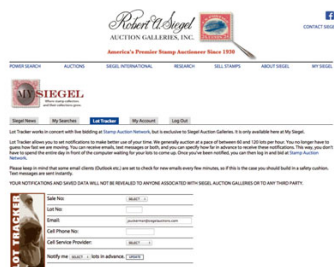


## POWER SEARCH™

Search by Scott number or keyword through all of the sales at our website. The best resource in philately for research.

## MY SIEGEL™

Save your Power Searches as want lists. We will automatically notify you when a match is included in an upcoming sale, whether it's as broad as any Columbian issue, or as narrow as a 241 graded 98. The most powerful want list in philately.

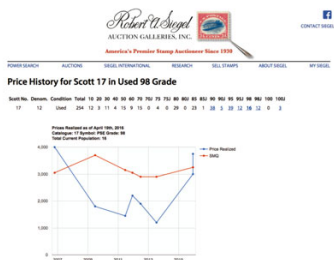


## LOT TRACKER™

Never miss another lot because you were away from your computer. Log into My Siegel™, then set up notifications to get texts and/or emails 10-30 lots before yours comes up (live bidding is still through Stamp Auction Network).

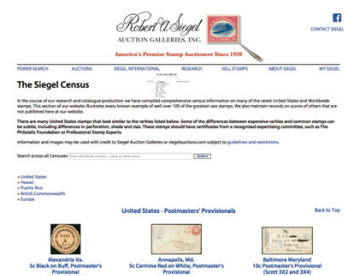
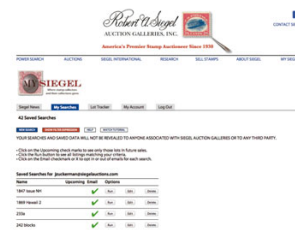
## CENSUS DATA FOR RARITIES

The up-to-date census data for U.S. and select International rarities are a valuable resource for buyers, sellers and researchers. Every recorded example of almost 150 different rare stamps is described and, in most cases, photographed.



## GRADED PRICE HISTORY

Graphs show the realizations of each grade over time in our auctions. The data points are easily visible for independent analysis.



We have several other important features of our website, such as the Siegel Encyclopedia, Exhibits, Today in History and a Perpetual Calendar. Go to siegelauctions.com for the most comprehensive website in philately.



# THE GRANT INMAN COLLECTION

## PART 3 — FIRST, SECOND AND THIRD ISSUE REVENUES

AFTERNOON SESSION (LOTS 1201-1328)  
WEDNESDAY, OCTOBER 5, 2016, AT 1:30 P.M.

### FIRST ISSUE IMPERFORATE

- 1201 **1c Express, Imperforate (R1a).** Large margins all around, brilliant color nicely complemented by blue August 12, 1863 oval datestamp, fresh and Extremely Fine, a beautiful stamp, with 2004 P.F. certificate..... 75.00



1201



1202

- 1202 **1c Playing Cards, Imperforate (R2a).** Large margins all around, fresh and bright color, neat manuscript cancel  
EXTREMELY FINE. THE IMPERFORATE ONE-CENT PLAYING CARDS IS DIFFICULT TO OBTAIN IN PRISTINE CONDITION.  
Ex Yost and Dr. Kingsley. 1996 P.F. certificate no longer accompanies..... 3,500.00

- 1203 **1c Proprietary, Imperforate (R3a).** Large to huge margins, fresh and bright color, neat 1863 manuscript cancel, Extremely Fine, ex Zoellner, with 2000 P.F. certificate ..... 1,250.00



1203



1204

- 1204 ★ **1c Telegraph, Imperforate (R4).** Part original gum, large margins all around, brilliant color, Extremely Fine Gem, a gorgeous stamp, with 2008 P.F. certificate, unpriced in Scott as unused, Scott Retail as used ..... 800.00

- 1205 **2c Proprietary, Blue, Imperforate (R13a).** Large margins all around, deep rich color, neat strike of San Francisco firm's March 20, 1863 circular datestamp, Extremely Fine Gem, a beautiful stamp and scarce cancelled solely by the circular datestamp, with 2002 P.F. certificate..... 1,200.00



1205



1206

1206 **3c Playing Cards, Imperforate (R17a).** Large margins all around, deep rich color, unusual slightly dry printing, neat "April" manuscript cancel

EXTREMELY FINE. A RARE SOUND EXAMPLE OF THE 3-CENT IMPERFORATE PLAYING CARDS WITH LARGE MARGINS ALL AROUND. ONE OF THE RAREST FIRST ISSUE REVENUE STAMPS, ESPECIALLY IN SOUND FOUR-MARGIN CONDITION.

This issue is exceedingly difficult to find in sound condition. The majority have faults to a lesser or greater degree, or smaller margins than this example possesses.

With 1986 and 2003 P.F. certificates..... 40,000.00



1207



1208



1209

- 1207 (★) **10c Certificate, Imperforate (R33a).** Unused (no gum), large margins to full, rich color, Very Fine and choice, ex Dr. Schauss, with 2012 P.F. certificate, unpriced in Scott as unused, Scott Retail as used..... 400.00
- 1208 **10c Certificate, Imperforate (R33a).** Large to huge margins including part of adjoining stamp at left, bright color, neat March 12, 1863 manuscript cancel, Extremely Fine Gem, with 1999 P.S.E. certificate ..... 400.00
- 1209 **10c Inland Exchange, Imperforate (R36a).** Huge margins all around, intense shade and impression, bluish plate wash in margins, unobtrusive manuscript cancel leaves entire design clearly visible, Extremely Fine Gem, a stamp with tremendous visual appeal, ex "Scarsdale", with 2002 P.F. certificate ..... 500.00



1210



1211

- 1210 **10c Power of Attorney, Imperforate (R37a).** Large margins to full, deep rich color and detailed impression, neat 1864 manuscript cancel, Extremely Fine, with 1993 P.F. certificate ..... 1,100.00
- 1211 (★) **20c Foreign Exchange, Imperforate (R41a).** Unused (no gum), large margins to full, intense color, Very Fine and choice, unlisted in Scott as unused, Scott Retail as used..... 95.00





1212

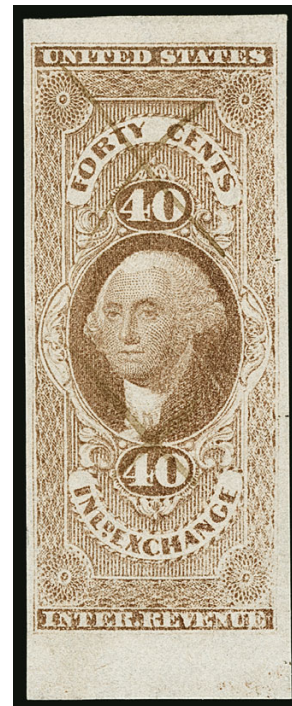


1213

1212 **25 Bond, Imperforate (R43a).** Large to huge margins including **bottom sheet margin**, bright color, May 20, 1863 manuscript cancel, Extremely Fine Gem..... 300.00

1213 **25c Protest, Imperforate (R49a).** Huge margins, fresh and bright color, neat magenta August 22, 1863 manuscript cancel, Extremely Fine Gem, ex Zoellner, with 2000 P.F. certificate..... 35.00

1214 **40c Inland Exchange, Imperforate (R53a).** Full to huge margins including **bottom sheet margin**, bright color, lightened manuscript cancels, tiny thin spot at upper right, Extremely Fine appearance, scarce, we have offered less than a dozen since keeping computerized records..... 2,500.00



1214



1215



1216

1215 **50c Life Insurance, Imperforate (R58a).** Large margins, deep rich color, cancelled solely by "Mutual Life Ins. Co. Jul. 28, 1863" circular date-stamp, Extremely Fine Gem, a beautiful stamp, especially desirable cancelled solely by the circular date-stamp, with 2005 P.F. certificate ..... 45.00

1216 **50c Passage Ticket, Imperforate (R61a).** Large even margins, radiant color, light strike of double-circle datestamp leaves entire design clearly visible, fresh and Extremely Fine Gem, a beautiful stamp..... 140.00



1217



1218



1219



1220

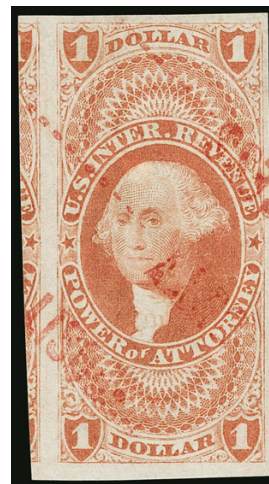
- 1217 **50c Probate of Will, Imperforate (R62a).** Large margins to full, rich color on bright paper, neat "C&PRR/Feb. 12, 1863" two-line datestamp, Extremely Fine, a stamp with great visual appeal, with 2005 P.F. certificate ..... 55.00
- 1218 **50c Surety Bond, Imperforate (R63a).** Large margins all around, gorgeous deep rich color and detailed impression, **red handstamp** cancel, Extremely Fine Gem, a stunning stamp, ex Zoellner, with 2000 P.F. certificate ..... 400.00
- 1219 **60c Inland Exchange, Imperforate (R64a).** Huge margins all around, neat Feb. 1, 1863 manuscript cancel, fresh and Extremely Fine Gem ..... 110.00
- 1220 **70c Foreign Exchange, Imperforate (R65a).** Huge margins all around, deep rich color and detailed impression, clear strike of "A. Hardy & Co., Boston Jun. 14, 1864" oval handstamp, Extremely Fine Gem, a superb stamp, from the Weill sale and ex Zoellner, with 2000 P.F. certificate ..... 725.00



1221



1222



1223

- 1221 **\$1.00 Life Insurance, Imperforate (R71a).** Large even margins, rich color, neat manuscript cancel, Very Fine and choice, a pretty stamp ..... 300.00
- 1222 **\$1.00 Passage Ticket, Imperforate (R74a).** Large margins, intense color, Feb. 18, 1863 manuscript cancel, Extremely Fine ..... 350.00
- 1223 **\$1.00 Power of Attorney, Imperforate (R75a).** Huge margins including significant portion of adjoining stamp at left, fresh color, neat **red handstamp** cancel, Extremely Fine Gem, a superb stamp, from the Weill sale and ex Zoellner, with 2000 P.F. certificate ..... 100.00





1224

1224

**\$1.30 Foreign Exchange, Imperforate (R77a).**  
Large margins all around, brilliant color, neat  
1863 manuscript cancel

EXTREMELY FINE GEM. A SUPERB EXAMPLE OF  
THE \$1.30 FOREIGN EXCHANGE IMPERFORATE.

Only 3,878 were issued imperforate (44 sheets  
with 82 stamps returned for perforating).  
Virtually all of the examples we have encoun-  
tered have smaller margins than the stamp  
offered here.

Ex Zoellner. With 2000 P.F. certificate .....  
..... 10,000.00

- 1225 (★) **\$1.60 Foreign Exchange, Imperforate (R79a).**  
Unused (no gum), large and even margins, deep  
rich color and proof-like impression, Extremely  
Fine Gem, we have offered only one other in  
unused condition since keeping computerized  
records, with 2008 P.F. certificate, unpriced in  
Scott as unused, Scott Retail as used.... 1,500.00



1225





1226

1226

**\$1.90 Foreign Exchange, Imperforate (R80a).** Large margins all around, fresh and bright color, well-struck "D. S & Co. Jun. 8, 1863" circular datestamp

EXTREMELY FINE GEM. A SUPERB EXAMPLE OF THE RARE \$1.90 IMPERFORATE FOREIGN EXCHANGE CANCELLED SOLELY BY THE HANDSTAMP.

It is believed that of the 9,000 examples originally issued imperforate, 312 were returned for perforating. It is not known how many were used. A review using Power Search found a dozen or so unduplicated copies. No multiples are known. This is an early use — they were first delivered to the Department on April 17, 1863.

Ex Chapin and Zoellner. With 1978 and 2000 P.F. certificates..... 12,500.00



1227

1227

**\$2.00 Conveyance, Imperforate (R81a).** Large margins all around, rich color, February 25, 1863 manuscript cancel, fresh and Extremely Fine..... 250.00



1228

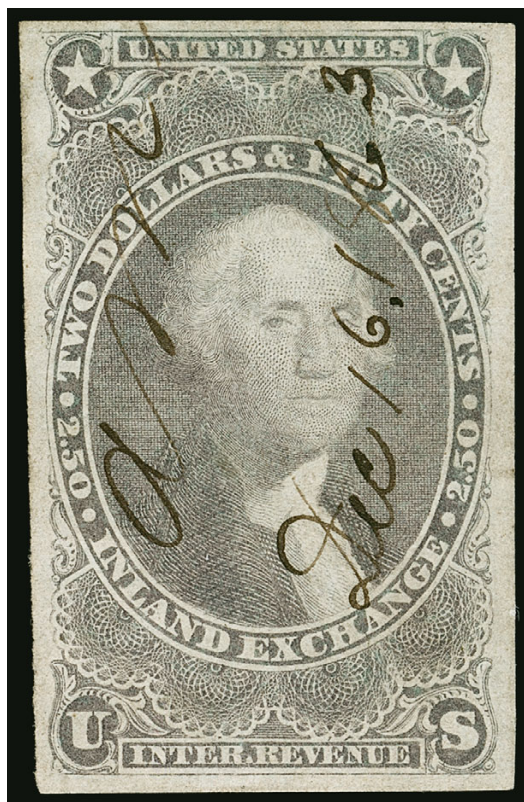
1228

**\$2.00 Probate of Will, Imperforate (R83a).** Large margins to full, rich color, face-free 1867 manuscript cancel

VERY FINE AND CHOICE. A RARE SOUND FOUR-MARGIN EXAMPLE OF THE \$2.00 PROBATE OF WILL IMPERFORATE.

This is a difficult issue to obtain in such choice condition.

With 1989 P.F. certificate..... 7,750.00



1229

- 1229     **\$2.50 Inland Exchange, Imperforate (R84a).** Large margins all around, bright color, neat December 16, 1863 manuscript cancel  
EXTREMELY FINE. AN EXCEEDINGLY RARE SOUND FOUR-MARGIN EXAMPLE OF THE \$2.50 INLAND EXCHANGE IMPERFORATE.  
With 1977 and 2002 P.F. certificates..... 10,000.00





1230



1231

- 1230 **\$3.00 Charter Party, Imperforate (R85a).** Huge margins all around, deep shade and detailed impression, unobtrusive manuscript cancel, Extremely Fine Gem, a stamp with great visual appeal, with 1999 P.F. certificate..... 200.00
- 1231 **\$3.00 Manifest, Imperforate (R86a).** Huge margins to full including part of adjoining stamp at right, intense shade, unobtrusive manuscript cancel, Extremely Fine..... 200.00



1232

- 1232 **\$3.50 Inland Exchange, Imperforate (R87a).** Large margins to full, deep rich color and proof-like impression, unobtrusive manuscript cancel
- EXTREMELY FINE. AN EXCEEDINGLY RARE SOUND FOUR-MARGIN EXAMPLE OF THE \$3.50 INLAND EXCHANGE IMPERFORATE. ONE OF THE MOST DIFFICULT FIRST ISSUE REVENUE STAMPS TO OBTAIN IN SUCH SUPERB CONDITION.
- Only 1,430 were issued imperforate. A review using Power Search found only one other that compares favorably to the example offered here.
- Ex Handy and Floyd. With 1984 and 2001 P.F. certificates..... 9,000.00



1233



1234



1235

- 1233 **\$5.00 Charter Party, Imperforate (R88a).** Huge margins all around, brilliant color, neat May 8, 1863 manuscript cancel, Extremely Fine Gem, a superb stamp in every respect, ex "Scarsdale", with 2000 P.F. certificate..... 300.00
- 1234 **\$5.00 Manifest, Imperforate (R90a).** Large even margins, fresh color and detailed impression, August 5, 1865 manuscript cancel, Extremely Fine, a beautiful stamp, ex Zoellner, with 2000 P.F. certificate ..... 250.00
- 1235 **\$5.00 Probate of Will, Imperforate (R92a).** Huge margins, brilliant color, neat manuscript cancel, Extremely Fine Gem, a gorgeous stamp, with 1999 P.F. certificate ..... 800.00



1236



1237

- 1236 **\$10.00 Charter Party, Imperforate (R93a).** Large even margins, deep rich color, faint manuscript cancel, Extremely Fine Gem, a beautiful stamp, from the Weill sale and ex Zoellner, with 2000 P.F. certificate..... 900.00
- 1237 **\$10.00 Mortgage, Imperforate (R95a).** Huge margins all around, deep rich color, faint manuscript cancellation, Extremely Fine Gem, a beautiful stamp, from the Weill sale and ex Zoellner, with 2000 P.F. certificate..... 900.00





1238

**\$10.00 Probate of Will, Imperforate (R96a).** Large margins all around, intense shade and impression, unobtrusive February 21, 1863 manuscript cancel

EXTREMELY FINE. A BEAUTIFUL EXAMPLE OF THE \$10.00 PROBATE OF WILL IMPERFORATE ISSUE.

Evidence points to an imperforate supply of 856, as eleven sheets (792 others) were returned for perforating. They were first delivered Dec. 18, 1862, so this is an early use. It is rare with such large margins in sound condition.

Ex Floyd. With 2001 P.F. certificate ..... 3,500.00

1238

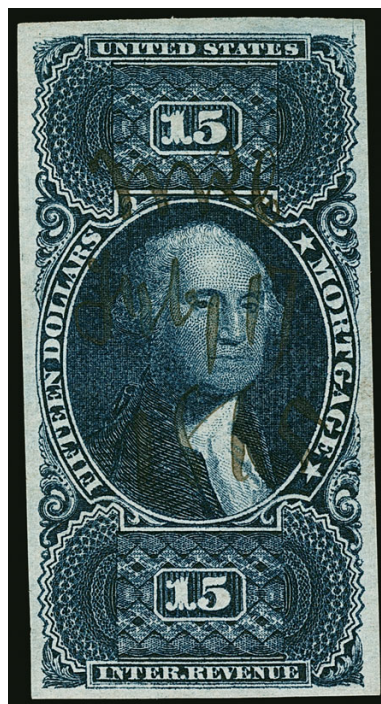
1239

**\$15.00 Mortgage, Imperforate (R97a).** Large margins all around, incredibly intense shade and impression, neat February 17, 1865 manuscript cancel

EXTREMELY FINE GEM. A SUPERB AND STUNNING EXAMPLE OF THE IMPERFORATE \$15.00 MORTGAGE. A MAGNIFICENT STAMP.

According to *Revenue Stamps of the United States 1862-1899*, the total supply of \$15.00 Mortgage stamps issued (in both perforated or imperforate form) was 18,358. The book also states that there was likely an imperforate supply of 162, less 90 returned for perforating, for a total supply of 72. However, the total available to collectors would indicate a slightly larger supply (including some that may be fraudulently trimmed perforated stamps).

Ex Zoellner. Small "W.H.C." (Colson) backstamp. With 2000 P.F. certificate ..... 3,750.00



1239



1240

**\$20.00 Conveyance, Imperforate (R98a).** Huge margins to full, vibrant color, July 20, 1864 manuscript cancel, Very Fine and choice ..... 175.00

1240



1241

**\$20.00 Probate of Will, Imperforate (R99a).** Large margins to full, vivid color, face-free strikes of “H.S.D. Jan. 2, 1863” circular datestamp

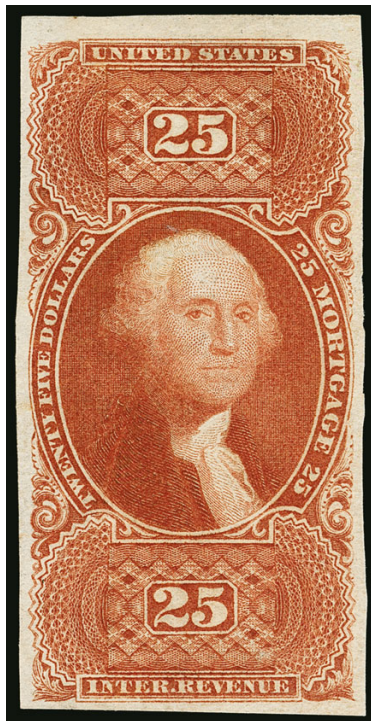
VERY FINE AND CHOICE. AN ATTRACTIVE SOUND FOUR-MARGIN EXAMPLE OF THE IMPERFORATE \$20.00 PROBATE OF WILL CANCELLED SOLELY BY A CIRCULAR DATESTAMP.

This is a very early use — the first delivery of this issue was December 19, 1862.

With 1999 P.S.E. certificate. .... 3,500.00



1241



1242

1242

**\$25.00 Mortgage, Imperforate (R100a).** Large margins all around, deep rich color and detailed impression, appears unused (accompanying certificate says used but we see no evidence of a cancel

EXTREMELY FINE. A STUNNING EXAMPLE OF THE IMPERFORATE \$25.00 MORTGAGE ISSUE.

From the Weill sale and ex Zoellner. With 2000 P.F. certificate ..... 2,700.00



1243

1243

**\$50.00 U.S.I.R., Imperforate (R101a).** Huge margins all around, beautiful color and crisp impression, faint strikes of handstamp cancel, Extremely Fine Gem, a superb stamp, ex Zoellner, with 2000 P.F. certificate ..... 325.00



1244

- 1244 ★ **\$200.00 U.S.I.R., Imperforate (R102a). Original gum**, lightly hinged, large to huge margins including **sheet margin with registration marks** at left, deep rich colors and proof-like impressions, two light vertical creases and tiny pinhole entirely in sheet margin still leave large left stamp margin

EXTREMELY FINE GEM. A SPECTACULAR AND EXCEEDINGLY RARE ORIGINAL-GUM EXAMPLE OF THE IMPERFORATE \$200.00 U.S.I.R. FIRST ISSUE.

The \$200.00 U.S.I.R. and all high-denomination First Issue revenue stamps were rarely saved in original-gum condition. This stamp not only has original gum, it comes from Position 3 on the plate of eight and has a wide left sheet margin showing the "+" mark used to keep both colors in registration.

Ex Tolman. With 2006 P.F. certificate ..... 2,750.00

- 1245 **First Issue Imperforate Balance.** 36 singles on Scott album pages, including few unused such as Nos. R7a, R54a and R60a, few with handstamp cancels including Nos. R67a (red cancel), R69a, R72a (red cancel), few other better including Nos. R19a (a real Gem), R51a, R68a, R70a, R76a, R82a, R91a and R94a, few with small faults but overall Very Fine, a difficult group to assemble in such nice condition .....(Website PDF) 1,881.50



FIRST ISSUE PART PERFORATED

- 1246 **1c Playing Cards, Part Perforated (R2b).** Wide margins, bright color, neat manuscript cancel  
 VERY FINE AND CHOICE EXAMPLE OF THE PART-PERFORATED ONE-CENT PLAYING CARDS ISSUE.  
 This is a surprisingly difficult issue to obtain in sound condition.  
 With 1992 P.S.E. certificate..... 2,250.00



1246



1247



1248

- 1247 **2c Playing Cards, Blue, Part Perforated (R11b).** Wide margins, intense color, small manuscript "X" cancel is barely noticeable, Extremely Fine ..... 325.00
- 1248 **2c Proprietary, Blue, Part Perforated (R13b).** Wide margins, rich color, cancelled by two penstrokes, small thin spot at bottom left, Very Fine appearance ..... 350.00



1249

- 1249 (★) **3c Proprietary, Part Perforated (R18b).** Unused (no gum), deep rich color and proof-like impression, almost perfectly centered, Extremely Fine Gem, a rare issue especially in unused condition, with 1981 and 2001 P.F. certificates, unlisted in Scott as unused, Scott Retail as used ..... 1,250.00





- 1250 **3c Proprietary, Part Perforated (R18b).** Jumbo margins, rich color, neat strike of “Madame Dupont Jul. 30, 1863” handstamp cancel, tiny thin spot, faint corner crease at top left not mentioned on accompanying certificate, Extremely Fine appearance, a stamp of great visual appeal, ex “Scarsdale”, with 2003 P.F. certificate ..... 1,250.00
- 1251 **4c Proprietary, Part Perforated (R22b).** Rich color, wide margins, neat 1864 manuscript cancel, trace of magenta manuscript at top right, Very Fine and attractive..... 650.00
- 1252 **5c Express, Part Perforated (R25b).** Vertical pair, wide margins, bright color nicely complemented by blue June 1, 1863 express company circular datestamps, Extremely Fine, with 2004 P.F. certificate ..... 100.00
- 1253 (★) **10c Bill of Lading, Part Perforated (R32b).** Unused (no gum), rich color, wide margins, Extremely Fine, with 2004 P.S.E. certificate (VF-XF 85; unpriced in SMQ), unlisted in Scott as unused, Scott Retail as used ..... 500.00
- 1254 **10c Certificate, Part Perforated (R33b).** Deep rich color on bright paper, 1864 manuscript cancel leaves entire design clearly visible, wide margins, Extremely Fine, a beautiful stamp ..... 950.00
- 1255 **10c Blue, Contract, Part Perforated (R34b).** Unusually wide and balanced margins, accompanying certificate states “faintly cancelled” but we do not see any evidence of one even under high magnification, Extremely Fine Gem, a beautiful stamp, with 2003 P.F. certificate..... 575.00
- 1256 **25c Entry of Goods, Part Perforated (R45b).** Horizontal pair, bright color, Dec. 17, 1862 manuscript cancel, well-balanced margins, Extremely Fine, right stamp small purple backstamp barely shows thru ..... 750.00

- 1257      **25c Life Insurance, Part Perforated (R47b).** Deep rich color, July 18, 1864 manuscript cancel, choice centering, fresh and Extremely Fine, with 1999 P.F. certificate ..... 1,000.00



1257



1258

- 1258      **25c Protest, Part Perforated (R49b).** Radiant color, beautiful centering, neat 1863 manuscript cancel, Extremely Fine ..... 1,100.00

- 1259      **25c Warehouse Receipt, Part Perforated (R50b).** Choice centering, rich color, July 25, 1863 manuscript cancel, Very Fine, ex "Scarsdale", with 2003 P.F. certificate ..... 1,200.00



1259





1260

1260

**30c Foreign Exchange, Part Perforated (R51b).** Gorgeous centering with well-balanced margins including part of the adjoining stamp at bottom, cancelled solely by "N.Y. Cen. R.R. Co., Aug. 28, 1865" oval datestamp

EXTREMELY FINE. A RARE EXAMPLE OF THE 30-CENT FOREIGN EXCHANGE PART PERFORATED ISSUE. ESPECIALLY DESIRABLE IN SOUND CONDITION AND WITH A HANDSTAMPED CANCEL. THIS IS WITHOUT QUESTION THE FINEST WE HAVE ENCOUNTERED.

Apart from the example offered here, Power Search located only two others. One is ex "Scarsdale" with manuscript cancel and a small thin spot. The other was offered in one of our 1992 auctions and has a horizontal crease. The online records of The Philatelic Foundation contain two additional examples, including one with a piece out at top right. This brings our informal count to five.

Ex Floyd. With 2000 P.F. certificate ..... 5,000.00



1261

**50c Original Process, Part Perforated (R60b).** Radiant color, choice centering with wide and balanced margins, neat December 21, 1863 manuscript cancel

EXTREMELY FINE GEM. THE 50-CENT PART PERFORATED ORIGINAL PROCESS IS ONE OF THE RAREST OF ALL PART PERFORATED ISSUES. THIS IS ONLY THE SECOND WE HAVE OFFERED SINCE KEEPING COMPUTERIZED RECORDS.

The first example we have offered since keeping computerized records was in our 2014 Curtis Collection auction, which realized \$6,000 hammer. The online records of The Philatelic Foundation contain only six, several of which have faults or are off-center.

With 1997 P.F. certificate. Woefully undercatalogued in Scott. .... 650.00



1261



1262

1262

**50c Passage Ticket, Part Perforated (R61b).** Gorgeous centering with wide and balanced margins, brilliant color and crisp impression nicely complemented by **red hand-stamp** cancel, Extremely Fine Gem, a phenomenal stamp in every respect, with 2002 P.F. certificate..... 500.00



1263

1263

**50c Probate of Will, Part Perforated (R62b).** Deep rich color, neat April 1863 manuscript cancel, tiny thin spot at bottom right, Extremely Fine appearance..... 250.00



1264

1264

**\$1.00 Conveyance, Part Perforated (R66b).** Wide margins including **sheet margin at bottom**, brilliant color, December 11, 1863 manuscript cancel, tiny corner crease at top left

VERY FINE APPEARANCE. A RARE EXAMPLE OF THE PART PERFORATED \$1.00 CONVEYANCE, WITH WIDE BOTTOM SHEET MARGIN.

We have offered only one other single and two pairs since keeping computerized records (plus a few that subsequently were certified as not genuine). The online records of The Philatelic Foundation contain only six singles and one pair.

Ex Cunliffe and "Scarsdale". With 2008 P.F. certificate ..... 3,000.00



1265

1265

**\$1.00 Inland Exchange, Part Perforated (R69b).** Wide imperforate margins and nicely centered, rich color, June 23, 1864 manuscript cancel

VERY FINE AND CHOICE. A RARE SOUND AND CENTERED EXAMPLE OF THE \$1.00 INLAND EXCHANGE PART PERFORATED ISSUE.

We have offered only three genuine singles and one pair since keeping computerized records.

Ex "Scarsdale". With 2005 P.F. certificate. .... 3,000.00

1266

**First Issue Part Perforated Balance.** 28 items on Scott album pages, including unused No. R56b, several other better including R24b pair (with 2008 P.F. certificate as part of block of eight), R57b, R65b, condition is far better than normally seen in a balance lot, a few reference items are included (almost an inevitability for Part Perforated balance lots), a Very Fine-Extremely Fine group, Scott Retail (excluding a few we thought were dubious) approximately .....(Website PDF) 1,400.00



## FIRST ISSUE PERFORATED



1267



1268

1267 (★) **1c Playing Cards, Perforated (R2c).** Unused (no gum), deep rich color on bright paper, perfectly centered with wide margins, Extremely Fine Gem, unpriced in Scott as unused, Scott Retail as used ..... 210.00

1268 **3c Playing Cards, Perforated (R17c).** Deep rich color, unobtrusive manuscript cancel, wide and balanced margins, Extremely Fine Gem, with 2001 P.F. certificate ..... 175.00



1269

1269 **4c Playing Cards, Perforated (R21c).** Well-centered with unusually wide margins, showing **stitch watermark**, deep rich color and proof-like impression, neat February 13, 1866 manuscript cancel, Extremely Fine Gem, a superb stamp, ex Zoellner, with 1988 P.F. certificate ..... 800.00

1270 ★ **6c Proprietary, Perforated (R31c).** Part original gum, vibrant color, three wide margins, barely in at top, thin at bottom, Fine appearance, scarce in unused condition, with 2008 P.F. certificate, unpriced in Scott as unused, Scott Retail as used ..... 1,750.00



1270





1271



1272



1273

- 1271 **\$1.00 Passage Ticket, Perforated (R74c).** Intense shade, well-balanced margins, bold August 24, 1865 manuscript cancel, Extremely Fine, with 2002 P.F. certificate .... 350.00
- 1272 **\$1.60 Foreign Exchange, Perforated (R79c).** Well-centered, deep rich color and sharp proof-like impression, appears unused (manuscript offset on back from document is only indication it was used), Extremely Fine, a beautiful stamp, from the Weill sale and ex Zoellner, with 2000 P.F. certificate ..... 180.00
- 1273 **\$5.00 Manifest, Perforated (R90c).** Brilliant color, beautiful centering with wide margins, cancelled solely by March 14, 1867 double-oval datestamp, Extremely Fine Gem.... 120.00



1274

- 1274 **\$20.00 Probate of Will, Perforated (R99c).** Brilliant color, crisp impression, choice centering with well-balanced margins, neat May 3, 1864 manuscript cancel

EXTREMELY FINE GEM. THIS IS WITHOUT QUESTION ONE OF THE FINEST EXAMPLES OF THE PERFORATED \$20.00 PROBATE OF WILL FIRST ISSUE REVENUE.

Ex Handy and Floyd. With 1980 and 2001 P.F. certificates ..... 3,000.00



1275



1276

- 1275 **\$25.00 Mortgage, Perforated (R100c).** Well-centered, incredibly intense color and impression, Oct. 27, 1865 manuscript cancel, Extremely Fine Gem, a magnificent stamp with great eye appeal, ex Zoellner, with 2000 P.F. certificate ..... 250.00
- 1276 **\$50.00 U.S.I.R., Perforated (R101c).** Well-centered with wide margins, deep dark shade and sharp proof-like impression, neat manuscript cancel, Extremely Fine Gem, a superb stamp, ex Zoellner, with 2000 P.F. certificate ..... 210.00



1277

- 1277 **\$200.00 U.S.I.R., Perforated (R102c).** Bright colors, crisp impressions, neat May 16, 1867 manuscript cancel, fresh and Very Fine, a pretty example of this elaborate design ..... 950.00
- 1278 **First Issue Perforated Balance.** 85 items on Scott album pages, including several unused such as R3c-R5c, R13c, R16c, R18c, R37c, R38c, R47c, R49c-R50c, R62c, R71c, R83c, R85c, R87c, R89c and R92c (several with gum), other better including Nos. R8c and R14c (circular dates-tamps), R28c, R29c, R41c (circular datestamp), R73c and R80c (circular datestamps, small faults), selected by the owner for superior eye appeal, few with small faults, Very Fine and desirable group, especially with so many unused stamps, Scott Retail as all used ..... (Website PDF) 1,777.40
- 1279 **First Issue Perforated, Shades.** 60 items on Scott album pages, including Nos. R51c (2), R52c (5), R53c (four singles and a pair), R63e (four singles, block of four and strip of four), R70c unused block of four, R78c pair, R82c block of four and three singles, R89c block of four, some of the shade differences are quite dramatic, some faults to be expected, overall Fine-Very Fine, Scott Retail with no premium for shades not listed in Scott.....(Website PDF) 1,080.20



## FIRST ISSUE SILK PAPER AND SHADES



- 1280 **1c Proprietary, Perforated, Silk Paper (R3d).** Rich color, clear blue silk fiber, neat manuscript "+" cancel, Very Fine and choice..... 175.00
- 1281 **2c Proprietary, Ultramarine, Perforated (R13e).** Brilliant color, light strike of **blue** double-circle datestamp, Very Fine and choice ..... 300.00
- 1282 **4c Proprietary, Perforated, Silk Paper (R22d).** Rich color, several blue silk fibers, bright color, 1872 manuscript cancel, Very Fine and choice ..... 250.00
- 1283 **25c Entry of Goods, Perforated, Silk Paper (R45d).** Horizontal pair, choice centering, radiant color, light strike of **blue** oval datestamp cancel, right stamp tiny thin speck, Extremely Fine appearance, the left stamp is a Gem, Scott Retail as singles..... 200.00
- 1284 **40c Inland Exchange, Perforated, Silk Paper (R53d).** Deep rich color and proof-like impression, unobtrusive cancel, wide margins, Extremely Fine ..... 600.00
- 1285 **\$1.00 Entry of Goods, Perforated, Silk Paper (R67d).** Intense color, neat 1872 manuscript cancel, well-balanced margins, several clearly visible silk fibers, Extremely Fine, with 2005 P.F. certificate ..... 150.00
- 1286 **\$2.00 Conveyance, Perforated, Silk Paper (R81d).** Brilliant color, wide and balanced margins, many clearly visible blue silk fibers, January 1871 manuscript cancel, Extremely Fine Gem, a beautiful stamp ..... 40.00
- 1287 **\$15.00 Ultramarine, Perforated (R97e).** Bright color in the true Ultramarine color, neat strike of December 6, 1869 oval datestamp cancel causes small indent in paper, wide and balanced margins, light horizontal crease at bottom visible only in fluid, Extremely Fine appearance ..... 350.00
- 1288 **First Issue Perforated, Silk Paper and Ultramarine Balance.** 26 items on Scott pages, including unused Nos. R15d, R36d, other better including Nos. R3d, R18d, R20d, R55d, R64d, R65d, R66d, R82d, R89d, R98d, R100d, selected by the owner for superior appearance, few small faults, a Very Fine group.....(Website PDF) 1,926.75

## SECOND ISSUE



1289



1290



1291

- 1289 **40c Blue & Black, Second Issue (R114).** Rich colors and detailed impressions, nicely complemented by magenta 1872 manuscript cancel, Extremely Fine..... 130.00
- 1290 **\$1.30 Blue & Black, Second Issue (R119).** Rich colors and detailed impressions, faint herringbone cancel does not break any paper fibers, blue oval datestamp cancel at right, fresh and Very Fine, Scott Retail as cut cancel \$160.00, Scott Retail as handstamped or manuscript cancel \$700.00..... E. 300-400
- 1291 **\$1.60 Blue & Black, Second Issue (R121).** Rich colors, blue herringbone cancel, Very Fine and choice, Scott Retail as cut cancel ..... 350.00



1292



1293



1294

- 1292 **\$1.90 Blue & Black, Second Issue (R122).** Brilliant colors, wide margins, unobtrusive handstamp cancel at top leaves entire design clearly visible, fresh and Extremely Fine, ex Floyd and "Scarsdale", with 2001 P.F. certificate ..... 550.00
- 1293 **\$3.50 Blue & Black, Second Issue (R126).** Barely cancelled (ink spot at bottom), rich colors, small pinholes in portrait, Very Fine appearance ..... 500.00
- 1294 **\$10.00 Blue & Black, Second Issue (R128).** Bright colors, wide margins, neat manuscript cancel, Extremely Fine ..... 230.00





1295

- 1295 **\$20.00 Blue & Black, Second Issue (R129).** Crisp impressions, neat October 28, 1871 manuscript cancel, Very Fine and choice, a spectacular stamp, with 2003 P.F. certificate ..... 1,150.00



1296

- 1296 **\$25.00 Blue & Black, Second Issue (R130).** Bright colors, detailed impressions, wide and balanced margins, 1871 manuscript cancel, fresh and Extremely Fine Gem, a beautiful stamp, with 1981 and 2003 P.F. certificates ..... 1,100.00



1297

- 1297 **\$50.00 Blue & Black, Second Issue (R131).** Rich colors, well-proportioned margins, unobtrusive manuscript cancel, small thin spot at top left, Extremely Fine appearance, scarce with such choice centering ..... 1,400.00

\$200.00 “SMALL PERSIAN RUG”



1298

1298

**\$200.00 Red, Blue & Black, Second Issue, “Small Persian Rug” (R132).** Bright colors, beautiful centering with wide and balanced margins, neat blue March 1, 1872 manuscript cancel

EXTREMELY FINE. A GORGEOUS SOUND EXAMPLE OF ONE OF THE MOST COLORFUL STAMPS IN UNITED STATES PHILATELY.

Both the Small and Large “Persian Rug” stamps were printed in sheets of one. Because of their size, the large number of perforations on each stamp, and the fact that they were used on documents which were frequently folded across the stamps, sound examples of the multicolored “Persian Rug” issues are extremely rare.

Only 446 of the small “Persian Rug” were issued. With 1992 P.F. certificate ..... 9,000.00





**\$500.00 “LARGE PERSIAN RUG”  
WITH SHEET MARGINS AND IMPRINTS**

- 1299 **\$500.00 Red Orange, Green & Black, Second Issue, “Large Persian Rug” (R133).** Well-centered **with sheet margins with full imprints at sides and original gum**, deep rich colors and sharp proof-like impressions, two manuscript “X” cancels thru both denominations and neat “E.C. July 7, 1872” (Erastus Corning) manuscript cancel on vignette, light creases in selvage only (the stamp itself is sound)
- EXTREMELY FINE. ONE OF FOUR REPORTED \$500.00 “LARGE PERSIAN RUG” STAMPS WITH SHEET MARGINS AND IMPRINTS.
- Only 210 were issued, and it is safe to say that most examples are faulty to some degree. A document exists from July 24, 1874, detailing the purchaser of each. The Kingsley census records 76 copies, and our expanded census, available at our website, contains 87.
- The initials “E.C.” on this stamp belong to Erastus Corning, from whose estate both of the Large and Small “Persian Rug” imprint examples originate. The \$200.00 Small Persian Rug was sold in our Zoellner Revenue sale (Sep. 2000), where it realized \$32,500 with a Scott Retail value of \$5,000. According to Dr. Thomas Kingsley, the stamps were purchased by Mr. Corning’s estate to pay the tax on his will, but the stamps were never attached to the will (this is why they retain their original gum).
- Census No. 1-3. With 2002 P.F. certificate..... 17,500.00





1300

1300

**\$500.00 Red Orange, Green & Black, Second Issue, "Large Persian Rug" (R133).** Rich colors, detailed impressions, unobtrusive "ARC & I Co. July 9, 1872" manuscript cancel, completely sound

FRESH AND VERY FINE. A RARE SOUND EXAMPLE OF THE CELEBRATED \$500.00 "LARGE PERSIAN RUG", WHICH IS ONE OF THE MOST COLORFUL AND ELABORATELY ENGRAVED STAMPS IN ALL OF PHILATELY.

Only 210 were issued, and it is safe to say that most examples are faulty to some degree. A document exists from July 24, 1874, detailing the purchaser of each. The Kingsley census records 76 copies, and our expanded census, available at our website, contains 87.

Census No. 5-2. With 1982 P.F. certificate..... 17,500.00

## SECOND ISSUE INVERTS

- 1301 **1c Blue & Black, Second Issue, Center Inverted (R103a).** Deep rich colors and proof-like impressions, manuscript cancel removed at top (appears unused and has not affected color), otherwise Fine and attractive, ex Floyd, with 2001 P.F. certificate..... 1,600.00



1301



1302

- 1302 **2c Blue & Black, Second Issue, Center Inverted (R104a).** Choice centering, rich colors and detailed impressions, neat "12/27/1871" manuscript cancel, trivial corner perf crease at top right not mentioned on accompanying certificate

EXTREMELY FINE. A GORGEOUS EXAMPLE OF THE 2-CENT SECOND REVENUE ISSUE WITH INVERTED CENTER.

The Joyce, Zoellner and Tolman stamps are consecutively dated in manuscript by the same user (12/27/1871, 1/2/1872 and 1/4/1872, respectively).

Ex Joyce. With 1991 P.F. certificate ..... 5,000.00

- 1303 (★) **5c Blue & Black, Second Issue, Center Inverted (R107a).** Unused (no gum), gorgeous rich colors and detailed impressions, perfectly centered with wide and balanced margins

EXTREMELY FINE GEM. THIS MAY WELL BE THE ONLY UNUSED EXAMPLE OF THIS ISSUE IN EXISTENCE. IT IS WITHOUT QUESTION THE FINEST EXAMPLE OF THE 5-CENT SECOND REVENUE ISSUE WITH INVERTED CENTER. A PHENOMENAL STAMP IN EVERY RESPECT, THIS RANKS AMONG THE FINEST IN TERMS OF CONDITION OF ANY INVERT.

A Power Search review and a search of older auction catalogs reveals just how rare this invert is in sound condition. Most are off-center or have faults. The stamp offered here, in unused condition and with perfect centering, is truly remarkable.

Ex Zoellner. With 2000 P.F. certificate. Unpriced in Scott as unused. Scott Retail for used ..... 4,000.00



1303



1304

- 1304 (★) **10c Blue & Black, Second Issue, Inverted Center (R109a).** Unused (no gum), well-centered, fresh color and detailed impressions

VERY FINE AND CHOICE. A RARE UNUSED EXAMPLE OF THE 10-CENT SECOND REVENUE ISSUE WITH INVERTED CENTER.

We have offered only three unused examples since keeping computerized records.

With 1953 A.P.S. and 2000 P.F. certificates. Scott does not price this stamp as unused. Scott Retail as used ..... 2,000.00





1305

1305 (★) **20c Blue & Black, Second Issue, Inverted Center (R111a).** Unused (no gum), deep rich color and clear impressions, centering is typical for all known copies of this invert, small natural pre-printing paper fold at bottom right

FINE. THIS IS ONE OF THE FINEST EXAMPLES OF THE 20-CENT SECOND REVENUE ISSUE WITH INVERTED CENTER. VERY FEW ARE RECORDED AND ONLY TWO ARE KNOWN IN SOUND CONDITION.

In his privately published census of Scott R111a, Larry Lyons notes thirteen singles and a pair. There exist a couple more outside of that census. Of these, only one single and one stamp in the pair are sound; seven have herringbone cut cancellations and the others are faulty. The stamp offered here is one of the finest extant.

Ex Lyons and Zoellner. With 1992 P.S.E. and 2000 P.F. certificates. Unlisted in Scott in unused condition. Scott Retail as used. .... 7,000.00



1306

1306 ★ **25c Blue & Black, Second Issue, Inverted Center (R112a).** Large part original gum, deep rich color and proof-like impressions, well-balanced margins

VERY FINE AND CHOICE. EASILY THE FINEST OF THE SIXTEEN RECORDED EXAMPLES OF THE 25-CENT SECOND ISSUE WITH INVERTED CENTER. THIS IS THE ONLY SOUND UNCANCELLED EXAMPLE IN EXISTENCE.

In his privately published census, Larry Lyons records sixteen examples of the 25c Second Issue Invert. Three are unused, including one with perfs touching the design and one with thin spots. Of the sixteen in existence, ten have faults, one is noted as having a herringbone cancellation, and three have no notes as to condition (our records note that at least one is faulty). This leaves only two confirmed sound examples.

Ex Zoellner. With 1984 P.F. certificate. Unlisted in Scott as unused. Scott Retail as used ..... 13,000.00

- 1307 (★) **50c Blue & Black, Second Issue, Center Inverted (R115b).** Traces of original gum, rich colors, choice centering  
VERY FINE. A RARE UNUSED EXAMPLE OF THE 50-CENT SECOND REVENUE ISSUE INVERT.

We have offered only three other unused examples since keeping computerized records. The online records of The Philatelic Foundation contains only two.

With 1992 and 2002 P.F. certificates. Unlisted in Scott as unused. Scott Retail as used. .... 1,150.00



1307



1308

- 1308 **70c Blue & Black, Second Issue, Center Inverted (R117a).** Rich colors, choice centering with well-balanced margins, unobtrusive herringbone and circular cut cancels, central thin from removal from document, Extremely Fine appearance, a stamp with great visual appeal, only 27 are recorded, with 1999 P.S.E. certificate, Scott Retail as cut cancel..... 1,250.00

- 1309 **\$1.00 Blue & Black, Second Issue, Inverted Center (R118a).** Fresh and bright colors, neat "Aug 8th, 1872" manuscript cancellation leaves vignette clearly visible, wide and balanced margins  
EXTREMELY FINE. A BEAUTIFUL EXAMPLE OF THE RARE \$1.00 SECOND REVENUE ISSUE WITH INVERTED CENTER. A BEAUTIFUL STAMP.

A review using Power Search shows that most examples of this invert are either off-center or have small faults. The example offered here is a condition rarity.

Ex Zoellner. With 1987 P.F. certificate.... 5,000.00



1309



1310

- 1310 **\$5.00 Blue & Black, Second Issue, Inverted Center (R127a).** Brilliant color, neat "W.R.M. 3d July 1871" manuscript cancel, well-centered with wide margins

EXTREMELY FINE EXAMPLE OF THE \$5.00 SECOND ISSUE WITH INVERTED CENTER. THIS IS THE HIGHEST DENOMINATION OF ANY UNITED STATES INVERT, AND IT IS A DIFFICULT ISSUE TO OBTAIN IN SOUND CONDITION WITH NICE CENTERING.

Ex Zoellner. With 2000 P.F. certificate..... 3,000.00



- 1311 **Second Issue Balance.** 21 stamps on Scott album pages, including Nos. R103-R118, R120, R123-R125 and R127, several unused including Nos. R107, R110-R112, R114-R115, R117-R118, R120, R124 and R127, No. R116 with blue circular datestamp (centered to bottom), three or four with small faults, overall Very Fine and definitely a desirable group, Scott Retail as all used .....(Website PDF) 1,072.15

## THIRD ISSUE



- 1312 **2c Vermilion & Black, Third Issue (R135a).** Choice centering with wide and balanced margins, radiant colors, neat December 21, 1872 manuscript cancel, fresh and Extremely Fine, with 1981 and 2002 P.F. certificates..... 800.00
- 1313 **15c Brown & Black, Third Issue (R139).** Outstanding centering, neat blue handstamp cancel, Extremely Fine Gem, ex DePriest and "Wildhorse", with 2007 P.S.E. certificate ... 22.50
- 1314 **30c Orange & Black, Third Issue (R140).** Intense colors, neat 1872 manuscript cancel, well-balanced margins, Extremely Fine Gem, a beautiful stamp ..... 40.00
- 1315 ★ **60c Orange & Black, Third Issue (R142).** Original gum, small h.r., vivid color, wide and balanced margins, Extremely Fine Gem, with 2000 P.F. certificate, most unused Revenue stamps have no gum and are actually used but uncanceled, the example offered here with original gum is the exception to the rule, unlisted in Scott as unused, Scott Retail as used..... 125.00
- 1316 **\$2.00 Vermilion & Black, Third Issue (R145).** Intense colors at the deepest end of the spectrum, neat 1872 manuscript cancel, beautiful centering, Extremely Fine Gem, a gorgeous stamp with great eye appeal ..... 45.00
- 1317 **\$3.00 Green & Black, Third Issue (R147).** Deep rich colors and proof-like impressions, perfectly centered, long and full perforations, Extremely Fine Gem, a phenomenal stamp in every respect..... 85.00

- 1318 **\$10.00 Green & Black, Third Issue (R149).** Bright colors, neat September 22, 1872 manuscript cancel, wide margins, Very Fine and choice ..... 400.00



1318



1319

- 1319 (★) **\$20.00 Orange & Black, Third Issue (R150).** Unused, pretty colors, well-balanced margins

EXTREMELY FINE. A MAGNIFICENT UNUSED EXAMPLE OF THE \$20.00 THIRD REVENUE ISSUE. THIS LARGE FORMAT BI-COLORED ISSUE IS RARE IN SOUND CONDITION, AND ESPECIALLY AS AN UNUSED STAMP.

Ex Dr. Schauss. With 2003 P.F. certificate. Unpriced in Scott as unused. Scott Retail as used ..... 800.00

- 1320 **\$20.00 Orange & Black, Third Issue (R150).** Bright colors, well-centered, August 12, 1872 manuscript cancel, Extremely Fine, scarce in such pristine condition, ex Zoellner, with 2000 P.F. certificate..... 800.00

- 1321 **Third Issue Balance.** Ten stamps on Scott album page, Nos. R134 (unused), R136 (blue circular datestamp), R137 (unused), R138, R141, R142 (blue circular datestamp), R143, R144, R146 and R148, most with manuscript cancels, selected by the owner for superior centering and eye appeal, one or two with tiny flaw, Very Fine-Extremely Fine, an attractive group.....(Website PDF) 625.85



1320



## THIRD ISSUE INVERTS



1322



1323

- 1322 **2c Orange & Black, Third Issue, Inverted Center (R135b).** Vivid color, neat “11/21/73” manuscript cancel, well-centered, Extremely Fine, scarce in such pristine condition, ex Zoellner, with 2000 P.F. certificate ..... 400.00
- 1323 **2c Orange & Black on Green Paper, Third Issue, Center Inverted (R151a).** Intense colors, neat manuscript cancel, wide margins, Very Fine and choice, with 1991 P.F. certificate..... 750.00



1324

- 1324 **5c Orange & Black, Third Issue, Inverted Center (R137a).** Bright color, nicely contrasted by blue handstamp cancellation, well-centered for this stamp  
 VERY FINE. ASIDE FROM THE THREE COPIES ON A PART DOCUMENT, THIS IS ONE OF ONLY FOUR SOUND EXAMPLES OF THE 5-CENT THIRD ISSUE WITH INVERTED CENTER. ONLY 21 EXAMPLES ARE KNOWN IN TOTAL.  
 In his privately published census, Larry Lyons records twenty examples of the 5c Third Issue with inverted center. Of these, three are on a part document. Of the seventeen off-document copies, thirteen have faults of varying degrees, the most common being creases (nine). The centering on the example offered here is better than most.  
 Ex Lyons and Zoellner. With 1991 and 2000 P.F. certificates. .... 5,000.00



1325

1325 **15c Brown & Black, Third Issue, Center Inverted (R139a).** Rich colors, detailed impressions, neat manuscript cancel, wide margins for this difficult issue

VERY FINE AND CHOICE. AN EXTREMELY RARE SOUND AND CENTERED EXAMPLE OF THE 15-CENT THIRD ISSUE REVENUE INVERT. ONLY THIRTEEN SINGLES AND ONE PAIR ARE RECORDED. THIS IS WITHOUT QUESTION THE FINEST IN EXISTENCE.

Larry Lyons, in his privately published census, records 13 singles and a pair, for a total of 15 stamps. Approximately half have cut cancels. Any others with decent centering have faults.

From our Sale 413 (May 31, 1972). With 1994 P.F. certificate ..... 16,000.00





1326

- 1326      **30c Orange & Black, Third Issue, Center Inverted (R140a).** Deep rich colors nicely complemented by blue September 16, 1872 double-circle datestamp, choice centering  
 VERY FINE AND CHOICE. A BEAUTIFUL EXAMPLE OF THE 30-CENT THIRD ISSUE REVENUE WITH INVERTED CENTER. EASILY ONE OF THE FINEST IN EXISTENCE.  
 This issue is often found with small faults, or is off-center. The example offered here is a condition rarity..... 3,500.00



1327

1327 **\$1.00 Green & Black, Third Issue, Center Inverted (R144a).** Deep rich colors, neat manuscript cancel, horizontal crease at top which is unobtrusive

VERY FINE APPEARANCE. A RARE EXAMPLE OF THE \$1.00 THIRD ISSUE REVENUE WITH INVERTED CENTER. THIS IS ONE OF THE FINEST RECORDED EXAMPLES. ONE OF THE GREAT REVENUE RARITIES.

In his privately published census, Larry Lyons records a total of 26 copies (one is known outside the census). Of these, five are on one document and one is on another, leaving 21 copies not on documents. Of these 21, virtually all have faults and most have poor centering. The example offered here is better centered than most, and has a fault that is not very noticeable.

Ex Joyce. With 1992 P.S.E. certificate ..... 15,000.00





1328

1328

**\$2.50 Claret & Black, Third Issue, Center Inverted (R146a).** Rich colors, choice centering, neat March 11, 1872 manuscript cancel, long and full perforations all around, horizontal crease

EXTREMELY FINE APPEARANCE. ONLY FOURTEEN EXAMPES OF THE \$2.50 THIRD ISSUE REVENUE INVERT ARE RECORDED, MAKING THIS ONE OF THE RAREST OF ALL REVENUE INVERTS. THIS IS WITHOUT QUESTION ONE OF THE FINEST.

In his privately published census, Larry Lyons records only fourteen copies of this invert rarity. Two are repaired, one has perfs trimmed away and most of the rest have faults to varying degrees.

Ex "Isleham" (Peyton). With 1999 P.S.E. certificate ..... 22,500.00

END OF SALE — THANK YOU



# BIDS

Use this form to submit absentee bids  
or to confirm telephone bids

# Sale 1137

October 5, 2016

PADDLE #

# 1

Please provide the following information:

NAME .....

ADDRESS .....

CITY/STATE/ZIP .....

PHONE ..... MOBILE .....

EMAIL .....

# 2

Have you purchased from us in the past 5 years? ☐ Yes (please go to Section 3)  
☐ No (references required below)

STAMP FIRM ..... PHONE .....

STAMP FIRM ..... PHONE .....

Please submit references at least **2 business days** before the sale. Bids from new clients will not be executed if satisfactory references are not received in time to be contacted.

# 3

- Enter the lot number and your corresponding maximum bid in the space below
- Use whole dollar amounts and bid according to the increments (see back of form)
- Bids do not include the 15% Buyer's Premium, taxes, duty or shipping charges
- Absentee bids will advance at one increment over the next highest competing bid
- "Plus", "Break Tie" or "Buy" bids will not be executed
- Indicate any "Or" bids between lot number/bid entries and bracket your choices
- If you wish to limit the total amount of your bids, follow the instructions below

Lot #	Bid \$	Lot #	Bid \$	Lot #	Bid \$

☐ **Limit Bids:** Check this box if you wish to limit the total hammer price of your bids (excluding 15% Buyer's Premium, taxes, duty and shipping costs). Your bids will be executed until your bidding limit has been reached. The total amount you wish to bid is \$ .....

# 4

By signing this form, you agree to all of the Conditions of Sale printed in the sale catalogue (printed and digital), including but not limited to a) payment in the manner demanded by the Siegel firm, and b) payment of the 15% Buyer's Premium, any sales tax or customs duty, shipping costs, late charges and

other prescribed charges. You agree that your bids will be executed as a courtesy by Siegel, but you waive the right to make any claim against Siegel or its employees arising from these bids or your participation in the sale. You agree to honor all bids as submitted, regardless of any errors or omissions.

SIGNED ..... DATE .....

Mail the signed form to Siegel Bid Department, 60 East 56th St., New York, NY 10022  
or email to [stamps@siegelauctions.com](mailto:stamps@siegelauctions.com)  
or fax to 212-753-6429





# Additional Bids

## Sale 1137

October 5, 2016

PADDLE #

Lot #	Bid \$	Lot #	Bid \$	Lot #	Bid \$

## Shipping & Insurance

We will be pleased to arrange for shipping and transit insurance for purchases in this sale, except for lots marked or announced as "floor sale only." To expedite billing and delivery to hundreds of buyers in each sale, we use standard charges for postage and insurance under our policy. These charges are based on the package weight and mailing requirements, according to the schedule shown here. Our standard charges do not include a fee for our services, and they may be slightly more or less than the actual postage or Fedex fee. We ask all buyers to remit the invoiced amount for shipping and insurance.

Transit insurance is provided in all cases, except when the buyer has furnished us with documentation that insurance is effective under the buyer's own policy.

There will be no added insurance charge for shipments of less than \$75,000 value. Shipments valued in excess of \$75,000 may require supplemental insurance and/or special courier service, the estimated cost of which will be furnished to the buyer prior to shipment. If the buyer refuses to pay the estimated charges or furnish proof of self-insured coverage, the buyer will be responsible for picking up the lots at our office and any resulting sales tax.

### Standard Shipping Charges

Weight Class	Shipping Method	Charge
Up to 2 lbs.	Fedex Envelope	\$20
Over 2 lbs.	Fedex Box	\$35 - \$50*
Outside US	Fedex	\$50 - \$100**
Bulky Lots	Fedex Ground or Express	By weight

\* Up to \$75,000 value and up to 5 lbs; additional charge may apply to packages exceeding limits

\*\* Buyers outside United States are liable for any applicable customs duty and clearance charges. An accurate declaration of contents and value will be made on all packages and import/export documents. **Siegel may refuse to ship lots to certain countries with a high risk factor.**

2/2015

## Bidding Increments

The auctioneer may regulate the bidding at his discretion. However, to assist absentee bidders in establishing their maximum bids, the increments shown here will be used in most cases. We recommend that written bids conform to these increments—bids that do not will be reduced accordingly.

Bid	Increment	Bid	Increment
Up to \$200	\$10	\$7,000-20,000	\$500
\$200-500	\$25	\$20,000-30,000	\$1,000
\$500-1,000	\$50	\$30,000-75,000	\$2,500
\$1,000-3,000	\$100	\$75,000-140,000	\$5,000
\$3,000-7,000	\$250	\$140,000-300,000	\$10,000

Robert A. Siegel Auction Galleries, Inc.  
Prices Realized for  
Sale 1137 10/5/2016 The Grant Inman Collection, Part 3: First -Third Issue Revenues

Lot#	Realized	Lot#	Realized	Lot#	Realized	Lot#	Realized
1201	225	1239	2,600	1277	800	1314	275
1202	6,000	1240	200	1278	1,000	1316	300
1203	2,700	1241	3,750	1279	650	1317	500
1204	1,000	1242	2,100	1280	110	1318	130
1205	2,100	1243	300	1281	350	1319	1,600
1207	350	1244	11,000	1282	275	1320	1,200
1208	650	1245	1,100	1283	650	1321	225
1209	800	1246	1,600	1284	600	1322	550
1210	700	1247	225	1285	350	1323	700
1211	200	1249	1,200	1286	180	1324	6,000
1212	375	1250	850	1287	225	1325	13,500
1213	400	1251	275	1288	1,300	1326	2,600
1214	850	1252	250	1289	400	1327	6,250
1215	160	1253	850	1290	160	1328	10,500
1216	450	1254	800	1291	300		
1217	450	1255	1,500	1292	850		
1218	850	1256	425	1294	160		
1219	140	1257	1,100	1295	1,100		
1220	1,600	1258	1,400	1296	2,100		
1221	350	1259	750	1297	400		
1222	500	1260	15,500	1298	7,000		
1223	550	1261	6,750	1299	35,000		
1224	12,000	1262	1,800	1300	13,500		
1225	2,000	1264	6,250	1301	800		
1226	18,500	1265	14,000	1302	7,000		
1227	350	1266	800	1303	10,500		
1228	5,000	1267	475	1304	3,000		
1229	9,500	1268	400	1305	5,250		
1230	225	1269	2,600	1306	14,000		
1231	225	1270	800	1307	2,000		
1232	6,750	1271	950	1308	2,200		
1233	750	1272	475	1309	8,000		
1234	275	1273	650	1310	3,250		
1235	800	1274	2,800	1311	750		
1236	1,100	1275	550	1312	2,000		
1237	900	1276	250	1313	225		