

THE BARRY K. SCHWARTZ COLLECTION OF
THE UNITED STATES 1909 BLUISH PAPER ISSUE



SALE 1148—TUESDAY, FEBRUARY 28, 2017, AT 1:30 P.M.

Robert A. Siegel
AUCTION GALLERIES, INC.

**THE BARRY K. SCHWARTZ COLLECTION OF
THE UNITED STATES 1909 BLUISH PAPER ISSUE**

SALE 1148—TUESDAY, FEBRUARY 28, 2017, AT 1:30 P.M. (LOTS 101-155)



Live auction at 60 East 56th Street (Park/Madison), 4th Floor, New York City

All lots sold subject to an **18% buyer's premium** and
applicable sales tax or customs duty

Please carefully read the Conditions of Sale before bidding

Presale Viewing:

Monday, February 27, 10am-4pm
and by appointment (please call 212-753-6421)

Robert A. Siegel

AUCTION GALLERIES, INC.

60 EAST 56TH STREET, 4TH FLOOR, NEW YORK, N.Y. 10022
Phone (212) 753-6421 • Fax (212) 753-6429 • E-mail: stamps@siegelauctions.com

Catalogues, internet bidding, resources, archives and the Siegel Encyclopedia at
siegelauctions.com



Robert A. Siegel

AUCTION GALLERIES, INC.

60 EAST 56TH STREET, 4TH FLOOR, NEW YORK, N.Y. 10022

Phone (212) 753-6421 • Fax (212) 753-6429 • E-mail: stamps@siegelauctions.com
siegelauctions.com



Scott R. Trepel
President
strepel
@siegelauctions.com



John P. Zuckerman
Senior Vice President
jzuckerman
@siegelauctions.com



Corey Long
Senior Vice President
clong
@siegelauctions.com



Colleen Stellato
Vice President–Accounts
colleen
@siegelauctions.com



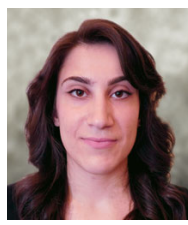
Charles F. Shreve
Director, Siegel International
charles
@siegelauctions.com



Andrew Titley
International Specialist
andrew
@siegelauctions.com



Helen Stewart
Bids and Inquiries
helen
@siegelauctions.com



Jocelyn Weibel
Digital Production
jocelyn
@siegelauctions.com



Chris Anderson
Siegel International
chris
@siegelauctions.com

Scott R. Trepel Principal Auctioneer (licensed by NYC Dept. of Consumer Affairs, #795952)

Information for Bidders

Bidding

The following means are available for placing bids:

- 1) **Attending the Live Auction in Person:** All bidders must register for a paddle, and new bidders must provide references at least three business days in advance of the sale.
- 2) **Live Internet Bidding:** Instructions for participating as a Live Internet Bidder are provided on the page opposite.
- 3) **Phone Bidding:** Bidders can be connected to the sale by phone and bid through a member of staff. Requests for phone bidding are subject to approval (please contact our office at least 24 hours before the sale). A signed Bid Form is required.
- 4) **Absentee Bids.** All bids received in advance of the sale, either by mail, fax, phone, e-mail or internet, are Absentee Bids, which instruct the auctioneer to bid up to a specific amount on one or more lots in the sale. Absentee Bids sent by phone, fax or e-mail should arrive at least one hour prior to the start of the sale session. Bids entered through Live Internet Bidding will be visible to the auctioneer during the sale. Written bids should be entered legibly on the Bid Form in the sale catalogue. E-mail and internet bids should be carefully typed and double-checked. All new bidders must provide references. We recommend calling or e-mailing to confirm that Absentee Bids sent by mail, fax or e-mail have been received and entered.

Pre-Sale Viewing

Subject to availability, certain lots (except group lots) can be sent to known clients for examination. Requests must be made no later than 7 days prior to the sale. Lots must be returned on the day received. Postage/insurance costs will be invoiced.

In addition to regular viewing, clients may view lots by appointment. Our staff will be pleased to answer questions or provide additional information about lots.

Expert Certification

Individual items offered without a PF or PSE certificate dated within the past five years may be purchased subject to independent certification of genuineness and our description. **Please refer to the Conditions of Sale and Grading Terms for policies governing certification.**

Shipping and Delivery

Procedures and charges for shipping lots are printed on the back of the Bid Form. **Bidders are responsible for all prescribed shipping charges and any applicable sales tax or customs duties.**

Price Realized

Prices realized are sent with each invoice. Bidders with e-mail will receive a Bid Results report after the sale. Session results are posted immediately to siegelauctions.com

Live Internet Bidding at Siegel Auctions

BIDDING FROM YOUR COMPUTER LETS YOU BE PART OF THE LIVE AUCTION FROM ANYWHERE IN THE WORLD!

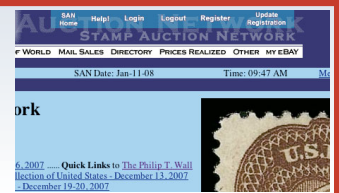
There's **NO SUBSTITUTE** for following the auction in real time.
Live Internet Bidding lets you bid and buy as though you were right there in the saleroom.
And it's easy.

This step-by-step guide will instruct you how to register, set your browser and use the bidding interface.

Start by following the simple steps to become a registered Live Internet Bidder.
Once you've been approved for bidding, you can listen to the auction and place bids with the click of a mouse.

Registering with **STAMP AUCTION NETWORK & SIEGEL AUCTION GALLERIES**

Live Internet Bidding is managed by Stamp Auction Network (SAN).
To bid, you must be registered and approved by *both* SAN and Siegel.
To decide what you need to do, choose the description below that best fits you.



I've already registered with SAN and have been approved by Siegel for internet bidding.

I'm a Siegel client, but I'm not registered with SAN.

Go to stampauctionnetwork.com/siegel and click on "Register" at the top. Check the box for Robert A. Siegel Auction Galleries (under "R") and submit the form, indicating you are a Siegel client. Once registered at SAN, you're ready for internet bidding.

I've bid through SAN before, but this is the first time I've bid in a Siegel sale.

Then you just need to be approved by Siegel. Go to stampauctionnetwork.com/siegel and click on "Update Registration" at the top. Your SAN account information will be sent to us for approval (you might be asked for other trade references). Once approved by Siegel for bidding, you're ready for internet bidding.

I've never bid with Siegel, nor registered with SAN.

Go to stampauctionnetwork.com/siegel and click on "Register" at the top. Check the box for Robert A. Siegel Auction Galleries (under "R") and submit the form **with your trade references** (please, no family members or credit card companies as references). Once registered at SAN and approved by Siegel for bidding, you're ready for internet bidding.

Live Internet Bidding works by allowing registered bidders to observe and place bids.

Live Internet Bidding will work with any browser on both PC and Mac operating systems.

Before bidding by internet for the first time, we recommend finding a sale in progress and listening to the public broadcast or logging in as a registered bidder. This will help you develop a feel for the sale tempo and bidding interface.

Log on to the auction at stampauctionnetwork.com/siegel.

You can also log on at siegelauctions.com

When you're logged on as a Live Internet Bidder, the bidding interface shows a photo and description of the lot, the current bid (and your bidding status), options for placing competitive bids and buttons with bid increments.

- After you click on a bid amount, the auctioneer is immediately notified of your bid.
- Retracting a bid is usually not acceptable, so please bid carefully.
- If you bid and then decide to stop, the "Pass" button will tell the auctioneer you are no longer bidding.
- You can send messages to the auctioneer (for example, a request for extension).
- You can track prior realizations from the bidding screen.



"System Down" or "Lost Connection" events do occasionally happen.

If you have any problems with Live Internet Bidding please call **212-753-6421** for immediate assistance.

Conditions of Sale (please read carefully before bidding)

THE PROPERTY DESCRIBED IN THIS CATALOGUE WILL BE OFFERED AT PUBLIC AUCTION BY ROBERT A. SIEGEL AUCTION GALLERIES, INC. ("GALLERIES") ON BEHALF OF VARIOUS CONSIGNORS AND ITSELF OR AFFILIATED COMPANIES. BY BIDDING ON ANY LOT, WHETHER DIRECTLY OR BY OR THROUGH AN AGENT, IN PERSON, OR BY TELEPHONE, FACSIMILE OR ANY OTHER MEANS, THE BIDDER ACKNOWLEDGES AND AGREES TO ALL OF THE FOLLOWING CONDITIONS OF SALE.

1. The highest bidder acknowledged by the auctioneer shall be the buyer. The term "final bid" means the last bid acknowledged by the auctioneer, which is normally the highest bid offered. **The purchase price payable by the buyer will be the sum of the final bid and a commission of 18% of the final bid ("buyer's premium"), together with any sales tax, use tax or customs duties due on the sale.**
2. The auctioneer has the right to reject any bid, to advance the bidding at his discretion and, in the event of a dispute, to determine the successful bidder, to continue the bidding or to reoffer and resell the lot in dispute. The Galleries' record of the final sale shall be conclusive.
3. All bids are per numbered lot in the catalogue unless otherwise announced by the auctioneer at the time of sale. The right is reserved to group two or more lots, to withdraw any lot or lots from the sale, or to act on behalf of the seller. The Galleries will execute bidding instructions on behalf of clients, but will not be responsible for the failure to execute such bids or for any errors in the execution of such bids.
4. **Lots with numbers followed by the symbol ° are offered subject to a confidential minimum bid ("reserve"), below which the lot will not be sold. The absence of the symbol ° means that the lot is offered without a reserve. If there is no reserve, the auctioneer has sole discretion to establish a minimum opening bid and may refuse an offer of less than half of the published estimate. Any lot that does not reach its reserve or opening bid requested by the auctioneer will be announced as "passed" and excluded from the prices realized lists after the sale. The Galleries may have a direct or indirect ownership interest in any or all lots in the sale resulting from an advance of monies or goods-in-trade or a guarantee of minimum net proceeds made by the Galleries to the seller.**
5. Subject to the exclusions listed in 5(A), the Galleries will accept the return of lots which have been misidentified or which have obvious faults that were present when the lot was in the Galleries' custody, but not so noted in the lot description. **All disputed lots must be received by the Galleries intact with the original packing material within 5 days of delivery to the buyer but no later than 30 days from the sale date.**
(5A) EXCLUSIONS: The following lots may not be returned for any reason, or may not be returned for the reasons stated: i) lots containing 10 or more items; ii) lots from buyers who registered for the pre-sale exhibition or received lots by postal viewing, thereby having had the opportunity to inspect them before the sale; iii) any lot described with "faults," "defects" or a specific fault may not be returned because of any secondary fault; iv) photographed lots may not be returned because of centering, margins, short/nibbed perforations or other factors shown in the illustrations; v) the color of the item does not match the color reproduction in the sale catalogue or website listing; vi) the description contains inaccurate information about the quantity known or reported; or vii) a certification service grades a stamp lower than the grade stated in the description.
6. Successful bidders, unless they have established credit with the Galleries prior to the sale, must make payment in full before the lots will be delivered. Buyers not known to the Galleries must make payment in full within 3 days from the date of sale. **The Galleries retains the right to demand a cash deposit from anyone prior to bidder registration and/or to demand payment at the time the lot is knocked down to the highest bidder, for any reason whatsoever.** In the event that any buyer refuses or fails to make payment in cash for any lot at the time it is knocked down to him, the auctioneer reserves the right to reoffer the lot immediately for sale to the highest bidder. **Credit cards (Visa, Mastercard and Discover only) can be accepted as payment but will be subject to a 3% Convenience Fee, which will be added to the total of the entire invoice (including hammer price, buyer's premium, shipping**

and transit insurance charges and any applicable taxes).

7. If the purchase price has not been paid within the time limit specified above, nor lots taken up within 7 days from the date of sale, the lots will be resold by whatever means deemed appropriate by the Galleries, and any loss incurred from resale will be charged to the defaulting buyer. **Any account more than 30 days in arrears will be subject to a late payment charge of 1½% per month as long as the account remains in arrears. Any expenses incurred in securing payment from delinquent accounts will be charged to the defaulter.** A fee of \$250.00 per check will be charged for each check returned for insufficient funds.
8. All lots are sold as genuine. **Any lot accompanied by a certificate issued by The Philatelic Foundation or by Professional Stamp Experts within 5 years of the sale date is sold "as is" and in accordance with the description on the certificate. Such lots may not be returned for any reason, including but not limited to a contrary certificate of opinion.** Buyers who wish to obtain a certificate for any item that does not have a P.F. or P.S.E. certificate (dated as above) may do so, provided that the following conditions are met: (1) the purchase price must be paid in full, (2) the item must be submitted to an acceptable expertizing committee with a properly executed application form within 21 days of the sale, (3) a copy of the application form must be given to the Galleries, (4) in the event that an adverse opinion is received, the Galleries retain the right to resubmit the item on the buyer's behalf for reconsideration, without time limit or other restrictions, (5) unless written notification to the contrary is received, items submitted for certification will be considered cleared 90 days from the date of sale, and (6) in the event any item is determined to be "not as described", the buyer will be refunded the purchase price and the certification fee up to \$800.00 unless otherwise agreed to in writing.
9. Until paid for in full, all lots remain the property of the Galleries on behalf of the seller.
10. Agents executing bids on behalf of clients will be held responsible for all purchases made on behalf of clients unless otherwise arranged prior to the sale.
11. The buyer assumes all risk for delivery of purchased lots and agrees to pay for prescribed shipping costs. **Buyers who receive lots in the U.S. are obligated to pay whatever sales tax or compensating use tax might be due, and buyers outside the U.S. are responsible for all customs duties.**
12. **The bidder consents that any action or proceeding against it may be commenced and maintained in any court within the State of New York or in the United States District Court for the Southern District of New York, that the courts of the State of New York and United States District Court for the Southern District of New York shall have jurisdiction with respect to the subject matter hereof and the person of the bidder. The bidder agrees not to assert any defense to any action or proceeding initiated by Galleries based upon improper venue or inconvenient forum. The bidder agrees that any action brought by the bidder shall be commenced and maintained only in a Federal Court in the United States District Court for the Southern District of New York or the State Court in the county in which Galleries has its principal place of business in New York. The bidder agrees not to use a public conflict resolution service and not to use any form of social media to publish comments or information about the Galleries and its employees which might harm the Galleries' reputation or business. These Conditions of Sale shall be governed by and construed in accordance with the substantive laws of the State of New York, and shall constitute an agreement that shall be binding on the parties, and their respective heirs, administrators, distributees, successors and assignees.**

SCOTT R. TREPEL, Principal Auctioneer
Auctioneer's License No. 795952
N.Y.C. Department of Consumer Affairs
80 Lafayette Street, New York, N.Y. 10013
Telephone (212) 577-0111

Revised 1/2017

Grades, Abbreviations and Values Used in Descriptions

Grades and Centering

Our descriptions contain detailed information and observations about each item's condition. We have also assigned grades to stamps and covers, which reflect our subjective assessment. For stamps, the margin width, centering and gum are described and graded according to generally-accepted standards (an approximate correlation to numeric grades is provided at right). Although we believe our grades are accurate, they are not always exactly aligned with third-party grading terms or standards for all issues. **A lot may not be returned because a certification service grades a stamp lower than the grade stated in the description. Information from the P.S.E. Stamp Market Quarterly and P.S.E. Population ReportSM is the most current available, but lots may not be returned due to errors or changes in statistics or data.**

Extremely Fine Gem (90-100): The term "Gem" describes condition that is the finest possible for the issue. This term is equivalent to "Superb" used by grading services.







Extremely Fine (80-90): Exceptionally large/wide margins or near perfect centering.

Very Fine (70-85): Normal-size margins for the issue and well-centered with the design a bit closer to one side. "Very Fine and choice" applies to stamps that have desirable traits such as rich color, sharp impression, freshness or clarity of cancel.

Fine (60-70): Smaller than usual margins or noticeably off center. Pre-1890 issues may have the design touched in places.

Very Good (below 60): Attractive appearance, but margins or perforations cut into the design.

Guide to Gum Condition

Gum Categories:	MINT N.H.	ORIGINAL GUM (O.G.)				NO GUM
	 Mint Never Hinged <i>Free from any disturbance</i>	 Lightly Hinged <i>Faint impression of a removed hinge over a small area</i>	 Hinge Mark or Remnant <i>Prominent hinged spot with part or all of the hinge remaining</i>	 Part o.g. <i>Approximately half or more of the gum intact</i>	 Small part o.g. <i>Approximately less than half of the gum intact</i>	 No gum <i>Only if issued with gum</i>
Catalogue Symbol:	★ ★	★	★	★	★	(★)
PRE-1890 ISSUES	<i>Pre-1890 stamps in these categories trade at a premium over Scott value</i>			Scott Value for "O.G."		Scott "No Gum" Values thru No. 218
1890-1935 ISSUES	Scott "Never Hinged" Values for Nos. 219-771	Scott Value for "O.G." (Actual value will be affected by the degree of hinging)		Disturbed Original Gum: Gum showing noticeable effects of humidity, climate or hinging over more than half of the gum. The significance of gum disturbance in valuing a stamp in any of the Original Gum categories depends on the degree of disturbance, the rarity and normal gum condition of the issue and other variables affecting quality. For example, stamps issued in tropical climates are expected to have some		
1935 TO DATE	Scott Value for "Unused"					

Covers

Minor nicks, short edge tears, flap tears and slight reduction at one side are normal conditions for 19th century envelopes. Folded letters should be expected to have at least one file fold. Light cleaning of covers and small mends along the edges are accepted forms of conservation. Unusual covers may have a common stamp with a slight crease or tiny tear. **These flaws exist in virtually all 19th century covers and are not always described. They are not grounds for return.**

Catalogue Values and Estimates

Unless otherwise noted, the currently available *Scott Catalogue* values are quoted in dollars with a decimal point. Other catalogues are often used for foreign countries or specialized areas and are referred to by their common name: *Stanley Gibbons* (SG), *Dietz*, *American Air Mail Catalogue* (AAMC), *Michel*, *Zumstein*, *Facit*, etc. Estimates are indicated with an "E." and reflect our conservative valuation in dollars. Reserves will never exceed the low end of the estimate range; they will sometimes exceed Scott Catalogue value for stamps in Extremely Fine condition.

Because of certain pricing inconsistencies in the *Scott Catalogue*—for example, blocks that have no gum, the absence of premiums for Mint N.H. items, etc.—we cannot guarantee the accuracy of values quoted for multiples, specialized items and collection lots. We generally try to be conservative, but buyers may not return a lot because of a discrepancy in catalogue value due to Scott pricing inconsistencies.

Symbols and Abbreviations (see chart above for gum symbols)

⊞	Block	E	Essay	pmk.	Postmark	No.	Scott Catalogue Number
⊞	Cover	P	Proof	cds	Circular Datestamp	hs	Handstamp
FC	Fancy Cancel	TC	Trial Color Proof	var.	Variety	ms.	Manuscript

THE 1909 BLUISH PAPER ISSUE

THE BARRY K. SCHWARTZ COLLECTION OF THE 1909 BLUISH PAPER ISSUE IS INDISPUTABLY THE finest and most comprehensive of its kind ever formed. It was started in earnest at the time of the 1977 Siegel auction of the W. Parsons Todd collection, from which Mr. Schwartz acquired several plate blocks, including the only recorded 5¢ in private hands. Assisted by his brother-in-law, Harry (Sonny) Hagendorf of Columbian Stamp Company, Mr. Schwartz continued to build the collection, adding multiples, used examples and covers. Due to the unusual circumstances in which the Bluish Paper stamps were produced and distributed, they range from uncommon to extremely rare; in certain cases, only one of a particular item exists outside government institutions. The key to appreciating the significance of the Schwartz collection is understanding the history of the Bluish Paper issue.

EXPERIMENTAL PAPER

The Bluish Paper stamps were first produced in early 1909 to remedy problems in manufacturing and handling. During the early production and use of the 1908-09 Washington-Franklin series, the Bureau of Engraving and Printing (BEP) encountered two problems. The first was the effect of paper shrinkage on the perforation process, which the Third Assistant Postmaster General's report specifically noted as the reason for the experimental paper. The second reason is found in a letter dated February 16, 1909, from the Third Assistant Postmaster General, A. L. Lawshe, to the BEP director, Joseph E. Ralph, which states that the 1¢ and 2¢ stamps would be placed on sale at the Washington, D.C., post office, to determine if "they display less tendency to curl than the stamps made of the regular wood pulp paper" (Winthrop S. Boggs, "United States—Notes on the Bluish Paper Stamps of 1909," reprint from *London Philatelist*, July-October 1960).

The paper shrinkage problem was the result of a necessary step in the printing process. In intaglio printing the sheet of paper was moistened before the impression was made, because the dampened paper picked up more of the ink in the recessed lines of the metal plate. After the sheet dried, the paper would shrink slightly, causing the rows of individual stamp subjects to fall out of alignment with the fixed rows of perforation pins. Postal officials reported that 9% of stamps were unsatisfactory due to paper shrinkage.

The curling and splitting problem occurred after the sheets were perforated and divided into panes. As the gum dried, it pulled along the grain of the paper, causing each row of stamps to curl (collectors sometimes see this effect today in mint multiples). Further down the line, panes had a tendency to split apart along the perforations, making it difficult to package them for distribution or handle them at post offices.

On February 1, 1909, the BEP director notified the Third Assistant Postmaster General that a supply of 1¢ and 2¢ stamps had been printed on an experimental rag paper stock, which the BEP developed to resolve the production and handling problems. The experimental paper—10,000 sheets in total—had 30% to 35% rag cloth added to the wood-pulp mixture. Ultimately, the rag stock did not prove to be an effective remedy and was discontinued. Better results were subsequently obtained by modifying the spacing of the six outside vertical rows on the plates (known as "Star" plates, because of the engraved star in the imprint, followed by plates with the letter "A" added to the imprint).

The stamps' distinctive grayish paper was first described as having "a bluish cast" by Charles R. Morris, an auditor in the Treasury Department who was the Washington, D.C., correspondent for *Mekeel's Weekly Stamp News*. Morris compared the paper shade to "skimmed milk," in contrast to the regular paper, which he said had a "creamy look" (Kevin G. Lowther, "'Blue Papers' Are Off the Color Chart," *U.S. Stamp Specialist*, Vol. 86, No. 3). The report of the Third Assistant Postmaster General (for the fiscal year ending June 30, 1909) described the experimental stamps as having a "slightly bluish tinge," and the moniker *Bluish Paper* entered philatelic lexicon permanently. The Bluish Paper issue is listed in the Scott Catalogue as numbers 357-366 (1¢-15¢ Washington-Franklin) and 369 (2¢ Lincoln).

BLUISH PAPER STAMP PRODUCTION

All of the Bluish Paper stamps were printed from plates of 400 subjects on the Hoe & Company four-plate intaglio press, which increased the speed of production through simultaneous tasking. The Hoe press had four positions and rotated. As the plate in the first position was being inked and polished, a wet sheet of paper was being laid on top of the plate in the second position, and a blanket on top of the paper. In the third position the form roller pulled the impression, while in the fourth position the assistant removed the blanket and set the pulled print out to dry. For this reason there are at least four plate numbers for each Bluish Paper stamp. Each sheet of 400 was divided into four panes.

The production of Bluish Paper stamps occurred in two stages. The first "regular" stage involved the printing of 1¢ and 2¢ stamps (Scott 357, 358 and 369). The data reported by Boggs and the plate numbers listed in the 2016 Durland catalogue are summarized in the table below.

REGULAR PRODUCTION OF BLUISH PAPER STAMPS						
Value (Scott No.)	Printing Date	Plates Used (x=Star Plate)	Sheets of 400	Panes of 100	Total Stamps	Distribution
1¢ Franklin (357)	January 1909	4889, 4890, 4892, 4894, 4899	4,005	16,020	1,602,000	14,800 panes Washington D.C. (1,480,000) sold out May 1, 1909, 1,220 panes destroyed
2¢ Washington (358)	January 1909	4837, 4860, 4861, 4863	4,005	16,020	1,602,000	14,940 panes Washington D.C. (1,494,000) sold out May 1, 1909, 1,080 panes destroyed
2¢ Lincoln (369)	Feb. 5, 1909	4976x, 4977x, 4978x, 4979x	1,754	7,016	701,600	6,370 panes Washington D.C. (637,000) sold out May 1, 1909, 646 panes destroyed

At the conclusion of this first stage of printing on experimental paper, 9,764 of the original 10,000 sheets of paper delivered to the BEP were used, leaving 236 sheets on hand.

In January 1909 Arthur M. Travers, the chief clerk to the Third Assistant Postmaster General (and then Acting Third Assistant PMG), ordered BEP director Ralph to use the remaining paper to print the 1¢ through 15¢ values of the 1908 Washington-Franklin series “for the Department’s files” and for the “Museum Collection.” The 50¢ and \$1.00 stamps were not ordered on Bluish Paper. There were eleven different Special Printing Bluish Paper stamps for a total face value of 69¢. Ten to thirteen sheets of 400 of each were printed from February to April 1909.

Since the 1¢ and 2¢ plates were always on the presses to meet the high-volume production demand, when the BEP filled Travers’ request for the Special Printings, ten sheets of each were printed from Star plates. Examples of the 1¢ Franklin and 2¢ Washington Bluish Paper stamps with the Star imprint (or with 3mm spacing between subjects) must be Special Printings. There is no way to distinguish the 2¢ Lincoln Special Printing on Bluish Paper unless the plate number 4983 is present, which is the only plate that was not used for the earlier regular production on Bluish Paper.

SPECIAL PRINTING OF 1¢ AND 2¢ BLUISH PAPER STAMPS

Value (Scott No.)	Printing Date	Plates Used (red=unrecorded) (★=Star Plate)	Sheets of 400	Panes of 100	Total Stamps
1¢ Franklin (357)	Mar. 9, 1909	4991★, 4993★, 4994★, 4995★, 4997★	10	40	4,000
2¢ Washington (358)	Mar. 10, 1909	4996★, 5015★, 5016★, 5017★	10	40	4,000
2¢ Lincoln (369)	Feb. 19, 1909	4977★, 4978★, 4979★, 4983★	10	40	4,000

The table at left summarizes the three 1¢ and 2¢ Special Printing data from Boggs and Durland.

The 3¢ through 15¢ values were printed on Bluish Paper from February 5, 1909, through April 6, 1909, presumably whenever the plates were on the presses for normal stamp production.

After dividing the sheets into panes of 100, all of the 3¢-15¢ Special Printing panes—and probably the 1¢ and 2¢ Special Printings as well—were marked with a manuscript “X” in the corner selvage. This mark is found on full panes and certain positions with the full corner selvage intact, regardless of the source.

In April 1909 four sets of panes, comprising the eleven different stamps, were delivered by the BEP to Travers at the Third Assistant Postmaster General’s office. Of these four sets of panes, one was placed in the Post Office Department’s official archives, and another was sent to the National Museum for the government stamp collection (what is today the Smithsonian National Postal Museum). One set was involved in an illegal exchange involving Travers and a prominent philatelist. The disposition of the fourth set of panes is unknown.

The Special Printings produced by the BEP at Travers’ request were never intended for release to the public. However, some of the 412 remaining panes at the BEP were packaged and distributed to various post offices around the country—excluding the 4¢ and 8¢—while some of the panes delivered to Travers were released into the philatelic market through other channels at different times. A summary of the production data and distribution of Bluish Paper Special Printing stamps is shown in the table below (including information from Boggs).

SPECIAL PRINTING OF 3¢-15¢ BLUISH PAPER STAMPS (WASHINGTON DESIGN TYPE)

Value (Scott No.)	Printing Date	Plates Used (red=unrecorded) Watermark Orientation	Sheets of 400	Panes of 100	Total Stamps	Distribution (NM=National Museum Deaccession)
3¢ Dp Violet (359)	Feb. 25, 1909	4918, 4925, 4926, 4927 Wmk inverted or reversed	10	40	4,000	Appr 250–NY PO; 100–Travers-Steinmetz 12–NM 9/16/1914; 65–NM 11/27/1914
4¢ Brown (360)	Feb. 10, 1909	4932, 4933, 4934, 4935 Wmk reversed	11	44	4,400	100–Travers-Steinmetz 12–NM 9/16/1914; 65–NM 11/27/1914
5¢ Blue (361)	Feb. 24, 1909	4928, 4929, 4930, 4931 Wmk normal or inverted	10	40	4,000	?–Rockford IL PO; 100–Travers-Steinmetz 12–NM 9/16/1914; 65–NM 11/27/1914
6¢ Orange (362)	Mar. 9, 1909	4936, 4937, 4938, 4939 Wmk normal or reversed	13	52	5,200	Appr 1000–Chicago; 100–Travers-Steinmetz 12–NM 9/16/1914; 65–NM 11/27/1914
8¢ Ol Grn (363)	Feb. 5, 1909	4919, 4922, 4923, 4924 Wmk inverted	10	40	4,000	100–Travers-Steinmetz 12–NM 9/16/1914; 65–NM 11/27/1914
10¢ Yellow (364)	Feb. 13, 1909	4940, 4941, 4943, 4944 Wmk normal or reversed	10	40	4,000	200–NYC PO (2 panes purchased by E. B. Power of Stanley Gibbons Inc, Jan. 1910); 100–Travers-Steinmetz 12–NM 9/16/1914; 65–NM 11/27/1914
13¢ Bl Grn (365)	Mar. 20, 1909	4942, 4945, 4946, 4948 Wmk normal or inverted	10	40	4,000	77–Washington DC (purchased by John Kay); 10–Chicago Hgts (purchased by John Lord); ?–Saginaw MI (Jonathan J. Spencer, Asst PM) 100–Travers-Steinmetz 12–NM 9/16/1914; 65–NM 11/27/1914
15¢ Ultra (366)	Apr. 6, 1909	4949, 4951, 4952, 4954 Wmk normal, reversed or inverted	10	40	4,000	?–Buffalo PO (Jan. 1911) 100–Travers-Steinmetz 12–NM 9/16/1914; 65–NM 11/27/1914

THE TRAVERS-STEINMETZ EXCHANGE

When collectors learned that Bluish Paper stamps were available at post offices, they clamored to locate examples. Travers and a well-known collector and pioneer aviation advocate, Joseph A. Steinmetz (later lieutenant-colonel), concocted a scheme to liberate some of the panes sent to Travers’ office. In exchange for a bribe of \$1,500, Travers agreed to meet Steinmetz at one of the Washington, D.C., post offices, where Travers would swap Bluish Paper panes for regular panes, and Steinmetz would buy the rare stamps as ordinary postage. If one full set of panes of all eleven Bluish Paper stamps was acquired in this manner, then Steinmetz paid \$69 face value for a philatelic treasure trove.

continued

continued from previous page



Arthur M. Travers

In 1910 examples of the 4¢ and 8¢ Bluish Paper stamps were reported sold to collectors in the Philadelphia area, where Steinmetz lived. In January and February 1911 the Philadelphia Stamp Co., for which Steinmetz served as secretary, advertised examples of the 4¢ and 8¢ for sale in *Mekeel's Weekly Stamp News*. Philip H. Ward Jr., a prominent Philadelphia dealer, grew suspicious of the way in which the 4¢ and 8¢ Bluish Paper stamps reached the public and tipped off postal officials that something was amiss. On March 6, 1911, after discovering a series of long-distance phone calls between Travers and Steinmetz, postal investigators arrested Travers and charged him with violating the law prohibiting postal officials from selling stamps for more than face value. Travers confessed to arranging the exchange and was fired. On April 3, 1911, Travers was indicted for embezzlement, and both Travers and Steinmetz were indicted for conspiracy (Dr. Stanley M. Bierman, "Joseph A. Steinmetz and the Blue Paper Scandal of 1911," *Chronicle* 133, February 1987).

Eighteen months later, in October 1912, Travers entered a no-contest plea and was fined \$1,500, and charges against the well-connected Steinmetz were quietly dropped. It is very likely that Travers and Steinmetz forfeited any Bluish Paper stamps still in their possession as part of the deal, and at that point they were the only source of the 4¢ and 8¢ Bluish Paper values.

Steinmetz went on to salvage his philatelic and personal reputation, and to participate in the advancement of military aviation. He prepared a large number of early flight covers and helped establish the American Air Mail Society. In 1918, together with Eugene Klein and Percy McGraw Mann, Steinmetz was involved in the purchase of the 24¢ Inverted Jenny sheet from William T. Robey. He died in 1928 at the age of 58, and his collection was sold through Eugene Klein in seven auctions held from March 1929 to March 1931 — the last two after the October 1929 Wall Street crash.

It has been reported that Ward received blocks of the 4¢ and 8¢ Bluish Paper stamps for his role in exposing the Travers-Steinmetz exchange, which, if true, would help round out a count of stamps later traded by the National Museum.



Lieut.-Col. Joseph A. Steinmetz

THE NATIONAL MUSEUM TRADES

The National Museum stamp collection was curated by Joseph B. Leavy, who was hired in 1913 as the government's first philatelist. Leavy wanted the museum to have a complete U.S. collection, and he set about creating a "want list" of missing items. Deprived of any cash resources to acquire the stamps, Leavy relied on an officially sanctioned strategy of exchanging duplicate or unnecessary items for needed stamps. In 1914 Leavy arranged for two exchanges involving the Bluish Paper stamps in the Museum's possession (documentation provided by Daniel A. Piazza, Assistant Curator of Philately at the Smithsonian National Postal Museum).

In September 1914 twelve of each of the eleven different Special Printing Bluish Paper stamps, including the 4¢ and 8¢, were traded with a well-known Washington, D.C., stamp dealer, H. F. Colman, for 114 Canal Zone and Philippines stamps. The stamps from Colman were received on September 18, and on the same day the 132 Bluish Paper stamps were shipped to him. Another exchange took place two months later. On December 2, 1914, the museum shipped 65 of each of the eleven different Bluish Paper Special Printings (total 715) to John Klemann Jr. of Nassau Stamp Company in New York City, in exchange for 39 United States and Puerto Principe stamps. Klemann acknowledged receipt of the "blue papers" on December 5.

Why quantities of 12 and 65? First and foremost, the straight edge positions—19 in each pane—were the least desirable and probably rejected by both Colman and Klemann. Of the 81 remaining positions, Colman, who had first pick, probably selected the desirable imprint and plate number pieces from each pane, either as two plate strips of three (six stamps total plus six other stamps) or two plate blocks of six (twelve total). Deducting Colman's allocation from the 81 non-straight-edge positions left 69 for Klemann. The four-stamp difference between 69 and the 65 he received could be explained by the report that Ward was given a set of blocks for his role in exposing the Travers-Steinmetz exchange. Perhaps further research will uncover the full story.

THE POST OFFICE DEPARTMENT BLUISH PAPER PANES

In 1960 Boggs reported details of eleven panes of 100 in the "Post Office Department files," noting the plate numbers and positions for each pane. According to Mr. Piazza, the "Postmaster General's Collection" contains panes of the 1¢, 2¢, 3¢, 4¢, 13¢ and 2¢ Lincoln, but not the other values reported by Boggs. Mr. Piazza confirmed that the plate numbers and positions match the Boggs data, so the current whereabouts of the other panes—5¢, 6¢, 8¢, 10¢ and 15¢—is a mystery. No identifiable imprint pieces have appeared in the market, nor has there been a marked increase in the number of available Bluish Paper stamps. The panes will either turn up in a dark corner of the postal archives or have been forever lost to philately.

ACKNOWLEDGEMENTS

We gratefully acknowledge the assistance of the following individuals in the preparation of this introduction and sale catalogue: Lewis Kaufman (The Philatelic Foundation), Ken Lawrence and Daniel A. Piazza.

THE BARRY K. SCHWARTZ COLLECTION OF THE UNITED STATES 1909 BLUISH PAPER ISSUE

AFTERNOON SESSION (LOTS 101-155)
TUESDAY, FEBRUARY 28, 2017, AT 1:30 P.M.

ONE-CENT GREEN AND TWO-CENT CARMINE

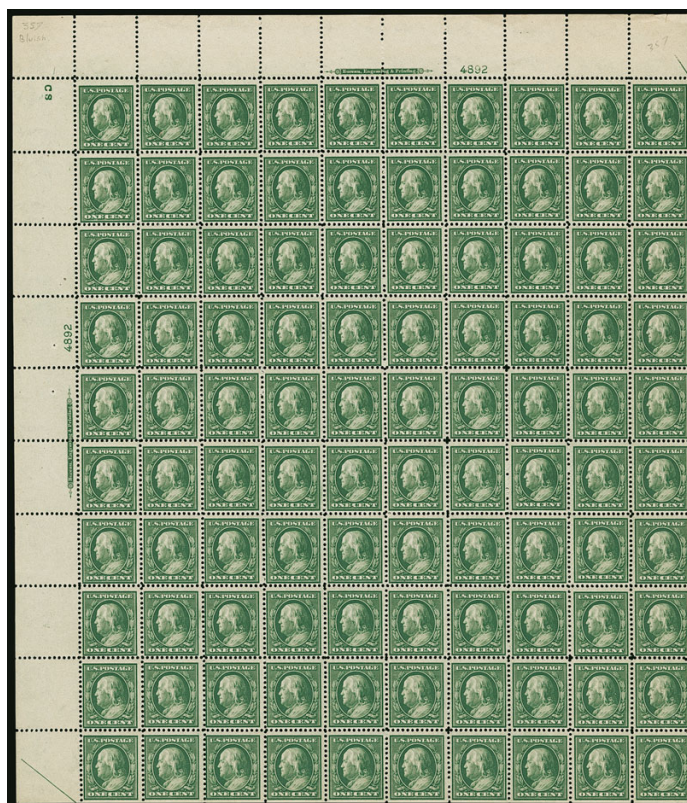


- 101 ★田 **1c Green, 2c Carmine, Bluish (357-358).** Blocks of four, two 1c and one 2c stamp Mint N.H., intense colors on deeply blued paper, Fine-Very Fine, Scott Retail as singles 940.00
- 102 ★★田 **1c Green, Bluish (357).** Mint N.H. block of four with **top left corner sheet selvage** and **“CS” plate printer’s initials**, deep rich color, nicely centered, small natural gum skip in bottom left stamp, Fine-Very Fine, with 1990 P.F. certificate 740.00
- 103 ★田 **1c Green, Bluish (357).** Block of four with **bottom imprint selvage**, beautiful fresh color and choice centering, Fine-Very Fine, with 2005 P.F. certificate for plate block of six (two righthand stamps removed) 360.00
- 104 ★田 **1c Green, Bluish (357).** Top imprint and plate no. 4894 block of six with wide selvage, intense shade on deeply blued paper, stamps Mint N.H., hinge traces in ungummed part of selvage, Fine-Very Fine, ex “MLG” Collection, with 1950 P.F. certificate, Scott Retail \$1,850.00 as hinged..... 1,100.00
- 105 ★田 **1c Green, Bluish (357).** Top imprint and plate no. 4890 block of six with wide selvage, rich color on deeply blued paper, few expertly rejoined perf separations not mentioned on accompanying certificate, Very Fine, ex “MLG” Collection, with 1986 P.F. certificate 1,100.00

- 106 ★★田 1c Green, Bluish (357). Mint N.H. complete pane of 100 with top and left imprint and plate no. 4892 blocks of six, "CS" plate printer's initials in selvage at upper left, natural s.e. at bottom and right, half arrows at top right and bottom left, four stamps nicked at lower right (straight edge positions), plate blocks and much of pane centered

FINE-VERY FINE. A SCARCE AND VERY FRESH PANE OF 100 OF THE ONE-CENT 1909 BLUISH PAPER ISSUE. VERY FEW REMAIN INTACT.

Scott Retail for Mint N.H. plate blocks and singles 19,540.00



106



107

108EX

- 107 1c Green, 2c Carmine, Bluish (357-358). Wide margins and choice centering, 1c wavy-line machine cancel, 2c very light cancel, rich colors, Extremely Fine, 1c with 2011 P.F. and 2006 P.S.E. certificates (XF 90), 2c with 2003 P.F. and 2005 P.S.E. certificates (XF 90), total SMQ \$500.00, P.S.E. Population Report for 1c is five 90 (and one 95) and for the 2c one 90 (and two 95) 300.00
- 108 ☒ 1c Green, 2c Carmine, Bluish (357-358). Five items, 1c on postcard, 2c on three covers, these four with Washington D.C. May-June 1909 dates, another 2c cover from Warner N.H. to Washington D.C. with 2c Postage Due, handstamped address and return address in same ink indicates it was probably a self-addressed stamped envelope provided by the Washington D.C. correspondent, this cover with trivial edge tear, another 2c with minor perf flaws, otherwise Very Fine and presentable group (Photo Ex) E. 300-400



109

111

- 109 ☒ **1c Green, Bluish (357).** Horizontal pair, centered slightly to right, tied by “Wash. & Greensboro R.P.O. TR37 Mar. 1, 1909” duplex datestamp and oval grid cancel on Union Station (Washington D.C.) picture postcard to **Havana, Cuba**, from the Union Transfer Co. to Atlantic Coast Line requesting “the names of several medium priced hotels in Havana”, receiving datestamp, Very Fine, the Scott value of \$175.00 for 1c on postcard is for a single, which paid the domestic 1c rate — this pair of 1c Bluish Paper stamps paying the UPU card rate is an extremely rare use — Scott Retail for two used singles is \$300.00 E. 200-300
- 110 ☒ **1c Green, Bluish (357).** Horizontal pair, top perfs slightly in, rich color, tied by “Washington D.C. Mar. 22 12 PM 1909” wavy-line machine cancel on corner card cover to Hanover Pa., Very Fine, with 1979 P.F. certificate, Scott Retail for two used singles is \$300.00 (the \$250.00 Scott value for “on cover” makes no sense, since the domestic rate was 2c, requiring two stamps)..... E. 200-300
- 111 ☒ **1c Green, Bluish (357).** Vertical pair, well-centered, natural s.e. at bottom, tied by “Detroit Mich. Jul. 13 9 PM 1909” wavy-line machine cancel on cover to local addressee with War Department imprint crossed out, purple handstamped return address of Brig. Gen. C. A. Coolidge, Very Fine, scarce Bluish Paper use outside Washington D.C. from a supply obtained by General Coolidge, a stamp collector and president of the American Philatelic Society, during his long military career General Coolidge led the first American force to enter the Forbidden City in Peking (Beijing), China, at the time of the Boxer Rebellion E. 200-300



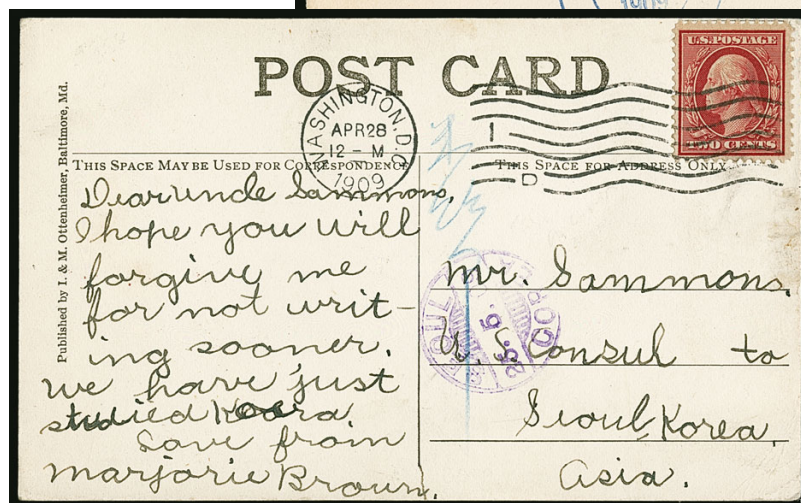
112



113

- 112 ★★田 **2c Carmine, Bluish (358).** Mint N.H. bottom imprint and plate no. 4860 block of six, well-centered, vivid color, tiny natural inclusion speck at left (characteristic of this issue), Very Fine, a scarce and desirable Mint N.H. plate block of the 2c Bluish Paper 1,800.00
- 113 田 **2c Carmine, Bluish (358).** Block of four, wavy-line machine cancel, remarkably choice centering, rich color, Very Fine-Extremely Fine, **genuine** used blocks of the Bluish Paper issue are very rare, Power Search located only one other used 2c block offered by our firm, this block is far superior and has a genuine machine cancel applied *once* — as it should be — as opposed to the multiples with forged cancels which often have machine cancels applied twice due to the forger’s profound ignorance of the most fundamental aspects of philately; in this case, that envelopes are typically run through a machine device once — with 2000 P.F. certificate 750.00

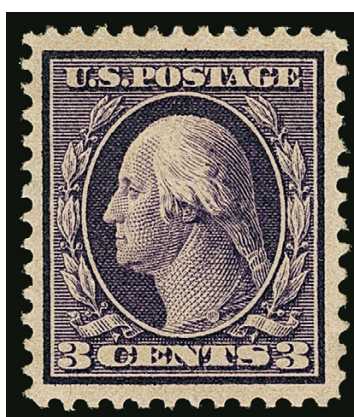
115



114

- 114 ☒ **2c Carmine, Bluish (358).** Rich color, tied by "Washington D.C. Apr. 28 12-M 1909" wavy-line machine cancel on District Building picture postcard to **Seoul, Korea**, purple receiving datestamp on front and back, Very Fine, unusual and undoubtedly very rare use of the 2c Bluish Paper, with 2000 P.S.E. certificate E. 300-400
- 115 ☒ **2c Carmine, Bluish (358).** Deep shade on strong Bluish Paper, well-centered, tied by "**Ballston Va. May 26 1PM 1909**" duplex datestamp and bars cancel on corner card cover to Falls Church Va., blue "Answered" circular datestamp, receiving backstamp, fresh and Very Fine, scarce use outside Washington D.C., ex Siskin and Dr. Martin E. 300-400

THREE-CENT DEEP VIOLET



116

- 116 ★ **3c Deep Violet, Bluish (359).** Small h.r., rich color and proof-like impression on nicely blued paper, beautifully centered
EXTREMELY FINE. AN EXCEPTIONALLY CHOICE EXAMPLE OF THE 3-CENT BLUISH PAPER.
Light blue Stanley Gibbons backstamp. With 2003 P.F. certificate 1,800.00



117

- 117 ★田 **3c Deep Violet, Bluish (359).** Block of four, deep rich color, exceptionally choice centering, bright and fresh

VERY FINE-EXTREMELY FINE. A MAGNIFICENT AND RARE BLOCK OF THE 3-CENT 1909 BLUISH PAPER ISSUE. BLOCKS OF THIS QUALITY ARE AN ENDANGERED SPECIES.

Ex Col. E. H. R. Green. With 1992 and 2011 P.F. certificates..... 7,750.00



118

- 118 ★田 **3c Deep Violet, Bluish (359).** Block of four with **imprint in wide right selvage**, deep rich color, nicely centered, bright and fresh, natural staple holes in selvage indicating distribution through a post office, certificate describes gum as slightly disturbed, which is just some small areas of patchiness and red offset from a 2c sheet, really quite moderate

VERY FINE. AN IMPRESSIVE AND EXTREMELY RARE IMPRINT BLOCK OF THE 3-CENT 1909 BLUISH PAPER ISSUE.

With 1989 P.F. certificate. Scott Retail as a normal block without premium for the imprint..... 7,750.00



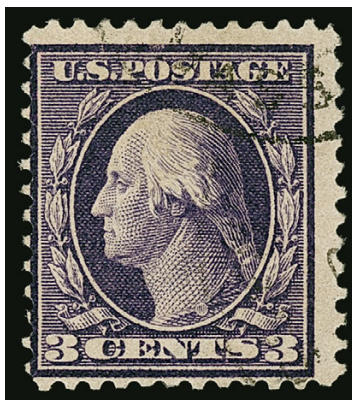
119

- 119 ★田 **3c Deep Violet, Bluish (359)**. Top imprint and plate no. 4927 block of six with wide selvage, **four stamps Mint N.H.**, positions 2-3 with small h.r. straddling the perfs, rich color on deeply blued paper, small natural inclusion in margin of position 2

FINE. AN EXCEEDINGLY RARE WIDE TOP IMPRINT AND PLATE NUMBER BLOCK OF SIX OF THE 3-CENT ON BLUISH PAPER WITH FOUR MINT NEVER-HINGED STAMPS. VERY FEW PLATE BLOCKS ARE KNOWN.

There are seven recorded 3c Bluish Paper plate blocks of six, including one in the Smithsonian National Postal Museum (4918 Right). Of the six in private hands, five are top positions and one is a left position. In addition to the plate blocks, there is one pane in private hands (4925 UR) and one in the "Postmaster General's Collection" at the Smithsonian National Postal Museum (4927 UR). This wide top plate block was probably acquired by W. Parsons Todd from one of the earliest dispersals, circa 1910-14, and was owned by him for more than 60 years, thus explaining its extraordinary freshness.

Ex Todd. With 2017 P.F. certificate..... 25,000.00



120

120 **3c Deep Violet, Bluish (359).** Deep rich color and proof-like impression on nicely blued paper, face-free strike of circular datestamp at upper right

FINE. THE 3-CENT ON BLUISH PAPER IS THE RAREST OF THE REGULARLY-ISSUED BLUISH PAPERS IN USED CONDITION. ONLY FOUR USED EXAMPLES ARE RECORDED.

A total of ten sheets of 400 (4,000 stamps) were printed, then divided into 40 panes of 100. A quantity was inadvertently distributed to various post offices, including the post office in New York.

Our census of Scott 359 in used condition, available at our website at <http://siegelauctions.com/dynamic/census/359/359.pdf>, records three copies plus one on cover. A fifth example off cover example needs to be reexamined for authenticity. This makes it as rare, or rarer, than the 5c Bluish Paper in used condition, which catalogues twice as much.

Census No. 359-CAN-01. Ex "Natalee Grace." With 1992 and 2011 P.S.E. certificates. For the record, the P.F. issued a certificate stating "counterfeit cancel and reperforated at bottom" (473528). 9,000.00

FOUR-CENT ORANGE BROWN



121

- 121 ★ **4c Orange Brown, Bluish (360).** Choice centering with balanced margins, deep rich color on strong Bluish Paper, hinge removal mark, exceptionally fresh

EXTREMELY FINE. ONE OF THE FINEST EXAMPLES OF THE 4-CENT 1909 BLuish PAPER ISSUE WITH A GRADE OF XF 90 FROM THE PHILATELIC FOUNDATION.

The June 1910 Third Assistant Postmaster General's report states that 4,400 (eleven sheets) of the 4c were printed on Bluish Paper. It is believed that none of the 4c and 8c Bluish Paper stamps were distributed to post offices, and that all of the examples in collectors' hands reached the market through the Travers-Steinmetz exchange and the 1914 National Museum trades to H. F. Colman (12 copies) and Nassau Stamp Company (65 copies).

Of the many examples of this major 20th Century rarity we have offered, only a small number have centering that can be compared to this stamp. In our sale of the Odeneal collection (Sale 941, lot 1249), we offered a superb example graded XF 90 by P.S.E., which realized \$82,500 hammer. That was the first and only 4c Bluish Paper to be certified XF 90 by P.S.E. (one other has been graded VF-XF 85). The Philatelic Foundation records list three graded XF 90, including the stamp offered here.

With 1969 and 2006 P.F. certificates (XF 90)..... 27,500.00



122

- 122 ★ **4c Orange Brown, Bluish (360).** Proof-like impression and crisp shade on deeply blued paper, centered slightly to right but balanced on other sides, fresh, small faint fingerprint on gum

FINE. AN EXTRAORDINARILY FRESH AND ATTRACTIVE EXAMPLE OF THE 4-CENT 1909 BLUISH PAPER ISSUE.

The June 1910 Third Assistant Postmaster General's report states that 4,400 (eleven sheets) of the 4c were printed on Bluish Paper. It is believed that none of the 4c and 8c Bluish Paper stamps were distributed to post offices, and that all of the examples in collectors' hands reached the market through the Travers-Steinmetz exchange and the 1914 National Museum trades to H. F. Colman (12 copies) and Nassau Stamp Company (65 copies).

With 1950 P.F. certificate 27,500.00



BLOCK OF THE FOUR-CENT BLuish PAPER

123 ★田 **4c Orange Brown, Bluish (360).** Block of four, rich color, well-centered, particularly the top pair, very fresh

VERY FINE AND CHOICE. AN EXTREMELY RARE BLOCK OF THE 1909 4-CENT ON BLuish PAPER. ONE OF THE RAREST OF ALL 20TH CENTURY MULTIPLES.

The June 1910 Third Assistant Postmaster General's report states that 4,400 (eleven sheets) of the 4c were printed on Bluish Paper. It is believed that none of the 4c and 8c Bluish Paper stamps were distributed to post offices, and that all of the examples in collectors' hands reached the market through the Travers-Steinmetz exchange and the 1914 National Museum trades to H. F. Colman (12 copies) and Nassau Stamp Company (65 copies).

To meet the demand for well-centered singles of the 4c Bluish Paper, blocks of this quality were broken, and this might well be the finest surviving block. Our Levi records contain images of a half-dozen blocks of four (none larger), but several of these have definitely been broken into singles since they were last sold in the 1950s and 1960s.

Ex Lilly. With 1968 P.F. certificate issued to Raymond H. Weill after the Lilly sale, and also with 2017 P.F. certificate..... 140,000.00



FOUR-CENT BLuish PAPER

THE ONLY IMPRINT AND PLATE NUMBER STRIP IN PRIVATE HANDS

- 124 ★★ **4c Orange Brown, Bluish (360).** Left imprint and plate no. 4934 (UL) strip of three with wide selvage, **bottom two stamps Mint N.H.**, top stamp small h.r., deep rich color, centered slightly to left

FINE. THIS IS THE ONLY IMPRINT AND PLATE NUMBER STRIP OF THE 1909 4-CENT ON BLuish PAPER IN PRIVATE HANDS. ONE OF THE MOST IMPORTANT 20TH CENTURY UNITED STATES PHILATELIC ITEMS EXTANT.

The June 1910 Third Assistant Postmaster General's report states that 4,400 (eleven sheets) of the 4c were printed on Bluish Paper. It is believed that none of the 4c and 8c Bluish Paper stamps were distributed to post offices, and that all of the examples in collectors' hands reached the market through the Travers-Steinmetz exchange and the 1914 National Museum trades to H. F. Colman (12 copies) and Nassau Stamp Company (65 copies).

Four different plates were used to print the 4c Bluish Paper on the Hoe & Company four-plate press: 4932, 4933, 4934 and 4935, but only number 4934 has been recorded from surviving examples. This strip comes from the left side of the upper left pane. The top imprint and plate number multiple from the same pane has been divided into singles, and no others are believed to exist in private hands. The "Postmaster General's Collection" at the Smithsonian National Postal Museum contains a pane of 100 from the upper right position of the same plate.

In the absence of a plate block of the 4c Bluish Paper, this imprint and plate number strip assumes far greater significance. We record only one other plate number example of the 4c Bluish Paper—the top-margin single from our sale of the Alan B. Whitman collection, which comes from the broken strip of three.

Ex Colonel Edward H. R. Green (Part 19, Eugene Costales, Feb. 19-24, 1945, lot 100). With 1965 and 2017 P.F. certificates.

The Scott Catalogue values this imprint and plate number strip at \$140,000.00, but since this item has not been sold since the 1970s, the Scott value is conjectural. In fact, the combined value of a hinged single and two Mint N.H. singles is \$187,500.00, which should be the minimum catalogue value for this strip. 187,500.00

FIVE-CENT BLUE



125

- 125 ★ **5c Blue, Bluish (361).** Position 1 (upper left corner in the full sheet of 400, possibly plate 4931) with **wide corner sheet selvage showing string of plate printers' initials "SM—MF—" and manuscript "X" which was applied to the sheets ordered by Third Assistant Postmaster General Arthur M. Travers**, barest trace of previous hinge at bottom right along one or two perfs visible only when cross-lighting the stamp, rich color on deeply blued paper, perfect centering with wide and well-balanced margins

EXTREMELY FINE GEM. ONE OF THE FINEST EXAMPLES OF THE 5-CENT 1909 BLUISH PAPER ISSUE IN EXISTENCE. A REMARKABLE STAMP, NOT ONLY IN TERMS OF MARGINS, COLOR, CENTERING AND GUM, BUT ALSO AS THE ONLY RECORDED FULL CORNER-MARGIN EXAMPLE.

This unique corner-margin example was part of a block of four in the Colonel Edward H. R. Green collection (Part 27, Fifield sale, Apr. 23-25, 1946, lot 635), the Amos Eno collection (Harmer, Rooke sale, May 18, 1954, lot 184) and the B. D. Phillips collection. Sometime after it was sold in the 1978 Rarities of the World auction and certified by The Philatelic Foundation (June 5, 1978), it was divided into singles, one of which was subsequently sold to Robert Drucker.

This stamp shows part of the string of plate printers' initials, each of which was entered by the BEP employee when the plate was put on the press. The position below continues the string, which is its entirety reads "SM—MF—TB—GD". Another left-margin single of the 5c Bluish Paper is recorded with the same string of letters on this stamp ("SM-MF-T") but in different positions, so it must be from a different plate.

Ex Col. Edward H. R. Green, Eno and B. D. Phillips as a block, ex Drucker as a single. With 1978 P.F. certificate for the block and 2002 P.F. certificate for the single. Scott value without any premium for the selvage or imprint letters. 5,750.00



126

- 126 ★田 **5c Blue, Bluish (361)**. Block of four with natural s.e. at right, well-centered, brilliant color on deeply blued paper, fresh gum with small hinge marks
 FINE-VERY FINE. AN EXTREMELY RARE BLOCK OF THE 5-CENT 1909 BLUISH PAPER ISSUE AND POSSIBLY ONE OF THE LAST THREE OR FOUR STILL INTACT.
 Blue Stanley Gibbons Inc. backstamps. With 1976 P.F. certificate..... 25,000.00



FIVE-CENT BLUISH PAPER

THE ONLY RECORDED PLATE BLOCK IN PRIVATE HANDS

127 ★田 **5c Blue, Bluish (361)**. Top imprint and plate no. 4930 block of six, two stamps are **Mint N.H.** (positions 1 and 4), rich color on deeply blued paper, interesting small streak of printer's ink straddling positions 5 and 6, tiny nick at top right of selvage is utterly trivial

VERY FINE. THIS IS THE ONLY RECORDED PLATE BLOCK OF THE 1909 5-CENT ON BLUISH PAPER IN PRIVATE HANDS. ONE OF THE MOST OUTSTANDING PLATE BLOCKS OF 20TH CENTURY UNITED STATES PHILATELY.

Four different plates were used to print the 5c Bluish Paper on the Hoe & Company four-plate press: 4928, 4929, 4930 and 4931. Plate number examples are recorded for all but plate 4929, listed below.

Plate 4928: top-margin block of four with plate number only, Col. Green sale, Part 18, Fifield, Jan. 24-30, 1945, lot 266—since divided into singles;

Plate 4930: plate block of six with full top-margin imprint, ex Todd, offered here;

Plate 4931: left-margin imprint and plate number strip of three, Col. Green sale, Part 17, Harmer Rooke, Nov. 13-18, 1944, lot 147—since divided into singles—and pane of 100 UR reported by Boggs to be in the Post Office Department files.

Apart from the pane in the Post Office Department files, the location of which is currently unknown, this is the only recorded complete imprint and plate number block of six.

While other Bluish Paper multiples were offered in the series of Colonel Green auctions, this was not. Presumably it was acquired by W. Parsons Todd from one of the original dispersals, circa 1910-14, and owned by him for more than 60 years, which explains its extraordinary freshness.

Ex Todd. Each stamp with light blue "E" backstamp, probably applied by Economist Stamp Company. With 2017 P.F. certificate 100,000.00



128



Digital image of stamp on cover

128 **5c Blue, Bluish (361).** Deep rich color on nicely blued paper, choice centering for this difficult issue, neat machine cancel, two pulled perfs at upper right have been expertly reattached

VERY FINE APPEARANCE. THIS IS ONE OF ONLY FIVE RECORDED USED EXAMPLES OF THE 5-CENT ON BLUISH PAPER. IT IS PRESENTED OFF COVER, BUT IS ACCOMPANIED BY THE COVER TO COLOMBIA FROM WHICH IT ORIGINATED. ONE OF THE GREAT RARITIES OF 20TH CENTURY PHILATELY.

Our census of used 5c Bluish Paper stamps, available at our website at <http://siegelauctions.com/dynamic/census/361/361.pdf>, records five examples. One is an off-cover stamp with small faults (ex Twigg-Smith). The stamp offered here has been removed from its original cover, but the cover itself accompanies, and the two are shown here together in a digital reconstruction. In addition there are three stamps still on their respective covers, one of which is offered in the following lot.

This cover and the cover listed as 361-COV-05 are addressed to the same person, Charles H. Small, a resident of Kansas City, Missouri, who served as vice consul in Bogota, Colombia, beginning in 1909. The cover offered here was sent from Kansas City on November 9, 1910, in care of the Department of State in Washington, D.C. The other cover to Charles Small also originated in Kansas City on May 18, 1910.

Census No. 361-CAN-02. Ex "Natalee Grace". Accompanied by the cover from which this stamp was removed. With 1993 P.F. certificate for the stamp on its cover. Scott value for a cover is \$27,500.00. The value for an off-cover used stamp is..... 17,500.00



129

- 129 ☒ **5c Blue, Bluish (361).** Deep rich color, natural s.e. at left, well-centered for this difficult issue, tied by "Cambridge Mass Oct. 24 12-M 1910" machine cancel on cover to **Bangkok, Siam**, addressed to Jens Iversen Westendard, Bangkok receiving backstamp, missing backflap

VERY FINE. THIS IS ONE OF ONLY FIVE RECORDED USED EXAMPLES OF THE 5-CENT 1909 BLUISH PAPER ISSUE, FOUR OF WHICH ARE ON COVER (ONE REMOVED). A RARITY AND VERY UNUSUAL USE OF THE STAMP TO AN IMPORTANT FIGURE IN THE HISTORY OF SIAM.

Our census of used 5c Bluish Paper stamps, available at our website at <http://siegelauctions.com/dynamic/census/361/361.pdf>, records five examples. One is an off-cover stamp with small faults (ex Twigg-Smith). Another off-cover stamp (offered in lot 128 of this sale) has been removed from its original cover, but the cover itself accompanies. In addition there are three stamps still on their respective covers, one of which is offered here.

This cover is addressed to Jens Iversen Westengard, a professor of law at Harvard University who resigned in 1903 to travel to Siam to serve as an assistant advisor to the King of Siam. He succeeded Edward Strobel as advisor in 1908 and was in turn succeeded by Wolcott Pitkin in 1915. The three General Advisors were known as the "Great Modernizers" of Thailand and the "Three American Kings of Siam."

Census No. 361-COV-03. With 1980 P.F. certificate 27,500.00

SIX-CENT RED ORANGE



130

- 130 ★★ **6c Red Orange, Bluish (362).** Mint N.H. with **top plate no. 4937** selvage, vibrant color, centered a bit low

FINE. A RARE MINT NEVER-HINGED 6-CENT 1909 BLuish PAPER ISSUE WITH PLATE NUMBER SELVAGE.

With 2011 P.F. certificate..... 3,000.00

- 131 ★田 **6c Red Orange, Bluish (362).** Block of four, lightly hinged, brilliant color on nicely blued paper, well-proportioned margins throughout

VERY FINE-EXTREMELY FINE. A SUPERB BLOCK OF FOUR OF THE 1909 6-CENT ON BLuish PAPER, WITH UNUSUALLY CHOICE CENTERING.

Ex Hall. With 1983, 1988 and 2015 P.F. certificates 5,250.00



131



132

- 132 ★田 **6c Red Orange, Bluish (362).** Block of four, small hinge marks, bright color on nicely blued paper, nicely centered, traces of oxidation

VERY FINE. A BEAUTIFUL BLOCK OF FOUR OF THE 1909 6-CENT ON BLuish PAPER.

With 1980 P.F. certificate 5,250.00



133

- 133 ★田 **6c Red Orange, Bluish (362)**. Top imprint and plate no. 4938 block of six with wide selvage, position 4 Mint N.H., the others stamps h.r., gorgeous color on blued paper, tiny natural inclusion in one stamp

FINE-VERY FINE. A RARE AND DESIRABLE PLATE BLOCK OF THE 6-CENT 1909 BLUSH PAPER ISSUE — APPROXIMATELY A DOZEN ARE KNOWN. ESPECIALLY DESIRABLE FROM THE TOP PLATE POSITION.

Lewis Kaufman records 14 6c Bluish Paper plate blocks, including five top, eight left and one right position. In addition to the plate blocks, one pane of 100 is also known with plate blocks at left and bottom, and a second pane (4936 UR) was reported by Boggs to be in the Post Office Department files.

Ex Todd. With 2017 P.F. certificate..... 17,500.00



134

134 **6c Red Orange, Bluish (362).** Brilliant color on deeply blued paper, full to wide margins and choice centering, bold strike of oval grid from duplex datestamp and cancel, partly reperforated at right

VERY FINE APPEARANCE. AN EXTREMELY RARE USED EXAMPLE OF THE 1909 6-CENT ON BLuish PAPER.

Our census of used 6c Bluish Paper stamps, available at our website at <http://siegel-auctions.com/dynamic/census/362/362.pdf>, records ten examples, including eight singles and one pair. A few of the stamps have cancellations of questionable status, leaving perhaps four with indisputably genuine cancels, including this example with a duplex oval grid.

Census No. 362-CAN-05. With 2011 P.F. certificate..... 12,500.00

EIGHT-CENT OLIVE GREEN



135

- 135 ★ **8c Olive Green, Bluish (363).** Nearly perfect centering, gorgeous fresh color and paper, hinge mark

EXTREMELY FINE. ONE OF THE FINEST EXAMPLES OF THE 1909 8-CENT BLuish PAPER ISSUE EXANT. AN IMPORTANT 20TH CENTURY RARITY IN OUTSTANDING CONDITION.

The June 1910 Third Assistant Postmaster General's report states that 4,000 (ten sheets) of the 8c were printed on Bluish Paper. It is believed that none of the 4c and 8c Bluish Paper stamps were distributed to post offices, and that all of the examples in collectors' hands reached the market through the Travers-Steinmetz exchange and the 1914 National Museum trades to H. F. Colman (12 copies) and Nassau Stamp Company (65 copies).

Although this stamp has not been numerically graded, it appears to qualify for at least a grade of VF-XF 85 (possibly XF 90). The P.S.E. Population gives some indication of the rarity of the 8c Bluish Paper in higher grades: one 80, two 85, one 90 and one 95. The Philatelic Foundation online records list the following graded examples (we do not know if any are duplicates of P.S.E.'s entries): four 80, one 85, and one 90. In our sale of the Odeneal collection (Sale 941, lot 1252), we offered the superb example graded XF-Superb 95 by P.S.E., which realized \$135,000 hammer.

With 1971 and 1989 P.F. certificates..... 30,000.00



EIGHT-CENT BLUISH PAPER

THE ONLY INTACT IMPRINT AND PLATE NUMBER MULTIPLE
IN PRIVATE HANDS

- 136 ★ **8c Olive Green, Bluish (363).** Top imprint and plate no. 4922 (UL) strip of three, outer stamps lightly hinged, deep rich color on nicely blued paper, perf separations between left two stamps, small thin spot in selva far from imprint

FINE. THIS IS THE ONLY RECORDED INTACT IMPRINT AND PLATE NUMBER MULTIPLE OF THE 1909 8-CENT ON BLUISH PAPER IN PRIVATE HANDS. ONE OF THE MOST OUTSTANDING ITEMS OF 20TH CENTURY UNITED STATES PHILATELY.

The June 1910 Third Assistant Postmaster General's report states that 4,000 (ten sheets) of the 8c were printed on Bluish Paper. It is believed that none of the 4c and 8c Bluish Paper stamps were distributed to post offices, and that all of the examples in collectors' hands reached the market through the Travers-Steinmetz exchange and the 1914 National Museum trades to H. F. Colman (12 copies) and Nassau Stamp Company (65 copies).

Four different plates were used to print the 8c Bluish Paper on the Hoe & Company four-plate press: 4919, 4922, 4923 and 4924, but only number 4922 has been recorded from surviving examples. This strip comes from the top of the upper left pane. The left imprint and plate number multiple from the same pane has been divided into singles and rejoined (offered in lot 137 of this sale), and no others are believed to exist in private hands. A pane of 100 from the upper right position of the same plate was reported by Boggs to be in the Post Office Department files.

In the absence of a plate block of the 8c Bluish Paper, this imprint and plate number strip assumes far greater significance.

Ex Colonel Edward H. R. Green (Part 17, Harmer Rooke, Nov. 13-18, 1944, lot 149), Amos Eno and B. D. Phillips. With 2017 P.F. certificate.

The Scott Catalogue values this imprint and plate number strip at \$150,000.00, but since this item has not been sold since the 1978 Rarities of the World sale (where it realized \$18,000 hammer versus its then-current \$24,000 Scott value), the Scott value is conjectural..... 150,000.00



EIGHT-CENT BLuish PAPER

IMPRINT AND PLATE NUMBER STRIP OF THREE (REJOINED)

- 137 ★ **8c Olive Green, Bluish (363).** Left imprint and plate no. 4922 (UL) vertical strip of three — separated into singles at the time of the Colonel Green auctions in the 1940s and later reunited and expertly rejoined along the horizontal perforations — bright fresh color, deeply blued paper

FINE. THIS REJOINED STRIP IS ONE OF TWO RECORDED IMPRINT AND PLATE NUMBER MULTIPLES OF THE 8-CENT 1909 BLuish PAPER ISSUE IN PRIVATE HANDS. A MAJOR 20TH CENTURY RARITY.

The June 1910 Third Assistant Postmaster General's report states that 4,000 (ten sheets) of the 8c were printed on Bluish Paper. It is believed that none of the 4c and 8c Bluish Paper stamps were distributed to post offices, and that all of the examples in collectors' hands reached the market through the Travers-Steinmetz exchange and the 1914 National Museum trades to H. F. Colman (12 copies) and Nassau Stamp Company (65 copies).

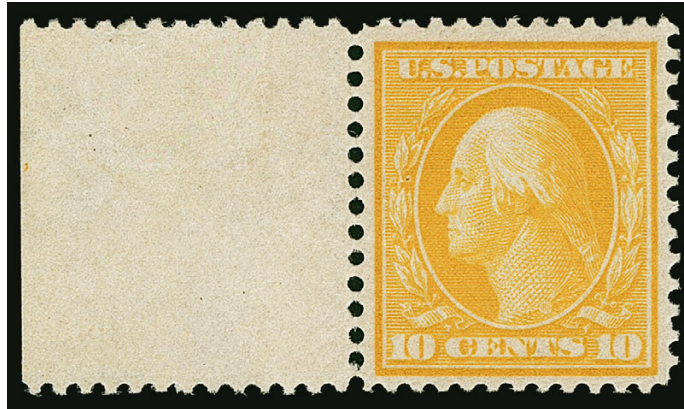
Four different plates were used to print the 8c Bluish Paper on the Hoe & Company four-plate press: 4919, 4922, 4923 and 4924, but only number 4922 has been recorded from surviving examples. This strip comes from the left of the upper left pane. The top imprint and plate number multiple from the same pane is offered in lot 136 of this sale, and no others are believed to exist in private hands. A pane of 100 from the upper right position of the same plate was reported by Boggs to be in the Post Office Department files.

In the absence of a plate block of the 8c Bluish Paper, this imprint and plate number strip assumes far greater significance. The top imprint and plate number strip offered in lot 136 is the only *intact* plate number multiple of the 8c Bluish Paper in private hands. The rejoined strip offered here, from the left side of the same pane, was offered in three different auctions in the series of sales of the Colonel Edward H. R. Green collection. The top "4922" stamp was in Part 21, lot 336 (Heiman, Mar. 19-23, 1945). The middle "aving & Printing" stamp was in Part 20, lot 408 (Laurence & Stryker, Mar. 5-6, 1945). The bottom "Bureau, Engr" stamp was offered a year earlier in Part 15, lot 62 (H. C. Barr, Mar. 23-Apr. 1, 1944). As recently as 2009, when the bottom stamp was sold by our firm in the Alan B. Whitman auction (Sale 968, lot 469), the three stamps remained apart. Finally, after more than six decades, they were reunited and expertly rejoined along the horizontal perforations.

All three ex Colonel Edward H. R. Green. Each stamp accompanied by at least one P.F. certificate, as follows: top (1973), middle (1950, ex Jack R. Hughes), and bottom (1983, 1997, ex Whitman).

Scott value for the intact strip is \$150,000.00. Scott value as three singles without premium for the plate number and imprint 90,000.00

TEN-CENT YELLOW



138

- 138 ★ **10c Yellow, Bluish (364).** Lightly hinged, with **left sheet selvage**, vibrant color and fresh paper, choice centering, Very Fine, a beautiful example of the 10c Bluish Paper, with 1980 P.F. certificate..... 1,600.00



139

- 139 ★田 **10c Yellow, Bluish (364).** Block of four with **bottom sheet selvage and imprint**, narrow selvage as always, h.r. at bottom and hinge mark at top, vivid color, well-centered, couple natural inclusions that are characteristic of this paper and do not show on face
FINE-VERY FINE. A RARE IMPRINT BLOCK OF THE 1909 10-CENT BLuish PAPER ISSUE.
Bottom right stamp has "Economist" (Stamp Co.) handstamp. With 1999 P.F. certificate.
Scott value without premium for the imprint 7,000.00



140

140 ★田 **10c Yellow, Bluish (364).** Bottom imprint and plate no. 4940 block of six, natural narrow bottom selvage as always (imprints trimmed slightly), positions 1, 3 and 6 **Mint N.H.**, small h.r. straddling two middle stamps, intense shade on deeply blued paper, unusually choice centering for this difficult issue

VERY FINE. AN EXTREMELY RARE IMPRINT AND PLATE NUMBER BLOCK OF SIX OF THE 1909 10-CENT ON BLUISH PAPER. THIS IS ONE OF THE RAREST OF ALL WASHINGTON-FRANKLIN ISSUE PLATE BLOCKS. ONLY FIVE ARE RECORDED, INCLUDING ONE IN THE SMITHSONIAN NATIONAL POSTAL MUSEUM.

We record five different 10c Bluish Paper plate blocks, including one bottom position in the Smithsonian National Postal Museum collection (4943 bottom), three bottom (4944, 4943 and this block from 4940) and one right (4944). We offered one of the bottom position plate blocks (4944) in our "MLG" sale in 2009. It was not as well-centered as the block offered here, but the imprint was complete (it realized \$35,000 hammer versus \$33,500 Scott value at the time). In addition to the plate blocks, a pane of 100 (4944 UR) was reported by Boggs to be in the Post Office Department files.

This plate block was probably acquired by W. Parsons Todd from one of the original dispersals, circa 1910-14, and was owned by him for more than 60 years, thus explaining its extraordinary freshness.

Ex Todd. With 2017 P.F. certificate..... 40,000.00



141

141 **10c Yellow, Bluish (364).** Bright shade, bold strike of registry oval cancel, intense watermark, light diagonal crease at bottom left

FINE APPEARING USED EXAMPLE OF THE 1909 10-CENT ON BLUISH PAPER. ONLY 13 OFF-COVER EXAMPLES ARE RECORDED IN OUR CENSUS.

Our census of Scott 364 used, available at our website at <http://siegelauctions.com/dynamic/census/364/364.pdf>, records 13 genuine off-cover examples, plus three others used on covers. Virtually all are either faulty or off-center to some degree. This stamp has only a light corner crease.

Census No. 364-CAN-10. With 2017 P.F. certificate 10,000.00



142

142 ☒ **10c Yellow, Bluish (364).** Well-centered, bright color, used with 2c Carmine (332), both tied by "New York REG" double-oval registry cancel on cover to Short Hills N.J., red Oct. 10, 1910 registry office datestamp on a label affixed to cover, Short Hills receiving backstamp, addressee's boxed receiving datestamp, pencil "Receipt Requested", 2c has se. at top and small faults, 10c tiny tear below "E" of "Cents"

VERY FINE APPEARANCE. ONE OF THREE RECORDED COVERS WITH THE 1909 10-CENT ON BLUISH PAPER. AN IMPORTANT AND RARE ITEM FOR THE 20TH CENTURY SPECIALIST.

Our census of Scott 364 used, available at our website at <http://siegelauctions.com/dynamic/census/364/364.pdf>, records thirteen genuine off-cover examples and three others used on covers.

Census No. 364-COV-03. With 1995 and 2007 P.F. certificates..... E. 7,500-10,000

THIRTEEN-CENT BLuish GREEN



143

- 143 ★ **13c Bluish Green, Bluish (365).** With **left plate no. 4945 selvage**, lightly hinged, near perfect centering, rich color and proof-like impression on fresh paper, natural staple hole in selvage along bottom perfs

EXTREMELY FINE. A SUPERB 13-CENT 1909 BLuish PAPER STAMP AND ESPECIALLY DESIRABLE WITH THE PLATE NUMBER SELVAGE.

With 2011 P.F. certificate..... 2,600.00



144

- 144 ★田 **13c Bluish Green, Bluish (365).** Block of four, bottom right stamp **Mint N.H.**, others lightly hinged, deep rich color

A FINE AND SCARCE BLOCK OF THE 13-CENT 1909 BLuish PAPER ISSUE.

With 2011 P.F. certificate. Scott Retail for a hinged block is \$11,500.00, but value as one Mint N.H. single and three hinged singles is higher at 13,800.00



145

- 145 ★ **13c Bluish Green, Bluish (365).** Vertical strip of three with **right imprint and plate no. 4946 selvage**, there is no evidence of actual hinge marks, but some skips and tiny patches of hinged-like areas place this into the “previously hinged” category, rich color and fresh, tiny natural staple hole in selvage indicating distribution through a post office, top stamp with a tiny corner thin at top left

FINE. AN IMPRESSIVE AND EXTREMELY RARE IMPRINT AND PLATE NUMBER MULTIPLE OF THE 13-CENT 1909 BLUISH PAPER ISSUE. THIS IS THE ONLY PLATE NUMBER EXAMPLE FROM PLATE 4946.

A plate block of six is valued at \$60,000.00 in Scott and very few are known. This imprint and plate number strip is a cost-effective alternative, and it is the only such multiple we were able to locate (excluding the plate blocks and full panes). It was reported in the *U.S. Stamp Specialist* (March 2004) and remains the only plate number example of the 13c Bluish Paper from Plate 4946.

With 2004 P.F. certificate. Scott value as singles without premium for the imprint and plate number..... 7,800.00



146

- 146 ★田 **13c Bluish Green, Bluish (365).** Top imprint and plate no. 4945 block of six with wide selvage, positions 1 and 4-6 **Mint N.H.**, small h.r. straddling positions 2-3, rich color on deep Bluish Paper, top row with unusually wide margins and choice centering

VERY FINE. A RARE AND DESIRABLE WIDE TOP PLATE NUMBER BLOCK OF SIX OF THE 1909 13-CENT ON BLUISH PAPER.

Lewis Kaufman records seven plate blocks of the 13c Bluish Paper — three from the top, three from the left and one from the bottom. In addition to these plate blocks, there is one complete pane of 100 in private hands (4942 UL, ex Weill Stock) and another complete pane (4945 UR) is in the “Postmaster General’s Collection” at the Smithsonian National Postal Museum, which is the pane reported by Boggs from the Post Office Department files.

This plate block was probably acquired by W. Parsons Todd from one of the original dispersals, circa 1910-14, and was owned by him for more than 60 years, thus explaining its extraordinary freshness.

Ex Todd. With 2017 P.F. certificate..... 60,000.00



147

147

13c Bluish Green, Bluish (365). Gorgeous rich color and proof-like impression on deeply blued paper, wide margins and outstanding centering, almost unheard of for this difficult issue, lightly cancelled (likely Saginaw Mich.)

EXTREMELY FINE GEM. A SUPERB USED EXAMPLE OF THE 1909 13-CENT BLUISH PAPER ISSUE. THIS BEAUTIFUL STAMP IS GRADED XF-SUPERB 95 BY BOTH THE P.F. AND P.S.E., WHICH IS THE HIGHEST GRADE AWARDED.

An estimated ten 13c Bluish Paper panes were packaged with normal stamps and distributed to the post office at Saginaw, Michigan. According to the Assistant Postmaster, John J. Spencer, "We found what was left of what no doubt had been originally ten sheets safely resting at the bottom under a lot of new stock, the coming of which had doubtless saved these from annihilation [or use]. They were readily distinguished, having a marginal pen and ink marking. We found a partial mint sheet and margins from several other sheets had been used. One or two sheets had also been precancelled. We were satisfied that ten sheets (of 100) had reached this post office."

Ex Kirke. Small backstamp. With 1974, 2003 and 2006 P.F. certificates (XF-Superb 95). With 2007 P.S.E. certificate (XF-Superb 95; SMQ \$7,750.00). The P.S.E. Population Report lists this single as the only used example graded 95..... 4,000.00

- 148 田 **13c Bluish Green, Bluish (365).** Block of four with **top plate no. 4942 selvage**, neatly cancelled by single strike of Saginaw Mich. oval cancel, deep rich color and well-centered, selvage with some reinforced perforations and top left selvage tab with crease, but the block itself is essentially sound

FINE-VERY FINE. THIS IS THE ONLY RECORDED USED PLATE NUMBER BLOCK OF ANY OF THE 3-CENT TO 15-CENT 1909 BLUISH PAPER SPECIAL PRINTINGS, SOME OF WHICH WERE INADVERTENTLY PACKAGED AND DISTRIBUTED TO POST OFFICES. AN IMPORTANT RARITY AND ESPECIALLY DESIRABLE WITH THE PLATE NUMBER SELVAGE.

An estimated ten 13c Bluish Paper panes were packaged with normal stamps and distributed to the post office at Saginaw, Michigan. According to the Assistant Postmaster, John J. Spencer, "We found what was left of what no doubt had been originally ten sheets safely resting at the bottom under a lot of new stock, the coming of which had doubtless saved these from annihilation [or use]. They were readily distinguished, having a marginal pen and ink marking. We found a partial mint sheet and margins from several other sheets had been used. One or two sheets had also been precancelled. We were satisfied that ten sheets (of 100) had reached this post office."

A Power Search review located four used blocks of the 13c Bluish Paper, all of which have Saginaw cancellations. This is the fifth recorded used block, and it is the only one with an imprint or plate number. A sixth used block was divided into singles after it was certified by The Philatelic Foundation in 1992.

Ex Todd. With 2011 P.F. certificate 17,500.00



148

FIFTEEN-CENT ULTRAMARINE



149

- 149 ★★ **15c Pale Ultramarine, Bluish (366).** Mint N.H. with **wide right selvage**, exceptionally choice centering, gorgeous bright color
 EXTREMELY FINE AND REMARKABLY FRESH MINT NEVER-HINGED SHEET-MARGIN EXAMPLE OF THE 15-CENT 1909 BLuish PAPER ISSUE.
 With 1989 P.F. certificate..... 3,000.00



150

- 150 田 **15c Pale Ultramarine, Bluish (366).** Block of four, lightly hinged, well-centered, beautiful pastel shade and very fresh
 VERY FINE AND CHOICE BLOCK OF THE 15-CENT 1909 BLuish PAPER ISSUE. REMARKABLE QUALITY FOR A MULTIPLE OF THIS ISSUE.
 With 1999 P.F. certificate..... 6,000.00



151

- 151 ★田 **15c Pale Ultramarine, Bluish (366).** Top imprint and plate no. 4949 block of six with wide selvage, positions 3 and 5 **Mint N.H.**, small h.r. at top of position 2 and in selvage, vivid color, outstanding centering and margins, small edge tear at top left of selvage

EXTREMELY FINE. A BEAUTIFUL IMPRINT AND PLATE NUMBER BLOCK OF SIX OF THE 1909 15-CENT BLUISH PAPER ISSUE.

Although Lewis Kaufman has recorded 24 plate blocks of the 15c Bluish Paper, top positions are scarce and very desirable. The Smithsonian National Postal Museum contains one plate block, and a pane of 100 (4952 UR) was reported by Boggs to be in the Post Office Department files.

This is believed to be the finest wide top plate block extant. It was probably acquired by W. Parsons Todd from one of the original dispersals, circa 1910-14, and was owned by him for more than 60 years, thus explaining its extraordinary freshness.

Ex Todd. With 2017 P.F. certificate 16,000.00



152

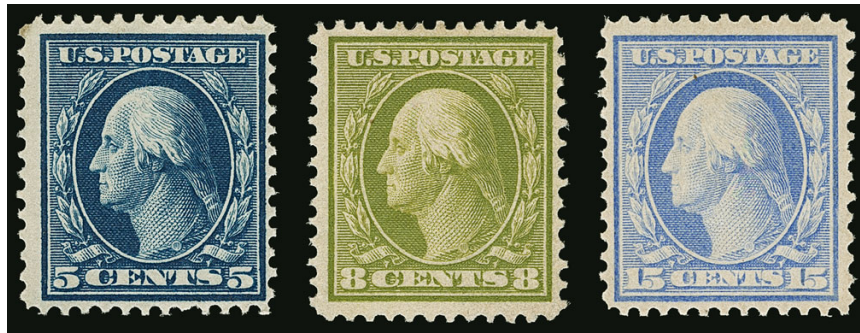
- 152 **15c Pale Ultramarine, Bluish (366).** Bright color, oval cancel, centered to right, small crease a bottom right

FINE APPEARANCE. ONLY TEN USED COPIES OF THE 15-CENT ON BLUISH HAVE BEEN CERTIFIED BY THE PHILATELIC FOUNDATION. A GREAT RARITY.

According to Johl-King and Boggs, 15c Bluish Paper stamps were discovered in the post office in Buffalo in January 1911. The rarity of the 15c Bluish Paper in used condition is often overlooked by collectors, probably because it is fairly plentiful in unused condition. Our census, available at our website at <http://siegelauctions.com/dynamic/census/366/366.pdf>, records only ten used copies. None is known on cover. Another has a certificate declining opinion as to whether the cancel is contemporary, and two others (not included) need to be reexamined for genuineness. Of the confirmed copies only two or three are sound.

Census No. 366-CAN-07. With 1999 P.F. certificate... 12,500.00

EXPERIMENTAL PAPER



153

- 153 ★ 5c, 8c, 15c “China Clay” Paper Varieties (335 var, 337 var, 340 var). Three different values, rich and bright colors on paper which looks to us to be a slightly different shade than normal, lightly hinged, 8c with 1982 and 15c with 1981 P.F. certificate specifying they are “China Clay” paper, this lot is offered on its own merits due to the controversial nature of China Clay paper — because of the White-Liston controversy, the P.F. will no longer certify these, although all experts agree they are printed on distinctive paper E. 750-1,000

1909 TWO-CENT LINCOLN

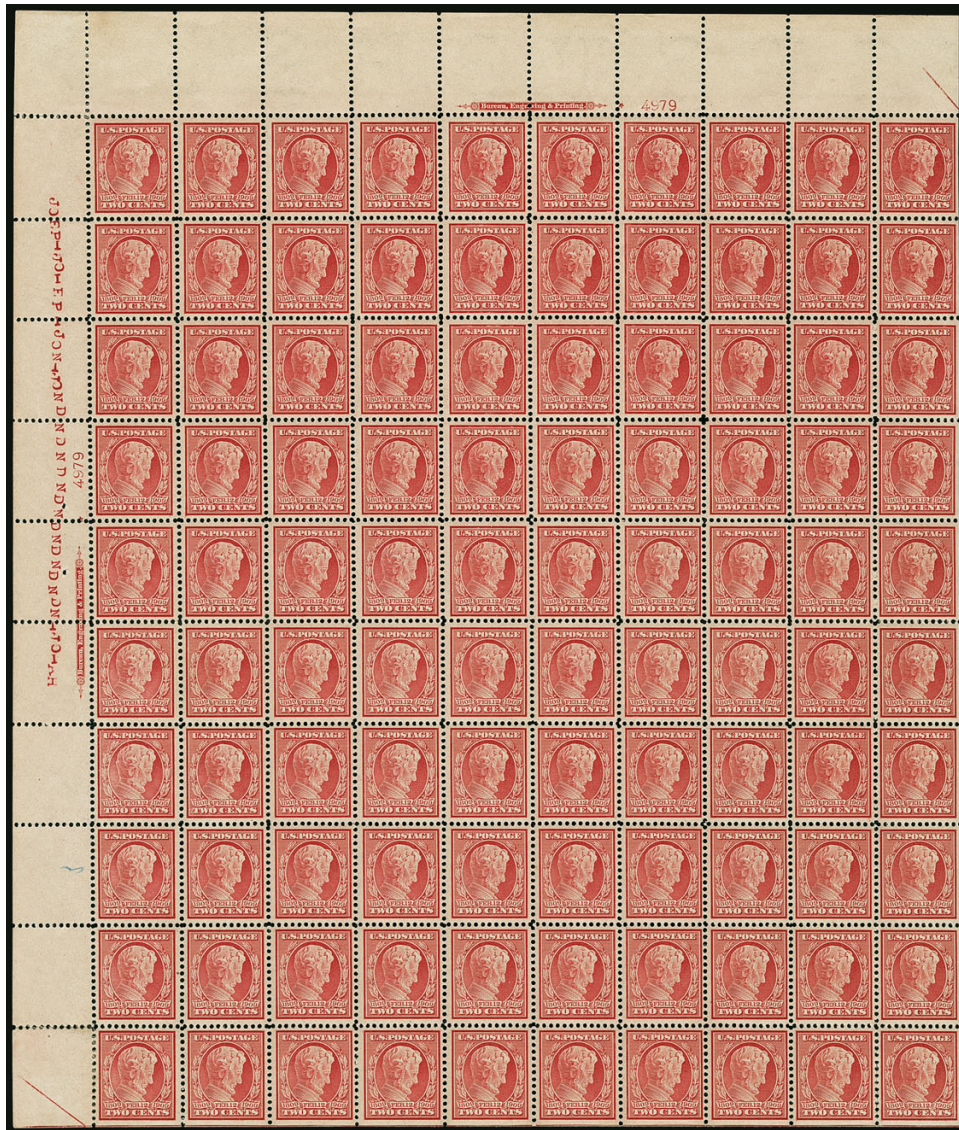


154

- 154 ★田 2c Lincoln, Bluish (369). Wide top imprint, solid star and plate no. 4978 block of six, bottom center stamp lightly hinged, others Mint N.H., extraordinary margins and centering, rich color

EXTREMELY FINE. ARGUABLY THE FINEST KNOWN WIDE-TOP PLATE NUMBER BLOCK OF THE 2-CENT LINCOLN ON BLUISH PAPER.

A Power Search review will reveal how plate blocks of the 2c Lincoln Bluish Paper issue are almost always poorly centered. This block is not only a desirable wide top position, its centering is unlike any other we have encountered. Incalculably rare in this quality and worthy of a strong bid. 2,750.00



155

- 155 ★田 2c Lincoln, Bluish (369). Pane of 100 with top and left imprint, solid star and plate no. 4979 blocks of six, natural s.e. at bottom and right, half arrows at top right and bottom left, six stamps with h.r. slivers, **other 94 stamps including both plate blocks Mint N.H.**, incredibly well-centered, a few inconsequential natural gum skips

EXTREMELY FINE PANE OF 100 OF THE 2-CENT LINCOLN ON BLUISH PAPER, WITH TWO MINT NEVER-HINGED PLATE BLOCKS AND 82 OTHER NEVER-HINGED STAMPS.

A review using Power Search found only two other panes of 100, both with a handful of hinged stamps. One is a lower left pane from the 400-subject plate with shorter selvage in the bottom plate block (both of which are hinged). This example, a top left pane with full selvage and two Mint N.H. plate blocks, is very desirable.

Scott Retail as two plate blocks and singles 35,640.00

END OF SALE — THANK YOU



BIDS

Use this form to submit absentee bids
or to confirm telephone bids

Sale 1148

February 28, 2017

PADDLE #

1

Please provide the following information:

NAME

ADDRESS

CITY/STATE/ZIP

PHONE MOBILE

EMAIL

2

Have you purchased from us in the past 5 years? ☐ Yes (please go to Section 3)
☐ No (references required below)

STAMP FIRM PHONE

STAMP FIRM PHONE

Please submit references at least **2 business days** before the sale. Bids from new clients will not be executed if satisfactory references are not received in time to be contacted.

3

- Enter the lot number and your corresponding maximum bid in the space below
- Use whole dollar amounts and bid according to the increments (see back of form)
- Bids do not include the **18% Buyer's Premium**, taxes, duty or shipping charges
- Absentee bids will advance at one increment over the next highest competing bid
- "Plus", "Break Tie" or "Buy" bids will not be executed
- Indicate any "Or" bids between lot number/bid entries and bracket your choices
- If you wish to limit the total amount of your bids, follow the instructions below

Lot #	Bid \$	Lot #	Bid \$	Lot #	Bid \$

☐ **Limit Bids:** Check this box if you wish to limit the total hammer price of your bids (excluding 18% Buyer's Premium, taxes, duty and shipping costs). Your bids will be executed until your bidding limit has been reached. The total amount you wish to bid is \$

4

By signing this form, you agree to all of the Conditions of Sale printed in the sale catalogue (printed and digital), including but not limited to a) payment in the manner demanded by the Siegel firm, and b) payment of the 18% Buyer's Premium, any sales tax or customs duty, shipping costs, late charges and

other prescribed charges. You agree that your bids will be executed as a courtesy by Siegel, but you waive the right to make any claim against Siegel or its employees arising from these bids or your participation in the sale. You agree to honor all bids as submitted, regardless of any errors or omissions.

SIGNED DATE

Mail the signed form to Siegel Bid Department, 60 East 56th St., New York, NY 10022
or email to stamps@siegelauctions.com
or fax to 212-753-6429



Additional Bids

Sale 1148

February 28, 2017

PADDLE #

Lot #	Bid \$	Lot #	Bid \$	Lot #	Bid \$

Shipping & Insurance

We will be pleased to arrange for shipping and transit insurance for purchases in this sale, except for lots marked or announced as "floor sale only." To expedite billing and delivery to hundreds of buyers in each sale, we use standard charges for postage and insurance under our policy. These charges are based on the package weight and mailing requirements, according to the schedule shown here. Our standard charges do not include a fee for our services, and they may be slightly more or less than the actual postage or Fedex fee. We ask all buyers to remit the invoiced amount for shipping and insurance.

Transit insurance is provided in all cases, except when the buyer has furnished us with documentation that insurance is effective under the buyer's own policy.

There will be no added insurance charge for shipments of less than \$75,000 value. Shipments valued in excess of \$75,000 may require supplemental insurance and/or special courier service, the estimated cost of which will be furnished to the buyer prior to shipment. If the buyer refuses to pay the estimated charges or furnish proof of self-insured coverage, the buyer will be responsible for picking up the lots at our office and any resulting sales tax.

Standard Shipping Charges

Weight Class	Shipping Method	Charge
Up to 2 lbs.	Fedex Envelope	\$20
Over 2 lbs.	Fedex Box	\$35 - \$50*
Outside US	Fedex	\$50 - \$100**
Bulky Lots	Fedex Ground or Express	By weight

* Up to \$75,000 value and up to 5 lbs; additional charge may apply to packages exceeding limits

** Buyers outside United States are liable for any applicable customs duty and clearance charges. An accurate declaration of contents and value will be made on all packages and import/export documents. **Siegel may refuse to ship lots to certain countries with a high risk factor.**

2/2015

Bidding Increments

The auctioneer may regulate the bidding at his discretion. However, to assist absentee bidders in establishing their maximum bids, the increments shown here will be used in most cases. We recommend that written bids conform to these increments—bids that do not will be reduced accordingly.

Bid	Increment	Bid	Increment
Up to \$200	\$10	\$7,000-20,000	\$500
\$200-500	\$25	\$20,000-30,000	\$1,000
\$500-1,000	\$50	\$30,000-75,000	\$2,500
\$1,000-3,000	\$100	\$75,000-140,000	\$5,000
\$3,000-7,000	\$250	\$140,000-300,000	\$10,000

Robert A. Siegel Auction Galleries, Inc.
Prices Realized for

Sale 1148 2/28/2017 The Barry K. Schwartz Collection of U.S. 1909 Bluish Paper Issue

Lot#	Realized	Lot#	Realized
101	375	137	60,000
102	225	138	2,500
103	225	139	4,000
104	425	140	16,000
105	550	141	5,000
106	3,250	142	5,500
107	400	143	4,750
108	550	144	4,750
109	550	145	3,500
110	200	146	35,000
111	225	147	8,500
112	850	148	15,000
113	1,100	149	7,500
114	700	150	3,500
115	600	151	11,000
116	2,100	152	13,000
117	4,750	153	1,100
118	2,700	154	5,500
119	15,000	155	9,000
120	6,000		
121	26,000		
122	22,000		
123	75,000		
124	140,000		
125	6,000		
126	11,500		
127	120,000		
128	19,000		
129	26,000		
130	2,100		
131	6,750		
132	2,700		
133	10,500		
134	14,000		
135	26,000		
136	75,000		