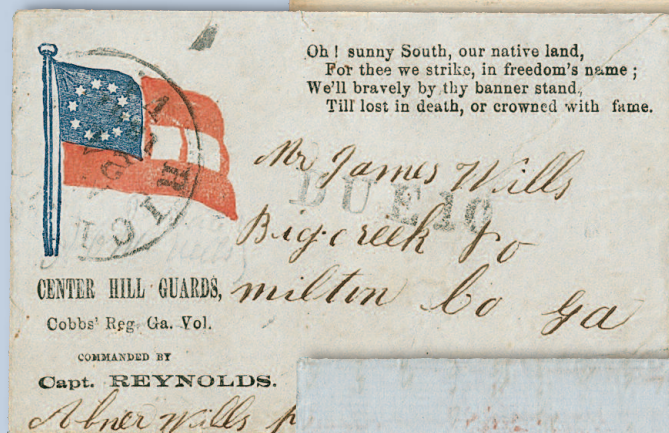


FEATURING THE DEANE R. BRIGGS, M.D. FLORIDA COLLECTION



Sale 1155 — Tuesday and Wednesday, May 9-10, 2017

United States and Confederate States Postal History

Featuring the Deane R. Briggs, M.D. Collection of Florida Postal History

Lots offered without reserves

Live auction to be held at Siegel Auction Galleries,
60 East 56th Street (Park/Madison), 4th Floor, New York City

Lots are sold subject to a 18% buyer's premium and
any applicable sales tax (or customs duty for non-U.S. buyers)

Please carefully read the Conditions of Sale before bidding



TUESDAY, MAY 9

4:30 p.m.—Session One—Lots 3001-3050

Following the Briggs sale of Florida C.S.A.

Confederate States 3001-3050

WEDNESDAY, MAY 10

10:30 a.m.—Session Two—Lots 3051-3175

Autographs and Free Franks 3051-3056
Colonial through 1800 3057-3065
Early Florida Postal History 3066-3079
Stampless by State 3080-3109
Mail to and from China 3110-3142
Railroads 3143-3147
Steamboats and Waterways 3148-3152
New York Postmaster's Provisional 3153-3154
1847 Issue, including Florida Usage 3155-3175

4:30 p.m.—Session Three—Lots 3176-3276

Following the Walske sale of Blockade and Packet Mail

1851-56 Issue 3176-3186
1857-60 and Later Issues 3187-3222
Air Post 3223-3238
Special Delivery 3239-3244
Officials 3245-3248
Carriers, Locals & Western Expresses 3249-3257
Postal Stationery 3258-3260
Group Lots 3261-3276

Pre-Sale Viewing—Monday, May 8, 10am-4pm, Tuesday, May 9, 10am-12 noon
and by appointment (please call 212-753-6421)

Robert A. Siegel
AUCTION GALLERIES, INC.

60 EAST 56TH STREET, 4TH FLOOR, NEW YORK, N.Y. 10022
Phone (212) 753-6421 • Fax (212) 753-6429 • E-mail: stamps@siegelauctions.com

Catalogues, internet bidding, resources, archives and the Siegel Encyclopedia at
siegelauctions.com



Robert A. Siegel

AUCTION GALLERIES, INC.

60 EAST 56TH STREET, 4TH FLOOR, NEW YORK, N.Y. 10022

Phone (212) 753-6421 • Fax (212) 753-6429 • E-mail: stamps@siegelauctions.com
siegelauctions.com



Scott R. Trepel
President
strepel
@siegelauctions.com



John P. Zuckerman
Senior Vice President
jzuckerman
@siegelauctions.com



Corey Long
Senior Vice President
clong
@siegelauctions.com



Colleen Stellato
Vice President—Accounts
colleen
@siegelauctions.com



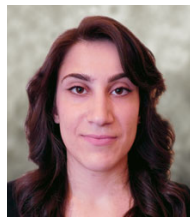
Charles F. Shreve
Director, Siegel International
charles
@siegelauctions.com



Andrew Titley
International Specialist
andrew
@siegelauctions.com



Helen Stewart
Bids and Inquiries
helen
@siegelauctions.com



Jocelyn Weibel
Digital Production
jocelyn
@siegelauctions.com



Chris Anderson
Siegel International
chris
@siegelauctions.com

Scott R. Trepel Principal Auctioneer (licensed by NYC Dept. of Consumer Affairs, #795952)

Information for Bidders

Bidding

The following means are available for placing bids:

- 1) **Attending the Live Auction in Person:** All bidders must register for a paddle, and new bidders must provide references at least three business days in advance of the sale.
- 2) **Live Internet Bidding:** Instructions for participating as a Live Internet Bidder are provided on the page opposite.
- 3) **Phone Bidding:** Bidders can be connected to the sale by phone and bid through a member of staff. Requests for phone bidding are subject to approval (please contact our office at least 24 hours before the sale). A signed Bid Form is required.
- 4) **Absentee Bids.** All bids received in advance of the sale, either by mail, fax, phone, e-mail or internet, are Absentee Bids, which instruct the auctioneer to bid up to a specific amount on one or more lots in the sale. Absentee Bids sent by phone, fax or e-mail should arrive at least one hour prior to the start of the sale session. Bids entered through Live Internet Bidding will be visible to the auctioneer during the sale. Written bids should be entered legibly on the Bid Form in the sale catalogue. E-mail and internet bids should be carefully typed and double-checked. All new bidders must provide references. We recommend calling or e-mailing to confirm that Absentee Bids sent by mail, fax or e-mail have been received and entered.

Pre-Sale Viewing

Subject to availability, certain lots (except group lots) can be sent to known clients for examination. Requests must be made no later than 7 days prior to the sale. Lots must be returned on the day received. Postage/insurance costs will be invoiced.

In addition to regular viewing, clients may view lots by appointment. Our staff will be pleased to answer questions or provide additional information about lots.

Expert Certification

Individual items offered without a PF or PSE certificate dated within the past five years may be purchased subject to independent certification of genuineness and our description. **Please refer to the Conditions of Sale and Grading Terms for policies governing certification.**

Shipping and Delivery

Procedures and charges for shipping lots are printed on the back of the Bid Form. **Bidders are responsible for all prescribed shipping charges and any applicable sales tax or customs duties.**

Price Realized

Prices realized are sent with each invoice. Bidders with e-mail will receive a Bid Results report after the sale. Session results are posted immediately to siegelauctions.com

Live Internet Bidding at Siegel Auctions

BIDDING FROM YOUR COMPUTER LETS YOU BE PART OF THE LIVE AUCTION FROM ANYWHERE IN THE WORLD!

There's **NO SUBSTITUTE** for following the auction in real time.
Live Internet Bidding lets you bid and buy as though you were right there in the saleroom.
And it's easy.

This step-by-step guide will instruct you how to register, set your browser and use the bidding interface.

Start by following the simple steps to become a registered Live Internet Bidder.
Once you've been approved for bidding, you can listen to the auction and place bids with the click of a mouse.

Registering with STAMP AUCTION NETWORK & SIEGEL AUCTION GALLERIES

Live Internet Bidding is managed by Stamp Auction Network (SAN).
To bid, you must be registered and approved by *both* SAN and Siegel.
To decide what you need to do, choose the description below that best fits you.



I've already registered with SAN and have been approved by Siegel for internet bidding.

I'm a Siegel client, but I'm not registered with SAN.

Go to stampauctionnetwork.com/siegel and click on "Register" at the top. Check the box for Robert A. Siegel Auction Galleries (under "R") and submit the form, indicating you are a Siegel client. Once registered at SAN, you're ready for internet bidding.

I've bid through SAN before, but this is the first time I've bid in a Siegel sale.

Then you just need to be approved by Siegel. Go to stampauctionnetwork.com/siegel and click on "Update Registration" at the top. Your SAN account information will be sent to us for approval (you might be asked for other trade references). Once approved by Siegel for bidding, you're ready for internet bidding.

I've never bid with Siegel, nor registered with SAN.

Go to stampauctionnetwork.com/siegel and click on "Register" at the top. Check the box for Robert A. Siegel Auction Galleries (under "R") and submit the form **with your trade references** (please, no family members or credit card companies as references). Once registered at SAN and approved by Siegel for bidding, you're ready for internet bidding.

Live Internet Bidding works by allowing registered bidders to observe and place bids.

Live Internet Bidding will work with any browser on both PC and Mac operating systems.

Before bidding by internet for the first time, we recommend finding a sale in progress and listening to the public broadcast or logging in as a registered bidder. This will help you develop a feel for the sale tempo and bidding interface.

Log on to the auction at stampauctionnetwork.com/siegel.

You can also log on at siegelauctions.com

When you're logged on as a Live Internet Bidder, the bidding interface shows a photo and description of the lot, the current bid (and your bidding status), options for placing competitive bids and buttons with bid increments.

- After you click on a bid amount, the auctioneer is immediately notified of your bid.
- Retracting a bid is usually not acceptable, so please bid carefully.
- If you bid and then decide to stop, the "Pass" button will tell the auctioneer you are no longer bidding.
- You can send messages to the auctioneer (for example, a request for extension).
- You can track prior realizations from the bidding screen.



"System Down" or "Lost Connection" events do occasionally happen.

If you have any problems with Live Internet Bidding please call **212-753-6421** for immediate assistance.

Conditions of Sale (please read carefully before bidding)

THE PROPERTY DESCRIBED IN THIS CATALOGUE WILL BE OFFERED AT PUBLIC AUCTION BY ROBERT A. SIEGEL AUCTION GALLERIES, INC. ("GALLERIES") ON BEHALF OF VARIOUS CONSIGNORS AND ITSELF OR AFFILIATED COMPANIES. BY BIDDING ON ANY LOT, WHETHER DIRECTLY OR BY OR THROUGH AN AGENT, IN PERSON, OR BY TELEPHONE, FACSIMILE OR ANY OTHER MEANS, THE BIDDER ACKNOWLEDGES AND AGREES TO ALL OF THE FOLLOWING CONDITIONS OF SALE.

1. The highest bidder acknowledged by the auctioneer shall be the buyer. The term "final bid" means the last bid acknowledged by the auctioneer, which is normally the highest bid offered. **The purchase price payable by the buyer will be the sum of the final bid and a commission of 18% of the final bid ("buyer's premium"), together with any sales tax, use tax or customs duties due on the sale.**

2. The auctioneer has the right to reject any bid, to advance the bidding at his discretion and, in the event of a dispute, to determine the successful bidder, to continue the bidding or to reoffer and resell the lot in dispute. The Galleries' record of the final sale shall be conclusive.

3. All bids are per numbered lot in the catalogue unless otherwise announced by the auctioneer at the time of sale. The right is reserved to group two or more lots, to withdraw any lot or lots from the sale, or to act on behalf of the seller. The Galleries will execute bidding instructions on behalf of clients, but will not be responsible for the failure to execute such bids or for any errors in the execution of such bids.

4. Lots with numbers followed by the symbol ° are offered subject to a confidential minimum bid ("reserve"), below which the lot will not be sold. The absence of the symbol ° means that the lot is offered without a reserve. If there is no reserve, the auctioneer has sole discretion to establish a minimum opening bid and may refuse an offer of less than half of the published estimate. Any lot that does not reach its reserve or opening bid requested by the auctioneer will be announced as "passed" and excluded from the prices realized lists after the sale. The Galleries may have a direct or indirect ownership interest in any or all lots in the sale resulting from an advance of monies or goods-in-trade or a guarantee of minimum net proceeds made by the Galleries to the seller.

5. Subject to the exclusions listed in 5(A), the Galleries will accept the return of lots which have been misidentified or which have obvious faults that were present when the lot was in the Galleries' custody, but not so noted in the lot description. **All disputed lots must be received by the Galleries intact with the original packing material within 5 days of delivery to the buyer but no later than 30 days from the sale date.** (5A) **EXCLUSIONS:** The following lots may not be returned for any reason, or may not be returned for the reasons stated: i) lots containing 10 or more items; ii) lots from buyers who registered for the pre-sale exhibition or received lots by postal viewing, thereby having had the opportunity to inspect them before the sale; iii) any lot described with "faults," "defects" or a specific fault may not be returned because of any secondary fault; iv) photographed lots may not be returned because of centering, margins, short/nibbed perforations or other factors shown in the illustrations; v) the color of the item does not match the color reproduction in the sale catalogue or website listing; vi) the description contains inaccurate information about the quantity known or reported; or vii) a certification service grades a stamp lower than the grade stated in the description.

6. Successful bidders, unless they have established credit with the Galleries prior to the sale, must make payment in full before the lots will be delivered. Buyers not known to the Galleries must make payment in full within 3 days from the date of sale. **The Galleries retains the right to demand a cash deposit from anyone prior to bidder registration and/or to demand payment at the time the lot is knocked down to the highest bidder, for any reason whatsoever.** In the event that any buyer refuses or fails to make payment in cash for any lot at the time it is knocked down to him, the auctioneer reserves the right to reoffer the lot immediately for sale to the highest bidder. **Credit cards (Visa, Mastercard and Discover only) can be accepted as payment but will be subject to a 3% Convenience Fee, which will be added to the total of the entire invoice (including hammer price, buyer's premium, shipping**

and transit insurance charges and any applicable taxes).

7. If the purchase price has not been paid within the time limit specified above, nor lots taken up within 7 days from the date of sale, the lots will be resold by whatever means deemed appropriate by the Galleries, and any loss incurred from resale will be charged to the defaulting buyer. **Any account more than 30 days in arrears will be subject to a late payment charge of 1½% per month as long as the account remains in arrears. Any expenses incurred in securing payment from delinquent accounts will be charged to the defaulter.** A fee of \$250.00 per check will be charged for each check returned for insufficient funds.

8. All lots are sold as genuine. **Any lot accompanied by a certificate issued by The Philatelic Foundation or by Professional Stamp Experts within 5 years of the sale date is sold "as is" and in accordance with the description on the certificate. Such lots may not be returned for any reason, including but not limited to a contrary certificate of opinion.** Buyers who wish to obtain a certificate for any item that does not have a P.F. or P.S.E. certificate (dated as above) may do so, provided that the following conditions are met: (1) the purchase price must be paid in full, (2) the item must be submitted to an acceptable expertizing committee with a properly executed application form within 21 days of the sale, (3) a copy of the application form must be given to the Galleries, (4) in the event that an adverse opinion is received, the Galleries retain the right to resubmit the item on the buyer's behalf for reconsideration, without time limit or other restrictions, (5) unless written notification to the contrary is received, items submitted for certification will be considered cleared 90 days from the date of sale, and (6) in the event any item is determined to be "not as described", the buyer will be refunded the purchase price and the certification fee up to \$800.00 unless otherwise agreed to in writing.

9. Until paid for in full, all lots remain the property of the Galleries on behalf of the seller.

10. Agents executing bids on behalf of clients will be held responsible for all purchases made on behalf of clients unless otherwise arranged prior to the sale.

11. The buyer assumes all risk for delivery of purchased lots and agrees to pay for prescribed shipping costs. **Buyers who receive lots in the U.S. are obligated to pay whatever sales tax or compensating use tax might be due, and buyers outside the U.S. are responsible for all customs duties.**

12. **The bidder consents that any action or proceeding against it may be commenced and maintained in any court within the State of New York or in the United States District Court for the Southern District of New York, that the courts of the State of New York and United States District Court for the Southern District of New York shall have jurisdiction with respect to the subject matter hereof and the person of the bidder. The bidder agrees not to assert any defense to any action or proceeding initiated by Galleries based upon improper venue or inconvenient forum. The bidder agrees that any action brought by the bidder shall be commenced and maintained only in a Federal Court in the United States District Court for the Southern District of New York or the State Court in the county in which Galleries has its principal place of business in New York. The bidder agrees not to use a public conflict resolution service and not to use any form of social media to publish comments or information about the Galleries and its employees which might harm the Galleries' reputation or business. These Conditions of Sale shall be governed by and construed in accordance with the substantive laws of the State of New York, and shall constitute an agreement that shall be binding on the parties, and their respective heirs, administrators, distributees, successors and assignees.**

SCOTT R. TREPEL, Principal Auctioneer
Auctioneer's License No. 795952

N.Y.C. Department of Consumer Affairs
80 Lafayette Street, New York, N.Y. 10013
Telephone (212) 577-0111

Revised 1/2017

Grades, Abbreviations and Values Used in Descriptions

Grades and Centering

Our descriptions contain detailed information and observations about each item's condition. We have also assigned grades to stamps and covers, which reflect our subjective assessment. For stamps, the margin width, centering and gum are described and graded according to generally-accepted standards (an approximate correlation to numeric grades is provided at right). Although we believe our grades are accurate, they are not always exactly aligned with third-party grading terms or standards for all issues. **A lot may not be returned because a certification service grades a stamp lower than the grade stated in the description. Information from the P.S.E. Stamp Market Quarterly and P.S.E. Population ReportSM is the most current available, but lots may not be returned due to errors or changes in statistics or data.**

Extremely Fine Gem (90-100): The term "Gem" describes condition that is the finest possible for the issue. This term is equivalent to "Superb" used by grading services.







Extremely Fine (80-90): Exceptionally large/wide margins or near perfect centering.

Very Fine (70-85): Normal-size margins for the issue and well-centered with the design a bit closer to one side. "Very Fine and choice" applies to stamps that have desirable traits such as rich color, sharp impression, freshness or clarity of cancel.

Fine (60-70): Smaller than usual margins or noticeably off center. Pre-1890 issues may have the design touched in places.

Very Good (below 60): Attractive appearance, but margins or perforations cut into the design.

Guide to Gum Condition

Gum Categories:	MINT N.H.	ORIGINAL GUM (O.G.)				NO GUM
	 Mint Never Hinged <i>Free from any disturbance</i>	 Lightly Hinged <i>Faint impression of a removed hinge over a small area</i>	 Hinge Mark or Remnant <i>Prominent hinged spot with part or all of the hinge remaining</i>	 Part o.g. <i>Approximately half or more of the gum intact</i>	 Small part o.g. <i>Approximately less than half of the gum intact</i>	 No gum <i>Only if issued with gum</i>
Catalogue Symbol:	★ ★	★	★	★	★	(★)
PRE-1890 ISSUES	<i>Pre-1890 stamps in these categories trade at a premium over Scott value</i>			Scott Value for "O.G."		Scott "No Gum" Values thru No. 218
1890-1935 ISSUES	Scott "Never Hinged" Values for Nos. 219-771	Scott Value for "O.G." (Actual value will be affected by the degree of hinging)		Disturbed Original Gum: Gum showing noticeable effects of humidity, climate or hinging over more than half of the gum. The significance of gum disturbance in valuing a stamp in any of the Original Gum categories depends on the degree of disturbance, the rarity and normal gum condition of the issue and other variables affecting quality. For example, stamps issued in tropical climates are expected to have some		
1935 TO DATE	Scott Value for "Unused"					

Covers

Minor nicks, short edge tears, flap tears and slight reduction at one side are normal conditions for 19th century envelopes. Folded letters should be expected to have at least one file fold. Light cleaning of covers and small mends along the edges are accepted forms of conservation. Unusual covers may have a common stamp with a slight crease or tiny tear. **These flaws exist in virtually all 19th century covers and are not always described. They are not grounds for return.**

Catalogue Values and Estimates

Unless otherwise noted, the currently available *Scott Catalogue* values are quoted in dollars with a decimal point. Other catalogues are often used for foreign countries or specialized areas and are referred to by their common name: *Stanley Gibbons* (SG), *Dietz*, *American Air Mail Catalogue* (AAMC), *Michel*, *Zumstein*, *Facit*, etc. Estimates are indicated with an "E." and reflect our conservative valuation in dollars. Reserves will never exceed the low end of the estimate range; they will sometimes exceed Scott Catalogue value for stamps in Extremely Fine condition.

Because of certain pricing inconsistencies in the *Scott Catalogue*—for example, blocks that have no gum, the absence of premiums for Mint N.H. items, etc.—we cannot guarantee the accuracy of values quoted for multiples, specialized items and collection lots. We generally try to be conservative, but buyers may not return a lot because of a discrepancy in catalogue value due to Scott pricing inconsistencies.

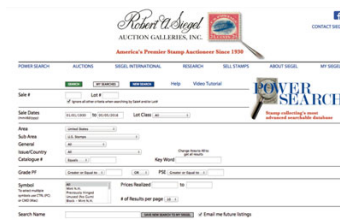
Symbols and Abbreviations (see chart above for gum symbols)

⊞	Block	E	Essay	pmk.	Postmark	No.	Scott Catalogue Number
⊞	Cover	P	Proof	cds	Circular Datestamp	hs	Handstamp
FC	Fancy Cancel	TC	Trial Color Proof	var.	Variety	ms.	Manuscript

R@ siegelauctions.com

CATALOGUES AND PRICES REALIZED

Images and descriptions for all sales going back to 1992, our Rarities sales from 1964 and selected older name sales. PDF catalogues go back to our first sale in 1931.



POWER SEARCH™

Search by Scott number or keyword through all of the sales at our website. The best resource in philately for research.

MY SIEGEL™

Save your Power Searches as want lists. We will automatically notify you when a match is included in an upcoming sale, whether it's as broad as any Columbian issue, or as narrow as a 241 graded 98. The most powerful want list in philately.

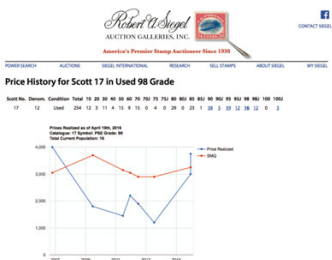


LOT TRACKER™

Never miss another lot because you were away from your computer. Log into My Siegel™, then set up notifications to get texts and/or emails 10-30 lots before yours comes up (live bidding is still through Stamp Auction Network).

CENSUS DATA FOR RARITIES

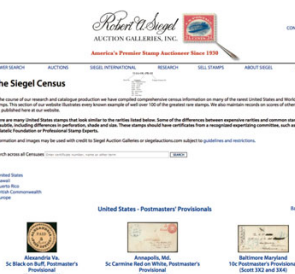
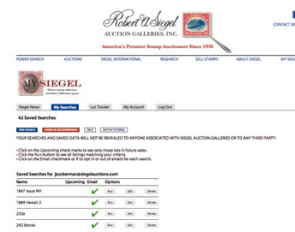
The up-to-date census data for U.S. and select International rarities are a valuable resource for buyers, sellers and researchers. Every recorded example of almost 150 different rare stamps is described and, in most cases, photographed.



GRADED PRICE HISTORY

Graphs show the realizations of each grade over time in our auctions. The data points are easily visible for independent analysis.

We have several other important features of our website, such as the Siegel Encyclopedia, Exhibits, Today in History and a Perpetual Calendar. Go to siegelauctions.com for the most comprehensive website in philately.



SESSION ONE (LOTS 3001-3050)

TUESDAY, MAY 9, 2017, AT 4:30 P.M.

Following the sale of the Deane R. Briggs, M.D. Collection

CONFEDERATE STATES POSTAL HISTORY

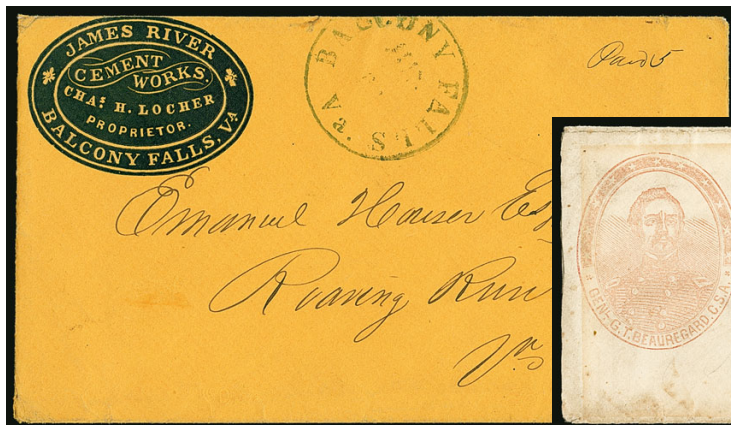
THROUGH-THE-LINE EXPRESS



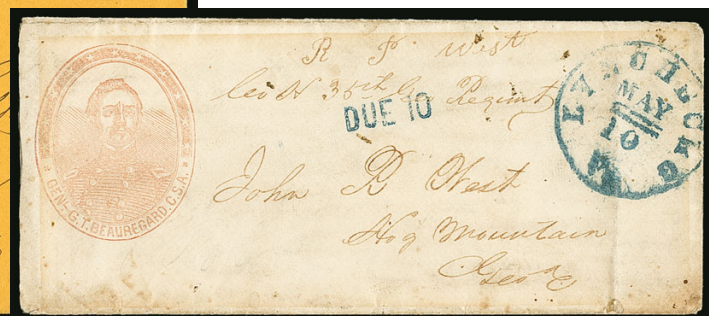
3001

- 3001 ☒ **Liverpool to Lynchburg Va. via Nashville.** Folded letter datelined Liverpool, England, June 8, 1861, addressed to Lynchburg Va., likely carried by Cunard steamship to New York in another envelope, then from New York **by through-the-lines express company** (Adams or American) to Nashville Tenn., blue "Nashville Ten. Jun. 26, 1861" circular datestamp, matching "PAID" straightline struck overlapping datestamp and "10" in oval for C.S.A. postage, pencil "10" rate notation, Very Fine, scarce use from England into the Confederacy by express after the suspension of mails..... E. 500-750

HANDSTAMPED PAID AND DUE MARKINGS



3002

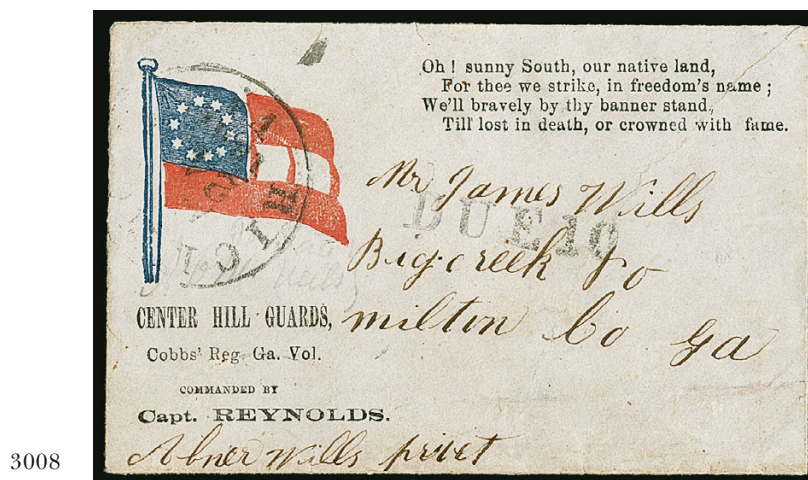


3003

- 3002 ☒ **Balcony Falls Va., Jun. ? (1861).** Blue circular datestamp and manuscript "Paid 5" on buff cover to Roaring Run Va. with **James River Cement Works blue embossed cameo corner card**, sealed flap tear barely nicks front at top, Very Fine, ex Kohn... E. 300-400
- 3003 ☒ **Lynchburg Va. May 10.** Circular datestamp in blue with matching "Due 10" straightline on narrow cover to Hog Mountain Ga. with **General G. T. Beauregard Three-Quarter Portrait in Oval Patriotic design** (MS-1), soldier's endorsement from member of 35th Ga. Regiment, slight staining, otherwise Fine, a scarce Patriotic design, C.S.A. Catalog value \$2,500.00..... E. 400-500



- 3004 ☒ **Lynchburg Va. Oct. 3.** Circular datestamp and "DUE 10" straightline on **Hand-Held 11-Star Confederate Flag** and "**Bartow**" Patriotic cover (F11-9) to Greenville Ga., soldier's endorsement at top, slightly irregularly opened at left and couple small stains, still Fine, C.S.A. Catalog value \$1,500.00 E. 300-400
- 3005 ☒ **Lynchburg Va. Sep. 6, 1861.** Circular datestamp and "Paid 10" handstamp on **Hand-Held 11-Star Confederate Flag Patriotic** cover (F11-9) to Lawrenceville Ga, sealed opening tears at top, otherwise Fine, ex Kimmel, C.S.A. Catalog value \$1,500.00 E. 300-400
- 3006 ☒ **Lynchburg Va. Aug. 14, 1861.** Circular datestamp and "Paid 5" in arc on buff cover to Pattonsburg Va. with **Anderson, Adams & Co. Grocers & Commission Merchants** corner card, states "lumber always on hand," part of backflap missing, fresh and Extremely Fine, a choice grocer corner card handstamped Paid E. 300-400
- 3007 ☒ **Lynchburg Va. Aug. 10.** Blue circular datestamp with matching "Paid 10" handstamp on cover to military address at Richmond with manuscript "**O.B. Qr. Master's Office Lynchburg Va.**" at top, charge box notation, fresh and Very Fine, a nice use from Lynchburg, ex Weatherly.. E. 200-300



- 3008 ☒ **Richmond Va. Apr. 24, 1862.** Circular datestamp and "DUE 10" straightline on small cover to Bridge Creek Ga. with **10-Star Confederate Flag design with unlisted slogan and verse**, "Center Hill Guards, Cobbs' Reb. Ga. Vol. Commanded by Capt. REYNOLDS" slogan and "Oh sunny South..." verse (F10-3 var.), soldier's endorsement at bottom from Private Abner Wills, who was a member of Company B of the 16th Georgia Infantry and was killed months after this cover was sent in the Antietam campaign, expertly sealed tear, Very Fine appearance and rare, the C.S.A. Catalog lists this design with a different Cobbs' imprint and no verse (\$1,000.00), this is the first one of these we have seen with the additional printing..... E. 1,000-1,500



3009



3010



3011



3012 and control mark

- 3009 ☒ **Tye River Warehouse Va. Feb. 15.** Circular datestamp with “Paid 5” in circle struck over old U.S. “Paid 3” on cover to Pedlar Mills Va., cleaned for some slight age staining, Very Fine appearance, reportedly **unique** with the town datestamp (manuscript postmarks are also known), ex Kohn, “Paid” marking illustrated in C.S.A. Catalog where priced at \$500.00..... E. 300-400
- 3010 ☒ **Canton Miss., 5c Black entire (14XU1).** Absolutely perfect bold strike of “PAID/5/P” Star in Circle provisional handstamp, light strike of “Canton Miss. Aug. 8, 1861” circular datestamp on cover to Carroll Hoy & Co. in New Orleans, usual filing pinholes, expertly restored at bottom, still an Extremely Fine strike of this fancy provisional handstamp, the “P” in center of the star is the initial of Postmaster William Priestly, ex Matz 4,000.00
- 3011 ☒ **Danville Va., 5c Black on Dark Buff entire (21XU3).** Style with “SOUTHERN” curved, press-printed illustrated design on dark buff cover to Greensboro N.C., “Danville Va. Jul. 15” (1861) circular datestamp, scattered toned specks and slightly worn as are virtually all are
VERY FINE EXAMPLE OF THE RARE DANVILLE VIRGINIA PRESS-PRINTED PROVISIONAL.
The Calhoun census lists 24 envelopes, but nearly half are not proper provisional uses (either lacking a Danville postmark or used with adhesive postage). There are only eleven or twelve properly used and postmarked envelopes (all 5c). The classification of Buff versus Amber is also questionable, and we think it is quite probable that all of the genuine July-September envelopes are more or less the same shade of Dark Buff (21XU3).
Ex Dietz, Weatherly and Everett 9,000.00
- 3012 ☒ **Greenville Court House S.C., 10c Black entire (34XU2).** Clear strike of control mark on back with “Paid” and “10” handstamps, “Greenville C.H. S.C. Feb. 9” circular datestamp on cover to Pendleton S.C., Very Fine and rare, only one is listed in Crown survey, there are a handful more but probably fewer than six survive, with 2007 A.P.S. certificate..... 2,000.00

POSTMASTERS' PROVISIONALS



3013

- 3013 ☒ **Lynchburg Va., 5c Blue (52X1).** Mostly large margins, clear at bottom left, small portion of adjoining stamp at upper left, tied by Lynchburg Va. circular datestamp on brown cover to Richmond Va.

VERY FINE STAMP AND ONE OF THE MORE ATTRACTIVE OF THE FEWER THAN 30 LYNCHBURG PROVISIONAL STAMPS KNOWN ON COVER.

Of the 25 single Lynchburg provisional stamps recorded on cover in the Calhoun census, about one-third have stamps with four full margins, while the majority is cut into on one side. The few known pairs demonstrate the extremely narrow spacing between stamps.... 6,500.00



3014



3015

- 3014 ☒ **Lynchburg Va., 5c Black on Amber entire (52XU2).** "Lynchburg Va. Jul. 1?" circular datestamp, addressed to Jetersville Va., repaired at top where opened, backflap replaced, otherwise Fine..... 4,000.00
- 3015 ☒ **Petersburg Va., 5c Red (65X1).** Affixed upside-down and tie by blue "Petersburg Va. Dec. 11" (1861) circular datestamp on small folded letter to Lynchburg Va., small toned spots do not affect stamp which has a faint scoring line at edge, Fine appearance 2,500.00



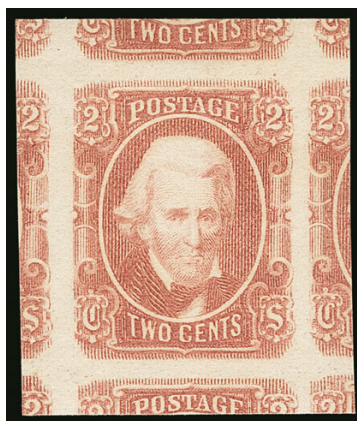
3016

- 3016 ☒ **Tuscomb Ala., 5c Black entire (84XU1).** Clear strike of “5 Paid” control handstamp with “Tuscomb Ala. Nov. 10” circular datestamp on cover to Richland Ark., endorsed “Via Memphis & L. Rock R.R.” at bottom left, Very Fine and rare, only eight are recorded in the Crown survey 4,000.00

GENERAL ISSUES OFF COVER



3017



3018



3019

- 3017 ★★ **5c Light Blue, De La Rue (6).** Mint N.H., enormous margins all around including parts of all eight adjoining stamps, brilliant color, Extremely Fine Gem, with 2015 P.S.E. certificate (Gem 100 Jumbo; SMQ \$400.00 as 100, unpriced in the Jumbo grade), Scott Retail as hinged 16.00
- 3018 ★★ **2c Brown Red (8).** Mint N.H., Jumbo margins showing parts of all eight adjoining stamps, lovely color on fresh paper, Extremely Fine Gem, with 2015 P.S.E. certificate (Gem 100 Jumbo; SMQ \$1,900.00 as 100, unpriced in Jumbo grade), this is the highest grade possible on the grading chart, Scott Retail as hinged 75.00
- 3019 ★★ **10c Greenish Blue, Die A (11c).** Mint N.H., enormous margins all around including significant portions of all eight adjoining stamps, Extremely Fine Gem, with 2015 P.S.E. certificate (Gem 100 Jumbo; unpriced in SMQ above the grade of 100, SMQ \$550.00 as 100), Scott Retail as hinged 30.00



3020



3021

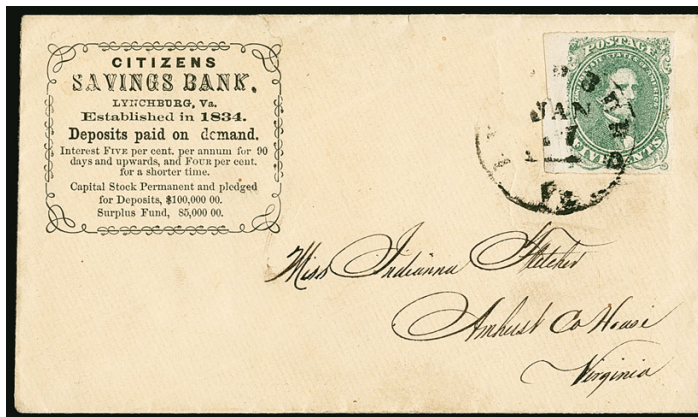
- 3020 ★★ **10c Blue, Die B (12).** Mint N.H., massive margins including significant portions of five adjoining stamps and **huge left sheet margin**, deep rich color, Extremely Fine Gem, with 2013 P.S.E. certificate (Gem 100 Jumbo; SMQ \$700.00 as 100, unpriced as 100J), this is the highest grade possible on the grading chart, Scott Retail as hinged 20.00

- 3021 ★★ **1c Orange (14).** Mint N.H., huge Jumbo margins including portions of all eight adjoining stamps, bright color

EXTREMELY FINE GEM. A SUPERB MINT NEVER-HINGED EXAMPLE OF THE CONFEDERATE STATES ONE-CENT TYPOGRAPHED ISSUE, WHICH HAS ACHIEVED THE ULTIMATE GRADE OF GEM 100 JUMBO.

With 2015 P.S.E. certificate (Gem 100 Jumbo; SMQ \$2,550.00 as 100, unpriced as 100J). Scott Retail as hinged..... 100.00

GENERAL ISSUES ON COVER



3022



3023



3024

- 3022 ☒ **5c Green, Stone 1-2 (1).** Large to huge margins including **sheet margin** at left, tied by "Lynchburg Va. Jan. 17" circular datestamp on **Citizens Savings Bank Lynchburg corner card** cover to Amhurst C.H. Va., stamp with light crease in margin far from design, small cover tear at top where missing backflap, Very Fine, a choice cover with a sheet-margin 5c Green Lithograph..... E. 500-750
- 3023 ☒ **10c Light Blue, Paterson (2a).** Huge margins to just clear at lower right, pretty pastel color, tied by "Richmond Va. Oct. 21, 1862" circular datestamp on buff cover to Cumberland Va., stamp **affixed over partially removed U.S. 1c 1857 Issue**, Confederate stamp shifted slightly to reveal U.S. stamp, some minor soiling, Fine and unusual adversity use re-mailed to the same address..... E. 200-300
- 3024 ☒ **10c Dark Blue, Hoyer & Ludwig (2b).** Large margins to just touching frameline at top left, exceptionally deep color which is complemented by bold strike of tying **blue** "Lynchburg Va. May 20" circular datestamp, on small buff cover to Capt. Thomas Hobbs of "Co. F 9th Ala. Regt., Camp near Long Bridge, New Kent Co. Va.", fresh and Very Fine, a pretty cover E. 400-500



- 3025 ☒ **10c Blue, Paterson (2).** Tied by blue "Lynchburg Va. Sep. 8" circular datestamp on **Virginia Ordinance Department semi-official corner card cover** with "Sic Semper Tyrannis" illustrated design at upper left ("thus always to tyrants", which John Wilkes Booth yelled out to the audience during the shooting of Lincoln), stamp with tear at bottom right, small edge stain at top, Very Fine appearing example of this rare Confederate franking, this is the only 2c Lithograph recorded in the Warren census from Leasburg N.C., Warren census no. NC-012, illustrated on p. 44 in 2011 Congress book, Scott Retail \$13,500.00 E. 500-750
- 3026 ☒ **2c Green (3).** Horizontal strip of five, cancelled by manuscript "Leasburg N.C. Dec. 29, 1862" postmark on cover to Oxford N.C., defective and repaired, reduced at sides, still Fine appearing and presentable example of this rare Confederate franking, this is the only 2c Lithograph recorded in the Warren census from Leasburg N.C., Warren census no. NC-012, illustrated on p. 44 in 2011 Congress book, Scott Retail \$13,500.00 E. 1,000-1,500
- 3027 ☒ **5c Light Milky Blue, Stone 2 (4b).** Horizontal pair, scoring line between stamps, manuscript "#" cancels with "Junction Store (Va.) 17th July 1862" postmark on **turned cover** to Covington Va., inside use with pair 5c Light Blue, De La Rue (6) tied by blue "Lynchburg Va. Jul. 1" (1862) first day of new 10c rate circular datestamp, addressed to Junction Store, small cover edge nick, right 5c Lithograph light crease, left 5c Typograph creased from refolding for display, Very Fine appearance, a striking turned use with two different issues paying the new 10c rate ... E. 500-750
- 3028 ☒ **5c Blue, Stone 2, 5c Light Blue, De La Rue (4, 6).** Tied together by blue "Lynchburg Va. Oct. ?" circular datestamp on "New Southern Gunboat For New Orleans and a Market" captured Union Patriotic design depicting a man riding a giant alligator about to swallow a steamboat, addressed to Stilesborough Ga., 5c Lithograph is defective and cover has some mended tears and light staining, still an exceptional and extremely rare Patriotic design, especially remarkable used with Confederate postage E. 400-500
- 3029 ☒ **10c Rose (5).** Large margins all around, tied by blue "Lynchburg Va. Jul. 20" (1862) circular datestamp on blue folded letter to Richmond, stamp with just a hint of gum staining at right, still Extremely Fine 750.00



- 3030 ☒ **10c Rose (5).** Three covers, each with four-margin stamps tied by **blue** Lynchburg Va. circular datestamps, July and August 1862 dates, addressed within Virginia, two stamps creased by file folds and with minor gum staining, third with slightly washed out color, still Very Fine appearing trio of covers with large-margined stamps, one signed Ashbrook(Photo Ex) 2,250.00
- 3031 ☒ **5c Light Blue, De La Rue (6).** Horizontal pair, tied by two strikes of **"Southern Express Co. Lynchburg Va. ? 16"** double-circle datestamp on small cover to Charlottesville Va., addressed to James P. Hawkins, the Southern Express Co. agent at Charlottesville and endorsed *"Kindness of Ex Messenger"* indicating no express fee was charged, slightly reduced at right, Very Fine and rare example of this Confederate express company marking from Lynchburg, ex Laurence, signed Bartels, with 1975 C.S.A. certificate, C.S.A. Catalog value \$2,500.00 E. 750-1,000
- 3032 ☒ **5c Blue, Local (7).** Two singles, tied by bold strike of **green** *"Lynchburg Va. Oct. 23"* (1864) circular datestamp on cover to Military Court at Richmond, Oct. 25 receipt docketing, backflap tears, Very Fine, a scarce town cancel in green, ex Stephen Brown E. 300-400
- 3033 ☒ **5c Blue, Local (7).** Horizontal pair, manuscript *"X"* cancel and *"Mattox Va. Jany 26th"* postmark (or possibly Matoaca) on **Richmond Female Institute illustrated corner card** cover to Charlotte N.C., 1865 docketing at left, sealed tears through the design, otherwise Fine, a nice design and a scarce manuscript town E. 300-400
- 3034 ☒ **5c Blue, Local (7).** Two singles, tied by **blue** *"Lynchburg Va. Dec. 6"* circular datestamp and by pen receipt docketing on **J.L. & J.H.C. Winston furniture dealers illustrated corner card** cover to Atlanta Ga., fine design depicting various pieces of furniture, sealed backflap tears, Very Fine E. 300-400



3035

3036

- 3035 ☒ **2c Brown Red (8).** Tied by clear strike of "Richmond Va. Aug. 7, 1863" circular datestamp on top of 10c Blue, Die A-B (11 or 12), 10c stamp tied by "Lynchburg Va. Aug. 5" circular datestamp and paid postage to Richmond, some slight wear, Very Fine appearance and an outstanding use, **2c stamp paid the Advertised fee in Richmond** once the recipient was located, ex Antrim, Scott Retail for single 2c on cover, without regard to the 10c original postage 1,500.00
- 3036 ☒ **2c Brown Red (8).** Large margins to just in at upper left, rich color, tied by "Richmond Va. Jun. 2" circular datestamp on **turned cover** to Middlebrook Va., inside use stampless with manuscript "Middlebrook March 21st", missing one side flap, Very Fine and choice circular use with the 2c Red Jack, with 1990 P.F. certificate 1,500.00

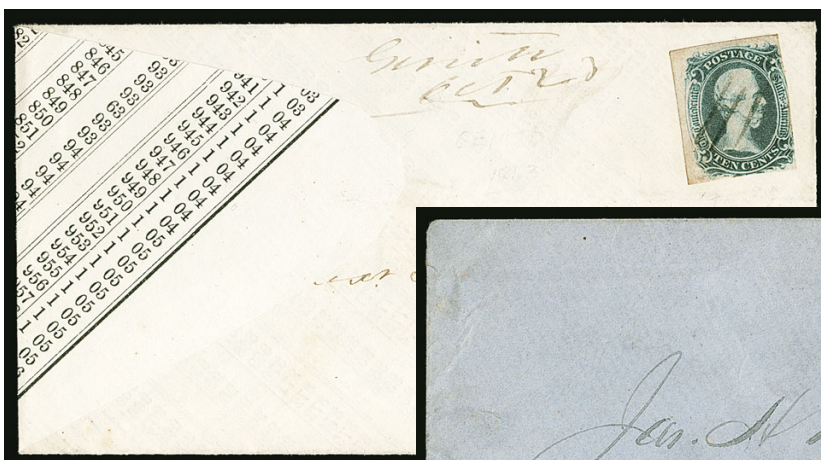


3037

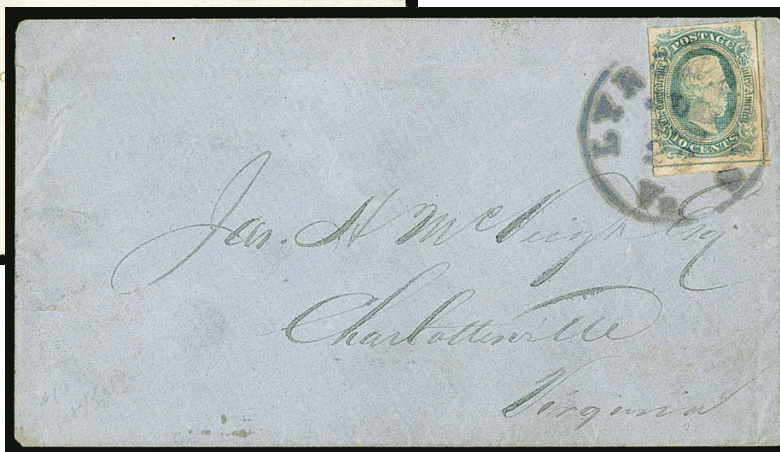
3039

3038

- 3037 ☒ **10c Blue, "TEN" (9).** Three huge margins, touched at bottom, tied by "Lynchburg Va. 1 Jul." circular datestamp on brown cover addressed locally, Very Fine 1,500.00
- 3038 ☒ **10c Blue, "TEN" (9).** Tied by **green** "Lynchburg Va. Nov. 9" circular datestamp on cover to Abingdon Va., bottom of stamp and cover with slight age toning, still Fine and scarce 10c "TEN" cancelled in green 2,100.00
- 3039 ☒ **10c Blue, "TEN" (9).** Three full margins to in at bottom, tied by "Lynchburg Va. Jul. 20" circular datestamp on cover to Williamsboro N.C., small backflap repair, Fine .. 1,500.00

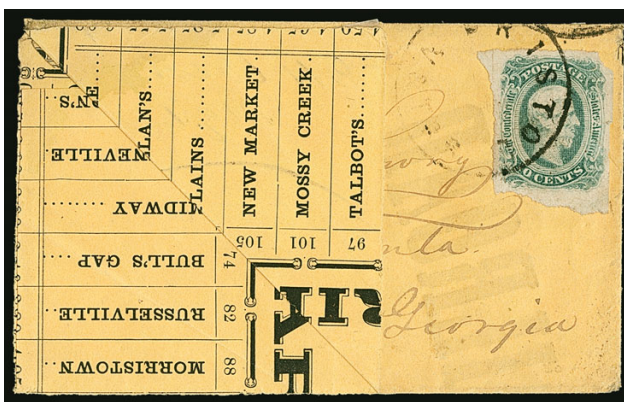


3040



3041

- 3040 ☒ **10c Gray Blue, "TEN" (9b).** Large margins to touched, neat pen cancel and matching "*Genito Va. Oct. 23*" (1863) postmark on **adversity cover made from a mathematical table**, addressed to Petersburg Va., Very Fine and scarce adversity use with the 10c "TEN", illustrated in Weiss book, accompanied by detailed analysis from Richard B. Graham 1,500.00
- 3041 ☒ **10c Blue, Frameline (10).** Complete framelines at bottom and right with large enough margin to show them crossing in corner, other two sides clear margins, tied by **violet** "*Lynchburg Va. Jul. 23*" circular datestamp on blue cover to Charlottesville Va., stamp with very slight gum toning, still Very Fine, with 1975 C.S.A. certificate, violet is listed in Scott for No. 9 (unpriced) but not for No. 10, Scott Retail for normally cancelled cover 3,250.00



3043

3044



- 3042 ★★田 **10c Blue, Die A (11).** Mint N.H. bottom imprint and plate no. 1 block of 12, rich color, Extremely Fine, Scott Retail as hinged.....*Not illustrated* 425.00
- 3043 ☒ **10c Blue, Die B (12).** Irregular but large margins all around, tied by "**Bristol V & T.R.R.**" **Virginia & Tennessee railroad** circular datestamp on **adversity cover made from an illustrated railroad schedule**, addressed to Atlanta Ga., folded up for display, missing backflap, Fine and desirable double railroad adversity use, C.S.A. catalog value for this marking on a normal cover \$750.00..... E. 500-750
- 3044 ☒ **20c Green (13).** Large margins all around, tied by clear strike of "*Lynchburg Va. Jul. 30*" circular datestamp on buff cover to Buckingham C.H. Va., manuscript "*Via Farmville*" at bottom, small cover tear at top and missing backflap, Very Fine and choice stamp on an attractive cover..... 1,250.00

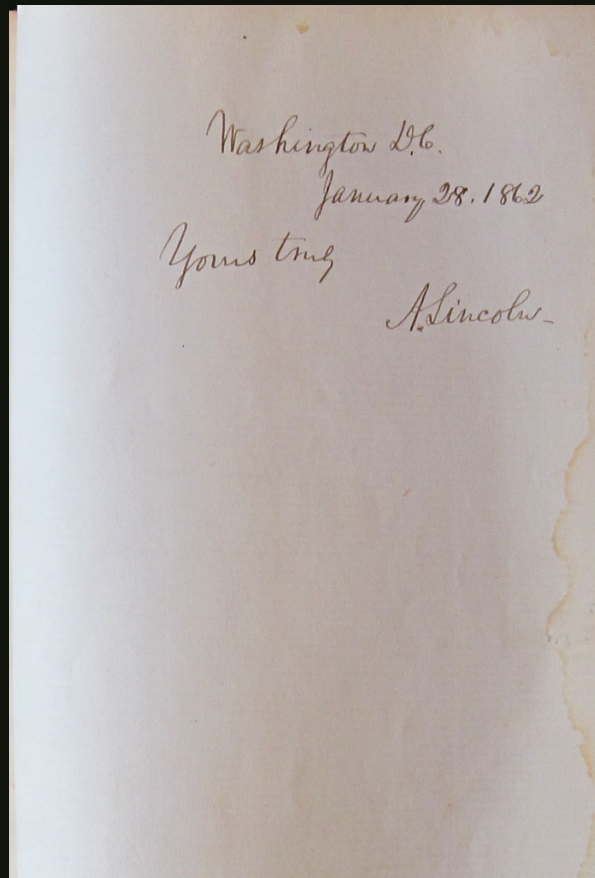


- 3045 ☒ **Richmond Va. May 26.** Circular datestamp in blue with matching “FREE” straightline handstamp on legal-size “Confederate States of America Adjutant & Inspector General’s Office Official Business” semi-official imprint cover (WD-AG-07) to a colonel in the 45th Virginia Regiment, forwarded to Marion Va. with blue “FORWARDED.” oval handstamp, some wear and creasing, small tear at top into “States”, otherwise Fine and scarce semi-official imprint cover with these two straightline markings..... E. 400-500
- 3046 ☒ **Lynchburg Va. Aug. 17.** Circular datestamp and matching “Paid 10” handstamp on “Official Business General Hospital, C.S.A. No. 1, Post at Lynchburg Va.” semi-official imprint cover (WD-MD-32) to Richmond, printed “Charge Box 25” at top left, slightly reduced at left, still Very Fine, C.S.A. catalog value..... 500.00
- 3047 ☒ **Southern Express Lynchburg, Nov. 10, 1865.** Clear strike of blue oval handstamp on 3c Pink on Buff entire (U59) to Staunton Va., manuscript “Per Southern Express Paid” at top, Very Fine and scarce, it took some time for mail in the post-war period to return to normal service, this use, which never entered U.S. mails, demonstrates the role express companies played during early Reconstruction, with 1973 P.F. certificate..... E. 400-500
- 3048 ☒ **Confederate Lynchburg Va., Better Balance.** 32 covers mostly from or to Lynchburg Va., range of material from handstamped Paid to General Issues, begins with John Tyler free frank (pre-war), a “Paid 2” drop rate, embossed grocer’s corner card, General Issues including four No. 1 (two with corner cards), three No. 2 including one pair and one on turned cover, three No. 4 with pairs, seven Nos. 6-7 including several corner cards and an interesting use with a strip of six over “Due 20” straightline (top four stamps moved for display), No. 8 on a faulty cover, five Nos. 11-12 including one used on obsolete 1c U.S. entire and another with green postmark, No. 13 on a cover on which it does not originate, finally U.S. No. 65 on a POW flag-of-truce cover from Elmira Prison N.Y. to Lynchburg, some faults to be expected but overall a Fine and desirable group, also includes standard edition Dietz 1929 book(Website PDF) E. 1,500-2,000
- 3049 ☒ **Confederate Lynchburg Va., Balance.** 41 covers, many but not all to or from Lynchburg, mix of handstamped Paid and General Issues, including several Lithograph issues, couple scarcer including Nelson Station Va. handstamped Paid, mixed condition with some Fine...Not ill. E. 750-1,000
- 3049A **Confederate Small Balance.** Seven items including Confederate use of U.S. 3c Star Die entire from Ga., turned cover with Nos. 11 and 12 on opposite sides, No. 7 pair on cover, also three unused Patriots including Seven-Star Confederate Flag allover “Jefferson Davis” design and another with S.C. Palmetto tree, Very Fine groupNot illustrated E. 400-500
- 3050 **Confederate States Balance.** Including used Charleston S.C. No. 16X1 (faulty), General Issues complete (1-14), mostly used with a few unused, the better stamps with flaws, otherwise Fine balance, Scott Retail more than \$5,500.00.....Not illustrated E. 500-750

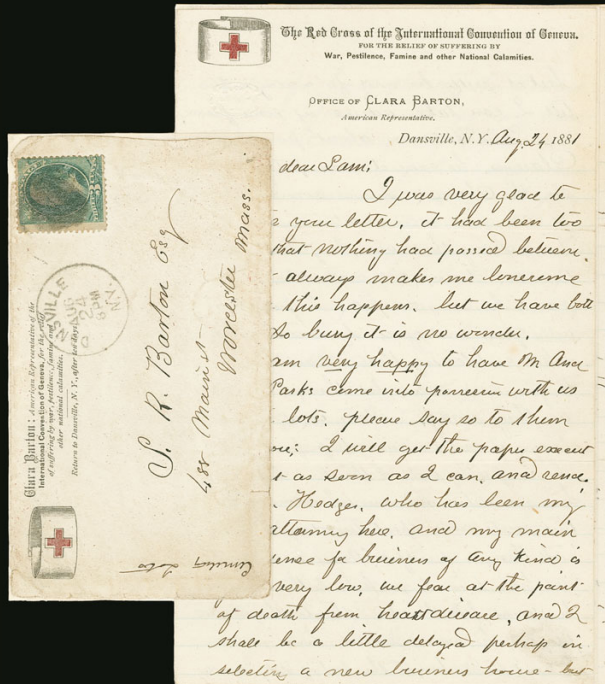
END OF SESSION ONE



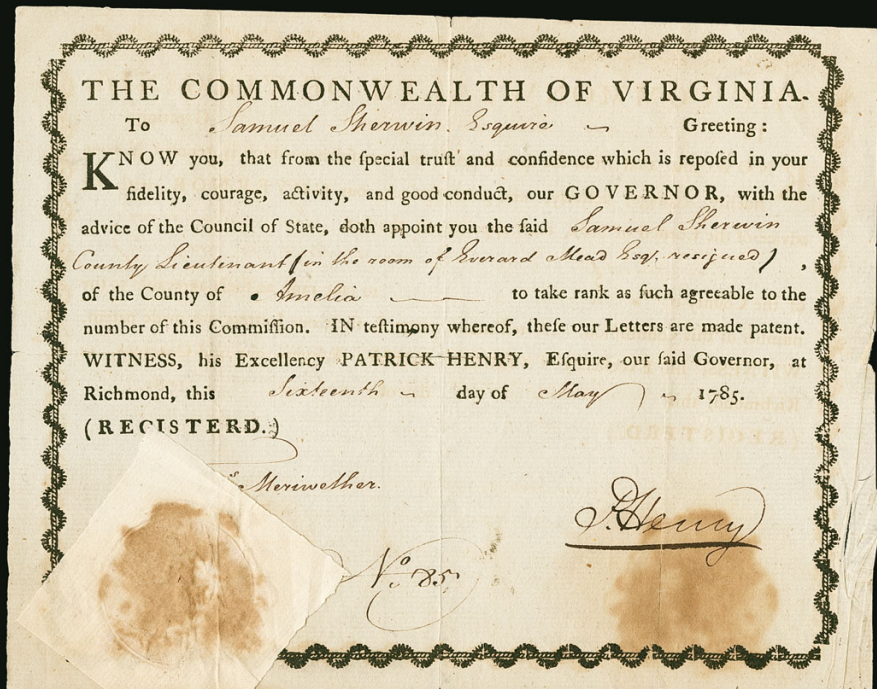
3051



3052



3053EX



3054

SESSION TWO (LOTS 3051-3175)

WEDNESDAY, MAY 10, 2017, AT 10:30 A.M.

AUTOGRAPHS AND FREE FRANKS

- 3051 ☒ **Andrew Jackson.** 1½ page autograph letter signed “*Andrew Jackson*” as ex-President to General J. B. Plauche at New Orleans, datelined “*Hermitage June 15th 1841*”, address leaf in Jackson’s hand with “*Free Andrew Jackson*” free frank, blue “Nashville Te. Jun. 17” circular datestamp and blue manuscript “f”, interesting letter in which Jackson, the former president, accepts a loan from General Plauche and decries “*the decline of property and the security of money*”, lightly toned along file folds, Very Fine, ex Kantor E. 1,500-2,000
- 3052 **Abraham Lincoln, His Cabinet and Contemporaries.** Leatherbound volume containing 102 pages with 224 autographs of all major Union government figures of the Civil War, first page starts with **Abraham Lincoln**, which is dated “*Washington D.C. January 28, 1862*”, with “*Yours truly*” and date also in his hand, others include Hannibal Hamlin (on other side of Lincoln’s, dated Jan. 29, 1862), Simon Cameron (Sec. of War), William Seward, Gideon Wells and other key members of the Cabinet, followed by Senators (42 out of 50) including Henry Wilson and Andrew Johnson, then 170 of the 180 members of the House of Representatives including William Wheeler and Schuyler Colfax, most of the signatures at the beginning are on individual pages, others are grouped with three to five per page, binding split and a few loose pages
A RARE AND DESIRABLE BOUND BOOK CONTAINING AUTOGRAPHS OF ALMOST ALL OF THE MAJOR UNION GOVERNMENT FIGURES IN THE EXECUTIVE AND LEGISLATIVE BRANCHES, INCLUDING ABRAHAM LINCOLN.
Based on the dates of office of the members of Congress, this book must have been assembled between December 1861 and February 1862. The date on Lincoln’s autograph is the same date that General Order No. 1 was issued, authorizing the advance of Union forces.....(Photo Ex) E. 5,000-7,500
- 3053 **Clara Barton.** Teacher, nurse, and humanitarian responsible for the organization of the American Branch of the International Red Cross, 8-page autograph letter signed and written at Dansville N.Y. on Aug. 24, 1881, to her brother in Worcester Mass., on “The Red Cross of the International Convention of Geneva, Office of Clara Barton, American Representative” letterhead, the letter mentions President Garfield’s assassination, setting back ratification of the Geneva treaty for the Red Cross: “*I went to Washington the last of July, and only left for home the day the President was shot, four months of very hard work, but successful, if it were not for the uncertainty of the changes which I suppose now, must come. The present Administration is fully pledged to my work, but it may require to be done over again, but if so, there is a prospect that it may be done in this state, as N.Y. will no doubt be the cornerstone of the government after the change — a dreadful thing! I could see some purpose in the wounding, but can see none in the death of Mr. Garfield, it is all dark beyond!*”, cover front accompanies (small faults), paper mounted (barely encroaching signature) on typed exhibition page, a Fine and fascinating letter, since her return from Geneva in 1873, Clara Barton had been trying to get Garfield to sign the treaty, in 1880 the American Red Cross was incorporated with the international organization, but it was not until 1882 that President Arthur signed the treaty.....(Photo Ex) E. 750-1,000
- 3054 **Patrick Henry.** Bold signature “*P. Henry*” as Governor on Commonwealth of Virginia printed document appointing Samuel Sherwin county lieutenant in Amelia County, dated May 1, 1785, with paper seal at bottom left, toned at bottom right where previously folded over glued seal, split along fold barely affects signature, Very Fine appearance, Henry twice served as Governor of Virginia, this document was signed during his second term in office E. 1,000-1,500
- 3055 **Land Grants with Presidential (Secretarial) Signatures, 1870s-90s.** Six Land Grants relating to Wisconsin and Michigan, each secretarial President signatures, including Ulysses S. Grant (two), James A. Garfield, Chester A. Arthur (two) and Grover Cleveland (second term), each with official seal and hole punches, one Grant soiled and all with creases due to size, mostly Fine-Very Fine.....Not illustrated E. 200-300
- 3056 ☒ **“Free” Accumulation.** Two oversize binders and some loose, all stampless including Waving Flag Patriotic used from Providence R.I. to Warren R.I., magenta “Free” in ribbon of Hebron Conn., 1842 turned use with both sent free, Daniel Webster free frank, some other interesting, overall Fine-Very Fine.....Not illustrated E. 750-1,000

COLONIAL THROUGH 1800



- 3057 ☒ **Cockermouth, England to Philadelphia via London, 1746, "COCKER/MOUTH".** Two-line handstamp on folded cover to Israel Pemberton in Philadelphia, manuscript "poast payd to London 4d" at bottom and "ppd 4" at top, brownish-black "PD" in circle handstamp on front and "18/NO" (Nov. 18) Bishop's mark on back, docketing inside gives yeardate and notes sender was Benjamin Holme, opened for display, some splitting along folds and faint toning, Very Fine, the recipient was one of the wealthiest merchants in Philadelphia, both the sender and recipient were prominent Quakers, ex Historical Society of Pennsylvania..... E. 400-500
- 3058 ☒ **Portsmouth N.H. to Boston, 1751.** Folded letter datelined "Portsmouth May 9, 1751" from Robert Traille to Boston, manuscript "2/6" rate (7.5 inflation), immaculate condition, Very Fine E. 400-500
- 3059 ☒ **Boston to Philadelphia, 1750's, "Bsh 7.16".** Manuscript ship-letter postmark and rate (7dwt plus 16gr ship fee) on undated folded cover from unknown overseas origin to John Reynell in Philadelphia, endorsed "pr The Recovery Capt. Robinson via Boston" at bottom, fresh and Very Fine, the recipient (1708-1784) was a prominent Quaker merchant and pro-British sympathizer, ex Historical Society of Pennsylvania..... E. 400-500
- 3060 ☒ **Philadelphia to Salem Mass., 1771, "PHILA/DELPHIA".** Two-line handstamp struck in red with "16/NO" in circle datestamp struck on back of Nov. 16, 1771 folded letter to "Salem, New England", red "4" dwt manuscript rate for distance between 300-400 miles, faint vertical file fold, Very Fine Colonial marking E. 500-750



- 3061 ☒ **Dominica to Baltimore, 1772.** Folded cover docketed on side flap "*Rich Milford, Dominica 10 Jany 1772, Ansd. 24 Octob. 1772*", addressed to Samuel and Robert Purviance in Baltimore, some minor soiling and splitting along folds, still Very Fine and unusual use carried outside of the mails. E. 300-400
- 3062 ☒ **England to Fredericksburg, 1777, "pr the Shipper of the Sloop York", British Blockade Run.** Folded cover addressed to Mr. James Hunter in Fredericksburg, docketing reads "*1777 Adam Craig Novr. 27*", minor wear, Very Fine, the British Admiralty issued a "seize and detain" order on July 6, 1775, it was designed to prevent all commerce by American vessels, the blockade that resulted grew to a peak of 32 warships by June 1778, before it was temporarily ended by French entry into the Revolutionary War..... E. 500-750
- 3063 ☒ **Philadelphia to Perth Amboy N.J., ca. 1770's.** Folded cover with red "PHILA/DELPHIA" two-line handstamp and "5/FE" in circle Franklin mark to Perth Amboy N.J., red "2" dwt manuscript rate, docketing indicates sender was Nicholas Waln (1742-1813) who was an attorney who in 1772 became a Quaker minister, some splitting along folds, still Very Fine use paying the 2dwt rate for distances between 60-100 miles..... E. 400-500
- 3064 ☒ **Philadelphia to Baltimore, 1792, "13/AU" "12½".** Clear Franklin mark on folded letter datelined "*Philada. Augt. 13 1792*" to James Perkins in Baltimore, light horizontal file fold, Very Fine use paying the 12½c rate for distance between 100-150 miles..... E. 300-400
- 3065 ☒ **Philadelphia to Richmond Va., ca. 1790's, "15/MR" "4" dwt.** Bold Franklin mark and manuscript rate on folded cover to Richmond Va., wax seal on back cut out, Very Fine..... E. 200-300

EARLY FLORIDA POSTAL HISTORY
BRITISH PERIOD



3066

- 3066 ☒ **St. Augustine, British Florida to Norfolk Va., 1767.** Folded letter datelined "St. Augustine 20th April 1767" and addressed to Norfolk Va., red "Charles Town Ship 2ct Sterl." manuscript postmark, sent via ship to Philadelphia where it received a bold strike of red "PHILA/DELPHIA" two-line handstamp and red manuscript "Sh. 6" rate (4p plus 2p ship fee) applied for overland delivery to Norfolk, some minor soiling

VERY FINE. THIS IS THE EARLIEST RECORDED COVER FROM FLORIDA SENT THROUGH THE MAILS AND WITH A POSTAL MARKING. A WONDERFUL EXHIBITION ITEM.

Ponce de Leon discovered Florida in 1513, and it was ceded by Spain to the British in 1763 in exchange for Havana, which the British captured in 1762. According to the *American Stampless Cover Catalog*, no covers are known from this first period. The earliest recorded letter from Florida was datelined "Exiled Pensacola September 5, 1763" but was carried privately and has no postal markings. The cover offered here is the earliest known used from Florida carried in the mails with a postmark.

Described in *American Stampless Cover Catalog* on p. 48. E. 10,000-15,000

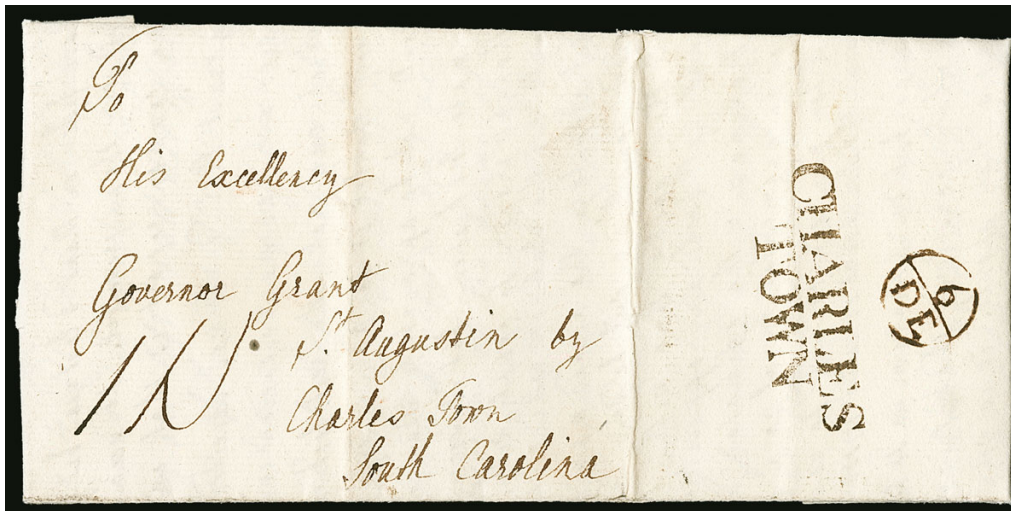


3067

- 3067 ✉ **Pensacola, British Florida to England, 1768.** Folded letter datelined "*Pensacola 6th August 1768*" and addressed to **Ponte Fract, Yorkshire, England**, originally rated "1/-" shilling which was crossed out, **intended to be carried on the Falmouth packet *Anna Teresa*** which was wrecked off the coast of Florida on July 28, so carried privately to England where rated "In all 5" (4p inland postage plus 1p ship's fee), bold "LONDON/SHIP LRE" handstamp and "15/NO" Bishop's mark, with typed transcript of contents sent by John Misdale (deputy distributor of stamps for stamp duty), some slight wear

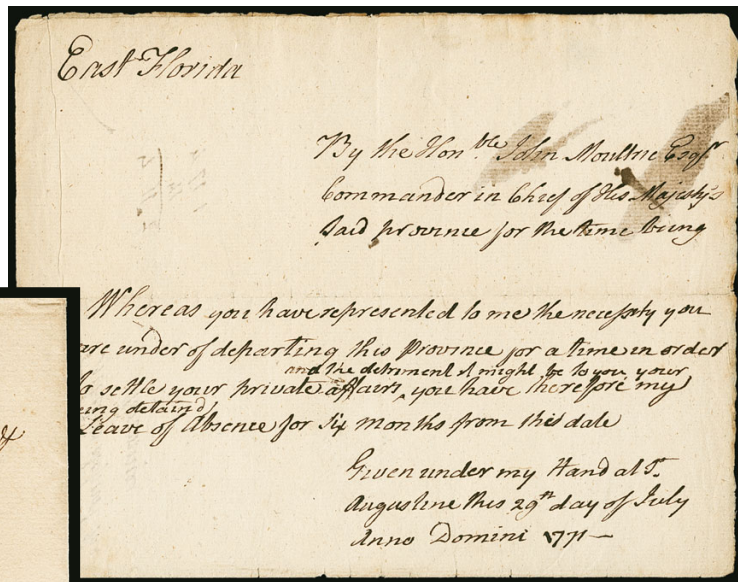
VERY FINE. THIS IS THE EARLIEST RECORDED EXAMPLE OF MAIL FROM PENSACOLA, AND A VERY RARE EARLY TRANSATLANTIC USE.

According to *American Stampless Cover Catalog*, the earliest recorded piece of mail thru Pensacola was a letter from New Orleans to Philadelphia sent thru Pensacola. The book does not note the earliest transatlantic use. This cover was intended to be carried on the Falmouth packet *Anna Teresa* which was wrecked off the coast of Florida on July 28; the rescued crew and mail were first taken to the Bahamas, then the crew was brought to St. Augustine on Aug. 5 and the mail was brought to Charlestown on Aug. 9. E. 5,000-7,500



3068

- 3068 ☒ **Inbound to St. Augustine, British Florida, 1770.** Folded letter with no originating dateline except for "Dec. 5th" and docketed "Mrs. Anderson December 5th 1770", addressed to "His Excellency Governor Grant, St. Augustine by Charles Town South Carolina", bold strike of brown "CHARLES/TOWN" two-line handstamp with "6/DE" Bishop's marking, manuscript "IN" rating, interesting contents including "I wish I were able to send you some certain intelligence concerning war or peace, but our reports have so flacimated (?) that every three days we have a different story. The truth of the Spanish ultimatum given in by their ambassador is, that they will evacuate the Islands and we may retake possession and then treat about the right to them.", other contents discuss the French and their lack of neutrality as a facilitator of peace, Lord Chatham and Lord Grafton are also mentioned, light vertical file fold, Very Fine and attractive inbound cover with fascinating contents E. 2,000-3,000

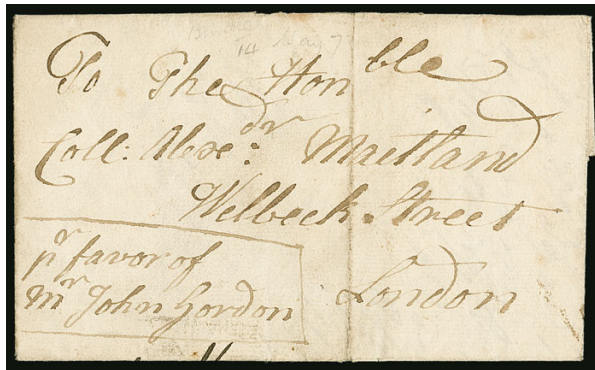


3069

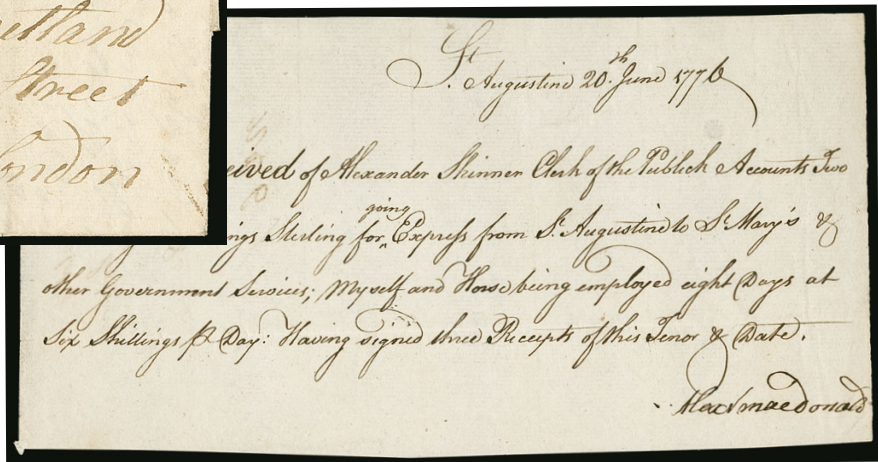


3070

- 3069 **East Florida, 1771.** Folded letter datelined "East Florida" and "By the Honble. John Moultrie Esq., Commander in Chief of His Majesty's said province for the time being", content is a leave of absence for six months, dated at St. Augustine on 29 July 1771, minor splitting along folds, Very Fine, a scarce document signed by Moultrie during the British Colonial period, ex Bogg E. 750-1,000
- 3070 ☒ **"Pensacola 23rd Septr. 1771".** Dateline on folded letter to Mobile Ala., manuscript "pr. Petit Jean" ship endorsement, Sep. 25 receipt and answer docketing, interesting content regarding the delivery of cattle for slaughter and the imminent arrival of Indians, small hole neat top, Fine, the **earliest British Colonial period cover sent within British West Florida** E. 1,000-1,500



3071



3072

- 3071 ☒ **Charlestown S.C. to London, 1772, Discussing Florida.** Folded letter datelined "Charlestown May 3rd 1772" on last page, from British army officer Richard Maitland to his brother, Alexander, in England, contents include (Mr. Gordon) "is to claim redress for vast tracts of land which was private property in East Florida under the Spanish Government and which they had a right to dispose of by the treaty of peace...he is therefore going to beg redress by receiving an adequate sum of money or something else in lieu of those vast tracts taken from him without his consent", endorsed "pr favor of Mr. John Gordon", vertical file fold, Very Fine and fascinating letter..... E. 200-300
- 3072 **"St. Augustine 20th June 1776."** Dateline on receipt for account of sundry government services including "Express from St. Augustine to St. Mary's", signed by Alexander Macdonald, fresh and Very Fine..... E. 400-500



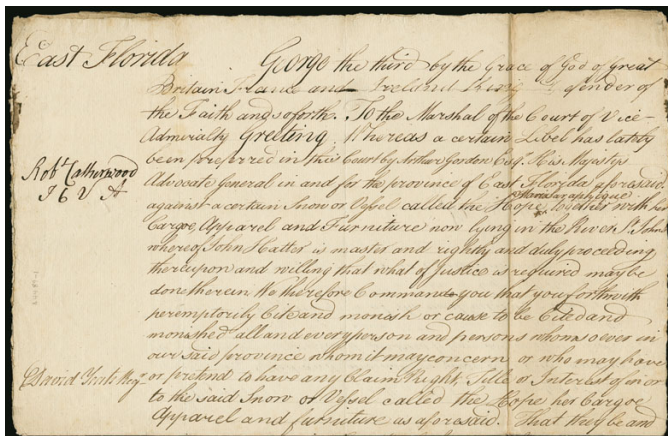
3073

- 3073 ☒ **St. Augustine, British Florida to British Occupied New York, 1776, American Blockade Run via British Packet.** Folded letter datelined "St. Augustine 30 July 1776" to New York, receipt docketing of July 2, 1777, bold "1N" packet rate, light file fold and minor soiling, Very Fine and scarce, during the transit of this cover the British drove Washington out of New York City and occupied the city (until 1783), by the time this cover reached New York nearly a year after it was mailed, the American Privateer blockade of British occupied New York was in operation, this is a wonderful illustration of the difficulty of sending mail during the Revolutionary War..... E. 1,000-1,500

- 3074 ☒ **St. Augustine, British Florida to England, 1777, American Blockade Run.** Folded letter datelined "St. Augustine 23rd July 1777" and addressed to **Berwick, England**, endorsed "per favor of Capt. McLeod" at lower left, neat "1" (ship) and "8" (8p inland) manuscript ratings, brown "DOVER/SHIP LRE" handstamp and "25/SE" Bishop's mark on back, sender is trying to buy the recipient's farm in Florida which is getting run down, Very Fine and rare use from British Florida to England during the Revolutionary War, the American Privateer blockade was active off British enclaves beginning in 1775, including Florida and the West Indies, this is a rare example of mail from Florida to England that ran the blockade..... E. 2,000-3,000



3074



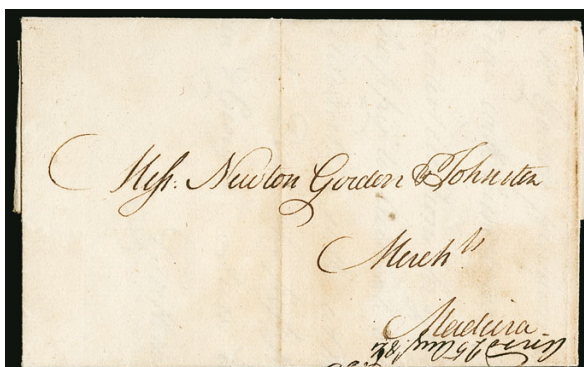
- 3075 **East Florida, 1777, Prize Court.** Document datelined "East Florida" (likely St. Augustine) on Nov. 25, 1777, from the judge of the court of the Vice Admiralty to the marshal of the court, advertising a motion against a seized vessel named the *Hope* or the *Maria Saraphique* and asking anyone with an interest in the boat to step forward by a certain date or else the boat and its contents will be forfeit, the judge was Robert Catherwood, who came to Florida in 1764 as a doctor, Very Fine and interesting Revolutionary War Prize Court document..... E. 500-750

3075

- 3076 ☒ **Pensacola, British Florida to England, 1779, American Blockade Run.** Folded letter with docketing "Saml. Fontenell Pensacola April 9 & 10 May Recd. 26 July, Ansd. 2 Nov. 1779" (originally two letters were enclosed), addressed to **London, England**, neat "DEAL/SHP LRE" handstamp and "24/IY" Bishop's marking, manuscript due marking, Very Fine and rare use from British Florida to England during the Revolutionary War, the American Privateer blockade was active off British enclaves beginning in 1775, including Florida and the West Indies, this is a rare example of mail from Florida to England that ran the blockade, Fontenell and three partners purchased an estate of 1,000 acres in West Florida in 1775..... E. 2,000-3,000



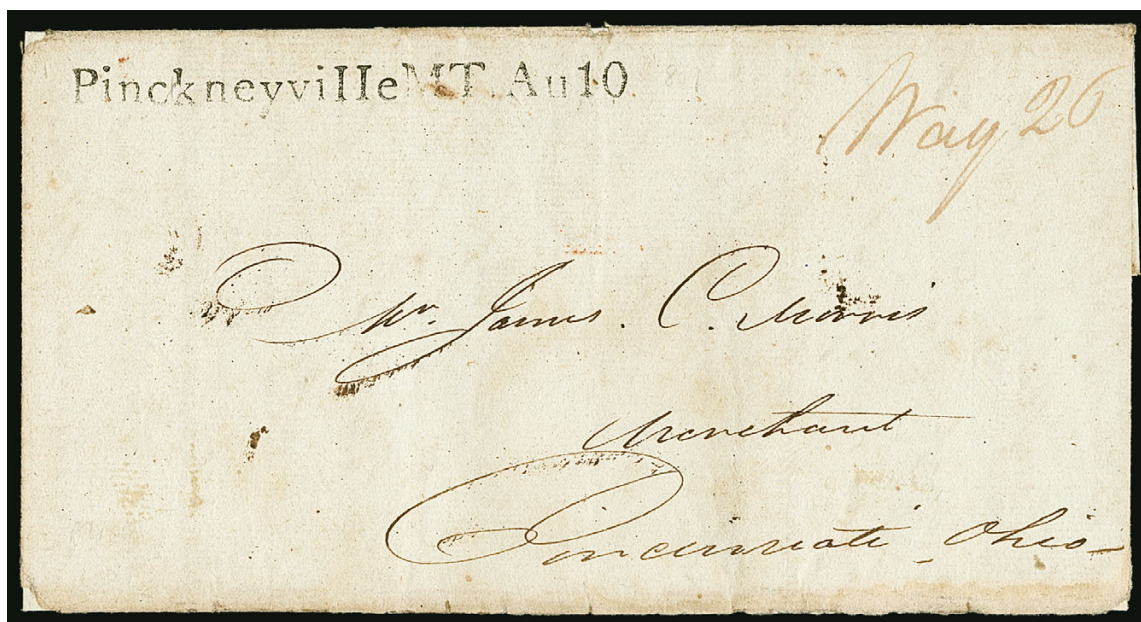
3076



3077

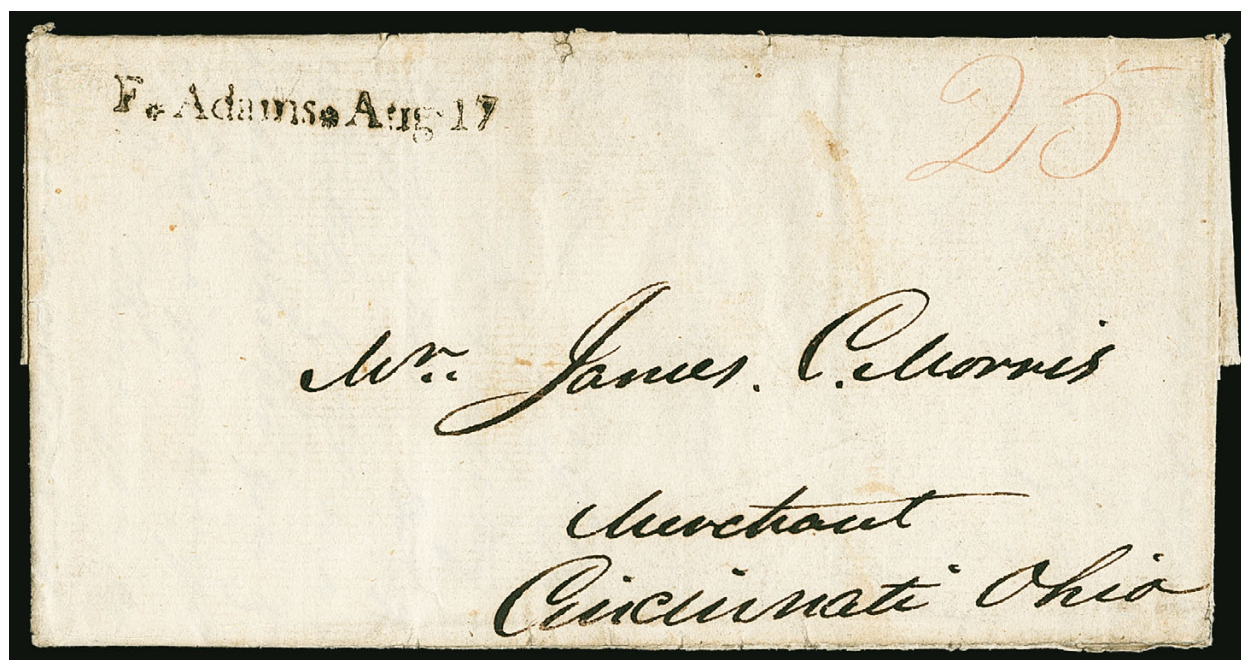
- 3077 ☒ **St. Augustine, British Florida to Madeira, 1783.** Folded latter date-lined "St. Augustin 18th May 1783" and addressed to **Madeira**, business contents, receipt docketing of Dec. 5 (six months later), light vertical file fold, Very Fine use carried outside of the mails sent shortly after the Revolutionary War hostilities and the American Privateer blockade ended..... E. 500-750

SECOND SPANISH PERIOD



3078

- 3078 ☒ **Spanish West Florida, 1807, "Pinckneyville MT. Au10".** Well-struck straightline datestamp on folded letter to Cincinnati O., datelined "*Bayou Sara (Florida) July the 25th 1807*", red manuscript "Way 26" for 25c over-500 miles rate plus 1c way fee, minor edge toning and small nicks, Very Fine example of this scarce territorial marking on a cover from Spanish West Florida, carried on the Natchez Trace mail route, sent to the same person who received the Fort Adams cover offered in lot 3079 E. 2,000-3,000



3079

- 3079 ☒ **Spanish West Florida, 1807, "F*Adams*Aug17".** Clear strike of straightline datestamp on folded letter to Cincinnati O., datelined "*Bayou Sara (Florida) August 13th 1807*", red manuscript "25" cents rate for over-500 miles rate (no way fee charged), couple small edge nicks, Very Fine example of this scarce territorial marking on a cover from Spanish West Florida, sent to the same person who received the Pinckneyville cover offered in lot 3078 E. 2,000-3,000

STAMPLESS BY STATE



- 3080 ✉ **San Francisco Cal. Nov. 15.** Neat strike of circular datestamp with boxed “40” handstamp on 1849 adversity cover made from a blue illustrated advertising cover for Wm. H. Cary & Co. to West Killingly Conn., some edge faults and overall wear, still a very unusual use..... E. 300-400
- 3081 ✉ **“Kaskaskia March 7” (1804).** Manuscript territorial postmark and “25” rate (over 500 miles) on folded letter to Williamstown Vt., datelined “Kaskaskia, Indiana Territory, 3 March 1804”, interesting content related to the recent **Louisiana Purchase**, including “Doubtless you are informed of Louisiana’s being ceded to the United States...possessions is taken without any resistance by the Spanish, but uniformly are highly pleased to be citizens...”, some minor soiling, Very Fine, Kaskaskia was the capital of Illinois during the territorial period and also for two years after statehood, it lies in the small area of Illinois that is west of the Mississippi, ex Kramer E. 750-1,000
- 3082 ✉ **(Louisiana Territory) “Cape Girardeau 31 May 1811”.** Manuscript postmark and free frank of postmaster J. M. Ferron on folded letter to Pittsburgh Pa., Fine and rare, this is the latest recorded example of this Louisiana Territory marking (subsequently became part of Missouri Territory), this is the listing example in ASCC, ex Kramer E. 750-1,000
- 3083 ✉ **St. Genevieve Missouri July 20.** Oval postmark with day and “Paid 25” in manuscript on 1813 folded letter to Camden N.J., two file folds, edge splitting and some toning, still Fine and very rare, possibly the earliest recorded example, ASCC \$950.00.... E. 300-400
- 3084 ✉ **Hermitage N.Y. March 20.** Red circular datestamp on 1844 folded letter to the Attorney General in Albany N.Y., matching “FREE” and “Sidney Stowe P.M.” handstamps, each in rectangular frame, the postmaster’s name in cursive type, letter written by the postmaster, vertical file fold, Very Fine and unusual postmaster’s marking..... E. 200-300



- 3085 ☒ **Scottsburg, Oregon Territory** Two covers, first with "Scottsburg O.T." circular handstamp with manuscript "April 22 Free" at center to Miss S. R. Fiske at Cambridge Mass., "FREE" handstamp and **signed by the postmaster** ("E.R. Fiske P.M."), 1853 docketing, some edgewear, second with "Scottsburg O.T. Sep. 5, 1854" manuscript postmark with printed address to Rufus Fiske in Cambridgeport Mass. with **printed "Free E.R. Fiske, P.M."** at top right, some edge flaws, a Very Fine pair of Oregon Territory postmaster's free frank covers..... E. 750-1,000
- 3086 ☒ **Philadelphia Full-Rigged Ship.** Clear strike of this pictorial handstamp in red, matching bold "PHILA./28/FEB." octagonal double-line frame crossed out, as is the "27" manuscript rating, on incoming folded ship cover datelined "U.S. Ship Vincennes, At Sea" to Portland Me., 1834 docketing at right, manuscript "Forwarded by G.H.N. who is here, all is well" in an arc around wax seal on back, Very Fine and very unusual, we don't know whether the datestamp and rate were crossed out because it was carried privately or whether this was done after receiving payment from the recipient, according to Wikipedia, the *Vincennes* was the first U.S. Navy ship to circumnavigate the globe, in 1833 she was deployed to the Pacific for the second time and was the first American warship to call at Guam, she sailed around the world again before returning to the east coast in 1836, she later became the flagship for the Wilkes expedition to Antarctica E. 500-750
- 3087 ☒ **Phila. Special Post June 1, Philadelphia Passenger Train Jan. 19.** Two stampless covers, first with lightly struck purple "Phila. Special Post June 1" circular datestamp on buff cover to local street address, Fine, reported to be ca. 1850 but style of marking looks to us to be of a later vintage (1860's), the **only recorded example**, ex Hahn, second cover with clear strike of "Passenger Train Jan. 19" oval datestamp on cover to Harrisburg Pa., original 1865 enclosure, Very Fine pair of covers with scarce Philadelphia markings(Photo Ex) E. 400-500
- 3088 ☒ **Bennington Vt./March 24 (1824).** Clear strike of red two-line postmark (28.5mm wide) with manuscript "12½" rate for 81-150 miles on folded letter to Oxford Mass., clear strike of "OXFORD MS." straightline with manuscript "Mar. 28 Missent & forwarded", light file fold, Very Fine and unusual with straightline town markings of two different states in two different colors E. 400-500
- 3089 ☒ **Bennington Vt./Sept. 14 (1829).** Clear strike of red two-line postmark with manuscript date and "12½" rate for 81-150 miles on folded letter to Hartford Conn., small singed spot at top right, Very Fine strike of this red straightline, this style (33mm wide) is larger than the example offered in the previous lot..... E. 200-300



3090

- 3090 ☒ **Burlington Vt. Nov. 17 (1858).** Bold strike of circular datestamp, **Canada, 1855, 6p Greenish Gray (5b) used from the United States**, pen-cancelled and just tied by partly clear strike of red “United States Paid 6d” two-line handstamp on grayish cover **to Hamilton Canada, 1856** docketing and two Canadian transit backstamps, split along one fold, stamp with slight edge toning, appears Very Fine, an extremely rare use of a Canadian stamp applied in the United States to prepay the treaty rate to Canada, we have not encountered another such use..... E. 1,500-2,000



3091

3092EX

3093

- 3091 ☒ **Chester Vt. March 8th (1830).** Clear strike of 33mm straightline with date in manuscript, “6” rate for 30 miles or less on folded letter to Acworth N.H., Very Fine strike, only about a dozen examples of this and the later larger Chester Vt. straightline are recorded..... E. 200-300
- 3092 ☒ **Danville Vt.** Three stampless covers, one with ASCC “broken oval” postmark in red (actually an omega shape) with manuscript date, other two are dotted ovals in brownish-red and black, latter with printed month, some minor corner wear, still Very Fine trio(Photo Ex) E. 300-400
- 3093 ☒ **Enosburgh Vt. March 14th (1851).** 29mm x 2.5mm straightline with date in manuscript, “Paid 5” on folded letter to Hampton N.H., some edge waterstaining, Fine and scarce, only about a dozen Enosburgh straightlines are recorded (four types) according to the PhilaMercury census..... E. 150-200



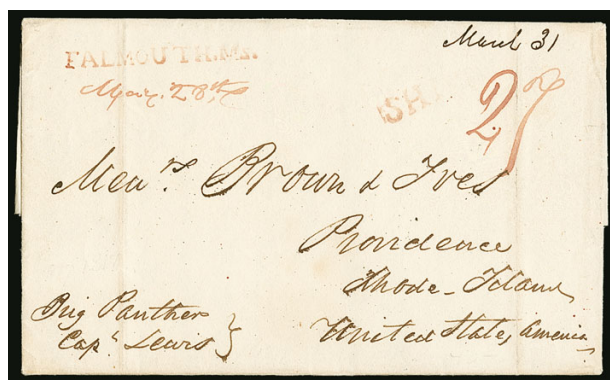
- 3094 ☒ **Fairhaven Vt. April 18 (1843).** Clear strike of 33.5mm straightline with “6” rate on folded letter to Rutland Vt., small single hole below address, still Very Fine, only six Enosburgh Vt. straightlines are recorded (two types) according to the PhilaMercury census E. 300-400
- 3095 ☒ **Newbury Vt.** Two folded letters with straightline postmarks and manuscript 12.5c rates from the same correspondence to Newburyport Mass., one with beautifully clear strike in **red** dated Jan. 24 (1839), second with mostly clear strike in green dated Nov. 28 (1838), file folds, Very Fine pair of covers, the red is a scarce color for Newbury Vt. (Photo Ex) E. 200-300
- 3096 ☒ **Plainfield Vt./ Aug. 29.** Bold strike of blue two-line postmark with matching “5” rate on ca. 1850 **border embossed ladies cover** to Lowell Mass., Very Fine, a pretty cover, there are two styles of the Plainfield Vt. straightline, this one without the year date is very scarce with only five recorded according to the PhilaMercury census E. 300-400
- 3097 ☒ **Randolph (Vermont) Sept 20 (1804).** Perfectly clear strike of fancy rimless circular postmark with state in parenthesis, manuscript “Free” on folded letter to Ryegate Vt., edge soiling, Very Fine strike of this rare early 19th Century fancy postmark E. 300-400
- 3098 ☒ **Rutland Vt. Jul. 25, 1856.** Clear strike of exchange office datestamp, **Canada, 1855, 6p Brownish Gray (5a)** tied by seven-ring target cancel, slight gum staining at top, “Montreal L.C. JY 23, 1856” circular datestamp on cover to Swampscott Mass., stamp with small tear at bottom right, small scissors-cut at bottom left, Very Fine appearance and scarce exchanged through Rutland Vt, with 1992 P.F. certificate E. 300-400



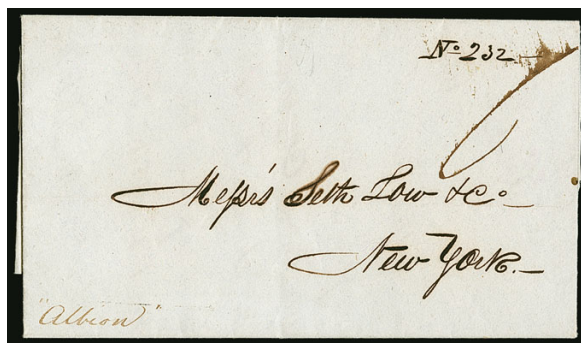
- 3099 ☒ **Strafford Vt. Jan. 26 (1843).** Clear strike of 43mm (to end of "Vt.") straightline postmark with blue manuscript "Free" on folded letter to postmaster at Willsboro N.Y., edge nicks all around, Very Fine strike, a scarce straightline with only eight recorded from four types (PhilaMercury census)..... E. 200-300
- 3100 ☒ **Thetford Vt.** Three stampless covers, first two with beautifully bold strikes of the unusual oval with town name and the date in manuscript, on 1814 folded letter and cover respectively, third with oval postmark containing printed town name and manuscript date on 1830 folded letter, each with manuscript rates, Very Fine trio, the style of the two early Thetford postmarks is unusual among stampless covers from the first half of the 19th Century.....(Photo Ex) E. 400-500
- 3101 ☒ **Vermont Cover Balance.** 12 covers, most are better stampless uses including bold strike of Orwell Vt. rimless datestamp on a green forwarded cover, also datestamps from Chelsea, Newbury (two), Plainfield, Woodstock rimless, two other Woodstock to Montreal, Windsor (manuscript), finally a few later covers including No. 11A on Vermont and Boston Telegraph corner card cover, Slab Hollow registry return receipt and 2c Small Bank Note on cover with East Sheldon datestamp, Very Fine group.....(Photo Ex) E. 750-1,000
- 3102 ☒ **Lynchburg Va. Straightlines.** Three stampless folded letters, two with the "LYNCH." variety dated Oct. 10 (1802) and June 21 (1804), one strike is quite bold and the other is clear, third cover with the "LYNCH*Va. Sep. 12" version of the straightline (1800), mostly clear strike with all letters visible, manuscript 17c or 20c rates, some splits along folds, Fine trio of these early Virginia straightline postmarks.....(Photo Ex) E. 500-750
- 3103 ☒ **Lynchburg Va., Stampless Cover Balance.** More than 140 covers mostly from Lynchburg Va. with a few to Lynchburg and perhaps a few unrelated, wide range of years as early as 1795 (to Scotland), 1798, then mostly from the 1830's-40's, several transatlantic uses, range of town marking styles as the years progressed, overall nice condition with some flaws to be expected, Fine-Very Fine group.....Not illustrated E. 750-1,000
- 3104 ☒ **Richmond Va. Mar. 8.** Red circular datestamp with matching "FREE" handstamp on folded letter datelined "Lynchburg March 6, 1848" to a member of Congress in Washington D.C., red manuscript "Way" at center, vertical file fold clear of all markings, Very Fine and unusual use..... E. 200-300

- 3105 ☒ **Civil War Depreciated Currency Exhibit.** Mounted and annotated 110-page exhibit with approximately 175 covers (25 outside the exhibit) sent to the United States, arranged chronologically to trace the progression of inflation factors, with steamships and rates discussed for most, destinations to New York and Boston with others including New Orleans, Maine, San Francisco and Baltimore, wide range of originations including Turkey, France, Germany, Brazil, Argentina, Italy, Uruguay, a few others, nice range of Depreciated Currency markings, condition mostly quite fresh
- VERY FINE. AN OUTSTANDING INTACT EXHIBIT OF DEPRECIATED CURRENCY MARKING COVERS, SENT DURING AND IN THE AFTERMATH OF THE CIVIL WAR.
- During and after the Civil War, inflation caused the value of the dollar to devalue. Letters sent collect were paid using these devalued Greenbacks. The Treasury therefore started losing money, because foreign postal accounts with other countries were settled in gold. A scheme was launched whereby the collect fee on a letter was charged in "Coin or U.S. Notes". Since inflation was rife, the slugs were interchangeable and could be adjusted. The exhibit offered here, with a wide range of originations and U.S. Notes rates, is a marvelous opportunity to study this subject. It was awarded a vermeil medal in APS competition(Website PDF) E. 5,000-7,500
- 3106 ☒ **United States Printed Matter Rates, 1845-72, Exhibit.** Approximately 144-page annotated exhibit, covers are mostly one to a page but many are separated from the pages (a check confirmed that all are present), study of printed matter rates beginning in 1845 and ending in 1872, majority are stampless with many stamped covers as well bearing 1c 1851-57 Issues, 2c Black Jacks and 1869 Pictorials, wide range of rate indications with manuscript, handstamped, integral and auxiliary markings, also a fascinating array of printed matter inside with everything from legislative documents to advertising designs, pamphlets, prices current, etc., some illustrated content as well, condition is mixed with the stamped covers generally franked with Very Good-Fine stamps with small flaws, overall a fascinating exhibit.....Not illustrated E. 2,000-3,000
- 3107 ☒ **Stampless Cover Accumulation.** Oversize binders and show box of stampless covers, including Free markings, Ship, Steamboat, mixed condition but some Fine-Very Fine.....Not illustrated E. 500-750
- 3108 ☒ **Stampless Cover Accumulation.** Few hundred from 1830's and 40's, many relate to Rhode Island and Blackstone Mfg. Co. and Lonsdale Co. with nice range of "Steam Boat" and "Steam" markings, several U.S. Express Mail, few Hale, "Steamer Oregon 5" in oval rate marking, few manuscript town markings, we even spotted a Tallahassee marking, some relate to Benjamin F. Butler, overall Fine-Very Fine groupNot illustrated E. 300-400
- 3109 ☒ **Stampless Cover Balance.** Folder of approximately 10 items, seven are stampless and several are Missouri related including a few items from the Bill Jennens collection sold by James E. Lee, most interesting probably is a postmaster free letter from St. Genevieve to Kaskaskia Mo. in 1822 (paid \$475), also a few others from that collection and an 1821 cover with Louisville circular datestamp, Fine and interesting groupNot illustrated E. 200-300

MAIL TO AND FROM CHINA—INBOUND (BY DATE)



3110



3111

- 3110 ☒ **Canton, China to Providence R.I.** Folded letter datelined "Canton November 6, 1817" to Providence R.I., endorsed "Brig. Panther, Capt. Lewis", at bottom left, red "FALMOUTH Ms." straightline with March 28" manuscript date, matching "SHIP" handstamp, red manuscript "27" rating (double 12½c rate plus 2c ship fee), light vertical file folds, minor splitting along folds, Very Fine and attractive early use from China E. 200-300
- 3111 ☒ **Canton, China to New York.** Gray folded letter datelined "Canton Oct. 3rd, 1838" and addressed to Messrs. Seth Low & Co. in New York, sender asks for 30 dozen concentrated compounds of sarsaparilla syrup, manuscript "Albion" at lower left and manuscript rating at top right, Very Fine, apparently carried outside of the mails to New York, sarsaparilla was a popular patent medicine considered a remedy for skin and blood problems, including protecting against venereal disease, ex Norman Bennett..... E. 200-300



- 3112 No Lot.
- 3113 ☒ **London to Canton, China, Forwarded to Boston.** Folded letter from Baring Bros. in London dated Feb. 19, 1846 showing balance of account for Dr Horace Gray Jr. of Boston, addressed to Dr. Gray care of Russell & Co. in Canton, China where forwarded to Boston, manuscript "via Southampton & Ceylon" and "Douglas", manuscript "2/-" rating, Hong Kong backstamp (Apr. 18), several circular datestamps struck over one another including what looks like a Boston marking from Aug. 23, second 2 shilling rate marking, light vertical file folds, Very Fine and very unusual use E. 400-500
- 3114 ☒ **Shanghai, China to Boston via Hong Kong.** Folded letter datelined "Shanghai July 5th 1848" and addressed to Boston, red "FORWARDED BY DRINKER & CO. HONG KONG" oval handstamp, blue "LEMUEL GODDARD LONDON" oval forwarder's backstamp (part missing), red "24" handstamp, small tape stain, minor wear, Very Fine and very unusual, carried by two forwarders — one from Hong Kong to London and the other from London to the U.S., the "24" represents **retaliatory rate** use from England to the U.S. E. 750-1,000
- 3115 ☒ **Canton, China to New York.** Folded letter datelined "Canton 26 March 1852" and addressed to New York, manuscript "5/5" and "98" both crossed out and uprated to "140", "Hong Kong 29 MR 1852" and London (May 10) backstamps, endorsed "via Marseilles", small extraneous blue ink mark, Very Fine and unusual, the original 5sh 5p rating applied in Hong Kong was changed to 98c in London then changed again to \$1.40 on arrival in New York, with 1996 Holcombe certificate..... E. 300-400
- 3116 ☒ **Shanghai, China to Haverhill Mass.** Blue folded letter datelined "Shanghai, Ship Thos. W. Sears, July 22, 1854" to Haverhill Mass., light strike of "Hong Kong AU 3, 1854" backstamp, "New-York Am. Pkt. Oct. 17" circular datestamp and "75" due from recipient, endorsed "overland via Marseilles", "54" manuscript marking for British part of postage, Very Fine double-rate use, this was likely carried on the first voyage of the P & O's *Nubia* from Egypt to England..... E. 300-400



- 3117 ☒ **Canton, China to New York.** Folded letter datelined "Canton 27th January 1852" to New York, bold "10/5" manuscript rating with "186" crossed out and marked "2.50", endorsed "via Marseilles", inside notes "duplicate, original sent per overland mail", red London transit backstamp, Very Fine, an unusually high rating E. 300-400
- 3118 ☒ **Hong Kong to Newport R.I.** Folded cover with "Hong Kong Nov. 30, 1862" backstamp, additional red Hong Kong circular datestamp of same date on front, red London transit and red "32 Cents" handstamp, red crayon "4/1" shilling rates, bold "10" due handstamp, neat "Boston Am. Pkt. Feb. 2" backstamp, Very Fine triple-rate cover sent via Marseilles, scarce carried by American Packet on that leg of the journey, ex Starnes.... E. 750-1,000
- 3119 ☒ **China to U.S.** 1862 tissue cover with red printed "PER OVERLAND VIA MARSEILLES" in ribbon to Greenfield Mass. and forwarded to Charlestown N.H., blue "FORWARDED BY WETMORE CRYDER & CO. HONG KONG" oval handstamp, red "Hong Kong Paid C SP 10, 62" circular datestamp, red "1/10" crayon rating, London transit, "N. York Am. Pkt. 5 Nov. 13" circular datestamp, "Greenfield Ms. Nov. 15, 1862" double-circle datestamp, neat strikes of "Forwarded" in oval and "Due 3" in circle handstamps, "8c" manuscript marking for postage due from recipient, slight edgewear including small tear at top with small tape mark, Very Fine, a beautiful and unusual use E. 750-1,000
- 3120 ☒ **Covers from China to the U.S.** Six, including 1851 datelined at Canton to New York, 1853 folded letter from Canton to New York, 1859 folded letter from Hong Kong to New York, 1857 cover from Hong Kong to Baltimore, folded cover with 1860 docketing from Shanghai to Salem Mass., folded letter from Manila, Philippines to Salem Mass. which was likely routed thru Hong Kong, nice range of rates and routes, overall Fine-Very Fine (Photo Ex) E. 750-1,000

OUTBOUND (BY DATE)



- 3121 ☒ **New York to Canton, China.** Sep. 1, 1837 folded letter to Wetmore & Co. in Canton, carried outside the mails with red “Forwarded by Jos. W. Alsop Jr.” rectangular framed handstamp with two lines in script, clearly struck on backflap, Very Fine, Alsop and Wetmore were partners at an earlier point E. 400-500
- 3121A ☒ **New York to Canton, China.** Two folded letters to Dr. John P. Green, first dated Feb. 26, 1845, second sent via Olyphant and Co., dated July 15, 1845 and docketed “Recd. March 7th”, Very Fine, Dr. Green was the first American missionary doctor sent to China.....(Photo Ex) E. 300-400
- 3122 ☒ **New York to London to Canton, China.** Blue folded letter with “New York 42 Sep. 7” debit circular datestamp to Baring Bros. in London where forwarded **to Canton, China**, red “London Paid 24 Sep. 1850” circular datestamp, small red “VIA MARSEILLES” handstamp, appropriate manuscript ratings, Hong Kong (Nov. 11) backstamp, light horizontal file fold, some slight age spotting, Very Fine..... E. 400-500
- 3123 ☒ **Philadelphia to Canton, China.** Blue folded cover to Augustine, Heard & Co., red “Phila. Paid 5cts” octagonal handstamp uprated to 45c, blue “Philadelphia Pa. Sep. 7” circular datestamp, 1852 transit datestamp, Hong Kong backstamp, manuscript “45 Cents Paid” crossed out and credited “40”, fresh and Very Fine, unusual use E. 1,000-1,500
- 3124 ☒ **Baltimore to Canton, China.** Baltimore May 2, 1854 datelined folded letter to Augustine Heard & Co. in **Canton, China**, blue “Baltimore Md. Jun. 5” circular datestamp, Boston Jun. 7 transit backstamp, “Paid” straightline with manuscript “45” in both pencil and magenta pen, bold red “40” credit handstamp, manuscript directive at top “Per Str. America from Boston to Liverpool & thence per Peninsular & Oriental Steam Ship Company Packets via Ceylon,” London and Hong Kong transit datestamps, fresh and Very Fine 45c rate to Canton, sent to England via British Packet, ship directives are rarely seen with such detail..... E. 500-750



- 3125 ☒ **New York to Canton, China.** Folded letter datelined "New York May 22nd 1855" to Augustine Heard & Co. **in Canton, China**, large red "Boston Paid Br. Pkt. May 23" circular datestamp and "48" credit handstamp, pencil "53" for total paid by sender, London transit, Hong Kong backstamps (26 Jul.), light horizontal file fold, fresh and Very Fine, ex Starnes E. 750-1,000
- 3126 ☒ **Boston to Canton, China.** Green folded cover to Augustine Heard & Co. **in Canton, China**, "Boston Br. Pkt. 23 May" and 1855 Hong Kong backstamps, endorsed "Via Marseilles", red "38" and "Paid" handstamps, pencil "43" at top for total amount paid by sender, London transit, Very Fine E. 400-500
- 3127 ☒ **Baltimore to Canton, China.** Baltimore Mar. 24, 1856 datelined folded letter to Augustine Heard & Co. **in Canton, China**, blue "Baltimore Md. Apr. 18" circular datestamp, New York Apr. 19 transit backstamp, "Paid" straightline with manuscript "33" and bold red "12" credit handstamp, manuscript directive at top "Per Steamer Washington and Peninsular Steam Navigation Company Packets," London and Hong Kong transit datestamps, fresh and Very Fine 33c rate to Canton, sent to England via American Packet..... E. 500-750
- 3128 ☒ **Ipswich Mass. to Hong Kong, China.** Cover with "Ipswich Mass. Jul. 14" circular datestamp and "Paid" and "10" handstamps to John Heard at Augustine Heard & Co. **in Hong Kong**, routing instructions "Via Marseilles", manuscript "3/4" rating for amount due from recipient (80c), Boston, London and receiving backstamps, docketed "Photographs July 13 1857" at right, minor edgewear, Very Fine E. 200-300



- 3129 ☒ **New York to Shanghai, China.** Blue 1857 folded letter to **Shanghai, China**, red "New-York Br. Pkt. Paid Jul. 22" circular datestamp, red London transit, Hong Kong backstamp (Sep. 19), endorsed "overland mails via Marseilles", magenta "40" manuscript credit and pencil "45" for total paid by sender, horizontal file fold, Very Fine cover from the Augustine Heard correspondence E. 300-400
- 3130 ☒ **New York to Shanghai, China.** 1857 folded cover with red "New-York Br. Pkt. Aug. 25" circular datestamp to **Shanghai, China**, endorsed "via Marseilles & Overland Mail", red London transit, magenta "40" manuscript credit, pencil "45" for total paid by sender, Hong Kong backstamp (Oct. 26), minor edgewear, Very Fine..... E. 300-400
- 3131 ☒ **Boston to Hong Kong, China.** 1858 folded letter with red "Boston B. Pkt. Paid 5 May" circular datestamp and red "19" credit handstamp to **Hong Kong, China**, addressed care of Baring Bros. in London, red May 17 London circular datestamp, endorsed "Via Marseilles" and "prepaid to London", pencil "24" for total postage paid by sender, light horizontal file fold, Very Fine and unusual use sent thru the mails to London then carried privately..... E. 300-400
- 3132 ☒ **To H.M.S. Camilla, China Station.** Ms. "Galesville Wi. Nov. 13/58" postmark and "Paid 30 cts" rate on small envelope to Albert Markham on board the H.M.S. *Camilla* in China, prepaid 30c for French Mail but credited 12c for British Mail via Southampton and sent by *Kangaroo* on Nov. 20, red New York Am. Pkt. backstamp and London Paid datestamp (Dec. 30), Very Fine E. 500-750
- 3133 ☒ **Boston to Hong Kong, China.** 1860 folded letter to **Hong Kong, China**, red "Boston B. Pkt. Paid Jan. 11" circular datestamp, red London transit, red crayon "74" credit marking and "2" for double the 1p colonial rate, endorsed "via Marseilles", receiving backstamp (March 11), pencil "84" for total paid by sender, Very Fine, a beautiful cover paying an unusual rate (double the U.S. and G.B. and triple the French portion)..... E. 300-400



3134

- 3134 ☒ **30c Orange (71).** Used with **12c Black and 3c Rose (69, 65)**, 3c and 30c bright early 1861 shades, tied by bold strikes of large "Paid" grid cancel, red "Boston Br. Pkt. 40 Nov. 13" (1861) credit datestamp on bluish folded cover **to Hong Kong, China**, sender's directive "for Overland Mail via Marseilles" and struck twice with "INSUFFICIENTLY/PREPAID" **two-line handstamp**, red crayon "1" 1p Colonial rate handstamp, red London transits and Hong Kong arrival backstamp, outstanding condition

EXTREMELY FINE. A BEAUTIFUL THREE-COLOR 1861 ISSUE FRANKING TO HONG KONG FROM THE AUGUSTINE HEARD CORRESPONDENCE.

The rate to Hong Kong by British Mail via Marseilles was 45c at this time. This was probably charged additional postage due to the Sep. 1861 change in rate for a half-ounce letter.

With 2017 P.F. certificate E. 4,000-5,000



3135

- 3135 ☒ **30c Orange (71).** Used with **24c Brown Lilac and 3c Rose (70a, 65)**, tied by bold strikes of large "Paid" grid cancel, red "Boston Am. Pkt. Paid Apr. 25" (1863) backstamp on bluish folded cover **to Hong Kong, China**, sender's directive "Via Marseilles" and "per Hibernian" at top, red crayon "36" credit, red crayon "1" Colonial rate marking, red London transit and Hong Kong arrival backstamp of June 20, 24c and 3c affixed slightly overlapping, beautiful condition

EXTREMELY FINE. A COLORFUL AND CHOICE 1861 ISSUE FRANKING TO HONG KONG.

This cover from the Augustine Heard correspondence is correctly prepaid 57c for the British Mail via Marseilles rate prior to June 1863.

With 2017 P.F. certificate E. 4,000-5,000



3136

- 3136 ☒ **3c Rose, 24c Red Lilac, 30c Orange (65, 70, 71).** Tied by grid cancels, red "N. York Br. Pkt. Paid Jul. 16" circular datestamp on 1862 cover to **Hong Kong and forwarded to Shanghai, China**, red London transit datestamp and red crayon "1" Colonial rate marking also tie 30c stamp, magenta manuscript "52" credit, sender's directive "*Via Marseilles*", blue "Hong Kong C SP 30 62" receiving backstamp with "C" reversed, missing part of top flap, minor edgewear, Very Fine and unusual forwarded use, carried on the Cunarder *Scotia* (dep. N.Y. July 16, arr. Queenstown July 25), then forwarded to Marseilles for sailing of the P. & O. steamer *Vectis* (dep. Marseilles July 28, 1862, arrived Alexandria Aug. 3), then carried overland to Suez where carried on the P. & O. steamer *Bengal* (dep. Suez Aug. 4, arrived Galle Aug. 17) then on the P. & O. steamer *Behar* (dep. Galle Aug. 19, arrived Hong Kong Sept. 3).... E. 1,000-1,500



3137

- 3137 ☒ **30c Orange (71).** Three singles, used with **24c Lilac (78)** and tied by grid cancels on 1863 folded letter to **Hong Kong, China**, sender's directive "*Via Marseilles*", red "N. York Br. Pkt. Paid Nov. 11" circular datestamp, manuscript magenta "98" credit, red London transit datestamp, red "2" Colonial double-rate handstamp, "Hong Kong C JA 7" receiving backstamp with "C" reversed, faint horizontal file fold well away from stamps, left stamp small tear at bottom

VERY FINE. A BEAUTIFUL DOUBLE-RATE 1861 ISSUE FRANKING SENT BY BRITISH MAIL VIA MARSEILLES.

This is an extremely rare high franking, with \$1.14 in postage. Power Search located only one higher to China (with two 90c a 30c and a 2c stamp) and two others equal to this (both to Shanghai, one with a 90c stamp). With copy of 2002 P.F. certificate E. 3,000-4,000



3138 front and back

- 3138 ☒ **5c Yellow Brown (205)**. Horizontal pair, tied by cork cancels and used with **China, 1885, 3ca Lilac, Rough Perf 12½ (11; Chan 17)**, affixed to back and tied by blue Tientsin customs seal and "Customs Shanghai Feb. 26, 1887" transit circular datestamp on cover to Pawtucket R.I., blue "Customs Tientsin Feb. 12 87" double-circle datestamp, red "San Francisco Cal. Apr. 4" also ties China stamps as does arrival circular datestamp (April 12), light strike of "U.S. Postal Agency Shanghai" oval handstamp on front, stamps affected by toning from gum or additional adhesive, cover torn and repaired affecting one China stamp

A RARE CHINA SMALL DRAGON AND UNITED STATES MIXED-FRANKING COVER FROM TIENTSIN TO THE UNITED STATES VIA SHANGHAI.

During the winter months the port at Tientsin was blocked by ice, so mails were carried overland, a journey of approximately twelve days through occasionally unsafe territory. This entered the U.S. postal system at the U.S. Postal Agency in Shanghai.

Illustrated in *Prize Selections from Rocpex Taipei 1981* on p. 88..... E. 5,000-7,500



- 3139 ☒ **6c Carmine (148).** Tied by cork cancel, "San Francisco Cal. Oct. 3" circular datestamp on 1874 cover **originating in Hong Kong** and sent to Charleston S.C., endorsed "*Vasco de Gama via San Francisco*" at top left, seal on back "Russell & Co., Hong Kong, China", blue "Forwarded by Macondray & Co., San Francisco" oval backstamp, receipt docketing, some edgewear, stamp with faulty perfs at right, otherwise Fine, a very unusual use, the *Vasco de Gama* was a British steamship plying the trans-Pacific route, it arrived in San Francisco on Oct. 2 (copy of *Shipping Intelligence* accompanies) E. 750-1,000
- 3140 ☒ **Covers from U.S. to China.** Three, including two with No. 205 on cover to J.C.A. Wingate in Foochow, China, last is 2c paid reply card from New York to Hong Kong used in 1905, some wear, Fine group **(Photo Ex)** E. 200-300
- 3141 ☒ **Manila, Philippines to Boston.** Folded letter datelined "*Manila 8 Jan'y 1861*" to Boston, red "RUSSELL & STURGIS, MANILA" oval forwarder's handstamp, Hong Kong (Jan. 30), London (Mar. 16) and Boston (Apr. 1) backstamps, bold "Boston 45 Apr. 1" integral-rate circular datestamp, "40 Cents" for credit to G.B., light vertical file fold, Very Fine E. 300-400
- 3142 ☒ **Manila, Philippines to Boston.** 1859 folded cover with red "RUSSELL & STURGIS, MANILA" oval forwarder's handstamp to Boston, Hong Kong (Nov. 28), London (Jan. 13, 1859), bold "45" handstamp for amount due from recipient, manuscript "40" cents credit to G.B., Very Fine, unusual with no Boston or other arrival marking E. 200-300

RAILROADS



- 3143 ☒ **East Tennessee & Va. R.R. Feb. 21.** Bold strike of circular datestamp cancels 3c Red on Buff Nesbitt entire (U10), second weaker strike also over the indicia, addressed to Cleveland Tenn., Very Fine and rare, ex Chase, Towle notes that only two are recorded..... E. 300-400
- 3144 ☒ **Florida R.R. 4 Jul.** Well-struck circular datestamp cancels 3c Red on Buff Nesbitt entire (U10) to Macon Ga., missing part of top flap and some edgewear, still a Very Fine strike and extremely rare, the **earliest known Florida Railroad postal marking and one of only two recorded** E. 750-1,000
- 3145 ☒ **3c Dull Red, Ty. II (11A).** Pen-canceled, bold strike of “**Orange & Alexa. R.R. Jan. 10**” (1854) **route agent’s circular datestamp** on folded letter letter datelined at Culpeper C.H. Va., addressed to Stanardsville Va., stamp with tiny cut at bottom, cover with minor edge tears, Very Fine strike, the **only recorded example** of the Orange & Alexandria Railroad circular datestamp, unlisted in Remele (though he notes one example of “Alexa & Orange”, offered in the following lot), this cover realized \$300 in Siegel Sale 271 in 1964 .. E. 500-750
- 3146 ☒ **Railroad Covers.** 16 railroad covers mostly connected to Lynchburg Va. — to, from or en route, several with No. 11A, also Nos. 24, 26, 65 and a couple entires and later issues, highlights include “**Alexandria & Orange R.R.**” **circular datestamp**, three embossed cameo corner card covers for Virginia & Tennessee Railroad (two in green, one in red), “**Virga & Tenn R.R.**” circular datestamp, two “**Southside R.R.**” circular datestamps, Virginia & Tennessee Railroad Company corner card, “**Louisa R. Road Va**” circular datestamp, others, a few minor flaws, overall Fine, a nice group.....**(Photo Ex/Website PDF)** E. 750-1,000
- 3147 ☒ **Railroad Cover Collection.** Over 65 covers, wide range of uses from stampless period thru about 1900, with both railroad cancels and advertising corner card covers including 1860s Pennsylvania Central “**New State of Lake Superior**” all-over design on back of cover, condition a bit mixed but much is Fine or better*Not illustrated* E. 300-400

STEAMBOAT AND WATERWAYS



- 3148 ☒ **Canada to Vermont via Lake Champlain, 1832, "Steam-Packet Franklin. Lake Champlain. Capt. R.W. Sherman".** Large red circular handstamp on folded cover to Grand Isle Vt., part of original letter enclosure datelined "Chambly 19th Sept. 1832", endorsed at top "Care of Capt. Anderson", Very Fine and scarce, the Steam Packet Franklin traveled Lake Champlain between St. John, Canada and Whitehall N.Y., this handstamp was in use from 1831-35..... E. 400-500
- 3149 ☒ **3c Dull Red, Ty. II (11A).** Margins to just in, cancelled by bold strike of blue "Way 6" in circle, blue "Lynchburg Va. Aug. 25" (1853) circular datestamp on cover to White Sulphur Springs Va., small edge stain at top, still Very Fine, this marking for the 5c collect fee plus 1c way fee was originally applied to stampless covers and was obsolete when struck on stamped covers, it was applied to mail travelling on the James River & Kanawha Canal E. 300-400
- 3150 ☒ **Lake Champlain S.B. Jun. 9.** Bold strike of steamboat circular datestamp with second part strike tying 3c Brownish Carmine (11A) on cover to Clinton Prison, N.Y., stamp with pre-use crease, Very Fine strike, also a second cover with lighter but clear strike tying 3c Rose (65) on cover to Burlington N.Y., cover edge tear at top left, Fine (Photo Ex) E. 300-400
- 3151 ☒ **3c Ultramarine (114).** Tied by neatly struck "Lake Champlain S.B. Sep. 2" circular datestamp on yellow cover to Burlington Vt., additional "Advertised Sep. 13" circular datestamp, slightly reduced at left, trivial toning around stamp, still a Very Fine strike of this steamboat marking..... E. 300-400
- 3152 ☒ **By Bain's Telegraph.** Bold but slightly oily two-line handstamp with pointing hand and "Delivery Free" on undated cover to Nathan, Trotter & Co., Philadelphia, Very Fine and rare, unlisted in the 1993 ASCC, ex Jarrett and Hahn, with 2011 P.F. certificate E. 400-500

NEW YORK POSTMASTER'S PROVISIONAL



3153

3154

- 3153 ☒ **New York N.Y., 5c Black, “ACM” Initials (9X1).** Mostly full to large margins except close at bottom, tied by blue pen strokes on folded letter with **large blue “R” handstamp** (Recorded Letter), red “New York 5 cts. 23 Feb.” (1846) integral-rate circular datestamp and matching “Paid” arc, cover with some edgewear, skillfully cleaned, Very Fine appearance, very scarce, Philadelphia’s post office was the first to apply a marking to indicate that a letter was registered, the “R” marking was only applied to incoming letters and the large “R” on this cover was used until October 1849, ex Pope E. 750-1,000
- 3154 ☒ **New York N.Y., 5c Black, “ACM” Initials (9X1).** Large margins to clear at bottom right, tied by blue pen and red “New-York 5 cts. 13 Jun.” integral-rate circular datestamp with matching “Paid” arc on blue folded cover to Philadelphia, 1846 docketing on back, Very Fine, with 2001 P.F. certificate 625.00

1847 ISSUE



3155

- 3155 ☒ **5c Red Brown (1).** Horizontal pair, tied by blue “Vergennes Vt. 27 Jan.” circular datestamp with second strike at left on **1852 or later demonetized use cover to Dundee, Canada East**, “Ogdensburg N.Y. Jan. 28” exchange office circular datestamp, “U States” ribbon ties pair, “10” (cents due) in U.S. and “6d” in circle due in Canada for unpaid treaty rate cover, red Montreal transit backstamp, left stamp with heavy crease, overall soiling and toned spots, otherwise Fine, a very rare 1852 attempted use of the demonetized 5c 1847 Issue to pay the 10c treaty rate to Canada, which was not accepted for postage, also a rare 1847 Issue cover exchanged through Ogdensburg, with 2017 P.F. certificate stating “it is a genuine demonetized usage...” E. 1,000-1,500



- 3156 ☒ **5c Red Brown.** Full margins to just touched, cancelled by red **"5" handstamp**, blue "Baltimore Md. May 1" (1850) circular datestamp and matching **"R" (Recorded)** handstamp on light green folded letter to Philadelphia, manuscript "33" registry number, inside with printed Mechanics Bank of Baltimore letterhead, stamp is slightly oxidized, light file fold passes thru but does not crease the stamp, Very Fine appearance, the "R" marking was applied to precursor registered mail at Philadelphia, this smaller "R" replaced the large "R" in October, 1849, with 2003 P.F. certificate as No. 1b Orange Brown..... E. 500-750
- 3157 ☒ **5c Red Brown (1).** Large to full margins, deep rich color and early impression, tiny tear in bottom right margin, tied by bold blue **"5" in double-line circle** handstamp on Dec. 18, 1847 datelined folded letter from Washington D.C. to Philadelphia, the cancel struck on arrival, light file fold does not affect stamp, Very Fine, a beautiful cover, with 2003 P.F. certificate E. 500-750
- 3158 ☒ **5c Red Brown (1).** Clear to large margins with tiny corner nick at top left, tied by bold blue **"12" in double-line circle** handstamp, matching "Philada Pa. 5 Mar. 20" (1849) integral-rate circular datestamp on folded letter to Harrisburg, very fresh and Fine, scarce example of this rate marking used simply as a cancel for a 5c 1847 Issue cover, from our 1984 Rarities sale and ex Stollnitz, with 1996 P.F. certificate..... E. 500-750
- 3159 ☒ **5c Brown (1).** Two, margins to cutting in one side, each tied by bold blue **"2" in double-line circle** handstamp, matching "Philada Pa. Apr. 13" (1849) circular datestamp on folded letter to Pittsburgh Pa., both stamps with light corner creases, left stamp tiny margin tears at bottom, Fine and scarce 5c 1847 Issue cover cancelled with a drop-rate handstamp, ex Stollnitz, with 1996 P.F. certificate E. 500-750
- 3160 ☒ **5c Red Brown (1).** Deep rich color, full margins to just in at top, tied by light strike of blue "Philada. Pa. Oct. 10" circular datestamp, second strike at left, on 1849 folded letter to "Near Burlington, New Jersey", well-struck **"Blood's Despatch 29 So. Sixth"** handstamp at left, Very Fine, with 2002 P.F. certificate..... E. 500-750



- 3161 ☒ **5c Red Brown (1).** Full margins to barely touched at bottom, deep rich color, cancelled by red grid with matching bold strike of "Bennington Vt. Apr. 4" (1850) circular datestamp on blue folded cover to New York, file fold not affecting stamp or marking, Very Fine, ex Bingham (Siegel Sale 325)..... 450.00
- 3162 ☒ **5c Red Brown (1).** Four margins, tied by red grid cancels with matching "Windsor Vt. Apr. 26" (1851) circular datestamp on buff cover with original dated enclosure to Boston Mass., fresh and Very Fine 450.00
- 3163 ☒ **5c Red Brown (1).** Huge to ample margins including **right sheet margin**, tied by red grid cancel with corresponding "New York Apr. 21" circular datestamp at right on folded letter to Hartford Ct., Very Fine, with 2017 P.F. certificate E. 300-400
- 3164 ☒ **5c Red Brown (1).** Three large margins, ample at top, tied by neat pen strokes on blue folded letter datelined "Washington March 18th, 1850" to Rockford Ill., business contents, light red "Dixon Ill. Mar. 30" circular datestamp, stamp affected by vertical file fold, otherwise Very Fine, ex Craveri where misdescribed as Washington D.C. (listed twice in census book, including correct entry under Dixon Ill.), with 2004 P.F. certificate..... E. 200-300
- 3165 ☒ **5c Orange Brown (1b).** Three large margins, clear at bottom, radiant color, tied by blue grid, "Schenectady N.Y. Apr. 29" circular datestamp on buff cover to Fayetteville N.Y., Very Fine, with 2017 P.F. certificate E. 300-400



3166

- 3166 ☒ **10c Black (2).** Large to full margins, intense shade, tied by "Louisville Ky. 10 Sep. 18" (1850) integral-rate circular datestamp on folded letter to Philadelphia, **blue "R"** (**Recorded**) handstamp struck in Philadelphia, manuscript "28" registry number, Very Fine, the "R" marking was applied to precursor registered mail at Philadelphia, this smaller "R" replaced the large "R" in October, 1849, from our 1984 Rarities sale and ex Stollnitz..... E. 1,500-2,000

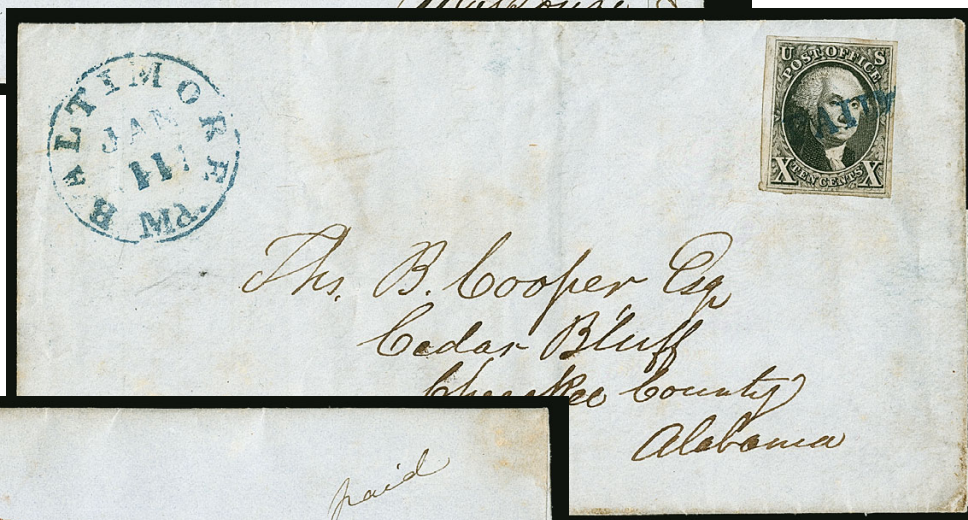


3167

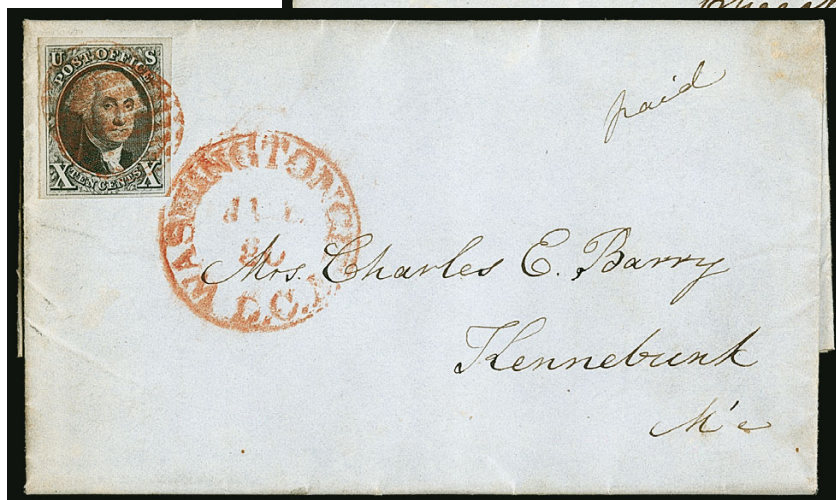
- 3167 ☒ **10c Black (2).** Mostly large to huge margins, just tied by blue grids, matching "Nashville Te. Jun. 3" (1848) circular datestamp and **blue "R"** (**Recorded**) handstamp on folded letter to Philadelphia, stamp with minute stains entirely confined to margins, Very Fine and choice appearance, the "R" marking was applied to precursor registered mail at Philadelphia, this larger "R" was replaced by the small "R" in October, 1849, ex Rust and Stollnitz, with 1996 P.F. certificate..... E. 1,500-2,000



3168



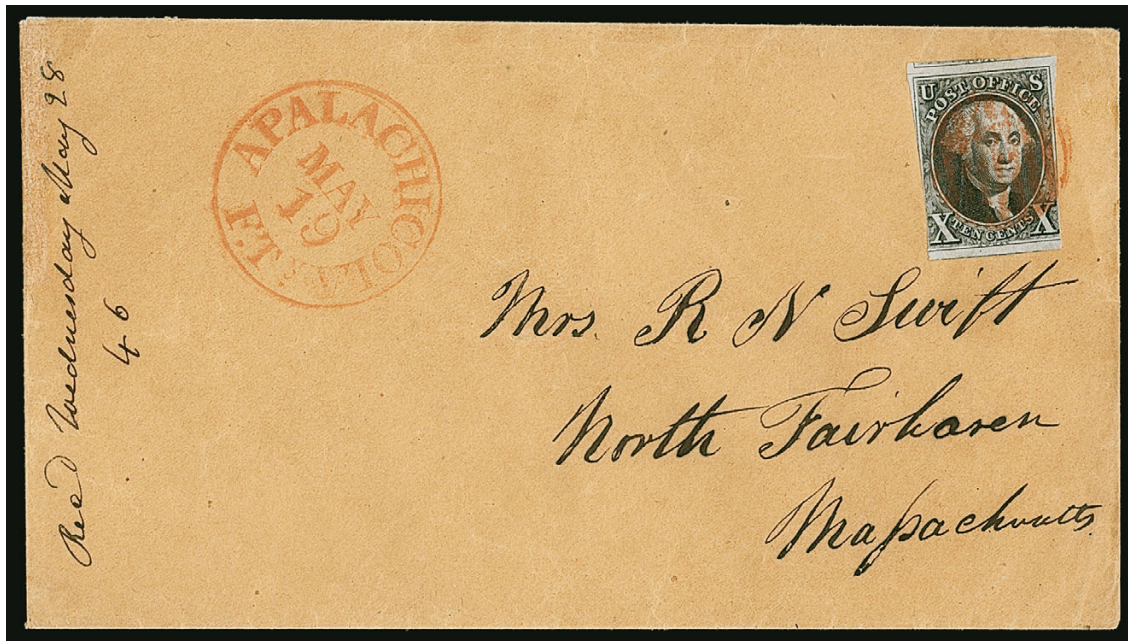
3169



3170EX

- 3168 ☒ **10c Black (2).** Ample to large margins, tied by "St. Louis Mo. 10 May 16" integral-rate circular datestamp, second strike at right on blue 1849 folded cover to St. Genevieve Mo., small cover age stain at bottom not mentioned on accompanying certificate, still Very Fine, attractive example of double 5c under-300 miles rate between post offices in Missouri, ex Mirsky, with 1998 P.F. certificate 1,050.00
- 3169 ☒ **10c Black (2).** Large to full margins, cancelled by blue straightline "Paid" with corresponding "Baltimore Md. Jan. 11" at top left on folded letter to Cedar Bluff Ala., stamp with small toned spot in far top margin, still Very Fine, with 2017 P.F. certificate E. 500-750
- 3170 ☒ **5c Red Brown, 10c Black (1, 2).** Four covers addressed to Kennebunk Me., including 5c tied by **black grid**, red "Boston 5cts. 25 Nov." integral-rate circular datestamp on 1850 folded letter, file fold and crease affects stamp, two of the 10c cancelled by manuscript and used from Washington D.C., last a 10c also used from Washington D.C. in 1849 and tied by red grid and circular datestamp, few small faults, Fine-Very Fine appearing group (Photo Ex) E. 1,000-1,500

1847 ISSUE USED FROM FLORIDA



3171

- 3171 ☒ **10c Black (2).** Large top and bottom margins, slightly in at sides, tied by red grid cancel, matching "Apalachicola F.Ty. May 19" (1851) circular datestamp on buff cover to North Fairhaven Mass. from the Swift correspondence, small mend on edge of backflap, Very Fine use from Florida, signed Ashbrook E. 1,000-1,500



3172

- 3172 ☒ **5c Red Brown (1).** Horizontal pair, large margins to close at bottom right, tied by green grid cancel with matching "Tallahassee Flor. May 7" (1850) circular datestamp, addressed to Abingdon Va., slight overall toning, pair with small scissors-cut in top margin, still Fine and scarce 1847 cover with Florida origin and a true green cancel, the green ink used to cancel the stamp and postmark the letter is an unmistakable true green, not one of the impure greenish-blue green inks seen more frequently in this period E. 1,000-1,500



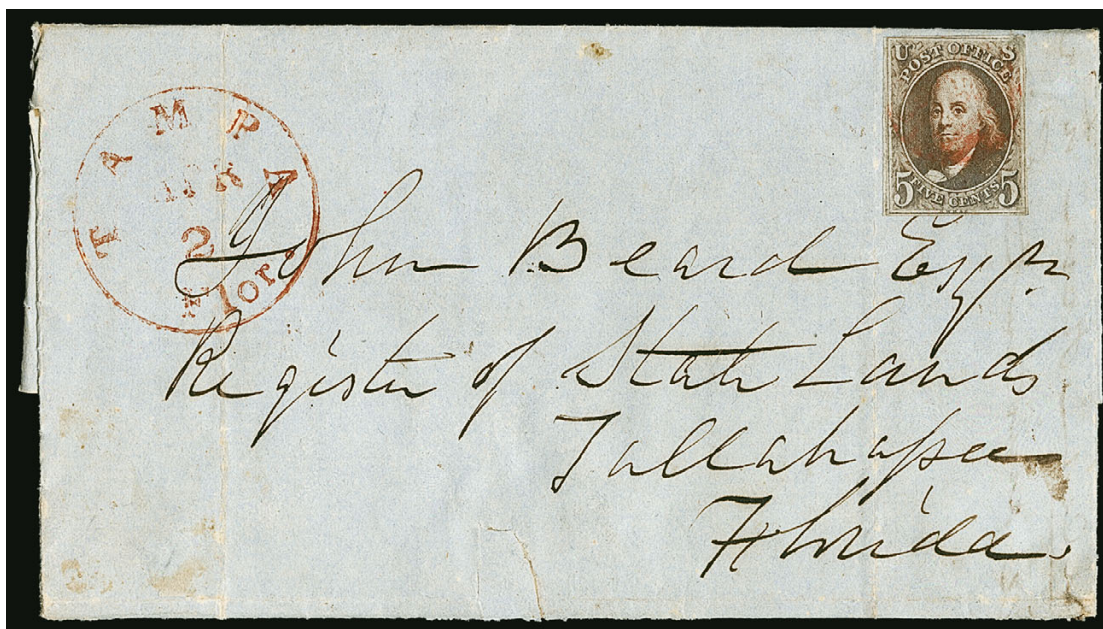
3173

- 3173 ☒ **10c Black (2).** Cancelled by **green “PAID” straightline with matching “Tallahassee Flor. Nov. 10 (1847)”** circular datestamp on folded letter datelined Nov. 8, 1847 and addressed to Princeton N.J., stamp lifted and replaced, cover has been cleaned

VERY FINE APPEARANCE. THIS IS THE EARLIEST RECORDED USE OF AN ADHESIVE STAMP FROM FLORIDA.

Several of the major Florida post offices received 5c and 10c stamps in late 1847. Tallahassee received 1,700 and 1,400 respectively. This is the earliest recorded use of either denomination of the 1847 Issue from Florida and the only pre-1848 use (EKU for 5c is June 9, 1848). The green ink used to cancel the stamp and postmark the letter is an unmistakable true green, not one of the impure greenish-blue green inks seen more frequently in this period.

With 1984 P.F. certificate E. 2,000-3,000



3174

- 3174 ☒ **5c Red Brown (1).** Red grid cancel with matching “**Tampa Flor. Apr. 2**” (1850) **circular datestamp** on folded letter datelined “*Fort Meade Florida March 30th, 1850*”, addressed to Tallahassee Fla., stamp with small defect in top right corner, Very Fine appearance, an extremely rare use of the 1857 Issue from Tampa, the *USPCS Census* lists only four covers from Tampa (two 5c, two 10c), each from the Beard correspondence, illustrated in *Florida Postal History Journal* (July 2005)..... E. 750-1,000



3175

- 3175 ☒ **10c Black (2).** Large to ample margins all around, tied by red grid with matching “**Quincy Flor. Jan. 9**” (1850) **circular datestamp** on folded letter to Philadelphia Pa., some negligible bleach spots, still Very Fine and rare, only four 10c 1847 Issue covers are recorded in the *USPCS Census*, ex Gibson and Kapiloff, with 1993 P.F. certificate E. 1,000-1,500

END OF SESSION TWO

Live Internet Bidding at Siegel Auctions

BIDDING FROM YOUR COMPUTER LETS YOU BE PART OF THE LIVE AUCTION FROM ANYWHERE IN THE WORLD!

There's **NO SUBSTITUTE** for following the auction in real time.
Live Internet Bidding lets you bid and buy as though you were right there in the saleroom.
And it's easy.

This step-by-step guide will instruct you how to register, set your browser and use the bidding interface.

Start by following the simple steps to become a registered Live Internet Bidder.
Once you've been approved for bidding, you can listen to the auction and place bids with the click of a mouse.

Registering with STAMP AUCTION NETWORK & SIEGEL AUCTION GALLERIES

Live Internet Bidding is managed by Stamp Auction Network (SAN).
To bid, you must be registered and approved by *both* SAN and Siegel.
To decide what you need to do, choose the description below that best fits you.



I've already registered with SAN and have been approved by Siegel for internet bidding.

Live Internet Bidding works by allowing registered bidders to observe and place bids.

Live Internet Bidding will work with any browser on both PC and Mac operating systems.

Before bidding by internet for the first time, we recommend finding a sale in progress and listening to the public broadcast or logging in as a registered bidder. This will help you develop a feel for the sale tempo and bidding interface.

I'm a Siegel client, but I'm not registered with SAN.

Go to stampauctionnetwork.com/siegel and click on "Register" at the top. Check the box for Robert A. Siegel Auction Galleries (under "R") and submit the form, indicating you are a Siegel client. Once registered at SAN, you're ready for internet bidding.

Log on to the auction at stampauctionnetwork.com/siegel.

You can also log on at siegelauctions.com

When you're logged on as a Live Internet Bidder, the bidding interface shows a photo and description of the lot, the current bid (and your bidding status), options for placing competitive bids and buttons with bid increments.

- After you click on a bid amount, the auctioneer is immediately notified of your bid.
- Retracting a bid is usually not acceptable, so please bid carefully.
- If you bid and then decide to stop, the "Pass" button will tell the auctioneer you are no longer bidding.
- You can send messages to the auctioneer (for example, a request for extension).
- You can track prior realizations from the bidding screen.

I've bid through SAN before, but this is the first time I've bid in a Siegel sale.

Then you just need to be approved by Siegel. Go to stampauctionnetwork.com/siegel and click on "Update Registration" at the top. Your SAN account information will be sent to us for approval (you might be asked for other trade references). Once approved by Siegel for bidding, you're ready for internet bidding.

I've never bid with Siegel, nor registered with SAN.

Go to stampauctionnetwork.com/siegel and click on "Register" at the top. Check the box for Robert A. Siegel Auction Galleries (under "R") and submit the form **with your trade references** (please, no family members or credit card companies as references). Once registered at SAN and approved by Siegel for bidding, you're ready for internet bidding.

Bidding	
United States	Bid 975000
Air Post - Inverted Jenny	Bid 900000
Position 57	Bid 925000
Lot 1305. 24c	<input type="button" value="PASS"/>
Carmine Rose & Blue, Center Inverted (C3a). Postion 57, nch colors on bright paper, fresh original gum, small light trace of hanging	Bid 950000
EXTREMELY FINE, ONE OF THE BEST-CENTERED AND FRESHEST STAMPS FROM THE ORIGINAL SHEET OF 100. FOR TH (Image)	Bid 975000
	Bid 1000000
	Send a Message to the Auction Floor
	Message History (from the public auction)

"System Down" or "Lost Connection" events do occasionally happen.

If you have any problems with Live Internet Bidding please call **212-753-6421** for immediate assistance.

SESSION THREE (LOTS 3176-3276)
WEDNESDAY, MAY 10, 2017, AT 4:30 P.M.

1851-56 ISSUE



3176

- 3176 ☒ **1c Blue, Ty. Ib (5A).** Positions 5-6R1E, horizontal pair, both are Ty. Ib, full margin at top nicely shows the type characteristics, bottom margin to slightly in on right stamp, tied by blue “Apalachicola Fla. Jan. 19” (1852) circular datestamp on folded circular to Providence R.I., docketing on back confirms date, file folds including one which has caused a slightly broken crease in left stamp

VERY FINE APPEARANCE. AN EXTREMELY RARE USE OF THE 1851 ONE-CENT TYPE Ib FROM FLORIDA.

Type Ib was produced only as an imperforate stamp. Six positions on Plate 1 Early furnished stamps qualifying as Type Ib — Positions 3-6R and 8-9R — distinguished by the complete design at top and nearly complete design at bottom. When first entered on the plate, these six positions (as well as 7R1E) had the complete design at top and bottom. However, unlike 7R, small portions of the bottoms of 3-6R and 8-9R were ironed out when the entries were made below them. Position 6 is one of the two best examples of the type as it had less of the bottom ironed out.

We have not encountered another example of Scott 5A used from Florida. In fact, there are very few 1851 Issue covers listed in Power Search for any type or denomination used from Florida.

Signed Ashbrook. Scott Retail for pair off-cover \$19,000.00, for two singles with premium for Position 6R1E \$20,500.00..... E. 4,000-5,000

3177



3178



3179



3180

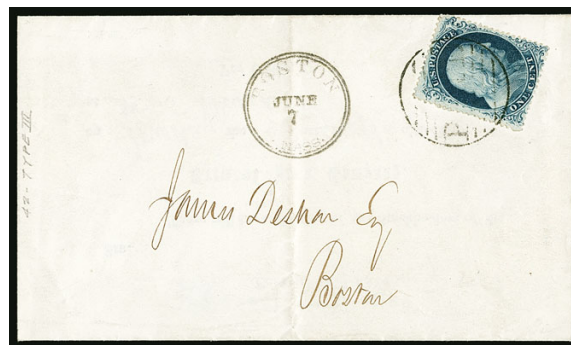
- 3177 ☒ **1c Blue, Ty. II (7).** Positions 41-42R1E, horizontal pair with **sheet margin and centerline** at left, tied by blue “**Apalachicola Fla. Paid 3 Mar. 23**” (1852) **circular datestamp** on folded circular to Providence R.I., offset of second circular datestamp on back, receipt docketing, file fold creases the left stamp which also has a margin tear, otherwise Very Fine and rare use from Florida E. 500-750
- 3178 ☒ **1c Blue, Ty. II (7).** Positions 78-80R2, horizontal strip of three, tied by “**Tallahassee Fla.**” **circular datestamp** on small mourning bordered cover to Prince Edward Va., right stamp small corner crease, still Very Fine and rare use from Florida E. 500-750
- 3179 ☒ **1c Blue, Ty. II (7).** Margins to in, used with **horizontal strip of three 3c Dull Red, Ty. II (11A)**, tied by two strikes of “**Warrington Fla.**” **circular datestamp** with unclear date on buff homemade cover to Stockton City Cal., some slight wrinkling, Fine and rare use of 1851 Issue stamps from Florida to California, paying the 10c rate..... E. 500-750
- 3180 ☒ **1c Blue, Ty. II (7).** Used with 3c Dull Red, Ty. I (11), both neatly tied by “**Philadelphia Pa. Oct. 30**” circular datestamp on small cover to St. Paul Minn., Very Fine and quite attractive, the 1c paid the carrier fee at a time when the Eagle Carrier stamp supply was exhausted, ex Gibson and Middendorf, with 1999 P.F. certificate E. 400-500



- 3181 ☒ **1c Blue, Ty. IIIa (8A).** Horizontal pair, large margins to in at top, tied by two clear strikes of blue "Apalachicola Fla." dateless circular handstamp on 1852 folded circular to Providence R.I., receipt docketing, file fold creases the right stamp, Very Fine appearance, the only No. 8a cover from Florida listed in Power Search..... E. 750-1,000
- 3182 ☒ **1c Blue, Ty. IV (9).** Horizontal strip of three, ample to large margins except just touched at top, tied by green Lynchburg Va. circular datestamps on pink cover to a lieutenant on the U.S. Sloop of War *Cyane* at the Boston Navy Yard, Oct. 31, 1856 receipt docketing, Very Fine and scarce, ex Haas (where current owner acquired it in Siegel Sale 615) E. 500-750
- 3183 ☒ **3c Orange Brown, Ty. II (10A).** Margins clear of framelines all around, rich color, tied by double-struck green "Lynchburg Va. 16 Apr." (1852) circular datestamp on blue folded letter to Appomattox Va., Very Fine, Scott retail for a green cancel off-cover is \$375.00 E. 200-300
- 3184 ☒ **3c Dull Red, Ty. II (11A).** Vertical pair, large bottom margin showing portion of adjoining stamp, tied by two strikes of "Fayetteville Vt. July 13" (1857) circular datestamp on folded letter to *Melbourne Australia*, forwarded to *Beechworth, Australia* oval Australian transit datestamp of Dec. 24, backstamps including "Boston Br. Pkt. 15 Jul." and three rimless transit and arrival ovals including red "Ship Letter Free P.O. Victoria DC 24 1857", also Melbourne and Beechworth ovals dated Dec. 24 and Dec. 27, small inconsequential square cut from back panel, top stamp light internal crease, Very Fine appearance and a very rare use, apparently overpaid by 1c for the private ship rate from Boston, but struck in Boston with the British Packet datestamp and then in transit more than five months, signed Ashbrook who stated "a most unusual cover 1c overpay on 5c rate," also with Chase note stating "one of the very few 3c '51 covers I've seen to Australia" E. 750-1,000



3185



3186

- 3185 ☒ **3c Dull Red, Ty. II (11A).** Tied by unclear strike of blue Philadelphia Pa. circular datestamp, bold strike of red **"R" handstamp** (recorded), manuscript **"Reg."** and **"20"** registry number, addressed to Philadelphia street address, stamp with slight oxidation and sealed tear at right, Very Fine appearance, scarce E. 300-400
- 3186 ☒ **1c Blue, Ty. III (21).** Position 81L4, attractive margins and centering, tied by large **"Paid"** grid cancel with **"Boston Mass. June 7"** (1858) circular datestamp on small folded notice for annual stockholder meeting of the Tremont Iron Company, addressed locally, central file fold far from stamp, Very Fine, a pretty cover with this scarce stamp, with 1992 P.F. certificate..... 2,200.00

1857-60 AND LATER ISSUES



3187

- 3187 ☒ **1c Blue, Ty. III, Position 99R2 (21 var).** The position with the widest breaks of any Type III, choice centering, deep shade, pieces torn away from top and bottom when separated by sender, tied by **"Chicago Ill. Oct. 27, 1857"** circular datestamp on yellow cover to Exeter Ill., with original enclosure

THE EARLIEST DOCUMENTED DATE OF USE OF POSITION 99R2 — THE ONE-CENT TYPE III — WHICH THE SCOTT CATALOGUE LISTS SEPARATELY, BOTH IMPERFORATE AND PERFORATED, IN RECOGNITION OF ITS EXTRAORDINARY CHARACTERISTICS.

This cover from the Armitage correspondence is the basis of the Scott-listed Earliest Documented Use of No. 21, Position 99R2, on October 27, 1857. The EDU for any perforated 1c stamp from Plate 2 is July 26, 1857. According to our records, only three covers are known with Position 99R2: a single, ex Ishikawa and Zoellner, a strip containing 99R2, and the Armitage cover offered here. The Scott Catalogue incorrectly states that two covers are known.

Please see *Chronicle* 199 (August 2003) for an article documenting the Armitage correspondence. With 1999 A.P.S. certificate stating "earliest documented cover". Scott Retail for an off-cover used stamp is \$20,000.00..... E. 2,000-3,000



3188



3189

- 3188 ☒ **1c Blue, Ty. V (24).** Used with 3c Dull Red, Ty. III (26), both canceled by grids and 1c tied by "Philadelphia Pa. Mar. 29" circular datestamp on **mourning** cover to New York, stamps with minor perf faults, Fine appearance, 1c paid carrier fee E. 200-300
- 3189 ☒ **5c Brick Red (27).** Vertical strip of three, bright color, scissors-separated with portions of adjoining stamps above and below, only a few perfs at lower left trimmed, tied by two strikes of "New Orleans La. May 31, 1859" circular datestamp on cover to **Paris, France**, red "New York Paid 12 Jun. 8" credit datestamp, French transit double-circle datestamp ties strip, missing backflap and portion of one side flap, minor cover scuffs at left and bottom stamp with cut perfs at bottom left, otherwise Fine-Very Fine strip, Scott Retail as off-cover strip of three \$6,250.00 E. 750-1,000



3190

- 3190 ☒ **12c Black, Plate 1 (36).** Two horizontal pairs and two singles, tied by partly clear strikes of "Newport Flor. Sep. 8" (1858) **circular datestamp** (clearer strike on back), "New-York Br. Pkt. Sep. 15" circular datestamp on cover to **Nottingham, England**, "SHORT PAID" in octagon handstamp struck twice on front and twice on back, manuscript "20" cents debit marking to England and "4/-" (4sh) due, Liverpool transit (from Cunarder *Africa*) and Nottingham receiving backstamps, cover and right stamp small staple holes, slight wrinkling

VERY FINE APPEARANCE. AN EXTREMELY RARE USE OF SIX COPIES OF THE 12-CENT 1857 ISSUE ON COVER FROM FLORIDA TO ENGLAND, ATTEMPTING TO PAY A TRIPLE RATE BUT UNDERPAID AND TREATED AS COMPLETELY UNPAID.

The 72c franking was an attempt by the sender to pay the triple 24c rate to England, but this was not possible before Apr. 1, 1866, due to British weight progressions. The franking was ignored by the New York exchange office and the underpaid cover was treated as totally unpaid. The correct quadruple rates are reflected in the "20" cents debit marking (quadruple 5c to the U.S. for carriage on a British steamer) and the 4sh due marking E. 2,000-3,000



- 3191 ☒ **3c Rose (65)**. Tied by bold “Nashville Ten. Jun. 14, 1863” double-circle datestamp on **Lincoln Patriotic** cover to Kalamazoo Mich, design with elaborate frame of crossed flags and eagle, in black on cream envelope, slightly reduced at right, cover with some light doodling and design with Lincoln’s eyes and mouth discreetly inked out, however this appears to be in the same ink as the address panel (possibly a disgruntled soldier at Nashville), Fine and rare design, ex Walcott and Gabriel, with 1993 P.F. certificate E. 500-750
- 3192 ☒ **3c Rose (65)**. Tied by rosette cancel and with “New York, Aug. 3” circular datestamp on buff cover with “**Phrenological Journal and Life Illustrated**” design to Manchester N.H., Very Fine E. 200-300
- 3193 ☒ **3c Rose (65)**. Tied by clear and bold strike of **right-facing Smiling Profile fancy cancel** (S-E PH-F 30), matching “Lynchburg Va. Dec. 18” circular datestamp on cover to Nelson County Va., missing part of backflap, Very Fine strike E. 300-400
- 3194 ☒ **3c Rose (65)**. Two covers, both with **Man in Hat fancy cancel**, first a small narrow cover with stamp also tied by “Lynchburg Va. Nov. 13” circular datestamp, second a buff cover with fancy cancel tying the stamp and “Lynchburg Va. Nov. 16” circular datestamp, Very Fine strikes, first cover ex Fausltich (Photo Ex) E. 300-400
- 3195 ☒ **3c Rose (65)**. Tied by **green “Free” in circle** with matching “Lacon Ill. 10 Jun. 1862” circular datestamp at left on cover to Philadelphia Pa., cover with horizontal file fold not affecting stamp, Very Fine, green cancels on 1861 Issue covers are quite scarce E. 400-500
- 3196 ☒ **3c Red, F. Grill (94)**. Tied by target cancel, “Lynchburg Va. Apr. 12” octagonal datestamp with bold strike of “**FICTITIOUS**” **straightline**, second part strike above, stamp and cover with small edge flaws, otherwise Fine appearing cover and Very Fine strike of this scarce marking, which was apparently rarely applied to letters addressed to individuals engaged in mail fraud, accompanied by a 1985 *Linn’s* article by Michael Laurence about a similar marking and by a 1968 letter from Robert A. Siegel that accompanied the purchase of this cover..... E. 200-300



3197

- 3197 ☒ **30c Orange (71).** Two singles, used with **pair 1c Blue and 10c Green (63, 68), "Key West Fla. Dec. 31" (1862) circular datestamp** on cover to Ireland, "New York Br. Pkt. Jan. 6" circular datestamp ties 1c pair, second strike ties both 30c, "20" cents debit handstamp to England struck multiple times including tying stamps, transit and receiving backstamps, manuscript rate notations including "ov 1 oz", and "4/-" (4sh) due, 10c stamp nicked corner, bottom flap slit where opened

VERY FINE APPEARANCE. A RARE THREE-COLOR TRIPLE-RATE 1861 ISSUE USE FROM FLORIDA TO IRELAND, WHICH WAS UNDERPAID AND TREATED AS COMPLETELY UNPAID.

The 72c franking was an attempt by the sender to pay the triple 24c rate to Ireland, but this was not possible before Apr. 1, 1866 due to British weight progressions. The franking was ignored by the New York exchange office and the underpaid cover was treated as totally unpaid. The correct quadruple rates are reflected in the "20" cents debit handstamps (quadruple 5c to the U.S. for carriage on a British steamer) and the 4sh due marking..... E. 2,000-3,000



3198

3199

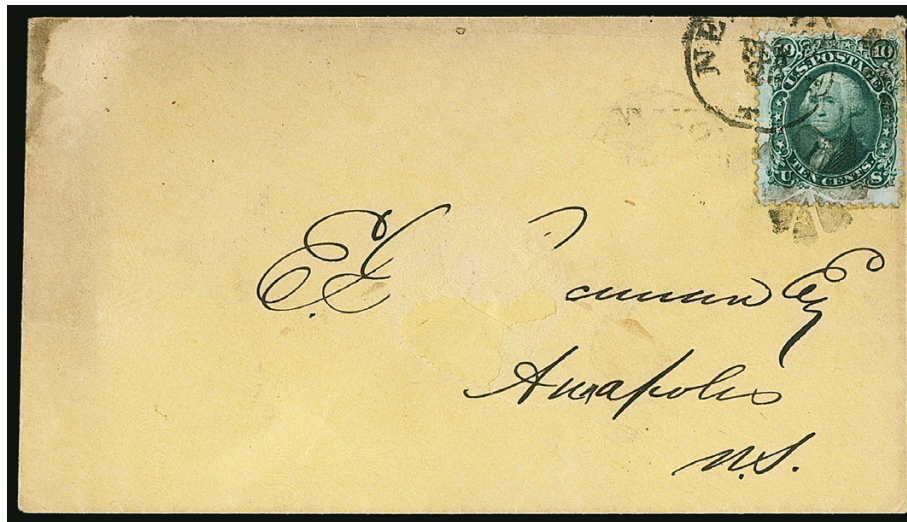
- 3198 ☒ **2c Black (73).** Tied by bold strike of "**paint red**" **Maltese Cross cancel**, matching "New York City Nov. 2" circular datestamp on blue 1866 folded letter **datelined Paris, France** and addressed to New York, Sussfeld Lorsch & Co. double oval handstamp, carried outside of the mails to New York where it was put in the mails for a post office box, small edge tear and slight discoloration at left from cleaning, still Fine and very scarce use of a Black Jack originating outside of the United States, ex Hahn, with 1992 P.F. certificate..... E. 400-500
- 3199 ☒ **5c Postage Currency.** Single cut from Fractional Currency note, tied by "Philadelphia Pa. May 27, 1887" duplex on cover to Germantown Pa., clear strike of "**Held For Postage**" handstamp at left, some cover wear, note creased prior to use, Very Fine appearance, a most unusual use of this item which was not intended for use as postage, with 2003 P.F. certificate..... E. 1,000-1,500



3201

3200

- 3200 ☒ **24c Lilac (78).** Horizontal pair and three singles, tied by red "Newark N.J. 18 Sep." double-circle datestamps on blue linen cover **to London, England**, red New York transit circular datestamp, 1866 London transit, magenta "95" credit marking, endorsed "*per Steamer Scotia*", right stamp cut off the cover and put back in place, cutting into the stamp which formed a pair with the one next to it, some soiling around stamp and some edgewear, otherwise Fine, a highly unusual franking, with pencil note on back dated June 9, 1930: "this cover was found by an elderly lady and wishing to know whether the stamps were valuable she cut one off and took to a dealer. The letter which this contained was written to a bridal couple on their honeymoon in 1866" E. 500-750
- 3201 ☒ **2c Black, Z. Grill (85B).** Particularly choice centering for this issue with wide margins and design clear of perfs on all sides, used **with 1861 10c Green (68)** and tied by cork cancel and matching "Chicago Ill. Mar. 9" circular datestamp on small cover **to Birmingham, England**, London Paid transit also tying 2c stamp, 10c with inconsequential corner crease and cover with right flap missing, Very Fine, particularly interesting use of the 2c Z Grill, with 2016 P.F. certificate E. 1,000-1,500



3202

- 3202 ☒ **10c Green, E. Grill (89).** Rich shade, tied by rosette and matching "New York Feb. 20 (1868)" circular datestamp on cover **to Annapolis, Nova Scotia**, Annapolis Mar. 11, 1868 arrival backstamp, stamp with tiny scuff at top and right (barely visible) and small piece of address panel missing
- FINE APPEARANCE. THIS IS THE EARLIEST DOCUMENTED USE OF THE 10-CENT E GRILL WHICH WAS RECENTLY DISCOVERED AND IS OFFERED FOR THE FIRST TIME.
- The example which was previously known as the earliest was datelined in New York on Feb. 21 and was offered in our 2010 Rarities Sale. With 2016 P.F. certificate E. 2,000-3,000



- 3203 ✉ **3c Red, F. Grill (94).** Tied by cork cancel with "New York Mar 18" circular datestamp on 1869 yellow printed prices current **Murphy's folded patent envelope** with all-over red "A.C. Downing & Company French Window, Coach & Picture Glass" advertising design to Plattsburgh N.Y., Murphy's imprint on back, showing perforations at top, Very Fine and attractive patent envelope E. 400-500
- 3204 ✉ **3c Ultramarine (114).** Tied by "Lynchburg Va. Dec. 31" (1869) circular datestamp with bold **negative Skull and Crossbones fancy cancel** (S-E PH-S 21) on cover addressed locally, Jan. 2, 1870 receipt docketing, Very Fine strike of this scarce fancy cancel E. 300-400
- 3205 ✉ **10c Yellow (116).** Bright color, tied by quartered cork and light strike of May 4 (1870) Rochester N.Y. circular datestamp on yellow cover **to Santo Domingo, Dominican Republic**, addressed to Capt. Samuel Pierce "Care Steamer Tybee" (the Tybee was one of the Santo Domingo Steam Line vessels), red "New York Jun. 4" transit circular datestamp, Santo Domingo Jun. 15 receiving datestamp on face of cover more clearly struck than other examples from this correspondence, Very Fine, colorful cover and very rare 1869 use to the Dominican Republic, Michael Laurence records only five 10c 1869 covers carried on the Santo Domingo Steam Line, ex Coulter E. 750-1,000
- 3206 ✉ **3c Green (158).** Tied by "Philadelphia Pa., Apr. 8" circular datestamp on illustrated "**I. B. Seeley's Truss, Supporter & Bandage Establishment**" advertising cover to Allenville, design continued on reverse, arrival backstamp, Very Fine E. 200-300
- 3207 ✉ **3c Green, 2c Vermilion (158, 178).** Tied by well-struck "Boston Mass. Nov. 4 10AM" circular datestamp with negative "2" duplex on 1878 cover **to Amherst, Australia and forwarded to Talbot**, unusual routing with French transits (incl. two Paris backstamps), Melbourne and Talbot backstamps, neat "T" in circle due marking, oval "More to Pay" with "1/8" due, Very Fine and very unusual routing which ignored the "Via Cal." at top left and went thru Europe instead E. 200-300



- 3208 ☒ **1c Dark Ultramarine (182).** Rich color, cancelled by **Glen Allen Star precancel** on buff International Printing Label Establishment corner card cover with illustration on back in blue, to New York N.Y., "Glen Allen Virginia Sep. 29, 1881" printed datestamp, some slight edgewear, Very Fine E. 500-750
- 3209 **90c Carmine (191).** Used with 5c Yellow Brown (205) and tied by well-struck "New York Reg." oval handstamp on large part of blue refolded cover front only to **Berlin, Germany**, neat "New York Reg'y. Div. 11-16 1887" oval datestamp, New York registry label at left, folded for display, Fine and rare, particularly after the U.P.U. came into effect, we have only offered two full covers since keeping computerized records, Scott Retail as on cover \$5,000.00 E. 750-1,000
- 3210 **90c Carmine (191).** Used with **1c Dark Ultramarine (182)** and two **10c Brown (188)**, cork cancels and "New York May 8" circular datestamp on large part of refolded courthouse wrapper to Montgomery Ala., receipt docketing on back, tying cancellations slightly enhanced and wrapper repaired, still Fine appearing and striking domestic use of the 90c 1879 American Bank Note Co. printing, with 1992 P.F. certificate E. 750-1,000
- 3211 ☒ **2c Red Brown (210).** Cancelled by cork, "Mohawk N.Y. Aug. 1, 1887" circular datestamp on **red Professor Carl Myers illustrated balloon** cover to Schenectady, receiving backstamp, small nick at bottom right corner, otherwise Fine, scarce early balloon cover E. 400-500
- 3212 ☒ **1c Ultramarine (212).** Tied by New York "H" oval registry cancel on **Johnson & Johnson stamp collar postal card** with printed advertisement for papoid medication to Providence R.I., Very Fine E. 200-300



- 3213 **15c Columbian (238).** Choice centering, tied by cork cancel on part of registered package wrapper from Otis Clapp & Sons to **London, England**, purple Providence R.I. three-line datestamp, New York registry label and May 29, 1894 backstamp, manuscript "**Samples merchandise, no writing**" at lower left, horizontal file fold does not affect stamp, Fine, very unusual use from a pharmaceutical manufacturer to England E. 200-300
- 3214 **Columbian Issue Commercial Uses.** Six items, including 15c on part of wrapper, 15c on part of wrapper with return address for surgical instrument manufacturer, 30c used with 5c 1890 Issue on piece of wrapper from Fred Haslam & Co. in Brooklyn, 50c used with 1c 1890 Issue on part of wrapper from Otis Clapp & Co. in Providence R.I., 30c and 6c used with single 219 and block of four of 220 on part of wrapper, last is 5c on card from elastic stocking manufacturer to Otis Clapp & Co., all are either from or to Otis Clapp and Co. which is one of the oldest pharmaceutical manufacturers in the U.S., some faults, overall Fine-Very Fine, an excellent group of commercial uses relating to the medical/pharmaceutical industry.....**(Photo Ex)** E. 400-500
- 3215 **2c Lincoln (367).** Tied by "Pittsfield Mass. Feb. 12, 1909" **First Day** flag machine cancel on picture post card of Lake George N.Y. to West Springfield Mass., card with minor corner crease, otherwise Very Fine..... 500.00
- 3216 **2c Hudson-Fulton, Imperforate (373).** Pair, full margins all around, tied by "U.S.Pos. Service Shanghai China Aug. 9" duplex with "1910" year date, on 2c on 3c Violet (U446) entire, also franked with **Special Delivery, 10c Ultramarine (E11)**, Very Fine, handsome and rare use..... E. 500-750
- 3217 **\$1.00 Violet Brown (423).** Two large cover fronts boldly addressed in blue "To Federal Reserve Agent, San Francisco, Cal.", both with **strips of three of No. 423** and additional stamps including 50c Perf 12 (421 or 422), 30c Perf 12 (420), 10c Perf 10 (433 or 472) and 2c Perf 11 (499), all stamps tied by Washington D.C. double oval cancels, purple "REGISTERED" straightlines and nearly consecutive registry numbers, both fronts with one defective stamp (30c and 10c respectively), Very Fine appearance, a very scarce pair of fronts bearing strips of Scott 423, these packages carried currency form the Bureau of Engraving and Printing, Scott Retail for No. 423 on cover is \$7,000.00**(Photo Ex)** E. 1,000-1,500



- 3218 ✉ **15c Gray (514).** Tied by "New York H.T." oval registry cancel on legal sized 1917 censored registered cover to **Samara, Russia**, New York Dec. 6 registered backstamps, "Service is Suspended" label affixed on front with an additional New York registered cancel of **Apr. 11, 1919** on reverse, cover with edge nicks and overall light toning, Fine, the most plausible explanation for the year and a half delay prior to the return of this cover is the effect of the Russian Revolution and subsequent Civil War..... E. 500-750
- 3219 **\$5.00 Deep Green & Black (524).** Horizontal strip of four, tied by wavy-lines machine cancel and used with **50c Lilac (570)** and **\$1.00 Violet Brown (571)**, similarly tied, also used with **Special Delivery, 10c Gray Violet (E15)** and **15c Deep Orange (E13)**, last oxidized, on label affixed to part of wrapper from The Rapid Electrotpe Company to Moorhead Minn., trivial wear, Very Fine, a scarce franking, a single Scott 524 on cover catalogues \$2,500.00 in Scott E. 500-750
- 3220 ✉ **2c Carmine Rose, Ty. III, Rotary (546).** Tied by "New York N.Y. G.P.O. Nov. 23 3PM 1921" duplex circular datestamp and used with **10c Ultramarine, Special Delivery (E11)**, natural s.e. at right, similarly tied, to street address in New York, attractive Thanksgiving card enclosure, 2c small corner creases at top right, Very Fine appearance, the sender must have really wanted this to reach the recipient quickly, which is echoed in his sentiments written on the card, with 1996 P.F. certificate, Scott 546 is scarce on cover and catalogues \$800.00..... E. 300-400
- 3221 ✉ **50c Lilac (570).** Tied by light strike of duplex circular datestamp and used with **Special Delivery, 10c Ultramarine (E11)**, tied by perfect strike of "Washington D.C. Nov. 11 7PM 1922" duplex circular datestamp to Syracuse N.Y., purple "FEE CLAIMED AT SYRACUSE N.Y." straightline handstamp, boxed "**FIRST DAY COVER**" handstamp at top left, Very Fine and choice, Scott 570 First Day catalogues \$1,500.00 in Scott, it is especially desirable with the Special Delivery stamp..... E. 500-750
- 3222 ✉ **1c-10c Kans. Overprints (658-668).** Two covers, first with 1c-5c, other with 6c-10c, tied by "Washington D.C. May 1 5:30 PM 1929" **First Day** duplex cancels on covers to Bellaire N.Y., Very Fine, attractive first day covers(Photo Ex) E. 200-300

AIR POST



- 3223 ☒ **8c-24c 1923 Air Post (C4-C6).** Each on First Day cover addressed to Edward C. Worden in Millburn N.J., fresh and Very Fine, accompanied by similar First Day covers for C7-C9**(Photo Ex)** 1,935.00
- 3224 ☒ **10c Lindbergh, Booklet Pane (C10a).** Two covers, each with **First Day** cancel from Cleveland, one Position H with blue cachet, other Position C with purple cachet, Very Fine, latter ex Gibson and Goodwin.....**(Photo Ex)** 1,600.00
- 3225 ☒ **10c Lindbergh, Booklet Pane (C10a).** Tied by "Washington D.C. May 26 1PM 1928" duplex **First Day** cancel on cover to Los Angeles, Chicago and receiving backstamps, fresh and Very Fine..... 875.00
- 3226 ☒ **6c-25c Air Post, First Day Covers (C34-C37, C39, C41).** Seven **Dorothy Knapp** multicolored hand-painted **First Day** covers, each addressed to Dorothy Knapp in Rhinebeck N.Y. in pencil, wonderful designs with all showing the planes depicted on the stamps and showing the views depicted on the stamp (for the four displaying views) and her own views for the other three, fresh and Very Fine, a wonderful group.....**(Photo Ex)** E. 2,000-3,000



- 3227 ☒ **65c-\$2.60 Graf Zeppelin (C13-C15)**. 65c on post card, others on covers, 65c tied by Varick Str. Sta. May 7, 1930 postmark to Seville, Spain with receiving backstamp, \$1.30 tied by similar cancel of the same day to Pernambuco, Brazil with receiving backstamp, \$2.60 with similar cancel of Apr. 28 to Rhode Island with May 31 Lakehurst backstamp, minor edgewear, \$2.60 with minute tear at top, otherwise Fine-Very Fine (Photo Ex) 1,200.00
- 3228 ☒ **\$2.60 Graf Zeppelin (C15)**. Tied by "Washington D.C. Apr. 19 5PM 1930" duplex circular datestamp on cacheted **First Day** cover to Reading Pa., used with **Special Delivery 10c Gray Violet (E15)**, similarly tied, Lakehurst and receiving backstamps, fresh and Very Fine, an attractive and scarce C15 flown First Day cover with the Special Delivery stamp E. 500-750
- 3229 ☒ **Charles A. Lindbergh**. Signature "C.A. Lindbergh" at left on legal-size cover with typed address to Cristobal, Canal Zone, with block of four of 5c Violet (C16) tied by targets, "Miami Fla. Nov. 19 7AM 1931" duplex, Pan-American Airways return address, purple "First Flight, 50 Passengers, Chas. A. Lindbergh Miami to Kingston, Cristobal, Barranquilla" cachet, receiving backstamp (Nov. 22), Very Fine and attractive E. 400-500
- 3230 ☒ **5c Beacon (C11)**. Used with **10c Red Lilac, Special Delivery (E15a)**, also also **China, 1923, 15c Deep Blue (260) and 15c Blue Green & Black, Air Post (C6)**, tied by "Changsha 23.10.30" circular datestamps on cover to New Haven Conn. and **forwarded** to New York City, Special Delivery 10c Gray Violet (E15) used for forwarding and tied by "New Haven Conn." oval handstamp, "New Haven Conn. Nov. 17 6:30PM 1930" circular datestamp, appropriate registry markings, slight wear, Very Fine and very unusual use, with 2005 Sismondo certificate E. 300-400
- 3231 ☒ **50c-\$2.00 Presidential (831-833)**. Tied by "New York N.Y. Grand Central Annex Jun. 12 11:30PM 1941" duplex circular datestamps on cover **to Melbourne, Australia**, with two **Special Delivery, 10c Red Lilac (E15a)**, similarly tied, purple "SPECIAL DELIVERY FEE PAID 20 CENTS" handstamp with amount in pencil, lots going on with routing instructions, "Photos!!! Do Not Fold!!!" and other markings, receiving backstamp, some edgewear, missing part of opening flap at right, Very Fine and unusual commercial use E. 300-400



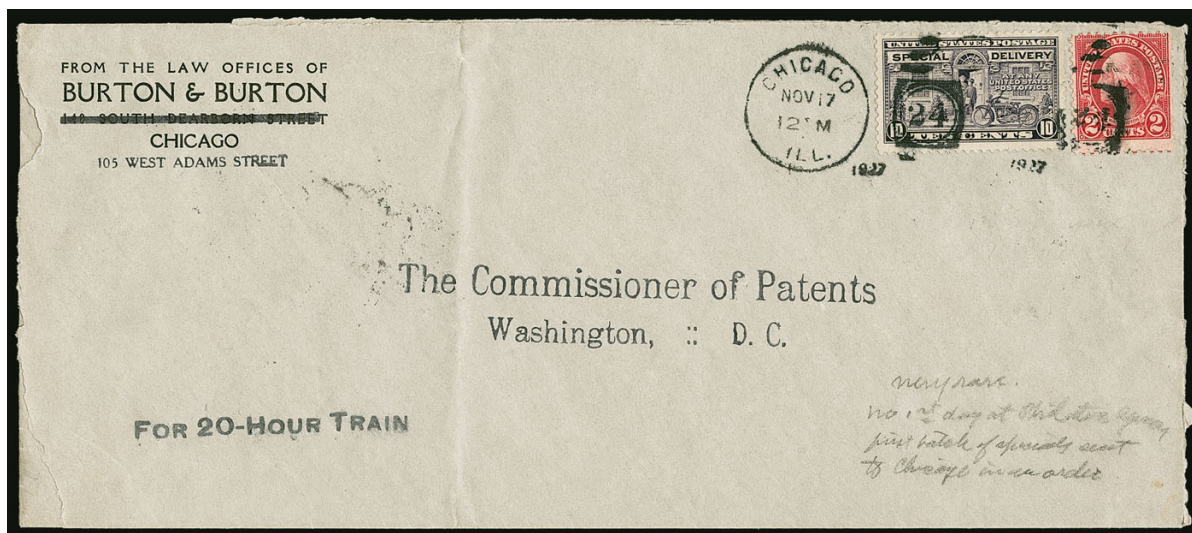
- 3232 ☒ **16c Red & Blue, Air Post Special Delivery (CE2).** Tied by light strike of registry double-circle datestamp and used with **Germany 50pf and 75pf Air Post (C57-C58)** and **Liechtenstein 1fr and 2fr Air Post (C15-C16)** on registered cover to New York, Liechtenstein stamps tied by "Triesenberg 4.V.36" double-circle datestamps, German stamps tied by "Frankfurt (Main) 6.5.36" double-circle datestamps, Liechtenstein registry label and Hindenburg cachets at left, receiving backstamps, German stamps with some toning around edges from gum, Very Fine and colorful three-country franking..... E. 300-400
- 3233 ☒ **10c Blue, Special Delivery (E5).** Used with **2c Brown (157), 2c Vermilion (183) and 2c Carmine (551)** as forwarding postage on cover originating in Denmark, bearing **Denmark 250, 350 and 400 (216, 218, 219) and 500 Air Post (C4)**, tied by "Kobenhavn Luftpost 17.8.31" double-circle datestamps to Pittsburgh Pa. where forwarded to Germany, U.S. stamps tied by "Pittsburgh Pa. C.P.O." ovals, "Pittsburgh Pa. Aug. 25 7PM 1931" circular datestamp, cachet at bottom indicates at least one U.S. stamp was present when mailed, Very Fine and very unusual, a colorful philatelic item E. 300-400
- 3234 ☒ **10c Gray Violet (E12).** Used with **seven different Japan stamps from 3s to 1y**, tied by purple "Tokio Japan 21.8.29" circular datestamps and used to South Pasadena Cal., red "First Round the World Flight by Graf Zeppelin, Tokio G.P.O." handstamp also ties U.S. and one Japan stamp, backstamps including Los Angeles and South Pasadena (both Aug. 26), another ties Special Delivery stamp, minor edgewear, Very Fine and attractive use E. 300-400
- 3235 ☒ **Wilkins-Ellsworth Trans-Arctic Submarine Expedition.** Two cacheted registered covers from New York through Longyearbyen, Norway and back to New York, first with U.S. 2c coil and Pulaski Issue and pair Norway No. 89, second with pair and single GB No. 161, both with appropriate markings and Longyearbyen registered labels, first cover 2c coil with small perf flaws, still Very Fine pair of covers created to support the 1931 attempt to reach the North Pole via submarine.....(Photo Ex) E. 150-200
- 3236 ☒ **Air Post Covers.** 51, including C10a single on First Day cover, few C7-C9 First Days, C16 first days (3, including two with blocks of four), C19 two First Days from Baltimore, some government contract flights such as nine different legs from July 1, 1924 transcontinental air mail route, overall fresh and Fine-Very FineNot illustrated E. 750-1,000
- 3237 ☒ **Air Post Covers.** Small group of slightly better Air Post covers, including post card signed by Hugh Robinson, another showing Burgess Dunn seaplane, few ship-to-shore uses, few 1936 rocket flights, few zeppelin flights, few other collateral items, overall Fine-Very Fine ..Not ill. E. 200-300
- 3238 ☒ **Air Mail Covers.** Massive accumulation in two cartons, much is First Days with cachets, also some first flights and other better, overall Very Fine.....Not illustrated E. 200-300

SPECIAL DELIVERY

See also lots 3216, 3219-3221 and 3233-3234 for additional Special Delivery covers



- 3239 ☒ **10c Blue, Special Delivery (E2).** tied by duplex, and used with **8c Lilac (225)**, **6c Dull Brown (256)** and **50c Orange (260)**, latter three cancelled by handstamp, on envelope to Lombardieville La., three holes in cover at left are either from filing or use as a tag, central stain affects two stamps, otherwise Very Fine and very unusual..... E. 300-400
- 3240 ☒ **10c Green, Special Delivery (E7).** Tied by indistinct N.J. duplex circular datestamp and used with **2c Shield from booklet (319Fh)**, similarly tied, on cover to New York, 2c with crease at bottom right, otherwise Fine, with 2012 P.F. certificate..... E. 200-300
- 3241 ☒ **10c Green, Special Delivery (E7).** S.e. at right, tied by "La Junta & Albuq. R.P.O. May 24, 1909" duplex circular datestamp on cover with printed address to Toledo O., used with **2c Carmine (332)**, some overall toning and minor edgewear, Very Fine. E. 200-300

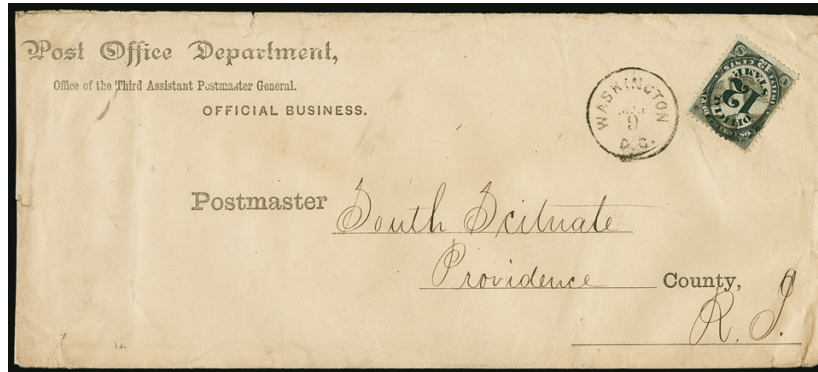


3242

- 3242 ☒ **10c Motorcycle, Special Delivery (E15).** Tied by **Earliest Documented Use** Chicago Ill. Nov. 17, 1927 12PM duplex cancel on legal-size corner card cover from "Law Offices of Burton & Burton Chicago" to "The Commissioner of Patents Washington, D.C." , additional **"FOR 20-HOUR TRAIN"** handstamp, opened at sides, crease at left side
- THIS IS THE EARLIEST DOCUMENTED USE OF THE 1927 10-CENT SPECIAL DELIVERY ISSUE, SCOTT E15. THIS PREDATES THE OFFICIAL FIRST DAY BY TWELVE DAYS. AN IMPORTANT BACK-OF-BOOK ITEM.
- This is most likely non-philatelic in origin and contained legal documents that needed to be "rushed" to Washington's Patent Office.
- Ex Markovits and Dr. Martin. With copy of 1975 P.F. certificate..... E. 2,000-3,000

- 3243 ☒ **Special Delivery Covers and Labels.** 24 covers each with a Special Delivery stamp and a label on back explaining the Special Delivery service, stamps including E3 (3), E4 (2), others are E5 or E6, range of auxiliary markings for first attempted delivery, some wear and few faults, overall a Fine-Very Fine and fascinating group ..*Not illustrated* E. 500-750
- 3244 ☒ **Special Delivery Cover Balance.** Twelve, including E2 on 2c entire with Wells, Fargo imprint used in 1893, E5 used with pair of 301c, E6 used with 319g single, E6 used with 332a pair and 337, E6 used with 301c, E7 on 2c entire, E7 used with 1c on post card, E7 on cover used with two Germany stamps, E8 used with 374a pair, E12 used on cover **originating in Thailand**, E16 on First Day cover, last is E15a used with C25 and Australia stamp from military A.P.O. (philatelic), few faults, overall appear Fine-Very Fine, seven with recent P.F. certificates.....*Not illustrated* E. 1,000-1,500

OFFICIALS



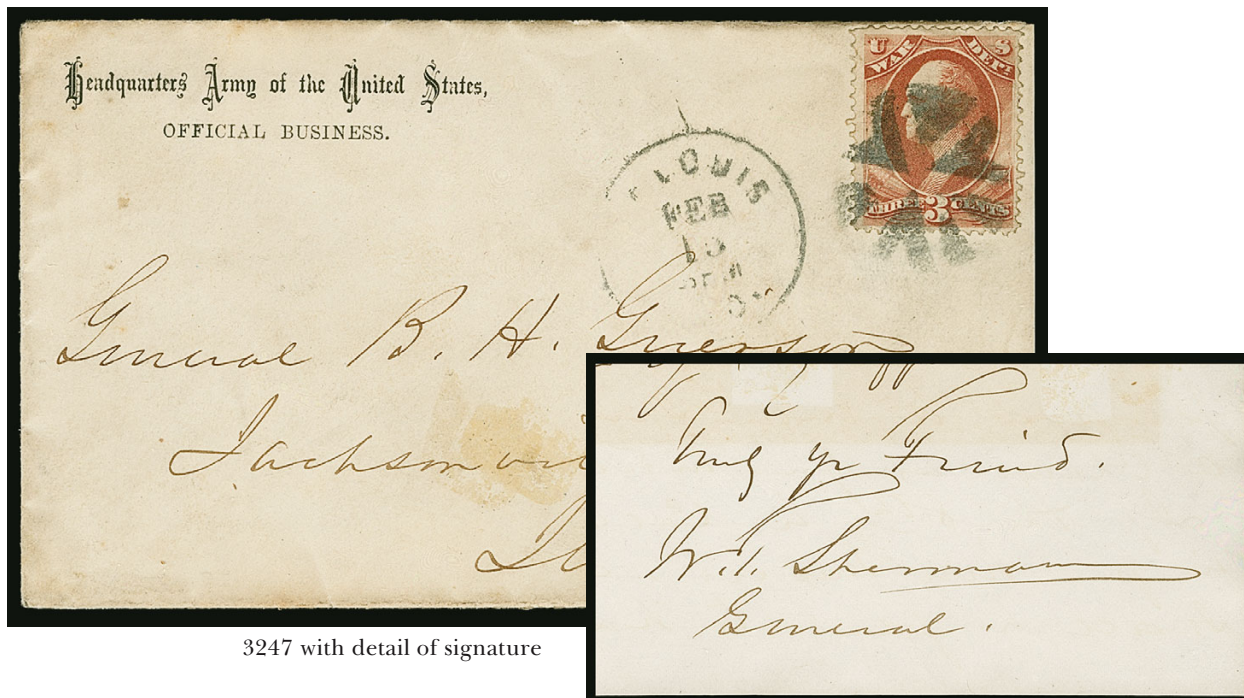
3245EX

- 3245 ☒ **12c Post Office (O52).** Two covers, first bears single tied by quartered cork, "Washington D.C. May 9" circular datestamp on legal-size imprint cover to South Scituate R.I., barely reduced at left and minor wrinkling, stamp with tear at bottom right; second bears single tied by quartered cork, "Providence R.I. Oct. 21 3PM" circular datestamp on oversize cover to South Scituate R.I., minor edgewear, a Fine pair of covers from the same source as the 15c offered in the following lot**(Photo Ex)** 2,000.00



3246

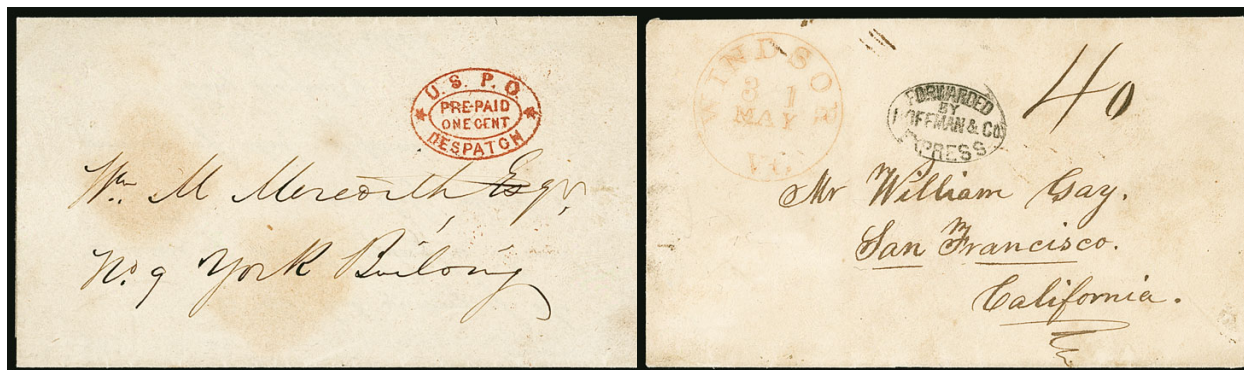
- 3246 ☒ **15c Post Office (O53).** Detailed impression, tied by cork on orange cover to the postmaster at South Scituate R.I., opened at sides, some edge tears
- VERY FINE APPEARANCE AND VERY RARE. PERHAPS FOUR OR FIVE COVERS ARE KNOWN WITH THE 15-CENT POST OFFICE DEPARTMENT OFFICIAL ISSUE.
- The 15c stamp pays the five-times 3c domestic rate. Judging by the size of this cover, it likely held a regulation manual or accounting of some sort. Robert Markovits recorded only four covers in total (2004 Bennett sale). We are not sure whether this is one of the four — this is offered to the market for the first time and was found by us in an old-time New England collection formed in the 1920's and 1930's..... 5,000.00



3247 with detail of signature

- 3247 ☒ **3c War (O85).** Choice centering with well-balanced margins, tied by well-struck circle of V's cancel, "St. Louis Mo. Feb. 15" circular datestamp on "Headquarters, Army of the United States, Official Business" imprint cover to General Benjamin H. Grierson at his home in Jacksonville Ill., addressed in the hand of William Tecumseh Sherman and with original 3-page autograph letter signed, with similar printed letterhead datelined "St. Louis Mo. Feb. 15, 1875", military content discussing strategy for troop placements, some splitting along folds of contents sensibly reinforced, Very Fine..... E. 1,000-1,500
- 3248 ☒ **Officials Covers.** Approximately 50 covers and a few cover fronts, majority are Post Office including O47 (2), O48 (2 single frankings plus strip of three), O49 (34), O50 (3), also O72, O73 strip of three, few other better, mixed condition, some Fine-Very Fine.....Not illustrated E. 750-1,000

CARRIERS, LOCALS AND WESTERN EXPRESSES



3249

3250

- 3249 ☒ **U.S.P.O. Despatch/Pre-Paid/One Cent.** Double-oval handstamp in red boldly struck on Mar. 1855 folded printed notice to street address, two faint toned spots, still Extremely Fine and a perfect strike of the scarce double oval, ex Hind, Middendorf and Meyersburg, with clear 1997 P.F. certificate E. 400-500
- 3250 ☒ **Forwarded by Hoffman & Co. Express.** Clear strike of oval express company handstamp (HOF-100) on cover to San Francisco, red "Windsor Vt. 31 May" circular datestamp and manuscript "40" cent rate, Very Fine and scarce, the Thomas book records only seven examples of this marking and reports that F.J. Hoffman ran this early express operation between Sacramento and the Placerville area, late in 1851 the express was dissolved E. 400-500



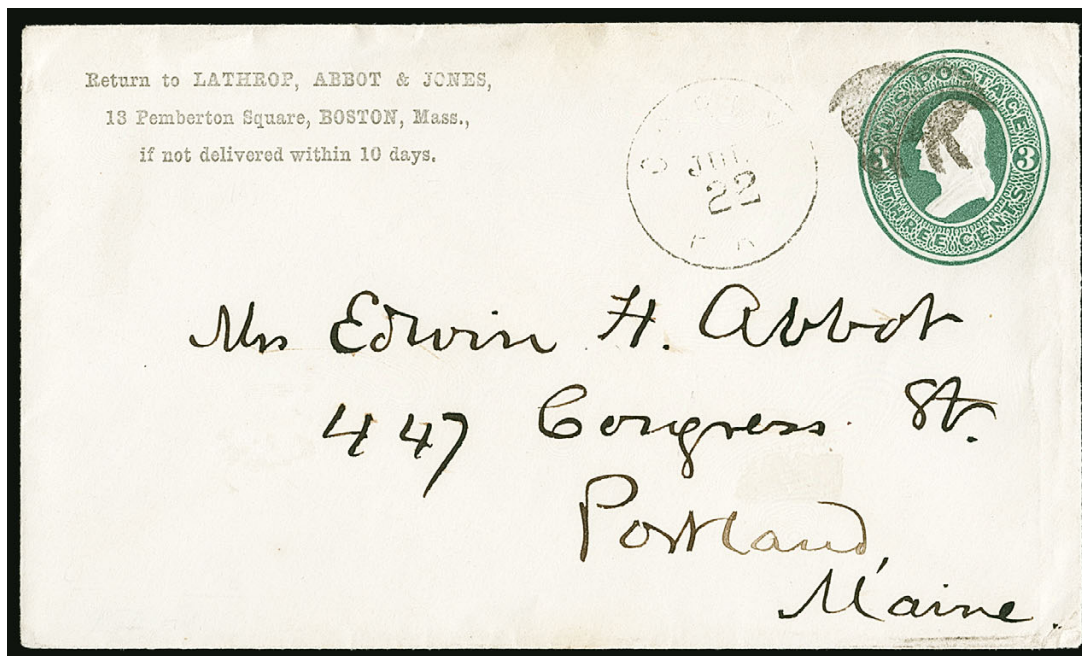
- 3251 ☒ **Johnson's Free P.O. Box, Philadelphia Pa., Black on Orange (unlisted in Scott).** Rectangular label (Ty. II) depicting **Abraham Lincoln** and with 1865 date affixed to back of folded cover franked with **2c Black (73)**, s.e. at left, tied by partly clear strike of Philadelphia Pa. double-circle datestamp and addressed to Baltimore Md., label with small bit of oxidation and tiny margin nick, file folds not affecting stamp or label, Very Fine, the Johnson's Box labels are believed by some specialists to be advertising labels applied to letters taken from a local merchant's mail-drop box, this one with the Lincoln design is the first example to appear in Power Search, with clear 2009 P.F. certificate..... E. 400-500
- 3252 ★★ **1c Blue, Eagle Carrier (LO2).** Mint N.H., Jumbo margins with framelines or design portions of all eight surrounding stamps, bright and fresh, Extremely Fine Gem, with 2016 P.S.E. certificate (Gem 100 Jumbo; Carriers & Locals unpriced in SMQ), this is the highest grade possible on the grading chart and it is shared by only 11 others, Scott Retail as hinged 50.00
- 3253 ★田 **Adams & Co.'s Express, Cal., 25c Black on Pink Glazed Card (1L3).** The so-called "Poker Chip" stamp, rumored to have circulated in California saloons during the Gold Rush era, complete sheet of 40, one stamp (Position 30) shows retouched flaw over bottom right "25", large margins, trivial wrinkle in top margin well away from stamps, Very Fine 2,000.00
- 3254 **Broadway Post Office, New York N.Y., (1c) Black (26L2).** Mostly large margins to just touching outer frameline at top, used with 1851 3c on small piece and tied by New York circular datestamp, Very Fine, with 2006 P.F. certificate, complete cover catalogues \$2,750.00, Scott Retail as single .. 400.00
- 3255 ★田 **Penny Express Co., 5c Blue, Red (114L2, 114L3).** Complete unused sheets of 32, slight wrinkling and toning in places, still an Extremely Fine and scarce pair of sheets *Not illustrated* 1,300.00
- 3256 ★田 **Wells, Fargo & Co., (unstated value) Blue, Newspaper, Horizontal Strip of Three, Imperforate Between (143LP9b).** Horizontal block of 10, right block of six contains two of the error strips, natural s.e. at right, original gum, h.r., shallow thin in top error strip, appears Very Fine, scarce multiple of this variety, Scott Retail as two error strips..... 700.00



3257

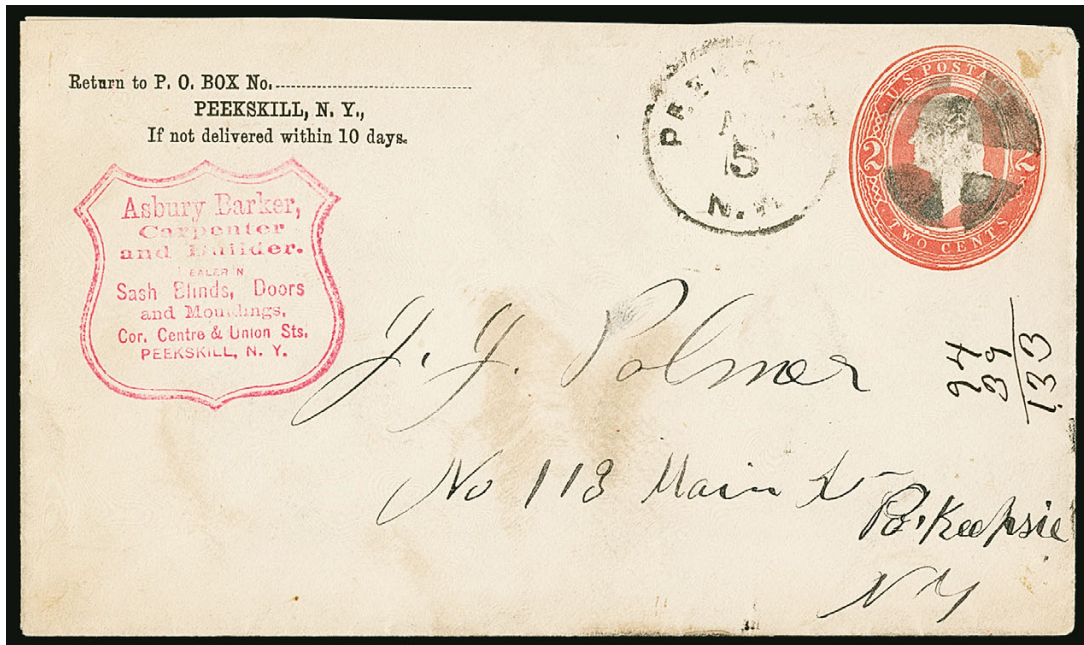
- 3257 ☒ **Wells, Fargo & Co.** Printed frank on 10c Yellow Green on White entire (U40) from Vancouver Island to Portland, Oregon, with British Columbia, 1869, 5c on 3c Bright Red (9), tied by blue "35" in barred oval cancel, blue "Wells, Fargo & Co. Victoria, Dec. 3" oval datestamp, expertly repaired tear at top not affecting embossed stamp, Very Fine, a handsome mixed franking cover from British Columbia to Oregon, ex Wilkinson E. 1,000-1,500

POSTAL STATIONERY



3258

- 3258 ☒ **3c Green on White, entire (U82).** Cancelled by well-struck **Pig fancy cancel**, "Corry Pa. Jul. 22" circular datestamp and used to Portland Me., Extremely Fine strike, with 2006 P.F. certificate E. 500-750



3259

- 3259 ☒ **2c Red on White Entire, Die 78 (U247; UPSS 752).** Size 7, knife 31, watermark 6, used with Peekskill N.Y. Aug. 5 circular datestamp to Poughkeepsie, arrival backstamp, advertising handstamp at left, slight soiling, Very Fine and quite scarce, the first used entire we have offered since our 1995 Rarities sale 1,100.00



3260

- 3260 ☒ **(Unstated Value) Orange Red on White Wove, Hyman L. Lipman, Philadelphia, Forerunner Postal Card Essay (UX1E-Ba).** Affixed with 1c Ultramarine (145), with Thomas Carson & Co. "hosiery, notions and fancy woolens" advertisement on back, addressed to Esqy Penn., stamp with faults and doubtful it originates, Very Fine, Understater value as unused card 1,500.00

For Hawaii and U.S. Possessions covers, please see Sale 1156 United States Stamps

GROUP LOTS

- 3261 ☒ **Female Seminary Postal History.** 11 covers ranging from 3c 1851 Issue to 3c Green Bank Notes, each with a female seminary corner card or design, four are illustrated and a couple others embossed, range of seminaries without duplication including Oneida N.Y., North Granville N.Y., Collegiate Va., Judson Ala., others, mixed condition with some edge flaws on several, overall Fine and interesting group..... E. 400-500
- 3262 ☒ **Territorial Cover Lot.** About 30 covers from 1830s-1900s, including uses from Alaska (Nome, Tyoonok and Skagway), Arizona, Colorado, Dakota, Indian, Michigan, Montana, Nebraska, Oklahoma and Utah, condition slightly mixed but much is Fine or better E. 400-500
- 3263 ☒ **Magnus Design Civil War Patriotics.** 72 unused Magnus design covers, most are multi-colored or gold including several of the better designs such as General portraits, monuments such as White House, city views, maps plus many "For the Union" and Rebel states designs, also including three used Magnus designs and two other printers (small faults), unused covers mostly Very Fine..... E. 1,500-2,000
- 3264 ☒ **1869 Issue Postal History Balance.** 12 covers, with seven No. 113 on illustrated advertising covers, two covers to Germany, one used with 1861 3c stamps, 12c used with 6c Banknote on 6-times franking, 3c used on uprated 3c stationery with 1861 12c and 3c used with 1867 15c on registered cover, additionally with fascinating unused Civil War "The Peculiar Instituion" patriotic, a couple ex Kuphal, mostly Very Fine E. 1,000-1,500
- 3265 ☒ **Bank Note Issue Covers.** Approximately 100, including significant number of registered covers with various 10c and 3c stamps, foreign destinations including Mexico, England, No. 205 to India and British Burma, some pre-U.P.U. foreign uses, mixed condition, some Fine-Very Fine..... E. 1,000-1,500
- 3266 ☒ **Lynchburg Va., Stamped Cover Balance.** More than 85 covers to or from Lynchburg Va., the only non-cover item is pair 5c Red Brown (1) pen cancelled on piece with Lynchburg circular datestamp, most of the rest from the 1850's-60's with a wide range of issues, best items include No. 11A with blue "Way 6" (James River & Kanawha Canal), a couple 3c 1851 Orange Browns, No. 15 to Havana, No. 17 solo use to Richmond, No. 367 first day cover, cover with 4c, 5c and 10c Parcel Post (purchased for \$400 at auction in 1977), lots of others which are largely ordinary, mixed condition with faults to be expected on many, overall Fine group E. 750-1,000
- 3267 ☒ **Lynchburg Va. Advertising Covers.** Collection of 45 advertising covers from Lynchburg Va., including 16 from before 1870, 23 from the Bank Note period and 7 later, wide range of designs with corner cards, embossed cameos including Lynchburg & Abingdon Telegraph, lots of illustrated including No. 26 on a livery and stable cover with illustration of a trotting horse, colleges, many other interesting designs, mixed condition with some downright faulty and some Fine, this collector never met a Lynchburg cover he did not like, overall an interesting group worth review..... E. 500-750
- 3268 ☒ **Advertising Collection Balance.** Over 380 covers, mostly from 1860s-1940s, tremendous and diverse array of topics, all-over designs and multicolored including food (ice cream, oysters, etc.), sleds, guns, tobacco, musical instruments, medicinal including Seabury & Johnson all-over (faulty), stationery (such as pens) and much more, we notice a fair few that would retail in excess of \$100.00 or more, some mixed condition but much is Fine or better, worthy of close inspection E. 3,000-4,000
- 3269 ☒ **Cameo Advertising Cover Lot.** Twelve covers, three 1851 3c, four 1857 3c, three 1861 3c, 2c Black Jack and 3c Bank Note, each with different advertisements and colored cameos including red, black, green, blue and even brown with advertisement for "Uterine Catholicon", couple minor edge nicks, mostly Very Fine E. 1,000-1,500

- 3270 ☒ **Circus Postal History Collection.** Large album with more than 80 circus-themed covers, earliest including three franked with 3c 1857 and thirteen franked with 3c 1861 (few with faults), range of other issues through Washington-Franklins and a few later including many with Bank Note issues, nearly all are illustrated, many elaborately and a few all-over designs, two most interesting groups are P. T. Barnum and Buffalo Bill, unused “Southern Menagerie is Coming” Civil War Patriotic design (see Siegel Sale 1048, lot 263 for used example), mixed condition with faults to be expected, overall Fine appearance, an outstanding circus-related group..... E. 4,000-5,000
- 3271 ☒ **Exposition Cover Collection.** Over 150 covers from 1898 Trans-Mississippi Expo thru 1915 Panama-Pacific Expo, wide range of uses including advertising covers, some with expo labels, foreign destination uses and many different expo cancels, even a rare 1901 Pan-American hand-out cover with facsimile imprinted stamp (Bomar B-01-13A, about seven recorded, with faults), some mixed condition but much is Fine or better..... E. 500-750
- 3272 **Match and Medicine Corner Card Covers or Illustrations.** Approximately 50 items, earliest is 1858 cover with No. 26 and James C. Ayer embossing on top flap, few other earlier including No. 26 with illustrated Dr. Hooker’s Cough and Croup Syrup, nice group of Match including two covers with all-over Byam, Carlton & Co. advertising with No. 26, two covers with No. 114 and Match company corner cards, few with matching letter-heads, some faults, most Fine-Very Fine, a fascinating group that would be difficult to assemble..... E. 1,500-2,000
- 3273 ☒ **20th Century Fancy Cancel Postal History.** Over 260 covers, mainly from 1930s with a few later, tremendous array of topics including holidays (Santa Claus for Christmas, Witch for Halloween, Turkey for Thanksgiving), animals (bird, bee, fox, cow, etc.), famous people (Lincoln and Washington) and those relating to postmarked city (such as Spider Ky. or Strawberry Ark.), fair number with George Rogers Clark handstamp, mostly Very Fine, a remarkable holding..... E. 2,000-3,000
- 3274 ☒ **Cover Accumulation.** Oversize binders and shoe boxes containing a range of covers, including few advertising, group of No. 65 including two with part imprint selvage, Bank Notes, nice group of 1890-93 and Columbian Issue with some fronts or part of commercial package labels, including few tags with No. 240, also some unused Patriotics, various others, mixed condition, some Fine-Very Fine..... E. 750-1,000
- 3275 ☒ **Cover Collection Balance.** Couple hundred covers from stampless period mostly to about 1930s, highlights noticed including Mauch Chunk Pa. and New Hope Pa. stampless, 1847 10c, couple Waterbury Conn. fancy cancels, Nos. 834 plate block first day with cachet, Air Posts including Nos. C1-C2 and C4-C6 plus Zeppelin and Catapult cover, Special Delivery including Nos. E1-E2, E4-E5 and E7, postal cards, few Alaska Dog team mail from 1940s and much more, mostly Fine or better, an interesting group . E. 1,000-1,500
- 3276 ☒ **Cover Balance.** Small but interesting accumulation of mostly classic covers, including pair of No. 9 used with 3c on folded letter to France, No. 32 on mourning cover from Cal. to R.I. (cover faults), few single frankings with No. 9, few with No. 14, a No. 63 which looks like a Dark Blue to us, No. 11 on Old Dr. Heath’s Japanese and East India Medicines illustrated cover, front only (two flaps) with “Saved from the Wreck of the Colombo” handstamp, nice group with express labels mostly related to Boston, few other interesting, mixed condition, few appear Fine-Very Fine..... E. 750-1,000

END OF SALE — THANK YOU

Live Internet Bidding at Siegel Auctions

BIDDING FROM YOUR COMPUTER LETS YOU BE PART OF THE LIVE AUCTION FROM ANYWHERE IN THE WORLD!

There's **NO SUBSTITUTE** for following the auction in real time.
Live Internet Bidding lets you bid and buy as though you were right there in the saleroom.
And it's easy.

This step-by-step guide will instruct you how to register, set your browser and use the bidding interface.

Start by following the simple steps to become a registered Live Internet Bidder.
Once you've been approved for bidding, you can listen to the auction and place bids with the click of a mouse.

Registering with STAMP AUCTION NETWORK & SIEGEL AUCTION GALLERIES

Live Internet Bidding is managed by Stamp Auction Network (SAN).
To bid, you must be registered and approved by *both* SAN and Siegel.
To decide what you need to do, choose the description below that best fits you.



I've already registered with SAN and have been approved by Siegel for internet bidding.

I'm a Siegel client, but I'm not registered with SAN.

Go to stampauctionnetwork.com/siegel and click on "Register" at the top. Check the box for Robert A. Siegel Auction Galleries (under "R") and submit the form, indicating you are a Siegel client. Once registered at SAN, you're ready for internet bidding.

I've bid through SAN before, but this is the first time I've bid in a Siegel sale.

Then you just need to be approved by Siegel. Go to stampauctionnetwork.com/siegel and click on "Update Registration" at the top. Your SAN account information will be sent to us for approval (you might be asked for other trade references). Once approved by Siegel for bidding, you're ready for internet bidding.

I've never bid with Siegel, nor registered with SAN.

Go to stampauctionnetwork.com/siegel and click on "Register" at the top. Check the box for Robert A. Siegel Auction Galleries (under "R") and submit the form **with your trade references** (please, no family members or credit card companies as references). Once registered at SAN and approved by Siegel for bidding, you're ready for internet bidding.

Live Internet Bidding works by allowing registered bidders to observe and place bids.

Live Internet Bidding will work with any browser on both PC and Mac operating systems.

Before bidding by internet for the first time, we recommend finding a sale in progress and listening to the public broadcast or logging in as a registered bidder. This will help you develop a feel for the sale tempo and bidding interface.

Log on to the auction at stampauctionnetwork.com/siegel.

You can also log on at siegelauctions.com

When you're logged on as a Live Internet Bidder, the bidding interface shows a photo and description of the lot, the current bid (and your bidding status), options for placing competitive bids and buttons with bid increments.

- After you click on a bid amount, the auctioneer is immediately notified of your bid.
- Retracting a bid is usually not acceptable, so please bid carefully.
- If you bid and then decide to stop, the "Pass" button will tell the auctioneer you are no longer bidding.
- You can send messages to the auctioneer (for example, a request for extension).
- You can track prior realizations from the bidding screen.



"System Down" or "Lost Connection" events do occasionally happen.

If you have any problems with Live Internet Bidding please call **212-753-6421** for immediate assistance.



BIDS

Use this form to submit absentee bids
or to confirm telephone bids

Sale 1155

May 9-10, 2017

PADDLE #

1

Please provide the following information:

NAME

ADDRESS

CITY/STATE/ZIP

PHONE MOBILE

EMAIL

2

Have you purchased from us in the past 5 years? ☐ Yes (please go to Section 3)
☐ No (references required below)

STAMP FIRM PHONE

STAMP FIRM PHONE

Please submit references at least **2 business days** before the sale. Bids from new clients will not be executed if satisfactory references are not received in time to be contacted.

3

- Enter the lot number and your corresponding maximum bid in the space below
- Use whole dollar amounts and bid according to the increments (see back of form)
- Bids do not include the **18% Buyer's Premium**, taxes, duty or shipping charges
- Absentee bids will advance at one increment over the next highest competing bid
- "Plus", "Break Tie" or "Buy" bids will not be executed
- Indicate any "Or" bids between lot number/bid entries and bracket your choices
- If you wish to limit the total amount of your bids, follow the instructions below

Lot #	Bid \$	Lot #	Bid \$	Lot #	Bid \$

☐ **Limit Bids:** Check this box if you wish to limit the total hammer price of your bids (excluding 18% Buyer's Premium, taxes, duty and shipping costs). Your bids will be executed until your bidding limit has been reached. The total amount you wish to bid is \$

4

By signing this form, you agree to all of the Conditions of Sale printed in the sale catalogue (printed and digital), including but not limited to a) payment in the manner demanded by the Siegel firm, and b) payment of the 18% Buyer's Premium, any sales tax or customs duty, shipping costs, late charges and

other prescribed charges. You agree that your bids will be executed as courtesy by Siegel, but you waive the right to make any claim against Siegel or its employees arising from these bids or your participation in the sale. You agree to honor all bids as submitted, regardless of any errors or omissions.

SIGNED DATE

Mail the signed form to Siegel Bid Department, 60 East 56th St., New York, NY 10022
or email to stamps@siegelauctions.com
or fax to 212-753-6429



Additional Bids

Sale 1155

May 9-10, 2017

PADDLE #

Lot #	Bid \$	Lot #	Bid \$	Lot #	Bid \$

Shipping & Insurance

We will be pleased to arrange for shipping and transit insurance for purchases in this sale, except for lots marked or announced as "floor sale only." To expedite billing and delivery to hundreds of buyers in each sale, we use standard charges for postage and insurance under our policy. These charges are based on the package weight and mailing requirements, according to the schedule shown here. Our standard charges do not include a fee for our services, and they may be slightly more or less than the actual postage or Fedex fee. We ask all buyers to remit the invoiced amount for shipping and insurance.

Transit insurance is provided in all cases, except when the buyer has furnished us with documentation that insurance is effective under the buyer's own policy.

There will be no added insurance charge for shipments of less than \$75,000 value. Shipments valued in excess of \$75,000 may require supplemental insurance and/or special courier service, the estimated cost of which will be furnished to the buyer prior to shipment. If the buyer refuses to pay the estimated charges or furnish proof of self-insured coverage, the buyer will be responsible for picking up the lots at our office and any resulting sales tax.

Standard Shipping Charges

Weight Class	Shipping Method	Charge
Up to 2 lbs.	Fedex Envelope	\$20
Over 2 lbs.	Fedex Box	\$35 - \$50*
Outside US	Fedex	\$50 - \$100**
Bulky Lots	Fedex Ground or Express	By weight

* Up to \$75,000 value and up to 5 lbs; additional charge may apply to packages exceeding limits

** Buyers outside United States are liable for any applicable customs duty and clearance charges. An accurate declaration of contents and value will be made on all packages and import/export documents. **Siegel may refuse to ship lots to certain countries with a high risk factor.**

2/2015

Bidding Increments

The auctioneer may regulate the bidding at his discretion. However, to assist absentee bidders in establishing their maximum bids, the increments shown here will be used in most cases. We recommend that written bids conform to these increments—bids that do not will be reduced accordingly.

Bid	Increment	Bid	Increment
Up to \$200	\$10	\$7,000-20,000	\$500
\$200-500	\$25	\$20,000-30,000	\$1,000
\$500-1,000	\$50	\$30,000-70,000	\$2,500
\$1,000-3,000	\$100	\$70,000-140,000	\$5,000
\$3,000-7,000	\$250	\$140,000-300,000	\$10,000

PRICES REALIZED FOR SALE 1155---5/9-10/2017

United States and Confederate States Postal History

Robert A. Siegel Auction Galleries, Inc.
60 East 56th Street, 4th Floor, New York, NY 10022
Tel (212) 753-6421 Fax (212) 753-6429

Lot#	Realized	Lot#	Realized	Lot#	Realized	Lot#	Realized	Lot#	Realized	Lot#	Realized
3001	475	3047	450	3095	475	3140	200	3188	160	3238	425
3002	550	3048	2,900	3096	450	3141	475	3189	600	3240	200
3003	275	3049	1,700	3097	450	3142	350	3190	2,600	3242	1,600
3004	800	3049	250	3098	300	3143	250	3191	600	3243	375
3005	300	3050	700	3099	400	3144	650	3192	110	3244	500
3006	1,000	3051	900	3100	750	3145	475	3193	950	3246	1,100
3007	200	3052	3,250	3101	800	3146	1,700	3194	160	3247	1,300
3008	5,750	3053	550	3102	700	3147	425	3195	150	3248	400
3009	275	3054	1,500	3103	2,000	3148	325	3196	325	3250	550
3010	550	3055	160	3104	375	3149	450	3197	1,900	3251	200
3011	800	3056	3,250	3105	7,000	3150	275	3199	750	3252	400
3012	900	3057	275	3106	1,700	3151	425	3200	850	3253	450
3013	1,500	3059	225	3107	2,000	3152	225	3204	275	3254	300
3014	250	3060	300	3108	1,600	3153	400	3205	800	3255	250
3015	400	3061	250	3109	550	3154	225	3206	150	3256	250
3016	1,100	3062	1,100	3110	350	3155	2,800	3207	110	3257	1,000
3017	400	3063	250	3111	350	3156	325	3208	450	3258	250
3022	500	3064	150	3113	250	3157	350	3209	500	3259	225
3023	140	3066	21,000	3114	850	3158	350	3210	600	3260	1,000
3024	400	3068	1,900	3115	400	3159	350	3211	225	3261	350
3025	650	3070	1,200	3116	225	3160	400	3212	250	3262	900
3026	425	3071	250	3117	550	3161	475	3213	160	3263	4,250
3027	500	3073	1,800	3118	500	3162	450	3214	400	3264	800
3028	1,700	3074	1,600	3119	1,200	3163	225	3215	170	3265	700
3029	425	3076	2,100	3120	950	3164	170	3216	750	3266	1,400
3030	500	3077	300	3121	600	3165	225	3217	800	3267	1,800
3031	800	3078	1,500	3121	200	3166	1,100	3219	500	3268	4,500
3032	225	3079	1,500	3122	800	3167	1,700	3222	200	3269	750
3033	300	3081	700	3123	1,700	3168	425	3224	225	3270	2,500
3034	500	3082	750	3124	750	3169	425	3225	130	3271	1,400
3035	1,000	3083	300	3125	375	3170	1,100	3226	1,000	3272	800
3036	500	3084	275	3126	350	3171	1,300	3227	400	3273	2,300
3037	500	3085	700	3127	800	3172	800	3228	500	3274	4,250
3038	750	3086	250	3128	225	3173	1,400	3229	225	3275	2,300
3039	475	3087	850	3129	375	3174	1,600	3230	450	3276	1,400
3040	550	3088	650	3130	225	3175	700	3231	650		
3041	1,900	3089	100	3131	350	3176	3,250	3232	160		
3042	250	3090	1,700	3133	400	3180	225	3233	160		
3043	550	3091	300	3134	5,000	3182	275	3234	160		
3044	375	3092	650	3135	5,000	3183	110	3235	100		
3045	275	3093	190	3136	1,000	3184	700	3236	550		
3046	275	3094	450	3137	3,500	3185	425	3237	275		