

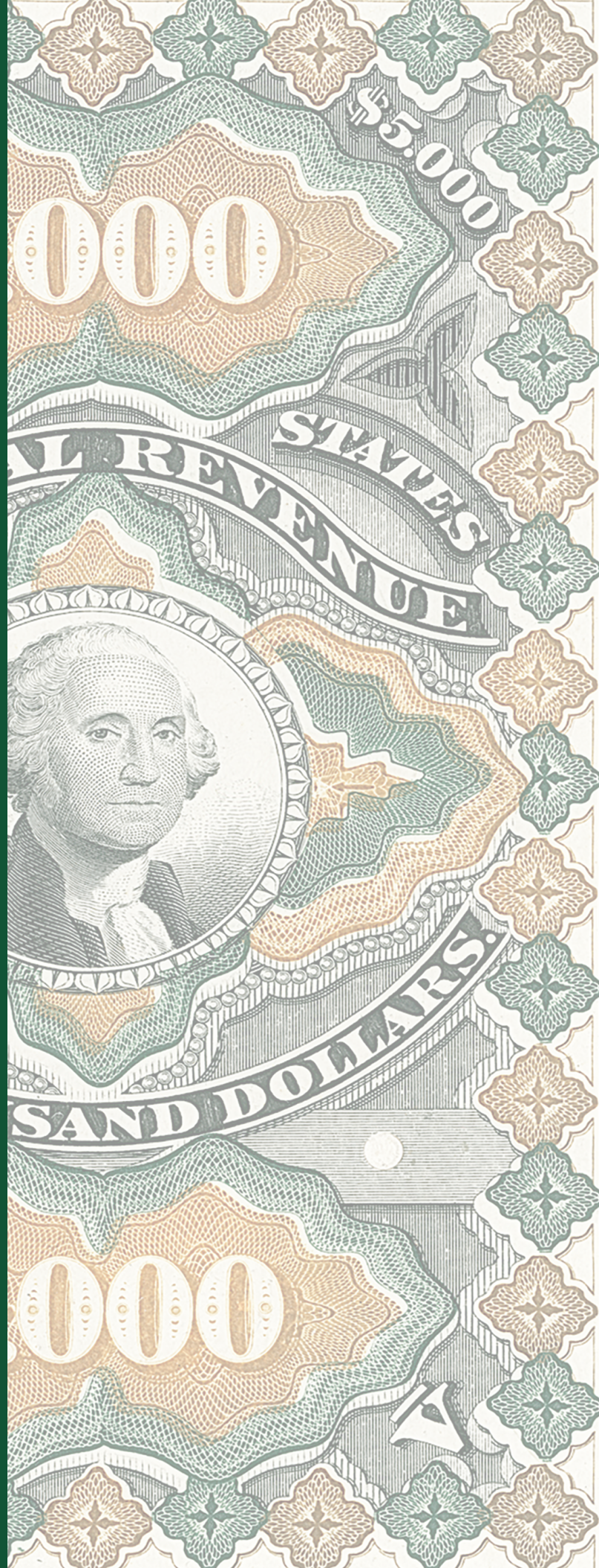
The VAQUERO COLLECTION

UNITED STATES
ESSAYS AND PROOFS



SALE 1158
FRIDAY, MAY 12, 2017

Robert A. Siegel
AUCTION GALLERIES, INC.



The VAQUERO COLLECTION

UNITED STATES ESSAYS AND PROOFS



SALE 1158—FRIDAY, MAY 12, 2017, AT 1:30 P.M. (LOTS 4001-4222)

Live auction at 60 East 56th Street (Park/Madison), 4th Floor, New York City

All lots sold subject to an **18% buyer's premium** and applicable sales tax or customs duty

Please carefully read the Conditions of Sale before bidding

Presale Viewing

Monday-Thursday, May 8-11, 10am-4pm, and Friday, May 12, 10am-12 noon
and by appointment (please call 212-753-6421)

Robert A. Siegel

AUCTION GALLERIES, INC.

60 EAST 56TH STREET, 4TH FLOOR, NEW YORK, N.Y. 10022
Phone (212) 753-6421 • Fax (212) 753-6429 • E-mail: stamps@siegelauctions.com

Catalogues, internet bidding, resources, archives and the Siegel Encyclopedia at
siegelauctions.com



Robert A. Siegel

AUCTION GALLERIES, INC.

60 EAST 56TH STREET, 4TH FLOOR, NEW YORK, N.Y. 10022

Phone (212) 753-6421 • Fax (212) 753-6429 • E-mail: stamps@siegelauctions.com
siegelauctions.com



Scott R. Trepel
President
strepel
@siegelauctions.com



John P. Zuckerman
Senior Vice President
jzuckerman
@siegelauctions.com



Corey Long
Senior Vice President
clong
@siegelauctions.com



Colleen Stellato
Vice President—Accounts
colleen
@siegelauctions.com



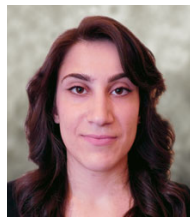
Charles F. Shreve
Director, Siegel International
charles
@siegelauctions.com



Andrew Titley
International Specialist
andrew
@siegelauctions.com



Helen Stewart
Bids and Inquiries
helen
@siegelauctions.com



Jocelyn Weibel
Digital Production
jocelyn
@siegelauctions.com



Chris Anderson
Siegel International
chris
@siegelauctions.com

Scott R. Trepel Principal Auctioneer (licensed by NYC Dept. of Consumer Affairs, #795952)

Information for Bidders

Bidding

The following means are available for placing bids:

- 1) **Attending the Live Auction in Person:** All bidders must register for a paddle, and new bidders must provide references at least three business days in advance of the sale.
- 2) **Live Internet Bidding:** Instructions for participating as a Live Internet Bidder are provided on the page opposite.
- 3) **Phone Bidding:** Bidders can be connected to the sale by phone and bid through a member of staff. Requests for phone bidding are subject to approval (please contact our office at least 24 hours before the sale). A signed Bid Form is required.
- 4) **Absentee Bids.** All bids received in advance of the sale, either by mail, fax, phone, e-mail or internet, are Absentee Bids, which instruct the auctioneer to bid up to a specific amount on one or more lots in the sale. Absentee Bids sent by phone, fax or e-mail should arrive at least one hour prior to the start of the sale session. Bids entered through Live Internet Bidding will be visible to the auctioneer during the sale. Written bids should be entered legibly on the Bid Form in the sale catalogue. E-mail and internet bids should be carefully typed and double-checked. All new bidders must provide references. We recommend calling or e-mailing to confirm that Absentee Bids sent by mail, fax or e-mail have been received and entered.

Pre-Sale Viewing

Subject to availability, certain lots (except group lots) can be sent to known clients for examination. Requests must be made no later than 7 days prior to the sale. Lots must be returned on the day received. Postage/insurance costs will be invoiced.

In addition to regular viewing, clients may view lots by appointment. Our staff will be pleased to answer questions or provide additional information about lots.

Expert Certification

Individual items offered without a PF or PSE certificate dated within the past five years may be purchased subject to independent certification of genuineness and our description. **Please refer to the Conditions of Sale and Grading Terms for policies governing certification.**

Shipping and Delivery

Procedures and charges for shipping lots are printed on the back of the Bid Form. **Bidders are responsible for all prescribed shipping charges and any applicable sales tax or customs duties.**

Price Realized

Prices realized are sent with each invoice. Bidders with e-mail will receive a Bid Results report after the sale. Session results are posted immediately to siegelauctions.com

Live Internet Bidding at Siegel Auctions

BIDDING FROM YOUR COMPUTER LETS YOU BE PART OF THE LIVE AUCTION FROM ANYWHERE IN THE WORLD!

There's **NO SUBSTITUTE** for following the auction in real time.
Live Internet Bidding lets you bid and buy as though you were right there in the saleroom.
And it's easy.

This step-by-step guide will instruct you how to register, set your browser and use the bidding interface.

Start by following the simple steps to become a registered Live Internet Bidder.
Once you've been approved for bidding, you can listen to the auction and place bids with the click of a mouse.

Registering with STAMP AUCTION NETWORK & SIEGEL AUCTION GALLERIES

Live Internet Bidding is managed by Stamp Auction Network (SAN).
To bid, you must be registered and approved by *both* SAN and Siegel.
To decide what you need to do, choose the description below that best fits you.



I've already registered with SAN and have been approved by Siegel for internet bidding.

I'm a Siegel client, but I'm not registered with SAN.

Go to stampauctionnetwork.com/siegel and click on "Register" at the top. Check the box for Robert A. Siegel Auction Galleries (under "R") and submit the form, indicating you are a Siegel client. Once registered at SAN, you're ready for internet bidding.

I've bid through SAN before, but this is the first time I've bid in a Siegel sale.

Then you just need to be approved by Siegel. Go to stampauctionnetwork.com/siegel and click on "Update Registration" at the top. Your SAN account information will be sent to us for approval (you might be asked for other trade references). Once approved by Siegel for bidding, you're ready for internet bidding.

I've never bid with Siegel, nor registered with SAN.

Go to stampauctionnetwork.com/siegel and click on "Register" at the top. Check the box for Robert A. Siegel Auction Galleries (under "R") and submit the form **with your trade references** (please, no family members or credit card companies as references). Once registered at SAN and approved by Siegel for bidding, you're ready for internet bidding.

Live Internet Bidding works by allowing registered bidders to observe and place bids.

Live Internet Bidding will work with any browser on both PC and Mac operating systems.

Before bidding by internet for the first time, we recommend finding a sale in progress and listening to the public broadcast or logging in as a registered bidder. This will help you develop a feel for the sale tempo and bidding interface.

Log on to the auction at stampauctionnetwork.com/siegel.

You can also log on at siegelauctions.com

When you're logged on as a Live Internet Bidder, the bidding interface shows a photo and description of the lot, the current bid (and your bidding status), options for placing competitive bids and buttons with bid increments.

- After you click on a bid amount, the auctioneer is immediately notified of your bid.
- Retracting a bid is usually not acceptable, so please bid carefully.
- If you bid and then decide to stop, the "Pass" button will tell the auctioneer you are no longer bidding.
- You can send messages to the auctioneer (for example, a request for extension).
- You can track prior realizations from the bidding screen.



"System Down" or "Lost Connection" events do occasionally happen.

If you have any problems with Live Internet Bidding please call **212-753-6421** for immediate assistance.

Conditions of Sale (please read carefully before bidding)

THE PROPERTY DESCRIBED IN THIS CATALOGUE WILL BE OFFERED AT PUBLIC AUCTION BY ROBERT A. SIEGEL AUCTION GALLERIES, INC. ("GALLERIES") ON BEHALF OF VARIOUS CONSIGNORS AND ITSELF OR AFFILIATED COMPANIES. BY BIDDING ON ANY LOT, WHETHER DIRECTLY OR BY OR THROUGH AN AGENT, IN PERSON, OR BY TELEPHONE, FACSIMILE OR ANY OTHER MEANS, THE BIDDER ACKNOWLEDGES AND AGREES TO ALL OF THE FOLLOWING CONDITIONS OF SALE.

1. The highest bidder acknowledged by the auctioneer shall be the buyer. The term "final bid" means the last bid acknowledged by the auctioneer, which is normally the highest bid offered. **The purchase price payable by the buyer will be the sum of the final bid and a commission of 18% of the final bid ("buyer's premium"), together with any sales tax, use tax or customs duties due on the sale.**
2. The auctioneer has the right to reject any bid, to advance the bidding at his discretion and, in the event of a dispute, to determine the successful bidder, to continue the bidding or to reoffer and resell the lot in dispute. The Galleries' record of the final sale shall be conclusive.
3. All bids are per numbered lot in the catalogue unless otherwise announced by the auctioneer at the time of sale. The right is reserved to group two or more lots, to withdraw any lot or lots from the sale, or to act on behalf of the seller. The Galleries will execute bidding instructions on behalf of clients, but will not be responsible for the failure to execute such bids or for any errors in the execution of such bids.
4. **Lots with numbers followed by the symbol ° are offered subject to a confidential minimum bid ("reserve"), below which the lot will not be sold. The absence of the symbol ° means that the lot is offered without a reserve. If there is no reserve, the auctioneer has sole discretion to establish a minimum opening bid and may refuse an offer of less than half of the published estimate. Any lot that does not reach its reserve or opening bid requested by the auctioneer will be announced as "passed" and excluded from the prices realized lists after the sale. The Galleries may have a direct or indirect ownership interest in any or all lots in the sale resulting from an advance of monies or goods-in-trade or a guarantee of minimum net proceeds made by the Galleries to the seller.**
5. Subject to the exclusions listed in 5(A), the Galleries will accept the return of lots which have been misidentified or which have obvious faults that were present when the lot was in the Galleries' custody, but not so noted in the lot description. **All disputed lots must be received by the Galleries intact with the original packing material within 5 days of delivery to the buyer but no later than 30 days from the sale date.**
(5A) **EXCLUSIONS:** The following lots may not be returned for any reason, or may not be returned for the reasons stated: i) lots containing 10 or more items; ii) lots from buyers who registered for the pre-sale exhibition or received lots by postal viewing, thereby having had the opportunity to inspect them before the sale; iii) any lot described with "faults," "defects" or a specific fault may not be returned because of any secondary fault; iv) photographed lots may not be returned because of centering, margins, short/nibbed perforations or other factors shown in the illustrations; v) the color of the item does not match the color reproduction in the sale catalogue or website listing; vi) the description contains inaccurate information about the quantity known or reported; or vii) a certification service grades a stamp lower than the grade stated in the description.
6. Successful bidders, unless they have established credit with the Galleries prior to the sale, must make payment in full before the lots will be delivered. Buyers not known to the Galleries must make payment in full within 3 days from the date of sale. **The Galleries retains the right to demand a cash deposit from anyone prior to bidder registration and/or to demand payment at the time the lot is knocked down to the highest bidder, for any reason whatsoever.** In the event that any buyer refuses or fails to make payment in cash for any lot at the time it is knocked down to him, the auctioneer reserves the right to reoffer the lot immediately for sale to the highest bidder. **Credit cards (Visa, Mastercard and Discover only) can be accepted as payment but will be subject to a 3% Convenience Fee, which will be added to the total of the entire invoice (including hammer price, buyer's premium, shipping**

and transit insurance charges and any applicable taxes).

7. If the purchase price has not been paid within the time limit specified above, nor lots taken up within 7 days from the date of sale, the lots will be resold by whatever means deemed appropriate by the Galleries, and any loss incurred from resale will be charged to the defaulting buyer. **Any account more than 30 days in arrears will be subject to a late payment charge of 1½% per month as long as the account remains in arrears. Any expenses incurred in securing payment from delinquent accounts will be charged to the defaulter.** A fee of \$250.00 per check will be charged for each check returned for insufficient funds.
8. All lots are sold as genuine. **Any lot accompanied by a certificate issued by The Philatelic Foundation or by Professional Stamp Experts within 5 years of the sale date is sold "as is" and in accordance with the description on the certificate. Such lots may not be returned for any reason, including but not limited to a contrary certificate of opinion.** Buyers who wish to obtain a certificate for any item that does not have a P.F. or P.S.E. certificate (dated as above) may do so, provided that the following conditions are met: (1) the purchase price must be paid in full, (2) the item must be submitted to an acceptable expertizing committee with a properly executed application form within 21 days of the sale, (3) a copy of the application form must be given to the Galleries, (4) in the event that an adverse opinion is received, the Galleries retain the right to resubmit the item on the buyer's behalf for reconsideration, without time limit or other restrictions, (5) unless written notification to the contrary is received, items submitted for certification will be considered cleared 90 days from the date of sale, and (6) in the event any item is determined to be "not as described", the buyer will be refunded the purchase price and the certification fee up to \$800.00 unless otherwise agreed to in writing.
9. Until paid for in full, all lots remain the property of the Galleries on behalf of the seller.
10. Agents executing bids on behalf of clients will be held responsible for all purchases made on behalf of clients unless otherwise arranged prior to the sale.
11. The buyer assumes all risk for delivery of purchased lots and agrees to pay for prescribed shipping costs. **Buyers who receive lots in the U.S. are obligated to pay whatever sales tax or compensating use tax might be due, and buyers outside the U.S. are responsible for all customs duties.**
12. **The bidder consents that any action or proceeding against it may be commenced and maintained in any court within the State of New York or in the United States District Court for the Southern District of New York, that the courts of the State of New York and United States District Court for the Southern District of New York shall have jurisdiction with respect to the subject matter hereof and the person of the bidder. The bidder agrees not to assert any defense to any action or proceeding initiated by Galleries based upon improper venue or inconvenient forum. The bidder agrees that any action brought by the bidder shall be commenced and maintained only in a Federal Court in the United States District Court for the Southern District of New York or the State Court in the county in which Galleries has its principal place of business in New York. The bidder agrees not to use a public conflict resolution service and not to use any form of social media to publish comments or information about the Galleries and its employees which might harm the Galleries' reputation or business. These Conditions of Sale shall be governed by and construed in accordance with the substantive laws of the State of New York, and shall constitute an agreement that shall be binding on the parties, and their respective heirs, administrators, distributees, successors and assignees.**

SCOTT R. TREPEL, Principal Auctioneer
Auctioneer's License No. 795952
N.Y.C. Department of Consumer Affairs
80 Lafayette Street, New York, N.Y. 10013
Telephone (212) 577-0111

Revised 1/2017

Grades, Abbreviations and Values Used in Descriptions

Grades and Centering

Our descriptions contain detailed information and observations about each item's condition. We have also assigned grades to stamps and covers, which reflect our subjective assessment. For stamps, the margin width, centering and gum are described and graded according to generally-accepted standards (an approximate correlation to numeric grades is provided at right). Although we believe our grades are accurate, they are not always exactly aligned with third-party grading terms or standards for all issues. **A lot may not be returned because a certification service grades a stamp lower than the grade stated in the description. Information from the P.S.E. Stamp Market Quarterly and P.S.E. Population ReportSM is the most current available, but lots may not be returned due to errors or changes in statistics or data.**

Extremely Fine Gem (90-100): The term "Gem" describes condition that is the finest possible for the issue. This term is equivalent to "Superb" used by grading services.







Extremely Fine (80-90): Exceptionally large/wide margins or near perfect centering.

Very Fine (70-85): Normal-size margins for the issue and well-centered with the design a bit closer to one side. "Very Fine and choice" applies to stamps that have desirable traits such as rich color, sharp impression, freshness or clarity of cancel.

Fine (60-70): Smaller than usual margins or noticeably off center. Pre-1890 issues may have the design touched in places.

Very Good (below 60): Attractive appearance, but margins or perforations cut into the design.

Guide to Gum Condition

Gum Categories:	MINT N.H.	ORIGINAL GUM (O.G.)				NO GUM
	 Mint Never Hinged <i>Free from any disturbance</i>	 Lightly Hinged <i>Faint impression of a removed hinge over a small area</i>	 Hinge Mark or Remnant <i>Prominent hinged spot with part or all of the hinge remaining</i>	 Part o.g. <i>Approximately half or more of the gum intact</i>	 Small part o.g. <i>Approximately less than half of the gum intact</i>	 No gum <i>Only if issued with gum</i>
Catalogue Symbol:	★ ★	★	★	★	★	(★)
PRE-1890 ISSUES	<i>Pre-1890 stamps in these categories trade at a premium over Scott value</i>			Scott Value for “O.G.”		Scott “No Gum” Values thru No. 218
1890-1935 ISSUES	Scott “Never Hinged” Values for Nos. 219-771	Scott Value for “O.G.” (Actual value will be affected by the degree of hinging)		Disturbed Original Gum: Gum showing noticeable effects of humidity, climate or hinging over more than half of the gum. The significance of gum disturbance in valuing a stamp in any of the Original Gum categories depends on the degree of disturbance, the rarity and normal gum condition of the issue and other variables affecting quality. For example, stamps issued in tropical climates are expected to have some		
1935 TO DATE	Scott Value for “Unused”					

Covers

Minor nicks, short edge tears, flap tears and slight reduction at one side are normal conditions for 19th century envelopes. Folded letters should be expected to have at least one file fold. Light cleaning of covers and small mends along the edges are accepted forms of conservation. Unusual covers may have a common stamp with a slight crease or tiny tear. **These flaws exist in virtually all 19th century covers and are not always described. They are not grounds for return.**

Catalogue Values and Estimates

Unless otherwise noted, the currently available *Scott Catalogue* values are quoted in dollars with a decimal point. Other catalogues are often used for foreign countries or specialized areas and are referred to by their common name: *Stanley Gibbons* (SG), *Dietz*, *American Air Mail Catalogue* (AAMC), *Michel*, *Zumstein*, *Facit*, etc. Estimates are indicated with an "E." and reflect our conservative valuation in dollars. Reserves will never exceed the low end of the estimate range; they will sometimes exceed Scott Catalogue value for stamps in Extremely Fine condition.

Because of certain pricing inconsistencies in the *Scott Catalogue*—for example, blocks that have no gum, the absence of premiums for Mint N.H. items, etc.—we cannot guarantee the accuracy of values quoted for multiples, specialized items and collection lots. We generally try to be conservative, but buyers may not return a lot because of a discrepancy in catalogue value due to Scott pricing inconsistencies.

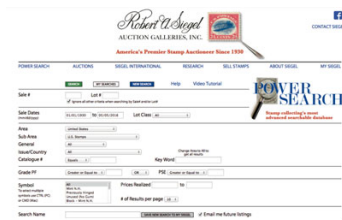
Symbols and Abbreviations (see chart above for gum symbols)

⊞	Block	E	Essay	pmk.	Postmark	No.	Scott Catalogue Number
⊞	Cover	P	Proof	cds	Circular Datestamp	hs	Handstamp
FC	Fancy Cancel	TC	Trial Color Proof	var.	Variety	ms.	Manuscript

Resources @ siegelauctions.com

CATALOGUES AND PRICES REALIZED

Images and descriptions for all sales going back to 1992, our Rarities sales from 1964 and selected older name sales. PDF catalogues go back to our first sale in 1931.

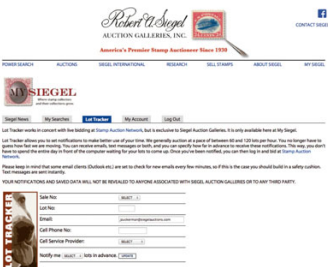


POWER SEARCH™

Search by Scott number or keyword through all of the sales at our website. The best resource in philately for research.

MY SIEGEL™

Save your Power Searches as want lists. We will automatically notify you when a match is included in an upcoming sale, whether it's as broad as any Columbian issue, or as narrow as a 241 graded 98. The most powerful want list in philately.

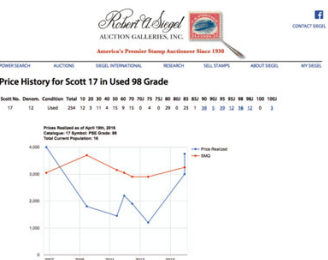


LOT TRACKER™

Never miss another lot because you were away from your computer. Log into My Siegel™, then set up notifications to get texts and/or emails 10-30 lots before yours comes up (live bidding is still through Stamp Auction Network).

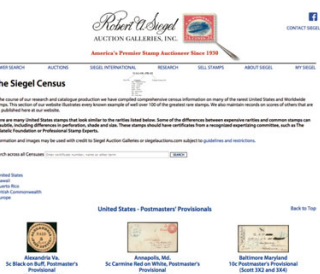
CENSUS DATA FOR RARITIES

The up-to-date census data for U.S. and select International rarities are a valuable resource for buyers, sellers and researchers. Every recorded example of almost 150 different rare stamps is described and, in most cases, photographed.



GRADED PRICE HISTORY

Graphs show the realizations of each grade over time in our auctions. The data points are easily visible for independent analysis.



We have several other important features of our website, such as the Siegel Encyclopedia, Exhibits, Today in History and a Perpetual Calendar. Go to siegelauctions.com for the most comprehensive website in philately.



UNITED STATES ESSAYS AND PROOFS

AFTERNOON SESSION (LOTS 4001-4222)

FRIDAY, MAY 12, 2017, AT 1:30 P.M.

1861-67 ISSUE ESSAYS



- 4001 E **Unknown Author, 2c-5c Indian and Liberty Designs, 1861-66 Essays (73-E3, 73-E4, 73-E5).** Three vertical strips of three, incl. Green on white wove, Red on yellow wove and Black on yellow wove, large margins, second with tiny thin speck, still Very Fine group, Scott Retail as singles.....**(Photo Ex)** 390.00
- 4002 E **Unknown Author, (Unstated Value) Green, Columbia Portrait.** 111 x 80mm, printed on thin glazed card and showing die sinkage area at right, trace of "42" imprint at bottom, fresh and Very Fine, a very unusual essay, the portrait reminds us of some essays printed by National Bank Note Company for re-use prevention but the Scott-listed designs have different portraits and "Liberty" in the headband instead of "Columbia" on the example offered here..... E. 300-400

AMERICAN BANK NOTE COMPANY

- 4003 E **American Bank Note Co., 3c and 2c Black, Columbia Portrait Die Essay on Thick Yellowish Wove (79-E11b).** 26 x 31mm and showing the complete design, Very Fine and striking essay, illustrated in Scott Catalogue on p. 827, this is much scarcer than the perforated plate essays of the same design, listed but unpriced in Scott E. 500-750

UNKNOWN AUTHOR



4004

- 4004 E **Unknown Author, (Unstated Value) Dull Violet on White, Blue on Bluish, Die Essays (79-E12a, 79-E12b).** Both 23 x 28mm, fresh and bright colors, few adherences on back, second faint toning spots at bottom left

VERY FINE EXAMPLES OF THESE RARE LIBERTY HEAD ESSAYS, WHICH MAY BE UNIQUE.

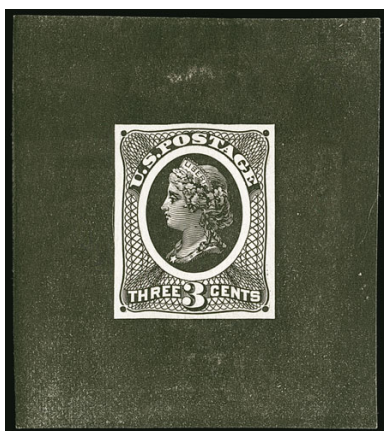
The creator of this essay is unknown. They bear some similarity to Liberty Head coins of the period engraved by James B. Longacre. These represent both of the listed colors, and as far as we know are unique. An excellent opportunity for additional research.

Ex Finkelburg and "Lake Shore" 5,500.00

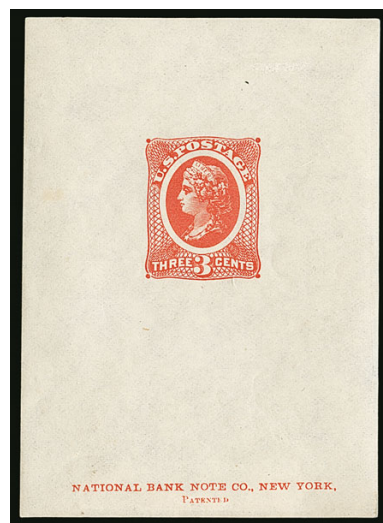
NATIONAL BANK NOTE COMPANY



4005EX



4006



4007EX

- 4005 E **National Bank Note Co., 3c Liberty, Black, Bright Blue, Vignette Only, Die Essays on Stiff Yellowish Wove and Proof Papers (79-E30a, 79-E30c).** First 36 x 44mm, intense color, Very Fine, second 34 x 41mm, in Bright Blue, Very Fine, attractive and scarce essays, first ex "Lake Shore"(Photo Ex) 1,450.00
- 4006 E **National Bank Note Co., 3c Liberty, Spencer Patent, Die Essay on Stiff Yellowish Wove (79-E30d).** 50 x 57mm with uncleared surrounds, struck in Black, fresh and Very Fine, a striking essay 750.00
- 4007 E **National Bank Note Co., 3c Liberty, Die Essay on Wove Stamp Paper, Gummed (79-E30I).** 19, each with imprint at bottom, **apparently complete for all Scott-listed colors** plus a few more (Scott lists 15 colors), a few minor flaws incl. four with nicks at bottom, Very Fine or appear so, a scarce large group of these die essays, rarely seen in this depth and an excellent opportunity to acquire the complete set(Photo Ex/Website PDF) 3,325.00

- 4008 E **National Bank Note Co., 3c Liberty, Die Essay on Wove Stamp Paper, Gummed, Perforated Oval (79-E30n).** Eleven, virtually all a different color, all but one with imprint at bottom, some faults, overall appear Fine-Very Fine, a scarce group**(Photo Ex/Website PDF) 1,650.00**



4008EX



4009

- 4009° E **National Bank Note Co., 3c Liberty, Spencer Patent, Rainbow Plate Essay on Wove, Perf 12 (79-E30r).** Four vertical pairs and two singles which originally formed a vertical pair, each a different color, original gum, h.r., few small faults
 VERY FINE APPEARANCE. A BEAUTIFUL AND RARE GROUP OF THE SPENCER PATENT RAINBOW ESSAYS. THIS GROUP IS COMPLETE FOR ALL SCOTT-LISTED COLORS.
 Ex Finkelburg and accompanied by his original page E. 4,000-5,000



4010

4010°E **National Bank Note Co., 3c Liberty, Black Green on White Wove, Safety Paper Essays (79-E31a, b, d, e, f, g, h).** Seven different safety paper essays, representing what we believe is the complete set of all designs, all have large margins, only one is merely ample on one side, deep rich colors

VERY FINE-EXTREMELY FINE. A RARE OPPORTUNITY TO ACQUIRE A SPECTACULAR SET OF NATIONAL BANK NOTE CO. 3-CENT LIBERTY SAFETY PAPER DESIGNS.

The Scott Catalogue began listing essays in its 1992 U.S. Specialized, and since then has listed one additional design of the 3c safety papers — 79-E31c with “2” in red circles. However we have never encountered this variety and it is the only type that has never been illustrated in Scott. In addition, the Finkelburg collection had a set of seven, without the extra essay, which he regarded as complete. While this additional variety may exist, we would like to see an example for confirmation.

These beautiful essays are similar to the subsequent 1869 safety paper essays (see lots 4124-4148 of this sale). Scott 79-E1a is the only one that shares the same safety paper underprint with the 1869 Pictorial Issue (see lot 4137 in this sale). Both of these sets are among the most beautiful and unique of all United States essays and proofs..... 9,800.00

1869 PICTORIAL ISSUE ESSAYS

GEORGE T. JONES

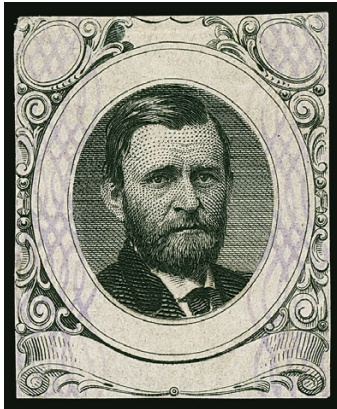
4011°E [No Denomination] Black, George T. Jones Grant Essay on India, Single Color (112-E1a). Exceptionally large 43 x 47mm margins (these and the two-color 112-E1b essays are always cut to stamp size), intense shade

EXTREMELY FINE. A VERY RARE LARGE-SIZE GEORGE T. JONES ESSAY FOR THE 1869 PICTORIAL ISSUE CONTRACT COMPETITION.

Scott lists and prices these as "cut to stamp size." In addition, while the single color essay offered here is priced less than the essays with light overprint this must be rarer as this is the only example we have offered since we started keeping computerized records more than 20 years ago..... 2,250.00



4011



4012

4012°E [No Denomination] George T. Jones Grant Essay on India (112-E1b). Black with light violet safety overprint, full margins to clear, unusual application of safety overprint which leaves portrait clear, tiny corner crease at top left

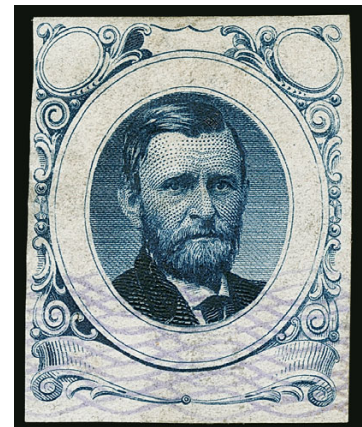
VERY FINE APPEARANCE. A RARE EXAMPLE OF THE GEORGE T. JONES ESSAY FOR THE 1869 PICTORIAL ISSUE, DEPICTING ULYSSES S. GRANT.

We have offered this essay with full safety overprint and with safety overprint at bottom only, but we are aware of only one other (in a less obvious color) with the overprint missing the portrait, which was no doubt deliberate. 3,250.00

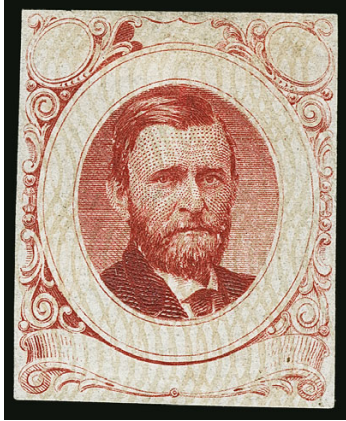
4013°E [No Denomination] George T. Jones Grant Essay on India (112-E1b). Blue with light violet overprint (unlisted color combination), top two-thirds of essay missing overprint, full margins all around, wonderful depth of color

VERY FINE EXAMPLE OF THE GEORGE T. JONES ESSAY FOR THE 1869 PICTORIAL ISSUE, DEPICTING ULYSSES S. GRANT. THIS COLOR COMBINATION IS UNLISTED IN SCOTT.

The George T. Jones essay depicts Ulysses S. Grant, who was a living presidential candidate at the time of the bidding process for the 1869 Issue contract. This color combination is unlisted in Scott 3,250.00



4013



4014

4014°E

[No Denomination] George T. Jones Grant Essay on India (112-E1b). Carmine with gray safety overprint, faint crease at bottom, small thin spot at top

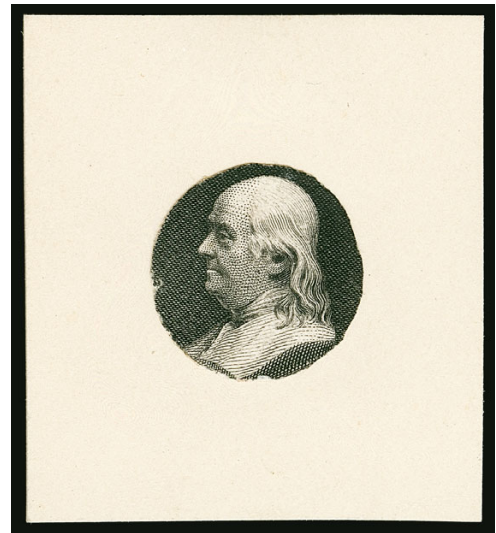
VERY FINE APPEARING EXAMPLE OF THE GEORGE T. JONES ESSAY FOR THE 1869 PICTORIAL ISSUE, DEPICTING ULYSSES S. GRANT.

George T. Jones of Cincinnati was one of four bidders for the contract. His one-cent essay depicts Ulysses S. Grant, who was a living presidential candidate at the time of the bidding process for the 1869 Issue contract.

Ex Finkelburg and Dr. Heimbürger 3,250.00

NATIONAL BANK NOTE COMPANY

4015 E **[1c] Black, Die Essay of Vignette on India (112-E2).** Cut to shape and mounted on 35 x 40mm card, fresh and Very Fine, scarce, with 2008 P.F. certificate 900.00



4015



4016

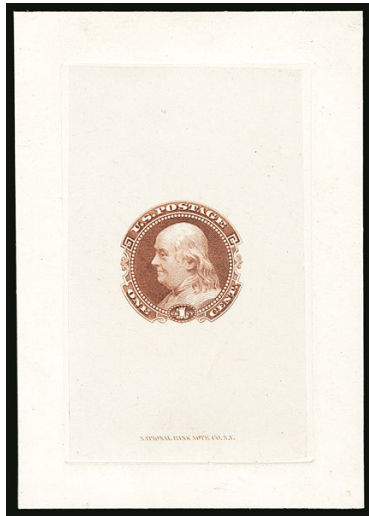
4016°E

1c Black, Die Essay on India with Pencil Frame and Numeral (112-E3). 41 x 40mm, vignette with pearls added around perimeter, pencil suggestion for frame design and numeral "1" also drawn in, small India paper translucency at top of no consequence

VERY FINE. THE UNIQUE HAND-DRAWN ESSAY FOR THE ONE-CENT 1869 PICTORIAL ISSUE. A PHENOMENAL EXHIBITION ITEM.

Apart from the pencil drawing on paper of the 2c post horse and rider, which is all drawing, this is the only other 1869 essay with elements of hand-drawn design. Undercatalogued in Scott at \$1,500.00

..... E. 2,000-3,000



4017EX



4018EX



4019EX

- 4017° E **1c Small Numeral, Die Essay on India (112-E4a).** 10 with very little duplication of colors, missing only Green and Yellow of the Scott-listed colors, all but one showing imprint at bottom (at least 63mm tall), one fully die sunk on card, just one cut down without imprint, vivid colors, most with India paper translucencies or irregularities at top or bottom from prior mounting

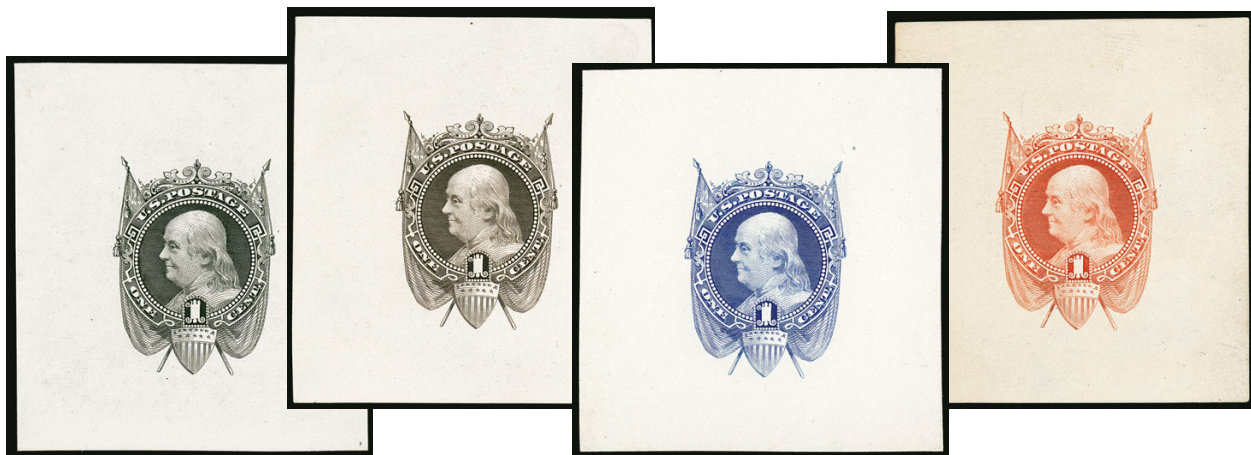
VERY FINE APPEARING AND RARE LARGE GROUP OF NATIONAL BANK NOTE CO. 1869 ONE-CENT SMALL NUMERAL DIE ESSAYS.

This is an exceedingly difficult group to assemble. We have not offered more than one example in a single lot since our 1999 Finkelburg sale, where we offered a group of seven.

Scott Retail as all die sunk(Photo Ex/Website PDF) 12,500.00

- 4018 E **1c Small Numeral, Plate Essay on Stamp Paper (112-E4b to 112-E4c).** Four imperforate and three perforated, **complete for all Scott-listed colors**, extra Deep Orange Brown imperforate, one of first slightly disturbed gum and small tear, one of latter Mint N.H., Very Fine group, six with 1996 P.F. certificates(Photo Ex) 725.00

- 4019 E **1c Small Numeral, Plate Essay on Stamp Paper, Perforated 12, Grilled (112-E4d).** Fourteen singles and a block of four, each a different color or shade, original gum (two slightly disturbed), rich colors, Green with light creases, otherwise Fine-Very Fine, ex Laehder, singles with 1996 P.F. certificate.....(Photo Ex/Website PDF) 1,730.00



4020

- 4020 E **1c Franklin, Die Essays on White Ivory (112-E5b).** Four, **complete for all Scott-listed colors**, incl. Black, Black Brown, Scarlet and Blue, approximately 50 x 55mm, detailed impressions, each with small thin spot at top left corner from mount removal

VERY FINE. A RARE OPPORTUNITY TO ACQUIRE A COMPLETE SET OF THE FOUR COLORS OF THIS UNADOPTED DESIGN FOR THE ONE-CENT 1869 PICTORIAL ISSUE.

This design, with the patriotic symbols of the flag and shield and depicting one of the Founding Fathers, is highly exhibitable. The collector painstakingly assembled this set from three different sources. Blue with 2005 P.F. certificate 8,000.00



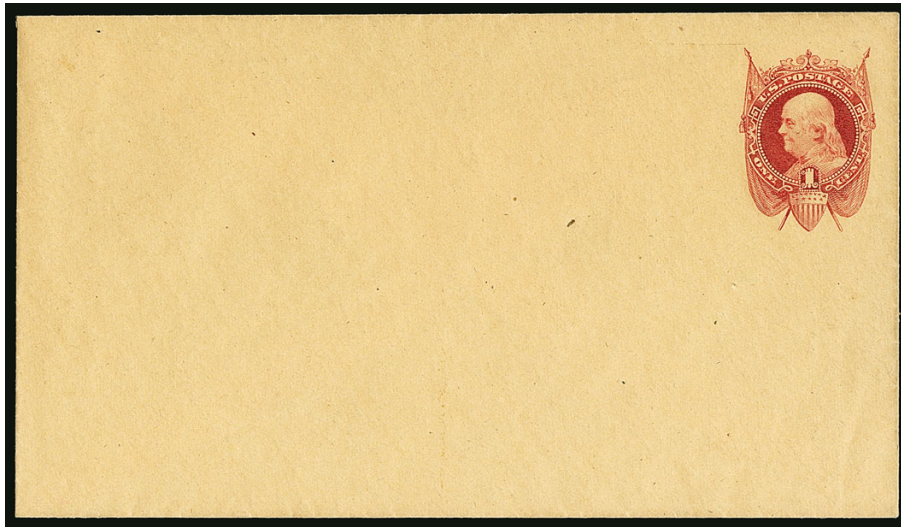
4021

- 4021 E **1c Blue, Die Essay on India (112-E5c).** 72 x 81mm off card, with full die sinkage, deep rich color, Extremely Fine and very rare, this is the only full-size example on India we have offered since our 1999 "European" collection (Kuphal), none was contained in the Finkelburg collection, far more elusive than the examples on ivory paper 2,000.00



4022

- 4022 E **1c Carmine, Die Essay on India, Cut to Shape (112-E5d).** Intense color, cut to shape as listed and mounted on 25 x 33mm piece of thin paper, Very Fine and choice, a rare example of this essay, this is the only example in this color we have offered since keeping computerized records, we have offered one in the other Scott-listed color (Yellow) 750.00



4023

- 4023 E **1c Carmine on Buff, 1869 National Bank Note Company Essay, entire (Undersander E35Ab).** Rich color, fresh, Very Fine example of this scarce essay, this is the only example we have offered in this color since keeping computerized records, Undersander catalogue value 2,500.00



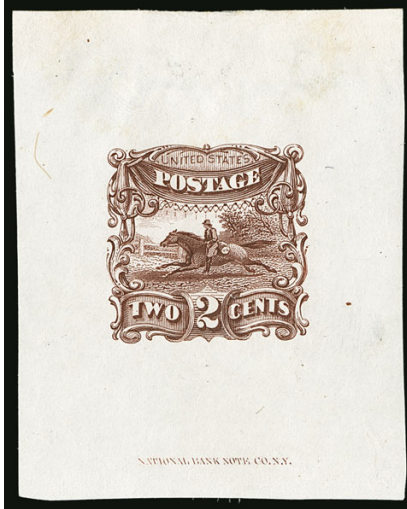
4024

4024° E **2c Small Numeral, Die Essay on India (113-E3a).** Five, showing incomplete shading around "United States", each die sunk on card from 97 x 108mm to 64 x 76mm, each shows full die sinkage, different colors including Green, Yellow, Red Orange, Scarlet and Dull Brown, few tiny scattered toned spots

VERY FINE AND RARE GROUP OF THE 1869 2-CENT SMALL NUMERAL ESSAYS, ALL FULLY DIE SUNK.

Since this group appeared in our 1999 Finkelburg sale, we have offered only two other examples, both cut down below the die sinkage area.

Ex Finkelburg 7,500.00



4025

4025 E **2c Brown, Small Numeral, Die Essay on India, Completed Die (113-E3a).** 39 x 50mm with imprint at bottom, completed state of the die including shading dots to left of "Postage" drapery, rich color, typical India paper translucencies outside the design, Very Fine and surprisingly rare, Power Search contains only one other, also in Brown and cut smaller without the imprint (ex "Lake Shore"), the Finkelburg collection did not contain an example..... 1,500.00

4026 E **2c Small Numeral, Plate Essay on Stamp Paper, Perforated 12, Ungrilled (113-E3d).** Three, incl. Brown, Dark Brown and Orange, first with disturbed original gum, others original gum, last slightly oxidized, Fine, Scott lists this in Brown, Dark Brown and Yellow, we believe the last to be a mistake (it should be Orange) so this is **complete for all colors**, each with 1990 or 1996 P.F. certificate (Photo Ex) 1,275.00



4026EX



4027EX



4028EX



4029

- 4027 E **2c Small Numeral, Plate Essay on Stamp Paper, Perforated 12, Grilled (113-E3e).** 18, wide range of shades with very few duplicated, original gum, few barely disturbed, rich colors, Fine-Very Fine group, ex Laehder.....(Photo Ex/Website PDF) 1,440.00
- 4028 E **2c Orange, Small Numeral, Plate Essay on Stamp Paper, Perforated 12, Double Grill (113-E3f).** Three, each with grill partly overlapping and so appearing much wider than normal, original gum, one Mint N.H., one with natural inclusion, vivid color except one slightly oxidized, Fine, each with 1996 or 1998 P.F. certificate(Photo Ex) 900.00
- 4029 E田 **2c Small Numeral, Plate Essay on Stamp Paper, Perforated 12, Grilled (113-E3e).** Eight blocks of four, each a distinctly different color incl. Green, Blue, Orange, Orange Brown, Rose, Brown, Violet and Brown Rose, original gum, fresh and Very Fine, an attractive group of blocks and highly exhibitable, Scott Retail as singles.....(Photo Ex/Website PDF) 2,560.00



4030EX

- 4030 E **3c Small Numeral, Die Essay on India, Completed Design (114-E6a).** Two of the three Scott-listed colors, Blue and Deep Orange Red, both 51 x 45mm, latter with some slight thinning at top from prior mounting
- VERY FINE AND EXTREMELY RARE EXAMPLES OF THE 3-CENT 1869 PICTORIAL SMALL NUMERAL DIE ESSAY ON INDIA. THESE MAY WELL BE UNIQUE.
- Scott Catalogue lists three colors for this essay (the other is Black). We have been unable to locate any others and have never seen the example listed in Black.
- The blue is ex Cutts..... 3,500.00



4031EX



4032



4033

- 4031 E **3c Small Numeral, Plate Essay on Stamp Paper, Imperforate (114-E6b).** Ten, most in the Rose or Brown family, two in the better Ultramarine family, two Mint N.H., overall fresh and Very Fine, a desirable group.....(Photo Ex) 1,845.00
- 4032 E **3c Dark Ultramarine, Small Numeral, Plate Essay on Stamp Paper, Perforated 12, Ungrilled (114-E6c).** Large part original gum, exceptionally well-centered with wide margins, unheard of for this scarce without grill plate essay, Extremely Fine Gem, the ungrilled 3c small numeral plate essays are scarce in general and very rare in this exceptional condition..... 500.00
- 4033 E **3c Small Numeral, Plate Essay on Stamp Paper, Perforated 12, Grilled (114-E6d).** Eight blocks of four, each in a distinctly different color, incl. Green, Blue, Orange, Brown Orange, Rose, Brown, Orange Brown and Violet, original gum, Green with right selvage, several essays Mint N.H., Very Fine and choice group, Scott Retail as singles 2,560.00

- 4034 E **3c Ultramarine, Plate Essay, Imperforate (114-E7a, 114-E7b).** Block of four, large margins, tropicalized original gum, trace of “National Bank Note Company Sep. 27, 1869” cancel at bottom right (114-E7b)

VERY FINE. A RARE MULTIPLE OF THIS 3-CENT 1869 PLATE ESSAY WITH THE NATIONAL BANK NOTE COMPANY CANCEL.

Ex Cutts. With 2008 P.F. certificate. Scott Retail as singles..... 3,200.00



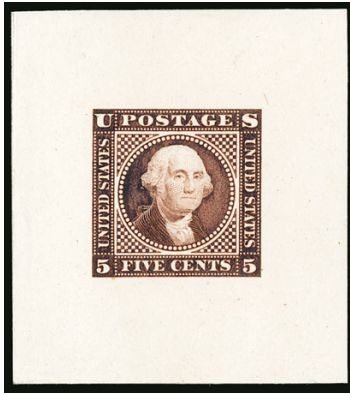
4034



4035EX

- 4035 E **3c Ultramarine, Plate Essays, Allover Grill (114-E7a, 114-E7d, 114-E7c, 114-E7d).** Singles of each of the Scott-listed varieties, including imperf with allover grill, allover grill with “National Bank Note Co. N.Y. Sep. 27, 1869” cancel, imperf on thick paper with horizontal line defacement (ungrilled, a variety of 114-E7c), finally allover grill perforated with line defacement, last with slight thin spot, Fine and rare complete group of these scarce plate essays featuring the normal design, 114-E7c with printout of P.F. certificate (actual certificate no longer accompanies).....

.....(Photo Ex) 3,200.00



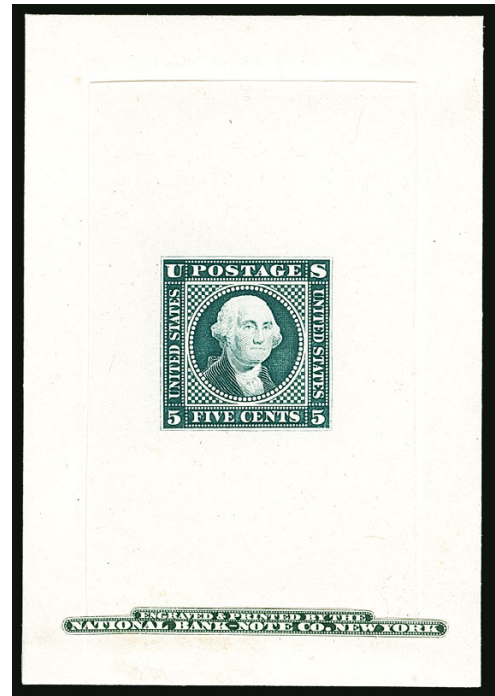
4036

- 4036 E **5c Washington, Large Lettering, Large Die Essay on India (115-E1a).** Four of the five Scott-listed colors, lacking only Carmine to be complete, from 40 x 45mm to 32 x 32mm, two on original card, fresh and Very Fine, scarce, Power Search contains only two others without frameline and solid background 2,800.00

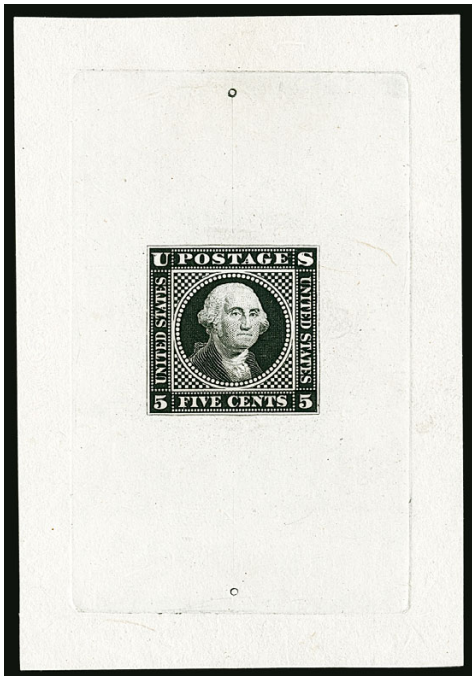
- 4037 E **5c Washington, Large Lettering, Completed Die, Large Die Essay on India (115-E1b).** Eight, from 61 x 87mm to 43 x 70mm, all on original card backing **with full die sinkage**, nice range of colors without duplication including Orange, Black, Red Brown, Black Brown, Blue Green (with imprint pasted to bottom), Dull Yellow, Blue, Brown

VERY FINE. A WONDERFUL ASSEMBLAGE OF LARGE DIE TRIAL COLOR ESSAYS FOR THE UNADOPTED 5-CENT DESIGN.

The portrait and elements of the design were used for the issued 6c stamps — no essays are known for the 6c. These are highly exhibitable.
.....(Photo Ex/Website PDF) 4,800.00



4037EX



4038EX

- 4038°E **5c Washington, Large Lettering, Large Die Essay on Proof Paper (115-E1c).** Ten different, from 54 x 78mm to 26 x 29mm, range of colors with no duplication incl. Deep Blue, Light Blue, Orange Brown, Gray Blue, Black, Dusky Green, Olive Brown, Carmine, Red Orange and Orange, few small faults as often associated with this fragile paper

FINE-VERY FINE APPEARANCE. A RARE AND DESIRABLE GROUP OF THE 5-CENT WASHINGTON ESSAYS ON PROOF PAPER.

This group represents ten of the 13 listed colors, and was assembled by scouring many different auctions. Some ex "Lafayette", "Lake Shore" and Hansen, some ex Dr. Heimburger, Black ex Liberman(Photo Ex/Website PDF) 6,000.00

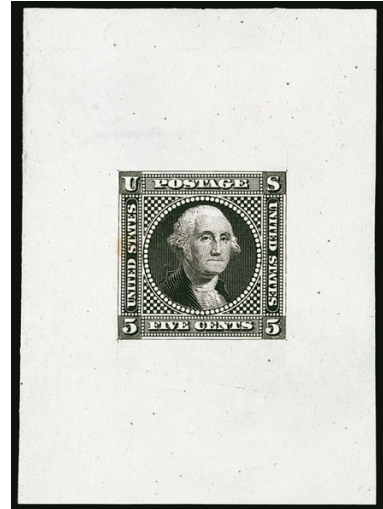


- 4039 E **5c Orange, Blue, Large Lettering, Large Die Essay on Pink Bond (115-E1d).** Two of the three Scott-listed colors, 32 x 38 and 29 x 30mm respectively, bright color on this unmistakable paper, lacking only the Brown color to be complete, fresh and Very Fine.....**(Photo Ex)** 1,200.00
- 4040 E **5c Orange, Large Lettering, Large Die Essay on Pale Olive Buff Bond (115-E1f).** Four of the five Scott-listed colors, incl. Black, Carmine, Orange and Red Orange, from 32 x 32mm to 55 x 55mm, rich colors, Carmine shows die sinkage area at sides, Very Fine and scarce group**(Photo Ex)** 2,400.00
- 4041 E **5c Washington, Large Lettering, Die Essay on Cream Wove (115-E1g).** Complete for **all four Scott-listed colors**, from 29 x 33mm to 35 x 36mm, Black with some slight toning, otherwise Very Fine, a difficult set to assemble**(Photo Ex)** 2,400.00
- 4042 E **5c Washington, Large Lettering, Large Die Essay on Clear White Bond (115-E1h).** Two, Black is 28 x 31mm, Red Orange Brown is 39 x 33mm, rich colors, Very Fine, the Black is especially scarce**(Photo Ex)** 1,200.00
- 4043 E **5c Orange, Large Lettering, Large Die Essay on Thick Cloudy Bond (115-E1i).** Three, Orange, Blue and Orange Brown, approximately 40 x 40mm, bright colors, Very Fine, scarce.....**(Photo Ex)** 1,800.00
- 4044 E **5c Washington, Large Lettering, Large Die Essay on Glazed Paper (115-E1k).** Four of the five Scott-listed colors, missing only Yellow, three showing full die sinkage and approximately 63 x 72mm, Blue 40 x 39mm, a couple with the usual mount removal translucencies at top or corners as usually seen with the glazed paper essays, Very Fine and desirable group**(Photo Ex)** 2,200.00



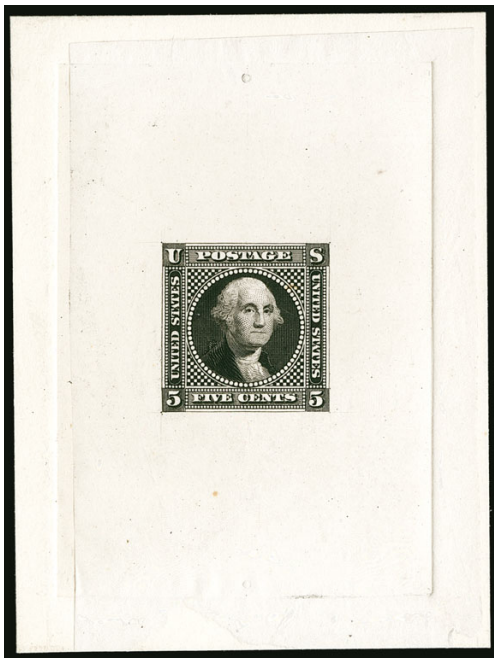
4045

- 4045 E **5c Green, Large Lettering, Die Essay on Red Violet Veined Marbled Card (115-E11).** 36 x 63mm, deep rich color, tiny irregularity at bottom left of design due to the characteristics of the card and the way it holds the ink, Very Fine and choice, possibly unique in this color, ex "Lake Shore" 1,750.00



4046

- 4046 E **5c Black, Small Lettering, Large Die Essay on India (115-E2a).** 42 x 59mm, small toned spot at left and small thin spot, otherwise Very Fine, scarce, this is the only example in any color we have offered since our 1999 Finkelburg sale, ex Dr. Heimburger 750.00



4047

- 4047 E **5c Washington, Small Lettering, Large Die Essay on India (115-E2b).** Two, first is Black, 56 x 75mm with full die sinkage, second is Red Brown, 44 x 45mm, fresh and Very Fine, first ex Liberman 1,500.00

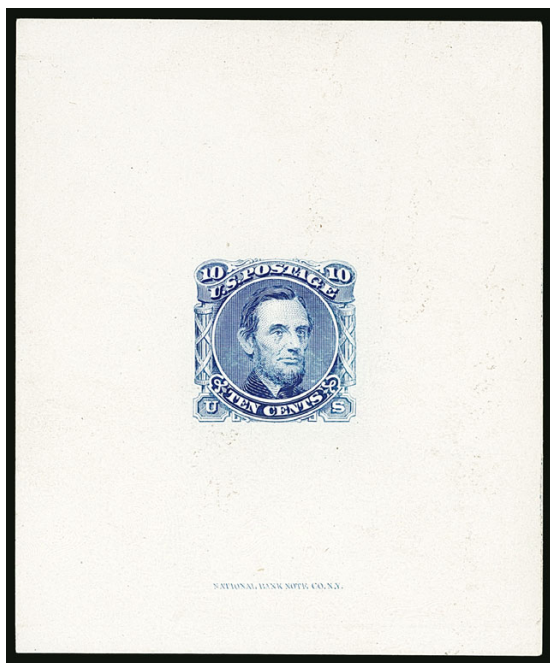
- 4048 E **5c Washington, Small Lettering, Plate Essay on Wove (115-E2c).** Three blocks of four, three pairs and eight singles, also one perforated in Blue, range of colors, overall Very Fine and very worthwhile group, also incl. 115-E2b die essay cut down to stamp size (not counted) (Photo Ex) 2,360.00



4048EX



- 4049 E **5c Washington, Small Lettering, Plate Essay on Wove, Perforated 12 (115-E2d).** Block of four in Orange, singles in Orange and Blue, original gum, bright colors, Fine-Very Fine, ex Finkelburg, Scott Retail as singles.....(Photo Ex) 1,200.00
- 4050 E **[No denomination] Black, Lincoln Large Die Essay on India (116-E1d).** 19 x 24mm, detailed impression, fresh and Very Fine, this is the first example of this rare essay we have offered since keeping computerized records, it differs from 116-E1 in that the outer double frameline has been removed..... 1,150.00
- 4051 E **10c Deep Orange, Lincoln Large Die Essay on India (116-E1c).** On 150 x 201mm card with full die sinkage, some toning, otherwise Very Fine, this is the largest we have offered since keeping computerized records 1,100.00
- 4052 E **10c Black, Lincoln Die Large Essay on India (116-E1c).** On 77 x 82mm card with full die sinkage, imprint at bottom, crisp impression, Very Fine and choice, this is only the second in Black we have offered since keeping computerized records, ex Ainsworth 1,100.00
- 4053 E **10c Brown Red, Lincoln Large Die Essay on India (116-E1c).** On 74 x 78mm card with full die sinkage, imprint at bottom, deep rich color, tiny pinhole top left far from design, fresh and Very Fine..... 1,100.00
- 4054 E **10c Green, Lincoln Large Die Essay on India (116-E1c).** On 77 x 89mm card with full die sinkage, imprint at bottom, rich color, small nick in India at top right well away from design, Very Fine and choice, this is the first example in this color we have offered that is on its original card, it is especially desirable showing the full die sinkage area, ex Ainsworth..... 1,100.00
- 4055 E **10c Black, Lincoln Large Die Essay on Proof Paper (116-E1d).** 64 x 77mm with imprint at bottom, few thin spots, Very Fine appearance..... 1,000.00
- 4056 E **10c Carmine, Lincoln Large Die Essay on Proof Paper (116-E1d).** 53 x 67mm, intense color, imprint at bottom, Very Fine and scarce, this is the first example in this color we have offered since keeping computerized records, ex Ainsworth..... 1,000.00



4057EX

4057 E **10c Lincoln, Large Die Essay on Ivory Paper (116-E1e).** Complete set of all four Scott-listed colors, approximately 63 x 74mm and each with imprint at bottom, Black Brown small thin spot

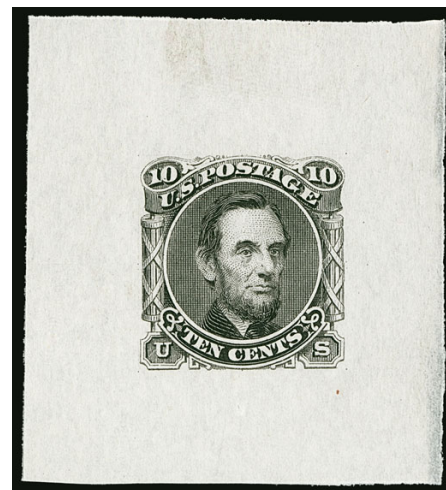
VERY FINE. A SCARCE COMPLETE SET OF THE 10-CENT LINCOLN DIE ESSAY ON IVORY PAPER.

Rare as a complete set. Ex Ainsworth.
.....(Photo Ex) 4,000.00

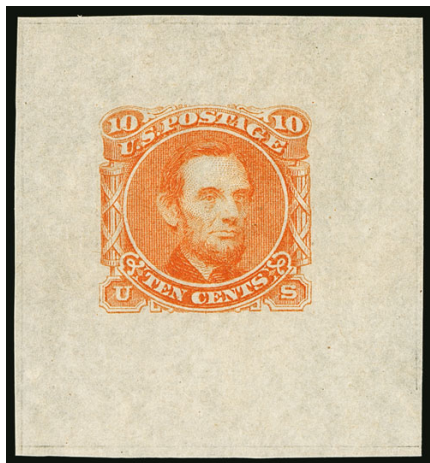
4058 E **10c Lincoln, Large Die Essay on White Thin Bond (116-E1f).** Complete for all six Scott-listed colors, from 31 x 34mm to 38 x 43mm, bright colors

FRESH AND VERY FINE. A RARE COMPLETE SET OF THE 10-CENT LINCOLN ESSAY ON WHITE THIN BOND.

It is extremely difficult to assemble a complete set such as the one offered here, with all properly identified.(Photo Ex) 6,000.00

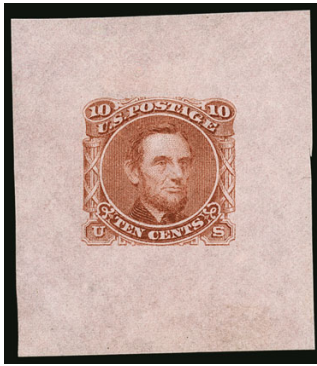


4058EX



4059EX

4059 E **10c Lincoln, Large Die Essay on Cloudy Creamy Bond (116-E1g).** Four, incl. two shades of Light Red Brown, Black and Red Orange, lacking only Blue to be complete, from 37 x 41 to 31 x 31mm, fresh and Very Fine, a rare and desirable group.....(Photo Ex) 4,400.00



4060EX



4061EX



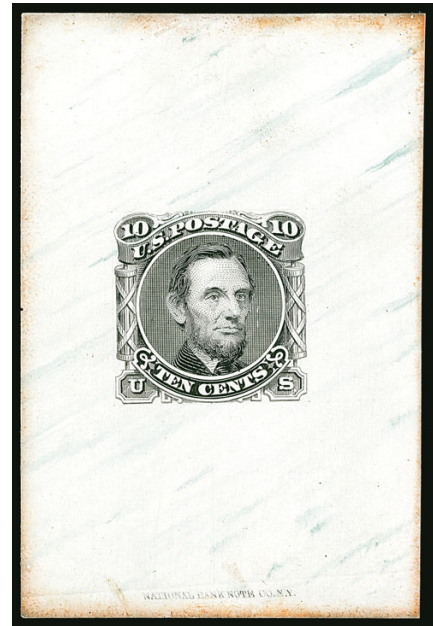
4062

- 4060 E **10c Lincoln, Large Die Essay on Pink Bond (116-E1h).** Three, **complete for all Scott-listed colors** including Red Brown, Red Orange and Yellow, two approximately 39 x 45mm, Red Orange is 24 x 26mm, bright colors, Fine-Very Fine **(Photo Ex)** 3,000.00
- 4061 E **10c Lincoln, Large Die Essay on Pale Greenish Gray Bond (116-E1i).** Four, including Blue, Deep Carmine, Dull Scarlet and Dark Brown, lacking only Black to be complete, from 42 x 42mm to 33 x 37mm, bright colors, Very Fine, a scarce and desirable group **(Photo Ex)** 4,200.00
- 4062 E **10c Red Brown, Lincoln Large Die Essay on Pale Greenish Gray Bond (116-E1i).** 34 x 34mm, rich color, faint vertical bend, Very Fine, this color is unlisted in Scott, ex Dr. Heimburger 1,050.00

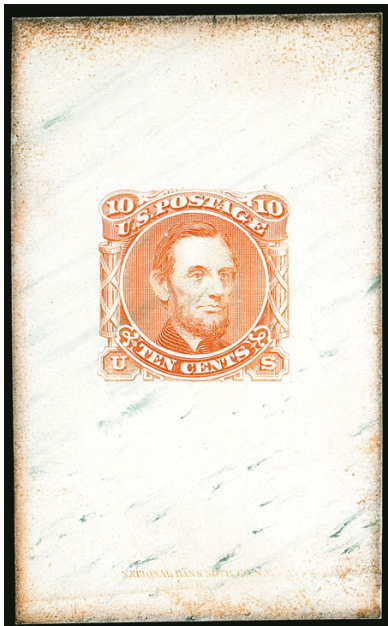
- 4063 E **10c Black, Lincoln Large Die Essay on Green Veined Marbled Card (116-E1j).** 41 x 62mm with imprint at bottom, intense shade and deep rich vein color

VERY FINE. AN EXCEEDINGLY RARE EXAMPLE OF THE 10-CENT LINCOLN 1869 PICTORIAL ISSUE ESSAY ON VEINED MARBLED CARD.

This is the only example in black on green marbled card of which we are aware. We have offered only one other color combination in the past 20 years of our auctions. The 1989 Lopez sale contained two in different colors and the 1990 Brazer sale contained one in Red Orange (offered in the following lot), leading us to believe that each is unique. 2,000.00



4063



4064

- 4064 E **10c Red Orange, Lincoln Large Die Essay on Green Veined Marbled Card (116-E1j).** 38 x 62mm, brilliant color, imprint at bottom

VERY FINE AND CHOICE. WE BELIEVE THAT EACH OF THE COLORS FOR THE 10-CENT LINCOLN DIE ESSAY ON VEINED MARBLED CARD ARE UNIQUE.

Ex Earl of Crawford, Brazer and Ainsworth. 2,000.00



4065EX



4066

- 4065 E **10c Lincoln, Plate Essays on Stamp Paper (116-E1k, 116-E1l).** Pair and three singles of imperforate in several different colors, two singles of perforated in Orange, original gum, h.r., Very Fine and attractive(Photo Ex) 1,025.00
- 4066 E田 **10c Orange, Lincoln Plate Essay on Stamp Paper, Perf 12 (116-E1l).** Block of four, original gum, small hinge slivers, radiant color, Fine-Very Fine, scarce block, Scott Retail as singles..... 800.00



4067

- 4067° E **10c Blue, Declaration of Independence Large Die Essay on India (116-E2a).** On 115 x 77mm card with full die sinkage, couple faint toned spots

VERY FINE. AN EXTREMELY RARE 10-CENT 1869 ESSAY WITH THE DECLARATION OF INDEPENDENCE VIGNETTE ENGRAVED BY JAMES SMILLIE, WHICH WAS ULTIMATELY USED FOR THE 24-CENT DENOMINATION. THIS IS THE ONLY EXAMPLE IN THIS COLOR WE HAVE OFFERED SINCE KEEPING COMPUTERIZED RECORDS.

This vignette is a miniature engraving by James Smillie, based on a painting by Trumbull which hangs in the Rotunda of the Capitol. Contrary to popular belief, the scene depicted by Trumbull is not the signing ceremony, but the presentation of the draft. It has been written that the 30c stamp was changed from the Surrender of Burgoyne to the Eagle, Shield and Flags design to avoid offending the British. If true, it seems odd that officials would choose to use the Declaration of Independence "1776" design for the 24c stamp, which was far more likely to adorn mail to England (the basic rate was 12c).

Ex Earl of Crawford, Finkelburg and Dr. Heimburger 4,250.00



4068

4068° E **10c Dim Rose, Declaration of Independence Large Die Die Essay on India (116-E2a).**
On 114 x 76mm card with full die sinkage, bright color

VERY FINE. REPORTED TO BE THE ONLY KNOWN EXAMPLE IN THIS COLOR. ESPECIALLY DESIRABLE SHOWING THE FULL DIE SINKAGE AREA.

Ex "Lake Shore" 4,250.00



4069

4069 E **10c Blackish Slate, Declaration of Independence Large Die Essay on India (116-E2a).**
On 115 x 177mm card with full die sinkage, immaculate condition

EXTREMELY FINE GEM. THIS IS REPORTED TO BE THE ONLY RECORDED EXAMPLE OF THIS ESSAY IN THE BLACKISH SLATE COLOR.

Ex Finkelburg and "Lake Shore". This color is unlisted in Scott. Scott Retail as listed color..... 4,250.00



4070

4070° E **10c Orange Yellow, Declaration of Independence Large Die Essay on India (116-E2a).** On 113 x 75mm card with full die sinkage, brilliant color, trivial soiling at top left well away from design

VERY FINE. REPORTED TO BE THE ONLY KNOWN EXAMPLE IN THIS COLOR. ESPECIALLY DESIRABLE SHOWING THE FULL DIE SINKAGE AREA.

Ex Finkelburg and "Lake Shore" 4,250.00



4071

4071 E **10 Red Brown, Declaration of Independence Large Die Essay on India (116-E2a).** Off card and cut down to 32 x 32mm, deep rich color, small thin spot of no consequence, Very Fine, a rare and desirable essay, Scott Retail as die sunk on card 4,250.00

4072 E **10c Black, Large Die Essay on India (116-E4).** On 151 x 221mm card with full die sinkage, imprint at bottom, trivial corner wear, Very Fine and choice example of this scarce essay, very few are known and this is the largest we have encountered, ex Kuphal, "Lake Shore" and Liberman..... 2,500.00



4072



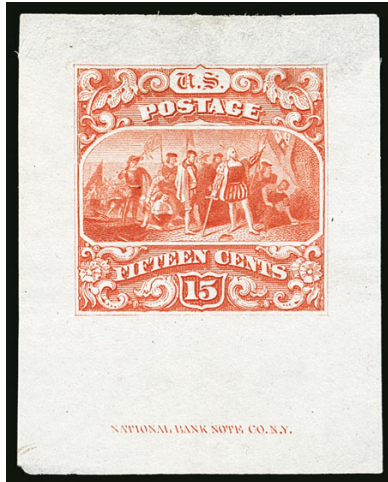
4073

- 4073° E **10c Declaration of Independence, Large Die Essay on India, Stamp Size (116-E2b).** Five, in Black, Red Orange, Blue Green, Brown and Buff, gorgeous colors, cut close as listed but with design elements intact, typical India paper translucencies or thins
 VERY FINE APPEARANCE. A RARE GROUP OF 1869 10-CENT DECLARATION OF INDEPENDENCE ESSAYS.

These are rarely seen at all, much less in a set. Only two Scott-listed colors are absent. Power Search located only one other example. Three are ex Brazer, which is the only sale where we were able to locate any others. 7,500.00



- 4074 E **12c Small Numeral, Large Die Essay on India (117-E2c; formerly 117-E1c).** Two, first in Blue Green, 42 x 45mm, second in Dark Red Brown, 52 x 45mm, off card, Very Fine and attractive(Photo Ex) 2,700.00
- 4075 E **12c Small Numeral, Plate Essay on Stamp Paper, Perforated 12 (117-E2e; formerly 117-E1e).** Nine of the ten Scott-listed colors, lacking only Yellow Orange to be complete, original gum, few small flaws, Fine-Very Fine, ex Laehder, seven with 1998 P.F. certificates..(Photo Ex/Website PDF) 1,125.00
- 4076 E **12c Dim Blue, Small Numeral, Large Die Essay on India, Cut to Stamp Size (117-E2d; formerly 117-E1d).** Brilliant color, small thin spot, otherwise Very Fine, ex Finkelburg, this is the only example in any of the four Scott-listed colors we have offered since keeping computerized records 600.00
- 4077 E **12c Brown Red, Typographed Small Numeral Die Essay on Card (117-E3a).** 59 x 45mm with uncleared surrounds, Very Fine and extremely rare, ex Finkelburg and Dr. Heimburger 750.00



4078

4078°E

15c Scarlet, Small Numeral, Large Die Essay on India (118-E3; formerly 118-E1c). 32 x 40mm, with die imprint at bottom, small thin spot at top

VERY FINE APPEARANCE. AN EXTREMELY RARE EXAMPLE OF THIS STRIKING 1869 PICTORIAL ESSAY IN SCARLET.

This is the only example in this color we have offered since keeping computerized records. Ex Dr. Heimburger. Scott Retail as die sunk on card..... 5,000.00

4079 P **15c Ultramarine, Ty. III, Large Die Proof on India, Red "15" Overprint (129-E1a).** 41 x 47mm, rich colors, few thin spots, small internal tear at left away from design, otherwise Very Fine, we have only been able to locate two in this color combination, ex "Lake Shore" 3,500.00



4079



4080

4080 P **15c Violet, Ty. III, Large Die Proof on India, Red "15" Overprint (129-E1a).** 27 x 31mm, vivid colors, thin spots, appears Very Fine, this is the only example we have offered in this color combination since keeping computerized records and our extensive PDF archive of old auction catalogues does not contain any others 3,500.00

4081 P **15c Dark Red Brown, Ty. III, Large Die Proof on India, Blue Green "15" Overprint (129-E1c).** 39 x 38mm, lovely colors, few small thin spots, appears Very Fine, we have only been able to locate two in this color combination in our extensive digital records 3,500.00

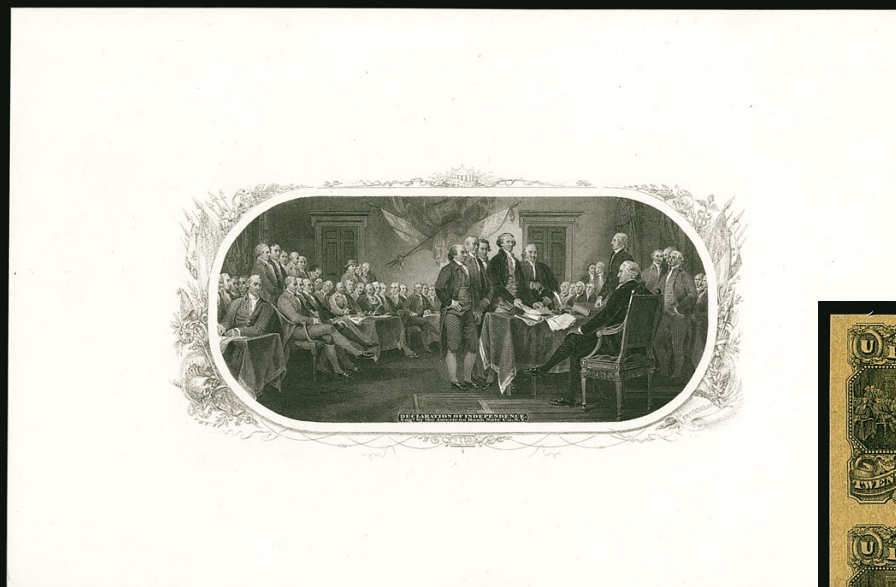


4081

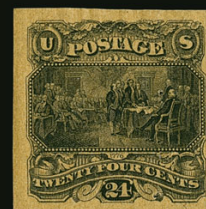
- 4082° E **15c Red Brown, Frame Only, Perforated Essay on Pink Tinted Paper (118-E5; formerly 129-E2a).** Paper with true Pink color which is especially noticeable when viewed from the back, rich color
VERY FINE AND CHOICE. THIS UNUSUAL PERFORATED ESSAY ON PINK PAPER IS LIKELY UNIQUE.
Ex Long. With 2008 P.F. certificate opining that this is privately perforated 3,750.00



4082



4083



4084EX



4085

- 4083 P **[24c] Declaration of Independence, Large Die Proof on Thin Card (120-E).** 210 x 140mm, with ornate border showing patriotic themes and "Engraved by American Bank Note Co." at bottom, intense shade, fresh and Very Fine, this design was also used for some currency, it is based on a famous painting by John Trumbull that hangs in the rotunda of the U.S. Capitol, this large-size engraving is an excellent way to see all 42 people shown on the stamp and makes a nice frontispiece..... E. 500-750
- 4084 E **24c Black on Tinted Paper, Small Numeral Plate Essays on India (120-E2c thru 120-E2f, 120-E2h, 120-E2j).** Large margins, rich colors, 120-E2e with two tiny pinholes, 120-E2j with tiny thin spot, Very Fine appearance, scarce and desirable group of these different paper types, ex Laehder, each with 1996 or 1997 P.F. certificate **(Photo Ex)** 1,500.00
- 4085 E田 **24c Black on Dull Yellow Tinted, Small Numeral Plate Essay on India (120-E2e).** Block of four, large margins, intense shade and impression, Very Fine and choice, ex Hansen, Scott Retail as singles 1,000.00



4086 with detail

4086 E **24c Violet & Green, Large Die Essay on India, Vignette Mounted in Place (120-E3a).**
 On 76 x 51mm India which is hinged onto 180 x 147mm card, "tied" on card by
 "National Bank Note Co. N.Y." embossed seal at bottom of India which breaks the paper,
showing part of frame design printed in vignette color at bottom left

VERY FINE AND VERY UNUSUAL. THIS IS THE ONLY EXAMPLE OF THIS ESSAY WE HAVE
 BEEN ABLE TO LOCATE THAT SHOWS A PORTION OF THE FRAME DESIGN PRINTED IN
 THE VIGNETTE COLOR. AN IMPORTANT PIECE THAT ADVANCES THE THEORY THAT AT
 ONE POINT A SINGLE DIE WAS CREATED FOR BOTH THE FRAME AND VIGNETTE DESIGN.

Our examination of other vignettes which were mounted in place failed to find another
 showing any of the frame design. The example offered here goes a long way towards vali-
 dating the theory that at some point both the frame and vignette of this bicolored stamp
 existed as a single die, probably in an early state. A new die was likely made of the frame
 only, and the original die with both frame and vignette was used for the vignette impres-
 sion, with the frame cut out, so they could see what the bicolored design would look like
 prior to finalizing the dies.

Ex Liberman. With 1992 P.F. certificate stating "small tear in margin below design"
 which is caused by the embossed seal 4,500.00



4087



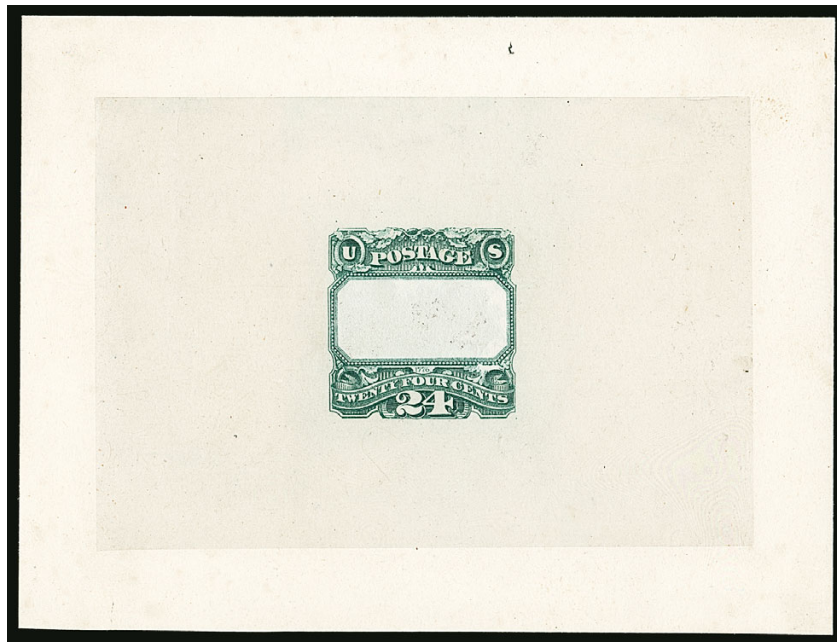
Detail

4087°P **24c Dark Green, Frame Only, Progressive Die Essay on India (120-E3b var).** 74 x 40mm, three border lines clearly visible at left and trimmed close at right so only two and in some spots only one are visible, small area at bottom right shows three which leads us to believe a piece of paper or something else was inserted into the vignette area prior to printing, rich color, minor India paper translucency at right

VERY FINE. A FASCINATING PROGRESSIVE DIE ESSAY FOR THE FRAME OF THE 24-CENT 1869 PICTORIAL ISSUE. THIS IS UNLIKE ANY OTHER FRAME ONLY DIE ESSAYS WE HAVE ENCOUNTERED.

On the issued stamp only two border lines are present between the vignette and the frame. The essay offered here shows three at left and at right shows one in parts and two in other parts. There is also an area at bottom above the "CE" of "CENTS" where all three lines are clearly visible. At one point a die existed with both the frame and vignette (see previous lot). There must have been a piece of paper inserted into the vignette area to obtain this frame-only essay, to simulate how two lines would have looked prior to altering the die. This theory is further reinforced by unevenness in other parts of the design — the paper must have become skewed because the bottom left shows more of the design and the top right shows less. The unevenness led us to think that this could be a hybrid, but it clearly is not.

Scott Retail as normal Scott 120-E3b..... 5,000.00



4088

4088°E **24c Dark Green, Frame Only, Die Essay on India (120-E3b).** With three border lines around the blank center area (as opposed to two on the issued stamp), on 93 x 70mm card, deep rich color, small scuff mark (paste-in of vignette may have been present at one time)

VERY FINE. AN EXTREMELY RARE FRAME ONLY ESSAY OF THE 24-CENT 1869 PICTORIAL ISSUE.

Ex Finkelburg and Dr. Heimburger..... 5,000.00



4089

- 4089 P **24c Dark Green, Frame Only, Progressive Die Proof on Thick Wove, Perforated (120-E3c var).** Two border lines around the blank portrait as on the issued stamp, perforated 12 (possibly privately) and without gum, bright color, two small translucencies in blank portrait, Very Fine and most unusual, ex Juhring, unlisted in Scott, Scott Retail as normal No. 120-E3c 5,000.00



- 4090 E **30c Black, Burgoyne Large Die Essay on India (121-E1a).** On 210 x 150mm card with full die sinkage, crisp impression, pencil notation at bottom reads "This series of P.O. stamp were never used, because the English might take offense on account of this subject being in the set" and signed at bottom right, fresh and Very Fine, unusual item, ex "Lake Shore" and Liberman..... 800.00
- 4091 E **30c Red Brown, Burgoyne Large Die Essay on India (121-E1a).** On 73 x 54mm card with full die sinkage, imprint at bottom, Very Fine and choice 800.00
- 4092 E **30c Orange, Burgoyne Large Die Essay on India (121-E1a).** On 227 x 149mm card with full die sinkage, radiant color, small irregularity at far left of card on back only, Very Fine, ex "Lake Shore" 800.00



- 4093 E **30c Light Red Brown, Burgoyne Large Die Essay on India (121-E1a).** On 77 x 60mm card with full die sinkage, bright color, tiny scrape on back of card not mentioned on accompanying certificate, fresh and Very Fine, ex Laehder, with 1998 P.F. certificate..... 800.00
- 4094 E **30c Burgoyne, Large Die Essay on India (121-E1a).** Eight, each a distinctly different color, incl. Rose Red, Red Orange, Brown Orange, Dull Dark Violet, Yellow Green, Yellow Brown, Deep Blue and Blue, from 81 x 61mm to 36 x 38mm with most in the 70 x 48mm range, one on original card, all except Blue show imprint at bottom, Very Fine and desirable group of the 30c Surrender of Burgoyne essays(Photo Ex/Website PDF) 6,400.00
- 4095 E **30c Burgoyne, Large Die Essay on Proof Paper (121-E1f).** Two, first is Carmine, 41 x 45mm with imprint at bottom, second is Red Orange, 32 x 32mm, small thin spot at top, Fine-Very Fine, first with 1998 P.F. certificate.....(Photo Ex) 1,000.00
- 4096 E **30c Black, Burgoyne Large Die Essay on Ivory Paper (121-E1g).** 56 x 51mm, with imprint at bottom, fresh and Very Fine example of this scarce essay, this is the only example in Black we have offered since 2005..... 1,000.00
- 4097 E **30c Scarlet, Burgoyne Large Die Essay on Ivory Paper (121-E1g).** 64 x 50mm, imprint at bottom, brilliant color, few small thin spots, Very Fine appearance, this is the only example in this color we have offered since 2005..... 1,000.00
- 4098 E **30c Blue, Burgoyne, Large Die Essay on Ivory Paper (121-E1g).** 70 x 50mm with imprint at bottom, deep rich color, Very Fine and choice, scarce 1,000.00

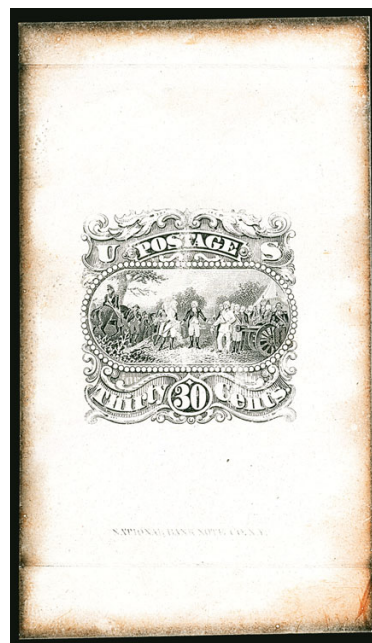


- 4099 E **30c Burgoyne, Large Die Essay on Clear White Bond (121-E1i).** Complete for **all four Scott-listed colors**, from 40 x 37mm to 31 x 29mm, Very Fine, extremely difficult to obtain as a complete set.....**(Photo Ex)** 2,400.00
- 4100 E **30c Burgoyne, Large Die Essay on Yellowish Cloudy Bond (121-E1j).** Three of the four Scott-listed colors, incl. Blue, Orange and Light Red Brown, from 44 x 44mm to 38 x 30mm, one shows imprint at bottom, fresh and Very Fine, a scarce and desirable group which lacks only the Black to be complete**(Photo Ex)** 1,800.00
- 4101 E **30c Burgoyne, Large Die Essay on Smoky Yellow Greenish Bond (121-E1k).** Four, complete for **all Scott-listed colors** plus one that is unlisted (Light Red Brown), from 49 x 50mm to 39 x 31mm, Very Fine, very rare, this is the first time we have offered any on this paper since our 1999 Finkelburg sale.....**(Photo Ex)** 2,400.00
- 4102 E **30c Burgoyne, Large Die Essay on Pink Bond (121-E1l).** Two of the three Scott-listed colors, first is Orange, 41 x 39mm, second is Blue, 48 x 40mm, fresh and Very Fine, surprisingly scarce, these are the first we have offered since 2005, lacking only the Dim Orange Red to be complete..... 1,200.00
- 4103 E **30c Orange, Burgoyne Large Die Essay on Pale Olive Buff (121-E1m).** 40 x 34mm, radiant color, fresh and Very Fine, surprisingly scarce 600.00

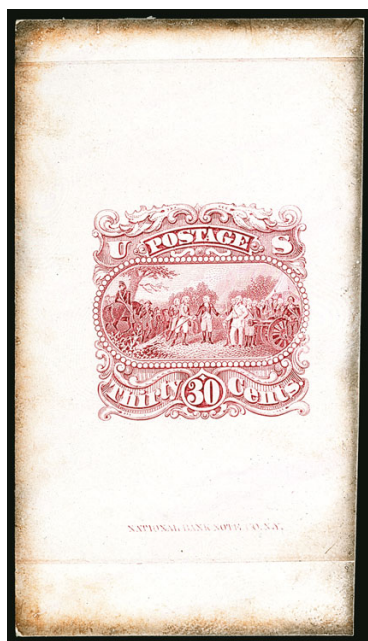
- 4104 **30c Black, Burgoyne Large Die Essay on Red Violet Veined Ivory Card (121-E1o).** 36 x 63mm and with imprint at bottom, bright colors

VERY FINE AND CHOICE. THIS IS ONE OF ONLY TWO COLOR COMBINATIONS OF THIS ESSAY ON VEINED IVORY CARD LISTED IN SCOTT.

We are aware of one other in this color combination, which was recently offered in our Sale 1113.....
..... 2,250.00



4104



4105

- 4105 E **30c Carmine, Burgoyne Large Die Essay on Red Violet Veined Ivory Card (121-E1o).** 35 x 62mm with imprint at bottom, veins are faint but clearly present

VERY FINE EXAMPLE OF THIS RARE 30-CENT BURGoyNE ESSAY. THIS COLOR IS UNLISTED IN SCOTT OR BRAZER.

Scott and Brazer list only Black on Green or Black on Red Violet veined card — they do not list any color for the design other than Black 2,500.00



4106EX

- 4106 E **30c Burgoyne, Plate Essay on Thin Surface-Tinted Paper (121-E1p).** Complete for all eleven Scott-listed colors, large margins

VERY FINE AND CHOICE. A RARE COMPLETE SET OF THE 30-CENT BURGoyNE PLATE ESSAYS ON THIN SURFACE-TINTED PAPER.

A rare opportunity to acquire the complete set, with certificates properly identifying the colors. Ex Laehder. Each with 1997 P.F. certificate(Photo Ex/Website PDF) 2,825.00

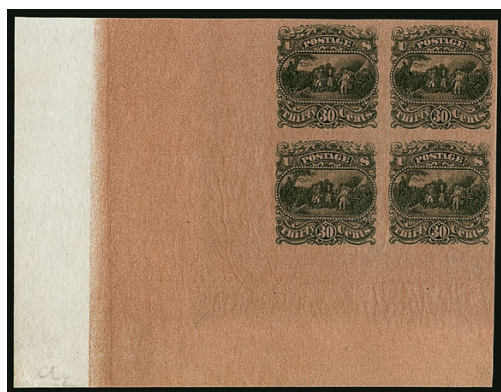


4107

- 4107 田 **30c Black, Burgoyne Plate Essay on Thin Salmon-Red Surface-Tinted Paper (121-E1p).** Block of 20 with **sheet margin at bottom and sides and imprint at bottom**, large margin at top, small tear in sheet margin at left

EXTREMELY FINE AND RARE BLOCK OF THE BOTTOM TWO ROWS OF THE PLATE OF THE 30-CENT BURGOYNE PLATE ESSAY. PROBABLY UNIQUE.

Ex "Lake Shore". Scott Retail as singles without premium for the position 3,500.00



4108



4109



4110

- 4108 田 **30c Black, Burgoyne Plate Essay on Thin Brown-Violet Surface-Tinted Paper (121-E1p).** Block of four from the bottom left corner of the sheet, with massive 55 x 30mm margins clearly showing where the paper tinting ended, fresh and Extremely Fine, a striking position piece, Scott Retail for four normal singles without premium for the position 1,100.00
- 4109 田 **30c Black, Burgoyne Plate Essay on India (121-E1q).** Block of four with bottom sheet margin, large to huge margins other sides, Extremely Fine, Scott Retail as singles 1,200.00
- 4110 田 **30c Dull Red Violet, Burgoyne Plate Essay on Bond, Red Bands (121-E1s).** Block of four, large to huge margins incl. **sheet margin with partial registration marks** at right, fresh and Very Fine, attractive multiple, ex Long, Scott Retail as singles 1,400.00



- 4111 E **30c Burgoyne, Blue on White entire (Undersander E43Aa).** Bright color, Very Fine example of this rare envelope essay using the 30c Surrender of Burgoyne design, ex Dr. Heimburger, Undersander value 2,000.00
- 4112 E **30c Burgoyne, Blue on White entire (Undersander E43Aa).** 194 x 93mm, laid paper, no watermark, bright color, Very Fine, Undersander value 2,000.00

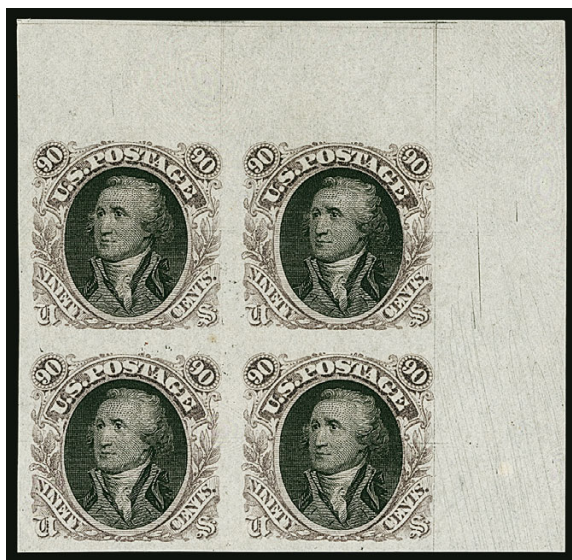


4113

- 4113° E **90c Washington, Plate Essay on Stamp Paper (122-E2b).** Seven horizontal pairs mounted on old-time exhibit page, large margins all around incl. **each with sheet margin at side with "T" guide markings**, colors incl. Orange Red, Pale Red Orange, Red Brown, Deep Red Brown, Pale Violet, Dull Violet and Blue

FRESH AND EXTREMELY FINE. A BEAUTIFUL SET OF SHEET MARGIN PAIRS OF THE 90-CENT WASHINGTON ESSAY WITH SMALL NUMERAL DESIGN, WHICH IS COMPLETE FOR ALL SCOTT-LISTED COLORS.

Scott catalogue lists five colors. The set offered here also includes Deep Red Brown and Pale Violet, which are unlisted in Scott. Scott Retail as singles..... 3,850.00



4114EX

4114°田 **90c Washington, Plate Essay on Stamp Paper (122-E2b).** Five blocks of four in four of the five Scott-listed colors (lacking Orange Red), incl. two in Dull Violet with one showing top right corner margin, large margins, Blue with bottom sheet margin, rich colors, free from the usual defects that can plague these essays

VERY FINE-EXTREMELY FINE. A SCARCE GROUP OF BLOCKS OF FOUR OF THE 90-CENT SMALL NUMERAL WASHINGTON ESSAY, SCOTT 122-E2B.

Scott Retail as singles(Photo Ex) 5,500.00



4115EX

4115 E **90c Frame Only, Plate Essay on Stamp Paper (122-E3).** Complete for all fifteen Scott-listed colors, large margins, few small flaws incl. couple tiny tears

VERY FINE. A RARE OPPORTUNITY TO ACQUIRE A COMPLETE SET OF ALL FIFTEEN SCOTT-LISTED COLORS FOR THE 90-CENT 1869 PICTORIAL SMALL NUMERAL FRAME ESSAY.

Ex Laehder.(Photo Ex) 3,375.00

4116°E **90c Deep Blue Green & Black, Lincoln Die Essay on India (122-E4a).** Vignette mounted in place as always, large margins, rich colors

EXTREMELY FINE. A BEAUTIFUL EXAMPLE OF THE 90-CENT SMALL NUMERAL ESSAY WITH LINCOLN'S VIGNETTE MOUNTED IN PLACE.

Ex Finkelburg and Ainsworth. 3,000.00



4116



4117

4117 E **90c Dark Navy Blue & Black, Lincoln Die Essay on India (122-E4a).** Large margins to full, deep rich colors, vignette cut wide enough to show double frameline as in the 116-E1 essay, Very Fine and choice, a rare and attractive essay, ex Ainsworth, with 1993 P.S.E. certificate 3,000.00

4118 E **90c Dull Violet & Black, Lincoln Die Essay on India (122-E4a).** Stamp size, vignette mounted in place, vignette clearly shows frameline around oval as on 116-E1, Extremely Fine 3,000.00



4118



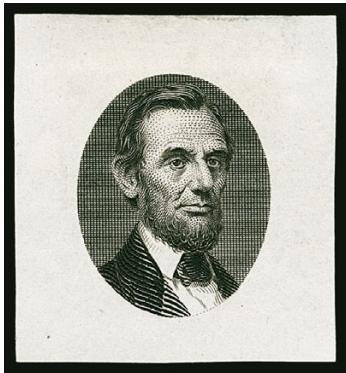
4119

4119°E **90c Yellow & Black, Lincoln Die Essay on India (122-E4a).** Vignette mounted in place as always, large margins, bright color, few small thin spots, Very Fine appearance, a rare essay, ex Ainsworth 3,000.00



4120

- 4120 E **[90c] Black, Lincoln Vignette Only Plate Essay on Rough Pitted Thick Gray Paper (122-E4b).** Left margin horizontal pair, tiny edge nicks, small surface scuffs as often found on this paper, Very Fine appearance, rare, we have offered only one single (which was seriously defective) and no other multiple since keeping computerized records, ex Finkelburg, "Lake Shore", Ainsworth and Price, Scott Retail \$1,000.00 as singles is far too low E. 1,000-1,500



4121

- 4121 E **[90c] Black, Lincoln Vignette Only Large Die Essay on India (122-E4c).** 23 x 25mm, fresh and bright

VERY FINE. AN EXTREMELY RARE ESSAY OF THE LINCOLN VIGNETTE USED FOR THE 90-CENT 1869 PICTORIAL ISSUE.

This is the only example of this vignette-only essay we have offered since keeping computerized records. It was also used on the 15c Lincoln, Scott 77.

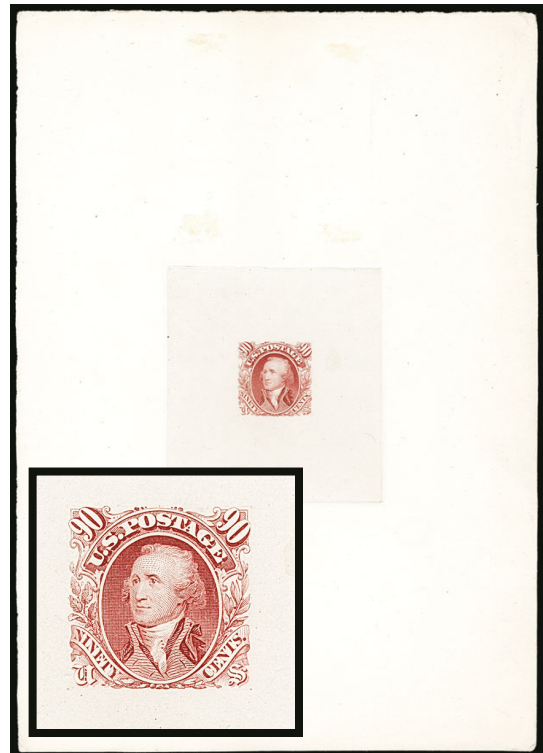
Ex Finkelburg and Dr. Heimbürger 2,500.00

- 4122°E **90c Carmine, Washington Large Die Essay on India (122-E5a).** On 152 x 215mm card with full die sinkage and die imprint, showing adopted frame and Washington's portrait, card with few imperfections

VERY FINE. A VERY RARE LARGE DIE ESSAY OF THE ADOPTED FRAME WITH WASHINGTON'S PORTRAIT.

None was contained in either the Brazer, Juhring or Lopez collections. We have offered only one other (in Black) since keeping computerized records. Ex Dr. Heimbürger... 5,000.00

- 4123 No Lot



4122 with detail

1869 PICTORIAL ISSUE SAFETY PAPER ESSAYS

There is no contemporary source documentation to explain how, when or why the 1869 Pictorial Issue safety paper essays were created. The Brazer catalogue notes they are “circa 1868” and also notes “Probably essayed after George T. Jones proposal of July 20, 1868.”

The Scott Catalogue and Brazer catalogue list a total of 25 distinct types of engraved safety paper underprint patterns, which come with a variety of denominations and colors. While working with the Vaquero collection, we identified one additional type. It is a variation of Type 24, which explains the relatively larger number of colors listed for that particular underprint type. The discovery is explained after lot 4147 in this sale.

Studying this collection has also revealed another previously unreported fact about the safety paper essays. Brazer noted that they are printed on “thin wove paper, underprinted with various engraved safety paper designs in another color.” Working with different denominations and colors with the same safety underprint, in several cases we were able to reconstruct the underlying sheet of safety paper. The sheets of safety paper were evidently cut apart prior to making the die impressions. The absence of die sinkage lines on any part of any proof and the narrow margins of most examples indicate that the safety paper was cut into small-size pieces before the impressions were made from the dies. Further, some of the underprints from the same safety paper sheet have different orientation relative to the stamp die impression. The few large-size examples show the boundaries of the underprinting.

4124°E **5c Orange, Die Essay on Scarlet Safety Paper, Type 1 Underprint (115-E3a).** 30 x 31mm, vivid colors, thinned at top, Very Fine appearance, ex Earl of Crawford 3,250.00



4124



4125

4125°E **5c Carmine, Die Essay on Violet Safety Paper, Type 2 Underprint (115-E4a).** 32 x 31mm, deep rich colors, Very Fine, completely sound examples such as this are rare, ex Earl of Crawford and Finkelburg 3,250.00

4126°E **30c Orange, Die Essay on Violet Safety Paper, Type 2 Underprint (115-E4c).** 30 x 32mm, bright color and crisp impression, slight thinning at top, Very Fine appearance, ex Earl of Crawford and Juhring 3,500.00



4126



4127

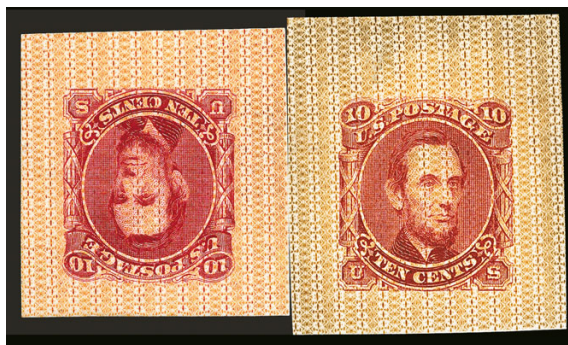
4127°E

10c Carmine, Die Essay on Orange Red Safety Paper, Type 3 Underprint (115-E5b). 31 x 32mm, rich colors, small hinge thin at top

VERY FINE APPEARANCE. AN EXTREMELY RARE SAFETY PAPER ESSAY OF THE 10-CENT LINCOLN DESIGN WITH TYPE 3 UNDERPRINT. WE ARE AWARE OF ONE OTHER, AND THESE WERE PRINTED FROM THE SAME PIECE OF SAFETY PAPER.

This is one of few safety paper essays for which more than one is known in the same color with the same underprinting. As shown in our digital reconstruction of the essay offered here and another, it is obvious they were made at the same time using the same piece of paper.

Ex Earl of Crawford and Ainsworth. ... 5,000.00



Digital reconstruction

*The apparent shade differences are due to scanning—
only the essay at right is contained in lot 4127*



4128

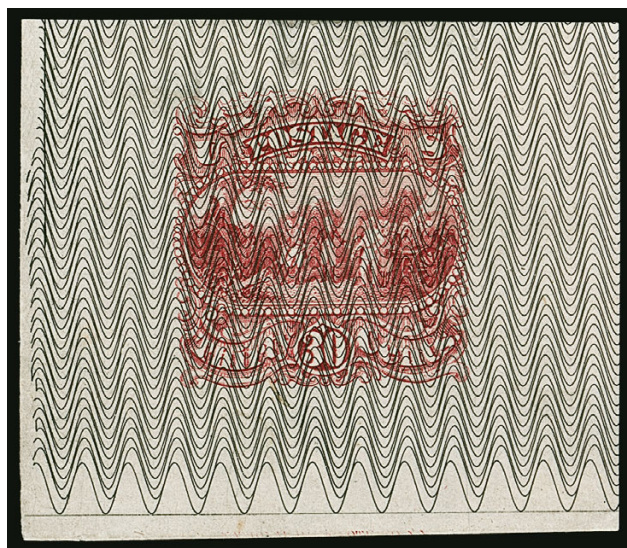
4128°E

10c Carmine, Die Essay on Scarlet Safety Paper, Type 4 Underprint (115-E6b). 40 x 35mm, vibrant color, minor small thins, Very Fine and particularly desirable in this larger size, ex Earl of Crawford and Juhring..... 5,000.00

- 4129°E **10c Carmine, Die Essay on Scarlet Safety Paper, Type 5 Underprint (115-E7b).** 38 x 35mm, bright colors and beautiful impression, tiny flaw at top, Very Fine appearance, ex Earl of Crawford and Juhring..... 5,000.00



4129



4130

- 4130°E **30c Carmine, Die Essay on Black Safety Paper, Type 6 Underprint (115-E8c).** 43 x 38mm, shows the full bottom and left trailing edges of the underprint pattern, rich color, small thin spot at top

VERY FINE APPEARANCE. A DESIRABLE LARGE-SIZE SAFETY PAPER ESSAY WITH WIDE WAVY LINES. VERY RARE IN SUCH A LARGE SIZE.

The bottom and left show the end of the safety paper underprinting.

Ex Earl of Crawford and Finkelburg. 3,500.00

- 4131°E **5c Carmine, Die Essay on Black Safety Paper, Type 7 Underprint (115-E9a).** 32 x 32mm, gorgeous deep die color on crisp Black underprint, thin spots at top corners from hinge removal, still beautiful and Very Fine appearance, a stunning essay, ex Earl of Crawford and Finkelburg 3,250.00



4131



4132

4132° E **15c Blue Green, Orange Brown, Die Essay on Orange Safety Paper, Type 9 Underprint (129-E3).** First is 30 x 31mm, deep shade, thinning and slight wrinkling at top from hinge, the Orange Brown 32 x 32mm, fresh and bright colors, small thin at top, **the underprinting has been rotated 180 degrees so they appear different**

VERY FINE APPEARANCE. THE TWO SAFETY PAPER ESSAYS OFFERED HERE ARE PROOF THAT THERE ARE MORE ORIENTATIONS TO THE PAPER THAN PREVIOUSLY KNOWN. HIGHLY EXHIBITABLE.

The Scott Catalogue lists this safety paper underprint with both vertical and horizontal orientations. It was previously thought that the 15c safety paper essays were the only ones with more than one example of a particular type. However, close examination reveals that the underprint is rotated 180 degrees on some, so technically there is no duplication. We now know there are three types: the normal underprint; underprint rotated 90 degrees; and underprint rotated 180 degrees. It is possible that one exists with the underprint rotated 270 degrees.

The Blue Green ex Earl of Crawford and Juhring. The Orange Brown ex Earl of Crawford, Juhring and Price..... 7,000.00



4133

4133°E **15c Orange Brown, Die Essay on Light Scarlet Safety Paper, Type 10 Underprint (129-E4).** 30 x 30mm, spectacular colors

VERY FINE. A BEAUTIFUL EXAMPLE OF THE 15-CENT 1869 PICTORIAL WITH THE TYPE 10 UNDERPRINT.

Ex Earl of Crawford. 3,500.00



4134

4134°E **15c Orange Brown, Die Essay on Scarlet Safety Paper, Ty. 11 Underprint (129-E5).** Large margins, brilliant colors

VERY FINE. A BEAUTIFUL AND RARE EXAMPLE OF THE 15-CENT 1869 PICTORIAL ISSUE WITH TYPE 11 SAFETY UNDERPRINT.

The Type 11 underprint is known in three colors and each is unique. However, the other two have the underprint applied vertically and not horizontally as on the example offered here. **This is unique with this orientation of the underprint.** 3,500.00



4135

4135°E **15c Orange Brown, Blue Green, Die Essay on Deep Scarlet Safety Paper, Ty. 12 Underprint (129-E6).** Two of the three Scott-listed colors, first is 28 x 30mm with bright colors, second is 30 x 28mm and deep colors

FRESH AND VERY FINE. THESE REMARKABLE SAFETY PAPER ESSAYS REPRESENT TWO OF THE THREE SCOTT-LISTED COLORS FOR THE TYPE 12 SAFETY PAPER, AND WERE MADE FROM THE SAME PIECE OF SAFETY PAPER. EACH IS UNIQUE.

The Scott Catalogue lists Orange Brown, Deep Blue and Blue Green designs with the same deep scarlet underprinting. Each is unique. As our digital reconstruction below shows, these originated from the same piece of safety paper, which was cut apart prior to printing.

Both are ex Earl of Crawford and the first is ex Finkelburg. To the best of our knowledge this is the first time these have been reunited since Lord Crawford's collection was dispersed in 1915 7,000.00



Digital reconstruction
Both essays are included in lot 4135



4136

- 4136°E **10c Blue, Die Essay on Brown Safety Paper, Type 13 Underprint (115-E11b).** 48 x 43mm, huge size which shows the full extent of the vertically oriented security underprinting and sheet margins on three sides, minor translucency
 EXTREMELY FINE APPEARANCE. THIS IS ONE OF THE LARGEST SAFETY PAPER ESSAYS WE HAVE EVER ENCOUNTERED.
 This full-size example of the safety paper shows the appearance of the sheets with underprinting before the die impressions were made.
 Ex Earl of Crawford and Juhring..... 5,500.00



4137

4137° E **5c Black, 10c Blue, Die Essays on Scarlet Safety Paper, Type 14 Underprint (115-E12a, 115-E12b).** First is 31 x 31mm with **vertical underprint orientation**, bright color, tiny thin spots, second is 27 x 31mm with normal orientation of the underprint, beautiful colors

VERY FINE. TWO REMARKABLE EXAMPLES OF THE TYPE 14 SAFETY PAPER UNDERPRINT, WHICH DESPITE THE DIFFERENT ORIENTATION OF THE UNDERPRINT COME FROM THE SAME PIECE OF PAPER AND FROM ADJOINING POSITIONS. THE 5-CENT OFFERED HERE IS THE ONLY RECORDED EXAMPLE OF THIS UNDERPRINT ORIENTED VERTICALLY.

As the reconstruction below shows, the two essays offered here come from the same piece of safety paper. The background design was first printed on the paper, which was then cut apart and used to print the stamp design from the die. This is the first time this has been proved. The paper was rotated 90 degrees when the 5c impression was made. All other colors and denominations have the same horizontal orientation. This safety paper was also used for one of the 3c Liberty essays, Scott 79-E31a (offered as part of lot 4010 in this sale), which was also printed in the upright orientation. It does not adjoin either of two essays offered here.

The 5c ex Earl of Crawford, Finkelburg and Geisler. The 10c ex Earl of Crawford and Juhring..... 9,000.00



Digital reconstruction

Both essays are included in lot 4137



4138

4138°E **5c Carmine, 30c Carmine, Die Essays on Orange Brown Safety Paper, Type 15 Underprint (115-E13a, 115-E13b).** 5c is 29 x 31mm, faint translucency at top, 10c is 50 x 32mm, large size which shows the full extent of the security underprinting and sheet margins on three sides

VERY FINE-EXTREMELY FINE. THESE TWO SAFETY PAPER ESSAYS ARE THE ONLY RECORDED EXAMPLES WITH THIS STYLE OF UNDERPRINTING. BASED ON OUR RESEARCH, THESE IMPRESSIONS WERE MADE ON THE SAME UNDERPRINTING SHEET.

These two essays are the only examples with this underprint. As the digital reconstruction shows, these two essays were part of the same piece of safety paper with the underprinting. The large-size 30c paper shows the boundary of the underprinting.

Both are ex Earl of Crawford. The 5c is also ex Juhring..... 6,750.00



Digital reconstruction

Both essays are included in lot 4138



4139

4139°E **10c Sepia, Die Essay on Scarlet Safety Paper, Type 16 Underprint (115-E14b).** 38 x 31mm, large size showing the partly incomplete underprint in bottom corner, rich color, faint thin

VERY FINE APPEARANCE. A STUNNING ESSAY WITH THE MULTIPLE ROSETTE UNDERPRINT AND UNADOPTED LINCOLN DESIGN.

This essay is very unusual in that it shows the rosette underprinting with a rosette missing from each side.

Ex Earl of Crawford and Juhring..... 5,000.00

4140°E **10c Orange Red, Die Essay on Scarlet Safety Paper, Type 16 Underprint (115-E14b).** 31 x 30mm, bright colors, faint translucency at top

VERY FINE APPEARING EXAMPLE OF THE 10-CENT LINCOLN DESIGN WITH MULTIPLE ROSETTES UNDERPRINT.

Ex Earl of Crawford, Juhring and Geisler 5,000.00



4140



4141

4141°E **5c Carmine, Die Essay on Scarlet Safety Paper, Type 17 Underprint (115-E15a).** 32 x 32mm, vivid colors

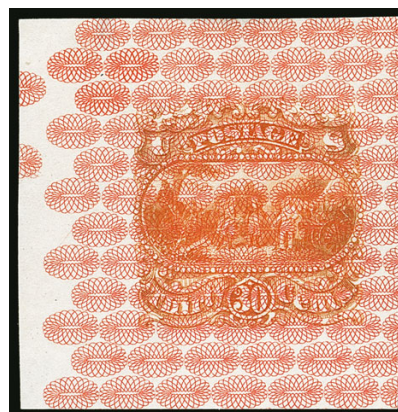
VERY FINE AND CHOICE. THIS IS THE ONLY RECORDED 5-CENT DESIGN WITH THIS TYPE OF UNDERPRINT.

Ex Earl of Crawford and Juhring..... 3,250.00

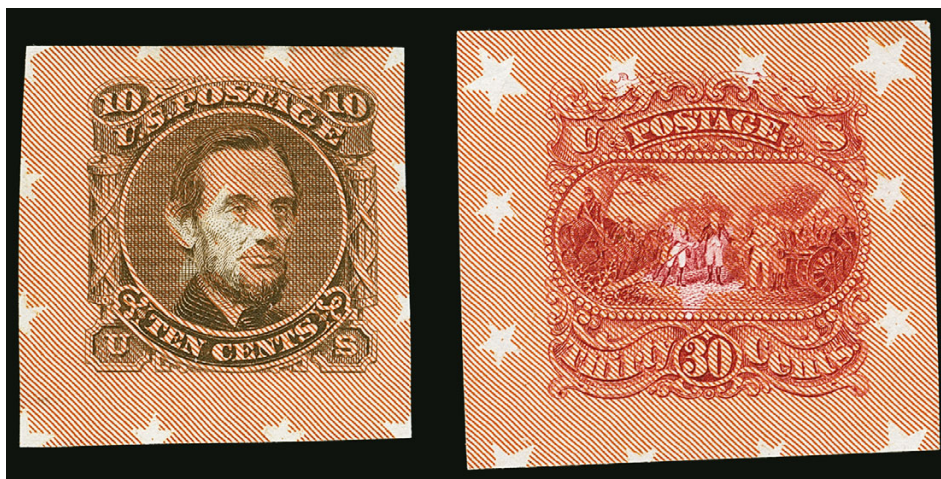
4142°E **30c Orange, Die Essay on Scarlet Safety Paper, Type 17 Underprint (115-E15b).** 36 x 37mm, showing trailing edge of underprint design at left, fresh and bright colors

EXTREMELY FINE. A SPECTACULAR LARGE EXAMPLE OF THE 30-CENT WITH MULTIPLE OVAL ROSETTE UNDERPRINT, SHOWING THE TRAILING EDGE OF THE DESIGN.

Ex Earl of Crawford, Juhring and Kuphal.....
..... 3,500.00



4142



4143

4143°E **10c Sepia, 30c Carmine, Die Essays on Scarlet Safety Paper, Type 18 Underprint (115-E16b, 115-E16c).** The 10c 36 x 36mm, fresh color, faint translucency at top, the 30c 31 x 29mm and rich colors, wide margins

VERY FINE. THE 30-CENT IS THE ONLY RECORDED EXAMPLE OF THIS DENOMINATION WITH THE STAR SAFETY PAPER UNDERPRINT. THE 10-CENT IS ONE OF TWO KNOWN EXAMPLES OF THIS DENOMINATION (THE COLOR IS UNIQUE). THESE ALL ORIGINATE FROM THE SAME PIECE OF PAPER. A PHENOMENAL PAIR PROVING THAT ONLY ONE SHEET OF PAPER WAS USED TO PRINT THIS SAFETY PAPER DESIGN.

Two 10c are known with this underprint — the other is printed in Carmine — and only one 30c is known. Two 5c are also known. We were able to digitally match the safety paper underprinting for the four that are known to us, proving that each sheet of safety paper was cut up prior to making the die impressions.

The 10c ex Earl of Crawford and Juhring. The 30c ex Earl of Crawford and Kuphal.....
 9,000.00



Digital reconstruction

Two of the four essays shown are included in lot 4143 (10c Sepia and 30c)



4144

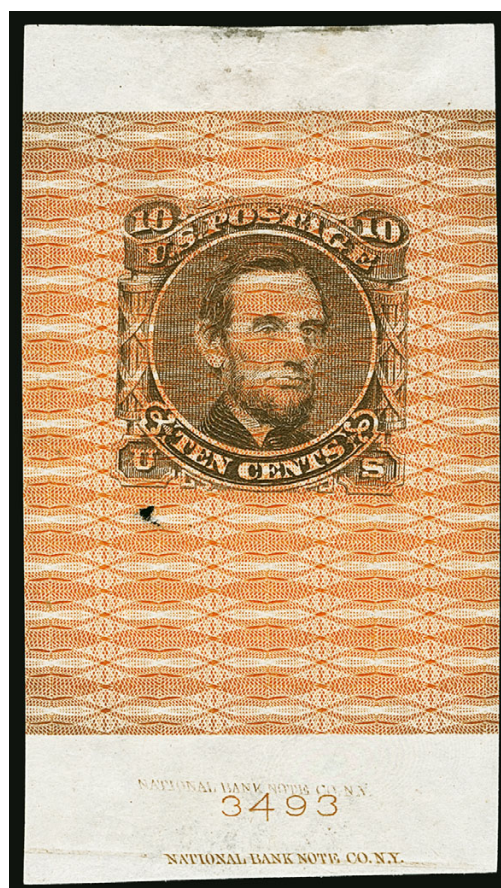
- 4144°E **10c Blue, Die Essay on Blue Green Safety Paper, Ty. 19 Underprint (116-E6a).** 28 x 29mm, incredibly deep rich colors, small thin spots
- VERY FINE. ONE OF THE MOST VISUALLY STUNNING OF THE 1869 PICTORIAL ISSUE SAFETY PAPER ESSAYS, DEPICTING MULTIPLE 6-POINT STARS, LINCOLN'S PORTRAIT AND INTRICATE LATHEWORK.
- Ex Finkelburg, "Lake Shore" and Ainsworth 7,500.00

4145°E **10c Brown, Die Essay on Orange Safety Paper, Type 20 Underprint (116-E7a).** 32 x 56mm, full vertical size with top and bottom margins and showing **two National Bank Note Co. N.Y. imprints and die no. 3493**, rich color, thinning at top and small hole below "U" outside of die

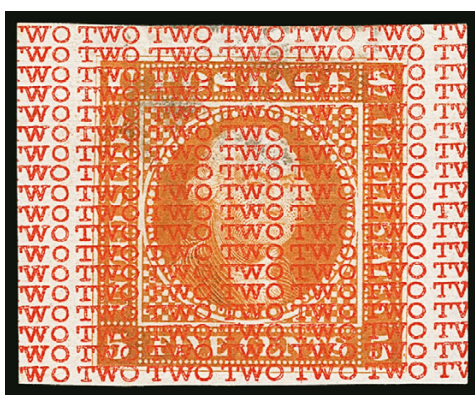
VERY FINE APPEARANCE. A FASCINATING SAFETY PAPER ESSAY, SHOWING THE IMPRINT AND DIE NUMBER PRINTED IN THE COLOR OF THE SAFETY PAPER AND AN IMPRINT PRINTED IN THE COLOR OF THE STAMP DESIGN.

This is the only example of a Safety Paper essay we have encountered with the National Bank Note Co. imprint or die number.

Ex Earl of Crawford and Brazer 5,500.00



4145



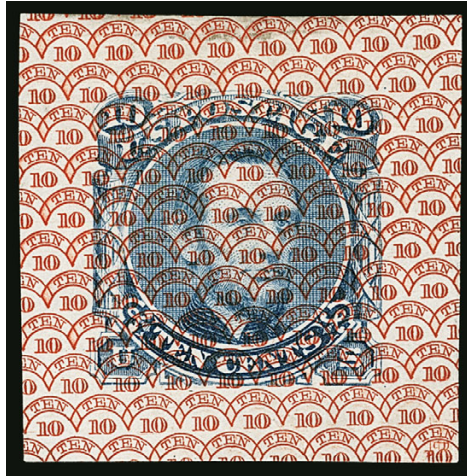
4146

4146°E **5c Orange, Die Essay on Scarlet Safety Paper, Type 22 Underprint (115-E17a).** 30 x 24mm, bright colors, faint hinge stain and minor thin spot

VERY FINE APPEARANCE. AN EXCEEDINGLY RARE EXAMPLE OF THE TYPE 22 UNDERPRINT, WHICH SPELLS OUT "TWO" ON A 5-CENT STAMP.

Underprint Types 21-25 each depict repeating numerals or a number spelled out. They are particularly rare — two or fewer are recorded for all but Type 24.

Ex Earl of Crawford and Juhring..... 3,250.00



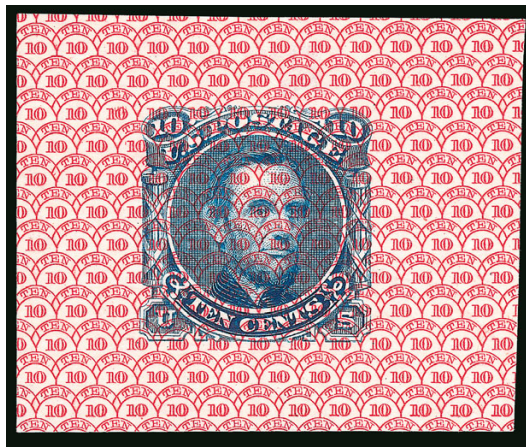
4147

4147° E **10c Carmine, Die Essay on Scarlet Safety Paper, Ty. 24 Underprint (115-E9b).** 30 x 30mm, rich colors, very unusual “(ct)” or burnishing at bottom right in underprinting

VERY FINE. A GORGEOUS EXAMPLE OF THE 10-CENT LINCOLN SAFETY PAPER ESSAY WITH “10” REPEATED IN THE BACKGROUND. WE HAVE IDENTIFIED TWO TYPES OF THIS UNDERPRINT, WHICH WARRANTS A NEW LISTING IN THE SCOTT CATALOGUE.

It has been assumed that each combination of safety paper and denomination/color is unique. Therefore, we were surprised to find a second example of this denomination and color with the same “10” underprinting offered in Siegel Sale 1048 (lot 170). However, after comparing the two, we identified a distinct difference in the underprint pattern. In the example offered here and two others we have sold in different colors, the arches above the “10” do not touch the row below them. In four other examples we have sold in the past, including the other 5c in this color, the bottoms of the arches *touch the row below them*. This difference is significant enough that the Scott Catalogue should create separate listings for the two Type 24 underprints.

Ex Finkelburg and Ainsworth..... 5,750.00



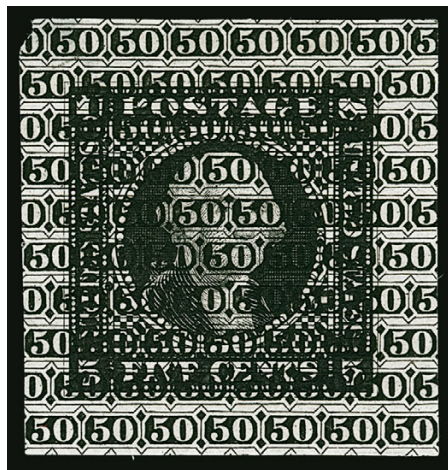
Not touching (lot 4147)



Touching

The bottoms of arches on the underprint do not touch in lot 4147, but do touch in the essay at left

This item is not included in lot 4147



4148

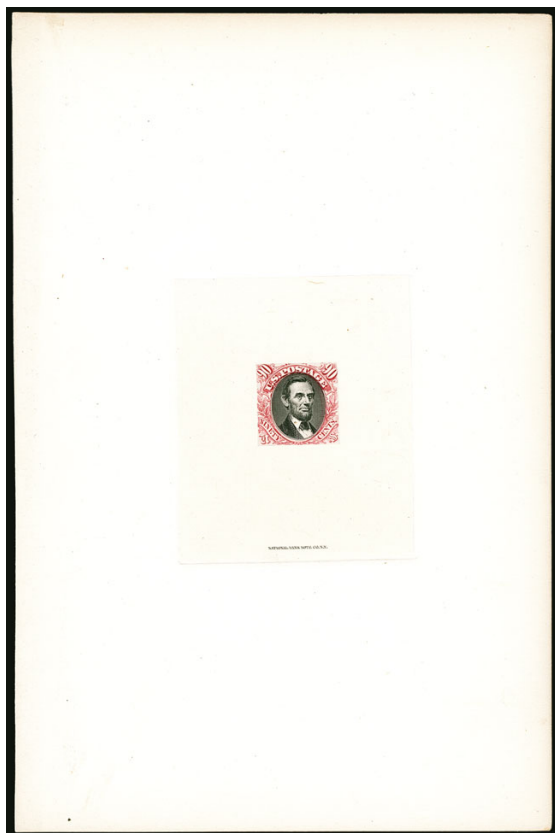
4148°E **5c Black, Die Essay on Black Safety Paper, Type 25 Underprint (115-E20).** 28 x 29mm, intense shade, tiny nick and small thin spot at top left

VERY FINE APPEARANCE. THIS IS ONE OF TWO RECORDED EXAMPLES OF THE TYPE 25 UNDERPRINT WITH ANY OF THE 1869 DESIGNS. IN THIS ESSAY, THE “50” REPEATING PATTERN IS USED WITH THE 5-CENT DENOMINATION. THIS IS ALSO THE ONLY RECORDED EXAMPLE OF A BLACK DESIGN PRINTED ON BLACK SAFETY PAPER, CREATING A VISUALLY STRIKING ESSAY.

Underprint Types 21-25 each depict repeating numerals or a number spelled out. They are particularly rare — one or two are recorded for all but Type 24. One other 5c is known with the “50” underprint pattern (the stamp design is in Orange). It is not known in any other denomination.

Ex Earl of Crawford and Finkelburg 3,250.00

1869 PICTORIAL ISSUE PROOFS



4149EX

4149°P

1c-90c 1869 Pictorial, Hybrid Large Die Proofs on India (112P1-122P1, 129P1). Complete set, includes both 15c, also two 3c, both 15c, 24c and 90c hybrids, most approximately 140 x 215mm, some with traces of binding at left from presentation or salesman's book

VERY FINE. AN ATTRACTIVE AND SCARCE COMPLETE SET OF LARGE DIE PROOFS FOR THE 1869 PICTORIAL ISSUE.

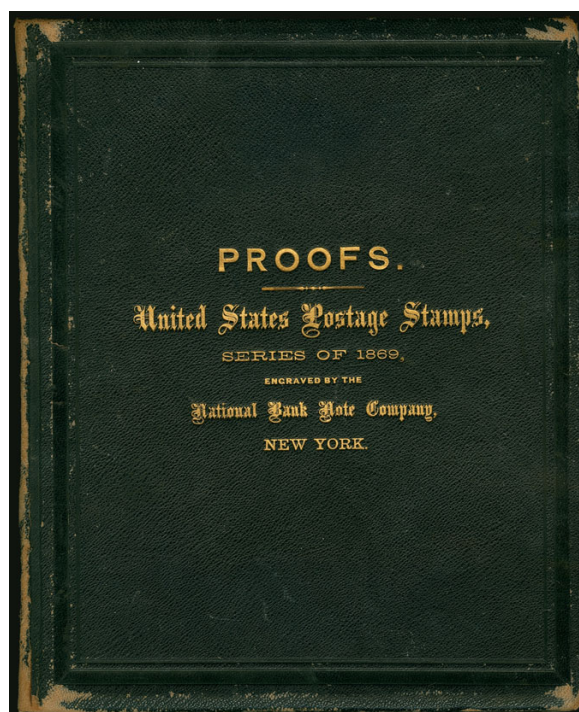
This set was created by buying two sets and taking the best proofs. The 24c and 90c are only known as hybrids, and the 15c are normally seen as hybrids. Six with 1998 P.F. certificates**(Photo Ex)** 9,450.00

4150°P

1c-90c 1869 Pictorial, Hybrid Large Die Proofs on India, Presentation Album (112P1var-122P1var). Stamp size and mounted on approximately 180 x 225mm cards with drawn in die sinkage area, bound into **black leather gold-stamped presentation album**, titled on front "PROOFS. *United States Postage Stamps, Series of 1869, Engraved by the National Bank Note Company, New York.*", binding is a bit loose and leather is worn on edges — nearly always the case for presentation albums of this era

VERY FINE AND RARE PRESENTATION ALBUM OF THE 1869 PICTORIAL ISSUE LARGE DIE PROOFS.

Security printers' presentation albums were specially made for a variety of people, often potential customers or dignitaries. Most have been broken apart over the years for the value of the individual proofs. Intact albums are very rare. A similar album realized \$7,500 in our Sale 1040. Ex Curtis**(Photo Ex)** E. 3,000-4,000



4150EX

4151°P **1c-90c 1869 Pictorial, Small Die Proofs on India (112P2-122P2).** Complete set incl. both 15c types, on original gray card backing, rich colors as fresh as the day they were printed

VERY FINE. A BEAUTIFUL AND RARE SET OF SMALL DIE PROOFS FROM THE ROOSEVELT PRESENTATION ALBUM.

Only 85 albums were produced. Ex Hansen... 4,575.00



4151



4152EX

4152 P **1c-90c 1869 Pictorial, Plate Proofs on India (112P3-122P3, 129P3).** Complete set of eleven, including both 15c, large margins, bright colors, few trivial flaws often associated with this fragile paper, Very Fine set, ex Hansen(Photo Ex) 1,205.00



4153EX

4153°P田 **1c-90c 1869 Pictorial, Plate Proofs on India (112P3-122P3, 120TC3a, 129P3).** Complete set of blocks of four, incl. both 15c, also two 24c with distinctly different vignette colors (one is the 120TC3a trial color), large margins, bright colors, few small flaws as normally associated with this fragile paper

VERY FINE APPEARANCE. A DESIRABLE SET OF BLOCKS OF THE 1869 PICTORIAL ISSUE PLATE PROOFS ON INDIA PAPER.

Ex Laehder. Each with 1998 P.F. certificate. Scott Retail counting both 24c as normal vignette (the Reddish Lilac is listed but unpriced in Scott).....(Photo Ex) 6,085.00



4154EX

4154 P **1c-90c 1869 Pictorial, Plate Proofs on Card (112P4-117P4, 120P4-122P4, 129P4).** Complete set, large to full margins, brilliant colors, incl. two 15c Type III (one with vignette strongly shifted), fresh and Very Fine(Photo Ex) 1,155.00



THE UNIQUE SET OF TOP IMPRINT AND PLATE NUMBER BLOCKS OF
THE 1869 PICTORIAL ISSUE PLATE PROOFS ON CARD



4155EX

4155° 田 **1c-90c 1869 Pictorial, Plate Proofs on Card (113P4-122P4, 129P4, 133P4).** Complete set (ten total) of top imprint and plate number blocks, blocks of twelve of 1c thru 12c, blocks of ten of the larger-size bicolor 15c-90c, 1c with additional sheet margin at left, 15c thru 90c with additional sheet margin at right, large margins other sides, brilliant colors as fresh as the day they were printed, 90c showing clear plate layout lines and vignette shifted noticeably to bottom, 12c with top margin just into plate no. and imprint, absolutely pristine

EXTREMELY FINE. A PHENOMENAL COMPLETE SET OF TOP IMPRINT AND PLATE NUMBER BLOCKS OF THE 1869 PICTORIAL ISSUE PLATE PROOFS ON CARD. THIS IS THE ONLY TOP POSITION SET THAT CAN EXIST.

This unique set of top imprint and plate number blocks on card originates from the set of complete sheets offered in our 1967 Lilly sale (Siegel Sale 321, lot 233). The 1c-12c were printed in sheets of 300 divided into two panes of 150, with one plate number at top and one at bottom on each pane (no one has ever seen the other panes of 150 and they may never have been released). The four bicolor denominations were printed in sheets of 100, with two imprint and plate numbers at top in the color of the frame and with corresponding imprint and plate numbers at bottom in the color of the vignette.

After the Lilly sale the sheets were divided into two half-sheets. The 1c-12c were divided horizontally into top and bottom halves (70 stamps in the top half, 80 in the bottom). The 15c-90c were divided vertically into equal left and right halves. One set of the half sheets (with the bottom positions for 1c-12c and left halves for the 15c-90c) remains intact today in a private collection. The other half was divided into smaller multiples, including the plate blocks offered here. The bottom plate blocks from the right halves for the bicolor denominations have not been seen since the sheets were broken decades ago.

Ex Lilly. Scott Catalogue lists but does not price the plate blocks of the Plate Proofs on Card. They do price the Plate Proofs on India, which are more common, at \$30,000.00.....
.....(Photo Ex) E. 30,000-40,000



- 4156 TC **6c Deep Dull Blue, Large Die Trial Color Proof on India (115TC1).** On 147 x 226mm card with full die sinkage, imprint at bottom, gorgeous rich color which is distinctly different from the issued stamp or the 115P1 color, bit of stray printer's ink at far bottom of card, Extremely Fine, scarce as a full size proof, Scott Catalogue lists trial colors in this color and in Black..... 2,500.00
- 4157 TC **6c Black, Large Die Trial Color Proof on India (115TC1).** On 40 x 40mm card, intense color, Very Fine and choice, **this is the first example struck in black we have offered since keeping computerized records**, we have only offered examples in the other listed color — Deep Dull Blue — which is not as dramatic as the example offered here, with 2005 P.S.E. certificate..... 2,500.00
- 4158 TC **10c Black, Large Die Trial Color Proof on India (116TC1).** On 78 x 91mm card with full die sinkage, imprint at bottom, fresh and Extremely Fine, a beautiful Trial Color proof in Black of the finished design, this is the first we have offered in this color showing the full die sinkage area since keeping computerized records and only the second showing full die sinkage in *any* color since our 1999 Finkelburg sale, ex Liberman 2,500.00
- 4159 TC **10c Chocolate, Large Die Trial Color Proof on India (116TC1k).** On 75 x 82mm card with full die sinkage, rich color, few trivial toned specks well away from design, Very Fine, scarce with the full die sinkage, ex Dr. Heimburger..... 2,500.00



- 4160°TC **15c Black, Vignette and Ty. III Frame in Single Die, Large Die Trial Color Proof on India (118TC1h).** On 79 x 62mm card with full die sinkage, pencil "2" at top right, albino impression of imprint at bottom

VERY FINE AND CHOICE. A RARE LARGE DIE TRIAL COLOR PROOF OF THE 15-CENT 1869 PICTORIAL ISSUE IN BLACK.

We have offered only one other in Black since keeping computerized records. That other example realized \$4,000 hammer in our 2005 "Lake Shore" sale..... 2,500.00

4160



4161

4162

4163

- 4161 TC **15c Dull Red Brown, Vignette and Ty. III Frame in Single Die, Large Die Trial Color Proof on India (118TC1g).** On 73 x 60mm card with full die sinkage, bright color, few trivial toned specks, Very Fine, ex Dr. Heimburger 2,500.00
- 4162 TC **15c Deep Blue, Vignette and Ty. III Frame in Single Die, Large Die Trial Color Proof on India (118TC1f).** 50 x 42mm, intense shade and impression, Very Fine, Scott Retail as die sunk on card, ex Dr. Heimburger 2,500.00
- 4163 TC **15c Pale Blue, Vignette and Ty. III Frame in Single Die, Large Die Trial Color Proof on India (118TC1).** Off-card and reduced to size of a "large margined" stamp, bright color, typical India paper imperfections, Very Fine appearance and very rare, **this color is unlisted in Scott** and is significantly different than the listed Deep Blue offered in the previous lot, Scott Retail as full size listed color 2,500.00

- 4164°P **15c Brown & Blue, Ty. II, Panama-Pacific Small Die Proof (119P2a).** Bright colors, wide margins

VERY FINE. A RARE EXAMPLE OF THE 15-CENT 1869 PICTORIAL PANAMA-PACIFIC SMALL DIE PROOF.

Only 3-5 are believed to have been produced. Ex Finkelburg.
With 2007 P.F. certificate 3,000.00



4164



4165

- 4165°P **15c Brown & Blue, Ty. II, Plate Proof on India (119P3).** Top imprint and plate no. 31 strip of eight with both plate nos. and both imprints, large margins, deep rich colors

EXTREMELY FINE. A BEAUTIFUL AND RARE IMPRINT AND PLATE NUMBER STRIP OF EIGHT OF THE 15-CENT TYPE II 1869 PICTORIAL ISSUE.

The bicolor 1869 Pictorials were printed in sheets of 100, with two plate numbers and imprints at top in the color of the frame and two at bottom in the color of the vignette. Plate proofs of Type I are not known. Virtually all have been split into single imprint and plate number multiples. This would be a wonderful companion piece to a similar multiple from the bottom of the sheet offered in our Heimburger sale.

Ex Long. Scott Retail as singles \$960.00 is a meaningless gauge of value E. 2,000-3,000



4166°P田 **15c Brown & Blue, Ty. III, Plate Proof on India (129P3).** Block of four, huge margins all around, vignette shifted strongly to the right, bright colors, Very Fine and choice, a remarkable plate proof multiple with a strongly shifted vignette, we were under the impression that greater care was taken when pulling proofs, apparently this was not always the case, ex Price..... 1,600.00

4166



4167

4167°P田 **15c Brown & Blue, Ty. III, Plate Proof on India (129P3).** Bottom left corner margin imprint and plate no. 23 block of ten, privately perforated, rich colors, vignette starts out shifted to left on left stamps and is in perfect position by the right stamps, missing small piece of corner selvage, pulled perf at top, few small flaws as often associated with this fragile paper, still Very Fine and very desirable, a plate block is not known for the issued stamp, Scott Retail as plate block of eight and two singles..... 3,700.00



4168

4168°TC田 **24c Green & Reddish Lilac, Trial Color Plate Proof on India (120TC3a).** Top imprint and plate no. 20 block of ten with green frame plate no., large margins all around, bottom stamps light horizontal crease at bottom, small flaw at upper right

VERY FINE APPEARANCE. AN EXTREMELY RARE AND DESIRABLE IMPRINT AND PLATE NUMBER BLOCK OF TEN OF THE 24-CENT 1869 PICTORIAL TRIAL COLOR PLATE PROOF ON INDIA.

Especially desirable from the top position. The corresponding bottom position shows the imprint and plate number (24) for the vignette trial color, and was offered in our recent auction of the Don David Price collection. Scott Retail \$6,000.00 as a plate block of eight (the two additional singles are unpriced) E. 3,000-4,000

4169°TC **30c Deep Blue & Deep Green, Large Die Trial Color Proof on India (121TC1).** On 71 x 79mm card with full die sinkage, bright colors, India with usual two small hole punches

VERY FINE. THIS COLOR COMBINATION FOR THE 30-CENT 1869 TRIAL COLOR PROOF IS REPORTEDLY UNIQUE.

Eleven colors are listed in Scott Catalogue, and all are believed to be unique. 3,500.00



4169



4170

4170 TC **30c Carmine Lake & Black, Large Die Trial Color Proof on India (121TC1).** On 72 x 81mm card with full die sinkage, Very Fine and choice example of this scarce Trial Color proof, ex "Lake Shore" and Liberman..... 3,500.00

4171 TC **30c Carmine Lake & Dark Ultramarine, Large Die Trial Color Proof on India (121TC1).** On 85 x 99mm card with full die sinkage, rich colors, Very Fine and choice example of this scarce Trial Color Large Die Proof, the colors on the example offered here approach those of the issued colors, but are different enough to qualify as a Trial Color (compare to lot 4174), ex "Lake Shore", this color combination unlisted in Scott, Scott Retail as listed color 3,500.00



4171



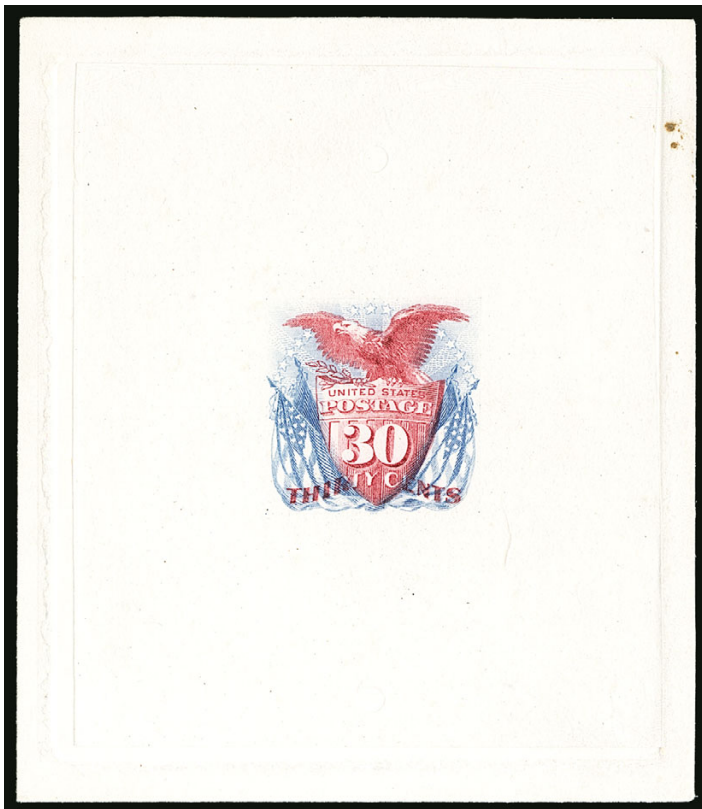
4172

- 4172 TC **30c Golden Brown & Carmine Lake, Large Die Trial Color Proof on India (121TC1g).** 46 x 49mm, bright colors, Very Fine and rare, ex Finkelburg and Dr. Heimburger..... 3,500.00

- 4173 TC **30c Carmine Lake & Dull Violet, Large Die Trial Color Proof on India (121TC1h).** 35 x 35mm, rich colors, faint crease at top away from design, Very Fine appearance, rare, this is the first example of this color combination we have offered since keeping computerized records, ex Dr. Heimburger..... 3,500.00



4173



4174

- 4174 P **30c Ultramarine & Carmine, Large Die Proof on India (121P1).** On 69 x 79mm card with full die sinkage, vivid color, Extremely Fine..... 1,250.00



4175

- 4175 P **30c Ultramarine & Carmine, Plate Proof on India (121P3).** Bottom imprint and plate no. 21 block of ten, imprint and plate no. in color of the vignette, large margins, showing both blue and red registration marks at left, rich colors, few small edge tears in selvage only

EXTREMELY FINE APPEARANCE. A BEAUTIFUL AND RARE IMPRINT AND PLATE BLOCK OF TEN ON INDIA PAPER OF THE 30-CENT 1869 PICTORIAL ISSUE.

A review using Power Search found something very interesting. At one state of the plate, multiples from both the top and bottom of the sheet show only the imprint and *no plate number*. This is confirmed for both left and right halves of the sheet, and from both top and bottom positions. For example our Sale 891, lot 2007 shows the same position offered here, with registration marks at left and sheet margin at right, but only the imprint. The plate numbers for both frame and vignette must have been added later. Perhaps this was due to the rushed nature of the 30c production, after the Burgoyne design was rejected.

We have offered only one complete plate block from top and one from bottom (both from the left pane), plus one strip of eight from the top, since keeping computerized records. This is the only example from this position we have offered since keeping computerized records. Scott Retail as plate block of eight and two singles 6,280.00



4176

- 4176 P **90c Carmine & Black, Plate Proof on India (122P3).** Top imprint and plate no. 22 strip of four, three ample to huge margins, ample to clear at left, Fine-Very Fine, an attractive position piece, Scott Retail as singles with no premium for the position (the plate block of eight catalogues \$6,500.00) 720.00



4177EX

4177°TC **1c-90c 1869 Pictorial, "Atlanta" Trial Color Plate Proofs on Card (123TC1-132TC1).**
Complete set of 79, all have ample to large margins, all have fresh colors

VERY FINE-EXTREMELY FINE. AN INCREDIBLY RARE COMPLETE SET OF "ATLANTA" TRIAL
COLOR PLATE PROOFS OF THE 1869 PICTORIAL ISSUE, IN THE FINEST CONDITION
ATTAINABLE.

The "Atlanta" trial color plate proofs on card were prepared for display at the 1881
International Cotton Exhibition in Atlanta. Only one sheet of 100 in each color was
printed. Very few have been kept together as intact sets. The set offered here represents
the best examples from two different sets(Photo Ex) 24,400.00



4178

4178°TC **90c Green & Black, Atlanta Trial Color Proof (132TC4g).** Large margins, struck in **unique color combination** and on the same distinctive card as the issued colors

EXTREMELY FINE. THIS IS THE ONLY RECORDED EXAMPLE OF THIS COLOR COMBINATION, AND IS THE KEY TO A TRULY COMPLETE SET OF THE 1869 PICTORIAL ATLANTA TRIAL COLOR PROOFS.

Color combinations are known in Green & Blue, Green & Brown and Black & Green (the opposite colors of this). Ex Long. With 2005 P.F. certificate. Scott Retail of \$3,500.00 is outdated for such a unique item..... E. 5,000-7,500

BANK NOTE ISSUE ESSAYS

1870 CONTINENTAL BANK NOTE COMPANY



4179

4179 E **Continental Bank Note Co., 1c Ultramarine, "Independence 1776", Large Die Essay on India (145-E1Cd; formerly 145-E1Ca).** On 52 x 52mm card, radiant color, fresh and Very Fine, very rare, the design was derived from concurrent tax paid revenue stamps and essays 1,500.00

4180 E **Continental Bank Note Co., 1c Black, "Independence 1776", Large Die Essay on India (145-E1Cd; formerly 145-E1Ca).** On 45 x 50mm card, some light toning on back, otherwise Fine, rare, the design was derived from concurrent tax paid revenue stamps and essays, ex Finkelburg..... 1,500.00



4180



4181

- 4181 E **Continental Bank Note Co., 2c Black, Large Die Essay on India (146-E1).** Cut close as always, crisp impression, traces of what may be gum on back, Very Fine and choice example of this rare and attractive essay, ex "Lake Shore" and Liberman 1,500.00

- 4182 E **Continental Bank Note Co., 3c Blue, "Emancipation Proclamation", Large Die Essay on India (147-E1a; formerly 147-E1).** On 50 x 54mm card with full die sinkage, rich color, few trivial toned spots well away from design, Very Fine, rare in such choice condition, this is the first in this color we have offered on its original card and showing the full die sinkage area, ex Ainsworth..... 2,250.00



4182



4183

- 4183 E **Continental Bank Note Co., 3c Scarlet, "Emancipation Proclamation", Large Die Essay on Proof Paper (147-E1c).** Stamp size and block sunk on 48 x 50mm card, rich color, Very Fine, scarce example of this essay commemorating Lincoln and the Emancipation Proclamation..... 1,500.00

- 4184 E **Continental Bank Note Co., 3c Black, Columbia Portrait, Large Die Essay on India (147-E3b; formerly 147-E1C).** On 36 x 40mm card, deep rich color

VERY FINE. AN EXCEEDINGLY RARE EXAMPLE OF THIS ESSAY, WHICH WAS PRINTED BY THE CONTINENTAL BANK NOTE COMPANY.

We are aware of one only other in Black, and one in the other known color, Green. 2,750.00



4184

- 4185 E **Continental Bank Note Co., 3c Green, Columbia Portrait, Large Die Essay on India (147-E6B).** With cut-out of vignette mounted in place, on 33 x 38mm card, few toned spots do not affect design

VERY FINE APPEARANCE. A RARE AND BEAUTIFUL EXAMPLE OF THE CONTINENTAL BANK NOTE COMPANY 3-CENT COMPOSITE ESSAY WITH SCROLLED ORNAMENTATION.

There are two types of the 3c Continental essay. One has a different style of foliate frame (Scott 147-E4 in the finished state) and the other has scrolled ornamentation, as in the example offered here. Both are known in black and green; we are aware of only this example in green for the second state and one in black..... 2,000.00



4185



4186

- 4186 E **Continental Bank Note Co., 6c Scarlet, "Monroe Doctrine", Frame Only, Large Die Essay on India (148-E1a).** On 56 x 58mm card with full die sinkage, brilliant color

EXTREMELY FINE. THIS IS THE ONLY EXAMPLE IN ANY COLOR WE HAVE OFFERED THAT SHOWS THE FULL DIE SINKAGE AREA.

We have offered perhaps a half-dozen unduplicated examples in all five Scott-listed colors since keeping computerized records. This is the only one with card showing the full die sinkage area, and only the second in Scarlet that we have ever offered..... 1,500.00

- 4187 E **Continental Bank Note Co., 6c Green, "Monroe Doctrine", Frame Only, Large Die Essay on India (148-E1a).** On 48 x 49mm card, remarkably detailed impression and intense color

VERY FINE AND CHOICE EXAMPLE OF THE RARE CONTINENTAL BANK NOTE COMPANY 6-CENT ESSAY COMMEMORATING THE MONROE DOCTRINE.

The Monroe Doctrine figured prominently in the Grant administration, when these essays were made. Grant attempted to annex the Dominican Republic in 1869 to protect it from foreign influence and invasion, but the measure was defeated in the Senate... 2,000.00



4187



- 4188 E **Continental Bank Note Co., 6c Blue, "Monroe Doctrine", Frame Only, Large Die Essay on India (148-E1a).** Slightly larger than stamp size, typical India paper translucencies, fresh and Very Fine appearance, this is the only example we have offered in this color since keeping computerized records and may well be unique 1,500.00



4189



4192EX



4191



4190EX



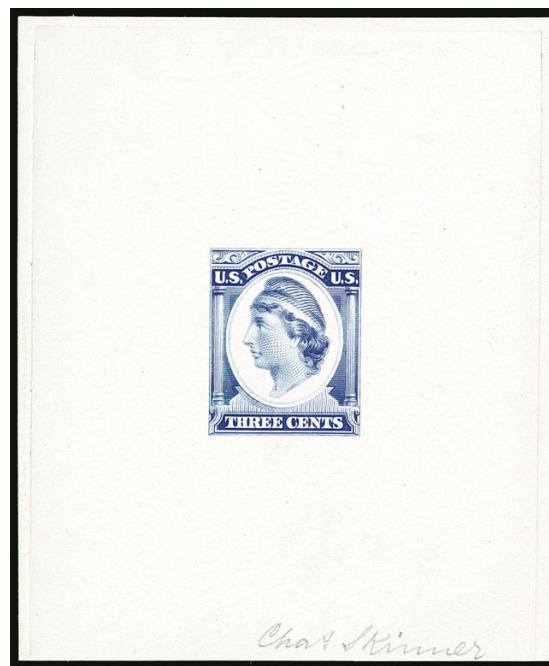
4193EX

- 4189 E **National Bank Note Co., 2c Jackson, Unadopted Design, Large Die Essay on India (146-E7a).** Red Violet, 62 x 72mm, accompanied by same size card with ghost impression of design so original, bright color, Very Fine 1,000.00
- 4190° E **7c Stanton, Large Die Essay on India (149-E6).** Nine of the fifteen different Scott-listed colors, eight on card showing full die sinkage area, ranging from 69 x 78mm to 150 x 225mm, one off card, one slight oxidation, several minor age toning, few minor corner dings on larger cards, otherwise Very Fine and desirable group(Photo Ex) 4,500.00
- 4191 E **Philadelphia Bank Note Co., 2c-30c Washington, Lithograph Essay, Perforated and Gummed (183-E2e).** Complete sheet of 16 in Dull Yellow Green, bright color, h.r., light diagonal crease at bottom left affects two essays, appears Fine-Very Fine, this is the first in this color we have offered since keeping computerized records 500.00
- 4192 E **Philadelphia Bank Note Co., 3c Washington, Plate Essay on Semi-Glazed Yellowish Wove (184-E5h).** Eight, each a different color, large margins to huge incl. two with corner sheet margins, Very Fine-Extremely Fine, Violet Blue with 1992 A.P.S. certificate, lot also includes 182-E3d strip of four 1c stamps in Dull Deep Violet Red (not counted in catalogue value)(Photo Ex) 240.00
- 4193 E **Continental Bank Note Co., 3c Liberty, Large Die Essay on India (184-E11a).** Five different colors, from 41 x 40mm to 26 x 30mm, last one on card, rich colors, Fine-Very Fine group, lacking only one color to be complete for all Scott-listed, Scott notes "all known examples have reduced margins", the examples offered here are for the most part larger than others we have encountered(Photo Ex) 1,750.00

- 4194°E **Continental Bank Note Co., 3c Liberty, Large Die Essay on Ivory Glazed Paper (184-E11c).** Complete for **all four Scott-listed colors**, Blue 64 x 77mm showing die sinkage area and **signed by engraver Charles Skinner**, other three from 41 x 43mm to 27 x 32mm, Black Brown with small translucency as often seen on this paper

VERY FINE. A RARE INTACT SET OF THE CONTINENTAL BANK NOTE COMPANY LIBERTY DESIGN ESSAY ON IVORY GLAZED PAPER, WITH ONE SIGNED BY THE ENGRAVER.

Especially desirable with the one signed essay.....(Photo Ex) 3,000.00



4194EX



4195EX

- 4195 E **Continental Bank Note Co., 3c Indian Maiden, Large Die Essay on Proof Paper (184-E15b).** Complete set of **all five Scott-listed colors**, from 23 x 32mm to 35 x 37mm, four show part of cracked die at top, few small thin spots

FINE-VERY FINE APPEARANCE. A RARE COMPLETE SET OF ALL FIVE SCOTT-LISTED COLORS FOR THE 3-CENT CONTINENTAL BANK NOTE COMPANY WITH THE "PORTAGE" SPELLING ERROR ON PROOF PAPER.

Four of the five essays show the "Portage" spelling error. One shows the normal "Postage." This is the only complete set we have offered since keeping computerized records.....

.....(Photo Ex) 2,600.00

- 4196 E **Continental Bank Note Co., 3c Indian Maiden, Large Die Essay on White Glazed Paper (184-E15c).** Complete set of **all four Scott-listed colors**, from 65 x 60mm to 65 x 77mm, bright colors, few small thin spots

VERY FINE APPEARANCE. A RARE COMPLETE SET OF ALL FOUR SCOTT-LISTED COLORS OF THE 3-CENT CONTINENTAL BANK NOTE COMPANY INDIAN MAIDEN ESSAY ON IVORY GLAZED PAPER, WITH THE "PORTAGE" SPELLING ERROR.

This is the only complete set we have offered since keeping computerized records.....
..... 3,000.00



4196



4197



4198EX

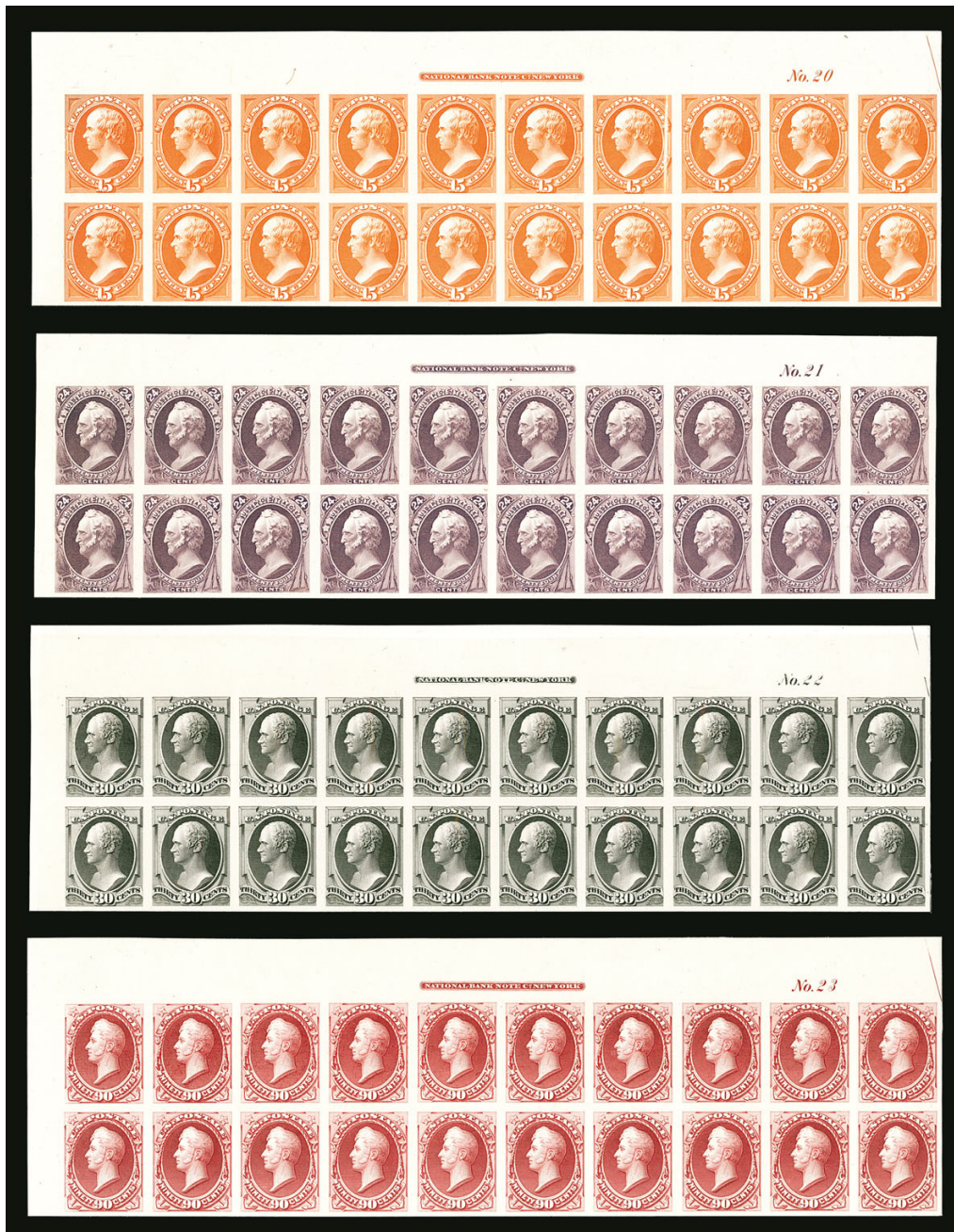


4199

- 4197 E **1c Blue, Franklin Facing Right, Large Die Essay on Ivory Glazed Paper (212-E4b).** 64 x 66mm, shows full die sinkage area, gorgeous color, fresh and Extremely Fine, ex Fekete 750.00

BANK NOTE ISSUE PROOFS

- 4198 P **1c-90c 1870-71 National Bank Note Co., Large Die Proofs on Card (145P1-155P1).** On approximately 72 x 84mm cards with full die sinkage, few light toned specks here and there, Very Fine set, ex Long.....(Photo Ex) 4,800.00
- 4199 P **1c-90c 1870-73 Bank Note Issues, Small Die Proofs on Wove (145P2, 157P2-166P2).** Complete page from a Roosevelt presentation album, with label "1870" at center, fresh colors except 15c slightly oxidized, slight bend at left just to edge of 15c proof, Very Fine and rare, only 85 albums were produced, few of the sets are intact on the original page, Scott Retail as singles 2,025.00



4200EX

4200° 田 **1c-90c National Bank Note Co., Plate Proofs on India (145P3-155P3, 166P3).** Complete set of **top imprint and plate no. blocks of 20** from the National Bank Note Co. issue, plus the 90c Continental issue, comprising the top two rows of the left pane of the sheet with sheet margin at left, affixed to their original cards, absolutely brilliant colors throughout, 6c couple minor wrinkles

EXTREMELY FINE. A SPECTACULAR SET OF MATCHED TOP PLATE BLOCKS OF 20 OF THE NATIONAL BANK NOTE COMPANY ISSUE INDIA PROOFS FROM THE LILLY SHEETS.

The Siegel firm auctioned the Lilly India and card proof sheets in September 1967. The left panes of the India sheets were broken up, and this set of top plate blocks originates from those panes. The right panes remain intact in a private collection.

Scott Retail as plate blocks of 12 and blocks of four does not adequately convey the rarity of this set.....(Photo Ex) 17,100.00



- 4201 P **1c-90c 1870-73 Bank Note Issues, Plate Proofs on India, Card (145P3-155P3, 156P4-166P4).** Incl. second 160P4, large margins, bright colors, No. 156P4 small thin, still fresh and Very Fine sets, the National Bank Note set is not known on card, ex Long.....**(Photo Ex)** 1,611.00
- 4202 P **1c-90c 1873 Bank Note Issue, Hybrid Large Die Proofs on India (156P1-166P1).** Full set of all values, cut to shape, mounted on India and die sunk on approximately 143 x 216mm cards, each with part of binding at left from presentation album, 6c some slight toning on card, otherwise Very Fine and unusual, Scott Retail as non-hybrids \$5,650.00 E. 750-1,000
- 4203°TC **1c-90c Continental Bank Note Co. Issue, Atlanta Trial Color Proofs (156TC4-166TC4).** Complete for all five colors and all eleven values of the series, lacking only the 5c (Scott 179TC4) to be complete for all Bank Note issues, all have large margins and bright color, an Extremely Fine set, this is one of the nicest we have encountered**(Photo Ex)** 2,885.00

LATER ESSAYS AND PROOFS

- 4204 P **[\$4.00 Columbian], Queen Isabella of Castile, Large Die Proof on India (244-E).** 115 x 147mm India mounted on 242 x 300mm thin card, with "Queen Isabella of Castile" imprint, minor toning at corners from mount, Very Fine and very unusual, the facial portrait was used for the design of the \$4.00 Columbian, this shows considerably more of her, an excellent frontispiece for a Columbian collection E. 500-750
- 4205 P **[\$5.00 Columbian], Liberty Proof on India (245-E).** 57 x 80mm with rounded corners, portrait is similar to that used for the portrait to the left of Columbus on the \$5.00 Columbian except the shield has an eagle on the issued stamp and a staff is substituted for the fasces in her left hand, Very Fine, a fascinating portrait and interesting collateral item, apparently this design was also used for a piece of Hungarian paper money printed 50 years before the Columbian Issue E. 200-300
- 4206 P **1c-\$5.00 Columbian, Plate Proofs on Card (230P4-245P4).** Full to large margins, fresh set, four values with light color "bleed" on their backs (does not show on fronts), otherwise Very Fine.....**(Photo Ex)** 2,110.00



- 4207° **1c-\$2.00 Trans-Mississippi, Bi-Color Essays on India (285E-293E).** On approximately 152 x 118mm cards with full die sinkage, deep rich colors, 2c tiny toned speck at top, \$2.00 some slight toning
- EXTREMELY FINE. A BEAUTIFUL AND RARE SET OF THE TRANS-MISSISSIPPI BI-COLOR ESSAYS.
- Of the 166 sets printed in these colors, many were hybrids. The set offered here are all die sunk and in fresh condition.
- Ex Long.....(Photo Ex) 4,950.00



- 4208°P **1c-\$2.00 Trans-Mississippi, Large Die Proofs on India (285P1-293P1).** On approximately 200 x 125mm cards with full die sinkage, bright colors, few insignificant toned spots
- VERY FINE. A SCARCE COMPLETE SET OF LARGE DIE PROOFS OF THE TRANS-MISSISSIPPI ISSUE.
- This is one of the nicer sets we have offered. Ex Hansen. 7,950.00



4209EX

4209°P

1c-\$2.00 Trans-Mississippi, Small Die Proofs on Wove (285P2-293P2). Complete set, each on original gray card backing, brilliant colors

VERY FINE. A BEAUTIFUL COMPLETE SET OF THE 1898 TRANS-MISSISSIPPI SMALL DIE PROOFS FROM A ROOSEVELT PRESENTATION ALBUM.

It is believed that only 85 Roosevelt albums were produced.
(Photo Ex) 6,750.00



4210

4210 P

1c-10c Pan-American, Large Die Proofs on India (294P1-299P1). On approximately 203 x 152mm cards with full die sinkage, blue control nos. on back (15764, 16187, 16514, 16624, 16853, 17086), rich colors, paper hinges on back

FRESH AND VERY FINE. A BEAUTIFUL AND HIGHLY EXHIBITABLE SET OF LARGE DIE PROOFS FOR THE PAN-AMERICAN EXPOSITION ISSUE.

This is one of the freshest sets we have ever encountered. They are especially desirable with the blue control numbers on back. Ex Hansen 3,450.00

4211°P **1c-\$5.00 1902-03 Issue, Small Die Proofs on Wove (300P2-313P2).** Complete set, rich colors, each on original gray card backing, 50c slightly oxidized

VERY FINE AND CHOICE. A SCARCE COMPLETE SET OF THE 1902 ISSUE FROM A ROOSEVELT PRESENTATION ALBUM.

Only 85 presentation albums were prepared.....
.....(Photo Ex) 4,275.00



4211EX



4212EX

4212°E **3c Minerva, Harris Automatic Press Company Offset Essay on Hard White Wove Paper (TD28, TD29; Brazer 385-E2b).** Horizontal pair of first and single of second, large margins, Very Fine, scarce, Harris installed one of their presses in the BEP to demonstrate production of stamps by the offset method, the design was a variation on the 2c 1903 Issue, the presses were not adopted at that time but were used for printing some Revenue stamps, particularly Tax Pairs.....(Photo Ex) 1,950.00

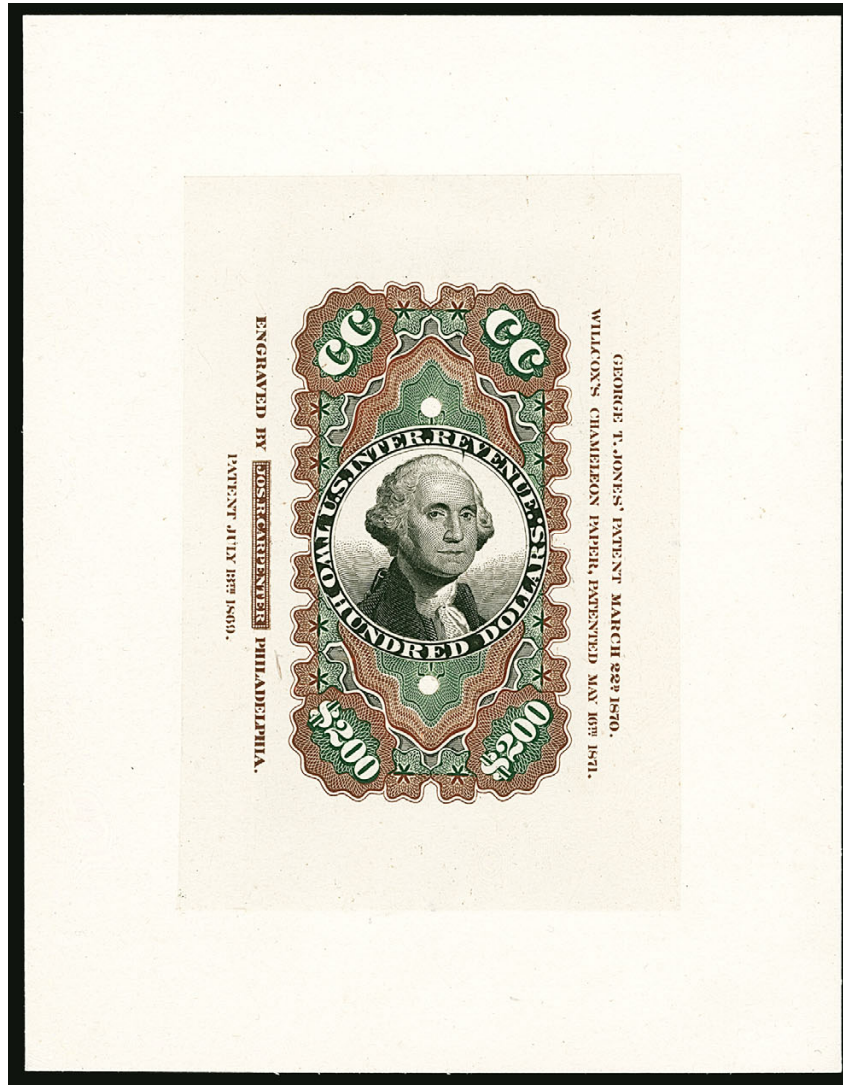
REVENUES

4213 P田 **3c-\$3.50 Second Issue, Plate Proofs on Card (R105P4, R109P4, R111P4-R112P4, R115P4, R119P4-R122P4, R126P4).** Blocks of four, complete for the set up to the \$3.50, large margins, rich colors, Very Fine and choice, ex Cunliffe and Curtis(Photo Ex) 1,615.00



4213EX

\$200.00 SMALL PERSIAN RUG TRIAL COLOR PROOF



4214

4214°TC **\$200.00 Red, Green & Black, Second Issue, Trial Color Proof on India (R132TC).** On 109 x 139mm card with **full imprints at sides**, two small security punches in design as found on all examples with imprints

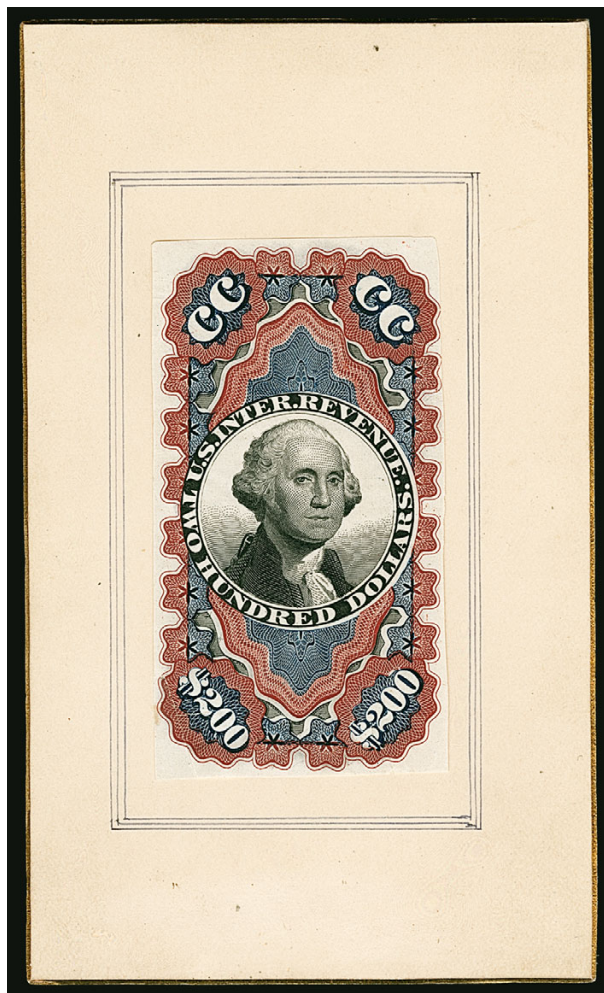
EXTREMELY FINE. AN ABSOLUTELY STUNNING EXAMPLE OF THE \$200.00 SMALL PERSIAN RUG TRIAL COLOR PROOF. THIS IS QUITE LIKELY THE FINEST IN EXISTENCE.

These colors are the only multicolor trial color printing for the \$200.00 Small Persian Rug.

Ex Cunliffe. Scott Catalogue prices this at \$2,500.00 but notes "full-size proofs on full-size card bring substantial premiums above the catalogue values listed". We offered one in our Sale 953 in 2008, on slightly smaller card, which realized \$13,000 hammer.

E. 12,000-15,000

\$200.00 SMALL PERSIAN RUG DIE PROOF



4215

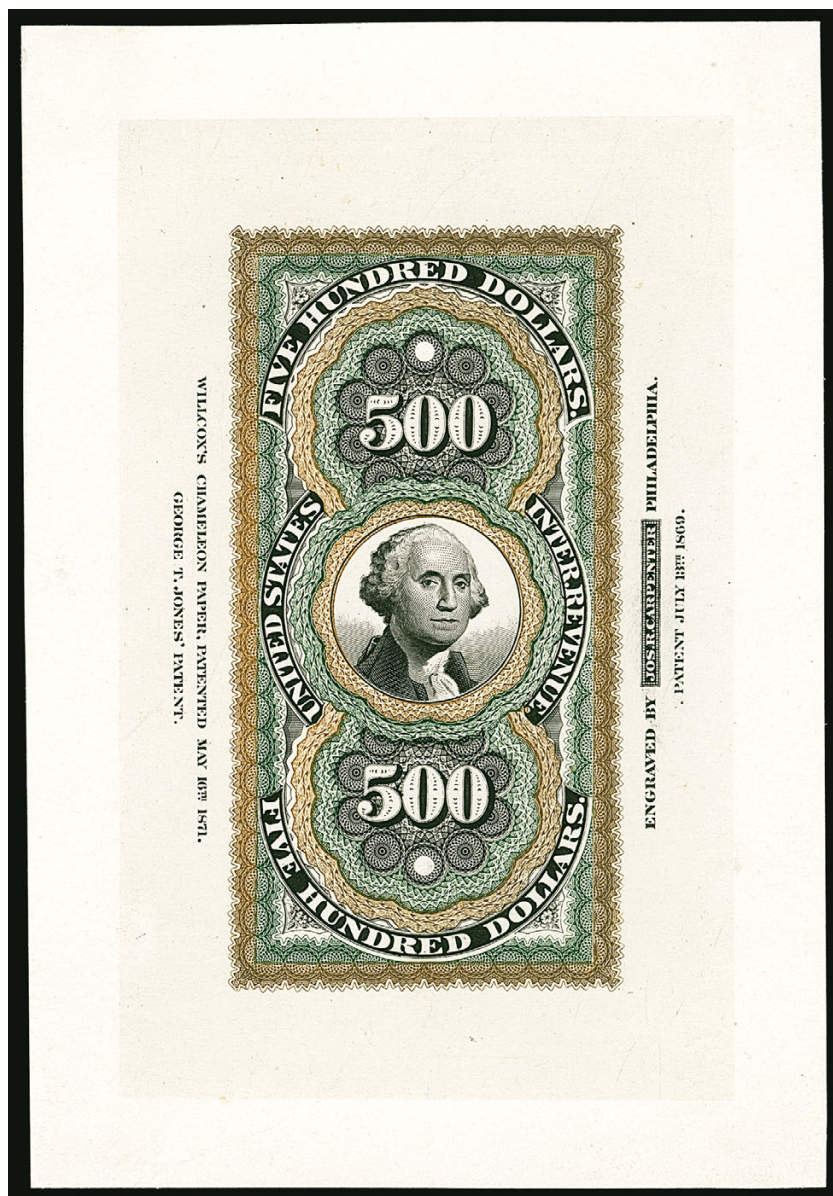
4215°P **\$200.00 Blue, Red & Black, Second Issue, Small Die Proof on India (R132P2).** Stamp size and mounted on 75 x 127mm thick card with gilded edges, few faults mostly at bottom where someone tried to remove from card

VERY FINE APPEARANCE. THIS IS THE ONLY RECORDED \$200.00 SMALL PERSIAN RUG SMALL DIE PROOF ON A PRESENTATION CARD. A WONDERFUL EXHIBITION PIECE.

Back of card with "E.B. Sterling \$200. 1-7-85" at top and "Value \$25.00" at bottom in the same hand. Sterling was a noted stamp dealer active starting in 1874.

Ex Philip Little Jr. (Siegel Sale 248, Feb. 13, 1962, lot 311, where described as ex Sterling's collection) and Cunliffe..... 2,750.00

\$500.00 LARGE PERSIAN RUG DIE PROOFS



4216

4216°TC **\$500.00 Yellow, Green & Black, Second Issue, Trial Color Proof on India (R133TC1e).** On 106 x 154mm card and with **full imprints at sides**, deep rich colors, security punches at top and bottom in center lathework above and below denominations as found on all examples with imprints

VERY FINE. AN EXCEEDINGLY RARE LARGE DIE TRIAL COLOR PROOF FOR THE \$500.00 LARGE PERSIAN RUG. ESPECIALLY DESIRABLE WITH THE IMPRINTS AT SIDES. A MAGNIFICENT SHOWPIECE.

We are aware of only one other in this color with the imprints. It was offered in the 2008 Spink Shreves auction of the Cunliffe Revenues, where it realized \$26,000 hammer. Scott Catalogue prices this at \$5,000.00 but notes "full-size proofs on full-size card bring substantial premiums above the catalogue values listed"..... E. 15,000-20,000

4217°TC **\$500.00 Light Brown, Light Green & Black, Trial Color Proof on India (R133TC).** Stamp size and on card, bright colors, light strike of purple "Bureau of Engraving and Printing Feb. 25, 1891" oval handstamp

VERY FINE AND CHOICE. A RARE TRIAL COLOR PROOF FOR THE \$500.00 LARGE PERSIAN RUG ISSUE, WITH A BUREAU OF ENGRAVING AND PRINTING HANDSTAMP. POSSIBLY UNIQUE.

This color combination is only listed in Scott on Bond paper. With 2008 P.F. certificate....
..... 5,000.00



4217



4218

4218°P **\$500.00 Red Orange, Green & Black, Large Die Proof on India (R133P1).** Stamp size and mounted on card so free from the faults that can plague this fragile paper, security hole punches at top and bottom as often seen, corners clipped

VERY FINE. AN EXTREMELY RARE LARGE DIE PROOF ON THE \$500.00 LARGE PERSIAN RUG ISSUE.

We have offered only one other since keeping computerized records, in our 2015 Hall sale (Sale 1096, lot 978). That example had no hole punches and small faults.

Ex Philip Little Jr. (Siegel Sale 248, Feb. 13, 1962, lot 313) and Cunliffe 5,500.00

WILKINSON'S CHAMPELION PAPER, PATENTED MAY 16TH 1871.
 GEORGE T. JONES' PATENT MARCH 22ND 1870.



ENGRAVED BY **ROSEKARPENTER** PHILADELPHIA.
 PATENT JULY 2ND 1869.

ONE OF THE FINEST EXAMPLES OF THE
UNISSUED \$5,000.00 LARGE PERSIAN RUG DIE PROOF

4219°TC **\$5,000.00 Yellow Orange, Green & Black, Large Die Trial Color Proof on India (R133ATC1e).** 98 x 142mm India mounted on 142x 186mm card, security punch at bottom right, **full imprints at sides**, insignificant shallow thin on back at right of card from mount

EXTREMELY FINE APPEARANCE. THIS IS ONE OF THE TWO FINEST EXAMPLES OF THE TRIAL COLOR PROOF FOR THE UNISSUED \$5,000.00 LARGE PERSIAN RUG. A GREAT RARITY AND ONE OF THE MOST BEAUTIFUL DESIGNS WE HAVE EVER ENCOUNTERED.

According to *The Legendary Persian Rug* by Dr. Thomas C. Kingsley, the \$5,000.00 design was approved in proof form, but was never printed as a stamp. It was created in case the need for such a large denomination ever arose. Since it was approved, this (and other trial colors) qualify as trial color proofs, not essays. In a letter to Mr. Lamasure, Carpenter wrote: "*I send you the \$5,000 stamp approved in the colors in which it is to be printed in case we have an order for this stamp — a very improbable contingency*".

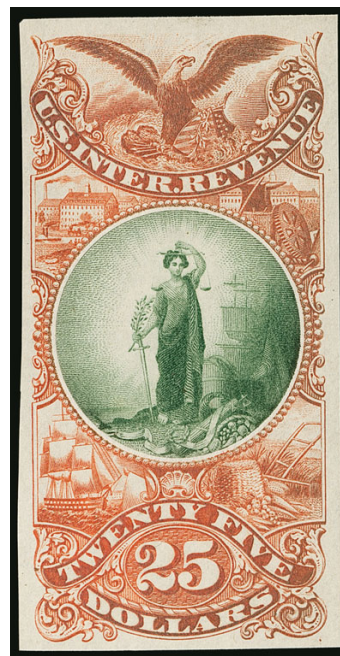
Dr. Kingsley records fifteen trial color proofs in private hands, plus ten in the holdings of the Smithsonian's National Postal Museum. Ralph Zerbonia records one additional proof in private hands. The colors of the proof offered here are very close to those that would have been used if stamps had been printed. Only three are known with the full imprints. One other (ex Joyce) compares favorably to the example offered here. The third has smaller margins and is not on a card.

Kingsley Census No. 5M-2. Ex Cunliffe. Considerably undercatalogued in Scott at \$20,000.00, which does not take into consideration the imprints..... E. 35,000-40,000



4220

- 4220 E **25c Black, American Bank Note Company Liberty Essay (Turner 2).** 21 x 37mm, crisp impression, Very Fine, this is not listed in Turner on India paper (only glazed papers) E. 200-300



4221

- 4221 E **\$25.00 Orange & Green, Revenue Essay (Turner 78-B).** Large margins, rich colors, Very Fine and choice, scarce..... E. 500-750



4222EX

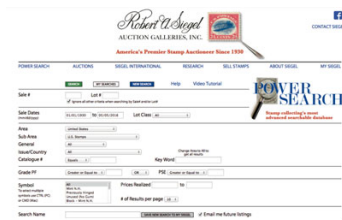
- 4222 E **Manufactured Tobacco, Series of 1875, Essays (Unlisted in Turner).** Three, incl. ½lb., two pounds and three pounds, each with similar scene depicting woman with scales and "U.S. Inter. Rev. Laws." next to barrels and crates with second figure writing in ledger, appear to be on rebacked India paper, some faults, appear Fine-Very Fine.....(Photo Ex) E. 200-300

END OF SALE — THANK YOU

Resources @ siegelauctions.com

CATALOGUES AND PRICES REALIZED

Images and descriptions for all sales going back to 1992, our Rarities sales from 1964 and selected older name sales. PDF catalogues go back to our first sale in 1931.

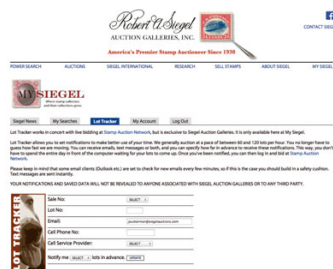


POWER SEARCH™

Search by Scott number or keyword through all of the sales at our website. The best resource in philately for research.

MY SIEGEL™

Save your Power Searches as want lists. We will automatically notify you when a match is included in an upcoming sale, whether it's as broad as any Columbian issue, or as narrow as a 241 graded 98. The most powerful want list in philately.

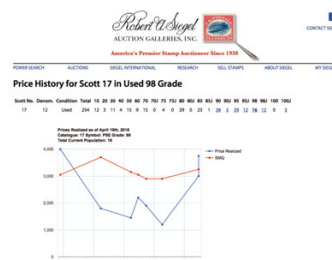


LOT TRACKER™

Never miss another lot because you were away from your computer. Log into My Siegel™, then set up notifications to get texts and/or emails 10-30 lots before yours comes up (live bidding is still through Stamp Auction Network).

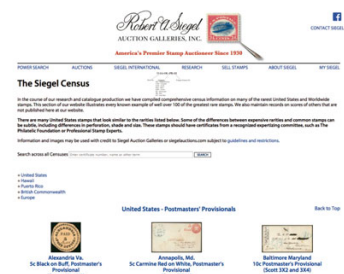
CENSUS DATA FOR RARITIES

The up-to-date census data for U.S. and select International rarities are a valuable resource for buyers, sellers and researchers. Every recorded example of almost 150 different rare stamps is described and, in most cases, photographed.



GRADED PRICE HISTORY

Graphs show the realizations of each grade over time in our auctions. The data points are easily visible for independent analysis.



We have several other important features of our website, such as the Siegel Encyclopedia, Exhibits, Today in History and a Perpetual Calendar. Go to siegelauctions.com for the most comprehensive website in philately.

Live Internet Bidding at Siegel Auctions

BIDDING FROM YOUR COMPUTER LETS YOU BE PART OF THE LIVE AUCTION FROM ANYWHERE IN THE WORLD!

There's **NO SUBSTITUTE** for following the auction in real time.
Live Internet Bidding lets you bid and buy as though you were right there in the saleroom.
And it's easy.

This step-by-step guide will instruct you how to register, set your browser and use the bidding interface.

Start by following the simple steps to become a registered Live Internet Bidder.
Once you've been approved for bidding, you can listen to the auction and place bids with the click of a mouse.

Registering with STAMP AUCTION NETWORK & SIEGEL AUCTION GALLERIES

Live Internet Bidding is managed by Stamp Auction Network (SAN).
To bid, you must be registered and approved by *both* SAN and Siegel.
To decide what you need to do, choose the description below that best fits you.



I've already registered with SAN and have been approved by Siegel for internet bidding.

I'm a Siegel client, but I'm not registered with SAN.

Go to stampauctionnetwork.com/siegel and click on "Register" at the top. Check the box for Robert A. Siegel Auction Galleries (under "R") and submit the form, indicating you are a Siegel client. Once registered at SAN, you're ready for internet bidding.

I've bid through SAN before, but this is the first time I've bid in a Siegel sale.

Then you just need to be approved by Siegel. Go to stampauctionnetwork.com/siegel and click on "Update Registration" at the top. Your SAN account information will be sent to us for approval (you might be asked for other trade references). Once approved by Siegel for bidding, you're ready for internet bidding.

I've never bid with Siegel, nor registered with SAN.

Go to stampauctionnetwork.com/siegel and click on "Register" at the top. Check the box for Robert A. Siegel Auction Galleries (under "R") and submit the form with **your trade references** (please, no family members or credit card companies as references). Once registered at SAN and approved by Siegel for bidding, you're ready for internet bidding.

Live Internet Bidding works by allowing registered bidders to observe and place bids.

Live Internet Bidding will work with any browser on both PC and Mac operating systems.

Before bidding by internet for the first time, we recommend finding a sale in progress and listening to the public broadcast or logging in as a registered bidder. This will help you develop a feel for the sale tempo and bidding interface.

Log on to the auction at stampauctionnetwork.com/siegel.

You can also log on at siegelauctions.com

When you're logged on as a Live Internet Bidder, the bidding interface shows a photo and description of the lot, the current bid (and your bidding status), options for placing competitive bids and buttons with bid increments.

- After you click on a bid amount, the auctioneer is immediately notified of your bid.
- Retracting a bid is usually not acceptable, so please bid carefully.
- If you bid and then decide to stop, the "Pass" button will tell the auctioneer you are no longer bidding.
- You can send messages to the auctioneer (for example, a request for extension).
- You can track prior realizations from the bidding screen.



"System Down" or "Lost Connection" events do occasionally happen.

If you have any problems with Live Internet Bidding please call **212-753-6421** for immediate assistance.



BIDS

Use this form to submit absentee bids
or to confirm telephone bids

Sale 1158

May 12, 2017

PADDLE #

1

Please provide the following information:

NAME

ADDRESS

CITY/STATE/ZIP

PHONE MOBILE

EMAIL

2

Have you purchased from us in the past 5 years? ☐ Yes (please go to Section 3)
☐ No (references required below)

STAMP FIRM PHONE

STAMP FIRM PHONE

Please submit references at least **2 business days** before the sale. Bids from new clients will not be executed if satisfactory references are not received in time to be contacted.

3

- Enter the lot number and your corresponding maximum bid in the space below
- Use whole dollar amounts and bid according to the increments (see back of form)
- Bids do not include the **18% Buyer's Premium**, taxes, duty or shipping charges
- Absentee bids will advance at one increment over the next highest competing bid
- "Plus", "Break Tie" or "Buy" bids will not be executed
- Indicate any "Or" bids between lot number/bid entries and bracket your choices
- If you wish to limit the total amount of your bids, follow the instructions below

Lot #	Bid \$	Lot #	Bid \$	Lot #	Bid \$

☐ **Limit Bids:** Check this box if you wish to limit the total hammer price of your bids (excluding 18% Buyer's Premium, taxes, duty and shipping costs). Your bids will be executed until your bidding limit has been reached. The total amount you wish to bid is \$

4

By signing this form, you agree to all of the Conditions of Sale printed in the sale catalogue (printed and digital), including but not limited to a) payment in the manner demanded by the Siegel firm, and b) payment of the 18% Buyer's Premium, any sales tax or customs duty, shipping costs, late charges and

other prescribed charges. You agree that your bids will be executed as courtesy by Siegel, but you waive the right to make any claim against Siegel or its employees arising from these bids or your participation in the sale. You agree to honor all bids as submitted, regardless of any errors or omissions.

SIGNED DATE

Mail the signed form to Siegel Bid Department, 60 East 56th St., New York, NY 10022
or email to stamps@siegelauctions.com
or fax to 212-753-6429



Additional Bids

Sale 1158

May 12, 2017

PADDLE #

Lot #	Bid \$	Lot #	Bid \$	Lot #	Bid \$

Shipping & Insurance

We will be pleased to arrange for shipping and transit insurance for purchases in this sale, except for lots marked or announced as "floor sale only." To expedite billing and delivery to hundreds of buyers in each sale, we use standard charges for postage and insurance under our policy. These charges are based on the package weight and mailing requirements, according to the schedule shown here. Our standard charges do not include a fee for our services, and they may be slightly more or less than the actual postage or Fedex fee. We ask all buyers to remit the invoiced amount for shipping and insurance.

Transit insurance is provided in all cases, except when the buyer has furnished us with documentation that insurance is effective under the buyer's own policy.

There will be no added insurance charge for shipments of less than \$75,000 value. Shipments valued in excess of \$75,000 may require supplemental insurance and/or special courier service, the estimated cost of which will be furnished to the buyer prior to shipment. If the buyer refuses to pay the estimated charges or furnish proof of self-insured coverage, the buyer will be responsible for picking up the lots at our office and any resulting sales tax.

Standard Shipping Charges

Weight Class	Shipping Method	Charge
Up to 2 lbs.	Fedex Envelope	\$20
Over 2 lbs.	Fedex Box	\$35 - \$50*
Outside US	Fedex	\$50 - \$100**
Bulky Lots	Fedex Ground or Express	By weight

* Up to \$75,000 value and up to 5 lbs; additional charge may apply to packages exceeding limits

** Buyers outside United States are liable for any applicable customs duty and clearance charges. An accurate declaration of contents and value will be made on all packages and import/export documents. **Siegel may refuse to ship lots to certain countries with a high risk factor.**

2/2015

Bidding Increments

The auctioneer may regulate the bidding at his discretion. However, to assist absentee bidders in establishing their maximum bids, the increments shown here will be used in most cases. We recommend that written bids conform to these increments—bids that do not will be reduced accordingly.

Bid	Increment	Bid	Increment
Up to \$200	\$10	\$7,000-20,000	\$500
\$200-500	\$25	\$20,000-30,000	\$1,000
\$500-1,000	\$50	\$30,000-70,000	\$2,500
\$1,000-3,000	\$100	\$70,000-140,000	\$5,000
\$3,000-7,000	\$250	\$140,000-300,000	\$10,000

Robert A. Siegel Auction Galleries, Inc.
Prices Realized for
Sale 1158 5/12/2017 The Vaquero Collection of U.S. Essays and Proofs

Lot#	Realized	Lot#	Realized	Lot#	Realized	Lot#	Realized
4001	150	4067	3,000	4115	1,400	4179	450
4002	160	4068	2,200	4117	800	4180	450
4003	275	4069	2,000	4118	700	4181	325
4005	425	4070	2,200	4120	600	4182	800
4006	225	4071	550	4121	4,000	4183	800
4008	400	4073	3,000	4122	2,500	4185	1,600
4011	3,000	4074	750	4131	1,200	4186	1,600
4015	160	4075	800	4136	2,200	4187	1,200
4018	190	4076	180	4137	2,800	4188	500
4019	1,100	4077	600	4138	2,800	4191	250
4020	2,300	4079	550	4141	1,300	4193	425
4021	500	4080	375	4144	4,500	4194	2,200
4023	800	4081	550	4145	4,000	4195	1,600
4024	5,000	4083	550	4147	2,800	4196	1,800
4025	650	4084	275	4148	1,900	4197	375
4026	130	4086	1,500	4149	2,000	4199	2,500
4027	650	4088	1,500	4150	3,250	4203	1,600
4028	130	4089	800	4151	3,500	4204	850
4029	900	4090	325	4152	750	4205	225
4030	3,000	4092	275	4153	2,300	4206	900
4031	650	4095	275	4154	600	4207	2,400
4032	500	4096	225	4155	30,000	4209	3,750
4033	650	4097	225	4159	800	4210	1,500
4034	1,400	4098	160	4161	800	4213	550
4035	2,500	4099	850	4164	1,800	4215	2,700
4037	2,600	4100	475	4165	2,000	4217	5,500
4038	2,000	4101	700	4167	2,300	4218	3,250
4045	650	4102	325	4168	2,900	4222	600
4047	375	4103	160	4170	800		
4048	475	4104	900	4171	550		
4049	350	4105	950	4172	800		
4058	1,500	4106	850	4173	800		
4063	900	4107	1,000	4174	375		
4064	900	4108	325	4175	2,100		
4065	200	4111	700	4176	1,300		
4066	425	4112	750	4178	9,000		