



# Dr. Paul M. Cere Collection

## SEMI-OFFICIAL AIR POSTS OF CANADA



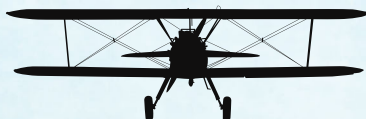
I N T E R N A T I O N A L

*Robert A. Siegel*

IN ASSOCIATION WITH CHARLES F. SHREVE

SALE 1169 • NOVEMBER 14, 2017

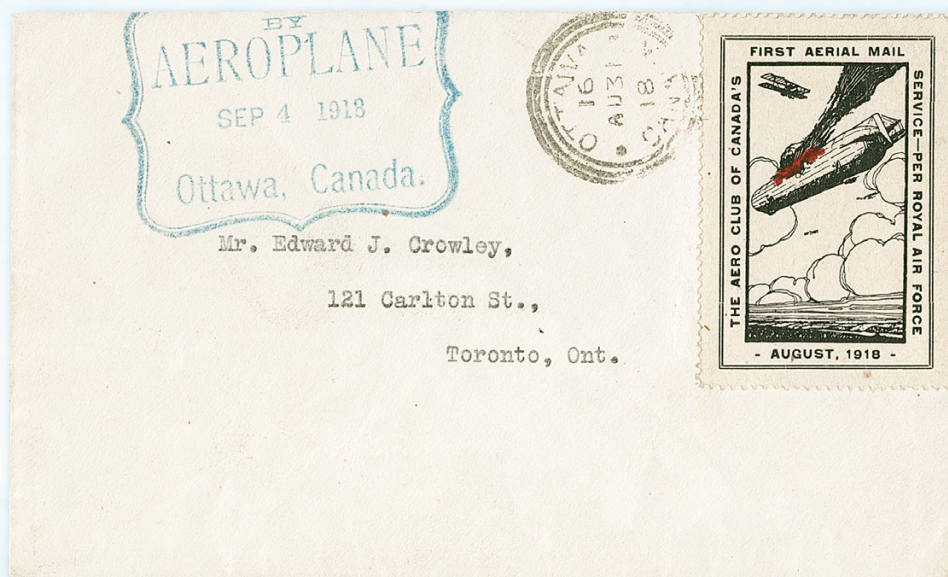




# Dr. Paul M. Cere Collection

## SEMI-OFFICIAL AIR POSTS OF CANADA

Sale 1169 — Tuesday, November 14, 2017, at 1:30 P.M.



Offered without reserves

Live auction to be held at Siegel Auction Galleries,  
6 West 48th Street (off Fifth Avenue), 9th Floor, New York City

Lots are sold subject to an 18% **buyer's premium** and  
any applicable sales tax (or customs duty for non-U.S. buyers)

Please carefully read the Conditions of Sale before bidding

Pre-Sale Viewing—Monday, November 13, 10am-4pm, and by appointment

I N T E R N A T I O N A L

*Robert A. Siegel*

IN ASSOCIATION WITH CHARLES F. SHREVE

6 WEST 48TH STREET, 9TH FLOOR, NEW YORK, N.Y. 10036  
Phone (212) 753-6421 • Fax (212) 753-6429 • E-mail: [stamps@siegelauctions.com](mailto:stamps@siegelauctions.com)

Catalogues, internet bidding, resources, archives and the Siegel Encyclopedia at  
[siegelauctions.com](http://siegelauctions.com)



INTERNATIONAL  
*Robert A. Siegel*  
 IN ASSOCIATION WITH CHARLES F. SHREVE

6 WEST 48TH STREET, 9TH FLOOR, NEW YORK, N.Y. 10036  
 Phone (212) 753-6421 • Fax (212) 753-6429 • E-mail: stamps@siegelauctions.com  
**siegelauctions.com**



Scott R. Trepel  
 President  
 strepel  
 @siegelauctions.com



John P. Zuckerman  
 Senior Vice President  
 jzuckerman  
 @siegelauctions.com



Corey Long  
 Senior Vice President  
 clong  
 @siegelauctions.com



Daphne Cebek  
 Accounts  
 daphne  
 @siegelauctions.com

**Siegel International**  
 Dallas (214) 754-5991



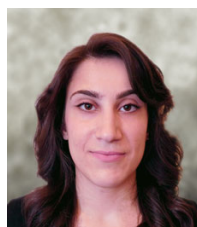
Charles F. Shreve  
 Director, Siegel International  
 charles  
 @siegelauctions.com



Helen Stewart  
 Bids and Inquiries  
 helen  
 @siegelauctions.com



Emma Masiello  
 Bids and Inquiries  
 emma  
 @siegelauctions.com



Jocelyn Weibel  
 Digital Production  
 jocelyn  
 @siegelauctions.com



Andrew Titley  
 International Specialist  
 andrew  
 @siegelauctions.com



Chris Anderson  
 International Specialist  
 chris  
 @siegelauctions.com

Scott R. Trepel Principal Auctioneer (licensed by NYC Dept. of Consumer Affairs, #795952)

## Information for Bidders

### Bidding

The following means are available for placing bids:

- 1) Attending the Live Auction in Person:** All bidders must register for a paddle, and new bidders must provide references at least three business days in advance of the sale.
- 2) Live Internet Bidding:** Instructions for participating as a Live Internet Bidder are provided on the page opposite.
- 3) Phone Bidding:** Bidders can be connected to the sale by phone and bid through a member of staff. Requests for phone bidding are subject to approval (please contact our office at least 24 hours before the sale). A signed Bid Form is required.
- 4) Absentee Bids.** All bids received in advance of the sale, either by mail, fax, phone, e-mail or internet, are Absentee Bids, which instruct the auctioneer to bid up to a specific amount on one or more lots in the sale. Absentee Bids sent by phone, fax or e-mail should arrive at least one hour prior to the start of the sale session. Bids entered through Live Internet Bidding will be visible to the auctioneer during the sale. Written bids should be entered legibly on the Bid Form in the sale catalogue. E-mail and internet bids should be carefully typed and double-checked. All new bidders must provide references. We recommend calling or e-mailing to confirm that Absentee Bids sent by mail, fax or e-mail have been received and entered.

### Pre-Sale Viewing

Subject to availability, certain lots (except group lots) can be sent to known clients for examination. Requests must be made no later than 7 days prior to the sale. Lots must be returned on the day received. Postage/insurance costs will be invoiced.

In addition to regular viewing, clients may view lots by appointment. Our staff will be pleased to answer questions or provide additional information about lots.

### Expert Certification

Individual items offered without a certificate dated within the past five years may be purchased subject to independent certification of genuineness and our description. **Please refer to the Conditions of Sale and Grading Terms for policies governing certification.**

### Shipping and Delivery

Procedures and charges for shipping lots are printed on the back of the Bid Form. **Bidders are responsible for all prescribed shipping charges and any applicable sales tax or customs duties.**

### Price Realized

Prices realized are sent with each invoice. Bidders with e-mail will receive a Bid Results report after the sale. Session results are posted immediately to **siegelauctions.com**



# Live Internet Bidding at Siegel Auctions

## BIDDING FROM YOUR COMPUTER LETS YOU BE PART OF THE LIVE AUCTION FROM ANYWHERE IN THE WORLD!

There's **NO SUBSTITUTE** for following the auction in real time.  
Live Internet Bidding lets you bid and buy as though you were right there in the saleroom.  
And it's easy.

This step-by-step guide will instruct you how to register, set your browser and use the bidding interface.

Start by following the simple steps to become a registered Live Internet Bidder.  
Once you've been approved for bidding, you can listen to the auction and place bids with the click of a mouse.

### Registering with STAMP AUCTION NETWORK & SIEGEL AUCTION GALLERIES

Live Internet Bidding is managed by Stamp Auction Network (SAN).  
To bid, you must be registered and approved by *both* SAN and Siegel.  
To decide what you need to do, choose the description below that best fits you.



I've already registered with SAN and have been approved by Siegel for internet bidding.

Live Internet Bidding works by allowing registered bidders to observe and place bids.

Live Internet Bidding will work with any browser on both PC and Mac operating systems.

Before bidding by internet for the first time, we recommend finding a sale in progress and listening to the public broadcast or logging in as a registered bidder. This will help you develop a feel for the sale tempo and bidding interface.

I'm a Siegel client, but I'm not registered with SAN.

Go to [stampauctionnetwork.com/siegel](http://stampauctionnetwork.com/siegel) and click on "Register" at the top. Check the box for Robert A. Siegel Auction Galleries (under "R") and submit the form, indicating you are a Siegel client. Once registered at SAN, you're ready for internet bidding.

### Log on to the auction at stampauctionnetwork.com

When you're logged on as a Live Internet Bidder, the bidding interface shows a photo and description of the lot, the current bid (and your bidding status), options for placing competitive bids and buttons with bid increments.

- After you click on a bid amount, the auctioneer is immediately notified of your bid.
- Retracting a bid is usually not acceptable, so please bid carefully.
- If you bid and then decide to stop, the "Pass" button will tell the auctioneer you are no longer bidding.
- You can send messages to the auctioneer (for example, a request for extension).
- You can track prior realizations from the bidding screen.

I've bid through SAN before, but this is the first time I've bid in a Siegel sale.

Then you just need to be approved by Siegel. Go to [stampauctionnetwork.com/siegel](http://stampauctionnetwork.com/siegel) and click on "Update Registration" at the top. Your SAN account information will be sent to us for approval (you might be asked for other trade references). Once approved by Siegel for bidding, you're ready for internet bidding.

I've never bid with Siegel, nor registered with SAN.

Go to [stampauctionnetwork.com/siegel](http://stampauctionnetwork.com/siegel) and click on "Register" at the top. Check the box for Robert A. Siegel Auction Galleries (under "R") and submit the form **with your trade references** (please, no family members or credit card companies as references). Once registered at SAN and approved by Siegel for bidding, you're ready for internet bidding.



"System Down" or "Lost Connection" events do occasionally happen.

If you have any problems with Live Internet Bidding please call **212-753-6421** for immediate assistance.



## Conditions of Sale (please read carefully before bidding)

**THE PROPERTY DESCRIBED IN THIS CATALOGUE WILL BE OFFERED AT PUBLIC AUCTION BY ROBERT A. SIEGEL AUCTION GALLERIES, INC. ("GALLERIES") ON BEHALF OF VARIOUS CONSIGNORS AND ITSELF OR AFFILIATED COMPANIES. BY BIDDING ON ANY LOT, WHETHER DIRECTLY OR BY OR THROUGH AN AGENT, IN PERSON, OR BY TELEPHONE, FACSIMILE OR ANY OTHER MEANS, THE BIDDER ACKNOWLEDGES AND AGREES TO ALL OF THE FOLLOWING CONDITIONS OF SALE.**

1. The highest bidder acknowledged by the auctioneer shall be the buyer. The term "final bid" means the last bid acknowledged by the auctioneer, which is normally the highest bid offered. **The purchase price payable by the buyer will be the sum of the final bid and a commission of 18% of the final bid ("buyer's premium"), together with any sales tax, use tax or customs duties due on the sale.**
2. The auctioneer has the right to reject any bid, to advance the bidding at his discretion and, in the event of a dispute, to determine the successful bidder, to continue the bidding or to reoffer and resell the lot in dispute. The Galleries' record of the final sale shall be conclusive.
3. All bids are per numbered lot in the catalogue unless otherwise announced by the auctioneer at the time of sale. The right is reserved to group two or more lots, to withdraw any lot or lots from the sale, or to act on behalf of the seller. The Galleries will execute bidding instructions on behalf of clients, but will not be responsible for the failure to execute such bids or for any errors in the execution of such bids.
4. **Lots with numbers followed by the symbol ° are offered subject to a confidential minimum bid ("reserve"), below which the lot will not be sold. The absence of the symbol ° means that the lot is offered without a reserve. If there is no reserve, the auctioneer has sole discretion to establish a minimum opening bid and may refuse an offer of less than half of the published estimate. Any lot that does not reach its reserve or opening bid requested by the auctioneer will be announced as "passed" and excluded from the prices realized lists after the sale. The Galleries may have a direct or indirect ownership interest in any or all lots in the sale resulting from an advance of monies or goods-in-trade or a guarantee of minimum net proceeds made by the Galleries to the seller.**
5. Subject to the exclusions listed in 5(A), the Galleries will accept the return of lots which have been misidentified or which have obvious faults that were present when the lot was in the Galleries' custody, but not so noted in the lot description. **All disputed lots must be received by the Galleries intact with the original packing material within 5 days of delivery to the buyer but no later than 30 days from the sale date.**  
**(5A) EXCLUSIONS: The following lots may not be returned for any reason, or may not be returned for the reasons stated: i) lots containing 10 or more items; ii) lots from buyers who registered for the pre-sale exhibition or received lots by postal viewing, thereby having had the opportunity to inspect them before the sale; iii) any lot described with "faults," "defects" or a specific fault may not be returned because of any secondary fault; iv) photographed lots may not be returned because of centering, margins, short/nibbed perforations or other factors shown in the illustrations; v) the color of the item does not match the color reproduction in the sale catalogue or website listing; vi) the description contains inaccurate information about the quantity known or reported; or vii) a certification service grades a stamp lower than the grade stated in the description.**
6. Successful bidders, unless they have established credit with the Galleries prior to the sale, must make payment in full before the lots will be delivered. Buyers not known to the Galleries must make payment in full within 3 days from the date of sale. **The Galleries retains the right to demand a cash deposit from anyone prior to bidder registration and/or to demand payment at the time the lot is knocked down to the highest bidder, for any reason whatsoever.** In the event that any buyer refuses or fails to make payment in cash for any lot at the time it is knocked down to him, the auctioneer reserves the right to reoffer the lot immediately for sale to the highest bidder. **Credit cards (Visa, Mastercard and Discover only) can be accepted as payment but will be subject to a 3% Convenience Fee, which will be added to the total of the entire invoice (including hammer price, buyer's premium, shipping**

**and transit insurance charges and any applicable taxes).**

7. If the purchase price has not been paid within the time limit specified above, nor lots taken up within 7 days from the date of sale, the lots will be resold by whatever means deemed appropriate by the Galleries, and any loss incurred from resale will be charged to the defaulting buyer. **Any account more than 30 days in arrears will be subject to a late payment charge of 1½% per month as long as the account remains in arrears. Any expenses incurred in securing payment from delinquent accounts will be charged to the defaulter.** A fee of \$250.00 per check will be charged for each check returned for insufficient funds.
8. All lots are sold as genuine. **Any lot accompanied by a certificate issued by The Philatelic Foundation, British Philatelic Association, Royal Philatelic Society of London or any other authority recognized by the A.I.E.P. in a specific area of expertise, and dated within 5 years of the sale date, is sold "as is" and in accordance with the description on the certificate. Such lots may not be returned for any reason, including but not limited to a contrary certificate of opinion.** Buyers who wish to obtain a certificate for any item that does not have a certificate (dated as above) may do so, provided that the following conditions are met: (1) the purchase price must be paid in full, (2) the item must be submitted to an acceptable expertizing committee with a properly executed application form within 21 days of the sale, (3) a copy of the application form must be given to the Galleries, (4) in the event that an adverse opinion is received, the Galleries retain the right to resubmit the item on the buyer's behalf for reconsideration, without time limit or other restrictions, (5) unless written notification to the contrary is received, items submitted for certification will be considered cleared 90 days from the date of sale, and (6) in the event any item is determined to be "not as described", the buyer will be refunded the purchase price and the certification fee up to \$800.00 unless otherwise agreed.
9. Until paid for in full, all lots remain the property of the Galleries on behalf of the seller.
10. Agents executing bids on behalf of clients will be held responsible for all purchases made on behalf of clients unless otherwise arranged prior to the sale.
11. The buyer assumes all risk for delivery of purchased lots and agrees to pay for prescribed shipping costs. **Buyers who receive lots in the U.S. are obligated to pay whatever sales tax or compensating use tax might be due, and buyers outside the U.S. are responsible for all customs duties.**
12. **The bidder consents that any action or proceeding against it may be commenced and maintained in any court within the State of New York or in the United States District Court for the Southern District of New York, that the courts of the State of New York and United States District Court for the Southern District of New York shall have jurisdiction with respect to the subject matter hereof and the person of the bidder. The bidder agrees not to assert any defense to any action or proceeding initiated by Galleries based upon improper venue or inconvenient forum. The bidder agrees that any action brought by the bidder shall be commenced and maintained only in a Federal Court in the United States District Court for the Southern District of New York or the State Court in the county in which Galleries has its principal place of business in New York. The bidder agrees not to use a public conflict resolution service and not to use any form of social media to publish comments or information about the Galleries and its employees which might harm the Galleries' reputation or business. These Conditions of Sale shall be governed by and construed in accordance with the substantive laws of the State of New York, and shall constitute an agreement that shall be binding on the parties, and their respective heirs, administrators, distributees, successors and assignees.**

SCOTT R. TREPEL, Principal Auctioneer  
Auctioneer's License No. 795952  
N.Y.C. Department of Consumer Affairs  
80 Lafayette Street, New York, N.Y. 10013  
Telephone (212) 577-0111

*Revised 1/2017*

## Grades, Abbreviations and Values Used in Descriptions

### Grades and Centering

Our descriptions contain detailed information and observations about each item's condition. We have also assigned grades to stamps and covers, which reflect our subjective assessment. For stamps, the margin width, centering and gum are described and graded according to generally-accepted standards (an approximate correlation to numeric grades is provided at right). Although we believe our grades are accurate, they are not always exactly aligned with third-party grading terms or standards for all issues. **A lot may not be returned because a certification service grades a stamp lower than the grade stated in the description. Information from the P.S.E. Stamp Market Quarterly and P.S.E. Population Report<sup>SM</sup> is the most current available, but lots may not be returned due to errors or changes in statistics or data.**

**Extremely Fine Gem (90-100):** The term "Gem" describes condition that is the finest possible for the issue. This term is equivalent to "Superb" used by grading services.







**Extremely Fine (80-90):** Exceptionally large/wide margins or near perfect centering.

**Very Fine (70-85):** Normal-size margins for the issue and well-centered with the design a bit closer to one side. "Very Fine and choice" applies to stamps that have desirable traits such as rich color, sharp impression, freshness or clarity of cancel.

**Fine (60-70):** Smaller than usual margins or noticeably off center. Pre-1890 issues may have the design touched in places.

**Very Good (below 60):** Attractive appearance, but margins or perforations cut into the design.

### Guide to Gum Condition

Gum Categories:	MINT N.H.	ORIGINAL GUM (O.G.)				NO GUM
	 <b>Mint Never Hinged</b> <i>Free from any disturbance</i>	 <b>Lightly Hinged</b> <i>Faint impression of a removed hinge over a small area</i>	 <b>Hinge Mark or Remnant</b> <i>Prominent hinged spot with part or all of the hinge remaining</i>	 <b>Part o.g.</b> <i>Approximately half or more of the gum intact</i>	 <b>Small part o.g.</b> <i>Approximately less than half of the gum intact</i>	 <b>No gum</b> <i>Only if issued with gum</i>
Catalogue Symbol:	★ ★	★	★	★	★	(★)
PRE-1890 ISSUES	<i>Pre-1890 stamps in these categories trade at a premium over Scott value</i>			Scott Value for “O.G.”		Scott “No Gum” Values thru No. 218
1890-1935 ISSUES	Scott “Never Hinged” Values for Nos. 219-771	Scott Value for “O.G.” (Actual value will be affected by the degree of hinging)		<b>Disturbed Original Gum:</b> Gum showing noticeable effects of humidity, climate or hinging over more than half of the gum. The significance of gum disturbance in valuing a stamp in any of the Original Gum categories depends on the degree of disturbance, the rarity and normal gum condition of the issue and other variables affecting quality. For example, stamps issued in tropical climates are expected to have some		
1935 TO DATE	Scott Value for “Unused”					

### Covers

Minor nicks, short edge tears, flap tears and slight reduction at one side are normal conditions for 19th century envelopes. Folded letters should be expected to have at least one file fold. Light cleaning of covers and small mends along the edges are accepted forms of conservation. Unusual covers may have a common stamp with a slight crease or tiny tear. **These flaws exist in virtually all 19th century covers and are not always described. They are not grounds for return.**

### Catalogue Values and Estimates

Unless otherwise noted, the currently available *Scott Catalogue* values are quoted in dollars with a decimal point. Other catalogues are often used for foreign countries or specialized areas and are referred to by their common name: *Stanley Gibbons* (SG), *Dietz*, *American Air Mail Catalogue* (AAMC), *Michel*, *Zumstein*, *Facit*, etc. Estimates are indicated with an "E." and reflect our conservative valuation in dollars. Reserves will never exceed the low end of the estimate range; they will sometimes exceed Scott Catalogue value for stamps in Extremely Fine condition.

Because of certain pricing inconsistencies in the *Scott Catalogue*—for example, blocks that have no gum, the absence of premiums for Mint N.H. items, etc.—we cannot guarantee the accuracy of values quoted for multiples, specialized items and collection lots. We generally try to be conservative, but buyers may not return a lot because of a discrepancy in catalogue value due to Scott pricing inconsistencies.

### Symbols and Abbreviations (see chart above for gum symbols)

⊞	Block	E	Essay	pmk.	Postmark	No.	Scott Catalogue Number
⊞	Cover	P	Proof	cds	Circular Datestamp	hs	Handstamp
FC	Fancy Cancel	TC	Trial Color Proof	var.	Variety	ms.	Manuscript



## Introduction to The Dr. Paul M. Cere Collection

The Air Post Semi-Official stamps of Canada, 1918-1934, are among the most popular and elusive stamps issued by any entity in the early pioneer aviation years. This collecting area provides ample intellectual challenges, with the vast array of issues produced by private companies and air clubs to frank mail carried on the early private flights throughout Canada.

It is these challenges that attracted Dr. Paul M. Cere to assemble one of the most important collections – of both stamps and their usage on cover – ever formed. Dr. Cere concentrated his efforts on buying scarce and rare items, including listed and unlisted varieties. He would not hesitate to acquire more than one example of a rarity. For example, he has both of the only two recorded examples of Scott CL14b – one of the iconic rarities of Canadian Semi-Official Air Posts.

Many of the most elusive stamps and covers in Dr. Cere's collection were acquired from such famous collections as Mac Goldberg, Ernie Wall and Robert Cunliffe. He was particularly fond of the stamps of the Patricia Airways and Exploration Company, with these overprinted stamps providing numerous combinations of errors and varieties. Many of these stamps have not been on the open auction market in years.

This unreserved auction sale represents a remarkable opportunity for established Canadian Semi-Official Air Post collectors to acquire stamps and covers that have long eluded them. The sale also represents a great opportunity for a collector seeking a new collecting challenge.

We are pleased Dr. Cere decided to honor Siegel International with the sale of his impressive collection. In return, we have honored Dr. Cere's great collecting achievement by producing this single-owner auction catalogue, and have provided as much pertinent detail in our descriptions as possible for future reference by specialist collectors.

We would also like to express our gratitude for the help and guidance provided by Ray Simrak – the preeminent collector and expert in the field of Canadian aerophilately.

— CHARLES F. SHREVE

The main catalogue identifications used throughout this sale are those found in the *Scott 2017 Classic Specialized Catalogue*, and the corresponding catalogue values (in U.S. dollars) are found in the right-hand column of our descriptions. However, whenever possible, we have also identified each item by the *2017 Unitrade Specialized Catalogue of Canadian Stamps* and have shown their catalogue values (in Canadian dollars). While both catalogue listings normally mirror one another, sometimes an item may only be listed in Scott, or vice versa. In those instances we have listed the identification and pricing by the sole catalogue that lists and prices that particular stamp or variety.



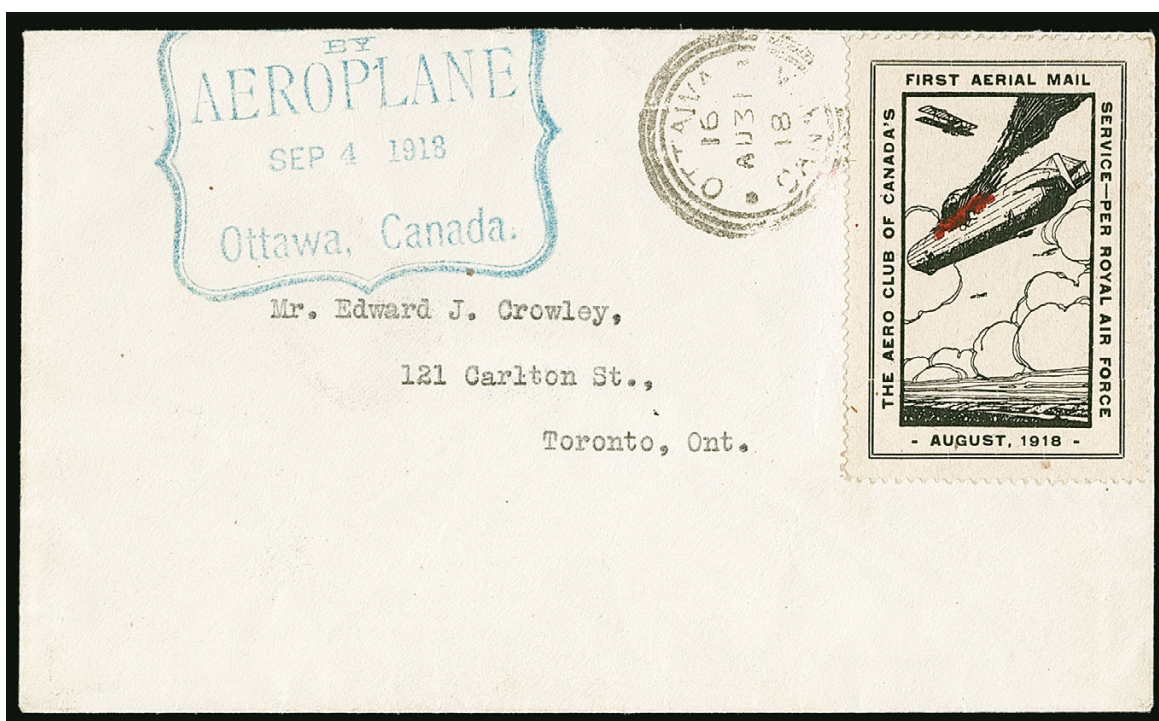
# Dr. Paul M. Cere Collection

## SEMI-OFFICIAL AIR POSTS OF CANADA

AFTERNOON SESSION (LOTS 3501-3681)  
TUESDAY, NOVEMBER 14, 2017, AT 1:30 P.M.

### AIR CLUBS AND SPECIAL FLIGHTS

AERO CLUB OF CANADA



3501

3501 ☒ **1918, (25c) Black & Red, Aero Club of Canada, Air Post Semi-Official (CLP1).** Tied by Aug. 31, 1918 circular datestamp **on front of cover**, to Toronto, bluish green flight cachet of Sept. 4, Toronto receiving backstamp, uncommonly fresh

VERY FINE AND CHOICE. RAY SIMRAK RECORDS ONLY ONE OTHER COVER WITH THIS DATE. LIKELY ONE OF THE FINEST QUALITY COVERS KNOWN BEARING THIS DISTINCTIVE STAMP.

An especially desirable cover, not only because it is unusually fresh and clean, but also the stamp and flight cachet are on the front of the cover.

Unitrade C\$4,500.00 ..... 3,400.00





3502



3503

- 3502 ☒ **1918, (25c) Black & Red, Aero Club of Canada, Air Post Semi-Official (CLP1).** Tied by bluish green Aug. 26, 1918 Aeroplane fancy datestamp on back of cover, front has three 1c Green (No. 104) tied by light circular datestamps, violet flight cachet, small bit of flap missing

FINE AND RARE. ONLY 100 REGULAR PIECES OF MAIL WERE CARRIED ON THIS FLIGHT.

Unitrade C\$3,250.00 ..... 3,000.00

- 3503 ☒ **1918, 25c Black and Red, Aero Club of Canada Air Post Semi-Official (CLP2).** Tied by Sept. 3, 1918 Toronto duplex **on front of cover** to Ottawa, 2c Brown War Tax (MR4) tied by violet oval Ottawa "Dead Letter Office" and "Returned for Postage" handstamps, similar D.L.O. handstamp on reverse, along with Sept. 4 Toronto oval datestamp, stamp with pre-use crease, cover with edge faults and slightly reduced at left, Fine appearance, with 2008 P.F. certificate, a rare use of No. CLP2 on cover..... 4,250.00



3504

- 3504 ★★ **1918, 25c Black and Red, Aero Club of Canada, Tête-Bêche Pane of Two (Unitrade CLP2a).** Mint N.H., the right stamp it tilted counter-clockwise, exceedingly fresh, Very Fine and choice, particularly rare and desirable in Mint Never Hinged condition, this being the finest quality example of this we have seen, Unitrade C\$3,000.00..... 2,000.00

ESTEVAN-WINNIPEG PROMOTIONAL ISSUE



3505



3506

- 3505 ★★ 1924, (\$1.00) Black on Red, Estevan-Winnipeg Air Post Semi-Official (CLP5). Mint N.H., four large margins, unusually fresh, Extremely Fine, quite challenging to find in this outstanding Mint Never-Hinged condition, Unitrade C\$800.00..... 650.00
- 3506 ★★ 1924, (\$1.00) Black on Red, Estevan-Winnipeg Air Post Semi-Official (CLP5). Mint N.H., large margins all around, strong impression, Very Fine and choice, seldom seen in this select Mint Never-Hinged quality, Unitrade C\$800.00 ..... 650.00



3507

- 3507 ☒ 1924, (\$1.00) Black on Red, Estevan-Winnipeg Air Post Semi-Official (CLP5). Used on Oct. 1, 1924 illustrated flight cover to Latvia, 10c Blue (No. 117) tied by oval violet date-stamp and Riga receiver, numerous backstamps, Air Post stamp with large margins all around, cover with slight edge wear, stamps are Very Fine, a rare and probably unique use to a most unusual destination ..... E. 400-500

- 3508 ★ 1924, (\$1.00) Black on Red, Estevan-Winnipeg Air Post Semi-Official, Type II, Inscription Inverted (CLP5c; Unitrade CLP5a). H.r., full to large margins on three sides, just in at right, minor gum thins

FINE APPEARANCE. ONLY TWELVE WERE PRINTED WITH THE INVERTED INSCRIPTIONS, SIX EACH OF TYPES I AND II.

Unitrade C\$3,000.00..... 2,000.00



3508





3509

- 3509 ★ **1924, (\$1.00) Black on Red, Estevan-Winnipeg Air Post Semi-Official, Inscription Omitted (CLP5d; Unitrade CLP5b).** Original gum, four large margins, trivial surface rub at left

VERY FINE. ONE OF ONLY FOUR EXAMPLES RECORDED AND ONE OF THE RAREST OF ALL THE CANADIAN SEMI-OFFICIAL STAMPS.

There are three unused examples, one of which is defective (see next lot) and one on cover known of this error.

Ex Cornelius and Richardson. Signed Kessler and Sanabria. Unitrade C\$7,000.00.... 5,000.00

- 3510 ★ **1924, (\$1.00) Black on Red, Estevan-Winnipeg Air Post Semi-Official, Inscription Omitted (CLP5d; Unitrade CLP5b).** H.r., four large margins, closed tear at top left and light horizontal crease at bottom, interestingly, has a full offset of another stamp (without inscriptions) on the reverse, Very Fine appearance, remarkably, the Cere collection contains half of the known examples of this error rarity, signed Champion, Unitrade C\$7,000.00 ... 5,000.00

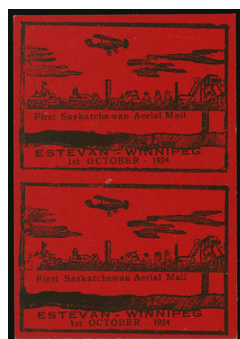


3510

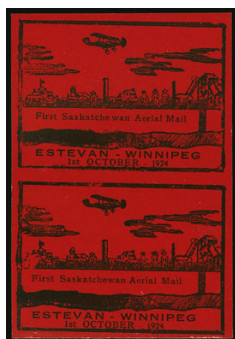


3511

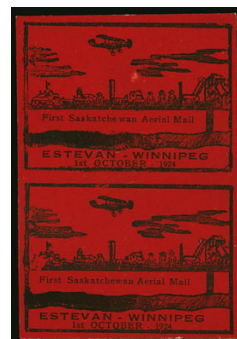
- 3511 ★★ **1924, (\$1.00) Black on Red, Estevan-Winnipeg Air Post Semi-Official, Pane of Two (CLP5f).** Top stamp with wide "ew" spacing, Mint N.H., large margins all around, strong impression, quite fresh, Extremely Fine, panes are especially difficult to come by in this choice Mint N.H. condition, Unitrade C\$3,500.00 ..... 2,250.00



3512

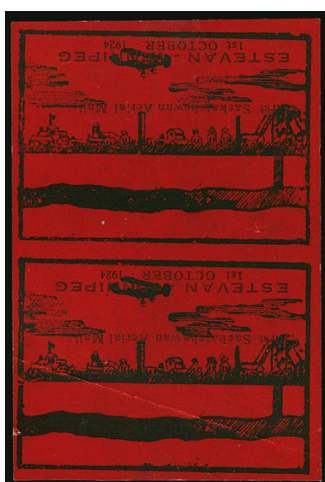


3513



3514

- 3512 ★ **1924, (\$1.00) Black on Red, Estevan-Winnipeg Air Post Semi-Official, Pane of Two (CLP5f).** Top stamp with wide “ew” spacing, lightly hinged, large balanced margins all around, strong impression, Extremely Fine, a most handsome pane of two, Unitrade C\$1,750.00..... 1,500.00
- 3513 ★ **1924, (\$1.00) Black on Red, Estevan-Winnipeg Air Post Semi-Official, Pane of Two (CLP5f).** Top stamp with wide “ew” spacing, top stamp lightly hinged, bottom stamp Mint N.H., large margins all around, Very Fine, Unitrade C\$1,750.00..... 1,500.00
- 3514 ★ **1924, (\$1.00) Black on Red, Estevan-Winnipeg Air Post Semi-Official, Pane of Two (CLP5f).** Top stamp with wide “ew” spacing, large margins all around, top stamp with small surface rub, otherwise Very Fine, Unitrade C\$1,750.00..... 1,500.00



3515

- 3515 ★ **1924, (\$1.00) Black on Red, Estevan-Winnipeg Air Post Semi-Official, Pane of Two, Inscription Inverted (CLP5g; Unitrade CLP5a).** H.r., large margins all around, bottom stamp with crease

VERY FINE APPEARANCE. ONLY FIVE PAIRS AND TWO SINGLES ARE RECORDED WITH THE INVERTED INSCRIPTIONS.

This is perhaps the finest of the four known unused pairs. The fifth recorded pair is the unique usage on cover. See lot 3517.

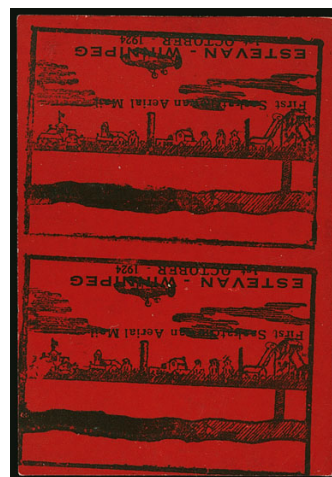
Unitrade C\$6,000.00 ..... 4,500.00

- 3516 ★ **1924, (\$1.00) Black on Red, Estevan-Winnipeg Air Post Semi-Official, Pane of Two, Inscription Inverted (CLP5g; Unitrade CLP5a).** Impressively, the Cere collection contains a second unused example of this rarity (and still a third example, on cover, is in the next lot), original gum, mostly large margins, just touching the frameline in a couple places

FINE. ONLY TWELVE EXAMPLES ARE KNOWN WITH THE INVERTED INSCRIPTIONS.

Of the twelve known examples, ten are contained in five panes of two.

Ex Cunliffe. Unitrade C\$6,000.00 ..... 4,500.00

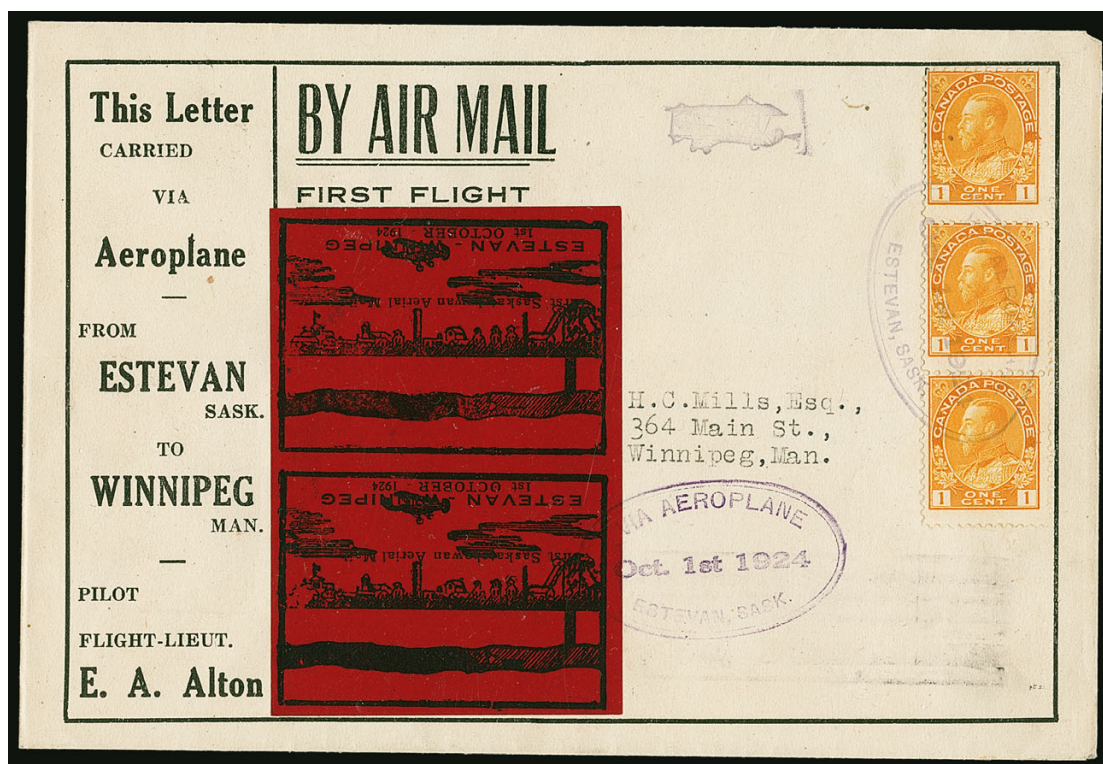


3516



**\$1.00 ESTEVAN-WINNIPEG AIR POST SEMI-OFFICIAL  
WITH INVERTED INSCRIPTIONS**

**THE ONLY RECORDED EXAMPLE ON COVER**



3517

3517 ☒ **1924, (\$1.00) Black on Red, Estevan-Winnipeg Air Post Semi-Official, Pane of Two, Inscriptions Inverted (CLP5g).** Large margins all around, tied to special illustrated cover (front and back) by violet Oct. 1, 1924 oval flight datestamp, along with three 1c Yellow (No. 105), Winnipeg backstamp, cover is particularly fresh

EXTREMELY FINE. THE ONLY RECORDED COVER WITH A COMPLETE PANE OF TWO WITH INVERTED INSCRIPTIONS. AN IMPORTANT CANADIAN AIR POST SEMI-OFFICIAL RARITY.

Only five pairs and two singles are recorded. This pair is the only one on cover.

Ex Cunliffe. Unpriced in Scott on cover. Unitrade value ..... C\$ 8,000.00

- 3518 ★ **1924, (\$1.00) Black on Red, Estevan-Winnipeg Air Post Semi-Official, "Aerial" instead of "Aerial" (CLP5h).** Original gum, four large margins, exceptionally fresh, small pencil mark noting the "i" should be and "e" (done by the printer - the other known example has this mark)

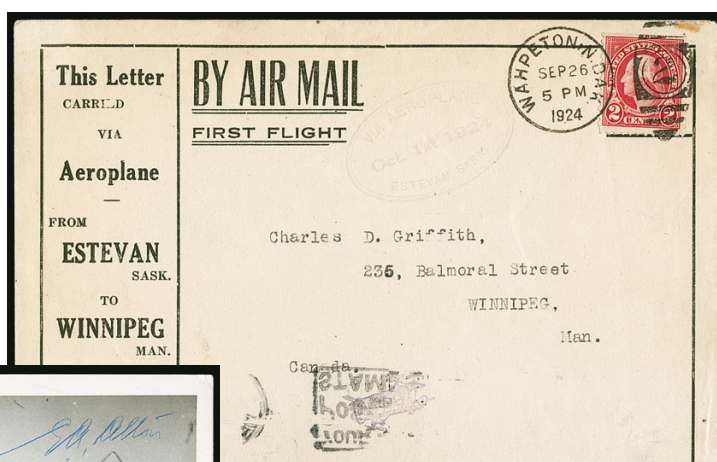
EXTREMELY FINE. ONE OF ONLY TWO KNOWN EXAMPLES OF THE "AIRIAL" MISSPELLING. ONE OF THE HIGHLIGHTS OF THE CERE COLLECTION.

Signed Kessler. Untrade (where it is listed as a proof) C\$8,000.00 ..... 6,500.00



3518

3519



3520



3521EX

- 3519 ☒ **Oct. 1, 1924 Estevan-Winnipeg Flight Cover.** United States 2c Carmine tied by Sept. 26. 1924 Wahpeton, North Dakota duplex on special flight cover, light violet oval flight datestamp, Winnipeg backstamp, Fine, only three covers are known posted at Wahpeton ..... E. 750-1,000
- 3520 **1924 Photo of Estevan-Winnipeg Pilot E. A. Alton.** Large photo measuring 177 x 123mm, showing the Postmaster handing Alton a mailbag to be carried on the Oct. 1, 1924 flight, signed by Alton, photo is particularly fresh and clean, Very Fine, an outstanding collateral item E. 500-750
- 3521 **1924 Photo of Estevan-Winnipeg Pilot E. A. Alton.** Similar to previous lot but smaller size (125 x 96mm), signed by Alton, also includes a flown cover with the stamp (CLP5) tied on the specially produced cover, the cover also signed by Alton, Very Fine .....(Photo Ex) E. 500-750
- 3522 ☒ **Estevan-Winnipeg Cover Balance.** Eleven flown covers, all on the special illustrated envelope, two are without the stamp (but these are signed by the pilot), some others pilot signed, Fine-Very Fine .....Not illustrated E. 750-1,000



MOOSE JAW FLYING CLUB

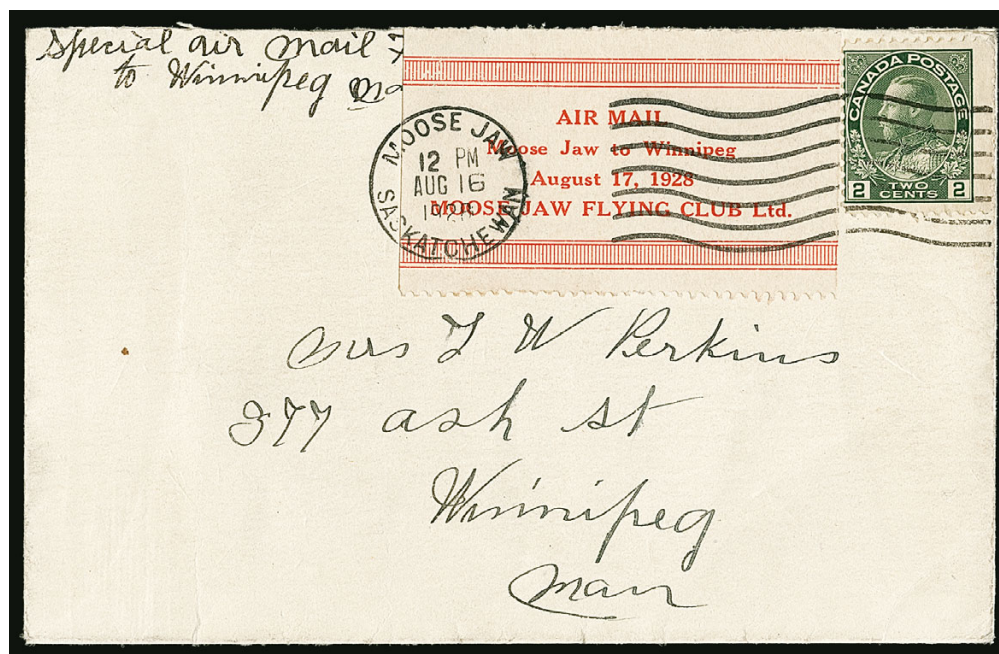


3523

- 3523 ★★ 1928, (\$1.00) Red on White, Moose Jaw Flying Club Air Post Semi-Official (CLP7). Mint N.H., extraordinarily bright and fresh

VERY FINE AND CHOICE EXAMPLE OF THE MOOSE JAW FLYING CLUB STAMP. FEW (IF ANY) OTHERS EXIST IN MINT NEVER-HINGED CONDITION.

Of the mere 200 produced, 161 were used on mail, leaving only 39 unused. We have not seen another in Mint Never-Hinged condition. Scott mistakenly prices Mint N.H. lower than hinged. Unitrade value..... C\$ 4,500.00



3524

- 3524 ☒ 1928, (\$1.00) Red on White, Moose Jaw Flying Club Air Post Semi-Official (CLP7). Tied by Aug. 16, 1924 Moose Jaw, Saskatchewan duplex on the front of the cover, along with 2c Green (No. 107), Winnipeg receiving backstamp

VERY FINE. THE ONLY RECORDED EXAMPLE OF THE \$1.00 MOOSE JAW FLYING CLUB USED ON THE FRONT OF THE COVER.

All of the other known covers have the stamp on the back, which was customary for Semi-Official Air Post stamps. It is more desirable (and far more exhibitable) when tied on the front of the cover.

With 2008 P.F. certificate. For the normal use Scott Retail is \$3,250.00 and Unitrade C\$3,500.00 ..... E. 3,000-4,000



3525

- 3525 ☒ **1928, (\$1.00) Red on White, Moose Jaw Flying Club Air Post Semi-Official (CLP7).** On back of Aug. 17, 1928 flown cover from Moose Jaw to Winnipeg, Aug. 17 duplex ties 2c Green (No. 104), same date receiving backstamp of Winnipeg  
 VERY FINE. A FRESH AND DESIRABLE COVER WITH THE MOOSE JAW FLYING CLUB STAMP.  
 Unitrade C\$3,500.00 ..... 3,250.00

## PRIVATE COMMERCIAL AIRLINES NORTHERN AIR SERVICE



3526

- 3526 ☒ **Northern Air Service, 1925 Haileybury-Rouyn Experimental Flight (AAMC 60).** 3c Confederation (No. 135) tied by Haileybury May 18, 1925 circular datestamp on cover to Rouyn (May 18 backstamp), two-line purple flight cachet  
 VERY FINE AND RARE. ONLY EIGHT PIECES OF MAIL WERE CARRIED ON THIS FLIGHT.  
 Unitrade value C\$2,500.00 ..... 2,500.00





3528



3529



3530



3532



3531



3533



3534





3527

- 3527 ☒ **Northern Air Service, 1925 Rouyn-Haileybury Experimental Flight (AAMC 60a).** Return trip of the previous lot, 1c Yellow and 2c Green (Nos. 105, 107) tied by Rouyn May 18, 1925 circular datestamps on cover to Haileybury (May 18 backstamp), two-line purple flight cachet  
VERY FINE AND RARE. ONLY EIGHT PIECES OF MAIL WERE CARRIED ON THIS RETURN FLIGHT.  
Also includes an affidavit confirming that only sixteen covers (eight on each leg) were carried.  
With 2009 P.F. certificate. Unitrade value C\$2,500.00 ..... 2,500.00

## ELLIOT-FAIRCHILDS AIR SERVICE

- 3528 ★★ **1926, (25c) Red and Yellow on White Paper Elliot-Fairchilds Air Service, Imperforate Proof Tête-Bêche Pair (CL9P).** Mint N.H. vertical gutter tête-bêche pair, large margins, bright and fresh, Very Fine and rare, Unitrade value ..... C\$ 1,225.00
- 3529 ☒ **1926, (25c) Elliot-Fairchilds Air Service Air Post Semi-Official (CL9).** Tied on the back of cover by May 25, 1926 circular datestamp to Hudson, Ontario, 3c Carmine (No. 109) tied by same cancel, the stamp was placed over the previously issued stamp (No. CL8), the cover was then **used a second time** on Patricia Airways June 27 Sioux Lookout-Rolling Portage inaugural flight, with the Air Post stamp tied by the company's blue straightline, also boxed flight cachet, Rolling Portage datestamp, Very Fine and unique double use ..... E. 300-400
- 3530 ☒ **1926, (25c) Blue & Yellow, Elliot-Fairchilds Air Service, Air Post Semi-Official, Vertical Tête-Bêche Pair (CL9b).** Right two stamps from the pane of eight, with selvage on three sides, tied on reverse of Hudson-Red Lake legal-size flight cover with Rolling Portage, Apr. 7, 1926 datestamp, franked with pair 1c Yellow (No. 105) and single 3c Brown (No. 108) tied by Toronto Apr. 5, 1926 circular datestamps, Red Lake datestamp of Apr. 5 alongside, cover with trivial edge wear, tête-bêche pair is Very Fine, a very rare and possibly unique use of a tête-bêche pair on a flown cover ..... E. 750-1,000

## FAIRCHILD AIR TRANSPORT, LTD.

- 3531 ★★▣ **1926, (25c) Deep Blue Fairchild Air Transport Air Post Semi-Official, Tête-Bêche Pane of Ten (CL11a).** Mint N.H. pane of ten containing four tête-bêche pairs, well-centered and fresh, Very Fine, Scott only prices hinged at \$450.00, but assigns a 50% premium for the never-hinged single, Unitrade value ..... C\$ 800.00
- 3532 ☒ **1926, (25c) Deep Blue Fairchild Air Transport Air Post Semi-Official, Tête-Bêche Pair (CL11a).** Tied on reverse of Rouyn-Haileybury first flight cover by Oct. 22, 1925 Rouyn circular datestamp and violet flight handstamp, cover sent registered, with 2c Green and 10c Bister Brown (Nos. 107, 118) tied by the Rouyn circular datestamp, Very Fine, with 2008 P.F. certificate, tête-bêche pairs used on the flight covers are very scarce ..... E. 400-500
- 3533 ★★▣ **1926, (25c) Ultramarine Fairchild Air Transport Air Post Semi-Official, Tête-Bêche Pane of Ten, One Side Darker (CL12b).** Mint N.H. pane of ten, with one vertical row in a distinctly darker shade, well-centered, fresh colors, a few fingerprints on gum, Very Fine and scarce, Scott only prices hinged at \$1,250.00, Unitrade value ..... C\$ 2,250.00
- 3534 ★▣ **1926, (25c) Ultramarine Fairchild Air Transport Air Post Semi-Official, Tête-Bêche Pane of Ten (CL12c; Unitrade CL12e).** All stamps tête-bêche (vertical and horizontal) lightly hinged on the top two stamps, others Mint N.H., bottom right stamp with small indentation that just breaks the paper in one place, otherwise Very Fine, few panes exist with all stamps tête-bêche, Unitrade C\$3,000.00 ..... 2,250.00



## PATRICIA AIRWAYS AND EXPLORATION CO. LTD.



- 3535 P 1926, (25c) Patricia Airways Air Post Semi-Official, Proof of Green Frame and Route Inscription, Small "t" (Unitrade CL13Pv). Vertical corner sheet-margin pair, bottom stamp the "t" variety, top stamp normal proof (CL13Pii), partial imprint in right margin, fresh color, bottom stamp with faint crease, otherwise Extremely Fine and rare, Unitrade value as singles ..... C\$ 1,500.00
- 3536 ☒ 1926, (25c) Green & Red on Yellow, Patricia Airways Air Post Semi-Official (CL13). Tied by blue Pine Ridge Oct. 24, 1926 circular datestamp and Sioux Lookout Oct. 23, 1926 circular datestamp on large-size registered cover, franked with four 5c Violet (No. 112) tied by the Sioux Lookout circular datestamp, sent to Kingston (several backstamps), sent from Red Lake Mining Division at Goldpines, cover with some faults as expected, a rare commercial use of the Semi-Official Air Post stamp ..... E. 400-500
- 3537 ☒ 1926, (25c) Green & Red on Yellow, Patricia Airways Air Post Semi-Official, Horizontal Pair, Imperforate Vertically (CL13b; Unitrade CL13a). Pair with part imprint in left selvage, tied on back of Sioux Lookout-Red Lake first flight cover by Red Lake July 7, 1926 datestamp and the bluish green flight cachet, cover franked with 2c Green (No. 107) and 5c Violet (No. 112), certificate mentions a fault on the 5c stamp that we do not see, error pair is Very Fine, **only four such imperforate vertically pairs exist**, with 2008 P.F. certificate, undervalued in Scott, Unitrade C\$1,250.00 ..... 500.00
- 3538 ☒ 1926, (25c) Green & Red on Yellow, Patricia Airways Air Post Semi-Official, Horizontal Pair, Imperforate Vertically (CL13b; Unitrade CL13a). Pair with part imprint in selvages, tied on back of Sioux Lookout-Red Lake first flight cover by Red Lake July 7, 1926 datestamps and the bluish green flight cachet, cover franked with 2c Green (No. 107) and 5c Blue (No. 111), Fine, **only four such imperforate vertically pairs exist**, undervalued in Scott, Unitrade C\$1,250.00 ..... 500.00

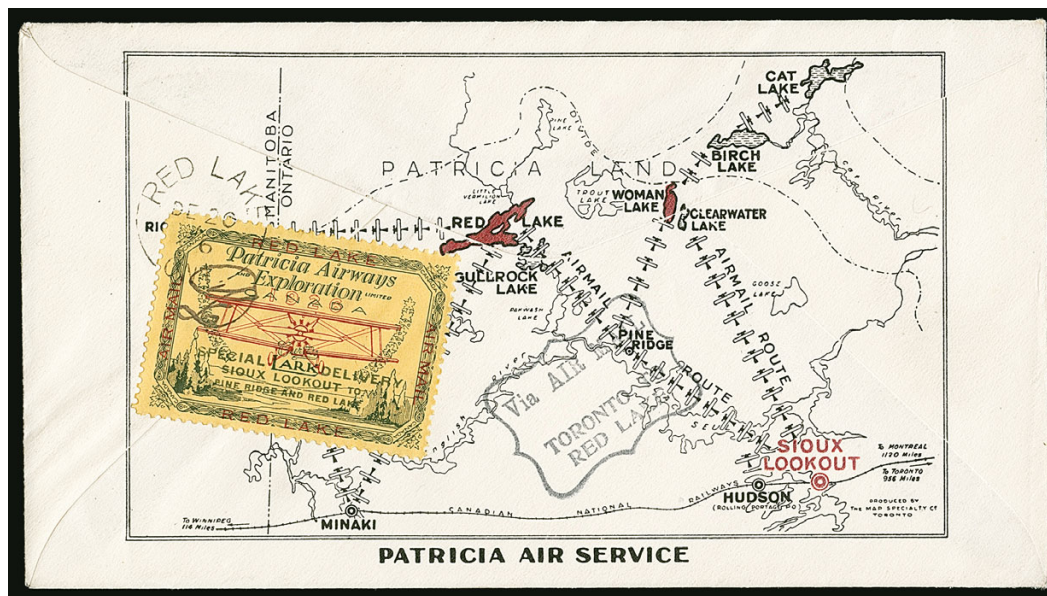


3539

- 3539 ★★田 1926, (25c) Green & Red on Yellow, Patricia Airways Air Post Semi-Official, Horizontal Pair, Imperforate Vertically and “Red Lake” Double, One Inverted (Unitrade CL13ai). Mint N.H. half-pane of four with part imprint and plate no. 1 in selvage, containing two imperf between pairs and all stamps with “Red Lake” double, one inverted, radiant colors, a couple faint fingerprints on gum mentioned only for strict accuracy

EXTREMELY FINE. A SPECTACULAR AND UNIQUE BLOCK CONTAINING TWO MAJOR ERRORS - IMPERFORATE VERTICALLY AND “RED LAKE” DOUBLE, ONE INVERTED.

Ex Cunliffe. Unitrade value as two pairs..... C\$ 6,000.00



3540

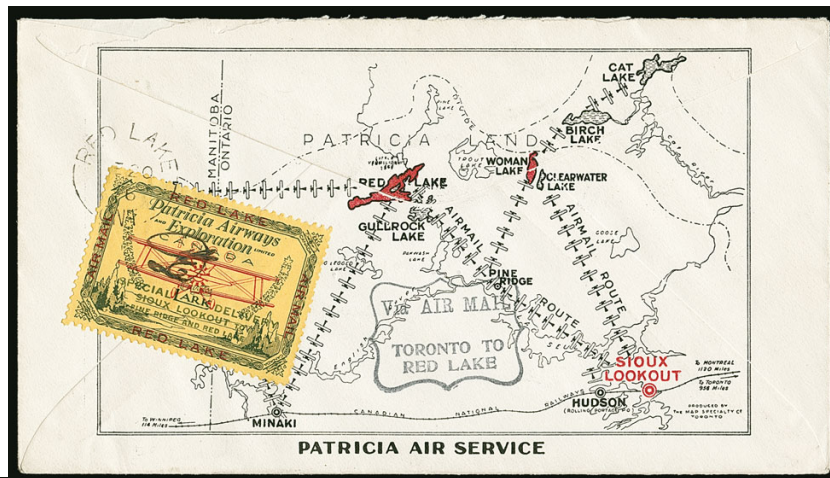
- 3540 ☒ 1926, (10c) Green & Red on Yellow, Patricia Airways Air Post Semi-Official, Inscribed “FED” in Violet Ink (CL13h var; Unitrade CL13e var). Tied on back of illustrated Toronto-Red Lake flight cover by Red Lake Dec. 20, 1926 datestamp, franked with 2c Green (No. 107), flight cachet mistakenly listing the year date as 1929, stamp is well-centered and fresh, the “FED” in an unmistakable dark violet shade

VERY FINE. THE ONLY RECORDED EXAMPLE OF THE “FED” OVERPRINT IN VIOLET INSTEAD OF RED.

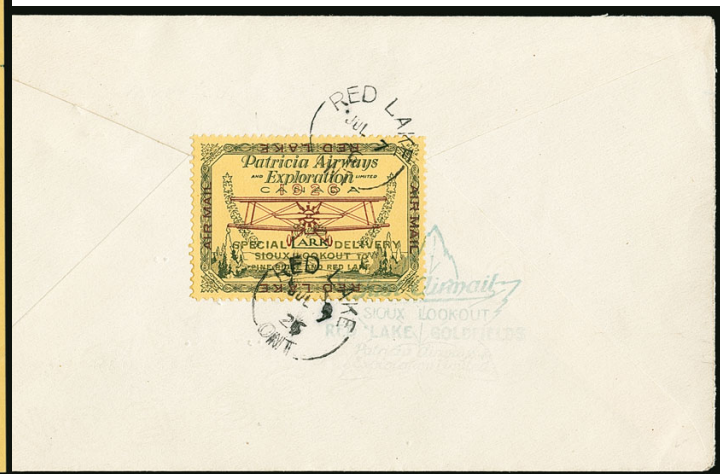
This unique stamp is not yet priced in Scott or Unitrade ..... E. 2,000-3,000



3541



3542



3543

- 3541 ☒ **1926, (10c) Green & Red on Yellow, Patricia Airways Air Post Semi-Official, Inscribed "FED" in Blue-Black Ink (CL13h var; Unitrade CL13e var).** Tied on back of illustrated Toronto-Red Lake flight cover by Dec. 20, 1926 datestamps, franked with 2c Green (No. 107), flight cachet mistakenly lists the year as 1929

VERY FINE. THE ONLY RECORDED EXAMPLE OF THE "FED" OVERPRINT IN BLUE-BLACK INSTEAD OF RED.

With 2016 Greene Foundation certificate. The normal red overprint catalogues \$1,500.00, this is at least as rare. Not yet listed in Scott or Unitrade ..... E. 2,000-3,000

- 3542 ★田 **1926, (25c) Green & Red on Yellow, Patricia Airways Air Post Semi-Official, Small "t" in "to" (CL13g; Unitrade CL13d).** Plate no. 1 pane of eight, position 8 the variety, h.r.'s in selvage, top two stamps lightly hinged, others Mint N.H. (including the variety), minor perf separation, Very Fine, Unitrade C\$1,000.00 ..... 1,200.00

- 3543 ☒ **1926, (25c) Green & Red on Yellow, Patricia Airways Air Post Semi-Official, "Red Lake" Inscriptions Inverted (CL13k; Unitrade CL13i).** Tied on back of Sioux Lookout-Red Lake flight cover by Red Lake July 7, 1926 datestamps and bluish green flight cachet, franked with pair of 1c Yellow (105), Air Post stamp with excellent centering and bright color

VERY FINE AND CHOICE. BELIEVED TO BE THE ONLY EXAMPLE OF THE "RED LAKE" INVERTED INSCRIPTIONS ON COVER.

Ex Cunliffe (where it realized \$2,800.00, plus the Buyer's Premium, in 2009). Unitrade C\$2,500.00 ..... 2,500.00

- 3544 ★ 1926, (25c) Green & Red on Yellow, Patricia Airways Air Post Semi-Official, Marginal Inscriptions Omitted (CL13 var). Original gum, precise centering, marvelously bright and fresh

EXTREMELY FINE. THE ONLY RECORDED EXAMPLE OF THE 1926 PATRICIA AIRWAYS STAMP WITH MARGINAL INSCRIPTIONS OMITTED.

This was purchased privately by Dr. Cere. It has not yet been listed or priced in Unitrade and Scott, since it has not been publicly offered. It will undoubtedly be listed and priced in both catalogues after the hammer falls on this lot. ....  
..... E. 1,500-2,000



3544



3545

- 3545 ★ 1926, (25c) Green & Red on Yellow, Patricia Airways Air Post Semi-Official, Green Route Inscriptions Omitted (CL13 var). Lightly hinged, well-centered, bright colors

VERY FINE. A HANDSOME AND VERY RARE EXAMPLE OF THE 1926 PATRICIA AIRWAYS STAMP WITH THE ROUTE INSCRIPTIONS OMITTED.

Not yet listed in Scott or Unitrade .....  
..... E. 1,500-2,000



3546

- 3546 ★ 1927, 10c Green & Red on Yellow, Patricia Airways Air Post Semi-Official, Small "t" in "TO" (CL14b). Horizontal pair, right stamp (Position 8 on the pane) with small "t", h.r., choice centering, strong colors

EXTREMELY FINE. ONE OF ONLY TWO KNOWN EXAMPLES OF NO. CL14 WITH THE SMALL "t". THIS IS THE ONLY ONE IN A PAIR WITH THE NORMAL OVERPRINT.

The other example is found in the following lot.

Considerably undervalued in Scott considering that only two are known. Unitrade  
C\$3,000.00..... 1,500.00





3547



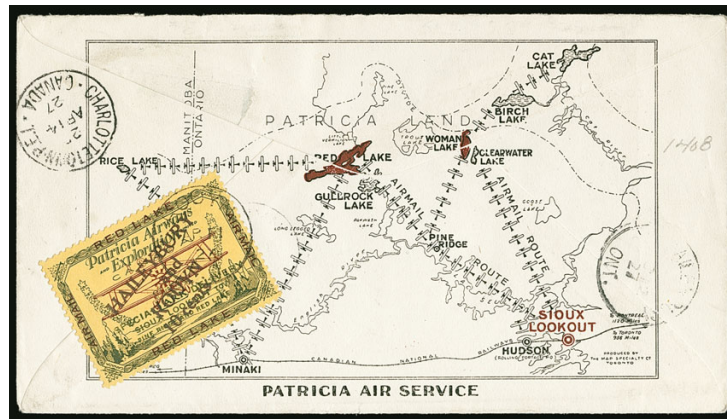
3548

- 3547 ★ **1927, 10c Green & Red on Yellow, Patricia Airways Air Post Semi-Official, Small “t” in “TO” (CL14b).** Position 8 on the pane, lightly hinged, intense colors

VERY FINE. ONE OF ONLY TWO KNOWN EXAMPLES OF NO. CL14 WITH THE SMALL “t”. BOTH ARE IN THE CERE COLLECTION.

Undervalued in Scott considering that only two are known. Unitrade C\$3,000.00..... 1,500.00

- 3548 ★★ **1926, (10c) Green & Red on Yellow, Patricia Airways Air Post Semi-Official, Red Overprint Inverted (CL14c).** Top left corner selvage single with plate no. 2, stamp Mint N.H. (hinged in selvage only), not only is the overprint inverted, it is also misplaced, causing a portion of another overprint at right, Very Fine, and eye-catching error stamp, with 2015 P.F. certificate, Unitrade C\$750.00, Scott Retail as hinged..... 500.00



3549

- 3549 ☒ **1927, 10c Green & Red on Yellow, Patricia Airways Air Post Semi-Official, Route Overprint in Violet (CL14 var).** The “Haileybury and Rouyn 10 Cents” overprint in violet instead of red or blue black, tied on back of illustrated flight cover from Rouyn to Charlottetown, Prince Edward Island by Rouyn, April 11, 1927 circular datestamp, franked with 2c Green (No. 107), stamp with brilliant colors

VERY FINE. THE ONLY RECORDED EXAMPLE WITH THE ROUTE OVERPRINT IN VIOLET.

Not yet priced in Scott or Unitrade..... E. 2,000-3,000



3550

- 3550 ★★ **1927, 5c Green & Red on Yellow, Patricia Airways Air Post Semi-Official, Black Overprint (CL15).** Mint N.H., deep intense colors, Very Fine and choice, Unitrade C\$412.50..... 400.00



3551



3552



3555

- 3551 ★ 1927, 5c Green & Red on Yellow, Patricia Airways Air Post Semi-Official, Black Overprint Descending (CL15a). Lightly hinged, excellent centering, vibrant colors, Extremely Fine, only one pane of eight was printed with the black overprint descending, Unitrade C\$2,500.00..... 1,200.00
- 3552 ★ 1927, 5c Green & Red on Yellow, Patricia Airways Air Post Semi-Official, Black Overprint Descending (CL15a). Original gum, strong colors, Very Fine, only one pane of eight was printed with the black overprint descending, ex Wall, Unitrade C\$2,500.00 ..... 1,200.00



3553



3554

- 3553 ☒ 1927, 5c Green & Red on Yellow, Patricia Airways Air Post Semi-Official, Black Overprint Descending (CL15a). Bottom selva single tied on back of Sioux Lookout-Gold Pines flight cover by light Gold Pines Feb. 4, 1928 circular datestamps, franked with 2c Green (No. 107), stamp is exceptionally well-centered and fresh
- EXTREMELY FINE. ONLY ONE PANE OF EIGHT WAS PRINTED AND ONLY TWO ARE RECORDED ON COVER.
- Ex Wall. Unitrade C\$2,900.00..... 2,000.00
- 3554 ☒ 1927, 5c Green & Red on Yellow, Patricia Airways Air Post Semi-Official, Black Overprint Descending (CL15a). Tied on back of Sioux Lookout-Gold Pines flight cover by Gold Pines Feb. 4, 1928 circular datestamps, franked with 2c Green (No. 107), stamp with intense colors
- VERY FINE. ONLY ONE PANE OF EIGHT WAS PRINTED AND ONLY TWO ARE RECORDED ON COVER. THE CERE COLLECTION CONTAINS BOTH OF THE KNOWN COVERS.
- Unitrade C\$2,900.00..... 2,000.00
- 3555 ★★ 1927, 5c Green & Red on Yellow, Patricia Airways Air Post Semi-Official, Red Overprint Descending (CL15b; Unitrade CL15c). Mint N.H., wonderfully bright and fresh, Very Fine, only 200 printed, Unitrade C\$750.00, Scott Retail as hinged..... 650.00





- 3556 ★★ 1927, 5c Green & Red on Yellow, Patricia Airways Air Post Semi-Official, Red Overprint Descending, Malformed “o” in “Lookout” (CL15c; Unitrade CL15d). Mint N.H. bottom left selvaige plate no. 1 single (position 7 on the pane), exceptionally well-centered, dazzling colors, Extremely Fine, a rare and undervalued variety, unquestionably the finest known example of this, being a plate no. single and in a pristine Never Hinged state, Unitrade C\$1,275.00, Scott Retail as hinged ..... 800.00
- 3557 ★ 1927, (5c) Green & Red on Yellow, Patricia Airways Air Post Semi-Official, Ascending Overprint (CL16). Minor h.r., deep colors, Very Fine, Scott mistakenly prices the ascending overprint less than descending, though the former is much rarer, only a small fraction of the 200 printed received the ascending overprint, Unitrade does not differentiate between the orientations, their generic price is C\$1,200.00 ..... 800.00
- 3558 ★★ 1927, (5c) Green & Red on Yellow, Patricia Airways Air Post Semi-Official, Overprint Descending (CL16a). Mint N.H., beautifully centered, bright and fresh, Extremely Fine, a very difficult stamp to find in this stellar Mint Never-Hinged condition, only 200 printed of all varieties ..... 1,350.00
- 3559 ★★ 1927, (5c) Green & Red on Yellow, Patricia Airways Air Post Semi-Official, Overprint Descending (CL16a). Mint N.H. (trivial fingerprint on gum), bright colors, Very Fine, only 200 printed of all varieties ..... 1,350.00
- 3560 ☒ 1927, (5c) Green & Red on Yellow, Patricia Airways Air Post Semi-Official, Overprint Descending (CL16a). Tied on back of Sioux Lookout flight to Halifax by Sioux Lookout, Mar. 9, 1928 circular datestamp, franked with pair 1c Confederation (No. 141) by Red Lake Mar. 9 circular datestamp, Sioux Lookout backstamp of Mar. 10 for the return flight, Very Fine and a particularly fresh cover, only a small number of the 200 printed exist on cover, ex Wall, Unitrade C\$1,600.00 ..... 1,600.00



3561



3562



3563

- 3561 ★ 1927, (5c) Green & Red on Yellow, Patricia Airways Air Post Semi-Official, Overprint Inverted Descending (CL16c; Unitrade CL16b). H.r., precise centering, deep colors, Extremely Fine, an exceedingly rare (and possibly unique) variety, only 200 total stamps were printed for this stamp, and a miniscule number have an inverted overprint, Unitrade C\$2,000.00 ..... 1,250.00
- 3562 ★ 1927, 10c Green & Red on Yellow, Patricia Airways Air Post Semi-Official, Black “Red Lake” Ascending (CL17). H.r., well-centered, strong colors, Very Fine and choice, a rare and undercatalogued stamp that is on almost every collector’s want list, Unitrade C\$1,200.00 ..... 750.00
- 3563 ★★ 1927, 10c Green & Red on Yellow, Patricia Airways Air Post Semi-Official, Black “Red Lake” Descending (CL17a). Mint N.H., with selvage at bottom, well-centered, remarkably fresh, Extremely Fine, Dr. Cere spent more than ten years searching for a Mint Never-Hinged example of this stamp, this turned out to be his last purchase before deciding to sell, it is safe to say it is undercatalogued when one considers just how infrequently a Mint Never-Hinged example comes to the market, Unitrade C\$2,250.00 ..... 1,250.00



3564

- 3564 ☒ 1927, 10c Green & Red on Yellow, Patricia Airways Air Post Semi-Official, Black “Red Lake” Descending (CL17a). Almost vertical handstamp “ties” the stamp to back of flight cover, tied by Sioux Lookout Sep. 19, 1927 circular datestamp, franked with 2c Green (No. 107) by Red Lake Sep. 13, 1927 datestamp, Very Fine, having the “Red Lake” handstamp actually tie the stamp is most unusual and desirable, ex Morrow and Wall, Unitrade C\$1,750.00 ..... 1,600.00





3565



3566

- 3565 ✉ **1927, 10c Green & Red on Yellow, Patricia Airways Air Post Semi-Official, Black “Red Lake” Descending (CL17a).** Cancelled on back of flight cover by Sioux Lookout Sep. 17, 1927 circular datestamp, franked with 2c Green (No. 107) tied by Red Lake Sep. 13 datestamp, stamp well-centered, fresh cover, Very Fine, few covers exist with this stamp, Unitrade C\$1,750.00 ..... 1,600.00
- 3566 ✉ **1927, 10c Green & Red on Yellow, Patricia Airways Air Post Semi-Official, Black “Red Lake” Descending (CL17a).** Also showing broken “N” in “ROUYN”, top selvage copy tied on flight cover by Feb. 3, 1928 datestamp, franked with 2c Green (No. 107) tied by Sioux Lookout Feb. 3, 1928 circular datestamp, covers with this stamp are extremely rare, Unitrade C\$1,750.00 for the normal overprint on cover ..... 1,600.00



3567



3568



3569

- 3567 ★ **1927, 10c Green & Red on Yellow, Patricia Airways Air Post Semi-Official, Black “Red Lake” Descending Inverted (CL17b).** Lightly hinged, exceptionally well-centered, intense colors, Extremely Fine, it is believed only 24 were printed, with 2015 P.F. certificate, Unitrade C\$2,500.00 ..... 1,500.00
- 3568 ★ **1927, 10c Green & Red on Yellow, Patricia Airways Air Post Semi-Official, Black “Red Lake” Descending Inverted (CL17b).** Lightly hinged, well-centered and fresh, Very Fine and rarely offered, Unitrade C\$2,500.00 ..... 1,500.00
- 3569 ★ **1927, 10c Green & Red on Yellow, Patricia Airways Air Post Semi-Official, Black “Red Lake” Descending Inverted (CL17b).** Also showing broken “N” in “ROUYN”, trivial h.r., deep colors, Very Fine, Unitrade \$2,500.00 ..... 1,500.00



3570

- 3570 ★ 1927, 10c Green & Red on Yellow, Patricia Airways Air Post Semi-Official, Red Violet “Red Lake” Descending Inverted (CL17c). Lightly hinged, brilliantly fresh, Very Fine, only 24 printed, Unitrade C\$3,000.00 ..... 1,600.00



3571

- 3571 ★ 1927, 10c Green & Red on Yellow, Patricia Airways Air Post Semi-Official, Red Violet “Red Lake” Descending Inverted (CL17c). H.r., deep colors, Very Fine, ex Jamieson, only 24 printed, Unitrade C\$3,000.00 ..... 1,600.00



3572

- 3572 ★ 1927, 10c Green & Red on Yellow, Patricia Airways Air Post Semi-Official, Red Violet “Red Lake” Descending Inverted (CL17c). H.r., well-centered, bright colors, Very Fine, only 24 printed, also of note is that the marginal inscriptions are printed in red violet and not violet as all the others we have seen, Unitrade C\$3,000.00..... 1,600.00





- 3573 ★ 1926, (50c) Black & Red on Blue, Patricia Airways Air Post Semi-Official, Imperforate Pair (CL18a). Vertical pair with part imprint in right margin, h.r., Very Fine and undervalued, Unitrade C\$300.00 ..... 300.00

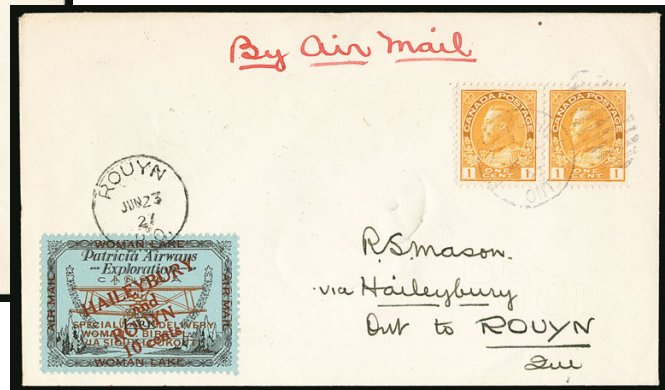


- 3574 ★ 1926, (50c) Black & Red on Blue, Patricia Airways Air Post Semi-Official, "FED" in Green Ink (CL18e). Lightly hinged, rich colors, Very Fine, rare to find unused, as most of the small number known are found on cover, Unitrade C\$2,500.00.. 2,000.00

- 3575 ☒ 1926, (50c) Black & Red on Blue, Patricia Airways Air Post Semi-Official, "FED" in Green Ink (CL18e). Tied on reverse of cover by Sioux Lookout Aug. 2, 1926 circular datestamp and flight cachet, franked with 2c Green (No. 107) tied by Woman Lake Aug. 2, 1926 datestamp, Very Fine and quite elusive, Unitrade C\$1,500.00 ..... 1,400.00
- 3576 ★★ 1926, 10c Black & Red on Blue, Patricia Airways Air Post Semi-Official, Red Overprint (CL19). Mint N.H., choice centering, strong rich colors, Extremely Fine, Unitrade C\$525.00 ..... 500.00
- 3577 ★★ 1926, 10c Black & Red on Blue, Patricia Airways Air Post Semi-Official, Red Overprint (CL19). Mint N.H., bright and fresh, Very Fine, Unitrade C\$525.00 ..... 500.00



3579



3578

- 3578 ☒ **1926, 10c Black & Red on Blue, Patricia Airways Air Post Semi-Official, Red Overprint (C19).** Tied by Rouyn June 23, 1927 circular datestamp along with pair 1c Yellow (No. 105) on flown cover, Haileybury backstamp, Very Fine, Unitrade C\$850.00 ..... 450.00
- 3579 ★★ **1926, 10c Black & Red on Blue, Patricia Airways Air Post Semi-Official, Dark Red Overprint (CL19b).** Mint N.H. (trivial fingerprint on gum), deep colors, Very Fine, Unitrade C\$525.00 ..... 500.00
- 3580 ☒ **1926, 10c Black & Red on Blue, Patricia Airways Air Post Semi-Official, Dark Red Overprint (CL19b).** Tied on reverse of cover by Rouyn May 23, 1927 circular datestamp, franked with pair 1c Yellow (No. 105), by same circular datestamp, sent to Montreal, cancel on reverse just breaks the paper (not affecting stamps), Very Fine, Unitrade C\$850.00 ..... 450.00

- 3581 ★ **1926, 10c Black & Red on Blue, Patricia Airways Air Post Semi-Official, Border Inscriptions Omitted (Unitrade CL19ii).** Vertical Pair, positions 1/3 on the pane, without the inscriptions at top and bottom, top stamp also missing a large part of the "N" in "ROUYN", light vertical gum bend, top stamp with thin

VERY FINE APPEARANCE. AN IMMENSELY RARE PAIR THAT CONTAINS TWO OF THE FOUR KNOWN EXAMPLES OF NO. CL19 WITH BORDER INSCRIPTIONS OMITTED.

With clear 2012 Greene Foundation certificate. Not yet listed in Scott. Unitrade value as two singles ..... C\$ 11,000.00



3581



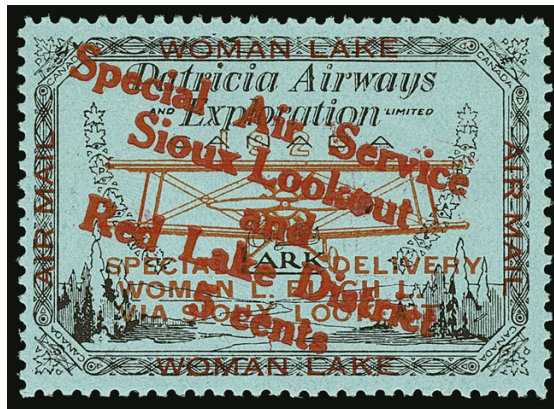


- 3582 ☒ 1926, 10c Black & Red on Blue, Patricia Airways Air Post Semi-Official, Red Overprint, Broken "N" in ROUYN" (C19 var). Tied by Rouyn June 23, 1927 circular datestamp along with pair 1c Yellow (No. 105) on flown cover, Haileybury and Rouyn backstamps, Very Fine, this variety is listed on other stamps of the series (e.g. No. CL22d) but not on No. C19..... E. 500-750
- 3583 ★★ 1926, 5c Black & Red on Blue, Patricia Airways Air Post Semi-Official, Black Overprint Ascending (CL20). Mint N.H., excellent centering, rich colors, Extremely Fine, a select quality example of this scarce stamp, of which only 200 were printed, Unitrade C\$1,500.00..... 1,500.00
- 3584 ★ 1926, 5c Black & Red on Blue, Patricia Airways Air Post Semi-Official, Black Overprint Descending (CL20a.). H.r., strong colors, Very Fine, Scott mistakenly prices this the same as No. CL20, despite only 24 examples printed, Unitrade value ..... C\$ 1,500.00
- 3585 ★ 1926, 5c Black & Red on Blue, Patricia Airways Air Post Semi-Official, Red Overprint Ascending (CL20b). Mint N.H., fresh colors, Very Fine, only 200 printed, Mint Never Hinged examples are especially elusive, priced only hinged in Scott, Unitrade value ..... C\$ 1,500.00
- 3586 ☒ 1926, 5c Black & Red on Blue, Patricia Airways Air Post Semi-Official, Red Overprint Ascending (CL20b). Tied on reverse of flown cover by Red Lake Mar. 9, 1928 datestamp, franked with 2c Green (No. 107) tied by Sioux Lookout Mar. 9, 1928 duplex, Very Fine, scarce on cover, Unitrade C\$1,450.00..... 1,000.00

- 3587 ★★ 1926, 5c Black & Red on Blue, Patricia Airways Air Post Semi-Official, Red Overprint Ascending, Small “v” in “VIA” (CL20b var). Mint N.H. top right corner selva single, position 2 on the pane, intense colors, Very Fine, no more than 25 can exist, the small “v” is not listed on this stamp, catalogued as the normal No. CL20, Untrade value C\$2,175.00 as the normal No. CL20b ..... C\$ 1,500.00



3587



3588

- 3588 ★ 1926, 5c Black & Red on Blue, Patricia Airways Air Post Semi-Official, Red Overprint Descending, Malformed “o” in “Lookout” (CL20d). Lightly hinged, bold overprint showing the variety particularly well

VERY FINE. ONLY THREE EXAMPLES WERE PRINTED WITH THE MALFORMED “o”.

Only three panes were printed with the red overprint descending. Position 7 on those sheets contained the malformed “o”. Scott and Untrade price the variety virtually the same as the normal stamp, despite it being considerably rarer.

Ex Jamieson..... E. 2,000-3,000



3589

- 3589 ★ 1926, (5c) Black & Red on Blue, Patricia Airways Air Post Semi-Official, Black Overprint Descending (CL21). Bottom left corner plate no. 1 selva, h.r., rich colors, Very Fine, only three panes (24 stamps) were printed, Untrade C\$2,500.00..... 1,500.00





3590

- 3590 ★ 1926, (5c) Black & Red on Blue, Patricia Airways Air Post Semi-Official, Black Overprint Descending (CL21). Original gum, strong colors, faint bend at top, Very Fine, **only 24 printed**, Unitrade C\$2,500.00 ..... 1,500.00

- 3591 ★ 1926, (5c) Black & Red on Blue, Patricia Airways Air Post Semi-Official, Violet Overprint Ascending (CL21a). Barest trace of hinging, exceptionally well-centered, fresh colors

EXTREMELY FINE. AMONG THE FINEST OF THE SIXTEEN STAMPS PRINTED WITH THE VIOLET OVERPRINT ASCENDING.

Unitrade C\$3,500.00 ..... 2,500.00



3591



3592

- 3592 ★ 1926, (5c) Black & Red on Blue, Patricia Airways Air Post Semi-Official, Violet Overprint Ascending (CL21a). Lightly hinged, deep colors

VERY FINE AND CHOICE. ONLY TWO PANES (SIXTEEN STAMPS) WERE PRINTED WITH THE VIOLET OVERPRINT ASCENDING.

Unitrade C\$3,500.00 ..... 2,500.00

- 3593 ★ 1926, (5c) Black & Red on Blue, Patricia Airways Air Post Semi-Official, Violet Overprint Ascending (CL21a). Lightly hinged, fresh colors, well-centered

VERY FINE. ONLY TWO PANES (SIXTEEN STAMPS) WERE PRINTED WITH THE VIOLET OVERPRINT ASCENDING.

Unitrade C\$3,500.00 ..... 2,500.00



3593



3594

- 3594 ☒ **1926, (5c) Black & Red on Blue, Patricia Airways Air Post Semi-Official, Violet “Red Lake” Ascending (CL21a).** Tied to reverse of flown cover by Red Lake June 8, 1927 datestamp, franked with 2c Green (No. 107) tied by Sioux Lookout June 8, 1927 circular datestamp, stamp is unusually well-centered

EXTREMELY FINE. A HIGHLY DESIRABLE USE OF THE RARE VIOLET “RED LAKE” OVERPRINT. ONLY TWO PANES (SIXTEEN STAMPS) WERE ISSUED. ONLY A SMALL NUMBER OF COVERS ARE KNOWN FRANKED WITH THIS RARE STAMP.

Unitrade C\$4,000.00 ..... 3,000.00



3595

- 3595 ★★ **1926, (5c) Black & Red on Blue, Patricia Airways Air Post Semi-Official, Violet Overprint Descending (CL21b).** Bottom left corner selvage plate no. 1 single, stamp Mint N.H. (hinged in selvage only), wonderfully fresh

EXTREMELY FINE. ONLY TWO PANES (SIXTEEN STAMPS) OF NO. CL21b WERE PRINTED.

It is reported that one of the two panes printed is still intact, leaving only eight singles available. This Mint Never-Hinged gem is surely one of the finest (if not the finest) of the handful of singles attainable.

Unitrade C\$5,250.00 ..... 3,750.00

- 3596 ★ **1926, (5c) Black & Red on Blue, Patricia Airways Air Post Semi-Official, Double Violet Overprint Ascending (CL21c).** Two close impressions of the violet overprint, h.r., trivial small translucent stain at left

VERY FINE. FEW (IF ANY) OTHERS CAN EXIST WITH THE DOUBLE VIOLET “RED LAKE” OVERPRINT.

Only two panes (sixteen stamps) of the violet ascending overprint were printed. This is the only one we have seen with a double overprint.

Unitrade C\$3,500.00 ..... 2,500.00



3596





3597

- 3597 ☒ **1926, (5c) Black & Red on Blue, Patricia Airways Air Post Semi-Official, Horizontal "Red Lake" Overprint (CL21d; Unitrade CL21bi).** Tied by Red Lake July 1, 1927 date-stamp, along with pair 1c Yellow (No. 105) on flown cover, Sioux Lookout arrival back-stamp of July 4, stamp is beautifully centered

EXTREMELY FINE. THE HORIZONTAL OVERPRINT IS THE RAREST ORIENTATION. ONLY A TINY NUMBER ARE KNOWN.

It is particularly desirable to find on the front of the cover.

Ex Goldberg. Unitrade C\$4,500.00 ..... 3,500.00



3598

- 3598 ☒ **1926, (5c) Black & Red on Blue, Patricia Airways Air Post Semi-Official, Horizontal "Red Lake" Overprint (CL21d; Unitrade CL21bi).** Tied on reverse of flown cover by Red Lake July 8, 1927 datestamp and blue green flight cachet, franked with 2c Green (No. 107) tied by same datestamp, Sioux Lookout arrival backstamp of July 9

VERY FINE AND CHOICE. THE HORIZONTAL OVERPRINT IS THE RAREST ORIENTATION. ONLY A TINY NUMBER ARE KNOWN.

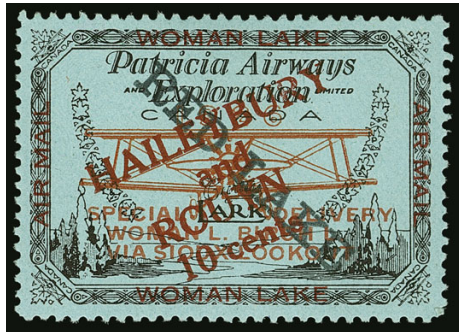
It is remarkable to have two covers with this rarity in the same collection.

Unitrade C\$4,500.00 ..... 3,500.00

- 3599 ★ 1926, (5c) Black & Red on Blue, Patricia Airways Air Post Semi-Official, Black Overprint Descending, Small “v” in “VIA” (Unitrade CL21i). Top selvage single (position 2 on the pane), lightly hinged, exceedingly well-centered, light horizontal crease

EXTREMELY FINE APPEARANCE. ONLY THREE EXAMPLES OF THE SMALL “v” VARIETY CAN EXIST.

Unitrade value ..... C\$ 3,500.00



3600

- 3600 ★ 1926, 10c Black & Red on Blue, Patricia Airways Air Post Semi-Official, “Red Lake” Descending (CL22a). Lightly hinged, choice centering, rich colors, Extremely Fine, **only 24 printed**, Unitrade C\$2,000.00 ..... 1,500.00



3599

- 3601 ★ 1926, 10c Black & Red on Blue, Patricia Airways Air Post Semi-Official, “Red Lake” Descending (CL22a). Minor h.r., exceedingly well-centered, strong colors, Extremely Fine, **only 24 printed**, Unitrade C\$2,000.00 ..... 1,500.00



3601



3602

- 3602 ☒ 1926, 10c Black & Red on Blue, Patricia Airways Air Post Semi-Official, “Red Lake” Descending (CL22a). Bottom selvage single tied on reverse of flown cover by Sioux Lookout Sept. 17, 1927 arrival datestamp, franked with 2c Green (No. 107) tied by Red Lake Sept. 13, 1927 datestamp, stamp with excellent centering

EXTREMELY FINE. A RARELY SEEN USE OF NO. CL22a ON A PARTICULARLY CHOICE FLIGHT COVER.

Few of the 24 issued are found on cover. Unitrade value C\$2,250.00..... 1,600.00





3603



3604

- 3603 ☒ **1926, 10c Black & Red on Blue, Patricia Airways Air Post Semi-Official, "Red Lake" Descending (CL22a).** Bottom selvage single cancelled on reverse of flown cover by Sioux Lookout Sept. 17, 1927 datestamp, franked with 2c Green (No. 107) tied by Red Lake Sept. 13 datestamp

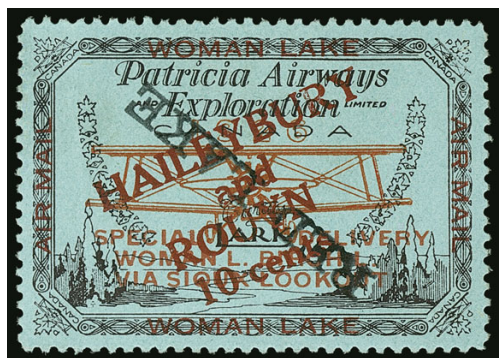
VERY FINE. A RARELY SEEN USE OF NO. CL22a ON A FLIGHT COVER.

Few of the 24 issued are found on cover. Unitrade value C\$3,500.00..... C\$ 1,600.00

- 3604 ☒ **1926, 10c Black & Red on Blue, Patricia Airways Air Post Semi-Official, "Red Lake" Descending (CL22a).** Bottom selvage single tied on reverse of flown cover by Red Lake Feb. 3, 1928 datestamp, franked with 2c Green (No. 107) tied by Sioux Lookout Feb. 3, 1928 circular datestamp, stamps and cover quite fresh

VERY FINE. A RARELY SEEN USE OF NO. CL22a ON A FLIGHT COVER.

Scant few of the 24 issued are found on cover. Unitrade value C\$3,500.00..... 1,600.00



3605

- 3605 ★ **1926, 10c Black & Red on Blue, Patricia Airways Air Post Semi-Official, Inverted "Red Lake" Descending (CL22c).** Lightly hinged, minor gum bend, choice centering

EXTREMELY FINE. ONLY TWO PANES (SIXTEEN STAMPS) WERE PRINTED WITH THE DESCENDING OVERPRINT INVERTED.

Unitrade lists a complete pane, suggesting one is known. This would limit the number of available singles to just eight. Unitrade C\$2,500.00 ..... 1,500.00

- 3606 ★ 1926, 10c Black & Red on Blue, Patricia Airways Air Post Semi-Official, Inverted "Red Lake" Descending (CL22c). Original gum, deep colors

VERY FINE. ONLY TWO PANES (SIXTEEN STAMPS) WERE PRINTED WITH THE DESCENDING "RED LAKE" INVERTED.

Unitrade C\$2,500.00 ..... 1,500.00



3606

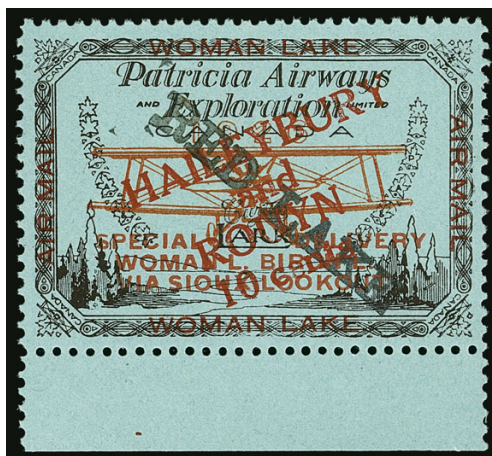


3607

- 3607 ★ 1926, 10c Black & Red on Blue, Patricia Airways Air Post Semi-Official, Inverted "Red Lake" Descending (CL22c). Large part original gum, well-centered and fresh

VERY FINE. ONLY TWO PANES (SIXTEEN STAMPS) WERE PRINTED WITH THE DESCENDING OVERPRINT INVERTED.

Undercatalogued in Scott considering its rarity. Unitrade value C\$2,500.00 ..... 1,500.00



3608

- 3608 ★ 1926, 10c Black & Red on Blue, Patricia Airways Air Post Semi-Official, "Red Lake" Descending, Type A Overprint in Light Red (CL22e). Bottom selvage single, faint trace of hinging, perfectly centered

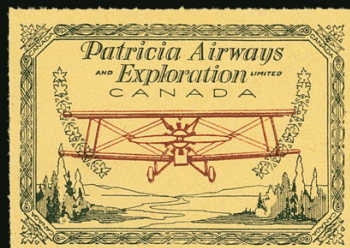
A SUPERB EXAMPLE OF THE 10-CENT BLACK & RED ON BLUE WITH THE HAILEYBURY OVERPRINT IN LIGHT RED.

This variety seems to come up with less frequency than the other rare varieties of this stamp. Woefully undercatalogued in Scott. Unitrade C\$2,500.00 ..... 1,600.00





3609



3611



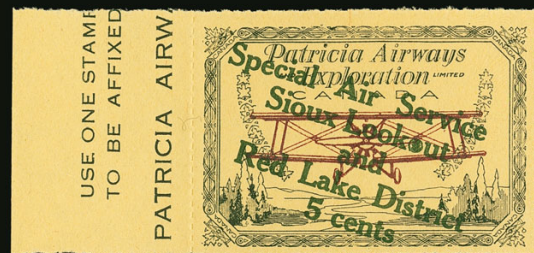
3612



3614



3613



3616



3615



3617



3618



- 3609 P 1927, (50c) Green & Red on Yellow, Patricia Airways Air Post Semi-Official, Imperforate with Red-Violet "Red Lake" (Unitrade CL23Pi). Vertical bottom left plate no. 10 sheet-margin pair, top overprint ascending, bottom overprint inverted descending, original gum, fresh colors, Extremely Fine, especially desirable to find in this se-tenant format, Unitrade value as singles..... C\$ 1,500.00



3610

- 3610 P 1926, (50c) Green & Red on Yellow, Patricia Airways Air Post Semi-Official, Proof with Inverted Airplane, Green "Red Lake" Ascending, with Colored Roulettes (Unitrade CL23Pii var). Original gum vertical pair with imprint selvage at left, bottom proof Mint N.H., strong offset of the green frame and imprint on gum  
VERY FINE. AN EXCEEDINGLY RARE (IF NOT UNIQUE) PROOF PAIR.  
Unitrade lists a proof with inverted airplane, but not with with the green overprint nor the colored roulettes. This might be more accurately described as a variety of No. C30a in green..... E. 2,000-3,000
- 3611 ★★ 1927, (50c) Green & Red on Yellow, Patricia Airways Air Post Semi-Official (CL23). Mint N.H., bright and fresh, Very Fine, an especially elusive stamp to find never hinged, Unitrade C\$1,312.50 ..... 1,000.00
- 3612 ★★田 1927, 10c Green & Red on Yellow, Patricia Airways Air Post Semi-Official (CL24). Mint N.H. plate no. 10 pane of eight, bright and fresh, tiny natural gum crease mentioned only for strict accuracy, Very Fine, Unitrade C\$1,500.00, Scott Retail as hinged ..... 1,000.00
- 3613 ★★ 1927, 5c Green & Red on Yellow, Patricia Airways Air Post Semi-Official, Descending Overprint in Red, Malformed "o" in "Lookout" (Unitrade CL25d). Mint N.H., with bottom left plate no. 14 selvage (position 7 on the pane), brilliant colors, Extremely Fine, the red overprint is much more difficult than the other colors to find with the malformed "o", despite them all cataloguing the same, Unitrade value..... C\$ 675.00
- 3614 ★田 1927, 5c Green & Red on Yellow, Patricia Airways Air Post Semi-Official, Descending Overprint in Red, Malformed "o" in "Lookout" (Unitrade CL25d). Plate no. 14 pane of eight, position 7 the variety, four stamps Mint N.H. including the important variety, Very Fine, Unitrade value (as a hinged pane) ..... C\$ 950.00
- 3615 ★田 1927, 5c Green & Red on Yellow, Patricia Airways Air Post Semi-Official, Descending Overprint in Red, Malformed "o" in "Lookout" (Unitrade CL25d). Plate no. 14 pane of eight, position 7 the variety, hinged mostly in the selvage, Very Fine, Unitrade value..... C\$ 950.00
- 3616 ★★ 1927, 5c Green & Red on Yellow, Patricia Airways Air Post Semi-Official, Descending Overprint in Green, Malformed "o" in "Lookout" (Unitrade CL25e). Mint N.H., with imprint in selvage at right (position 7 on the pane), wonderfully fresh, Very Fine, Unitrade value ..... C\$ 675.00
- 3617 ★田 1927, 5c Green & Red on Yellow, Patricia Airways Air Post Semi-Official, Descending Overprint in Green, Malformed "o" in "Lookout" (Unitrade CL25e). Plate no. 13 pane of eight, variety in position 7, most stamps Mint N.H. including the variety (which alone catalogues C\$675.00), selvage slightly reduced at right, Very Fine, Unitrade value ..... C\$ 950.00
- 3618 ★田 1927, 5c Green & Red on Yellow, Patricia Airways Air Post Semi-Official, Descending Overprint in Dark Green, Malformed "o" in "Lookout" (Unitrade CL25e). Plate no. 13 pane of eight, similar to the previous lot, but in a distinctively darker overprint color, seven stamps Mint N.H. including the variety, Very Fine, Unitrade value ..... C\$ 950.00





- 3619 ★★ 1927, 5c Green & Red on Yellow, Patricia Airways Air Post Semi-Official, Descending Overprint in Black, Malformed “o” in “Lookout” (Unitrade CL25f). Mint N.H., excellent centering, bright colors, Extremely Fine, Unitrade value ..... C\$ 675.00
- 3620 ★★ 1927, 5c Green & Red on Yellow, Patricia Airways Air Post Semi-Official, Descending Overprint in Black, Malformed “o” in “Lookout” (Unitrade CL25f). Mint N.H. horizontal pair with plate no. 15 and imprints in selva on three sides, left stamp the variety (position 7 on the pane), choice centering, exceedingly fresh, Extremely Fine, an eye-catching position piece, Unitrade value ..... C\$ 765.00
- 3621 ★田 1927, 5c Green & Red on Yellow, Patricia Airways Air Post Semi-Official, Descending Overprint in Black, Malformed “o” in “Lookout” (Unitrade CL25f). Plate no. 12 pane of eight, position 7 the variety, which is Mint N.H. (catalogues C\$675.00), staple hole in bottom left selva, otherwise Very Fine, Unitrade ..... C\$ 950.00
- 3622 ★★田 1927, 5c Green & Red on Yellow, Patricia Airways Air Post Semi-Official, Black Overprint (CL26). Block of four (bottom half of pane) with plate no. 17 selva on three sides, stamps all Mint N.H. (hinged in the bottom selva only), deep colors, Extremely Fine, catalogue values as singles, Unitrade C\$720.00 ..... 700.00
- 3623 (★) 1927, 5c Green & Red on Yellow, Patricia Airways Air Post Semi-Official, Red Overprint Inverted (CL26d). Unused (no gum), part imprint in selva at right, fresh colors, Very Fine and scarce, Unitrade C\$750.00 ..... 500.00
- 3624 ★ 1926, 10c Green & Red on Yellow, Patricia Airways Air Post Semi-Official (CL27). H.r., strong colors, Very Fine, only 400 printed, Unitrade C\$375.00 ..... 400.00



3625

3625 ★★田 1927, 10c Green & Red on Yellow, Patricia Airways Air Post Semi-Official (CL27). Mint N.H. plate no. 2 pane of eight, brilliant fresh, crisp and intact

EXTREMELY FINE. A RARE PANE OF EIGHT OF NO. CL27 IN EXTRAORDINARY MINT NEVER-HINGED CONDITION.

Only 50 panes were printed. Few exist today, especially in this stellar quality.

Scott does not price a pane in Mint N.H. condition. Untrade value ..... C\$ 4,500.00



3626 ★田 1927, 10c Green & Red on Yellow, Patricia Airways Air Post Semi-Official (CL28). Plate no. 8 pane of eight, four stamps Mint N.H., a few separated perfs at top, Very Fine, Untrade C\$1,250.00 ..... 1,400.00

3626





3627



3628



3629



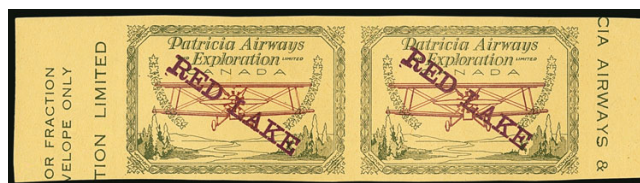
3630

- 3627 ★ 1926, 10c Green & Red on Yellow, Patricia Airways Air Post Semi-Official, Overprint Inverted (CL28a). Part disturbed original gum, imprint in left selvage, overprint shifted so a portion of a second at right, Very Fine, Unitrade C\$600.00..... 450.00
- 3628 ★★ 1926, 10c Green & Red on Yellow, Air Post Semi-Official, Black Inverted Overprint Descending (CL29b; Unitrade CL29i). Mint N.H., well-centered, bright colors, Very Fine, Unitrade C\$412.50 ..... 375.00
- 3629 ☒ 1926, 10c Green & Red on Yellow, Patricia Air Post Semi-Official, Black Inverted Overprint Descending (CL29b; Unitrade CL29i). Top right corner selvage single tied on reverse of flown cover by Sioux Lookout September 13, 1927 circular datestamp, franked with 2c Green (No. 107) tied by Red Lake Sept. 13, 1927 datestamp, fresh and Very Fine, only 20 pieces of mail were carried on this flight, Unitrade C\$425.00..... 375.00
- 3630 ★田 1927, 10c Green & Red on Yellow, Patricia Airways Air Post Semi-Official, Purple Overprint Ascending Inverted (CL29f; Unitrade CL29c). Plate no. 10 pane of eight, hinged in the selvage, stamps Mint N.H., Very Fine, Unitrade C\$2,200.00 ..... 2,000.00

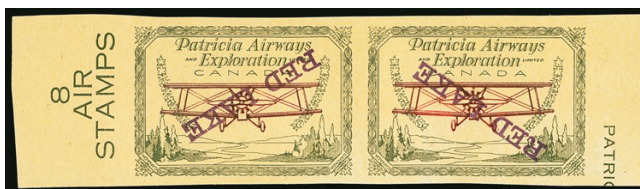




3631



3632



3633

- 3631 ★田 1927, 10c Green & Red on Yellow, Patricia Airways Air Post Semi-Official, Green Overprint Ascending Inverted (CL29j; Unitrade CL29c). Plate no. 8 pane of eight, lightly hinged in the selvage, stamps Mint N.H., Very Fine, Unitrade C\$2,200.00 ..... 2,000.00
- 3632 ★ 1927, (5c) Green & Red on Yellow, Patricia Airways Air Post Semi-Official, Violet Overprint, Imperforate Pair (CL30i var; Unitrade CL30e). Horizontal pair with selvage at both sides, h.r., large margins, Extremely Fine, the imperforate pair is not listed in Scott with the violet overprint, ex Goldberg, Unitrade value ..... C\$ 1,500.00
- 3633 (★) 1927, (5c) Green & Red on Yellow, Patricia Airways Air Post Semi-Official, Purple Inverted Surcharge, Imperforate Pair (CL30i var). Horizontal pair with selvage on both sides, showing inverted overprint both ascending and descending, unused (no gum), Very Fine, a stunning combination of overprints, Unitrade value as a normal imperforate pair..... C\$ 1,500.00



3634

- 3634 ★★ 1926, (5c) Green & Red on Yellow, Patricia Airways Air Post Semi-Official, Purple Overprint Ascending, Inverted Airplane (CL30q; Unitrade CL30di). Mint N.H., choice centering, deep intense colors
- EXTREMELY FINE. ONE OF THE FINEST EXAMPLES FROM THE SINGLE PANE (EIGHT STAMPS) THAT WAS PRINTED.
- Only priced hinged in Scott (at \$2,250.00). Unitrade value..... C\$ 3,750.00



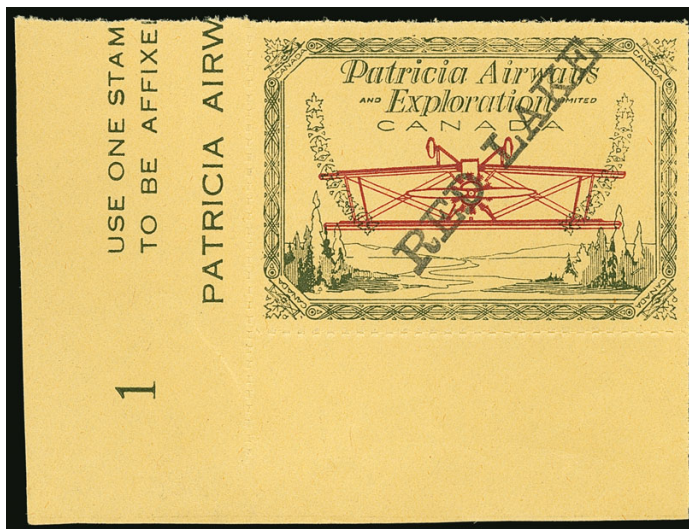


3635

- 3635 ★ 1926, (5c) Green & Red on Yellow, Patricia Airways Air Post Semi-Official, Purple Overprint Ascending, Inverted Airplane (CL30q; Unitrade CL30di). Lightly hinged, bright colors

VERY FINE. ONLY ONE PANE OF EIGHT STAMPS WAS PRINTED.

Unitrade C\$2,500.00 ..... 2,250.00



3636

- 3636 ★★ 1926, (5c) Green & Red on Yellow, Patricia Airways Air Post Semi-Official, Black Overprint Ascending, Inverted Airplane (CL30s; Unitrade CL30a). Mint N.H. bottom left selva plate no. 1 single, outstanding centering, wonderfully fresh

EXTREMELY FINE. ONE OF THE FINEST EXAMPLES FROM THE SOLE PANE (EIGHT STAMPS) THAT WAS PRINTED.

Only priced hinged in Scott (at \$3,000.00). Unitrade value ..... C\$ 5,250.00



3637

- 3637 ★★ 1926, (5c) Green & Red on Yellow, Patricia Airways Air Post Semi-Official, Black Overprint Ascending, Inverted Airplane (CL30s; Unitrade CL30a). Mint N.H. with left part imprint selva (trivial fingerprint on gum), excellent centering, strong colors

EXTREMELY FINE. A HIGHLY DESIRABLE EXAMPLE FROM THE SOLE PANE (EIGHT STAMPS) THAT WAS PRINTED.

It is remarkable that one collection has two of these rarities.

With 2009 A.P.S. certificate. Only priced hinged in Scott (at \$3,000.00). Unitrade value ..... C\$ 5,250.00



- 3638 ✉ **Patricia Airways Cover Balance.** Fifteen flown covers with a Patricia Airways stamp tied, includes two with No. CL14, five with No. CL18 (one has small "v" in "VIA"), and one with No. CL27, some better flights, one each to England and Switzerland, Fine-Very Fine, Unitrade value as the most common usages is over C\$3,000.00 .....*Not illustrated* E. 750-1,000
- 3639 **Patricia Airways Letters.** Four, one 1926 to Ernest Lee in Los Angeles regarding price on stamps and envelopes, and mentioning Jack Elliot is out of business, on the reverse of the letter is **land map and small key map** that shows the different locations they fly to, three letters to George King in London, 1927 letter confirming payment of stamps, March 1928 letter stating Patricia Airways & Exploration Limited was sold to Patricia Airway Limited, and a June 1928 letter on the letterhead of the newly formed Patricia Airway Limited describing their flights and that one new stamp was issued, Fine-Very Fine, interesting letters following the short-lived history of Patricia Airways .....**(Photo Ex)** E. 750-1,000

### WESTERN CANADA AIRWAYS SERVICE

- 3640 ★★田 **1927, (10c) Black & Orange, Western Canada Airways, Air Post Semi-Official, Jubilee Issue (CL41).** Mint N.H. pane of 50, Fine-Very Fine, Unitrade C\$1,125.00...*Not illustrated* 1,125.00
- 3641 **Western Canada Airways Letters.** Three, one 1927, two 1928, to George King, acknowledging receiving money for stamps and talking about the flights and covers, also two 8½ x 11 photographs of the Fokker airplane that was used on the flights, and a 1931 flyer E.M. Laird stating Canadian Airways are using their planes, Fine-Very Fine, interesting collateral items.. .....**(Photo Ex)** E. 400-500

### YUKON AIRWAYS AND EXPLORATION CO. LTD.

- 3642 ✉ **1927, 25c Blue, Yukon Airways, Air Post Semi-Official (CL42).** Tied on reverse of Nov 11, 1927 White Horse to Dawson flight cover (AAMC 110) by White Horse (originating) and Dawson circular date stamps, franked with 2c Confederation (142) tied by Nov. 11 Whitehorse duplex, Fine, only 21 pieces of mail carried on this flight..... E. 300-400





- 3643 ☒ **1927, 25c Blue, Yukon Airways, Air Post Semi-Official (CL42).** Tied on Nov. 24, 1927 White Horse-Keno Hill flight cover (AAMC 111b) by White Horse circular datestamp and Dec. 6 arrival datestamp, 2c Green (No. 107) tied by the White Horse circular datestamp, fresh and Very Fine, AAMC notes the number of pieces carried as "very small" ..... E. 300-400
- 3644 ☒ **1927, 25c Blue, Yukon Airways, Air Post Semi-Official (CL42).** Tied on Nov. 24, 1927 White Horse-Dawson flight cover (AAMC 111c) by White Horse circular datestamp, 2c Green (No. 107) tied by the same datestamp, Dawson backstamp of Dec. 8, fresh and Very Fine, AAMC notes the number of pieces carried as "very small" ..... E. 300-400
- 3645 ☒ **Yukon Airways Cover Balance.** Eight flown covers with No. CL42 tied, three are from the scarce November 24, 1927 flight (three different legs including White Horse-Dawson which is franked with 2c on 3c Carmine - No. 139), one on illustrated first flight, one with repair entry of left "2" (Unitrade CL42f) on June 23, 1929 Champagne-White Horse first flight, Fine-Very Fine.....*Not illustrated* E. 750-1,000

## PATRICIA AIRWAYS LTD.

- 3646 P **1928, (10c) Patricia Airways Air Post Semi-Official, Proof in Black on White Card (Unitrade CL43P).** Without the airplane, large margins, Very Fine and seldom seen, Unitrade value..... C\$ 900.00
- 3647 P **1928, (10c) Green & Red on Yellow, Patricia Airways Air Post Semi-Official, Imperforate, Triple Airplane (Unitrade CL43Pii).** Bottom left corner plate no. 20 single, trivial h.r., brilliant colors, Extremely Fine, scarce and very striking, Unitrade value ..... C\$ 750.00
- 3648 ★★田 **1928, (10c) Green & Red on Yellow, Patricia Airways Air Post Semi-Official (CL43).** Mint N.H. plate no. 8 pane of eight, brilliantly fresh, Extremely Fine, a pristine pane, Unitrade value ..... C\$ 562.50



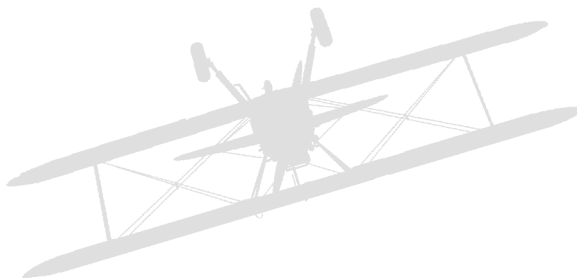
3649

3649 ★★田 1928, (10c) Green & Red on Yellow, Patricia Airways Air Post Semi-Official, Inverted Airplane (CL43a). Mint N.H. block of four, representing the top half of the pane, full selvages with plate no. 20, remarkably fresh

EXTREMELY FINE. A SPECTACULAR MINT NEVER-HINGED BLOCK OF THE 1928 PATRICIA AIRWAYS STAMP WITH AIRPLANE INVERTED.

Only 48 stamps were printed with the inverted airplane. One other block exists, the ex Cunliffe block, which is hinged and is the bottom half of the same pane as the block offered here.

Catalogue values are as singles. Unitrade C\$12,000.00 ..... 9,000.00







- 3650 ★★ **1928, (10c) Green & Red on Yellow, Patricia Airways Air Post Semi-Official, Imperforate Pair (CL43b; Unitrade CL43c).** Mint N.H. selvage pair with plate no. 4, exceptionally fresh, Extremely Fine, a choice imperforate pair, Unitrade C\$975.00, Scott Retail as hinged ..... 700.00
- 3651 ★ **1928, (10c) Green & Red on Yellow, Patricia Airways Air Post Semi-Official, Grounded Plane Variety (Unitrade CL43b).** Vertical bottom left selvage pair with plate no. 20, lightly hinged, deep colors, Very Fine, a desirable variety showing a strong downward shift of the airplane, Unitrade value ..... C\$ 900.00

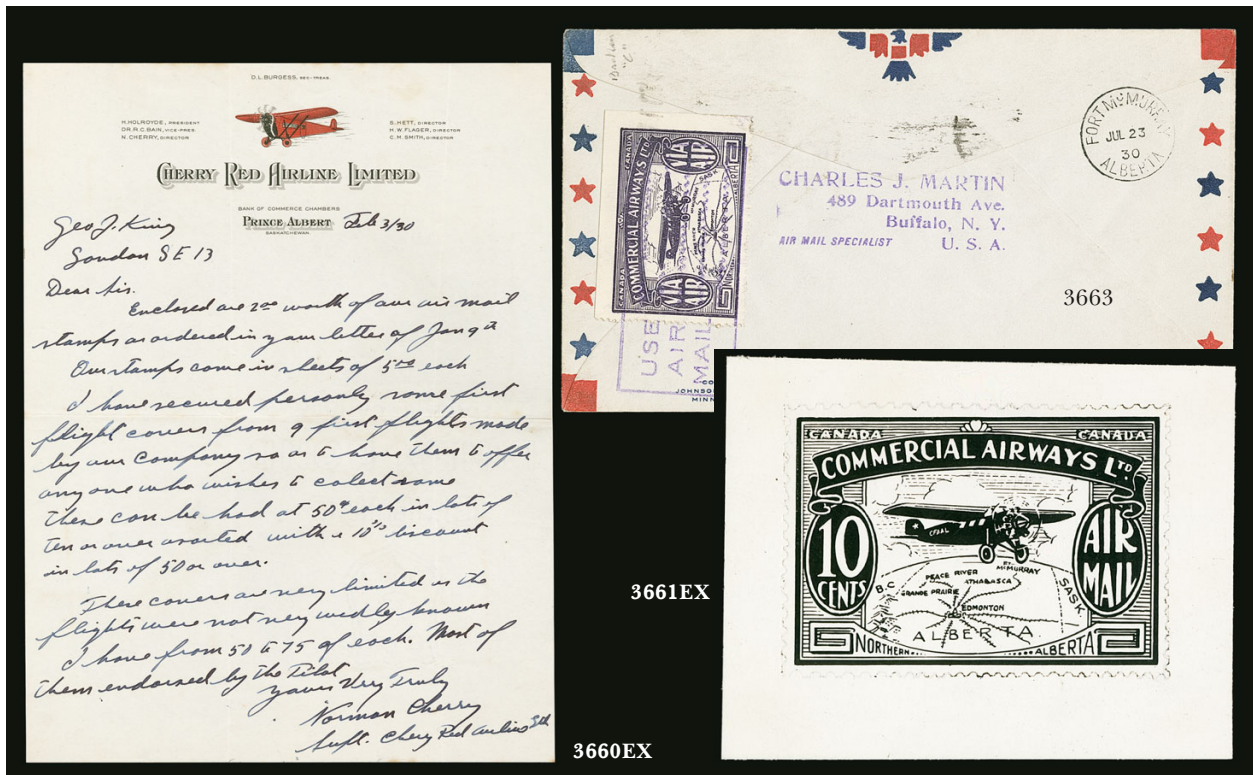
## KLONDIKE AIRWAYS LTD.

- 3652 ☒ **1928, 25c Blue, Klondike Airways, Air Post Semi-Official (CL45).** Tied by White Horse, Yukon Nov. 21, 1929 circular datestamp, along with 2c Green (No. 150) on flown cover to Champagne (Dec. 19 backstamp), additional Champagne datestamp of Jan. 3, 1930 on front, signed by pilot Norman Jeffries, Very Fine, genuine flight covers with this stamp are very scarce and demand a significant premium over “souvenir” covers.... E. 500-750
- 3653 ☒ **1928, 25c Blue, Klondike Airways, Air Post Semi-Official (CL45).** Tied by White Horse, Yukon Nov. 21, 1929 circular datestamp, along with two 2c Green (No. 150) on flown cover to Dawson (Dec. 15 receiving backstamp), signed by pilot Norman Jeffries, Very Fine, genuine flight covers with this stamp are very scarce, with this being a particularly scarce destination ..... E. 500-750
- 3654 ☒ **1928, 25c Blue, Klondike Airways, Air Post Semi-Official (CL45).** Tied by White Horse, Yukon Nov. 21, 1929 circular datestamp, along with 2c Green (No. 150) on flown cover to Keno (Dec. 19 receiving datestamp), all marking on the front, signed by Norman Jeffries, Very Fine, genuine flight covers with this stamp are very scarce ..... E. 500-750
- 3655 ☒ **1928, 25c Blue, Klondike Airways, Air Post Semi-Official (CL45).** Tied by White Horse, Yukon Nov. 21, 1929 circular datestamp, along with 2c Green (No. 150) on flown cover to Mayo Landing (Dec. 16 receiver on front), White Horse backstamp of Dec. 2?, signed by pilot Norman Jeffries, Very Fine, genuine flight covers with this stamp are very scarce ..... E. 500-750
- 3656 ☒ **1928, 25c Blue, Klondike Airways, Air Post Semi-Official (CL45).** Tied by White Horse, Yukon Nov. 21, 1929 circular datestamp, along with two 2c Green (No. 150) on flown cover to Wernecke (Dec. ?9 receiver also ties the stamp), White Horse backstamp of Dec. 24, Mayo Landing datestamp of Dec. 15, signed by pilot Norman Jeffries, Very Fine, genuine flight covers with this stamp are very scarce ..... E. 500-750
- 3657 ☒ **1928, 25c Blue, Klondike Airways, Air Post Semi-Official (CL45).** Tied by Dawson Feb. 16, 1931 circular datestamp on legal-size airmail cover, White Horse receiving circular datestamp of Feb. 23, signed by Pilot Everett Wasson, Very Fine and rare, most of what went on the Klondike Airway flight were parcels and freight, very few covers are known ..... E. 750-1,000
- 3658 ☒ **1928, 25c Blue, Klondike Airways, Air Post Semi-Official (CL45).** Tied by Dawson Feb. 16, 1931 circular datestamp on legal-size airmail cover, White Horse receiving circular datestamp of Feb. 23, signed by Pilot Everett Wasson, Very Fine and rare.. E. 750-1,000

## CHERRY RED AIRLINE LTD.

- 3659 ★★田 **1929, 10c Red & Black, Cherry Red Airline Air Post Semi-Official (CL46).** Four Mint N.H. panes of 50, three are different settings, the fourth is the “snow on wings” variety (Unitrade CL46i) caused by a downward shift of the red color, Fine-Very Fine, Unitrade value.....(Photo Ex) C\$ 4,125.00





- 3660 **Cherry Red Airline Letters.** Two, one from from Norman Cherry to Edward Vickers, undated but certainly 1929 and around the time he first started his service, letter mentions Jack Elliot, the new 10c stamps that arrived and his first flight, second letter on company stationery from Norman Cherry to George King, he enclosed stamps and mentions the covers that he has, Fine-Very Fine, excellent collateral material.....(Photo Ex) E. 400-500

## COMMERCIAL AIRWAYS LTD.

- 3661 E **1929, (10c) Black, Commercial Airways Air Post Semi-Official, Photographic Essays (CL47E).** Two photographic essays, stamp size on approximately 62 x 50mm glossy card, one has "10 Cents" where left "Air Mail" is in the final design, other has "Air Mail" inked out at left, Very Fine, excellent collateral material.....(Photo Ex) E. 200-300



3662

- 3662 P **1929, (10c) Black, Commercial Airways Air Post Semi-Official, Large Die Proof (CL47P).** Stamp size on 61 x 53mm card, final design with portions drawn in black ink and Chinese white, pencil note at bottom that this is original unfinished (but accepted) sketch by Jack Housez

A UNIQUE PROOF OF THE COMMERCIAL AIRWAYS AIR POST SEMI-OFFICIAL STAMP.

Signed Kessler and Matthews..... E. 1,000-1,500

- 3663 ☒ **1929, (10c) Purple, Commercial Airways Air Post Semi-Official, Broken "C" in "CIAL" (Unitrade CL49a).** Tied on back of July 23, 1930 Edmonton-Fort McMurray first flight cover by violet box Air Mail handstamp, Very Fine, scarce on cover, Unitrade value ..... C\$ 500.00



- 3664 ☒ **1929, (10c) Orange, Commercial Airways Air Post Semi-Official, Imperforate (CL50b; Unitrade CL50c).** Single with large to huge margins (probably a sheet-margin example) tied to back of cover by Feb. 23, 1931 Edmonton circular datestamp and bluish green Air Mail boxed handstamp, used on Athabasca-Edmonton first flight, only 873 covers were carried - this is the only imperforate franking we are aware of, Unitrade value ..... C\$ 750.00
- 3665 **Commercial Airways Ephemera.** Three items, two are letters (1930 and 1931) from R.B. Jackson to George King in London acknowledging payment for stamps and a schedule, also a route schedule for the MacKenzie River District (Winter 1929-30), Fine-Very Fine .....(Photo Ex) E. 500-750

# CANADIAN AIRWAYS LTD.

- 3666 ☒ **1932, (10c) Orange & Blue, Canadian Airways Air Post Semi-Official, Vertical Shift of Orange (Unitrade CL51e).** Tied to registered airmail cover by violet Fort McMurray, Alberta registered datestamp, also with pair No. C2 and single C4, sent to Montreal, a remarkable fourteen backstamps, including Chicago, New York, and various Canadian R.P.O.'s, Very Fine, an unusual use of this eye-catching variety ..... E. 400-500
- 3667 E **1934, 10c on (10c) Blue & Orange, Canadian Airways Air Post Semi-Official, Unadopted Surcharge in Violet (CL52E).** Lightly hinged, bright colors, Very Fine and scarce, with 2009 Greene Foundation certificate, Unitrade value ..... C\$ 1,250.00





3668



3669



3670

- 3668 E 1934, 10c on (10c) Blue & Orange, Canadian Airways Air Post Semi-Official, Unadopted Surcharge in Violet (CL52E). Original gum, rich colors, Very Fine and scarce, Untrade value ..... C\$ 1,250.00
- 3669 E 1934, 10c on (10c) Blue & Orange, Canadian Airways Air Post Semi-Official, Unadopted Surcharge in Violet (CL52E). Mint N.H. vertical pair with selvage at top, rich colors, top stamp with slight paper clip indentation, some fingerprints on gum (particularly on the top stamp), Very Fine, the violet surcharge essay is seldom seen, any size multiple is rare, accompanied by a hand-written note identifying them as being received from Mr. Sigerson, General Manager of Canadian Airways, Untrade value as hinged singles ..... C\$ 2,500.00
- 3670 E 1934, 10c on (10c) Blue & Orange, Canadian Airways Air Post Semi-Official, Unadopted Surcharge in Violet (CL52E). Surcharge is in a different shade than the others we are offering, slightly disturbed original gum, strong color, Very Fine and scarce, Untrade value ..... C\$ 1,250.00
- 3671 ★★ 1932, 10c on (10c) Canadian Airways Air Post Semi-Official (CL52). Mint N.H. pane of 50, position 27 with broken "T" in "CENTS", the last column with the surcharge shifted slightly higher, Very Fine, Untrade value ..... *Not illustrated* C\$ 1,562.00

- 3672 ★★ 1934, 10c on (10c) Blue & Orange, Canadian Airways Air Post Semi-Official, Inverted Surcharge (CL52a). Mint N.H., selvage at right, wonderfully bright and fresh, Very Fine, a rare error, ex "Trillium", Untrade C\$1,500.00..... 1,250.00



3672



3673

- 3673 ★★田 1934, 10c on (10c) Blue & Orange, Canadian Airways Air Post Semi-Official, Inverted Surcharge (CL52a). Mint N.H. block of four with selvage at right, beautiful vibrant colors on fresh white paper

VERY FINE. AN EXTREMELY RARE BLOCK OF FOUR OF THE CANADIAN AIRWAYS INVERTED SURCHARGE.

Scott notes there are 50 known, while Untrade states 100. Either way, very few blocks still exist today.

Catalogue values are as singles. Untrade C\$6,000.00 ..... 5,000.00

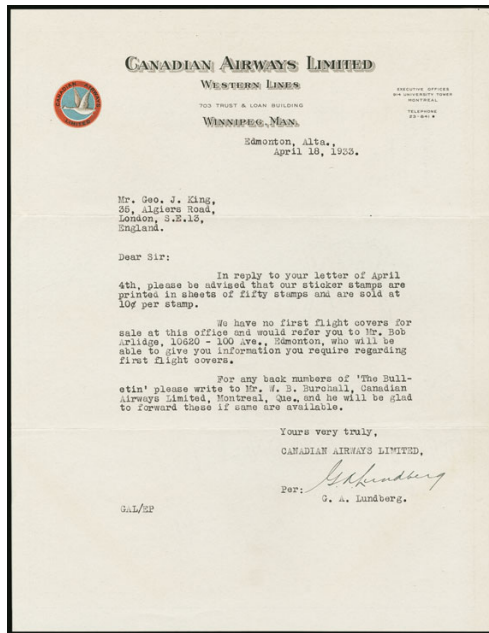


3674

- 3674 ★ **1934, 10c on (10c) Blue & Orange, Canadian Airways Air Post Semi-Official, Pair, One with Inverted Surcharge (CL52c).** Horizontal pair, right stamp with surcharge inverted, lightly hinged, bright colors, right stamps with a few small spots on gum side (one just barely shows thru)

VERY FINE. ONLY TEN SUCH SE-TENANT ERROR PAIRS CAN EXIST.

Unitrade C\$2,000.00 ..... 2,000.00



3676



3677

3675EX

- 3675 **Canadian Airways Ephemera.** Six items, two 1933 letters to George King regarding stamps, flight covers and bulletins, on Montreal and Winnipeg letterhead, includes one of the envelopes with company letterhead, a schedule (No. 19, Oct. 19, 1931), 1937 list of passenger and express rates, and an Aerial Survey ("Reveals Unique Information Leading to Gold Discovery"), Fine-Very Fine, outstanding collateral material relating to Canadian Airways .....(Photo Ex) E. 500-750

### UNITED EMPIRE LOYALISTS

- 3676 ★★ **1918, Blue United Empire Loyalists Donation Stamp.** Mint N.H., well-centered, bright and fresh, horizontal crease at top, Very Fine appearance, these labels, inscribed "Lick the Stamp to Lick the Hun" were used to help in raising funds for the Canada Aviation Fund to help support a World War I pilot training school in Toronto, they are seldom encountered..... E. 400-500
- 3677 ★★ **1918, Blue United Empire Loyalists Donation Stamp.** Mint N.H. horizontal pair, well-centered, fresh color and paper, horizontal crease at top, Very Fine appearance, **one of only two recorded pairs** of this rare label ..... E. 1,500-2,000





3678

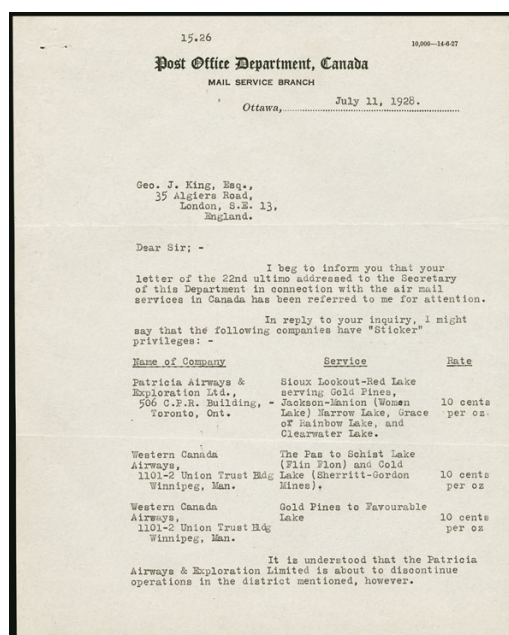
- 3678 ☒ **1918, Blue United Empire Loyalists Donation Stamp.** Used on back of 1921 cover from Herbert, Saskatchewan to Germany, light duplex tied 2c Indicia and 3c Brown (No. 108)

VERY FINE. A VERY RARE (IF NOT UNIQUE) EXAMPLE OF THE UNITED EMPIRE LOYALISTS LABEL ON COVER.

Ray Simrak notes this is the only such example he has seen on cover ..... E. 1,500-2,000

## BALANCE LOTS

- 3679 ★ **Semi-Official Air Post Stamp Balance.** 30 items including a few multiples, includes Estevan-Winnipeg four singles and one pane of two (some are the wide spacing variety), good value in Patricia Airways, with several in the \$200.00-\$400.00 catalogue value range, varieties both listed (such as Nos. CL29c, CL42f and CL51e) and unlisted (CL49 pair with partial imperforate between), two examples of the Cherry Red Airline stamp with Specimen overprint, and more, many Mint N.H., a few small flaws but most are Fine-Very Fine, Unitrade value exceeds \$6,000.00.....*Not illustrated* E. 1,000-1,500
- 3680 ☒ **Balance of the Air Post Semi-Official Covers.** Eighteen flown covers, nice range of companies, most are better items, as even the relatively common stamps have uncommon usages (better flights, pilot signed, or a scarce commercial usage), Fine-Very Fine.....*Not illustrated* E. 1,000-1,500



3681EX

3681

**Air Post Semi-Official Ephemera.** July 11, 1929 two-page letter from Post Office Department to George King in London, noting that Patricia Airways and Western Canada Airways have "sticker" privileges, that Patricia Airways is about to discontinue operations, and lists the airmail routes the Post Office uses, letter signed by the Chief of Rural Services, also and advertising brochure from Laurentide Air Service (Winter 1924-1925), and a photocopy of a 1931 letter from Yukon Airways, Fine-Very Fine .....**(Photo Ex)** E. 400-500

END OF SALE — THANK YOU



# BIDS

Use this form to submit absentee bids  
or to confirm telephone bids

# Sale 1169

November 14, 2017

PADDLE #

# 1

Please provide the following information:

NAME .....

ADDRESS .....

CITY/STATE/ZIP .....

PHONE ..... MOBILE .....

EMAIL .....

# 2

Have you purchased from us in the past 5 years? ☐ Yes (please go to Section 3)  
☐ No (references required below)

STAMP FIRM ..... PHONE .....

STAMP FIRM ..... PHONE .....

Please submit references at least **2 business days** before the sale. Bids from new clients will not be executed if satisfactory references are not received in time to be contacted.

# 3

- Enter the lot number and your corresponding maximum bid in the space below
- Use whole dollar amounts and bid according to the increments (see back of form)
- Bids do not include the **18% Buyer's Premium**, taxes, duty or shipping charges
- Absentee bids will advance at one increment over the next highest competing bid
- "Plus", "Break Tie" or "Buy" bids will not be executed
- Indicate any "Or" bids between lot number/bid entries and bracket your choices
- If you wish to limit the total amount of your bids, follow the instructions below

Lot #	Bid \$	Lot #	Bid \$	Lot #	Bid \$

☐ **Limit Bids:** Check this box if you wish to limit the total hammer price of your bids (excluding 18% Buyer's Premium, taxes, duty and shipping costs). Your bids will be executed until your bidding limit has been reached. The total amount you wish to bid is \$ .....

# 4

By signing this form, you agree to all of the Conditions of Sale printed in the sale catalogue (printed and digital), including but not limited to a) payment in the manner demanded by the Siegel firm, and b) payment of the 18% Buyer's Premium, any sales tax or customs duty, shipping costs, late charges and

other prescribed charges. You agree that your bids will be executed as a courtesy by Siegel, but you waive the right to make any claim against Siegel or its employees arising from these bids or your participation in the sale. You agree to honor all bids as submitted, regardless of any errors or omissions.

SIGNED ..... DATE .....

Mail the signed form to Siegel Bid Department, 6 West 48th St., 9th Floor, New York, NY 10036  
or email to [stamps@siegelauctions.com](mailto:stamps@siegelauctions.com)  
or fax to 212-753-6429





# Additional Bids

## Sale 1169

November 14, 2017

PADDLE #

Lot #	Bid \$	Lot #	Bid \$	Lot #	Bid \$

## Shipping & Insurance

We will be pleased to arrange for shipping and transit insurance for purchases in this sale, except for lots marked or announced as "floor sale only." To expedite billing and delivery to hundreds of buyers in each sale, we use standard charges for postage and insurance under our policy. These charges are based on the package weight and mailing requirements, according to the schedule shown here. Our standard charges do not include a fee for our services, and they may be slightly more or less than the actual postage or Fedex fee. We ask all buyers to remit the invoiced amount for shipping and insurance.

Transit insurance is provided in all cases, except when the buyer has furnished us with documentation that insurance is effective under the buyer's own policy.

There will be no added insurance charge for shipments of less than \$75,000 value. Shipments valued in excess of \$75,000 may require supplemental insurance and/or special courier service, the estimated cost of which will be furnished to the buyer prior to shipment. If the buyer refuses to pay the estimated charges or furnish proof of self-insured coverage, the buyer will be responsible for picking up the lots at our office and any resulting sales tax.

### Standard Shipping Charges

Weight Class	Shipping Method	Charge
Up to 2 lbs.	Fedex Envelope	\$25
Over 2 lbs.	Fedex Box	\$35 - \$50*
Outside US	Fedex	\$50 - \$100**
Bulky Lots	Fedex Ground or Express	By weight

\* Up to \$75,000 value and up to 5 lbs; additional charge may apply to packages exceeding limits

\*\* Buyers outside United States are liable for any applicable customs duty and clearance charges. An accurate declaration of contents and value will be made on all packages and import/export documents. **Siegel may refuse to ship lots to certain countries with a high risk factor.**

2/2015

## Bidding Increments

The auctioneer may regulate the bidding at his discretion. However, to assist absentee bidders in establishing their maximum bids, the increments shown here will be used in most cases. We recommend that written bids conform to these increments—bids that do not will be reduced accordingly.

Bid	Increment	Bid	Increment
Up to \$200	\$10	\$7,000-20,000	\$500
\$200-500	\$25	\$20,000-30,000	\$1,000
\$500-1,000	\$50	\$30,000-70,000	\$2,500
\$1,000-3,000	\$100	\$70,000-140,000	\$5,000
\$3,000-7,000	\$250	\$140,000-300,000	\$10,000

Robert A. Siegel Auction Galleries, Inc.  
Prices Realized for

Sale 1169 11/14/2017 The Dr. Paul M. Cere Collection of Semi-Official Air Posts of Canada

Lot#	Realized	Lot#	Realized	Lot#	Realized	Lot#	Realized	Lot#	Realized
3501	2,000	3543	1,400	3581	3,000	3625	3,250	3666	250
3502	1,300	3544	1,600	3583	750	3626	325	3667	500
3504	1,300	3545	1,100	3584	500	3627	150	3668	375
3505	300	3546	1,100	3585	500	3628	160	3669	1,600
3506	225	3547	1,100	3586	350	3629	200	3670	350
3507	300	3548	350	3588	2,200	3630	950	3671	950
3508	1,100	3550	150	3589	900	3631	1,200	3672	450
3509	3,250	3551	800	3590	850	3632	500	3673	2,800
3511	2,100	3552	850	3591	1,300	3633	350	3674	1,200
3512	900	3553	1,300	3592	1,000	3634	2,100	3675	600
3513	500	3554	950	3593	1,100	3635	1,800	3676	600
3514	300	3555	250	3594	1,400	3636	2,900	3677	1,600
3515	2,700	3556	800	3595	2,400	3637	3,250	3678	1,500
3516	2,600	3557	425	3596	2,900	3638	700	3679	1,000
3517	3,750	3558	900	3597	1,500	3639	400	3681	600
3518	4,500	3559	400	3598	1,500	3641	300		
3521	325	3560	2,300	3599	2,800	3642	350		
3523	2,900	3561	800	3600	1,700	3646	450		
3524	2,000	3562	2,700	3601	1,000	3647	1,000		
3525	1,000	3563	800	3602	950	3648	350		
3526	1,400	3565	650	3603	1,100	3649	3,750		
3527	1,100	3566	1,400	3604	1,100	3650	400		
3528	600	3567	900	3605	900	3651	650		
3530	650	3568	900	3606	900	3652	600		
3531	550	3569	950	3607	850	3653	550		
3532	425	3570	1,000	3608	850	3654	425		
3533	900	3571	1,000	3609	425	3655	425		
3534	1,100	3572	1,000	3610	2,200	3656	375		
3535	800	3573	500	3611	450	3657	500		
3536	425	3574	800	3612	750	3658	500		
3537	550	3575	500	3613	500	3659	1,500		
3538	550	3576	250	3614	250	3660	250		
3539	3,250	3577	170	3615	400	3661	550		
3540	2,200	3578	275	3617	500	3662	1,600		
3541	2,200	3579	350	3621	250	3664	450		
3542	650	3580	375	3623	180	3665	350		