

THE SCARSDALE COLLECTION



**PART TEN—SALE 1177
TUESDAY, MARCH 13, 2018**

I N T E R N A T I O N A L

Robert A. Siegel

IN ASSOCIATION WITH CHARLES F. SHREVE

THE SCARSDALE COLLECTION

PART TEN—SALE 1177
TUESDAY, MARCH 13, 2018
AT 10:30 A.M. (LOTS 1001-1085)

France

Offered at unreserved public auction by

I N T E R N A T I O N A L

IN ASSOCIATION WITH CHARLES F. SHREVE
6 WEST 48TH STREET, 9TH FLOOR
NEW YORK, NEW YORK 10036
Phone (212) 753-6421 Fax (212) 753-6429
E-mail: stamps@siegelauctions.com
www.siegelauctions.com

PRE-SALE EXHIBITION

February 14-17 at Stand 116 at Stampex in London, England
Monday, March 12 — 10:00 a.m. to 4:00 p.m.
or by appointment (please call 212-753-6421)

Lots in this sale will be sold subject to an 18% buyer's premium



INTERNATIONAL
Robert A. Siegel
 IN ASSOCIATION WITH CHARLES F. SHREVE

6 WEST 48TH STREET, 9TH FLOOR, NEW YORK, N.Y. 10036
 Phone (212) 753-6421 • Fax (212) 753-6429 • E-mail: stamps@siegelauctions.com
siegelauctions.com



Scott R. Trepel
 President
 strepel
 @siegelauctions.com



John P. Zuckerman
 Senior Vice President
 jzuckerman
 @siegelauctions.com



Corey Long
 Senior Vice President
 clong
 @siegelauctions.com



Daphne Cebek
 Accounts
 daphne
 @siegelauctions.com

Siegel International
 Dallas (214) 754-5991



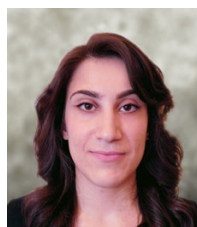
Charles F. Shreve
 Director, Siegel International
 charles
 @siegelauctions.com



Helen Stewart
 Bids and Inquiries
 helen
 @siegelauctions.com



Emma Masiello
 Bids and Inquiries
 emma
 @siegelauctions.com



Jocelyn Weibel
 Digital Production
 jocelyn
 @siegelauctions.com



Andrew Titley
 International Specialist
 andrew
 @siegelauctions.com



Chris Anderson
 International Specialist
 chris
 @siegelauctions.com

Scott R. Trepel Principal Auctioneer (licensed by NYC Dept. of Consumer Affairs, #795952)

Information for Bidders

Bidding

The following means are available for placing bids:

- 1) Attending the Live Auction in Person:** All bidders must register for a paddle, and new bidders must provide references at least three business days in advance of the sale.
- 2) Live Internet Bidding:** Instructions for participating as a Live Internet Bidder are provided on the page opposite.
- 3) Phone Bidding:** Bidders can be connected to the sale by phone and bid through a member of staff. Requests for phone bidding are subject to approval (please contact our office at least 24 hours before the sale). A signed Bid Form is required.
- 4) Absentee Bids.** All bids received in advance of the sale, either by mail, fax, phone, e-mail or internet, are Absentee Bids, which instruct the auctioneer to bid up to a specific amount on one or more lots in the sale. Absentee Bids sent by phone, fax or e-mail should arrive at least one hour prior to the start of the sale session. Bids entered through Live Internet Bidding will be visible to the auctioneer during the sale. Written bids should be entered legibly on the Bid Form in the sale catalogue. E-mail and internet bids should be carefully typed and double-checked. All new bidders must provide references. We recommend calling or e-mailing to confirm that Absentee Bids sent by mail, fax or e-mail have been received and entered.

Pre-Sale Viewing

Subject to availability, certain lots (except group lots) can be sent to known clients for examination. Requests must be made no later than 7 days prior to the sale. Lots must be returned on the day received. Postage/insurance costs will be invoiced.

In addition to regular viewing, clients may view lots by appointment. Our staff will be pleased to answer questions or provide additional information about lots.

Expert Certification

Individual items offered without a certificate dated within the past five years may be purchased subject to independent certification of genuineness and our description. **Please refer to the Conditions of Sale and Grading Terms for policies governing certification.**

Shipping and Delivery

Procedures and charges for shipping lots are printed on the back of the Bid Form. **Bidders are responsible for all prescribed shipping charges and any applicable sales tax or customs duties.**

Price Realized

Prices realized are sent with each invoice. Bidders with e-mail will receive a Bid Results report after the sale. Session results are posted immediately to **siegelauctions.com**

Live Internet Bidding at Siegel Auctions

BIDDING FROM YOUR COMPUTER LETS YOU BE PART OF THE LIVE AUCTION FROM ANYWHERE IN THE WORLD!

There's **NO SUBSTITUTE** for following the auction in real time.
Live Internet Bidding lets you bid and buy as though you were right there in the saleroom.
And it's easy.

This step-by-step guide will instruct you how to register, set your browser and use the bidding interface.

Start by following the simple steps to become a registered Live Internet Bidder.
Once you've been approved for bidding, you can listen to the auction and place bids with the click of a mouse.

Registering with STAMP AUCTION NETWORK & SIEGEL AUCTION GALLERIES

Live Internet Bidding is managed by Stamp Auction Network (SAN).
To bid, you must be registered and approved by *both* SAN and Siegel.
To decide what you need to do, choose the description below that best fits you.



I've already registered with SAN and have been approved by Siegel for internet bidding.

Live Internet Bidding works by allowing registered bidders to observe and place bids.

Live Internet Bidding will work with any browser on both PC and Mac operating systems.

Before bidding by internet for the first time, we recommend finding a sale in progress and listening to the public broadcast or logging in as a registered bidder. This will help you develop a feel for the sale tempo and bidding interface.

I'm a Siegel client, but I'm not registered with SAN.

Go to stampauctionnetwork.com/siegel and click on "Register" at the top. Check the box for Robert A. Siegel Auction Galleries (under "R") and submit the form, indicating you are a Siegel client. Once registered at SAN, you're ready for internet bidding.

Log on to the auction at stampauctionnetwork.com

When you're logged on as a Live Internet Bidder, the bidding interface shows a photo and description of the lot, the current bid (and your bidding status), options for placing competitive bids and buttons with bid increments.

- After you click on a bid amount, the auctioneer is immediately notified of your bid.
- Retracting a bid is usually not acceptable, so please bid carefully.
- If you bid and then decide to stop, the "Pass" button will tell the auctioneer you are no longer bidding.
- You can send messages to the auctioneer (for example, a request for extension).
- You can track prior realizations from the bidding screen.

I've bid through SAN before, but this is the first time I've bid in a Siegel sale.

Then you just need to be approved by Siegel. Go to stampauctionnetwork.com/siegel and click on "Update Registration" at the top. Your SAN account information will be sent to us for approval (you might be asked for other trade references). Once approved by Siegel for bidding, you're ready for internet bidding.

I've never bid with Siegel, nor registered with SAN.

Go to stampauctionnetwork.com/siegel and click on "Register" at the top. Check the box for Robert A. Siegel Auction Galleries (under "R") and submit the form **with your trade references** (please, no family members or credit card companies as references). Once registered at SAN and approved by Siegel for bidding, you're ready for internet bidding.



"System Down" or "Lost Connection" events do occasionally happen.

If you have any problems with Live Internet Bidding please call **212-753-6421** for immediate assistance.

Conditions of Sale (please read carefully before bidding)

THE PROPERTY DESCRIBED IN THIS CATALOGUE WILL BE OFFERED AT PUBLIC AUCTION BY ROBERT A. SIEGEL AUCTION GALLERIES, INC. ("GALLERIES") ON BEHALF OF VARIOUS CONSIGNORS AND ITSELF OR AFFILIATED COMPANIES. BY BIDDING ON ANY LOT, WHETHER DIRECTLY OR BY OR THROUGH AN AGENT, IN PERSON, OR BY TELEPHONE, FACSIMILE OR ANY OTHER MEANS, THE BIDDER ACKNOWLEDGES AND AGREES TO ALL OF THE FOLLOWING CONDITIONS OF SALE.

1. The highest bidder acknowledged by the auctioneer shall be the buyer. The term "final bid" means the last bid acknowledged by the auctioneer, which is normally the highest bid offered. **The purchase price payable by the buyer will be the sum of the final bid and a commission of 18% of the final bid ("buyer's premium"), together with any sales tax, use tax or customs duties due on the sale.**
2. The auctioneer has the right to reject any bid, to advance the bidding at his discretion and, in the event of a dispute, to determine the successful bidder, to continue the bidding or to reoffer and resell the lot in dispute. The Galleries' record of the final sale shall be conclusive.
3. All bids are per numbered lot in the catalogue unless otherwise announced by the auctioneer at the time of sale. The right is reserved to group two or more lots, to withdraw any lot or lots from the sale, or to act on behalf of the seller. The Galleries will execute bidding instructions on behalf of clients, but will not be responsible for the failure to execute such bids or for any errors in the execution of such bids.
4. **Lots with numbers followed by the symbol ° are offered subject to a confidential minimum bid ("reserve"), below which the lot will not be sold. The absence of the symbol ° means that the lot is offered without a reserve. If there is no reserve, the auctioneer has sole discretion to establish a minimum opening bid and may refuse an offer of less than half of the published estimate. Any lot that does not reach its reserve or opening bid requested by the auctioneer will be announced as "passed" and excluded from the prices realized lists after the sale. The Galleries may have a direct or indirect ownership interest in any or all lots in the sale resulting from an advance of monies or goods-in-trade or a guarantee of minimum net proceeds made by the Galleries to the seller.**
5. Subject to the exclusions listed in 5(A), the Galleries will accept the return of lots which have been misidentified or which have obvious faults that were present when the lot was in the Galleries' custody, but not so noted in the lot description. **All disputed lots must be received by the Galleries intact with the original packing material within 5 days of delivery to the buyer but no later than 30 days from the sale date.**
(5A) EXCLUSIONS: The following lots may not be returned for any reason, or may not be returned for the reasons stated: i) lots containing 10 or more items; ii) lots from buyers who registered for the pre-sale exhibition or received lots by postal viewing, thereby having had the opportunity to inspect them before the sale; iii) any lot described with "faults," "defects" or a specific fault may not be returned because of any secondary fault; iv) photographed lots may not be returned because of centering, margins, short/nibbed perforations or other factors shown in the illustrations; v) the color of the item does not match the color reproduction in the sale catalogue or website listing; vi) the description contains inaccurate information about the quantity known or reported; or vii) a certification service grades a stamp lower than the grade stated in the description.
6. Successful bidders, unless they have established credit with the Galleries prior to the sale, must make payment in full before the lots will be delivered. Buyers not known to the Galleries must make payment in full within 3 days from the date of sale. **The Galleries retains the right to demand a cash deposit from anyone prior to bidder registration and/or to demand payment at the time the lot is knocked down to the highest bidder, for any reason whatsoever.** In the event that any buyer refuses or fails to make payment in cash for any lot at the time it is knocked down to him, the auctioneer reserves the right to reoffer the lot immediately for sale to the highest bidder. **Credit cards (Visa, Mastercard and Discover only) can be accepted as payment but will be subject to a 3% Convenience Fee, which will be added to the total of the entire invoice (including hammer price, buyer's premium, shipping**

and transit insurance charges and any applicable taxes).

7. If the purchase price has not been paid within the time limit specified above, nor lots taken up within 7 days from the date of sale, the lots will be resold by whatever means deemed appropriate by the Galleries, and any loss incurred from resale will be charged to the defaulting buyer. **Any account more than 30 days in arrears will be subject to a late payment charge of 1½% per month as long as the account remains in arrears. Any expenses incurred in securing payment from delinquent accounts will be charged to the defaulter.** A fee of \$250.00 per check will be charged for each check returned for insufficient funds.
8. All lots are sold as genuine. **Any lot accompanied by a certificate issued by The Philatelic Foundation, British Philatelic Association, Royal Philatelic Society of London or any other authority recognized by the A.I.E.P. in a specific area of expertise, and dated within 5 years of the sale date, is sold "as is" and in accordance with the description on the certificate. Such lots may not be returned for any reason, including but not limited to a contrary certificate of opinion.** Buyers who wish to obtain a certificate for any item that does not have a certificate (dated as above) may do so, provided that the following conditions are met: (1) the purchase price must be paid in full, (2) the item must be submitted to an acceptable expertizing committee with a properly executed application form within 21 days of the sale, (3) a copy of the application form must be given to the Galleries, (4) in the event that an adverse opinion is received, the Galleries retain the right to resubmit the item on the buyer's behalf for reconsideration, without time limit or other restrictions, (5) unless written notification to the contrary is received, items submitted for certification will be considered cleared 90 days from the date of sale, and (6) in the event any item is determined to be "not as described", the buyer will be refunded the purchase price and the certification fee up to \$800.00 unless otherwise agreed.
9. Until paid for in full, all lots remain the property of the Galleries on behalf of the seller.
10. Agents executing bids on behalf of clients will be held responsible for all purchases made on behalf of clients unless otherwise arranged prior to the sale.
11. The buyer assumes all risk for delivery of purchased lots and agrees to pay for prescribed shipping costs. **Buyers who receive lots in the U.S. are obligated to pay whatever sales tax or compensating use tax might be due, and buyers outside the U.S. are responsible for all customs duties.**
12. **The bidder consents that any action or proceeding against it may be commenced and maintained in any court within the State of New York or in the United States District Court for the Southern District of New York, that the courts of the State of New York and United States District Court for the Southern District of New York shall have jurisdiction with respect to the subject matter hereof and the person of the bidder. The bidder agrees not to assert any defense to any action or proceeding initiated by Galleries based upon improper venue or inconvenient forum. The bidder agrees that any action brought by the bidder shall be commenced and maintained only in a Federal Court in the United States District Court for the Southern District of New York or the State Court in the county in which Galleries has its principal place of business in New York. The bidder agrees not to use a public conflict resolution service and not to use any form of social media to publish comments or information about the Galleries and its employees which might harm the Galleries' reputation or business. These Conditions of Sale shall be governed by and construed in accordance with the substantive laws of the State of New York, and shall constitute an agreement that shall be binding on the parties, and their respective heirs, administrators, distributees, successors and assignees.**

SCOTT R. TREPEL, Principal Auctioneer
Auctioneer's License No. 795952
N.Y.C. Department of Consumer Affairs
80 Lafayette Street, New York, N.Y. 10013
Telephone (212) 577-0111

Revised 1/2017

Grades, Abbreviations and Values Used in Descriptions

Grades and Centering

Our descriptions contain detailed information and observations about each item's condition. We have also assigned grades to stamps and covers, which reflect our subjective assessment. For stamps, the margin width, centering and gum are described and graded according to generally-accepted standards (an approximate correlation to numeric grades is provided at right). Although we believe our grades are accurate, they are not always exactly aligned with third-party grading terms or standards for all issues. **A lot may not be returned because a certification service grades a stamp lower than the grade stated in the description. Information from the P.S.E. Stamp Market Quarterly and P.S.E. Population ReportSM is the most current available, but lots may not be returned due to errors or changes in statistics or data.**

Extremely Fine Gem (90-100): The term "Gem" describes condition that is the finest possible for the issue. This term is equivalent to "Superb" used by grading services.







Extremely Fine (80-90): Exceptionally large/wide margins or near perfect centering.

Very Fine (70-85): Normal-size margins for the issue and well-centered with the design a bit closer to one side. "Very Fine and choice" applies to stamps that have desirable traits such as rich color, sharp impression, freshness or clarity of cancel.

Fine (60-70): Smaller than usual margins or noticeably off center. Pre-1890 issues may have the design touched in places.

Very Good (below 60): Attractive appearance, but margins or perforations cut into the design.

Guide to Gum Condition

Gum Categories:	MINT N.H.	ORIGINAL GUM (O.G.)				NO GUM
	 Mint Never Hinged <i>Free from any disturbance</i>	 Lightly Hinged <i>Faint impression of a removed hinge over a small area</i>	 Hinge Mark or Remnant <i>Prominent hinged spot with part or all of the hinge remaining</i>	 Part o.g. <i>Approximately half or more of the gum intact</i>	 Small part o.g. <i>Approximately less than half of the gum intact</i>	 No gum <i>Only if issued with gum</i>
Catalogue Symbol:	★ ★	★	★	★	★	(★)
PRE-1890 ISSUES	<i>Pre-1890 stamps in these categories trade at a premium over Scott value</i>			Scott Value for "O.G."		Scott "No Gum" Values thru No. 218
1890-1935 ISSUES	Scott "Never Hinged" Values for Nos. 219-771	Scott Value for "O.G." (Actual value will be affected by the degree of hinging)		Disturbed Original Gum: Gum showing noticeable effects of humidity, climate or hinging over more than half of the gum. The significance of gum disturbance in valuing a stamp in any of the Original Gum categories depends on the degree of disturbance, the rarity and normal gum condition of the issue and other variables affecting quality. For example, stamps issued in tropical climates are expected to have some		
1935 TO DATE	Scott Value for "Unused"					

Covers

Minor nicks, short edge tears, flap tears and slight reduction at one side are normal conditions for 19th century envelopes. Folded letters should be expected to have at least one file fold. Light cleaning of covers and small mends along the edges are accepted forms of conservation. Unusual covers may have a common stamp with a slight crease or tiny tear. **These flaws exist in virtually all 19th century covers and are not always described. They are not grounds for return.**

Catalogue Values and Estimates

Unless otherwise noted, the currently available *Scott Catalogue* values are quoted in dollars with a decimal point. Other catalogues are often used for foreign countries or specialized areas and are referred to by their common name: *Stanley Gibbons* (SG), *Dietz*, *American Air Mail Catalogue* (AAMC), *Michel*, *Zumstein*, *Facit*, etc. Estimates are indicated with an "E." and reflect our conservative valuation in dollars. Reserves will never exceed the low end of the estimate range; they will sometimes exceed Scott Catalogue value for stamps in Extremely Fine condition.

Because of certain pricing inconsistencies in the *Scott Catalogue*—for example, blocks that have no gum, the absence of premiums for Mint N.H. items, etc.—we cannot guarantee the accuracy of values quoted for multiples, specialized items and collection lots. We generally try to be conservative, but buyers may not return a lot because of a discrepancy in catalogue value due to Scott pricing inconsistencies.

Symbols and Abbreviations (see chart above for gum symbols)

⊞	Block	E	Essay	pmk.	Postmark	No.	Scott Catalogue Number
⊞	Cover	P	Proof	cds	Circular Datestamp	hs	Handstamp
FC	Fancy Cancel	TC	Trial Color Proof	var.	Variety	ms.	Manuscript

France

THE SERIES OF MAGNIFICENT SCARSDALE COLLECTION SALES began in April 2006 with extraordinary quality United States postage stamps. The series continued through 2013, showcasing similarly outstanding collections of United States revenues and postal stationery.

When stamps needed for the various Scarsdale U.S. collections became increasingly hard to find, particularly in the exceptional quality he demands, the collector decided to branch out and began collecting certain other worldwide countries. After all, a collector needs to collect to enjoy the thrill of acquisition.

One of the areas Scarsdale has always been drawn to are the postage stamps of France. Production of French stamps has always been of the highest quality, and France was one of the few countries to continue printing engraved stamps well into the 20th century. The modern issues of France caught the collector's eye and, as with all of his other collections, he was drawn to the challenge of acquiring the classic issues. Outstanding quality was the common thread.

The tenth Scarsdale sale will now disperse, at unreserved public auction, the product of his collecting efforts related to France. Knowledgeable collectors and dealers will recognize and appreciate the exceptional overall quality of the stamps found in the Scarsdale collection, particularly in the challenging classic issues. Just as with his United States collections, the collector demanded that the stamps he acquired be completely sound, possess eye appealing physical qualities (color, margins, centering) and, if at all possible, still retain their original gum.

If you, too, are seeking a new area to collect, we recommend the stamps of France. The final lot offered in the sale (lot 1085) should be on your bidding list. This is the Scarsdale collection balance, containing stamps that were not offered individually. It is filled with stamps of consistently high quality, and acquiring them individually or in sets would take great effort. In one purchase, a collector can have the foundation of a beautiful French collection.

—CHARLES F. SHREVE



MORNING SESSION (LOTS 1001-1085)
TUESDAY, MARCH 13, 2018, AT 10:30 A.M.

THE SCARSDALE COLLECTION — PART TEN
FRANCE

1849-50 CERES ISSUE

- 1001 ★ **1850, 10c Bister on Yellowish (1; Yvert 1).** Original gum, trivial h.r., large to full margins, rich color, crisp impression, Very Fine, ex Gross, with 2010 P.F. certificate, Yvert €3,000..... 1,500.00



1001



1002

- 1002 ★ **1849, 15c Green on Greenish (2; Yvert 2a).** Nearly full original gum, full margins around, beautiful rich color and a sharp detailed impression
VERY FINE. A HIGHLY DESIRABLE AND BRILLIANT ORIGINAL-GUM EXAMPLE OF THE RARE 15-CENTIMES 1850 CERES ISSUE OF FRANCE.
Ex Venn. With 1995 A.P.S. and 2014 P.F. certificates. Yvert €26,500..... 21,500.00



1003

- 1003 ★★ **1862, 20c Black on Yellowish, Re-Issue (3d; Yvert 3f).** Mint N.H., four large margins, strong impression, Extremely Fine, an uncommonly fresh and choice example, with 1999 du Vachat certificate, catalogue values are as hinged, Yvert €500..... 375.00

- 1004 ★ **1849, 25c Blue on Bluish (6a; Yvert 4a).** Original gum, full to mostly large margins all around, wonderfully fresh color

VERY FINE AND CHOICE. AN EYE-APPEALING EXAMPLE OF THIS SCARCE STAMP, ESPECIALLY SOUND AND WITH ORIGINAL GUM.

Signed A. Brun. With 2013 J.F. Brun certificate. Yvert €9,000 5,400.00



1004



1005

- 1005 ★ **1850, 40c Orange on Yellowish, Type I (7; Yvert 5).** Original gum, lightly hinged, four mostly large margins, brilliant color, Very Fine, signed A. Diena and with 2016 P.F. certificate, Yvert €6,500..... 2,950.00

1849 ONE-FRANC VERMILION “TERNE”

A CHOICE EXAMPLE OF ONE OF
THE GREAT CLASSIC RARITIES OF FRANCE



1006

1006 ★ **1849, 1fr Dull Orange Red (Vermillon Terne) on Yellowish (8a; Yvert 7B).** Original gum, full to mostly large margins on all four sides, gorgeous color that is noted as “an exceptionally bright shade” on the accompanying Calves certificate

VERY FINE. A CHOICE ORIGINAL-GUM EXAMPLE OF THE RAREST STAMP OF THE FIRST ISSUE OF FRANCE.

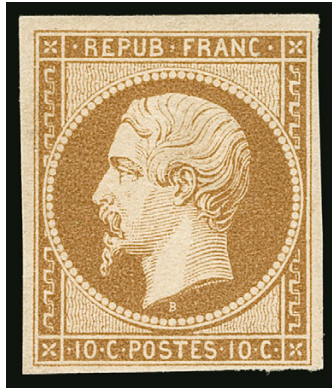
The 1849 One-Franc stamp comes in two basic shades, Vermilion (Scott No. 8) and Carmine (Scott No. 9), with each having several sub-shades. This Dull Orange Red shade is from the Vermilion group, which is far rarer than the Carmine. In fact, this is one of the key rarities for someone trying to collect France in original-gum condition.

Ex Venn. With 1995 Calves and 1999 P.F. certificates. Yvert €65,000 95,000.00



1852 NAPOLEON ISSUE

1852 10-CENTIMES DARK BISTER ON YELLOWISH PAPER
A CHOICE ORIGINAL-GUM EXAMPLE OF THIS RARITY



1007

- 1007 ★ **1852, 10c Dark Bister on Yellowish (10a; Yvert 9d).** Part original gum, mostly large to ample margins all around, gorgeous rich color and a highly detailed impression
VERY FINE. A HANDSOME AND EXTRAORDINARILY RARE ORIGINAL-GUM EXAMPLE OF THE 1852 10-CENTIMES NAPOLEON. ESPECIALLY DESIRABLE IN THE DARK BISTER SHADE.
This classic rarity is almost never offered in sound condition and with full original gum.
Ex Gross. With 1998 von der Weid certificate as a generic Bister. With 2010 P.F. certificate as the Dark Bister. Yvert €48,500 30,000.00

- 1008 ★ **1852, 25c Blue on Bluish (11; Yvert 10).** Original gum (recent certificate states "part o.g.", but it has nearly full original gum), large to full margins all around, strong color and impression, Very Fine, ex Gross, with photocopy of 1971 A. Dena certificate and 2010 P.F. certificate, Yvert €5,500 2,450.00



1008

1853-60 SECOND EMPIRE NAPOLEON ISSUE



1009

- 1009 (★) **1854, 5c Green on Greenish (13; Yvert 12).** Unused (no gum), huge margins all around, wonderfully bright color, Extremely Fine, signed Bloch, with 1993 and 2016 P.F. certificates, Yvert €425..... 315.00

- 1010 ★ **1853, 10c Bister on Yellowish, Type I (14; Yvert 13A).** Original gum, very lightly hinged, uncommonly large margins all around, attractive color, Extremely Fine, ex Gross, with 2010 P.F. certificate, Yvert €900..... 360.00



1010



1011

- 1011 ★ **1853, 25c Milky Blue on Bluish (17a; Yvert 15a).** Original gum, lightly hinged, large to full margins all around, rich color in this distinctive shade, crisp impression, Extremely Fine, signed A. Brun and Sorani, with 2009 P.F. certificate, Yvert €3,500 2,000.00



1012

- 1012 ★ **1853, 40c Orange on Yellowish (18; Yvert 16).** Part original gum, four margins ranging from large to close at top, Very Fine, a scarce stamp with original gum, ex Feldman, with 2015 P.F. certificate, Yvert €3,800 2,000.00

- 1013 ★ **1854, 80c Lake on Yellow (19; Yvert 17Aa).** Original gum, four large margins, fresh color and a clear impression, Very Fine and choice, a desirable example of this scarce original-gum stamp, ex Gross, signed Calves, with 2010 P.F. certificate, Yvert €4,000..... 2,800.00



1013



1014

- 1014 ★ **1860, 80c Rose on Pinkish (20; Yvert 17B).** Original gum, lightly hinged, large margins, unusually fresh, Extremely Fine, with 1991 and 2008 P.F. certificates, Yvert €3,800...
..... 1,875.00



1015

- 1015 ★ **1853, 1fr Lake on Yellowish (21; Yvert 18).** Original gum, trivial h.r., rich color in a deep shade, highly detailed impression
VERY FINE. A HIGHLY DESIRABLE ORIGINAL-GUM EXAMPLE OF THE RARE 1853 ONE-FRANC NAPOLEON III ISSUE.
Ex Gross. With 1971 A. Deina and 2010 P.F. certificates. Yvert €8,000..... 7,450.00

1861-71 PERFORATED NAPOLEON ISSUE



1016



1017



1018

- 1016 ★ **1862, 5c Yellow Green on Greenish (23; Yvert 20).** Original gum, bright color, uncharacteristically well-centered, Very Fine and choice, ex Venn, signed Roumet, Yvert €350 .
..... 190.00
- 1017 ★ **1862, 10c Bister on Yellowish (25; Yvert 21).** Original gum, uncharacteristically well-centered, fresh color, Very Fine, ex Gross, signed Calves and with 2010 P.F. certificate, Yvert €2,200 1,350.00
- 1018 ★ **1862, 40c Pale Orange on Yellowish (27; Yvert 23).** Original gum, uncharacteristically well-centered, bright color, Extremely Fine, rarely encountered in this premium quality, ex Venn, signed Calves and with 1999 P.F. certificate, Yvert €2,900..... 1,200.00



1019



1020



1021



1022

- 1019 (★) **1862, 80c Bright Rose on Pinkish (28a; Yvert 24a).** Unused (no gum), remarkably well-centered, brilliantly fresh, Extremely Fine, signed Calves, with 2016 P.F. certificate, Yvert €500 for the generic Rose color 425.00
- 1020 ★★ **1862, 2c Red Brown on Yellowish (30; Yvert 26A).** Mint N.H., rich color and sharp impression, Very Fine, not easy to find in Mint Never-Hinged condition, with 2010 P.F. certificate, catalogued as hinged, Yvert €200 105.00
- 1021 ★ **1867, 20c Blue on Bluish, Type I (33 var; Yvert 29A).** Original gum, lightly hinged, brilliantly fresh, Extremely Fine, ex Venn, signed Roumet, Yvert value € 475
- 1022 ★ **1868, 80c Rose on Pinkish (36; Yvert 32).** Original gum, lightly hinged, well-centered, rich vibrant color, Very Fine and choice, ex Venn, with 2001 A.P.S. certificate, Yvert €1,750 800.00



1023

- 1023 ★ **1869, 5fr Gray Lilac on Lavender (37; Yvert 33).** Full original gum, rich color and a well defined impression

VERY FINE. A HANDSOME ORIGINAL-GUM EXAMPLE OF THE 1869 5-FRANC NAPOLEON. A NOTORIOUSLY CHALLENGING STAMP TO FIND THIS CHOICE.

Ex Feldman. Signed A. Brun. With 2001 Sismondo and 2015 P.F. certificates. Yvert
€9,000..... 6,000.00

1870-71 BORDEAUX ISSUE



1024



1025



1026

- 1024 ★ **1870, 4c Gray (40; Yvert 41B).** Original gum, barest trace of hinging, four large even margins, fresh color, Extremely Fine, ex Venn, signed Calves and with 2010 P.F. certificate, Yvert €400..... 250.00

- 1025 ★ **1870, 5c Yellow Green on Greenish (41; Yvert 42B).** Original gum, lightly hinged, four exceptionally large margins, wonderfully bright color, Extremely Fine, ex "Chappaqua" and Venn, Yvert €370 250.00

- 1026 ★ **1870, 10c Bister on Yellowish, Die I (42; Yvert 43A).** Original gum, lightly hinged, large margins all around, rich color, Extremely Fine, a particularly handsome stamp, signed A. Brun and with 2014 P.F. certificate, Yvert €1,250..... 825.00

1852 20-CENT BLUE ON BLUISH, TYPE I, DIE II
A VERY RARE ORIGINAL-GUM EXAMPLE IN OUTSTANDING CONDITION



1027

- 1027 ★ **1870, 20c Dark Blue on Bluish, Type I, Die II (43a; Yvert 44Ba).** Full original gum, light h.r., full even margins all around, deep color and characteristic impression on brilliantly fresh paper
- VERY FINE AND CHOICE. AN IMPRESSIVE EXAMPLE OF THE 1870 20-CENTIMES TYPE I. BY FAR THE RAREST STAMP OF THE BORDEAUX ISSUE.
- Ex Gross. Signed Friedl. With 1998 von der Weid certificate (as Dark Blue) and 2010 P.F. certificate (as Blue). Yvert €33,000 25,000.00



1028



1029



1030



1031

- 1028 ★ **1870, 20c Blue on Bluish, Type II, Die II (44; Yvert 45B).** Original gum, lightly hinged, large margins all around, remarkably bright and fresh, Extremely Fine and choice, ex Markowitz, with 2015 P.F. certificate, Yvert €1,950 950.00
- 1029 ★ **1871, 20c Blue on Bluish, Type III, Die II (45; Yvert 46B).** Original gum, lightly hinged, large margins all around, brilliant color on fresh paper, Very Fine and choice, ex Gross, signed A. Brun and Calves, with 2010 P.F. certificate, Yvert €1,800 825.00
- 1030 ★ **1870, 40c Bright Orange on Yellowish (47b; Yvert 48a).** Original gum, minor h.r., four large margins, beautiful vibrant color, Extremely Fine, an eye-catching stamp, ex Feldman, with 1989 Roumet and 2010 P.F. certificates, Yvert €800 625.00
- 1031 ★ **1870, 80c Rose on Pinkish (48; Yvert 49).** Original gum, four large margins, radiant color and a deeply etched impression on immaculate white paper, Extremely Fine, a beautiful stamp, signed Calves and with 2014 P.F. certificate, Yvert €725 600.00

1870-75 CERES ISSUE



1032



1033



1034



1035

- 1032 ★ **1871, 10c on 10c Bister (49; Yvert 34).** Full original gum, lightly hinged, spectacularly well-centered, fresh color, Extremely Fine, the 1871 10c on 10c Surcharged stamp is notorious for being off centered and/or lacking original gum, the example offered here is the rare exception and is, without question, the finest quality example of this stamp we have ever encountered, ex Venn, signed Roumet and with 2006 Calves certificate, Yvert €3,000 1,400.00
- 1033 ★ **1870, 10c Bister on Yellowish (54; Yvert 36).** Full original gum, well-centered, bright color, Very Fine, ex "Chappaqua" and Venn, signed Calves and with 2010 P.F. certificate, Yvert €950 540.00
- 1034 ★★ **1870, 40c Orange on Yellowish, Type I (59; Yvert 38).** Mint N.H. (scarce thus), bright color, Fine, ex Feldman, with 1994 A.P.S. and 2015 P.F. certificates, catalogue values are as hinged, Yvert €725 475.00
- 1035 ★ **1875, 10c Bister on Rose (60; Yvert 54).** Original gum, barest trace of hinging (if any), well-centered, exceptionally fresh, Very Fine, ex Venn, signed Calves and with 2014 P.F. certificate, Yvert €750 325.00



1036



1037



1038

- 1036 ★ **1873, 15c Bister (61; Yvert 55).** Original gum, fresh color, Very Fine, ex Venn, with 2001 Behr certificate, Yvert €700..... 320.00
- 1037 ★ **1872, 30c Brown on Yellowish (62; Yvert 56).** Original gum, lightly hinged, well-centered, bright fresh color, Very Fine and choice, ex Venn, with 2000 P.F. certificate, Yvert €1,100 550.00
- 1038 ★ **1872, 80c Rose on Pinkish, Larger Numerals (63; Yvert 57).** Original gum, barely hinged, fabulous centering and magnificent color, bright and crisp, Extremely Fine, with 2010 P.F. certificate as the lined background variety (Yvert 57d, which catalogues €1,650), Yvert as No. 57 €1,200 640.00

1876-79 PEACE AND COMMERCE ISSUES



1039



1040



1041



1042

- 1039 ★ **1876, 2c Green on Greenish, Type I (65; Yvert 62).** Original gum, very lightly hinged, outstanding centering, fresh color, Extremely Fine, a challenging stamp to find in this superior quality, with 2002 Behr certificate ("gomme intacte") and 2009 P.F. certificate ("previously hinged"), Yvert €1,800..... 1,425.00
- 1040 ★ **1876, 5c Green on Greenish, Type I (67; Yvert 64).** Original gum, barest trace of hinging (if any), lovely rich color, fresh and Very Fine, with 2003 Behr certificate ("gomme intacte") and 2009 P.F. certificate ("previously hinged"), Yvert €900..... 650.00
- 1041 ★ **1876, 10c Green on Greenish, Type I (68; Yvert 65).** Original gum, very lightly hinged, well-centered, rich color, Extremely Fine, particularly elusive in this premium condition, ex Venn, signed Calves, with 2004 Roumet certificate (selvage subsequently removed) and 2004 P.F. certificate, Yvert €1,200 800.00
- 1042 ★★ **1876, 20c Red Brown on Straw, Type I (70; Yvert 67).** Mint N.H., vibrant color, well centered, Very Fine, a most elusive stamp in this choice Mint Never-Hinged condition, ex Venn, signed A. Brun and with 2004 P.F. certificate, Yvert €1,237 875.00



1043

- 1043 ★ **1876, 25c Ultramarine on Bluish, Type I (72; Yvert 68).** Original gum, h.r., wonderfully fresh color and paper

FINE. A RARE ORIGINAL-GUM STAMP MISSING FROM MOST COLLECTIONS.

Ex Gross. Signed A. Brun. With 1996 Calves, 1996 Roumet, and 2010 P.F. certificates. Yvert €11,500 7,750.00



- 1044 ★★ **1876, 30c Brown on Yellowish, Type I (73; Yvert 69).** Mint N.H., extraordinarily well-centered, fresh color, Extremely Fine, scarce in this exceptional Mint Never-Hinged condition, signed Miro and with 2010 P.F. certificate, Yvert €1,050 650.00
- 1045 ★★ **1878, 40c Red on Straw, Type I (74; Yvert 70).** Mint N.H., outstanding centering, brilliantly rich color, Extremely Fine Gem, an exceedingly scarce stamp in this superb Mint Never-Hinged quality, ex "Chappaqua" and Venn, signed A. Brun and with 2004 P.F. certificate, Yvert €1,350 950.00
- 1046 ★ **1876, 75c Carmine on Rose, Type I (75; Yvert 71).** Original gum, lightly hinged, fresh color, well-centered, Extremely Fine, ex Venn, signed A. Brun and with 2004 P.F. certificate, Yvert €1,400 950.00
- 1047 ★ **1876, 1fr Bronze Green on Straw, Type I (76; Yvert 72).** Original gum, barely hinged, lovely rich color, Very Fine, a choice example of this high value, ex Venn, signed A. Brun and with 2000 P.F. certificate, Yvert €1,400 925.00
- 1048 ★ **1876, 10c Green on Greenish, Type II (79; Yvert 76).** Original gum, lightly hinged, deep color and intense impression, well-centered, Very Fine and choice, with 2016 P.F. certificate, Yvert €1,400 1,100.00
- 1049 ★ **1876, 15c Gray Lilac on Grayish, Type II (80; Yvert 77).** Original gum, especially bright and fresh, Very Fine, ex Venn, signed Calves and with 2004 P.F. certificate, Yvert €1,200 675.00



1050



1051



1052



1053



1054

- 1050 ★ **1876, 25c Ultramarine on Bluish, Type II (81; Yvert 78).** Original gum, lightly hinged, excellent centering, beautiful rich color, Extremely Fine Gem, ex Venn, signed Calves, Yvert €650 425.00
- 1051 ★ **1877, 75c Carmine on Rose, Type II (83; Yvert 81).** Original gum, a Very Fine example of this key stamp, ex Venn, signed A. Brun, and with 2011 Roumet and 2011 Scheller certificates, Yvert €2,750 1,775.00
- 1052 ★ **1878, 25c Black on Deep Red, Type II (93; Yvert 91a).** Original gum, lightly hinged, exceptionally well-centered, intense impression on brilliant paper color, Extremely Fine, an eye-catching Gem, ex Venn, signed A. Brun, Roumet and Calves, and with 2002 P.F. certificate, Yvert €1,700 1,075.00
- 1053 ★ **1878, 35c Black on Yellow, Type II (94; Yvert 93).** Original gum, very lightly hinged, fresh color, Fine, ex Feldman, with 2015 P.F. certificate, Yvert €800 525.00
- 1054 ★ **1877, 5fr Violet on Lavender, Type II (96; Yvert 95).** Original gum, lightly hinged, choice centering, bright and fresh, Extremely Fine, ex Venn, signed von der Weid and with 2004 P.F. certificate, Yvert €650 440.00



1055



1056



1057

- 1055 ★ **1879, 25c Yellow on Straw, Type II (99; Yvert 92).** Original gum, brilliant color, Very Fine, ex “Chappaqua” and Venn, with 1997 P.F. certificate, Yvert €550 340.00

TWENTIETH CENTURY ISSUES

- 1056 ★ **1900, 2fr Gray Violet & Yellow (126; Yvert 122).** Lightly hinged, excellent centering, fresh and Extremely Fine, ex “Chappaqua” and Venn, with 1997 P.F. certificate, Yvert €1,000 625.00
- 1057 ★ **1923, 1fr Bordeaux Congress (197; Yvert 182).** Lightly hinged, well-centered and fresh, Extremely Fine, with 1990 A.P.S. certificate, Yvert €575 440.00



- 1058 ★★ 1925, 20fr Philatelic Exhibition Souvenir Sheet (226; Yvert Bloc 1). Mint N.H., quite fresh, faint mounting bend at top left corner, otherwise Very Fine, Yvert €5,500. 3,750.00
- 1059 ★ 1927, 15fr Strasbourg Exhibition Souvenir Sheet (241; Yvert Bloc 2). With Exhibition cachet at bottom, lightly hinged, Very Fine, Yvert €1,350 1,000.00
- 1060 ★ 1929, 2fr Le Havre (246; Yvert 257A). Lightly hinged, remarkably bright and fresh, beautifully centered, Extremely Fine and choice, signed Calves and with 1995 P.F. certificate, Yvert €875 600.00
- 1061 ★ 1930, 3fr Dark Gray, Type III (247B; Yvert 259b). Lightly hinged, flawless centering, rich color, Extremely Fine, Yvert €460..... 375.00
- 1062 ★ 1932, 20fr Bright Red Brown, Die II, Perf 11 (254; Yvert 262B). Lightly hinged, choice centering, bright color, Extremely Fine, with 2008 P.F. certificate, Yvert €1,250.. 1,000.00
- 1063 ★★ 1931, 20fr Bright Red Brown, Die III, Perf 13 (254A; Yvert 262). Mint N.H., well-centered, rich color, Very Fine, with 2010 P.F. certificate, Yvert €550..... 450.00
- 1064 ★★ 1937, 1fr Philatelic Exhibition Souvenir Sheet (329; Yvert Bloc 3). Mint N.H., bright and fresh, Very Fine, Yvert €800 700.00

- 1065 ★★ 1917-19, 2c+3c to 5Fr+5Fr Orphans (B3-B10; Yvert 148-155). Mint N.H., bright colors on fresh white paper

VERY FINE. A CHOICE MINT NEVER-HINGED SET OF THE KEY SEMI-POSTAL SERIES OF FRANCE.

Three high values signed Calves and with 2011 Scheller certificates for the 35c+25c and 5Fr+5Fr. Yvert €9,150 ..
.....(Photo Ex) 6,430.00



1065EX

AIR POST



1066

- 1066 ★ 1928, 10fr on 90c Ile de France, Air Post (C3; Yvert PA3). Minor h.r., vibrant color on fresh paper, well-centered, Very Fine, a scarce Air Post stamp, ex Feldman, signed Champion and with 2015 P.F. certificate, Yvert €3,500..... 2,400.00



1067



1068



1069

- 1067 ★★ 1936, 50fr Plane Over Paris, Air Post (C14; Yvert PA14). Mint N.H., radiant color, flawless centering, Extremely Fine Gem, with 2010 P.F. certificate, Yvert €2,000.... 1,450.00
- 1068 ★★ 1936, 50fr Banknote, Air Post (C15; Yvert PA15). Mint N.H., bright colors, Very Fine and choice example of this popular issue, with 2010 P.F. certificate, Yvert €1,500..... 1,700.00
- 1069 ★★ 1936, 10fr South Atlantic Flight (C17; Yvert 321). Mint N.H., precisely centered, deep color, Extremely Fine, with 2008 P.F. certificate, Yvert €800..... 700.00

POSTAGE DUE



1070

1070 (★) **1859, 10c Black, Postage Due (J1; Yvert TT1).** Unused (no gum), large to full margins

VERY FINE. AN ATTRACTIVE UNUSED EXAMPLE OF THE RARE 1859 10-CENTIMES LITHOGRAPHED POSTAGE DUE.

Signed A. Brun and Calves. With 1985 Robineau and 2016 P.F. certificates. Yvert €7,500 7,250.00



1071



1072



1073



1074



1075



1076

- 1071 **1859, 10c Black, Postage Due (J1; Yvert TT1).** Four large margins, deep shade, sharp detailed impression and pristine white paper, lightly cancelled, Extremely Fine Gem, with 2016 P.F. certificate, Yvert €350 240.00
- 1072 ★★ **1871, 60c Yellow, Postage Due (J9; Yvert TT8).** Mint N.H., large margins all around, rich color, trivial natural gum inclusion, Extremely Fine, signed Calves and with clear 2010 P.F. certificate, catalogue values are as hinged, Yvert €800 475.00
- 1073 (★) **1859, 60c Black, Postage Due (J10B; Yvert TT9B).** Unused (no gum as usual), large margins, intense shade and impression, a Very Fine example of this scarce unissued Postage Due, ex Markowitz, signed Calves and with 2015 P.F. certificate, Yvert only prices with original gum at €4,000 1,600.00
- 1074 ★ **1882, 20c Black, Postage Due (J18; Yvert TT17).** Original gum, lightly hinged, uncommonly well centered and fresh, Extremely Fine, ex Venn, with 2000 P.F. certificate, Yvert €500 350.00
- 1075 ★ **1892, 50c Black, Postage Due (J21; Yvert TT20).** Original gum, h.r., fresh and Fine, signed Calves and Kosack, with 2016 P.F. certificate, Yvert €950 600.00
- 1076 ★ **1884, 60c Black, Postage Due (J22; Yvert TT21).** Original gum, fresh, Very Fine, ex Venn, with 2014 P.F. certificate Yvert €1,000 600.00

- 1077 ★ **1882, 1fr Black, Postage Due (J23; Yvert TT22).** Original gum, well centered, fresh and Extremely Fine, ex Venn, signed A. Brun and with 2014 P.F. certificate, Yvert €1,450..... 750.00



1077



1078

- 1078 ★ **1884, 2fr Black, Postage Due (J24; Yvert TT23).** Original gum, lightly hinged, rich shade, well-centered, Very Fine, not an easy stamp to find in this premium original gum condition, ex Venn, signed Calves and with 2001 Behr certificate, Yvert €2,000..... 1,400.00



1079

- 1079 ★ **1884, 5fr Brown, Postage Due (J28; Yvert TT27).** Original gum, lightly hinged, quite fresh, Very Fine, ex Venn, with 1999 P.F. certificate, Yvert €800 450.00



1080

- 1080 ★ **1894, 30c Orange Red, Postage Due (J35; Yvert TT34).** Original gum, mild h.r., well-centered, Very Fine, with 2008 P.F. certificate, Yvert €950 475.00



1081

- 1081 ★ **1896, 1fr Rose on Straw, Postage Due (J40; Yvert TT39).** Original gum, attractive color, Very Fine, ex Venn, with 1999 P.F. certificate, Yvert €950 475.00

NEWSPAPER ISSUES



1082



1083



1084

- 1082 ★ **1868, 2c Lilac, Imperforate, Newspaper Stamp (P1; Yvert J1).** Original gum, lightly hinged, large margins all around, Extremely Fine, signed A. Brun and with 2016 P.F. certificate, Yvert €350 300.00
- 1083 ★ **1868, 2c (+2c) Blue, Imperforate, Newspaper Stamp (P2; Yvert J2).** Sheet margin at top, original gum, minor h.r., rich color, fresh paper, Very Fine, ex Markowitz, with 2013 Behr certificate, Yvert €700 600.00
- 1084 ★★ **1868, 5c Lilac, Newspaper Stamp (P6; Yvert J10).** Mint N.H., exceedingly fresh, Very Fine, a particularly difficult stamp to find in Mint N.H. condition, ex Markowitz, signed Calves and with 2013 Behr certificate, catalogue values are as hinged, Yvert €1,600 1,250.00

BALANCE OF THE SCARSDALE COLLECTION OF FRANCE

- 1085 ★ **Balance of the Scarsdale France Collection.** Unused to 1996 in three Scott albums, the early period is a little sparse, since most were of sufficient value and condition to make into individual lots, there are some useful stamps in this period, including a few with certificates, decent range of Sage issues, the 20th Century is exceptionally well-filled and just about complete except for what was made into individual lots, including Semi-Postals and Air Posts, with many of the modern Semi-Postals in complete panes, also Postage Dues, Newspaper Stamps and some other Back-of-Book, all housed in Showgard mounts, with the post-war issues all Mint N.H. and many of the pre-war Mint N.H., the collector was just as meticulous about condition on these lesser valued stamps as we was on the stamps we offered individually, so the condition is far above the norm, majority Very Fine, this is the perfect basis on which to form a high quality unused France collection

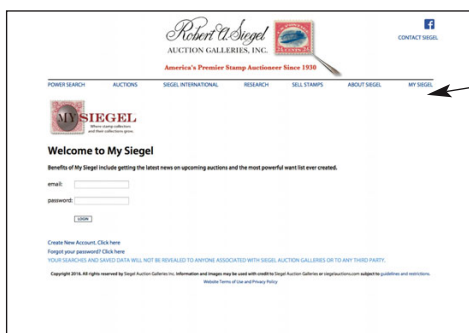
The "Scarsdale" collector had been assembling a France collection for several years and by 2013 had a complete run of the modern issues and many of the earlier issues. When the Siegel firm offered the Porter W. Venn collection of France in November 2013, the collector not only bought many of the rarities, he bought the balance lot, which was in exceptional condition. That helped him fill in many missing spaces. But there were many stamps in the Venn balance the collector already had, so over a period of several weeks, he carefully compared every duplicate stamp (no matter how inexpensive) and kept the best one for his collection. This is one reason the quality of the Scarsdale balance is far better than what is normally encounteredNot illustrated E. 5,000-7,500

END OF SALE — THANK YOU

NEVER MISS OUT AGAIN

REGISTER WITH THE MOST DETAILED WANT LIST IN PHILATELY

Whether you collect Caroline Island covers, used Great Britain or British Africa, you never have to miss out again. Register at our website, and receive email notifications when something matching your interests is part of an upcoming auction. You can also see what we have sold in the past in your area of interest. Just follow the steps below.



Step 1. Register for an account at our website.

You will be sent an email with a link to activate the account. This ensures notifications are received.

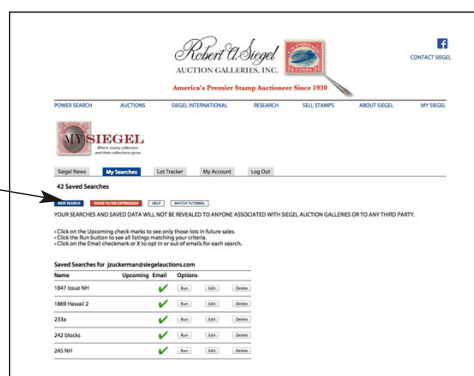
Note: You will also log in here once you've created your account.

Step 2. Go to the My Searches tab and select New Search

This will take you to the Power Search page, where you can create your searches.

Note: Once you've created some searches, you can review them and run them from this page.

There is also a short video tutorial at the bottom of this page showing how to create your want list.



Step 3. Create your search

Select your search criteria on this page, following the steps below.

Note: you can skip steps if you want to create a broader list

4. If you want a specific country then select it under the Issue/Country field.

Note: you can go right to this step after selecting Area if you are looking for a specific country.

5. Looking for just Penny Blacks? Use the Catalogue # field to restrict your search to a specific stamp (by Scott no.)

6. Use the symbol field to narrow your list to used only, covers only, etc.

8. Name and save your search. It will then appear on your My Searches page.

1. Select the general Area. There are five to choose from.

2. If you want a broad criteria such as all British Commonwealth then use the Sub Area field.

3. If you want a slightly more specific area such as British Africa, then use the General field.

7. Use the Key Word to pick up on any word in descriptions

Use the Help button for ideas about creating lists and for a video tutorial.

Live Internet Bidding at Siegel Auctions

BIDDING FROM YOUR COMPUTER LETS YOU BE PART OF THE LIVE AUCTION FROM ANYWHERE IN THE WORLD!

There's **NO SUBSTITUTE** for following the auction in real time.
Live Internet Bidding lets you bid and buy as though you were right there in the saleroom.
And it's easy.

This step-by-step guide will instruct you how to register, set your browser and use the bidding interface.

Start by following the simple steps to become a registered Live Internet Bidder.
Once you've been approved for bidding, you can listen to the auction and place bids with the click of a mouse.

Registering with STAMP AUCTION NETWORK & SIEGEL AUCTION GALLERIES

Live Internet Bidding is managed by Stamp Auction Network (SAN).
To bid, you must be registered and approved by *both* SAN and Siegel.
To decide what you need to do, choose the description below that best fits you.



I've already registered with SAN and have been approved by Siegel for internet bidding.

Live Internet Bidding works by allowing registered bidders to observe and place bids.

Live Internet Bidding will work with any browser on both PC and Mac operating systems.

Before bidding by internet for the first time, we recommend finding a sale in progress and listening to the public broadcast or logging in as a registered bidder. This will help you develop a feel for the sale tempo and bidding interface.

I'm a Siegel client, but I'm not registered with SAN.

Go to stampauctionnetwork.com/siegel and click on "Register" at the top. Check the box for Robert A. Siegel Auction Galleries (under "R") and submit the form, indicating you are a Siegel client. Once registered at SAN, you're ready for internet bidding.

Log on to the auction at stampauctionnetwork.com

When you're logged on as a Live Internet Bidder, the bidding interface shows a photo and description of the lot, the current bid (and your bidding status), options for placing competitive bids and buttons with bid increments.

- After you click on a bid amount, the auctioneer is immediately notified of your bid.
- Retracting a bid is usually not acceptable, so please bid carefully.
- If you bid and then decide to stop, the "Pass" button will tell the auctioneer you are no longer bidding.
- You can send messages to the auctioneer (for example, a request for extension).
- You can track prior realizations from the bidding screen.

I've bid through SAN before, but this is the first time I've bid in a Siegel sale.

Then you just need to be approved by Siegel. Go to stampauctionnetwork.com/siegel and click on "Update Registration" at the top. Your SAN account information will be sent to us for approval (you might be asked for other trade references). Once approved by Siegel for bidding, you're ready for internet bidding.

I've never bid with Siegel, nor registered with SAN.

Go to stampauctionnetwork.com/siegel and click on "Register" at the top. Check the box for Robert A. Siegel Auction Galleries (under "R") and submit the form **with your trade references** (please, no family members or credit card companies as references). Once registered at SAN and approved by Siegel for bidding, you're ready for internet bidding.



"System Down" or "Lost Connection" events do occasionally happen.

If you have any problems with Live Internet Bidding please call **212-753-6421** for immediate assistance.



BIDS

Use this form to submit absentee bids
or to confirm telephone bids

Sale 1177

March 13, 2018

PADDLE #

1

Please provide the following information:

NAME

ADDRESS

CITY/STATE/ZIP

PHONE MOBILE

EMAIL

2

Have you purchased from us in the past 5 years? ☐ Yes (please go to Section 3)
☐ No (references required below)

STAMP FIRM PHONE

STAMP FIRM PHONE

Please submit references at least **2 business days** before the sale. Bids from new clients will not be executed if satisfactory references are not received in time to be contacted.

3

- Enter the lot number and your corresponding maximum bid in the space below
- Use whole dollar amounts and bid according to the increments (see back of form)
- Bids do not include the **18% Buyer's Premium**, taxes, duty or shipping charges
- Absentee bids will advance at one increment over the next highest competing bid
- "Plus", "Break Tie" or "Buy" bids will not be executed
- Indicate any "Or" bids between lot number/bid entries and bracket your choices
- If you wish to limit the total amount of your bids, follow the instructions below

Lot #	Bid \$	Lot #	Bid \$	Lot #	Bid \$

☐ **Limit Bids:** Check this box if you wish to limit the total hammer price of your bids (excluding 18% Buyer's Premium, taxes, duty and shipping costs). Your bids will be executed until your bidding limit has been reached. The total amount you wish to bid is \$

4

By signing this form, you agree to all of the Conditions of Sale printed in the sale catalogue (printed and digital), including but not limited to a) payment in the manner demanded by the Siegel firm, and b) payment of the 18% Buyer's Premium, any sales tax or customs duty, shipping costs, late charges and

other prescribed charges. You agree that your bids will be executed as a courtesy by Siegel, but you waive the right to make any claim against Siegel or its employees arising from these bids or your participation in the sale. You agree to honor all bids as submitted, regardless of any errors or omissions.

SIGNED DATE

Mail the signed form to Siegel Bid Department, 6 West 48th St., 9th Floor, New York, NY 10036
or email to stamps@siegelauctions.com
or fax to 212-753-6429



Additional Bids

Sale 1177

March 13, 2018

PADDLE #

Lot #	Bid \$	Lot #	Bid \$	Lot #	Bid \$

Shipping & Insurance

We will be pleased to arrange for shipping and transit insurance for purchases in this sale, except for lots marked or announced as "floor sale only." To expedite billing and delivery to hundreds of buyers in each sale, we use standard charges for postage and insurance under our policy. These charges are based on the package weight and mailing requirements, according to the schedule shown here. Our standard charges do not include a fee for our services, and they may be slightly more or less than the actual postage or Fedex fee. We ask all buyers to remit the invoiced amount for shipping and insurance.

Transit insurance is provided in all cases, except when the buyer has furnished us with documentation that insurance is effective under the buyer's own policy.

There will be no added insurance charge for shipments of less than \$75,000 value. Shipments valued in excess of \$75,000 may require supplemental insurance and/or special courier service, the estimated cost of which will be furnished to the buyer prior to shipment. If the buyer refuses to pay the estimated charges or furnish proof of self-insured coverage, the buyer will be responsible for picking up the lots at our office and any resulting sales tax.

Standard Shipping Charges

Weight Class	Shipping Method	Charge
Up to 2 lbs.	Fedex Envelope	\$20
Over 2 lbs.	Fedex Box	\$35 - \$50*
Outside US	Fedex	\$50 - \$100**
Bulky Lots	Fedex Ground or Express	By weight

* Up to \$75,000 value and up to 5 lbs; additional charge may apply to packages exceeding limits

** Buyers outside United States are liable for any applicable customs duty and clearance charges. An accurate declaration of contents and value will be made on all packages and import/export documents. **Siegel may refuse to ship lots to certain countries with a high risk factor.**

2/2015

Bidding Increments

The auctioneer may regulate the bidding at his discretion. However, to assist absentee bidders in establishing their maximum bids, the increments shown here will be used in most cases. We recommend that written bids conform to these increments—bids that do not will be reduced accordingly.

Bid	Increment	Bid	Increment
Up to \$200	\$10	\$7,000-20,000	\$500
\$200-500	\$25	\$20,000-30,000	\$1,000
\$500-1,000	\$50	\$30,000-70,000	\$2,500
\$1,000-3,000	\$100	\$70,000-140,000	\$5,000
\$3,000-7,000	\$250	\$140,000-300,000	\$10,000

Robert A. Siegel Auction Galleries, Inc.
 Prices Realized for
 Sale 1177 3/13/2018 The Scarsdale Collection, Part 10: France

Lot#	Realized	Lot#	Realized	Lot#	Realized
1001	750	1037	275	1073	2,200
1002	12,500	1038	450	1074	325
1003	425	1039	425	1075	300
1004	4,250	1040	325	1076	325
1005	2,500	1041	525	1077	450
1006	50,000	1042	500	1078	700
1007	5,250	1043	2,700	1079	160
1008	1,100	1044	600	1080	200
1009	200	1045	650	1081	250
1010	375	1046	275	1082	550
1011	1,300	1047	325	1083	400
1012	400	1048	275	1084	650
1013	1,800	1049	160	1085	10,000
1014	1,600	1050	250		
1015	2,100	1051	375		
1016	130	1052	600		
1017	750	1053	100		
1018	1,400	1054	160		
1019	120	1055	120		
1020	325	1056	225		
1021	180	1057	225		
1022	650	1058	550		
1023	3,250	1059	180		
1024	275	1060	225		
1025	275	1061	190		
1026	450	1062	375		
1027	19,000	1063	150		
1028	425	1064	200		
1029	550	1065	1,400		
1030	1,100	1066	850		
1031	350	1067	425		
1032	550	1068	475		
1033	400	1069	200		
1034	325	1070	1,400		
1035	375	1071	170		
1036	375	1072	400		