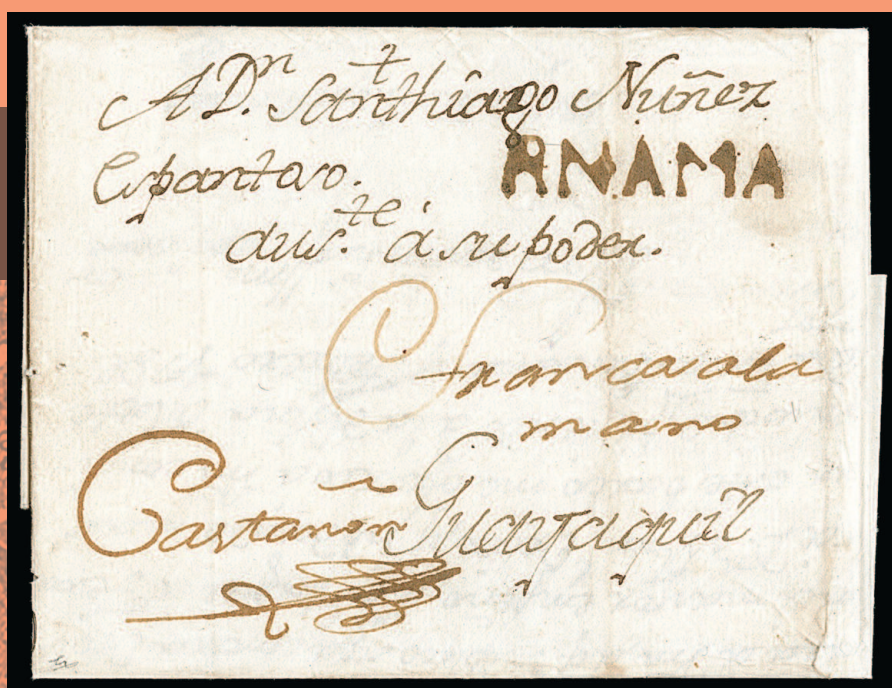


The  
ALFREDO FROHLICH  
Collection

The Evolution of Postal Systems in

PANAMA

1777 to 1881



INTERNATIONAL

Robert A. Siegel

IN ASSOCIATION WITH CHARLES F. SHREVE

SALE 1193 • DECEMBER 4, 2018

The  
**ALFREDO FROHLICH**  
Collection

The Evolution of Postal Systems in

**PANAMA**

1777 to 1881

SALE 1193—TUESDAY, DECEMBER 4, 2018, AT 10:30 A.M. (LOTS 1501-1648)



Live auction at 6 West 48th Street (off Fifth Avenue), 9th Floor, New York City

All lots sold subject to an **18% buyer's premium** and  
applicable sales tax or customs duty

Please carefully read the Conditions of Sale before bidding

Presale Viewing:

Monday, December 3, 10am-4pm  
and by appointment (please call 212-753-6421)

INTERNATIONAL  
*Robert A. Siegel*  
IN ASSOCIATION WITH CHARLES F. SHREVE

6 WEST 48TH STREET, 9TH FLOOR, NEW YORK, N.Y. 10036  
Phone (212) 753-6421 • Fax (212) 753-6429 • E-mail: [stamps@siegelauctions.com](mailto:stamps@siegelauctions.com)

Catalogues, internet bidding, resources, archives and the Siegel Encyclopedia at  
[siegelauctions.com](http://siegelauctions.com)



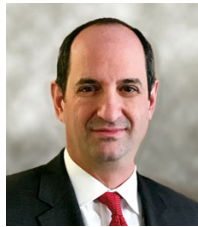


INTERNATIONAL  
*Robert A. Siegel*  
 IN ASSOCIATION WITH CHARLES F. SHREVE

6 WEST 48TH STREET, 9TH FLOOR, NEW YORK, N.Y. 10036  
 Phone (212) 753-6421 • Fax (212) 753-6429 • Email: stamps@siegelauctions.com  
 siegelauctions.com



Scott R. Trepel  
 President  
 strepel  
 @siegelauctions.com



John P. Zuckerman  
 Senior Vice President  
 jzuckerman  
 @siegelauctions.com



Corey Long  
 Senior Vice President  
 clong  
 @siegelauctions.com

**Siegel International**  
 Dallas (214) 754-5991



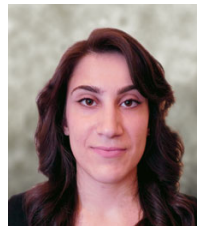
Charles F. Shreve  
 Director, Siegel International  
 charles  
 @siegelauctions.com



Daphne Aitken  
 Accounts  
 daphne  
 @siegelauctions.com



Helen Stewart  
 VP, Operations  
 helen  
 @siegelauctions.com



Jocelyn Weibel  
 Digital Production  
 jocelyn  
 @siegelauctions.com



Andrew Titley  
 International Specialist  
 andrew  
 @siegelauctions.com



Chris Anderson  
 International Specialist  
 chris  
 @siegelauctions.com

Scott R. Trepel Principal Auctioneer (licensed by NYC Dept. of Consumer Affairs, #795952)

## Information for Bidders

### Bidding

The following means are available for placing bids:

- 1) Attending the Live Auction in Person:** All bidders must register for a paddle, and new bidders must provide references at least three business days in advance of the sale.
- 2) Live Internet Bidding:** Instructions for participating as a Live Internet Bidder are provided on the page opposite.
- 3) Phone Bidding:** Bidders can be connected to the sale by phone and bid through a member of staff. Requests for phone bidding are subject to approval (please contact our office at least 24 hours before the sale). A signed Bid Form is required.
- 4) Absentee Bids.** All bids received in advance of the sale, either by mail, fax, phone, email or internet, are Absentee Bids, which instruct the auctioneer to bid up to a specific amount on one or more lots in the sale. Absentee Bids sent by phone, fax or email should arrive at least one hour prior to the start of the sale session. Bids entered through Live Internet Bidding will be visible to the auctioneer during the sale. Written bids should be entered legibly on the Bid Form in the sale catalogue. Email and internet bids should be carefully typed and double-checked. All new bidders must provide references. We recommend calling or e-mailing to confirm that Absentee Bids sent by mail, fax or email have been received and entered.

### Pre-Sale Viewing

Subject to availability, certain lots (except group lots) can be sent to known clients for examination. Requests must be made no later than 7 days prior to the sale. Lots must be returned on the day received. Postage/insurance costs will be invoiced.

In addition to regular viewing, clients may view lots by appointment. Our staff will be pleased to answer questions or provide additional information about lots.

### Expert Certification

Individual items offered without a certificate dated within the past five years may be purchased subject to independent certification of genuineness and our description. **Please refer to the Conditions of Sale and Grading Terms for policies governing certification.**

### Shipping and Delivery

Procedures and charges for shipping lots are printed on the back of the Bid Form. **Bidders are responsible for all prescribed shipping charges and any applicable sales tax or customs duties.**

### Price Realized

Prices realized are sent with each invoice. Bidders with email will receive a Bid Results report after the sale. Session results are posted immediately to [siegelauctions.com](http://siegelauctions.com)

# Live Internet Bidding at Siegel Auctions

## REGISTERED BIDDERS MAY BID IN THIS SALE USING LIVE INTERNET BIDDING

This step-by-step guide will instruct you how to register, set your browser and use the bidding interface.

Start by following the simple steps to become a registered Live Internet Bidder.

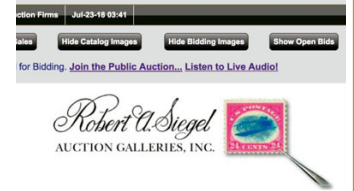
Once you have been approved for bidding, you can listen to the auction and place bids with the click of a mouse.

### Registering with STAMP AUCTION NETWORK & SIEGEL AUCTION GALLERIES

Live Internet Bidding is managed by Stamp Auction Network (SAN).

To bid, you must be registered and approved by both SAN and Siegel.

To decide what you need to do, choose the description below that best fits you.



**I've already registered with SAN and have been approved by Siegel for internet bidding**

**I'm a Siegel client, but I'm not registered with SAN**

Go to [stampauctionnetwork.com/siegel](http://stampauctionnetwork.com/siegel) and click on "Register" at the top. Check the box for Robert A. Siegel Auction Galleries (under "R") and submit the form, indicating you are a Siegel client. Once registered at SAN, you're ready for internet bidding.

**I've bid through SAN before, but this is the first time I've bid in a Siegel sale**

Then you just need to be approved by Siegel. Go to [stampauctionnetwork.com/siegel](http://stampauctionnetwork.com/siegel) and click on "Update Registration" at the top. Your SAN account information will be sent to us for approval (you might be asked for other trade references). Once approved by Siegel for bidding, you're ready for internet bidding.

**I've never bid with Siegel, nor registered with SAN**

Go to [stampauctionnetwork.com/siegel](http://stampauctionnetwork.com/siegel) and click on "Register" at the top. Check the box for Robert A. Siegel Auction Galleries (under "R") and submit the form with your trade references (please, no family members or credit card companies as references). Once registered at SAN and approved by Siegel for bidding, you're ready for internet bidding.

Live Internet Bidding works by allowing registered bidders to observe and place bids.

Live Internet Bidding will work with any browser on both PC and Mac operating systems.

Before bidding by internet for the first time, we recommend finding a sale in progress and listening to the public broadcast or logging in as a registered bidder. This will help you develop a feel for the sale tempo and bidding interface.

### Log on to the auction at [stampauctionnetwork.com](http://stampauctionnetwork.com)

When you're logged on as a Live Internet Bidder, the bidding interface shows a photo and description of the lot, the current bid (and your bidding status), options for placing competitive bids and buttons with bid increments.

- After you click on a bid amount, the auctioneer is immediately notified of your bid.
- Retracting a bid is usually not acceptable, so please bid carefully.
- If you bid and then decide to stop, the "Pass" button will tell the auctioneer you are no longer bidding.
- You can send messages to the auctioneer (for example, a request for extension).
- You can track prior realizations from the bidding screen.

**Robert A. Siegel Auction Galleries, Inc.'s Sale 1185**

Closing on June 27, 2018. [Listen to the Auction.](#)  
Contact us by Phone at (212) 753-6421, [Contact us Via eMail.](#)

F11 (if using Internet Explorer) toggles full

Lot and Description	Bidding
 United States Inverted Jenny Postage Positions 15 and 6 <b>Lot 91.</b> 24c Carmine Rose & Blue, Center Inverted (C3a). Position 15, the fifth stamp from the left in the second row of the sheet, original gum, deep rich colors, tiny thin spot just below the plane, faint traces of purple ink above the bottom left "2" (image)	<div>Bid 280000</div> <div>Bid 290000</div> <div>Bid 300000</div> <div>Bid 310000</div> <div>Bid 320000</div> <div>Bid 330000</div> <div>Send a Message to the Auctioneer</div>
\$ 450,000.00 <b>Sold for \$ 270,000.00</b> <b>Your Bid \$ 0.00</b>	

**"System Down" or "Lost Connection" events do occasionally happen.**

**If you have any problems with Live Internet Bidding please call 212-753-6421 for immediate assistance.**



## Conditions of Sale (please read carefully before bidding)

THE PROPERTY IN THIS CATALOGUE WILL BE OFFERED AT PUBLIC AUCTION BY ROBERT A. SIEGEL AUCTION GALLERIES, INC. ("GALLERIES") ON BEHALF OF VARIOUS CONSIGNORS AND ITSELF OR AFFILIATED COMPANIES. BY BIDDING ON ANY LOT, WHETHER DIRECTLY OR THROUGH A THIRD PARTY, IN PERSON, BY TELEPHONE, FACSIMILE, INTERNET OR BY ANY OTHER MEANS, THE BIDDER ACKNOWLEDGES AND AGREES TO ALL OF THE FOLLOWING CONDITIONS OF SALE.

1. The highest bidder acknowledged by the auctioneer shall be the buyer. The term "final bid" means the last bid acknowledged by the auctioneer, which is normally the highest bid offered. **The purchase price payable by the buyer will be the sum of the final bid and a commission of 18% of the final bid ("buyer's premium"), together with any sales tax, use tax or customs duties due on the sale.**

2. The auctioneer has the right to reject any bid, to advance the bidding at his discretion and, in the event of a dispute, to determine the successful bidder, to continue the bidding or to reoffer and resell the lot in dispute. The Galleries' record of the final sale shall be conclusive.

3. All bids are per numbered lot in the catalogue unless otherwise announced by the auctioneer at the time of sale. The right is reserved to group two or more lots, to withdraw any lot or lots from the sale, or to act on behalf of the seller. The Galleries will execute bidding instructions on behalf of clients, but will not be responsible for the failure to execute such bids or for any errors in the execution of such bids.

4. **Lots with numbers followed by the symbol ° are offered subject to a confidential minimum bid ("reserve"), below which the lot will not be sold. The absence of the symbol ° means that the lot is offered without a reserve. If there is no reserve, the auctioneer has sole discretion to establish a minimum opening bid and may refuse an offer of less than half of the published estimate. Any lot that does not reach its reserve or opening bid requested by the auctioneer will be announced as "passed" and excluded from the prices realized lists after the sale. The Galleries may have a direct or indirect ownership interest in any or all lots in the sale resulting from an advance of monies or goods-in-trade or a guarantee of minimum net proceeds made by the Galleries to the seller.**

5. Subject to the exclusions listed in 5(A), the Galleries will accept the return of lots which have been misidentified or which have obvious faults that were present when the lot was in the Galleries' custody, but not so noted in the lot description. **All disputed lots must be received by the Galleries intact with the original packing material within 5 days of delivery to the buyer but no later than 30 days from the sale date.**

(5A) EXCLUSIONS: The following lots may not be returned for any reason, or may not be returned for the reasons stated: i) lots containing 5 or more items; ii) lots from buyers who registered for the pre-sale exhibition or received lots by postal viewing, thereby having had the opportunity to inspect them before the sale; iii) any lot described with "faults," "defects" or a specific fault may not be returned because of any secondary fault; iv) photographed lots may not be returned because of centering, margins, short/nibbed perforations or other factors shown in the illustrations; v) the color of the item does not match the color reproduction in the sale catalogue or website listing; vi) the description contains inaccurate information about the quantity known or reported; or vii) a certification service grades a stamp lower than the grade stated in the description or on an accompanying certificate.

6. Successful bidders, unless they have established credit with the Galleries prior to the sale, must make payment in full before the lots will be delivered. Buyers not known to the Galleries must make payment in full within 3 days from the date of sale. **The Galleries retains the right to demand a cash deposit from anyone prior to bidder registration and/or to demand payment at the time the lot is knocked down to the highest bidder, for any reason whatsoever.** In the event that any buyer refuses or fails to make payment in cash for any lot at the time it is knocked down to him, the auctioneer reserves the right to reoffer the lot immediately for sale to the highest bidder. **Credit cards (Visa, Mastercard and Discover only) can be accepted as payment but will be subject to a 3% non-refundable Convenience Fee, which will be added to the total of the entire invoice (including hammer price, buyer's premium, shipping and transit insurance charges and any applicable taxes). The buyer waives the right to dispute all credit card charges.**

7. If the purchase price has not been paid within the time limit specified above, nor lots taken up within 7 days from the date of sale, the lots will be resold by whatever means deemed appropriate by the Galleries, and any loss incurred from resale will be charged to the defaulting buyer. **Any account more than 30 days in arrears will be subject to a late payment charge of 1½% per month as long as the account remains in arrears. Any expenses incurred in securing payment from delinquent accounts will be charged to the defaulter.** A fee of \$250.00 per check will be charged for each check returned for insufficient funds.

8. All lots are sold as genuine. **Any lot accompanied by a certificate issued by The Philatelic Foundation, British Philatelic Association, Royal Philatelic Society of London or any other authority recognized by the A.I.E.P. in a specific area of expertise, and dated within 5 years of the sale date, is sold "as is" and in accordance with the description on the certificate. Such lots may not be returned for any reason, including but not limited to a contrary certificate of opinion.** Buyers who wish to obtain a certificate for any item that does not have a certificate (dated as above) may do so, provided that the following conditions are met: (i) the purchase price must be paid in full, (ii) the item must be submitted to an acceptable expertizing committee with a properly executed application form within 21 days of the sale, (iii) a copy of the application form must be given to the Galleries, (iv) the Galleries retains the right to resubmit the item for reconsideration, without time limit or other restrictions, for the purpose of obtaining a satisfactory opinion, (v) lots submitted for certification will be considered cleared 90 days from the date of sale, whether or not a certificate has been issued, unless the Galleries issues written approval of a further extension of return privileges, and (vi) in the event the lot is determined to be misidentified or misdescribed, pursuant to 5 and 5(A) of these Conditions, the Galleries will issue a refund to the buyer for the full purchase price and actual certification fees up to \$800.00, but the reimbursement for certificate fees (and related costs) shall not exceed 10% of the hammer price of the lot.

9. Until paid for in full, all lots remain the property of the Galleries on behalf of the seller.

10. Agents executing bids on behalf of clients will be held responsible for all purchases made on behalf of clients unless otherwise arranged prior to the sale.

11. The buyer assumes all risk for delivery of purchased lots and agrees to pay for prescribed shipping costs. **Buyers who receive lots in the U.S. are obligated to pay whatever sales tax or compensating use tax might be due, at any time, and buyers outside the U.S. are responsible for all customs duties.**

12. **The bidder consents that any action or proceeding against it may be commenced and maintained in any court within the State of New York or in the United States District Court for the Southern District of New York, that the courts of the State of New York and United States District Court for the Southern District of New York shall have jurisdiction with respect to the subject matter hereof and the person of the bidder. The bidder agrees not to assert any defense to any action or proceeding initiated by Galleries based upon improper venue or inconvenient forum. The bidder agrees that any action brought by the bidder shall be commenced and maintained only in a Federal Court in the United States District Court for the Southern District of New York or the State Court in the county in which Galleries has its principal place of business in New York. The bidder agrees not to use a public conflict resolution service and not to use any form of social media to publish comments or information about the Galleries and its employees which might harm the Galleries' reputation or business. These Conditions of Sale shall be governed by and construed in accordance with the substantive laws of the State of New York, and shall constitute an agreement that shall be binding on the parties, and their respective heirs, administrators, distributees, successors and assignees.**

SCOTT R. TREPEL, Principal Auctioneer

Auctioneer's License No. 795952

N.Y.C. Department of Consumer Affairs

80 Lafayette Street, New York, N.Y. 10013

Telephone (212) 577-0111

*Revised 5/2018*

## Grades, Abbreviations and Values Used in Descriptions

### Grades and Centering

Our descriptions contain detailed information and observations about each item's condition. We have also assigned grades to stamps and covers, which reflect our subjective assessment. For stamps, the margin width, centering and gum are described and graded according to generally-accepted standards (an approximate correlation to numeric grades is provided at right). Although we believe our grades are accurate, they are not always exactly aligned with third-party grading terms or standards for all issues. **A lot may not be returned because a certification service grades a stamp lower than the grade stated in the description. Information from the P.S.E. Stamp Market Quarterly and P.S.E. Population Report<sup>SM</sup> is the most current available, but lots may not be returned due to errors or changes in statistics or data.**

**Extremely Fine Gem (90-100):** The term "Gem" describes condition that is the finest possible for the issue. This term is equivalent to "Superb" used by grading services.







**Extremely Fine (80-90):** Exceptionally large/wide margins or near perfect centering.

**Very Fine (70-85):** Normal-size margins for the issue and well-centered with the design a bit closer to one side. "Very Fine and choice" applies to stamps that have desirable traits such as rich color, sharp impression, freshness or clarity of cancel.

**Fine (60-70):** Smaller than usual margins or noticeably off center. Pre-1890 issues may have the design touched in places.

**Very Good (below 60):** Attractive appearance, but margins or perforations cut into the design.

### Guide to Gum Condition

Gum Categories:	MINT N.H.	ORIGINAL GUM (O.G.)				NO GUM
	 <b>Mint Never Hinged</b> <i>Free from any disturbance</i>	 <b>Lightly Hinged</b> <i>Faint impression of a removed hinge over a small area</i>	 <b>Hinge Mark or Remnant</b> <i>Prominent hinged spot with part or all of the hinge remaining</i>	 <b>Part o.g.</b> <i>Approximately half or more of the gum intact</i>	 <b>Small part o.g.</b> <i>Approximately less than half of the gum intact</i>	 <b>No gum</b> <i>Only if issued with gum</i>
Catalogue Symbol:	★ ★	★	★	★	★	(★)
PRE-1890 ISSUES	<i>Pre-1890 stamps in these categories trade at a premium over Scott value</i>			Scott Value for “O.G.”		Scott “No Gum” Values thru No. 218
1890-1935 ISSUES	Scott “Never Hinged” Values for Nos. 219-771	Scott Value for “O.G.” (Actual value will be affected by the degree of hinging)		<b>Disturbed Original Gum:</b> Gum showing noticeable effects of humidity, climate or hinging over more than half of the gum. The significance of gum disturbance in valuing a stamp in any of the Original Gum categories depends on the degree of disturbance, the rarity and normal gum condition of the issue and other variables affecting quality. For example, stamps issued in tropical climates are expected to have some		
1935 TO DATE	Scott Value for “Unused”					

### Covers

Minor nicks, short edge tears, flap tears and slight reduction at one side are normal conditions for 19th century envelopes. Folded letters should be expected to have at least one file fold. Light cleaning of covers and small mends along the edges are accepted forms of conservation. Unusual covers may have a common stamp with a slight crease or tiny tear. **These flaws exist in virtually all 19th century covers and are not always described. They are not grounds for return.**

### Catalogue Values and Estimates

Unless otherwise noted, the currently available *Scott Catalogue* values are quoted in dollars with a decimal point. Other catalogues are often used for foreign countries or specialized areas and are referred to by their common name: *Stanley Gibbons* (SG), *Dietz*, *American Air Mail Catalogue* (AAMC), *Michel*, *Zumstein*, *Facit*, etc. Estimates are indicated with an "E." and reflect our conservative valuation in dollars. Reserves will never exceed the low end of the estimate range; they will sometimes exceed Scott Catalogue value for stamps in Extremely Fine condition.

Because of certain pricing inconsistencies in the *Scott Catalogue*—for example, blocks that have no gum, the absence of premiums for Mint N.H. items, etc.—we cannot guarantee the accuracy of values quoted for multiples, specialized items and collection lots. We generally try to be conservative, but buyers may not return a lot because of a discrepancy in catalogue value due to Scott pricing inconsistencies.

### Symbols and Abbreviations (see chart above for gum symbols)

⊞	Block	E	Essay	pmk.	Postmark	No.	Scott Catalogue Number
⊞	Cover	P	Proof	cds	Circular Datestamp	hs	Handstamp
FC	Fancy Cancel	TC	Trial Color Proof	var.	Variety	ms.	Manuscript



## Alfredo Frohlich—The Consummate Philatelic Exhibitor

There is a small group of philatelic exhibitors whose success proves that they “get it” when it comes to creating and building award-winning exhibits. Alfredo Frohlich is a member of this high-achieving group. He has been honored time and time again with well-deserved awards at the highest levels, in both domestic and international philatelic competitions.

Mr. Frohlich has created a remarkable array of award-winning exhibits related to Latin America, including the stamps of Colombia (both the confederation and federal governments), Chile, and the SCADTA issues of Ecuador. He has won top awards for each of these exhibits, culminating in one of philately's highest honors, the 2007 Champion of Champions award for his Classic Colombia.

In my opinion, Mr. Frohlich's magnificent exhibit of “The Evolution of Postal Systems in Panama—1777-1881” is his most important accomplishment. This exhibit, which we are offering for sale at unreserved public auction, is one of postal history's most fascinating, challenging and historically significant areas. To convey this subject's full scope and depth in just eight frames (128 pages) has required the greatest degree of exhibiting skill and a focused approach to acquisition. This exhibit has won numerous domestic and international awards (see page 61 for a complete listing), including no less than three Large Golds in the FIP international competitive arena.

Apart from his achievements as a philatelic exhibitor, Mr. Frohlich is one of philately's most enthusiastic and generous supporters, both financially and with his tireless effort. Over the time we have known each other, I have come to respect him as true gentleman. On a personal level, he is a wonderful friend, and I am proud to have been given the great responsibility of offering his collection of Panama.

— CHARLES F. SHREVE

# PANAMA

## The Evolution of Postal Systems in Panama (1777 -1881)

Spanish Colonial Period to Panama joining the UPU

**Purpose and Importance**

This postal history exhibit details the development of Panama's postal system from 1777 to 1881, when Panama joined the Universal Postal Union. Due to its unique geographical position, the Isthmus of Panama had major commercial and political influence in the 19<sup>th</sup> century, including enormous importance in the international mail system.


**Historical Background**

Explored and settled by the Spanish in the 16th century, a Spanish colonial jurisdiction in northern South America was created as the **Viceroyalty of Nueva Granada** in May 27, 1717. It encompassed the modern nations of Colombia, Ecuador and Venezuela. Panama was incorporated into it in 1739.

Panama broke with Spain and became independent on November 21, 1821. It joined Nueva Granada, Ecuador and Venezuela in forming the **Republic of Gran Colombia**. Although Gran Colombia was dissolved in 1831, Panama and Nueva Granada remained together as the **Republic of Colombia**. Panama seceded from Colombia in 1903.

**Exhibit Plan**

Panama Mails 1777 -1866  
Foreign Postal Agencies in Panama  
Forwarding Agents  
Via Panama  
Via Panama - After Joining the UPU

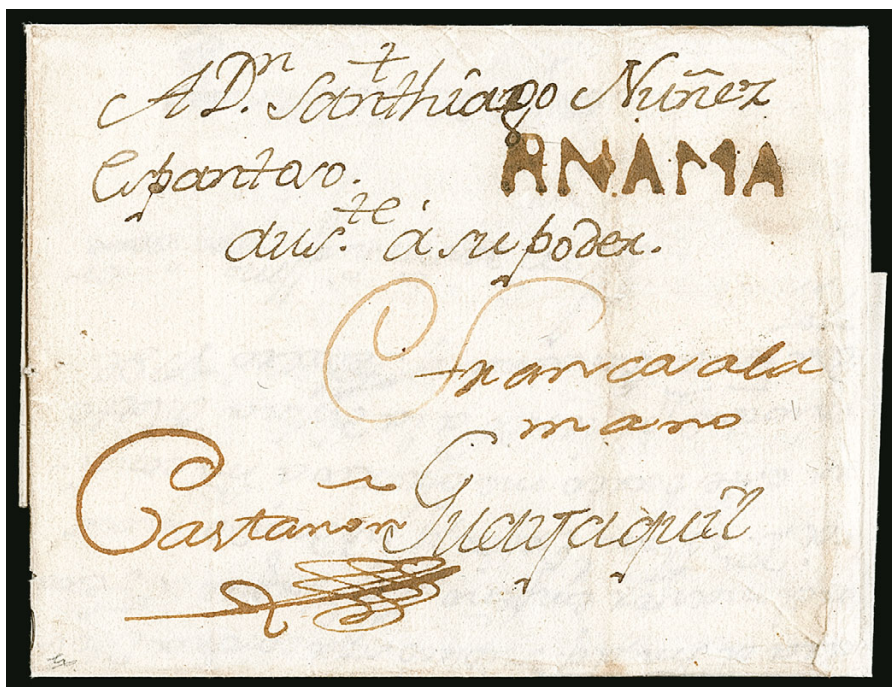


The  
ALFREDO FROHLICH  
Collection

The Evolution of Postal Systems in  
**PANAMA**  
1777 to 1881

MORNING SESSION (LOTS 1501-1648)  
TUESDAY, DECEMBER 4, 2018, AT 10:30 A.M.

SPANISH COLONIAL PERIOD, 1777-1831  
(Arranged chronologically)



1501

- 1501 ☒ **1777 “PANAMA” with Condensed “PA” Handstamp.** Bold Brownish straightline handstamp on folded letter datelined Feb. 19, 1777 from Panama to Guayaquil, manuscript endorsement “*Franca a la mano*” and signed “*Castano*”, letter is in regards to a partial repayment of debt, light vertical file folds

VERY FINE. A SUPERB STRIKE OF THIS RARE CONDENSED “PANAMA” HANDSTAMP — WHICH IS THE EARLIEST RECORDED USE OF A PRE-STAMP MARKING IN PANAMA. ONLY TWO EXAMPLES ARE KNOWN. AN ESSENTIAL ITEM FOR ANY AWARD-WINNING EXHIBIT COLLECTION.

The other recorded example, ex Camino and Goeggel, has a similar quality strike but is undated.

Ex Goeggel. With 2013 Moorhouse certificate. .... E. 7,500-10,000



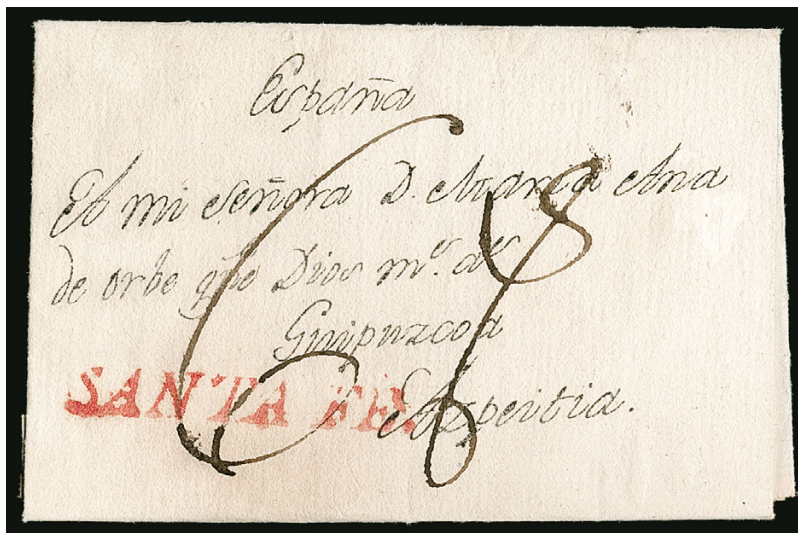


1502



1504

- 1502 ☒ **1790 Folded Letter from Chagres.** Dated "Chagres near Panama, Nov. 29th, 1790" with perfect "RH" handstamp and addressed to "Mr. Robert Hodgson, if he should stop at Corn Islands" (which is located off the coast of Nicaragua), carried privately with no indication of postal markings, fascinating letter in English in which the author states he is going to arrive in the coming months and "where I think you had better stay and receive some Robinson Crusoe education...", docketing indicating cover received on Oct. 10, 1791, Very Fine, this is one of the earliest Panama covers and the **earliest known** cover from Chagres, ex Goeggel, with 2013 Moorhouse certificate..... E. 500-750



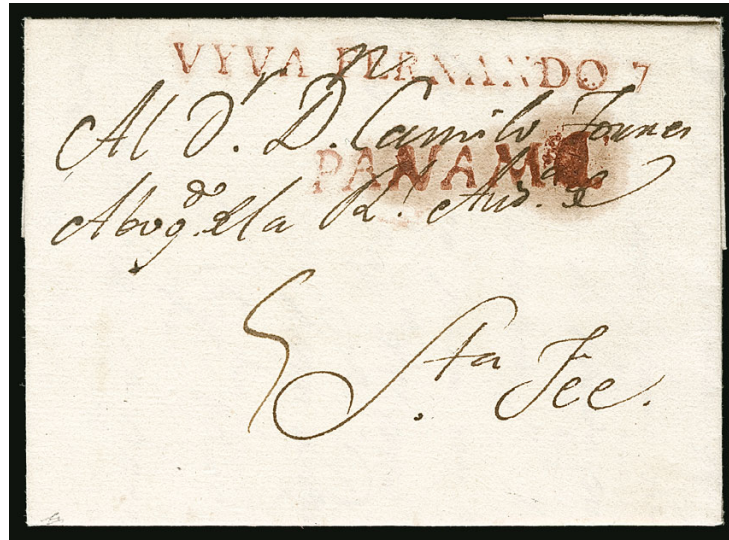
1503

- 1503 ☒ **1804 "SANTA FE".** Bold and clear strike of red straightline handstamp on small folded letter datelined in **Portovelo** on Dec. 4, 1804 and addressed to **Azpeitia, Spain**, rated "6rs" (reales) for unpaid single letter rate, minor split in fold at top

VERY FINE AND RARE. THIS IS THE ONLY RECORDED EXAMPLE OF THE "SANTA FE" HANDSTAMP USED IN PANAMA.

The "SANTA FE" handstamp, per postal rules of Sept. 1, 1779, was to be used not only in Santa Fe de Bogota, but other areas in the postal district. This was done prior to the creation of the Portovelo handstamp. Only two covers, including this one, are known used outside of Santa Fe de Bogota ..... E. 3,000-4,000

- 1504 ☒ **1808 "PANAMA".** Red straightline handstamp on folded letter datelined Dec. 2, 1808 from Panama to Santa Fe de Bogota, additionally struck with red "FRANCA" handstamp, addressed to Camilo Torres who was the leader of the Revolutionary Forces and was elected President of United Provinces of Nueva Granada in 1815, Very Fine, a rare combination of strikes with only 21 "PANAMA" examples recorded during the Colonial Period, **only four of which have the "Franca" handstamp**, ex Camino and Goeggel, with 2013 Moorhouse certificate..... E. 2,000-3,000



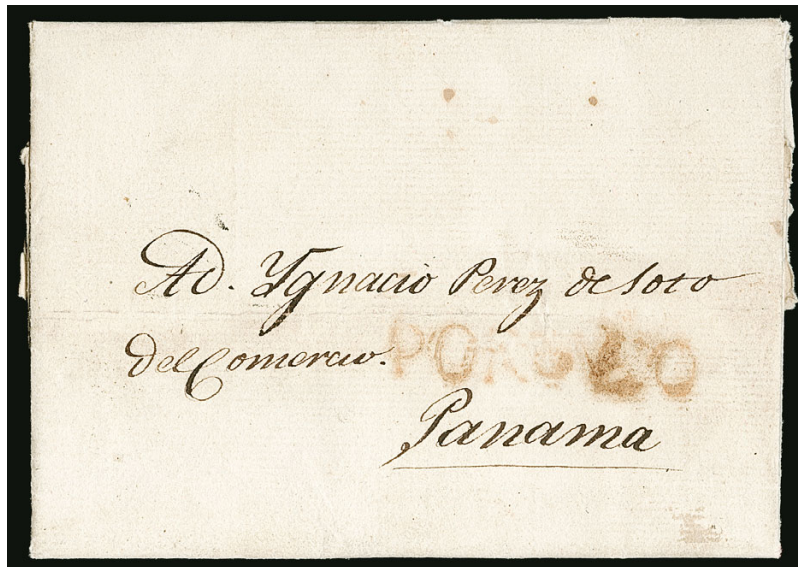
1505

- 1505 ✉ **1809 "PANAMA"**. Red straightline handstamp on folded letter datelined Jun. 30, 1809 from Panama to Sante Fe de Bogota, additionally struck with red "VYVA FERNANDO 7" patriotic handstamp, addressed to Camilo Torres, rated "5" reales for a double letter up to 2 ounces, "PANAMA" straightline with slightly oily ink residue

VERY FINE. THE UNIQUE EXAMPLE OF THE PATRIOTIC "VYVA FERNANDO 7" HANDSTAMP ON COVER.

The "VYVA FERNANDO" straightline refers to King Ferdinand VII of Spain who was then imprisoned in France by Napoleon Bonaparte. Ironically, the addressee Torres went on to become a leading politician and revolutionary figure in support of independence from Spain. He became President of the United Provinces of Nueva Granada in 1815 and was executed on Oct. 5, 1816 for treason against the Spanish monarchy.

Ex Goeggel. With 2013 Moorhouse certificate. .... E. 4,000-5,000



1506

- 1506 ✉ **1816 "PORTOVLO"**. Clear brownish red straightline handstamp on folded letter datelined in Portovelo on Feb. 16, 1816 and addressed to Panama, no indication of rate but should be 1½ reales for under ½ oz, contents referring to large shipment of silver

FINE. AN EXCEPTIONALLY RARE "PORTOVLO" HANDSTAMP. ONLY TWO ARE RECORDED USED DURING THE COLONIAL PERIOD AND THIS IS THE ONLY ONE FROM PORTOVELO.

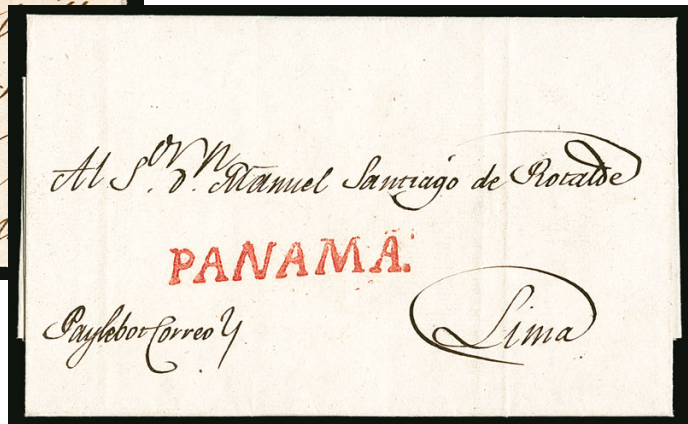
The other recorded Colonial use of this rare straightline is dated 1811 and was sent from London, England to Lima, Peru via Portovelo.

Ex Goeggel. .... E. 3,000-4,000





1507



1508

- 1507 ☒ **1816 "PANAMA"**. Red straightline handstamp on folded letter datelined Nov. 19, 1816 from Panama to Lima, Peru, manuscript "*Par la Bot Abarcal*", rated "4" reales for a double letter up to 1½ ounces, Very Fine, only 21 covers with this handstamp are recorded during the Colonial period, ex Goeggel, with 2014 Moorhouse certificate..... E. 500-750
- 1508 ☒ **1819 "PANAMA"**. Perfect strike of red straightline handstamp on immaculate folded letter dated May 6, 1819 from Panama to Lima, Peru, manuscript "*Paquebot Correo Y*", Very Fine, only 21 covers with this handstamp are recorded during the Colonial period ..... E. 500-750



1509

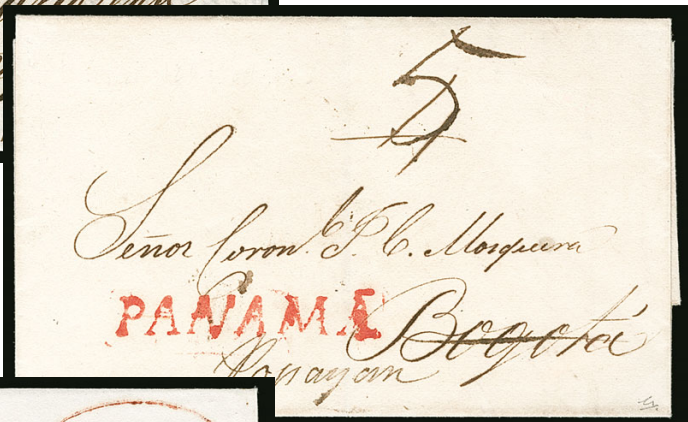
- 1509 ☒ **1819 "PANAMA"**. Well-struck red straightline handstamp applied in transit on folded letter dated Sept. 9, 1819 from Lima, to Cadiz, Spain, via Panama, red "10R." handstamp struck on arrival, cover with light overall soiling
- VERY FINE. OF THE 21 "PANAMA" HANDSTAMPS KNOWN ON COVER DURING THE COLONIAL PERIOD, ONLY THREE WERE APPLIED IN TRANSIT. THIS IS THE ONLY EASTBOUND COVER KNOWN.
- There are a total of four covers addressed to Spain — the other three having originated in Panama. Interestingly, the 10 reales due marking would indicate this letter was treated as a second weight letter from Panama rather than from Peru.
- Ex Goeggel. With 2013 Moorhouse certificate ..... E. 4,000-5,000

REPUBLIC OF NEW GRANADA 1831-1858 AND  
GRENADINE CONFEDERATION 1858-1863  
(Arranged Geographically by Town)

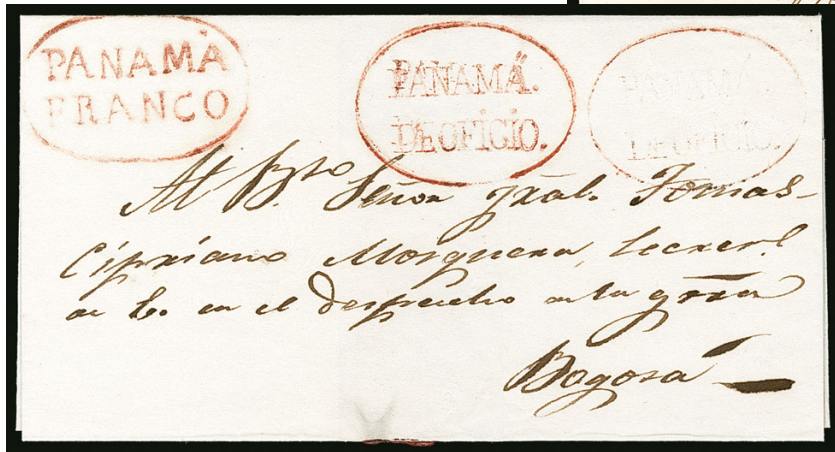
PANAMA



1510



1511



1512

- 1510 ☒ **1837 “PANAMA”**. Bold red straightline handstamp on folded letter datelined Sept. 11, 1837 from Panama to Cartagena, then forwarded to Bogota, originally rated “2” reales but amended to “4” reales with additional “4” reales at left due for forwarding, Very Fine, fewer than ten “Panama” covers are recorded during the New Granada period ..... E. 300-400
- 1511 ☒ **Undated “PANAMA”**. Red straightline handstamp on folded cover from Panama to Bogota, forwarded to Popayan, originally rated “4” reales but amended to “5” reales due to forwarding, Very Fine, fewer than ten “Panama” covers are recorded during the New Granada period ..... E. 300-400
- 1512 ☒ **1838 “PANAMA FRANCO” and “PANAMA DE OFICIO”**. Bold red strikes in oval handstamps, additional light strike of “PANAMA DE OFICIO” at right, on Sept. 1838 folded cover from Panama to General Mosquera in Bogota, Very Fine, General Mosquera went on to become the President of Colombia (in different versions) four times, this the **only known cover** with both “Franco” and “De Oficio” strikes — which is not fully explainable as one states prepaid (Franco) and the other as free for official purposes (De Oficio), ex Santa Maria, with 2009 Bortfeldt certificate ..... E. 1,500-2,000



THE EARLIEST REGISTERED COVER ORIGINATING IN PANAMA  
AN IMPORTANT ITEM FOR AN AWARD WINNING EXHIBIT



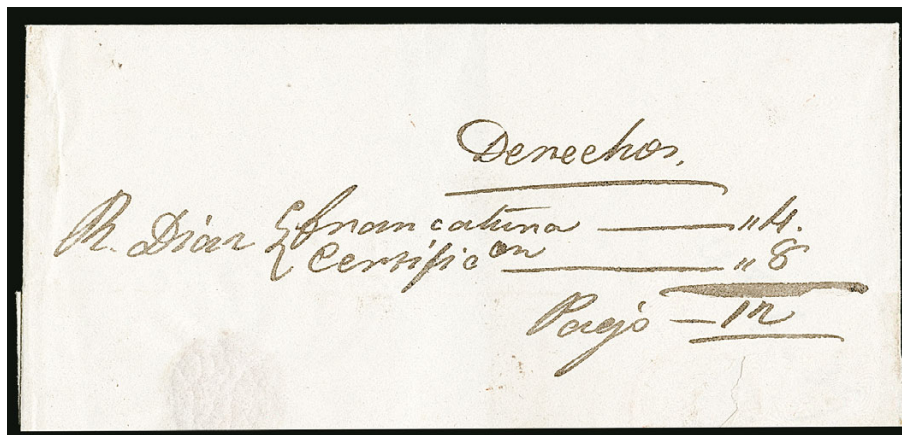
1513

- 1513 ☒ **1839 "PANAMA FRANCO".** Well-struck red oval handstamp on prepaid **registered** folded cover dated Feb. 4, 1839 from Panama to General Mosquera in Bogota, manuscript markings along edges indicating registration with "Certification Panama, Sale hoy 4 de Feb. 1839, Gonzalez" notation, reverse with explanation of rate—4 reales postage and 8 reales registration paid

VERY FINE. A REMARKABLE REGISTERED COVER FROM PANAMA. THIS IS THE EARLIEST REGISTERED COVER FROM PANAMA AND THE SOLE EXAMPLE MAILED DURING THE NEW GRANADA PERIOD.

At this time, General Mosquera was Secretary of War. He went on to become the President of Colombia four times (in various forms).

Ex Castillejo, Santa Maria and Goeggel. With 2014 Moorhouse certificate.... E. 5,000-7,500



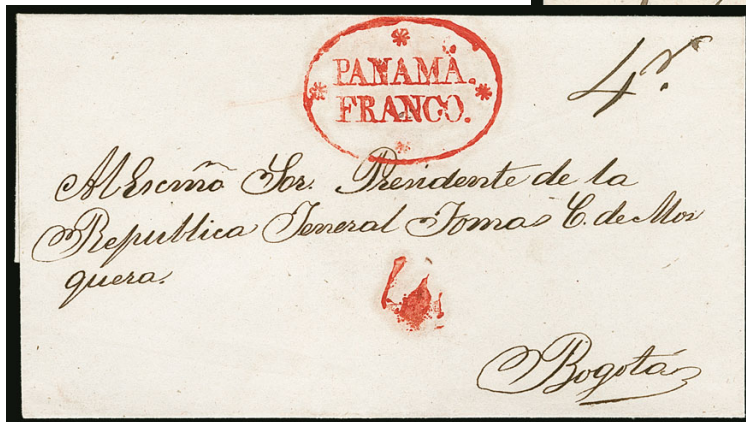
Detail of back



1514



1515



1516

- 1514 ☒ **1842 “PANAMA FRANCO” with Stars.** Red oval handstamp on folded letter datelined Mar. 13, 1842 from Panama to London, England via Jamaica, manuscript “1½” reales for ship letter rate to Jamaica and “1/8” due for British packet to London, “Jamaica Ship Letter” two-line handstamp and Kingston transit backstamp, London arrival, Very Fine, fewer than 20 examples of this handstamp are recorded..... E. 750-1,000
- 1515 ☒ **1844 “PANAMA FRANCO” with Stars.** Bold red oval handstamp on folded letter datelined Jul. 9, 1844 from Panama to London, England via Jamaica, red “1” real handstamp for internal postage to port, privately carried to Jamaica and charged “1/” due for British packet to London, undated black “Panama” double arc handstamp applied in Kingston, Kingston transit and London arrival backstamps, minor toned marks and small piece missing at top left, still Fine and rare, **only seven examples of the “Panama” handstamp in Black are recorded** by DeVoss, ex Santa Maria, with 2009 Bortfeldt certificate ..... E. 1,000-1,500
- 1516 ☒ **1846 “PANAMA FRANCO” with Stars.** Perfectly struck red oval on Jun. 1846 folded cover from Panama to President Mosquera in Bogota, red “4” reales handstamp and manuscript “4” at top right for triple letter rate, Extremely Fine, fewer than 20 examples of this handstamp are recorded, this was sent to Mosquera as President of New Granada during his first of four terms, ex Santa Maria ..... E. 400-500





- 1517 ✉ **1842-1855 “PANAMA DEBE”**. Strikes of red oval handstamp on three folded letters from Panama paying different rates, one dated 1842 with “1½” reales handstamp to General Mosquera during his time as Ambassador in Bogota, manuscript “Cartagena o Barranquilla”, paying single rate up to ½oz, second with “4” reales to Bogota paying triple rate up to 1oz, last is “15” centavos to Bogota paying single letter rate, Very Fine trio of strikes, this handstamp was used to indicate postage due upon delivery, only about a dozen examples have been recorded, the last is ex Santa Maria .....(Photo Ex) E. 750-1,000
- 1518 ✉ **1868 “PANAMA DEBE”**. Folded letter from Paris with France 10c Napoleon pair and 80c Napoleon tied by dotted star and “Paris 29 Fevr. 68” double-circle datestamp to **Buenaventura, Colombia** via London, blue “SANTA MARTA DEBE” oval handstamp (first port of entry), then to Colon and Panama where it received red “PANAMA DEBE” and “DE ULTRAMAR” handstamps, then to Buenaventura where it received “10” due handstamp, cover with some expected faults due to extensive travel, still Fine and rare destination, ex Goeggel, with 2014 J.F. Brun certificate ..... E. 1,000-1,500
- 1519 ✉ **1840s “PANAMA DE OFICIO”**. Red oval handstamp on 1840s cover from **French Consulate** in Panama to Bogota, blue “Consulat de France, a Panama” circular handstamp with eagle cachet, some edge faults, Very Fine strike, this handstamp was used to designate free postage for official use, fewer than a dozen examples have been recorded, ex Goeggel..... E. 400-500
- 1520 ✉ **1846-1852 “PANAMA DE OFICIO”**. Two covers from Panama with bold red “PANAMA DE OFICIO” oval handstamps, first a folded letter datelined Aug. 11, 1846 and addressed to San Carlos, the **only recorded** example to this destination, second is folded cover datelined Jun. 30, 1852 and addressed to Veraguas, Very Fine duo, this handstamp was used to designate free postage for official use, fewer than a dozen examples have been recorded.....(Photo Ex) E. 500-750

CHAGRES



- 1521 ☒ **1840 Folded Letter from Chagres.** Letter datelined in Panama on Aug. 7, 1840 and addressed to **London, England** via Kingston, Jamaica, originally rated with manuscript "1/- + 11d from Chagre" but "deleted" by cross and red Crown handstamp in London where it was rated "2/3", Kingston transit and London arrival backstamps, vertical file fold thru crown handstamp, Fine, "2/3" (d) was the correct packet rate from Panama to England in 1840, ex Risvold, with 2014 Moorhouse certificate ..... E. 200-300
- 1522 ☒ **1840 "CHAGRE FRANCA".** Bold strike of red oval handstamp on blue Aug. 27, 1840 folded cover from Chagres to General Mosquera in Panama, who was Secretary of War at the time, manuscript "1" real paying the single letter rate, Very Fine and rare, **only two examples of this handstamp are recorded**, the other offered in the following lot, ex Santa Maria ..... E. 1,000-1,500
- 1523 ☒ **1844 "CHAGRE FRANCA".** Well-struck red oval handstamp on folded letter datelined Nov. 21, 1844 from Chagres to General Pedro Alcantara Herran in Bogota, who was serving at President of New Granada, manuscript "4" reales paying the triple rate up to 1oz, Very Fine and rare, **only two examples of this handstamp are recorded**, the other offered in the previous lot ..... E. 1,000-1,500
- 1524 ☒ **1850 "DEBE CHAGRE".** Clear strike of red oval handstamp on blue folded letter docketed Aug. 28, 1850 from Chagres to General Mosquera in Panama, who had just completed his first term as President of New Granada (1845-1849), manuscript "1" real due for single letter rate, light file fold thru handstamp, Fine **only three examples of this handstamp are recorded**, ex DeVoss and Goeggel, with 1989 Holcombe certificate ..... E. 750-1,000
- 1525 ☒ **1850 "DEBE CHAGRE".** Perfect strike of red oval handstamp on Sept. 18, 1850 folded cover datelined from Chagres to General Mosquera in Panama, who had just completed his first term as President of New Granada (1845-1849), manuscript "1" real due paying the single letter rate, Very Fine, **only three examples of this handstamp are recorded**, ex Santa Maria ..... E. 1,000-1,500



PORTOVELO



1526

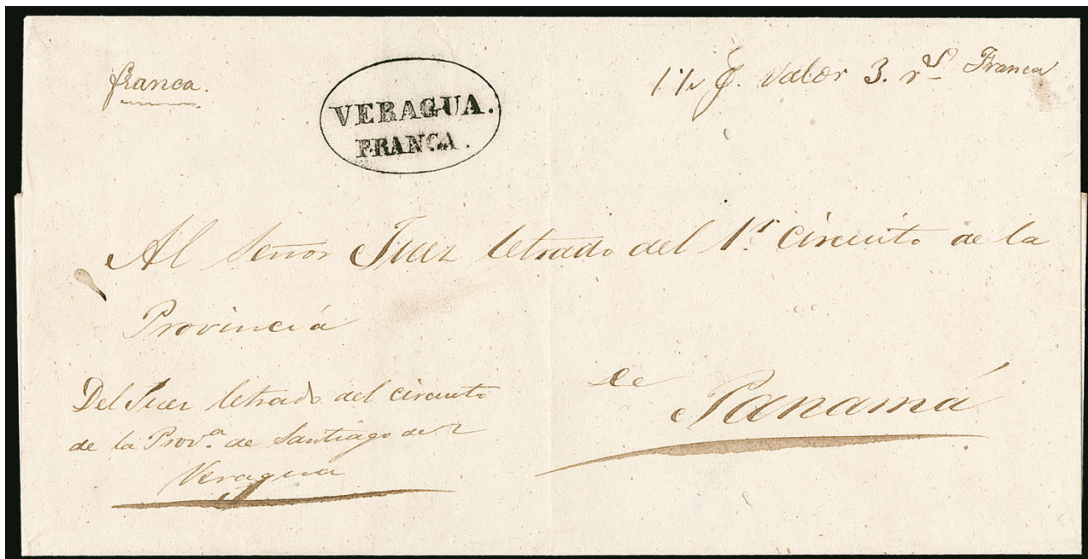
- 1526 ☒ **1833 “PORTOVLO”**. Superb strike of red straightline handstamp on folded letter dated in Portovelo on Feb. 20, 1833 and addressed to General Mosquera in Cartagena, then forwarded to Popayan, initially rated “1½” reales but corrected with red “4” reales handstamp after forwarding, red “Repub. de Colombia Debe, Cartagena” handstamp

VERY FINE AND RARE. ONLY TWO EXAMPLES OF THIS “PORTOVLO” HANDSTAMP ARE RECORDED USED DURING THE NEW GRANADA PERIOD.

The other example, ex Santa Maria, is dated 1837 and addressed to Panama. At the time of posting, the addressee, General Mosquera, was a Diplomat and would later serve his first of four terms as President, beginning in 1845.

Ex Santa Maria. With 2014 Moorhouse certificate..... E. 3,000-4,000

VERAGUA

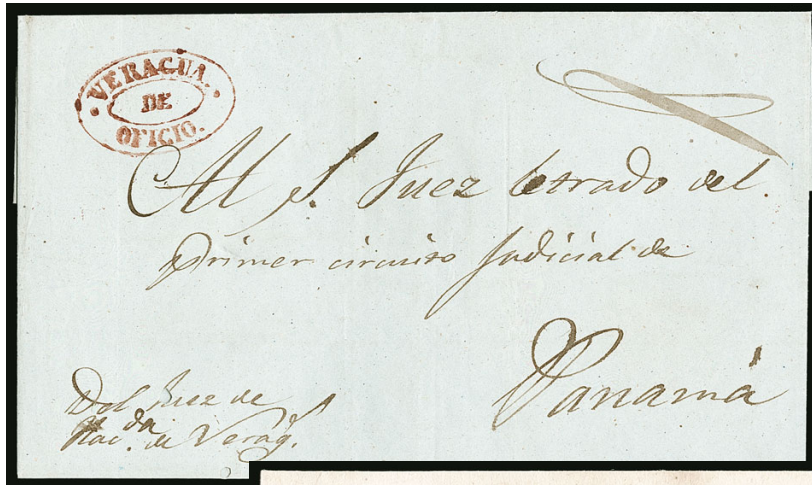


1527

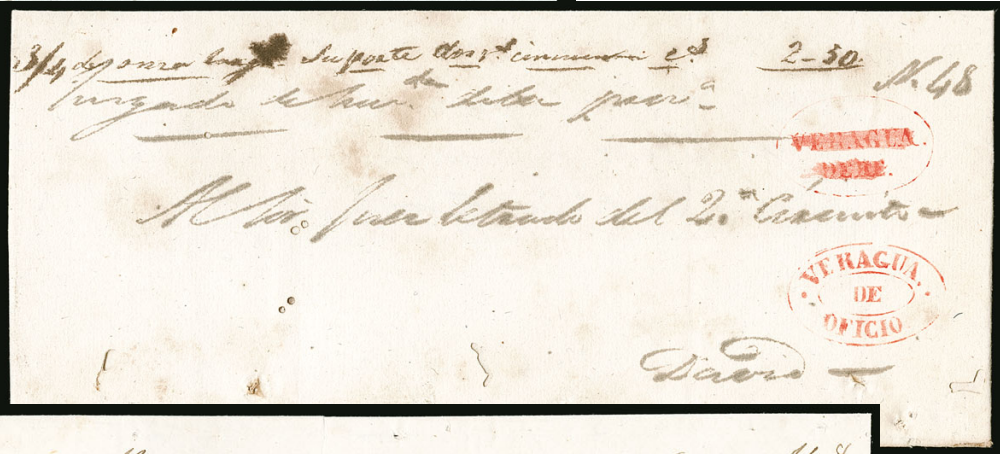
- 1527 ☒ **1850 “VERAGUA FRANCA”**. Beautifully struck black oval handstamp on folded cover docketed Nov. 9, 1850 from Veragua to Panama, prepaid and rated “3rs” (reales) at top right for 1½oz

VERY FINE. ONE OF ONLY TWO RECORDED STRIKES OF THE “VERAGUA FRANCA” OVAL HANDSTAMP, AND THE SOLE EXAMPLE IN BLACK.

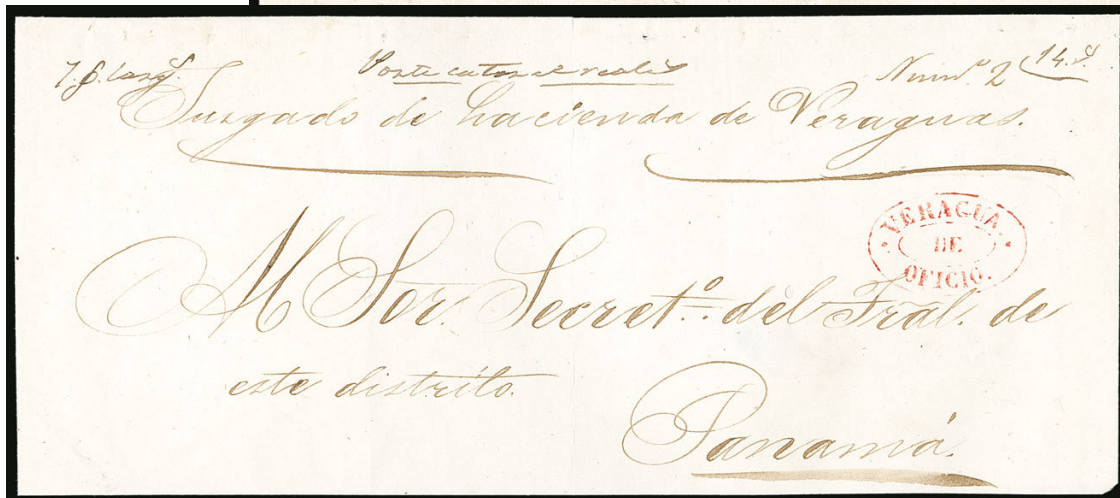
The other recorded example is struck in red on an undated cover. The significance of the differing colors of the handstamp is unknown, as they each represented full prepayment of postage..... E. 2,000-3,000



1528



1529



1530

- 1528 ☒ **1846 “VERAGUA DE OFICIO”.** Bold strike of red double oval handstamp on folded blue letter datelined Sept. 16, 1846 from Veragua to Panama, couple minor wormholes, Very Fine strike and quite rare, **one of only six recorded covers** with this handstamp.... E. 500-750
- 1529 ☒ **1847 “VERAGUA DE OFICIO”.** Strike of red double oval handstamp on folded judicial cover dated Aug. 30, 1847 from Santiago (Veragua) to David, endorsed “¾ de onza. Su porte dos ris cincuenta Cs. 2-50”, originally with red “VERAGUA DEBE” oval handstamp that was “deleted” by red manuscript, as this was official correspondence, cover with small faults including minor wormholes, still Fine and rare, this is the **only known cover with this combination of strikes**, as well as the only recorded use of the “VERAGUA DEBE” oval handstamp, ex Goeggel, with 2004 Moorhouse certificate..... E. 750-1,000
- 1530 ☒ **1847 “VERAGUA DE OFICIO”.** Red double oval handstamp on large 1847 official judicial folded cover from Santiago to Panama, endorsed “7 oz largas” and rated “14½” along top, Very Fine strike, **one of only six recorded covers with this handstamp**..... E. 500-750



1.º h.º largos. Superficie de i. media. n.º 57

M.º Sr. Juan letrado del D.º Circuito de la Prov. de Panamá

Nata -

1531

VERACUA DE OFICIO

Del 1.º Cantonal de Araguas

1533

M.º Sr. Juan de Hacienda de la Provincia de Veraguas

Del 1.º Cantonal de Manzanillo

DAVID DE OFICIO

Santiago

1534

Subrogante del Circuito de

DAVID DE OFICIO

16.º

1532

N.º 69

7.º J. Valor P.º 14.

del sup.º del distrito judicial del M.º

Panamá

2.º

Amor de Justicia

NATÁ

Valor 4.º

1536

1.º h.º

NATÁ

Amor de Justicia

Del 1.º Cantonal de Araguas

1535

Valor 4.º

V.º

1538EX

15

Gen. J. C. de Mosquera

DAVID DE OFICIO

1537

Administración de Justicia

M.º Sr. Juan letrado de Hacienda de la Prov. de Veraguas

Del 1.º Cantonal de Araguas

Santiago

1539

Mexico

Lanman & Remond

New York

NOTOS

NEW YORK

1540EX

Via de Cartago

Servicio Lanman & Remond

67- Water St. N.Y.

NEW YORK

NEW YORK

- 1531 ☒ **1847 “VERAGUA DE OFICIO”**. Red double oval handstamp on large 1847 official judicial folded cover from Santiago to Nata, endorsed “*1¼ oz largas, su porte dos i medio rs. 2½*” along top, Very Fine, a rare handstamp on cover and **one of only six recorded**, ex Goeggel, with 2004 Moorhouse certificate..... E. 500-750
- 1532 ☒ **1851 “VERAGUA DE OFICIO”**. Black double oval handstamp on large 1851 official judicial folded cover from Santiago to Panama, endorsed “*7 oz., valor rs. 14*” along top, Very Fine strike, **one of only six recorded covers** with this handstamp and the **only example** we have encountered in black, ex Goeggel..... E. 500-750

## DAVID

- 1533 ☒ **1847 “DAVID DE OFICIO”**. Strike of brown double oval handstamp on folded official letter datelined Apr. 18, 1847 from David to Santiago (Veragua), Fine, a rare strike with **only two examples recorded**, the other offered in the following lot, ex Goeggel, with 2004 Moorhouse certificate ..... E. 750-1,000
- 1534 ☒ **1850 “DAVID DE OFICIO”**. Two strikes of black handstamp on large folded official cover docketed Mar. 4, 1850 from David to Veragua, rated “*16rs*” (reales) for postage but not collected due to official marking, cover refolded for display and overall toning, still Fine and rare, **only two examples recorded**, the other offered in the previous lot ..... E. 500-750

## NATA

- 1535 ☒ **1851 “NATA”**. Bold strike of black straightline handstamp on large folded official cover docketed Feb. 16, 1851 from Nata to Veragua, manuscript “*2oz, valor 4rs*” (reales) rating along top, “FRANCA” straightline indicating postage paid but deleted with ink, Fine, **only three examples are recorded**, one of the others is offered in the following lot ..... E. 750-1,000
- 1536 ☒ **1851 “NATA”**. Bold strike of black straightline handstamp on large folded official cover docketed Apr. 10, 1851 from Nata to Veragua, manuscript “*14½oz, valor 29rs*” (reales) rating along top, cover refolded for display and with slight ink erosion in address, Fine, **only three examples are recorded**, one of the others is offered in the previous lot ..... E. 750-1,000

## LOS SANTOS

- 1537 ☒ **1848 “H.C.DE.L.S.” (Hacienda de Los Santos)**. Bold and clear strike of straightline handstamp on large folded official cover docketed Mar. 16, 1848 from Los Santos to Santiago (Veraguas), manuscript “*1oz, 2rs*” (reales) rating along top and “*De Ofo*” (De Oficio) below, handstamp with ink erosion and cover with few minor wormholes, still Fine and exceptionally rare with **only two covers recorded**, ex Goeggel, with 2004 Moorhouse certificate ..... E. 750-1,000

## COLON

- 1538 ☒ **1857 “ADMINISTRACION DE CORREOS COLON, DABE”**. Two folded letters, each with clear strikes of red double-circle handstamp, datelined in New York and carried privately before entering the mails in Colon where they received manuscript “*15*” centavos due markings, first dated Jul. 20, 1857 and sent to General Mosquera in Bogota, other dated Oct. 6, 1857 and sent to General Mosquera in Cartagena, both letters regarding debt repayment, with the hope that “*everything in dispute between the Governments will be amicably arranged*”, Very Fine pair, interesting to note the misspelling of “Debe” as “Dabe”, this lot includes **two of the five examples recorded**.....(Photo Ex) E. 500-750
- 1539 ☒ **1863 “COLON”**. Beautiful strike of red oval handstamp on folded letter datelined in Barranquilla on Sept. 29, 1863 and addressed to New York, privately carried to Colon with forwarder handstamp on reverse, “N York Steamship” circular handstamp and “3” due handstamp, Very Fine..... E. 400-500
- 1540 ☒ **1859 “ADMINISTRACION DE CORREOS COLON, FRANCA”**. Two folded letters to New York, each with clear strikes of red double-circle handstamp and C.J. Fox forwarding handstamp, first dated Apr. 4, 1859 and sent from Bogota via Cartagena and Colon with blue “Bogota Franca” and “15” centavos paid handstamp, second dated Jul. 6, 1859 from Cartagena, sent via Colon, Very Fine duo, these covers were sent during the short-lived Granadine Confederation (1858-1863), first cover signed Holcombe .....(Photo Ex) E. 1,000-1,500





1541

- 1541 ☒ **1860 “ADMINISTRACION DE CORREOS COLON, FRANCA”.** Bold strike of red double-circle handstamp applied in transit indicating prepayment, on folded cover date-lined in Cali on Apr. 24, 1860, with two **Colombia, 1859 5c Blue and 20c Blue (2, 6)**, 5c with sheet margin at bottom, 20c from Stone A, both with large margins to touching, tied by “Cali” in oval handstamp and addressed to **New York**, light red “Forwarded by C.J. Fox, Aspinwall N.C.” handstamp indicating carriage outside the mails from Colon to New York, light file fold thru 20c and Colon handstamp apparently lightly “inked in” at left
- VERY FINE APPEARANCE. AN EXCEPTIONAL SHOWPIECE DISPLAYING THE USE OF TWO DIFFERENT COLOMBIA FIRST ISSUE STAMPS ON COVER TO NEW YORK. FEWER THAN HALF A DOZEN FIRST ISSUE COVERS TO THE UNITED STATES ARE KNOWN.
- The 25c franking paid the double letter rate to Colon. Ex Goeggel. With 2012 Moorhouse certificate. .... E. 7,500-10,000

- 1542 ☒ **Panama Mails Balance, 1822-1857.** Eight covers, including “Panama” straightline (ex Goeggel), “Panama Franco” (two), “Panama de Oficio” (two), “Panama Debe” (two), and “Administracion de Correos de Colon, Dabe”, few addressed to Mosquera, plus two forwarding agent covers with “Hurtado Hermanos” and “Mosquera Hurtado”, most strikes with fewer than 10 known, couple small faults, mostly Fine-Very Fine .....(Website PDF) E. 1,000-1,500

BRITISH POSTAL AGENCIES  
PANAMA CITY



- 1543 ☒ **1842 “Panama” Double-Arc.** Clear undated strike in black on folded letter datelined in Lima, Peru on Jan. 20, 1842, sent via Panama and Kingston, the latter where the handstamp was applied, to Edinburgh, Scotland, Kingston transit and arrival backstamps, manuscript “2/-” rating for double the 1sh uniform rate by British packet, Very Fine, DeVoss recorded **fewer than seven examples**, this is the earliest known use.. E. 500-750
- 1544 ☒ **1842 “South America via Panama” Rimless Circular Handstamp.** Clear strike on folded letter from Lima, Peru to London, sent via Panama with “Panama July 1842, forwarded by Fr. W. Byrne” on backflap and Kingston where handstamp was applied (though no Kingston datestamp), manuscript “2/-” rating, arrival backstamp, some sensible strengthening on flap, Fine and scarce, ex DeVoss..... E. 300-400
- 1545 ☒ **1843 “South America via Panama” Rimless Circular Handstamp.** Clear strike on folded cover to London with manuscript “Recd. and Forwd. by Your Obs Servt., Seth Sweetser, U.S. Consul, Guayaquil 15 Aug. 1843” along backflap (unknown origin), sent via Panama and Kingston where handstamp was applied, additional boxed “Panama Forwarded by Frederick W. Byrne” handstamp, manuscript “2/” rating, arrival backstamps, Very Fine strike, the addressee, Sir W.J. Hooker, was a famous botanist and Director of the Royal Botanic Gardens in Kew, ex Bentley, with 2006 R.P.S. certificate ..... E. 400-500
- 1546 ☒ **1844 “South America via Panama” Rimless Circular Handstamp.** Clear strike on folded cover to **Tours, France**, sent via Panama and Kingston where it received the handstamp and “Kingston MR 29 1844” transit, “Received & Forwarded by Louis Lewis of Panama” handstamp, manuscript “17” decimes rating, transit and arrival backstamps, Very Fine, lovely strikes of all markings..... E. 400-500





1547

- 1547 ☒ **1845 “Panama” Double-Arc.** Clear undated strike in red on folded cover with “F.W. Byrne, Panama 16 Aug 1845” along backflap, addressed to London, Kingston Aug. 31 transit backstamp, manuscript “1/” due, Very Fine strike, particularly rare in red as DeVoss records only two examples (though one or two others may exist)..... E. 500-750



1548

- 1548 ☒ **1847, Red “Paid at Panama” Crowned Circle Handstamp (A82; SG CC5).** Perfect strike on folded letter datelined at Liverpool on Mar. 16, 1847 and addressed to Lima, Peru, Panama Apr. 24 double-arc transit backstamp, manuscript “1/6” rating for triple letter rate, Extremely Fine, easily one of the finest strikes of this Crowned Circle we have encountered, signed Holcombe, Scott \$2,200.00, SG £1,900 ..... E. 1,000-1,500

### “TRANSIT” HANDSTAMP

According to Parmenter-Gordon, this is believed to be a precursor to the three-line transit datestamp, having been produced locally as it was not entered into the proof books. It was created as a temporary solution while the proper handstamps were requested from London following the Mar. 16, 1848 Postal Convention between the United Kingdom and New Granada. It is only recorded used from March 1856 until the new handstamp was received after having been sent from London on June 2.

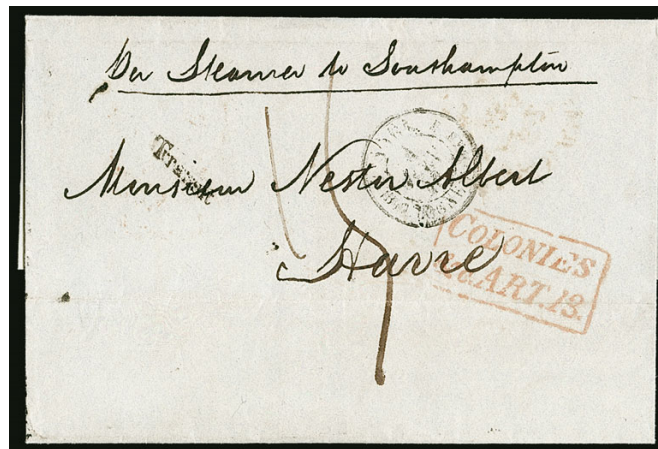


1549

- 1549 ☒ **1848, “Transit”.** Petite italicized straightline handstamp on 1848 folded cover from Chile with red “Copiapo” handstamp, addressed to Birmingham, England with manuscript directives “via Panama” and “para Inglaterra” at top, rated “1½” for domestic postage and “2/-” for British mail from Valparaiso, Panama Apr. 25 and London transit and Birmingham arrival backstamps, cover with slight reinforcements along folds

VERY FINE. AN EXCEEDINGLY RARE PROVISIONAL “TRANSIT” HANDSTAMP AND THE EARLIEST TRANSIT HANDSTAMP USED IN PANAMA. FEWER THAN 10 EXAMPLES ARE BELIEVED TO EXIST.

With 2016 Moorhouse certificate ..... E. 3,000-4,000



1550

- 1550 ☒ **1848, “Transit”.** Petite italicized straightline handstamp on 1848 folded cover from Chile with Coquimbo Mar. 30 docketing, addressed to Havre, France with manuscript directives “par Steamer to Southampton” at top, rated “15” decimes due with red boxed “Colonies & C. Art 13” accountancy handstamp, Panama Apr. 25 and London transit and Le Havre arrival backstamps

VERY FINE EXAMPLE OF THE PROVISIONAL “TRANSIT” HANDSTAMP FROM PANAMA. FEWER THAN 10 EXAMPLES ARE BELIEVED TO EXIST.

..... E. 3,000-4,000

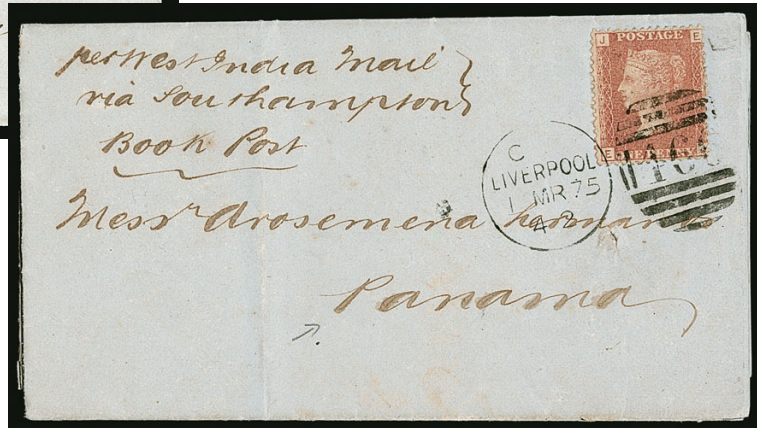




- 1551 ☒ **1849, Red "Paid at Panama" Crowned Circle Handstamp (A82; SG CC5).** Clear strike on folded letter datelined in Panama on Feb. 27, 1849 and addressed to Lima, Peru, Panama Feb. 27 double-arc transit backstamp, manuscript "1/-" and "2" ratings at top right, indicating double rate, Very Fine, Scott Retail \$2,200.00, SG £1,900..... E. 500-750
- 1552 ☒ **1852, Red "Paid at Panama" Crowned Circle Handstamp (A82; SG CC5).** Clear strike on 1852 folded cover to Valparaiso, Chile, Panama Jul. 23 double-arc transit backstamp, manuscript "1/-" rating, Very Fine, Scott Retail \$2,200.00, SG £1,900..... E. 500-750
- 1553 ☒ **1852, Red "Paid at Panama" Crowned Circle Handstamp (A82; SG CC5).** Clear strike on 1852 folded cover to Santiago, Chile, likely originating in the United States with manuscript "50" cents paying the American packet rate to Chile via Panama and Valparaiso, Panama Sept. 8 double-arc transit backstamp, few other rate markings, small bleach stain at center from wax seal just affecting Crowned Circle handstamp, Fine, Scott Retail \$2,200.00, SG £1,900 ..... E. 400-500
- 1554 ☒ **1853, Red "Paid at Panama" Crowned Circle Handstamp (A82; SG CC5).** Well-struck on folded letter datelined at **San Francisco** on Mar. 15, 1853 and addressed to Valparaiso, Chile, rated "50" cents with black "Paid" handstamp, Panama Apr. 8 double-arc transit backstamp, manuscript "2/-" rating, Very Fine, a scarce use from San Francisco via Panama, ex DeVoss, Scott Retail \$2,200.00, SG £1,900 ..... E. 750-1,000



1555



1556

- 1555 ☒ **1853, Red “Paid at Panama” Crowned Circle Handstamp (A82; SG CC5).** Clear strike on small folded cover with “San Francisco Cal. 32 Aug.” circular datestamp to Lima, Peru, rated “32” cents with black “Paid” handstamp, Panama Sept. 6 double-arc transit backstamp, manuscript “6d” for postage to Lima and charged “1” for internal delivery, Very Fine, a scarce use of the Panama Crowned Circle from San Francisco, ex DeVoss, with 1989 Holcombe certificate, Scott Retail \$2,200.00, SG £1,900..... E. 500-750
- 1556 ☒ **1864, 1p Rose Red (33; SG 43).** Plate 159, tied by “166” oval and “Liverpool 1 MR 75” duplex datestamp on folded printed circular to **Panama**, manuscript directive “per West India mail, via Southampton, Book Post” along top, Very Fine, a scarce book post rate cover which was reduced in 1870 to 1p per two ounce weight, with 2016 Moorhouse certificate ..... E. 400-500

## GREAT BRITAIN STAMPS USED IN PANAMA — “C35”

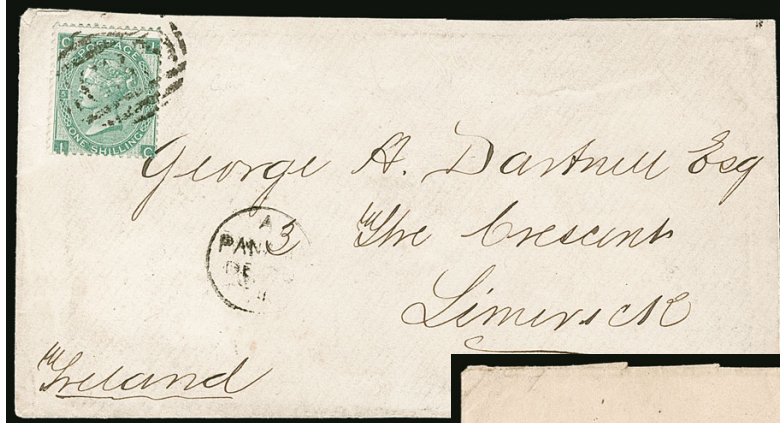


1557

- 1557 ☒ **1867, 1sh Green (A121; SG Z102).** Plate 4, tied by bold barred “C35” of Panama on cover to **Schwerin, Germany**, cover originating in Lima, Peru and carried outside the mails to Panama, “Panama 20 JY 1867 Transit” datestamp and “Insufficiently Prepaid” handstamp (Parmenter-Gordon “Rarity G, very rare”) with manuscript “1/5”, transited via London, blue German rate markings, Very Fine and attractive cover ..... E. 750-1,000



1558

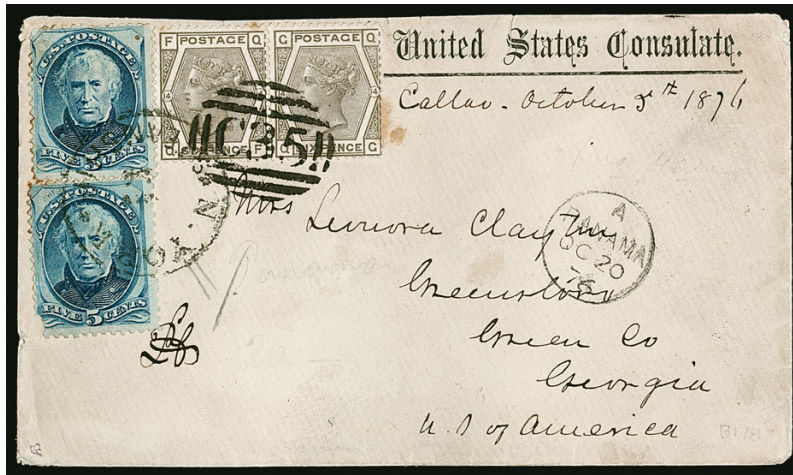


1559



1560

- 1558 ☒ **1869, 1p Rose Red, 4p Vermilion, 1sh Green (A84, A102, A122; SG Z72, Z85, Z103).** 1p Plate 203, 4p Plate 11, 1sh Plate 4, tied by barred "C35" of Panama with "Panama AP 22 69" circular datestamp on small cover **to Melbourne, Australia**, London transit and Melbourne arrival datestamps, cover with couple minor tears and slightly reduced at top and bottom, Fine, a rare destination ..... E. 300-400
- 1559 ☒ **1871, 1sh Green (A122; SG Z103).** Plate 5, tied by "C35" of Panama with "Panama DE ?? 71" circular datestamp on cover **to Limerick, Ireland**, arrival backstamp, Fine and seldom seen destination ..... E. 200-300
- 1560 ☒ **1874, 3p Rose (A98; SG Z82).** Plate 12, two singles, one with part imprint salvage at bottom, other with wing margin, each tied by bold barred "C35" cancel of Panama in transit, cover originated in Lima and franked with **Peru 10c** tied by grid cancel with "Lima Principal 27 Novb. 74" double-circle datestamp, addressed **to Jalapa, Mexico**, "25" centavos due handstamp, central file fold away from stamps, Fine, a rare dual-country combination, only about ten such covers are known with this Peru stamp, unusual choice of route rather than using the British Post in Callao ..... E. 1,500-2,000



1561



1562

- 1561 ✉ **1876, 6p Gray (A115; SG Z96).** Horizontal pair, Plate 14, tied by bold barred "C35" of Panama applied in transit with Oct. 20 circular datestamp, cover originating in Callao, Peru with printed "United States Consulate" and manuscript "Callao, October 5th, 1876" below, two singles of **United States 1875 5c Blue (179)** (one faulty), tied by New York Steamship datestamp, addressed to Greensboro Ga., backflap repaired and couple light toned marks just affecting stamps

FINE. AN EXCEPTIONALLY RARE GREAT BRITAIN AND UNITED STATES COMBINATION FRANKING FROM THE U.S. CONSULATE IN PERU VIA PANAMA. A FANTASTIC EXHIBIT PIECE.

This cover was carried from Peru to Panama via diplomatic mail. The British rate from Callao to Panama was 6p per ½oz and U.S. postage to addressee was 5c per ½oz.

Ex Risvold. Signed Ashbrook..... E. 4,000-5,000

- 1562 ✉ **1876, 6p Gray (A115; SG Z96).** Horizontal pair and single, Plate 14, applied to back of cover and cancelled by clear barred "C35" of Panama applied in transit with Jan. 18 circular datestamp, cover originated in Callao, Peru with printed "United States Consulate" and manuscript "Callao, Jan 5th, 1876", horizontal strip of three of **United States 1875 5c Blue (179)** applied below the British stamps and tied by New York Steamship Feb. 5 datestamps with an additional strike on front, addressed to Greensboro Ga., slightly reduced at left and cover opened for display

FINE AND ATTRACTIVE UNITED STATES AND GREAT BRITAIN MIXED FRANKING USE FROM THE U.S. CONSULATE IN PERU TO THE UNITED STATES VIA PANAMA.

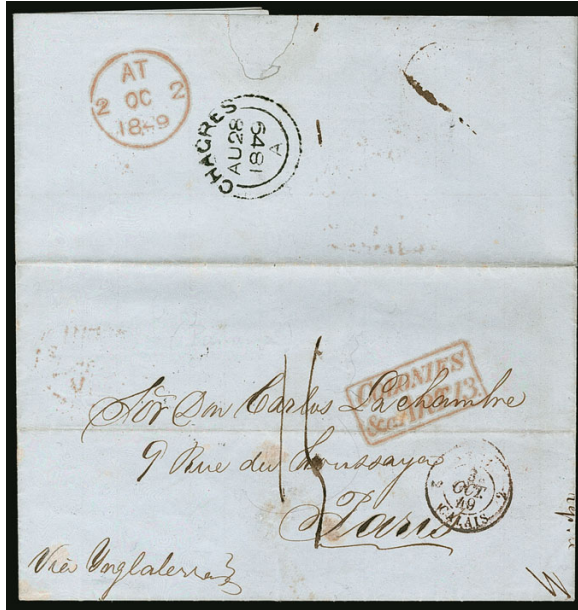
This cover was carried from Peru to Panama via diplomatic mail. The British rate from Callao to Panama was 6p per ½oz and U.S. postage to addressee was 5c per ½oz. .... E. 4,000-5,000





- 1563 ☒ **1877, 4p Sage Green (A104; SG Z87).** Tied by barred “C35” oval and “Panama DE 20 77” circular datestamp where it entered the mails, folded letter datelined in **Jipijapa, Ecuador** on Dec. 6, 1877 and sent outside the mails with blue “Encaminada por Rodriguez, Cordova & Co., Manta, Agentes Comisionistas” forwarding agent handstamp, addressed to **St. Thomas**, arrival backstamp, horizontal file fold thru postmark and minor aesthetic repair on top flap, Very Fine, ex Campbell..... E. 400-500
- 1564 ☒ **1877, 4p Sage Green (A104; SG Z87).** Tied by bold barred “C35” oval and “Panama MR 7 79” circular datestamp where it entered the mails, folded letter datelined in **Montecristi, Ecuador** on Feb. 24, 1879 and sent outside the mails with blue “Encaminada por L.A. Fernandez y Co., de Panama” forwarding agent handstamp, addressed to **St. Thomas**, arrival backstamp, some slight splitting along folds, Very Fine..... E. 400-500
- 1565 **1879, 8p Orange (A117; SG Z98).** Tied on small piece by barred “C35” oval of Panama, used with **Costa Rica 2r** tied by boxed “25 ABR 79” datestamp, also incl. Costa Rica 2r with “Agencia Postal de Costa Rica, Panama” handstamp, Very Fine, the combination on piece is unknown on a complete cover and catalogues \$350.00 (SG £300) as a single.... E. 200-300
- 1566 ☒ **1880, 1p Rose Red (A84; SG Z72).** Two vertical pairs, Plate 193, tied by barred “C35” oval and “Panama-Transit OC 19 80” (Parmenter-Gordon “Rarity G”) circular datestamps on cover to Bretforton, England, “H.M.S. Shannon” insignia on reverse, cover with small faults incl. tear at top between pairs and quite reduced at bottom, Fine, this rate paid the reduced seaman’s rate of 4p per ½oz, the H.M.S. Shannon was stationed in the Pacific at this time, the Panama cancel was only used between Aug. 1880 and Jul. 1882, listed in Parmenter-Gordon as very rare with “price from £900”..... E. 300-400

## CHAGRES AND COLON

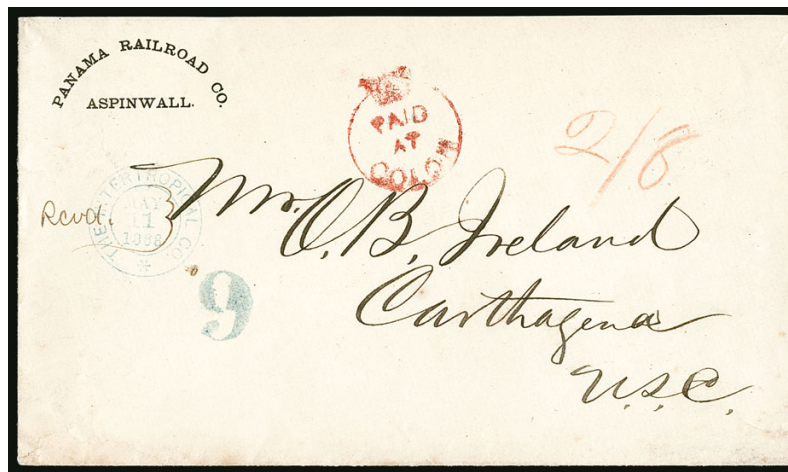


1567



1568

- 1567 ☒ **Chagres, 1849 “Chagres” Double-Arc Datestamp.** Folded letter datelined at Chagres on Aug. 26, 1849 and addressed to **Paris, France**, bold “Chagres AU 28 1849” double-arc datestamp with “4” in year inverted (Parmenter-Gordon “Rarity H, very few exist”), London and Calais transit handstamps, red boxed “Colonies & C. Art 13” accountancy handstamp with “15” decimes due, Very Fine, DeVoss records fewer than five examples known, with this believed to be the **only known example with inverted date slug**, ex Glassco and DeVoss..... E. 750-1,000
- 1568 ☒ **Colon, 1855 “Colon” Double-Arc Datestamp.** Folded letter datelined in Panama on Sept. 22, 1855 and addressed to **Paris, France**, bold red “Colon SP 23 1855” double-arc datestamp applied in transit on backflap, London and Calais transit, boxed red “Colonies & C. Art 13” accountancy handstamp, Very Fine, a scarce handstamp, **fewer than half a dozen are recorded**, Parmenter-Gordon “Rarity G, very rare” ..... E. 500-750



1569

- 1569 ☒ **Colon, 1868, Red “Paid at Colon” Crowned Circle Handstamp (A53; SG CC4).** Crisp strike on 1868 “Panama Railroad Co., Aspinwall” corner card cover to Cartagena, Colon Apr. 22, 1868 departure backstamp, British 0manuscript “2/8” rate and Colombian blue “9” reales, apparently forwarded to Monteria with blue Intertropical Co. handstamp and docketing on reverse
- VERY FINE STRIKE OF THIS RARE COLON CROWNED CIRCLE HANDSTAMP. IT IS BELIEVED LESS THAN HALF A DOZEN ARE KNOWN.
- Parmenter-Gordon “Rarity H, very few exist”. Ex Bentley. With 2007 R.P.S. certificate. Scott \$5,500.00. SG £4,750 ..... E. 2,000-3,000





1570 one of two



1570 two of two

## A REMARKABLE PAIR OF COVERS INVOLVING POSTAL SYSTEMS OF THREE DIFFERENT COUNTRIES

- 1570 ☒ **Colon, 1872-73 Three Country Combination Folded Letter.** Folded letter datelined in Manchester, England on Nov. 30, 1872 with **Great Britain 1sh, Plate 6** and tied by barred “498” postmark and red Manchester Nov. 30 double-circle datestamp **to San Jose, Puerto Rico**, the address was misread—as there is no San Jose in Puerto Rico—and sent to Costa Rica in error where the letter was held by the Postmaster with “Admon Gral De Correos de Costa Rica, San Jose 10 Enero 1875” handstamp (date corrected to “14”), accompanied by **second folded cover** which evidently had an enclosure requesting payment for additional postage to original addressee in Puerto Rico that was franked with two **Great Britain 1p (Plate 149)** stamps and tied by barred “C35” oval of Panama with “Panama FE 5 73” circular datestamp and manuscript “Servicio Publico, Aviso de carta rezagada” along top, original cover then forwarded via Panama and Colon where it received **Great Britain 4p, Plate 13** and tied by barred “E88” of Colon with “Colon AP 3 73” circular datestamp, the cover was **returned in error** from St. Thomas to Colon and resent with Colon Apr. 23 circular datestamp, again via St. Thomas to Puerto Rico where “1” real handstamp and Cuba 25c was applied and tied by cancel paying the postage due

VERY FINE. A TRULY REMARKBLE PAIR OF HISTORICAL COVERS. IDEAL FOR AN AWARD-WINNING EXHIBIT, HIGHLIGHTING THE PROCESSING OF MAIL THROUGH VARIOUS POSTAL SERVICES AND THE DETERMINATION OF A POSTMASTER TO FIND THE RECIPIENT, DESPITE HAVING BEEN POORLY ADDRESSED.

An even more thorough explanation of these two covers can be found in *The Postal History of Costa Rica to 1883* by Frajola and Mayer. It is astonishing to note that these two covers still exist and have been reunited. In addition to the incredible story, the “E88” marking is exceptionally rare on cover with Paramenter-Gordon as “Rarity G, very rare”. Oddly, off-cover cancels are known on various stamps which is not surprising due the importance of Colon as a transit hub, but less than a dozen on covers are known—certainly nothing as spectacular as this use.

Ex Mayer..... E. 7,500-10,000





- 1571 ☒ **France, 1870-75, 40c Orange on Yellowish, 80c Rose on Pinkish (59, 63; Yvert 38, 57).** Three singles of 40c, tied by dotted star cancel with "Paris, R. D'Enghien, 2 Janv. 76" double-circle datestamp on folded letter to **Caracas, Venezuela**, beautifully struck blue "Colon" fancy handstamp with additional strike cancelling stamps, one 40c stamp with piece missing, otherwise Very Fine, a rare Colon marking of which only a small handful are known ..... E. 1,000-1,500
- 1572 ☒ **British Postal Agency Balance.** Three covers and a front only neatly mounted on exhibit pages, incl. 1844 "Jamaica Ship Letter" folded letter with "Panama Forwarded by Frederick W. Byrne" handstamp to London, 1847 folded letter from Tacna to Bordeaux with red Panama double-arc datestamp (early use), two Great Britain used in Panama with "C35" handstamps (one is front only to Paris), Fine-Very Fine ..... (Website PDF) E. 300-400

#### FRENCH POSTAL AGENCIES, INCLUDING BRITISH COMBINATIONS

- 1573 ☒ **FRENCH POSTAL AGENCY, Panama, 1844 Official Folded Cover.** Clear "Panama, 6 Juin 44" double-circle datestamp in red on folded cover to "Charge d'affaires" at the French Consulate in Lima, manuscript "Service du Roi" along top, therefore no postage charged, Very Fine and early French postal agency cover ..... E. 400-500
- 1574 ☒ **FRENCH POSTAL AGENCY, Panama, 1844-1866 Covers to, from and via Panama.** Five covers, four with Panama double-circle datestamps and last with Panama Pacquebot datestamp, incl. 1844 from Panama to Lima, 1844 Lima to Bordeaux via Panama, 1846 Paris to Lima via Panama, 1847 Callao, Peru to Rochefort via Panama (datestamp error "1843" instead of "1847") and 1866 Panama to Rochefort then forwarded, Fine-Very Fine ..... (Photo Ex/Website PDF) E. 750-1,000
- 1575 ☒ **BRITISH & FRENCH POSTAL AGENCY in Panama, 1867, Dual Postal Agency Use.** Folded letter datelined in Paita, Peru on Aug. 23, 1867, entered the mails in Panama with British "Panama AU 30 67" circular datestamp and three-line handstamp, French "Panama Paq. Fr. A. No. 1, 1 Sept. 67" circular datestamp, to Paris, France, charged "24" decimes due, arrival backstamp, Very Fine, an attractive and scarce combination use, with 2006 Roumet certificate ..... E. 300-400



- 1576 ☒ **FRENCH POSTAL AGENCY, Aspinwall (Colon), France, 1868, 80c Rose on Pinkish (36; Yvert 32).** Tied by dotted anchor cancel on folded letter datelined in Panama to Paris, France, neat "Aspinwall Paq. Fr. No. 1, 11 Mai 70" circular datestamp and red boxed "PP", transit and arrival backstamps, Very Fine, a rare use, **only seven Napoleon 80c covers are recorded from Aspinwall** ..... E. 750-1,000
- 1577 ☒ **BRITISH & FRENCH POSTAL AGENCY in Panama, Peru, 1868, 1d Green (14).** Tied by blue "Lima 21 Oct. 1869" fancy circular datestamp on folded letter to Bordeaux, France, via Callao and Panama with British "Panama-Transit OC 29 69" circular datestamp and French "Panama Paq. Fr. A. No. 1, 1 Nov. 69" circular datestamp, charged "24" decimes due, Very Fine and nice use of both postal services ..... E. 400-500
- 1578 ☒ **FRENCH POSTAL AGENCY, Aspinwall (Colon), 1868-1870 From and Via Aspinwall.** Two folded letters with Aspinwall Paquebot datestamps, first datelined in Guatemala on Dec. 12, 1868 and sent via Aspinwall to Paris, rated "10" decimes due, second dated Jun. 1, 1870 from Aspinwall to Paris, rated "10" decimes due, Very Fine covers ..... (Photo Ex) E. 400-500
- 1579 ☒ **BRITISH & FRENCH POSTAL AGENCY in Panama, 1870, Dual Postal Agency Use.** Folded letter datelined in Guayaquil, Ecuador on Jul. 25, 1870 with partial "Guayaquil JY 25 1870" double-arc datestamp (over backflaps) to Paris, France, sent via Panama with British "Panama-Transit JY 29 70" circular datestamp and French "Panama Paq. Fr. A. No. 1, 1 Aout 70" circular datestamp, charged "24" decimes due, horizontal file fold, Very Fine, scarce combination use ..... E. 300-400
- 1580 ☒ **FRENCH POSTAL AGENCY in Panama, 1881 Peru to Paris via Panama.** Two covers, first from Chimbote with 1c and 5c "Plata Peru" currency overprints, both horizontal pairs, second from Lima with 1c and 5c "Plata Lima" currency overprint, 5c horizontal pair on mourning cover, underpaid by 1c, each with "Panama Union Paq. Fr. No. 1" datestamps, Very Fine, each with 2011 Moorhouse certificate ..... (Photo Ex) E. 400-500



## FORWARDING AND ROUTE AGENTS



1581EX

- 1581 ✉ **1852-1872 Forwarding Agents in Aspinwall (Colon), Chagres and Panama.** Seventeen covers with different forwarding agent handstamps, each individually selected for the quality of the strike, eight from Aspinwall (Colon) incl. E&H Abrahams & Co., Jose A. Cespedes, T.R. Cowan, J.B. Donalisio, Geo. W. Fletcher, C.J. Fox, W.P. Maal and West India & Pacific Steamship, one from Chagres (T.R. Cowan), and eight from Panama incl. Corwine Brothers, De Sabla (used with Well's Fargo), F. Gogorza, Hourquet Poylo & Co. (used with Great Britain Lsh), Jimenez Hermanos and two Hurtado Hermanos, a few with double forwarding marks and most to either New York, San Francisco or London, couple to Bogota

VERY FINE-EXTREMELY FINE STRIKES. A REMARKABLE GROUP OF FORWARDING AGENTS IN PANAMA—EACH WITH CHOICE STRIKES—OFFERED INTACT ON TEN PAGES FROM ALFREDO FROHLICH'S AWARD-WINNING EXHIBIT.

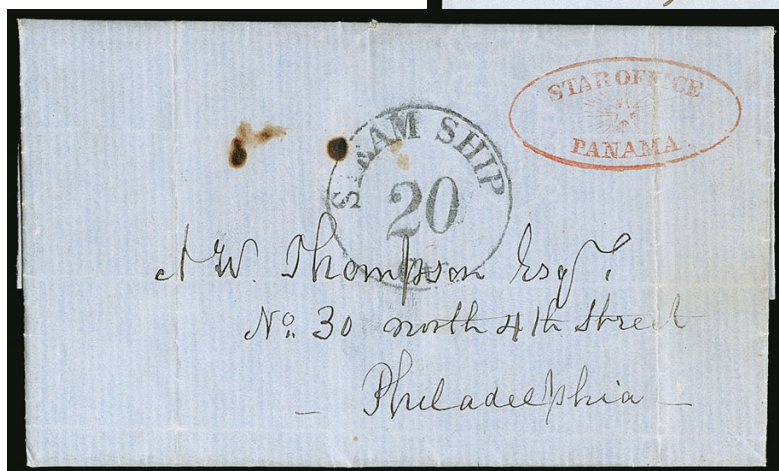
Prior to the establishment of the Universal Postal Union, forwarding agents played a vital role in the movement of mail from one country to another. The importance of these agents in Panama grew exponentially in the mid-1800s, due to Panama's location as a major crossing between the Atlantic and Pacific Oceans, as well as the westward expansion of the United States.

While the strikes here are not all inclusive of the known agents, this does comprise many of the better strikes in exceptional quality. According to Rowe, most of these are Rarity 3, with a few Rarity 4.....(Photo Ex/Website PDF) E. 3,000-4,000





1582



1583

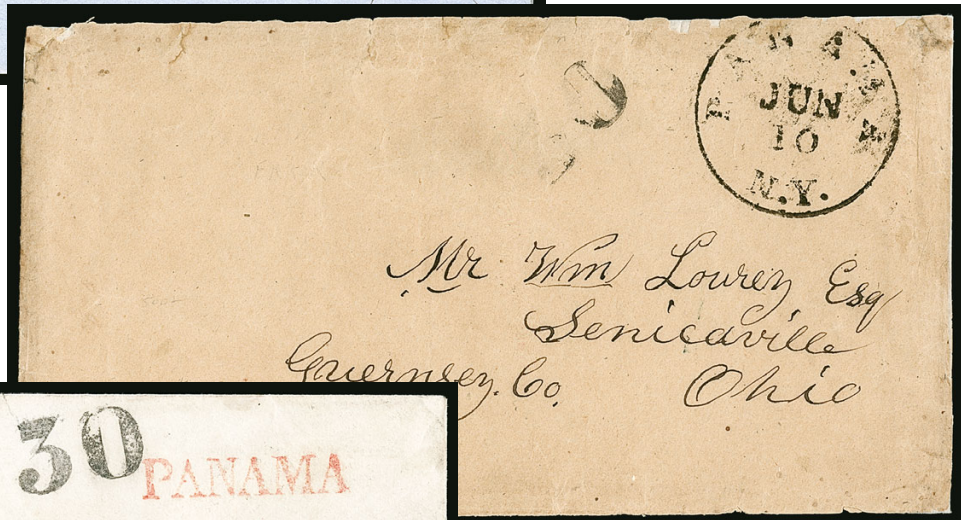
1584

- 1582 ☒ 1854 "Forwarded by A.M. Hinckley & Co. Express, Panama". Excellent strike on 1854 folded printed circular datelined in Havana, Cuba regarding cigar and tobacco prices, addressed to San Francisco Cal., blue Havana forwarding handstamp, horizontal file fold thru handstamp, still Very Fine, rare forwarding mark which has a "Rarity Factor" 5 in Rowe..... E. 500-750
- 1583 ☒ 1856 "Freeman & Co.'s Express, Panama, Cova & Co. Agents". Bold strike of red oval handstamp on 1856 folded partly printed notice to San Francisco, Very Fine and scarce, fewer than ten examples are recorded, "Rarity Factor" 5 in Rowe ..... E. 300-400
- 1584 ☒ 1852 "Star Office Panama". Fancy red illustrated oval handstamp showing star with rays on blue folded letter datelined "David, Decr. 5th, 1852" and addressed to Philadelphia Pa., New York "Steam Ship 20 ct" in circle handstamp for rate over 2,500 miles, small stains and light file fold thru handstamp, Very Fine and attractive forwarding agent cachet, ex Feldman ..... E. 500-750





1585



1586



1587

- 1585 ☒ **1850 "Panama N.Y."**. Bold strike of Panama route agent's circular datestamp dated Jun. 23 with "N.Y." in error (was supposed to read "N.G." for New Granada) on folded letter to New York, datelined in Panama Jun. 20 with original contents regarding coinage and gold, inside fold with "Smith & Lewis" forwarding handstamp, rated "30" for American packet from Panama, minor file fold thru postmark, still Very Fine and rare, **only twelve covers are recorded** with this error handstamp from four different dates (used from Jun. 10 to Jul. 21, 1850), this is the second earliest date, this postmark is attributed to Amos B. Corwine who was at the U.S. Consul's office in Panama, ex Campbell..... E. 1,000-1,500
- 1586 ☒ **1850 "Panama N.Y."** Clear strike of Panama route agent's circular datestamp dated Jun. 10 with "N.Y." in error (was supposed to read "N.G." for New Granada) on cover to Senecaville O., "30" handstamp for American packet rate from Panama, some edge flaws and minor repairs, otherwise Fine and rare, **only twelve covers are recorded** with this error handstamp from four different dates (used from Jun. 10 to Jul. 21, 1850), this is the **earliest recorded date**, this postmark is attributed to Amos B. Corwine who was at the U.S. Consul's office in Panama, ex Jessup and Feldman..... E. 500-750
- 1587 ☒ **1850s "PANAMA"**. Bold red straightline handstamp on petite cover to New York, "30" handstamp for American Packet rate from Panama, cover with small tear at top just extending into marking, Very Fine strikes, this postmark is attributed to Amos B. Corwine who was at the U.S. Consul's office in Panama, it was in use for a short period of time from 1850-1851..... E. 400-500

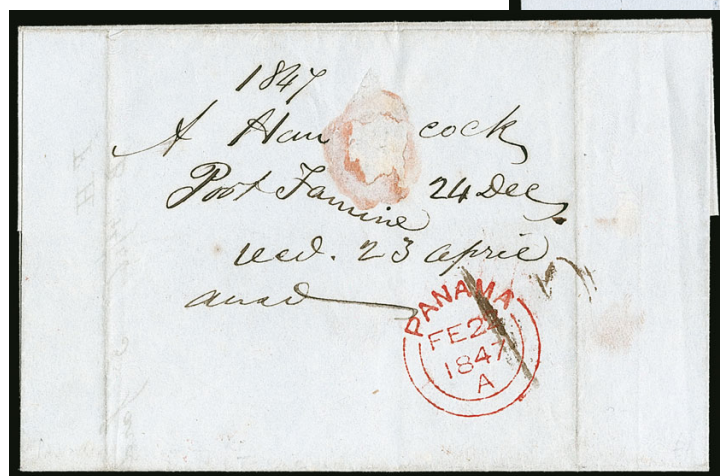
VIA PANAMA  
CENTRAL AND SOUTH AMERICA  
(Arranged alphabetically by country)



1588



1589



1590

- 1588 ☒ **Bolivia, 1876 “Correos de la Chimba, Bolivia”.** Perfectly struck blue negative ship illustrated handstamp on 1876 cover to **Danzig, Germany**, departing from the coastal port of La Chamba with ornate blue “Cancelado”, boxed “Franca” and “La Chimba Mayo 21” handstamps, traveled via Panama with “Panama-Transit JU 4 1876” circular datestamp, London transit and Danzig arrival backstamps, rated “180” due in blue crayon, cover with edge faults, still Fine and very rare, covers with this handstamp are seldom found used to Europe, there is still some debate on whether this handstamp was from a privately run local post or a government service, as it is exclusively found on mail sent by ship ..... E. 750-1,000
- 1589 ☒ **Brazil, 1856 Rio de Janeiro to San Francisco.** Folded letter datelined in Rio de Janeiro on Apr. 7, 1856, addressed to San Francisco Cal., “20” reis handstamp and manuscript “per French corret Caravane to Valparaiso” directive, red “Forwarded by Wm. Nelson, Panama” handstamp and carried privately to San Francisco, Very Fine, an extremely rare use via Panama as mail from Brazil was generally sent locally, or to the east coast of the United States or Europe ..... E. 750-1,000
- 1590 ☒ **Chile, 1846 Port Famine to London.** Folded cover with manuscript “A. Hancock, Port Famine 24 Dec.” docketing and addressed to London, England, cover traveled via Panama with “Panama FE 22 1847” double-arc datestamp on reverse, rated “2/” due, London arrival backstamp, Very Fine, a remarkable origin from one of the southern-most cities in the world, renamed by Thomas Cavendish in 1587 when he found nothing but ruins from the Spanish who had starved and frozen to death just three years prior, ex Campbell ..... E. 200-300





- 1591 ☒ **Chile, 1855 Valparaiso to Great Britain.** Manuscript "Valparaiso, March 31, 1855" at bottom left on blue cover to Brighton, England, interesting docketing "Death of King Kamehameha & Pitcairn Islands" at top and "Description of Pitcairn Island, enclosing a note about experience" on reverse, Panama three-line datestamp struck in transit, London transit and Brighton arrival backstamps, rated "2/-", Very Fine, an intriguing cover which leads us to believe this was sent by a sailor who visited Hawaii during the death of King Kamehameha (Dec. 15, 1854) and Pitcairn Islands before posting this cover in Valparaiso, one can only imagine the details contained in the original letter, with 2015 R.P.S. certificate ..... E. 1,000-1,500
- 1592 ☒ **Chile, 1863 "Steam Panama".** Bold strike of oval handstamp on folded letter datelined in Valparaiso on Jan. 1, 1863 and addressed to San Francisco Cal., departure backstamp and red "Paid to Panama" handstamp, "20" due handstamp and "San Francisco Cal. Feb. 7, 1863" double-circle datestamp struck on arrival, Very Fine, this handstamp was struck in San Francisco on mail from contract steamers of the Pacific Mail Steamship Company. .... E. 750-1,000
- 1593 ☒ **Chile, 1865 "Steam Panama".** Excellent strike on 1865 orange-buff cover to Oakland Cal., "10" due handstamp and "San Francisco Cal. Nov. 13, 1865" double-circle datestamp struck on arrival, **original letter** on "Hotel Aubry" letterhead datelined in Valparaiso Oct. 3, historical contents relating to the arrival of the Spanish fleet during the Chinha Islands War and stating "I never saw such a mess in all my gains a fishing" referring to people fleeing the city from an impending Spanish attack, cover barely reduced at left from opening and couple bleach stains, otherwise Very Fine, this handstamp was struck in San Francisco on mail from contract steamers of the Pacific Mail Steamship Company, ex Myerson ..... E. 750-1,000
- 1594 ☒ **Great Britain, Used in Chile, 1876, 4p Gray (A80; SG Z75).** Plate 14 with wing margin at right, tied by bold barred "C30" oval of Valparaiso, with "Valparaiso MY 10 76" circular datestamp on pre-printed addressed cover to New Bedford Mass., sent via Panama with "Panama MY 29 76" circular datestamp, "New-York Jun. 11 Due 5ct" circular datestamp, arrival backstamp, Very Fine, ex Campbell ..... E. 300-400



1595

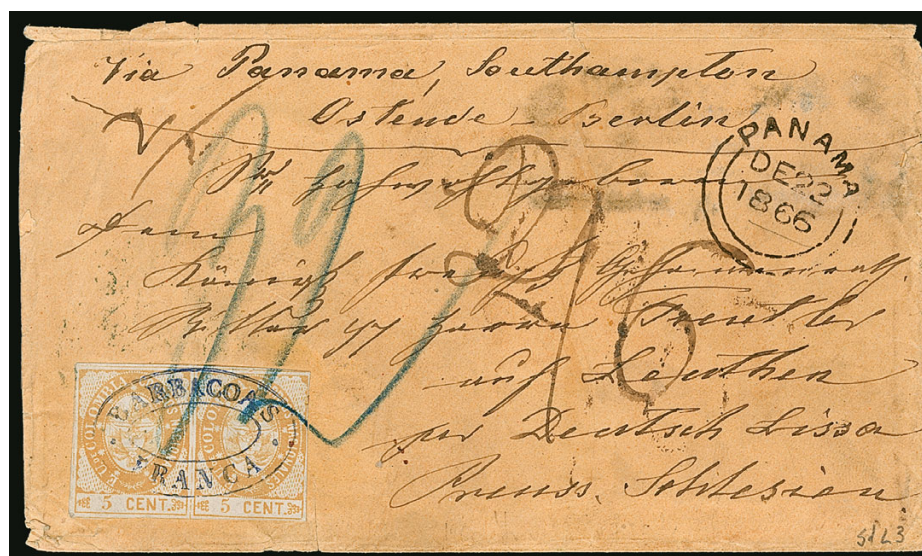


1596



1598

- 1595 ☒ **Chile, 1877, 1c Gray, 10c Blue (20, 23).** Each tied by "Valparaiso 11 Mayo 81" double-circle datestamp on cover to Paris, France, manuscript "via Panama" directive at top, Calais transit and Paris arrival datestamps, Very Fine, interestingly this was mailed after Chile joined the U.P.U. (on April 1, 1881) but prior to Panama joining (on July 1, 1881), it is unlikely many other covers exist from this short period..... E. 750-1,000
- 1596 ☒ **Colombia, 1854 to New York.** Folded letter datelined Nov. 6, 1854 and sent from Barranquilla with blue "Barranquilla Franca" handstamp and red "Hamburger i Batis, Barranquilla" forwarder marking, addressed to New York, beautifully struck "Steamship 20" upon arrival, Very Fine, a most eye-appealing cover..... E. 200-300



1597

- 1597 ☒ **Colombia, 1865, 5c Yellow (35).** Horizontal pair, full to clear margins, cancelled by clear blue "Barbacoas Franca" oval handstamp on 1866 orange cover to Prussia, sent via Panama with British "Panama DE 22 1866" datestamp, manuscript rates "2/6" and "32" silvergroshen (the latter also tying stamps), London transit and arrival backstamps, cover with minor edge faults and tears
- FINE. AN EARLY AND RARE COVER FROM COLOMBIA TO PRUSSIA VIA PANAMA. THIS IS THE ONLY KNOWN FOREIGN DESTINATION OF THIS 5-CENT VALUE.
- The Colombia stamps paid the domestic double letter rate. With 2014 Moorhouse certificate..... E. 2,000-3,000
- 1598 ☒ **Great Britain, Used in Colombia, 1869, 4p Vermilion (A10; SG Z7).** Plate 11, tied by well-struck barred "C56" oval of Cartagena with "Cartagena JY 31 1869" double-arc datestamp on reverse of folded cover to New York, cover sent via Colon with "Colon AU 3 69" circular datestamp, New York Steamship "10" arrival, Very Fine..... E. 300-400





1599



1600



1601

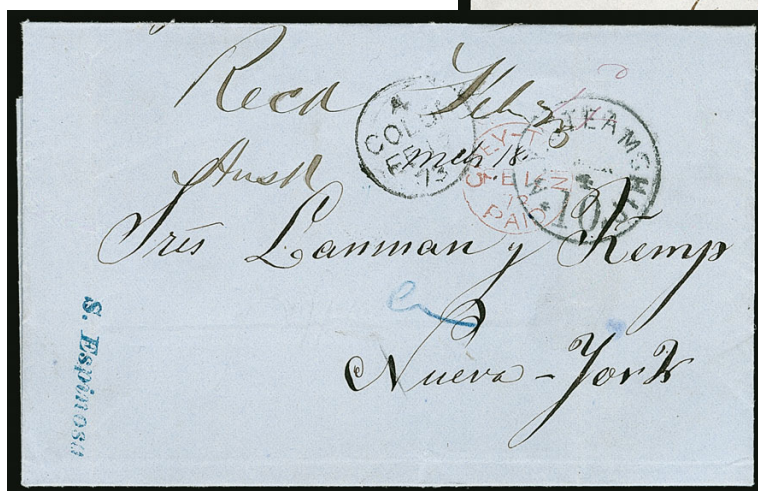
- 1599 ☒ **Great Britain, Used in Colombia, 1872, 4p Vermilion (A135; SG Z116).** Horizontal pair, Plate 12, tied by clear barred "C62" oval of Santa Martha with "Santa Martha MY 29 72" circular datestamp on folded letter to New York, blue forwarder handstamp and sent via Colon with "Colon JU 2 72" circular datestamp, "New York Jun. 16 20 U.S. Notes" **depreciated currency** circular datestamp struck on arrival, file fold thru left stamp, otherwise Fine and handsome cover, Parmenter-Gordon "Rarity F, rare" ..... E. 1,000-1,500
- 1600 ☒ **Great Britain, Used in Colombia, 1877, 4p Pale Olive Green (A157; SG Z137).** Plate 15 with wing margin at left, tied by clear barred "F69" oval of Savanilla with "Savanilla SP 17 77" circular datestamp on folded letter to **St. Thomas**, red forwarding handstamp and sent via Colon with "Colon SP 21 77" circular datestamp and "Transit" handstamp, arrival backstamp, Very Fine, Parmenter-Gordon "Rarity E, scarce", signed Holcombe.... E. 500-750
- 1601 ☒ **Ecuador, Great Britain, Used in Ecuador, 1871, 1p Rose Red, 4p Vermilion, 2sh Blue (A3, A13, A36; SG Z3, Z11, Z29).** 1p Plate 180, 4p Plate 11, singles of each tied by two strikes of barred "C41" oval of Guayaquil, with "Guayaquil JA 9 1871" double-arc datestamp on reverse of folded cover to **Barcelona, Spain**, sent via Panama with Jan. 20 three-line datestamp, red "PD" handstamp and London transit, arrival handstamp, Very Fine, a rare and exceptional use to Spain ..... E. 1,000-1,500



1602



1603



1604

- 1602 ☒ **Guadeloupe, French Colonies, 1859-65, 5c Yellow Green on Greenish, 40c Orange on Yellowish (2, 5; Yvert 2, 5).** 5c single, 40c vertical strip of four, margins to just touching, all tied by diamond of dots cancels with "Pointe-a-Pitre, Guadeloupe 24 Dec. 64" circular datestamp on folded circular **to Lima, Peru**, originally marked "6" due prior to French Colonies stamps being added to pay entire rate, cover went through British post with red "Paid at Guadeloupe" Crowned circle (A1; SG CC1), with Dec. 27 despatch on reverse and via Panama with Jan. 8 double-arc datestamp, cover with horizontal file fold thru markings, still Very Fine, a stunning use of French and British postal systems to an unusual and rare destination ..... E. 1,000-1,500
- 1603 ☒ **Guatemala, 1860 Cover to Senator William M. Gwin.** Bold red "Guatemala ABL 22, 1860" circular datestamp on cover **to Senator William Gwin** in Washington D.C., sent via Panama with "Encaminada por Hurtado i Hermanos, Panama" forwarders handstamp, "Steamship 20" struck upon arrival, Very Fine, Gwin, along with John C. Fremont, were the first Senators to represent California, he had a storied history and sympathized with the South during the Civil War, so much so that he attempted to gain interest from Napoleon III to settle American slave owners in Sonora, Mexico, ex DeVoss. E. 400-500
- 1604 ☒ **Nicaragua, 1873 Folded Letter to New York.** Blue folded letter datelined in Granada on Feb. 6, 1873 and addressed to New York, entered the British Post Office with "Grey-Town FB 16 73 Paid" circular datestamp, Colon transit and "N.Y. Steamship 10" struck upon arrival, blue "S. Espinosa" forwarders handstamp, Very Fine, unusual use as the normal routing of British mail would have been via St. Thomas..... E. 200-300





- 1605 **Peru, Circa 1810.** Large size cover front only with red "PERU" straightline handstamp from Lima to Madrid, Spain, manuscript "Panama" denoting route thru Panama rather than New Granada, manuscript "404" weight paid by bold "115R" handstamp at top right, Very Fine and truly remarkable use for two reasons, first this is one of the highest recorded postal rates for colonial mail from Peru, and second, the route via Panama was used because of the ongoing Civil War in Colombia ..... E. 750-1,000
- 1606 ☒ **Peru, 1868, 1d Green (14).** Large to ample margins, tied by "Lima 27 Jul. 1869" double-circle datestamp on folded cover to Paris, France, manuscript "voie Panama" at top, Callao and London transits with boxed "GB 1f90c" accountancy marking, arrival marking on front with "12" decimes due, Very Fine ..... E. 300-400
- 1607 ☒ **Peru, 1886-67, 5c Green, 10c Vermilion (16-17).** Single 5c and three 10c, tied by unframed "Receptoría de Correos de Pabellón de Pica" handstamps on folded letter dated in "Huanillo 12 Decembre 1875" and addressed to **Genoa, Italy**, manuscript "Via di Panama" at bottom, Iquique and Lima transit and Genoa arrival backstamps, Very Fine and rare, this cover paid the 35c German treaty rate only available in Peru and Chile to Europe, sent via closed bags thru Panama, **fewer than ten covers** are recorded, with 2014 Eichele and 2016 Moorhouse certificates ..... E. 1,000-1,500
- 1608 ☒ **Salvador, 1869 "Steam Panama".** Clear strike of oval handstamp on 1869 folded cover to San Francisco Cal., docketed "San Salvador May 21", "San Francisco Cal. Jun. 23" circular datestamp struck upon arrival, horizontal file fold thru datestamp, otherwise Fine, this oval handstamp was applied in San Francisco on mail from contract steamers of the Pacific Mail Steamship Company ..... E. 300-400





1609

- 1609 ☒ **Salvador, 1867, 1r Red (2).** Horizontal pair, tied by grid of diamonds cancel with "Cojutepeque, Salvador 19 Setiembre 1872" circular datestamp on pre-printed addressed cover to **Paris, France**, sent via San Salvador and Panama with "Panama-Transit OC 3 72" circular datestamp, boxed "GB 1fr90c" accountancy handstamp and rated "15" decimes due, arrival backstamp

VERY FINE. A RARE AND HANDSOME COVER WITH A PAIR OF THE ONE-REAL FIRST ISSUE TO FRANCE.

With 1990 Holcombe certificate..... E. 2,000-3,000



1610

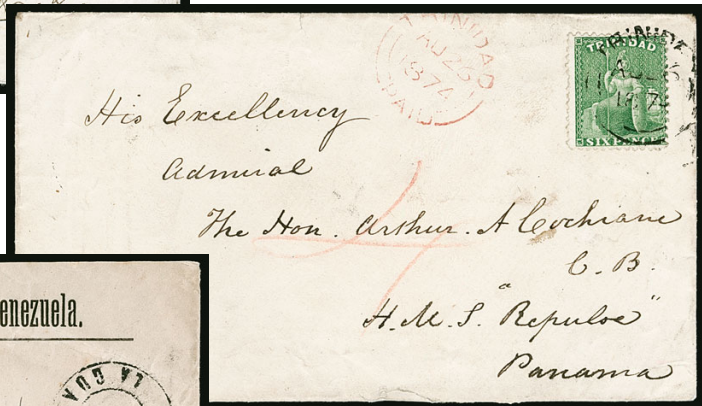
1611

- 1610 ☒ **Salvador, 1874, 2r Green, "Contra Sello" Overprint (7).** Cancelled by manuscript with blue "La Libertad, Salvador 14 Marzo 1875" circular datestamp on cover to Liverpool, England, sent via Panama with three-line datestamp, "1/6" rating and arrival datestamp, cover with expertly repaired tears, Very Fine appearance, signed Holcombe. E. 400-500
- 1611 ☒ **Salvador, 1874, 2r Green, "Contra Sello" Overprint (7).** Cancelled by dotted circles and tied by "Administracion de La Union Correos, Nov. 6, 1877" circular datestamp on cover to **Barbaste, France**, sent via Panama with circular datestamp, rated "17" decimes due, various transit and arrival datestamps, cover with minor tear at top and missing small piece of backflap, otherwise Fine and scarce ..... E. 400-500





1612



1613



1614

- 1612 ☒ **Trinidad, 1864-72, 4p Gray, 6p Yellow Green (51, 53; SG 71-72).** Tied by two strikes of "Trinidad AP 6 1874" double-arc datestamp with additional red strike with "Paid" below, on cover "To His Excellency, The Honorable Arthur A.L.P. Cochrane C.B., Admiral and Commander in Chief on the Pacific Station, H.M. Ship Repulse, Panama", further note at bottom left requesting the postmaster in Panama to forward this cover if addressee was not there, rated "8", St. Thomas transit, Fine and scarce, Admiral Sir Cochrane was Commander in Chief of the Pacific from 1873-1876, ex Sir Marriott..... E. 400-500
- 1613 ☒ **Trinidad, 1864-72, 6p Yellow Green (53; SG 72).** Tied by "Trinidad AU 26 1874" double-arc datestamp with additional red strike with "Paid" below, on cover "To His Excellency, Admiral The Hon. Aruthur A. Cochrane C.B., H.M.S. Repulse, Panama", rated "4", St. Thomas transit, couple minor edge tears, Fine and scarce, Admiral Sir Cochrane was Commander in Chief of the Pacific from 1873-1876, ex Sir Marriott..... E. 300-400
- 1614 ☒ **Venezuela, 1876 Caracas to Chile.** Printed "Legacion del Imperio Germanico en Venezuela" on 1876 official cover from Caracas to Valparaiso, Chile, red "Detained for Postage" handstamp, La Guaira, St. Thomas and Colon transit datestamps, additional St. Thomas Dec. 27 circular datestamp likely indicating this cover was returned, German consulate seal on back, couple file folds, Fine, particularly scarce route via Panama as most mail from Venezuela was sent either to the east coast of United States or to Europe, it is doubtful that many other examples exist..... E. 500-750

UNITED STATES  
(Arranged chronologically)



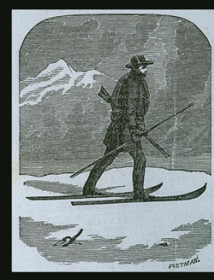
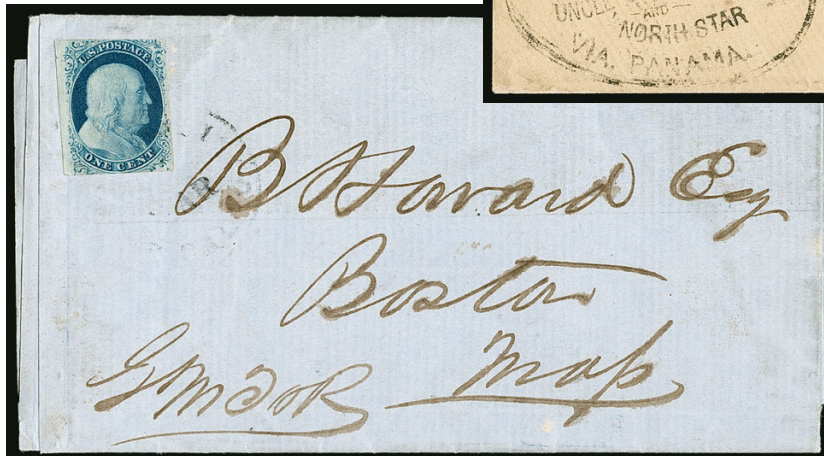
- 1615 ☒ **United States, 1849 “SAN FRANCISCO” Straightline.** Clear strike of straightline handstamp with manuscript “June 20” date and “40” rate on brown cover to Clinton N.J., 1849 receipt docketing, sent via Panama and across the isthmus in closed bags, couple light creases in cover, Very Fine, this is the **earliest recorded use** of the rare San Francisco straightline — essentially a first day of use after Postmaster R. T. Allen arrived on June 15, 1849, and prepared the mail for the first trip of the PMSS *Panama*, which departed on June 20th, only **ten examples exist from this first day** per the Mingee Census, this cover is No. SF SL3..... E. 750-1,000
- 1616 **United States, 1849 San Francisco Prices Current.** Folded “San Francisco Letter Sheet Price Current, Vol. 1, No. 1” dated August 30, 1840 (in error, should read 1849) with pencil manuscript “Appleton, Boston” and **unrecorded**, red “Forwarded by Robt. Wells & Co., San Francisco, U. Calif.” handstamp on flap, sent via Panama likely inside another cover, couple minor splits along folds, Very Fine, this is the **earliest recorded** prices current under the U.S. Military Administration of California, the addressee is likely Nathan Appleton who was a merchant and politician, this forwarding agent is unlisted in Rowe, ex Cipolla, with 2014 Moorhouse certificate..... E. 1,500-2,000
- 1617 ☒ **United States, 1851 San Francisco News-Letter.** Folded “San Francisco News-Letter, Vol. 1, No. 4” with “For the Steamers Carolina and Panama, September 13 and 15, 1851.”, lightly struck “San Francisco 15 Sept 6” circular datestamp and “Paid” handstamp, addressed to Hardwick Mass., “Pr Steamer Panama” directive at top, couple minor toned spots and splitting along folds, otherwise Fine and scarce, with 2014 Moorhouse certificate..... E. 500-750
- 1618 ☒ **United States, 1851 San Francisco to France.** Folded letter datelined San Francisco Sept. 30, 1851 to Bordeaux, France, forwarded privately to Panama with blue stylized boxed “JBF Arrivet a Panama” backstamp (over fold) so no U.S. postal markings, British “Panama OC 22, 1851” double-arc datestamp, red London transit and boxed “Colonies &c Art. 13” accountancy handstamp, Bordeaux arrival with “15” decimes due, Very Fine and unusual routing, U.S. postal regulations required eastbound mail from California to be carried by U.S. packets via Panama and New York, only letters forwarded outside the U.S. mails could reach RMSP steamers at Chagres..... E. 500-750





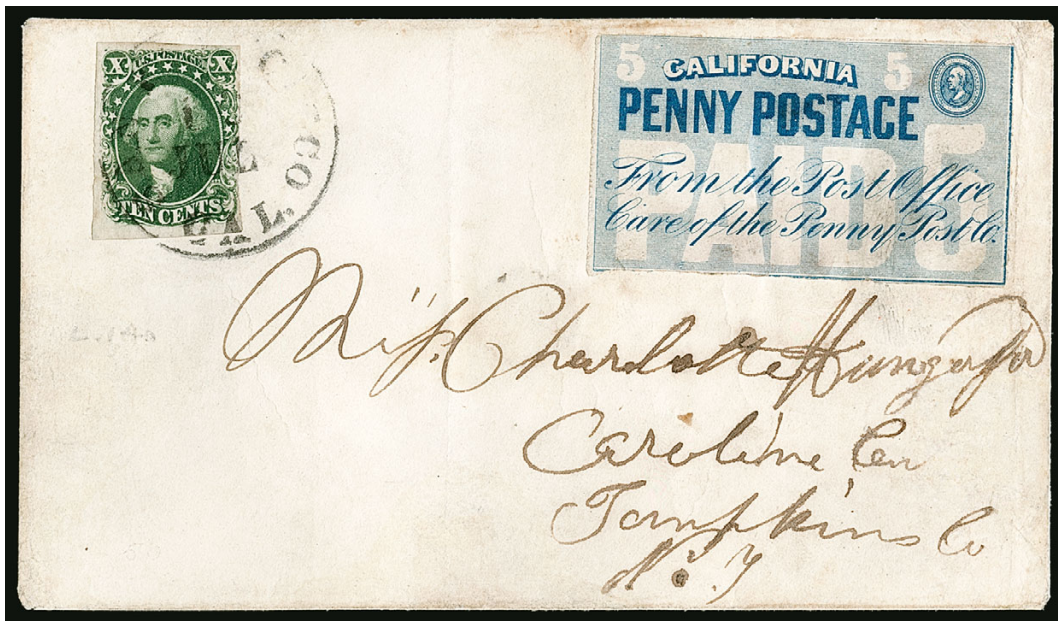
1619

1620



1621 with detail of lettersheet

- 1619 ☒ **United States, 1852 San Francisco Prices Current.** Folded "The San Francisco Prices Current and Shipping List" of Hussey, Bond & Hale, dated Aug. 13, 1852, with two strikes of blue "San Francisco 15 Aug." circular datestamp, "5" handstamp and black "Paid" straightline, addressed to Boston Mass., small archival reinforcement, Very Fine, a rare over-3,500 miles printed circular rate, **only six examples are recorded**, four of which are stampless, ex Cipolla, with 2010 P.F. certificate ..... E. 1,000-1,500
- 1620 ☒ **United States, 1854 "Independent Line Ahead of the Mails, Uncle Sam and North Star, via Panama".** Clear strike of oval handstamp on cover to Reading Pa., horizontal pair of 3c Dull Red, Ty. II (11A), margins to in, tied by two penstrokes, "Missent" handstamp, top flap reattached, small ink spot at left, Fine and scarce, this Independent Line was created by Cornelius Vanderbilt as an opposition line between California and New York via Panama from Aug. 17, 1853 thru Sept. 1, 1854, ex Goldberg, Campbell and Feldman ..... E. 1,000-1,500
- 1621 ☒ **United States, 1851, 1c Blue, Ty. II (7).** Affixed and lightly cancelled by San Francisco datestamp on three-page folded "The San Francisco News Letter, No. 16" with "A Summary of Events from Feb., 20th to March 5th, 1857.", addressed to Boston Mass., incl. vignette advertisement for "Mr. Thompson, the Mountain Express Man", Very Fine, the 1c stamp paid the reduced printed circular rate to any distance, John A. "Snowshoe" Thompson was a lone individual who would carry as much as 60-80 pounds of mail over the Sierra Nevadas during the winter months, ex Risvold, with 2014 Moorhouse certificate..... E. 1,000-1,500



1622

- 1622 ☒ **United States, California Penny Post Co., San Francisco, 5c Blue (34L4).** Large margins to just in, uncanceled as almost always, used with **1855, 10c Green, Ty. II (14)**, large margins to clear, tied by "San Francisco Cal. 16 Jul." circular datestamp on cover to Caroline Center N.Y., 10c small scissors-cut at top right, 5c creases at bottom right and light soiling, cover with some soiling and wear including surface scrape at right

VERY FINE APPEARANCE. ONE OF ONLY SIX RECORDED INTACT COVERS BEARING THIS RARE SAN FRANCISCO LOCAL POST STAMP, OF WHICH FOUR ARE USED WITH THE 10-CENT 1855 ISSUE.

The Frajola census records only four covers with this combination of the 10c 1855 and 5c adhesive, plus one 5c Penny Post adhesive cover with a 3c 1851 and another missing an adhesive (<http://www.rfrajola.com/cpp/CP7.htm> )

This was carried on the Pacific Mail Steam Ship Company's *John L. Stephens* which departed San Francisco on July 16, 1855, and arrived in Panama on July 31. It was then carried over the isthmus and put on the USMC Steamer *Empire City* which departed Aspinwall August 2 and arrived in New York on August 11.

Ex Dale-Lichtenstein and Walske. With 2004 P.F. certificate ..... E. 7,500-10,000





1623

- 1623 ✉ **United States, 1855, 10c Green, Ty. III (15).** Three large margins, just in at bottom, tiny margin nick at top, tied by light strike of "San Francisco Cal. 20 Jun." circular datestamp on 1857 "The San Francisco News Letter" illustrated newspaper depicting Eagle, Steamship, Train etc. and addressed to Troy N.Y., printed "P.M.S.S. Golden Age June 20" at upper left, newspaper does not accompany but with handwritten note inside, minor edgewear

VERY FINE. A RARE EXAMPLE OF THE SAN FRANCISCO NEWS LETTER ILLUSTRATED LETTERSHEET.

The *San Francisco News Letter* was published by Frederick Marriott and served to advance his intertwining financial and political interests, to level attacks against his foes, and to extort money from public figures who he threatened with the prospect of scandalous news reports. Each publication date was tied to an outbound Pacific Mail Steam Ship Company sailing to Panama and was sold by all Wells, Fargo & Co. agents throughout California. This was carried on the PMSS *Golden Age*, which departed San Francisco June 20 and arrived Panama July 4. After transiting across the isthmus it was carried on the USMSC *Star of the West*, which departed Aspinwall July 4 and arrived New York July 13.

Ex Beane and Walske..... E. 7,500-10,000



1624

- 1624 ☒ **United States, 1851, 1c Blue, Ty. II (7).** Plate 2, large to full margins, tied by square grid cancel on “**The San Francisco News Letter**” illustrated newspaper depicting Eagle, Steamship, Train, etc. and addressed to New York City, printed “P.M.S.S. Sonora July 4th 1857” at upper left, newsletter contains many stories covering period from June 20 thru July 4, pristine condition

EXTREMELY FINE. A RARE AND BEAUTIFUL EXAMPLE OF A SINGLE ONE-CENT 1851 ISSUE STAMP USED ON THE ILLUSTRATED SAN FRANCISCO NEWSLETTER. THIS IS THE FINEST OF ONLY THREE RECORDED WITH THE ONE-CENT 1851 ISSUE.

The *San Francisco News Letter* was published by Frederick Marriott and served to advance his intertwining financial and political interests, to level attacks against his foes, and to extort money from public figures who he threatened with the prospect of scandalous news reports. Each publication date was tied to an outbound Pacific Mail Steam Ship Company sailing to Panama and was sold by all Wells, Fargo & Co. agents throughout California. This was carried on the PMSS *Sonora*, which departed San Francisco July 4 and arrived Panama July 18. After transiting across the isthmus it was carried on the USMSC *Illinois*, which departed Aspinwall July 19 and arrived New York July 27.

Ex Polland, Haas, Vogel and Bailar ..... E. 7,500-10,000

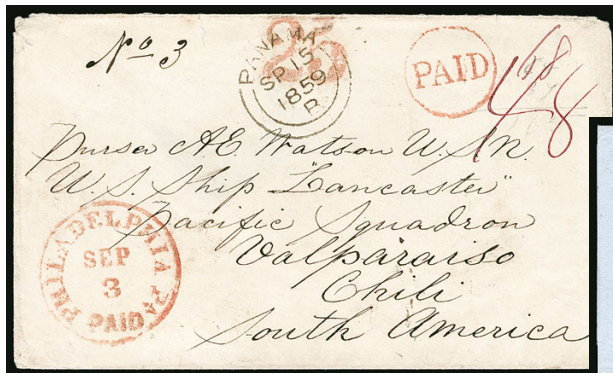




- 1625 ☒ **United States, 1857, 10c Green, Ty. II, III (32, 33).** Ty. II horizontal pair and single, Ty. III horizontal strip of three, all tied by multiple strikes of "San Francisco Cal. May 20, 1859" circular datestamps on folded letter to **Hamburg, Germany**, cover datelined in **Mazatlan, Mexico** on May 8 where this cover originated, carried privately to San Francisco where it entered the mails, sent via Panama and New York, two strikes of red "New York Br. Pkt. Jun. 14" datestamp, cover missing top and left flaps of outer page, horizontal pair with slight perf faults from placement over edge

FINE AND EXCEPTIONALLY RARE USE. THIS WAS CARRIED PRIVATELY FROM MAZATLAN, MEXICO TO SAN FRANCISCO WHERE IT ENTERED THE MAILS WITH SIX 10-CENT 1857 ISSUE STAMPS TO PAY THE DOUBLE 30-CENT PRUSSIAN CLOSED MAIL RATE TO GERMANY.

With 2014 Moorhouse certificate. .... E. 1,500-2,000



1626



1627

- 1626 ☒ **United States, 1859 Cover to U.S.S. Lancaster in Chile.** Red "Philadelphia Pa. Sep. 3 Paid" circular datestamp on cover to **"U.S. Ship Lancaster, Pacific Squadron, Valparaiso, Chile"**, red "Paid" in circle, manuscript "68" for double rate with "48" due to Britain, "Panama SP 15 1859" double-arc datestamp, minor edge nicks and small part of backflap missing, otherwise Fine..... E. 300-400
- 1627 ☒ **United States, 1864 San Francisco to Jarnac, France.** "San Francisco Cal. Mar. 23, 1864" double-circle datestamp on blue folded letter to **Jarnac, France**, endorsed **"Steamer Constitution"** confirming via Panama route rather than overland, "New York Apr. 16" debit handstamp, "15" treaty rate handstamp, transit and arrival backstamps, "8" decimes due handstamp, Very Fine..... E. 300-400





1628



1629



1630

- 1628 ☒ **United States, 1861, 12c Black (69).** Used with **10c Green (68)**, tied by target cancel and San Francisco double-circle datestamp on 1864 folded cover **to Lima, Peru**, Panama May 18 double-arc transit datestamp, arrival backstamp, Very Fine, an attractive cover to Peru paying the 22c rate by British Mail via Panama, signed Holcombe and Calves .... E. 300-400
- 1629 ☒ **United States, 1861, 10c Yellow Green (68).** Two singles, used with **2c Black (73)** and cancelled in **blue** with matching "Cumberland Md. May 11" circular datestamp on 1864 cover **addressed to Commodore Roger Perry at Callao, Peru**, Panama May 24 double-arc transit datestamp and arrival backstamps, cover with minor edge tears, Very Fine, signed Ashbrook and with 1988 P.F. certificate..... E. 400-500
- 1630 ☒ **United States, 1861, 12c Black (69).** Used with **10c Green (68)**, each with target cancels, "Holmes Hole Mass. Oct. 1" (1864) circular datestamp on cover **to Callao, Peru**, Panama Oct. 14 double-arc transit datestamp, arrival backstamps, S. Crosby & Co. forwarders handstamp at top left, slightly reduced at right, Very Fine..... E. 300-400





1631

- 1631 ☒ **United States, 1861, 5c Brown, 30c Orange (71, 76).** Tied by grid in circle cancel, clear strike of "San Francisco Cal. Jun. 17, 1865" double-circle datestamp on cover with "Via Panama" illustrated steamship corner card, addressed to Locarno, Switzerland, red New York transit datestamp and "12" credit handstamp, blue "Aachen Franco 23 7" framed transit handstamp, red and blue crayon credits, Swiss transit backstamps, faint purple ink stain at lower right, light toning and folds at edges

VERY FINE. THIS IS THE ONLY EXAMPLE OF THIS "VIA PANAMA" ILLUSTRATED DESIGN WE HAVE ENCOUNTERED. A WONDERFUL 1861 ISSUE TRANSATLANTIC COVER.

The illustrated "Via Panama" envelopes were published and used mainly from 1858 through 1860. This is the only example of this particular type we have seen or could locate in the Levi records. It is used quite late, but was probably published years earlier..... E. 5,000-7,500



1632

- 1632 ☒ **United States, 1866 Wells Fargo & Co. to Colombia.** 3c Pink entire (U59) with Wells Fargo & Co. printed frank to Buenaventura, Colombia, clear strike of blue "Wells Fargo & Co. San Francisco Mar 9" oval datestamp and "Paid" in oval, "via Panama" endorsement at bottom, red "Panama de Oficio" and "Panama Debe" handstamps, the former likely struck in error as this was not an official use, also with boxed "De Ultramar" handstamp, rated "10" and manuscript "10c", Lima Jul. 31 transit backstamp, stamp originally affixed at top left but subsequently removed prior to mailing as the Wells Fargo "Paid" oval is struck over that spot

VERY FINE AND STRIKING USE OF A WELLS FARGO & CO. ENTIRE TO COLOMBIA VIA PANAMA AND LIMA, PERU. UNDOUBTEDLY A UNIQUE USE.

The Panama "De Ultramar" handstamp is very rare and is seldom found used on cover. The interesting route via Lima was likely employed due to the infrequency of southbound ships stopping at Buenaventura from Panama. It was probably deemed faster to catch a northbound coastal ship from Lima that would call at Buenaventura.

Ex Campbell. With 2014 Moorhouse certificate. .... E. 2,000-3,000



1633

- 1633 ☒ **United States, 1861, 3c Rose, 10c Yellow Green (65, 68).** 3c single with corner torn off, 10c horizontal pair, cancelled by ovals, "Weaverville Cal. Apr. 18" (1868) circular datestamp on cover to **Newcastle, New South Wales**, from the Richardson correspondence, "12" cents credit handstamp, "Panama MY 17 68" transit datestamp, faint Sydney transit and arrival backstamps, cover tear on back, minor edge faults

FINE. A RARE AND UNUSUAL ROUTE FROM CALIFORNIA TO NEW SOUTH WALES VIA PANAMA.

This cover overpaid by 1c the 22c rate to New South Wales by American Packet to Panama, then by British Packet to Australasia (with 12c credited to Great Britain). The PMSS *Golden Age* carried it from San Francisco to Panama on April 20, 1868. It then sailed by British steamer *Rakaia* from Panama on May 24. This cover originates from a group of nine covers addressed to Martin Richardson at Newcastle, New South Wales, which came to light in 1981 and were sold through Christie's Robson Lowe in New York. .... E. 1,500-2,000



1634

- 1634 ☒ **United States, 1869, 2c Brown, 3c Ultramarine (113, 114).** Horizontal pair of 3c, used with four singles **15c Black, F. Grill (97)**, tied by cork cancels, "Portchester N.Y. Aug. 31" circular datestamp on cover to **Lima, Peru**, Davis correspondence, 1869 Panama transit circular datestamp, red "24" credit also ties 2c, receiving backstamp, two 15c barely affected from placement near edge of cover

VERY FINE. A COLORFUL AND SCARCE FRANKING TO PAY DOUBLE THE 34-CENT RATE BY AMERICAN PACKET TO PANAMA AND THEN TO DESTINATION VIA BRITISH PACKET.

This rate was in effect from October 1867 to March 1870. Ex Foote. With 2014 Moorhouse certificate. .... E. 3,000-4,000



- 1635 ☒ **Via Panama, United States Balance.** Sixteen covers, some neatly written up on exhibit pages, eight with 1851 or 1857 Issue stamps, most going westbound to San Francisco, one to Hawaii, two with New York Ocean Mail circular datestamps with integral grid, plus seven stampless from 1854-67 going from either San Francisco or San Diego to France via Panama and New York, few in slightly mixed condition, mostly Fine or better .....  
 .....(Website PDF) E. 1,500-2,000

## OCEANIA

(Arranged alphabetically by country)



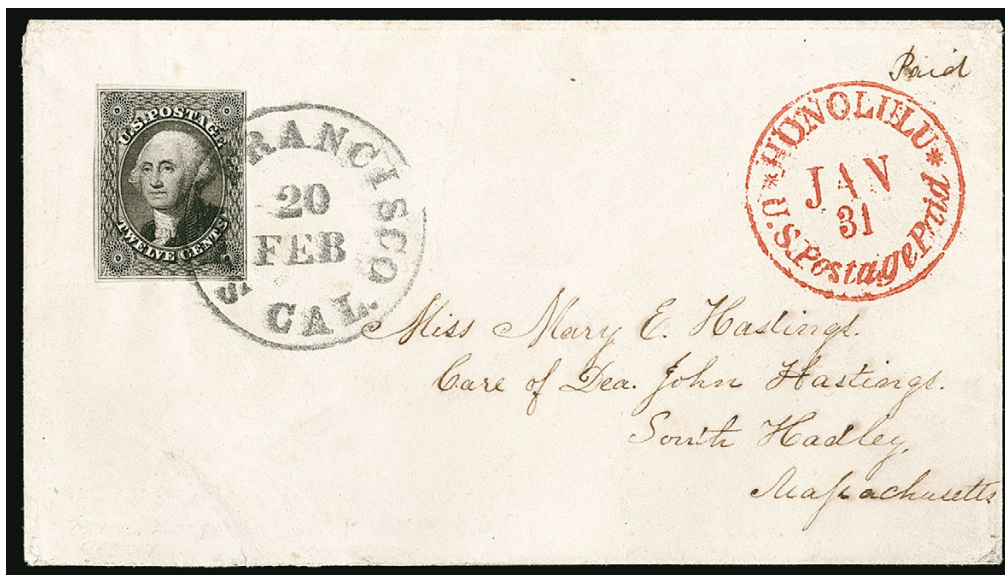
1636

- 1636 ☒ **(Australia) New South Wales, 1852-55, 3p Green (17; SG 66).** Margins to just touching, tied by barred oval cancel on 1854 folded letter **to London, England**, sent from Sydney with bold "Sydney, New S. Wales MY 10 1854" crowned datestamp on reverse, manuscript "*per Golden Age via Panama*" endorsement along top, "2/-" rating, London Jul. 18 arrival backstamp, few splits along folds

VERY FINE EXAMPLE OF THE FIRST TRANS-PACIFIC STEAMSHIP ABOARD THE S.S. *GOLDEN AGE*.

The S.S. *Golden Age* departed Melbourne on May 5 and Sydney on May 11. After calling in Tahiti, she arrived in Panama on Jun. 6. The route was considered a financial disaster due to the high price of coal and was not repeated again until 1866. The *Golden Age* was eventually sold to the Pacific Mail Steamship company.

With 2014 Moorhouse certificate. .... E. 1,500-2,000



1637

- 1637 ✉ **Hawaii, 1856 "Honolulu \* U.S. Postage Paid \* Jan 31"**. Perfect strike in red on 1856 cover to Mary E. Hastings in South Hadley Mass., U.S. 1851 12c Black (17) with full margins to just touching outer frameline, **Position 73L1 showing double recut**, tied by bold "San Francisco Cal. 20 Feb." circular datestamp, cover with couple expertly sealed edge tears at bottom and lightly cleaned

VERY FINE APPEARANCE. A HANDSOME COVER WITH THE 12-CENT 1851 ISSUE USED FROM HAWAII, PAYING THE 10-CENT POSTAGE AND 2-CENT SHIP CAPTAIN'S FEE.

Carried on the American schooner *L.P. Foster*, which departed Honolulu February 2 and arrived in San Francisco on February 19. Then carried on the *Sonora* for Panama, arriving March 4 and crossed the isthmus before sailing on the *George Law*, arriving in New York on March 15.

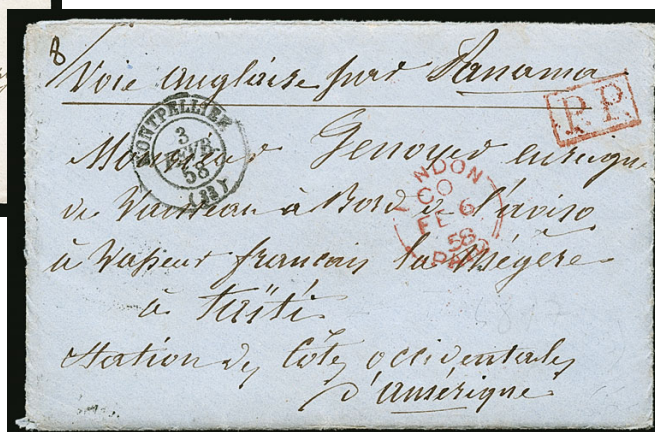
Ex Knapp, Eno, Haas and Grunin. Signed Ashbrook. With 2015 P.F. certificate .....  
..... E. 3,000-4,000



1638EX



1639



1640

- 1638 ☒ **New Zealand, 1864-71, 6p Red Brown (36; SG 122).** Two covers, first with Dunedin Jan. 4, 1867 circular datestamp on blue cover to Farnborough, England, cover with light bleach spots, second with Nelson Apr. 6, 1868 circular datestamp on cover to London, cover with some toned spots, both with "via Panama" endorsement and London circular datestamps, Fine pair.....(Photo Ex) E. 400-500
- 1639 ☒ **Tahiti, 1861 Cover from Papeete to France.** Bold strike of "Papeiti, Taiti 17 Aout 1861" double-circle datestamp on cover to Rochefort, France, boxed "PD" handstamp and Panama Oct. 22 three-line datestamp applied in transit, boxed "GB 2f87 5c/10" accountancy marking, London, Calais and Paris transit backstamps, rated "12" decimes due, Very Fine and rare route via Panama, this is one of the earliest examples of the 2nd Papeete circular datestamp, ex Eastgate, with 2017 Moorhouse certificate E. 1,000-1,500

## EUROPE

(Arranged alphabetically by country)

- 1640 ☒ **1858 France to Tahiti.** Small cover with "Montpellier 3 Fevb. 58" double-circle datestamp and addressed to "a Bord de l'aviso a vapeur francais La Megere a Taiti, Station du cote occidentale d'Amerique," manuscript "voie Anglaise pour Panama" directive at top, red boxed "PP", Paris and London transit datestamps, including **original enclosure**, Very Fine, one of the earliest recorded French covers to Tahiti, ex Eastgate, with 2017 Moorhouse certificate..... E. 300-400



1641



1642



1643

- 1641 ☒ **France, 1862, 80c Rose on Pinkish (28; Yvert 24).** Horizontal strip of three, tied by dotted star cancel with "Paris 15 Sept. 64" double-circle datestamp on folded cover **to Guatemala**, manuscript "Par l'Angleterre, via Panama" directive at top, red boxed "PP" and "franco" straightline handstamp, London and Panama double-arc transit datestamps, Very Fine and attractive use ..... E. 300-400
- 1642 ☒ **France, 1872, 80c Rose on Pinkish, Larger Numerals (63; Yvert 57).** Horizontal strip of three, used with 5c Yellow Green on Pale Blue and 15c Bister on Yellowish (53, 56; Yvert 53, 55), all tied by dotted diamonds cancels with 1874 Bordeaux double-circle datestamp on folded letter **to Santa Ana, Salvador**, manuscript "via Southampton and Panama" directive, red boxed "PP", Calais and London transit datestamps, 5c with corner damage, vertical file fold affecting 15c, otherwise Fine and rare destination, ex Campbell, signed Calves ..... E. 200-300
- 1643 ☒ **Great Britain, 1859, "VIA PANAMA".** Bold and clear straightline handstamp on 1859 folded letter from London with red "Lombard Street, Paid MY 16 59" circular datestamp **to Cobija, Bolivia**, Panama Jul. 10 double-arc datestamp struck in transit, Very Fine, a very early cover to Bolivia, this Panama marking was applied in London by Murrieta & Sons..... E. 300-400





1644



1645

- 1644 ☒ **Spain, 1855, 2r Reddish Purple on Blue (39).** Horizontal pair, large balanced margins, cancelled by perfectly struck "Vergara 13 DIC 59" double-circle datestamp on folded letter to **Sucre, Bolivia**, "Lamar" straightline handstamp indicating ship, London and Panama double-arc transit datestamps, Extremely Fine ..... E. 300-400
- 1645 ☒ **Switzerland, 1855, 40r Yellow Green (29; Zumstein 26C).** Used with 15r Dark Rose and 20r Dark Orange (38-39; Zumstein 24G-25G), two 20r singles, margins to touching, all tied by "Aarau 28 Dec. 58" circular datestamps on folded letter to **Valparaiso, Chile**, manuscript "Per Steamer via Panama" directive at top, "PP" handstamp, Basel, St. Louis, Calais and London transit datestamps, cover with minor bleach and toned spots, one just affecting 40r, otherwise Fine and scarce franking to an unusual destination, with 1888 Rellstab certificate ..... E. 750-1,000
- 1646 ☒ **Via Panama, Worldwide Balance.** 39 covers, many of which are neatly written up on exhibit pages, both stampless and stamped, with twelve covers from Central and South America incl. Colombia, Ecuador, Cuba, Chile, Guatemala, etc., most to New York or Europe, 19 from Great Britain and Channel Islands to Central or South America, other eight are from Europe incl. France, Italy or Germany, quite a few attractive frankings, some mixed condition but mostly Fine-Very Fine .....(Website PDF) E. 3,000-4,000

## THE OVERLAND ROUTE



1647

- 1647 ☒ **United States, 1859 Overland via Los Angeles.** Clear “Chico Cal. Oct. 28” circular date-stamp on 1859 cover with **illustrated four-horse stagecoach design** and “Overland via Los Angeles U.S. Mail” imprint, addressed to **Paris, France**, manuscript “Paid 15 cents” at top right, New York Paid Nov. 26 credit datestamp, Paris arrival backstamp, slightly rough opening at top and missing backflap

FINE AND RARE ILLUSTRATED BUTTERFIELD STAGECOACH COVER CARRIED OVER THE SOUTHERN ROUTE TO PARIS, FRANCE.

The inscription “Oct. 31, 8am” at top was likely written by a Butterfield agent as this cover departed that day from San Francisco. The 15c rate was 3c for U.S. postage, 6c U.S. ship and 6c French ship (2c British transit) ..... E. 4,000-5,000





1648

- 1648 ☒ **United States, 1860, 5c Brown, Ty. II (30A).** Positions 68-70R2, horizontal strip of three with part of **captured imprint** at upper right, tied by "San Francisco Cal. Jul. 1, 1861" circular date stamps on cover **to Dordogne, France**, endorsed "By overland mail" at upper right, red "New York Paid 12 Jul. 23" credit date stamp, appropriate transits, stamps also tied by red boxed "P.D." handstamp, some edgewear

VERY FINE. AN EXTREMELY RARE COVER SENT BY THE CENTRAL ROUTE VIA SALT LAKE CITY ON THE FIRST DAY OF THE NEW DAILY OVERLAND MAIL SERVICE. ESPECIALLY DESIRABLE WITH THIS FRANKING, THE IMPRINT AND THE FOREIGN DESTINATION.

On March 12, 1861, service on the Southern Overland Mail Route (the Butterfield route) was ordered discontinued due to disruptions caused by the Civil War. The first daily stages on the new central route left St. Joseph and Placerville on July 1, 1861 (the same day the government contract for the Pony Express commenced). Both coaches reached their destinations on July 18, a savings of approximately eight days over the old route. ..

..... E. 3,000-4,000

END OF SALE — THANK YOU

The  
**ALFREDO FROHLICH**  
 Collection

The Evolution of Postal Systems in  
**PANAMA**  
 1777 to 1881

## EXHIBITION AWARDS

Date	Show	Location	Award
9/21/12	EXPOAFE	Quito, Ecuador	Large Gold
2/1/13	Sarasota	Sarasota, FL	Gold
9/6/13	EXFILBO	Bogota, Colombia	Large Gold
9/19/13	ABPS AUTUMN	London, England	Large Gold
12/7/13	FLOREX	Orlando, FL	Gold
4/25/14	WESTPEX	San Francisco, CA	Gold
5/2/14	Boxborough	Boston, MA	Gold
6/9/14	NAPEX	Washington, DC	Gold, Grand Award
8/12/14	PHILAKOREA	Seoul, Korea	Large Gold (FIP)
8/29/14	BALPEX	Baltimore, MD	Gold, Grand Award
9/29/15	Ecuador	Quito, Ecuador	Grand Prix
11/7/15	EXFIME	Medellin, Colombia	Grand Prix
12/4/15	FLOREX	Orlando, FL	Gold, Grand Award
5/28/16	NEW YORK 2016	New York, NY	Large Gold (FIP)
9/18/16	MILCOPEX	Milwaukee, WI	Gold, Grand Award
10/21/16	PHILATAIPEI	Taipei, Taiwan	Large Gold (FIP)
9/1/17	BALPEX	Baltimore, MD	Gold, Grand Award



# Live Internet Bidding at Siegel Auctions

## REGISTERED BIDDERS MAY BID IN THIS SALE USING LIVE INTERNET BIDDING

This step-by-step guide will instruct you how to register, set your browser and use the bidding interface.

Start by following the simple steps to become a registered Live Internet Bidder.

Once you have been approved for bidding, you can listen to the auction and place bids with the click of a mouse.

### Registering with STAMP AUCTION NETWORK & SIEGEL AUCTION GALLERIES

Live Internet Bidding is managed by Stamp Auction Network (SAN).

To bid, you must be registered and approved by both SAN and Siegel.

To decide what you need to do, choose the description below that best fits you.



**I've already registered with SAN and have been approved by Siegel for internet bidding**

**I'm a Siegel client, but I'm not registered with SAN**

Go to [stampauctionnetwork.com/siegel](http://stampauctionnetwork.com/siegel) and click on "Register" at the top. Check the box for Robert A. Siegel Auction Galleries (under "R") and submit the form, indicating you are a Siegel client. Once registered at SAN, you're ready for internet bidding.

**I've bid through SAN before, but this is the first time I've bid in a Siegel sale**

Then you just need to be approved by Siegel. Go to [stampauctionnetwork.com/siegel](http://stampauctionnetwork.com/siegel) and click on "Update Registration" at the top. Your SAN account information will be sent to us for approval (you might be asked for other trade references). Once approved by Siegel for bidding, you're ready for internet bidding.

**I've never bid with Siegel, nor registered with SAN**

Go to [stampauctionnetwork.com/siegel](http://stampauctionnetwork.com/siegel) and click on "Register" at the top. Check the box for Robert A. Siegel Auction Galleries (under "R") and submit the form with your trade references (please, no family members or credit card companies as references). Once registered at SAN and approved by Siegel for bidding, you're ready for internet bidding.

Live Internet Bidding works by allowing registered bidders to observe and place bids.

Live Internet Bidding will work with any browser on both PC and Mac operating systems.

Before bidding by internet for the first time, we recommend finding a sale in progress and listening to the public broadcast or logging in as a registered bidder. This will help you develop a feel for the sale tempo and bidding interface.

### Log on to the auction at [stampauctionnetwork.com](http://stampauctionnetwork.com)

When you're logged on as a Live Internet Bidder, the bidding interface shows a photo and description of the lot, the current bid (and your bidding status), options for placing competitive bids and buttons with bid increments.

- After you click on a bid amount, the auctioneer is immediately notified of your bid.
- Retracting a bid is usually not acceptable, so please bid carefully.
- If you bid and then decide to stop, the "Pass" button will tell the auctioneer you are no longer bidding.
- You can send messages to the auctioneer (for example, a request for extension).
- You can track prior realizations from the bidding screen.

**Robert A. Siegel Auction Galleries, Inc.'s Sale 1185**

Closing on June 27, 2018. [Listen to the Auction.](#)  
Contact us by Phone at (212) 753-6421, [Contact us Via eMail.](#)

F11 (if using Internet Explorer) toggles full

Lot and Description	Bidding
 United States Inverted Jenny Postage Positions 15 and 6 <b>Lot 91.</b> 24c Carmine Rose & Blue, Center Inverted (C3a). Position 15, the fifth stamp from the left in the second row of the sheet, original gum, deep rich colors, tiny thin spot just below the plane, faint traces of purple ink above the bottom left "2" (image)	<div>Bid 280000</div> <div>Bid 290000</div> <div>Bid 300000</div> <div>Bid 310000</div> <div>Bid 320000</div> <div>Bid 330000</div> <div>Send a Message to the Auctioneer</div>
\$ 450,000.00 <b>Sold for \$ 270,000.00</b> <b>Your Bid \$ 0.00</b>	

**"System Down" or "Lost Connection" events do occasionally happen.**

**If you have any problems with Live Internet Bidding please call 212-753-6421 for immediate assistance.**



# BIDS

Use this form to submit absentee bids  
or to confirm telephone bids

# Sale 1193

December 4, 2018

PADDLE #

# 1

Please provide the following information:

NAME .....

ADDRESS .....

CITY/STATE/ZIP .....

PHONE ..... MOBILE .....

EMAIL .....

# 2

Have you purchased from us in the past 5 years? ☐ Yes (please go to Section 3)  
☐ No (references required below)

STAMP FIRM ..... PHONE .....

STAMP FIRM ..... PHONE .....

Please submit references at least **2 business days** before the sale. Bids from new clients will not be executed if satisfactory references are not received in time to be contacted.

# 3

- Enter the lot number and your corresponding maximum bid in the space below
- Use whole dollar amounts and bid according to the increments (see back of form)
- Bids do not include the **18% Buyer's Premium**, taxes, duty or shipping charges
- Absentee bids will advance at one increment over the next highest competing bid
- "Plus", "Break Tie" or "Buy" bids will not be executed
- Indicate any "Or" bids between lot number/bid entries and bracket your choices
- If you wish to limit the total amount of your bids, follow the instructions below

Lot #	Bid \$	Lot #	Bid \$	Lot #	Bid \$

☐ **Limit Bids:** Check this box if you wish to limit the total hammer price of your bids (excluding 18% Buyer's Premium, taxes, duty and shipping costs). Your bids will be executed until your bidding limit has been reached. The total amount you wish to bid is \$ .....

# 4

By signing this form, you agree to all of the Conditions of Sale printed in the sale catalogue (printed and digital), including but not limited to a) payment in the manner demanded by the Siegel firm, and b) payment of the 18% Buyer's Premium, any sales tax or customs duty, shipping costs, late charges and

other prescribed charges. You agree that your bids will be executed as a courtesy by Siegel, but you waive the right to make any claim against Siegel or its employees arising from these bids or your participation in the sale. You agree to honor all bids as submitted, regardless of any errors or omissions.

SIGNED ..... DATE .....

Mail the signed form to Siegel Bid Department, 6 West 48th St., 9th Floor, New York, NY 10036  
or email to [stamps@siegelauctions.com](mailto:stamps@siegelauctions.com)  
or fax to 212-753-6429





# Additional Bids

## Sale 1193

December 4, 2018

PADDLE #

Lot #	Bid \$	Lot #	Bid \$	Lot #	Bid \$

## Shipping & Insurance

We will be pleased to arrange for shipping and transit insurance for purchases in this sale, except for lots marked or announced as "floor sale only." To expedite billing and delivery to hundreds of buyers in each sale, we use standard charges for postage and insurance under our policy. These charges are based on the package weight and mailing requirements, according to the schedule shown here. Our standard charges do not include a fee for our services, and they may be slightly more or less than the actual postage or Fedex fee. We ask all buyers to remit the invoiced amount for shipping and insurance.

Transit insurance is provided in all cases, except when the buyer has furnished us with documentation that insurance is effective under the buyer's own policy.

There will be no added insurance charge for shipments of less than \$75,000 value. Shipments valued in excess of \$75,000 may require supplemental insurance and/or special courier service, the estimated cost of which will be furnished to the buyer prior to shipment. If the buyer refuses to pay the estimated charges or furnish proof of self-insured coverage, the buyer will be responsible for picking up the lots at our office and any resulting sales tax.

### Standard Shipping Charges

Weight Class	Shipping Method	Charge
Up to 2 lbs.	Fedex Envelope	\$25
Over 2 lbs.	Fedex Box	\$35 - \$50*
Outside US	Fedex	\$50 - \$100**
Bulky Lots	Fedex Ground or Express	By weight

\* Up to \$75,000 value and up to 5 lbs; additional charge may apply to packages exceeding limits

\*\* Buyers outside United States are liable for any applicable customs duty and clearance charges. An accurate declaration of contents and value will be made on all packages and import/export documents. **Siegel may refuse to ship lots to certain countries with a high risk factor.**

2/2015

## Bidding Increments

The auctioneer may regulate the bidding at his discretion. However, to assist absentee bidders in establishing their maximum bids, the increments shown here will be used in most cases. We recommend that written bids conform to these increments—bids that do not will be reduced accordingly.

Bid	Increment	Bid	Increment
Up to \$200	\$10	\$7,000-20,000	\$500
\$200-500	\$25	\$20,000-30,000	\$1,000
\$500-1,000	\$50	\$30,000-70,000	\$2,500
\$1,000-3,000	\$100	\$70,000-140,000	\$5,000
\$3,000-7,000	\$250	\$140,000-300,000	\$10,000

Robert A. Siegel Auction Galleries, Inc.  
Prices Realized for

Sale 1193 12/4/2018 The Alfredo Frohlich Collection: The Evolution of Postal Systems in Panama 1777-1881

Lot#	Realized	Lot#	Realized	Lot#	Realized	Lot#	Realized
1501	7,500	1557	1,300	1598	350	1641	350
1502	700	1558	650	1599	1,000	1642	300
1503	1,900	1559	425	1600	1,500	1643	800
1504	1,400	1560	2,000	1601	1,700	1644	350
1505	2,200	1561	2,200	1602	1,200	1645	2,600
1506	2,100	1563	1,000	1603	1,400	1646	4,250
1507	550	1564	1,300	1604	550		
1508	1,400	1565	550	1608	180		
1509	3,250	1566	400	1609	2,000		
1510	150	1567	1,400	1610	650		
1511	150	1568	600	1611	900		
1515	600	1569	3,750	1612	600		
1516	225	1570	6,000	1613	550		
1518	1,000	1573	950	1614	700		
1521	350	1574	1,200	1615	800		
1522	900	1575	200	1616	1,000		
1523	600	1576	800	1617	425		
1524	700	1577	275	1618	300		
1528	500	1578	250	1619	1,800		
1534	450	1579	325	1620	2,600		
1538	550	1580	500	1621	1,300		
1539	400	1581	2,100	1622	5,000		
1541	6,500	1582	300	1623	7,000		
1542	650	1583	180	1624	20,000		
1543	800	1584	1,000	1625	2,300		
1544	475	1585	700	1626	225		
1545	900	1586	450	1627	225		
1546	700	1587	500	1628	225		
1547	1,300	1588	700	1629	250		
1548	1,400	1589	425	1630	300		
1551	325	1590	120	1632	2,300		
1552	325	1591	475	1634	4,250		
1553	275	1592	1,300	1636	2,600		
1554	650	1594	450	1637	2,500		
1555	425	1596	550	1639	1,100		
1556	200	1597	2,900	1640	375		